



HEALTH QUARTERLY STATEMENT

AS OF SEPTEMBER 30, 2025
OF THE CONDITION AND AFFAIRS OF THE

Superior Dental Care, Inc.

NAIC Group Code 0730 (Current) 0730 (Prior) NAIC Company Code 96280 Employer's ID Number 31-1119867

Organized under the Laws of Ohio, State of Domicile or Port of Entry OH

Country of Domicile United States of America

Licensed as business type: Dental Service Corporation

Is HMO Federally Qualified? Yes [] No [X]

Incorporated/Organized 11/30/1984 Commenced Business 01/01/1986

Statutory Home Office 100 American Road (Street and Number) Cleveland, OH, US 44144 (City or Town, State, Country and Zip Code)

Main Administrative Office 100 American Road (Street and Number) Cleveland, OH, US 44144 (City or Town, State, Country and Zip Code) 216-687-7000 (Area Code) (Telephone Number)

Mail Address 100 American Road (Street and Number or P.O. Box) Cleveland, OH, US 44144 (City or Town, State, Country and Zip Code)

Primary Location of Books and Records 100 American Road (Street and Number) Cleveland, OH, US 44144 (City or Town, State, Country and Zip Code) 216-687-7000 (Area Code) (Telephone Number)

Internet Website Address www.SuperiorDental.com

Statutory Statement Contact Debra Gibson (Name) 216-687-2860 (Area Code) (Telephone Number) Debra.Gibson@medmutual.com (E-mail Address) 216-687-4073 (FAX Number)

OFFICERS

CEO Anthony Michael Helton

Treasurer James Edward McNutt

Secretary Patricia Bunn Decensi

President Andrea Marie Hogben

OTHER

DIRECTORS OR TRUSTEES

Andrea Marie Hogben

Anthony Michael Helton

James Edward McNutt

Patricia Bunn Decensi

State of Ohio

County of Cuyahoga

SS:

The officers of this reporting entity being duly sworn, each depose and say that they are the described officers of said reporting entity, and that on the reporting period stated above, all of the herein described assets were the absolute property of the said reporting entity, free and clear from any liens or claims thereon, except as herein stated, and that this statement, together with related exhibits, schedules and explanations therein contained, annexed or referred to, is a full and true statement of all the assets and liabilities and of the condition and affairs of the said reporting entity as of the reporting period stated above, and of its income and deductions therefrom for the period ended, and have been completed in accordance with the NAIC Annual Statement Instructions and Accounting Practices and Procedures manual except to the extent that: (1) state law may differ; or, (2) that state rules or regulations require differences in reporting not related to accounting practices and procedures, according to the best of their information, knowledge and belief, respectively. Furthermore, the scope of this attestation by the described officers also includes the related corresponding electronic filing with the NAIC, when required, that is an exact copy (except for formatting differences due to electronic filing) of the enclosed statement. The electronic filing may be requested by various regulators in lieu of or in addition to the enclosed statement.

Anthony Michael Helton
CEO

Patricia Bunn Decensi
Secretary

James Edward McNutt
Treasurer

Subscribed and sworn to before me this day of

a. Is this an original filing? Yes [X] No []

b. If no,

1. State the amendment number.....

2. Date filed11/15/2025

3. Number of pages attached.....

ASSETS

	Current Statement Date			4 December 31 Prior Year Net Admitted Assets
	1 Assets	2 Nonadmitted Assets	3 Net Admitted Assets (Cols. 1 - 2)	
1. Bonds	12,243,242		12,243,242	9,727,766
2. Stocks:				
2.1 Preferred stocks			0	0
2.2 Common stocks			0	0
3. Mortgage loans on real estate:				
3.1 First liens			0	0
3.2 Other than first liens.....			0	0
4. Real estate:				
4.1 Properties occupied by the company (less \$ encumbrances)	873,287		873,287	905,740
4.2 Properties held for the production of income (less \$ encumbrances)			0	0
4.3 Properties held for sale (less \$ encumbrances)			0	0
5. Cash (\$ 236,918), cash equivalents (\$ 9,132,374) and short-term investments (\$)	9,369,292		9,369,292	11,615,917
6. Contract loans (including \$ premium notes)			0	0
7. Derivatives			0	0
8. Other invested assets			0	0
9. Receivables for securities			0	0
10. Securities lending reinvested collateral assets			0	0
11. Aggregate write-ins for invested assets	0	0	0	0
12. Subtotals, cash and invested assets (Lines 1 to 11)	22,485,821	0	22,485,821	22,249,424
13. Title plants less \$ charged off (for Title insurers only)			0	0
14. Investment income due and accrued	164,323		164,323	127,092
15. Premiums and considerations:				
15.1 Uncollected premiums and agents' balances in the course of collection	1,688,297		1,688,297	2,089,675
15.2 Deferred premiums, agents' balances and installments booked but deferred and not yet due (including \$ earned but unbilled premiums)			0	0
15.3 Accrued retrospective premiums (\$) and contracts subject to redetermination (\$)			0	0
16. Reinsurance:				
16.1 Amounts recoverable from reinsurers			0	0
16.2 Funds held by or deposited with reinsured companies			0	0
16.3 Other amounts receivable under reinsurance contracts			0	0
17. Amounts receivable relating to uninsured plans			0	0
18.1 Current federal and foreign income tax recoverable and interest thereon			0	0
18.2 Net deferred tax asset			0	0
19. Guaranty funds receivable or on deposit			0	0
20. Electronic data processing equipment and software			0	0
21. Furniture and equipment, including health care delivery assets (\$)			0	0
22. Net adjustment in assets and liabilities due to foreign exchange rates			0	0
23. Receivables from parent, subsidiaries and affiliates	343,602		343,602	910,352
24. Health care (\$) and other amounts receivable			0	0
25. Aggregate write-ins for other-than-invested assets	10,380	7,687	2,693	1,208
26. Total assets excluding Separate Accounts, Segregated Accounts and Protected Cell Accounts (Lines 12 to 25)	24,692,423	7,687	24,684,736	25,377,751
27. From Separate Accounts, Segregated Accounts and Protected Cell Accounts			0	0
28. Total (Lines 26 and 27)	24,692,423	7,687	24,684,736	25,377,751
DETAILS OF WRITE-INS				
1101.				
1102.				
1103.				
1198. Summary of remaining write-ins for Line 11 from overflow page	0	0	0	0
1199. Totals (Lines 1101 through 1103 plus 1198)(Line 11 above)	0	0	0	0
2501. Prepaid Expenses	7,687	7,687	0	0
2502. Other Receivables	0	0	0	0
2503. Other Assets	2,693	0	2,693	1,208
2598. Summary of remaining write-ins for Line 25 from overflow page	0	0	0	0
2599. Totals (Lines 2501 through 2503 plus 2598)(Line 25 above)	10,380	7,687	2,693	1,208

LIABILITIES, CAPITAL AND SURPLUS

	Current Period			Prior Year
	1 Covered	2 Uncovered	3 Total	4 Total
1. Claims unpaid (less \$ reinsurance ceded)	4,240,000		4,240,000	4,070,000
2. Accrued medical incentive pool and bonus amounts			0	0
3. Unpaid claims adjustment expenses	110,469		110,469	110,469
4. Aggregate health policy reserves, including the liability of \$0 for medical loss ratio rebate per the Public Health Service Act	1,637,000		1,637,000	1,637,000
5. Aggregate life policy reserves			0	0
6. Property/casualty unearned premium reserve			0	0
7. Aggregate health claim reserves			0	0
8. Premiums received in advance	1,491,193		1,491,193	1,206,889
9. General expenses due or accrued	1,836,857		1,836,857	1,552,736
10.1 Current federal and foreign income tax payable and interest thereon (including \$ on realized gains (losses))			0	556,831
10.2 Net deferred tax liability			0	0
11. Ceded reinsurance premiums payable			0	0
12. Amounts withheld or retained for the account of others.....			0	0
13. Remittances and items not allocated			0	0
14. Borrowed money (including \$ current) and interest thereon \$ (including \$ current)			0	0
15. Amounts due to parent, subsidiaries and affiliates			0	0
16. Derivatives			0	0
17. Payable for securities			0	0
18. Payable for securities lending			0	0
19. Funds held under reinsurance treaties (with \$ authorized reinsurers, \$ unauthorized reinsurers and \$ certified reinsurers).....			0	0
20. Reinsurance in unauthorized and certified (\$) companies			0	0
21. Net adjustments in assets and liabilities due to foreign exchange rates			0	0
22. Liability for amounts held under uninsured plans			0	0
23. Aggregate write-ins for other liabilities (including \$ 1,498,991 current)	1,533,991	0	1,533,991	272,394
24. Total liabilities (Lines 1 to 23)	10,849,509	0	10,849,509	9,406,319
25. Aggregate write-ins for special surplus funds	XXX	XXX	0	0
26. Common capital stock	XXX	XXX	500	500
27. Preferred capital stock	XXX	XXX		
28. Gross paid in and contributed surplus	XXX	XXX		
29. Surplus notes	XXX	XXX		
30. Aggregate write-ins for other-than-special surplus funds	XXX	XXX	0	0
31. Unassigned funds (surplus)	XXX	XXX	13,834,727	15,970,932
32. Less treasury stock, at cost:				
32.1 shares common (value included in Line 26 \$)	XXX	XXX		
32.2 shares preferred (value included in Line 27 \$)	XXX	XXX		
33. Total capital and surplus (Lines 25 to 31 minus Line 32)	XXX	XXX	13,835,227	15,971,432
34. Total liabilities, capital and surplus (Lines 24 and 33)	XXX	XXX	24,684,736	25,377,751
DETAILS OF WRITE-INS				
2301. Unclaimed Funds	203,835		203,835	237,364
2302. Other Liabilities	1,295,156		1,295,156	30
2303. Guaranty Fund Liability	35,000		35,000	35,000
2398. Summary of remaining write-ins for Line 23 from overflow page	0	0	0	0
2399. Totals (Lines 2301 through 2303 plus 2398)(Line 23 above)	1,533,991	0	1,533,991	272,394
2501.	XXX	XXX		
2502.	XXX	XXX		
2503.	XXX	XXX		
2598. Summary of remaining write-ins for Line 25 from overflow page	XXX	XXX	0	0
2599. Totals (Lines 2501 through 2503 plus 2598)(Line 25 above)	XXX	XXX	0	0
3001.	XXX	XXX		
3002.	XXX	XXX		
3003.	XXX	XXX		
3098. Summary of remaining write-ins for Line 30 from overflow page	XXX	XXX	0	0
3099. Totals (Lines 3001 through 3003 plus 3098)(Line 30 above)	XXX	XXX	0	0

STATEMENT OF REVENUE AND EXPENSES

	Current Year To Date		Prior Year To Date	Prior Year Ended December 31
	1 Uncovered	2 Total	3 Total	4 Total
1. Member Months	XXX	2,012,989	1,930,981	2,571,250
2. Net premium income (including \$ non-health premium income).....	XXX	50,524,466	46,883,710	62,521,768
3. Change in unearned premium reserves and reserve for rate credits.....	XXX			0
4. Fee-for-service (net of \$ medical expenses)	XXX			0
5. Risk revenue	XXX			0
6. Aggregate write-ins for other health care related revenues	XXX	0	0	0
7. Aggregate write-ins for other non-health revenues	XXX	0	0	0
8. Total revenues (Lines 2 to 7)	XXX	50,524,466	46,883,710	62,521,768
Hospital and Medical:				
9. Hospital/medical benefits				0
10. Other professional services		43,260,014	40,905,089	53,670,314
11. Outside referrals				0
12. Emergency room and out-of-area				0
13. Prescription drugs				0
14. Aggregate write-ins for other hospital and medical	0	0	0	0
15. Incentive pool, withhold adjustments and bonus amounts				0
16. Subtotal (Lines 9 to 15)	0	43,260,014	40,905,089	53,670,314
Less:				
17. Net reinsurance recoveries				0
18. Total hospital and medical (Lines 16 minus 17)	0	43,260,014	40,905,089	53,670,314
19. Non-health claims (net)				
20. Claims adjustment expenses, including \$ 1,272,006 cost containment expenses		2,268,139	2,206,757	1,576,274
21. General administrative expenses		8,027,227	6,684,338	10,298,065
22. Increase in reserves for life and accident and health contracts (including \$ increase in reserves for life only) .			0	1,637,000
23. Total underwriting deductions (Lines 18 through 22).....	0	53,555,380	49,796,184	67,181,653
24. Net underwriting gain or (loss) (Lines 8 minus 23)	XXX	(3,030,914)	(2,912,474)	(4,659,885)
25. Net investment income earned		845,983	775,403	1,063,075
26. Net realized capital gains (losses) less capital gains tax of \$				0
27. Net investment gains (losses) (Lines 25 plus 26)	0	845,983	775,403	1,063,075
28. Net gain or (loss) from agents' or premium balances charged off [(amount recovered \$) (amount charged off \$)].....				
29. Aggregate write-ins for other income or expenses	0	36,982	19,699	27,919
30. Net income or (loss) after capital gains tax and before all other federal income taxes (Lines 24 plus 27 plus 28 plus 29)	XXX	(2,147,949)	(2,117,372)	(3,568,892)
31. Federal and foreign income taxes incurred	XXX	3	(416,251)	16,367
32. Net income (loss) (Lines 30 minus 31)	XXX	(2,147,952)	(1,701,121)	(3,585,259)
DETAILS OF WRITE-INS				
0601.	XXX			
0602.	XXX			
0603.	XXX			
0698. Summary of remaining write-ins for Line 6 from overflow page	XXX	0	0	0
0699. Totals (Lines 0601 through 0603 plus 0698)(Line 6 above)	XXX	0	0	0
0701.	XXX			
0702.	XXX			
0703.	XXX			
0798. Summary of remaining write-ins for Line 7 from overflow page	XXX	0	0	0
0799. Totals (Lines 0701 through 0703 plus 0798)(Line 7 above)	XXX	0	0	0
1401.				
1402.				
1403.				
1498. Summary of remaining write-ins for Line 14 from overflow page	0	0	0	0
1499. Totals (Lines 1401 through 1403 plus 1498)(Line 14 above)	0	0	0	0
2901. Other Income(Expense)		36,982	19,699	27,919
2902.				
2903.				
2998. Summary of remaining write-ins for Line 29 from overflow page	0	0	0	0
2999. Totals (Lines 2901 through 2903 plus 2998)(Line 29 above)	0	36,982	19,699	27,919

STATEMENT OF REVENUE AND EXPENSES (Continued)

	1 Current Year to Date	2 Prior Year to Date	3 Prior Year Ended December 31
CAPITAL AND SURPLUS ACCOUNT			
33. Capital and surplus prior reporting year.....	15,971,432	19,594,451	19,594,451
34. Net income or (loss) from Line 32	(2,147,952)	(1,701,121)	(3,585,259)
35. Change in valuation basis of aggregate policy and claim reserves			
36. Change in net unrealized capital gains (losses) less capital gains tax of \$			
37. Change in net unrealized foreign exchange capital gain or (loss)			
38. Change in net deferred income tax		36,710	(59,595)
39. Change in nonadmitted assets	11,746	(25,979)	21,835
40. Change in unauthorized and certified reinsurance	0	0	0
41. Change in treasury stock	0	0	0
42. Change in surplus notes	0	0	0
43. Cumulative effect of changes in accounting principles.....			
44. Capital Changes:			
44.1 Paid in			0
44.2 Transferred from surplus (Stock Dividend).....	0	0	0
44.3 Transferred to surplus.....			
45. Surplus adjustments:			
45.1 Paid in	0	0	0
45.2 Transferred to capital (Stock Dividend)			
45.3 Transferred from capital			
46. Dividends to stockholders			
47. Aggregate write-ins for gains or (losses) in surplus	0	0	0
48. Net change in capital & surplus (Lines 34 to 47)	(2,136,206)	(1,690,390)	(3,623,019)
49. Capital and surplus end of reporting period (Line 33 plus 48)	13,835,227	17,904,061	15,971,432
DETAILS OF WRITE-INS			
4701.			
4702.			
4703.			
4798. Summary of remaining write-ins for Line 47 from overflow page	0	0	0
4799. Totals (Lines 4701 through 4703 plus 4798)(Line 47 above)	0	0	0

CASH FLOW

	1 Current Year To Date	2 Prior Year To Date	3 Prior Year Ended December 31
Cash from Operations			
1. Premiums collected net of reinsurance	51,210,148	47,347,627	62,440,999
2. Net investment income	859,709	880,564	1,202,989
3. Miscellaneous income	0	0	0
4. Total (Lines 1 to 3)	52,069,857	48,228,191	63,643,988
5. Benefit and loss related payments	43,090,014	39,955,089	53,110,314
6. Net transfers to Separate Accounts, Segregated Accounts and Protected Cell Accounts			
7. Commissions, expenses paid and aggregate write-ins for deductions	9,940,506	8,506,603	11,049,444
8. Dividends paid to policyholders			
9. Federal and foreign income taxes paid (recovered) net of \$ tax on capital gains (losses)	556,834	0	0
10. Total (Lines 5 through 9)	53,587,354	48,461,691	64,159,758
11. Net cash from operations (Line 4 minus Line 10)	(1,517,497)	(233,500)	(515,770)
Cash from Investments			
12. Proceeds from investments sold, matured or repaid:			
12.1 Bonds	475,000	2,000,000	3,000,000
12.2 Stocks	0	0	0
12.3 Mortgage loans	0	0	0
12.4 Real estate	0	0	0
12.5 Other invested assets	0	0	0
12.6 Net gains or (losses) on cash, cash equivalents and short-term investments	0	0	0
12.7 Miscellaneous proceeds	0	0	0
12.8 Total investment proceeds (Lines 12.1 to 12.7)	475,000	2,000,000	3,000,000
13. Cost of investments acquired (long-term only):			
13.1 Bonds	3,010,284	1,428,420	2,451,506
13.2 Stocks	0	0	0
13.3 Mortgage loans	0	0	0
13.4 Real estate	0	0	0
13.5 Other invested assets	0	0	0
13.6 Miscellaneous applications	0	0	0
13.7 Total investments acquired (Lines 13.1 to 13.6)	3,010,284	1,428,420	2,451,506
14. Net increase/(decrease) in contract loans and premium notes	0	0	0
15. Net cash from investments (Line 12.8 minus Line 13.7 and Line 14)	(2,535,284)	571,580	548,494
Cash from Financing and Miscellaneous Sources			
16. Cash provided (applied):			
16.1 Surplus notes, capital notes	0	0	0
16.2 Capital and paid in surplus, less treasury stock	0	0	0
16.3 Borrowed funds	0	0	0
16.4 Net deposits on deposit-type contracts and other insurance liabilities	0	0	0
16.5 Dividends to stockholders	0	0	0
16.6 Other cash provided (applied)	1,806,155	(187,206)	(820,947)
17. Net cash from financing and miscellaneous sources (Line 16.1 through Line 16.4 minus Line 16.5 plus Line 16.6)	1,806,155	(187,206)	(820,947)
RECONCILIATION OF CASH, CASH EQUIVALENTS AND SHORT-TERM INVESTMENTS			
18. Net change in cash, cash equivalents and short-term investments (Line 11, plus Lines 15 and 17) .	(2,246,625)	150,874	(788,223)
19. Cash, cash equivalents and short-term investments:			
19.1 Beginning of year	11,615,917	12,404,140	12,404,140
19.2 End of period (Line 18 plus Line 19.1)	9,369,292	12,555,014	11,615,917

Note: Supplemental disclosures of cash flow information for non-cash transactions:

--	--	--	--

EXHIBIT OF PREMIUMS, ENROLLMENT AND UTILIZATION

	1	Comprehensive (Hospital & Medical)		4	5	6	7	8	9	10	11	12	13	14
		2	3											
	Total	Individual	Group	Medicare Supplement	Vision Only	Dental Only	Federal Employees Health Benefits Plan	Title XVIII Medicare	Title XIX Medicaid	Credit A&H	Disability Income	Long-Term Care	Other Health	Other Non-Health
Total Members at end of:														
1. Prior Year	212,720	0	0	0	0	212,720	0	0	0	0	0	0	0	0
2. First Quarter	224,232	0	0	0	0	224,232	0	0	0	0	0	0	0	0
3. Second Quarter	222,726	0	0	0	0	222,726	0	0	0	0	0	0	0	0
4. Third Quarter	224,186					224,186								
5. Current Year	0													
6. Current Year Member Months	2,012,989					2,012,989								
Total Member Ambulatory Encounters for Period:														
7 Physician	0													
8. Non-Physician	0													
9. Total	0	0	0	0	0	0	0	0	0	0	0	0	0	0
10. Hospital Patient Days Incurred	0													
11. Number of Inpatient Admissions	0													
12. Health Premiums Written (a)	50,524,466					50,524,466								
13. Life Premiums Direct	0													
14. Property/Casualty Premiums Written	0													
15. Health Premiums Earned.....	50,524,466					50,524,466								
16. Property/Casualty Premiums Earned	0													
17. Amount Paid for Provision of Health Care Services.....	43,090,014					43,090,014								
18. Amount Incurred for Provision of Health Care Services	43,260,014					43,260,014								

(a) For health premiums written: amount of Medicare Title XVIII exempt from state taxes or fees \$

CLAIMS UNPAID AND INCENTIVE POOL, WITHHOLD AND BONUS (Reported and Unreported)

oo

UNDERWRITING AND INVESTMENT EXHIBIT

ANALYSIS OF CLAIMS UNPAID - PRIOR YEAR - NET OF REINSURANCE

Line of Business	Claims Paid Year to Date		Liability End of Current Quarter		5 Claims Incurred in Prior Years (Columns 1 + 3)	6 Estimated Claim Reserve and Claim Liability December 31 of Prior Year
	1 On Claims Incurred Prior to January 1 of Current Year	2 On Claims Incurred During the Year	3 On Claims Unpaid Dec. 31 of Prior Year	4 On Claims Incurred During the Year		
1. Comprehensive (hospital and medical) individual					0	0
2. Comprehensive (hospital and medical) group					0	0
3. Medicare Supplement					0	0
4. Vision only					0	0
5. Dental only	3,093,021	39,996,993	68,961	4,171,039	3,161,982	4,070,000
6. Federal Employees Health Benefits Plan					0	0
7. Title XVIII - Medicare					0	0
8. Title XIX - Medicaid					0	0
9. Credit A&H					0	0
10. Disability Income					0	0
11. Long-term care					0	0
12. Other health					0	0
13. Health subtotal (Lines 1 to 12)	3,093,021	39,996,993	68,961	4,171,039	3,161,982	4,070,000
14. Health care receivables (a)					0	0
15. Other non-health					0	0
16. Medical incentive pools and bonus amounts					0	0
17. Totals (Lines 13 - 14 + 15 + 16)	3,093,021	39,996,993	68,961	4,171,039	3,161,982	4,070,000

(a) Excludes \$ loans or advances to providers not yet expensed.

NOTES TO FINANCIAL STATEMENTS

NOTE 1 Summary of Significant Accounting Policies and Going Concern

A. Accounting Practices

	SSAP #	F/S Page	F/S Line #	2025	2024
NET INCOME					
(1) State basis (Page 4, Line 32, Columns 2 & 4)	XXX	XXX	XXX	\$ (2,147,952)	\$ (3,585,259)
(2) State Prescribed Practices that are an increase/ (decrease) from NAIC SAP:					
(3) State Permitted Practices that are an increase/(decrease) from NAIC SAP:					
(4) NAIC SAP (1-2-3=4)	XXX	XXX	XXX	\$ (2,147,952)	\$ (3,585,259)
SURPLUS					
(5) State basis (Page 3, Line 33, Columns 3 & 4)	XXX	XXX	XXX	\$ 13,835,227	\$ 15,971,432
(6) State Prescribed Practices that are an increase/(decrease) from NAIC SAP:					
(7) State Permitted Practices that are an increase/(decrease) from NAIC SAP:					
(8) NAIC SAP (5-6-7=8)	XXX	XXX	XXX	\$ 13,835,227	\$ 15,971,432

B. Use of Estimates in the Preparation of the Financial Statements
No significant change

C. Accounting Policy
No significant change

D. Going Concern
Not Applicable

NOTE 2 Accounting Changes and Corrections of Errors
No significant change

NOTE 3 Business Combinations and Goodwill
Not Applicable

NOTE 4 Discontinued Operations
Not Applicable

NOTE 5 Investments

- A. Mortgage Loans, including Mezzanine Real Estate Loans
Not Applicable
- B. Debt Restructuring
Not Applicable
- C. Reverse Mortgages
Not Applicable
- D. Asset-Backed Securities
Not Applicable
- E. Dollar Repurchase Agreements and/or Securities Lending Transactions
Not Applicable
- F. Repurchase Agreements Transactions Accounted for as Secured Borrowing
Not Applicable
- G. Reverse Repurchase Agreements Transactions Accounted for as Secured Borrowing
Not Applicable
- H. Repurchase Agreements Transactions Accounted for as a Sale
Not Applicable
- I. Reverse Repurchase Agreements Transactions Accounted for as a Sale
Not Applicable
- J. Real Estate
On June 30, 2025, the Company entered into an agreement for the sale of certain real estate assets. The transaction did not qualify for sale accounting due to the Company's continuing involvement in the real estate assets in the form of a six month rent-free occupancy period and a twelve month lease extension and renewal option for a fixed monthly rental rate. As such, the transaction has been accounted for as a financing arrangement that did not result in any gain recognition. The underlying assets remain on the Company's statutory balance sheet and have not been derecognized. The proceeds received from the agreement have been recorded as a liability, not as revenue, with interest expense recognized over the rent-free occupancy period using an implied interest rate derived from the present value of expected lease payments. This treatment reflects the Company's continuing control over the asset and the lack of substantive transfer of risks and rewards of ownership. On October 1, 2025, we executed the lease extension through 12/31/2026 which will result in lease payments beginning January 2026, at which time the financing

NOTES TO FINANCIAL STATEMENTS

liability will be derecognized along with the assets and a gain recorded with the lease being accounted for under SSAP No. 22 - Leases.

K. Investments in Tax Credit Structures (tax credit investments)
Not Applicable

L. Restricted Assets

1. Restricted Assets (Including Pledged)

Restricted Asset Category	1 Total Gross (Admitted & Non- admitted) Restricted from Current Year	2 Total Gross (Admitted & Non- admitted) Restricted from Prior Year	3 Increase/ (Decrease) (1 minus 2)	4 Total Current Year Non- admitted Restricted	5 Total Current Year Admitted Restricted (1 minus 4)	6 Gross (Admitted & Non- admitted) Restricted to Total Assets (a)	7 Admitted Restricted to Total Admitted Assets (b)
a. Subject to contractual obligation for which liability is not shown			\$ -		\$ -	0.000%	0.000%
b. Collateral held under security lending agreements			\$ -		\$ -	0.000%	0.000%
c. Subject to repurchase agreements			\$ -		\$ -	0.000%	0.000%
d. Subject to reverse repurchase agreements			\$ -		\$ -	0.000%	0.000%
e. Subject to dollar repurchase agreements			\$ -		\$ -	0.000%	0.000%
f. Subject to dollar reverse repurchase agreements			\$ -		\$ -	0.000%	0.000%
g. Placed under option contracts			\$ -		\$ -	0.000%	0.000%
h. Letter stock or securities restricted as to sale - excluding FHLB capital stock			\$ -		\$ -	0.000%	0.000%
i. FHLB capital stock			\$ -		\$ -	0.000%	0.000%
j. On deposit with states	\$ 128,745	\$ 130,461	\$ (1,716)		\$ 128,745	0.521%	0.522%
k. On deposit with other regulatory bodies			\$ -		\$ -	0.000%	0.000%
l. Pledged collateral to FHLB (including assets backing funding agreements)			\$ -		\$ -	0.000%	0.000%
m. Pledged as collateral not captured in other categories			\$ -		\$ -	0.000%	0.000%
n. Other restricted assets			\$ -		\$ -	0.000%	0.000%
o. Total Restricted Assets (Sum of a through n)	\$ 128,745	\$ 130,461	\$ (1,716)	\$ -	\$ 128,745	0.521%	0.522%

(a) Column 1 divided by Asset Page, Column 1, Line 28

(b) Column 5 divided by Asset Page, Column 3, Line 28

2. Detail of Assets Pledged as Collateral Not Captured in Other Categories (Contracts That Share Similar Characteristics, Such as Reinsurance and Derivatives, Are Reported in the Aggregate)
Not Applicable

3. Detail of Other Restricted Assets (Contracts That Share Similar Characteristics, Such as Reinsurance and Derivatives, Are Reported in the Aggregate)
Not Applicable

4. Collateral Received and Reflected as Assets Within the Reporting Entity's Financial Statements
Not Applicable

M. Working Capital Finance Investments
Not Applicable

N. Offsetting and Netting of Assets and Liabilities
Not Applicable

O. 5GI Securities
Not Applicable

P. Short Sales

(1) Unsettled Short Sale Transactions (Outstanding as of Reporting Date)

	Proceeds Received	Current Fair Value of Securities Sold Short	Unrealized Gain or (Loss)	Expected Settlement (# of Days)	Fair Value of Short Sales Exceeding (or expected to exceed) 3 Settlement Days	Fair Value of Short Sales Expected to be Settled by Secured Borrowing
a. ICO						
b. ABS						
c. Preferred Stock						
d. Common Stock						
e. Totals (a+b+c+d)	\$ -	\$ -	\$ -	XXX	\$ -	\$ -

(2) Settled Short Sale Transactions

	Proceeds Received	Current Fair Value of Securities Sold Short	Realized Gain or (Loss) on Transaction	Fair Value of Short Sales that Exceeded 3 Settlement Days	Fair Value of Short Sales Settled by Secured Borrowing
a. ICO					
b. ABS					
c. Preferred Stock					
d. Common Stock					
e. Totals (a+b+c+d)	\$ -	\$ -	\$ -	\$ -	\$ -

NOTES TO FINANCIAL STATEMENTS

Q. Prepayment Penalty and Acceleration Fees

	General Account
1. Number of CUSIPs	0
2. Aggregate Amount of Investment Income	\$ -

R. Reporting Entity's Share of Cash Pool by Asset Type
Not Applicable

S. Aggregate Collateral Loans by Qualifying Investment Collateral
Not Applicable

NOTE 6 Joint Ventures, Partnerships and Limited Liability Companies
Not Applicable

NOTE 7 Investment Income
A. Not Applicable

B. Not Applicable

C. The gross, nonadmitted and admitted amounts for interest income due and accrued.

Interest Income Due and Accrued	Amount
1. Gross	\$ 164,323
2. Nonadmitted	
3. Admitted	\$ 164,323

D. The aggregate deferred interest.
Not Applicable

E. The cumulative amounts of paid-in-kind (PIK) interest included in the current principal balance.
Not Applicable

NOTE 8 Derivative Instruments
Not Applicable

NOTE 9 Income Taxes
No significant change

NOTE 10 Information Concerning Parent, Subsidiaries, Affiliates and Other Related Parties
A. No significant change

NOTE 11 Debt
Not Applicable

NOTE 12 Retirement Plans, Deferred Compensation, Postemployment Benefits and Compensated Absences and Other Postretirement Benefit Plans

Not Applicable

NOTE 13 Capital and Surplus, Dividend Restrictions and Quasi-Reorganizations
No significant change

NOTE 14 Liabilities, Contingencies and Assessments
No significant change

NOTE 15 Leases
Not Applicable

NOTE 16 Information About Financial Instruments With Off-Balance Sheet Risk and Financial Instruments With Concentrations of Credit Risk

Not Applicable

NOTE 17 Sale, Transfer and Servicing of Financial Assets and Extinguishments of Liabilities
Not Applicable

NOTE 18 Gain or Loss to the Reporting Entity from Uninsured Plans and the Uninsured Portion of Partially Insured Plans
No significant change

NOTE 19 Direct Premium Written/Produced by Managing General Agents/Third Party Administrators
Not Applicable

NOTE 20 Fair Value Measurements
A.

- (1) Fair Value Measurements at Reporting Date
Not Applicable
- (2) Fair Value Measurements in (Level 3) of the Fair Value hierarchy
Not Applicable
- (3) Policies when TransfersBetween Levels are Recognized
Not Applicable
- (4) Description of Valuation Techniques and Inputs Used in Fair Value Measurement
Not Applicable
- (5) Fair Value Disclosure for Derivative Assets and Liabilities
Not Applicable

B. Fair Value reporting under SSAP 100 and Other Accounting Pronouncements
Not Applicable

C. Aggregate fair value for all financial instruments and the level within the fair value hierarchy in which the fair value measurements in their entirety fall.

Type of Financial Instrument	Aggregate Fair Value	Admitted Assets	(Level 1)	(Level 2)	(Level 3)	Net Asset Value (NAV)	Not Practicable (Carrying Value)
BONDS	\$ 12,482,468	\$ 12,243,242		\$ 12,482,468			

NOTES TO FINANCIAL STATEMENTS

--	--	--	--	--	--	--	--

D. Not Practicable to Estimate Fair Value
Not Applicable

E. Not Applicable

NOTE 21 Other Items
No significant change

NOTE 22 Events Subsequent
No significant change

NOTE 23 Reinsurance
Not Applicable

NOTE 24 Retrospectively Rated Contracts & Contracts Subject to Redetermination
Not Applicable

NOTE 25 Change in Incurred Claims and Claim Adjustment Expenses
Reserves for unpaid claims and claims adjustment expenses, net of reinsurance and recoveries, as of December 31, 2024 were \$4.1 million. As of September 30, 2025, \$3.1 million has been paid for incurred claims and claims adjustment expenses attributable to insured events of prior years. Reserves available for prior years are \$0.1 million based on an estimate of unpaid claims and claims adjustment expenses as of September 30, 2025. Therefore, a \$0.9 million redundancy has emerged as of September 30, 2025 related to 2024.

NOTE 26 Intercompany Pooling Arrangements
Not Applicable

NOTE 27 Structured Settlements
Not Applicable

NOTE 28 Health Care Receivables
Not Applicable

NOTE 29 Participating Policies
Not Applicable

NOTE 30 Premium Deficiency Reserves
Not Applicable

NOTE 31 Anticipated Salvage and Subrogation
Not Applicable

GENERAL INTERROGATORIES

PART 1 - COMMON INTERROGATORIES

GENERAL

1.1

Did the reporting entity experience any material transactions requiring the filing of Disclosure of Material Transactions with the State of Domicile, as required by the Model Act?

Yes [] No [X]

1.2

If yes, has the report been filed with the domiciliary state?

Yes [] No []

2.1

Has any change been made during the year of this statement in the charter, by-laws, articles of incorporation, or deed of settlement of the reporting entity?

Yes [] No [X]

2.2

If yes, date of change:

3.1

Is the reporting entity a member of an Insurance Holding Company System consisting of two or more affiliated persons, one or more of which is an insurer?
If yes, complete Schedule Y, Parts 1 and 1A.

Yes [X] No []

3.2

Have there been any substantial changes in the organizational chart since the prior quarter end?

Yes [] No [X]

3.3

If the response to 3.2 is yes, provide a brief description of those changes.

3.4

Is the reporting entity publicly traded or a member of a publicly traded group?

Yes [] No [X]

3.5

If the response to 3.4 is yes, provide the CIK (Central Index Key) code issued by the SEC for the entity/group.

4.1

Has the reporting entity been a party to a merger or consolidation during the period covered by this statement?

Yes [] No [X]

4.2

If yes, provide the name of the entity, NAIC Company Code, and state of domicile (use two letter state abbreviation) for any entity that has ceased to exist as a result of the merger or consolidation.

1	2	3
Name of Entity	NAIC Company Code	State of Domicile

5.

If the reporting entity is subject to a management agreement, including third-party administrator(s), managing general agent(s), attorney-in-fact, or similar agreement, have there been any significant changes regarding the terms of the agreement or principals involved?
If yes, attach an explanation.

Yes [] No [] N/A [X]

6.1

State as of what date the latest financial examination of the reporting entity was made or is being made.

12/31/2023

6.2

State the as of date that the latest financial examination report became available from either the state of domicile or the reporting entity. This date should be the date of the examined balance sheet and not the date the report was completed or released.

12/31/2023

6.3

State as of what date the latest financial examination report became available to other states or the public from either the state of domicile or the reporting entity. This is the release date or completion date of the examination report and not the date of the examination (balance sheet date).

04/14/2025

6.4

By what department or departments?
Ohio Department of Insurance

6.5

Have all financial statement adjustments within the latest financial examination report been accounted for in a subsequent financial statement filed with Departments?

Yes [] No [] N/A [X]

6.6

Have all of the recommendations within the latest financial examination report been complied with?

Yes [] No [] N/A [X]

7.1

Has this reporting entity had any Certificates of Authority, licenses or registrations (including corporate registration, if applicable) suspended or revoked by any governmental entity during the reporting period?

Yes [] No [X]

7.2

If yes, give full information:

8.1

Is the company a subsidiary of a bank holding company regulated by the Federal Reserve Board?

Yes [] No [X]

8.2

If response to 8.1 is yes, please identify the name of the bank holding company.

8.3

Is the company affiliated with one or more banks, thrifts or securities firms?

Yes [] No [X]

8.4

If response to 8.3 is yes, please provide below the names and location (city and state of the main office) of any affiliates regulated by a federal regulatory services agency [i.e. the Federal Reserve Board (FRB), the Office of the Comptroller of the Currency (OCC), the Federal Deposit Insurance Corporation (FDIC) and the Securities Exchange Commission (SEC)] and identify the affiliate's primary federal regulator.

1	2	3	4	5	6
Affiliate Name	Location (City, State)	FRB	OCC	FDIC	SEC

STATEMENT AS OF SEPTEMBER 30, 2025 OF THE Superior Dental Care, Inc.

GENERAL INTERROGATORIES

- 9.1

Are the senior officers (principal executive officer, principal financial officer, principal accounting officer or controller, or persons performing similar functions) of the reporting entity subject to a code of ethics, which includes the following standards?
(a) Honest and ethical conduct, including the ethical handling of actual or apparent conflicts of interest between personal and professional relationships;
(b) Full, fair, accurate, timely and understandable disclosure in the periodic reports required to be filed by the reporting entity;
(c) Compliance with applicable governmental laws, rules and regulations;
(d) The prompt internal reporting of violations to an appropriate person or persons identified in the code; and
(e) Accountability for adherence to the code.

Yes [X] No []
- 9.11

If the response to 9.1 is No, please explain:
.....
- 9.2

Has the code of ethics for senior managers been amended?

Yes [] No [X]
- 9.21

If the response to 9.2 is Yes, provide information related to amendment(s).
.....
- 9.3

Have any provisions of the code of ethics been waived for any of the specified officers?

Yes [] No [X]
- 9.31

If the response to 9.3 is Yes, provide the nature of any waiver(s).
.....

FINANCIAL

- 10.1

Does the reporting entity report any amounts due from parent, subsidiaries or affiliates on Page 2 of this statement?

Yes [X] No []
- 10.2

If yes, indicate any amounts receivable from parent included in the Page 2 amount:\$.....

343,986

INVESTMENT

- 11.1

Were any of the stocks, bonds, or other assets of the reporting entity loaned, placed under option agreement, or otherwise made available for use by another person? (Exclude securities under securities lending agreements.)

Yes [] No [X]
- 11.2

If yes, give full and complete information relating thereto:
.....
12.

Amount of real estate and mortgages held in other invested assets in Schedule BA:

\$.....
13.

Amount of real estate and mortgages held in short-term investments:

\$.....
- 14.1

Does the reporting entity have any investments in parent, subsidiaries and affiliates?

Yes [] No [X]
- 14.2

If yes, please complete the following:

	1	2
	Prior Year-End Book/Adjusted Carrying Value	Current Quarter Book/Adjusted Carrying Value
14.21 Bonds	\$.....0	\$.....
14.22 Preferred Stock	\$.....0	\$.....
14.23 Common Stock	\$.....0	\$.....
14.24 Short-Term Investments	\$.....0	\$.....
14.25 Mortgage Loans on Real Estate	\$.....0	\$.....
14.26 All Other	\$.....0	\$.....
14.27 Total Investment in Parent, Subsidiaries and Affiliates (Subtotal Lines 14.21 to 14.26)	\$.....0	\$.....0
14.28 Total Investment in Parent included in Lines 14.21 to 14.26 above	\$.....	\$.....

15.1

Has the reporting entity entered into any hedging transactions reported on Schedule DB?

Yes [] No [X]

15.2

If yes, has a comprehensive description of the hedging program been made available to the domiciliary state? Yes [] No [] N/A [X]
If no, attach a description with this statement.
.....

16.

For the reporting entity's security lending program, state the amount of the following as of the current statement date:

16.1

Total fair value of reinvested collateral assets reported on Schedule DL, Parts 1 and 2.

\$.....0

16.2

Total book/adjusted carrying value of reinvested collateral assets reported on Schedule DL, Parts 1 and 2

\$.....0

16.3

Total payable for securities lending reported on the liability page.

\$.....0

STATEMENT AS OF SEPTEMBER 30, 2025 OF THE Superior Dental Care, Inc.

GENERAL INTERROGATORIES

17. Excluding items in Schedule E - Part 3 - Special Deposits, real estate, mortgage loans and investments held physically in the reporting entity's offices, vaults or safety deposit boxes, were all stocks, bonds and other securities, owned throughout the current year held pursuant to a custodial agreement with a qualified bank or trust company in accordance with Section 1, III - General Examination Considerations, F. Outsourcing of Critical Functions, Custodial or Safekeeping Agreements of the NAIC Financial Condition Examiners Handbook? Yes [X] No []
- 17.1 For all agreements that comply with the requirements of the NAIC Financial Condition Examiners Handbook, complete the following:

1 Name of Custodian(s)	2 Custodian Address
FIFTH THIRD BANK	5050 KINGSLEY DRIVE, CINCINNATI, OH 45263

- 17.2 For all agreements that do not comply with the requirements of the NAIC Financial Condition Examiners Handbook, provide the name, location and a complete explanation:

1 Name(s)	2 Location(s)	3 Complete Explanation(s)

- 17.3 Have there been any changes, including name changes, in the custodian(s) identified in 17.1 during the current quarter? Yes [] No [X]
- 17.4 If yes, give full information relating thereto:

1 Old Custodian	2 New Custodian	3 Date of Change	4 Reason

- 17.5 Investment management – Identify all investment advisors, investment managers, broker/dealers, including individuals that have the authority to make investment decisions on behalf of the reporting entity. This includes both primary and sub-advisors. For assets that are managed internally by employees of the reporting entity, note as such. ["...that have access to the investment accounts"; "...handle securities"]

1 Name of Firm or Individual	2 Affiliation
JAMES CELLURA	I.....

- 17.5097 For those firms/individuals listed in the table for Question 17.5, do any firms/individuals unaffiliated with the reporting entity (i.e. designated with a "U") manage more than 10% of the reporting entity's invested assets?..... Yes [] No [X]

- 17.5098 For firms/individuals unaffiliated with the reporting entity (i.e. designated with a "U") listed in the table for Question 17.5, does the total assets under management aggregate to more than 50% of the reporting entity's invested assets?..... Yes [] No [X]

- 17.6 For those firms or individuals listed in the table for 17.5 with an affiliation code of "A" (affiliated) or "U" (unaffiliated), provide the information for the table below.

1	2	3	4	5
Central Registration Depository Number	Name of Firm or Individual	Legal Entity Identifier (LEI)	Registered With	Investment Management Agreement (IMA) Filed

- 18.1 Have all the filing requirements of the Purposes and Procedures Manual of the NAIC Investment Analysis Office been followed? Yes [X] No []
- 18.2 If no, list exceptions:
.....

19. By self-designating 5GI securities, the reporting entity is certifying the following elements for each self-designated 5GI security:

a. Documentation necessary to permit a full credit analysis of the security does not exist or an NAIC CRP credit rating for an FE or PL security is not available.

b. Issuer or obligor is current on all contracted interest and principal payments.

c. The insurer has an actual expectation of ultimate payment of all contracted interest and principal.

Has the reporting entity self-designated 5GI securities? Yes [] No [X]

20. By self-designating PLGI securities, the reporting entity is certifying the following elements of each self-designated PLGI security:

a. The security was purchased prior to January 1, 2018.

b. The reporting entity is holding capital commensurate with the NAIC Designation reported for the security.

c. The NAIC Designation was derived from the credit rating assigned by an NAIC CRP in its legal capacity as a NRSRO which is shown on a current private letter rating held by the insurer and available for examination by state insurance regulators.

d. The reporting entity is not permitted to share this credit rating of the PL security with the SVO.

Has the reporting entity self-designated PLGI securities? Yes [] No [X]

21. By assigning FE to a Schedule BA non-registered private fund, the reporting entity is certifying the following elements of each self-designated FE fund:

a. The shares were purchased prior to January 1, 2019.

b. The reporting entity is holding capital commensurate with the NAIC Designation reported for the security.

c. The security had a public credit rating(s) with annual surveillance assigned by an NAIC CRP in its legal capacity as an NRSRO prior to January 1, 2019.

d. The fund only or predominantly holds bonds in its portfolio.

e. The current reported NAIC Designation was derived from the public credit rating(s) with annual surveillance assigned by an NAIC CRP in its legal capacity as an NRSRO.

f. The public credit rating(s) with annual surveillance assigned by an NAIC CRP has not lapsed.

Has the reporting entity assigned FE to Schedule BA non-registered private funds that complied with the above criteria? Yes [] No [X]

GENERAL INTERROGATORIES

PART 2 - HEALTH

1.

Operating Percentages:

1.1 A&H loss percent

87.600 %

1.2 A&H cost containment percent

2.000 %

1.3 A&H expense percent excluding cost containment expenses

18.400 %
- 2.1

Do you act as a custodian for health savings accounts?

Yes [☐] No [☒]
- 2.2

If yes, please provide the amount of custodial funds held as of the reporting date

\$
- 2.3

Do you act as an administrator for health savings accounts?

Yes [☐] No [☒]
- 2.4

If yes, please provide the balance of the funds administered as of the reporting date

\$
3.

Is the reporting entity licensed or chartered, registered, qualified, eligible or writing business in at least two states?

Yes [☒] No [☐]
- 3.1

If no, does the reporting entity assume reinsurance business that covers risks residing in at least one state other than the state of domicile of the reporting entity?

Yes [☐] No [☐]

STATEMENT AS OF SEPTEMBER 30, 2025 OF THE Superior Dental Care, Inc.

SCHEDULE S - CEDED REINSURANCE

Showing All New Reinsurance Treaties - Current Year to Date

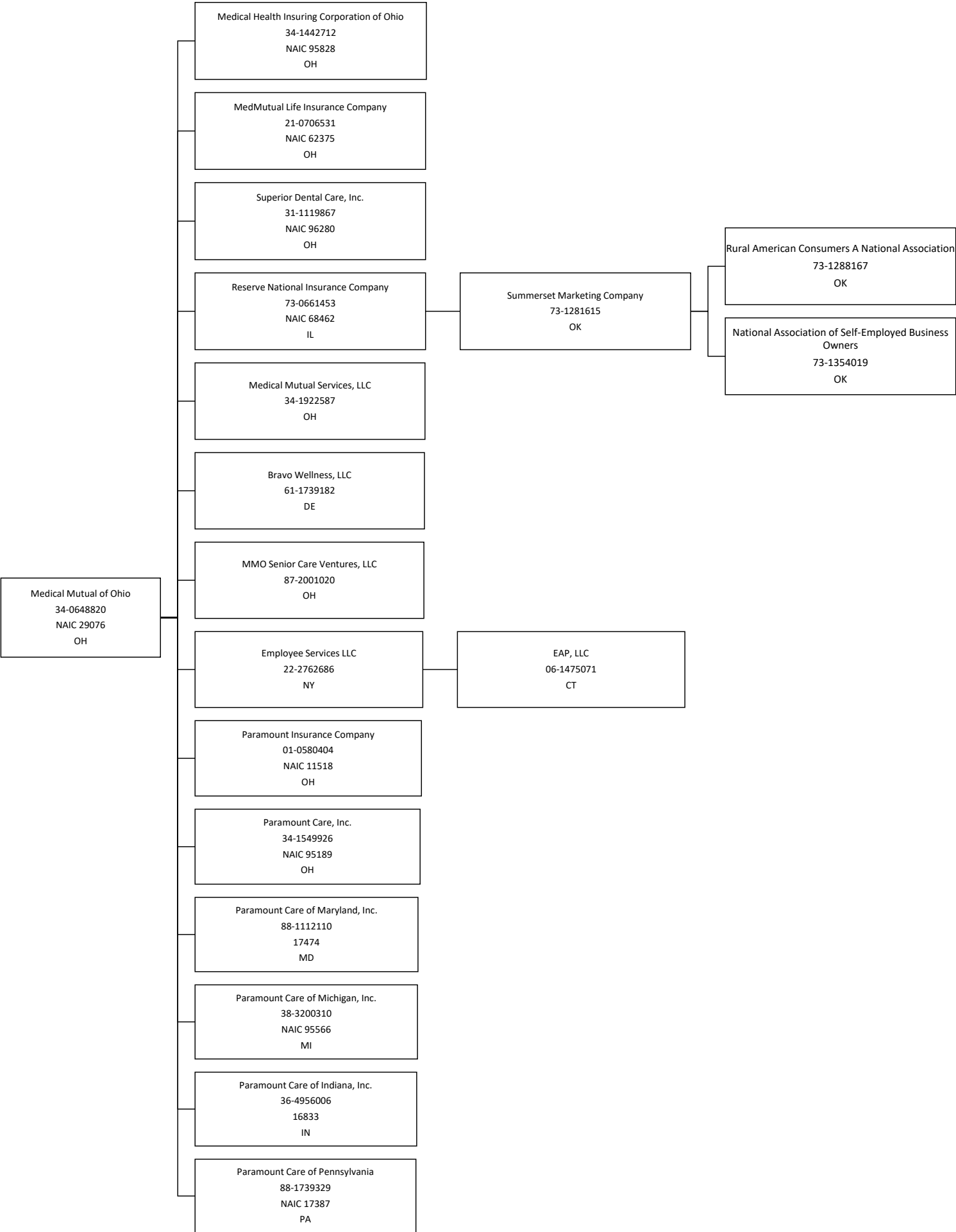
1	2	3	4	5	6	7	8	9	10
NAIC Company Code	ID Number	Effective Date	Name of Reinsurer	Domiciliary Jurisdiction	Type of Reinsurance Ceded	Type of Business Ceded	Type of Reinsurer	Certified Reinsurer Rating (1 through 6)	Effective Date of Certified Reinsurer Rating
			NONE						

SCHEDULE T - PREMIUMS AND OTHER CONSIDERATIONS

Current Year to Date - Allocated by States and Territories											
		1	Direct Business Only								
		Active Status (a)	2	3	4	5	6	7	8	9	10
States, etc.			Accident and Health Premiums	Medicare Title XVIII	Medicaid Title XIX	CHIP Title XXI	Federal Employees Health Benefits Program Premiums	Life and Annuity Premiums & Other Considerations	Property/Casualty Premiums	Total Columns 2 Through 8	Deposit-Type Contracts
1.	Alabama	AL ..N.								.0	
2.	Alaska	AK ..N.								.0	
3.	Arizona	AZ ..N.								.0	
4.	Arkansas	AR ..N.								.0	
5.	California	CA ..N.								.0	
6.	Colorado	CO ..N.								.0	
7.	Connecticut	CT ..N.								.0	
8.	Delaware	DE ..N.								.0	
9.	District of Columbia	DC ..N.								.0	
10.	Florida	FL ..N.								.0	
11.	Georgia	GA ..N.								.0	
12.	Hawaii	HI ..N.								.0	
13.	Idaho	ID ..N.								.0	
14.	Illinois	IL ..N.								.0	
15.	Indiana	IN ..L.	53,116							53,116	
16.	Iowa	IA ..N.								.0	
17.	Kansas	KS ..N.								.0	
18.	Kentucky	KY ..L.	1,456,129							1,456,129	
19.	Louisiana	LA ..N.								.0	
20.	Maine	ME ..N.								.0	
21.	Maryland	MD ..N.								.0	
22.	Massachusetts	MA ..N.								.0	
23.	Michigan	MI ..N.								.0	
24.	Minnesota	MN ..N.								.0	
25.	Mississippi	MS ..N.								.0	
26.	Missouri	MO ..N.								.0	
27.	Montana	MT ..N.								.0	
28.	Nebraska	NE ..N.								.0	
29.	Nevada	NV ..N.								.0	
30.	New Hampshire	NH ..N.								.0	
31.	New Jersey	NJ ..N.								.0	
32.	New Mexico	NM ..N.								.0	
33.	New York	NY ..N.								.0	
34.	North Carolina	NC ..N.								.0	
35.	North Dakota	ND ..N.								.0	
36.	Ohio	OH ..L.	49,015,221							49,015,221	
37.	Oklahoma	OK ..N.								.0	
38.	Oregon	OR ..N.								.0	
39.	Pennsylvania	PA ..N.								.0	
40.	Rhode Island	RI ..N.								.0	
41.	South Carolina	SC ..N.								.0	
42.	South Dakota	SD ..N.								.0	
43.	Tennessee	TN ..N.								.0	
44.	Texas	TX ..N.								.0	
45.	Utah	UT ..N.								.0	
46.	Vermont	VT ..N.								.0	
47.	Virginia	VA ..N.								.0	
48.	Washington	WA ..N.								.0	
49.	West Virginia	WV ..N.								.0	
50.	Wisconsin	WI ..N.								.0	
51.	Wyoming	WY ..N.								.0	
52.	American Samoa	AS ..N.								.0	
53.	Guam	GU ..N.								.0	
54.	Puerto Rico	PR ..N.								.0	
55.	U.S. Virgin Islands	VI ..N.								.0	
56.	Northern Mariana Islands	MP ..N.								.0	
57.	Canada	CAN ..N.								.0	
58.	Aggregate Other Aliens	OT ..XXX.	.0	.0	.0	.0	.0	.0	.0	.0	.0
59.	Subtotal	XXX.	50,524,466	.0	.0	.0	.0	.0	.0	50,524,466	.0
60.	Reporting Entity Contributions for Employee Benefit Plans	XXX.								.0	
61.	Totals (Direct Business)	XXX.	50,524,466	0	0	0	0	0	0	50,524,466	0
DETAILS OF WRITE-INS											
58001.	XXX.									
58002.	XXX.									
58003.	XXX.									
58998.	Summary of remaining write-ins for Line 58 from overflow page	XXX.	.0	.0	.0	.0	.0	.0	.0	.0	.0
58999.	Totals (Lines 58001 through 58003 plus 58998)(Line 58 above)	XXX.	0	0	0	0	0	0	0	0	0

(a) Active Status Counts:
1. L - Licensed or Chartered - Licensed insurance carrier or domiciled RRG..... 3 4. Q - Qualified - Qualified or accredited reinsurer..... 0
2. R - Registered - Non-domiciled RRGs..... 0 5. N - None of the above - Not allowed to write business in the state..... 54
3. E - Eligible - Reporting entities eligible or approved to write surplus lines in the state. 0

SCHEDULE Y - INFORMATION CONCERNING ACTIVITIES OF INSURER MEMBERS OF A HOLDING COMPANY GROUP
PART 1 - ORGANIZATIONAL CHART



SCHEDULE Y
PART 1A - DETAILS OF INSURANCE HOLDING COMPANY SYSTEM

1	2	3	4	5	6	7	8	9	10	11	12	13	14	15	16
Group Code	Group Name	NAIC Company Code	ID Number	Federal RSSD	CIK	Name of Securities Exchange if Publicly Traded (U.S. or International)	Names of Parent, Subsidiaries Or Affiliates	Domi-ciliary Loca-tion	Relation-ship to Reporting Entity	Directly Controlled by (Name of Entity/Person)	Type of Control (Ownership, Board, Management, Attorney-in-Fact, Influence, Other)	If Control is Owner-ship Provide Percen-tage	Ultimate Controlling Entity(ies)/Person(s)	Is an SCA Filing Re-quired? (Yes/No)	*
. 0730 ...	Medical Mutual of Ohio 29076	34-0648820	Medical Mutal of Ohio OH..... UDP.....	Board of Directors..... 0.000	Medical Mutual of Ohio NO.....
. 0730 ...	Medical Mutual of Ohio 95828	34-1442712	Medical Health Insuring Corporation of Ohio OH..... IA.....	Medical Mutual of Ohio	Ownership..... 100.000	Medical Mutual of Ohio NO.....
. 0730 ...	Medical Mutual of Ohio 62375	21-0706531	MedMutual Life Insurance Company OH..... IA.....	Medical Mutual of Ohio	Ownership..... 100.000	Medical Mutual of Ohio NO.....
. 0730 ...	Medical Mutual of Ohio 96280	31-1119867	Superior Dental Care, Inc OH..... RE.....	Medical Mutual of Ohio	Ownership..... 100.000	Medical Mutual of Ohio NO.....
. 0730 ...	Medical Mutual of Ohio 68462	73-0661453	Reserve National Insurance Company IL..... IA.....	Medical Mutual of Ohio	Ownership..... 100.000	Medical Mutual of Ohio NO.....
. 0730 ...	Medical Mutual of Ohio 95189	34-1549926	Paramount Care, Inc. OH..... IA.....	Medical Mutual of Ohio	Ownership..... 100.000	Medical Mutual of Ohio NO.....
. 0730 ...	Medical Mutual of Ohio 95566	38-3200310	Paramount Care of Michigan, Inc. MI..... IA.....	Medical Mutual of Ohio	Ownership..... 100.000	Medical Mutual of Ohio NO.....
. 0730 ...	Medical Mutual of Ohio 11518	01-0580404	Paramount Insurance Company OH..... IA.....	Medical Mutual of Ohio	Ownership..... 100.000	Medical Mutual of Ohio NO.....
. 0730 ...	Medical Mutual of Ohio 16833	36-4956006	Paramount Care of Indiana, Inc IN..... IA.....	Medical Mutual of Ohio	Ownership..... 100.000	Medical Mutual of Ohio NO.....
. 0730 ...	Medical Mutual of Ohio 17474	88-1112110	Paramount Care of Maryland, Inc. MD..... IA.....	Medical Mutual of Ohio	Ownership..... 100.000	Medical Mutual of Ohio NO.....
. 0730 ...	Medical Mutual of Ohio 17387	88-1739329	Paramount Care of Pennsylvania PA..... IA.....	Medical Mutual of Ohio	Ownership..... 100.000	Medical Mutual of Ohio NO.....
.....	Medical Mutual of Ohio	34-1922587	Medical Mutual Services, LLC OH..... NIA.....	Medical Mutual of Ohio	Ownership..... 100.000	Medical Mutual of Ohio NO.....
.....	Medical Mutual of Ohio	61-1739182	Bravo Wellness, LLC DE..... NIA.....	Medical Mutual of Ohio	Ownership..... 100.000	Medical Mutual of Ohio NO.....
.....	Medical Mutual of Ohio	22-2762686	Employee Services LLC NY..... NIA.....	Medical Mutual of Ohio	Ownership..... 100.000	Medical Mutual of Ohio NO.....
.....	Medical Mutual of Ohio	06-1475071	EAP, LLC CT..... NIA.....	Medical Mutual of Ohio	Ownership..... 100.000	Medical Mutual of Ohio NO.....
.....	Medical Mutual of Ohio	87-2001020	MMO Senior Care Ventures, LLC OH..... NIA.....	Medical Mutual of Ohio	Ownership..... 100.000	Medical Mutual of Ohio NO.....
.....	Medical Mutual of Ohio	73-1281615	Summerset Marketing Company OK..... NIA.....	Reserve National Insurance Company	Ownership..... 100.000	Medical Mutual of Ohio NO.....
.....	Medical Mutual of Ohio	73-1288167	Rural American Consumers A National Association OK..... NIA.....	Summerset Marketing Company	Ownership..... 100.000	Medical Mutual of Ohio NO.....
.....	Medical Mutual of Ohio	73-1354019	National Association of Self-Employed Business Owners OK..... NIA.....	Summerset Marketing Company	Ownership..... 100.000	Medical Mutual of Ohio NO.....
.....
.....

Asterisk	Explanation

SUPPLEMENTAL EXHIBITS AND SCHEDULES INTERROGATORIES

The following supplemental reports are required to be filed as part of your statement filing. However, in the event that your company does not transact the type of business for which the special report must be filed, your response of NO to the specific interrogatory will be accepted in lieu of filing a "NONE" report and a bar code will be printed below. If the supplement is required of your company but is not being filed for whatever reason enter SEE EXPLANATION and provide an explanation following the interrogatory questions.

	Response
1. Will the Medicare Part D Coverage Supplement be filed with the state of domicile and the NAIC with this statement?	NO

AUGUST FILING

2. Will the regulator-only (non-public) Communication of Internal Control Related Matters Noted in Audit be filed with the state of domicile and electronically with the NAIC (as a regulator-only non-public document) by August 1? The response for 1st and 3rd quarters should be N/A. A NO response resulting with a bar code is only appropriate in the 2nd quarter.	N/A
--	-----

Explanation:

- 1. No filing required.

Bar Code:

- 1. Medicare Part D Coverage Supplement [Document Identifier 365]



NONE

SCHEDULE A - VERIFICATION

Real Estate

	1	2
	Year to Date	Prior Year Ended December 31
1. Book/adjusted carrying value, December 31 of prior year	905,740	950,971
2. Cost of acquired:		
2.1 Actual cost at time of acquisition		
2.2 Additional investment made after acquisition		
3. Current year change in encumbrances		0
4. Total gain (loss) on disposals		
5. Deduct amounts received on disposals		
6. Total foreign exchange change in book/adjusted carrying value		0
7. Deduct current year's other than temporary impairment recognized		0
8. Deduct current year's depreciation	32,453	45,230
9. Book/adjusted carrying value at the end of current period (Lines 1+2+3+4-5+6-7-8)	873,287	905,740
10. Deduct total nonadmitted amounts		0
11. Statement value at end of current period (Line 9 minus Line 10)	873,287	905,740

SCHEDULE B - VERIFICATION

Mortgage Loans

	1	2
	Year to Date	Prior Year Ended December 31
1. Book value/recorded investment excluding accrued interest, December 31 of prior year		
2. Cost of acquired:		
2.1 Actual cost at time of acquisition		
2.2 Additional investment made after acquisition		
3. Capitalized deferred interest and other		
4. Accrual of discount		
5. Unrealized valuation increase/(decrease)		
6. Total gain (loss) on disposals		
7. Deduct amounts received on disposals		
8. Deduct amortization of premium and mortgage interest paid and commitment fees		
9. Total foreign exchange change in book value/recorded investment excluding accrued interest		
10. Deduct current year's other than temporary impairment recognized		
11. Book value/recorded investment excluding accrued interest at end of current period (Lines 1+2+3+4+5+6-7-8+9-10)		
12. Total valuation allowance		
13. Subtotal (Line 11 plus Line 12)		
14. Deduct total nonadmitted amounts		
15. Statement value at end of current period (Line 13 minus Line 14)		

NONE

SCHEDULE BA - VERIFICATION

Other Long-Term Invested Assets

	1	2
	Year to Date	Prior Year Ended December 31
1. Book/adjusted carrying value, December 31 of prior year		
2. Cost of acquired:		
2.1 Actual cost at time of acquisition		
2.2 Additional investment made after acquisition		
3. Capitalized deferred interest and other		
4. Accrual of discount		
5. Unrealized valuation increase/(decrease)		
6. Total gain (loss) on disposals		
7. Deduct amounts received on disposals		
8. Deduct amortization of premium, depreciation and proportional amortization		
9. Total foreign exchange change in book/adjusted carrying value		
10. Deduct current year's other than temporary impairment recognized		
11. Book/adjusted carrying value at end of current period (Lines 1+2+3+4+5+6-7-8+9-10)		
12. Deduct total nonadmitted amounts		
13. Statement value at end of current period (Line 11 minus Line 12)		

NONE

SCHEDULE D - VERIFICATION

Bonds and Stocks

	1	2
	Year to Date	Prior Year Ended December 31
1. Book/adjusted carrying value of bonds and stocks, December 31 of prior year	9,727,766	10,371,300
2. Cost of bonds and stocks acquired	3,010,284	2,451,506
3. Accrual of discount	40,656	40,029
4. Unrealized valuation increase/(decrease)	0	
5. Total gain (loss) on disposals	0	
6. Deduct consideration for bonds and stocks disposed of	475,000	3,000,000
7. Deduct amortization of premium	60,465	135,069
8. Total foreign exchange change in book/adjusted carrying value	0	
9. Deduct current year's other than temporary impairment recognized	0	
10. Total investment income recognized as a result of prepayment penalties and/or acceleration fees	0	
11. Book/adjusted carrying value at end of current period (Lines 1+2+3+4+5-6-7+8-9+10)	12,243,242	9,727,766
12. Deduct total nonadmitted amounts	0	
13. Statement value at end of current period (Line 11 minus Line 12)	12,243,242	9,727,766

STATEMENT AS OF SEPTEMBER 30, 2025 OF THE Superior Dental Care, Inc.

SCHEDULE D - PART 1B

Showing the Acquisitions, Dispositions and Non-Trading Activity
During the Current Quarter for all Bonds and Preferred Stock by NAIC Designation

NAIC Designation	1 Book/Adjusted Carrying Value Beginning of Current Quarter	2 Acquisitions During Current Quarter	3 Dispositions During Current Quarter	4 Non-Trading Activity During Current Quarter	5 Book/Adjusted Carrying Value End of First Quarter	6 Book/Adjusted Carrying Value End of Second Quarter	7 Book/Adjusted Carrying Value End of Third Quarter	8 Book/Adjusted Carrying Value December 31 Prior Year
ISSUER CREDIT OBLIGATIONS (ICO)								
1. NAIC 1 (a)	10,220,721	0	0	(8,269)	8,251,033	10,220,721	10,212,452	8,735,810
2. NAIC 2 (a)	996,766	1,031,640	0	2,384	994,352	996,766	2,030,790	991,957
3. NAIC 3 (a)	0	0	0	0	0	0	0	0
4. NAIC 4 (a)	0	0	0	0	0	0	0	0
5. NAIC 5 (a)	0	0	0	0	0	0	0	0
6. NAIC 6 (a)	0	0	0	0	0	0	0	0
7. Total ICO	11,217,487	1,031,640	0	(5,886)	9,245,385	11,217,487	12,243,242	9,727,766
ASSET-BACKED SECURITIES (ABS)								
8. NAIC 1	0	0	0	0	0	0	0	0
9. NAIC 2	0	0	0	0	0	0	0	0
10. NAIC 3	0	0	0	0	0	0	0	0
11. NAIC 4	0	0	0	0	0	0	0	0
12. NAIC 5	0	0	0	0	0	0	0	0
13. NAIC 6	0	0	0	0	0	0	0	0
14. Total ABS	0	0	0	0	0	0	0	0
PREFERRED STOCK								
15. NAIC 1	0	0	0	0	0	0	0	0
16. NAIC 2	0	0	0	0	0	0	0	0
17. NAIC 3	0	0	0	0	0	0	0	0
18. NAIC 4	0	0	0	0	0	0	0	0
19. NAIC 5	0	0	0	0	0	0	0	0
20. NAIC 6	0	0	0	0	0	0	0	0
21. Total Preferred Stock	0	0	0	0	0	0	0	0
22. Total ICO, ABS & Preferred Stock	11,217,487	1,031,640	0	(5,886)	9,245,385	11,217,487	12,243,242	9,727,766

(a) Book/Adjusted Carrying Value column for the end of the current reporting period includes the following amount of short-term and cash equivalent bonds by NAIC designation:

NAIC 1 \$0 ; NAIC 2 \$0 ; NAIC 3 \$0 NAIC 4 \$0 ; NAIC 5 \$0 ; NAIC 6 \$0

Schedule DA - Part 1 - Short-Term Investments

N O N E

Schedule DA - Verification - Short-Term Investments

N O N E

Schedule DB - Part A - Verification - Options, Caps, Floors, Collars, Swaps and Forwards

N O N E

Schedule DB - Part B - Verification - Futures Contracts

N O N E

Schedule DB - Part C - Section 1 - Replication (Synthetic Asset) Transactions (RSATs) Open

N O N E

Schedule DB-Part C-Section 2-Reconciliation of Replication (Synthetic Asset) Transactions Open

N O N E

Schedule DB - Verification - Book/Adjusted Carrying Value, Fair Value and Potential Exposure of
Derivatives

N O N E

SCHEDULE E - PART 2 - VERIFICATION

(Cash Equivalents)

	1	2
	Year To Date	Prior Year Ended December 31
1. Book/adjusted carrying value, December 31 of prior year	11,010,053	8,868,952
2. Cost of cash equivalents acquired	1,273,992	3,392,271
3. Accrual of discount		0
4. Unrealized valuation increase/(decrease)		0
5. Total gain (loss) on disposals		0
6. Deduct consideration received on disposals	3,151,671	1,251,170
7. Deduct amortization of premium		0
8. Total foreign exchange change in book/adjusted carrying value		0
9. Deduct current year's other than temporary impairment recognized		0
10. Book/adjusted carrying value at end of current period (Lines 1+2+3+4+5-6-7+8-9)	9,132,374	11,010,053
11. Deduct total nonadmitted amounts		0
12. Statement value at end of current period (Line 10 minus Line 11)	9,132,374	11,010,053

Schedule A - Part 2 - Real Estate Acquired and Additions Made

N O N E

Schedule A - Part 3 - Real Estate Disposed

N O N E

Schedule B - Part 2 - Mortgage Loans Acquired and Additions Made

N O N E

Schedule B - Part 3 - Mortgage Loans Disposed, Transferred or Repaid

N O N E

Schedule BA - Part 2 - Other Long-Term Invested Assets Acquired and Additions Made

N O N E

Schedule BA - Part 3 - Other Long-Term Invested Assets Disposed, Transferred or Repaid

N O N E

SCHEDULE D - PART 3

Show All Long-Term Bonds and Stock Acquired During the Current Quarter

1	2	3	4	5	6	7	8	9
CUSIP Identification	Description	Date Acquired	Name of Vendor	Number of Shares of Stock	Actual Cost	Par Value	Paid for Accrued Interest and Dividends	NAIC Designation, NAIC Designation Modifier and SVO Admini- strative Symbol
446150-BE-3	HUNTINGTON BANCSHARES INC	09/26/2025	ANCORA ADVISORS		1,031,640	1,000,000	10,837	2.A FE
0089999999. Subtotal - Issuer Credit Obligations - Corporate Bonds (Unaffiliated)					1,031,640	1,000,000	10,837	XXX
0489999999. Total - Issuer Credit Obligations (Unaffiliated)					1,031,640	1,000,000	10,837	XXX
0499999999. Total - Issuer Credit Obligations (Affiliated)					0	0	0	XXX
0509999997. Total - Issuer Credit Obligations - Part 3					1,031,640	1,000,000	10,837	XXX
0509999998. Total - Issuer Credit Obligations - Part 5					XXX	XXX	XXX	XXX
0509999999. Total - Issuer Credit Obligations					1,031,640	1,000,000	10,837	XXX
1889999999. Total - Asset-Backed Securities (Unaffiliated)					0	0	0	XXX
1899999999. Total - Asset-Backed Securities (Affiliated)					0	0	0	XXX
1909999997. Total - Asset-Backed Securities - Part 3					0	0	0	XXX
1909999998. Total - Asset-Backed Securities - Part 5					XXX	XXX	XXX	XXX
1909999999. Total - Asset-Backed Securities					0	0	0	XXX
2009999999. Total - Issuer Credit Obligations and Asset-Backed Securities					1,031,640	1,000,000	10,837	XXX
4509999997. Total - Preferred Stocks - Part 3					0	XXX	0	XXX
4509999998. Total - Preferred Stocks - Part 5					XXX	XXX	XXX	XXX
4509999999. Total - Preferred Stocks					0	XXX	0	XXX
5989999997. Total - Common Stocks - Part 3					0	XXX	0	XXX
5989999998. Total - Common Stocks - Part 5					XXX	XXX	XXX	XXX
5989999999. Total - Common Stocks					0	XXX	0	XXX
5999999999. Total - Preferred and Common Stocks					0	XXX	0	XXX
6009999999 - Totals					1,031,640	XXX	10,837	XXX

STATEMENT AS OF SEPTEMBER 30, 2025 OF THE Superior Dental Care, Inc.

SCHEDULE D - PART 4

Show All Long-Term Bonds and Stock Sold, Redeemed or Otherwise Disposed of During the Current Quarter

1	2	3	4	5	6	7	8	9	Change In Book/Adjusted Carrying Value					15	16	17	18	19	20	21
									10	11	12	13	14							
CUSIP Ident- ification	Description	Disposal Date	Name of Purchaser	Number of Shares of Stock	Consid- eration	Par Value	Actual Cost	Prior Year Book/ Adjusted Carrying Value	Unrealized Valuation Increase/ (Decrease)	Current Year's (Amor- tization)/ Accretion	Current Year's Other Than Temporary Impairment Recog- nized	Total Change in Book/ Adjusted Carrying Value (10 + 11 - 12)	Total Foreign Exchange Change in Book /Adjusted Carrying Value	Book/ Adjusted Carrying Value at Disposal Date	Foreign Exchange Gain (Loss) on Disposal	Realized Gain (Loss) on Disposal	Total Gain (Loss) on Disposal	Bond Interest/ Stock Dividends Received During Year	Stated Con- tractual Maturity Date	NAIC Desig- nation, NAIC Desig- nation Modifier and SVO Admini- strative Symbol
0489999999. Total - Issuer Credit Obligations (Unaffiliated)				0	0	0	0	0	0	0	0	0	0	0	0	0	0	0	XXX	XXX
0499999999. Total - Issuer Credit Obligations (Affiliated)				0	0	0	0	0	0	0	0	0	0	0	0	0	0	0	XXX	XXX
0509999997. Total - Issuer Credit Obligations - Part 4				0	0	0	0	0	0	0	0	0	0	0	0	0	0	0	XXX	XXX
0509999998. Total - Issuer Credit Obligations - Part 5				XXX	XXX	XXX	XXX	XXX	XXX	XXX	XXX	XXX	XXX	XXX	XXX	XXX	XXX	XXX	XXX	XXX
0509999999. Total - Issuer Credit Obligations				0	0	0	0	0	0	0	0	0	0	0	0	0	0	0	XXX	XXX
1889999999. Total - Asset-Backed Securities (Unaffiliated)				0	0	0	0	0	0	0	0	0	0	0	0	0	0	0	XXX	XXX
1899999999. Total - Asset-Backed Securities (Affiliated)				0	0	0	0	0	0	0	0	0	0	0	0	0	0	0	XXX	XXX
1909999997. Total - Asset-Backed Securities - Part 4				0	0	0	0	0	0	0	0	0	0	0	0	0	0	0	XXX	XXX
1909999998. Total - Asset-Backed Securities - Part 5				XXX	XXX	XXX	XXX	XXX	XXX	XXX	XXX	XXX	XXX	XXX	XXX	XXX	XXX	XXX	XXX	XXX
1909999999. Total - Asset-Backed Securities				0	0	0	0	0	0	0	0	0	0	0	0	0	0	0	XXX	XXX
2009999999. Total - Issuer Credit Obligations and Asset-Backed Securities				0	0	0	0	0	0	0	0	0	0	0	0	0	0	0	XXX	XXX
4509999997. Total - Preferred Stocks - Part 4				0	XXX	0	0	0	0	0	0	0	0	0	0	0	0	0	XXX	XXX
4509999998. Total - Preferred Stocks - Part 5				XXX	XXX	XXX	XXX	XXX	XXX	XXX	XXX	XXX	XXX	XXX	XXX	XXX	XXX	XXX	XXX	XXX
4509999999. Total - Preferred Stocks				0	XXX	0	0	0	0	0	0	0	0	0	0	0	0	0	XXX	XXX
5989999997. Total - Common Stocks - Part 4				0	XXX	0	0	0	0	0	0	0	0	0	0	0	0	0	XXX	XXX
5989999998. Total - Common Stocks - Part 5				XXX	XXX	XXX	XXX	XXX	XXX	XXX	XXX	XXX	XXX	XXX	XXX	XXX	XXX	XXX	XXX	XXX
5989999999. Total - Common Stocks				0	XXX	0	0	0	0	0	0	0	0	0	0	0	0	0	XXX	XXX
5999999999. Total - Preferred and Common Stocks				0	XXX	0	0	0	0	0	0	0	0	0	0	0	0	0	XXX	XXX
.....
.....
.....
6009999999 - Totals				0	XXX	0	0	0	0	0	0	0	0	0	0	0	0	0	XXX	XXX

Schedule DB - Part A - Section 1 - Options, Caps, Floors, Collars, Swaps and Forwards Open
N O N E

Schedule DB - Part B - Section 1 - Futures Contracts Open
N O N E

Schedule DB - Part B - Section 1B - Brokers with whom cash deposits have been made
N O N E

Schedule DB - Part D - Section 1 - Counterparty Exposure for Derivative Instruments Open
N O N E

Schedule DB - Part D-Section 2 - Collateral for Derivative Instruments Open - Pledged By
N O N E

Schedule DB - Part D-Section 2 - Collateral for Derivative Instruments Open - Pledged To
N O N E

Schedule DB - Part E - Derivatives Hedging Variable Annuity Guarantees
N O N E

Schedule DL - Part 1 - Reinvested Collateral Assets Owned
N O N E

Schedule DL - Part 2 - Reinvested Collateral Assets Owned
N O N E

SCHEDULE E - PART 1 - CASH

[illegible]

SCHEDULE E - PART 2 - CASH EQUIVALENTS

Show Investments Owned End of Current Quarter

[illegible]