



PROPERTY AND CASUALTY COMPANIES - ASSOCIATION EDITION

QUARTERLY STATEMENT  
AS OF SEPTEMBER 30, 2025  
OF THE CONDITION AND AFFAIRS OF THE  
STATE AUTOMOBILE MUTUAL INSURANCE COMPANY

NAIC Group Code	0111	0111	NAIC Company Code	25135	Employer's ID Number	31-4316080
	(Current)	(Prior)				
Organized under the Laws of	Ohio		State of Domicile or Port of Entry		OH	
Country of Domicile	United States of America					
Incorporated/Organized	08/15/1921		Commenced Business		09/01/1921	
Statutory Home Office	518 East Broad Street		Columbus, OH, US 43215			
	(Street and Number)		(City or Town, State, Country and Zip Code)			
Main Administrative Office	175 Berkeley Street					
	(Street and Number)					
	Boston, MA US 02116		617-357-9500			
	(City or Town, State, Country and Zip Code)		(Area Code) (Telephone Number)			
Mail Address	175 Berkeley Street		Boston, MA US 02116			
	(Street and Number or P.O. Box)		(City or Town, State, Country and Zip Code)			
Primary Location of Books and Records	175 Berkeley Street					
	(Street and Number)					
	Boston, MA US 02116		617-357-9500			
	(City or Town, State, Country and Zip Code)		(Area Code) (Telephone Number)			
Internet Website Address	www.stateauto.com					
Statutory Statement Contact	Joel Peltokangas		617-357-9500			
	(Name)		(Area Code) (Telephone Number)			
	Statutory.Compliance@LibertyMutual.com		603-430-1653			
	(E-mail Address)		(FAX Number)			

OFFICERS

President and Chief Executive Officer	Hamid Talal Mirza	Executive Vice President and Chief Financial Officer	Matthew Edwin Johnson
Executive Vice President Chief Legal Officer and Secretary	Damon Paul Hart		

OTHER

Vlad Yakov Barbalat, Executive Vice President and Chief Investment Officer	Julie Marie Haase, Executive Vice President and Chief Financial Officer	Paul Sanghera, Executive Vice President and Comptroller
--	---	---

DIRECTORS OR TRUSTEES

James Matthew Czapla	Matthew Paul Dolan	Alison Brooke Erbig
Michael Joseph Fallon	Damon Paul Hart	Matthew Edwin Johnson
Hamid Talal Mirza	Elizabeth Julia Morahan	Paul Sanghera

State of Massachusetts SS:  
County of Suffolk

The officers of this reporting entity being duly sworn, each depose and say that they are the described officers of said reporting entity, and that on the reporting period stated above, all of the herein described assets were the absolute property of the said reporting entity, free and clear from any liens or claims thereon, except as herein stated, and that this statement, together with related exhibits, schedules and explanations therein contained, annexed or referred to, is a full and true statement of all the assets and liabilities and of the condition and affairs of the said reporting entity as of the reporting period stated above, and of its income and deductions therefrom for the period ended, and have been completed in accordance with the NAIC QUARTERLY Statement Instructions and Accounting Practices and Procedures manual except to the extent that: (1) state law may differ; or, (2) that state rules or regulations require differences in reporting not related to accounting practices and procedures, according to the best of their information, knowledge and belief, respectively. Furthermore, the scope of this attestation by the described officers also includes the related corresponding electronic filing with the NAIC, when required, that is an exact copy (except for formatting differences due to electronic filing) of the enclosed statement. The electronic filing may be requested by various regulators in lieu of or in addition to the enclosed statement.

 Hamid Talal Mirza President and Chief Executive Officer	 Damon Paul Hart EVP, Chief Legal Officer and Secretary	 Matthew Edwin Johnson Executive Vice President and Chief Financial Officer
--	---	---

Subscribed and sworn to before me this  
15th day of October, 2025

a. Is this an original filing? ..... Yes [ X ] No [ ]  
b. If no,  
1. State the amendment number.....  
2. Date filed .....  
3. Number of pages attached.....



STATEMENT AS OF SEPTEMBER 30, 2025 OF THE STATE AUTOMOBILE MUTUAL INSURANCE COMPANY

ASSETS

	Current Statement Date			4 December 31 Prior Year Net Admitted Assets
	1 Assets	2 Nonadmitted Assets	3 Net Admitted Assets (Cols. 1 - 2)	
1. Bonds .....	73,749,652		73,749,652	75,572,868
2. Stocks:				
2.1 Preferred stocks .....				
2.2 Common stocks .....	429,328,092	43,492,972	385,835,120	387,937,931
3. Mortgage loans on real estate:				
3.1 First liens .....				
3.2 Other than first liens.....				
4. Real estate:				
4.1 Properties occupied by the company (less \$ .....0 encumbrances) .....	64,864,978		64,864,978	66,454,692
4.2 Properties held for the production of income (less \$ .....0 encumbrances) .....				
4.3 Properties held for sale (less \$ .....0 encumbrances) .....				
5. Cash (\$ .....27,128,575 ), cash equivalents (\$ .....21,568 ) and short-term investments (\$ .....4,858,744 ) .....	32,008,887		32,008,887	17,455,219
6. Contract loans (including \$ .....0 premium notes) .....				
7. Derivatives .....				
8. Other invested assets .....	9,948,032		9,948,032	10,008,806
9. Receivables for securities .....				
10. Securities lending reinvested collateral assets .....				
11. Aggregate write-ins for invested assets .....				
12. Subtotals, cash and invested assets (Lines 1 to 11) .....	609,899,641	43,492,972	566,406,669	557,429,516
13. Title plants less \$ .....0 charged off (for Title insurers only) .....				
14. Investment income due and accrued .....	(177,250)		(177,250)	(249,335)
15. Premiums and considerations:				
15.1 Uncollected premiums and agents' balances in the course of collection .....	(1,088,267)		(1,088,267)	34,744
15.2 Deferred premiums, agents' balances and installments booked but deferred and not yet due (including \$ .....0 earned but unbilled premiums) .....				
15.3 Accrued retrospective premiums (\$ .....0 ) and contracts subject to redetermination (\$ .....0 ) .....				
16. Reinsurance:				
16.1 Amounts recoverable from reinsurers .....	57,688,518		57,688,518	69,056,761
16.2 Funds held by or deposited with reinsured companies .....				
16.3 Other amounts receivable under reinsurance contracts .....				
17. Amounts receivable relating to uninsured plans .....				
18.1 Current federal and foreign income tax recoverable and interest thereon ....				593,390
18.2 Net deferred tax asset .....	39,380,548	33,925,360	5,455,188	6,228,044
19. Guaranty funds receivable or on deposit .....				
20. Electronic data processing equipment and software .....	7,560,137	7,560,137		
21. Furniture and equipment, including health care delivery assets (\$ .....0 ) .....	1,126,518	1,126,518		
22. Net adjustment in assets and liabilities due to foreign exchange rates .....				
23. Receivables from parent, subsidiaries and affiliates .....	62,461,908	591,537	61,870,371	54,559,749
24. Health care (\$ .....0 ) and other amounts receivable .....				
25. Aggregate write-ins for other than invested assets .....	6,487,350		6,487,350	6,722,600
26. Total assets excluding Separate Accounts, Segregated Accounts and Protected Cell Accounts (Lines 12 to 25) .....	783,339,103	86,696,524	696,642,579	694,375,469
27. From Separate Accounts, Segregated Accounts and Protected Cell Accounts .....				
28. Total (Lines 26 and 27)	783,339,103	86,696,524	696,642,579	694,375,469
DETAILS OF WRITE-INS				
1101. ....				
1102. ....				
1103. ....				
1198. Summary of remaining write-ins for Line 11 from overflow page .....				
1199. Totals (Lines 1101 through 1103 plus 1198)(Line 11 above)				
2501. Other assets .....	6,487,350		6,487,350	6,722,600
2502. Cash Surrender Value Life Insurance .....				
2503. Equities and deposits in pools and associations .....				
2598. Summary of remaining write-ins for Line 25 from overflow page .....				
2599. Totals (Lines 2501 through 2503 plus 2598)(Line 25 above)	6,487,350		6,487,350	6,722,600

STATEMENT AS OF SEPTEMBER 30, 2025 OF THE STATE AUTOMOBILE MUTUAL INSURANCE COMPANY

LIABILITIES, SURPLUS AND OTHER FUNDS

	1 Current Statement Date	2 December 31, Prior Year
1. Losses (current accident year \$ .....0 ) .....		
2. Reinsurance payable on paid losses and loss adjustment expenses .....	12,393,993	5,772,578
3. Loss adjustment expenses .....		
4. Commissions payable, contingent commissions and other similar charges .....		
5. Other expenses (excluding taxes, licenses and fees) .....		
6. Taxes, licenses and fees (excluding federal and foreign income taxes) .....		
7.1 Current federal and foreign income taxes (including \$ .....0 on realized capital gains (losses)) .....	1,977,481	
7.2 Net deferred tax liability .....		
8. Borrowed money \$ .....0 and interest thereon \$ .....0 .....		
9. Unearned premiums (after deducting unearned premiums for ceded reinsurance of \$ .....369,424,408 and including warranty reserves of \$ .....0 and accrued accident and health experience rating refunds including \$ ..... for medical loss ratio rebate per the Public Health Service Act) .....		
10. Advance premium .....		
11. Dividends declared and unpaid:		
11.1 Stockholders .....		
11.2 Policyholders .....		
12. Ceded reinsurance premiums payable (net of ceding commissions) .....	75,090,864	89,306,148
13. Funds held by company under reinsurance treaties .....		
14. Amounts withheld or retained by company for account of others .....	34,579	34,579
15. Remittances and items not allocated .....		
16. Provision for reinsurance (including \$ .....0 certified) .....		
17. Net adjustments in assets and liabilities due to foreign exchange rates .....		
18. Drafts outstanding .....		13,592,821
19. Payable to parent, subsidiaries and affiliates .....	22,960,132	12,314,656
20. Derivatives .....		
21. Payable for securities .....		
22. Payable for securities lending .....		
23. Liability for amounts held under uninsured plans .....		
24. Capital notes \$ .....0 and interest thereon \$ .....0 .....		
25. Aggregate write-ins for liabilities .....	2,094,461	
26. Total liabilities excluding protected cell liabilities (Lines 1 through 25) .....	114,551,510	121,020,782
27. Protected cell liabilities .....		
28. Total liabilities (Lines 26 and 27) .....	114,551,510	121,020,782
29. Aggregate write-ins for special surplus funds .....		
30. Common capital stock .....	5,000,000	5,000,000
31. Preferred capital stock .....		
32. Aggregate write-ins for other than special surplus funds .....		
33. Surplus notes .....		
34. Gross paid in and contributed surplus .....	75,000,000	75,000,000
35. Unassigned funds (surplus) .....	502,091,069	493,354,687
36. Less treasury stock, at cost:		
36.1 .....0 shares common (value included in Line 30 \$ .....0 ) .....		
36.2 .....0 shares preferred (value included in Line 31 \$ .....0 ) .....		
37. Surplus as regards policyholders (Lines 29 to 35, less 36) .....	582,091,069	573,354,687
38. Totals (Page 2, Line 28, Col. 3)	696,642,579	694,375,469
DETAILS OF WRITE-INS		
2501. Other liabilities .....	2,094,461	
2502. Retroactive reinsurance reserves .....		
2503. Amounts held under uninsured plans .....		
2598. Summary of remaining write-ins for Line 25 from overflow page .....		
2599. Totals (Lines 2501 through 2503 plus 2598)(Line 25 above)	2,094,461	
2901. Special surplus from retroactive reinsurance .....		
2902. SSAP 10R incremental change .....		
2903. ....		
2998. Summary of remaining write-ins for Line 29 from overflow page .....		
2999. Totals (Lines 2901 through 2903 plus 2998)(Line 29 above)		
3201. Guaranty funds .....		
3202. ....		
3203. ....		
3298. Summary of remaining write-ins for Line 32 from overflow page .....		
3299. Totals (Lines 3201 through 3203 plus 3298)(Line 32 above)		

STATEMENT OF INCOME

	1 Current Year to Date	2 Prior Year to Date	3 Prior Year Ended December 31
UNDERWRITING INCOME			
1. Premiums earned:			
1.1 Direct (written \$ .....552,365,148 ) .....	614,880,989	756,993,617	993,221,457
1.2 Assumed (written \$ .....906,300 ) .....	1,032,016	1,335,387	1,909,994
1.3 Ceded (written \$ .....553,271,448 ) .....	615,913,006	758,329,004	995,131,451
1.4 Net (written \$ ..... ) .....	(1)		
DEDUCTIONS:			
2. Losses incurred (current accident year \$ .....0 ):			
2.1 Direct .....	366,180,212	611,813,830	929,429,712
2.2 Assumed .....	7,902,884	1,688,658	2,701,869
2.3 Ceded .....	374,083,096	613,502,488	932,131,581
2.4 Net .....			
3. Loss adjustment expenses incurred .....			
4. Other underwriting expenses incurred .....			
5. Aggregate write-ins for underwriting deductions .....			
6. Total underwriting deductions (Lines 2 through 5) .....			
7. Net income of protected cells .....			
8. Net underwriting gain (loss) (Line 1 minus Line 6 + Line 7) .....	(1)		
INVESTMENT INCOME			
9. Net investment income earned .....	4,397,810	3,794,958	5,013,445
10. Net realized capital gains (losses) less capital gains tax of \$ .....24,054 .....	90,487	(66,096)	(66,096)
11. Net investment gain (loss) (Lines 9 + 10) .....	4,488,297	3,728,862	4,947,349
OTHER INCOME			
12. Net gain or (loss) from agents' or premium balances charged off (amount recovered \$ .....0 amount charged off \$ .....0 ) .....			
13. Finance and service charges not included in premiums .....			
14. Aggregate write-ins for miscellaneous income .....	(1,862)	(108,011)	(528,794)
15. Total other income (Lines 12 through 14) .....	(1,862)	(108,011)	(528,794)
16. Net income before dividends to policyholders, after capital gains tax and before all other federal and foreign income taxes (Lines 8 + 11 + 15) .....	4,486,434	3,620,851	4,418,555
17. Dividends to policyholders .....			
18. Net income, after dividends to policyholders, after capital gains tax and before all other federal and foreign income taxes (Line 16 minus Line 17) .....	4,486,434	3,620,851	4,418,555
19. Federal and foreign income taxes incurred .....	707,814	1,762,208	(536,430)
20. Net income (Line 18 minus Line 19)(to Line 22) .....	3,778,620	1,858,644	4,954,985
CAPITAL AND SURPLUS ACCOUNT			
21. Surplus as regards policyholders, December 31 prior year .....	573,354,687	528,578,519	528,578,519
22. Net income (from Line 20) .....	3,778,620	1,858,644	4,954,985
23. Net transfers (to) from Protected Cell accounts .....			
24. Change in net unrealized capital gains (losses) less capital gains tax of \$ .....31,227 .....	(2,116,986)	11,770,013	20,482,597
25. Change in net unrealized foreign exchange capital gain (loss) .....			
26. Change in net deferred income tax .....	147,775	5,245,247	3,578,719
27. Change in nonadmitted assets .....	6,926,973	5,289,540	13,369,867
28. Change in provision for reinsurance .....			2,390,000
29. Change in surplus notes .....			
30. Surplus (contributed to) withdrawn from protected cells .....			
31. Cumulative effect of changes in accounting principles .....			
32. Capital changes:			
32.1 Paid in .....			
32.2 Transferred from surplus (Stock Dividend) .....			
32.3 Transferred to surplus .....			
33. Surplus adjustments:			
33.1 Paid in .....			
33.2 Transferred to capital (Stock Dividend) .....			
33.3 Transferred from capital .....			
34. Net remittances from or (to) Home Office .....			
35. Dividends to stockholders .....			
36. Change in treasury stock .....			
37. Aggregate write-ins for gains and losses in surplus .....			
38. Change in surplus as regards policyholders (Lines 22 through 37).....	8,736,382	24,163,444	44,776,168
39. Surplus as regards policyholders, as of statement date (Lines 21 plus 38)	582,091,069	552,741,963	573,354,687
DETAILS OF WRITE-INS			
0501. ....			
0502. ....			
0503. ....			
0598. Summary of remaining write-ins for Line 5 from overflow page .....			
0599. Totals (Lines 0501 through 0503 plus 0598)(Line 5 above)			
1401. Other income/(expense) .....	(1,862)	(108,011)	(528,794)
1402. Retroactive reinsurance gain/(loss) .....			
1403. ....			
1498. Summary of remaining write-ins for Line 14 from overflow page .....			
1499. Totals (Lines 1401 through 1403 plus 1498)(Line 14 above)	(1,862)	(108,011)	(528,794)
3701. Other changes in surplus .....			
3702. SSAP 10R incremental change .....			
3703. ....			
3798. Summary of remaining write-ins for Line 37 from overflow page .....			
3799. Totals (Lines 3701 through 3703 plus 3798)(Line 37 above)			

STATEMENT AS OF SEPTEMBER 30, 2025 OF THE STATE AUTOMOBILE MUTUAL INSURANCE COMPANY

CASH FLOW

	1 Current Year To Date	2 Prior Year To Date	3 Prior Year Ended December 31
<b>Cash from Operations</b>			
1. Premiums collected net of reinsurance .....	( 13,092,273)	(91,373,535)	( 140,452,351)
2. Net investment income .....	4,144,115	5,467,573	4,934,740
3. Miscellaneous income .....	( 1,862)	(108,011)	(528,794)
4. Total (Lines 1 to 3) .....	(8,950,020)	(86,013,973)	(136,046,405)
5. Benefit and loss related payments .....	(17,989,657)	(79,370,178)	(125,298,166)
6. Net transfers to Separate Accounts, Segregated Accounts and Protected Cell Accounts .....			
7. Commissions, expenses paid and aggregate write-ins for deductions .....		343,840	343,840
8. Dividends paid to policyholders .....			
9. Federal and foreign income taxes paid (recovered) net of \$ ..... tax on capital gains (losses) .....	(1,839,003)	(2,354,184)	(1,881,797)
10. Total (Lines 5 through 9) .....	(19,828,660)	(81,380,521)	(126,836,123)
11. Net cash from operations (Line 4 minus Line 10) .....	10,878,640	(4,633,452)	(9,210,282)
<b>Cash from Investments</b>			
12. Proceeds from investments sold, matured or repaid:			
12.1 Bonds .....	23,075,997	14,982,538	15,115,145
12.2 Stocks .....	3,285,401	930,000	930,000
12.3 Mortgage loans .....			
12.4 Real estate .....			
12.5 Other invested assets .....	216,000		
12.6 Net gains or (losses) on cash, cash equivalents and short-term investments .....			(3,815)
12.7 Miscellaneous proceeds .....		82	82
12.8 Total investment proceeds (Lines 12.1 to 12.7) .....	26,577,398	15,912,620	16,041,411
13. Cost of investments acquired (long-term only):			
13.1 Bonds .....	23,587,898	35,013,392	35,288,397
13.2 Stocks .....	581,079	535,065	535,065
13.3 Mortgage loans .....			
13.4 Real estate .....			
13.5 Other invested assets .....	6,800	5,500	5,500
13.6 Miscellaneous applications .....		6,016,331	6,016,331
13.7 Total investments acquired (Lines 13.1 to 13.6) .....	24,175,777	41,570,288	41,845,293
14. Net increase/(decrease) in contract loans and premium notes .....			
15. Net cash from investments (Line 12.8 minus Line 13.7 and Line 14) .....	2,401,621	(25,657,668)	(25,803,881)
<b>Cash from Financing and Miscellaneous Sources</b>			
16. Cash provided (applied):			
16.1 Surplus notes, capital notes .....			
16.2 Capital and paid in surplus, less treasury stock .....			
16.3 Borrowed funds .....			
16.4 Net deposits on deposit-type contracts and other insurance liabilities .....			
16.5 Dividends to stockholders .....			
16.6 Other cash provided (applied) .....	1,273,407	11,057,750	73,326,175
17. Net cash from financing and miscellaneous sources (Line 16.1 through Line 16.4 minus Line 16.5 plus Line 16.6) .....	1,273,407	11,057,750	73,326,175
<b>RECONCILIATION OF CASH, CASH EQUIVALENTS AND SHORT-TERM INVESTMENTS</b>			
18. Net change in cash, cash equivalents and short-term investments (Line 11, plus Lines 15 and 17) .	14,553,668	(19,233,369)	38,312,011
19. Cash, cash equivalents and short-term investments:			
19.1 Beginning of year .....	17,455,219	(20,856,793)	(20,856,793)
19.2 End of period (Line 18 plus Line 19.1)	32,008,887	(40,090,162)	17,455,219

Note: Supplemental disclosures of cash flow information for non-cash transactions:

20.0001. ....			
---------------	--	--	--

STATEMENT AS OF SEPTEMBER 30, 2025 OF THE STATE AUTOMOBILE MUTUAL INSURANCE COMPANY

NOTES TO FINANCIAL STATEMENTS

NOTE 1    Summary of Significant Accounting Policies and Going Concern

A.    Accounting Practices

Effective January 1, 2001, and subject to any deviations prescribed or permitted by the State of Ohio, the accompanying financial statements of The First Liberty Insurance Corporation (the “Company”) have been prepared in conformity with the National Association of Insurance Commissioners (“NAIC”) Accounting Practices and Procedures Manual (“APP Manual”).

The Company does not have any prescribed or permitted accounting practices.

	SSAP #	F/S Page	F/S Line #		2025		2024
NET INCOME							
(1) State basis (Page 4, Line 20, Columns 1 & 3)	XXX	XXX	XXX	\$	3,778,620	\$	4,954,985
State Prescribed Practices that are an increase/ (2) (decrease) from NAIC SAP:							
State Prescribed Practices that are an increase/ (3) (decrease) from NAIC SAP:							
(4) NAIC SAP (1-2-3=4)	XXX	XXX	XXX	\$	3,778,620	\$	4,954,985
SURPLUS							
(5) State basis (Page 3, Line 37, Columns 1 & 2)	XXX	XXX	XXX	\$	582,091,069	\$	573,354,687
State Prescribed Practices that are an increase/ (6) (decrease) from NAIC SAP:							
State Prescribed Practices that are an increase/ (7) (decrease) from NAIC SAP:							
(8) NAIC SAP (5-6-7=8)	XXX	XXX	XXX	\$	582,091,069	\$	573,354,687

B.    Use of Estimates in the Preparation of the Financial Statements

The preparation of financial statements requires management to make estimates and assumptions that affect the reported amounts of assets, liabilities, revenues, and expenses. It also requires estimates in the disclosure of contingent assets and liabilities. Actual results could differ from these estimates.

C.    Accounting Policy

Premiums are earned over the terms of the related policies and reinsurance contracts. Unearned premium reserves are established to cover the unexpired portion of premiums written. Such reserves are computed by pro-rata methods. Expenses incurred in connection with acquiring new insurance business, including acquisition costs such as sales commissions, are charged to operations as incurred. Expenses incurred are reduced for ceding allowances received or receivable.

In addition, the Company applies the following accounting policies, where applicable:

1. Short term investments are carried at cost, adjusted where appropriate for amortization of premium or discount, or fair value as specified by the Purposes and Procedures Manual of the NAIC Investment Analysis Office (SVO Manual).
2. Bonds are carried at cost, adjusted where appropriate for amortization of premium or discount, or fair value as specified by the SVO Manual.
3. Common stocks are carried at fair value, except that investments in stocks of subsidiaries, controlled and affiliated ("SCA") companies are carried according to Note 1C(7).
4. Preferred stocks are carried at cost or fair value as specified by the SVO Manual. Preferred stocks of SCA companies are carried according to Note 1C(7).
5. Mortgage loans are carried at amortized cost, less impairments as specified by the SVO Manual.
6. Mortgage backed/asset backed securities are carried at amortized cost or fair value based on guidance in the SVO Manual. Prepayment assumptions for mortgage backed/asset backed securities are based on market expectations. The retrospective adjustment method and prospective interest method are used to value all mortgage backed/asset backed securities.
7. Investments in SCA companies are carried in accordance with SSAP No. 97, Investments in Subsidiary, Controlled, and Affiliated Entities, A Replacement of SSAP No. 88, and the SVO Manual.
8. Investments in joint ventures, partnerships, and limited liability companies are carried in accordance with SSAP No. 48, Joint Ventures, Partnerships and Limited Liability Companies, and the SVO Manual.
9. Derivative Securities, refer to Note 8 .
10. Investment income is anticipated as a factor in the premium deficiency calculation, in accordance with SSAP No. 53, Property Casualty Contracts - Premiums. Refer to Note 30.
11. Unpaid losses and loss adjustment expenses include an amount determined from individual case estimates and an amount, based on past experience, for losses and loss adjustment expenses incurred but not reported. Such liabilities are necessarily based on assumptions and estimates, and while management believes the amount is adequate, the ultimate liability may be in excess of or less than the amount provided. The methods, for making such estimates and for establishing the resulting liability, are continually reviewed and follow current standards of practice. Any adjustments to the liability are reflected in the period that they are determined.
12. The Company did not change its capitalization policy in 2025.
13. The Company has no pharmaceutical rebate receivables.

D.    Going Concern

The Company is not aware of any conditions that would impact its ability to continue as a going concern.

NOTE 2    Accounting Changes and Corrections of Errors

There were no material changes in accounting principles and/or correction of errors.

NOTES TO FINANCIAL STATEMENTS

NOTE 3 Business Combinations and Goodwill

No Change

NOTE 4 Discontinued Operations

The Company has no discontinued operations.

NOTE 5 Investments

A. Mortgage Loans, including Mezzanine Real Estate Loans

The Company does not invest in mortgage loans.

B. Debt Restructuring

Not applicable.

C. Reverse Mortgages

The Company has no reverse mortgages.

D. Asset-Backed Securities

(1) Prepayment speed assumptions are updated monthly with data sourced from the Bloomberg data service.

(2) OTTI recognized 1st Quarter

- a. Intent to sell
- b. Inability or lack of intent to retain the investment in the security for a period of time sufficient to recover the amortized cost basis
- c. Total 1st Quarter (a+b)

OTTI recognized 2nd Quarter

- d. Intent to sell
- e. Inability or lack of intent to retain the investment in the security for a period of time sufficient to recover the amortized cost basis
- f. Total 2nd Quarter (d+e)

OTTI recognized 3rd Quarter

- g. Intent to sell
- h. Inability or lack of intent to retain the investment in the security for a period of time sufficient to recover the amortized cost basis
- i. Total 3rd Quarter (g+h)

OTTI recognized 4th Quarter

- j. Intent to sell
- k. Inability or lack of intent to retain the investment in the security for a period of time sufficient to recover the amortized cost basis
- l. Total 4th Quarter (j+k)

m. Annual Aggregate Total (c+f+i+l)

1 Amortized Cost Basis Before Other-than- Temporary Impairment	2 Other-than- Temporary Impairment Recognized in Loss	3  Fair Value 1 - 2
		\$ -
\$ -	\$ -	\$ -
		\$ -
\$ -	\$ -	\$ -
		\$ -
\$ -	\$ -	\$ -
		\$ -
\$ -	\$ -	\$ -
		\$ -
\$ -	\$ -	\$ -
	\$ -	

(3)

1  CUSIP	2 Book/Adjusted Carrying Value Amortized Cost Before Current Period OTTI	3 Present Value of Projected Cash Flows	4 Recognized Other-Than- Temporary Impairment	5 Amortized Cost After Other-Than- Temporary Impairment	6 Fair Value at time of OTTI	7 Date of Financial Statement Where Reported
Total	XXX	XXX	\$ -	XXX	XXX	XXX

All impaired Loaned Backed Securities for which an other-than-temporary impairment has not been recognized in earnings as a realized loss as of September 30, 2025:

a) The aggregate amount of unrealized losses:

- 1. Less than 12 Months \$ (1,271)
- 2. 12 Months or Longer \$ (109,826)

b)The aggregate related fair value of securities with unrealized losses:

- 1. Less than 12 Months \$ 2,908,505
- 2. 12 Months or Longer \$ 3,271,549

(5) The Company reviews fixed income securities for impairment on a quarterly basis. Securities are reviewed for both quantitative and qualitative considerations including, but not limited to: (a) the extent of the decline in fair value below book value, (b) the duration of the decline, (c) significant adverse changes in the financial condition or near term prospects of the investment or issuer, (d) significant change in the business climate or credit ratings of the issuer, (e) general market conditions and volatility, (f) industry factors, and (g) the past impairment of the security holding or the issuer. If the Company believes a decline in the value of a particular investment is temporary, the decline is recorded as an unrealized loss in policyholders' equity. If the decline is believed to be "other-than-temporary," and the Company believes it will not be able to collect all cash flows due on its fixed income securities, then the carrying value of the investment is written down to the expected cash flow amount and a realized loss is recorded as a credit impairment.

E. Dollar Repurchase Agreements and/or Securities Lending Transactions

(1) The company has not entered into any repurchase agreements during the year. Refer to Note 17B of the annual statement for the policy on requiring collateral for securities lending.

(2) The Company has not pledged any of its assets as collateral as of September 30, 2025.

NOTES TO FINANCIAL STATEMENTS

(3) Collateral Received

a. Aggregate Amount Collateral Received

	Fair Value	
1. Securities Lending		
(a) Open	\$	-
(b) 30 Days or Less	\$	-
(c) 31 to 60 Days	\$	-
(d) 61 to 90 Days	\$	-
(e) Greater Than 90 Days	\$	-
(f) Subtotal (a+b+c+d+e)	\$	-
(g) Securities Received	\$	-
(h) Total Collateral Received (f+g)	\$	-
2. Dollar Repurchase Agreement		
(a) Open	\$	-
(b) 30 Days or Less	\$	-
(c) 31 to 60 Days	\$	-
(d) 61 to 90 Days	\$	-
(e) Greater Than 90 Days	\$	-
(f) Subtotal (a+b+c+d+e)	\$	-
(g) Securities Received	\$	-
(h) Total Collateral Received (f+g)	\$	-

b. The fair value of that collateral and of the portion of that collateral that it has sold or repledged

\$	-
----	---

c. All collateral is received in the form of cash and/or securities equal to or in excess of 102% of the loaned value and are maintained in a separate custody account. Cash collateral is reinvested into short-term investments as outlined in the terms of the investment agreement. Per the terms of the investment agreement the Company has the right and ability to redeem any eligible securities on short notice.

d. Not Applicable

(4) Securities Lending Transactions Administered by an Affiliated Agent

Not Applicable for any LMG reporting entity

(5) Collateral Reinvestment

a. Aggregate Amount Collateral Reinvested

	Amortized Cost		Fair Value	
1. Securities Lending				
(a) Open	\$	-	\$	-
(b) 30 Days or Less	\$	-	\$	-
(c) 31 to 60 Days	\$	-	\$	-
(d) 61 to 90 Days	\$	-	\$	-
(e) 91 to 120 Days	\$	-	\$	-
(f) 121 to 180 Days	\$	-	\$	-
(g) 181 to 365 Days	\$	-	\$	-
(h) 1 to 2 years	\$	-	\$	-
(i) 2 to 3 years	\$	-	\$	-
(j) Greater than 3 years	\$	-	\$	-
(k) Subtotal (Sum of a through j)	\$	-	\$	-
(l) Securities Received	\$	-	\$	-
(m) Total Collateral Reinvested (k+l)	\$	-	\$	-
2. Dollar Repurchase Agreement				
(a) Open	\$	-	\$	-
(b) 30 Days or Less	\$	-	\$	-
(c) 31 to 60 Days	\$	-	\$	-
(d) 61 to 90 Days	\$	-	\$	-
(e) 91 to 120 Days	\$	-	\$	-
(f) 121 to 180 Days	\$	-	\$	-
(g) 181 to 365 Days	\$	-	\$	-
(h) 1 to 2 years	\$	-	\$	-
(i) 2 to 3 years	\$	-	\$	-
(j) Greater than 3 years	\$	-	\$	-
(k) Subtotal (Sum of a through j)	\$	-	\$	-
(l) Securities Received	\$	-	\$	-
(m) Total Collateral Reinvested (k+l)	\$	-	\$	-

b. The reporting entity's sources of cash that it uses to return the cash collateral is dependent on the liquidity of the current market conditions. Under current conditions, the reporting entity could liquidate all or a portion of its cash collateral reinvestment securities in order to meet the collateral calls that could come due under a worst-case scenario.

(6) The Company has not accepted collateral that it is not permitted by contract or custom to sell or re-pledge.

(7) Collateral for securities lending transactions that extend beyond one year from the reporting date.

The Company has not accepted collateral that extends beyond one year from the reporting date for securities lending transactions.

F. Repurchase Agreements Transactions Accounted for as Secured Borrowing

Not applicable

G. Reverse Repurchase Agreements Transactions Accounted for as Secured Borrowing

Not applicable



NOTES TO FINANCIAL STATEMENTS

H. Repurchase Agreements Transactions Accounted for as a Sale

Not applicable

I. Reverse Repurchase Agreements Transactions Accounted for as a Sale

Not applicable

J. Real Estate

The Company does not hold any investments in real estate.

(5) Company input

No Change

M. Working Capital Finance Investments

The Company does not invest in working capital finance investments.

N. Offsetting and Netting of Assets and Liabilities

Not Applicable

O. 5GI Securities

Not Applicable

d. Common Stock						
e. Totals (a+b+c+d)	\$ -	\$ -	\$ -	XXX	\$ -	\$ -

Q. Prepayment Penalty and Acceleration Fees

Not Applicable

R. Reporting Entity's Share of Cash Pool by Asset Type

Not Applicable.

Not Applicable

NOTE 6 Joint Ventures, Partnerships and Limited Liability Companies

No Change

NOTE 7 Investment Income

No Change

NOTE 8 Derivative Instruments

The Company's investment activities do not include derivatives. However, the Company may acquire derivatives as additions to bond, common stock, or preferred stock investments. These derivatives are ancillary to the overall investment and are immaterial to the underlying investment portfolio.

NOTE 9 Income Taxes

No change

NOTE 10 Information Concerning Parent, Subsidiaries, Affiliates and Other Related Parties

No change

NOTE 11 Debt

A. Debt (Including Capital Notes)

The Company has no debt, including capital notes.

B. FHLB (Federal Home Loan Bank) Agreements

Not Applicable

NOTES TO FINANCIAL STATEMENTS

C. There were no outstanding borrowings as of September 30, 2025.

NOTE 12 Retirement Plans, Deferred Compensation, Postemployment Benefits and Compensated Absences and Other Postretirement Benefit Plans

The Company does not have any direct employees and therefore, does not have any direct obligations for a defined benefit plan, deferred compensation arrangements, compensated absences or other postretirement benefit plans. Services for the operation of the Company are provided under provisions of the management services agreements, as described in Note 10F.

NOTE 13 Capital and Surplus, Dividend Restrictions and Quasi-Reorganizations

No Change

NOTE 14 Liabilities, Contingencies and Assessments

No Change

NOTE 15 Leases

No Change

NOTE 16 Information About Financial Instruments With Off-Balance Sheet Risk and Financial Instruments With Concentrations of Credit Risk

The Company is not exposed to financial instruments with off-balance sheet risk or concentration of credit risk.

NOTE 17 Sale, Transfer and Servicing of Financial Assets and Extinguishments of Liabilities

A. Transfers of Receivables Reported as Sales

The Company did not have any transfers of receivables reported as sales.

B. Transfer and Servicing of Financial Assets

No change

C. Wash Sales

(1) The Company did not have any wash sale transactions during the year.

(2) Not applicable.

NOTE 18 Gain or Loss to the Reporting Entity from Uninsured Plans and the Uninsured Portion of Partially Insured Plans

No Change

NOTE 19 Direct Premium Written/Produced by Managing General Agents/Third Party Administrators

The Company has no direct premiums written or produced through managing general agents or third party administrators.

NOTE 20 Fair Value Measurements

A. Inputs Used for Assets and Liabilities Measured at Fair Value

Pursuant to the guidance in SSAP No. 100, Fair Value Measurements, the Company carries no assets or liabilities on its balance sheet measured at fair value.

(1) Fair Value Measurements at Reporting Date

of asset or liability	(Level 1)	(Level 2)	(Level 3)	(NAV)	Total
a. Assets at fair value					
Corporate and other (ICO)	\$ -	\$ -	\$ -	\$ -	\$ -
Foreign Government (ICO)	\$ -	\$ -	\$ -	\$ -	\$ -
Special Revenue and Political Subdivisions	\$ -	\$ -	\$ -	\$ -	\$ -
US Govt and Agency (ICO)	\$ -	\$ -	\$ -	\$ -	\$ -
Non Mortgage ABS (ABS)	\$ -	\$ -	\$ -	\$ -	\$ -
CMBS - Non-Agency (ABS)	\$ -	\$ -	\$ -	\$ -	\$ -
CMBS - Agency (ABS)	\$ -	\$ -	\$ -	\$ -	\$ -
RMBS - Agency (ABS)	\$ -	\$ -	\$ -	\$ -	\$ -
SBA Loans (ABS)	\$ -	\$ -	\$ -	\$ -	\$ -
RMBS - Non-Agency (ABS)	\$ -	\$ -	\$ -	\$ -	\$ -
					\$ -
Preferred Stocks	\$ -	\$ -	\$ -	\$ -	\$ -
					\$ -
Common Stocks	\$ -	\$ -	\$ 555,600	\$ -	\$ 555,600
Total assets at fair value/NAV	\$ -	\$ -	\$ 555,600	\$ -	\$ 555,600

of asset or liability	(Level 1)	(Level 2)	(Level 3)	(NAV)	Total
b. Liabilities at fair value					
Total liabilities at fair value	\$ -	\$ -	\$ -	\$ -	\$ -

NOTES TO FINANCIAL STATEMENTS

(2) Fair Value Measurements in (Level 3) of the Fair Value hierarchy

Description	Off for Quarter End	into Level 3	Out of Level 3	Included in Net Income	Included in Surplus	Purchases	Issuances	Sales	Settlements	for Current Quarter End
a. Assets										
Common Stocks	\$ 555,600	\$ -	\$ -	\$ -	\$ -	\$ -	\$ -	\$ -	\$ -	\$ 555,600
Total Assets	\$ 555,600	\$ -	\$ -	\$ -	\$ -	\$ -	\$ -	\$ -	\$ -	\$ 555,600

Description	Off for Quarter End	into Level 3	Out of Level 3	Included in Net Income	Included in Surplus	Purchases	Issuances	Sales	Settlements	for Current Quarter End
b. Liabilities										
Total Liabilities	\$ -	\$ -	\$ -	\$ -	\$ -	\$ -	\$ -	\$ -	\$ -	\$ -

(3) The Company holds NAIC designated 6 fixed maturity securities at the lower of amortized cost or fair value defined by SSAP No. 26, Bonds and NAIC

(4) Inputs and Techniques Used for Fair Value

(5) Company input

B. Other Fair Value Disclosures

Not Applicable

C. Aggregate fair value for all financial instruments and the level within the fair value hierarchy in which the fair value measurements in their entirety fall.

Type of Financial Instrument	Aggregate Fair Value	Admitted Assets	(Level 1)	(Level 2)	(Level 3)	Net Asset Value (NAV)	Not Practicable (Carrying Value)
& Short Term	\$ 32,010,003	\$ 32,008,887	\$ 27,128,575	\$ 4,881,428	\$ -	\$ -	\$ -
Bonds	\$ 74,181,604	\$ 73,749,652	\$ 40,221,149	\$ 33,960,455	\$ -	\$ -	\$ -
Preferred Stock	\$ -	\$ -	\$ -	\$ -	\$ -	\$ -	\$ -
Common Stock	\$ 555,600	\$ 555,600	\$ -	\$ -	\$ 555,600	\$ -	\$ -
Securities Lending	\$ -	\$ -	\$ -	\$ -	\$ -	\$ -	\$ -
Mortgage Loans	\$ -	\$ -	\$ -	\$ -	\$ -	\$ -	\$ -
Surplus Notes	\$ -	\$ -	\$ -	\$ -	\$ -	\$ -	\$ -
Net Derivatives	\$ -	\$ -	\$ -	\$ -	\$ -	\$ -	\$ -
Total	\$ 106,747,207	\$ 106,314,138	\$ 67,349,724	\$ 38,841,883	\$ 555,600	\$ -	\$ -

D. Not Practicable to Estimate Fair Value

Not Applicable

E. Instruments Measured at Net Asset Value (NAV)

The Company elected to use NAV for all money market mutual funds in lieu of fair value as NAV is more readily available. These funds are backed by high quality, very liquid short-term instruments and the probability is remote that the funds would be sold for a value other than NAV.

B. Troubled Debt Restructuring: Debtors

Company input

C. Other Disclosures

NOTE 22 Events Subsequent

No change

NOTE 23 Reinsurance

No change

NOTE 24 Retrospectively Rated Contracts & Contracts Subject to Redetermination

A. Company input

B. Company input

C. Company input

D. Medical loss ratio rebates required pursuant to the Public Health Service Act.

	1	2	3	4	5
	Individual	Small Group Employer	Large Group Employer	Other Categories with Rebates	Total
Prior Reporting Year					
(1) Medical loss ratio rebates incurred	\$ -	\$ -	\$ -	\$ -	\$ -
(2) Medical loss ratio rebates paid	\$ -	\$ -	\$ -	\$ -	\$ -
(3) Medical loss ratio rebates unpaid	\$ -	\$ -	\$ -	\$ -	\$ -
(4) Plus reinsurance assumed amounts	XXX	XXX	XXX	XXX	
(5) Less reinsurance ceded amounts	XXX	XXX	XXX	XXX	
(6) Rebates unpaid net of reinsurance	XXX	XXX	XXX	XXX	\$ -
Current Reporting Year-to-Date					
(7) Medical loss ratio rebates incurred	\$ -	\$ -	\$ -	\$ -	\$ -
(8) Medical loss ratio rebates paid					\$ -

NOTES TO FINANCIAL STATEMENTS

(9) Medical loss ratio rebates unpaid					\$	-
(10) Plus reinsurance assumed amounts	XXX	XXX	XXX	XXX		
(11) Less reinsurance ceded amounts	XXX	XXX	XXX	XXX		
(12) Rebates unpaid net of reinsurance	XXX	XXX	XXX	XXX	\$	-

- E.
- (1) For Ten Percent (10%) Method of Determining Nonadmitted Retrospective Premium
- a. Total accrued retro premium
  - b. Unsecured amount
  - c. Less: Nonadmitted amount (10%) \$ -
  - d. Less: Nonadmitted for any person for whom agents' balances or uncollected premiums are nonadmitted
  - e. Admitted amount (a) - (c) - (d) \$ -

(2) For Quality Rating Method of Determining Nonadmitted Retrospective Premium

		(1)	(2)			(3)	(4)
		Insured's Current Quality Rating	Total Amount	Unsecured Balances	%	Nonadmitted Amount (2) x %	Admitted Amount (1) - (3)
a.	1				1%	\$ -	\$ -
b.	2				2%	\$ -	\$ -
c.	3				5%	\$ -	\$ -
d.	4				10%	\$ -	\$ -
e.	5				20%	\$ -	\$ -
f.	6				100%	\$ -	\$ -
g. Nonadmitted for any person for whom agents' balances or uncollected premiums are nonadmitted							
h. Total (a) through (f)							
- (g)		\$	-	\$	-	\$	-

F. Risk Sharing Provisions of the Affordable Care Act

(1) Did the reporting entity write accident and health insurance premium which is subject to the Affordable Care Act risk sharing provisions (YES/NO)?

(2) Impact of Risk Sharing Provisions of the Affordable Care Act on Admitted Assets, Liabilities and Revenue for the Current Year

Amount

- a. Permanent ACA Risk Adjustment Program
- Assets
- 1. Premium adjustments receivable due to ACA Risk Adjustment (including high risk pool payments)
- Liabilities
- 2. Risk adjustment user fees payable for ACA Risk Adjustment
  - 3. Premium adjustments payable due to ACA Risk Adjustment (including high risk pool premium)
- Operations (Revenue & Expense)
- 4. Reported as revenue in premium for accident and health contracts (written/collected) due to ACA Risk Adjustment
  - 5. Reported in expenses as ACA risk adjustment user fees (incurred/paid)

(3) Roll forward of prior year ACA risk sharing provisions for the following asset (gross of any nonadmission) and liability balances along with the reasons for adjustments to prior year balance.

	Accrued During the Prior Year on Business Written Before December 31 of the Prior Year		Received or Paid as of the Current Year on Business Written Before December 31 of the Prior Year		Differences		Adjustments			Unsettled Balances as of the Reporting Date	
					Prior Year Accrued Less Payments (Col 1 - 3)	Prior Year Accrued Less Payments (Col 2 - 4)	To Prior Year Balances	To Prior Year Balances		Cumulative Balance from Prior Years (Col 1-3+7)	Cumulative Balance from Prior Years (Col 2-4+8)
	1	2	3	4	5	6	7	8	Ref	9	10
	Receivable	Payable	Receivable	Payable	Receivable	Payable	Receivable	Payable		Receivable	Payable
a. Permanent ACA Risk Adjustment Program											
1. Premium adjustments receivable (including high risk pool payments)					\$ -	\$ -			A	\$ -	\$ -
2. Premium adjustments (payable) (including high risk pool premium)					\$ -	\$ -			B	\$ -	\$ -
3. Subtotal ACA Permanent Risk Adjustment Program	\$ -	\$ -	\$ -	\$ -	\$ -	\$ -	\$ -	\$ -		\$ -	\$ -

Explanations of Adjustments

A.

B.

NOTE 25 Change in Incurred Losses and Loss Adjustment Expenses

The Company has no net exposure to changes in incurred losses and loss adjustment expenses. Refer to Note 26.

NOTE 26 Intercompany Pooling Arrangements

No change

NOTE 27 Structured Settlements

No change

NOTE 28 Health Care Receivables

# NOTES TO FINANCIAL STATEMENTS

Not Applicable

**NOTE 29 Participating Policies**

Not Applicable

**NOTE 30 Premium Deficiency Reserves**

No change

**NOTE 31 High Deductibles**

Not applicable.

**NOTE 32 Discounting of Liabilities for Unpaid Losses or Unpaid Loss Adjustment Expenses**

The Company has no net loss and loss adjustment expense reserves. Refer to Note 26.

**NOTE 33 Asbestos/Environmental Reserves**

The Company has no net exposure to asbestos and environmental claims. Refer to Note 26.

**NOTE 34 Subscriber Savings Accounts**

The Company is not a reciprocal insurance company.

**NOTE 35 Multiple Peril Crop Insurance**

Not Applicable

**NOTE 36 Financial Guaranty Insurance**

Not Applicable

STATEMENT AS OF SEPTEMBER 30, 2025 OF THE STATE AUTOMOBILE MUTUAL INSURANCE COMPANY

GENERAL INTERROGATORIES

PART 1 - COMMON INTERROGATORIES

GENERAL

1.1

Did the reporting entity experience any material transactions requiring the filing of Disclosure of Material Transactions with the State of Domicile, as required by the Model Act?

Yes [ ] No [ X ]

1.2

If yes, has the report been filed with the domiciliary state?

Yes [ ] No [ ]

2.1

Has any change been made during the year of this statement in the charter, by-laws, articles of incorporation, or deed of settlement of the reporting entity?

Yes [ ] No [ X ]

2.2

If yes, date of change:

3.1

Is the reporting entity a member of an Insurance Holding Company System consisting of two or more affiliated persons, one or more of which is an insurer?  
If yes, complete Schedule Y, Parts 1 and 1A.

Yes [ X ] No [ ]

3.2

Have there been any substantial changes in the organizational chart since the prior quarter end?

Yes [ X ] No [ ]

3.3

If the response to 3.2 is yes, provide a brief description of those changes.  
Dissolution of one (1) international entity; change in ownership of three (3) international entities; increase in stock ownership of one (1) international entity.

3.4

Is the reporting entity publicly traded or a member of a publicly traded group?

Yes [ ] No [ X ]

3.5

If the response to 3.4 is yes, provide the CIK (Central Index Key) code issued by the SEC for the entity/group.

4.1

Has the reporting entity been a party to a merger or consolidation during the period covered by this statement?

Yes [ ] No [ X ]

4.2

If yes, provide the name of the entity, NAIC Company Code, and state of domicile (use two letter state abbreviation) for any entity that has ceased to exist as a result of the merger or consolidation.

1 Name of Entity	2 NAIC Company Code	3 State of Domicile

5.

If the reporting entity is subject to a management agreement, including third-party administrator(s), managing general agent(s), attorney-in-fact, or similar agreement, have there been any significant changes regarding the terms of the agreement or principals involved?  
If yes, attach an explanation.

Yes [ ] No [ X ] N/A [ ]

6.1

State as of what date the latest financial examination of the reporting entity was made or is being made.

12/31/2023

6.2

State the as of date that the latest financial examination report became available from either the state of domicile or the reporting entity. This date should be the date of the examined balance sheet and not the date the report was completed or released.

12/31/2023

6.3

State as of what date the latest financial examination report became available to other states or the public from either the state of domicile or the reporting entity. This is the release date or completion date of the examination report and not the date of the examination (balance sheet date).

05/30/2025

6.4

By what department or departments?  
Ohio Department Insurance

6.5

Have all financial statement adjustments within the latest financial examination report been accounted for in a subsequent financial statement filed with Departments?

Yes [ ] No [ ] N/A [ X ]

6.6

Have all of the recommendations within the latest financial examination report been complied with?

Yes [ ] No [ ] N/A [ X ]

7.1

Has this reporting entity had any Certificates of Authority, licenses or registrations (including corporate registration, if applicable) suspended or revoked by any governmental entity during the reporting period?

Yes [ ] No [ X ]

7.2

If yes, give full information:

8.1

Is the company a subsidiary of a bank holding company regulated by the Federal Reserve Board?

Yes [ ] No [ X ]

8.2

If response to 8.1 is yes, please identify the name of the bank holding company.

8.3

Is the company affiliated with one or more banks, thrifts or securities firms?

Yes [ ] No [ X ]

8.4

If response to 8.3 is yes, please provide below the names and location (city and state of the main office) of any affiliates regulated by a federal regulatory services agency [i.e. the Federal Reserve Board (FRB), the Office of the Comptroller of the Currency (OCC), the Federal Deposit Insurance Corporation (FDIC) and the Securities Exchange Commission (SEC)] and identify the affiliate's primary federal regulator.

1 Affiliate Name	2 Location (City, State)	3 FRB	4 OCC	5 FDIC	6 SEC

STATEMENT AS OF SEPTEMBER 30, 2025 OF THE STATE AUTOMOBILE MUTUAL INSURANCE COMPANY

GENERAL INTERROGATORIES

- 9.1

Are the senior officers (principal executive officer, principal financial officer, principal accounting officer or controller, or persons performing similar functions) of the reporting entity subject to a code of ethics, which includes the following standards? .....  
(a) Honest and ethical conduct, including the ethical handling of actual or apparent conflicts of interest between personal and professional relationships;  
(b) Full, fair, accurate, timely and understandable disclosure in the periodic reports required to be filed by the reporting entity;  
(c) Compliance with applicable governmental laws, rules and regulations;  
(d) The prompt internal reporting of violations to an appropriate person or persons identified in the code; and  
(e) Accountability for adherence to the code.

Yes [ X ] No [ ]
- 9.11

If the response to 9.1 is No, please explain:  
.....
- 9.2

Has the code of ethics for senior managers been amended? .....

Yes [ ] No [ X ]
- 9.21

If the response to 9.2 is Yes, provide information related to amendment(s).  
.....
- 9.3

Have any provisions of the code of ethics been waived for any of the specified officers? .....

Yes [ ] No [ X ]
- 9.31

If the response to 9.3 is Yes, provide the nature of any waiver(s).  
.....

FINANCIAL

- 10.1

Does the reporting entity report any amounts due from parent, subsidiaries or affiliates on Page 2 of this statement? .....

Yes [ X ] No [ ]
- 10.2

If yes, indicate any amounts receivable from parent included in the Page 2 amount: .....\$ .....

INVESTMENT

- 11.1

Were any of the stocks, bonds, or other assets of the reporting entity loaned, placed under option agreement, or otherwise made available for use by another person? (Exclude securities under securities lending agreements.) .....

Yes [ ] No [ X ]
- 11.2

If yes, give full and complete information relating thereto:  
.....
12.

Amount of real estate and mortgages held in other invested assets in Schedule BA: .....

\$ .....
13.

Amount of real estate and mortgages held in short-term investments: .....

\$ .....
- 14.1

Does the reporting entity have any investments in parent, subsidiaries and affiliates? .....

Yes [ ] No [ X ]
- 14.2

If yes, please complete the following:

	1	2
	Prior Year-End Book/Adjusted Carrying Value	Current Quarter Book/Adjusted Carrying Value
14.21 Bonds .....	\$ .....	\$ .....
14.22 Preferred Stock .....	\$ .....	\$ .....
14.23 Common Stock .....	\$ 431,006,950	\$ .....
14.24 Short-Term Investments .....	\$ .....	\$ .....
14.25 Mortgage Loans on Real Estate .....	\$ .....	\$ .....
14.26 All Other .....	\$ .....	\$ .....
14.27 Total Investment in Parent, Subsidiaries and Affiliates (Subtotal Lines 14.21 to 14.26) .....	\$ 431,006,950	\$ .....
14.28 Total Investment in Parent included in Lines 14.21 to 14.26 above .....	\$ .....	\$ .....

15.1

Has the reporting entity entered into any hedging transactions reported on Schedule DB? .....

Yes [ ] No [ X ]

15.2

If yes, has a comprehensive description of the hedging program been made available to the domiciliary state? ..... Yes [ ] No [ X ] N/A [ ]  
If no, attach a description with this statement.  
.....

16.

For the reporting entity's security lending program, state the amount of the following as of the current statement date:

16.1

Total fair value of reinvested collateral assets reported on Schedule DL, Parts 1 and 2. ....

\$ .....

16.2

Total book/adjusted carrying value of reinvested collateral assets reported on Schedule DL, Parts 1 and 2 .....

\$ .....

16.3

Total payable for securities lending reported on the liability page. ....

\$ .....
- 7.1

STATEMENT AS OF SEPTEMBER 30, 2025 OF THE STATE AUTOMOBILE MUTUAL INSURANCE COMPANY

GENERAL INTERROGATORIES

17. Excluding items in Schedule E - Part 3 - Special Deposits, real estate, mortgage loans and investments held physically in the reporting entity's offices, vaults or safety deposit boxes, were all stocks, bonds and other securities, owned throughout the current year held pursuant to a custodial agreement with a qualified bank or trust company in accordance with Section 1, III - General Examination Considerations, F. Outsourcing of Critical Functions, Custodial or Safekeeping Agreements of the NAIC Financial Condition Examiners Handbook? ..... Yes [ X ] No [ ]
- 17.1 For all agreements that comply with the requirements of the NAIC Financial Condition Examiners Handbook, complete the following:

1 Name of Custodian(s)	2 Custodian Address
JP Morgan Chase .....	1 Chase Manhattan Plaza, New York, NY 10005 .....

- 17.2 For all agreements that do not comply with the requirements of the NAIC Financial Condition Examiners Handbook, provide the name, location and a complete explanation:

1 Name(s)	2 Location(s)	3 Complete Explanation(s)

- 17.3 Have there been any changes, including name changes, in the custodian(s) identified in 17.1 during the current quarter? ..... Yes [ ] No [ X ]
- 17.4 If yes, give full information relating thereto:

1 Old Custodian	2 New Custodian	3 Date of Change	4 Reason

- 17.5 Investment management – Identify all investment advisors, investment managers, broker/dealers, including individuals that have the authority to make investment decisions on behalf of the reporting entity. This includes both primary and sub-advisors. For assets that are managed internally by employees of the reporting entity, note as such. ["...that have access to the investment accounts"; "...handle securities"]

1 Name of Firm or Individual	2 Affiliation
Liberty Mutual Group Asset Management Inc. ....	A.....
Liberty Mutual Investment Advisors, LLC .....	A.....
.....	.....

- 17.5097 For those firms/individuals listed in the table for Question 17.5, do any firms/individuals unaffiliated with the reporting entity (i.e. designated with a "U") manage more than 10% of the reporting entity's invested assets?..... Yes [ ] No [ X ]
- 17.5098 For firms/individuals unaffiliated with the reporting entity (i.e. designated with a "U") listed in the table for Question 17.5, does the total assets under management aggregate to more than 50% of the reporting entity's invested assets?..... Yes [ ] No [ X ]

- 17.6 For those firms or individuals listed in the table for 17.5 with an affiliation code of "A" (affiliated) or "U" (unaffiliated), provide the information for the table below.

1	2	3	4	5
Central Registration Depository Number	Name of Firm or Individual	Legal Entity Identifier (LEI)	Registered With	Investment Management Agreement (IMA) Filed
.....	Liberty Mutual Group Asset Management Inc. ....	N/A .....	N/A .....	DS.....
.....	Liberty Mutual Investment Advisors, LLC .....	N/A .....	N/A .....	DS.....
.....	.....	.....	.....	.....

- 18.1 Have all the filing requirements of the Purposes and Procedures Manual of the NAIC Investment Analysis Office been followed? ..... Yes [ X ] No [ ]
- 18.2 If no, list exceptions:  
.....

19. By self-designating 5GI securities, the reporting entity is certifying the following elements for each self-designated 5GI security:  
a. Documentation necessary to permit a full credit analysis of the security does not exist or an NAIC CRP credit rating for an FE or PL security is not available.  
b. Issuer or obligor is current on all contracted interest and principal payments.  
c. The insurer has an actual expectation of ultimate payment of all contracted interest and principal.  
Has the reporting entity self-designated 5GI securities? ..... Yes [ ] No [ X ]

20. By self-designating PLGI securities, the reporting entity is certifying the following elements of each self-designated PLGI security:  
a. The security was purchased prior to January 1, 2018.  
b. The reporting entity is holding capital commensurate with the NAIC Designation reported for the security.  
c. The NAIC Designation was derived from the credit rating assigned by an NAIC CRP in its legal capacity as a NRSRO which is shown on a current private letter rating held by the insurer and available for examination by state insurance regulators.  
d. The reporting entity is not permitted to share this credit rating of the PL security with the SVO.  
Has the reporting entity self-designated PLGI securities? ..... Yes [ ] No [ X ]

21. By assigning FE to a Schedule BA non-registered private fund, the reporting entity is certifying the following elements of each self-designated FE fund:  
a. The shares were purchased prior to January 1, 2019.  
b. The reporting entity is holding capital commensurate with the NAIC Designation reported for the security.  
c. The security had a public credit rating(s) with annual surveillance assigned by an NAIC CRP in its legal capacity as an NRSRO prior to January 1, 2019.  
d. The fund only or predominantly holds bonds in its portfolio.  
e. The current reported NAIC Designation was derived from the public credit rating(s) with annual surveillance assigned by an NAIC CRP in its legal capacity as an NRSRO.  
f. The public credit rating(s) with annual surveillance assigned by an NAIC CRP has not lapsed.  
Has the reporting entity assigned FE to Schedule BA non-registered private funds that complied with the above criteria? ..... Yes [ ] No [ X ]



STATEMENT AS OF SEPTEMBER 30, 2025 OF THE STATE AUTOMOBILE MUTUAL INSURANCE COMPANY

GENERAL INTERROGATORIES

PART 2 - PROPERTY & CASUALTY INTERROGATORIES

1.

If the reporting entity is a member of a pooling arrangement, did the agreement or the reporting entity's participation change? .....  
If yes, attach an explanation.  
.....

Yes [   ] No [ X ] N/A [   ]
2.

Has the reporting entity reinsured any risk with any other reporting entity and agreed to release such entity from liability, in whole or in part, from any loss that may occur on the risk, or portion thereof, reinsured? .....  
If yes, attach an explanation.  
.....

Yes [   ] No [ X ]
- 3.1

Have any of the reporting entity's primary reinsurance contracts been canceled? .....

Yes [   ] No [ X ]
- 3.2

If yes, give full and complete information thereto.  
.....
- 4.1

Are any of the liabilities for unpaid losses and loss adjustment expenses other than certain workers' compensation tabular reserves (see Annual Statement Instructions pertaining to disclosure of discounting for definition of " tabular reserves" ) discounted at a rate of interest greater than zero? .....

Yes [   ] No [ X ]

4.2 If yes, complete the following schedule:

			TOTAL DISCOUNT				DISCOUNT TAKEN DURING PERIOD			
1	2	3	4	5	6	7	8	9	10	11
Line of Business	Maximum Interest	Discount Rate	Unpaid Losses	Unpaid LAE	IBNR	TOTAL	Unpaid Losses	Unpaid LAE	IBNR	TOTAL
TOTAL										

5.

Operating Percentages:
- 5.1

A&H loss percent .....

0.000 %
- 5.2

A&H cost containment percent .....

0.000 %
- 5.3

A&H expense percent excluding cost containment expenses .....

0.000 %
- 6.1

Do you act as a custodian for health savings accounts? .....

Yes [   ] No [ X ]
- 6.2

If yes, please provide the amount of custodial funds held as of the reporting date .....\$.....
- 6.3

Do you act as an administrator for health savings accounts? .....

Yes [   ] No [ X ]
- 6.4

If yes, please provide the balance of the funds administered as of the reporting date .....\$.....
7.

Is the reporting entity licensed or chartered, registered, qualified, eligible or writing business in at least two states? .....

Yes [ X ] No [   ]
- 7.1

If no, does the reporting entity assume reinsurance business that covers risks residing in at least one state other than the state of domicile of the reporting entity? .....

Yes [   ] No [   ]

## STATEMENT AS OF SEPTEMBER 30, 2025 OF THE STATE AUTOMOBILE MUTUAL INSURANCE COMPANY

## SCHEDULE F - CEDED REINSURANCE

Showing All New Reinsurers - Current Year to Date

[illegible]

SCHEDULE T - EXHIBIT OF PREMIUMS WRITTEN

Current Year to Date - Allocated by States and Territories

		1 Active Status (a)	Direct Premiums Written		Direct Losses Paid (Deducting Salvage)		Direct Losses Unpaid		
			2 Current Year To Date	3 Prior Year To Date	4 Current Year To Date	5 Prior Year To Date	6 Current Year To Date	7 Prior Year To Date	
States, etc.		(a)	To Date	To Date	To Date	To Date	To Date	To Date	
1.	Alabama .....	AL	L	19,692,393	25,150,868	6,152,775	13,433,734	42,765,060	30,605,458
2.	Alaska .....	AK	L						
3.	Arizona .....	AZ	L	13,783,247	18,863,637	10,685,245	10,062,221	35,253,959	27,635,806
4.	Arkansas .....	AR	L	20,934,168	27,383,597	14,557,354	33,889,112	37,904,005	31,165,741
5.	California .....	CA	N						
6.	Colorado .....	CO	L	14,751,176	16,620,527	10,014,636	7,643,292	30,147,090	23,264,955
7.	Connecticut .....	CT	L	15,198,977	24,437,809	20,617,300	17,990,930	26,010,495	26,611,394
8.	Delaware .....	DE	L	132,925	139,151	25,094	66,025	275,577	161,024
9.	District of Columbia .....	DC	L	19,498	82,120	43,148	3,930	901,453	773,675
10.	Florida .....	FL	L	276,453	202,558	342,807	1,585,329	(293,970)	(433,033)
11.	Georgia .....	GA	L	22,074,604	25,421,943	14,079,561	22,971,970	32,337,969	40,167,071
12.	Hawaii .....	HI	L						
13.	Idaho .....	ID	L	19,579	128,626	48,237		78,342	44,356
14.	Illinois .....	IL	L	14,433,191	20,994,384	12,721,261	12,185,701	35,430,875	31,498,957
15.	Indiana .....	IN	L	17,626,483	23,033,714	10,542,451	21,735,800	3,176,129	13,050,236
16.	Iowa .....	IA	L	12,617,287	9,872,486	4,494,743	2,185,716	12,734,317	6,715,626
17.	Kansas .....	KS	L	12,867,557	23,393,576	12,293,726	20,723,321	18,973,167	17,961,222
18.	Kentucky .....	KY	L	12,518,338	16,620,740	9,959,945	10,252,516	16,667,525	17,996,346
19.	Louisiana .....	LA	L					(38)	(38)
20.	Maine .....	ME	L						
21.	Maryland .....	MD	L	12,172,114	17,515,100	5,761,308	10,542,279	37,208,487	28,314,370
22.	Massachusetts .....	MA	L	4,815,101	5,329,156	2,192,761	3,450,687	13,134,683	9,992,140
23.	Michigan .....	MI	L	9,098,470	13,925,521	8,719,405	16,898,201	68,233,726	66,691,000
24.	Minnesota .....	MN	L	24,662,035	24,907,491	12,284,960	11,601,133	27,972,913	25,557,405
25.	Mississippi .....	MS	L	17,652,521	21,815,974	13,296,512	8,729,105	30,538,503	23,336,486
26.	Missouri .....	MO	L	26,764,974	48,007,086	30,921,006	51,716,504	42,618,617	46,223,016
27.	Montana .....	MT	L						
28.	Nebraska .....	NE	L						
29.	Nevada .....	NV	L	1,328	976			19,289	18,312
30.	New Hampshire .....	NH	L						
31.	New Jersey .....	NJ	L					(6)	(6)
32.	New Mexico .....	NM	L						
33.	New York .....	NY	L						
34.	North Carolina .....	NC	L	12,489,642	21,060,817	8,724,826	10,363,507	27,583,265	24,261,784
35.	North Dakota .....	ND	L	11,539,558	15,324,258	10,356,499	7,555,402	5,772,254	7,769,236
36.	Ohio .....	OH	L	27,658,663	42,741,764	13,056,307	26,931,868	90,265,229	73,969,102
37.	Oklahoma .....	OK	L	15,065,641	14,739,107	8,751,276	8,471,380	21,583,226	17,070,025
38.	Oregon .....	OR	L						
39.	Pennsylvania .....	PA	L	22,972,967	26,199,893	12,086,003	11,776,201	59,833,399	42,845,370
40.	Rhode Island .....	RI	L						
41.	South Carolina .....	SC	L	11,808,319	18,615,009	8,002,535	8,201,374	38,274,324	28,996,507
42.	South Dakota .....	SD	L	9,552,351	10,076,099	2,621,801	4,118,073	3,552,707	3,844,517
43.	Tennessee .....	TN	L	23,356,256	27,750,099	6,669,278	19,549,303	62,440,008	41,984,714
44.	Texas .....	TX	L	123,119,586	154,015,097	101,217,535	120,746,001	159,835,188	160,125,946
45.	Utah .....	UT	L	4,531,655	5,765,228	3,102,972	4,324,122	8,495,403	6,940,903
46.	Vermont .....	VT	L						
47.	Virginia .....	VA	L	6,220,163	8,813,078	3,840,303	5,082,771	12,370,239	10,602,079
48.	Washington .....	WA	L						
49.	West Virginia .....	WV	L	5,322,189	6,808,259	4,482,704	3,912,672	11,941,115	10,131,432
50.	Wisconsin .....	WI	L	6,615,739	7,265,774	4,502,918	4,305,285	8,408,599	5,412,247
51.	Wyoming .....	WY	L						
52.	American Samoa .....	AS	N						
53.	Guam .....	GU	N						
54.	Puerto Rico .....	PR	N						
55.	U.S. Virgin Islands .....	VI	N						
56.	Northern Mariana Islands .....	MP	N						
57.	Canada .....	CAN	N						
58.	Aggregate Other Alien OT .....	XXX							
59.	Totals	XXX		552,365,148	723,021,522	387,169,192	513,005,462	1,022,443,123	901,305,383
DETAILS OF WRITE-INS									
58001.	State 0TH .....	XXX							
58002.	.....	XXX							
58003.	.....	XXX							
58998.	Summary of remaining write-ins for Line 58 from overflow page .....	XXX							
58999.	Totals (Lines 58001 through 58003 plus 58998)(Line 58 above)	XXX							

(a) Active Status Counts:

1. L - Licensed or Chartered - Licensed insurance carrier or domiciled RRG.....

2. R - Registered - Non-domiciled RRGs.....

3. E - Eligible - Reporting entities eligible or approved to write surplus lines in the state (other than their state of domicile - see DSLI).....

4. Q - Qualified - Qualified or accredited reinsurer.....

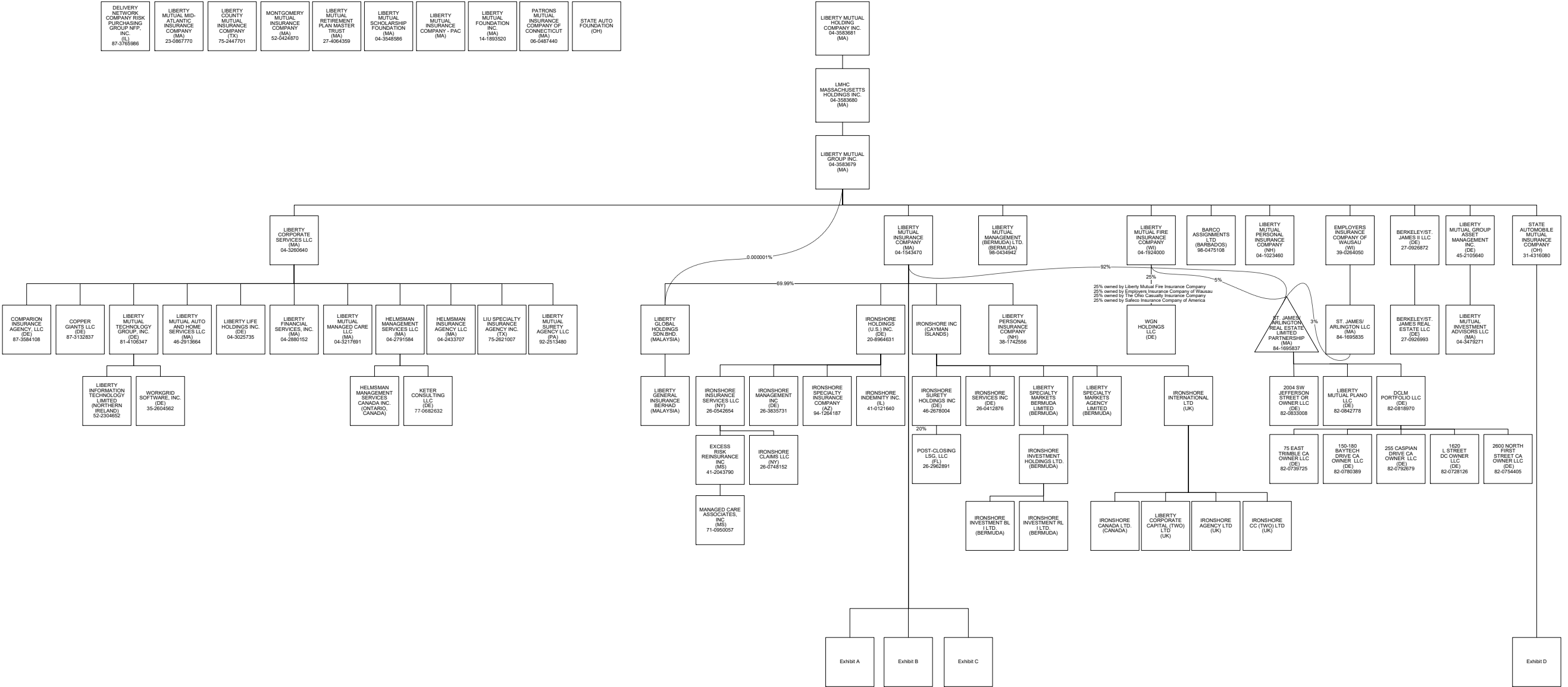
5. D - Domestic Surplus Lines Insurer (DSLII) - Reporting entities authorized to write surplus lines in the state of domicile.....

6. N - None of the above - Not allowed to write business in the state... ..

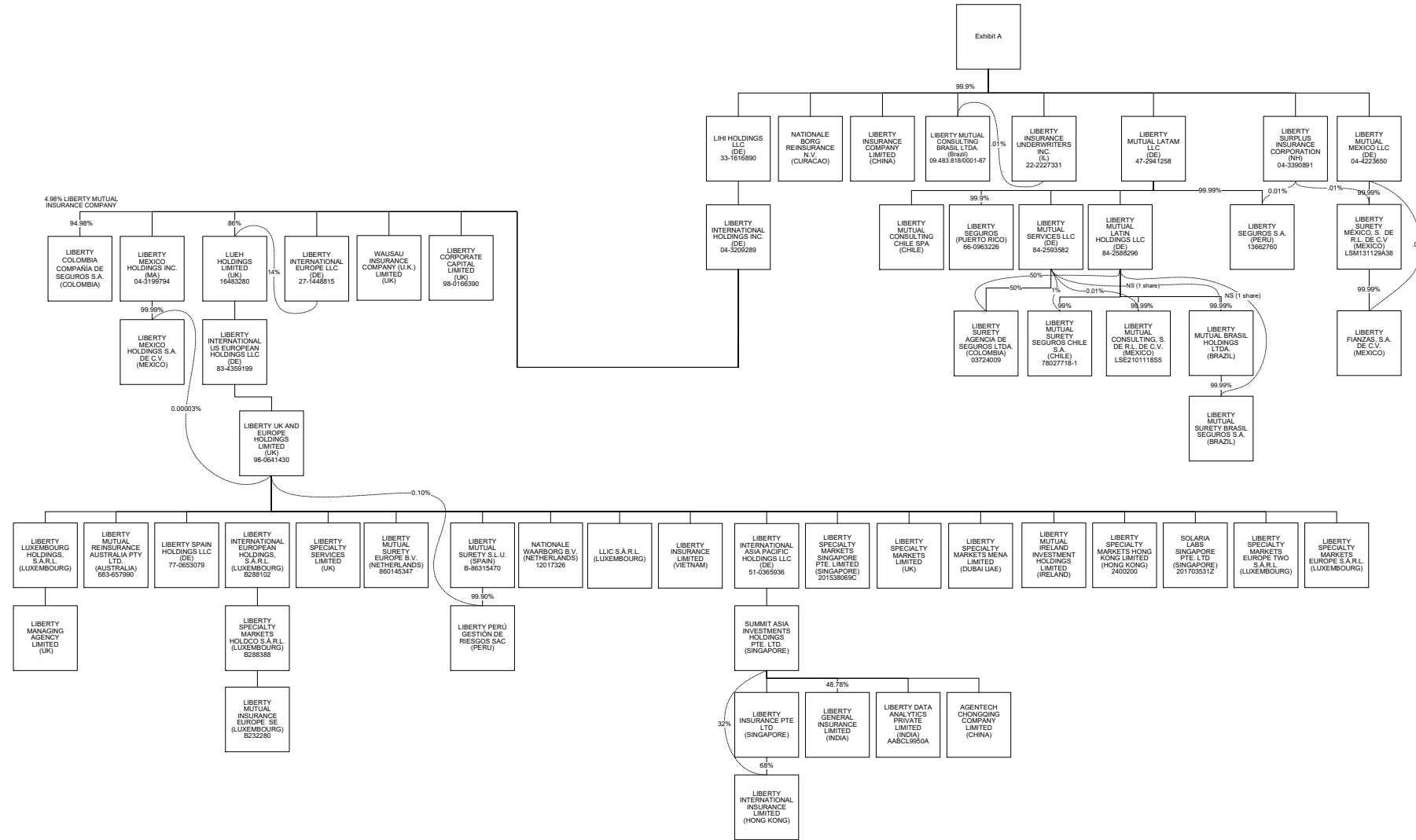
50

7

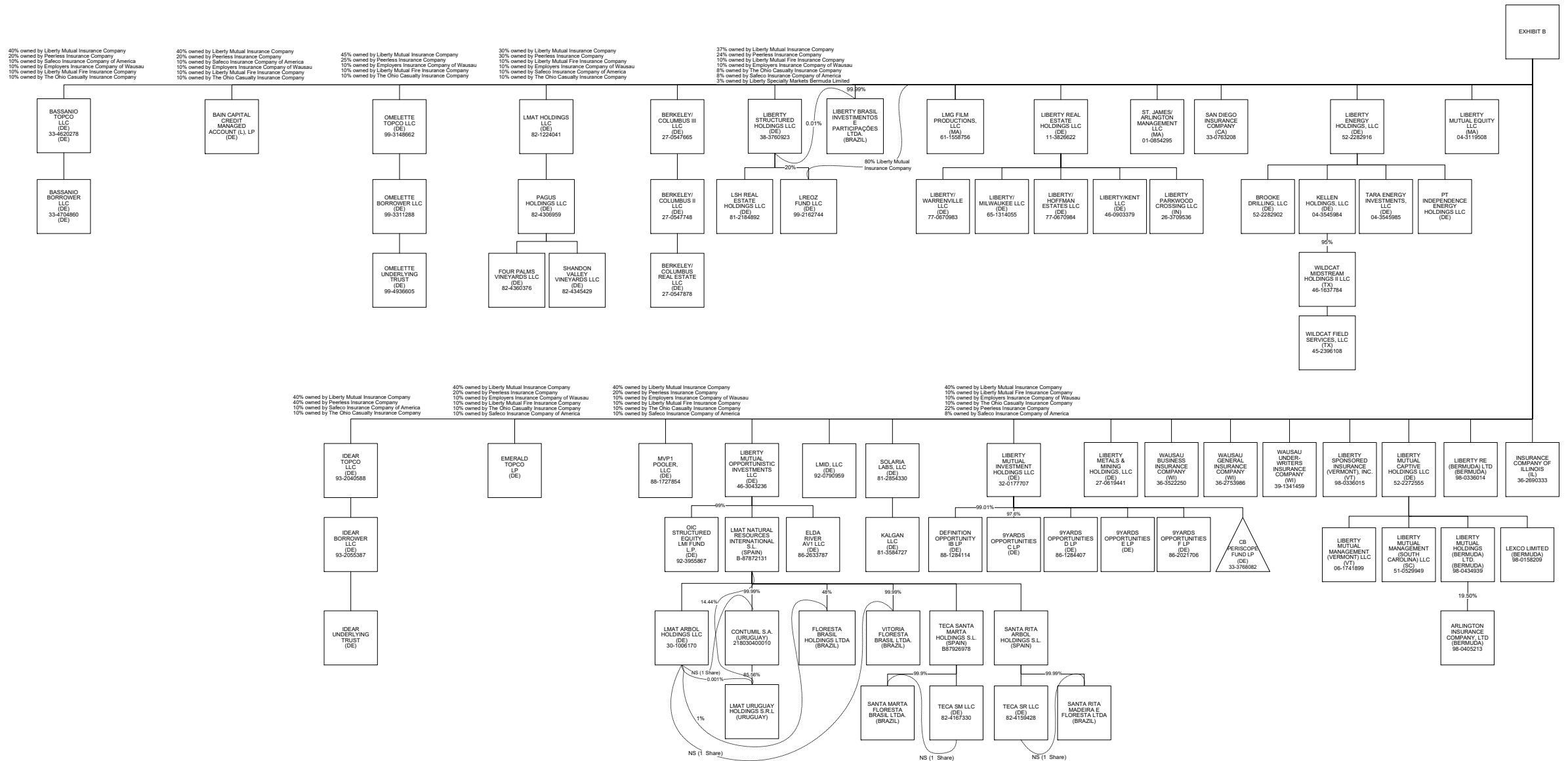
STATEMENT AS OF SEPTEMBER 30, 2025 OF THE STATE AUTOMOBILE MUTUAL INSURANCE COMPANY



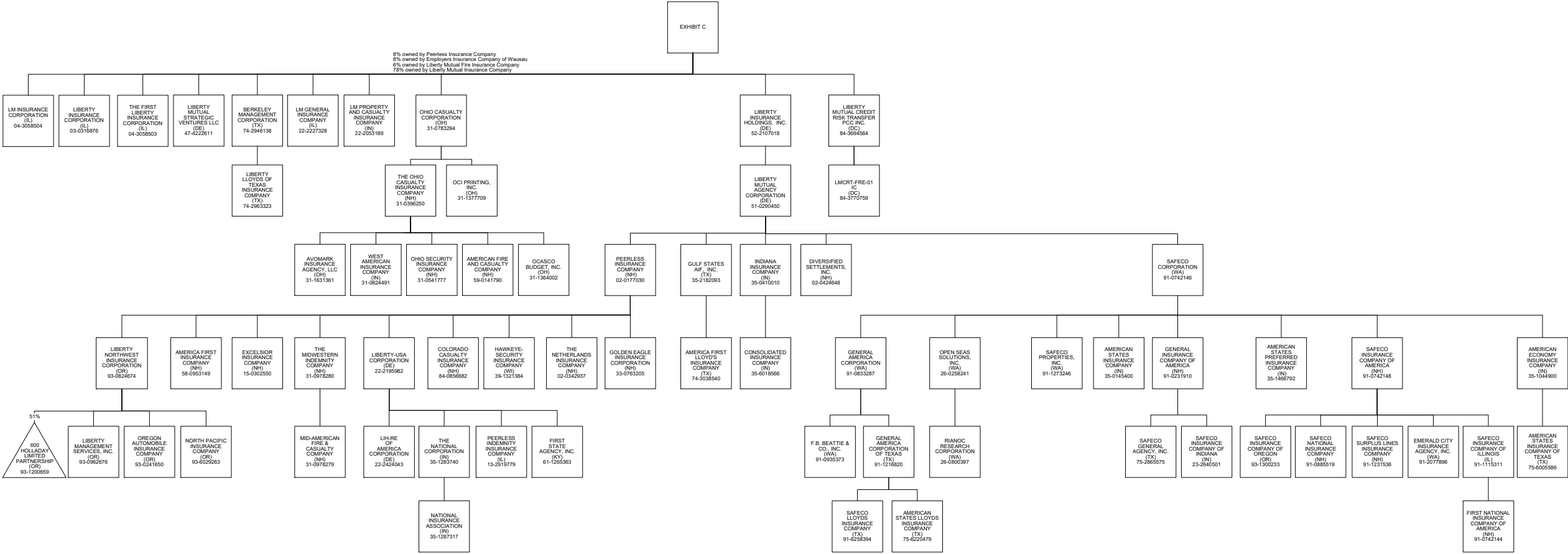
STATEMENT AS OF SEPTEMBER 30, 2025 OF THE STATE AUTOMOBILE MUTUAL INSURANCE COMPANY



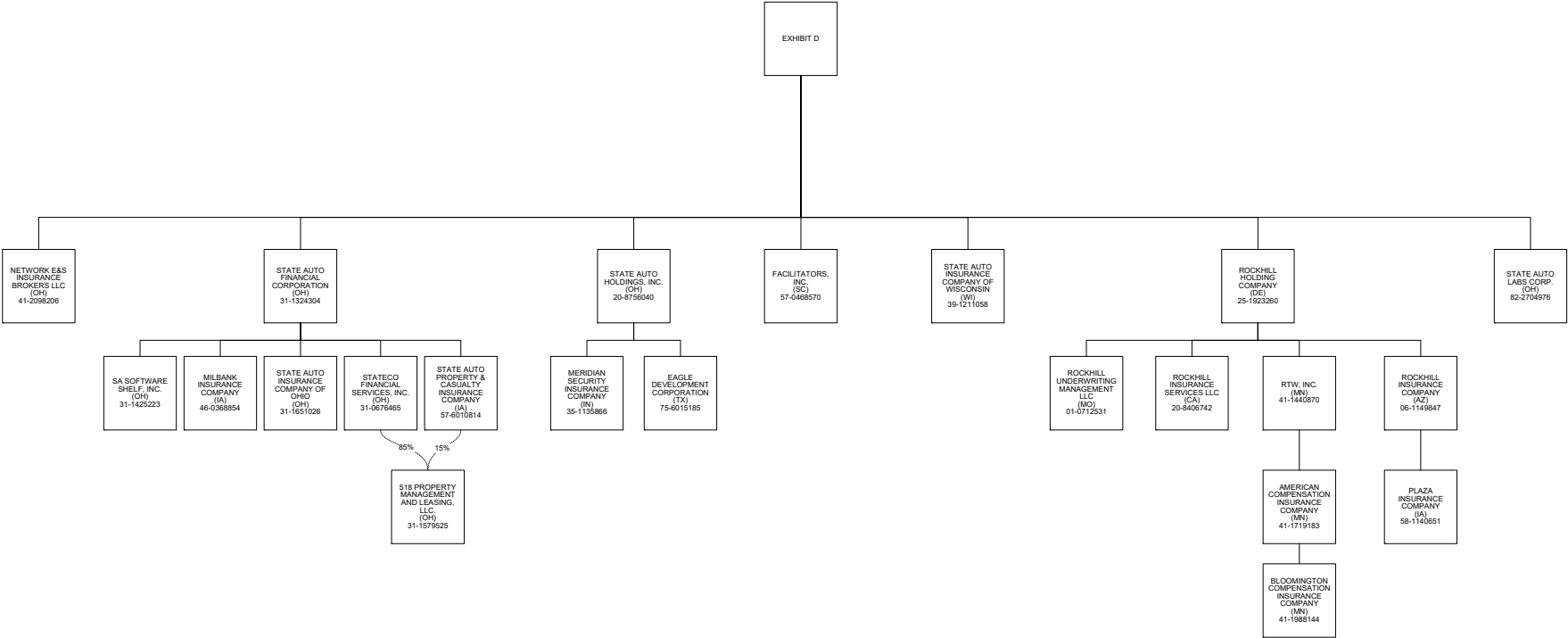
STATEMENT AS OF SEPTEMBER 30, 2025 OF THE STATE AUTOMOBILE MUTUAL INSURANCE COMPANY



STATEMENT AS OF SEPTEMBER 30, 2025 OF THE STATE AUTOMOBILE MUTUAL INSURANCE COMPANY



STATEMENT AS OF SEPTEMBER 30, 2025 OF THE STATE AUTOMOBILE MUTUAL INSURANCE COMPANY





STATEMENT AS OF SEPTEMBER 30, 2025 OF THE STATE AUTOMOBILE MUTUAL INSURANCE COMPANY

SCHEDULE Y

PART 1A - DETAILS OF INSURANCE HOLDING COMPANY SYSTEM

1	2	3	4	5	6	7	8	9	10	11	12	13	14	15	16
Group Code	Group Name	NAIC Company Code	ID Number	Federal RSSD	CIK	Name of Securities Exchange if Publicly Traded (U.S. or International)	Names of Parent, Subsidiaries Or Affiliates	Domi-ciliary Location	Relation-ship to Reporting Entity	Directly Controlled by (Name of Entity/Person)	Type of Control (Ownership, Board, Management, Attorney-in-Fact, Influence, Other)	If Control is Ownership Provide Percen-tage	Ultimate Controlling Entity(ies)/Person(s)	Is an SCA Filing Re-quired? (Yes/No)	*
		00000	82-0780389				150-180 Baytech Drive CA Owner LLC	DE	NIA	DGLM Portfolio LLC	Ownership, Board, Management	100.000	Liberty Mutual Holding Company Inc.	NO	
		00000	82-0728126				1620 L Street DC Owner LLC	DE	NIA	DGLM Portfolio LLC	Ownership, Board, Management	100.000	Liberty Mutual Holding Company Inc.	NO	
		00000	82-0833008				2004 SW Jefferson Street OR Owner LLC	DE	NIA	Partnership	Ownership, Board, Management	100.000	Liberty Mutual Holding Company Inc.	NO	
		00000	82-0792679				255 Caspian Drive CA Owner LLC	DE	NIA	DGLM Portfolio LLC	Ownership, Board, Management	100.000	Liberty Mutual Holding Company Inc.	NO	
		00000	82-0754405				2600 North First Street CA Owner LLC	DE	NIA	DGLM Portfolio LLC	Ownership, Board, Management	100.000	Liberty Mutual Holding Company Inc.	NO	
		00000	31-1579525				518 Property Management and Leasing, LLC	OH	NIA	State Auto Property & Casualty Insurance Company	Ownership, Board, and Management	15.000	Liberty Mutual Holding Company Inc.	NO	
		00000	31-1579525				518 Property Management and Leasing, LLC	OH	NIA	Stateco Financial Services, Inc.	Ownership, Board, and Management	85.000	Liberty Mutual Holding Company Inc.	NO	
		00000	93-1200659				600 Holladay Limited Partnership	OR	NIA	Liberty Northwest Insurance Corporation	Ownership	51.000	Liberty Mutual Holding Company Inc.	NO	
		00000	82-0739725				75 East Trimble CA Owner LLC	DE	NIA	DGLM Portfolio LLC	Ownership, Board, Management	100.000	Liberty Mutual Holding Company Inc.	NO	
		00000					9Yards Opportunities C L.P.	DE	NIA	Liberty Mutual Investment Holdings LLC	Ownership	98.000	Liberty Mutual Holding Company Inc.	NO	
		00000	86-1284407				9Yards Opportunities D LP	DE	NIA	Liberty Mutual Investment Holdings LLC	Ownership	100.000	Liberty Mutual Holding Company Inc.	NO	
		00000	86-1284407				9Yards Opportunities E LP	DE	NIA	Liberty Mutual Investment Holdings LLC	Ownership	100.000	Liberty Mutual Holding Company Inc.	NO	
		00000	86-2021706				9Yards Opportunities F LP	DE	NIA	Liberty Mutual Investment Holdings LLC	Ownership	100.000	Liberty Mutual Holding Company Inc.	NO	
		00000					AgentTech Chongqing Company Limited	CHN	NIA	Summit Asia Investments Holdings Pte.Ltd.	Ownership	100.000	Liberty Mutual Holding Company Inc.	NO	
.0111	Liberty Mutual Insurance Company and its Affiliated Insurers	12696	58-0953149				America First Insurance Company	NH	IA	Peerless Insurance Company	Ownership, Board and Management	100.000	Liberty Mutual Holding Company Inc.	NO	
.0111	Liberty Mutual Insurance Company and its Affiliated Insurers	11526	74-3038540				America First Lloyd's Insurance Company	TX	IA	Gulf States AIF, Inc.	Management and Attorney-in-Fact	0.000	Liberty Mutual Holding Company Inc.	NO	
.0111	Liberty Mutual Insurance Company and its Affiliated Insurers	45934	41-1719183				American Compensation Insurance Company	IN	IA	RTW, Inc.	Ownership, Board and Management	100.000	Liberty Mutual Holding Company Inc.	NO	
.0111	Liberty Mutual Insurance Company and its Affiliated Insurers	19690	35-1044900				American Economy Insurance Company	IN	IA	Safeco Corporation	Ownership, Board and Management	100.000	Liberty Mutual Holding Company Inc.	NO	
.0111	Liberty Mutual Insurance Company and its Affiliated Insurers	24066	59-0141790				American Fire and Casualty Company	NH	IA	The Ohio Casualty Insurance Company	Ownership, Board and Management	100.000	Liberty Mutual Holding Company Inc.	NO	
.0111	Liberty Mutual Insurance Company and its Affiliated Insurers	19704	35-0145400				American States Insurance Company	IN	IA	Safeco Corporation	Ownership, Board and Management	100.000	Liberty Mutual Holding Company Inc.	NO	
.0111	Liberty Mutual Insurance Company and its Affiliated Insurers	19712	75-6005586				American States Insurance Company of Texas	TX	IA	American Economy Insurance Company	Ownership, Board and Management	100.000	Liberty Mutual Holding Company Inc.	NO	
.0111	Liberty Mutual Insurance Company and its Affiliated Insurers	31933	75-6220479				American States Lloyds Insurance Company	TX	IA	General America Corporation of Texas	Management and Attorney-in-Fact	0.000	Liberty Mutual Holding Company Inc.	NO	
.0111	Liberty Mutual Insurance Company and its Affiliated Insurers	37214	35-1466792				American States Preferred Insurance Company	IN	IA	Safeco Corporation	Ownership, Board and Management	100.000	Liberty Mutual Holding Company Inc.	NO	
		00000	98-0405213				Arlington Insurance Company Ltd.	BMU	IA	Liberty Mutual Holdings (Bermuda) Ltd	Ownership, Board and Management	100.000	Liberty Mutual Holding Company Inc.	NO	
		00000	31-1631361				Avomark Insurance Agency, LLC	OH	IA	The Ohio Casualty Insurance Company	Ownership, Board and Management	100.000	Liberty Mutual Holding Company Inc.	NO	
		00000					Bain Capital Credit Managed Account (L), LP	DE	NIA	Liberty Mutual Insurance Company	Ownership	40.000	Liberty Mutual Holding Company Inc.	NO	
							Bain Capital Credit Managed Account (L), LP	DE	NIA	Peerless Insurance Company	Ownership	20.000	Liberty Mutual Holding Company Inc.	NO	
							Bain Capital Credit Managed Account (L), LP	DE	NIA	Safeco Insurance Company of America	Ownership	10.000	Liberty Mutual Holding Company Inc.	NO	
							Bain Capital Credit Managed Account (L), LP	DE	NIA	Employers Insurance Company of Wausau	Ownership	10.000	Liberty Mutual Holding Company Inc.	NO	
							Bain Capital Credit Managed Account (L), LP	DE	NIA	Liberty Mutual Fire Insurance Company	Ownership	10.000	Liberty Mutual Holding Company Inc.	NO	
							Bain Capital Credit Managed Account (L), LP	DE	NIA	The Ohio Casualty Insurance Company	Ownership	10.000	Liberty Mutual Holding Company Inc.	NO	
		00000	98-0475108				BARCO Assignments Ltd.	BRB	NIA	Liberty Mutual Group Inc.	Ownership	100.000	Liberty Mutual Holding Company Inc.	NO	
		00000	33-4704860				Bassanio Borrower LLC	DE	NIA	Bassanio Topco LLC	Ownership, Management	100.000	Liberty Mutual Holding Company Inc.	NO	
		00000	33-4620278				Bassanio Topco LLC	DE	NIA	Employers Insurance Company of Wausau	Ownership, Management	10.000	Liberty Mutual Holding Company Inc.	NO	
		00000	33-4620278				Bassanio Topco LLC	DE	NIA	Liberty Mutual Fire Insurance Company	Ownership, Management	10.000	Liberty Mutual Holding Company Inc.	NO	
		00000	33-4620278				Bassanio Topco LLC	DE	NIA	Liberty Mutual Insurance Company	Ownership, Management	40.000	Liberty Mutual Holding Company Inc.	NO	
		00000	33-4620278				Bassanio Topco LLC	DE	NIA	The Ohio Casualty Insurance Company	Ownership, Management	10.000	Liberty Mutual Holding Company Inc.	NO	
		00000	33-4620278				Bassanio Topco LLC	DE	NIA	Peerless Insurance Company	Ownership, Management	20.000	Liberty Mutual Holding Company Inc.	NO	
		00000	33-4620278				Bassanio Topco LLC	DE	NIA	Safeco Insurance Company of America	Ownership, Management	10.000	Liberty Mutual Holding Company Inc.	NO	
		00000	74-2946138				Berkeley Management Corporation	TX	NIA	Liberty Mutual Insurance Company	Ownership, Board and Management	100.000	Liberty Mutual Holding Company Inc.	NO	

STATEMENT AS OF SEPTEMBER 30, 2025 OF THE STATE AUTOMOBILE MUTUAL INSURANCE COMPANY

SCHEDULE Y

PART 1A - DETAILS OF INSURANCE HOLDING COMPANY SYSTEM

1	2	3	4	5	6	7	8	9	10	11	12	13	14	15	16
Group Code	Group Name	NAIC Company Code	ID Number	Federal RSSD	CIK	Name of Securities Exchange if Publicly Traded (U.S. or International)	Names of Parent, Subsidiaries Or Affiliates	Domi-ciliary Location	Relation-ship to Reporting Entity	Directly Controlled by (Name of Entity/Person)	Type of Control (Ownership, Board, Management, Attorney-in-Fact, Influence, Other)	If Control is Ownership Provide Percen-tage	Ultimate Controlling Entity(ies)/Person(s)	Is an SCA Filing Re-quired? (Yes/No)	*
		00000	27-0547748				Berkeley/Columbus II LLC	DE	NIA	Berkeley/Columbus III LLC	Ownership, Board and Management	100.000	Liberty Mutual Holding Company Inc.	NO	
		00000	27-0547665				Berkeley/Columbus III LLC	DE	NIA	Liberty Mutual Insurance Company	Ownership, Board and Management	100.000	Liberty Mutual Holding Company Inc.	NO	
		00000	27-0547878				Berkeley/Columbus Real Estate LLC	DE	NIA	Berkeley/Columbus II LLC	Ownership, Board and Management	100.000	Liberty Mutual Holding Company Inc.	NO	
		00000	27-0926872				Berkeley/St. James II LLC	DE	NIA	Liberty Mutual Group Inc.	Ownership, Board and Management	100.000	Liberty Mutual Holding Company Inc.	NO	
		00000	27-0926993				Berkeley/St. James Real Estate LLC	DE	NIA	Berkeley/St. James II LLC	Ownership, Board and Management	100.000	Liberty Mutual Holding Company Inc.	NO	
.0111	Liberty Mutual Insurance Company and its Affiliated Insurers	12311	41-1988144				Bloomington Compensation Insurance Company	IN	IA	American Compensation Insurance Company	Ownership, Board and Management	100.000	Liberty Mutual Holding Company Inc.	NO	
		00000	52-2282902				Brooke Drilling, LLC	DE	NIA	Liberty Energy Holdings, LLC	Ownership, Board and Management	100.000	Liberty Mutual Holding Company Inc.	NO	
		00000	33-3768082				CB Periscope Fund LP	DE	NIA	Liberty Mutual Investment Holdings LLC	Ownership	99.000	Liberty Mutual Holding Company Inc.	NO	
		00000													
.0111	Liberty Mutual Insurance Company and its Affiliated Insurers	41785	84-0856682				Colorado Casualty Insurance Company	NH	IA	Peerless Insurance Company	Ownership, Board and Management	100.000	Liberty Mutual Holding Company Inc.	NO	
		00000	87-3584108				Comparion Insurance Agency, LLC	DE	IA	Liberty Corporate Services LLC	Ownership, Board and Management	100.000	Liberty Mutual Holding Company Inc.	NO	
		00000													
		00000													
.0111	Liberty Mutual Insurance Company and its Affiliated Insurers	22640	35-6018566				Consolidated Insurance Company	IN	IA	Indiana Insurance Company	Ownership, Board and Management	100.000	Liberty Mutual Holding Company Inc.	NO	
		00000					Contumil S.A.	URY	NIA	LMAT Natural Resources International S.L.	Ownership	100.000	Liberty Mutual Holding Company Inc.	NO	
		00000					Contumil S.A.	URY	NIA	LMAT Arbol Holdings LLC	Ownership	1.000	Liberty Mutual Holding Company Inc.	NO	
		00000	87-3132837				Copper Giants LLC	DE	NIA	Liberty Corporate Services LLC	Ownership	100.000	Liberty Mutual Holding Company Inc.	NO	
		00000	82-0818970				DCLM Portfolio LLC	DE	NIA	Partnership	Ownership, Board and Management	100.000	Liberty Mutual Holding Company Inc.	NO	
		00000	88-1284114				Definition Opportunity IB LP	DE	NIA	Liberty Mutual Investment Holdings LLC	Ownership	99.000	Liberty Mutual Holding Company Inc.	NO	
		00000					Delivery Network Company Risk Purchasing Group NFP, Inc.	IL	NIA	Not Applicable	Board and Management	0.000	Liberty Mutual Holding Company Inc.	NO	
		00000	02-0424648				Diversified Settlements, Inc.	NH	NIA	Liberty Mutual Agency Corporation	Ownership, Board and Management	100.000	Liberty Mutual Holding Company Inc.	NO	
		00000	75-6015185				Eagle Development Corporation	TX	NIA	State Auto Holdings, Inc.	Ownership, Board and Management	100.000	Liberty Mutual Holding Company Inc.	NO	
		00000								Liberty Mutual Opportunistic Investments LLC	Ownership	100.000	Liberty Mutual Holding Company Inc.	NO	
		00000	86-2633787				Elda River AV1 LLC	DE	NIA		Ownership	100.000	Liberty Mutual Holding Company Inc.	NO	
		00000	91-2077896				Emerald City Insurance Agency, Inc.	WA	IA	Safeco Insurance Company of America	Ownership, Board and Management	100.000	Liberty Mutual Holding Company Inc.	NO	
		00000					Emerald Topco LP	DE	NIA	Liberty Mutual Insurance Company	Ownership	40.000	Liberty Mutual Holding Company Inc.	NO	
		00000					Emerald Topco LP	DE	NIA	Peerless Insurance Company	Ownership	20.000	Liberty Mutual Holding Company Inc.	NO	
		00000					Emerald Topco LP	DE	NIA	Employers Insurance Company of Wausau	Ownership	10.000	Liberty Mutual Holding Company Inc.	NO	
		00000					Emerald Topco LP	DE	NIA	Liberty Mutual Fire Insurance Company	Ownership	10.000	Liberty Mutual Holding Company Inc.	NO	
		00000					Emerald Topco LP	DE	NIA	The Ohio Casualty Insurance Company	Ownership	10.000	Liberty Mutual Holding Company Inc.	NO	
		00000					Emerald Topco LP	DE	NIA	Safeco Insurance Company of America	Ownership	10.000	Liberty Mutual Holding Company Inc.	NO	
		00000													
		00000													
.0111	Liberty Mutual Insurance Company and its Affiliated Insurers	21458	39-0264050				Employers Insurance Company of Wausau	WI	IA	Liberty Mutual Group Inc.	Ownership, Board and Management	100.000	Liberty Mutual Holding Company Inc.	NO	
		00000													
		11045	15-0302550				Excelsior Insurance Company	NH	IA	Peerless Insurance Company	Ownership, Board and Management	100.000	Liberty Mutual Holding Company Inc.	NO	
		00000	41-2043790				Excess Risk Reinsurance, Inc.	MS	IA	Ironshore Insurance Services LLC	Ownership	100.000	Liberty Mutual Holding Company Inc.	NO	
		00000	91-0935373				F.B. Beattie & Co., Inc.	WA	IA	General America Corporation	Ownership, Board and Management	100.000	Liberty Mutual Holding Company Inc.	NO	
		00000	57-0468570				Facilitators, Inc.	SC	IA	State Automobile Mutual Insurance Company	Ownership, Board and Management	100.000	Liberty Mutual Holding Company Inc.	YES	
		00000													
		00000													
.0111	Liberty Mutual Insurance Company and its Affiliated Insurers	24724	91-0742144				First National Insurance Company of America	NH	IA	Safeco Insurance Company of Illinois	Ownership, Board and Management	100.000	Liberty Mutual Holding Company Inc.	NO	
		00000	61-1265363				First State Agency, Inc.	KY	NIA	Liberty-USA Corporation	Ownership, Board and Management	100.000	Liberty Mutual Holding Company Inc.	NO	
		00000								LMAT Natural Resources International, S.L.	Ownership	48.000	Liberty Mutual Holding Company Inc.	NO	
		00000					Floresta Brasil Holdings Ltda.	BRA	NIA		Ownership	100.000	Liberty Mutual Holding Company Inc.	NO	
		00000					Floresta Brasil Holdings Ltda.	BRA	NIA	LMAT Arbol Holdings LLC	Ownership	100.000	Liberty Mutual Holding Company Inc.	NO	
		00000	82-4360376				Four Palms Vineyards LLC	DE	NIA	PAGUS Holdings LLC	Ownership	100.000	Liberty Mutual Holding Company Inc.	NO	
		00000	91-0833287				General America Corporation	WA	NIA	Safeco Corporation	Ownership, Board and Management	100.000	Liberty Mutual Holding Company Inc.	NO	
		00000	91-1216820				General America Corporation of Texas	TX	NIA	General America Corporation	Ownership, Board and Management	100.000	Liberty Mutual Holding Company Inc.	NO	

STATEMENT AS OF SEPTEMBER 30, 2025 OF THE STATE AUTOMOBILE MUTUAL INSURANCE COMPANY

SCHEDULE Y

PART 1A - DETAILS OF INSURANCE HOLDING COMPANY SYSTEM

1	2	3	4	5	6	7	8	9	10	11	12	13	14	15	16
Group Code	Group Name	NAIC Company Code	ID Number	Federal RSSD	CIK	Name of Securities Exchange if Publicly Traded (U.S. or International)	Names of Parent, Subsidiaries Or Affiliates	Domi-ciliary Location	Relation-ship to Reporting Entity	Directly Controlled by (Name of Entity/Person)	Type of Control (Ownership, Board, Management, Attorney-in-Fact, Influence, Other)	If Control is Owner-ship Provide Percen-tage	Ultimate Controlling Entity(ies)/Person(s)	Is an SCA Filing Re-quired? (Yes/No)	*
.0111	Liberty Mutual Insurance Company and its Affiliated Insurers	24732	91-0231910				General Insurance Company of America	NH	IA	Safeco Corporation	Ownership, Board and Management	100.000	Liberty Mutual Holding Company Inc.	NO	
.0111	Liberty Mutual Insurance Company and its Affiliated Insurers	10836	33-0763205				Golden Eagle Insurance Corporation	NH	IA	Peerless Insurance Company	Ownership, Board and Management	100.000	Liberty Mutual Holding Company Inc.	NO	
		00000	35-2182093				Gulf States AIF, Inc.	TX	NIA	Liberty Mutual Agency Corporation	Ownership, Board and Management	100.000	Liberty Mutual Holding Company Inc.	NO	
.0111	Liberty Mutual Insurance Company and its Affiliated Insurers	36919	39-1321384				Hawkeye-Security Insurance Company	WI	IA	Peerless Insurance Company	Ownership, Board and Management	100.000	Liberty Mutual Holding Company Inc.	NO	
		00000	04-2433707				Helmsman Insurance Agency LLC	MA	IA	Liberty Corporate Services LLC	Ownership, Board and Management	100.000	Liberty Mutual Holding Company Inc.	NO	
		00000	93-2040588				Helmsman Management Services Canada Inc.	CAN	NIA	Helmsman Management Services LLC	Ownership, Board and Management	100.000	Liberty Mutual Holding Company Inc.	NO	
		00000	04-2791584				Helmsman Management Services LLC	MA	NIA	Liberty Corporate Services LLC	Ownership, Board and Management	100.000	Liberty Mutual Holding Company Inc.	NO	
		00000	93-2055387				Idear Borrower LLC	DE	NIA	Idear Topco LLC	Ownership, Management	100.000	Liberty Mutual Holding Company Inc.	NO	
		00000	93-2040588				Idear Topco LLC	DE	NIA	Liberty Mutual Insurance Company	Ownership, Management	40.000	Liberty Mutual Holding Company Inc.	NO	
		00000	93-2040588				Idear Topco LLC	DE	NIA	Peerless Insurance Company	Ownership, Management	40.000	Liberty Mutual Holding Company Inc.	NO	
		00000	93-2040588				Idear Topco LLC	DE	NIA	Safeco Insurance Company of America	Ownership, Management	10.000	Liberty Mutual Holding Company Inc.	NO	
		00000	93-2040588				Idear Topco LLC	DE	NIA	The Ohio Casualty Insurance Company	Ownership, Management	10.000	Liberty Mutual Holding Company Inc.	NO	
		00000					Idear Underlying Trust	DE	NIA	Idear Borrower LLC	Ownership	100.000	Liberty Mutual Holding Company Inc.	NO	
.0111	Liberty Mutual Insurance Company and its Affiliated Insurers	22659	35-0410010				Indiana Insurance Company	IN	IA	Liberty Mutual Agency Corporation	Ownership, Board and Management	100.000	Liberty Mutual Holding Company Inc.	NO	
.0111	Liberty Mutual Insurance Company and its Affiliated Insurers	26700	36-2690333				Insurance Company of Illinois	IL	IA	Liberty Mutual Insurance Company	Ownership, Board and Management	100.000	Liberty Mutual Holding Company Inc.	NO	
		00000					Ironshore Agency Ltd.	GBR	NIA	Ironshore International Ltd.	Ownership	100.000	Liberty Mutual Holding Company Inc.	NO	
		00000					Ironshore Canada Ltd.	CAN	NIA	Ironshore International Ltd.	Ownership	100.000	Liberty Mutual Holding Company Inc.	NO	
		00000					Ironshore CC (Two) Ltd.	GBR	NIA	Ironshore International Ltd.	Ownership	100.000	Liberty Mutual Holding Company Inc.	NO	
		00000	26-0748152				Ironshore Claims LLC	NY	NIA	Ironshore Insurance Services LLC	Ownership	100.000	Liberty Mutual Holding Company Inc.	NO	
		00000	20-8964631				Ironshore Holdings (US) Inc.	DE	NIA	Liberty Mutual Insurance Company	Ownership	100.000	Liberty Mutual Holding Company Inc.	NO	
		00000	98-0579286				Ironshore Inc.	CYM	NIA	Liberty Mutual Insurance Company	Ownership	100.000	Liberty Mutual Holding Company Inc.	NO	
.0111	Liberty Mutual Insurance Company and its Affiliated Insurers	23647	41-0121640				Ironshore Indemnity Inc.	IL	IA	Ironshore Holdings (US) Inc.	Ownership	100.000	Liberty Mutual Holding Company Inc.	NO	
		00000	26-0542654				Ironshore Insurance Services LLC	NY	IA	Ironshore Holdings (US) Inc.	Ownership	100.000	Liberty Mutual Holding Company Inc.	NO	
		00000					Ironshore International Ltd.	GBR	NIA	Ironshore Inc.	Ownership	100.000	Liberty Mutual Holding Company Inc.	NO	
		00000					Ironshore Investment BL I Ltd.	BMU	NIA	Ironshore Investment Holdings Ltd.	Ownership	100.000	Liberty Mutual Holding Company Inc.	NO	
		00000					Ironshore Investment Holdings Ltd.	BMU	NIA	Ironshore Insurance Ltd.	Ownership	100.000	Liberty Mutual Holding Company Inc.	NO	
		00000					Ironshore Investment RL I Ltd.	BMU	NIA	Ironshore Investment Holdings Ltd.	Ownership	100.000	Liberty Mutual Holding Company Inc.	NO	
		00000	26-3835731				Ironshore Management Inc.	DE	NIA	Ironshore Holdings (US) Inc.	Ownership	100.000	Liberty Mutual Holding Company Inc.	NO	
		00000	26-0412876				Ironshore Services Inc.	DE	NIA	Ironshore Inc.	Ownership	100.000	Liberty Mutual Holding Company Inc.	NO	
.0111	Liberty Mutual Insurance Company and its Affiliated Insurers	25445	94-1264187				Ironshore Specialty Insurance Company	AZ	IA	Ironshore Holdings (US) Inc.	Ownership	100.000	Liberty Mutual Holding Company Inc.	NO	
		00000	46-2678004				Ironshore Surety Holdings Inc.	DE	IA	Ironshore Inc.	Ownership	100.000	Liberty Mutual Holding Company Inc.	NO	
		00000					Liberty Colombia Compañía de Seguros S.A.		NIA	Liberty International Holdings Inc.	Ownership, Board, Management	95.000	Liberty Mutual Holding Company Inc.	NO	
		00000					Liberty Colombia Compañía de Seguros S.A.		NIA	Liberty Mutual Insurance Company	Ownership, Board, Management	5.000	Liberty Mutual Holding Company Inc.	NO	
		00000	81-3584727				Kalgan LLC	DE	NIA	Solaria Labs LLC	Ownership, Board and Management	100.000	Liberty Mutual Holding Company Inc.	NO	
		00000	04-3545984				Kellen Holdings, LLC	BMU	IA	Liberty Energy Holdings, LLC	Ownership, Board and Management	100.000	Liberty Mutual Holding Company Inc.	NO	
		00000	77-0682632				Keter Consulting LLC	BRA	NIA	Helmsman Management Services LLC	Ownership, Board and Management	100.000	Liberty Mutual Holding Company Inc.	NO	
		00000	98-0158209				LEXCO Limited	BRA	NIA	Liberty Mutual Captive Holdings LLC	Ownership, Board and Management	100.000	Liberty Mutual Holding Company Inc.	NO	
		00000					Liberty Brasil Investimentos e Participacoes Ltda.	COL	IA	Liberty Mutual Insurance Company	Ownership, Board and Management	100.000	Liberty Mutual Holding Company Inc.	NO	
		00000					Liberty Brasil Investimentos e Participacoes Ltda.	COL	IA	Liberty Structured Holdings LLC	Ownership, Board and Management	1.000	Liberty Mutual Holding Company Inc.	NO	
		00000					Liberty Corporate Capital (Two) Ltd.	GBR	NIA	Ironshore International Ltd.	Ownership	100.000	Liberty Mutual Holding Company Inc.	NO	
		00000	98-0166390				Liberty Corporate Capital Limited	GBR	IA	Liberty International Holdings Inc.	Ownership, Board and Management	100.000	Liberty Mutual Holding Company Inc.	NO	

## 12.3

## 12.3

## 12.3

## 12.3

STATEMENT AS OF SEPTEMBER 30, 2025 OF THE STATE AUTOMOBILE MUTUAL INSURANCE COMPANY

SCHEDULE Y

PART 1A - DETAILS OF INSURANCE HOLDING COMPANY SYSTEM

1	2	3	4	5	6	7	8	9	10	11	12	13	14	15	16
Group Code	Group Name	NAIC Company Code	ID Number	Federal RSSD	CIK	Name of Securities Exchange if Publicly Traded (U.S. or International)	Names of Parent, Subsidiaries Or Affiliates	Domi-ciliary Location	Relation-ship to Reporting Entity	Directly Controlled by (Name of Entity/Person)	Type of Control (Ownership, Board, Management, Attorney-in-Fact, Influence, Other)	If Control is Ownership Provide Percen-tage	Ultimate Controlling Entity(ies)/Person(s)	Is an SCA Filing Re-quired? (Yes/No)	*
		00000					Liberty Mutual Consulting Brasil Ltda. ....	..BRA.....	..NIA.....	Liberty Mutual Insurance Company .....	Ownership, Board and Management .....	100.000	Liberty Mutual Holding Company Inc. ....	...NO.....	.....
		00000					Liberty Mutual Consulting Brasil Ltda. ....	..BRA.....	..NIA.....	Liberty Insurance Underwriters Inc. ....	Ownership, Board and Management .....	10.000	Liberty Mutual Holding Company Inc. ....	...NO.....	.....
		00000					Liberty Mutual Consulting Chile SpA .....	..CHL.....	..NIA.....	Liberty Mutual Latam LLC .....	Ownership, Management .....	100.000	Liberty Mutual Holding Company Inc. ....	...NO.....	.....
							Liberty Mutual Consulting, S. de R.L. de C.V. ....								
		00000					Liberty Mutual Consulting, S. de R.L. de C.V. ....	..MEX.....	..IA.....	Liberty Mutual Latin Holdings LLC .....	Ownership, Board and Management .....	100.000	Liberty Mutual Holding Company Inc. ....	...NO.....	.....
		00000					Liberty Mutual Credit Risk Transfer PCC Inc. ....	..MEX.....	..IA.....	Liberty Mutual Services LLC .....	Ownership, Board and Management .....	1.000	Liberty Mutual Holding Company Inc. ....	...NO.....	.....
		00000	84-3694564				Liberty Mutual Equity LLC .....	..DC.....	..IA.....	Liberty Mutual Insurance Company .....	Ownership, Board, Management .....	100.000	Liberty Mutual Holding Company Inc. ....	...NO.....	.....
		00000	04-3119508				Liberty Mutual Insurance Company .....	..MA.....	..NIA.....	Liberty Mutual Insurance Company .....	Ownership, Board and Management .....	100.000	Liberty Mutual Holding Company Inc. ....	...NO.....	.....
		23035	04-1924000				Liberty Mutual Fire Insurance Company .....	..WI.....	..IA.....	Liberty Mutual Group Inc. ....	Ownership, Board and Management .....	100.000	Liberty Mutual Holding Company Inc. ....	...NO.....	.....
		00000	14-1893520				Liberty Mutual Foundation Inc. ....	..MA.....	..NIA.....	Liberty Mutual Insurance Company .....	Board and Management .....	0.000	Liberty Mutual Holding Company Inc. ....	...NO.....	.....
.0111	Liberty Mutual Insurance Company and its Affiliated Insurers .....	00000	45-2105640				Liberty Mutual Group Asset Management Inc. ....	..DE.....	..NIA.....	Liberty Mutual Group Inc. ....	Ownership, Board and Management .....	100.000	Liberty Mutual Holding Company Inc. ....	...NO.....	.....
		00000	04-3583679				Liberty Mutual Group Inc. ....	..MA.....	..UIP.....	LMHC Massachusetts Holdings Inc. ....	Ownership, Board and Management .....	100.000	Liberty Mutual Holding Company Inc. ....	...NO.....	.....
		00000	04-3583681				Liberty Mutual Holding Company Inc. ....	..MA.....	..UIP.....	N/A	Ultimate Controlling Parent .....	0.000	Liberty Mutual Holding Company Inc. ....	...NO.....	.....
		00000	98-0434939				Liberty Mutual Holdings (Bermuda) Ltd .....	..BMU.....	..NIA.....	Liberty Mutual Captive Holdings LLC .....	Ownership, Board and Management .....	100.000	Liberty Mutual Holding Company Inc. ....	...NO.....	.....
		23043	04-1543470				Liberty Mutual Insurance Company .....	..MA.....	..IA.....	Liberty Mutual Group Inc. ....	Ownership, Board and Management .....	100.000	Liberty Mutual Holding Company Inc. ....	...NO.....	.....
		00000					Liberty Mutual Insurance Company – PAC .....	..MA.....	..NIA.....	Liberty Mutual Insurance Company .....	Board and Management .....	0.000	Liberty Mutual Holding Company Inc. ....	...NO.....	.....
		00000					Liberty Mutual Insurance Europe SE .....	..LUX.....	..IA.....	Liberty Specialty Markets Holdco S.L.U. ....	Ownership, Board and Management .....	100.000	Liberty Mutual Holding Company Inc. ....	...NO.....	.....
		00000	04-3479271				Liberty Mutual Investment Advisors LLC .....	..MA.....	..NIA.....	Liberty Mutual Group Asset Management Inc. ....	Ownership, Board and Management .....	100.000	Liberty Mutual Holding Company Inc. ....	...NO.....	.....
		00000	32-0177707				Liberty Mutual Investment Holdings LLC .....	..DE.....	..NIA.....	Liberty Mutual Insurance Company .....	Ownership, Board and Management .....	40.000	Liberty Mutual Holding Company Inc. ....	...NO.....	.....
		00000	32-0177707				Liberty Mutual Investment Holdings LLC .....	..DE.....	..NIA.....	Peerless Insurance Company .....	Ownership, Board and Management .....	22.000	Liberty Mutual Holding Company Inc. ....	...NO.....	.....
		00000	32-0177707				Liberty Mutual Investment Holdings LLC .....	..DE.....	..NIA.....	Employers Insurance Company of Wausau ....	Ownership, Board and Management .....	10.000	Liberty Mutual Holding Company Inc. ....	...NO.....	.....
		00000	32-0177707				Liberty Mutual Investment Holdings LLC .....	..DE.....	..NIA.....	Liberty Mutual Fire Insurance Company .....	Ownership, Board and Management .....	10.000	Liberty Mutual Holding Company Inc. ....	...NO.....	.....
		00000	32-0177707				Liberty Mutual Investment Holdings LLC .....	..DE.....	..NIA.....	The Ohio Casualty Insurance Company .....	Ownership, Board and Management .....	10.000	Liberty Mutual Holding Company Inc. ....	...NO.....	.....
		00000	32-0177707				Liberty Mutual Investment Holdings LLC .....	..DE.....	..NIA.....	Safeco Insurance Company of America .....	Ownership, Board and Management .....	8.000	Liberty Mutual Holding Company Inc. ....	...NO.....	.....
		00000					Liberty Mutual Ireland Investment Holdings Limited .....	..IRL.....	..NIA.....	Liberty UK and Europe Holdings Limited ....	Ownership, Board and Management .....	100.000	Liberty Mutual Holding Company Inc. ....	...NO.....	.....
		00000	47-2941258				Liberty Mutual Latam LLC .....	..DE.....	..NIA.....	Liberty Mutual Insurance Company .....	Ownership, Board and Management .....	100.000	Liberty Mutual Holding Company Inc. ....	...NO.....	.....
		00000	84-2588296				Liberty Mutual Latin Holdings LLC .....	..DE.....	..NIA.....	Liberty Mutual Latam LLC .....	Ownership, Board, Management .....	100.000	Liberty Mutual Holding Company Inc. ....	...NO.....	.....
		00000	04-3217691				Liberty Mutual Managed Care LLC .....	..MA.....	..NIA.....	Liberty Corporate Services LLC .....	Ownership, Board and Management .....	100.000	Liberty Mutual Holding Company Inc. ....	...NO.....	.....
		00000	98-0434942				Liberty Mutual Management (Bermuda) Ltd .....	..BMU.....	..NIA.....	Liberty Mutual Group Inc. ....	Ownership, Board and Management .....	100.000	Liberty Mutual Holding Company Inc. ....	...NO.....	.....
		00000	51-0529949				Liberty Mutual Management (South Carolina) LLC .....	..SC.....	..NIA.....	Liberty Mutual Captive Holdings LLC .....	Ownership, Board and Management .....	100.000	Liberty Mutual Holding Company Inc. ....	...NO.....	.....
.0111	Liberty Mutual Insurance Company and its Affiliated Insurers .....	00000	06-1741899				Liberty Mutual Management (Vermont) LLC .....	..VT.....	..NIA.....	Liberty Mutual Captive Holdings LLC .....	Ownership, Board and Management .....	100.000	Liberty Mutual Holding Company Inc. ....	...NO.....	.....
		00000	04-4223650				Liberty Mutual Mexico LLC .....	..DE.....	..NIA.....	Liberty Mutual Insurance Company .....	Ownership, Board and Management .....	100.000	Liberty Mutual Holding Company Inc. ....	...NO.....	.....
		14486	23-0867770				Liberty Mutual Mid-Atlantic Insurance Company .....	..MA.....	..IA.....	Liberty Mutual Insurance Company .....	Board and Management .....	0.000	Liberty Mutual Holding Company Inc. ....	...NO.....	.....
		00000	46-3043236				Liberty Mutual Opportunistic Investments LLC .....	..DE.....	..NIA.....	Liberty Mutual Insurance Company .....	Ownership, Board and Management .....	100.000	Liberty Mutual Holding Company Inc. ....	...NO.....	.....
		12484	04-1023460				Liberty Mutual Personal Insurance Company ...	..NH.....	..IA.....	Liberty Mutual Group Inc. ....	Ownership, Board and Management .....	100.000	Liberty Mutual Holding Company Inc. ....	...NO.....	.....
		00000	82-0842778				Liberty Mutual Plano LLC .....	..DE.....	..NIA.....	St. James/Arlington Real Estate Limited Partnership .....	Ownership, Board and Management .....	100.000	Liberty Mutual Holding Company Inc. ....	...NO.....	.....
		00000					Liberty Mutual Reinsurance Australia Pty Ltd. ....	..AUS.....	..IA.....	Liberty UK and Europe Holdings Limited ....	Ownership, Board, Management .....	100.000	Liberty Mutual Holding Company Inc. ....	...NO.....	.....
		00000	27-4064359				Liberty Mutual Retirement Plan Master Trust .....	..MA.....	..NIA.....	Liberty Mutual Group Inc. ....	Board .....	0.000	Liberty Mutual Holding Company Inc. ....	...NO.....	.....
		00000	04-3548586				Liberty Mutual Scholarship Foundation .....	..MA.....	..NIA.....	Liberty Mutual Insurance Company .....	Board and Management .....	0.000	Liberty Mutual Holding Company Inc. ....	...NO.....	.....

STATEMENT AS OF SEPTEMBER 30, 2025 OF THE STATE AUTOMOBILE MUTUAL INSURANCE COMPANY

SCHEDULE Y

PART 1A - DETAILS OF INSURANCE HOLDING COMPANY SYSTEM

1	2	3	4	5	6	7	8	9	10	11	12	13	14	15	16
Group Code	Group Name	NAIC Company Code	ID Number	Federal RSSD	CIK	Name of Securities Exchange if Publicly Traded (U.S. or International)	Names of Parent, Subsidiaries Or Affiliates	Domi-ciliary Location	Relation-ship to Reporting Entity	Directly Controlled by (Name of Entity/Person)	Type of Control (Ownership, Board, Management, Attorney-in-Fact, Influence, Other)	If Control is Owner-ship Provide Percen-tage	Ultimate Controlling Entity(ies)/Person(s)	Is an SCA Filing Re-quired? (Yes/No)	*
		.....00000.....	84-2593582 .....				Liberty Mutual Services LLC .....	..DE.....	.....NIA.....	Liberty Mutual Latam LLC .....	Ownership, Board, Management .....	100.000 ...	Liberty Mutual Holding Company Inc. ...	....NO.....	.....
		.....00000.....	47-4222611 .....				Liberty Mutual Strategic Ventures LLC .....	..DE.....	.....NIA.....	Liberty Mutual Insurance Company .....	Ownership, Board and Management .....	100.000 ...	Liberty Mutual Holding Company Inc. ...	....NO.....	.....
		.....00000.....	92-2513480 .....				Liberty Mutual Surety Agency LLC .....	..PA.....	.....IA.....	Liberty Corporate Services LLC .....	Ownership, Board, Management .....	100.000 ...	Liberty Mutual Holding Company Inc. ...	....NO.....	.....
		.....00000.....	.....BRA.....				Liberty Mutual Surety Brasil Seguros S.A. ....	..BRA.....	.....IA.....	Liberty Mutual Brasil Holdings Ltda. ....	Ownership, Board, Management .....	100.000 ...	Liberty Mutual Holding Company Inc. ...	....NO.....	.....
		.....00000.....	.....BRA.....				Liberty Mutual Surety Brasil Seguros S.A. ....	..BRA.....	.....IA.....	Liberty Mutual Latin Holdings LLC .....	Ownership, Board, Management .....	0.000 ...	Liberty Mutual Holding Company Inc. ...	....NO.....	.....
		.....00000.....	86-0145347 ..				Liberty Mutual Surety Europe B.V. ....	..MLD.....	.....IA.....	Liberty UK and Europe Holdings Limited ....	Ownership.....	100.000 ...	Liberty Mutual Holding Company Inc. ...	....NO.....	.....
		.....00000.....	.....ESP.....				Liberty Mutual Surety S.L.U. ....	..ESP.....	.....IA.....	Liberty UK and Europe Holdings Limited ....	Ownership, Board, Management .....	100.000 ...	Liberty Mutual Holding Company Inc. ...	....NO.....	.....
		.....00000.....	78-0277181 ..				Liberty Mutual Surety Seguros Chile S.A. ....	..CHL.....	.....IA.....	Liberty Mutual Latin Holdings LLC .....	Ownership, Board, Management .....	99.000 ...	Liberty Mutual Holding Company Inc. ...	....NO.....	.....
		.....00000.....	78-0277182 ..				Liberty Mutual Surety Seguros Chile S.A. ....	..CHL.....	.....IA.....	Liberty Mutual Services LLC .....	Ownership, Board, Management .....	100.000 ...	Liberty Mutual Holding Company Inc. ...	....NO.....	.....
		.....00000.....	81-4106347 ..				Liberty Mutual Technology Group, Inc. ....	..DE.....	.....NIA.....	Liberty Corporate Services LLC .....	Ownership, Board and Management .....	100.000 ...	Liberty Mutual Holding Company Inc. ...	....NO.....	.....
.0111	Liberty Mutual Insurance Company and its Affiliated Insurers .....	.....41939.....	93-0824674 ..				Liberty Northwest Insurance Corporation .....	..OR.....	.....IA.....	Peerless Insurance Company .....	Ownership, Board and Management .....	100.000 ...	Liberty Mutual Holding Company Inc. ...	....NO.....	.....
		.....00000.....	26-3709536 ..				Liberty Parkwood Crossing LLC .....	..IN.....	.....NIA.....	Liberty Real Estate Holdings LLC .....	Ownership, Board and Management .....	100.000 ...	Liberty Mutual Holding Company Inc. ...	....NO.....	.....
.0111	Liberty Mutual Insurance Company and its Affiliated Insurers .....	.....11746.....	38-1742556 ..				Liberty Personal Insurance Company .....	..NH.....	.....IA.....	Liberty Mutual Insurance Company .....	Ownership, Board and Management .....	100.000 ...	Liberty Mutual Holding Company Inc. ...	....NO.....	.....
		.....00000.....	.....PER.....				Liberty Perú Gestión de Riesgos SAC .....	..PER.....	.....NIA.....	Liberty Mutual Surety S.L.U. ....	Ownership, Board, Management .....	100.000 ...	Liberty Mutual Holding Company Inc. ...	....NO.....	.....
		.....00000.....	.....PER.....				Liberty Perú Gestión de Riesgos SAC .....	..PER.....	.....NIA.....	Liberty UK and Europe Holdings Limited ....	Ownership, Board, Management .....	10.000 ...	Liberty Mutual Holding Company Inc. ...	....NO.....	.....
		.....00000.....	98-0336014 ..				Liberty Re (Bermuda) Limited .....	..BMU.....	.....IA.....	Liberty Mutual Insurance Company .....	Ownership, Board and Management .....	100.000 ...	Liberty Mutual Holding Company Inc. ...	....NO.....	.....
		.....00000.....	11-3826622 ..				Liberty Real Estate Holdings LLC .....	..DE.....	.....NIA.....	Liberty Mutual Insurance Company .....	Ownership, Board and Management .....	100.000 ...	Liberty Mutual Holding Company Inc. ...	....NO.....	.....
		.....00000.....	66-0963226 ..				Liberty Seguros .....	..PR.....	.....IA.....	Liberty Mutual Latam LLC .....	Ownership, Board and Management .....	100.000 ...	Liberty Mutual Holding Company Inc. ...	....NO.....	.....
		.....00000.....	.....PER.....				Liberty Seguros S.A. ....	..PER.....	.....IA.....	Liberty Mutual Latam LLC .....	Ownership, Board and Management .....	100.000 ...	Liberty Mutual Holding Company Inc. ...	....NO.....	.....
		.....00000.....	.....PER.....				Liberty Seguros S.A. ....	..PER.....	.....IA.....	Liberty Surplus Insurance Corporation ....	Ownership, Board and Management .....	1.000 ...	Liberty Mutual Holding Company Inc. ...	....NO.....	.....
		.....00000.....	77-0653079 ..				Liberty Spain Holdings LLC .....	..DE.....	.....NIA.....	Liberty UK and Europe Holdings Limited ....	Ownership, Board and Management .....	100.000 ...	Liberty Mutual Holding Company Inc. ...	....NO.....	.....
		.....00000.....	.....BMU.....				Liberty Specialty Markets Agency Limited ....	..BMU.....	.....NIA.....	Ironshore Inc. ....	Ownership.....	100.000 ...	Liberty Mutual Holding Company Inc. ...	....NO.....	.....
		.....00000.....	98-0579287 ..				Liberty Specialty Markets Bermuda Limited ....	..BMU.....	.....NIA.....	Ironshore Inc. ....	Ownership.....	100.000 ...	Liberty Mutual Holding Company Inc. ...	....NO.....	.....
		.....00000.....	.....LUX.....				Liberty Specialty Markets Europe S.a.r.l. ....	..LUX.....	.....NIA.....	Liberty UK and Europe Holdings Limited ....	Ownership, Board and Management .....	100.000 ...	Liberty Mutual Holding Company Inc. ...	....NO.....	.....
		.....00000.....	.....LUX.....				Liberty Specialty Markets Europe Two Sàrl ....	..LUX.....	.....NIA.....	Liberty UK and Europe Holdings Limited ....	Ownership.....	100.000 ...	Liberty Mutual Holding Company Inc. ...	....NO.....	.....
		.....00000.....	.....LUX.....				Liberty Specialty Markets Holdco Sàrl .....	..LUX.....	.....NIA.....	Sàrl .....	Ownership, Board and Management .....	100.000 ...	Liberty Mutual Holding Company Inc. ...	....NO.....	.....
		.....00000.....	.....HKG.....				Liberty Specialty Markets Hong Kong Limited .....	..HKG.....	.....IA.....	Liberty UK and Europe Holdings Limited ....	Ownership, Board and Management .....	100.000 ...	Liberty Mutual Holding Company Inc. ...	....NO.....	.....
		.....00000.....	.....GBR.....				Liberty Specialty Markets Limited .....	..GBR.....	.....NIA.....	Liberty UK and Europe Holdings Limited ....	Ownership, Board and Management .....	100.000 ...	Liberty Mutual Holding Company Inc. ...	....NO.....	.....
		.....00000.....	.....ARE.....				Liberty Specialty Markets MENA Limited .....	..ARE.....	.....IA.....	Liberty UK and Europe Holdings Limited ....	Ownership, Board and Management .....	100.000 ...	Liberty Mutual Holding Company Inc. ...	....NO.....	.....
		.....00000.....	.....SGP.....				Liberty Specialty Markets Singapore Pte. Limited .....	..SGP.....	.....IA.....	Liberty UK and Europe Holdings Limited ....	Ownership, Board and Management .....	100.000 ...	Liberty Mutual Holding Company Inc. ...	....NO.....	.....
		.....00000.....	.....GBR.....				Liberty Specialty Services Limited .....	..GBR.....	.....IA.....	Liberty UK and Europe Holdings Limited ....	Ownership, Board and Management .....	100.000 ...	Liberty Mutual Holding Company Inc. ...	....NO.....	.....
		.....00000.....	98-0336015 ..				Liberty Sponsored Insurance (Vermont), Inc. ....	..VT.....	.....IA.....	Liberty Mutual Insurance Company .....	Ownership, Board and Management .....	100.000 ...	Liberty Mutual Holding Company Inc. ...	....NO.....	.....
		.....00000.....	38-3760923 ..				Liberty Structured Holdings LLC .....	..DE.....	.....NIA.....	Liberty Mutual Insurance Company .....	Ownership, Board and Management .....	37.000 ...	Liberty Mutual Holding Company Inc. ...	....NO.....	.....
		.....00000.....	38-3760923 ..				Liberty Structured Holdings LLC .....	..DE.....	.....NIA.....	Peerless Insurance Company .....	Ownership, Board and Management .....	24.000 ...	Liberty Mutual Holding Company Inc. ...	....NO.....	.....
		.....00000.....	38-3760923 ..				Liberty Structured Holdings LLC .....	..DE.....	.....NIA.....	Employers Insurance Company of Wausau ....	Ownership, Board and Management .....	10.000 ...	Liberty Mutual Holding Company Inc. ...	....NO.....	.....
		.....00000.....	38-3760923 ..				Liberty Structured Holdings LLC .....	..DE.....	.....NIA.....	Liberty Mutual Fire Insurance Company ....	Ownership, Board and Management .....	10.000 ...	Liberty Mutual Holding Company Inc. ...	....NO.....	.....
		.....00000.....	38-3760923 ..				Liberty Structured Holdings LLC .....	..DE.....	.....NIA.....	The Ohio Casualty Insurance Company .....	Ownership, Board and Management .....	8.000 ...	Liberty Mutual Holding Company Inc. ...	....NO.....	.....
		.....00000.....	38-3760923 ..				Liberty Structured Holdings LLC .....	..DE.....	.....NIA.....	Safeco Insurance Company of America .....	Ownership, Board and Management .....	8.000 ...	Liberty Mutual Holding Company Inc. ...	....NO.....	.....
		.....00000.....	38-3760923 ..				Liberty Structured Holdings LLC .....	..DE.....	.....NIA.....	Liberty Specialty Markets Bermuda Limited .....	Ownership, Board and Management .....	3.000 ...	Liberty Mutual Holding Company Inc. ...	....NO.....	.....
		.....00000.....	.....COL.....				Liberty Surety Agencia de Seguros Ltda. ....	..COL.....	.....IA.....	Liberty Mutual Latin Holdings LLC .....	Ownership, Board, Management .....	50.000 ...	Liberty Mutual Holding Company Inc. ...	....NO.....	.....
		.....00000.....	.....COL.....				Liberty Surety Agencia de Seguros Ltda. ....	..COL.....	.....IA.....	Liberty Mutual Services LLC .....	Ownership, Board, Management .....	50.000 ...	Liberty Mutual Holding Company Inc. ...	....NO.....	.....
		.....00000.....	.....MEX.....				Liberty Surety México, S. de R.L. de C.V. ....	..MEX.....	.....NIA.....	Liberty Mutual Mexico LLC .....	Ownership, Board and Management .....	100.000 ...	Liberty Mutual Holding Company Inc. ...	....NO.....	.....
		.....00000.....	.....MEX.....				Liberty Surety México, S. de R.L. de C.V. ....	..MEX.....	.....NIA.....	Liberty Surplus Insurance Corporation ....	Ownership, Board and Management .....	1.000 ...	Liberty Mutual Holding Company Inc. ...	....NO.....	.....
.0111	Liberty Mutual Insurance Company and its Affiliated Insurers .....	.....10725.....	04-3390891 ..				Liberty Surplus Insurance Corporation .....	..NH.....	.....IA.....	Liberty Mutual Insurance Company .....	Ownership, Board and Management .....	100.000 ...	Liberty Mutual Holding Company Inc. ...	....NO.....	.....

STATEMENT AS OF SEPTEMBER 30, 2025 OF THE STATE AUTOMOBILE MUTUAL INSURANCE COMPANY

SCHEDULE Y

PART 1A - DETAILS OF INSURANCE HOLDING COMPANY SYSTEM

1	2	3	4	5	6	7	8	9	10	11	12	13	14	15	16
Group Code	Group Name	NAIC Company Code	ID Number	Federal RSSD	CIK	Name of Securities Exchange if Publicly Traded (U.S. or International)	Names of Parent, Subsidiaries Or Affiliates	Domi-ciliary Location	Relation-ship to Reporting Entity	Directly Controlled by (Name of Entity/Person)	Type of Control (Ownership, Board, Management, Attorney-in-Fact, Influence, Other)	If Control is Owner-ship Provide Percen-tage	Ultimate Controlling Entity(ies)/Person(s)	Is an SCA Filing Re-quired? (Yes/No)	*
.....	.....	.....00000.....	98-0641430 ..	.....	.....	.....	Liberty UK and Europe Holdings Limited .....	..GBR.....	..NIA.....	Liberty International US European Holdings LLC .....	Ownership, Board and Management .....	100.000 .....	Liberty Mutual Holding Company Inc. ...	...NO.....	.....
.....	.....	.....00000.....	77-0670984 ..	.....	.....	.....	Liberty/Hoffman Estates LLC .....	..DE.....	..NIA.....	Liberty Real Estate Holdings LLC .....	Ownership, Board and Management .....	100.000 .....	Liberty Mutual Holding Company Inc. ...	...NO.....	.....
.....	.....	.....00000.....	46-0903379 ..	.....	.....	.....	Liberty/Kent LLC .....	..DE.....	..NIA.....	Liberty Real Estate Holdings LLC .....	Ownership, Board and Management .....	100.000 .....	Liberty Mutual Holding Company Inc. ...	...NO.....	.....
.....	.....	.....00000.....	65-1314055 ..	.....	.....	.....	Liberty/Milwaukee LLC .....	..DE.....	..NIA.....	Liberty Real Estate Holdings LLC .....	Ownership, Board and Management .....	100.000 .....	Liberty Mutual Holding Company Inc. ...	...NO.....	.....
.....	.....	.....00000.....	77-0670983 ..	.....	.....	.....	Liberty/Warrenville LLC .....	..DE.....	..NIA.....	Liberty Real Estate Holdings LLC .....	Ownership, Board and Management .....	100.000 .....	Liberty Mutual Holding Company Inc. ...	...NO.....	.....
.....	.....	.....00000.....	22-2195982 ..	.....	.....	.....	Liberty-USA Corporation .....	..DE.....	..NIA.....	Peerless Insurance Company .....	Ownership, Board and Management .....	100.000 .....	Liberty Mutual Holding Company Inc. ...	...NO.....	.....
.....	.....	.....00000.....	33-1616890 ..	.....	.....	.....	LIHI Holdings LLC .....	..DE.....	..NIA.....	Liberty Mutual Insurance Company .....	Ownership, Management .....	100.000 .....	Liberty Mutual Holding Company Inc. ...	...NO.....	.....
.....	.....	.....00000.....	22-2424043 ..	.....	.....	.....	LIH-RE of America Corporation .....	..DE.....	..NIA.....	Liberty-USA Corporation .....	Ownership, Board and Management .....	100.000 .....	Liberty Mutual Holding Company Inc. ...	...NO.....	.....
.....	.....	.....00000.....	75-2621007 ..	.....	.....	.....	LIU Specialty Insurance Agency Inc. ....	..TX.....	..IA.....	Liberty Corporate Services LLC .....	Ownership, Board and Management .....	100.000 .....	Liberty Mutual Holding Company Inc. ...	...NO.....	.....
.....	.....	.....00000.....	.....	.....	.....	.....	LLIC S.a. r.l. ....	..LUX.....	..NIA.....	Liberty UK and Europe Holdings Limited ....	Ownership, Board and Management .....	100.000 .....	Liberty Mutual Holding Company Inc. ...	...NO.....	.....
.0111 ..	Liberty Mutual Insurance Company and its Affiliated Insurers .....	.....36447.....	22-2227328 ..	.....	.....	.....	LM General Insurance Company .....	..IL.....	..IA.....	Liberty Mutual Insurance Company .....	Ownership, Board and Management .....	100.000 .....	Liberty Mutual Holding Company Inc. ...	...NO.....	.....
.0111 ..	Liberty Mutual Insurance Company and its Affiliated Insurers .....	.....33600.....	04-3058504 ..	.....	.....	.....	LM Insurance Corporation .....	..IL.....	..IA.....	Liberty Mutual Insurance Company .....	Ownership, Board and Management .....	100.000 .....	Liberty Mutual Holding Company Inc. ...	...NO.....	.....
.0111 ..	Liberty Mutual Insurance Company and its Affiliated Insurers .....	.....32352.....	22-2053189 ..	.....	.....	.....	LM Property and Casualty Insurance Company ..	..IN.....	..IA.....	Liberty Mutual Insurance Company .....	Ownership, Board and Management .....	100.000 .....	Liberty Mutual Holding Company Inc. ...	...NO.....	.....
.....	.....	.....00000.....	30-1006170 ..	.....	.....	.....	LMAT Arbol Holdings LLC .....	..DE.....	..NIA.....	LMAT Natural Resources International S.L. ....	Ownership, Board and Management .....	100.000 .....	Liberty Mutual Holding Company Inc. ...	...NO.....	.....
.....	.....	.....00000.....	82-1224041 ..	.....	.....	.....	LMAT Holdings LLC .....	..DE.....	..NIA.....	Liberty Mutual Insurance Company .....	Ownership.....	30.000 .....	Liberty Mutual Holding Company Inc. ...	...NO.....	.....
.....	.....	.....00000.....	82-1224041 ..	.....	.....	.....	LMAT Holdings LLC .....	..DE.....	..NIA.....	Peerless Insurance Company .....	Ownership.....	30.000 .....	Liberty Mutual Holding Company Inc. ...	...NO.....	.....
.....	.....	.....00000.....	82-1224041 ..	.....	.....	.....	LMAT Holdings LLC .....	..DE.....	..NIA.....	Liberty Mutual Fire Insurance Company .....	Ownership.....	10.000 .....	Liberty Mutual Holding Company Inc. ...	...NO.....	.....
.....	.....	.....00000.....	82-1224041 ..	.....	.....	.....	LMAT Holdings LLC .....	..DE.....	..NIA.....	Employers Insurance Company of Wausau .....	Ownership.....	10.000 .....	Liberty Mutual Holding Company Inc. ...	...NO.....	.....
.....	.....	.....00000.....	82-1224041 ..	.....	.....	.....	LMAT Holdings LLC .....	..DE.....	..NIA.....	Safeco Insurance Company of America .....	Ownership.....	10.000 .....	Liberty Mutual Holding Company Inc. ...	...NO.....	.....
.....	.....	.....00000.....	82-1224041 ..	.....	.....	.....	LMAT Holdings LLC .....	..DE.....	..NIA.....	The Ohio Casualty Insurance Company .....	Ownership.....	10.000 .....	Liberty Mutual Holding Company Inc. ...	...NO.....	.....
.....	.....	.....00000.....	.....	.....	.....	.....	LMAT Natural Resources International S.L. ....	..ESP.....	..NIA.....	Liberty Mutual Opportunistic Investments LLC .....	Ownership, Board and Management .....	100.000 .....	Liberty Mutual Holding Company Inc. ...	...NO.....	.....
.....	.....	.....00000.....	.....	.....	.....	.....	LMAT Uruguay Holdings S.R.L. ....	..URY.....	..NIA.....	Contumil S.A. ....	Ownership.....	86.000 .....	Liberty Mutual Holding Company Inc. ...	...NO.....	.....
.....	.....	.....00000.....	.....	.....	.....	.....	LMAT Uruguay Holdings S.R.L. ....	..URY.....	..NIA.....	LMAT Natural Resources International S.L. ....	Ownership.....	14.000 .....	Liberty Mutual Holding Company Inc. ...	...NO.....	.....
.....	.....	.....00000.....	.....	.....	.....	.....	LMAT Uruguay Holdings S.R.L. ....	..URY.....	..NIA.....	LMAT Arbol Holdings LLC .....	Ownership.....	0.000 .....	Liberty Mutual Holding Company Inc. ...	...NO.....	.....
.....	.....	.....00000.....	84-3770759 ..	.....	.....	.....	LMCRT-FRE-01 IC .....	..DC.....	..IA.....	Liberty Mutual Credit Risk Transfer PCC Inc. ....	Ownership, Board, Management .....	100.000 .....	Liberty Mutual Holding Company Inc. ...	...NO.....	.....
.....	.....	.....00000.....	61-1558756 ..	.....	.....	.....	LMG Film Productions, LLC .....	..MA.....	..NIA.....	Liberty Mutual Insurance Company .....	Ownership, Board and Management .....	100.000 .....	Liberty Mutual Holding Company Inc. ...	...NO.....	.....
.....	.....	.....00000.....	04-3583680 ..	.....	.....	.....	LMHC Massachusetts Holdings Inc. ....	..MA.....	..UIP.....	Liberty Mutual Holding Company Inc. ....	Ownership, Board and Management .....	100.000 .....	Liberty Mutual Holding Company Inc. ...	...NO.....	.....
.....	.....	.....00000.....	92-0790959 ..	.....	.....	.....	LMID, LLC .....	..DE.....	..NIA.....	Liberty Mutual Insurance Company .....	Ownership.....	100.000 .....	Liberty Mutual Holding Company Inc. ...	...NO.....	.....
.....	.....	.....00000.....	99-2162744 ..	.....	.....	.....	LREOZ Fund LLC .....	..DE.....	..NIA.....	Liberty Structured Holdings LLC .....	Ownership, Management .....	20.000 .....	Liberty Mutual Holding Company Inc. ...	...NO.....	.....
.....	.....	.....00000.....	99-2162744 ..	.....	.....	.....	LREOZ Fund LLC .....	..DE.....	..NIA.....	Liberty Mutual Insurance Company .....	Ownership, Management .....	80.000 .....	Liberty Mutual Holding Company Inc. ...	...NO.....	.....
.....	.....	.....00000.....	81-2184892 ..	.....	.....	.....	LSH Real Estate Holdings LLC .....	..DE.....	..NIA.....	Liberty Structured Holdings LLC .....	Ownership, Board and Management .....	100.000 .....	Liberty Mutual Holding Company Inc. ...	...NO.....	.....
.....	.....	.....00000.....	.....	.....	.....	.....	LUEH Holdings Limited .....	..GBR.....	..NIA.....	Liberty International Holdings Inc. ....	Ownership, Board, Management .....	86.000 .....	Liberty Mutual Holding Company Inc. ...	...NO.....	.....
.....	.....	.....00000.....	.....	.....	.....	.....	LUEH Holdings Limited .....	..GBR.....	..NIA.....	Liberty International Europe LLC .....	Ownership, Board, Management .....	14.000 .....	Liberty Mutual Holding Company Inc. ...	...NO.....	.....
.....	.....	.....00000.....	71-0950057 ..	.....	.....	.....	Managed Care Associates, Inc. ....	..MS.....	..IA.....	Excess Risk Reinsurance Inc. ....	Ownership.....	100.000 .....	Liberty Mutual Holding Company Inc. ...	...NO.....	.....
.0111 ..	Liberty Mutual Insurance Company and its Affiliated Insurers .....	.....23353.....	35-1135866 ..	.....	.....	.....	Meridian Security Insurance Company .....	..IN.....	..IA.....	State Auto Holdings, Inc. ....	Ownership, Board and Management .....	100.000 .....	Liberty Mutual Holding Company Inc. ...	...NO.....	.....
.0111 ..	Liberty Mutual Insurance Company and its Affiliated Insurers .....	.....23507.....	31-0978279 ..	.....	.....	.....	Mid-American Fire & Casualty Company .....	..NH.....	..IA.....	The Midwestern Indemnity Company .....	Ownership, Board and Management .....	100.000 .....	Liberty Mutual Holding Company Inc. ...	...NO.....	.....
.0111 ..	Liberty Mutual Insurance Company and its Affiliated Insurers .....	.....41653.....	46-0368854 ..	.....	.....	.....	Milbank Insurance Company .....	..IA.....	..IA.....	State Auto Financial Corporation .....	Ownership, Board and Management .....	100.000 .....	Liberty Mutual Holding Company Inc. ...	...NO.....	.....
.0111 ..	Liberty Mutual Insurance Company and its Affiliated Insurers .....	.....14613.....	52-0424870 ..	.....	.....	.....	Montgomery Mutual Insurance Company .....	..MA.....	..IA.....	Liberty Mutual Insurance Company .....	Board and Management .....	0.000 .....	Liberty Mutual Holding Company Inc. ...	...NO.....	.....
.....	.....	.....00000.....	88-1727854 ..	.....	.....	.....	MVP1 Pooler, LLC .....	..DE.....	..NIA.....	Liberty Mutual Insurance Company .....	Ownership.....	40.000 .....	Liberty Mutual Holding Company Inc. ...	...NO.....	.....
.....	.....	.....00000.....	88-1727854 ..	.....	.....	.....	MVP1 Pooler, LLC .....	..DE.....	..NIA.....	Peerless Insurance Company .....	Ownership.....	20.000 .....	Liberty Mutual Holding Company Inc. ...	...NO.....	.....
.....	.....	.....00000.....	88-1727854 ..	.....	.....	.....	MVP1 Pooler, LLC .....	..DE.....	..NIA.....	Employers Insurance Company of Wausau .....	Ownership.....	10.000 .....	Liberty Mutual Holding Company Inc. ...	...NO.....	.....

STATEMENT AS OF SEPTEMBER 30, 2025 OF THE STATE AUTOMOBILE MUTUAL INSURANCE COMPANY

SCHEDULE Y

PART 1A - DETAILS OF INSURANCE HOLDING COMPANY SYSTEM

1	2	3	4	5	6	7	8	9	10	11	12	13	14	15	16
Group Code	Group Name	NAIC Company Code	ID Number	Federal RSSD	CIK	Name of Securities Exchange if Publicly Traded (U.S. or International)	Names of Parent, Subsidiaries Or Affiliates	Domi-ciliary Location	Relation-ship to Reporting Entity	Directly Controlled by (Name of Entity/Person)	Type of Control (Ownership, Board, Management, Attorney-in-Fact, Influence, Other)	If Control is Owner-ship Provide Percen-tage	Ultimate Controlling Entity(ies)/Person(s)	Is an SCA Filing Re-quired? (Yes/No)	*
.0111	Liberty Mutual Insurance Company and its Affiliated Insurers	00000	88-1727854				MVP1 Pooler, LLC	DE	NIA	Liberty Mutual Fire Insurance Company	Ownership	10.000	Liberty Mutual Holding Company Inc.	NO	
		00000	88-1727854				MVP1 Pooler, LLC	DE	NIA	The Ohio Casualty Insurance Company	Ownership	10.000	Liberty Mutual Holding Company Inc.	NO	
		00000	88-1727854				MVP1 Pooler, LLC	DE	NIA	Safeco Insurance Company of America	Ownership	10.000	Liberty Mutual Holding Company Inc.	NO	
.0111	Liberty Mutual Insurance Company and its Affiliated Insurers	27944	35-1287317				National Insurance Association	IN	IA	The National Corporation	Management and Attorney-in-Fact	0.000	Liberty Mutual Holding Company Inc.	NO	
		00000					Nationale Borg Reinsurance N.V.	CJW	IA	Liberty Mutual Insurance Company	Ownership, Board, Management	100.000	Liberty Mutual Holding Company Inc.	NO	
		00000					Nationale Waarborg B.V.	NLD	IA	Liberty UK and Europe Holdings Limited	Ownership, Board, Management	100.000	Liberty Mutual Holding Company Inc.	NO	
.0111	Liberty Mutual Insurance Company and its Affiliated Insurers	00000	41-2098206				Network E&S Insurance Brokers, LLC	OH	IA	State Automobile Mutual Insurance Company	Ownership, Board and Management	100.000	Liberty Mutual Holding Company Inc.	NO	
		23892	93-6029263				North Pacific Insurance Company	OR	IA	Liberty Northwest Insurance Corporation	Ownership, Board and Management	100.000	Liberty Mutual Holding Company Inc.	NO	
		00000	31-1364002				Ocasco Budget, Inc.	OH	NIA	The Ohio Casualty Insurance Company	Ownership, Board and Management	100.000	Liberty Mutual Holding Company Inc.	NO	
.0111	Liberty Mutual Insurance Company and its Affiliated Insurers	00000	31-1377709				OCI Printing, Inc.	OH	NIA	Ohio Casualty Corporation	Ownership, Board and Management	100.000	Liberty Mutual Holding Company Inc.	NO	
		00000	31-0783294				Ohio Casualty Corporation	OH	NIA	Liberty Mutual Insurance Company	Ownership, Board and Management	78.000	Liberty Mutual Holding Company Inc.	NO	
		00000	31-0783294				Ohio Casualty Corporation	OH	NIA	Employers Insurance Company of Wausau	Ownership, Board and Management	8.000	Liberty Mutual Holding Company Inc.	NO	
.0111	Liberty Mutual Insurance Company and its Affiliated Insurers	00000	31-0783294				Ohio Casualty Corporation	OH	NIA	Peerless Insurance Company	Ownership, Board and Management	8.000	Liberty Mutual Holding Company Inc.	NO	
		00000	31-0783294				Ohio Casualty Corporation	OH	NIA	Liberty Mutual Fire Insurance Company	Ownership, Board and Management	6.000	Liberty Mutual Holding Company Inc.	NO	
		24082	31-0541777				Ohio Security Insurance Company	NH	IA	The Ohio Casualty Insurance Company	Ownership, Board and Management	100.000	Liberty Mutual Holding Company Inc.	NO	
.0111	Liberty Mutual Insurance Company and its Affiliated Insurers	00000	92-3955867				OIC Structured Equity LMI Fund L.P.	DE	NIA	Liberty Mutual Opportunistic Investments LLC	Ownership	99.000	Liberty Mutual Holding Company Inc.	NO	
		00000	99-3311288				Omelette Borrower LLC	DE	NIA	Omelette Topco LLC	Ownership	100.000	Liberty Mutual Holding Company Inc.	NO	
		00000	99-3148662				Omelette Topco LLC	DE	NIA	Liberty Mutual Insurance Company	Ownership	45.000	Liberty Mutual Holding Company Inc.	NO	
.0111	Liberty Mutual Insurance Company and its Affiliated Insurers	00000	99-3148662				Omelette Topco LLC	DE	NIA	Peerless Insurance Company	Ownership	25.000	Liberty Mutual Holding Company Inc.	NO	
		00000	99-3148662				Omelette Topco LLC	DE	NIA	Employers Insurance Company of Wausau	Ownership	10.000	Liberty Mutual Holding Company Inc.	NO	
		00000	99-3148662				Omelette Topco LLC	DE	NIA	Liberty Mutual Fire Insurance Company	Ownership	10.000	Liberty Mutual Holding Company Inc.	NO	
.0111	Liberty Mutual Insurance Company and its Affiliated Insurers	00000	99-3148662				Omelette Topco LLC	DE	NIA	The Ohio Casualty Insurance Company	Ownership	10.000	Liberty Mutual Holding Company Inc.	NO	
		00000	99-4936605				Omelette Underlying Trust	DE	NIA	Omelette Borrower LLC	Ownership	100.000	Liberty Mutual Holding Company Inc.	NO	
		00000	26-0258241				Open Seas Solutions, Inc.	WA	NIA	Safeco Corporation	Ownership, Board and Management	100.000	Liberty Mutual Holding Company Inc.	NO	
.0111	Liberty Mutual Insurance Company and its Affiliated Insurers	23922	93-0241650				Oregon Automobile Insurance Company	OR	IA	Liberty Northwest Insurance Corporation	Ownership, Board and Management	100.000	Liberty Mutual Holding Company Inc.	NO	
		00000	82-4306959				PAGUS Holdings LLC	DE	NIA	LMAT Holdings LLC	Ownership, Board and Management	100.000	Liberty Mutual Holding Company Inc.	NO	
		14923	06-0487440				Patrons Mutual Insurance Company of Connecticut	MA	IA	State Automobile Mutual Insurance Company	Board, Management	0.000	Liberty Mutual Holding Company Inc.	NO	
.0111	Liberty Mutual Insurance Company and its Affiliated Insurers	18333	13-2919779				Peerless Indemnity Insurance Company	IL	IA	Liberty-USA Corporation	Ownership, Board and Management	100.000	Liberty Mutual Holding Company Inc.	NO	
.0111	Liberty Mutual Insurance Company and its Affiliated Insurers	24198	02-0177030				Peerless Insurance Company	NH	IA	Liberty Mutual Agency Corporation	Ownership, Board and Management	100.000	Liberty Mutual Holding Company Inc.	NO	
.0111	Liberty Mutual Insurance Company and its Affiliated Insurers	30945	58-1140651				Plaza Insurance Company	IA	IA	Rockhill Insurance Company	Ownership, Board and Management	100.000	Liberty Mutual Holding Company Inc.	NO	
		00000	46-2678004				Post-Closing LSG, LLC	FL	IA	Ironshore Surety Holdings Inc.	Ownership	20.000	Liberty Mutual Holding Company Inc.	NO	
		00000					PT Independence Energy Holdings LLC	DE	NIA	Liberty Energy Holdings, LLC	Ownership	100.000	Liberty Mutual Holding Company Inc.	NO	
.0111	Liberty Mutual Insurance Company and its Affiliated Insurers	00000	26-0800397				Rianoc Research Corporation	WA	NIA	Open Seas Solutions, Inc.	Ownership, Board and Management	100.000	Liberty Mutual Holding Company Inc.	NO	
		00000	25-1923260				Rockhill Holding Company	DE	NIA	State Automobile Mutual Insurance Company	Ownership, Board and Management	100.000	Liberty Mutual Holding Company Inc.	YES	
		28053	06-1149847				Rockhill Insurance Company	AZ	IA	Rockhill Holding Company	Ownership, Board and Management	100.000	Liberty Mutual Holding Company Inc.	NO	
.0111	Liberty Mutual Insurance Company and its Affiliated Insurers	00000	20-8406742				Rockhill Insurance Services LLC	CA	NIA	Rockhill Holding Company	Ownership, Board and Management	100.000	Liberty Mutual Holding Company Inc.	NO	
		00000	01-0712531				Rockhill Underwriting Management, LLC	MO	NIA	Rockhill Holding Company	Ownership, Board and Management	100.000	Liberty Mutual Holding Company Inc.	NO	
		00000	41-1440870				RTW, Inc	MN	NIA	Rockhill Holding Company	Ownership, Board and Management	100.000	Liberty Mutual Holding Company Inc.	NO	
.0111	Liberty Mutual Insurance Company and its Affiliated Insurers	00000	31-1425223				SA Software Shelf, Inc	OH	NIA	State Auto Financial Corporation	Ownership, Board, Management	100.000	Liberty Mutual Holding Company Inc.	NO	
		00000	91-0742146				Safeco Corporation	WA	NIA	Liberty Mutual Agency Corporation	Ownership, Board and Management	100.000	Liberty Mutual Holding Company Inc.	NO	



STATEMENT AS OF SEPTEMBER 30, 2025 OF THE STATE AUTOMOBILE MUTUAL INSURANCE COMPANY

SCHEDULE Y

PART 1A - DETAILS OF INSURANCE HOLDING COMPANY SYSTEM

1	2	3	4	5	6	7	8	9	10	11	12 Type of Control (Ownership, Board, Management, Attorney-in-Fact, Influence, Other)	13 If Control is Owner- ship Provide Percen- tage	14 Ultimate Controlling Entity(ies)/Person(s)	15 Is an SCA Filing Re- quired? (Yes/No)	16 *
Group Code	Group Name	NAIC Company Code	ID Number	Federal RSSD	CIK	Name of Securities Exchange if Publicly Traded (U.S. or International)	Names of Parent, Subsidiaries Or Affiliates	Domi- ciliary Loca- tion	Rela- tion- ship to Reporting Entity	Directly Controlled by (Name of Entity/Person)					
		00000	75-2865575				Safeco General Agency, Inc.	TX	IA	General Insurance Company of America	Ownership, Board and Management	100.000	Liberty Mutual Holding Company Inc.	NO	
0111	Liberty Mutual Insurance Company and its Affiliated Insurers	24740	91-0742148				Safeco Insurance Company of America	NH	IA	Safeco Corporation	Ownership, Board and Management	100.000	Liberty Mutual Holding Company Inc.	NO	
0111	Liberty Mutual Insurance Company and its Affiliated Insurers	39012	91-1115311				Safeco Insurance Company of Illinois	IL	IA	Safeco Insurance Company of America	Ownership, Board and Management	100.000	Liberty Mutual Holding Company Inc.	NO	
0111	Liberty Mutual Insurance Company and its Affiliated Insurers	11215	23-2640501				Safeco Insurance Company of Indiana	IN	IA	General Insurance Company of America	Ownership, Board and Management	100.000	Liberty Mutual Holding Company Inc.	NO	
0111	Liberty Mutual Insurance Company and its Affiliated Insurers	11071	93-1300233				Safeco Insurance Company of Oregon	OR	IA	Safeco Insurance Company of America	Ownership, Board and Management	100.000	Liberty Mutual Holding Company Inc.	NO	
0111	Liberty Mutual Insurance Company and its Affiliated Insurers	11070	91-6258394				Safeco Lloyds Insurance Company	TX	IA	General America Corporation of Texas	Management and Attorney-in-Fact	0.000	Liberty Mutual Holding Company Inc.	NO	
0111	Liberty Mutual Insurance Company and its Affiliated Insurers	24759	91-0885519				Safeco National Insurance Company	NH	IA	Safeco Insurance Company of America	Ownership, Board and Management	100.000	Liberty Mutual Holding Company Inc.	NO	
		00000	91-1273246				Safeco Properties, Inc.	WA	NIA	Safeco Corporation	Ownership, Board and Management	100.000	Liberty Mutual Holding Company Inc.	NO	
0111	Liberty Mutual Insurance Company and its Affiliated Insurers	11100	91-1231536				Safeco Surplus Lines Insurance Company	NH	IA	Safeco Insurance Company of America	Ownership, Board and Management	100.000	Liberty Mutual Holding Company Inc.	NO	
0111	Liberty Mutual Insurance Company and its Affiliated Insurers	10837	33-0763208				San Diego Insurance Company	CA	IA	Liberty Mutual Insurance Company	Ownership, Board and Management	100.000	Liberty Mutual Holding Company Inc.	NO	
		00000					Santa Marta Floresta Brasil Ltda.	BRA	NIA	TECA Santa Marta Holdings, S.L.	Ownership	100.000	Liberty Mutual Holding Company Inc.	NO	
		00000					Santa Marta Floresta Brasil Ltda.	BRA	NIA	TECA SM LLC	Ownership	1.000	Liberty Mutual Holding Company Inc.	NO	
		00000					Santa Rita Arbol Holdings S.L.	ESP	NIA	LMAT Natural Resources International S.L.	Ownership	100.000	Liberty Mutual Holding Company Inc.	NO	
		00000					Santa Rita Madeira e Floresta Ltda.	BRA	NIA	Santa Rita Arbol Holdings, S.L.	Ownership	100.000	Liberty Mutual Holding Company Inc.	NO	
		00000					Santa Rita Madeira e Floresta Ltda.	BRA	NIA	TECA SR LLC	Ownership	1.000	Liberty Mutual Holding Company Inc.	NO	
		00000	82-4345429				Shandon Valley Vineyards LLC	DE	NIA	PAGUS Holdings LLC	Ownership, Board and Management	100.000	Liberty Mutual Holding Company Inc.	NO	
		00000					Solaria Labs Singapore Pte. Ltd	SGP	NIA	Liberty UK and Europe Holdings Limited	Ownership, Board and Management	100.000	Liberty Mutual Holding Company Inc.	NO	
		00000	81-2854330				Solaria Labs, LLC	DE	NIA	Liberty Mutual Insurance Company	Ownership, Board and Management	100.000	Liberty Mutual Holding Company Inc.	NO	
		00000	84-1695835				St. James/Arlington LLC	MA	NIA	Employers Insurance Company of Wausau	Ownership, Board and Management	100.000	Liberty Mutual Holding Company Inc.	NO	
		00000	01-0854295				St. James/Arlington Management LLC	MA	NIA	Liberty Mutual Insurance Company	Ownership, Board and Management	100.000	Liberty Mutual Holding Company Inc.	NO	
		00000	84-1695837				St. James/Arlington Real Estate Limited Partnership	MA	NIA	St. James/Arlington LLC	Ownership, Board and Management	3.000	Liberty Mutual Holding Company Inc.	NO	
		00000	84-1695837				St. James/Arlington Real Estate Limited Partnership	MA	NIA	Liberty Mutual Insurance Company	Ownership, Board and Management	92.000	Liberty Mutual Holding Company Inc.	NO	
		00000	84-1695837				St. James/Arlington Real Estate Limited Partnership	MA	NIA	Liberty Mutual Fire Insurance Company	Ownership, Board and Management	5.000	Liberty Mutual Holding Company Inc.	NO	
		00000	31-1324304				State Auto Financial Corporation	OH	UDP	State Automobile Mutual Insurance Company	Ownership, Board and Management	100.000	Liberty Mutual Holding Company Inc.	YES	
		00000					State Auto Foundation	OH	NIA	Liberty Mutual Insurance Company	Board, Management	0.000	Liberty Mutual Holding Company Inc.	NO	
		00000	20-8756040				State Auto Holdings, Inc.	OH	NIA	State Automobile Mutual Insurance Company	Ownership, Board and Management	100.000	Liberty Mutual Holding Company Inc.	YES	
0111	Liberty Mutual Insurance Company and its Affiliated Insurers	11017	31-1651026				State Auto Insurance Company of Ohio	OH	IA	State Auto Financial Corporation	Ownership, Board and Management	100.000	Liberty Mutual Holding Company Inc.	NO	
0111	Liberty Mutual Insurance Company and its Affiliated Insurers	31755	39-1211058				State Auto Insurance Company of Wisconsin	WI	IA	State Automobile Mutual Insurance Company	Ownership, Board and Management	100.000	Liberty Mutual Holding Company Inc.	NO	
		00000	82-2704976				State Auto Labs Corp.	OH	NIA	State Automobile Mutual Insurance Company	Ownership, Board and Management	100.000	Liberty Mutual Holding Company Inc.	YES	
0111	Liberty Mutual Insurance Company and its Affiliated Insurers	25127	57-6010814				State Auto Property & Casualty Insurance Company	IA	IA	State Auto Financial Corporation	Ownership, Board and Management	100.000	Liberty Mutual Holding Company Inc.	NO	
0111	Liberty Mutual Insurance Company and its Affiliated Insurers	25135	31-4316080				State Automobile Mutual Insurance Company	OH		Liberty Mutual Group Inc.	Ownership, Board and Management	100.000	Liberty Mutual Holding Company Inc.	NO	
		00000	31-0676465				Stateco Financial Services, Inc.	OH	NIA	State Auto Financial Corporation	Ownership, Board and Management	100.000	Liberty Mutual Holding Company Inc.	NO	
		00000					Summit Asia Investments Holdings Pte. Ltd.	SGP	NIA	Liberty International Asia Pacific Holdings LLC	Ownership, Board and Management	100.000	Liberty Mutual Holding Company Inc.	NO	
		00000	04-3545985				Tara Energy Investments, LLC	DE	NIA	Liberty Energy Holdings, LLC	Ownership, Board and Management	100.000	Liberty Mutual Holding Company Inc.	NO	
		00000					TECA Santa Marta Holdings S.L.	ESP	NIA	LMAT Natural Resources International S.L.	Ownership	100.000	Liberty Mutual Holding Company Inc.	NO	
		00000	82-4167330				TECA SM LLC	DE	NIA	Teca Santa Marta Holdings S.L.	Ownership	100.000	Liberty Mutual Holding Company Inc.	NO	

STATEMENT AS OF SEPTEMBER 30, 2025 OF THE STATE AUTOMOBILE MUTUAL INSURANCE COMPANY

SCHEDULE Y

PART 1A - DETAILS OF INSURANCE HOLDING COMPANY SYSTEM

1	2	3	4	5	6	7	8	9	10	11	12	13	14	15	16
Group Code	Group Name	NAIC Company Code	ID Number	Federal RSSD	CIK	Name of Securities Exchange if Publicly Traded (U.S. or International)	Names of Parent, Subsidiaries Or Affiliates	Domi-ciliary Loca-tion	Rela-tion-ship to Reporting Entity	Directly Controlled by (Name of Entity/Person)	Type of Control (Ownership, Board, Management, Attorney-in-Fact, Influence, Other)	If Control is Owner-ship Provide Percen-tage	Ultimate Controlling Entity(ies)/Person(s)	Is an SCA Filing Re-quired? (Yes/No)	*
.....	.....	..... 00000 .....	82-4159428 ..	.....	.....	.....	TECA SR LLC .....	.. DE.....	..... NIA.....	Santa Rita Arbol Holdings S.L. ....	Ownership.....	100.000 ...	Liberty Mutual Holding Company Inc. ...	.... NO.....	.....
. 0111 ...	Liberty Mutual Insurance Company and its Affiliated Insurers .....	..... 33588 .....	04-3058503 ..	.....	.....	.....	The First Liberty Insurance Corporation .....	.. IL.....	..... IA.....	Liberty Mutual Insurance Company .....	Ownership, Board and Management .....	100.000 ...	Liberty Mutual Holding Company Inc. ...	.... NO.....	.....
. 0111 ...	Liberty Mutual Insurance Company and its Affiliated Insurers .....	..... 23515 .....	31-0978280 ..	.....	.....	.....	The Midwestern Indemnity Company .....	.. NH.....	..... IA.....	Peerless Insurance Company .....	Ownership, Board and Management .....	100.000 ...	Liberty Mutual Holding Company Inc. ...	.... NO.....	.....
.....	.....	..... 00000 .....	35-1283740 ..	.....	.....	.....	The National Corporation .....	.. IN.....	..... NIA.....	Liberty-USA Corporation .....	Ownership, Board and Management .....	100.000 ...	Liberty Mutual Holding Company Inc. ...	.... NO.....	.....
. 0111 ...	Liberty Mutual Insurance Company and its Affiliated Insurers .....	..... 24171 .....	02-0342937 ..	.....	.....	.....	The Netherlands Insurance Company .....	.. NH.....	..... IA.....	Peerless Insurance Company .....	Ownership, Board and Management .....	100.000 ...	Liberty Mutual Holding Company Inc. ...	.... NO.....	.....
. 0111 ...	Liberty Mutual Insurance Company and its Affiliated Insurers .....	..... 24074 .....	31-0396250 ..	.....	.....	.....	The Ohio Casualty Insurance Company .....	.. NH.....	..... IA.....	Ohio Casualty Corporation .....	Ownership, Board and Management .....	100.000 ...	Liberty Mutual Holding Company Inc. ...	.... NO.....	.....
.....	.....	..... 00000 .....	.....	.....	.....	.....	Vitoria Floresta Brasil Ltda. ....	.. BRA.....	..... NIA.....	LMAT Natural Resources International S.L. ....	Ownership.....	100.000 ...	Liberty Mutual Holding Company Inc. ...	.... NO.....	.....
.....	.....	..... 00000 .....	.....	.....	.....	.....	Vitoria Floresta Brasil Ltda. ....	.. BRA.....	..... NIA.....	LMAT Arbol Holdings LLC .....	Ownership.....	1.000 ...	Liberty Mutual Holding Company Inc. ...	.... NO.....	.....
. 0111 ...	Liberty Mutual Insurance Company and its Affiliated Insurers .....	..... 26069 .....	36-3522250 ..	.....	.....	.....	Wausau Business Insurance Company .....	.. WI.....	..... IA.....	Liberty Mutual Insurance Company .....	Ownership, Board and Management .....	100.000 ...	Liberty Mutual Holding Company Inc. ...	.... NO.....	.....
. 0111 ...	Liberty Mutual Insurance Company and its Affiliated Insurers .....	..... 26425 .....	36-2753986 ..	.....	.....	.....	Wausau General Insurance Company .....	.. WI.....	..... IA.....	Liberty Mutual Insurance Company .....	Ownership, Board and Management .....	100.000 ...	Liberty Mutual Holding Company Inc. ...	.... NO.....	.....
.....	.....	..... 00000 .....	.....	.....	.....	.....	Wausau Insurance Company (U.K.) Limited .....	.. GBR.....	..... IA.....	Liberty International Holdings Inc. ....	Ownership, Board and Management .....	100.000 ...	Liberty Mutual Holding Company Inc. ...	.... NO.....	.....
. 0111 ...	Liberty Mutual Insurance Company and its Affiliated Insurers .....	..... 26042 .....	39-1341459 ..	.....	.....	.....	Wausau Underwriters Insurance Company .....	.. WI.....	..... IA.....	Liberty Mutual Insurance Company .....	Ownership, Board and Management .....	100.000 ...	Liberty Mutual Holding Company Inc. ...	.... NO.....	.....
. 0111 ...	Liberty Mutual Insurance Company and its Affiliated Insurers .....	..... 44393 .....	31-0624491 ..	.....	.....	.....	West American Insurance Company .....	.. IN.....	..... IA.....	The Ohio Casualty Insurance Company .....	Ownership, Board and Management .....	100.000 ...	Liberty Mutual Holding Company Inc. ...	.... NO.....	.....
.....	.....	..... 00000 .....	.....	.....	.....	.....	WGN Holdings LLC .....	.. DE.....	..... NIA.....	Employers Insurance Company of Wausau .....	Ownership, Management .....	..25.000 ...	Liberty Mutual Holding Company Inc. ...	.... NO.....	.....
.....	.....	..... 00000 .....	.....	.....	.....	.....	WGN Holdings LLC .....	.. DE.....	..... NIA.....	Liberty Mutual Fire Insurance Company .....	Ownership, Management .....	..25.000 ...	Liberty Mutual Holding Company Inc. ...	.... NO.....	.....
.....	.....	..... 00000 .....	.....	.....	.....	.....	WGN Holdings LLC .....	.. DE.....	..... NIA.....	The Ohio Casualty Insurance Company .....	Ownership, Management .....	..25.000 ...	Liberty Mutual Holding Company Inc. ...	.... NO.....	.....
.....	.....	..... 00000 .....	.....	.....	.....	.....	WGN Holdings LLC .....	.. DE.....	..... NIA.....	Safeco Insurance Company of America .....	Ownership, Management .....	..25.000 ...	Liberty Mutual Holding Company Inc. ...	.... NO.....	.....
.....	.....	..... 00000 .....	45-2396108 ..	.....	.....	.....	Wildcat Field Services, LLC .....	.. TX.....	..... NIA.....	Wildcat Midstream Holdings II LLC .....	Ownership.....	100.000 ...	Liberty Mutual Holding Company Inc. ...	.... NO.....	.....
.....	.....	..... 00000 .....	46-1637784 ..	.....	.....	.....	Wildcat Midstream Holdings II LLC .....	.. TX.....	..... NIA.....	Kellen Holdings, LLC .....	Ownership.....	..95.000 ...	Liberty Mutual Holding Company Inc. ...	.... NO.....	.....
.....	.....	..... 00000 .....	35-2604562 ..	.....	.....	.....	Workgrid Software, Inc. ....	.. DE.....	..... NIA.....	Liberty Mutual Technology Group, Inc. ....	Ownership, Board and Management .....	100.000 ...	Liberty Mutual Holding Company Inc. ...	.... NO.....	.....

Asterisk	Explanation

PART 1 - LOSS EXPERIENCE

Line of Business		Current Year to Date			4
		1 Direct Premiums Earned	2 Direct Losses Incurred	3 Direct Loss Percentage	Prior Year to Date Direct Loss Percentage
1.	Fire .....	42,947,515	12,444,480	29.0	58.5
2.1	Allied Lines .....	48,218,013	20,528,847	42.6	140.7
2.2	Multiple peril crop .....				
2.3	Federal flood .....				
2.4	Private crop .....				
2.5	Private flood .....				
3.	Farmowners multiple peril .....	126,855,010	67,974,880	53.6	84.9
4.	Homeowners multiple peril .....	15,143,539	13,601,693	89.8	112.1
5.1	Commercial multiple peril (non-liability portion) .....	57,563,693	31,682,504	55.0	84.1
5.2	Commercial multiple peril (liability portion) .....	26,837,043	11,517,322	42.9	45.8
6.	Mortgage guaranty .....				
8.	Ocean marine .....				4.6
9.1	Inland marine .....	5,598,008	1,806,191	32.3	33.4
9.2	Pet insurance .....				
10.	Financial guaranty .....				
11.1	Medical professional liability - occurrence .....				
11.2	Medical professional liability - claims-made .....				
12.	Earthquake .....	1,172,279			
13.1	Comprehensive (hospital and medical) individual .....				
13.2	Comprehensive (hospital and medical) group .....				
14.	Credit accident and health .....				
15.1	Vision only .....				
15.2	Dental only .....				
15.3	Disability income .....				
15.4	Medicare supplement .....				
15.5	Medicaid Title XIX .....				
15.6	Medicare Title XVIII .....				
15.7	Long-term care .....				
15.8	Federal employees health benefits plan .....				
15.9	Other health .....	608			
16.	Workers' compensation .....	5,341,175	2,227,776	41.7	51.7
17.1	Other liability - occurrence .....	71,911,172	47,013,146	65.4	57.9
17.2	Other liability - claims-made .....	1,265,835	602,997	47.6	58.3
17.3	Excess workers' compensation .....				
18.1	Products liability - occurrence .....	2,311,067	1,199,906	51.9	65.3
18.2	Products liability - claims-made .....				
19.1	Private passenger auto no-fault (personal injury protection) .....	28,827	260,079	902.2	4,177.0
19.2	Other private passenger auto liability .....	3,120,889	2,945,275	94.4	84.0
19.3	Commercial auto no-fault (personal injury protection) .....	1,662,421	1,394,713	83.9	32.6
19.4	Other commercial auto liability .....	143,383,007	120,746,470	84.2	85.1
21.1	Private passenger auto physical damage .....	2,531,072	702,016	27.7	52.4
21.2	Commercial auto physical damage .....	56,426,749	28,212,291	50.0	61.9
22.	Aircraft (all perils) .....				
23.	Fidelity .....	184,681	243,141	131.7	14.1
24.	Surety .....	36	1	2.8	0.9
26.	Burglary and theft .....	234,888	214,227	91.2	75.2
27.	Boiler and machinery .....	2,143,461	862,256	40.2	50.2
28.	Credit .....				
29.	International .....				
30.	Warranty .....				
31.	Reinsurance - Nonproportional Assumed Property .....	XXX	XXX	XXX	XXX
32.	Reinsurance - Nonproportional Assumed Liability .....	XXX	XXX	XXX	XXX
33.	Reinsurance - Nonproportional Assumed Financial Lines .....	XXX	XXX	XXX	XXX
34.	Aggregate write-ins for other lines of business .....				
35.	Totals	614,880,988	366,180,211	59.6	80.8
DETAILS OF WRITE-INS					
3401.	.....				
3402.	.....				
3403.	.....				
3498.	Summary of remaining write-ins for Line 34 from overflow page .....				
3499.	Totals (Lines 3401 through 3403 plus 3498)(Line 34 above)				

STATEMENT AS OF SEPTEMBER 30, 2025 OF THE STATE AUTOMOBILE MUTUAL INSURANCE COMPANY

PART 2 - DIRECT PREMIUMS WRITTEN

Line of Business		1 Current Quarter	2 Current Year to Date	3 Prior Year Year to Date
1.	Fire .....	11,751,564	34,920,190	47,230,677
2.1	Allied Lines .....	12,635,118	39,566,219	53,649,458
2.2	Multiple peril crop .....			
2.3	Federal flood .....			
2.4	Private crop .....			
2.5	Private flood .....			
3.	Farmowners multiple peril .....	46,419,460	138,651,132	118,924,869
4.	Homeowners multiple peril .....	(78,330)	875,528	38,711,395
5.1	Commercial multiple peril (non-liability portion) .....	18,106,646	53,620,702	62,308,835
5.2	Commercial multiple peril (liability portion) .....	7,635,718	23,783,925	31,138,384
6.	Mortgage guaranty .....			
8.	Ocean marine .....			(8)
9.1	Inland marine .....	1,180,493	4,309,494	7,632,325
9.2	Pet insurance .....			
10.	Financial guaranty .....			
11.1	Medical professional liability - occurrence .....			
11.2	Medical professional liability - claims-made .....			
12.	Earthquake .....	249,642	861,529	1,626,333
13.1	Comprehensive (hospital and medical) individual .....			
13.2	Comprehensive (hospital and medical) group .....			
14.	Credit accident and health .....			
15.1	Vision only .....			
15.2	Dental only .....			
15.3	Disability income .....			
15.4	Medicare supplement .....			
15.5	Medicaid Title XIX .....			
15.6	Medicare Title XVIII .....			
15.7	Long-term care .....			
15.8	Federal employees health benefits plan .....			
15.9	Other health .....		(145)	
16.	Workers' compensation .....	1,502,273	4,364,310	7,897,935
17.1	Other liability - occurrence .....	19,131,669	62,436,848	83,239,811
17.2	Other liability - claims-made .....	345,866	1,044,239	1,530,871
17.3	Excess workers' compensation .....			
18.1	Products liability - occurrence .....	386,985	2,127,847	2,889,984
18.2	Products liability - claims-made .....			
19.1	Private passenger auto no-fault (personal injury protection) .....	(76)	(1,887)	149,670
19.2	Other private passenger auto liability .....	(34,972)	701,903	10,505,160
19.3	Commercial auto no-fault (personal injury protection) .....	318,717	1,607,875	1,937,075
19.4	Other commercial auto liability .....	39,846,518	131,624,111	172,547,383
21.1	Private passenger auto physical damage .....	(17,203)	537,984	9,045,720
21.2	Commercial auto physical damage .....	14,452,504	49,147,538	69,050,661
22.	Aircraft (all perils) .....			
23.	Fidelity .....	40,064	148,555	221,648
24.	Surety .....			
26.	Burglary and theft .....	62,405	188,938	274,150
27.	Boiler and machinery .....	531,970	1,848,313	2,509,186
28.	Credit .....			
29.	International .....			
30.	Warranty .....			
31.	Reinsurance - Nonproportional Assumed Property .....	XXX	XXX	XXX
32.	Reinsurance - Nonproportional Assumed Liability .....	XXX	XXX	XXX
33.	Reinsurance - Nonproportional Assumed Financial Lines .....	XXX	XXX	XXX
34.	Aggregate write-ins for other lines of business .....			
35.	Totals	174,467,031	552,365,148	723,021,522
DETAILS OF WRITE-INS				
3401.	.....			
3402.	.....			
3403.	.....			
3498.	Summary of remaining write-ins for Line 34 from overflow page .....			
3499.	Totals (Lines 3401 through 3403 plus 3498)(Line 34 above)			

STATEMENT AS OF SEPTEMBER 30, 2025 OF THE STATE AUTOMOBILE MUTUAL INSURANCE COMPANY

PART 3 (\$000 OMITTED)

LOSS AND LOSS ADJUSTMENT EXPENSE RESERVES SCHEDULE

	1	2	3	4	5	6	7	8	9	10	11	12	13									
Years in Which Losses Occurred	Prior Year-End Known Case Loss and LAE Reserves	Prior Year-End IBNR Loss and LAE Reserves	Total Prior Year-End Loss and LAE Reserves (Cols. 1+2)	2025 Loss and LAE Payments on Claims Reported as of Prior Year-End	2025 Loss and LAE Payments on Claims Unreported as of Prior Year-End	Total 2025 Loss and LAE Payments (Cols. 4+5)	Q.S. Date Known Case Loss and LAE Reserves on Claims Reported and Open as of Prior Year End	Q.S. Date Known Case Loss and LAE Reserves on Claims Reported or Reopened Subsequent to Prior Year End	Q.S. Date IBNR Loss and LAE Reserves	Total Q.S. Loss and LAE Reserves (Cols.7+8+9)	Prior Year-End Known Case Loss and LAE Reserves Developed (Savings)/ Deficiency (Cols.4+7 minus Col. 1)	Prior Year-End IBNR Loss and LAE Reserves Developed (Savings)/ Deficiency (Cols. 5+8+9 minus Col. 2)	Prior Year-End Total Loss and LAE Reserve Developed (Savings)/ Deficiency (Cols. 11+12)									
1. 2022 + Prior .....	.....	.....	.....	.....	.....	.....	.....	.....	.....	.....	.....	.....	.....									
2. 2023 .....	.....	.....	.....	.....	.....	.....	.....	.....	.....	.....	.....	.....	.....									
3. Subtotals 2023 + Prior .....	.....	.....	.....	.....	.....	.....	.....	.....	.....	.....	.....	.....	.....									
4. 2024 .....	.....	.....	.....	.....	.....	.....	.....	.....	.....	.....	.....	.....	.....									
5. Subtotals 2024 + Prior .....	.....	.....	.....	.....	.....	.....	.....	.....	.....	.....	.....	.....	.....									
6. 2025 .....	.....XXX.....	.....XXX.....	.....XXX.....	.....XXX.....	.....	.....	.....XXX.....	.....	.....	.....	.....XXX.....	.....XXX.....	.....XXX.....									
7. Totals .....	.....	.....	.....	.....	.....	.....	.....	.....	.....	.....	.....	.....	.....									
8. Prior Year-End Surplus As Regards Policyholders	573,355										Col. 11, Line 7 As % of Col. 1 Line 7	Col. 12, Line 7 As % of Col. 2 Line 7	Col. 13, Line 7 As % of Col. 3 Line 7									
											1.	2.	3.									
											Col. 13, Line 7 As a % of Col. 1 Line 8											
											4.											

STATEMENT AS OF SEPTEMBER 30, 2025 OF THE STATE AUTOMOBILE MUTUAL INSURANCE COMPANY

SUPPLEMENTAL EXHIBITS AND SCHEDULES INTERROGATORIES

The following supplemental reports are required to be filed as part of your statement filing. However, in the event that your company does not transact the type of business for which the special report must be filed, your response of NO to the specific interrogatory will be accepted in lieu of filing a "NONE" report and a bar code will be printed below. If the supplement is required of your company but is not being filed for whatever reason enter SEE EXPLANATION and provide an explanation following the interrogatory questions.

	Response
1. Will the Trusteed Surplus Statement be filed with the state of domicile and the NAIC with this statement? .....	NO
2. Will Supplement A to Schedule T (Medical Professional Liability Supplement) be filed with this statement? .....	NO
3. Will the Medicare Part D Coverage Supplement be filed with the state of domicile and the NAIC with this statement? .....	NO
4. Will the Director and Officer Insurance Coverage Supplement be filed with the state of domicile and the NAIC with this statement? .....	YES
AUGUST FILING	
5. Will the regulator-only (non-public) Communication of Internal Control Related Matters Noted in Audit be filed with the state of domicile and electronically with the NAIC (as a regulator-only non-public document) by August 1? The response for 1st and 3rd quarters should be N/A. A NO response resulting with a bar code is only appropriate in the 2nd quarter. ....	N/A

Explanations:

1. The Trusteed Surplus Statement is not required as the Company is a U.S. insurer.
2. Supplement A to Schedule T is not required as the Company does not provide medical professional liability coverage for physicians, hospitals, other health care professionals and other health care facilities.
3. Medicare Part D Coverage Supplement is not required as the Company does not provide prescription drug coverage.

Bar Codes:

1. Trusteed Surplus Statement [Document Identifier 490]	
2. Supplement A to Schedule T [Document Identifier 455]	
3. Medicare Part D Coverage Supplement [Document Identifier 365]	

STATEMENT AS OF SEPTEMBER 30, 2025 OF THE STATE AUTOMOBILE MUTUAL INSURANCE COMPANY

OVERFLOW PAGE FOR WRITE-INS

Additional Write-ins for Assets Line 25

	Current Statement Date			4 December 31 Prior Year Net Admitted Assets
	1 Assets	2 Nonadmitted Assets	3 Net Admitted Assets (Cols. 1 - 2)	
2504. Amounts receivable under high deductible policies .....	.....	.....	.....	.....
2505. Goodwill .....	.....	.....	.....	.....
2597. Summary of remaining write-ins for Line 25 from overflow page				

Additional Write-ins for Liabilities Line 25

		1 Current Statement Date	2 December 31, Prior Year
2504. Deposit liability .....			
2597. Summary of remaining write-ins for Line 25 from overflow page			

SCHEDULE A - VERIFICATION

Real Estate

	1	2
	Year to Date	Prior Year Ended December 31
1. Book/adjusted carrying value, December 31 of prior year .....	66,454,692	68,588,198
2. Cost of acquired:		
2.1 Actual cost at time of acquisition .....		
2.2 Additional investment made after acquisition .....		
3. Current year change in encumbrances .....		
4. Total gain (loss) on disposals .....		
5. Deduct amounts received on disposals .....		
6. Total foreign exchange change in book/adjusted carrying value .....		
7. Deduct current year's other than temporary impairment recognized .....		
8. Deduct current year's depreciation .....	1,589,713	2,133,506
9. Book/adjusted carrying value at the end of current period (Lines 1+2+3+4-5+6-7-8) .....	64,864,978	66,454,692
10. Deduct total nonadmitted amounts .....		
11. Statement value at end of current period (Line 9 minus Line 10)	64,864,978	66,454,692

SCHEDULE B - VERIFICATION

Mortgage Loans

	1	2
	Year to Date	Prior Year Ended December 31
1. Book value/recorded investment excluding accrued interest, December 31 of prior year .....		
2. Cost of acquired:		
2.1 Actual cost at time of acquisition .....		
2.2 Additional investment made after acquisition .....		
3. Capitalized deferred interest and other .....		
4. Accrual of discount .....		
5. Unrealized valuation increase/(decrease) .....		
6. Total gain (loss) on disposals .....		
7. Deduct amounts received on disposals .....		
8. Deduct amortization of premium and mortgage interest paid and commitment fees .....		
9. Total foreign exchange change in book value/recorded investment excluding accrued interest .....		
10. Deduct current year's other than temporary impairment recognized .....		
11. Book value/recorded investment excluding accrued interest at end of current period (Lines 1+2+3+4+5+6-7-8+9-10) .....		
12. Total valuation allowance .....		
13. Subtotal (Line 11 plus Line 12) .....		
14. Deduct total nonadmitted amounts .....		
15. Statement value at end of current period (Line 13 minus Line 14)		

NONE

SCHEDULE BA - VERIFICATION

Other Long-Term Invested Assets

	1	2
	Year to Date	Prior Year Ended December 31
1. Book/adjusted carrying value, December 31 of prior year .....	10,008,807	10,447,522
2. Cost of acquired:		
2.1 Actual cost at time of acquisition .....	6,800	5,500
2.2 Additional investment made after acquisition .....		
3. Capitalized deferred interest and other .....		
4. Accrual of discount .....		
5. Unrealized valuation increase/(decrease) .....	135,466	(444,215)
6. Total gain (loss) on disposals .....	12,960	
7. Deduct amounts received on disposals .....	216,000	
8. Deduct amortization of premium, depreciation and proportional amortization .....		
9. Total foreign exchange change in book/adjusted carrying value .....		
10. Deduct current year's other than temporary impairment recognized .....		
11. Book/adjusted carrying value at end of current period (Lines 1+2+3+4+5+6-7-8+9-10) .....	9,948,033	10,008,807
12. Deduct total nonadmitted amounts .....		
13. Statement value at end of current period (Line 11 minus Line 12)	9,948,033	10,008,807

SCHEDULE D - VERIFICATION

Bonds and Stocks

	1	2
	Year to Date	Prior Year Ended December 31
1. Book/adjusted carrying value of bonds and stocks, December 31 of prior year .....	507,230,817	466,610,465
2. Cost of bonds and stocks acquired .....	24,168,977	35,823,462
3. Accrual of discount .....	272,383	335,205
4. Unrealized valuation increase/(decrease) .....	(2,221,225)	20,836,456
5. Total gain (loss) on disposals .....	101,581	(79,851)
6. Deduct consideration for bonds and stocks disposed of .....	26,361,398	16,045,145
7. Deduct amortization of premium .....	113,391	249,776
8. Total foreign exchange change in book/adjusted carrying value .....		
9. Deduct current year's other than temporary impairment recognized .....		
10. Total investment income recognized as a result of prepayment penalties and/or acceleration fees .....		
11. Book/adjusted carrying value at end of current period (Lines 1+2+3+4+5-6-7+8-9+10) .....	503,077,744	507,230,817
12. Deduct total nonadmitted amounts .....	43,492,972	43,720,020
13. Statement value at end of current period (Line 11 minus Line 12)	459,584,772	463,510,797



STATEMENT AS OF SEPTEMBER 30, 2025 OF THE STATE AUTOMOBILE MUTUAL INSURANCE COMPANY

SCHEDULE D - PART 1B

Showing the Acquisitions, Dispositions and Non-Trading Activity  
During the Current Quarter for all Bonds and Preferred Stock by NAIC Designation

NAIC Designation	1 Book/Adjusted Carrying Value Beginning of Current Quarter	2 Acquisitions During Current Quarter	3 Dispositions During Current Quarter	4 Non-Trading Activity During Current Quarter	5 Book/Adjusted Carrying Value End of First Quarter	6 Book/Adjusted Carrying Value End of Second Quarter	7 Book/Adjusted Carrying Value End of Third Quarter	8 Book/Adjusted Carrying Value December 31 Prior Year
ISSUER CREDIT OBLIGATIONS (ICO)								
1. NAIC 1 (a) .....	55,482,509	9,695,137	8,675,692	606,775	57,682,335	55,482,509	57,108,728	60,511,365
2. NAIC 2 (a) .....								
3. NAIC 3 (a) .....								
4. NAIC 4 (a) .....								
5. NAIC 5 (a) .....								
6. NAIC 6 (a) .....								
7. Total ICO	55,482,509	9,695,137	8,675,692	606,775	57,682,335	55,482,509	57,108,728	60,511,365
ASSET-BACKED SECURITIES (ABS)								
8. NAIC 1 .....	20,345,231	2,200,248	1,095,853	50,041	16,015,111	20,345,231	21,499,668	15,061,503
9. NAIC 2 .....								
10. NAIC 3 .....								
11. NAIC 4 .....								
12. NAIC 5 .....								
13. NAIC 6 .....								
14. Total ABS	20,345,231	2,200,248	1,095,853	50,041	16,015,111	20,345,231	21,499,668	15,061,503
PREFERRED STOCK								
15. NAIC 1 .....								
16. NAIC 2 .....								
17. NAIC 3 .....								
18. NAIC 4 .....								
19. NAIC 5 .....								
20. NAIC 6 .....								
21. Total Preferred Stock .....								
22. Total ICO, ABS & Preferred Stock	75,827,740	11,895,385	9,771,545	656,816	73,697,445	75,827,740	78,608,396	75,572,868

(a) Book/Adjusted Carrying Value column for the end of the current reporting period includes the following amount of short-term and cash equivalent bonds by NAIC designation:  
NAIC 1 \$ 4,858,744 ; NAIC 2 \$ ; NAIC 3 \$ NAIC 4 \$ ; NAIC 5 \$ ; NAIC 6 \$

SCHEDULE DA - PART 1

Short-Term Investments

	1	2	3	4	5
	Book/Adjusted Carrying Value	Par Value	Actual Cost	Interest Collected Year-to-Date	Paid for Accrued Interest Year-to-Date
7709999999 Totals	4,858,744	xxx	4,853,415		4,501

SCHEDULE DA - VERIFICATION

Short-Term Investments

	1	2
	Year To Date	Prior Year Ended December 31
1. Book/adjusted carrying value, December 31 of prior year .....		14,701,943
2. Cost of short-term investments acquired .....	4,853,415	
3. Accrual of discount .....	5,500	243,276
4. Unrealized valuation increase/(decrease) .....		
5. Total gain (loss) on disposals .....		(3,815)
6. Deduct consideration received on disposals .....		14,941,403
7. Deduct amortization of premium .....	172	
8. Total foreign exchange change in book/adjusted carrying value .....		
9. Deduct current year's other than temporary impairment recognized .....		
10. Book/adjusted carrying value at end of current period (Lines 1+2+3+4+5-6-7+8-9) .....	4,858,744	
11. Deduct total nonadmitted amounts .....		
12. Statement value at end of current period (Line 10 minus Line 11)	4,858,744	

Schedule DB - Part A - Verification - Options, Caps, Floors, Collars, Swaps and Forwards

**N O N E**

Schedule DB - Part B - Verification - Futures Contracts

**N O N E**

Schedule DB - Part C - Section 1 - Replication (Synthetic Asset) Transactions (RSATs) Open

**N O N E**

Schedule DB-Part C-Section 2-Reconciliation of Replication (Synthetic Asset) Transactions Open

**N O N E**

Schedule DB - Verification - Book/Adjusted Carrying Value, Fair Value and Potential Exposure of  
Derivatives

**N O N E**

SCHEDULE E - PART 2 - VERIFICATION

(Cash Equivalents)

	1	2
	Year To Date	Prior Year Ended December 31
1. Book/adjusted carrying value, December 31 of prior year .....	21,567	21,567
2. Cost of cash equivalents acquired .....		
3. Accrual of discount .....		
4. Unrealized valuation increase/(decrease) .....		
5. Total gain (loss) on disposals .....		
6. Deduct consideration received on disposals .....		
7. Deduct amortization of premium .....		
8. Total foreign exchange change in book/adjusted carrying value .....		
9. Deduct current year's other than temporary impairment recognized .....		
10. Book/adjusted carrying value at end of current period (Lines 1+2+3+4+5-6-7+8-9) .....	21,567	21,567
11. Deduct total nonadmitted amounts .....		
12. Statement value at end of current period (Line 10 minus Line 11)	21,567	21,567

Schedule A - Part 2 - Real Estate Acquired and Additions Made

**N O N E**

Schedule A - Part 3 - Real Estate Disposed

**N O N E**

Schedule B - Part 2 - Mortgage Loans Acquired and Additions Made

**N O N E**

Schedule B - Part 3 - Mortgage Loans Disposed, Transferred or Repaid

**N O N E**

## SCHEDULE BA - PART 2

CUSIP Identification	Name or Description	Location		Name of Vendor or General Partner	6 NAIC Designation, NAIC Designation Modifier and SVO Administrative Symbol	7 Date Originally Acquired	8 Type and Strategy	9 Actual Cost at Time of Acquisition	10 Additional Investment Made After Acquisition	11 Amount of Encumbrances	12 Commitment for Additional Investment	13 Percentage of Ownership
		3 City	4 State									
BLM80Z-43-4 .....	SOUTH CAROLINA AFROBLE HSNF FUND II .....	Jefferson City .....	MO.....	SOUTH CAROLINA HOUSING MANAGEMENT, L.L.C. ....	.....	09/09/2025 ...	.....	100 .....	.....	.....	.....	0.000 .....
BLM80Z-5D-1 .....	GEORGIA TAX CREDIT FUND XXI LP .....	Jefferson City .....	MO.....	Georgia Housing Management II, L.L.C. ....	.....	09/09/2025 ...	.....	100 .....	.....	.....	.....	0.010 .....
BLM80Z-6Y-0 .....	MISSOURI AFROBLE HSNF FUND XXIX LP .....	Jefferson City .....	MO.....	Missouri Housing Management II, L.L.C. ....	.....	09/09/2025 ...	.....	100 .....	.....	.....	.....	0.010 .....
<b>3999999. Qualifying State Tax Credit Investments - Unaffiliated</b>								<b>300</b>				<b>XXX</b>
<b>6899999. Total - Unaffiliated</b>								<b>300</b>				<b>XXX</b>
<b>6999999. Total - Affiliated</b>												<b>XXX</b>
<b>7099999 - Totals</b>								<b>300</b>				<b>XXX</b>

## SCHEDULE BA - PART 3

[illegible]

STATEMENT AS OF SEPTEMBER 30, 2025 OF THE STATE AUTOMOBILE MUTUAL INSURANCE COMPANY

SCHEDULE D - PART 3

Show All Long-Term Bonds and Stock Acquired During the Current Quarter

1	2	3	4	5	6	7	8	9
CUSIP Identification	Description	Date Acquired	Name of Vendor	Number of Shares of Stock	Actual Cost	Par Value	Paid for Accrued Interest and Dividends	NAIC Designation, NAIC Designation Modifier and SVO Administrative Symbol
91282C-LU-3 .....	TREASURY NOTE .....	...08/18/2025 .....	BMO CAPITAL MARKETS .....		1,934,741	2,500,000	31,106	1.A .....
91282C-MY-4 .....	TREASURY NOTE .....	...07/16/2025 .....	BMO CAPITAL MARKETS .....		498,457	500,000	3,974	1.A .....
91282C-NK-3 .....	TREASURY NOTE .....	...07/25/2025 .....	TD SECURITIES .....		348,523	350,000	1,032	1.A .....
0019999999. Subtotal - Issuer Credit Obligations - U.S. Government Obligations (Exempt from RBC)					2,781,721	3,350,000	36,112	XXX
161037-SY-8 .....	CHARLOTTE N C CTFS PARTN .....	...07/25/2025 .....	PNC BANK .....		250,000	250,000		1.B FE .....
544647-LA-6 .....	LOS ANGELES CALIF UNI SCH DIST .....	...07/02/2025 .....	RBC CAPITAL MARKETS .....		260,000	260,000		1.D FE .....
574296-EN-5 .....	MARYLAND ST STAD AUTH REV .....	...08/14/2025 .....	RAYMOND JAMES ASSOCIATES .....		1,000,000	1,000,000		1.C FE .....
72205R-JL-7 .....	PINAL CNTY ARIZ REV OBLIGS .....	...07/09/2025 .....	STIFEL NICOLAUS & CO. ....		300,000	300,000		1.C FE .....
72205R-JM-5 .....	PINAL CNTY ARIZ REV OBLIGS .....	...07/09/2025 .....	STIFEL NICOLAUS & CO. ....		250,000	250,000		1.C FE .....
0059999999. Subtotal - Issuer Credit Obligations - Municipal Bonds - Special Revenues					2,060,000	2,060,000		XXX
0489999999. Total - Issuer Credit Obligations (Unaffiliated)					4,841,721	5,410,000	36,112	XXX
0499999999. Total - Issuer Credit Obligations (Affiliated)								XXX
0509999997. Total - Issuer Credit Obligations - Part 3					4,841,721	5,410,000	36,112	XXX
0509999998. Total - Issuer Credit Obligations - Part 5					XXX	XXX	XXX	XXX
0509999999. Total - Issuer Credit Obligations					4,841,721	5,410,000	36,112	XXX
831641-GA-7 .....	SBIC 2025-10B 1 .....	...09/23/2025 .....	VARIOUS .....		698,598	700,000	20	1.A .....
1029999999. Subtotal - Asset-Backed Securities - Financial Asset-Backed - Self-Liquidating - Agency Commercial Mortgage-Backed Securities - Guaranteed (Exempt from RBC)					698,598	700,000	20	XXX
12552F-BC-6 .....	CIFC 2014-4RA A1A2 .....	...09/08/2025 .....	BANK OF AMERICA .....		750,750	750,000	5,976	1.A FE .....
67592B-AY-4 .....	OCT40 2019-1A A1RR .....	...09/08/2025 .....	MORGAN STANLEY & CO INC .....		750,900	750,000	5,589	1.A FE .....
1099999999. Subtotal - Asset-Backed Securities - Financial Asset-Backed - Self-Liquidating - Non-Agency - CLOs/CBOs/CDOs (Unaffiliated)					1,501,650	1,500,000	11,566	XXX
1889999999. Total - Asset-Backed Securities (Unaffiliated)					2,200,248	2,200,000	11,585	XXX
1899999999. Total - Asset-Backed Securities (Affiliated)								XXX
1909999997. Total - Asset-Backed Securities - Part 3					2,200,248	2,200,000	11,585	XXX
1909999998. Total - Asset-Backed Securities - Part 5					XXX	XXX	XXX	XXX
1909999999. Total - Asset-Backed Securities					2,200,248	2,200,000	11,585	XXX
2009999999. Total - Issuer Credit Obligations and Asset-Backed Securities					7,041,970	7,610,000	47,697	XXX
4509999997. Total - Preferred Stocks - Part 3						XXX		XXX
4509999998. Total - Preferred Stocks - Part 5					XXX	XXX	XXX	XXX
4509999999. Total - Preferred Stocks						XXX		XXX
5989999997. Total - Common Stocks - Part 3						XXX		XXX
5989999998. Total - Common Stocks - Part 5					XXX	XXX	XXX	XXX
5989999999. Total - Common Stocks						XXX		XXX
5999999999. Total - Preferred and Common Stocks						XXX		XXX
6009999999 - Totals					7,041,970	XXX	47,697	XXX

STATEMENT AS OF SEPTEMBER 30, 2025 OF THE STATE AUTOMOBILE MUTUAL INSURANCE COMPANY

SCHEDULE D - PART 4

Show All Long-Term Bonds and Stock Sold, Redeemed or Otherwise Disposed of During the Current Quarter

1	2	3	4	5	6	7	8	9	Change In Book/Adjusted Carrying Value					15	16	17	18	19	20	21
									10	11	12	13	14							
CUSIP Ident- ification	Description	Disposal Date	Name of Purchaser	Number of Shares of Stock	Consid- eration	Par Value	Actual Cost	Prior Year Book/ Adjusted Carrying Value	Unrealized Valuation Increase/ (Decrease)	Current Year's (Amor- tization)/ Accretion	Current Year's Other Than Temporary Impairment Recogn- ized	Total Change in Book/ Adjusted Carrying Value (10 + 11 - 12)	Total Foreign Exchange Change in Book /Adjusted Carrying Value	Book/ Adjusted Carrying Value at Disposal Date	Foreign Exchange Gain (Loss) on Disposal	Realized Gain (Loss) on Disposal	Total Gain (Loss) on Disposal	Bond Interest/ Stock Dividends Received During Year	Stated Con- tractual Maturity Date	NAIC Desig- nation, NAIC Desig- nation Modifier and SVO Admini- strative Symbol
..91282C-EY-3 ..91282C-FE-6	TREASURY NOTE ..... TREASURY NOTE .....	. 07/15/2025 . . 08/15/2025 .	MATURITY ..... MATURITY ..... INTERNATIONAL FCGSTONE FINANCIA		1,160,000 1,810,000	1,160,000 5,000,000	1,124,022 4,873,438	1,152,693 4,952,026		7,307 47,974		7,307 47,974		1,160,000 5,000,000				34,803 156,250	. 07/15/2025 . . 08/15/2025 .	1.A ..... 1.A .....
..91282C-LU-3	TREASURY NOTE .....	. 09/17/2025 .			2,556,641	2,500,000	2,515,820			(128)		(128)		2,515,692		40,948	40,948	39,513	10/31/2031	1.A .....
0019999999. Subtotal - Issuer Credit Obligations - U.S. Government Obligations (Exempt from RBC)					5,526,641	8,660,000	8,513,280	6,104,719		55,153		55,153		8,675,692		40,948	40,948	230,565	XXX	XXX
0489999999. Total - Issuer Credit Obligations (Unaffiliated)					5,526,641	8,660,000	8,513,280	6,104,719		55,153		55,153		8,675,692		40,948	40,948	230,565	XXX	XXX
0499999999. Total - Issuer Credit Obligations (Affiliated)																			XXX	XXX
0509999997. Total - Issuer Credit Obligations - Part 4					5,526,641	8,660,000	8,513,280	6,104,719		55,153		55,153		8,675,692		40,948	40,948	230,565	XXX	XXX
0509999998. Total - Issuer Credit Obligations - Part 5					XXX	XXX	XXX	XXX	XXX	XXX	XXX	XXX	XXX	XXX	XXX	XXX	XXX	XXX	XXX	XXX
0509999999. Total - Issuer Credit Obligations					5,526,641	8,660,000	8,513,280	6,104,719		55,153		55,153		8,675,692		40,948	40,948	230,565	XXX	XXX
..38379R-OP-1	GNMA 17-47 .....	. 09/01/2025 .	PAY DOWN .....		119,548	119,548	117,923			3,624		3,624		119,548				1,992	. 08/16/2058 .	1.A .....
1029999999. Subtotal - Asset-Backed Securities - Financial Asset-Backed - Self-Liquidating - Agency Commercial Mortgage-Backed Securities - Guaranteed (Exempt from RBC)					119,548	119,548	117,923			3,624		3,624		119,548				1,992	XXX	XXX
..3140LK-AX-1	FNMA 7YR MULTI BALLOON .....	. 09/01/2025 .	PAY DOWN .....		5,050	5,050	5,043	5,043		7		7		5,050				164	. 05/01/2030 .	1.A .....
1039999999. Subtotal - Asset-Backed Securities - Financial Asset-Backed - Self-Liquidating - Agency Residential Mortgage-Backed Securities - Not/Partially Guaranteed (Not Exempt from RBC)					5,050	5,050	5,043	5,043		7		7		5,050				164	XXX	XXX
..55820J-BC-3 ..92338B-AW-5	MDPK 2016-21A ..... VERDE 2019-1A APR .....	. 09/04/2025 . . 07/15/2025 .	PAY DOWN ..... PAY DOWN .....		833,724 43,876	833,724 43,876	833,724 43,876	833,724 43,876						833,724 43,876				42,966 1,835	. 10/15/2032 . . 04/15/2032 .	1.A FE .... 1.A FE .....
1099999999. Subtotal - Asset-Backed Securities - Financial Asset-Backed - Self-Liquidating - Non-Agency - CLOs/CBOs/CDOs (Unaffiliated)					877,601	877,601	877,601	877,601						877,601				44,801	XXX	XXX
..12530V-AA-3 ..33767J-AA-0	CFMT 2024-HB13 A ..... FKH 20-SFR2 .....	. 09/25/2025 . . 09/01/2025 .	PAY DOWN ..... PAY DOWN .....		62,040 31,614	62,040 31,614	59,143 29,113	59,949 30,412		2,090 1,202		2,090 1,202		62,040 31,614				1,262 279	. 05/25/2034 . . 10/19/2037 .	1.A Z ..... 1.A FE .....
1339999999. Subtotal - Asset-Backed Securities - Financial Asset-Backed - Not Self-Liquidating - Other Financial Asset-Backed Securities - Not Self-Liquidating (Unaffiliated)					93,654	93,654	88,256	90,361		3,292		3,292		93,654				1,541	XXX	XXX
1889999999. Total - Asset-Backed Securities (Unaffiliated)					1,095,853	1,095,853	1,088,823	973,005		6,923		6,923		1,095,853				48,499	XXX	XXX
1899999999. Total - Asset-Backed Securities (Affiliated)																			XXX	XXX
1909999997. Total - Asset-Backed Securities - Part 4					1,095,853	1,095,853	1,088,823	973,005		6,923		6,923		1,095,853				48,499	XXX	XXX
1909999998. Total - Asset-Backed Securities - Part 5					XXX	XXX	XXX	XXX	XXX	XXX	XXX	XXX	XXX	XXX	XXX	XXX	XXX	XXX	XXX	XXX
1909999999. Total - Asset-Backed Securities					1,095,853	1,095,853	1,088,823	973,005		6,923		6,923		1,095,853				48,499	XXX	XXX
2009999999. Total - Issuer Credit Obligations and Asset-Backed Securities					6,622,493	9,755,853	9,602,103	7,077,724		62,076		62,076		9,771,545		40,948	40,948	279,064	XXX	XXX
4509999997. Total - Preferred Stocks - Part 4						XXX													XXX	XXX
4509999998. Total - Preferred Stocks - Part 5					XXX	XXX	XXX	XXX	XXX	XXX	XXX	XXX	XXX	XXX	XXX	XXX	XXX	XXX	XXX	XXX
4509999999. Total - Preferred Stocks						XXX													XXX	XXX
5989999997. Total - Common Stocks - Part 4						XXX													XXX	XXX
5989999998. Total - Common Stocks - Part 5					XXX	XXX	XXX	XXX	XXX	XXX	XXX	XXX	XXX	XXX	XXX	XXX	XXX	XXX	XXX	XXX
5989999999. Total - Common Stocks						XXX													XXX	XXX
5999999999. Total - Preferred and Common Stocks						XXX													XXX	XXX
6009999999 - Totals					6,622,493	XXX	9,602,103	7,077,724		62,076		62,076		9,771,545		40,948	40,948	279,064	XXX	XXX



Schedule DB - Part A - Section 1 - Options, Caps, Floors, Collars, Swaps and Forwards Open  
**N O N E**

Schedule DB - Part B - Section 1 - Futures Contracts Open  
**N O N E**

Schedule DB - Part B - Section 1B - Brokers with whom cash deposits have been made  
**N O N E**

Schedule DB - Part D - Section 1 - Counterparty Exposure for Derivative Instruments Open  
**N O N E**

Schedule DB - Part D-Section 2 - Collateral for Derivative Instruments Open - Pledged By  
**N O N E**

Schedule DB - Part D-Section 2 - Collateral for Derivative Instruments Open - Pledged To  
**N O N E**

Schedule DB - Part E - Derivatives Hedging Variable Annuity Guarantees  
**N O N E**

Schedule DL - Part 1 - Reinvested Collateral Assets Owned  
**N O N E**

Schedule DL - Part 2 - Reinvested Collateral Assets Owned  
**N O N E**

SCHEDULE E - PART 1 - CASH

Month End Depository Balances

1	2	3	4	5	Book Balance at End of Each Month During Current Quarter			9
					6	7	8	
					First Month	Second Month	Third Month	
Depository	Restricted Asset Code	Rate of Interest	Amount of Interest Received During Current Quarter	Amount of Interest Accrued at Current Statement Date				*
FHLB Cincinnati Cincinnati, OH 45202		3.800	2,087		203,379	204,091	231,540	XXX
Huntington National Bank Columbus, OH 43215		0.250	441		1,860,305	2,094,185	1,750,044	XXX
JPMorgan - Trust Columbus, OH 43215		3.270			10,972,224	1,737,359	(32,036,078)	XXX
JPMorgan Chase Columbus, OH 43215		4.300	34,476		3,024,797	3,411,356	5,726,992	XXX
PNC Bank - Operating/Other Columbus, OH 43215		3.040	64,776		(9,042,530)	1,746,602	23,813,507	XXX
PNC Bank - Savings Columbus, OH 43215		4.180	501,279		8,162,626	9,883,121	33,867,855	XXX
0199998. Deposits in ... depositories that do not exceed the allowable limit in any one depository (See instructions) - Open Depositories	XXX	XXX						XXX
0199999. Totals - Open Depositories	XXX	XXX	603,059		15,180,802	19,076,714	33,353,859	XXX
0299998. Deposits in ... depositories that do not exceed the allowable limit in any one depository (See instructions) - Suspended Depositories	XXX	XXX						XXX
0299999. Totals - Suspended Depositories	XXX	XXX						XXX
0399999. Total Cash on Deposit	XXX	XXX	603,059		15,180,802	19,076,714	33,353,859	XXX
0499999. Cash in Company's Office	XXX	XXX	XXX	XXX		(4,732,476)	(6,225,285)	XXX
0599999. Total - Cash	XXX	XXX	603,059		15,180,802	14,344,238	27,128,575	XXX

## SCHEDULE E - PART 2 - CASH EQUIVALENTS

[illegible]



SUPPLEMENT FOR THE QUARTER ENDING SEPTEMBER 30, 2025 OF THE STATE AUTOMOBILE MUTUAL  
INSURANCE COMPANY

DIRECTOR AND OFFICER INSURANCE COVERAGE SUPPLEMENT

Year To Date For The Period Ended SEPTEMBER 30, 2025

NAIC Group Code 0111 NAIC Company Code 25135

Company Name STATE AUTOMOBILE MUTUAL INSURANCE COMPANY

If the reporting entity writes any director and officer (D&O) business, please provide the following:

1. Monoline Policies

1 Direct Written Premium	2 Direct Earned Premium	3 Direct Losses Incurred
\$	\$	\$

2. Commercial Multiple Peril (CMP) Packaged Policies

- 2.1 Does the reporting entity provide D&O liability coverage as part of a CMP packaged policy?

Yes [ ] No [ ]
- 2.2 Can the direct premium earned for D&O liability coverage provided as part of a CMP packaged policy be quantified or estimated?

Yes [ ] No [ ]
- 2.3 If the answer to question 2.2 is yes, provide the quantified or estimated direct premium earned amount for D&O liability coverage in CMP packaged policies

2.31 Amount quantified:

\$

2.32 Amount estimated using reasonable assumptions:

\$
- 2.4 If the answer to question 2.1 is yes, provide direct losses incurred (losses paid plus change in case reserves) for the D&O liability coverage provided in CMP packaged policies.

\$