

QUARTERLY STATEMENT

AS OF SEPTEMBER 30, 2025

OF THE CONDITION AND AFFAIRS OF THE

EVERGREEN NATIONAL INDEMNITY COMPANY

NAIC Group Code.....4869,.....4869.....

NAIC Company Code.....12750.....

Employer's ID Number....36-2467238.....

(Current)(Prior)

Organized under the Laws of.....OH.....

State of Domicile or Port of Entry....OH.....

Country of Domicile.....US.....

Incorporated/Organized.....12/30/1939.....

Commenced Business.....01/01/1940.....

Statutory Home Office.....6150 Oak Tree Blvd., STE 440.....

Independence, OH, US 44131.....

Main Administrative Office.....6150 Oak Tree Blvd., STE 440.....

Independence, OH, US 44131.....

440-229-3420.....

(Telephone Number)

Mail Address.....6150 Oak Tree Blvd., STE 440.....

Independence, OH, US 44131.....

Primary Location of Books and

Records.....6150 Oak Tree Blvd., STE 440.....

Independence, OH, US 44131.....

440-229-3403.....

(Telephone Number)

Internet Website Address.....www.evergreen-national.com.....

Statutory Statement Contact.....DAVID ALAN CANZONE.....

440-229-3403.....

(Telephone Number)

dcanzone@evergreen-national.com.....

440-229-3421.....

(E-Mail Address)(Fax Number)

OFFICERS

ROBERT WILLARD SHEPARD, PRESIDENT.....

WAN CHEN COLLIER, SECRETARY.....

DAVID ALAN CANZONE, CFO/TREASURER.....

DIRECTORS OR TRUSTEES

CHARLES KYLE SLATERY.....

ROBERT WILLARD SHEPARD.....

JAMES DONALD LACKIE.....

DAVID ALAN CANZONE.....

EMMEL BERNHARDT GOLDEN III.....

State ofOhio.....

County ofCuyahoga.....SS

The officers of this reporting entity being duly sworn, each depose and say that they are the described officers of said reporting entity, and that on the reporting period stated above, all of the herein described assets were the absolute property of the said reporting entity, free and clear from any liens or claims thereon, except as herein stated, and that this statement, together with related exhibits, schedules and explanations therein contained, annexed or referred to, is a full and true statement of all the assets and liabilities and of the condition and affairs of the said reporting entity as of the reporting period stated above, and of its income and deductions therefrom for the period ended, and have been completed in accordance with the NAIC Annual Statement Instructions and Accounting Practices and Procedures manual except to the extent that: (1) state law may differ; or, (2) that state rules or regulations require differences in reporting not related to accounting practices and procedures, according to the best of their information, knowledge and belief, respectively. Furthermore, the scope of this attestation by the described officers also includes the related corresponding electronic filing with the NAIC, when required, that is an exact copy (except for formatting differences due to electronic filing) of the enclosed statement. The electronic filing may be requested by various regulators in lieu of or in addition to the enclosed statement.

x

ROBERT WILLARD SHEPARD

PRESIDENT

x

DAVID ALAN CANZONE

CFO/TREASURER

x

WAN CHEN COLLIER

SECRETARY

Subscribed and sworn to before me

this.....day of

....., 2025

a. Is this an original filing? Yes

b. If no:

1. State the amendment number:.....

2. Date filed:.....

3. Number of pages attached:.....

x

ASSETS

		Current Statement Date			4  December 31 Prior Year Net Admitted Assets
		1  Assets	2  Nonadmitted Assets	3  Net Admitted Assets (Cols. 1 - 2)	
1.	Bonds.....	41,420,392		41,420,392	34,473,234
2.	Stocks:				
2.1	Preferred stocks.....	5,608,807		5,608,807	6,029,675
2.2	Common stocks.....	2,546,247		2,546,247	17,599,594
3.	Mortgage loans on real estate:				
3.1	First liens.....				
3.2	Other than first liens.....				
4.	Real estate:				
4.1	Properties occupied by the company (less \$..... encumbrances)				
4.2	Properties held for the production of income (less \$..... encumbrances)				
4.3	Properties held for sale (less \$..... encumbrances)				
5.	Cash (\$.....7,049,057), cash equivalents (\$.....7,953,210) and short-term investments (\$.....1,686,346).....	16,688,613		16,688,613	7,085,511
6.	Contract loans (including \$..... premium notes).....				
7.	Derivatives.....				
8.	Other invested assets.....	6,570,710	2,000	6,568,710	6,168,859
9.	Receivables for securities.....				
10.	Securities lending reinvested collateral assets.....				
11.	Aggregate write-ins for invested assets.....				
12.	Subtotals, cash and invested assets (Lines 1 to 11).....	72,834,769	2,000	72,832,769	71,356,873
13.	Title plants less \$..... charged off (for Title insurers only).....	361,055		361,055	294,300
14.	Investment income due and accrued.....				
15.	Premiums and considerations:				
15.1	Uncollected premiums and agents' balances in the course of collection.....	3,077,815		3,077,815	1,795,056
15.2	Deferred premiums, agents' balances and installments booked but deferred and not yet due (including \$..... earned but unbilled premiums).....				
15.3	Accrued retrospective premiums (\$.....) and contracts subject to redetermination (\$.....).....				
16.	Reinsurance:				
16.1	Amounts recoverable from reinsurers.....	127,245		127,245	127,245
16.2	Funds held by or deposited with reinsured companies.....				
16.3	Other amounts receivable under reinsurance contracts.....				
17.	Amounts receivable relating to uninsured plans.....				
18.1	Current federal and foreign income tax recoverable and interest thereon.....				
18.2	Net deferred tax asset.....				
19.	Guaranty funds receivable or on deposit.....				
20.	Electronic data processing equipment and software.....	38,250	38,250	—	—
21.	Furniture and equipment, including health care delivery assets (\$.....)				
22.	Net adjustment in assets and liabilities due to foreign exchange rates.....				
23.	Receivables from parent, subsidiaries and affiliates.....				
24.	Health care (\$.....) and other amounts receivable.....				
25.	Aggregate write-ins for other-than-invested assets.....	23,417	20,082	3,335	3,119
26.	Total assets excluding Separate Accounts, Segregated Accounts and Protected Cell Accounts (Lines 12 to 25).....	76,462,551	60,332	76,402,219	73,576,593
27.	From Separate Accounts, Segregated Accounts and Protected Cell Accounts.....				
28.	Total (Lines 26 and 27).....	76,462,551	60,332	76,402,219	73,576,593
Details of Write-Ins					
1101.	.....				
1102.	.....				
1103.	.....				
1198.	Summary of remaining write-ins for Line 11 from overflow page.....				
1199.	Totals (Lines 1101 through 1103 plus 1198) (Line 11 above).....				
2501.	Miscellaneous Receivable.....	8,583	5,248	3,335	3,119
2502.	Prepaid Insurance.....	14,834	14,834	—	—
2503.	.....				
2598.	Summary of remaining write-ins for Line 25 from overflow page.....				
2599.	Totals (Lines 2501 through 2503 plus 2598) (Line 25 above).....	23,417	20,082	3,335	3,119

LIABILITIES, SURPLUS AND OTHER FUNDS

	1	2
	Current Statement Date	December 31, Prior Year
1. Losses (current accident year \$.....5,512,925).....	6,630,689	8,033,974
2. Reinsurance payable on paid losses and loss adjustment expenses.....		
3. Loss adjustment expenses.....	245,286	132,040
4. Commissions payable, contingent commissions and other similar charges.....	180,230	220,938
5. Other expenses (excluding taxes, licenses and fees).....	4,516,043	113,279
6. Taxes, licenses and fees (excluding federal and foreign income taxes).....	132,812	287,888
7.1 Current federal and foreign income taxes (including \$..... on realized capital gains (losses)).....	498,095	89,819
7.2 Net deferred tax liability.....	29,059	1,764,979
8. Borrowed money \$..... and interest thereon \$.....		
9. Unearned premiums (after deducting unearned premiums for ceded reinsurance of \$.....12,793,622 and including warranty reserves of \$.....26,104 and accrued accident and health experience rating refunds including \$..... for medical loss ratio rebate per the Public Health Service Act).....	8,000,077	8,124,892
10. Advance premium.....		
11. Dividends declared and unpaid:		
11.1 Stockholders.....		
11.2 Policyholders.....		
12. Ceded reinsurance premiums payable (net of ceding commissions).....	3,628,072	3,180,308
13. Funds held by company under reinsurance treaties.....	24,373	24,373
14. Amounts withheld or retained by company for account of others.....	1,914,780	1,788,334
15. Remittances and items not allocated.....		
16. Provision for reinsurance (including \$..... certified).....		97,816
17. Net adjustments in assets and liabilities due to foreign exchange rates.....		
18. Drafts outstanding.....		
19. Payable to parent, subsidiaries and affiliates.....		
20. Derivatives.....		
21. Payable for securities.....	264,070	
22. Payable for securities lending.....		
23. Liability for amounts held under uninsured plans.....		
24. Capital notes \$..... and interest thereon \$.....		
25. Aggregate write-ins for liabilities.....	151,718	269,566
26. Total liabilities excluding protected cell liabilities (Lines 1 through 25).....	26,215,304	24,128,206
27. Protected cell liabilities.....		
28. Total liabilities (Lines 26 and 27).....	26,215,304	24,128,206
29. Aggregate write-ins for special surplus funds.....		
30. Common capital stock.....	3,018,004	3,018,004
31. Preferred capital stock.....		
32. Aggregate write-ins for other-than-special surplus funds.....		
33. Surplus notes.....		
34. Gross paid in and contributed surplus.....	25,841,820	25,841,820
35. Unassigned funds (surplus).....	21,327,091	20,588,563
36. Less treasury stock, at cost:		
36.1 shares common (value included in Line 30 \$.....)		
36.2 shares preferred (value included in Line 31 \$.....)		
37. Surplus as regards policyholders (Lines 29 to 35, less 36).....	50,186,915	49,448,387
38. Totals (Page 2, Line 28, Col. 3).....	76,402,219	73,576,593
Details of Write-Ins		
2501. Pledged as Collateral.....	151,718	269,566
2502.....		
2503.....		
2598. Summary of remaining write-ins for Line 25 from overflow page.....		
2599. Totals (Lines 2501 through 2503 plus 2598) (Line 25 above).....	151,718	269,566
2901.....		
2902.....		
2903.....		
2998. Summary of remaining write-ins for Line 29 from overflow page.....		
2999. Totals (Lines 2901 through 2903 plus 2998) (Line 29 above).....		
3201.....		
3202.....		
3203.....		
3298. Summary of remaining write-ins for Line 32 from overflow page.....		
3299. Totals (Lines 3201 through 3203 plus 3298) (Line 32 above).....		

STATEMENT OF INCOME

		1	2	3
		Current Year to Date	Prior Year to Date	Prior Year Ended December 31
Underwriting Income				
1.	Premiums earned:			
1.1.	Direct (written \$.....31,291,442)	32,458,992	30,950,297	41,770,713
1.2.	Assumed (written \$.....2,064,022)	1,914,199	2,247,252	2,807,566
1.3.	Ceded (written \$.....19,789,935)	20,682,846	19,808,194	26,791,571
1.4.	Net (written \$.....13,565,529)	13,690,345	13,389,355	17,786,709
Deductions:				
2.	Losses incurred (current accident year \$7,550,470 ):			
2.1	Direct	8,603,349	5,901,232	6,600,133
2.2	Assumed	140,911	193,471	74,051
2.3	Ceded	4,438,430	1,906,946	2,201,511
2.4	Net	4,305,830	4,187,757	4,472,672
3.	Loss adjustment expenses incurred	225,027	85,935	(559)
4.	Other underwriting expenses incurred	8,989,579	8,360,602	11,415,582
5.	Aggregate write-ins for underwriting deductions			
6.	Total underwriting deductions (Lines 2 through 5)	13,520,436	12,634,294	15,887,695
7.	Net income of protected cells			
8.	Net underwriting gain (loss) (Line 1 minus Line 6 + Line 7)	169,909	755,061	1,899,014
Investment Income				
9.	Net investment income earned	2,346,388	2,058,145	2,717,323
10.	Net realized capital gains (losses) less capital gains tax of \$.....1,707,883	6,486,000	(38,299)	(66,463)
11.	Net investment gain (loss) (Lines 9 + 10)	8,832,388	2,019,846	2,650,860
Other Income				
12.	Net gain or (loss) from agents' or premium balances charged off (amount recovered \$..... amount charged off \$.....)			
13.	Finance and service charges not included in premiums			
14.	Aggregate write-ins for miscellaneous income		15,005	23,536
15.	Total other income (Lines 12 through 14)		15,005	23,536
16.	Net income before dividends to policyholders, after capital gains tax and before all other federal and foreign income taxes (Lines 8 + 11 + 15)	9,002,297	2,789,912	4,573,410
17.	Dividends to policyholders			
18.	Net income, after dividends to policyholders, after capital gains tax and before all other federal and foreign income taxes (Line 16 minus Line 17)	9,002,297	2,789,912	4,573,410
19.	Federal and foreign income taxes incurred	531,312	524,548	697,989
20.	Net income (Line 18 minus Line 19) (to Line 22)	8,470,985	2,265,364	3,875,421
Capital and Surplus Account				
21.	Surplus as regards policyholders, December 31 prior year	49,448,387	45,275,379	45,275,379
22.	Net income (from Line 20)	8,470,985	2,265,364	3,875,421
23.	Net transfers (to) from Protected Cell accounts			
24.	Change in net unrealized capital gains or (losses) less capital gains tax of \$.....(1,766,850)	(6,646,720)	2,421,768	2,839,609
25.	Change in net unrealized foreign exchange capital gain (loss)			
26.	Change in net deferred income tax	(30,930)	3,846	(75,539)
27.	Change in nonadmitted assets	97,377	67,161	81,332
28.	Change in provision for reinsurance	97,816		(97,816)
29.	Change in surplus notes			
30.	Surplus (contributed to) withdrawn from protected cells			
31.	Cumulative effect of changes in accounting principles			
32.	Capital changes:			
32.1.	Paid in			
32.2.	Transferred from surplus (Stock Dividend)			
32.3.	Transferred to surplus			
33.	Surplus adjustments:			
33.1.	Paid in	—	—	—
33.2.	Transferred to capital (Stock Dividend)			
33.3.	Transferred from capital			
34.	Net remittances from or (to) Home Office			
35.	Dividends to stockholders	(1,250,000)	(1,250,000)	(2,450,000)
36.	Change in treasury stock			
37.	Aggregate write-ins for gains and losses in surplus			
38.	Change in surplus as regards policyholders (Lines 22 through 37)	738,528	3,508,140	4,173,007
39.	Surplus as regards policyholders, as of statement date (Lines 21 plus 38)	50,186,915	48,783,519	49,448,387
Details of Write-Ins				
0501.				
0502.				
0503.				
0598.	Summary of remaining write-ins for Line 5 from overflow page			
0599.	Totals (Lines 0501 through 0503 plus 0598) (Line 5 above)			
1401.	Miscellaneous Income		15,005	23,536
1402.				
1403.				
1498.	Summary of remaining write-ins for Line 14 from overflow page			
1499.	Totals (Lines 1401 through 1403 plus 1498) (Line 14 above)		15,005	23,536
3701.	Misc Surplus Change			
3702.				
3703.				
3798.	Summary of remaining write-ins for Line 37 from overflow page			
3799.	Totals (Lines 3701 through 3703 plus 3798) (Line 37 above)			

CASH FLOW

	1	2	3
	Current Year To Date	Prior Year To Date	Prior Year Ended December 31
Cash from Operations			
1. Premiums collected net of reinsurance	12,730,535	13,281,107	17,839,579
2. Net investment income	2,223,727	2,053,777	2,715,463
3. Miscellaneous income		15,005	23,536
4. Total (Lines 1 to 3)	14,954,262	15,349,889	20,578,578
5. Benefit and loss related payments	5,709,115	2,233,029	2,903,646
6. Net transfers to Separate Accounts, Segregated Accounts and Protected Cell Accounts			
7. Commissions, expenses paid and aggregate write-ins for deductions	4,894,380	8,926,532	11,619,647
8. Dividends paid to policyholders			
9. Federal and foreign income taxes paid (recovered) net of \$..... tax on capital gains (losses)	1,830,919	810,000	880,000
10. Total (Lines 5 through 9)	12,434,414	11,969,561	15,403,293
11. Net cash from operations (Line 4 minus Line 10)	2,519,848	3,380,329	5,175,285
Cash from Investments			
12. Proceeds from investments sold, matured or repaid:			
12.1 Bonds	7,709,856	4,825,940	7,137,667
12.2 Stocks	16,102,239	1,919,238	3,359,242
12.3 Mortgage loans			
12.4 Real estate			
12.5 Other invested assets	113,168	207,584	266,021
12.6 Net gains or (losses) on cash, cash equivalents and short-term investments	117		115
12.7 Miscellaneous proceeds	264,070	37,219	37,219
12.8 Total investment proceeds (Lines 12.1 to 12.7)	24,189,450	6,989,980	10,800,265
13. Cost of investments acquired (long-term only):			
13.1 Bonds	14,993,912	10,502,182	14,202,940
13.2 Stocks	697,583	2,109,515	2,636,952
13.3 Mortgage loans			
13.4 Real estate			
13.5 Other invested assets	270,459	249,863	877,963
13.6 Miscellaneous applications	—	—	—
13.7 Total investments acquired (Lines 13.1 to 13.6)	15,961,955	12,861,561	17,717,855
14. Net increase/(decrease) in contract loans and premium notes			
15. Net cash from investments (Line 12.8 minus Line 13.7 and Line 14)	8,227,495	(5,871,580)	(6,917,590)
Cash from Financing and Miscellaneous Sources			
16. Cash provided (applied):			
16.1 Surplus notes, capital notes			
16.2 Capital and paid in surplus, less treasury stock	—	—	—
16.3 Borrowed funds			
16.4 Net deposits on deposit-type contracts and other insurance liabilities			
16.5 Dividends to stockholders	1,250,000	1,250,000	2,450,000
16.6 Other cash provided (applied)	105,758	893,952	131,581
17. Net cash from financing and miscellaneous sources (Line 16.1 through Line 16.4 minus Line 16.5 plus Line 16.6)	(1,144,242)	(356,048)	(2,318,419)
Reconciliation of Cash, Cash Equivalents and Short-Term Investments			
18. Net change in cash, cash equivalents and short-term investments (Line 11, plus Lines 15 and 17)	9,603,101	(2,847,299)	(4,060,725)
19. Cash, cash equivalents and short-term investments:			
19.1 Beginning of year	7,085,511	11,146,236	11,146,236
19.2 End of period (Line 18 plus Line 19.1)	16,688,613	8,298,937	7,085,511
Note: Supplemental disclosures of cash flow information for non-cash transactions:			
20.0001.			

Notes to the Financial Statements

1. Summary of Significant Accounting Policies and Going Concern

A. Accounting Practices

	SSAP #	F/S Page	F/S Line #	09/30/2025	12/31/2024
Net Income					
(1) State basis (Page 4, Line 20, Columns 1 & 3)	XXX	XXX	XXX	\$ 8,470,985	\$ 3,875,421
(2) State prescribed practices that are an increase / (decrease) from NAIC SAP:					
(3) State permitted practices that are an increase / (decrease) from NAIC SAP:					
(4) NAIC SAP (1-2-3=4)	XXX	XXX	XXX	<u>\$ 8,470,985</u>	<u>\$ 3,875,421</u>
Surplus					
(5) State basis (Page 3, Line 37, Columns 1 & 2)	XXX	XXX	XXX	\$ 50,186,915	\$ 49,448,387
(6) State prescribed practices that are an increase / (decrease) from NAIC SAP:					
(7) State permitted practices that are an increase / (decrease) from NAIC SAP:					
(8) NAIC SAP (5-6-7=8)	XXX	XXX	XXX	<u>\$ 50,186,915</u>	<u>\$ 49,448,387</u>

B. Use of Estimates in the Preparation of the Financial Statements - No Significant Changes

C. Accounting Policy

- (1) Short-term investments - No Significant Changes
- (2) Bonds not backed by other loans are stated at amortized cost using the interest method.
- (3) Common stocks - No Significant Changes
- (4) Preferred stocks - No Significant Changes
- (5) Mortgage loans - Not Applicable
- (6) Loan-backed securities are stated at either amortized cost or the lower of amortized cost or fair market value. The retrospective adjustment method is used to value such securities.
- (7) Investments in subsidiaries, controlled and affiliated entities - Not Applicable
- (8) Investments in joint ventures, partnerships and limited liability companies - No Significant Changes
- (9) Derivatives - Not Applicable
- (10) Investment income as a factor in the premium deficiency calculation - Not Applicable
- (11) Liabilities for losses and loss/claim adjustment expenses - No Significant Changes
- (12) No Significant Changes
- (13) Pharmaceutical rebate receivables - Not Applicable

D. Going Concern

No going concern issues.

2. Accounting Changes and Corrections of Errors - Not Applicable

3. Business Combinations and Goodwill - Not Applicable

4. Discontinued Operations - Not Applicable

5. Investments

A. Mortgage Loans, including Mezzanine Real Estate Loans - Not Applicable

B. Debt Restructuring - Not Applicable

C. Reverse Mortgages - Not Applicable

D. Asset-Backed Securities

- (1) Prepayment assumptions were determined from independent security information service providers or the Company's external investment advisory firm.
- (2) Asset-backed securities with a recognized other-than-temporary impairment (OTTI) - Not Applicable
- (3) Securities held that were other-than-temporarily impaired due to the present value of cash flows expected to be collected was less than the amortized cost of securities - Not Applicable
- (4) All impaired securities for which an OTTI has not been recognized in earnings as a realized loss
  - a. The aggregate amount of unrealized losses:
    - 1. Less than 12 months \$ 42,659
    - 2. 12 months or longer 233,963
  - b. The aggregate related fair value of securities with unrealized losses:
    - 1. Less than 12 months \$ 4,791,708
    - 2. 12 months or longer 3,455,461

Notes to the Financial Statements

5. Investments (Continued)

(5) All loan-backed and structured securities in an unrealized loss position were reviewed to determine whether other-than-temporary impairments should be recognized. The Company asserts that it has the intent and ability to hold these securities long enough to allow the cost basis of these securities to be recovered. These conclusions are supported by a detail analysis of the underlying credit and cash flows of each security. Unrealized losses are primarily attributable to credit spread widening and increased liquidity discounts. It is possible that the Company could recognize other-than-temporary impairments in the future on some of the securities, if future events, information and the passage of time causes it to conclude that declines in value are other-than-temporary.

- E. Dollar Repurchase Agreements and/or Securities Lending Transactions - Not Applicable
- F. Repurchase Agreements Transactions Accounted for as Secured Borrowing - Not Applicable
- G. Reverse Repurchase Agreements Transactions Accounted for as Secured Borrowing - Not Applicable
- H. Repurchase Agreements Transactions Accounted for as a Sale - Not Applicable
- I. Reverse Repurchase Agreements Transactions Accounted for as a Sale - Not Applicable
- J. Real Estate - Not Applicable
- K. Investments in Tax Credit Structures (tax credit investments)

- (1) Nature, recognition and measurement of investments in projects that generate tax credits and other tax benefits - None
- (2) Amount of tax credits and other tax benefits recognized - None
- (3) Balance of investment recognized - None
- (4) Amount of investment amortization and non-income tax related activity recognized in net investment income and outside of income tax expense - None
- (5) Tax credits generated for each of the subsequent five years and thereafter - None
- (6) Commitments or contingent commitments including the year(s) the contingent commitments are expected to be paid - None
- (7) Regulatory reviews - None
- (8) Impaired assets - None

L. Restricted Assets

- (1) Restricted assets (including pledged)

Restricted Asset Category	Gross (Admitted & Nonadmitted) Restricted										
	Current Year							Current Year			
	(1)	(2)	(3)	(4)	(5)	(6)	(7)	(8)	(9)	(10)	(11)
	Total General Account (G/A)	G/A Supporting Protected Cell Account Activity	Total Protected Cell Account Restricted Assets	Protected Cell Account Assets Supporting G/A Activity	Total (1 + 3)	Total From Prior Year	Increase / (Decrease) (5 - 6)	Total Nonadmitted Restricted	Total Admitted Restricted (5-8)	Gross (Admitted & Nonadmitted) Restricted to Total Assets, %	Admitted Restricted to Total Admitted Assets, %
a. Subject to contractual obligation for which liability is not shown	\$ .....	\$ .....	\$ .....	\$ .....	\$ .....	\$ .....	\$ .....	\$ .....	\$ .....	..... %	..... %
b. Collateral held under security lending agreements	.....	.....	.....	.....	.....	.....	.....	.....	.....	.....	.....
c. Subject to repurchase agreements	.....	.....	.....	.....	.....	.....	.....	.....	.....	.....	.....
d. Subject to reverse repurchase agreements	.....	.....	.....	.....	.....	.....	.....	.....	.....	.....	.....
e. Subject to dollar repurchase agreements	.....	.....	.....	.....	.....	.....	.....	.....	.....	.....	.....
f. Subject to dollar reverse repurchase agreements	.....	.....	.....	.....	.....	.....	.....	.....	.....	.....	.....
g. Placed under option contracts	.....	.....	.....	.....	.....	.....	.....	.....	.....	.....	.....
h. Letter stock or securities restricted as to sale - excluding FHLB capital stock	.....	.....	.....	.....	.....	.....	.....	.....	.....	.....	.....
i. FHLB capital stock	.....	.....	.....	.....	.....	.....	.....	.....	.....	.....	.....
j. On deposit with states	4,894,125	.....	.....	.....	4,894,125	4,869,659	24,466	.....	4,894,125	6.401	6.406
k. On deposit with other regulatory bodies	.....	.....	.....	.....	.....	.....	.....	.....	.....	.....	.....
l. Pledged as collateral to FHLB (including assets backing funding agreements)	.....	.....	.....	.....	.....	.....	.....	.....	.....	.....	.....
m. Pledged as collateral not captured in other categories	151,718	.....	.....	.....	151,718	269,566	(117,848)	.....	151,718	0.198	0.199
n. Other restricted assets	1,894,581	.....	.....	.....	1,894,581	1,729,034	165,547	.....	1,894,581	2.478	2.480
o. Total restricted assets (Sum of a through n)	<u>\$ 6,940,424</u>	<u>\$ .....</u>	<u>\$ .....</u>	<u>\$ .....</u>	<u>\$ 6,940,424</u>	<u>\$ 6,868,259</u>	<u>\$ 72,165</u>	<u>\$ .....</u>	<u>\$ 6,940,424</u>	<u>9.077 %</u>	<u>9.084 %</u>

Notes to the Financial Statements

5. Investments (Continued)

(2) Detail of assets pledged as collateral not captured in other categories (contracts that share similar characteristics, such as reinsurance and derivatives, are reported in the aggregate)

Description of Assets	Gross (Admitted & Nonadmitted) Restricted							Percentage		
	Current Year							(9) Gross (Admitted & Nonadmitted) Restricted to Total Assets, %	(10) Admitted Restricted to Total Admitted Assets, %	
	(1)	(2)	(3)	(4)	(5)	(6)	(7)			(8)
	Total General Account (G/A)	G/A Supporting Protected Cell Account Activity	Total Protected Cell Account Restricted Assets	Protected Cell Account Assets Supporting G/A Activity	Total (1 + 3)	Total From Prior Year	Increase/ (Decrease) (5 - 6)			Total Current Year Admitted Restricted
Warranty Business Pledged	\$ 151,718	\$	\$	\$	\$ 151,718	\$ 269,566	\$ (117,848)	\$ 151,718	0.198 %	0.199 %
Total	\$ 151,718	\$	\$	\$	\$ 151,718	\$ 269,566	\$ (117,848)	\$ 151,718	0.198 %	0.199 %

(3) Detail of other restricted assets (contracts that share similar characteristics, such as reinsurance and derivatives, are reported in the aggregate)

Description of Assets	Gross (Admitted & Nonadmitted) Restricted							Percentage		
	Current Year					(6)	(7)	(8)	(9)	(10)
	(1)	(2)	(3)	(4)	(5)					
	Total General Account (G/A)	G/A Supporting Protected Cell Account Activity	Total Protected Cell Account Restricted Assets	Protected Cell Account Assets Supporting G/A Activity	Total (1 + 3)					
Retained for Others	\$ 1,894,581	\$	\$	\$	\$ 1,894,581	\$ 1,729,034	\$ 165,547	\$ 1,894,581	2.478 %	2.480 %
Total	\$ 1,894,581	\$	\$	\$	\$ 1,894,581	\$ 1,729,034	\$ 165,547	\$ 1,894,581	2.478 %	2.480 %

(4) Collateral received and reflected as assets within the reporting entity's financial statements

Collateral Assets	(1)	(2)	(3)	(4)
	Book/Adjusted Carrying Value (BACV)	Fair Value	% of BACV to Total Assets (Admitted and Nonadmitted)	% of BACV to Total Admitted Assets
General Account:				
a. Cash, cash equivalents and short-term investments	\$ 1,179,437	\$ 1,179,437	1.543 %	1.544 %
b. Schedule D Part 1 Section 1	866,862	869,565	1.134	1.135
c. Schedule D Part 1 Section 2				
d. Schedule D Part 2 Section 1				
e. Schedule D Part 2 Section 2				
f. Schedule B				
g. Schedule A				
h. Schedule BA Part 1				
i. Schedule DL Part 1				
j. Other				
k. Total Collateral Assets (a+b+c+d+e+f+g+h+i+j)	\$ 2,046,299	\$ 2,049,002	2.676 %	2.678 %
Protected Cell:				
l. Cash, Cash Equivalents and Short-Term Investments	\$	\$	%	%
m. Schedule D Part 1 Section 1				
n. Schedule D Part 1 Section 2				
o. Schedule D Part 2 Section 1				
p. Schedule D Part 2 Section 2				
q. Schedule B				
r. Schedule A				
s. Schedule BA Part 1				
t. Schedule DL Part 1				
u. Other				
v. Total Collateral Assets (l+m+n+o+p+q+r+s+t+u)	\$	\$	%	%
			(1)	(2)
			Amount	% of Liability to Total Liabilities
w. Recognized Obligation to Return Collateral Asset (General Account)		\$		%
x. Recognized Obligation to Return Collateral Asset (Protected Cell)		\$		%

M. Working Capital Finance Investments - Not Applicable

N. Offsetting and Netting of Assets and Liabilities - Not Applicable



Notes to the Financial Statements

5. Investments (Continued)

O. 5GI Securities

Investment	Number of 5GI Securities		Aggregate BACV		Aggregate Fair Value	
	09/30/2025	12/31/2024	09/30/2025	12/31/2024	09/30/2025	12/31/2024
(1) ICO - AC			\$	\$	\$	\$
(2) ICO - FV	6	5	2,442,421	2,271,108	2,457,436	2,320,430
(3) ABS - AC						
(4) ABS - FV						
(5) Preferred Stock - AC						
(6) Preferred Stock - FV	1	1	500,000	500,000	500,000	500,000
(7) Total (1+2+3+4+5+6)	7	6	\$ 2,942,421	\$ 2,771,108	\$ 2,957,436	\$ 2,820,430

P. Short Sales - Not Applicable

Q. Prepayment Penalty and Acceleration Fees - Not Applicable

R. Reporting Entity's Share of Cash Pool by Asset Type - Not Applicable

S. Aggregate Collateral Loans by Qualifying Investment Collateral - Not Applicable

6. Joint Ventures, Partnerships and Limited Liability Companies - No Significant Changes

7. Investment Income

A. Due and Accrued Income Excluded from Surplus

The bases, by category of investment income, for excluding (nonadmitting) any investment income due and accrued:

The Company non-admits investment income due and accrued if amounts are over 90 days past due.

B. Total Amount Excluded - No Significant Changes

C. The gross, nonadmitted and admitted amounts for interest income due and accrued

Interest Income Due and Accrued	Amount
1. Gross	\$ 361,055
2. Nonadmitted	\$
3. Admitted	\$ 361,055

D. The aggregate deferred interest - Not Applicable

E. The cumulative amounts of paid-in-kind (PIK) interest included in the current principal balance - Not Applicable

8. Derivative Instruments - Not Applicable

9. Income Taxes - No Significant Changes

10. Information Concerning Parent, Subsidiaries, Affiliates and Other Related Parties - No Significant Changes

11. Debt - Not Applicable

12. Retirement Plans, Deferred Compensation, Postemployment Benefits and Compensated Absences and Other Postretirement Benefit Plans

A. Defined Benefit Plan - Not Applicable

B. Investment Policies and Strategies of Plan Assets - Not Applicable

C. Fair Value of Each Class of Plan Assets - Not Applicable

D. Expected Long-Term Rate of Return for the Plan Assets - Not Applicable

E. Defined Contribution Plans - No Significant Changes

F. Multiemployer Plans - Not Applicable

G. Consolidated/Holding Company Plans - Not Applicable

H. Postemployment Benefits and Compensated Absences - Not Applicable

I. Impact of Medicare Modernization Act on Postretirement Benefits (INT 04-17) - Not Applicable

13. Capital and Surplus, Dividend Restrictions and Quasi-Reorganizations

A. Outstanding Shares - No Significant Changes

B. Dividend Rate of Preferred Stock - Not Applicable

C. Dividend Restrictions - No Significant Changes

D. On May 20, 2025, the Company declared an ordinary dividend of \$1,250,000. The cash dividend was paid May, 31, 2025.

E. Company Profits Paid as Ordinary Dividends - No Significant Changes

F. Surplus Restrictions - No Significant Changes

G. Surplus Advances - Not Applicable

Notes to the Financial Statements

13. Capital and Surplus, Dividend Restrictions and Quasi-Reorganizations (Continued)

- H. Stock Held for Special Purposes - Not Applicable
- I. Changes in Special Surplus Funds - Not Applicable
- J. Unassigned Funds (Surplus) - No Significant Changes
- K. Company-Issued Surplus Debentures or Similar Obligations - Not Applicable
- L. Impact of Any Restatement Due to Prior Quasi-Reorganizations - Not Applicable
- M. Effective Date(s) of Quasi-Reorganizations in the Prior 10 Years - Not Applicable

14. Liabilities, Contingencies and Assessments - No Significant Changes

15. Leases - No Significant Changes

16. Information About Financial Instruments With Off-Balance-Sheet Risk And Financial Instruments With Concentrations of Credit Risk - Not Applicable

17. Sale, Transfer and Servicing of Financial Assets and Extinguishments of Liabilities - Not Applicable

18. Gain or Loss to the Reporting Entity from Uninsured Plans and the Uninsured Portion of Partially Insured Plans - Not Applicable

19. Direct Premium Written/Produced by Managing General Agents/Third Party Administrators

The Company does business with two Third Party Administrators that produce Direct Premiums Written and perform certain services on behalf of the Company. Specifically, Evergreen UNI, LLC is an independent general agent for the Company and Deposit Choice, LLC is an independent producer for the Company that perform certain services as defined in the "Type of Authority Granted" column below.

Name and Address of Managing General Agent or Third Party Administration	FEIN Number	Exclusive Contract	Types of Business Written	Type of Authority Granted	Total Direct Premium Written / Produced By
Evergreen UNI, LLC	46-4545990	NO	Surety	B,PU	\$ 28,024,620
Deposit Choice, LLC	27-1777509	NO	Surety	B,PU	\$ 3,266,822
Total					<u>\$ 31,291,442</u>

Type of Authority Granted codes  
C - Claims Payment  
CA - Claims Adjustment  
R - Reinsurance Ceding  
B- Binding Authority  
P - Premium Collection  
U - Underwriting

20. Fair Value Measurements

A. Fair Value Measurement

(1) Fair value measurements at reporting date

Description for each class of asset or liability	Level 1	Level 2	Level 3	Net Asset Value (NAV)	Total
a. Assets at fair value					
Bonds	\$	8,134,728	\$	\$	\$ 8,134,728
Preferred Stocks		4,708,807	500,000		5,208,807
Common Stocks	2,546,247				2,546,247
Total assets at fair value/NAV	<u>\$ 2,546,247</u>	<u>\$ 12,843,535</u>	<u>\$ 500,000</u>	<u>\$</u>	<u>\$ 15,889,782</u>
b. Liabilities at fair value					
Total liabilities at fair value	<u>\$</u>	<u>\$</u>	<u>\$</u>	<u>\$</u>	<u>\$</u>

(2) Fair value measurements in Level 3 of the fair value hierarchy

Description	Beginning balance as of 07/01/2025	Transfers Into Level 3	Transfers Out of Level 3	Total Gains and (Losses) Included in Net Income	Total Gains and (Losses) Included in Surplus	Purchases	Issuances	Sales	Settlements	Ending Balance at 09/30/2025
a. Assets										
Preferred Stock	\$ 500,000	\$	\$	\$	\$	\$	\$	\$	\$	\$ 500,000
Total assets	<u>\$ 500,000</u>	<u>\$</u>	<u>\$</u>	<u>\$</u>	<u>\$</u>	<u>\$</u>	<u>\$</u>	<u>\$</u>	<u>\$</u>	<u>\$ 500,000</u>
b. Liabilities										
Total liabilities	<u>\$</u>	<u>\$</u>	<u>\$</u>	<u>\$</u>	<u>\$</u>	<u>\$</u>	<u>\$</u>	<u>\$</u>	<u>\$</u>	<u>\$</u>

(3) Policy on transfers into and out of Level 3 - Not Applicable

(4) Description of Valuation Techniques and Inputs Used in Fair Value Measurement

Level 2 fair value for bonds, preferred stocks, and common stocks is determined by independent pricing services using observable inputs.

Level 3 fair value for bonds and preferred stocks is based on actual cost adjusted for quarterly internal analysis. Quarterly internal analysis is based on current year and history of earnings, book value, coupon payment history, audited financial statements, and general market factors.

(5) Derivatives - Not Applicable

B. Other Fair Value Disclosures - Not Applicable

Notes to the Financial Statements

20. Fair Value Measurements (Continued)

C. Fair Values for All Financial Instruments by Level 1, 2 and 3

Type of Financial Instrument	Aggregate Fair Value	Admitted Assets	Level 1	Level 2	Level 3	Net Asset Value (NAV)	Not Practicable (Carrying Value)
Bonds.....	\$ 41,328,999	\$ 41,420,392	\$ 4,570,745	\$ 35,256,877	\$ 1,501,377	\$	\$
Preferred Stocks.....	5,608,807	5,608,807		5,108,807	500,000		
Common Stocks.....	2,546,247	2,546,247	2,546,247				
Cash & Short Term Investments.....	16,688,613	16,688,613	16,688,613				

D. Not Practicable to Estimate Fair Value - Not Applicable

E. Nature and Risk of Investments Reported at NAV - Not Applicable

21. Other Items - Not Applicable

22. Events Subsequent

Subsequent events have been considered for these statutory financial statements which are to be issued on. There were no events occurring subsequent to the end of the quarter that merited recognition or disclosure in these statements.

23. Reinsurance - No Significant Changes

24. Retrospectively Rated Contracts & Contracts Subject to Redetermination - Not Applicable

25. Changes in Incurred Losses and Loss Adjustment Expenses

A. Reasons for Changes in the Provision for Incurred Loss and Loss Adjustment Expenses Attributable to Insured Events of Prior Years

Reserves as of December 31, 2024 were \$8.16 million. As of September 30, 2025, \$3.70 million has been paid for incurred losses and loss adjustment expenses attributable to insured events of prior years. Reserves remaining for prior years are now \$1.36 million as a result of re-estimation of unpaid claims and claim adjustment expenses principally on the surety lines of insurance. Therefore, there has been a \$3.10 million favorable prior year development since December 31, 2024 to September 30, 2025. The change is generally the result of ongoing analysis of recent loss development trends. Original estimates are increased or decreased, as additional information becomes known regarding individual claims.

B. Significant Changes in Methodologies and Assumptions Used in Calculating the Liability for Unpaid Losses and Loss Adjustment Expenses - Not Applicable

26. Intercompany Pooling Arrangements - Not Applicable

27. Structured Settlements - Not Applicable

28. Health Care Receivables - Not Applicable

29. Participating Policies - Not Applicable

30. Premium Deficiency Reserves - No Significant Changes

31. High Deductibles - Not Applicable

32. Discounting of Liabilities For Unpaid Losses or Unpaid Loss Adjustment Expenses - Not Applicable

33. Asbestos/Environmental Reserves - Not Applicable

34. Subscriber Savings Accounts - Not Applicable

35. Multiple Peril Crop Insurance - Not Applicable

36. Financial Guaranty Insurance - Not Applicable

GENERAL INTERROGATORIES  
PART 1 - COMMON INTERROGATORIES

GENERAL

- 1.1 Did the reporting entity experience any material transactions requiring the filing of Disclosure of Material Transactions with the State of Domicile, as required by the Model Act?..... NO
- 1.2 If yes, has the report been filed with the domiciliary state?.....
- 2.1 Has any change been made during the year of this statement in the charter, by-laws, articles of incorporation, or deed of settlement of the reporting entity?..... NO
- 2.2 If yes, date of change:.....
- 3.1 Is the reporting entity a member of an Insurance Holding Company System consisting of two or more affiliated persons, one or more of which is an insurer?..... YES  
If yes, complete Schedule Y, Parts 1 and 1A.
- 3.2 Have there been any substantial changes in the organizational chart since the prior quarter end?..... NO
- 3.3 If the response to 3.2 is yes, provide a brief description of those changes.  
.....
- 3.4 Is the reporting entity publicly traded or a member of a publicly traded group?..... NO
- 3.5 If the response to 3.4 is yes, provide the CIK (Central Index Key) code issued by the SEC for the entity/group.....
- 4.1 Has the reporting entity been a party to a merger or consolidation during the period covered by this statement?..... NO
- 4.2 If yes, provide the name of entity, NAIC Company Code, and state of domicile (use two letter state abbreviation) for any entity that has ceased to exist as a result of the merger or consolidation.

1	2	3
Name of Entity	NAIC Company Code	State of Domicile

5. If the reporting entity is subject to a management agreement, including third-party administrator(s), managing general agent(s), attorney-in-fact, or similar agreement, have there been any significant changes regarding the terms of the agreement or principals involved?..... NO  
If yes, attach an explanation.  
.....
- 6.1 State as of what date the latest financial examination of the reporting entity was made or is being made..... 12/31/2024
- 6.2 State the as of date that the latest financial examination report became available from either the state of domicile or the reporting entity. This date should be the date of the examined balance sheet and not the date the report was completed or released..... 12/31/2019
- 6.3 State as of what date the latest financial examination report became available to other states or the public from either the state of domicile or the reporting entity. This is the release date or completion date of the examination report and not the date of the examination (balance sheet date)..... 08/24/2020
- 6.4 By what department or departments?  
OHIO DEPARTMENT OF INSURANCE.....
- 6.5 Have all financial statement adjustments within the latest financial examination report been accounted for in a subsequent financial statement filed with Departments?..... N/A
- 6.6 Have all of the recommendations within the latest financial examination report been complied with?..... YES
- 7.1 Has this reporting entity had any Certificates of Authority, licenses or registrations (including corporate registration, if applicable) suspended or revoked by any governmental entity during the reporting period?..... NO
- 7.2 If yes, give full information  
.....
- 8.1 Is the company a subsidiary of a bank holding company regulated by the Federal Reserve Board?..... NO
- 8.2 If response to 8.1 is yes, please identify the name of the bank holding company.  
.....
- 8.3 Is the company affiliated with one or more banks, thrifts or securities firms?..... NO
- 8.4 If response to 8.3 is yes, please provide below the names and location (city and state of the main office) of any affiliates regulated by a federal regulatory services agency [i.e. the Federal Reserve Board (FRB), the Office of the Comptroller of the Currency (OCC), the Federal Deposit Insurance Corporation (FDIC) and the Securities Exchange Commission (SEC)] and identify the affiliates primary federal regulator.

1	2	3	4	5	6
Affiliate Name	Location (City, State)	FRB	OCC	FDIC	SEC

GENERAL INTERROGATORIES  
PART 1 - COMMON INTERROGATORIES

- 9.1 Are the senior officers (principal executive officer, principal financial officer, principal accounting officer or controller, or persons performing similar functions) of the reporting entity subject to a code of ethics, which includes the following standards?..... YES
- (a) Honest and ethical conduct, including the ethical handling of actual or apparent conflicts of interest between personal and professional relationships;
- (b) Full, fair, accurate, timely and understandable disclosure in the periodic reports required to be filed by the reporting entity;
- (c) Compliance with applicable governmental laws, rules and regulations;
- (d) The prompt internal reporting of violations to an appropriate person or persons identified in the code; and
- (e) Accountability for adherence to the code.
- 9.11 If the response to 9.1 is No, please explain:
- 9.2 Has the code of ethics for senior managers been amended?..... NO
- 9.21 If the response to 9.2 is Yes, provide information related to amendment(s).
- 9.3 Have any provisions of the code of ethics been waived for any of the specified officers?..... NO
- 9.31 If the response to 9.3 is Yes, provide the nature of any waiver(s).

FINANCIAL

- 10.1 Does the reporting entity report any amounts due from parent, subsidiaries or affiliates on Page 2 of this statement?..... NO
- 10.2 If yes, indicate any amounts receivable from parent included in the Page 2 amount:..... \$

INVESTMENT

- 11.1 Were any of the stocks, bonds, or other assets of the reporting entity loaned, placed under option agreement, or otherwise made available for use by another person? (Exclude securities under securities lending agreements.)..... NO
- 11.2 If yes, give full and complete information relating thereto:
12. Amount of real estate and mortgages held in other invested assets in Schedule BA:..... \$
13. Amount of real estate and mortgages held in short-term investments:..... \$
- 14.1 Does the reporting entity have any investments in parent, subsidiaries and affiliates?..... NO
- 14.2 If yes, please complete the following:

	1	2
	Prior Year-End Book / Adjusted Carrying Value	Current Quarter Book / Adjusted Carrying Value
14.21 Bonds.....	\$.....	\$.....
14.22 Preferred Stock.....		
14.23 Common Stock.....		
14.24 Short-Term Investments.....		
14.25 Mortgage Loans on Real Estate.....		
14.26 All Other.....		
14.27 Total Investment in Parent, Subsidiaries and Affiliates (Subtotal Lines 14.21 to 14.26).....		
14.28 Total Investment in Parent included in Lines 14.21 to 14.26 above.....		

- 15.1 Has the reporting entity entered into any hedging transactions reported on Schedule DB?..... NO
- 15.2 If yes, has a comprehensive description of the hedging program been made available to the domiciliary state?..... N/A
- If no, attach a description with this statement.
16. For the reporting entity's security lending program, state the amount of the following as of the current statement date:
- 16.1 Total fair value of reinvested collateral assets reported on Schedule DL, Parts 1 and 2..... \$
- 16.2 Total book adjusted/carrying value of reinvested collateral assets reported on Schedule DL, Parts 1 and 2..... \$
- 16.3 Total payable for securities lending reported on the liability page..... \$
17. Excluding items in Schedule E - Part 3 - Special Deposits, real estate, mortgage loans and investments held physically in the reporting entity's offices, vaults or safety deposit boxes, were all stocks, bonds and other securities, owned throughout the current year held pursuant to a custodial agreement with a qualified bank or trust company in accordance with Section 1, III - General Examination Considerations, F. Outsourcing of Critical Functions, Custodial or Safekeeping Agreements of the NAIC *Financial Condition Examiners Handbook*?..... YES

- 17.1 For all agreements that comply with the requirements of the *Financial Condition Examiners Handbook*, complete the following:

1	2
Name of Custodian(s)	Custodian Address
HUNTINGTON NATIONAL BANK.....	7 EAST OVAL, COLUMBUS, OH 43219.....

- 17.2 For all agreements that do not comply with the requirements of the NAIC *Financial Condition Examiners Handbook*, provide the name, location and a complete explanation:

1	2	3
Name(s)	Location(s)	Complete Explanation(s)

- 17.3 Have there been any changes, including name changes, in the custodian(s) identified in 17.1 during the current quarter?..... NO
- 17.4 If yes, give full and complete information relating thereto:

GENERAL INTERROGATORIES  
PART 1 - COMMON INTERROGATORIES

1	2	3	4
Old Custodian	New Custodian	Date of Change	Reason

17.5 Investment management – Identify all investment advisors, investment managers, broker/dealers, including individuals that have the authority to make investment decisions on behalf of the reporting entity. This includes both primary and sub-advisors. For assets that are managed internally by employees of the reporting entity, note as such.

1	2
Name of Firm or Individual	Affiliation
NFC INVESTMENTS, LLC	U

17.5097 For those firms/individuals listed in the table for Question 17.5, do any firms/individuals unaffiliated with the reporting entity (i.e., designated with a "U") manage more than 10% of the reporting entity's invested assets? YES

17.5098 For firms/individuals unaffiliated with the reporting entity (i.e., designated with a "U") listed in the table for Question 17.5, does the total assets under management aggregate to more than 50% of the reporting entity's invested assets? YES

17.6 For those firms or individuals listed in the table for 17.5 with an affiliation code of "A" (affiliated) or "U" (unaffiliated), provide the information for the table below.

1	2	3	4	5
Central Registration Depository Number	Name of Firm or Individual	Legal Entity Identifier (LEI)	Registered With	Investment Management Agreement (IMA) Filed
132844	NFC INVESTMENTS, LLC		SEC	DS

18.1 Have all the filing requirements of the *Purposes and Procedures Manual of the NAIC Investment Analysis Office* been followed? YES

18.2 If no, list exceptions:

19. By self-designating 5GI securities, the reporting entity is certifying the following elements for each self-designated 5GI security:

a. Documentation necessary to permit a full credit analysis of the security does not exist or an NAIC CRP credit rating for an FE or PL security is not available.

b. Issuer or obligor is current on all contracted interest and principal payments.

c. The insurer has an actual expectation of ultimate payment of all contracted interest and principal.

Has the reporting entity self-designated 5GI securities? YES

20. By self-designating PLGI securities, the reporting entity is certifying the following elements of each self-designated PLGI security:

a. The security was purchased prior to January 1, 2018.

b. The reporting entity is holding capital commensurate with the NAIC Designation reported for the security.

c. The NAIC Designation was derived from the credit rating assigned by an NAIC CRP in its legal capacity as a NRSRO which is shown on a current private letter rating held by the insurer and available for examination by state insurance regulators.

d. The reporting entity is not permitted to share this credit rating of the PL security with the SVO.

Has the reporting entity self-designated PLGI securities? NO

21. By assigning FE to a Schedule BA non-registered private fund, the reporting entity is certifying the following elements of each self-designated FE fund:

a. The shares were purchased prior to January 1, 2019.

b. The reporting entity is holding capital commensurate with the NAIC Designation reported for the security.

c. The security had a public credit rating(s) with annual surveillance assigned by an NAIC CRP in its legal capacity as an NRSRO prior to January 1, 2019.

d. The fund only or predominantly holds bonds in its portfolio.

e. The current reported NAIC Designation was derived from the public credit rating(s) with annual surveillance assigned by an NAIC CRP in its legal capacity as an NRSRO.

f. The public credit rating(s) with annual surveillance assigned by an NAIC CRP has not lapsed.

Has the reporting entity assigned FE to Schedule BA non-registered private funds that complied with the above criteria? NO

GENERAL INTERROGATORIES  
PART 2 – PROPERTY & CASUALTY INTERROGATORIES

1. If the reporting entity is a member of a pooling arrangement, did the agreement or the reporting entity's participation change? N/A  
If yes, attach an explanation.
2. Has the reporting entity reinsured any risk with any other reporting entity and agreed to release such entity from liability, in whole or in part, from any loss that may occur on the risk, or portion thereof, reinsured? NO  
If yes, attach an explanation.
- 3.1 Have any of the reporting entity's primary reinsurance contracts been canceled? NO
- 3.2 If yes, give full and complete information thereto
- 4.1 Are any of the liabilities for unpaid losses and loss adjustment expenses other than certain workers' compensation tabular reserves (see Annual Statement Instructions pertaining to disclosure of discounting for definition of "tabular reserves,") discounted at a rate of interest greater than zero? NO
- 4.2 If yes, complete the following schedule:
- |                  |                  |            | Total Discount |            |      |       | Discount Taken During Period |            |      |       |
|------------------|------------------|------------|----------------|------------|------|-------|------------------------------|------------|------|-------|
| 1                | 2                | 3          | 4              | 5          | 6    | 7     | 8                            | 9          | 10   | 11    |
| Line of Business | Maximum Interest | Disc. Rate | Unpaid Losses  | Unpaid LAE | IBNR | Total | Unpaid Losses                | Unpaid LAE | IBNR | Total |
| Total            |                  |            |                |            |      |       |                              |            |      |       |
5. Operating Percentages:  
5.1 A&H loss percent %  
5.2 A&H cost containment percent %  
5.3 A&H expense percent excluding cost containment expenses %
- 6.1 Do you act as a custodian for health savings accounts? NO
- 6.2 If yes, please provide the amount of custodial funds held as of the reporting date. \$
- 6.3 Do you act as an administrator for health savings accounts? NO
- 6.4 If yes, please provide the balance of the funds administered as of the reporting date. \$
7. Is the reporting entity licensed or chartered, registered, qualified, eligible or writing business in at least two states? YES
- 7.1 If no, does the reporting entity assume reinsurance business that covers risks residing in at least one state other than the state of domicile of the reporting entity?

**SCHEDULE F - CEDED REINSURANCE**  
Showing All New Reinsurers - Current Year to Date

1	2	3	4	5	6	7
NAIC Company Code	ID Number	Name of Reinsurer	Domiciliary Jurisdiction	Type of Reinsurer	Certified Reinsurer Rating (1 through 6)	Effective Date of Certified Reinsurer Rating

NONE



SCHEDULE T – EXHIBIT OF PREMIUMS WRITTEN

Current Year to Date - Allocated by States and Territories

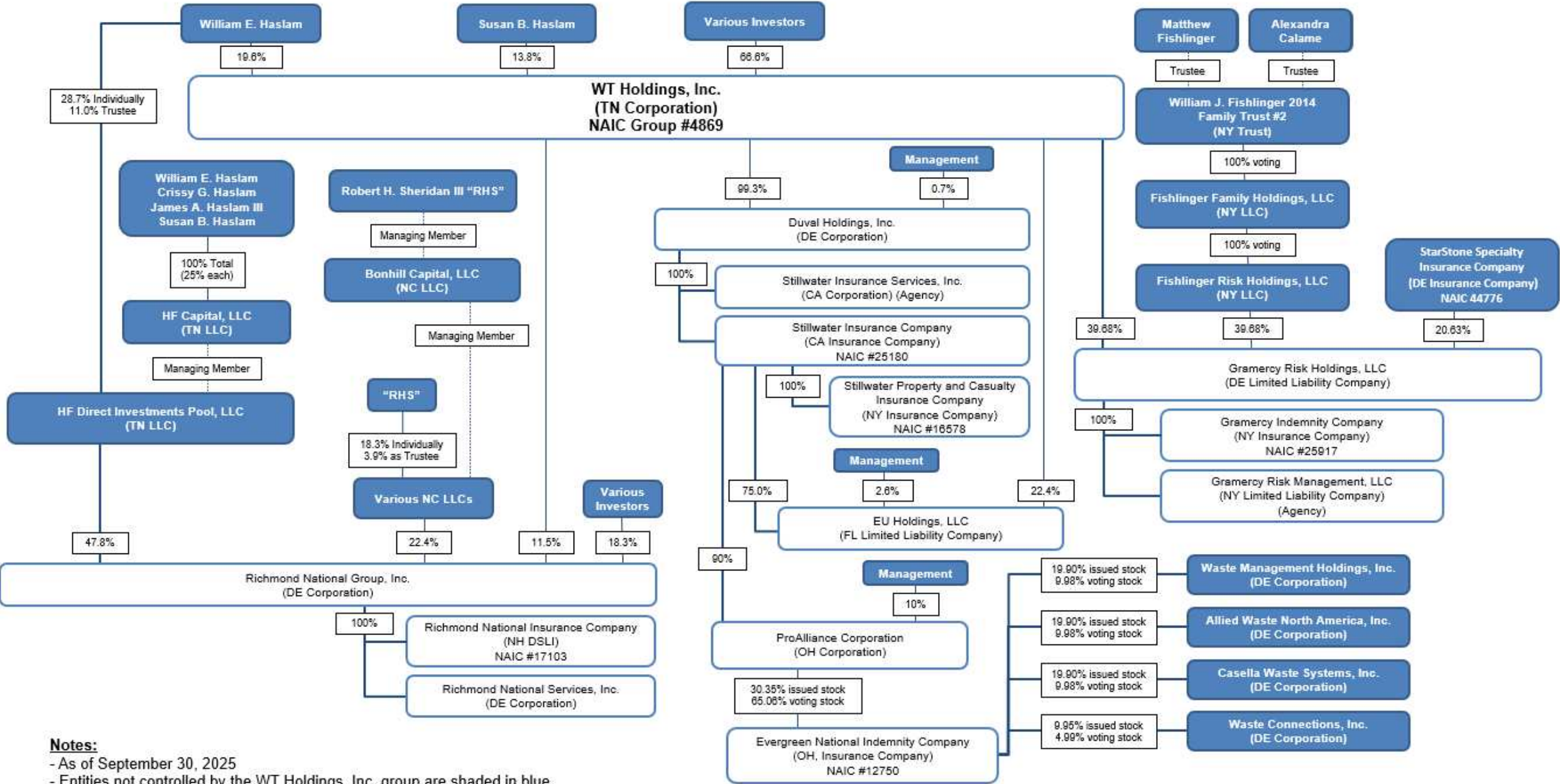
		1		Direct Premiums Written		Direct Losses Paid (Deducting Salvage)		Direct Losses Unpaid	
				2	3	4	5	6	7
				Current Year To Date	Prior Year To Date	Current Year To Date	Prior Year To Date	Current Year To Date	Prior Year To Date
States, Etc.		Active Status (a)							
1.	Alabama	AL	L	494,769	360,201	95,099	196,385	215,476	202,728
2.	Alaska	AK	L	2,500	100	–		600	40
3.	Arizona	AZ	L	208,072	240,866	7,732	7,417	92,445	108,970
4.	Arkansas	AR	L	64,718	164,211	8,967	41,364	28,438	69,369
5.	California	CA	L	2,585,166	1,727,480	–		1,156,096	705,621
6.	Colorado	CO	L	473,366	397,386	178,963	13,480	173,894	222,342
7.	Connecticut	CT	L	303,329	319,592	–		136,377	128,758
8.	Delaware	DE	L	52,578	61,282	7,448	18,359	23,419	32,000
9.	District of Columbia	DC	L	29,389	16,620	–		11,432	15,538
10.	Florida	FL	L	763,556	715,284	112,089	110,230	341,209	364,975
11.	Georgia	GA	L	1,401,581	1,880,573	1,042,256	1,010,224	657,367	1,285,330
12.	Hawaii	HI	N			–		–	
13.	Idaho	ID	L	12,522	21,559	–		3,431	15,474
14.	Illinois	IL	L	299,433	295,749	66,080	9,358	132,927	136,071
15.	Indiana	IN	L	1,123,564	1,558,279	139,609	98,922	503,419	670,180
16.	Iowa	IA	L	102,598	107,897	66,535	15,708	45,674	49,491
17.	Kansas	KS	L	66,641	88,550	–	16,139	29,309	35,614
18.	Kentucky	KY	L	620,387	1,028,500	104,015	98,190	1,700,620	1,963,486
19.	Louisiana	LA	L	1,172,335	1,429,246	4,731,766	5,447	512,434	3,185,180
20.	Maine	ME	L	577,988	660,179	–		259,811	266,158
21.	Maryland	MD	L	267,179	221,968	64,500	2,090	117,804	101,260
22.	Massachusetts	MA	L	1,046,233	774,856	–		470,292	312,340
23.	Michigan	MI	L	2,219,398	2,170,091	48,280	176,580	995,484	938,586
24.	Minnesota	MN	L	136,960	105,701	6,782	69,680	60,667	46,996
25.	Mississippi	MS	L	554,892	526,271	100,000	5,627	236,150	244,216
26.	Missouri	MO	L	353,817	388,523	57,107	100,226	259,109	342,425
27.	Montana	MT	L	50,510	49,110	–		21,318	22,068
28.	Nebraska	NE	L	176,955	145,983	34,855	11,685	77,301	67,616
29.	Nevada	NV	L	50,631	45,803	–		22,759	19,312
30.	New Hampshire	NH	L	713,550	331,488	–		320,748	133,321
31.	New Jersey	NJ	L	87,689	78,695	–		39,420	31,673
32.	New Mexico	NM	L	549,846	163,608	–		170,958	107,085
33.	New York	NY	L	1,277,918	1,454,712	–		575,131	591,906
34.	North Carolina	NC	E	102,668	132,799	106,350	30,182	43,553	92,560
35.	North Dakota	ND	L	135,352	17,213	–	4,084	50,798	9,239
36.	Ohio	OH	L	2,820,680	4,389,788	4,245	31,230	1,552,283	2,211,595
37.	Oklahoma	OK	L	461,928	432,680	–	43,246	201,447	182,396
38.	Oregon	OR	L	291,176	258,081	10,795	1,065	130,711	104,153
39.	Pennsylvania	PA	L	3,019,297	3,869,789	316	(2,973)	1,356,963	1,559,704
40.	Rhode Island	RI	L	3,480	1,999	–		1,564	804
41.	South Carolina	SC	L	414,375	491,280	100,139	59,069	184,632	249,499
42.	South Dakota	SD	L	773	673	–		347	271
43.	Tennessee	TN	L	1,192,772	1,011,803	6,236	42,661	532,878	422,526
44.	Texas	TX	L	1,740,578	1,485,375	506,180	154,956	741,471	734,279
45.	Utah	UT	L	81,513	85,320	–		33,969	41,702
46.	Vermont	VT	L	338,296	252,543	–		152,067	101,570
47.	Virginia	VA	L	895,683	878,278	–	5,067	5,005,663	361,171
48.	Washington	WA	L	112,460	131,394	–		50,552	52,845
49.	West Virginia	WV	E	275	93,337	–		124	10,013
50.	Wisconsin	WI	L	1,656,629	1,804,148	500		744,671	725,612
51.	Wyoming	WY	L	183,437	59,353	–		78,593	28,543
52.	American Samoa	AS	N						
53.	Guam	GU	N						
54.	Puerto Rico	PR	N						
55.	U.S. Virgin Islands	VI	N						
56.	Northern Mariana Islands	MP	N						
57.	Canada	CAN	N						
58.	Aggregate Other Alien	OT	XXX						
59.	Totals		XXX	31,291,442	32,926,216	7,606,844	2,375,698	20,253,805	19,304,611
Details of Write-Ins									
58001.			XXX						
58002.			XXX						
58003.			XXX						
58998.	Summary of remaining write-ins for Line 58 from overflow page		XXX						
58999.	Totals (Lines 58001 through 58003 plus 58998) (Line 58 above)		XXX						

(a) Active Status Counts

1. L – Licensed or Chartered - Licensed insurance carrier or domiciled RRG	48	4. Q – Qualified - Qualified or accredited reinsurer	–
		Domestic Surplus Lines Insurer (DSLII) – Reporting entities	
2. R – Registered – Non-domiciled RRGs	–	5. D – authorized to write surplus lines in the state of domicile	–
3. E – Eligible - Reporting entities eligible or approved to write surplus lines in the state (other than the state of domicile - see DSLII)	2	6. N – None of the above - Not allowed to write business in the state	7

SCHEDULE Y - INFORMATION CONCERNING ACTIVITIES OF INSURER MEMBERS OF A HOLDING COMPANY GROUP  
PART 1 - ORGANIZATIONAL CHART

WT Holdings Group Ownership



Notes:

- As of September 30, 2025
- Entities not controlled by the WT Holdings, Inc. group are shaded in blue

SCHEDULE Y

PART 1A - DETAILS OF INSURANCE HOLDING COMPANY SYSTEM

1	2	3	4	5	6	7	8	9	10	11	12	13	14	15	16
Group Code	Group Name	NAIC Company Code	ID Number	Federal RSSD	CIK	Name of Securities Exchange if Publicly Traded (U.S. or International)	Names of Parent, Subsidiaries Or Affiliates	Domiciliary Location	Relationship to Reporting Entity	Directly Controlled by (Name of Entity/Person)	Type of Control (Ownership, Board, Management, Attorney-in-Fact, Influence, Other)	If Control is Ownership Provide Percentage	Ultimate Controlling Entity(ies) / Person(s)	Is an SCA Filing Required? (Yes/No)	*
4869	WT Holdings Group		86-0843596				Allied Waste North America, Inc.	DE	OTH	Republic Services, Inc.	Ownership	100.0	N/A public entity	NO	2
4869	WT Holdings Group		03-0338873		0000911177	NASDAQ	Cassella Waste Systems, Inc.	DE	OTH	N/A public entity	N / A		N/A public entity	NO	2
4869	WT Holdings Group		38-3865632				Duval Holdings, Inc.	DE	UIP	WT Holdings, Inc.	Ownership, Board, Mgmt	99.3	William Haslam/Susan Haslam	NO	
4869	WT Holdings Group		46-4581025				EU Holdings, LLC	FL	NIA	Stillwater Insurance Company	Ownership	75.0	William Haslam/Susan Haslam	NO	
4869	WT Holdings Group		46-4581025				EU Holdings, LLC	FL	NIA	WT Holdings, Inc.	Ownership	22.4	William Haslam/Susan Haslam	NO	
4869	WT Holdings Group	12750	36-2467238				Evergreen National Indemnity Company	OH	RE	Pro-Alliance Corporation	Ownership	65.1	William Haslam/Susan Haslam	NO	
4869	WT Holdings Group	12750	36-2467238				Evergreen National Indemnity Company	OH	RE	Waste Management Holdings, Inc.	Ownership	10.0	Waste Management, Inc.	NO	
4869	WT Holdings Group	12750	36-2467238				Evergreen National Indemnity Company	OH	RE	Allied Waste North America, Inc.	Ownership	10.0	Republic Services, Inc.	NO	
4869	WT Holdings Group	12750	36-2467238				Evergreen National Indemnity Company	OH	RE	Cassella Waste Systems, Inc.	Ownership	10.0	N/A public entity	NO	
4869	WT Holdings Group	12750	36-2467238				Evergreen National Indemnity Company	OH	RE	Waste Connections, Inc.	Ownership	5.0	N/A public entity	NO	
4869	WT Holdings Group		61-1739269				Fishlinger Family Holdings, LLC	NY	OTH	William J. Fishlinger 2014 Family Trust #2	Ownership, Board, Mgmt	100.0	Matthew Fishlinger/Alexandra Calame	NO	2
4869	WT Holdings Group		47-1171079				Fishlinger Risk Holdings, LLC	NY	OTH	Fishlinger Family Holdings, LLC	Ownership, Board	100.0	Matthew Fishlinger/Alexandra Calame	NO	2
4869	WT Holdings Group	25917	13-2741040				Gramercy Indemnity Company	NY	IA	Gramercy Risk Holdings, LLC	Ownership, Board	100.0	W.Haslam/S.Haslam/M.Fishli	NO	
4869	WT Holdings Group		82-3800657				Gramercy Risk Holdings, LLC	DE	NIA	WT Holdings, Inc.	Ownership, Board	39.7	William Haslam/Susan Haslam	NO	
4869	WT Holdings Group		82-3800657				Gramercy Risk Holdings, LLC	DE	NIA	Fishlinger Risk Holdings, LLC	Ownership, Board	39.7	Matthew Fishlinger/Alexandra Calame	NO	
4869	WT Holdings Group		82-3800657				Gramercy Risk Holdings, LLC	DE	OTH	StarStone Specialty Insurance Company	Ownership, Board	20.6	Core Specialty Insurance Holdings, Inc.	NO	3
4869	WT Holdings Group		38-3937473				Gramercy Risk Management, LLC	NY	NIA	Gramercy Risk Holdings, LLC	Ownership, Board	100.0	W.Haslam/S.Haslam/M.Fishli	NO	
4869	WT Holdings Group		20-1048841				Pro-Alliance Corporation	OH	UDP	Stillwater Insurance Company	Ownership	90.0	William Haslam/Susan Haslam	NO	
4869	WT Holdings Group	17103	87-2521969				Richmond National Insurance Company	NH	IA	Richmond National Group, Inc.	Ownership	100.0	WT Holdings, Inc./HF Direct Investments Pool, LLC/Bonhill RNG, LLC	NO	
4869	WT Holdings Group		85-3739647				Richmond National Services, Inc.	DE	NIA	Richmond National Group, Inc.	Ownership	100.0	WT Holdings, Inc./HF Direct Investments Pool, LLC/Bonhill RNG, LLC	NO	
4869	WT Holdings Group		86-1194255				Richmond National Group, Inc.	DE	OTH	HF Direct Investments Pool, LLC	Ownership	47.8	William Haslam	NO	2
4869	WT Holdings Group		86-1194255				Richmond National Group, Inc.	DE	OTH	Bonhill RNG, LLC	Ownership, Board	9.4	Robert Sheridan III	NO	2
4869	WT Holdings Group		86-1194255				Richmond National Group, Inc.	DE	OTH	Bonhill RNG II, LLC	Ownership, Board	3.2	Robert Sheridan III	NO	2

SCHEDULE Y

PART 1A - DETAILS OF INSURANCE HOLDING COMPANY SYSTEM

1	2	3	4	5	6	7	8	9	10	11	12	13	14	15	16
Group Code	Group Name	NAIC Company Code	ID Number	Federal RSSD	CIK	Name of Securities Exchange if Publicly Traded (U.S. or International)	Names of Parent, Subsidiaries Or Affiliates	Domiciliary Location	Relationship to Reporting Entity	Directly Controlled by (Name of Entity/Person)	Type of Control (Ownership, Board, Management, Attorney-in-Fact, Influence, Other)	If Control is Ownership Provide Percentage	Ultimate Controlling Entity(ies) / Person(s)	Is an SCA Filing Required? (Yes/No)	*
4869	WT Holdings Group		86-1194255				Richmond National Group, Inc.	DE	OTH	Bonhill RNG III, LLC	Ownership, Board	5.5	Robert Sheridan III	NO	2
4869	WT Holdings Group		86-1194255				Richmond National Group, Inc.	DE	OTH	Bonhill RNG IV, LLC	Ownership, Board	4.3	Robert Sheridan III	NO	2
4869	WT Holdings Group		86-1194255				Richmond National Group, Inc.	DE	OTH	WT Holdings, Inc.	Ownership, Board	11.5	William Haslam/Susan Haslam	NO	
4869	WT Holdings Group	25180	68-0266416				Stillwater Insurance Company	CA	UIP	Duval Holdings, Inc.	Ownership, Board, Mgmt	100.0	William Haslam/Susan Haslam	NO	
4869	WT Holdings Group		71-0900874				Stillwater Insurance Services, Inc.	CA	NIA	Duval Holdings, Inc.	Ownership, Board, Mgmt	100.0	William Haslam/Susan Haslam	NO	
4869	WT Holdings Group	16578	16-0986300				Stillwater Property & Casualty Insurance Company	NY	IA	Stillwater Insurance Company	Ownership, Board, Mgmt	100.0	William Haslam/Susan Haslam	NO	
4869	WT Holdings Group		94-3283464		0001057058	NYSE	Waste Connections, Inc.	DE	OTH	N/A public entity	N / A		N/A public entity	NO	2
4869	WT Holdings Group		73-1039529				Waste Management Holdings, Inc.	DE	OTH	Waste Management, Inc.	Ownership	100.0	N/A public entity	NO	2
4869	WT Holdings Group		46-7406727				William J. Fishlinger 2014 Family Trust #2	NY	OTH	Matthew Fishlinger/Alexandra Calame	Trustees	100.0		NO	2
4869	WT Holdings Group		26-2099042		0001546636	none	WT Holdings, Inc.	TN	UIP	William E. Haslam	Ownership	19.6		NO	1
4869	WT Holdings Group		26-2099042		0001546636	none	WT Holdings, Inc.	TN	UIP	Susan B. Haslam	Ownership	13.8		NO	1
Asterisk		Explanation													
1	No Securities Exchange listing as CIK # is for Reg D filing only														
2	Unaffiliated investor(s)														

PART 1 – LOSS EXPERIENCE

		Current Year to Date			4
		1	2	3	Prior Year to Date Direct Loss Percentage
Line of Business		Direct Premiums Earned	Direct Losses Incurred	Direct Loss Percentage	
1.	Fire .....				
2.1	Allied lines .....				
2.2	Multiple peril crop .....				
2.3	Federal flood .....				
2.4	Private crop .....				
2.5	Private flood .....				
3.	Farmowners multiple peril .....				
4.	Homeowners multiple peril .....				
5.1	Commercial multiple peril (non-liability portion) .....				
5.2	Commercial multiple peril (liability portion) .....				
6.	Mortgage guaranty .....				
8.	Ocean marine .....				
9.1	Inland marine .....				
9.2	Pet insurance .....				
10.	Financial guaranty .....				
11.1	Medical professional liability - occurrence .....				
11.2	Medical professional liability - claims made .....				
12.	Earthquake .....				
13.1	Comprehensive (hospital and medical) individual .....				
13.2	Comprehensive (hospital and medical) group .....				
14.	Credit accident and health .....				
15.1	Vision only .....				
15.2	Dental only .....				
15.3	Disability income .....				
15.4	Medicare supplement .....				
15.5	Medicaid Title XIX .....				
15.6	Medicare Title XVIII .....				
15.7	Long-term care .....				
15.8	Federal employees health benefits plan .....				
15.9	Other health .....				
16.	Workers' compensation .....		(25,132)		
17.1	Other liability occurrence .....				
17.2	Other liability-claims made .....				
17.3	Excess workers' compensation .....				
18.1	Products liability - occurrence .....				
18.2	Products liability - claims made .....				
19.1	Private passenger auto no-fault (personal injury protection) .....				
19.2	Other private passenger auto liability .....				
19.3	Commercial auto no-fault (personal injury protection) .....				
19.4	Other commercial auto liability .....				
21.1	Private passenger auto physical damage .....				
21.2	Commercial auto physical damage .....				
22.	Aircraft (all perils) .....				
23.	Fidelity .....				
24.	Surety .....	32,429,469	8,628,481	26.607	19.061
26.	Burglary and theft .....				
27.	Boiler and machinery .....				
28.	Credit .....				
29.	International .....				
30.	Warranty .....	29,524			
31.	Reinsurance - nonproportional assumed property .....	XXX	XXX	XXX	XXX
32.	Reinsurance - nonproportional assumed liability .....	XXX	XXX	XXX	XXX
33.	Reinsurance - nonproportional assumed financial lines .....	XXX	XXX	XXX	XXX
34.	Aggregate write-ins for other lines of business .....				
35.	Totals .....	32,458,993	8,603,349	26.505	19.067
Details of Write-Ins					
3401.	.....				
3402.	.....				
3403.	.....				
3498.	Summary of remaining write-ins for Line 34 from overflow page				
3499.	Summary of remaining write-ins for Line 34 from overflow page				

PART 2 – DIRECT PREMIUMS WRITTEN

		1	2	3
Line of Business		Current Quarter	Current Year to Date	Prior Year Year to Date
1.	Fire .....			
2.1	Allied lines .....			
2.2	Multiple peril crop .....			
2.3	Federal flood .....			
2.4	Private crop .....			
2.5	Private flood .....			
3.	Farmowners multiple peril .....			
4.	Homeowners multiple peril .....			
5.1	Commercial multiple peril (non-liability portion) .....			
5.2	Commercial multiple peril (liability portion) .....			
6.	Mortgage guaranty .....			
8.	Ocean marine .....			
9.1	Inland marine .....			
9.2	Pet insurance .....			
10.	Financial guaranty .....			
11.1	Medical professional liability - occurrence .....			
11.2	Medical professional liability - claims made .....			
12.	Earthquake .....			
13.1	Comprehensive (hospital and medical) individual .....			
13.2	Comprehensive (hospital and medical) group .....			
14.	Credit accident and health .....			
15.1	Vision only .....			
15.2	Dental only .....			
15.3	Disability income .....			
15.4	Medicare supplement .....			
15.5	Medicaid Title XIX .....			
15.6	Medicare Title XVIII .....			
15.7	Long-term care .....			
15.8	Federal employees health benefits plan .....			
15.9	Other health .....			
16.	Workers' compensation .....			
17.1	Other liability occurrence .....			
17.2	Other liability-claims made .....			
17.3	Excess workers' compensation .....			
18.1	Products liability - occurrence .....			
18.2	Products liability - claims made .....			
19.1	Private passenger auto no-fault (personal injury protection) .....			
19.2	Other private passenger auto liability .....			
19.3	Commercial auto no-fault (personal injury protection) .....			
19.4	Other commercial auto liability .....			
21.1	Private passenger auto physical damage .....			
21.2	Commercial auto physical damage .....			
22.	Aircraft (all perils) .....			
23.	Fidelity .....			
24.	Surety .....	15,270,755	31,291,442	32,926,216
26.	Burglary and theft .....			
27.	Boiler and machinery .....			
28.	Credit .....			
29.	International .....			
30.	Warranty .....			
31.	Reinsurance - nonproportional assumed property .....	XXX	XXX	XXX
32.	Reinsurance - nonproportional assumed liability .....	XXX	XXX	XXX
33.	Reinsurance - nonproportional assumed financial lines .....	XXX	XXX	XXX
34.	Aggregate write-ins for other lines of business .....			
35.	Totals .....	15,270,755	31,291,442	32,926,216
Details of Write-Ins				
3401.	.....			
3402.	.....			
3403.	.....			
3498.	Summary of remaining write-ins for Line 34 from overflow page .....			
3499.	Summary of remaining write-ins for Line 34 from overflow page .....			

PART 3 (\$000 OMITTED)  
LOSS AND LOSS ADJUSTMENT EXPENSE RESERVES SCHEDULE

	1	2	3	4	5	6	7	8	9	10	11	12	13
								Q.S. Date Known Case Loss and LAE Reserves on Claims Reported or Reopened Subsequent to Prior Year End			Prior Year-End Known Case Loss and LAE Reserves Developed (Savings) / Deficiency (Cols.4+7 minus Col. 1)	Prior Year-End IBNR Loss and LAE Reserves Developed (Savings) / Deficiency (Cols. 5+8+9 minus Col. 2)	Prior Year-End Total Loss and LAE Reserve Developed (Savings) / Deficiency (Cols. 11+12)
Years in Which Losses Occurred	Prior Year End Known Case Loss and LAE Reserves	Prior Year End IBNR Loss and LAE Reserves	Total Prior Year End Loss and LAE Reserves (Cols. 1+2)	2025 Loss and LAE Payments on Claims Reported as of Prior Year End	2025 Loss and LAE Payments on Claims Unreported as of Prior Year End	Total 2025 Loss and LAE Payments (Cols. 4+5)	Q.S. Date Known Case Loss and LAE Reserves on Claims Reported and Open as of Prior Year End		Q.S. Date IBNR Loss and LAE Reserves	Total Q.S. Loss and LAE Reserves (Cols.7+8+9)			
1. 2022 + Prior.....	110	190	300				110		190	300	—	—	—
2. 2023.....		17	17				35		17	52	35	—	35
3. Subtotals 2023 + prior.....	110	207	317				145		207	352	35	—	35
4. 2024.....	200	7,649	7,849	1,812	1,891	3,703			1,009	1,009	1,612	(4,749)	(3,137)
5. Subtotals 2024 + prior.....	310	7,856	8,166	1,812	1,891	3,703	145		1,216	1,361	1,647	(4,749)	(3,102)
6. 2025.....	XXX	XXX	XXX	XXX	2,118	2,118	XXX		5,515	5,515	XXX	XXX	XXX
7. Totals.....	310	7,856	8,166	1,812	4,009	5,821	145		6,731	6,876	1,647	(4,749)	(3,102)
8. Prior Year-End Surplus As Regards Policyholders.....											Col. 11, Line 7 As % of Col. 1, Line 7	Col. 12, Line 7 As % of Col. 2, Line 7	Col. 13, Line 7 As % of Col. 3, Line 7
	49,448										531.290 %	(60.451)%	(37.987)% Col. 13, Line 7 / Line 8 (6.273)%

SUPPLEMENTAL EXHIBITS AND SCHEDULES INTERROGATORIES

The following supplemental reports are required to be filed as part of your statement filing. However, in the event that your company does not transact the type of business for which the special report must be filed, your response of **NO** to the specific interrogatory will be accepted in lieu of filing a “NONE” report and a bar code will be printed below. If the supplement is required of your company but is not being filed for whatever reason enter **SEE EXPLANATION** and provide an explanation following the interrogatory questions.

	Response
1. Will the Trusteed Surplus Statement be filed with the state of domicile and the NAIC with this statement?.....	NO.....
2. Will Supplement A to Schedule T (Medical Professional Liability Supplement) be filed with this statement?.....	NO.....
3. Will the Medicare Part D Coverage Supplement be filed with the state of domicile and the NAIC with this statement?.....	NO.....
4. Will the Director and Officer Insurance Coverage Supplement be filed with the state of domicile and the NAIC with this statement?.....	NO.....

August Filing

5. Will the regulator-only (non-public) Communication of Internal Control Related Matters Noted in Audit be filed with the state of domicile and electronically with the NAIC (as a regulator-only non-public document) by August 1? The response for 1st and 3rd quarters should be N/A. A NO response resulting with a bar code is only appropriate in the 2nd quarter. ....	N/A.....
--------------------------------------------------------------------------------------------------------------------------------------------------------------------------------------------------------------------------------------------------------------------------------------------------------------------------------------------------------------------------------	----------

EXPLANATION:

1. No, the Company is a U.S. entity.....
2. The data for this supplement is not required to be filed.....
3. The data for this supplement is not required to be filed.....
4. This line of business is not written by the Company.....
5. ....

BARCODES:

1.   
1 2 7 5 0 2 0 2 5 4 9 0 0 0 0 3
2.   
1 2 7 5 0 2 0 2 5 4 5 5 0 0 0 3
3.   
1 2 7 5 0 2 0 2 5 3 6 5 0 0 0 3
4.   
1 2 7 5 0 2 0 2 5 5 0 5 0 0 0 3
5.



**OVERFLOW PAGE FOR WRITE-INS**

SCHEDULE A – VERIFICATION  
Real Estate

		1	2
		Year to Date	Prior Year Ended December 31
1.	Book/adjusted carrying value, December 31 of prior year .....		
2.	Cost of acquired:		
2.1	Actual cost at time of acquisition .....		
2.2	Additional investment made after acquisition .....		
3.	Current year change in encumbrances .....		
4.	Total gain (loss) on disposals .....		
5.	Deduct amounts received on disposals .....		
6.	Total foreign exchange change in book / adjusted carrying value .....		
7.	Deduct current year's other-than-temporary impairment recognized .....		
8.	Deduct current year's depreciation .....		
9.	Book/adjusted carrying value at the end of current period (Lines 1+2+3+4-5+6-7-8) .....		
10.	Deduct total nonadmitted amounts .....		
11.	Statement value at end of current period (Line 9 minus Line 10) .....		

SCHEDULE B – VERIFICATION  
Mortgage Loans

		1	2
		Year to Date	Prior Year Ended December 31
1.	Book value/recorded investment excluding accrued interest, December 31 of prior year .....	–	–
2.	Cost of acquired:		
2.1	Actual cost at time of acquisition .....		
2.2	Additional investment made after acquisition .....		
3.	Capitalized deferred interest and other .....		
4.	Accrual of discount .....		
5.	Unrealized valuation increase / (decrease) .....		
6.	Total gain (loss) on disposals .....		
7.	Deduct amounts received on disposals .....		
8.	Deduct amortization of premium and mortgage interest points and commitment fees .....		
9.	Total foreign exchange change in book value/recorded investment excluding accrued interest .....		
10.	Deduct current year's other-than-temporary impairment recognized .....		
11.	Book value/recorded investment excluding accrued interest at end of current period (Lines 1+2+3+4+5+6-7-8+9-10) .....	–	–
12.	Total valuation allowance .....		
13.	Subtotal (Line 11 plus Line 12) .....	–	–
14.	Deduct total nonadmitted amounts .....		
15.	Statement value at end of current period (Line 13 minus Line 14) .....	–	–

SCHEDULE BA - VERIFICATION  
Other Long-Term Invested Assets

		1	2
		Year to Date	Prior Year Ended December 31
1.	Book/adjusted carrying value, December 31 of prior year .....	6,170,859	5,114,329
2.	Cost of acquired:		
2.1	Actual cost at time of acquisition .....	180,000	500,000
2.2	Additional investment made after acquisition .....	90,459	377,963
3.	Capitalized deferred interest and other .....		
4.	Accrual of discount .....		
5.	Unrealized valuation increase / (decrease) .....	242,561	443,044
6.	Total gain (loss) on disposals .....		1,544
7.	Deduct amounts received on disposals .....	113,168	266,021
8.	Deduct amortization of premium, depreciation and proportional amortization .....		
9.	Total foreign exchange change in book / adjusted carrying value .....		
10.	Deduct current year's other-than-temporary impairment recognized .....		
11.	Book/adjusted carrying value at end of current period (Lines 1+2+3+4+5+6-7-8+9-10) .....	6,570,710	6,170,859
12.	Deduct total nonadmitted amounts .....	2,000	2,000
13.	Statement value at end of current period (Line 11 minus Line 12) .....	6,568,710	6,168,859

SCHEDULE D - VERIFICATION  
Bonds and Stocks

		1	2
		Year to Date	Prior Year Ended December 31
1.	Book/adjusted carrying value of bonds and stocks, December 31 of prior year .....	58,102,503	48,504,124
2.	Cost of bonds and stocks acquired .....	15,691,496	16,839,892
3.	Accrual of discount .....	110,096	118,183
4.	Unrealized valuation increase / (decrease) .....	(8,656,130)	3,151,397
5.	Total gain (loss) on disposals .....	8,463,767	629,187
6.	Deduct consideration for bonds and stocks disposed of .....	23,812,095	10,496,910
7.	Deduct amortization of premium .....	54,190	78,539
8.	Total foreign exchange change in book / adjusted carrying value .....		
9.	Deduct current year's other-than-temporary impairment recognized .....	270,000	564,831
10.	Total investment income recognized as a result of prepayment penalties and/or acceleration fees .....		
11.	Book/adjusted carrying value at end of current period (Lines 1+2+3+4+5-6-7+8-9+10) .....	49,575,446	58,102,503
12.	Deduct total nonadmitted amounts .....		
13.	Statement value at end of current period (Line 11 minus Line 12) .....	49,575,446	58,102,503

SCHEDULE D – PART 1B

Showing the Acquisitions, Dispositions and Non-Trading Activity  
During the Current Quarter for all Bonds and Preferred Stock by NAIC Designation

	1	2	3	4	5	6	7	8
NAIC Designation	Book / Adjusted Carrying Value Beginning of Current Quarter	Acquisitions During Current Quarter	Dispositions During Current Quarter	Non-Trading Activity During Current Quarter	Book / Adjusted Carrying Value End of First Quarter	Book / Adjusted Carrying Value End of Second Quarter	Book / Adjusted Carrying Value End of Third Quarter	Book / Adjusted Carrying Value December 31 Prior Year
<b>Issuer Credit Obligations (ICO)</b>								
1. NAIC 1 (a).....	8,911,583	2,331,845	1,687,000	32,332	9,611,698	8,911,583	9,588,761	8,091,324
2. NAIC 2 (a).....	5,798,167	2,340,050	200,000	(291,994)	5,642,824	5,798,167	7,646,223	5,770,030
3. NAIC 3 (a).....	2,353,679			2,544	2,453,579	2,353,679	2,356,223	2,444,994
4. NAIC 4 (a).....	530,077			1,708	517,219	530,077	531,785	520,336
5. NAIC 5 (a).....	2,195,221			247,200	2,266,780	2,195,221	2,442,421	2,271,108
6. NAIC 6 (a).....	264,268			38,468	537,384	264,268	302,736	533,294
7. Total ICO.....	20,052,994	4,671,895	1,887,000	30,259	21,029,484	20,052,994	22,868,149	19,631,085
<b>Asset-Backed Securities (ABS)</b>								
8. NAIC 1.....	15,162,978	4,478,417	1,473,122	(13,908)	14,769,318	15,162,978	18,154,364	14,543,147
9. NAIC 2.....	2,206,497		561,084	179	2,207,050	2,206,497	1,645,592	2,063,617
10. NAIC 3.....	184,355		14,569		449,817	184,355	169,786	246,751
11. NAIC 4.....	252,344			260	—	252,344	252,604	200,000
12. NAIC 5.....								
13. NAIC 6.....	17,726		1,593	109	18,730	17,726	16,243	20,265
14. Total ABS.....	17,823,900	4,478,417	2,050,367	(13,360)	17,444,915	17,823,900	20,238,589	17,073,780
<b>Preferred Stock</b>								
15. NAIC 1.....	348,600			(2,600)	349,300	348,600	346,000	358,300
16. NAIC 2.....	2,355,203			78,587	2,354,280	2,355,203	2,433,789	2,379,368
17. NAIC 3.....	1,194,065		399,688	9,385	1,189,922	1,194,065	803,763	1,163,897
18. NAIC 4.....	1,489,970			11,450	1,497,120	1,489,970	1,501,420	1,511,700
19. NAIC 5.....	524,675			(840)	593,275	524,675	523,835	616,410
20. NAIC 6.....	—				—	—	—	—
21. Total Preferred Stock.....	5,912,513		399,688	95,981	5,983,897	5,912,513	5,608,807	6,029,675
22. Total ICO, ABS, & Preferred Stock.....	43,789,408	9,150,312	4,337,055	112,881	44,458,295	43,789,408	48,715,545	42,734,540

(a) Book/Adjusted Carrying Value column for the end of the current reporting period includes the following amount of short-term and cash equivalent bonds by NAIC designation:  
NAIC 1 \$ 1,686,346; NAIC 2 \$ ; NAIC 3 \$ ; NAIC 4 \$ ; NAIC 5 \$ ; NAIC 6 \$

SCHEDULE DA - PART 1  
Short-Term Investments

	1	2	3	4	5
	Book / Adjusted Carrying Value	Par Value	Actual Cost	Interest Collected Year To Date	Paid for Accrued Interest Year To Date
7709999999 Total.....	1,686,346	XXX.....	1,661,429		

SCHEDULE DA - VERIFICATION  
Short-Term Investments

		1	2
		Year to Date	Prior Year Ended December 31
1.	Book/adjusted carrying value, December 31 of prior year.....	2,231,631	3,549,932
2.	Cost of short-term investments acquired.....	1,636,646	5,778,935
3.	Accrual of discount.....	59,752	157,255
4.	Unrealized valuation increase / (decrease).....		
5.	Total gain (loss) on disposals.....	117	115
6.	Deduct consideration received on disposals.....	2,241,800	7,254,607
7.	Deduct amortization of premium.....		
8.	Total foreign exchange change in book / adjusted carrying value.....		
9.	Deduct current year's other-than-temporary impairment recognized.....		
10.	Book/adjusted carrying value at end of current period (Lines 1+2+3+4+5-6-7+8-9).....	1,686,346	2,231,631
11.	Deduct total nonadmitted amounts.....		
12.	Statement value at end of current period (Line 10 minus Line 11).....	1,686,346	2,231,631

(SI-04) Schedule DB - Part A - Verification - Options, Caps, Floors, Collars, Swaps and Forwards

NONE

(SI-04) Schedule DB - Part B - Verification - Futures Contracts

NONE

(SI-05) Schedule DB - Part C - Section 1

NONE

(SI-06) Schedule DB - Part C - Section 2

NONE

(SI-07) Schedule DB - Verification

NONE

SCHEDULE E – PART 2 – VERIFICATION  
(Cash Equivalents)

		1	2
		Year to Date	Prior Year Ended December 31
1.	Book/adjusted carrying value, December 31 of prior year.....	1,111,743	2,675,789
2.	Cost of cash equivalents acquired.....	27,567,537	22,634,435
3.	Accrual of discount.....		
4.	Unrealized valuation increase / (decrease).....		
5.	Total gain (loss) on disposals.....		
6.	Deduct consideration received on disposals.....	20,726,070	24,198,481
7.	Deduct amortization of premium.....		
8.	Total foreign exchange change in book / adjusted carrying value.....		
9.	Deduct current year's other-than-temporary impairment recognized.....		
10.	Book/adjusted carrying value at end of current period (Lines 1+2+3+4+5-6-7+8-9).....	7,953,210	1,111,743
11.	Deduct total nonadmitted amounts.....		
12.	Statement value at end of current period (Line 10 minus Line 11).....	7,953,210	1,111,743

(E-01) Schedule A - Part 2

**NONE**

(E-01) Schedule A - Part 3

**NONE**

(E-02) Schedule B - Part 2

**NONE**

(E-02) Schedule B - Part 3

**NONE**

SCHEDULE BA - PART 2

Showing Other Long-Term Invested Assets ACQUIRED AND ADDITIONS MADE During the Current Quarter

1	2	Location		5	6	7	8	9	10	11	12	13
		3	4									
CUSIP	Name or Description	City	State	Name of Vendor or General Partner	NAIC Designation, NAIC Designation Modifier and SVO Administrative Symbol	Date Originally Acquired	Type and Strategy	Actual Cost at Time of Acquisition	Additional Investment Made After Acquisition	Amount of Encumbrances	Commitment for Additional Investment	Percentage of Ownership
Interests in Joint Ventures, Partnerships or Limited Liability Companies (Including Non-Registered Private Funds) with Underlying Assets Having the Characteristics of: Common Stocks, Unaffiliated												
000000-00-0	FRONTRANGE PROPERTY FUND III, LP			FrontRange Property Fund III, LP		05/31/2019			245			
1999999 – Interests in Joint Ventures, Partnerships or Limited Liability Companies (Including Non-Registered Private Funds) with Underlying Assets Having the Characteristics of: Common Stocks, Unaffiliated									245			XXX
Interests in Joint Ventures, Partnerships or Limited Liability Companies (Including Non-Registered Private Funds) with Underlying Assets Having the Characteristics of: Other, Unaffiliated												
000000-00-0	Resolute Capital Partners Fund V, LP			Resolute Capital Partners Fund V, LP		12/08/2021			50,000			
2599999 – Interests in Joint Ventures, Partnerships or Limited Liability Companies (Including Non-Registered Private Funds) with Underlying Assets Having the Characteristics of: Other, Unaffiliated									50,000			XXX
6899999 – Subtotals - Unaffiliated									50,245			XXX
7099999 – Totals									50,245			XXX

SCHEDULE BA - PART 3

Showing Other Long-Term Invested Assets DISPOSED, Transferred, Repaid During the Current Quarter

1	2	Location		5	6	7	8	Change in Book / Adjusted Carrying Value						15	16	17	18	19	20
		3	4					9	10	11	12	13	14						
CUSIP	Name or Description	City	State	Name of Purchaser or Nature of Disposal	Date Originally Acquired	Disposal Date	Book / Adjusted Carrying Value Less Encumbrances, Prior Year	Unrealized Valuation Increase / (Decrease)	Current Year's (Depreciation) or (Amortization) / Accretion	Current Year's Other-Than-Temporary Impairment Recognized	Capitalized Deferred Interest and Other	Total Change in B./A.C.V. (9+10-11+12)	Total Foreign Exchange Change in B./A.C.V.	Book / Adjusted Carrying Value Less Encumbrances on Disposal	Consideration	Foreign Exchange Gain (Loss) on Disposal	Realized Gain (Loss) on Disposal	Total Gain (Loss) on Disposal	Investment Income
Interests in Joint Ventures, Partnerships or Limited Liability Companies (Including Non-Registered Private Funds) with Underlying Assets Having the Characteristics of: Common Stocks, Unaffiliated																			
000000-00-0.....	CCALIFEFUNDII.....			CCALIFEFUNDII.....	06/17/2019	08/07/2025	15,338							15,338	15,338				
000000-00-0.....	ENIC Fairwood Fund II, LP.....			ENIC Fairwood Fund II, LP.....	01/21/2021	07/07/2025	37,254							37,254	37,254				
1999999 – Interests in Joint Ventures, Partnerships or Limited Liability Companies (Including Non-Registered Private Funds) with Underlying Assets Having the Characteristics of: Common Stocks, Unaffiliated							52,592							52,592	52,592				
Interests in Joint Ventures, Partnerships or Limited Liability Companies (Including Non-Registered Private Funds) with Underlying Assets Having the Characteristics of: Other, Unaffiliated																			
000000-00-0.....	Resolute Capital Partners Fund IV, LP.....			Return of Capital.....	03/06/2018	09/11/2025	20,031							20,031	20,031				
2599999 – Interests in Joint Ventures, Partnerships or Limited Liability Companies (Including Non-Registered Private Funds) with Underlying Assets Having the Characteristics of: Other, Unaffiliated							20,031							20,031	20,031				
6899999 – Subtotals - Unaffiliated							72,622							72,622	72,622				
7099999 – Totals							72,622							72,622	72,622				



SCHEDULE D - PART 3

Show All Long-Term Bonds and Stock Acquired During the Current Quarter

1	2	3	4	5	6	7	8	9
CUSIP Identification	Description	Date Acquired	Name of Vendor	Number of Shares of Stock	Actual Cost	Par Value	Paid for Accrued Interest and Dividends	NAIC Designation, NAIC Designation Modifier and SVO Administrative Symbol
Issuer Credit Obligations: U.S. Government Obligations (Exempt from RBC)								
91282C-HJ-3	UNITED STATES TREASURY	09/08/2025	FIRST TENNESSEE BANK BOND DIVI	XXX	353,172	350,000	2,532	1.A
0019999999 – Issuer Credit Obligations: U.S. Government Obligations (Exempt from RBC)					353,172	350,000	2,532	XXX
Issuer Credit Obligations: Other U.S. Government Obligations (Not Exempt from RBC)								
19075Q-AD-4	COBANK ACB	08/14/2025	PIPER JAFFRAY & CO	XXX	243,438	250,000	1,299	1.A
0029999999 – Issuer Credit Obligations: Other U.S. Government Obligations (Not Exempt from RBC)					243,438	250,000	1,299	XXX
Issuer Credit Obligations: Corporate Bonds (Unaffiliated)								
05465C-AC-4	AXOS FINANCIAL INC	09/16/2025	Stifel Nicolaus & Co	XXX	300,000	300,000		2.B FE
06417N-A9-4	BANK OZK	08/15/2025	Stifel Nicolaus & Co	XXX	273,000	300,000	3,140	2.C FE
25746U-EA-3	DOMINION ENERGY INC	09/05/2025	PIPER JAFFRAY & CO	XXX	503,750	500,000	2,756	2.C FE
299808-AE-5	EVEREST REINSURANCE HOLDINGS INC	07/02/2025	PIPER JAFFRAY & CO	XXX	98,750	100,000	949	2.C FE
55261F-AN-4	M&T BANK CORP	09/15/2025	PIPER JAFFRAY & CO	XXX	486,875	500,000	729	2.C FE
693475-BC-8	PNC FINANCIAL SERVICES GROUP INC	09/04/2025	PIPER JAFFRAY & CO	XXX	486,250	500,000	3,778	2.C FE
828730-AC-5	SIMMONS FIRST NATIONAL CORP	09/09/2025	Stifel Nicolaus & Co	XXX	250,000	250,000		2.B FE
84470P-AG-4	SOUTHSIDE BANCSHARES INC	08/07/2025	Stifel Nicolaus & Co	XXX	200,000	200,000		2.B FE
902973-BC-9	US BANCORP	07/23/2025	PIPER JAFFRAY & CO	XXX	241,425	250,000	231	2.B FE
949746-NG-2	WELLS FARGO & CO	09/30/2025	Stifel Nicolaus & Co	XXX	261,360	264,000	2,710	1.E FE
0089999999 – Issuer Credit Obligations: Corporate Bonds (Unaffiliated)					3,101,410	3,164,000	14,293	XXX
0489999999 – Subtotal - Issuer Obligations (Unaffiliated)					3,698,019	3,764,000	18,124	XXX
0509999997 – Subtotals - Issuer Credit Obligations - Part 3					3,698,019	3,764,000	18,124	XXX
0509999998 – Summary Item from Part 5 for Issuer Credit Obligations (N/A to Quarterly)					XXX	XXX	XXX	XXX
0509999999 – Subtotals - Issuer Credit Obligations					3,698,019	3,764,000	18,124	XXX
Asset-Backed Securities: Financial Asset-Backed - Self-Liquidating, Agency Residential Mortgage-Backed Securities - Guaranteed (Exempt from RBC)								
3618N5-MQ-9	G2 MB0366 - RMBS	09/25/2025	CANTOR FITZGERALD & CO. INC	XXX	499,238	494,525	2,115	1.A
3618N5-RF-8	G2 MB0485 - RMBS	08/19/2025	CANTOR FITZGERALD & CO. INC	XXX	501,547	498,742	1,600	1.A
3618N5-TN-9	G2 MB0556 - RMBS	08/14/2025	CANTOR FITZGERALD & CO. INC	XXX	502,813	500,000	1,451	1.A
38384L-KH-1	GNR 2025-H10 CI - CMO/RMBS	07/01/2025	RAYMOND JAMES & ASSOCIATES	XXX			(40)	1.A
38384L-RP-6	GNR 2025-H14 IC - CMO/RMBS	09/01/2025	RAYMOND JAMES & ASSOCIATES	XXX	297,394		449	1.A
38384L-VJ-5	GNR 2025-H17 ID - CMO/RMBS	08/20/2025	RAYMOND JAMES & ASSOCIATES	XXX	501,813		3,690	1.A
1019999999 – Asset-Backed Securities: Financial Asset-Backed - Self-Liquidating, Agency Residential Mortgage-Backed Securities - Guaranteed (Exempt from RBC)					2,302,805	1,493,267	9,266	XXX
Asset-Backed Securities: Financial Asset-Backed - Self-Liquidating, Agency Residential Mortgage-Backed Securities - Not/Partially Guaranteed (Not Exempt from RBC)								
3132DW-MY-6	FH SD8475 - RMBS	08/14/2025	CANTOR FITZGERALD & CO. INC	XXX	463,771	462,110	1,341	1.A
3132DW-NX-7	FH SD8506 - RMBS	08/19/2025	CANTOR FITZGERALD & CO. INC	XXX	475,971	474,562	1,523	1.A
3137HM-YL-8	FHR 5574 AP - CMO/RMBS	08/14/2025	RAYMOND JAMES & ASSOCIATES	XXX	998,438	1,000,000	3,889	1.A
1039999999 – Asset-Backed Securities: Financial Asset-Backed - Self-Liquidating, Agency Residential Mortgage-Backed Securities - Not/Partially Guaranteed (Not Exempt from RBC)					1,938,179	1,936,672	6,753	XXX
Asset-Backed Securities: Financial Asset-Backed - Self-Liquidating, Non-Agency Residential Mortgage-Backed Securities (Unaffiliated)								
64831V-AA-0	NRZT 22NQM5 A1 - CMO/RMBS	06/10/2025	CANTOR FITZGERALD & CO. INC	XXX	(4,518)	(615)	(7)	Z
1059999999 – Asset-Backed Securities: Financial Asset-Backed - Self-Liquidating, Non-Agency Residential Mortgage-Backed Securities (Unaffiliated)					(4,518)	(615)	(7)	XXX
Asset-Backed Securities: Financial Asset-Backed - Self-Liquidating, Non-Agency Commercial Mortgage-Backed Securities (Unaffiliated)								
00792M-AC-7	AG 2024-NLP B - CMBS	09/19/2025	PIPER SANDLER & CO	XXX	241,950	240,000	323	1.D FE
1079999999 – Asset-Backed Securities: Financial Asset-Backed - Self-Liquidating, Non-Agency Commercial Mortgage-Backed Securities (Unaffiliated)					241,950	240,000	323	XXX
1889999999 – Subtotal - Asset-Backed Securities (Unaffiliated)					4,478,417	3,669,324	16,335	XXX

SCHEDULE D - PART 3

Show All Long-Term Bonds and Stock Acquired During the Current Quarter

1	2	3	4	5	6	7	8	9
CUSIP Identification	Description	Date Acquired	Name of Vendor	Number of Shares of Stock	Actual Cost	Par Value	Paid for Accrued Interest and Dividends	NAIC Designation, NAIC Designation Modifier and SVO Administrative Symbol
1909999997 – Subtotals - Asset-Backed Securities - Part 3 .....					4,478,417	3,669,324	16,335	XXX
1909999998 – Summary Item from Part 5 for Asset-Backed Securities (N/A to Quarterly) .....					XXX	XXX	XXX	XXX
1909999999 – Subtotals - Asset-Backed Securities .....					4,478,417	3,669,324	16,335	XXX
2009999999 – Subtotals - Issuer Credit Obligations and Asset-Backed Securities .....					8,176,436	7,433,324	34,458	XXX
Common Stocks: Industrial and Miscellaneous (Unaffiliated) Publicly Traded								
64361Q-10-1 .....	VIPER ENERGY CL A ORD .....	08/19/2025 .....	Various .....	11,001.430 .....	280,160	XXX		XXX
5019999999 – Common Stocks: Industrial and Miscellaneous (Unaffiliated) Publicly Traded .....					280,160	XXX		XXX
5989999997 – Subtotals - Common Stocks - Part 3 .....					280,160	XXX		XXX
5989999998 – Summary Item from Part 5 for Common Stocks (N/A to Quarterly) .....					XXX	XXX	XXX	XXX
5989999999 – Subtotals Common Stocks .....					280,160	XXX		XXX
5999999999 – Subtotals Preferred and Common Stocks .....					280,160	XXX		XXX
6009999999 – Totals .....					8,456,596	XXX	34,458	XXX

SCHEDULE D - PART 4

Show All Long-Term Bonds and Stock Sold, Redeemed or Otherwise Disposed of During the Current Quarter

1	2	3	4	5	6	7	8	9	Change in Book / Adjusted Carrying Value					15	16	17	18	19	20	21
									10	11	12	13	14							
CUSIP Identification	Description	Disposal Date	Name of Purchaser	Number of Shares of Stock	Consideration	Par Value	Actual Cost	Prior Year Book / Adjusted Carrying Value	Unrealized Valuation Increase / (Decrease)	Current Year's (Amortization) / Accretion	Current Year's Other-Than- Temporary Impairment Recognized	Total Change in B. / A.C.V. (10+11-12)	Total Foreign Exchange Change in B./A.C.V.	Book / Adjusted Carrying Value at Disposal Date	Foreign Exchange Gain (Loss) on Disposal	Realized Gain (Loss) on Disposal	Total Gain (Loss) on Disposal	Bond Interest / Stock Dividends Received During Year	Stated Contractual Maturity Date	NAIC Designation, NAIC Designation Modifier and SVO Administrative Symbol
Issuer Credit Obligations: U.S. Government Obligations (Exempt from RBC)																				
912828-4Z-0	UNITED STATES TREASURY	08/31/2025	Maturity @ 100.00	XXX	256,000	256,000	248,062	252,102		3,898		3,898		256,000				7,040	08/31/2025	1.A
0019999999 – Issuer Credit Obligations: U.S. Government Obligations (Exempt from RBC)					256,000	256,000	248,062	252,102		3,898		3,898		256,000				7,040	XXX	XXX
Issuer Credit Obligations: Municipal Bonds - Special Revenues																				
187145-DB-0	CLIFTON TEX HIGHER ED FIN CORP ED REV	07/11/2025	Call @ 100.00	XXX	500,000	500,000	568,045	500,000						500,000				22,639	08/15/2039	1.A FE
0059999999 – Issuer Credit Obligations: Municipal Bonds - Special Revenues					500,000	500,000	568,045	500,000						500,000				22,639	XXX	XXX
Issuer Credit Obligations: Corporate Bonds (Unaffiliated)																				
20161D-AA-2	COMMERCIAL CREDIT GROUP INC	08/14/2025	Call @ 100.00	XXX	250,000	250,000	250,000	250,000						250,000				8,599	05/30/2026	1.G PL
21869M-AA-5	CORESTATES CAPITAL III	06/30/2025	Call @ 100.00	XXX														1,318	02/15/2027	1.E FE
29360A-AA-8	ENSTAR FINANCE LLC	09/02/2025	Call @ 100.00	XXX	200,000	200,000	203,875	200,572		(572)		(572)		200,000				11,500	09/01/2040	2.C FE
0089999999 – Issuer Credit Obligations: Corporate Bonds (Unaffiliated)					450,000	450,000	453,875	450,572		(572)		(572)		450,000				21,417	XXX	XXX
0489999999 – Subtotal - Issuer Obligations (Unaffiliated)					1,206,000	1,206,000	1,269,982	1,202,673		3,327		3,327		1,206,000				51,096	XXX	XXX
0509999997 – Subtotals - Issuer Credit Obligations - Part 4					1,206,000	1,206,000	1,269,982	1,202,673		3,327		3,327		1,206,000				51,096	XXX	XXX
0509999998 – Summary Item from Part 5 for Issuer Credit Obligations (N/A to Quarterly)					XXX	XXX	XXX	XXX	XXX	XXX	XXX	XXX	XXX	XXX	XXX	XXX	XXX	XXX	XXX	XXX
0509999999 – Subtotals - Issuer Credit Obligations					1,206,000	1,206,000	1,269,982	1,202,673		3,327		3,327		1,206,000				51,096	XXX	XXX
Asset-Backed Securities: Financial Asset-Backed - Self-Liquidating, Agency Residential Mortgage-Backed Securities - Guaranteed (Exempt from RBC)																				
3618N5-RF-8	G2 MB0485 - RMBS	09/01/2025	Paydown	XXX	1,189	1,189	1,196							1,196		(7)	(7)	5	07/20/2055	1.A
3618N5-TN-9	G2 MB0556 - RMBS	09/01/2025	Paydown	XXX	1,135	1,135	1,141							1,141		(6)	(6)	5	08/20/2055	1.A
38383K-5L-2	GNR 2024-H21 IC - CMO/RMBS	09/20/2025	Direct	XXX			4,635	4,540						4,540		(4,540)	(4,540)		11/20/2074	1.A
38383K-R9-5	GNR 2024-H17 IJ - CMO/RMBS	09/01/2025	Direct	XXX			2,284	2,237						2,237		(2,237)	(2,237)		09/20/2074	1.A
38383K-SB-9	GNR 2024-H04 NI - CMO/RMBS	09/01/2025	Direct	XXX			886	844						844		(844)	(844)		03/20/2074	1.A
38383K-XB-3	GNR 2024-H07 IG - CMO/RMBS	09/20/2025	Direct	XXX			3,338	3,218						3,218		(3,218)	(3,218)		04/20/2074	1.A
38384G-SB-2	GNR 2024-009 AN - CMO/RMBS	09/01/2025	Paydown	XXX	18,622	18,622	18,738	18,647		(29)		(29)		18,619		3	3	756	06/20/2050	1.A
38384L-DA-4	GNR 2025-H05 LI - CMO/RMBS	09/20/2025	Direct	XXX			7,146							7,146		(7,146)	(7,146)		02/20/2075	1.A
38384L-KH-1	GNR 2025-H10 CI - CMO/RMBS	09/01/2025	Direct	XXX			1,351							1,351		(1,351)	(1,351)		04/20/2075	1.A
38384V-VV-6	GNR 2024-188 PA - CMO/RMBS	09/01/2025	Paydown	XXX	25,929	25,929	26,318	26,317		(11)		(11)		26,306		(377)	(377)	1,115	03/20/2054	1.A
1019999999 – Asset-Backed Securities: Financial Asset-Backed - Self-Liquidating, Agency Residential Mortgage-Backed Securities - Guaranteed (Exempt from RBC)					46,875	46,875	67,033	55,803		(40)		(40)		66,597		(19,721)	(19,721)	1,882	XXX	XXX
Asset-Backed Securities: Financial Asset-Backed - Self-Liquidating, Agency Residential Mortgage-Backed Securities - Not/Partially Guaranteed (Not Exempt from RBC)																				
3132DW-MY-6	FH SD8475 - RMBS	09/01/2025	Paydown	XXX	3,397	3,397	3,409							3,409		(12)	(12)	16	11/01/2054	1.A
3132DW-NX-7	FH SD8506 - RMBS	09/01/2025	Paydown	XXX	3,476	3,476	3,486							3,486		(10)	(10)	16	02/01/2055	1.A
3136BU-T7-5	FNR 2025-4 BA - CMO/RMBS	09/01/2025	Paydown	XXX	13,852	13,852	13,750			3		3		13,753		99	99	449	08/25/2051	1.A
3137BP-D4-8	FHR 4583 JI - CMO/RMBS	09/01/2025	Direct	XXX			1,179	192						192		(192)	(192)		05/15/2031	1.A
3137HM-YL-8	FHR 5574 AP - CMO/RMBS	09/01/2025	Paydown	XXX	3,400	3,400	3,395							3,395		5	5	14	02/25/2054	1.A
1039999999 – Asset-Backed Securities: Financial Asset-Backed - Self-Liquidating, Agency Residential Mortgage-Backed Securities - Not/Partially Guaranteed (Not Exempt from RBC)					24,125	24,125	25,219	192		3		3		24,235		(111)	(111)	494	XXX	XXX
Asset-Backed Securities: Financial Asset-Backed - Self-Liquidating, Non-Agency Residential Mortgage-Backed Securities (Unaffiliated)																				
22758H-AB-6	CROSS 24H4 A2 - RMBS	09/01/2025	Paydown	XXX	15,193	15,193	15,193	15,183		(38)		(38)		15,145		49	49	661	07/25/2069	1.A
25150M-AC-0	DBALT 2007-RAMP1 A2 - RMBS	09/25/2025	Paydown	XXX	1,840	1,840	1,656	1,757		23		23		1,780		60	60	16	12/25/2036	1.A FM
31739T-AC-3	FASST 2023-S2 A3 - CMO/RMBS	09/25/2025	Paydown	XXX	4,292	4,292	4,109	4,062		14		14		4,077		215	215	183	04/25/2073	1.A FE
31740X-AA-5	FASST 2022-S6 A1 - CMO/RMBS	09/25/2025	Paydown	XXX	13,714	13,714	12,457	13,294		111		111		13,405		309	309	174	12/27/2072	1.A FE
437307-AD-3	HMIR 2021-1 M2 - CMO/RMBS	09/25/2025	Paydown	XXX	43,601	43,601	40,806	42,538		361		361		42,899		702	702	2,180	07/25/2033	1.B FE
45669A-AB-0	INDA 2007-AR1 1A2 - CMO/RMBS	09/01/2025	Paydown	XXX	259	259	222	205		(4)		(4)		201		58	58	8	03/25/2037	1.A FM
46593D-AA-5	JPMMT 249 A2 - RMBS	09/01/2025	Paydown	XXX	16,861	16,861	16,998	16,991		(162)		(162)		16,829		32	32	620	02/25/2055	1.A FE
64831H-AM-5	NRZT 2023-NQM1 A1A - RMBS	09/01/2025	Paydown	XXX	9,476	9,476	9,467			(32)		(32)		9,435		41	41	442	10/25/2063	1.A
64831V-AA-0	NRZT 22NQM5 A1 - CMO/RMBS	09/01/2025	Paydown	XXX	8,899	8,899	8,938			6		6		5,042		3,858	3,858	98	11/25/2052	Z
670843-AA-9	OBX 23NQM2 A1 - CMO/RMBS	09/01/2025	Paydown	XXX	6,310	6,310	6,297	6,297		(17)		(17)		6,279		30	30	262	01/25/2063	1.A FE
67119C-AA-8	OBX 24NQM8 A1 - RMBS	09/01/2025	Paydown	XXX	20,312	20,312	20,312	20,296		(44)		(44)		20,252		60	60	845	05/27/2064	1.A FE
69337H-BD-2	PHHAM 2007-2 2A5 - CMO/RMBS	09/25/2025	Paydown	XXX	2,380	3,485	2,500	2,684		44		44		2,729		(349)	(349)	111	05/26/2037	1.A FM
69378K-AC-8	PRPM 22NQM1 A3 - CMO/RMBS	09/01/2025	Paydown	XXX	2,980	2,980	2,820	2,860		2		2		2,862		118	118	105	08/25/2067	1.C
73072D-AA-9	PNT 2025-1 A1 - RMBS	09/25/2025	Paydown	XXX	4,603	4,603	4,549			4		4		4,553		50	50	77	06/25/2055	1.G FE
749241-AA-3	RALI 2007-QH9 A1 - CMO/RMBS	09/01/2025	Paydown	XXX	704	581	485	510		3		3		514		191	191	22	11/25/2037	2.B FM
75049X-AB-8	RMIR 221 M1B - CMO/RMBS	08/26/2025	Paydown	XXX	14,569	14,569	14,569	14,569						14,569				1,021	09/25/2032	3.A FE
81743G-AA-4	SEMT 255 A1 - RMBS	09/01/2025	Paydown	XXX	11,230	11,230	11,230							11,230				163	06/25/2055	1.A FE
81749P-AB-6	SEMT 2024-9 A2 - RMBS	09/01/2025	Paydown	XXX	13,197	13,197	13,306	13,317		(1)		(1)		13,316		(119)	(119)	467	10/26/2054	1.A FE
92539B-AB-8	VERUS 2023-1 A2 - CMO/RMBS	09/01/2025	Paydown	XXX	5,109	5,109	5,109	5,138		13		13		5,151		(42)	(42)	225	12/27/2067	1.A
92539B-AC-6	VERUS 2023-1 A3 - CMO/RMBS	09/01/2025	Paydown	XXX	3,065	3,065	3,065	3,082		8		8		3,090		(24)	(24)	142	12/27/2067	1.B
1059999999 – Asset-Backed Securities: Financial Asset-Backed - Self-Liquidating, Non-Agency Residential Mortgage-Backed Securities (Unaffiliated)					198,595	199,576	194,097	172,249		292		292		193,356		5,239	5,239	7,824	XXX	XXX

SCHEDULE D - PART 4

Show All Long-Term Bonds and Stock Sold, Redeemed or Otherwise Disposed of During the Current Quarter

1	2	3	4	5	6	7	8	9	Change in Book / Adjusted Carrying Value					15	16	17	18	19	20	21
									10	11	12	13	14							
CUSIP Identification	Description	Disposal Date	Name of Purchaser	Number of Shares of Stock	Consideration	Par Value	Actual Cost	Prior Year Book / Adjusted Carrying Value	Unrealized Valuation Increase / (Decrease)	Current Year's (Amortization) / Accretion	Current Year's Other-Than- Temporary Impairment Recognized	Total Change in B. / A.C.V. (10+11-12)	Total Foreign Exchange Change in B./A.C.V.	Book / Adjusted Carrying Value at Disposal Date	Foreign Exchange Gain (Loss) on Disposal	Realized Gain (Loss) on Disposal	Total Gain (Loss) on Disposal	Bond Interest / Stock Dividends Received During Year	Stated Contractual Maturity Date	NAIC Designation, NAIC Designation Modifier and SVO Administrative Symbol
Asset-Backed Securities: Financial Asset-Backed - Self-Liquidating, Non-Agency Commercial Mortgage-Backed Securities (Unaffiliated)																				
03880K-AA-2	ARCLO 2021-FL3 A - CMBS	09/15/2025	Paydown	XXX	44,517	44,517	44,517							44,517				1,722	08/15/2034	1.A FE
03880R-AA-7	ARCLO 2021-FL4 A - CMBS	09/15/2025	Paydown	XXX	38,619	38,619	38,571	38,528		43		43					48	1,543	11/17/2036	1.A FE
05606D-AS-7	BX 2022-PSB A - CMBS	07/15/2025	Paydown	XXX	229,242	229,242	230,101			(638)		(638)		229,464		(222)	(222)	3,924	08/15/2039	Z
123910-AA-9	BX 2024-GPA3 A - CMBS	09/15/2025	Paydown	XXX	19,558	19,558	19,605	19,605		(10)		(10)		19,595		(38)	(38)	798	12/15/2039	1.A FE
48275E-AA-4	KREF 2022-FL3 A - CMBS	09/19/2025	Paydown	XXX	63,075	63,075	62,996	62,911		86		86		62,997		78	78	2,810	02/22/2039	1.A FE
1079999999 – Asset-Backed Securities: Financial Asset-Backed - Self-Liquidating, Non-Agency Commercial Mortgage-Backed Securities (Unaffiliated)					395,010	395,010	395,792	165,562		(519)		(519)		395,144		(134)	(134)	10,797	XXX	XXX
Asset-Backed Securities: Financial Asset-Backed - Self-Liquidating, Non-Agency - CLOs/CBOs/CDOs (Unaffiliated)																				
10949W-AE-2	BWCAP 2021-2 C1 - CDO	09/26/2025	Call @ 100.00	XXX	250,000	250,000	250,000	250,000						250,000				18,086	11/15/2030	1.F FE
26254F-AC-8	DRSLF 107 A2 - CDO	08/15/2025	Call @ 100.00	XXX	250,000	250,000	253,500	252,368		(231)		(231)		252,137		(2,137)	(2,137)	12,406	08/15/2035	1.A FE
27580X-AG-3	CIFC 2019-1 D - CDO	08/15/2025	Call @ 100.00	XXX	250,000	250,000	254,125	262,915		(1,431)		(1,431)		261,484		(11,484)	(11,484)	19,371	01/21/2033	2.C FE
43133Y-AL-9	HITR 4 A1R - CDO	07/23/2025	Paydown	XXX	10,045	10,045	10,045							10,045				197	01/23/2040	1.A FE
60689W-AK-7	VENTR B A2 - CDO	07/22/2025	Paydown	XXX	32,318	32,318	31,963	31,927		117		117		32,043		275	275	1,384	07/23/2030	1.A FE
76676J-AA-9	RIN 6 A1 - CDO	07/15/2025	Paydown	XXX	250,000	250,000	251,783	250,825		(76)		(76)		250,749		(749)	(749)	12,660	07/16/2035	1.A FE
87240P-AQ-4	TCP 1R DR - CDO	07/03/2025	RAYMOND JAMES & ASSOCIATES	XXX	297,000	300,000	299,499	299,325		(239)		(239)		299,086		(2,086)	(2,086)	16,247	08/20/2033	2.C FE
1099999999 – Asset-Backed Securities: Financial Asset-Backed - Self-Liquidating, Non-Agency - CLOs/CBOs/CDOs (Unaffiliated)					1,339,364	1,342,364	1,350,915	1,347,360		(1,860)		(1,860)		1,355,545		(16,182)	(16,182)	80,351	XXX	XXX
Asset-Backed Securities: Financial Asset-Backed - Self-Liquidating, Other Financial Asset-Backed Securities - Self-Liquidating (Unaffiliated)																				
63939Q-AA-4	NAVSL 165 A - ABS	09/25/2025	Paydown	XXX	3,159	3,159	3,103	3,098		1		1		3,099		60	60	117	06/25/2065	1.B FE
78443C-BP-8	SLMA 2004-B A4 - ABS	09/15/2025	Paydown	XXX	10,545	10,545	10,294		(48)			(48)		10,799		(254)	(254)	401	09/15/2033	1.A FE
78444Y-AD-7	SLMA 2008-5 A4 - ABS	07/25/2025	Paydown	XXX	1,473	1,473	1,482	1,457	164	(28)		136		1,593		(120)	(120)	74	07/25/2023	6. *
1119999999 – Asset-Backed Securities: Financial Asset-Backed - Self-Liquidating, Other Financial Asset-Backed Securities - Self-Liquidating (Unaffiliated)					15,176	15,176	14,880	15,401	164	(74)		89		15,490		(314)	(314)	593	XXX	XXX
1889999999 – Subtotal - Asset-Backed Securities (Unaffiliated)					2,019,144	2,023,126	2,047,936	1,756,567	164	(2,198)		(2,035)		2,050,367		(31,223)	(31,223)	101,940	XXX	XXX
1909999997 – Subtotals - Asset-Backed Securities - Part 4					2,019,144	2,023,126	2,047,936	1,756,567	164	(2,198)		(2,035)		2,050,367		(31,223)	(31,223)	101,940	XXX	XXX
1909999998 – Summary Item from Part 5 for Asset-Backed Securities (N/A to Quarterly)					XXX	XXX	XXX	XXX	XXX	XXX	XXX	XXX	XXX	XXX	XXX	XXX	XXX	XXX	XXX	XXX
1909999999 – Subtotals - Asset-Backed Securities					2,019,144	2,023,126	2,047,936	1,756,567	164	(2,198)		(2,035)		2,050,367		(31,223)	(31,223)	101,940	XXX	XXX
2009999999 – Subtotals - Issuer Credit Obligations and Asset-Backed Securities					3,225,144	3,229,126	3,317,918	2,959,240	164	1,128		1,292		3,256,367		(31,223)	(31,223)	153,036	XXX	XXX
Preferred Stocks: Industrial and Miscellaneous (Unaffiliated) Perpetual Preferred																				
200340-AU-1	COMERICA INC	07/01/2025	Call @ 100.00	400,000.000	400,000		399,688	397,000	2,688			2,688		399,688		313	313	16,875	XXX	3.B FE
4019999999 – Preferred Stocks: Industrial and Miscellaneous (Unaffiliated) Perpetual Preferred					400,000	XXX	399,688	397,000	2,688			2,688		399,688		313	313	16,875	XXX	XXX
4509999997 – Subtotals - Preferred Stocks - Part 4					400,000	XXX	399,688	397,000	2,688			2,688		399,688		313	313	16,875	XXX	XXX
4509999998 – Summary Item from Part 5 for Preferred Stocks (N/A to Quarterly)					XXX	XXX	XXX	XXX	XXX	XXX	XXX	XXX	XXX	XXX	XXX	XXX	XXX	XXX	XXX	XXX
4509999999 – Subtotals - Preferred Stocks					400,000	XXX	399,688	397,000	2,688			2,688		399,688		313	313	16,875	XXX	XXX
Common Stocks: Industrial and Miscellaneous (Unaffiliated) Publicly Traded																				
02079K-10-7	ALPHABET CL C ORD	08/12/2025	National Alliance Securities Corporation	7,000.000	1,419,556	XXX	344,165	1,333,080	(988,915)			(988,915)		344,165		1,075,391	1,075,391	2,870	XXX	XXX
025816-10-9	AMERICAN EXPRESS ORD	08/12/2025	National Alliance Securities Corporation	3,000.000	905,056	XXX	236,662	890,370	(653,708)			(653,708)		236,662		668,394	668,394	7,020	XXX	XXX
03769M-10-6	APOLLO GLOBAL MANAGEMENT ORD	08/12/2025	National Alliance Securities Corporation	13,035.000	1,886,901	XXX	246,987	2,152,861	(1,905,873)			(1,905,873)		246,987		1,639,914	1,639,914	12,677	XXX	XXX
053332-10-2	AUTOZONE ORD	08/12/2025	CANTOR FITZGERALD & CO. INC.	415.000	1,661,110	XXX	235,011	1,328,830	(1,093,819)			(1,093,819)		235,011		1,426,099	1,426,099		XXX	XXX
237266-10-1	DARLING INGREDIENTS ORD	08/12/2025	National Alliance Securities Corporation	24,000.000	741,689	XXX	562,211	808,560	(246,349)			(246,349)		562,211		179,478	179,478		XXX	XXX
320517-10-5	FIRST HORIZON ORD	08/12/2025	National Alliance Securities Corporation	25,000.000	554,204	XXX	251,428	503,500	(252,072)			(252,072)		251,428		302,776	302,776	11,250	XXX	XXX
526057-30-2	LENNAR CL B ORD	08/12/2025	CANTOR FITZGERALD & CO. INC.	768,245	768,245	XXX	539,869	858,975	(319,106)			(319,106)		539,869		228,375	228,375	96,655	XXX	XXX
552848-10-3	MGIC INVESTMENT ORD	08/13/2025	National Alliance Securities Corporation	65,000.000	1,791,489	XXX	782,322	1,541,150	(758,828)			(758,828)		782,322		1,009,167	1,009,167	26,650	XXX	XXX
64361Q-10-1	VIPER ENERGY CL A ORD	08/26/2025	NO BROKER	0.430	17	XXX	12							12		5	5		XXX	XXX
680223-10-4	OLD REPUBLIC INTERNATIONAL ORD	08/12/2025	National Alliance Securities Corporation	30,000.000	1,133,019	XXX	459,579	1,085,700	(626,121)			(626,121)		459,579		673,440	673,440	77,400	XXX	XXX
743315-10-3	PROGRESSIVE ORD	08/12/2025	National Alliance Securities Corporation	4,000.000	975,352	XXX	313,164	958,440	(645,276)			(645,276)		313,164		662,188	662,188	19,200	XXX	XXX
75281A-10-9	RANGE RESOURCES ORD	08/12/2025	National Alliance Securities Corporation	13,000.000	443,023	XXX	482,746	256,501	(9,711)			(9,711)		482,746		(39,723)	(39,723)	2,340	XXX	XXX
82983N-10-8	SITIO ROYALTIES CL A ORD	08/19/2025	Unknown	22,660.000	280,160	XXX	280,160	434,619	(154,459)			(154,459)		280,160				25,379	XXX	XXX
89679E-30-0	TRIUMPH FINANCIAL ORD	08/12/2025	CANTOR FITZGERALD & CO. INC.	9,000.000	482,260	XXX	211,249	817,920	(606,671)			(606,671)		211,249		271,011	271,011		XXX	XXX
G3198U-10-2	ESSENT GROUP ORD	08/12/2025	CANTOR FITZGERALD & CO. INC.	5,000.000	308,038	XXX	148,702	272,200	(123,499)			(123,499)		148,702		159,337	159,337	3,100	XXX	XXX
5019999999 – Common Stocks: Industrial and Miscellaneous (Unaffiliated) Publicly Traded					13,350,118	XXX	5,094,266	13,242,706	(8,384,407)			(8,384,407)		5,094,266		8,255,852	8,255,852	284,541	XXX	XXX

SCHEDULE D - PART 4

Show All Long-Term Bonds and Stock Sold, Redeemed or Otherwise Disposed of During the Current Quarter

1	2	3	4	5	6	7	8	9	Change in Book / Adjusted Carrying Value					15	16	17	18	19	20	21
									10	11	12	13	14							
CUSIP Identification	Description	Disposal Date	Name of Purchaser	Number of Shares of Stock	Consideration	Par Value	Actual Cost	Prior Year Book / Adjusted Carrying Value	Unrealized Valuation Increase / (Decrease)	Current Year's (Amortization) / Accretion	Current Year's Other-Than- Temporary Impairment Recognized	Total Change in B. / A.C.V. (10+11-12)	Total Foreign Exchange Change in B./A.C.V.	Book / Adjusted Carrying Value at Disposal Date	Foreign Exchange Gain (Loss) on Disposal	Realized Gain (Loss) on Disposal	Total Gain (Loss) on Disposal	Bond Interest / Stock Dividends Received During Year	Stated Contractual Maturity Date	NAIC Designation, NAIC Designation Modifier and SVO Administrative Symbol
Common Stocks: Industrial and Miscellaneous (Unaffiliated) Other																				
96145W-10-3	WESTROCK COFFEE ORD	08/22/2025	Adjustment		15,000.000		100,676	XXX		150,000		150,000		150,000		(49,325)	(49,325)		XXX	XXX
5029999999 - Common Stocks: Industrial and Miscellaneous (Unaffiliated) Other							100,676	XXX		150,000		150,000		150,000		(49,325)	(49,325)		XXX	XXX
5989999997 - Subtotals - Common Stocks - Part 4							13,450,793	XXX		5,244,266		13,392,706	(8,384,407)	5,244,266		8,206,527	8,206,527	284,541	XXX	XXX
5989999998 - Summary Item from Part 5 for Common Stocks (N/A to Quarterly)							XXX	XXX		XXX		XXX	XXX	XXX		XXX	XXX	XXX	XXX	XXX
5989999999 - Subtotals Common Stocks							13,450,793	XXX		5,244,266		13,392,706	(8,384,407)	5,244,266		8,206,527	8,206,527	284,541	XXX	XXX
5999999999 - Subtotals Preferred and Common Stocks							13,850,793	XXX		5,643,953		13,789,706	(8,381,720)	5,643,953		8,206,840	8,206,840	301,416	XXX	XXX
6009999999 - Totals							17,075,938	XXX		8,961,872		16,748,946	(8,381,556)	8,900,321		8,175,617	8,175,617	454,452	XXX	XXX

(E-06) Schedule DB - Part A - Section 1

NONE

(E-06) Schedule DB - Part A - Section 1 - Description of Hedged Risk(s)

NONE

(E-06) Schedule DB - Part A - Section 1 - Financial or Economic Impact of The Hedge at the End of the Reporting Period

NONE

(E-07) Schedule DB - Part B - Section 1

NONE

(E-07) Schedule DB - Part B - Section 1 - Broker Name

NONE

(E-07) Schedule DB - Part B - Section 1 - Description of Hedged Risk(s)

NONE

(E-07) Schedule DB - Part B - Section 1 - Financial or Economic Impact of The Hedge at the End of the Reporting Period

NONE

(E-08) Schedule DB - Part D - Section 1

NONE

(E-09) Schedule DB - Part D - Section 2 - Collateral Pledged By Reporting Entity

NONE

(E-09) Schedule DB - Part D - Section 2 - Collateral Pledged To Reporting Entity

NONE

(E-10) Schedule DB - Part E

NONE

(E-11) Schedule DL - Part 1

NONE

(E-12) Schedule DL - Part 2

NONE

SCHEDULE E - PART 1 - CASH  
Month End Depository Balances

1  Depository	2  Restricted Asset Code	3  Rate of Interest	4  Amount of Interest Received During Current Quarter	5  Amount of Interest Accrued at Current Statement Date	Book Balance at End of Each Month During Current Quarter			9  *
					6	7	8	
					First Month	Second Month	Third Month	
HUNTINGTON TRUST – COLUMBUS, OH					276,831	781,608	291,967	XXX
HUNTINGTON OPERATING – COLUMBUS, OH					2,010,227	4,204,538	6,098,694	XXX
PINNACLE – NASHVILLE, TN					(5,761)	144,806	255,931	XXX
0199998 – Deposits in 4 depositories that do not exceed the allowable limit in any one depository (see Instructions) - Open Depositories					156,995	301,784	402,466	XXX
0199999 – Total Open Depositories					2,438,292	5,432,735	7,049,057	XXX
0299998 – Deposits in depositories that do not exceed the allowable limit in any one depository (see Instructions) - Suspended Depositories								XXX
0299999 – Total Suspended Depositories								XXX
0399999 – Total Cash on Deposit					2,438,292	5,432,735	7,049,057	XXX
0499999 – Cash in Company's Office			XXX	XXX				XXX
0599999 – Total					2,438,292	5,432,735	7,049,057	XXX

SCHEDULE E - PART 2 - CASH EQUIVALENTS

Show Investments Owned End of Current Quarter

1	2	3	4	5	6	7	8	9
CUSIP	Description	Restricted Asset Code	Date Acquired	Stated Rate of Interest	Maturity Date	Book / Adjusted Carrying Value	Amount of Interest Due and Accrued	Amount Received During Year
Exempt Money Market Mutual Funds – as Identified by SVO								
316175-50-4.....	FIDELITY IMM:TRS I.....		09/30/2025.....	3.970.....	XXX.....	7,380,722.....	28,668.....	15,814.....
8209999999 – Exempt Money Market Mutual Funds – as Identified by SVO.....						7,380,722.....	28,668.....	15,814.....
All Other Money Market Mutual Funds								
000000-00-0.....	Pinnacle Cash Sweep.....		09/30/2025.....		XXX.....	34,599.....		79.....
990220-47-7.....	RBS CITIZENS NA CASH SWEEP.....		09/02/2025.....		XXX.....	502,974.....		2,974.....
PINNAC-LE-9.....	CASH SWEEP.....		09/30/2025.....		XXX.....	34,914.....		20.....
8309999999 – All Other Money Market Mutual Funds.....						572,487.....		3,073.....
8589999999 – Total Cash Equivalents (Unaffiliated).....						7,953,210.....	28,668.....	18,887.....
8609999999 – Total Cash Equivalents.....						7,953,210.....	28,668.....	18,887.....