



LIFE, ACCIDENT AND HEALTH COMPANIES/FRATERNAL BENEFIT SOCIETIES — ASSOCIATION EDITION

QUARTERLY STATEMENT

AS OF JUNE 30, 2025
OF THE CONDITION AND AFFAIRS OF THE

Grange Life Insurance Company

NAIC Group Code00588, 00588NAIC Company Code71218Employer's ID Number31-0739286

(Current Period)(Prior Period)

Organized under the Laws ofOhio, State of Domicile or Port of EntryOhio

Country of DomicileUnited States

Licensed as business type: Life, Accident and Health [x]Fraternal Benefit Societies []

Incorporated/Organized03/05/1968Commenced Business07/01/1968

Statutory Home Office671 South High Street, Columbus, OH, US 43206-1066

(Street and Number)(City or Town, State, Country and Zip Code)

Main Administrative Office671 South High Street, Columbus, OH, US 43206-1066800-399-3797

(Street and Number)(City or Town, State, Country and Zip Code)(Area Code) (Telephone Number)

Mail AddressP.O. Box 182828, Columbus, OH, US 43218-2828

(Street and Number or P.O. Box)(City or Town, State, Country and Zip Code)

Primary Location of Books and Records3520 Broadway, Kansas City, MO, US 64111-2565800-399-3797

(Street and Number)(City or Town, State, Country and Zip Code)(Area Code) (Telephone Number)

Internet Web Site Addresswww.grangeinsurance.com

Statutory Statement ContactJennifer Kay Pieper, 816-753-7000

(Name)(Area Code) (Telephone Number) (Extension)

Jenny.Pieper@kclife.com, 816-531-8979

(E-mail Address)(FAX Number)

OFFICERS

Name	Title	Name	Title
WALTER EDWIN BIXBY	PRESIDENT AND CHIEF EXECUTIVE OFFICER	ALAN CRAIG MASON Jr.	GENERAL COUNSEL & SECRETARY
JENNIFER KAY PIEPER	CONTROLLER		

OTHER OFFICERS

ROBERT PHILIP BIXBY	CHAIRMAN OF THE BOARD	DAVID ARNOLD LAIRD	CHIEF FINANCIAL OFFICER
MARK ALAN MILTON	ACTUARY		

DIRECTORS OR TRUSTEES

ROBERT PHILIP BIXBY	WALTER EDWIN BIXBY	DAVID ARNOLD LAIRD	MARK ALAN MILTON
STEPHEN EDWARD ROPP			

State ofMissouri.....
County ofJackson.....

The officers of this reporting entity being duly sworn, each depose and say that they are the described officers of said reporting entity, and that on the reporting period stated above, all of the herein described assets were the absolute property of the said reporting entity, free and clear from any liens or claims thereon, except as herein stated, and that this statement, together with related exhibits, schedules and explanations therein contained, annexed or referred to, is a full and true statement of all the assets and liabilities and of the condition and affairs of the said reporting entity as of the reporting period stated above, and of its income and deductions therefrom for the period ended, and have been completed in accordance with the NAIC Annual Statement Instructions and Accounting Practices and Procedures manual except to the extent that: (1) state law may differ; or, (2) that state rules or regulations require differences in reporting not related to accounting practices and procedures, according to the best of their information, knowledge and belief, respectively. Furthermore, the scope of this attestation by the described officers also includes the related corresponding electronic filing with the NAIC, when required, that is an exact copy (except for formatting differences due to electronic filing) of the enclosed statement. The electronic filing may be requested by various regulators in lieu of or in addition to the enclosed statement.

WALTER EDWIN BIXBY
PRESIDENT AND CHIEF EXECUTIVE OFFICER

ALAN CRAIG MASON Jr.
GENERAL COUNSEL & SECRETARY

JENNIFER KAY PIEPER
CONTROLLER

Subscribed and sworn to before me this _____ day of _____,

a. Is this an original filing? Yes [X] No []

b. If no:
1. State the amendment number _____
2. Date filed _____
3. Number of pages attached _____

Jamar Buford, Paralegal
January 24, 2029

STATEMENT AS OF JUNE 30, 2025 OF THE Grange Life Insurance Company

ASSETS

	Current Statement Date			4 December 31 Prior Year Net Admitted Assets
	1	2	3	
	Assets	Nonadmitted Assets	Net Admitted Assets (Cols. 1 - 2)	
1. Bonds	406,004,722	0	406,004,722	403,612,792
2. Stocks:				
2.1 Preferred stocks	0	0	0	0
2.2 Common stocks	0	0	0	0
3. Mortgage loans on real estate:				
3.1 First liens	6,447,216	0	6,447,216	6,463,185
3.2 Other than first liens	0	0	0	0
4. Real estate:				
4.1 Properties occupied by the company (less \$ encumbrances)	0	0	0	0
4.2 Properties held for the production of income (less \$ encumbrances)	0	0	0	0
4.3 Properties held for sale (less \$ encumbrances)	0	0	0	0
5. Cash (\$2,758,518), cash equivalents (\$11,296,026) and short-term investments (\$0)	14,054,544	0	14,054,544	16,797,640
6. Contract loans (including \$premium notes)	14,466,324	0	14,466,324	14,172,527
7. Derivatives	0	0	0	0
8. Other invested assets	0	0	0	0
9. Receivables for securities	0	0	0	0
10. Securities lending reinvested collateral assets	0	0	0	0
11. Aggregate write-ins for invested assets	0	0	0	0
12. Subtotals, cash and invested assets (Lines 1 to 11)	440,972,806	0	440,972,806	441,046,144
13. Title plants less \$charged off (for Title insurers only)	0	0	0	0
14. Investment income due and accrued	4,076,023	0	4,076,023	3,963,143
15. Premiums and considerations:				
15.1 Uncollected premiums and agents' balances in the course of collection	1,221,347	70,779	1,150,568	1,292,463
15.2 Deferred premiums, agents' balances and installments booked but deferred and not yet due (including \$earned but unbilled premiums)	35,030,040	0	35,030,040	35,156,038
15.3 Accrued retrospective premiums (\$) and contracts subject to redetermination (\$)	0	0	0	0
16. Reinsurance:				
16.1 Amounts recoverable from reinsurers	3,242,810	98,713	3,144,097	2,685,141
16.2 Funds held by or deposited with reinsured companies	0	0	0	0
16.3 Other amounts receivable under reinsurance contracts	0	0	0	0
17. Amounts receivable relating to uninsured plans	0	0	0	0
18.1 Current federal and foreign income tax recoverable and interest thereon	0	0	0	0
18.2 Net deferred tax asset	13,542,495	10,743,802	2,798,693	2,386,666
19. Guaranty funds receivable or on deposit	487,852	478,900	8,952	129
20. Electronic data processing equipment and software	0	0	0	0
21. Furniture and equipment, including health care delivery assets (\$)	0	0	0	0
22. Net adjustment in assets and liabilities due to foreign exchange rates	0	0	0	0
23. Receivables from parent, subsidiaries and affiliates	0	0	0	0
24. Health care (\$) and other amounts receivable	0	0	0	0
25. Aggregate write-ins for other-than-invested assets	75,182	0	75,182	54,696
26. Total assets excluding Separate Accounts, Segregated Accounts and Protected Cell Accounts (Lines 12 to 25)	498,648,555	11,392,194	487,256,361	486,584,420
27. From Separate Accounts, Segregated Accounts and Protected Cell Accounts	0	0	0	0
28. Total (Lines 26 and 27)	498,648,555	11,392,194	487,256,361	486,584,420
DETAILS OF WRITE-INS				
1101.			0	0
1102.			0	0
1103.			0	0
1198. Summary of remaining write-ins for Line 11 from overflow page	0	0	0	0
1199. Totals (Lines 1101 through 1103 plus 1198) (Line 11 above)	0	0	0	0
2501. INTEREST MAINTENANCE RESERVE	0	0	0	54,696
2502. MISCELLANEOUS ASSETS	75,182	0	75,182	0
2503.			0	0
2598. Summary of remaining write-ins for Line 25 from overflow page	0	0	0	0
2599. Totals (Lines 2501 through 2503 plus 2598) (Line 25 above)	75,182	0	75,182	54,696

LIABILITIES, SURPLUS AND OTHER FUNDS

	1 Current Statement Date	2 December 31 Prior Year
1. Aggregate reserve for life contracts \$445,039,124 less \$0 included in Line 6.3 (including \$0 Modco Reserve)	445,039,124	445,222,607
2. Aggregate reserve for accident and health contracts (including \$ Modco Reserve)	244,596	302,103
3. Liability for deposit-type contracts (including \$ Modco Reserve)	432,072	486,705
4. Contract claims:		
4.1 Life	6,159,206	5,890,545
4.2 Accident and health	984	1,089
5. Policyholders' dividends/refunds to members \$ and coupons \$ due and unpaid	0	0
6. Provision for policyholders' dividends, refunds to members and coupons payable in following calendar year—estimated amounts:		
6.1 Policyholders' dividends and refunds to members apportioned for payment (including \$ Modco)	54,956	54,956
6.2 Policyholders' dividends and refunds to members not yet apportioned (including \$ Modco)	0	0
6.3 Coupons and similar benefits (including \$ Modco)	0	0
7. Amount provisionally held for deferred dividend policies not included in Line 6	0	0
8. Premiums and annuity considerations for life and accident and health contracts received in advance less \$ discount; including \$ accident and health premiums	443,672	334,359
9. Contract liabilities not included elsewhere:		
9.1 Surrender values on canceled contracts	0	0
9.2 Provision for experience rating refunds, including the liability of \$ accident and health experience rating refunds of which \$ is for medical loss ratio rebate per the Public Health Service Act.....	0	0
9.3 Other amounts payable on reinsurance, including \$ assumed and \$ ceded.....	0	0
9.4 Interest Maintenance Reserve	85,745	0
10. Commissions to agents due or accrued-life and annuity contracts \$326,430 , accident and health \$0 and deposit-type contract funds \$0	326,430	305,467
11. Commissions and expense allowances payable on reinsurance assumed	0	0
12. General expenses due or accrued	67,875	67,875
13. Transfers to Separate Accounts due or accrued (net) (including \$ accrued for expense allowances recognized in reserves, net of reinsured allowances)	0	0
14. Taxes, licenses and fees due or accrued, excluding federal income taxes	767,369	807,122
15.1 Current federal and foreign income taxes, including \$ on realized capital gains (losses)	79,004	395,193
15.2 Net deferred tax liability	0	0
16. Unearned investment income	587,854	548,609
17. Amounts withheld or retained by reporting entity as agent or trustee	0	0
18. Amounts held for agents' account, including \$ agents' credit balances	0	0
19. Remittances and items not allocated	1,992,870	3,576,939
20. Net adjustment in assets and liabilities due to foreign exchange rates	0	0
21. Liability for benefits for employees and agents if not included above	0	0
22. Borrowed money \$ and interest thereon \$	0	0
23. Dividends to stockholders declared and unpaid	0	0
24. Miscellaneous liabilities:		
24.01 Asset valuation reserve	3,067,190	2,780,000
24.02 Reinsurance in unauthorized and certified (\$) companies	0	0
24.03 Funds held under reinsurance treaties with unauthorized and certified (\$) reinsurers	0	0
24.04 Payable to parent, subsidiaries and affiliates	1,622,657	98,603
24.05 Drafts outstanding	0	0
24.06 Liability for amounts held under uninsured plans	0	0
24.07 Funds held under coinsurance	0	0
24.08 Derivatives	0	0
24.09 Payable for securities	0	0
24.10 Payable for securities lending.....	0	0
24.11 Capital notes \$ and interest thereon \$	0	0
25. Aggregate write-ins for liabilities	435,309	458,123
26. Total liabilities excluding Separate Accounts business (Lines 1 to 25)	461,406,913	461,330,295
27. From Separate Accounts statement		0
28. Total liabilities (Lines 26 and 27)	461,406,913	461,330,295
29. Common capital stock	1,893,750	1,893,750
30. Preferred capital stock	0	0
31. Aggregate write-ins for other than special surplus funds	0	0
32. Surplus notes	0	0
33. Gross paid in and contributed surplus	40,202,189	40,202,189
34. Aggregate write-ins for special surplus funds	0	0
35. Unassigned funds (surplus)	(16,246,491)	(16,841,814)
36. Less treasury stock, at cost:		
36.1 shares common (value included in Line 29 \$)	0	0
36.2 shares preferred (value included in Line 30 \$)	0	0
37. Surplus (Total Lines 31 + 32 + 33 + 34 + 35 - 36) (including \$ in Separate Accounts Statement)	23,955,698	23,360,375
38. Totals of Lines 29, 30 and 37	25,849,448	25,254,125
39. Totals of Lines 28 and 38 (Page 2, Line 28, Col. 3)	487,256,361	486,584,420
DETAILS OF WRITE-INS		
2501. UNCASHED CHECKS PENDING ESCHEATMENT	435,309	458,123
2502.		
2503.		
2598. Summary of remaining write-ins for Line 25 from overflow page	0	0
2599. Totals (Lines 2501 through 2503 plus 2598) (Line 25 above)	435,309	458,123
3101.		0
3102.		0
3103.		0
3198. Summary of remaining write-ins for Line 31 from overflow page	0	0
3199. Totals (Lines 3101 through 3103 plus 3198) (Line 31 above)	0	0
3401.		0
3402.		0
3403.		0
3498. Summary of remaining write-ins for Line 34 from overflow page	0	0
3499. Totals (Lines 3401 through 3403 plus 3498) (Line 34 above)	0	0

SUMMARY OF OPERATIONS

	1 Current Year To Date	2 Prior Year Year to Date	3 Prior Year Ended December 31
1. Premiums and annuity considerations for life and accident and health contracts	20,434,825	20,482,332	39,298,079
2. Considerations for supplementary contracts with life contingencies	0	0	0
3. Net investment income	8,659,767	8,493,941	17,104,270
4. Amortization of Interest Maintenance Reserve (IMR)	(130,392)	(161,681)	(160,963)
5. Separate Accounts net gain from operations excluding unrealized gains or losses	0	0	0
6. Commissions and expense allowances on reinsurance ceded	1,153,269	1,150,791	2,187,149
7. Reserve adjustments on reinsurance ceded	0	0	0
8. Miscellaneous Income:			
8.1 Income from fees associated with investment management, administration and contract guarantees from Separate Accounts	0	0	0
8.2 Charges and fees for deposit-type contracts	0	0	0
8.3 Aggregate write-ins for miscellaneous income	(175)	3,421	2,426
9. Totals (Lines 1 to 8.3)	30,117,294	29,968,804	58,430,961
10. Death benefits	16,191,059	16,006,482	31,275,554
11. Matured endowments (excluding guaranteed annual pure endowments)	0	0	0
12. Annuity benefits	2,969,842	2,374,251	4,696,532
13. Disability benefits and benefits under accident and health contracts	231,679	176,570	569,752
14. Coupons, guaranteed annual pure endowments and similar benefits	0	0	0
15. Surrender benefits and withdrawals for life contracts	5,352,376	3,841,881	7,982,406
16. Group conversions	0	0	0
17. Interest and adjustments on contract or deposit-type contract funds	100,796	97,356	186,228
18. Payments on supplementary contracts with life contingencies	23,481	23,481	46,961
19. Increase in aggregate reserves for life and accident and health contracts	(240,990)	2,418,822	5,366,508
20. Totals (Lines 10 to 19)	24,628,243	24,938,843	50,123,941
21. Commissions on premiums, annuity considerations, and deposit-type contract funds (direct business only)	440,196	494,878	966,453
22. Commissions and expense allowances on reinsurance assumed	46,903	49,308	99,351
23. General insurance expenses and fraternal expenses	2,642,600	2,775,897	4,989,824
24. Insurance taxes, licenses and fees, excluding federal income taxes	953,728	694,794	1,287,600
25. Increase in loading on deferred and uncollected premiums	775,357	228,268	806,137
26. Net transfers to or (from) Separate Accounts net of reinsurance	0	0	0
27. Aggregate write-ins for deductions	280	431	542
28. Totals (Lines 20 to 27)	29,487,307	29,182,419	58,273,848
29. Net gain from operations before dividends to policyholders and federal income taxes (Line 9 minus Line 28)	629,987	786,385	157,113
30. Dividends to policyholders and refunds to members	27,855	26,402	55,617
31. Net gain from operations after dividends to policyholders, refunds to members and before federal income taxes (Line 29 minus Line 30)	602,132	759,983	101,496
32. Federal and foreign income taxes incurred (excluding tax on capital gains)	79,004	511,565	717,008
33. Net gain from operations after dividends to policyholders, refunds to members and federal income taxes and before realized capital gains or (losses) (Line 31 minus Line 32)	523,128	248,418	(615,512)
34. Net realized capital gains (losses) (excluding gains (losses) transferred to the IMR) less capital gains tax of \$10,049 (excluding taxes of \$2,671 transferred to the IMR)	2,672	0	6,663
35. Net income (Line 33 plus Line 34)	525,800	248,418	(608,849)
CAPITAL AND SURPLUS ACCOUNT			
36. Capital and surplus, December 31, prior year	25,254,125	26,390,430	26,390,430
37. Net income (Line 35)	525,800	248,418	(608,849)
38. Change in net unrealized capital gains (losses) less capital gains tax of \$	0	0	0
39. Change in net unrealized foreign exchange capital gain (loss)	0	0	0
40. Change in net deferred income tax	250,668	315,587	659,351
41. Change in nonadmitted assets	106,045	(190,021)	(856,807)
42. Change in liability for reinsurance in unauthorized and certified companies	0	0	0
43. Change in reserve on account of change in valuation basis, (increase) or decrease	0	0	0
44. Change in asset valuation reserve	(287,190)	(320,000)	(330,000)
45. Change in treasury stock	0	0	0
46. Surplus (contributed to) withdrawn from Separate Accounts during period	0	0	0
47. Other changes in surplus in Separate Accounts Statement	0	0	0
48. Change in surplus notes	0	0	0
49. Cumulative effect of changes in accounting principles	0	0	0
50. Capital changes:			
50.1 Paid in	0	0	0
50.2 Transferred from surplus (Stock Dividend)	0	0	0
50.3 Transferred to surplus	0	0	0
51. Surplus adjustment:			
51.1 Paid in	0	0	0
51.2 Transferred to capital (Stock Dividend)	0	0	0
51.3 Transferred from capital	0	0	0
51.4 Change in surplus as a result of reinsurance	0	0	0
52. Dividends to stockholders	0	0	0
53. Aggregate write-ins for gains and losses in surplus	0	0	0
54. Net change in capital and surplus (Lines 37 through 53)	595,323	53,984	(1,136,305)
55. Capital and surplus as of statement date (Lines 36 + 54)	25,849,448	26,444,414	25,254,125
DETAILS OF WRITE-INS			
08.301. MISCELLANEOUS INCOME:	(175)	3,421	2,426
08.302.			
08.303.			
08.398. Summary of remaining write-ins for Line 8.3 from overflow page	0	0	0
08.399. Totals (Lines 08.301 through 08.303 plus 08.398) (Line 8.3 above)	(175)	3,421	2,426
2701. MISCELLANEOUS EXPENSES	280	431	542
2702.			
2703.			
2798. Summary of remaining write-ins for Line 27 from overflow page	0	0	0
2799. Totals (Lines 2701 through 2703 plus 2798) (Line 27 above)	280	431	542
5301.		0	0
5302.		0	0
5303.		0	0
5398. Summary of remaining write-ins for Line 53 from overflow page	0	0	0
5399. Totals (Lines 5301 through 5303 plus 5398) (Line 53 above)	0	0	0

CASH FLOW

	1 Current Year To Date	2 Prior Year To Date	3 Prior Year Ended December 31
Cash from Operations			
1. Premiums collected net of reinsurance.....	19,997,440	20,966,114	40,481,979
2. Net investment income	9,027,796	8,748,758	17,605,108
3. Miscellaneous income	1,153,094	1,154,212	2,189,575
4. Total (Lines 1 to 3)	30,178,330	30,869,084	60,276,662
5. Benefit and loss related payments	25,075,158	24,869,647	44,386,114
6. Net transfers to Separate Accounts, Segregated Accounts and Protected Cell Accounts.....	0	0	0
7. Commissions, expenses paid and aggregate write-ins for deductions	4,064,034	3,921,450	7,479,071
8. Dividends paid to policyholders	27,855	26,402	54,956
9. Federal and foreign income taxes paid (recovered) net of \$ tax on capital gains (losses).....	407,913	817,246	98,936
10. Total (Lines 5 through 9)	29,574,960	29,634,745	52,019,077
11. Net cash from operations (Line 4 minus Line 10)	603,370	1,234,339	8,257,585
Cash from Investments			
12. Proceeds from investments sold, matured or repaid:			
12.1 Bonds	18,358,484	6,157,420	15,327,162
12.2 Stocks	0	0	0
12.3 Mortgage loans	15,969	0	0
12.4 Real estate	0	0	0
12.5 Other invested assets	0	0	0
12.6 Net gains or (losses) on cash, cash equivalents and short-term investments	0	0	0
12.7 Miscellaneous proceeds	0	0	0
12.8 Total investment proceeds (Lines 12.1 to 12.7)	18,374,453	6,157,420	15,327,162
13. Cost of investments acquired (long-term only):			
13.1 Bonds	21,179,353	11,557,754	18,657,822
13.2 Stocks	0	0	0
13.3 Mortgage loans	0	0	1,000,000
13.4 Real estate	0	0	0
13.5 Other invested assets	0	0	0
13.6 Miscellaneous applications	0	0	0
13.7 Total investments acquired (Lines 13.1 to 13.6)	21,179,353	11,557,754	19,657,822
14. Net increase/(decrease) in contract loans and premium notes	293,797	(72,609)	(153,424)
15. Net cash from investments (Line 12.8 minus Line 13.7 and Line 14)	(3,098,697)	(5,327,725)	(4,177,236)
Cash from Financing and Miscellaneous Sources			
16. Cash provided (applied):			
16.1 Surplus notes, capital notes	0	0	0
16.2 Capital and paid in surplus, less treasury stock.....	0	0	0
16.3 Borrowed funds	0	0	0
16.4 Net deposits on deposit-type contracts and other insurance liabilities	(63,006)	(1,927,867)	(2,180,453)
16.5 Dividends to stockholders	0	0	0
16.6 Other cash provided (applied).....	(184,763)	1,386,514	641,224
17. Net cash from financing and miscellaneous sources (Line 16.1 through Line 16.4 minus Line 16.5 plus Line 16.6).....	(247,769)	(541,353)	(1,539,229)
RECONCILIATION OF CASH, CASH EQUIVALENTS AND SHORT-TERM INVESTMENTS			
18. Net change in cash, cash equivalents and short-term investments (Line 11, plus Lines 15 and 17)	(2,743,096)	(4,634,739)	2,541,120
19. Cash, cash equivalents and short-term investments:			
19.1 Beginning of year.....	16,797,640	14,256,520	14,256,520
19.2 End of period (Line 18 plus Line 19.1)	14,054,544	9,621,781	16,797,640

EXHIBIT 1

DIRECT PREMIUMS AND DEPOSIT-TYPE CONTRACTS			
	1 Current Year to Date	2 Prior Year to Date	3 Prior Year Ended December 31
1. Individual life	36,251,604	36,728,476	72,300,178
2. Group life	0	0	0
3. Individual annuities	122,524	197,310	318,543
4. Group annuities	0	0	0
5. Accident & health	36,189	40,403	78,044
6. Fraternal	0	0	0
7. Other lines of business	0	0	0
8. Subtotal (Lines 1 through 7)	36,410,317	36,966,189	72,696,765
9. Deposit-type contracts	0	0	0
10. Total (Lines 8 and 9)	36,410,317	36,966,189	72,696,765

STATEMENT AS OF JUNE 30, 2025 OF THE Grange Life Insurance Company

NOTES TO FINANCIAL STATEMENTS

1. Summary of Significant Accounting Policies and Going Concern

- A.

Accounting Practices

The financial statements of Grange Life Insurance Company (Grange or the Company) are presented on the basis of accounting practices prescribed or permitted by the Ohio Department of Insurance.

The Ohio Department of Insurance recognizes only statutory accounting practices prescribed or permitted by the State of Ohio for determining and reporting the financial condition and results of operations of an insurance company and for determining its solvency under the Ohio Insurance Law. Unless otherwise indicated, the National Association of Insurance Commissioners' (NAIC) Accounting Practices and Procedures Manual (NAIC SAP) has been adopted as the prescribed or permitted practices by the State of Ohio.

	SSAP #	F/S Page	F/S Line #	2025	2024
NET INCOME					
(1) Company state basis (Page 4, Line 35, Columns 1 & 3)	XXX	XXX	XXX	\$ 525,800	\$ (608,849)
(2) State Prescribed Practices that are an increase/(decrease) from NAIC SAP:					
(3) State Permitted Practices that are an increase/(decrease) from NAIC SAP:					
(4) NAIC SAP (1-2-3=4)	XXX	XXX	XXX	\$ 525,800	\$ (608,849)
SURPLUS					
(5) Company state basis (Page 3, Line 38, Columns 1 & 2)	XXX	XXX	XXX	\$ 25,849,448	\$ 25,254,125
(6) State Prescribed Practices that are an increase/(decrease) from NAIC SAP:					
(7) State Permitted Practices that are an increase/(decrease) from NAIC SAP:					
(8) NAIC SAP (5-6-7=8)	XXX	XXX	XXX	\$ 25,849,448	\$ 25,254,125
- B.

Use of Estimates in the Preparation of the Financial Statements

No significant changes
- C.

Accounting Policy

Life premiums are recognized as income over the premium-paying period of the related policies. Annuity considerations are recognized as revenue when received. Health premiums are earned ratably over the terms of the related insurance contracts or policies. Policyholder benefits are recognized either as established in the contracts or upon receipt of notice as defined within the contractual terms of the agreement. Expenses incurred in connection with acquiring new insurance business, including acquisition costs such as sales commissions, are charged to operations as incurred.

In addition, the Company uses the following accounting policies:

(1)

Basis for Short-Term Investments

No significant changes

(2)

Basis for Bonds and Amortization Schedule

Bonds, excluding loan-backed and structured securities, are stated at amortized cost using the scientific interest method. Bonds rated "6" are reported at the lower of amortized cost or fair value.

(3)

Basis for Common Stocks

No significant changes

(4)

Basis for Preferred Stocks

No significant changes

(5)

Basis for Mortgage Loans

No significant changes

(6)

Basis for Loan-Backed Securities and Adjustment Methodology

Loan-backed and structured securities are stated at either amortized cost or the lower of amortized cost or fair value. The interest method is used to amortize any purchase premium or discount. The retrospective adjustment method is used to recognize changes in the estimated yield-to-maturity, with the exception of the following: adjustable rate mortgages (ARM), securities where the yield became negative, or securities that have had an other-than-temporary impairment recorded. These are adjusted using the prospective method.

(7)

Accounting Policies for Investments in Subsidiaries, Controlled and Affiliated Entities

No significant changes

(8)

Accounting Policies for Investments in Joint Ventures, Partnerships and Limited Liability Entities

No significant changes

(9)

Accounting Policies for Derivatives

No significant changes

(10)

Anticipated Investment Income Used in Premium Deficiency Calculation

No significant changes

(11)

Management's Policies and Methodologies for Estimating Liabilities for Losses and Loss/Claim Adjustment Expenses

No significant changes

(12)

Changes in the Capitalization Policy and Predefined Threshold from Prior Period

No significant changes

(13)

Method Used to Estimate Pharmaceutical Rebate Receivables

No significant changes
- D.

Going Concern

After evaluating the entity's ability to continue as a going concern, management was not aware of any conditions or events which raised substantial doubts concerning the entity's ability to continue as a going concern as of the date of the filing of this statement.

2. Accounting Changes and Corrections of Errors

There were no material changes in accounting principles or corrections of errors during the year.

3. Business Combinations and Goodwill

Not Applicable

4. Discontinued Operations

Not Applicable

5. Investments

- A.

Mortgage Loans, including Mezzanine Real Estate Loans

No significant changes
- B.

Debt Restructuring

No significant changes
- C.

Reverse Mortgages

No significant changes
- D.

Asset-Backed Securities

(1)

Description of Sources Used to Determine Prepayment Assumptions

Prepayment assumptions for single and multi-class mortgage-backed/asset-backed securities were obtained from external vendors or internal estimates.

(2)

OTTI Recognized

None

STATEMENT AS OF JUNE 30, 2025 OF THE Grange Life Insurance Company

(3)	Recognized OTTI Securities			
	None			
(4)	All impaired securities (fair value is less than cost or amortized cost) for which an other-than-temporary impairment has not been recognized in earnings as a realized loss (including securities with a recognized other-than-temporary impairment for non-interest related declines when a non-recognized interest related impairment remains):			
	a. The aggregate amount of unrealized losses:	1.	Less than 12 Months ..	\$
		2.	12 Months or Longer ..	\$..... 6,626,531
	b. The aggregate related fair value of securities with unrealized losses:	1.	Less than 12 Months ..	\$
		2.	12 Months or Longer ..	\$ 58,572,134
(5)	The Company considered three primary indicators of potential other-than-temporary impairment, related to asset-backed securities, including; investments that recently entered a formal restructuring process, investments with market values less than 80% of amortized cost and spreads wider than the BB/B rated index and investments which have suffered a sharp decline (>10%) in market value during the period. If any of these conditions exist, then the Company considers additional factors including, but not limited to, a determination as to the likelihood of receiving all of the principal and interest due. Based on the criteria noted, the Company did not identify any asset-backed securities with indicators of other-than-temporary impairment.			
E.	Dollar Repurchase Agreements and/or Securities Lending Transactions			
	Not Applicable			
F.	Repurchase Agreements Transactions Accounted for as Secured Borrowing			
	Not Applicable			
G.	Reverse Repurchase Agreements Transactions Accounted for as Secured Borrowing			
	Not Applicable			
H.	Repurchase Agreements Transactions Accounted for as a Sale			
	Not Applicable			
I.	Reverse Repurchase Agreements Transactions Accounted for as a Sale			
	Not Applicable			
J.	Real Estate			
	Not Applicable			
K.	Investments in Tax Credit Structures (tax credit investments)			
	No significant changes			
L.	Restricted Assets			
	No significant changes			
M.	Working Capital Finance Investments			
	Not Applicable			
N.	Offsetting and Netting of Assets and Liabilities			
	Not Applicable			
O.	5GI Securities			
	Not Applicable			
P.	Short Sales			
	Not Applicable			
Q.	Prepayment Penalty and Acceleration Fees			
	No significant changes			
R.	Reporting Entity's Share of Cash Pool by Asset type.			
	Not Applicable			
S.	Aggregate Collateral Loans by Qualifying Investment Collateral			
	Not Applicable			
6.	Joint Ventures, Partnerships and Limited Liability Companies			
	Not Applicable			
7.	Investment Income			
	No significant changes			
8.	Derivative Instruments			
	Not Applicable			
9.	Income Taxes			
	No significant changes			
10.	Information Concerning Parent, Subsidiaries, Affiliates and Other Related Parties			
	A. Nature of the Relationship Involved			
	During the second quarter of 2025 the Company had no transactions that exceeded one-half of one percent of the Company's total admitted assets with its parent or affiliates, except as noted in 10E below.			
	B. Detail of Transactions			
	See "A" above.			
	C. Transactions with related party who are not reported on Schedule Y			
	None			
	D. Amounts Due From or To Related Parties			
	The Company had a \$1,622,657 payable to its parent at June 30, 2025.			
	E. Material Management or Service Contracts and Cost-Sharing Arrangements			
	The Company receives certain administrative, investment, and collection services from its parent. For the second quarter ended June 30, 2025, the Company incurred \$927,001 for management fees and administrative services to Kansas City Life Insurance Company. For the six months ended June 30, 2025, the Company incurred \$1,876,502 for management fees and administrative services to Kansas City Life Insurance Company.			
	F. Guarantees or Undertakings			
	The Company has not guaranteed any affiliated company debt.			
	G. Nature of the Control Relationship			
	All of the outstanding common and preferred shares of stock of the Company are owned by Kansas City Life, an insurance holding company domiciled in the state of Missouri.			

STATEMENT AS OF JUNE 30, 2025 OF THE Grange Life Insurance Company

H.	Amount Deducted for Investment in Upstream Intermediate Entity or Ultimate Parent Owned																																								
	The Company has no intermediate entities.																																								
I.	Investments in SCA that Exceed 10% of Admitted Assets																																								
	The Company has no SCA entities.																																								
J.	Investments in Impaired SCAs																																								
	The Company has no SCA entities.																																								
K.	Investment in Foreign Insurance Subsidiary																																								
	The Company has no foreign insurance subsidiaries.																																								
L.	Investment in Downstream Noninsurance Holding Company																																								
	The Company does not have any investments in downstream noninsurance holding companies.																																								
M.	All SCA Investments																																								
	Not Applicable																																								
N.	Investment in Insurance SCAs																																								
	Not Applicable																																								
O.	SCA or SSAP No. 48 Entity Loss Tracking																																								
	Not Applicable																																								
11.	Debt																																								
A.	All Other Debt																																								
	The Company had no capital notes or debentures outstanding at period end. The Company has a \$20,000,000 revolving line of credit with a major commercial bank to borrow as needed. The line of credit, which was renewed in June of 2025, is at a variable interest rate based upon short-term indices and will mature in June of 2026. At June 30, 2025 the Company had no borrowings outstanding from this line of credit. The line of credit is guaranteed by the Company's parent, and the Company expects to renew the line of credit at maturity.																																								
B.	FHLB (Federal Home Loan Bank) Agreements																																								
	None																																								
12.	Retirement Plans, Deferred Compensation, Postemployment Benefits and Compensated Absences and Other Postretirement Benefit Plans																																								
	None																																								
13.	Capital and Surplus, Dividend Restrictions and Quasi-Reorganizations																																								
	No significant changes																																								
14.	Liabilities, Contingencies and Assessments																																								
	No significant changes																																								
15.	Leases																																								
	Not Applicable																																								
16.	Information About Financial Instruments With Off-Balance-Sheet Risk And Financial Instruments With Concentrations of Credit Risk																																								
	Not Applicable																																								
17.	Sale, Transfer and Servicing of Financial Assets and Extinguishments of Liabilities																																								
	Not Applicable																																								
18.	Gain or Loss to the Reporting Entity from Uninsured Plans and the Uninsured Portion of Partially Insured Plans																																								
	Not Applicable																																								
19.	Direct Premium Written/Produced by Managing General Agents/Third-Party Administrators																																								
	Not Applicable																																								
20.	Fair Value Measurements																																								
A.	Assets and Liabilities Measured at Fair Value																																								
	(1) Fair Value Measurements at Reporting Date																																								
	None																																								
	(2) Fair Value Measurements in (Level 3) of the Fair Value Hierarchy																																								
	Not Applicable																																								
	(3) Policies when Transfers Between Levels are Recognized																																								
	Not Applicable																																								
	(4) Description of Valuation Techniques and Inputs Used in Fair Value Measurement																																								
	Level 1 - Valuations are based on quoted market prices in active markets for identical instruments at the measurement date.																																								
	Level 2 – Valuations are based upon quoted prices for similar instruments in active markets, quoted prices for identical or similar instruments in markets that are not active, and model-based valuation techniques for which all significant assumptions are observable in the market or are derived principally from or corroborated by observable market data.																																								
	Level 3 – Valuations are based on inputs that are not observable in the market. These unobservable inputs reflect the Company's assumptions that market participants would use in pricing the instrument. Valuation techniques include the use of discounted cash flow models, spread-based models, and similar techniques, using the best information available in the circumstances																																								
	(5) Derivative Fair Values																																								
	The Company did not have any derivatives as of the end of the reporting period.																																								
B.	Other Fair Value Disclosures																																								
	Not Applicable																																								
C.	Fair Value of Financial Instruments																																								
	<table><tr><th>Type of Financial Instrument</th><th>Aggregate Fair Value</th><th>Admitted Assets</th><th>(Level 1)</th><th>(Level 2)</th><th>(Level 3)</th><th>Net Asset Value (NAV)</th><th>Not Practicable (Carrying Value)</th></tr><tr><td>Bonds.....</td><td>\$.. 372,978,189</td><td>\$.. 406,004,722</td><td>\$ 2,492,182</td><td>\$.. 369,486,008</td><td>\$ 1,000,000</td><td>\$</td><td>\$</td></tr><tr><td>Mortgage.....</td><td>\$ 6,533,000</td><td>\$ 6,447,216</td><td>\$</td><td>\$</td><td>\$ 6,533,000</td><td>\$</td><td>\$</td></tr><tr><td>Policy Loans.....</td><td>\$ 14,466,324</td><td>\$ 14,466,324</td><td>\$</td><td>\$</td><td>\$ 14,466,324</td><td>\$</td><td>\$</td></tr><tr><td>Cash and cash equivalents .</td><td>\$ 14,054,544</td><td>\$ 14,054,544</td><td>\$ 14,054,544</td><td>\$</td><td>\$</td><td>\$</td><td>\$</td></tr></table>	Type of Financial Instrument	Aggregate Fair Value	Admitted Assets	(Level 1)	(Level 2)	(Level 3)	Net Asset Value (NAV)	Not Practicable (Carrying Value)	Bonds.....	\$.. 372,978,189	\$.. 406,004,722	\$ 2,492,182	\$.. 369,486,008	\$ 1,000,000	\$	\$	Mortgage.....	\$ 6,533,000	\$ 6,447,216	\$	\$	\$ 6,533,000	\$	\$	Policy Loans.....	\$ 14,466,324	\$ 14,466,324	\$	\$	\$ 14,466,324	\$	\$	Cash and cash equivalents .	\$ 14,054,544	\$ 14,054,544	\$ 14,054,544	\$	\$	\$	\$
Type of Financial Instrument	Aggregate Fair Value	Admitted Assets	(Level 1)	(Level 2)	(Level 3)	Net Asset Value (NAV)	Not Practicable (Carrying Value)																																		
Bonds.....	\$.. 372,978,189	\$.. 406,004,722	\$ 2,492,182	\$.. 369,486,008	\$ 1,000,000	\$	\$																																		
Mortgage.....	\$ 6,533,000	\$ 6,447,216	\$	\$	\$ 6,533,000	\$	\$																																		
Policy Loans.....	\$ 14,466,324	\$ 14,466,324	\$	\$	\$ 14,466,324	\$	\$																																		
Cash and cash equivalents .	\$ 14,054,544	\$ 14,054,544	\$ 14,054,544	\$	\$	\$	\$																																		
	The Company utilizes external independent third-party pricing services to determine its fair values on investments when available. In the event a price is not available from a third-party pricing service, the Company pursues external pricing from brokers. If a broker price is not available, the Company determines a fair value through various valuation techniques that may include discounted cash flows, spread-based models, or similar techniques, depending upon the specific security to be priced.																																								
	Fair value measurements for assets and liabilities where there exists limited or no observable market data are calculated using the Company's own estimates and are categorized as Level 3. These estimates are based on current interest rates, credit spreads, liquidity premium or discount, the economic and competitive environment, unique characteristics of the asset or liability, and other pertinent factors.																																								
D.	Not Practicable to Estimate Fair Value																																								
	Not Applicable																																								
E.	Investments Measured using the NAV as Practical Expedient																																								

STATEMENT AS OF JUNE 30, 2025 OF THE Grange Life Insurance Company

Not Applicable

21. Other Items
No significant changes

22. Events Subsequent
Subsequent events have been considered through August 5, 2025, the date these statutory financial statements were issued.

23. Reinsurance
No significant changes

24. Retrospectively Rated Contracts & Contracts Subject to Redetermination
Not Applicable

25. Changes in Incurred Losses and Loss Adjustment Expenses

A. Reasons for changes in the Provision for Incurred Loss and Loss Adjustment Expenses

Reserves as of December 31, 2024 for Individual accident and health lines were \$70,000. As of June 30, 2025, \$10,000 was paid for incurred claims and claim adjustment expenses attributable to insured events of prior years. Reserves remaining for prior years are now \$54,000 as a result of reestimation of unpaid claims and claim adjustment expenses. The decrease of \$6,000 is generally the result of ongoing analysis of recent loss development trends. Original estimates are increased or decreased as additional information becomes known regarding individual claims.

B. Information about Significant Changes in Methodologies and Assumptions

There were no significant changes in methodologies or assumptions.

26. Intercompany Pooling Arrangements
Not Applicable

27. Structured Settlements
Not Applicable

28. Health Care Receivables
Not Applicable

29. Participating Policies
No significant changes

30. Premium Deficiency Reserves
Not Applicable

31. Reserves for Life Contracts and Annuity Contracts

(1) Reserve Practices
The Company waives deduction of deferred fractional premium upon the death of an insured and returns any portion of the final premium beyond the date of the death. Surrender values are not promised in excess of the legally computed reserves.

(2) Valuation of Substandard Policies
On substandard policies issued with extra premiums, the Company holds standard reserves plus one-half the gross annual extra premium except universal life.

(3) Amount of insurance for which the gross premiums are less than the net premiums according to valuation standards
As of June 30, 2025, the Company had \$680,595,027 of insurance in force for which the gross premiums were less than the net premiums according to the standard valuation set by the State of Ohio.

(4) Method Used to Determine Tabular Interest, Reserves Released, and Cost
Tabular interest, tabular less actual reserve released, and tabular cost have been determined by formula in accordance with the instructions.

(5) Method of Determination of Tabular Interest on Funds not Involving Life Contingencies
The tabular interest on funds no involving life contingencies is the current balance plus funds added, reserve basis increase, and other increases minus funds withdrawn and the previous balance.

(6) Details for Other Changes
The Company did not have any other reserve changes.

32. Analysis of Annuity Actuarial Reserves and Deposit-Type Contract Liabilities by Withdrawal Characteristics

A. INDIVIDUAL ANNUITIES:

	General Account	Separate Account with Guarantees	Separate Account Nonguaranteed	Total	% of Total
(1) Subject to discretionary withdrawal:					
a. With market value adjustment .. \$	0	0	0	0	0.000 %
b. At book value less current surrender charge of 5% or more	0	0	0	0	0.000
c. At fair value	0	0	0	0	0.000
d. Total with market value adjustment or at fair value (total of a through c)	0	0	0	0	0.000
e. At book value without adjustment (minimal or no charge or adjustment)	29,448,478	0	0	29,448,478	98.681
(2) Not subject to discretionary withdrawal	393,551	0	0	393,551	1.319
(3) Total (gross: direct + assumed)	29,842,029	0	0	29,842,029	100.000
(4) Reinsurance ceded	0	0	0	0	
(5) Total (net) (3) - (4)	\$ 29,842,029	\$ 0	\$ 0	\$ 29,842,029	
(6) Amount included in A(1)e above that will move to A(1)e for the first time within the year after the statement date:	\$ 0	\$ 0	\$ 0	\$ 0	

B. GROUP ANNUITIES

None

C. DEPOSIT-TYPE CONTRACTS
(no life contingencies):

	General Account	Separate Account with Guarantees	Separate Account Nonguaranteed	Total	% of Total
(1) Subject to discretionary withdrawal:					
a. With market value adjustment .. \$	0	0	0	0	0.000 %
b. At book value less current surrender charge of 5% or more	0	0	0	0	0.000
c. At fair value	0	0	0	0	0.000
d. Total with market value adjustment or at fair value (total of a through c)	0	0	0	0	0.000
e. At book value without adjustment (minimal or no charge or adjustment)	55,543	0	0	55,543	12.855
(2) Not subject to discretionary withdrawal	376,528	0	0	376,528	87.145
(3) Total (gross: direct + assumed)	432,071	0	0	432,071	100.000
(4) Reinsurance ceded	0	0	0	0	
(5) Total (net) (3) - (4)	\$ 432,071	\$ 0	\$ 0	\$ 432,071	
(6) Amount included in C(1)b above that will move to C(1)e for the first time within the year after the statement date:	\$ 0	\$ 0	\$ 0	\$ 0	

D.

Amount

Life & Accident & Health Annual Statement:
(1) Exhibit 5, Annuities Section, Total (net) \$ 29,463,428
(2) Exhibit 5, Supplementary Contracts with Life Contingencies Section, Total (net) 378,601

STATEMENT AS OF JUNE 30, 2025 OF THE Grange Life Insurance Company

(3)	Exhibit 7, Deposit-Type Contracts, Line 14, Column 1	432,071
(4)	Subtotal (1+2+3)	30,274,100
Separate Accounts Annual Statement:		
(5)	Exhibit 3, Line 0299999, Column 2	0
(6)	Exhibit 3, Line 0399999, Column 2	0
(7)	Policyholder dividend and coupon accumulations	0
(8)	Policyholder premiums	0
(9)	Guaranteed interest contracts	0
(10)	Other contract deposit funds	0
(11)	Subtotal (5+6+7+8+9+10)	0
(12)	Combined Total (4+11)	\$ 30,274,100

33. Analysis of Life Actuarial Reserves by Withdrawal Characteristics

A. General Account		Account Value	Cash Value	Reserve
(1)	Subject to discretionary withdrawal, surrender values, or policy loans:			
a.	Term Policies with Cash Value	0	10,999,159	33,373,951
b.	Universal Life	146,779,414	145,856,197	146,953,595
c.	Universal Life with Secondary Guarantees	13,996,745	9,024,530	68,703,491
d.	Indexed Universal Life	0	0	0
e.	Indexed Universal Life with Secondary Guarantees	0	0	0
f.	Indexed Life	0	0	0
g.	Other Permanent Cash Value Life Insurance	0	107,261,335	147,063,856
h.	Variable Life	0	0	0
i.	Variable Universal Life	0	0	0
j.	Miscellaneous Reserves	0	0	0
(2)	Not subject to discretionary withdrawal or no cash values			
a.	Term Policies without Cash Value	XXX	XXX	358,124,606
b.	Accidental Death Benefits	XXX	XXX	154,772
c.	Disability – Active Lives	XXX	XXX	1,343,897
d.	Disability – Disabled Lives	XXX	XXX	2,552,697
e.	Miscellaneous Reserves	XXX	XXX	0
(3)	Total (gross: direct + assumed)	160,776,159	273,141,221	758,270,865
(4)	Reinsurance Ceded	0	0	343,073,770
(5)	Total (net) (3) – (4)	160,776,159	273,141,221	415,197,095
B. Separate Account with Guarantees				
None				
C. Separate Account Nonguaranteed				
None				
D.				
Life & Accident & Health Annual Statement:			Amount	
(1)	Exhibit 5, Life Insurance Section, Total (net)	\$	402,926,881	
(2)	Exhibit 5, Accidental Death Benefits Section, Total (net)		154,772	
(3)	Exhibit 5, Disability – Active Lives Section, Total (net)		1,343,897	
(4)	Exhibit 5, Disability – Disabled Lives Section, Total (net)		2,552,697	
(5)	Exhibit 5, Miscellaneous Reserves Section, Total (net)		8,218,848	
(6)	Subtotal (1+2+3+4+5)		415,197,095	
Separate Accounts Annual Statement:				
(7)	Exhibit 3, Line 0199999, Column 2		0	
(8)	Exhibit 3, Line 0499999, Column 2		0	
(9)	Exhibit 3, Line 0599999, Column 2		0	
(10)	Subtotal (7+8+9)		0	
(11)	Combined Total (6+10)	\$	415,197,095	

34. Premiums and Annuity Considerations Deferred and Uncollected

No significant changes

35. Separate Accounts

Not Applicable

36. Loss/Claim Adjustment Expenses

Not Applicable

GENERAL INTERROGATORIES

PART 1 - COMMON INTERROGATORIES

GENERAL

- 1.1

Did the reporting entity experience any material transactions requiring the filing of Disclosure of Material Transactions with the State of Domicile, as required by the Model Act?

Yes ☐ No ☒
- 1.2

If yes, has the report been filed with the domiciliary state?

Yes ☐ No ☐
- 2.1

Has any change been made during the year of this statement in the charter, by-laws, articles of incorporation, or deed of settlement of the reporting entity?

Yes ☐ No ☒
- 2.2

If yes, date of change:
- 3.1

Is the reporting entity a member of an Insurance Holding Company System consisting of two or more affiliated persons, one or more of which is an insurer?

Yes ☒ No ☐
- If yes, complete Schedule Y, Parts 1 and 1A.
- 3.2

Have there been any substantial changes in the organizational chart since the prior quarter end?

Yes ☐ No ☒
- 3.3

If the response to 3.2 is yes, provide a brief description of those changes.
- 3.4

Is the reporting entity publicly traded or a member of a publicly traded group?

Yes ☐ No ☒
- 3.5

If the response to 3.4 is yes, provide the CIK (Central Index Key) code issued by the SEC for the entity/group.
- 4.1

Has the reporting entity been a party to a merger or consolidation during the period covered by this statement?

Yes ☐ No ☒
- 4.2

If yes, provide the name of entity, NAIC Company Code, and state of domicile (use two letter state abbreviation) for any entity that has ceased to exist as a result of the merger or consolidation.

1	2	3
Name of Entity	NAIC Company Code	State of Domicile

5.

If the reporting entity is subject to a management agreement, including third-party administrator(s), managing general agent(s), attorney-in-fact, or similar agreement, have there been any significant changes regarding the terms of the agreement or principals involved?

If yes, attach an explanation.

Yes ☐ No ☒ NA ☐
- 6.1

State as of what date the latest financial examination of the reporting entity was made or is being made.

12/31/2023
- 6.2

State the as of date that the latest financial examination report became available from either the state of domicile or the reporting entity. This date should be the date of the examined balance sheet and not the date the report was completed or released.

12/31/2023
- 6.3

State as of what date the latest financial examination report became available to other states or the public from either the state of domicile or the reporting entity. This is the release date or completion date of the examination report and not the date of the examination (balance sheet date).

05/20/2025
- 6.4

By what department or departments?

OHIO/MISSOURI
- 6.5

Have all financial statement adjustments within the latest financial examination report been accounted for in a subsequent financial statement filed with Departments?

Yes ☐ No ☐ NA ☒
- 6.6

Have all of the recommendations within the latest financial examination report been complied with?

Yes ☐ No ☐ NA ☒
- 7.1

Has this reporting entity had any Certificates of Authority, licenses or registrations (including corporate registration, if applicable) suspended or revoked by any governmental entity during the reporting period?

Yes ☐ No ☒
- 7.2

If yes, give full information:
- 8.1

Is the company a subsidiary of a bank holding company regulated by the Federal Reserve Board?

Yes ☐ No ☒
- 8.2

If response to 8.1 is yes, please identify the name of the bank holding company.
- 8.3

Is the company affiliated with one or more banks, thrifts or securities firms?

Yes ☒ No ☐
- 8.4

If response to 8.3 is yes, please provide below the names and location (city and state of the main office) of any affiliates regulated by a federal regulatory services agency [i.e. the Federal Reserve Board (FRB), the Office of the Comptroller of the Currency (OCC), the Federal Deposit Insurance Corporation (FDIC) and the Securities Exchange Commission (SEC)] and identify the affiliate's primary federal regulator.]

1	2	3	4	5	6
Affiliate Name	Location (City, State)	FRB	OCC	FDIC	SEC
Sunset Financial Services, Inc.	Kansas City, MO	NO	NO	NO	YES

- 9.1

Are the senior officers (principal executive officer, principal financial officer, principal accounting officer or controller, or persons performing similar functions) of the reporting entity subject to a code of ethics, which includes the following standards?

(a) Honest and ethical conduct, including the ethical handling of actual or apparent conflicts of interest between personal and professional relationships;
(b) Full, fair, accurate, timely and understandable disclosure in the periodic reports required to be filed by the reporting entity;
(c) Compliance with applicable governmental laws, rules and regulations;
(d) The prompt internal reporting of violations to an appropriate person or persons identified in the code; and
(e) Accountability for adherence to the code.

Yes ☒ No ☐
- 9.11

If the response to 9.1 is No, please explain:
- 9.2

Has the code of ethics for senior managers been amended?

Yes ☐ No ☒
- 9.21

If the response to 9.2 is Yes, provide information related to amendment(s).
- 9.3

Have any provisions of the code of ethics been waived for any of the specified officers?

Yes ☐ No ☒
- 9.31

If the response to 9.3 is Yes, provide the nature of any waiver(s).

FINANCIAL

- 10.1

Does the reporting entity report any amounts due from parent, subsidiaries or affiliates on Page 2 of this statement?

Yes ☐ No ☒
- 10.2

If yes, indicate any amounts receivable from parent included in the Page 2 amount:

\$

GENERAL INTERROGATORIES

INVESTMENT

11.1 Were any of the stocks, bonds, or other assets of the reporting entity loaned, placed under option agreement, or otherwise made available for use by another person? (Exclude securities under securities lending agreements.) Yes [] No [X]

11.2 If yes, give full and complete information relating thereto:

12. Amount of real estate and mortgages held in other invested assets in Schedule BA:\$0

13. Amount of real estate and mortgages held in short-term investments:\$0

14.1 Does the reporting entity have any investments in parent, subsidiaries and affiliates? Yes [] No [X]

14.2 If yes, please complete the following:

	1 Prior Year-End Book/Adjusted Carrying Value	2 Current Quarter Book/Adjusted Carrying Value
14.21 Bonds	\$0	\$0
14.22 Preferred Stock	\$0	\$0
14.23 Common Stock	\$0	\$0
14.24 Short-Term Investments	\$0	\$0
14.25 Mortgage Loans on Real Estate	\$0	\$0
14.26 All Other	\$0	\$0
14.27 Total Investment in Parent, Subsidiaries and Affiliates (Subtotal Lines 14.21 to 14.26).....	\$0	\$0
14.28 Total Investment in Parent included in Lines 14.21 to 14.26 above	\$0	\$0

15.1 Has the reporting entity entered into any hedging transactions reported on Schedule DB? Yes [] No [X]

15.2 If yes, has a comprehensive description of the hedging program been made available to the domiciliary state? Yes [] No [] NA []
If no, attach a description with this statement.

16. For the reporting entity's security lending program, state the amount of the following as of the current statement date:
16.1 Total fair value of reinvested collateral assets reported on Schedule DL, Parts 1 and 2\$0
16.2 Total book/adjusted carrying value of reinvested collateral assets reported on Schedule DL, Parts 1 and 2\$0
16.3 Total payable for securities lending reported on the liability page\$0

17. Excluding items in Schedule E – Part 3 – Special Deposits, real estate, mortgage loans and investments held physically in the reporting entity's offices, vaults or safety deposit boxes, were all stocks, bonds and other securities, owned throughout the current year held pursuant to a custodial agreement with a qualified bank or trust company in accordance with Section 1, III – General Examination Considerations, F. Outsourcing of Critical Functions, Custodial or Safekeeping Agreements of the NAIC *Financial Condition Examiners Handbook*? Yes [X] No []

17.1 For all agreements that comply with the requirements of the NAIC *Financial Condition Examiners Handbook*, complete the following:

1 Name of Custodian(s)	2 Custodian Address
UMB TRUST SERVICES DEPT.....	P.O. BOX 419226 KANSAS CITY, MO 64141-6226.....

17.2 For all agreements that do not comply with the requirements of the NAIC *Financial Condition Examiners Handbook*, provide the name, location and a complete explanation:

1 Name(s)	2 Location(s)	3 Complete Explanation(s)

17.3 Have there been any changes, including name changes, in the custodian(s) identified in 17.1 during the current quarter? Yes [] No [X]

17.4 If yes, give full and complete information relating thereto:

1 Old Custodian	2 New Custodian	3 Date of Change	4 Reason

17.5 Investment management – Identify all investment advisors, investment managers, broker/dealers, including individuals that have the authority to make investment decisions on behalf of the reporting entity. This includes both primary and sub-advisors. For assets that are managed internally by employees of the reporting entity, note as such. [...that have access to the investment accounts"; "...handle securities"]

1 Name of Firm or Individual	2 Affiliation

17.5097 For those firms/individuals listed in the table for Question 17.5, do any firms/individuals unaffiliated with the reporting entity (i.e., designated with a "U") manage more than 10% of the reporting entity's invested assets? Yes [] No [X]

17.5098 For firms/individuals unaffiliated with the reporting entity (i.e., designated with a "U") listed in the table for Question 17.5, does the total assets under management aggregate to more than 50% of the reporting entity's invested assets? Yes [] No [X]

17.6 For those firms or individuals listed in the table for 17.5 with an affiliation code of "A" (affiliated) or "U" (unaffiliated), provide the information for the table below.

1 Central Registration Depository Number	2 Name of Firm or Individual	3 Legal Entity Identifier (LEI)	4 Registered With	5 Investment Management Agreement (IMA) Filed

18.1 Have all the filing requirements of the *Purposes and Procedures Manual of the NAIC Investment Analysis Office* been followed? Yes [X] No []

18.2 If no, list exceptions:

19. By self-designating 5GI securities, the reporting entity is certifying the following elements for each self-designated 5GI security:

- a. Documentation necessary to permit a full credit analysis of the security does not exist or an NAIC CRP credit rating for an FE or PL security is not available.
- b. Issuer or obligor is current on all contracted interest and principal payments.
- c. The insurer has an actual expectation of ultimate payment of all contracted interest and principal.

Has the reporting entity self-designated 5GI securities?..... Yes [] No [X]

20. By self-designating PLGI securities, the reporting entity is certifying its compliance with the requirements as specified in the *Purposes and Procedures Manual of the NAIC Investment Analysis Office* (P&P Manual) for private letter rating (PLR) securities and the following elements of each self-designated PLGI security:

- a. The security was either:
 - i. issued prior to January 1, 2018 (which is exempt from PLR filing requirements pursuant to the P&P Manual), or
 - ii. issued from January 1, 2018 to December 31, 2021 and subject to a confidentiality agreement executed prior to January 1, 2022 which confidentiality agreement remains in force, for which an insurance company cannot provide a copy of a private letter rating

GENERAL INTERROGATORIES

- rationale report to the SVO due to confidentiality or other contractual reasons (“waived submission PLR securities”).
- b. The reporting entity is holding capital commensurate with the NAIC Designation and NAIC Designation Category reported for the security.
- c. The NAIC Designation and NAIC Designation Category were derived from the credit rating assigned by an NAIC CRP in its legal capacity as an NRSRO which is shown on a current private letter rating, dated during the financial statement year, held by the insurer and available for examination by state insurance regulators.
- d. Other than for waived submission PLR securities, defined above, on or after January 1, 2024 for any PLR securities issued on or after January 1, 2022, if the reporting entity is not permitted to share this private credit rating or the private rating letter rationale report of the PL security with the SVO, it certifies that it is reporting it as an NAIC 5.B GI and may not assign any other self-designation.

Has the reporting entity self-designated PLGI to securities, all of which meet the above requirement and as specified in the P&P Manual?.... Yes [] No [X]

21. By assigning FE to a Schedule BA non-registered private fund, the reporting entity is certifying the following elements of each self-designated FE fund:
- a. The shares were purchased prior to January 1, 2019.
 - b. The reporting entity is holding capital commensurate with the NAIC Designation reported for the security.
 - c. The security had a public credit rating(s) with annual surveillance assigned by an NAIC CRP in its legal capacity as an NRSRO prior to January 1, 2019.
 - d. The fund only or predominantly holds bonds in its portfolio.
 - e. The current reported NAIC Designation was derived from the public credit rating(s) with annual surveillance assigned by an NAIC CRP in its legal capacity as an NRSRO.
 - f. The public credit rating(s) with annual surveillance assigned by an NAIC CRP has not lapsed.

Has the reporting entity assigned FE to Schedule BA non-registered private funds that complied with the above criteria?..... Yes [] No [X]

GENERAL INTERROGATORIES

PART 2 - LIFE AND ACCIDENT AND HEALTH COMPANIES/FRATERNAL BENEFIT SOCIETIES

Life and Accident Health Companies/Fraternal Benefit Societies:

1.

Report the statement value of mortgage loans at the end of this reporting period for the following categories:

1

Amount

1.1

Long-Term Mortgages in Good Standing

1.11

Farm Mortgages

\$

1.12

Residential Mortgages

\$

1.13

Commercial Mortgages

\$

6,447,216

1.14

Total Mortgages in Good Standing

\$

6,447,216

1.2

Long-Term Mortgages in Good Standing with Restructured Terms

1.21

Total Mortgages in Good Standing with Restructured Terms

\$

1.3

Long-Term Mortgage Loans upon which Interest is Overdue more than Three Months

1.31

Farm Mortgages

\$

1.32

Residential Mortgages

\$

1.33

Commercial Mortgages

\$

1.34

Total Mortgages with Interest Overdue more than Three Months

\$

0

1.4

Long-Term Mortgage Loans in Process of Foreclosure

1.41

Farm Mortgages

\$

1.42

Residential Mortgages

\$

1.43

Commercial Mortgages

\$

1.44

Total Mortgages in Process of Foreclosure

\$

0

1.5

Total Mortgage Loans (Lines 1.14 + 1.21 + 1.34 + 1.44) (Page 2, Column 3, Lines 3.1 + 3.2)

\$

6,447,216

1.6

Long-Term Mortgages Foreclosed, Properties Transferred to Real Estate in Current Quarter

1.61

Farm Mortgages

\$

1.62

Residential Mortgages

\$

1.63

Commercial Mortgages

\$

1.64

Total Mortgages Foreclosed and Transferred to Real Estate

\$

0

2.

Operating Percentages:

2.1

A&H loss percent

(161.3) %

2.2

A&H cost containment percent

0.0 %

2.3

A&H expense percent excluding cost containment expenses

3.1 %

3.1

Do you act as a custodian for health savings accounts?

Yes

[]

No

[X]

3.2

If yes, please provide the amount of custodial funds held as of the reporting date

\$

3.3

Do you act as an administrator for health savings accounts?

Yes

[]

No

[X]

3.4

If yes, please provide the balance of the funds administered as of the reporting date

\$

4.

Is the reporting entity licensed or chartered, registered, qualified, eligible or writing business in at least two states?

Yes

[X]

No

[]

4.1

If no, does the reporting entity assume reinsurance business that covers risks residing in at least one state other than the state of domicile of the reporting entity?

Yes

[]

No

[]

Fraternal Benefit Societies Only:

5.1

In all cases where the reporting entity has assumed accident and health risks from another company, provisions should be made in this statement on account of such reinsurances for reserve equal to that which the original company would have been required to establish had it retained the risks. Has this been done?

Yes

[]

No

[]

NA

[]

5.2

If no, explain:

6.1

Does the reporting entity have outstanding assessments in the form of liens against policy benefits that have increased surplus?

Yes

[]

No

[]

6.2

If yes, what is the date(s) of the original lien and the total outstanding balance of liens that remain in surplus?

Date	Outstanding Lien Amount
	\$
	\$
	\$

STATEMENT AS OF JUNE 30, 2025 OF THE Grange Life Insurance Company

SCHEDULE S – CEDED REINSURANCE

Showing All New Reinsurance Treaties – Current Year to Date

[illegible]

SCHEDULE T – PREMIUMS AND ANNUITY CONSIDERATIONS

Current Year To Date - Allocated by States and Territories								
States, Etc.	1	Direct Business Only						
		Life Contracts		4 Accident and Health Insurance Premiums, Including Policy, Membership and Other Fees	5 Other Considerations	6 Total Columns 2 Through 5	7 Deposit - Type Contracts	
		2 Life Insurance Premiums	3 Annuity Considerations					
1. Alabama	AL	N	55,910	0	0	55,910		
2. Alaska	AK	N	5,047	0	0	5,047		
3. Arizona	AZ	N	42,842	0	0	42,842		
4. Arkansas	AR	N	19,715	0	0	19,715		
5. California	CA	N	51,548	0	0	51,548		
6. Colorado	CO	N	27,196	0	0	27,196		
7. Connecticut	CT	N	5,176	0	0	5,176		
8. Delaware	DE	N	2,439	0	0	2,439		
9. District of Columbia	DC	N	1,001	0	0	1,001		
10. Florida	FL	N	366,857	300	1,868	369,025		
11. Georgia	GA	L	3,515,982	660	5,333	3,521,975		
12. Hawaii	HI	N	1,718	0	0	1,718		
13. Idaho	ID	N	5,109	0	0	5,109		
14. Illinois	IL	L	1,324,987	10,300	470	1,335,757		
15. Indiana	IN	L	2,634,335	0	321	2,634,655		
16. Iowa	IA	L	56,264	0	0	56,264		
17. Kansas	KS	L	18,851	0	0	18,851		
18. Kentucky	KY	L	4,281,396	21,943	7,015	4,310,354		
19. Louisiana	LA	N	7,220	0	0	7,220		
20. Maine	ME	N	5,258	0	0	5,258		
21. Maryland	MD	N	23,606	0	0	23,606		
22. Massachusetts	MA	N	5,752	0	0	5,752		
23. Michigan	MI	L	1,934,129	450	0	1,934,579		
24. Minnesota	MN	L	235,227	75	0	235,302		
25. Mississippi	MS	N	33,746	0	0	33,746		
26. Missouri	MO	L	49,496	0	0	49,496		
27. Montana	MT	N	2,978	0	0	2,978		
28. Nebraska	NE	N	3,904	0	0	3,904		
29. Nevada	NV	N	12,588	0	0	12,588		
30. New Hampshire	NH	N	2,181	0	0	2,181		
31. New Jersey	NJ	N	21,317	0	0	21,317		
32. New Mexico	NM	N	3,782	0	0	3,782		
33. New York	NY	N	10,910	0	0	10,910		
34. North Carolina	NC	N	99,613	0	107	99,720		
35. North Dakota	ND	N	1,061	0	0	1,061		
36. Ohio	OH	L	14,669,032	54,358	18,482	14,741,872		
37. Oklahoma	OK	N	4,877	0	0	4,877		
38. Oregon	OR	N	3,375	0	0	3,375		
39. Pennsylvania	PA	L	1,028,093	0	0	1,028,093		
40. Rhode Island	RI	N	802	0	0	802		
41. South Carolina	SC	L	947,279	0	0	947,279		
42. South Dakota	SD	N	235	0	0	235		
43. Tennessee	TN	L	3,258,994	25,550	2,890	3,287,434		
44. Texas	TX	N	86,185	0	0	86,185		
45. Utah	UT	N	11,531	0	0	11,531		
46. Vermont	VT	N	5,176	0	0	5,176		
47. Virginia	VA	L	391,972	3,600	197	395,770		
48. Washington	WA	N	10,381	0	0	10,381		
49. West Virginia	WV	N	42,216	5,288	78	47,582		
50. Wisconsin	WI	L	513,434	0	0	513,434		
51. Wyoming	WY	N	507	0	0	507		
52. American Samoa	AS	N	0	0	0	0		
53. Guam	GU	N	0	0	0	0		
54. Puerto Rico	PR	N	72	0	0	72		
55. U.S. Virgin Islands	VI	N	433	0	0	433		
56. Northern Mariana Islands	MP	N	0	0	0	0		
57. Canada	CAN	N	0	0	0	0		
58. Aggregate Other Alien	OT	XXX	2,505	0	0	2,505		0
59. Subtotal	XXX		35,846,239	122,524	36,761	36,005,524		0
90. Reporting entity contributions for employee benefits plans	XXX					0		
91. Dividends or refunds applied to purchase paid-up additions and annuities	XXX					0		
92. Dividends or refunds applied to shorten endowment or premium paying period	XXX					0		
93. Premium or annuity considerations waived under disability or other contract provisions	XXX					0		
94. Aggregate other amounts not allocable by State	XXX		0	0	0	0		0
95. Totals (Direct Business)	XXX		35,846,239	122,524	36,761	36,005,524		0
96. Plus Reinsurance Assumed	XXX		1,299,889	0	0	1,299,889		
97. Totals (All Business)	XXX		37,146,128	122,524	36,761	37,305,413		0
98. Less Reinsurance Ceded	XXX		17,291,126	0	16,847	17,307,973		
99. Totals (All Business) less Reinsurance Ceded	XXX		19,855,002	122,524	19,914	19,997,440		0
DETAILS OF WRITE-INS								
58001. ZZZ Other Alien	XXX		2,505			2,505		
58002.	XXX							
58003.	XXX							
58998. Summary of remaining write-ins for Line 58 from overflow page	XXX		0	0	0	0		0
58999. Total (Lines 58001 through 58003 + 58998) (Line 58 above)	XXX		2,505	0	0	2,505		0
9401.	XXX							
9402.	XXX							
9403.	XXX							
9498. Summary of remaining write-ins for Line 94 from overflow page	XXX		0	0	0	0		0
9499. Total (Lines 9401 through 9403 + 9498) (Line 94 above)	XXX		0	0	0	0		0

(a) Active Status Counts:

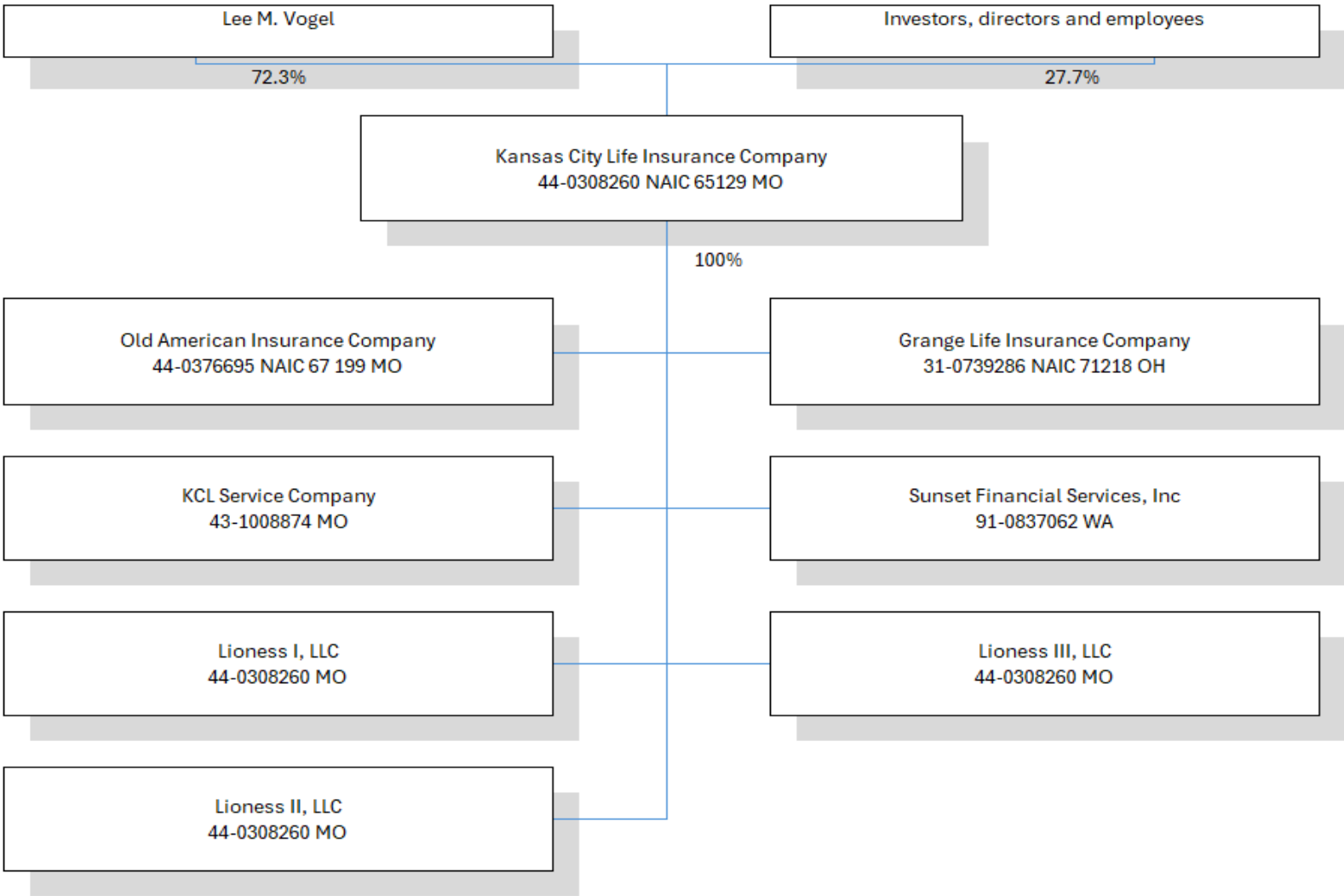
1. L – Licensed or Chartered – Licensed insurance carrier or domiciled RRG15

2. R – Registered – Non-domiciled RRGs0

3. E – Eligible – Reporting entities eligible or approved to write surplus lines in the state0
4. Q – Qualified – Qualified or accredited reinsurer0

5. N – None of the above – Not allowed to write business in the state.....42

SCHEDULE Y - INFORMATION CONCERNING ACTIVITIES OF INSURER MEMBERS OF A HOLDING COMPANY GROUP
PART 1 - ORGANIZATIONAL CHART



$\frac{1}{3}$
$$\frac{1}{\omega}$$
$$\frac{1}{\omega}$$
$$\frac{1}{\omega}$$
$$\frac{1}{\omega}$$

STATEMENT AS OF JUNE 30, 2025 OF THE Grange Life Insurance Company

SUPPLEMENTAL EXHIBITS AND SCHEDULES INTERROGATORIES

The following supplemental reports are required to be filed as part of your statement filing. However, in the event that your company does not transact the type of business for which the special report must be filed, your response of **NO** to the specific interrogatory will be accepted in lieu of filing a "NONE" report and a bar code will be printed below. If the supplement is required of your company but is not being filed for whatever reason enter **SEE EXPLANATION** and provide an explanation following the interrogatory questions.

	Response
1. Will the Trusteed Surplus Statement be filed with the state of domicile and the NAIC with this statement?NO.....
2. Will the Medicare Part D Coverage Supplement be filed with the state of domicile and the NAIC with this statement?NO.....
3. Will the Reasonableness of Assumptions Certification required by Actuarial Guideline XXXV be filed with the state of domicile and electronically with the NAIC?NO.....
4. Will the Reasonableness and Consistency of Assumptions Certification required by Actuarial Guideline XXXV be filed with the state of domicile and electronically with the NAIC?NO.....
5. Will the Reasonableness of Assumptions Certification for Implied Guaranteed Rate Method required by Actuarial Guideline XXXVI be filed with the state of domicile and electronically with the NAIC?NO.....
6. Will the Reasonableness and Consistency of Assumptions Certification required by Actuarial Guideline XXXVI (Updated Average Market Value) be filed with the state of domicile and electronically with the NAIC?NO.....
7. Will the Reasonableness and Consistency of Assumptions Certification required by Actuarial Guideline XXXVI (Updated Market Value) be filed with the state of domicile and electronically with the NAIC?NO.....
8. Will the Life PBR Statement of Exemption be filed with the state of domicile by July 1st and electronically with the NAIC with the second quarterly filing per the Valuation Manual (by August 15)? (2nd Quarter Only) The response for 1st and 3rd quarters should be N/A. A NO response resulting with a bar code is only appropriate in the 2nd quarter. In the case of an ongoing statement of exemption, enter "SEE EXPLANATION" and provide as an explanation that the company is utilizing an ongoing statement of exemption.SEE EXPLANATION.....
AUGUST FILING	
9. Will the regulator-only (non-public) Communication of Internal Control Related Matters Noted in Audit be filed with the state of domicile and electronically with the NAIC (as a regulator-only non-public document) by August 1? The response for 1st and 3rd quarters should be N/A. A NO response resulting with a bar code is only appropriate in the 2nd quarter.YES.....

Explanation:


8.The Company is utilizing an ongoing statement of exemption

Bar Code:


1.



71218202549000002
2.




71218202536500002
3.



71218202544500002
4.



71218202544600002
5.



71218202544700002
6.



71218202544800002
7.



71218202544900002

OVERFLOW PAGE FOR WRITE-INS

SCHEDULE A – VERIFICATION

Real Estate		
	1	2
	Year To Date	Prior Year Ended December 31
1. Book/adjusted carrying value, December 31 of prior year	0	0
2. Cost of acquired:		
2.1 Actual cost at time of acquisition		0
2.2 Additional investment made after acquisition		0
3. Current year change in encumbrances		0
4. Total gain (loss) on disposals		0
5. Deduct amounts received on disposals		0
6. Total foreign exchange change in book/adjusted carrying value		0
7. Deduct current year's other-than-temporary impairment recognized		0
8. Deduct current year's depreciation		0
9. Book/adjusted carrying value at the end of current period (Lines 1+2+3+4-5+6-7-8)	0	0
10. Deduct total nonadmitted amounts	0	0
11. Statement value at end of current period (Line 9 minus Line 10)	0	0

SCHEDULE B – VERIFICATION

Mortgage Loans		
	1	2
	Year To Date	Prior Year Ended December 31
1. Book value/recorded investment excluding accrued interest, December 31 of prior year	6,463,185	5,483,477
2. Cost of acquired:		
2.1 Actual cost at time of acquisition	0	1,000,000
2.2 Additional investment made after acquisition		0
3. Capitalized deferred interest and other		0
4. Accrual of discount		0
5. Unrealized valuation increase/(decrease)		0
6. Total gain (loss) on disposals		0
7. Deduct amounts received on disposals	15,969	20,291
8. Deduct amortization of premium and mortgage interest points and commitment fees		0
9. Total foreign exchange change in book value/recorded investment excluding accrued interest		0
10. Deduct current year's other-than-temporary impairment recognized		0
11. Book value/recorded investment excluding accrued interest at end of current period (Lines 1+2+3+4+5+6-7-8+9-10)	6,447,216	6,463,185
12. Total valuation allowance		0
13. Subtotal (Line 11 plus Line 12)	6,447,216	6,463,185
14. Deduct total nonadmitted amounts	0	0
15. Statement value at end of current period (Line 13 minus Line 14)	6,447,216	6,463,185

SCHEDULE BA – VERIFICATION

Other Long-Term Invested Assets		
	1	2
	Year To Date	Prior Year Ended December 31
1. Book/adjusted carrying value, December 31 of prior year	0	0
2. Cost of acquired:		
2.1 Actual cost at time of acquisition		0
2.2 Additional investment made after acquisition		0
3. Capitalized deferred interest and other		0
4. Accrual of discount		0
5. Unrealized valuation increase/(decrease)		0
6. Total gain (loss) on disposals		0
7. Deduct amounts received on disposals		0
8. Deduct amortization of premium, depreciation and proportional amortization		0
9. Total foreign exchange change in book/adjusted carrying value		0
10. Deduct current year's other-than-temporary impairment recognized		0
11. Book/adjusted carrying value at end of current period (Lines 1+2+3+4+5+6-7-8+9-10)	0	0
12. Deduct total nonadmitted amounts	0	0
13. Statement value at end of current period (Line 11 minus Line 12)	0	0

SCHEDULE D – VERIFICATION

Bonds and Stocks		
	1	2
	Year To Date	Prior Year Ended December 31
1. Book/adjusted carrying value of bonds and stocks, December 31 of prior year	403,612,792	400,948,901
2. Cost of bonds and stocks acquired	21,179,353	18,657,821
3. Accrual of discount	238,786	479,207
4. Unrealized valuation increase/(decrease)	0	0
5. Total gain (loss) on disposals	12,721	15,867
6. Deduct consideration for bonds and stocks disposed of	18,358,480	15,352,042
7. Deduct amortization of premium	680,450	1,161,842
8. Total foreign exchange change in book/adjusted carrying value	0	0
9. Deduct current year's other-than-temporary impairment recognized	0	0
10. Total investment income recognized as a result of prepayment penalties and/or acceleration fees	0	24,880
11. Book/adjusted carrying value at end of current period (Lines 1+2+3+4+5-6-7+8-9+10)	406,004,722	403,612,792
12. Deduct total nonadmitted amounts	0	0
13. Statement value at end of current period (Line 11 minus Line 12)	406,004,722	403,612,792

STATEMENT AS OF JUNE 30, 2025 OF THE Grange Life Insurance Company

SCHEDULE D - PART 1B

Showing the Acquisitions, Dispositions and Non-Trading Activity
During the Current Quarter for all Bonds and Preferred Stock by NAIC Designation

NAIC Designation	1 Book/Adjusted Carrying Value Beginning of Current Quarter	2 Acquisitions During Current Quarter	3 Dispositions During Current Quarter	4 Non-Trading Activity During Current Quarter	5 Book/Adjusted Carrying Value End of First Quarter	6 Book/Adjusted Carrying Value End of Second Quarter	7 Book/Adjusted Carrying Value End of Third Quarter	8 Book/Adjusted Carrying Value December 31 Prior Year
ISSUER CREDIT OBLIGATIONS (ICO)								
1. NAIC 1 (a).....	179,894,701	5,394,975	5,097,053	5,805,279	179,894,701	185,997,902	0	180,123,929
2. NAIC 2 (a).....	149,701,664	10,496,120	9,881,741	(4,537,624)	149,701,664	145,778,419	0	144,671,716
3. NAIC 3 (a).....	3,454,246			(416,855)	3,454,246	3,037,391	0	4,464,068
4. NAIC 4 (a).....	0				0	0	0	0
5. NAIC 5 (a).....	0				0	0	0	0
6. NAIC 6 (a).....	0				0	0	0	0
7. Total ICO	333,050,611	15,891,095	14,978,794	850,800	333,050,611	334,813,712	0	329,259,713
ASSET-BACKED SECURITIES (ABS)								
8. NAIC 1	73,055,375	134,930	1,419,009	(1,037,391)	73,055,375	70,733,905	0	73,838,292
9. NAIC 2	483,649		27,403	859	483,649	457,105	0	514,787
10. NAIC 3	0				0	0	0	0
11. NAIC 4	0				0	0	0	0
12. NAIC 5	0				0	0	0	0
13. NAIC 6	0				0	0	0	0
14. Total ABS.....	73,539,024	134,930	1,446,412	(1,036,532)	73,539,024	71,191,010	0	74,353,079
PREFERRED STOCK								
15. NAIC 1	0				0	0	0	0
16. NAIC 2	0				0	0	0	0
17. NAIC 3	0				0	0	0	0
18. NAIC 4	0				0	0	0	0
19. NAIC 5	0				0	0	0	0
20. NAIC 6	0				0	0	0	0
21. Total Preferred Stock.....	0	0	0	0	0	0	0	0
22. Total ICO, ABS & Preferred Stock	406,589,635	16,026,025	16,425,206	(185,732)	406,589,635	406,004,722	0	403,612,792

(a) Book/Adjusted Carrying Value column for the end of the current reporting period includes the following amount of short-term and cash equivalent bonds by NAIC designation: NAIC 1 \$; NAIC 2 \$;

NAIC 3 \$; NAIC 4 \$; NAIC 5 \$; NAIC 6 \$

Schedule DA - Part 1

NONE

Schedule DA - Verification

NONE

Schedule DB - Part A - Verification

NONE

Schedule DB - Part B - Verification

NONE

Schedule DB - Part C - Section 1

NONE

Schedule DB - Part C - Section 2

NONE

Schedule DB - Verification

NONE

SCHEDULE E – PART 2 – VERIFICATION
(Cash Equivalents)

	1 Year To Date	2 Prior Year Ended December 31
1. Book/adjusted carrying value, December 31 of prior year.....	14,129,369	12,064,117
2. Cost of cash equivalents acquired	66,819,526	171,719,631
3. Accrual of discount		0
4. Unrealized valuation increase/(decrease)		0
5. Total gain (loss) on disposals.....		0
6. Deduct consideration received on disposals	69,652,869	169,654,379
7. Deduct amortization of premium		0
8. Total foreign exchange change in book/adjusted carrying value		0
9. Deduct current year's other-than-temporary impairment recognized		0
10. Book/adjusted carrying value at end of current period (Lines 1+2+3+4+5-6-7+8-9)	11,296,026	14,129,369
11. Deduct total nonadmitted amounts		0
12. Statement value at end of current period (Line 10 minus Line 11)	11,296,026	14,129,369

EO1

NONE

NONE

NONE

NONE

NONE

NONE

SCHEDULE B - PART 2

Showing All Mortgage Loans ACQUIRED AND ADDITIONS MADE During the Current Quarter

[illegible]

SCHEDULE B - PART 3

Showing All Mortgage Loans DISPOSED, Transferred or Repaid During the Current Quarter

1 Loan Number	Location		4 Loan Type	5 Date Acquired	6 Disposal Date	7 Book Value/ Re- corded Investment Excluding Accrued Interest Prior Year	Change in Book Value/Recorded Investment						14 Book Value/ Re- corded Investment Excluding Accrued Interest on Disposal	15 Consideration	16 Foreign Exchange Gain (Loss) on Disposal	17 Realized Gain (Loss) on Disposal	18 Total Gain (Loss) on Disposal
	2 City	3 State					8 Unrealized Valuation Increase/(Decrease)	9 Current Year's (Amortization)/Accretion	10 Current Year's Other-Than-Temporary Impairment Recognized	11 Capitalized Deferred Interest and Other	12 Total Change in Book Value (8+9-10+11)	13 Total Foreign Exchange Change in Book Value					
Mortgages with partial repayments																	
6100.....	SCOTTSDALE.....	AZ.....		.07/17/2024.....		994,698.....						.0.....	4,121.....	4,121.....			.0.....
90016.....	HAMBURG.....	NY.....		.09/09/2022.....		968,488.....						.0.....	3,923.....	3,923.....			.0.....
0299999 - Mortgages with partial repayments						1,963,185.....	0.....	0.....	0.....	0.....	0.....	0.....	8,044.....	8,044.....	0.....	0.....	0.....
0599999 Totals						1,963,185.....	0.....	0.....	0.....	0.....	0.....	0.....	8,044.....	8,044.....	0.....	0.....	0.....

STATEMENT AS OF JUNE 30, 2025 OF THE Grange Life Insurance Company

SCHEDULE BA - PART 2

Showing Other Long-Term Invested Assets ACQUIRED AND ADDITIONS MADE During the Current Quarter

[illegible]

SCHEDULE BA - PART 3

Showing Other Long-Term Invested Assets DISPOSED, Transferred or Repaid During the Current Quarter

[illegible]

STATEMENT AS OF JUNE 30, 2025 OF THE Grange Life Insurance Company

SCHEDULE D - PART 3

Show All Long-Term Bonds and Stock Acquired During the Current Quarter

1	2	3	4	5	6	7	8	9
CUSIP Identification	Description	Date Acquired	Name of Vendor	Number of Shares of Stock	Actual Cost	Par Value	Paid for Accrued Interest and Dividends	NAIC Designation, NAIC Designation Modifier and SVO Administrative Symbol
Issuer Credit Obligations - Corporate Bonds (Unaffiliated)								
125523-AK-6	CIGNA GROUP / THE	05/14/2025	MARKETAXESS	XXX	416,250	500,000	10,208	2 A FE
171340-AL-6	CHURCH & DWIGHT CO INC	05/14/2025	JANE STREET	XXX	753,980	1,000,000	11,411	2 A FE
26439X-AH-6	DCP MIDSTREAM OPERATING	05/14/2025	BARCLAY CAPITAL	XXX	540,800	539,000	1,159	2 B FE
29273V-BE-9	ENERGY TRANSFER LP	05/14/2025	MITSUBISHI UFJ SECURITIES	XXX	494,495	500,000	5,621	2 B FE
337738-AV-0	FISERV INC	05/14/2025	MORGAN STANLEY/DEAN WITTER	XXX	782,310	1,000,000	16,378	2 B FE
38175@-AQ-0	GOLUB CAPITAL PARTNERS	04/22/2025	VOYA INVESTMENT MANAGEMENT LLC	XXX	1,000,000	1,000,000		2 A PL
438516-BS-4	HONEYWELL INTL INC	06/18/2025	JANE STREET	XXX	764,990	1,000,000	3,071	1 F FE
494550-BD-7	KINDER MORGAN ENERGY PART	05/14/2025	MORGAN STANLEY/DEAN WITTER	XXX	1,016,090	1,000,000	13,361	2 B FE
571748-BJ-0	MARSH & MCLENNAN COS INC	05/14/2025	MARKETAXESS	XXX	435,430	500,000	4,083	1 G FE
581557-BC-8	MCKESSON CORP	06/11/2025	FIRST TENNESSEE BANK	XXX	441,640	500,000	5,900	2 A FE
58769J-BH-9	MERCEDES-BENZ FIN NA	05/14/2025	MIZUHO SECURITIES USA LLC	XXX	493,070	500,000	3,331	1 F FE
59523U-AX-5	MID-AMERICA APARTMENTS	05/14/2025	J. P. MORGAN	XXX	963,820	1,000,000	20,213	1 G FE
67103H-AN-7	O'REILLY AUTOMOTIVE INC	05/14/2025	WELLS FARGO	XXX	484,225	500,000	5,972	2 B FE
75913M-AA-7	REGIONS BANK	06/18/2025	JPM CHASE	XXX	512,305	500,000	15,588	2 A FE
808513-CA-1	CHARLES SCHWAB CORP	05/14/2025	WELLS FARGO	XXX	435,885	500,000	2,900	1 F FE
857477-CC-5	STATE STREET CORP	05/14/2025	GOLDMAN SACHS, NEW YORK	XXX	498,150	500,000	12,683	1 D FE
86172*-AD-3	STONE POINT CAPITAL LLC	05/15/2025	HARTFORD INVESTMENT MANAGEMENT COMPANY	XXX	500,000	500,000		2 B FE
898813-AQ-3	TUCSON ELECTRIC POWER CO	05/06/2025	GOLDMAN SACHS, NEW YORK	XXX	858,910	1,000,000	21,017	1 G FE
91913Y-AL-4	VALERO ENERGY CORP	06/18/2025	GOLDMAN SACHS, NEW YORK	XXX	1,062,810	1,000,000	920	2 B FE
94106L-CF-4	WASTE MANAGEMENT	05/06/2025	MARKETAXESS	XXX	944,720	1,000,000	3,269	1 G FE
94973V-AY-3	ANTHEM INC	05/14/2025	MORGAN STANLEY/DEAN WITTER	XXX	845,540	1,000,000		2 A FE
01626P-AP-1	ALIMENTATION COUCHE-TARD	05/21/2025	JANE STREET	XXX	359,450	500,000	430	2 A FE
06368D-H7-2	BANK OF MONTREAL	05/14/2025	MARKETAXESS	XXX	844,400	1,000,000	10,722	2 A FE
25156P-AR-4	DEUTSCHE TELEKOM INT FIN	05/21/2025	MORGAN STANLEY/DEAN WITTER	XXX	441,825	500,000	5,146	2 A FE
0089999999 - Issuer Credit Obligations - Corporate Bonds (Unaffiliated)					15,891,095	17,539,000	173,383	XXX
0489999999 - Subtotal - Issuer Credit Obligations (Unaffiliated)					15,891,095	17,539,000	173,383	XXX
0509999997 - Subtotals - Issuer Credit Obligations - Part 3					15,891,095	17,539,000	173,383	XXX
0509999999 - Subtotals - Issuer Credit Obligations					15,891,095	17,539,000	173,383	XXX
Asset-Backed Securities - Financial Asset-Backed - Self-Liquidating - Agency Residential Mortgage-Backed Securities - Guaranteed (Exempt from RBC)								
38380A-A5-6	GNR 2016-121 AZ	06/20/2025	CAPITALIZED INTEREST	XXX	28,177	28,177		1
38380B-N2-7	GNR 2016-153 AZ	06/20/2025	CAPITALIZED INTEREST	XXX	57,338	57,338		1
38380B-N4-3	GNR 2016-153 ZB	06/20/2025	CAPITALIZED INTEREST	XXX	49,415	49,415		1
1019999999 - Asset-Backed Securities - Financial Asset-Backed - Self-Liquidating - Agency Residential Mortgage-Backed Securities - Guaranteed (Exempt from RBC)					134,930	134,930	0	XXX
1889999999 - Subtotal - Asset-Backed Securities (Unaffiliated)					134,930	134,930	0	XXX
1909999997 - Subtotals - Asset-Backed Securities - Part 3					134,930	134,930	0	XXX
1909999999 - Subtotals - Asset-Backed Securities					134,930	134,930	0	XXX
2009999999 - Subtotals - Issuer Credit Obligations and Asset-Backed Securities					16,026,025	17,673,930	173,383	XXX
6009999999 Totals					16,026,025	XXX	173,383	XXX

STATEMENT AS OF JUNE 30, 2025 OF THE Grange Life Insurance Company

SCHEDULE D - PART 4

Show All Long-Term Bonds and Stock Sold, Redeemed or Otherwise Disposed of During the Current Quarter

1	2	3	4	5	6	7	8	9	Change in Book/Adjusted Carrying Value					15	16	17	18	19	20	21
									10	11	12	13	14							
CUSIP Identification	Description	Disposal Date	Name of Purchaser	Number of Shares of Stock	Consideration	Par Value	Actual Cost	Prior Year Book/Adjusted Carrying Value	Unrealized Valuation Increase/ (Decrease)	Current Year's (Amortization)/ Accretion	Current Year's Other-Than-Temporary Impairment Recognized	Total Change in B./A.C.V. (10+11-12)	Total Foreign Exchange Change in B./A.C.V.	Book/ Adjusted Carrying Value at Disposal Date	Foreign Exchange Gain (Loss) on Disposal	Realized Gain (Loss) on Disposal	Total Gain (Loss) on Disposal	Bond Interest/Stock Dividends Received During Year	Stated Contractual Maturity Date	NAIC Designation, NAIC Desig. Modifier and SVO Administrative Symbol
Issuer Credit Obligations - Project Finance Bonds Issued by Operating Entities (Unaffiliated)																				
48255@-AA-7	KKR PINE BROOKE ISSUER LLC	06/16/2025	SINKING FUND REDEMPTION	XXX	7,673	7,673	7,673	7,673				0		7,673			0	111	03/15/2051	2 A PL
52678@-AB-6	LERADO INVESTMENTS LLC	06/30/2025	SINKING FUND REDEMPTION	XXX	10,319	10,319	10,319	10,319				0		10,319			0	325	03/31/2036	2 B PL
78115@-AA-4	RUBRIC PORTFOLIO HOLDINGS, LLC	03/31/2025	SINKING FUND REDEMPTION	XXX	13,304	13,304	13,304	13,304				0		13,304			0	352	09/30/2049	2 C PL
84929Y-AC-1	AES CLEAN ENERGY 4	06/30/2025	SINKING FUND REDEMPTION	XXX	1,576	1,576	1,576	1,576				0		1,576			0	48	11/30/2049	2 C PL
92838@-AA-1	VISTA RIDGE LLC	06/30/2025	SINKING FUND REDEMPTION	XXX	3,280	3,280	3,280	3,280				0		3,280			0	42	10/14/2049	1 F PL
06489*-AA-7	NHK PTY LTD	05/15/2025	SINKING FUND REDEMPTION	XXX	9,298	9,298	9,298	9,298				0		9,298			0	331	11/15/2032	2 C FE
0069999999 - Issuer Credit Obligations - Project Finance Bonds Issued by Operating Entities (Unaffiliated)					45,450	45,450	45,450	45,450	0	0	0	0	0	45,450	0	0	0	1,209	XXX	XXX
Issuer Credit Obligations - Corporate Bonds (Unaffiliated)																				
036752-AG-8	ANTHEM INC	05/14/2025	MILLENNIUM ADVISORS, SECURITY CALLED BY ISSUER at 100,000	XXX	986,150	1,000,000	973,680	989,886		1,118		1,118		991,004		(4,854)	(4,854)	28,935	03/01/2028	2 A FE
09062X-AF-0	BIOGEN INC	06/27/2025	MARKETAXESS	XXX	1,000,000	1,000,000	1,038,010	1,002,337		(2,337)		(2,337)		1,000,000			0	31,725	09/15/2025	2 A FE
125523-AH-3	HALFMOON PARENT INC	05/14/2025	MARKETAXESS	XXX	493,745	500,000	492,685	496,851		286		286		497,136		(3,391)	(3,391)	12,760	10/15/2028	2 A FE
126650-BQ-2	CVS PASS-THROUGH	06/10/2025	SINKING FUND REDEMPTION	XXX	7,999	7,999	8,159	8,005		(6)		(6)		7,999			0	232	01/10/2030	2 B FE
17136M-AC-6	CHURCH & DWIGHT CO INC	05/14/2025	MORGAN STANLEY/DEAN WITTER	XXX	1,028,340	1,000,000	998,150	998,491		57		57		998,549		29,791	29,791	28,000	11/15/2032	2 A FE
233851-DT-8	DAIMLER FINANCE NA LLC	05/14/2025	J. P. MORGAN, SECURITY CALLED BY ISSUER at 100,000	XXX	488,380	500,000	498,795	499,438		47		47		499,484		(11,104)	(11,104)	15,707	02/22/2029	1 F FE
256677-AD-7	DOLLAR GENERAL CORP	04/29/2025	MILLENNIUM ADVISORS	XXX	500,000	500,000	493,985	499,183		317		317		499,500		500	500	10,260	11/01/2025	2 B FE
26439X-AC-7	DCP MIDSTREAM OPERATING	05/14/2025	MORGAN STANLEY/DEAN WITTER	XXX	566,435	500,000	560,150	545,445		(2,554)		(2,554)		542,891		23,544	23,544	30,356	08/16/2030	2 B FE
29278N-AG-8	ENERGY TRANSFER OPERATING	05/14/2025	MORGAN STANLEY/DEAN WITTER	XXX	504,270	500,000	498,945	499,469		41		41		499,511		4,759	4,759	15,313	04/15/2029	2 B FE
31946M-AA-1	FIRST CITIZENS BANCSHARE	06/16/2025	JEFFERIES	XXX	500,000	500,000	500,000	500,000		8,332		8,332		500,000		29,591	29,591	17,081	03/15/2030	2 B FE
337738-BC-1	FISERV INC	05/14/2025	SINKING FUND REDEMPTION	XXX	897,550	1,000,000	814,180	859,628		(16)		(16)		867,959			0	12,072	06/01/2030	2 B FE
33803W-AA-7	FISHERS LANE ASSOC LLC	06/05/2025	JANE STREET	XXX	15,776	15,776	16,183	15,792		50		50		20,871			0	553	12/15/2035	1 F FE
347466-AE-4	IRWIN LAND LLC	06/15/2025	J. P. MORGAN	XXX	991,000	1,000,000	963,680	985,823		1,560		1,560		987,382		3,618	3,618	30,339	03/01/2028	2 B FE
49456B-AP-6	KINDER MORGAN INC	05/14/2025	STIFEL NICOLAUS & CO	XXX	495,210	500,000	499,825	499,942		5		5		499,947		50	50	14,583	03/15/2029	1 G FE
571748-BG-6	MARSH & MCLENNAN COS INC	05/14/2025	BARCLAY CAPITAL	XXX	999,650	1,000,000	999,100	999,567		33		33		999,601			0	21,771	05/30/2029	2 A FE
581557-BN-4	MCKESSON CORP	05/14/2025	MARKETAXESS	XXX	972,790	500,000	499,795	499,883		7		7		499,891		(13,206)	(13,206)	13,067	04/01/2030	2 A FE
59523U-AQ-0	MID-AMERICA APARTMENTS	05/14/2025	VARIOUS	XXX	625	625	616	625		0		0		625			0	24	09/21/2028	2 C PL
67103H-AJ-6	O'REILLY AUTOMOTIVE INC	05/14/2025	JANE STREET	XXX	491,800	500,000	497,985	499,086		77		77		499,164		(7,364)	(7,364)	15,778	02/01/2029	1 F FE
73940B-AD-7	ACQUISITION, LLC	03/31/2025	J. P. MORGAN	XXX	492,180	500,000	500,000	500,000		0		0		500,000		(7,820)	(7,820)	9,317	12/03/2029	1 D FE
808513-AZ-8	CHARLES SCHWAB CORP	05/14/2025	GOLDMAN SACHS, NEW YORK	XXX	1,151,890	1,000,000	1,338,300	1,183,821		(7,343)		(7,343)		1,176,478		(24,588)	(24,588)	37,028	05/15/2032	1 G FE
857477-BD-4	STATE STREET CORP	05/14/2025	MORGAN STANLEY/DEAN WITTER	XXX	962,400	1,000,000	914,960	945,386		2,138		2,138		947,524		14,876	14,876	15,846	12/15/2032	2 A FE
94106L-AN-9	WASTE MANAGEMENT INC	05/06/2025	JANE STREET	XXX	892,320	1,000,000	851,440	878,486		4,766		4,766		883,252		9,068	9,068	15,528	05/15/2032	1 G FE
06368B-GS-1	BANK OF MONTREAL	05/14/2025	POWERGRID SERVICES	XXX	486,685	500,000	499,795	499,883		7		7		499,891			0	13,067	04/01/2030	2 A FE
898813-AU-4	TUCSON ELECTRIC POWER CO	05/06/2025	ACQUISITION, LLC	XXX	625	625	616	625		0		0		625			0	24	09/21/2028	2 C PL
0089999999 - Issuer Credit Obligations - Corporate Bonds (Unaffiliated)					14,946,066	15,045,271	14,976,321	14,926,659	0	6,685	0	6,685	0	14,933,344	0	12,722	12,722	402,849	XXX	XXX
0489999999 - Subtotal - Issuer Credit Obligations (Unaffiliated)					14,991,516	15,090,721	15,021,771	14,972,109	0	6,685	0	6,685	0	14,978,794	0	12,722	12,722	404,058	XXX	XXX
0509999997 - Subtotals - Issuer Credit Obligations - Part 4					14,991,516	15,090,721	15,021,771	14,972,109	0	6,685	0	6,685	0	14,978,794	0	12,722	12,722	404,058	XXX	XXX
0509999999 - Subtotals - Issuer Credit Obligations					14,991,516	15,090,721	15,021,771	14,972,109	0	6,685	0	6,685	0	14,978,794	0	12,722	12,722	404,058	XXX	XXX
Asset-Backed Securities - Financial Asset-Backed - Self-Liquidating - Agency Residential Mortgage-Backed Securities - Guaranteed (Exempt from RBC)																				
38373Q-HL-8	GNR 2003-34 OG	06/01/2025	MBS PAYDOWN	XXX	14,400	14,400	16,724	14,490		(90)		(90)		14,400			0	328	04/20/2033	1
38377Y-AP-5	GNR 2011-128 PE	06/01/2025	MBS PAYDOWN	XXX	48,696	48,696	51,115	48,755		(59)		(59)		48,696			0	653	09/20/2041	1
38378G-CY-2	GNR 2012-134 EA	06/01/2025	MBS PAYDOWN	XXX	6,013	6,013	6,302	6,022		(10)		(10)		6,013			0	88	11/20/2042	1
38378T-X2-1	GNR 2013-109 TW	06/01/2025	MBS PAYDOWN	XXX	48,972	48,972	47,848	48,895		78		78		48,972			0	521	07/20/2041	1
38378W-3A-9	GNR 2013-134 LB	06/01/2025	MBS PAYDOWN	XXX	41,866	41,866	41,761	41,862		3		3		41,866			0	522	09/20/2043	1
38379F-VF-3	GNR 2015-161 MB	06/01/2025	MBS PAYDOWN	XXX	125,093	125,093	126,598	125,100		(7)		(7)		125,093			0	1,572	07/20/2045	1
38380U-QZ-9	GNR 2018-15 GZ	06/01/2025	MBS PAYDOWN	XXX	17,926	17,926	17,215	17,899		27		27		17,926			0	218	01/20/2048	1
38381A-XQ-4	GNR 2018-154 NB	06/01/2025	MBS PAYDOWN	XXX	74,996	74,996	72,746	74,939		57		57		74,996			0	1,108	11/20/2048	1
38381B-X3-3	GNR 2019-18 PZ	06/01/2025	MBS PAYDOWN	XXX	10,666	10,666	10,426	10,661		5		5		10,666			0	180	02/20/2049	1
1019999999 - Asset-Backed Securities - Financial Asset-Backed - Self-Liquidating - Agency Residential Mortgage-Backed Securities - Guaranteed (Exempt from RBC)					388,628	388,628	390,735	388,623	0	4	0	4	0	388,628	0	0	0	5,190	XXX	XXX
Asset-Backed Securities - Financial Asset-Backed - Self-Liquidating - Agency Commercial Mortgage-Backed Securities - Guaranteed (Exempt from RBC)																				
38378K-SX-3	GNR 2013-161 B	06/01/2025	MBS PAYDOWN	XXX	11,267	11,267	11,795	11,280		(13)		(13)		11,267			0	131	11/16/2054	1
38379U-6F-8	GNR 2017-24 BC	06/01/2025	MBS PAYDOWN	XXX	11,500	11,500	10,971	11,487		13		13		11,500			0	115	07/16/2050	1
38380J-HK-7	GNR 2017-181 AB	06/01/2025	MBS PAYDOWN	XXX	16,272	16,272	15,760	16,247		25		25		16,272			0	159	04/16/2052	1

STATEMENT AS OF JUNE 30, 2025 OF THE Grange Life Insurance Company

SCHEDULE D - PART 4

Show All Long-Term Bonds and Stock Sold, Redeemed or Otherwise Disposed of During the Current Quarter

1	2	3	4	5	6	7	8	9	Change in Book/Adjusted Carrying Value					15	16	17	18	19	20	21
									10	11	12	13	14							
CUSIP Identification	Description	Disposal Date	Name of Purchaser	Number of Shares of Stock	Consideration	Par Value	Actual Cost	Prior Year Book/Adjusted Carrying Value	Unrealized Valuation Increase/ (Decrease)	Current Year's (Amortization)/ Accretion	Current Year's Other-Than-Temporary Impairment Recognized	Total Change in B./A.C.V. (10+11-12)	Total Foreign Exchange Change in B./A.C.V.	Book/ Adjusted Carrying Value at Disposal Date	Foreign Exchange Gain (Loss) on Disposal	Realized Gain (Loss) on Disposal	Total Gain (Loss) on Disposal	Bond Interest/Stock Dividends Received During Year	Stated Contractual Maturity Date	NAIC Designation, NAIC Desig. Modifier and SVO Administrative Symbol
38380J-XC-7	GNR 2018-45 A	06/01/2025	MBS PAYDOWN	XXX	102,073	102,073	98,468	102,015		58		58		102,073			0	866	11/16/2048	1
1029999999 - Asset-Backed Securities - Financial Asset-Backed - Self-Liquidating - Agency Commercial Mortgage-Backed Securities - Guaranteed (Exempt from RBC)					141,112	141,112	136,994	141,029	0	83	0	83	0	141,112	0	0	0	1,271	XXX	XXX
Asset-Backed Securities - Financial Asset-Backed - Self-Liquidating - Agency Residential Mortgage-Backed Securities – Not/Partially Guaranteed (Not Exempt from RBC)																				
3128HX-SS-5	FHS 268 30	06/01/2025	MBS PAYDOWN	XXX	8,880	8,880	9,246	8,895		(15)		(15)		8,880			0	117	08/15/2042	1
3128KJ-CZ-3	FG A55488	06/01/2025	MBS PAYDOWN	XXX	209	209	209							209			0	6	12/01/2036	1
3128MJ-BW-9	FG G08052	06/01/2025	MBS PAYDOWN	XXX	1,418	1,418	1,411	1,417		1		1		1,418			0	30	04/01/2035	1
3128P7-RY-1	FG C91403	06/01/2025	MBS PAYDOWN	XXX	5,818	5,818	6,263	5,818						5,818			0	85	03/01/2032	1
3128P7-S2-0	FG C91437	06/01/2025	MBS PAYDOWN	XXX	4,826	4,826	5,073	4,843		(18)		(18)		4,826			0	70	04/01/2032	1
3136AJ-E9-3	FNR 2014-26 BL	06/01/2025	MBS PAYDOWN	XXX	22,767	22,767	23,281	22,767						22,767			0	321	11/25/2042	1
3136AP-ZK-7	FNR 2015-68 BW	06/01/2025	MBS PAYDOWN	XXX	23,101	23,101	23,097	23,101						23,101			0	295	08/25/2035	1
31371N-CM-5	FN 256676	06/01/2025	MBS PAYDOWN	XXX	3,085	3,085	3,346	3,117		(33)		(33)		3,085			0	67	04/01/2027	1
3137A3-JW-0	FHR 3753 AS	06/01/2025	MBS PAYDOWN	XXX	4,668	4,668	4,816	4,683		(15)		(15)		4,668			0	68	11/15/2025	1
3137AG-CA-6	FHR 3947 BC	06/01/2025	MBS PAYDOWN	XXX	1,230	1,230	1,273	1,234		(4)		(4)		1,230			0	13	10/15/2026	1
3137AM-K7-1	FHR 4020 EJ	06/01/2025	MBS PAYDOWN	XXX	8,864	8,864	8,864	8,864						8,864			0	115	02/15/2042	1
3137BS-FA-6	FHR 4622 TQ	06/01/2025	MBS PAYDOWN	XXX	139,591	139,591	136,625	139,252		339		339		139,591			0	1,843	03/15/2045	1
3137BS-FF-5	FHR 4622 VB	06/01/2025	MBS PAYDOWN	XXX	14,836	14,836	14,780	14,830		6		6		14,836			0	187	12/15/2039	1
31393M-W9-8	FHR 2586 WG	06/01/2025	MBS PAYDOWN	XXX	4,289	4,289	4,403	4,293		(4)		(4)		4,289			0	71	03/15/2033	1
31396J-ZL-8	FHR 3127 CY	06/01/2025	MBS PAYDOWN	XXX	1,977	1,977	2,056	1,981		(4)		(4)		1,977			0	45	03/15/2026	1
31397S-5N-0	FNR 2011-43 B	06/01/2025	MBS PAYDOWN	XXX	9,143	9,143	9,713	9,174		(31)		(31)		9,143			0	131	05/25/2031	1
31398L-BJ-6	FHR 3597 LE	06/01/2025	MBS PAYDOWN	XXX	3,134	3,134	3,279	3,148		(13)		(13)		3,134			0	52	07/15/2039	1
31398T-B8-3	FNR 2010-92 B	06/01/2025	MBS PAYDOWN	XXX	156,424	156,424	177,394	157,106		(682)		(682)		156,424			0	2,939	08/25/2030	1
31402R-JV-2	FN 735676	06/01/2025	MBS PAYDOWN	XXX	1,445	1,445	1,497	1,448		(3)		(3)		1,445			0	30	07/01/2035	1
31403D-BW-8	FN 745353	06/01/2025	MBS PAYDOWN	XXX	1,936	1,936	1,883	1,933		3		3		1,936			0	44	03/01/2036	1
31404S-GD-1	FN 776996	06/01/2025	MBS PAYDOWN	XXX	641	641	665	642		(1)		(1)		641			0	13	04/01/2034	1
31417G-VK-9	FN AB9617	06/01/2025	MBS PAYDOWN	XXX	17,006	17,006	17,033	17,008		(2)		(2)		17,006			0	201	06/01/2033	1
31417Y-ZJ-5	FN MA0776	06/01/2025	MBS PAYDOWN	XXX	4,868	4,868	5,130	4,890		(22)		(22)		4,868			0	93	06/01/2031	1
31417Y-3N-5	FN MA0804	06/01/2025	MBS PAYDOWN	XXX	2,862	2,862	2,947	2,869		(6)		(6)		2,862			0	46	07/01/2031	1
31417Y-TV-9	FN MA0563	06/01/2025	MBS PAYDOWN	XXX	2,534	2,534	2,613	2,534						2,534			0	42	11/01/2030	1
31418A-E9-5	FN MA1059	06/01/2025	MBS PAYDOWN	XXX	4,464	4,464	4,725	4,480		(16)		(16)		4,464			0	66	05/01/2032	1
31418A-EB-0	FN MA1029	06/01/2025	MBS PAYDOWN	XXX	4,294	4,294	4,515	4,310		(15)		(15)		4,294			0	62	04/01/2032	1
31418A-TA-6	FN MA1444	06/01/2025	MBS PAYDOWN	XXX	8,296	8,296	8,581	8,316		(20)		(20)		8,296			0	85	05/01/2033	1
31418B-TK-2	FN MA2353	06/01/2025	MBS PAYDOWN	XXX	36,825	36,825	37,735	36,894		(68)		(68)		36,825			0	473	08/01/2035	1
1039999999 - Asset-Backed Securities - Financial Asset-Backed - Self-Liquidating - Agency Residential Mortgage-Backed Securities – Not/Partially Guaranteed (Not Exempt from RBC)					499,431	499,431	522,452	500,056	0	(623)	0	(623)	0	499,431	0	0	0	7,610	XXX	XXX
Asset-Backed Securities - Financial Asset-Backed - Self-Liquidating - Agency Commercial Mortgage-Backed Securities – Not/Partially Guaranteed (Not Exempt from RBC)																				
3136AQ-LX-6	FNR 2015-80 VM	06/25/2025	MBS PAYDOWN	XXX	223,883	223,883	224,968	223,883				0		223,883			0	2,448	08/25/2034	1 E Z
3138L4-ZC-6	FN AM4370	06/01/2025	MBS PAYDOWN	XXX	4,930	4,930	5,686	4,949		(19)		(19)		4,930			0	101	09/01/2031	1
3138L4-6B-4	FN AM4465	06/01/2025	MBS PAYDOWN	XXX	31,047	31,047	34,462	31,168		(121)		(121)		31,047			0	582	10/01/2033	1
38378C-RT-6	GNR 2012-13 EG	04/21/2025	MBS PAYDOWN	XXX	419	419	424	419				0		419			0	3	10/20/2040	1 E Z
1049999999 - Asset-Backed Securities - Financial Asset-Backed - Self-Liquidating - Agency Commercial Mortgage-Backed Securities – Not/Partially Guaranteed (Not Exempt from RBC)					260,279	260,279	265,540	260,419	0	(140)	0	(140)	0	260,279	0	0	0	3,134	XXX	XXX
Asset-Backed Securities - Financial Asset-Backed - Self-Liquidating - Non-Agency – CLOs/CBOs/CDOs (Unaffiliated)																				
98877G-AQ-1	ZCCP 2019-1A A1R	04/16/2025	MBS PAYDOWN	XXX	78,176	78,176	76,417	77,720		456		456		78,176			0	2,471	07/16/2031	1 A FE
1099999999 - Asset-Backed Securities - Financial Asset-Backed - Self-Liquidating - Non-Agency – CLOs/CBOs/CDOs (Unaffiliated)					78,176	78,176	76,417	77,720	0	456	0	456	0	78,176	0	0	0	2,471	XXX	XXX
Asset-Backed Securities - Non-Financial Asset-Backed Securities – Practical Expedient - Other Non-Financial Asset-Backed Securities - Practical Expedient (Unaffiliated)																				
25512V-AA-7	DIVERSIFIED ABS VI, LLC	06/30/2025	MBS PAYDOWN	XXX	27,403	27,403	26,683	27,183		220		220		27,403			0	855	11/28/2039	2 A FE
89657B-AA-2	TRL 2019-1A A	06/17/2025	MBS PAYDOWN	XXX	9,198	9,198	9,193	9,182		15		15		9,198			0	146	04/17/2026	1 F FE
89680H-AA-0	TCF 2020-1A A	06/20/2025	MBS PAYDOWN	XXX	21,250	21,250	21,246	21,227		23		23		21,250			0	187	05/20/2030	1 F FE
12807C-AA-1	CAI 2020-1A A	06/25/2025	MBS PAYDOWN	XXX	10,938	10,938	10,935	10,922		15		15		10,938			0	101	03/27/2028	1 F FE
88315L-AQ-1	TMCL 2021-2A A	06/20/2025	MBS PAYDOWN	XXX	10,000	10,000	9,998	9,989		11		11		10,000			0	93	04/20/2046	1 F FE
1539999999 - Asset-Backed Securities - Non-Financial Asset-Backed Securities – Practical Expedient - Other Non-Financial Asset-Backed Securities - Practical Expedient (Unaffiliated)					78,789	78,789	78,055	78,503	0	284	0	284	0	78,789	0	0	0	1,382	XXX	XXX
1889999999 - Subtotal - Asset-Backed Securities (Unaffiliated)					1,446,415	1,446,415	1,470,193	1,446,350	0	64	0	64	0	1,446,415	0	0	0	21,058	XXX	XXX

STATEMENT AS OF JUNE 30, 2025 OF THE Grange Life Insurance Company

SCHEDULE D - PART 4

Show All Long-Term Bonds and Stock Sold, Redeemed or Otherwise Disposed of During the Current Quarter

1 CUSIP Identi- fication	2 Description	3 Disposal Date	4 Name of Purchaser	5 Number of Shares of Stock	6 Consideration	7 Par Value	8 Actual Cost	9 Prior Year Book/Adjusted Carrying Value	Change in Book/Adjusted Carrying Value					15 Book/ Adjusted Carrying Value at Disposal Date	16 Foreign Exchange Gain (Loss) on Disposal	17 Realized Gain (Loss) on Disposal	18 Total Gain (Loss) on Disposal	19 Bond Interest/Stock Dividends Received During Year	20 Stated Contractual Maturity Date	21 NAIC Designation, NAIC Desig. Modifier and SVO Administrative Symbol	
									10 Unrealized Valuation Increase/ (Decrease)	11 Current Year's (Amortization)/ Accretion	12 Current Year's Other-Than- Temporary Impairment Recognized	13 Total Change in B./A.C.V. (10+11-12)	14 Total Foreign Exchange Change in B./A.C.V.								
1909999997 - Subtotals - Asset-Backed Securities - Part 4					1,446,415	1,446,415	1,470,193	1,446,350	0	64	0	64	0	1,446,415	0	0	0	21,058	XXX	XXX	
1909999999 - Subtotals - Asset-Backed Securities					1,446,415	1,446,415	1,470,193	1,446,350	0	64	0	64	0	1,446,415	0	0	0	21,058	XXX	XXX	
2009999999 - Subtotals - Issuer Credit Obligations and Asset-Backed Securities					16,437,931	16,537,136	16,491,964	16,418,459	0	6,749	0	6,749	0	16,425,209	0	12,722	12,722	425,116	XXX	XXX	
	6009999999 Totals					16,437,931	XXX	16,491,964	16,418,459	0	6,749	0	6,749	0	16,425,209	0	12,722	12,722	425,116	XXX	XXX

Schedule DB - Part A - Section 1

NONE

Schedule DB - Part B - Section 1

NONE

Schedule DB - Part D - Section 1

NONE

Schedule DB - Part D - Section 2

NONE

Schedule DB - Part E

NONE

Schedule DL - Part 1

NONE

Schedule DL - Part 2

NONE

STATEMENT AS OF JUNE 30, 2025 OF THE Grange Life Insurance Company

SCHEDULE E - PART 1 - CASH

[illegible]

SCHEDULE E - PART 2 - CASH EQUIVALENTS

E14