



PROPERTY AND CASUALTY COMPANIES - ASSOCIATION EDITION

QUARTERLY STATEMENT
AS OF JUNE 30, 2025
OF THE CONDITION AND AFFAIRS OF THE
PROGRESSIVE CASUALTY INSURANCE COMPANY

NAIC Group Code01550155NAIC Company Code24260Employer's ID Number34-6513736
(Current)(Prior)

Organized under the Laws ofOH, State of Domicile or Port of EntryOH

Country of DomicileUnited States of America

Incorporated/Organized11/19/1956Commenced Business12/11/1956

Statutory Home Office300 N. COMMONS BLVD., W94MAYFIELD VILLAGE, OH, US 44143-1589
(Street and Number)(City or Town, State, Country and Zip Code)

Main Administrative Office300 N. COMMONS BLVD., W94MAYFIELD VILLAGE, OH, US 44143-1589
(Street and Number)(City or Town, State, Country and Zip Code)

440-461-5000
(Area Code) (Telephone Number)

Mail AddressP.O. BOX 89490CLEVELAND, OH, US 44101-6490
(Street and Number or P.O. Box)(City or Town, State, Country and Zip Code)

Primary Location of Books and Records300 N. COMMONS BLVD., W94MAYFIELD VILLAGE, OH, US 44143-1589
(Street and Number)(City or Town, State, Country and Zip Code)

440-395-4460
(Area Code) (Telephone Number)

Internet Website AddressPROGRESSIVE.COM

Statutory Statement ContactMICHELLE CRISTEN CAVELL440-395-4460
(Name)(Area Code) (Telephone Number)

FINANCIAL_REPORTING@PROGRESSIVE.COM
(E-mail Address)(FAX Number)

OFFICERS

PRESIDENTGEOFFREY THOMAS SOUSER

TREASURERMAUREEN MCCOY SPOONER #

SECRETARYPETER JAMES ALBERT

OTHER

PETER JAMES ALBERT, (VICE PRESIDENT)	FOLASADE ADENRELE BALOGUN, (VICE PRESIDENT)	KIARA COX BERGLUND, (VICE PRESIDENT)
TODD LOZON BRACKETT, (VICE PRESIDENT)	STEVEN ANTHONY BROZ, (VICE PRESIDENT)	JOHN MICHAEL CARROS, (VICE PRESIDENT)
MICHELLE CRISTEN CAVELL, (VICE PRESIDENT)	WILLIAM LEO CLAWSON, (VICE PRESIDENT)	CHARLES ERNEST CONOVER, (VICE PRESIDENT)
CHRISTINA LYNN CREWS, (ASST. SECRETARY)	JAMES CHARLES CURTIS, (VICE PRESIDENT)	HEATHER ELIZABETH DAY, (VICE PRESIDENT)
MATTHEW HERRICK DOWNING, (VICE PRESIDENT)	ROBIN DANIELLE ENGLAND #, (VICE PRESIDENT)	MICHAEL VINCENT ESPOSITO, (VICE PRESIDENT)
CORY WHITEHEAD FISCHER, (VICE PRESIDENT)	SEAN O'HARA FREEMAN, (VICE PRESIDENT)	RHANCHELLE MARIE GARMON, (VICE PRESIDENT)
JAMES EDWARD GLENN JR., (VICE PRESIDENT)	MARK JAMES HALPIN #, (ASSISTANT TREASURER)	JEFFREY WILLIAM HANNON, (VICE PRESIDENT)
JOHN CHARLES JONES, (VICE PRESIDENT)	NEIL JOSEPH LENANE, (VICE PRESIDENT)	LYNN NAVARRE MAJOR, (VICE PRESIDENT)
HEATHER MARIE MURRAY, (VICE PRESIDENT)	ALBERT GARRETT PLESS, (VICE PRESIDENT)	MARIBEL (NMN) PUMAREJO #, (VICE PRESIDENT)
		CARRIE FISHER RADIVOYEVTCH, (VICE PRESIDENT)
ANDREW JOHN QUIGG, (VICE PRESIDENT)	TIMOTHY PATRICK RADIGAN, (VICE PRESIDENT)	DANIEL JOSEPH WITALEC, (VICE PRESIDENT)
JOCHEN GERWIN SCHUNTER, (VICE PRESIDENT)	MICHELLE LEIGH SMITH, (VICE PRESIDENT)	
VIDA PAULE ZIEDONIS, (VICE PRESIDENT)		

DIRECTORS OR TRUSTEES

CHARLES ERNEST CONOVER	HEATHER ELIZABETH DAY	CORY WHITEHEAD FISCHER #
KATHRYN MARGARET LEMIEUX	GEOFFREY THOMAS SOUSER	KANIK (NMN) VARMA
JAMES DAVID WILLIAMS		

State ofOHIO
County ofCUYAHOGASS:

The officers of this reporting entity being duly sworn, each depose and say that they are the described officers of said reporting entity, and that on the reporting period stated above, all of the herein described assets were the absolute property of the said reporting entity, free and clear from any liens or claims thereon, except as herein stated, and that this statement, together with related exhibits, schedules and explanations therein contained, annexed or referred to, is a full and true statement of all the assets and liabilities and of the condition and affairs of the said reporting entity as of the reporting period stated above, and of its income and deductions therefrom for the period ended, and have been completed in accordance with the NAIC Annual Statement Instructions and Accounting Practices and Procedures manual except to the extent that: (1) state law may differ; or, (2) that state rules or regulations require differences in reporting not related to accounting practices and procedures, according to the best of their information, knowledge and belief, respectively. Furthermore, the scope of this attestation by the described officers also includes the related corresponding electronic filing with the NAIC, when required, that is an exact copy (except for formatting differences due to electronic filing) of the enclosed statement. The electronic filing may be requested by various regulators in lieu of or in addition to the enclosed statement.

GEOFFREY THOMAS SOUSER
PRESIDENT

CHRISTINA LYNN CREWS
ASSISTANT SECRETARY

MARK JAMES HALPIN #
ASSISTANT TREASURER

Subscribed and sworn to before me this 8TH day of AUGUST, 2025

a. Is this an original filing?
b. If no,
1. State the amendment number.....
2. Date filed
3. Number of pages attached.....

Yes [X] No []

DIANA M PISTONE
Notary Public, State of Ohio
My Comm. Exp. Jan. 16, 2026
Recorded in Cuyahoga County



STATEMENT AS OF JUNE 30, 2025 OF THE PROGRESSIVE CASUALTY INSURANCE COMPANY

ASSETS

	Current Statement Date			4 December 31 Prior Year Net Admitted Assets
	1 Assets	2 Nonadmitted Assets	3 Net Admitted Assets (Cols. 1 – 2)	
1. Bonds	16,389,026,619		16,389,026,619	15,400,150,196
2. Stocks:				
2.1 Preferred stocks	13,870,665		13,870,665	18,392,571
2.2 Common stocks	3,389,258,495		3,389,258,495	3,020,957,408
3. Mortgage loans on real estate:				
3.1 First liens				
3.2 Other than first liens.....				
4. Real estate:				
4.1 Properties occupied by the company (less \$220,472,531 encumbrances)	153,178,666		153,178,666	157,173,523
4.2 Properties held for the production of income (less \$ encumbrances)				
4.3 Properties held for sale (less \$ encumbrances)	67,293,865		67,293,865	102,285,601
5. Cash (\$(84,663,612)), cash equivalents (\$ 1,185,741,907) and short-term investments (\$ 26,152,494)	1,127,230,789		1,127,230,789	193,968,835
6. Contract loans (including \$ premium notes)				
7. Derivatives				
8. Other invested assets	32,913,093	12,713,460	20,199,633	15,806,389
9. Receivables for securities	37,457		37,457	22,169
10. Securities lending reinvested collateral assets				
11. Aggregate write-ins for invested assets				
12. Subtotals, cash and invested assets (Lines 1 to 11)	21,172,809,649	12,713,460	21,160,096,189	18,908,756,692
13. Title plants less \$ charged off (for Title insurers only)				
14. Investment income due and accrued	130,623,315		130,623,315	118,536,260
15. Premiums and considerations:				
15.1 Uncollected premiums and agents' balances in the course of collection	508,828,489	52,331,856	456,496,633	535,102,406
15.2 Deferred premiums, agents' balances and installments booked but deferred and not yet due (including \$ earned but unbilled premiums)	3,055,493,619		3,055,493,619	2,744,564,292
15.3 Accrued retrospective premiums (\$) and contracts subject to redetermination (\$)				
16. Reinsurance:				
16.1 Amounts recoverable from reinsurers	126,553,650		126,553,650	49,145,951
16.2 Funds held by or deposited with reinsured companies				
16.3 Other amounts receivable under reinsurance contracts				
17. Amounts receivable relating to uninsured plans				
18.1 Current federal and foreign income tax recoverable and interest thereon				
18.2 Net deferred tax asset	356,882,290		356,882,290	339,378,713
19. Guaranty funds receivable or on deposit	141,828		141,828	25,909
20. Electronic data processing equipment and software	550,443,697	467,024,722	83,418,975	55,290,277
21. Furniture and equipment, including health care delivery assets (\$)	102,378,735	102,378,735		
22. Net adjustment in assets and liabilities due to foreign exchange rates				
23. Receivables from parent, subsidiaries and affiliates				
24. Health care (\$) and other amounts receivable				
25. Aggregate write-ins for other than invested assets	321,667,781	314,249,460	7,418,321	8,748,338
26. Total assets excluding Separate Accounts, Segregated Accounts and Protected Cell Accounts (Lines 12 to 25)	26,325,823,053	948,698,233	25,377,124,820	22,759,548,838
27. From Separate Accounts, Segregated Accounts and Protected Cell Accounts				
28. Total (Lines 26 and 27)	26,325,823,053	948,698,233	25,377,124,820	22,759,548,838
DETAILS OF WRITE-INS				
1101.				
1102.				
1103.				
1198. Summary of remaining write-ins for Line 11 from overflow page				
1199. Totals (Lines 1101 through 1103 plus 1198)(Line 11 above)				
2501. STATE UNEARNED SURCHARGE RECOVERABLE	7,165,037		7,165,037	6,127,921
2502. MISCELLANEOUS OTHER ASSETS	99,468,536	99,215,252	253,284	
2503. PREPAID EXPENSES	215,034,208	215,034,208		
2598. Summary of remaining write-ins for Line 25 from overflow page				2,620,417
2599. Totals (Lines 2501 through 2503 plus 2598)(Line 25 above)	321,667,781	314,249,460	7,418,321	8,748,338

STATEMENT AS OF JUNE 30, 2025 OF THE PROGRESSIVE CASUALTY INSURANCE COMPANY

LIABILITIES, SURPLUS AND OTHER FUNDS

	1 Current Statement Date	2 December 31, Prior Year
1. Losses (current accident year \$ 2,695,255,611)	6,893,336,647	6,407,516,071
2. Reinsurance payable on paid losses and loss adjustment expenses	839,030,589	547,437,030
3. Loss adjustment expenses	1,110,990,303	1,058,633,410
4. Commissions payable, contingent commissions and other similar charges	50,041,922	80,391,201
5. Other expenses (excluding taxes, licenses and fees)	1,183,538,616	895,313,157
6. Taxes, licenses and fees (excluding federal and foreign income taxes)	112,267,310	134,369,433
7.1 Current federal and foreign income taxes (including \$ 6,826,174 on realized capital gains (losses))	315,892,555	121,488,708
7.2 Net deferred tax liability		
8. Borrowed money \$ 0 and interest thereon \$ 0		
9. Unearned premiums (after deducting unearned premiums for ceded reinsurance of \$ 5,909,344,289 and including warranty reserves of \$ 550,699 and accrued accident and health experience rating refunds including \$ for medical loss ratio rebate per the Public Health Service Act)	5,677,358,490	5,282,895,124
10. Advance premium	25,924,116	22,463,170
11. Dividends declared and unpaid:		
11.1 Stockholders		
11.2 Policyholders		
12. Ceded reinsurance premiums payable (net of ceding commissions)	145,304,430	16,855,097
13. Funds held by company under reinsurance treaties		
14. Amounts withheld or retained by company for account of others	6,157,516	13,598,114
15. Remittances and items not allocated		
16. Provision for reinsurance (including \$ 0 certified)		10
17. Net adjustments in assets and liabilities due to foreign exchange rates		
18. Drafts outstanding	309,522,896	318,997,380
19. Payable to parent, subsidiaries and affiliates	2,271,864,107	2,019,224,236
20. Derivatives		
21. Payable for securities	299,655,370	125,196,230
22. Payable for securities lending		
23. Liability for amounts held under uninsured plans		
24. Capital notes \$ 0 and interest thereon \$ 0		
25. Aggregate write-ins for liabilities	67,172,895	58,781,943
26. Total liabilities excluding protected cell liabilities (Lines 1 through 25)	19,308,057,762	17,103,160,314
27. Protected cell liabilities		
28. Total liabilities (Lines 26 and 27)	19,308,057,762	17,103,160,314
29. Aggregate write-ins for special surplus funds	5,491,576	5,317,150
30. Common capital stock	3,000,000	3,000,000
31. Preferred capital stock		
32. Aggregate write-ins for other than special surplus funds		
33. Surplus notes		
34. Gross paid in and contributed surplus	1,659,818,236	1,617,379,592
35. Unassigned funds (surplus)	4,400,757,246	4,030,691,782
36. Less treasury stock, at cost:		
36.1 0 shares common (value included in Line 30 \$ 0)		
36.2 0 shares preferred (value included in Line 31 \$ 0)		
37. Surplus as regards policyholders (Lines 29 to 35, less 36)	6,069,067,058	5,656,388,524
38. Totals (Page 2, Line 28, Col. 3)	25,377,124,820	22,759,548,838
DETAILS OF WRITE-INS		
2501. STATE PLAN LIABILITY	55,669,717	46,882,631
2502. OTHER LIABILITIES	8,779,504	8,877,444
2503. ESCHEATABLE PROPERTY	2,723,674	3,021,868
2598. Summary of remaining write-ins for Line 25 from overflow page		
2599. Totals (Lines 2501 through 2503 plus 2598)(Line 25 above)	67,172,895	58,781,943
2901. LEASEBACK SURPLUS ADJUSTMENT	5,491,576	5,317,150
2902.		
2903.		
2998. Summary of remaining write-ins for Line 29 from overflow page		
2999. Totals (Lines 2901 through 2903 plus 2998)(Line 29 above)	5,491,576	5,317,150
3201.		
3202.		
3203.		
3298. Summary of remaining write-ins for Line 32 from overflow page		
3299. Totals (Lines 3201 through 3203 plus 3298)(Line 32 above)		

STATEMENT OF INCOME

	1	2	3
	Current Year to Date	Prior Year to Date	Prior Year Ended December 31
UNDERWRITING INCOME			
1. Premiums earned:			
1.1 Direct (written \$ 2,053,234,947)	1,945,089,558	1,638,298,898	3,471,298,591
1.2 Assumed (written \$ 16,417,185,407)	15,720,275,251	13,509,287,696	28,565,641,704
1.3 Ceded (written \$ 9,420,052,438)	9,009,460,262	7,725,433,777	16,339,118,603
1.4 Net (written \$ 9,050,367,916)	8,655,904,547	7,422,152,817	15,697,821,692
DEDUCTIONS:			
2. Losses incurred (current accident year \$ 5,079,671,143):			
2.1 Direct	1,218,093,540	1,122,684,086	2,343,528,162
2.2 Assumed	8,981,563,352	7,963,238,936	16,840,020,070
2.3 Ceded	5,202,167,940	4,635,000,502	9,786,034,635
2.4 Net	4,997,488,952	4,450,922,520	9,397,513,597
3. Loss adjustment expenses incurred	683,848,461	617,206,405	1,291,354,185
4. Other underwriting expenses incurred	1,699,322,135	1,538,817,796	3,218,848,366
5. Aggregate write-ins for underwriting deductions			
6. Total underwriting deductions (Lines 2 through 5)	7,380,659,548	6,606,946,721	13,907,716,148
7. Net income of protected cells			
8. Net underwriting gain (loss) (Line 1 minus Line 6 + Line 7)	1,275,244,999	815,206,096	1,790,105,544
INVESTMENT INCOME			
9. Net investment income earned	348,016,645	288,522,161	827,277,027
10. Net realized capital gains (losses) less capital gains tax of \$ 6,826,174	40,981,008	(42,624,675)	(16,846,750)
11. Net investment gain (loss) (Lines 9 + 10)	388,997,653	245,897,486	810,430,277
OTHER INCOME			
12. Net gain or (loss) from agents' or premium balances charged off (amount recovered \$ 2,847,928 amount charged off \$ 55,743,244)	(52,895,316)	(51,072,049)	(96,859,271)
13. Finance and service charges not included in premiums	19,437,029	16,340,663	34,489,918
14. Aggregate write-ins for miscellaneous income	(82,120,330)	(72,264,625)	(143,661,821)
15. Total other income (Lines 12 through 14)	(115,578,617)	(106,996,011)	(206,031,174)
16. Net income before dividends to policyholders, after capital gains tax and before all other federal and foreign income taxes (Lines 8 + 11 + 15)	1,548,664,035	954,107,571	2,394,504,647
17. Dividends to policyholders			
18. Net income, after dividends to policyholders, after capital gains tax and before all other federal and foreign income taxes (Line 16 minus Line 17)	1,548,664,035	954,107,571	2,394,504,647
19. Federal and foreign income taxes incurred	309,066,381	242,655,635	508,403,884
20. Net income (Line 18 minus Line 19)(to Line 22)	1,239,597,654	711,451,936	1,886,100,763
CAPITAL AND SURPLUS ACCOUNT			
21. Surplus as regards policyholders, December 31 prior year	5,656,388,524	4,687,991,767	4,687,991,767
22. Net income (from Line 20)	1,239,597,654	711,451,936	1,886,100,763
23. Net transfers (to) from Protected Cell accounts			
24. Change in net unrealized capital gains (losses) less capital gains tax of \$ 16,799,224	352,045,540	309,206,201	384,272,048
25. Change in net unrealized foreign exchange capital gain (loss)			
26. Change in net deferred income tax	34,554,947	52,504,973	109,777,736
27. Change in nonadmitted assets	(58,343,142)	(46,541,541)	(289,408,721)
28. Change in provision for reinsurance	10	(81,652)	(10)
29. Change in surplus notes			
30. Surplus (contributed to) withdrawn from protected cells			
31. Cumulative effect of changes in accounting principles			
32. Capital changes:			
32.1 Paid in			
32.2 Transferred from surplus (Stock Dividend)			
32.3 Transferred to surplus			
33. Surplus adjustments:			
33.1 Paid in	42,438,644	43,395,351	111,193,752
33.2 Transferred to capital (Stock Dividend)			
33.3 Transferred from capital			
34. Net remittances from or (to) Home Office			
35. Dividends to stockholders	(1,200,000,000)	(600,000,000)	(1,238,000,000)
36. Change in treasury stock			
37. Aggregate write-ins for gains and losses in surplus	2,384,881	4,741,953	4,461,189
38. Change in surplus as regards policyholders (Lines 22 through 37)	412,678,534	474,677,221	968,396,757
39. Surplus as regards policyholders, as of statement date (Lines 21 plus 38)	6,069,067,058	5,162,668,988	5,656,388,524
DETAILS OF WRITE-INS			
0501.			
0502.			
0503.			
0598. Summary of remaining write-ins for Line 5 from overflow page			
0599. Totals (Lines 0501 through 0503 plus 0598)(Line 5 above)			
1401. MISCELLANEOUS INCOME	14,722,057	15,448,769	32,940,213
1402. FINANCE AND SERVICE CHARGE REVENUE ASSUMED	9,072,605	9,924,547	18,885,404
1403. INTEREST EXPENSE ON INTERCOMPANY BALANCES	(105,914,992)	(97,637,941)	(195,487,438)
1498. Summary of remaining write-ins for Line 14 from overflow page			
1499. Totals (Lines 1401 through 1403 plus 1498)(Line 14 above)	(82,120,330)	(72,264,625)	(143,661,821)
3701. SPECIAL SURPLUS AMORTIZATION	1,261,904	1,788,636	3,839,218
3702. CHANGE IN ELIMINATION IN DEFERRED UNREALIZED GAIN (LOSS) PER SSAP 25	948,551	(1,054,540)	(2,847,441)
3703. CHANGE IN SPECIAL SURPLUS FUNDS	174,426	4,007,857	3,469,412
3798. Summary of remaining write-ins for Line 37 from overflow page			
3799. Totals (Lines 3701 through 3703 plus 3798)(Line 37 above)	2,384,881	4,741,953	4,461,189

STATEMENT AS OF JUNE 30, 2025 OF THE PROGRESSIVE CASUALTY INSURANCE COMPANY

CASH FLOW

	1 Current Year To Date	2 Prior Year To Date	3 Prior Year Ended December 31
Cash from Operations			
1. Premiums collected net of reinsurance	8,946,549,319	7,005,226,113	15,881,725,812
2. Net investment income	332,370,554	265,326,638	823,774,752
3. Miscellaneous income	(115,423,319)	(103,583,640)	(196,568,234)
4. Total (Lines 1 to 3)	9,163,496,554	7,166,969,111	16,508,932,330
5. Benefit and loss related payments	4,297,482,516	3,940,021,401	8,512,570,729
6. Net transfers to Separate Accounts, Segregated Accounts and Protected Cell Accounts			
7. Commissions, expenses paid and aggregate write-ins for deductions	2,084,391,571	1,786,025,124	3,960,936,473
8. Dividends paid to policyholders			
9. Federal and foreign income taxes paid (recovered) net of \$ (23,856,928) tax on capital gains (losses)	121,236,562	92,567,644	444,241,591
10. Total (Lines 5 through 9)	6,503,110,649	5,818,614,169	12,917,748,793
11. Net cash from operations (Line 4 minus Line 10)	2,660,385,905	1,348,354,942	3,591,183,537
Cash from Investments			
12. Proceeds from investments sold, matured or repaid:			
12.1 Bonds	4,180,029,139	2,620,589,303	7,995,014,564
12.2 Stocks	26,139,286	42,242,164	59,881,847
12.3 Mortgage loans			
12.4 Real estate	44,351,357	24,920,371	48,815,130
12.5 Other invested assets	215,821	981,900	41,348,045
12.6 Net gains or (losses) on cash, cash equivalents and short-term investments	(108)	(15,749)	(15,658)
12.7 Miscellaneous proceeds	174,459,140		126,825,917
12.8 Total investment proceeds (Lines 12.1 to 12.7)	4,425,194,635	2,688,717,989	8,271,869,845
13. Cost of investments acquired (long-term only):			
13.1 Bonds	5,130,334,225	4,193,580,688	10,706,647,599
13.2 Stocks	17,673,596	4,115,479	38,063,724
13.3 Mortgage loans			
13.4 Real estate	4,369,003	7,144,557	19,669,999
13.5 Other invested assets	1,084,779	958,857	1,883,669
13.6 Miscellaneous applications	15,288	8,492,829	
13.7 Total investments acquired (Lines 13.1 to 13.6)	5,153,476,891	4,214,292,410	10,766,264,991
14. Net increase/(decrease) in contract loans and premium notes			
15. Net cash from investments (Line 12.8 minus Line 13.7 and Line 14)	(728,282,256)	(1,525,574,421)	(2,494,395,146)
Cash from Financing and Miscellaneous Sources			
16. Cash provided (applied):			
16.1 Surplus notes, capital notes			
16.2 Capital and paid in surplus, less treasury stock	42,438,644	43,395,351	111,193,752
16.3 Borrowed funds			
16.4 Net deposits on deposit-type contracts and other insurance liabilities			
16.5 Dividends to stockholders	1,200,000,000	600,000,000	1,238,000,000
16.6 Other cash provided (applied)	158,719,660	710,616,766	(34,913,580)
17. Net cash from financing and miscellaneous sources (Line 16.1 through Line 16.4 minus Line 16.5 plus Line 16.6)	(998,841,696)	154,012,117	(1,161,719,828)
RECONCILIATION OF CASH, CASH EQUIVALENTS AND SHORT-TERM INVESTMENTS			
18. Net change in cash, cash equivalents and short-term investments (Line 11, plus Lines 15 and 17) .	933,261,954	(23,207,362)	(64,931,437)
19. Cash, cash equivalents and short-term investments:			
19.1 Beginning of year	193,968,835	258,900,271	258,900,271
19.2 End of period (Line 18 plus Line 19.1)	1,127,230,789	235,692,909	193,968,835

Note: Supplemental disclosures of cash flow information for non-cash transactions:

--	--	--	--

STATEMENT AS OF JUNE 30, 2025 OF THE PROGRESSIVE CASUALTY INSURANCE COMPANY

NOTES TO FINANCIAL STATEMENTS

NOTE 1 Summary of Significant Accounting Policies and Going Concern

A. Accounting Practices

The accompanying statutory-basis financial statements of Progressive Casualty Insurance Company (the “Company”) were prepared on the basis of accounting practices prescribed or permitted by the Ohio Department of Insurance (“DOI”).

The DOI requires insurance companies domiciled in the state of Ohio to prepare their statutory-basis financial statements in accordance with the National Association of Insurance Commissioners’ (“NAIC”) Accounting Practices and Procedures Manual subject to any deviations prescribed or permitted by the DOI. No deviations from NAIC statutory accounting practices (“NAIC SAP”) were used in preparing these statutory-basis financial statements as illustrated in the table below:

	SSAP #	F/S Page	F/S Line #		2025	2024
NET INCOME						
(1) State basis (Page 4, Line 20, Columns 1 & 3)	XXX	XXX	XXX	\$	1,239,597,654	\$ 1,886,100,763
(2) State Prescribed Practices that are an increase/ (decrease) from NAIC SAP:						
(3) State Permitted Practices that are an increase/(decrease) from NAIC SAP:						
(4) NAIC SAP (1-2-3=4)	XXX	XXX	XXX	\$	1,239,597,654	\$ 1,886,100,763
SURPLUS						
(5) State basis (Page 3, Line 37, Columns 1 & 2)	XXX	XXX	XXX	\$	6,069,067,058	\$ 5,656,388,524
(6) State Prescribed Practices that are an increase/(decrease) from NAIC SAP:						
(7) State Permitted Practices that are an increase/(decrease) from NAIC SAP:						
(8) NAIC SAP (5-6-7=8)	XXX	XXX	XXX	\$	6,069,067,058	\$ 5,656,388,524

B. Use of Estimates in the Preparation of the Financial Statements

The Company is required to make estimates and assumptions when preparing its financial statements and accompanying notes in conformity with NAIC SAP. Actual results may differ from those estimates. Material estimates that are susceptible to significant changes in the near term include the loss and loss adjustment expense ("LAE") reserves.

C. Accounting Policy

Premiums, Acquisition Costs, Other Income, and Nonadmitted Assets:

Insurance premiums written are being earned into income on a pro rata basis over the period of risk based on a daily earnings convention. Unearned premiums are established to cover the unexpired portion of premiums written. The Company offers a variety of payment plans to meet individual customer needs. Generally, insurance premiums are collected in advance of providing risk coverage, minimizing the Company’s exposure to credit risk.

Acquisition costs, such as agents’ commissions, premium taxes, and other policy initiation costs, as well as advertising costs, are charged to operations as incurred.

Other income includes finance and service charges collected on premiums receivable installment payments and assumed under the intercompany quota-share reinsurance agreements with the Company’s non-pooled insurance company affiliates.

Certain assets designated as “nonadmitted assets,” in accordance with Statement of Statutory Accounting Principles (“SSAP”) No. 4, Assets and Nonadmitted Assets, are reported on page 2 - Assets in column 2. The change in nonadmitted assets is charged directly against surplus as regards policyholders on page 4, Statement of Income, Capital and Surplus section.

Investment Policies:

(1) Cash, Cash Equivalents, and Short-term Investments

Cash and cash equivalents can include bank accounts, securities with original maturities of three months or less, and securities acquired with remaining maturities of three months or less that are reported at amortized cost, which approximates fair market value. Cash and cash equivalents also include money market mutual funds valued at fair value or net asset value (NAV) as a practical expedient.

Short-term investments include securities acquired within one year of maturity, excluding those with maturities of three months or less (see cash and cash equivalents above) and are reported at amortized cost which approximates fair market value.

(2) Bonds

Investment-grade bond valuations are based on NAIC designations or NAIC Credit Rating Provider (“CRP”) designations and are reported at amortized cost using the scientific method, which closely approximates the effective interest method. Non-investment-grade bond valuations are also based on NAIC designations or NAIC CRP designations and are reported at the lower of amortized cost or fair market value (“LCM”). Changes in LCM are reflected directly as unrealized gains or losses in statutory surplus, net of deferred income taxes. Asset-backed securities follow the guidance prescribed by SSAP No. 43, Asset-Backed Securities (“SSAP No. 43”), for the determination of the bond valuation and reporting designation. The difference between the original cost and redemption value of these securities is recognized over the lives of the respective issues and included in net investment gain.

(3) Common Stocks

Common stocks, other than investments in stocks of subsidiaries and affiliates, are reported at fair market value based on active market closing quotations from a regulated exchange. Changes in the fair market value of these securities are reflected directly as unrealized gains or losses in statutory surplus, net of deferred income taxes.

(4) Preferred Stocks

Nonredeemable preferred stocks are reported at fair market value and are not to exceed currently effective call price. Changes in the fair market value of these securities are reflected directly as unrealized gains or losses in statutory surplus, net of deferred income taxes.

(5) Mortgage Loans

Not applicable

NOTES TO FINANCIAL STATEMENTS

(6) Asset-backed Securities

Asset-backed securities are accounted for as prescribed by SSAP No. 43. These securities are generally stated at amortized cost as determined by the estimated value of future cash flows. Interest income for asset-backed securities is included in net investment gain based on estimated cash flows, including expected changes in interest rates and estimated prepayments of principal. Prepayment assumptions are reviewed and updated quarterly, and effective yields are recalculated when differences arise between the prepayments originally estimated, and the actual prepayments received and currently estimated. For asset-backed securities of high credit quality, the effective yield is recalculated on a retrospective basis to the inception of the investment holding period, and applies the required adjustment, if any, to the cost basis, with the offset recorded to net investment gain. For those securities below high credit quality, interest-only securities, and certain asset-backed securities where there is a greater risk of non-performance, the effective yield is recalculated on a prospective basis for future period adjustments, resulting in no current period impact (see Note 5.D).

(7) Investments in Subsidiaries, Controlled and Affiliated Entities

The Company owns 100% of the common stock of Progressive Specialty Insurance Company ("Specialty") and Progressive Gulf Insurance Company ("Gulf"), insurance subsidiaries domiciled in Ohio, and PC Investment Company ("PCI"), a non-insurance subsidiary. These investments are reported on the equity basis as described in the Purposes and Procedures Manual of the NAIC Investment Analysis Office.

(8) Investments in Joint Ventures, Partnerships and Limited Liability Companies

Investments in limited partnerships are valued by using the Accounting Principles Generally Accepted in the United States equity method of accounting.

The Company owns a 100% interest in the USB RETC Fund 2018-13, LLC and the USB NMTC Fund 2021-5, LLC, both of which are unaffiliated non-insurance companies. In accordance with SSAP No. 93 - Investments in Tax Credit Structures, these investments are reported as other invested assets in the Company's statutory-basis financial statements and nonadmitted. These investments are reported using the proportional amortization method (see Note 5K).

(9) Derivatives

Not applicable

Fair Market Values, Realized Gains and Losses, and Other-Than-Temporary Impairment:

The fair market values reported are derived from independent and observable market input evaluations provided by reputable pricing services, independent broker/dealer bid lists, independent broker/dealer quotations, independent broker/dealer pricing services, or active market closing quotations from a regulated exchange. The approved methods for computation of fair market value are prescribed in the Purposes and Procedures Manual of the NAIC Investment Analysis Office.

Determining the fair value of the investment portfolio is the responsibility of the Company's management. As part of the responsibility, Management evaluates whether a market is distressed or inactive in determining the fair value for the Company's portfolio. Management reviews certain market level inputs to evaluate whether sufficient activity, volume, and new issuances exist to create an active market.

Realized gains and losses on sales of securities are computed based on the first-in, first-out method.

The Company's management routinely monitors individual securities in its investment portfolio for pricing changes that might indicate potential impairments and performs detailed reviews of securities with unrealized losses based on predetermined guidelines to determine whether a decline in the value of a security is other-than-temporary. A review for other-than-temporary impairment ("OTTI") requires making certain judgments regarding the materiality of the decline, its effect on the financial statements, the probability, extent, and timing of a valuation recovery, and the Company's ability and intent to hold the security. The scope of this review is broad and requires a forward-looking assessment of the fundamental characteristics of a security, as well as the market-related prospects of the issuer and its industry.

Management assesses valuation declines to determine the extent to which such changes are attributable to (i) fundamental factors specific to the issuer, such as financial conditions, business prospects or other factors, or (ii) market-related factors such as interest rates or equity market declines (i.e., negative returns at either a sector index level or the broader market level), or (iii) credit-related losses where the present value of cash flows expected to be collected are lower than the amortized cost basis of the security (includes only those securities covered under SSAP No. 43). This evaluation reflects Management's assessment of current conditions, as well as predictions of uncertain future events that may have a material effect on the financial statements related to security valuation.

Asset-backed securities are analyzed for impairment under SSAP No. 43. An initial review is performed to determine whether it is likely the Company would be required, or intends, to sell any securities prior to the recovery of their respective cost bases (which could be maturity), and if so, the Company writes down the security to its current fair market value with the entire amount of the write-down recorded as a realized loss. For those securities the Company determines it is not likely, or does not intend, to sell prior to a potential recovery, additional analysis is performed to determine if any of the decline in value is due to a credit loss (i.e., where the present value of cash flows expected to be collected is lower than the amortized cost basis of the security) and, if so, the Company recognizes that portion of the impairment as a realized loss.

When persuasive evidence exists that causes Management to conclude that a decline in fair value is other-than-temporary, the book value of such security is written down and recognized as a realized loss. All other unrealized gains or losses are reflected in statutory surplus.

Real Estate, Electronic Data Processing Equipment, and Furniture and Equipment Fixtures:

Company occupied real estate along with the Company's data centers, which have a highly specialized purpose, are reported at book/adjusted carrying value, less any related encumbrances. Property held for sale is reported at the lower of book/adjusted carrying value or fair market value, less any related encumbrances.

For properties held for sale, the Company engages the services of independent firms or the Company's internal real estate department to issue summary reports indicating the properties' fair market value. The valuations are completed using various methods of valuation including the cost approach, sales comparison approach, or income approach. For occupied properties, the Company uses book/adjusted carrying value to report fair market value.

All real estate, except land, is depreciated over its estimated useful life using the straight-line method.

Electronic data processing equipment and furniture and equipment are reported at depreciated cost and are depreciated over the estimated useful lives of the assets using accelerated methods for computers and the straight-line method for furniture and equipment. The resulting net book value of furniture and equipment is nonadmitted. Application software is capitalized and depreciated over its estimated useful life using the straight-line method, and the resulting net book value is nonadmitted.

Loss, LAE, and Premium Deficiency Reserves:

Loss reserves represent the estimated liability on claims reported to the Company, plus reserves for losses incurred but not yet reported ("IBNR"). These estimates are reported net of amounts recoverable from salvage and subrogation. LAE reserves represent the estimated expenses required to settle reported claims and IBNR losses. Such loss and LAE reserves could be susceptible to significant change in the near term. The Company reviews a large majority of its reserves by product/state subset combinations on a quarterly time frame, with the remaining reserves generally reviewed on a semiannual basis. A change in the Company's scheduled reviews of a particular subset of the business depends on the size of the subset or emerging issues relating to the product or state (see Note 25).

The Company does not anticipate investment income when evaluating the need for premium deficiency reserves.

NOTES TO FINANCIAL STATEMENTS

Capitalization of Assets:

The Company has written capitalization policies for its various asset classes. The capitalization policy thresholds have not materially changed from the prior year.

Pharmaceutical Rebate Receivables:

Not applicable

D. Going Concern

Management regularly monitors the Company's financial results and compliance with regulatory requirements. There are currently no circumstances that could call into question the Company's ability to continue as a going concern.

NOTE 2 Accounting Changes and Corrections of Errors

Not applicable

NOTE 3 Business Combinations and Goodwill

Not applicable

NOTE 4 Discontinued Operations

Not applicable

NOTE 5 Investments

A. Mortgage Loans, including Mezzanine Real Estate Loans

Not applicable

B. Debt Restructuring

Not applicable

C. Reverse Mortgages

Not applicable

D. Asset-Backed Securities

(1) Sources Used to Determine Prepayment Assumptions

See Note 1.C

(2) OTTI Recognized due to Intent to Sell or Lack of Intent to Hold until Recovery

Not applicable

(3) OTTI Recognized Based on Present Value of Cash Flows Expected to be Collected

Not applicable

(4) Asset-Backed Securities in an Unrealized Loss Position

At the end of the reporting period, the composition of fair value and gross unrealized losses on asset-backed securities by the length of time that individual securities have been in a continuous unrealized loss position is as follows:

a) The aggregate amount of unrealized losses:

1. Less than 12 Months	\$ 1,599,941
2. 12 Months or Longer	\$ 45,241,517

b) The aggregate related fair value of securities with unrealized losses:

1. Less than 12 Months	\$ 455,689,358
2. 12 Months or Longer	\$ 626,385,960

(5) Analysis Performed in Determining that Securities are not Other-than-Temporarily Impaired

See Note 1.C

E. Dollar Repurchase Agreements and/or Securities Lending Transactions

Not applicable

F. Repurchase Agreements Transactions Accounted for as Secured Borrowing

Not applicable

G. Reverse Repurchase Agreements Transactions Accounted for as Secured Borrowing

Not applicable

H. Repurchase Agreements Transactions Accounted for as a Sale

Not applicable

NOTES TO FINANCIAL STATEMENTS

I. Reverse Repurchase Agreements Transactions Accounted for as a Sale

Not applicable

J. Real Estate

(1) Recognized Impairment Loss

The Company recognized impairment write-downs for its investments in real estate during the statement period. The amount of impairment recognized of \$5,567,669 (see Schedule A - Verification) is reflected in realized capital gains (losses) in the Company's Statement of Income. See Note 1.C - Accounting Policy for the basis upon which fair market value is determined. The impairment losses primarily reflect write-downs associated with various claims offices.

(2) Sold or Classified Real Estate Investments as Held for Sale

The Company has various property holdings classified as "Property Held for Sale" that are measured at the lower of their book/adjusted carrying value or fair market value. Some of the properties have executed purchase agreements and are undergoing a due diligence process and others are still being marketed. Any gain or loss on the sale will be recognized when the sale closes.

The Company sold various properties to unaffiliated parties as detailed in the table below. In accordance with SSAP 40 – Real Estate Investments, the properties were classified as "Property Held for Sale," and therefore measured at the lower of book/adjusted carrying value or fair market value less cost to sell. All realized gains and losses on these sales are included in realized capital gains (losses) in the Company's Statement of Income, except for those properties where the Company entered into a sale leaseback. See Schedule A, Part 3 from the respective quarterly statutory statements for additional information regarding these sales.

Sale date	Property location	Proceeds net of commissions and expenses	Realized gain (loss)	Leaseback Yes or No (if Yes, see Note 15)
January 21, 2025	Williamsville, NY	\$ 2,468,309	\$ 83,309	Yes
February 27, 2025	La Vista, NE	\$ 3,009,259	\$ 375,208	Yes
March 10, 2025	Phoenix, AZ	\$ 4,836,303	\$ 612,084	No
May 7, 2025	Riverview, FL	\$ 30,901,511	\$ 8,779,940	No
June 27, 2025	Newington, CT	\$ 3,135,975	\$ 977,812	Yes

(3) Changes to a Plan of Sale for an Investment in Real Estate

Not applicable

(4) Retail Land Sales Operations

Not applicable

(5) Real Estate Investments with Participating Mortgage Loan Features

Not applicable

K. Investments in Tax Credit Structures (tax credit investments)

See Note 1.C for information regarding the nature of investments in projects that generate tax credits.

(1) Tax credits and other tax benefits recognized during the statement period

The Company recognized \$5,677,367 in tax credits and other tax benefits for its investments in tax credits during the statement period.

(2) Balance of tax credits and other tax benefits

The Company held a balance of \$12,613,461 of investments in tax credits and other tax benefits recognized in the statement of financial position for the statement period presented.

(3) Tax credits and other tax benefits investment amortization

The amount of investment amortization and non-income tax related activity on tax credits and other tax benefits recognized as a component of net investment income, and other returns allocated that were recognized outside of income tax expense was \$4,452,831 during the statment period.

(4) Expected generation of tax credits and other tax benefits

Tax credits expected to be generated each year for the subsequent five years and thereafter, disaggregated by transferable/certificated and non-transferable:

Year	Non-transferable
2025	\$ 5,498,887
2026	\$ 6,497,903
2027	\$ 3,540,000
Thereafter	\$ -
Total	\$ 15,536,790

(5) Tax credits and other tax benefits commitments and contingent commitments

Not applicable

L. Restricted Assets

No significant changes

M. Working Capital Finance Investments

Not applicable

N. Offsetting and Netting of Assets and Liabilities

Not applicable

NOTES TO FINANCIAL STATEMENTS

- O. 5GI Securities
- Not applicable
- P. Short Sales
- Not applicable
- Q. Prepayment Penalty and Acceleration Fees
- Not applicable
- R. Reporting Entity's Share of Cash Pool by Asset Type
- Not applicable
- S. Aggregate Collateral Loans by Qualifying Investment Collateral
- Not applicable

NOTE 6 Joint Ventures, Partnerships and Limited Liability Companies

Not applicable

NOTE 7 Investment Income

- A. Accrued Investment Income
- The Company nonadmits investment income due and accrued if the amounts are greater than 90 days past due.
- B. Amounts Nonadmitted
- Not applicable
- C. Gross, Nonadmitted and Admitted Amounts for Interest Income Due and Accrued
- | | |
|---------------------------------|----------------|
| Interest Income Due and Accrued | Amount |
| 1. Gross | \$ 130,623,315 |
| 2. Nonadmitted | \$ - |
| 3. Admitted | \$ 130,623,315 |
- D. Aggregate Deferred Interest
- Not applicable
- E. Cumulative Amounts of Paid-in-Kind Interest Included in the Current Principal Balance
- Not applicable

NOTE 8 Derivative Instruments

Not applicable

NOTE 9 Income Taxes

No significant changes

NOTE 10 Information Concerning Parent, Subsidiaries, Affiliates and Other Related Parties

No significant changes

NOTE 11 Debt

Not applicable

NOTE 12 Retirement Plans, Deferred Compensation, Postemployment Benefits and Compensated Absences and Other Postretirement Benefit Plans

No significant changes

NOTES TO FINANCIAL STATEMENTS

NOTE 13 Capital and Surplus, Dividend Restrictions and Quasi-Reorganizations

A.	Outstanding Shares	No significant changes
B.	Dividend Rate of Preferred Stock	Not applicable
C.	Dividend Restrictions	No significant changes
D.	Dates and Amounts of Dividends Paid	On June 20, 2025, the Company paid a \$1,200,000,000 ordinary cash dividend to Progressive Agency Holdings, Inc., a holding company incorporated in Delaware.
E.	Amount of Ordinary Dividends That May Be Paid	No significant changes
F.	Restrictions on Unassigned Funds	No significant changes
G.	Mutual Surplus Advances	Not applicable
H.	Company Stock Held for Special Purposes	Not applicable
I.	Changes in Special Surplus Funds	The change in the balance of special surplus funds from the prior year is due to gains on sale-leaseback of real properties, offset by the related amortization (see Note 15.A.3).
J.	Changes in Unassigned Funds	No significant changes
K.	Surplus Notes	Not applicable
L.	Impact of Quasi Reorganizations	Not applicable
M.	Dates of Quasi Reorganizations	Not applicable

NOTE 14 Liabilities, Contingencies and Assessments

No significant changes

NOTE 15 Leases

A.	Lessee Leasing Arrangements	
	(1) a. Rental Expense	No significant changes
	b. Contingent Rental Payments	Not applicable
	c. Renewal Options	No significant changes
	d. Restrictions Imposed by Lease Agreements	Not applicable
	e. Early Lease Terminations	No significant changes

NOTES TO FINANCIAL STATEMENTS

(2) Minimum Rental Payments

No significant changes

(3) Sale-Leaseback Transactions

In 2025, the Company sold properties to unaffiliated parties and entered into sale-leaseback transactions. In accordance with SSAP 22 - Leases, the realized gains were recorded to Special Surplus Funds (see Page 3, Line 29), and were amortized to Unassigned Surplus on a pro-rata basis over the terms of the leases. The details of these transactions are as follows:

Sale date	Property location	Realized gain	Lease expiration date	Base rent per month
January 21, 2025	Williamsville, NY	\$ 83,309	January 21, 2026*	\$ 15,000
February 27, 2025	La Vista, NE	\$ 375,208	February 28, 2026	\$ 14,175
June 27, 2025	Newington, CT	\$ 977,812	June 26, 2026	\$ 13,818

*Lease terminated early on April 14, 2025

B. Lessor Leasing Arrangements

No significant changes

NOTE 16 Information About Financial Instruments With Off-Balance Sheet Risk and Financial Instruments With Concentrations of Credit Risk

Not applicable

NOTE 17 Sale, Transfer and Servicing of Financial Assets and Extinguishments of Liabilities

Not applicable

NOTE 18 Gain or Loss to the Reporting Entity from Uninsured Plans and the Uninsured Portion of Partially Insured Plans

Not applicable

NOTE 19 Direct Premium Written/Produced by Managing General Agents/Third Party Administrators

Not applicable

NOTE 20 Fair Value Measurements

A. Inputs Used for Assets and Liabilities Measured at Fair Value

(1) Fair Value Measurements by Levels 1, 2, and 3

The Company categorizes its financial instruments, based on the degree of subjectivity inherent in the method by which they are valued, into a fair value hierarchy of three levels, as follows:

Level 1 - Inputs are unadjusted, quoted prices in active markets for identical instruments at the measurement date (e.g., U.S. government obligations, which are continually priced on a daily basis, active exchange-traded equity securities, and certain short-term securities).

Level 2 - Inputs (other than quoted prices included within Level 1) that are observable for the instrument either directly or indirectly. This includes: (i) quoted prices for similar instruments in active markets, (ii) quoted prices for identical or similar instruments in markets that are not active, (iii) inputs other than quoted prices that are observable for the instruments, and (iv) inputs that are derived principally from or corroborated by observable market data by correlation or other means.

Level 3 - Inputs that are unobservable. Unobservable inputs reflect the Company's subjective evaluation about the assumptions market participants would use in pricing the financial instrument.

See Note 1.C for further information regarding methods used to determine fair market value.

Fair Value Measurements at Reporting Date:

Description for each class of asset or liability	Level 1	Level 2	Level 3	Net Asset Value (NAV)	Total
a. Assets at fair value					
Issuer Credit Obligations	\$ -	\$ 76,109,061	\$ -	\$ -	\$ 76,109,061
Asset Backed Securities	\$ -	\$ 27,629,532	\$ -	\$ -	\$ 27,629,532
Common stock	\$ 1,185,793,046	\$ -	\$ -	\$ -	\$ 1,185,793,046
Preferred stock	\$ -	\$ 13,870,665	\$ -	\$ -	\$ 13,870,665
Total assets at fair value/NAV	\$ 1,185,793,046	\$ 117,609,258	\$ -	\$ -	\$ 1,303,402,304

The Company does not have any liabilities measured at fair value on the balance sheet.

(2) Fair Value Measurements in Level 3 of the Fair Value Hierarchy

Not applicable

(3) Policy on Transfers Into and Out of Level 3

At the end of each reporting period, the Company evaluates whether or not any event has occurred or circumstances have changed that would cause an instrument to be transferred into or out of Level 3.

NOTES TO FINANCIAL STATEMENTS

(4) Inputs and Techniques Used for Level 2 and Level 3 Fair Values

See Note 1.C and Note 20.A.1 above.

(5) Derivative Fair Values

Not applicable

B. Other Fair Value Disclosures

Not applicable

C. Fair Values for all Financial Instruments by Levels 1, 2, and 3

The table below represents the fair value of all financial instruments at the reporting date, however, not all financial instruments are reported at fair value in the Company's financial statements.

Type of Financial Instrument	Aggregate Fair Value	Admitted Assets	Level 1	Level 2	Level 3	Net Asset Value (NAV)	Not Practicable (Carrying Value)
Issuer Credit Obligations	\$ 14,044,427,728	\$ 14,084,291,750	\$ 12,155,309,506	\$ 1,889,118,222	\$ -	\$ -	\$ -
Asset Backed Securities	\$ 2,268,432,417	\$ 2,304,734,871	\$ -	\$ 2,268,432,417	\$ -	\$ -	\$ -
Preferred stock	\$ 13,870,665	\$ 13,870,665	\$ -	\$ 13,870,665	\$ -	\$ -	\$ -
Common stock	\$ 1,185,793,046	\$ 1,185,793,046	\$ 1,185,793,046	\$ -	\$ -	\$ -	\$ -
Cash equivalents	\$ 1,185,741,907	\$ 1,185,741,907	\$ 1,115,641,907	\$ 70,100,000	\$ -	\$ -	\$ -
Short-term investments	\$ 26,152,234	\$ 26,152,494	\$ -	\$ 26,152,234	\$ -	\$ -	\$ -

D. Not Practicable to Estimate Fair Value

Not applicable

E. NAV Practical Expedient Investments

Not applicable

NOTE 21 Other Items

A. Unusual or Infrequent Items

Not applicable

B. Troubled Debt Restructuring: Debtors

Not applicable

C. Other Disclosures

Agents' Balances Certification, Florida Statute 625.012 (5):

Not applicable

D. Business Interruption Insurance Recoveries

Not applicable

E. State Transferable and Non-transferable Tax Credits

No significant changes

F. Subprime Mortgage Related Risk Exposure

No significant changes

G. Insurance-Linked Securities (ILS) Contracts

Not applicable

H. The Amount That Could Be Realized on Life Insurance Where the Reporting Entity is Owner and Beneficiary or Has Otherwise Obtained Rights to Control the Policy

Not applicable

NOTE 22 Events Subsequent

Subsequent events have been considered through August 8, 2025 for these statutory-basis financial statements that were available for issuance by August 15, 2025. There were no events occurring subsequent to the current balance sheet date that merited recognition or disclosure in these statements.

NOTES TO FINANCIAL STATEMENTS

NOTE 23 Reinsurance

A. Unsecured Reinsurance Recoverables

No significant changes

B. Reinsurance Recoverable in Dispute

Not applicable

C. Reinsurance Assumed and Ceded

No significant changes

D. Uncollectible Reinsurance

Not applicable

E. Commutation of Ceded Reinsurance

Effective June 2, 2025, the Company commuted the property catastrophe excess of loss reinsurance agreement with B&L Insurance, Ltd., a captive affiliated insurer, that expired on May 31, 2025. The Company reported no loss, LAE, or premiums earned as a result of the commutation.

F. Retroactive Reinsurance

Not applicable

G. Reinsurance Accounted for as a Deposit

Not applicable

H. Disclosures for the Transfer of Property and Casualty Run-off Agreements

Not applicable

I. Certified Reinsurer Rating Downgraded or Status Subject to Revocation

Not applicable

J. Reinsurance Agreements Qualifying for Reinsurer Aggregation

Not applicable

K. Reinsurance Credit on Contracts Covering Health Business

Not applicable

NOTE 24 Retrospectively Rated Contracts & Contracts Subject to Redetermination

A. Method Used to Estimate

Not applicable

B. Method Used to Record

Not applicable

C. Amount and Percent of Net Retrospective Premiums

Not applicable

D. Medical Loss Ratio Rebates

Not applicable

E. Calculation of Nonadmitted Accrued Retrospective Premiums

Not applicable

F. Risk Sharing Provisions of the Affordable Care Act

(1) Did the reporting entity write accident and health insurance premium which is subject to the Affordable Care Act risk sharing provisions (YES/NO)? Yes [] No [X]

(2) Impact of Risk Sharing Provisions of the Affordable Care Act on Admitted Assets, Liabilities and Revenue for the Current Year

Not applicable

(3) Roll forward of prior year ACA Risk Sharing Provisions

Not applicable

NOTES TO FINANCIAL STATEMENTS

NOTE 25 Change in Incurred Losses and Loss Adjustment Expenses

A. Change in Incurred Losses and Loss Adjustment Expenses

Incurred losses and LAE attributable to insured events of prior accident years decreased by \$115,060,977 in 2025, which is 1.5% of the total prior year net unpaid losses and LAE of \$7,466,149,481. The favorable development is primarily due to lower than anticipated late reports in private passenger auto liability and lower than anticipated severity in commercial auto liability, partially offset by more late reports than anticipated in commercial auto liability and lower than anticipated recoveries in auto physical damage.

B. Information about Significant Changes in Methodologies and Assumptions

Not applicable

NOTE 26 Intercompany Pooling Arrangements

No significant changes

NOTE 27 Structured Settlements

Not applicable

NOTE 28 Health Care Receivables

Not applicable

NOTE 29 Participating Policies

Not applicable

NOTE 30 Premium Deficiency Reserves

No significant changes

NOTE 31 High Deductibles

Not applicable

NOTE 32 Discounting of Liabilities for Unpaid Losses or Unpaid Loss Adjustment Expenses

Not applicable

NOTE 33 Asbestos/Environmental Reserves

No significant changes

NOTE 34 Subscriber Savings Accounts

Not applicable

NOTE 35 Multiple Peril Crop Insurance

Not applicable

NOTE 36 Financial Guaranty Insurance

Not applicable

STATEMENT AS OF JUNE 30, 2025 OF THE PROGRESSIVE CASUALTY INSURANCE COMPANY

GENERAL INTERROGATORIES

PART 1 - COMMON INTERROGATORIES

GENERAL

1.1

Did the reporting entity experience any material transactions requiring the filing of Disclosure of Material Transactions with the State of Domicile, as required by the Model Act?

Yes [] No [X]

1.2

If yes, has the report been filed with the domiciliary state?

Yes [] No []

2.1

Has any change been made during the year of this statement in the charter, by-laws, articles of incorporation, or deed of settlement of the reporting entity?

Yes [] No [X]

2.2

If yes, date of change:

3.1

Is the reporting entity a member of an Insurance Holding Company System consisting of two or more affiliated persons, one or more of which is an insurer?
If yes, complete Schedule Y, Parts 1 and 1A.

Yes [X] No []

3.2

Have there been any substantial changes in the organizational chart since the prior quarter end?

Yes [] No [X]

3.3

If the response to 3.2 is yes, provide a brief description of those changes.

3.4

Is the reporting entity publicly traded or a member of a publicly traded group?

Yes [X] No []

3.5

If the response to 3.4 is yes, provide the CIK (Central Index Key) code issued by the SEC for the entity/group.

0000080661

4.1

Has the reporting entity been a party to a merger or consolidation during the period covered by this statement?

Yes [] No [X]

4.2

If yes, provide the name of the entity, NAIC Company Code, and state of domicile (use two letter state abbreviation) for any entity that has ceased to exist as a result of the merger or consolidation.

1	2	3
Name of Entity	NAIC Company Code	State of Domicile

5.

If the reporting entity is subject to a management agreement, including third-party administrator(s), managing general agent(s), attorney-in-fact, or similar agreement, have there been any significant changes regarding the terms of the agreement or principals involved?
If yes, attach an explanation.

Yes [] No [X] N/A []

6.1

State as of what date the latest financial examination of the reporting entity was made or is being made.

12/31/2022

6.2

State the as of date that the latest financial examination report became available from either the state of domicile or the reporting entity. This date should be the date of the examined balance sheet and not the date the report was completed or released.

12/31/2022

6.3

State as of what date the latest financial examination report became available to other states or the public from either the state of domicile or the reporting entity. This is the release date or completion date of the examination report and not the date of the examination (balance sheet date).

05/29/2024

6.4

By what department or departments?
OHIO

6.5

Have all financial statement adjustments within the latest financial examination report been accounted for in a subsequent financial statement filed with Departments?

Yes [] No [] N/A [X]

6.6

Have all of the recommendations within the latest financial examination report been complied with?

Yes [X] No [] N/A []

7.1

Has this reporting entity had any Certificates of Authority, licenses or registrations (including corporate registration, if applicable) suspended or revoked by any governmental entity during the reporting period?

Yes [] No [X]

7.2

If yes, give full information:

8.1

Is the company a subsidiary of a bank holding company regulated by the Federal Reserve Board?

Yes [] No [X]

8.2

If response to 8.1 is yes, please identify the name of the bank holding company.

8.3

Is the company affiliated with one or more banks, thrifts or securities firms?

Yes [] No [X]

8.4

If response to 8.3 is yes, please provide below the names and location (city and state of the main office) of any affiliates regulated by a federal regulatory services agency [i.e. the Federal Reserve Board (FRB), the Office of the Comptroller of the Currency (OCC), the Federal Deposit Insurance Corporation (FDIC) and the Securities Exchange Commission (SEC)] and identify the affiliate's primary federal regulator.

1	2	3	4	5	6
Affiliate Name	Location (City, State)	FRB	OCC	FDIC	SEC

STATEMENT AS OF JUNE 30, 2025 OF THE PROGRESSIVE CASUALTY INSURANCE COMPANY

GENERAL INTERROGATORIES

9.1

Are the senior officers (principal executive officer, principal financial officer, principal accounting officer or controller, or persons performing similar functions) of the reporting entity subject to a code of ethics, which includes the following standards?
(a) Honest and ethical conduct, including the ethical handling of actual or apparent conflicts of interest between personal and professional relationships;
(b) Full, fair, accurate, timely and understandable disclosure in the periodic reports required to be filed by the reporting entity;
(c) Compliance with applicable governmental laws, rules and regulations;
(d) The prompt internal reporting of violations to an appropriate person or persons identified in the code; and
(e) Accountability for adherence to the code.

Yes [X] No []

9.11

If the response to 9.1 is No, please explain:
.....

9.2

Has the code of ethics for senior managers been amended?

Yes [] No [X]

9.21

If the response to 9.2 is Yes, provide information related to amendment(s).
.....

9.3

Have any provisions of the code of ethics been waived for any of the specified officers?

Yes [] No [X]

9.31

If the response to 9.3 is Yes, provide the nature of any waiver(s).
.....

FINANCIAL

10.1

Does the reporting entity report any amounts due from parent, subsidiaries or affiliates on Page 2 of this statement?

Yes [] No [X]

10.2

If yes, indicate any amounts receivable from parent included in the Page 2 amount:\$

INVESTMENT

11.1

Were any of the stocks, bonds, or other assets of the reporting entity loaned, placed under option agreement, or otherwise made available for use by another person? (Exclude securities under securities lending agreements.)

Yes [] No [X]

11.2

If yes, give full and complete information relating thereto:
.....

12.

Amount of real estate and mortgages held in other invested assets in Schedule BA:

\$

13.

Amount of real estate and mortgages held in short-term investments:

\$

14.1

Does the reporting entity have any investments in parent, subsidiaries and affiliates?

Yes [X] No []

14.2

If yes, please complete the following:

	1	2
	Prior Year-End Book/Adjusted Carrying Value	Current Quarter Book/Adjusted Carrying Value
14.21 Bonds	\$	\$
14.22 Preferred Stock	\$	\$
14.23 Common Stock	\$ 1,914,616,985	\$ 2,203,465,449
14.24 Short-Term Investments	\$	\$
14.25 Mortgage Loans on Real Estate	\$	\$
14.26 All Other	\$ 100,000	\$ 100,000
14.27 Total Investment in Parent, Subsidiaries and Affiliates (Subtotal Lines 14.21 to 14.26)	\$ 1,914,716,985	\$ 2,203,565,449
14.28 Total Investment in Parent included in Lines 14.21 to 14.26 above	\$	\$

15.1

Has the reporting entity entered into any hedging transactions reported on Schedule DB?

Yes [] No [X]

15.2

If yes, has a comprehensive description of the hedging program been made available to the domiciliary state? Yes [] No [] N/A [X]
If no, attach a description with this statement.
.....

16.

For the reporting entity's security lending program, state the amount of the following as of the current statement date:

16.1

Total fair value of reinvested collateral assets reported on Schedule DL, Parts 1 and 2.

\$

16.2

Total book/adjusted carrying value of reinvested collateral assets reported on Schedule DL, Parts 1 and 2

\$

16.3

Total payable for securities lending reported on the liability page.

\$

7.1

STATEMENT AS OF JUNE 30, 2025 OF THE PROGRESSIVE CASUALTY INSURANCE COMPANY

GENERAL INTERROGATORIES

17. Excluding items in Schedule E - Part 3 - Special Deposits, real estate, mortgage loans and investments held physically in the reporting entity's offices, vaults or safety deposit boxes, were all stocks, bonds and other securities, owned throughout the current year held pursuant to a custodial agreement with a qualified bank or trust company in accordance with Section 1, III - General Examination Considerations, F. Outsourcing of Critical Functions, Custodial or Safekeeping Agreements of the NAIC Financial Condition Examiners Handbook? Yes [X] No []
- 17.1 For all agreements that comply with the requirements of the NAIC Financial Condition Examiners Handbook, complete the following:

1 Name of Custodian(s)	2 Custodian Address
PNC BANK, N.A.	1900 EAST 9TH STREET CLEVELAND, OH 44114
STATE STREET	801 PENNSYLVANIA AVE KANSAS CITY, MO 64105
CITIBANK, N.A.	338 GREENWICH STREET NEW YORK, NY 10013

- 17.2 For all agreements that do not comply with the requirements of the NAIC Financial Condition Examiners Handbook, provide the name, location and a complete explanation:

1 Name(s)	2 Location(s)	3 Complete Explanation(s)

- 17.3 Have there been any changes, including name changes, in the custodian(s) identified in 17.1 during the current quarter? Yes [] No [X]
- 17.4 If yes, give full information relating thereto:

1 Old Custodian	2 New Custodian	3 Date of Change	4 Reason

- 17.5 Investment management – Identify all investment advisors, investment managers, broker/dealers, including individuals that have the authority to make investment decisions on behalf of the reporting entity. This includes both primary and sub-advisors. For assets that are managed internally by employees of the reporting entity, note as such. ["...that have access to the investment accounts"; "...handle securities"]

1 Name of Firm or Individual	2 Affiliation
STATE STREET GLOBAL ADVISORS	U.....
PROGRESSIVE CAPITAL MANAGEMENT CORP	A.....

- 17.5097 For those firms/individuals listed in the table for Question 17.5, do any firms/individuals unaffiliated with the reporting entity (i.e. designated with a "U") manage more than 10% of the reporting entity's invested assets?..... Yes [] No [X]
- 17.5098 For firms/individuals unaffiliated with the reporting entity (i.e. designated with a "U") listed in the table for Question 17.5, does the total assets under management aggregate to more than 50% of the reporting entity's invested assets?..... Yes [] No [X]

- 17.6 For those firms or individuals listed in the table for 17.5 with an affiliation code of "A" (affiliated) or "U" (unaffiliated), provide the information for the table below.

1 Central Registration Depository Number	2 Name of Firm or Individual	3 Legal Entity Identifier (LEI)	4 Registered With	5 Investment Management Agreement (IMA) Filed
30107	STATE STREET GLOBAL ADVISORS	549300BYW0XNH286YR10	SEC	DS.....
	PROGRESSIVE CAPITAL MANAGEMENT CORP	5493001ZR2ZQPS7K1G26	N/A	DS.....

- 18.1 Have all the filing requirements of the Purposes and Procedures Manual of the NAIC Investment Analysis Office been followed? Yes [X] No []
- 18.2 If no, list exceptions:
.....

19. By self-designating 5GI securities, the reporting entity is certifying the following elements for each self-designated 5GI security:
- a. Documentation necessary to permit a full credit analysis of the security does not exist or an NAIC CRP credit rating for an FE or PL security is not available.
 - b. Issuer or obligor is current on all contracted interest and principal payments.
 - c. The insurer has an actual expectation of ultimate payment of all contracted interest and principal.
- Has the reporting entity self-designated 5GI securities? Yes [] No [X]

20. By self-designating PLGI securities, the reporting entity is certifying the following elements of each self-designated PLGI security:
- a. The security was purchased prior to January 1, 2018.
 - b. The reporting entity is holding capital commensurate with the NAIC Designation reported for the security.
 - c. The NAIC Designation was derived from the credit rating assigned by an NAIC CRP in its legal capacity as a NRSRO which is shown on a current private letter rating held by the insurer and available for examination by state insurance regulators.
 - d. The reporting entity is not permitted to share this credit rating of the PL security with the SVO.
- Has the reporting entity self-designated PLGI securities? Yes [] No [X]

21. By assigning FE to a Schedule BA non-registered private fund, the reporting entity is certifying the following elements of each self-designated FE fund:
- a. The shares were purchased prior to January 1, 2019.
 - b. The reporting entity is holding capital commensurate with the NAIC Designation reported for the security.
 - c. The security had a public credit rating(s) with annual surveillance assigned by an NAIC CRP in its legal capacity as an NRSRO prior to January 1, 2019.
 - d. The fund only or predominantly holds bonds in its portfolio.
 - e. The current reported NAIC Designation was derived from the public credit rating(s) with annual surveillance assigned by an NAIC CRP in its legal capacity as an NRSRO.
 - f. The public credit rating(s) with annual surveillance assigned by an NAIC CRP has not lapsed.
- Has the reporting entity assigned FE to Schedule BA non-registered private funds that complied with the above criteria? Yes [] No [X]

STATEMENT AS OF JUNE 30, 2025 OF THE PROGRESSIVE CASUALTY INSURANCE COMPANY

GENERAL INTERROGATORIES

PART 2 - PROPERTY & CASUALTY INTERROGATORIES

1.

If the reporting entity is a member of a pooling arrangement, did the agreement or the reporting entity's participation change?
If yes, attach an explanation.
.....

Yes [] No [X] N/A []
2.

Has the reporting entity reinsured any risk with any other reporting entity and agreed to release such entity from liability, in whole or in part, from any loss that may occur on the risk, or portion thereof, reinsured?
If yes, attach an explanation.
Effective June 2, 2025, the Company commuted the property catastrophe excess of loss reinsurance agreement with B&L Insurance, Ltd., a captive affiliated insurer, that expired on May 31, 2025. The Company reported no loss, LAE, or premiums earned as a result of the commutation.

Yes [X] No []
- 3.1

Have any of the reporting entity's primary reinsurance contracts been canceled?

Yes [] No [X]
- 3.2

If yes, give full and complete information thereto.
.....
- 4.1

Are any of the liabilities for unpaid losses and loss adjustment expenses other than certain workers' compensation tabular reserves (see Annual Statement Instructions pertaining to disclosure of discounting for definition of " tabular reserves") discounted at a rate of interest greater than zero?

Yes [] No [X]
- 4.2

If yes, complete the following schedule:

			TOTAL DISCOUNT				DISCOUNT TAKEN DURING PERIOD			
1	2	3	4	5	6	7	8	9	10	11
Line of Business	Maximum Interest	Discount Rate	Unpaid Losses	Unpaid LAE	IBNR	TOTAL	Unpaid Losses	Unpaid LAE	IBNR	TOTAL
TOTAL										

5.

Operating Percentages:
- 5.1

A&H loss percent

0.000 %
- 5.2

A&H cost containment percent

0.000 %
- 5.3

A&H expense percent excluding cost containment expenses

0.000 %
- 6.1

Do you act as a custodian for health savings accounts?

Yes [] No [X]
- 6.2

If yes, please provide the amount of custodial funds held as of the reporting date\$.....
- 6.3

Do you act as an administrator for health savings accounts?

Yes [] No [X]
- 6.4

If yes, please provide the balance of the funds administered as of the reporting date\$.....
7.

Is the reporting entity licensed or chartered, registered, qualified, eligible or writing business in at least two states?

Yes [X] No []
- 7.1

If no, does the reporting entity assume reinsurance business that covers risks residing in at least one state other than the state of domicile of the reporting entity?

Yes [] No []

STATEMENT AS OF JUNE 30, 2025 OF THE PROGRESSIVE CASUALTY INSURANCE COMPANY

SCHEDULE F - CEDED REINSURANCE

Showing All New Reinsurers - Current Year to Date

[illegible]

SCHEDULE T - EXHIBIT OF PREMIUMS WRITTEN

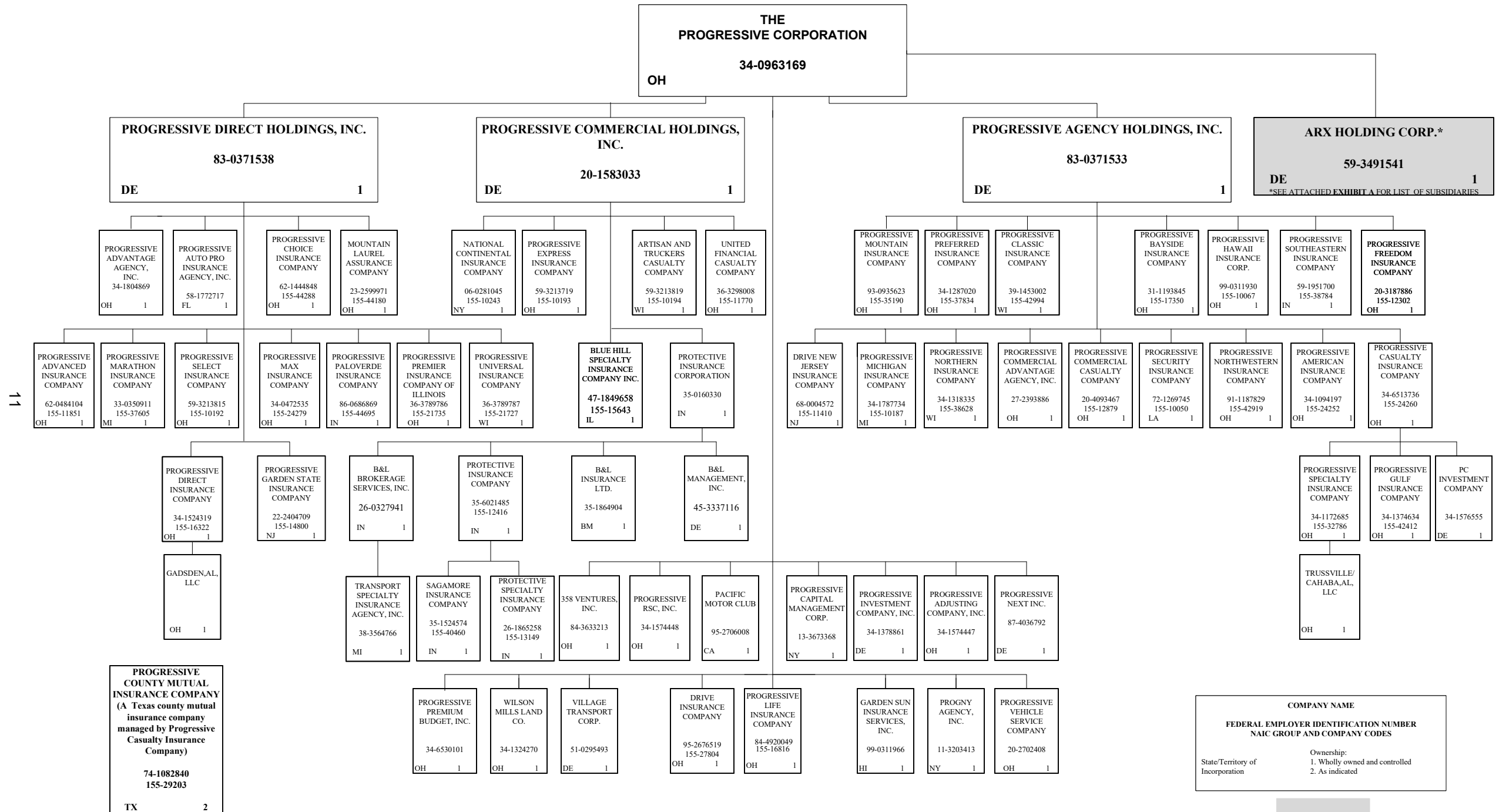
Current Year to Date - Allocated by States and Territories							
States, etc.	1 Active Status (a)	Direct Premiums Written		Direct Losses Paid (Deducting Salvage)		Direct Losses Unpaid	
		2 Current Year To Date	3 Prior Year To Date	4 Current Year To Date	5 Prior Year To Date	6 Current Year To Date	7 Prior Year To Date
1. Alabama	L		(3,303)	(338)	(308)		
2. Alaska	L	8,030	19,798	(1,786)	624	53,759	54,416
3. Arizona	L		(477)	(7,638)	(2,835)	(14)	212
4. Arkansas	L	380,812	416,735	457,748	153,871	111,164	142,444
5. California	L	31,181,063	27,827,488	14,611,679	11,596,495	8,470,427	9,009,222
6. Colorado	L	1,578,952	1,729,846	1,044,286	860,948	649,910	1,166,073
7. Connecticut	L	235,712,284	200,809,752	116,463,353	103,791,647	256,509,627	196,655,086
8. Delaware	L						
9. District of Columbia	L	7,780,746	7,110,109	3,361,083	3,846,548	3,943,763	3,436,936
10. Florida	N						
11. Georgia	L	(1,639)		(11,253)	(7,525)		
12. Hawaii	L	480,664	1,069,800	486,317	524,234	353,252	659,655
13. Idaho	L			(428)	(456)		
14. Illinois	L			(677)	(876)		2
15. Indiana	L						
16. Iowa	L			(829)	(1,864)		
17. Kansas	L					11	69
18. Kentucky	L	169,903,850	130,978,687	101,660,091	69,050,851	96,900,084	73,839,083
19. Louisiana	L				(200)		
20. Maine	L	264,438	277,383	159,846	577,790	194,553	147,794
21. Maryland	L	65,476,446	60,176,535	23,842,087	26,080,695	70,381,896	62,451,802
22. Massachusetts	L	144,865,365	115,364,811	59,888,854	53,172,310	88,029,813	67,983,989
23. Michigan	L			175,000	497,268		
24. Minnesota	L		(45)				
25. Mississippi	L						
26. Missouri	L	390,568,167	348,398,690	207,329,064	192,336,611	281,444,910	243,656,613
27. Montana	L	55,385	68,430	14,946	22,954	15,146	8,717
28. Nebraska	L						
29. Nevada	L			(600)	(633)		
30. New Hampshire	L	9,186	9,004	546	(33)	1,027	726
31. New Jersey	L			184,072	170,396	336,130	686,988
32. New Mexico	L	123,791	132,041	56,490	84,016	273,063	251,980
33. New York	L	540,198,157	506,523,523	306,746,157	321,564,930	773,369,044	704,754,159
34. North Carolina	L				(59)		
35. North Dakota	L						
36. Ohio	L	5,336,706	5,931,458	49,321,518	16,702,346	62,170,045	66,226,012
37. Oklahoma	L						
38. Oregon	L			(2,025)	(687)		
39. Pennsylvania	L	1,590,080	1,795,422	622,625	837,782	781,102	958,545
40. Rhode Island	L	106,168,068	93,352,844	62,019,117	53,264,906	81,418,793	68,332,496
41. South Carolina	L						
42. South Dakota	L						
43. Tennessee	L	57,786,084	48,939,840	29,221,350	25,770,247	26,830,324	22,110,817
44. Texas	L	29,586,980	27,882,207	8,029,637	8,218,000	4,969,748	6,451,511
45. Utah	L	68,865	69,466	24,553	34,805	37,218	13,260
46. Vermont	L			(16)	(676)		
47. Virginia	L	33,594,404	22,352,313	14,352,673	6,223,799	23,274,765	10,655,908
48. Washington	L	230,455,087	186,941,073	113,048,480	111,082,184	203,143,868	160,342,625
49. West Virginia	L			232	(50)		
50. Wisconsin	L	62,978	71,038	72,757	52,387	8,343	12,281
51. Wyoming	L			(1,200)	(5,848)		
52. American Samoa	N						
53. Guam	N						
54. Puerto Rico	N						
55. U.S. Virgin Islands	E						
56. Northern Mariana Islands	N						
57. Canada	N						
58. Aggregate Other Alien OT	XXX						
59. Totals	XXX	2,053,234,947	1,788,244,468	1,113,167,769	1,006,496,596	1,983,671,773	1,700,009,422
DETAILS OF WRITE-INS							
58001.	XXX						
58002.	XXX						
58003.	XXX						
58998. Summary of remaining write-ins for Line 58 from overflow page	XXX						
58999. Totals (Lines 58001 through 58003 plus 58998)(Line 58 above)	XXX						

(a) Active Status Counts:

1. L - Licensed or Chartered - Licensed insurance carrier or domiciled RRG.....	50	4. Q - Qualified - Qualified or accredited reinsurer.....	
2. R - Registered - Non-domiciled RRGs.....		5. D - Domestic Surplus Lines Insurer (DSLII) - Reporting entities authorized to write surplus lines in the state of domicile.....	
3. E - Eligible - Reporting entities eligible or approved to write surplus lines in the state (other than their state of domicile - see DSLII).....	1	6. N - None of the above - Not allowed to write business in the state... ..	6

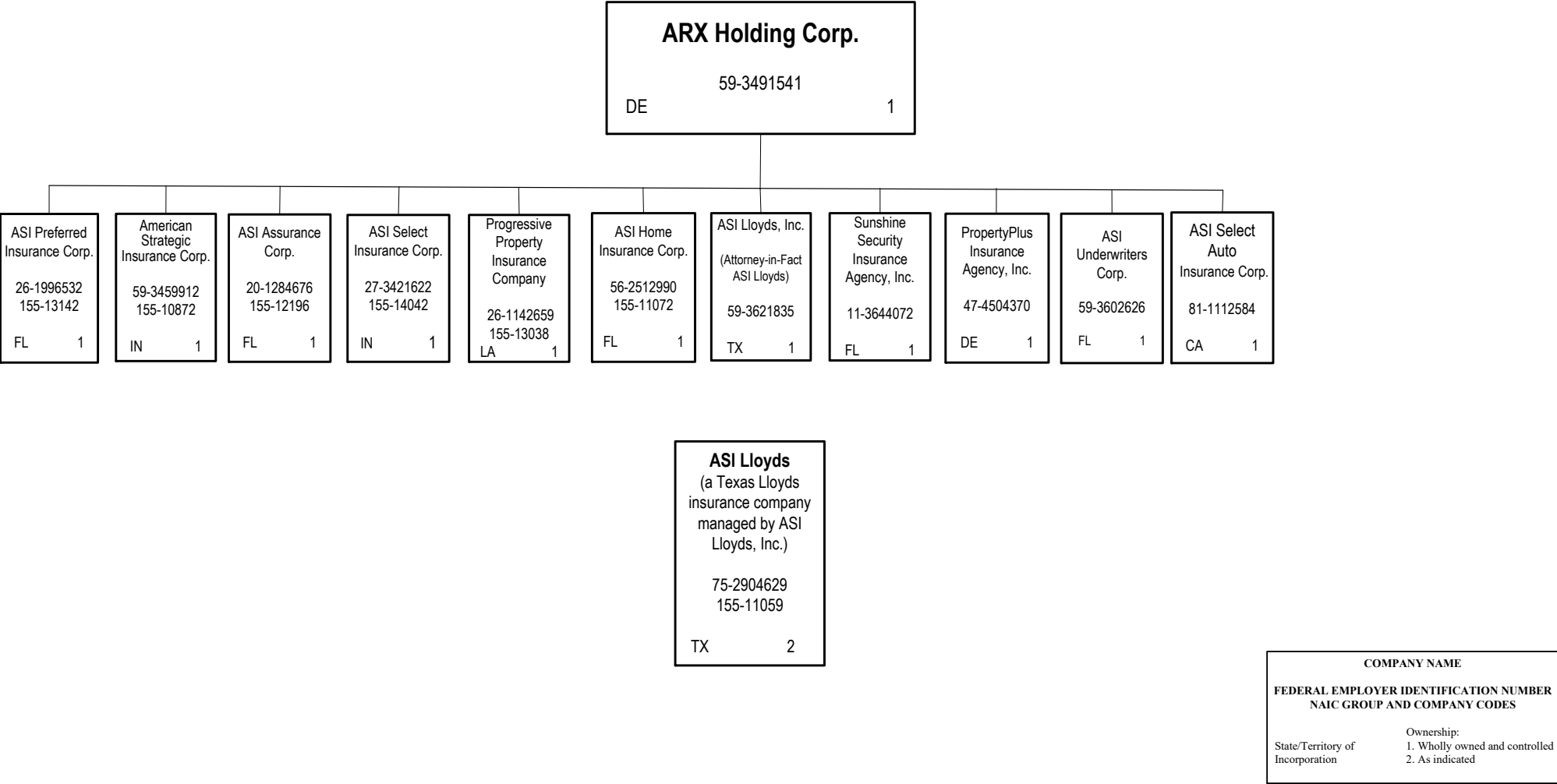
STATEMENT AS OF JUNE 30, 2025 OF THE PROGRESSIVE CASUALTY INSURANCE COMPANY

SCHEDULE Y – INFORMATION CONCERNING ACTIVITIES OF INSURER MEMBERS OF A HOLDING COMPANY GROUP -- PART 1 – ORGANIZATIONAL CHART



06/30/25

SCHEDULE Y – INFORMATION CONCERNING ACTIVITIES OF INSURER MEMBERS OF A HOLDING COMPANY GROUP -- PART 1 – ORGANIZATIONAL CHART



STATEMENT AS OF JUNE 30, 2025 OF THE PROGRESSIVE CASUALTY INSURANCE COMPANY

SCHEDULE Y
PART 1A - DETAILS OF INSURANCE HOLDING COMPANY SYSTEM

1	2	3	4	5	6	7	8	9	10	11	12	13	14	15	16
Group Code	Group Name	NAIC Company Code	ID Number	Federal RSSD	CIK	Name of Securities Exchange if Publicly Traded (U.S. or International)	Names of Parent, Subsidiaries Or Affiliates	Domi-ciliary Location	Relation-ship to Reporting Entity	Directly Controlled by (Name of Entity/Person)	Type of Control (Ownership, Board, Management, Attorney-in-Fact, Influence, Other)	If Control is Owner-ship Provide Percen-tage	Ultimate Controlling Entity(ies)/Person(s)	Is an SCA Filing Re-quired? (Yes/No)	*
		00000	34-0963169		0000080661	NYSE	The Progressive Corporation	..OH.....	UIP.....	Board, Management	Board		The Progressive Corporation	...NO.....	13
.0155	Progressive Insurance Group	27804	95-2676519				Drive Insurance Company	..OH.....	IA.....	The Progressive Corporation	Ownership.....	100.000	The Progressive Corporation	...NO.....	13
		00000	83-0371533				Progressive Agency Holdings, Inc.	..DE.....	UDP.....	The Progressive Corporation	Ownership.....	100.000	The Progressive Corporation	...NO.....	13
.0155	Progressive Insurance Group	11410	68-0004572				Drive New Jersey Insurance Company	..NJ.....	IA.....	Progressive Agency Holdings, Inc.	Ownership.....	100.000	The Progressive Corporation	...NO.....	13
.0155	Progressive Insurance Group	12879	20-4093467				Progressive Commercial Casualty Company	..OH.....	IA.....	Progressive Agency Holdings, Inc.	Ownership.....	100.000	The Progressive Corporation	...NO.....	13
.0155	Progressive Insurance Group	24252	34-1094197				Progressive American Insurance Company	..OH.....	IA.....	Progressive Agency Holdings, Inc.	Ownership.....	100.000	The Progressive Corporation	...NO.....	13
.0155	Progressive Insurance Group	17350	31-1193845				Progressive Bayside Insurance Company	..OH.....	IA.....	Progressive Agency Holdings, Inc.	Ownership.....	100.000	The Progressive Corporation	...NO.....	13
.0155	Progressive Insurance Group	24260	34-6513736				Progressive Casualty Insurance Company	..OH.....	RE.....	Progressive Agency Holdings, Inc.	Ownership.....	100.000	The Progressive Corporation	...NO.....	13
		00000	34-1576555				PC Investment Company	..DE.....	DS.....	Progressive Casualty Insurance Company	Ownership.....	100.000	The Progressive Corporation	...YES.....	13
.0155	Progressive Insurance Group	29203	74-1082840				Progressive County Mutual Insurance Company	..TX.....	IA.....	Progressive Casualty Insurance Company	Management.....		The Progressive Corporation	...NO.....	123
.0155	Progressive Insurance Group	42412	34-1374634				Progressive Gulf Insurance Company	..OH.....	DS.....	Progressive Casualty Insurance Company	Ownership.....	100.000	The Progressive Corporation	...YES.....	13
.0155	Progressive Insurance Group	32786	34-1172685				Progressive Specialty Insurance Company	..OH.....	DS.....	Progressive Casualty Insurance Company	Ownership.....	100.000	The Progressive Corporation	...YES.....	13
		00000					Trussville/Cahaba, AL, LLC	..OH.....	NIA.....	Progressive Specialty Insurance Company	Ownership.....	100.000	The Progressive Corporation	...NO.....	13
.0155	Progressive Insurance Group	42994	39-1453002				Progressive Classic Insurance Company	..WI.....	IA.....	Progressive Agency Holdings, Inc.	Ownership.....	100.000	The Progressive Corporation	...NO.....	13
.0155	Progressive Insurance Group	10067	99-0311930				Progressive Hawaii Insurance Corp.	..OH.....	IA.....	Progressive Agency Holdings, Inc.	Ownership.....	100.000	The Progressive Corporation	...NO.....	13
.0155	Progressive Insurance Group	10187	34-1787734				Progressive Michigan Insurance Company	..MI.....	IA.....	Progressive Agency Holdings, Inc.	Ownership.....	100.000	The Progressive Corporation	...NO.....	13
.0155	Progressive Insurance Group	35190	93-0935623				Progressive Mountain Insurance Company	..OH.....	IA.....	Progressive Agency Holdings, Inc.	Ownership.....	100.000	The Progressive Corporation	...NO.....	13
.0155	Progressive Insurance Group	38628	34-1318335				Progressive Northern Insurance Company	..WI.....	IA.....	Progressive Agency Holdings, Inc.	Ownership.....	100.000	The Progressive Corporation	...NO.....	13
.0155	Progressive Insurance Group	42919	91-1187829				Progressive Northwestern Insurance Company	..OH.....	IA.....	Progressive Agency Holdings, Inc.	Ownership.....	100.000	The Progressive Corporation	...NO.....	13
.0155	Progressive Insurance Group	37834	34-1287020				Progressive Preferred Insurance Company	..OH.....	IA.....	Progressive Agency Holdings, Inc.	Ownership.....	100.000	The Progressive Corporation	...NO.....	13
.0155	Progressive Insurance Group	10050	72-1269745				Progressive Security Insurance Company	..LA.....	IA.....	Progressive Agency Holdings, Inc.	Ownership.....	100.000	The Progressive Corporation	...NO.....	13
.0155	Progressive Insurance Group	38784	59-1951700				Progressive Southeastern Insurance Company	..IN.....	IA.....	Progressive Agency Holdings, Inc.	Ownership.....	100.000	The Progressive Corporation	...NO.....	13
.0155	Progressive Insurance Group	12302	20-3187886				Progressive Freedom Insurance Company	..OH.....	IA.....	Progressive Agency Holdings, Inc.	Ownership.....	100.000	The Progressive Corporation	...NO.....	13
							Progressive Commercial Advantage Agency, Inc.								
		00000	27-2393886					..OH.....	NIA.....	Progressive Agency Holdings, Inc.	Ownership.....	100.000	The Progressive Corporation	...NO.....	13
		00000	20-1583033				Progressive Commercial Holdings, Inc.	..DE.....	NIA.....	The Progressive Corporation	Ownership.....	100.000	The Progressive Corporation	...NO.....	13
.0155	Progressive Insurance Group	10194	59-3213819				Artisan and Truckers Casualty Company	..WI.....	IA.....	Progressive Commercial Holdings, Inc.	Ownership.....	100.000	The Progressive Corporation	...NO.....	13
.0155	Progressive Insurance Group	10243	06-0281045				National Continental Insurance Company	..NY.....	IA.....	Progressive Commercial Holdings, Inc.	Ownership.....	100.000	The Progressive Corporation	...NO.....	13
.0155	Progressive Insurance Group	10193	59-3213719				Progressive Express Insurance Company	..OH.....	IA.....	Progressive Commercial Holdings, Inc.	Ownership.....	100.000	The Progressive Corporation	...NO.....	13
.0155	Progressive Insurance Group	11770	36-3298008				United Financial Casualty Company	..OH.....	IA.....	Progressive Commercial Holdings, Inc.	Ownership.....	100.000	The Progressive Corporation	...NO.....	13
.0155	Progressive Insurance Group	15643	47-1849658				Blue Hill Specialty Insurance Company Inc.	..IL.....	IA.....	Progressive Commercial Holdings, Inc.	Ownership.....	100.000	The Progressive Corporation	...NO.....	13
		00000	35-0160330				Protective Insurance Corporation	..IN.....	NIA.....	Progressive Commercial Holdings, Inc.	Ownership.....	100.000	The Progressive Corporation	...NO.....	13
.0155	Progressive Insurance Group	12416	35-6021485				Protective Insurance Company	..IN.....	IA.....	Protective Insurance Corporation	Ownership.....	100.000	The Progressive Corporation	...NO.....	13
.0155	Progressive Insurance Group	40460	35-1524574				Sagamore Insurance Company	..IN.....	IA.....	Protective Insurance Company	Ownership.....	100.000	The Progressive Corporation	...NO.....	13
.0155	Progressive Insurance Group	13149	26-1865258				Protective Specialty Insurance Company	..IN.....	IA.....	Protective Insurance Company	Ownership.....	100.000	The Progressive Corporation	...NO.....	13
		00000	26-0327941				B&L Brokerage Services, Inc.	..IN.....	NIA.....	Protective Insurance Corporation	Ownership.....	100.000	The Progressive Corporation	...NO.....	13
		00000	45-3337116				B&L Management, Inc.	..DE.....	NIA.....	Protective Insurance Corporation	Ownership.....	100.000	The Progressive Corporation	...NO.....	13
		00000	35-1864904				B&L Insurance Ltd.	..BMU.....	IA.....	Protective Insurance Corporation	Ownership.....	100.000	The Progressive Corporation	...NO.....	13
		00000	38-3564766				Transport Specialty Insurance Agency, Inc.	..MI.....	NIA.....	B&L Brokerage Services, Inc.	Ownership.....	100.000	The Progressive Corporation	...NO.....	13
		00000	83-0371538				Progressive Direct Holdings, Inc.	..DE.....	NIA.....	The Progressive Corporation	Ownership.....	100.000	The Progressive Corporation	...NO.....	13
.0155	Progressive Insurance Group	44180	23-2599971				Mountain Laurel Assurance Company	..OH.....	IA.....	Progressive Direct Holdings, Inc.	Ownership.....	100.000	The Progressive Corporation	...NO.....	13
.0155	Progressive Insurance Group	11851	62-0484104				Progressive Advanced Insurance Company	..OH.....	IA.....	Progressive Direct Holdings, Inc.	Ownership.....	100.000	The Progressive Corporation	...NO.....	13
		00000	58-1772717				Progressive Auto Pro Insurance Agency, Inc.	..FL.....	NIA.....	Progressive Direct Holdings, Inc.	Ownership.....	100.000	The Progressive Corporation	...NO.....	13
.0155	Progressive Insurance Group	44288	62-1444848				Progressive Choice Insurance Company	..OH.....	IA.....	Progressive Direct Holdings, Inc.	Ownership.....	100.000	The Progressive Corporation	...NO.....	13
.0155	Progressive Insurance Group	16322	34-1524319				Progressive Direct Insurance Company	..OH.....	IA.....	Progressive Direct Holdings, Inc.	Ownership.....	100.000	The Progressive Corporation	...NO.....	13
		00000					Gadsden, AL, LLC	..OH.....	NIA.....	Progressive Direct Insurance Company	Ownership.....	100.000	The Progressive Corporation	...NO.....	13
.0155	Progressive Insurance Group	14800	22-2404709				Progressive Garden State Insurance Company	..NJ.....	IA.....	Progressive Direct Holdings, Inc.	Ownership.....	100.000	The Progressive Corporation	...NO.....	13
.0155	Progressive Insurance Group	37605	33-0350911				Progressive Marathon Insurance Company	..MI.....	IA.....	Progressive Direct Holdings, Inc.	Ownership.....	100.000	The Progressive Corporation	...NO.....	13
.0155	Progressive Insurance Group	24279	34-0472535				Progressive Max Insurance Company	..OH.....	IA.....	Progressive Direct Holdings, Inc.	Ownership.....	100.000	The Progressive Corporation	...NO.....	13

STATEMENT AS OF JUNE 30, 2025 OF THE PROGRESSIVE CASUALTY INSURANCE COMPANY

SCHEDULE Y
PART 1A - DETAILS OF INSURANCE HOLDING COMPANY SYSTEM

1	2	3	4	5	6	7	8	9	10	11	12 Type of Control (Ownership, Board, Management, Attorney-in-Fact, Influence, Other)	13 If Control is Owner- ship Provide Percen- tage	14 Ultimate Controlling Entity(ies)/Person(s)	15 Is an SCA Filing Re- quired? (Yes/No)	16 *
Group Code	Group Name	NAIC Company Code	ID Number	Federal RSSD	CIK	Name of Securities Exchange if Publicly Traded (U.S. or International)	Names of Parent, Subsidiaries Or Affiliates	Domi- ciliary Loca- tion	Rela- tion- ship to Reporting Entity	Directly Controlled by (Name of Entity/Person)					
. 0155 ...	Progressive Insurance Group 44695	86-0686869	Progressive Paloverde Insurance Company IN..... IA.....	Progressive Direct Holdings, Inc.	Ownership.....	100.000 ...	The Progressive Corporation NO.....13
. 0155 ...	Progressive Insurance Group 21735	36-3789786	Progressive Premier Insurance Company of Illinois OH..... IA.....	Progressive Direct Holdings, Inc.	Ownership.....	100.000 ...	The Progressive Corporation NO.....13
. 0155 ...	Progressive Insurance Group 10192	59-3213815	Progressive Select Insurance Company OH..... IA.....	Progressive Direct Holdings, Inc.	Ownership.....	100.000 ...	The Progressive Corporation NO.....13
..... 00000	34-1804869	Progressive Advantage Agency, Inc. OH..... NIA.....	Progressive Direct Holdings, Inc.	Ownership.....	100.000 ...	The Progressive Corporation NO.....13
. 0155 ...	Progressive Insurance Group 21727	36-3789787	Progressive Universal Insurance Company WI..... IA.....	Progressive Direct Holdings, Inc.	Ownership.....	100.000 ...	The Progressive Corporation NO.....13
. 0155 ...	Progressive Insurance Group 16816	84-4920049	Progressive Life Insurance Company OH..... IA.....	The Progressive Corporation	Ownership.....	100.000 ...	The Progressive Corporation NO.....13
..... 00000	99-0311966	Garden Sun Insurance Services, Inc. HI..... NIA.....	The Progressive Corporation	Ownership.....	100.000 ...	The Progressive Corporation NO.....13
..... 00000	95-2706008	Pacific Motor Club CA..... NIA.....	The Progressive Corporation	Ownership.....	100.000 ...	The Progressive Corporation NO.....13
..... 00000	11-3203413	PROGNY Agency, Inc. NY..... NIA.....	The Progressive Corporation	Ownership.....	100.000 ...	The Progressive Corporation NO.....13
..... 00000	34-1574447	Progressive Adjusting Company, Inc. OH..... NIA.....	The Progressive Corporation	Ownership.....	100.000 ...	The Progressive Corporation NO.....13
..... 00000	13-3673368	Progressive Capital Management Corp. NY..... NIA.....	The Progressive Corporation	Ownership.....	100.000 ...	The Progressive Corporation NO.....13
..... 00000	34-1378861	Progressive Investment Company, Inc. DE..... NIA.....	The Progressive Corporation	Ownership.....	100.000 ...	The Progressive Corporation NO.....13
..... 00000	34-6530101	Progressive Premium Budget, Inc. OH..... NIA.....	The Progressive Corporation	Ownership.....	100.000 ...	The Progressive Corporation NO.....13
..... 00000	34-1574448	Progressive RSC, Inc. OH..... NIA.....	The Progressive Corporation	Ownership.....	100.000 ...	The Progressive Corporation NO.....13
..... 00000	84-3633213	358 Ventures, Inc. OH..... NIA.....	The Progressive Corporation	Ownership.....	100.000 ...	The Progressive Corporation NO.....13
..... 00000	20-2702408	Progressive Vehicle Service Company OH..... NIA.....	The Progressive Corporation	Ownership.....	100.000 ...	The Progressive Corporation NO.....13
..... 00000	51-0295493	Village Transport Corp. DE..... NIA.....	The Progressive Corporation	Ownership.....	100.000 ...	The Progressive Corporation NO.....13
..... 00000	34-1324270	Wilson Mills Land Co. OH..... NIA.....	The Progressive Corporation	Ownership.....	100.000 ...	The Progressive Corporation NO.....13
..... 00000	87-4036792	Progressive Next Inc. DE..... NIA.....	The Progressive Corporation	Ownership.....	100.000 ...	The Progressive Corporation NO.....13
..... 00000	59-3491541	ARX Holding Corp. DE..... NIA.....	The Progressive Corporation	Ownership.....	100.000 ...	The Progressive Corporation NO.....135 ..
. 0155 ...	Progressive Insurance Group 11072	56-2512990	ASI Home Insurance Corp. FL..... IA.....	ARX Holding Corp.	Ownership.....	100.000 ...	The Progressive Corporation NO.....13
. 0155 ...	Progressive Insurance Group 13142	26-1996532	ASI Preferred Insurance Corp. FL..... IA.....	ARX Holding Corp.	Ownership.....	100.000 ...	The Progressive Corporation NO.....13
. 0155 ...	Progressive Insurance Group 10872	59-3459912	American Strategic Insurance Corp. IN..... IA.....	ARX Holding Corp.	Ownership.....	100.000 ...	The Progressive Corporation NO.....13
. 0155 ...	Progressive Insurance Group 11059	75-2904629	ASI Lloyds TX..... IA.....	ASI Lloyds, Inc.	Management.....	The Progressive Corporation NO.....134 ...
. 0155 ...	Progressive Insurance Group 12196	20-1284676	ASI Assurance Corp. FL..... IA.....	ARX Holding Corp.	Ownership.....	100.000 ...	The Progressive Corporation NO.....13
. 0155 ...	Progressive Insurance Group 14042	27-3421622	ASI Select Insurance Corp. IN..... IA.....	ARX Holding Corp.	Ownership.....	100.000 ...	The Progressive Corporation NO.....13
..... 00000	59-3621835	ASI Lloyds, Inc. TX..... NIA.....	ARX Holding Corp.	Ownership.....	100.000 ...	The Progressive Corporation NO.....13
..... 00000	11-3644072	Sunshine Security Insurance Agency, Inc. FL..... NIA.....	ARX Holding Corp.	Ownership.....	100.000 ...	The Progressive Corporation NO.....13
..... 00000	59-3602626	ASI Underwriters Corp. FL..... IA.....	ARX Holding Corp.	Ownership.....	100.000 ...	The Progressive Corporation NO.....13
. 0155 ...	Progressive Insurance Group 13038	26-1142659	Progressive Property Insurance Company LA..... IA.....	ARX Holding Corp.	Ownership.....	100.000 ...	The Progressive Corporation NO.....13
..... 00000	81-1112584	ASI Select Auto Insurance Corp. CA..... NIA.....	ARX Holding Corp.	Ownership.....	100.000 ...	The Progressive Corporation NO.....13
..... 00000	47-4504370	PropertyPlus Insurance Agency, Inc. DE..... NIA.....	ARX Holding Corp.	Ownership.....	100.000 ...	The Progressive Corporation NO.....13

Asterisk	Explanation
1	Schedule Y Part 1A is a common schedule for all companies of The Progressive Corporation, however column 10 requires specific relationship information relative to the reporting entity.
2	Progressive County Mutual Insurance Company is a Texas county mutual insurance company that is managed, but not owned by Progressive Casualty Insurance Company.
3	None of the companies that are part of The Progressive Corporation are Federally chartered or insured institutions and therefore, do not have Federal RSSD numbers.
4	ASI Lloyds is a Texas Lloyds insurance company that is managed, but not owned by ASI Lloyds, Inc.
5	Effective November 19, 2024 ARK Royal Underwriters, LLC was administratively dissolved.

PART 1 - LOSS EXPERIENCE

Line of Business		Current Year to Date			4
		1 Direct Premiums Earned	2 Direct Losses Incurred	3 Direct Loss Percentage	Prior Year to Date Direct Loss Percentage
1.	Fire				
2.1	Allied Lines				
2.2	Multiple peril crop				
2.3	Federal flood				
2.4	Private crop				
2.5	Private flood				
3.	Farmowners multiple peril				
4.	Homeowners multiple peril	7,088,224	5,008,295	70.7	91.6
5.1	Commercial multiple peril (non-liability portion)	1,071,830	393,824	36.7	25.7
5.2	Commercial multiple peril (liability portion)	3,184,069	3,117,166	97.9	25.0
6.	Mortgage guaranty				
8.	Ocean marine				
9.1	Inland marine	43,768,085	15,080,627	34.5	44.9
9.2	Pet insurance				
10.	Financial guaranty				
11.1	Medical professional liability - occurrence				
11.2	Medical professional liability - claims-made	17,773			
12.	Earthquake				
13.1	Comprehensive (hospital and medical) individual				
13.2	Comprehensive (hospital and medical) group				
14.	Credit accident and health				
15.1	Vision only				
15.2	Dental only				
15.3	Disability income				
15.4	Medicare supplement				
15.5	Medicaid Title XIX				
15.6	Medicare Title XVIII				
15.7	Long-term care				
15.8	Federal employees health benefits plan				
15.9	Other health				
16.	Workers' compensation				
17.1	Other liability - occurrence	10,665,359	3,400,966	31.9	23.2
17.2	Other liability - claims-made	581,786	12,480,686	2,145.2	7,859.6
17.3	Excess workers' compensation				
18.1	Products liability - occurrence				
18.2	Products liability - claims-made				
19.1	Private passenger auto no-fault (personal injury protection)	106,501,467	54,220,711	50.9	57.9
19.2	Other private passenger auto liability	836,031,059	546,481,772	65.4	68.7
19.3	Commercial auto no-fault (personal injury protection)	13,984,364	16,546,845	118.3	91.2
19.4	Other commercial auto liability	244,040,080	164,424,044	67.4	71.3
21.1	Private passenger auto physical damage	594,474,786	363,772,926	61.2	65.6
21.2	Commercial auto physical damage	83,672,319	33,186,791	39.7	52.3
22.	Aircraft (all perils)				
23.	Fidelity		(21,462)		
24.	Surety	3,332			
26.	Burglary and theft				
27.	Boiler and machinery				
28.	Credit				
29.	International				
30.	Warranty	5,027	350	7.0	20.0
31.	Reinsurance - Nonproportional Assumed Property	XXX	XXX	XXX	XXX
32.	Reinsurance - Nonproportional Assumed Liability	XXX	XXX	XXX	XXX
33.	Reinsurance - Nonproportional Assumed Financial Lines	XXX	XXX	XXX	XXX
34.	Aggregate write-ins for other lines of business				
35.	Totals	1,945,089,558	1,218,093,540	62.6	68.5
DETAILS OF WRITE-INS					
3401.				
3402.				
3403.				
3498.	Summary of remaining write-ins for Line 34 from overflow page				
3499.	Totals (Lines 3401 through 3403 plus 3498)(Line 34 above)				

PART 2 - DIRECT PREMIUMS WRITTEN

Line of Business		1 Current Quarter	2 Current Year to Date	3 Prior Year Year to Date
1.	Fire			
2.1	Allied Lines			
2.2	Multiple peril crop			
2.3	Federal flood			
2.4	Private crop			
2.5	Private flood			
3.	Farmowners multiple peril			
4.	Homeowners multiple peril	4,158,536	7,565,701	6,688,556
5.1	Commercial multiple peril (non-liability portion)	760,161	1,325,330	926,162
5.2	Commercial multiple peril (liability portion)	2,270,426	4,041,631	2,943,102
6.	Mortgage guaranty			
8.	Ocean marine			
9.1	Inland marine	33,354,239	52,021,907	50,089,531
9.2	Pet insurance			
10.	Financial guaranty			
11.1	Medical professional liability - occurrence			
11.2	Medical professional liability - claims-made		35,954	35,388
12.	Earthquake			
13.1	Comprehensive (hospital and medical) individual			
13.2	Comprehensive (hospital and medical) group			
14.	Credit accident and health			
15.1	Vision only			
15.2	Dental only			
15.3	Disability income			
15.4	Medicare supplement			
15.5	Medicaid Title XIX			
15.6	Medicare Title XVIII			
15.7	Long-term care			
15.8	Federal employees health benefits plan			
15.9	Other health			
16.	Workers' compensation			
17.1	Other liability - occurrence	7,601,187	12,020,881	12,054,073
17.2	Other liability - claims-made	106,821	1,084,099	1,023,937
17.3	Excess workers' compensation			
18.1	Products liability - occurrence			
18.2	Products liability - claims-made			
19.1	Private passenger auto no-fault (personal injury protection)	53,905,843	109,675,266	100,816,606
19.2	Other private passenger auto liability	443,874,871	885,072,985	723,743,507
19.3	Commercial auto no-fault (personal injury protection)	6,708,974	14,750,917	13,884,020
19.4	Other commercial auto liability	126,163,260	260,524,606	255,733,571
21.1	Private passenger auto physical damage	312,864,088	621,708,713	533,113,938
21.2	Commercial auto physical damage	40,977,131	83,398,616	87,181,647
22.	Aircraft (all perils)			
23.	Fidelity			
24.	Surety			9,422
26.	Burglary and theft			
27.	Boiler and machinery			
28.	Credit			
29.	International			
30.	Warranty	6,492	8,341	1,008
31.	Reinsurance - Nonproportional Assumed Property	XXX	XXX	XXX
32.	Reinsurance - Nonproportional Assumed Liability	XXX	XXX	XXX
33.	Reinsurance - Nonproportional Assumed Financial Lines	XXX	XXX	XXX
34.	Aggregate write-ins for other lines of business			
35.	Totals	1,032,752,030	2,053,234,947	1,788,244,468
DETAILS OF WRITE-INS				
3401.			
3402.			
3403.			
3498.	Summary of remaining write-ins for Line 34 from overflow page			
3499.	Totals (Lines 3401 through 3403 plus 3498)(Line 34 above)			

STATEMENT AS OF JUNE 30, 2025 OF THE PROGRESSIVE CASUALTY INSURANCE COMPANY

PART 3 (\$000 OMITTED)

LOSS AND LOSS ADJUSTMENT EXPENSE RESERVES SCHEDULE

	1	2	3	4	5	6	7	8	9	10	11	12	13	
Years in Which Losses Occurred	Prior Year-End Known Case Loss and LAE Reserves	Prior Year-End IBNR Loss and LAE Reserves	Total Prior Year-End Loss and LAE Reserves (Cols. 1+2)	2025 Loss and LAE Payments on Claims Reported as of Prior Year-End	2025 Loss and LAE Payments on Claims Unreported as of Prior Year-End	Total 2025 Loss and LAE Payments (Cols. 4+5)	Q.S. Date Known Case Loss and LAE Reserves on Claims Reported and Open as of Prior Year End	Q.S. Date Known Case Loss and LAE Reserves on Claims Reported or Reopened Subsequent to Prior Year End	Q.S. Date IBNR Loss and LAE Reserves	Total Q.S. Loss and LAE Reserves (Cols.7+8+9)	Prior Year-End Known Case Loss and LAE Reserves Developed (Savings)/ Deficiency (Cols.4+7 minus Col. 1)	Prior Year-End IBNR Loss and LAE Reserves Developed (Savings)/ Deficiency (Cols. 5+8+9 minus Col. 2)	Prior Year-End Total Loss and LAE Reserve Developed (Savings)/ Deficiency (Cols. 11+12)	
1. 2022 + Prior	1,012,559	238,112	1,250,671	329,927	16,629	346,556	676,596	35,535	168,269	880,400	(6,037)	(17,679)	(23,715)	
2. 2023	1,428,543	348,686	1,777,228	446,535	36,516	483,051	965,080	93,445	219,219	1,277,744	(16,928)	495	(16,433)	
3. Subtotals 2023 + Prior	2,441,102	586,797	3,027,899	776,462	53,145	829,607	1,641,676	128,980	387,489	2,158,144	(22,964)	(17,183)	(40,148)	
4. 2024	3,215,386	1,222,864	4,438,250	1,340,891	191,909	1,532,800	1,851,836	357,238	621,463	2,830,537	(22,660)	(52,254)	(74,913)	
5. Subtotals 2024 + Prior	5,656,488	1,809,661	7,466,149	2,117,353	245,055	2,362,407	3,493,511	486,218	1,008,951	4,988,681	(45,624)	(69,437)	(115,061)	
6. 2025	XXX	XXX	XXX	XXX	2,780,753	2,780,753	XXX	2,064,690	950,956	3,015,646	XXX	XXX	XXX	
7. Totals	5,656,488	1,809,661	7,466,149	2,117,353	3,025,807	5,143,160	3,493,511	2,550,909	1,959,907	8,004,327	(45,624)	(69,437)	(115,061)	
8. Prior Year-End Surplus As Regards Policyholders	5,656,389											Col. 11, Line 7 As % of Col. 1 Line 7	Col. 12, Line 7 As % of Col. 2 Line 7	Col. 13, Line 7 As % of Col. 3 Line 7
												1. (0.8)	2. (3.8)	3. (1.5)
												Col. 13, Line 7 As a % of Col. 1 Line 8		
												4. (2.0)		

STATEMENT AS OF JUNE 30, 2025 OF THE PROGRESSIVE CASUALTY INSURANCE COMPANY

SUPPLEMENTAL EXHIBITS AND SCHEDULES INTERROGATORIES

The following supplemental reports are required to be filed as part of your statement filing. However, in the event that your company does not transact the type of business for which the special report must be filed, your response of NO to the specific interrogatory will be accepted in lieu of filing a "NONE" report and a bar code will be printed below. If the supplement is required of your company but is not being filed for whatever reason enter SEE EXPLANATION and provide an explanation following the interrogatory questions.

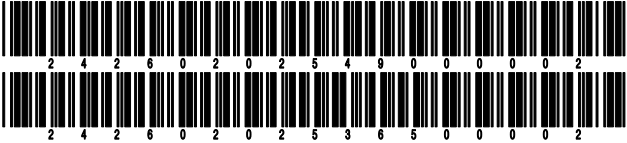
	Response
1. Will the Trusteed Surplus Statement be filed with the state of domicile and the NAIC with this statement?	NO
2. Will Supplement A to Schedule T (Medical Professional Liability Supplement) be filed with this statement?	YES
3. Will the Medicare Part D Coverage Supplement be filed with the state of domicile and the NAIC with this statement?	NO
4. Will the Director and Officer Insurance Coverage Supplement be filed with the state of domicile and the NAIC with this statement?	YES
AUGUST FILING	
5. Will the regulator-only (non-public) Communication of Internal Control Related Matters Noted in Audit be filed with the state of domicile and electronically with the NAIC (as a regulator-only non-public document) by August 1? The response for 1st and 3rd quarters should be N/A. A NO response resulting with a bar code is only appropriate in the 2nd quarter.	YES

Explanations:

1.
3.

Bar Codes:

1. Trusteed Surplus Statement [Document Identifier 490]
3. Medicare Part D Coverage Supplement [Document Identifier 365]



STATEMENT AS OF JUNE 30, 2025 OF THE PROGRESSIVE CASUALTY INSURANCE COMPANY

OVERFLOW PAGE FOR WRITE-INS

Additional Write-ins for Assets Line 25

		Current Statement Date			4 December 31 Prior Year Net Admitted Assets
		1 Assets	2 Nonadmitted Assets	3 Net Admitted Assets (Cols. 1 - 2)	
2504.	STATE TAX CREDITS				2,613,995
2505.	VIRGINIA UNINSURED MOTROIST REFUND				6,422
2597.	Summary of remaining write-ins for Line 25 from overflow page				2,620,417

SCHEDULE A - VERIFICATION

Real Estate

	1	2
	Year to Date	Prior Year Ended December 31
1. Book/adjusted carrying value, December 31 of prior year	259,459,124	305,001,281
2. Cost of acquired:		
2.1 Actual cost at time of acquisition		
2.2 Additional investment made after acquisition	4,369,003	19,669,999
3. Current year change in encumbrances		
4. Total gain (loss) on disposals	10,828,353	8,814,613
5. Deduct amounts received on disposals	44,351,357	48,815,130
6. Total foreign exchange change in book/adjusted carrying value		
7. Deduct current year's other than temporary impairment recognized	5,567,669	14,766,510
8. Deduct current year's depreciation	4,264,923	10,445,129
9. Book/adjusted carrying value at the end of current period (Lines 1+2+3+4-5+6-7-8)	220,472,531	259,459,124
10. Deduct total nonadmitted amounts		
11. Statement value at end of current period (Line 9 minus Line 10)	220,472,531	259,459,124

SCHEDULE B - VERIFICATION

Mortgage Loans

	1	2
	Year to Date	Prior Year Ended December 31
1. Book value/recorded investment excluding accrued interest, December 31 of prior year		
2. Cost of acquired:		
2.1 Actual cost at time of acquisition		
2.2 Additional investment made after acquisition		
3. Capitalized deferred interest and other		
4. Accrual of discount		
5. Unrealized valuation increase/(decrease)		
6. Total gain (loss) on disposals		
7. Deduct amounts received on disposals		
8. Deduct amortization of premium and mortgage interest paid and commitment fees		
9. Total foreign exchange change in book value/recorded investment excluding accrued interest		
10. Deduct current year's other than temporary impairment recognized		
11. Book value/recorded investment excluding accrued interest at end of current period (Lines 1+2+3+4+5+6-7-8+9-10)		
12. Total valuation allowance		
13. Subtotal (Line 11 plus Line 12)		
14. Deduct total nonadmitted amounts		
15. Statement value at end of current period (Line 13 minus Line 14)		

NONE

SCHEDULE BA - VERIFICATION

Other Long-Term Invested Assets

	1	2
	Year to Date	Prior Year Ended December 31
1. Book/adjusted carrying value, December 31 of prior year	32,972,680	47,022,309
2. Cost of acquired:		
2.1 Actual cost at time of acquisition		
2.2 Additional investment made after acquisition	1,084,779	1,883,669
3. Capitalized deferred interest and other		
4. Accrual of discount		
5. Unrealized valuation increase/(decrease)	3,308,465	(1,413,307)
6. Total gain (loss) on disposals	215,821	36,336,185
7. Deduct amounts received on disposals	215,821	41,348,045
8. Deduct amortization of premium, depreciation and proportional amortization	4,452,831	
9. Total foreign exchange change in book/adjusted carrying value		
10. Deduct current year's other than temporary impairment recognized		9,508,131
11. Book/adjusted carrying value at end of current period (Lines 1+2+3+4+5+6-7-8+9-10)	32,913,093	32,972,680
12. Deduct total nonadmitted amounts	12,713,460	17,166,291
13. Statement value at end of current period (Line 11 minus Line 12)	20,199,633	15,806,389

SCHEDULE D - VERIFICATION

Bonds and Stocks

	1	2
	Year to Date	Prior Year Ended December 31
1. Book/adjusted carrying value of bonds and stocks, December 31 of prior year	18,439,500,175	15,387,769,775
2. Cost of bonds and stocks acquired	5,148,441,458	10,797,632,727
3. Accrual of discount	14,270,713	23,671,447
4. Unrealized valuation increase/(decrease)	365,536,299	431,493,105
5. Total gain (loss) on disposals	43,767,114	(60,714,721)
6. Deduct consideration for bonds and stocks disposed of	4,206,602,062	8,107,817,815
7. Deduct amortization of premium	12,757,917	27,132,623
8. Total foreign exchange change in book/adjusted carrying value		
9. Deduct current year's other than temporary impairment recognized		5,401,720
10. Total investment income recognized as a result of prepayment penalties and/or acceleration fees		
11. Book/adjusted carrying value at end of current period (Lines 1+2+3+4+5-6-7+8-9+10)	19,792,155,780	18,439,500,175
12. Deduct total nonadmitted amounts		
13. Statement value at end of current period (Line 11 minus Line 12)	19,792,155,780	18,439,500,175

STATEMENT AS OF JUNE 30, 2025 OF THE PROGRESSIVE CASUALTY INSURANCE COMPANY

SCHEDULE D - PART 1B

Showing the Acquisitions, Dispositions and Non-Trading Activity
During the Current Quarter for all Bonds and Preferred Stock by NAIC Designation

NAIC Designation	1 Book/Adjusted Carrying Value Beginning of Current Quarter	2 Acquisitions During Current Quarter	3 Dispositions During Current Quarter	4 Non-Trading Activity During Current Quarter	5 Book/Adjusted Carrying Value End of First Quarter	6 Book/Adjusted Carrying Value End of Second Quarter	7 Book/Adjusted Carrying Value End of Third Quarter	8 Book/Adjusted Carrying Value December 31 Prior Year
ISSUER CREDIT OBLIGATIONS (ICO)								
1. NAIC 1 (a)	14,248,691,760	6,935,091,367	7,438,952,571	(14,231,467)	14,248,691,760	13,730,599,089		12,331,899,861
2. NAIC 2 (a)	1,662,673,719	26,309,750,456	26,566,237,815	32,410,797	1,662,673,719	1,438,597,157		1,035,715,753
3. NAIC 3 (a)	65,585,134		51,477	692,308	65,585,134	66,225,965		62,279,416
4. NAIC 4 (a)	35,666,157		75,000	455,735	35,666,157	36,046,892		37,674,309
5. NAIC 5 (a)								
6. NAIC 6 (a)								
7. Total ICO	16,012,616,770	33,244,841,823	34,005,316,863	19,327,373	16,012,616,770	15,271,469,103		13,467,569,339
ASSET-BACKED SECURITIES (ABS)								
8. NAIC 1	2,211,927,738	99,411,149	177,260,947	(865,827)	2,211,927,738	2,133,212,113		2,017,447,091
9. NAIC 2	141,224,211		305,468	17,936	141,224,211	140,936,679		138,545,541
10. NAIC 3	17,704,649	7,923,913		193,399	17,704,649	25,821,961		2,987
11. NAIC 4	4,582,461		39	181,696	4,582,461	4,764,118		4,396,958
12. NAIC 5								
13. NAIC 6								
14. Total ABS	2,375,439,059	107,335,062	177,566,454	(472,796)	2,375,439,059	2,304,734,871		2,160,392,577
PREFERRED STOCK								
15. NAIC 1								
16. NAIC 2	13,768,560			102,105	13,768,560	13,870,665		13,740,385
17. NAIC 3								4,652,186
18. NAIC 4								
19. NAIC 5								
20. NAIC 6								
21. Total Preferred Stock	13,768,560			102,105	13,768,560	13,870,665		18,392,571
22. Total ICO, ABS & Preferred Stock	18,401,824,389	33,352,176,885	34,182,883,317	18,956,682	18,401,824,389	17,590,074,639		15,646,354,487

(a) Book/Adjusted Carrying Value column for the end of the current reporting period includes the following amount of short-term and cash equivalent bonds by NAIC designation:

NAIC 1 \$ 844,449,859 ; NAIC 2 \$ 342,727,494 ; NAIC 3 \$; NAIC 4 \$; NAIC 5 \$; NAIC 6 \$

SCHEDULE DA - PART 1

Short-Term Investments

	1	2	3	4	5
	Book/Adjusted Carrying Value	Par Value	Actual Cost	Interest Collected Year-to-Date	Paid for Accrued Interest Year-to-Date
7709999999 Totals	26,152,494	xxx	26,147,653	23,080	

SCHEDULE DA - VERIFICATION

Short-Term Investments

	1	2
	Year To Date	Prior Year Ended December 31
1. Book/adjusted carrying value, December 31 of prior year	9,838,889	19,549,466
2. Cost of short-term investments acquired	25,000,000	24,268,287
3. Accrual of discount	44,605	235,610
4. Unrealized valuation increase/(decrease)		
5. Total gain (loss) on disposals		(15,658)
6. Deduct consideration received on disposals	8,731,000	34,198,816
7. Deduct amortization of premium		
8. Total foreign exchange change in book/adjusted carrying value		
9. Deduct current year's other than temporary impairment recognized		
10. Book/adjusted carrying value at end of current period (Lines 1+2+3+4+5-6-7+8-9)	26,152,494	9,838,889
11. Deduct total nonadmitted amounts		
12. Statement value at end of current period (Line 10 minus Line 11)	26,152,494	9,838,889

Schedule DB - Part A - Verification - Options, Caps, Floors, Collars, Swaps and Forwards

N O N E

Schedule DB - Part B - Verification - Futures Contracts

N O N E

Schedule DB - Part C - Section 1 - Replication (Synthetic Asset) Transactions (RSATs) Open

N O N E

Schedule DB-Part C-Section 2-Reconciliation of Replication (Synthetic Asset) Transactions Open

N O N E

Schedule DB - Verification - Book/Adjusted Carrying Value, Fair Value and Potential Exposure of
Derivatives

N O N E

SCHEDULE E - PART 2 - VERIFICATION

(Cash Equivalents)

	1	2
	Year To Date	Prior Year Ended December 31
1. Book/adjusted carrying value, December 31 of prior year	228,193,808	280,932,344
2. Cost of cash equivalents acquired	62,417,069,143	67,853,274,017
3. Accrual of discount	24,426,872	16,013,607
4. Unrealized valuation increase/(decrease)		
5. Total gain (loss) on disposals	(108)	
6. Deduct consideration received on disposals	61,483,947,808	67,922,026,160
7. Deduct amortization of premium		
8. Total foreign exchange change in book/adjusted carrying value		
9. Deduct current year's other than temporary impairment recognized		
10. Book/adjusted carrying value at end of current period (Lines 1+2+3+4+5-6-7+8-9)	1,185,741,907	228,193,808
11. Deduct total nonadmitted amounts		
12. Statement value at end of current period (Line 10 minus Line 11)	1,185,741,907	228,193,808

STATEMENT AS OF JUNE 30, 2025 OF THE PROGRESSIVE CASUALTY INSURANCE COMPANY

SCHEDULE A - PART 2

Showing All Real Estate ACQUIRED AND ADDITIONS MADE During the Current Quarter

1	Location		4	5		6	7	8	9
	2	3							
Description of Property	City	State	Date Acquired	Name of Vendor		Actual Cost at Time of Acquisition	Amount of Encumbrances	Book/Adjusted Carrying Value Less Encumbrances	Additional Investment Made After Acquisition
Miami Service Center – 14505 SW 27th Way	Miramar	FL.....	03/03/2016	(47,401)
Campus II Home Office Complex – 300 North Commons Boulevard	Mayfield Village	OH.....	11/17/1997	1,739,554
SOM Data Center – 300 North Commons Boulevard	Mayfield Village	OH.....	03/27/1998	1,915,048
Tampa Call Center Bldg D – 3302 South Falkenburg Road	Riverview	FL.....	12/02/1997	98,424
0199999. Acquired by Purchase									3,705,625
.....
.....
.....
.....
.....
0399999 - Totals									3,705,625

SCHEDULE A - PART 3

Showing All Real Estate DISPOSED During the Quarter, Including Payments During the Final Year on “Sales Under Contract”

1	Location		4	5	6	7	8	Change in Book/Adjusted Carrying Value Less Encumbrances					14	15	16	17	18	19	20
	2	3						9	10	11	12	13							
Description of Property	City	State	Disposal Date	Name of Purchaser	Actual Cost	Expended for Additions, Permanent Improvements and Changes in Encumbrances	Book/ Adjusted Carrying Value Less Encumbrances Prior Year	Current Year's Depreciation	Current Year's Other-Than-Temporary Impairment Recognized	Current Year's Change in Encumbrances	Total Change in Book/ Adjusted Carrying Value (11-9-10)	Total Foreign Exchange Change in Book/ Adjusted Carrying Value	Book/ Adjusted Carrying Value Less Encumbrances on Disposal	Amounts Received During Year	Foreign Exchange Gain (Loss) on Disposal	Realized Gain (Loss) on Disposal	Total Gain (Loss) on Disposal	Gross Income Earned Less Interest Incurred on Encumbrances	Taxes, Repairs and Expenses Incurred
Tampa Call Center Buildings A, B, & C – 4090 Crescent Park Drive	Riverview	FL.....	.05/07/2025 ..	East Group Properties L.P.	48,739,102	22,121,571	22,121,571	30,901,511	8,779,940	8,779,940	548,794
Hartford 2 Service Center & Claims Office – 40 Commerce Court	Newington	CT.....	.06/27/2025 ..	ATD Realty, LLC	5,416,757	2,158,163	2,158,163	3,135,975	977,812	977,812	183,927	121,554
0199999. Property Disposed					54,155,859	24,279,734	24,279,734	34,037,486	9,757,752	9,757,752	183,927	670,348
.....
.....
.....
.....
.....
.....
0399999 - Totals					54,155,859	24,279,734	24,279,734	34,037,486	9,757,752	9,757,752	183,927	670,348

STATEMENT AS OF JUNE 30, 2025 OF THE PROGRESSIVE CASUALTY INSURANCE COMPANY

SCHEDULE B - PART 2

Showing All Mortgage Loans ACQUIRED AND ADDITIONS MADE During the Current Quarter

[illegible]

SCHEDULE B - PART 3

Showing All Mortgage Loans DISPOSED, Transferred or Repaid During the Current Quarter

[illegible]

SCHEDULE BA - PART 2

[illegible]

SCHEDULE BA - PART 3

[illegible]

STATEMENT AS OF JUNE 30, 2025 OF THE PROGRESSIVE CASUALTY INSURANCE COMPANY

SCHEDULE D - PART 3

Show All Long-Term Bonds and Stock Acquired During the Current Quarter

1	2		3	4		5	6	7	8	9
CUSIP Identification	Description		Date Acquired	Name of Vendor		Number of Shares of Stock	Actual Cost	Par Value	Paid for Accrued Interest and Dividends	NAIC Designation, NAIC Designation Modifier and SVO Administrative Symbol
91282C-MK-4	US TREASURY NOTES	4.375% 01/31/32	06/26/2025	Various			293,633,706	287,800,000	5,078,239	1.A
91282C-MT-5	US TREASURY NOTES	4.125% 03/31/32	04/08/2025	Wells Fargo Bank			50,294,922	50,000,000	50,717	1.A
91282C-NF-4	US TREASURY NOTES	4.125% 05/31/32	06/25/2025	Various			238,760,488	238,500,000	560,820	1.A
91282C-NJ-6	US TREASURY NOTES	4.000% 06/30/32	06/30/2025	Toronto Dominion			154,386,453	154,600,000	10,870	1.A
0019999999. Subtotal - Issuer Credit Obligations - U.S. Government Obligations (Exempt from RBC)							737,075,569	730,900,000	5,700,646	XXX
03740M-AC-4	AON NORTH AMERICA INC	5.300% 03/01/31	04/07/2025	Goldman Sachs			15,307,200	15,000,000	81,708	2.A FE
052769-AG-1	AUTODESK INC	2.850% 01/15/30	04/07/2025	Goldman Sachs			13,768,050	15,000,000	98,563	2.A FE
06051G-HV-4	BANK OF AMERICA CORP	3.194% 07/23/30	04/04/2025	Barclays Capital			4,721,900	5,000,000	32,827	1.G FE
06406R-BK-2	BANK OF NY MELLON CORP	4.596% 07/26/30	04/07/2025	Goldman Sachs			14,987,550	15,000,000	137,880	1.F FE
06406R-BV-8	BANK OF NY MELLON CORP	4.975% 03/14/30	04/07/2025	Goldman Sachs			10,112,800	10,000,000	33,167	1.D FE
134429-BN-8	THE CAMPBELL'S COMPANY	5.200% 03/21/29	04/07/2025	Goldman Sachs			10,144,400	10,000,000	24,556	2.B FE
14448C-AQ-7	CARRIER GLOBAL CORP	2.722% 02/15/30	04/07/2025	Goldman Sachs			9,123,400	10,000,000	40,074	2.A FE
20030N-DN-8	COMCAST CORP	1.500% 02/15/31	04/07/2025	Goldman Sachs			12,536,850	15,000,000	33,125	1.G FE
29364W-AX-6	ENTERGY LOUISIANA LLC	3.050% 06/01/31	06/25/2025	Bank of America Corp			17,925,784	19,537,000	41,380	1.F FE
30217A-AB-9	EXPERIAN FINANCE PLC	4.250% 02/01/29	05/06/2025	Bank of America Corp			1,280,587	1,295,000	14,677	1.G FE
370334-CL-6	GENERAL MILLS INC	2.875% 04/15/30	04/03/2025	JP Morgan Securities Inc			4,605,050	5,000,000	67,483	2.B FE
372460-AF-2	GENUINE PARTS CO	4.950% 08/15/29	04/07/2025	Goldman Sachs			9,980,000	10,000,000	72,875	2.B FE
37940X-AD-4	GLOBAL PAYMENTS INC	2.900% 05/15/30	04/07/2025	Goldman Sachs			9,047,300	10,000,000	115,194	2.C FE
38141G-WZ-3	GOLDMAN SACHS GROUP INC	4.223% 05/01/29	04/07/2025	Goldman Sachs			9,854,400	10,000,000	184,170	2.A FE
43475R-AC-0	HOLCIM FINANCE US LLC	4.950% 04/07/30	04/02/2025	Citadel Securities Inst LLC			10,040,100	10,000,000		2.A FE
55354G-AH-3	MSCI INC	4.000% 11/15/29	04/07/2025	Goldman Sachs			14,341,800	15,000,000	238,333	2.C FE
571676-AY-1	MARS INC	4.800% 03/01/30	04/07/2025	Goldman Sachs			10,062,400	10,000,000	34,667	1.F FE
67103H-AJ-6	O'REILLY AUTOMOT	4.200% 04/01/30	04/07/2025	Goldman Sachs			9,769,800	10,000,000	8,167	2.A FE
67103H-AL-1	O'REILLY AUTOMOT	4.700% 06/15/32	04/07/2025	Goldman Sachs			9,723,700	10,000,000	147,528	2.B FE
690742-AK-7	OWENS CORNING INC	3.875% 06/01/30	04/07/2025	Goldman Sachs			4,762,500	5,000,000	68,351	2.A FE
690742-AM-3	OWENS CORNING INC	3.500% 02/15/30	04/07/2025	Goldman Sachs			4,708,100	5,000,000	25,764	2.A FE
693475-BX-2	PNC FINANCIAL SERVICES GROUP I	5.492% 05/14/30	04/07/2025	Goldman Sachs			10,236,700	10,000,000	219,680	1.G FE
785592-AX-4	SABINE PASS LIQUEFACTION	4.500% 05/15/30	04/07/2025	Goldman Sachs			9,801,000	10,000,000	178,750	2.A FE
824348-BL-9	SHERWIN-WILLIAMS CO	2.300% 05/15/30	04/07/2025	Goldman Sachs			13,241,400	15,000,000	137,042	2.B FE
842587-DE-4	SOUTHERN CO	3.700% 04/30/30	04/07/2025	Goldman Sachs			9,549,200	10,000,000	162,389	2.A FE
852060-AD-4	SPRINT CAPITAL CORP	6.875% 11/15/28	04/07/2025	Goldman Sachs			15,997,650	15,000,000	409,635	2.B FE
857477-BN-2	STATE STREET CORP	3.152% 03/30/31	04/07/2025	Goldman Sachs			23,271,500	25,000,000	17,511	1.F FE
89788M-AQ-5	TRUIST FINANCIAL CORP	7.161% 10/30/29	04/07/2025	Goldman Sachs			5,377,450	5,000,000	157,144	1.G FE
92345Y-AF-3	VERISK ANALYTICS INC	4.125% 03/15/29	04/07/2025	Goldman Sachs			9,817,100	10,000,000	26,354	2.B FE
969457-CR-9	WILLIAMS COS INC	4.625% 06/30/30	06/26/2025	Barclays Capital			10,991,200	11,000,000		2.B FE
970648-AG-6	WILLIS NORTH AMERICA INC	4.500% 09/15/28	04/07/2025	Goldman Sachs			24,811,000	25,000,000	71,875	2.A FE
98138H-AH-4	WORKDAY INC	3.700% 04/01/29	04/07/2025	Goldman Sachs			14,456,850	15,000,000	10,792	2.A FE
902613-AA-6	UBS GROUP AG	3.126% 08/13/30	04/07/2025	Goldman Sachs			9,262,900	10,000,000	47,758	1.G FE
0089999999. Subtotal - Issuer Credit Obligations - Corporate Bonds (Unaffiliated)							363,617,621	376,832,000	2,939,419	XXX
0489999999. Total - Issuer Credit Obligations (Unaffiliated)							1,100,693,190	1,107,732,000	8,640,065	XXX
0499999999. Total - Issuer Credit Obligations (Affiliated)										XXX
0509999997. Total - Issuer Credit Obligations - Part 3							1,100,693,190	1,107,732,000	8,640,065	XXX
0509999998. Total - Issuer Credit Obligations - Part 5							XXX	XXX	XXX	XXX
0509999999. Total - Issuer Credit Obligations							1,100,693,190	1,107,732,000	8,640,065	XXX
33853G-AE-3	FSMT 2021-12 A5	2.500% 11/25/51	04/24/2025	JP Morgan Securities Inc			21,198,203	24,216,788	47,088	1.A
35564K-RE-1	STACR 2022-DNA2 M1A	5.605% 02/25/42	06/26/2025	BNP Paribas Securities Corp			1,414,331	1,410,365	439	1.A
36264P-AF-6	GSNBS 2021-PJ4 A6	2.500% 09/25/51	06/25/2025	Goldman Sachs			10,327,248	11,104,568	19,279	1.A
89172Y-AE-0	TPMT 2016-3 B1	4.097% 04/25/56	06/26/2025	JP Morgan Securities Inc			19,681,250	20,000,000	59,173	1.A
89190K-AA-6	TPMT 2025-1 A1A	4.753% 06/25/65	06/23/2025	Bank of America Corp			46,790,117	47,000,000	179,938	1.A FE
1059999999. Subtotal - Asset-Backed Securities - Financial Asset-Backed - Self-Liquidating - Non-Agency Residential Mortgage-Backed Securities (Unaffiliated)							99,411,149	103,731,721	305,917	XXX
55293B-AM-7	MHP 2021-STOR F	6.626% 07/15/38	04/14/2025	JP Morgan Securities Inc			7,923,913	8,047,000	18,602	3.C FE
1079999999. Subtotal - Asset-Backed Securities - Financial Asset-Backed - Self-Liquidating - Non-Agency Commercial Mortgage-Backed Securities (Unaffiliated)							7,923,913	8,047,000	18,602	XXX
1889999999. Total - Asset-Backed Securities (Unaffiliated)							107,335,062	111,778,721	324,519	XXX

STATEMENT AS OF JUNE 30, 2025 OF THE PROGRESSIVE CASUALTY INSURANCE COMPANY

SCHEDULE D - PART 3

Show All Long-Term Bonds and Stock Acquired During the Current Quarter

1	2	3	4	5	6	7	8	9
CUSIP Identification	Description	Date Acquired	Name of Vendor	Number of Shares of Stock	Actual Cost	Par Value	Paid for Accrued Interest and Dividends	NAIC Designation, NAIC Designation Modifier and SVO Admini- strative Symbol
1899999999. Total - Asset-Backed Securities (Affiliated)								XXX
1909999997. Total - Asset-Backed Securities - Part 3					107,335,062	111,778,721	324,519	XXX
1909999998. Total - Asset-Backed Securities - Part 5					XXX	XXX	XXX	XXX
1909999999. Total - Asset-Backed Securities					107,335,062	111,778,721	324,519	XXX
2009999999. Total - Issuer Credit Obligations and Asset-Backed Securities					1,208,028,252	1,219,510,721	8,964,584	XXX
4509999997. Total - Preferred Stocks - Part 3						XXX		XXX
4509999998. Total - Preferred Stocks - Part 5					XXX	XXX	XXX	XXX
4509999999. Total - Preferred Stocks						XXX		XXX
023939-10-1	AMENTUM HOLDINGS INC05/16/2025	Spin Off164,250895			
14040H-10-5	CAPITAL ONE FINANCIAL CORP05/19/2025	Tax Free Exchange30,474,080422,556			
750940-10-8	RALLIANT CORP06/30/2025	Spin Off2,018,67010,186			
5019999999. Subtotal - Common Stocks - Industrial and Miscellaneous (Unaffiliated) Publicly Traded					433,637	XXX		XXX
5989999997. Total - Common Stocks - Part 3					433,637	XXX		XXX
5989999998. Total - Common Stocks - Part 5					XXX	XXX	XXX	XXX
5989999999. Total - Common Stocks					433,637	XXX		XXX
5999999999. Total - Preferred and Common Stocks					433,637	XXX		XXX
6009999999 - Totals					1,208,461,889	XXX	8,964,584	XXX

STATEMENT AS OF JUNE 30, 2025 OF THE PROGRESSIVE CASUALTY INSURANCE COMPANY

SCHEDULE D - PART 4

Show All Long-Term Bonds and Stock Sold, Redeemed or Otherwise Disposed of During the Current Quarter

1	2	3	4	5	6	7	8	9	Change In Book/Adjusted Carrying Value					15	16	17	18	19	20	21
									10	11	12	13	14							
CUSIP Identification	Description	Disposal Date	Name of Purchaser	Number of Shares of Stock	Consideration	Par Value	Actual Cost	Prior Year Book/ Adjusted Carrying Value	Unrealized Valuation Increase/ (Decrease)	Current Year's (Amortization)/ Accretion	Current Year's Other Than Temporary Impairment Recognized	Total Change in Book/ Adjusted Carrying Value (10 + 11 - 12)	Total Foreign Exchange Change in Book /Adjusted Carrying Value	Book/ Adjusted Carrying Value at Disposal Date	Foreign Exchange Gain (Loss) on Disposal	Realized Gain (Loss) on Disposal	Total Gain (Loss) on Disposal	Bond Interest/ Stock Dividends Received During Year	Stated Contractual Maturity Date	NAIC Designation, NAIC Designation Modifier and SVO Administrative Symbol
..91282C-EH-0	US TREASURY NOTES 2.625% 04/15/25	04/15/2025	Maturity		1,000,000	1,000,000	998,203	999,778		222		222		1,000,000				13,125	04/15/2025	1.A
..91282C-HH-4	US TREASURY NOTES 4.125% 08/31/30	06/20/2025	Various		264,788,118	263,400,000	258,713,330	259,463,352		285,365		285,365		259,748,717		5,039,401	5,039,401	8,739,440	08/31/2030	1.A
..91282C-JG-7	US TREASURY NOTES 4.875% 10/31/30	06/20/2025	Various		364,094,500	350,000,000	360,377,500	359,635,775		(686,065)		(686,065)		358,949,710		5,144,790	5,144,790	10,895,890	10/31/2030	1.A
..91282C-LR-0	US TREASURY NOTES 4.125% 10/31/29	04/07/2025	Toronto Dominion Progressive Investment Co. Inc		313,947,656	310,000,000	308,762,305	308,778,621		68,618		68,618		308,847,239		5,100,417	5,100,417	5,616,609	10/31/2029	1.A
..91282C-MD-0	US TREASURY NOTES 4.375% 12/31/29	06/20/2025			334,461,400	329,000,000	328,580,621	328,580,432		31,948		31,948		328,612,380		5,849,020	5,849,020	6,799,258	12/31/2029	1.A
0019999999. Subtotal - Issuer Credit Obligations - U.S. Government Obligations (Exempt from RBC)					1,278,291,674	1,253,400,000	1,257,431,959	1,257,457,958		(299,912)		(299,912)		1,257,158,046		21,133,628	21,133,628	32,064,322	XXX	XXX
..15189Y-AG-1	CENTERPOINT ENERGY RES 5.250% 03/01/28	06/20/2025	Progressive Investment Co. Inc		25,481,000	25,000,000	24,920,000	24,945,471		7,115		7,115		24,952,586		528,414	528,414	1,053,646	03/01/2028	1.G FE
..22822V-BD-2	CROWN CASTLE INC 5.600% 06/01/29	06/20/2025	Progressive Investment Co. Inc		20,517,600	20,000,000	19,932,200	19,942,581		5,696		5,696		19,948,277		569,323	569,323	619,111	06/01/2029	2.B FE
..30040W-AT-5	EVERSOURCE ENERGY 5.450% 03/01/28	06/20/2025	Progressive Investment Co. Inc		25,542,750	25,000,000	24,950,750	24,964,982		4,384		4,384		24,969,366		573,384	573,384	1,093,785	03/01/2028	2.B FE
..337738-BD-9	FISERV INC 5.450% 03/02/28	06/20/2025	Progressive Investment Co. Inc		30,663,900	30,000,000	29,977,900	29,982,833		1,846		1,846		29,984,679		679,221	679,221	1,308,000	03/02/2028	2.B FE
..341081-GK-7	FLORIDA POWER & LIGHT CO 5.050% 04/01/28	06/20/2025	Progressive Investment Co. Inc		23,459,080	23,000,000	22,970,100	22,979,032		2,605		2,605		22,981,637		477,443	477,443	835,635	04/01/2028	1.D FE
..548661-EP-8	LOW 4.800% 04/01/26	06/20/2025	Progressive Investment Co. Inc		25,033,000	25,000,000	24,995,350	24,996,219		765		765		24,996,984		36,016	36,016	863,333	04/01/2026	2.A FE
..852060-AD-4	SPRINT CAPITAL CORP 6.875% 11/15/28	06/20/2025			50,145,240	47,000,000	49,701,400	33,208,380		(183,522)		(183,522)		49,022,509		1,122,731	1,122,731	1,929,774	11/15/2028	2.B FE
..89236T-GX-7	TOYOTA MOTOR CREDIT CORP 3.000% 04/01/25	04/01/2025	Maturity		7,300,000	7,300,000	7,286,568	7,298,864		1,136		1,136		7,300,000				109,500	04/01/2025	1.E FE
..91324P-EQ-1	UNITEDHEALTH GRP INC 5.300% 02/15/30	06/11/2025	Susquehanna Financial Group Progressive Investment Co. Inc		5,116,650	5,000,000	4,993,925	4,993,925		369		369		4,994,294		122,356	122,356	218,625	02/15/2030	1.F FE
..89115A-2M-3	TORONTO-DOMINION BANK 5.156% 01/10/28	06/20/2025			20,313,000	20,000,000	19,978,400	19,986,467		1,541		1,541		19,988,008		324,992	324,992	973,911	01/10/2028	1.F FE
0089999999. Subtotal - Issuer Credit Obligations - Corporate Bonds (Unaffiliated)					233,572,220	227,300,000	229,705,318	213,298,754		(158,065)		(158,065)		229,138,340		4,433,880	4,433,880	9,005,320	XXX	XXX
..02474R-AJ-2	ABC SUPPLY CO B TERM LOAN 6.077% 01/29/31	06/30/2025	Redemption 100.0000		51,477	51,477	51,413	51,061		416		416		51,477				1,573	01/29/2031	3.B FE
..41151P-AR-6	HARBOR FREIGHT TOOLS B TERM LOAN 6.577% 06/05/31	04/30/2025	Redemption 100.0000		75,000	75,000	74,813	73,813	1,011	176		1,187		75,000				1,715	06/05/2031	4.B FE
..85350E-AB-2	STANDARD INDUSTRIES INC B TERM LOAN 6.071% 09/22	06/23/2025	Redemption 100.0000		55,000	55,000	54,680	54,482		518		518		55,000				1,689	09/22/2028	2.C FE
0209999999. Subtotal - Issuer Credit Obligations - Bank Loans - Acquired (Unaffiliated)					181,477	181,477	180,906	179,356	1,011	1,110		2,121		181,477				4,977	XXX	XXX
0489999999. Total - Issuer Credit Obligations (Unaffiliated)					1,512,045,371	1,480,881,477	1,487,318,183	1,470,936,068	1,011	(456,867)		(455,856)		1,486,477,863		25,567,508	25,567,508	41,074,619	XXX	XXX
0499999999. Total - Issuer Credit Obligations (Affiliated)																			XXX	XXX
0509999997. Total - Issuer Credit Obligations - Part 4					1,512,045,371	1,480,881,477	1,487,318,183	1,470,936,068	1,011	(456,867)		(455,856)		1,486,477,863		25,567,508	25,567,508	41,074,619	XXX	XXX
0509999998. Total - Issuer Credit Obligations - Part 5					XXX	XXX	XXX	XXX	XXX	XXX	XXX	XXX	XXX	XXX	XXX	XXX	XXX	XXX	XXX	XXX
0509999999. Total - Issuer Credit Obligations					1,512,045,371	1,480,881,477	1,487,318,183	1,470,936,068	1,011	(456,867)		(455,856)		1,486,477,863		25,567,508	25,567,508	41,074,619	XXX	XXX
..313921-6B-9	FNW GT 2001-T10 A2 PT 7.500% 12/25/41	06/01/2025	Paydown		15,584	15,584	17,011	16,858		(1,274)		(1,274)		15,584				480	12/25/2041	1.A FE
..313921-6F-0	FNW 2001-HI3 A 7.000% 09/01/41	05/01/2025	Paydown		350	350	360	333		17		17		350				6	09/01/2041	1.A FE
..313921-6F-0	FNW 2001-HI3 A 7.000% 09/01/41	06/01/2025	Paydown		167	167	172	159		8		8		167				4	09/01/2041	1.B FE
..31392C-MS-0	FNW 2002-W1 2A 4.453% 02/25/42	06/01/2025	Paydown		3,767	3,767	4,060	3,725		42		42		3,767				68	02/25/2042	1.B FE
1039999999. Subtotal - Asset-Backed Securities - Financial Asset-Backed - Self-Liquidating - Agency Residential Mortgage-Backed Securities - Not/Partially Guaranteed (Not Exempt from RBC)					19,868	19,868	21,603	21,075		(1,207)		(1,207)		19,868				558	XXX	XXX
..3137F4-D6-6	FHMS 2018-K074 X1 I0 0.293% 01/25/28	06/01/2025	Paydown				25,885	8,709		(8,709)		(8,709)						1,325	01/25/2028	1.A FE
..3137F4-X9-8	FHMS 2018-K075 X1 I0 0.129% 02/25/28	06/01/2025	Paydown				31,250	9,888		(9,888)		(9,888)						1,495	02/25/2028	1.A FE
..3137F6-2P-1	FHMS 2020-K118 X1 I0 0.951% 09/25/30	06/01/2025	Paydown				21,814	12,724		(12,724)		(12,724)						1,112	09/25/2030	1.A FE
..3137F6-GV-3	FHMS 2020-K119 X1 I0 0.923% 09/25/30	06/01/2025	Paydown				22,993	13,451		(13,451)		(13,451)						1,182	09/25/2030	1.A FE
..3137FA-WU-8	FHLMC 2017-K067 X1 I0 0.562% 07/25/27	06/01/2025	Paydown				21,249	5,539		(5,539)		(5,539)						1,087	07/25/2027	1.A FE

STATEMENT AS OF JUNE 30, 2025 OF THE PROGRESSIVE CASUALTY INSURANCE COMPANY

SCHEDULE D - PART 4

Show All Long-Term Bonds and Stock Sold, Redeemed or Otherwise Disposed of During the Current Quarter

1	2	3	4	5	6	7	8	9	Change In Book/Adjusted Carrying Value					15	16	17	18	19	20	21
									10	11	12	13	14							
CUSIP Identification	Description	Disposal Date	Name of Purchaser	Number of Shares of Stock	Consid- eration	Par Value	Actual Cost	Prior Year Book/ Adjusted Carrying Value	Unrealized Valuation Increase/ (Decrease)	Current Year's (Amor- tization)/ Accretion	Current Year's Other Than Temporary Impairment Recogn- ized	Total Change in Book/ Adjusted Carrying Value (10 + 11 - 12)	Total Foreign Exchange Change in Book /Adjusted Carrying Value	Book/ Adjusted Carrying Value at Disposal Date	Foreign Exchange Gain (Loss) on Disposal	Realized Gain (Loss) on Disposal	Total Gain (Loss) on Disposal	Bond Interest/ Stock Dividends Received During Year	Stated Con- tractual Maturity Date	NAIC Desig- nation, NAIC Desig- nation Modifier and SVO Admini- strative Symbol
..3137FG-6Z-3	FHMS 2018-K077 X1 10 0.117% 05/25/28	06/01/2025	Paydown	52,726	17,967	(17,967)	(17,967)	2,487	05/25/2028	1.A FE
..3137FP-JJ-5	FHMS 2019-K099 X1 10 0.878% 09/25/29	06/01/2025	Paydown	66,007	31,944	(31,944)	(31,944)	3,383	09/25/2029	1.A FE
..3137FQ-4B-6	FHMS 2019-K101 X1 10 0.829% 10/25/29	06/01/2025	Paydown	38,336	18,996	(18,996)	(18,996)	1,954	10/25/2029	1.A FE
1049999999. Subtotal - Asset-Backed Securities - Financial Asset-Backed - Self-Liquidating - Agency Commercial Mortgage-Backed Securities - Not/Partially Guaranteed (Not Exempt from RBC)				280,260	119,218	(119,218)	(119,218)	14,025	XXX	XXX
..05949C-FY-7	BOAMS 2005-H 2A3 5.625% 09/25/35	06/01/2025	Paydown	562	562	557	566	(4)	(4)	562	15	09/25/2035	1.B FM
..05949C-FY-7	BOAMS 2005-H 2A3 5.625% 09/25/35	04/01/2025	Paydown	887	887	879	893	(6)	(6)	887	11/25/2035	1.C FM
..05949C-HS-8	BOAMS 2005-I 2A3 4.858% 03/25/54	06/01/2025	Paydown	277	277	277	258	19	19	277	6	03/25/2054	1.F FM
..12674L-AA-1	COLT 2025-3 A1 5.352% 03/25/70	06/01/2025	Paydown	784,122	784,122	784,121	1	1	784,122	10,432	03/25/2070	1.A FE
..16159X-AL-6	CHASE 2024-8 A6A 5.500% 08/25/55	06/01/2025	Paydown	12,194,981	12,194,981	12,194,307	12,194,359	622	622	12,194,981	272,659	08/25/2055	1.A
.....	COLORADO ST HSG & FIN AUTH 4.000% 05/01/50	06/01/2025
..196480-EW-3	05/01/2025	Redemption 100.0000	210,000	210,000	221,796	215,151	(5,151)	(5,151)	210,000	4,200	05/01/2050	1.A FE
..20753X-AA-2	CAS 2022-R03 1M1 6.405% 03/25/42	05/27/2025	Bank of America Corp	17,666,851	17,383,500	17,395,442	17,219,532	(270)	(270)	17,219,262	447,589	447,589	479,836	03/25/2042	1.A
..20753X-AA-2	CAS 2022-R03 1M1 6.405% 03/25/42	05/27/2025	Paydown	959,882	959,882	960,542	950,828	9,054	9,054	959,882	23,755	03/25/2042	1.A
..20754A-AA-1	CAS 2021-R03 1M1 5.155% 12/25/41	06/25/2025	Paydown	3,424,976	3,424,976	3,424,976	3,414,934	10,042	10,042	3,424,976	76,248	12/25/2041	1.A
..20754L-AA-7	CAS 2022-R01 1M1 5.305% 12/25/41	06/25/2025	Paydown	3,093,307	3,093,307	3,093,307	3,082,719	10,588	10,588	3,093,307	70,590	12/25/2041	1.A
..20754T-AC-6	CAS 2025-R02 1M1 5.455% 02/25/45	06/25/2025	Paydown	3,314,010	3,314,010	3,314,010	3,314,010	41,492	02/25/2045	1.G FE
..22540V-G6-3	CSFB 2002-9 1A1 7.000% 03/25/40	04/01/2025	Paydown	13	13	12	11	1	1	13	03/25/2040	4.A FM
..22540V-G6-3	CSFB 2002-9 1A1 7.000% 03/25/40	06/01/2025	Paydown	26	26	23	22	1	1	26	1	03/25/2040	4.B FM
..30711X-KZ-6	CAS 2017-C03 1ED2 5.620% 10/25/29	05/27/2025	Paydown	505,894	505,894	506,526	505,564	330	330	505,894	10,543	10/25/2029	1.A FE
..33852J-AE-8	FSMT 2021-7 A5 2.500% 08/25/51	06/01/2025	Paydown	610,758	610,758	536,394	74,365	74,365	610,758	2,249	08/25/2051	1.A
..33853G-AE-3	FSMT 2021-12 A5 2.500% 11/25/51	06/01/2025	Paydown	2,081,019	2,081,019	1,782,564	1,433,664	291,837	291,837	2,081,019	18,946	11/25/2051	1.A
..35564K-RE-1	STACR 2022-DNA2 M1A 5.605% 02/25/42	06/25/2025	Paydown	3,059,511	3,059,511	3,059,586	3,045,128	14,383	14,383	3,059,511	73,761	02/25/2042	1.A
..35564K-UW-7	STACR 2022-DNA3 M1A 6.305% 04/25/42	06/25/2025	Paydown	2,641,547	2,641,547	2,642,319	2,613,318	28,229	28,229	2,641,547	71,134	04/25/2042	1.A
..36262W-AF-3	GSMS 2021-PJ8 A6 2.500% 01/25/52	06/01/2025	Paydown	1,233,394	1,233,394	1,110,440	1,115,391	118,003	118,003	1,233,394	13,644	01/25/2052	1.A
..36263C-AG-4	GSMS 2021-PJ9 A7 2.000% 02/26/52	06/01/2025	Paydown	939,831	939,831	792,983	143,933	143,933	939,831	8,014	02/26/2052	1.A
..46590Y-AA-2	JPMIT 2017-5 A1 4.921% 10/26/48	06/01/2025	Paydown	506,082	506,082	510,995	541,673	(35,592)	(35,592)	506,082	10,930	10/26/2048	1.A
..46592T-AF-0	JPMIT 2021-9 A4 2.500% 12/25/51	06/01/2025	Paydown	1,226,510	1,226,510	1,054,799	1,059,077	167,433	167,433	1,226,510	13,054	12/25/2051	1.A
..46593D-AL-1	JPMIT 2024-9 A6A 5.000% 02/25/55	06/01/2025	Paydown	10,573,670	10,573,670	10,533,011	10,532,999	40,671	40,671	10,573,670	212,283	02/25/2055	1.A
..465971-AH-2	JPMIT 2024-7 A4 3.000% 04/25/53	06/01/2025	Paydown	2,824,686	2,824,686	2,525,776	2,501,607	293,226	293,226	2,824,686	36,654	04/25/2053	1.A
..46643U-DJ-5	JPMIT 2015-1 AM1 5.665% 12/25/44	06/01/2025	Paydown	9,128	9,128	9,086	10,183	(1,055)	(1,055)	9,128	399	12/25/2044	1.A
..46650A-AD-5	JPMIT 2018-7FRB A2 5.184% 04/25/46	06/25/2025	Paydown	1,210,245	1,210,245	1,207,074	1,272,091	(61,846)	(61,846)	1,210,245	21,580	04/25/2046	1.A
..46651F-AD-3	JPMIT 2019-HYB1 A2 4.970% 10/25/49	06/01/2025	Paydown	342,592	342,592	351,696	360,497	(17,905)	(17,905)	342,592	6,927	10/25/2049	1.A
..46654K-AF-4	JPMIT 2021-11 A4 2.500% 01/25/52	06/01/2025	Paydown	1,483,623	1,483,623	1,270,121	1,277,496	206,127	206,127	1,483,623	16,063	01/25/2052	1.A
..46659A-AK-0	JPMIT 2024-11 A6A 5.500% 04/25/55	06/01/2025	Paydown	3,424,565	3,424,565	3,402,130	3,402,289	22,276	22,276	3,424,565	79,989	04/25/2055	1.A
..576433-UF-1	MARM 2004-13 3A1 6.043% 02/21/54	06/01/2025	Paydown	1,692	1,692	1,639	1,708	(16)	(16)	1,692	52	02/21/2054	1.C FM
..576433-UF-1	MARM 2004-13 3A1 6.043% 02/21/54	04/01/2025	Paydown	361	361	350	365	(3)	(3)	361	8	02/21/2054	1.D FM
..60637B-KZ-2	MISSOURI ST HSG DEV COMMN 4.000% 05/01/40	05/01/2025	Redemption 100.0000	135,000	135,000	147,637	136,218	(1,218)	(1,218)	135,000	2,700	05/01/2040	1.B FE
.....	MONTANA ST BRD OF HSG SF MTGE 3.500%
..61212W-BB-0	12/01/42	Redemption 100.0000	105,000	105,000	110,181	105,695	(695)	(695)	105,000	1,838	12/01/2042	1.B FE
..61763Y-AJ-3	MSRM 2014-1A B2 5.962% 06/25/44	06/01/2025	Paydown	68,352	68,352	67,199	68,062	290	290	68,352	1,947	06/25/2044	1.A
..647200-4R-2	NEW MEX100 MTG FIN AGY 3.500% 03/01/46	06/01/2025	Redemption 100.0000	40,000	40,000	42,447	40,739	(739)	(739)	40,000	1,050	03/01/2046	1.B FE
..65535Y-BZ-0	NAA 2003-A3 A1 5.500% 08/25/33	06/01/2025	Paydown	3,967	3,967	3,973	3,986	(19)	(19)	3,967	91	08/25/2033	1.A FM
..67120Q-AA-4	OBX 2025-NM4 A1 5.400% 02/25/55	06/01/2025	Paydown	904,401	904,401	904,388	13	13	904,401	11,706	02/25/2055	1.A FE
..67756Q-UY-1	OHIO ST HSG FIN MTG REV 4.500% 03/01/47	06/01/2025	Redemption 100.0000	80,000	80,000	87,710	81,357	(1,357)	(1,357)	80,000	2,700	03/01/2047	1.B FE
..67756Q-UZ-8	OHIO ST HSG FIN MTG REV 4.500% 03/01/47	06/01/2025	Redemption 100.0000	30,000	30,000	32,602	30,477	(477)	(477)	30,000	1,013	03/01/2047	1.B FE
..708796-2J-5	PENNSYLVANIA HSG FIN 3.500% 10/01/41	04/01/2025	Redemption 100.0000	100,000	100,000	105,789	100,000	100,000	1,750	10/01/2041	1.B FE
..92540G-AA-6	VERUS 2024-4 A1 6.218% 06/25/69	06/01/2025	Paydown	2,235,412	2,235,412	2,257,521	(22,109)	(22,109)	2,235,412	20,774	06/25/2069	1.A
..92540H-AA-6	VERUS 2024-5 A1 6.192% 06/25/69	06/01/2025	Paydown	2,094,135	2,094,135	2,114,272	(20,137)	(20,137)	2,094,135	21,696	06/25/2069	1.A
..92540V-AA-3	VERUS 2025-2 A1 5.307% 03/25/70	06/01/2025	Paydown	844,848	844,848	844,845	3	3	844,848	8,218	03/25/2070	1.A FE
..929227-4D-5	WAMU 2003-AR6 A1 6.385% 06/25/33	06/01/2025	Paydown	9,567	9,567	9,400	9,310	(1,074)	(1,074)	9,567	333	06/25/2033	1.A FM

STATEMENT AS OF JUNE 30, 2025 OF THE PROGRESSIVE CASUALTY INSURANCE COMPANY

SCHEDULE D - PART 4

Show All Long-Term Bonds and Stock Sold, Redeemed or Otherwise Disposed of During the Current Quarter

1	2	3	4	5	6	7	8	9	Change In Book/Adjusted Carrying Value					15	16	17	18	19	20	21
									10	11	12	13	14							
CUSIP Ident-ification	Description	Disposal Date	Name of Purchaser	Number of Shares of Stock	Consid-eration	Par Value	Actual Cost	Prior Year Book/ Adjusted Carrying Value	Unrealized Valuation Increase/ (Decrease)	Current Year's (Amor-tization)/ Accretion	Current Year's Other Than Temporary Impairment Recogn-ized	Total Change in Book/ Adjusted Carrying Value (10 + 11 - 12)	Total Foreign Exchange Change in Book /Adjusted Carrying Value	Book/ Adjusted Carrying Value at Disposal Date	Foreign Exchange Gain (Loss) on Disposal	Realized Gain (Loss) on Disposal	Total Gain (Loss) on Disposal	Bond Interest/ Stock Dividends Received During Year	Stated Con-tractual Maturity Date	NAIC Desig-nation, NAIC Desig-nation Modifier and SVO Admini-strative Symbol
..95662M-2Y-5	WEST VIRGINIA ST HSG 3.300% 05/01/25	05/01/2025	Maturity	500,000	500,000	500,000	500,000	500,000	8,250	05/01/2025	1.A FE
..98322Q-LL-9	WYOMING ST CMNTY DEV AUTH HSGR 3.500% 12/01/38	06/01/2025	Redemption 100,0000	205,000	205,000	219,393	206,458	(1,458)	(1,458)	205,000	3,588	12/01/2038	1.B FE
1059999999. Subtotal - Asset-Backed Securities - Financial Asset-Backed - Self-Liquidating - Non-Agency Residential Mortgage-Backed Securities (Unaffiliated)					81,680,684	81,397,333	80,135,095	68,830,523	1,078	1,260,571	1,261,649	81,233,095	447,589	447,589	1,663,135	XXX	XXX
..201736-AE-5	CMCBC 2001-CMLB X 10 1.545% 06/01/31	06/01/2025	Paydown	573	100	06/01/2031	6. FE
..85237A-AA-1	SREIT 2021-PALM A 5.016% 10/15/34	04/24/2025	JP Morgan Securities Inc	14,905,078	15,000,000	14,933,100	15,062,488	(28,038)	(28,038)	15,034,450	(129,371)	(129,371)	263,813	10/15/2034	1.A
1079999999. Subtotal - Asset-Backed Securities - Financial Asset-Backed - Self-Liquidating - Non-Agency Commercial Mortgage-Backed Securities (Unaffiliated)					14,905,078	15,000,000	14,933,673	15,062,488	(28,038)	(28,038)	15,034,450	(129,371)	(129,371)	263,913	XXX	XXX
..09629E-AL-5	BLUEM 2017-2A A1AR 5.534% 10/20/30	04/21/2025	Paydown	3,504,474	3,504,474	3,504,474	3,504,474	3,504,474	101,318	10/20/2030	1.A FE
..262431-AH-2	DRSLF 2017-50A A1R 5.518% 07/15/30	04/15/2025	Paydown	2,135,969	2,135,969	2,135,969	2,135,969	2,135,969	62,010	07/15/2030	1.A FE
..26244Q-AN-3	DRSLF 2017-49A AR 5.481% 07/18/30	04/18/2025	Paydown	3,974,027	3,974,027	3,974,027	3,974,027	3,974,027	114,153	07/18/2030	1.A FE
..33835N-AA-9	MORGN 2018-3A AR 5.574% 10/20/31	04/21/2025	Paydown	1,958,445	1,958,445	1,958,445	1,958,445	1,958,445	57,017	10/20/2031	1.A FE
..55819B-AW-0	MDPK 2015-18A APR 5.474% 10/21/30	04/21/2025	Paydown	1,488,055	1,488,055	1,488,055	1,488,055	1,488,055	42,570	10/21/2030	1.A FE
..55820T-AJ-7	MDPK 2017-23A AR 5.514% 07/27/30	04/28/2025	Paydown	1,866,779	1,866,779	1,866,779	1,866,779	1,866,779	53,702	07/27/2030	1.A FE
..69702B-AA-9	PSTAT 2021-3A A1 5.334% 07/20/29	04/21/2025	Paydown	1,137,454	1,137,454	1,137,454	1,137,454	1,137,454	31,735	07/20/2029	1.A FE
..69702B-AC-5	PSTAT 2021-3A A2 5.934% 07/20/29	04/21/2025	Paydown	25,000,000	25,000,000	25,000,000	25,000,000	25,000,000	773,333	07/20/2029	1.A FE
..69702H-AA-6	PSTAT 2021-4A A1 5.318% 10/15/29	04/15/2025	Paydown	3,085,197	3,085,197	3,085,197	3,085,197	3,085,197	86,448	10/15/2029	1.A FE
..92916M-AF-8	VOYA 2017-1A A1R 5.491% 04/17/30	04/17/2025	Paydown	691,108	691,108	691,108	691,108	691,108	19,876	04/17/2030	1.A FE
1099999999. Subtotal - Asset-Backed Securities - Financial Asset-Backed - Self-Liquidating - Non-Agency - CLOs/CBOs/CDOs (Unaffiliated)					44,841,508	44,841,508	44,841,508	44,841,508	44,841,508	1,342,162	XXX	XXX
..03065U-AB-5	AMCAR 2023-2 A2A 6.190% 04/19/27	06/18/2025	Paydown	2,893,754	2,893,754	2,893,713	2,893,543	211	211	2,893,754	74,428	04/19/2027	1.A FE
..17295F-AB-0	CITZN 2023-2 A2A 6.090% 10/15/26	06/15/2025	Paydown	5,245,785	5,245,785	5,245,493	5,244,915	870	870	5,245,785	125,039	10/15/2026	1.A FE
..18978G-AB-0	QNH 2024-C A2A 4.300% 02/18/28	06/15/2025	Paydown	7,042,471	7,042,471	7,042,069	7,042,076	395	395	7,042,471	141,949	02/18/2028	1.A FE
..26207A-AC-7	DRIVE 2024-2 A2 4.940% 12/15/27	06/15/2025	Paydown	8,792,548	8,792,548	8,792,357	8,792,050	498	498	8,792,548	177,560	12/15/2027	1.A FE
..26208W-AB-0	DRIVE 2024-1 A2 5.830% 12/15/26	04/15/2025	Paydown	945,662	945,662	945,643	945,655	8	8	945,662	18,377	12/15/2026	1.A FE
..34493Q-AB-8	FORDO 2023-B A2A 5.570% 06/15/26	05/15/2025	Paydown	3,095,514	3,095,514	3,095,189	3,095,451	63	63	3,095,514	63,904	06/15/2026	1.A FE
..46591H-CD-0	CACLN 2021-3 B 0.760% 02/26/29	05/25/2025	Paydown	315,707	315,707	315,707	315,707	315,707	843	02/26/2029	1.C FE
..78398A-AB-9	SFAST 2023-1A A2A 5.890% 03/22/27	05/20/2025	Paydown	506,330	506,330	505,622	506,172	158	158	506,330	10,674	03/22/2027	1.A FE
..80287D-AB-3	SDART 2023-6 A2 6.080% 05/17/27	06/15/2025	Paydown	2,835,244	2,835,244	2,835,219	2,834,772	472	472	2,835,244	65,431	05/17/2027	1.A FE
..89239F-AB-8	TAOT 2023-D A2A 5.800% 11/16/26	06/15/2025	Paydown	1,035,406	1,035,406	1,038,561	1,038,618	(1,212)	(1,212)	1,035,406	24,911	11/16/2026	1.A FE
..92887Q-AB-3	VFET 2024-1A A2 4.560% 05/17/27	06/15/2025	Paydown	2,532,676	2,532,676	2,532,453	2,532,470	206	206	2,532,676	57,745	05/17/2027	1.A FE
1119999999. Subtotal - Asset-Backed Securities - Financial Asset-Backed - Self-Liquidating - Other Financial Asset-Backed Securities - Self-Liquidating (Unaffiliated)					35,241,097	35,241,097	35,242,026	35,239,429	1,669	1,669	35,241,097	760,861	XXX	XXX
..96328G-AS-6	WFLF 2023-1A A 5.800% 04/18/38	06/18/2025	Paydown	456,283	456,283	453,139	454,704	1,579	1,579	456,283	10,919	04/18/2038	1.A FE
..96328G-BT-3	WFLF 2024-2A A1 4.870% 06/21/39	06/18/2025	Paydown	434,685	434,685	436,672	(1,987)	(1,987)	434,685	7,056	06/21/2039	1.A FE
1519999999. Subtotal - Asset-Backed Securities - Non-Financial Asset-Backed Securities - Practical Expedient - Lease-Backed Securities - Practical Expedient (Unaffiliated)					890,968	890,968	889,811	454,704	(408)	(408)	890,968	17,975	XXX	XXX
..12803V-AA-3	CAJUN 2021-1 A2 3.931% 11/20/51	05/20/2025	Paydown	3,346	3,346	2,920	3,074	271	271	3,346	66	11/20/2051	2.B FE
..86430Q-AC-2	SUBWAY 2024-1A A21I 6.268% 07/30/54	04/30/2025	Paydown	75,000	75,000	75,000	75,000	75,000	2,351	07/30/2054	2.B FE
..86430Q-AG-3	SUBWAY 2024-3A A21 5.246% 07/30/54	04/30/2025	Paydown	150,000	150,000	150,000	150,000	150,000	3,934	07/30/2054	2.B FE
..95058X-AG-3	WEN 2019-1A A21 3.783% 06/15/49	06/15/2025	Paydown	77,122	77,122	76,960	68,567	162	162	77,122	1,459	06/15/2049	2.B FE
1739999999. Subtotal - Asset-Backed Securities - Non-Financial Asset-Backed Securities - Full Analysis - Other Non-Financial Asset-Backed Securities - Full Analysis (Unaffiliated)					305,468	305,468	304,880	296,641	433	433	305,468	7,810	XXX	XXX
1889999999. Total - Asset-Backed Securities (Unaffiliated)					177,884,671	177,696,242	176,648,856	164,865,586	1,078	1,113,802	1,114,880	177,566,454	318,218	318,218	4,070,439	XXX	XXX
1899999999. Total - Asset-Backed Securities (Affiliated)					XXX	XXX
1909999997. Total - Asset-Backed Securities - Part 4					177,884,671	177,696,242	176,648,856	164,865,586	1,078	1,113,802	1,114,880	177,566,454	318,218	318,218	4,070,439	XXX	XXX
1909999998. Total - Asset-Backed Securities - Part 5					XXX	XXX	XXX	XXX	XXX	XXX	XXX	XXX	XXX	XXX	XXX	XXX	XXX	XXX	XXX	XXX
1909999999. Total - Asset-Backed Securities					177,884,671	177,696,242	176,648,856	164,865,586	1,078	1,113,802	1,114,880	177,566,454	318,218	318,218	4,070,439	XXX	XXX
2009999999. Total - Issuer Credit Obligations and Asset-Backed Securities					1,689,930,042	1,658,577,719	1,663,967,039	1,635,801,654	2,089	656,935	659,024	1,664,044,317	25,885,726	25,885,726	45,145,058	XXX	XXX

STATEMENT AS OF JUNE 30, 2025 OF THE PROGRESSIVE CASUALTY INSURANCE COMPANY

SCHEDULE D - PART 4

Show All Long-Term Bonds and Stock Sold, Redeemed or Otherwise Disposed of During the Current Quarter

1	2	3	4	5	6	7	8	9	Change In Book/Adjusted Carrying Value					15	16	17	18	19	20	21
									10	11	12	13	14							
CUSIP Identification	Description	Disposal Date	Name of Purchaser	Number of Shares of Stock	Consideration	Par Value	Actual Cost	Prior Year Book/ Adjusted Carrying Value	Unrealized Valuation Increase/ (Decrease)	Current Year's (Amortization)/ Accretion	Current Year's Other Than Temporary Impairment Recognized	Total Change in Book/ Adjusted Carrying Value (10 + 11 - 12)	Total Foreign Exchange Change in Book /Adjusted Carrying Value	Book/ Adjusted Carrying Value at Disposal Date	Foreign Exchange Gain (Loss) on Disposal	Realized Gain (Loss) on Disposal	Total Gain (Loss) on Disposal	Bond Interest/ Stock Dividends Received During Year	Stated Contractual Maturity Date	NAIC Designation, NAIC Designation Modifier and SVO Administrative Symbol
4509999997. Total - Preferred Stocks - Part 4						XXX													XXX	XXX
4509999998. Total - Preferred Stocks - Part 5					XXX	XXX	XXX	XXX	XXX	XXX	XXX	XXX	XXX	XXX	XXX	XXX	XXX	XXX	XXX	XXX
4509999999. Total - Preferred Stocks						XXX													XXX	XXX
..023939-10-1	AMENTUM HOLDINGS INC	06/09/2025	State Street Bank	0.0005	1						1	44			
..14040H-10-5	CAPITAL ONE FINANCIAL CORP	05/19/2025	Cash Adjustment	0.00016	1						1	1515			
..254709-10-8	DISCOVER FINANCIAL	05/19/2025	Tax Free Exchange	29,900.000422,556	422,5565,179,577	... (4,757,021)			... (4,757,021)	422,556			20,930		
..34959J-10-8	FORTIVE CORPORATION	06/30/2025	Spin Off	0.00010,186	10,186112,028 (101,841)		 (101,841)	10,186						
..46982L-10-8	JACOBS SOLUTIONS INC	05/16/2025	Spin Off	0.000895	8953,681 (2,785)		 (2,785)	895						
..84265V-10-5	SOUTHERN COPPER CORP	05/02/2025	Cash Adjustment	1.00057	855 (47)		 (47)	8	4949	1	
..912909-10-8	UNITED STATES STEEL CORP	06/18/2025	State Street Bank	81,400.0004,477,000	493,7402,766,786	... (2,273,046)			... (2,273,046)	493,740		...3,983,260	...3,983,2608,140		
5019999999. Subtotal - Common Stocks - Industrial and Miscellaneous (Unaffiliated) Publicly Traded					4,910,715	XXX	927,387	8,062,127	(7,134,740)			(7,134,740)		927,387		3,983,328	3,983,328	29,071	XXX	XXX
5989999997. Total - Common Stocks - Part 4					4,910,715	XXX	927,387	8,062,127	(7,134,740)			(7,134,740)		927,387		3,983,328	3,983,328	29,071	XXX	XXX
5989999998. Total - Common Stocks - Part 5					XXX	XXX	XXX	XXX	XXX	XXX	XXX	XXX	XXX	XXX	XXX	XXX	XXX	XXX	XXX	XXX
5989999999. Total - Common Stocks					4,910,715	XXX	927,387	8,062,127	(7,134,740)			(7,134,740)		927,387		3,983,328	3,983,328	29,071	XXX	XXX
5999999999. Total - Preferred and Common Stocks					4,910,715	XXX	927,387	8,062,127	(7,134,740)			(7,134,740)		927,387		3,983,328	3,983,328	29,071	XXX	XXX
6009999999 - Totals					1,694,840,757	XXX	1,664,894,426	1,643,863,781	(7,132,651)	656,935		(6,475,716)		1,664,971,704		29,869,054	29,869,054	45,174,129	XXX	XXX

Schedule DB - Part A - Section 1 - Options, Caps, Floors, Collars, Swaps and Forwards Open
N O N E

Schedule DB - Part B - Section 1 - Futures Contracts Open
N O N E

Schedule DB - Part B - Section 1B - Brokers with whom cash deposits have been made
N O N E

Schedule DB - Part D - Section 1 - Counterparty Exposure for Derivative Instruments Open
N O N E

Schedule DB - Part D-Section 2 - Collateral for Derivative Instruments Open - Pledged By
N O N E

Schedule DB - Part D-Section 2 - Collateral for Derivative Instruments Open - Pledged To
N O N E

Schedule DB - Part E - Derivatives Hedging Variable Annuity Guarantees
N O N E

Schedule DL - Part 1 - Reinvested Collateral Assets Owned
N O N E

Schedule DL - Part 2 - Reinvested Collateral Assets Owned
N O N E

SCHEDULE E - PART 1 - CASH

Month End Depository Balances

1	2	3	4	5	Book Balance at End of Each Month During Current Quarter			9
					6	7	8	
					First Month	Second Month	Third Month	
Depository	Restricted Asset Code	Rate of Interest	Amount of Interest Received During Current Quarter	Amount of Interest Accrued at Current Statement Date				*
CITIBANK NEW YORK, NY		2.750	232,710		57,895,617	33,807,070	(5,971,626)	XXX.
JP MORGAN CHASE CLEVELAND, OH		0.000			6,061,394	2,974,043	19,233,322	XXX.
PNC BANK CLEVELAND, OH		0.000			(77,589,516)	(89,729,886)	(98,306,261)	XXX.
WELLS FARGO SAN FRANCISCO, CA		0.000			862,629	745,774	309,816	XXX.
STATE STREET BANK KANSAS CITY, MO		0.000					(24,563)	XXX.
0199998. Deposits in ... 2 depositories that do not exceed the allowable limit in any one depository (See instructions) - Open Depositories	XXX	XXX			95,671	95,671	95,700	XXX
0199999. Totals - Open Depositories	XXX	XXX	232,710		(12,674,205)	(52,107,328)	(84,663,612)	XXX
0299998. Deposits in ... depositories that do not exceed the allowable limit in any one depository (See instructions) - Suspended Depositories	XXX	XXX						XXX
0299999. Totals - Suspended Depositories	XXX	XXX						XXX
0399999. Total Cash on Deposit	XXX	XXX	232,710		(12,674,205)	(52,107,328)	(84,663,612)	XXX
0499999. Cash in Company's Office	XXX	XXX	XXX	XXX				XXX
.....								...
.....								...
.....								...
.....								...
.....								...
.....								...
.....								...
.....								...
0599999. Total - Cash	XXX	XXX	232,710		(12,674,205)	(52,107,328)	(84,663,612)	XXX

SCHEDULE E - PART 2 - CASH EQUIVALENTS

[illegible]



SUPPLEMENT FOR THE QUARTER ENDING JUNE 30, 2025 OF THE PROGRESSIVE CASUALTY INSURANCE COMPANY

Designate the type of health care providers reported on this page:
Other health care facilities

SUPPLEMENT A TO SCHEDULE T
EXHIBIT OF MEDICAL PROFESSIONAL LIABILITY PREMIUMS WRITTEN
ALLOCATED BY STATES AND TERRITORIES

	1	2	Direct Losses Paid		5	Direct Losses Unpaid		8
			3	4		6	7	
States, etc.	Direct Premiums Written	Direct Premiums Earned	Amount	No. of Claims	Direct Losses Incurred	Amount Reported	No. of Claims	Direct Losses Incurred But Not Reported
1. AlabamaAL								
2. AlaskaAK								
3. ArizonaAZ								
4. ArkansasAR								
5. CaliforniaCA								
6. ColoradoCO								
7. ConnecticutCT								
8. DelawareDE								
9. District of ColumbiaDC								
10. FloridaFL								
11. GeorgiaGA								
12. HawaiiHI								
13. IdahoID								
14. IllinoisIL								
15. IndianaIN								
16. IowaIA								
17. KansasKS								
18. KentuckyKY								
19. LouisianaLA								
20. MaineME								
21. MarylandMD								
22. MassachusettsMA								
23. MichiganMI								
24. MinnesotaMN								
25. MississippiMS								
26. MissouriMO								
27. MontanaMT								
28. NebraskaNE								
29. NevadaNV								
30. New HampshireNH								
31. New JerseyNJ								
32. New MexicoNM								
33. New YorkNY								
34. North CarolinaNC								
35. North DakotaND								
36. OhioOH	35,954	17,773						
37. OklahomaOK								
38. OregonOR								
39. PennsylvaniaPA								
40. Rhode IslandRI								
41. South CarolinaSC								
42. South DakotaSD								
43. TennesseeTN								
44. TexasTX								
45. UtahUT								
46. VermontVT								
47. VirginiaVA								
48. WashingtonWA								
49. West VirginiaWV								
50. WisconsinWI								
51. WyomingWY								
52. American SamoaAS								
53. GuamGU								
54. Puerto RicoPR								
55. U.S. Virgin IslandsVI								
56. Nothern Mariana IslandsMP								
57. CanadaCAN								
58. Aggregate Other AliensOT								
59. Totals	35,954	17,773						
DETAILS OF WRITE-INS								
58001.								
58002.								
58003.								
58998. Summary of remaining write-ins for Line 58 from overflow page								
58999. Totals (Lines 58001 through 58003 plus 58998)(Line 58 above)								



SUPPLEMENT FOR THE QUARTER ENDING JUNE 30, 2025 OF THE PROGRESSIVE CASUALTY INSURANCE COMPANY

DIRECTOR AND OFFICER INSURANCE COVERAGE SUPPLEMENT

Year To Date For The Period Ended JUNE 30, 2025

NAIC Group Code 0155 NAIC Company Code 24260

Company Name PROGRESSIVE CASUALTY INSURANCE COMPANY

If the reporting entity writes any director and officer (D&O) business, please provide the following:

1. Monoline Policies

1 Direct Written Premium	2 Direct Earned Premium	3 Direct Losses Incurred
\$	\$	\$ (768)

2. Commercial Multiple Peril (CMP) Packaged Policies

- 2.1 Does the reporting entity provide D&O liability coverage as part of a CMP packaged policy?

Yes [] No [X]
- 2.2 Can the direct premium earned for D&O liability coverage provided as part of a CMP packaged policy be quantified or estimated?

Yes [] No [X]
- 2.3 If the answer to question 2.2 is yes, provide the quantified or estimated direct premium earned amount for D&O liability coverage in CMP packaged policies

2.31 Amount quantified:

\$

2.32 Amount estimated using reasonable assumptions:

\$
- 2.4 If the answer to question 2.1 is yes, provide direct losses incurred (losses paid plus change in case reserves) for the D&O liability coverage provided in CMP packaged policies.

\$