



PROPERTY AND CASUALTY COMPANIES - ASSOCIATION EDITION

QUARTERLY STATEMENT

AS OF JUNE 30, 2025

OF THE CONDITION AND AFFAIRS OF THE

Westfield Premier Insurance Company

NAIC Group Code02280228NAIC Company Code16450Employer's ID Number83-0887963

(Current)(Prior)

Organized under the Laws ofOhio, State of Domicile or Port of EntryOH

Country of DomicileUnited States of America

Incorporated/Organized04/24/2018Commenced Business12/25/2018

Statutory Home OfficeOne Park CircleWestfield Center, OH, US 44251-5001

(Street and Number)(City or Town, State, Country and Zip Code)

Main Administrative OfficeOne Park Circle

(Street and Number)

Westfield Center, OH, US 44251-5001330-887-0101

(City or Town, State, Country and Zip Code)(Area Code) (Telephone Number)

Mail AddressP. O. Box 5001Westfield Center, OH, US 44251-5001

(Street and Number or P.O. Box)(City or Town, State, Country and Zip Code)

Primary Location of Books and RecordsOne Park Circle

(Street and Number)

Westfield Center, OH, US 44251-5001330-887-0101

(City or Town, State, Country and Zip Code)(Area Code) (Telephone Number)

Internet Website Addresswww.westfieldgrp.com

Statutory Statement ContactMichelle Lynne Manzagol330-887-6099

(Name)(Area Code) (Telephone Number)

FinancialReporting@westfieldgrp.com330-887-4415

(E-mail Address)(FAX Number)

OFFICERS

President, CEO, and BoardChairEdward James Largent IIIChief Administrative Officer and SecretaryKathleen Rose Golovan #

Chief Operating Officer and TreasurerJoseph Christian KohmannSpecial CounselFrank Anthony Carrino

OTHER

John Andrew Kuhn, President, Westfield SpecialtyKristine Lynn Neate, Chief of StaffJennifer Constantine Palmieri, Chief People Officer

Stuart Wayne Rosenberg, President, Standard LinesRobert John Looney, Chief Financial Officer

DIRECTORS OR TRUSTEES

Barbara Marie BufkinDavid Preston HollanderMichael Tufts Jeans

John Patrick Lanigan JrEdward James Largent IIICraig David Pfeiffer

Billie Kay RawotJohn Lewis WatsonMary Kim Elkins

Gregory Robert Galeaz

State ofOhioSS:

County ofMedina

The officers of this reporting entity being duly sworn, each depose and say that they are the described officers of said reporting entity, and that on the reporting period stated above, all of the herein described assets were the absolute property of the said reporting entity, free and clear from any liens or claims thereon, except as herein stated, and that this statement, together with related exhibits, schedules and explanations therein contained, annexed or referred to, is a full and true statement of all the assets and liabilities and of the condition and affairs of the said reporting entity as of the reporting period stated above, and of its income and deductions therefrom for the period ended, and have been completed in accordance with the NAIC Annual Statement Instructions and Accounting Practices and Procedures manual except to the extent that: (1) state law may differ; or, (2) that state rules or regulations require differences in reporting not related to accounting practices and procedures, according to the best of their information, knowledge and belief, respectively. Furthermore, the scope of this attestation by the described officers also includes the related corresponding electronic filing with the NAIC, when required, that is an exact copy (except for formatting differences due to electronic filing) of the enclosed statement. The electronic filing may be requested by various regulators in lieu of or in addition to the enclosed statement.

Edward James Largent IIIPresident, CEO, and Board ChairJoseph Christian KohmannChief Operating Officer and TreasurerKathleen Rose GolovanChief Administrative Officer and Secretary

Subscribed and sworn to before me this15th day of July, 2025

a. Is this an original filing? Yes [X] No []

b. If no,

1. State the amendment number.....

2. Date filed

3. Number of pages attached.....

ASSETS

	Current Statement Date			4 December 31 Prior Year Net Admitted Assets
	1 Assets	2 Nonadmitted Assets	3 Net Admitted Assets (Cols. 1 - 2)	
1. Bonds	8,351,236	0	8,351,236	8,103,137
2. Stocks:				
2.1 Preferred stocks	0	0	0	0
2.2 Common stocks	0	0	0	0
3. Mortgage loans on real estate:				
3.1 First liens	0	0	0	0
3.2 Other than first liens.....	0	0	0	0
4. Real estate:				
4.1 Properties occupied by the company (less \$0 encumbrances)	0	0	0	0
4.2 Properties held for the production of income (less \$0 encumbrances)	0	0	0	0
4.3 Properties held for sale (less \$0 encumbrances)	0	0	0	0
5. Cash (\$0), cash equivalents (\$284,198) and short-term investments (\$0)	284,198	0	284,198	415,859
6. Contract loans (including \$0 premium notes)	0	0	0	0
7. Derivatives	0	0	0	0
8. Other invested assets	0	0	0	0
9. Receivables for securities	0	0	0	0
10. Securities lending reinvested collateral assets	0	0	0	0
11. Aggregate write-ins for invested assets	0	0	0	0
12. Subtotals, cash and invested assets (Lines 1 to 11)	8,635,434	0	8,635,434	8,518,996
13. Title plants less \$0 charged off (for Title insurers only)	0	0	0	0
14. Investment income due and accrued	82,430	0	82,430	81,275
15. Premiums and considerations:				
15.1 Uncollected premiums and agents' balances in the course of collection	0	0	0	0
15.2 Deferred premiums, agents' balances and installments booked but deferred and not yet due (including \$0 earned but unbilled premiums)	0	0	0	0
15.3 Accrued retrospective premiums (\$0) and contracts subject to redetermination (\$0)	0	0	0	0
16. Reinsurance:				
16.1 Amounts recoverable from reinsurers	0	0	0	0
16.2 Funds held by or deposited with reinsured companies	0	0	0	0
16.3 Other amounts receivable under reinsurance contracts	0	0	0	0
17. Amounts receivable relating to uninsured plans	0	0	0	0
18.1 Current federal and foreign income tax recoverable and interest thereon	531	0	531	431
18.2 Net deferred tax asset	0	0	0	0
19. Guaranty funds receivable or on deposit	0	0	0	0
20. Electronic data processing equipment and software	0	0	0	0
21. Furniture and equipment, including health care delivery assets (\$0)	0	0	0	0
22. Net adjustment in assets and liabilities due to foreign exchange rates	0	0	0	0
23. Receivables from parent, subsidiaries and affiliates	2,720,074	0	2,720,074	2,509,826
24. Health care (\$0) and other amounts receivable	0	0	0	0
25. Aggregate write-ins for other than invested assets	0	0	0	0
26. Total assets excluding Separate Accounts, Segregated Accounts and Protected Cell Accounts (Lines 12 to 25)	11,438,469	0	11,438,469	11,110,528
27. From Separate Accounts, Segregated Accounts and Protected Cell Accounts	0	0	0	0
28. Total (Lines 26 and 27)	11,438,469	0	11,438,469	11,110,528
DETAILS OF WRITE-INS				
1101.				
1102.				
1103.				
1198. Summary of remaining write-ins for Line 11 from overflow page	0	0	0	0
1199. Totals (Lines 1101 through 1103 plus 1198)(Line 11 above)	0	0	0	0
2501.				
2502.				
2503.				
2598. Summary of remaining write-ins for Line 25 from overflow page	0	0	0	0
2599. Totals (Lines 2501 through 2503 plus 2598)(Line 25 above)	0	0	0	0

STATEMENT AS OF JUNE 30, 2025 OF THE Westfield Premier Insurance Company

LIABILITIES, SURPLUS AND OTHER FUNDS

	1 Current Statement Date	2 December 31, Prior Year
1. Losses (current accident year \$0)	0	0
2. Reinsurance payable on paid losses and loss adjustment expenses	0	0
3. Loss adjustment expenses	0	0
4. Commissions payable, contingent commissions and other similar charges	0	0
5. Other expenses (excluding taxes, licenses and fees)	0	0
6. Taxes, licenses and fees (excluding federal and foreign income taxes)	0	0
7.1 Current federal and foreign income taxes (including \$0 on realized capital gains (losses))	0	0
7.2 Net deferred tax liability	19,273	16,866
8. Borrowed money \$0 and interest thereon \$0	0	0
9. Unearned premiums (after deducting unearned premiums for ceded reinsurance of \$26,202,492 and including warranty reserves of \$0 and accrued accident and health experience rating refunds including \$0 for medical loss ratio rebate per the Public Health Service Act)	0	0
10. Advance premium	0	0
11. Dividends declared and unpaid:		
11.1 Stockholders	0	0
11.2 Policyholders	0	0
12. Ceded reinsurance premiums payable (net of ceding commissions)	2,716,729	2,505,945
13. Funds held by company under reinsurance treaties	0	0
14. Amounts withheld or retained by company for account of others	0	0
15. Remittances and items not allocated	0	0
16. Provision for reinsurance (including \$0 certified)	0	0
17. Net adjustments in assets and liabilities due to foreign exchange rates	0	0
18. Drafts outstanding	0	0
19. Payable to parent, subsidiaries and affiliates	0	0
20. Derivatives	0	0
21. Payable for securities	0	0
22. Payable for securities lending	0	0
23. Liability for amounts held under uninsured plans	0	0
24. Capital notes \$0 and interest thereon \$0	0	0
25. Aggregate write-ins for liabilities	0	0
26. Total liabilities excluding protected cell liabilities (Lines 1 through 25)	2,736,002	2,522,811
27. Protected cell liabilities	0	0
28. Total liabilities (Lines 26 and 27)	2,736,002	2,522,811
29. Aggregate write-ins for special surplus funds	0	0
30. Common capital stock	3,000,000	3,000,000
31. Preferred capital stock	0	0
32. Aggregate write-ins for other than special surplus funds	0	0
33. Surplus notes	0	0
34. Gross paid in and contributed surplus	4,500,000	4,500,000
35. Unassigned funds (surplus)	1,202,467	1,087,717
36. Less treasury stock, at cost:		
36.10 shares common (value included in Line 30 \$0)	0	0
36.20 shares preferred (value included in Line 31 \$0)	0	0
37. Surplus as regards policyholders (Lines 29 to 35, less 36)	8,702,467	8,587,717
38. Totals (Page 2, Line 28, Col. 3)	11,438,469	11,110,528
DETAILS OF WRITE-INS		
2501.		
2502.		
2503.		
2598. Summary of remaining write-ins for Line 25 from overflow page	0	0
2599. Totals (Lines 2501 through 2503 plus 2598)(Line 25 above)	0	0
2901.		
2902.		
2903.		
2998. Summary of remaining write-ins for Line 29 from overflow page	0	0
2999. Totals (Lines 2901 through 2903 plus 2998)(Line 29 above)	0	0
3201.		
3202.		
3203.		
3298. Summary of remaining write-ins for Line 32 from overflow page	0	0
3299. Totals (Lines 3201 through 3203 plus 3298)(Line 32 above)	0	0

STATEMENT OF INCOME

	1	2	3
	Current Year to Date	Prior Year to Date	Prior Year Ended December 31
UNDERWRITING INCOME			
1. Premiums earned:			
1.1 Direct (written \$ 28,059,572)	24,271,130	16,966,705	38,241,282
1.2 Assumed (written \$ 30,862)	30,570	25,427	47,891
1.3 Ceded (written \$ 28,090,434)	24,301,700	16,992,132	38,289,173
1.4 Net (written \$ 0)	0	0	0
DEDUCTIONS:			
2. Losses incurred (current accident year \$ 0):			
2.1 Direct	7,285,705	14,665,635	21,710,687
2.2 Assumed	21,186	30,989	38,702
2.3 Ceded	7,306,891	14,696,624	21,749,389
2.4 Net	0	0	0
3. Loss adjustment expenses incurred	0	0	0
4. Other underwriting expenses incurred	0	0	0
5. Aggregate write-ins for underwriting deductions	0	0	0
6. Total underwriting deductions (Lines 2 through 5)	0	0	0
7. Net income of protected cells	0	0	0
8. Net underwriting gain (loss) (Line 1 minus Line 6 + Line 7)	0	0	0
INVESTMENT INCOME			
9. Net investment income earned	121,939	120,062	242,249
10. Net realized capital gains (losses) less capital gains tax of \$ 0	0	0	0
11. Net investment gain (loss) (Lines 9 + 10)	121,939	120,062	242,249
OTHER INCOME			
12. Net gain or (loss) from agents' or premium balances charged off (amount recovered \$ 0 amount charged off \$ 0)	0	0	0
13. Finance and service charges not included in premiums	23,315	21,627	42,143
14. Aggregate write-ins for miscellaneous income	0	0	0
15. Total other income (Lines 12 through 14)	23,315	21,627	42,143
16. Net income before dividends to policyholders, after capital gains tax and before all other federal and foreign income taxes (Lines 8 + 11 + 15)	145,254	141,689	284,392
17. Dividends to policyholders	0	0	0
18. Net income, after dividends to policyholders, after capital gains tax and before all other federal and foreign income taxes (Line 16 minus Line 17)	145,254	141,689	284,392
19. Federal and foreign income taxes incurred	28,097	27,547	55,200
20. Net income (Line 18 minus Line 19)(to Line 22)	117,157	114,142	229,192
CAPITAL AND SURPLUS ACCOUNT			
21. Surplus as regards policyholders, December 31 prior year	8,587,717	8,363,051	8,363,051
22. Net income (from Line 20)	117,157	114,142	229,192
23. Net transfers (to) from Protected Cell accounts	0	0	0
24. Change in net unrealized capital gains (losses) less capital gains tax of \$ 0	0	0	0
25. Change in net unrealized foreign exchange capital gain (loss)	0	0	0
26. Change in net deferred income tax	(2,407)	(2,208)	(4,526)
27. Change in nonadmitted assets	0	0	0
28. Change in provision for reinsurance	0	0	0
29. Change in surplus notes	0	0	0
30. Surplus (contributed to) withdrawn from protected cells	0	0	0
31. Cumulative effect of changes in accounting principles	0	0	0
32. Capital changes:			
32.1 Paid in	0	0	0
32.2 Transferred from surplus (Stock Dividend)	0	0	0
32.3 Transferred to surplus	0	0	0
33. Surplus adjustments:			
33.1 Paid in	0	0	0
33.2 Transferred to capital (Stock Dividend)	0	0	0
33.3 Transferred from capital	0	0	0
34. Net remittances from or (to) Home Office	0	0	0
35. Dividends to stockholders	0	0	0
36. Change in treasury stock	0	0	0
37. Aggregate write-ins for gains and losses in surplus	0	0	0
38. Change in surplus as regards policyholders (Lines 22 through 37)	114,750	111,934	224,666
39. Surplus as regards policyholders, as of statement date (Lines 21 plus 38)	8,702,467	8,474,985	8,587,717
DETAILS OF WRITE-INS			
0501.			
0502.			
0503.			
0598. Summary of remaining write-ins for Line 5 from overflow page	0	0	0
0599. Totals (Lines 0501 through 0503 plus 0598)(Line 5 above)	0	0	0
1401.			
1402.			
1403.			
1498. Summary of remaining write-ins for Line 14 from overflow page	0	0	0
1499. Totals (Lines 1401 through 1403 plus 1498)(Line 14 above)	0	0	0
3701.			
3702.			
3703.			
3798. Summary of remaining write-ins for Line 37 from overflow page	0	0	0
3799. Totals (Lines 3701 through 3703 plus 3798)(Line 37 above)	0	0	0

CASH FLOW

	1 Current Year To Date	2 Prior Year To Date	3 Prior Year Ended December 31
Cash from Operations			
1. Premiums collected net of reinsurance	210,784	0	2,505,945
2. Net investment income	120,028	118,778	238,526
3. Miscellaneous income	23,316	21,627	42,143
4. Total (Lines 1 to 3)	354,128	140,405	2,786,614
5. Benefit and loss related payments	0	0	0
6. Net transfers to Separate Accounts, Segregated Accounts and Protected Cell Accounts	0	0	0
7. Commissions, expenses paid and aggregate write-ins for deductions	0	0	0
8. Dividends paid to policyholders	0	0	0
9. Federal and foreign income taxes paid (recovered) net of \$0 tax on capital gains (losses)	28,198	18,094	45,436
10. Total (Lines 5 through 9)	28,198	18,094	45,436
11. Net cash from operations (Line 4 minus Line 10)	325,930	122,311	2,741,178
Cash from Investments			
12. Proceeds from investments sold, matured or repaid:			
12.1 Bonds	0	0	0
12.2 Stocks	0	0	0
12.3 Mortgage loans	0	0	0
12.4 Real estate	0	0	0
12.5 Other invested assets	0	0	0
12.6 Net gains or (losses) on cash, cash equivalents and short-term investments	0	0	0
12.7 Miscellaneous proceeds	0	0	0
12.8 Total investment proceeds (Lines 12.1 to 12.7)	0	0	0
13. Cost of investments acquired (long-term only):			
13.1 Bonds	247,343	154,257	347,470
13.2 Stocks	0	0	0
13.3 Mortgage loans	0	0	0
13.4 Real estate	0	0	0
13.5 Other invested assets	0	0	0
13.6 Miscellaneous applications	0	0	0
13.7 Total investments acquired (Lines 13.1 to 13.6)	247,343	154,257	347,470
14. Net increase/(decrease) in contract loans and premium notes	0	0	0
15. Net cash from investments (Line 12.8 minus Line 13.7 and Line 14)	(247,343)	(154,257)	(347,470)
Cash from Financing and Miscellaneous Sources			
16. Cash provided (applied):			
16.1 Surplus notes, capital notes	0	0	0
16.2 Capital and paid in surplus, less treasury stock	0	0	0
16.3 Borrowed funds	0	0	0
16.4 Net deposits on deposit-type contracts and other insurance liabilities	0	0	0
16.5 Dividends to stockholders	0	0	0
16.6 Other cash provided (applied)	(210,248)	(42,617)	(2,549,529)
17. Net cash from financing and miscellaneous sources (Line 16.1 through Line 16.4 minus Line 16.5 plus Line 16.6)	(210,248)	(42,617)	(2,549,529)
RECONCILIATION OF CASH, CASH EQUIVALENTS AND SHORT-TERM INVESTMENTS			
18. Net change in cash, cash equivalents and short-term investments (Line 11, plus Lines 15 and 17) .	(131,661)	(74,563)	(155,821)
19. Cash, cash equivalents and short-term investments:			
19.1 Beginning of year	415,859	571,680	571,680
19.2 End of period (Line 18 plus Line 19.1)	284,198	497,117	415,859

Note: Supplemental disclosures of cash flow information for non-cash transactions:

--	--	--	--

NOTES TO FINANCIAL STATEMENTS

NOTE 1 Summary of Significant Accounting Policies and Going Concern

A. Accounting Practices
The financial statements of Westfield Premier Insurance Company (the Company) are presented on the basis of accounting practices prescribed or permitted by the Ohio Department of Insurance.

The Ohio Department of Insurance recognizes only statutory accounting practices (SAP) prescribed or permitted by the State of Ohio for determining and reporting the financial condition and results of operations of an insurance company, for determining its solvency under the Ohio Insurance law. The National Association of Insurance Commissioners' (NAIC) Accounting Practices and Procedures Manual (NAIC SAP) has been adopted as a component of prescribed or permitted practices by the State of Ohio.

The Company has not implemented any prescribed or permitted accounting practices by the State of Ohio that differ from those found in NAIC SAP.

A reconciliation of the Company's net income and capital and surplus between NAIC SAP and practices prescribed and permitted by the State of Ohio is shown below:

	SSAP #	F/S Page	F/S Line #	6/30/2025		12/31/2024	
NET INCOME							
(1) State basis (Page 4, Line 20, Columns 1 & 3)	XXX	XXX	XXX	\$	117,157	\$	229,192
(2) State Prescribed Practices that are an increase/ (decrease) from NAIC SAP:							
(3) State Permitted Practices that are an increase/(decrease) from NAIC SAP:							
(4) NAIC SAP (1-2-3=4)	XXX	XXX	XXX	\$	117,157	\$	229,192
SURPLUS							
(5) State basis (Page 3, Line 37, Columns 1 & 2)	XXX	XXX	XXX	\$	8,702,467	\$	8,587,717
(6) State Prescribed Practices that are an increase/(decrease) from NAIC SAP:							
(7) State Permitted Practices that are an increase/(decrease) from NAIC SAP:							
(8) NAIC SAP (5-6-7=8)	XXX	XXX	XXX	\$	8,702,467	\$	8,587,717

B. Use of Estimates in the Preparation of the Financial Statements
No significant changes

C. Accounting Policy
Premiums are earned over the terms of the related insurance policies and reinsurance contracts. Unearned premium reserves are established to cover the unexpired portion of premiums written. Such reserves are computed by pro rata methods for direct business and are based on reports received from ceding companies for reinsurance.

Expenses incurred in connection with acquiring new insurance business, including such acquisition costs as sales commissions, are charged to operations as incurred. Expenses incurred are reduced for ceding allowances received or receivable.

In addition, the Company uses the following accounting policies:

(1) No significant changes
(2) Bonds not backed by other loans are stated at amortized cost using the scientific interest method per SSAP No.26.
(3-9) Not applicable
(10-13) No significant changes

D. Going Concern
Not applicable

NOTE 2 Accounting Changes and Corrections of Errors
Not applicable

NOTE 3 Business Combinations and Goodwill
Not applicable

NOTE 4 Discontinued Operations
Not applicable

NOTE 5 Investments

A. Mortgage Loans, including Mezzanine Real Estate Loans
The Company does not invest in mortgage loans. No mezzanine real estate loans are held.

B. Debt Restructuring
The Company is not a creditor for any loans that have been restructured.

C. Reverse Mortgages
Not applicable

D. Asset-Backed Securities
Not applicable

E. Dollar Repurchase Agreements and/or Securities Lending Transactions
Not applicable

F. Repurchase Agreements Transactions Accounted for as Secured Borrowing

NOTES TO FINANCIAL STATEMENTS

- Not applicable
- G. Reverse Repurchase Agreements Transactions Accounted for as Secured Borrowing
Not applicable
- H. Repurchase Agreements Transactions Accounted for as a Sale
Not applicable
- I. Reverse Repurchase Agreements Transactions Accounted for as a Sale
Not applicable
- J. Real Estate
Not applicable
- K. Investments in Tax Credit Structures (tax credit investments)
Not applicable
- L. Restricted Assets
No significant changes
- M. Working Capital Finance Investments
Not applicable
- N. Offsetting and Netting of Assets and Liabilities
Not applicable
- O. 5GI Securities
Not applicable
- P. Short Sales
Not applicable
- Q. Prepayment Penalty and Acceleration Fees
Not applicable
- R. Reporting Entity's Share of Cash Pool by Asset Type
Not applicable
- S. Aggregate Collateral Loans by Qualifying Investment Collateral
Not applicable

NOTE 6 Joint Ventures, Partnerships and Limited Liability Companies
Not applicable

NOTE 7 Investment Income
No significant changes

NOTE 8 Derivative Instruments
Not applicable

NOTE 9 Income Taxes
No significant changes

- NOTE 10 Information Concerning Parent, Subsidiaries, Affiliates and Other Related Parties**
- A. The Company is owned and operated by its parent company, Ohio Farmers Insurance Company.
- B. Transactions
Not applicable
- C. Transactions with related party who are not reported on Schedule Y
Not applicable
- D. Amounts Due to or from Related Parties
No significant changes
- E. Material Management or Service Contracts and Cost-Sharing Arrangements
No significant changes
- F. Guarantees or Undertakings
No significant changes
- G. Nature of the Control Relationship
The Company is owned and operated by its parent company, Ohio Farmers Insurance Company.
- H. Amount Deducted from the Value of Upstream Intermediate Entity or Ultimate Parent Owned
Not applicable
- I. Investments in SCA that Exceed 10% of Admitted Assets
No significant changes
- J. Investments in Impaired SCAs
Not applicable
- K. Investment in Foreign Insurance Subsidiary
Not applicable

NOTES TO FINANCIAL STATEMENTS

- L. Investment in Downstream Noninsurance Holding Company
Not applicable
- M. All SCA Investments
Not applicable
- N. Investment in Insurance SCAs
Not applicable
- O. SCA or SSAP 48 Entity Loss Tracking
Not applicable

NOTE 11 Debt

- A. Debt, Including Capital Notes
Not applicable
- B. FHLB (Federal Home Loan Bank) Agreements
Not applicable

NOTE 12 Retirement Plans, Deferred Compensation, Postemployment Benefits and Compensated Absences and Other Postretirement Benefit Plans

Not applicable

NOTE 13 Capital and Surplus, Dividend Restrictions and Quasi-Reorganizations

No significant changes

NOTE 14 Liabilities, Contingencies and Assessments

- A. Contingent Commitments
Not applicable
- B. Assessments
No significant changes
- C. Gain Contingencies
Not applicable
- D. Claims related extra contractual obligations and bad faith losses stemming from lawsuits
Not applicable
- E. Product Warranties
Not applicable
- F. Joint and Several Liabilities
Not applicable
- G. All Other Contingencies
Various lawsuits against the Company have arisen in the course of the Company's business. Contingent liabilities arising from litigation, income taxes, and other matters are not considered material in relation to the financial position of the Company. There are no contingent liabilities arising from litigation.

The Company is a participant in the Ohio Farmers Insurance Company's pooling agreement with zero pool percentage and as such has no accounts receivable related to agents balances or uncollected premiums.

NOTE 15 Leases

No significant changes

NOTE 16 Information About Financial Instruments With Off-Balance Sheet Risk and Financial Instruments With Concentrations of Credit Risk

Not applicable

NOTE 17 Sale, Transfer and Servicing of Financial Assets and Extinguishments of Liabilities

- A. Transfers of Receivables Reported as Sales
The Company has not sold or transferred any receivables to any other parties.
- B. Transfer and Servicing of Financial Assets
Not applicable
- C. Wash Sales
Not applicable

NOTE 18 Gain or Loss to the Reporting Entity from Uninsured Plans and the Uninsured Portion of Partially Insured Plans

Not applicable

NOTE 19 Direct Premium Written/Produced by Managing General Agents/Third Party Administrators

Not applicable

NOTE 20 Fair Value Measurements

- A. Fair Value Measurements

For assets that are measured and reported at fair value or net asset value (NAV) in the statement of financial position after initial recognition, the valuation techniques and the inputs used to develop those measurements are as follows:

Level 1 - Values are unadjusted quoted prices for identical assets and liabilities in active markets accessible at the measurement date.

NOTES TO FINANCIAL STATEMENTS

Level 2 - Inputs include quoted prices for similar assets or liabilities in active markets, quoted prices from those willing to trade in markets that are not active, or other inputs that are observable or can be corroborated by market data for the term of the instrument. Such inputs include market interest rates and volatilities, spreads and yield curves.

Level 3 - Certain inputs are unobservable (supported by little or no market activity) and significant to the fair value measurement. Unobservable inputs reflect the Company's best estimate of what hypothetical market participants would use to determine a transaction price for the asset or liability at the reporting date.

The Company has no liabilities that are measured at fair value in the statement of financial position.

(1) Fair Value Measurements at Reporting Date

Description for each class of asset or liability	(Level 1)	(Level 2)	(Level 3)	Net Asset Value (NAV)	Total
a. Assets at fair value					
CE - Money Market Mutual Funds	\$ -	\$ 284,198	\$ -	\$ -	\$ 284,198
Total assets at fair value/NAV	\$ -	\$ 284,198	\$ -	\$ -	\$ 284,198

Description for each class of asset or liability	(Level 1)	(Level 2)	(Level 3)	Net Asset Value (NAV)	Total
b. Liabilities at fair value					
Total liabilities at fair value	\$ -	\$ -	\$ -	\$ -	\$ -

(2) At June 30, 2025, the Company held no investments in assets or liabilities measured and reported at fair value that were classified as Level 3.

(3) The Company's policy for determining when transfers between levels is required is based upon change in the inputs used to determine fair value measurement. If an input changes, the Company evaluates the new input(s) and makes the determination whether or not a transfer between levels is appropriate. If an asset or liability is transferred between levels, it is the Company's policy to record the transfer as of the beginning of the quarter in which the transfer occurs. The Company held no assets or liabilities categorized as Level 1, 2 or 3 during the reporting period that were transferred into or out of the level categorization held at January 1, 2025.

(4) As of June 30, 2025, the Company held money market mutual funds, which were reported at fair value and were classified as Level 2. As of June 30, 2025, the Company held no investments in assets or liabilities measured and reported at fair value that were classified as Level 3. Historically, fair values in the Level 2 category are provided by independent pricing services. Where independent pricing services provide fair values, the Company has obtained an understanding of the methods, models and inputs used in pricing and has controls in place to validate that amounts provided represent current fair values. Estimated fair values of investments categorized as Level 3 generally include inputs for which no readily observable inputs are available and require management judgment.

(5) As of June 30, 2025, the Company had no holdings classified as either a derivative asset or liability.

B. Fair Value Reporting under SSAP 100 and Other Accounting Pronouncements - Not required

C. Fair Value Level

The method(s) and significant assumptions used to estimate the fair value of financial instruments are as follows:

Investment Securities - Fair values for bonds, including the aggregate write-ins for invested assets are based on the values prescribed by an independent pricing service or from brokers. For bonds that are not actively traded, estimated fair values are based on values of bonds of comparable yield and credit quality. The fair values for common stocks are based on quoted market prices, where available, which are provided to the Company by an independent pricing service.

Cash Equivalents - Cash equivalents include money market mutual funds, which are reported at fair value. Cash equivalents are short-term, highly liquid investments that are both readily convertible to known amounts of cash, and so near their maturity that they present insignificant risk of changes in value due to change in interest rates.

Type of Financial Instrument	Aggregate Fair Value	Admitted Assets	(Level 1)	(Level 2)	(Level 3)	Net Asset Value (NAV)	Not Practicable (Carrying Value)
Obligations	\$ 7,756,388	\$ 8,351,236	\$ 7,756,388	\$ -	\$ -	\$ -	\$ -
Cash equivalents	\$ 284,198	\$ 284,198	\$ -	\$ 284,198	\$ -	\$ -	\$ -

D. Not Practicable to Estimate Fair Value
Not applicable

E. NAV Practical Expedient Investments
Not applicable

NOTE 21 Other Items

A. Unusual or Infrequent Items
Not applicable

B. Troubled Debt Restructuring: Debtors
Not applicable

C. Other Disclosures
Not applicable

D. Business Interruption Insurance Recoveries
No significant changes

E. State Transferable and Non-transferable Tax Credits
Not applicable

F. Subprime Mortgage Related Risk Exposure
No significant changes

G. Insurance-Linked Securities (ILS) Contracts
Not applicable

NOTES TO FINANCIAL STATEMENTS

H. The Amount That Could Be Realized on Life Insurance Where the Reporting Entity is Owner and Beneficiary or Has Otherwise Obtained Rights to Control the Policy
Not applicable

NOTE 22 Events Subsequent
Subsequent events have been considered through July 15, 2025 for the statutory statements issued as of June 30, 2025. No events or transactions have occurred that would give rise to a Type I or Type II subsequent event.

NOTE 23 Reinsurance
No significant changes

NOTE 24 Retrospectively Rated Contracts & Contracts Subject to Redetermination
Not applicable

NOTE 25 Change in Incurred Losses and Loss Adjustment Expenses
The Company is a participant in the Ohio Farmers Insurance Company's pooling agreement with a zero pool percentage, and as such has no net incurred losses nor loss adjustment expenses.

NOTE 26 Intercompany Pooling Arrangements
A.-F. No significant changes

G. Amounts due to/from the lead entity and pool participants as of June 30, 2025:

	Amount Receivable	Amount Payable
Ohio Farmers Insurance Company (lead entity)	\$ 69,555,145	\$ 2,001,185
Westfield Insurance Company	\$ -	\$ 26,992
Westfield National Insurance Company	\$ -	\$ 2,293,275
American Select Insurance Company	\$ -	\$ 17,864,974
Old Guard Insurance Company	\$ -	\$ 3,404,200
Westfield Champion Insurance Company	\$ -	\$ 4,575,589
Westfield Select Insurance Company	\$ -	\$ 4,362,741
Westfield Premier Insurance Company	\$ -	\$ 2,716,729
Westfield Superior Insurance Company	\$ -	\$ 5,489,694
Westfield Specialty Insurance Company	\$ -	\$ 28,820,951
Westfield Touchstone Insurance Company	\$ 2,001,185	\$ -

NOTE 27 Structured Settlements
No significant changes

NOTE 28 Health Care Receivables
Not applicable

NOTE 29 Participating Policies
Not applicable

NOTE 30 Premium Deficiency Reserves
No significant changes

NOTE 31 High Deductibles
Not applicable

NOTE 32 Discounting of Liabilities for Unpaid Losses or Unpaid Loss Adjustment Expenses
No significant changes

NOTE 33 Asbestos/Environmental Reserves
No significant changes

NOTE 34 Subscriber Savings Accounts
Not applicable

NOTE 35 Multiple Peril Crop Insurance
Not applicable

NOTE 36 Financial Guaranty Insurance
Not applicable

STATEMENT AS OF JUNE 30, 2025 OF THE Westfield Premier Insurance Company

GENERAL INTERROGATORIES

PART 1 - COMMON INTERROGATORIES

GENERAL

- 1.1

Did the reporting entity experience any material transactions requiring the filing of Disclosure of Material Transactions with the State of Domicile, as required by the Model Act?

Yes [] No [X]
- 1.2

If yes, has the report been filed with the domiciliary state?

Yes [] No []
- 2.1

Has any change been made during the year of this statement in the charter, by-laws, articles of incorporation, or deed of settlement of the reporting entity?

Yes [] No [X]
- 2.2

If yes, date of change:
- 3.1

Is the reporting entity a member of an Insurance Holding Company System consisting of two or more affiliated persons, one or more of which is an insurer?

If yes, complete Schedule Y, Parts 1 and 1A.

Yes [X] No []
- 3.2

Have there been any substantial changes in the organizational chart since the prior quarter end?

Yes [] No [X]
- 3.3

If the response to 3.2 is yes, provide a brief description of those changes.
- 3.4

Is the reporting entity publicly traded or a member of a publicly traded group?

Yes [] No [X]
- 3.5

If the response to 3.4 is yes, provide the CIK (Central Index Key) code issued by the SEC for the entity/group.
- 4.1

Has the reporting entity been a party to a merger or consolidation during the period covered by this statement?

Yes [] No [X]
- 4.2

If yes, provide the name of the entity, NAIC Company Code, and state of domicile (use two letter state abbreviation) for any entity that has ceased to exist as a result of the merger or consolidation.
- | | | |
|----------------|-------------------|-------------------|
| 1 | 2 | 3 |
| Name of Entity | NAIC Company Code | State of Domicile |
| | | |
5.

If the reporting entity is subject to a management agreement, including third-party administrator(s), managing general agent(s), attorney-in-fact, or similar agreement, have there been any significant changes regarding the terms of the agreement or principals involved?

If yes, attach an explanation.

Yes [] No [X] N/A []
- 6.1

State as of what date the latest financial examination of the reporting entity was made or is being made.

12/31/2022
- 6.2

State the as of date that the latest financial examination report became available from either the state of domicile or the reporting entity. This date should be the date of the examined balance sheet and not the date the report was completed or released.

12/31/2022
- 6.3

State as of what date the latest financial examination report became available to other states or the public from either the state of domicile or the reporting entity. This is the release date or completion date of the examination report and not the date of the examination (balance sheet date).

05/31/2024
- 6.4

By what department or departments?
Ohio
- 6.5

Have all financial statement adjustments within the latest financial examination report been accounted for in a subsequent financial statement filed with Departments?

Yes [] No [] N/A [X]
- 6.6

Have all of the recommendations within the latest financial examination report been complied with?

Yes [] No [] N/A [X]
- 7.1

Has this reporting entity had any Certificates of Authority, licenses or registrations (including corporate registration, if applicable) suspended or revoked by any governmental entity during the reporting period?

Yes [] No [X]
- 7.2

If yes, give full information:
- 8.1

Is the company a subsidiary of a bank holding company regulated by the Federal Reserve Board?

Yes [X] No []
- 8.2

If response to 8.1 is yes, please identify the name of the bank holding company.
Ohio Farmers Insurance Company
- 8.3

Is the company affiliated with one or more banks, thrifts or securities firms?

Yes [X] No []
- 8.4

If response to 8.3 is yes, please provide below the names and location (city and state of the main office) of any affiliates regulated by a federal regulatory services agency [i.e. the Federal Reserve Board (FRB), the Office of the Comptroller of the Currency (OCC), the Federal Deposit Insurance Corporation (FDIC) and the Securities Exchange Commission (SEC)] and identify the affiliate's primary federal regulator.

1 Affiliate Name	2 Location (City, State)	3 FRB	4 OCC	5 FDIC	6 SEC
Ohio Farmers Insurance Company	Westfield Center, Ohio	YES	NO	NO	NO
Westfield Bancorp, Inc.	Westfield Center, Ohio	YES	NO	NO	NO
Westfield Bank, FSB	Westfield Center, Ohio	NO	YES	NO	NO

STATEMENT AS OF JUNE 30, 2025 OF THE Westfield Premier Insurance Company

GENERAL INTERROGATORIES

9.1

Are the senior officers (principal executive officer, principal financial officer, principal accounting officer or controller, or persons performing similar functions) of the reporting entity subject to a code of ethics, which includes the following standards?
(a) Honest and ethical conduct, including the ethical handling of actual or apparent conflicts of interest between personal and professional relationships;
(b) Full, fair, accurate, timely and understandable disclosure in the periodic reports required to be filed by the reporting entity;
(c) Compliance with applicable governmental laws, rules and regulations;
(d) The prompt internal reporting of violations to an appropriate person or persons identified in the code; and
(e) Accountability for adherence to the code.

Yes [X] No []

9.11

If the response to 9.1 is No, please explain:
.....

9.2

Has the code of ethics for senior managers been amended?

Yes [] No [X]

9.21

If the response to 9.2 is Yes, provide information related to amendment(s).
.....

9.3

Have any provisions of the code of ethics been waived for any of the specified officers?

Yes [] No [X]

9.31

If the response to 9.3 is Yes, provide the nature of any waiver(s).
.....

FINANCIAL

10.1

Does the reporting entity report any amounts due from parent, subsidiaries or affiliates on Page 2 of this statement?

Yes [X] No []

10.2

If yes, indicate any amounts receivable from parent included in the Page 2 amount:\$.....

2,720,074

INVESTMENT

11.1

Were any of the stocks, bonds, or other assets of the reporting entity loaned, placed under option agreement, or otherwise made available for use by another person? (Exclude securities under securities lending agreements.)

Yes [] No [X]

11.2

If yes, give full and complete information relating thereto:
.....

12.

Amount of real estate and mortgages held in other invested assets in Schedule BA:

\$.....

0

13.

Amount of real estate and mortgages held in short-term investments:

\$.....

0

14.1

Does the reporting entity have any investments in parent, subsidiaries and affiliates?

Yes [] No [X]

14.2

If yes, please complete the following:

	1	2
	Prior Year-End Book/Adjusted Carrying Value	Current Quarter Book/Adjusted Carrying Value
14.21 Bonds	\$.....0	\$.....0
14.22 Preferred Stock	\$.....0	\$.....0
14.23 Common Stock	\$.....0	\$.....0
14.24 Short-Term Investments	\$.....0	\$.....0
14.25 Mortgage Loans on Real Estate	\$.....0	\$.....0
14.26 All Other	\$.....0	\$.....0
14.27 Total Investment in Parent, Subsidiaries and Affiliates (Subtotal Lines 14.21 to 14.26)	\$.....0	\$.....0
14.28 Total Investment in Parent included in Lines 14.21 to 14.26 above	\$.....0	\$.....0

15.1

Has the reporting entity entered into any hedging transactions reported on Schedule DB?

Yes [] No [X]

15.2

If yes, has a comprehensive description of the hedging program been made available to the domiciliary state? Yes [] No [] N/A []
If no, attach a description with this statement.
.....

16.

For the reporting entity's security lending program, state the amount of the following as of the current statement date:

16.1

Total fair value of reinvested collateral assets reported on Schedule DL, Parts 1 and 2.

\$.....

0

16.2

Total book/adjusted carrying value of reinvested collateral assets reported on Schedule DL, Parts 1 and 2

\$.....

0

16.3

Total payable for securities lending reported on the liability page.

\$.....

0

STATEMENT AS OF JUNE 30, 2025 OF THE Westfield Premier Insurance Company

GENERAL INTERROGATORIES

17. Excluding items in Schedule E - Part 3 - Special Deposits, real estate, mortgage loans and investments held physically in the reporting entity's offices, vaults or safety deposit boxes, were all stocks, bonds and other securities, owned throughout the current year held pursuant to a custodial agreement with a qualified bank or trust company in accordance with Section 1, III - General Examination Considerations, F. Outsourcing of Critical Functions, Custodial or Safekeeping Agreements of the NAIC Financial Condition Examiners Handbook? Yes [X] No []
- 17.1 For all agreements that comply with the requirements of the NAIC Financial Condition Examiners Handbook, complete the following:

1 Name of Custodian(s)	2 Custodian Address
BNY Mellon	240 Greenwich St., New York, NY 10286

- 17.2 For all agreements that do not comply with the requirements of the NAIC Financial Condition Examiners Handbook, provide the name, location and a complete explanation:

1 Name(s)	2 Location(s)	3 Complete Explanation(s)

- 17.3 Have there been any changes, including name changes, in the custodian(s) identified in 17.1 during the current quarter? Yes [] No [X]
- 17.4 If yes, give full information relating thereto:

1 Old Custodian	2 New Custodian	3 Date of Change	4 Reason

- 17.5 Investment management – Identify all investment advisors, investment managers, broker/dealers, including individuals that have the authority to make investment decisions on behalf of the reporting entity. This includes both primary and sub-advisors. For assets that are managed internally by employees of the reporting entity, note as such. ["...that have access to the investment accounts"; "...handle securities"]

1 Name of Firm or Individual	2 Affiliation
Individuals designated by the Chief Investment Officer	I.....

17.5097 For those firms/individuals listed in the table for Question 17.5, do any firms/individuals unaffiliated with the reporting entity (i.e. designated with a "U") manage more than 10% of the reporting entity's invested assets?..... Yes [] No [X]

17.5098 For firms/individuals unaffiliated with the reporting entity (i.e. designated with a "U") listed in the table for Question 17.5, does the total assets under management aggregate to more than 50% of the reporting entity's invested assets?..... Yes [] No [X]

- 17.6 For those firms or individuals listed in the table for 17.5 with an affiliation code of "A" (affiliated) or "U" (unaffiliated), provide the information for the table below.

1	2	3	4	5
Central Registration Depository Number	Name of Firm or Individual	Legal Entity Identifier (LEI)	Registered With	Investment Management Agreement (IMA) Filed

- 18.1 Have all the filing requirements of the Purposes and Procedures Manual of the NAIC Investment Analysis Office been followed? Yes [X] No []
- 18.2 If no, list exceptions:
.....

19. By self-designating 5GI securities, the reporting entity is certifying the following elements for each self-designated 5GI security:

a. Documentation necessary to permit a full credit analysis of the security does not exist or an NAIC CRP credit rating for an FE or PL security is not available.
b. Issuer or obligor is current on all contracted interest and principal payments.
c. The insurer has an actual expectation of ultimate payment of all contracted interest and principal.

Has the reporting entity self-designated 5GI securities? Yes [] No [X]

20. By self-designating PLGI securities, the reporting entity is certifying the following elements of each self-designated PLGI security:

a. The security was purchased prior to January 1, 2018.
b. The reporting entity is holding capital commensurate with the NAIC Designation reported for the security.
c. The NAIC Designation was derived from the credit rating assigned by an NAIC CRP in its legal capacity as a NRSRO which is shown on a current private letter rating held by the insurer and available for examination by state insurance regulators.
d. The reporting entity is not permitted to share this credit rating of the PL security with the SVO.

Has the reporting entity self-designated PLGI securities? Yes [] No [X]

21. By assigning FE to a Schedule BA non-registered private fund, the reporting entity is certifying the following elements of each self-designated FE fund:

a. The shares were purchased prior to January 1, 2019.
b. The reporting entity is holding capital commensurate with the NAIC Designation reported for the security.
c. The security had a public credit rating(s) with annual surveillance assigned by an NAIC CRP in its legal capacity as an NRSRO prior to January 1, 2019.
d. The fund only or predominantly holds bonds in its portfolio.
e. The current reported NAIC Designation was derived from the public credit rating(s) with annual surveillance assigned by an NAIC CRP in its legal capacity as an NRSRO.
f. The public credit rating(s) with annual surveillance assigned by an NAIC CRP has not lapsed.

Has the reporting entity assigned FE to Schedule BA non-registered private funds that complied with the above criteria? Yes [] No [X]

GENERAL INTERROGATORIES

PART 2 - PROPERTY & CASUALTY INTERROGATORIES

1.

If the reporting entity is a member of a pooling arrangement, did the agreement or the reporting entity's participation change?
If yes, attach an explanation.
.....

Yes [] No [X] N/A []
2.

Has the reporting entity reinsured any risk with any other reporting entity and agreed to release such entity from liability, in whole or in part, from any loss that may occur on the risk, or portion thereof, reinsured?
If yes, attach an explanation.
.....

Yes [] No [X]
- 3.1

Have any of the reporting entity's primary reinsurance contracts been canceled?

Yes [] No [X]
- 3.2

If yes, give full and complete information thereto.
.....
- 4.1

Are any of the liabilities for unpaid losses and loss adjustment expenses other than certain workers' compensation tabular reserves (see Annual Statement Instructions pertaining to disclosure of discounting for definition of " tabular reserves") discounted at a rate of interest greater than zero?

Yes [] No [X]

4.2 If yes, complete the following schedule:

			TOTAL DISCOUNT				DISCOUNT TAKEN DURING PERIOD			
1	2	3	4	5	6	7	8	9	10	11
Line of Business	Maximum Interest	Discount Rate	Unpaid Losses	Unpaid LAE	IBNR	TOTAL	Unpaid Losses	Unpaid LAE	IBNR	TOTAL
TOTAL			0	0	0	0	0	0	0	0

5.

Operating Percentages:

5.1 A&H loss percent0.000 %

5.2 A&H cost containment percent0.000 %

5.3 A&H expense percent excluding cost containment expenses0.000 %
- 6.1

Do you act as a custodian for health savings accounts?

Yes [] No [X]
- 6.2

If yes, please provide the amount of custodial funds held as of the reporting date\$.....0
- 6.3

Do you act as an administrator for health savings accounts?

Yes [] No [X]
- 6.4

If yes, please provide the balance of the funds administered as of the reporting date\$.....0
7.

Is the reporting entity licensed or chartered, registered, qualified, eligible or writing business in at least two states?

Yes [X] No []
- 7.1

If no, does the reporting entity assume reinsurance business that covers risks residing in at least one state other than the state of domicile of the reporting entity?

Yes [] No []

STATEMENT AS OF JUNE 30, 2025 OF THE Westfield Premier Insurance Company

SCHEDULE F - CEDED REINSURANCE

Showing All New Reinsurers - Current Year to Date

[illegible]

STATEMENT AS OF JUNE 30, 2025 OF THE Westfield Premier Insurance Company

SCHEDULE T - EXHIBIT OF PREMIUMS WRITTEN

Current Year to Date - Allocated by States and Territories							
States, etc.	1 Active Status (a)	Direct Premiums Written		Direct Losses Paid (Deducting Salvage)		Direct Losses Unpaid	
		2 Current Year To Date	3 Prior Year To Date	4 Current Year To Date	5 Prior Year To Date	6 Current Year To Date	7 Prior Year To Date
1. Alabama	L	182	(183)	0	0	5,080	3,741
2. Alaska	N	0	0	0	0	0	0
3. Arizona	L	412,290	394,209	44,491	11,179	267,530	171,075
4. Arkansas	L	0	0	0	0	0	0
5. California	N	0	0	0	0	0	0
6. Colorado	L	1,099,474	822,867	181,536	568,139	768,204	1,027,769
7. Connecticut	N	0	0	0	0	0	0
8. Delaware	L	265,368	168,313	62,601	1,085	105,205	63,398
9. District of Columbia	N	0	0	0	0	0	0
10. Florida	N	0	0	0	0	0	0
11. Georgia	L	2,565,950	1,563,694	416,589	38,473	1,364,543	857,872
12. Hawaii	N	0	0	0	0	0	0
13. Idaho	N	0	0	0	0	0	0
14. Illinois	L	2,683,727	2,070,621	165,474	75,143	2,486,157	1,404,236
15. Indiana	L	1,366,018	1,077,417	479,123	4,499,693	1,223,571	2,005,614
16. Iowa	L	688,700	374,487	38,628	12,328	299,204	138,609
17. Kansas	L	0	0	0	0	0	0
18. Kentucky	L	358,669	222,670	329,452	34,377	291,251	297,531
19. Louisiana	N	0	0	0	0	0	0
20. Maine	N	0	0	0	0	0	0
21. Maryland	L	696,834	807,627	123,878	48,549	430,832	335,298
22. Massachusetts	N	0	0	0	0	0	0
23. Michigan	L	1,502,887	1,235,011	219,658	27,505	989,633	566,550
24. Minnesota	L	0	0	0	0	0	0
25. Mississippi	L	0	0	0	0	0	0
26. Missouri	L	0	0	0	0	0	0
27. Montana	N	0	0	0	0	0	0
28. Nebraska	L	1,775	2,438	0	0	388	68
29. Nevada	L	(270)	0	0	0	209	0
30. New Hampshire	N	0	0	0	0	0	0
31. New Jersey	N	0	0	0	0	0	0
32. New Mexico	L	1,027,857	710,300	76,864	46,451	668,989	286,809
33. New York	N	0	0	0	0	0	0
34. North Carolina	L	1,079,860	504,647	45,818	95,912	557,333	297,166
35. North Dakota	N	0	0	0	0	0	0
36. Ohio	L	6,093,224	5,068,601	1,100,666	1,704,132	3,948,262	3,104,463
37. Oklahoma	N	0	0	0	0	0	0
38. Oregon	N	0	0	0	0	0	0
39. Pennsylvania	L	2,552,708	2,080,182	601,673	157,291	2,595,814	929,631
40. Rhode Island	N	0	0	0	0	0	0
41. South Carolina	L	496,844	209,644	19,050	3,253	284,341	147,830
42. South Dakota	N	0	0	0	0	0	0
43. Tennessee	L	2,314,877	2,019,512	104,009	951,322	1,273,086	991,795
44. Texas	L	0	3	0	0	0	0
45. Utah	N	0	0	0	0	0	0
46. Vermont	N	0	0	0	0	0	0
47. Virginia	L	430,141	446,759	49,480	19,850	263,466	319,478
48. Washington	N	0	0	0	0	0	0
49. West Virginia	L	2,252,847	1,497,648	525,908	36,635	1,099,077	3,664,904
50. Wisconsin	L	169,609	260,576	436	15,675	193,494	95,935
51. Wyoming	N	0	0	0	0	0	0
52. American Samoa	N	0	0	0	0	0	0
53. Guam	N	0	0	0	0	0	0
54. Puerto Rico	N	0	0	0	0	0	0
55. U.S. Virgin Islands	N	0	0	0	0	0	0
56. Northern Mariana Islands	N	0	0	0	0	0	0
57. Canada	N	0	0	0	0	0	0
58. Aggregate Other Alien OT	XXX	0	0	0	0	0	0
59. Totals	XXX	28,059,571	21,537,043	4,585,334	8,346,992	19,115,669	16,709,772
DETAILS OF WRITE-INS							
58001.	XXX						
58002.	XXX						
58003.	XXX						
58998. Summary of remaining write-ins for Line 58 from overflow page	XXX	0	0	0	0	0	0
58999. Totals (Lines 58001 through 58003 plus 58998)(Line 58 above)	XXX	0	0	0	0	0	0

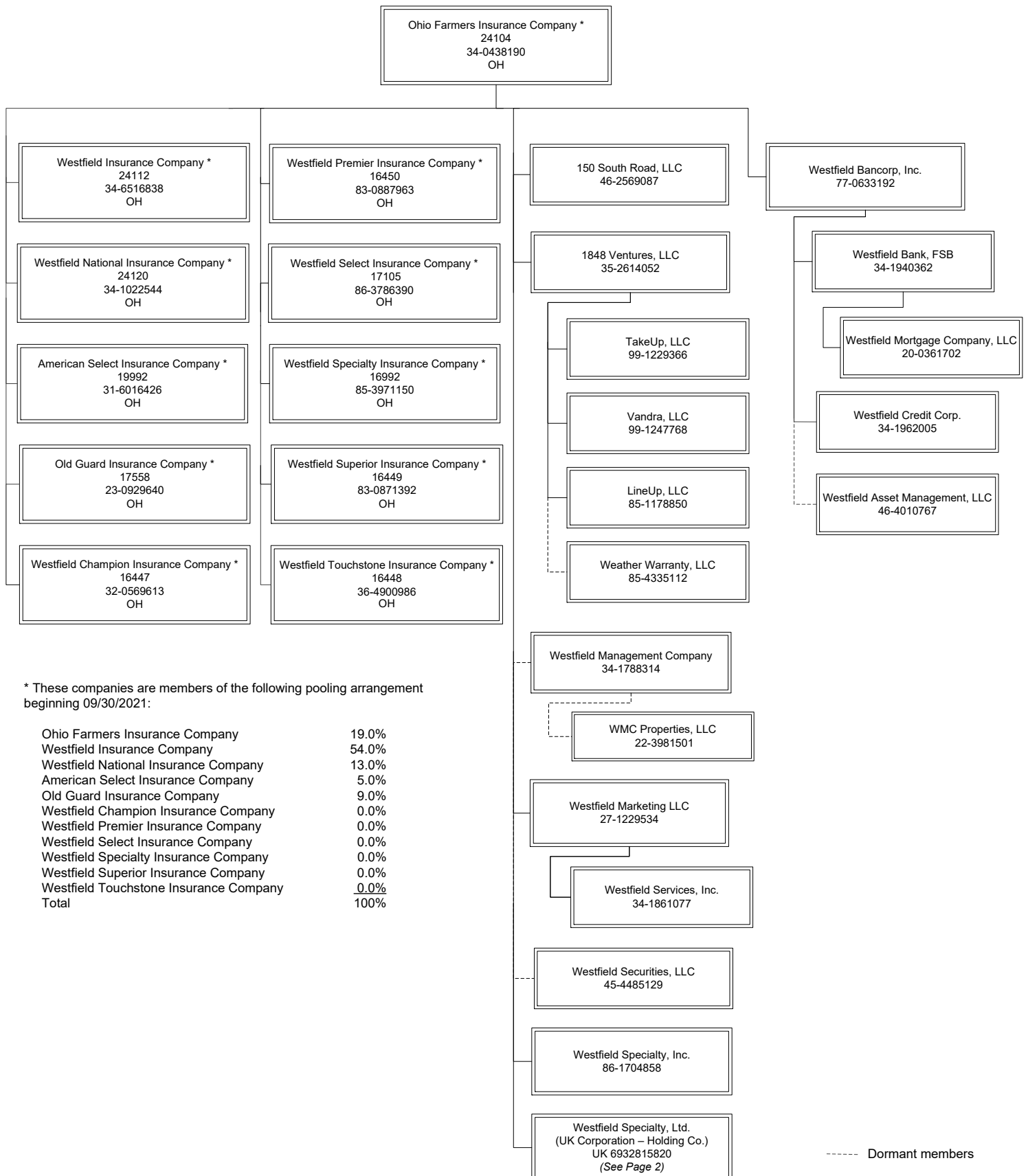
(a) Active Status Counts:

1. L - Licensed or Chartered - Licensed insurance carrier or domiciled RRG.....	28	4. Q - Qualified - Qualified or accredited reinsurer.....	0
2. R - Registered - Non-domiciled RRGs.....	0	5. D - Domestic Surplus Lines Insurer (DSLII) - Reporting entities authorized to write surplus lines in the state of domicile.....	0
3. E - Eligible - Reporting entities eligible or approved to write surplus lines in the state (other than their state of domicile - see DSLI).....	0	6. N - None of the above - Not allowed to write business in the state.....	29

STATEMENT AS OF JUNE 30, 2025 OF THE Westfield Premier Insurance Company

SCHEDULE Y – INFORMATION CONCERNING ACTIVITIES OF INSURER MEMBERS OF A HOLDING COMPANY GROUP

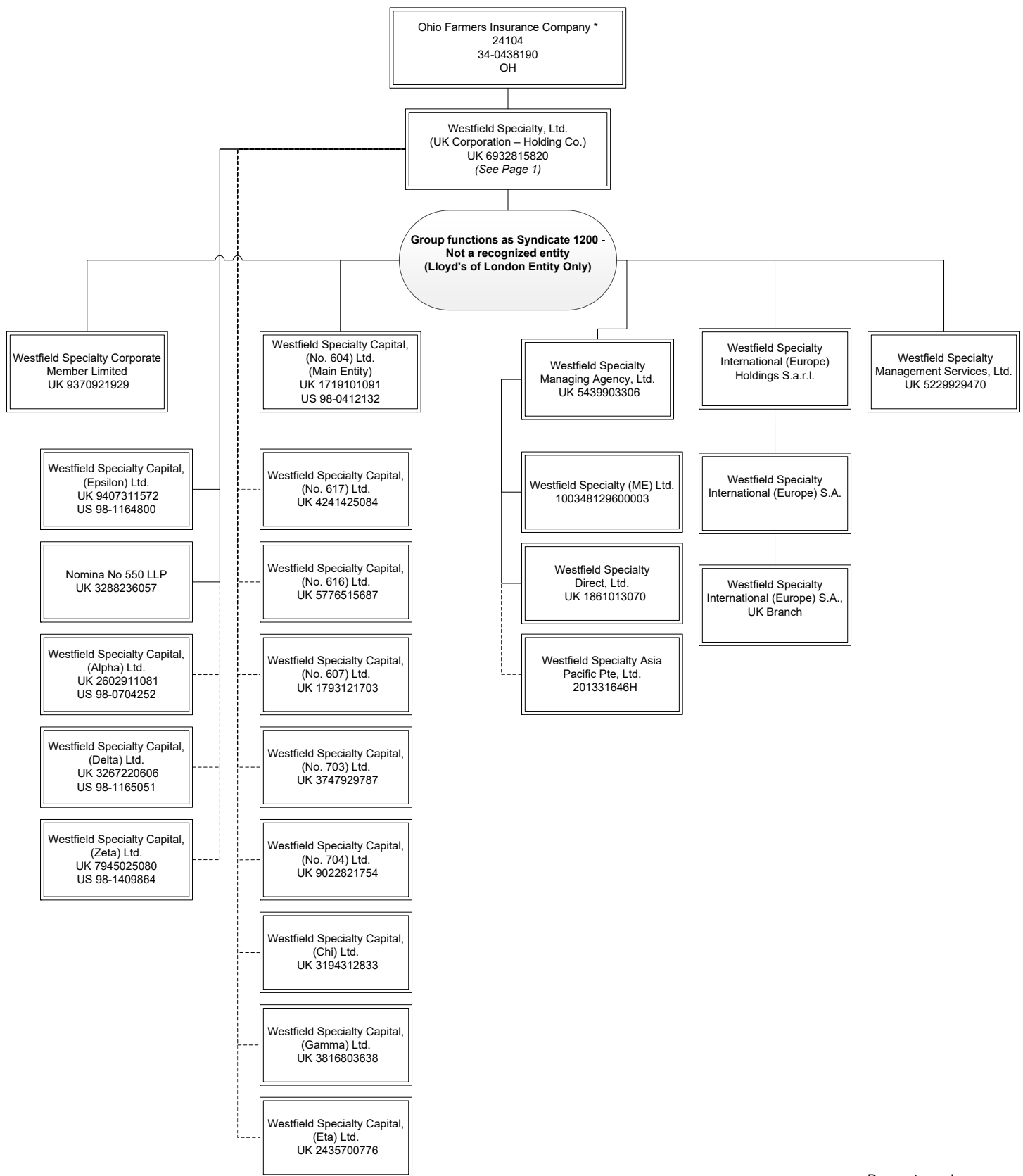
PART 1 – ORGANIZATIONAL CHART



STATEMENT AS OF JUNE 30, 2025 OF THE Westfield Premier Insurance Company

SCHEDULE Y – INFORMATION CONCERNING ACTIVITIES OF INSURER MEMBERS OF A HOLDING COMPANY GROUP

PART 1 – ORGANIZATIONAL CHART (cont.)



STATEMENT AS OF JUNE 30, 2025 OF THE Westfield Premier Insurance Company

SCHEDULE Y

PART 1A - DETAILS OF INSURANCE HOLDING COMPANY SYSTEM

1	2	3	4	5	6	7	8	9	10	11	12	13	14	15	16
Group Code	Group Name	NAIC Company Code	ID Number	Federal RSSD	CIK	Name of Securities Exchange if Publicly Traded (U.S. or International)	Names of Parent, Subsidiaries Or Affiliates	Domi-ciliary Location	Relation-ship to Reporting Entity	Directly Controlled by (Name of Entity/Person)	Type of Control (Ownership, Board, Management, Attorney-in-Fact, Influence, Other)	If Control is Ownership Provide Percentage	Ultimate Controlling Entity(ies)/Person(s)	Is an SCA Filing Re-quired? (Yes/No)	*
.0228...	OFIC & Affiliates	24104	34-0438190	0	0		Ohio Farmers Insurance Company	..OH...	UDP.....	NA	NA	0.000	NA	...NO...	...1....
.0228...	OFIC & Affiliates	24112	34-6516838	0	0		Westfield Insurance Company	..OH...	..IA.....	Ohio Farmers Insurance Company	Ownership.....	100.000	Ohio Farmers Insurance Company	...NO...	...0....
.0228...	OFIC & Affiliates	24120	34-1022544	0	0		Westfield National Insurance Company	..OH...	..IA.....	Ohio Farmers Insurance Company	Ownership.....	100.000	Ohio Farmers Insurance Company	...NO...	...0....
.0228...	OFIC & Affiliates	19992	31-6016426	0	0		American Select Insurance Company	..OH...	..IA.....	Ohio Farmers Insurance Company	Ownership.....	100.000	Ohio Farmers Insurance Company	...NO...	...0....
.0228...	OFIC & Affiliates	17558	23-0929640	0	0		Old Guard Insurance Company	..OH...	..IA.....	Ohio Farmers Insurance Company	Ownership.....	100.000	Ohio Farmers Insurance Company	...NO...	...0....
.0228...	OFIC & Affiliates	16447	32-0569613	0	0		Westfield Champion Insurance Company	..OH...	..IA.....	Ohio Farmers Insurance Company	Ownership.....	100.000	Ohio Farmers Insurance Company	...NO...	...0....
.0228...	OFIC & Affiliates	16450	83-0887963	0	0		Westfield Premier Insurance Company	..OH...	..RE.....	Ohio Farmers Insurance Company	Ownership.....	100.000	Ohio Farmers Insurance Company	...NO...	...0....
.0228...	OFIC & Affiliates	17105	86-3786390	0	0		Westfield Select Insurance Company	..OH...	..IA.....	Ohio Farmers Insurance Company	Ownership.....	100.000	Ohio Farmers Insurance Company	...NO...	...0....
.0228...	OFIC & Affiliates	16992	85-3971150	0	0		Westfield Specialty Insurance Company	..OH...	..IA.....	Ohio Farmers Insurance Company	Ownership.....	100.000	Ohio Farmers Insurance Company	...NO...	...0....
.0228...	OFIC & Affiliates	16449	83-0871392	0	0		Westfield Superior Insurance Company	..OH...	..IA.....	Ohio Farmers Insurance Company	Ownership.....	100.000	Ohio Farmers Insurance Company	...NO...	...0....
.0228...	OFIC & Affiliates	16448	36-4900986	0	0		Westfield Touchstone Insurance Company	..OH...	..IA.....	Ohio Farmers Insurance Company	Ownership.....	100.000	Ohio Farmers Insurance Company	...NO...	...0....
.0000		00000	46-2569087	0	0		150 South Road, LLC	..OH...	..NIA.....	Ohio Farmers Insurance Company	Ownership.....	100.000	Ohio Farmers Insurance Company	...NO...	...0....
.0000		00000	35-2614052	0	0		1848 Ventures, LLC	..OH...	..NIA.....	Ohio Farmers Insurance Company	Ownership.....	100.000	Ohio Farmers Insurance Company	...NO...	...0....
.0000		00000	85-1178850	0	0		LineUp, LLC	..OH...	..NIA.....	1848 Ventures, LLC	Ownership.....	100.000	Ohio Farmers Insurance Company	...NO...	...0....
.0000		00000	85-4335112	0	0		Weather Warranty, LLC	..OH...	..NIA.....	1848 Ventures, LLC	Ownership.....	100.000	Ohio Farmers Insurance Company	...NO...	...0....
.0000		00000	99-1229366	0	0		TakeUp, LLC	..OH...	..NIA.....	1848 Ventures, LLC	Ownership.....	100.000	Ohio Farmers Insurance Company	...NO...	...0....
.0000		00000	99-1247768	0	0		Vandra, LLC	..OH...	..NIA.....	1848 Ventures, LLC	Ownership.....	100.000	Ohio Farmers Insurance Company	...NO...	...0....
.0000		00000	34-1788314	0	0		Westfield Management Company	..OH...	..NIA.....	Ohio Farmers Insurance Company	Ownership.....	100.000	Ohio Farmers Insurance Company	...NO...	...0....
.0000		00000	22-3981501	0	0		WMC Properties, LLC	..OH...	..NIA.....	Westfield Management Company	Ownership.....	100.000	Ohio Farmers Insurance Company	...NO...	...0....
.0000		00000	27-1229534	0	0		Westfield Marketing LLC	..OH...	..NIA.....	Ohio Farmers Insurance Company	Ownership.....	100.000	Ohio Farmers Insurance Company	...NO...	...0....
.0000		00000	34-1861077	0	0		Westfield Services, Inc.	..OH...	..NIA.....	Westfield Marketing LLC	Ownership.....	100.000	Ohio Farmers Insurance Company	...NO...	...0....
.0000		00000	45-4485129	0	0		Westfield Securities, LLC	..OH...	..NIA.....	Ohio Farmers Insurance Company	Ownership.....	100.000	Ohio Farmers Insurance Company	...NO...	...0....
.0000		00000	86-1704858	0	0		Westfield Specialty, Inc.	..OH...	..NIA.....	Ohio Farmers Insurance Company	Ownership.....	100.000	Ohio Farmers Insurance Company	...NO...	...0....
.0000		00000	77-0633192	0	0		Westfield Bancorp, Inc.	..OH...	..NIA.....	Ohio Farmers Insurance Company	Ownership.....	100.000	Ohio Farmers Insurance Company	...YES...	...0....
.0000		00000	34-1940362	0	0		Westfield Bank, FSB	..OH...	..NIA.....	Westfield Bancorp, Inc.	Ownership.....	100.000	Ohio Farmers Insurance Company	...NO...	...0....
.0000		00000	20-0361702	0	0		Westfield Mortgage Company, LLC	..OH...	..NIA.....	Westfield Bank, FSB	Ownership.....	100.000	Ohio Farmers Insurance Company	...NO...	...0....
.0000		00000	46-4010767	0	0		Westfield Asset Management, LLC	..OH...	..NIA.....	Westfield Bancorp, Inc.	Ownership.....	100.000	Ohio Farmers Insurance Company	...NO...	...0....
.0000		00000	34-1962005	0	0		Westfield Credit Corp.	..OH...	..NIA.....	Westfield Bancorp, Inc.	Ownership.....	100.000	Ohio Farmers Insurance Company	...NO...	...0....
.0000		00000		0	0		Westfield Specialty, Ltd.	..GBR...	..NIA.....	Ohio Farmers Insurance Company	Ownership.....	100.000	Ohio Farmers Insurance Company	...YES...	...0....
.0000		00000		0	0		Westfield Specialty Corporate Member Limited	..GBR...	..NIA.....						
.0000		00000		0	0		Westfield Specialty Management Services, Ltd.	..GBR...	..NIA.....	Westfield Specialty, Ltd.	Ownership.....	100.000	Ohio Farmers Insurance Company	...NO...	...0....
.0000		00000		0	0			..GBR...	..NIA.....	Westfield Specialty, Ltd.	Ownership.....	100.000	Ohio Farmers Insurance Company	...NO...	...0....
.0000		00000		0	0		Westfield Specialty Managing Agency, Ltd.	..GBR...	..NIA.....	Westfield Specialty, Ltd.	Ownership.....	100.000	Ohio Farmers Insurance Company	...NO...	...0....
.0000		00000		0	0		Westfield Specialty (ME) Ltd.	..ARE...	..NIA.....	Westfield Specialty Managing Agency, Ltd.	Ownership.....	100.000	Ohio Farmers Insurance Company	...NO...	...0....
.0000		00000		0	0		Westfield Specialty Asia Pacific Pte, Ltd.	..SGP...	..NIA.....	Westfield Specialty Managing Agency, Ltd.	Ownership.....	100.000	Ohio Farmers Insurance Company	...NO...	...0....
.0000		00000		0	0		Westfield Specialty Direct, Ltd.	..GBR...	..NIA.....	Westfield Specialty Managing Agency, Ltd.	Ownership.....	100.000	Ohio Farmers Insurance Company	...NO...	...0....
.0000		00000	98-0412132	0	0		Westfield Specialty Capital, (No. 604) Ltd.	..GBR...	..NIA.....	Westfield Specialty, Ltd.	Ownership.....	100.000	Ohio Farmers Insurance Company	...NO...	...0....
.0000		00000		0	0		Nomina No 550 LLP	..GBR...	..NIA.....	Westfield Specialty, Ltd.	Ownership.....	100.000	Ohio Farmers Insurance Company	...NO...	...0....
.0000		00000	98-0704252	0	0		Westfield Specialty Capital, (Alpha) Ltd.	..GBR...	..NIA.....	Westfield Specialty, Ltd.	Ownership.....	100.000	Ohio Farmers Insurance Company	...NO...	...0....
.0000		00000	98-1165051	0	0		Westfield Specialty Capital, (Delta) Ltd.	..GBR...	..NIA.....	Westfield Specialty, Ltd.	Ownership.....	100.000	Ohio Farmers Insurance Company	...NO...	...0....
.0000		00000	98-1164800	0	0		Westfield Specialty Capital, (Epsilon) Ltd.	..GBR...	..NIA.....	Westfield Specialty, Ltd.	Ownership.....	100.000	Ohio Farmers Insurance Company	...NO...	...0....
.0000		00000	98-1409864	0	0		Westfield Specialty Capital, (Zeta) Ltd.	..GBR...	..NIA.....	Westfield Specialty, Ltd.	Ownership.....	100.000	Ohio Farmers Insurance Company	...NO...	...0....
.0000		00000		0	0		Westfield Specialty Capital, (No. 617) Ltd.	..GBR...	..NIA.....	Westfield Specialty, Ltd.	Ownership.....	100.000	Ohio Farmers Insurance Company	...NO...	...0....
.0000		00000		0	0		Westfield Specialty Capital, (No. 616) Ltd.	..GBR...	..NIA.....	Westfield Specialty, Ltd.	Ownership.....	100.000	Ohio Farmers Insurance Company	...NO...	...0....
.0000		00000		0	0		Westfield Specialty Capital, (No. 607) Ltd.	..GBR...	..NIA.....	Westfield Specialty, Ltd.	Ownership.....	100.000	Ohio Farmers Insurance Company	...NO...	...0....
.0000		00000		0	0		Westfield Specialty Capital, (No. 703) Ltd.	..GBR...	..NIA.....	Westfield Specialty, Ltd.	Ownership.....	100.000	Ohio Farmers Insurance Company	...NO...	...0....
.0000		00000		0	0		Westfield Specialty Capital, (No. 704) Ltd.	..GBR...	..NIA.....	Westfield Specialty, Ltd.	Ownership.....	100.000	Ohio Farmers Insurance Company	...NO...	...0....
.0000		00000		0	0		Westfield Specialty Capital, (Chi) Ltd.	..GBR...	..NIA.....	Westfield Specialty, Ltd.	Ownership.....	100.000	Ohio Farmers Insurance Company	...NO...	...0....

SCHEDULE Y
PART 1A - DETAILS OF INSURANCE HOLDING COMPANY SYSTEM

1	2	3	4	5	6	7	8	9	10	11	12	13	14	15	16
Group Code	Group Name	NAIC Company Code	ID Number	Federal RSSD	CIK	Name of Securities Exchange if Publicly Traded (U.S. or International)	Names of Parent, Subsidiaries Or Affiliates	Domi-ciliary Loca-tion	Relation-ship to Reporting Entity	Directly Controlled by (Name of Entity/Person)	Type of Control (Ownership, Board, Management, Attorney-in-Fact, Influence, Other)	If Control is Owner-ship Provide Percen-tage	Ultimate Controlling Entity(ies)/Person(s)	Is an SCA Filing Re-quired? (Yes/No)	*
. 0000 00000	0	0	Westfield Specialty Capital, (Gamma) Ltd.GBR..... NIA.....	Westfield Specialty, Ltd.	Ownership.....	. 100.000 ...	Ohio Farmers Insurance Company NO..... 0
. 0000 00000	0	0	Westfield Specialty Capital, (Eta) Ltd.GBR..... NIA.....	Westfield Specialty, Ltd.	Ownership.....	. 100.000 ...	Ohio Farmers Insurance Company NO..... 0
. 0000 00000	0	0	Westfield Specialty International (Europe) Holdings S.a.r.l.LUX..... NIA.....	Westfield Specialty, Ltd.	Ownership.....	. 100.000 ...	Ohio Farmers Insurance Company NO..... 0
. 0000 00000	0	0	Westfield Specialty International (Europe) S.A.LUX..... NIA.....	Westfield Specialty International (Europe) Holdings S.a.r.l.	Ownership.....	. 100.000 ...	Ohio Farmers Insurance Company NO..... 0
. 0000 00000	0	0	Westfield Specialty International (Europe) S.A., UK BranchGBR..... NIA.....	Westfield Specialty International (Europe) S.A.	Ownership.....	. 100.000 ...	Ohio Farmers Insurance Company NO..... 0

Asterisk	Explanation
1	No Entity(ies) or Person(s) has control of Ohio Farmers Insurance Company

PART 1 - LOSS EXPERIENCE

Line of Business		Current Year to Date			4 Prior Year to Date Direct Loss Percentage
		1 Direct Premiums Earned	2 Direct Losses Incurred	3 Direct Loss Percentage	
1.	Fire	244,713	9,779	4.0	(15.7)
2.1	Allied Lines	395,244	92,775	23.5	2.8
2.2	Multiple peril crop	0	0	0.0	0.0
2.3	Federal flood	0	0	0.0	0.0
2.4	Private crop	0	0	0.0	0.0
2.5	Private flood	0	0	0.0	0.0
3.	Farmowners multiple peril	0	0	0.0	0.0
4.	Homeowners multiple peril	0	0	0.0	0.0
5.1	Commercial multiple peril (non-liability portion)	9,858,688	1,504,972	15.3	123.2
5.2	Commercial multiple peril (liability portion)	3,524,142	1,537,299	43.6	54.4
6.	Mortgage guaranty	0	0	0.0	0.0
8.	Ocean marine	0	0	0.0	0.0
9.1	Inland marine	930,411	216,329	23.3	14.0
9.2	Pet insurance	0	0	0.0	0.0
10.	Financial guaranty	0	0	0.0	0.0
11.1	Medical professional liability - occurrence	0	0	0.0	0.0
11.2	Medical professional liability - claims-made	0	0	0.0	0.0
12.	Earthquake	21,466	0	0.0	0.0
13.1	Comprehensive (hospital and medical) individual	0	0	0.0	0.0
13.2	Comprehensive (hospital and medical) group	0	0	0.0	0.0
14.	Credit accident and health	0	0	0.0	0.0
15.1	Vision only	0	0	0.0	0.0
15.2	Dental only	0	0	0.0	0.0
15.3	Disability income	0	0	0.0	0.0
15.4	Medicare supplement	0	0	0.0	0.0
15.5	Medicaid Title XIX	0	0	0.0	0.0
15.6	Medicare Title XVIII	0	0	0.0	0.0
15.7	Long-term care	0	0	0.0	0.0
15.8	Federal employees health benefits plan	0	0	0.0	0.0
15.9	Other health	0	0	0.0	0.0
16.	Workers' compensation	1,167,030	1,483,756	127.1	52.2
17.1	Other liability - occurrence	3,163,084	244,957	7.7	98.6
17.2	Other liability - claims-made	33,938	10,506	31.0	43.0
17.3	Excess workers' compensation	0	0	0.0	0.0
18.1	Products liability - occurrence	62,164	15,180	24.4	2.9
18.2	Products liability - claims-made	0	0	0.0	0.0
19.1	Private passenger auto no-fault (personal injury protection)	0	0	0.0	0.0
19.2	Other private passenger auto liability	0	0	0.0	0.0
19.3	Commercial auto no-fault (personal injury protection)	35,175	10,802	30.7	5.8
19.4	Other commercial auto liability	3,002,326	1,340,150	44.6	74.2
21.1	Private passenger auto physical damage	0	0	0.0	0.0
21.2	Commercial auto physical damage	1,489,748	743,230	49.9	27.0
22.	Aircraft (all perils)	0	0	0.0	0.0
23.	Fidelity	8,067	1,213	15.0	2.1
24.	Surety	0	0	0.0	0.0
26.	Burglary and theft	589	1	0.2	1.2
27.	Boiler and machinery	334,345	74,754	22.4	84.8
28.	Credit	0	0	0.0	0.0
29.	International	0	0	0.0	0.0
30.	Warranty	0	0	0.0	0.0
31.	Reinsurance - Nonproportional Assumed Property	XXX	XXX	XXX	XXX
32.	Reinsurance - Nonproportional Assumed Liability	XXX	XXX	XXX	XXX
33.	Reinsurance - Nonproportional Assumed Financial Lines	XXX	XXX	XXX	XXX
34.	Aggregate write-ins for other lines of business	0	0	0.0	0.0
35.	Totals	24,271,130	7,285,703	30.0	86.4
DETAILS OF WRITE-INS					
3401.				
3402.				
3403.				
3498.	Summary of remaining write-ins for Line 34 from overflow page	0	0	0.0	0.0
3499.	Totals (Lines 3401 through 3403 plus 3498)(Line 34 above)	0	0	0.0	0.0

PART 2 - DIRECT PREMIUMS WRITTEN

Line of Business		1 Current Quarter	2 Current Year to Date	3 Prior Year Year to Date
1.	Fire	198,201	326,073	211,774
2.1	Allied Lines	343,401	552,356	352,336
2.2	Multiple peril crop	0	0	0
2.3	Federal flood	0	0	0
2.4	Private crop	0	0	0
2.5	Private flood	0	0	0
3.	Farmowners multiple peril	0	0	0
4.	Homeowners multiple peril	0	0	0
5.1	Commercial multiple peril (non-liability portion)	5,302,340	11,039,473	8,451,909
5.2	Commercial multiple peril (liability portion)	1,984,206	4,001,317	3,077,144
6.	Mortgage guaranty	0	0	0
8.	Ocean marine	0	0	0
9.1	Inland marine	606,039	1,065,876	875,615
9.2	Pet insurance	0	0	0
10.	Financial guaranty	0	0	0
11.1	Medical professional liability - occurrence	0	0	0
11.2	Medical professional liability - claims-made	0	0	0
12.	Earthquake	13,021	20,987	19,947
13.1	Comprehensive (hospital and medical) individual	0	0	0
13.2	Comprehensive (hospital and medical) group	0	0	0
14.	Credit accident and health	0	0	0
15.1	Vision only	0	0	0
15.2	Dental only	0	0	0
15.3	Disability income	0	0	0
15.4	Medicare supplement	0	0	0
15.5	Medicaid Title XIX	0	0	0
15.6	Medicare Title XVIII	0	0	0
15.7	Long-term care	0	0	0
15.8	Federal employees health benefits plan	0	0	0
15.9	Other health	0	0	0
16.	Workers' compensation	779,906	1,444,486	812,523
17.1	Other liability - occurrence	1,820,588	3,542,891	2,863,823
17.2	Other liability - claims-made	20,168	36,570	30,481
17.3	Excess workers' compensation	0	0	0
18.1	Products liability - occurrence	26,036	100,545	63,981
18.2	Products liability - claims-made	0	0	0
19.1	Private passenger auto no-fault (personal injury protection)	0	0	0
19.2	Other private passenger auto liability	0	0	0
19.3	Commercial auto no-fault (personal injury protection)	20,008	46,241	40,499
19.4	Other commercial auto liability	1,854,137	3,639,329	3,061,976
21.1	Private passenger auto physical damage	0	0	0
21.2	Commercial auto physical damage	980,266	1,847,782	1,386,921
22.	Aircraft (all perils)	0	0	0
23.	Fidelity	3,777	9,738	7,107
24.	Surety	0	0	0
26.	Burglary and theft	440	773	640
27.	Boiler and machinery	202,012	385,136	280,368
28.	Credit	0	0	0
29.	International	0	0	0
30.	Warranty	0	0	0
31.	Reinsurance - Nonproportional Assumed Property	XXX	XXX	XXX
32.	Reinsurance - Nonproportional Assumed Liability	XXX	XXX	XXX
33.	Reinsurance - Nonproportional Assumed Financial Lines	XXX	XXX	XXX
34.	Aggregate write-ins for other lines of business	0	0	0
35.	Totals	14,154,546	28,059,573	21,537,044
DETAILS OF WRITE-INS				
3401.			
3402.			
3403.			
3498.	Summary of remaining write-ins for Line 34 from overflow page	0	0	0
3499.	Totals (Lines 3401 through 3403 plus 3498)(Line 34 above)	0	0	0

STATEMENT AS OF JUNE 30, 2025 OF THE Westfield Premier Insurance Company

PART 3 (\$000 OMITTED)

LOSS AND LOSS ADJUSTMENT EXPENSE RESERVES SCHEDULE

	1	2	3	4	5	6	7	8	9	10	11	12	13
Years in Which Losses Occurred	Prior Year-End Known Case Loss and LAE Reserves	Prior Year-End IBNR Loss and LAE Reserves	Total Prior Year-End Loss and LAE Reserves (Cols. 1+2)	2025 Loss and LAE Payments on Claims Reported as of Prior Year-End	2025 Loss and LAE Payments on Claims Unreported as of Prior Year-End	Total 2025 Loss and LAE Payments (Cols. 4+5)	Q.S. Date Known Case Loss and LAE Reserves on Claims Reported and Open as of Prior Year End	Q.S. Date Known Case Loss and LAE Reserves on Claims Reported or Reopened Subsequent to Prior Year End	Q.S. Date IBNR Loss and LAE Reserves	Total Q.S. Loss and LAE Reserves (Cols.7+8+9)	Prior Year-End Known Case Loss and LAE Reserves Developed (Savings)/ Deficiency (Cols.4+7 minus Col. 1)	Prior Year-End IBNR Loss and LAE Reserves Developed (Savings)/ Deficiency (Cols. 5+8+9 minus Col. 2)	Prior Year-End Total Loss and LAE Reserve Developed (Savings)/ Deficiency (Cols. 11+12)
1. 2022 + Prior	0	0	0	0	0	0	0	0	0	0	0	0	0
2. 2023	0	0	0	0	0	0	0	0	0	0	0	0	0
3. Subtotals 2023 + Prior	0	0	0	0	0	0	0	0	0	0	0	0	0
4. 2024	0	0	0	0	0	0	0	0	0	0	0	0	0
5. Subtotals 2024 + Prior	0	0	0	0	0	0	0	0	0	0	0	0	0
6. 2025	XXX	XXX	XXX	XXX	0	0	XXX	0	0	0	XXX	XXX	XXX
7. Totals	0	0	0	0	0	0	0	0	0	0	0	0	0
8. Prior Year-End Surplus As Regards Policyholders	8,588										Col. 11, Line 7 As % of Col. 1 Line 7	Col. 12, Line 7 As % of Col. 2 Line 7	Col. 13, Line 7 As % of Col. 3 Line 7
											1. 0.0	2. 0.0	3. 0.0
											Col. 13, Line 7 As a % of Col. 1 Line 8		
											4. 0.0		

STATEMENT AS OF JUNE 30, 2025 OF THE Westfield Premier Insurance Company

SUPPLEMENTAL EXHIBITS AND SCHEDULES INTERROGATORIES

The following supplemental reports are required to be filed as part of your statement filing. However, in the event that your company does not transact the type of business for which the special report must be filed, your response of NO to the specific interrogatory will be accepted in lieu of filing a "NONE" report and a bar code will be printed below. If the supplement is required of your company but is not being filed for whatever reason enter SEE EXPLANATION and provide an explanation following the interrogatory questions.

	Response
1. Will the Trusteed Surplus Statement be filed with the state of domicile and the NAIC with this statement?	NO
2. Will Supplement A to Schedule T (Medical Professional Liability Supplement) be filed with this statement?	NO
3. Will the Medicare Part D Coverage Supplement be filed with the state of domicile and the NAIC with this statement?	NO
4. Will the Director and Officer Insurance Coverage Supplement be filed with the state of domicile and the NAIC with this statement?	YES
AUGUST FILING	
5. Will the regulator-only (non-public) Communication of Internal Control Related Matters Noted in Audit be filed with the state of domicile and electronically with the NAIC (as a regulator-only non-public document) by August 1? The response for 1st and 3rd quarters should be N/A. A NO response resulting with a bar code is only appropriate in the 2nd quarter.	YES

Explanations:

1. The data for this supplement is not required to be filed.
2. The data for this supplement is not required to be filed.
3. The data for this supplement is not required to be filed.

Bar Codes:

1. Trusteed Surplus Statement [Document Identifier 490]	
2. Supplement A to Schedule T [Document Identifier 455]	
3. Medicare Part D Coverage Supplement [Document Identifier 365]	

OVERFLOW PAGE FOR WRITE-INS

NONE

SCHEDULE A - VERIFICATION

Real Estate

	1	2
	Year to Date	Prior Year Ended December 31
1. Book/adjusted carrying value, December 31 of prior year		
2. Cost of acquired:		
2.1 Actual cost at time of acquisition		
2.2 Additional investment made after acquisition		
3. Current year change in encumbrances		
4. Total gain (loss) on disposals		
5. Deduct amounts received on disposals		
6. Total foreign exchange change in book/adjusted carrying value		
7. Deduct current year's other than temporary impairment recognized		
8. Deduct current year's depreciation		
9. Book/adjusted carrying value at the end of current period (Lines 1+2+3+4-5+6-7-8)		
10. Deduct total nonadmitted amounts		
11. Statement value at end of current period (Line 9 minus Line 10)		

SCHEDULE B - VERIFICATION

Mortgage Loans

	1	2
	Year to Date	Prior Year Ended December 31
1. Book value/recorded investment excluding accrued interest, December 31 of prior year		
2. Cost of acquired:		
2.1 Actual cost at time of acquisition		
2.2 Additional investment made after acquisition		
3. Capitalized deferred interest and other		
4. Accrual of discount		
5. Unrealized valuation increase/(decrease)		
6. Total gain (loss) on disposals		
7. Deduct amounts received on disposals		
8. Deduct amortization of premium and mortgage interest paid and commitment fees		
9. Total foreign exchange change in book value/recorded investment excluding accrued interest		
10. Deduct current year's other than temporary impairment recognized		
11. Book value/recorded investment excluding accrued interest at end of current period (Lines 1+2+3+4+5+6-7-8+9-10)		
12. Total valuation allowance		
13. Subtotal (Line 11 plus Line 12)		
14. Deduct total nonadmitted amounts		
15. Statement value at end of current period (Line 13 minus Line 14)		

SCHEDULE BA - VERIFICATION

Other Long-Term Invested Assets

	1	2
	Year to Date	Prior Year Ended December 31
1. Book/adjusted carrying value, December 31 of prior year		
2. Cost of acquired:		
2.1 Actual cost at time of acquisition		
2.2 Additional investment made after acquisition		
3. Capitalized deferred interest and other		
4. Accrual of discount		
5. Unrealized valuation increase/(decrease)		
6. Total gain (loss) on disposals		
7. Deduct amounts received on disposals		
8. Deduct amortization of premium, depreciation and proportional amortization		
9. Total foreign exchange change in book/adjusted carrying value		
10. Deduct current year's other than temporary impairment recognized		
11. Book/adjusted carrying value at end of current period (Lines 1+2+3+4+5+6-7-8+9-10)		
12. Deduct total nonadmitted amounts		
13. Statement value at end of current period (Line 11 minus Line 12)		

SCHEDULE D - VERIFICATION

Bonds and Stocks

	1	2
	Year to Date	Prior Year Ended December 31
1. Book/adjusted carrying value of bonds and stocks, December 31 of prior year	8,103,137	7,755,371
2. Cost of bonds and stocks acquired	247,343	347,469
3. Accrual of discount	11,461	21,536
4. Unrealized valuation increase/(decrease)	0	0
5. Total gain (loss) on disposals	0	0
6. Deduct consideration for bonds and stocks disposed of	0	0
7. Deduct amortization of premium	10,705	21,239
8. Total foreign exchange change in book/adjusted carrying value	0	0
9. Deduct current year's other than temporary impairment recognized	0	0
10. Total investment income recognized as a result of prepayment penalties and/or acceleration fees	0	0
11. Book/adjusted carrying value at end of current period (Lines 1+2+3+4+5-6-7+8-9+10)	8,351,236	8,103,137
12. Deduct total nonadmitted amounts	0	0
13. Statement value at end of current period (Line 11 minus Line 12)	8,351,236	8,103,137

STATEMENT AS OF JUNE 30, 2025 OF THE Westfield Premier Insurance Company

SCHEDULE D - PART 1B

Showing the Acquisitions, Dispositions and Non-Trading Activity
During the Current Quarter for all Bonds and Preferred Stock by NAIC Designation

NAIC Designation	1 Book/Adjusted Carrying Value Beginning of Current Quarter	2 Acquisitions During Current Quarter	3 Dispositions During Current Quarter	4 Non-Trading Activity During Current Quarter	5 Book/Adjusted Carrying Value End of First Quarter	6 Book/Adjusted Carrying Value End of Second Quarter	7 Book/Adjusted Carrying Value End of Third Quarter	8 Book/Adjusted Carrying Value December 31 Prior Year
ISSUER CREDIT OBLIGATIONS (ICO)								
1. NAIC 1 (a)	8,103,513	247,343	0	380	8,103,513	8,351,236	0	8,103,137
2. NAIC 2 (a)	0	0	0	0	0	0	0	0
3. NAIC 3 (a)	0	0	0	0	0	0	0	0
4. NAIC 4 (a)	0	0	0	0	0	0	0	0
5. NAIC 5 (a)	0	0	0	0	0	0	0	0
6. NAIC 6 (a)	0	0	0	0	0	0	0	0
7. Total ICO	8,103,513	247,343	0	380	8,103,513	8,351,236	0	8,103,137
ASSET-BACKED SECURITIES (ABS)								
8. NAIC 1	0	0	0	0	0	0	0	0
9. NAIC 2	0	0	0	0	0	0	0	0
10. NAIC 3	0	0	0	0	0	0	0	0
11. NAIC 4	0	0	0	0	0	0	0	0
12. NAIC 5	0	0	0	0	0	0	0	0
13. NAIC 6	0	0	0	0	0	0	0	0
14. Total ABS	0	0	0	0	0	0	0	0
PREFERRED STOCK								
15. NAIC 1	0	0	0	0	0	0	0	0
16. NAIC 2	0	0	0	0	0	0	0	0
17. NAIC 3	0	0	0	0	0	0	0	0
18. NAIC 4	0	0	0	0	0	0	0	0
19. NAIC 5	0	0	0	0	0	0	0	0
20. NAIC 6	0	0	0	0	0	0	0	0
21. Total Preferred Stock	0	0	0	0	0	0	0	0
22. Total ICO, ABS & Preferred Stock	8,103,513	247,343	0	380	8,103,513	8,351,236	0	8,103,137

(a) Book/Adjusted Carrying Value column for the end of the current reporting period includes the following amount of short-term and cash equivalent bonds by NAIC designation:

NAIC 1 \$0 ; NAIC 2 \$0 ; NAIC 3 \$0 NAIC 4 \$0 ; NAIC 5 \$0 ; NAIC 6 \$0

Schedule DA - Part 1 - Short-Term Investments

N O N E

Schedule DA - Verification - Short-Term Investments

N O N E

Schedule DB - Part A - Verification - Options, Caps, Floors, Collars, Swaps and Forwards

N O N E

Schedule DB - Part B - Verification - Futures Contracts

N O N E

Schedule DB - Part C - Section 1 - Replication (Synthetic Asset) Transactions (RSATs) Open

N O N E

Schedule DB-Part C-Section 2-Reconciliation of Replication (Synthetic Asset) Transactions Open

N O N E

Schedule DB - Verification - Book/Adjusted Carrying Value, Fair Value and Potential Exposure of
Derivatives

N O N E

SCHEDULE E - PART 2 - VERIFICATION

(Cash Equivalents)

	1	2
	Year To Date	Prior Year Ended December 31
1. Book/adjusted carrying value, December 31 of prior year	415,859	571,680
2. Cost of cash equivalents acquired	126,150	223,637
3. Accrual of discount	0	0
4. Unrealized valuation increase/(decrease)	0	0
5. Total gain (loss) on disposals	0	0
6. Deduct consideration received on disposals	257,811	379,458
7. Deduct amortization of premium	0	0
8. Total foreign exchange change in book/adjusted carrying value	0	0
9. Deduct current year's other than temporary impairment recognized	0	0
10. Book/adjusted carrying value at end of current period (Lines 1+2+3+4+5-6-7+8-9)	284,198	415,859
11. Deduct total nonadmitted amounts	0	0
12. Statement value at end of current period (Line 10 minus Line 11)	284,198	415,859

Schedule A - Part 2 - Real Estate Acquired and Additions Made

N O N E

Schedule A - Part 3 - Real Estate Disposed

N O N E

Schedule B - Part 2 - Mortgage Loans Acquired and Additions Made

N O N E

Schedule B - Part 3 - Mortgage Loans Disposed, Transferred or Repaid

N O N E

Schedule BA - Part 2 - Other Long-Term Invested Assets Acquired and Additions Made

N O N E

Schedule BA - Part 3 - Other Long-Term Invested Assets Disposed, Transferred or Repaid

N O N E

STATEMENT AS OF JUNE 30, 2025 OF THE Westfield Premier Insurance Company

SCHEDULE D - PART 3

Show All Long-Term Bonds and Stock Acquired During the Current Quarter

1	2	3	4	5	6	7	8	9
CUSIP Identification	Description	Date Acquired	Name of Vendor	Number of Shares of Stock	Actual Cost	Par Value	Paid for Accrued Interest and Dividends	NAIC Designation, NAIC Designation Modifier and SVO Admini- strative Symbol
91282C-MZ-1	UNITED STATES TREAS NTS 3.875% 04/30/3005/21/2025	StoneX Financial Inc		247,343	249,999	579	1.A
0019999999. Subtotal - Issuer Credit Obligations - U.S. Government Obligations (Exempt from RBC)					247,343	249,999	579	XXX
0489999999. Total - Issuer Credit Obligations (Unaffiliated)					247,343	249,999	579	XXX
0499999999. Total - Issuer Credit Obligations (Affiliated)					0	0	0	XXX
0509999997. Total - Issuer Credit Obligations - Part 3					247,343	249,999	579	XXX
0509999998. Total - Issuer Credit Obligations - Part 5					XXX	XXX	XXX	XXX
0509999999. Total - Issuer Credit Obligations					247,343	249,999	579	XXX
1889999999. Total - Asset-Backed Securities (Unaffiliated)					0	0	0	XXX
1899999999. Total - Asset-Backed Securities (Affiliated)					0	0	0	XXX
1909999997. Total - Asset-Backed Securities - Part 3					0	0	0	XXX
1909999998. Total - Asset-Backed Securities - Part 5					XXX	XXX	XXX	XXX
1909999999. Total - Asset-Backed Securities					0	0	0	XXX
2009999999. Total - Issuer Credit Obligations and Asset-Backed Securities					247,343	249,999	579	XXX
4509999997. Total - Preferred Stocks - Part 3					0	XXX	0	XXX
4509999998. Total - Preferred Stocks - Part 5					XXX	XXX	XXX	XXX
4509999999. Total - Preferred Stocks					0	XXX	0	XXX
5989999997. Total - Common Stocks - Part 3					0	XXX	0	XXX
5989999998. Total - Common Stocks - Part 5					XXX	XXX	XXX	XXX
5989999999. Total - Common Stocks					0	XXX	0	XXX
5999999999. Total - Preferred and Common Stocks					0	XXX	0	XXX
6009999999 - Totals					247,343	XXX	579	XXX

Schedule D - Part 4 - Long-Term Bonds and Stocks Sold, Redeemed or Otherwise Disposed Of
N O N E

Schedule DB - Part A - Section 1 - Options, Caps, Floors, Collars, Swaps and Forwards Open
N O N E

Schedule DB - Part B - Section 1 - Futures Contracts Open
N O N E

Schedule DB - Part B - Section 1B - Brokers with whom cash deposits have been made
N O N E

Schedule DB - Part D - Section 1 - Counterparty Exposure for Derivative Instruments Open
N O N E

Schedule DB - Part D-Section 2 - Collateral for Derivative Instruments Open - Pledged By
N O N E

Schedule DB - Part D-Section 2 - Collateral for Derivative Instruments Open - Pledged To
N O N E

Schedule DB - Part E - Derivatives Hedging Variable Annuity Guarantees
N O N E

Schedule DL - Part 1 - Reinvested Collateral Assets Owned
N O N E

Schedule DL - Part 2 - Reinvested Collateral Assets Owned
N O N E

Schedule E - Part 1 - Month End Depository Balances
N O N E

SCHEDULE E - PART 2 - CASH EQUIVALENTS

[illegible]



DIRECTOR AND OFFICER INSURANCE COVERAGE SUPPLEMENT