



QUARTERLY STATEMENT
AS OF JUNE 30, 2025
OF THE CONDITION AND AFFAIRS OF THE
GRANGE INDEMNITY INSURANCE COMPANY

NAIC Group Code.....0267.....0267.....NAIC Company Code.....10322.....Employer's ID Number.....31-1432675.....
(Current)(Prior)
Organized under the Laws of.....OH.....State of Domicile or Port of Entry.....OH.....
Country of Domicile.....US.....
Incorporated/Organized.....03/10/1995.....Commenced Business.....08/03/1995.....
Statutory Home Office.....671 South High Street.....Columbus, OH, US 43206-1066.....
Main Administrative Office.....671 South High Street.....
Columbus, OH, US 43206-1066.....614-445-2900.....
(Telephone Number)
Mail Address.....671 South High Street.....Columbus, OH, US 43206-1066.....
Primary Location of Books and
Records.....671 South High Street.....
Columbus, OH, US 43206-1066.....614-445-2900.....
(Telephone Number)
Internet Website Address.....www.grangeinsurance.com.....
Statutory Statement Contact.....William Charles Thorsberg.....614-445-2900.....
(Telephone Number)
thorsbergw@grangeinsurance.com.....
(E-Mail Address)(Fax Number)

OFFICERS
JOHN (NMN) AMMENDOLA, PRESIDENT & CEO.....CHERYL MCRAE LEBENS, EVP & CFO.....
BETH WILLIAMS MURPHY, EVP & SECRETARY.....
DIRECTORS OR TRUSTEES
JOHN (NMN) AMMENDOLA.....KATHIE JANE ANDRADE.....
ANNA HOLLIDAY BENSON.....JAMES MARTIN BENSON.....
MARK LEWIS BOXER.....PHILIP NELSON DAVIS.....
MICHAEL DESMOND FRAIZER.....ROBERT ENLOW HOYT.....
CHERYL MCRAE LEBENS.....MARY MARNETTE PERRY.....
THOMAS SIMRALL STEWART.....CHRISTIANNA (NMN) WOOD.....

State of Ohio.....
County of Franklin.....SS

The officers of this reporting entity being duly sworn, each depose and say that they are the described officers of said reporting entity, and that on the reporting period stated above, all of the herein described assets were the absolute property of the said reporting entity, free and clear from any liens or claims thereon, except as herein stated, and that this statement, together with related exhibits, schedules and explanations therein contained, annexed or referred to, is a full and true statement of all the assets and liabilities and of the condition and affairs of the said reporting entity as of the reporting period stated above, and of its income and deductions therefrom for the period ended, and have been completed in accordance with the NAIC Annual Statement Instructions and Accounting Practices and Procedures manual except to the extent that: (1) state law may differ; or, (2) that state rules or regulations require differences in reporting not related to accounting practices and procedures, according to the best of their information, knowledge and belief, respectively. Furthermore, the scope of this attestation by the described officers also includes the related corresponding electronic filing with the NAIC, when required, that is an exact copy (except for formatting differences due to electronic filing) of the enclosed statement. The electronic filing may be requested by various regulators in lieu of or in addition to the enclosed statement.

x [Signature] x [Signature] x [Signature]
JOHN (NMN) AMMENDOLA BETH WILLIAMS MURPHY CHERYL MCRAE LEBENS
PRESIDENT & CEO EVP & SECRETARY EVP & CFO

Subscribed and sworn to before me
this 22nd day of July, 2025
a. Is this an original filing? Yes
b. If no:
1. State the amendment number:
2. Date filed:
3. Number of pages attached:

x [Signature]



TERESA J BURCHWELL
Notary Public
State of Ohio
My Comm. Expires
April 28, 2027

ASSETS

		Current Statement Date			4 December 31 Prior Year Net Admitted Assets
		1 Assets	2 Nonadmitted Assets	3 Net Admitted Assets (Cols. 1 - 2)	
1.	Bonds	40,542,047		40,542,047	51,988,885
2.	Stocks:				
	2.1 Preferred stocks				
	2.2 Common stocks				
3.	Mortgage loans on real estate:				
	3.1 First liens				
	3.2 Other than first liens				
4.	Real estate:				
	4.1 Properties occupied by the company (less \$..... encumbrances)				
	4.2 Properties held for the production of income (less \$..... encumbrances)				
	4.3 Properties held for sale (less \$..... encumbrances)				
5.	Cash (\$.....), cash equivalents (\$.....1,205,950) and short-term investments (\$.....)	1,205,950		1,205,950	974,834
6.	Contract loans (including \$..... premium notes)				
7.	Derivatives				
8.	Other invested assets				
9.	Receivables for securities				
10.	Securities lending reinvested collateral assets				
11.	Aggregate write-ins for invested assets				
12.	Subtotals, cash and invested assets (Lines 1 to 11)	41,747,997		41,747,997	52,963,719
13.	Title plants less \$..... charged off (for Title insurers only)				
14.	Investment income due and accrued	339,970		339,970	441,107
15.	Premiums and considerations:				
	15.1 Uncollected premiums and agents' balances in the course of collection				
	15.2 Deferred premiums, agents' balances and installments booked but deferred and not yet due (including \$..... earned but unbilled premiums)				
	15.3 Accrued retrospective premiums (\$.....) and contracts subject to redetermination (\$.....)				
16.	Reinsurance:				
	16.1 Amounts recoverable from reinsurers				
	16.2 Funds held by or deposited with reinsured companies				
	16.3 Other amounts receivable under reinsurance contracts				
17.	Amounts receivable relating to uninsured plans				
18.1	Current federal and foreign income tax recoverable and interest thereon				
18.2	Net deferred tax asset				
19.	Guaranty funds receivable or on deposit				
20.	Electronic data processing equipment and software				
21.	Furniture and equipment, including health care delivery assets (\$.....)				
22.	Net adjustment in assets and liabilities due to foreign exchange rates				
23.	Receivables from parent, subsidiaries and affiliates				
24.	Health care (\$.....) and other amounts receivable				
25.	Aggregate write-ins for other-than-invested assets				
26.	Total assets excluding Separate Accounts, Segregated Accounts and Protected Cell Accounts (Lines 12 to 25)	42,087,967		42,087,967	53,404,826
27.	From Separate Accounts, Segregated Accounts and Protected Cell Accounts				
28.	Total (Lines 26 and 27)	42,087,967		42,087,967	53,404,826
Details of Write-Ins					
1101.				
1102.				
1103.				
1198.	Summary of remaining write-ins for Line 11 from overflow page				
1199.	Totals (Lines 1101 through 1103 plus 1198) (Line 11 above)				
2501.				
2502.				
2503.				
2598.	Summary of remaining write-ins for Line 25 from overflow page				
2599.	Totals (Lines 2501 through 2503 plus 2598) (Line 25 above)				

LIABILITIES, SURPLUS AND OTHER FUNDS

		1	2
		Current Statement Date	December 31, Prior Year
1.	Losses (current accident year \$.....)		–
2.	Reinsurance payable on paid losses and loss adjustment expenses		
3.	Loss adjustment expenses		
4.	Commissions payable, contingent commissions and other similar charges		
5.	Other expenses (excluding taxes, licenses and fees)	3,864	3,864
6.	Taxes, licenses and fees (excluding federal and foreign income taxes)		
7.1	Current federal and foreign income taxes (including \$.....(34,814) on realized capital gains (losses))	430,694	296,113
7.2	Net deferred tax liability	25,456	32,295
8.	Borrowed money \$..... and interest thereon \$.....		
9.	Unearned premiums (after deducting unearned premiums for ceded reinsurance of \$.....233,666,043 and including warranty reserves of \$..... and accrued accident and health experience rating refunds including \$..... for medical loss ratio rebate per the Public Health Service Act)		
10.	Advance premium		
11.	Dividends declared and unpaid:		
11.1	Stockholders		
11.2	Policyholders		
12.	Ceded reinsurance premiums payable (net of ceding commissions)		
13.	Funds held by company under reinsurance treaties	594,581	509,697
14.	Amounts withheld or retained by company for account of others		
15.	Remittances and items not allocated		
16.	Provision for reinsurance (including \$..... certified)		
17.	Net adjustments in assets and liabilities due to foreign exchange rates		
18.	Drafts outstanding		
19.	Payable to parent, subsidiaries and affiliates	35,468	84,936
20.	Derivatives		
21.	Payable for securities		
22.	Payable for securities lending		
23.	Liability for amounts held under uninsured plans		
24.	Capital notes \$..... and interest thereon \$.....		
25.	Aggregate write-ins for liabilities		
26.	Total liabilities excluding protected cell liabilities (Lines 1 through 25)	1,090,062	926,904
27.	Protected cell liabilities		
28.	Total liabilities (Lines 26 and 27)	1,090,062	926,904
29.	Aggregate write-ins for special surplus funds		
30.	Common capital stock	2,000,000	2,000,000
31.	Preferred capital stock		
32.	Aggregate write-ins for other-than-special surplus funds		
33.	Surplus notes		
34.	Gross paid in and contributed surplus	5,000,000	5,000,000
35.	Unassigned funds (surplus)	33,997,905	45,477,922
36.	Less treasury stock, at cost:		
36.1	shares common (value included in Line 30 \$.....)		
36.2	shares preferred (value included in Line 31 \$.....)		
37.	Surplus as regards policyholders (Lines 29 to 35, less 36)	40,997,905	52,477,922
38.	Totals (Page 2, Line 28, Col. 3)	42,087,967	53,404,826
Details of Write-Ins			
2501.			
2502.			
2503.			
2598.	Summary of remaining write-ins for Line 25 from overflow page		
2599.	Totals (Lines 2501 through 2503 plus 2598) (Line 25 above)		
2901.			
2902.			
2903.			
2998.	Summary of remaining write-ins for Line 29 from overflow page		
2999.	Totals (Lines 2901 through 2903 plus 2998) (Line 29 above)		
3201.			
3202.			
3203.			
3298.	Summary of remaining write-ins for Line 32 from overflow page		
3299.	Totals (Lines 3201 through 3203 plus 3298) (Line 32 above)		

STATEMENT OF INCOME

	1	2	3
	Current Year to Date	Prior Year to Date	Prior Year Ended December 31
Underwriting Income			
1. Premiums earned:			
1.1. Direct (written \$.....257,634,443)	242,689,752	237,409,275	483,496,756
1.2. Assumed (written \$.....453,257)	404,172	(36,991)	291,410
1.3. Ceded (written \$.....258,087,700)	243,093,924	237,372,284	483,788,166
1.4. Net (written \$.....0)	—	—	—
Deductions:			
2. Losses incurred (current accident year \$):			
2.1. Direct	120,489,747	149,030,698	274,370,074
2.2. Assumed	638,892	277,593	501,628
2.3. Ceded	121,128,639	149,308,291	274,871,702
2.4. Net	—	—	—
3. Loss adjustment expenses incurred			
4. Other underwriting expenses incurred			
5. Aggregate write-ins for underwriting deductions			
6. Total underwriting deductions (Lines 2 through 5)	—	—	—
7. Net income of protected cells			
8. Net underwriting gain (loss) (Line 1 minus Line 6 + Line 7)	—	—	—
Investment Income			
9. Net investment income earned	813,508	1,041,813	1,988,217
10. Net realized capital gains (losses) less capital gains tax of \$.....(34,814)	(130,969)		(223,304)
11. Net investment gain (loss) (Lines 9 + 10)	682,539	1,041,813	1,764,913
Other Income			
12. Net gain or (loss) from agents' or premium balances charged off (amount recovered \$..... amount charged off \$.....)			
13. Finance and service charges not included in premiums			
14. Aggregate write-ins for miscellaneous income			
15. Total other income (Lines 12 through 14)			
16. Net income before dividends to policyholders, after capital gains tax and before all other federal and foreign income taxes (Lines 8 + 11 + 15)	682,539	1,041,813	1,764,913
17. Dividends to policyholders			
18. Net income, after dividends to policyholders, after capital gains tax and before all other federal and foreign income taxes (Line 16 minus Line 17)	682,539	1,041,813	1,764,913
19. Federal and foreign income taxes incurred	169,394	185,712	355,471
20. Net income (Line 18 minus Line 19) (to Line 22)	513,145	856,101	1,409,441
Capital and Surplus Account			
21. Surplus as regards policyholders, December 31 prior year	52,477,922	66,086,649	66,086,649
22. Net income (from Line 20)	513,145	856,101	1,409,441
23. Net transfers (to) from Protected Cell accounts			
24. Change in net unrealized capital gains or (losses) less capital gains tax of \$.....			
25. Change in net unrealized foreign exchange capital gain (loss)			
26. Change in net deferred income tax	6,839	(236)	(18,168)
27. Change in nonadmitted assets			
28. Change in provision for reinsurance			
29. Change in surplus notes			
30. Surplus (contributed to) withdrawn from protected cells			
31. Cumulative effect of changes in accounting principles			
32. Capital changes:			
32.1. Paid in			
32.2. Transferred from surplus (Stock Dividend)			
32.3. Transferred to surplus			
33. Surplus adjustments:			
33.1. Paid in	—	—	—
33.2. Transferred to capital (Stock Dividend)			
33.3. Transferred from capital			
34. Net remittances from or (to) Home Office			
35. Dividends to stockholders	(12,000,000)		(15,000,000)
36. Change in treasury stock			
37. Aggregate write-ins for gains and losses in surplus			
38. Change in surplus as regards policyholders (Lines 22 through 37)	(11,480,017)	855,865	(13,608,727)
39. Surplus as regards policyholders, as of statement date (Lines 21 plus 38)	40,997,905	66,942,514	52,477,922
Details of Write-Ins			
0501.			
0502.			
0503.			
0598. Summary of remaining write-ins for Line 5 from overflow page			
0599. Totals (Lines 0501 through 0503 plus 0598) (Line 5 above)			
1401.			
1402.			
1403.			
1498. Summary of remaining write-ins for Line 14 from overflow page			
1499. Totals (Lines 1401 through 1403 plus 1498) (Line 14 above)			
3701.			
3702.			
3703.			
3798. Summary of remaining write-ins for Line 37 from overflow page			
3799. Totals (Lines 3701 through 3703 plus 3798) (Line 37 above)			

CASH FLOW

	1	2	3
	Current Year To Date	Prior Year To Date	Prior Year Ended December 31
Cash from Operations			
1. Premiums collected net of reinsurance	—	—	—
2. Net investment income	964,728	1,201,173	2,399,091
3. Miscellaneous income			
4. Total (Lines 1 to 3)	964,728	1,201,173	2,399,091
5. Benefit and loss related payments	—	—	—
6. Net transfers to Separate Accounts, Segregated Accounts and Protected Cell Accounts			
7. Commissions, expenses paid and aggregate write-ins for deductions	—	—	—
8. Dividends paid to policyholders			
9. Federal and foreign income taxes paid (recovered) net of \$(34,814) tax on capital gains (losses)	—	309,744	309,744
10. Total (Lines 5 through 9)	—	309,744	309,744
11. Net cash from operations (Line 4 minus Line 10)	964,728	891,429	2,089,346
Cash from Investments			
12. Proceeds from investments sold, matured or repaid:			
12.1 Bonds	13,469,816	2,981,953	21,318,885
12.2 Stocks			
12.3 Mortgage loans			
12.4 Real estate			
12.5 Other invested assets			
12.6 Net gains or (losses) on cash, cash equivalents and short-term investments			
12.7 Miscellaneous proceeds	—	11,588	11,588
12.8 Total investment proceeds (Lines 12.1 to 12.7)	13,469,816	2,993,541	21,330,473
13. Cost of investments acquired (long-term only):			
13.1 Bonds	2,238,844	3,369,094	11,455,188
13.2 Stocks			
13.3 Mortgage loans			
13.4 Real estate			
13.5 Other invested assets			
13.6 Miscellaneous applications	—	—	—
13.7 Total investments acquired (Lines 13.1 to 13.6)	2,238,844	3,369,094	11,455,188
14. Net increase/(decrease) in contract loans and premium notes			
15. Net cash from investments (Line 12.8 minus Line 13.7 and Line 14)	11,230,972	(375,553)	9,875,285
Cash from Financing and Miscellaneous Sources			
16. Cash provided (applied):			
16.1 Surplus notes, capital notes			
16.2 Capital and paid in surplus, less treasury stock	—	—	—
16.3 Borrowed funds			
16.4 Net deposits on deposit-type contracts and other insurance liabilities			
16.5 Dividends to stockholders	12,000,000		15,000,000
16.6 Other cash provided (applied)	35,416	367,416	394,680
17. Net cash from financing and miscellaneous sources (Line 16.1 through Line 16.4 minus Line 16.5 plus Line 16.6)	(11,964,584)	367,416	(14,605,320)
Reconciliation of Cash, Cash Equivalents and Short-Term Investments			
18. Net change in cash, cash equivalents and short-term investments (Line 11, plus Lines 15 and 17)	231,116	883,292	(2,640,689)
19. Cash, cash equivalents and short-term investments:			
19.1 Beginning of year	974,834	3,615,523	3,615,523
19.2 End of period (Line 18 plus Line 19.1)	1,205,950	4,498,815	974,834
Note: Supplemental disclosures of cash flow information for non-cash transactions:			
20.0001.			

Notes to the Financial Statements

1. Summary of Significant Accounting Policies and Going Concern

A. Accounting Practices

Grange Indemnity Insurance Company (the “Company”) prepares its statutory financial statements in conformity with accounting practices prescribed or permitted by The Ohio Department of Insurance (the “Department”). The Department requires that insurance companies domiciled in the State of Ohio prepare their statutory basis financial statements in accordance with the National Association of Insurance Commissioners (“NAIC”) Accounting Practices and Procedures Manual (“NAIC SAP”) subject to any deviations prescribed or permitted by the Department. The Company does not employ accounting practices that depart from the NAIC SAP.

A reconciliation of the Company’s net income and surplus between NAIC SAP and practices prescribed and permitted by the State of Ohio is shown below:

	SSAP #	F/S Page	F/S Line #	06/30/2025	12/31/2024
Net Income					
(1) State basis (Page 4, Line 20, Columns 1 & 3)	XXX	XXX	XXX	\$ 513,145	\$ 1,409,441
(2) State prescribed practices that are an increase / (decrease) from NAIC SAP:					
(3) State permitted practices that are an increase / (decrease) from NAIC SAP:					
(4) NAIC SAP (1-2-3=4)	XXX	XXX	XXX	<u>\$ 513,145</u>	<u>\$ 1,409,441</u>
Surplus					
(5) State basis (Page 3, Line 37, Columns 1 & 2)	XXX	XXX	XXX	\$ 40,997,905	\$ 52,477,922
(6) State prescribed practices that are an increase / (decrease) from NAIC SAP:					
(7) State permitted practices that are an increase / (decrease) from NAIC SAP:					
(8) NAIC SAP (5-6-7=8)	XXX	XXX	XXX	<u>\$ 40,997,905</u>	<u>\$ 52,477,922</u>

C. Accounting Policy

- (2) Bonds not backed by other loans are stated at amortized cost using the scientific method.
- (6) Asset-backed securities are stated at either amortized cost or the lower of amortized cost or fair market value. The retrospective adjustment method is used to value all securities except for interest only securities or securities where the yield had become negative, those are valued using the prospective method.

D. Going Concern

Management has evaluated the Company’s viability and has no doubt as to the Company’s ability to continue as a going concern.

2. Accounting Changes and Corrections of Errors - Not Applicable

3. Business Combinations and Goodwill - Not Applicable

4. Discontinued Operations - Not Applicable

5. Investments

- D. Asset-Backed Securities - Not Applicable
- E. Dollar Repurchase Agreements and/or Securities Lending Transactions - Not Applicable
- F. Repurchase Agreements Transactions Accounted for as Secured Borrowing - Not Applicable
- G. Reverse Repurchase Agreements Transactions Accounted for as Secured Borrowing - Not Applicable
- H. Repurchase Agreements Transactions Accounted for as a Sale - Not Applicable
- I. Reverse Repurchase Agreements Transactions Accounted for as a Sale - Not Applicable
- K. Investments in Tax Credit Structures (tax credit investments) - Not Applicable
- M. Working Capital Finance Investments - Not Applicable
- N. Offsetting and Netting of Assets and Liabilities - Not Applicable
- Q. Prepayment Penalty and Acceleration Fees - Not Applicable
- R. Reporting Entity's Share of Cash Pool by Asset Type - Not Applicable
- S. Aggregate Collateral Loans by Qualifying Investment Collateral - Not Applicable

6. Joint Ventures, Partnerships and Limited Liability Companies - Not Applicable

7. Investment Income - No Significant Changes

8. Derivative Instruments - Not Applicable

9. Income Taxes - No Significant Changes

10. Information Concerning Parent, Subsidiaries, Affiliates and Other Related Parties

- A. The Company is a 100% owned subsidiary of Grange Insurance Company (“GIC”), an insurance company domiciled in the State of Ohio and a member of the Grange Insurance Operations. The Company’s parent, GIC, and its affiliate, Integrity Insurance Company, are stock companies 100% owned by Grange Holdings, Inc. (“GHI”), which is 100% owned by Grange Mutual Holding Company.
- B. In May 2025, the Board approved a \$12.0 million dividend from the Company to GIC, which was completed in June 2025.

11. Debt - Not Applicable

Notes to the Financial Statements

12. Retirement Plans, Deferred Compensation, Postemployment Benefits and Compensated Absences and Other Postretirement Benefit Plans

- A. Defined Benefit Plan - Not Applicable
- G. Consolidated/Holding Company Plans - No Significant Changes

13. Capital and Surplus, Dividend Restrictions and Quasi-Reorganizations - No Significant Changes

14. Liabilities, Contingencies and Assessments - No Significant Changes

15. Leases - Not Applicable

16. Information About Financial Instruments With Off-Balance-Sheet Risk And Financial Instruments With Concentrations of Credit Risk - Not Applicable

17. Sale, Transfer and Servicing of Financial Assets and Extinguishments of Liabilities - Not Applicable

18. Gain or Loss to the Reporting Entity from Uninsured Plans and the Uninsured Portion of Partially Insured Plans - Not Applicable

19. Direct Premium Written/Produced by Managing General Agents/Third Party Administrators - Not Applicable

20. Fair Value Measurements

- A. Fair Value Measurement

All assets and liabilities of the Company are measured and reported at cost or amortized cost.

 - (1) Fair value measurements at reporting date - Not Applicable
 - (2) Fair value measurements in Level 3 of the fair value hierarchy - Not Applicable
 - (3) Policy on transfers into and out of Level 3 - Not Applicable
 - (4) Reported Fair Value of Investments within Level 2 and Level 3: According to statutory accounting rules, fixed income securities with a rating of NAIC 1 or 2 are reported at amortized cost. Securities with a rating of NAIC 3 thru 6, or non-investment grade ratings, are measured and reported at the lower of amortized cost or fair value on the statement of financial position. As of the end of the period, the Company did not have any bonds rated NAIC 3 thru 6, and therefore did not report any securities at fair value.
 - (5) Derivatives - Not Applicable
- B. Other Fair Value Disclosures - Not Applicable
- C. Fair Values for All Financial Instruments by Level 1, 2 and 3

Type of Financial Instrument	Aggregate Fair Value	Admitted Assets	Level 1	Level 2	Level 3	Net Asset Value (NAV)	Not Practicable (Carrying Value)
Bonds	\$..... 38,605,961	\$..... 40,542,047	\$..... —	\$..... 38,605,961	\$..... —	\$..... —	\$..... —
Money market 1,205,950 1,205,950 1,205,950 — — — —

- D. Not Practicable to Estimate Fair Value - Not Applicable
- E. Nature and Risk of Investments Reported at NAV - Not Applicable

21. Other Items - No Significant Changes

22. Events Subsequent

There have been no events after the period’s end, but before the filing of this statement, which have a material effect upon the financial condition of the Company.

23. Reinsurance - No Significant Changes

24. Retrospectively Rated Contracts & Contracts Subject to Redetermination

- A. Method Used to Estimate - Not Applicable
- B. Method Used to Record - Not Applicable
- C. Amount and Percent of Net Retrospective Premiums - Not Applicable
- D. Medical Loss Ratio Rebates Required Pursuant to the Public Health Service Act - Not Applicable
- E. Calculation of Nonadmitted Retrospective Premium - Not Applicable
- F. Risk-Sharing Provisions of the Affordable Care Act (ACA)
 - (1) Accident and health insurance premium subject to the Affordable Care Act risk-sharing provisions

Did the reporting entity write accident and health insurance premium which is subject to the Affordable Care Act risk sharing provisions? NO

- (2) Impact of Risk-Sharing Provisions of the Affordable Care Act on admitted assets, liabilities and revenue for the current year - Not Applicable
- (3) Roll-forward of prior year ACA risk-sharing provisions for the following asset (gross of any nonadmission) and liability balances, along with the reasons for adjustments to prior year balance - Not Applicable

25. Changes in Incurred Losses and Loss Adjustment Expenses

- A. Reasons for Changes in the Provision for Incurred Loss and Loss Adjustment Expenses Attributable to Insured Events of Prior Years

As a result of the intercompany pooling agreement, all reserves have been ceded based on the pooling agreement.
- B. Significant Changes in Methodologies and Assumptions Used in Calculating the Liability for Unpaid Losses and Loss Adjustment Expenses - Not Applicable

26. Intercompany Pooling Arrangements - No Significant Changes

Notes to the Financial Statements

- 27. **Structured Settlements** - Not Applicable
- 28. **Health Care Receivables** - Not Applicable
- 29. **Participating Policies** - Not Applicable
- 30. **Premium Deficiency Reserves** - No Significant Changes
- 31. **High Deductibles** - Not Applicable
- 32. **Discounting of Liabilities For Unpaid Losses or Unpaid Loss Adjustment Expenses** - Not Applicable
- 33. **Asbestos/Environmental Reserves** - Not Applicable
- 34. **Subscriber Savings Accounts** - Not Applicable
- 35. **Multiple Peril Crop Insurance** - Not Applicable
- 36. **Financial Guaranty Insurance** - Not Applicable

GENERAL INTERROGATORIES
PART 1 - COMMON INTERROGATORIES

GENERAL

- 1.1 Did the reporting entity experience any material transactions requiring the filing of Disclosure of Material Transactions with the State of Domicile, as required by the Model Act?..... NO
- 1.2 If yes, has the report been filed with the domiciliary state?.....
- 2.1 Has any change been made during the year of this statement in the charter, by-laws, articles of incorporation, or deed of settlement of the reporting entity?..... NO
- 2.2 If yes, date of change:.....
- 3.1 Is the reporting entity a member of an Insurance Holding Company System consisting of two or more affiliated persons, one or more of which is an insurer?..... YES
If yes, complete Schedule Y, Parts 1 and 1A.
- 3.2 Have there been any substantial changes in the organizational chart since the prior quarter end?..... NO
- 3.3 If the response to 3.2 is yes, provide a brief description of those changes.
.....
- 3.4 Is the reporting entity publicly traded or a member of a publicly traded group?..... NO
- 3.5 If the response to 3.4 is yes, provide the CIK (Central Index Key) code issued by the SEC for the entity/group.....
- 4.1 Has the reporting entity been a party to a merger or consolidation during the period covered by this statement?..... NO
- 4.2 If yes, provide the name of entity, NAIC Company Code, and state of domicile (use two letter state abbreviation) for any entity that has ceased to exist as a result of the merger or consolidation.

1	2	3
Name of Entity	NAIC Company Code	State of Domicile

5. If the reporting entity is subject to a management agreement, including third-party administrator(s), managing general agent(s), attorney-in-fact, or similar agreement, have there been any significant changes regarding the terms of the agreement or principals involved?..... NO
If yes, attach an explanation.
.....
- 6.1 State as of what date the latest financial examination of the reporting entity was made or is being made.....12/31/2019
- 6.2 State the as of date that the latest financial examination report became available from either the state of domicile or the reporting entity. This date should be the date of the examined balance sheet and not the date the report was completed or released.....12/31/2019
- 6.3 State as of what date the latest financial examination report became available to other states or the public from either the state of domicile or the reporting entity. This is the release date or completion date of the examination report and not the date of the examination (balance sheet date).....02/03/2021
- 6.4 By what department or departments?
Ohio.....
- 6.5 Have all financial statement adjustments within the latest financial examination report been accounted for in a subsequent financial statement filed with Departments?..... N/A
- 6.6 Have all of the recommendations within the latest financial examination report been complied with?..... YES
- 7.1 Has this reporting entity had any Certificates of Authority, licenses or registrations (including corporate registration, if applicable) suspended or revoked by any governmental entity during the reporting period?..... NO
- 7.2 If yes, give full information
.....
- 8.1 Is the company a subsidiary of a bank holding company regulated by the Federal Reserve Board?..... NO
- 8.2 If response to 8.1 is yes, please identify the name of the bank holding company.
.....
- 8.3 Is the company affiliated with one or more banks, thrifts or securities firms?..... NO
- 8.4 If response to 8.3 is yes, please provide below the names and location (city and state of the main office) of any affiliates regulated by a federal regulatory services agency [i.e. the Federal Reserve Board (FRB), the Office of the Comptroller of the Currency (OCC), the Federal Deposit Insurance Corporation (FDIC) and the Securities Exchange Commission (SEC)] and identify the affiliates primary federal regulator.

1	2	3	4	5	6
Affiliate Name	Location (City, State)	FRB	OCC	FDIC	SEC

GENERAL INTERROGATORIES
PART 1 - COMMON INTERROGATORIES

- 9.1 Are the senior officers (principal executive officer, principal financial officer, principal accounting officer or controller, or persons performing similar functions) of the reporting entity subject to a code of ethics, which includes the following standards?..... YES
- (a) Honest and ethical conduct, including the ethical handling of actual or apparent conflicts of interest between personal and professional relationships;
- (b) Full, fair, accurate, timely and understandable disclosure in the periodic reports required to be filed by the reporting entity;
- (c) Compliance with applicable governmental laws, rules and regulations;
- (d) The prompt internal reporting of violations to an appropriate person or persons identified in the code; and
- (e) Accountability for adherence to the code.
- 9.11 If the response to 9.1 is No, please explain:
- 9.2 Has the code of ethics for senior managers been amended?..... NO
- 9.21 If the response to 9.2 is Yes, provide information related to amendment(s).
- 9.3 Have any provisions of the code of ethics been waived for any of the specified officers?..... NO
- 9.31 If the response to 9.3 is Yes, provide the nature of any waiver(s).

FINANCIAL

- 10.1 Does the reporting entity report any amounts due from parent, subsidiaries or affiliates on Page 2 of this statement?..... NO
- 10.2 If yes, indicate any amounts receivable from parent included in the Page 2 amount: \$

INVESTMENT

- 11.1 Were any of the stocks, bonds, or other assets of the reporting entity loaned, placed under option agreement, or otherwise made available for use by another person? (Exclude securities under securities lending agreements.)..... NO
- 11.2 If yes, give full and complete information relating thereto:
12. Amount of real estate and mortgages held in other invested assets in Schedule BA:..... \$
13. Amount of real estate and mortgages held in short-term investments:..... \$
- 14.1 Does the reporting entity have any investments in parent, subsidiaries and affiliates?..... NO
- 14.2 If yes, please complete the following:

	1	2
	Prior Year-End Book / Adjusted Carrying Value	Current Quarter Book / Adjusted Carrying Value
14.21 Bonds	\$	\$
14.22 Preferred Stock
14.23 Common Stock
14.24 Short-Term Investments
14.25 Mortgage Loans on Real Estate
14.26 All Other
14.27 Total Investment in Parent, Subsidiaries and Affiliates (Subtotal Lines 14.21 to 14.26)
14.28 Total Investment in Parent included in Lines 14.21 to 14.26 above

- 15.1 Has the reporting entity entered into any hedging transactions reported on Schedule DB?..... NO
- 15.2 If yes, has a comprehensive description of the hedging program been made available to the domiciliary state?..... N/A
If no, attach a description with this statement.
16. For the reporting entity's security lending program, state the amount of the following as of the current statement date:
- 16.1 Total fair value of reinvested collateral assets reported on Schedule DL, Parts 1 and 2..... \$
- 16.2 Total book adjusted/carrying value of reinvested collateral assets reported on Schedule DL, Parts 1 and 2..... \$
- 16.3 Total payable for securities lending reported on the liability page..... \$
17. Excluding items in Schedule E - Part 3 - Special Deposits, real estate, mortgage loans and investments held physically in the reporting entity's offices, vaults or safety deposit boxes, were all stocks, bonds and other securities, owned throughout the current year held pursuant to a custodial agreement with a qualified bank or trust company in accordance with Section 1, III - General Examination Considerations, F. Outsourcing of Critical Functions, Custodial or Safekeeping Agreements of the NAIC *Financial Condition Examiners Handbook*?..... YES

- 17.1 For all agreements that comply with the requirements of the *Financial Condition Examiners Handbook*, complete the following:

1	2
Name of Custodian(s)	Custodian Address
Northern Trust	333 S Wabash Street WB43, Chicago, IL 60604

- 17.2 For all agreements that do not comply with the requirements of the NAIC *Financial Condition Examiners Handbook*, provide the name, location and a complete explanation:

1	2	3
Name(s)	Location(s)	Complete Explanation(s)
.....

- 17.3 Have there been any changes, including name changes, in the custodian(s) identified in 17.1 during the current quarter?..... NO
- 17.4 If yes, give full and complete information relating thereto:

GENERAL INTERROGATORIES
PART 1 - COMMON INTERROGATORIES

1	2	3	4
Old Custodian	New Custodian	Date of Change	Reason

17.5 Investment management – Identify all investment advisors, investment managers, broker/dealers, including individuals that have the authority to make investment decisions on behalf of the reporting entity. This includes both primary and sub-advisors. For assets that are managed internally by employees of the reporting entity, note as such.

1	2
Name of Firm or Individual	Affiliation
J. Christopher Montgomery.....	I.....
James Habegger.....	I.....
John Ammendola.....	I.....
Cheryl Lebens.....	I.....

17.5097 For those firms/individuals listed in the table for Question 17.5, do any firms/individuals unaffiliated with the reporting entity (i.e., designated with a "U") manage more than 10% of the reporting entity's invested assets?..... NO.....

17.5098 For firms/individuals unaffiliated with the reporting entity (i.e., designated with a "U") listed in the table for Question 17.5, does the total assets under management aggregate to more than 50% of the reporting entity's invested assets?..... NO.....

17.6 For those firms or individuals listed in the table for 17.5 with an affiliation code of "A" (affiliated) or "U" (unaffiliated), provide the information for the table below.

1	2	3	4	5
Central Registration Depository Number	Name of Firm or Individual	Legal Entity Identifier (LEI)	Registered With	Investment Management Agreement (IMA) Filed

18.1 Have all the filing requirements of the *Purposes and Procedures Manual of the NAIC Investment Analysis Office* been followed?..... YES.....

18.2 If no, list exceptions:
.....

19. By self-designating 5GI securities, the reporting entity is certifying the following elements for each self-designated 5GI security:

a. Documentation necessary to permit a full credit analysis of the security does not exist or an NAIC CRP credit rating for an FE or PL security is not available.

b. Issuer or obligor is current on all contracted interest and principal payments.

c. The insurer has an actual expectation of ultimate payment of all contracted interest and principal.

Has the reporting entity self-designated 5GI securities?..... NO.....

20. By self-designating PLGI securities, the reporting entity is certifying the following elements of each self-designated PLGI security:

a. The security was purchased prior to January 1, 2018.

b. The reporting entity is holding capital commensurate with the NAIC Designation reported for the security.

c. The NAIC Designation was derived from the credit rating assigned by an NAIC CRP in its legal capacity as a NRSRO which is shown on a current private letter rating held by the insurer and available for examination by state insurance regulators.

d. The reporting entity is not permitted to share this credit rating of the PL security with the SVO.

Has the reporting entity self-designated PLGI securities?..... NO.....

21. By assigning FE to a Schedule BA non-registered private fund, the reporting entity is certifying the following elements of each self-designated FE fund:

a. The shares were purchased prior to January 1, 2019.

b. The reporting entity is holding capital commensurate with the NAIC Designation reported for the security.

c. The security had a public credit rating(s) with annual surveillance assigned by an NAIC CRP in its legal capacity as an NRSRO prior to January 1, 2019.

d. The fund only or predominantly holds bonds in its portfolio.

e. The current reported NAIC Designation was derived from the public credit rating(s) with annual surveillance assigned by an NAIC CRP in its legal capacity as an NRSRO.

f. The public credit rating(s) with annual surveillance assigned by an NAIC CRP has not lapsed.

Has the reporting entity assigned FE to Schedule BA non-registered private funds that complied with the above criteria?..... NO.....

GENERAL INTERROGATORIES
PART 2 – PROPERTY & CASUALTY INTERROGATORIES

1. If the reporting entity is a member of a pooling arrangement, did the agreement or the reporting entity's participation change?..... NO
If yes, attach an explanation.
.....
2. Has the reporting entity reinsured any risk with any other reporting entity and agreed to release such entity from liability, in whole or in part, from any loss that may occur on the risk, or portion thereof, reinsured?..... NO
If yes, attach an explanation.
.....
- 3.1 Have any of the reporting entity's primary reinsurance contracts been canceled?..... NO
- 3.2 If yes, give full and complete information thereto
.....
- 4.1 Are any of the liabilities for unpaid losses and loss adjustment expenses other than certain workers' compensation tabular reserves (see Annual Statement Instructions pertaining to disclosure of discounting for definition of "tabular reserves,") discounted at a rate of interest greater than zero? NO
- 4.2 If yes, complete the following schedule:

			Total Discount				Discount Taken During Period			
1	2	3	4	5	6	7	8	9	10	11
Line of Business	Maximum Interest	Disc. Rate	Unpaid Losses	Unpaid LAE	IBNR	Total	Unpaid Losses	Unpaid LAE	IBNR	Total
Total.....										
5. Operating Percentages:

5.1 A&H loss percent..... %
5.2 A&H cost containment percent..... %
5.3 A&H expense percent excluding cost containment expenses..... %
- 6.1 Do you act as a custodian for health savings accounts?..... NO
- 6.2 If yes, please provide the amount of custodial funds held as of the reporting date..... \$
- 6.3 Do you act as an administrator for health savings accounts?..... NO
- 6.4 If yes, please provide the balance of the funds administered as of the reporting date..... \$
7. Is the reporting entity licensed or chartered, registered, qualified, eligible or writing business in at least two states?..... YES
- 7.1 If no, does the reporting entity assume reinsurance business that covers risks residing in at least one state other than the state of domicile of the reporting entity?.....

SCHEDULE F - CEDED REINSURANCE
Showing All New Reinsurers - Current Year to Date

1	2	3	4	5	6	7
NAIC Company Code	ID Number	Name of Reinsurer	Domiciliary Jurisdiction	Type of Reinsurer	Certified Reinsurer Rating (1 through 6)	Effective Date of Certified Reinsurer Rating
All Other Insurers						
	AA-1120236	Lloyd's Syndicate Number 2843	GBR	Authorized		

SCHEDULE T – EXHIBIT OF PREMIUMS WRITTEN

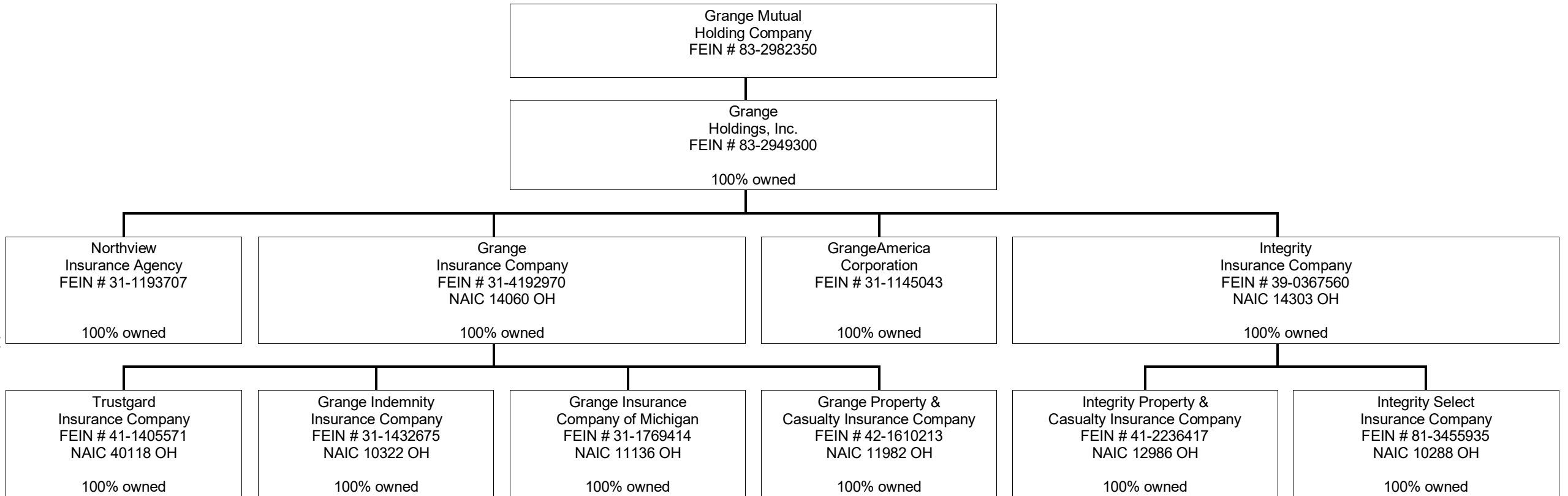
Current Year to Date - Allocated by States and Territories

			1	Direct Premiums Written		Direct Losses Paid (Deducting Salvage)		Direct Losses Unpaid	
			Active Status (a)	2	3	4	5	6	7
				Current Year To Date	Prior Year To Date	Current Year To Date	Prior Year To Date	Current Year To Date	Prior Year To Date
States, Etc.									
1.	Alabama	AL	N	-		-		-	
2.	Alaska	AK	N	-		-		-	
3.	Arizona	AZ	L	-		-		-	
4.	Arkansas	AR	N	-		-		-	
5.	California	CA	N	-		-		-	
6.	Colorado	CO	N	-		-		-	
7.	Connecticut	CT	N	-		-		-	
8.	Delaware	DE	N	-		-		-	
9.	District of Columbia	DC	N	-		-		-	
10.	Florida	FL	N	-		-		-	
11.	Georgia	GA	L	8,983,546	6,768,765	5,024,158	3,304,279	13,104,561	11,902,790
12.	Hawaii	HI	N	-		-		-	
13.	Idaho	ID	N	-		-		-	
14.	Illinois	IL	L	6,525,712	5,761,837	3,462,577	5,188,581	5,030,880	6,143,794
15.	Indiana	IN	L	2,759,322	1,900,388	3,133,915	462,313	2,758,143	3,292,608
16.	Iowa	IA	L	-		-		-	
17.	Kansas	KS	L	-		-		-	
18.	Kentucky	KY	L	2,427,312	1,977,559	704,848	431,964	2,205,139	1,955,189
19.	Louisiana	LA	N	-		-		-	
20.	Maine	ME	N	-		-		-	
21.	Maryland	MD	L	-		-		-	
22.	Massachusetts	MA	N	-		-		-	
23.	Michigan	MI	N	-		-		-	
24.	Minnesota	MN	L	-		-		-	
25.	Mississippi	MS	L	-		-		-	
26.	Missouri	MO	L	-		-		-	
27.	Montana	MT	N	-		-		-	
28.	Nebraska	NE	N	-		-		-	
29.	Nevada	NV	N	-		-		-	
30.	New Hampshire	NH	N	-		-		-	
31.	New Jersey	NJ	N	-		-		-	
32.	New Mexico	NM	N	-		-		-	
33.	New York	NY	N	-		-		-	
34.	North Carolina	NC	L	-		-		-	
35.	North Dakota	ND	N	-		-		-	
36.	Ohio	OH	L	213,615,205	211,362,739	99,359,884	125,530,368	111,900,308	119,242,057
37.	Oklahoma	OK	N	-		-		-	
38.	Oregon	OR	N	-		-		-	
39.	Pennsylvania	PA	L	3,251,803	3,329,368	2,061,776	1,040,056	4,857,426	5,843,208
40.	Rhode Island	RI	N	-		-		-	
41.	South Carolina	SC	N	-		-		-	
42.	South Dakota	SD	N	-		-		-	
43.	Tennessee	TN	L	16,831,226	12,242,031	5,093,064	8,241,285	7,271,502	7,647,458
44.	Texas	TX	N	-		-		-	
45.	Utah	UT	L	-		-		-	
46.	Vermont	VT	N	-		-		-	
47.	Virginia	VA	L	3,240,317	2,470,539	972,691	756,019	4,118,132	3,689,874
48.	Washington	WA	N	-		-		-	
49.	West Virginia	WV	L	-		-		-	
50.	Wisconsin	WI	L	-		-		-	
51.	Wyoming	WY	N	-		-		-	
52.	American Samoa	AS	N	-		-		-	
53.	Guam	GU	N	-		-		-	
54.	Puerto Rico	PR	N	-		-		-	
55.	U.S. Virgin Islands	VI	N	-		-		-	
56.	Northern Mariana Islands	MP	N	-		-		-	
57.	Canada	CAN	N	-		-		-	
58.	Aggregate Other Alien	OT	XXX	-		-		-	
59.	Totals		XXX	257,634,443	245,813,226	119,812,913	144,954,865	151,246,091	159,716,978
Details of Write-Ins									
58001.			XXX						
58002.			XXX						
58003.			XXX						
58998.	Summary of remaining write-ins for Line 58 from overflow page		XXX						
58999.	Totals (Lines 58001 through 58003 plus 58998) (Line 58 above)		XXX						

(a) Active Status Counts

1. L – Licensed or Chartered - Licensed insurance carrier or domiciled RRG	19	4. Q – Qualified - Qualified or accredited reinsurer	–
		Domestic Surplus Lines Insurer (DSLII) – Reporting entities	
2. R – Registered – Non-domiciled RRGs	–	5. D – authorized to write surplus lines in the state of domicile	–
3. E – Eligible - Reporting entities eligible or approved to write surplus lines in the state (other than the state of domicile - see DSLI)	–	6. N – None of the above - Not allowed to write business in the state	38

11



SCHEDULE Y

PART 1A - DETAILS OF INSURANCE HOLDING COMPANY SYSTEM

1	2	3	4	5	6	7	8	9	10	11	12	13	14	15	16
Group Code	Group Name	NAIC Company Code	ID Number	Federal RSSD	CIK	Name of Securities Exchange if Publicly Traded (U.S. or International)	Names of Parent, Subsidiaries Or Affiliates	Domiciliary Location	Relationship to Reporting Entity	Directly Controlled by (Name of Entity/Person)	Type of Control (Ownership, Board, Management, Attorney-in-Fact, Influence, Other)	If Control is Ownership Provide Percentage	Ultimate Controlling Entity(ies) / Person(s)	Is an SCA Filing Required? (Yes/No)	*
0267	GRANGE INSURANCE POOL	14060	31-4192970				GRANGE INSURANCE COMPANY	OH	UDP	GRANGE HOLDINGS, INC.	OWNERSHIP	100.0	GRANGE MUTUAL HOLDING COMPANY	NO	
0267	GRANGE INSURANCE POOL	10322	31-1432675				GRANGE INDEMNITY INSURANCE COMPANY	OH	RE	GRANGE INSURANCE COMPANY	OWNERSHIP	100.0	GRANGE MUTUAL HOLDING COMPANY	NO	
0267	GRANGE INSURANCE POOL	40118	41-1405571				TRUSTGARD INSURANCE COMPANY	OH	IA	GRANGE INSURANCE COMPANY	OWNERSHIP	100.0	GRANGE MUTUAL HOLDING COMPANY	NO	
0267	GRANGE INSURANCE POOL	11136	31-1769414				GRANGE INSURANCE COMPANY OF MICHIGAN	OH	IA	GRANGE INSURANCE COMPANY	OWNERSHIP	100.0	GRANGE MUTUAL HOLDING COMPANY	NO	
0267	GRANGE INSURANCE POOL	11982	42-1610213				GRANGE PROPERTY & CASUALTY INSURANCE COMPANY	OH	IA	GRANGE INSURANCE COMPANY	OWNERSHIP	100.0	GRANGE MUTUAL HOLDING COMPANY	NO	
0267	GRANGE INSURANCE POOL	14303	39-0367560				INTEGRITY INSURANCE COMPANY	OH	IA	GRANGE HOLDINGS, INC.	OWNERSHIP	100.0	GRANGE MUTUAL HOLDING COMPANY	NO	
0267	GRANGE INSURANCE POOL	10288	81-3455935				INTEGRITY SELECT INSURANCE COMPANY	OH	IA	INTEGRITY INSURANCE COMPANY	OWNERSHIP	100.0	GRANGE MUTUAL HOLDING COMPANY	NO	
0267	GRANGE INSURANCE POOL	12986	41-2236417				INTEGRITY PROPERTY & CASUALTY INSURANCE COMPANY	OH	IA	INTEGRITY INSURANCE COMPANY	OWNERSHIP	100.0	GRANGE MUTUAL HOLDING COMPANY	NO	
			31-1145043				GRANGEAMERICA	OH	NIA	GRANGE HOLDINGS, INC.	OWNERSHIP	100.0	GRANGE MUTUAL HOLDING COMPANY	NO	
			31-1193707				NORTHVIEW INSURANCE AGENCY	OH	NIA	GRANGE HOLDINGS, INC.	OWNERSHIP	100.0	GRANGE MUTUAL HOLDING COMPANY	NO	
			83-2982350				GRANGE MUTUAL HOLDING COMPANY	OH	UIP	GRANGE MUTUAL HOLDING COMPANY	Board of Directors		GRANGE MUTUAL HOLDING COMPANY	NO	
			83-2949300				GRANGE HOLDINGS, INC.	OH	UIP	GRANGE MUTUAL HOLDING COMPANY	OWNERSHIP	100.0	GRANGE MUTUAL HOLDING COMPANY	NO	
Asterisk	Explanation														

PART 1 – LOSS EXPERIENCE

Line of Business		Current Year to Date			4
		1	2	3	Prior Year to Date Direct Loss Percentage
		Direct Premiums Earned	Direct Losses Incurred	Direct Loss Percentage	
1.	Fire	53,719	(3,823)	(7.117)	20.438
2.1	Allied lines	73,874	403	0.546	61.620
2.2	Multiple peril crop	-	-	-	-
2.3	Federal flood	-	-	-	-
2.4	Private crop	-	-	-	-
2.5	Private flood	-	-	-	-
3.	Farmowners multiple peril	119,726	31,441	26.261	-
4.	Homeowners multiple peril	82,935,367	41,591,499	50.149	68.412
5.1	Commercial multiple peril (non-liability portion)	2,635,092	4,785,392	181.602	75.708
5.2	Commercial multiple peril (liability portion)	2,941,133	1,252,682	42.592	24.192
6.	Mortgage guaranty	-	-	-	-
8.	Ocean marine	-	-	-	-
9.1	Inland marine	1,082,254	189,885	17.545	11.071
9.2	Pet insurance	-	-	-	-
10.	Financial guaranty	-	-	-	-
11.1	Medical professional liability - occurrence	-	-	-	-
11.2	Medical professional liability - claims made	-	-	-	-
12.	Earthquake	250,033	-	-	-
13.1	Comprehensive (hospital and medical) individual	-	-	-	-
13.2	Comprehensive (hospital and medical) group	-	-	-	-
14.	Credit accident and health	-	-	-	-
15.1	Vision only	-	-	-	-
15.2	Dental only	-	-	-	-
15.3	Disability income	-	-	-	-
15.4	Medicare supplement	-	-	-	-
15.5	Medicaid Title XIX	-	-	-	-
15.6	Medicare Title XVIII	-	-	-	-
15.7	Long-term care	-	-	-	-
15.8	Federal employees health benefits plan	-	-	-	-
15.9	Other health	-	-	-	-
16.	Workers' compensation	119,965	36,691	30.585	-
17.1	Other liability occurrence	1,804,457	1,243,394	68.907	32.309
17.2	Other liability-claims made	-	-	-	-
17.3	Excess workers' compensation	-	-	-	-
18.1	Products liability - occurrence	3,489	1,857	53.224	(421.146)
18.2	Products liability - claims made	-	-	-	-
19.1	Private passenger auto no-fault (personal injury protection)	12,213	2,469	20.216	45.970
19.2	Other private passenger auto liability	55,083,693	27,441,077	49.817	71.386
19.3	Commercial auto no-fault (personal injury protection)	174,411	(33,121)	(18.990)	25.509
19.4	Other commercial auto liability	16,044,634	7,892,179	49.189	39.308
21.1	Private passenger auto physical damage	73,582,142	33,309,464	45.268	57.007
21.2	Commercial auto physical damage	5,773,550	2,748,258	47.601	59.770
22.	Aircraft (all perils)	-	-	-	-
23.	Fidelity	-	-	-	-
24.	Surety	-	-	-	-
26.	Burglary and theft	-	-	-	-
27.	Boiler and machinery	-	-	-	-
28.	Credit	-	-	-	-
29.	International	-	-	-	-
30.	Warranty	-	-	-	-
31.	Reinsurance - nonproportional assumed property	XXX	XXX	XXX	XXX
32.	Reinsurance - nonproportional assumed liability	XXX	XXX	XXX	XXX
33.	Reinsurance - nonproportional assumed financial lines	XXX	XXX	XXX	XXX
34.	Aggregate write-ins for other lines of business	-	-	-	-
35.	Totals	242,689,752	120,489,747	49.648	62.774
Details of Write-Ins					
3401.				
3402.				
3403.				
3498.	Summary of remaining write-ins for Line 34 from overflow page				
3499.	Summary of remaining write-ins for Line 34 from overflow page				

PART 2 – DIRECT PREMIUMS WRITTEN

		1	2	3
Line of Business		Current Quarter	Current Year to Date	Prior Year Year to Date
1.	Fire	25,833	50,310	48,558
2.1	Allied lines	47,955	83,840	85,855
2.2	Multiple peril crop	—	—	—
2.3	Federal flood	—	—	—
2.4	Private crop	—	—	—
2.5	Private flood	—	—	—
3.	Farmowners multiple peril	227,419	467,358	—
4.	Homeowners multiple peril	52,159,381	89,798,971	—
5.1	Commercial multiple peril (non-liability portion)	2,239,274	3,427,171	79,082,958
5.2	Commercial multiple peril (liability portion)	2,125,314	4,308,760	2,657,946
6.	Mortgage guaranty	—	—	2,995,333
8.	Ocean marine	—	—	—
9.1	Inland marine	616,366	1,084,280	1,063,402
9.2	Pet insurance	—	—	—
10.	Financial guaranty	—	—	—
11.1	Medical professional liability - occurrence	—	—	—
11.2	Medical professional liability - claims made	—	—	—
12.	Earthquake	151,704	259,088	246,486
13.1	Comprehensive (hospital and medical) individual	—	—	—
13.2	Comprehensive (hospital and medical) group	—	—	—
14.	Credit accident and health	—	—	—
15.1	Vision only	—	—	—
15.2	Dental only	—	—	—
15.3	Disability income	—	—	—
15.4	Medicare supplement	—	—	—
15.5	Medicaid Title XIX	—	—	—
15.6	Medicare Title XVIII	—	—	—
15.7	Long-term care	—	—	—
15.8	Federal employees health benefits plan	—	—	—
15.9	Other health	—	—	—
16.	Workers' compensation	355,597	515,173	—
17.1	Other liability occurrence	1,075,832	1,899,959	1,640,621
17.2	Other liability-claims made	—	—	—
17.3	Excess workers' compensation	—	—	—
18.1	Products liability - occurrence	7,441	9,787	10,000
18.2	Products liability - claims made	—	—	—
19.1	Private passenger auto no-fault (personal injury protection)	6,748	13,305	15,328
19.2	Other private passenger auto liability	30,527,406	57,471,403	62,164,975
19.3	Commercial auto no-fault (personal injury protection)	153,199	230,645	195,399
19.4	Other commercial auto liability	12,344,170	19,876,263	14,651,198
21.1	Private passenger auto physical damage	37,775,130	71,117,776	75,616,340
21.2	Commercial auto physical damage	4,685,631	7,020,354	5,338,827
22.	Aircraft (all perils)	—	—	—
23.	Fidelity	—	—	—
24.	Surety	—	—	—
26.	Burglary and theft	—	—	—
27.	Boiler and machinery	—	—	—
28.	Credit	—	—	—
29.	International	—	—	—
30.	Warranty	—	—	—
31.	Reinsurance - nonproportional assumed property	XXX	XXX	XXX
32.	Reinsurance - nonproportional assumed liability	XXX	XXX	XXX
33.	Reinsurance - nonproportional assumed financial lines	XXX	XXX	XXX
34.	Aggregate write-ins for other lines of business	—	—	—
35.	Totals	144,524,400	257,634,443	245,813,226
Details of Write-Ins				
3401.			
3402.			
3403.			
3498.	Summary of remaining write-ins for Line 34 from overflow page			
3499.	Summary of remaining write-ins for Line 34 from overflow page			

PART 3 (000 OMITTED)
LOSS AND LOSS ADJUSTMENT EXPENSE RESERVES SCHEDULE

	1	2	3	4	5	6	7	8	9	10	11	12	13
Years in Which Losses Occurred	Prior Year End Known Case Loss and LAE Reserves	Prior Year End IBNR Loss and LAE Reserves	Total Prior Year End Loss and LAE Reserves (Cols. 1+2)	2025 Loss and LAE Payments on Claims Reported as of Prior Year End	2025 Loss and LAE Payments on Claims Unreported as of Prior Year End	Total 2025 Loss and LAE Payments (Cols. 4+5)	Q.S. Date Known Case Loss and LAE Reserves on Claims Reported and Open as of Prior Year End	Q.S. Date Known Case Loss and LAE Reserves on Claims Reported or Reopened Subsequent to Prior Year End	Q.S. Date IBNR Loss and LAE Reserves	Total Q.S. Loss and LAE Reserves (Cols.7+8+9)	Prior Year-End Known Case Loss and LAE Reserves Developed (Savings) / Deficiency (Cols.4+7 minus Col. 1)	Prior Year-End IBNR Loss and LAE Reserves Developed (Savings) / Deficiency (Cols. 5+8+9 minus Col. 2)	Prior Year-End Total Loss and LAE Reserve Developed (Savings) / Deficiency (Cols. 11+12)
1. 2022 + Prior													
2. 2023													
3. Subtotals 2023 + prior.....													
4. 2024													
5. Subtotals 2024 + prior.....													
6. 2025	XXX	XXX	XXX	XXX			XXX				XXX	XXX	XXX
7. Totals													
8. Prior Year-End Surplus As Regards Policyholders	52,478										Col. 11, Line 7 As % of Col. 1, Line 7	Col. 12, Line 7 As % of Col. 2, Line 7	Col. 13, Line 7 As % of Col. 3, Line 7
											%	%	%
													Col. 13, Line 7 / Line 8
													%

SUPPLEMENTAL EXHIBITS AND SCHEDULES INTERROGATORIES

The following supplemental reports are required to be filed as part of your statement filing. However, in the event that your company does not transact the type of business for which the special report must be filed, your response of **NO** to the specific interrogatory will be accepted in lieu of filing a “NONE” report and a bar code will be printed below. If the supplement is required of your company but is not being filed for whatever reason enter **SEE EXPLANATION** and provide an explanation following the interrogatory questions.

	Response
1. Will the Trusteed Surplus Statement be filed with the state of domicile and the NAIC with this statement?.....	NO.....
2. Will Supplement A to Schedule T (Medical Professional Liability Supplement) be filed with this statement?.....	NO.....
3. Will the Medicare Part D Coverage Supplement be filed with the state of domicile and the NAIC with this statement?.....	NO.....
4. Will the Director and Officer Insurance Coverage Supplement be filed with the state of domicile and the NAIC with this statement?.....	NO.....



August Filing

5. Will the regulator-only (non-public) Communication of Internal Control Related Matters Noted in Audit be filed with the state of domicile and electronically with the NAIC (as a regulator-only non-public document) by August 1? The response for 1st and 3rd quarters should be N/A. A NO response resulting with a bar code is only appropriate in the 2nd quarter.	YES.....
--	----------

EXPLANATION:

1. No business written.
2. No business written.
3. No business written.
4. No business written.
5.

BARCODES:

1. 
1 0 3 2 2 2 0 2 5 4 9 0 0 0 0 2
2. 
1 0 3 2 2 2 0 2 5 4 5 5 0 0 0 2
3. 
1 0 3 2 2 2 0 2 5 3 6 5 0 0 0 2
4. 
1 0 3 2 2 2 0 2 5 5 0 5 0 0 0 2
5.

OVERFLOW PAGE FOR WRITE-INS

SCHEDULE A – VERIFICATION
Real Estate

		1	2
		Year to Date	Prior Year Ended December 31
1.	Book/adjusted carrying value, December 31 of prior year		
2.	Cost of acquired:		
2.1	Actual cost at time of acquisition		
2.2	Additional investment made after acquisition		
3.	Current year change in encumbrances		
4.	Total gain (loss) on disposals		
5.	Deduct amounts received on disposals		
6.	Total foreign exchange change in book / adjusted carrying value		
7.	Deduct current year's other-than-temporary impairment recognized		
8.	Deduct current year's depreciation		
9.	Book/adjusted carrying value at the end of current period (Lines 1+2+3+4-5+6-7-8)		
10.	Deduct total nonadmitted amounts		
11.	Statement value at end of current period (Line 9 minus Line 10)		

SCHEDULE B – VERIFICATION
Mortgage Loans

		1	2
		Year to Date	Prior Year Ended December 31
1.	Book value/recorded investment excluding accrued interest, December 31 of prior year		
2.	Cost of acquired:		
2.1	Actual cost at time of acquisition		
2.2	Additional investment made after acquisition		
3.	Capitalized deferred interest and other		
4.	Accrual of discount		
5.	Unrealized valuation increase / (decrease)		
6.	Total gain (loss) on disposals		
7.	Deduct amounts received on disposals		
8.	Deduct amortization of premium and mortgage interest points and commitment fees		
9.	Total foreign exchange change in book value/recorded investment excluding accrued interest		
10.	Deduct current year's other-than-temporary impairment recognized		
11.	Book value/recorded investment excluding accrued interest at end of current period (Lines 1+2+3+4+5+6-7-8+9-10)		
12.	Total valuation allowance		
13.	Subtotal (Line 11 plus Line 12)		
14.	Deduct total nonadmitted amounts		
15.	Statement value at end of current period (Line 13 minus Line 14)		

SCHEDULE BA - VERIFICATION
Other Long-Term Invested Assets

		1	2
		Year to Date	Prior Year Ended December 31
1.	Book/adjusted carrying value, December 31 of prior year		
2.	Cost of acquired:		
2.1	Actual cost at time of acquisition		
2.2	Additional investment made after acquisition		
3.	Capitalized deferred interest and other		
4.	Accrual of discount		
5.	Unrealized valuation increase / (decrease)		
6.	Total gain (loss) on disposals		
7.	Deduct amounts received on disposals		
8.	Deduct amortization of premium, depreciation and proportional amortization		
9.	Total foreign exchange change in book / adjusted carrying value		
10.	Deduct current year's other-than-temporary impairment recognized		
11.	Book/adjusted carrying value at end of current period (Lines 1+2+3+4+5+6-7-8+9-10)		
12.	Deduct total nonadmitted amounts		
13.	Statement value at end of current period (Line 11 minus Line 12)		

SCHEDULE D - VERIFICATION
Bonds and Stocks

		1	2
		Year to Date	Prior Year Ended December 31
1.	Book/adjusted carrying value of bonds and stocks, December 31 of prior year	51,988,885	62,384,253
2.	Cost of bonds and stocks acquired	2,238,844	11,455,188
3.	Accrual of discount	32,571	67,309
4.	Unrealized valuation increase / (decrease)		
5.	Total gain (loss) on disposals	(165,783)	(282,663)
6.	Deduct consideration for bonds and stocks disposed of	13,469,816	21,318,885
7.	Deduct amortization of premium	82,654	316,316
8.	Total foreign exchange change in book / adjusted carrying value		
9.	Deduct current year's other-than-temporary impairment recognized		
10.	Total investment income recognized as a result of prepayment penalties and/or acceleration fees		
11.	Book/adjusted carrying value at end of current period (Lines 1+2+3+4+5-6-7+8-9+10)	40,542,047	51,988,885
12.	Deduct total nonadmitted amounts		
13.	Statement value at end of current period (Line 11 minus Line 12)	40,542,047	51,988,885

SCHEDULE D – PART 1B

Showing the Acquisitions, Dispositions and Non-Trading Activity
During the Current Quarter for all Bonds and Preferred Stock by NAIC Designation

	1	2	3	4	5	6	7	8
NAIC Designation	Book / Adjusted Carrying Value Beginning of Current Quarter	Acquisitions During Current Quarter	Dispositions During Current Quarter	Non-Trading Activity During Current Quarter	Book / Adjusted Carrying Value End of First Quarter	Book / Adjusted Carrying Value End of Second Quarter	Book / Adjusted Carrying Value End of Third Quarter	Book / Adjusted Carrying Value December 31 Prior Year
Issuer Credit Obligations (ICO)								
1. NAIC 1 (a).....	46,353,430	2,238,844	12,107,849	226,885	46,353,430	36,711,309		47,490,427
2. NAIC 2 (a).....	4,080,298			(249,560)	4,080,298	3,830,738		4,498,458
3. NAIC 3 (a).....								
4. NAIC 4 (a).....								
5. NAIC 5 (a).....								
6. NAIC 6 (a).....								
7. Total ICO.....	50,433,728	2,238,844	12,107,849	(22,675)	50,433,728	40,542,047		51,988,885
Asset-Backed Securities (ABS)								
8. NAIC 1.....								
9. NAIC 2.....								
10. NAIC 3.....								
11. NAIC 4.....								
12. NAIC 5.....								
13. NAIC 6.....								
14. Total ABS.....								
Preferred Stock								
15. NAIC 1.....								
16. NAIC 2.....								
17. NAIC 3.....								
18. NAIC 4.....								
19. NAIC 5.....								
20. NAIC 6.....								
21. Total Preferred Stock.....								
22. Total ICO, ABS, & Preferred Stock.....	50,433,728	2,238,844	12,107,849	(22,675)	50,433,728	40,542,047		51,988,885

(a) Book/Adjusted Carrying Value column for the end of the current reporting period includes the following amount of short-term and cash equivalent bonds by NAIC designation:
NAIC 1 \$; NAIC 2 \$; NAIC 3 \$; NAIC 4 \$; NAIC 5 \$; NAIC 6 \$

(SI-03) Schedule DA - Part 1

NONE

(SI-03) Schedule DA - Verification - Short-Term Investments

NONE

(SI-04) Schedule DB - Part A - Verification - Options, Caps, Floors, Collars, Swaps and Forwards

NONE

(SI-04) Schedule DB - Part B - Verification - Futures Contracts

NONE

(SI-05) Schedule DB - Part C - Section 1

NONE

(SI-06) Schedule DB - Part C - Section 2

NONE

(SI-07) Schedule DB - Verification

NONE

SCHEDULE E – PART 2 – VERIFICATION
(Cash Equivalents)

		1	2
		Year to Date	Prior Year Ended December 31
1.	Book/adjusted carrying value, December 31 of prior year.....	974,834	3,615,523
2.	Cost of cash equivalents acquired.....	14,507,654	22,657,018
3.	Accrual of discount.....		
4.	Unrealized valuation increase / (decrease).....		
5.	Total gain (loss) on disposals.....		
6.	Deduct consideration received on disposals.....	14,276,538	25,297,707
7.	Deduct amortization of premium.....		
8.	Total foreign exchange change in book / adjusted carrying value.....		
9.	Deduct current year's other-than-temporary impairment recognized.....		
10.	Book/adjusted carrying value at end of current period (Lines 1+2+3+4+5-6-7+8-9).....	1,205,950	974,834
11.	Deduct total nonadmitted amounts.....		
12.	Statement value at end of current period (Line 10 minus Line 11).....	1,205,950	974,834

(E-01) Schedule A - Part 2
NONE

(E-01) Schedule A - Part 3
NONE

(E-02) Schedule B - Part 2
NONE

(E-02) Schedule B - Part 3
NONE

(E-03) Schedule BA - Part 2
NONE

(E-03) Schedule BA - Part 3
NONE

SCHEDULE D - PART 3

Show All Long-Term Bonds and Stock Acquired During the Current Quarter

1	2	3	4	5	6	7	8	9
CUSIP Identification	Description	Date Acquired	Name of Vendor	Number of Shares of Stock	Actual Cost	Par Value	Paid for Accrued Interest and Dividends	NAIC Designation, NAIC Designation Modifier and SVO Administrative Symbol
Issuer Credit Obligations: U.S. Government Obligations (Exempt from RBC)								
912810-UL-0	US TREASURY N/B 5 15/05/45	06/25/2025	STIFEL NICOLAUS AND CO	XXX	2,238,844	2,200,000	12,554	1.A
0019999999 – Issuer Credit Obligations: U.S. Government Obligations (Exempt from RBC)					2,238,844	2,200,000	12,554	XXX
0489999999 – Subtotal - Issuer Obligations (Unaffiliated)					2,238,844	2,200,000	12,554	XXX
0509999997 – Subtotals - Issuer Credit Obligations - Part 3					2,238,844	2,200,000	12,554	XXX
0509999998 – Summary Item from Part 5 for Issuer Credit Obligations (N/A to Quarterly)					XXX	XXX	XXX	XXX
0509999999 – Subtotals - Issuer Credit Obligations					2,238,844	2,200,000	12,554	XXX
2009999999 – Subtotals - Issuer Credit Obligations and Asset-Backed Securities					2,238,844	2,200,000	12,554	XXX
6009999999 – Totals					2,238,844	XXX	12,554	XXX

SCHEDULE D - PART 4

Show All Long-Term Bonds and Stock Sold, Redeemed or Otherwise Disposed of During the Current Quarter

1	2	3	4	5	6	7	8	9	Change in Book / Adjusted Carrying Value					15	16	17	18	19	20	21
									10	11	12	13	14							
CUSIP Identification	Description	Disposal Date	Name of Purchaser	Number of Shares of Stock	Consideration	Par Value	Actual Cost	Prior Year Book / Adjusted Carrying Value	Unrealized Valuation Increase / (Decrease)	Current Year's (Amortization) / Accretion	Current Year's Other-Than- Temporary Impairment Recognized	Total Change in B. / A.C.V. (10+11-12)	Total Foreign Exchange Change in B./A.C.V.	Book / Adjusted Carrying Value at Disposal Date	Foreign Exchange Gain (Loss) on Disposal	Realized Gain (Loss) on Disposal	Total Gain (Loss) on Disposal	Bond Interest / Stock Dividends Received During Year	Stated Contractual Maturity Date	NAIC Designation, NAIC Designation Modifier and SVO Administrative Symbol
Issuer Credit Obligations: U.S. Government Obligations (Exempt from RBC)																				
91282C-JC-6	US TREASURY N/B 4.625 15/10/26	06/03/2025	STIFEL NICOLAUS AND CO	XXX	8,055,625	8,000,000	8,086,094	8,079,437		(18,365)		(18,365)		8,061,071		(5,446)	(5,446)	235,546	10/15/2026	1.A
0019999999 – Issuer Credit Obligations: U.S. Government Obligations (Exempt from RBC)					8,055,625	8,000,000	8,086,094	8,079,437		(18,365)		(18,365)		8,061,071		(5,446)	(5,446)	235,546	XXX	XXX
Issuer Credit Obligations: Other U.S. Government Obligations (Not Exempt from RBC)																				
3130AR-UL-3	FEDERAL HOME LOAN BANK 3.5 18/05/27	06/17/2025	STIFEL NICOLAUS AND CO	XXX	492,270	500,000	500,000	500,000						500,000		(7,730)	(7,730)	10,208	05/18/2027	1.B FE
3130B0-V9-7	FEDERAL HOME LOAN BANK 5.1 12/04/32	06/17/2025	STIFEL NICOLAUS AND CO	XXX	647,451	645,000	645,000	645,000						645,000		2,451	2,451	22,478	04/12/2032	1.B FE
3133EM-V7-4	FEDERAL FARM CREDIT BANK 1.4 26/04/29	05/13/2025	D. A. DAVIDSON & CO. INC. DADAVINC	XXX	672,945	750,000	744,653	746,875		261		261		747,136		(74,191)	(74,191)	5,775	04/26/2029	1.B FE
3135GA-4U-2	FANNIE MAE 1 19/05/28	06/17/2025	STIFEL NICOLAUS AND CO	XXX	457,575	500,000	500,000	500,000						500,000		(42,425)	(42,425)	2,903	05/19/2028	1.B FE
3136G4-ZU-0	FANNIE MAE 1 28/01/28	05/20/2025	STIFEL NICOLAUS AND CO	XXX	460,912	500,000	500,000	500,000						500,000		(39,089)	(39,089)	4,069	01/28/2028	1.B FE
0029999999 – Issuer Credit Obligations: Other U.S. Government Obligations (Not Exempt from RBC)					2,731,153	2,895,000	2,889,653	2,891,875		261		261		2,892,136		(160,983)	(160,983)	45,434	XXX	XXX
Issuer Credit Obligations: Municipal Bonds - General Obligations (Direct and Guaranteed)																				
678713-GL-6	OKLAHOMA CNTY OK INDEP SCH DIS 4.75	05/01/2025	MATURITY	XXX	400,000	400,000	402,184	400,393		(393)		(393)		400,000				9,500	05/01/2025	1.E FE
0049999999 – Issuer Credit Obligations: Municipal Bonds - General Obligations (Direct and Guaranteed)					400,000	400,000	402,184	400,393		(393)		(393)		400,000				9,500	XXX	XXX
Issuer Credit Obligations: Municipal Bonds - Special Revenues																				
917567-AY-5	UTAH ST TRANSIT AUTH SALES TAX 5	06/15/2025	Conversion at 100.000	XXX	500,000	500,000	602,330	505,180		(5,180)		(5,180)		500,000				12,500	06/15/2038	1.C FE
93978H-MC-6	WASHINGTON ST HLTH CARE FACS A 5	06/25/2025	Conversion at 100.000	XXX	250,000	250,000	295,790	251,332		(1,332)		(1,332)		250,000				9,167	10/01/2030	1.C FE
0059999999 – Issuer Credit Obligations: Municipal Bonds - Special Revenues					750,000	750,000	898,120	756,512		(6,512)		(6,512)		750,000				21,667	XXX	XXX
Issuer Credit Obligations: Corporate Bonds (Unaffiliated)																				
129268-AB-4	CALEDONIA GENERA 1.95 28/02/34	06/30/2025	MBS PAYDOWN	XXX	4,642	4,642	4,745	4,719		(7)		(7)		4,642				33	02/28/2034	1.D FE
0089999999 – Issuer Credit Obligations: Corporate Bonds (Unaffiliated)					4,642	4,642	4,745	4,719		(7)		(7)		4,642				33	XXX	XXX
0489999999 – Subtotal - Issuer Obligations (Unaffiliated)					11,941,420	12,049,642	12,280,795	12,132,935		(25,016)		(25,016)		12,107,849		(166,430)	(166,430)	312,180	XXX	XXX
0509999997 – Subtotals - Issuer Credit Obligations - Part 4					11,941,420	12,049,642	12,280,795	12,132,935		(25,016)		(25,016)		12,107,849		(166,430)	(166,430)	312,180	XXX	XXX
0509999998 – Summary Item from Part 5 for Issuer Credit Obligations (N/A to Quarterly)					XXX	XXX	XXX	XXX	XXX	XXX	XXX	XXX	XXX	XXX	XXX	XXX	XXX	XXX	XXX	XXX
0509999999 – Subtotals - Issuer Credit Obligations					11,941,420	12,049,642	12,280,795	12,132,935		(25,016)		(25,016)		12,107,849		(166,430)	(166,430)	312,180	XXX	XXX
2009999999 – Subtotals - Issuer Credit Obligations and Asset-Backed Securities					11,941,420	12,049,642	12,280,795	12,132,935		(25,016)		(25,016)		12,107,849		(166,430)	(166,430)	312,180	XXX	XXX
6009999999 – Totals					11,941,420	XXX	12,280,795	12,132,935		(25,016)		(25,016)		12,107,849		(166,430)	(166,430)	312,180	XXX	XXX

(E-06) Schedule DB - Part A - Section 1

NONE

(E-06) Schedule DB - Part A - Section 1 - Description of Hedged Risk(s)

NONE

(E-06) Schedule DB - Part A - Section 1 - Financial or Economic Impact of The Hedge at the End of the Reporting Period

NONE

(E-07) Schedule DB - Part B - Section 1

NONE

(E-07) Schedule DB - Part B - Section 1 - Broker Name

NONE

(E-07) Schedule DB - Part B - Section 1 - Description of Hedged Risk(s)

NONE

(E-07) Schedule DB - Part B - Section 1 - Financial or Economic Impact of The Hedge at the End of the Reporting Period

NONE

(E-08) Schedule DB - Part D - Section 1

NONE

(E-09) Schedule DB - Part D - Section 2 - Collateral Pledged By Reporting Entity

NONE

(E-09) Schedule DB - Part D - Section 2 - Collateral Pledged To Reporting Entity

NONE

(E-10) Schedule DB - Part E

NONE

(E-11) Schedule DL - Part 1

NONE

(E-12) Schedule DL - Part 2

NONE

(E-13) Schedule E - Part 1

NONE

SCHEDULE E - PART 2 - CASH EQUIVALENTS

Show Investments Owned End of Current Quarter

1	2	3	4	5	6	7	8	9
CUSIP	Description	Restricted Asset Code	Date Acquired	Stated Rate of Interest	Maturity Date	Book / Adjusted Carrying Value	Amount of Interest Due and Accrued	Amount Received During Year
Exempt Money Market Mutual Funds – as Identified by SVO								
665279-87-3	NORTHERN INSTITUTIONAL TREASURY PORTFOLI.....		06/30/2025		XXX.....	1,205,950	13,866	55,313
8209999999 – Exempt Money Market Mutual Funds – as Identified by SVO.....						1,205,950	13,866	55,313
8589999999 – Total Cash Equivalents (Unaffiliated).....						1,205,950	13,866	55,313
8609999999 – Total Cash Equivalents						1,205,950	13,866	55,313