



PROPERTY AND CASUALTY COMPANIES - ASSOCIATION EDITION

QUARTERLY STATEMENT

AS OF MARCH 31, 2025

OF THE CONDITION AND AFFAIRS OF THE

SCOTTSDALE INSURANCE COMPANY

NAIC Group Code01400140NAIC Company Code41297Employer's ID Number31-1024978
(Current)(Prior)

Organized under the Laws ofOHIO, State of Domicile or Port of EntryOH

Country of DomicileUnited States of America

Incorporated/Organized01/04/1982Commenced Business07/01/1982

Statutory Home OfficeONE WEST NATIONWIDE BLVD.,COLUMBUS, OH, US 43215-2220
(Street and Number)(City or Town, State, Country and Zip Code)

Main Administrative Office18700 N. HAYDEN ROAD
(Street and Number)
SCOTTSDALE, AZ, US 85255480-365-4000
(City or Town, State, Country and Zip Code)(Area Code) (Telephone Number)

Mail AddressONE WEST NATIONWIDE BLVD., 1-14-301COLUMBUS, OH, US 43215-2220
(Street and Number or P.O. Box)(City or Town, State, Country and Zip Code)

Primary Location of Books and RecordsONE WEST NATIONWIDE BLVD., 1-14-301
(Street and Number)
COLUMBUS, OH, US 43215-2220614-249-1545
(City or Town, State, Country and Zip Code)(Area Code) (Telephone Number)

Internet Website AddressWWW.NATIONWIDE.COM

Statutory Statement ContactANDREA D. IACOBONI614-249-1545
(Name)(Area Code) (Telephone Number)
FINRPT@NATIONWIDE.COM866-315-1430
(E-mail Address)(FAX Number)

OFFICERS

PRESIDENTRUSSELL MARK JOHNSTONVP & TREASURERKIMBERLY ELLEN LACKER

SVP & SECRETARYDENISE LYNN SKINGLE

OTHER

VINITA JANE CLEMENTS, EVP-CHIEF HRO

KEVIN PAUL SCHEIDERER, VP-CHIEF TAX OFFC

DIRECTORS OR TRUSTEES

MARK ALLEN BERVENOSCAR GUERRERO
CASEY ELLEN KEMPTONDAVID NEIL NELSON

RUSSELL MARK JOHNSTON

State ofOHIOSS:

County ofFRANKLIN

The officers of this reporting entity being duly sworn, each depose and say that they are the described officers of said reporting entity, and that on the reporting period stated above, all of the herein described assets were the absolute property of the said reporting entity, free and clear from any liens or claims thereon, except as herein stated, and that this statement, together with related exhibits, schedules and explanations therein contained, annexed or referred to, is a full and true statement of all the assets and liabilities and of the condition and affairs of the said reporting entity as of the reporting period stated above, and of its income and deductions therefrom for the period ended, and have been completed in accordance with the NAIC Annual Statement Instructions and Accounting Practices and Procedures manual except to the extent that: (1) state law may differ; or, (2) that state rules or regulations require differences in reporting not related to accounting practices and procedures, according to the best of their information, knowledge and belief, respectively. Furthermore, the scope of this attestation by the described officers also includes the related corresponding electronic filing with the NAIC, when required, that is an exact copy (except for formatting differences due to electronic filing) of the enclosed statement. The electronic filing may be requested by various regulators in lieu of or in addition to the enclosed statement.

RUSSELL MARK JOHNSTON
PRESIDENT

DENISE LYNN SKINGLE
SVP & SECRETARY

KIMBERLY ELLEN LACKER
VP & TREASURER

Subscribed and sworn to before me this13th day ofMAY 2025

- a. Is this an original filing? Yes [X] No []
- b. If no,
1. State the amendment number.....
2. Date filed
3. Number of pages attached.....



ANDREW SWARTZEL
NOTARY PUBLIC • STATE OF OHIO
Comm. No. 2021-RE-839107
My Commission Expires Oct. 24, 2026

STATEMENT AS OF MARCH 31, 2025 OF THE SCOTTSDALE INSURANCE COMPANY

ASSETS

	Current Statement Date			4 December 31 Prior Year Net Admitted Assets
	1 Assets	2 Nonadmitted Assets	3 Net Admitted Assets (Cols. 1 – 2)	
1. Bonds	197,396,247		197,396,247	202,160,335
2. Stocks:				
2.1 Preferred stocks				
2.2 Common stocks	71,268,409		71,268,409	70,341,015
3. Mortgage loans on real estate:				
3.1 First liens				
3.2 Other than first liens.....				
4. Real estate:				
4.1 Properties occupied by the company (less \$ encumbrances)				
4.2 Properties held for the production of income (less \$ encumbrances)				
4.3 Properties held for sale (less \$ encumbrances)				
5. Cash (\$(58,504,785)), cash equivalents (\$174,703) and short-term investments (\$)	(58,330,082)		(58,330,082)	(51,709,306)
6. Contract loans (including \$ premium notes)				
7. Derivatives				
8. Other invested assets				
9. Receivables for securities				
10. Securities lending reinvested collateral assets	1,949,236		1,949,236	2,451,367
11. Aggregate write-ins for invested assets				
12. Subtotals, cash and invested assets (Lines 1 to 11)	212,283,810		212,283,810	223,243,411
13. Title plants less \$ charged off (for Title insurers only)				
14. Investment income due and accrued	2,306,616		2,306,616	2,386,440
15. Premiums and considerations:				
15.1 Uncollected premiums and agents' balances in the course of collection	624,050,925	28,523,651	595,527,274	610,647,093
15.2 Deferred premiums, agents' balances and installments booked but deferred and not yet due (including \$ earned but unbilled premiums)	312,421,614		312,421,614	324,155,297
15.3 Accrued retrospective premiums (\$) and contracts subject to redetermination (\$)				
16. Reinsurance:				
16.1 Amounts recoverable from reinsurers	204,202,660		204,202,660	219,536,857
16.2 Funds held by or deposited with reinsured companies	646,057		646,057	583,638
16.3 Other amounts receivable under reinsurance contracts	118,988,956		118,988,956	89,838,716
17. Amounts receivable relating to uninsured plans				
18.1 Current federal and foreign income tax recoverable and interest thereon				
18.2 Net deferred tax asset	7,422,669		7,422,669	6,147,823
19. Guaranty funds receivable or on deposit				
20. Electronic data processing equipment and software				
21. Furniture and equipment, including health care delivery assets (\$)				
22. Net adjustment in assets and liabilities due to foreign exchange rates				
23. Receivables from parent, subsidiaries and affiliates	61,005,354		61,005,354	77,660,715
24. Health care (\$) and other amounts receivable				
25. Aggregate write-ins for other than invested assets	2,596,767	2,644,750	(47,983)	(263,783)
26. Total assets excluding Separate Accounts, Segregated Accounts and Protected Cell Accounts (Lines 12 to 25)	1,545,925,428	31,168,401	1,514,757,027	1,553,936,207
27. From Separate Accounts, Segregated Accounts and Protected Cell Accounts				
28. Total (Lines 26 and 27)	1,545,925,428	31,168,401	1,514,757,027	1,553,936,207
DETAILS OF WRITE-INS				
1101.				
1102.				
1103.				
1198. Summary of remaining write-ins for Line 11 from overflow page				
1199. Totals (Lines 1101 through 1103 plus 1198)(Line 11 above)				
2501. Miscellaneous assets	(47,983)		(47,983)	(263,783)
2502. Other assets nonadmitted	2,644,750	2,644,750		
2503.				
2598. Summary of remaining write-ins for Line 25 from overflow page				
2599. Totals (Lines 2501 through 2503 plus 2598)(Line 25 above)	2,596,767	2,644,750	(47,983)	(263,783)

STATEMENT AS OF MARCH 31, 2025 OF THE SCOTTSDALE INSURANCE COMPANY

LIABILITIES, SURPLUS AND OTHER FUNDS

	1 Current Statement Date	2 December 31, Prior Year
1. Losses (current accident year \$)		
2. Reinsurance payable on paid losses and loss adjustment expenses	112,527,125	129,169,691
3. Loss adjustment expenses		
4. Commissions payable, contingent commissions and other similar charges		
5. Other expenses (excluding taxes, licenses and fees)		
6. Taxes, licenses and fees (excluding federal and foreign income taxes)		
7.1 Current federal and foreign income taxes (including \$ 1,599,004 on realized capital gains (losses))	1,914,387	108,078
7.2 Net deferred tax liability		
8. Borrowed money \$ and interest thereon \$		
9. Unearned premiums (after deducting unearned premiums for ceded reinsurance of \$ 2,375,093,282 and including warranty reserves of \$ and accrued accident and health experience rating refunds including \$ for medical loss ratio rebate per the Public Health Service Act)		
10. Advance premium		
11. Dividends declared and unpaid:		
11.1 Stockholders		
11.2 Policyholders		
12. Ceded reinsurance premiums payable (net of ceding commissions)	1,188,362,091	1,167,521,769
13. Funds held by company under reinsurance treaties	689,503	627,084
14. Amounts withheld or retained by company for account of others		
15. Remittances and items not allocated	41,379	37,572
16. Provision for reinsurance (including \$ certified)	5,637,000	5,637,000
17. Net adjustments in assets and liabilities due to foreign exchange rates	2,648	673
18. Drafts outstanding		
19. Payable to parent, subsidiaries and affiliates	8,675,603	55,085,984
20. Derivatives		
21. Payable for securities		
22. Payable for securities lending	1,965,980	2,464,420
23. Liability for amounts held under uninsured plans		
24. Capital notes \$ and interest thereon \$		
25. Aggregate write-ins for liabilities	13,773,982	14,411,406
26. Total liabilities excluding protected cell liabilities (Lines 1 through 25)	1,333,589,698	1,375,063,677
27. Protected cell liabilities		
28. Total liabilities (Lines 26 and 27)	1,333,589,698	1,375,063,677
29. Aggregate write-ins for special surplus funds		
30. Common capital stock	6,027,200	6,027,200
31. Preferred capital stock		
32. Aggregate write-ins for other than special surplus funds		
33. Surplus notes		
34. Gross paid in and contributed surplus	110,036,570	110,036,570
35. Unassigned funds (surplus)	65,103,559	62,808,760
36. Less treasury stock, at cost:		
36.1 shares common (value included in Line 30 \$)		
36.2 shares preferred (value included in Line 31 \$)		
37. Surplus as regards policyholders (Lines 29 to 35, less 36)	181,167,329	178,872,530
38. Totals (Page 2, Line 28, Col. 3)	1,514,757,027	1,553,936,207
DETAILS OF WRITE-INS		
2501. Reserve for state escheat payment	13,773,982	14,411,406
2502.		
2503.		
2598. Summary of remaining write-ins for Line 25 from overflow page		
2599. Totals (Lines 2501 through 2503 plus 2598)(Line 25 above)	13,773,982	14,411,406
2901.		
2902.		
2903.		
2998. Summary of remaining write-ins for Line 29 from overflow page		
2999. Totals (Lines 2901 through 2903 plus 2998)(Line 29 above)		
3201.		
3202.		
3203.		
3298. Summary of remaining write-ins for Line 32 from overflow page		
3299. Totals (Lines 3201 through 3203 plus 3298)(Line 32 above)		

STATEMENT OF INCOME

	1	2	3
	Current Year to Date	Prior Year to Date	Prior Year Ended December 31
UNDERWRITING INCOME			
1. Premiums earned:			
1.1 Direct (written \$ 651,881,550)	678,097,423	643,164,021	2,597,906,445
1.2 Assumed (written \$ 561,248,641)	538,895,469	507,091,092	2,031,577,462
1.3 Ceded (written \$ 1,213,130,191)	1,216,992,892	1,150,255,113	4,629,483,907
1.4 Net (written \$)			
DEDUCTIONS:			
2. Losses incurred (current accident year \$):			
2.1 Direct	322,817,093	281,565,359	1,096,066,654
2.2 Assumed	368,059,814	337,007,768	1,381,362,247
2.3 Ceded	690,876,907	618,573,127	2,477,428,901
2.4 Net			
3. Loss adjustment expenses incurred			
4. Other underwriting expenses incurred			
5. Aggregate write-ins for underwriting deductions			
6. Total underwriting deductions (Lines 2 through 5)			
7. Net income of protected cells			
8. Net underwriting gain (loss) (Line 1 minus Line 6 + Line 7)			
INVESTMENT INCOME			
9. Net investment income earned	1,531,857	1,563,994	6,493,137
10. Net realized capital gains (losses) less capital gains tax of \$ 1,599,004	(1,646,499)	(34,056)	(737,342)
11. Net investment gain (loss) (Lines 9 + 10)	(114,642)	1,529,938	5,755,795
OTHER INCOME			
12. Net gain or (loss) from agents' or premium balances charged off (amount recovered \$ amount charged off \$)			
13. Finance and service charges not included in premiums			
14. Aggregate write-ins for miscellaneous income	263,784		
15. Total other income (Lines 12 through 14)	263,784		
16. Net income before dividends to policyholders, after capital gains tax and before all other federal and foreign income taxes (Lines 8 + 11 + 15)	149,142	1,529,938	5,755,795
17. Dividends to policyholders			
18. Net income, after dividends to policyholders, after capital gains tax and before all other federal and foreign income taxes (Line 16 minus Line 17)	149,142	1,529,938	5,755,795
19. Federal and foreign income taxes incurred	207,305	(1,691,079)	(85,529)
20. Net income (Line 18 minus Line 19)(to Line 22)	(58,163)	3,221,017	5,841,324
CAPITAL AND SURPLUS ACCOUNT			
21. Surplus as regards policyholders, December 31 prior year	178,872,530	172,307,706	172,307,706
22. Net income (from Line 20)	(58,163)	3,221,017	5,841,324
23. Net transfers (to) from Protected Cell accounts			
24. Change in net unrealized capital gains (losses) less capital gains tax of \$ 31,652	1,054,131	1,132,363	5,146,576
25. Change in net unrealized foreign exchange capital gain (loss)	(7,667)	(395,387)	(1,681,819)
26. Change in net deferred income tax	1,306,498	(3,588,152)	(3,799,457)
27. Change in nonadmitted assets	718,671	7,667,482	13,097,745
28. Change in provision for reinsurance			1,058,200
29. Change in surplus notes			
30. Surplus (contributed to) withdrawn from protected cells			
31. Cumulative effect of changes in accounting principles			
32. Capital changes:			
32.1 Paid in			
32.2 Transferred from surplus (Stock Dividend)			
32.3 Transferred to surplus			
33. Surplus adjustments:			
33.1 Paid in			
33.2 Transferred to capital (Stock Dividend)			
33.3 Transferred from capital			
34. Net remittances from or (to) Home Office			
35. Dividends to stockholders			
36. Change in treasury stock			
37. Aggregate write-ins for gains and losses in surplus	(718,671)	(7,667,482)	(13,097,745)
38. Change in surplus as regards policyholders (Lines 22 through 37).....	2,294,799	369,841	6,564,824
39. Surplus as regards policyholders, as of statement date (Lines 21 plus 38)	181,167,329	172,677,547	178,872,530
DETAILS OF WRITE-INS			
0501.			
0502.			
0503.			
0598. Summary of remaining write-ins for Line 5 from overflow page			
0599. Totals (Lines 0501 through 0503 plus 0598)(Line 5 above)			
1401. Other	263,784		
1402.			
1403.			
1498. Summary of remaining write-ins for Line 14 from overflow page			
1499. Totals (Lines 1401 through 1403 plus 1498)(Line 14 above)	263,784		
3701. Change in surplus pooled nonadmitted premiums in the course of collection offset	(718,671)	(7,667,482)	(13,097,745)
3702.			
3703.			
3798. Summary of remaining write-ins for Line 37 from overflow page			
3799. Totals (Lines 3701 through 3703 plus 3798)(Line 37 above)	(718,671)	(7,667,482)	(13,097,745)

STATEMENT AS OF MARCH 31, 2025 OF THE SCOTTSDALE INSURANCE COMPANY

CASH FLOW

	1 Current Year To Date	2 Prior Year To Date	3 Prior Year Ended December 31
Cash from Operations			
1. Premiums collected net of reinsurance	47,693,824	(35,188,826)	58,014,427
2. Net investment income	1,588,148	1,503,678	6,072,902
3. Miscellaneous income	201,365	(5,204)	(25,405)
4. Total (Lines 1 to 3)	49,483,337	(33,690,352)	64,061,924
5. Benefit and loss related payments	1,308,369	(9,170,996)	(2,871,843)
6. Net transfers to Separate Accounts, Segregated Accounts and Protected Cell Accounts			
7. Commissions, expenses paid and aggregate write-ins for deductions	29,150,240	7,371,997	60,510,577
8. Dividends paid to policyholders			
9. Federal and foreign income taxes paid (recovered) net of \$ tax on capital gains (losses)			3,743,550
10. Total (Lines 5 through 9)	30,458,609	(1,798,999)	61,382,284
11. Net cash from operations (Line 4 minus Line 10)	19,024,728	(31,891,353)	2,679,640
Cash from Investments			
12. Proceeds from investments sold, matured or repaid:			
12.1 Bonds	4,899,244	534,329	10,088,757
12.2 Stocks			
12.3 Mortgage loans			
12.4 Real estate			
12.5 Other invested assets			
12.6 Net gains or (losses) on cash, cash equivalents and short-term investments	(6,471)		(347,786)
12.7 Miscellaneous proceeds	502,182		
12.8 Total investment proceeds (Lines 12.1 to 12.7)	5,394,955	534,329	9,740,971
13. Cost of investments acquired (long-term only):			
13.1 Bonds			16,415,540
13.2 Stocks			
13.3 Mortgage loans			
13.4 Real estate			
13.5 Other invested assets			
13.6 Miscellaneous applications		86,135	444,181
13.7 Total investments acquired (Lines 13.1 to 13.6)		86,135	16,859,721
14. Net increase/(decrease) in contract loans and premium notes			
15. Net cash from investments (Line 12.8 minus Line 13.7 and Line 14)	5,394,955	448,194	(7,118,750)
Cash from Financing and Miscellaneous Sources			
16. Cash provided (applied):			
16.1 Surplus notes, capital notes			
16.2 Capital and paid in surplus, less treasury stock			
16.3 Borrowed funds			
16.4 Net deposits on deposit-type contracts and other insurance liabilities			
16.5 Dividends to stockholders			
16.6 Other cash provided (applied)	(31,040,460)	58,694,487	12,472,985
17. Net cash from financing and miscellaneous sources (Line 16.1 through Line 16.4 minus Line 16.5 plus Line 16.6)	(31,040,460)	58,694,487	12,472,985
RECONCILIATION OF CASH, CASH EQUIVALENTS AND SHORT-TERM INVESTMENTS			
18. Net change in cash, cash equivalents and short-term investments (Line 11, plus Lines 15 and 17) .	(6,620,777)	27,251,328	8,033,875
19. Cash, cash equivalents and short-term investments:			
19.1 Beginning of year	(51,709,306)	(59,743,181)	(59,743,181)
19.2 End of period (Line 18 plus Line 19.1)	(58,330,082)	(32,491,853)	(51,709,306)

Note: Supplemental disclosures of cash flow information for non-cash transactions:

20.0001. Exchange of bond investment to bond investment		956,326	1,079,362
---	--	---------	-----------

NOTES TO THE FINANCIAL STATEMENTS

Note 1 – Summary of Significant Accounting Policies and Going Concern

A. Accounting Practices

The accompanying statutory financial statements of Scottsdale Insurance Company (the Company) have been prepared in conformity with accounting practices prescribed or permitted by the National Association of Insurance Commissioners (NAIC) and the State of Ohio.

The Ohio Department of Insurance (Department) recognizes only statutory accounting practices (SAP) prescribed or permitted by the State of Ohio for determining and reporting the financial condition and results of operations of an insurance company, as well as, determining its solvency under the Ohio Insurance law. The NAIC’s *Accounting Practices and Procedures Manual* (NAIC SAP) has been adopted as a component of prescribed or permitted practices by the State of Ohio. The Company has no statutory accounting practices that differ from NAIC SAP.

A reconciliation of the Company’s net income and capital and surplus between NAIC SAP and practices prescribed and permitted by the State of Ohio is shown below:

	SSAP #	F/S Page	F/S Line #	2025	2024
Net Income					
(1) Scottsdale Insurance Company state basis (Page 4, Line 20, Columns 1 & 3)	XXX	XXX	XXX	\$ (58,163)	\$ 5,841,324
(2) State Prescribed Practices that are an increase/(decrease) from NAIC SAP				-	-
(3) State Permitted Practices that are an increase/(decrease) from NAIC SAP				-	-
(4) NAIC SAP (1-2-3=4)	XXX	XXX	XXX	<u>\$ (58,163)</u>	<u>\$ 5,841,324</u>
Surplus					
(5) Scottsdale Insurance Company state basis (Page 3, Line 37, Columns 1 & 2)	XXX	XXX	XXX	\$ 181,167,329	\$ 178,872,530
(6) State Prescribed Practices that are an increase/(decrease) from NAIC SAP				-	-
(7) State Permitted Practices that are an increase/(decrease) from NAIC SAP				-	-
(8) NAIC SAP (5-6-7=8)	XXX	XXX	XXX	<u>\$ 181,167,329</u>	<u>\$ 178,872,530</u>

B. Use of Estimates in the Preparation of the Financial Statements

There were no changes that were considered significant to the Company from prior year end.

C. Accounting Policies

1. There were no changes that were considered significant to the Company from prior year end.
2. Bonds, excluding asset-backed securities, are stated at amortized cost except those with a NAIC designation of “3” through “6”, which are stated at the lower of amortized cost or fair value. Amortization of premiums and discounts is calculated using the effective yield method. The Company does not hold any mandatory convertible securities or Securities Valuation Office (SVO) identified investments.
- 3-5. There were no changes that were considered significant to the Company from prior year end.
6. Asset-backed securities are stated at amortized cost or the lower of amortized cost or fair value in accordance with the provisions of Statement of Statutory Accounting Principles (SSAP) No. 43 – *Asset-Backed Securities* and the *Purposes and Procedures Manual* of the NAIC SVO. The retrospective adjustment method is used to value asset-backed securities where the collection of all contractual cash flows is probable. For all other asset-backed securities, the Company uses the prospective adjustment method. Refer to Note 5(D) for a discussion of the other-than-temporary impairment policy for asset-backed securities.
- 7-13. There were no changes that were considered significant to the Company from prior year end.

D. Going Concern

Not applicable.

Note 2 – Accounting Changes and Corrections of Errors

Effective January 1, 2025, the Company adopted revisions to SSAP No. 26 – *Bonds*, SSAP No. 43 – *Asset-Backed Securities* and SSAP No. 21 – *Other Admitted Assets*, in conformity with the NAIC’s revised guidance to develop a principles-based definition for debt securities qualifying for reporting as a bond. The adopted revisions require the assessment of securities to focus on their substance rather than legal form, updated the accounting and reporting guidance for debt securities that qualify for reporting as a bond, updated the accounting and reporting guidance for debt securities that do not qualify for reporting as a bond, and updated guidance for the accounting and reporting of residual interests. There were no material impacts to the Company as a result of the adoption.

Note 3 – Business Combinations and Goodwill

Not applicable.

Note 4 – Discontinued Operations

Not applicable.

Note 5 – Investments

A. Mortgage Loans, including Mezzanine Real Estate Loans

Not applicable.

B. Debt Restructuring

Not applicable.

NOTES TO THE FINANCIAL STATEMENTS

C. Reverse Mortgages

Not applicable.

D. Asset-Backed Securities

1. Prepayment assumptions are generally obtained using a model provided by a third-party vendor.
2. Not applicable.
3. Not applicable.
4. All impaired securities (fair value is less than cost or amortized cost) for which an other-than-temporary impairment has not been recognized in earnings as a realized loss (including securities with a recognized other-than-temporary impairment for non-interest related declines when a non-recognized interest related impairment remains):

a. The aggregate amount of unrealized losses:	1. Less than 12 Months	\$ <u>-</u>
	2. 12 Months or Longer	\$ <u>(3,632,510)</u>
b. The aggregate related fair value of securities with unrealized losses:	1. Less than 12 Months	\$ <u>-</u>
	2. 12 Months or Longer	\$ <u>28,002,919</u>

5. The Company periodically reviews asset-backed securities in an unrealized loss position by comparing the present value of cash flows, including estimated prepayments, expected to be collected from the security to the amortized cost basis of the security. If the present value of cash flows expected to be collected, discounted at the security's effective interest rate, is less than the amortized cost basis of the security, the impairment is considered other-than-temporary and a realized loss is recorded.

E. Dollar Repurchase Agreements and/or Securities Lending Transactions

1-2. There were no changes that were considered significant to the Company from prior year end.

3. Collateral Received

- a. There were no changes that were considered significant to the Company from prior year end.
- b. Not applicable.
- c. There were no changes that were considered significant to the Company from prior year end.

4-7. There were no changes that were considered significant to the Company from prior year end.

F. Repurchase Agreements Transactions Accounted for as Secured Borrowing

Not applicable.

G. Reverse Repurchase Agreements Transactions Accounted for as Secured Borrowing

1. To manage short-term liquidity needs within the Nationwide insurance subsidiaries, the Company has agreements to enter into repurchase or reverse repurchase agreements with several authorized affiliated insurance companies. The collateral required meets minimum state specific requirements or statutory requirements if state of domicile does not specify.

As these transactions are with affiliated insurance companies within the Nationwide family and are short-term in nature, the risk of changes in the fair value of the collateral are considered negligible.

For yield enhancement, the Company has agreements to enter into repurchase agreements through its securities lending program with collateral consisting of United States (U.S.) Government/Agency securities with investment grade counterparties. The collateral, which is marked to market daily, must represent 102% of the amount loaned and is monitored by the plan's manager, Bank of New York Mellon, for changes in fair value.

2. Type of Repo Trades Used

	1	2	3	4
	First Quarter	Second Quarter	Third Quarter	Fourth Quarter
a. Bilateral (YES/NO)	NO	-	-	-
b. Tri-Party (YES/NO)	YES	-	-	-

NOTES TO THE FINANCIAL STATEMENTS

3. Original (Flow) & Residual Maturity

	1		2		3		4
	First Quarter		Second Quarter		Third Quarter		Fourth Quarter
a. Maximum Amount							
1. Open - No Maturity		-		-		-	-
2. Overnight	\$	3,033,381	\$	-	\$	-	\$
3. 2 Days to 1 Week		-		-		-	-
4. > 1 Week to 1 Month		-		-		-	-
5. > 1 Month to 3 Months		-		-		-	-
6. > 3 Months to 1 Year		-		-		-	-
7. > 1 Year		-		-		-	-
b. Ending Balance							
1. Open - No Maturity		-		-		-	-
2. Overnight	\$	1,928,490	\$	-	\$	-	\$
3. 2 Days to 1 Week		-		-		-	-
4. > 1 Week to 1 Month		-		-		-	-
5. > 1 Month to 3 Months		-		-		-	-
6. > 3 Months to 1 Year		-		-		-	-
7. > 1 Year		-		-		-	-

4. Not applicable.

5. Fair Value of Securities Acquired Under Repo - Secured Borrowing

	1		2		3		4
	First Quarter		Second Quarter		Third Quarter		Fourth Quarter
a. Maximum Amount		\$3,094,049		\$-		\$-	\$-
b. Ending Balance		\$1,967,060		\$-		\$-	\$-

6. Securities Acquired Under Repo - Secured Borrowing by NAIC Designation

ENDING BALANCE							
	1	2	3	4	5	6	7
	None	NAIC 1	NAIC 2	NAIC 3	NAIC 4	NAIC 5	NAIC 6
a. ICO - FV	\$-	\$1,967,060	\$-	\$-	\$-	\$-	\$-
b. ABS - FV	-	-	-	-	-	-	-
c. Preferred Stock - FV	-	-	-	-	-	-	-
d. Common Stock	-	-	-	-	-	-	-
e. Mortgage Loans - FV	-	-	-	-	-	-	-
f. Real Estate - FV	-	-	-	-	-	-	-
g. Derivatives - FV	-	-	-	-	-	-	-
h. Other Invested Assets - FV	-	-	-	-	-	-	-
i. Total Assets - FV	\$-	\$1,967,060	\$-	\$-	\$-	\$-	\$-
(Sum of a through h)							

7. Collateral Provided - Secured Borrowing

	1		2		3		4
	First Quarter		Second Quarter		Third Quarter		Fourth Quarter
a. Maximum Amount							
1. Cash		\$3,033,381		\$-		\$-	\$-
2. Securities (FV)		-		-		-	-
3. Securities (BACV)		-		-		-	-
4. Nonadmitted Subset (BACV)		-		-		-	-
b. Ending Balance							
1. Cash		\$1,928,490		\$-		\$-	\$-
2. Securities (FV)		-		-		-	-
3. Securities (BACV)		-		-		-	-
4. Nonadmitted Subset (BACV)		-		-		-	-

8. Allocation of Aggregate Collateral Pledged by Remaining Contractual Maturity

	Amortized Cost	Fair Value
a. Overnight and Continuous	\$1,928,490	\$1,928,490
b. 30 Days or Less	-	-
c. 31 to 90 Days	-	-
d. > 90 Days	-	-

9-10. Not applicable.

NOTES TO THE FINANCIAL STATEMENTS

H. Repurchase Agreements Transactions Accounted for as a Sale

Not applicable.

I. Reverse Repurchase Agreements Transactions Accounted for as a Sale

Not applicable.

J. Real Estate

Not applicable.

K. Investments in Tax Credit Structures (tax credit investments)

Not applicable.

L. Restricted Assets

There were no changes that were considered significant to the Company from prior year end.

M. Working Capital Finance Investments

Not applicable.

N. Offsetting and Netting of Assets and Liabilities

No assets or liabilities are offset and reported net in accordance with a valid right to offset per SSAP No. 64 – *Offsetting and Netting of Assets and Liabilities*.

O. 5GI Securities

Not applicable.

P. Short Sales

Not applicable.

Q. Prepayment Penalty and Acceleration Fees

There were no changes that were considered significant to the Company from prior year end.

R. Reporting Entity's Share of Cash Pool by Asset Type

Asset Type	Percent Share
(1) Cash	0%
(2) Cash equivalents	75%
(3) Short-term investments	25%
(4) Total (Must equal 100%)	100%

S. Aggregate Collateral Loans by Qualifying Investment Collateral

Not applicable.

Note 6 – Joint Ventures, Partnerships and Limited Liability Companies

There were no changes that were considered significant to the Company from prior year end.

Note 7 – Investment Income

There were no changes that were considered significant to the Company from prior year end.

Note 8 – Derivative Instruments

Not applicable.

Note 9 – Income Taxes

There were no changes that were considered significant to the Company from prior year end.

Note 10 – Information Concerning Parent, Subsidiaries, Affiliates and Other Related Parties

There were no changes that were considered significant to the Company from prior year end.

Note 11 – Debt

Not applicable.

Note 12 – Retirement Plans, Deferred Compensation, Postemployment Benefits and Compensated Absences and Other Postretirement Benefit Plans

Not applicable.

Note 13 – Capital and Surplus, Dividend Restrictions and Quasi-Reorganizations

There were no changes that were considered significant to the Company from prior year end.

Note 14 – Liabilities, Contingencies and Assessments

There were no changes that were considered significant to the Company from prior year end.

Note 15 – Leases

Not applicable.

NOTES TO THE FINANCIAL STATEMENTS

Note 16 – Information about Financial Instruments with Off-Balance Sheet Risk and Financial Instruments with Concentrations of Credit Risk

Not applicable.

Note 17 – Sale, Transfer and Servicing of Financial Assets and Extinguishments of Liabilities

A. Transfers of Receivables Reported as Sales

Not applicable.

B. Transfers and Servicing of Financial Assets

There were no changes that were considered significant to the Company from prior year end.

C. Wash Sales

Not applicable.

Note 18 – Gain or Loss to the Reporting Entity from Uninsured Plans and the Uninsured Portion of Partially Insured Plans

Not applicable.

Note 19 – Direct Premium Written/Produced by Managing General Agents/Third-Party Administrators

There were no changes that were considered significant to the Company from prior year end.

Note 20 – Fair Value Measurements

A. Fair value is defined as the price that would be received to sell an asset or paid to transfer a liability in an orderly transaction between market participants at the measurement date. Fair value measurements are based upon observable and unobservable inputs. Observable inputs reflect market data obtained from independent sources while unobservable inputs reflect the Company's view of market assumptions in the absence of observable market information. The Company utilizes valuation techniques that maximize the use of observable inputs and minimize the use of unobservable inputs. In determining fair value, the Company uses various methods including market, income and cost approaches.

The Company categorizes its financial instruments into a three-level hierarchy based on the priority of the inputs to the valuation technique. The fair value hierarchy gives the highest priority to quoted prices in active markets for identical assets or liabilities (Level 1) and the lowest priority to unobservable inputs (Level 3). If the inputs used to measure fair value fall within different levels of the hierarchy, the category level is based on the lowest priority level input that is significant to the fair value measurement of the instrument in its entirety.

The Company categorizes assets and liabilities held at fair value in the statutory statements of assets and liabilities, surplus and other funds as follows:

Level 1. Unadjusted quoted prices accessible in active markets for identical assets or liabilities at the measurement date and mutual funds where the value per share (unit) is determined and published daily and is the basis for current transactions.

Level 2. Unadjusted quoted prices for similar assets or liabilities in active markets, quoted prices for identical or similar assets or liabilities in markets that are not active or inputs (other than quoted prices) that are observable or that are derived principally from or corroborated by observable market data through correlation or other means. Primary inputs to this valuation technique may include comparative trades, bid/asks, interest rate movements, U.S. Treasury rates, Secured Overnight Financing Rate, prime rates, cash flows, maturity dates, call ability, estimated prepayments and/or underlying collateral values.

Level 3. Prices or valuation techniques that require inputs that are both unobservable and significant to the overall fair value measurement. Inputs reflect management's best estimates of the assumptions market participants would use at the measurement date in pricing the asset or liability. Consideration is given to the risk inherent in both the method of valuation and the valuation inputs. Primary inputs to this valuation technique include broker quotes and comparative trades.

The Company reviews its fair value hierarchy classifications for assets and liabilities quarterly. Changes in the observability of significant valuation inputs identified during these reviews may trigger reclassifications. Reclassifications are reported as transfers at the beginning of the reporting period in which the change occurs.

Independent pricing services are most often utilized, and compared to pricing from additional sources when available, to determine the fair value of bonds and stocks for which market quotations or quotations on comparable securities or models are used. For these bonds and stocks, the Company obtains the pricing services' methodologies and classifies the investments accordingly in the fair value hierarchy.

Corporate pricing matrices are used in valuing certain bonds. The corporate pricing matrices were developed using publicly and privately available spreads segmented by various weighted average lives and credit quality ratings. Certain private placement bonds have adjusted spreads to capture the impacts of liquidity premium based on industry sector. The weighted average life and credit quality rating of a particular bond to be priced using those matrices are important inputs into the model and are used to determine a corresponding spread that is added to the appropriate industry sector or U.S. Treasury yield to create an estimated market yield for that bond. The estimated market yield and other relevant factors are then used to estimate the fair value of the particular bond.

Non-binding broker quotes are also utilized to determine the fair value of certain bonds when deemed appropriate or when valuations are not available from independent pricing services or corporate pricing matrices. These bonds are classified with the lowest priority in the fair value hierarchy as only one broker quote is ordinarily obtained, the investment is not traded on an exchange, the pricing is not available to other entities and/or the transaction volume in the same or similar investments has decreased. Inputs used in the development of prices are not provided to the Company by the brokers, as the brokers often do not provide the necessary transparency into their quotes and methodologies. At least annually, the Company performs reviews and tests to ensure that quotes are a reasonable estimate of the investments' fair value. Price movements of broker quotes are subject to validation and require approval from the Company's management. Management uses its knowledge of the investment and current market conditions to determine if the price is indicative of the investment's fair value.

The Company carries short-term investments at amortized cost, which approximates fair value.

NOTES TO THE FINANCIAL STATEMENTS

The following table summarizes assets held at fair value as of March 31, 2025:

	Level 1		Level 2		Level 3		Net Asset Value (NAV)	Total
Assets at Fair Value								
Bonds								
Issuer Credit Obligation	\$	-	\$	5,905,793	\$	-	\$	5,905,793
Asset-Backed Securities		-		337,626		-		337,626
Total Bonds	\$	-	\$	6,243,419	\$	-	\$	6,243,419
Securities lending collateral assets		-		2,298		-		2,298
Total Assets at Fair Value/(NAV)	\$	-	\$	6,245,717	\$	-	\$	6,245,717

B. & C. The following table summarizes the carrying value and fair value of the Company's assets not held at fair value as of March 31, 2025:

	Aggregate Fair Value	Admitted Assets	Level 1	Level 2	Level 3	Net Asset Value (NAV)	Not Practicable (Carrying Value)
Assets							
Bonds							
Issuer Credit Obligation	\$128,108,661	\$142,689,732	\$41,500,512	\$85,291,751	\$1,316,398	\$-	\$-
Asset-Backed Securities	45,063,692	48,463,096	-	45,063,692	-	-	-
Total Bonds	\$173,172,353	\$191,152,828	\$41,500,512	\$130,355,443	\$1,316,398	\$-	\$-
Cash, cash equivalents and short-term investments	(58,330,082)	(58,330,082)	(58,504,785)	174,703	-	-	-
Securities lending collateral assets	1,955,312	1,946,938	1,928,490	26,822	-	-	-
Total Assets	\$116,797,583	\$134,769,684	\$(15,075,783)	\$130,556,968	\$1,316,398	\$-	\$-

D. Not Practicable to Estimate Fair Value

Not applicable.

E. Measured Using Net Asset Value

Not applicable.

Note 21 – Other Items

There were no changes that were considered significant to the Company from prior year end.

Note 22 – Events Subsequent

Type I – Recognized Subsequent Events:

Subsequent events have been considered through May 2, 2025, for the statutory statement available to be issued on May 8, 2025.

There were no material Type I events occurring subsequent to the end of the period that merited recognition or disclosure in these statements that have not already been reflected as required.

Type II – Nonrecognized Subsequent Events:

Subsequent events have been considered through May 2, 2025, for the statutory statement available to be issued on May 8, 2025.

There were no material Type II events occurring subsequent to the end of the period that merited recognition or disclosure in these statements that have not already been reflected as required.

Note 23 – Reinsurance

There were no changes that were considered significant to the Company from prior year end.

Note 24 – Retrospectively Rated Contracts and Contracts Subject to Redetermination

There were no changes that were considered significant to the Company from prior year end.

Note 25 – Changes in Incurred Losses and Loss Adjustment Expenses

The Company is a participant in a 100% quota share reinsurance agreement with Nationwide Mutual Insurance Company, and as such has zero net incurred losses and loss adjustment expenses.

Note 26 – Intercompany Pooling Arrangements

There were no changes that were considered significant to the Company from prior year end.

Note 27 – Structured Settlements

Not applicable.

Note 28 – Health Care Receivables

Not applicable.

Note 29 – Participating Policies

Not applicable.

Note 30 – Premium Deficiency Reserves

There were no changes that were considered significant to the Company from prior year end.

NOTES TO THE FINANCIAL STATEMENTS

Note 31 – High Deductibles

Not applicable.

Note 32 – Discounting of Liabilities for Unpaid Losses or Unpaid Loss Adjustment Expenses

Not applicable.

Note 33 – Asbestos/Environmental Reserves

Not applicable.

Note 34 – Subscriber Savings Accounts

Not applicable.

Note 35 – Multiple Peril Crop Insurance

Not applicable.

Note 36 – Financial Guaranty Insurance

Not applicable.

STATEMENT AS OF MARCH 31, 2025 OF THE SCOTTSDALE INSURANCE COMPANY

GENERAL INTERROGATORIES

PART 1 - COMMON INTERROGATORIES

GENERAL

1.1

Did the reporting entity experience any material transactions requiring the filing of Disclosure of Material Transactions with the State of Domicile, as required by the Model Act?

Yes [] No [X]

1.2

If yes, has the report been filed with the domiciliary state?

Yes [] No []

2.1

Has any change been made during the year of this statement in the charter, by-laws, articles of incorporation, or deed of settlement of the reporting entity?

Yes [] No [X]

2.2

If yes, date of change:

3.1

Is the reporting entity a member of an Insurance Holding Company System consisting of two or more affiliated persons, one or more of which is an insurer?
If yes, complete Schedule Y, Parts 1 and 1A.

Yes [X] No []

3.2

Have there been any substantial changes in the organizational chart since the prior quarter end?

Yes [] No [X]

3.3

If the response to 3.2 is yes, provide a brief description of those changes.

3.4

Is the reporting entity publicly traded or a member of a publicly traded group?

Yes [] No [X]

3.5

If the response to 3.4 is yes, provide the CIK (Central Index Key) code issued by the SEC for the entity/group.

4.1

Has the reporting entity been a party to a merger or consolidation during the period covered by this statement?

Yes [] No [X]

4.2

If yes, provide the name of the entity, NAIC Company Code, and state of domicile (use two letter state abbreviation) for any entity that has ceased to exist as a result of the merger or consolidation.

1	2	3
Name of Entity	NAIC Company Code	State of Domicile

5.

If the reporting entity is subject to a management agreement, including third-party administrator(s), managing general agent(s), attorney-in-fact, or similar agreement, have there been any significant changes regarding the terms of the agreement or principals involved?
If yes, attach an explanation.

Yes [] No [X] N/A []

6.1

State as of what date the latest financial examination of the reporting entity was made or is being made.

12/31/2021

6.2

State the as of date that the latest financial examination report became available from either the state of domicile or the reporting entity. This date should be the date of the examined balance sheet and not the date the report was completed or released.

12/31/2021

6.3

State as of what date the latest financial examination report became available to other states or the public from either the state of domicile or the reporting entity. This is the release date or completion date of the examination report and not the date of the examination (balance sheet date).

05/31/2023

6.4

By what department or departments?
OH

6.5

Have all financial statement adjustments within the latest financial examination report been accounted for in a subsequent financial statement filed with Departments?

Yes [] No [] N/A [X]

6.6

Have all of the recommendations within the latest financial examination report been complied with?

Yes [] No [] N/A [X]

7.1

Has this reporting entity had any Certificates of Authority, licenses or registrations (including corporate registration, if applicable) suspended or revoked by any governmental entity during the reporting period?

Yes [] No [X]

7.2

If yes, give full information:

8.1

Is the company a subsidiary of a bank holding company regulated by the Federal Reserve Board?

Yes [] No [X]

8.2

If response to 8.1 is yes, please identify the name of the bank holding company.

8.3

Is the company affiliated with one or more banks, thrifts or securities firms?

Yes [X] No []

8.4

If response to 8.3 is yes, please provide below the names and location (city and state of the main office) of any affiliates regulated by a federal regulatory services agency [i.e. the Federal Reserve Board (FRB), the Office of the Comptroller of the Currency (OCC), the Federal Deposit Insurance Corporation (FDIC) and the Securities Exchange Commission (SEC)] and identify the affiliate's primary federal regulator.

1 Affiliate Name	2 Location (City, State)	3 FRB	4 OCC	5 FDIC	6 SEC
Nationwide Trust Company, FSB	Columbus, OH	NO	YES	NO	NO
Nationwide Investment Services Corp.	Columbus, OH	NO	NO	NO	YES
Nationwide Investment Advisors, LLC	Columbus, OH	NO	NO	NO	YES
Nationwide Securities, LLC	Columbus, OH	NO	NO	NO	YES
Nationwide Fund Advisors	Columbus, OH	NO	NO	NO	YES
Nationwide Fund Distributors, LLC	Columbus, OH	NO	NO	NO	YES
Nationwide Asset Management, LLC	Columbus, OH	NO	NO	NO	YES

STATEMENT AS OF MARCH 31, 2025 OF THE SCOTTSDALE INSURANCE COMPANY

GENERAL INTERROGATORIES

9.1

Are the senior officers (principal executive officer, principal financial officer, principal accounting officer or controller, or persons performing similar functions) of the reporting entity subject to a code of ethics, which includes the following standards?
(a) Honest and ethical conduct, including the ethical handling of actual or apparent conflicts of interest between personal and professional relationships;
(b) Full, fair, accurate, timely and understandable disclosure in the periodic reports required to be filed by the reporting entity;
(c) Compliance with applicable governmental laws, rules and regulations;
(d) The prompt internal reporting of violations to an appropriate person or persons identified in the code; and
(e) Accountability for adherence to the code.

Yes [X] No []

9.11

If the response to 9.1 is No, please explain:
.....

9.2

Has the code of ethics for senior managers been amended?

Yes [] No [X]

9.21

If the response to 9.2 is Yes, provide information related to amendment(s).
.....

9.3

Have any provisions of the code of ethics been waived for any of the specified officers?

Yes [] No [X]

9.31

If the response to 9.3 is Yes, provide the nature of any waiver(s).
.....

FINANCIAL

10.1

Does the reporting entity report any amounts due from parent, subsidiaries or affiliates on Page 2 of this statement?

Yes [X] No []

10.2

If yes, indicate any amounts receivable from parent included in the Page 2 amount:\$.....

47,660,343

INVESTMENT

11.1

Were any of the stocks, bonds, or other assets of the reporting entity loaned, placed under option agreement, or otherwise made available for use by another person? (Exclude securities under securities lending agreements.)

Yes [] No [X]

11.2

If yes, give full and complete information relating thereto:
.....

12.

Amount of real estate and mortgages held in other invested assets in Schedule BA:

\$.....

13.

Amount of real estate and mortgages held in short-term investments:

\$.....

14.1

Does the reporting entity have any investments in parent, subsidiaries and affiliates?

Yes [X] No []

14.2

If yes, please complete the following:

	1	2
	Prior Year-End Book/Adjusted Carrying Value	Current Quarter Book/Adjusted Carrying Value
14.21 Bonds	\$	\$.....
14.22 Preferred Stock	\$	\$.....
14.23 Common Stock	\$ 70,341,015	\$..... 71,268,409
14.24 Short-Term Investments	\$	\$.....
14.25 Mortgage Loans on Real Estate	\$	\$.....
14.26 All Other	\$	\$.....
14.27 Total Investment in Parent, Subsidiaries and Affiliates (Subtotal Lines 14.21 to 14.26)	\$ 70,341,015	\$..... 71,268,409
14.28 Total Investment in Parent included in Lines 14.21 to 14.26 above	\$	\$.....

15.1

Has the reporting entity entered into any hedging transactions reported on Schedule DB?

Yes [] No [X]

15.2

If yes, has a comprehensive description of the hedging program been made available to the domiciliary state? Yes [] No [] N/A [X]
If no, attach a description with this statement.
.....

16.

For the reporting entity's security lending program, state the amount of the following as of the current statement date:

16.1

Total fair value of reinvested collateral assets reported on Schedule DL, Parts 1 and 2.

\$ 1,957,610

16.2

Total book/adjusted carrying value of reinvested collateral assets reported on Schedule DL, Parts 1 and 2

\$ 1,949,236

16.3

Total payable for securities lending reported on the liability page.

\$ 1,965,980

7.1

STATEMENT AS OF MARCH 31, 2025 OF THE SCOTTSDALE INSURANCE COMPANY

GENERAL INTERROGATORIES

17. Excluding items in Schedule E - Part 3 - Special Deposits, real estate, mortgage loans and investments held physically in the reporting entity's offices, vaults or safety deposit boxes, were all stocks, bonds and other securities, owned throughout the current year held pursuant to a custodial agreement with a qualified bank or trust company in accordance with Section 1, III - General Examination Considerations, F. Outsourcing of Critical Functions, Custodial or Safekeeping Agreements of the NAIC Financial Condition Examiners Handbook? Yes [X] No []
- 17.1 For all agreements that comply with the requirements of the NAIC Financial Condition Examiners Handbook, complete the following:

1 Name of Custodian(s)	2 Custodian Address
The Bank of New York Mellon	1 Wall Street, New York, NY 10286
BNY Trust of Canada	320 Bay St., 11th Floor, Toronto, ON M5H 4A6

- 17.2 For all agreements that do not comply with the requirements of the NAIC Financial Condition Examiners Handbook, provide the name, location and a complete explanation:

1 Name(s)	2 Location(s)	3 Complete Explanation(s)

- 17.3 Have there been any changes, including name changes, in the custodian(s) identified in 17.1 during the current quarter? Yes [] No [X]
- 17.4 If yes, give full information relating thereto:

1 Old Custodian	2 New Custodian	3 Date of Change	4 Reason

- 17.5 Investment management – Identify all investment advisors, investment managers, broker/dealers, including individuals that have the authority to make investment decisions on behalf of the reporting entity. This includes both primary and sub-advisors. For assets that are managed internally by employees of the reporting entity, note as such. ["...that have access to the investment accounts"; "...handle securities"]

1 Name of Firm or Individual	2 Affiliation
Members of the investment staff designated by the Chief Investment Officer as detailed in the Corporate Resolution	I.....

- 17.5097 For those firms/individuals listed in the table for Question 17.5, do any firms/individuals unaffiliated with the reporting entity (i.e. designated with a "U") manage more than 10% of the reporting entity's invested assets?..... Yes [] No [X]
- 17.5098 For firms/individuals unaffiliated with the reporting entity (i.e. designated with a "U") listed in the table for Question 17.5, does the total assets under management aggregate to more than 50% of the reporting entity's invested assets?..... Yes [] No [X]
- 17.6 For those firms or individuals listed in the table for 17.5 with an affiliation code of "A" (affiliated) or "U" (unaffiliated), provide the information for the table below.

1	2	3	4	5
Central Registration Depository Number	Name of Firm or Individual	Legal Entity Identifier (LEI)	Registered With	Investment Management Agreement (IMA) Filed
.....

- 18.1 Have all the filing requirements of the Purposes and Procedures Manual of the NAIC Investment Analysis Office been followed? Yes [X] No []
- 18.2 If no, list exceptions:
.....

19. By self-designating 5GI securities, the reporting entity is certifying the following elements for each self-designated 5GI security:

a. Documentation necessary to permit a full credit analysis of the security does not exist or an NAIC CRP credit rating for an FE or PL security is not available.
b. Issuer or obligor is current on all contracted interest and principal payments.
c. The insurer has an actual expectation of ultimate payment of all contracted interest and principal.

Has the reporting entity self-designated 5GI securities? Yes [] No [X]
20. By self-designating PLGI securities, the reporting entity is certifying the following elements of each self-designated PLGI security:

a. The security was purchased prior to January 1, 2018.
b. The reporting entity is holding capital commensurate with the NAIC Designation reported for the security.
c. The NAIC Designation was derived from the credit rating assigned by an NAIC CRP in its legal capacity as a NRSRO which is shown on a current private letter rating held by the insurer and available for examination by state insurance regulators.
d. The reporting entity is not permitted to share this credit rating of the PL security with the SVO.

Has the reporting entity self-designated PLGI securities? Yes [] No [X]
21. By assigning FE to a Schedule BA non-registered private fund, the reporting entity is certifying the following elements of each self-designated FE fund:

a. The shares were purchased prior to January 1, 2019.
b. The reporting entity is holding capital commensurate with the NAIC Designation reported for the security.
c. The security had a public credit rating(s) with annual surveillance assigned by an NAIC CRP in its legal capacity as an NRSRO prior to January 1, 2019.
d. The fund only or predominantly holds bonds in its portfolio.
e. The current reported NAIC Designation was derived from the public credit rating(s) with annual surveillance assigned by an NAIC CRP in its legal capacity as an NRSRO.
f. The public credit rating(s) with annual surveillance assigned by an NAIC CRP has not lapsed.

Has the reporting entity assigned FE to Schedule BA non-registered private funds that complied with the above criteria? Yes [] No [X]

GENERAL INTERROGATORIES

PART 2 - PROPERTY & CASUALTY INTERROGATORIES

1.

If the reporting entity is a member of a pooling arrangement, did the agreement or the reporting entity's participation change?
If yes, attach an explanation.
.....

Yes [] No [X] N/A []
2.

Has the reporting entity reinsured any risk with any other reporting entity and agreed to release such entity from liability, in whole or in part, from any loss that may occur on the risk, or portion thereof, reinsured?
If yes, attach an explanation.
.....

Yes [] No [X]
- 3.1

Have any of the reporting entity's primary reinsurance contracts been canceled?

Yes [] No [X]
- 3.2

If yes, give full and complete information thereto.
.....
- 4.1

Are any of the liabilities for unpaid losses and loss adjustment expenses other than certain workers' compensation tabular reserves (see Annual Statement Instructions pertaining to disclosure of discounting for definition of " tabular reserves") discounted at a rate of interest greater than zero?

Yes [] No [X]

4.2 If yes, complete the following schedule:

			TOTAL DISCOUNT				DISCOUNT TAKEN DURING PERIOD			
1	2	3	4	5	6	7	8	9	10	11
Line of Business	Maximum Interest	Discount Rate	Unpaid Losses	Unpaid LAE	IBNR	TOTAL	Unpaid Losses	Unpaid LAE	IBNR	TOTAL
TOTAL										

5.

Operating Percentages:

5.1 A&H loss percent0.000 %

5.2 A&H cost containment percent0.000 %

5.3 A&H expense percent excluding cost containment expenses0.000 %
- 6.1

Do you act as a custodian for health savings accounts?

Yes [] No [X]
- 6.2

If yes, please provide the amount of custodial funds held as of the reporting date\$.....
- 6.3

Do you act as an administrator for health savings accounts?

Yes [] No [X]
- 6.4

If yes, please provide the balance of the funds administered as of the reporting date\$.....
7.

Is the reporting entity licensed or chartered, registered, qualified, eligible or writing business in at least two states?

Yes [X] No []
- 7.1

If no, does the reporting entity assume reinsurance business that covers risks residing in at least one state other than the state of domicile of the reporting entity?

Yes [] No []

STATEMENT AS OF MARCH 31, 2025 OF THE SCOTTSDALE INSURANCE COMPANY

SCHEDULE F - CEDED REINSURANCE

Showing All New Reinsurers - Current Year to Date

[illegible]

SCHEDULE T - EXHIBIT OF PREMIUMS WRITTEN

Current Year to Date - Allocated by States and Territories

		1 Active Status (a)	Direct Premiums Written		Direct Losses Paid (Deducting Salvage)		Direct Losses Unpaid		
			2 Current Year To Date	3 Prior Year To Date	4 Current Year To Date	5 Prior Year To Date	6 Current Year To Date	7 Prior Year To Date	
States, etc.		(a)	To Date	To Date	To Date	To Date	To Date	To Date	
1.	Alabama	AL	E.....	9,177,719	11,217,748	1,856,577	3,044,690	31,785,281	32,572,372
2.	Alaska	AK	E.....	1,425,624	1,127,106	337,347	1,000,212	4,183,570	4,301,562
3.	Arizona	AZ	L.....	1,867,848	2,032,994	382,519	1,039,415	9,442,708	9,562,394
4.	Arkansas	AR	E.....	3,331,562	2,707,742	842,336	569,487	11,746,154	12,363,602
5.	California	CA	E.....	160,617,550	138,922,859	119,608,532	42,381,914	696,772,990	637,431,054
6.	Colorado	CO	E.....	13,803,225	12,332,433	4,847,606	2,606,808	55,153,889	54,979,335
7.	Connecticut	CT	E.....	3,319,041	3,162,059	607,563	5,439,533	19,812,072	20,548,524
8.	Delaware	DE	L.....	1,085,286	836,005	30,900	86,946	2,158,580	2,649,826
9.	District of Columbia	DC	E.....	7,263,451	4,602,061	174,973	439,309	10,617,523	13,539,324
10.	Florida	FL	E.....	73,146,197	63,784,419	19,582,247	22,392,721	255,692,538	285,324,221
11.	Georgia	GA	E.....	17,507,311	15,360,776	13,560,978	6,554,523	89,172,963	87,817,827
12.	Hawaii	HI	E.....	7,230,553	5,822,450	2,723,006	1,429,090	23,222,845	26,221,271
13.	Idaho	ID	E.....	2,500,227	2,449,185	528,933	153,706	8,680,523	9,758,627
14.	Illinois	IL	E.....	17,958,603	13,453,822	33,613,187	5,232,754	122,767,169	110,199,287
15.	Indiana	IN	E.....	7,311,773	6,464,963	1,492,479	1,482,206	32,644,974	33,188,109
16.	Iowa	IA	E.....	4,556,951	2,168,083	379,749	158,836	11,246,023	9,598,409
17.	Kansas	KS	E.....	2,614,075	2,873,887	972,675	594,774	15,511,847	18,264,077
18.	Kentucky	KY	E.....	3,866,571	3,495,218	483,393	1,177,987	17,045,124	15,599,827
19.	Louisiana	LA	E.....	22,718,038	17,828,947	16,708,293	13,985,189	122,169,477	195,797,934
20.	Maine	ME	E.....	1,129,926	732,098	202,130	87,521	3,027,076	3,217,845
21.	Maryland	MD	E.....	5,482,108	6,544,063	2,321,345	1,475,268	32,318,144	35,126,873
22.	Massachusetts	MA	E.....	14,222,139	12,949,268	8,028,100	3,025,210	59,803,695	53,288,586
23.	Michigan	MI	E.....	6,683,665	5,591,540	2,900,030	3,004,303	36,155,479	35,784,268
24.	Minnesota	MN	E.....	8,054,182	4,684,995	298,850	1,895,027	28,302,247	28,127,285
25.	Mississippi	MS	E.....	3,895,346	3,723,696	475,811	4,547,769	14,293,999	17,101,835
26.	Missouri	MO	E.....	7,101,971	6,234,806	3,589,001	1,998,021	54,760,124	49,738,910
27.	Montana	MT	E.....	3,895,910	3,485,382	1,081,933	469,416	11,099,882	11,148,356
28.	Nebraska	NE	E.....	2,142,409	1,585,658	250,181	68,171	12,502,212	10,514,881
29.	Nevada	NV	E.....	5,631,694	5,260,887	11,480,879	5,872,975	27,329,541	33,664,208
30.	New Hampshire	NH	E.....	1,073,997	747,005	100,248	19,924	3,458,903	3,014,183
31.	New Jersey	NJ	E.....	14,642,414	14,375,410	11,861,618	5,986,527	107,782,435	108,706,305
32.	New Mexico	NM	E.....	2,428,150	1,846,868	1,169,545	788,221	26,842,762	14,911,231
33.	New York	NY	E.....	40,104,526	34,173,052	31,199,929	31,645,884	458,732,307	488,360,744
34.	North Carolina	NC	E.....	9,657,445	12,969,512	2,219,184	2,020,474	46,120,880	55,202,055
35.	North Dakota	ND	E.....	1,279,077	1,961,223	574,208	141,598	8,247,011	6,786,901
36.	Ohio	OH	L.....	296,929	419,863	24,040	42,434	29,504,608	29,832,956
37.	Oklahoma	OK	E.....	5,413,390	5,150,767	6,032,026	1,282,241	29,630,081	32,090,769
38.	Oregon	OR	E.....	6,327,490	6,752,940	1,428,120	1,351,637	29,646,507	29,146,019
39.	Pennsylvania	PA	E.....	14,824,035	12,916,503	4,360,883	8,135,667	99,751,142	76,757,893
40.	Rhode Island	RI	E.....	1,980,350	1,653,600	124,039	475,953	6,489,530	6,167,815
41.	South Carolina	SC	E.....	8,831,138	7,988,041	4,019,784	2,649,753	39,826,128	37,060,042
42.	South Dakota	SD	E.....	862,073	863,491	50,914	26,251	2,731,172	3,015,343
43.	Tennessee	TN	E.....	6,888,938	4,972,650	5,664,770	3,223,247	40,692,493	34,828,968
44.	Texas	TX	E.....	76,164,927	65,692,583	41,382,899	24,173,126	410,669,923	402,566,437
45.	Utah	UT	E.....	5,008,022	5,206,120	1,601,209	1,455,983	28,617,839	29,667,625
46.	Vermont	VT	E.....	1,283,290	1,656,589	759,527	15,231	8,294,677	5,319,380
47.	Virginia	VA	E.....	7,959,184	7,328,584	5,885,451	1,860,995	46,772,802	45,036,614
48.	Washington	WA	E.....	17,328,114	16,948,416	3,678,297	6,308,169	67,308,276	58,399,259
49.	West Virginia	WV	E.....	1,930,370	2,344,863	50,053	672,956	8,219,688	10,441,726
50.	Wisconsin	WI	E.....	5,008,865	4,048,624	3,459,743	2,281,872	23,750,148	17,647,662
51.	Wyoming	WY	E.....	1,862,837	1,688,174	4,651,727	77,997	12,582,990	15,648,114
52.	American Samoa	AS	N.....
53.	Guam	GU	N.....
54.	Puerto Rico	PR	E.....	26,000	32,500	600,270	332,085
55.	U.S. Virgin Islands	VI	E.....	350,176	555,283
56.	Northern Mariana Islands	MP	N.....
57.	Canada	CAN	E.....	134,140	437,344	2,584,527	1,105,131
58.	Aggregate Other Alien OT	XXX.....	1,024,895	273,788	7,007,705	6,747,928
59.	Totals	XXX	651,881,551	573,883,660	379,659,767	226,849,921	3,365,633,629	3,376,779,097
DETAILS OF WRITE-INS									
58001.	Bermuda	XXX	198,224	278,781	7,029,504	6,732,870
58002.	England	XXX	826,671	(4,993)	(21,799)	15,058
58003.	XXX
58998.	Summary of remaining write-ins for Line 58 from overflow page	XXX
58999.	Totals (Lines 58001 through 58003 plus 58998)(Line 58 above)	XXX	1,024,895	273,788	7,007,705	6,747,928

- (a) Active Status Counts:
1. L - Licensed or Chartered - Licensed insurance carrier or domiciled RRG.....

2. R - Registered - Non-domiciled RRGs.....

3. E - Eligible - Reporting entities eligible or approved to write surplus lines in the state (other than their state of domicile - see DSLI).....
4. Q - Qualified - Qualified or accredited reinsurer.....

5. D - Domestic Surplus Lines Insurer (DSLII) - Reporting entities authorized to write surplus lines in the state of domicile.....

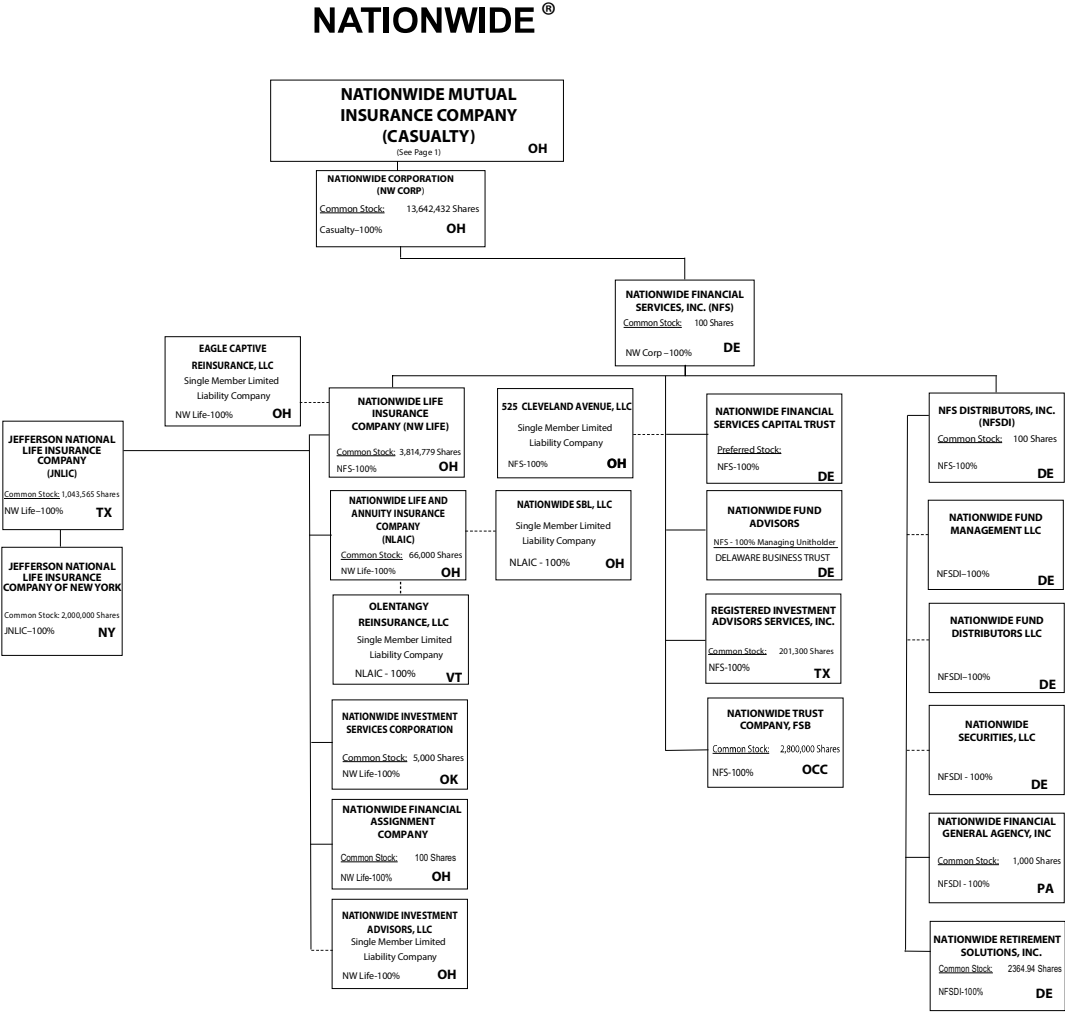
51 6. N - None of the above - Not allowed to write business in the state... ..

11



STATEMENT AS OF MARCH 31, 2025 OF THE SCOTTSDALE INSURANCE COMPANY

11.1



Subsidiary Companies Solid Line
Contractual Association Double Line
Limited Liability Company Dotted Line

NATIONWIDE INSURANCE COMPANIES

NAIC Group Code	Group Name	NAIC Company Code	State of Domicile	Federal ID Number	Name of Company
0140	Nationwide	10127	OH	27-0114983	Allied Insurance Company of America
0140	Nationwide	42579	IA	42-1201931	Allied Property and Casualty Insurance Company
0140	Nationwide	19100	IA	42-6054959	AMCO Insurance Company
0140	Nationwide	29262	TX	74-1061659	Colonial County Mutual Insurance Company
0140	Nationwide	18961	OH	68-0066866	Crestbrook Insurance Company
0140	Nationwide	42587	IA	42-1207150	Depositors Insurance Company
0140	Nationwide	15821	OH	42-4523959	Eagle Captive Reinsurance, LLC
0140	Nationwide	22209	OH	75-6013587	Freedom Specialty Insurance Company
0140	Nationwide	23582	OH	41-0417250	Harleysville Insurance Company
0140	Nationwide	42900	NJ	23-2253669	Harleysville Insurance Company of New Jersey
0140	Nationwide	10674	OH	23-2864924	Harleysville Insurance Company of New York
0140	Nationwide	35696	OH	23-2384978	Harleysville Preferred Insurance Company
0140	Nationwide	26182	OH	04-1989660	Harleysville Worcester Insurance Company
0140	Nationwide	64017	TX	75-0300900	Jefferson National Life Insurance Company
0140	Nationwide	15727	NY	47-1180302	Jefferson National Life Insurance Company of New York
0140	Nationwide	11991	OH	38-0865250	National Casualty Company
0140	Nationwide	26093	OH	48-0470690	Nationwide Affinity Insurance Company of America
0140	Nationwide	28223	IA	42-1015537	Nationwide Agribusiness Insurance Company
0140	Nationwide	10723	OH	95-0639970	Nationwide Assurance Company
0140	Nationwide	23760	OH	31-4425763	Nationwide General Insurance Company
0140	Nationwide	10070	OH	31-1399201	Nationwide Indemnity Company
0140	Nationwide	25453	OH	95-2130882	Nationwide Insurance Company of America
0140	Nationwide	10948	OH	31-1613686	Nationwide Insurance Company of Florida
0140	Nationwide	92657	OH	31-1000740	Nationwide Life and Annuity Insurance Company
0140	Nationwide	66869	OH	31-4156830	Nationwide Life Insurance Company
0140	Nationwide	23787	OH	31-4177100	Nationwide Mutual Insurance Company
0140	Nationwide	37877	OH	31-0970750	Nationwide Property & Casualty Insurance Company
0140	Nationwide	13999	VT	27-1712056	Olentangy Reinsurance, LLC
0140	Nationwide	15580	OH	31-1117969	Scottsdale Indemnity Company
0140	Nationwide	41297	OH	31-1024978	Scottsdale Insurance Company
0140	Nationwide	10672	AZ	86-0835870	Scottsdale Surplus Lines Insurance Company
0140	Nationwide	36269	MI	86-0619597	Titan Insurance Company
0140	Nationwide	42285	OH	95-3750113	Veterinary Pet Insurance Company
0140	Nationwide	42889	OH	34-1394913	Victoria Fire & Casualty Company
0140	Nationwide	10105	OH	34-1777972	Victoria Select Insurance Company

STATEMENT AS OF MARCH 31, 2025 OF THE SCOTTSDALE INSURANCE COMPANY

SCHEDULE Y

PART 1A - DETAILS OF INSURANCE HOLDING COMPANY SYSTEM

1	2	3	4	5	6	7	8	9	10	11	12	13	14	15	16
Group Code	Group Name	NAIC Company Code	ID Number	Federal RSSD	CIK	Name of Securities Exchange if Publicly Traded (U.S. or International)	Names of Parent, Subsidiaries Or Affiliates	Domi-ciliary Location	Relation-ship to Reporting Entity	Directly Controlled by (Name of Entity/Person)	Type of Control (Ownership, Board, Management, Attorney-in-Fact, Influence, Other)	If Control is Owner-ship Provide Percen-tage	Ultimate Controlling Entity(ies)/Person(s)	Is an SCA Filing Re-quired? (Yes/No)	*
. 0140 ...	Nationwide	31-1486309	10 W. Nationwide, LLC OH.....	NIA.....	Nationwide Realty Investors, Ltd.	Ownership.....	100.000 ...	Nationwide Mutual Insurance Company NO.....
. 0140 ...	Nationwide	31-1486309	100 Green Meadows Drive, LLC OH.....	NIA.....	Nationwide Realty Investors, Ltd.	Ownership.....	100.000 ...	Nationwide Mutual Insurance Company NO.....
. 0140 ...	Nationwide	31-1486309	1000 Yard Street, LLC OH.....	NIA.....	Nationwide Realty Investors, Ltd.	Ownership.....	100.000 ...	Nationwide Mutual Insurance Company NO.....
. 0140 ...	Nationwide	31-1486309	1050 Yard Street, LLC OH.....	NIA.....	Nationwide Realty Investors, Ltd.	Ownership.....	100.000 ...	Nationwide Mutual Insurance Company NO.....
. 0140 ...	Nationwide	20-4939866	1055 Yard Street, LLC OH.....	NIA.....	GVY Residential, LLC	Ownership.....	100.000 ...	Nationwide Mutual Insurance Company NO.....
. 0140 ...	Nationwide	31-1486309	1125 Rail Street, LLC OH.....	NIA.....	Nationwide Realty Investors, Ltd.	Ownership.....	100.000 ...	Nationwide Mutual Insurance Company NO.....
. 0140 ...	Nationwide	31-1733036	120 Acre Partners, LLC DE.....	NIA.....	Nationwide Realty Investors, Ltd.	Ownership.....	95.000 ...	Nationwide Mutual Insurance Company NO.....
. 0140 ...	Nationwide	20-4939866	1125 Yard Street, LLC OH.....	NIA.....	NRI Equity Land Investments, LLC	Ownership.....	100.000 ...	Nationwide Mutual Insurance Company NO.....
. 0140 ...	Nationwide	20-4939867	1175 Bobcat, LLC OH.....	NIA.....	NRI Equity Land Investments, LLC	Ownership.....	100.000 ...	Nationwide Mutual Insurance Company NO.....
. 0140 ...	Nationwide	26-2451988	1492 Capital, LLC OH.....	NIA.....	Nationwide Mutual Insurance Company	Ownership.....	100.000 ...	Nationwide Mutual Insurance Company NO.....
. 0140 ...	Nationwide	31-1486309	111 Rivulon Boulevard, LLC OH.....	NIA.....	NRI-Rivulon, LLC	Ownership.....	100.000 ...	Nationwide Mutual Insurance Company NO.....
. 0140 ...	Nationwide	31-1486309	155 Rivulon Boulevard, LLC OH.....	NIA.....	NRI-Rivulon, LLC	Ownership.....	100.000 ...	Nationwide Mutual Insurance Company NO.....
. 0140 ...	Nationwide	31-1486309	161 Rivulon Boulevard, LLC OH.....	NIA.....	NRI-Rivulon, LLC	Ownership.....	100.000 ...	Nationwide Mutual Insurance Company NO.....
. 0140 ...	Nationwide	31-1580283	170 Marconi, LLC OH.....	NIA.....	NWD Investments, LLC	Ownership.....	100.000 ...	Nationwide Mutual Insurance Company NO.....
. 0140 ...	Nationwide	38-4118665	220 Vine St., LLC OH.....	NIA.....	NWD HP, LLC	Ownership.....	100.000 ...	Nationwide Mutual Insurance Company NO.....
. 0140 ...	Nationwide	31-1580283	245 Parks Edge Place, LLC OH.....	NIA.....	NWD Investments, LLC	Ownership.....	100.000 ...	Nationwide Mutual Insurance Company NO.....
. 0140 ...	Nationwide	31-1486309	275 Rivulon Boulevard, LLC OH.....	NIA.....	NRI-Rivulon, LLC	Ownership.....	100.000 ...	Nationwide Mutual Insurance Company NO.....
. 0140 ...	Nationwide	31-1486309	280 High Street, LLC OH.....	NIA.....	Nationwide Realty Investors, Ltd.	Ownership.....	100.000 ...	Nationwide Mutual Insurance Company NO.....
. 0140 ...	Nationwide	31-1486309	300 Rivulon Boulevard, LLC OH.....	NIA.....	NRI-Rivulon, LLC	Ownership.....	100.000 ...	Nationwide Mutual Insurance Company NO.....
. 0140 ...	Nationwide	31-1486309	310 Rivulon Boulevard, LLC OH.....	NIA.....	NRI-Rivulon, LLC	Ownership.....	100.000 ...	Nationwide Mutual Insurance Company NO.....
. 0140 ...	Nationwide	31-1486309	343 N. Front, LLC OH.....	NIA.....	Nationwide Realty Investors, Ltd.	Ownership.....	100.000 ...	Nationwide Mutual Insurance Company NO.....
. 0140 ...	Nationwide	31-1486309	400 Rivulon Boulevard, LLC OH.....	NIA.....	NRI-Rivulon, LLC	Ownership.....	100.000 ...	Nationwide Mutual Insurance Company NO.....
. 0140 ...	Nationwide	31-1580283	400 West Nationwide Boulevard, LLC OH.....	NIA.....	NWD Investments, LLC	Ownership.....	100.000 ...	Nationwide Mutual Insurance Company NO.....
. 0140 ...	Nationwide	31-1486309	410 Rivulon Boulevard, LLC OH.....	NIA.....	NRI-Rivulon, LLC	Ownership.....	100.000 ...	Nationwide Mutual Insurance Company NO.....
. 0140 ...	Nationwide	31-1580283	425 West Nationwide Boulevard, LLC OH.....	NIA.....	NWD Investments, LLC	Ownership.....	100.000 ...	Nationwide Mutual Insurance Company NO.....
. 0140 ...	Nationwide	31-1486309	44 Chestnut, LLC OH.....	NIA.....	Nationwide Realty Investors, Ltd.	Ownership.....	100.000 ...	Nationwide Mutual Insurance Company NO.....
. 0140 ...	Nationwide	38-4118665	500 Neil Avenue, LLC OH.....	NIA.....	NWD HP, LLC	Ownership.....	100.000 ...	Nationwide Mutual Insurance Company NO.....
. 0140 ...	Nationwide	38-4118665	515 Kilbourne Street, LLC OH.....	NIA.....	NWD HP, LLC	Ownership.....	100.000 ...	Nationwide Mutual Insurance Company NO.....
. 0140 ...	Nationwide	87-1954007	525 Cleveland Avenue, LLC OH.....	NIA.....	Nationwide Financial Services, Inc.	Ownership.....	100.000 ...	Nationwide Mutual Insurance Company NO.....
. 0140 ...	Nationwide	31-1486309	75 Rivulon Boulevard, LLC OH.....	NIA.....	NRI-Rivulon, LLC	Ownership.....	100.000 ...	Nationwide Mutual Insurance Company NO.....
. 0140 ...	Nationwide	20-4939866	775 Yard Street, LLC OH.....	NIA.....	NRI Equity Land Investments, LLC	Ownership.....	100.000 ...	Nationwide Mutual Insurance Company NO.....
. 0140 ...	Nationwide	20-4939866	777 Swan Street, LLC OH.....	NIA.....	NRI Equity Land Investments, LLC	Ownership.....	100.000 ...	Nationwide Mutual Insurance Company NO.....
. 0140 ...	Nationwide	20-4939866	780 Yard Street, LLC OH.....	NIA.....	NRI Equity Land Investments, LLC	Ownership.....	100.000 ...	Nationwide Mutual Insurance Company NO.....
. 0140 ...	Nationwide	20-4939866	795 Rail Street, LLC OH.....	NIA.....	NRI Equity Land Investments, LLC	Ownership.....	100.000 ...	Nationwide Mutual Insurance Company NO.....
. 0140 ...	Nationwide	20-4939866	800 Bobcat Avenue, LLC OH.....	NIA.....	NRI Equity Land Investments, LLC	Ownership.....	100.000 ...	Nationwide Mutual Insurance Company NO.....
. 0140 ...	Nationwide	20-4939866	800 Goodale Boulevard, LLC OH.....	NIA.....	NRI Equity Land Investments, LLC	Ownership.....	100.000 ...	Nationwide Mutual Insurance Company NO.....
. 0140 ...	Nationwide	20-4939866	800 Yard Street, LLC OH.....	NIA.....	NRI Equity Land Investments, LLC	Ownership.....	100.000 ...	Nationwide Mutual Insurance Company NO.....
. 0140 ...	Nationwide	20-4939866	805 Bobcat Avenue, LLC OH.....	NIA.....	GVY Residential, LLC	Ownership.....	100.000 ...	Nationwide Mutual Insurance Company NO.....
. 0140 ...	Nationwide	20-4939866	808 Yard Street, LLC OH.....	NIA.....	GVY Residential, LLC	Ownership.....	100.000 ...	Nationwide Mutual Insurance Company NO.....
. 0140 ...	Nationwide	20-4939866	820 Goodale Boulevard, LLC OH.....	NIA.....	NRI Equity Land Investments, LLC	Ownership.....	100.000 ...	Nationwide Mutual Insurance Company NO.....
. 0140 ...	Nationwide	20-4939866	822 Williams Avenue, LLC OH.....	NIA.....	GVY Residential, LLC	Ownership.....	100.000 ...	Nationwide Mutual Insurance Company NO.....
. 0140 ...	Nationwide	20-4939866	825 Junction Way, LLC OH.....	NIA.....	GVY Residential, LLC	Ownership.....	100.000 ...	Nationwide Mutual Insurance Company NO.....
. 0140 ...	Nationwide	20-4939866	828 Bobcat Avenue, LLC OH.....	NIA.....	NRI Equity Land Investments, LLC	Ownership.....	100.000 ...	Nationwide Mutual Insurance Company NO.....
. 0140 ...	Nationwide	20-4939866	840 Third Avenue, LLC OH.....	NIA.....	NRI Equity Land Investments, LLC	Ownership.....	100.000 ...	Nationwide Mutual Insurance Company NO.....
. 0140 ...	Nationwide	20-4939866	840 Yard Street, LLC OH.....	NIA.....	NRI Equity Land Investments, LLC	Ownership.....	100.000 ...	Nationwide Mutual Insurance Company NO.....
. 0140 ...	Nationwide	20-4939866	845 Yard Street, LLC OH.....	NIA.....	GVY Residential, LLC	Ownership.....	100.000 ...	Nationwide Mutual Insurance Company NO.....
. 0140 ...	Nationwide	20-4939866	855 Third Avenue, LLC OH.....	NIA.....	NRI Equity Land Investments, LLC	Ownership.....	100.000 ...	Nationwide Mutual Insurance Company NO.....
. 0140 ...	Nationwide	20-4939866	860 Third Avenue, LLC OH.....	NIA.....	NRI Equity Land Investments, LLC	Ownership.....	100.000 ...	Nationwide Mutual Insurance Company NO.....
. 0140 ...	Nationwide	20-4939866	875 First Avenue, LLC OH.....	NIA.....	GVY Residential, LLC	Ownership.....	100.000 ...	Nationwide Mutual Insurance Company NO.....

STATEMENT AS OF MARCH 31, 2025 OF THE SCOTTSDALE INSURANCE COMPANY

SCHEDULE Y

PART 1A - DETAILS OF INSURANCE HOLDING COMPANY SYSTEM

1	2	3	4	5	6	7	8	9	10	11	12	13	14	15	16
Group Code	Group Name	NAIC Company Code	ID Number	Federal RSSD	CIK	Name of Securities Exchange if Publicly Traded (U.S. or International)	Names of Parent, Subsidiaries Or Affiliates	Domi-ciliary Loca-tion	Rela-tion-ship to Reporting Entity	Directly Controlled by (Name of Entity/Person)	Type of Control (Ownership, Board, Management, Attorney-in-Fact, Influence, Other)	If Control is Owner-ship Provide Percen-tage	Ultimate Controlling Entity(ies)/Person(s)	Is an SCA Filing Re-quired? (Yes/No)	*
.0140	Nationwide		20-4939866				875 Junction Way, LLC	..OH.....	..NIA.....	NRI Equity Land Investments, LLC	Ownership.....	100.000	Nationwide Mutual Insurance CompanyNO.....	
.0140	Nationwide		20-4939866				880 Third Avenue, LLC	..OH.....	..NIA.....	NRI Equity Land Investments, LLC	Ownership.....	100.000	Nationwide Mutual Insurance CompanyNO.....	
.0140	Nationwide		20-4939866				880 Yard Street, LLC	..OH.....	..NIA.....	GVY Residential, LLC	Ownership.....	100.000	Nationwide Mutual Insurance CompanyNO.....	
.0140	Nationwide		20-4939866				895 W. Third Avenue, LLC	..OH.....	..NIA.....	NRI Equity Land Investments, LLC	Ownership.....	100.000	Nationwide Mutual Insurance CompanyNO.....	
.0140	Nationwide		20-4939866				950 Dorchester Way, LLC	..OH.....	..NIA.....	GVY Residential, LLC	Ownership.....	100.000	Nationwide Mutual Insurance CompanyNO.....	
.0140	Nationwide		20-4939866				950 Goodale Boulevard, LLC	..OH.....	..NIA.....	NRI Equity Land Investments, LLC	Ownership.....	100.000	Nationwide Mutual Insurance CompanyNO.....	
.0140	Nationwide		31-1486309				960 Bobcat Avenue, LLC	..OH.....	..NIA.....	Nationwide Realty Investors, Ltd.	Ownership.....	100.000	Nationwide Mutual Insurance CompanyNO.....	
.0140	Nationwide		31-1486309				975 Rail Street, LLC	..OH.....	..NIA.....	Nationwide Realty Investors, Ltd.	Ownership.....	100.000	Nationwide Mutual Insurance CompanyNO.....	
.0140	Nationwide		31-1486309				995 Yard Street, LLC	..OH.....	..NIA.....	Nationwide Realty Investors, Ltd.	Ownership.....	100.000	Nationwide Mutual Insurance CompanyNO.....	
.0140	Nationwide		31-1486309				12062 Sycamore Trace, LLC	..OH.....	..NIA.....	Jerome Village Company, LLC	Ownership.....	100.000	Nationwide Mutual Insurance CompanyNO.....	
.0140	Nationwide		31-1486309				18615 Claret Drive, LLC	..OH.....	..NIA.....	NRI Cavasson, LLC	Ownership.....	100.000	Nationwide Mutual Insurance CompanyNO.....	
.0140	Nationwide		31-1486309				18655 Claret Drive, LLC	..OH.....	..NIA.....	NRI Cavasson, LLC	Ownership.....	100.000	Nationwide Mutual Insurance CompanyNO.....	
.0140	Nationwide		31-1486309				18700 Hayden Road, LLC	..OH.....	..NIA.....	NRI Cavasson, LLC	Ownership.....	100.000	Nationwide Mutual Insurance CompanyNO.....	
.0140	Nationwide		31-1486309				18750 Hayden Road, LLC	..OH.....	..NIA.....	NRI Cavasson, LLC	Ownership.....	100.000	Nationwide Mutual Insurance CompanyNO.....	
.0140	Nationwide		31-1580283				AD DORA, LLC	..OH.....	..NIA.....	NID Investments, LLC	Ownership.....	100.000	Nationwide Mutual Insurance CompanyNO.....	
.0140	Nationwide		31-1580283				ADTV, LLC	..OH.....	..NIA.....	NID Investments, LLC	Ownership.....	100.000	Nationwide Mutual Insurance CompanyNO.....	
.0140	Nationwide	10127	27-0114983				ALLIED Insurance Company of America	..OH.....	..IA.....	Nationwide Mutual Insurance Company	Ownership.....	100.000	Nationwide Mutual Insurance CompanyNO.....	
							ALLIED Property and Casualty Insurance Company	..IA.....	..IA.....	Nationwide Mutual Insurance Company	Ownership.....	100.000	Nationwide Mutual Insurance CompanyNO.....	
.0140	Nationwide	42579	42-1201931				ALLIED Texas Agency, Inc.	..TX.....	..IA.....	AMCO Insurance Company	Ownership.....	100.000	Nationwide Mutual Insurance CompanyNO.....	
.0140	Nationwide	19100	42-6054959				AMCO Insurance Company	..IA.....	..IA.....	Nationwide Mutual Insurance Company	Ownership.....	100.000	Nationwide Mutual Insurance CompanyNO.....	
.0140	Nationwide		59-1031596				American Marine Underwriters, Inc.	..FL.....	..NIA.....	Nationwide Mutual Insurance Company	Ownership.....	100.000	Nationwide Mutual Insurance CompanyNO.....	
.0140	Nationwide		81-4532504				American Tax Credit Fund 2017-A, LLC	..OH.....	..OTH.....	Nationwide Life Insurance Company	Other.....	0.010	Nationwide Mutual Insurance CompanyNO.....	1
.0140	Nationwide		82-2001573				American Tax Credit Fund 2017-B, LLC	..OH.....	..OTH.....	Nationwide Life Insurance Company	Other.....	0.010	Nationwide Mutual Insurance CompanyNO.....	1
.0140	Nationwide		82-4591498				American Tax Credit Fund 2018-A, LLC	..OH.....	..OTH.....	Nationwide Life Insurance Company	Other.....	0.010	Nationwide Mutual Insurance CompanyNO.....	1
.0140	Nationwide		83-0606592				American Tax Credit Fund 2018-B, LLC	..OH.....	..OTH.....	Nationwide Life Insurance Company	Other.....	0.010	Nationwide Mutual Insurance CompanyNO.....	1
.0140	Nationwide		83-0620232				American Tax Credit Fund 2018-C, LLC	..OH.....	..OTH.....	Nationwide Life Insurance Company	Other.....	0.010	Nationwide Mutual Insurance CompanyNO.....	1
.0140	Nationwide		83-3900932				American Tax Credit Fund 2019-A, LLC	..OH.....	..OTH.....	Nationwide Life Insurance Company	Other.....	0.010	Nationwide Mutual Insurance CompanyNO.....	1
.0140	Nationwide		83-3953721				American Tax Credit Fund 2019-B, LLC	..OH.....	..OTH.....	Nationwide Life Insurance Company	Other.....	0.010	Nationwide Mutual Insurance CompanyNO.....	1
.0140	Nationwide		84-3443067				American Tax Credit Fund 2020-A, LLC	..OH.....	..OTH.....	Nationwide Life Insurance Company	Other.....	0.010	Nationwide Mutual Insurance CompanyNO.....	1
.0140	Nationwide		85-2359702				American Tax Credit Fund 2020-B, LLC	..OH.....	..OTH.....	Nationwide Life Insurance Company	Other.....	0.010	Nationwide Mutual Insurance CompanyNO.....	1
							American Tax Credit Fund 2021-A, LLC (fka	..OH.....	..OTH.....	Nationwide Life Insurance Company	Other.....	0.010	Nationwide Mutual Insurance CompanyNO.....	1
.0140	Nationwide		85-2649655				American Tax Credit Fund 2020-C, LLC)	..OH.....	..OTH.....	Nationwide Life Insurance Company	Other.....	0.010	Nationwide Mutual Insurance CompanyNO.....	1
.0140	Nationwide		86-2502912				American Tax Credit Fund 2021-B, LLC	..OH.....	..OTH.....	Nationwide Life Insurance Company	Other.....	0.010	Nationwide Mutual Insurance CompanyNO.....	1
.0140	Nationwide		87-1349942				American Tax Credit Fund 2021-C, LLC	..OH.....	..OTH.....	Nationwide Life Insurance Company	Other.....	0.010	Nationwide Mutual Insurance CompanyNO.....	1
							American Tax Credit Fund 2023-B, LLC (fka	..OH.....	..OTH.....	Nationwide Life Insurance Company	Other.....	0.010	Nationwide Mutual Insurance CompanyNO.....	1
.0140	Nationwide		87-4753681				American Tax Credit Fund 2022-A, LLC)	..OH.....	..OTH.....	Nationwide Life Insurance Company	Other.....	0.010	Nationwide Mutual Insurance CompanyNO.....	1
							American Tax Credit Fund 2023-C, LLC (fka	..OH.....	..OTH.....	Nationwide Life Insurance Company	Other.....	0.010	Nationwide Mutual Insurance CompanyNO.....	1
.0140	Nationwide		87-4771309				American Tax Credit Fund 2022-B, LLC)	..OH.....	..OTH.....	Nationwide Life Insurance Company	Other.....	0.010	Nationwide Mutual Insurance CompanyNO.....	1
.0140	Nationwide		92-1389304				American Tax Credit Fund 2023-A, LLC	..OH.....	..OTH.....	Nationwide Life Insurance Company	Other.....	0.010	Nationwide Mutual Insurance CompanyNO.....	1
.0140	Nationwide		99-0672884				American Tax Credit Fund 2024-A, LLC	..OH.....	..OTH.....	Nationwide Life Insurance Company	Other.....	0.010	Nationwide Mutual Insurance CompanyNO.....	1
.0140	Nationwide		99-0698188				American Tax Credit Fund 2024-B, LLC	..OH.....	..NIA.....	Nationwide Life Insurance Company	Ownership.....	100.000	Nationwide Mutual Insurance CompanyNO.....	
.0140	Nationwide		31-1580283				Arena District CA 1, LLC	..OH.....	..NIA.....	NID Investments, LLC	Ownership.....	100.000	Nationwide Mutual Insurance CompanyNO.....	
			90-0280710				Arena District Owners Association	..OH.....	..OTH.....	Other non-Nationwide	Other.....	0.000	Other non-NationwideNO.....	2
.0140	Nationwide		31-1486309				Cavasson Hotel, LLC	..OH.....	..NIA.....	Cavasson Hotel Holdings, LLC	Ownership.....	100.000	Nationwide Mutual Insurance CompanyNO.....	
.0140	Nationwide		31-1486309				Cavasson Hotel Holdings, LLC	..OH.....	..NIA.....	NRI Cavasson, LLC	Ownership.....	100.000	Nationwide Mutual Insurance CompanyNO.....	
.0140	Nationwide		20-1618232				CNRI-Cannonsport Condominium, LLC	..OH.....	..NIA.....	CNRI-Cannonsport, LLC	Ownership.....	100.000	Nationwide Mutual Insurance CompanyNO.....	
.0140	Nationwide		20-1618232				CNRI-Cannonsport, LLC	..OH.....	..NIA.....	Nationwide Realty Investors, Ltd.	Ownership.....	100.000	Nationwide Mutual Insurance CompanyNO.....	
.0140	Nationwide	29262	74-1061659				Colonial County Mutual Insurance Company	..TX.....	..IA.....	Other non-Nationwide	Other.....	0.000	Other non-NationwideNO.....	2
.0140	Nationwide	18961	68-0066866				Crestbrook Insurance Company	..OH.....	..IA.....	Nationwide Mutual Insurance Company	Ownership.....	100.000	Nationwide Mutual Insurance CompanyNO.....	

STATEMENT AS OF MARCH 31, 2025 OF THE SCOTTSDALE INSURANCE COMPANY

SCHEDULE Y
PART 1A - DETAILS OF INSURANCE HOLDING COMPANY SYSTEM

1	2	3	4	5	6	7	8	9	10	11	12	13	14	15	16
Group Code	Group Name	NAIC Company Code	ID Number	Federal RSSD	CIK	Name of Securities Exchange if Publicly Traded (U.S. or International)	Names of Parent, Subsidiaries Or Affiliates	Domi-ciliary Location	Relation-ship to Reporting Entity	Directly Controlled by (Name of Entity/Person)	Type of Control (Ownership, Board, Management, Attorney-in-Fact, Influence, Other)	If Control is Ownership Provide Percen-tage	Ultimate Controlling Entity(ies)/Person(s)	Is an SCA Filing Re-quired? (Yes/No)	*
. 0140 ...	Nationwide	31-1486309	Crewville, Ltd. OH.....NIA.....	Nationwide Realty Investors, Ltd.	Ownership.....	100.000 ...	Nationwide Mutual Insurance Company NO.....
. 0140 ...	Nationwide	84-5052608	Danforth, LLC OH.....NIA.....	Nationwide Mutual Insurance Company	Ownership.....	100.000 ...	Nationwide Mutual Insurance Company NO.....
. 0140 ...	Nationwide	42587	42-1207150	Depositors Insurance Company IA.....IA.....	Nationwide Mutual Insurance Company	Ownership.....	100.000 ...	Nationwide Mutual Insurance Company NO.....
.....	46-4104813	Discover Affordable Housing Investment Fund I LLC OH.....OTH.....	Other non-Nationwide	Other.....	0.000 ...	Other non-Nationwide NO.....	2
. 0140 ...	Nationwide	33-0096671	DVM Insurance Agency CA.....NIA.....	Veterinary Pet Insurance Company	Ownership.....	100.000 ...	Nationwide Mutual Insurance Company NO.....
. 0140 ...	Nationwide	15821	47-4523959	Eagle Captive Reinsurance, LLC OH.....IA.....	Nationwide Life Insurance Company	Ownership.....	100.000 ...	Nationwide Mutual Insurance Company NO.....
. 0140 ...	Nationwide	26-3260559	E-Risk Services, L.L.C. DE.....NIA.....	Nationwide Mutual Insurance Company	Ownership.....	100.000 ...	Nationwide Mutual Insurance Company NO.....
. 0140 ...	Nationwide	22209	75-6013587	Freedom Specialty Insurance Company OH.....IA.....	Scottsdale Insurance Company	Ownership.....	100.000 ...	Nationwide Mutual Insurance Company NO.....
. 0140 ...	Nationwide	20-4939866	Grandview Yard Hotel Holdings, LLC OH.....NIA.....	NRI Equity Land Investments, LLC	Ownership.....	100.000 ...	Nationwide Mutual Insurance Company NO.....
. 0140 ...	Nationwide	20-4939866	Grandview Yard Hotel, LLC OH.....NIA.....	Grandview Yard Hotel Holdings, LLC	Ownership.....	100.000 ...	Nationwide Mutual Insurance Company NO.....
. 0140 ...	Nationwide	20-4939866	GVY Residential, LLC OH.....NIA.....	NRI Equity Land Investments, LLC	Ownership.....	100.000 ...	Nationwide Mutual Insurance Company NO.....
. 0140 ...	Nationwide	23582	41-0417250	Harleysville Insurance Company OH.....IA.....	Nationwide Mutual Insurance Company	Ownership.....	100.000 ...	Nationwide Mutual Insurance Company NO.....
.....	Harleysville Insurance Company of New Jersey
. 0140 ...	Nationwide	42900	23-2253669 NJ.....IA.....	Nationwide Mutual Insurance Company	Ownership.....	100.000 ...	Nationwide Mutual Insurance Company NO.....
. 0140 ...	Nationwide	10674	23-2864924	Harleysville Insurance Company of New York OH.....IA.....	Nationwide Mutual Insurance Company	Ownership.....	100.000 ...	Nationwide Mutual Insurance Company NO.....
. 0140 ...	Nationwide	35696	23-2384978	Harleysville Preferred Insurance Company OH.....IA.....	Nationwide Mutual Insurance Company	Ownership.....	100.000 ...	Nationwide Mutual Insurance Company NO.....
. 0140 ...	Nationwide	26182	04-1989660	Harleysville Worcester Insurance Company OH.....IA.....	Nationwide Mutual Insurance Company	Ownership.....	100.000 ...	Nationwide Mutual Insurance Company NO.....
. 0140 ...	Nationwide	64017	75-0300900	Jefferson National Life Insurance Company TX.....IA.....	Nationwide Life Insurance Company	Ownership.....	100.000 ...	Nationwide Mutual Insurance Company NO.....
.....	Jefferson National Life Insurance Company of New York
. 0140 ...	Nationwide	15727	47-1180302 NY.....IA.....	Jefferson National Life Insurance Company	Ownership.....	100.000 ...	Nationwide Mutual Insurance Company NO.....
. 0140 ...	Nationwide	31-1486309	Jerome Village Company, LLC OH.....NIA.....	Nationwide Realty Investors, Ltd.	Ownership.....	100.000 ...	Nationwide Mutual Insurance Company NO.....
. 0140 ...	Nationwide	74-1395229	Lone Star General Agency, Inc. TX.....IA.....	Nationwide Mutual Insurance Company	Ownership.....	100.000 ...	Nationwide Mutual Insurance Company NO.....
. 0140 ...	Nationwide	11991	38-0865250	National Casualty Company OH.....IA.....	Nationwide Mutual Insurance Company	Ownership.....	100.000 ...	Nationwide Mutual Insurance Company NO.....
. 0140 ...	Nationwide	National Casualty Company of America, Ltd. .	.. GBR.....IA.....	National Casualty Company	Ownership.....	100.000 ...	Nationwide Mutual Insurance Company NO.....
. 0140 ...	Nationwide	42-1154244	Nationwide Advantage Mortgage Company IA.....NIA.....	AMCO Insurance Company	Ownership.....	87.300 ...	Nationwide Mutual Insurance Company YES.....
.....	ALLIED Property & Casualty Insurance Company
. 0140 ...	Nationwide	42-1154244	Nationwide Advantage Mortgage Company IA.....NIA.....	Company	Ownership.....	8.470 ...	Nationwide Mutual Insurance Company YES.....
. 0140 ...	Nationwide	42-1154244	Nationwide Advantage Mortgage Company IA.....NIA.....	Depositors Insurance Company	Ownership.....	4.230 ...	Nationwide Mutual Insurance Company YES.....
.....	Nationwide Affinity Insurance Company of America
. 0140 ...	Nationwide	26093	48-0470690 OH.....IA.....	Nationwide Mutual Insurance Company	Ownership.....	100.000 ...	Nationwide Mutual Insurance Company NO.....
. 0140 ...	Nationwide	28223	42-1015537	Nationwide Agribusiness Insurance Company IA.....IA.....	Nationwide Mutual Insurance Company	Ownership.....	100.000 ...	Nationwide Mutual Insurance Company NO.....
. 0140 ...	Nationwide	31-1578869	Nationwide Arena, LLC OH.....NIA.....	NRI Arena, LLC	Ownership.....	90.000 ...	Nationwide Mutual Insurance Company NO.....
. 0140 ...	Nationwide	20-8670712	Nationwide Asset Management, LLC OH.....NIA.....	Nationwide Mutual Insurance Company	Ownership.....	100.000 ...	Nationwide Mutual Insurance Company NO.....
. 0140 ...	Nationwide	10723	95-0639970	Nationwide Assurance Company OH.....IA.....	Nationwide Mutual Insurance Company	Ownership.....	100.000 ...	Nationwide Mutual Insurance Company NO.....
. 0140 ...	Nationwide	31-1036287	Nationwide Cash Management Company OH.....NIA.....	Nationwide Mutual Insurance Company	Ownership.....	100.000 ...	Nationwide Mutual Insurance Company NO.....
. 0140 ...	Nationwide	31-4416546	Nationwide Corporation OH.....NIA.....	Nationwide Mutual Insurance Company	Ownership.....	100.000 ...	Nationwide Mutual Insurance Company YES.....
. 0140 ...	Nationwide	31-1667326	Nationwide Financial Assignment Company OH.....NIA.....	Nationwide Life Insurance Company	Ownership.....	100.000 ...	Nationwide Mutual Insurance Company NO.....
. 0140 ...	Nationwide	23-2412039	Nationwide Financial General Agency, Inc. PA.....NIA.....	NFS Distributors, Inc.	Ownership.....	100.000 ...	Nationwide Mutual Insurance Company NO.....
. 0140 ...	Nationwide	31-6554353	Nationwide Financial Services Capital Trust DE.....NIA.....	Nationwide Financial Services, Inc.	Ownership.....	100.000 ...	Nationwide Mutual Insurance Company NO.....
. 0140 ...	Nationwide	31-1486870	Nationwide Financial Services, Inc. DE.....NIA.....	Nationwide Corporation	Ownership.....	100.000 ...	Nationwide Mutual Insurance Company NO.....
. 0140 ...	Nationwide	52-6969857	Nationwide Fund Advisors DE.....NIA.....	Nationwide Financial Services, Inc.	Ownership.....	100.000 ...	Nationwide Mutual Insurance Company NO.....
. 0140 ...	Nationwide	31-1748721	Nationwide Fund Distributors LLC DE.....NIA.....	NFS Distributors, Inc.	Ownership.....	100.000 ...	Nationwide Mutual Insurance Company NO.....
. 0140 ...	Nationwide	31-0900518	Nationwide Fund Management LLC DE.....NIA.....	NFS Distributors, Inc.	Ownership.....	100.000 ...	Nationwide Mutual Insurance Company NO.....
. 0140 ...	Nationwide	23760	31-4425763	Nationwide General Insurance Company OH.....IA.....	Nationwide Mutual Insurance Company	Ownership.....	100.000 ...	Nationwide Mutual Insurance Company NO.....
. 0140 ...	Nationwide	10070	31-1399201	Nationwide Indemnity Company OH.....IA.....	Nationwide Mutual Insurance Company	Ownership.....	100.000 ...	Nationwide Mutual Insurance Company NO.....
. 0140 ...	Nationwide	33-3724100	Nationwide GSC Holding, Inc. OH.....NIA.....	Nationwide Mutual Insurance Company	Ownership.....	100.000 ...	Nationwide Mutual Insurance Company NO.....
. 0140 ...	Nationwide	25453	95-2130882	Nationwide Insurance Company of America OH.....IA.....	Nationwide Mutual Insurance Company	Ownership.....	100.000 ...	Nationwide Mutual Insurance Company NO.....
. 0140 ...	Nationwide	10948	31-1613686	Nationwide Insurance Company of Florida OH.....IA.....	Nationwide Mutual Insurance Company	Ownership.....	100.000 ...	Nationwide Mutual Insurance Company NO.....
. 0140 ...	Nationwide	41-2206199	Nationwide Investment Advisors, LLC OH.....NIA.....	Nationwide Life Insurance Company	Ownership.....	100.000 ...	Nationwide Mutual Insurance Company NO.....

STATEMENT AS OF MARCH 31, 2025 OF THE SCOTTSDALE INSURANCE COMPANY

SCHEDULE Y

PART 1A - DETAILS OF INSURANCE HOLDING COMPANY SYSTEM

1	2	3	4	5	6	7	8	9	10	11	12	13	14	15	16
Group Code	Group Name	NAIC Company Code	ID Number	Federal RSSD	CIK	Name of Securities Exchange if Publicly Traded (U.S. or International)	Names of Parent, Subsidiaries Or Affiliates	Domi-ciliary Location	Relation-ship to Reporting Entity	Directly Controlled by (Name of Entity/Person)	Type of Control (Ownership, Board, Management, Attorney-in-Fact, Influence, Other)	If Control is Owner-ship Provide Percen-tage	Ultimate Controlling Entity(ies)/Person(s)	Is an SCA Filing Re-quired? (Yes/No)	*
. 0140	Nationwide		73-0988442				Nationwide Investment Services Corporation .. Nationwide Life and Annuity Insurance Company	.. OK..... NIA.....	Nationwide Life Insurance Company	Ownership.....	100.000	Nationwide Mutual Insurance Company YES.....
. 0140	Nationwide	92657	31-1000740					.. OH..... IA.....	Nationwide Life Insurance Company	Ownership.....	100.000	Nationwide Mutual Insurance Company NO.....
. 0140	Nationwide	66869	31-4156830				Nationwide Life Insurance Company OH..... IA.....	Nationwide Financial Services, Inc.	Ownership.....	100.000	Nationwide Mutual Insurance Company NO.....
. 0140	Nationwide		54-2113175				Nationwide Life Tax Credit Partners 2003-A, LLC OH..... OTH.....	Nationwide Life Insurance Company	Other.....	0.010	Nationwide Mutual Insurance Company NO.....	... 1
. 0140	Nationwide		58-2672725				Nationwide Life Tax Credit Partners 2003-B, LLC OH..... OTH.....	Nationwide Life Insurance Company	Other.....	0.010	Nationwide Mutual Insurance Company NO.....	... 1
. 0140	Nationwide		20-0382144				Nationwide Life Tax Credit Partners 2004-A, LLC OH..... OTH.....	Nationwide Life Insurance Company	Other.....	0.010	Nationwide Mutual Insurance Company NO.....	... 1
. 0140	Nationwide		20-1918935				Nationwide Life Tax Credit Partners 2004-F, LLC OH..... OTH.....	Nationwide Life Insurance Company	Other.....	0.010	Nationwide Mutual Insurance Company NO.....	... 1
. 0140	Nationwide		20-2303694				Nationwide Life Tax Credit Partners 2005-A, LLC OH..... OTH.....	Nationwide Life Insurance Company	Other.....	0.010	Nationwide Mutual Insurance Company NO.....	... 1
. 0140	Nationwide		20-2303602				Nationwide Life Tax Credit Partners 2005-B, LLC OH..... OTH.....	Nationwide Life Insurance Company	Other.....	0.010	Nationwide Mutual Insurance Company NO.....	... 1
. 0140	Nationwide		27-1362364				Nationwide Life Tax Credit Partners 2009-I, LLC OH..... OTH.....	Nationwide Life Insurance Company	Other.....	0.010	Nationwide Mutual Insurance Company NO.....	... 1
. 0140	Nationwide		33-3698490				Nationwide Nom, LLC OH..... NIA.....	Nationwide Mutual Insurance Company	Ownership.....	100.000	Nationwide Mutual Insurance Company NO.....
. 0140	Nationwide		42-1373380				Nationwide Sales Solutions, Inc. (fka	.. IA..... NIA.....	Nationwide Mutual Insurance Company	Ownership.....	100.000	Nationwide Mutual Insurance Company NO.....
. 0140	Nationwide		75-3191025				Nationwide Member Solutions Agency Inc.) OH..... NIA.....	Nationwide Mutual Insurance Company	Ownership.....	100.000	Nationwide Mutual Insurance Company NO.....
. 0140	Nationwide	23787	31-4177100				Nationwide Mutual Capital, LLC OH..... UDP.....	Other non-Nationwide	Ownership.....	0.000	Other non-Nationwide NO.....
. 0140	Nationwide		34-2012765				Nationwide Mutual Insurance Company OH..... NIA.....	Nationwide Mutual Insurance Company	Ownership.....	100.000	Nationwide Mutual Insurance Company NO.....
. 0140	Nationwide	37877	31-0970750				Nationwide Private Equity Fund, LLC OH..... NIA.....	Nationwide Mutual Insurance Company	Ownership.....	100.000	Nationwide Mutual Insurance Company NO.....
. 0140	Nationwide		31-1486309				Nationwide Property and Casualty Insurance Company OH..... IA.....	Nationwide Mutual Insurance Company	Ownership.....	100.000	Nationwide Mutual Insurance Company NO.....
. 0140	Nationwide		31-1486309				Nationwide Realty Investors, Ltd. OH..... NIA.....	Nationwide Mutual Insurance Company	Ownership.....	97.121	Nationwide Mutual Insurance Company NO.....
. 0140	Nationwide		31-1486309				Nationwide Realty Investors, Ltd. OH..... NIA.....	Nationwide Indemnity Company	Ownership.....	2.879	Nationwide Mutual Insurance Company NO.....
. 0140	Nationwide		31-1486309				Nationwide Realty Management, LLC OH..... NIA.....	Nationwide Realty Investors, Ltd.	Ownership.....	100.000	Nationwide Mutual Insurance Company NO.....
. 0140	Nationwide		73-0948330				Nationwide Realty Services, Ltd. OH..... NIA.....	Nationwide Mutual Insurance Company	Ownership.....	100.000	Nationwide Mutual Insurance Company NO.....
. 0140	Nationwide						Nationwide Retirement Solutions, Inc. DE..... NIA.....	NFS Distributors, Inc.	Ownership.....	100.000	Nationwide Mutual Insurance Company NO.....
. 0140	Nationwide		83-2250056				Nationwide Life and Annuity Insurance Company OH..... NIA.....	Nationwide Mutual Insurance Company	Ownership.....	100.000	Nationwide Mutual Insurance Company NO.....
. 0140	Nationwide		36-2434406				Nationwide SBL, LLC OH..... NIA.....	Company	Ownership.....	100.000	Nationwide Mutual Insurance Company NO.....
. 0140	Nationwide		46-1952215				Nationwide Securities, LLC OH..... NIA.....	NFS Distributors, Inc.	Ownership.....	100.000	Nationwide Mutual Insurance Company NO.....
. 0140	Nationwide		46-1971926				Nationwide Tax Credit Partners 2013-A, LLC OH..... OTH.....	Nationwide Life Insurance Company	Other.....	0.010	Nationwide Mutual Insurance Company NO.....	... 1
. 0140	Nationwide		31-1592130	2729677			Nationwide Tax Credit Partners 2013-B, LLC OH..... OTH.....	Nationwide Life Insurance Company	Other.....	0.010	Nationwide Mutual Insurance Company NO.....	... 1
. 0140	Nationwide		20-5976272				Nationwide Trust Company, FSB US..... NIA.....	Nationwide Financial Services, Inc.	Ownership.....	100.000	Nationwide Mutual Insurance Company NO.....
. 0140	Nationwide		85-4193218				Nationwide Ventures, LLC OH..... NIA.....	Nationwide Mutual Insurance Company	Ownership.....	100.000	Nationwide Mutual Insurance Company NO.....
. 0140	Nationwide		11-3651828				NCS Arizona, LLC OH..... NIA.....	Nationwide Mutual Insurance Company	Ownership.....	100.000	Nationwide Mutual Insurance Company NO.....
. 0140	Nationwide		31-1630871				ND La Quinta Partners, LLC DE..... NIA.....	Nationwide Realty Investors, Ltd.	Ownership.....	95.000	Nationwide Mutual Insurance Company NO.....
. 0140	Nationwide						NFS Distributors, Inc. DE..... NIA.....	Nationwide Financial Services, Inc.	Ownership.....	100.000	Nationwide Mutual Insurance Company NO.....
. 0140	Nationwide		93-4557312				Nationwide Life and Annuity Insurance Company OH..... NIA.....	Company	Ownership.....	100.000	Nationwide Mutual Insurance Company NO.....
. 0140	Nationwide		82-5195340				NLAIC REO Holdings, LLC OH..... NIA.....	Nationwide Life Insurance Company	Ownership.....	100.000	Nationwide Mutual Insurance Company NO.....
. 0140	Nationwide		82-5194959				NLIC REO Holdings, LLC OH..... NIA.....	Nationwide Mutual Insurance Company	Ownership.....	100.000	Nationwide Mutual Insurance Company NO.....
. 0140	Nationwide		46-3762545				NMIC REO Holdings, LLC OH..... NIA.....	Nationwide Mutual Insurance Company	Ownership.....	100.000	Nationwide Mutual Insurance Company NO.....
. 0140	Nationwide		20-4939866				NNOV8, LLC OH..... NIA.....	Nationwide Mutual Insurance Company	Ownership.....	100.000	Nationwide Mutual Insurance Company NO.....
. 0140	Nationwide		31-1486309				North of Third, LLC OH..... NIA.....	Nationwide Mutual Insurance Company	Ownership.....	100.000	Nationwide Mutual Insurance Company NO.....
. 0140	Nationwide		31-1486309				NRI Arena, LLC OH..... NIA.....	NRI Equity Land Investments, LLC	Ownership.....	100.000	Nationwide Mutual Insurance Company NO.....
. 0140	Nationwide		31-1486309				NRI Brookledge, LLC OH..... NIA.....	Nationwide Realty Investors, Ltd.	Ownership.....	100.000	Nationwide Mutual Insurance Company NO.....
. 0140	Nationwide		31-1486309				NRI Builders, LLC OH..... NIA.....	Nationwide Realty Investors, Ltd.	Ownership.....	100.000	Nationwide Mutual Insurance Company NO.....
. 0140	Nationwide		31-1486309				NRI Cavasson, LLC OH..... NIA.....	Nationwide Realty Investors, Ltd.	Ownership.....	100.000	Nationwide Mutual Insurance Company NO.....

STATEMENT AS OF MARCH 31, 2025 OF THE SCOTTSDALE INSURANCE COMPANY

SCHEDULE Y

PART 1A - DETAILS OF INSURANCE HOLDING COMPANY SYSTEM

1	2	3	4	5	6	7	8	9	10	11	12	13	14	15	16
Group Code	Group Name	NAIC Company Code	ID Number	Federal RSSD	CIK	Name of Securities Exchange if Publicly Traded (U.S. or International)	Names of Parent, Subsidiaries Or Affiliates	Domi-ciliary Loca-tion	Rela-tion-ship to Reporting Entity	Directly Controlled by (Name of Entity/Person)	Type of Control (Ownership, Board, Management, Attorney-in-Fact, Influence, Other)	If Control is Owner-ship Provide Percen-tage	Ultimate Controlling Entity(ies)/Person(s)	Is an SCA Filing Re-quired? (Yes/No)	*
. 0140 ...	Nationwide	31-1486309	NRI Corporate Housing, LLC OH.....	.. NIA.....	Nationwide Realty Investors, Ltd.	Ownership.....	100.000 ...	Nationwide Mutual Insurance Company NO.....
. 0140 ...	Nationwide	31-1486309	NRI Cramer Creek, LLC OH.....	.. NIA.....	Nationwide Realty Investors, Ltd.	Ownership.....	100.000 ...	Nationwide Mutual Insurance Company NO.....
. 0140 ...	Nationwide	20-4939866	NRI Equity Land Investments, LLC OH.....	.. NIA.....	Nationwide Realty Investors, Ltd.	Ownership.....	80.000 ...	Nationwide Mutual Insurance Company NO.....
. 0140 ...	Nationwide	26-0212217	NRI Equity Tampa, LLC OH.....	.. NIA.....	Nationwide Realty Investors, Ltd.	Ownership.....	100.000 ...	Nationwide Mutual Insurance Company NO.....
. 0140 ...	Nationwide	31-1486309	NRI Office Ventures, Ltd OH.....	.. NIA.....	Nationwide Realty Investors, Ltd.	Ownership.....	100.000 ...	Nationwide Mutual Insurance Company NO.....
. 0140 ...	Nationwide	31-1580283	NRI Telecom, LLC OH.....	.. NIA.....	NID Investments, LLC	Ownership.....	100.000 ...	Nationwide Mutual Insurance Company NO.....
. 0140 ...	Nationwide	31-1486309	NRI-Rivulon, LLC OH.....	.. NIA.....	Nationwide Realty Investors, Ltd.	Ownership.....	100.000 ...	Nationwide Mutual Insurance Company NO.....
. 0140 ...	Nationwide	90-0729552	NTCIF-2011, LLC OH.....	.. NIA.....	Nationwide Mutual Insurance Company	Ownership.....	100.000 ...	Nationwide Mutual Insurance Company NO.....
. 0140 ...	Nationwide	27-4700627	NTCP 2011-A, LLC OH.....	.. OTH.....	Nationwide Life Insurance Company	Other.....	0.010 ...	Nationwide Mutual Insurance Company NO.....	1
. 0140 ...	Nationwide	46-0741029	NTCP 2012-A, LLC OH.....	.. OTH.....	Nationwide Life Insurance Company	Other.....	0.010 ...	Nationwide Mutual Insurance Company NO.....	1
. 0140 ...	Nationwide	46-3309896	NTCP 2013-C, LLC OH.....	.. OTH.....	Nationwide Life Insurance Company	Other.....	0.010 ...	Nationwide Mutual Insurance Company NO.....	1
. 0140 ...	Nationwide	46-4111078	NTCP 2014-A, LLC OH.....	.. OTH.....	Nationwide Life Insurance Company	Other.....	0.010 ...	Nationwide Mutual Insurance Company NO.....	1
. 0140 ...	Nationwide	47-1404116	NTCP 2014-B, LLC OH.....	.. OTH.....	Nationwide Life Insurance Company	Other.....	0.010 ...	Nationwide Mutual Insurance Company NO.....	1
. 0140 ...	Nationwide	47-1413242	NTCP 2014-C, LLC OH.....	.. NIA.....	Nationwide Life Insurance Company	Ownership.....	100.000 ...	Nationwide Mutual Insurance Company NO.....
. 0140 ...	Nationwide	47-3909345	NTCP 2015-A, LLC OH.....	.. OTH.....	Nationwide Life Insurance Company	Other.....	0.010 ...	Nationwide Mutual Insurance Company NO.....	1
. 0140 ...	Nationwide	47-4148470	NTCP 2015-B, LLC OH.....	.. OTH.....	Nationwide Life Insurance Company	Other.....	0.010 ...	Nationwide Mutual Insurance Company NO.....	1
. 0140 ...	Nationwide	81-3836925	NTCP 2016-A, LLC OH.....	.. OTH.....	Nationwide Life Insurance Company	Other.....	0.010 ...	Nationwide Mutual Insurance Company NO.....	1
. 0140 ...	Nationwide	82-2015065	NTCP 2017-A, LLC OH.....	.. OTH.....	Nationwide Life Insurance Company	Other.....	0.010 ...	Nationwide Mutual Insurance Company NO.....	1
. 0140 ...	Nationwide	84-1969518	NW Fyrebyrd, LLC OH.....	.. NIA.....	NNOV8, LLC	Ownership.....	100.000 ...	Nationwide Mutual Insurance Company NO.....
. 0140 ...	Nationwide	85-3363961	NW Next, LLC OH.....	.. NIA.....	NNOV8, LLC	Ownership.....	100.000 ...	Nationwide Mutual Insurance Company NO.....
. 0140 ...	Nationwide	81-0936428	NW Private Debt, LLC OH.....	.. NIA.....	Nationwide Mutual Insurance Company	Ownership.....	100.000 ...	Nationwide Mutual Insurance Company NO.....
. 0140 ...	Nationwide	26-1903919	NW REI, LLC DE.....	Nationwide Mutual Insurance Company	Ownership.....	100.000 ...	Nationwide Mutual Insurance Company NO.....
. 0140 ...	Nationwide	92-1294202	NW-Adams, LLC OH.....	.. NIA.....	NW REI, LLC	Ownership.....	100.000 ...	Nationwide Mutual Insurance Company NO.....
. 0140 ...	Nationwide	99-3508624	NW-Aureum, LLC OH.....	.. NIA.....	NW REI (NLIC), LLC	Ownership.....	100.000 ...	Nationwide Mutual Insurance Company NO.....
. 0140 ...	Nationwide	92-2674633	NW-Brandon LLC OH.....	.. NIA.....	NW REI (NLIC), LLC	Ownership.....	100.000 ...	Nationwide Mutual Insurance Company NO.....
. 0140 ...	Nationwide	87-0847675	NW-Broadway at Surf, LLC OH.....	.. NIA.....	NMIC REO Holdings, LLC	Ownership.....	100.000 ...	Nationwide Mutual Insurance Company NO.....
. 0140 ...	Nationwide	88-2152576	NW-Colfax, LLC OH.....	.. NIA.....	NW REI (NLAIC), LLC	Ownership.....	100.000 ...	Nationwide Mutual Insurance Company NO.....
. 0140 ...	Nationwide	92-0292630	NW-Conroe, LLC OH.....	.. NIA.....	Nationwide Life Insurance Company	Ownership.....	100.000 ...	Nationwide Mutual Insurance Company NO.....
. 0140 ...	Nationwide	87-3648595	NW-Corazon, LLC OH.....	.. NIA.....	Nationwide Life Insurance Company	Ownership.....	100.000 ...	Nationwide Mutual Insurance Company NO.....
. 0140 ...	Nationwide	99-3065627	NW-Denton, LLC OH.....	.. NIA.....	NW REI, LLC	Ownership.....	100.000 ...	Nationwide Mutual Insurance Company NO.....
. 0140 ...	Nationwide	86-3529884	NW-Englewood, LLC OH.....	.. NIA.....	NW REI (NLIC), LLC	Ownership.....	100.000 ...	Nationwide Mutual Insurance Company NO.....
. 0140 ...	Nationwide	84-4388876	NW-Escalante, LLC OH.....	.. NIA.....	NW REI, LLC	Ownership.....	100.000 ...	Nationwide Mutual Insurance Company NO.....
. 0140 ...	Nationwide	86-1538532	NW-Escalante II, LLC OH.....	.. NIA.....	NW REI, LLC	Ownership.....	100.000 ...	Nationwide Mutual Insurance Company NO.....
. 0140 ...	Nationwide	92-3310596	NW-FSU, LLC OH.....	.. NIA.....	NW REI (NLIC), LLC	Ownership.....	100.000 ...	Nationwide Mutual Insurance Company NO.....
. 0140 ...	Nationwide	31-1580283	NWD 205 Vine, LLC OH.....	.. NIA.....	NWD Investments, LLC	Ownership.....	100.000 ...	Nationwide Mutual Insurance Company NO.....
. 0140 ...	Nationwide	31-1580283	NWD 225 Nationwide, LLC OH.....	.. NIA.....	NWD Investments, LLC	Ownership.....	100.000 ...	Nationwide Mutual Insurance Company NO.....
. 0140 ...	Nationwide	31-1580283	NWD 230 West, LLC OH.....	.. NIA.....	NWD Investments, LLC	Ownership.....	100.000 ...	Nationwide Mutual Insurance Company NO.....
. 0140 ...	Nationwide	31-1580283	NWD 240 Nationwide, LLC OH.....	.. NIA.....	NWD Investments, LLC	Ownership.....	100.000 ...	Nationwide Mutual Insurance Company NO.....
. 0140 ...	Nationwide	31-1580283	NWD 250 Brodbelt, LLC OH.....	.. NIA.....	NWD Investments, LLC	Ownership.....	100.000 ...	Nationwide Mutual Insurance Company NO.....
. 0140 ...	Nationwide	31-1580283	NWD 250 West, LLC OH.....	.. NIA.....	NWD Investments, LLC	Ownership.....	100.000 ...	Nationwide Mutual Insurance Company NO.....
. 0140 ...	Nationwide	31-1580283	NWD 265 Neil, LLC OH.....	.. NIA.....	NWD Investments, LLC	Ownership.....	100.000 ...	Nationwide Mutual Insurance Company NO.....
. 0140 ...	Nationwide	31-1580283	NWD 275 Marconi, LLC OH.....	.. NIA.....	NWD Investments, LLC	Ownership.....	100.000 ...	Nationwide Mutual Insurance Company NO.....
. 0140 ...	Nationwide	31-1580283	NWD 300 Neil, LLC OH.....	.. NIA.....	NWD Investments, LLC	Ownership.....	100.000 ...	Nationwide Mutual Insurance Company NO.....
. 0140 ...	Nationwide	31-1580283	NWD 300 Spring, LLC OH.....	.. NIA.....	NWD Investments, LLC	Ownership.....	100.000 ...	Nationwide Mutual Insurance Company NO.....
. 0140 ...	Nationwide	31-1580283	NWD 355 McConnell, LLC OH.....	.. NIA.....	NWD Investments, LLC	Ownership.....	100.000 ...	Nationwide Mutual Insurance Company NO.....
. 0140 ...	Nationwide	31-1580283	NWD 425 Nationwide, LLC OH.....	.. NIA.....	NWD Investments, LLC	Ownership.....	100.000 ...	Nationwide Mutual Insurance Company NO.....
. 0140 ...	Nationwide	31-1580283	NWD 500 Nationwide, LLC OH.....	.. NIA.....	NWD Investments, LLC	Ownership.....	100.000 ...	Nationwide Mutual Insurance Company NO.....
. 0140 ...	Nationwide	31-1580283	NWD Arena Crossing, LLC OH.....	.. NIA.....	NWD Investments, LLC	Ownership.....	100.000 ...	Nationwide Mutual Insurance Company NO.....
. 0140 ...	Nationwide	31-1580283	NWD Arena District I, LLC OH.....	.. NIA.....	NWD Investments, LLC	Ownership.....	100.000 ...	Nationwide Mutual Insurance Company NO.....

STATEMENT AS OF MARCH 31, 2025 OF THE SCOTTSDALE INSURANCE COMPANY

SCHEDULE Y
PART 1A - DETAILS OF INSURANCE HOLDING COMPANY SYSTEM

1	2	3	4	5	6	7	8	9	10	11	12 Type of Control (Ownership, Board, Management, Attorney-in-Fact, Influence, Other)	13 If Control is Owner- ship Provide Percent- age	14 Ultimate Controlling Entity(ies)/Person(s)	15 Is an SCA Filing Re- quired? (Yes/No)	16 *
Group Code	Group Name	NAIC Company Code	ID Number	Federal RSSD	CIK	Name of Securities Exchange if Publicly Traded (U.S. or International)	Names of Parent, Subsidiaries Or Affiliates	Domi- ciliary Loca- tion	Relation- ship to Reporting Entity	Directly Controlled by (Name of Entity/Person)					
. 0140 ...	Nationwide	31-1580283	NWD Arena District II, LLC OH.....	.. NIA.....	NWD Investments, LLC	Ownership.....	100.000 ...	Nationwide Mutual Insurance Company NO.....
. 0140 ...	Nationwide	31-1580283	NWD Arena District MM, LLC OH.....	.. NIA.....	NWD Investments, LLC	Ownership.....	100.000 ...	Nationwide Mutual Insurance Company NO.....
. 0140 ...	Nationwide	31-1580283	NWD Arena District PW, LLC OH.....	.. NIA.....	NWD Investments, LLC	Ownership.....	100.000 ...	Nationwide Mutual Insurance Company NO.....
. 0140 ...	Nationwide	31-1580283	NWD Arena District V, LLC OH.....	.. NIA.....	NWD Investments, LLC	Ownership.....	100.000 ...	Nationwide Mutual Insurance Company NO.....
. 0140 ...	Nationwide	31-1580283	NWD Athletic Club, LLC OH.....	.. NIA.....	NWD Investments, LLC	Ownership.....	100.000 ...	Nationwide Mutual Insurance Company NO.....
. 0140 ...	Nationwide	88-2975730	NW-Boise, LLC OH.....	.. NIA.....	Nationwide Life Insurance Company	Ownership.....	100.000 ...	Nationwide Mutual Insurance Company NO.....
. 0140 ...	Nationwide	31-1580283	NWD Brodbelt, LLC OH.....	.. NIA.....	NWD Investments, LLC	Ownership.....	100.000 ...	Nationwide Mutual Insurance Company NO.....
. 0140 ...	Nationwide	30-0876022	NWD Franklinton, LLC OH.....	.. NIA.....	Nationwide Realty Investors, Ltd.	Ownership.....	80.000 ...	Nationwide Mutual Insurance Company NO.....
. 0140 ...	Nationwide	31-4118665	NWD HP, LLC OH.....	.. NIA.....	NWD Investments, LLC	Ownership.....	75.000 ...	Nationwide Mutual Insurance Company NO.....
. 0140 ...	Nationwide	31-1580283	NWD Investments, LLC OH.....	.. NIA.....	Nationwide Realty Investors, Ltd.	Ownership.....	80.000 ...	Nationwide Mutual Insurance Company NO.....
. 0140 ...	Nationwide	31-1486309	NWGH, LLC OH.....	.. NIA.....	Nationwide Realty Investors, Ltd.	Ownership.....	75.000 ...	Nationwide Mutual Insurance Company NO.....
. 0140 ...	Nationwide	87-3124154	NW-Gallatin, LLC OH.....	.. NIA.....	Nationwide Life Insurance Company	Ownership.....	100.000 ...	Nationwide Mutual Insurance Company NO.....
. 0140 ...	Nationwide	92-2943602	NW-Holly Springs, LLC OH.....	.. NIA.....	Nationwide Mutual Insurance Company	Ownership.....	100.000 ...	Nationwide Mutual Insurance Company NO.....
. 0140 ...	Nationwide	86-2431839	NW-Hub13, LLC OH.....	.. NIA.....	NW REI, LLC	Ownership.....	100.000 ...	Nationwide Mutual Insurance Company NO.....
. 0140 ...	Nationwide	92-3558072	NW-Huntersville, LLC OH.....	.. NIA.....	NW REI, LLC	Ownership.....	100.000 ...	Nationwide Mutual Insurance Company NO.....
. 0140 ...	Nationwide	47-2482818	NW-Jasper WAG, LLC OH.....	.. NIA.....	NW REI, LLC	Ownership.....	100.000 ...	Nationwide Mutual Insurance Company NO.....
. 0140 ...	Nationwide	87-3767006	NW-Kingsbury, LLC OH.....	.. NIA.....	Nationwide Life Insurance Company	Ownership.....	100.000 ...	Nationwide Mutual Insurance Company NO.....
. 0140 ...	Nationwide	81-5146596	NW-Logan, LLC OH.....	.. NIA.....	NW REI, LLC	Ownership.....	100.000 ...	Nationwide Mutual Insurance Company NO.....
. 0140 ...	Nationwide	87-1565013	NW-Midtown, LLC OH.....	.. NIA.....	NW REI, LLC	Ownership.....	100.000 ...	Nationwide Mutual Insurance Company NO.....
. 0140 ...	Nationwide	88-2595124	NW-OG, LLC OH.....	.. NIA.....	NW REI, LLC	Ownership.....	100.000 ...	Nationwide Mutual Insurance Company NO.....
. 0140 ...	Nationwide	83-2260477	NW-ORBDP, LLC OH.....	.. NIA.....	NW REI (NMFC), LLC	Ownership.....	100.000 ...	Nationwide Mutual Insurance Company NO.....
. 0140 ...	Nationwide	93-1728625	NW-Pleasant Prairie, LLC OH.....	.. NIA.....	NW REI (NLIC), LLC	Ownership.....	100.000 ...	Nationwide Mutual Insurance Company NO.....
. 0140 ...	Nationwide	47-2449044	NW-Promenade at Madison, LLC OH.....	.. NIA.....	NW REI, LLC	Ownership.....	100.000 ...	Nationwide Mutual Insurance Company NO.....
. 0140 ...	Nationwide	87-1367836	NW-Rancho, LLC OH.....	.. NIA.....	NW REI, LLC	Ownership.....	100.000 ...	Nationwide Mutual Insurance Company NO.....
. 0140 ...	Nationwide	88-1405151	NW-Riverchase, LLC OH.....	.. NIA.....	Nationwide Life Insurance Company	Ownership.....	100.000 ...	Nationwide Mutual Insurance Company NO.....
. 0140 ...	Nationwide	86-3702669	NW-RPG Cranberry, LLC OH.....	.. NIA.....	NW REI, LLC	Ownership.....	100.000 ...	Nationwide Mutual Insurance Company NO.....
. 0140 ...	Nationwide	87-3273918	NW-San Marco, LLC OH.....	.. NIA.....	Nationwide Life Insurance Company	Ownership.....	100.000 ...	Nationwide Mutual Insurance Company NO.....
. 0140 ...	Nationwide	87-3289289	NW-San Pablo, LLC OH.....	.. NIA.....	NW REI, LLC	Ownership.....	100.000 ...	Nationwide Mutual Insurance Company NO.....
. 0140 ...	Nationwide	81-3212025	NW-Springfield, LLC OH.....	.. NIA.....	NW REI, LLC	Ownership.....	100.000 ...	Nationwide Mutual Insurance Company NO.....
. 0140 ...	Nationwide	93-2022585	NW-Spring Hill, LLC OH.....	.. NIA.....	NW REI, LLC	Ownership.....	100.000 ...	Nationwide Mutual Insurance Company NO.....
. 0140 ...	Nationwide	92-2878794	NW-SR-16, LLC OH.....	.. NIA.....	NW REI, LLC	Ownership.....	100.000 ...	Nationwide Mutual Insurance Company NO.....
. 0140 ...	Nationwide	92-0677233	NW-UNCC, LLC OH.....	.. NIA.....	NW REI (NLIC), LLC	Ownership.....	100.000 ...	Nationwide Mutual Insurance Company NO.....
. 0140 ...	Nationwide	81-1603024	NW REI (NLAIC), LLC OH.....	.. NIA.....	Nationwide Life and Annuity Insurance Company	Ownership.....	100.000 ...	Nationwide Mutual Insurance Company NO.....
. 0140 ...	Nationwide	81-1619428	NW REI (NLIC), LLC OH.....	.. NIA.....	Nationwide Life Insurance Company	Ownership.....	100.000 ...	Nationwide Mutual Insurance Company NO.....
. 0140 ...	Nationwide	81-1861190	NW REI (NMIC), LLC OH.....	.. NIA.....	Nationwide Mutual Insurance Company	Ownership.....	100.000 ...	Nationwide Mutual Insurance Company NO.....
. 0140 ...	Nationwide	31-0947092	OCH Company, LLC OH.....	.. NIA.....	Nationwide Realty Investors, Ltd.	Ownership.....	100.000 ...	Nationwide Mutual Insurance Company NO.....
. 0140 ...	Nationwide	26-0263012	Old Track Street Owners Association, Inc. OH.....	.. OTH.....	Other non-Nationwide	Other.....	0.000 ...	Other non-Nationwide NO.....	2
. 0140 ...	Nationwide ...	13999 ..	27-1712056	Olentangy Reinsurance, LLC VT.....	.. IA.....	Company	Ownership.....	100.000 ...	Nationwide Mutual Insurance Company NO.....
. 0140 ...	Nationwide	31-1486309	Perimeter A, Ltd. OH.....	.. NIA.....	Nationwide Realty Investors, Ltd.	Ownership.....	100.000 ...	Nationwide Mutual Insurance Company NO.....
. 0140 ...	Nationwide	20-4939866	Rail Street Parking, LLC OH.....	.. NIA.....	NRI Equity Land Investments, LLC	Ownership.....	100.000 ...	Nationwide Mutual Insurance Company NO.....
. 0140 ...	Nationwide	75-2938844	Registered Investment Advisors Services, Inc.
. 0140 ...	Nationwide	82-0549218	Retention Alternatives Ltd. TX.....	.. NIA.....	Nationwide Financial Services, Inc.	Ownership.....	100.000 ...	Nationwide Mutual Insurance Company NO.....
. 0140 ...	Nationwide ...	15580 ..	31-1117969	Scottsdale Indemnity Company BMJ.....	.. IA.....	Nationwide Mutual Insurance Company	Ownership.....	100.000 ...	Nationwide Mutual Insurance Company NO.....
. 0140 ...	Nationwide ...	41297 ..	31-1024978	Scottsdale Insurance Company OH.....	.. RE.....	Nationwide Mutual Insurance Company	Ownership.....	100.000 ...	Nationwide Mutual Insurance Company NO.....
. 0140 ...	Nationwide ...	10672 ..	86-0835870	Scottsdale Surplus Lines Insurance Company .	.. AZ.....	.. IA.....	Scottsdale Insurance Company	Ownership.....	100.000 ...	Nationwide Mutual Insurance Company NO.....
. 0140 ...	Nationwide	31-1610040	The Waterfront Partners, LLC OH.....	.. NIA.....	Nationwide Realty Investors, Ltd.	Ownership.....	50.000 ...	Nationwide Mutual Insurance Company NO.....

SCHEDULE Y
PART 1A - DETAILS OF INSURANCE HOLDING COMPANY SYSTEM

1	2	3	4	5	6	7	8	9	10	11	12	13	14	15	16
Group Code	Group Name	NAIC Company Code	ID Number	Federal RSSD	CIK	Name of Securities Exchange if Publicly Traded (U.S. or International)	Names of Parent, Subsidiaries Or Affiliates	Domi-ciliary Loca-tion	Relation-ship to Reporting Entity	Directly Controlled by (Name of Entity/Person)	Type of Control (Ownership, Board, Management, Attorney-in-Fact, Influence, Other)	If Control is Owner-ship Provide Percen-tage	Ultimate Controlling Entity(ies)/Person(s)	Is an SCA Filing Re-quired? (Yes/No)	*
. 0140 ...	Nationwide 36269	86-0619597	Titan Insurance Company MI..... IA.....	Nationwide Mutual Insurance Company	Ownership.....	100.000 ...	Nationwide Mutual Insurance Company NO.....
. 0140 ...	Nationwide	75-1284530	Titan Insurance Services, Inc. TX..... IA.....	Nationwide Mutual Insurance Company	Ownership.....	100.000 ...	Nationwide Mutual Insurance Company NO.....
. 0140 ...	Nationwide	33-0160222	V.P.I. Services, Inc. CA..... IA.....	Veterinary Pet Insurance Company	Ownership.....	100.000 ...	Nationwide Mutual Insurance Company NO.....
. 0140 ...	Nationwide 42285	95-3750113	Veterinary Pet Insurance Company OH..... IA.....	Scottsdale Insurance Company	Ownership.....	100.000 ...	Nationwide Mutual Insurance Company NO.....
. 0140 ...	Nationwide 42889	34-1394913	Victoria Fire & Casualty Company OH..... IA.....	Nationwide Mutual Insurance Company	Ownership.....	100.000 ...	Nationwide Mutual Insurance Company NO.....
. 0140 ...	Nationwide 10105	34-1777972	Victoria Select Insurance Company OH..... IA.....	Victoria Fire & Casualty Insurance Company	Ownership.....	100.000 ...	Nationwide Mutual Insurance Company NO.....

Asterisk	Explanation
1	Nationwide retains management responsibility for these entities, despite a minority ownership stake.
2	Other ownership indicates a non-ownership circumstance by a Nationwide entity.

PART 1 - LOSS EXPERIENCE

Line of Business		Current Year to Date			4
		1 Direct Premiums Earned	2 Direct Losses Incurred	3 Direct Loss Percentage	Prior Year to Date Direct Loss Percentage
1.	Fire	23,222,740	22,154,896	95.4	7.4
2.1	Allied Lines	89,124,846	41,670,907	46.8	22.1
2.2	Multiple peril crop				
2.3	Federal flood				
2.4	Private crop				
2.5	Private flood	2,353	964	41.0	52.5
3.	Farmowners multiple peril	898,439	28,298	3.1	(5.0)
4.	Homeowners multiple peril	43,280,524	47,699,128	110.2	20.8
5.1	Commercial multiple peril (non-liability portion)	75,822,562	2,311,978	3.0	6.4
5.2	Commercial multiple peril (liability portion)	38,816,259	12,663,090	32.6	(21.4)
6.	Mortgage guaranty				
8.	Ocean marine	395,225	(3,056,932)	(773.5)	68.4
9.1	Inland marine	11,690,967	1,576,620	13.5	86.2
9.2	Pet insurance				
10.	Financial guaranty				
11.1	Medical professional liability - occurrence		(24,323)		
11.2	Medical professional liability - claims-made		(9)		
12.	Earthquake	20,451	7,848	38.4	(138.7)
13.1	Comprehensive (hospital and medical) individual				
13.2	Comprehensive (hospital and medical) group				
14.	Credit accident and health				
15.1	Vision only				
15.2	Dental only				
15.3	Disability income				
15.4	Medicare supplement				
15.5	Medicaid Title XIX				
15.6	Medicare Title XVIII				
15.7	Long-term care				
15.8	Federal employees health benefits plan				
15.9	Other health				
16.	Workers' compensation				
17.1	Other liability - occurrence	186,006,251	66,921,804	36.0	84.5
17.2	Other liability - claims-made	175,010,263	95,601,928	54.6	40.2
17.3	Excess workers' compensation				
18.1	Products liability - occurrence	7,104,866	12,134,675	170.8	375.1
18.2	Products liability - claims-made	4,719,617	276,809	5.9	(10.4)
19.1	Private passenger auto no-fault (personal injury protection)				
19.2	Other private passenger auto liability				
19.3	Commercial auto no-fault (personal injury protection)		(23,498)		(80.3)
19.4	Other commercial auto liability	17,943,659	19,382,967	108.0	64.5
21.1	Private passenger auto physical damage				
21.2	Commercial auto physical damage	15,629	143,459	917.9	(9.1)
22.	Aircraft (all perils)				
23.	Fidelity	81,363			
24.	Surety	451,535	67,844	15.0	174.4
26.	Burglary and theft	18,018	1,417	7.9	25.0
27.	Boiler and machinery	826,959	96,140	11.6	33.9
28.	Credit				
29.	International				
30.	Warranty	2,644,897	3,181,083	120.3	83.1
31.	Reinsurance - Nonproportional Assumed Property	XXX	XXX	XXX	XXX
32.	Reinsurance - Nonproportional Assumed Liability	XXX	XXX	XXX	XXX
33.	Reinsurance - Nonproportional Assumed Financial Lines	XXX	XXX	XXX	XXX
34.	Aggregate write-ins for other lines of business				
35.	Totals	678,097,423	322,817,093	47.6	43.8
DETAILS OF WRITE-INS					
3401.				
3402.				
3403.				
3498.	Summary of remaining write-ins for Line 34 from overflow page				
3499.	Totals (Lines 3401 through 3403 plus 3498)(Line 34 above)				

STATEMENT AS OF MARCH 31, 2025 OF THE SCOTTSDALE INSURANCE COMPANY

PART 2 - DIRECT PREMIUMS WRITTEN

Line of Business		1 Current Quarter	2 Current Year to Date	3 Prior Year Year to Date
1.	Fire	21,258,262	21,258,262	14,809,515
2.1	Allied Lines	80,064,881	80,064,881	68,857,982
2.2	Multiple peril crop			
2.3	Federal flood			
2.4	Private crop			
2.5	Private flood	3,644	3,644	2,449
3.	Farmowners multiple peril	69,518	69,518	802,456
4.	Homeowners multiple peril	50,930,622	50,930,622	32,341,295
5.1	Commercial multiple peril (non-liability portion)	77,215,469	77,215,469	68,064,158
5.2	Commercial multiple peril (liability portion)	39,241,693	39,241,693	36,084,811
6.	Mortgage guaranty			
8.	Ocean marine	(261,722)	(261,722)	1,827,639
9.1	Inland marine	10,998,819	10,998,819	11,894,831
9.2	Pet insurance			
10.	Financial guaranty			
11.1	Medical professional liability - occurrence			
11.2	Medical professional liability - claims-made			
12.	Earthquake	2,083	2,083	12,641
13.1	Comprehensive (hospital and medical) individual			
13.2	Comprehensive (hospital and medical) group			
14.	Credit accident and health			
15.1	Vision only			
15.2	Dental only			
15.3	Disability income			
15.4	Medicare supplement			
15.5	Medicaid Title XIX			
15.6	Medicare Title XVIII			
15.7	Long-term care			
15.8	Federal employees health benefits plan			
15.9	Other health			
16.	Workers' compensation			
17.1	Other liability - occurrence	186,963,069	186,963,069	166,747,481
17.2	Other liability - claims-made	153,052,366	153,052,366	150,192,456
17.3	Excess workers' compensation			
18.1	Products liability - occurrence	9,524,089	9,524,089	2,205,482
18.2	Products liability - claims-made	4,696,198	4,696,198	3,419,197
19.1	Private passenger auto no-fault (personal injury protection)			
19.2	Other private passenger auto liability			
19.3	Commercial auto no-fault (personal injury protection)			41,945
19.4	Other commercial auto liability	15,602,668	15,602,668	12,328,898
21.1	Private passenger auto physical damage			
21.2	Commercial auto physical damage	10,668	10,668	29,220
22.	Aircraft (all perils)			
23.	Fidelity			
24.	Surety	338,216	338,216	95,453
26.	Burglary and theft	30,769	30,769	23,125
27.	Boiler and machinery	765,545	765,545	693,430
28.	Credit			
29.	International			
30.	Warranty	1,374,693	1,374,693	3,409,194
31.	Reinsurance - Nonproportional Assumed Property	XXX	XXX	XXX
32.	Reinsurance - Nonproportional Assumed Liability	XXX	XXX	XXX
33.	Reinsurance - Nonproportional Assumed Financial Lines	XXX	XXX	XXX
34.	Aggregate write-ins for other lines of business			
35.	Totals	651,881,550	651,881,550	573,883,658
DETAILS OF WRITE-INS				
3401.			
3402.			
3403.			
3498.	Summary of remaining write-ins for Line 34 from overflow page			
3499.	Totals (Lines 3401 through 3403 plus 3498)(Line 34 above)			

STATEMENT AS OF MARCH 31, 2025 OF THE SCOTTSDALE INSURANCE COMPANY

PART 3 (\$000 OMITTED)

LOSS AND LOSS ADJUSTMENT EXPENSE RESERVES SCHEDULE

	1	2	3	4	5	6	7	8	9	10	11	12	13									
Years in Which Losses Occurred	Prior Year-End Known Case Loss and LAE Reserves	Prior Year-End IBNR Loss and LAE Reserves	Total Prior Year-End Loss and LAE Reserves (Cols. 1+2)	2025 Loss and LAE Payments on Claims Reported as of Prior Year-End	2025 Loss and LAE Payments on Claims Unreported as of Prior Year-End	Total 2025 Loss and LAE Payments (Cols. 4+5)	Q.S. Date Known Case Loss and LAE Reserves on Claims Reported and Open as of Prior Year End	Q.S. Date Known Case Loss and LAE Reserves on Claims Reported or Reopened Subsequent to Prior Year End	Q.S. Date IBNR Loss and LAE Reserves	Total Q.S. Loss and LAE Reserves (Cols.7+8+9)	Prior Year-End Known Case Loss and LAE Reserves Developed (Savings)/ Deficiency (Cols.4+7 minus Col. 1)	Prior Year-End IBNR Loss and LAE Reserves Developed (Savings)/ Deficiency (Cols. 5+8+9 minus Col. 2)	Prior Year-End Total Loss and LAE Reserve Developed (Savings)/ Deficiency (Cols. 11+12)									
1. 2022 + Prior									
2. 2023									
3. Subtotals 2023 + Prior									
4. 2024									
5. Subtotals 2024 + Prior									
6. 2025XXX.....XXX.....XXX.....XXX.....XXX.....XXX.....XXX.....XXX.....									
7. Totals									
8. Prior Year-End Surplus As Regards Policyholders	178,873										Col. 11, Line 7 As % of Col. 1 Line 7	Col. 12, Line 7 As % of Col. 2 Line 7	Col. 13, Line 7 As % of Col. 3 Line 7									
											1.	2.	3.									
											Col. 13, Line 7 As a % of Col. 1 Line 8											
											4.											

STATEMENT AS OF MARCH 31, 2025 OF THE SCOTTSDALE INSURANCE COMPANY

SUPPLEMENTAL EXHIBITS AND SCHEDULES INTERROGATORIES

The following supplemental reports are required to be filed as part of your statement filing. However, in the event that your company does not transact the type of business for which the special report must be filed, your response of NO to the specific interrogatory will be accepted in lieu of filing a "NONE" report and a bar code will be printed below. If the supplement is required of your company but is not being filed for whatever reason enter SEE EXPLANATION and provide an explanation following the interrogatory questions.

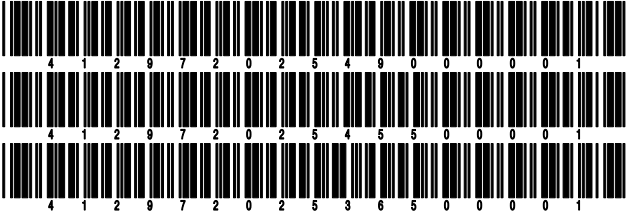
	Response
1. Will the Trusteed Surplus Statement be filed with the state of domicile and the NAIC with this statement?	NO
2. Will Supplement A to Schedule T (Medical Professional Liability Supplement) be filed with this statement?	NO
3. Will the Medicare Part D Coverage Supplement be filed with the state of domicile and the NAIC with this statement?	NO
4. Will the Director and Officer Insurance Coverage Supplement be filed with the state of domicile and the NAIC with this statement?	YES
AUGUST FILING	
5. Will the regulator-only (non-public) Communication of Internal Control Related Matters Noted in Audit be filed with the state of domicile and electronically with the NAIC (as a regulator-only non-public document) by August 1? The response for 1st and 3rd quarters should be N/A. A NO response resulting with a bar code is only appropriate in the 2nd quarter.	N/A

Explanations:

1.
2.
3.

Bar Codes:

1. Trusteed Surplus Statement [Document Identifier 490]
2. Supplement A to Schedule T [Document Identifier 455]
3. Medicare Part D Coverage Supplement [Document Identifier 365]



STATEMENT AS OF MARCH 31, 2025 OF THE SCOTTSDALE INSURANCE COMPANY
OVERFLOW PAGE FOR WRITE-INS

NONE

SCHEDULE A - VERIFICATION

Real Estate

	1	2
	Year to Date	Prior Year Ended December 31
1. Book/adjusted carrying value, December 31 of prior year		
2. Cost of acquired:		
2.1 Actual cost at time of acquisition		
2.2 Additional investment made after acquisition		
3. Current year change in encumbrances		
4. Total gain (loss) on disposals		
5. Deduct amounts received on disposals		
6. Total foreign exchange change in book/adjusted carrying value		
7. Deduct current year's other than temporary impairment recognized		
8. Deduct current year's depreciation		
9. Book/adjusted carrying value at the end of current period (Lines 1+2+3+4-5+6-7-8)		
10. Deduct total nonadmitted amounts		
11. Statement value at end of current period (Line 9 minus Line 10)		

SCHEDULE B - VERIFICATION

Mortgage Loans

	1	2
	Year to Date	Prior Year Ended December 31
1. Book value/recorded investment excluding accrued interest, December 31 of prior year		
2. Cost of acquired:		
2.1 Actual cost at time of acquisition		
2.2 Additional investment made after acquisition		
3. Capitalized deferred interest and other		
4. Accrual of discount		
5. Unrealized valuation increase/(decrease)		
6. Total gain (loss) on disposals		
7. Deduct amounts received on disposals		
8. Deduct amortization of premium and mortgage interest paid and commitment fees		
9. Total foreign exchange change in book value/recorded investment excluding accrued interest		
10. Deduct current year's other than temporary impairment recognized		
11. Book value/recorded investment excluding accrued interest at end of current period (Lines 1+2+3+4+5+6-7-8+9-10)		
12. Total valuation allowance		
13. Subtotal (Line 11 plus Line 12)		
14. Deduct total nonadmitted amounts		
15. Statement value at end of current period (Line 13 minus Line 14)		

SCHEDULE BA - VERIFICATION

Other Long-Term Invested Assets

	1	2
	Year to Date	Prior Year Ended December 31
1. Book/adjusted carrying value, December 31 of prior year		
2. Cost of acquired:		
2.1 Actual cost at time of acquisition		
2.2 Additional investment made after acquisition		
3. Capitalized deferred interest and other		
4. Accrual of discount		
5. Unrealized valuation increase/(decrease)		
6. Total gain (loss) on disposals		
7. Deduct amounts received on disposals		
8. Deduct amortization of premium, depreciation and proportional amortization		
9. Total foreign exchange change in book/adjusted carrying value		
10. Deduct current year's other than temporary impairment recognized		
11. Book/adjusted carrying value at end of current period (Lines 1+2+3+4+5+6-7-8+9-10)		
12. Deduct total nonadmitted amounts		
13. Statement value at end of current period (Line 11 minus Line 12)		

SCHEDULE D - VERIFICATION

Bonds and Stocks

	1	2
	Year to Date	Prior Year Ended December 31
1. Book/adjusted carrying value of bonds and stocks, December 31 of prior year	272,501,349	262,939,992
2. Cost of bonds and stocks acquired		17,494,901
3. Accrual of discount	176,151	728,550
4. Unrealized valuation increase/(decrease)	1,085,733	4,981,336
5. Total gain (loss) on disposals	(41,024)	(182,222)
6. Deduct consideration for bonds and stocks disposed of	4,899,244	11,182,153
7. Deduct amortization of premium	150,643	611,266
8. Total foreign exchange change in book/adjusted carrying value	(7,667)	(1,681,820)
9. Deduct current year's other than temporary impairment recognized		
10. Total investment income recognized as a result of prepayment penalties and/or acceleration fees		14,031
11. Book/adjusted carrying value at end of current period (Lines 1+2+3+4+5-6-7+8-9+10)	268,664,655	272,501,349
12. Deduct total nonadmitted amounts		
13. Statement value at end of current period (Line 11 minus Line 12)	268,664,655	272,501,349

STATEMENT AS OF MARCH 31, 2025 OF THE SCOTTSDALE INSURANCE COMPANY

SCHEDULE D - PART 1B

Showing the Acquisitions, Dispositions and Non-Trading Activity
During the Current Quarter for all Bonds and Preferred Stock by NAIC Designation

NAIC Designation	1 Book/Adjusted Carrying Value Beginning of Current Quarter	2 Acquisitions During Current Quarter	3 Dispositions During Current Quarter	4 Non-Trading Activity During Current Quarter	5 Book/Adjusted Carrying Value End of First Quarter	6 Book/Adjusted Carrying Value End of Second Quarter	7 Book/Adjusted Carrying Value End of Third Quarter	8 Book/Adjusted Carrying Value December 31 Prior Year
ISSUER CREDIT OBLIGATIONS (ICO)								
1. NAIC 1 (a)	101,809,791		79,949	1,613,447	103,343,289			101,809,791
2. NAIC 2 (a)	40,759,563		2,020,835	(1,948,070)	36,790,658			40,759,563
3. NAIC 3 (a)	5,502,326		1,606,391	565,993	4,461,928			5,502,326
4. NAIC 4 (a)	3,525,401		511,027	(48,988)	2,965,386			3,525,401
5. NAIC 5 (a)								
6. NAIC 6 (a)	1,037,716			(3,452)	1,034,264			1,037,716
7. Total ICO	152,634,797		4,218,202	178,930	148,595,525			152,634,797
ASSET-BACKED SECURITIES (ABS)								
8. NAIC 1	49,191,845		722,065	(6,684)	48,463,096			49,191,845
9. NAIC 2								
10. NAIC 3	333,693			3,933	337,626			333,693
11. NAIC 4								
12. NAIC 5								
13. NAIC 6								
14. Total ABS	49,525,538		722,065	(2,751)	48,800,722			49,525,538
PREFERRED STOCK								
15. NAIC 1								
16. NAIC 2								
17. NAIC 3								
18. NAIC 4								
19. NAIC 5								
20. NAIC 6								
21. Total Preferred Stock								
22. Total ICO, ABS & Preferred Stock	202,160,335		4,940,267	176,179	197,396,247			202,160,335

(a) Book/Adjusted Carrying Value column for the end of the current reporting period includes the following amount of short-term and cash equivalent bonds by NAIC designation:
NAIC 1 \$; NAIC 2 \$; NAIC 3 \$ NAIC 4 \$; NAIC 5 \$; NAIC 6 \$

Schedule DA - Part 1 - Short-Term Investments

N O N E

Schedule DA - Verification - Short-Term Investments

N O N E

Schedule DB - Part A - Verification - Options, Caps, Floors, Collars, Swaps and Forwards

N O N E

Schedule DB - Part B - Verification - Futures Contracts

N O N E

Schedule DB - Part C - Section 1 - Replication (Synthetic Asset) Transactions (RSATs) Open

N O N E

Schedule DB-Part C-Section 2-Reconciliation of Replication (Synthetic Asset) Transactions Open

N O N E

Schedule DB - Verification - Book/Adjusted Carrying Value, Fair Value and Potential Exposure of
Derivatives

N O N E

SCHEDULE E - PART 2 - VERIFICATION

(Cash Equivalents)

	1	2
	Year To Date	Prior Year Ended December 31
1. Book/adjusted carrying value, December 31 of prior year	1,776,138	13,330,551
2. Cost of cash equivalents acquired	118,077,603	286,159,038
3. Accrual of discount		
4. Unrealized valuation increase/(decrease)		
5. Total gain (loss) on disposals		
6. Deduct consideration received on disposals	119,679,038	297,713,451
7. Deduct amortization of premium		
8. Total foreign exchange change in book/adjusted carrying value		
9. Deduct current year's other than temporary impairment recognized		
10. Book/adjusted carrying value at end of current period (Lines 1+2+3+4+5-6-7+8-9)	174,703	1,776,138
11. Deduct total nonadmitted amounts		
12. Statement value at end of current period (Line 10 minus Line 11)	174,703	1,776,138

Schedule A - Part 2 - Real Estate Acquired and Additions Made

N O N E

Schedule A - Part 3 - Real Estate Disposed

N O N E

Schedule B - Part 2 - Mortgage Loans Acquired and Additions Made

N O N E

Schedule B - Part 3 - Mortgage Loans Disposed, Transferred or Repaid

N O N E

Schedule BA - Part 2 - Other Long-Term Invested Assets Acquired and Additions Made

N O N E

Schedule BA - Part 3 - Other Long-Term Invested Assets Disposed, Transferred or Repaid

N O N E

Schedule D - Part 3 - Long-Term Bonds and Stocks Acquired

N O N E

STATEMENT AS OF MARCH 31, 2025 OF THE SCOTTSDALE INSURANCE COMPANY

SCHEDULE D - PART 4

Show All Long-Term Bonds and Stock Sold, Redeemed or Otherwise Disposed of During the Current Quarter

1	2	3	4	5	6	7	8	9	Change In Book/Adjusted Carrying Value					15	16	17	18	19	20	21
									10	11	12	13	14							
CUSIP Identification	Description	Disposal Date	Name of Purchaser	Number of Shares of Stock	Consideration	Par Value	Actual Cost	Prior Year Book/ Adjusted Carrying Value	Unrealized Valuation Increase/ (Decrease)	Current Year's (Amortization)/ Accretion	Current Year's Other Than Temporary Impairment Recognized	Total Change in Book/ Adjusted Carrying Value (10 + 11 - 12)	Total Foreign Exchange Change in Book /Adjusted Carrying Value	Book/ Adjusted Carrying Value at Disposal Date	Foreign Exchange Gain (Loss) on Disposal	Realized Gain (Loss) on Disposal	Total Gain (Loss) on Disposal	Bond Interest/ Stock Dividends Received During Year	Stated Contractual Maturity Date	NAIC Designation, NAIC Designation Modifier and SVO Administrative Symbol
..163851-AH-1	Chemours Co Sr Nt 4.625% 11/15/29	03/19/2025	Goldman Sachs & Company		152,250	175,000	156,840	152,213	9,964	489		10,453		162,666		(10,416)	(10,416)	2,810	11/15/2029	4.A FE
..23345M-AA-5	DT Midstream Inc Sr Nt 4.125% 06/15/29	02/26/2025	Truist Financial		107,090	113,000	103,395	105,735	744	205		949		106,684		406	406	932	06/15/2029	3.A FE
..235825-AG-1	DANA Inc Sr Nt 5.625% 06/15/28	03/13/2025	Bank of America Bisd Dealer		593,250	600,000	600,750	591,787	8,334	(53)		8,281		600,068		(6,818)	(6,818)	8,344	06/15/2028	3.C FE
..428102-AE-7	Hess Midstream Operation Sr Nt 4.250% 02/15/30	03/28/2025	Various		235,329	250,000	228,171	231,076	3,363	532		3,895		234,970		359	359	6,220	02/15/2030	3.A FE
..654740-BS-7	Nissan Motor Acceptance Corp Sr Nt 2.000% 03/09/26	03/05/2025	JP Morgan Securities LLC		154,554	160,000	161,109	160,275		(43)		(43)		160,232		(5,678)	(5,678)	1,569	03/09/2026	3.A FE
..86765L-AT-4	Sunoco Finance Corp Sr Nt 4.500% 05/15/29	02/26/2025	Truist Financial		114,917	120,000	114,102	112,776	3,381	124		3,505		116,281		(1,364)	(1,364)	1,530	05/15/2029	3.A FE
..96145D-AF-2	Westrock Co Sr Nt 3.750% 03/15/25	03/15/2025	Maturity		1,000,000	1,000,000	997,584	999,912		88		88		1,000,000				18,750	03/15/2025	2.B FE
..36168Q-AN-4	GFL Environmental Inc Sr Nt 4.750% 06/15/29	03/26/2025	Various		353,536	367,000	338,251	347,481	15	866		881		348,361		5,175	5,175	4,727	06/15/2029	4.C FE
..654744-AC-5	Nissan Motor Co Sr Nt 4.345% 09/17/27	03/04/2025	JP Morgan Securities LLC		365,910	375,000	408,139	389,082		(927)		(927)		388,155		(22,245)	(22,245)	7,597	09/17/2027	3.A FE
..92857W-BJ-8	Vodafone Group PLC Sr Nt 4.125% 05/30/25	03/10/2025	Call 100.0000		1,000,000	1,000,000	1,041,570	1,001,942		(1,501)		(1,501)		1,000,441		(441)	(441)	11,458	05/30/2025	2.B FE
0089999999. Subtotal - Issuer Credit Obligations - Corporate Bonds (Unaffiliated)					4,076,836	4,160,000	4,149,911	4,092,279	25,801	(220)		25,581		4,117,858		(41,022)	(41,022)	63,937	XXX	XXX
..126650-BP-4	CVS Health Corp LBASS PTC Nt 6.036% 12/10/28	03/10/2025	Redemption 100.0000		20,394	20,394	23,688	21,267		(874)		(874)		20,394				205	12/10/2028	2.B FE
..64508Q-AA-3	New Haven Fed Office Bldg Ls CTL GSA Gtd Tr 2002 3.000% 01/15/27	03/15/2025	Redemption 100.0000		17,511	17,511	17,511	17,511						17,511				88	01/15/2027	1.A
..94978#-AT-4	Wells Fargo Bank Northwest NA CTL Ser 2002 CI 20 6.650% 08/01/27	03/01/2025	Redemption 100.0000		17,305	17,305	17,305	17,305						17,305				192	08/01/2027	1.D
..94978#-AU-1	Wells Fargo Bank Northwest NA CTL MWRA Ls Bkd Ln 7.380% 05/15/32	03/15/2025	Redemption 100.0000		24,210	24,210	25,347	24,589		(379)		(379)		24,210				298	05/15/2032	1.B
..11042T-AA-1	British Airways Plc EETC 3.800% 09/20/31	03/20/2025	Redemption 100.0000		20,924	20,924	20,924	20,924						20,924				199	09/20/2031	1.D FE
0129999999. Subtotal - Issuer Credit Obligations - Single Entity Backed Obligations (Unaffiliated)					100,344	100,344	104,775	101,596		(1,253)		(1,253)		100,344				982	XXX	XXX
0489999999. Total - Issuer Credit Obligations (Unaffiliated)					4,177,180	4,260,344	4,254,686	4,193,875	25,801	(1,473)		24,328		4,218,202		(41,022)	(41,022)	64,919	XXX	XXX
0499999999. Total - Issuer Credit Obligations (Affiliated)																			XXX	XXX
0509999997. Total - Issuer Credit Obligations - Part 4					4,177,180	4,260,344	4,254,686	4,193,875	25,801	(1,473)		24,328		4,218,202		(41,022)	(41,022)	64,919	XXX	XXX
0509999998. Total - Issuer Credit Obligations - Part 5					XXX	XXX	XXX	XXX	XXX	XXX	XXX	XXX	XXX	XXX	XXX	XXX	XXX	XXX	XXX	XXX
0509999999. Total - Issuer Credit Obligations					4,177,180	4,260,344	4,254,686	4,193,875	25,801	(1,473)		24,328		4,218,202		(41,022)	(41,022)	64,919	XXX	XXX
..36179X-LJ-3	GNMA Pool #MAB429 5.500% 11/20/52	03/01/2025	Paydown		53,435	53,435	53,233	53,233		202		202		53,435				464	11/20/2052	1.A
..911760-GT-7	Vendee Mtg Tr RMBS REMIC Ser 1995-3 1Z 7.250% 09/15/25	03/01/2025	Paydown		4,436	4,436	4,560	4,432		5		5		4,436				49	09/15/2025	1.A
..911760-HH-2	Vendee Mtg Tr RMBS REMIC Ser 1996-2 1Z 6.750% 06/15/26	03/01/2025	Paydown		11,433	11,433	11,376	11,399		34		34		11,433				130	06/15/2026	1.A
..911760-LQ-7	Vendee Mtg Tr RMBS REMIC Ser 1998-2 CI 1G 6.750% 06/15/28	03/01/2025	Paydown		811	811	852	818		(7)		(7)		811				9	06/15/2028	1.A
1019999999. Subtotal - Asset-Backed Securities - Financial Asset-Backed - Self-Liquidating - Agency Residential Mortgage-Backed Securities - Guaranteed (Exempt from RBC)					70,115	70,115	70,021	69,882		234		234		70,115				652	XXX	XXX
..3132DN-HC-9	FHLMC Pool #SD1383 2.000% 02/25/52	03/01/2025	Paydown		26,531	26,531	20,886	21,143		5,389		5,389		26,531				88	02/25/2052	1.A
..3132DN-DS-9	FHLMC Pool #SD8213 3.000% 05/25/52	03/01/2025	Paydown		2,808	2,808	2,381	2,399		409		409		2,808				13	05/25/2052	1.A
..3132DN-DT-7	FHLMC Pool #SD8214 3.500% 05/25/52	03/01/2025	Paydown		7,084	7,084	6,230	6,263		821		821		7,084				41	05/25/2052	1.A
..3132DN-E7-4	FHLMC Pool #SD8258 5.000% 10/25/52	03/01/2025	Paydown		22,409	22,409	21,572	21,598		812		812		22,409				179	10/25/2052	1.A
..3132DN-GS-6	FHLMC Pool #SD8309 6.000% 03/01/53	03/01/2025	Paydown		74,904	74,904	75,448	75,433		(530)		(530)		74,904				731	03/01/2053	1.A
..3132DN-GZ-0	FHLMC Pool #SD8316 5.500% 04/25/53	03/01/2025	Paydown		55,785	55,785	55,291	55,294		491		491		55,785				560	04/25/2053	1.A
..3133TC-6P-8	FHLMC Structured Ser 2008 M 7.000% 11/20/27	03/01/2025	Paydown		1,971	1,971	2,046	1,983		(12)		(12)		1,971				25	11/20/2027	1.A
..3133TC-AU-2	FHLMC Structured Ser FSPC T-9 A6 6.564% 03/25/29	03/01/2025	Paydown		2	2	2	2						2					03/25/2029	1.A
..3135JU-TL-9	FNMA REMIC Ser 1998-54C 6.000% 09/18/28	03/01/2025	Paydown		227	227	228	226						227				2	09/18/2028	1.A

STATEMENT AS OF MARCH 31, 2025 OF THE SCOTTSDALE INSURANCE COMPANY

SCHEDULE D - PART 4

Show All Long-Term Bonds and Stock Sold, Redeemed or Otherwise Disposed of During the Current Quarter

1	2	3	4	5	6	7	8	9	Change In Book/Adjusted Carrying Value					15	16	17	18	19	20	21
									10	11	12	13	14							
CUSIP Identification	Description	Disposal Date	Name of Purchaser	Number of Shares of Stock	Consideration	Par Value	Actual Cost	Prior Year Book/Adjusted Carrying Value	Unrealized Valuation Increase/(Decrease)	Current Year's (Amortization)/Accretion	Current Year's Other Than Temporary Impairment Recognized	Total Change in Book/Adjusted Carrying Value (10 + 11 - 12)	Total Foreign Exchange Change in Book /Adjusted Carrying Value	Book/Adjusted Carrying Value at Disposal Date	Foreign Exchange Gain (Loss) on Disposal	Realized Gain (Loss) on Disposal	Total Gain (Loss) on Disposal	Bond Interest/Stock Dividends Received During Year	Stated Contractual Maturity Date	NAIC Designation, NAIC Designation Modifier and SVO Administrative Symbol
..31359U-YS-8	FNMA REMIC Ser 1998-58 CI ZB 6.000% 10/25/28	03/01/2025	Paydown		324	324	316	321		3		3		324				3	10/25/2028	1.A
..31396N-EM-4	FHLMC REMIC Ser 3140 CI UP 6.000% 03/15/36	03/01/2025	Paydown		5,181	5,181	5,150	5,157		24		24		5,181				51	03/15/2036	1.A
..31400T-XA-2	FNMA Pool #CB7872 7.000% 01/25/54	03/01/2025	Paydown		224,283	224,283	231,607	231,413		(7,130)		(7,130)		224,283				2,354	01/25/2054	1.A
..3140XG-PS-2	FNMA Pool #FS1332 3.500% 03/25/52	03/01/2025	Paydown		15,395	15,395	14,753	14,773		621		621		15,395				90	03/25/2052	1.A
..31418E-CU-2	Fn MA5192 Pool #MA4582 2.000% 04/25/37	03/01/2025	Paydown		22,731	22,731	19,918	20,242		2,489		2,489		22,731				75	04/25/2037	1.A
..31418E-D5-6	Fn MA5192 Pool #MA4623 2.500% 06/25/52	03/01/2025	Paydown		14,069	14,069	11,482	11,595		2,474		2,474		14,069				53	06/25/2052	1.A
..31418E-E6-3	Fn MA5192 Pool #MA4656 4.500% 07/01/52	03/01/2025	Paydown		45,239	45,239	45,133	45,137		102		102		45,239				341	07/01/2052	1.A
..31418E-HJ-2	Fn MA5192 Pool #MA4732 4.000% 09/01/52	03/01/2025	Paydown		39,122	39,122	38,341	38,373		750		750		39,122				265	09/01/2052	1.A
..31418E-KS-8	Fn MA5192 Pool #MA4804 4.000% 11/25/52	03/01/2025	Paydown		18,720	18,720	16,985	17,054		1,666		1,666		18,720				107	11/25/2052	1.A
..31418E-LT-6	Fn MA5192 Pool #MA4805 4.500% 11/25/52	03/01/2025	Paydown		11,855	11,855	11,094	11,120		734		734		11,855				88	11/25/2052	1.A
..31418E-LY-4	Fn MA5192 Pool #MA4842 5.500% 12/01/52	03/01/2025	Paydown		19,220	19,220	18,929	18,935		285		285		19,220				170	12/01/2052	1.A
..31419B-BF-1	FNMA Pool #AE0937 3.500% 02/25/41	03/01/2025	Paydown		3,100	3,100	3,129	3,123		(23)		(23)		3,100				18	02/25/2041	1.A
1039999999. Subtotal - Asset-Backed Securities - Financial Asset-Backed - Self-Liquidating - Agency Residential Mortgage-Backed Securities - Not/Partially Guaranteed (Not Exempt from RBC)					610,960	610,960	600,921	601,584		9,375		9,375		610,960				5,254	XXX	XXX
..03464R-AA-1	Angel Oak Mortgage Trust RMBS Series 2020-1 CI A1 4.800% 12/25/59	03/01/2025	Paydown		7,574	7,574	7,574	7,568		6		6		7,574				34	12/25/2059	1.A
..92837D-AB-3	Visio RMBS Ser 2019-2 CI A2 1.545% 11/25/54	03/01/2025	Paydown		12,771	12,771	12,771	12,757		14		14		12,771				74	11/25/2054	1.A
1059999999. Subtotal - Asset-Backed Securities - Financial Asset-Backed - Self-Liquidating - Non-Agency Residential Mortgage-Backed Securities (Unaffiliated)					20,345	20,345	20,345	20,325		20		20		20,345				108	XXX	XXX
..90269P-AA-9	UBS-BofA Merrill Lynch Tr CMBS Ser 2012-11RM CI A 3.663% 06/10/30	01/01/2025	Paydown		15,845	15,845	15,939	15,845						15,845				48	06/10/2030	1.A FM
1079999999. Subtotal - Asset-Backed Securities - Financial Asset-Backed - Self-Liquidating - Non-Agency Commercial Mortgage-Backed Securities (Unaffiliated)					15,845	15,845	15,939	15,845						15,845				48	XXX	XXX
..38218G-AA-0	Goodgreen Trust LBASS Ser 2018-1A CI A 3.930% 10/15/53	03/15/2025	Paydown		4,799	4,799	5,038	4,992		(193)		(193)		4,799				28	10/15/2053	1.A FE
1099999999. Subtotal - Asset-Backed Securities - Financial Asset-Backed - Self-Liquidating - Non-Agency - CLOs/CBOs/CDOs (Unaffiliated)					4,799	4,799	5,038	4,992		(193)		(193)		4,799				28	XXX	XXX
1889999999. Total - Asset-Backed Securities (Unaffiliated)					722,064	722,064	712,264	712,628		9,436		9,436		722,064				6,090	XXX	XXX
1899999999. Total - Asset-Backed Securities (Affiliated)																			XXX	XXX
1909999997. Total - Asset-Backed Securities - Part 4					722,064	722,064	712,264	712,628		9,436		9,436		722,064				6,090	XXX	XXX
1909999998. Total - Asset-Backed Securities - Part 5					XXX	XXX	XXX	XXX	XXX	XXX	XXX	XXX	XXX	XXX	XXX	XXX	XXX	XXX	XXX	XXX
1909999999. Total - Asset-Backed Securities					722,064	722,064	712,264	712,628		9,436		9,436		722,064				6,090	XXX	XXX
2009999999. Total - Issuer Credit Obligations and Asset-Backed Securities					4,899,244	4,982,408	4,966,950	4,906,503	25,801	7,963		33,764		4,940,266		(41,022)	(41,022)	71,009	XXX	XXX
4509999997. Total - Preferred Stocks - Part 4					XXX	XXX	XXX	XXX	XXX	XXX	XXX	XXX	XXX	XXX	XXX	XXX	XXX	XXX	XXX	XXX
4509999998. Total - Preferred Stocks - Part 5					XXX	XXX	XXX	XXX	XXX	XXX	XXX	XXX	XXX	XXX	XXX	XXX	XXX	XXX	XXX	XXX
4509999999. Total - Preferred Stocks						XXX													XXX	XXX
5989999997. Total - Common Stocks - Part 4						XXX													XXX	XXX
5989999998. Total - Common Stocks - Part 5					XXX	XXX	XXX	XXX	XXX	XXX	XXX	XXX	XXX	XXX	XXX	XXX	XXX	XXX	XXX	XXX
5989999999. Total - Common Stocks						XXX													XXX	XXX
5999999999. Total - Preferred and Common Stocks						XXX													XXX	XXX
6009999999 - Totals					4,899,244	XXX	4,966,950	4,906,503	25,801	7,963		33,764		4,940,266		(41,022)	(41,022)	71,009	XXX	XXX

Schedule DB - Part A - Section 1 - Options, Caps, Floors, Collars, Swaps and Forwards Open
N O N E

Schedule DB - Part B - Section 1 - Futures Contracts Open
N O N E

Schedule DB - Part B - Section 1B - Brokers with whom cash deposits have been made
N O N E

Schedule DB - Part D - Section 1 - Counterparty Exposure for Derivative Instruments Open
N O N E

Schedule DB - Part D-Section 2 - Collateral for Derivative Instruments Open - Pledged By
N O N E

Schedule DB - Part D-Section 2 - Collateral for Derivative Instruments Open - Pledged To
N O N E

Schedule DB - Part E - Derivatives Hedging Variable Annuity Guarantees
N O N E

SCHEDULE DL - PART 1
SECURITIES LENDING COLLATERAL ASSETS

Reinvested Collateral Assets Owned Current Statement Date
(Securities lending collateral assets reported in aggregate on Line 10 of the Assets page (Line 9 for Separate Accounts)
and not included on Schedules A, B, BA, D, DB and E)

1	2	3	4	5	6	7
CUSIP Identification	Description	Restricted Asset Code	NAIC Designation, NAIC Designation Modifier and SVO Administrative Symbol	Fair Value	Book/Adjusted Carrying Value	Maturity Date
0489999999	Total - Issuer Credit Obligations (Schedule D, Part 1, Section 1 type) - (Unaffiliated)					XXX
0499999999	Total - Issuer Credit Obligations (Schedule D, Part 1, Section 1 type) - (Affiliated)					XXX
0509999999	Total - Issuer Credit Obligations (Schedule D, Part 1, Section 1 type)					XXX
362334-BQ-6	GSAA Home Equity Tr RMBS Ser 2006-3 CI A		1.A FI	2,298	2,298	03/25/2036
81376G-AC-4	Securitized AB Receivables LLC RMBS Ser		1.A FI	26,822	18,448	09/25/2036
1059999999	Subtotal - Asset-Backed Securities (Schedule D, Part 1, Section 2 type) - Financial Asset-Backed - Self-Liquidating - Non-Agency Residential Mortgage-Backed Securities (Unaffiliated)			29,120	20,746	XXX
1889999999	Total - Asset-Backed Securities (Schedule D, Part 1, Section 2 type) - (Unaffiliated)			29,120	20,746	XXX
1899999999	Total - Asset-Backed Securities (Schedule D, Part 1, Section 2 type) - (Affiliated)					XXX
1909999999	Total - Asset-Backed Securities (Schedule D, Part 1, Section 2 type)			29,120	20,746	XXX
2009999999	Total - Issuer Credit Obligations and Asset-Backed Securities			29,120	20,746	XXX
4109999999	Total - Preferred Stocks (Schedule D, Part 2, Section 1 type) - Industrial and Miscellaneous (Unaffiliated)					XXX
4409999999	Total - Preferred Stocks (Schedule D, Part 2, Section 1 type) - Parent, Subsidiaries and Affiliates					XXX
4509999999	Total - Preferred Stocks (Schedule D, Part 2, Section 1 type)					XXX
5109999999	Total - Common Stocks (Schedule D, Part 2, Section 2 type) - Industrial and Miscellaneous (Unaffiliated)					XXX
5409999999	Total - Common Stocks (Schedule D, Part 2, Section 2 type) - Mutual Funds					XXX
5609999999	Total - Common Stocks (Schedule D, Part 2, Section 2 type) - Unit Investment Trusts					XXX
5809999999	Total - Common Stocks (Schedule D, Part 2, Section 2 type) - Closed-End Funds					XXX
5979999999	Total - Common Stocks (Schedule D, Part 2, Section 2 type) - Parent, Subsidiaries and Affiliates					XXX
5989999999	Total - Common Stocks (Schedule D, Part 2, Section 2 type)					XXX
5999999999	Total - Preferred and Common Stocks					XXX
000000-00-0	Overnight Repos SEC LENDING ONLY		1.A	1,928,490	1,928,490	04/01/2025
9709999999	Subtotal - Cash Equivalents (Schedule E Part 2 type)			1,928,490	1,928,490	XXX
9999999999	Totals			1,957,610	1,949,236	XXX

General Interrogatories:

1. Total activity for the year
- Fair Value \$ (501,527)
- Book/Adjusted Carrying Value \$ (502,131)
2. Average balance for the year
- Fair Value \$ 2,140,698
- Book/Adjusted Carrying Value \$ 2,132,526
3. Reinvested securities lending collateral assets book/adjusted carrying value included in this schedule by NAIC designation:
- NAIC 1 \$ 1,949,236
- NAIC 2 \$
- NAIC 3 \$
- NAIC 4 \$
- NAIC 5 \$
- NAIC 6 \$

SCHEDULE DL - PART 2
SECURITIES LENDING COLLATERAL ASSETS

1	2	3	4	5	6	7
CUSIP Identification	Description	Restricted Asset Code	NAIC Designation, NAIC Designation Modifier and SVO Administrative Symbol	Fair Value	Book/Adjusted Carrying Value	Maturity Date
NONE						
999999999 - Totals						XXX

Book/Adjusted Carrying Value \$
Book/Adjusted Carrying Value \$

SCHEDULE E - PART 1 - CASH

[illegible]

SCHEDULE E - PART 2 - CASH EQUIVALENTS

[illegible]



DIRECTOR AND OFFICER INSURANCE COVERAGE SUPPLEMENT

Year To Date For The Period Ended MARCH 31, 2025

NAIC Company Code 41297

If the reporting entity writes any director and officer (D&O) business, please provide the following:

1 Direct Written Premium	2 Direct Earned Premium	3 Direct Losses Incurred
\$ 18,204,933	\$ 4,342,666	\$ 3,386,713

2.1 Does the reporting entity provide D&O liability coverage as part of a CMP packaged policy?	Yes [<input type="checkbox"/>]	No [<input checked="" type="checkbox"/>]
2.2 Can the direct premium earned for D&O liability coverage provided as part of a CMP packaged policy be quantified or estimated?	Yes [<input type="checkbox"/>]	No [<input checked="" type="checkbox"/>]
2.3 If the answer to question 2.2 is yes, provide the quantified or estimated direct premium earned amount for D&O liability coverage in CMP packaged policies		
2.31 Amount quantified:.....	\$
2.32 Amount estimated using reasonable assumptions:.....	\$
2.4 If the answer to question 2.1 is yes, provide direct losses incurred (losses paid plus change in case reserves) for the D&O liability coverage provided in CMP packaged policies.	\$