



PROPERTY AND CASUALTY COMPANIES - ASSOCIATION EDITION

QUARTERLY STATEMENT
AS OF MARCH 31, 2025
OF THE CONDITION AND AFFAIRS OF THE
STATE AUTOMOBILE MUTUAL INSURANCE COMPANY

NAIC Group Code	0111	0111	NAIC Company Code	25135	Employer's ID Number	31-4316080
	(Current)	(Prior)				
Organized under the Laws of	Ohio			State of Domicile or Port of Entry		OH
Country of Domicile	United States of America					
Incorporated/Organized	08/15/1921			Commenced Business		09/01/1921
Statutory Home Office	518 East Broad Street			Columbus, OH, US 43215		
	(Street and Number)			(City or Town, State, Country and Zip Code)		
Main Administrative Office	175 Berkeley Street					
	(Street and Number)					
	Boston, MA US 02116			617-357-9500		
	(City or Town, State, Country and Zip Code)			(Area Code) (Telephone Number)		
Mail Address	175 Berkeley Street			Boston, MA US 02116		
	(Street and Number or P.O. Box)			(City or Town, State, Country and Zip Code)		
Primary Location of Books and Records	175 Berkeley Street					
	(Street and Number)					
	Boston, MA US 02116			617-357-9500		
	(City or Town, State, Country and Zip Code)			(Area Code) (Telephone Number)		
Internet Website Address	www.stateauto.com					
Statutory Statement Contact	Joel Peltokangas			617-357-9500		
	(Name)			(Area Code) (Telephone Number)		
	Statutory.Compliance@LibertyMutual.com			603-430-1653		
	(E-mail Address)			(FAX Number)		

OFFICERS

President and Chief Executive Officer	Hamid Talal Mirza	Executive Vice President and Treasurer	Nikos Vasilakos
Executive Vice President, Chief Legal Officer and Secretary	Damon Paul Hart		

OTHER

Julie Marie Haase, Executive Vice President	Matthew Edwin Johnson, Chief Financial Officer	Paul Sanghera, EVP and Comptroller
Vlad Yakov Barbalat, EVP and Chief Investment Officer		

DIRECTORS OR TRUSTEES

James Matthew Czapla	Matthew Paul Dolan	Alison Brooke Erbig
Michael Joseph Fallon	Damon Paul Hart	Matthew Edwin Johnson
Hamid Talal Mirza	Elizabeth Julia Morahan	Paul Sanghera

State of Massachusetts
County of Suffolk
SS:

The officers of this reporting entity being duly sworn, each depose and say that they are the described officers of said reporting entity, and that on the reporting period stated above, all of the herein described assets were the absolute property of the said reporting entity, free and clear from any liens or claims thereon, except as herein stated, and that this statement, together with related exhibits, schedules and explanations therein contained, annexed or referred to, is a full and true statement of all the assets and liabilities and of the condition and affairs of the said reporting entity as of the reporting period stated above, and of its income and deductions therefrom for the period ended, and have been completed in accordance with the NAIC QUARTERLY Statement Instructions and Accounting Practices and Procedures manual except to the extent that: (1) state law may differ; or, (2) that state rules or regulations require differences in reporting not related to accounting practices and procedures, according to the best of their information, knowledge and belief, respectively. Furthermore, the scope of this attestation by the described officers also includes the related corresponding electronic filing with the NAIC, when required, that is an exact copy (except for formatting differences due to electronic filing) of the enclosed statement. The electronic filing may be requested by various regulators in lieu of or in addition to the enclosed statement.

Hamid Talal Mirza President and Chief Executive Officer	Damon Paul Hart EVP, Chief Legal Officer and Secretary	Nikos Vasilakos Executive Vice President and Treasurer

Subscribed and sworn to before me this
15th day of April, 2025

a. Is this an original filing? Yes [X] No []
b. If no,
1. State the amendment number.....
2. Date filed
3. Number of pages attached.....



STATEMENT AS OF MARCH 31, 2025 OF THE STATE AUTOMOBILE MUTUAL INSURANCE COMPANY

ASSETS

	Current Statement Date			4 December 31 Prior Year Net Admitted Assets
	1 Assets	2 Nonadmitted Assets	3 Net Admitted Assets (Cols. 1 - 2)	
1. Bonds	73,697,445		73,697,445	75,572,868
2. Stocks:				
2.1 Preferred stocks				
2.2 Common stocks	425,439,547	43,726,974	381,712,573	387,937,931
3. Mortgage loans on real estate:				
3.1 First liens				
3.2 Other than first liens.....				
4. Real estate:				
4.1 Properties occupied by the company (less \$0 encumbrances)	65,922,998		65,922,998	66,454,692
4.2 Properties held for the production of income (less \$0 encumbrances)				
4.3 Properties held for sale (less \$0 encumbrances)				
5. Cash (\$26,345,230), cash equivalents (\$21,568) and short-term investments (\$)	26,366,798		26,366,798	17,455,219
6. Contract loans (including \$0 premium notes)				
7. Derivatives				
8. Other invested assets	10,008,806		10,008,806	10,008,806
9. Receivables for securities				
10. Securities lending reinvested collateral assets				
11. Aggregate write-ins for invested assets				
12. Subtotals, cash and invested assets (Lines 1 to 11)	601,435,594	43,726,974	557,708,620	557,429,516
13. Title plants less \$0 charged off (for Title insurers only)				
14. Investment income due and accrued	(229,104)		(229,104)	(249,335)
15. Premiums and considerations:				
15.1 Uncollected premiums and agents' balances in the course of collection	47,889		47,889	34,744
15.2 Deferred premiums, agents' balances and installments booked but deferred and not yet due (including \$0 earned but unbilled premiums)				
15.3 Accrued retrospective premiums (\$0) and contracts subject to redetermination (\$0)				
16. Reinsurance:				
16.1 Amounts recoverable from reinsurers	43,030,479		43,030,479	69,056,761
16.2 Funds held by or deposited with reinsured companies				
16.3 Other amounts receivable under reinsurance contracts				
17. Amounts receivable relating to uninsured plans				
18.1 Current federal and foreign income tax recoverable and interest thereon				593,390
18.2 Net deferred tax asset	39,526,621	33,402,467	6,124,154	6,228,044
19. Guaranty funds receivable or on deposit				
20. Electronic data processing equipment and software	12,163,513	12,163,513		
21. Furniture and equipment, including health care delivery assets (\$0)	1,403,422	1,403,422		
22. Net adjustment in assets and liabilities due to foreign exchange rates				
23. Receivables from parent, subsidiaries and affiliates	83,531,349		83,531,349	54,559,749
24. Health care (\$0) and other amounts receivable				
25. Aggregate write-ins for other than invested assets	7,654,664	2,499	7,652,165	6,722,600
26. Total assets excluding Separate Accounts, Segregated Accounts and Protected Cell Accounts (Lines 12 to 25)	788,564,427	90,698,875	697,865,552	694,375,469
27. From Separate Accounts, Segregated Accounts and Protected Cell Accounts				
28. Total (Lines 26 and 27)	788,564,427	90,698,875	697,865,552	694,375,469
DETAILS OF WRITE-INS				
1101.				
1102.				
1103.				
1198. Summary of remaining write-ins for Line 11 from overflow page				
1199. Totals (Lines 1101 through 1103 plus 1198)(Line 11 above)				
2501. Other assets	7,654,664	2,499	7,652,165	6,722,600
2502.				
2503.				
2598. Summary of remaining write-ins for Line 25 from overflow page				
2599. Totals (Lines 2501 through 2503 plus 2598)(Line 25 above)	7,654,664	2,499	7,652,165	6,722,600

STATEMENT AS OF MARCH 31, 2025 OF THE STATE AUTOMOBILE MUTUAL INSURANCE COMPANY

LIABILITIES, SURPLUS AND OTHER FUNDS

	1 Current Statement Date	2 December 31, Prior Year
1. Losses (current accident year \$0)		
2. Reinsurance payable on paid losses and loss adjustment expenses	6,219,432	5,772,578
3. Loss adjustment expenses		
4. Commissions payable, contingent commissions and other similar charges		
5. Other expenses (excluding taxes, licenses and fees)		
6. Taxes, licenses and fees (excluding federal and foreign income taxes)		
7.1 Current federal and foreign income taxes (including \$0 on realized capital gains (losses))	410,019	
7.2 Net deferred tax liability		
8. Borrowed money \$0 and interest thereon \$0		
9. Unearned premiums (after deducting unearned premiums for ceded reinsurance of \$397,756,834 and including warranty reserves of \$0 and accrued accident and health experience rating refunds including \$ for medical loss ratio rebate per the Public Health Service Act)		
10. Advance premium		
11. Dividends declared and unpaid:		
11.1 Stockholders		
11.2 Policyholders		
12. Ceded reinsurance premiums payable (net of ceding commissions)	92,625,752	89,306,148
13. Funds held by company under reinsurance treaties		
14. Amounts withheld or retained by company for account of others	34,579	34,579
15. Remittances and items not allocated		
16. Provision for reinsurance (including \$0 certified)		
17. Net adjustments in assets and liabilities due to foreign exchange rates		
18. Drafts outstanding	5,014,029	13,592,821
19. Payable to parent, subsidiaries and affiliates	19,656,359	12,314,656
20. Derivatives		
21. Payable for securities		
22. Payable for securities lending		
23. Liability for amounts held under uninsured plans		
24. Capital notes \$0 and interest thereon \$0		
25. Aggregate write-ins for liabilities	2,528,691	
26. Total liabilities excluding protected cell liabilities (Lines 1 through 25)	126,488,861	121,020,782
27. Protected cell liabilities		
28. Total liabilities (Lines 26 and 27)	126,488,861	121,020,782
29. Aggregate write-ins for special surplus funds		
30. Common capital stock	5,000,000	5,000,000
31. Preferred capital stock		
32. Aggregate write-ins for other than special surplus funds		
33. Surplus notes		
34. Gross paid in and contributed surplus	75,000,000	75,000,000
35. Unassigned funds (surplus)	491,376,691	493,354,687
36. Less treasury stock, at cost:		
36.10 shares common (value included in Line 30 \$0)		
36.20 shares preferred (value included in Line 31 \$0)		
37. Surplus as regards policyholders (Lines 29 to 35, less 36)	571,376,691	573,354,687
38. Totals (Page 2, Line 28, Col. 3)	697,865,552	694,375,469
DETAILS OF WRITE-INS		
2501. Other liabilities	2,528,691	
2502.		
2503.		
2598. Summary of remaining write-ins for Line 25 from overflow page		
2599. Totals (Lines 2501 through 2503 plus 2598)(Line 25 above)	2,528,691	
2901.		
2902.		
2903.		
2998. Summary of remaining write-ins for Line 29 from overflow page		
2999. Totals (Lines 2901 through 2903 plus 2998)(Line 29 above)		
3201.		
3202.		
3203.		
3298. Summary of remaining write-ins for Line 32 from overflow page		
3299. Totals (Lines 3201 through 3203 plus 3298)(Line 32 above)		

STATEMENT OF INCOME

	1	2	3
	Current Year to Date	Prior Year to Date	Prior Year Ended December 31
UNDERWRITING INCOME			
1. Premiums earned:			
1.1 Direct (written \$183,052,445)	217,527,870	258,283,204	993,221,457
1.2 Assumed (written \$580,832)	589,429	250,673	1,909,994
1.3 Ceded (written \$183,633,277)	218,117,299	258,533,877	995,131,451
1.4 Net (written \$)			
DEDUCTIONS:			
2. Losses incurred (current accident year \$0):			
2.1 Direct	125,305,360	210,843,127	929,429,712
2.2 Assumed	260,250	1,983,446	2,701,869
2.3 Ceded	125,565,610	212,826,573	932,131,581
2.4 Net			
3. Loss adjustment expenses incurred			
4. Other underwriting expenses incurred			
5. Aggregate write-ins for underwriting deductions			
6. Total underwriting deductions (Lines 2 through 5)			
7. Net income of protected cells			
8. Net underwriting gain (loss) (Line 1 minus Line 6 + Line 7)			
INVESTMENT INCOME			
9. Net investment income earned	1,424,218	1,347,906	5,013,445
10. Net realized capital gains (losses) less capital gains tax of \$7,698	28,960		(66,096)
11. Net investment gain (loss) (Lines 9 + 10)	1,453,178	1,347,906	4,947,349
OTHER INCOME			
12. Net gain or (loss) from agents' or premium balances charged off (amount recovered \$0 amount charged off \$0)			
13. Finance and service charges not included in premiums			
14. Aggregate write-ins for miscellaneous income	(342)	(77,412)	(528,794)
15. Total other income (Lines 12 through 14)	(342)	(77,412)	(528,794)
16. Net income before dividends to policyholders, after capital gains tax and before all other federal and foreign income taxes (Lines 8 + 11 + 15)	1,452,836	1,270,494	4,418,555
17. Dividends to policyholders			
18. Net income, after dividends to policyholders, after capital gains tax and before all other federal and foreign income taxes (Line 16 minus Line 17)	1,452,836	1,270,494	4,418,555
19. Federal and foreign income taxes incurred	403,170	389,589	(536,430)
20. Net income (Line 18 minus Line 19)(to Line 22)	1,049,666	880,905	4,954,985
CAPITAL AND SURPLUS ACCOUNT			
21. Surplus as regards policyholders, December 31 prior year	573,354,687	528,578,519	528,578,519
22. Net income (from Line 20)	1,049,666	880,905	4,954,985
23. Net transfers (to) from Protected Cell accounts			
24. Change in net unrealized capital gains (losses) less capital gains tax of \$735	(6,215,638)	3,123,284	20,482,597
25. Change in net unrealized foreign exchange capital gain (loss)			
26. Change in net deferred income tax	263,356	2,192,645	3,578,719
27. Change in nonadmitted assets	2,924,621	1,873,889	13,369,867
28. Change in provision for reinsurance			2,390,000
29. Change in surplus notes			
30. Surplus (contributed to) withdrawn from protected cells			
31. Cumulative effect of changes in accounting principles			
32. Capital changes:			
32.1 Paid in			
32.2 Transferred from surplus (Stock Dividend)			
32.3 Transferred to surplus			
33. Surplus adjustments:			
33.1 Paid in			
33.2 Transferred to capital (Stock Dividend)			
33.3 Transferred from capital			
34. Net remittances from or (to) Home Office			
35. Dividends to stockholders			
36. Change in treasury stock			
37. Aggregate write-ins for gains and losses in surplus	(1)		
38. Change in surplus as regards policyholders (Lines 22 through 37)	(1,977,996)	8,070,722	44,776,168
39. Surplus as regards policyholders, as of statement date (Lines 21 plus 38)	571,376,691	536,649,241	573,354,687
DETAILS OF WRITE-INS			
0501.			
0502.			
0503.			
0598. Summary of remaining write-ins for Line 5 from overflow page			
0599. Totals (Lines 0501 through 0503 plus 0598)(Line 5 above)			
1401. Other income/(expense)	(342)		(528,794)
1402. Governmental fines and penalties		(77,412)	
1403.			
1498. Summary of remaining write-ins for Line 14 from overflow page			
1499. Totals (Lines 1401 through 1403 plus 1498)(Line 14 above)	(342)	(77,412)	(528,794)
3701. Other changes in surplus	(1)		
3702.			
3703.			
3798. Summary of remaining write-ins for Line 37 from overflow page			
3799. Totals (Lines 3701 through 3703 plus 3798)(Line 37 above)	(1)		

STATEMENT AS OF MARCH 31, 2025 OF THE STATE AUTOMOBILE MUTUAL INSURANCE COMPANY

CASH FLOW

	1 Current Year To Date	2 Prior Year To Date	3 Prior Year Ended December 31
Cash from Operations			
1. Premiums collected net of reinsurance	3,306,458	235,523,467	(140,452,351)
2. Net investment income	1,333,387	1,113,913	4,934,740
3. Miscellaneous income	(342)	(77,412)	(528,794)
4. Total (Lines 1 to 3)	4,639,503	236,559,968	(136,046,405)
5. Benefit and loss related payments	(26,473,136)	165,966,908	(125,298,166)
6. Net transfers to Separate Accounts, Segregated Accounts and Protected Cell Accounts			
7. Commissions, expenses paid and aggregate write-ins for deductions		(34,431)	343,840
8. Dividends paid to policyholders			
9. Federal and foreign income taxes paid (recovered) net of \$ tax on capital gains (losses)	(592,541)	(1,948,472)	(1,881,797)
10. Total (Lines 5 through 9)	(27,065,677)	163,984,005	(126,836,123)
11. Net cash from operations (Line 4 minus Line 10)	31,705,180	72,575,963	(9,210,282)
Cash from Investments			
12. Proceeds from investments sold, matured or repaid:			
12.1 Bonds	10,451,503	29,307	15,115,145
12.2 Stocks	3,190,001		930,000
12.3 Mortgage loans			
12.4 Real estate			
12.5 Other invested assets			
12.6 Net gains or (losses) on cash, cash equivalents and short-term investments			(3,815)
12.7 Miscellaneous proceeds		82	82
12.8 Total investment proceeds (Lines 12.1 to 12.7)	13,641,504	29,389	16,041,411
13. Cost of investments acquired (long-term only):			
13.1 Bonds	8,487,941	3,176,489	35,288,397
13.2 Stocks	581,079	250,000	535,065
13.3 Mortgage loans			
13.4 Real estate			
13.5 Other invested assets			5,500
13.6 Miscellaneous applications		4,333,086	6,016,331
13.7 Total investments acquired (Lines 13.1 to 13.6)	9,069,020	7,759,575	41,845,293
14. Net increase/(decrease) in contract loans and premium notes			
15. Net cash from investments (Line 12.8 minus Line 13.7 and Line 14)	4,572,484	(7,730,185)	(25,803,881)
Cash from Financing and Miscellaneous Sources			
16. Cash provided (applied):			
16.1 Surplus notes, capital notes			
16.2 Capital and paid in surplus, less treasury stock			
16.3 Borrowed funds			
16.4 Net deposits on deposit-type contracts and other insurance liabilities			
16.5 Dividends to stockholders			
16.6 Other cash provided (applied)	(27,366,085)	(90,545,336)	73,326,175
17. Net cash from financing and miscellaneous sources (Line 16.1 through Line 16.4 minus Line 16.5 plus Line 16.6)	(27,366,085)	(90,545,336)	73,326,175
RECONCILIATION OF CASH, CASH EQUIVALENTS AND SHORT-TERM INVESTMENTS			
18. Net change in cash, cash equivalents and short-term investments (Line 11, plus Lines 15 and 17) .	8,911,579	(25,699,559)	38,312,011
19. Cash, cash equivalents and short-term investments:			
19.1 Beginning of year	17,455,219	(20,856,793)	(20,856,793)
19.2 End of period (Line 18 plus Line 19.1)	26,366,798	(46,556,352)	17,455,219

Note: Supplemental disclosures of cash flow information for non-cash transactions:

20.0001.			
---------------	--	--	--

NOTES TO FINANCIAL STATEMENTS

NOTE 1 Summary of Significant Accounting Policies and Going Concern

A. Accounting Practices

Effective January 1, 2001, and subject to any deviations prescribed or permitted by the State of Ohio, the accompanying financial statements of The First Liberty Insurance Corporation (the “Company”) have been prepared in conformity with the National Association of Insurance Commissioners (“NAIC”) Accounting Practices and Procedures Manual (“APP Manual”).

The Company does not have any prescribed or permitted accounting practices.

	SSAP #	F/S Page	F/S Line #		2025		2024
NET INCOME							
(1) State basis (Page 4, Line 20, Columns 1 & 3)	XXX	XXX	XXX	\$	1,049,666	\$	4,954,985
State Prescribed Practices that are an increase/ (2) (decrease) from NAIC SAP:							
State Prescribed Practices that are an increase/ (3) (decrease) from NAIC SAP:							
(4) NAIC SAP (1-2-3=4)	XXX	XXX	XXX	\$	1,049,666	\$	4,954,985
SURPLUS							
(5) State basis (Page 3, Line 37, Columns 1 & 2)	XXX	XXX	XXX	\$	571,376,691	\$	573,354,687
State Prescribed Practices that are an increase/ (6) (decrease) from NAIC SAP:							
State Prescribed Practices that are an increase/ (7) (decrease) from NAIC SAP:							
(8) NAIC SAP (5-6-7=8)	XXX	XXX	XXX	\$	571,376,691	\$	573,354,687

B. Use of Estimates in the Preparation of the Financial Statements

The preparation of financial statements requires management to make estimates and assumptions that affect the reported amounts of assets, liabilities, revenues, and expenses. It also requires estimates in the disclosure of contingent assets and liabilities. Actual results could differ from these estimates.

C. Accounting Policy

Premiums are earned over the terms of the related policies and reinsurance contracts. Unearned premium reserves are established to cover the unexpired portion of premiums written. Such reserves are computed by pro-rata methods. Expenses incurred in connection with acquiring new insurance business, including acquisition costs such as sales commissions, are charged to operations as incurred. Expenses incurred are reduced for ceding allowances received or receivable.

In addition, the Company applies the following accounting policies, where applicable:

- Short term investments are carried at cost, adjusted where appropriate for amortization of premium or discount, or fair value as specified by the Purposes and Procedures Manual of the NAIC Investment Analysis Office (SVO Manual).
- Bonds are carried at cost, adjusted where appropriate for amortization of premium or discount, or fair value as specified by the SVO Manual.
- Common stocks are carried at fair value, except that investments in stocks of subsidiaries, controlled and affiliated ("SCA") companies are carried according to Note 1C(7).
- Preferred stocks are carried at cost or fair value as specified by the SVO Manual. Preferred stocks of SCA companies are carried according to Note 1C(7).
- Mortgage loans are carried at amortized cost, less impairments as specified by the SVO Manual.
- Mortgage backed/asset backed securities are carried at amortized cost or fair value based on guidance in the SVO Manual. Prepayment assumptions for mortgage backed/asset backed securities are based on market expectations. The retrospective adjustment method and prospective interest method are used to value all mortgage backed/asset backed securities.
- Investments in SCA companies are carried in accordance with SSAP No. 97, Investments in Subsidiary, Controlled, and Affiliated Entities, A Replacement of SSAP No. 88, and the SVO Manual.
- Investments in joint ventures, partnerships, and limited liability companies are carried in accordance with SSAP No. 48, Joint Ventures, Partnerships and Limited Liability Companies, and the SVO Manual.
- Derivative Securities, refer to Note 8 .
- Investment income is anticipated as a factor in the premium deficiency calculation, in accordance with SSAP No. 53, Property Casualty Contracts - Premiums. Refer to Note 30.
- Unpaid losses and loss adjustment expenses include an amount determined from individual case estimates and an amount, based on past experience, for losses and loss adjustment expenses incurred but not reported. Such liabilities are necessarily based on assumptions and estimates, and while management believes the amount is adequate, the ultimate liability may be in excess of or less than the amount provided. The methods, for making such estimates and for establishing the resulting liability, are continually reviewed and follow current standards of practice. Any adjustments to the liability are reflected in the period that they are determined.
- The Company did not change its capitalization policy in 2025.
- The Company has no pharmaceutical rebate receivables.

D. Going Concern

The Company is not aware of any conditions that would impact its ability to continue as a going concern.

NOTE 2 Accounting Changes and Corrections of Errors

There were no material changes in accounting principles and/or correction of errors.

NOTES TO FINANCIAL STATEMENTS

NOTE 3 Business Combinations and Goodwill

No Change

NOTE 4 Discontinued Operations

The Company has no discontinued operations.

NOTE 5 Investments

A. Mortgage Loans, including Mezzanine Real Estate Loans

The Company does not invest in mortgage loans.

B. Debt Restructuring

Not applicable.

C. Reverse Mortgages

The Company has no reverse mortgages.

D. Asset-Backed Securities

(1) Prepayment speed assumptions are updated monthly with data sourced from the Bloomberg data service.

(2) OTTI recognized 1st Quarter

- a. Intent to sell
- b. Inability or lack of intent to retain the investment in the security for a period of time sufficient to recover the amortized cost basis
- c. Total 1st Quarter (a+b)

OTTI recognized 2nd Quarter

- d. Intent to sell
- e. Inability or lack of intent to retain the investment in the security for a period of time sufficient to recover the amortized cost basis
- f. Total 2nd Quarter (d+e)

OTTI recognized 3rd Quarter

- g. Intent to sell
- h. Inability or lack of intent to retain the investment in the security for a period of time sufficient to recover the amortized cost basis
- i. Total 3rd Quarter (g+h)

OTTI recognized 4th Quarter

- j. Intent to sell
- k. Inability or lack of intent to retain the investment in the security for a period of time sufficient to recover the amortized cost basis
- l. Total 4th Quarter (j+k)

m. Annual Aggregate Total (c+f+i+l)

1 Amortized Cost Basis Before Other-than- Temporary Impairment	2 Other-than- Temporary Impairment Recognized in Loss	3 Fair Value 1 - 2
		\$ -
\$ -	\$ -	\$ -
		\$ -
\$ -	\$ -	\$ -
		\$ -
\$ -	\$ -	\$ -
		\$ -
\$ -	\$ -	\$ -
		\$ -
\$ -	\$ -	\$ -
	\$ -	

(3)

1	2	3	4	5	6	7
CUSIP	Book/Adjusted Carrying Value Amortized Cost Before Current Period OTTI	Present Value of Projected Cash Flows	Recognized Other-Than- Temporary Impairment	Amortized Cost After Other-Than- Temporary Impairment	Fair Value at time of OTTI	Date of Financial Statement Where Reported
Total	XXX	XXX	\$ -	XXX	XXX	XXX

All impaired Loaned Backed Securities for which an other-than-temporary impairment has not been recognized in earnings as a realized loss as of March 31, 2025:

a) The aggregate amount of unrealized losses:

- 1. Less than 12 Months \$ (30,452)
- 2. 12 Months or Longer \$ (100,211)

b)The aggregate related fair value of securities with unrealized losses:

- 1. Less than 12 Months \$ 3,983,329
- 2. 12 Months or Longer \$ 1,020,898

(5) The Company reviews fixed income securities for impairment on a quarterly basis. Securities are reviewed for both quantitative and qualitative considerations including, but not limited to: (a) the extent of the decline in fair value below book value, (b) the duration of the decline, (c) significant adverse changes in the financial condition or near term prospects of the investment or issuer, (d) significant change in the business climate or credit ratings of the issuer, (e) general market conditions and volatility, (f) industry factors, and (g) the past impairment of the security holding or the issuer. If the Company believes a decline in the value of a particular investment is temporary, the decline is recorded as an unrealized loss in policyholders' equity. If the decline is believed to be "other-than-temporary," and the Company believes it will not be able to collect all cash flows due on its fixed income securities, then the carrying value of the investment is written down to the expected cash flow amount and a realized loss is recorded as a credit impairment.

E. Dollar Repurchase Agreements and/or Securities Lending Transactions

(1) The company has not entered into any repurchase agreements during the year. Refer to Note 17B of the annual statement for the policy on requiring collateral for securities lending.

(2) The Company has not pledged any of its assets as collateral as of September 30, 2024.

NOTES TO FINANCIAL STATEMENTS

(3) Collateral Received

a. Aggregate Amount Collateral Received

	Fair Value	
1. Securities Lending		
(a) Open		
(b) 30 Days or Less		
(c) 31 to 60 Days		
(d) 61 to 90 Days		
(e) Greater Than 90 Days		
(f) Subtotal (a+b+c+d+e)	\$	-
(g) Securities Received		
(h) Total Collateral Received (f+g)	\$	-
2. Dollar Repurchase Agreement		
(a) Open		
(b) 30 Days or Less		
(c) 31 to 60 Days		
(d) 61 to 90 Days		
(e) Greater Than 90 Days		
(f) Subtotal (a+b+c+d+e)	\$	-
(g) Securities Received		
(h) Total Collateral Received (f+g)	\$	-

b. The fair value of that collateral and of the portion of that collateral that it has sold or repledged

c. All collateral is received in the form of cash and/or securities equal to or in excess of 102% of the loaned value and are maintained in a separate custody account. Cash collateral is reinvested into short-term investments as outlined in the terms of the investment agreement. Per the terms of the investment agreement the Company has the right and ability to redeem any eligible securities on short notice.

d. Not Applicable

(4) Securities Lending Transactions Administered by an Affiliated Agent

Not Applicable for any LMG reporting entity

(5) Collateral Reinvestment

a. Aggregate Amount Collateral Reinvested

	Amortized Cost		Fair Value	
1. Securities Lending				
(a) Open				
(b) 30 Days or Less				
(c) 31 to 60 Days				
(d) 61 to 90 Days				
(e) 91 to 120 Days				
(f) 121 to 180 Days				
(g) 181 to 365 Days				
(h) 1 to 2 years				
(i) 2 to 3 years				
(j) Greater than 3 years				
(k) Subtotal (Sum of a through j)	\$	-	\$	-
(l) Securities Received				
(m) Total Collateral Reinvested (k+l)	\$	-	\$	-
2. Dollar Repurchase Agreement				
(a) Open				
(b) 30 Days or Less				
(c) 31 to 60 Days				
(d) 61 to 90 Days				
(e) 91 to 120 Days				
(f) 121 to 180 Days				
(g) 181 to 365 Days				
(h) 1 to 2 years				
(i) 2 to 3 years				
(j) Greater than 3 years				
(k) Subtotal (Sum of a through j)	\$	-	\$	-
(l) Securities Received				
(m) Total Collateral Reinvested (k+l)	\$	-	\$	-

b. The reporting entity's sources of cash that it uses to return the cash collateral is dependent on the liquidity of the current market conditions. Under current conditions, the reporting entity could liquidate all or a portion of its cash collateral reinvestment securities in order to meet the collateral calls that could come due under a worst-case scenario.

(6) The Company has not accepted collateral that it is not permitted by contract or custom to sell or re-pledge.

(7) Collateral for securities lending transactions that extend beyond one year from the reporting date.

The Company has not accepted collateral that extends beyond one year from the reporting date for securities lending transactions.

F. Repurchase Agreements Transactions Accounted for as Secured Borrowing

Not applicable

G. Reverse Repurchase Agreements Transactions Accounted for as Secured Borrowing

Not applicable

NOTES TO FINANCIAL STATEMENTS

H. Repurchase Agreements Transactions Accounted for as a Sale

Not applicable

I. Reverse Repurchase Agreements Transactions Accounted for as a Sale

Not applicable

J. Real Estate

The Company does not hold any investments in real estate.

K. Investments in Tax Credit Structures (tax credit investments)

(1) Company input

L. Restricted Assets

No Change

M. Working Capital Finance Investments

The Company does not invest in working capital finance investments.

N. Offsetting and Netting of Assets and Liabilities

Not Applicable

O. 5GI Securities

Not Applicable

P. Short Sales

(1) Unsettled Short Sale Transactions (Outstanding as of Reporting Date)

Q. Prepayment Penalty and Acceleration Fees

Not Applicable

R. Reporting Entity's Share of Cash Pool by Asset Type

Asset Type	Percent Share
(1) Cash	0.00%
(2) Cash Equivalents	0.01%
(3) Short-Term Investments	0.00%
(4) Total (Must equal 100%)	0.01%

S. Aggregate Collateral Loans by Qualifying Investment Collateral

Not Applicable

NOTE 6 Joint Ventures, Partnerships and Limited Liability Companies

No Change

NOTE 7 Investment Income

No Change

NOTE 8 Derivative Instruments

The Company's investment activities do not include derivatives. However, the Company may acquire derivatives as additions to bond, common stock, or preferred stock investments. These derivatives are ancillary to the overall investment and are immaterial to the underlying investment portfolio.

NOTE 9 Income Taxes

No change

NOTE 10 Information Concerning Parent, Subsidiaries, Affiliates and Other Related Parties

No change

NOTE 11 Debt

NOTES TO FINANCIAL STATEMENTS

A. Debt (Including Capital Notes)

The Company has no debt, including capital notes.

B. FHLB (Federal Home Loan Bank) Agreements

Not Applicable

C. There were no outstanding borrowings as of March 31, 2025

NOTE 12 Retirement Plans, Deferred Compensation, Postemployment Benefits and Compensated Absences and Other Postretirement Benefit Plans

The Company does not have any direct employees and therefore, does not have any direct obligations for a defined benefit plan, deferred compensation arrangements, compensated absences or other postretirement benefit plans. Services for the operation of the Company are provided under provisions of the management services agreements, as described in Note 10F.

NOTE 13 Capital and Surplus, Dividend Restrictions and Quasi-Reorganizations

No Change

NOTE 14 Liabilities, Contingencies and Assessments

No Change

NOTE 15 Leases

No Change

NOTE 16 Information About Financial Instruments With Off-Balance Sheet Risk and Financial Instruments With Concentrations of Credit Risk

The Company is not exposed to financial instruments with off-balance sheet risk or concentration of credit risk.

NOTE 17 Sale, Transfer and Servicing of Financial Assets and Extinguishments of Liabilities

A. Transfers of Receivables Reported as Sales

The Company did not have any transfers of receivables reported as sales.

B. Transfer and Servicing of Financial Assets

No change

C. Wash Sales

(1) The Company did not have any wash sale transactions during the year.

(2) Not applicable.

NOTE 18 Gain or Loss to the Reporting Entity from Uninsured Plans and the Uninsured Portion of Partially Insured Plans

No Change

NOTE 19 Direct Premium Written/Produced by Managing General Agents/Third Party Administrators

The Company has no direct premiums written or produced through managing general agents or third party administrators.

NOTE 20 Fair Value Measurements

A. Inputs Used for Assets and Liabilities Measured at Fair Value

Pursuant to the guidance in SSAP No. 100, Fair Value Measurements, the Company carries no assets or liabilities on its balance sheet measured at fair value.

(1) Fair Value Measurements at Reporting Date

of asset or liability	(Level 1)	(Level 2)	(Level 3)	(NAV)	Total
a. Assets at fair value					
Corporate and other (ICO)	\$ -	\$ -	\$ -	\$ -	\$ -
Foreign Government (ICO)	\$ -	\$ -	\$ -	\$ -	\$ -
Special Revenue and Political Subdivisions	\$ -	\$ -	\$ -	\$ -	\$ -
US Govt and Agency (ICO)	\$ -	\$ -	\$ -	\$ -	\$ -
Non Mortgage ABS (ABS)	\$ -	\$ -	\$ -	\$ -	\$ -
CMBS - Non-Agency (ABS)	\$ -	\$ -	\$ -	\$ -	\$ -
CMBS - Agency (ABS)	\$ -	\$ -	\$ -	\$ -	\$ -
RMBS - Agency (ABS)	\$ -	\$ -	\$ -	\$ -	\$ -
SBA Loans (ABS)	\$ -	\$ -	\$ -	\$ -	\$ -
RMBS - Non-Agency (ABS)	\$ -	\$ -	\$ -	\$ -	\$ -
Preferred Stocks	\$ -	\$ -	\$ -	\$ -	\$ -
Common Stocks	\$ -	\$ -	\$ 651,000	\$ -	\$ 651,000
Total assets at fair value/NAV	\$ -	\$ -	\$ 651,000	\$ -	\$ 651,000

NOTES TO FINANCIAL STATEMENTS

of asset or liability	(Level 1)	(Level 2)	(Level 3)	(NAV)	Total
b. Liabilities at fair value					
Total liabilities at fair value	\$ -	\$ -	\$ -	\$ -	\$ -

(2) Fair Value Measurements in (Level 3) of the Fair Value hierarchy

Description	for Prior Quarter End	into Level 3	out of Level 3	included in Net Income	included in Surplus	Purchases	Issuances	Sales	Settlements	for Current Quarter End
a. Assets										
Common stocks	\$ 651,000	\$ -	\$ -	\$ -	\$ -	\$ -	\$ -	\$ -	\$ -	\$ 651,000
Total Assets	\$ 651,000	\$ -	\$ -	\$ -	\$ -	\$ -	\$ -	\$ -	\$ -	\$ 651,000

Description	for Prior Quarter End	into Level 3	out of Level 3	included in Net Income	included in Surplus	Purchases	Issuances	Sales	Settlements	for Current Quarter End
b. Liabilities										
Total Liabilities	\$ -	\$ -	\$ -	\$ -	\$ -	\$ -	\$ -	\$ -	\$ -	\$ -

(3) The Company holds NAIC designated 6 fixed maturity securities at the lower of amortized cost or fair value defined by SSAP No. 26, Bonds and NAIC

(4) Inputs and Techniques Used for Fair Value

(5) Company input

B. Other Fair Value Disclosures

Not Applicable

C. Aggregate fair value for all financial instruments and the level within the fair value hierarchy in which the fair value measurements in their entirety fall.

Type of Financial Instrument	Aggregate Fair Value	Admitted Assets	(Level 1)	(Level 2)	(Level 3)	Net Asset Value (NAV)	Not Practicable (Carrying Value)
& Short Term	\$ 26,366,798	\$ 26,366,798	\$ 26,345,230	\$ 21,567	\$ -	\$ -	\$ -
Issuer Credit Obligations	\$ 60,646,417	\$ 60,566,618	\$ 49,385,952	\$ 11,260,465	\$ -	\$ -	\$ -
Asset Backed Securities	\$ 13,142,210	\$ 13,135,583	\$ -	\$ 13,142,210	\$ -	\$ -	\$ -
Preferred Stock	\$ -	\$ -	\$ -	\$ -	\$ -	\$ -	\$ -
Common Stock	\$ 651,000	\$ 651,000	\$ -	\$ -	\$ 651,000	\$ -	\$ -
Securities Lending	\$ -	\$ -	\$ -	\$ -	\$ -	\$ -	\$ -
Mortgage Loans	\$ -	\$ -	\$ -	\$ -	\$ -	\$ -	\$ -
Surplus Notes	\$ -	\$ -	\$ -	\$ -	\$ -	\$ -	\$ -
Net Derivatives	\$ -	\$ -	\$ -	\$ -	\$ -	\$ -	\$ -
Total	\$ 100,806,424	\$ 100,719,999	\$ 75,731,182	\$ 24,424,242	\$ 651,000	\$ -	\$ -

D. Not Practicable to Estimate Fair Value

Not Applicable

E. Instruments Measured at Net Asset Value (NAV)

The Company elected to use NAV for all money market mutual funds in lieu of fair value as NAV is more readily available. These funds are backed by high quality, very liquid short-term instruments and the probability is remote that the funds would be sold for a value other than NAV.

NOTE 21 Other Items

A. Unusual or Infrequent Items

NOTE 22 Events Subsequent

No change

NOTE 23 Reinsurance

No change

NOTE 24 Retrospectively Rated Contracts & Contracts Subject to Redetermination

A. Company input

B. Company input

C. Company input

D. Medical loss ratio rebates required pursuant to the Public Health Service Act.

	1	2	3	4	5
	Individual	Small Group Employer	Large Group Employer	Other Categories with Rebates	Total
Prior Reporting Year					
(1) Medical loss ratio rebates incurred	\$ -	\$ -	\$ -	\$ -	\$ -
(2) Medical loss ratio rebates paid	\$ -	\$ -	\$ -	\$ -	\$ -
(3) Medical loss ratio rebates unpaid	\$ -	\$ -	\$ -	\$ -	\$ -
(4) Plus reinsurance assumed amounts	XXX	XXX	XXX	XXX	
(5) Less reinsurance ceded amounts	XXX	XXX	XXX	XXX	
(6) Rebates unpaid net of reinsurance	XXX	XXX	XXX	XXX	\$ -

NOTES TO FINANCIAL STATEMENTS

Current Reporting Year-to-Date						
(7) Medical loss ratio rebates incurred	\$	-	\$	-	\$	-
(8) Medical loss ratio rebates paid					\$	-
(9) Medical loss ratio rebates unpaid					\$	-
(10) Plus reinsurance assumed amounts	XXX	XXX	XXX	XXX		
(11) Less reinsurance ceded amounts	XXX	XXX	XXX	XXX		
(12) Rebates unpaid net of reinsurance	XXX	XXX	XXX	XXX	\$	-

E.

(1) For Ten Percent (10%) Method of Determining Nonadmitted Retrospective Premium

a. Total accrued retro premium		
b. Unsecured amount		
c. Less: Nonadmitted amount (10%)	\$	-
d. Less: Nonadmitted for any person for whom agents' balances or uncollected premiums are nonadmitted		
e. Admitted amount (a) - (c) - (d)	\$	-

(2) For Quality Rating Method of Determining Nonadmitted Retrospective Premium

		(1)	(2)		(3)	(4)
Insured's Current Quality Rating		Total Amount	Unsecured Balances	%	Nonadmitted Amount (2) x %	Admitted Amount (1) - (3)
a.	1			1%	\$ -	\$ -
b.	2			2%	\$ -	\$ -
c.	3			5%	\$ -	\$ -
d.	4			10%	\$ -	\$ -
e.	5			20%	\$ -	\$ -
f.	6			100%	\$ -	\$ -
g. Nonadmitted for any person for whom agents' balances or uncollected premiums are nonadmitted						
h. Total (a) through (f)						
- (g)		\$ -	\$ -		\$ -	\$ -

F. Risk Sharing Provisions of the Affordable Care Act

(1) Did the reporting entity write accident and health insurance premium which is subject to the Affordable Care Act risk sharing provisions (YES/NO)?

(2) Impact of Risk Sharing Provisions of the Affordable Care Act on Admitted Assets, Liabilities and Revenue for the Current Year

a. Permanent ACA Risk Adjustment Program	Amount
Assets	
1. Premium adjustments receivable due to ACA Risk Adjustment (including high risk pool payments)	
Liabilities	
2. Risk adjustment user fees payable for ACA Risk Adjustment	
3. Premium adjustments payable due to ACA Risk Adjustment (including high risk pool premium)	
Operations (Revenue & Expense)	
4. Reported as revenue in premium for accident and health contracts (written/collected) due to ACA Risk Adjustment	
5. Reported in expenses as ACA risk adjustment user fees (incurred/paid)	

(3) Roll forward of prior year ACA risk sharing provisions for the following asset (gross of any nonadmission) and liability balances along with the reasons for adjustments to prior year balance.

	Accrued During the Prior Year on Business Written Before December 31 of the Prior Year		Received or Paid as of the Current Year on Business Written Before December 31 of the Prior Year		Differences		Adjustments			Unsettled Balances as of the Reporting Date	
					Prior Year Accrued Less Payments (Col 1 - 3)	Prior Year Accrued Less Payments (Col 2 - 4)	To Prior Year Balances	To Prior Year Balances		Cumulative Balance from Prior Years (Col 1-3+7)	Cumulative Balance from Prior Years (Col 2-4+8)
					1	2	3	4	5	6	7
	Receivable	Payable	Receivable	Payable	Receivable	Payable	Receivable	Payable	Ref	Receivable	Payable
a. Permanent ACA Risk Adjustment Program											
1. Premium adjustments receivable (including high risk pool payments)					\$ -	\$ -			A	\$ -	\$ -
2. Premium adjustments (payable) (including high risk pool premium)					\$ -	\$ -			B	\$ -	\$ -
3. Subtotal ACA Permanent Risk Adjustment Program	\$ -	\$ -	\$ -	\$ -	\$ -	\$ -	\$ -	\$ -		\$ -	\$ -

Explanations of Adjustments

A.

B.

NOTE 25 Change in Incurred Losses and Loss Adjustment Expenses

The Company has no net exposure to changes in incurred losses and loss adjustment expenses. Refer to Note 26.

NOTE 26 Intercompany Pooling Arrangements

No change

NOTE 27 Structured Settlements

NOTES TO FINANCIAL STATEMENTS

No change

NOTE 28 Health Care Receivables

Not Applicable

NOTE 29 Participating Policies

Not Applicable

NOTE 30 Premium Deficiency Reserves

No change

NOTE 31 High Deductibles

Not applicable.

NOTE 32 Discounting of Liabilities for Unpaid Losses or Unpaid Loss Adjustment Expenses

The Company has no net loss and loss adjustment expense reserves. Refer to Note 26.

NOTE 33 Asbestos/Environmental Reserves

The Company has no net exposure to asbestos and environmental claims. Refer to Note 26.

NOTE 34 Subscriber Savings Accounts

The Company is not a reciprocal insurance company.

NOTE 35 Multiple Peril Crop Insurance

Not Applicable

NOTE 36 Financial Guaranty Insurance

Not Applicable

STATEMENT AS OF MARCH 31, 2025 OF THE STATE AUTOMOBILE MUTUAL INSURANCE COMPANY

GENERAL INTERROGATORIES

PART 1 - COMMON INTERROGATORIES

GENERAL

1.1

Did the reporting entity experience any material transactions requiring the filing of Disclosure of Material Transactions with the State of Domicile, as required by the Model Act?

Yes ☐ No ☒

1.2

If yes, has the report been filed with the domiciliary state?

Yes ☐ No ☐

2.1

Has any change been made during the year of this statement in the charter, by-laws, articles of incorporation, or deed of settlement of the reporting entity?

Yes ☐ No ☒

2.2

If yes, date of change:

3.1

Is the reporting entity a member of an Insurance Holding Company System consisting of two or more affiliated persons, one or more of which is an insurer?
If yes, complete Schedule Y, Parts 1 and 1A.

Yes ☒ No ☐

3.2

Have there been any substantial changes in the organizational chart since the prior quarter end?

Yes ☒ No ☐

3.3

If the response to 3.2 is yes, provide a brief description of those changes.
The formation of two international entities, one in Australia and one in Chile. The sale of three entities in Thailand. The dissolution of one entity in Ireland.

3.4

Is the reporting entity publicly traded or a member of a publicly traded group?

Yes ☐ No ☒

3.5

If the response to 3.4 is yes, provide the CIK (Central Index Key) code issued by the SEC for the entity/group.

0

4.1

Has the reporting entity been a party to a merger or consolidation during the period covered by this statement?

Yes ☐ No ☒

4.2

If yes, provide the name of the entity, NAIC Company Code, and state of domicile (use two letter state abbreviation) for any entity that has ceased to exist as a result of the merger or consolidation.

1	2	3
Name of Entity	NAIC Company Code	State of Domicile

5.

If the reporting entity is subject to a management agreement, including third-party administrator(s), managing general agent(s), attorney-in-fact, or similar agreement, have there been any significant changes regarding the terms of the agreement or principals involved?
If yes, attach an explanation.

Yes ☐ No ☒ N/A ☐

6.1

State as of what date the latest financial examination of the reporting entity was made or is being made.

12/31/2023

6.2

State the as of date that the latest financial examination report became available from either the state of domicile or the reporting entity. This date should be the date of the examined balance sheet and not the date the report was completed or released.

12/31/2018

6.3

State as of what date the latest financial examination report became available to other states or the public from either the state of domicile or the reporting entity. This is the release date or completion date of the examination report and not the date of the examination (balance sheet date).

01/09/2020

6.4

By what department or departments?
Ohio Department of Insurance

6.5

Have all financial statement adjustments within the latest financial examination report been accounted for in a subsequent financial statement filed with Departments?

Yes ☐ No ☐ N/A ☒

6.6

Have all of the recommendations within the latest financial examination report been complied with?

Yes ☐ No ☐ N/A ☒

7.1

Has this reporting entity had any Certificates of Authority, licenses or registrations (including corporate registration, if applicable) suspended or revoked by any governmental entity during the reporting period?

Yes ☐ No ☒

7.2

If yes, give full information:
#N/A

8.1

Is the company a subsidiary of a bank holding company regulated by the Federal Reserve Board?

Yes ☐ No ☒

8.2

If response to 8.1 is yes, please identify the name of the bank holding company.
0

8.3

Is the company affiliated with one or more banks, thrifts or securities firms?

Yes ☐ No ☒

8.4

If response to 8.3 is yes, please provide below the names and location (city and state of the main office) of any affiliates regulated by a federal regulatory services agency [i.e. the Federal Reserve Board (FRB), the Office of the Comptroller of the Currency (OCC), the Federal Deposit Insurance Corporation (FDIC) and the Securities Exchange Commission (SEC)] and identify the affiliate's primary federal regulator.

1	2	3	4	5	6
Affiliate Name	Location (City, State)	FRB	OCC	FDIC	SEC

STATEMENT AS OF MARCH 31, 2025 OF THE STATE AUTOMOBILE MUTUAL INSURANCE COMPANY

GENERAL INTERROGATORIES

- 9.1

Are the senior officers (principal executive officer, principal financial officer, principal accounting officer or controller, or persons performing similar functions) of the reporting entity subject to a code of ethics, which includes the following standards?
(a) Honest and ethical conduct, including the ethical handling of actual or apparent conflicts of interest between personal and professional relationships;
(b) Full, fair, accurate, timely and understandable disclosure in the periodic reports required to be filed by the reporting entity;
(c) Compliance with applicable governmental laws, rules and regulations;
(d) The prompt internal reporting of violations to an appropriate person or persons identified in the code; and
(e) Accountability for adherence to the code.

Yes [X] No []
- 9.11

If the response to 9.1 is No, please explain:
0
- 9.2

Has the code of ethics for senior managers been amended?

Yes [] No [X]
- 9.21

If the response to 9.2 is Yes, provide information related to amendment(s).
0
- 9.3

Have any provisions of the code of ethics been waived for any of the specified officers?

Yes [] No [X]
- 9.31

If the response to 9.3 is Yes, provide the nature of any waiver(s).
0

FINANCIAL

- 10.1

Does the reporting entity report any amounts due from parent, subsidiaries or affiliates on Page 2 of this statement?

Yes [X] No []
- 10.2

If yes, indicate any amounts receivable from parent included in the Page 2 amount:\$

INVESTMENT

- 11.1

Were any of the stocks, bonds, or other assets of the reporting entity loaned, placed under option agreement, or otherwise made available for use by another person? (Exclude securities under securities lending agreements.)

Yes [] No [X]
- 11.2

If yes, give full and complete information relating thereto:
.....
12.

Amount of real estate and mortgages held in other invested assets in Schedule BA:

\$
13.

Amount of real estate and mortgages held in short-term investments:

\$
- 14.1

Does the reporting entity have any investments in parent, subsidiaries and affiliates?

Yes [] No [X]
- 14.2

If yes, please complete the following:

	1	2
	Prior Year-End Book/Adjusted Carrying Value	Current Quarter Book/Adjusted Carrying Value
14.21 Bonds	\$	\$
14.22 Preferred Stock	\$	\$
14.23 Common Stock	\$ 431,006,950	\$
14.24 Short-Term Investments	\$	\$
14.25 Mortgage Loans on Real Estate	\$	\$
14.26 All Other	\$	\$
14.27 Total Investment in Parent, Subsidiaries and Affiliates (Subtotal Lines 14.21 to 14.26)	\$ 431,006,950	\$
14.28 Total Investment in Parent included in Lines 14.21 to 14.26 above	\$	\$
- 15.1

Has the reporting entity entered into any hedging transactions reported on Schedule DB?

Yes [] No [X]
- 15.2

If yes, has a comprehensive description of the hedging program been made available to the domiciliary state? Yes [] No [X] N/A []
If no, attach a description with this statement.
.....
16.

For the reporting entity's security lending program, state the amount of the following as of the current statement date:

16.1

Total fair value of reinvested collateral assets reported on Schedule DL, Parts 1 and 2.

\$

16.2

Total book/adjusted carrying value of reinvested collateral assets reported on Schedule DL, Parts 1 and 2

\$

16.3

Total payable for securities lending reported on the liability page.

\$

STATEMENT AS OF MARCH 31, 2025 OF THE STATE AUTOMOBILE MUTUAL INSURANCE COMPANY

GENERAL INTERROGATORIES

17. Excluding items in Schedule E - Part 3 - Special Deposits, real estate, mortgage loans and investments held physically in the reporting entity's offices, vaults or safety deposit boxes, were all stocks, bonds and other securities, owned throughout the current year held pursuant to a custodial agreement with a qualified bank or trust company in accordance with Section 1, III - General Examination Considerations, F. Outsourcing of Critical Functions, Custodial or Safekeeping Agreements of the NAIC Financial Condition Examiners Handbook? Yes [X] No []
- 17.1 For all agreements that comply with the requirements of the NAIC Financial Condition Examiners Handbook, complete the following:

1 Name of Custodian(s)	2 Custodian Address
JP Morgan Chase	1 Chase Manhattan Plaza, New York, NY 10005

- 17.2 For all agreements that do not comply with the requirements of the NAIC Financial Condition Examiners Handbook, provide the name, location and a complete explanation:

1 Name(s)	2 Location(s)	3 Complete Explanation(s)

- 17.3 Have there been any changes, including name changes, in the custodian(s) identified in 17.1 during the current quarter? Yes [] No [X]
- 17.4 If yes, give full information relating thereto:

1 Old Custodian	2 New Custodian	3 Date of Change	4 Reason

- 17.5 Investment management – Identify all investment advisors, investment managers, broker/dealers, including individuals that have the authority to make investment decisions on behalf of the reporting entity. This includes both primary and sub-advisors. For assets that are managed internally by employees of the reporting entity, note as such. ["...that have access to the investment accounts"; "...handle securities"]

1 Name of Firm or Individual	2 Affiliation
Liberty Mutual Group Asset Management Inc.	A.....
Liberty Mutual Investment Advisors, LLC	A.....
.....

- 17.5097 For those firms/individuals listed in the table for Question 17.5, do any firms/individuals unaffiliated with the reporting entity (i.e. designated with a "U") manage more than 10% of the reporting entity's invested assets?..... Yes [] No [X]
- 17.5098 For firms/individuals unaffiliated with the reporting entity (i.e. designated with a "U") listed in the table for Question 17.5, does the total assets under management aggregate to more than 50% of the reporting entity's invested assets?..... Yes [] No [X]

- 17.6 For those firms or individuals listed in the table for 17.5 with an affiliation code of "A" (affiliated) or "U" (unaffiliated), provide the information for the table below.

1	2	3	4	5
Central Registration Depository Number	Name of Firm or Individual	Legal Entity Identifier (LEI)	Registered With	Investment Management Agreement (IMA) Filed
.....	Liberty Mutual Group Asset Management Inc.	N/A	N/A	DS.....
.....	Liberty Mutual Investment Advisors, LLC	N/A	N/A	DS.....
.....

- 18.1 Have all the filing requirements of the Purposes and Procedures Manual of the NAIC Investment Analysis Office been followed? Yes [X] No []
- 18.2 If no, list exceptions:
.....

19. By self-designating 5GI securities, the reporting entity is certifying the following elements for each self-designated 5GI security:
a. Documentation necessary to permit a full credit analysis of the security does not exist or an NAIC CRP credit rating for an FE or PL security is not available.
b. Issuer or obligor is current on all contracted interest and principal payments.
c. The insurer has an actual expectation of ultimate payment of all contracted interest and principal.
Has the reporting entity self-designated 5GI securities? Yes [] No [X]

20. By self-designating PLGI securities, the reporting entity is certifying the following elements of each self-designated PLGI security:
a. The security was purchased prior to January 1, 2018.
b. The reporting entity is holding capital commensurate with the NAIC Designation reported for the security.
c. The NAIC Designation was derived from the credit rating assigned by an NAIC CRP in its legal capacity as a NRSRO which is shown on a current private letter rating held by the insurer and available for examination by state insurance regulators.
d. The reporting entity is not permitted to share this credit rating of the PL security with the SVO.
Has the reporting entity self-designated PLGI securities? Yes [] No [X]

21. By assigning FE to a Schedule BA non-registered private fund, the reporting entity is certifying the following elements of each self-designated FE fund:
a. The shares were purchased prior to January 1, 2019.
b. The reporting entity is holding capital commensurate with the NAIC Designation reported for the security.
c. The security had a public credit rating(s) with annual surveillance assigned by an NAIC CRP in its legal capacity as an NRSRO prior to January 1, 2019.
d. The fund only or predominantly holds bonds in its portfolio.
e. The current reported NAIC Designation was derived from the public credit rating(s) with annual surveillance assigned by an NAIC CRP in its legal capacity as an NRSRO.
f. The public credit rating(s) with annual surveillance assigned by an NAIC CRP has not lapsed.
Has the reporting entity assigned FE to Schedule BA non-registered private funds that complied with the above criteria? Yes [] No [X]

GENERAL INTERROGATORIES

PART 2 - PROPERTY & CASUALTY INTERROGATORIES

1.

If the reporting entity is a member of a pooling arrangement, did the agreement or the reporting entity's participation change?
If yes, attach an explanation.
.....

Yes [] No [X] N/A []
2.

Has the reporting entity reinsured any risk with any other reporting entity and agreed to release such entity from liability, in whole or in part, from any loss that may occur on the risk, or portion thereof, reinsured?
If yes, attach an explanation.
.....

Yes [] No [X]
- 3.1

Have any of the reporting entity's primary reinsurance contracts been canceled?

Yes [] No [X]
- 3.2

If yes, give full and complete information thereto.
0
- 4.1

Are any of the liabilities for unpaid losses and loss adjustment expenses other than certain workers' compensation tabular reserves (see Annual Statement Instructions pertaining to disclosure of discounting for definition of " tabular reserves") discounted at a rate of interest greater than zero?

Yes [] No [X]

4.2 If yes, complete the following schedule:

			TOTAL DISCOUNT				DISCOUNT TAKEN DURING PERIOD			
1	2	3	4	5	6	7	8	9	10	11
Line of Business	Maximum Interest	Discount Rate	Unpaid Losses	Unpaid LAE	IBNR	TOTAL	Unpaid Losses	Unpaid LAE	IBNR	TOTAL
TOTAL										

5.

Operating Percentages:

5.1 A&H loss percent0.000 %

5.2 A&H cost containment percent0.000 %

5.3 A&H expense percent excluding cost containment expenses0.000 %
- 6.1

Do you act as a custodian for health savings accounts?

Yes [] No [X]
- 6.2

If yes, please provide the amount of custodial funds held as of the reporting date\$.....
- 6.3

Do you act as an administrator for health savings accounts?

Yes [] No [X]
- 6.4

If yes, please provide the balance of the funds administered as of the reporting date \$.....
7.

Is the reporting entity licensed or chartered, registered, qualified, eligible or writing business in at least two states?

Yes [X] No []
- 7.1

If no, does the reporting entity assume reinsurance business that covers risks residing in at least one state other than the state of domicile of the reporting entity?

Yes [] No []

STATEMENT AS OF MARCH 31, 2025 OF THE STATE AUTOMOBILE MUTUAL INSURANCE COMPANY

SCHEDULE F - CEDED REINSURANCE

Showing All New Reinsurers - Current Year to Date

[illegible]

SCHEDULE T - EXHIBIT OF PREMIUMS WRITTEN

Current Year to Date - Allocated by States and Territories

		1 Active Status (a)	Direct Premiums Written		Direct Losses Paid (Deducting Salvage)		Direct Losses Unpaid		
			2 Current Year To Date	3 Prior Year To Date	4 Current Year To Date	5 Prior Year To Date	6 Current Year To Date	7 Prior Year To Date	
States, etc.		(a)							
1.	Alabama	AL	L	6,382,359	8,225,041	1,315,930	4,795,794	40,138,175	21,851,520
2.	Alaska	AK	L						
3.	Arizona	AZ	L	4,901,932	6,420,334	3,188,292	4,648,229	36,152,272	24,237,475
4.	Arkansas	AR	L	6,465,757	8,200,316	3,893,110	13,953,759	41,131,166	26,726,729
5.	California	CA	N						
6.	Colorado	CO	L	5,100,016	5,862,781	3,964,481	3,433,740	28,443,412	16,293,007
7.	Connecticut	CT	L	6,071,042	7,500,701	6,390,071	5,810,816	28,190,677	28,488,309
8.	Delaware	DE	L	29,428	76,450	22,849	38,487	220,392	135,019
9.	District of Columbia	DC	L	(1,266)	17,238	42,000	991	889,799	746,029
10.	Florida	FL	L	74,903	15,138	59,892	903,059	(149,180)	114,286
11.	Georgia	GA	L	7,276,460	8,709,826	3,612,267	4,136,961	33,879,141	27,132,097
12.	Hawaii	HI	L						
13.	Idaho	ID	L	28,108	19,636	47,682		54,530	28,025
14.	Illinois	IL	L	5,123,984	7,280,110	5,188,866	5,238,046	37,234,797	31,120,424
15.	Indiana	IN	L	5,127,165	6,706,123	2,980,616	7,981,086	6,188,869	17,181,182
16.	Iowa	IA	L	3,883,191	2,843,692	1,098,205	555,917	9,597,533	5,289,800
17.	Kansas	KS	L	4,458,962	8,320,745	3,595,858	4,532,656	17,224,010	19,429,490
18.	Kentucky	KY	L	4,233,025	5,393,688	2,329,023	3,934,346	19,236,577	17,886,261
19.	Louisiana	LA	L					(38)	(38)
20.	Maine	ME	L						
21.	Maryland	MD	L	3,903,482	5,768,784	2,032,863	2,568,758	36,136,304	26,532,634
22.	Massachusetts	MA	L	1,706,712	1,742,531	1,008,347	1,333,583	13,331,011	9,676,313
23.	Michigan	MI	L	3,871,260	5,117,672	3,544,761	5,691,359	70,211,058	71,524,219
24.	Minnesota	MN	L	7,724,444	7,187,861	3,709,258	2,409,154	26,427,208	24,473,844
25.	Mississippi	MS	L	6,250,228	7,661,244	3,401,061	3,384,473	33,116,495	19,231,768
26.	Missouri	MO	L	8,209,189	16,517,001	7,127,323	10,991,826	52,441,428	51,501,018
27.	Montana	MT	L						
28.	Nebraska	NE	L						
29.	Nevada	NV	L		976			18,644	17,671
30.	New Hampshire	NH	L						
31.	New Jersey	NJ	L					(6)	(6)
32.	New Mexico	NM	L						
33.	New York	NY	L						
34.	North Carolina	NC	L	4,414,619	7,527,905	3,168,629	3,466,058	29,567,471	19,227,202
35.	North Dakota	ND	L	3,218,705	4,515,686	888,144	1,212,466	8,848,222	4,794,416
36.	Ohio	OH	L	9,898,159	14,509,087	3,748,385	9,351,947	89,846,223	70,700,385
37.	Oklahoma	OK	L	4,775,780	4,571,563	1,623,284	2,566,766	23,168,896	14,402,006
38.	Oregon	OR	L						
39.	Pennsylvania	PA	L	8,437,303	9,324,078	4,047,862	3,716,530	60,031,791	40,337,721
40.	Rhode Island	RI	L						
41.	South Carolina	SC	L	3,339,918	6,114,976	2,503,172	2,458,756	39,453,854	20,422,104
42.	South Dakota	SD	L	2,861,775	3,356,698	446,511	766,082	2,958,084	3,147,035
43.	Tennessee	TN	L	8,347,139	9,568,826	1,416,956	6,719,393	58,583,392	46,141,443
44.	Texas	TX	L	39,818,944	50,284,835	26,630,476	41,141,982	177,358,338	158,245,109
45.	Utah	UT	L	1,814,872	1,837,700	552,603	2,414,698	8,907,418	6,083,578
46.	Vermont	VT	L						
47.	Virginia	VA	L	1,273,801	2,324,585	2,161,352	1,345,749	11,981,062	10,581,938
48.	Washington	WA	L						
49.	West Virginia	WV	L	1,573,336	2,351,968	2,474,143	1,496,566	11,357,610	9,864,455
50.	Wisconsin	WI	L	2,457,715	2,940,332	465,801	1,287,218	7,880,760	5,488,425
51.	Wyoming	WY	L						
52.	American Samoa	AS	N						
53.	Guam	GU	N						
54.	Puerto Rico	PR	N						
55.	U.S. Virgin Islands	VI	N						
56.	Northern Mariana Islands	MP	N						
57.	Canada	CAN	N						
58.	Aggregate Other Alien OT	OT	XXX						
59.	Totals		XXX	183,052,447	238,816,130	108,680,073	164,287,248	1,060,057,395	849,052,894
DETAILS OF WRITE-INS									
58001.	State 0TH		XXX						
58002.		XXX						
58003.		XXX						
58998.	Summary of remaining write-ins for Line 58 from overflow page		XXX						
58999.	Totals (Lines 58001 through 58003 plus 58998)(Line 58 above)		XXX						

(a) Active Status Counts:

1. L - Licensed or Chartered - Licensed insurance carrier or domiciled RRG.....

2. R - Registered - Non-domiciled RRGs.....

3. E - Eligible - Reporting entities eligible or approved to write surplus lines in the state (other than their state of domicile - see DSLI).....

4. Q - Qualified - Qualified or accredited reinsurer.....

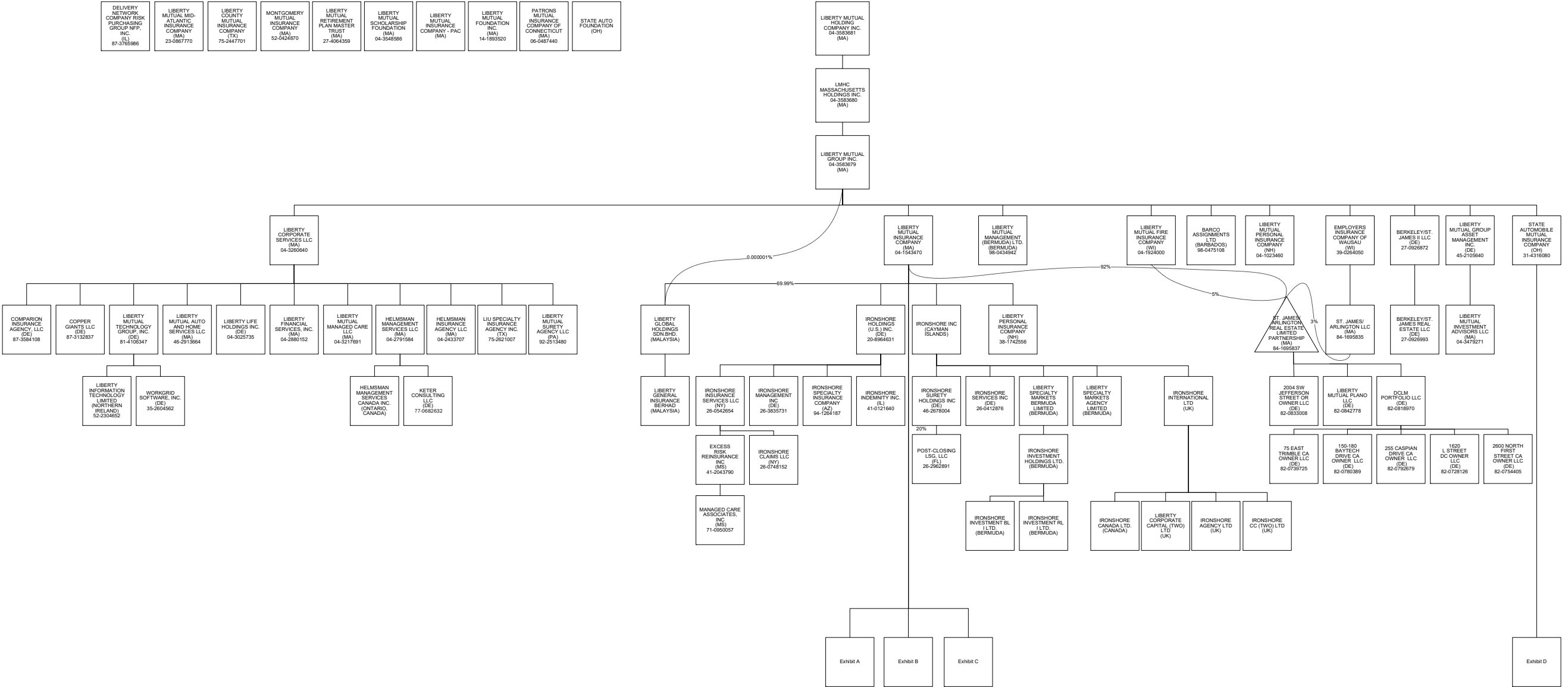
5. D - Domestic Surplus Lines Insurer (DSLII) - Reporting entities authorized to write surplus lines in the state of domicile.....

6. N - None of the above - Not allowed to write business in the state... ..

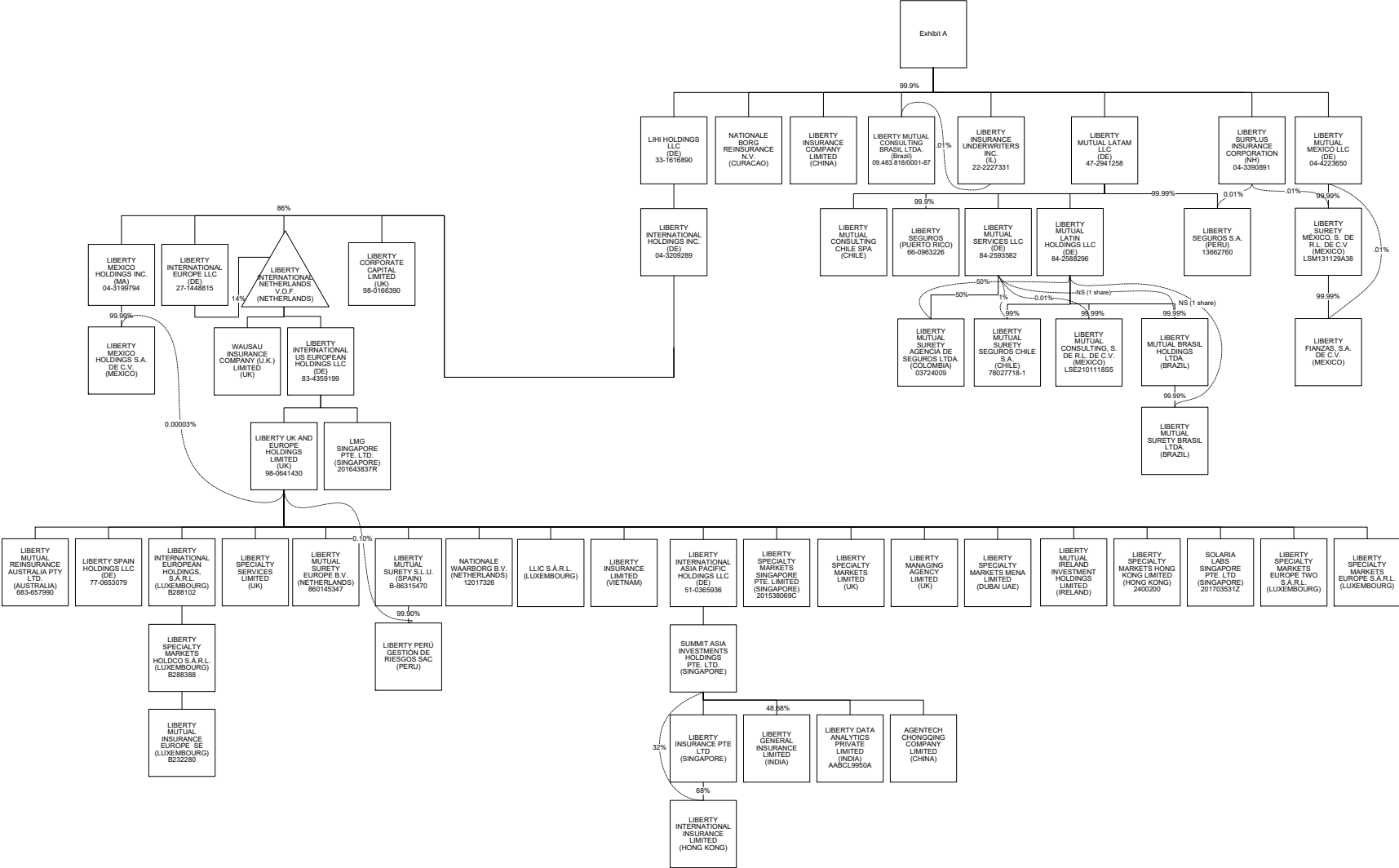
50

7

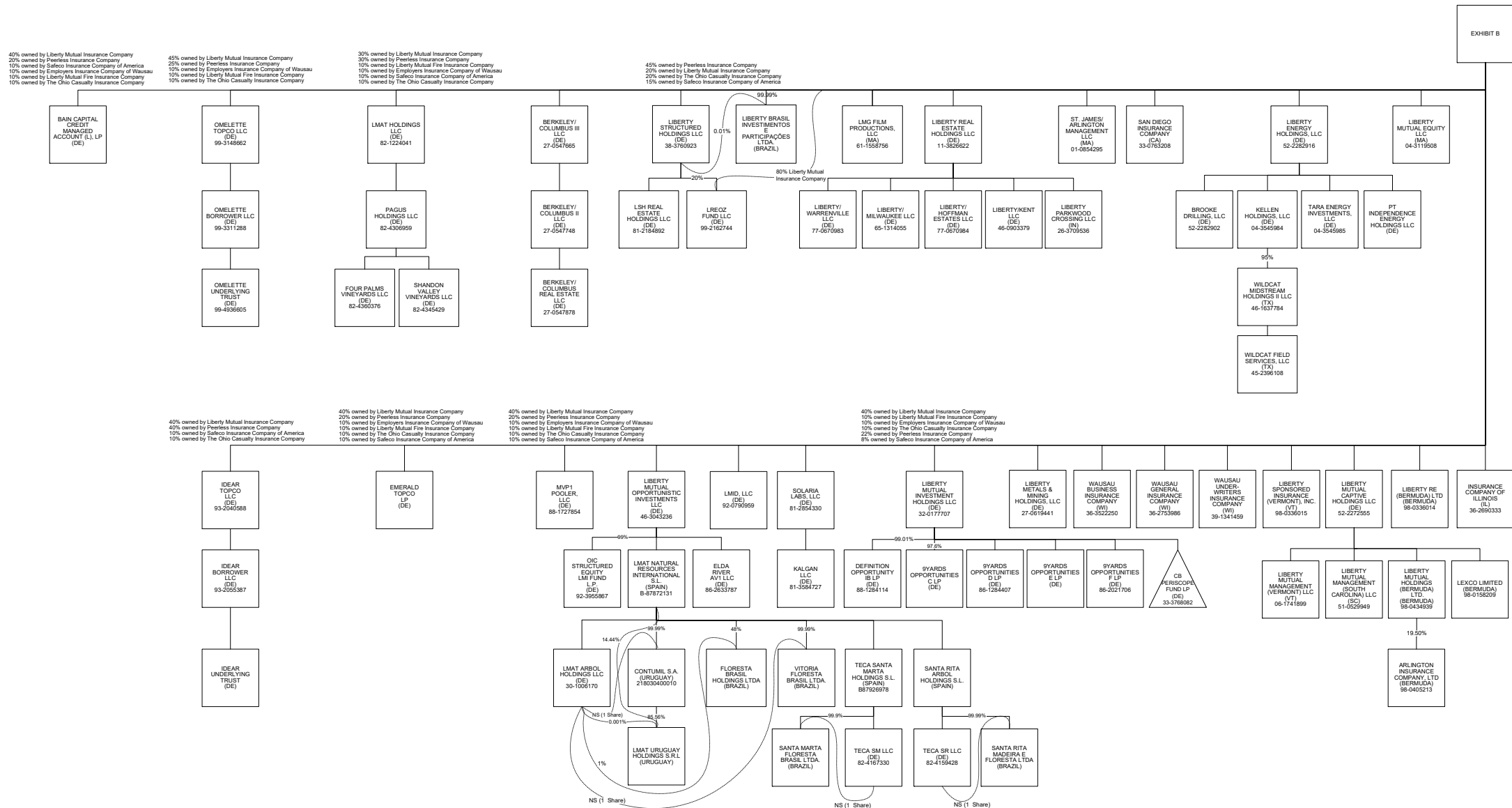
STATEMENT AS OF MARCH 31, 2025 OF THE STATE AUTOMOBILE MUTUAL INSURANCE COMPANY



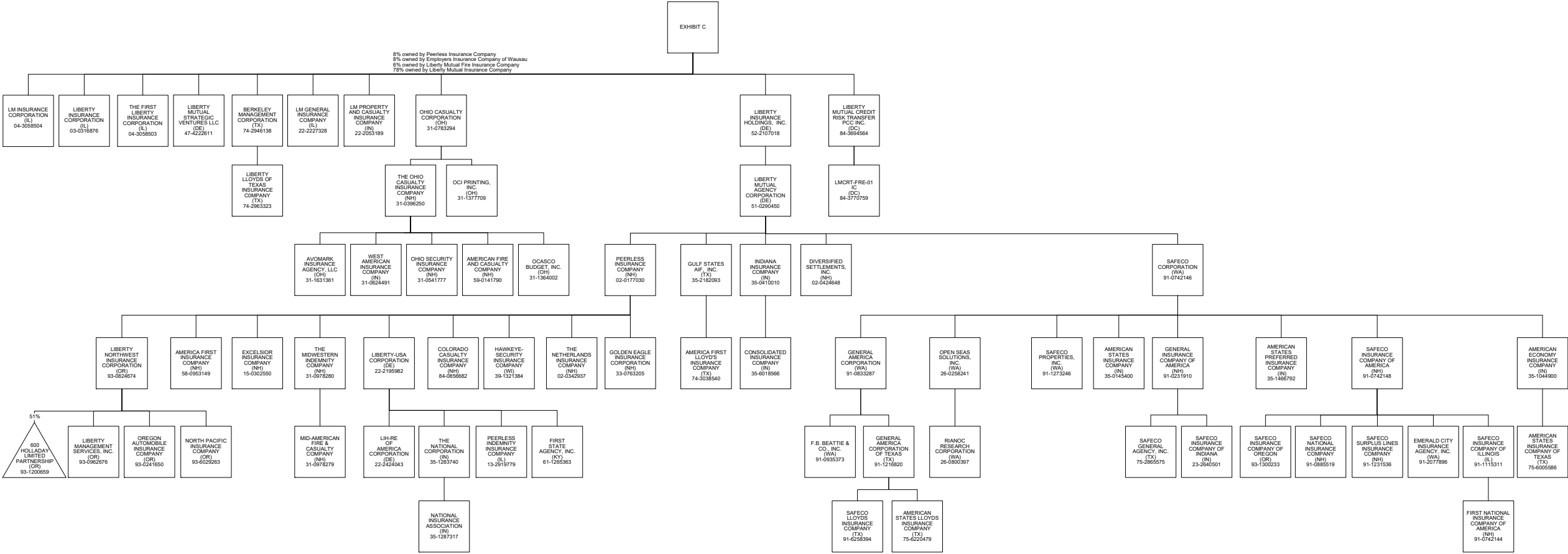
STATEMENT AS OF MARCH 31, 2025 OF THE STATE AUTOMOBILE MUTUAL INSURANCE COMPANY



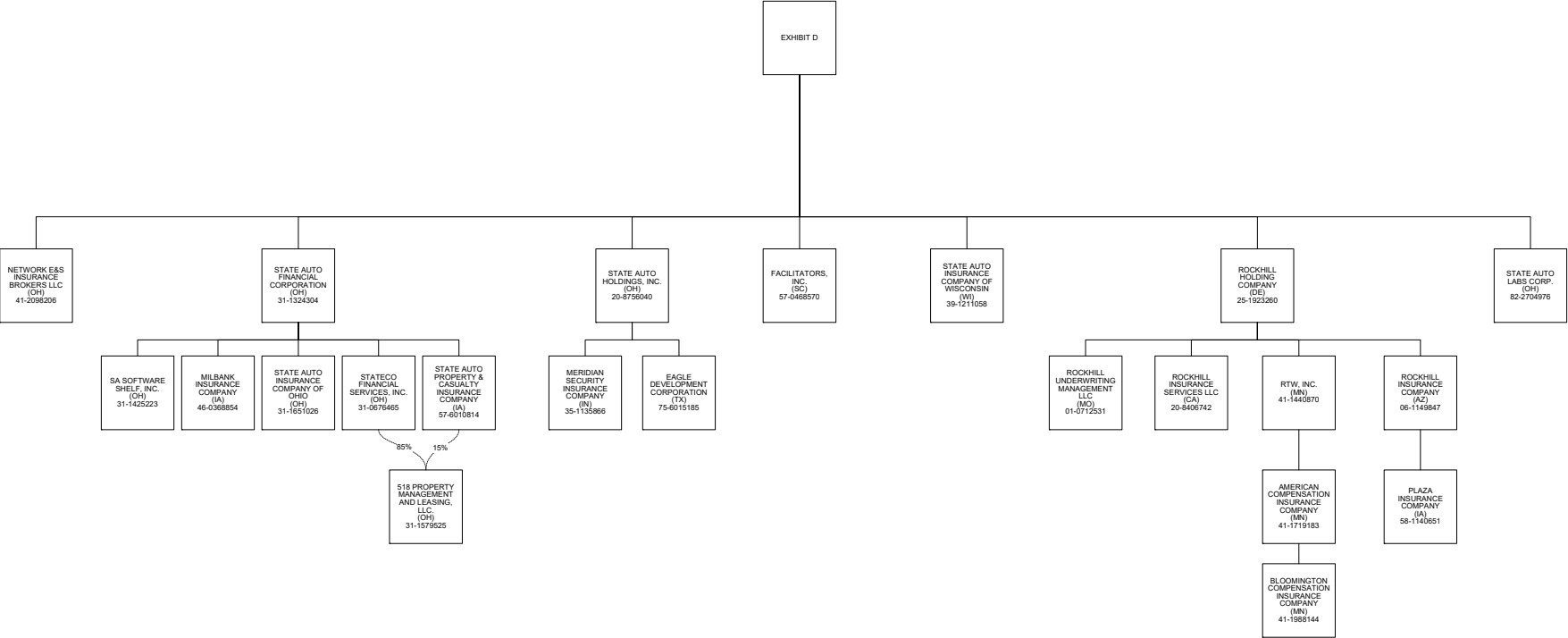
STATEMENT AS OF MARCH 31, 2025 OF THE STATE AUTOMOBILE MUTUAL INSURANCE COMPANY



STATEMENT AS OF MARCH 31, 2025 OF THE STATE AUTOMOBILE MUTUAL INSURANCE COMPANY



STATEMENT AS OF MARCH 31, 2025 OF THE STATE AUTOMOBILE MUTUAL INSURANCE COMPANY



STATEMENT AS OF MARCH 31, 2025 OF THE STATE AUTOMOBILE MUTUAL INSURANCE COMPANY

SCHEDULE Y

PART 1A - DETAILS OF INSURANCE HOLDING COMPANY SYSTEM

1	2	3	4	5	6	7	8	9	10	11	12	13	14	15	16
Group Code	Group Name	NAIC Company Code	ID Number	Federal RSSD	CIK	Name of Securities Exchange if Publicly Traded (U.S. or International)	Names of Parent, Subsidiaries Or Affiliates	Domi-ciliary Location	Relation-ship to Reporting Entity	Directly Controlled by (Name of Entity/Person)	Type of Control (Ownership, Board, Management, Attorney-in-Fact, Influence, Other)	If Control is Ownership Provide Percen-tage	Ultimate Controlling Entity(ies)/Person(s)	Is an SCA Filing Re-quired? (Yes/No)	*
		00000	82-0780389				150-180 Baytech Drive CA Owner LLC	DE	NIA	DGLM Portfolio LLC	Ownership, Board, Management	100.000	Liberty Mutual Holding Company Inc.	NO	
		00000	82-0728126				1620 L Street DC Owner LLC	DE	NIA	DGLM Portfolio LLC	Ownership, Board, Management	100.000	Liberty Mutual Holding Company Inc.	NO	
		00000	82-0833008				2004 SW Jefferson Street OR Owner LLC	DE	NIA	Partnership	Ownership, Board, Management	100.000	Liberty Mutual Holding Company Inc.	NO	
		00000	82-0792679				255 Caspian Drive CA Owner LLC	DE	NIA	DGLM Portfolio LLC	Ownership, Board, Management	100.000	Liberty Mutual Holding Company Inc.	NO	
		00000	82-0754405				2600 North First Street CA Owner LLC	DE	NIA	DGLM Portfolio LLC	Ownership, Board, Management	100.000	Liberty Mutual Holding Company Inc.	NO	
		00000	31-1579525				518 Property Management and Leasing, LLC	OH	NIA	State Auto Property & Casualty Insurance Company	Ownership, Board, and Management	15.000	Liberty Mutual Holding Company Inc.	NO	
		00000	31-1579525				518 Property Management and Leasing, LLC	OH	NIA	Stateco Financial Services, Inc.	Ownership, Board, and Management	85.000	Liberty Mutual Holding Company Inc.	NO	
		00000	93-1200659				600 Holladay Limited Partnership	OR	NIA	Liberty Northwest Insurance Corporation	Ownership	51.000	Liberty Mutual Holding Company Inc.	NO	
		00000	82-0739725				75 East Trimble CA Owner LLC	DE	NIA	DGLM Portfolio LLC	Ownership, Board, Management	100.000	Liberty Mutual Holding Company Inc.	NO	
		00000					9Yards Opportunities C L.P.	DE	NIA	Liberty Mutual Investment Holdings LLC	Ownership	98.000	Liberty Mutual Holding Company Inc.	NO	
		00000	86-1284407				9Yards Opportunities D LP	DE	NIA	Liberty Mutual Investment Holdings LLC	Ownership	100.000	Liberty Mutual Holding Company Inc.	NO	
		00000	86-1284407				9Yards Opportunities E LP	DE	NIA	Liberty Mutual Investment Holdings LLC	Ownership	100.000	Liberty Mutual Holding Company Inc.	NO	
		00000	86-2021706				9Yards Opportunities F LP	DE	NIA	Liberty Mutual Investment Holdings LLC	Ownership	100.000	Liberty Mutual Holding Company Inc.	NO	
		00000					AgentTech Chongqing Company Limited	CHN	NIA	Summit Asia Investments Holdings Pte.Ltd.	Ownership	100.000	Liberty Mutual Holding Company Inc.	NO	
.0111	Liberty Mutual Insurance Company and its Affiliated Insurers	12696	58-0953149				America First Insurance Company	NH	IA	Peerless Insurance Company	Ownership, Board and Management	100.000	Liberty Mutual Holding Company Inc.	NO	
.0111	Liberty Mutual Insurance Company and its Affiliated Insurers	11526	74-3038540				America First Lloyd's Insurance Company	TX	IA	Gulf States AIF, Inc.	Management and Attorney-in-Fact	0.000	Liberty Mutual Holding Company Inc.	NO	
.0111	Liberty Mutual Insurance Company and its Affiliated Insurers	45934	41-1719183				American Compensation Insurance Company	IN	DS	RTW, Inc.	Ownership, Board and Management	100.000	Liberty Mutual Holding Company Inc.	NO	
.0111	Liberty Mutual Insurance Company and its Affiliated Insurers	19690	35-1044900				American Economy Insurance Company	IN	IA	Safeco Corporation	Ownership, Board and Management	100.000	Liberty Mutual Holding Company Inc.	NO	
.0111	Liberty Mutual Insurance Company and its Affiliated Insurers	24066	59-0141790				American Fire and Casualty Company	NH	IA	The Ohio Casualty Insurance Company	Ownership, Board and Management	100.000	Liberty Mutual Holding Company Inc.	NO	
.0111	Liberty Mutual Insurance Company and its Affiliated Insurers	19704	35-0145400				American States Insurance Company	IN	IA	Safeco Corporation	Ownership, Board and Management	100.000	Liberty Mutual Holding Company Inc.	NO	
.0111	Liberty Mutual Insurance Company and its Affiliated Insurers	19712	75-6005586				American States Insurance Company of Texas	TX	IA	American Economy Insurance Company	Ownership, Board and Management	100.000	Liberty Mutual Holding Company Inc.	NO	
.0111	Liberty Mutual Insurance Company and its Affiliated Insurers	31933	75-6220479				American States Lloyds Insurance Company	TX	IA	General America Corporation of Texas	Management and Attorney-in-Fact	0.000	Liberty Mutual Holding Company Inc.	NO	
.0111	Liberty Mutual Insurance Company and its Affiliated Insurers	37214	35-1466792				American States Preferred Insurance Company	IN	IA	Safeco Corporation	Ownership, Board and Management	100.000	Liberty Mutual Holding Company Inc.	NO	
		00000	98-0405213				Arlington Insurance Company Ltd.	BMU	IA	Liberty Mutual Holdings (Bermuda) Ltd	Ownership, Board and Management	100.000	Liberty Mutual Holding Company Inc.	NO	
		00000	31-1631361				Avomark Insurance Agency, LLC	OH	IA	The Ohio Casualty Insurance Company	Ownership, Board and Management	100.000	Liberty Mutual Holding Company Inc.	NO	
		00000					Bain Capital Credit Managed Account (L), LP	DE	NIA	Liberty Mutual Insurance Company	Ownership	40.000	Liberty Mutual Holding Company Inc.	NO	
							Bain Capital Credit Managed Account (L), LP	DE	NIA	Peerless Insurance Company	Ownership	20.000	Liberty Mutual Holding Company Inc.	NO	
							Bain Capital Credit Managed Account (L), LP	DE	NIA	Safeco Insurance Company of America	Ownership	10.000	Liberty Mutual Holding Company Inc.	NO	
							Bain Capital Credit Managed Account (L), LP	DE	NIA	Employers Insurance Company of Wausau	Ownership	10.000	Liberty Mutual Holding Company Inc.	NO	
							Bain Capital Credit Managed Account (L), LP	DE	NIA	Liberty Mutual Fire Insurance Company	Ownership	10.000	Liberty Mutual Holding Company Inc.	NO	
							Bain Capital Credit Managed Account (L), LP	DE	NIA	The Ohio Casualty Insurance Company	Ownership	10.000	Liberty Mutual Holding Company Inc.	NO	
		00000	98-0475108				BARCO Assignments Ltd.	BRB	NIA	Liberty Mutual Group Inc.	Ownership	100.000	Liberty Mutual Holding Company Inc.	NO	
		00000	74-2946138				Berkeley Management Corporation	TX	NIA	Liberty Mutual Insurance Company	Ownership, Board and Management	100.000	Liberty Mutual Holding Company Inc.	NO	
		00000	27-0547748				Berkeley/Columbus II LLC	DE	NIA	Berkeley/Columbus III LLC	Ownership, Board and Management	100.000	Liberty Mutual Holding Company Inc.	NO	
		00000	27-0547665				Berkeley/Columbus III LLC	DE	NIA	Liberty Mutual Insurance Company	Ownership, Board and Management	100.000	Liberty Mutual Holding Company Inc.	NO	
		00000	27-0547878				Berkeley/Columbus Real Estate LLC	DE	NIA	Berkeley/Columbus II LLC	Ownership, Board and Management	100.000	Liberty Mutual Holding Company Inc.	NO	
		00000	27-0926872				Berkeley/St. James II LLC	DE	NIA	Liberty Mutual Group Inc.	Ownership, Board and Management	100.000	Liberty Mutual Holding Company Inc.	NO	
		00000	27-0926993				Berkeley/St. James Real Estate LLC	DE	NIA	Berkeley/St. James II LLC	Ownership, Board and Management	100.000	Liberty Mutual Holding Company Inc.	NO	
.0111	Liberty Mutual Insurance Company and its Affiliated Insurers	12311	41-1988144				Bloomington Compensation Insurance Company	MN	DS	American Compensation Insurance Company	Ownership, Board and Management	100.000	Liberty Mutual Holding Company Inc.	NO	

STATEMENT AS OF MARCH 31, 2025 OF THE STATE AUTOMOBILE MUTUAL INSURANCE COMPANY

SCHEDULE Y

PART 1A - DETAILS OF INSURANCE HOLDING COMPANY SYSTEM

1	2	3	4	5	6	7	8	9	10	11	12	13	14	15	16
Group Code	Group Name	NAIC Company Code	ID Number	Federal RSSD	CIK	Name of Securities Exchange if Publicly Traded (U.S. or International)	Names of Parent, Subsidiaries Or Affiliates	Domi-ciliary Location	Relation-ship to Reporting Entity	Directly Controlled by (Name of Entity/Person)	Type of Control (Ownership, Board, Management, Attorney-in-Fact, Influence, Other)	If Control is Owner-ship Provide Percen-tage	Ultimate Controlling Entity(ies)/Person(s)	Is an SCA Filing Re-quired? (Yes/No)	*
.0111	Liberty Mutual Insurance Company and its Affiliated Insurers	00000	52-2282902				Brooke Drilling, LLC	..DE.....	..NIA.....	Liberty Energy Holdings, LLC	Ownership, Board and Management	100.000	Liberty Mutual Holding Company Inc.	...NO.....	
		00000	33-3768082				CB Periscope Fund LP	..DE.....	..NIA.....	Liberty Mutual Investment Holdings LLC	Ownership.....	99.000	Liberty Mutual Holding Company Inc.	...NO.....	
		41785	84-0856682				Colorado Casualty Insurance Company	..NH.....	..IA.....	Peerless Insurance Company	Ownership, Board and Management	100.000	Liberty Mutual Holding Company Inc.	...NO.....	
.0111	Liberty Mutual Insurance Company and its Affiliated Insurers	00000	87-3584108				Comparion Insurance Agency, LLC	..DE.....	..IA.....	Liberty Corporate Services LLC	Ownership, Board and Management	100.000	Liberty Mutual Holding Company Inc.	...NO.....	
		22640	35-6018566				Consolidated Insurance Company	..IN.....	..IA.....	Indiana Insurance Company	Ownership, Board and Management	100.000	Liberty Mutual Holding Company Inc.	...NO.....	
		00000					Contumil S.A.	..URY.....	..NIA.....	LMAT Natural Resources International S.L.	Ownership.....	100.000	Liberty Mutual Holding Company Inc.	...NO.....	
		00000					Contumil S.A.	..URY.....	..NIA.....	LMAT Arbol Holdings LLC	Ownership.....	0.010	Liberty Mutual Holding Company Inc.	...NO.....	
		00000	87-3132837				Copper Giants LLC	..DE.....	..NIA.....	Liberty Corporate Services LLC	Ownership.....	100.000	Liberty Mutual Holding Company Inc.	...NO.....	
							St. James/Arlington Real Estate Limited								
		00000	82-0818970				DCLM Portfolio LLC	..DE.....	..NIA.....	Partnership	Ownership, Board and Management	100.000	Liberty Mutual Holding Company Inc.	...NO.....	
		00000	88-1284114				Definition Opportunity IB LP	..DE.....	..NIA.....	Liberty Mutual Investment Holdings LLC	Ownership.....	99.000	Liberty Mutual Holding Company Inc.	...NO.....	
							Delivery Network Company Risk Purchasing								
		00000	87-3765986				Group NFP, Inc.	..IL.....	..NIA.....	Not Applicable	Board and Management	0.000	Liberty Mutual Holding Company Inc.	...NO.....	
		00000	02-0424648				Diversified Settlements, Inc.	..NH.....	..NIA.....	Liberty Mutual Agency Corporation	Ownership, Board and Management	100.000	Liberty Mutual Holding Company Inc.	...NO.....	
		00000	75-6015185				Eagle Development Corporation	..TX.....	..DS.....	State Auto Holdings, Inc.	Ownership, Board and Management	100.000	Liberty Mutual Holding Company Inc.	...NO.....	
		00000	86-2633787				Elda River AV1 LLC	..DE.....	..NIA.....	Liberty Mutual Opportunistic Investments LLC	Ownership.....	100.000	Liberty Mutual Holding Company Inc.	...NO.....	
		00000	91-2077896				Emerald City Insurance Agency, Inc.	..WA.....	..IA.....	Safeco Insurance Company of America	Ownership, Board and Management	100.000	Liberty Mutual Holding Company Inc.	...NO.....	
		00000					Emerald Topco LP	..DE.....	..NIA.....	Liberty Mutual Insurance Company	Ownership.....	40.000	Liberty Mutual Holding Company Inc.	...NO.....	
		00000					Emerald Topco LP	..DE.....	..NIA.....	Peerless Insurance Company	Ownership.....	20.000	Liberty Mutual Holding Company Inc.	...NO.....	
		00000					Emerald Topco LP	..DE.....	..NIA.....	Employers Insurance Company of Wausau	Ownership.....	10.000	Liberty Mutual Holding Company Inc.	...NO.....	
		00000					Emerald Topco LP	..DE.....	..NIA.....	Liberty Mutual Fire Insurance Compnay	Ownership.....	10.000	Liberty Mutual Holding Company Inc.	...NO.....	
		00000					Emerald Topco LP	..DE.....	..NIA.....	The Ohio Casualty Insurance Company	Ownership.....	10.000	Liberty Mutual Holding Company Inc.	...NO.....	
		00000					Emerald Topco LP	..DE.....	..NIA.....	Safeco Insurance Company of America	Ownership.....	10.000	Liberty Mutual Holding Company Inc.	...NO.....	
.0111	Liberty Mutual Insurance Company and its Affiliated Insurers	21458	39-0264050				Employers Insurance Company of Wausau	..WI.....	..IA.....	Liberty Mutual Group Inc.	Ownership, Board and Management	100.000	Liberty Mutual Holding Company Inc.	...NO.....	
		11045	15-0302550				Excelsior Insurance Company	..NH.....	..IA.....	Peerless Insurance Company	Ownership, Board and Management	100.000	Liberty Mutual Holding Company Inc.	...NO.....	
		00000	41-2043790				Excess Risk Reinsurance, Inc.	..MS.....	..IA.....	Ironshore Insurance Services LLC	Ownership.....	100.000	Liberty Mutual Holding Company Inc.	...NO.....	
	Liberty Mutual Insurance Company and its Affiliated Insurers	00000	91-0935373				F.B. Beattie & Co., Inc.	..WA.....	..IA.....	General America Corporation	Ownership, Board and Management	100.000	Liberty Mutual Holding Company Inc.	...NO.....	
		00000	57-0468570				Facilitators, Inc.	..SC.....	..DS.....	State Automobile Mutual Insurance Company	Ownership, Board and Management	100.000	Liberty Mutual Holding Company Inc.	...YES.....	
		24724	91-0742144				First National Insurance Company of America	..NH.....	..IA.....	Safeco Insurance Company of Illinois	Ownership, Board and Management	100.000	Liberty Mutual Holding Company Inc.	...NO.....	
	Liberty Mutual Insurance Company and its Affiliated Insurers	00000	61-1265363				First State Agency, Inc.	..KY.....	..NIA.....	Liberty-USA Corporation	Ownership, Board and Management	100.000	Liberty Mutual Holding Company Inc.	...NO.....	
		00000					LMAT Natural Resources International, S.L.								
		00000					Floresta Brasil Holdings Ltda.	..BRA.....	..NIA.....	LMAT Natural Resources Internationals	Ownership.....	48.000	Liberty Mutual Holding Company Inc.	...NO.....	
		00000					Floresta Brasil Holdings Ltda.	..BRA.....	..NIA.....	LMAT Arbol Holdings LLC	Ownership.....	1.000	Liberty Mutual Holding Company Inc.	...NO.....	
		00000	82-4360376				Four Palms Vineyards LLC	..DE.....	..NIA.....	PAGUS Holdings LLC	Ownership.....	100.000	Liberty Mutual Holding Company Inc.	...NO.....	
		00000	91-0833287				General America Corporation	..WA.....	..NIA.....	Safeco Corporation	Ownership, Board and Management	100.000	Liberty Mutual Holding Company Inc.	...NO.....	
	Liberty Mutual Insurance Company and its Affiliated Insurers	00000	91-1216820				General America Corporation of Texas	..TX.....	..NIA.....	General America Corporation	Ownership, Board and Management	100.000	Liberty Mutual Holding Company Inc.	...NO.....	
		24732	91-0231910				General Insurance Company of America	..NH.....	..IA.....	Safeco Corporation	Ownership, Board and Management	100.000	Liberty Mutual Holding Company Inc.	...NO.....	
.0111	Liberty Mutual Insurance Company and its Affiliated Insurers	10836	33-0763205				Golden Eagle Insurance Corporation	..NH.....	..IA.....	Peerless Insurance Company	Ownership, Board and Management	100.000	Liberty Mutual Holding Company Inc.	...NO.....	
		00000	35-2182093				Gulf States AIF, Inc.	..TX.....	..NIA.....	Liberty Mutual Agency Corporation	Ownership, Board and Management	100.000	Liberty Mutual Holding Company Inc.	...NO.....	
		36919	39-1321384				Hawkeye-Security Insurance Company	..WI.....	..IA.....	Peerless Insurance Company	Ownership, Board and Management	100.000	Liberty Mutual Holding Company Inc.	...NO.....	
	Liberty Mutual Insurance Company and its Affiliated Insurers	00000	04-2433707				Helmsman Insurance Agency LLC	..IA.....	..IA.....	Liberty Corporate Services LLC	Ownership, Board and Management	100.000	Liberty Mutual Holding Company Inc.	...NO.....	
		00000					Helmsman Management Services Canada Inc.	..CAN.....	..NIA.....	Helmsman Management Services LLC	Ownership, Board and Management	100.000	Liberty Mutual Holding Company Inc.	...NO.....	

STATEMENT AS OF MARCH 31, 2025 OF THE STATE AUTOMOBILE MUTUAL INSURANCE COMPANY

SCHEDULE Y

PART 1A - DETAILS OF INSURANCE HOLDING COMPANY SYSTEM

1	2	3	4	5	6	7	8	9	10	11	12	13	14	15	16
Group Code	Group Name	NAIC Company Code	ID Number	Federal RSSD	CIK	Name of Securities Exchange if Publicly Traded (U.S. or International)	Names of Parent, Subsidiaries Or Affiliates	Domi-ciliary Location	Relation-ship to Reporting Entity	Directly Controlled by (Name of Entity/Person)	Type of Control (Ownership, Board, Management, Attorney-in-Fact, Influence, Other)	If Control is Owner-ship Provide Percen-tage	Ultimate Controlling Entity(ies)/Person(s)	Is an SCA Filing Re-quired? (Yes/No)	*
	00000	04-2791584				Helmsman Management Services LLCMA.....	..NIA.....	Liberty Corporate Services LLC	Ownership, Board and Management	100.000	Liberty Mutual Holding Company Inc.NO.....	
	00000	93-2055387				Idear Borrower LLCDE.....	..NIA.....	Idear Topco LLC	Ownership, Management	100.000	Liberty Mutual Holding Company Inc.NO.....	
	00000	93-2040588				Idear Topco LLCDE.....	..NIA.....	Liberty Mutual Insurance Company	Ownership, Management	40.000	Liberty Mutual Holding Company Inc.NO.....	
	00000	93-2040588				Idear Topco LLCDE.....	..NIA.....	Peerless Insurance Company	Ownership, Management	40.000	Liberty Mutual Holding Company Inc.NO.....	
	00000	93-2040588				Idear Topco LLCDE.....	..NIA.....	Safeco Insurance Company of America	Ownership, Management	10.000	Liberty Mutual Holding Company Inc.NO.....	
	00000	93-2040588				Idear Topco LLCDE.....	..NIA.....	The Ohio Casualty Insurance Company	Ownership, Management	10.000	Liberty Mutual Holding Company Inc.NO.....	
	00000					Idear Underlying TrustDE.....	..NIA.....	Idear Borrower LLC	Ownership.....	100.000	Liberty Mutual Holding Company Inc.NO.....	
.0111	Liberty Mutual Insurance Company and its Affiliated Insurers22659	35-0410010				Indiana Insurance CompanyIN.....IA.....	Liberty Mutual Agency Corporation	Ownership, Board and Management	100.000	Liberty Mutual Holding Company Inc.NO.....	
.0111	Liberty Mutual Insurance Company and its Affiliated Insurers26700	36-2690333				Insurance Company of IllinoisIL.....IA.....	Liberty Mutual Insurance Company	Ownership, Board and Management	100.000	Liberty Mutual Holding Company Inc.NO.....	
	00000					Ironshore Agency Ltd.GBR.....NIA.....	Ironshore International Ltd.	Ownership.....	100.000	Liberty Mutual Holding Company Inc.NO.....	
	00000					Ironshore Canada Ltd.CAN.....NIA.....	Ironshore International Ltd.	Ownership.....	100.000	Liberty Mutual Holding Company Inc.NO.....	
	00000					Ironshore CC (Two) Ltd.GBR.....NIA.....	Ironshore International Ltd.	Ownership.....	100.000	Liberty Mutual Holding Company Inc.NO.....	
	00000	26-0748152				Ironshore Claims LLCNY.....NIA.....	Ironshore Insurance Services LLC	Ownership.....	100.000	Liberty Mutual Holding Company Inc.NO.....	
	00000	20-8964631				Ironshore Holdings (US) Inc.DE.....NIA.....	Liberty Mutual Insurance Company	Ownership.....	100.000	Liberty Mutual Holding Company Inc.NO.....	
	00000	98-0579286				Ironshore Inc.CYM.....NIA.....	Liberty Mutual Insurance Company	Ownership.....	100.000	Liberty Mutual Holding Company Inc.NO.....	
.0111	Liberty Mutual Insurance Company and its Affiliated Insurers23647	41-0121640				Ironshore Indemnity Inc.IL.....IA.....	Ironshore Holdings (US) Inc.	Ownership.....	100.000	Liberty Mutual Holding Company Inc.NO.....	
	00000	26-0542654				Ironshore Insurance Services LLCNY.....IA.....	Ironshore Holdings (US) Inc.	Ownership.....	100.000	Liberty Mutual Holding Company Inc.NO.....	
	00000					Ironshore International Ltd.GBR.....NIA.....	Ironshore Inc.	Ownership.....	100.000	Liberty Mutual Holding Company Inc.NO.....	
	00000					Ironshore Investment BL I Ltd.BMU.....NIA.....	Ironshore Investment Holdings Ltd.	Ownership.....	100.000	Liberty Mutual Holding Company Inc.NO.....	
	00000					Ironshore Investment Holdings Ltd.BMU.....NIA.....	Ironshore Insurance Ltd.	Ownership.....	100.000	Liberty Mutual Holding Company Inc.NO.....	
	00000					Ironshore Investment RL I Ltd.BMU.....NIA.....	Ironshore Investment Holdings Ltd.	Ownership.....	100.000	Liberty Mutual Holding Company Inc.NO.....	
	00000	26-3835731				Ironshore Management Inc.DE.....NIA.....	Ironshore Holdings (US) Inc.	Ownership.....	100.000	Liberty Mutual Holding Company Inc.NO.....	
	00000	26-0412876				Ironshore Services Inc.DE.....NIA.....	Ironshore Inc.	Ownership.....	100.000	Liberty Mutual Holding Company Inc.NO.....	
.0111	Liberty Mutual Insurance Company and its Affiliated Insurers25445	94-1264187				Ironshore Specialty Insurance CompanyAZ.....IA.....	Ironshore Holdings (US) Inc.	Ownership.....	100.000	Liberty Mutual Holding Company Inc.NO.....	
	00000	46-2678004				Ironshore Surety Holdings Inc.DE.....IA.....	Ironshore Inc.	Ownership.....	100.000	Liberty Mutual Holding Company Inc.NO.....	
	00000	81-3584727				Kalgan LLCDE.....NIA.....	Solaria Labs LLC	Ownership, Board and Management	100.000	Liberty Mutual Holding Company Inc.NO.....	
	00000	04-3545984				Kellen Holdings, LLCDE.....NIA.....	Liberty Energy Holdings, LLC	Ownership, Board and Management	100.000	Liberty Mutual Holding Company Inc.NO.....	
	00000	77-0682632				Keter Consulting LLCDE.....NIA.....	Helmsman Management Services LLC	Ownership, Board and Management	100.000	Liberty Mutual Holding Company Inc.NO.....	
	00000	98-0158209				LEXCO LimitedBMU.....IA.....	Liberty Mutual Captive Holdings LLC	Ownership, Board and Management	100.000	Liberty Mutual Holding Company Inc.NO.....	
	00000					Liberty Brasil Investimentos e Participacoes Ltda.BRA.....NIA.....	Liberty Mutual Insurance Company	Ownership, Board and Management	100.000	Liberty Mutual Holding Company Inc.NO.....	
	00000					Liberty Brasil Investimentos e Participacoes Ltda.BRA.....NIA.....	Liberty Structured Holdings LLC	Ownership, Board and Management	0.010	Liberty Mutual Holding Company Inc.NO.....	
	00000					Liberty Corporate Capital (Two) Ltd.GBR.....NIA.....	Ironshore International Ltd.	Ownership.....	100.000	Liberty Mutual Holding Company Inc.NO.....	
	00000	98-0166390				Liberty Corporate Capital LimitedGBR.....IA.....	Liberty International Holdings Inc.	Ownership, Board and Management	100.000	Liberty Mutual Holding Company Inc.NO.....	
	00000	04-3260640				Liberty Corporate Services LLCMA.....NIA.....	Liberty Mutual Group Inc.	Ownership, Board and Management	100.000	Liberty Mutual Holding Company Inc.NO.....	
.0111	Liberty Mutual Insurance Company and its Affiliated Insurers19544	75-2447701				Liberty County Mutual Insurance CompanyTX.....IA.....	Berkeley Management Corporation	Board and Management	0.000	Liberty Mutual Holding Company Inc.NO.....	
	00000					Summit Asia Investments Holdings Pte. Ltd.								
	00000					Liberty Data Analytics Private LimitedIND.....NIA.....		Ownership, Board and Management	100.000	Liberty Mutual Holding Company Inc.NO.....	
	00000	52-2282916				Liberty Energy Holdings, LLCDE.....NIA.....	Liberty Mutual Insurance Company	Ownership, Board and Management	100.000	Liberty Mutual Holding Company Inc.NO.....	
	00000					Liberty Fianzas, S.A. de C.V.MEX.....IA.....	Liberty Surety Mexico, S. de R.L. de C.V.	Ownership, Board and Management	100.000	Liberty Mutual Holding Company Inc.NO.....	
	00000					Liberty Fianzas, S.A. de C.V.MEX.....IA.....	Liberty Mutual Mexico LLC	Ownership, Board and Management	0.010	Liberty Mutual Holding Company Inc.NO.....	
	00000	04-2880152				Liberty Financial Services, Inc.MA.....NIA.....	Liberty Corporate Services LLC	Ownership, Board and Management	100.000	Liberty Mutual Holding Company Inc.NO.....	
	00000					Liberty General Insurance BerhadMYS.....IA.....	Liberty Global Holdings SDN.BHD.	Ownership.....	100.000	Liberty Mutual Holding Company Inc.NO.....	

STATEMENT AS OF MARCH 31, 2025 OF THE STATE AUTOMOBILE MUTUAL INSURANCE COMPANY

SCHEDULE Y

PART 1A - DETAILS OF INSURANCE HOLDING COMPANY SYSTEM

1	2	3	4	5	6	7	8	9	10	11	12	13	14	15	16
Group Code	Group Name	NAIC Company Code	ID Number	Federal RSSD	CIK	Name of Securities Exchange if Publicly Traded (U.S. or International)	Names of Parent, Subsidiaries Or Affiliates	Domi-ciliary Location	Relation-ship to Reporting Entity	Directly Controlled by (Name of Entity/Person)	Type of Control (Ownership, Board, Management, Attorney-in-Fact, Influence, Other)	If Control is Owner-ship Provide Percen-tage	Ultimate Controlling Entity(ies)/Person(s)	Is an SCA Filing Re-quired? (Yes/No)	*
		00000					Liberty General Insurance Limited	IND	IA	Summit Asia Investments Holdings Pte. Ltd.	Ownership, Management	49.000	Liberty Mutual Holding Company Inc.	NO	
		00000					Liberty Global Holdings SDN.BHD.	MYS	IA	Liberty Mutual Insurance Company	Ownership, Board and Management	70.000	Liberty Mutual Holding Company Inc.	NO	
		00000					Liberty Global Holdings SDN.BHD.	MYS	IA	Liberty Mutual Group Inc.	Ownership, Board and Management	0.000	Liberty Mutual Holding Company Inc.	NO	
		00000	52-2304652				Liberty Information Technology Limited	GBR	NIA	Liberty Mutual Technology Group Inc.	Ownership, Board and Management	100.000	Liberty Mutual Holding Company Inc.	NO	
		00000					Liberty Insurance Company Limited	CHN	IA	Liberty Mutual Insurance Company	Ownership, Board and Management	100.000	Liberty Mutual Holding Company Inc.	NO	
.0111	Liberty Mutual Insurance Company and its Affiliated Insurers	42404	03-0316876				Liberty Insurance Corporation	IL	IA	Liberty Mutual Insurance Company	Ownership, Board and Management	100.000	Liberty Mutual Holding Company Inc.	NO	
		00000	52-2107018				Liberty Insurance Holdings, Inc.	DE	NIA	Liberty Mutual Insurance Company	Ownership, Board and Management	100.000	Liberty Mutual Holding Company Inc.	NO	
		00000					Liberty Insurance Limited	WMI	IA	Liberty UK and Europe Holdings Limited	Ownership, Board and Management	100.000	Liberty Mutual Holding Company Inc.	NO	
		00000					Liberty Insurance Pte Ltd	SGP	IA	Summit Asia Investments Holdings Pte. Ltd.	Ownership, Board and Management	100.000	Liberty Mutual Holding Company Inc.	NO	
.0111	Liberty Mutual Insurance Company and its Affiliated Insurers	19917	22-2227331				Liberty Insurance Underwriters Inc.	IL	IA	Liberty Mutual Insurance Company	Ownership, Board and Management	100.000	Liberty Mutual Holding Company Inc.	NO	
		00000	51-0365936				Liberty International Asia Pacific Holdings LLC	DE	NIA	Liberty UK and Europe Holdings Limited	Ownership, Board and Management	100.000	Liberty Mutual Holding Company Inc.	NO	
		00000	27-1448815				Liberty International Europe LLC	DE	NIA	Liberty International Holdings Inc.	Ownership, Board and Management	100.000	Liberty Mutual Holding Company Inc.	NO	
		00000					Liberty International European Holdings, Sarl	LUX	NIA	Liberty UK and Europe Holdings Limited	Ownership, Board and Management	100.000	Liberty Mutual Holding Company Inc.	NO	
		00000	04-3209289				Liberty International Holdings Inc.	DE	NIA	LIHI Holdings LLC	Ownership, Board and Management	100.000	Liberty Mutual Holding Company Inc.	NO	
		00000					Liberty International Insurance Limited	HKG	IA	Liberty Insurance Pte Ltd	Ownership, Board and Management	68.000	Liberty Mutual Holding Company Inc.	NO	
		00000					Liberty International Insurance Limited	HKG	IA	Summit Asia Investments Holdings Pte. Ltd.	Ownership, Board and Management	32.000	Liberty Mutual Holding Company Inc.	NO	
		00000					Liberty International Netherlands V.O.F.	NLD	NIA	Liberty International Holdings Inc.	Ownership, Board and Management	86.000	Liberty Mutual Holding Company Inc.	NO	
		00000					Liberty International Netherlands V.O.F.	NLD	NIA	Liberty International Europe LLC	Ownership, Board and Management	14.000	Liberty Mutual Holding Company Inc.	NO	
		00000	83-4359199				Liberty International US European Holdings LLC	DE	NIA	Liberty International Netherlands V.O.F.	Ownership, Board and Management	100.000	Liberty Mutual Holding Company Inc.	NO	
.0111	Liberty Mutual Insurance Company and its Affiliated Insurers	00000	04-3025735				Liberty Life Holdings Inc.	DE	NIA	Liberty Corporate Services LLC	Ownership, Board and Management	100.000	Liberty Mutual Holding Company Inc.	NO	
		11041	74-2963323				Liberty Lloyds of Texas Insurance Company	TX	IA	Berkeley Management Corporation	Management and Attorney-in-Fact	0.000	Liberty Mutual Holding Company Inc.	NO	
		00000	93-0962676				Liberty Management Services, Inc.	OR	NIA	Liberty Northwest Insurance Corporation	Ownership, Board and Management	100.000	Liberty Mutual Holding Company Inc.	NO	
		00000					Liberty Managing Agency Limited	GBR	IA	Liberty UK and Europe Holdings Limited	Ownership, Board and Management	100.000	Liberty Mutual Holding Company Inc.	NO	
		00000	27-0619441				Liberty Metals & Mining Holdings, LLC	DE	NIA	Liberty Mutual Insurance Company	Ownership, Board and Management	100.000	Liberty Mutual Holding Company Inc.	NO	
		00000	04-3199794				Liberty Mexico Holdings Inc.	MA	NIA	Liberty International Holdings Inc.	Ownership, Board and Management	100.000	Liberty Mutual Holding Company Inc.	NO	
		00000					Liberty Mexico Holdings S.A. de C.V.	MEX	NIA	Liberty Mexico Holdings Inc.	Ownership, Board and Management	100.000	Liberty Mutual Holding Company Inc.	NO	
		00000					Liberty Mexico Holdings S.A. de C.V.	MEX	NIA	Liberty UK and Europe Holdings Limited	Ownership, Board and Management	0.000	Liberty Mutual Holding Company Inc.	NO	
		00000	51-0290450				Liberty Mutual Agency Corporation	DE	NIA	Liberty Insurance Holdings, Inc.	Ownership, Board and Management	100.000	Liberty Mutual Holding Company Inc.	NO	
		00000	46-2913664				Liberty Mutual Auto and Home Services LLC	IA	NIA	Liberty Corporate Services LLC	Ownership, Board and Management	100.000	Liberty Mutual Holding Company Inc.	NO	
		00000					Liberty Mutual Brasil Holdings Ltda.	BRA	NIA	Liberty Mutual Latin Holdings LLC	Ownership, Board, Management	100.000	Liberty Mutual Holding Company Inc.	NO	
		00000					Liberty Mutual Brasil Holdings Ltda.	BRA	NIA	Liberty Mutual Services LLC	Ownership, Board, Management	0.000	Liberty Mutual Holding Company Inc.	NO	
		00000	52-2272555				Liberty Mutual Captive Holdings LLC	DE	NIA	Liberty Mutual Insurance Company	Ownership, Board and Management	100.000	Liberty Mutual Holding Company Inc.	NO	
		00000					Liberty Mutual Consulting Brasil Ltda.	BRA	NIA	Liberty Mutual Insurance Company	Ownership, Board and Management	100.000	Liberty Mutual Holding Company Inc.	NO	
		00000					Liberty Mutual Consulting Brasil Ltda.	BRA	NIA	Liberty Insurance Underwriters Inc.	Ownership, Board and Management	0.100	Liberty Mutual Holding Company Inc.	NO	
		00000					Liberty Mutual Consulting Chile SpA	CHL	NIA	Liberty Mutual Latam LLC	Ownership, Management	100.000	Liberty Mutual Holding Company Inc.	NO	
		00000					Liberty Mutual Consulting, S. de R.L. de C.V.	MEX	IA	Liberty Mutual Latin Holdings LLC	Ownership, Board and Management	100.000	Liberty Mutual Holding Company Inc.	NO	
		00000					Liberty Mutual Consulting, S. de R.L. de C.V.	MEX	IA	Liberty Mutual Services LLC	Ownership, Board and Management	0.010	Liberty Mutual Holding Company Inc.	NO	
		00000	84-3694564				Liberty Mutual Credit Risk Transfer PCC Inc.	DC	IA	Liberty Mutual Insurance Company	Ownership, Board, Management	100.000	Liberty Mutual Holding Company Inc.	NO	

STATEMENT AS OF MARCH 31, 2025 OF THE STATE AUTOMOBILE MUTUAL INSURANCE COMPANY

SCHEDULE Y

PART 1A - DETAILS OF INSURANCE HOLDING COMPANY SYSTEM

1	2	3	4	5	6	7	8	9	10	11	12	13	14	15	16
Group Code	Group Name	NAIC Company Code	ID Number	Federal RSSD	CIK	Name of Securities Exchange if Publicly Traded (U.S. or International)	Names of Parent, Subsidiaries Or Affiliates	Domi-ciliary Location	Relation-ship to Reporting Entity	Directly Controlled by (Name of Entity/Person)	Type of Control (Ownership, Board, Management, Attorney-in-Fact, Influence, Other)	If Control is Owner-ship Provide Percen-tage	Ultimate Controlling Entity(ies)/Person(s)	Is an SCA Filing Re-quired? (Yes/No)	*
	00000	04-3119508 ..				Liberty Mutual Equity LLCMA.....NIA.....	Liberty Mutual Insurance Company	Ownership, Board and Management	100.000 ...	Liberty Mutual Holding Company Inc.NO.....
.0111 ..	Liberty Mutual Insurance Company and its Affiliated Insurers23035	04-1924000 ..				Liberty Mutual Fire Insurance CompanyWI.....IA.....	Liberty Mutual Group Inc.	Ownership, Board and Management	100.000 ...	Liberty Mutual Holding Company Inc.NO.....
	00000	14-1893520 ..				Liberty Mutual Foundation Inc.MA.....NIA.....	Liberty Mutual Insurance Company	Board and Management	0.000 ...	Liberty Mutual Holding Company Inc.NO.....
	00000	45-2105640 ..				Liberty Mutual Group Asset Management Inc. .	..DE.....NIA.....	Liberty Mutual Group Inc.	Ownership, Board and Management	100.000 ...	Liberty Mutual Holding Company Inc.NO.....
	00000	04-3583679 ..				Liberty Mutual Group Inc.MA.....UIP.....	LMHC Massachusetts Holdings Inc.	Ownership, Board and Management	100.000 ...	Liberty Mutual Holding Company Inc.NO.....
	00000	04-3583681 ..				Liberty Mutual Holding Company Inc.MA.....UIP.....	N/A	Ultimate Controlling Parent	0.000 ...	Liberty Mutual Holding Company Inc.NO.....
	00000	98-0434939 ..				Liberty Mutual Holdings (Bermuda) LtdBMU.....NIA.....	Liberty Mutual Captive Holdings LLC	Ownership, Board and Management	100.000 ...	Liberty Mutual Holding Company Inc.NO.....
.0111 ..	Liberty Mutual Insurance Company and its Affiliated Insurers23043	04-1543470 ..				Liberty Mutual Insurance CompanyMA.....IA.....	Liberty Mutual Group Inc.	Ownership, Board and Management	100.000 ...	Liberty Mutual Holding Company Inc.NO.....
	00000					Liberty Mutual Insurance Company – PACMA.....NIA.....	Liberty Mutual Insurance Company	Board and Management	0.000 ...	Liberty Mutual Holding Company Inc.NO.....
	00000					Liberty Mutual Insurance Europe SELUX.....IA.....	Liberty Specialty Markets Holdco S.L.U. ...	Ownership, Board and Management	100.000 ...	Liberty Mutual Holding Company Inc.NO.....
	00000	04-3479271 ..				Liberty Mutual Investment Advisors LLCMA.....NIA.....	Liberty Mutual Group Asset Management Inc.	Ownership, Board and Management	100.000 ...	Liberty Mutual Holding Company Inc.NO.....
	00000	32-0177707 ..				Liberty Mutual Investment Holdings LLCDE.....NIA.....	Liberty Mutual Insurance Company	Ownership, Board and Management	40.000 ...	Liberty Mutual Holding Company Inc.NO.....
	00000	32-0177707 ..				Liberty Mutual Investment Holdings LLCDE.....NIA.....	Peerless Insurance Company	Ownership, Board and Management	22.000 ...	Liberty Mutual Holding Company Inc.NO.....
	00000	32-0177707 ..				Liberty Mutual Investment Holdings LLCDE.....NIA.....	Employers Insurance Company of Wausau	Ownership, Board and Management	10.000 ...	Liberty Mutual Holding Company Inc.NO.....
	00000	32-0177707 ..				Liberty Mutual Investment Holdings LLCDE.....NIA.....	Liberty Mutual Fire Insurance Company	Ownership, Board and Management	10.000 ...	Liberty Mutual Holding Company Inc.NO.....
	00000	32-0177707 ..				Liberty Mutual Investment Holdings LLCDE.....NIA.....	The Ohio Casualty Insurance Company	Ownership, Board and Management	10.000 ...	Liberty Mutual Holding Company Inc.NO.....
	00000	32-0177707 ..				Liberty Mutual Investment Holdings LLCDE.....NIA.....	Safeco Insurance Company of America	Ownership, Board and Management	8.000 ...	Liberty Mutual Holding Company Inc.NO.....
	00000					Liberty Mutual Ireland Investment Holdings LimitedIRL.....NIA.....	Liberty UK and Europe Holdings Limited	Ownership, Board and Management	100.000 ...	Liberty Mutual Holding Company Inc.NO.....
	00000	47-2941258 ..				Liberty Mutual Latam LLCDE.....NIA.....	Liberty Mutual Insurance Company	Ownership, Board and Management	100.000 ...	Liberty Mutual Holding Company Inc.NO.....
	00000	84-2588296 ..				Liberty Mutual Latin Holdings LLCDE.....NIA.....	Liberty Mutual Latam LLC	Ownership, Board, Management	100.000 ...	Liberty Mutual Holding Company Inc.NO.....
	00000	04-3217691 ..				Liberty Mutual Managed Care LLCMA.....NIA.....	Liberty Corporate Services LLC	Ownership, Board and Management	100.000 ...	Liberty Mutual Holding Company Inc.NO.....
	00000	98-0434942 ..				Liberty Mutual Management (Bermuda) LtdBMU.....NIA.....	Liberty Mutual Group Inc.	Ownership, Board and Management	100.000 ...	Liberty Mutual Holding Company Inc.NO.....
	00000	51-0529949 ..				Liberty Mutual Management (South Carolina) LLCSC.....NIA.....	Liberty Mutual Captive Holdings LLC	Ownership, Board and Management	100.000 ...	Liberty Mutual Holding Company Inc.NO.....
	00000	06-1741899 ..				Liberty Mutual Management (Vermont) LLCVT.....NIA.....	Liberty Mutual Captive Holdings LLC	Ownership, Board and Management	100.000 ...	Liberty Mutual Holding Company Inc.NO.....
	00000	04-4223650 ..				Liberty Mutual Mexico LLCDE.....NIA.....	Liberty Mutual Insurance Company	Ownership, Board and Management	100.000 ...	Liberty Mutual Holding Company Inc.NO.....
.0111 ..	Liberty Mutual Insurance Company and its Affiliated Insurers14486	23-0867770 ..				Liberty Mutual Mid-Atlantic Insurance CompanyMA.....IA.....	Liberty Mutual Insurance Company	Board and Management	0.000 ...	Liberty Mutual Holding Company Inc.NO.....
	00000	46-3043236 ..				Liberty Mutual Opportunistic Investments LLCDE.....NIA.....	Liberty Mutual Insurance Company	Ownership, Board and Management	100.000 ...	Liberty Mutual Holding Company Inc.NO.....
.0111 ..	Liberty Mutual Insurance Company and its Affiliated Insurers12484	04-1023460 ..				Liberty Mutual Personal Insurance CompanyNH.....IA.....	Liberty Mutual Group Inc.	Ownership, Board and Management	100.000 ...	Liberty Mutual Holding Company Inc.NO.....
	00000	82-0842778 ..				Liberty Mutual Plano LLCDE.....NIA.....	St. James/Arlington Real Estate Limited Partnership	Ownership, Board and Management	100.000 ...	Liberty Mutual Holding Company Inc.NO.....
	00000					Liberty Mutual Reinsurance Australia Pty Ltd.AUS.....IA.....	Liberty UK and Europe Holdings Limited	Ownership, Board, Management	100.000 ...	Liberty Mutual Holding Company Inc.NO.....
	00000	27-4064359 ..				Liberty Mutual Retirement Plan Master TrustMA.....NIA.....	Liberty Mutual Group Inc.	Board	0.000 ...	Liberty Mutual Holding Company Inc.NO.....
	00000	04-3548586 ..				Liberty Mutual Scholarship FoundationMA.....NIA.....	Liberty Mutual Insurance Company	Board and Management	0.000 ...	Liberty Mutual Holding Company Inc.NO.....
	00000	84-2593582 ..				Liberty Mutual Services LLCDE.....NIA.....	Liberty Mutual Latam LLC	Ownership, Board, Management	100.000 ...	Liberty Mutual Holding Company Inc.NO.....
	00000	47-4222611 ..				Liberty Mutual Strategic Ventures LLCDE.....NIA.....	Liberty Mutual Insurance Company	Ownership, Board and Management	100.000 ...	Liberty Mutual Holding Company Inc.NO.....
	00000					Liberty Mutual Surety Agencia de Seguros Ltda.COL.....IA.....	Liberty Mutual Latin Holdings LLC	Ownership, Board, Management	50.000 ...	Liberty Mutual Holding Company Inc.NO.....
	00000					Liberty Mutual Surety Agencia de Seguros Ltda.COL.....IA.....	Liberty Mutual Services LLC	Ownership, Board, Management	50.000 ...	Liberty Mutual Holding Company Inc.NO.....
	00000	92-2513480 ..				Liberty Mutual Surety Agency LLCPA.....IA.....	Liberty Corporate Services LLC	Ownership, Board, Management	100.000 ...	Liberty Mutual Holding Company Inc.NO.....
	00000					Liberty Mutual Surety Brasil Ltda.BRA.....IA.....	Liberty Mutual Brasil Holdings Ltda.	Ownership, Board, Management	100.000 ...	Liberty Mutual Holding Company Inc.NO.....
	00000					Liberty Mutual Surety Brasil Ltda.BRA.....IA.....	Liberty Mutual Latin Holdings LLC	Ownership, Board, Management	0.000 ...	Liberty Mutual Holding Company Inc.NO.....

12.5

12.5

12.5

12.5

STATEMENT AS OF MARCH 31, 2025 OF THE STATE AUTOMOBILE MUTUAL INSURANCE COMPANY

SCHEDULE Y

PART 1A - DETAILS OF INSURANCE HOLDING COMPANY SYSTEM

1	2	3	4	5	6	7	8	9	10	11	12	13	14	15	16
Group Code	Group Name	NAIC Company Code	ID Number	Federal RSSD	CIK	Name of Securities Exchange if Publicly Traded (U.S. or International)	Names of Parent, Subsidiaries Or Affiliates	Domi-ciliary Location	Relation-ship to Reporting Entity	Directly Controlled by (Name of Entity/Person)	Type of Control (Ownership, Board, Management, Attorney-in-Fact, Influence, Other)	If Control is Ownership Provide Percen-tage	Ultimate Controlling Entity(ies)/Person(s)	Is an SCA Filing Re-quired? (Yes/No)	*
		00000					LLIC S.a. r.l.	..LUX.....	..NIA.....	Liberty UK and Europe Holdings Limited	Ownership, Board and Management	100.000	Liberty Mutual Holding Company Inc.	...NO.....	
.0111	Liberty Mutual Insurance Company and its Affiliated Insurers	36447	22-2227328				LM General Insurance Company	..IL.....	..IA.....	Liberty Mutual Insurance Company	Ownership, Board and Management	100.000	Liberty Mutual Holding Company Inc.	...NO.....	
.0111	Liberty Mutual Insurance Company and its Affiliated Insurers	33600	04-3058504				LM Insurance Corporation	..IL.....	..IA.....	Liberty Mutual Insurance Company	Ownership, Board and Management	100.000	Liberty Mutual Holding Company Inc.	...NO.....	
.0111	Liberty Mutual Insurance Company and its Affiliated Insurers	32352	22-2053189				LM Property and Casualty Insurance Company	..IN.....	..IA.....	Liberty Mutual Insurance Company	Ownership, Board and Management	100.000	Liberty Mutual Holding Company Inc.	...NO.....	
		00000	30-1006170				LMAT Arbol Holdings LLC	..DE.....	..NIA.....	LMAT Natural Resources International S.L.	Ownership, Board and Management	100.000	Liberty Mutual Holding Company Inc.	...NO.....	
		00000	82-1224041				LMAT Holdings LLC	..DE.....	..NIA.....	Liberty Mutual Insurance Company	Ownership.....	30.000	Liberty Mutual Holding Company Inc.	...NO.....	
		00000	82-1224041				LMAT Holdings LLC	..DE.....	..NIA.....	Peerless Insurance Company	Ownership.....	30.000	Liberty Mutual Holding Company Inc.	...NO.....	
		00000	82-1224041				LMAT Holdings LLC	..DE.....	..NIA.....	Liberty Mutual Fire Insurance Company	Ownership.....	10.000	Liberty Mutual Holding Company Inc.	...NO.....	
		00000	82-1224041				LMAT Holdings LLC	..DE.....	..NIA.....	Employers Insurance Company of Wausau	Ownership.....	10.000	Liberty Mutual Holding Company Inc.	...NO.....	
		00000	82-1224041				LMAT Holdings LLC	..DE.....	..NIA.....	Safeco Insurance Company of America	Ownership.....	10.000	Liberty Mutual Holding Company Inc.	...NO.....	
		00000	82-1224041				LMAT Holdings LLC	..DE.....	..NIA.....	The Ohio Casualty Insurance Company	Ownership.....	10.000	Liberty Mutual Holding Company Inc.	...NO.....	
		00000					Liberty Mutual Opportunistic Investments LLC								
		00000					LMAT Natural Resources International S.L.	..ESP.....	..NIA.....	Liberty Mutual Opportunistic Investments LLC	Ownership, Board and Management	100.000	Liberty Mutual Holding Company Inc.	...NO.....	
		00000					LMAT Uruguay Holdings S.R.L.	..URY.....	..NIA.....	Contumil S.A.	Ownership.....	86.000	Liberty Mutual Holding Company Inc.	...NO.....	
		00000					LMAT Uruguay Holdings S.R.L.	..URY.....	..NIA.....	LMAT Natural Resources International S.L.	Ownership.....	14.000	Liberty Mutual Holding Company Inc.	...NO.....	
		00000					LMAT Uruguay Holdings S.R.L.	..URY.....	..NIA.....	LMAT Arbol Holdings LLC	Ownership.....	0.001	Liberty Mutual Holding Company Inc.	...NO.....	
		00000	84-3770759				LMCORT-FRE-01 IC	..DC.....	..IA.....	Inc.	Ownership, Board, Management	100.000	Liberty Mutual Holding Company Inc.	...NO.....	
		00000	61-1558756				LMG Film Productions, LLC	..MA.....	..NIA.....	Liberty Mutual Insurance Company	Ownership, Board and Management	100.000	Liberty Mutual Holding Company Inc.	...NO.....	
		00000					Liberty International US European Holdings LLC								
		00000					LMG Singapore Holdings Pte. Ltd.	..SGP.....	..NIA.....	LLC	Ownership, Board and Management	100.000	Liberty Mutual Holding Company Inc.	...NO.....	
		00000	04-3583680				LMHC Massachusetts Holdings Inc.	..MA.....	..UIP.....	Liberty Mutual Holding Company Inc.	Ownership, Board and Management	100.000	Liberty Mutual Holding Company Inc.	...NO.....	
		00000	92-0790959				LMID, LLC	..DE.....	..NIA.....	Liberty Mutual Insurance Company	Ownership.....	100.000	Liberty Mutual Holding Company Inc.	...NO.....	
		00000	99-2162744				LREOZ Fund LLC	..DE.....	..NIA.....	Liberty Structured Holdings LLC	Ownership, Management	20.000	Liberty Mutual Holding Company Inc.	...NO.....	
		00000	99-2162744				LREOZ Fund LLC	..DE.....	..NIA.....	Liberty Mutual Insurance Company	Ownership, Management	80.000	Liberty Mutual Holding Company Inc.	...NO.....	
		00000	81-2184892				LSH Real Estate Holdings LLC	..DE.....	..NIA.....	Liberty Structured Holdings LLC	Ownership, Board and Management	100.000	Liberty Mutual Holding Company Inc.	...NO.....	
		00000	71-0950057				Managed Care Associates, Inc.	..MS.....	..IA.....	Excess Risk Reinsurance Inc.	Ownership.....	100.000	Liberty Mutual Holding Company Inc.	...NO.....	
.0111	Liberty Mutual Insurance Company and its Affiliated Insurers	23353	35-1135866				Meridian Security Insurance Company	..IN.....	..DS.....	State Auto Holdings, Inc.	Ownership, Board and Management	100.000	Liberty Mutual Holding Company Inc.	...NO.....	
.0111	Liberty Mutual Insurance Company and its Affiliated Insurers	23507	31-0978279				Mid-American Fire & Casualty Company	..NH.....	..IA.....	The Midwestern Indemnity Company	Ownership, Board and Management	100.000	Liberty Mutual Holding Company Inc.	...NO.....	
.0111	Liberty Mutual Insurance Company and its Affiliated Insurers	41653	46-0368854				Milbank Insurance Company	..IA.....	..DS.....	State Auto Financial Corporation	Ownership, Board and Management	100.000	Liberty Mutual Holding Company Inc.	...NO.....	
.0111	Liberty Mutual Insurance Company and its Affiliated Insurers	14613	52-0424870				Montgomery Mutual Insurance Company	..MA.....	..IA.....	Liberty Mutual Insurance Company	Board and Management	0.000	Liberty Mutual Holding Company Inc.	...NO.....	
		00000	88-1727854				MVP1 Pooler, LLC	..DE.....	..NIA.....	Liberty Mutual Insurance Company	Ownership.....	40.000	Liberty Mutual Holding Company Inc.	...NO.....	
		00000	88-1727854				MVP1 Pooler, LLC	..DE.....	..NIA.....	Peerless Insurance Company	Ownership.....	20.000	Liberty Mutual Holding Company Inc.	...NO.....	
		00000	88-1727854				MVP1 Pooler, LLC	..DE.....	..NIA.....	Employers Insurance Company of Wausau	Ownership.....	10.000	Liberty Mutual Holding Company Inc.	...NO.....	
		00000	88-1727854				MVP1 Pooler, LLC	..DE.....	..NIA.....	Liberty Mutual Fire Insurance Company	Ownership.....	10.000	Liberty Mutual Holding Company Inc.	...NO.....	
		00000	88-1727854				MVP1 Pooler, LLC	..DE.....	..NIA.....	The Ohio Casualty Insurance Company	Ownership.....	10.000	Liberty Mutual Holding Company Inc.	...NO.....	
		00000	88-1727854				MVP1 Pooler, LLC	..DE.....	..NIA.....	Safeco Insurance Company of America	Ownership.....	10.000	Liberty Mutual Holding Company Inc.	...NO.....	
.0111	Liberty Mutual Insurance Company and its Affiliated Insurers	27944	35-1287317				National Insurance Association	..IN.....	..IA.....	The National Corporation	Management and Attorney-in-Fact	0.000	Liberty Mutual Holding Company Inc.	...NO.....	
		00000					Nationale Borg Reinsurance N.V.	..CUW.....	..IA.....	Liberty Mutual Insurance Company	Ownership, Board, Management	100.000	Liberty Mutual Holding Company Inc.	...NO.....	
		00000					Nationale Waarborg B.V.	..NLD.....	..IA.....	Liberty UK and Europe Holdings Limited	Ownership, Board, Management	100.000	Liberty Mutual Holding Company Inc.	...NO.....	
		00000	41-2098206				Network E&S Insurance Brokers, LLC	..OH.....	..DS.....	State Automobile Mutual Insurance Company	Ownership, Board and Management	100.000	Liberty Mutual Holding Company Inc.	...NO.....	
.0111	Liberty Mutual Insurance Company and its Affiliated Insurers	23892	93-6029263				North Pacific Insurance Company	..OR.....	..IA.....	Liberty Northwest Insurance Corporation	Ownership, Board and Management	100.000	Liberty Mutual Holding Company Inc.	...NO.....	

STATEMENT AS OF MARCH 31, 2025 OF THE STATE AUTOMOBILE MUTUAL INSURANCE COMPANY

SCHEDULE Y

PART 1A - DETAILS OF INSURANCE HOLDING COMPANY SYSTEM

1	2	3	4	5	6	7	8	9	10	11	12	13	14	15	16
Group Code	Group Name	NAIC Company Code	ID Number	Federal RSSD	CIK	Name of Securities Exchange if Publicly Traded (U.S. or International)	Names of Parent, Subsidiaries Or Affiliates	Domi-ciliary Location	Relation-ship to Reporting Entity	Directly Controlled by (Name of Entity/Person)	Type of Control (Ownership, Board, Management, Attorney-in-Fact, Influence, Other)	If Control is Owner-ship Provide Percen-tage	Ultimate Controlling Entity(ies)/Person(s)	Is an SCA Filing Re-quired? (Yes/No)	*
		00000	31-1364002				Ocasco Budget, Inc.	..OH.....	NIA.....	The Ohio Casualty Insurance Company	Ownership, Board and Management	100.000	Liberty Mutual Holding Company Inc.	...NO.....	
		00000	31-1377709				OCI Printing, Inc.	..OH.....	NIA.....	Ohio Casualty Corporation	Ownership, Board and Management	100.000	Liberty Mutual Holding Company Inc.	...NO.....	
		00000	31-0783294				Ohio Casualty Corporation	..OH.....	NIA.....	Liberty Mutual Insurance Company	Ownership, Board and Management	78.000	Liberty Mutual Holding Company Inc.	...NO.....	
		00000	31-0783294				Ohio Casualty Corporation	..OH.....	NIA.....	Employers Insurance Company of Wausau	Ownership, Board and Management	8.000	Liberty Mutual Holding Company Inc.	...NO.....	
		00000	31-0783294				Ohio Casualty Corporation	..OH.....	NIA.....	Peerless Insurance Company	Ownership, Board and Management	8.000	Liberty Mutual Holding Company Inc.	...NO.....	
		00000	31-0783294				Ohio Casualty Corporation	..OH.....	NIA.....	Liberty Mutual Fire Insurance Company	Ownership, Board and Management	6.000	Liberty Mutual Holding Company Inc.	...NO.....	
		24082	31-0541777				Ohio Security Insurance Company	..NH.....	IA.....	The Ohio Casualty Insurance Company	Ownership, Board and Management	100.000	Liberty Mutual Holding Company Inc.	...NO.....	
		00000	92-3955867				OIC Structured Equity LMI Fund L.P.	..DE.....	NIA.....	Liberty Mutual Opportunistic Investments LLC	Ownership.....	99.000	Liberty Mutual Holding Company Inc.	...NO.....	
		00000	99-3311288				Omelette Borrower LLC	..DE.....	NIA.....	Omelette Topco LLC	Ownership.....	100.000	Liberty Mutual Holding Company Inc.	...NO.....	
		00000	99-3148662				Omelette Topco LLC	..DE.....	NIA.....	Liberty Mutual Insurance Company	Ownership.....	45.000	Liberty Mutual Holding Company Inc.	...NO.....	
		00000	99-3148662				Omelette Topco LLC	..DE.....	NIA.....	Peerless Insurance Company	Ownership.....	25.000	Liberty Mutual Holding Company Inc.	...NO.....	
		00000	99-3148662				Omelette Topco LLC	..DE.....	NIA.....	Employers Insurance Company of Wausau	Ownership.....	10.000	Liberty Mutual Holding Company Inc.	...NO.....	
		00000	99-3148662				Omelette Topco LLC	..DE.....	NIA.....	Liberty Mutual Fire Insurance Company	Ownership.....	10.000	Liberty Mutual Holding Company Inc.	...NO.....	
		00000	99-3148662				Omelette Topco LLC	..DE.....	NIA.....	The Ohio Casualty Insurance Company	Ownership.....	10.000	Liberty Mutual Holding Company Inc.	...NO.....	
		00000	99-4936605				Omelette Underlying Trust	..DE.....	NIA.....	Omelette Borrower LLC	Ownership.....	100.000	Liberty Mutual Holding Company Inc.	...NO.....	
		00000	26-0258241				Open Seas Solutions, Inc.	..WA.....	NIA.....	Safeco Corporation	Ownership, Board and Management	100.000	Liberty Mutual Holding Company Inc.	...NO.....	
		23922	93-0241650				Oregon Automobile Insurance Company	..OR.....	IA.....	Liberty Northwest Insurance Corporation	Ownership, Board and Management	100.000	Liberty Mutual Holding Company Inc.	...NO.....	
		00000	82-4306959				PAGUS Holdings LLC	..DE.....	NIA.....	LMAT Holdings LLC	Ownership, Board and Management	100.000	Liberty Mutual Holding Company Inc.	...NO.....	
		14923	06-0487440				Patrons Mutual Insurance Company of Connecticut	..MA.....	IA.....	State Automobile Mutual Insurance Company	Board, Management	0.000	Liberty Mutual Holding Company Inc.	...NO.....	
		18333	13-2919779				Peerless Indemnity Insurance Company	..IL.....	IA.....	Liberty-USA Corporation	Ownership, Board and Management	100.000	Liberty Mutual Holding Company Inc.	...NO.....	
		24198	02-0177030				Peerless Insurance Company	..NH.....	IA.....	Liberty Mutual Agency Corporation	Ownership, Board and Management	100.000	Liberty Mutual Holding Company Inc.	...NO.....	
		30945	58-1140651				Plaza Insurance Company	..IA.....	DS.....	Rockhill Insurance Company	Ownership, Board and Management	100.000	Liberty Mutual Holding Company Inc.	...NO.....	
		00000	46-2678004				Post-Closing LSG, LLC	..FL.....	IA.....	Ironshore Surety Holdings Inc.	Ownership.....	20.000	Liberty Mutual Holding Company Inc.	...NO.....	
		00000	26-0800397				PT Independence Energy Holdings LLC	..DE.....	NIA.....	Liberty Energy Holdings, LLC	Ownership.....	100.000	Liberty Mutual Holding Company Inc.	...NO.....	
		00000	25-1923260				Rianoc Research Corporation	..WA.....	NIA.....	Open Seas Solutions, Inc.	Ownership, Board and Management	100.000	Liberty Mutual Holding Company Inc.	...NO.....	
		00000	25-1923260				Rockhill Holding Company	..DE.....	DS.....	State Automobile Mutual Insurance Company	Ownership, Board and Management	100.000	Liberty Mutual Holding Company Inc.	...YES.....	
		28053	06-1149847				Rockhill Insurance Company	..AZ.....	DS.....	Rockhill Holding Company	Ownership, Board and Management	100.000	Liberty Mutual Holding Company Inc.	...NO.....	
		00000	20-8406742				Rockhill Insurance Services LLC	..CA.....	DS.....	Rockhill Holding Company	Ownership, Board and Management	100.000	Liberty Mutual Holding Company Inc.	...NO.....	
		00000	01-0712531				Rockhill Underwriting Management, LLC	..MO.....	DS.....	Rockhill Holding Company	Ownership, Board and Management	100.000	Liberty Mutual Holding Company Inc.	...NO.....	
		00000	41-1440870				RTW, Inc	..MN.....	DS.....	Rockhill Holding Company	Ownership, Board and Management	100.000	Liberty Mutual Holding Company Inc.	...NO.....	
		00000	31-1425223				SA Software Shelf, Inc	..OH.....	DS.....	State Auto Financial Corporation	Ownership, Board, Management	100.000	Liberty Mutual Holding Company Inc.	...NO.....	
		00000	91-0742146				Safeco Corporation	..WA.....	NIA.....	Liberty Mutual Agency Corporation	Ownership, Board and Management	100.000	Liberty Mutual Holding Company Inc.	...NO.....	
		00000	75-2865575				Safeco General Agency, Inc.	..TX.....	IA.....	General Insurance Company of America	Ownership, Board and Management	100.000	Liberty Mutual Holding Company Inc.	...NO.....	
		24740	91-0742148				Safeco Insurance Company of America	..NH.....	IA.....	Safeco Corporation	Ownership, Board and Management	100.000	Liberty Mutual Holding Company Inc.	...NO.....	
		39012	91-1115311				Safeco Insurance Company of Illinois	..IL.....	IA.....	Safeco Insurance Company of America	Ownership, Board and Management	100.000	Liberty Mutual Holding Company Inc.	...NO.....	
		11215	23-2640501				Safeco Insurance Company of Indiana	..IN.....	IA.....	General Insurance Company of America	Ownership, Board and Management	100.000	Liberty Mutual Holding Company Inc.	...NO.....	
		11071	93-1300233				Safeco Insurance Company of Oregon	..OR.....	IA.....	Safeco Insurance Company of America	Ownership, Board and Management	100.000	Liberty Mutual Holding Company Inc.	...NO.....	

STATEMENT AS OF MARCH 31, 2025 OF THE STATE AUTOMOBILE MUTUAL INSURANCE COMPANY

SCHEDULE Y

PART 1A - DETAILS OF INSURANCE HOLDING COMPANY SYSTEM

1	2	3	4	5	6	7	8	9	10	11	12	13	14	15	16
Group Code	Group Name	NAIC Company Code	ID Number	Federal RSSD	CIK	Name of Securities Exchange if Publicly Traded (U.S. or International)	Names of Parent, Subsidiaries Or Affiliates	Domi-ciliary Location	Relation-ship to Reporting Entity	Directly Controlled by (Name of Entity/Person)	Type of Control (Ownership, Board, Management, Attorney-in-Fact, Influence, Other)	If Control is Owner-ship Provide Percen-tage	Ultimate Controlling Entity(ies)/Person(s)	Is an SCA Filing Re-quired? (Yes/No)	*
. 0111 ...	Liberty Mutual Insurance Company and its Affiliated Insurers 11070	91-6258394	Safeco Lloyds Insurance Company TX..... IA.....	General America Corporation of Texas	Management and Attorney-in-Fact	0.000	Liberty Mutual Holding Company Inc. NO.....
. 0111 ...	Liberty Mutual Insurance Company and its Affiliated Insurers 24759	91-0885519	Safeco National Insurance Company NH..... IA.....	Safeco Insurance Company of America	Ownership, Board and Management	100.000	Liberty Mutual Holding Company Inc. NO.....
..... 00000	91-1273246	Safeco Properties, Inc. WA..... NIA.....	Safeco Corporation	Ownership, Board and Management	100.000	Liberty Mutual Holding Company Inc. NO.....
. 0111 ...	Liberty Mutual Insurance Company and its Affiliated Insurers 11100	91-1231536	Safeco Surplus Lines Insurance Company NH..... IA.....	Safeco Insurance Company of America	Ownership, Board and Management	100.000	Liberty Mutual Holding Company Inc. NO.....
. 0111 ...	Liberty Mutual Insurance Company and its Affiliated Insurers 10837	33-0763208	San Diego Insurance Company CA..... IA.....	Liberty Mutual Insurance Company	Ownership, Board and Management	100.000	Liberty Mutual Holding Company Inc. NO.....
..... 00000	Santa Marta Floresta Brasil Ltda. BRA..... NIA.....	TECA Santa Marta Holdings, S.L.	Ownership.....	100.000	Liberty Mutual Holding Company Inc. NO.....
..... 00000	Santa Marta Floresta Brasil Ltda. BRA..... NIA.....	TECA SM LLC	Ownership.....	0.010	Liberty Mutual Holding Company Inc. NO.....
..... 00000	Santa Rita Arbol Holdings S.L. ESP..... NIA.....	LMAT Natural Resources International S.L.	Ownership.....	100.000	Liberty Mutual Holding Company Inc. NO.....
..... 00000	Santa Rita Madeira e Floresta Ltda. BRA..... NIA.....	Santa Rita Arbol Holdings, S.L.	Ownership.....	100.000	Liberty Mutual Holding Company Inc. NO.....
..... 00000	Santa Rita Madeira e Floresta Ltda. BRA..... NIA.....	TECA SR LLC	Ownership.....	0.010	Liberty Mutual Holding Company Inc. NO.....
..... 00000	82-4345429	Shandon Valley Vineyards LLC DE..... NIA.....	PAGUS Holdings LLC	Ownership, Board and Management	100.000	Liberty Mutual Holding Company Inc. NO.....
..... 00000	Solaria Labs Singapore Pte. Ltd SGP..... NIA.....	Liberty UK and Europe Holdings Limited	Ownership, Board and Management	100.000	Liberty Mutual Holding Company Inc. NO.....
..... 00000	81-2854330	Solaria Labs, LLC DE..... NIA.....	Liberty Mutual Insurance Company	Ownership, Board and Management	100.000	Liberty Mutual Holding Company Inc. NO.....
..... 00000	84-1695835	St. James/Arlington LLC MA..... NIA.....	Employers Insurance Company of Wausau	Ownership, Board and Management	100.000	Liberty Mutual Holding Company Inc. NO.....
..... 00000	01-0854295	St. James/Arlington Management LLC MA..... NIA.....	Liberty Mutual Insurance Company	Ownership, Board and Management	100.000	Liberty Mutual Holding Company Inc. NO.....
..... 00000	St. James/Arlington Real Estate Limited	.. MA..... NIA.....	St. James/Arlington LLC	Ownership, Board and Management	3.000	Liberty Mutual Holding Company Inc. NO.....
..... 00000	84-1695837	Partnership MA..... NIA.....	St. James/Arlington LLC	Ownership, Board and Management	100.000	Liberty Mutual Holding Company Inc. NO.....
..... 00000	84-1695837	St. James/Arlington Real Estate Limited	.. MA..... NIA.....	Liberty Mutual Insurance Company	Ownership, Board and Management	92.000	Liberty Mutual Holding Company Inc. NO.....
..... 00000	St. James/Arlington Real Estate Limited	.. MA..... NIA.....	Liberty Mutual Fire Insurance Company	Ownership, Board and Management	5.000	Liberty Mutual Holding Company Inc. NO.....
..... 00000	31-1324304	State Auto Financial Corporation OH..... DS.....	State Automobile Mutual Insurance Company	Ownership, Board and Management	100.000	Liberty Mutual Holding Company Inc. YES.....
..... 00000	State Auto Foundation OH..... NIA.....	Liberty Mutual Insurance Company	Board, Management	0.000	Liberty Mutual Holding Company Inc. NO.....
..... 00000	20-8756040	State Auto Holdings, Inc. OH..... DS.....	State Automobile Mutual Insurance Company	Ownership, Board and Management	100.000	Liberty Mutual Holding Company Inc. YES.....
. 0111 ...	Liberty Mutual Insurance Company and its Affiliated Insurers 11017	31-1651026	State Auto Insurance Company of Ohio OH..... DS.....	State Auto Financial Corporation	Ownership, Board and Management	100.000	Liberty Mutual Holding Company Inc. NO.....
. 0111 ...	Liberty Mutual Insurance Company and its Affiliated Insurers 31755	39-1211058	State Auto Insurance Company of Wisconsin WI..... DS.....	State Automobile Mutual Insurance Company	Ownership, Board and Management	100.000	Liberty Mutual Holding Company Inc. NO.....
..... 00000	82-2704976	State Auto Labs Corp. OH..... DS.....	State Automobile Mutual Insurance Company	Ownership, Board and Management	100.000	Liberty Mutual Holding Company Inc. YES.....
. 0111 ...	Liberty Mutual Insurance Company and its Affiliated Insurers 25127	57-6010814	State Auto Property & Casualty Insurance Company IA..... DS.....	State Auto Financial Corporation	Ownership, Board and Management	100.000	Liberty Mutual Holding Company Inc. NO.....
. 0111 ...	Liberty Mutual Insurance Company and its Affiliated Insurers 25135	31-4316080	State Automobile Mutual Insurance Company OH.....	Liberty Mutual Group Inc.	Ownership, Board and Management	100.000	Liberty Mutual Holding Company Inc. NO.....
..... 00000	31-0676465	Stateco Financial Services, Inc. OH..... DS.....	State Auto Financial Corporation	Ownership, Board and Management	100.000	Liberty Mutual Holding Company Inc. NO.....
..... 00000	Summit Asia Investments Holdings Pte. Ltd. .	.. SGP..... NIA.....	Liberty International Asia Pacific Holdings LLC	Ownership, Board and Management	100.000	Liberty Mutual Holding Company Inc. NO.....
..... 00000	04-3545985	Tara Energy Investments, LLC DE..... NIA.....	Liberty Energy Holdings, LLC	Ownership, Board and Management	100.000	Liberty Mutual Holding Company Inc. NO.....
..... 00000	TECA Santa Marta Holdings S.L. ESP..... NIA.....	LMAT Natural Resources International S.L.	Ownership.....	100.000	Liberty Mutual Holding Company Inc. NO.....
..... 00000	82-4167330	TECA SM LLC DE..... NIA.....	Teca Santa Marta Holdings S.L.	Ownership.....	100.000	Liberty Mutual Holding Company Inc. NO.....
..... 00000	82-4159428	TECA SR LLC DE..... NIA.....	Santa Rita Arbol Holdings S.L.	Ownership.....	100.000	Liberty Mutual Holding Company Inc. NO.....
. 0111 ...	Liberty Mutual Insurance Company and its Affiliated Insurers 33588	04-3058503	The First Liberty Insurance Corporation IL..... IA.....	Liberty Mutual Insurance Company	Ownership, Board and Management	100.000	Liberty Mutual Holding Company Inc. NO.....
. 0111 ...	Liberty Mutual Insurance Company and its Affiliated Insurers 23515	31-0978280	The Midwestern Indemnity Company NH..... IA.....	Peerless Insurance Company	Ownership, Board and Management	100.000	Liberty Mutual Holding Company Inc. NO.....
..... 00000	35-1283740	The National Corporation IN..... NIA.....	Liberty-USA Corporation	Ownership, Board and Management	100.000	Liberty Mutual Holding Company Inc. NO.....
. 0111 ...	Liberty Mutual Insurance Company and its Affiliated Insurers 24171	02-0342937	The Netherlands Insurance Company NH..... IA.....	Peerless Insurance Company	Ownership, Board and Management	100.000	Liberty Mutual Holding Company Inc. NO.....

STATEMENT AS OF MARCH 31, 2025 OF THE STATE AUTOMOBILE MUTUAL INSURANCE COMPANY

SCHEDULE Y

PART 1A - DETAILS OF INSURANCE HOLDING COMPANY SYSTEM

1	2	3	4	5	6	7	8	9	10	11	12	13	14	15	16
Group Code	Group Name	NAIC Company Code	ID Number	Federal RSSD	CIK	Name of Securities Exchange if Publicly Traded (U.S. or International)	Names of Parent, Subsidiaries Or Affiliates	Domi-ciliary Loca-tion	Relation-ship to Reporting Entity	Directly Controlled by (Name of Entity/Person)	Type of Control (Ownership, Board, Management, Attorney-in-Fact, Influence, Other)	If Control is Owner-ship Provide Percen-tage	Ultimate Controlling Entity(ies)/Person(s)	Is an SCA Filing Re-quired? (Yes/No)	*
. 0111 ...	Liberty Mutual Insurance Company and its Affiliated Insurers 24074	31-0396250	The Ohio Casualty Insurance Company NH..... IA.....	Ohio Casualty Corporation	Ownership, Board and Management	100.000 ...	Liberty Mutual Holding Company Inc. NO.....
..... 00000	Vitoria Floresta Brasil Ltda.BRA..... NIA.....	LMAT Natural Resources International S.L.	Ownership.....	100.000 ...	Liberty Mutual Holding Company Inc. NO.....
..... 00000	Vitoria Floresta Brasil Ltda.BRA..... NIA.....	LMAT Arbol Holdings LLC	Ownership.....	0.010	Liberty Mutual Holding Company Inc. NO.....
. 0111 ...	Liberty Mutual Insurance Company and its Affiliated Insurers 26069	36-3522250	Wausau Business Insurance Company WI..... IA.....	Liberty Mutual Insurance Company	Ownership, Board and Management	100.000 ...	Liberty Mutual Holding Company Inc. NO.....
. 0111 ...	Liberty Mutual Insurance Company and its Affiliated Insurers 26425	36-2753986	Wausau General Insurance Company WI..... IA.....	Liberty Mutual Insurance Company	Ownership, Board and Management	100.000 ...	Liberty Mutual Holding Company Inc. NO.....
..... 00000	Wausau Insurance Company (U.K.) LimitedGBR..... IA.....	Liberty International Netherlands V.O.F. .	Ownership, Board and Management	100.000 ...	Liberty Mutual Holding Company Inc. NO.....
. 0111 ...	Liberty Mutual Insurance Company and its Affiliated Insurers 26042	39-1341459	Wausau Underwriters Insurance Company WI..... IA.....	Liberty Mutual Insurance Company	Ownership, Board and Management	100.000 ...	Liberty Mutual Holding Company Inc. NO.....
. 0111 ...	Liberty Mutual Insurance Company and its Affiliated Insurers 44393	31-0624491	West American Insurance Company IN..... IA.....	The Ohio Casualty Insurance Company	Ownership, Board and Management	100.000 ...	Liberty Mutual Holding Company Inc. NO.....
..... 00000	45-2396108	Wildcat Field Services, LLC TX..... NIA.....	Wildcat Midstream Holdings II LLC	Ownership.....	100.000 ...	Liberty Mutual Holding Company Inc. NO.....
..... 00000	46-1637784	Wildcat Midstream Holdings II LLC TX..... NIA.....	Kellen Holdings, LLC	Ownership.....	95.000 ...	Liberty Mutual Holding Company Inc. NO.....
..... 00000	35-2604562	Workgrid Software, Inc. DE..... NIA.....	Liberty Mutual Technology Group, Inc.	Ownership, Board and Management	100.000 ...	Liberty Mutual Holding Company Inc. NO.....

Asterisk	Explanation

PART 1 - LOSS EXPERIENCE

Line of Business		Current Year to Date			4
		1 Direct Premiums Earned	2 Direct Losses Incurred	3 Direct Loss Percentage	Prior Year to Date Direct Loss Percentage
1.	Fire	15, 104, 960	2, 379, 363	15. 8	39. 9
2.1	Allied Lines	17, 060, 013	7, 153, 638	41. 9	181. 5
2.2	Multiple peril crop				
2.3	Federal flood				
2.4	Private crop				
2.5	Private flood				
3.	Farmowners multiple peril	40, 245, 546	21, 084, 897	52. 4	57. 5
4.	Homeowners multiple peril	8, 566, 650	7, 377, 366	86. 1	132. 0
5.1	Commercial multiple peril (non-liability portion)	19, 754, 656	7, 647, 762	38. 7	68. 4
5.2	Commercial multiple peril (liability portion)	9, 488, 029	4, 137, 473	43. 6	45. 0
6.	Mortgage guaranty				
8.	Ocean marine				10. 1
9.1	Inland marine	2, 196, 538	561, 133	25. 5	33. 6
9.2	Pet insurance				
10.	Financial guaranty				
11.1	Medical professional liability - occurrence				
11.2	Medical professional liability - claims-made				
12.	Earthquake	449, 983			
13.1	Comprehensive (hospital and medical) individual				
13.2	Comprehensive (hospital and medical) group				
14.	Credit accident and health				
15.1	Vision only				
15.2	Dental only				
15.3	Disability income				
15.4	Medicare supplement				
15.5	Medicaid Title XIX				
15.6	Medicare Title XVIII				
15.7	Long-term care				
15.8	Federal employees health benefits plan				
15.9	Other health	308			
16.	Workers' compensation	1, 895, 976	761, 163	40. 1	51. 3
17.1	Other liability - occurrence	25, 606, 676	16, 380, 115	64. 0	40. 6
17.2	Other liability - claims-made	459, 853	316, 573	68. 8	41. 8
17.3	Excess workers' compensation				
18.1	Products liability - occurrence	875, 532	454, 576	51. 9	48. 6
18.2	Products liability - claims-made				
19.1	Private passenger auto no-fault (personal injury protection)	18, 101	(246, 637)	(1, 362. 6)	17, 485. 9
19.2	Other private passenger auto liability	1, 583, 294	1, 494, 092	94. 4	84. 0
19.3	Commercial auto no-fault (personal injury protection)	577, 061	484, 558	84. 0	(89. 1)
19.4	Other commercial auto liability	51, 048, 764	43, 273, 431	84. 8	85. 2
21.1	Private passenger auto physical damage	1, 308, 516	399, 707	30. 5	85. 9
21.2	Commercial auto physical damage	20, 376, 279	11, 226, 121	55. 1	79. 3
22.	Aircraft (all perils)				
23.	Fidelity	67, 911	57, 226	84. 3	20. 5
24.	Surety	21	2	9. 5	10. 0
26.	Burglary and theft	84, 098	27, 588	32. 8	61. 0
27.	Boiler and machinery	759, 106	335, 212	44. 2	20. 1
28.	Credit				
29.	International				
30.	Warranty				
31.	Reinsurance - Nonproportional Assumed Property	XXX.	XXX.	XXX.	XXX.
32.	Reinsurance - Nonproportional Assumed Liability	XXX.	XXX.	XXX.	XXX.
33.	Reinsurance - Nonproportional Assumed Financial Lines	XXX.	XXX.	XXX.	XXX.
34.	Aggregate write-ins for other lines of business				
35.	Totals	217, 527, 871	125, 305, 359	57. 6	81. 6
DETAILS OF WRITE-INS					
3401.				
3402.				
3403.				
3498.	Summary of remaining write-ins for Line 34 from overflow page				
3499.	Totals (Lines 3401 through 3403 plus 3498)(Line 34 above)				

STATEMENT AS OF MARCH 31, 2025 OF THE STATE AUTOMOBILE MUTUAL INSURANCE COMPANY

PART 2 - DIRECT PREMIUMS WRITTEN

Line of Business		1 Current Quarter	2 Current Year to Date	3 Prior Year Year to Date
1.	Fire	11,307,862	11,307,862	13,920,726
2.1	Allied Lines	13,090,555	13,090,555	16,031,195
2.2	Multiple peril crop			
2.3	Federal flood			
2.4	Private crop			
2.5	Private flood			
3.	Farmowners multiple peril	42,920,759	42,920,759	36,778,566
4.	Homeowners multiple peril	598,911	598,911	12,527,498
5.1	Commercial multiple peril (non-liability portion)	17,502,101	17,502,101	21,480,224
5.2	Commercial multiple peril (liability portion)	8,112,018	8,112,018	11,249,916
6.	Mortgage guaranty			
8.	Ocean marine			
9.1	Inland marine	1,465,240	1,465,240	2,749,999
9.2	Pet insurance			
10.	Financial guaranty			
11.1	Medical professional liability - occurrence			
11.2	Medical professional liability - claims-made			
12.	Earthquake	285,240	285,240	549,408
13.1	Comprehensive (hospital and medical) individual			
13.2	Comprehensive (hospital and medical) group			
14.	Credit accident and health			
15.1	Vision only			
15.2	Dental only			
15.3	Disability income			
15.4	Medicare supplement			
15.5	Medicaid Title XIX			
15.6	Medicare Title XVIII			
15.7	Long-term care			
15.8	Federal employees health benefits plan			
15.9	Other health			
16.	Workers' compensation	1,769,223	1,769,223	2,981,528
17.1	Other liability - occurrence	20,491,475	20,491,475	25,317,077
17.2	Other liability - claims-made	351,507	351,507	524,768
17.3	Excess workers' compensation			
18.1	Products liability - occurrence	725,549	725,549	879,951
18.2	Products liability - claims-made			
19.1	Private passenger auto no-fault (personal injury protection)	(1,200)	(1,200)	58,657
19.2	Other private passenger auto liability	539,846	539,846	3,996,079
19.3	Commercial auto no-fault (personal injury protection)	664,261	664,261	736,529
19.4	Other commercial auto liability	45,153,982	45,153,982	60,899,673
21.1	Private passenger auto physical damage	405,266	405,266	3,453,829
21.2	Commercial auto physical damage	16,861,704	16,861,704	23,660,408
22.	Aircraft (all perils)			
23.	Fidelity	56,904	56,904	76,048
24.	Surety			
26.	Burglary and theft	65,787	65,787	94,201
27.	Boiler and machinery	685,457	685,457	849,850
28.	Credit			
29.	International			
30.	Warranty			
31.	Reinsurance - Nonproportional Assumed Property	XXX	XXX	XXX
32.	Reinsurance - Nonproportional Assumed Liability	XXX	XXX	XXX
33.	Reinsurance - Nonproportional Assumed Financial Lines	XXX	XXX	XXX
34.	Aggregate write-ins for other lines of business			
35.	Totals	183,052,447	183,052,447	238,816,130
DETAILS OF WRITE-INS				
3401.			
3402.			
3403.			
3498.	Summary of remaining write-ins for Line 34 from overflow page			
3499.	Totals (Lines 3401 through 3403 plus 3498)(Line 34 above)			

STATEMENT AS OF MARCH 31, 2025 OF THE STATE AUTOMOBILE MUTUAL INSURANCE COMPANY

PART 3 (\$000 OMITTED)

LOSS AND LOSS ADJUSTMENT EXPENSE RESERVES SCHEDULE

	1	2	3	4	5	6	7	8	9	10	11	12	13									
Years in Which Losses Occurred	Prior Year-End Known Case Loss and LAE Reserves	Prior Year-End IBNR Loss and LAE Reserves	Total Prior Year-End Loss and LAE Reserves (Cols. 1+2)	2025 Loss and LAE Payments on Claims Reported as of Prior Year-End	2025 Loss and LAE Payments on Claims Unreported as of Prior Year-End	Total 2025 Loss and LAE Payments (Cols. 4+5)	Q.S. Date Known Case Loss and LAE Reserves on Claims Reported and Open as of Prior Year End	Q.S. Date Known Case Loss and LAE Reserves on Claims Reported or Reopened Subsequent to Prior Year End	Q.S. Date IBNR Loss and LAE Reserves	Total Q.S. Loss and LAE Reserves (Cols.7+8+9)	Prior Year-End Known Case Loss and LAE Reserves Developed (Savings)/ Deficiency (Cols.4+7 minus Col. 1)	Prior Year-End IBNR Loss and LAE Reserves Developed (Savings)/ Deficiency (Cols. 5+8+9 minus Col. 2)	Prior Year-End Total Loss and LAE Reserve Developed (Savings)/ Deficiency (Cols. 11+12)									
1. 2022 + Prior									
2. 2023									
3. Subtotals 2023 + Prior									
4. 2024									
5. Subtotals 2024 + Prior									
6. 2025XXX.....XXX.....XXX.....XXX.....XXX.....XXX.....XXX.....XXX.....									
7. Totals									
8. Prior Year-End Surplus As Regards Policyholders	573,355										Col. 11, Line 7 As % of Col. 1 Line 7	Col. 12, Line 7 As % of Col. 2 Line 7	Col. 13, Line 7 As % of Col. 3 Line 7									
											1.	2.	3.									
											Col. 13, Line 7 As a % of Col. 1 Line 8											
											4.											

STATEMENT AS OF MARCH 31, 2025 OF THE STATE AUTOMOBILE MUTUAL INSURANCE COMPANY

SUPPLEMENTAL EXHIBITS AND SCHEDULES INTERROGATORIES

The following supplemental reports are required to be filed as part of your statement filing. However, in the event that your company does not transact the type of business for which the special report must be filed, your response of NO to the specific interrogatory will be accepted in lieu of filing a "NONE" report and a bar code will be printed below. If the supplement is required of your company but is not being filed for whatever reason enter SEE EXPLANATION and provide an explanation following the interrogatory questions.

	Response
1. Will the Trusteed Surplus Statement be filed with the state of domicile and the NAIC with this statement?	NO
2. Will Supplement A to Schedule T (Medical Professional Liability Supplement) be filed with this statement?	NO
3. Will the Medicare Part D Coverage Supplement be filed with the state of domicile and the NAIC with this statement?	NO
4. Will the Director and Officer Insurance Coverage Supplement be filed with the state of domicile and the NAIC with this statement?	YES
AUGUST FILING	
5. Will the regulator-only (non-public) Communication of Internal Control Related Matters Noted in Audit be filed with the state of domicile and electronically with the NAIC (as a regulator-only non-public document) by August 1? The response for 1st and 3rd quarters should be N/A. A NO response resulting with a bar code is only appropriate in the 2nd quarter.	N/A

Explanations:

1. The Trusteed Surplus Statement is not required as the Company is a U.S. insurer.
2. Supplement A to Schedule T is not required as the Company does not provide medical professional liability coverage for physicians, hospitals, other health care professionals and other health care facilities.
3. Medicare Part D Coverage Supplement is not required as the Company does not provide prescription drug coverage.

Bar Codes:

1. Trusteed Surplus Statement [Document Identifier 490]	 251352025490000001
2. Supplement A to Schedule T [Document Identifier 455]	 251352025455000001
3. Medicare Part D Coverage Supplement [Document Identifier 365]	 251352025365000001

NONE

SCHEDULE A - VERIFICATION

Real Estate

	1	2
	Year to Date	Prior Year Ended December 31
1. Book/adjusted carrying value, December 31 of prior year	66,454,692	68,588,198
2. Cost of acquired:		
2.1 Actual cost at time of acquisition		
2.2 Additional investment made after acquisition		
3. Current year change in encumbrances		
4. Total gain (loss) on disposals		
5. Deduct amounts received on disposals		
6. Total foreign exchange change in book/adjusted carrying value		
7. Deduct current year's other than temporary impairment recognized		
8. Deduct current year's depreciation	531,694	2,133,506
9. Book/adjusted carrying value at the end of current period (Lines 1+2+3+4-5+6-7-8)	65,922,998	66,454,692
10. Deduct total nonadmitted amounts		
11. Statement value at end of current period (Line 9 minus Line 10)	65,922,998	66,454,692

SCHEDULE B - VERIFICATION

Mortgage Loans

	1	2
	Year to Date	Prior Year Ended December 31
1. Book value/recorded investment excluding accrued interest, December 31 of prior year		
2. Cost of acquired:		
2.1 Actual cost at time of acquisition		
2.2 Additional investment made after acquisition		
3. Capitalized deferred interest and other		
4. Accrual of discount		
5. Unrealized valuation increase/(decrease)		
6. Total gain (loss) on disposals		
7. Deduct amounts received on disposals		
8. Deduct amortization of premium and mortgage interest paid and commitment fees		
9. Total foreign exchange change in book value/recorded investment excluding accrued interest		
10. Deduct current year's other than temporary impairment recognized		
11. Book value/recorded investment excluding accrued interest at end of current period (Lines 1+2+3+4+5+6-7-8+9-10)		
12. Total valuation allowance		
13. Subtotal (Line 11 plus Line 12)		
14. Deduct total nonadmitted amounts		
15. Statement value at end of current period (Line 13 minus Line 14)		

NONE

SCHEDULE BA - VERIFICATION

Other Long-Term Invested Assets

	1	2
	Year to Date	Prior Year Ended December 31
1. Book/adjusted carrying value, December 31 of prior year	10,008,807	10,447,522
2. Cost of acquired:		
2.1 Actual cost at time of acquisition		5,500
2.2 Additional investment made after acquisition		
3. Capitalized deferred interest and other		
4. Accrual of discount		
5. Unrealized valuation increase/(decrease)		(444,215)
6. Total gain (loss) on disposals		
7. Deduct amounts received on disposals		
8. Deduct amortization of premium, depreciation and proportional amortization		
9. Total foreign exchange change in book/adjusted carrying value		
10. Deduct current year's other than temporary impairment recognized		
11. Book/adjusted carrying value at end of current period (Lines 1+2+3+4+5+6-7-8+9-10)	10,008,807	10,008,807
12. Deduct total nonadmitted amounts		
13. Statement value at end of current period (Line 11 minus Line 12)	10,008,807	10,008,807

SCHEDULE D - VERIFICATION

Bonds and Stocks

	1	2
	Year to Date	Prior Year Ended December 31
1. Book/adjusted carrying value of bonds and stocks, December 31 of prior year	507,230,817	466,610,465
2. Cost of bonds and stocks acquired	9,069,020	35,823,462
3. Accrual of discount	93,446	335,205
4. Unrealized valuation increase/(decrease)	(3,607,183)	20,836,456
5. Total gain (loss) on disposals	36,658	(79,851)
6. Deduct consideration for bonds and stocks disposed of	13,641,504	16,045,145
7. Deduct amortization of premium	44,261	249,776
8. Total foreign exchange change in book/adjusted carrying value		
9. Deduct current year's other than temporary impairment recognized		
10. Total investment income recognized as a result of prepayment penalties and/or acceleration fees		
11. Book/adjusted carrying value at end of current period (Lines 1+2+3+4+5-6-7+8-9+10)	499,136,994	507,230,817
12. Deduct total nonadmitted amounts	43,726,974	43,720,020
13. Statement value at end of current period (Line 11 minus Line 12)	455,410,020	463,510,797

STATEMENT AS OF MARCH 31, 2025 OF THE STATE AUTOMOBILE MUTUAL INSURANCE COMPANY

SCHEDULE D - PART 1B

Showing the Acquisitions, Dispositions and Non-Trading Activity
During the Current Quarter for all Bonds and Preferred Stock by NAIC Designation

NAIC Designation	1 Book/Adjusted Carrying Value Beginning of Current Quarter	2 Acquisitions During Current Quarter	3 Dispositions During Current Quarter	4 Non-Trading Activity During Current Quarter	5 Book/Adjusted Carrying Value End of First Quarter	6 Book/Adjusted Carrying Value End of Second Quarter	7 Book/Adjusted Carrying Value End of Third Quarter	8 Book/Adjusted Carrying Value December 31 Prior Year
ISSUER CREDIT OBLIGATIONS (ICO)								
1. NAIC 1 (a)	60,511,365	6,121,198	8,965,493	15,264	57,682,335			60,511,365
2. NAIC 2 (a)								
3. NAIC 3 (a)								
4. NAIC 4 (a)								
5. NAIC 5 (a)								
6. NAIC 6 (a)								
7. Total ICO	60,511,365	6,121,198	8,965,493	15,264	57,682,335			60,511,365
ASSET-BACKED SECURITIES (ABS)								
8. NAIC 1	15,061,503	2,366,742	1,449,352	36,218	16,015,111			15,061,503
9. NAIC 2								
10. NAIC 3								
11. NAIC 4								
12. NAIC 5								
13. NAIC 6								
14. Total ABS	15,061,503	2,366,742	1,449,352	36,218	16,015,111			15,061,503
PREFERRED STOCK								
15. NAIC 1								
16. NAIC 2								
17. NAIC 3								
18. NAIC 4								
19. NAIC 5								
20. NAIC 6								
21. Total Preferred Stock								
22. Total ICO, ABS & Preferred Stock	75,572,868	8,487,941	10,414,845	51,482	73,697,445			75,572,868

(a) Book/Adjusted Carrying Value column for the end of the current reporting period includes the following amount of short-term and cash equivalent bonds by NAIC designation:

NAIC 1 \$; NAIC 2 \$; NAIC 3 \$ NAIC 4 \$; NAIC 5 \$; NAIC 6 \$

SCHEDULE DA - PART 1

Short-Term Investments

	1	2	3	4	5
	Book/Adjusted Carrying Value	Prior Year Value	Actual Cost	Interest Collected Year-to-Date	Paid for Accrued Interest Year-to-Date
7709999999 Totals		XX			

NONE

SCHEDULE DA - VERIFICATION

Short-Term Investments

	1	2
	Year To Date	Prior Year Ended December 31
1. Book/adjusted carrying value, December 31 of prior year		14,701,943
2. Cost of short-term investments acquired		
3. Accrual of discount		243,276
4. Unrealized valuation increase/(decrease)		
5. Total gain (loss) on disposals		(3,815)
6. Deduct consideration received on disposals		14,941,403
7. Deduct amortization of premium		
8. Total foreign exchange change in book/adjusted carrying value		
9. Deduct current year's other than temporary impairment recognized		
10. Book/adjusted carrying value at end of current period (Lines 1+2+3+4+5-6-7+8-9)		
11. Deduct total nonadmitted amounts		
12. Statement value at end of current period (Line 10 minus Line 11)		

Schedule DB - Part A - Verification - Options, Caps, Floors, Collars, Swaps and Forwards

N O N E

Schedule DB - Part B - Verification - Futures Contracts

N O N E

Schedule DB - Part C - Section 1 - Replication (Synthetic Asset) Transactions (RSATs) Open

N O N E

Schedule DB-Part C-Section 2-Reconciliation of Replication (Synthetic Asset) Transactions Open

N O N E

Schedule DB - Verification - Book/Adjusted Carrying Value, Fair Value and Potential Exposure of
Derivatives

N O N E

SCHEDULE E - PART 2 - VERIFICATION

(Cash Equivalents)

	1	2
	Year To Date	Prior Year Ended December 31
1. Book/adjusted carrying value, December 31 of prior year	21,567	21,567
2. Cost of cash equivalents acquired		
3. Accrual of discount		
4. Unrealized valuation increase/(decrease)		
5. Total gain (loss) on disposals		
6. Deduct consideration received on disposals		
7. Deduct amortization of premium		
8. Total foreign exchange change in book/adjusted carrying value		
9. Deduct current year's other than temporary impairment recognized		
10. Book/adjusted carrying value at end of current period (Lines 1+2+3+4+5-6-7+8-9)	21,567	21,567
11. Deduct total nonadmitted amounts		
12. Statement value at end of current period (Line 10 minus Line 11)	21,567	21,567

Schedule A - Part 2 - Real Estate Acquired and Additions Made

N O N E

Schedule A - Part 3 - Real Estate Disposed

N O N E

Schedule B - Part 2 - Mortgage Loans Acquired and Additions Made

N O N E

Schedule B - Part 3 - Mortgage Loans Disposed, Transferred or Repaid

N O N E

Schedule BA - Part 2 - Other Long-Term Invested Assets Acquired and Additions Made

N O N E

Schedule BA - Part 3 - Other Long-Term Invested Assets Disposed, Transferred or Repaid

N O N E

STATEMENT AS OF MARCH 31, 2025 OF THE STATE AUTOMOBILE MUTUAL INSURANCE COMPANY

SCHEDULE D - PART 3

Show All Long-Term Bonds and Stock Acquired During the Current Quarter

1	2	3	4	5	6	7	8	9
CUSIP Identification	Description	Date Acquired	Name of Vendor	Number of Shares of Stock	Actual Cost	Par Value	Paid for Accrued Interest and Dividends	NAIC Designation, NAIC Designation Modifier and SVO Administrative Symbol
91282C-GQ-8	TREASURY NOTE03/20/2025	TD SECURITIES		1,998,600	2,000,000	4,565	1.A
91282C-MA-6	TREASURY NOTE02/12/2025	BNP PARIBAS		2,462,598	2,500,000	21,248	1.A
0019999999. Subtotal - Issuer Credit Obligations - U.S. Government Obligations (Exempt from RBC)					4,461,198	4,500,000	25,814	XXX
70869P-RB-5	PENNSYLVANIA ECONOMIC DEV FING02/20/2025	BANK OF AMERICA		1,660,000	1,660,000		1.D FE
0049999999. Subtotal - Issuer Credit Obligations - Municipal Bonds - General Obligations (Direct and Guaranteed)					1,660,000	1,660,000		XXX
0489999999. Total - Issuer Credit Obligations (Unaffiliated)					6,121,198	6,160,000	25,814	XXX
0499999999. Total - Issuer Credit Obligations (Affiliated)								XXX
0509999997. Total - Issuer Credit Obligations - Part 3					6,121,198	6,160,000	25,814	XXX
0509999998. Total - Issuer Credit Obligations - Part 5					XXX	XXX	XXX	XXX
0509999999. Total - Issuer Credit Obligations					6,121,198	6,160,000	25,814	XXX
3132XF-DH-8	FHLMC MULTIFAM 55DAY INTEREST ONLY03/04/2025	JP MORGAN CHASE		764,938	800,000	411	1.A
1039999999. Subtotal - Asset-Backed Securities - Financial Asset-Backed - Self-Liquidating - Agency Residential Mortgage-Backed Securities - Not/Partially Guaranteed (Not Exempt from RBC)					764,938	800,000	411	XXX
08164A-AG-7	BMARK 2025-V13 A402/07/2025	CITIGROUP		823,992	800,000	2,326	1.A FE
1079999999. Subtotal - Asset-Backed Securities - Financial Asset-Backed - Self-Liquidating - Non-Agency Commercial Mortgage-Backed Securities (Unaffiliated)					823,992	800,000	2,326	XXX
05377R-HM-9	AESOP 23-802/04/2025	VARIOUS		777,813	750,000	1,881	1.A FE
1119999999. Subtotal - Asset-Backed Securities - Financial Asset-Backed - Self-Liquidating - Other Financial Asset-Backed Securities - Self-Liquidating (Unaffiliated)					777,813	750,000	1,881	XXX
1889999999. Total - Asset-Backed Securities (Unaffiliated)					2,366,742	2,350,000	4,618	XXX
1899999999. Total - Asset-Backed Securities (Affiliated)								XXX
1909999997. Total - Asset-Backed Securities - Part 3					2,366,742	2,350,000	4,618	XXX
1909999998. Total - Asset-Backed Securities - Part 5					XXX	XXX	XXX	XXX
1909999999. Total - Asset-Backed Securities					2,366,742	2,350,000	4,618	XXX
2009999999. Total - Issuer Credit Obligations and Asset-Backed Securities					8,487,941	8,510,000	30,431	XXX
4509999997. Total - Preferred Stocks - Part 3						XXX		XXX
4509999998. Total - Preferred Stocks - Part 5					XXX	XXX	XXX	XXX
4509999999. Total - Preferred Stocks						XXX		XXX
85572#-10-5	STATE AUTO LABS CORP03/31/2025	Contribution	0.000	581,079			
5929999999. Subtotal - Common Stocks - Parent, Subsidiaries and Affiliates Other					581,079	XXX		XXX
5989999997. Total - Common Stocks - Part 3					581,079	XXX		XXX
5989999998. Total - Common Stocks - Part 5					XXX	XXX	XXX	XXX
5989999999. Total - Common Stocks					581,079	XXX		XXX
5999999999. Total - Preferred and Common Stocks					581,079	XXX		XXX
6009999999 - Totals					9,069,020	XXX	30,431	XXX

STATEMENT AS OF MARCH 31, 2025 OF THE STATE AUTOMOBILE MUTUAL INSURANCE COMPANY

SCHEDULE D - PART 4

Show All Long-Term Bonds and Stock Sold, Redeemed or Otherwise Disposed of During the Current Quarter

1	2	3	4	5	6	7	8	9	Change In Book/Adjusted Carrying Value					15	16	17	18	19	20	21
									10	11	12	13	14							
CUSIP Identification	Description	Disposal Date	Name of Purchaser	Number of Shares of Stock	Consideration	Par Value	Actual Cost	Prior Year Book/ Adjusted Carrying Value	Unrealized Valuation Increase/ (Decrease)	Current Year's (Amortization)/ Accretion	Current Year's Other Than Temporary Impairment Recognized	Total Change in Book/ Adjusted Carrying Value (10 + 11 - 12)	Total Foreign Exchange Change in Book /Adjusted Carrying Value	Book/ Adjusted Carrying Value at Disposal Date	Foreign Exchange Gain (Loss) on Disposal	Realized Gain (Loss) on Disposal	Total Gain (Loss) on Disposal	Bond Interest/ Stock Dividends Received During Year	Stated Contractual Maturity Date	NAIC Designation, NAIC Designation Modifier and SVO Administrative Symbol
.91282C-GG-0	TREASURY NOTE01/31/2025 .	MATURITY		3,000,000	3,000,000	2,977,969	2,998,155		1,845		1,845		3,000,000				61,875	01/31/2025	1.A
.91282C-GN-5	TREASURY NOTE02/28/2025 .	MATURITY		5,000,000	5,000,000	4,984,297	4,997,358		2,642		2,642		5,000,000				115,625	02/28/2025	1.A
0019999999. Subtotal - Issuer Credit Obligations - U.S. Government Obligations (Exempt from RBC)					8,000,000	8,000,000	7,962,266	7,995,514		4,486		4,486		8,000,000				177,500	XXX	XXX
.010268-CP-3	ALABAMA FED AID HWY FIN AUTH S03/27/2025 .			988,260	1,040,000	929,219	958,597		6,895		6,895		965,493		22,767	22,767	9,206	09/01/2027	1.C FE
0049999999. Subtotal - Issuer Credit Obligations - Municipal Bonds - General Obligations (Direct and Guaranteed)					988,260	1,040,000	929,219	958,597		6,895		6,895		965,493		22,767	22,767	9,206	XXX	XXX
0489999999. Total - Issuer Credit Obligations (Unaffiliated)					8,988,260	9,040,000	8,891,485	8,954,111		11,382		11,382		8,965,493		22,767	22,767	186,706	XXX	XXX
0499999999. Total - Issuer Credit Obligations (Affiliated)																			XXX	XXX
0509999997. Total - Issuer Credit Obligations - Part 4					8,988,260	9,040,000	8,891,485	8,954,111		11,382		11,382		8,965,493		22,767	22,767	186,706	XXX	XXX
0509999998. Total - Issuer Credit Obligations - Part 5					XXX	XXX	XXX	XXX	XXX	XXX	XXX	XXX	XXX	XXX	XXX	XXX	XXX	XXX	XXX	XXX
0509999999. Total - Issuer Credit Obligations					8,988,260	9,040,000	8,891,485	8,954,111		11,382		11,382		8,965,493		22,767	22,767	186,706	XXX	XXX
.3140LK-AX-1	FNMA 7YR MULTI BALLOON03/01/2025 .	PAY DOWN		5,671	5,671	5,663	5,662		8		8		5,671				51	05/01/2030	1.A
1039999999. Subtotal - Asset-Backed Securities - Financial Asset-Backed - Self-Liquidating - Agency Residential Mortgage-Backed Securities - Not/Partially Guaranteed (Not Exempt from RBC)					5,671	5,671	5,663	5,662		8		8		5,671				51	XXX	XXX
.38379R-OP-1	GNMA 17-4703/01/2025 .	PAY DOWN		6,669	6,669	6,578	6,467		202		202		6,669				28	08/16/2058	1.A
1049999999. Subtotal - Asset-Backed Securities - Financial Asset-Backed - Self-Liquidating - Agency Commercial Mortgage-Backed Securities - Not/Partially Guaranteed (Not Exempt from RBC)					6,669	6,669	6,578	6,467		202		202		6,669				28	XXX	XXX
.09660S-AT-7	BMO 24-5C4-A202/12/2025 .	BMO CAPITAL MARKETS		821,375	800,000	808,000	807,789		(305)		(305)		807,484		13,891	13,891	9,672	02/15/2057	1.A FE
1079999999. Subtotal - Asset-Backed Securities - Financial Asset-Backed - Self-Liquidating - Non-Agency Commercial Mortgage-Backed Securities (Unaffiliated)					821,375	800,000	808,000	807,789		(305)		(305)		807,484		13,891	13,891	9,672	XXX	XXX
.55820J-BC-3	MDPK 2016-21A01/15/2025 .	PAY DOWN		12,718	12,718	12,718	12,718						12,718				195	10/15/2032	1.A FE
.670881-AM-3	CCP 2020-19A03/25/2025 .	PAY DOWN		450,000	450,000	450,450	450,381		(381)		(381)		450,000				11,426	10/20/2034	1.A Z
.92338B-AW-5	VERDE 2019-1A ARR01/15/2025 .	PAY DOWN		70,685	70,685	70,685	70,685						70,685				1,042	04/15/2032	1.A FE
1099999999. Subtotal - Asset-Backed Securities - Financial Asset-Backed - Self-Liquidating - Non-Agency - CLOs/CBOs/CDOs (Unaffiliated)					533,403	533,403	533,853	533,784		(381)		(381)		533,403				12,662	XXX	XXX
.12530V-AA-3	CFMT 2024-HB13 A03/25/2025 .	PAY DOWN		86,409	86,409	82,374	83,497		2,911		2,911		86,409				435	05/25/2034	1.A Z
.33767J-AA-0	FKH 20-SFR203/01/2025 .	PAY DOWN		9,717	9,717	8,948	9,347		369		369		9,717				27	10/19/2037	1.A FE
1339999999. Subtotal - Asset-Backed Securities - Financial Asset-Backed - Not Self-Liquidating - Other Financial Asset-Backed Securities - Not Self-Liquidating (Unaffiliated)					96,125	96,125	91,322	92,845		3,281		3,281		96,125				462	XXX	XXX
1889999999. Total - Asset-Backed Securities (Unaffiliated)					1,463,243	1,441,868	1,445,415	1,446,547		2,805		2,805		1,449,352		13,891	13,891	22,875	XXX	XXX
1899999999. Total - Asset-Backed Securities (Affiliated)																			XXX	XXX
1909999997. Total - Asset-Backed Securities - Part 4					1,463,243	1,441,868	1,445,415	1,446,547		2,805		2,805		1,449,352		13,891	13,891	22,875	XXX	XXX
1909999998. Total - Asset-Backed Securities - Part 5					XXX	XXX	XXX	XXX	XXX	XXX	XXX	XXX	XXX	XXX	XXX	XXX	XXX	XXX	XXX	XXX
1909999999. Total - Asset-Backed Securities					1,463,243	1,441,868	1,445,415	1,446,547		2,805		2,805		1,449,352		13,891	13,891	22,875	XXX	XXX
2009999999. Total - Issuer Credit Obligations and Asset-Backed Securities					10,451,503	10,481,868	10,336,900	10,400,658		14,187		14,187		10,414,845		36,658	36,658	209,582	XXX	XXX
4509999997. Total - Preferred Stocks - Part 4						XXX													XXX	XXX
4509999998. Total - Preferred Stocks - Part 5					XXX	XXX	XXX	XXX	XXX	XXX	XXX	XXX	XXX	XXX	XXX	XXX	XXX	XXX	XXX	XXX
4509999999. Total - Preferred Stocks						XXX													XXX	XXX
.85572#-10-5	STATE AUTO LABS CORP02/28/2025 .	Contribution	0.000	3,190,001		3,190,001							3,190,001						
5929999999. Subtotal - Common Stocks - Parent, Subsidiaries and Affiliates Other					3,190,001	XXX	3,190,001							3,190,001					XXX	XXX
5989999997. Total - Common Stocks - Part 4					3,190,001	XXX	3,190,001							3,190,001					XXX	XXX
5989999998. Total - Common Stocks - Part 5					XXX	XXX	XXX	XXX	XXX	XXX	XXX	XXX	XXX	XXX	XXX	XXX	XXX	XXX	XXX	XXX

STATEMENT AS OF MARCH 31, 2025 OF THE STATE AUTOMOBILE MUTUAL INSURANCE COMPANY

SCHEDULE D - PART 4

Show All Long-Term Bonds and Stock Sold, Redeemed or Otherwise Disposed of During the Current Quarter

1	2	3	4	5	6	7	8	9	Change In Book/Adjusted Carrying Value					15	16	17	18	19	20	21
									10	11	12	13	14							
CUSIP Ident- ification	Description	Disposal Date	Name of Purchaser	Number of Shares of Stock	Consid- eration	Par Value	Actual Cost	Prior Year Book/ Adjusted Carrying Value	Unrealized Valuation Increase/ (Decrease)	Current Year's (Amor- tization)/ Accretion	Current Year's Other Than Temporary Impairment Recogn- ized	Total Change in Book/ Adjusted Carrying Value (10 + 11 - 12)	Total Foreign Exchange Change in Book /Adjusted Carrying Value	Book/ Adjusted Carrying Value at Disposal Date	Foreign Exchange Gain (Loss) on Disposal	Realized Gain (Loss) on Disposal	Total Gain (Loss) on Disposal	Bond Interest/ Stock Dividends Received During Year	Stated Con- tractual Maturity Date	NAIC Desig- nation, NAIC Desig- nation Modifier and SVO Admini- strative Symbol
5989999999. Total - Common Stocks					3,190,001	XXX	3,190,001							3,190,001					XXX	XXX
5999999999. Total - Preferred and Common Stocks					3,190,001	XXX	3,190,001							3,190,001					XXX	XXX
6009999999 - Totals					13,641,504	XXX	13,526,901	10,400,658		14,187		14,187		13,604,846		36,658	36,658	209,582	XXX	XXX

Schedule DB - Part A - Section 1 - Options, Caps, Floors, Collars, Swaps and Forwards Open
N O N E

Schedule DB - Part B - Section 1 - Futures Contracts Open
N O N E

Schedule DB - Part B - Section 1B - Brokers with whom cash deposits have been made
N O N E

Schedule DB - Part D - Section 1 - Counterparty Exposure for Derivative Instruments Open
N O N E

Schedule DB - Part D-Section 2 - Collateral for Derivative Instruments Open - Pledged By
N O N E

Schedule DB - Part D-Section 2 - Collateral for Derivative Instruments Open - Pledged To
N O N E

Schedule DB - Part E - Derivatives Hedging Variable Annuity Guarantees
N O N E

Schedule DL - Part 1 - Reinvested Collateral Assets Owned
N O N E

Schedule DL - Part 2 - Reinvested Collateral Assets Owned
N O N E

SCHEDULE E - PART 1 - CASH

Month End Depository Balances

1	2	3	4	5	Book Balance at End of Each Month During Current Quarter			9
					6	7	8	
					First Month	Second Month	Third Month	
Depository	Restricted Asset Code	Rate of Interest	Amount of Interest Received During Current Quarter	Amount of Interest Accrued at Current Statement Date				*
JPMorgan - Trust Columbus, OH 43215		3.270			4,523,933	8,124,516	6,578,350	XXX.
PNC Bank - Savings Columbus, OH 43215		4.180	510,361		53,549,346	53,717,920	39,668,183	XXX.
PNC Bank - Operating/Other ... Columbus, OH 43215		3.040	89,350		(44,645,859)	(53,557,485)	(26,597,559)	XXX.
JPMorgan Chase Columbus, OH 43215		4.390	45,702		7,110,468	6,432,601	2,494,594	XXX.
Huntington National Bank Columbus, OH 43215		0.250	396		1,202,246	1,087,280	4,110,478	XXX.
FHLB Cincinnati Cincinnati, OH 45202		3.800	843		90,620	90,916	91,185	XXX.
0199998. Deposits in ... depositories that do not exceed the allowable limit in any one depository (See instructions) - Open Depositories	XXX	XXX						XXX
0199999. Totals - Open Depositories	XXX	XXX	646,652		21,830,754	15,895,748	26,345,231	XXX
0299998. Deposits in ... depositories that do not exceed the allowable limit in any one depository (See instructions) - Suspended Depositories	XXX	XXX						XXX
0299999. Totals - Suspended Depositories	XXX	XXX						XXX
0399999. Total Cash on Deposit	XXX	XXX	646,652		21,830,754	15,895,748	26,345,231	XXX
0499999. Cash in Company's Office	XXX	XXX	XXX	XXX				XXX
.....							
.....							
.....							
.....							
.....							
.....							
0599999. Total - Cash	XXX	XXX	646,652		21,830,754	15,895,748	26,345,231	XXX

STATEMENT AS OF MARCH 31, 2025 OF THE STATE AUTOMOBILE MUTUAL INSURANCE COMPANY

SCHEDULE E - PART 2 - CASH EQUIVALENTS

Show Investments Owned End of Current Quarter

[illegible]



SUPPLEMENT FOR THE QUARTER ENDING MARCH 31, 2025 OF THE STATE AUTOMOBILE MUTUAL INSURANCE COMPANY

DIRECTOR AND OFFICER INSURANCE COVERAGE SUPPLEMENT

Year To Date For The Period Ended MARCH 31, 2025

NAIC Group Code 0111 NAIC Company Code 25135

Company Name STATE AUTOMOBILE MUTUAL INSURANCE COMPANY

If the reporting entity writes any director and officer (D&O) business, please provide the following:

1. Monoline Policies

1 Direct Written Premium	2 Direct Earned Premium	3 Direct Losses Incurred
\$	\$	\$

2. Commercial Multiple Peril (CMP) Packaged Policies

- 2.1 Does the reporting entity provide D&O liability coverage as part of a CMP packaged policy?

Yes [] No []
- 2.2 Can the direct premium earned for D&O liability coverage provided as part of a CMP packaged policy be quantified or estimated?

Yes [] No []
- 2.3 If the answer to question 2.2 is yes, provide the quantified or estimated direct premium earned amount for D&O liability coverage in CMP packaged policies

2.31 Amount quantified:

\$

2.32 Amount estimated using reasonable assumptions:

\$
- 2.4 If the answer to question 2.1 is yes, provide direct losses incurred (losses paid plus change in case reserves) for the D&O liability coverage provided in CMP packaged policies.

\$