



PROPERTY AND CASUALTY COMPANIES - ASSOCIATION EDITION

QUARTERLY STATEMENT

AS OF MARCH 31, 2025  
OF THE CONDITION AND AFFAIRS OF THE

NATIONWIDE GENERAL INSURANCE COMPANY

NAIC Group Code01400140NAIC Company Code23760Employer's ID Number31-4425763  
(Current)(Prior)

Organized under the Laws ofOHIO, State of Domicile or Port of EntryOH

Country of DomicileUnited States of America

Incorporated/Organized08/22/1957Commenced Business09/03/1958

Statutory Home OfficeONE WEST NATIONWIDE BLVD.,COLUMBUS, OH, US 43215-2220  
(Street and Number)(City or Town, State, Country and Zip Code)

Main Administrative OfficeONE WEST NATIONWIDE BLVD.  
(Street and Number)  
COLUMBUS, OH, US 43215-2220614-249-1545  
(City or Town, State, Country and Zip Code)(Area Code) (Telephone Number)

Mail AddressONE WEST NATIONWIDE BLVD., 1-14-301COLUMBUS, OH, US 43215-2220  
(Street and Number or P.O. Box)(City or Town, State, Country and Zip Code)

Primary Location of Books and RecordsONE WEST NATIONWIDE BLVD., 1-14-301  
(Street and Number)  
COLUMBUS, OH, US 43215-2220614-249-1545  
(City or Town, State, Country and Zip Code)(Area Code) (Telephone Number)

Internet Website AddressWWW.NATIONWIDE.COM

Statutory Statement ContactANDREA D. IACOBONI614-249-1545  
(Name)(Area Code) (Telephone Number)  
FINRPT@NATIONWIDE.COM866-315-1430  
(E-mail Address)(FAX Number)

OFFICERS

PRESIDENT & COOMARK ALLEN BERVENVP & TREASURERPETER JUSTIN ROTHERMEL

SVP & SECRETARYDENISE LYNN SKINGLE

OTHER

KEVIN PAUL SCHEIDERER, VP-CHIEF TAX OFFC

DIRECTORS OR TRUSTEES

CHARLES ANTHONY BEALMARK ALLEN BERVENOSCAR GUERRERO

CASEY ELLEN KEMPTONGEORGE MIDDLETON WILLIAMS III

State ofOHIOSS:

County ofFRANKLIN

The officers of this reporting entity being duly sworn, each depose and say that they are the described officers of said reporting entity, and that on the reporting period stated above, all of the herein described assets were the absolute property of the said reporting entity, free and clear from any liens or claims thereon, except as herein stated, and that this statement, together with related exhibits, schedules and explanations therein contained, annexed or referred to, is a full and true statement of all the assets and liabilities and of the condition and affairs of the said reporting entity as of the reporting period stated above, and of its income and deductions therefrom for the period ended, and have been completed in accordance with the NAIC Annual Statement Instructions and Accounting Practices and Procedures manual except to the extent that: (1) state law may differ; or, (2) that state rules or regulations require differences in reporting not related to accounting practices and procedures, according to the best of their information, knowledge and belief, respectively. Furthermore, the scope of this attestation by the described officers also includes the related corresponding electronic filing with the NAIC, when required, that is an exact copy (except for formatting differences due to electronic filing) of the enclosed statement. The electronic filing may be requested by various regulators in lieu of or in addition to the enclosed statement.

MARK ALLEN BERVEN  
PRESIDENT & COO

DENISE LYNN SKINGLE  
SVP & SECRETARY

PETER JUSTIN ROTHERMEL  
VP & TREASURER

Subscribed and sworn to before me this13<sup>th</sup> day ofMAY2025

a. Is this an original filing? Yes [ X ] No [ ]

b. If no,  
1. State the amendment number.....  
2. Date filed .....  
3. Number of pages attached.....



ANDREW SWARTZEL  
NOTARY PUBLIC • STATE OF OHIO  
Comm. No. 2021-RE-839107  
My Commission Expires Oct. 24, 2026

STATEMENT AS OF MARCH 31, 2025 OF THE NATIONWIDE GENERAL INSURANCE COMPANY

ASSETS

	Current Statement Date			4 December 31 Prior Year Net Admitted Assets
	1 Assets	2 Nonadmitted Assets	3 Net Admitted Assets (Cols. 1 - 2)	
1. Bonds .....	510,582,769		510,582,769	491,965,524
2. Stocks:				
2.1 Preferred stocks .....				
2.2 Common stocks .....				
3. Mortgage loans on real estate:				
3.1 First liens .....				
3.2 Other than first liens.....				
4. Real estate:				
4.1 Properties occupied by the company (less \$ .....0 encumbrances) .....				
4.2 Properties held for the production of income (less \$ .....0 encumbrances) .....				
4.3 Properties held for sale (less \$ .....0 encumbrances) .....				
5. Cash (\$ .....299,377 ), cash equivalents (\$ .....5,022,987 ) and short-term investments (\$ ..... ) .....	5,322,364		5,322,364	16,186,656
6. Contract loans (including \$ .....0 premium notes) .....				
7. Derivatives .....				
8. Other invested assets .....	7,956,437		7,956,437	9,341,398
9. Receivables for securities .....				
10. Securities lending reinvested collateral assets .....				
11. Aggregate write-ins for invested assets .....				
12. Subtotals, cash and invested assets (Lines 1 to 11) .....	523,861,570		523,861,570	517,493,578
13. Title plants less \$ .....0 charged off (for Title insurers only) .....				
14. Investment income due and accrued .....	4,330,790		4,330,790	4,461,684
15. Premiums and considerations:				
15.1 Uncollected premiums and agents' balances in the course of collection .....	91,074,045	816,655	90,257,390	92,072,383
15.2 Deferred premiums, agents' balances and installments booked but deferred and not yet due (including \$ .....0 earned but unbilled premiums) .....	361,083,201	1,238,982	359,844,219	357,550,025
15.3 Accrued retrospective premiums (\$ .....0 ) and contracts subject to redetermination (\$ .....0 ) .....				
16. Reinsurance:				
16.1 Amounts recoverable from reinsurers .....	100,449,725		100,449,725	106,072,265
16.2 Funds held by or deposited with reinsured companies .....	231,976		231,976	534,934
16.3 Other amounts receivable under reinsurance contracts .....	42,414,610		42,414,610	64,241,738
17. Amounts receivable relating to uninsured plans .....				
18.1 Current federal and foreign income tax recoverable and interest thereon ....				
18.2 Net deferred tax asset .....	8,322,897	4,317,622	4,005,275	3,980,449
19. Guaranty funds receivable or on deposit .....	118,730		118,730	126,886
20. Electronic data processing equipment and software .....				
21. Furniture and equipment, including health care delivery assets (\$ .....0 ) .....				
22. Net adjustment in assets and liabilities due to foreign exchange rates .....				
23. Receivables from parent, subsidiaries and affiliates .....	28,613,974		28,613,974	29,374,621
24. Health care (\$ .....0 ) and other amounts receivable .....				
25. Aggregate write-ins for other than invested assets .....	3,478,162	261,618	3,216,544	2,913,720
26. Total assets excluding Separate Accounts, Segregated Accounts and Protected Cell Accounts (Lines 12 to 25) .....	1,163,979,680	6,634,877	1,157,344,803	1,178,822,283
27. From Separate Accounts, Segregated Accounts and Protected Cell Accounts .....				
28. Total (Lines 26 and 27)	1,163,979,680	6,634,877	1,157,344,803	1,178,822,283
DETAILS OF WRITE-INS				
1101. ....				
1102. ....				
1103. ....				
1198. Summary of remaining write-ins for Line 11 from overflow page .....				
1199. Totals (Lines 1101 through 1103 plus 1198)(Line 11 above)				
2501. Miscellaneous .....	593,273		593,273	445,826
2502. Third party administrator receivable .....	910,769	259,471	651,298	522,187
2503. Recoupment receivable .....	159,706		159,706	17,686
2598. Summary of remaining write-ins for Line 25 from overflow page .....	1,814,414	2,147	1,812,267	1,928,021
2599. Totals (Lines 2501 through 2503 plus 2598)(Line 25 above)	3,478,162	261,618	3,216,544	2,913,720

STATEMENT AS OF MARCH 31, 2025 OF THE NATIONWIDE GENERAL INSURANCE COMPANY

LIABILITIES, SURPLUS AND OTHER FUNDS

	1 Current Statement Date	2 December 31, Prior Year
1. Losses (current accident year \$ 16,606,603 )	136,870,563	138,013,101
2. Reinsurance payable on paid losses and loss adjustment expenses	6,136,407	5,848,476
3. Loss adjustment expenses	30,903,722	30,887,591
4. Commissions payable, contingent commissions and other similar charges	2,082,286	3,072,636
5. Other expenses (excluding taxes, licenses and fees)	2,703,084	2,713,794
6. Taxes, licenses and fees (excluding federal and foreign income taxes)	467,650	642,085
7.1 Current federal and foreign income taxes (including \$ 9,097 on realized capital gains (losses))	3,690,304	2,411,366
7.2 Net deferred tax liability		
8. Borrowed money \$ 0 and interest thereon \$ 0		
9. Unearned premiums (after deducting unearned premiums for ceded reinsurance of \$ 802,624,797 and including warranty reserves of \$ 211,873 and accrued accident and health experience rating refunds including \$ for medical loss ratio rebate per the Public Health Service Act)	76,989,239	77,917,181
10. Advance premium	1,557,376	1,138,540
11. Dividends declared and unpaid:		
11.1 Stockholders		
11.2 Policyholders	36,849	37,980
12. Ceded reinsurance premiums payable (net of ceding commissions)	559,732,122	584,809,304
13. Funds held by company under reinsurance treaties	272,355	617
14. Amounts withheld or retained by company for account of others	2,594,588	6,907,098
15. Remittances and items not allocated	351,981	450,034
16. Provision for reinsurance (including \$ 0 certified)		
17. Net adjustments in assets and liabilities due to foreign exchange rates		
18. Drafts outstanding		
19. Payable to parent, subsidiaries and affiliates	21,183,039	14,568,591
20. Derivatives		
21. Payable for securities		
22. Payable for securities lending		
23. Liability for amounts held under uninsured plans		
24. Capital notes \$ 0 and interest thereon \$ 0		
25. Aggregate write-ins for liabilities	6,603,980	8,009,456
26. Total liabilities excluding protected cell liabilities (Lines 1 through 25)	852,175,545	877,427,850
27. Protected cell liabilities		
28. Total liabilities (Lines 26 and 27)	852,175,545	877,427,850
29. Aggregate write-ins for special surplus funds	1,198,799	
30. Common capital stock	4,200,000	4,200,000
31. Preferred capital stock		
32. Aggregate write-ins for other than special surplus funds		
33. Surplus notes		
34. Gross paid in and contributed surplus	290,760,974	290,760,974
35. Unassigned funds (surplus)	9,009,485	6,433,459
36. Less treasury stock, at cost:		
36.1 0 shares common (value included in Line 30 \$ 0 )		
36.2 0 shares preferred (value included in Line 31 \$ 0 )		
37. Surplus as regards policyholders (Lines 29 to 35, less 36)	305,169,258	301,394,433
38. Totals (Page 2, Line 28, Col. 3)	1,157,344,803	1,178,822,283
DETAILS OF WRITE-INS		
2501. Contingent suit liability	118,262	79,407
2502. Miscellaneous liabilities	6,073,309	7,539,060
2503. Escrow liability	64,394	109,975
2598. Summary of remaining write-ins for Line 25 from overflow page	348,015	281,014
2599. Totals (Lines 2501 through 2503 plus 2598)(Line 25 above)	6,603,980	8,009,456
2901. EU solvency directive	1,198,799	
2902.		
2903.		
2998. Summary of remaining write-ins for Line 29 from overflow page		
2999. Totals (Lines 2901 through 2903 plus 2998)(Line 29 above)	1,198,799	
3201.		
3202.		
3203.		
3298. Summary of remaining write-ins for Line 32 from overflow page		
3299. Totals (Lines 3201 through 3203 plus 3298)(Line 32 above)		

STATEMENT OF INCOME

	1	2	3
	Current Year to Date	Prior Year to Date	Prior Year Ended December 31
UNDERWRITING INCOME			
1. Premiums earned:			
1.1 Direct (written \$ .....474,132,047 ) .....	496,206,928	530,407,073	2,077,662,495
1.2 Assumed (written \$ ..... 34,561,792 ) .....	38,468,118	50,073,102	208,281,855
1.3 Ceded (written \$ .....467,339,163 ) .....	492,392,697	534,148,664	2,107,140,655
1.4 Net (written \$ ..... 41,354,676 ) .....	42,282,349	46,331,511	178,803,695
DEDUCTIONS:			
2. Losses incurred (current accident year \$ ..... 24,514,226 ): .....			
2.1 Direct .....	277,914,493	354,582,384	1,313,478,607
2.2 Assumed .....	20,697,097	30,261,391	133,240,336
2.3 Ceded .....	274,238,904	357,406,793	1,339,885,294
2.4 Net .....	24,372,686	27,436,982	106,833,649
3. Loss adjustment expenses incurred .....	4,021,880	3,779,504	15,485,851
4. Other underwriting expenses incurred .....	13,828,953	14,681,474	57,985,914
5. Aggregate write-ins for underwriting deductions .....			
6. Total underwriting deductions (Lines 2 through 5) .....	42,223,519	45,897,960	180,305,414
7. Net income of protected cells .....			
8. Net underwriting gain (loss) (Line 1 minus Line 6 + Line 7) .....	58,830	433,551	(1,501,719)
INVESTMENT INCOME			
9. Net investment income earned .....	3,679,574	4,676,647	15,190,177
10. Net realized capital gains (losses) less capital gains tax of \$ .....9,097 .....	(110,073)	(288,076)	569,955
11. Net investment gain (loss) (Lines 9 + 10) .....	3,569,501	4,388,571	15,760,132
OTHER INCOME			
12. Net gain or (loss) from agents' or premium balances charged off (amount recovered \$ ..... (3,512) amount charged off \$ ..... 94,427 ) .....	(97,939)	(164,007)	(602,865)
13. Finance and service charges not included in premiums .....	225,957	264,151	999,060
14. Aggregate write-ins for miscellaneous income .....	1,076,792	286,241	1,322,769
15. Total other income (Lines 12 through 14) .....	1,204,810	386,385	1,718,964
16. Net income before dividends to policyholders, after capital gains tax and before all other federal and foreign income taxes (Lines 8 + 11 + 15) .....	4,833,141	5,208,507	15,977,377
17. Dividends to policyholders .....	6,675	8,011	43,625
18. Net income, after dividends to policyholders, after capital gains tax and before all other federal and foreign income taxes (Line 16 minus Line 17) .....	4,826,466	5,200,496	15,933,752
19. Federal and foreign income taxes incurred .....	1,269,842	962,915	3,209,567
20. Net income (Line 18 minus Line 19)(to Line 22) .....	3,556,624	4,237,581	12,724,185
CAPITAL AND SURPLUS ACCOUNT			
21. Surplus as regards policyholders, December 31 prior year .....	301,394,433	288,402,607	288,402,607
22. Net income (from Line 20) .....	3,556,624	4,237,581	12,724,185
23. Net transfers (to) from Protected Cell accounts .....			
24. Change in net unrealized capital gains (losses) less capital gains tax of \$ ..... 19,575 .....	72,088	9,912	327,961
25. Change in net unrealized foreign exchange capital gain (loss) .....	1,553	72	374
26. Change in net deferred income tax .....	284,433	(88,768)	(743,768)
27. Change in nonadmitted assets .....	(273,244)	391,070	744,242
28. Change in provision for reinsurance .....			
29. Change in surplus notes .....			
30. Surplus (contributed to) withdrawn from protected cells .....			
31. Cumulative effect of changes in accounting principles .....			
32. Capital changes:			
32.1 Paid in .....			
32.2 Transferred from surplus (Stock Dividend) .....			
32.3 Transferred to surplus .....			
33. Surplus adjustments:			
33.1 Paid in .....			
33.2 Transferred to capital (Stock Dividend) .....			
33.3 Transferred from capital .....			
34. Net remittances from or (to) Home Office .....			
35. Dividends to stockholders .....			
36. Change in treasury stock .....			
37. Aggregate write-ins for gains and losses in surplus .....	133,371	10,232	(61,168)
38. Change in surplus as regards policyholders (Lines 22 through 37).....	3,774,825	4,560,099	12,991,826
39. Surplus as regards policyholders, as of statement date (Lines 21 plus 38)	305,169,258	292,962,706	301,394,433
DETAILS OF WRITE-INS			
0501. ....			
0502. ....			
0503. ....			
0598. Summary of remaining write-ins for Line 5 from overflow page .....			
0599. Totals (Lines 0501 through 0503 plus 0598)(Line 5 above)			
1401. Other .....	1,115,646	281,035	1,343,769
1402. Change in contingent suit liability .....	(38,854)	5,206	(21,000)
1403. ....			
1498. Summary of remaining write-ins for Line 14 from overflow page .....			
1499. Totals (Lines 1401 through 1403 plus 1498)(Line 14 above)	1,076,792	286,241	1,322,769
3701. Change in surplus pooled nonadmitted premiums in the course of collection offset .....	133,371	10,232	(61,168)
3702. ....			
3703. ....			
3798. Summary of remaining write-ins for Line 37 from overflow page .....			
3799. Totals (Lines 3701 through 3703 plus 3798)(Line 37 above)	133,371	10,232	(61,168)

STATEMENT AS OF MARCH 31, 2025 OF THE NATIONWIDE GENERAL INSURANCE COMPANY

CASH FLOW

	1 Current Year To Date	2 Prior Year To Date	3 Prior Year Ended December 31
Cash from Operations			
1. Premiums collected net of reinsurance .....	16,187,341	43,822,680	212,899,639
2. Net investment income .....	5,144,137	4,686,625	19,986,606
3. Miscellaneous income .....	308,969	340,597	1,639,753
4. Total (Lines 1 to 3) .....	21,640,447	48,849,902	234,525,998
5. Benefit and loss related payments .....	19,597,989	27,981,023	96,835,543
6. Net transfers to Separate Accounts, Segregated Accounts and Protected Cell Accounts .....			
7. Commissions, expenses paid and aggregate write-ins for deductions .....	(2,825,088)	10,251,679	100,773,324
8. Dividends paid to policyholders .....	7,806	8,215	45,829
9. Federal and foreign income taxes paid (recovered) net of \$ ..... tax on capital gains (losses) .....			(1,804,015)
10. Total (Lines 5 through 9) .....	16,780,707	38,240,917	195,850,681
11. Net cash from operations (Line 4 minus Line 10) .....	4,859,740	10,608,985	38,675,317
Cash from Investments			
12. Proceeds from investments sold, matured or repaid:			
12.1 Bonds .....	12,396,453	34,746,527	66,259,829
12.2 Stocks .....			
12.3 Mortgage loans .....			
12.4 Real estate .....			
12.5 Other invested assets .....			
12.6 Net gains or (losses) on cash, cash equivalents and short-term investments .....			
12.7 Miscellaneous proceeds .....			
12.8 Total investment proceeds (Lines 12.1 to 12.7) .....	12,396,453	34,746,527	66,259,829
13. Cost of investments acquired (long-term only):			
13.1 Bonds .....	30,968,008	11,426,049	53,731,153
13.2 Stocks .....			
13.3 Mortgage loans .....			
13.4 Real estate .....			
13.5 Other invested assets .....	141	2,874,246	4,368,774
13.6 Miscellaneous applications .....			
13.7 Total investments acquired (Lines 13.1 to 13.6) .....	30,968,149	14,300,295	58,099,928
14. Net increase/(decrease) in contract loans and premium notes .....			
15. Net cash from investments (Line 12.8 minus Line 13.7 and Line 14) .....	(18,571,696)	20,446,232	8,159,902
Cash from Financing and Miscellaneous Sources			
16. Cash provided (applied):			
16.1 Surplus notes, capital notes .....			
16.2 Capital and paid in surplus, less treasury stock .....			
16.3 Borrowed funds .....			
16.4 Net deposits on deposit-type contracts and other insurance liabilities .....			
16.5 Dividends to stockholders .....			
16.6 Other cash provided (applied) .....	2,847,664	(30,513,223)	(32,164,897)
17. Net cash from financing and miscellaneous sources (Line 16.1 through Line 16.4 minus Line 16.5 plus Line 16.6) .....	2,847,664	(30,513,223)	(32,164,897)
RECONCILIATION OF CASH, CASH EQUIVALENTS AND SHORT-TERM INVESTMENTS			
18. Net change in cash, cash equivalents and short-term investments (Line 11, plus Lines 15 and 17) .	(10,864,292)	541,994	14,670,322
19. Cash, cash equivalents and short-term investments:			
19.1 Beginning of year .....	16,186,656	1,516,333	1,516,333
19.2 End of period (Line 18 plus Line 19.1) .....	5,322,364	2,058,327	16,186,656

Note: Supplemental disclosures of cash flow information for non-cash transactions:

20.0001. Tax Credit Commitment Liabilities .....			3,250,320
20.0002. Exchange of Bond Investment to Bond Investment .....	2,439,433	2,752,489	3,121,768

NOTES TO THE FINANCIAL STATEMENTS

Note 1 – Summary of Significant Accounting Policies and Going Concern

A. Accounting Practices

The accompanying statutory financial statements of Nationwide General Insurance Company (the Company) have been prepared in conformity with accounting practices prescribed or permitted by the National Association of Insurance Commissioners (NAIC) and the State of Ohio.

The Ohio Department of Insurance (Department) recognizes only statutory accounting practices (SAP) prescribed or permitted by the State of Ohio for determining and reporting the financial condition and results of operations of an insurance company, as well as, determining its solvency under the Ohio Insurance law. The NAIC’s *Accounting Practices and Procedures Manual* (NAIC SAP) has been adopted as a component of prescribed or permitted practices by the State of Ohio. The Company has no statutory accounting practices that differ from the NAIC SAP.

A reconciliation of the Company’s net income and capital and surplus between NAIC SAP and practices prescribed and permitted by the State of Ohio is shown below:

	SSAP #	F/S Page	F/S Line #	2025	2024
<b>Net Income</b>					
(1) Nationwide General Insurance Company state basis (Page 4, Line 20, Columns 1 & 3)	XXX	XXX	XXX	\$ 3,556,624	\$ 12,724,185
(2) State Prescribed Practices that are an increase/(decrease) from NAIC SAP				-	-
(3) State Permitted Practices that are an increase/(decrease) from NAIC SAP				-	-
(4) NAIC SAP (1-2-3=4)	XXX	XXX	XXX	\$ 3,556,624	\$ 12,724,185
<b>Surplus</b>					
(5) Nationwide General Insurance Company state basis (Page 3, Line 37, Columns 1 & 2)	XXX	XXX	XXX	\$ 305,169,258	\$ 301,394,433
(6) State Prescribed Practices that are an increase/(decrease) from NAIC SAP				-	-
(7) State Permitted Practices that are an increase/(decrease) from NAIC SAP				-	-
(8) NAIC SAP (5-6-7=8)	XXX	XXX	XXX	\$ 305,169,258	\$ 301,394,433

B. Use of Estimates in the Preparation of the Financial Statements

There were no changes that were considered significant to the Company from prior year end.

C. Accounting Policies

1. There were no changes that were considered significant to the Company from prior year end.
2. Bonds, excluding asset-backed securities, are stated at amortized cost except those with a NAIC designation of “3” through “6”, which are stated at the lower of amortized cost or fair value. Amortization of premiums and discounts is calculated using the effective yield method. The Company does not hold any mandatory convertible securities or Securities Valuation Office (SVO) identified investments.
- 3-5. There were no changes that were considered significant to the Company from prior year end.
6. Asset-backed securities are stated at amortized cost or the lower of amortized cost or fair value in accordance with the provisions of Statement of Statutory Accounting Principles (SSAP) No. 43 – *Asset-Backed Securities* and the *Purposes and Procedures Manual* of the NAIC SVO. The retrospective adjustment method is used to value asset-backed securities where the collection of all contractual cash flows is probable. For all other asset-backed securities, the Company uses the prospective adjustment method. Refer to Note 5(D) for a discussion of the other-than-temporary impairment policy for asset-backed securities.
- 7-13. There were no changes that were considered significant to the Company from prior year end.

D. Going Concern

Not applicable.

Note 2 – Accounting Changes and Corrections of Errors

Effective January 1, 2025, the Company adopted revisions to SSAP No. 26 – *Bonds*, SSAP No. 43 – *Asset-Backed Securities* and SSAP No. 21 – *Other Admitted Assets*, in conformity with the NAIC’s revised guidance to develop a principles-based definition for debt securities qualifying for reporting as a bond. The adopted revisions require the assessment of securities to focus on their substance rather than legal form, updated the accounting and reporting guidance for debt securities that qualify for reporting as a bond, updated the accounting and reporting guidance for debt securities that do not qualify for reporting as a bond, and updated guidance for the accounting and reporting of residual interests. There were no material impacts to the Company as a result of the adoption.

Effective January 1, 2025, the Company adopted the revisions to SSAP No. 93 – *Investments in Tax Credit Structures* and SSAP No. 94 – *State and Federal Tax Credits*. The revisions to SSAP No. 93 expand the scope of tax credit investments required to use the proportional amortization method and include additional annual disclosure requirements. The revisions to SSAP No. 94 require purchased tax credits to be recorded at face value with any discount deferred as a miscellaneous liability. Additional annual disclosures are also required as part of the revisions to SSAP No. 94. The adoptions did not have a material impact on the Company’s statutory financial statements.

Note 3 – Business Combinations and Goodwill

Not applicable.

Note 4 – Discontinued Operations

Not applicable.

Note 5 – Investments

A. Mortgage Loans, including Mezzanine Real Estate Loans

Not applicable.

NOTES TO THE FINANCIAL STATEMENTS

B. Debt Restructuring

Not applicable.

C. Reverse Mortgages

Not applicable.

D. Asset-Backed Securities

- 1. Prepayment assumptions are generally obtained using a model provided by a third-party vendor.
- 2. Not applicable.
- 3. Not applicable.
- 4. All impaired securities (fair value is less than cost or amortized cost) for which an other-than-temporary impairment has not been recognized in earnings as a realized loss (including securities with a recognized other-than-temporary impairment for non-interest related declines when a non-recognized interest related impairment remains):

a. The aggregate amount of unrealized losses:

1. Less than 12 Months	\$ (76,135)
2. 12 Months or Longer	\$ (8,504,916)

b. The aggregate related fair value of securities with unrealized losses:

1. Less than 12 Months	\$ 29,026,672
2. 12 Months or Longer	\$ 55,483,089

- 5. The Company periodically reviews asset-backed securities in an unrealized loss position by comparing the present value of cash flows, including estimated prepayments, expected to be collected from the security to the amortized cost basis of the security. If the present value of cash flows expected to be collected, discounted at the security's effective interest rate, is less than the amortized cost basis of the security, the impairment is considered other-than-temporary and a realized loss is recorded.

E. Dollar Repurchase Agreements and/or Securities Lending Transactions

Not applicable.

F. Repurchase Agreements Transactions Accounted for as Secured Borrowing

Not applicable.

G. Reverse Repurchase Agreements Transactions Accounted for as Secured Borrowing

Not applicable.

H. Repurchase Agreements Transactions Accounted for as a Sale

Not applicable.

I. Reverse Repurchase Agreements Transactions Accounted for as a Sale

Not applicable.

J. Real Estate

Not applicable.

K. Investments in Tax Credit Structures (tax credit investments)

There were no changes that were considered significant to the Company from prior year end.

L. Restricted Assets

There were no changes that were considered significant to the Company from prior year end.

M. Working Capital Finance Investments

Not applicable.

N. Offsetting and Netting of Assets and Liabilities

No assets or liabilities are offset and reported net in accordance with a valid right to offset per SSAP No. 64 – *Offsetting and Netting of Assets and Liabilities*.

O. 5GI Securities

Not applicable.

P. Short Sales

Not applicable.

Q. Prepayment Penalty and Acceleration Fees

Not applicable.

NOTES TO THE FINANCIAL STATEMENTS

R. Reporting Entity's Share of Cash Pool by Asset Type

Asset Type	Percent Share
(1) Cash	0%
(2) Cash equivalents	75%
(3) Short-term investments	25%
(4) Total (Must equal 100%)	100%

S. Aggregate Collateral Loans by Qualifying Investment Collateral

Not applicable.

**Note 6 – Joint Ventures, Partnerships and Limited Liability Companies**

There were no changes that were considered significant to the Company from prior year end.

**Note 7 – Investment Income**

There were no changes that were considered significant to the Company from prior year end.

**Note 8 – Derivative Instruments**

Not applicable.

**Note 9 – Income Taxes**

There were no changes that were considered significant to the Company from prior year end.

**Note 10 – Information Concerning Parent, Subsidiaries, Affiliates and Other Related Parties**

There were no changes that were considered significant to the Company from prior year end.

**Note 11 – Debt**

Not applicable.

**Note 12 – Retirement Plans, Deferred Compensation, Postemployment Benefits and Compensated Absences and Other Postretirement Benefit Plans**

There were no changes that were considered significant to the Company from prior year end.

**Note 13 – Capital and Surplus, Dividend Restrictions and Quasi-Reorganizations**

There were no changes that were considered significant to the Company from prior year end.

**Note 14 – Liabilities, Contingencies and Assessments**

There were no changes that were considered significant to the Company from prior year end.

**Note 15 – Leases**

Not applicable.

**Note 16 – Information about Financial Instruments with Off-Balance Sheet Risk and Financial Instruments with Concentrations of Credit Risk**

Not applicable.

**Note 17 – Sale, Transfer and Servicing of Financial Assets and Extinguishments of Liabilities**

Not applicable.

**Note 18 – Gain or Loss to the Reporting Entity from Uninsured Plans and the Uninsured Portion of Partially Insured Plans**

Not applicable.

**Note 19 – Direct Premium Written/Produced by Managing General Agents/Third-Party Administrators**

Not applicable.

**Note 20 – Fair Value Measurements**

A. Fair value is defined as the price that would be received to sell an asset or paid to transfer a liability in an orderly transaction between market participants at the measurement date. Fair value measurements are based upon observable and unobservable inputs. Observable inputs reflect market data obtained from independent sources while unobservable inputs reflect the Company's view of market assumptions in the absence of observable market information. The Company utilizes valuation techniques that maximize the use of observable inputs and minimize the use of unobservable inputs. In determining fair value, the Company uses various methods including market, income and cost approaches.

The Company categorizes its financial instruments into a three-level hierarchy based on the priority of the inputs to the valuation technique. The fair value hierarchy gives the highest priority to quoted prices in active markets for identical assets or liabilities (Level 1) and the lowest priority to unobservable inputs (Level 3). If the inputs used to measure fair value fall within different levels of the hierarchy, the category level is based on the lowest priority level input that is significant to the fair value measurement of the instrument in its entirety.

The Company categorizes assets and liabilities held at fair value in the statutory statements of assets and liabilities, surplus and other funds as follows:

*Level 1.* Unadjusted quoted prices accessible in active markets for identical assets or liabilities at the measurement date and mutual funds where the value per share (unit) is determined and published daily and is the basis for current transactions.

*Level 2.* Unadjusted quoted prices for similar assets or liabilities in active markets, quoted prices for identical or similar assets or liabilities in markets that are not active or inputs (other than quoted prices) that are observable or that are derived principally from or corroborated by observable market data through correlation or other means. Primary inputs to this valuation technique may include comparative trades, bid/asks, interest rate movements, U.S. Treasury rates, Secured Overnight Financing Rate, prime rates, cash flows, maturity dates, call ability, estimated prepayments and/or underlying collateral values.



NOTES TO THE FINANCIAL STATEMENTS

Level 3. Prices or valuation techniques that require inputs that are both unobservable and significant to the overall fair value measurement. Inputs reflect management's best estimates of the assumptions market participants would use at the measurement date in pricing the asset or liability. Consideration is given to the risk inherent in both the method of valuation and the valuation inputs. Primary inputs to this valuation technique include broker quotes and comparative trades.

The Company reviews its fair value hierarchy classifications for assets and liabilities quarterly. Changes in the observability of significant valuation inputs identified during these reviews may trigger reclassifications. Reclassifications are reported as transfers at the beginning of the reporting period in which the change occurs.

Independent pricing services are most often utilized, and compared to pricing from additional sources when available, to determine the fair value of bonds and stocks for which market quotations or quotations on comparable securities or models are used. For these bonds and stocks, the Company obtains the pricing services' methodologies and classifies the investments accordingly in the fair value hierarchy.

Corporate pricing matrices are used in valuing certain bonds. The corporate pricing matrices were developed using publicly and privately available spreads segmented by various weighted average lives and credit quality ratings. Certain private placement bonds have adjusted spreads to capture the impacts of liquidity premium based on industry sector. The weighted average life and credit quality rating of a particular bond to be priced using those matrices are important inputs into the model and are used to determine a corresponding spread that is added to the appropriate industry sector or U.S. Treasury yield to create an estimated market yield for that bond. The estimated market yield and other relevant factors are then used to estimate the fair value of the particular bond.

Non-binding broker quotes are also utilized to determine the fair value of certain bonds when deemed appropriate or when valuations are not available from independent pricing services or corporate pricing matrices. These bonds are classified with the lowest priority in the fair value hierarchy as only one broker quote is ordinarily obtained, the investment is not traded on an exchange, the pricing is not available to other entities and/or the transaction volume in the same or similar investments has decreased. Inputs used in the development of prices are not provided to the Company by the brokers, as the brokers often do not provide the necessary transparency into their quotes and methodologies. At least annually, the Company performs reviews and tests to ensure that quotes are a reasonable estimate of the investments' fair value. Price movements of broker quotes are subject to validation and require approval from the Company's management. Management uses its knowledge of the investment and current market conditions to determine if the price is indicative of the investment's fair value.

The Company carries short-term investments at amortized cost, which approximates fair value.

The following table summarizes assets held at fair value as of March 31, 2025:

	Level 1	Level 2	Level 3	Net Asset Value (NAV)	Total
<b>Assets at Fair Value</b>					
Bonds					
Issuer Credit Obligation	\$ -	\$ 2,872,968	\$ -	\$ -	\$ 2,872,968
Total Bonds	\$ -	\$ 2,872,968	\$ -	\$ -	\$ 2,872,968
<b>Total Assets at Fair Value/(NAV)</b>	<b>\$ -</b>	<b>\$ 2,872,968</b>	<b>\$ -</b>	<b>\$ -</b>	<b>\$ 2,872,968</b>

B. & C. The following table summarizes the carrying value and fair value of the Company's assets not held at fair value as of March 31, 2025:

	Aggregate Fair Value	Admitted Assets	Level 1	Level 2	Level 3	Net Asset Value (NAV)	Not Practicable (Carrying Value)
<b>Assets</b>							
Bonds							
Issuer Credit Obligation	\$380,246,889	\$390,874,744	\$76,900,401	\$303,346,488	\$-	\$-	\$-
Asset-Backed Securities	108,531,196	116,835,057	-	108,123,227	407,969	-	-
Total Bonds	\$488,778,085	\$507,709,801	\$76,900,401	\$411,469,715	\$407,969	\$-	\$-
Cash, cash equivalents and short-term investments	5,322,364	5,322,364	299,377	5,022,987	-	-	-
Other invested assets	7,956,437	7,956,437	-	-	7,956,437	-	-
<b>Total Assets</b>	<b>\$502,056,886</b>	<b>\$520,988,602</b>	<b>\$77,199,778</b>	<b>\$416,492,702</b>	<b>\$8,364,406</b>	<b>\$-</b>	<b>\$-</b>

D. Not Practicable to Estimate Fair Value

Not applicable.

E. Measured Using Net Asset Value

Not applicable.

Note 21 – Other Items

There were no changes that were considered significant to the Company from prior year end.

Note 22 – Events Subsequent

Type I – Recognized Subsequent Events:

Subsequent events have been considered through May 2, 2025, for the statutory statement available to be issued on May 8, 2025.

There were no material Type I events occurring subsequent to the end of the period that merited recognition or disclosure in these statements that have not already been reflected as required.

Type II – Nonrecognized Subsequent Events:

Subsequent events have been considered through May 2, 2025, for the statutory statement available to be issued on May 8, 2025.

There were no material Type II events occurring subsequent to the end of the period that merited recognition or disclosure in these statements that have not already been reflected as required.

NOTES TO THE FINANCIAL STATEMENTS

**Note 23 – Reinsurance**

There were no changes that were considered significant to the Company from prior year end, except for the following.

Effective 1/1/25, the Company executed a retroactive reinsurance agreement for certain policies on a funds withheld basis to a third-party reinsurer. The impact to surplus as a result of this agreement was immaterial.

**Note 24 – Retrospectively Rated Contracts and Contracts Subject to Redetermination**

There were no changes that were considered significant to the Company from prior year end.

**Note 25 – Changes in Incurred Losses and Loss Adjustment Expenses**

- A. As of December 31, 2024, loss and loss adjustment expense reserves, net of reinsurance recoveries, were \$168.9 million. Payments for incurred claims and claim adjustment expenses attributable to insured events of prior years were \$20.4 million for the three months ended March 31, 2025. As of March 31, 2025, remaining loss and loss adjustment expense reserves attributable to insured events of prior years were \$148.6 million, which included a \$979.8 thousand increase as a result of an amendment to an internal reinsurance agreement. For the three months ended March 31, 2025, favorable prior-year development of \$930.9 thousand in incurred losses was primarily driven by lower than expected loss emergence in catastrophes.
- B. During 2025, the Company did not make any significant changes in methodologies and assumptions used in calculating the liability for unpaid losses and loss adjustment expenses.

**Note 26 – Intercompany Pooling Arrangements**

There were no changes that were considered significant to the Company from prior year end.

**Note 27 – Structured Settlements**

There were no changes that were considered significant to the Company from prior year end.

**Note 28 – Health Care Receivables**

Not applicable.

**Note 29 – Participating Policies**

Not applicable.

**Note 30 – Premium Deficiency Reserves**

There were no changes that were considered significant to the Company from prior year end.

**Note 31 – High Deductibles**

Not applicable.

**Note 32 – Discounting of Liabilities for Unpaid Losses or Unpaid Loss Adjustment Expenses**

There were no changes that were considered significant to the Company from prior year end.

**Note 33 – Asbestos/Environmental Reserves**

There were no changes that were considered significant to the Company from prior year end.

**Note 34 – Subscriber Savings Accounts**

Not applicable.

**Note 35 – Multiple Peril Crop Insurance**

Not applicable.

**Note 36 – Financial Guaranty Insurance**

Not applicable.

STATEMENT AS OF MARCH 31, 2025 OF THE NATIONWIDE GENERAL INSURANCE COMPANY

GENERAL INTERROGATORIES

PART 1 - COMMON INTERROGATORIES

GENERAL

- 1.1

Did the reporting entity experience any material transactions requiring the filing of Disclosure of Material Transactions with the State of Domicile, as required by the Model Act? .....

Yes [ ] No [ X ]
- 1.2

If yes, has the report been filed with the domiciliary state? .....

Yes [ ] No [ ]
- 2.1

Has any change been made during the year of this statement in the charter, by-laws, articles of incorporation, or deed of settlement of the reporting entity? .....

Yes [ ] No [ X ]
- 2.2

If yes, date of change: .....
- 3.1

Is the reporting entity a member of an Insurance Holding Company System consisting of two or more affiliated persons, one or more of which is an insurer? .....  
If yes, complete Schedule Y, Parts 1 and 1A.

Yes [ X ] No [ ]
- 3.2

Have there been any substantial changes in the organizational chart since the prior quarter end? .....

Yes [ ] No [ X ]
- 3.3

If the response to 3.2 is yes, provide a brief description of those changes.  
.....
- 3.4

Is the reporting entity publicly traded or a member of a publicly traded group? .....

Yes [ ] No [ X ]
- 3.5

If the response to 3.4 is yes, provide the CIK (Central Index Key) code issued by the SEC for the entity/group. ....
- 4.1

Has the reporting entity been a party to a merger or consolidation during the period covered by this statement? .....

Yes [ ] No [ X ]
- 4.2

If yes, provide the name of the entity, NAIC Company Code, and state of domicile (use two letter state abbreviation) for any entity that has ceased to exist as a result of the merger or consolidation.

1	2	3
Name of Entity	NAIC Company Code	State of Domicile
5.

If the reporting entity is subject to a management agreement, including third-party administrator(s), managing general agent(s), attorney-in-fact, or similar agreement, have there been any significant changes regarding the terms of the agreement or principals involved? ..... Yes [ ] No [ X ] N/A [ ]  
If yes, attach an explanation.  
.....
- 6.1

State as of what date the latest financial examination of the reporting entity was made or is being made. ....

12/31/2021
- 6.2

State the as of date that the latest financial examination report became available from either the state of domicile or the reporting entity. This date should be the date of the examined balance sheet and not the date the report was completed or released. ....

12/31/2021
- 6.3

State as of what date the latest financial examination report became available to other states or the public from either the state of domicile or the reporting entity. This is the release date or completion date of the examination report and not the date of the examination (balance sheet date). ....

05/31/2023
- 6.4

By what department or departments?  
OH .....
- 6.5

Have all financial statement adjustments within the latest financial examination report been accounted for in a subsequent financial statement filed with Departments? ..... Yes [ ] No [ ] N/A [ X ]
- 6.6

Have all of the recommendations within the latest financial examination report been complied with? ..... Yes [ ] No [ ] N/A [ X ]
- 7.1

Has this reporting entity had any Certificates of Authority, licenses or registrations (including corporate registration, if applicable) suspended or revoked by any governmental entity during the reporting period? .....

Yes [ ] No [ X ]
- 7.2

If yes, give full information:  
.....
- 8.1

Is the company a subsidiary of a bank holding company regulated by the Federal Reserve Board? .....

Yes [ ] No [ X ]
- 8.2

If response to 8.1 is yes, please identify the name of the bank holding company.  
.....
- 8.3

Is the company affiliated with one or more banks, thrifts or securities firms? .....

Yes [ X ] No [ ]
- 8.4

If response to 8.3 is yes, please provide below the names and location (city and state of the main office) of any affiliates regulated by a federal regulatory services agency [i.e. the Federal Reserve Board (FRB), the Office of the Comptroller of the Currency (OCC), the Federal Deposit Insurance Corporation (FDIC) and the Securities Exchange Commission (SEC)] and identify the affiliate's primary federal regulator.

1	2	3	4	5	6
Affiliate Name	Location (City, State)	FRB	OCC	FDIC	SEC
Nationwide Trust Company, FSB .....	Columbus, OH .....	..NO...	..YES...	..NO...	..NO...
Nationwide Investment Services Corp. ....	Columbus, OH .....	..NO...	..NO...	..NO...	..YES...
Nationwide Investment Advisors, LLC .....	Columbus, OH .....	..NO...	..NO...	..NO...	..YES...
Nationwide Securities, LLC .....	Columbus, OH .....	..NO...	..NO...	..NO...	..YES...
Nationwide Fund Advisors .....	Columbus, OH .....	..NO...	..NO...	..NO...	..YES...
Nationwide Fund Distributors, LLC .....	Columbus, OH .....	..NO...	..NO...	..NO...	..YES...
Nationwide Asset Management, LLC .....	Columbus, OH .....	..NO...	..NO...	..NO...	..YES...

STATEMENT AS OF MARCH 31, 2025 OF THE NATIONWIDE GENERAL INSURANCE COMPANY

GENERAL INTERROGATORIES

- 9.1

Are the senior officers (principal executive officer, principal financial officer, principal accounting officer or controller, or persons performing similar functions) of the reporting entity subject to a code of ethics, which includes the following standards? .....  
(a) Honest and ethical conduct, including the ethical handling of actual or apparent conflicts of interest between personal and professional relationships;  
(b) Full, fair, accurate, timely and understandable disclosure in the periodic reports required to be filed by the reporting entity;  
(c) Compliance with applicable governmental laws, rules and regulations;  
(d) The prompt internal reporting of violations to an appropriate person or persons identified in the code; and  
(e) Accountability for adherence to the code.

Yes [ X ] No [ ]
- 9.11

If the response to 9.1 is No, please explain:  
.....
- 9.2

Has the code of ethics for senior managers been amended? .....

Yes [ ] No [ X ]
- 9.21

If the response to 9.2 is Yes, provide information related to amendment(s).  
.....
- 9.3

Have any provisions of the code of ethics been waived for any of the specified officers? .....

Yes [ ] No [ X ]
- 9.31

If the response to 9.3 is Yes, provide the nature of any waiver(s).  
.....

FINANCIAL

- 10.1

Does the reporting entity report any amounts due from parent, subsidiaries or affiliates on Page 2 of this statement? .....

Yes [ X ] No [ ]
- 10.2

If yes, indicate any amounts receivable from parent included in the Page 2 amount: .....\$ .....

INVESTMENT

- 11.1

Were any of the stocks, bonds, or other assets of the reporting entity loaned, placed under option agreement, or otherwise made available for use by another person? (Exclude securities under securities lending agreements.) .....

Yes [ ] No [ X ]
- 11.2

If yes, give full and complete information relating thereto:  
.....
12.

Amount of real estate and mortgages held in other invested assets in Schedule BA: .....

\$ .....
13.

Amount of real estate and mortgages held in short-term investments: .....

\$ .....
- 14.1

Does the reporting entity have any investments in parent, subsidiaries and affiliates? .....

Yes [ ] No [ X ]
- 14.2

If yes, please complete the following:

	1	2
	Prior Year-End Book/Adjusted Carrying Value	Current Quarter Book/Adjusted Carrying Value
14.21 Bonds .....	\$ .....	\$ .....
14.22 Preferred Stock .....	\$ .....	\$ .....
14.23 Common Stock .....	\$ .....	\$ .....
14.24 Short-Term Investments .....	\$ .....	\$ .....
14.25 Mortgage Loans on Real Estate .....	\$ .....	\$ .....
14.26 All Other .....	\$ .....	\$ .....
14.27 Total Investment in Parent, Subsidiaries and Affiliates (Subtotal Lines 14.21 to 14.26) .....	\$ .....	\$ .....
14.28 Total Investment in Parent included in Lines 14.21 to 14.26 above .....	\$ .....	\$ .....

15.1

Has the reporting entity entered into any hedging transactions reported on Schedule DB? .....

Yes [ ] No [ X ]

15.2

If yes, has a comprehensive description of the hedging program been made available to the domiciliary state? ..... Yes [ ] No [ ] N/A [ X ]  
If no, attach a description with this statement.  
.....

16.

For the reporting entity's security lending program, state the amount of the following as of the current statement date:

16.1

Total fair value of reinvested collateral assets reported on Schedule DL, Parts 1 and 2. ....

\$ .....

16.2

Total book/adjusted carrying value of reinvested collateral assets reported on Schedule DL, Parts 1 and 2 .....

\$ .....

16.3

Total payable for securities lending reported on the liability page. ....

\$ .....
- 7.1

STATEMENT AS OF MARCH 31, 2025 OF THE NATIONWIDE GENERAL INSURANCE COMPANY

GENERAL INTERROGATORIES

17. Excluding items in Schedule E - Part 3 - Special Deposits, real estate, mortgage loans and investments held physically in the reporting entity's offices, vaults or safety deposit boxes, were all stocks, bonds and other securities, owned throughout the current year held pursuant to a custodial agreement with a qualified bank or trust company in accordance with Section 1, III - General Examination Considerations, F. Outsourcing of Critical Functions, Custodial or Safekeeping Agreements of the NAIC Financial Condition Examiners Handbook? ..... Yes [ X ] No [ ]
- 17.1 For all agreements that comply with the requirements of the NAIC Financial Condition Examiners Handbook, complete the following:

1 Name of Custodian(s)	2 Custodian Address
The Bank of New York Mellon .....	1 Wall Street, New York, NY 10286 .....

- 17.2 For all agreements that do not comply with the requirements of the NAIC Financial Condition Examiners Handbook, provide the name, location and a complete explanation:

1 Name(s)	2 Location(s)	3 Complete Explanation(s)

- 17.3 Have there been any changes, including name changes, in the custodian(s) identified in 17.1 during the current quarter? ..... Yes [ ] No [ X ]
- 17.4 If yes, give full information relating thereto:

1 Old Custodian	2 New Custodian	3 Date of Change	4 Reason

- 17.5 Investment management – Identify all investment advisors, investment managers, broker/dealers, including individuals that have the authority to make investment decisions on behalf of the reporting entity. This includes both primary and sub-advisors. For assets that are managed internally by employees of the reporting entity, note as such. ["...that have access to the investment accounts"; "...handle securities"]

1 Name of Firm or Individual	2 Affiliation
Members of the investment staff designated by the Chief Investment Officer as detailed in the Corporate Resolution .....	I.....

- 17.5097 For those firms/individuals listed in the table for Question 17.5, do any firms/individuals unaffiliated with the reporting entity (i.e. designated with a "U") manage more than 10% of the reporting entity's invested assets?..... Yes [ ] No [ X ]
- 17.5098 For firms/individuals unaffiliated with the reporting entity (i.e. designated with a "U") listed in the table for Question 17.5, does the total assets under management aggregate to more than 50% of the reporting entity's invested assets?..... Yes [ ] No [ X ]

- 17.6 For those firms or individuals listed in the table for 17.5 with an affiliation code of "A" (affiliated) or "U" (unaffiliated), provide the information for the table below.

1	2	3	4	5
Central Registration Depository Number	Name of Firm or Individual	Legal Entity Identifier (LEI)	Registered With	Investment Management Agreement (IMA) Filed

- 18.1 Have all the filing requirements of the Purposes and Procedures Manual of the NAIC Investment Analysis Office been followed? ..... Yes [ X ] No [ ]
- 18.2 If no, list exceptions:

.....

19. By self-designating 5GI securities, the reporting entity is certifying the following elements for each self-designated 5GI security:

a. Documentation necessary to permit a full credit analysis of the security does not exist or an NAIC CRP credit rating for an FE or PL security is not available.

b. Issuer or obligor is current on all contracted interest and principal payments.

c. The insurer has an actual expectation of ultimate payment of all contracted interest and principal.

Has the reporting entity self-designated 5GI securities? ..... Yes [ ] No [ X ]

20. By self-designating PLGI securities, the reporting entity is certifying the following elements of each self-designated PLGI security:

a. The security was purchased prior to January 1, 2018.

b. The reporting entity is holding capital commensurate with the NAIC Designation reported for the security.

c. The NAIC Designation was derived from the credit rating assigned by an NAIC CRP in its legal capacity as a NRSRO which is shown on a current private letter rating held by the insurer and available for examination by state insurance regulators.

d. The reporting entity is not permitted to share this credit rating of the PL security with the SVO.

Has the reporting entity self-designated PLGI securities? ..... Yes [ ] No [ X ]

21. By assigning FE to a Schedule BA non-registered private fund, the reporting entity is certifying the following elements of each self-designated FE fund:

a. The shares were purchased prior to January 1, 2019.

b. The reporting entity is holding capital commensurate with the NAIC Designation reported for the security.

c. The security had a public credit rating(s) with annual surveillance assigned by an NAIC CRP in its legal capacity as an NRSRO prior to January 1, 2019.

d. The fund only or predominantly holds bonds in its portfolio.

e. The current reported NAIC Designation was derived from the public credit rating(s) with annual surveillance assigned by an NAIC CRP in its legal capacity as an NRSRO.

f. The public credit rating(s) with annual surveillance assigned by an NAIC CRP has not lapsed.

Has the reporting entity assigned FE to Schedule BA non-registered private funds that complied with the above criteria? ..... Yes [ ] No [ X ]

GENERAL INTERROGATORIES

PART 2 - PROPERTY & CASUALTY INTERROGATORIES

1.

If the reporting entity is a member of a pooling arrangement, did the agreement or the reporting entity's participation change? .....  
If yes, attach an explanation.  
.....

Yes [ ] No [ X ] N/A [ ]
2.

Has the reporting entity reinsured any risk with any other reporting entity and agreed to release such entity from liability, in whole or in part, from any loss that may occur on the risk, or portion thereof, reinsured? .....  
If yes, attach an explanation.  
.....

Yes [ ] No [ X ]
- 3.1

Have any of the reporting entity's primary reinsurance contracts been canceled? .....

Yes [ ] No [ X ]
- 3.2

If yes, give full and complete information thereto.  
.....
- 4.1

Are any of the liabilities for unpaid losses and loss adjustment expenses other than certain workers' compensation tabular reserves (see Annual Statement Instructions pertaining to disclosure of discounting for definition of " tabular reserves" ) discounted at a rate of interest greater than zero? .....

Yes [ X ] No [ ]

4.2 If yes, complete the following schedule:

			TOTAL DISCOUNT				DISCOUNT TAKEN DURING PERIOD			
1	2	3	4	5	6	7	8	9	10	11
Line of Business	Maximum Interest	Discount Rate	Unpaid Losses	Unpaid LAE	IBNR	TOTAL	Unpaid Losses	Unpaid LAE	IBNR	TOTAL
Non-renewable for stated reasons only .	0.1	0.049	136	6		142	(7)			(7)
TOTAL			136	6		142	(7)			(7)

5. Operating Percentages:

- 5.1

A&H loss percent .....

71.000 %
- 5.2

A&H cost containment percent .....

0.000 %
- 5.3

A&H expense percent excluding cost containment expenses .....

25.000 %
- 6.1

Do you act as a custodian for health savings accounts? .....

Yes [ ] No [ X ]
- 6.2

If yes, please provide the amount of custodial funds held as of the reporting date .....\$.....
- 6.3

Do you act as an administrator for health savings accounts? .....

Yes [ ] No [ X ]
- 6.4

If yes, please provide the balance of the funds administered as of the reporting date .....\$.....
7.

Is the reporting entity licensed or chartered, registered, qualified, eligible or writing business in at least two states? .....

Yes [ X ] No [ ]
- 7.1

If no, does the reporting entity assume reinsurance business that covers risks residing in at least one state other than the state of domicile of the reporting entity? .....

Yes [ ] No [ ]

STATEMENT AS OF MARCH 31, 2025 OF THE NATIONWIDE GENERAL INSURANCE COMPANY

## SCHEDULE F - CEDED REINSURANCE

Showing All New Reinsurers - Current Year to Date

[illegible]

STATEMENT AS OF MARCH 31, 2025 OF THE NATIONWIDE GENERAL INSURANCE COMPANY

SCHEDULE T - EXHIBIT OF PREMIUMS WRITTEN

Current Year to Date - Allocated by States and Territories									
		1 Active Status (a)	Direct Premiums Written		Direct Losses Paid (Deducting Salvage)		Direct Losses Unpaid		
			2 Current Year To Date	3 Prior Year To Date	4 Current Year To Date	5 Prior Year To Date	6 Current Year To Date	7 Prior Year To Date	
States, etc.									
1.	Alabama .....	AL	L	7,764,785	8,115,633	4,749,941	6,300,061	9,025,203	10,688,685
2.	Alaska .....	AK	L						
3.	Arizona .....	AZ	L	9,141,321	8,812,526	4,761,702	9,763,369	13,215,549	17,553,881
4.	Arkansas .....	AR	L	6,383,654	7,289,348	2,729,401	4,872,496	10,485,097	9,706,370
5.	California .....	CA	L	21,531,446	36,036,620	12,343,102	201,644	41,249,509	2,242,824
6.	Colorado .....	CO	L	8,892,359	11,458,489	3,117,713	6,913,245	15,799,490	14,792,311
7.	Connecticut .....	CT	L	11,724,201	12,962,906	7,352,246	10,063,519	27,221,868	32,465,580
8.	Delaware .....	DE	L	6,708,155	6,348,938	3,338,092	5,062,192	7,084,773	7,217,833
9.	District of Columbia .....	DC	L	994,345	1,038,015	185,682	803,343	993,236	1,266,541
10.	Florida .....	FL	L	10,845,623	12,482,766	5,273,627	5,398,302	36,388,782	47,109,775
11.	Georgia .....	GA	L	21,105,149	24,943,088	14,387,268	25,747,360	46,982,927	49,495,986
12.	Hawaii .....	HI	N						
13.	Idaho .....	ID	L	904,374	1,218,949	1,065,771	1,200,401	1,836,183	2,642,161
14.	Illinois .....	IL	L	5,628,109	7,523,953	6,139,810	7,359,131	22,995,605	23,571,898
15.	Indiana .....	IN	L	827,879	1,192,753	272,245	440,836	2,850,838	4,105,108
16.	Iowa .....	IA	L	750,744	959,666	146,646	397,751	1,185,543	3,270,613
17.	Kansas .....	KS	L	1,232,872	1,415,282	989,919	2,091,316	2,697,985	2,682,591
18.	Kentucky .....	KY	L	4,368,127	4,233,168	2,947,367	2,719,221	7,220,776	9,055,923
19.	Louisiana .....	LA	L						
20.	Maine .....	ME	L	181,096	155,438	14,547	122,174	438,991	455,602
21.	Maryland .....	MD	L	10,073,480	16,617,093	4,543,482	10,799,471	16,891,374	22,602,956
22.	Massachusetts .....	MA	L	364,973	410,326	432,179	205,490	2,192,838	1,934,696
23.	Michigan .....	MI	L	8,986,967	8,837,546	5,511,740	5,874,049	15,782,520	15,812,955
24.	Minnesota .....	MN	L	714,613	783,909	203,421	844,972	1,845,364	1,036,531
25.	Mississippi .....	MS	L	12,837,531	14,501,705	9,026,405	11,509,851	18,889,295	20,647,358
26.	Missouri .....	MO	L	12,308,571	15,876,470	8,848,245	13,524,238	29,893,700	33,639,803
27.	Montana .....	MT	L	1,134,381	1,011,262	19,750	164,284	1,506,931	947,918
28.	Nebraska .....	NE	L	2,697,752	3,409,316	1,034,325	1,271,117	3,939,869	3,624,534
29.	Nevada .....	NV	L	2,231,408	2,551,340	2,324,117	2,225,025	10,358,996	9,411,274
30.	New Hampshire .....	NH	L	660,182	680,904	141,002	216,802	767,541	592,054
31.	New Jersey .....	NJ	L	758,199	1,023,319	5,103	125,400	4,467,323	3,688,872
32.	New Mexico .....	NM	L	368,749	442,077	125,530	232,984	1,284,822	2,534,159
33.	New York .....	NY	L	44,789,349	41,645,968	40,306,761	46,628,350	160,162,858	161,388,105
34.	North Carolina .....	NC	L	69,133,263	58,160,063	30,730,759	31,736,924	68,796,516	61,148,222
35.	North Dakota .....	ND	L	281,805	323,787	193,546	43,872	166,900	219,384
36.	Ohio .....	OH	L	32,595,178	37,547,043	15,145,977	19,914,816	38,657,618	45,285,433
37.	Oklahoma .....	OK	L						
38.	Oregon .....	OR	L	5,555,758	6,219,386	4,100,960	7,924,288	13,520,510	17,180,710
39.	Pennsylvania .....	PA	L	73,073,042	81,413,748	50,116,917	66,390,472	121,234,284	129,073,571
40.	Rhode Island .....	RI	L	8,671,275	8,880,029	5,573,170	6,248,462	18,425,815	19,999,116
41.	South Carolina .....	SC	L	10,796,839	13,169,215	8,654,461	9,194,711	20,118,366	18,572,184
42.	South Dakota .....	SD	L	835,732	979,901	149,451	2,057,712	674,533	1,751,322
43.	Tennessee .....	TN	L	8,314,874	9,406,131	4,144,523	8,021,706	11,853,781	18,821,868
44.	Texas .....	TX	L	5,593,902	7,231,963	2,433,819	8,341,439	19,420,196	27,239,290
45.	Utah .....	UT	L	4,413,878	4,907,053	1,828,449	3,506,435	6,913,343	7,835,562
46.	Vermont .....	VT	L	471,652	456,218	328,193	102,370	1,327,083	193,539
47.	Virginia .....	VA	L	21,151,132	21,200,565	10,140,921	14,780,084	28,376,703	26,596,416
48.	Washington .....	WA	L	8,995,352	9,994,553	5,847,637	9,362,170	16,522,501	18,628,245
49.	West Virginia .....	WV	L	3,324,405	3,162,247	1,615,808	1,375,187	2,269,204	2,860,666
50.	Wisconsin .....	WI	L	3,332,122	3,716,508	1,829,569	3,310,163	6,757,801	6,521,127
51.	Wyoming .....	WY	L	681,443	661,219	119,228	169,198	527,725	557,459
52.	American Samoa .....	AS	N						
53.	Guam .....	GU	N						
54.	Puerto Rico .....	PR	N						
55.	U.S. Virgin Islands .....	VI	N						
56.	Northern Mariana Islands .....	MP	N						
57.	Canada .....	CAN	N						
58.	Aggregate Other Alien OT .....	XXX							
59.	Totals	XXX		474,132,046	521,408,402	285,290,527	375,558,403	891,218,665	918,669,011
DETAILS OF WRITE-INS									
58001.	.....	XXX							
58002.	.....	XXX							
58003.	.....	XXX							
58998.	Summary of remaining write-ins for Line 58 from overflow page	XXX							
58999.	Totals (Lines 58001 through 58003 plus 58998)(Line 58 above)	XXX							

- (a) Active Status Counts:
1. L - Licensed or Chartered - Licensed insurance carrier or domiciled RRG..... 50

2. R - Registered - Non-domiciled RRGs.....

3. E - Eligible - Reporting entities eligible or approved to write surplus lines in the state (other than their state of domicile - see DSLI).....

4. Q - Qualified - Qualified or accredited reinsurer.....

5. D - Domestic Surplus Lines Insurer (DSLII) - Reporting entities authorized to write surplus lines in the state of domicile.....

6. N - None of the above - Not allowed to write business in the state... 7

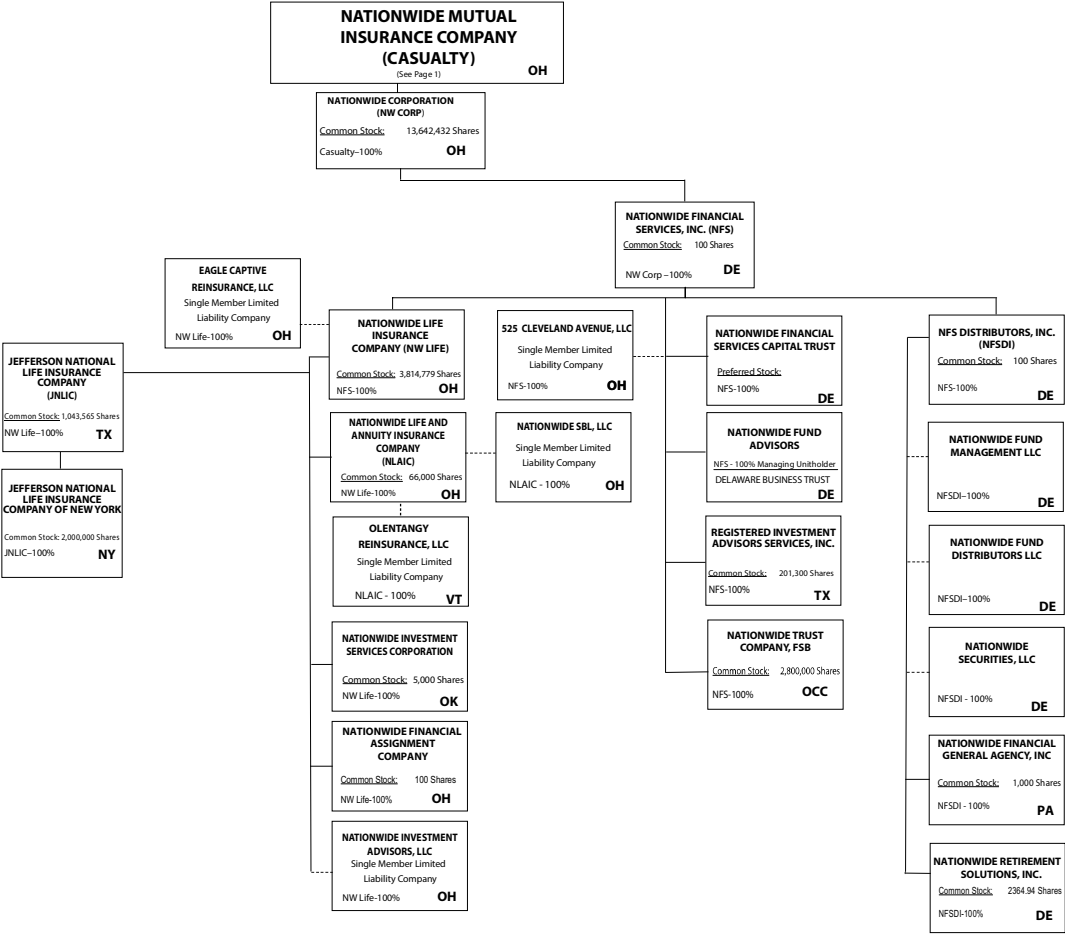


## 11

## 11



NATIONWIDE®



Subsidiary Companies      Solid Line  
Contractual Association      Double Line  
Limited Liability Company      Dotted Line

NATIONWIDE INSURANCE COMPANIES

NAIC Group Code	Group Name	NAIC Company Code	State of Domicile	Federal ID Number	Name of Company
0140	Nationwide	10127	OH	27-0114983	Allied Insurance Company of America
0140	Nationwide	42579	IA	42-1201931	Allied Property and Casualty Insurance Company
0140	Nationwide	19100	IA	42-6054959	AMCO Insurance Company
0140	Nationwide	29262	TX	74-1061659	Colonial County Mutual Insurance Company
0140	Nationwide	18961	OH	68-0066866	Crestbrook Insurance Company
0140	Nationwide	42587	IA	42-1207150	Depositors Insurance Company
0140	Nationwide	15821	OH	42-4523959	Eagle Captive Reinsurance, LLC
0140	Nationwide	22209	OH	75-6013587	Freedom Specialty Insurance Company
0140	Nationwide	23582	OH	41-0417250	Harleysville Insurance Company
0140	Nationwide	42900	NJ	23-2253669	Harleysville Insurance Company of New Jersey
0140	Nationwide	10674	OH	23-2864924	Harleysville Insurance Company of New York
0140	Nationwide	35696	OH	23-2384978	Harleysville Preferred Insurance Company
0140	Nationwide	26182	OH	04-1989660	Harleysville Worcester Insurance Company
0140	Nationwide	64017	TX	75-0300900	Jefferson National Life Insurance Company
0140	Nationwide	15727	NY	47-1180302	Jefferson National Life Insurance Company of New York
0140	Nationwide	11991	OH	38-0865250	National Casualty Company
0140	Nationwide	26093	OH	48-0470690	Nationwide Affinity Insurance Company of America
0140	Nationwide	28223	IA	42-1015537	Nationwide Agribusiness Insurance Company
0140	Nationwide	10723	OH	95-0639970	Nationwide Assurance Company
0140	Nationwide	23760	OH	31-4425763	Nationwide General Insurance Company
0140	Nationwide	10070	OH	31-1399201	Nationwide Indemnity Company
0140	Nationwide	25453	OH	95-2130882	Nationwide Insurance Company of America
0140	Nationwide	10948	OH	31-1613686	Nationwide Insurance Company of Florida
0140	Nationwide	92657	OH	31-1000740	Nationwide Life and Annuity Insurance Company
0140	Nationwide	66869	OH	31-4156830	Nationwide Life Insurance Company
0140	Nationwide	23787	OH	31-4177100	Nationwide Mutual Insurance Company
0140	Nationwide	37877	OH	31-0970750	Nationwide Property & Casualty Insurance Company
0140	Nationwide	13999	VT	27-1712056	Olentangy Reinsurance, LLC
0140	Nationwide	15580	OH	31-1117969	Scottsdale Indemnity Company
0140	Nationwide	41297	OH	31-1024978	Scottsdale Insurance Company
0140	Nationwide	10672	AZ	86-0835870	Scottsdale Surplus Lines Insurance Company
0140	Nationwide	36269	MI	86-0619597	Titan Insurance Company
0140	Nationwide	42285	OH	95-3750113	Veterinary Pet Insurance Company
0140	Nationwide	42889	OH	34-1394913	Victoria Fire & Casualty Company
0140	Nationwide	10105	OH	34-1777972	Victoria Select Insurance Company

STATEMENT AS OF MARCH 31, 2025 OF THE NATIONWIDE GENERAL INSURANCE COMPANY

SCHEDULE Y  
PART 1A - DETAILS OF INSURANCE HOLDING COMPANY SYSTEM

1	2	3	4	5	6	7	8	9	10	11	12 Type of Control (Ownership, Board, Management, Attorney-in-Fact, Influence, Other)	13 If Control is Owner- ship Provide Percen- tage	14 Ultimate Controlling Entity(ies)/Person(s)	15 Is an SCA Filing Re- quired? (Yes/No)	16 *
Group Code	Group Name	NAIC Company Code	ID Number	Federal RSSD	CIK	Name of Securities Exchange if Publicly Traded (U.S. or International)	Names of Parent, Subsidiaries Or Affiliates	Domi- ciliary Loca- tion	Rela- tion- ship to Reporting Entity	Directly Controlled by (Name of Entity/Person)					
. 0140 ...	Nationwide		31-1486309				10 W. Nationwide, LLC	.. OH....	NIA.....	Nationwide Realty Investors, Ltd.	Ownership.....	100.000	Nationwide Mutual Insurance Company	... NO.....	
. 0140 ...	Nationwide		31-1486309				100 Green Meadows Drive, LLC	.. OH....	NIA.....	Nationwide Realty Investors, Ltd.	Ownership.....	100.000	Nationwide Mutual Insurance Company	... NO.....	
. 0140 ...	Nationwide		31-1486309				1000 Yard Street, LLC	.. OH....	NIA.....	Nationwide Realty Investors, Ltd.	Ownership.....	100.000	Nationwide Mutual Insurance Company	... NO.....	
. 0140 ...	Nationwide		31-1486309				1050 Yard Street, LLC	.. OH....	NIA.....	Nationwide Realty Investors, Ltd.	Ownership.....	100.000	Nationwide Mutual Insurance Company	... NO.....	
. 0140 ...	Nationwide		20-4939866				1055 Yard Street, LLC	.. OH....	NIA.....	GVY Residential, LLC	Ownership.....	100.000	Nationwide Mutual Insurance Company	... NO.....	
. 0140 ...	Nationwide		31-1486309				1125 Rail Street, LLC	.. OH....	NIA.....	Nationwide Realty Investors, Ltd.	Ownership.....	100.000	Nationwide Mutual Insurance Company	... NO.....	
. 0140 ...	Nationwide		31-1733036				120 Acre Partners, LLC	.. DE....	NIA.....	Nationwide Realty Investors, Ltd.	Ownership.....	95.000	Nationwide Mutual Insurance Company	... NO.....	
. 0140 ...	Nationwide		20-4939866				1125 Yard Street, LLC	.. OH....	NIA.....	NRI Equity Land Investments, LLC	Ownership.....	100.000	Nationwide Mutual Insurance Company	... NO.....	
. 0140 ...	Nationwide		20-4939867				1175 Bobcat, LLC	.. OH....	NIA.....	NRI Equity Land Investments, LLC	Ownership.....	100.000	Nationwide Mutual Insurance Company	... NO.....	
. 0140 ...	Nationwide		26-2451988				1492 Capital, LLC	.. OH....	NIA.....	Nationwide Mutual Insurance Company	Ownership.....	100.000	Nationwide Mutual Insurance Company	... NO.....	
. 0140 ...	Nationwide		31-1486309				111 Rivulon Boulevard, LLC	.. OH....	NIA.....	NRI-Rivulon, LLC	Ownership.....	100.000	Nationwide Mutual Insurance Company	... NO.....	
. 0140 ...	Nationwide		31-1486309				155 Rivulon Boulevard, LLC	.. OH....	NIA.....	NRI-Rivulon, LLC	Ownership.....	100.000	Nationwide Mutual Insurance Company	... NO.....	
. 0140 ...	Nationwide		31-1486309				161 Rivulon Boulevard, LLC	.. OH....	NIA.....	NRI-Rivulon, LLC	Ownership.....	100.000	Nationwide Mutual Insurance Company	... NO.....	
. 0140 ...	Nationwide		31-1580283				170 Marconi, LLC	.. OH....	NIA.....	NWD Investments, LLC	Ownership.....	100.000	Nationwide Mutual Insurance Company	... NO.....	
. 0140 ...	Nationwide		38-4118665				220 Vine St., LLC	.. OH....	NIA.....	NWD HP, LLC	Ownership.....	100.000	Nationwide Mutual Insurance Company	... NO.....	
. 0140 ...	Nationwide		31-1580283				245 Parks Edge Place, LLC	.. OH....	NIA.....	NWD Investments, LLC	Ownership.....	100.000	Nationwide Mutual Insurance Company	... NO.....	
. 0140 ...	Nationwide		31-1486309				275 Rivulon Boulevard, LLC	.. OH....	NIA.....	NRI-Rivulon, LLC	Ownership.....	100.000	Nationwide Mutual Insurance Company	... NO.....	
. 0140 ...	Nationwide		31-1486309				280 High Street, LLC	.. OH....	NIA.....	Nationwide Realty Investors, Ltd.	Ownership.....	100.000	Nationwide Mutual Insurance Company	... NO.....	
. 0140 ...	Nationwide		31-1486309				300 Rivulon Boulevard, LLC	.. OH....	NIA.....	NRI-Rivulon, LLC	Ownership.....	100.000	Nationwide Mutual Insurance Company	... NO.....	
. 0140 ...	Nationwide		31-1486309				310 Rivulon Boulevard, LLC	.. OH....	NIA.....	NRI-Rivulon, LLC	Ownership.....	100.000	Nationwide Mutual Insurance Company	... NO.....	
. 0140 ...	Nationwide		31-1486309				343 N. Front, LLC	.. OH....	NIA.....	Nationwide Realty Investors, Ltd.	Ownership.....	100.000	Nationwide Mutual Insurance Company	... NO.....	
. 0140 ...	Nationwide		31-1486309				400 Rivulon Boulevard, LLC	.. OH....	NIA.....	NRI-Rivulon, LLC	Ownership.....	100.000	Nationwide Mutual Insurance Company	... NO.....	
. 0140 ...	Nationwide		31-1580283				400 West Nationwide Boulevard, LLC	.. OH....	NIA.....	NWD Investments, LLC	Ownership.....	100.000	Nationwide Mutual Insurance Company	... NO.....	
. 0140 ...	Nationwide		31-1486309				410 Rivulon Boulevard, LLC	.. OH....	NIA.....	NRI-Rivulon, LLC	Ownership.....	100.000	Nationwide Mutual Insurance Company	... NO.....	
. 0140 ...	Nationwide		31-1580283				425 West Nationwide Boulevard, LLC	.. OH....	NIA.....	NWD Investments, LLC	Ownership.....	100.000	Nationwide Mutual Insurance Company	... NO.....	
. 0140 ...	Nationwide		31-1486309				44 Chestnut, LLC	.. OH....	NIA.....	Nationwide Realty Investors, Ltd.	Ownership.....	100.000	Nationwide Mutual Insurance Company	... NO.....	
. 0140 ...	Nationwide		38-4118665				500 Neil Avenue, LLC	.. OH....	NIA.....	NWD HP, LLC	Ownership.....	100.000	Nationwide Mutual Insurance Company	... NO.....	
. 0140 ...	Nationwide		38-4118665				515 Kilbourne Street, LLC	.. OH....	NIA.....	NWD HP, LLC	Ownership.....	100.000	Nationwide Mutual Insurance Company	... NO.....	
. 0140 ...	Nationwide		87-1954007				525 Cleveland Avenue, LLC	.. OH....	NIA.....	Nationwide Financial Services, Inc.	Ownership.....	100.000	Nationwide Mutual Insurance Company	... NO.....	
. 0140 ...	Nationwide		31-1486309				75 Rivulon Boulevard, LLC	.. OH....	NIA.....	NRI-Rivulon, LLC	Ownership.....	100.000	Nationwide Mutual Insurance Company	... NO.....	
. 0140 ...	Nationwide		20-4939866				775 Yard Street, LLC	.. OH....	NIA.....	NRI Equity Land Investments, LLC	Ownership.....	100.000	Nationwide Mutual Insurance Company	... NO.....	
. 0140 ...	Nationwide		20-4939866				777 Swan Street, LLC	.. OH....	NIA.....	NRI Equity Land Investments, LLC	Ownership.....	100.000	Nationwide Mutual Insurance Company	... NO.....	
. 0140 ...	Nationwide		20-4939866				780 Yard Street, LLC	.. OH....	NIA.....	NRI Equity Land Investments, LLC	Ownership.....	100.000	Nationwide Mutual Insurance Company	... NO.....	
. 0140 ...	Nationwide		20-4939866				795 Rail Street, LLC	.. OH....	NIA.....	NRI Equity Land Investments, LLC	Ownership.....	100.000	Nationwide Mutual Insurance Company	... NO.....	
. 0140 ...	Nationwide		20-4939866				800 Bobcat Avenue, LLC	.. OH....	NIA.....	NRI Equity Land Investments, LLC	Ownership.....	100.000	Nationwide Mutual Insurance Company	... NO.....	
. 0140 ...	Nationwide		20-4939866				800 Goodale Boulevard, LLC	.. OH....	NIA.....	NRI Equity Land Investments, LLC	Ownership.....	100.000	Nationwide Mutual Insurance Company	... NO.....	
. 0140 ...	Nationwide		20-4939866				800 Yard Street, LLC	.. OH....	NIA.....	NRI Equity Land Investments, LLC	Ownership.....	100.000	Nationwide Mutual Insurance Company	... NO.....	
. 0140 ...	Nationwide		20-4939866				805 Bobcat Avenue, LLC	.. OH....	NIA.....	GVY Residential, LLC	Ownership.....	100.000	Nationwide Mutual Insurance Company	... NO.....	
. 0140 ...	Nationwide		20-4939866				808 Yard Street, LLC	.. OH....	NIA.....	GVY Residential, LLC	Ownership.....	100.000	Nationwide Mutual Insurance Company	... NO.....	
. 0140 ...	Nationwide		20-4939866				820 Goodale Boulevard, LLC	.. OH....	NIA.....	NRI Equity Land Investments, LLC	Ownership.....	100.000	Nationwide Mutual Insurance Company	... NO.....	
. 0140 ...	Nationwide		20-4939866				822 Williams Avenue, LLC	.. OH....	NIA.....	GVY Residential, LLC	Ownership.....	100.000	Nationwide Mutual Insurance Company	... NO.....	
. 0140 ...	Nationwide		20-4939866				825 Junction Way, LLC	.. OH....	NIA.....	GVY Residential, LLC	Ownership.....	100.000	Nationwide Mutual Insurance Company	... NO.....	
. 0140 ...	Nationwide		20-4939866				828 Bobcat Avenue, LLC	.. OH....	NIA.....	NRI Equity Land Investments, LLC	Ownership.....	100.000	Nationwide Mutual Insurance Company	... NO.....	
. 0140 ...	Nationwide		20-4939866				840 Third Avenue, LLC	.. OH....	NIA.....	NRI Equity Land Investments, LLC	Ownership.....	100.000	Nationwide Mutual Insurance Company	... NO.....	
. 0140 ...	Nationwide		20-4939866				840 Yard Street, LLC	.. OH....	NIA.....	NRI Equity Land Investments, LLC	Ownership.....	100.000	Nationwide Mutual Insurance Company	... NO.....	
. 0140 ...	Nationwide		20-4939866				845 Yard Street, LLC	.. OH....	NIA.....	GVY Residential, LLC	Ownership.....	100.000	Nationwide Mutual Insurance Company	... NO.....	
. 0140 ...	Nationwide		20-4939866				855 Third Avenue, LLC	.. OH....	NIA.....	NRI Equity Land Investments, LLC	Ownership.....	100.000	Nationwide Mutual Insurance Company	... NO.....	
. 0140 ...	Nationwide		20-4939866				860 Third Avenue, LLC	.. OH....	NIA.....	NRI Equity Land Investments, LLC	Ownership.....	100.000	Nationwide Mutual Insurance Company	... NO.....	
. 0140 ...	Nationwide		20-4939866				875 First Avenue, LLC	.. OH....	NIA.....	GVY Residential, LLC	Ownership.....	100.000	Nationwide Mutual Insurance Company	... NO.....	

STATEMENT AS OF MARCH 31, 2025 OF THE NATIONWIDE GENERAL INSURANCE COMPANY

SCHEDULE Y

PART 1A - DETAILS OF INSURANCE HOLDING COMPANY SYSTEM

1	2	3	4	5	6	7	8	9	10	11	12	13	14	15	16
Group Code	Group Name	NAIC Company Code	ID Number	Federal RSSD	CIK	Name of Securities Exchange if Publicly Traded (U.S. or International)	Names of Parent, Subsidiaries Or Affiliates	Domi-ciliary Loca-tion	Relation-ship to Reporting Entity	Directly Controlled by (Name of Entity/Person)	Type of Control (Ownership, Board, Management, Attorney-in-Fact, Influence, Other)	If Control is Owner-ship Provide Percen-tage	Ultimate Controlling Entity(ies)/Person(s)	Is an SCA Filing Re-quired? (Yes/No)	*
.0140	Nationwide		20-4939866				875 Junction Way, LLC	..OH.....	..NIA.....	NRI Equity Land Investments, LLC	Ownership.....	100.000	Nationwide Mutual Insurance Company	....NO.....	
.0140	Nationwide		20-4939866				880 Third Avenue, LLC	..OH.....	..NIA.....	NRI Equity Land Investments, LLC	Ownership.....	100.000	Nationwide Mutual Insurance Company	....NO.....	
.0140	Nationwide		20-4939866				880 Yard Street, LLC	..OH.....	..NIA.....	GVY Residential, LLC	Ownership.....	100.000	Nationwide Mutual Insurance Company	....NO.....	
.0140	Nationwide		20-4939866				895 W. Third Avenue, LLC	..OH.....	..NIA.....	NRI Equity Land Investments, LLC	Ownership.....	100.000	Nationwide Mutual Insurance Company	....NO.....	
.0140	Nationwide		20-4939866				950 Dorchester Way, LLC	..OH.....	..NIA.....	GVY Residential, LLC	Ownership.....	100.000	Nationwide Mutual Insurance Company	....NO.....	
.0140	Nationwide		20-4939866				950 Goodale Boulevard, LLC	..OH.....	..NIA.....	NRI Equity Land Investments, LLC	Ownership.....	100.000	Nationwide Mutual Insurance Company	....NO.....	
.0140	Nationwide		31-1486309				960 Bobcat Avenue, LLC	..OH.....	..NIA.....	Nationwide Realty Investors, Ltd.	Ownership.....	100.000	Nationwide Mutual Insurance Company	....NO.....	
.0140	Nationwide		31-1486309				975 Rail Street, LLC	..OH.....	..NIA.....	Nationwide Realty Investors, Ltd.	Ownership.....	100.000	Nationwide Mutual Insurance Company	....NO.....	
.0140	Nationwide		31-1486309				995 Yard Street, LLC	..OH.....	..NIA.....	Nationwide Realty Investors, Ltd.	Ownership.....	100.000	Nationwide Mutual Insurance Company	....NO.....	
.0140	Nationwide		31-1486309				12062 Sycamore Trace, LLC	..OH.....	..NIA.....	Jerome Village Company, LLC	Ownership.....	100.000	Nationwide Mutual Insurance Company	....NO.....	
.0140	Nationwide		31-1486309				18615 Claret Drive, LLC	..OH.....	..NIA.....	NRI Cavasson, LLC	Ownership.....	100.000	Nationwide Mutual Insurance Company	....NO.....	
.0140	Nationwide		31-1486309				18655 Claret Drive, LLC	..OH.....	..NIA.....	NRI Cavasson, LLC	Ownership.....	100.000	Nationwide Mutual Insurance Company	....NO.....	
.0140	Nationwide		31-1486309				18700 Hayden Road, LLC	..OH.....	..NIA.....	NRI Cavasson, LLC	Ownership.....	100.000	Nationwide Mutual Insurance Company	....NO.....	
.0140	Nationwide		31-1486309				18750 Hayden Road, LLC	..OH.....	..NIA.....	NRI Cavasson, LLC	Ownership.....	100.000	Nationwide Mutual Insurance Company	....NO.....	
.0140	Nationwide		31-1580283				AD DORA, LLC	..OH.....	..NIA.....	NID Investments, LLC	Ownership.....	100.000	Nationwide Mutual Insurance Company	....NO.....	
.0140	Nationwide		31-1580283				ADTV, LLC	..OH.....	..NIA.....	NID Investments, LLC	Ownership.....	100.000	Nationwide Mutual Insurance Company	....NO.....	
.0140	Nationwide	10127	27-0114983				ALLIED Insurance Company of America	..OH.....	..IA.....	Nationwide Mutual Insurance Company	Ownership.....	100.000	Nationwide Mutual Insurance Company	....NO.....	
							ALLIED Property and Casualty Insurance Company	..IA.....	..IA.....	Nationwide Mutual Insurance Company	Ownership.....	100.000	Nationwide Mutual Insurance Company	....NO.....	
.0140	Nationwide	42579	42-1201931				ALLIED Texas Agency, Inc.	..TX.....	..IA.....	AMCO Insurance Company	Ownership.....	100.000	Nationwide Mutual Insurance Company	....NO.....	
.0140	Nationwide	19100	42-6054959				AMCO Insurance Company	..IA.....	..IA.....	Nationwide Mutual Insurance Company	Ownership.....	100.000	Nationwide Mutual Insurance Company	....NO.....	
.0140	Nationwide		59-1031596				American Marine Underwriters, Inc.	..FL.....	..NIA.....	Nationwide Mutual Insurance Company	Ownership.....	100.000	Nationwide Mutual Insurance Company	....NO.....	
.0140	Nationwide		81-4532504				American Tax Credit Fund 2017-A, LLC	..OH.....	..OTH.....	Nationwide Life Insurance Company	Other.....	0.010	Nationwide Mutual Insurance Company	....NO.....	1
.0140	Nationwide		82-2001573				American Tax Credit Fund 2017-B, LLC	..OH.....	..OTH.....	Nationwide Life Insurance Company	Other.....	0.010	Nationwide Mutual Insurance Company	....NO.....	1
.0140	Nationwide		82-4591498				American Tax Credit Fund 2018-A, LLC	..OH.....	..OTH.....	Nationwide Life Insurance Company	Other.....	0.010	Nationwide Mutual Insurance Company	....NO.....	1
.0140	Nationwide		83-0606592				American Tax Credit Fund 2018-B, LLC	..OH.....	..OTH.....	Nationwide Life Insurance Company	Other.....	0.010	Nationwide Mutual Insurance Company	....NO.....	1
.0140	Nationwide		83-0620232				American Tax Credit Fund 2018-C, LLC	..OH.....	..OTH.....	Nationwide Life Insurance Company	Other.....	0.010	Nationwide Mutual Insurance Company	....NO.....	1
.0140	Nationwide		83-3900932				American Tax Credit Fund 2019-A, LLC	..OH.....	..OTH.....	Nationwide Life Insurance Company	Other.....	0.010	Nationwide Mutual Insurance Company	....NO.....	1
.0140	Nationwide		83-3953721				American Tax Credit Fund 2019-B, LLC	..OH.....	..OTH.....	Nationwide Life Insurance Company	Other.....	0.010	Nationwide Mutual Insurance Company	....NO.....	1
.0140	Nationwide		84-3443067				American Tax Credit Fund 2020-A, LLC	..OH.....	..OTH.....	Nationwide Life Insurance Company	Other.....	0.010	Nationwide Mutual Insurance Company	....NO.....	1
.0140	Nationwide		85-2359702				American Tax Credit Fund 2020-B, LLC	..OH.....	..OTH.....	Nationwide Life Insurance Company	Other.....	0.010	Nationwide Mutual Insurance Company	....NO.....	1
							American Tax Credit Fund 2021-A, LLC (fka	..OH.....	..OTH.....	Nationwide Life Insurance Company	Other.....	0.010	Nationwide Mutual Insurance Company	....NO.....	1
.0140	Nationwide		85-2649655				American Tax Credit Fund 2020-C, LLC)	..OH.....	..OTH.....	Nationwide Life Insurance Company	Other.....	0.010	Nationwide Mutual Insurance Company	....NO.....	1
.0140	Nationwide		86-2502912				American Tax Credit Fund 2021-B, LLC	..OH.....	..OTH.....	Nationwide Life Insurance Company	Other.....	0.010	Nationwide Mutual Insurance Company	....NO.....	1
.0140	Nationwide		87-1349942				American Tax Credit Fund 2021-C, LLC	..OH.....	..OTH.....	Nationwide Life Insurance Company	Other.....	0.010	Nationwide Mutual Insurance Company	....NO.....	1
							American Tax Credit Fund 2023-B, LLC (fka	..OH.....	..OTH.....	Nationwide Life Insurance Company	Other.....	0.010	Nationwide Mutual Insurance Company	....NO.....	1
.0140	Nationwide		87-4753681				American Tax Credit Fund 2022-A, LLC)	..OH.....	..OTH.....	Nationwide Life Insurance Company	Other.....	0.010	Nationwide Mutual Insurance Company	....NO.....	1
							American Tax Credit Fund 2023-C, LLC (fka	..OH.....	..OTH.....	Nationwide Life Insurance Company	Other.....	0.010	Nationwide Mutual Insurance Company	....NO.....	1
.0140	Nationwide		87-4771309				American Tax Credit Fund 2022-B, LLC)	..OH.....	..OTH.....	Nationwide Life Insurance Company	Other.....	0.010	Nationwide Mutual Insurance Company	....NO.....	1
.0140	Nationwide		92-1389304				American Tax Credit Fund 2023-A, LLC	..OH.....	..OTH.....	Nationwide Life Insurance Company	Other.....	0.010	Nationwide Mutual Insurance Company	....NO.....	1
.0140	Nationwide		99-0672884				American Tax Credit Fund 2024-A, LLC	..OH.....	..OTH.....	Nationwide Life Insurance Company	Other.....	0.010	Nationwide Mutual Insurance Company	....NO.....	1
.0140	Nationwide		99-0698188				American Tax Credit Fund 2024-B, LLC	..OH.....	..NIA.....	Nationwide Life Insurance Company	Ownership.....	100.000	Nationwide Mutual Insurance Company	....NO.....	
.0140	Nationwide		31-1580283				Arena District CA 1, LLC	..OH.....	..NIA.....	NID Investments, LLC	Ownership.....	100.000	Nationwide Mutual Insurance Company	....NO.....	
			90-0280710				Arena District Owners Association	..OH.....	..OTH.....	Other non-Nationwide	Other.....	0.000	Other non-Nationwide	....NO.....	2
.0140	Nationwide		31-1486309				Cavasson Hotel, LLC	..OH.....	..NIA.....	Cavasson Hotel Holdings, LLC	Ownership.....	100.000	Nationwide Mutual Insurance Company	....NO.....	
.0140	Nationwide		31-1486309				Cavasson Hotel Holdings, LLC	..OH.....	..NIA.....	NRI Cavasson, LLC	Ownership.....	100.000	Nationwide Mutual Insurance Company	....NO.....	
.0140	Nationwide		20-1618232				CNRI-Cannonsport Condominium, LLC	..OH.....	..NIA.....	CNRI-Cannonsport, LLC	Ownership.....	100.000	Nationwide Mutual Insurance Company	....NO.....	
.0140	Nationwide		20-1618232				CNRI-Cannonsport, LLC	..OH.....	..NIA.....	Nationwide Realty Investors, Ltd.	Ownership.....	100.000	Nationwide Mutual Insurance Company	....NO.....	
.0140	Nationwide	29262	74-1061659				Colonial County Mutual Insurance Company	..TX.....	..IA.....	Other non-Nationwide	Other.....	0.000	Other non-Nationwide	....NO.....	2
.0140	Nationwide	18961	68-0066866				Crestbrook Insurance Company	..OH.....	..IA.....	Nationwide Mutual Insurance Company	Ownership.....	100.000	Nationwide Mutual Insurance Company	....NO.....	

STATEMENT AS OF MARCH 31, 2025 OF THE NATIONWIDE GENERAL INSURANCE COMPANY

SCHEDULE Y

PART 1A - DETAILS OF INSURANCE HOLDING COMPANY SYSTEM

1	2	3	4	5	6	7	8	9	10	11	12	13	14	15	16
Group Code	Group Name	NAIC Company Code	ID Number	Federal RSSD	CIK	Name of Securities Exchange if Publicly Traded (U.S. or International)	Names of Parent, Subsidiaries Or Affiliates	Domi-ciliary Location	Relation-ship to Reporting Entity	Directly Controlled by (Name of Entity/Person)	Type of Control (Ownership, Board, Management, Attorney-in-Fact, Influence, Other)	If Control is Ownership Provide Percen-tage	Ultimate Controlling Entity(ies)/Person(s)	Is an SCA Filing Re-quired? (Yes/No)	*
. 0140 ...	Nationwide .....	.....	31-1486309 ..	.....	.....	.....	Crewville, Ltd. ....	.. OH.....	.....	Nationwide Realty Investors, Ltd. ....	Ownership.....	100.000 ...	Nationwide Mutual Insurance Company ...	... NO.....	.....
. 0140 ...	Nationwide .....	.....	84-5052608 ..	.....	.....	.....	Danforth, LLC .....	.. OH.....	.....	Nationwide Mutual Insurance Company .....	Ownership.....	100.000 ...	Nationwide Mutual Insurance Company ...	... NO.....	.....
. 0140 ...	Nationwide .....	42587 .....	42-1207150 ..	.....	.....	.....	Depositors Insurance Company .....	.. IA.....	.....	Nationwide Mutual Insurance Company .....	Ownership.....	100.000 ...	Nationwide Mutual Insurance Company ...	... NO.....	.....
.....	.....	.....	46-4104813 ..	.....	.....	.....	Discover Affordable Housing Investment Fund I LLC .....	.. OH.....	.....	Other non-Nationwide .....	Other.....	0.000 ...	Other non-Nationwide .....	... NO.....	2 .....
. 0140 ...	Nationwide .....	.....	33-0096671 ..	.....	.....	.....	DVM Insurance Agency .....	.. CA.....	.....	Veterinary Pet Insurance Company .....	Ownership.....	100.000 ...	Nationwide Mutual Insurance Company ...	... NO.....	.....
. 0140 ...	Nationwide .....	15821 .....	47-4523959 ..	.....	.....	.....	Eagle Captive Reinsurance, LLC .....	.. OH.....	.....	Nationwide Life Insurance Company .....	Ownership.....	100.000 ...	Nationwide Mutual Insurance Company ...	... NO.....	.....
. 0140 ...	Nationwide .....	.....	26-3260559 ..	.....	.....	.....	E-Risk Services, L.L.C. ....	.. DE.....	.....	Nationwide Mutual Insurance Company .....	Ownership.....	100.000 ...	Nationwide Mutual Insurance Company ...	... NO.....	.....
. 0140 ...	Nationwide .....	22209 .....	75-6013587 ..	.....	.....	.....	Freedom Specialty Insurance Company .....	.. OH.....	.....	Scottsdale Insurance Company .....	Ownership.....	100.000 ...	Nationwide Mutual Insurance Company ...	... NO.....	.....
. 0140 ...	Nationwide .....	.....	20-4939866 ..	.....	.....	.....	Grandview Yard Hotel Holdings, LLC .....	.. OH.....	.....	NRI Equity Land Investments, LLC .....	Ownership.....	100.000 ...	Nationwide Mutual Insurance Company ...	... NO.....	.....
. 0140 ...	Nationwide .....	.....	20-4939866 ..	.....	.....	.....	Grandview Yard Hotel, LLC .....	.. OH.....	.....	Grandview Yard Hotel Holdings, LLC .....	Ownership.....	100.000 ...	Nationwide Mutual Insurance Company ...	... NO.....	.....
. 0140 ...	Nationwide .....	.....	20-4939866 ..	.....	.....	.....	GVY Residential, LLC .....	.. OH.....	.....	NRI Equity Land Investments, LLC .....	Ownership.....	100.000 ...	Nationwide Mutual Insurance Company ...	... NO.....	.....
. 0140 ...	Nationwide .....	23582 .....	41-0417250 ..	.....	.....	.....	Harleysville Insurance Company .....	.. OH.....	.....	Nationwide Mutual Insurance Company .....	Ownership.....	100.000 ...	Nationwide Mutual Insurance Company ...	... NO.....	.....
.....	.....	.....	.....	.....	.....	.....	Harleysville Insurance Company of New Jersey .....	.....	.....	.....	.....	.....	.....	.....	.....
. 0140 ...	Nationwide .....	42900 .....	23-2253669 ..	.....	.....	.....	.....	.. NJ.....	.....	Nationwide Mutual Insurance Company .....	Ownership.....	100.000 ...	Nationwide Mutual Insurance Company ...	... NO.....	.....
. 0140 ...	Nationwide .....	10674 .....	23-2864924 ..	.....	.....	.....	Harleysville Insurance Company of New York .....	.. OH.....	.....	Nationwide Mutual Insurance Company .....	Ownership.....	100.000 ...	Nationwide Mutual Insurance Company ...	... NO.....	.....
. 0140 ...	Nationwide .....	35696 .....	23-2384978 ..	.....	.....	.....	Harleysville Preferred Insurance Company .....	.. OH.....	.....	Nationwide Mutual Insurance Company .....	Ownership.....	100.000 ...	Nationwide Mutual Insurance Company ...	... NO.....	.....
. 0140 ...	Nationwide .....	26182 .....	04-1989660 ..	.....	.....	.....	Harleysville Worcester Insurance Company .....	.. OH.....	.....	Nationwide Mutual Insurance Company .....	Ownership.....	100.000 ...	Nationwide Mutual Insurance Company ...	... NO.....	.....
. 0140 ...	Nationwide .....	64017 .....	75-0300900 ..	.....	.....	.....	Jefferson National Life Insurance Company ...	.. TX.....	.....	Nationwide Life Insurance Company .....	Ownership.....	100.000 ...	Nationwide Mutual Insurance Company ...	... NO.....	.....
.....	.....	.....	.....	.....	.....	.....	Jefferson National Life Insurance Company of New York .....	.....	.....	.....	.....	.....	.....	.....	.....
. 0140 ...	Nationwide .....	15727 .....	47-1180302 ..	.....	.....	.....	.....	.. NY.....	.....	Jefferson National Life Insurance Company .....	Ownership.....	100.000 ...	Nationwide Mutual Insurance Company ...	... NO.....	.....
. 0140 ...	Nationwide .....	.....	31-1486309 ..	.....	.....	.....	Jerome Village Company, LLC .....	.. OH.....	.....	Nationwide Realty Investors, Ltd. ....	Ownership.....	100.000 ...	Nationwide Mutual Insurance Company ...	... NO.....	.....
. 0140 ...	Nationwide .....	.....	74-1395229 ..	.....	.....	.....	Lone Star General Agency, Inc. ....	.. TX.....	.....	Nationwide Mutual Insurance Company .....	Ownership.....	100.000 ...	Nationwide Mutual Insurance Company ...	... NO.....	.....
. 0140 ...	Nationwide .....	11991 .....	38-0865250 ..	.....	.....	.....	National Casualty Company .....	.. OH.....	.....	Nationwide Mutual Insurance Company .....	Ownership.....	100.000 ...	Nationwide Mutual Insurance Company ...	... NO.....	.....
. 0140 ...	Nationwide .....	.....	.....	.....	.....	.....	National Casualty Company of America, Ltd. .	.. GBR.....	.....	National Casualty Company .....	Ownership.....	100.000 ...	Nationwide Mutual Insurance Company ...	... NO.....	.....
. 0140 ...	Nationwide .....	.....	42-1154244 ..	.....	.....	.....	Nationwide Advantage Mortgage Company .....	.. IA.....	.....	AMCO Insurance Company .....	Ownership.....	87.300 ...	Nationwide Mutual Insurance Company ...	... YES.....	.....
.....	.....	.....	.....	.....	.....	.....	.....	.....	.....	ALLIED Property & Casualty Insurance Company .....	.....	.....	.....	.....	.....
. 0140 ...	Nationwide .....	.....	42-1154244 ..	.....	.....	.....	Nationwide Advantage Mortgage Company .....	.. IA.....	.....	Company .....	Ownership.....	8.470 ...	Nationwide Mutual Insurance Company ...	... YES.....	.....
. 0140 ...	Nationwide .....	.....	42-1154244 ..	.....	.....	.....	Nationwide Advantage Mortgage Company .....	.. IA.....	.....	Depositors Insurance Company .....	Ownership.....	4.230 ...	Nationwide Mutual Insurance Company ...	... YES.....	.....
.....	.....	.....	.....	.....	.....	.....	Nationwide Affinity Insurance Company of America .....	.....	.....	.....	.....	.....	.....	.....	.....
. 0140 ...	Nationwide .....	26093 .....	48-0470690 ..	.....	.....	.....	.....	.. OH.....	.....	Nationwide Mutual Insurance Company .....	Ownership.....	100.000 ...	Nationwide Mutual Insurance Company ...	... NO.....	.....
. 0140 ...	Nationwide .....	28223 .....	42-1015537 ..	.....	.....	.....	Nationwide Agribusiness Insurance Company ...	.. IA.....	.....	Nationwide Mutual Insurance Company .....	Ownership.....	100.000 ...	Nationwide Mutual Insurance Company ...	... NO.....	.....
. 0140 ...	Nationwide .....	.....	31-1578869 ..	.....	.....	.....	Nationwide Arena, LLC .....	.. OH.....	.....	NRI Arena, LLC .....	Ownership.....	90.000 ...	Nationwide Mutual Insurance Company ...	... NO.....	.....
. 0140 ...	Nationwide .....	.....	20-8670712 ..	.....	.....	.....	Nationwide Asset Management, LLC .....	.. OH.....	.....	Nationwide Mutual Insurance Company .....	Ownership.....	100.000 ...	Nationwide Mutual Insurance Company ...	... NO.....	.....
. 0140 ...	Nationwide .....	10723 .....	95-0639970 ..	.....	.....	.....	Nationwide Assurance Company .....	.. OH.....	.....	Nationwide Mutual Insurance Company .....	Ownership.....	100.000 ...	Nationwide Mutual Insurance Company ...	... NO.....	.....
. 0140 ...	Nationwide .....	.....	31-1036287 ..	.....	.....	.....	Nationwide Cash Management Company .....	.. OH.....	.....	Nationwide Mutual Insurance Company .....	Ownership.....	100.000 ...	Nationwide Mutual Insurance Company ...	... NO.....	.....
. 0140 ...	Nationwide .....	.....	31-4416546 ..	.....	.....	.....	Nationwide Corporation .....	.. OH.....	.....	Nationwide Mutual Insurance Company .....	Ownership.....	100.000 ...	Nationwide Mutual Insurance Company ...	... YES.....	.....
. 0140 ...	Nationwide .....	.....	31-1667326 ..	.....	.....	.....	Nationwide Financial Assignment Company .....	.. OH.....	.....	Nationwide Life Insurance Company .....	Ownership.....	100.000 ...	Nationwide Mutual Insurance Company ...	... NO.....	.....
. 0140 ...	Nationwide .....	.....	23-2412039 ..	.....	.....	.....	Nationwide Financial General Agency, Inc. ...	.. PA.....	.....	NFS Distributors, Inc. ....	Ownership.....	100.000 ...	Nationwide Mutual Insurance Company ...	... NO.....	.....
. 0140 ...	Nationwide .....	.....	31-6554353 ..	.....	.....	.....	Nationwide Financial Services Capital Trust .....	.. DE.....	.....	Nationwide Financial Services, Inc. ....	Ownership.....	100.000 ...	Nationwide Mutual Insurance Company ...	... NO.....	.....
. 0140 ...	Nationwide .....	.....	31-1486870 ..	.....	.....	.....	Nationwide Financial Services, Inc. ....	.. DE.....	.....	Nationwide Corporation .....	Ownership.....	100.000 ...	Nationwide Mutual Insurance Company ...	... NO.....	.....
. 0140 ...	Nationwide .....	.....	52-6969857 ..	.....	.....	.....	Nationwide Fund Advisors .....	.. DE.....	.....	Nationwide Financial Services, Inc. ....	Ownership.....	100.000 ...	Nationwide Mutual Insurance Company ...	... NO.....	.....
. 0140 ...	Nationwide .....	.....	31-1748721 ..	.....	.....	.....	Nationwide Fund Distributors LLC .....	.. DE.....	.....	NFS Distributors, Inc. ....	Ownership.....	100.000 ...	Nationwide Mutual Insurance Company ...	... NO.....	.....
. 0140 ...	Nationwide .....	.....	31-0900518 ..	.....	.....	.....	Nationwide Fund Management LLC .....	.. DE.....	.....	NFS Distributors, Inc. ....	Ownership.....	100.000 ...	Nationwide Mutual Insurance Company ...	... NO.....	.....
. 0140 ...	Nationwide .....	23760 .....	31-4425763 ..	.....	.....	.....	Nationwide General Insurance Company .....	.. OH.....	.....	Nationwide Mutual Insurance Company .....	Ownership.....	100.000 ...	Nationwide Mutual Insurance Company ...	... NO.....	.....
. 0140 ...	Nationwide .....	10070 .....	31-1399201 ..	.....	.....	.....	Nationwide Indemnity Company .....	.. OH.....	.....	Nationwide Mutual Insurance Company .....	Ownership.....	100.000 ...	Nationwide Mutual Insurance Company ...	... NO.....	.....
. 0140 ...	Nationwide .....	.....	33-3724100 ..	.....	.....	.....	Nationwide GSC Holding, Inc. ....	.. OH.....	.....	Nationwide Mutual Insurance Company .....	Ownership.....	100.000 ...	Nationwide Mutual Insurance Company ...	... NO.....	.....
. 0140 ...	Nationwide .....	25453 .....	95-2130882 ..	.....	.....	.....	Nationwide Insurance Company of America .....	.. OH.....	.....	Nationwide Mutual Insurance Company .....	Ownership.....	100.000 ...	Nationwide Mutual Insurance Company ...	... NO.....	.....
. 0140 ...	Nationwide .....	10948 .....	31-1613686 ..	.....	.....	.....	Nationwide Insurance Company of Florida .....	.. OH.....	.....	Nationwide Mutual Insurance Company .....	Ownership.....	100.000 ...	Nationwide Mutual Insurance Company ...	... NO.....	.....
. 0140 ...	Nationwide .....	.....	41-2206199 ..	.....	.....	.....	Nationwide Investment Advisors, LLC .....	.. OH.....	.....	Nationwide Life Insurance Company .....	Ownership.....	100.000 ...	Nationwide Mutual Insurance Company ...	... NO.....	.....

STATEMENT AS OF MARCH 31, 2025 OF THE NATIONWIDE GENERAL INSURANCE COMPANY

SCHEDULE Y

PART 1A - DETAILS OF INSURANCE HOLDING COMPANY SYSTEM

1	2	3	4	5	6	7	8	9	10	11	12	13	14	15	16
Group Code	Group Name	NAIC Company Code	ID Number	Federal RSSD	CIK	Name of Securities Exchange if Publicly Traded (U.S. or International)	Names of Parent, Subsidiaries Or Affiliates	Domi-ciliary Location	Relation-ship to Reporting Entity	Directly Controlled by (Name of Entity/Person)	Type of Control (Ownership, Board, Management, Attorney-in-Fact, Influence, Other)	If Control is Ownership Provide Percen-tage	Ultimate Controlling Entity(ies)/Person(s)	Is an SCA Filing Re-quired? (Yes/No)	*
. 0140	Nationwide		73-0988442				Nationwide Investment Services Corporation .. Nationwide Life and Annuity Insurance Company	.. OK.....	.....NIA.....	Nationwide Life Insurance Company .....	Ownership.....	100.000	Nationwide Mutual Insurance Company ...	...YES.....	.....
. 0140	Nationwide	92657	31-1000740					.. OH.....	.....IA.....	Nationwide Life Insurance Company .....	Ownership.....	100.000	Nationwide Mutual Insurance Company ...	...NO.....	.....
. 0140	Nationwide	66869	31-4156830				Nationwide Life Insurance Company .....	.. OH.....	.....IA.....	Nationwide Financial Services, Inc. ....	Ownership.....	100.000	Nationwide Mutual Insurance Company ...	...NO.....	.....
. 0140	Nationwide		54-2113175				Nationwide Life Tax Credit Partners 2003-A, LLC .....	.. OH.....	.....OTH.....	Nationwide Life Insurance Company .....	Other.....	0.010	Nationwide Mutual Insurance Company ...	...NO.....	... 1 .....
. 0140	Nationwide		58-2672725				Nationwide Life Tax Credit Partners 2003-B, LLC .....	.. OH.....	.....OTH.....	Nationwide Life Insurance Company .....	Other.....	0.010	Nationwide Mutual Insurance Company ...	...NO.....	... 1 .....
. 0140	Nationwide		20-0382144				Nationwide Life Tax Credit Partners 2004-A, LLC .....	.. OH.....	.....OTH.....	Nationwide Life Insurance Company .....	Other.....	0.010	Nationwide Mutual Insurance Company ...	...NO.....	... 1 .....
. 0140	Nationwide		20-1918935				Nationwide Life Tax Credit Partners 2004-F, LLC .....	.. OH.....	.....OTH.....	Nationwide Life Insurance Company .....	Other.....	0.010	Nationwide Mutual Insurance Company ...	...NO.....	... 1 .....
. 0140	Nationwide		20-2303694				Nationwide Life Tax Credit Partners 2005-A, LLC .....	.. OH.....	.....OTH.....	Nationwide Life Insurance Company .....	Other.....	0.010	Nationwide Mutual Insurance Company ...	...NO.....	... 1 .....
. 0140	Nationwide		20-2303602				Nationwide Life Tax Credit Partners 2005-B, LLC .....	.. OH.....	.....OTH.....	Nationwide Life Insurance Company .....	Other.....	0.010	Nationwide Mutual Insurance Company ...	...NO.....	... 1 .....
. 0140	Nationwide		27-1362364				Nationwide Life Tax Credit Partners 2009-I, LLC .....	.. OH.....	.....OTH.....	Nationwide Life Insurance Company .....	Other.....	0.010	Nationwide Mutual Insurance Company ...	...NO.....	... 1 .....
. 0140	Nationwide		33-3698490				Nationwide Nom, LLC .....	.. OH.....	.....NIA.....	Nationwide Mutual Insurance Company .....	Ownership.....	100.000	Nationwide Mutual Insurance Company ...	...NO.....	.....
. 0140	Nationwide		42-1373380				Nationwide Sales Solutions, Inc. (fka	.. IA.....	.....NIA.....	Nationwide Mutual Insurance Company .....	Ownership.....	100.000	Nationwide Mutual Insurance Company ...	...NO.....	.....
. 0140	Nationwide		75-3191025				Nationwide Member Solutions Agency Inc.) ....	.. OH.....	.....NIA.....	Nationwide Mutual Insurance Company .....	Ownership.....	100.000	Nationwide Mutual Insurance Company ...	...NO.....	.....
. 0140	Nationwide	23787	31-4177100				Nationwide Mutual Capital, LLC .....	.. OH.....	.....UDP.....	Other non-Nationwide .....	Ownership.....	0.000	Other non-Nationwide .....	...NO.....	.....
. 0140	Nationwide		34-2012765				Nationwide Mutual Insurance Company .....	.. OH.....	.....NIA.....	Nationwide Mutual Insurance Company .....	Ownership.....	100.000	Nationwide Mutual Insurance Company ...	...NO.....	.....
. 0140	Nationwide	37877	31-0970750				Nationwide Private Equity Fund, LLC .....	.. OH.....	.....NIA.....	Nationwide Mutual Insurance Company .....	Ownership.....	100.000	Nationwide Mutual Insurance Company ...	...NO.....	.....
. 0140	Nationwide		31-1486309				Nationwide Property and Casualty Insurance Company .....	.. OH.....	.....IA.....	Nationwide Mutual Insurance Company .....	Ownership.....	100.000	Nationwide Mutual Insurance Company ...	...NO.....	.....
. 0140	Nationwide		31-1486309				Nationwide Realty Investors, Ltd. ....	.. OH.....	.....NIA.....	Nationwide Mutual Insurance Company .....	Ownership.....	97.121	Nationwide Mutual Insurance Company ...	...NO.....	.....
. 0140	Nationwide		31-1486309				Nationwide Realty Investors, Ltd. ....	.. OH.....	.....NIA.....	Nationwide Indemnity Company .....	Ownership.....	2.879	Nationwide Mutual Insurance Company ...	...NO.....	.....
. 0140	Nationwide		31-1486309				Nationwide Realty Management, LLC .....	.. OH.....	.....NIA.....	Nationwide Realty Investors, Ltd. ....	Ownership.....	100.000	Nationwide Mutual Insurance Company ...	...NO.....	.....
. 0140	Nationwide		73-0948330				Nationwide Realty Services, Ltd. ....	.. OH.....	.....NIA.....	Nationwide Mutual Insurance Company .....	Ownership.....	100.000	Nationwide Mutual Insurance Company ...	...NO.....	.....
. 0140	Nationwide						Nationwide Retirement Solutions, Inc. ....	.. DE.....	.....NIA.....	NFS Distributors, Inc. ....	Ownership.....	100.000	Nationwide Mutual Insurance Company ...	...NO.....	.....
. 0140	Nationwide		83-2250056				Nationwide Life and Annuity Insurance Company .....	.. OH.....	.....NIA.....	Nationwide Mutual Insurance Company .....	Ownership.....	100.000	Nationwide Mutual Insurance Company ...	...NO.....	.....
. 0140	Nationwide		36-2434406				Nationwide SBL, LLC .....	.. OH.....	.....NIA.....	Nationwide Mutual Insurance Company .....	Ownership.....	100.000	Nationwide Mutual Insurance Company ...	...NO.....	.....
. 0140	Nationwide		46-1952215				Nationwide Securities, LLC .....	.. OH.....	.....NIA.....	NFS Distributors, Inc. ....	Ownership.....	100.000	Nationwide Mutual Insurance Company ...	...NO.....	.....
. 0140	Nationwide		46-1971926				Nationwide Tax Credit Partners 2013-A, LLC ..	.. OH.....	.....OTH.....	Nationwide Life Insurance Company .....	Other.....	0.010	Nationwide Mutual Insurance Company ...	...NO.....	... 1 .....
. 0140	Nationwide		31-1592130	2729677			Nationwide Tax Credit Partners 2013-B, LLC ..	.. OH.....	.....OTH.....	Nationwide Life Insurance Company .....	Other.....	0.010	Nationwide Mutual Insurance Company ...	...NO.....	... 1 .....
. 0140	Nationwide		20-5976272				Nationwide Trust Company, FSB .....	.. US.....	.....NIA.....	Nationwide Financial Services, Inc. ....	Ownership.....	100.000	Nationwide Mutual Insurance Company ...	...NO.....	.....
. 0140	Nationwide		85-4193218				Nationwide Ventures, LLC .....	.. OH.....	.....NIA.....	Nationwide Mutual Insurance Company .....	Ownership.....	100.000	Nationwide Mutual Insurance Company ...	...NO.....	.....
. 0140	Nationwide		11-3651828				NCS Arizona, LLC .....	.. OH.....	.....NIA.....	Nationwide Mutual Insurance Company .....	Ownership.....	100.000	Nationwide Mutual Insurance Company ...	...NO.....	.....
. 0140	Nationwide		31-1630871				ND La Quinta Partners, LLC .....	.. DE.....	.....NIA.....	Nationwide Realty Investors, Ltd. ....	Ownership.....	95.000	Nationwide Mutual Insurance Company ...	...NO.....	.....
. 0140	Nationwide						NFS Distributors, Inc. ....	.. DE.....	.....NIA.....	Nationwide Financial Services, Inc. ....	Ownership.....	100.000	Nationwide Mutual Insurance Company ...	...NO.....	.....
. 0140	Nationwide		93-4557312				Nationwide Life and Annuity Insurance Company .....	.. OH.....	.....NIA.....	Nationwide Mutual Insurance Company .....	Ownership.....	100.000	Nationwide Mutual Insurance Company ...	...NO.....	.....
. 0140	Nationwide		82-5195340				NLAIC REO Holdings, LLC .....	.. OH.....	.....NIA.....	Nationwide Life Insurance Company .....	Ownership.....	100.000	Nationwide Mutual Insurance Company ...	...NO.....	.....
. 0140	Nationwide		82-5194959				NLIC REO Holdings, LLC .....	.. OH.....	.....NIA.....	Nationwide Mutual Insurance Company .....	Ownership.....	100.000	Nationwide Mutual Insurance Company ...	...NO.....	.....
. 0140	Nationwide		46-3762545				NMIC REO Holdings, LLC .....	.. OH.....	.....NIA.....	Nationwide Mutual Insurance Company .....	Ownership.....	100.000	Nationwide Mutual Insurance Company ...	...NO.....	.....
. 0140	Nationwide		20-4939866				NNOV8, LLC .....	.. OH.....	.....NIA.....	Nationwide Mutual Insurance Company .....	Ownership.....	100.000	Nationwide Mutual Insurance Company ...	...NO.....	.....
. 0140	Nationwide		31-1486309				North of Third, LLC .....	.. OH.....	.....NIA.....	Nationwide Mutual Insurance Company .....	Ownership.....	100.000	Nationwide Mutual Insurance Company ...	...NO.....	.....
. 0140	Nationwide		31-1486309				NRI Arena, LLC .....	.. OH.....	.....NIA.....	NRI Equity Land Investments, LLC .....	Ownership.....	100.000	Nationwide Mutual Insurance Company ...	...NO.....	.....
. 0140	Nationwide		31-1486309				Nationwide Realty Investors, Ltd. ....	.. OH.....	.....NIA.....	Nationwide Realty Investors, Ltd. ....	Ownership.....	100.000	Nationwide Mutual Insurance Company ...	...NO.....	.....
. 0140	Nationwide		31-1486309				NRI Brookledge, LLC .....	.. OH.....	.....NIA.....	Nationwide Realty Investors, Ltd. ....	Ownership.....	100.000	Nationwide Mutual Insurance Company ...	...NO.....	.....
. 0140	Nationwide		31-1486309				NRI Builders, LLC .....	.. OH.....	.....NIA.....	Nationwide Realty Investors, Ltd. ....	Ownership.....	100.000	Nationwide Mutual Insurance Company ...	...NO.....	.....
. 0140	Nationwide		31-1486309				NRI Cavasson, LLC .....	.. OH.....	.....NIA.....	Nationwide Realty Investors, Ltd. ....	Ownership.....	100.000	Nationwide Mutual Insurance Company ...	...NO.....	.....

STATEMENT AS OF MARCH 31, 2025 OF THE NATIONWIDE GENERAL INSURANCE COMPANY

SCHEDULE Y  
PART 1A - DETAILS OF INSURANCE HOLDING COMPANY SYSTEM

1	2	3	4	5	6	7	8	9	10	11	12	13	14	15	16
Group Code	Group Name	NAIC Company Code	ID Number	Federal RSSD	CIK	Name of Securities Exchange if Publicly Traded (U.S. or International)	Names of Parent, Subsidiaries Or Affiliates	Domi-ciliary Location	Relation-ship to Reporting Entity	Directly Controlled by (Name of Entity/Person)	Type of Control (Ownership, Board, Management, Attorney-in-Fact, Influence, Other)	If Control is Owner-ship Provide Percen-tage	Ultimate Controlling Entity(ies)/Person(s)	Is an SCA Filing Re-quired? (Yes/No)	*
.0140	Nationwide		31-1486309				NRI Corporate Housing, LLC	..OH.....	NIA.....	Nationwide Realty Investors, Ltd.	Ownership.....	100.000	Nationwide Mutual Insurance Company	...NO.....	
.0140	Nationwide		31-1486309				NRI Cramer Creek, LLC	..OH.....	NIA.....	Nationwide Realty Investors, Ltd.	Ownership.....	100.000	Nationwide Mutual Insurance Company	...NO.....	
.0140	Nationwide		20-4939866				NRI Equity Land Investments, LLC	..OH.....	NIA.....	Nationwide Realty Investors, Ltd.	Ownership.....	80.000	Nationwide Mutual Insurance Company	...NO.....	
.0140	Nationwide		26-0212217				NRI Equity Tampa, LLC	..OH.....	NIA.....	Nationwide Realty Investors, Ltd.	Ownership.....	100.000	Nationwide Mutual Insurance Company	...NO.....	
.0140	Nationwide		31-1486309				NRI Office Ventures, Ltd	..OH.....	NIA.....	Nationwide Realty Investors, Ltd.	Ownership.....	100.000	Nationwide Mutual Insurance Company	...NO.....	
.0140	Nationwide		31-1580283				NRI Telecom, LLC	..OH.....	NIA.....	NID Investments, LLC	Ownership.....	100.000	Nationwide Mutual Insurance Company	...NO.....	
.0140	Nationwide		31-1486309				NRI-Rivulon, LLC	..OH.....	NIA.....	Nationwide Realty Investors, Ltd.	Ownership.....	100.000	Nationwide Mutual Insurance Company	...NO.....	
.0140	Nationwide		90-0729552				NTCIF-2011, LLC	..OH.....	NIA.....	Nationwide Mutual Insurance Company	Ownership.....	100.000	Nationwide Mutual Insurance Company	...NO.....	
.0140	Nationwide		27-4700627				NTCP 2011-A, LLC	..OH.....	OTH.....	Nationwide Life Insurance Company	Other.....	0.010	Nationwide Mutual Insurance Company	...NO.....	1
.0140	Nationwide		46-0741029				NTCP 2012-A, LLC	..OH.....	OTH.....	Nationwide Life Insurance Company	Other.....	0.010	Nationwide Mutual Insurance Company	...NO.....	1
.0140	Nationwide		46-3309896				NTCP 2013-C, LLC	..OH.....	OTH.....	Nationwide Life Insurance Company	Other.....	0.010	Nationwide Mutual Insurance Company	...NO.....	1
.0140	Nationwide		46-4111078				NTCP 2014-A, LLC	..OH.....	OTH.....	Nationwide Life Insurance Company	Other.....	0.010	Nationwide Mutual Insurance Company	...NO.....	1
.0140	Nationwide		47-1404116				NTCP 2014-B, LLC	..OH.....	OTH.....	Nationwide Life Insurance Company	Other.....	0.010	Nationwide Mutual Insurance Company	...NO.....	1
.0140	Nationwide		47-1413242				NTCP 2014-C, LLC	..OH.....	NIA.....	Nationwide Life Insurance Company	Ownership.....	100.000	Nationwide Mutual Insurance Company	...NO.....	
.0140	Nationwide		47-3909345				NTCP 2015-A, LLC	..OH.....	OTH.....	Nationwide Life Insurance Company	Other.....	0.010	Nationwide Mutual Insurance Company	...NO.....	1
.0140	Nationwide		47-4148470				NTCP 2015-B, LLC	..OH.....	OTH.....	Nationwide Life Insurance Company	Other.....	0.010	Nationwide Mutual Insurance Company	...NO.....	1
.0140	Nationwide		81-3836925				NTCP 2016-A, LLC	..OH.....	OTH.....	Nationwide Life Insurance Company	Other.....	0.010	Nationwide Mutual Insurance Company	...NO.....	1
.0140	Nationwide		82-2015065				NTCP 2017-A, LLC	..OH.....	OTH.....	Nationwide Life Insurance Company	Other.....	0.010	Nationwide Mutual Insurance Company	...NO.....	1
.0140	Nationwide		84-1969518				NW Fyrebyrd, LLC	..OH.....	NIA.....	NNOV8, LLC	Ownership.....	100.000	Nationwide Mutual Insurance Company	...NO.....	
.0140	Nationwide		85-3363961				NW Next, LLC	..OH.....	NIA.....	NNOV8, LLC	Ownership.....	100.000	Nationwide Mutual Insurance Company	...NO.....	
.0140	Nationwide		81-0936428				NW Private Debt, LLC	..OH.....	NIA.....	Nationwide Mutual Insurance Company	Ownership.....	100.000	Nationwide Mutual Insurance Company	...NO.....	
.0140	Nationwide		26-1903919				NW REI, LLC	..DE.....	NIA.....	Nationwide Mutual Insurance Company	Ownership.....	100.000	Nationwide Mutual Insurance Company	...NO.....	
.0140	Nationwide		92-1294202				NW-Adams, LLC	..OH.....	NIA.....	NW REI, LLC	Ownership.....	100.000	Nationwide Mutual Insurance Company	...NO.....	
.0140	Nationwide		99-3508624				NW-Aureum, LLC	..OH.....	NIA.....	NW REI (NLIC), LLC	Ownership.....	100.000	Nationwide Mutual Insurance Company	...NO.....	
.0140	Nationwide		92-2674633				NW-Brandon LLC	..OH.....	NIA.....	NW REI (NLIC), LLC	Ownership.....	100.000	Nationwide Mutual Insurance Company	...NO.....	
.0140	Nationwide		87-0847675				NW-Broadway at Surf, LLC	..OH.....	NIA.....	NMIC REO Holdings, LLC	Ownership.....	100.000	Nationwide Mutual Insurance Company	...NO.....	
.0140	Nationwide		88-2152576				NW-Colfax, LLC	..OH.....	NIA.....	NW REI (NLAIC), LLC	Ownership.....	100.000	Nationwide Mutual Insurance Company	...NO.....	
.0140	Nationwide		92-0292630				NW-Conroe, LLC	..OH.....	NIA.....	Nationwide Life Insurance Company	Ownership.....	100.000	Nationwide Mutual Insurance Company	...NO.....	
.0140	Nationwide		87-3648595				NW-Corazon, LLC	..OH.....	NIA.....	Nationwide Life Insurance Company	Ownership.....	100.000	Nationwide Mutual Insurance Company	...NO.....	
.0140	Nationwide		99-3065627				NW-Denton, LLC	..OH.....	NIA.....	NW REI, LLC	Ownership.....	100.000	Nationwide Mutual Insurance Company	...NO.....	
.0140	Nationwide		86-3529884				NW-Englewood, LLC	..OH.....	NIA.....	NW REI (NLIC), LLC	Ownership.....	100.000	Nationwide Mutual Insurance Company	...NO.....	
.0140	Nationwide		84-4388876				NW-Escalante, LLC	..OH.....	NIA.....	NW REI, LLC	Ownership.....	100.000	Nationwide Mutual Insurance Company	...NO.....	
.0140	Nationwide		86-1538532				NW-Escalante II, LLC	..OH.....	NIA.....	NW REI, LLC	Ownership.....	100.000	Nationwide Mutual Insurance Company	...NO.....	
.0140	Nationwide		92-3310596				NW-FSU, LLC	..OH.....	NIA.....	NW REI (NLIC), LLC	Ownership.....	100.000	Nationwide Mutual Insurance Company	...NO.....	
.0140	Nationwide		31-1580283				NWD 205 Vine, LLC	..OH.....	NIA.....	NWD Investments, LLC	Ownership.....	100.000	Nationwide Mutual Insurance Company	...NO.....	
.0140	Nationwide		31-1580283				NWD 225 Nationwide, LLC	..OH.....	NIA.....	NWD Investments, LLC	Ownership.....	100.000	Nationwide Mutual Insurance Company	...NO.....	
.0140	Nationwide		31-1580283				NWD 230 West, LLC	..OH.....	NIA.....	NWD Investments, LLC	Ownership.....	100.000	Nationwide Mutual Insurance Company	...NO.....	
.0140	Nationwide		31-1580283				NWD 240 Nationwide, LLC	..OH.....	NIA.....	NWD Investments, LLC	Ownership.....	100.000	Nationwide Mutual Insurance Company	...NO.....	
.0140	Nationwide		31-1580283				NWD 250 Brodbelt, LLC	..OH.....	NIA.....	NWD Investments, LLC	Ownership.....	100.000	Nationwide Mutual Insurance Company	...NO.....	
.0140	Nationwide		31-1580283				NWD 250 West, LLC	..OH.....	NIA.....	NWD Investments, LLC	Ownership.....	100.000	Nationwide Mutual Insurance Company	...NO.....	
.0140	Nationwide		31-1580283				NWD 265 Neil, LLC	..OH.....	NIA.....	NWD Investments, LLC	Ownership.....	100.000	Nationwide Mutual Insurance Company	...NO.....	
.0140	Nationwide		31-1580283				NWD 275 Marconi, LLC	..OH.....	NIA.....	NWD Investments, LLC	Ownership.....	100.000	Nationwide Mutual Insurance Company	...NO.....	
.0140	Nationwide		31-1580283				NWD 300 Neil, LLC	..OH.....	NIA.....	NWD Investments, LLC	Ownership.....	100.000	Nationwide Mutual Insurance Company	...NO.....	
.0140	Nationwide		31-1580283				NWD 300 Spring, LLC	..OH.....	NIA.....	NWD Investments, LLC	Ownership.....	100.000	Nationwide Mutual Insurance Company	...NO.....	
.0140	Nationwide		31-1580283				NWD 355 McConnell, LLC	..OH.....	NIA.....	NWD Investments, LLC	Ownership.....	100.000	Nationwide Mutual Insurance Company	...NO.....	
.0140	Nationwide		31-1580283				NWD 425 Nationwide, LLC	..OH.....	NIA.....	NWD Investments, LLC	Ownership.....	100.000	Nationwide Mutual Insurance Company	...NO.....	
.0140	Nationwide		31-1580283				NWD 500 Nationwide, LLC	..OH.....	NIA.....	NWD Investments, LLC	Ownership.....	100.000	Nationwide Mutual Insurance Company	...NO.....	
.0140	Nationwide		31-1580283				NWD Arena Crossing, LLC	..OH.....	NIA.....	NWD Investments, LLC	Ownership.....	100.000	Nationwide Mutual Insurance Company	...NO.....	
.0140	Nationwide		31-1580283				NWD Arena District I, LLC	..OH.....	NIA.....	NWD Investments, LLC	Ownership.....	100.000	Nationwide Mutual Insurance Company	...NO.....	



STATEMENT AS OF MARCH 31, 2025 OF THE NATIONWIDE GENERAL INSURANCE COMPANY

SCHEDULE Y  
PART 1A - DETAILS OF INSURANCE HOLDING COMPANY SYSTEM

1	2	3	4	5	6	7	8	9	10	11	12 Type of Control (Ownership, Board, Management, Attorney-in-Fact, Influence, Other)	13 If Control is Owner- ship Provide Percen- tage	14	15	16
Group Code	Group Name	NAIC Company Code	ID Number	Federal RSSD	CIK	Name of Securities Exchange if Publicly Traded (U.S. or International)	Names of Parent, Subsidiaries Or Affiliates	Domi- ciliary Loca- tion	Relation- ship to Reporting Entity	Directly Controlled by (Name of Entity/Person)			Ultimate Controlling Entity(ies)/Person(s)	Is an SCA Filing Re- quired? (Yes/No)	*
. 0140 ...	Nationwide ...	.....	31-1580283 ..	.....	.....	.....	NWD Arena District II, LLC .....	.. OH.....	..... NIA.....	NWD Investments, LLC .....	Ownership.....	100.000 ...	Nationwide Mutual Insurance Company ...	... NO.....	.....
. 0140 ...	Nationwide ...	.....	31-1580283 ..	.....	.....	.....	NWD Arena District MM, LLC .....	.. OH.....	..... NIA.....	NWD Investments, LLC .....	Ownership.....	100.000 ...	Nationwide Mutual Insurance Company ...	... NO.....	.....
. 0140 ...	Nationwide ...	.....	31-1580283 ..	.....	.....	.....	NWD Arena District PW, LLC .....	.. OH.....	..... NIA.....	NWD Investments, LLC .....	Ownership.....	100.000 ...	Nationwide Mutual Insurance Company ...	... NO.....	.....
. 0140 ...	Nationwide ...	.....	31-1580283 ..	.....	.....	.....	NWD Arena District V, LLC .....	.. OH.....	..... NIA.....	NWD Investments, LLC .....	Ownership.....	100.000 ...	Nationwide Mutual Insurance Company ...	... NO.....	.....
. 0140 ...	Nationwide ...	.....	31-1580283 ..	.....	.....	.....	NWD Athletic Club, LLC .....	.. OH.....	..... NIA.....	NWD Investments, LLC .....	Ownership.....	100.000 ...	Nationwide Mutual Insurance Company ...	... NO.....	.....
. 0140 ...	Nationwide ...	.....	88-2975730 ..	.....	.....	.....	NW-Boise, LLC .....	.. OH.....	..... NIA.....	Nationwide Life Insurance Company .....	Ownership.....	100.000 ...	Nationwide Mutual Insurance Company ...	... NO.....	.....
. 0140 ...	Nationwide ...	.....	31-1580283 ..	.....	.....	.....	NWD Brodbelt, LLC .....	.. OH.....	..... NIA.....	NWD Investments, LLC .....	Ownership.....	100.000 ...	Nationwide Mutual Insurance Company ...	... NO.....	.....
. 0140 ...	Nationwide ...	.....	30-0876022 ..	.....	.....	.....	NWD Franklinton, LLC .....	.. OH.....	..... NIA.....	Nationwide Realty Investors, Ltd. ....	Ownership.....	80.000 ...	Nationwide Mutual Insurance Company ...	... NO.....	.....
. 0140 ...	Nationwide ...	.....	31-4118665 ..	.....	.....	.....	NWD HP, LLC .....	.. OH.....	..... NIA.....	NWD Investments, LLC .....	Ownership.....	75.000 ...	Nationwide Mutual Insurance Company ...	... NO.....	.....
. 0140 ...	Nationwide ...	.....	31-1580283 ..	.....	.....	.....	NWD Investments, LLC .....	.. OH.....	..... NIA.....	Nationwide Realty Investors, Ltd. ....	Ownership.....	80.000 ...	Nationwide Mutual Insurance Company ...	... NO.....	.....
. 0140 ...	Nationwide ...	.....	31-1486309 ..	.....	.....	.....	NWGH, LLC .....	.. OH.....	..... NIA.....	Nationwide Realty Investors, Ltd. ....	Ownership.....	75.000 ...	Nationwide Mutual Insurance Company ...	... NO.....	.....
. 0140 ...	Nationwide ...	.....	87-3124154 ..	.....	.....	.....	NW-Gallatin, LLC .....	.. OH.....	..... NIA.....	Nationwide Life Insurance Company .....	Ownership.....	100.000 ...	Nationwide Mutual Insurance Company ...	... NO.....	.....
. 0140 ...	Nationwide ...	.....	92-2943602 ..	.....	.....	.....	NW-Holly Springs, LLC .....	.. OH.....	..... NIA.....	Nationwide Mutual Insurance Company .....	Ownership.....	100.000 ...	Nationwide Mutual Insurance Company ...	... NO.....	.....
. 0140 ...	Nationwide ...	.....	86-2431839 ..	.....	.....	.....	NW-Hub13, LLC .....	.. OH.....	..... NIA.....	NW REI, LLC .....	Ownership.....	100.000 ...	Nationwide Mutual Insurance Company ...	... NO.....	.....
. 0140 ...	Nationwide ...	.....	92-3558072 ..	.....	.....	.....	NW-Huntersville, LLC .....	.. OH.....	..... NIA.....	NW REI, LLC .....	Ownership.....	100.000 ...	Nationwide Mutual Insurance Company ...	... NO.....	.....
. 0140 ...	Nationwide ...	.....	47-2482818 ..	.....	.....	.....	NW-Jasper WAG, LLC .....	.. OH.....	..... NIA.....	NW REI, LLC .....	Ownership.....	100.000 ...	Nationwide Mutual Insurance Company ...	... NO.....	.....
. 0140 ...	Nationwide ...	.....	87-3767006 ..	.....	.....	.....	NW-Kingsbury, LLC .....	.. OH.....	..... NIA.....	Nationwide Life Insurance Company .....	Ownership.....	100.000 ...	Nationwide Mutual Insurance Company ...	... NO.....	.....
. 0140 ...	Nationwide ...	.....	81-5146596 ..	.....	.....	.....	NW-Logan, LLC .....	.. OH.....	..... NIA.....	NW REI, LLC .....	Ownership.....	100.000 ...	Nationwide Mutual Insurance Company ...	... NO.....	.....
. 0140 ...	Nationwide ...	.....	87-1565013 ..	.....	.....	.....	NW-Midtown, LLC .....	.. OH.....	..... NIA.....	NW REI, LLC .....	Ownership.....	100.000 ...	Nationwide Mutual Insurance Company ...	... NO.....	.....
. 0140 ...	Nationwide ...	.....	88-2595124 ..	.....	.....	.....	NW-OG, LLC .....	.. OH.....	..... NIA.....	NW REI, LLC .....	Ownership.....	100.000 ...	Nationwide Mutual Insurance Company ...	... NO.....	.....
. 0140 ...	Nationwide ...	.....	83-2260477 ..	.....	.....	.....	NW-ORBD, LLC .....	.. OH.....	..... NIA.....	NW REI (NMFC), LLC .....	Ownership.....	100.000 ...	Nationwide Mutual Insurance Company ...	... NO.....	.....
. 0140 ...	Nationwide ...	.....	93-1728625 ..	.....	.....	.....	NW-Pleasant Prairie, LLC .....	.. OH.....	..... NIA.....	NW REI (NLIC), LLC .....	Ownership.....	100.000 ...	Nationwide Mutual Insurance Company ...	... NO.....	.....
. 0140 ...	Nationwide ...	.....	47-2449044 ..	.....	.....	.....	NW-Promenade at Madison, LLC .....	.. OH.....	..... NIA.....	NW REI, LLC .....	Ownership.....	100.000 ...	Nationwide Mutual Insurance Company ...	... NO.....	.....
. 0140 ...	Nationwide ...	.....	87-1367836 ..	.....	.....	.....	NW-Rancho, LLC .....	.. OH.....	..... NIA.....	NW REI, LLC .....	Ownership.....	100.000 ...	Nationwide Mutual Insurance Company ...	... NO.....	.....
. 0140 ...	Nationwide ...	.....	88-1405151 ..	.....	.....	.....	NW-Riverchase, LLC .....	.. OH.....	..... NIA.....	Nationwide Life Insurance Company .....	Ownership.....	100.000 ...	Nationwide Mutual Insurance Company ...	... NO.....	.....
. 0140 ...	Nationwide ...	.....	86-3702669 ..	.....	.....	.....	NW-RPG Cranberry, LLC .....	.. OH.....	..... NIA.....	NW REI, LLC .....	Ownership.....	100.000 ...	Nationwide Mutual Insurance Company ...	... NO.....	.....
. 0140 ...	Nationwide ...	.....	87-3273918 ..	.....	.....	.....	NW-San Marco, LLC .....	.. OH.....	..... NIA.....	Nationwide Life Insurance Company .....	Ownership.....	100.000 ...	Nationwide Mutual Insurance Company ...	... NO.....	.....
. 0140 ...	Nationwide ...	.....	87-3289289 ..	.....	.....	.....	NW-San Pablo, LLC .....	.. OH.....	..... NIA.....	NW REI, LLC .....	Ownership.....	100.000 ...	Nationwide Mutual Insurance Company ...	... NO.....	.....
. 0140 ...	Nationwide ...	.....	81-3212025 ..	.....	.....	.....	NW-Springfield, LLC .....	.. OH.....	..... NIA.....	NW REI, LLC .....	Ownership.....	100.000 ...	Nationwide Mutual Insurance Company ...	... NO.....	.....
. 0140 ...	Nationwide ...	.....	93-2022585 ..	.....	.....	.....	NW-Spring Hill, LLC .....	.. OH.....	..... NIA.....	NW REI, LLC .....	Ownership.....	100.000 ...	Nationwide Mutual Insurance Company ...	... NO.....	.....
. 0140 ...	Nationwide ...	.....	92-2878794 ..	.....	.....	.....	NW-SR-16, LLC .....	.. OH.....	..... NIA.....	NW REI, LLC .....	Ownership.....	100.000 ...	Nationwide Mutual Insurance Company ...	... NO.....	.....
. 0140 ...	Nationwide ...	.....	92-0677233 ..	.....	.....	.....	NW-UNCC, LLC .....	.. OH.....	..... NIA.....	NW REI (NLIC), LLC .....	Ownership.....	100.000 ...	Nationwide Mutual Insurance Company ...	... NO.....	.....
. 0140 ...	Nationwide ...	.....	81-1603024 ..	.....	.....	.....	NW REI (NLAIC), LLC .....	.. OH.....	..... NIA.....	Nationwide Life and Annuity Insurance Company .....	Ownership.....	100.000 ...	Nationwide Mutual Insurance Company ...	... NO.....	.....
. 0140 ...	Nationwide ...	.....	81-1619428 ..	.....	.....	.....	NW REI (NLIC), LLC .....	.. OH.....	..... NIA.....	Nationwide Life Insurance Company .....	Ownership.....	100.000 ...	Nationwide Mutual Insurance Company ...	... NO.....	.....
. 0140 ...	Nationwide ...	.....	81-1861190 ..	.....	.....	.....	NW REI (NMIC), LLC .....	.. OH.....	..... NIA.....	Nationwide Mutual Insurance Company .....	Ownership.....	100.000 ...	Nationwide Mutual Insurance Company ...	... NO.....	.....
. 0140 ...	Nationwide ...	.....	31-0947092 ..	.....	.....	.....	OCH Company, LLC .....	.. OH.....	..... NIA.....	Nationwide Realty Investors, Ltd. ....	Ownership.....	100.000 ...	Nationwide Mutual Insurance Company ...	... NO.....	.....
. 0140 ...	Nationwide ...	.....	26-0263012 ..	.....	.....	.....	Old Track Street Owners Association, Inc. ...	.. OH.....	..... OTH.....	Other non-Nationwide .....	Other.....	0.000 ...	Other non-Nationwide .....	... NO.....	2 .....
. 0140 ...	Nationwide ...	13999	27-1712056 ..	.....	.....	.....	Olentangy Reinsurance, LLC .....	.. VT.....	..... IA.....	Company .....	Ownership.....	100.000 ...	Nationwide Mutual Insurance Company ...	... NO.....	.....
. 0140 ...	Nationwide ...	.....	31-1486309 ..	.....	.....	.....	Perimeter A, Ltd. ....	.. OH.....	..... NIA.....	Nationwide Realty Investors, Ltd. ....	Ownership.....	100.000 ...	Nationwide Mutual Insurance Company ...	... NO.....	.....
. 0140 ...	Nationwide ...	.....	20-4939866 ..	.....	.....	.....	Rail Street Parking, LLC .....	.. OH.....	..... NIA.....	NRI Equity Land Investments, LLC .....	Ownership.....	100.000 ...	Nationwide Mutual Insurance Company ...	... NO.....	.....
. 0140 ...	Nationwide ...	.....	75-2938844 ..	.....	.....	.....	Registered Investment Advisors Services, Inc.	.....	.....	.....	.....	.....	.....	.....	.....
. 0140 ...	Nationwide ...	.....	82-0549218 ..	.....	.....	.....	Retention Alternatives Ltd. ....	.. TX.....	..... NIA.....	Nationwide Financial Services, Inc. ....	Ownership.....	100.000 ...	Nationwide Mutual Insurance Company ...	... NO.....	.....
. 0140 ...	Nationwide ...	15580	31-1117969 ..	.....	.....	.....	Scottsdale Indemnity Company .....	.....	..... IA.....	Nationwide Mutual Insurance Company .....	Ownership.....	100.000 ...	Nationwide Mutual Insurance Company ...	... NO.....	.....
. 0140 ...	Nationwide ...	41297	31-1024978 ..	.....	.....	.....	Scottsdale Insurance Company .....	.. OH.....	..... IA.....	Nationwide Mutual Insurance Company .....	Ownership.....	100.000 ...	Nationwide Mutual Insurance Company ...	... NO.....	.....
. 0140 ...	Nationwide ...	10672	86-0835870 ..	.....	.....	.....	Scottsdale Surplus Lines Insurance Company .	.. AZ.....	..... IA.....	Scottsdale Insurance Company .....	Ownership.....	100.000 ...	Nationwide Mutual Insurance Company ...	... NO.....	.....
. 0140 ...	Nationwide ...	.....	31-1610040 ..	.....	.....	.....	The Waterfront Partners, LLC .....	.. OH.....	..... NIA.....	Nationwide Realty Investors, Ltd. ....	Ownership.....	50.000 ...	Nationwide Mutual Insurance Company ...	... NO.....	.....

SCHEDULE Y  
PART 1A - DETAILS OF INSURANCE HOLDING COMPANY SYSTEM

1	2	3	4	5	6	7	8	9	10	11	12	13	14	15	16
Group Code	Group Name	NAIC Company Code	ID Number	Federal RSSD	CIK	Name of Securities Exchange if Publicly Traded (U.S. or International)	Names of Parent, Subsidiaries Or Affiliates	Domi-ciliary Loca-tion	Relation-ship to Reporting Entity	Directly Controlled by (Name of Entity/Person)	Type of Control (Ownership, Board, Management, Attorney-in-Fact, Influence, Other)	If Control is Owner-ship Provide Percen-tage	Ultimate Controlling Entity(ies)/Person(s)	Is an SCA Filing Re-quired? (Yes/No)	*
. 0140 ...	Nationwide .....	..... 36269 ....	86-0619597 ..	.....	.....	.....	Titan Insurance Company .....	.. MI.....	..... IA.....	Nationwide Mutual Insurance Company .....	Ownership.....	.. 100.000 ...	Nationwide Mutual Insurance Company ...	.... NO.....	.....
. 0140 ...	Nationwide .....	.....	75-1284530 ..	.....	.....	.....	Titan Insurance Services, Inc. ....	.. TX.....	..... IA.....	Nationwide Mutual Insurance Company .....	Ownership.....	.. 100.000 ...	Nationwide Mutual Insurance Company ...	.... NO.....	.....
. 0140 ...	Nationwide .....	.....	33-0160222 ..	.....	.....	.....	V.P.I. Services, Inc. ....	.. CA.....	..... IA.....	Veterinary Pet Insurance Company .....	Ownership.....	.. 100.000 ...	Nationwide Mutual Insurance Company ...	.... NO.....	.....
. 0140 ...	Nationwide .....	..... 42285 ....	95-3750113 ..	.....	.....	.....	Veterinary Pet Insurance Company .....	.. OH.....	..... IA.....	Scottsdale Insurance Company .....	Ownership.....	.. 100.000 ...	Nationwide Mutual Insurance Company ...	.... NO.....	.....
. 0140 ...	Nationwide .....	..... 42889 ....	34-1394913 ..	.....	.....	.....	Victoria Fire & Casualty Company .....	.. OH.....	..... IA.....	Nationwide Mutual Insurance Company .....	Ownership.....	.. 100.000 ...	Nationwide Mutual Insurance Company ...	.... NO.....	.....
. 0140 ...	Nationwide .....	..... 10105 ....	34-1777972 ..	.....	.....	.....	Victoria Select Insurance Company .....	.. OH.....	..... IA.....	Victoria Fire & Casualty Insurance Company .....	Ownership.....	.. 100.000 ...	Nationwide Mutual Insurance Company ...	.... NO.....	.....

Asterisk	Explanation
1 .....	Nationwide retains management responsibility for these entities, despite a minority ownership stake. ....
2 .....	Other ownership indicates a non-ownership circumstance by a Nationwide entity. ....

STATEMENT AS OF MARCH 31, 2025 OF THE NATIONWIDE GENERAL INSURANCE COMPANY

PART 1 - LOSS EXPERIENCE

Line of Business		Current Year to Date			4
		1 Direct Premiums Earned	2 Direct Losses Incurred	3 Direct Loss Percentage	Prior Year to Date Direct Loss Percentage
1.	Fire .....	578,292	1,228,413	212.4	19.0
2.1	Allied Lines .....	801,446	89,859	11.2	62.8
2.2	Multiple peril crop .....				
2.3	Federal flood .....				
2.4	Private crop .....				
2.5	Private flood .....	13,095	(1,670)	(12.8)	(9.6)
3.	Farmowners multiple peril .....				
4.	Homeowners multiple peril .....	174,727,128	88,574,370	50.7	63.3
5.1	Commercial multiple peril (non-liability portion) .....	42,785,090	20,568,929	48.1	65.5
5.2	Commercial multiple peril (liability portion) .....	18,722,424	10,566,475	56.4	91.6
6.	Mortgage guaranty .....				
8.	Ocean marine .....				
9.1	Inland marine .....	2,257,112	476,871	21.1	26.3
9.2	Pet insurance .....				
10.	Financial guaranty .....				
11.1	Medical professional liability - occurrence .....				
11.2	Medical professional liability - claims-made .....				
12.	Earthquake .....	1,104,892	91,681	8.3	11.1
13.1	Comprehensive (hospital and medical) individual .....				
13.2	Comprehensive (hospital and medical) group .....				
14.	Credit accident and health .....				
15.1	Vision only .....				
15.2	Dental only .....				
15.3	Disability income .....				
15.4	Medicare supplement .....				
15.5	Medicaid Title XIX .....				
15.6	Medicare Title XVIII .....				
15.7	Long-term care .....				
15.8	Federal employees health benefits plan .....				
15.9	Other health .....				
16.	Workers' compensation .....	611,093	108,940	17.8	60.6
17.1	Other liability - occurrence .....	8,661,169	5,501,064	63.5	65.8
17.2	Other liability - claims-made .....	317,865	33,149	10.4	2.9
17.3	Excess workers' compensation .....				
18.1	Products liability - occurrence .....				
18.2	Products liability - claims-made .....				
19.1	Private passenger auto no-fault (personal injury protection) .....	8,388,923	5,125,369	61.1	70.4
19.2	Other private passenger auto liability .....	106,887,399	72,614,559	67.9	69.9
19.3	Commercial auto no-fault (personal injury protection) .....	68,597	146,945	214.2	204.0
19.4	Other commercial auto liability .....	12,454,844	7,244,111	58.2	93.1
21.1	Private passenger auto physical damage .....	113,572,936	63,760,425	56.1	65.4
21.2	Commercial auto physical damage .....	2,892,574	1,025,185	35.4	77.6
22.	Aircraft (all perils) .....				
23.	Fidelity .....				
24.	Surety .....				
26.	Burglary and theft .....	22,940	57,305	249.8	(0.1)
27.	Boiler and machinery .....	1,339,109	702,513	52.5	21.2
28.	Credit .....				
29.	International .....				
30.	Warranty .....				
31.	Reinsurance - Nonproportional Assumed Property .....	XXX	XXX	XXX	XXX
32.	Reinsurance - Nonproportional Assumed Liability .....	XXX	XXX	XXX	XXX
33.	Reinsurance - Nonproportional Assumed Financial Lines .....	XXX	XXX	XXX	XXX
34.	Aggregate write-ins for other lines of business .....				
35.	Totals	496,206,928	277,914,493	56.0	66.9
DETAILS OF WRITE-INS					
3401.	.....				
3402.	.....				
3403.	.....				
3498.	Summary of remaining write-ins for Line 34 from overflow page .....				
3499.	Totals (Lines 3401 through 3403 plus 3498)(Line 34 above)				

STATEMENT AS OF MARCH 31, 2025 OF THE NATIONWIDE GENERAL INSURANCE COMPANY

PART 2 - DIRECT PREMIUMS WRITTEN

Line of Business		1 Current Quarter	2 Current Year to Date	3 Prior Year Year to Date
1.	Fire .....	436,904	436,904	567,006
2.1	Allied Lines .....	689,968	689,968	909,050
2.2	Multiple peril crop .....			
2.3	Federal flood .....			
2.4	Private crop .....			
2.5	Private flood .....	9,230	9,230	2,514
3.	Farmowners multiple peril .....			
4.	Homeowners multiple peril .....	155,605,712	155,605,712	162,870,226
5.1	Commercial multiple peril (non-liability portion) .....	44,518,510	44,518,510	56,009,172
5.2	Commercial multiple peril (liability portion) .....	19,496,902	19,496,902	23,688,645
6.	Mortgage guaranty .....			
8.	Ocean marine .....			
9.1	Inland marine .....	1,827,179	1,827,179	2,032,397
9.2	Pet insurance .....			
10.	Financial guaranty .....			
11.1	Medical professional liability - occurrence .....			
11.2	Medical professional liability - claims-made .....			
12.	Earthquake .....	897,266	897,266	1,010,031
13.1	Comprehensive (hospital and medical) individual .....			
13.2	Comprehensive (hospital and medical) group .....			
14.	Credit accident and health .....			
15.1	Vision only .....			
15.2	Dental only .....			
15.3	Disability income .....			
15.4	Medicare supplement .....			
15.5	Medicaid Title XIX .....			
15.6	Medicare Title XVIII .....			
15.7	Long-term care .....			
15.8	Federal employees health benefits plan .....			
15.9	Other health .....			
16.	Workers' compensation .....	866,042	866,042	886,438
17.1	Other liability - occurrence .....	8,623,510	8,623,510	10,288,203
17.2	Other liability - claims-made .....	318,590	318,590	381,113
17.3	Excess workers' compensation .....			
18.1	Products liability - occurrence .....			
18.2	Products liability - claims-made .....			
19.1	Private passenger auto no-fault (personal injury protection) .....	8,384,524	8,384,524	8,949,251
19.2	Other private passenger auto liability .....	106,088,885	106,088,885	115,556,809
19.3	Commercial auto no-fault (personal injury protection) .....	75,856	75,856	72,332
19.4	Other commercial auto liability .....	10,527,967	10,527,967	15,718,373
21.1	Private passenger auto physical damage .....	111,879,917	111,879,917	117,164,101
21.2	Commercial auto physical damage .....	2,541,683	2,541,683	3,593,617
22.	Aircraft (all perils) .....			
23.	Fidelity .....			
24.	Surety .....			
26.	Burglary and theft .....	21,980	21,980	24,203
27.	Boiler and machinery .....	1,321,422	1,321,422	1,684,921
28.	Credit .....			
29.	International .....			
30.	Warranty .....			
31.	Reinsurance - Nonproportional Assumed Property .....	XXX	XXX	XXX
32.	Reinsurance - Nonproportional Assumed Liability .....	XXX	XXX	XXX
33.	Reinsurance - Nonproportional Assumed Financial Lines .....	XXX	XXX	XXX
34.	Aggregate write-ins for other lines of business .....			
35.	Totals	474,132,047	474,132,047	521,408,402
DETAILS OF WRITE-INS				
3401.	.....			
3402.	.....			
3403.	.....			
3498.	Summary of remaining write-ins for Line 34 from overflow page .....			
3499.	Totals (Lines 3401 through 3403 plus 3498)(Line 34 above)			

STATEMENT AS OF MARCH 31, 2025 OF THE NATIONWIDE GENERAL INSURANCE COMPANY

PART 3 (\$000 OMITTED)

LOSS AND LOSS ADJUSTMENT EXPENSE RESERVES SCHEDULE

	1	2	3	4	5	6	7	8	9	10	11	12	13											
Years in Which Losses Occurred	Prior Year-End Known Case Loss and LAE Reserves	Prior Year-End IBNR Loss and LAE Reserves	Total Prior Year-End Loss and LAE Reserves (Cols. 1+2)	2025 Loss and LAE Payments on Claims Reported as of Prior Year-End	2025 Loss and LAE Payments on Claims Unreported as of Prior Year-End	Total 2025 Loss and LAE Payments (Cols. 4+5)	Q.S. Date Known Case Loss and LAE Reserves on Claims Reported and Open as of Prior Year End	Q.S. Date Known Case Loss and LAE Reserves on Claims Reported or Reopened Subsequent to Prior Year End	Q.S. Date IBNR Loss and LAE Reserves	Total Q.S. Loss and LAE Reserves (Cols.7+8+9)	Prior Year-End Known Case Loss and LAE Reserves Developed (Savings)/ Deficiency (Cols.4+7 minus Col. 1)	Prior Year-End IBNR Loss and LAE Reserves Developed (Savings)/ Deficiency (Cols. 5+8+9 minus Col. 2)	Prior Year-End Total Loss and LAE Reserve Developed (Savings)/ Deficiency (Cols. 11+12)											
1. 2022 + Prior .....	38,743	39,148	77,891	7,377	263	7,640	35,221	527	35,862	71,610	3,855	(2,496)	1,359											
2. 2023 .....	15,873	20,111	35,984	3,700	118	3,818	13,633	511	17,708	31,852	1,460	(1,774)	(314)											
3. Subtotals 2023 + Prior .....	54,616	59,259	113,875	11,077	381	11,458	48,854	1,038	53,570	103,462	5,315	(4,270)	1,045											
4. 2024 .....	19,106	35,920	55,026	7,884	1,236	9,120	14,770	1,410	28,931	45,111	3,548	(4,343)	(795)											
5. Subtotals 2024 + Prior .....	73,722	95,179	168,901	18,961	1,617	20,578	63,624	2,448	82,501	148,573	8,863	(8,613)	250											
6. 2025 .....	XXX	XXX	XXX	XXX	8,943	8,943	XXX	4,930	14,272	19,202	XXX	XXX	XXX											
7. Totals .....	73,722	95,179	168,901	18,961	10,560	29,521	63,624	7,378	96,773	167,775	8,863	(8,613)	250											
8. Prior Year-End Surplus As Regards Policyholders	301,394											Col. 11, Line 7 As % of Col. 1 Line 7	Col. 12, Line 7 As % of Col. 2 Line 7	Col. 13, Line 7 As % of Col. 3 Line 7										
												1. 12.0	2. (9.0)	3. 0.1										
													Col. 13, Line 7 As a % of Col. 1 Line 8											
													4. 0.1											

STATEMENT AS OF MARCH 31, 2025 OF THE NATIONWIDE GENERAL INSURANCE COMPANY

SUPPLEMENTAL EXHIBITS AND SCHEDULES INTERROGATORIES

The following supplemental reports are required to be filed as part of your statement filing. However, in the event that your company does not transact the type of business for which the special report must be filed, your response of NO to the specific interrogatory will be accepted in lieu of filing a "NONE" report and a bar code will be printed below. If the supplement is required of your company but is not being filed for whatever reason enter SEE EXPLANATION and provide an explanation following the interrogatory questions.

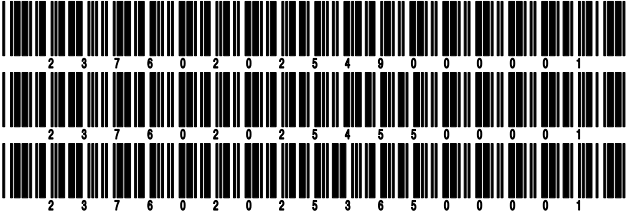
	Response
1. Will the Trusteed Surplus Statement be filed with the state of domicile and the NAIC with this statement? .....	NO
2. Will Supplement A to Schedule T (Medical Professional Liability Supplement) be filed with this statement? .....	NO
3. Will the Medicare Part D Coverage Supplement be filed with the state of domicile and the NAIC with this statement? .....	NO
4. Will the Director and Officer Insurance Coverage Supplement be filed with the state of domicile and the NAIC with this statement? .....	YES
AUGUST FILING	
5. Will the regulator-only (non-public) Communication of Internal Control Related Matters Noted in Audit be filed with the state of domicile and electronically with the NAIC (as a regulator-only non-public document) by August 1? The response for 1st and 3rd quarters should be N/A. A NO response resulting with a bar code is only appropriate in the 2nd quarter. ....	N/A

Explanations:

1.
2.
3.

Bar Codes:

1. Trusteed Surplus Statement [Document Identifier 490]
2. Supplement A to Schedule T [Document Identifier 455]
3. Medicare Part D Coverage Supplement [Document Identifier 365]



STATEMENT AS OF MARCH 31, 2025 OF THE NATIONWIDE GENERAL INSURANCE COMPANY

OVERFLOW PAGE FOR WRITE-INS

Additional Write-ins for Assets Line 25

		Current Statement Date			4 December 31 Prior Year Net Admitted Assets
		1 Assets	2 Nonadmitted Assets	3 Net Admitted Assets (Cols. 1 - 2)	
2504.	Funds held equity pools & associations .....	1,790,167		1,790,167	1,899,730
2505.	Deductible receivables .....	26,902	2,147	24,755	28,425
2506.	Deposits and prepaid assets .....	(2,580)		(2,580)	
2507.	Other assets nonadmitted .....	(75)		(75)	(134)
2597.	Summary of remaining write-ins for Line 25 from overflow page	1,814,414	2,147	1,812,267	1,928,021

Additional Write-ins for Liabilities Line 25

		1 Current Statement Date	2 December 31, Prior Year
2504.	State surcharge/recoupment payable .....	130,895	147,942
2505.	Third party administrator payable .....	217,120	133,072
2597.	Summary of remaining write-ins for Line 25 from overflow page	348,015	281,014

SCHEDULE A - VERIFICATION

Real Estate

	1	2
	Year to Date	Prior Year Ended December 31
1. Book/adjusted carrying value, December 31 of prior year .....		
2. Cost of acquired:		
2.1 Actual cost at time of acquisition .....		
2.2 Additional investment made after acquisition .....		
3. Current year change in encumbrances .....		
4. Total gain (loss) on disposals .....		
5. Deduct amounts received on disposals .....		
6. Total foreign exchange change in book/adjusted carrying value .....		
7. Deduct current year's other than temporary impairment recognized .....		
8. Deduct current year's depreciation .....		
9. Book/adjusted carrying value at the end of current period (Lines 1+2+3+4-5+6-7-8) .....		
10. Deduct total nonadmitted amounts .....		
11. Statement value at end of current period (Line 9 minus Line 10)		

SCHEDULE B - VERIFICATION

Mortgage Loans

	1	2
	Year to Date	Prior Year Ended December 31
1. Book value/recorded investment excluding accrued interest, December 31 of prior year .....		
2. Cost of acquired:		
2.1 Actual cost at time of acquisition .....		
2.2 Additional investment made after acquisition .....		
3. Capitalized deferred interest and other .....		
4. Accrual of discount .....		
5. Unrealized valuation increase/(decrease) .....		
6. Total gain (loss) on disposals .....		
7. Deduct amounts received on disposals .....		
8. Deduct amortization of premium and mortgage interest paid and commitment fees .....		
9. Total foreign exchange change in book value/recorded investment excluding accrued interest .....		
10. Deduct current year's other than temporary impairment recognized .....		
11. Book value/recorded investment excluding accrued interest at end of current period (Lines 1+2+3+4+5+6-7-8+9-10) .....		
12. Total valuation allowance .....		
13. Subtotal (Line 11 plus Line 12) .....		
14. Deduct total nonadmitted amounts .....		
15. Statement value at end of current period (Line 13 minus Line 14)		

SCHEDULE BA - VERIFICATION

Other Long-Term Invested Assets

	1	2
	Year to Date	Prior Year Ended December 31
1. Book/adjusted carrying value, December 31 of prior year .....	9,341,399	12,704,160
2. Cost of acquired:		
2.1 Actual cost at time of acquisition .....		15,590
2.2 Additional investment made after acquisition .....	141	1,102,864
3. Capitalized deferred interest and other .....		
4. Accrual of discount .....		
5. Unrealized valuation increase/(decrease) .....		
6. Total gain (loss) on disposals .....		
7. Deduct amounts received on disposals .....		
8. Deduct amortization of premium, depreciation and proportional amortization .....	1,385,103	4,481,215
9. Total foreign exchange change in book/adjusted carrying value .....		
10. Deduct current year's other than temporary impairment recognized .....		
11. Book/adjusted carrying value at end of current period (Lines 1+2+3+4+5+6-7-8+9-10) .....	7,956,437	9,341,399
12. Deduct total nonadmitted amounts .....		
13. Statement value at end of current period (Line 11 minus Line 12)	7,956,437	9,341,399

SCHEDULE D - VERIFICATION

Bonds and Stocks

	1	2
	Year to Date	Prior Year Ended December 31
1. Book/adjusted carrying value of bonds and stocks, December 31 of prior year .....	491,965,521	504,658,689
2. Cost of bonds and stocks acquired .....	33,407,441	56,852,914
3. Accrual of discount .....	360,821	1,173,180
4. Unrealized valuation increase/(decrease) .....	91,663	415,240
5. Total gain (loss) on disposals .....	(100,976)	(316,566)
6. Deduct consideration for bonds and stocks disposed of .....	14,835,886	69,357,282
7. Deduct amortization of premium .....	305,818	1,436,339
8. Total foreign exchange change in book/adjusted carrying value .....		
9. Deduct current year's other than temporary impairment recognized .....		
10. Total investment income recognized as a result of prepayment penalties and/or acceleration fees .....		(24,315)
11. Book/adjusted carrying value at end of current period (Lines 1+2+3+4+5-6-7+8-9+10) .....	510,582,766	491,965,521
12. Deduct total nonadmitted amounts .....		
13. Statement value at end of current period (Line 11 minus Line 12)	510,582,766	491,965,521



STATEMENT AS OF MARCH 31, 2025 OF THE NATIONWIDE GENERAL INSURANCE COMPANY

**SCHEDULE D - PART 1B**

Showing the Acquisitions, Dispositions and Non-Trading Activity  
During the Current Quarter for all Bonds and Preferred Stock by NAIC Designation

NAIC Designation	1 Book/Adjusted Carrying Value Beginning of Current Quarter	2 Acquisitions During Current Quarter	3 Dispositions During Current Quarter	4 Non-Trading Activity During Current Quarter	5 Book/Adjusted Carrying Value End of First Quarter	6 Book/Adjusted Carrying Value End of Second Quarter	7 Book/Adjusted Carrying Value End of Third Quarter	8 Book/Adjusted Carrying Value December 31 Prior Year
ISSUER CREDIT OBLIGATIONS (ICO)								
1. NAIC 1 (a) .....	202,233,124	5,674,344	141,219	119,732	207,885,981			202,233,124
2. NAIC 2 (a) .....	178,330,011	12,642,785	4,894,433	(3,516,637)	182,561,726			178,330,011
3. NAIC 3 (a) .....	2,218,642		3,789,945	3,458,325	1,887,022			2,218,642
4. NAIC 4 (a) .....	1,507,497		143,184	29,382	1,393,695			1,507,497
5. NAIC 5 (a) .....	19,036			244	19,280			19,036
6. NAIC 6 (a) .....								
7. Total ICO	384,308,310	18,317,129	8,968,781	91,046	393,747,704			384,308,310
ASSET-BACKED SECURITIES (ABS)								
8. NAIC 1 .....	107,657,205	15,090,312	5,968,081	55,621	116,835,057			107,657,205
9. NAIC 2 .....								
10. NAIC 3 .....								
11. NAIC 4 .....								
12. NAIC 5 .....								
13. NAIC 6 .....								
14. Total ABS	107,657,205	15,090,312	5,968,081	55,621	116,835,057			107,657,205
PREFERRED STOCK								
15. NAIC 1 .....								
16. NAIC 2 .....								
17. NAIC 3 .....								
18. NAIC 4 .....								
19. NAIC 5 .....								
20. NAIC 6 .....								
21. Total Preferred Stock .....								
22. Total ICO, ABS & Preferred Stock	491,965,515	33,407,441	14,936,862	146,667	510,582,761			491,965,515

(a) Book/Adjusted Carrying Value column for the end of the current reporting period includes the following amount of short-term and cash equivalent bonds by NAIC designation:

NAIC 1 \$ ..... ; NAIC 2 \$ ..... ; NAIC 3 \$ ..... NAIC 4 \$ ..... ; NAIC 5 \$ ..... ; NAIC 6 \$ .....

Schedule DA - Part 1 - Short-Term Investments

**N O N E**

Schedule DA - Verification - Short-Term Investments

**N O N E**

Schedule DB - Part A - Verification - Options, Caps, Floors, Collars, Swaps and Forwards

**N O N E**

Schedule DB - Part B - Verification - Futures Contracts

**N O N E**

Schedule DB - Part C - Section 1 - Replication (Synthetic Asset) Transactions (RSATs) Open

**N O N E**

Schedule DB-Part C-Section 2-Reconciliation of Replication (Synthetic Asset) Transactions Open

**N O N E**

Schedule DB - Verification - Book/Adjusted Carrying Value, Fair Value and Potential Exposure of  
Derivatives

**N O N E**

SCHEDULE E - PART 2 - VERIFICATION

(Cash Equivalents)

	1	2
	Year To Date	Prior Year Ended December 31
1. Book/adjusted carrying value, December 31 of prior year .....	16,166,170	1,510,664
2. Cost of cash equivalents acquired .....	76,285,989	432,229,509
3. Accrual of discount .....		
4. Unrealized valuation increase/(decrease) .....		
5. Total gain (loss) on disposals .....		
6. Deduct consideration received on disposals .....	87,429,172	417,574,003
7. Deduct amortization of premium .....		
8. Total foreign exchange change in book/adjusted carrying value .....		
9. Deduct current year's other than temporary impairment recognized .....		
10. Book/adjusted carrying value at end of current period (Lines 1+2+3+4+5-6-7+8-9) .....	5,022,987	16,166,170
11. Deduct total nonadmitted amounts .....		
12. Statement value at end of current period (Line 10 minus Line 11)	5,022,987	16,166,170

Schedule A - Part 2 - Real Estate Acquired and Additions Made  
**N O N E**

Schedule A - Part 3 - Real Estate Disposed  
**N O N E**

Schedule B - Part 2 - Mortgage Loans Acquired and Additions Made  
**N O N E**

Schedule B - Part 3 - Mortgage Loans Disposed, Transferred or Repaid  
**N O N E**

## SCHEDULE BA - PART 2

[illegible]

## SCHEDULE BA - PART 3

1  CUSIP Identification	2  Name or Description	Location		5  Name of Purchaser or Nature of Disposal	6  Date Originally Acquired	7  Disposal Date	8  Book/ Adjusted Carrying Value Less Encumbrances, Prior Year	Change in Book/Adjusted Carrying Value						15  Book/ Adjusted Carrying Value Less Encumbrances on Disposal	16  Consid- eration	17  Foreign Exchange Gain (Loss) on Disposal	18  Realized Gain (Loss) on Disposal	19  Total Gain (Loss) on Disposal	20  Investment Income
		3  City	4  State					9  Unrealized Valuation Increase/(Decrease)	10  Current Year's (Depreciation) or (Amortization)/ Accretion	11  Current Year's Other Than Temporary Impairment Recognized	12  Capitalized Deferred Interest and Other	13  Total Change in Book/ Adjusted Carrying Value (9+10-11+12)	14  Total Foreign Exchange Change in Book/ Adjusted Carrying Value						
.....	NY BRTC 4th Ave LLC .....	Wahington .....	.....DC.....	Fully Amortized .....	...08/22/2024 ...	...03/31/2025 ...	.....8,319 .....	.....	.....(8,460) .....	.....	.....	.....(8,460) .....	.....	.....	.....	.....	.....	.....	
3999999. Qualifying State Tax Credit Investments - Unaffiliated								8,319		(8,460)			(8,460)						
6899999. Total - Unaffiliated								8,319		(8,460)			(8,460)						
6999999. Total - Affiliated																			
.....	.....	.....	.....	.....	.....	.....	.....	.....	.....	.....	.....	.....	.....	.....	.....	.....	.....	.....	
.....	.....	.....	.....	.....	.....	.....	.....	.....	.....	.....	.....	.....	.....	.....	.....	.....	.....	.....	
.....	.....	.....	.....	.....	.....	.....	.....	.....	.....	.....	.....	.....	.....	.....	.....	.....	.....	.....	
.....	.....	.....	.....	.....	.....	.....	.....	.....	.....	.....	.....	.....	.....	.....	.....	.....	.....	.....	
.....	.....	.....	.....	.....	.....	.....	.....	.....	.....	.....	.....	.....	.....	.....	.....	.....	.....	.....	
.....	.....	.....	.....	.....	.....	.....	.....	.....	.....	.....	.....	.....	.....	.....	.....	.....	.....	.....	
.....	.....	.....	.....	.....	.....	.....	.....	.....	.....	.....	.....	.....	.....	.....	.....	.....	.....	.....	
.....	.....	.....	.....	.....	.....	.....	.....	.....	.....	.....	.....	.....	.....	.....	.....	.....	.....	.....	
.....	.....	.....	.....	.....	.....	.....	.....	.....	.....	.....	.....	.....	.....	.....	.....	.....	.....	.....	
.....	.....	.....	.....	.....	.....	.....	.....	.....	.....	.....	.....	.....	.....	.....	.....	.....	.....	.....	
.....	.....	.....	.....	.....	.....	.....	.....	.....	.....	.....	.....	.....	.....	.....	.....	.....	.....	.....	
7099999 - Totals								8,319		(8,460)			(8,460)						

STATEMENT AS OF MARCH 31, 2025 OF THE NATIONWIDE GENERAL INSURANCE COMPANY

SCHEDULE D - PART 3

Show All Long-Term Bonds and Stock Acquired During the Current Quarter

1	2	3	4	5	6	7	8	9
CUSIP Identification	Description	Date Acquired	Name of Vendor	Number of Shares of Stock	Actual Cost	Par Value	Paid for Accrued Interest and Dividends	NAIC Designation, NAIC Designation Modifier and SVO Administrative Symbol
91282C-MM-0	US Treasury Nt 4.625% 02/15/35	03/18/2025	Bank of America BISD Dealer		1,874,906	1,850,000	2,734	1.A
0019999999	Subtotal - Issuer Credit Obligations - U.S. Government Obligations (Exempt from RBC)				1,874,906	1,850,000	2,734	XXX
014916-AA-8	Alexander Funding Trust II Sr Nt 7.467% 07/31/28	02/11/2025	Jane Street Advisors		703,489	666,000	1,658	2.C FE
22822V-AR-2	Crown Castle Intl Corp Sr Nt 3.300% 07/01/30	02/10/2025	Wells Fargo Securities LLC		1,950,952	2,140,000	7,847	2.B FE
31428X-CF-1	Fedex Corp Sr Nt 3.400% 02/15/28	02/26/2025	Tax Free Exchange		2,439,433	2,500,000	2,597	2.B FE
529537-AA-0	LXP Industrial Trust Sr Nt 2.375% 10/01/31	02/10/2025	Goldman Sachs & Company		86,950	105,600	906	2.B FE
835495-AL-6	Sonoco Products Co Sr Nt 3.125% 05/01/30	02/11/2025	Barclays Capital Inc		601,345	666,000	5,839	2.C FE
835495-AR-3	Sonoco Products Co Sr Nt 4.600% 09/01/29	02/12/2025	Citadel Securities LLC		1,940,780	2,000,000	36,800	2.C FE
835495-AS-1	Sonoco Products Co Sr Nt 5.070% 09/01/34	02/14/2025	Barclays Capital Inc		468,567	490,000	10,140	2.C FE
871607-AC-1	Synopsys Inc Sr Nt 4.850% 04/01/30	03/03/2025	Bank of America BISD Dealer		999,840	1,000,000		2.A FE
883203-CE-9	Textron Inc Sr Nt 5.700% 05/15/35	02/10/2025	Various		918,757	920,000		2.B FE
90932W-AB-9	United Airlines Sec Nt 5.875% 02/15/37	02/03/2025	Seaport Global Securities LLC		3,088,539	3,077,000	89,885	1.G FE
98956P-BB-7	Zimmer Hldgs Inc Sr Nt 5.300% 02/19/30	02/11/2025	Goldman Sachs & Company		1,327,566	1,330,000		2.B FE
98956P-BC-5	Zimmer Hldgs Inc Sr Nt 5.500% 02/19/35	02/11/2025	Goldman Sachs & Company		664,548	665,000		2.B FE
02344B-AA-4	Amcor Group Finance Sr Nt 5.450% 05/23/29	02/10/2025	Mizuho Securities USA Inc		540,558	534,000	6,306	2.B FE
48241F-AC-8	KBC Group NV Sr Nt 6.324% 09/21/34	02/11/2025	Bank of America BISD Dealer		710,899	680,000	16,843	1.G FE
0089999999	Subtotal - Issuer Credit Obligations - Corporate Bonds (Unaffiliated)				16,442,223	16,773,600	178,821	XXX
0489999999	Total - Issuer Credit Obligations (Unaffiliated)				18,317,129	18,623,600	181,555	XXX
0499999999	Total - Issuer Credit Obligations (Affiliated)							XXX
0509999997	Total - Issuer Credit Obligations - Part 3				18,317,129	18,623,600	181,555	XXX
0509999998	Total - Issuer Credit Obligations - Part 5				XXX	XXX	XXX	XXX
0509999999	Total - Issuer Credit Obligations				18,317,129	18,623,600	181,555	XXX
36169G-AB-1	GCAT RMBS Ser 2023-NQM3 CI A2 7.192% 08/25/68	01/23/2025	Wells Fargo Securities LLC		903,283	889,934	4,089	1.C FE
43789K-AB-8	Homeward Opportunities Fund RMBS Ser 22-1 CL A2 5.082% 07/25/67	01/15/2025	Wells Fargo Securities LLC		199,229	201,075	422	1.C FE
69378K-AB-0	PRP Advisors, LLC RMBS Ser 22-NQM1 CL A2 5.500% 08/25/67	01/14/2025	Nomura Securities Intl LLC		785,228	789,174	1,688	1.C FE
69392F-AA-5	Pretium Mort Cred Partnership RMBS Ser 2025-RPL1 CI A1 4.000% 07/25/69	01/16/2025	Nomura Securities Intl LLC		1,192,447	1,253,000	3,759	1.A FE
73015J-A6-3	PMT Loan Trust RMBS Ser 2025-INV2 CI A7 6.000% 02/25/56	02/11/2025	Goldman Sachs & Company		992,999	989,221	3,297	1.A FE
85571Y-AL-9	Starwood Mortgage Residential STAR Ser 2022-4 CI A1 5.192% 05/25/67	03/04/2025	Wells Fargo Securities LLC		2,897,163	2,905,335	1,676	1.A FE
1059999999	Subtotal - Asset-Backed Securities - Financial Asset-Backed - Self-Liquidating - Non-Agency Residential Mortgage-Backed Securities (Unaffiliated)				6,970,349	7,027,739	14,931	XXX
08164A-A6-7	Benchmark Mtg Tr CMBS Ser 2025-V13 CI A4 5.815% 02/15/57	02/07/2025	Citigroup		4,119,962	4,000,000	11,630	1.A FE
1079999999	Subtotal - Asset-Backed Securities - Financial Asset-Backed - Self-Liquidating - Non-Agency Commercial Mortgage-Backed Securities (Unaffiliated)				4,119,962	4,000,000	11,630	XXX
471914-AA-9	Jefferies Credit Partners BDC CLO Ser 2025-1A CI A 5.850% 04/25/37	02/28/2025	JP Morgan Securities LLC		4,000,000	4,000,000		1.A FE
1099999999	Subtotal - Asset-Backed Securities - Financial Asset-Backed - Self-Liquidating - Non-Agency - CLOs/CBOs/CDOs (Unaffiliated)				4,000,000	4,000,000		XXX
1889999999	Total - Asset-Backed Securities (Unaffiliated)				15,090,311	15,027,739	26,561	XXX
1899999999	Total - Asset-Backed Securities (Affiliated)							XXX
1909999997	Total - Asset-Backed Securities - Part 3				15,090,311	15,027,739	26,561	XXX
1909999998	Total - Asset-Backed Securities - Part 5				XXX	XXX	XXX	XXX
1909999999	Total - Asset-Backed Securities				15,090,311	15,027,739	26,561	XXX
2009999999	Total - Issuer Credit Obligations and Asset-Backed Securities				33,407,440	33,651,339	208,116	XXX
4509999997	Total - Preferred Stocks - Part 3					XXX		XXX
4509999998	Total - Preferred Stocks - Part 5				XXX	XXX	XXX	XXX
4509999999	Total - Preferred Stocks					XXX		XXX
5989999997	Total - Common Stocks - Part 3					XXX		XXX
5989999998	Total - Common Stocks - Part 5				XXX	XXX	XXX	XXX
5989999999	Total - Common Stocks					XXX		XXX
5999999999	Total - Preferred and Common Stocks					XXX		XXX
6009999999	Totals				33,407,440	XXX	208,116	XXX

STATEMENT AS OF MARCH 31, 2025 OF THE NATIONWIDE GENERAL INSURANCE COMPANY

SCHEDULE D - PART 4

Show All Long-Term Bonds and Stock Sold, Redeemed or Otherwise Disposed of During the Current Quarter

1	2	3	4	5	6	7	8	9	Change In Book/Adjusted Carrying Value					15	16	17	18	19	20	21
									10	11	12	13	14							
CUSIP Identification	Description	Disposal Date	Name of Purchaser	Number of Shares of Stock	Consideration	Par Value	Actual Cost	Prior Year Book/ Adjusted Carrying Value	Unrealized Valuation Increase/ (Decrease)	Current Year's (Amortization)/ Accretion	Current Year's Other Than Temporary Impairment Recognized	Total Change in Book/ Adjusted Carrying Value (10 + 11 - 12)	Total Foreign Exchange Change in Book /Adjusted Carrying Value	Book/ Adjusted Carrying Value at Disposal Date	Foreign Exchange Gain (Loss) on Disposal	Realized Gain (Loss) on Disposal	Total Gain (Loss) on Disposal	Bond Interest/ Stock Dividends Received During Year	Stated Contractual Maturity Date	NAIC Designation, NAIC Designation Modifier and SVO Administrative Symbol
..54628C-G3-0	LA LOCAL GOVT ENVIRNMN TXBL-LA Util Rstr Crp Prj/Eno 5.197% 09/01/39 .....	03/01/2025	Redemption	100.0000 .....	98.507	98.507	93.998	94.349	.....	4.158	.....	4.158	.....	98.507	.....	.....	.....	2.560	09/01/2039	1.B FE .....
0059999999. Subtotal - Issuer Credit Obligations - Municipal Bonds - Special Revenues					98.507	98.507	93.998	94.349	.....	4.158	.....	4.158	.....	98.507	.....	.....	.....	2.560	XXX	XXX
..23345M-AB-3	DT Midstream Inc Sr Nt 4.375% 06/15/31 ....	02/26/2025	Morgan Stanley & Co LLC	.....	62.143	67.000	61.570	61.170	1.733	84	.....	1.817	.....	62.987	.....	(844)	(844)	586	06/15/2031	3.A FE .....
..235825-AG-1	DANA Inc Sr Nt 5.625% 06/15/28 .....	03/13/2025	Bank of America BLSO Dealer ...	.....	197.750	200.000	200.250	197.262	2.778	(18)	.....	2.760	.....	200.023	.....	(2,273)	(2,273)	2.781	06/15/2028	3.C FE .....
..31428X-BP-0	Fedex Corp Sr Nt 3.400% 02/15/28 .....	02/26/2025	Tax Free Exchange	.....	2,439,433	2,500,000	2,334,318	2,436,533	.....	2,900	.....	2,900	.....	2,439,433	.....	.....	.....	45,097	02/15/2028	2.B FE .....
..37940X-AA-0	Global Payments Inc Sr Nt 2.650% 02/15/25	02/15/2025	Maturity	.....	870,000	870,000	893,464	870,293	.....	(293)	.....	(293)	.....	870,000	.....	.....	.....	11,528	02/15/2025	2.C FE .....
..654740-BS-7	Nissan Motor Acceptance Corp Sr Nt 2.000% 03/09/26 .....	03/05/2025	JP Morgan Securities LLC	.....	1,569,685	1,625,000	1,475,156	1,543,180	.....	11,622	.....	11,622	.....	1,554,801	.....	14,884	14,884	15,931	03/09/2026	3.A FE .....
..65480C-AC-9	Nissan Motor Acc Co Sr Nt 1.850% 09/16/26	03/04/2025	Morgan Stanley & Co LLC	.....	474,375	500,000	499,880	499,958	.....	4	.....	4	.....	499,962	.....	4,342	(25,587)	4,342	09/16/2026	3.A FE .....
..65480C-AD-7	Nissan Motor Acc Co Sr Nt 2.450% 09/15/28	03/04/2025	Various	.....	243,445	269,000	268,898	268,944	.....	3	.....	3	.....	268,946	.....	(25,501)	(25,501)	3,112	09/15/2028	3.A FE .....
..76131V-AA-1	Retail PPYTS of America Sr Nt 4.000% 03/15/25 .....	03/15/2025	Maturity	.....	335,000	335,000	348,088	335,000	.....	.....	.....	.....	.....	335,000	.....	.....	.....	6,700	03/15/2025	2.B FE .....
..86765L-AT-4	Sunoco Finance Corp Sr Nt 4.500% 05/15/29	02/26/2025	Truist Financial	.....	38,306	40,000	38,034	37,592	1,127	41	.....	1,168	.....	38,760	.....	(455)	(455)	510	05/15/2029	3.A FE .....
..90832W-AB-9	United Airlines Sec Nt 5.875% 02/15/37 .....	02/26/2025	Redemption	.....	100.0000	100.0000	100.0000	100.0000	.....	(100)	.....	(100)	.....	26,778	.....	.....	.....	830	02/15/2037	1.G FE .....
..90832W-AB-9	GFL Environmental Inc Sr Nt 4.750% 06/15/29	03/26/2025	Various	.....	147,386	153,000	137,853	142,737	.....	447	.....	447	.....	143,184	.....	4,202	4,202	1,972	06/15/2029	4.C FE .....
..06738E-AE-5	Barclays Plc Sr Nt 3.650% 03/16/25 .....	03/16/2025	Maturity	.....	1,250,000	1,250,000	1,327,325	1,254,938	.....	(4,938)	.....	(4,938)	.....	1,250,000	.....	.....	.....	22,813	03/16/2025	2.A FE .....
..654744-AC-5	Nissan Motor Co Sr Nt 4.345% 09/17/27 .....	03/04/2025	JP Morgan Securities LLC	.....	1,097,730	1,125,000	1,224,416	1,167,247	.....	(2,781)	.....	(2,781)	.....	1,164,465	.....	(66,735)	(66,735)	22,791	09/17/2027	3.A FE .....
0089999999. Subtotal - Issuer Credit Obligations - Corporate Bonds (Unaffiliated)					8,752,031	8,960,778	8,836,130	8,814,854	5,638	6,971	.....	12,609	.....	8,854,339	.....	(102,309)	(102,309)	138,993	XXX	XXX
..11042C-AA-8	British Airways PTC Ser 2021-1 A PPT 2.900% 09/15/36 .....	03/15/2025	Redemption	.....	15.935	15.935	15.998	15.980	.....	(46)	.....	(46)	.....	15.935	.....	.....	.....	116	09/15/2036	1.D FE .....
0129999999. Subtotal - Issuer Credit Obligations - Single Entity Backed Obligations (Unaffiliated)					15.935	15.935	15.998	15.980	.....	(46)	.....	(46)	.....	15.935	.....	.....	.....	116	XXX	XXX
0489999999. Total - Issuer Credit Obligations (Unaffiliated)					8,866,473	9,075,220	8,946,126	8,925,183	5,638	11,083	.....	16,721	.....	8,968,781	.....	(102,309)	(102,309)	141,669	XXX	XXX
0499999999. Total - Issuer Credit Obligations (Affiliated)					.....	.....	.....	.....	.....	.....	.....	.....	.....	.....	.....	.....	.....	.....	XXX	XXX
0509999997. Total - Issuer Credit Obligations - Part 4					8,866,473	9,075,220	8,946,126	8,925,183	5,638	11,083	.....	16,721	.....	8,968,781	.....	(102,309)	(102,309)	141,669	XXX	XXX
0509999998. Total - Issuer Credit Obligations - Part 5					XXX	XXX	XXX	XXX	XXX	XXX	XXX	XXX	XXX	XXX	XXX	XXX	XXX	XXX	XXX	XXX
0509999999. Total - Issuer Credit Obligations					8,866,473	9,075,220	8,946,126	8,925,183	5,638	11,083	.....	16,721	.....	8,968,781	.....	(102,309)	(102,309)	141,669	XXX	XXX
..36179X-LJ-3	GNMA Pool #MA8429 5.500% 11/20/52 .....	03/01/2025	Paydown	.....	37.498	.....	37.356	37.357	.....	142	.....	142	.....	37.498	.....	.....	.....	325	11/20/2052	1.A .....
..36179Y-RK-2	Multiple G2 MA9016 Pool# MA9490 6.500% 03/11/54 .....	03/20/2025	Paydown	.....	16.635	16.635	16.949	16.951	.....	(316)	.....	(316)	.....	16.635	.....	.....	.....	165	03/11/2054	1.A .....
1019999999. Subtotal - Asset-Backed Securities - Financial Asset-Backed - Self-Liquidating - Agency Residential Mortgage-Backed Securities - Guaranteed (Exempt from RBC)					54.133	54.133	54.305	54.308	.....	(174)	.....	(174)	.....	54.133	.....	.....	.....	490	XXX	XXX
..31320W-AU-8	FHLMC Pool #B0019 3.500% 06/25/34 .....	03/01/2025	Paydown	.....	48.843	48.843	50.659	50.370	.....	(1,527)	.....	(1,527)	.....	48.843	.....	.....	.....	285	06/25/2034	1.A .....
..31320S-6D-9	FHLMC Pool #SB8068 1.500% 10/25/35 .....	03/01/2025	Paydown	.....	108.099	108.099	110.552	110.031	.....	(1,932)	.....	(1,932)	.....	108.099	.....	.....	.....	261	10/25/2035	1.A .....
..31320N-RC-9	FHLMC Pool #SD1383 2.000% 02/25/52 .....	03/01/2025	Paydown	.....	2.948	2.948	2.321	2.349	.....	599	.....	599	.....	2.948	.....	.....	.....	10	02/25/2052	1.A .....
..31320S-5H-1	FHLMC Pool# SD5348 5.500% 11/25/53 .....	03/01/2025	Paydown	.....	3.760	3.760	3.700	3.701	.....	60	.....	60	.....	3.760	.....	.....	.....	20	11/25/2053	1.A .....
..31320S-E8-1	Fr SD4659 Pool# SD4659 5.000% 06/25/53 ....	03/01/2025	Paydown	.....	2.893	2.893	2.789	2.790	.....	103	.....	103	.....	2.893	.....	.....	.....	24	06/25/2053	1.A .....
..31320W-A6-0	FHLMC Pool #SD8129 2.500% 02/25/51 .....	03/01/2025	Paydown	.....	96.068	96.068	101.176	100.899	.....	(4,831)	.....	(4,831)	.....	96.068	.....	.....	.....	396	02/25/2051	1.A .....
..31320W-CT-8	FHLMC Pool #SD8182 2.000% 12/25/51 .....	03/01/2025	Paydown	.....	31.415	31.415	27.714	27.920	.....	3,496	.....	3,496	.....	31.415	.....	.....	.....	103	12/25/2051	1.A .....
..31320W-DD-2	FHLMC Pool #SD8200 2.500% 03/25/52 .....	03/01/2025	Paydown	.....	40.006	40.006	39.204	39.243	.....	763	.....	763	.....	40.006	.....	.....	.....	166	03/25/2052	1.A .....
..31320W-DK-6	FHLMC Pool #SD8206 3.000% 04/25/52 .....	03/01/2025	Paydown	.....	39.295	39.295	39.399	39.388	.....	(94)	.....	(94)	.....	39.295	.....	.....	.....	199	04/25/2052	1.A .....
..31320W-DS-9	FHLMC Pool #SD8213 3.000% 05/25/52 .....	03/01/2025	Paydown	.....	281	281	238	240	.....	41	.....	41	.....	281	.....	.....	.....	1	05/25/2052	1.A .....
..31320W-DT-7	FHLMC Pool #SD8214 3.500% 05/25/52 .....	03/01/2025	Paydown	.....	833	833	733	737	.....	97	.....	97	.....	833	.....	.....	.....	5	05/25/2052	1.A .....
..31320W-E7-4	FHLMC Pool #SD8258 5.000% 10/25/52 .....	03/01/2025	Paydown	.....	2,490	2,490	2,397	2,400	.....	90	.....	90	.....	2,490	.....	.....	.....	20	10/25/2052	1.A .....
..31320W-ER-0	FHLMC Pool #SD8244 4.000% 09/25/52 .....	03/01/2025	Paydown	.....	4,225	4,225	4,105	4,110	.....	114	.....	114	.....	4,225	.....	.....	.....	28	09/25/2052	1.A .....
..31320W-ET-6	FHLMC Pool# SD8246 5.000% 09/25/52 .....	03/01/2025	Paydown	.....	34.143	34.143	33.514	33.531	.....	612	.....	612	.....	34.143	.....	.....	.....	275	09/25/2052	1.A .....
..31320W-F7-3	FHLMC Pool# SD8290 6.000% 01/25/53 .....	03/01/2025	Paydown	.....	17.164	17.164	17.383	17.380	.....	(217)	.....	(217)	.....	17.164	.....	.....	.....	165	01/25/2053	1.A .....
..3138M4-D8-2	FNMA Pool #AP1026 3.000% 07/25/42 .....	03/01/2025	Paydown	.....	4.308	4.308	4.144	4.160	.....	148	.....	148	.....	4.308	.....	.....	.....	19	07/25/2042	1.A .....
..3138I9-LM-0	FNMA Pool #AS0331 3.000% 08/25/43 .....	03/01/2025	Paydown	.....	22.541	22.541	21.655	21.743	.....	798	.....	798	.....	22.541	.....	.....	.....	102	08/25/2043	1.A .....
..3138X0-Y2-8	FNMA Pool #AU1628 3.000% 07/25/43 .....	03/01/2025	Paydown	.....	34.965	34.965	33.587	33.725	.....	1,240	.....	1,240	.....	34.965	.....	.....	.....	167	07/25/2043	1.A .....

STATEMENT AS OF MARCH 31, 2025 OF THE NATIONWIDE GENERAL INSURANCE COMPANY

SCHEDULE D - PART 4

Show All Long-Term Bonds and Stock Sold, Redeemed or Otherwise Disposed of During the Current Quarter

1	2	3	4	5	6	7	8	9	Change In Book/Adjusted Carrying Value					15	16	17	18	19	20	21
									10	11	12	13	14							
CUSIP Ident-ification	Description	Disposal Date	Name of Purchaser	Number of Shares of Stock	Consid-eration	Par Value	Actual Cost	Prior Year Book/ Adjusted Carrying Value	Unrealized Valuation Increase/ (Decrease)	Current Year's (Amor-tization)/ Accretion	Current Year's Other Than Temporary Impairment Recogn-ized	Total Change in Book/ Adjusted Carrying Value (10 + 11 - 12)	Total Foreign Exchange Change in Book /Adjusted Carrying Value	Book/ Adjusted Carrying Value at Disposal Date	Foreign Exchange Gain (Loss) on Disposal	Realized Gain (Loss) on Disposal	Total Gain (Loss) on Disposal	Bond Interest/ Stock Dividends Received During Year	Stated Con-tractual Maturity Date	NAIC Desig-nation, NAIC Desig-nation Modifier and SVO Admini-strative Symbol
..3138YY-DT-7	FNMA Pool #A26413 3.000% 11/25/45 .....	03/01/2025	Paydown	.....	6,770	6,770	6,466	6,487	.....	284	.....	284	.....	6,770	.....	.....	.....	34	11/25/2045	1.A
..3140KD-G4-6	FNMA Pool #BP5618 2.500% 06/25/50 .....	03/01/2025	Paydown	.....	37,340	37,340	38,837	38,752	.....	(1,412)	.....	(1,412)	.....	37,340	.....	.....	.....	125	06/25/2050	1.A
..3140NG-GP-9	FN BYO205 Pool# BY0205 5.500% 05/25/53 ....	03/01/2025	Paydown	.....	35,340	35,340	35,329	35,327	.....	13	.....	13	.....	35,340	.....	.....	.....	396	05/25/2053	1.A FE
..3140OD-6N-9	FNMA Pool #CA6276 2.000% 07/25/50 .....	03/01/2025	Paydown	.....	21,498	21,498	21,985	21,951	.....	(453)	.....	(453)	.....	21,498	.....	.....	.....	65	07/25/2050	1.A
..3140OK-AH-1	FNMA Pool# CB0007 3.000% 04/25/51 .....	03/01/2025	Paydown	.....	14,534	14,534	12,619	12,638	.....	1,896	.....	1,896	.....	14,534	.....	.....	.....	59	04/25/2051	1.A
..3140OT-XA-2	FNMA Pool #CB7872 7.000% 01/25/54 .....	03/01/2025	Paydown	.....	157,392	157,392	162,531	162,395	.....	(5,004)	.....	(5,004)	.....	157,392	.....	.....	1,652	01/25/2054	1.A	
..3140XG-5K-1	FNMA Pool #FS1749 2.500% 04/25/52 .....	03/01/2025	Paydown	.....	18,611	18,611	17,016	17,105	.....	1,506	.....	1,506	.....	18,611	.....	.....	.....	63	04/25/2052	1.A
..3140XG-PS-2	FNMA Pool #FS1332 3.500% 03/25/52 .....	03/01/2025	Paydown	.....	20,954	20,954	20,080	20,108	.....	846	.....	846	.....	20,954	.....	.....	.....	123	03/25/2052	1.A
..3140XG-U9-8	FNMA Pool #FS1507 3.000% 02/25/52 .....	03/01/2025	Paydown	.....	10,879	10,879	9,992	10,032	.....	847	.....	847	.....	10,879	.....	.....	.....	55	02/25/2052	1.A
..3140XG-WN-5	FNMA Pool# FS1552 2.500% 11/25/51 .....	03/01/2025	Paydown	.....	9,587	9,587	8,516	8,563	.....	1,024	.....	1,024	.....	9,587	.....	.....	.....	38	11/25/2051	1.A
..3140XH-Y7-6	FNMA Pool# FS2533 2.000% 07/25/52 .....	03/01/2025	Paydown	.....	11,917	11,917	10,174	10,265	.....	1,652	.....	1,652	.....	11,917	.....	.....	.....	32	07/25/2052	1.A
..3140XM-SS-1	Fannie Mae Super Pool# FS6256 3.500% 08/25/52 .....	03/01/2025	Paydown	.....	15,065	15,065	13,436	13,458	.....	1,607	.....	1,607	.....	15,065	.....	.....	.....	89	08/25/2052	1.A
..3140XN-M5-0	Fannie Mae Super Pool #FS6679 6.000% 12/25/53 .....	03/01/2025	Paydown	.....	17,574	17,574	17,662	17,661	.....	(87)	.....	(87)	.....	17,574	.....	.....	.....	162	12/25/2053	1.A
..3140XP-JT-7	FNMA Pool# FS7473 6.000% 02/25/54 .....	03/01/2025	Paydown	.....	75,892	75,892	77,848	77,807	.....	(1,915)	.....	(1,915)	.....	75,892	.....	.....	.....	692	02/25/2054	1.A
..31416X-YZ-7	FNMA Pool #AB2527 4.000% 03/25/41 .....	03/01/2025	Paydown	.....	20,024	20,024	20,169	20,140	.....	(116)	.....	(116)	.....	20,024	.....	.....	.....	133	03/25/2041	1.A
..31418B-TJ-5	FNMA Pool #MA2352 3.500% 08/01/45 .....	03/01/2025	Paydown	.....	23,263	23,263	24,144	24,059	.....	(796)	.....	(796)	.....	23,263	.....	.....	.....	135	08/01/2045	1.A
..31418D-2L-5	FNMA Pool #MA4378 2.000% 07/25/51 .....	03/01/2025	Paydown	.....	112,472	112,472	113,246	113,175	.....	(703)	.....	(703)	.....	112,472	.....	.....	.....	369	07/25/2051	1.A
..31418D-4X-7	FNMA Pool #MA4437 2.000% 10/25/51 .....	03/01/2025	Paydown	.....	45,853	45,853	43,655	43,789	.....	2,064	.....	2,064	.....	45,853	.....	.....	.....	152	10/25/2051	1.A
..31418D-CA-8	FNMA Pool #MA3664 4.000% 05/25/49 .....	03/01/2025	Paydown	.....	52,094	52,094	53,982	53,902	.....	(1,808)	.....	(1,808)	.....	52,094	.....	.....	.....	382	05/25/2049	1.A
..31418D-CB-6	FNMA Pool #MA3665 4.500% 05/25/49 .....	03/01/2025	Paydown	.....	17,989	17,989	18,824	18,794	.....	(805)	.....	(805)	.....	17,989	.....	.....	.....	165	05/25/2049	1.A
..31418D-WR-9	FNMA Pool #MA4255 2.000% 02/25/51 .....	03/01/2025	Paydown	.....	101,273	101,273	104,481	104,225	.....	(2,952)	.....	(2,952)	.....	101,273	.....	.....	.....	336	02/25/2051	1.A
..31418E-CU-2	Fn MA5192 Pool #MA4582 2.000% 04/25/37 ....	03/01/2025	Paydown	.....	2,476	2,476	2,169	2,205	.....	271	.....	271	.....	2,476	.....	.....	.....	8	04/25/2037	1.A
..31418E-D5-6	Fn MA5192 Pool #MA4623 2.500% 06/25/52 ....	03/01/2025	Paydown	.....	1,486	1,486	1,213	1,225	.....	261	.....	261	.....	1,486	.....	.....	.....	6	06/25/2052	1.A
..31418E-E6-3	Fn MA5192 Pool #MA4656 4.500% 07/01/52 ....	03/01/2025	Paydown	.....	66,068	66,068	65,886	65,893	.....	175	.....	175	.....	66,068	.....	.....	.....	499	07/01/2052	1.A
..31418E-HJ-2	Fn MA5192 Pool #MA4732 4.000% 09/01/52 ....	03/01/2025	Paydown	.....	62,624	62,624	60,947	61,013	.....	1,611	.....	1,611	.....	62,624	.....	.....	.....	424	09/01/2052	1.A
..31418E-HK-9	Fn MA5192 Pool # MA4733 4.500% 09/25/52 ....	03/01/2025	Paydown	.....	10,815	10,815	10,380	10,395	.....	420	.....	420	.....	10,815	.....	.....	.....	83	09/25/2052	1.A
..31418E-KS-8	Fn MA5192 Pool #MA4804 4.000% 11/25/52 ....	03/01/2025	Paydown	.....	2,080	2,080	1,887	1,895	.....	185	.....	185	.....	2,080	.....	.....	.....	12	11/25/2052	1.A
..31418E-KT-6	Fn MA5192 Pool #MA4805 4.500% 11/25/52 ....	03/01/2025	Paydown	.....	1,317	1,317	1,233	1,236	.....	82	.....	82	.....	1,317	.....	.....	.....	10	11/25/2052	1.A
..31418E-LY-4	Fn MA5192 Pool #MA4842 5.500% 12/01/52 ....	03/01/2025	Paydown	.....	2,093	2,093	2,062	2,062	.....	31	.....	31	.....	2,093	.....	.....	.....	19	12/01/2052	1.A
..31419B-CT-0	FNMA Pool #AE0981 3.500% 03/25/41 .....	03/01/2025	Paydown	.....	19,286	19,286	19,886	19,778	.....	(492)	.....	(492)	.....	19,286	.....	.....	.....	109	03/25/2041	1.A
..31419L-3D-3	FNMA Pool #AE9795 3.500% 11/25/40 .....	03/01/2025	Paydown	.....	12,346	12,346	13,019	12,911	.....	(565)	.....	(565)	.....	12,346	.....	.....	.....	46	11/25/2040	1.A
..31418E-W5-5	Fn MA5192 Pool #MA5167 6.500% 10/01/53 ....	03/01/2025	Paydown	.....	26,397	26,397	27,146	27,140	.....	(743)	.....	(743)	.....	26,397	.....	.....	.....	265	10/01/2053	1.A
1039999999 Subtotal - Asset-Backed Securities - Financial Asset-Backed - Self-Liquidating - Agency Residential Mortgage-Backed Securities - Not/Partially Guaranteed (Not Exempt from RBC)					1,527,586	1,527,586	1,532,086	1,531,103	.....	(3,516)	.....	(3,516)	.....	1,527,586	.....	.....	.....	8,984	XXX	XXX
..03464R-AA-1	Angel Oak Mortgage Trust RMBS Series 2020-1 CI A1 4.800% 12/25/59 .....	03/01/2025	Paydown	.....	2,095	2,095	2,095	2,093	.....	2	.....	2	.....	2,095	.....	.....	.....	9	12/25/2059	1.A
..36169G-AB-1	GCAT RMBS Ser 2023-NQM3 CI A2 7.192% 08/25/68 .....	03/01/2025	Paydown	.....	30,719	30,719	31,179	.....	(461)	.....	.....	(461)	.....	30,719	.....	.....	.....	243	08/25/2068	1.C FE
..43789K-AB-8	Homeward Opportunities Fund RMBS Ser 22-1 CL A2 5.082% 07/25/67 .....	03/01/2025	Paydown	.....	6,459	6,459	6,400	.....	59	.....	.....	59	.....	6,459	.....	.....	.....	46	07/25/2067	1.C FE
..61748H-LC-3	Morgan Stanley Mtg Tr RMBS Ser 2005-SAR CI 3A1 5.446% 09/25/35 .....	03/01/2025	Paydown	.....	16,136	16,136	14,802	14,802	.....	.....	.....	.....	.....	14,802	.....	1,333	1,333	146	09/25/2035	1.A FM
..64830B-AA-5	New Residential Mtg Ln Tr RMBS Ser 2017-6A CI A1 4.000% 08/27/57 .....	03/01/2025	Paydown	.....	35,151	35,151	36,337	35,758	.....	(607)	.....	(607)	.....	35,151	.....	.....	.....	241	08/27/2057	1.A
..69378K-AB-0	PRP Advisors, LLC RMBS Ser 22-NQM1 CL A2 5.500% 08/25/67 .....	03/01/2025	Paydown	.....	16,914	16,914	16,829	.....	85	.....	.....	85	.....	16,914	.....	.....	.....	120	08/25/2067	1.C FE
..69392F-AA-5	Pretium Mort Cred Partnership RMBS Ser 2025-RPL1 CI A1 4.000% 07/25/69 .....	03/01/2025	Paydown	.....	14,677	14,677	13,968	.....	709	.....	.....	709	.....	14,677	.....	.....	.....	78	07/25/2069	1.A FE



STATEMENT AS OF MARCH 31, 2025 OF THE NATIONWIDE GENERAL INSURANCE COMPANY

SCHEDULE D - PART 4

Show All Long-Term Bonds and Stock Sold, Redeemed or Otherwise Disposed of During the Current Quarter

1	2	3	4	5	6	7	8	9	Change In Book/Adjusted Carrying Value					15	16	17	18	19	20	21
									10	11	12	13	14							
CUSIP Identification	Description	Disposal Date	Name of Purchaser	Number of Shares of Stock	Consideration	Par Value	Actual Cost	Prior Year Book/Adjusted Carrying Value	Unrealized Valuation Increase/(Decrease)	Current Year's (Amortization)/Accretion	Current Year's Other Than Temporary Impairment Recognized	Total Change in Book/Adjusted Carrying Value (10 + 11 - 12)	Total Foreign Exchange Change in Book /Adjusted Carrying Value	Book/Adjusted Carrying Value at Disposal Date	Foreign Exchange Gain (Loss) on Disposal	Realized Gain (Loss) on Disposal	Total Gain (Loss) on Disposal	Bond Interest/Stock Dividends Received During Year	Stated Contractual Maturity Date	NAIC Designation, NAIC Designation Modifier and SVO Administrative Symbol
..73015J-AG-3	PMT Loan Trust RMBS Ser 2025-INW2 CI A7 6.000% 02/25/56 .....	03/01/2025	Paydown .....		8,787	8,787	8,821			(34)		(34)		8,787				44	02/25/2056	1.A FE ....
..89177B-AA-3	Towd Point Mortgage Tr RMBS Ser 2019-1 CI A1 3.750% 03/25/58 .....	03/01/2025	Paydown .....		65,758	65,758	65,357	65,454		304		304		65,758				414	03/25/2058	1.A .....
1059999999. Subtotal - Asset-Backed Securities - Financial Asset-Backed - Self-Liquidating - Non-Agency Residential Mortgage-Backed Securities (Unaffiliated)					196,696	196,696	195,788	118,107		57		57		195,362		1,333	1,333	1,341	XXX	XXX
..6176SL-AS-9	Morgan Stanley BAML Tr CMBS Ser 2015-C24 CI ASB 3.479% 05/15/48 .....	03/01/2025	Paydown .....		316,881	316,881	326,371	316,636		245		245		316,881				1,828	05/15/2048	1.A .....
1079999999. Subtotal - Asset-Backed Securities - Financial Asset-Backed - Self-Liquidating - Non-Agency Commercial Mortgage-Backed Securities (Unaffiliated)					316,881	316,881	326,371	316,636		245		245		316,881				1,828	XXX	XXX
..75973F-AA-9	Renew LBASS Ser 2018-1 CI A 3.950% 09/20/53 .....	03/20/2025	Paydown .....		21,551	21,551	21,504	21,516		35		35		21,551				143	09/20/2053	1.A FE ....
..67222G-AA-2	Preferred Term Secs XVII LBASS Sec Nt 4.961% 06/23/35 .....	03/25/2025	Redemption 791.7626 .....		44,145	5,576	5,390	5,444		38,701		38,701		44,145				5,576	06/23/2035	1.A FE ....
1099999999. Subtotal - Asset-Backed Securities - Financial Asset-Backed - Self-Liquidating - Non-Agency - CLOs/CBOs/CDOs (Unaffiliated)					65,696	27,127	26,894	26,960		38,736		38,736		65,696				5,719	XXX	XXX
..31568A-AB-2	First Help Financial LLC Ser 2024-1A CI A2 5.690% 02/15/30 .....	03/15/2025	Paydown .....		15,652	15,652	15,651	15,651		1		1		15,652				146	02/15/2030	1.C FE ....
..34532R-AA-4	Ford Credit Auto Owner Tr LBASS Ser 2018-1 CI A 3.190% 07/15/31 .....	01/15/2025	Paydown .....		3,685,000	3,685,000	3,572,066	3,660,593		24,407		24,407		3,685,000				9,796	07/15/2031	1.A FE ....
..35105A-AB-3	Foursight Capital Auto Rec Tr Ser 2024-1 CI A2 5.490% 01/16/29 .....	03/15/2025	Paydown .....		47,194	47,194	47,193	47,194		1		1		47,194				432	01/16/2029	1.A FE ....
..37988X-AB-1	QLS Auto Select Receivables Tr Ser 2024-1A CI A2 5.240% 03/15/30 .....	03/15/2025	Paydown .....		20,943	20,943	20,943	20,943						20,943				183	03/15/2030	1.A FE ....
1119999999. Subtotal - Asset-Backed Securities - Financial Asset-Backed - Self-Liquidating - Other Financial Asset-Backed Securities - Self-Liquidating (Unaffiliated)					3,768,789	3,768,789	3,655,853	3,744,381		24,409		24,409		3,768,789				10,557	XXX	XXX
..90931G-AA-7	United Airlines Inc 1st Lien 5.875% 10/15/27 .....	01/15/2025	Redemption 100.0000 .....		39,632	39,632	43,978	42,189		(2,557)		(2,557)		39,632				582	10/15/2027	1.E FE ....
1519999999. Subtotal - Asset-Backed Securities - Non-Financial Asset-Backed Securities - Practical Expedient - Lease-Backed Securities - Practical Expedient (Unaffiliated)					39,632	39,632	43,978	42,189		(2,557)		(2,557)		39,632				582	XXX	XXX
1889999999. Total - Asset-Backed Securities (Unaffiliated)					5,969,413	5,930,844	5,835,275	5,833,684		57,200		57,200		5,968,079		1,333	1,333	29,501	XXX	XXX
1899999999. Total - Asset-Backed Securities (Affiliated)																			XXX	XXX
1909999997. Total - Asset-Backed Securities - Part 4					5,969,413	5,930,844	5,835,275	5,833,684		57,200		57,200		5,968,079		1,333	1,333	29,501	XXX	XXX
1909999998. Total - Asset-Backed Securities - Part 5					XXX	XXX	XXX	XXX	XXX	XXX	XXX	XXX	XXX	XXX	XXX	XXX	XXX	XXX	XXX	XXX
1909999999. Total - Asset-Backed Securities					5,969,413	5,930,844	5,835,275	5,833,684		57,200		57,200		5,968,079		1,333	1,333	29,501	XXX	XXX
2009999999. Total - Issuer Credit Obligations and Asset-Backed Securities					14,835,886	15,006,064	14,781,401	14,758,867	5,638	68,283		73,921		14,936,860		(100,976)	(100,976)	171,170	XXX	XXX
4509999997. Total - Preferred Stocks - Part 4						XXX													XXX	XXX
4509999998. Total - Preferred Stocks - Part 5					XXX	XXX	XXX	XXX	XXX	XXX	XXX	XXX	XXX	XXX	XXX	XXX	XXX	XXX	XXX	XXX
4509999999. Total - Preferred Stocks						XXX													XXX	XXX
5989999997. Total - Common Stocks - Part 4						XXX													XXX	XXX
5989999998. Total - Common Stocks - Part 5					XXX	XXX	XXX	XXX	XXX	XXX	XXX	XXX	XXX	XXX	XXX	XXX	XXX	XXX	XXX	XXX
5989999999. Total - Common Stocks						XXX													XXX	XXX
5999999999. Total - Preferred and Common Stocks						XXX													XXX	XXX
6009999999 - Totals					14,835,886	XXX	14,781,401	14,758,867	5,638	68,283		73,921		14,936,860		(100,976)	(100,976)	171,170	XXX	XXX

Schedule DB - Part A - Section 1 - Options, Caps, Floors, Collars, Swaps and Forwards Open  
**N O N E**

Schedule DB - Part B - Section 1 - Futures Contracts Open  
**N O N E**

Schedule DB - Part B - Section 1B - Brokers with whom cash deposits have been made  
**N O N E**

Schedule DB - Part D - Section 1 - Counterparty Exposure for Derivative Instruments Open  
**N O N E**

Schedule DB - Part D-Section 2 - Collateral for Derivative Instruments Open - Pledged By  
**N O N E**

Schedule DB - Part D-Section 2 - Collateral for Derivative Instruments Open - Pledged To  
**N O N E**

Schedule DB - Part E - Derivatives Hedging Variable Annuity Guarantees  
**N O N E**

Schedule DL - Part 1 - Reinvested Collateral Assets Owned  
**N O N E**

Schedule DL - Part 2 - Reinvested Collateral Assets Owned  
**N O N E**

## SCHEDULE E - PART 1 - CASH

[illegible]

## SCHEDULE E - PART 2 - CASH EQUIVALENTS

[illegible]



SUPPLEMENT FOR THE QUARTER ENDING MARCH 31, 2025 OF THE NATIONWIDE GENERAL INSURANCE COMPANY

DIRECTOR AND OFFICER INSURANCE COVERAGE SUPPLEMENT
Year To Date For The Period Ended MARCH 31, 2025

NAIC Group Code 0140 NAIC Company Code 23760
Company Name NATIONWIDE GENERAL INSURANCE COMPANY

If the reporting entity writes any director and officer (D&O) business, please provide the following:

1. Monoline Policies

Table with 3 columns: 1 Direct Written Premium, 2 Direct Earned Premium, 3 Direct Losses Incurred. Row 1: \$ 2,834, \$ 3,313, \$

2. Commercial Multiple Peril (CMP) Packaged Policies

- 2.1 Does the reporting entity provide D&O liability coverage as part of a CMP packaged policy? Yes [ X ] No [ ]
- 2.2 Can the direct premium earned for D&O liability coverage provided as part of a CMP packaged policy be quantified or estimated? Yes [ X ] No [ ]
- 2.3 If the answer to question 2.2 is yes, provide the quantified or estimated direct premium earned amount for D&O liability coverage in CMP packaged policies
2.31 Amount quantified: \$ 120,071
2.32 Amount estimated using reasonable assumptions: \$
- 2.4 If the answer to question 2.1 is yes, provide direct losses incurred (losses paid plus change in case reserves) for the D&O liability coverage provided in CMP packaged policies. \$ 50,199