



PROPERTY AND CASUALTY COMPANIES - ASSOCIATION EDITION

QUARTERLY STATEMENT

AS OF MARCH 31, 2025  
OF THE CONDITION AND AFFAIRS OF THE

WILSON MUTUAL INSURANCE COMPANY

NAIC Group Code 0291 0291 NAIC Company Code 19950 Employer's ID Number 39-0739760  
(Current) (Prior)

Organized under the Laws of Ohio, State of Domicile or Port of Entry OH

Country of Domicile United States of America

Incorporated/Organized 01/01/1872 Commenced Business 05/01/1872

Statutory Home Office 471 EAST BROAD STREET COLUMBUS, OH, US 43215  
(Street and Number) (City or Town, State, Country and Zip Code)

Main Administrative Office 471 EAST BROAD STREET  
(Street and Number)  
COLUMBUS, OH, US 43215 614-225-8211  
(City or Town, State, Country and Zip Code) (Area Code) (Telephone Number)

Mail Address 471 EAST BROAD STREET COLUMBUS, OH, US 43215  
(Street and Number or P.O. Box) (City or Town, State, Country and Zip Code)

Primary Location of Books and Records 471 EAST BROAD STREET  
(Street and Number)  
COLUMBUS, OH, US 43215 614-225-8211  
(City or Town, State, Country and Zip Code) (Area Code) (Telephone Number)

Internet Website Address ENCOVA.COM

Statutory Statement Contact AMY E KUHLMAN 614-225-8285  
(Name) (Area Code) (Telephone Number)  
ACCOUNTING@ENCOVA.COM 614-225-8330  
(E-mail Address) (FAX Number)

OFFICERS

PRESIDENT & CHIEF EXECUTIVE OFFICER THOMAS JOSEPH OBROKTA JR. TREASURER JAMES CHRISTOPHER HOWAT  
SECRETARY WILLIAM JOSEPH MCGEE JR.

OTHER

DIRECTORS OR TRUSTEES

JEFFREY LEIGH BENINTENDI MELISSA D. PRYOR JAMES CHRISTOPHER HOWAT  
THOMAS JOSEPH OBROKTA JR. MATTHEW CARL WILCOX

State of OH  
County of FRANKLIN SS:

The officers of this reporting entity being duly sworn, each depose and say that they are the described officers of said reporting entity, and that on the reporting period stated above, all of the herein described assets were the absolute property of the said reporting entity, free and clear from any liens or claims thereon, except as herein stated, and that this statement, together with related exhibits, schedules and explanations therein contained, annexed or referred to, is a full and true statement of all the assets and liabilities and of the condition and affairs of the said reporting entity as of the reporting period stated above, and of its income and deductions therefrom for the period ended, and have been completed in accordance with the NAIC Annual Statement Instructions and Accounting Practices and Procedures manual except to the extent that: (1) state law may differ; or, (2) that state rules or regulations require differences in reporting not related to accounting practices and procedures, according to the best of their information, knowledge and belief, respectively. Furthermore, the scope of this attestation by the described officers also includes the related corresponding electronic filing with the NAIC, when required, that is an exact copy (except for formatting differences due to electronic filing) of the enclosed statement. The electronic filing may be requested by various regulators in lieu of or in addition to the enclosed statement.

THOMAS JOSEPH OBROKTA JR.  
PRESIDENT & CHIEF EXECUTIVE OFFICER

WILLIAM JOSEPH MCGEE JR.  
SECRETARY

JAMES CHRISTOPHER HOWAT  
TREASURER

Subscribed and sworn to before me this  
5TH day of MAY 2025

- a. Is this an original filing? ..... Yes [ X ] No [ ]  
b. If no,  
1. State the amendment number.....  
2. Date filed .....  
3. Number of pages attached.....



Christine Lynn Yonut  
Notary Public, State of Ohio  
My Comm. Expires 01/16/2030

STATEMENT AS OF MARCH 31, 2025 OF THE WILSON MUTUAL INSURANCE COMPANY

ASSETS

	Current Statement Date			4 December 31 Prior Year Net Admitted Assets
	1 Assets	2 Nonadmitted Assets	3 Net Admitted Assets (Cols. 1 - 2)	
1. Bonds .....	46,188,052		46,188,052	45,417,051
2. Stocks:				
2.1 Preferred stocks .....			0	0
2.2 Common stocks .....	8,143,739	0	8,143,739	8,006,439
3. Mortgage loans on real estate:				
3.1 First liens .....			0	0
3.2 Other than first liens.....			0	0
4. Real estate:				
4.1 Properties occupied by the company (less \$ encumbrances) .....	0	0	0	0
4.2 Properties held for the production of income (less \$ ..... encumbrances) .....	0		0	0
4.3 Properties held for sale (less \$ ..... encumbrances) .....	0	0	0	0
5. Cash (\$ ..... 125,551 ), cash equivalents (\$ ..... 3,392,367 ) and short-term investments (\$ ..... ) .....	3,517,918		3,517,918	3,586,536
6. Contract loans (including \$ ..... premium notes) .....			0	0
7. Derivatives .....			0	0
8. Other invested assets .....	0	0	0	0
9. Receivables for securities .....	0		0	78,883
10. Securities lending reinvested collateral assets .....	0		0	0
11. Aggregate write-ins for invested assets .....	0	0	0	0
12. Subtotals, cash and invested assets (Lines 1 to 11) .....	57,849,709	0	57,849,709	57,088,909
13. Title plants less \$ ..... charged off (for Title insurers only) .....			0	0
14. Investment income due and accrued .....	357,544		357,544	403,002
15. Premiums and considerations:				
15.1 Uncollected premiums and agents' balances in the course of collection .....	1,620,369	2,432	1,617,937	1,554,864
15.2 Deferred premiums, agents' balances and installments booked but deferred and not yet due (including \$ ..... 414,036 earned but unbilled premiums) .....	4,441,306	0	4,441,306	3,614,234
15.3 Accrued retrospective premiums (\$ ..... ) and contracts subject to redetermination (\$ ..... ) .....			0	0
16. Reinsurance:				
16.1 Amounts recoverable from reinsurers .....	1,756,831	0	1,756,831	1,548,470
16.2 Funds held by or deposited with reinsured companies .....	6,778,991		6,778,991	6,838,977
16.3 Other amounts receivable under reinsurance contracts .....			0	0
17. Amounts receivable relating to uninsured plans .....			0	0
18.1 Current federal and foreign income tax recoverable and interest thereon ....	0		0	0
18.2 Net deferred tax asset .....	498,068	0	498,068	545,855
19. Guaranty funds receivable or on deposit .....			0	0
20. Electronic data processing equipment and software .....	0	0	0	0
21. Furniture and equipment, including health care delivery assets (\$ ..... ) .....	0	0	0	0
22. Net adjustment in assets and liabilities due to foreign exchange rates .....			0	0
23. Receivables from parent, subsidiaries and affiliates .....	189,656		189,656	0
24. Health care (\$ ..... ) and other amounts receivable .....			0	0
25. Aggregate write-ins for other than invested assets .....	3,469,705	0	3,469,705	3,463,816
26. Total assets excluding Separate Accounts, Segregated Accounts and Protected Cell Accounts (Lines 12 to 25) .....	76,962,179	2,432	76,959,747	75,058,126
27. From Separate Accounts, Segregated Accounts and Protected Cell Accounts .....			0	0
28. Total (Lines 26 and 27)	76,962,179	2,432	76,959,747	75,058,126
DETAILS OF WRITE-INS				
1101. ....				
1102. ....				
1103. ....				
1198. Summary of remaining write-ins for Line 11 from overflow page .....	0	0	0	0
1199. Totals (Lines 1101 through 1103 plus 1198)(Line 11 above)	0	0	0	0
2501. ICOLI cash surrender value .....	3,454,688		3,454,688	3,443,694
2502. Misc Other Assets .....	15,017		15,017	20,122
2503. ....				
2598. Summary of remaining write-ins for Line 25 from overflow page .....	0	0	0	0
2599. Totals (Lines 2501 through 2503 plus 2598)(Line 25 above)	3,469,705	0	3,469,705	3,463,816

STATEMENT AS OF MARCH 31, 2025 OF THE WILSON MUTUAL INSURANCE COMPANY

LIABILITIES, SURPLUS AND OTHER FUNDS

	1 Current Statement Date	2 December 31, Prior Year
1. Losses (current accident year \$ .....2,283,131 ) .....	25,322,831	25,144,885
2. Reinsurance payable on paid losses and loss adjustment expenses .....	1,112,484	896,254
3. Loss adjustment expenses .....	4,193,580	4,071,507
4. Commissions payable, contingent commissions and other similar charges .....	202,802	397,954
5. Other expenses (excluding taxes, licenses and fees) .....	1,446,224	1,788,928
6. Taxes, licenses and fees (excluding federal and foreign income taxes) .....	191,885	243,110
7.1 Current federal and foreign income taxes (including \$ ..... on realized capital gains (losses)) .....	87,556	19,205
7.2 Net deferred tax liability .....		
8. Borrowed money \$ ..... and interest thereon \$ ..... .....	0	0
9. Unearned premiums (after deducting unearned premiums for ceded reinsurance of \$ .....7,635,277 and including warranty reserves of \$ ..... and accrued accident and health experience rating refunds including \$ .....0 for medical loss ratio rebate per the Public Health Service Act) .....	8,436,320	8,311,243
10. Advance premium .....	188,909	104,622
11. Dividends declared and unpaid:		
11.1 Stockholders .....	0	0
11.2 Policyholders .....		
12. Ceded reinsurance premiums payable (net of ceding commissions) .....	1,131,357	688,720
13. Funds held by company under reinsurance treaties .....	4,597,948	3,678,830
14. Amounts withheld or retained by company for account of others .....	0	0
15. Remittances and items not allocated .....	1,322,548	1,335,828
16. Provision for reinsurance (including \$ ..... certified) .....	0	0
17. Net adjustments in assets and liabilities due to foreign exchange rates .....		
18. Drafts outstanding .....	0	0
19. Payable to parent, subsidiaries and affiliates .....	0	190,805
20. Derivatives .....	0	0
21. Payable for securities .....	264,483	54,693
22. Payable for securities lending .....	0	0
23. Liability for amounts held under uninsured plans .....		
24. Capital notes \$ ..... and interest thereon \$ ..... .....		
25. Aggregate write-ins for liabilities .....	189,924	139,604
26. Total liabilities excluding protected cell liabilities (Lines 1 through 25) .....	48,688,852	47,066,187
27. Protected cell liabilities .....		
28. Total liabilities (Lines 26 and 27) .....	48,688,852	47,066,187
29. Aggregate write-ins for special surplus funds .....	0	0
30. Common capital stock .....	5,000,000	5,000,000
31. Preferred capital stock .....	0	0
32. Aggregate write-ins for other than special surplus funds .....	0	0
33. Surplus notes .....		
34. Gross paid in and contributed surplus .....	13,000,000	13,000,000
35. Unassigned funds (surplus) .....	10,270,895	9,991,938
36. Less treasury stock, at cost:		
36.1 ..... shares common (value included in Line 30 \$ ..... ) .....		
36.2 ..... shares preferred (value included in Line 31 \$ ..... ) .....		
37. Surplus as regards policyholders (Lines 29 to 35, less 36) .....	28,270,895	27,991,938
38. Totals (Page 2, Line 28, Col. 3)	76,959,747	75,058,125
DETAILS OF WRITE-INS		
2501. Miscellaneous liabilities .....	189,924	139,604
2502. ....		
2503. ....		
2598. Summary of remaining write-ins for Line 25 from overflow page .....	0	0
2599. Totals (Lines 2501 through 2503 plus 2598)(Line 25 above)	189,924	139,604
2901. ....		
2902. ....		
2903. ....		
2998. Summary of remaining write-ins for Line 29 from overflow page .....	0	0
2999. Totals (Lines 2901 through 2903 plus 2998)(Line 29 above)	0	0
3201. ....		
3202. ....		
3203. ....		
3298. Summary of remaining write-ins for Line 32 from overflow page .....	0	0
3299. Totals (Lines 3201 through 3203 plus 3298)(Line 32 above)	0	0

STATEMENT OF INCOME

	1 Current Year to Date	2 Prior Year to Date	3 Prior Year Ended December 31
UNDERWRITING INCOME			
1. Premiums earned:			
1.1 Direct (written \$ .....4,209,063 )	3,370,088	2,947,606	11,985,267
1.2 Assumed (written \$ .....4,601,754 )	4,476,678	4,246,290	17,926,143
1.3 Ceded (written \$ .....4,209,063 )	3,370,088	2,947,606	11,985,279
1.4 Net (written \$ .....4,601,754 )	4,476,678	4,246,290	17,926,131
DEDUCTIONS:			
2. Losses incurred (current accident year \$ .....2,674,256 ):			
2.1 Direct .....	1,651,191	(189,647)	3,177,243
2.2 Assumed .....	2,437,868	2,230,495	9,700,168
2.3 Ceded .....	1,651,223	(189,739)	3,177,033
2.4 Net .....	2,437,836	2,230,587	9,700,378
3. Loss adjustment expenses incurred .....	770,979	650,598	2,973,603
4. Other underwriting expenses incurred .....	1,324,423	1,302,016	5,329,574
5. Aggregate write-ins for underwriting deductions .....	0	0	0
6. Total underwriting deductions (Lines 2 through 5) .....	4,533,238	4,183,201	18,003,555
7. Net income of protected cells .....		0	
8. Net underwriting gain (loss) (Line 1 minus Line 6 + Line 7) .....	(56,560)	63,089	(77,424)
INVESTMENT INCOME			
9. Net investment income earned .....	505,679	386,505	1,714,266
10. Net realized capital gains (losses) less capital gains tax of \$ .....(4) .....	(148,612)	(2,805)	(405,120)
11. Net investment gain (loss) (Lines 9 + 10) .....	357,067	383,700	1,309,146
OTHER INCOME			
12. Net gain or (loss) from agents' or premium balances charged off (amount recovered \$ ..... amount charged off \$ .....52,919 ) .....	(52,919)	(5,344)	(81,395)
13. Finance and service charges not included in premiums .....	10,974	9,941	41,643
14. Aggregate write-ins for miscellaneous income .....	11,043	69,725	86,735
15. Total other income (Lines 12 through 14) .....	(30,902)	74,322	46,983
16. Net income before dividends to policyholders, after capital gains tax and before all other federal and foreign income taxes (Lines 8 + 11 + 15) .....	269,605	521,111	1,278,705
17. Dividends to policyholders .....	9,698	13,628	55,340
18. Net income, after dividends to policyholders, after capital gains tax and before all other federal and foreign income taxes (Line 16 minus Line 17) .....	259,907	507,483	1,223,365
19. Federal and foreign income taxes incurred .....	68,355	27,889	408,654
20. Net income (Line 18 minus Line 19)(to Line 22) .....	191,552	479,594	814,711
CAPITAL AND SURPLUS ACCOUNT			
21. Surplus as regards policyholders, December 31 prior year .....	27,991,944	26,631,311	26,631,312
22. Net income (from Line 20) .....	191,552	479,594	814,711
23. Net transfers (to) from Protected Cell accounts .....			
24. Change in net unrealized capital gains (losses) less capital gains tax of \$ .....68,195 .....	68,009	405,922	427,167
25. Change in net unrealized foreign exchange capital gain (loss) .....			
26. Change in net deferred income tax .....	20,408	19,802	89,215
27. Change in nonadmitted assets .....	(1,013)		(1,419)
28. Change in provision for reinsurance .....			30,958
29. Change in surplus notes .....			
30. Surplus (contributed to) withdrawn from protected cells .....			
31. Cumulative effect of changes in accounting principles .....			
32. Capital changes:			
32.1 Paid in .....			
32.2 Transferred from surplus (Stock Dividend) .....			
32.3 Transferred to surplus .....			
33. Surplus adjustments:			
33.1 Paid in .....	0	0	0
33.2 Transferred to capital (Stock Dividend) .....			
33.3 Transferred from capital .....			
34. Net remittances from or (to) Home Office .....			
35. Dividends to stockholders .....			
36. Change in treasury stock .....			0
37. Aggregate write-ins for gains and losses in surplus .....	0	0	0
38. Change in surplus as regards policyholders (Lines 22 through 37).....	278,956	905,318	1,360,632
39. Surplus as regards policyholders, as of statement date (Lines 21 plus 38)	28,270,900	27,536,629	27,991,944
DETAILS OF WRITE-INS			
0501. ....			
0502. ....			
0503. ....			
0598. Summary of remaining write-ins for Line 5 from overflow page .....	0	0	0
0599. Totals (Lines 0501 through 0503 plus 0598)(Line 5 above)	0	0	0
1401. Miscellaneous income or expense .....	49	62,369	70,158
1402. Change in ICOLI cash surrender value .....	10,994	7,356	16,577
1403. ....			
1498. Summary of remaining write-ins for Line 14 from overflow page .....	0	0	0
1499. Totals (Lines 1401 through 1403 plus 1498)(Line 14 above)	11,043	69,725	86,735
3701. Miscellaneous gains / losses .....		0	0
3702. Reclass for organizational restructure .....		0	0
3703. ....			
3798. Summary of remaining write-ins for Line 37 from overflow page .....	0	0	0
3799. Totals (Lines 3701 through 3703 plus 3798)(Line 37 above)	0	0	0

STATEMENT AS OF MARCH 31, 2025 OF THE WILSON MUTUAL INSURANCE COMPANY

CASH FLOW

	1 Current Year To Date	2 Prior Year To Date	3 Prior Year Ended December 31
<b>Cash from Operations</b>			
1. Premiums collected net of reinsurance .....	4,528,895	2,920,175	17,967,969
2. Net investment income .....	566,351	25,722	1,736,283
3. Miscellaneous income .....	(41,896)	64,381	46,983
4. Total (Lines 1 to 3) .....	5,053,350	3,010,278	19,751,236
5. Benefit and loss related payments .....	2,318,444	(515,314)	7,929,448
6. Net transfers to Separate Accounts, Segregated Accounts and Protected Cell Accounts .....	0	0	0
7. Commissions, expenses paid and aggregate write-ins for deductions .....	2,641,096	403,192	8,157,263
8. Dividends paid to policyholders .....	9,698	0	55,340
9. Federal and foreign income taxes paid (recovered) net of \$ ..... tax on capital gains (losses) .....	0	(27,888)	346,962
10. Total (Lines 5 through 9) .....	4,969,238	(140,010)	16,489,013
11. Net cash from operations (Line 4 minus Line 10) .....	84,112	3,150,288	3,262,223
<b>Cash from Investments</b>			
12. Proceeds from investments sold, matured or repaid:			
12.1 Bonds .....	3,013,174	2,217,858	10,509,071
12.2 Stocks .....	1,173	1,988	154,839
12.3 Mortgage loans .....	0	0	0
12.4 Real estate .....	0	0	0
12.5 Other invested assets .....	0	0	0
12.6 Net gains or (losses) on cash, cash equivalents and short-term investments .....	0	0	0
12.7 Miscellaneous proceeds .....	288,674	326,113	54,693
12.8 Total investment proceeds (Lines 12.1 to 12.7) .....	3,303,021	2,545,958	10,718,603
13. Cost of investments acquired (long-term only):			
13.1 Bonds .....	3,948,204	2,441,890	15,330,087
13.2 Stocks .....	2,120	0	127,458
13.3 Mortgage loans .....	0	0	0
13.4 Real estate .....	0	0	0
13.5 Other invested assets .....	0	0	0
13.6 Miscellaneous applications .....	0	0	3,883
13.7 Total investments acquired (Lines 13.1 to 13.6) .....	3,950,323	2,441,890	15,461,428
14. Net increase/(decrease) in contract loans and premium notes .....	0	0	0
15. Net cash from investments (Line 12.8 minus Line 13.7 and Line 14) .....	(647,303)	104,068	(4,742,825)
<b>Cash from Financing and Miscellaneous Sources</b>			
16. Cash provided (applied):			
16.1 Surplus notes, capital notes .....	0	0	0
16.2 Capital and paid in surplus, less treasury stock .....	0	0	0
16.3 Borrowed funds .....	0	0	0
16.4 Net deposits on deposit-type contracts and other insurance liabilities .....	0	0	0
16.5 Dividends to stockholders .....	0	0	0
16.6 Other cash provided (applied) .....	494,574	1,498,232	2,350,429
17. Net cash from financing and miscellaneous sources (Line 16.1 through Line 16.4 minus Line 16.5 plus Line 16.6) .....	494,574	1,498,232	2,350,429
<b>RECONCILIATION OF CASH, CASH EQUIVALENTS AND SHORT-TERM INVESTMENTS</b>			
18. Net change in cash, cash equivalents and short-term investments (Line 11, plus Lines 15 and 17) .	(68,618)	4,752,588	869,827
19. Cash, cash equivalents and short-term investments:			
19.1 Beginning of year .....	3,586,540	2,716,714	2,716,714
19.2 End of period (Line 18 plus Line 19.1) .....	3,517,923	7,469,302	3,586,540

Note: Supplemental disclosures of cash flow information for non-cash transactions:

20.0001. Non-cash investment exchanges .....	72	41,640	96,825
--	----	--------	--------

NOTES TO FINANCIAL STATEMENTS

NOTE 1 Summary of Significant Accounting Policies and Going Concern

A. Accounting Practices  
This statement has been completed in accordance with the accounting practices and procedures prescribed or permitted by the National Association of Insurance Commissioners (NAIC) and the State of Ohio. A reconciliation of the company's net income and capital and surplus between NAIC SAP and practices prescribed and permitted by the State of Ohio is shown below.

	SSAP #	F/S Page	F/S Line #	2025	2024
NET INCOME					
(1) State basis (Page 4, Line 20, Columns 1 & 3)	XXX	XXX	XXX	\$ 191,552	\$ 814,711
(2) State Prescribed Practices that are an increase/ (decrease) from NAIC SAP:					
(3) State Permitted Practices that are an increase/(decrease) from NAIC SAP:					
(4) NAIC SAP (1-2-3=4)	XXX	XXX	XXX	\$ 191,552	\$ 814,711
SURPLUS					
(5) State basis (Page 3, Line 37, Columns 1 & 2)	XXX	XXX	XXX	\$ 28,270,895	\$ 27,991,938
(6) State Prescribed Practices that are an increase/(decrease) from NAIC SAP:					
(7) State Permitted Practices that are an increase/(decrease) from NAIC SAP:					
(8) NAIC SAP (5-6-7=8)	XXX	XXX	XXX	\$ 28,270,895	\$ 27,991,938

B. Use of Estimates in the Preparation of the Financial Statements  
The preparation of financial statements in conformity with Statutory Accounting Principles as described in the NAIC Annual Statement Instructions and the Accounting Policies and Procedures Manual requires management to make estimates and assumptions that affect the reported amounts of assets and liabilities and disclosures of contingent assets and liabilities at the date of the financial statements and the reported amounts of revenue and expenses during the period. Actual results could differ from those estimates.

C. Accounting Policy  
(1) Basis for Short-Term Investments  
No significant changes  
(2) Basis for Bonds and Amortization Schedule  
Bonds not backed by other loans are stated at amortized cost using the scientific amortization method.  
(3) - (5) No significant changes  
(6) Basis for Loan-Backed Securities and Adjustment Methodology  
Loan-backed securities are stated in accordance with the guidance provided in SSAP No. 43R: Loan-backed and Structured Securities. The restrospective adjustment method is used to value these securities  
(7) - (13) No significant changes

D. Going Concern  
Management has concluded that there is no substantial doubt about the Company's ability to continue as a going concern.

NOTE 2 Accounting Changes and Corrections of Errors  
Not Applicable

NOTE 3 Business Combinations and Goodwill  
Not Applicable

NOTE 4 Discontinued Operations  
Not Applicable

NOTE 5 Investments  
A. - C. Not Applicable

D. Asset-Backed Securities  
(1) Prepayment assumptions for mortgage-backed/loan-backed and structured securities were obtained from market data vendors or broker dealer values.  
(2) - (3) Not Applicable  
(4) At March 31, 2025, the estimated fair value and gross unrealized losses for loan-backed securities, aggregated by length of time the securities have been in a continuous loss position were as follows:  
  
a) The aggregate amount of unrealized losses:  
1. Less than 12 Months \$ 69,272  
2. 12 Months or Longer \$ 635,274  
b) The aggregate related fair value of securities with unrealized losses:  
1. Less than 12 Months \$ 7,402,359  
2. 12 Months or Longer \$ 6,059,678  
(5) The Company performed an analysis of loan-backed securities and determined that exposure to credit risk was not a factor and did not warrant any other-than-temporary impairments.

E. - I. Not Applicable

J. - L. No significant changes

M. - S. Not Applicable

NOTE 6 Joint Ventures, Partnerships and Limited Liability Companies  
Not Applicable

NOTE 7 Investment Income  
No significant changes

NOTES TO FINANCIAL STATEMENTS

NOTE 8 Derivative Instruments

Not Applicable

NOTE 9 Income Taxes

No significant changes

NOTE 10 Information Concerning Parent, Subsidiaries, Affiliates and Other Related Parties

No significant changes

NOTE 11 Debt

Not Applicable

NOTE 12 Retirement Plans, Deferred Compensation, Postemployment Benefits and Compensated Absences and Other Postretirement Benefit Plans

A. - D. Not Applicable

E. Defined Contribution Plan  
No Significant Changes

F. Multiemployer Plans  
Not Applicable

G. - H. No Significant Changes

I. Impact of Medicare Modernization Act on Postretirement Benefits (INT 04-17)  
Not Applicable

NOTE 13 Capital and Surplus, Dividend Restrictions and Quasi-Reorganizations

No significant changes

NOTE 14 Liabilities, Contingencies and Assessments

No significant changes

NOTE 15 Leases

No significant changes

NOTE 16 Information About Financial Instruments With Off-Balance Sheet Risk and Financial Instruments With Concentrations of Credit Risk

Not Applicable

NOTE 17 Sale, Transfer and Servicing of Financial Assets and Extinguishments of Liabilities

Not Applicable

NOTE 18 Gain or Loss to the Reporting Entity from Uninsured Plans and the Uninsured Portion of Partially Insured Plans

Not Applicable

NOTE 19 Direct Premium Written/Produced by Managing General Agents/Third Party Administrators

Not Applicable

NOTE 20 Fair Value Measurements

A. Fair Value Measurements  
SSAP No. 100, Fair Value Measurements, clarifies the definition of estimated fair value and establishes a hierarchy for measuring estimated fair value. The hierarchy established by this standard consists of three levels to indicate the quality of the estimated fair value measurements as described below.

Level 1 - Quoted Prices in Active Markets for Identical Assets and Liabilities: Unadjusted quoted prices for identical assets or liabilities in active markets that are readily and regularly obtainable.

Level 2 - Significant Other Observable Inputs: Quoted prices in markets that are not active or inputs that are observable either directly or indirectly. These inputs can include quoted prices for similar but not identical assets or liabilities other than quoted prices in Level 1.

Level 3 - Significant Unobservable Inputs: Prices or valuation techniques that require inputs that are both unobservable and significant to the overall fair value measurement. Inputs reflect management's best estimates of the assumptions market participants would use at the measurement date in pricing the asset or liability. Consideration is given to the risk inherent in both the method of valuation and the valuation inputs. Primary inputs to this valuation technique include broker quotes, comparative trades, and independent third-party providers.

The Company reviews its fair value heirarchy classifications for assets and liabilities quarterly. Changes in observability of significant valuation inputs identified during these reviews may trigger reclassifications in or out of Level 3. Reclassifications are reported as transfers at the beginning of the period in which the change occurs.

The estimated fair values for substantially all bonds, including loan-backed and structured securities, unaffiliated common stock and certain short-term investments are based on quoted prices or quotations on comparable securities in active markets that are readily and regularly obtainable. Valuation of these securities does not involve management's judgement.

When quoted prices in active markets are not available, the determination of estimated fair value is based on market standard valuation methodologies, giving priority to observable inputs. The significant inputs to the market standard valuation methodologies for certain types of securities with reasonable levels of price transparency are inputs that are observable in the market or can be derived principally from or corroborated by observable market data.

When observable inputs are not available, the market standard valuation methodologies for determining the estimated fair value of certain types of securities that trade infrequently, and therefore have little or no price transparency, rely on inputs that are significant to the estimated fair value that are not observable in the market or cannot be derived principally from or corroborated by observable market data. These observable inputs can be based in large part on management's judgement or estimation, and cannot be supported by reference or maket activity. Even though these inputs are unobservable, management believes they are consistent with what other market participants would use when pricing such securities and are considered appropriate given the circumstances.

NOTES TO FINANCIAL STATEMENTS

Fair Value Measurements at Reporting Date

Description for each class of asset or liability	(Level 1)	(Level 2)	(Level 3)	Net Asset Value (NAV)	Total
a. Assets at fair value					
Common Stocks, unaffiliated	\$ 8,047,991		\$ 95,748		\$ 8,143,739
Total assets at fair value/NAV	\$ 8,047,991	\$ -	\$ 95,748	\$ -	\$ 8,143,739

Fair Value Measurements in (Level 3) of the Fair Value hierarchy

Description	Ending Balance as of Prior Quarter End	Transfers into Level 3	Transfers out of Level 3	Total gains and (losses) included in Net Income	Total gains and (losses) included in Surplus	Purchases	Issuances	Sales	Settlements	Ending Balance for Current Quarter End
a. Assets										
Common Stocks, unaffiliated	\$ 95,748									\$ 95,748
Total Assets	\$ 95,748	\$ -	\$ -	\$ -	\$ -	\$ -	\$ -	\$ -	\$ -	\$ 95,748

B. Fair Value Reporting under SSAP 100 and Other Accounting Pronouncements  
Not Applicable

C. Fair Value Level  
The following tables reflect the estimated fair values and admitted values of all admitted assets and liabilities that are financial instruments excluding those accounted for under the equity method (subsidiaries, joint ventures and ventures). The estimated fair values are categorized into the three-level fair value hierarchy as described above.

Type of Financial Instrument	Aggregate Fair Value	Admitted Assets	(Level 1)	(Level 2)	(Level 3)	Net Asset Value (NAV)	Not Practicable (Carrying Value)
Bonds	\$ 44,247,320	\$ 46,188,052	\$ 519,656	\$ 43,727,664			
Common Stocks, unaffiliated	\$ 8,143,739	\$ 8,143,739	\$ 8,047,991		\$ 95,748		

D. - E. Not Applicable

NOTE 21 Other Items  
No significant changes

NOTE 22 Events Subsequent  
Subsequent events have been considered through May 8, 2025 for these statutory financial statements which are to be issued on May 12, 2025.

NOTE 23 Reinsurance  
No significant changes

NOTE 24 Retrospectively Rated Contracts & Contracts Subject to Redetermination  
Not Applicable

NOTE 25 Change in Incurred Losses and Loss Adjustment Expenses  
Reserves for the Company's incurred losses and loss adjustment expenses (after intercompany pooling) attributable to insured events of prior years reflect favorable development totaling \$89,292. The development can be attributed primarily to the re-estimation of unpaid losses and loss adjustment expenses in the homeowners and farmowners, private passenger auto liability, commercial auto liability, workers' compensation, auto physical damage, other liability, and other lines of buisness. The favorable development in these lines was slightly offset by losses in commercial multiple peril and products liability. The changes reflected in these lines were generally the result of recent development trends. There were not any premium adjustments made as a result of this loss and loss adjustment expense development.

NOTE 26 Intercompany Pooling Arrangements

A. Identification of the Lead Entity and all Affiliated Entities Participating in the Intercompany Pool  
Motorists Mutual Insurance Company is the lead company in the Encova Pool. Each member contributes 100% of its applicable results to the Encova Pool through the reinsurance pooling agreement.

Effective January 1, 2022, the reinsurance pooling agreement was revised to adjust the percentages assumed back by each member of the Encova Pool. The companies in the Encova Pool and their portion assumed during 2025 and 2024 are:

	NAIC Company Code	Pooling Percentage
Lead Entity and all Affiliated Entities		
Motorists Mutual Insurance Company (Lead Entity)	14621	24.1%
BrickStreet Mutual Insurance Company	12372	48.2%
Motorists Commercial Mutual Insurance Company	13331	13.4%
Consumers Insurance USA, Inc.	10204	1.9%
Iowa Mutual Insurance Company	14338	1.9%
PinnaclePoint Insurance Company	15137	1.7%
SummitPoint Insurance Company	15136	1.7%
MICO Insurance Company	40932	1.7%
Phenix Mutual Fire Insurance Company	23175	1.4%
AlleghenyPoint Insurance Company	13016	1.4%
Wilson Mutual Insurance Company	19950	1.3%
NorthStone Insurance Company	13045	1.3%
Iowa American Insurance Company	31577	0.0%

B. - G. No significant changes



NOTES TO FINANCIAL STATEMENTS

NOTE 27    Structured Settlements

Not Applicable

NOTE 28    Health Care Receivables

Not Applicable

NOTE 29    Participating Policies

Not Applicable

NOTE 30    Premium Deficiency Reserves

As of March 31, 2025 the Company reported no premium deficiency reserves.

(1) Liability carried for premium deficiency reserves	\$	-
(2) Date of the most recent evaluation of this liability	02/28/2025	
(3) Was anticipated investment income utilized in the calculation?	Yes <input type="checkbox"/> No <input checked="" type="checkbox"/>	

NOTE 31    High Deductibles

Not Applicable

NOTE 32    Discounting of Liabilities for Unpaid Losses or Unpaid Loss Adjustment Expenses

Not Applicable

NOTE 33    Asbestos/Environmental Reserves

No significant changes

NOTE 34    Subscriber Savings Accounts

Not Applicable

NOTE 35    Multiple Peril Crop Insurance

Not Applicable

NOTE 36    Financial Guaranty Insurance

Not Applicable

STATEMENT AS OF MARCH 31, 2025 OF THE WILSON MUTUAL INSURANCE COMPANY

GENERAL INTERROGATORIES

PART 1 - COMMON INTERROGATORIES

GENERAL

- 1.1

Did the reporting entity experience any material transactions requiring the filing of Disclosure of Material Transactions with the State of Domicile, as required by the Model Act? .....

Yes [ ] No [ X ]
- 1.2

If yes, has the report been filed with the domiciliary state? .....

Yes [ ] No [ ]
- 2.1

Has any change been made during the year of this statement in the charter, by-laws, articles of incorporation, or deed of settlement of the reporting entity? .....

Yes [ ] No [ X ]
- 2.2

If yes, date of change: .....
- 3.1

Is the reporting entity a member of an Insurance Holding Company System consisting of two or more affiliated persons, one or more of which is an insurer? .....

If yes, complete Schedule Y, Parts 1 and 1A.

Yes [ X ] No [ ]
- 3.2

Have there been any substantial changes in the organizational chart since the prior quarter end? .....

Yes [ ] No [ X ]
- 3.3

If the response to 3.2 is yes, provide a brief description of those changes. ....
- 3.4

Is the reporting entity publicly traded or a member of a publicly traded group? .....

Yes [ ] No [ X ]
- 3.5

If the response to 3.4 is yes, provide the CIK (Central Index Key) code issued by the SEC for the entity/group. ....
- 4.1

Has the reporting entity been a party to a merger or consolidation during the period covered by this statement? .....

Yes [ ] No [ X ]
- 4.2

If yes, provide the name of the entity, NAIC Company Code, and state of domicile (use two letter state abbreviation) for any entity that has ceased to exist as a result of the merger or consolidation.

1	2	3
Name of Entity	NAIC Company Code	State of Domicile
5.

If the reporting entity is subject to a management agreement, including third-party administrator(s), managing general agent(s), attorney-in-fact, or similar agreement, have there been any significant changes regarding the terms of the agreement or principals involved? .....

If yes, attach an explanation.

Yes [ ] No [ X ] N/A [ ]
- 6.1

State as of what date the latest financial examination of the reporting entity was made or is being made. ....

12/31/2022
- 6.2

State the as of date that the latest financial examination report became available from either the state of domicile or the reporting entity. This date should be the date of the examined balance sheet and not the date the report was completed or released. ....

12/31/2022
- 6.3

State as of what date the latest financial examination report became available to other states or the public from either the state of domicile or the reporting entity. This is the release date or completion date of the examination report and not the date of the examination (balance sheet date). ....

04/09/2024
- 6.4

By what department or departments? .....
- 6.5

Have all financial statement adjustments within the latest financial examination report been accounted for in a subsequent financial statement filed with Departments? .....

Yes [ X ] No [ ] N/A [ ]
- 6.6

Have all of the recommendations within the latest financial examination report been complied with? .....

Yes [ X ] No [ ] N/A [ ]
- 7.1

Has this reporting entity had any Certificates of Authority, licenses or registrations (including corporate registration, if applicable) suspended or revoked by any governmental entity during the reporting period? .....

Yes [ ] No [ X ]
- 7.2

If yes, give full information: .....
- 8.1

Is the company a subsidiary of a bank holding company regulated by the Federal Reserve Board? .....

Yes [ ] No [ X ]
- 8.2

If response to 8.1 is yes, please identify the name of the bank holding company. ....
- 8.3

Is the company affiliated with one or more banks, thrifts or securities firms? .....

Yes [ ] No [ X ]
- 8.4

If response to 8.3 is yes, please provide below the names and location (city and state of the main office) of any affiliates regulated by a federal regulatory services agency [i.e. the Federal Reserve Board (FRB), the Office of the Comptroller of the Currency (OCC), the Federal Deposit Insurance Corporation (FDIC) and the Securities Exchange Commission (SEC)] and identify the affiliate's primary federal regulator.

1	2	3	4	5	6
Affiliate Name	Location (City, State)	FRB	OCC	FDIC	SEC

STATEMENT AS OF MARCH 31, 2025 OF THE WILSON MUTUAL INSURANCE COMPANY

GENERAL INTERROGATORIES

- 9.1

Are the senior officers (principal executive officer, principal financial officer, principal accounting officer or controller, or persons performing similar functions) of the reporting entity subject to a code of ethics, which includes the following standards? .....  
(a) Honest and ethical conduct, including the ethical handling of actual or apparent conflicts of interest between personal and professional relationships;  
(b) Full, fair, accurate, timely and understandable disclosure in the periodic reports required to be filed by the reporting entity;  
(c) Compliance with applicable governmental laws, rules and regulations;  
(d) The prompt internal reporting of violations to an appropriate person or persons identified in the code; and  
(e) Accountability for adherence to the code.

Yes [ X ] No [ ]
- 9.11

If the response to 9.1 is No, please explain:  
.....
- 9.2

Has the code of ethics for senior managers been amended? .....

Yes [ ] No [ X ]
- 9.21

If the response to 9.2 is Yes, provide information related to amendment(s).  
.....
- 9.3

Have any provisions of the code of ethics been waived for any of the specified officers? .....

Yes [ ] No [ X ]
- 9.31

If the response to 9.3 is Yes, provide the nature of any waiver(s).  
.....

FINANCIAL

- 10.1

Does the reporting entity report any amounts due from parent, subsidiaries or affiliates on Page 2 of this statement? .....

Yes [ X ] No [ ]
- 10.2

If yes, indicate any amounts receivable from parent included in the Page 2 amount: .....\$.....

488,294

INVESTMENT

- 11.1

Were any of the stocks, bonds, or other assets of the reporting entity loaned, placed under option agreement, or otherwise made available for use by another person? (Exclude securities under securities lending agreements.) .....

Yes [ ] No [ X ]
- 11.2

If yes, give full and complete information relating thereto:  
.....
12.

Amount of real estate and mortgages held in other invested assets in Schedule BA: .....

\$.....
13.

Amount of real estate and mortgages held in short-term investments: .....

\$.....
- 14.1

Does the reporting entity have any investments in parent, subsidiaries and affiliates? .....

Yes [ ] No [ X ]
- 14.2

If yes, please complete the following:

	1	2
	Prior Year-End Book/Adjusted Carrying Value	Current Quarter Book/Adjusted Carrying Value
14.21 Bonds .....	\$.....0	\$.....
14.22 Preferred Stock .....	\$.....0	\$.....
14.23 Common Stock .....	\$.....0	\$.....
14.24 Short-Term Investments .....	\$.....0	\$.....
14.25 Mortgage Loans on Real Estate .....	\$.....0	\$.....
14.26 All Other .....	\$.....0	\$.....
14.27 Total Investment in Parent, Subsidiaries and Affiliates (Subtotal Lines 14.21 to 14.26) .....	\$.....0	\$.....0
14.28 Total Investment in Parent included in Lines 14.21 to 14.26 above .....	\$.....	\$.....

15.1

Has the reporting entity entered into any hedging transactions reported on Schedule DB? .....

Yes [ ] No [ X ]

15.2

If yes, has a comprehensive description of the hedging program been made available to the domiciliary state? ..... Yes [ ] No [ ] N/A [ X ]  
If no, attach a description with this statement.  
.....

16.

For the reporting entity's security lending program, state the amount of the following as of the current statement date:

16.1

Total fair value of reinvested collateral assets reported on Schedule DL, Parts 1 and 2. ....

\$.....0

16.2

Total book/adjusted carrying value of reinvested collateral assets reported on Schedule DL, Parts 1 and 2 .....

\$.....0

16.3

Total payable for securities lending reported on the liability page. ....

\$.....0

STATEMENT AS OF MARCH 31, 2025 OF THE WILSON MUTUAL INSURANCE COMPANY

GENERAL INTERROGATORIES

17. Excluding items in Schedule E - Part 3 - Special Deposits, real estate, mortgage loans and investments held physically in the reporting entity's offices, vaults or safety deposit boxes, were all stocks, bonds and other securities, owned throughout the current year held pursuant to a custodial agreement with a qualified bank or trust company in accordance with Section 1, III - General Examination Considerations, F. Outsourcing of Critical Functions, Custodial or Safekeeping Agreements of the NAIC Financial Condition Examiners Handbook? ..... Yes [ X ] No [ ]
- 17.1 For all agreements that comply with the requirements of the NAIC Financial Condition Examiners Handbook, complete the following:

1 Name of Custodian(s)	2 Custodian Address
BNY Mellon .....	500 Grant Street One Mellon Center, Suite #1035., Pittsburgh, PA 15258 .....

- 17.2 For all agreements that do not comply with the requirements of the NAIC Financial Condition Examiners Handbook, provide the name, location and a complete explanation:

1 Name(s)	2 Location(s)	3 Complete Explanation(s)

- 17.3 Have there been any changes, including name changes, in the custodian(s) identified in 17.1 during the current quarter? ..... Yes [ ] No [ X ]
- 17.4 If yes, give full information relating thereto:

1 Old Custodian	2 New Custodian	3 Date of Change	4 Reason

- 17.5 Investment management – Identify all investment advisors, investment managers, broker/dealers, including individuals that have the authority to make investment decisions on behalf of the reporting entity. This includes both primary and sub-advisors. For assets that are managed internally by employees of the reporting entity, note as such. ["...that have access to the investment accounts"; "...handle securities"]

1 Name of Firm or Individual	2 Affiliation
New England Asset Management, Inc. ....	U.....
Northern Trust Investments, N.A. ....	U.....

- 17.5097 For those firms/individuals listed in the table for Question 17.5, do any firms/individuals unaffiliated with the reporting entity (i.e. designated with a "U") manage more than 10% of the reporting entity's invested assets?..... Yes [ X ] No [ ]

- 17.5098 For firms/individuals unaffiliated with the reporting entity (i.e. designated with a "U") listed in the table for Question 17.5, does the total assets under management aggregate to more than 50% of the reporting entity's invested assets?..... Yes [ X ] No [ ]

- 17.6 For those firms or individuals listed in the table for 17.5 with an affiliation code of "A" (affiliated) or "U" (unaffiliated), provide the information for the table below.

1 Central Registration Depository Number	2 Name of Firm or Individual	3 Legal Entity Identifier (LEI)	4 Registered With	5 Investment Management Agreement (IMA) Filed
105900 .....	New England Asset Management, Inc. ....	KUR85E5PS4GQFZTFC130 .....	SEC .....	NO.....
105780 .....	Northern Trust Investments, N.A. ....	BEL4B8X7EHJU845Y2N39 .....	SEC .....	NO.....

- 18.1 Have all the filing requirements of the Purposes and Procedures Manual of the NAIC Investment Analysis Office been followed? ..... Yes [ X ] No [ ]
- 18.2 If no, list exceptions: .....

19. By self-designating 5GI securities, the reporting entity is certifying the following elements for each self-designated 5GI security:
- a. Documentation necessary to permit a full credit analysis of the security does not exist or an NAIC CRP credit rating for an FE or PL security is not available.
  - b. Issuer or obligor is current on all contracted interest and principal payments.
  - c. The insurer has an actual expectation of ultimate payment of all contracted interest and principal.
- Has the reporting entity self-designated 5GI securities? ..... Yes [ ] No [ X ]

20. By self-designating PLGI securities, the reporting entity is certifying the following elements of each self-designated PLGI security:
- a. The security was purchased prior to January 1, 2018.
  - b. The reporting entity is holding capital commensurate with the NAIC Designation reported for the security.
  - c. The NAIC Designation was derived from the credit rating assigned by an NAIC CRP in its legal capacity as a NRSRO which is shown on a current private letter rating held by the insurer and available for examination by state insurance regulators.
  - d. The reporting entity is not permitted to share this credit rating of the PL security with the SVO.
- Has the reporting entity self-designated PLGI securities? ..... Yes [ ] No [ X ]

21. By assigning FE to a Schedule BA non-registered private fund, the reporting entity is certifying the following elements of each self-designated FE fund:
- a. The shares were purchased prior to January 1, 2019.
  - b. The reporting entity is holding capital commensurate with the NAIC Designation reported for the security.
  - c. The security had a public credit rating(s) with annual surveillance assigned by an NAIC CRP in its legal capacity as an NRSRO prior to January 1, 2019.
  - d. The fund only or predominantly holds bonds in its portfolio.
  - e. The current reported NAIC Designation was derived from the public credit rating(s) with annual surveillance assigned by an NAIC CRP in its legal capacity as an NRSRO.
  - f. The public credit rating(s) with annual surveillance assigned by an NAIC CRP has not lapsed.
- Has the reporting entity assigned FE to Schedule BA non-registered private funds that complied with the above criteria? ..... Yes [ ] No [ X ]

GENERAL INTERROGATORIES

PART 2 - PROPERTY & CASUALTY INTERROGATORIES

1.

If the reporting entity is a member of a pooling arrangement, did the agreement or the reporting entity's participation change? .....  
If yes, attach an explanation.  
.....

Yes [ ] No [ X ] N/A [ ]
2.

Has the reporting entity reinsured any risk with any other reporting entity and agreed to release such entity from liability, in whole or in part, from any loss that may occur on the risk, or portion thereof, reinsured? .....  
If yes, attach an explanation.  
.....

Yes [ ] No [ X ]
- 3.1

Have any of the reporting entity's primary reinsurance contracts been canceled? .....

Yes [ ] No [ X ]
- 3.2

If yes, give full and complete information thereto.  
.....
- 4.1

Are any of the liabilities for unpaid losses and loss adjustment expenses other than certain workers' compensation tabular reserves (see Annual Statement Instructions pertaining to disclosure of discounting for definition of " tabular reserves" ) discounted at a rate of interest greater than zero? .....

Yes [ ] No [ X ]

4.2 If yes, complete the following schedule:

			TOTAL DISCOUNT				DISCOUNT TAKEN DURING PERIOD			
1	2	3	4	5	6	7	8	9	10	11
Line of Business	Maximum Interest	Discount Rate	Unpaid Losses	Unpaid LAE	IBNR	TOTAL	Unpaid Losses	Unpaid LAE	IBNR	TOTAL
TOTAL			0	0	0	0	0	0	0	0

5.

Operating Percentages:

5.1 A&H loss percent .....

5.2 A&H cost containment percent .....

5.3 A&H expense percent excluding cost containment expenses .....

%

%

%
- 6.1

Do you act as a custodian for health savings accounts? .....

Yes [ ] No [ X ]
- 6.2

If yes, please provide the amount of custodial funds held as of the reporting date .....\$.....
- 6.3

Do you act as an administrator for health savings accounts? .....

Yes [ ] No [ X ]
- 6.4

If yes, please provide the balance of the funds administered as of the reporting date .....\$.....
7.

Is the reporting entity licensed or chartered, registered, qualified, eligible or writing business in at least two states? .....

Yes [ X ] No [ ]
- 7.1

If no, does the reporting entity assume reinsurance business that covers risks residing in at least one state other than the state of domicile of the reporting entity? .....

Yes [ ] No [ ]

## SCHEDULE F - CEDED REINSURANCE

[illegible]

STATEMENT AS OF MARCH 31, 2025 OF THE WILSON MUTUAL INSURANCE COMPANY

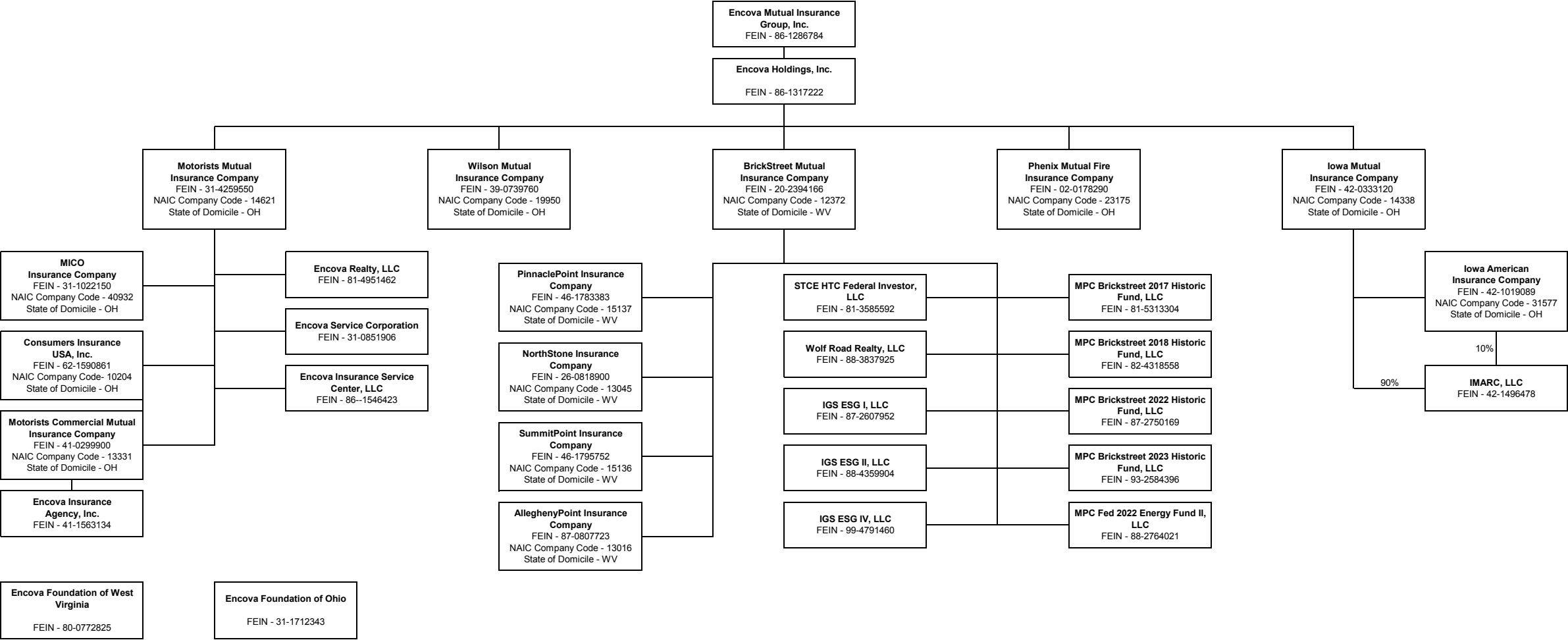
SCHEDULE T - EXHIBIT OF PREMIUMS WRITTEN

Current Year to Date - Allocated by States and Territories							
States, etc.	1 Active Status (a)	Direct Premiums Written		Direct Losses Paid (Deducting Salvage)		Direct Losses Unpaid	
		2 Current Year To Date	3 Prior Year To Date	4 Current Year To Date	5 Prior Year To Date	6 Current Year To Date	7 Prior Year To Date
1. Alabama .....	AL	N					
2. Alaska .....	AK	N					
3. Arizona .....	AZ	N					
4. Arkansas .....	AR	N					
5. California .....	CA	N					
6. Colorado .....	CO	N					
7. Connecticut .....	CT	N					
8. Delaware .....	DE	N					
9. District of Columbia .....	DC	N					
10. Florida .....	FL	N					
11. Georgia .....	GA	L	7,294				
12. Hawaii .....	HI	N					
13. Idaho .....	ID	N					
14. Illinois .....	IL	L	473,977				
15. Indiana .....	IN	L	220,574				
16. Iowa .....	IA	L	246,486				
17. Kansas .....	KS	N					
18. Kentucky .....	KY	L	224,242				
19. Louisiana .....	LA	N					
20. Maine .....	ME	L					
21. Maryland .....	MD	L	3,900				
22. Massachusetts .....	MA	L					
23. Michigan .....	MI	L	35,668				
24. Minnesota .....	MN	L		214,192		439,466	
25. Mississippi .....	MS	N					
26. Missouri .....	MO	N					
27. Montana .....	MT	N					
28. Nebraska .....	NE	L	33,946				
29. Nevada .....	NV	N					
30. New Hampshire .....	NH	L	4,111				
31. New Jersey .....	NJ	N					
32. New Mexico .....	NM	N					
33. New York .....	NY	N					
34. North Carolina .....	NC	L	8,986				
35. North Dakota .....	ND	N					
36. Ohio .....	OH	L	864,997	51,889		361,255	
37. Oklahoma .....	OK	N					
38. Oregon .....	OR	N					
39. Pennsylvania .....	PA	L					
40. Rhode Island .....	RI	L					
41. South Carolina .....	SC	L	136,034				
42. South Dakota .....	SD	N					
43. Tennessee .....	TN	L	2,892				
44. Texas .....	TX	N					
45. Utah .....	UT	N					
46. Vermont .....	VT	L					
47. Virginia .....	VA	L					
48. Washington .....	WA	N					
49. West Virginia .....	WV	L	469,678				
50. Wisconsin .....	WI	L	1,476,278	1,776,929	1,156,190	7,901,884	9,332,931
51. Wyoming .....	WY	N			653,831		
52. American Samoa .....	AS	N					
53. Guam .....	GU	N					
54. Puerto Rico .....	PR	N					
55. U.S. Virgin Islands .....	VI	N					
56. Northern Mariana Islands .....	MP	N					
57. Canada .....	CAN	N					
58. Aggregate Other Alien OT .....	XXX	0	0	0	0	0	0
59. Totals	XXX	4,209,063	1,776,929	1,422,271	653,831	8,702,605	9,332,931
DETAILS OF WRITE-INS							
58001. ....	XXX						
58002. ....	XXX						
58003. ....	XXX						
58998. Summary of remaining write-ins for Line 58 from overflow page .....	XXX	0	0	0	0	0	0
58999. Totals (Lines 58001 through 58003 plus 58998)(Line 58 above) .....	XXX	0	0	0	0	0	0

(a) Active Status Counts:

1. L - Licensed or Chartered - Licensed insurance carrier or domiciled RRG.....	22	4. Q - Qualified - Qualified or accredited reinsurer.....	0
2. R - Registered - Non-domiciled RRGs.....	0	5. D - Domestic Surplus Lines Insurer (DSLII) - Reporting entities authorized to write surplus lines in the state of domicile.....	0
3. E - Eligible - Reporting entities eligible or approved to write surplus lines in the state (other than their state of domicile - see DSLI).....	0	6. N - None of the above - Not allowed to write business in the state.....	35

SCHEDULE Y - INFORMATION CONCERNING ACTIVITIES OF INSURER MEMBERS OF A HOLDING COMPANY GROUP  
PART 1 - ORGANIZATIONAL CHART





STATEMENT AS OF MARCH 31, 2025 OF THE WILSON MUTUAL INSURANCE COMPANY

SCHEDULE Y

PART 1A - DETAILS OF INSURANCE HOLDING COMPANY SYSTEM

1	2	3	4	5	6	7	8	9	10	11	12	13	14	15	16
Group Code	Group Name	NAIC Company Code	ID Number	Federal RSSD	CIK	Name of Securities Exchange if Publicly Traded (U.S. or International)	Names of Parent, Subsidiaries Or Affiliates	Domi-ciliary Location	Relation-ship to Reporting Entity	Directly Controlled by (Name of Entity/Person)	Type of Control (Ownership, Board, Management, Attorney-in-Fact, Influence, Other)	If Control is Owner-ship Provide Percen-tage	Ultimate Controlling Entity(ies)/Person(s)	Is an SCA Filing Re-quired? (Yes/No)	*
. 0291 ...	Encova Mutual Insurance Group .....	..... 10204 ....	62-1590861 .. ..... 42-1496478 .....	.....	.....	.....	Consumers Insurance USA, Inc. .... ..... IMARC, LLC .....	.. OH..... ..... IA.....	..... IA..... ..... NIA.....	Motorists Mutual Insurance Company ..... Iowa Mutual Insurance Company .....	Ownership..... .....	100.000 ... .....90.000 .....	Encova Mutual Insurance Group, Inc. .. ..... Encova Mutual Insurance Group, Inc. ..	.... NO..... ..... NO.....	.....
. 0291 ...	Encova Mutual Insurance Group .....	..... 31577 ....	42-1019089 .. ..... 42-0333120 .....	.....	.....	.....	Iowa American Insurance Company ..... ..... Iowa Mutual Insurance Company .....	.. OH..... ..... OH.....	..... IA..... ..... IA.....	Iowa Mutual Insurance Company ..... Encova Holdings, Inc. .... Motorists Commercial Mutual Insurance	Ownership..... ..... .....	100.000 ... .....100.000 .....	Encova Mutual Insurance Group, Inc. .. ..... Encova Mutual Insurance Group, Inc. ..	.... NO..... ..... NO.....	.....
. 0291 ...	Encova Mutual Insurance Group .....	..... 14338 ....	41-1563134 .. ..... 31-1022150 .....	.....	.....	.....	Encova Insurance Agency, Inc. .... ..... MICO Insurance Company .....	.. MN..... ..... OH.....	..... NIA..... ..... IA.....	Company ..... Motorists Mutual Insurance Company .....	Ownership..... .....	100.000 ... .....100.000 .....	Encova Mutual Insurance Group, Inc. .. ..... Encova Mutual Insurance Group, Inc. ..	.... NO..... ..... NO.....	.....
. 0291 ...	Encova Mutual Insurance Group .....	..... 40932 ....	41-0299900 .. ..... 31-4259550 .....	.....	.....	.....	Motorists Commercial Mutual Insurance Company .....	.. OH.....	..... IA.....	Motorists Mutual Insurance Company .....	Ownership.....	100.000 ...	Encova Mutual Insurance Group, Inc. ..	.... NO.....	.....
. 0291 ...	Encova Mutual Insurance Group .....	..... 13331 ....	31-0851906 .. ..... 02-0178290 .....	.....	.....	.....	Motorists Mutual Insurance Company .....	.. OH.....	..... IA.....	Encova Holdings, Inc. ....	Ownership.....	100.000 ...	Encova Mutual Insurance Group, Inc. ..	.... NO.....	.....
. 0291 ...	Encova Mutual Insurance Group .....	..... 14621 ....	31-0851906 .. ..... 02-0178290 .....	.....	.....	.....	Encova Service Corporation .....	.. OH.....	..... NIA.....	Motorists Mutual Insurance Company .....	Ownership.....	100.000 ...	Encova Mutual Insurance Group, Inc. ..	.... NO.....	.....
. 0291 ...	Encova Mutual Insurance Group .....	..... 23175 ....	31-0851906 .. ..... 02-0178290 .....	.....	.....	.....	Phenix Mutual Fire Insurance Company .....	.. OH.....	..... IA.....	Encova Holdings, Inc. ....	Ownership.....	100.000 ...	Encova Mutual Insurance Group, Inc. ..	.... NO.....	.....
. 0291 ...	Encova Mutual Insurance Group .....	..... 19950 ....	39-0739760 .. ..... 81-4951462 .....	.....	.....	.....	Wilson Mutual Insurance Company .....	.. OH.....	..... RE.....	Encova Holdings, Inc. ....	Ownership.....	100.000 ...	Encova Mutual Insurance Group, Inc. ..	.... NO.....	.....
.....	.....	.....	81-4951462 .. ..... 31-1712343 .....	.....	.....	.....	Encova Realty, LLC .....	.. OH.....	..... NIA.....	Motorists Mutual Insurance Company .....	Ownership.....	100.000 ...	Encova Mutual Insurance Group, Inc. ..	.... NO.....	.....
.....	.....	.....	31-1712343 .. ..... 20-2394166 .....	.....	.....	.....	Encova Foundation of Ohio .....	.. OH.....	..... NIA.....	Motorists Mutual Insurance Company .....	Board .....	0.000 ...	Encova Mutual Insurance Group, Inc. ..	.... NO.....	.....
. 0291 ...	Encova Mutual Insurance Group .....	..... 12372 ....	20-2394166 .. ..... 46-1783383 .....	.....	.....	.....	BrickStreet Mutual Insurance Company .....	.. WV.....	..... IA.....	Encova Holdings, Inc. ....	Ownership.....	100.000 ...	Encova Mutual Insurance Group, Inc. ..	.... NO.....	.....
. 0291 ...	Encova Mutual Insurance Group .....	..... 15137 ....	46-1783383 .. ..... 26-0818900 .....	.....	.....	.....	PinnaclePoint Insurance Company .....	.. WV.....	..... IA.....	BrickStreet Mutual Insurance Company .....	Ownership.....	100.000 ...	Encova Mutual Insurance Group, Inc. ..	.... NO.....	.....
. 0291 ...	Encova Mutual Insurance Group .....	..... 13045 ....	26-0818900 .. ..... 46-1795752 .....	.....	.....	.....	NorthStone Insurance Company .....	.. WV.....	..... IA.....	BrickStreet Mutual Insurance Company .....	Ownership.....	100.000 ...	Encova Mutual Insurance Group, Inc. ..	.... NO.....	.....
. 0291 ...	Encova Mutual Insurance Group .....	..... 15136 ....	46-1795752 .. ..... 87-0807723 .....	.....	.....	.....	SummitPoint Insurance Company .....	.. WV.....	..... IA.....	BrickStreet Mutual Insurance Company .....	Ownership.....	100.000 ...	Encova Mutual Insurance Group, Inc. ..	.... NO.....	.....
. 0291 ...	Encova Mutual Insurance Group .....	..... 13016 ....	87-0807723 .. ..... 88-3837925 .....	.....	.....	.....	AlleghenyPoint Insurance Company .....	.. WV.....	..... IA.....	BrickStreet Mutual Insurance Company .....	Ownership.....	100.000 ...	Encova Mutual Insurance Group, Inc. ..	.... NO.....	.....
.....	.....	.....	88-3837925 .. ..... 80-0772825 .....	.....	.....	.....	Wolf Road Realty, LLC. ....	.. IL.....	..... NIA.....	BrickStreet Mutual Insurance Company .....	Ownership.....	100.000 ...	Encova Mutual Insurance Group, Inc. ..	.... NO.....	.....
.....	.....	.....	80-0772825 .. ..... 81-3585592 .....	.....	.....	.....	Encova Foundation of West Virginia, Inc .....	.. WV.....	..... NIA.....	BrickStreet Mutual Insurance Company .....	Board .....	0.000 ...	Encova Mutual Insurance Group, Inc. ..	.... NO.....	.....
.....	.....	.....	81-3585592 .. ..... 81-5313304 .....	.....	.....	.....	STCE HTC Federal Investor, LLC .....	.. GA.....	..... NIA.....	BrickStreet Mutual Insurance Company .....	Ownership.....	99.990 ...	Encova Mutual Insurance Group, Inc. ..	.... NO.....	.....
.....	.....	.....	81-5313304 .. ..... 82-4318558 .....	.....	.....	.....	MPC Brickstreet 2017 Historic Fund, LLC .....	.. GA.....	..... NIA.....	BrickStreet Mutual Insurance Company .....	Ownership.....	99.990 ...	Encova Mutual Insurance Group, Inc. ..	.... NO.....	.....
.....	.....	.....	82-4318558 .. ..... 87-2750169 .....	.....	.....	.....	MPC Brickstreet 2018 Historic Fund, LLC .....	.. GA.....	..... NIA.....	BrickStreet Mutual Insurance Company .....	Ownership.....	99.990 ...	Encova Mutual Insurance Group, Inc. ..	.... NO.....	.....
.....	.....	.....	87-2750169 .. ..... 87-2607952 .....	.....	.....	.....	MPC Brickstreet 2022 Historic Fund, LLC .....	.. GA.....	..... NIA.....	BrickStreet Mutual Insurance Company .....	Ownership.....	99.990 ...	Encova Mutual Insurance Group, Inc. ..	.... NO.....	.....
.....	.....	.....	87-2607952 .. ..... 86-1546423 .....	.....	.....	.....	IGS ESG I, LLC. ....	.. OH.....	..... NIA.....	BrickStreet Mutual Insurance Company .....	Ownership.....	50.000 ...	Encova Mutual Insurance Group, Inc. ..	.... NO.....	.....
.....	.....	.....	86-1546423 .. ..... 86-1371222 .....	.....	.....	.....	Encova Insurance Service Center, LLC .....	.. OH.....	..... NIA.....	Motorists Mutual Insurance Company .....	Ownership.....	100.000 ...	Encova Mutual Insurance Group, Inc. ..	.... NO.....	.....
.....	.....	.....	86-1371222 .. ..... 86-1286784 .....	.....	.....	.....	Encova Holdings, Inc. ....	.. OH.....	..... UDP.....	Encova Mutual Insurance Group, Inc. ....	Ownership.....	100.000 ...	Encova Mutual Insurance Group, Inc. ..	.... NO.....	.....
.....	.....	.....	86-1286784 .. ..... 88-2764021 .....	.....	.....	.....	Encova Mutual Insurance Group, Inc. ....	.. OH.....	..... UIP.....	.....	Ownership.....	100.000 ...	.....	.... NO.....	.....
.....	.....	.....	88-2764021 .. ..... 93-2584396 .....	.....	.....	.....	MPC Fed 2022 Energy Fund II, LLC .....	.. GA.....	..... NIA.....	BrickStreet Mutual Insurance Company .....	Ownership.....	99.990 ...	Encova Mutual Insurance Group, Inc. ..	.... NO.....	.....
.....	.....	.....	93-2584396 .. ..... 99-4791460 .....	.....	.....	.....	MPC Brickstreet 2023 Historic Fund, LLC .....	.. GA.....	..... NIA.....	BrickStreet Mutual Insurance Company .....	Ownership.....	99.990 ...	Encova Mutual Insurance Group, Inc. ..	.... NO.....	.....
.....	.....	.....	99-4791460 .. ..... 88-4359904 .....	.....	.....	.....	IGS ESG IV, LLC .....	.. OH.....	..... NIA.....	BrickStreet Mutual Insurance Company .....	Ownership.....	33.333 ...	Encova Mutual Insurance Group, Inc. ..	.... NO.....	.....
.....	.....	.....	88-4359904 ..	.....	.....	.....	IGS ESG II, LLC .....	.. OH.....	..... NIA.....	BrickStreet Mutual Insurance Company .....	Ownership.....	80.000 ...	Encova Mutual Insurance Group, Inc. ..	.... NO.....	.....

Asterisk	.....
	.....

NONE

PART 1 - LOSS EXPERIENCE

Line of Business		Current Year to Date			4 Prior Year to Date Direct Loss Percentage
		1 Direct Premiums Earned	2 Direct Losses Incurred	3 Direct Loss Percentage	
1.	Fire .....	2,690	211	7.8	(27.2)
2.1	Allied Lines .....	507	76,670	15,122.3	83.9
2.2	Multiple peril crop .....			0.0	0.0
2.3	Federal flood .....			0.0	0.0
2.4	Private crop .....			0.0	0.0
2.5	Private flood .....			0.0	0.0
3.	Farmowners multiple peril .....		(2,172)	0.0	0.0
4.	Homeowners multiple peril .....	1,099,402	529,793	48.2	24.0
5.1	Commercial multiple peril (non-liability portion) .....	388,752	(2,241)	(0.6)	0.0
5.2	Commercial multiple peril (liability portion) .....	193,182	283,756	146.9	0.0
6.	Mortgage guaranty .....			0.0	0.0
8.	Ocean marine .....			0.0	0.0
9.1	Inland marine .....	87,211	2,816	3.2	6.0
9.2	Pet insurance .....			0.0	0.0
10.	Financial guaranty .....			0.0	0.0
11.1	Medical professional liability - occurrence .....			0.0	0.0
11.2	Medical professional liability - claims-made .....			0.0	0.0
12.	Earthquake .....	1,255		0.0	0.0
13.1	Comprehensive (hospital and medical) individual .....			0.0	0.0
13.2	Comprehensive (hospital and medical) group .....			0.0	0.0
14.	Credit accident and health .....			0.0	0.0
15.1	Vision only .....			0.0	0.0
15.2	Dental only .....			0.0	0.0
15.3	Disability income .....			0.0	0.0
15.4	Medicare supplement .....			0.0	0.0
15.5	Medicaid Title XIX .....			0.0	0.0
15.6	Medicare Title XVIII .....			0.0	0.0
15.7	Long-term care .....			0.0	0.0
15.8	Federal employees health benefits plan .....			0.0	0.0
15.9	Other health .....			0.0	0.0
16.	Workers' compensation .....		(115,879)	0.0	0.0
17.1	Other liability - occurrence .....	329,673	162,529	49.3	(174.9)
17.2	Other liability - claims-made .....	10,430		0.0	0.0
17.3	Excess workers' compensation .....			0.0	0.0
18.1	Products liability - occurrence .....	13,846	(1,561)	(11.3)	0.0
18.2	Products liability - claims-made .....			0.0	0.0
19.1	Private passenger auto no-fault (personal injury protection) .....			0.0	(138.4)
19.2	Other private passenger auto liability .....	467,546	445,449	95.3	37.0
19.3	Commercial auto no-fault (personal injury protection) .....	518		0.0	0.0
19.4	Other commercial auto liability .....	200,969	7,145	3.6	0.0
21.1	Private passenger auto physical damage .....	496,740	237,026	47.7	44.2
21.2	Commercial auto physical damage .....	53,024	27,649	52.1	0.0
22.	Aircraft (all perils) .....			0.0	0.0
23.	Fidelity .....			0.0	0.0
24.	Surety .....			0.0	0.0
26.	Burglary and theft .....	4,908		0.0	0.0
27.	Boiler and machinery .....	19,435		0.0	0.0
28.	Credit .....			0.0	0.0
29.	International .....			0.0	0.0
30.	Warranty .....			0.0	0.0
31.	Reinsurance - Nonproportional Assumed Property .....	XXX	XXX	XXX	XXX
32.	Reinsurance - Nonproportional Assumed Liability .....	XXX	XXX	XXX	XXX
33.	Reinsurance - Nonproportional Assumed Financial Lines .....	XXX	XXX	XXX	XXX
34.	Aggregate write-ins for other lines of business .....	0	0	0.0	0.0
35.	Totals	3,370,088	1,651,191	49.0	(6.4)
DETAILS OF WRITE-INS					
3401.	.....				
3402.	.....				
3403.	.....				
3498.	Summary of remaining write-ins for Line 34 from overflow page .....	0	0	0.0	0.0
3499.	Totals (Lines 3401 through 3403 plus 3498)(Line 34 above)	0	0	0.0	0.0

STATEMENT AS OF MARCH 31, 2025 OF THE WILSON MUTUAL INSURANCE COMPANY

PART 2 - DIRECT PREMIUMS WRITTEN

Line of Business		1 Current Quarter	2 Current Year to Date	3 Prior Year Year to Date
1.	Fire .....	36,508	36,508	(262)
2.1	Allied Lines .....	7,066	7,066	(218)
2.2	Multiple peril crop .....	0		
2.3	Federal flood .....	0		
2.4	Private crop .....	0		
2.5	Private flood .....	0		
3.	Farmowners multiple peril .....	0		
4.	Homeowners multiple peril .....	700,977	700,977	863,385
5.1	Commercial multiple peril (non-liability portion) .....	707,207	707,207	
5.2	Commercial multiple peril (liability portion) .....	485,474	485,474	
6.	Mortgage guaranty .....	0		
8.	Ocean marine .....	0		
9.1	Inland marine .....	185,641	185,641	24,772
9.2	Pet insurance .....	0		
10.	Financial guaranty .....	0		
11.1	Medical professional liability - occurrence .....	0		
11.2	Medical professional liability - claims-made .....	0		
12.	Earthquake .....	1,831	1,831	
13.1	Comprehensive (hospital and medical) individual .....	0		
13.2	Comprehensive (hospital and medical) group .....	0		
14.	Credit accident and health .....	0		
15.1	Vision only .....	0		
15.2	Dental only .....	0		
15.3	Disability income .....	0		
15.4	Medicare supplement .....	0		
15.5	Medicaid Title XIX .....	0		
15.6	Medicare Title XVIII .....	0		
15.7	Long-term care .....	0		
15.8	Federal employees health benefits plan .....	0		
15.9	Other health .....	0		
16.	Workers' compensation .....	0		
17.1	Other liability - occurrence .....	798,168	798,168	15,380
17.2	Other liability - claims-made .....	13,506	13,506	
17.3	Excess workers' compensation .....	0		
18.1	Products liability - occurrence .....	56,821	56,821	
18.2	Products liability - claims-made .....	0		
19.1	Private passenger auto no-fault (personal injury protection) .....	0		(868)
19.2	Other private passenger auto liability .....	330,801	330,801	435,774
19.3	Commercial auto no-fault (personal injury protection) .....	165	165	
19.4	Other commercial auto liability .....	341,430	341,430	
21.1	Private passenger auto physical damage .....	366,968	366,968	438,966
21.2	Commercial auto physical damage .....	130,770	130,770	
22.	Aircraft (all perils) .....	0		
23.	Fidelity .....	0		
24.	Surety .....	0		
26.	Burglary and theft .....	8,844	8,844	
27.	Boiler and machinery .....	36,886	36,886	
28.	Credit .....	0		
29.	International .....	0		
30.	Warranty .....	0		
31.	Reinsurance - Nonproportional Assumed Property .....	XXX	XXX	XXX
32.	Reinsurance - Nonproportional Assumed Liability .....	XXX	XXX	XXX
33.	Reinsurance - Nonproportional Assumed Financial Lines .....	XXX	XXX	XXX
34.	Aggregate write-ins for other lines of business .....	0	0	0
35.	Totals	4,209,063	4,209,063	1,776,929
DETAILS OF WRITE-INS				
3401.	.....			
3402.	.....			
3403.	.....			
3498.	Summary of remaining write-ins for Line 34 from overflow page .....	0	0	0
3499.	Totals (Lines 3401 through 3403 plus 3498)(Line 34 above)	0	0	0

STATEMENT AS OF MARCH 31, 2025 OF THE WILSON MUTUAL INSURANCE COMPANY

**PART 3 (\$000 OMITTED)**

LOSS AND LOSS ADJUSTMENT EXPENSE RESERVES SCHEDULE

	1	2	3	4	5	6	7	8	9	10	11	12	13											
Years in Which Losses Occurred	Prior Year-End Known Case Loss and LAE Reserves	Prior Year-End IBNR Loss and LAE Reserves	Total Prior Year-End Loss and LAE Reserves (Cols. 1+2)	2025 Loss and LAE Payments on Claims Reported as of Prior Year-End	2025 Loss and LAE Payments on Claims Unreported as of Prior Year-End	Total 2025 Loss and LAE Payments (Cols. 4+5)	Q.S. Date Known Case Loss and LAE Reserves on Claims Reported and Open as of Prior Year End	Q.S. Date Known Case Loss and LAE Reserves on Claims Reported or Reopened Subsequent to Prior Year End	Q.S. Date IBNR Loss and LAE Reserves	Total Q.S. Loss and LAE Reserves (Cols.7+8+9)	Prior Year-End Known Case Loss and LAE Reserves Developed (Savings)/ Deficiency (Cols.4+7 minus Col. 1)	Prior Year-End IBNR Loss and LAE Reserves Developed (Savings)/ Deficiency (Cols. 5+8+9 minus Col. 2)	Prior Year-End Total Loss and LAE Reserve Developed (Savings)/ Deficiency (Cols. 11+12)											
1. 2022 + Prior .....	8,603	6,549	15,152	739	80	819	7,969	104	6,299	14,372	105	(66)	39											
2. 2023 .....	2,728	2,285	5,013	425	9	433	2,260	188	2,100	4,548	(44)	12	(32)											
3. Subtotals 2023 + Prior .....	11,331	8,833	20,165	1,163	89	1,252	10,229	292	8,399	18,920	61	(54)	8											
4. 2024 .....	4,156	4,896	9,052	1,168	46	1,214	3,740	153	3,848	7,741	752	(849)	(97)											
5. Subtotals 2024 + Prior .....	15,487	13,729	29,216	2,331	135	2,466	13,969	445	12,246	26,661	813	(902)	(89)											
6. 2025 .....	XXX	XXX	XXX	XXX	443	443	XXX	1,020	1,835	2,856	XXX	XXX	XXX											
7. Totals .....	15,487	13,729	29,216	2,331	577	2,909	13,969	1,466	14,082	29,516	813	(902)	(89)											
8. Prior Year-End Surplus As Regards Policyholders	0											Col. 11, Line 7 As % of Col. 1 Line 7	Col. 12, Line 7 As % of Col. 2 Line 7	Col. 13, Line 7 As % of Col. 3 Line 7										
												1. 5.3	2. (6.6)	3. (0.3)										
													Col. 13, Line 7 As a % of Col. 1 Line 8											
													4. 0.0											

STATEMENT AS OF MARCH 31, 2025 OF THE WILSON MUTUAL INSURANCE COMPANY

SUPPLEMENTAL EXHIBITS AND SCHEDULES INTERROGATORIES

The following supplemental reports are required to be filed as part of your statement filing. However, in the event that your company does not transact the type of business for which the special report must be filed, your response of NO to the specific interrogatory will be accepted in lieu of filing a "NONE" report and a bar code will be printed below. If the supplement is required of your company but is not being filed for whatever reason enter SEE EXPLANATION and provide an explanation following the interrogatory questions.

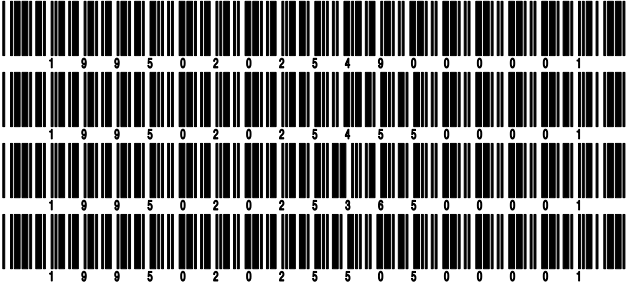
	Response
1. Will the Trusteed Surplus Statement be filed with the state of domicile and the NAIC with this statement? .....	NO
2. Will Supplement A to Schedule T (Medical Professional Liability Supplement) be filed with this statement? .....	NO
3. Will the Medicare Part D Coverage Supplement be filed with the state of domicile and the NAIC with this statement? .....	NO
4. Will the Director and Officer Insurance Coverage Supplement be filed with the state of domicile and the NAIC with this statement? .....	NO
AUGUST FILING	
5. Will the regulator-only (non-public) Communication of Internal Control Related Matters Noted in Audit be filed with the state of domicile and electronically with the NAIC (as a regulator-only non-public document) by August 1? The response for 1st and 3rd quarters should be N/A. A NO response resulting with a bar code is only appropriate in the 2nd quarter. ....	N/A

Explanations:

1.
2.
3.
4.

Bar Codes:

1. Trusteed Surplus Statement [Document Identifier 490]
2. Supplement A to Schedule T [Document Identifier 455]
3. Medicare Part D Coverage Supplement [Document Identifier 365]
4. Director and Officer Supplement [Document Identifier 505]



STATEMENT AS OF MARCH 31, 2025 OF THE WILSON MUTUAL INSURANCE COMPANY  
**OVERFLOW PAGE FOR WRITE-INS**

**NONE**

SCHEDULE A - VERIFICATION

Real Estate

	1	2
	Year to Date	Prior Year Ended December 31
1. Book/adjusted carrying value, December 31 of prior year .....		
2. Cost of acquired:		
2.1 Actual cost at time of acquisition .....		
2.2 Additional investment made after acquisition .....		
3. Current year change in encumbrances .....		
4. Total gain (loss) on disposals .....		
5. Deduct amounts received on disposals .....		
6. Total foreign exchange change in book/adjusted carrying value .....		
7. Deduct current year's other than temporary impairment recognized .....		
8. Deduct current year's depreciation .....		
9. Book/adjusted carrying value at the end of current period (Lines 1+2+3+4-5+6-7-8) .....		
10. Deduct total nonadmitted amounts .....		
11. Statement value at end of current period (Line 9 minus Line 10)		

SCHEDULE B - VERIFICATION

Mortgage Loans

	1	2
	Year to Date	Prior Year Ended December 31
1. Book value/recorded investment excluding accrued interest, December 31 of prior year .....		
2. Cost of acquired:		
2.1 Actual cost at time of acquisition .....		
2.2 Additional investment made after acquisition .....		
3. Capitalized deferred interest and other .....		
4. Accrual of discount .....		
5. Unrealized valuation increase/(decrease) .....		
6. Total gain (loss) on disposals .....		
7. Deduct amounts received on disposals .....		
8. Deduct amortization of premium and mortgage interest paid and commitment fees .....		
9. Total foreign exchange change in book value/recorded investment excluding accrued interest .....		
10. Deduct current year's other than temporary impairment recognized .....		
11. Book value/recorded investment excluding accrued interest at end of current period (Lines 1+2+3+4+5+6-7-8+9-10) .....		
12. Total valuation allowance .....		
13. Subtotal (Line 11 plus Line 12) .....		
14. Deduct total nonadmitted amounts .....		
15. Statement value at end of current period (Line 13 minus Line 14)		

SCHEDULE BA - VERIFICATION

Other Long-Term Invested Assets

	1	2
	Year to Date	Prior Year Ended December 31
1. Book/adjusted carrying value, December 31 of prior year .....		
2. Cost of acquired:		
2.1 Actual cost at time of acquisition .....		
2.2 Additional investment made after acquisition .....		
3. Capitalized deferred interest and other .....		
4. Accrual of discount .....		
5. Unrealized valuation increase/(decrease) .....		
6. Total gain (loss) on disposals .....		
7. Deduct amounts received on disposals .....		
8. Deduct amortization of premium, depreciation and proportional amortization .....		
9. Total foreign exchange change in book/adjusted carrying value .....		
10. Deduct current year's other than temporary impairment recognized .....		
11. Book/adjusted carrying value at end of current period (Lines 1+2+3+4+5+6-7-8+9-10) .....		
12. Deduct total nonadmitted amounts .....		
13. Statement value at end of current period (Line 11 minus Line 12)		

SCHEDULE D - VERIFICATION

Bonds and Stocks

	1	2
	Year to Date	Prior Year Ended December 31
1. Book/adjusted carrying value of bonds and stocks, December 31 of prior year .....	53,423,489	48,698,259
2. Cost of bonds and stocks acquired .....	3,950,395	15,554,370
3. Accrual of discount .....	10,539	45,227
4. Unrealized valuation increase/(decrease) .....	136,204	540,717
5. Total gain (loss) on disposals .....	(148,616)	(254,116)
6. Deduct consideration for bonds and stocks disposed of .....	3,014,419	10,760,735
7. Deduct amortization of premium .....	25,803	141,540
8. Total foreign exchange change in book/adjusted carrying value .....	0	
9. Deduct current year's other than temporary impairment recognized .....	0	258,692
10. Total investment income recognized as a result of prepayment penalties and/or acceleration fees .....	0	
11. Book/adjusted carrying value at end of current period (Lines 1+2+3+4+5-6-7+8-9+10) .....	54,331,790	53,423,489
12. Deduct total nonadmitted amounts .....	0	
13. Statement value at end of current period (Line 11 minus Line 12)	54,331,790	53,423,489

STATEMENT AS OF MARCH 31, 2025 OF THE WILSON MUTUAL INSURANCE COMPANY

**SCHEDULE D - PART 1B**

Showing the Acquisitions, Dispositions and Non-Trading Activity  
During the Current Quarter for all Bonds and Preferred Stock by NAIC Designation

NAIC Designation	1 Book/Adjusted Carrying Value Beginning of Current Quarter	2 Acquisitions During Current Quarter	3 Dispositions During Current Quarter	4 Non-Trading Activity During Current Quarter	5 Book/Adjusted Carrying Value End of First Quarter	6 Book/Adjusted Carrying Value End of Second Quarter	7 Book/Adjusted Carrying Value End of Third Quarter	8 Book/Adjusted Carrying Value December 31 Prior Year
ISSUER CREDIT OBLIGATIONS (ICO)								
1. NAIC 1 (a) .....	20,213,584	1,012,448	1,889,190	(13,720)	19,323,122	0	0	20,213,584
2. NAIC 2 (a) .....	5,204,180	0	349,737	226	4,854,668	0	0	5,204,180
3. NAIC 3 (a) .....	0	0	0	0	0	0	0	0
4. NAIC 4 (a) .....	0	0	0	0	0	0	0	0
5. NAIC 5 (a) .....	0	0	0	0	0	0	0	0
6. NAIC 6 (a) .....	0	0	0	0	0	0	0	0
7. Total ICO	25,417,764	1,012,448	2,238,927	(13,494)	24,177,790	0	0	25,417,764
ASSET-BACKED SECURITIES (ABS)								
8. NAIC 1 .....	19,999,288	2,935,756	923,012	(1,770)	22,010,262	0	0	19,999,288
9. NAIC 2 .....	0	0	0	0	0	0	0	0
10. NAIC 3 .....	0	0	0	0	0	0	0	0
11. NAIC 4 .....	0	0	0	0	0	0	0	0
12. NAIC 5 .....	0	0	0	0	0	0	0	0
13. NAIC 6 .....	0	0	0	0	0	0	0	0
14. Total ABS	19,999,288	2,935,756	923,012	(1,770)	22,010,262	0	0	19,999,288
PREFERRED STOCK								
15. NAIC 1 .....	0	0	0	0	0	0	0	0
16. NAIC 2 .....	0	0	0	0	0	0	0	0
17. NAIC 3 .....	0	0	0	0	0	0	0	0
18. NAIC 4 .....	0	0	0	0	0	0	0	0
19. NAIC 5 .....	0	0	0	0	0	0	0	0
20. NAIC 6 .....	0	0	0	0	0	0	0	0
21. Total Preferred Stock .....	0	0	0	0	0	0	0	0
22. Total ICO, ABS & Preferred Stock	45,417,052	3,948,204	3,161,939	(15,264)	46,188,052	0	0	45,417,052

(a) Book/Adjusted Carrying Value column for the end of the current reporting period includes the following amount of short-term and cash equivalent bonds by NAIC designation:

NAIC 1 \$ .....0 ; NAIC 2 \$ .....0 ; NAIC 3 \$ .....0 NAIC 4 \$ .....0 ; NAIC 5 \$ .....0 ; NAIC 6 \$ .....0



Schedule DA - Part 1 - Short-Term Investments

**N O N E**

Schedule DA - Verification - Short-Term Investments

**N O N E**

Schedule DB - Part A - Verification - Options, Caps, Floors, Collars, Swaps and Forwards

**N O N E**

Schedule DB - Part B - Verification - Futures Contracts

**N O N E**

Schedule DB - Part C - Section 1 - Replication (Synthetic Asset) Transactions (RSATs) Open

**N O N E**

Schedule DB-Part C-Section 2-Reconciliation of Replication (Synthetic Asset) Transactions Open

**N O N E**

Schedule DB - Verification - Book/Adjusted Carrying Value, Fair Value and Potential Exposure of  
Derivatives

**N O N E**

SCHEDULE E - PART 2 - VERIFICATION

(Cash Equivalents)

	1	2
	Year To Date	Prior Year Ended December 31
1. Book/adjusted carrying value, December 31 of prior year .....	3,467,131	2,478,932
2. Cost of cash equivalents acquired .....	3,545,391	21,775,184
3. Accrual of discount .....	0	0
4. Unrealized valuation increase/(decrease) .....	0	0
5. Total gain (loss) on disposals .....	0	0
6. Deduct consideration received on disposals .....	3,620,155	20,786,985
7. Deduct amortization of premium .....	0	0
8. Total foreign exchange change in book/adjusted carrying value .....	0	0
9. Deduct current year's other than temporary impairment recognized .....	0	0
10. Book/adjusted carrying value at end of current period (Lines 1+2+3+4+5-6-7+8-9) .....	3,392,367	3,467,131
11. Deduct total nonadmitted amounts .....	0	0
12. Statement value at end of current period (Line 10 minus Line 11)	3,392,367	3,467,131

Schedule A - Part 2 - Real Estate Acquired and Additions Made

**N O N E**

Schedule A - Part 3 - Real Estate Disposed

**N O N E**

Schedule B - Part 2 - Mortgage Loans Acquired and Additions Made

**N O N E**

Schedule B - Part 3 - Mortgage Loans Disposed, Transferred or Repaid

**N O N E**

Schedule BA - Part 2 - Other Long-Term Invested Assets Acquired and Additions Made

**N O N E**

Schedule BA - Part 3 - Other Long-Term Invested Assets Disposed, Transferred or Repaid

**N O N E**

STATEMENT AS OF MARCH 31, 2025 OF THE WILSON MUTUAL INSURANCE COMPANY

SCHEDULE D - PART 3

Show All Long-Term Bonds and Stock Acquired During the Current Quarter

1	2	3	4	5	6	7	8	9
CUSIP Identification	Description	Date Acquired	Name of Vendor	Number of Shares of Stock	Actual Cost	Par Value	Paid for Accrued Interest and Dividends	NAIC Designation, NAIC Designation Modifier and SVO Administrative Symbol
544445-3D-9	LOS ANGELES CALIF DEPT ARPTS ARPT REV	03/28/2025	BARCLAYS CAPITAL INC		262,448	250,000	0	1.D FE
0059999999	Subtotal - Issuer Credit Obligations - Municipal Bonds - Special Revenues				262,448	250,000	0	XXX
13607P-VQ-4	CANADIAN IMPERIAL BANK OF COMMERCE	01/06/2025	BANC OF AMERICA/FIXED INCOME		500,000	500,000	0	1.F FE
686514-AP-5	ORLANDO HEALTH INC	01/15/2025	MORGAN STANLEY & COMPANY		250,000	250,000	0	1.E FE
0089999999	Subtotal - Issuer Credit Obligations - Corporate Bonds (Unaffiliated)				750,000	750,000	0	XXX
0489999999	Total - Issuer Credit Obligations (Unaffiliated)				1,012,448	1,000,000	0	XXX
0499999999	Total - Issuer Credit Obligations (Affiliated)				0	0	0	XXX
0509999997	Total - Issuer Credit Obligations - Part 3				1,012,448	1,000,000	0	XXX
0509999998	Total - Issuer Credit Obligations - Part 5				XXX	XXX	XXX	XXX
0509999999	Total - Issuer Credit Obligations				1,012,448	1,000,000	0	XXX
38384K-QG-9	GNR 2024-043 F - CMO/RMBS	02/24/2025	NOMURA SECURITIES INTL INC		297,523	297,198	306	1.A
38384N-B9-5	GNR 2024-081 FE - CMO/RMBS	03/27/2025	GOLDMAN		487,012	487,012	818	1.A
1019999999	Subtotal - Asset-Backed Securities - Financial Asset-Backed - Self-Liquidating - Agency Residential Mortgage-Backed Securities - Guaranteed (Exempt from RBC)				784,536	784,211	1,124	XXX
3137HJ-SA-1	FEDERAL HOME LOAN MORTGAGE CORPORATION -	03/13/2025	GOLDMAN		207,702	207,217	722	1.A
31427M-RE-3	FH SLO484 - RMBS	03/28/2025	PERSHING DIV OF DLJ SEC LNDING		989,126	990,286	4,539	1.A
1039999999	Subtotal - Asset-Backed Securities - Financial Asset-Backed - Self-Liquidating - Agency Residential Mortgage-Backed Securities - Not/Partially Guaranteed (Not Exempt from RBC)				1,196,828	1,197,503	5,261	XXX
60416U-QK-4	MINNESOTA HOUSING FINANCE AGENCY	02/05/2025	RBC CAPITAL MARKETS		155,117	150,000	0	1.B FE
1059999999	Subtotal - Asset-Backed Securities - Financial Asset-Backed - Self-Liquidating - Non-Agency Residential Mortgage-Backed Securities (Unaffiliated)				155,117	150,000	0	XXX
55287H-AA-8	MF1 25FL17 A - CMBS	01/24/2025	MORGAN STANLEY & COMPANY		274,313	275,000	0	1.A FE
1079999999	Subtotal - Asset-Backed Securities - Financial Asset-Backed - Self-Liquidating - Non-Agency Commercial Mortgage-Backed Securities (Unaffiliated)				274,313	275,000	0	XXX
06744N-BQ-9	BARDT 1911RR APR - CDO	01/17/2025	BARCLAYS CAPITAL INC		225,000	225,000	0	1.A FE
1099999999	Subtotal - Asset-Backed Securities - Financial Asset-Backed - Self-Liquidating - Non-Agency - CLOs/CBOs/CDOs (Unaffiliated)				225,000	225,000	0	XXX
14319W-AD-8	CARMX 251 A3 - ABS	01/14/2025	RBC CAPITAL MARKETS		149,975	150,000	0	1.A FE
362955-AD-8	GMCAR 2025-1 A3 - ABS	01/09/2025	J P MORGAN SECURITIES		149,989	150,000	0	1.A FE
1119999999	Subtotal - Asset-Backed Securities - Financial Asset-Backed - Self-Liquidating - Other Financial Asset-Backed Securities - Self-Liquidating (Unaffiliated)				299,964	300,000	0	XXX
1889999999	Total - Asset-Backed Securities (Unaffiliated)				2,935,756	2,931,714	6,384	XXX
1899999999	Total - Asset-Backed Securities (Affiliated)				0	0	0	XXX
1909999997	Total - Asset-Backed Securities - Part 3				2,935,756	2,931,714	6,384	XXX
1909999998	Total - Asset-Backed Securities - Part 5				XXX	XXX	XXX	XXX
1909999999	Total - Asset-Backed Securities				2,935,756	2,931,714	6,384	XXX
2009999999	Total - Issuer Credit Obligations and Asset-Backed Securities				3,948,204	3,931,714	6,384	XXX
4509999997	Total - Preferred Stocks - Part 3				0	XXX	0	XXX
4509999998	Total - Preferred Stocks - Part 5				XXX	XXX	XXX	XXX
4509999999	Total - Preferred Stocks				0	XXX	0	XXX
55939A-10-7	MAGNERA ORD	02/01/2025	ITG INC	0.487	6		0	
601137-10-2	MILLROSE PROPERTIES CL A ORD	02/03/2025	Not Available	6.000	132		0	
80004C-20-0	SANDISK ORD	02/24/2025	CORPORATE ACTION	5.333	166		0	
958102-10-5	WESTERN DIGITAL ORD	02/24/2025	CORPORATE ACTION	16.000	506		0	
68267P-10-8	SMURFIT WESTROCK ORD	01/01/2025	Various	(18.000)	(654)		0	
5019999999	Subtotal - Common Stocks - Industrial and Miscellaneous (Unaffiliated) Publicly Traded				156	XXX	0	XXX
04314H-66-7	ARTISAN: INTL VAL ADV	03/27/2025	Not Available	40.983	2,036		0	
5329999999	Subtotal - Common Stocks - Mutual Funds - Designations Not Assigned by the SVO				2,036	XXX	0	XXX
5989999997	Total - Common Stocks - Part 3				2,192	XXX	0	XXX
5989999998	Total - Common Stocks - Part 5				XXX	XXX	XXX	XXX
5989999999	Total - Common Stocks				2,192	XXX	0	XXX
5999999999	Total - Preferred and Common Stocks				2,192	XXX	0	XXX
6009999999	Totals				3,950,395	XXX	6,384	XXX

STATEMENT AS OF MARCH 31, 2025 OF THE WILSON MUTUAL INSURANCE COMPANY

SCHEDULE D - PART 4

Show All Long-Term Bonds and Stock Sold, Redeemed or Otherwise Disposed of During the Current Quarter

1	2	3	4	5	6	7	8	9	Change In Book/Adjusted Carrying Value					15	16	17	18	19	20	21
									10	11	12	13	14							
CUSIP Identification	Description	Disposal Date	Name of Purchaser	Number of Shares of Stock	Consideration	Par Value	Actual Cost	Prior Year Book/ Adjusted Carrying Value	Unrealized Valuation Increase/ (Decrease)	Current Year's (Amortization)/ Accretion	Current Year's Other Than Temporary Impairment Recognized	Total Change in Book/ Adjusted Carrying Value (10 + 11 - 12)	Total Foreign Exchange Change in Book /Adjusted Carrying Value	Book/ Adjusted Carrying Value at Disposal Date	Foreign Exchange Gain (Loss) on Disposal	Realized Gain (Loss) on Disposal	Total Gain (Loss) on Disposal	Bond Interest/ Stock Dividends Received During Year	Stated Contractual Maturity Date	NAIC Designation, NAIC Designation Modifier and SVO Administrative Symbol
932423-VN-3	WALLED LAKE MICH CONS SCH DIST	03/27/2025	BAIRD, ROBERT W., & COMPANY IN		98,821	110,000	110,000	110,000	0	0	0	0	0	110,000	0	(11,179)	(11,179)	684	05/01/2029	1.B FE
0049999999. Subtotal - Issuer Credit Obligations - Municipal Bonds - General Obligations (Direct and Guaranteed)					98,821	110,000	110,000	110,000	0	0	0	0	0	110,000	0	(11,179)	(11,179)	684	XXX	XXX
495289-X4-7	KING CNTY WASH SWR REV	12/26/2024	Call @ 100.00		0	0	0	0	0	0	0	0	0	0	0	0	0	1,250	07/01/2038	1.B FE
649902-T2-9	NEW YORK STATE DORMITORY AUTHORITY	03/15/2025	Direct		40,445	40,445	43,044	42,264	0	(1,819)	0	(1,819)	0	40,445	0	0	0	1,112	03/15/2030	1.B FE
0059999999. Subtotal - Issuer Credit Obligations - Municipal Bonds - Special Revenues					40,445	40,445	43,044	42,264	0	(1,819)	0	(1,819)	0	40,445	0	0	0	2,362	XXX	XXX
00287Y-BV-0	ABBVIE INC	03/26/2025	US BANCORP INVESTMENTS INC.		244,255	250,000	258,370	253,194	0	(429)	0	(429)	0	252,765	0	(8,510)	(8,510)	2,581	11/21/2026	1.G FE
025816-CP-2	AMERICAN EXPRESS CO	03/26/2025	MARKETAXESS CORPORATION		195,470	200,000	193,396	198,090	0	184	0	184	0	198,275	0	(2,805)	(2,805)	2,640	05/03/2027	1.F FE
13645R-BE-3	CANADIAN PACIFIC RAILWAY CO	03/26/2025	BARCLAYS CAPITAL INC		95,501	100,000	99,852	99,942	0	7	0	7	0	99,949	0	(4,448)	(4,448)	559	12/02/2026	2.A FE
254687-FN-1	WALT DISNEY CO	03/24/2025	Maturity		50,000	50,000	49,973	49,999	0	1	0	1	0	50,000	0	0	0	838	03/24/2025	1.F FE
747525-AU-7	QUALCOMM INC	03/26/2025	BARCLAYS CAPITAL INC		464,783	475,000	495,799	484,132	0	(982)	0	(982)	0	483,150	0	(18,367)	(18,367)	5,446	05/20/2027	1.F FE
75625Q-AE-9	RECKITT BENCKISER TREASURY SERVICES PLC	03/26/2025	J P MORGAN SECURITIES		290,346	300,000	311,835	305,268	0	(540)	0	(540)	0	304,729	0	(14,383)	(14,383)	2,275	06/26/2027	1.G FE
89236T-JV-8	TOYOTA MOTOR CREDIT CORP	03/26/2025	MARKETAXESS CORPORATION		430,853	450,000	449,532	449,804	0	22	0	22	0	449,827	0	(18,974)	(18,974)	6,032	01/13/2027	1.E FE
96388M-AB-3	XCEL ENERGY INC	03/26/2025	US BANCORP INVESTMENTS INC.		236,200	250,000	249,443	249,764	0	25	0	25	0	249,789	0	(13,589)	(13,589)	2,333	03/15/2027	2.A FE
0089999999. Subtotal - Issuer Credit Obligations - Corporate Bonds (Unaffiliated)					2,007,407	2,075,000	2,108,199	2,090,193	0	(1,711)	0	(1,711)	0	2,088,482	0	(81,075)	(81,075)	22,705	XXX	XXX
0489999999. Total - Issuer Credit Obligations (Unaffiliated)					2,146,673	2,225,445	2,261,243	2,242,458	0	(3,530)	0	(3,530)	0	2,238,927	0	(92,254)	(92,254)	25,750	XXX	XXX
0499999999. Total - Issuer Credit Obligations (Affiliated)					0	0	0	0	0	0	0	0	0	0	0	0	0	0	XXX	XXX
0509999997. Total - Issuer Credit Obligations - Part 4					2,146,673	2,225,445	2,261,243	2,242,458	0	(3,530)	0	(3,530)	0	2,238,927	0	(92,254)	(92,254)	25,750	XXX	XXX
0509999998. Total - Issuer Credit Obligations - Part 5					XXX	XXX	XXX	XXX	XXX	XXX	XXX	XXX	XXX	XXX	XXX	XXX	XXX	XXX	XXX	XXX
0509999999. Total - Issuer Credit Obligations					2,146,673	2,225,445	2,261,243	2,242,458	0	(3,530)	0	(3,530)	0	2,238,927	0	(92,254)	(92,254)	25,750	XXX	XXX
36179T-4P-7	G2 MAS330 - RMBS	03/01/2025	Direct		577	577	590	607	0	(30)	0	(30)	0	577	0	0	0	4	07/20/2048	1.A
38384Q-QG-9	GNR 2024-043 F - CMO/RMBS	03/20/2025	Direct		7,625	7,625	7,634	0	0	(8)	0	(8)	0	7,625	0	0	0	34	03/20/2054	1.A
1019999999. Subtotal - Asset-Backed Securities - Financial Asset-Backed - Self-Liquidating - Agency Residential Mortgage-Backed Securities - Guaranteed (Exempt from RBC)					8,202	8,202	8,224	607	0	(39)	0	(39)	0	8,202	0	0	0	37	XXX	XXX
3131XJ-DM-1	FH ZL2808 - RMBS	03/01/2025	Direct		125	125	129	131	0	(5)	0	(5)	0	125	0	0	0	1	03/01/2042	1.A
3131XQ-TK-2	FH ZL8654 - RMBS	03/01/2025	Direct		801	801	850	856	0	(56)	0	(56)	0	801	0	0	0	8	11/01/2044	1.A
3131Y0-2A-9	FH ZMG169 - RMBS	03/01/2025	Direct		380	380	397	410	0	(30)	0	(30)	0	380	0	0	0	3	04/01/2048	1.A
31329K-X3-3	FH ZA2498 - RMBS	03/01/2025	Direct		614	614	616	616	0	(3)	0	(3)	0	614	0	0	0	3	03/01/2038	1.A
3132A1-XW-9	FH ZS1593 - RMBS	03/01/2025	Direct		258	258	275	275	0	(14)	0	(14)	0	258	0	0	0	2	08/01/2037	1.A
3132A4-NN-4	FH ZS3997 - RMBS	03/01/2025	Direct		443	443	470	468	0	(25)	0	(25)	0	443	0	0	0	3	08/01/2044	1.A
3132A5-E8-4	FH ZS4659 - RMBS	03/01/2025	Direct		3,971	3,971	4,048	4,087	0	(116)	0	(116)	0	3,971	0	0	0	24	04/01/2046	1.A
3132A9-MJ-8	FH ZS8471 - RMBS	03/01/2025	Direct		507	507	526	511	0	(4)	0	(4)	0	507	0	0	0	2	09/01/2027	1.A
3132A9-R3-3	FH ZS8606 - RMBS	03/01/2025	Direct		11,654	11,654	11,631	11,624	0	30	0	30	0	11,654	0	0	0	59	04/01/2031	1.A
3132DN-VE-0	FH SD1513 - RMBS	03/01/2025	Direct		10,321	10,321	10,208	10,209	0	112	0	112	0	10,321	0	0	0	106	08/01/2052	1.A
3132DN-Z4-8	FH SD1663 - RMBS	03/01/2025	Direct		4,667	4,667	4,309	4,328	0	339	0	339	0	4,667	0	0	0	32	10/01/2052	1.A
3132DT-04-5	FH SD5875 - RMBS	03/01/2025	Paydown		5,313	5,313	5,545	5,542	0	(229)	0	(229)	0	5,313	0	0	0	126	06/01/2054	1.A
3132DT-R3-6	FH SD5906 - RMBS	03/01/2025	Direct		25,395	25,395	24,522	24,528	0	867	0	867	0	25,395	0	0	0	177	02/01/2053	1.A
3132DT-UJ-2	FH SD5995 - RMBS	03/01/2025	Paydown		4,351	4,351	4,434	4,433	0	(82)	0	(82)	0	4,351	0	0	0	39	03/01/2054	1.A
3132DV-7B-5	FH SD6090 - RMBS	03/01/2025	Direct		2,965	2,965	3,054	3,055	0	(90)	0	(90)	0	2,965	0	0	0	10	09/01/2050	1.A
3133AB-NR-5	FH GB2168 - RMBS	03/01/2025	Direct		9,460	9,460	9,788	9,818	0	(358)	0	(358)	0	9,460	0	0	0	19	08/01/2050	1.A
3133GB-GD-0	FH QM4696 - RMBS	03/26/2025	PERSHING DIV OF DLJ SEC LNDING		187,930	207,013	216,167	214,141	0	(430)	0	(430)	0	213,711	0	(25,781)	(25,781)	1,306	12/01/2035	1.A
3133KQ-FT-8	FH RAB278 - RMBS	03/01/2025	Direct		1,710	1,710	1,695	1,696	0	14	0	14	0	1,710	0	0	0	10	12/01/2052	1.A
3133KQ-N6-9	FH RAB513 - RMBS	03/01/2025	Direct		9,397	9,397	9,464	9,459	0	(62)	0	(62)	0	9,397	0	0	0	91	02/01/2053	1.A
3133KY-U6-4	FH RBS105 - RMBS	03/01/2025	Direct		6,720	6,720	6,942	6,904	0	(184)	0	(184)	0	6,720	0	0	0	22	03/01/2041	1.A
3136AE-PS-0	FNR 2013-63 PD - CMO/RMBS	03/01/2025	Direct		796	796	773	776	0	20	0	20	0	796	0	0	0	3	05/25/2043	1.A
3136AE-ZQ-3	FNR 2013-56 P - CMO/RMBS	03/01/2025	Direct		1,618	1,618	1,599	1,604	0	14	0	14	0	1,618	0	0	0	7	06/25/2043	1.A
3137IN-XK-6	FN 257282 - RMBS	03/01/2025	Direct		224	224	221	222	0	1	0	1	0	224	0	0	0	2	07/01/2028	1.A
3137HJ-SA-1	FEDERAL HOME LOAN MORTGAGE CORPORATION	03/25/2025	Direct		2,114	2,114	2,119	0	0	(5)	0	(5)	0	2,114	0	0	0	10	01/25/2055	1.A
3138AB-NC-9	FN AH9386 - RMBS	03/01/2025	Direct		633	633	654	654	0	(21)	0	(21)	0	633	0	0	0	4	04/01/2041	1.A
3138EN-HG-7	FN AL5630 - RMBS	03/01/2025	Direct		1,039	1,039	1,102	1,096	0	(57)	0	(57)	0	1,039	0	0	0	8	08/01/2044	1.A

STATEMENT AS OF MARCH 31, 2025 OF THE WILSON MUTUAL INSURANCE COMPANY

SCHEDULE D - PART 4

Show All Long-Term Bonds and Stock Sold, Redeemed or Otherwise Disposed of During the Current Quarter

1	2	3	4	5	6	7	8	9	Change In Book/Adjusted Carrying Value					15	16	17	18	19	20	21
									10	11	12	13	14							
CUSIP Ident-ification	Description	Disposal Date	Name of Purchaser	Number of Shares of Stock	Consid-eration	Par Value	Actual Cost	Prior Year Book/ Adjusted Carrying Value	Unrealized Valuation Increase/ (Decrease)	Current Year's (Amor-tization)/ Accretion	Current Year's Other Than Temporary Impairment Recogn-ized	Total Change in Book/ Adjusted Carrying Value (10 + 11 - 12)	Total Foreign Exchange Change in Book /Adjusted Carrying Value	Book/ Adjusted Carrying Value at Disposal Date	Foreign Exchange Gain (Loss) on Disposal	Realized Gain (Loss) on Disposal	Total Gain (Loss) on Disposal	Bond Interest/ Stock Dividends Received During Year	Stated Con-tractual Maturity Date	NAIC Desig-nation, NAIC Desig-nation Modifier and SVO Admini-strative Symbol
..3138X3-BX-9	FN AU3653 - RMBS	03/01/2025	Direct		1,696	1,696	1,783	1,765	0	(69)	0	(69)	0	1,696	0	0	0	7	09/01/2043	1.A
..3138XW-AM-0	FN AW6311 - RMBS	03/01/2025	Direct		78	78	82	82	0	(5)	0	(5)	0	78	0	0	0	1	06/01/2044	1.A
..3138XX-H7-4	FN AW7453 - RMBS	03/01/2025	Direct		114	114	122	122	0	(8)	0	(8)	0	114	0	0	0	1	09/01/2044	1.A
..3138Y6-MY-7	FN AX4874 - RMBS	03/01/2025	Direct		989	989	1,048	1,036	0	(46)	0	(46)	0	989	0	0	0	4	12/01/2044	1.A
..3140FP-C9-8	FN BE3695 - RMBS	03/01/2025	Direct		1,371	1,371	1,437	1,401	0	(66)	0	(66)	0	1,371	0	0	0	9	06/01/2047	1.A
..3140FG-DG-1	FN BE3702 - RMBS	03/01/2025	Direct		1,617	1,617	1,695	1,739	0	(123)	0	(123)	0	1,617	0	0	0	12	06/01/2047	1.A
..3140JQ-TE-3	FN BN7748 - RMBS	03/01/2025	Direct		1,504	1,504	1,563	1,596	0	(92)	0	(92)	0	1,504	0	0	0	11	09/01/2049	1.A
..3140QA-NN-6	FN CA3096 - RMBS	03/26/2025	PERSHING DIV OF DLJ SEC LINDING		64,356	66,620	69,841	75,821	0	(387)	0	(387)	0	75,433	0	(11,077)	(11,077)	947	02/01/2049	1.A
..3140QK-QX-9	FN CB0469 - RMBS	03/01/2025	Direct		8,577	8,577	8,986	8,906	0	(329)	0	(329)	0	8,577	0	0	0	32	05/01/2041	1.A
..3140QN-BZ-4	FN CB2755 - RMBS	03/01/2025	Direct		3,986	3,986	3,714	3,730	0	256	0	256	0	3,986	0	0	0	19	02/01/2052	1.A
..3140QP-2F-3	FN CB4373 - RMBS	03/01/2025	Direct		8,680	8,680	8,614	8,617	0	63	0	63	0	8,680	0	0	0	52	08/01/2052	1.A
..3140QR-KE-2	FN CB5692 - RMBS	03/01/2025	Direct		12,613	12,613	12,715	12,705	0	(93)	0	(93)	0	12,613	0	0	0	120	02/01/2053	1.A
..3140QS-U3-3	FN CB6901 - RMBS	03/01/2025	Direct		7,771	7,771	7,876	7,875	0	(104)	0	(104)	0	7,771	0	0	0	60	08/01/2053	1.A
..3140QV-LC-6	FN CB9322 - RMBS	03/01/2025	Direct		7,587	7,587	7,652	7,652	0	(64)	0	(64)	0	7,587	0	0	0	64	10/01/2054	1.A
..3140X4-H2-5	FN FH1148 - RMBS	03/01/2025	Direct		656	656	674	698	0	(42)	0	(42)	0	656	0	0	0	4	12/01/2048	1.A
..3140X4-M4-5	FN FM1278 - RMBS	03/01/2025	Direct		1,501	1,501	1,535	1,537	0	(37)	0	(37)	0	1,501	0	0	0	8	07/01/2034	1.A
..3140X9-V5-1	FN FM6035 - RMBS	03/26/2025	PERSHING DIV OF DLJ SEC LINDING		129,443	142,832	148,411	147,270	0	(201)	0	(201)	0	147,069	0	(17,626)	(17,626)	908	02/01/2036	1.A
..3140XM-EB-8	FN FSS529 - RMBS	03/01/2025	Direct		14,790	14,790	14,717	14,716	0	74	0	74	0	14,790	0	0	0	133	08/01/2053	1.A
..3140XR-20-7	FN FS9782 - RMBS	03/01/2025	Direct		2,226	2,226	2,236	2,236	0	(9)	0	(9)	0	2,226	0	0	0	16	11/01/2054	1.A
..31410L-LV-2	FN 890796 - RMBS	03/01/2025	Direct		1,049	1,049	1,073	1,076	0	(26)	0	(26)	0	1,049	0	0	0	6	12/01/2045	1.A
..31418R-P7-0	FN AD0405 - RMBS	03/01/2025	Direct		106	106	111	111	0	(4)	0	(4)	0	106	0	0	0	1	04/01/2040	1.A
..3142GS-S8-3	FH RJ2656 - RMBS	03/01/2025	Direct		2,657	2,657	2,604	2,604	0	53	0	53	0	2,657	0	0	0	22	10/01/2054	1.A
1039999999. Subtotal - Asset-Backed Securities - Financial Asset-Backed - Self-Liquidating - Agency Residential Mortgage-Backed Securities - Not/Partially Guaranteed (Not Exempt from RBC)					566,771	601,506	619,993	620,772	0	(1,636)	0	(1,636)	0	621,254	0	(54,483)	(54,483)	4,510	XXX	XXX
..03463W-AD-5	AOMT 2019-2 M1 - CMO/RMBS	01/27/2025	Direct		1,905	1,905	1,898	1,900	0	5	0	5	0	1,905	0	0	0	6	03/25/2049	1.A
..03464P-AC-1	AOMT 2022-2 A3 - RMBS	03/01/2025	Direct		2,141	2,141	2,136	2,136	0	5	0	5	0	2,141	0	0	0	14	01/25/2067	1.B
..10569F-AC-2	BRAVO 2022-NQM1 A3 - CMO/RMBS	03/01/2025	Direct		2,529	2,529	2,528	2,527	0	2	0	2	0	2,529	0	0	0	14	09/26/2061	1.A
..31573E-AA-9	EFMT 223 A1 - CMO/RMBS	03/01/2025	Direct		9,043	9,043	8,944	9,041	0	2	0	2	0	9,043	0	0	0	80	08/25/2067	1.A
..33853H-AB-7	FSMT 2021-131NV A2 - CMO/RMBS	03/01/2025	Direct		4,665	4,665	3,868	3,890	0	775	0	775	0	4,665	0	0	0	26	12/25/2051	1.A
..36267B-AB-3	GSMB5 22GR2 A2 - CMO/RMBS	03/01/2025	Direct		5,153	5,153	4,258	4,272	0	881	0	881	0	5,153	0	0	0	23	08/26/2052	1.A
..46593F-AD-4	JPMMT 2022-INV3 A3B - CMO/RMBS	03/01/2025	Direct		1,760	1,760	1,455	1,458	0	301	0	301	0	1,760	0	0	0	8	09/25/2052	1.A
..46658D-AA-7	JPMMT 24VIS2 A1 - CMO/RMBS	03/01/2025	Direct		3,913	3,913	3,913	3,913	0	0	0	0	0	3,913	0	0	0	34	11/25/2064	1.A FE
..46658D-AC-3	JPMMT 24VIS2 A3 - RMBS	03/01/2025	Direct		7,044	7,044	7,044	7,044	0	0	0	0	0	7,044	0	0	0	64	11/25/2064	1.0 FE
..67115Q-BD-4	OBX 22J2 B1A - RMBS	03/01/2025	Paydown		712	712	596	598	0	114	0	114	0	712	0	0	0	4	08/26/2052	1.0 FE
..67116E-AA-7	OBX 2022-INV3 A1 - CMO/RMBS	03/01/2025	Direct		1,431	1,431	1,184	1,188	0	243	0	243	0	1,431	0	0	0	9	02/26/2052	1.A
..67116M-AN-1	OBX 23J1 A13 - RMBS	03/01/2025	Direct		3,218	3,218	2,948	2,954	0	264	0	264	0	3,218	0	0	0	25	01/27/2053	1.B FE
..75408T-AA-4	RATE 24J4 A1 - RMBS	03/01/2025	Direct		5,769	5,769	5,750	5,750	0	19	0	19	0	5,769	0	0	0	55	05/25/2055	1.A FE
..816939-AB-8	SEMT 2024-INV1 A2 - RMBS	03/01/2025	Direct		9,088	9,088	9,072	9,072	0	16	0	16	0	9,088	0	0	0	91	10/26/2054	1.A FE
..92812U-K5-6	VIRGINIA HOUSING DEVELOPMENT AUTHORITY -	03/01/2025	Direct		1,110	1,110	1,110	1,110	0	0	0	0	0	1,110	0	0	0	5	04/25/2042	1.A FE
1059999999. Subtotal - Asset-Backed Securities - Financial Asset-Backed - Self-Liquidating - Non-Agency Residential Mortgage-Backed Securities (Unaffiliated)					59,481	59,481	56,703	56,854	0	2,627	0	2,627	0	59,481	0	0	0	457	XXX	XXX
..33768N-AA-0	FKH 2022-SFR1 A - CMBS	03/01/2025	Direct		242	242	242	242	0	0	0	0	0	242	0	0	0	2	05/19/2039	1.A FE
1079999999. Subtotal - Asset-Backed Securities - Financial Asset-Backed - Self-Liquidating - Non-Agency Commercial Mortgage-Backed Securities (Unaffiliated)					242	242	242	242	0	0	0	0	0	242	0	0	0	2	XXX	XXX
..03768C-AN-9	APID 30R A1R - CDO	01/18/2025	Direct		108,832	108,832	108,832	108,832	0	0	0	0	0	108,832	0	0	0	0	10/20/2031	1.A FE
1099999999. Subtotal - Asset-Backed Securities - Financial Asset-Backed - Self-Liquidating - Non-Agency - CLOs/CBOs/CDOs (Unaffiliated)					108,832	108,832	108,832	108,832	0	0	0	0	0	108,832	0	0	0	0	XXX	XXX
..34534L-AD-9	FORDO 2022-B A3 - ABS	03/15/2025	Direct		14,532	14,532	14,531	14,532	0	0	0	0	0	14,532	0	0	0	89	09/15/2026	1.A FE
..36265Q-AD-8	GMCAR 2022-4 A3 - ABS	03/16/2025	Direct		43,674	43,674	43,667	43,672	0	2	0	2	0	43,674	0	0	0	343	08/16/2027	1.A FE
..55389T-AA-9	MVIWOT 211W A - ABS	03/27/2025			35,408	37,443	37,433	37,434	0	1	0	1	0	37,435	0	(2,028)	(2,028)	111	01/22/2041	1.A FE

STATEMENT AS OF MARCH 31, 2025 OF THE WILSON MUTUAL INSURANCE COMPANY

SCHEDULE D - PART 4

Show All Long-Term Bonds and Stock Sold, Redeemed or Otherwise Disposed of During the Current Quarter

1	2	3	4	5	6	7	8	9	Change In Book/Adjusted Carrying Value					15	16	17	18	19	20	21
									10	11	12	13	14							
CUSIP Ident- ification	Description	Disposal Date	Name of Purchaser	Number of Shares of Stock	Consid- eration	Par Value	Actual Cost	Prior Year Book/ Adjusted Carrying Value	Unrealized Valuation Increase/ (Decrease)	Current Year's (Amor- tization)/ Accretion	Current Year's Other Than Temporary Impairment Recogn- ized	Total Change in Book/ Adjusted Carrying Value (10 + 11 - 12)	Total Foreign Exchange Change in Book /Adjusted Carrying Value	Book/ Adjusted Carrying Value at Disposal Date	Foreign Exchange Gain (Loss) on Disposal	Realized Gain (Loss) on Disposal	Total Gain (Loss) on Disposal	Bond Interest/ Stock Dividends Received During Year	Stated Con- tractual Maturity Date	21 NAIC Desig- nation, NAIC Desig- nation Modifier and SVO Admini- strative Symbol
..89231C-AD-9	TAOT 2022-C A3 - ABS .....	03/15/2025	Direct .....		27,109	27,109	27,104	27,108	0	1	0	1	0	27,109	0	0	0	168	04/15/2027	1-A FE
11199999999. Subtotal - Asset-Backed Securities - Financial Asset-Backed - Self-Liquidating - Other Financial Asset-Backed Securities - Self-Liquidating (Unaffiliated)					120,722	122,758	122,735	122,746	0	4	0	4	0	122,750	0	(2,028)	(2,028)	711	XXX	XXX
..12510H-AS-9	CAUTO 231 A1 - ABS .....	03/15/2025	Direct .....		1,250	1,250	1,217	1,217	0	33	0	33	0	1,250	0	0	0	12	09/15/2053	1-A FE
..12510H-AV-2	CAUTO 242 A1 - ABS .....	03/15/2025	Direct .....		1,000	1,000	971	971	0	29	0	29	0	1,000	0	0	0	5	05/15/2054	1-A FE
15199999999. Subtotal - Asset-Backed Securities - Non-Financial Asset-Backed Securities - Practical Expedient - Lease-Backed Securities - Practical Expedient (Unaffiliated)					2,250	2,250	2,188	2,188	0	62	0	62	0	2,250	0	0	0	18	XXX	XXX
18899999999. Total - Asset-Backed Securities (Unaffiliated)					866,501	903,271	918,916	912,240	0	1,019	0	1,019	0	923,012	0	(56,511)	(56,511)	5,735	XXX	XXX
18999999999. Total - Asset-Backed Securities (Affiliated)					0	0	0	0	0	0	0	0	0	0	0	0	0	0	XXX	XXX
19099999997. Total - Asset-Backed Securities - Part 4					866,501	903,271	918,916	912,240	0	1,019	0	1,019	0	923,012	0	(56,511)	(56,511)	5,735	XXX	XXX
19099999998. Total - Asset-Backed Securities - Part 5					XXX	XXX	XXX	XXX	XXX	XXX	XXX	XXX	XXX	XXX	XXX	XXX	XXX	XXX	XXX	XXX
19099999999. Total - Asset-Backed Securities					866,501	903,271	918,916	912,240	0	1,019	0	1,019	0	923,012	0	(56,511)	(56,511)	5,735	XXX	XXX
20099999999. Total - Issuer Credit Obligations and Asset-Backed Securities					3,013,174	3,128,716	3,180,160	3,154,698	0	(2,512)	0	(2,512)	0	3,161,939	0	(148,765)	(148,765)	31,485	XXX	XXX
45099999997. Total - Preferred Stocks - Part 4					0	XXX	0	0	0	0	0	0	0	0	0	0	0	0	XXX	XXX
45099999998. Total - Preferred Stocks - Part 5					XXX	XXX	XXX	XXX	XXX	XXX	XXX	XXX	XXX	XXX	XXX	XXX	XXX	XXX	XXX	XXX
45099999999. Total - Preferred Stocks					0	XXX	0	0	0	0	0	0	0	0	0	0	0	0	XXX	XXX
..13646K-10-8	CANADIAN PACIFIC KANSAS CITY ORD .....	12/31/2024	MERRILL LYNCH PIERCE FENNER & SMITH INC. ....	0.000	0		0	0	0	0	0	0	0	0	0	0	0	0		
..29109X-10-6	ASPEN TECHNOLOGY ORD .....	03/14/2025	Not Available .....	2.000	530		368	499	(131)	0	0	(131)	0	368	0	162	162	0		
..418100-10-3	HASHICORP CL A ORD .....	02/28/2025	Not Available .....	9.000	315		308	308	0	0	0	0	0	308	0	7	7	0		
..58463J-30-4	MEDICAL PROPERTIES REIT ORD .....	12/31/2024	MERRILL LYNCH PIERCE FENNER & SMITH INC. ....	0.000	0		0	0	0	0	0	0	0	0	0	0	0	4		
..654106-10-3	NIKE CL B ORD .....	12/31/2024	MERRILL LYNCH PIERCE FENNER & SMITH INC. ....	0.000	0		0	0	0	0	0	0	0	0	0	0	0	4		
..80004C-20-0	SANDISK ORD .....	02/24/2025	Adjustment .....	0.333	17		13	0	0	0	0	0	0	13	0	4	4	0		
..83200N-10-3	SMARTSHEET CL A ORD .....	01/23/2025	Not Available .....	8.000	452		387	448	(61)	0	0	(61)	0	387	0	65	65	0		
..84265V-10-5	SOUTHERN COPPER ORD .....	02/11/2025	Adjustment .....	0.037	4		2	2	0	0	0	0	0	2	0	1	1	0		
..92556H-20-6	PARAMOUNT GLOBAL CL B ORD .....	12/31/2024	MERRILL LYNCH PIERCE FENNER & SMITH INC. ....	0.000	0		0	0	0	0	0	0	0	0	0	0	0	2		
..958102-10-5	WESTERN DIGITAL ORD .....	02/24/2025	Various .....	16.000	672		672	954	(283)	0	0	(283)	0	672	0	0	0	0		
..96145D-10-5	WESTROCK ORD .....	01/01/2025	Adjustment .....	(18.000)	(744)		(654)	(654)	0	0	0	0	0	(654)	0	(90)	(90)	(11)		
..98267P-10-8	SMURFIT WESTROCK ORD .....	01/01/2025	Various .....	0.000	0		0	316	(316)	0	0	(316)	0	0	0	0	0	(11)		
50199999999. Subtotal - Common Stocks - Industrial and Miscellaneous (Unaffiliated) Publicly Traded					1,245	XXX	1,096	1,874	(791)	0	0	(791)	0	1,096	0	149	149	(11)	XXX	XXX
59899999997. Total - Common Stocks - Part 4					1,245	XXX	1,096	1,874	(791)	0	0	(791)	0	1,096	0	149	149	(11)	XXX	XXX
59899999998. Total - Common Stocks - Part 5					XXX	XXX	XXX	XXX	XXX	XXX	XXX	XXX	XXX	XXX	XXX	XXX	XXX	XXX	XXX	XXX
59899999999. Total - Common Stocks					1,245	XXX	1,096	1,874	(791)	0	0	(791)	0	1,096	0	149	149	(11)	XXX	XXX
59999999999. Total - Preferred and Common Stocks					1,245	XXX	1,096	1,874	(791)	0	0	(791)	0	1,096	0	149	149	(11)	XXX	XXX
60099999999 - Totals					3,014,419	XXX	3,181,255	3,156,572	(791)	(2,512)	0	(3,303)	0	3,163,035	0	(148,616)	(148,616)	31,474	XXX	XXX

Schedule DB - Part A - Section 1 - Options, Caps, Floors, Collars, Swaps and Forwards Open  
**N O N E**

Schedule DB - Part B - Section 1 - Futures Contracts Open  
**N O N E**

Schedule DB - Part B - Section 1B - Brokers with whom cash deposits have been made  
**N O N E**

Schedule DB - Part D - Section 1 - Counterparty Exposure for Derivative Instruments Open  
**N O N E**

Schedule DB - Part D-Section 2 - Collateral for Derivative Instruments Open - Pledged By  
**N O N E**

Schedule DB - Part D-Section 2 - Collateral for Derivative Instruments Open - Pledged To  
**N O N E**

Schedule DB - Part E - Derivatives Hedging Variable Annuity Guarantees  
**N O N E**

Schedule DL - Part 1 - Reinvested Collateral Assets Owned  
**N O N E**

Schedule DL - Part 2 - Reinvested Collateral Assets Owned  
**N O N E**



## SCHEDULE E - PART 1 - CASH

[illegible]

## SCHEDULE E - PART 2 - CASH EQUIVALENTS

[illegible]