



PROPERTY AND CASUALTY COMPANIES - ASSOCIATION EDITION

QUARTERLY STATEMENT
AS OF MARCH 31, 2025
OF THE CONDITION AND AFFAIRS OF THE
NATIONAL CASUALTY COMPANY

NAIC Group Code 0140 0140 NAIC Company Code 11991 Employer's ID Number 38-0865250
(Current) (Prior)

Organized under the Laws of OHIO, State of Domicile or Port of Entry OH

Country of Domicile United States of America

Incorporated/Organized 12/19/1904 Commenced Business 12/31/1904

Statutory Home Office ONE WEST NATIONWIDE BLVD., COLUMBUS, OH, US 43215-2220
(Street and Number) (City or Town, State, Country and Zip Code)

Main Administrative Office 18700 N. HAYDEN ROAD
(Street and Number)
SCOTTSDALE, AZ, US 85255, 480-365-4000
(City or Town, State, Country and Zip Code) (Area Code) (Telephone Number)

Mail Address ONE WEST NATIONWIDE BLVD., 1-14-301, COLUMBUS, OH, US 43215-2220
(Street and Number or P.O. Box) (City or Town, State, Country and Zip Code)

Primary Location of Books and Records ONE WEST NATIONWIDE BLVD., 1-14-301
(Street and Number)
COLUMBUS, OH, US 43215-2220, 614-249-1545
(City or Town, State, Country and Zip Code) (Area Code) (Telephone Number)

Internet Website Address WWW.NATIONWIDE.COM

Statutory Statement Contact ANDREA D. IACOBONI, 614-249-1545
(Name) (Area Code) (Telephone Number)
FINRPT@NATIONWIDE.COM, 866-315-1430
(E-mail Address) (FAX Number)

OFFICERS

PRESIDENT RUSSELL MARK JOHNSTON VP & TREASURER KIMBERLY ELLEN LACKER
SVP & SECRETARY DENISE LYNN SKINGLE

OTHER

KEVIN PAUL SCHEIDERER, VP-CHIEF TAX OFFC

DIRECTORS OR TRUSTEES

MARK ALLEN BERVEN OSCAR GUERRERO RUSSELL MARK JOHNSTON
CASEY ELLEN KEMPTON DAVID NEIL NELSON

State of OHIO SS:
County of FRANKLIN

The officers of this reporting entity being duly sworn, each depose and say that they are the described officers of said reporting entity, and that on the reporting period stated above, all of the herein described assets were the absolute property of the said reporting entity, free and clear from any liens or claims thereon, except as herein stated, and that this statement, together with related exhibits, schedules and explanations therein contained, annexed or referred to, is a full and true statement of all the assets and liabilities and of the condition and affairs of the said reporting entity as of the reporting period stated above, and of its income and deductions therefrom for the period ended, and have been completed in accordance with the NAIC Annual Statement Instructions and Accounting Practices and Procedures manual except to the extent that: (1) state law may differ; or, (2) that state rules or regulations require differences in reporting not related to accounting practices and procedures, according to the best of their information, knowledge and belief, respectively. Furthermore, the scope of this attestation by the described officers also includes the related corresponding electronic filing with the NAIC, when required, that is an exact copy (except for formatting differences due to electronic filing) of the enclosed statement. The electronic filing may be requested by various regulators in lieu of or in addition to the enclosed statement.

RUSSELL MARK JOHNSTON DENISE LYNN SKINGLE KIMBERLY ELLEN LACKER
PRESIDENT SVP & SECRETARY VP & TREASURER

Subscribed and sworn to before me this 13th day of MAY 2025
Andrew Swartzel

- a. Is this an original filing? Yes [X] No []
b. If no,
1. State the amendment number.....
2. Date filed
3. Number of pages attached.....



ANDREW SWARTZEL
NOTARY PUBLIC • STATE OF OHIO
Comm. No. 2021-RE-839107
My Commission Expires Oct. 24, 2026

STATEMENT AS OF MARCH 31, 2025 OF THE NATIONAL CASUALTY COMPANY

ASSETS

	Current Statement Date			4 December 31 Prior Year Net Admitted Assets
	1 Assets	2 Nonadmitted Assets	3 Net Admitted Assets (Cols. 1 - 2)	
1. Bonds	387,303,889		387,303,889	396,580,063
2. Stocks:				
2.1 Preferred stocks				
2.2 Common stocks				
3. Mortgage loans on real estate:				
3.1 First liens				
3.2 Other than first liens.....				
4. Real estate:				
4.1 Properties occupied by the company (less \$0 encumbrances)				
4.2 Properties held for the production of income (less \$0 encumbrances)				
4.3 Properties held for sale (less \$0 encumbrances)				
5. Cash (\$23,616,020), cash equivalents (\$60,056,194) and short-term investments (\$)	83,672,214		83,672,214	20,111,756
6. Contract loans (including \$0 premium notes)				
7. Derivatives				
8. Other invested assets	3,414,575		3,414,575	1,181,839
9. Receivables for securities				
10. Securities lending reinvested collateral assets				
11. Aggregate write-ins for invested assets				
12. Subtotals, cash and invested assets (Lines 1 to 11)	474,390,678		474,390,678	417,873,658
13. Title plants less \$0 charged off (for Title insurers only)				
14. Investment income due and accrued	3,047,985		3,047,985	3,108,479
15. Premiums and considerations:				
15.1 Uncollected premiums and agents' balances in the course of collection	189,551,905	13,060,522	176,491,383	123,916,550
15.2 Deferred premiums, agents' balances and installments booked but deferred and not yet due (including \$0 earned but unbilled premiums)	338,359,779	78,440	338,281,339	350,117,994
15.3 Accrued retrospective premiums (\$0) and contracts subject to redetermination (\$0)				
16. Reinsurance:				
16.1 Amounts recoverable from reinsurers	85,562,052		85,562,052	71,062,422
16.2 Funds held by or deposited with reinsured companies	734,811		734,811	975,940
16.3 Other amounts receivable under reinsurance contracts	32,276,428		32,276,428	20,283,371
17. Amounts receivable relating to uninsured plans				
18.1 Current federal and foreign income tax recoverable and interest thereon				
18.2 Net deferred tax asset	10,767,166	4,369,866	6,397,300	6,681,587
19. Guaranty funds receivable or on deposit	118,730		118,730	126,886
20. Electronic data processing equipment and software				
21. Furniture and equipment, including health care delivery assets (\$0)				
22. Net adjustment in assets and liabilities due to foreign exchange rates				
23. Receivables from parent, subsidiaries and affiliates	5,394,159		5,394,159	74,877,065
24. Health care (\$0) and other amounts receivable				
25. Aggregate write-ins for other than invested assets	3,828,188	261,618	3,566,570	2,996,084
26. Total assets excluding Separate Accounts, Segregated Accounts and Protected Cell Accounts (Lines 12 to 25)	1,144,031,881	17,770,446	1,126,261,435	1,072,020,036
27. From Separate Accounts, Segregated Accounts and Protected Cell Accounts				
28. Total (Lines 26 and 27)	1,144,031,881	17,770,446	1,126,261,435	1,072,020,036
DETAILS OF WRITE-INS				
1101.				
1102.				
1103.				
1198. Summary of remaining write-ins for Line 11 from overflow page				
1199. Totals (Lines 1101 through 1103 plus 1198)(Line 11 above)				
2501. Miscellaneous	702,322		702,322	528,190
2502. Third party administrator receivable	1,151,746	259,471	892,275	522,187
2503. Deposits and prepaid assets	(2,580)		(2,580)	
2598. Summary of remaining write-ins for Line 25 from overflow page	1,976,700	2,147	1,974,553	1,945,707
2599. Totals (Lines 2501 through 2503 plus 2598)(Line 25 above)	3,828,188	261,618	3,566,570	2,996,084

STATEMENT AS OF MARCH 31, 2025 OF THE NATIONAL CASUALTY COMPANY

LIABILITIES, SURPLUS AND OTHER FUNDS

	1 Current Statement Date	2 December 31, Prior Year
1. Losses (current accident year \$ 16,606,603)	157,480,943	138,013,102
2. Reinsurance payable on paid losses and loss adjustment expenses	6,135,231	5,847,300
3. Loss adjustment expenses	30,903,722	30,887,591
4. Commissions payable, contingent commissions and other similar charges	2,082,286	3,072,636
5. Other expenses (excluding taxes, licenses and fees)	2,703,084	2,713,794
6. Taxes, licenses and fees (excluding federal and foreign income taxes)	467,650	642,085
7.1 Current federal and foreign income taxes (including \$ (6,824) on realized capital gains (losses))	3,535,040	2,029,508
7.2 Net deferred tax liability		
8. Borrowed money \$ 0 and interest thereon \$ 0		
9. Unearned premiums (after deducting unearned premiums for ceded reinsurance of \$ 839,769,656 and including warranty reserves of \$ 211,873 and accrued accident and health experience rating refunds including \$ for medical loss ratio rebate per the Public Health Service Act)	76,989,239	77,917,181
10. Advance premium	1,557,376	1,138,540
11. Dividends declared and unpaid:		
11.1 Stockholders		
11.2 Policyholders	36,849	37,980
12. Ceded reinsurance premiums payable (net of ceding commissions)	588,425,255	568,455,562
13. Funds held by company under reinsurance treaties	21,899,822	(1,059,843)
14. Amounts withheld or retained by company for account of others	2,594,588	6,907,098
15. Remittances and items not allocated		
16. Provision for reinsurance (including \$ 0 certified)		
17. Net adjustments in assets and liabilities due to foreign exchange rates		
18. Drafts outstanding		
19. Payable to parent, subsidiaries and affiliates	29,557,926	17,968,400
20. Derivatives		
21. Payable for securities		
22. Payable for securities lending		
23. Liability for amounts held under uninsured plans		
24. Capital notes \$ 0 and interest thereon \$ 0		
25. Aggregate write-ins for liabilities	(18,414,730)	1,633,434
26. Total liabilities excluding protected cell liabilities (Lines 1 through 25)	905,954,281	856,204,368
27. Protected cell liabilities		
28. Total liabilities (Lines 26 and 27)	905,954,281	856,204,368
29. Aggregate write-ins for special surplus funds	796,633	
30. Common capital stock	5,000,000	5,000,000
31. Preferred capital stock		
32. Aggregate write-ins for other than special surplus funds		
33. Surplus notes		
34. Gross paid in and contributed surplus	106,686,670	106,686,670
35. Unassigned funds (surplus)	107,823,851	104,128,998
36. Less treasury stock, at cost:		
36.1 0 shares common (value included in Line 30 \$ 0)		
36.2 0 shares preferred (value included in Line 31 \$ 0)		
37. Surplus as regards policyholders (Lines 29 to 35, less 36)	220,307,154	215,815,668
38. Totals (Page 2, Line 28, Col. 3)	1,126,261,435	1,072,020,036
DETAILS OF WRITE-INS		
2501. Contingent suit liability	118,262	79,407
2502. Miscellaneous liabilities	(19,797,810)	1,163,038
2503. Escrow liability	64,394	109,975
2598. Summary of remaining write-ins for Line 25 from overflow page	1,200,424	281,014
2599. Totals (Lines 2501 through 2503 plus 2598)(Line 25 above)	(18,414,730)	1,633,434
2901. EU solvency directive	796,633	
2902.		
2903.		
2998. Summary of remaining write-ins for Line 29 from overflow page		
2999. Totals (Lines 2901 through 2903 plus 2998)(Line 29 above)	796,633	
3201.		
3202.		
3203.		
3298. Summary of remaining write-ins for Line 32 from overflow page		
3299. Totals (Lines 3201 through 3203 plus 3298)(Line 32 above)		

STATEMENT AS OF MARCH 31, 2025 OF THE NATIONAL CASUALTY COMPANY

STATEMENT OF INCOME

	1 Current Year to Date	2 Prior Year to Date	3 Prior Year Ended December 31
UNDERWRITING INCOME			
1. Premiums earned:			
1.1 Direct (written \$469,248,977)	420,029,642	375,481,470	1,533,705,218
1.2 Assumed (written \$ 45,037,726)	46,493,766	49,881,436	192,324,603
1.3 Ceded (written \$472,932,027)	424,241,022	379,031,395	1,547,226,116
1.4 Net (written \$ 41,354,676)	42,282,386	46,331,511	178,803,705
DEDUCTIONS:			
2. Losses incurred (current accident year \$ 24,514,226):			
2.1 Direct	304,546,177	231,902,789	1,040,856,740
2.2 Assumed	23,740,745	28,935,550	120,910,763
2.3 Ceded	306,084,860	233,401,356	1,054,933,806
2.4 Net	22,202,062	27,436,983	106,833,697
3. Loss adjustment expenses incurred	4,042,597	3,779,504	15,485,850
4. Other underwriting expenses incurred	13,828,953	14,681,474	57,985,913
5. Aggregate write-ins for underwriting deductions			
6. Total underwriting deductions (Lines 2 through 5)	40,073,612	45,897,961	180,305,460
7. Net income of protected cells			
8. Net underwriting gain (loss) (Line 1 minus Line 6 + Line 7)	2,208,774	433,550	(1,501,755)
INVESTMENT INCOME			
9. Net investment income earned	3,141,288	3,529,501	13,597,818
10. Net realized capital gains (losses) less capital gains tax of \$ (6,824)	(43,586)	(229,959)	(261,865)
11. Net investment gain (loss) (Lines 9 + 10)	3,097,702	3,299,542	13,335,953
OTHER INCOME			
12. Net gain or (loss) from agents' or premium balances charged off (amount recovered \$ (3,512) amount charged off \$ 94,427)	(97,939)	(164,007)	(602,865)
13. Finance and service charges not included in premiums	225,957	264,151	999,060
14. Aggregate write-ins for miscellaneous income	683,569	256,404	1,452,836
15. Total other income (Lines 12 through 14)	811,587	356,548	1,849,031
16. Net income before dividends to policyholders, after capital gains tax and before all other federal and foreign income taxes (Lines 8 + 11 + 15)	6,118,063	4,089,640	13,683,229
17. Dividends to policyholders	6,675	8,011	43,625
18. Net income, after dividends to policyholders, after capital gains tax and before all other federal and foreign income taxes (Line 16 minus Line 17)	6,111,388	4,081,629	13,639,604
19. Federal and foreign income taxes incurred	1,512,357	673,086	2,423,419
20. Net income (Line 18 minus Line 19)(to Line 22)	4,599,031	3,408,543	11,216,185
CAPITAL AND SURPLUS ACCOUNT			
21. Surplus as regards policyholders, December 31 prior year	215,815,668	202,386,270	202,386,270
22. Net income (from Line 20)	4,599,031	3,408,543	11,216,185
23. Net transfers (to) from Protected Cell accounts			
24. Change in net unrealized capital gains (losses) less capital gains tax of \$ 33,201	123,348	46,245	491,668
25. Change in net unrealized foreign exchange capital gain (loss)	1,553	72	374
26. Change in net deferred income tax	(224,606)	(402,312)	1,429,737
27. Change in nonadmitted assets	2,169,018	1,663,717	(8,024,300)
28. Change in provision for reinsurance			
29. Change in surplus notes			
30. Surplus (contributed to) withdrawn from protected cells			
31. Cumulative effect of changes in accounting principles			
32. Capital changes:			
32.1 Paid in			
32.2 Transferred from surplus (Stock Dividend)			
32.3 Transferred to surplus			
33. Surplus adjustments:			
33.1 Paid in			
33.2 Transferred to capital (Stock Dividend)			
33.3 Transferred from capital			
34. Net remittances from or (to) Home Office			
35. Dividends to stockholders			
36. Change in treasury stock			
37. Aggregate write-ins for gains and losses in surplus	(2,176,858)	(1,197,568)	8,315,734
38. Change in surplus as regards policyholders (Lines 22 through 37).....	4,491,486	3,518,697	13,429,398
39. Surplus as regards policyholders, as of statement date (Lines 21 plus 38)	220,307,154	205,904,967	215,815,668
DETAILS OF WRITE-INS			
0501.			
0502.			
0503.			
0598. Summary of remaining write-ins for Line 5 from overflow page			
0599. Totals (Lines 0501 through 0503 plus 0598)(Line 5 above)			
1401. Other	722,423	251,198	1,473,836
1402. Change in contingent suit liability	(38,854)	5,206	(21,000)
1403.			
1498. Summary of remaining write-ins for Line 14 from overflow page			
1499. Totals (Lines 1401 through 1403 plus 1498)(Line 14 above)	683,569	256,404	1,452,836
3701. Change in surplus pooled nonadmitted premiums in the course of collection offset	(2,176,858)	(1,197,568)	8,315,734
3702.			
3703.			
3798. Summary of remaining write-ins for Line 37 from overflow page			
3799. Totals (Lines 3701 through 3703 plus 3798)(Line 37 above)	(2,176,858)	(1,197,568)	8,315,734

STATEMENT AS OF MARCH 31, 2025 OF THE NATIONAL CASUALTY COMPANY

CASH FLOW

	1 Current Year To Date	2 Prior Year To Date	3 Prior Year Ended December 31
Cash from Operations			
1. Premiums collected net of reinsurance	20,975,240	86,115,675	234,024,937
2. Net investment income	3,908,479	3,882,049	15,128,722
3. Miscellaneous income	256,081	304,329	1,747,884
4. Total (Lines 1 to 3)	25,139,800	90,302,053	250,901,543
5. Benefit and loss related payments	16,939,153	37,190,073	109,723,976
6. Net transfers to Separate Accounts, Segregated Accounts and Protected Cell Accounts			
7. Commissions, expenses paid and aggregate write-ins for deductions	31,015,814	18,798,651	93,444,903
8. Dividends paid to policyholders	7,806	8,215	45,829
9. Federal and foreign income taxes paid (recovered) net of \$ tax on capital gains (losses)			(1,821,248)
10. Total (Lines 5 through 9)	47,962,773	55,996,939	201,393,460
11. Net cash from operations (Line 4 minus Line 10)	(22,822,973)	34,305,114	49,508,083
Cash from Investments			
12. Proceeds from investments sold, matured or repaid:			
12.1 Bonds	17,014,012	28,677,553	58,240,636
12.2 Stocks			
12.3 Mortgage loans			
12.4 Real estate			
12.5 Other invested assets			
12.6 Net gains or (losses) on cash, cash equivalents and short-term investments			
12.7 Miscellaneous proceeds			
12.8 Total investment proceeds (Lines 12.1 to 12.7)	17,014,012	28,677,553	58,240,636
13. Cost of investments acquired (long-term only):			
13.1 Bonds	7,727,799	28,569,259	39,776,114
13.2 Stocks			
13.3 Mortgage loans			
13.4 Real estate			
13.5 Other invested assets	160	455,995	640,700
13.6 Miscellaneous applications			
13.7 Total investments acquired (Lines 13.1 to 13.6)	7,727,959	29,025,254	40,416,814
14. Net increase/(decrease) in contract loans and premium notes			
15. Net cash from investments (Line 12.8 minus Line 13.7 and Line 14)	9,286,053	(347,701)	17,823,822
Cash from Financing and Miscellaneous Sources			
16. Cash provided (applied):			
16.1 Surplus notes, capital notes			
16.2 Capital and paid in surplus, less treasury stock			
16.3 Borrowed funds			
16.4 Net deposits on deposit-type contracts and other insurance liabilities			
16.5 Dividends to stockholders			
16.6 Other cash provided (applied)	77,097,379	(33,865,920)	(54,187,992)
17. Net cash from financing and miscellaneous sources (Line 16.1 through Line 16.4 minus Line 16.5 plus Line 16.6)	77,097,379	(33,865,920)	(54,187,992)
RECONCILIATION OF CASH, CASH EQUIVALENTS AND SHORT-TERM INVESTMENTS			
18. Net change in cash, cash equivalents and short-term investments (Line 11, plus Lines 15 and 17) .	63,560,458	91,493	13,143,913
19. Cash, cash equivalents and short-term investments:			
19.1 Beginning of year	20,111,756	6,967,843	6,967,843
19.2 End of period (Line 18 plus Line 19.1)	83,672,214	7,059,336	20,111,756

Note: Supplemental disclosures of cash flow information for non-cash transactions:

20.0001. Exchange of bond investment to bond investment		2,360,769	2,595,709
20.0002. Tax credit commitment liabilities	2,272,500		206,176

NOTES TO THE FINANCIAL STATEMENTS

Note 1 – Summary of Significant Accounting Policies and Going Concern

A. Accounting Practices

The accompanying statutory financial statements of National Casualty Company (the Company) have been prepared in conformity with accounting practices prescribed or permitted by the National Association of Insurance Commissioners (NAIC) and the State of Ohio.

The Ohio Department of Insurance (Department) recognizes only statutory accounting practices (SAP) prescribed or permitted by the State of Ohio for determining and reporting the financial condition and results of operations of an insurance company, as well as, determining its solvency under the Ohio Insurance law. The NAIC’s *Accounting Practices and Procedures Manual* (NAIC SAP) has been adopted as a component of prescribed or permitted practices by the State of Ohio. The Company has no statutory accounting practices that differ from the NAIC SAP.

A reconciliation of the Company’s net income and capital and surplus between NAIC SAP and practices prescribed and permitted by the State of Ohio is shown below:

	SSAP #	F/S Page	F/S Line #	2025	2024
Net Income					
(1) National Casualty Company state basis (Page 4, Line 20, Columns 1 & 3)	XXX	XXX	XXX	\$ 4,599,031	\$ 11,216,185
(2) State Prescribed Practices that are an increase/(decrease) from NAIC SAP				-	-
(3) State Permitted Practices that are an increase/(decrease) from NAIC SAP				-	-
(4) NAIC SAP (1-2-3=4)	XXX	XXX	XXX	\$ 4,599,031	\$ 11,216,185
Surplus					
(5) National Casualty Company state basis (Page 3, Line 37, Columns 1 & 2)	XXX	XXX	XXX	\$ 220,307,154	\$ 215,815,668
(6) State Prescribed Practices that are an increase/(decrease) from NAIC SAP				-	-
(7) State Permitted Practices that are an increase/(decrease) from NAIC SAP				-	-
(8) NAIC SAP (5-6-7=8)	XXX	XXX	XXX	\$ 220,307,154	\$ 215,815,668

B. Use of Estimates in the Preparation of the Financial Statements

There were no changes that were considered significant to the Company from prior year end.

C. Accounting Policies

1. There were no changes that were considered significant to the Company from prior year end.
2. Bonds, excluding asset-backed securities, are stated at amortized cost except those with a NAIC designation of “3” through “6”, which are stated at the lower of amortized cost or fair value. Amortization of premiums and discounts is calculated using the effective yield method. The Company does not hold any mandatory convertible securities or Securities Valuation Office (SVO) identified investments.
- 3-5. There were no changes that were considered significant to the Company from prior year end.
6. Asset-backed securities are stated at amortized cost or the lower of amortized cost or fair value in accordance with the provisions of Statement of Statutory Accounting Principles (SSAP) No. 43 – *Asset-Backed Securities* and the *Purposes and Procedures Manual* of the NAIC SVO. The retrospective adjustment method is used to value asset-backed securities where the collection of all contractual cash flows is probable. For all other asset-backed securities, the Company uses the prospective adjustment method. Refer to Note 5(D) for a discussion of the other-than-temporary impairment policy for asset-backed securities.
- 7-13. There were no changes that were considered significant to the Company from prior year end.

D. Going Concern

Not applicable.

Note 2 – Accounting Changes and Corrections of Errors

Effective January 1, 2025, the Company adopted revisions to SSAP No. 26 – *Bonds*, SSAP No. 43 – *Asset-Backed Securities* and SSAP No. 21 – *Other Admitted Assets*, in conformity with the NAIC’s revised guidance to develop a principles-based definition for debt securities qualifying for reporting as a bond. The adopted revisions require the assessment of securities to focus on their substance rather than legal form, updated the accounting and reporting guidance for debt securities that qualify for reporting as a bond, updated the accounting and reporting guidance for debt securities that do not qualify for reporting as a bond, and updated guidance for the accounting and reporting of residual interests. There were no material impacts to the Company as a result of the adoption.

Effective January 1, 2025, the Company adopted the revisions to SSAP No. 93 – *Investments in Tax Credit Structures* and SSAP No. 94 – *State and Federal Tax Credits*. The revisions to SSAP No. 93 expand the scope of tax credit investments required to use the proportional amortization method and include additional annual disclosure requirements. The revisions to SSAP No. 94 require purchased tax credits to be recorded at face value with any discount deferred as a miscellaneous liability. Additional annual disclosures are also required as part of the revisions to SSAP No. 94. The adoptions did not have a material impact on the Company’s statutory financial statements.

Note 3 – Business Combinations and Goodwill

Not applicable.

Note 4 – Discontinued Operations

Not applicable.

Note 5 – Investments

A. Mortgage Loans, including Mezzanine Real Estate Loans

Not applicable.

NOTES TO THE FINANCIAL STATEMENTS

- B. Debt Restructuring
- Not applicable.
- C. Reverse Mortgages
- Not applicable.
- D. Asset-Backed Securities
1. Prepayment assumptions are generally obtained using a model provided by a third-party vendor.

2. Not applicable.

3. Not applicable.

4. All impaired securities (fair value is less than cost or amortized cost) for which an other-than-temporary impairment has not been recognized in earnings as a realized loss (including securities with a recognized other-than-temporary impairment for non-interest related declines when a non-recognized interest related impairment remains):

a. The aggregate amount of unrealized losses:

1. Less than 12 Months

\$

(21,939)

2. 12 Months or Longer

\$

(5,766,639)

b. The aggregate related fair value of securities with unrealized losses:

1. Less than 12 Months

\$

9,414,087

2. 12 Months or Longer

\$

40,608,739

5. The Company periodically reviews asset-backed securities in an unrealized loss position by comparing the present value of cash flows, including estimated prepayments, expected to be collected from the security to the amortized cost basis of the security. If the present value of cash flows expected to be collected, discounted at the security's effective interest rate, is less than the amortized cost basis of the security, the impairment is considered other-than-temporary and a realized loss is recorded.
- E. Dollar Repurchase Agreements and/or Securities Lending Transactions
- Not applicable.
- F. Repurchase Agreements Transactions Accounted for as Secured Borrowing
- Not applicable.
- G. Reverse Repurchase Agreements Transactions Accounted for as Secured Borrowing
- Not applicable.
- H. Repurchase Agreements Transactions Accounted for as a Sale
- Not applicable.
- I. Reverse Repurchase Agreements Transactions Accounted for as a Sale
- Not applicable.
- J. Real Estate
- Not applicable.
- K. Investments in Tax Credit Structures (tax credit investments)
- There were no changes that were considered significant to the Company from prior year end.
- L. Restricted Assets
- There were no changes that were considered significant to the Company from prior year end.
- M. Working Capital Finance Investments
- Not applicable.
- N. Offsetting and Netting of Assets and Liabilities
- No assets or liabilities are offset and reported net in accordance with a valid right to offset per SSAP No. 64 – *Offsetting and Netting of Assets and Liabilities*.
- O. 5GI Securities
- Not applicable.
- P. Short Sales
- Not applicable.
- Q. Prepayment Penalty and Acceleration Fees
- Not applicable.

NOTES TO THE FINANCIAL STATEMENTS

R. Reporting Entity's Share of Cash Pool by Asset Type

Asset Type	Percent Share
(1) Cash	0%
(2) Cash equivalents	75%
(3) Short-term investments	25%
(4) Total (Must equal 100%)	100%

S. Aggregate Collateral Loans by Qualifying Investment Collateral

Not applicable.

Note 6 – Joint Ventures, Partnerships and Limited Liability Companies

There were no changes that were considered significant to the Company from prior year end.

Note 7 – Investment Income

There were no changes that were considered significant to the Company from prior year end.

Note 8 – Derivative Instruments

Not applicable.

Note 9 – Income Taxes

There were no changes that were considered significant to the Company from prior year end.

Note 10 – Information Concerning Parent, Subsidiaries, Affiliates and Other Related Parties

There were no changes that were considered significant to the Company from prior year end.

Note 11 – Debt

Not applicable.

Note 12 – Retirement Plans, Deferred Compensation, Postemployment Benefits and Compensated Absences and Other Postretirement Benefit Plans

There were no changes that were considered significant to the Company from prior year end.

Note 13 – Capital and Surplus, Dividend Restrictions and Quasi-Reorganizations

There were no changes that were considered significant to the Company from prior year end.

Note 14 – Liabilities, Contingencies and Assessments

There were no changes that were considered significant to the Company from prior year end.

Note 15 – Leases

Not applicable.

Note 16 – Information about Financial Instruments with Off-Balance Sheet Risk and Financial Instruments with Concentrations of Credit Risk

Not applicable.

Note 17 – Sale, Transfer and Servicing of Financial Assets and Extinguishments of Liabilities

Not applicable.

Note 18 – Gain or Loss to the Reporting Entity from Uninsured Plans and the Uninsured Portion of Partially Insured Plans

Not applicable.

Note 19 – Direct Premium Written/Produced by Managing General Agents/Third-Party Administrators

There were no changes that were considered significant to the Company from prior year end.

Note 20 – Fair Value Measurements

A. Fair value is defined as the price that would be received to sell an asset or paid to transfer a liability in an orderly transaction between market participants at the measurement date. Fair value measurements are based upon observable and unobservable inputs. Observable inputs reflect market data obtained from independent sources while unobservable inputs reflect the Company's view of market assumptions in the absence of observable market information. The Company utilizes valuation techniques that maximize the use of observable inputs and minimize the use of unobservable inputs. In determining fair value, the Company uses various methods including market, income and cost approaches.

The Company categorizes its financial instruments into a three-level hierarchy based on the priority of the inputs to the valuation technique. The fair value hierarchy gives the highest priority to quoted prices in active markets for identical assets or liabilities (Level 1) and the lowest priority to unobservable inputs (Level 3). If the inputs used to measure fair value fall within different levels of the hierarchy, the category level is based on the lowest priority level input that is significant to the fair value measurement of the instrument in its entirety.

The Company categorizes assets and liabilities held at fair value in the statutory statements of assets and liabilities, surplus and other funds as follows:

Level 1. Unadjusted quoted prices accessible in active markets for identical assets or liabilities at the measurement date and mutual funds where the value per share (unit) is determined and published daily and is the basis for current transactions.

Level 2. Unadjusted quoted prices for similar assets or liabilities in active markets, quoted prices for identical or similar assets or liabilities in markets that are not active or inputs (other than quoted prices) that are observable or that are derived principally from or corroborated by observable market data through correlation or other means. Primary inputs to this valuation technique may include comparative trades, bid/asks, interest rate movements, U.S. Treasury rates, Secured Overnight Financing Rate, prime rates, cash flows, maturity dates, call ability, estimated prepayments and/or underlying collateral values.

NOTES TO THE FINANCIAL STATEMENTS

Level 3. Prices or valuation techniques that require inputs that are both unobservable and significant to the overall fair value measurement. Inputs reflect management's best estimates of the assumptions market participants would use at the measurement date in pricing the asset or liability. Consideration is given to the risk inherent in both the method of valuation and the valuation inputs. Primary inputs to this valuation technique include broker quotes and comparative trades.

The Company reviews its fair value hierarchy classifications for assets and liabilities quarterly. Changes in the observability of significant valuation inputs identified during these reviews may trigger reclassifications. Reclassifications are reported as transfers at the beginning of the reporting period in which the change occurs.

Independent pricing services are most often utilized, and compared to pricing from additional sources when available, to determine the fair value of bonds and stocks for which market quotations or quotations on comparable securities or models are used. For these bonds and stocks, the Company obtains the pricing services' methodologies and classifies the investments accordingly in the fair value hierarchy.

Corporate pricing matrices are used in valuing certain bonds. The corporate pricing matrices were developed using publicly and privately available spreads segmented by various weighted average lives and credit quality ratings. Certain private placement bonds have adjusted spreads to capture the impacts of liquidity premium based on industry sector. The weighted average life and credit quality rating of a particular bond to be priced using those matrices are important inputs into the model and are used to determine a corresponding spread that is added to the appropriate industry sector or U.S. Treasury yield to create an estimated market yield for that bond. The estimated market yield and other relevant factors are then used to estimate the fair value of the particular bond.

Non-binding broker quotes are also utilized to determine the fair value of certain bonds when deemed appropriate or when valuations are not available from independent pricing services or corporate pricing matrices. These bonds are classified with the lowest priority in the fair value hierarchy as only one broker quote is ordinarily obtained, the investment is not traded on an exchange, the pricing is not available to other entities and/or the transaction volume in the same or similar investments has decreased. Inputs used in the development of prices are not provided to the Company by the brokers, as the brokers often do not provide the necessary transparency into their quotes and methodologies. At least annually, the Company performs reviews and tests to ensure that quotes are a reasonable estimate of the investments' fair value. Price movements of broker quotes are subject to validation and require approval from the Company's management. Management uses its knowledge of the investment and current market conditions to determine if the price is indicative of the investment's fair value.

The Company carries short-term investments at amortized cost, which approximates fair value.

No assets or liabilities were held at fair value as of March 31, 2025.

B. & C. The following table summarizes the carrying value and fair value of the Company's assets not held at fair value as of March 31, 2025:

	Aggregate Fair Value	Admitted Assets	Level 1	Level 2	Level 3	Net Asset Value (NAV)	Not Practicable (Carrying Value)
Assets							
Bonds							
Issuer Credit Obligation	\$290,565,819	\$311,392,243	\$69,545,381	\$206,936,138	\$14,084,300	\$-	\$-
Asset-Backed Securities	70,298,868	75,911,646	-	70,298,868	-	-	-
Total Bonds	\$360,864,687	\$387,303,889	\$69,545,381	\$277,235,006	\$14,084,300	\$-	\$-
Cash, cash equivalents and short-term investments	83,672,214	83,672,214	23,616,020	60,056,194	-	-	-
Other invested assets	3,414,575	3,414,575	-	-	3,414,575	-	-
Total Assets	\$447,951,476	\$474,390,678	\$93,161,401	\$337,291,200	\$17,498,875	\$-	\$-

D. Not Practicable to Estimate Fair Value

Not applicable.

E. Measured Using Net Asset Value

Not applicable.

Note 21 – Other Items

There were no changes that were considered significant to the Company from prior year end.

Note 22 – Events Subsequent

Type I – Recognized Subsequent Events:

Subsequent events have been considered through May 2, 2025, for the statutory statement available to be issued on May 8, 2025.

There were no material Type I events occurring subsequent to the end of the period that merited recognition or disclosure in these statements that have not already been reflected as required.

Type II – Nonrecognized Subsequent Events:

Subsequent events have been considered through May 2, 2025, for the statutory statement available to be issued on May 8, 2025.

There were no material Type II events occurring subsequent to the end of the period that merited recognition or disclosure in these statements that have not already been reflected as required.

Note 23 – Reinsurance

There were no changes that were considered significant to the Company from prior year end, except for the following.

Effective 1/1/25, the Company executed a retroactive reinsurance agreement for certain policies on a funds withheld basis to a third-party reinsurer. The impact to surplus as a result of this agreement was immaterial.

Note 24 – Retrospectively Rated Contracts and Contracts Subject to Redetermination

There were no changes that were considered significant to the Company from prior year end.

NOTES TO THE FINANCIAL STATEMENTS

Note 25 – Changes in Incurred Losses and Loss Adjustment Expenses

- A. As of December 31, 2024, loss and loss adjustment expense reserves, net of reinsurance recoveries, were \$168.9 million. Payments for incurred claims and claim adjustment expenses attributable to insured events of prior years were \$19.3 million for the three months ended March 31, 2025. As of March 31, 2025, remaining loss and loss adjustment expense reserves attributable to insured events of prior years were \$169.2 million, which included a \$22.2 million increase as a result of an amendment to an internal reinsurance agreement. For the three months ended March 31, 2025, favorable prior-year development of \$2.6 million in incurred losses was primarily driven by lower than expected loss emergence in catastrophes.
- B. During 2025, the Company did not make any significant changes in methodologies and assumptions used in calculating the liability for unpaid losses and loss adjustment expenses.

Note 26 – Intercompany Pooling Arrangements

There were no changes that were considered significant to the Company from prior year end.

Note 27 – Structured Settlements

There were no changes that were considered significant to the Company from prior year end.

Note 28 – Health Care Receivables

Not applicable.

Note 29 – Participating Policies

Not applicable.

Note 30 – Premium Deficiency Reserves

There were no changes that were considered significant to the Company from prior year end.

Note 31 – High Deductibles

There were no changes that were considered significant to the Company from prior year end.

Note 32 – Discounting of Liabilities for Unpaid Losses or Unpaid Loss Adjustment Expenses

There were no changes that were considered significant to the Company from prior year end.

Note 33 – Asbestos/Environmental Reserves

There were no changes that were considered significant to the Company from prior year end.

Note 34 – Subscriber Savings Accounts

Not applicable.

Note 35 – Multiple Peril Crop Insurance

Not applicable.

Note 36 – Financial Guaranty Insurance

Not applicable.

STATEMENT AS OF MARCH 31, 2025 OF THE NATIONAL CASUALTY COMPANY

GENERAL INTERROGATORIES

PART 1 - COMMON INTERROGATORIES

GENERAL

1.1

Did the reporting entity experience any material transactions requiring the filing of Disclosure of Material Transactions with the State of Domicile, as required by the Model Act?

Yes [] No [X]

1.2

If yes, has the report been filed with the domiciliary state?

Yes [] No []

2.1

Has any change been made during the year of this statement in the charter, by-laws, articles of incorporation, or deed of settlement of the reporting entity?

Yes [] No [X]

2.2

If yes, date of change:

3.1

Is the reporting entity a member of an Insurance Holding Company System consisting of two or more affiliated persons, one or more of which is an insurer?
If yes, complete Schedule Y, Parts 1 and 1A.

Yes [X] No []

3.2

Have there been any substantial changes in the organizational chart since the prior quarter end?

Yes [] No [X]

3.3

If the response to 3.2 is yes, provide a brief description of those changes.

3.4

Is the reporting entity publicly traded or a member of a publicly traded group?

Yes [] No [X]

3.5

If the response to 3.4 is yes, provide the CIK (Central Index Key) code issued by the SEC for the entity/group.

4.1

Has the reporting entity been a party to a merger or consolidation during the period covered by this statement?

Yes [] No [X]

4.2

If yes, provide the name of the entity, NAIC Company Code, and state of domicile (use two letter state abbreviation) for any entity that has ceased to exist as a result of the merger or consolidation.

1	2	3
Name of Entity	NAIC Company Code	State of Domicile

5.

If the reporting entity is subject to a management agreement, including third-party administrator(s), managing general agent(s), attorney-in-fact, or similar agreement, have there been any significant changes regarding the terms of the agreement or principals involved?
If yes, attach an explanation.

Yes [] No [X] N/A []

6.1

State as of what date the latest financial examination of the reporting entity was made or is being made.

12/31/2021

6.2

State the as of date that the latest financial examination report became available from either the state of domicile or the reporting entity. This date should be the date of the examined balance sheet and not the date the report was completed or released.

12/31/2021

6.3

State as of what date the latest financial examination report became available to other states or the public from either the state of domicile or the reporting entity. This is the release date or completion date of the examination report and not the date of the examination (balance sheet date).

05/31/2023

6.4

By what department or departments?
OH

6.5

Have all financial statement adjustments within the latest financial examination report been accounted for in a subsequent financial statement filed with Departments?

Yes [] No [] N/A [X]

6.6

Have all of the recommendations within the latest financial examination report been complied with?

Yes [] No [] N/A [X]

7.1

Has this reporting entity had any Certificates of Authority, licenses or registrations (including corporate registration, if applicable) suspended or revoked by any governmental entity during the reporting period?

Yes [] No [X]

7.2

If yes, give full information:

8.1

Is the company a subsidiary of a bank holding company regulated by the Federal Reserve Board?

Yes [] No [X]

8.2

If response to 8.1 is yes, please identify the name of the bank holding company.

8.3

Is the company affiliated with one or more banks, thrifts or securities firms?

Yes [X] No []

8.4

If response to 8.3 is yes, please provide below the names and location (city and state of the main office) of any affiliates regulated by a federal regulatory services agency [i.e. the Federal Reserve Board (FRB), the Office of the Comptroller of the Currency (OCC), the Federal Deposit Insurance Corporation (FDIC) and the Securities Exchange Commission (SEC)] and identify the affiliate's primary federal regulator.

1 Affiliate Name	2 Location (City, State)	3 FRB	4 OCC	5 FDIC	6 SEC
Nationwide Trust Company, FSB	Columbus, OH	NO	YES	NO	NO
Nationwide Investment Services Corp.	Columbus, OH	NO	NO	NO	YES
Nationwide Investment Advisors, LLC	Columbus, OH	NO	NO	NO	YES
Nationwide Securities, LLC	Columbus, OH	NO	NO	NO	YES
Nationwide Fund Advisors	Columbus, OH	NO	NO	NO	YES
Nationwide Fund Distributors, LLC	Columbus, OH	NO	NO	NO	YES
Nationwide Asset Management, LLC	Columbus, OH	NO	NO	NO	YES

STATEMENT AS OF MARCH 31, 2025 OF THE NATIONAL CASUALTY COMPANY

GENERAL INTERROGATORIES

- 9.1

Are the senior officers (principal executive officer, principal financial officer, principal accounting officer or controller, or persons performing similar functions) of the reporting entity subject to a code of ethics, which includes the following standards?
(a) Honest and ethical conduct, including the ethical handling of actual or apparent conflicts of interest between personal and professional relationships;
(b) Full, fair, accurate, timely and understandable disclosure in the periodic reports required to be filed by the reporting entity;
(c) Compliance with applicable governmental laws, rules and regulations;
(d) The prompt internal reporting of violations to an appropriate person or persons identified in the code; and
(e) Accountability for adherence to the code.

Yes [X] No []
- 9.11

If the response to 9.1 is No, please explain:
.....
- 9.2

Has the code of ethics for senior managers been amended?

Yes [] No [X]
- 9.21

If the response to 9.2 is Yes, provide information related to amendment(s).
.....
- 9.3

Have any provisions of the code of ethics been waived for any of the specified officers?

Yes [] No [X]
- 9.31

If the response to 9.3 is Yes, provide the nature of any waiver(s).
.....

FINANCIAL

- 10.1

Does the reporting entity report any amounts due from parent, subsidiaries or affiliates on Page 2 of this statement?

Yes [X] No []
- 10.2

If yes, indicate any amounts receivable from parent included in the Page 2 amount:\$

INVESTMENT

- 11.1

Were any of the stocks, bonds, or other assets of the reporting entity loaned, placed under option agreement, or otherwise made available for use by another person? (Exclude securities under securities lending agreements.)

Yes [] No [X]
- 11.2

If yes, give full and complete information relating thereto:
.....
12.

Amount of real estate and mortgages held in other invested assets in Schedule BA:

\$
13.

Amount of real estate and mortgages held in short-term investments:

\$
- 14.1

Does the reporting entity have any investments in parent, subsidiaries and affiliates?

Yes [] No [X]
- 14.2

If yes, please complete the following:

	1	2
	Prior Year-End Book/Adjusted Carrying Value	Current Quarter Book/Adjusted Carrying Value
14.21 Bonds	\$	\$
14.22 Preferred Stock	\$	\$
14.23 Common Stock	\$	\$
14.24 Short-Term Investments	\$	\$
14.25 Mortgage Loans on Real Estate	\$	\$
14.26 All Other	\$	\$
14.27 Total Investment in Parent, Subsidiaries and Affiliates (Subtotal Lines 14.21 to 14.26)	\$	\$
14.28 Total Investment in Parent included in Lines 14.21 to 14.26 above	\$	\$

15.1

Has the reporting entity entered into any hedging transactions reported on Schedule DB?

Yes [] No [X]

15.2

If yes, has a comprehensive description of the hedging program been made available to the domiciliary state? Yes [] No [] N/A [X]
If no, attach a description with this statement.
.....

16.

For the reporting entity's security lending program, state the amount of the following as of the current statement date:

16.1

Total fair value of reinvested collateral assets reported on Schedule DL, Parts 1 and 2.

\$

16.2

Total book/adjusted carrying value of reinvested collateral assets reported on Schedule DL, Parts 1 and 2

\$

16.3

Total payable for securities lending reported on the liability page.

\$
- 7.1

STATEMENT AS OF MARCH 31, 2025 OF THE NATIONAL CASUALTY COMPANY

GENERAL INTERROGATORIES

17. Excluding items in Schedule E - Part 3 - Special Deposits, real estate, mortgage loans and investments held physically in the reporting entity's offices, vaults or safety deposit boxes, were all stocks, bonds and other securities, owned throughout the current year held pursuant to a custodial agreement with a qualified bank or trust company in accordance with Section 1, III - General Examination Considerations, F. Outsourcing of Critical Functions, Custodial or Safekeeping Agreements of the NAIC Financial Condition Examiners Handbook? Yes [X] No []
- 17.1 For all agreements that comply with the requirements of the NAIC Financial Condition Examiners Handbook, complete the following:

1 Name of Custodian(s)	2 Custodian Address
The Bank of New York Mellon	1 Wall Street, New York, NY 10286

- 17.2 For all agreements that do not comply with the requirements of the NAIC Financial Condition Examiners Handbook, provide the name, location and a complete explanation:

1 Name(s)	2 Location(s)	3 Complete Explanation(s)

- 17.3 Have there been any changes, including name changes, in the custodian(s) identified in 17.1 during the current quarter? Yes [] No [X]
- 17.4 If yes, give full information relating thereto:

1 Old Custodian	2 New Custodian	3 Date of Change	4 Reason

- 17.5 Investment management – Identify all investment advisors, investment managers, broker/dealers, including individuals that have the authority to make investment decisions on behalf of the reporting entity. This includes both primary and sub-advisors. For assets that are managed internally by employees of the reporting entity, note as such. ["...that have access to the investment accounts"; "...handle securities"]

1 Name of Firm or Individual	2 Affiliation
Members of the investment staff designated by the Chief Investment Officer as detailed in the Corporate Resolution	I.....

- 17.5097 For those firms/individuals listed in the table for Question 17.5, do any firms/individuals unaffiliated with the reporting entity (i.e. designated with a "U") manage more than 10% of the reporting entity's invested assets?..... Yes [] No [X]
- 17.5098 For firms/individuals unaffiliated with the reporting entity (i.e. designated with a "U") listed in the table for Question 17.5, does the total assets under management aggregate to more than 50% of the reporting entity's invested assets?..... Yes [] No [X]

- 17.6 For those firms or individuals listed in the table for 17.5 with an affiliation code of "A" (affiliated) or "U" (unaffiliated), provide the information for the table below.

1	2	3	4	5
Central Registration Depository Number	Name of Firm or Individual	Legal Entity Identifier (LEI)	Registered With	Investment Management Agreement (IMA) Filed

- 18.1 Have all the filing requirements of the Purposes and Procedures Manual of the NAIC Investment Analysis Office been followed? Yes [X] No []
- 18.2 If no, list exceptions:

.....

19. By self-designating 5GI securities, the reporting entity is certifying the following elements for each self-designated 5GI security:

a. Documentation necessary to permit a full credit analysis of the security does not exist or an NAIC CRP credit rating for an FE or PL security is not available.

b. Issuer or obligor is current on all contracted interest and principal payments.

c. The insurer has an actual expectation of ultimate payment of all contracted interest and principal.

Has the reporting entity self-designated 5GI securities? Yes [] No [X]

20. By self-designating PLGI securities, the reporting entity is certifying the following elements of each self-designated PLGI security:

a. The security was purchased prior to January 1, 2018.

b. The reporting entity is holding capital commensurate with the NAIC Designation reported for the security.

c. The NAIC Designation was derived from the credit rating assigned by an NAIC CRP in its legal capacity as a NRSRO which is shown on a current private letter rating held by the insurer and available for examination by state insurance regulators.

d. The reporting entity is not permitted to share this credit rating of the PL security with the SVO.

Has the reporting entity self-designated PLGI securities? Yes [] No [X]

21. By assigning FE to a Schedule BA non-registered private fund, the reporting entity is certifying the following elements of each self-designated FE fund:

a. The shares were purchased prior to January 1, 2019.

b. The reporting entity is holding capital commensurate with the NAIC Designation reported for the security.

c. The security had a public credit rating(s) with annual surveillance assigned by an NAIC CRP in its legal capacity as an NRSRO prior to January 1, 2019.

d. The fund only or predominantly holds bonds in its portfolio.

e. The current reported NAIC Designation was derived from the public credit rating(s) with annual surveillance assigned by an NAIC CRP in its legal capacity as an NRSRO.

f. The public credit rating(s) with annual surveillance assigned by an NAIC CRP has not lapsed.

Has the reporting entity assigned FE to Schedule BA non-registered private funds that complied with the above criteria? Yes [] No [X]

STATEMENT AS OF MARCH 31, 2025 OF THE NATIONAL CASUALTY COMPANY

GENERAL INTERROGATORIES

PART 2 - PROPERTY & CASUALTY INTERROGATORIES

1.

If the reporting entity is a member of a pooling arrangement, did the agreement or the reporting entity's participation change?
If yes, attach an explanation.
.....

Yes [] No [X] N/A []
2.

Has the reporting entity reinsured any risk with any other reporting entity and agreed to release such entity from liability, in whole or in part, from any loss that may occur on the risk, or portion thereof, reinsured?
If yes, attach an explanation.
.....

Yes [] No [X]
- 3.1

Have any of the reporting entity's primary reinsurance contracts been canceled?

Yes [] No [X]
- 3.2

If yes, give full and complete information thereto.
.....
- 4.1

Are any of the liabilities for unpaid losses and loss adjustment expenses other than certain workers' compensation tabular reserves (see Annual Statement Instructions pertaining to disclosure of discounting for definition of " tabular reserves") discounted at a rate of interest greater than zero?

Yes [X] No []

4.2 If yes, complete the following schedule:

			TOTAL DISCOUNT				DISCOUNT TAKEN DURING PERIOD			
1	2	3	4	5	6	7	8	9	10	11
Line of Business	Maximum Interest	Discount Rate	Unpaid Losses	Unpaid LAE	IBNR	TOTAL	Unpaid Losses	Unpaid LAE	IBNR	TOTAL
Non-renewable for stated reasons only .	0.1	0.049	136	6		142	(7)			(7)
TOTAL			136	6		142	(7)			(7)

5. Operating Percentages:

- 5.1

A&H loss percent

71.000 %
- 5.2

A&H cost containment percent

0.000 %
- 5.3

A&H expense percent excluding cost containment expenses

25.000 %
- 6.1

Do you act as a custodian for health savings accounts?

Yes [] No [X]
- 6.2

If yes, please provide the amount of custodial funds held as of the reporting date\$.....
- 6.3

Do you act as an administrator for health savings accounts?

Yes [] No [X]
- 6.4

If yes, please provide the balance of the funds administered as of the reporting date\$.....
7.

Is the reporting entity licensed or chartered, registered, qualified, eligible or writing business in at least two states?

Yes [X] No []
- 7.1

If no, does the reporting entity assume reinsurance business that covers risks residing in at least one state other than the state of domicile of the reporting entity?

Yes [] No []

STATEMENT AS OF MARCH 31, 2025 OF THE NATIONAL CASUALTY COMPANY

SCHEDULE F - CEDED REINSURANCE

Showing All New Reinsurers - Current Year to Date

[illegible]

STATEMENT AS OF MARCH 31, 2025 OF THE NATIONAL CASUALTY COMPANY

SCHEDULE T - EXHIBIT OF PREMIUMS WRITTEN

Current Year to Date - Allocated by States and Territories									
		1 Active Status (a)	Direct Premiums Written		Direct Losses Paid (Deducting Salvage)		Direct Losses Unpaid		
			2 Current Year To Date	3 Prior Year To Date	4 Current Year To Date	5 Prior Year To Date	6 Current Year To Date	7 Prior Year To Date	
States, etc.									
1.	Alabama	AL	L	1,491,289	811,318	2,122,647	3,762,697	13,643,292	27,086,023
2.	Alaska	AK	L	878,298	579,642	564,492	473,917	3,555,114	3,383,334
3.	Arizona	AZ	L	7,321,214	7,371,550	3,971,357	4,336,248	9,935,294	12,566,619
4.	Arkansas	AR	L	1,347,413	1,802,646	856,110	362,846	7,127,536	7,169,898
5.	California	CA	L	60,997,014	43,956,794	20,747,230	11,616,942	253,423,026	180,959,141
6.	Colorado	CO	L	10,127,576	10,397,779	6,717,879	8,243,896	15,855,466	19,246,952
7.	Connecticut	CT	L	9,912,045	11,127,020	5,048,285	5,251,416	48,263,782	37,857,133
8.	Delaware	DE	L	1,396,894	1,377,972	950,695	876,131	4,793,027	3,141,456
9.	District of Columbia	DC	L	2,960,418	1,177,900	719,592	789,696	3,069,280	3,013,259
10.	Florida	FL	L	26,083,760	24,180,500	16,154,207	15,682,415	57,910,392	63,999,914
11.	Georgia	GA	L	9,841,477	8,999,081	6,187,523	4,584,814	29,257,632	26,309,982
12.	Hawaii	HI	L	2,636,072	1,758,934	1,025,008	1,063,549	5,584,826	6,446,400
13.	Idaho	ID	L	1,769,783	1,072,496	520,248	563,899	2,042,590	3,332,760
14.	Illinois	IL	L	18,027,527	17,890,553	12,219,205	8,879,993	54,826,548	57,240,101
15.	Indiana	IN	L	4,676,074	4,821,412	7,376,320	3,548,598	32,715,632	30,696,363
16.	Iowa	IA	L	1,602,524	1,696,784	903,775	1,093,426	5,637,009	6,937,568
17.	Kansas	KS	L	11,960,804	1,572,254	1,376,773	4,614,671	17,098,353	12,073,324
18.	Kentucky	KY	L	2,126,285	1,798,271	684,783	2,064,609	9,239,636	11,251,726
19.	Louisiana	LA	L	2,867,120	2,970,388	6,072,172	1,291,417	8,816,116	12,671,862
20.	Maine	ME	L	2,111,573	1,206,549	1,411,468	889,194	3,288,668	4,252,923
21.	Maryland	MD	L	9,152,108	8,237,670	4,166,673	4,839,416	13,238,784	14,097,777
22.	Massachusetts	MA	L	16,473,102	19,007,252	8,019,502	9,515,260	30,041,469	26,522,733
23.	Michigan	MI	L	8,895,890	8,150,705	3,708,128	5,971,659	14,608,802	25,546,873
24.	Minnesota	MN	L	7,339,517	6,156,972	2,044,578	3,614,524	17,099,157	15,156,248
25.	Mississippi	MS	L	5,459,302	1,422,522	798,274	3,015,198	8,433,688	10,134,615
26.	Missouri	MO	L	3,061,608	3,004,259	1,826,936	2,229,787	28,393,470	25,185,679
27.	Montana	MT	L	804,905	472,593	343,905	205,753	2,009,873	4,350,447
28.	Nebraska	NE	L	513,599	182,933	392,875	1,731,637	9,660,118	7,972,007
29.	Nevada	NV	L	5,257,228	4,729,050	4,191,808	6,806,567	15,692,498	20,576,640
30.	New Hampshire	NH	L	2,747,864	2,602,341	1,275,551	1,526,033	4,265,174	6,230,077
31.	New Jersey	NJ	L	26,600,726	23,171,467	17,286,965	12,021,256	55,875,091	61,064,719
32.	New Mexico	NM	L	975,788	930,206	539,234	682,507	3,284,829	3,528,280
33.	New York	NY	L	58,160,245	50,964,104	40,782,191	21,781,591	311,305,696	292,095,094
34.	North Carolina	NC	L	11,636,587	10,742,642	5,627,742	5,738,795	27,844,592	28,736,037
35.	North Dakota	ND	L	172,988	143,403	67,436	130,562	1,323,695	2,732,122
36.	Ohio	OH	L	7,518,403	7,451,454	3,744,919	5,075,542	33,017,222	15,738,522
37.	Oklahoma	OK	L	31,712,895	2,054,939	2,863,908	2,120,649	27,753,529	27,984,487
38.	Oregon	OR	L	3,342,629	3,722,718	2,317,605	2,081,436	8,504,408	13,567,805
39.	Pennsylvania	PA	L	19,640,069	17,070,780	10,575,418	12,646,069	48,401,953	46,402,439
40.	Rhode Island	RI	L	1,766,466	2,053,193	1,098,218	1,027,877	4,584,175	3,299,055
41.	South Carolina	SC	L	4,212,480	4,122,443	13,258,865	3,315,895	15,942,740	16,799,738
42.	South Dakota	SD	L	267,290	242,116	100,870	101,683	1,101,443	1,168,105
43.	Tennessee	TN	L	5,464,266	4,929,829	2,989,400	11,940,504	12,838,998	14,854,780
44.	Texas	TX	L	26,408,016	44,164,101	17,342,515	21,717,877	150,387,757	107,658,138
45.	Utah	UT	L	2,783,782	2,470,526	1,571,237	1,570,146	9,300,412	10,920,749
46.	Vermont	VT	L	809,506	706,967	457,881	414,752	2,042,855	1,175,071
47.	Virginia	VA	L	10,823,096	11,554,881	5,922,876	7,063,669	24,306,566	25,071,772
48.	Washington	WA	L	8,694,158	8,256,505	6,751,184	6,675,891	21,787,967	26,829,535
49.	West Virginia	WV	L	622,304	671,726	308,198	778,283	3,871,526	5,202,815
50.	Wisconsin	WI	L	5,155,437	5,366,745	1,861,258	3,385,499	16,225,741	16,700,915
51.	Wyoming	WY	L	213,339	(2,183,362)	284,158	550,527	1,471,063	3,217,297
52.	American Samoa	AS	N						
53.	Guam	GU	L						
54.	Puerto Rico	PR	L	149,129	123,956				
55.	U.S. Virgin Islands	VI	L						
56.	Northern Mariana Islands	MP	N						
57.	Canada	CAN	L	31,604	63,591	41,114		253,548	402,551
58.	Aggregate Other Alien OT	XXX		2,247,490	1,646,686	13,120		5,360,447	6,425,778
59.	Totals	XXX		469,248,976	400,977,756	258,204,311	240,267,218	1,516,312,505	1,416,985,638
DETAILS OF WRITE-INS									
58001.	Bermuda	XXX						16,837	39,068
58002.	England	XXX		1,904,765	1,275,299	7,065		2,906,918	3,923,612
58003.	Ireland	XXX			24,221			110,012	139,082
58998.	Summary of remaining write-ins for Line 58 from overflow page	XXX		342,725	347,166	6,055		2,326,680	2,324,016
58999.	Totals (Lines 58001 through 58003 plus 58998)(Line 58 above)	XXX		2,247,490	1,646,686	13,120		5,360,447	6,425,778

- (a) Active Status Counts:
1. L - Licensed or Chartered - Licensed insurance carrier or domiciled RRG.....

2. R - Registered - Non-domiciled RRGs.....

3. E - Eligible - Reporting entities eligible or approved to write surplus lines in the state (other than their state of domicile - see DSLI).....
4. Q - Qualified - Qualified or accredited reinsurer.....

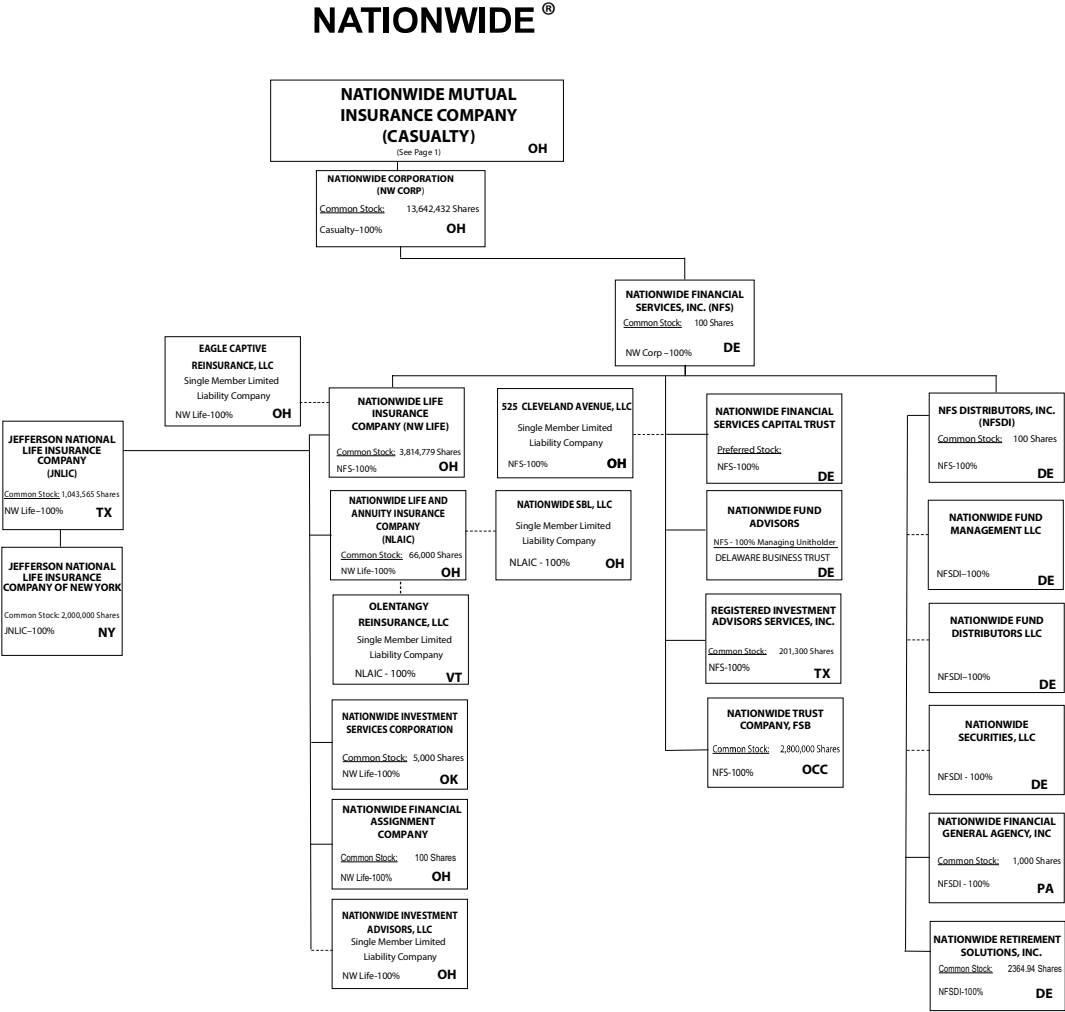
5. D - Domestic Surplus Lines Insurer (DSLII) - Reporting entities authorized to write surplus lines in the state of domicile.....

6. N - None of the above - Not allowed to write business in the state.....
- 2

11

11





Subsidiary Companies Solid Line
Contractual Association Double Line
Limited Liability Company Dotted Line

NATIONWIDE INSURANCE COMPANIES

NAIC Group Code	Group Name	NAIC Company Code	State of Domicile	Federal ID Number	Name of Company
0140	Nationwide	10127	OH	27-0114983	Allied Insurance Company of America
0140	Nationwide	42579	IA	42-1201931	Allied Property and Casualty Insurance Company
0140	Nationwide	19100	IA	42-6054959	AMCO Insurance Company
0140	Nationwide	29262	TX	74-1061659	Colonial County Mutual Insurance Company
0140	Nationwide	18961	OH	68-0066866	Crestbrook Insurance Company
0140	Nationwide	42587	IA	42-1207150	Depositors Insurance Company
0140	Nationwide	15821	OH	42-4523959	Eagle Captive Reinsurance, LLC
0140	Nationwide	22209	OH	75-6013587	Freedom Specialty Insurance Company
0140	Nationwide	23582	OH	41-0417250	Harleysville Insurance Company
0140	Nationwide	42900	NJ	23-2253669	Harleysville Insurance Company of New Jersey
0140	Nationwide	10674	OH	23-2864924	Harleysville Insurance Company of New York
0140	Nationwide	35696	OH	23-2384978	Harleysville Preferred Insurance Company
0140	Nationwide	26182	OH	04-1989660	Harleysville Worcester Insurance Company
0140	Nationwide	64017	TX	75-0300900	Jefferson National Life Insurance Company
0140	Nationwide	15727	NY	47-1180302	Jefferson National Life Insurance Company of New York
0140	Nationwide	11991	OH	38-0865250	National Casualty Company
0140	Nationwide	26093	OH	48-0470690	Nationwide Affinity Insurance Company of America
0140	Nationwide	28223	IA	42-1015537	Nationwide Agribusiness Insurance Company
0140	Nationwide	10723	OH	95-0639970	Nationwide Assurance Company
0140	Nationwide	23760	OH	31-4425763	Nationwide General Insurance Company
0140	Nationwide	10070	OH	31-1399201	Nationwide Indemnity Company
0140	Nationwide	25453	OH	95-2130882	Nationwide Insurance Company of America
0140	Nationwide	10948	OH	31-1613686	Nationwide Insurance Company of Florida
0140	Nationwide	92657	OH	31-1000740	Nationwide Life and Annuity Insurance Company
0140	Nationwide	66869	OH	31-4156830	Nationwide Life Insurance Company
0140	Nationwide	23787	OH	31-4177100	Nationwide Mutual Insurance Company
0140	Nationwide	37877	OH	31-0970750	Nationwide Property & Casualty Insurance Company
0140	Nationwide	13999	VT	27-1712056	Olentangy Reinsurance, LLC
0140	Nationwide	15580	OH	31-1117969	Scottsdale Indemnity Company
0140	Nationwide	41297	OH	31-1024978	Scottsdale Insurance Company
0140	Nationwide	10672	AZ	86-0835870	Scottsdale Surplus Lines Insurance Company
0140	Nationwide	36269	MI	86-0619597	Titan Insurance Company
0140	Nationwide	42285	OH	95-3750113	Veterinary Pet Insurance Company
0140	Nationwide	42889	OH	34-1394913	Victoria Fire & Casualty Company
0140	Nationwide	10105	OH	34-1777972	Victoria Select Insurance Company

STATEMENT AS OF MARCH 31, 2025 OF THE NATIONAL CASUALTY COMPANY

SCHEDULE Y
PART 1A - DETAILS OF INSURANCE HOLDING COMPANY SYSTEM

1	2	3	4	5	6	7	8	9	10	11	12	13	14	15	16
Group Code	Group Name	NAIC Company Code	ID Number	Federal RSSD	CIK	Name of Securities Exchange if Publicly Traded (U.S. or International)	Names of Parent, Subsidiaries Or Affiliates	Domi-ciliary Location	Relation-ship to Reporting Entity	Directly Controlled by (Name of Entity/Person)	Type of Control (Ownership, Board, Management, Attorney-in-Fact, Influence, Other)	If Control is Ownership Provide Percen-tage	Ultimate Controlling Entity(ies)/Person(s)	Is an SCA Filing Re-quired? (Yes/No)	*
. 0140 ...	Nationwide	31-1486309	10 W. Nationwide, LLC OH.....	NIA.....	Nationwide Realty Investors, Ltd.	Ownership.....	100.000 ...	Nationwide Mutual Insurance Company NO.....
. 0140 ...	Nationwide	31-1486309	100 Green Meadows Drive, LLC OH.....	NIA.....	Nationwide Realty Investors, Ltd.	Ownership.....	100.000 ...	Nationwide Mutual Insurance Company NO.....
. 0140 ...	Nationwide	31-1486309	1000 Yard Street, LLC OH.....	NIA.....	Nationwide Realty Investors, Ltd.	Ownership.....	100.000 ...	Nationwide Mutual Insurance Company NO.....
. 0140 ...	Nationwide	31-1486309	1050 Yard Street, LLC OH.....	NIA.....	Nationwide Realty Investors, Ltd.	Ownership.....	100.000 ...	Nationwide Mutual Insurance Company NO.....
. 0140 ...	Nationwide	20-4939866	1055 Yard Street, LLC OH.....	NIA.....	GVY Residential, LLC	Ownership.....	100.000 ...	Nationwide Mutual Insurance Company NO.....
. 0140 ...	Nationwide	31-1486309	1125 Rail Street, LLC OH.....	NIA.....	Nationwide Realty Investors, Ltd.	Ownership.....	100.000 ...	Nationwide Mutual Insurance Company NO.....
. 0140 ...	Nationwide	31-1733036	120 Acre Partners, LLC DE.....	NIA.....	Nationwide Realty Investors, Ltd.	Ownership.....	95.000 ...	Nationwide Mutual Insurance Company NO.....
. 0140 ...	Nationwide	20-4939866	1125 Yard Street, LLC OH.....	NIA.....	NRI Equity Land Investments, LLC	Ownership.....	100.000 ...	Nationwide Mutual Insurance Company NO.....
. 0140 ...	Nationwide	20-4939867	1175 Bobcat, LLC OH.....	NIA.....	NRI Equity Land Investments, LLC	Ownership.....	100.000 ...	Nationwide Mutual Insurance Company NO.....
. 0140 ...	Nationwide	26-2451988	1492 Capital, LLC OH.....	NIA.....	Nationwide Mutual Insurance Company	Ownership.....	100.000 ...	Nationwide Mutual Insurance Company NO.....
. 0140 ...	Nationwide	31-1486309	111 Rivulon Boulevard, LLC OH.....	NIA.....	NRI-Rivulon, LLC	Ownership.....	100.000 ...	Nationwide Mutual Insurance Company NO.....
. 0140 ...	Nationwide	31-1486309	155 Rivulon Boulevard, LLC OH.....	NIA.....	NRI-Rivulon, LLC	Ownership.....	100.000 ...	Nationwide Mutual Insurance Company NO.....
. 0140 ...	Nationwide	31-1486309	161 Rivulon Boulevard, LLC OH.....	NIA.....	NRI-Rivulon, LLC	Ownership.....	100.000 ...	Nationwide Mutual Insurance Company NO.....
. 0140 ...	Nationwide	31-1580283	170 Marconi, LLC OH.....	NIA.....	NWD Investments, LLC	Ownership.....	100.000 ...	Nationwide Mutual Insurance Company NO.....
. 0140 ...	Nationwide	38-4118665	220 Vine St., LLC OH.....	NIA.....	NWD HP, LLC	Ownership.....	100.000 ...	Nationwide Mutual Insurance Company NO.....
. 0140 ...	Nationwide	31-1580283	245 Parks Edge Place, LLC OH.....	NIA.....	NWD Investments, LLC	Ownership.....	100.000 ...	Nationwide Mutual Insurance Company NO.....
. 0140 ...	Nationwide	31-1486309	275 Rivulon Boulevard, LLC OH.....	NIA.....	NRI-Rivulon, LLC	Ownership.....	100.000 ...	Nationwide Mutual Insurance Company NO.....
. 0140 ...	Nationwide	31-1486309	280 High Street, LLC OH.....	NIA.....	Nationwide Realty Investors, Ltd.	Ownership.....	100.000 ...	Nationwide Mutual Insurance Company NO.....
. 0140 ...	Nationwide	31-1486309	300 Rivulon Boulevard, LLC OH.....	NIA.....	NRI-Rivulon, LLC	Ownership.....	100.000 ...	Nationwide Mutual Insurance Company NO.....
. 0140 ...	Nationwide	31-1486309	310 Rivulon Boulevard, LLC OH.....	NIA.....	NRI-Rivulon, LLC	Ownership.....	100.000 ...	Nationwide Mutual Insurance Company NO.....
. 0140 ...	Nationwide	31-1486309	343 N. Front, LLC OH.....	NIA.....	Nationwide Realty Investors, Ltd.	Ownership.....	100.000 ...	Nationwide Mutual Insurance Company NO.....
. 0140 ...	Nationwide	31-1486309	400 Rivulon Boulevard, LLC OH.....	NIA.....	NRI-Rivulon, LLC	Ownership.....	100.000 ...	Nationwide Mutual Insurance Company NO.....
. 0140 ...	Nationwide	31-1580283	400 West Nationwide Boulevard, LLC OH.....	NIA.....	NWD Investments, LLC	Ownership.....	100.000 ...	Nationwide Mutual Insurance Company NO.....
. 0140 ...	Nationwide	31-1486309	410 Rivulon Boulevard, LLC OH.....	NIA.....	NRI-Rivulon, LLC	Ownership.....	100.000 ...	Nationwide Mutual Insurance Company NO.....
. 0140 ...	Nationwide	31-1580283	425 West Nationwide Boulevard, LLC OH.....	NIA.....	NWD Investments, LLC	Ownership.....	100.000 ...	Nationwide Mutual Insurance Company NO.....
. 0140 ...	Nationwide	31-1486309	44 Chestnut, LLC OH.....	NIA.....	Nationwide Realty Investors, Ltd.	Ownership.....	100.000 ...	Nationwide Mutual Insurance Company NO.....
. 0140 ...	Nationwide	38-4118665	500 Neil Avenue, LLC OH.....	NIA.....	NWD HP, LLC	Ownership.....	100.000 ...	Nationwide Mutual Insurance Company NO.....
. 0140 ...	Nationwide	38-4118665	515 Kilbourne Street, LLC OH.....	NIA.....	NWD HP, LLC	Ownership.....	100.000 ...	Nationwide Mutual Insurance Company NO.....
. 0140 ...	Nationwide	87-1954007	525 Cleveland Avenue, LLC OH.....	NIA.....	Nationwide Financial Services, Inc.	Ownership.....	100.000 ...	Nationwide Mutual Insurance Company NO.....
. 0140 ...	Nationwide	31-1486309	75 Rivulon Boulevard, LLC OH.....	NIA.....	NRI-Rivulon, LLC	Ownership.....	100.000 ...	Nationwide Mutual Insurance Company NO.....
. 0140 ...	Nationwide	20-4939866	775 Yard Street, LLC OH.....	NIA.....	NRI Equity Land Investments, LLC	Ownership.....	100.000 ...	Nationwide Mutual Insurance Company NO.....
. 0140 ...	Nationwide	20-4939866	777 Swan Street, LLC OH.....	NIA.....	NRI Equity Land Investments, LLC	Ownership.....	100.000 ...	Nationwide Mutual Insurance Company NO.....
. 0140 ...	Nationwide	20-4939866	780 Yard Street, LLC OH.....	NIA.....	NRI Equity Land Investments, LLC	Ownership.....	100.000 ...	Nationwide Mutual Insurance Company NO.....
. 0140 ...	Nationwide	20-4939866	795 Rail Street, LLC OH.....	NIA.....	NRI Equity Land Investments, LLC	Ownership.....	100.000 ...	Nationwide Mutual Insurance Company NO.....
. 0140 ...	Nationwide	20-4939866	800 Bobcat Avenue, LLC OH.....	NIA.....	NRI Equity Land Investments, LLC	Ownership.....	100.000 ...	Nationwide Mutual Insurance Company NO.....
. 0140 ...	Nationwide	20-4939866	800 Goodale Boulevard, LLC OH.....	NIA.....	NRI Equity Land Investments, LLC	Ownership.....	100.000 ...	Nationwide Mutual Insurance Company NO.....
. 0140 ...	Nationwide	20-4939866	800 Yard Street, LLC OH.....	NIA.....	NRI Equity Land Investments, LLC	Ownership.....	100.000 ...	Nationwide Mutual Insurance Company NO.....
. 0140 ...	Nationwide	20-4939866	805 Bobcat Avenue, LLC OH.....	NIA.....	GVY Residential, LLC	Ownership.....	100.000 ...	Nationwide Mutual Insurance Company NO.....
. 0140 ...	Nationwide	20-4939866	808 Yard Street, LLC OH.....	NIA.....	GVY Residential, LLC	Ownership.....	100.000 ...	Nationwide Mutual Insurance Company NO.....
. 0140 ...	Nationwide	20-4939866	820 Goodale Boulevard, LLC OH.....	NIA.....	NRI Equity Land Investments, LLC	Ownership.....	100.000 ...	Nationwide Mutual Insurance Company NO.....
. 0140 ...	Nationwide	20-4939866	822 Williams Avenue, LLC OH.....	NIA.....	GVY Residential, LLC	Ownership.....	100.000 ...	Nationwide Mutual Insurance Company NO.....
. 0140 ...	Nationwide	20-4939866	825 Junction Way, LLC OH.....	NIA.....	GVY Residential, LLC	Ownership.....	100.000 ...	Nationwide Mutual Insurance Company NO.....
. 0140 ...	Nationwide	20-4939866	828 Bobcat Avenue, LLC OH.....	NIA.....	NRI Equity Land Investments, LLC	Ownership.....	100.000 ...	Nationwide Mutual Insurance Company NO.....
. 0140 ...	Nationwide	20-4939866	840 Third Avenue, LLC OH.....	NIA.....	NRI Equity Land Investments, LLC	Ownership.....	100.000 ...	Nationwide Mutual Insurance Company NO.....
. 0140 ...	Nationwide	20-4939866	840 Yard Street, LLC OH.....	NIA.....	NRI Equity Land Investments, LLC	Ownership.....	100.000 ...	Nationwide Mutual Insurance Company NO.....
. 0140 ...	Nationwide	20-4939866	845 Yard Street, LLC OH.....	NIA.....	GVY Residential, LLC	Ownership.....	100.000 ...	Nationwide Mutual Insurance Company NO.....
. 0140 ...	Nationwide	20-4939866	855 Third Avenue, LLC OH.....	NIA.....	NRI Equity Land Investments, LLC	Ownership.....	100.000 ...	Nationwide Mutual Insurance Company NO.....
. 0140 ...	Nationwide	20-4939866	860 Third Avenue, LLC OH.....	NIA.....	NRI Equity Land Investments, LLC	Ownership.....	100.000 ...	Nationwide Mutual Insurance Company NO.....
. 0140 ...	Nationwide	20-4939866	875 First Avenue, LLC OH.....	NIA.....	GVY Residential, LLC	Ownership.....	100.000 ...	Nationwide Mutual Insurance Company NO.....

STATEMENT AS OF MARCH 31, 2025 OF THE NATIONAL CASUALTY COMPANY

SCHEDULE Y
PART 1A - DETAILS OF INSURANCE HOLDING COMPANY SYSTEM

1	2	3	4	5	6	7	8	9	10	11	12 Type of Control (Ownership, Board, Management, Attorney-in-Fact, Influence, Other)	13 If Control is Owner- ship Provide Percent- age	14 Ultimate Controlling Entity(ies)/Person(s)	15 Is an SCA Filing Re- quired? (Yes/No)	16 *
Group Code	Group Name	NAIC Company Code	ID Number	Federal RSSD	CIK	Name of Securities Exchange if Publicly Traded (U.S. or International)	Names of Parent, Subsidiaries Or Affiliates	Domi- ciliary Loca- tion	Rela- tion- ship to Report- ing Entity	Directly Controlled by (Name of Entity/Person)					
.0140	Nationwide		20-4939866				875 Junction Way, LLC	..OH.....	..NIA.....	NRI Equity Land Investments, LLC	Ownership.....	100.000	Nationwide Mutual Insurance CompanyNO.....	
.0140	Nationwide		20-4939866				880 Third Avenue, LLC	..OH.....	..NIA.....	NRI Equity Land Investments, LLC	Ownership.....	100.000	Nationwide Mutual Insurance CompanyNO.....	
.0140	Nationwide		20-4939866				880 Yard Street, LLC	..OH.....	..NIA.....	GVY Residential, LLC	Ownership.....	100.000	Nationwide Mutual Insurance CompanyNO.....	
.0140	Nationwide		20-4939866				895 W. Third Avenue, LLC	..OH.....	..NIA.....	NRI Equity Land Investments, LLC	Ownership.....	100.000	Nationwide Mutual Insurance CompanyNO.....	
.0140	Nationwide		20-4939866				950 Dorchester Way, LLC	..OH.....	..NIA.....	GVY Residential, LLC	Ownership.....	100.000	Nationwide Mutual Insurance CompanyNO.....	
.0140	Nationwide		20-4939866				950 Goodale Boulevard, LLC	..OH.....	..NIA.....	NRI Equity Land Investments, LLC	Ownership.....	100.000	Nationwide Mutual Insurance CompanyNO.....	
.0140	Nationwide		31-1486309				960 Bobcat Avenue, LLC	..OH.....	..NIA.....	Nationwide Realty Investors, Ltd.	Ownership.....	100.000	Nationwide Mutual Insurance CompanyNO.....	
.0140	Nationwide		31-1486309				975 Rail Street, LLC	..OH.....	..NIA.....	Nationwide Realty Investors, Ltd.	Ownership.....	100.000	Nationwide Mutual Insurance CompanyNO.....	
.0140	Nationwide		31-1486309				995 Yard Street, LLC	..OH.....	..NIA.....	Nationwide Realty Investors, Ltd.	Ownership.....	100.000	Nationwide Mutual Insurance CompanyNO.....	
.0140	Nationwide		31-1486309				12062 Sycamore Trace, LLC	..OH.....	..NIA.....	Jerome Village Company, LLC	Ownership.....	100.000	Nationwide Mutual Insurance CompanyNO.....	
.0140	Nationwide		31-1486309				18615 Claret Drive, LLC	..OH.....	..NIA.....	NRI Cavasson, LLC	Ownership.....	100.000	Nationwide Mutual Insurance CompanyNO.....	
.0140	Nationwide		31-1486309				18655 Claret Drive, LLC	..OH.....	..NIA.....	NRI Cavasson, LLC	Ownership.....	100.000	Nationwide Mutual Insurance CompanyNO.....	
.0140	Nationwide		31-1486309				18700 Hayden Road, LLC	..OH.....	..NIA.....	NRI Cavasson, LLC	Ownership.....	100.000	Nationwide Mutual Insurance CompanyNO.....	
.0140	Nationwide		31-1486309				18750 Hayden Road, LLC	..OH.....	..NIA.....	NRI Cavasson, LLC	Ownership.....	100.000	Nationwide Mutual Insurance CompanyNO.....	
.0140	Nationwide		31-1580283				AD DORA, LLC	..OH.....	..NIA.....	NID Investments, LLC	Ownership.....	100.000	Nationwide Mutual Insurance CompanyNO.....	
.0140	Nationwide		31-1580283				ADTV, LLC	..OH.....	..NIA.....	NID Investments, LLC	Ownership.....	100.000	Nationwide Mutual Insurance CompanyNO.....	
.0140	Nationwide	10127	27-0114983				ALLIED Insurance Company of America	..OH.....	..IA.....	Nationwide Mutual Insurance Company	Ownership.....	100.000	Nationwide Mutual Insurance CompanyNO.....	
							ALLIED Property and Casualty Insurance Company	..IA.....	..IA.....	Nationwide Mutual Insurance Company	Ownership.....	100.000	Nationwide Mutual Insurance CompanyNO.....	
.0140	Nationwide	42579	42-1201931				ALLIED Texas Agency, Inc.	..TX.....	..IA.....	AMCO Insurance Company	Ownership.....	100.000	Nationwide Mutual Insurance CompanyNO.....	
.0140	Nationwide	19100	42-6054959				AMCO Insurance Company	..IA.....	..IA.....	Nationwide Mutual Insurance Company	Ownership.....	100.000	Nationwide Mutual Insurance CompanyNO.....	
.0140	Nationwide		59-1031596				American Marine Underwriters, Inc.	..FL.....	..NIA.....	Nationwide Mutual Insurance Company	Ownership.....	100.000	Nationwide Mutual Insurance CompanyNO.....	
.0140	Nationwide		81-4532504				American Tax Credit Fund 2017-A, LLC	..OH.....	..OTH.....	Nationwide Life Insurance Company	Other.....	0.010	Nationwide Mutual Insurance CompanyNO.....	1
.0140	Nationwide		82-2001573				American Tax Credit Fund 2017-B, LLC	..OH.....	..OTH.....	Nationwide Life Insurance Company	Other.....	0.010	Nationwide Mutual Insurance CompanyNO.....	1
.0140	Nationwide		82-4591498				American Tax Credit Fund 2018-A, LLC	..OH.....	..OTH.....	Nationwide Life Insurance Company	Other.....	0.010	Nationwide Mutual Insurance CompanyNO.....	1
.0140	Nationwide		83-0606592				American Tax Credit Fund 2018-B, LLC	..OH.....	..OTH.....	Nationwide Life Insurance Company	Other.....	0.010	Nationwide Mutual Insurance CompanyNO.....	1
.0140	Nationwide		83-0620232				American Tax Credit Fund 2018-C, LLC	..OH.....	..OTH.....	Nationwide Life Insurance Company	Other.....	0.010	Nationwide Mutual Insurance CompanyNO.....	1
.0140	Nationwide		83-3900932				American Tax Credit Fund 2019-A, LLC	..OH.....	..OTH.....	Nationwide Life Insurance Company	Other.....	0.010	Nationwide Mutual Insurance CompanyNO.....	1
.0140	Nationwide		83-3953721				American Tax Credit Fund 2019-B, LLC	..OH.....	..OTH.....	Nationwide Life Insurance Company	Other.....	0.010	Nationwide Mutual Insurance CompanyNO.....	1
.0140	Nationwide		84-3443067				American Tax Credit Fund 2020-A, LLC	..OH.....	..OTH.....	Nationwide Life Insurance Company	Other.....	0.010	Nationwide Mutual Insurance CompanyNO.....	1
.0140	Nationwide		85-2359702				American Tax Credit Fund 2020-B, LLC	..OH.....	..OTH.....	Nationwide Life Insurance Company	Other.....	0.010	Nationwide Mutual Insurance CompanyNO.....	1
							American Tax Credit Fund 2021-A, LLC (fka	..OH.....	..OTH.....	Nationwide Life Insurance Company	Other.....	0.010	Nationwide Mutual Insurance CompanyNO.....	1
.0140	Nationwide		85-2649655				American Tax Credit Fund 2020-C, LLC)	..OH.....	..OTH.....	Nationwide Life Insurance Company	Other.....	0.010	Nationwide Mutual Insurance CompanyNO.....	1
.0140	Nationwide		86-2502912				American Tax Credit Fund 2021-B, LLC	..OH.....	..OTH.....	Nationwide Life Insurance Company	Other.....	0.010	Nationwide Mutual Insurance CompanyNO.....	1
.0140	Nationwide		87-1349942				American Tax Credit Fund 2021-C, LLC	..OH.....	..OTH.....	Nationwide Life Insurance Company	Other.....	0.010	Nationwide Mutual Insurance CompanyNO.....	1
							American Tax Credit Fund 2023-B, LLC (fka	..OH.....	..OTH.....	Nationwide Life Insurance Company	Other.....	0.010	Nationwide Mutual Insurance CompanyNO.....	1
.0140	Nationwide		87-4753681				American Tax Credit Fund 2022-A, LLC)	..OH.....	..OTH.....	Nationwide Life Insurance Company	Other.....	0.010	Nationwide Mutual Insurance CompanyNO.....	1
							American Tax Credit Fund 2023-C, LLC (fka	..OH.....	..OTH.....	Nationwide Life Insurance Company	Other.....	0.010	Nationwide Mutual Insurance CompanyNO.....	1
.0140	Nationwide		87-4771309				American Tax Credit Fund 2022-B, LLC)	..OH.....	..OTH.....	Nationwide Life Insurance Company	Other.....	0.010	Nationwide Mutual Insurance CompanyNO.....	1
.0140	Nationwide		92-1389304				American Tax Credit Fund 2023-A, LLC	..OH.....	..OTH.....	Nationwide Life Insurance Company	Other.....	0.010	Nationwide Mutual Insurance CompanyNO.....	1
.0140	Nationwide		99-0672884				American Tax Credit Fund 2024-A, LLC	..OH.....	..OTH.....	Nationwide Life Insurance Company	Other.....	0.010	Nationwide Mutual Insurance CompanyNO.....	1
.0140	Nationwide		99-0698188				American Tax Credit Fund 2024-B, LLC	..OH.....	..NIA.....	Nationwide Life Insurance Company	Ownership.....	100.000	Nationwide Mutual Insurance CompanyNO.....	
.0140	Nationwide		31-1580283				Arena District CA 1, LLC	..OH.....	..NIA.....	NID Investments, LLC	Ownership.....	100.000	Nationwide Mutual Insurance CompanyNO.....	
			90-0280710				Arena District Owners Association	..OH.....	..OTH.....	Other non-Nationwide	Other.....	0.000	Other non-NationwideNO.....	2
.0140	Nationwide		31-1486309				Cavasson Hotel, LLC	..OH.....	..NIA.....	Cavasson Hotel Holdings, LLC	Ownership.....	100.000	Nationwide Mutual Insurance CompanyNO.....	
.0140	Nationwide		31-1486309				Cavasson Hotel Holdings, LLC	..OH.....	..NIA.....	NRI Cavasson, LLC	Ownership.....	100.000	Nationwide Mutual Insurance CompanyNO.....	
.0140	Nationwide		20-1618232				CNRI-Cannonsport Condominium, LLC	..OH.....	..NIA.....	CNRI-Cannonsport, LLC	Ownership.....	100.000	Nationwide Mutual Insurance CompanyNO.....	
.0140	Nationwide		20-1618232				CNRI-Cannonsport, LLC	..OH.....	..NIA.....	Nationwide Realty Investors, Ltd.	Ownership.....	100.000	Nationwide Mutual Insurance CompanyNO.....	
.0140	Nationwide	29262	74-1061659				Colonial County Mutual Insurance Company	..TX.....	..IA.....	Other non-Nationwide	Other.....	0.000	Other non-NationwideNO.....	2
.0140	Nationwide	18961	68-0066866				Crestbrook Insurance Company	..OH.....	..IA.....	Nationwide Mutual Insurance Company	Ownership.....	100.000	Nationwide Mutual Insurance CompanyNO.....	

STATEMENT AS OF MARCH 31, 2025 OF THE NATIONAL CASUALTY COMPANY

SCHEDULE Y

PART 1A - DETAILS OF INSURANCE HOLDING COMPANY SYSTEM

1	2	3	4	5	6	7	8	9	10	11	12	13	14	15	16
Group Code	Group Name	NAIC Company Code	ID Number	Federal RSSD	CIK	Name of Securities Exchange if Publicly Traded (U.S. or International)	Names of Parent, Subsidiaries Or Affiliates	Domi-ciliary Location	Relation-ship to Reporting Entity	Directly Controlled by (Name of Entity/Person)	Type of Control (Ownership, Board, Management, Attorney-in-Fact, Influence, Other)	If Control is Ownership Provide Percen-tage	Ultimate Controlling Entity(ies)/Person(s)	Is an SCA Filing Re-quired? (Yes/No)	*
. 0140 ...	Nationwide	31-1486309	Crewville, Ltd. OH.....NIA.....	Nationwide Realty Investors, Ltd.	Ownership.....	100.000 ...	Nationwide Mutual Insurance Company NO.....
. 0140 ...	Nationwide	84-5052608	Danforth, LLC OH.....NIA.....	Nationwide Mutual Insurance Company	Ownership.....	100.000 ...	Nationwide Mutual Insurance Company NO.....
. 0140 ...	Nationwide	42587	42-1207150	Depositors Insurance Company IA.....IA.....	Nationwide Mutual Insurance Company	Ownership.....	100.000 ...	Nationwide Mutual Insurance Company NO.....
.....	46-4104813	Discover Affordable Housing Investment Fund I LLC OH.....OTH.....	Other non-Nationwide	Other.....	0.000 ...	Other non-Nationwide NO.....	2
. 0140 ...	Nationwide	33-0096671	DVM Insurance Agency CA.....NIA.....	Veterinary Pet Insurance Company	Ownership.....	100.000 ...	Nationwide Mutual Insurance Company NO.....
. 0140 ...	Nationwide	15821	47-4523959	Eagle Captive Reinsurance, LLC OH.....IA.....	Nationwide Life Insurance Company	Ownership.....	100.000 ...	Nationwide Mutual Insurance Company NO.....
. 0140 ...	Nationwide	26-3260559	E-Risk Services, L.L.C. DE.....NIA.....	Nationwide Mutual Insurance Company	Ownership.....	100.000 ...	Nationwide Mutual Insurance Company NO.....
. 0140 ...	Nationwide	22209	75-6013587	Freedom Specialty Insurance Company OH.....IA.....	Scottsdale Insurance Company	Ownership.....	100.000 ...	Nationwide Mutual Insurance Company NO.....
. 0140 ...	Nationwide	20-4939866	Grandview Yard Hotel Holdings, LLC OH.....NIA.....	NRI Equity Land Investments, LLC	Ownership.....	100.000 ...	Nationwide Mutual Insurance Company NO.....
. 0140 ...	Nationwide	20-4939866	Grandview Yard Hotel, LLC OH.....NIA.....	Grandview Yard Hotel Holdings, LLC	Ownership.....	100.000 ...	Nationwide Mutual Insurance Company NO.....
. 0140 ...	Nationwide	20-4939866	GVY Residential, LLC OH.....NIA.....	NRI Equity Land Investments, LLC	Ownership.....	100.000 ...	Nationwide Mutual Insurance Company NO.....
. 0140 ...	Nationwide	23582	41-0417250	Harleysville Insurance Company OH.....IA.....	Nationwide Mutual Insurance Company	Ownership.....	100.000 ...	Nationwide Mutual Insurance Company NO.....
.....	Harleysville Insurance Company of New Jersey
. 0140 ...	Nationwide	42900	23-2253669 NJ.....IA.....	Nationwide Mutual Insurance Company	Ownership.....	100.000 ...	Nationwide Mutual Insurance Company NO.....
. 0140 ...	Nationwide	10674	23-2864924	Harleysville Insurance Company of New York OH.....IA.....	Nationwide Mutual Insurance Company	Ownership.....	100.000 ...	Nationwide Mutual Insurance Company NO.....
. 0140 ...	Nationwide	35696	23-2384978	Harleysville Preferred Insurance Company OH.....IA.....	Nationwide Mutual Insurance Company	Ownership.....	100.000 ...	Nationwide Mutual Insurance Company NO.....
. 0140 ...	Nationwide	26182	04-1989660	Harleysville Worcester Insurance Company OH.....IA.....	Nationwide Mutual Insurance Company	Ownership.....	100.000 ...	Nationwide Mutual Insurance Company NO.....
. 0140 ...	Nationwide	64017	75-0300900	Jefferson National Life Insurance Company TX.....IA.....	Nationwide Life Insurance Company	Ownership.....	100.000 ...	Nationwide Mutual Insurance Company NO.....
.....	Jefferson National Life Insurance Company of New York
. 0140 ...	Nationwide	15727	47-1180302 NY.....IA.....	Jefferson National Life Insurance Company	Ownership.....	100.000 ...	Nationwide Mutual Insurance Company NO.....
. 0140 ...	Nationwide	31-1486309	Jerome Village Company, LLC OH.....NIA.....	Nationwide Realty Investors, Ltd.	Ownership.....	100.000 ...	Nationwide Mutual Insurance Company NO.....
. 0140 ...	Nationwide	74-1395229	Lone Star General Agency, Inc. TX.....IA.....	Nationwide Mutual Insurance Company	Ownership.....	100.000 ...	Nationwide Mutual Insurance Company NO.....
. 0140 ...	Nationwide	11991	38-0865250	National Casualty Company OH.....RE.....	Nationwide Mutual Insurance Company	Ownership.....	100.000 ...	Nationwide Mutual Insurance Company NO.....
. 0140 ...	Nationwide	National Casualty Company of America, Ltd. .	.. GBR.....IA.....	National Casualty Company	Ownership.....	100.000 ...	Nationwide Mutual Insurance Company NO.....
. 0140 ...	Nationwide	42-1154244	Nationwide Advantage Mortgage Company IA.....NIA.....	AMCO Insurance Company	Ownership.....	87.300 ...	Nationwide Mutual Insurance Company YES.....
.....	ALLIED Property & Casualty Insurance Company
. 0140 ...	Nationwide	42-1154244	Nationwide Advantage Mortgage Company IA.....NIA.....	Company	Ownership.....	8.470 ...	Nationwide Mutual Insurance Company YES.....
. 0140 ...	Nationwide	42-1154244	Nationwide Advantage Mortgage Company IA.....NIA.....	Depositors Insurance Company	Ownership.....	4.230 ...	Nationwide Mutual Insurance Company YES.....
.....	Nationwide Affinity Insurance Company of America
. 0140 ...	Nationwide	26093	48-0470690 OH.....IA.....	Nationwide Mutual Insurance Company	Ownership.....	100.000 ...	Nationwide Mutual Insurance Company NO.....
. 0140 ...	Nationwide	28223	42-1015537	Nationwide Agribusiness Insurance Company IA.....IA.....	Nationwide Mutual Insurance Company	Ownership.....	100.000 ...	Nationwide Mutual Insurance Company NO.....
. 0140 ...	Nationwide	31-1578869	Nationwide Arena, LLC OH.....NIA.....	NRI Arena, LLC	Ownership.....	90.000 ...	Nationwide Mutual Insurance Company NO.....
. 0140 ...	Nationwide	20-8670712	Nationwide Asset Management, LLC OH.....NIA.....	Nationwide Mutual Insurance Company	Ownership.....	100.000 ...	Nationwide Mutual Insurance Company NO.....
. 0140 ...	Nationwide	10723	95-0639970	Nationwide Assurance Company OH.....IA.....	Nationwide Mutual Insurance Company	Ownership.....	100.000 ...	Nationwide Mutual Insurance Company NO.....
. 0140 ...	Nationwide	31-1036287	Nationwide Cash Management Company OH.....NIA.....	Nationwide Mutual Insurance Company	Ownership.....	100.000 ...	Nationwide Mutual Insurance Company NO.....
. 0140 ...	Nationwide	31-4416546	Nationwide Corporation OH.....NIA.....	Nationwide Mutual Insurance Company	Ownership.....	100.000 ...	Nationwide Mutual Insurance Company YES.....
. 0140 ...	Nationwide	31-1667326	Nationwide Financial Assignment Company OH.....NIA.....	Nationwide Life Insurance Company	Ownership.....	100.000 ...	Nationwide Mutual Insurance Company NO.....
. 0140 ...	Nationwide	23-2412039	Nationwide Financial General Agency, Inc. PA.....NIA.....	NFS Distributors, Inc.	Ownership.....	100.000 ...	Nationwide Mutual Insurance Company NO.....
. 0140 ...	Nationwide	31-6554353	Nationwide Financial Services Capital Trust DE.....NIA.....	Nationwide Financial Services, Inc.	Ownership.....	100.000 ...	Nationwide Mutual Insurance Company NO.....
. 0140 ...	Nationwide	31-1486870	Nationwide Financial Services, Inc. DE.....NIA.....	Nationwide Corporation	Ownership.....	100.000 ...	Nationwide Mutual Insurance Company NO.....
. 0140 ...	Nationwide	52-6969857	Nationwide Fund Advisors DE.....NIA.....	Nationwide Financial Services, Inc.	Ownership.....	100.000 ...	Nationwide Mutual Insurance Company NO.....
. 0140 ...	Nationwide	31-1748721	Nationwide Fund Distributors LLC DE.....NIA.....	NFS Distributors, Inc.	Ownership.....	100.000 ...	Nationwide Mutual Insurance Company NO.....
. 0140 ...	Nationwide	31-0900518	Nationwide Fund Management LLC DE.....NIA.....	NFS Distributors, Inc.	Ownership.....	100.000 ...	Nationwide Mutual Insurance Company NO.....
. 0140 ...	Nationwide	23760	31-4425763	Nationwide General Insurance Company OH.....IA.....	Nationwide Mutual Insurance Company	Ownership.....	100.000 ...	Nationwide Mutual Insurance Company NO.....
. 0140 ...	Nationwide	10070	31-1399201	Nationwide Indemnity Company OH.....IA.....	Nationwide Mutual Insurance Company	Ownership.....	100.000 ...	Nationwide Mutual Insurance Company NO.....
. 0140 ...	Nationwide	33-3724100	Nationwide GSC Holding, Inc. OH.....NIA.....	Nationwide Mutual Insurance Company	Ownership.....	100.000 ...	Nationwide Mutual Insurance Company NO.....
. 0140 ...	Nationwide	25453	95-2130882	Nationwide Insurance Company of America OH.....IA.....	Nationwide Mutual Insurance Company	Ownership.....	100.000 ...	Nationwide Mutual Insurance Company NO.....
. 0140 ...	Nationwide	10948	31-1613686	Nationwide Insurance Company of Florida OH.....IA.....	Nationwide Mutual Insurance Company	Ownership.....	100.000 ...	Nationwide Mutual Insurance Company NO.....
. 0140 ...	Nationwide	41-2206199	Nationwide Investment Advisors, LLC OH.....NIA.....	Nationwide Life Insurance Company	Ownership.....	100.000 ...	Nationwide Mutual Insurance Company NO.....

STATEMENT AS OF MARCH 31, 2025 OF THE NATIONAL CASUALTY COMPANY

SCHEDULE Y

PART 1A - DETAILS OF INSURANCE HOLDING COMPANY SYSTEM

1	2	3	4	5	6	7	8	9	10	11	12	13	14	15	16
Group Code	Group Name	NAIC Company Code	ID Number	Federal RSSD	CIK	Name of Securities Exchange if Publicly Traded (U.S. or International)	Names of Parent, Subsidiaries Or Affiliates	Domi-ciliary Location	Relation-ship to Reporting Entity	Directly Controlled by (Name of Entity/Person)	Type of Control (Ownership, Board, Management, Attorney-in-Fact, Influence, Other)	If Control is Ownership Provide Percen-tage	Ultimate Controlling Entity(ies)/Person(s)	Is an SCA Filing Re-quired? (Yes/No)	*
. 0140	Nationwide		73-0988442				Nationwide Investment Services Corporation .. Nationwide Life and Annuity Insurance Company	.. OK..... NIA.....	Nationwide Life Insurance Company	Ownership.....	100.000	Nationwide Mutual Insurance Company YES.....
. 0140	Nationwide	92657	31-1000740					.. OH..... IA.....	Nationwide Life Insurance Company	Ownership.....	100.000	Nationwide Mutual Insurance Company NO.....
. 0140	Nationwide	66869	31-4156830				Nationwide Life Insurance Company OH..... IA.....	Nationwide Financial Services, Inc.	Ownership.....	100.000	Nationwide Mutual Insurance Company NO.....
. 0140	Nationwide		54-2113175				Nationwide Life Tax Credit Partners 2003-A, LLC OH..... OTH.....	Nationwide Life Insurance Company	Other.....	0.010	Nationwide Mutual Insurance Company NO.....	... 1
. 0140	Nationwide		58-2672725				Nationwide Life Tax Credit Partners 2003-B, LLC OH..... OTH.....	Nationwide Life Insurance Company	Other.....	0.010	Nationwide Mutual Insurance Company NO.....	... 1
. 0140	Nationwide		20-0382144				Nationwide Life Tax Credit Partners 2004-A, LLC OH..... OTH.....	Nationwide Life Insurance Company	Other.....	0.010	Nationwide Mutual Insurance Company NO.....	... 1
. 0140	Nationwide		20-1918935				Nationwide Life Tax Credit Partners 2004-F, LLC OH..... OTH.....	Nationwide Life Insurance Company	Other.....	0.010	Nationwide Mutual Insurance Company NO.....	... 1
. 0140	Nationwide		20-2303694				Nationwide Life Tax Credit Partners 2005-A, LLC OH..... OTH.....	Nationwide Life Insurance Company	Other.....	0.010	Nationwide Mutual Insurance Company NO.....	... 1
. 0140	Nationwide		20-2303602				Nationwide Life Tax Credit Partners 2005-B, LLC OH..... OTH.....	Nationwide Life Insurance Company	Other.....	0.010	Nationwide Mutual Insurance Company NO.....	... 1
. 0140	Nationwide		27-1362364				Nationwide Life Tax Credit Partners 2009-I, LLC OH..... OTH.....	Nationwide Life Insurance Company	Other.....	0.010	Nationwide Mutual Insurance Company NO.....	... 1
. 0140	Nationwide		33-3698490				Nationwide Nom, LLC OH..... NIA.....	Nationwide Mutual Insurance Company	Ownership.....	100.000	Nationwide Mutual Insurance Company NO.....
. 0140	Nationwide		42-1373380				Nationwide Sales Solutions, Inc. (fka	.. IA..... NIA.....	Nationwide Mutual Insurance Company	Ownership.....	100.000	Nationwide Mutual Insurance Company NO.....
. 0140	Nationwide		75-3191025				Nationwide Member Solutions Agency Inc.) OH..... NIA.....	Nationwide Mutual Insurance Company	Ownership.....	100.000	Nationwide Mutual Insurance Company NO.....
. 0140	Nationwide	23787	31-4177100				Nationwide Mutual Capital, LLC OH..... UDP.....	Other non-Nationwide	Ownership.....	0.000	Other non-Nationwide NO.....
. 0140	Nationwide		34-2012765				Nationwide Mutual Insurance Company OH..... NIA.....	Nationwide Mutual Insurance Company	Ownership.....	100.000	Nationwide Mutual Insurance Company NO.....
. 0140	Nationwide	37877	31-0970750				Nationwide Private Equity Fund, LLC OH..... NIA.....	Nationwide Mutual Insurance Company	Ownership.....	100.000	Nationwide Mutual Insurance Company NO.....
. 0140	Nationwide		31-1486309				Nationwide Property and Casualty Insurance Company OH..... IA.....	Nationwide Mutual Insurance Company	Ownership.....	100.000	Nationwide Mutual Insurance Company NO.....
. 0140	Nationwide		31-1486309				Nationwide Realty Investors, Ltd. OH..... NIA.....	Nationwide Mutual Insurance Company	Ownership.....	97.121	Nationwide Mutual Insurance Company NO.....
. 0140	Nationwide		31-1486309				Nationwide Realty Investors, Ltd. OH..... NIA.....	Nationwide Indemnity Company	Ownership.....	2.879	Nationwide Mutual Insurance Company NO.....
. 0140	Nationwide		31-1486309				Nationwide Realty Management, LLC OH..... NIA.....	Nationwide Realty Investors, Ltd.	Ownership.....	100.000	Nationwide Mutual Insurance Company NO.....
. 0140	Nationwide		73-0948330				Nationwide Realty Services, Ltd. OH..... NIA.....	Nationwide Mutual Insurance Company	Ownership.....	100.000	Nationwide Mutual Insurance Company NO.....
. 0140	Nationwide						Nationwide Retirement Solutions, Inc. DE..... NIA.....	NFS Distributors, Inc.	Ownership.....	100.000	Nationwide Mutual Insurance Company NO.....
. 0140	Nationwide		83-2250056				Nationwide Life and Annuity Insurance Company OH..... NIA.....	Nationwide Mutual Insurance Company	Ownership.....	100.000	Nationwide Mutual Insurance Company NO.....
. 0140	Nationwide		36-2434406				Nationwide SBL, LLC OH..... NIA.....	Nationwide Mutual Insurance Company	Ownership.....	100.000	Nationwide Mutual Insurance Company NO.....
. 0140	Nationwide		46-1952215				Nationwide Securities, LLC OH..... NIA.....	NFS Distributors, Inc.	Ownership.....	100.000	Nationwide Mutual Insurance Company NO.....
. 0140	Nationwide		46-1971926				Nationwide Tax Credit Partners 2013-A, LLC OH..... OTH.....	Nationwide Life Insurance Company	Other.....	0.010	Nationwide Mutual Insurance Company NO.....	... 1
. 0140	Nationwide		31-1592130	2729677			Nationwide Tax Credit Partners 2013-B, LLC OH..... OTH.....	Nationwide Life Insurance Company	Other.....	0.010	Nationwide Mutual Insurance Company NO.....	... 1
. 0140	Nationwide		20-5976272				Nationwide Trust Company, FSB US..... NIA.....	Nationwide Financial Services, Inc.	Ownership.....	100.000	Nationwide Mutual Insurance Company NO.....
. 0140	Nationwide		85-4193218				Nationwide Ventures, LLC OH..... NIA.....	Nationwide Mutual Insurance Company	Ownership.....	100.000	Nationwide Mutual Insurance Company NO.....
. 0140	Nationwide		11-3651828				NCS Arizona, LLC OH..... NIA.....	Nationwide Mutual Insurance Company	Ownership.....	100.000	Nationwide Mutual Insurance Company NO.....
. 0140	Nationwide		31-1630871				ND La Quinta Partners, LLC DE..... NIA.....	Nationwide Realty Investors, Ltd.	Ownership.....	95.000	Nationwide Mutual Insurance Company NO.....
. 0140	Nationwide						NFS Distributors, Inc. DE..... NIA.....	Nationwide Financial Services, Inc.	Ownership.....	100.000	Nationwide Mutual Insurance Company NO.....
. 0140	Nationwide		93-4557312				Nationwide Life and Annuity Insurance Company OH..... NIA.....	Nationwide Mutual Insurance Company	Ownership.....	100.000	Nationwide Mutual Insurance Company NO.....
. 0140	Nationwide		82-5195340				NLAIC REO Holdings, LLC OH..... NIA.....	Nationwide Mutual Insurance Company	Ownership.....	100.000	Nationwide Mutual Insurance Company NO.....
. 0140	Nationwide		82-5194959				NLIC REO Holdings, LLC OH..... NIA.....	Nationwide Life Insurance Company	Ownership.....	100.000	Nationwide Mutual Insurance Company NO.....
. 0140	Nationwide		46-3762545				NMIC REO Holdings, LLC OH..... NIA.....	Nationwide Mutual Insurance Company	Ownership.....	100.000	Nationwide Mutual Insurance Company NO.....
. 0140	Nationwide		20-4939866				NNOV8, LLC OH..... NIA.....	Nationwide Mutual Insurance Company	Ownership.....	100.000	Nationwide Mutual Insurance Company NO.....
. 0140	Nationwide		31-1486309				North of Third, LLC OH..... NIA.....	Nationwide Mutual Insurance Company	Ownership.....	100.000	Nationwide Mutual Insurance Company NO.....
. 0140	Nationwide		31-1486309				NRI Arena, LLC OH..... NIA.....	NRI Equity Land Investments, LLC	Ownership.....	100.000	Nationwide Mutual Insurance Company NO.....
. 0140	Nationwide		31-1486309				NRI Brookledge, LLC OH..... NIA.....	Nationwide Realty Investors, Ltd.	Ownership.....	100.000	Nationwide Mutual Insurance Company NO.....
. 0140	Nationwide		31-1486309				NRI Builders, LLC OH..... NIA.....	Nationwide Realty Investors, Ltd.	Ownership.....	100.000	Nationwide Mutual Insurance Company NO.....
. 0140	Nationwide		31-1486309				NRI Cavasson, LLC OH..... NIA.....	Nationwide Realty Investors, Ltd.	Ownership.....	100.000	Nationwide Mutual Insurance Company NO.....

STATEMENT AS OF MARCH 31, 2025 OF THE NATIONAL CASUALTY COMPANY

SCHEDULE Y

PART 1A - DETAILS OF INSURANCE HOLDING COMPANY SYSTEM

1	2	3	4	5	6	7	8	9	10	11	12	13	14	15	16
Group Code	Group Name	NAIC Company Code	ID Number	Federal RSSD	CIK	Name of Securities Exchange if Publicly Traded (U.S. or International)	Names of Parent, Subsidiaries Or Affiliates	Domi-ciliary Location	Relation-ship to Reporting Entity	Directly Controlled by (Name of Entity/Person)	Type of Control (Ownership, Board, Management, Attorney-in-Fact, Influence, Other)	If Control is Owner-ship Provide Percen-tage	Ultimate Controlling Entity(ies)/Person(s)	Is an SCA Filing Re-quired? (Yes/No)	*
.0140	Nationwide		31-1486309				NRI Corporate Housing, LLC	..OH.....	NIA.....	Nationwide Realty Investors, Ltd.	Ownership.....	100.000	Nationwide Mutual Insurance Company	...NO.....	
.0140	Nationwide		31-1486309				NRI Cramer Creek, LLC	..OH.....	NIA.....	Nationwide Realty Investors, Ltd.	Ownership.....	100.000	Nationwide Mutual Insurance Company	...NO.....	
.0140	Nationwide		20-4939866				NRI Equity Land Investments, LLC	..OH.....	NIA.....	Nationwide Realty Investors, Ltd.	Ownership.....	80.000	Nationwide Mutual Insurance Company	...NO.....	
.0140	Nationwide		26-0212217				NRI Equity Tampa, LLC	..OH.....	NIA.....	Nationwide Realty Investors, Ltd.	Ownership.....	100.000	Nationwide Mutual Insurance Company	...NO.....	
.0140	Nationwide		31-1486309				NRI Office Ventures, Ltd	..OH.....	NIA.....	Nationwide Realty Investors, Ltd.	Ownership.....	100.000	Nationwide Mutual Insurance Company	...NO.....	
.0140	Nationwide		31-1580283				NRI Telecom, LLC	..OH.....	NIA.....	NID Investments, LLC	Ownership.....	100.000	Nationwide Mutual Insurance Company	...NO.....	
.0140	Nationwide		31-1486309				NRI-Rivulon, LLC	..OH.....	NIA.....	Nationwide Realty Investors, Ltd.	Ownership.....	100.000	Nationwide Mutual Insurance Company	...NO.....	
.0140	Nationwide		90-0729552				NTCIF-2011, LLC	..OH.....	NIA.....	Nationwide Mutual Insurance Company	Ownership.....	100.000	Nationwide Mutual Insurance Company	...NO.....	
.0140	Nationwide		27-4700627				NTCP 2011-A, LLC	..OH.....	OTH.....	Nationwide Life Insurance Company	Other.....	0.010	Nationwide Mutual Insurance Company	...NO.....	1
.0140	Nationwide		46-0741029				NTCP 2012-A, LLC	..OH.....	OTH.....	Nationwide Life Insurance Company	Other.....	0.010	Nationwide Mutual Insurance Company	...NO.....	1
.0140	Nationwide		46-3309896				NTCP 2013-C, LLC	..OH.....	OTH.....	Nationwide Life Insurance Company	Other.....	0.010	Nationwide Mutual Insurance Company	...NO.....	1
.0140	Nationwide		46-4111078				NTCP 2014-A, LLC	..OH.....	OTH.....	Nationwide Life Insurance Company	Other.....	0.010	Nationwide Mutual Insurance Company	...NO.....	1
.0140	Nationwide		47-1404116				NTCP 2014-B, LLC	..OH.....	OTH.....	Nationwide Life Insurance Company	Other.....	0.010	Nationwide Mutual Insurance Company	...NO.....	1
.0140	Nationwide		47-1413242				NTCP 2014-C, LLC	..OH.....	NIA.....	Nationwide Life Insurance Company	Ownership.....	100.000	Nationwide Mutual Insurance Company	...NO.....	
.0140	Nationwide		47-3909345				NTCP 2015-A, LLC	..OH.....	OTH.....	Nationwide Life Insurance Company	Other.....	0.010	Nationwide Mutual Insurance Company	...NO.....	1
.0140	Nationwide		47-4148470				NTCP 2015-B, LLC	..OH.....	OTH.....	Nationwide Life Insurance Company	Other.....	0.010	Nationwide Mutual Insurance Company	...NO.....	1
.0140	Nationwide		81-3836925				NTCP 2016-A, LLC	..OH.....	OTH.....	Nationwide Life Insurance Company	Other.....	0.010	Nationwide Mutual Insurance Company	...NO.....	1
.0140	Nationwide		82-2015065				NTCP 2017-A, LLC	..OH.....	OTH.....	Nationwide Life Insurance Company	Other.....	0.010	Nationwide Mutual Insurance Company	...NO.....	1
.0140	Nationwide		84-1969518				NW Fyrebyrd, LLC	..OH.....	NIA.....	NNOV8, LLC	Ownership.....	100.000	Nationwide Mutual Insurance Company	...NO.....	
.0140	Nationwide		85-3363961				NW Next, LLC	..OH.....	NIA.....	NNOV8, LLC	Ownership.....	100.000	Nationwide Mutual Insurance Company	...NO.....	
.0140	Nationwide		81-0936428				NW Private Debt, LLC	..OH.....	NIA.....	Nationwide Mutual Insurance Company	Ownership.....	100.000	Nationwide Mutual Insurance Company	...NO.....	
.0140	Nationwide		26-1903919				NW REI, LLC	..DE.....	NIA.....	Nationwide Mutual Insurance Company	Ownership.....	100.000	Nationwide Mutual Insurance Company	...NO.....	
.0140	Nationwide		92-1294202				NW-Adams, LLC	..OH.....	NIA.....	NW REI, LLC	Ownership.....	100.000	Nationwide Mutual Insurance Company	...NO.....	
.0140	Nationwide		99-3508624				NW-Aureum, LLC	..OH.....	NIA.....	NW REI (NLIC), LLC	Ownership.....	100.000	Nationwide Mutual Insurance Company	...NO.....	
.0140	Nationwide		92-2674633				NW-Brandon LLC	..OH.....	NIA.....	NW REI (NLIC), LLC	Ownership.....	100.000	Nationwide Mutual Insurance Company	...NO.....	
.0140	Nationwide		87-0847675				NW-Broadway at Surf, LLC	..OH.....	NIA.....	NMIC REO Holdings, LLC	Ownership.....	100.000	Nationwide Mutual Insurance Company	...NO.....	
.0140	Nationwide		88-2152576				NW-Colfax, LLC	..OH.....	NIA.....	NW REI (NLAIC), LLC	Ownership.....	100.000	Nationwide Mutual Insurance Company	...NO.....	
.0140	Nationwide		92-0292630				NW-Conroe, LLC	..OH.....	NIA.....	Nationwide Life Insurance Company	Ownership.....	100.000	Nationwide Mutual Insurance Company	...NO.....	
.0140	Nationwide		87-3648595				NW-Corazon, LLC	..OH.....	NIA.....	Nationwide Life Insurance Company	Ownership.....	100.000	Nationwide Mutual Insurance Company	...NO.....	
.0140	Nationwide		99-3065627				NW-Denton, LLC	..OH.....	NIA.....	NW REI, LLC	Ownership.....	100.000	Nationwide Mutual Insurance Company	...NO.....	
.0140	Nationwide		86-3529884				NW-Englewood, LLC	..OH.....	NIA.....	NW REI (NLIC), LLC	Ownership.....	100.000	Nationwide Mutual Insurance Company	...NO.....	
.0140	Nationwide		84-4388876				NW-Escalante, LLC	..OH.....	NIA.....	NW REI, LLC	Ownership.....	100.000	Nationwide Mutual Insurance Company	...NO.....	
.0140	Nationwide		86-1538532				NW-Escalante II, LLC	..OH.....	NIA.....	NW REI, LLC	Ownership.....	100.000	Nationwide Mutual Insurance Company	...NO.....	
.0140	Nationwide		92-3310596				NW-FSU, LLC	..OH.....	NIA.....	NW REI (NLIC), LLC	Ownership.....	100.000	Nationwide Mutual Insurance Company	...NO.....	
.0140	Nationwide		31-1580283				NWD 205 Vine, LLC	..OH.....	NIA.....	NWD Investments, LLC	Ownership.....	100.000	Nationwide Mutual Insurance Company	...NO.....	
.0140	Nationwide		31-1580283				NWD 225 Nationwide, LLC	..OH.....	NIA.....	NWD Investments, LLC	Ownership.....	100.000	Nationwide Mutual Insurance Company	...NO.....	
.0140	Nationwide		31-1580283				NWD 230 West, LLC	..OH.....	NIA.....	NWD Investments, LLC	Ownership.....	100.000	Nationwide Mutual Insurance Company	...NO.....	
.0140	Nationwide		31-1580283				NWD 240 Nationwide, LLC	..OH.....	NIA.....	NWD Investments, LLC	Ownership.....	100.000	Nationwide Mutual Insurance Company	...NO.....	
.0140	Nationwide		31-1580283				NWD 250 Brodbelt, LLC	..OH.....	NIA.....	NWD Investments, LLC	Ownership.....	100.000	Nationwide Mutual Insurance Company	...NO.....	
.0140	Nationwide		31-1580283				NWD 250 West, LLC	..OH.....	NIA.....	NWD Investments, LLC	Ownership.....	100.000	Nationwide Mutual Insurance Company	...NO.....	
.0140	Nationwide		31-1580283				NWD 265 Neil, LLC	..OH.....	NIA.....	NWD Investments, LLC	Ownership.....	100.000	Nationwide Mutual Insurance Company	...NO.....	
.0140	Nationwide		31-1580283				NWD 275 Marconi, LLC	..OH.....	NIA.....	NWD Investments, LLC	Ownership.....	100.000	Nationwide Mutual Insurance Company	...NO.....	
.0140	Nationwide		31-1580283				NWD 300 Neil, LLC	..OH.....	NIA.....	NWD Investments, LLC	Ownership.....	100.000	Nationwide Mutual Insurance Company	...NO.....	
.0140	Nationwide		31-1580283				NWD 300 Spring, LLC	..OH.....	NIA.....	NWD Investments, LLC	Ownership.....	100.000	Nationwide Mutual Insurance Company	...NO.....	
.0140	Nationwide		31-1580283				NWD 355 McConnell, LLC	..OH.....	NIA.....	NWD Investments, LLC	Ownership.....	100.000	Nationwide Mutual Insurance Company	...NO.....	
.0140	Nationwide		31-1580283				NWD 425 Nationwide, LLC	..OH.....	NIA.....	NWD Investments, LLC	Ownership.....	100.000	Nationwide Mutual Insurance Company	...NO.....	
.0140	Nationwide		31-1580283				NWD 500 Nationwide, LLC	..OH.....	NIA.....	NWD Investments, LLC	Ownership.....	100.000	Nationwide Mutual Insurance Company	...NO.....	
.0140	Nationwide		31-1580283				NWD Arena Crossing, LLC	..OH.....	NIA.....	NWD Investments, LLC	Ownership.....	100.000	Nationwide Mutual Insurance Company	...NO.....	
.0140	Nationwide		31-1580283				NWD Arena District I, LLC	..OH.....	NIA.....	NWD Investments, LLC	Ownership.....	100.000	Nationwide Mutual Insurance Company	...NO.....	

STATEMENT AS OF MARCH 31, 2025 OF THE NATIONAL CASUALTY COMPANY

SCHEDULE Y
PART 1A - DETAILS OF INSURANCE HOLDING COMPANY SYSTEM

1	2	3	4	5	6	7	8	9	10	11	12	13	14	15	16
Group Code	Group Name	NAIC Company Code	ID Number	Federal RSSD	CIK	Name of Securities Exchange if Publicly Traded (U.S. or International)	Names of Parent, Subsidiaries Or Affiliates	Domi-ciliary Location	Relation-ship to Reporting Entity	Directly Controlled by (Name of Entity/Person)	Type of Control (Ownership, Board, Management, Attorney-in-Fact, Influence, Other)	If Control is Owner-ship Provide Percen-tage	Ultimate Controlling Entity(ies)/Person(s)	Is an SCA Filing Re-quired? (Yes/No)	*
. 0140 ...	Nationwide	31-1580283	NWD Arena District II, LLC OH.....NIA.....	NWD Investments, LLC	Ownership.....	100.000 ...	Nationwide Mutual Insurance Company NO.....
. 0140 ...	Nationwide	31-1580283	NWD Arena District MM, LLC OH.....NIA.....	NWD Investments, LLC	Ownership.....	100.000 ...	Nationwide Mutual Insurance Company NO.....
. 0140 ...	Nationwide	31-1580283	NWD Arena District PW, LLC OH.....NIA.....	NWD Investments, LLC	Ownership.....	100.000 ...	Nationwide Mutual Insurance Company NO.....
. 0140 ...	Nationwide	31-1580283	NWD Arena District V, LLC OH.....NIA.....	NWD Investments, LLC	Ownership.....	100.000 ...	Nationwide Mutual Insurance Company NO.....
. 0140 ...	Nationwide	31-1580283	NWD Athletic Club, LLC OH.....NIA.....	NWD Investments, LLC	Ownership.....	100.000 ...	Nationwide Mutual Insurance Company NO.....
. 0140 ...	Nationwide	88-2975730	NW-Boise, LLC OH.....NIA.....	Nationwide Life Insurance Company	Ownership.....	100.000 ...	Nationwide Mutual Insurance Company NO.....
. 0140 ...	Nationwide	31-1580283	NWD Brodbelt, LLC OH.....NIA.....	NWD Investments, LLC	Ownership.....	100.000 ...	Nationwide Mutual Insurance Company NO.....
. 0140 ...	Nationwide	30-0876022	NWD Franklinton, LLC OH.....NIA.....	Nationwide Realty Investors, Ltd.	Ownership.....	80.000 ...	Nationwide Mutual Insurance Company NO.....
. 0140 ...	Nationwide	31-4118665	NWD HP, LLC OH.....NIA.....	NWD Investments, LLC	Ownership.....	75.000 ...	Nationwide Mutual Insurance Company NO.....
. 0140 ...	Nationwide	31-1580283	NWD Investments, LLC OH.....NIA.....	Nationwide Realty Investors, Ltd.	Ownership.....	80.000 ...	Nationwide Mutual Insurance Company NO.....
. 0140 ...	Nationwide	31-1486309	NWGH, LLC OH.....NIA.....	Nationwide Realty Investors, Ltd.	Ownership.....	75.000 ...	Nationwide Mutual Insurance Company NO.....
. 0140 ...	Nationwide	87-3124154	NW-Gallatin, LLC OH.....NIA.....	Nationwide Life Insurance Company	Ownership.....	100.000 ...	Nationwide Mutual Insurance Company NO.....
. 0140 ...	Nationwide	92-2943602	NW-Holly Springs, LLC OH.....NIA.....	Nationwide Mutual Insurance Company	Ownership.....	100.000 ...	Nationwide Mutual Insurance Company NO.....
. 0140 ...	Nationwide	86-2431839	NW-Hub13, LLC OH.....NIA.....	NW REI, LLC	Ownership.....	100.000 ...	Nationwide Mutual Insurance Company NO.....
. 0140 ...	Nationwide	92-3558072	NW-Huntersville, LLC OH.....NIA.....	NW REI, LLC	Ownership.....	100.000 ...	Nationwide Mutual Insurance Company NO.....
. 0140 ...	Nationwide	47-2482818	NW-Jasper WAG, LLC OH.....NIA.....	NW REI, LLC	Ownership.....	100.000 ...	Nationwide Mutual Insurance Company NO.....
. 0140 ...	Nationwide	87-3767006	NW-Kingsbury, LLC OH.....NIA.....	Nationwide Life Insurance Company	Ownership.....	100.000 ...	Nationwide Mutual Insurance Company NO.....
. 0140 ...	Nationwide	81-5146596	NW-Logan, LLC OH.....NIA.....	NW REI, LLC	Ownership.....	100.000 ...	Nationwide Mutual Insurance Company NO.....
. 0140 ...	Nationwide	87-1565013	NW-Midtown, LLC OH.....NIA.....	NW REI, LLC	Ownership.....	100.000 ...	Nationwide Mutual Insurance Company NO.....
. 0140 ...	Nationwide	88-2595124	NW-OG, LLC OH.....NIA.....	NW REI, LLC	Ownership.....	100.000 ...	Nationwide Mutual Insurance Company NO.....
. 0140 ...	Nationwide	83-2260477	NW-ORBD, LLC OH.....NIA.....	NW REI (NMFC), LLC	Ownership.....	100.000 ...	Nationwide Mutual Insurance Company NO.....
. 0140 ...	Nationwide	93-1728625	NW-Pleasant Prairie, LLC OH.....NIA.....	NW REI (NLIC), LLC	Ownership.....	100.000 ...	Nationwide Mutual Insurance Company NO.....
. 0140 ...	Nationwide	47-2449044	NW-Promenade at Madison, LLC OH.....NIA.....	NW REI, LLC	Ownership.....	100.000 ...	Nationwide Mutual Insurance Company NO.....
. 0140 ...	Nationwide	87-1367836	NW-Rancho, LLC OH.....NIA.....	NW REI, LLC	Ownership.....	100.000 ...	Nationwide Mutual Insurance Company NO.....
. 0140 ...	Nationwide	88-1405151	NW-Riverchase, LLC OH.....NIA.....	Nationwide Life Insurance Company	Ownership.....	100.000 ...	Nationwide Mutual Insurance Company NO.....
. 0140 ...	Nationwide	86-3702669	NW-RPG Cranberry, LLC OH.....NIA.....	NW REI, LLC	Ownership.....	100.000 ...	Nationwide Mutual Insurance Company NO.....
. 0140 ...	Nationwide	87-3273918	NW-San Marco, LLC OH.....NIA.....	Nationwide Life Insurance Company	Ownership.....	100.000 ...	Nationwide Mutual Insurance Company NO.....
. 0140 ...	Nationwide	87-3289289	NW-San Pablo, LLC OH.....NIA.....	NW REI, LLC	Ownership.....	100.000 ...	Nationwide Mutual Insurance Company NO.....
. 0140 ...	Nationwide	81-3212025	NW-Springfield, LLC OH.....NIA.....	NW REI, LLC	Ownership.....	100.000 ...	Nationwide Mutual Insurance Company NO.....
. 0140 ...	Nationwide	93-2022585	NW-Spring Hill, LLC OH.....NIA.....	NW REI, LLC	Ownership.....	100.000 ...	Nationwide Mutual Insurance Company NO.....
. 0140 ...	Nationwide	92-2878794	NW-SR-16, LLC OH.....NIA.....	NW REI, LLC	Ownership.....	100.000 ...	Nationwide Mutual Insurance Company NO.....
. 0140 ...	Nationwide	92-0677233	NW-UNCC, LLC OH.....NIA.....	NW REI (NLIC), LLC	Ownership.....	100.000 ...	Nationwide Mutual Insurance Company NO.....
. 0140 ...	Nationwide	81-1603024	NW REI (NLAIC), LLC OH.....NIA.....	Nationwide Life and Annuity Insurance Company	Ownership.....	100.000 ...	Nationwide Mutual Insurance Company NO.....
. 0140 ...	Nationwide	81-1619428	NW REI (NLIC), LLC OH.....NIA.....	Nationwide Life Insurance Company	Ownership.....	100.000 ...	Nationwide Mutual Insurance Company NO.....
. 0140 ...	Nationwide	81-1861190	NW REI (NMIC), LLC OH.....NIA.....	Nationwide Mutual Insurance Company	Ownership.....	100.000 ...	Nationwide Mutual Insurance Company NO.....
. 0140 ...	Nationwide	31-0947092	OCH Company, LLC OH.....NIA.....	Nationwide Realty Investors, Ltd.	Ownership.....	100.000 ...	Nationwide Mutual Insurance Company NO.....
. 0140 ...	Nationwide	26-0263012	Old Track Street Owners Association, Inc. OH.....OTH.....	Other non-Nationwide	Other.....	0.000 ...	Other non-Nationwide NO.....	2
. 0140 ...	Nationwide ...	13999 ..	27-1712056	Olentangy Reinsurance, LLC VT.....IA.....	Company	Ownership.....	100.000 ...	Nationwide Mutual Insurance Company NO.....
. 0140 ...	Nationwide	31-1486309	Perimeter A, Ltd. OH.....NIA.....	Nationwide Realty Investors, Ltd.	Ownership.....	100.000 ...	Nationwide Mutual Insurance Company NO.....
. 0140 ...	Nationwide	20-4939866	Rail Street Parking, LLC OH.....NIA.....	NRI Equity Land Investments, LLC	Ownership.....	100.000 ...	Nationwide Mutual Insurance Company NO.....
. 0140 ...	Nationwide	75-2938844	Registered Investment Advisors Services, Inc.
. 0140 ...	Nationwide	82-0549218	Retention Alternatives Ltd. TX.....NIA.....	Nationwide Financial Services, Inc.	Ownership.....	100.000 ...	Nationwide Mutual Insurance Company NO.....
. 0140 ...	Nationwide ...	15580 ..	31-1117969	Scottsdale Indemnity CompanyIA.....	Nationwide Mutual Insurance Company	Ownership.....	100.000 ...	Nationwide Mutual Insurance Company NO.....
. 0140 ...	Nationwide ...	41297 ..	31-1024978	Scottsdale Insurance Company OH.....IA.....	Nationwide Mutual Insurance Company	Ownership.....	100.000 ...	Nationwide Mutual Insurance Company NO.....
. 0140 ...	Nationwide ...	10672 ..	86-0835870	Scottsdale Surplus Lines Insurance Company .	.. AZ.....IA.....	Scottsdale Insurance Company	Ownership.....	100.000 ...	Nationwide Mutual Insurance Company NO.....
. 0140 ...	Nationwide	31-1610040	The Waterfront Partners, LLC OH.....NIA.....	Nationwide Realty Investors, Ltd.	Ownership.....	50.000 ...	Nationwide Mutual Insurance Company NO.....

SCHEDULE Y
PART 1A - DETAILS OF INSURANCE HOLDING COMPANY SYSTEM

1	2	3	4	5	6	7	8	9	10	11	12	13	14	15	16
Group Code	Group Name	NAIC Company Code	ID Number	Federal RSSD	CIK	Name of Securities Exchange if Publicly Traded (U.S. or International)	Names of Parent, Subsidiaries Or Affiliates	Domi-ciliary Loca-tion	Relation-ship to Reporting Entity	Directly Controlled by (Name of Entity/Person)	Type of Control (Ownership, Board, Management, Attorney-in-Fact, Influence, Other)	If Control is Owner-ship Provide Percen-tage	Ultimate Controlling Entity(ies)/Person(s)	Is an SCA Filing Re-quired? (Yes/No)	*
. 0140 ...	Nationwide 36269 ...	86-0619597	Titan Insurance Company MI..... IA.....	Nationwide Mutual Insurance Company	Ownership.....	100.000 ...	Nationwide Mutual Insurance Company NO.....
. 0140 ...	Nationwide	75-1284530	Titan Insurance Services, Inc. TX..... IA.....	Nationwide Mutual Insurance Company	Ownership.....	100.000 ...	Nationwide Mutual Insurance Company NO.....
. 0140 ...	Nationwide	33-0160222	V.P.I. Services, Inc. CA..... IA.....	Veterinary Pet Insurance Company	Ownership.....	100.000 ...	Nationwide Mutual Insurance Company NO.....
. 0140 ...	Nationwide 42285 ...	95-3750113	Veterinary Pet Insurance Company OH..... IA.....	Scottsdale Insurance Company	Ownership.....	100.000 ...	Nationwide Mutual Insurance Company NO.....
. 0140 ...	Nationwide 42889 ...	34-1394913	Victoria Fire & Casualty Company OH..... IA.....	Nationwide Mutual Insurance Company	Ownership.....	100.000 ...	Nationwide Mutual Insurance Company NO.....
. 0140 ...	Nationwide 10105 ...	34-1777972	Victoria Select Insurance Company OH..... IA.....	Victoria Fire & Casualty Insurance Company	Ownership.....	100.000 ...	Nationwide Mutual Insurance Company NO.....

Asterisk	Explanation
1	Nationwide retains management responsibility for these entities, despite a minority ownership stake.
2	Other ownership indicates a non-ownership circumstance by a Nationwide entity.

STATEMENT AS OF MARCH 31, 2025 OF THE NATIONAL CASUALTY COMPANY

PART 1 - LOSS EXPERIENCE

Line of Business		Current Year to Date			4
		1 Direct Premiums Earned	2 Direct Losses Incurred	3 Direct Loss Percentage	Prior Year to Date Direct Loss Percentage
1.	Fire	4,572,774	321,929	7.0	13.1
2.1	Allied Lines	47,620,995	49,042,266	103.0	45.8
2.2	Multiple peril crop				
2.3	Federal flood				
2.4	Private crop				
2.5	Private flood	104	(7,072)	(6,800.0)	(574.0)
3.	Farmowners multiple peril	(184)	1,083	(588.6)	
4.	Homeowners multiple peril	(268)	593,898	(221,603.7)	(35.3)
5.1	Commercial multiple peril (non-liability portion)	305,613	2,256,634	738.4	(689.3)
5.2	Commercial multiple peril (liability portion)	17,525	(1,979,613)	(11,295.9)	(832.7)
6.	Mortgage guaranty				
8.	Ocean marine	9,342,299	9,742,279	104.3	32.3
9.1	Inland marine	3,329,417	1,797,636	54.0	73.3
9.2	Pet insurance	197,625,348	149,517,384	75.7	79.4
10.	Financial guaranty				
11.1	Medical professional liability - occurrence				
11.2	Medical professional liability - claims-made				
12.	Earthquake	781	440	56.3	(88.8)
13.1	Comprehensive (hospital and medical) individual				
13.2	Comprehensive (hospital and medical) group	1,934	(12,485)	(645.6)	(254.3)
14.	Credit accident and health				
15.1	Vision only				
15.2	Dental only				
15.3	Disability income	9,756	4,448	45.6	28.9
15.4	Medicare supplement				
15.5	Medicaid Title XIX				
15.6	Medicare Title XVIII				
15.7	Long-term care				
15.8	Federal employees health benefits plan				
15.9	Other health	25,473	9,844	38.6	20.0
16.	Workers' compensation	84,406,762	54,350,736	64.4	53.2
17.1	Other liability - occurrence	21,287,519	20,332,308	95.5	97.2
17.2	Other liability - claims-made	42,183,932	23,894,990	56.6	34.4
17.3	Excess workers' compensation				
18.1	Products liability - occurrence	1,921,182	(644,053)	(33.5)	39.8
18.2	Products liability - claims-made	34,078			
19.1	Private passenger auto no-fault (personal injury protection)	(724)	(75)	10.4	6.0
19.2	Other private passenger auto liability		(415)		
19.3	Commercial auto no-fault (personal injury protection)	26,162	(727,675)	(2,781.4)	(55.9)
19.4	Other commercial auto liability	1,754,489	(1,705,869)	(97.2)	72.7
21.1	Private passenger auto physical damage				
21.2	Commercial auto physical damage	360,919	(8,147)	(2.3)	51.0
22.	Aircraft (all perils)	282,066	(42,953)	(15.2)	11.9
23.	Fidelity	1,954,497	58,461	3.0	
24.	Surety		(976,235)		
26.	Burglary and theft	41,846	196,577	469.8	286.7
27.	Boiler and machinery	625,433	(2,445,452)	(391.0)	(18.5)
28.	Credit				
29.	International				
30.	Warranty	2,299,914	975,308	42.4	11.8
31.	Reinsurance - Nonproportional Assumed Property	XXX	XXX	XXX	XXX
32.	Reinsurance - Nonproportional Assumed Liability	XXX	XXX	XXX	XXX
33.	Reinsurance - Nonproportional Assumed Financial Lines	XXX	XXX	XXX	XXX
34.	Aggregate write-ins for other lines of business				
35.	Totals	420,029,642	304,546,177	72.5	61.8
DETAILS OF WRITE-INS					
3401.				
3402.				
3403.				
3498.	Summary of remaining write-ins for Line 34 from overflow page				
3499.	Totals (Lines 3401 through 3403 plus 3498)(Line 34 above)				

STATEMENT AS OF MARCH 31, 2025 OF THE NATIONAL CASUALTY COMPANY

PART 2 - DIRECT PREMIUMS WRITTEN

Line of Business		1 Current Quarter	2 Current Year to Date	3 Prior Year Year to Date
1.	Fire	5,190,437	5,190,437	154,017
2.1	Allied Lines	72,601,921	72,601,921	44,554,410
2.2	Multiple peril crop			
2.3	Federal flood			
2.4	Private crop			
2.5	Private flood			500
3.	Farmowners multiple peril	974	974	102
4.	Homeowners multiple peril			397,200
5.1	Commercial multiple peril (non-liability portion)	347,410	347,410	159,386
5.2	Commercial multiple peril (liability portion)	11,804	11,804	400,311
6.	Mortgage guaranty			
8.	Ocean marine	6,253,461	6,253,461	9,593,913
9.1	Inland marine	4,738,644	4,738,644	1,824,730
9.2	Pet insurance	218,637,093	218,637,093	215,462,198
10.	Financial guaranty			
11.1	Medical professional liability - occurrence			
11.2	Medical professional liability - claims-made			
12.	Earthquake	1,295	1,295	892
13.1	Comprehensive (hospital and medical) individual			
13.2	Comprehensive (hospital and medical) group	3,152	3,152	3,878
14.	Credit accident and health			
15.1	Vision only			
15.2	Dental only			
15.3	Disability income	14,313	14,313	18,715
15.4	Medicare supplement			
15.5	Medicaid Title XIX			
15.6	Medicare Title XVIII			
15.7	Long-term care			
15.8	Federal employees health benefits plan			
15.9	Other health	10,473	10,473	17,082
16.	Workers' compensation	100,848,508	100,848,508	68,294,518
17.1	Other liability - occurrence	21,486,555	21,486,555	20,085,271
17.2	Other liability - claims-made	29,544,146	29,544,146	34,151,114
17.3	Excess workers' compensation			
18.1	Products liability - occurrence	3,355,985	3,355,985	3,333,086
18.2	Products liability - claims-made	83,487	83,487	54,793
19.1	Private passenger auto no-fault (personal injury protection)	(1,317)	(1,317)	929
19.2	Other private passenger auto liability			
19.3	Commercial auto no-fault (personal injury protection)	22,922	22,922	65,527
19.4	Other commercial auto liability	1,454,627	1,454,627	(1,313,003)
21.1	Private passenger auto physical damage			
21.2	Commercial auto physical damage	443,389	443,389	280,589
22.	Aircraft (all perils)	448,639	448,639	222,700
23.	Fidelity	1,461,799	1,461,799	1,556,481
24.	Surety			
26.	Burglary and theft	46,873	46,873	31,510
27.	Boiler and machinery	552,966	552,966	94,075
28.	Credit			
29.	International			
30.	Warranty	1,689,421	1,689,421	1,532,833
31.	Reinsurance - Nonproportional Assumed Property	XXX	XXX	XXX
32.	Reinsurance - Nonproportional Assumed Liability	XXX	XXX	XXX
33.	Reinsurance - Nonproportional Assumed Financial Lines	XXX	XXX	XXX
34.	Aggregate write-ins for other lines of business			
35.	Totals	469,248,977	469,248,977	400,977,757
DETAILS OF WRITE-INS				
3401.			
3402.			
3403.			
3498.	Summary of remaining write-ins for Line 34 from overflow page			
3499.	Totals (Lines 3401 through 3403 plus 3498)(Line 34 above)			

STATEMENT AS OF MARCH 31, 2025 OF THE NATIONAL CASUALTY COMPANY

PART 3 (\$000 OMITTED)

LOSS AND LOSS ADJUSTMENT EXPENSE RESERVES SCHEDULE

	1	2	3	4	5	6	7	8	9	10	11	12	13	
Years in Which Losses Occurred	Prior Year-End Known Case Loss and LAE Reserves	Prior Year-End IBNR Loss and LAE Reserves	Total Prior Year-End Loss and LAE Reserves (Cols. 1+2)	2025 Loss and LAE Payments on Claims Reported as of Prior Year-End	2025 Loss and LAE Payments on Claims Unreported as of Prior Year-End	Total 2025 Loss and LAE Payments (Cols. 4+5)	Q.S. Date Known Case Loss and LAE Reserves on Claims Reported and Open as of Prior Year End	Q.S. Date Known Case Loss and LAE Reserves on Claims Reported or Reopened Subsequent to Prior Year End	Q.S. Date IBNR Loss and LAE Reserves	Total Q.S. Loss and LAE Reserves (Cols.7+8+9)	Prior Year-End Known Case Loss and LAE Reserves Developed (Savings)/ Deficiency (Cols.4+7 minus Col. 1)	Prior Year-End IBNR Loss and LAE Reserves Developed (Savings)/ Deficiency (Cols. 5+8+9 minus Col. 2)	Prior Year-End Total Loss and LAE Reserve Developed (Savings)/ Deficiency (Cols. 11+12)	
1. 2022 + Prior	38,743	39,148	77,891	(14,593)	(518)	(15,111)	45,758	685	45,778	92,221	(7,578)	6,797	(781)	
2. 2023	15,873	20,111	35,984	3,700	118	3,818	13,633	511	17,708	31,852	1,460	(1,774)	(314)	
3. Subtotals 2023 + Prior	54,616	59,259	113,875	(10,893)	(400)	(11,293)	59,391	1,196	63,486	124,073	(6,118)	5,023	(1,095)	
4. 2024	19,106	35,920	55,026	7,884	1,236	9,120	14,770	1,410	28,931	45,111	3,548	(4,343)	(795)	
5. Subtotals 2024 + Prior	73,722	95,179	168,901	(3,009)	836	(2,173)	74,161	2,606	92,417	169,184	(2,570)	680	(1,890)	
6. 2025	XXX	XXX	XXX	XXX	8,934	8,934	XXX	4,930	14,271	19,201	XXX	XXX	XXX	
7. Totals	73,722	95,179	168,901	(3,009)	9,770	6,761	74,161	7,536	106,688	188,385	(2,570)	680	(1,890)	
8. Prior Year-End Surplus As Regards Policyholders	215,816											Col. 11, Line 7 As % of Col. 1 Line 7	Col. 12, Line 7 As % of Col. 2 Line 7	Col. 13, Line 7 As % of Col. 3 Line 7
												1. (3.5)	2. 0.7	3. (1.1)
												Col. 13, Line 7 As a % of Col. 1 Line 8		
												4. (0.9)		

STATEMENT AS OF MARCH 31, 2025 OF THE NATIONAL CASUALTY COMPANY

SUPPLEMENTAL EXHIBITS AND SCHEDULES INTERROGATORIES

The following supplemental reports are required to be filed as part of your statement filing. However, in the event that your company does not transact the type of business for which the special report must be filed, your response of NO to the specific interrogatory will be accepted in lieu of filing a "NONE" report and a bar code will be printed below. If the supplement is required of your company but is not being filed for whatever reason enter SEE EXPLANATION and provide an explanation following the interrogatory questions.

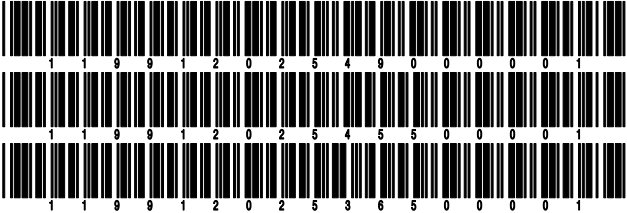
	Response
1. Will the Trusteed Surplus Statement be filed with the state of domicile and the NAIC with this statement?	NO
2. Will Supplement A to Schedule T (Medical Professional Liability Supplement) be filed with this statement?	NO
3. Will the Medicare Part D Coverage Supplement be filed with the state of domicile and the NAIC with this statement?	NO
4. Will the Director and Officer Insurance Coverage Supplement be filed with the state of domicile and the NAIC with this statement?	YES
AUGUST FILING	
5. Will the regulator-only (non-public) Communication of Internal Control Related Matters Noted in Audit be filed with the state of domicile and electronically with the NAIC (as a regulator-only non-public document) by August 1? The response for 1st and 3rd quarters should be N/A. A NO response resulting with a bar code is only appropriate in the 2nd quarter.	N/A

Explanations:

1.
2.
3.

Bar Codes:

1. Trusteed Surplus Statement [Document Identifier 490]
2. Supplement A to Schedule T [Document Identifier 455]
3. Medicare Part D Coverage Supplement [Document Identifier 365]



STATEMENT AS OF MARCH 31, 2025 OF THE NATIONAL CASUALTY COMPANY

OVERFLOW PAGE FOR WRITE-INS

Additional Write-ins for Assets Line 25

	Current Statement Date			4 December 31 Prior Year Net Admitted Assets
	1 Assets	2 Nonadmitted Assets	3 Net Admitted Assets (Cols. 1 - 2)	
2504. Other assets nonadmitted	(75)		(75)	(134)
2505. Recoupment receivable	159,706		159,706	17,686
2506. Funds held equity pools & associations	1,790,167		1,790,167	1,899,730
2507. Deductible receivables	26,902	2,147	24,755	28,425
2597. Summary of remaining write-ins for Line 25 from overflow page	1,976,700	2,147	1,974,553	1,945,707

Additional Write-ins for Liabilities Line 25

	1 Current Statement Date	2 December 31, Prior Year
2504. State surcharge/recoupment payable	130,895	147,942
2505. Third party administrator payable	1,069,529	133,072
2597. Summary of remaining write-ins for Line 25 from overflow page	1,200,424	281,014

Additional Write-ins for Schedule T Line 58

	1 Active Status	Direct Premiums Written		Direct Losses Paid (Deducting Salvage)		Direct Losses Unpaid	
		2 Current Year To Date	3 Prior Year To Date	4 Current Year To Date	5 Prior Year To Date	6 Current Year To Date	7 Prior Year To Date
58004. Mexico	XXX	(214,946)	40,569			567,107	703,293
58005. Austria	XXX					9,679	55,463
58006. Brazil	XXX					71,993	60,267
58007. China	XXX	(127,336)	306,172			590,280	301,407
58008. France	XXX					301,019	451,625
58009. Singapore	XXX	(23,670)				4,183	52,804
58010. Netherlands	XXX	708,677				311,879	69,282
58011. Australia	XXX					102,480	140,377
58012. Vietnam	XXX					10,170	32,367
58013. Belgium	XXX					15,464	50,933
58014. Spain	XXX					38,864	41,176
58015. Japan	XXX		425			56,070	74,208
58016. South Africa	XXX					23,514	13,514
58017. Italy	XXX					125,624	162,454
58018. Phillipines	XXX					5,049	12,326
58019. Argentina	XXX					4,206	21,369
58020. Guatemala	XXX					24,353	9,142
58021. Hong Kong	XXX					64,746	72,009
58022. Germany	XXX			6,055			
58997. Summary of remaining write-ins for Line 58 from overflow page	XXX	342,725	347,166	6,055		2,326,680	2,324,016

STATEMENT AS OF MARCH 31, 2025 OF THE NATIONAL CASUALTY COMPANY

SCHEDULE A - VERIFICATION

Real Estate

	1	2
	Year to Date	Prior Year Ended December 31
1. Book/adjusted carrying value, December 31 of prior year		
2. Cost of acquired:		
2.1 Actual cost at time of acquisition		
2.2 Additional investment made after acquisition		
3. Current year change in encumbrances		
4. Total gain (loss) on disposals		
5. Deduct amounts received on disposals		
6. Total foreign exchange change in book/adjusted carrying value		
7. Deduct current year's other than temporary impairment recognized		
8. Deduct current year's depreciation		
9. Book/adjusted carrying value at the end of current period (Lines 1+2+3+4-5+6-7-8)		
10. Deduct total nonadmitted amounts		
11. Statement value at end of current period (Line 9 minus Line 10)		

SCHEDULE B - VERIFICATION

Mortgage Loans

	1	2
	Year to Date	Prior Year Ended December 31
1. Book value/recorded investment excluding accrued interest, December 31 of prior year		
2. Cost of acquired:		
2.1 Actual cost at time of acquisition		
2.2 Additional investment made after acquisition		
3. Capitalized deferred interest and other		
4. Accrual of discount		
5. Unrealized valuation increase/(decrease)		
6. Total gain (loss) on disposals		
7. Deduct amounts received on disposals		
8. Deduct amortization of premium and mortgage interest paid and commitment fees		
9. Total foreign exchange change in book value/recorded investment excluding accrued interest		
10. Deduct current year's other than temporary impairment recognized		
11. Book value/recorded investment excluding accrued interest at end of current period (Lines 1+2+3+4+5+6-7-8+9-10)		
12. Total valuation allowance		
13. Subtotal (Line 11 plus Line 12)		
14. Deduct total nonadmitted amounts		
15. Statement value at end of current period (Line 13 minus Line 14)		

SCHEDULE BA - VERIFICATION

Other Long-Term Invested Assets

	1	2
	Year to Date	Prior Year Ended December 31
1. Book/adjusted carrying value, December 31 of prior year	1,181,840	1,330,840
2. Cost of acquired:		
2.1 Actual cost at time of acquisition		9,837
2.2 Additional investment made after acquisition	2,272,660	424,687
3. Capitalized deferred interest and other		
4. Accrual of discount		
5. Unrealized valuation increase/(decrease)		
6. Total gain (loss) on disposals		
7. Deduct amounts received on disposals		
8. Deduct amortization of premium, depreciation and proportional amortization	39,925	583,524
9. Total foreign exchange change in book/adjusted carrying value		
10. Deduct current year's other than temporary impairment recognized		
11. Book/adjusted carrying value at end of current period (Lines 1+2+3+4+5+6-7-8+9-10)	3,414,575	1,181,840
12. Deduct total nonadmitted amounts		
13. Statement value at end of current period (Line 11 minus Line 12)	3,414,575	1,181,840

SCHEDULE D - VERIFICATION

Bonds and Stocks

	1	2
	Year to Date	Prior Year Ended December 31
1. Book/adjusted carrying value of bonds and stocks, December 31 of prior year	396,580,063	415,212,000
2. Cost of bonds and stocks acquired	7,727,799	42,371,817
3. Accrual of discount	177,988	713,710
4. Unrealized valuation increase/(decrease)	156,549	622,464
5. Total gain (loss) on disposals	(50,410)	(245,969)
6. Deduct consideration for bonds and stocks disposed of	17,014,012	60,831,386
7. Deduct amortization of premium	274,091	1,257,615
8. Total foreign exchange change in book/adjusted carrying value		
9. Deduct current year's other than temporary impairment recognized		
10. Total investment income recognized as a result of prepayment penalties and/or acceleration fees		(4,958)
11. Book/adjusted carrying value at end of current period (Lines 1+2+3+4+5-6-7+8-9+10)	387,303,886	396,580,063
12. Deduct total nonadmitted amounts		
13. Statement value at end of current period (Line 11 minus Line 12)	387,303,886	396,580,063

STATEMENT AS OF MARCH 31, 2025 OF THE NATIONAL CASUALTY COMPANY

SCHEDULE D - PART 1B

Showing the Acquisitions, Dispositions and Non-Trading Activity
During the Current Quarter for all Bonds and Preferred Stock by NAIC Designation

NAIC Designation	1 Book/Adjusted Carrying Value Beginning of Current Quarter	2 Acquisitions During Current Quarter	3 Dispositions During Current Quarter	4 Non-Trading Activity During Current Quarter	5 Book/Adjusted Carrying Value End of First Quarter	6 Book/Adjusted Carrying Value End of Second Quarter	7 Book/Adjusted Carrying Value End of Third Quarter	8 Book/Adjusted Carrying Value December 31 Prior Year
ISSUER CREDIT OBLIGATIONS (ICO)								
1. NAIC 1 (a)	187,755,851	807,003	5,772,752	140,158	182,930,260			187,755,851
2. NAIC 2 (a)	138,199,578		8,075,980	(1,661,619)	128,461,979			138,199,578
3. NAIC 3 (a)			1,594,125	1,594,125				
4. NAIC 4 (a)								
5. NAIC 5 (a)								
6. NAIC 6 (a)								
7. Total ICO	325,955,429	807,003	15,442,857	72,664	311,392,239			325,955,429
ASSET-BACKED SECURITIES (ABS)								
8. NAIC 1	70,472,555	6,920,796	1,602,181	(15,304)	75,775,866			70,472,555
9. NAIC 2	152,079		19,384	3,084	135,779			152,079
10. NAIC 3								
11. NAIC 4								
12. NAIC 5								
13. NAIC 6								
14. Total ABS	70,624,634	6,920,796	1,621,565	(12,220)	75,911,645			70,624,634
PREFERRED STOCK								
15. NAIC 1								
16. NAIC 2								
17. NAIC 3								
18. NAIC 4								
19. NAIC 5								
20. NAIC 6								
21. Total Preferred Stock								
22. Total ICO, ABS & Preferred Stock	396,580,063	7,727,799	17,064,422	60,444	387,303,884			396,580,063

(a) Book/Adjusted Carrying Value column for the end of the current reporting period includes the following amount of short-term and cash equivalent bonds by NAIC designation:

NAIC 1 \$; NAIC 2 \$; NAIC 3 \$ NAIC 4 \$; NAIC 5 \$; NAIC 6 \$

Schedule DA - Part 1 - Short-Term Investments

N O N E

Schedule DA - Verification - Short-Term Investments

N O N E

Schedule DB - Part A - Verification - Options, Caps, Floors, Collars, Swaps and Forwards

N O N E

Schedule DB - Part B - Verification - Futures Contracts

N O N E

Schedule DB - Part C - Section 1 - Replication (Synthetic Asset) Transactions (RSATs) Open

N O N E

Schedule DB-Part C-Section 2-Reconciliation of Replication (Synthetic Asset) Transactions Open

N O N E

Schedule DB - Verification - Book/Adjusted Carrying Value, Fair Value and Potential Exposure of
Derivatives

N O N E

STATEMENT AS OF MARCH 31, 2025 OF THE NATIONAL CASUALTY COMPANY

SCHEDULE E - PART 2 - VERIFICATION

(Cash Equivalents)

	1	2
	Year To Date	Prior Year Ended December 31
1. Book/adjusted carrying value, December 31 of prior year	20,091,244	6,966,132
2. Cost of cash equivalents acquired	255,709,237	603,943,158
3. Accrual of discount		
4. Unrealized valuation increase/(decrease)		
5. Total gain (loss) on disposals		
6. Deduct consideration received on disposals	215,744,287	590,818,046
7. Deduct amortization of premium		
8. Total foreign exchange change in book/adjusted carrying value		
9. Deduct current year's other than temporary impairment recognized		
10. Book/adjusted carrying value at end of current period (Lines 1+2+3+4+5-6-7+8-9)	60,056,194	20,091,244
11. Deduct total nonadmitted amounts		
12. Statement value at end of current period (Line 10 minus Line 11)	60,056,194	20,091,244

Schedule A - Part 2 - Real Estate Acquired and Additions Made

N O N E

Schedule A - Part 3 - Real Estate Disposed

N O N E

Schedule B - Part 2 - Mortgage Loans Acquired and Additions Made

N O N E

Schedule B - Part 3 - Mortgage Loans Disposed, Transferred or Repaid

N O N E

SCHEDULE BA - PART 2

CUSIP Identification	Name or Description	Location		Name of Vendor or General Partner	6 NAIC Designation, NAIC Designation Modifier and SVO Administrative Symbol	7 Date Originally Acquired	8 Type and Strategy	9 Actual Cost at Time of Acquisition	10 Additional Investment Made After Acquisition	11 Amount of Encumbrances	12 Commitment for Additional Investment	13 Percentage of Ownership
		3 City	4 State									
	North Arcade Manager LLC	Dayton	OH.....	North Arcade Master Tenant LLC04/26/2023 ...			2,272,500			1,000
	NY BRTC 4th Ave LLC	Washington	DC.....	Capital Tax Credit Partners LLC08/22/2024 ...			160			17,120
3999999. Qualifying State Tax Credit Investments - Unaffiliated									2,272,660			XXX
6899999. Total - Unaffiliated									2,272,660			XXX
6999999. Total - Affiliated												XXX
7099999 - Totals									2,272,660			XXX

Showing Other Long-Term Invested Assets DISPOSED, Transferred or Repaid During the Current Quarter

1 CUSIP Identification	2 Name or Description	Location		5 Name of Purchaser or Nature of Disposal	6 Date Originally Acquired	7 Disposal Date	8 Book/ Adjusted Carrying Value Less Encum- brances, Prior Year	Change in Book/Adjusted Carrying Value						15 Book/ Adjusted Carrying Value Less Encum- brances on Disposal	16 Consid- eration	17 Foreign Exchange Gain (Loss) on Disposal	18 Realized Gain (Loss) on Disposal	19 Total Gain (Loss) on Disposal	20 Invest- ment Income
		3	4					9	10	11	12	13	14						
.....	NY BRTC 4th Ave LLC	Washington	DC.....	Fully Amortized	08/22/2024 ...	03/31/2025 ...	9,356		(9,516)				(9,516)						
3999999. Qualifying State Tax Credit Investments - Unaffiliated							9,356		(9,516)				(9,516)						
6899999. Total - Unaffiliated							9,356		(9,516)				(9,516)						
6999999. Total - Affiliated																			
.....													
.....													
.....													
.....													
.....													
.....													
.....													
.....													
.....													
.....													
.....													
.....													
.....													
.....													
.....													
.....													
.....													
.....													
.....													
.....													
.....													
.....													
.....													
.....													
.....													
.....													
.....													
.....													
.....													
.....													
.....													
.....													
.....													
.....													
.....													
.....													
.....													
.....													
.....													
.....													
.....													
.....									</				

STATEMENT AS OF MARCH 31, 2025 OF THE NATIONAL CASUALTY COMPANY

SCHEDULE D - PART 3

Show All Long-Term Bonds and Stock Acquired During the Current Quarter

1	2	3	4	5	6	7	8	9
CUSIP Identification	Description	Date Acquired	Name of Vendor	Number of Shares of Stock	Actual Cost	Par Value	Paid for Accrued Interest and Dividends	NAIC Designation, NAIC Designation Modifier and SVO Administrative Symbol
91282C-MM-0	US Treasury Nt 4.625% 02/15/3502/18/2025	Bank of America BISO Dealer		807,003	800,000	409	1.A
0019999999. Subtotal - Issuer Credit Obligations - U.S. Government Obligations (Exempt from RBC)					807,003	800,000	409	XXX
0489999999. Total - Issuer Credit Obligations (Unaffiliated)					807,003	800,000	409	XXX
0499999999. Total - Issuer Credit Obligations (Affiliated)								XXX
0509999997. Total - Issuer Credit Obligations - Part 3					807,003	800,000	409	XXX
0509999998. Total - Issuer Credit Obligations - Part 5					XXX	XXX	XXX	XXX
0509999999. Total - Issuer Credit Obligations					807,003	800,000	409	XXX
43789K-AB-8	Homeward Opportunities Fund RMBS Ser 22-1 CL A2 5.082% 07/25/6701/15/2025	Wells Fargo Securities LLC		174,333	175,949	1,987	1.C FE
69378K-AB-0	PRP Advisors, LLC RMBS Ser 22-NQM1 CL A2 5.500% 08/25/6701/14/2025	Nomura Securities Intl LLC		686,976	690,428	1,477	1.C FE
69392F-AA-5	Pretium Mort Cred Partnership RMBS Ser 2025-RPL1 CI A1 4.000% 07/25/6901/16/2025	Nomura Securities Intl LLC		1,043,034	1,096,000	3,288	1.A FE
85571Y-AL-9	Starwood Mortgage Residential STAR Ser 2022-4 CI A1 5.192% 05/25/6703/04/2025	Wells Fargo Securities LLC		1,926,481	1,931,915	1,115	1.A FE
1059999999. Subtotal - Asset-Backed Securities - Financial Asset-Backed - Self-Liquidating - Non-Agency Residential Mortgage-Backed Securities (Unaffiliated)					3,830,824	3,894,292	7,867	XXX
08164A-AQ-7	Benchmark Mtg Tr CMBS Ser 2025-V13 CI A4 5.815% 02/15/5702/07/2025	Citigroup		3,089,972	3,000,000	8,723	1.A FE
1079999999. Subtotal - Asset-Backed Securities - Financial Asset-Backed - Self-Liquidating - Non-Agency Commercial Mortgage-Backed Securities (Unaffiliated)					3,089,972	3,000,000	8,723	XXX
1889999999. Total - Asset-Backed Securities (Unaffiliated)					6,920,796	6,894,292	16,590	XXX
1899999999. Total - Asset-Backed Securities (Affiliated)								XXX
1909999997. Total - Asset-Backed Securities - Part 3					6,920,796	6,894,292	16,590	XXX
1909999998. Total - Asset-Backed Securities - Part 5					XXX	XXX	XXX	XXX
1909999999. Total - Asset-Backed Securities					6,920,796	6,894,292	16,590	XXX
2009999999. Total - Issuer Credit Obligations and Asset-Backed Securities					7,727,799	7,694,292	16,999	XXX
4509999997. Total - Preferred Stocks - Part 3						XXX		XXX
4509999998. Total - Preferred Stocks - Part 5					XXX	XXX	XXX	XXX
4509999999. Total - Preferred Stocks						XXX		XXX
5989999997. Total - Common Stocks - Part 3						XXX		XXX
5989999998. Total - Common Stocks - Part 5					XXX	XXX	XXX	XXX
5989999999. Total - Common Stocks						XXX		XXX
5999999999. Total - Preferred and Common Stocks						XXX		XXX
6009999999 - Totals					7,727,799	XXX	16,999	XXX

STATEMENT AS OF MARCH 31, 2025 OF THE NATIONAL CASUALTY COMPANY

SCHEDULE D - PART 4

Show All Long-Term Bonds and Stock Sold, Redeemed or Otherwise Disposed of During the Current Quarter

1	2	3	4	5	6	7	8	9	Change In Book/Adjusted Carrying Value					15	16	17	18	19	20	21
									10	11	12	13	14							
CUSIP Ident- ification	Description	Disposal Date	Name of Purchaser	Number of Shares of Stock	Consid- eration	Par Value	Actual Cost	Prior Year Book/ Adjusted Carrying Value	Unrealized Valuation Increase/ (Decrease)	Current Year's (Amor- tization)/ Accretion	Current Year's Other Than Temporary Impairment Recogn- ized	Total Change in Book/ Adjusted Carrying Value (10 + 11 - 12)	Total Foreign Exchange Change in Book /Adjusted Carrying Value	Book/ Adjusted Carrying Value at Disposal Date	Foreign Exchange Gain (Loss) on Disposal	Realized Gain (Loss) on Disposal	Total Gain (Loss) on Disposal	Bond Interest/ Stock Dividends Received During Year	Stated Con- tractual Maturity Date	NAIC Desig- nation, NAIC Desig- nation Modifier and SVO Admini- strative Symbol
..37940X-AA-0	Global Payments Inc Sr Nt 2.650% 02/15/25	02/15/2025	Maturity		1,730,000	1,730,000	1,776,658	1,730,582		(582)		(582)		1,730,000				22,923	02/15/2025	2.C FE
..50540R-AQ-5	Laboratory Corp of America Sr Nt 3.600% 02/01/25	02/01/2025	Maturity		443,350	443,350	478,248	443,350						443,350				7,980	02/01/2025	2.B FE
..637432-ND-3	National Rural Utilities Coop Sr Nt 2.850% 01/27/25	01/27/2025	Maturity		2,000,000	2,000,000	1,998,780	1,999,990		10		10		2,000,000				28,500	01/27/2025	1.E FE
..654740-BS-7	Nissan Motor Acceptance Corp Sr Nt 2.000% 03/09/26	03/05/2025	JP Morgan Securities LLC		825,896	855,000	792,022	820,281		4,936		4,936		825,217		678	678	8,382	03/09/2026	3.A FE
..65480C-AC-9	Nissan Motor Acc Co Sr Nt 1.850% 09/16/26	03/04/2025	Morgan Stanley & Co LLC		474,375	500,000	499,880	499,958		4		4		499,962		(25,587)	(25,587)	4,342	09/16/2026	3.A FE
..65480C-AD-7	Nissan Motor Acc Co Sr Nt 2.450% 09/15/28	03/04/2025	Various		243,445	269,000	268,898	268,944		3		3		268,946		(25,501)	(25,501)	3,112	09/15/2028	3.A FE
..664397-AM-8	Eversource Energy Sr Nt 3.150% 01/15/25 Retail PPTYS Of America Sr Nt 4.000%	01/15/2025	Maturity		2,000,000	2,000,000	1,997,960	1,999,991		9		9		2,000,000				31,500	01/15/2025	2.B FE
..76131V-AA-1	TTX Co Sr Nt 3.600% 01/15/25	03/15/2025	Maturity		670,000	670,000	696,177	670,000						670,000				13,400	03/15/2025	2.B FE
..87305Q-QH-2	Waste Management Inc Sr Nt 3.125% 03/01/25	01/15/2025	Maturity		1,500,000	1,500,000	1,528,695	1,500,129		(129)		(129)		1,500,000				27,000	01/15/2025	1.F FE
..94106L-BA-6	Williams Partners LP Sr Nt 3.900% 01/15/25	03/01/2025	Maturity		2,000,000	2,000,000	1,991,480	1,999,840		160		160		2,000,000				31,250	03/01/2025	1.G FE
..96950F-AQ-7	Barclays Plc Sr Nt 3.650% 03/16/25	01/15/2025	Maturity		750,000	750,000	814,863	750,000						750,000				14,625	01/15/2025	2.B FE
..06738E-AE-5	UBS Group AG Sr Nt 3.750% 03/26/25	03/16/2025	Maturity		2,450,000	2,450,000	2,601,557	2,458,679		(9,679)		(9,679)		2,450,000				44,713	03/16/2025	2.A FE
..902613-AX-6	UBS Group AG Sr Nt 3.750% 03/26/25	03/26/2025	Maturity		250,000	250,000	260,997	251,438		(1,438)		(1,438)		250,000				4,688	03/26/2025	1.G FE
0089999999. Subtotal - Issuer Credit Obligations - Corporate Bonds (Unaffiliated)					15,337,066	15,417,350	15,706,215	15,394,182		(6,706)		(6,706)		15,387,475		(50,410)	(50,410)	242,415	XXX	XXX
..126650-BP-4	CVS Health Corp LBASS PTC Nt 6.036% 12/10/28	03/10/2025	Redemption	100.0000	32,630	32,630	38,384	34,112		(1,482)		(1,482)		32,630				329	12/10/2028	2.B FE
..11042C-AA-8	British Airways PTC Ser 2021-1 A PPT 2.900% 09/15/36	03/15/2025	Redemption	100.0000	22,752	22,752	22,843	22,817		(65)		(65)		22,752				165	09/15/2036	1.D FE
0129999999. Subtotal - Issuer Credit Obligations - Single Entity Backed Obligations (Unaffiliated)					55,382	55,382	61,227	56,929		(1,547)		(1,547)		55,382				494	XXX	XXX
0489999999. Total - Issuer Credit Obligations (Unaffiliated)					15,392,448	15,472,732	15,767,442	15,451,111		(8,253)		(8,253)		15,442,857		(50,410)	(50,410)	242,909	XXX	XXX
0499999999. Total - Issuer Credit Obligations (Affiliated)																			XXX	XXX
0509999997. Total - Issuer Credit Obligations - Part 4					15,392,448	15,472,732	15,767,442	15,451,111		(8,253)		(8,253)		15,442,857		(50,410)	(50,410)	242,909	XXX	XXX
0509999998. Total - Issuer Credit Obligations - Part 5					XXX	XXX	XXX	XXX	XXX	XXX	XXX	XXX	XXX	XXX	XXX	XXX	XXX	XXX	XXX	XXX
0509999999. Total - Issuer Credit Obligations					15,392,448	15,472,732	15,767,442	15,451,111		(8,253)		(8,253)		15,442,857		(50,410)	(50,410)	242,909	XXX	XXX
..36179X-LJ-3	GNMA Pool #MA8429 5.500% 11/20/52	03/01/2025	Paydown		4,687	4,687	4,669	4,669		18		18		4,687				41	11/20/2052	1.A
1019999999. Subtotal - Asset-Backed Securities - Financial Asset-Backed - Self-Liquidating - Agency Residential Mortgage-Backed Securities - Guaranteed (Exempt from RBC)					4,687	4,687	4,669	4,669											XXX	XXX
..31320W-AU-8	FHLMC Pool #B0019 3.500% 06/25/34	03/01/2025	Paydown		41,865	41,865	43,422	43,175		(1,309)		(1,309)		41,865				244	06/25/2034	1.A
..313205-6D-9	FHLMC Pool #SB0689 1.500% 10/25/35	03/01/2025	Paydown		77,213	77,213	78,966	78,593		(1,380)		(1,380)		77,213				186	10/25/2035	1.A
..31320W-BC-6	FHLMC Pool #SD8135 2.500% 03/25/51	03/01/2025	Paydown		22,808	22,808	23,751	23,694		(886)		(886)		22,808				100	03/25/2051	1.A
..31320W-DD-2	FHLMC Pool #SD8200 2.500% 03/25/52	03/01/2025	Paydown		40,006	40,006	39,200	39,243		763		763		40,006				166	03/25/2052	1.A
..31320W-DK-6	FHLMC Pool #SD8206 3.000% 04/25/52	03/01/2025	Paydown		39,295	39,295	39,399	39,388		(94)		(94)		39,295				199	04/25/2052	1.A
..31320W-ET-6	FHLMC Pool# SD8246 5.000% 09/25/52	03/01/2025	Paydown		18,076	18,076	17,743	17,752		324		324		18,076				146	09/25/2052	1.A
..31320W-GS-6	FHLMC Pool #SD8309 6.000% 03/01/53	03/01/2025	Paydown		73,796	73,796	74,332	74,317		(522)		(522)		73,796				720	03/01/2053	1.A
..31320W-GZ-0	FHLMC Pool #SD8316 5.500% 04/25/53	03/01/2025	Paydown		54,932	54,932	54,445	54,449		484		484		54,932				551	04/25/2053	1.A
..3133TC-6P-8	FHLMC Structured Ser 2008 M 7.000% 11/20/27																			
..3138YV-DT-7	FNMA Pool #A26413 3.000% 11/25/45	03/01/2025	Paydown		287	287	298	289		(2)		(2)		287				4	11/20/2027	1.A
..3140GV-ZY-4	FNMA Pool #BH7058 3.500% 12/25/47	03/01/2025	Paydown		2,257	2,257	2,298	2,293		(36)		(36)		2,257				11	11/25/2045	1.A
..3140H5-JU-2	FNMA Pool #BJ3876 3.000% 01/25/48	03/01/2025	Paydown		7,498	7,498	7,450	7,451		46		46		7,498				40	12/25/2047	1.A
..3140KD-G4-6	FNMA Pool #BP5618 2.500% 06/25/50	03/01/2025	Paydown		6,042	6,042	5,854	5,865		177		177		6,042				30	01/25/2048	1.A
..3140NG-GP-9	FN BY0205 Pool# BY0205 5.500% 05/25/53	03/01/2025	Paydown		12,447	12,447	12,946	12,918		(471)		(471)		12,447				42	06/25/2050	1.A
..3140OD-6N-9	FNMA Pool #CA6276 2.000% 07/25/50	03/01/2025	Paydown		50,292	50,292	50,276	50,274		18		18		50,292				563	05/25/2053	1.A FE
..3140OT-XA-2	FNMA Pool #CB7872 7.000% 01/25/54	03/01/2025	Paydown		7,166	7,166	7,328	7,317		(151)		(151)		7,166				22	07/25/2050	1.A
..3140X9-GY-6	FNMA Pool #FM6286 2.500% 01/25/51	03/01/2025	Paydown		19,674	19,674	20,317	20,300		(625)		(625)		19,674				207	01/25/2054	1.A

STATEMENT AS OF MARCH 31, 2025 OF THE NATIONAL CASUALTY COMPANY

SCHEDULE D - PART 4

Show All Long-Term Bonds and Stock Sold, Redeemed or Otherwise Disposed of During the Current Quarter

1	2	3	4	5	6	7	8	9	Change In Book/Adjusted Carrying Value					15	16	17	18	19	20	21
									10	11	12	13	14							
CUSIP Ident- ification	Description	Disposal Date	Name of Purchaser	Number of Shares of Stock	Consid- eration	Par Value	Actual Cost	Prior Year Book/ Adjusted Carrying Value	Unrealized Valuation Increase/ (Decrease)	Current Year's (Amor- tization)/ Accretion	Current Year's Temporary Impairment Recogn- ized	Total Change in Book/ Adjusted Carrying Value (10 + 11 - 12)	Total Foreign Exchange Change in Book /Adjusted Carrying Value	Book/ Adjusted Carrying Value at Disposal Date	Foreign Exchange Gain (Loss) on Disposal	Realized Gain (Loss) on Disposal	Total Gain (Loss) on Disposal	Bond Interest/ Stock Dividends Received During Year	Stated Con- tractual Maturity Date	NAIC Desig- nation, NAIC Desig- nation Modifier and SVO Admini- strative Symbol
..3140XG-PS-2	FNMA Pool #FS1332 3.500% 03/25/52	03/01/2025	Paydown		6,521	6,521	6,249	6,258		263		263		6,521				38	03/25/2052	1.A
..3140XM-SB-1	Fannie Mae Super Pool# FS6256 3.500% 08/25/52	03/01/2025	Paydown		19,249	19,249	17,168	17,196		2,053		2,053		19,249				114	08/25/2052	1.A
..3140XN-M5-0	Fannie Mae Super Pool #FS6679 6.000% 12/25/53	03/01/2025	Paydown		16,695	16,695	16,779	16,777		(82)		(82)		16,695				154	12/25/2053	1.A
..31416X-YZ-7	FNMA Pool #AB2527 4.000% 03/25/41	03/01/2025	Paydown		9,344	9,344	9,412	9,399		(54)		(54)		9,344				62	03/25/2041	1.A
..31418D-4X-7	FNMA Pool #MA4437 2.000% 10/25/51	03/01/2025	Paydown		45,853	45,853	43,655	43,789		2,064		2,064		45,853				152	10/25/2051	1.A
..31418D-CA-8	FNMA Pool #MA3664 4.000% 05/25/49	03/01/2025	Paydown		3,256	3,256	3,374	3,369		(113)		(113)		3,256				24	05/25/2049	1.A
..31418D-XJ-6	FNMA Pool #MA4280 1.500% 03/25/51	03/01/2025	Paydown		7,554	7,554	7,455	7,463		91		91		7,554				19	03/25/2051	1.A
..31418D-XL-1	FNMA Pool #MA4282 2.500% 03/25/51	03/01/2025	Paydown		9,631	9,631	10,026	10,002		(371)		(371)		9,631				43	03/25/2051	1.A
..31418E-E6-3	Fn MAS192 Pool #MA4656 4.500% 07/01/52	03/01/2025	Paydown		19,446	19,446	19,401	19,402		44		44		19,446				147	07/01/2052	1.A
..31418E-HJ-2	Fn MAS192 Pool #MA4732 4.000% 09/01/52	03/01/2025	Paydown		21,883	21,883	21,221	21,247		637		637		21,883				148	09/01/2052	1.A
..31418E-HK-9	Fn MAS192 Pool # MA4733 4.500% 09/25/52	03/01/2025	Paydown		5,726	5,726	5,495	5,503		222		222		5,726				44	09/25/2052	1.A
..31419B-CT-0	FNMA Pool #AE0981 3.500% 03/25/41	03/01/2025	Paydown		3,857	3,857	3,977	3,956		(98)		(98)		3,857				22	03/25/2041	1.A
1039999999. Subtotal - Asset-Backed Securities - Financial Asset-Backed - Self-Liquidating - Agency Residential Mortgage-Backed Securities - Not/Partially Guaranteed (Not Exempt from RBC)					651,327	651,327	651,266	650,687		642		642		651,327				4,226	XXX	XXX
..36157R-DB-5	GE Cap Mtg Serv Inc RMBS Ser 1999-HE1 CI A7 6.265% 04/25/29	03/01/2025	Paydown																04/25/2029	1.A FM
..43789K-AB-8	Homeward Opportunities Fund RMBS Ser 22-1 CL A2 5.082% 07/25/67	03/01/2025	Paydown		5,652	5,652	5,600			52		52		5,652				40	07/25/2067	1.C FE
..65535V-CN-6	Nomura Asset Sec Corp RMBS Ser 2004-AP1 CI A6 4.820% 03/25/34	03/01/2025	Paydown		6	6	6	6						6					03/25/2034	1.A FM
..69378K-AB-0	PRP Advisors, LLC RMBS Ser 22-NQM1 CL A2 5.500% 08/25/67	03/01/2025	Paydown		14,797	14,797	14,723			74		74		14,797				105	08/25/2067	1.C FE
..69392F-AA-5	Pretium Mort Cred Partnership RMBS Ser 2025- RPL1 CI A1 4.000% 07/25/69	03/01/2025	Paydown		12,838	12,838	12,218			620		620		12,838				69	07/25/2069	1.A FE
..89177B-AA-3	Towd Point Mortgage Tr RMBS Ser 2019-1 CI A1 3.750% 03/25/58	03/01/2025	Paydown		26,303	26,303	26,143	26,182		122		122		26,303				165	03/25/2058	1.A
1059999999. Subtotal - Asset-Backed Securities - Financial Asset-Backed - Self-Liquidating - Non-Agency Residential Mortgage-Backed Securities (Unaffiliated)					59,596	59,596	58,690	26,188		868		868		59,596				379	XXX	XXX
..06054M-AC-7	Banc of America Comm Mtg Tr CMBS Ser 2016- UB10 CI ASB 3.019% 07/15/49	03/01/2025	Paydown		88,199	88,199	90,840	88,283		(84)		(84)		88,199				459	07/15/2049	1.A
..36251X-AS-6	GS Mortgage Securities Trust CMBS Ser 2016- GS4 CI AAB 3.278% 11/10/49	03/01/2025	Paydown		48,450	48,450	49,901	48,549		(100)		(100)		48,450				271	11/10/2049	1.A
..36252T-AS-4	GS Mortgage Securities Trust CMBS Ser 2016- GS2 CI AAB 2.922% 05/10/49	03/01/2025	Paydown		136,242	136,242	140,321	136,446		(204)		(204)		136,242				688	05/10/2049	1.A
..61691E-AY-1	Morgan Stanley Capital I Tr CMBS Ser 2016- UB12 CI ASB 3.436% 12/15/49	03/01/2025	Paydown		35,968	35,968	37,046	36,067		(99)		(99)		35,968				212	12/15/2049	1.A
..94989J-BA-3	Wells Fargo Comm Mtg Tr CMBS Ser 2015-C28 CI ASB 3.306% 05/15/48	02/01/2025	Paydown		2,334	2,334	2,395	2,332		2		2		2,334				6	05/15/2048	1.A
..95000J-AW-8	Wells Fargo Comm Mtg Tr CMBS Ser 2016-LQ25 CI ASB 3.486% 12/15/59	03/01/2025	Paydown		44,713	44,713	46,052	44,769		(56)		(56)		44,713				268	12/15/2059	1.A
1079999999. Subtotal - Asset-Backed Securities - Financial Asset-Backed - Self-Liquidating - Non-Agency Commercial Mortgage-Backed Securities (Unaffiliated)					355,906	355,906	366,555	356,446		(541)		(541)		355,906				1,904	XXX	XXX
..03237C-AB-8	AXIS Equipment Finance Ser 2024-1A CI A2 5.380% 01/21/31	03/21/2025	Paydown		179,150	179,150	179,131	179,137		14		14		179,150				1,564	01/21/2031	1.A FE
..08862H-AA-0	Bankers Healthcare Group ABS Ser 2024-1A CI A 5.810% 04/17/35	03/17/2025	Paydown		86,014	86,014	86,007	86,008		7		7		86,014				791	04/17/2035	1.A FE
..37988X-AB-1	GLS Auto Select Receivables Tr Ser 2024-1A CI A2 5.240% 03/15/30	03/15/2025	Paydown		73,301	73,301	73,299	73,299		1		1		73,301				641	03/15/2030	1.A FE

STATEMENT AS OF MARCH 31, 2025 OF THE NATIONAL CASUALTY COMPANY

SCHEDULE D - PART 4

Show All Long-Term Bonds and Stock Sold, Redeemed or Otherwise Disposed of During the Current Quarter

1	2	3	4	5	6	7	8	9	Change In Book/Adjusted Carrying Value					15	16	17	18	19	20	21
									10	11	12	13	14							
CUSIP Ident- ification	Description	Disposal Date	Name of Purchaser	Number of Shares of Stock	Consid- eration	Par Value	Actual Cost	Prior Year Book/ Adjusted Carrying Value	Unrealized Valuation Increase/ (Decrease)	Current Year's (Amor- tization)/ Accretion	Current Year's Other Than Temporary Impairment Recog- nized	Total Change in Book/ Adjusted Carrying Value (10 + 11 - 12)	Total Foreign Exchange Change in Book /Adjusted Carrying Value	Book/ Adjusted Carrying Value at Disposal Date	Foreign Exchange Gain (Loss) on Disposal	Realized Gain (Loss) on Disposal	Total Gain (Loss) on Disposal	Bond Interest/ Stock Dividends Received During Year	Stated Con- tractual Maturity Date	NAIC Desig- nation, NAIC Desig- nation Modifier and SVO Admini- strative Symbol
..59549R-AC-8	Mid State Tr X LBASS Ser 10 CI M1 6.280% 02/15/36 03/15/2025 .	Paydown 19,384 19,384 16,300 16,3003,084 3,084 19,384204	. 02/15/2036 .	2.B FE
..74113Q-AC-5	Prestige Auto Receivables Tr ABS Ser 2024-1A CI A2 5.690% 05/17/27 03/17/2025 .	Paydown 127,765127,765127,757 127,7613 3127,765 1,222	. 05/17/2027 .	1.A FE
1119999999. Subtotal - Asset-Backed Securities - Financial Asset-Backed - Self-Liquidating - Other Financial Asset-Backed Securities - Self-Liquidating (Unaffiliated)					485,614	485,614	482,494	482,505		3,109		3,109		485,614				4,422	XXX	XXX
..046497-AC-7	Atalaya Equipment LBASS Ser 2021-1A CI B 2.080% 02/15/27 03/15/2025 .	Paydown 13,74613,746 13,743 13,746 13,746 57	. 02/15/2027 .	1.A FE
..90931G-AA-7	United Airlines Inc 1st Lien 5.875% 10/15/27 01/15/2025 .	Redemption	100,0000 50,68950,689 56,04553,855 (3,166) (3,166) 50,689744	. 10/15/2027 .	1.E FE
1519999999. Subtotal - Asset-Backed Securities - Non-Financial Asset-Backed Securities - Practical Expedient - Lease-Backed Securities - Practical Expedient (Unaffiliated)					64,435	64,435	69,788	67,601		(3,166)		(3,166)		64,435				801	XXX	XXX
1889999999. Total - Asset-Backed Securities (Unaffiliated)					1,621,565	1,621,565	1,633,462	1,588,096		930		930		1,621,565				11,773	XXX	XXX
1899999999. Total - Asset-Backed Securities (Affiliated)																			XXX	XXX
1909999997. Total - Asset-Backed Securities - Part 4					1,621,565	1,621,565	1,633,462	1,588,096		930		930		1,621,565				11,773	XXX	XXX
1909999998. Total - Asset-Backed Securities - Part 5					XXX	XXX	XXX	XXX	XXX	XXX	XXX	XXX	XXX	XXX	XXX	XXX	XXX	XXX	XXX	XXX
1909999999. Total - Asset-Backed Securities					1,621,565	1,621,565	1,633,462	1,588,096		930		930		1,621,565				11,773	XXX	XXX
2009999999. Total - Issuer Credit Obligations and Asset-Backed Securities					17,014,013	17,094,297	17,400,904	17,039,207		(7,323)		(7,323)		17,064,422		(50,410)	(50,410)	254,682	XXX	XXX
4509999997. Total - Preferred Stocks - Part 4						XXX													XXX	XXX
4509999998. Total - Preferred Stocks - Part 5					XXX	XXX	XXX	XXX	XXX	XXX	XXX	XXX	XXX	XXX	XXX	XXX	XXX	XXX	XXX	XXX
4509999999. Total - Preferred Stocks						XXX													XXX	XXX
5989999997. Total - Common Stocks - Part 4						XXX													XXX	XXX
5989999998. Total - Common Stocks - Part 5					XXX	XXX	XXX	XXX	XXX	XXX	XXX	XXX	XXX	XXX	XXX	XXX	XXX	XXX	XXX	XXX
5989999999. Total - Common Stocks						XXX													XXX	XXX
5999999999. Total - Preferred and Common Stocks						XXX													XXX	XXX
6009999999 - Totals					17,014,013	XXX	17,400,904	17,039,207		(7,323)		(7,323)		17,064,422		(50,410)	(50,410)	254,682	XXX	XXX

Schedule DB - Part A - Section 1 - Options, Caps, Floors, Collars, Swaps and Forwards Open
N O N E

Schedule DB - Part B - Section 1 - Futures Contracts Open
N O N E

Schedule DB - Part B - Section 1B - Brokers with whom cash deposits have been made
N O N E

Schedule DB - Part D - Section 1 - Counterparty Exposure for Derivative Instruments Open
N O N E

Schedule DB - Part D-Section 2 - Collateral for Derivative Instruments Open - Pledged By
N O N E

Schedule DB - Part D-Section 2 - Collateral for Derivative Instruments Open - Pledged To
N O N E

Schedule DB - Part E - Derivatives Hedging Variable Annuity Guarantees
N O N E

Schedule DL - Part 1 - Reinvested Collateral Assets Owned
N O N E

Schedule DL - Part 2 - Reinvested Collateral Assets Owned
N O N E

SCHEDULE E - PART 1 - CASH

[illegible]

SCHEDULE E - PART 2 - CASH EQUIVALENTS

[illegible]



SUPPLEMENT FOR THE QUARTER ENDING MARCH 31, 2025 OF THE NATIONAL CASUALTY COMPANY

DIRECTOR AND OFFICER INSURANCE COVERAGE SUPPLEMENT

Year To Date For The Period Ended MARCH 31, 2025

NAIC Group Code0140NAIC Company Code11991

Company NameNATIONAL CASUALTY COMPANY

If the reporting entity writes any director and officer (D&O) business, please provide the following:

1. Monoline Policies

1 Direct Written Premium	2 Direct Earned Premium	3 Direct Losses Incurred
\$8,549,133	\$1,534,853	\$12,525,000

2. Commercial Multiple Peril (CMP) Packaged Policies

- 2.1 Does the reporting entity provide D&O liability coverage as part of a CMP packaged policy? Yes [] No [X]
- 2.2 Can the direct premium earned for D&O liability coverage provided as part of a CMP packaged policy be quantified or estimated? Yes [] No [X]
- 2.3 If the answer to question 2.2 is yes, provide the quantified or estimated direct premium earned amount for D&O liability coverage in CMP packaged policies

2.31 Amount quantified:.....\$

2.32 Amount estimated using reasonable assumptions:.....\$
- 2.4 If the answer to question 2.1 is yes, provide direct losses incurred (losses paid plus change in case reserves) for the D&O liability coverage provided in CMP packaged policies.\$