



PROPERTY AND CASUALTY COMPANIES - ASSOCIATION EDITION

QUARTERLY STATEMENT
AS OF MARCH 31, 2025
OF THE CONDITION AND AFFAIRS OF THE
NATIONWIDE INDEMNITY COMPANY

NAIC Group Code 0140 0140 NAIC Company Code 10070 Employer's ID Number 31-1399201
(Current) (Prior)

Organized under the Laws of OHIO, State of Domicile or Port of Entry OH

Country of Domicile United States of America

Incorporated/Organized 02/16/1994 Commenced Business 04/15/1994

Statutory Home Office ONE WEST NATIONWIDE BLVD., COLUMBUS, OH, US 43215-2220
(Street and Number) (City or Town, State, Country and Zip Code)

Main Administrative Office ONE WEST NATIONWIDE BLVD.
(Street and Number)
COLUMBUS, OH, US 43215-2220, 614-249-1545
(City or Town, State, Country and Zip Code) (Area Code) (Telephone Number)

Mail Address ONE WEST NATIONWIDE BLVD., 1-14-301, COLUMBUS, OH, US 43215-2220
(Street and Number or P.O. Box) (City or Town, State, Country and Zip Code)

Primary Location of Books and Records ONE WEST NATIONWIDE BLVD., 1-14-301
(Street and Number)
COLUMBUS, OH, US 43215-2220, 614-249-1545
(City or Town, State, Country and Zip Code) (Area Code) (Telephone Number)

Internet Website Address WWW.NATIONWIDE.COM

Statutory Statement Contact ANDREA D. IACOBONI, 614-249-1545
(Name) (Area Code) (Telephone Number)
FINRPT@NATIONWIDE.COM, 866-315-1430
(E-mail Address) (FAX Number)

OFFICERS

PRESIDENT & COO MARK ALLEN BERVEN VP & TREASURER KIMBERLY ELLEN LACKER
SVP & SECRETARY DENISE LYNN SKINGLE

OTHER
KEVIN PAUL SCHEIDERER, VP-CHIEF TAX OFFC

DIRECTORS OR TRUSTEES

MARK ALLEN BERVEN TIMOTHY GERARD FROMMEYER OSCAR GUERRERO
CASEY ELLEN KEMPTON GEORGE MIDDLETON WILLIAMS III

State of OHIO SS:
County of FRANKLIN

The officers of this reporting entity being duly sworn, each depose and say that they are the described officers of said reporting entity, and that on the reporting period stated above, all of the herein described assets were the absolute property of the said reporting entity, free and clear from any liens or claims thereon, except as herein stated, and that this statement, together with related exhibits, schedules and explanations therein contained, annexed or referred to, is a full and true statement of all the assets and liabilities and of the condition and affairs of the said reporting entity as of the reporting period stated above, and of its income and deductions therefrom for the period ended, and have been completed in accordance with the NAIC Annual Statement Instructions and Accounting Practices and Procedures manual except to the extent that: (1) state law may differ; or, (2) that state rules or regulations require differences in reporting not related to accounting practices and procedures, according to the best of their information, knowledge and belief, respectively. Furthermore, the scope of this attestation by the described officers also includes the related corresponding electronic filing with the NAIC, when required, that is an exact copy (except for formatting differences due to electronic filing) of the enclosed statement. The electronic filing may be requested by various regulators in lieu of or in addition to the enclosed statement.

MARK ALLEN BERVEN DENISE LYNN SKINGLE KIMBERLY ELLEN LACKER
PRESIDENT & COO SVP & SECRETARY VP & TREASURER

Subscribed and sworn to before me this 1st day of MAY 2025
Andrew Swartzel

- a. Is this an original filing? Yes [X] No []
b. If no,
1. State the amendment number.....
2. Date filed
3. Number of pages attached.....



ANDREW SWARTZEL
NOTARY PUBLIC • STATE OF OHIO
Comm. No. 2021-RE-839107
My Commission Expires Oct. 24, 2026

STATEMENT AS OF MARCH 31, 2025 OF THE NATIONWIDE INDEMNITY COMPANY

ASSETS

	Current Statement Date			4 December 31 Prior Year Net Admitted Assets
	1 Assets	2 Nonadmitted Assets	3 Net Admitted Assets (Cols. 1 - 2)	
1. Bonds	214,186,284		214,186,284	208,786,847
2. Stocks:				
2.1 Preferred stocks				
2.2 Common stocks				
3. Mortgage loans on real estate:				
3.1 First liens				
3.2 Other than first liens.....				
4. Real estate:				
4.1 Properties occupied by the company (less \$ encumbrances)				
4.2 Properties held for the production of income (less \$ encumbrances)				
4.3 Properties held for sale (less \$ encumbrances)				
5. Cash (\$ (6,105,618)), cash equivalents (\$ 2,083,272) and short-term investments (\$)	(4,022,346)		(4,022,346)	1,990,421
6. Contract loans (including \$ premium notes)				
7. Derivatives				
8. Other invested assets	92,925,482		92,925,482	93,971,743
9. Receivables for securities				
10. Securities lending reinvested collateral assets	3,713,550		3,713,550	10,437,468
11. Aggregate write-ins for invested assets				
12. Subtotals, cash and invested assets (Lines 1 to 11)	306,802,970		306,802,970	315,186,479
13. Title plants less \$ charged off (for Title insurers only)				
14. Investment income due and accrued	1,891,992	7,661	1,884,331	1,669,712
15. Premiums and considerations:				
15.1 Uncollected premiums and agents' balances in the course of collection	519,675	519,675		
15.2 Deferred premiums, agents' balances and installments booked but deferred and not yet due (including \$ earned but unbilled premiums)				
15.3 Accrued retrospective premiums (\$) and contracts subject to redetermination (\$)				
16. Reinsurance:				
16.1 Amounts recoverable from reinsurers	17,476,443		17,476,443	14,696,448
16.2 Funds held by or deposited with reinsured companies	2,899,925		2,899,925	21,808,537
16.3 Other amounts receivable under reinsurance contracts	3,313,518		3,313,518	4,588,921
17. Amounts receivable relating to uninsured plans				
18.1 Current federal and foreign income tax recoverable and interest thereon				
18.2 Net deferred tax asset				
19. Guaranty funds receivable or on deposit				
20. Electronic data processing equipment and software				
21. Furniture and equipment, including health care delivery assets (\$)				
22. Net adjustment in assets and liabilities due to foreign exchange rates				
23. Receivables from parent, subsidiaries and affiliates	223,301		223,301	116,179
24. Health care (\$) and other amounts receivable				
25. Aggregate write-ins for other than invested assets	103,577	71,622	31,955	13,376
26. Total assets excluding Separate Accounts, Segregated Accounts and Protected Cell Accounts (Lines 12 to 25)	333,231,401	598,958	332,632,443	358,079,652
27. From Separate Accounts, Segregated Accounts and Protected Cell Accounts				
28. Total (Lines 26 and 27)	333,231,401	598,958	332,632,443	358,079,652
DETAILS OF WRITE-INS				
1101.				
1102.				
1103.				
1198. Summary of remaining write-ins for Line 11 from overflow page				
1199. Totals (Lines 1101 through 1103 plus 1198)(Line 11 above)				
2501. Miscellaneous assets	103,577	71,622	31,955	13,376
2502.				
2503.				
2598. Summary of remaining write-ins for Line 25 from overflow page				
2599. Totals (Lines 2501 through 2503 plus 2598)(Line 25 above)	103,577	71,622	31,955	13,376

STATEMENT AS OF MARCH 31, 2025 OF THE NATIONWIDE INDEMNITY COMPANY

LIABILITIES, SURPLUS AND OTHER FUNDS

	1 Current Statement Date	2 December 31, Prior Year
1. Losses (current accident year \$)		
2. Reinsurance payable on paid losses and loss adjustment expenses		
3. Loss adjustment expenses		
4. Commissions payable, contingent commissions and other similar charges		
5. Other expenses (excluding taxes, licenses and fees)		
6. Taxes, licenses and fees (excluding federal and foreign income taxes)		
7.1 Current federal and foreign income taxes (including \$557,263 on realized capital gains (losses))	6,298,201	4,845,834
7.2 Net deferred tax liability	23,979,458	25,271,687
8. Borrowed money \$ and interest thereon \$		
9. Unearned premiums (after deducting unearned premiums for ceded reinsurance of \$ and including warranty reserves of \$ and accrued accident and health experience rating refunds including \$ for medical loss ratio rebate per the Public Health Service Act)		
10. Advance premium		
11. Dividends declared and unpaid:		
11.1 Stockholders		
11.2 Policyholders		
12. Ceded reinsurance premiums payable (net of ceding commissions)	9,804	695,497
13. Funds held by company under reinsurance treaties	2,899,915	21,808,537
14. Amounts withheld or retained by company for account of others	54,713	54,713
15. Remittances and items not allocated	2,571,481	2,796,129
16. Provision for reinsurance (including \$ certified)		
17. Net adjustments in assets and liabilities due to foreign exchange rates	79,757	79,758
18. Drafts outstanding		
19. Payable to parent, subsidiaries and affiliates	16,322,978	16,994,369
20. Derivatives		
21. Payable for securities		
22. Payable for securities lending	6,852,698	13,645,530
23. Liability for amounts held under uninsured plans		
24. Capital notes \$ and interest thereon \$		
25. Aggregate write-ins for liabilities	124,091	969,630
26. Total liabilities excluding protected cell liabilities (Lines 1 through 25)	59,193,096	87,161,684
27. Protected cell liabilities		
28. Total liabilities (Lines 26 and 27)	59,193,096	87,161,684
29. Aggregate write-ins for special surplus funds		
30. Common capital stock	3,080,000	3,080,000
31. Preferred capital stock		
32. Aggregate write-ins for other than special surplus funds		
33. Surplus notes		
34. Gross paid in and contributed surplus	176,449,000	176,449,000
35. Unassigned funds (surplus)	93,910,347	91,388,968
36. Less treasury stock, at cost:		
36.1 shares common (value included in Line 30 \$)		
36.2 shares preferred (value included in Line 31 \$)		
37. Surplus as regards policyholders (Lines 29 to 35, less 36)	273,439,347	270,917,968
38. Totals (Page 2, Line 28, Col. 3)	332,632,443	358,079,652
DETAILS OF WRITE-INS		
2501. Reserve for state escheat payment	124,091	969,630
2502.		
2503.		
2598. Summary of remaining write-ins for Line 25 from overflow page		
2599. Totals (Lines 2501 through 2503 plus 2598)(Line 25 above)	124,091	969,630
2901.		
2902.		
2903.		
2998. Summary of remaining write-ins for Line 29 from overflow page		
2999. Totals (Lines 2901 through 2903 plus 2998)(Line 29 above)		
3201.		
3202.		
3203.		
3298. Summary of remaining write-ins for Line 32 from overflow page		
3299. Totals (Lines 3201 through 3203 plus 3298)(Line 32 above)		

STATEMENT OF INCOME

	1	2	3
	Current Year to Date	Prior Year to Date	Prior Year Ended December 31
UNDERWRITING INCOME			
1. Premiums earned:			
1.1 Direct (written \$)			
1.2 Assumed (written \$ 1,266,388)	1,266,388	13,126	(151,596)
1.3 Ceded (written \$ 1,266,388)	1,266,388	13,126	(151,596)
1.4 Net (written \$)			
DEDUCTIONS:			
2. Losses incurred (current accident year \$):			
2.1 Direct			
2.2 Assumed	(1,225,056)	(629,728)	46,330,251
2.3 Ceded	(1,225,056)	(629,728)	46,330,251
2.4 Net			
3. Loss adjustment expenses incurred			
4. Other underwriting expenses incurred			
5. Aggregate write-ins for underwriting deductions			
6. Total underwriting deductions (Lines 2 through 5)			
7. Net income of protected cells			
8. Net underwriting gain (loss) (Line 1 minus Line 6 + Line 7)			
INVESTMENT INCOME			
9. Net investment income earned	3,647,857	2,473,499	10,498,477
10. Net realized capital gains (losses) less capital gains tax of \$ 557,263	(564,180)	(110,362)	(1,352,376)
11. Net investment gain (loss) (Lines 9 + 10)	3,083,677	2,363,137	9,146,101
OTHER INCOME			
12. Net gain or (loss) from agents' or premium balances charged off (amount recovered \$ amount charged off \$)			
13. Finance and service charges not included in premiums			
14. Aggregate write-ins for miscellaneous income	7,213	2,717	(5,544)
15. Total other income (Lines 12 through 14)	7,213	2,717	(5,544)
16. Net income before dividends to policyholders, after capital gains tax and before all other federal and foreign income taxes (Lines 8 + 11 + 15)	3,090,890	2,365,854	9,140,557
17. Dividends to policyholders			
18. Net income, after dividends to policyholders, after capital gains tax and before all other federal and foreign income taxes (Line 16 minus Line 17)	3,090,890	2,365,854	9,140,557
19. Federal and foreign income taxes incurred	895,104	883,062	4,148,533
20. Net income (Line 18 minus Line 19)(to Line 22)	2,195,786	1,482,792	4,992,024
CAPITAL AND SURPLUS ACCOUNT			
21. Surplus as regards policyholders, December 31 prior year	270,917,968	263,535,255	263,535,255
22. Net income (from Line 20)	2,195,786	1,482,792	4,992,024
23. Net transfers (to) from Protected Cell accounts			
24. Change in net unrealized capital gains (losses) less capital gains tax of \$ (205,103)	(771,578)	(1,676,554)	(1,748,766)
25. Change in net unrealized foreign exchange capital gain (loss)	24,745	13,382	61,555
26. Change in net deferred income tax	1,087,126	761,738	4,142,482
27. Change in nonadmitted assets	(845,330)	(122,865)	558,999
28. Change in provision for reinsurance			
29. Change in surplus notes			
30. Surplus (contributed to) withdrawn from protected cells			
31. Cumulative effect of changes in accounting principles			
32. Capital changes:			
32.1 Paid in			
32.2 Transferred from surplus (Stock Dividend)			
32.3 Transferred to surplus			
33. Surplus adjustments:			
33.1 Paid in			
33.2 Transferred to capital (Stock Dividend)			
33.3 Transferred from capital			
34. Net remittances from or (to) Home Office			
35. Dividends to stockholders			
36. Change in treasury stock			
37. Aggregate write-ins for gains and losses in surplus	830,630	122,865	(623,581)
38. Change in surplus as regards policyholders (Lines 22 through 37)	2,521,379	581,358	7,382,713
39. Surplus as regards policyholders, as of statement date (Lines 21 plus 38)	273,439,347	264,116,613	270,917,968
DETAILS OF WRITE-INS			
0501.			
0502.			
0503.			
0598. Summary of remaining write-ins for Line 5 from overflow page			
0599. Totals (Lines 0501 through 0503 plus 0598)(Line 5 above)			
1401. Miscellaneous income/(expense)	7,213	2,717	(5,544)
1402.			
1403.			
1498. Summary of remaining write-ins for Line 14 from overflow page			
1499. Totals (Lines 1401 through 1403 plus 1498)(Line 14 above)	7,213	2,717	(5,544)
3701. Change in surplus – pooled nonadmitted premiums in the course of collection offset	830,630	122,865	(623,581)
3702.			
3703.			
3798. Summary of remaining write-ins for Line 37 from overflow page			
3799. Totals (Lines 3701 through 3703 plus 3798)(Line 37 above)	830,630	122,865	(623,581)

STATEMENT AS OF MARCH 31, 2025 OF THE NATIONWIDE INDEMNITY COMPANY

CASH FLOW

	1 Current Year To Date	2 Prior Year To Date	3 Prior Year Ended December 31
Cash from Operations			
1. Premiums collected net of reinsurance	(685,693)	(95,112)	738,810
2. Net investment income	3,415,967	2,091,816	10,415,987
3. Miscellaneous income	18,915,825	114,605	862,140
4. Total (Lines 1 to 3)	21,646,099	2,111,309	12,016,937
5. Benefit and loss related payments	2,779,995	(3,196,066)	354,100
6. Net transfers to Separate Accounts, Segregated Accounts and Protected Cell Accounts			
7. Commissions, expenses paid and aggregate write-ins for deductions	(1,275,403)	(1,693,482)	(1,327,437)
8. Dividends paid to policyholders			
9. Federal and foreign income taxes paid (recovered) net of \$ tax on capital gains (losses)		1	6,965,179
10. Total (Lines 5 through 9)	1,504,592	(4,889,547)	5,991,842
11. Net cash from operations (Line 4 minus Line 10)	20,141,507	7,000,856	6,025,095
Cash from Investments			
12. Proceeds from investments sold, matured or repaid:			
12.1 Bonds	2,948,583	3,526,410	10,693,323
12.2 Stocks			
12.3 Mortgage loans			
12.4 Real estate			
12.5 Other invested assets			
12.6 Net gains or (losses) on cash, cash equivalents and short-term investments	2	(1)	(1)
12.7 Miscellaneous proceeds	6,798,587	13,382	
12.8 Total investment proceeds (Lines 12.1 to 12.7)	9,747,172	3,539,791	10,693,322
13. Cost of investments acquired (long-term only):			
13.1 Bonds	8,319,354	17,541,981	31,284,799
13.2 Stocks			
13.3 Mortgage loans			
13.4 Real estate			
13.5 Other invested assets			
13.6 Miscellaneous applications		1,997,931	7,727,350
13.7 Total investments acquired (Lines 13.1 to 13.6)	8,319,354	19,539,912	39,012,149
14. Net increase/(decrease) in contract loans and premium notes			
15. Net cash from investments (Line 12.8 minus Line 13.7 and Line 14)	1,427,818	(16,000,121)	(28,318,827)
Cash from Financing and Miscellaneous Sources			
16. Cash provided (applied):			
16.1 Surplus notes, capital notes			
16.2 Capital and paid in surplus, less treasury stock			
16.3 Borrowed funds			
16.4 Net deposits on deposit-type contracts and other insurance liabilities			
16.5 Dividends to stockholders			
16.6 Other cash provided (applied)	(27,582,092)	(9,161,813)	8,601,239
17. Net cash from financing and miscellaneous sources (Line 16.1 through Line 16.4 minus Line 16.5 plus Line 16.6)	(27,582,092)	(9,161,813)	8,601,239
RECONCILIATION OF CASH, CASH EQUIVALENTS AND SHORT-TERM INVESTMENTS			
18. Net change in cash, cash equivalents and short-term investments (Line 11, plus Lines 15 and 17) .	(6,012,767)	(18,161,078)	(13,692,493)
19. Cash, cash equivalents and short-term investments:			
19.1 Beginning of year	1,990,421	15,682,914	15,682,914
19.2 End of period (Line 18 plus Line 19.1)	(4,022,346)	(2,478,164)	1,990,421

Note: Supplemental disclosures of cash flow information for non-cash transactions:

20.0001. Exchange of bond investment to bond investment		564,563	564,563
---	--	---------	---------

NOTES TO THE FINANCIAL STATEMENTS

Note 1 – Summary of Significant Accounting Policies and Going Concern

A. Accounting Practices

The accompanying statutory financial statements of Nationwide Indemnity Company (the Company) have been prepared in conformity with accounting practices prescribed or permitted by the National Association of Insurance Commissioners (NAIC) and the State of Ohio.

The Ohio Department of Insurance (Department) recognizes only statutory accounting practices (SAP) prescribed or permitted by the State of Ohio for determining and reporting the financial condition and results of operations of an insurance company, as well as, determining its solvency under the Ohio Insurance law. The NAIC’s *Accounting Practices and Procedures Manual* (NAIC SAP) has been adopted as a component of prescribed or permitted practices by the State of Ohio. The Company has no statutory accounting practices that differ from NAIC SAP.

A reconciliation of the Company’s net income and capital and surplus between NAIC SAP and practices prescribed and permitted by the State of Ohio is shown below:

	SSAP #	F/S Page	F/S Line #	2025	2024
Net Income					
(1) Nationwide Indemnity Company state basis (Page 4, Line 20, Columns 1 & 3)	XXX	XXX	XXX	\$ 2,195,786	\$ 4,992,024
(2) State Prescribed Practices that are an increase/(decrease) from NAIC SAP				-	-
(3) State Permitted Practices that are an increase/(decrease) from NAIC SAP				-	-
(4) NAIC SAP (1-2-3=4)	XXX	XXX	XXX	\$ 2,195,786	\$ 4,992,024
Surplus					
(5) Nationwide Indemnity Company state basis (Page 3, Line 37, Columns 1 & 2)	XXX	XXX	XXX	\$ 273,439,347	\$ 270,917,968
(6) State Prescribed Practices that are an increase/(decrease) from NAIC SAP				-	-
(7) State Permitted Practices that are an increase/(decrease) from NAIC SAP				-	-
(8) NAIC SAP (5-6-7=8)	XXX	XXX	XXX	\$ 273,439,347	\$ 270,917,968

B. Use of Estimates in the Preparation of the Financial Statements

There were no changes that were considered significant to the Company from prior year end.

C. Accounting Policies

1. There were no changes that were considered significant to the Company from prior year end.
2. Bonds, excluding asset-backed securities, are stated at amortized cost except those with a NAIC designation of “3” through “6”, which are stated at the lower of amortized cost or fair value. Amortization of premiums and discounts is calculated using the effective yield method. The Company does not hold any mandatory convertible securities or Securities Valuation Office (SVO) identified investments.
- 3-5. There were no changes that were considered significant to the Company from prior year end.
6. Asset-backed securities are stated at amortized cost or the lower of amortized cost or fair value in accordance with the provisions of Statement of Statutory Accounting Principles (SSAP) No. 43 – *Asset-Backed Securities* and the *Purposes and Procedures Manual* of the NAIC SVO. The retrospective adjustment method is used to value asset-backed securities where the collection of all contractual cash flows is probable. For all other asset-backed securities, the Company uses the prospective adjustment method. Refer to Note 5(D) for a discussion of the other-than-temporary impairment policy for asset-backed securities.
- 7-13. There were no changes that were considered significant to the Company from prior year end.

D. Going Concern

Not applicable.

Note 2 – Accounting Changes and Corrections of Errors

Effective January 1, 2025, the Company adopted revisions to SSAP No. 26 – *Bonds*, SSAP No. 43 – *Asset-Backed Securities* and SSAP No. 21 – *Other Admitted Assets*, in conformity with the NAIC’s revised guidance to develop a principles-based definition for debt securities qualifying for reporting as a bond. The adopted revisions require the assessment of securities to focus on their substance rather than legal form, updated the accounting and reporting guidance for debt securities that qualify for reporting as a bond, updated the accounting and reporting guidance for debt securities that do not qualify for reporting as a bond, and updated guidance for the accounting and reporting of residual interests. There were no material impacts to the Company as a result of the adoption.

Note 3 – Business Combinations and Goodwill

Not applicable.

Note 4 – Discontinued Operations

Not applicable.

Note 5 – Investments

A. Mortgage Loans, including Mezzanine Real Estate Loans

Not applicable.

B. Debt Restructuring

Not applicable.

NOTES TO THE FINANCIAL STATEMENTS

C. Reverse Mortgages

Not applicable.

D. Asset-Backed Securities

1. Prepayment assumptions are generally obtained using a model provided by a third-party vendor.
2. Not applicable.
3. Not applicable.
4. All impaired securities (fair value is less than cost or amortized cost) for which an other-than-temporary impairment has not been recognized in earnings as a realized loss (including securities with a recognized other-than-temporary impairment for non-interest related declines when a non-recognized interest related impairment remains):

a. The aggregate amount of unrealized losses:	1. Less than 12 Months	\$ (39,377)
	2. 12 Months or Longer	\$ (1,797,858)
b. The aggregate related fair value of securities with unrealized losses:	1. Less than 12 Months	\$ 11,071,132
	2. 12 Months or Longer	\$ 12,618,825

5. The Company periodically reviews asset-backed securities in an unrealized loss position by comparing the present value of cash flows, including estimated prepayments, expected to be collected from the security to the amortized cost basis of the security. If the present value of cash flows expected to be collected, discounted at the security's effective interest rate, is less than the amortized cost basis of the security, the impairment is considered other-than-temporary and a realized loss is recorded.

E. Dollar Repurchase Agreements and/or Securities Lending Transactions

1-2. There were no changes that were considered significant to the Company from prior year end.

3. Collateral Received

- a. There were no changes that were considered significant to the Company from prior year end.
- b. Not applicable.
- c. There were no changes that were considered significant to the Company from prior year end.

4-7. There were no changes that were considered significant to the Company from prior year end.

F. Repurchase Agreements Transactions Accounted for as Secured Borrowing

Not applicable.

G. Reverse Repurchase Agreements Transactions Accounted for as Secured Borrowing

1. To manage short-term liquidity needs within the Nationwide insurance subsidiaries, the Company has agreements to enter into repurchase or reverse repurchase agreements with several authorized affiliated insurance companies. The collateral required meets minimum state specific requirements or statutory requirements if state of domicile does not specify.

As these transactions are with affiliated insurance companies within the Nationwide family and are short-term in nature, the risk of changes in the fair value of the collateral are considered negligible.

For yield enhancement, the Company has agreements to enter into repurchase agreements through its securities lending program with collateral consisting of United States (U.S.) Government/Agency securities with investment grade counterparties. The collateral, which is marked to market daily, must represent 102% of the amount loaned and is monitored by the plan's manager, Bank of New York Mellon, for changes in fair value.

2. Type of Repo Trades Used

	1	2	3	4
	First Quarter	Second Quarter	Third Quarter	Fourth Quarter
a. Bilateral (YES/NO)	NO	-	-	-
b. Tri-Party (YES/NO)	YES	-	-	-

NOTES TO THE FINANCIAL STATEMENTS

3. Original (Flow) & Residual Maturity

	1		2		3		4
	First Quarter		Second Quarter		Third Quarter		Fourth Quarter
a. Maximum Amount							
1. Open - No Maturity		-		-		-	-
2. Overnight	\$	7,738,101	\$	-	\$	-	\$
3. 2 Days to 1 Week		-		-		-	-
4. > 1 Week to 1 Month		-		-		-	-
5. > 1 Month to 3 Months		-		-		-	-
6. > 3 Months to 1 Year		-		-		-	-
7. > 1 Year		-		-		-	-
b. Ending Balance							
1. Open - No Maturity		-		-		-	-
2. Overnight	\$	1,229,610	\$	-	\$	-	\$
3. 2 Days to 1 Week		-		-		-	-
4. > 1 Week to 1 Month		-		-		-	-
5. > 1 Month to 3 Months		-		-		-	-
6. > 3 Months to 1 Year		-		-		-	-
7. > 1 Year		-		-		-	-

4. Not applicable.

5. Fair Value of Securities Acquired Under Repo - Secured Borrowing

	1		2		3		4
	First Quarter		Second Quarter		Third Quarter		Fourth Quarter
a. Maximum Amount		\$7,892,863		\$-		\$-	\$-
b. Ending Balance		\$1,254,202		\$-		\$-	\$-

6. Securities Acquired Under Repo - Secured Borrowing by NAIC Designation

ENDING BALANCE							
	1	2	3	4	5	6	7
	None	NAIC 1	NAIC 2	NAIC 3	NAIC 4	NAIC 5	NAIC 6
a. ICO - FV	\$-	\$1,254,202	\$-	\$-	\$-	\$-	\$-
b. ABS - FV	-	-	-	-	-	-	-
c. Preferred Stock - FV	-	-	-	-	-	-	-
d. Common Stock	-	-	-	-	-	-	-
e. Mortgage Loans - FV	-	-	-	-	-	-	-
f. Real Estate - FV	-	-	-	-	-	-	-
g. Derivatives - FV	-	-	-	-	-	-	-
h. Other Invested Assets - FV	-	-	-	-	-	-	-
i. Total Assets - FV	\$-	\$1,254,202	\$-	\$-	\$-	\$-	\$-
(Sum of a through h)							

7. Collateral Provided - Secured Borrowing

	1		2		3		4
	First Quarter		Second Quarter		Third Quarter		Fourth Quarter
a. Maximum Amount							
1. Cash		\$7,738,101		\$-		\$-	\$-
2. Securities (FV)		-		-		-	-
3. Securities (BACV)		-		-		-	-
4. Nonadmitted Subset (BACV)		-		-		-	-
b. Ending Balance							
1. Cash		\$1,229,610		\$-		\$-	\$-
2. Securities (FV)		-		-		-	-
3. Securities (BACV)		-		-		-	-
4. Nonadmitted Subset (BACV)		-		-		-	-

8. Allocation of Aggregate Collateral Pledged by Remaining Contractual Maturity

	Amortized Cost	Fair Value
a. Overnight and Continuous	\$1,229,610	\$1,229,610
b. 30 Days or Less	-	-
c. 31 to 90 Days	-	-
d. > 90 Days	-	-

9-10. Not applicable.

NOTES TO THE FINANCIAL STATEMENTS

H. Repurchase Agreements Transactions Accounted for as a Sale

Not applicable.

I. Reverse Repurchase Agreements Transactions Accounted for as a Sale

Not applicable.

J. Real Estate

Not applicable.

K. Investments in Tax Credit Structures (tax credit investments)

Not applicable.

L. Restricted Assets

There were no changes that were considered significant to the Company from prior year end.

M. Working Capital Finance Investments

Not applicable.

N. Offsetting and Netting of Assets and Liabilities

No assets or liabilities are offset and reported net in accordance with a valid right to offset per SSAP No. 64 – *Offsetting and Netting of Assets and Liabilities*.

O. 5GI Securities

Not applicable.

P. Short Sales

Not applicable.

Q. Prepayment Penalty and Acceleration Fees

Not applicable.

R. Reporting Entity's Share of Cash Pool by Asset Type

Asset Type	Percent Share
(1) Cash	0%
(2) Cash equivalents	75%
(3) Short-term investments	25%
(4) Total (Must equal 100%)	100%

S. Aggregate Collateral Loans by Qualifying Investment Collateral

Not applicable.

Note 6 – Joint Ventures, Partnerships and Limited Liability Companies

There were no changes that were considered significant to the Company from prior year end.

Note 7 – Investment Income

There were no changes that were considered significant to the Company from prior year end.

Note 8 – Derivative Instruments

Not applicable.

Note 9 – Income Taxes

There were no changes that were considered significant to the Company from prior year end.

Note 10 – Information Concerning Parent, Subsidiaries, Affiliates and Other Related Parties

There were no changes that were considered significant to the Company from prior year end.

Note 11 – Debt

Not applicable.

Note 12 – Retirement Plans, Deferred Compensation, Postemployment Benefits and Compensated Absences and Other Postretirement Benefit Plans

Not applicable.

Note 13 – Capital and Surplus, Dividend Restrictions and Quasi-Reorganizations

There were no changes that were considered significant to the Company from prior year end.

Note 14 – Liabilities, Contingencies and Assessments

There were no changes that were considered significant to the Company from prior year end.

Note 15 – Leases

Not applicable.

NOTES TO THE FINANCIAL STATEMENTS

Note 16 – Information about Financial Instruments with Off-Balance Sheet Risk and Financial Instruments with Concentrations of Credit Risk

Not applicable.

Note 17 – Sale, Transfer and Servicing of Financial Assets and Extinguishments of Liabilities

A. Transfers of Receivables Reported as Sales

Not applicable.

B. Transfers and Servicing of Financial Assets

There were no changes that were considered significant to the Company from prior year end.

C. Wash Sales

Not applicable.

Note 18 – Gain or Loss to the Reporting Entity from Uninsured Plans and the Uninsured Portion of Partially Insured Plans

Not applicable.

Note 19 – Direct Premium Written/Produced by Managing General Agents/Third-Party Administrators

Not applicable.

Note 20 – Fair Value Measurements

A. Fair value is defined as the price that would be received to sell an asset or paid to transfer a liability in an orderly transaction between market participants at the measurement date. Fair value measurements are based upon observable and unobservable inputs. Observable inputs reflect market data obtained from independent sources while unobservable inputs reflect the Company's view of market assumptions in the absence of observable market information. The Company utilizes valuation techniques that maximize the use of observable inputs and minimize the use of unobservable inputs. In determining fair value, the Company uses various methods including market, income and cost approaches.

The Company categorizes its financial instruments into a three-level hierarchy based on the priority of the inputs to the valuation technique. The fair value hierarchy gives the highest priority to quoted prices in active markets for identical assets or liabilities (Level 1) and the lowest priority to unobservable inputs (Level 3). If the inputs used to measure fair value fall within different levels of the hierarchy, the category level is based on the lowest priority level input that is significant to the fair value measurement of the instrument in its entirety.

The Company categorizes assets and liabilities held at fair value in the statutory statements of assets and liabilities, surplus and other funds as follows:

Level/ 1. Unadjusted quoted prices accessible in active markets for identical assets or liabilities at the measurement date and mutual funds where the value per share (unit) is determined and published daily and is the basis for current transactions.

Level/ 2. Unadjusted quoted prices for similar assets or liabilities in active markets, quoted prices for identical or similar assets or liabilities in markets that are not active or inputs (other than quoted prices) that are observable or that are derived principally from or corroborated by observable market data through correlation or other means. Primary inputs to this valuation technique may include comparative trades, bid/asks, interest rate movements, U.S. Treasury rates, Secured Overnight Financing Rate, prime rates, cash flows, maturity dates, call ability, estimated prepayments and/or underlying collateral values.

Level/ 3. Prices or valuation techniques that require inputs that are both unobservable and significant to the overall fair value measurement. Inputs reflect management's best estimates of the assumptions market participants would use at the measurement date in pricing the asset or liability. Consideration is given to the risk inherent in both the method of valuation and the valuation inputs. Primary inputs to this valuation technique include broker quotes and comparative trades.

The Company reviews its fair value hierarchy classifications for assets and liabilities quarterly. Changes in the observability of significant valuation inputs identified during these reviews may trigger reclassifications. Reclassifications are reported as transfers at the beginning of the reporting period in which the change occurs.

Independent pricing services are most often utilized, and compared to pricing from additional sources when available, to determine the fair value of bonds and stocks for which market quotations or quotations on comparable securities or models are used. For these bonds and stocks, the Company obtains the pricing services' methodologies and classifies the investments accordingly in the fair value hierarchy.

Corporate pricing matrices are used in valuing certain bonds. The corporate pricing matrices were developed using publicly and privately available spreads segmented by various weighted average lives and credit quality ratings. Certain private placement bonds have adjusted spreads to capture the impacts of liquidity premium based on industry sector. The weighted average life and credit quality rating of a particular bond to be priced using those matrices are important inputs into the model and are used to determine a corresponding spread that is added to the appropriate industry sector or U.S. Treasury yield to create an estimated market yield for that bond. The estimated market yield and other relevant factors are then used to estimate the fair value of the particular bond.

Non-binding broker quotes are also utilized to determine the fair value of certain bonds when deemed appropriate or when valuations are not available from independent pricing services or corporate pricing matrices. These bonds are classified with the lowest priority in the fair value hierarchy as only one broker quote is ordinarily obtained, the investment is not traded on an exchange, the pricing is not available to other entities and/or the transaction volume in the same or similar investments has decreased. Inputs used in the development of prices are not provided to the Company by the brokers, as the brokers often do not provide the necessary transparency into their quotes and methodologies. At least annually, the Company performs reviews and tests to ensure that quotes are a reasonable estimate of the investments' fair value. Price movements of broker quotes are subject to validation and require approval from the Company's management. Management uses its knowledge of the investment and current market conditions to determine if the price is indicative of the investment's fair value.

The Company carries short-term investments at amortized cost, which approximates fair value.

NOTES TO THE FINANCIAL STATEMENTS

The following table summarizes assets held at fair value as of March 31, 2025:

	Level 1		Level 2		Level 3		Net Asset Value (NAV)		Total	
Assets at Fair Value										
Bonds										
Issuer Credit Obligation	\$	-	\$	3,522,932	\$	84,538	\$	-	\$	3,607,470
Asset-Backed Securities		-		158,358		-		-		158,358
Total Bonds	\$	-	\$	3,681,290	\$	84,538	\$	-	\$	3,765,828
Securities lending collateral assets		-		1,963,327		-		-		1,963,327
Total Assets at Fair Value/(NAV)	\$	-	\$	5,644,617	\$	84,538	\$	-	\$	5,729,155

The following table presents the rollforward of Level 3 assets held at fair value during the year ended March 31, 2025:

	Beginning Balance at 12/31/2024	Transfers into Level 3	Transfers out of Level 3	Total gains and (losses) included in Net Income	Total gains and (losses) included in Surplus	Purchases	Issuances	Sales	Settlements	Ending Balance at 3/31/2025
Assets at Fair Value										
Bonds										
Issuer Credit Obligation	\$104,836	\$-	\$-	\$-	\$123	\$-	\$-	\$(20,354)	\$(67)	\$84,538
Total Bonds	\$104,836	\$-	\$-	\$-	\$123	\$-	\$-	\$(20,354)	\$(67)	\$84,538
Total Assets at Fair Value	\$104,836	\$-	\$-	\$-	\$123	\$-	\$-	\$(20,354)	\$(67)	\$84,538

B. & C. The following table summarizes the carrying value and fair value of the Company's assets not held at fair value as of March 31, 2025:

	Aggregate Fair Value	Admitted Assets	Level 1	Level 2	Level 3	Net Asset Value (NAV)	Not Practicable (Carrying Value)
Assets							
Bonds							
Issuer Credit Obligation	\$151,266,424	\$159,050,205	\$36,283,417	\$113,128,806	\$1,854,201	\$-	\$-
Asset-Backed Securities	51,070,283	51,370,251	-	43,904,066	7,166,217	-	-
Total Bonds	\$202,336,707	\$210,420,456	\$36,283,417	\$157,032,872	\$9,020,418	\$-	\$-
Cash, cash equivalents and short-term investments	(4,022,346)	(4,022,346)	(6,105,618)	2,083,272	-	-	-
Securities lending collateral assets	1,993,278	1,750,223	1,229,610	763,668	-	-	-
Total Assets	\$200,307,639	\$208,148,333	\$31,407,409	\$159,879,812	\$9,020,418	\$-	\$-

D. Not Practicable to Estimate Fair Value

Not applicable.

E. Measured Using Net Asset Value

Not applicable.

Note 21 – Other Items

There were no changes that were considered significant to the Company from prior year end.

Note 22 – Events Subsequent

Type I – Recognized Subsequent Events:

Subsequent events have been considered through May 2, 2025, for the statutory statement available to be issued on May 8, 2025.

There were no material Type I events occurring subsequent to the end of the period that merited recognition or disclosure in these statements that have not already been reflected as required.

Type II – Nonrecognized Subsequent Events:

Subsequent events have been considered through May 2, 2025, for the statutory statement available to be issued on May 8, 2025.

There were no material Type II events occurring subsequent to the end of the period that merited recognition or disclosure in these statements that have not already been reflected as required.

Note 23 – Reinsurance

There were no changes that were considered significant to the Company from prior year end.

Note 24 – Retrospectively Rated Contracts and Contracts Subject to Redetermination

Not applicable.

Note 25 – Changes in Incurred Losses and Loss Adjustment Expenses

The Company is a participant in a 100% pooling reinsurance agreement with Nationwide Mutual Insurance Company, and as such has zero net incurred losses and loss adjustment expenses.

Note 26 – Intercompany Pooling Arrangements

There were no changes that were considered significant to the Company from prior year end.

Note 27 – Structured Settlements

Not applicable.

NOTES TO THE FINANCIAL STATEMENTS

Note 28 – Health Care Receivables

Not applicable.

Note 29 – Participating Policies

Not applicable.

Note 30 – Premium Deficiency Reserves

There were no changes that were considered significant to the Company from prior year end.

Note 31 – High Deductibles

Not applicable.

Note 32 – Discounting of Liabilities for Unpaid Losses or Unpaid Loss Adjustment Expenses

Not applicable.

Note 33 – Asbestos/Environmental Reserves

There were no changes that were considered significant to the Company from prior year end.

Note 34 – Subscriber Savings Accounts

Not applicable.

Note 35 – Multiple Peril Crop Insurance

Not applicable.

Note 36 – Financial Guaranty Insurance

Not applicable.

STATEMENT AS OF MARCH 31, 2025 OF THE NATIONWIDE INDEMNITY COMPANY

GENERAL INTERROGATORIES

PART 1 - COMMON INTERROGATORIES

GENERAL

- 1.1

Did the reporting entity experience any material transactions requiring the filing of Disclosure of Material Transactions with the State of Domicile, as required by the Model Act?

Yes [] No [X]
- 1.2

If yes, has the report been filed with the domiciliary state?

Yes [] No []
- 2.1

Has any change been made during the year of this statement in the charter, by-laws, articles of incorporation, or deed of settlement of the reporting entity?

Yes [] No [X]
- 2.2

If yes, date of change:
- 3.1

Is the reporting entity a member of an Insurance Holding Company System consisting of two or more affiliated persons, one or more of which is an insurer?

If yes, complete Schedule Y, Parts 1 and 1A.

Yes [X] No []
- 3.2

Have there been any substantial changes in the organizational chart since the prior quarter end?

Yes [] No [X]
- 3.3

If the response to 3.2 is yes, provide a brief description of those changes.
- 3.4

Is the reporting entity publicly traded or a member of a publicly traded group?

Yes [] No [X]
- 3.5

If the response to 3.4 is yes, provide the CIK (Central Index Key) code issued by the SEC for the entity/group.
- 4.1

Has the reporting entity been a party to a merger or consolidation during the period covered by this statement?

Yes [] No [X]
- 4.2

If yes, provide the name of the entity, NAIC Company Code, and state of domicile (use two letter state abbreviation) for any entity that has ceased to exist as a result of the merger or consolidation.
- | | | |
|----------------|-------------------|-------------------|
| 1 | 2 | 3 |
| Name of Entity | NAIC Company Code | State of Domicile |
| | | |
5.

If the reporting entity is subject to a management agreement, including third-party administrator(s), managing general agent(s), attorney-in-fact, or similar agreement, have there been any significant changes regarding the terms of the agreement or principals involved?

If yes, attach an explanation.

Yes [] No [X] N/A []
- 6.1

State as of what date the latest financial examination of the reporting entity was made or is being made.

12/31/2021
- 6.2

State the as of date that the latest financial examination report became available from either the state of domicile or the reporting entity. This date should be the date of the examined balance sheet and not the date the report was completed or released.

12/31/2021
- 6.3

State as of what date the latest financial examination report became available to other states or the public from either the state of domicile or the reporting entity. This is the release date or completion date of the examination report and not the date of the examination (balance sheet date).

05/31/2023
- 6.4

By what department or departments?
OH
- 6.5

Have all financial statement adjustments within the latest financial examination report been accounted for in a subsequent financial statement filed with Departments?

Yes [] No [] N/A [X]
- 6.6

Have all of the recommendations within the latest financial examination report been complied with?

Yes [] No [] N/A [X]
- 7.1

Has this reporting entity had any Certificates of Authority, licenses or registrations (including corporate registration, if applicable) suspended or revoked by any governmental entity during the reporting period?

Yes [] No [X]
- 7.2

If yes, give full information:
- 8.1

Is the company a subsidiary of a bank holding company regulated by the Federal Reserve Board?

Yes [] No [X]
- 8.2

If response to 8.1 is yes, please identify the name of the bank holding company.
- 8.3

Is the company affiliated with one or more banks, thrifts or securities firms?

Yes [X] No []
- 8.4

If response to 8.3 is yes, please provide below the names and location (city and state of the main office) of any affiliates regulated by a federal regulatory services agency [i.e. the Federal Reserve Board (FRB), the Office of the Comptroller of the Currency (OCC), the Federal Deposit Insurance Corporation (FDIC) and the Securities Exchange Commission (SEC)] and identify the affiliate's primary federal regulator.

1	2	3	4	5	6
Affiliate Name	Location (City, State)	FRB	OCC	FDIC	SEC
Nationwide Trust Company, FSB	Columbus, OHNO...	..YES...	..NO...	..NO...
Nationwide Investment Services Corp.	Columbus, OHNO...	..NO...	..NO...	..YES...
Nationwide Investment Advisors, LLC	Columbus, OHNO...	..NO...	..NO...	..YES...
Nationwide Securities, LLC	Columbus, OHNO...	..NO...	..NO...	..YES...
Nationwide Fund Advisors	Columbus, OHNO...	..NO...	..NO...	..YES...
Nationwide Fund Distributors, LLC	Columbus, OHNO...	..NO...	..NO...	..YES...
Nationwide Asset Management, LLC	Columbus, OHNO...	..NO...	..NO...	..YES...

STATEMENT AS OF MARCH 31, 2025 OF THE NATIONWIDE INDEMNITY COMPANY

GENERAL INTERROGATORIES

- 9.1

Are the senior officers (principal executive officer, principal financial officer, principal accounting officer or controller, or persons performing similar functions) of the reporting entity subject to a code of ethics, which includes the following standards?
(a) Honest and ethical conduct, including the ethical handling of actual or apparent conflicts of interest between personal and professional relationships;
(b) Full, fair, accurate, timely and understandable disclosure in the periodic reports required to be filed by the reporting entity;
(c) Compliance with applicable governmental laws, rules and regulations;
(d) The prompt internal reporting of violations to an appropriate person or persons identified in the code; and
(e) Accountability for adherence to the code.

Yes [X] No []
- 9.11

If the response to 9.1 is No, please explain:
.....
- 9.2

Has the code of ethics for senior managers been amended?

Yes [] No [X]
- 9.21

If the response to 9.2 is Yes, provide information related to amendment(s).
.....
- 9.3

Have any provisions of the code of ethics been waived for any of the specified officers?

Yes [] No [X]
- 9.31

If the response to 9.3 is Yes, provide the nature of any waiver(s).
.....

FINANCIAL

- 10.1

Does the reporting entity report any amounts due from parent, subsidiaries or affiliates on Page 2 of this statement?

Yes [X] No []
- 10.2

If yes, indicate any amounts receivable from parent included in the Page 2 amount:\$

INVESTMENT

- 11.1

Were any of the stocks, bonds, or other assets of the reporting entity loaned, placed under option agreement, or otherwise made available for use by another person? (Exclude securities under securities lending agreements.)

Yes [] No [X]
- 11.2

If yes, give full and complete information relating thereto:
.....
12.

Amount of real estate and mortgages held in other invested assets in Schedule BA:

\$92,925,482
13.

Amount of real estate and mortgages held in short-term investments:

\$
- 14.1

Does the reporting entity have any investments in parent, subsidiaries and affiliates?

Yes [X] No []
- 14.2

If yes, please complete the following:

	1	2
	Prior Year-End Book/Adjusted Carrying Value	Current Quarter Book/Adjusted Carrying Value
14.21 Bonds	\$	\$
14.22 Preferred Stock	\$	\$
14.23 Common Stock	\$	\$
14.24 Short-Term Investments	\$	\$
14.25 Mortgage Loans on Real Estate	\$	\$
14.26 All Other	\$34,745,257	\$34,890,139
14.27 Total Investment in Parent, Subsidiaries and Affiliates (Subtotal Lines 14.21 to 14.26)	\$34,745,257	\$34,890,139
14.28 Total Investment in Parent included in Lines 14.21 to 14.26 above	\$	\$

15.1

Has the reporting entity entered into any hedging transactions reported on Schedule DB?

Yes [] No [X]

15.2

If yes, has a comprehensive description of the hedging program been made available to the domiciliary state? Yes [] No [] N/A [X]
If no, attach a description with this statement.
.....

16.

For the reporting entity's security lending program, state the amount of the following as of the current statement date:

16.1

Total fair value of reinvested collateral assets reported on Schedule DL, Parts 1 and 2.

\$3,956,606

16.2

Total book/adjusted carrying value of reinvested collateral assets reported on Schedule DL, Parts 1 and 2

\$3,713,551

16.3

Total payable for securities lending reported on the liability page.

\$6,852,698
- 7.1

STATEMENT AS OF MARCH 31, 2025 OF THE NATIONWIDE INDEMNITY COMPANY

GENERAL INTERROGATORIES

17. Excluding items in Schedule E - Part 3 - Special Deposits, real estate, mortgage loans and investments held physically in the reporting entity's offices, vaults or safety deposit boxes, were all stocks, bonds and other securities, owned throughout the current year held pursuant to a custodial agreement with a qualified bank or trust company in accordance with Section 1, III - General Examination Considerations, F. Outsourcing of Critical Functions, Custodial or Safekeeping Agreements of the NAIC Financial Condition Examiners Handbook? Yes [X] No []
- 17.1 For all agreements that comply with the requirements of the NAIC Financial Condition Examiners Handbook, complete the following:

1 Name of Custodian(s)	2 Custodian Address
The Bank of New York Mellon	1 Wall Street, New York, NY 10286

- 17.2 For all agreements that do not comply with the requirements of the NAIC Financial Condition Examiners Handbook, provide the name, location and a complete explanation:

1 Name(s)	2 Location(s)	3 Complete Explanation(s)

- 17.3 Have there been any changes, including name changes, in the custodian(s) identified in 17.1 during the current quarter? Yes [] No [X]
- 17.4 If yes, give full information relating thereto:

1 Old Custodian	2 New Custodian	3 Date of Change	4 Reason

- 17.5 Investment management – Identify all investment advisors, investment managers, broker/dealers, including individuals that have the authority to make investment decisions on behalf of the reporting entity. This includes both primary and sub-advisors. For assets that are managed internally by employees of the reporting entity, note as such. ["...that have access to the investment accounts"; "...handle securities"]

1 Name of Firm or Individual	2 Affiliation
Members of the investment staff designated by the Chief Investment Officer as detailed in the Corporate Resolution	I.....

- 17.5097 For those firms/individuals listed in the table for Question 17.5, do any firms/individuals unaffiliated with the reporting entity (i.e. designated with a "U") manage more than 10% of the reporting entity's invested assets?..... Yes [] No [X]
- 17.5098 For firms/individuals unaffiliated with the reporting entity (i.e. designated with a "U") listed in the table for Question 17.5, does the total assets under management aggregate to more than 50% of the reporting entity's invested assets?..... Yes [] No [X]

- 17.6 For those firms or individuals listed in the table for 17.5 with an affiliation code of "A" (affiliated) or "U" (unaffiliated), provide the information for the table below.

1	2	3	4	5
Central Registration Depository Number	Name of Firm or Individual	Legal Entity Identifier (LEI)	Registered With	Investment Management Agreement (IMA) Filed

- 18.1 Have all the filing requirements of the Purposes and Procedures Manual of the NAIC Investment Analysis Office been followed? Yes [X] No []
- 18.2 If no, list exceptions:

.....

19. By self-designating 5GI securities, the reporting entity is certifying the following elements for each self-designated 5GI security:

a. Documentation necessary to permit a full credit analysis of the security does not exist or an NAIC CRP credit rating for an FE or PL security is not available.
b. Issuer or obligor is current on all contracted interest and principal payments.
c. The insurer has an actual expectation of ultimate payment of all contracted interest and principal.

Has the reporting entity self-designated 5GI securities? Yes [] No [X]

20. By self-designating PLGI securities, the reporting entity is certifying the following elements of each self-designated PLGI security:

a. The security was purchased prior to January 1, 2018.
b. The reporting entity is holding capital commensurate with the NAIC Designation reported for the security.
c. The NAIC Designation was derived from the credit rating assigned by an NAIC CRP in its legal capacity as a NRSRO which is shown on a current private letter rating held by the insurer and available for examination by state insurance regulators.
d. The reporting entity is not permitted to share this credit rating of the PL security with the SVO.

Has the reporting entity self-designated PLGI securities? Yes [] No [X]

21. By assigning FE to a Schedule BA non-registered private fund, the reporting entity is certifying the following elements of each self-designated FE fund:

a. The shares were purchased prior to January 1, 2019.
b. The reporting entity is holding capital commensurate with the NAIC Designation reported for the security.
c. The security had a public credit rating(s) with annual surveillance assigned by an NAIC CRP in its legal capacity as an NRSRO prior to January 1, 2019.
d. The fund only or predominantly holds bonds in its portfolio.
e. The current reported NAIC Designation was derived from the public credit rating(s) with annual surveillance assigned by an NAIC CRP in its legal capacity as an NRSRO.
f. The public credit rating(s) with annual surveillance assigned by an NAIC CRP has not lapsed.

Has the reporting entity assigned FE to Schedule BA non-registered private funds that complied with the above criteria? Yes [] No [X]

STATEMENT AS OF MARCH 31, 2025 OF THE NATIONWIDE INDEMNITY COMPANY

GENERAL INTERROGATORIES

PART 2 - PROPERTY & CASUALTY INTERROGATORIES

1.

If the reporting entity is a member of a pooling arrangement, did the agreement or the reporting entity's participation change?
If yes, attach an explanation.
.....

Yes [] No [X] N/A []
2.

Has the reporting entity reinsured any risk with any other reporting entity and agreed to release such entity from liability, in whole or in part, from any loss that may occur on the risk, or portion thereof, reinsured?
If yes, attach an explanation.
.....

Yes [] No [X]
- 3.1

Have any of the reporting entity's primary reinsurance contracts been canceled?

Yes [] No [X]
- 3.2

If yes, give full and complete information thereto.
.....
- 4.1

Are any of the liabilities for unpaid losses and loss adjustment expenses other than certain workers' compensation tabular reserves (see Annual Statement Instructions pertaining to disclosure of discounting for definition of " tabular reserves") discounted at a rate of interest greater than zero?

Yes [] No [X]

4.2 If yes, complete the following schedule:

			TOTAL DISCOUNT				DISCOUNT TAKEN DURING PERIOD			
1	2	3	4	5	6	7	8	9	10	11
Line of Business	Maximum Interest	Discount Rate	Unpaid Losses	Unpaid LAE	IBNR	TOTAL	Unpaid Losses	Unpaid LAE	IBNR	TOTAL
TOTAL										

5.

Operating Percentages:

5.1 A&H loss percent0.000 %

5.2 A&H cost containment percent0.000 %

5.3 A&H expense percent excluding cost containment expenses0.000 %
- 6.1

Do you act as a custodian for health savings accounts?

Yes [] No [X]
- 6.2

If yes, please provide the amount of custodial funds held as of the reporting date\$.....
- 6.3

Do you act as an administrator for health savings accounts?

Yes [] No [X]
- 6.4

If yes, please provide the balance of the funds administered as of the reporting date\$.....
7.

Is the reporting entity licensed or chartered, registered, qualified, eligible or writing business in at least two states?

Yes [X] No []
- 7.1

If no, does the reporting entity assume reinsurance business that covers risks residing in at least one state other than the state of domicile of the reporting entity?

Yes [] No []

STATEMENT AS OF MARCH 31, 2025 OF THE NATIONWIDE INDEMNITY COMPANY

SCHEDULE F - CEDED REINSURANCE

Showing All New Reinsurers - Current Year to Date

[illegible]

NONE

STATEMENT AS OF MARCH 31, 2025 OF THE NATIONWIDE INDEMNITY COMPANY

SCHEDULE T - EXHIBIT OF PREMIUMS WRITTEN

Current Year to Date - Allocated by States and Territories							
States, etc.	1 Active Status (a)	Direct Premiums Written		Direct Losses Paid (Deducting Salvage)		Direct Losses Unpaid	
		2 Current Year To Date	3 Prior Year To Date	4 Current Year To Date	5 Prior Year To Date	6 Current Year To Date	7 Prior Year To Date
1. Alabama	AL	N					
2. Alaska	AK	N					
3. Arizona	AZ	N					
4. Arkansas	AR	N					
5. California	CA	N					
6. Colorado	CO	N					
7. Connecticut	CT	N					
8. Delaware	DE	N					
9. District of Columbia	DC	N					
10. Florida	FL	N					
11. Georgia	GA	N					
12. Hawaii	HI	N					
13. Idaho	ID	N					
14. Illinois	IL	Q					
15. Indiana	IN	N					
16. Iowa	IA	Q					
17. Kansas	KS	N					
18. Kentucky	KY	N					
19. Louisiana	LA	N					
20. Maine	ME	N					
21. Maryland	MD	N					
22. Massachusetts	MA	N					
23. Michigan	MI	N					
24. Minnesota	MN	N					
25. Mississippi	MS	N					
26. Missouri	MO	N					
27. Montana	MT	N					
28. Nebraska	NE	N					
29. Nevada	NV	N					
30. New Hampshire	NH	N					
31. New Jersey	NJ	N					
32. New Mexico	NM	N					
33. New York	NY	Q					
34. North Carolina	NC	N					
35. North Dakota	ND	N					
36. Ohio	OH	L					
37. Oklahoma	OK	N					
38. Oregon	OR	N					
39. Pennsylvania	PA	N					
40. Rhode Island	RI	N					
41. South Carolina	SC	N					
42. South Dakota	SD	N					
43. Tennessee	TN	N					
44. Texas	TX	N					
45. Utah	UT	N					
46. Vermont	VT	N					
47. Virginia	VA	N					
48. Washington	WA	N					
49. West Virginia	WV	N					
50. Wisconsin	WI	Q					
51. Wyoming	WY	N					
52. American Samoa	AS	N					
53. Guam	GU	N					
54. Puerto Rico	PR	N					
55. U.S. Virgin Islands	VI	N					
56. Northern Mariana Islands	MP	N					
57. Canada	CAN	N					
58. Aggregate Other Alien OT	XXX						
59. Totals	XXX						
DETAILS OF WRITE-INS							
58001.	XXX						
58002.	XXX						
58003.	XXX						
58998. Summary of remaining write-ins for Line 58 from overflow page	XXX						
58999. Totals (Lines 58001 through 58003 plus 58998)(Line 58 above)	XXX						

- (a) Active Status Counts:
1. L - Licensed or Chartered - Licensed insurance carrier or domiciled RRG..... 1

2. R - Registered - Non-domiciled RRGs.....

3. E - Eligible - Reporting entities eligible or approved to write surplus lines in the state (other than their state of domicile - see DSLI).....

4. Q - Qualified - Qualified or accredited reinsurer..... 4

5. D - Domestic Surplus Lines Insurer (DSLII) - Reporting entities authorized to write surplus lines in the state of domicile.....

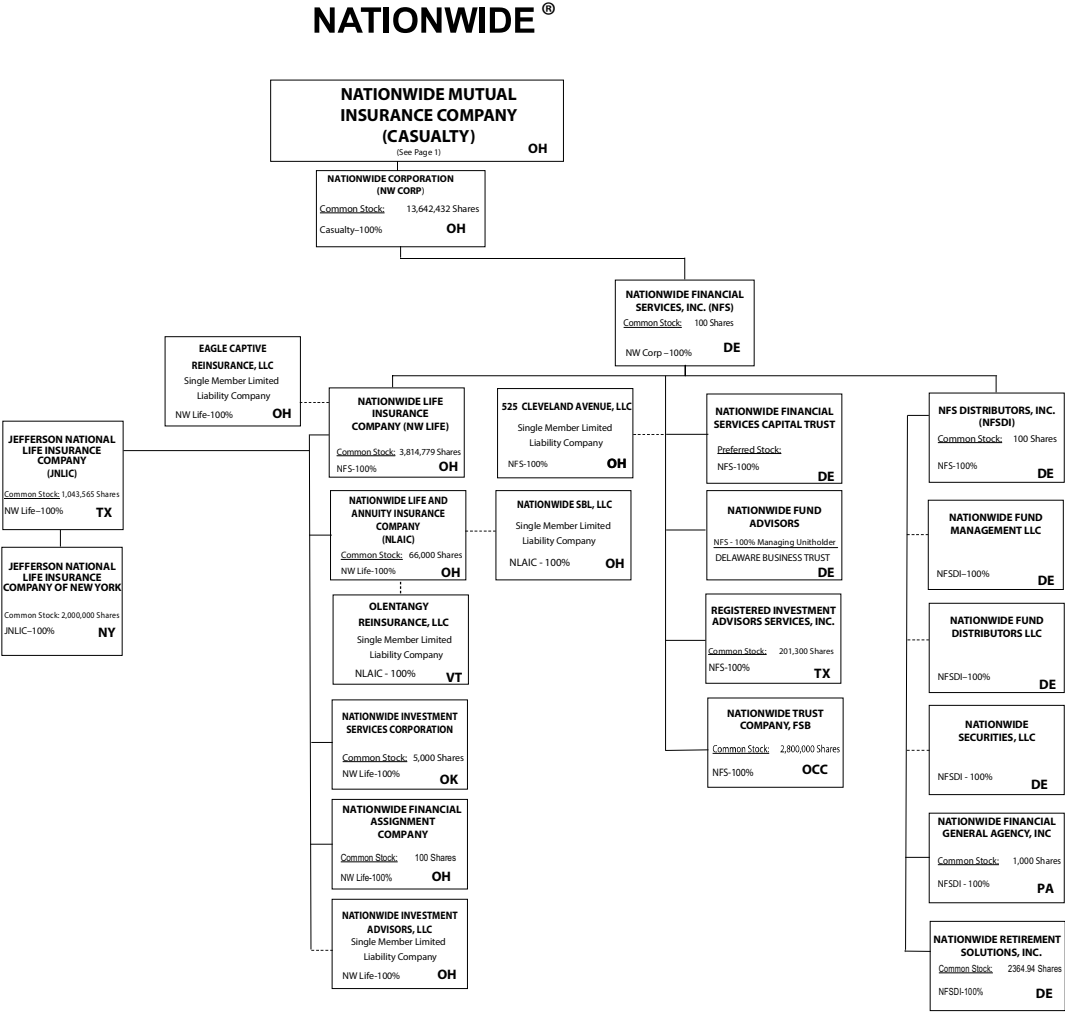
6. N - None of the above - Not allowed to write business in the state... .. 52

11

11



11.1



NATIONWIDE INSURANCE COMPANIES

NAIC Group Code	Group Name	NAIC Company Code	State of Domicile	Federal ID Number	Name of Company
0140	Nationwide	10127	OH	27-0114983	Allied Insurance Company of America
0140	Nationwide	42579	IA	42-1201931	Allied Property and Casualty Insurance Company
0140	Nationwide	19100	IA	42-6054959	AMCO Insurance Company
0140	Nationwide	29262	TX	74-1061659	Colonial County Mutual Insurance Company
0140	Nationwide	18961	OH	68-0066866	Crestbrook Insurance Company
0140	Nationwide	42587	IA	42-1207150	Depositors Insurance Company
0140	Nationwide	15821	OH	42-4523959	Eagle Captive Reinsurance, LLC
0140	Nationwide	22209	OH	75-6013587	Freedom Specialty Insurance Company
0140	Nationwide	23582	OH	41-0417250	Harleysville Insurance Company
0140	Nationwide	42900	NJ	23-2253669	Harleysville Insurance Company of New Jersey
0140	Nationwide	10674	OH	23-2864924	Harleysville Insurance Company of New York
0140	Nationwide	35696	OH	23-2384978	Harleysville Preferred Insurance Company
0140	Nationwide	26182	OH	04-1989660	Harleysville Worcester Insurance Company
0140	Nationwide	64017	TX	75-0300900	Jefferson National Life Insurance Company
0140	Nationwide	15727	NY	47-1180302	Jefferson National Life Insurance Company of New York
0140	Nationwide	11991	OH	38-0865250	National Casualty Company
0140	Nationwide	26093	OH	48-0470690	Nationwide Affinity Insurance Company of America
0140	Nationwide	28223	IA	42-1015537	Nationwide Agribusiness Insurance Company
0140	Nationwide	10723	OH	95-0639970	Nationwide Assurance Company
0140	Nationwide	23760	OH	31-4425763	Nationwide General Insurance Company
0140	Nationwide	10070	OH	31-1399201	Nationwide Indemnity Company
0140	Nationwide	25453	OH	95-2130882	Nationwide Insurance Company of America
0140	Nationwide	10948	OH	31-1613686	Nationwide Insurance Company of Florida
0140	Nationwide	92657	OH	31-1000740	Nationwide Life and Annuity Insurance Company
0140	Nationwide	66869	OH	31-4156830	Nationwide Life Insurance Company
0140	Nationwide	23787	OH	31-4177100	Nationwide Mutual Insurance Company
0140	Nationwide	37877	OH	31-0970750	Nationwide Property & Casualty Insurance Company
0140	Nationwide	13999	VT	27-1712056	Olentangy Reinsurance, LLC
0140	Nationwide	15580	OH	31-1117969	Scottsdale Indemnity Company
0140	Nationwide	41297	OH	31-1024978	Scottsdale Insurance Company
0140	Nationwide	10672	AZ	86-0835870	Scottsdale Surplus Lines Insurance Company
0140	Nationwide	36269	MI	86-0619597	Titan Insurance Company
0140	Nationwide	42285	OH	95-3750113	Veterinary Pet Insurance Company
0140	Nationwide	42889	OH	34-1394913	Victoria Fire & Casualty Company
0140	Nationwide	10105	OH	34-1777972	Victoria Select Insurance Company

STATEMENT AS OF MARCH 31, 2025 OF THE NATIONWIDE INDEMNITY COMPANY

SCHEDULE Y
PART 1A - DETAILS OF INSURANCE HOLDING COMPANY SYSTEM

1	2	3	4	5	6	7	8	9	10	11	12	13	14	15	16
Group Code	Group Name	NAIC Company Code	ID Number	Federal RSSD	CIK	Name of Securities Exchange if Publicly Traded (U.S. or International)	Names of Parent, Subsidiaries Or Affiliates	Domi-ciliary Location	Relation-ship to Reporting Entity	Directly Controlled by (Name of Entity/Person)	Type of Control (Ownership, Board, Management, Attorney-in-Fact, Influence, Other)	If Control is Owner-ship Provide Percen-tage	Ultimate Controlling Entity(ies)/Person(s)	Is an SCA Filing Re-quired? (Yes/No)	*
. 0140 ...	Nationwide	31-1486309	10 W. Nationwide, LLC OH.....	NIA.....	Nationwide Realty Investors, Ltd.	Ownership.....	100.000 ...	Nationwide Mutual Insurance Company NO.....
. 0140 ...	Nationwide	31-1486309	100 Green Meadows Drive, LLC OH.....	NIA.....	Nationwide Realty Investors, Ltd.	Ownership.....	100.000 ...	Nationwide Mutual Insurance Company NO.....
. 0140 ...	Nationwide	31-1486309	1000 Yard Street, LLC OH.....	NIA.....	Nationwide Realty Investors, Ltd.	Ownership.....	100.000 ...	Nationwide Mutual Insurance Company NO.....
. 0140 ...	Nationwide	31-1486309	1050 Yard Street, LLC OH.....	NIA.....	Nationwide Realty Investors, Ltd.	Ownership.....	100.000 ...	Nationwide Mutual Insurance Company NO.....
. 0140 ...	Nationwide	20-4939866	1055 Yard Street, LLC OH.....	NIA.....	GVY Residential, LLC	Ownership.....	100.000 ...	Nationwide Mutual Insurance Company NO.....
. 0140 ...	Nationwide	31-1486309	1125 Rail Street, LLC OH.....	NIA.....	Nationwide Realty Investors, Ltd.	Ownership.....	100.000 ...	Nationwide Mutual Insurance Company NO.....
. 0140 ...	Nationwide	31-1733036	120 Acre Partners, LLC DE.....	NIA.....	Nationwide Realty Investors, Ltd.	Ownership.....	95.000 ...	Nationwide Mutual Insurance Company NO.....
. 0140 ...	Nationwide	20-4939866	1125 Yard Street, LLC OH.....	NIA.....	NRI Equity Land Investments, LLC	Ownership.....	100.000 ...	Nationwide Mutual Insurance Company NO.....
. 0140 ...	Nationwide	20-4939867	1175 Bobcat, LLC OH.....	NIA.....	NRI Equity Land Investments, LLC	Ownership.....	100.000 ...	Nationwide Mutual Insurance Company NO.....
. 0140 ...	Nationwide	26-2451988	1492 Capital, LLC OH.....	NIA.....	Nationwide Mutual Insurance Company	Ownership.....	100.000 ...	Nationwide Mutual Insurance Company NO.....
. 0140 ...	Nationwide	31-1486309	111 Rivulon Boulevard, LLC OH.....	NIA.....	NRI-Rivulon, LLC	Ownership.....	100.000 ...	Nationwide Mutual Insurance Company NO.....
. 0140 ...	Nationwide	31-1486309	155 Rivulon Boulevard, LLC OH.....	NIA.....	NRI-Rivulon, LLC	Ownership.....	100.000 ...	Nationwide Mutual Insurance Company NO.....
. 0140 ...	Nationwide	31-1486309	161 Rivulon Boulevard, LLC OH.....	NIA.....	NRI-Rivulon, LLC	Ownership.....	100.000 ...	Nationwide Mutual Insurance Company NO.....
. 0140 ...	Nationwide	31-1580283	170 Marconi, LLC OH.....	NIA.....	NWD Investments, LLC	Ownership.....	100.000 ...	Nationwide Mutual Insurance Company NO.....
. 0140 ...	Nationwide	38-4118665	220 Vine St., LLC OH.....	NIA.....	NWD HP, LLC	Ownership.....	100.000 ...	Nationwide Mutual Insurance Company NO.....
. 0140 ...	Nationwide	31-1580283	245 Parks Edge Place, LLC OH.....	NIA.....	NWD Investments, LLC	Ownership.....	100.000 ...	Nationwide Mutual Insurance Company NO.....
. 0140 ...	Nationwide	31-1486309	275 Rivulon Boulevard, LLC OH.....	NIA.....	NRI-Rivulon, LLC	Ownership.....	100.000 ...	Nationwide Mutual Insurance Company NO.....
. 0140 ...	Nationwide	31-1486309	280 High Street, LLC OH.....	NIA.....	Nationwide Realty Investors, Ltd.	Ownership.....	100.000 ...	Nationwide Mutual Insurance Company NO.....
. 0140 ...	Nationwide	31-1486309	300 Rivulon Boulevard, LLC OH.....	NIA.....	NRI-Rivulon, LLC	Ownership.....	100.000 ...	Nationwide Mutual Insurance Company NO.....
. 0140 ...	Nationwide	31-1486309	310 Rivulon Boulevard, LLC OH.....	NIA.....	NRI-Rivulon, LLC	Ownership.....	100.000 ...	Nationwide Mutual Insurance Company NO.....
. 0140 ...	Nationwide	31-1486309	343 N. Front, LLC OH.....	NIA.....	Nationwide Realty Investors, Ltd.	Ownership.....	100.000 ...	Nationwide Mutual Insurance Company NO.....
. 0140 ...	Nationwide	31-1486309	400 Rivulon Boulevard, LLC OH.....	NIA.....	NRI-Rivulon, LLC	Ownership.....	100.000 ...	Nationwide Mutual Insurance Company NO.....
. 0140 ...	Nationwide	31-1580283	400 West Nationwide Boulevard, LLC OH.....	NIA.....	NWD Investments, LLC	Ownership.....	100.000 ...	Nationwide Mutual Insurance Company NO.....
. 0140 ...	Nationwide	31-1486309	410 Rivulon Boulevard, LLC OH.....	NIA.....	NRI-Rivulon, LLC	Ownership.....	100.000 ...	Nationwide Mutual Insurance Company NO.....
. 0140 ...	Nationwide	31-1580283	425 West Nationwide Boulevard, LLC OH.....	NIA.....	NWD Investments, LLC	Ownership.....	100.000 ...	Nationwide Mutual Insurance Company NO.....
. 0140 ...	Nationwide	31-1486309	44 Chestnut, LLC OH.....	NIA.....	Nationwide Realty Investors, Ltd.	Ownership.....	100.000 ...	Nationwide Mutual Insurance Company NO.....
. 0140 ...	Nationwide	38-4118665	500 Neil Avenue, LLC OH.....	NIA.....	NWD HP, LLC	Ownership.....	100.000 ...	Nationwide Mutual Insurance Company NO.....
. 0140 ...	Nationwide	38-4118665	515 Kilbourne Street, LLC OH.....	NIA.....	NWD HP, LLC	Ownership.....	100.000 ...	Nationwide Mutual Insurance Company NO.....
. 0140 ...	Nationwide	87-1954007	525 Cleveland Avenue, LLC OH.....	NIA.....	Nationwide Financial Services, Inc.	Ownership.....	100.000 ...	Nationwide Mutual Insurance Company NO.....
. 0140 ...	Nationwide	31-1486309	75 Rivulon Boulevard, LLC OH.....	NIA.....	NRI-Rivulon, LLC	Ownership.....	100.000 ...	Nationwide Mutual Insurance Company NO.....
. 0140 ...	Nationwide	20-4939866	775 Yard Street, LLC OH.....	NIA.....	NRI Equity Land Investments, LLC	Ownership.....	100.000 ...	Nationwide Mutual Insurance Company NO.....
. 0140 ...	Nationwide	20-4939866	777 Swan Street, LLC OH.....	NIA.....	NRI Equity Land Investments, LLC	Ownership.....	100.000 ...	Nationwide Mutual Insurance Company NO.....
. 0140 ...	Nationwide	20-4939866	780 Yard Street, LLC OH.....	NIA.....	NRI Equity Land Investments, LLC	Ownership.....	100.000 ...	Nationwide Mutual Insurance Company NO.....
. 0140 ...	Nationwide	20-4939866	795 Rail Street, LLC OH.....	NIA.....	NRI Equity Land Investments, LLC	Ownership.....	100.000 ...	Nationwide Mutual Insurance Company NO.....
. 0140 ...	Nationwide	20-4939866	800 Bobcat Avenue, LLC OH.....	NIA.....	NRI Equity Land Investments, LLC	Ownership.....	100.000 ...	Nationwide Mutual Insurance Company NO.....
. 0140 ...	Nationwide	20-4939866	800 Goodale Boulevard, LLC OH.....	NIA.....	NRI Equity Land Investments, LLC	Ownership.....	100.000 ...	Nationwide Mutual Insurance Company NO.....
. 0140 ...	Nationwide	20-4939866	800 Yard Street, LLC OH.....	NIA.....	NRI Equity Land Investments, LLC	Ownership.....	100.000 ...	Nationwide Mutual Insurance Company NO.....
. 0140 ...	Nationwide	20-4939866	805 Bobcat Avenue, LLC OH.....	NIA.....	GVY Residential, LLC	Ownership.....	100.000 ...	Nationwide Mutual Insurance Company NO.....
. 0140 ...	Nationwide	20-4939866	808 Yard Street, LLC OH.....	NIA.....	GVY Residential, LLC	Ownership.....	100.000 ...	Nationwide Mutual Insurance Company NO.....
. 0140 ...	Nationwide	20-4939866	820 Goodale Boulevard, LLC OH.....	NIA.....	NRI Equity Land Investments, LLC	Ownership.....	100.000 ...	Nationwide Mutual Insurance Company NO.....
. 0140 ...	Nationwide	20-4939866	822 Williams Avenue, LLC OH.....	NIA.....	GVY Residential, LLC	Ownership.....	100.000 ...	Nationwide Mutual Insurance Company NO.....
. 0140 ...	Nationwide	20-4939866	825 Junction Way, LLC OH.....	NIA.....	GVY Residential, LLC	Ownership.....	100.000 ...	Nationwide Mutual Insurance Company NO.....
. 0140 ...	Nationwide	20-4939866	828 Bobcat Avenue, LLC OH.....	NIA.....	NRI Equity Land Investments, LLC	Ownership.....	100.000 ...	Nationwide Mutual Insurance Company NO.....
. 0140 ...	Nationwide	20-4939866	840 Third Avenue, LLC OH.....	NIA.....	NRI Equity Land Investments, LLC	Ownership.....	100.000 ...	Nationwide Mutual Insurance Company NO.....
. 0140 ...	Nationwide	20-4939866	840 Yard Street, LLC OH.....	NIA.....	NRI Equity Land Investments, LLC	Ownership.....	100.000 ...	Nationwide Mutual Insurance Company NO.....
. 0140 ...	Nationwide	20-4939866	845 Yard Street, LLC OH.....	NIA.....	GVY Residential, LLC	Ownership.....	100.000 ...	Nationwide Mutual Insurance Company NO.....
. 0140 ...	Nationwide	20-4939866	855 Third Avenue, LLC OH.....	NIA.....	NRI Equity Land Investments, LLC	Ownership.....	100.000 ...	Nationwide Mutual Insurance Company NO.....
. 0140 ...	Nationwide	20-4939866	860 Third Avenue, LLC OH.....	NIA.....	NRI Equity Land Investments, LLC	Ownership.....	100.000 ...	Nationwide Mutual Insurance Company NO.....
. 0140 ...	Nationwide	20-4939866	875 First Avenue, LLC OH.....	NIA.....	GVY Residential, LLC	Ownership.....	100.000 ...	Nationwide Mutual Insurance Company NO.....

STATEMENT AS OF MARCH 31, 2025 OF THE NATIONWIDE INDEMNITY COMPANY

SCHEDULE Y

PART 1A - DETAILS OF INSURANCE HOLDING COMPANY SYSTEM

1	2	3	4	5	6	7	8	9	10	11	12	13	14	15	16
Group Code	Group Name	NAIC Company Code	ID Number	Federal RSSD	CIK	Name of Securities Exchange if Publicly Traded (U.S. or International)	Names of Parent, Subsidiaries Or Affiliates	Domi-ciliary Location	Relation-ship to Reporting Entity	Directly Controlled by (Name of Entity/Person)	Type of Control (Ownership, Board, Management, Attorney-in-Fact, Influence, Other)	If Control is Ownership Provide Percentage	Ultimate Controlling Entity(ies)/Person(s)	Is an SCA Filing Re-quired? (Yes/No)	*
.0140	Nationwide		20-4939866				875 Junction Way, LLC	..OH.....	..NIA.....	NRI Equity Land Investments, LLC	Ownership.....	100.000	Nationwide Mutual Insurance CompanyNO.....	
.0140	Nationwide		20-4939866				880 Third Avenue, LLC	..OH.....	..NIA.....	NRI Equity Land Investments, LLC	Ownership.....	100.000	Nationwide Mutual Insurance CompanyNO.....	
.0140	Nationwide		20-4939866				880 Yard Street, LLC	..OH.....	..NIA.....	GVY Residential, LLC	Ownership.....	100.000	Nationwide Mutual Insurance CompanyNO.....	
.0140	Nationwide		20-4939866				895 W. Third Avenue, LLC	..OH.....	..NIA.....	NRI Equity Land Investments, LLC	Ownership.....	100.000	Nationwide Mutual Insurance CompanyNO.....	
.0140	Nationwide		20-4939866				950 Dorchester Way, LLC	..OH.....	..NIA.....	GVY Residential, LLC	Ownership.....	100.000	Nationwide Mutual Insurance CompanyNO.....	
.0140	Nationwide		20-4939866				950 Goodale Boulevard, LLC	..OH.....	..NIA.....	NRI Equity Land Investments, LLC	Ownership.....	100.000	Nationwide Mutual Insurance CompanyNO.....	
.0140	Nationwide		31-1486309				960 Bobcat Avenue, LLC	..OH.....	..NIA.....	Nationwide Realty Investors, Ltd.	Ownership.....	100.000	Nationwide Mutual Insurance CompanyNO.....	
.0140	Nationwide		31-1486309				975 Rail Street, LLC	..OH.....	..NIA.....	Nationwide Realty Investors, Ltd.	Ownership.....	100.000	Nationwide Mutual Insurance CompanyNO.....	
.0140	Nationwide		31-1486309				995 Yard Street, LLC	..OH.....	..NIA.....	Nationwide Realty Investors, Ltd.	Ownership.....	100.000	Nationwide Mutual Insurance CompanyNO.....	
.0140	Nationwide		31-1486309				12062 Sycamore Trace, LLC	..OH.....	..NIA.....	Jerome Village Company, LLC	Ownership.....	100.000	Nationwide Mutual Insurance CompanyNO.....	
.0140	Nationwide		31-1486309				18615 Claret Drive, LLC	..OH.....	..NIA.....	NRI Cavasson, LLC	Ownership.....	100.000	Nationwide Mutual Insurance CompanyNO.....	
.0140	Nationwide		31-1486309				18655 Claret Drive, LLC	..OH.....	..NIA.....	NRI Cavasson, LLC	Ownership.....	100.000	Nationwide Mutual Insurance CompanyNO.....	
.0140	Nationwide		31-1486309				18700 Hayden Road, LLC	..OH.....	..NIA.....	NRI Cavasson, LLC	Ownership.....	100.000	Nationwide Mutual Insurance CompanyNO.....	
.0140	Nationwide		31-1486309				18750 Hayden Road, LLC	..OH.....	..NIA.....	NRI Cavasson, LLC	Ownership.....	100.000	Nationwide Mutual Insurance CompanyNO.....	
.0140	Nationwide		31-1580283				AD DORA, LLC	..OH.....	..NIA.....	NID Investments, LLC	Ownership.....	100.000	Nationwide Mutual Insurance CompanyNO.....	
.0140	Nationwide		31-1580283				ADTV, LLC	..OH.....	..NIA.....	NID Investments, LLC	Ownership.....	100.000	Nationwide Mutual Insurance CompanyNO.....	
.0140	Nationwide	10127	27-0114983				ALLIED Insurance Company of America	..OH.....	..IA.....	Nationwide Mutual Insurance Company	Ownership.....	100.000	Nationwide Mutual Insurance CompanyNO.....	
.0140	Nationwide	42579	42-1201931				ALLIED Property and Casualty Insurance Company	..IA.....	..IA.....	Nationwide Mutual Insurance Company	Ownership.....	100.000	Nationwide Mutual Insurance CompanyNO.....	
.0140	Nationwide		42-1527863				ALLIED Texas Agency, Inc.	..TX.....	..IA.....	AMCO Insurance Company	Ownership.....	100.000	Nationwide Mutual Insurance CompanyNO.....	
.0140	Nationwide	19100	42-6054959				AMCO Insurance Company	..IA.....	..IA.....	Nationwide Mutual Insurance Company	Ownership.....	100.000	Nationwide Mutual Insurance CompanyNO.....	
.0140	Nationwide		59-1031596				American Marine Underwriters, Inc.	..FL.....	..NIA.....	Nationwide Mutual Insurance Company	Ownership.....	100.000	Nationwide Mutual Insurance CompanyNO.....	
.0140	Nationwide		81-4532504				American Tax Credit Fund 2017-A, LLC	..OH.....	..OTH.....	Nationwide Life Insurance Company	Other.....	0.010	Nationwide Mutual Insurance CompanyNO.....	1
.0140	Nationwide		82-2001573				American Tax Credit Fund 2017-B, LLC	..OH.....	..OTH.....	Nationwide Life Insurance Company	Other.....	0.010	Nationwide Mutual Insurance CompanyNO.....	1
.0140	Nationwide		82-4591498				American Tax Credit Fund 2018-A, LLC	..OH.....	..OTH.....	Nationwide Life Insurance Company	Other.....	0.010	Nationwide Mutual Insurance CompanyNO.....	1
.0140	Nationwide		83-0606592				American Tax Credit Fund 2018-B, LLC	..OH.....	..OTH.....	Nationwide Life Insurance Company	Other.....	0.010	Nationwide Mutual Insurance CompanyNO.....	1
.0140	Nationwide		83-0620232				American Tax Credit Fund 2018-C, LLC	..OH.....	..OTH.....	Nationwide Life Insurance Company	Other.....	0.010	Nationwide Mutual Insurance CompanyNO.....	1
.0140	Nationwide		83-3900932				American Tax Credit Fund 2019-A, LLC	..OH.....	..OTH.....	Nationwide Life Insurance Company	Other.....	0.010	Nationwide Mutual Insurance CompanyNO.....	1
.0140	Nationwide		83-3953721				American Tax Credit Fund 2019-B, LLC	..OH.....	..OTH.....	Nationwide Life Insurance Company	Other.....	0.010	Nationwide Mutual Insurance CompanyNO.....	1
.0140	Nationwide		84-3443067				American Tax Credit Fund 2020-A, LLC	..OH.....	..OTH.....	Nationwide Life Insurance Company	Other.....	0.010	Nationwide Mutual Insurance CompanyNO.....	1
.0140	Nationwide		85-2359702				American Tax Credit Fund 2020-B, LLC	..OH.....	..OTH.....	Nationwide Life Insurance Company	Other.....	0.010	Nationwide Mutual Insurance CompanyNO.....	1
.0140	Nationwide						American Tax Credit Fund 2021-A, LLC (fka	..OH.....	..OTH.....	Nationwide Life Insurance Company	Other.....	0.010	Nationwide Mutual Insurance CompanyNO.....	1
.0140	Nationwide		85-2649655				American Tax Credit Fund 2020-C, LLC)	..OH.....	..OTH.....	Nationwide Life Insurance Company	Other.....	0.010	Nationwide Mutual Insurance CompanyNO.....	1
.0140	Nationwide		86-2502912				American Tax Credit Fund 2021-B, LLC	..OH.....	..OTH.....	Nationwide Life Insurance Company	Other.....	0.010	Nationwide Mutual Insurance CompanyNO.....	1
.0140	Nationwide		87-1349942				American Tax Credit Fund 2021-C, LLC	..OH.....	..OTH.....	Nationwide Life Insurance Company	Other.....	0.010	Nationwide Mutual Insurance CompanyNO.....	1
.0140	Nationwide						American Tax Credit Fund 2023-B, LLC (fka	..OH.....	..OTH.....	Nationwide Life Insurance Company	Other.....	0.010	Nationwide Mutual Insurance CompanyNO.....	1
.0140	Nationwide		87-4753681				American Tax Credit Fund 2022-A, LLC)	..OH.....	..OTH.....	Nationwide Life Insurance Company	Other.....	0.010	Nationwide Mutual Insurance CompanyNO.....	1
.0140	Nationwide						American Tax Credit Fund 2023-C, LLC (fka	..OH.....	..OTH.....	Nationwide Life Insurance Company	Other.....	0.010	Nationwide Mutual Insurance CompanyNO.....	1
.0140	Nationwide		87-4771309				American Tax Credit Fund 2022-B, LLC)	..OH.....	..OTH.....	Nationwide Life Insurance Company	Other.....	0.010	Nationwide Mutual Insurance CompanyNO.....	1
.0140	Nationwide		92-1389304				American Tax Credit Fund 2023-A, LLC	..OH.....	..OTH.....	Nationwide Life Insurance Company	Other.....	0.010	Nationwide Mutual Insurance CompanyNO.....	1
.0140	Nationwide		99-0672884				American Tax Credit Fund 2024-A, LLC	..OH.....	..OTH.....	Nationwide Life Insurance Company	Other.....	0.010	Nationwide Mutual Insurance CompanyNO.....	1
.0140	Nationwide		99-0698188				American Tax Credit Fund 2024-B, LLC	..OH.....	..NIA.....	Nationwide Life Insurance Company	Ownership.....	100.000	Nationwide Mutual Insurance CompanyNO.....	
.0140	Nationwide		31-1580283				Arena District CA 1, LLC	..OH.....	..NIA.....	NID Investments, LLC	Ownership.....	100.000	Nationwide Mutual Insurance CompanyNO.....	
.0140	Nationwide		90-0280710				Arena District Owners Association	..OH.....	..OTH.....	Other non-Nationwide	Other.....	0.000	Other non-NationwideNO.....	2
.0140	Nationwide		31-1486309				Cavasson Hotel, LLC	..OH.....	..NIA.....	Cavasson Hotel Holdings, LLC	Ownership.....	100.000	Nationwide Mutual Insurance CompanyNO.....	
.0140	Nationwide		31-1486309				Cavasson Hotel Holdings, LLC	..OH.....	..NIA.....	NRI Cavasson, LLC	Ownership.....	100.000	Nationwide Mutual Insurance CompanyNO.....	
.0140	Nationwide		20-1618232				CNRI-Cannonsport Condominium, LLC	..OH.....	..NIA.....	CNRI-Cannonsport, LLC	Ownership.....	100.000	Nationwide Mutual Insurance CompanyNO.....	
.0140	Nationwide		20-1618232				CNRI-Cannonsport, LLC	..OH.....	..NIA.....	Nationwide Realty Investors, Ltd.	Ownership.....	100.000	Nationwide Mutual Insurance CompanyNO.....	
.0140	Nationwide	29262	74-1061659				Colonial County Mutual Insurance Company	..TX.....	..IA.....	Other non-Nationwide	Other.....	0.000	Other non-NationwideNO.....	2
.0140	Nationwide	18961	68-0066866				Crestbrook Insurance Company	..OH.....	..IA.....	Nationwide Mutual Insurance Company	Ownership.....	100.000	Nationwide Mutual Insurance CompanyNO.....	

STATEMENT AS OF MARCH 31, 2025 OF THE NATIONWIDE INDEMNITY COMPANY

SCHEDULE Y
PART 1A - DETAILS OF INSURANCE HOLDING COMPANY SYSTEM

1	2	3	4	5	6	7	8	9	10	11	12	13	14	15	16
Group Code	Group Name	NAIC Company Code	ID Number	Federal RSSD	CIK	Name of Securities Exchange if Publicly Traded (U.S. or International)	Names of Parent, Subsidiaries Or Affiliates	Domi-ciliary Location	Relation-ship to Reporting Entity	Directly Controlled by (Name of Entity/Person)	Type of Control (Ownership, Board, Management, Attorney-in-Fact, Influence, Other)	If Control is Ownership Provide Percentage	Ultimate Controlling Entity(ies)/Person(s)	Is an SCA Filing Re-quired? (Yes/No)	*
. 0140 ...	Nationwide	31-1486309	Crewville, Ltd. OH.....NIA.....	Nationwide Realty Investors, Ltd.	Ownership.....	100.000 ...	Nationwide Mutual Insurance Company NO.....
. 0140 ...	Nationwide	84-5052608	Danforth, LLC OH.....NIA.....	Nationwide Mutual Insurance Company	Ownership.....	100.000 ...	Nationwide Mutual Insurance Company NO.....
. 0140 ...	Nationwide	42587	42-1207150	Depositors Insurance Company IA.....IA.....	Nationwide Mutual Insurance Company	Ownership.....	100.000 ...	Nationwide Mutual Insurance Company NO.....
.....	46-4104813	Discover Affordable Housing Investment Fund I LLC OH.....OTH.....	Other non-Nationwide	Other.....	0.000 ...	Other non-Nationwide NO.....	2
. 0140 ...	Nationwide	33-0096671	DVM Insurance Agency CA.....NIA.....	Veterinary Pet Insurance Company	Ownership.....	100.000 ...	Nationwide Mutual Insurance Company NO.....
. 0140 ...	Nationwide	15821	47-4523959	Eagle Captive Reinsurance, LLC OH.....IA.....	Nationwide Life Insurance Company	Ownership.....	100.000 ...	Nationwide Mutual Insurance Company NO.....
. 0140 ...	Nationwide	26-3260559	E-Risk Services, L.L.C. DE.....NIA.....	Nationwide Mutual Insurance Company	Ownership.....	100.000 ...	Nationwide Mutual Insurance Company NO.....
. 0140 ...	Nationwide	22209	75-6013587	Freedom Specialty Insurance Company OH.....IA.....	Scottsdale Insurance Company	Ownership.....	100.000 ...	Nationwide Mutual Insurance Company NO.....
. 0140 ...	Nationwide	20-4939866	Grandview Yard Hotel Holdings, LLC OH.....NIA.....	NRI Equity Land Investments, LLC	Ownership.....	100.000 ...	Nationwide Mutual Insurance Company NO.....
. 0140 ...	Nationwide	20-4939866	Grandview Yard Hotel, LLC OH.....NIA.....	Grandview Yard Hotel Holdings, LLC	Ownership.....	100.000 ...	Nationwide Mutual Insurance Company NO.....
. 0140 ...	Nationwide	20-4939866	GVY Residential, LLC OH.....NIA.....	NRI Equity Land Investments, LLC	Ownership.....	100.000 ...	Nationwide Mutual Insurance Company NO.....
. 0140 ...	Nationwide	23582	41-0417250	Harleysville Insurance Company OH.....IA.....	Nationwide Mutual Insurance Company	Ownership.....	100.000 ...	Nationwide Mutual Insurance Company NO.....
.....	Harleysville Insurance Company of New Jersey
. 0140 ...	Nationwide	42900	23-2253669 NJ.....IA.....	Nationwide Mutual Insurance Company	Ownership.....	100.000 ...	Nationwide Mutual Insurance Company NO.....
. 0140 ...	Nationwide	10674	23-2864924	Harleysville Insurance Company of New York OH.....IA.....	Nationwide Mutual Insurance Company	Ownership.....	100.000 ...	Nationwide Mutual Insurance Company NO.....
. 0140 ...	Nationwide	35696	23-2384978	Harleysville Preferred Insurance Company OH.....IA.....	Nationwide Mutual Insurance Company	Ownership.....	100.000 ...	Nationwide Mutual Insurance Company NO.....
. 0140 ...	Nationwide	26182	04-1989660	Harleysville Worcester Insurance Company OH.....IA.....	Nationwide Mutual Insurance Company	Ownership.....	100.000 ...	Nationwide Mutual Insurance Company NO.....
. 0140 ...	Nationwide	64017	75-0300900	Jefferson National Life Insurance Company TX.....IA.....	Nationwide Life Insurance Company	Ownership.....	100.000 ...	Nationwide Mutual Insurance Company NO.....
.....	Jefferson National Life Insurance Company of New York
. 0140 ...	Nationwide	15727	47-1180302 NY.....IA.....	Jefferson National Life Insurance Company	Ownership.....	100.000 ...	Nationwide Mutual Insurance Company NO.....
. 0140 ...	Nationwide	31-1486309	Jerome Village Company, LLC OH.....NIA.....	Nationwide Realty Investors, Ltd.	Ownership.....	100.000 ...	Nationwide Mutual Insurance Company NO.....
. 0140 ...	Nationwide	74-1395229	Lone Star General Agency, Inc. TX.....IA.....	Nationwide Mutual Insurance Company	Ownership.....	100.000 ...	Nationwide Mutual Insurance Company NO.....
. 0140 ...	Nationwide	11991	38-0865250	National Casualty Company OH.....IA.....	Nationwide Mutual Insurance Company	Ownership.....	100.000 ...	Nationwide Mutual Insurance Company NO.....
. 0140 ...	Nationwide	National Casualty Company of America, Ltd. .	.. GBR.....IA.....	National Casualty Company	Ownership.....	100.000 ...	Nationwide Mutual Insurance Company NO.....
. 0140 ...	Nationwide	42-1154244	Nationwide Advantage Mortgage Company IA.....NIA.....	AMCO Insurance Company	Ownership.....	87.300 ...	Nationwide Mutual Insurance Company YES.....
.....	ALLIED Property & Casualty Insurance Company
. 0140 ...	Nationwide	42-1154244	Nationwide Advantage Mortgage Company IA.....NIA.....	Company	Ownership.....	8.470 ...	Nationwide Mutual Insurance Company YES.....
. 0140 ...	Nationwide	42-1154244	Nationwide Advantage Mortgage Company IA.....NIA.....	Depositors Insurance Company	Ownership.....	4.230 ...	Nationwide Mutual Insurance Company YES.....
.....	Nationwide Affinity Insurance Company of America
. 0140 ...	Nationwide	26093	48-0470690 OH.....IA.....	Nationwide Mutual Insurance Company	Ownership.....	100.000 ...	Nationwide Mutual Insurance Company NO.....
. 0140 ...	Nationwide	28223	42-1015537	Nationwide Agribusiness Insurance Company IA.....IA.....	Nationwide Mutual Insurance Company	Ownership.....	100.000 ...	Nationwide Mutual Insurance Company NO.....
. 0140 ...	Nationwide	31-1578869	Nationwide Arena, LLC OH.....NIA.....	NRI Arena, LLC	Ownership.....	90.000 ...	Nationwide Mutual Insurance Company NO.....
. 0140 ...	Nationwide	20-8670712	Nationwide Asset Management, LLC OH.....NIA.....	Nationwide Mutual Insurance Company	Ownership.....	100.000 ...	Nationwide Mutual Insurance Company NO.....
. 0140 ...	Nationwide	10723	95-0639970	Nationwide Assurance Company OH.....IA.....	Nationwide Mutual Insurance Company	Ownership.....	100.000 ...	Nationwide Mutual Insurance Company NO.....
. 0140 ...	Nationwide	31-1036287	Nationwide Cash Management Company OH.....NIA.....	Nationwide Mutual Insurance Company	Ownership.....	100.000 ...	Nationwide Mutual Insurance Company NO.....
. 0140 ...	Nationwide	31-4416546	Nationwide Corporation OH.....NIA.....	Nationwide Mutual Insurance Company	Ownership.....	100.000 ...	Nationwide Mutual Insurance Company YES.....
. 0140 ...	Nationwide	31-1667326	Nationwide Financial Assignment Company OH.....NIA.....	Nationwide Life Insurance Company	Ownership.....	100.000 ...	Nationwide Mutual Insurance Company NO.....
. 0140 ...	Nationwide	23-2412039	Nationwide Financial General Agency, Inc. PA.....NIA.....	NFS Distributors, Inc.	Ownership.....	100.000 ...	Nationwide Mutual Insurance Company NO.....
. 0140 ...	Nationwide	31-6554353	Nationwide Financial Services Capital Trust DE.....NIA.....	Nationwide Financial Services, Inc.	Ownership.....	100.000 ...	Nationwide Mutual Insurance Company NO.....
. 0140 ...	Nationwide	31-1486870	Nationwide Financial Services, Inc. DE.....NIA.....	Nationwide Corporation	Ownership.....	100.000 ...	Nationwide Mutual Insurance Company NO.....
. 0140 ...	Nationwide	52-6969857	Nationwide Fund Advisors DE.....NIA.....	Nationwide Financial Services, Inc.	Ownership.....	100.000 ...	Nationwide Mutual Insurance Company NO.....
. 0140 ...	Nationwide	31-1748721	Nationwide Fund Distributors LLC DE.....NIA.....	NFS Distributors, Inc.	Ownership.....	100.000 ...	Nationwide Mutual Insurance Company NO.....
. 0140 ...	Nationwide	31-0900518	Nationwide Fund Management LLC DE.....NIA.....	NFS Distributors, Inc.	Ownership.....	100.000 ...	Nationwide Mutual Insurance Company NO.....
. 0140 ...	Nationwide	23760	31-4425763	Nationwide General Insurance Company OH.....IA.....	Nationwide Mutual Insurance Company	Ownership.....	100.000 ...	Nationwide Mutual Insurance Company NO.....
. 0140 ...	Nationwide	10070	31-1399201	Nationwide Indemnity Company OH.....RE.....	Nationwide Mutual Insurance Company	Ownership.....	100.000 ...	Nationwide Mutual Insurance Company NO.....
. 0140 ...	Nationwide	33-3724100	Nationwide GSC Holding, Inc. OH.....NIA.....	Nationwide Mutual Insurance Company	Ownership.....	100.000 ...	Nationwide Mutual Insurance Company NO.....
. 0140 ...	Nationwide	25453	95-2130882	Nationwide Insurance Company of America OH.....IA.....	Nationwide Mutual Insurance Company	Ownership.....	100.000 ...	Nationwide Mutual Insurance Company NO.....
. 0140 ...	Nationwide	10948	31-1613686	Nationwide Insurance Company of Florida OH.....IA.....	Nationwide Mutual Insurance Company	Ownership.....	100.000 ...	Nationwide Mutual Insurance Company NO.....
. 0140 ...	Nationwide	41-2206199	Nationwide Investment Advisors, LLC OH.....NIA.....	Nationwide Life Insurance Company	Ownership.....	100.000 ...	Nationwide Mutual Insurance Company NO.....

STATEMENT AS OF MARCH 31, 2025 OF THE NATIONWIDE INDEMNITY COMPANY

SCHEDULE Y
PART 1A - DETAILS OF INSURANCE HOLDING COMPANY SYSTEM

1	2	3	4	5	6	7	8	9	10	11	12	13	14	15	16
Group Code	Group Name	NAIC Company Code	ID Number	Federal RSSD	CIK	Name of Securities Exchange if Publicly Traded (U.S. or International)	Names of Parent, Subsidiaries Or Affiliates	Domi-ciliary Location	Relation-ship to Reporting Entity	Directly Controlled by (Name of Entity/Person)	Type of Control (Ownership, Board, Management, Attorney-in-Fact, Influence, Other)	If Control is Owner-ship Provide Percen-tage	Ultimate Controlling Entity(ies)/Person(s)	Is an SCA Filing Re-quired? (Yes/No)	*
. 0140 ...	Nationwide	73-0988442	Nationwide Investment Services Corporation .. Nationwide Life and Annuity Insurance Company	.. OK..... NIA.....	Nationwide Life Insurance Company	Ownership.....	100.000 ...	Nationwide Mutual Insurance Company YES.....
. 0140 ...	Nationwide	92657 ..	31-1000740 OH..... IA.....	Nationwide Life Insurance Company	Ownership.....	100.000 ...	Nationwide Mutual Insurance Company NO.....
. 0140 ...	Nationwide	66869 ..	31-4156830 OH..... IA.....	Nationwide Financial Services, Inc.	Ownership.....	100.000 ...	Nationwide Mutual Insurance Company NO.....
. 0140 ...	Nationwide	54-2113175 OH..... OTH.....	Nationwide Life Insurance Company	Other.....	0.010 ...	Nationwide Mutual Insurance Company NO.....	... 1
. 0140 ...	Nationwide	58-2672725 OH..... OTH.....	Nationwide Life Insurance Company	Other.....	0.010 ...	Nationwide Mutual Insurance Company NO.....	... 1
. 0140 ...	Nationwide	20-0382144 OH..... OTH.....	Nationwide Life Insurance Company	Other.....	0.010 ...	Nationwide Mutual Insurance Company NO.....	... 1
. 0140 ...	Nationwide	20-1918935 OH..... OTH.....	Nationwide Life Insurance Company	Other.....	0.010 ...	Nationwide Mutual Insurance Company NO.....	... 1
. 0140 ...	Nationwide	20-2303694 OH..... OTH.....	Nationwide Life Insurance Company	Other.....	0.010 ...	Nationwide Mutual Insurance Company NO.....	... 1
. 0140 ...	Nationwide	20-2303602 OH..... OTH.....	Nationwide Life Insurance Company	Other.....	0.010 ...	Nationwide Mutual Insurance Company NO.....	... 1
. 0140 ...	Nationwide	27-1362364 OH..... OTH.....	Nationwide Life Insurance Company	Other.....	0.010 ...	Nationwide Mutual Insurance Company NO.....	... 1
. 0140 ...	Nationwide	33-3698490 OH..... NIA.....	Nationwide Mutual Insurance Company	Ownership.....	100.000 ...	Nationwide Mutual Insurance Company NO.....
. 0140 ...	Nationwide	42-1373380 IA..... NIA.....	Nationwide Mutual Insurance Company	Ownership.....	100.000 ...	Nationwide Mutual Insurance Company NO.....
. 0140 ...	Nationwide	75-3191025 OH..... NIA.....	Nationwide Mutual Insurance Company	Ownership.....	100.000 ...	Nationwide Mutual Insurance Company NO.....
. 0140 ...	Nationwide	23787 ..	31-4177100 OH..... UDP.....	Other non-Nationwide	Ownership.....	0.000 ...	Other non-Nationwide NO.....
. 0140 ...	Nationwide	34-2012765 OH..... NIA.....	Nationwide Mutual Insurance Company	Ownership.....	100.000 ...	Nationwide Mutual Insurance Company NO.....
. 0140 ...	Nationwide	37877 ..	31-0970750 OH..... IA.....	Nationwide Mutual Insurance Company	Ownership.....	100.000 ...	Nationwide Mutual Insurance Company NO.....
. 0140 ...	Nationwide	31-1486309 OH..... NIA.....	Nationwide Mutual Insurance Company	Ownership.....	97.121 ...	Nationwide Mutual Insurance Company NO.....
. 0140 ...	Nationwide	31-1486309 OH..... NIA.....	Nationwide Indemnity Company	Ownership.....	2.879 ...	Nationwide Mutual Insurance Company NO.....
. 0140 ...	Nationwide	31-1486309 OH..... NIA.....	Nationwide Realty Investors, Ltd.	Ownership.....	100.000 ...	Nationwide Mutual Insurance Company NO.....
. 0140 ...	Nationwide OH..... NIA.....	Nationwide Realty Services, Ltd.	Ownership.....	100.000 ...	Nationwide Mutual Insurance Company NO.....
. 0140 ...	Nationwide	73-0948330 DE..... NIA.....	NFS Distributors, Inc. Nationwide Life and Annuity Insurance Company	Ownership.....	100.000 ...	Nationwide Mutual Insurance Company NO.....
. 0140 ...	Nationwide	83-2250056 OH..... NIA.....	Ownership.....	100.000 ...	Nationwide Mutual Insurance Company NO.....
. 0140 ...	Nationwide	36-2434406 OH..... NIA.....	NFS Distributors, Inc.	Ownership.....	100.000 ...	Nationwide Mutual Insurance Company NO.....
. 0140 ...	Nationwide	46-1952215 OH..... OTH.....	Nationwide Life Insurance Company	Other.....	0.010 ...	Nationwide Mutual Insurance Company NO.....	... 1
. 0140 ...	Nationwide	46-1971926 OH..... OTH.....	Nationwide Life Insurance Company	Other.....	0.010 ...	Nationwide Mutual Insurance Company NO.....	... 1
. 0140 ...	Nationwide	31-1592130 ..	2729677 US..... NIA.....	Nationwide Financial Services, Inc.	Ownership.....	100.000 ...	Nationwide Mutual Insurance Company NO.....
. 0140 ...	Nationwide	20-5976272 OH..... NIA.....	Nationwide Mutual Insurance Company	Ownership.....	100.000 ...	Nationwide Mutual Insurance Company NO.....
. 0140 ...	Nationwide	85-4193218 OH..... NIA.....	Nationwide Mutual Insurance Company	Ownership.....	100.000 ...	Nationwide Mutual Insurance Company NO.....
. 0140 ...	Nationwide	11-3651828 DE..... NIA.....	Nationwide Realty Investors, Ltd.	Ownership.....	95.000 ...	Nationwide Mutual Insurance Company NO.....
. 0140 ...	Nationwide	31-1630871 DE..... NIA.....	Nationwide Financial Services, Inc. Nationwide Life and Annuity Insurance Company	Ownership.....	100.000 ...	Nationwide Mutual Insurance Company NO.....
. 0140 ...	Nationwide	93-4557312 OH..... NIA.....	Ownership.....	100.000 ...	Nationwide Mutual Insurance Company NO.....
. 0140 ...	Nationwide	82-5195340 OH..... NIA.....	Nationwide Life Insurance Company	Ownership.....	100.000 ...	Nationwide Mutual Insurance Company NO.....
. 0140 ...	Nationwide	82-5194959 OH..... NIA.....	Nationwide Mutual Insurance Company	Ownership.....	100.000 ...	Nationwide Mutual Insurance Company NO.....
. 0140 ...	Nationwide	46-3762545 OH..... NIA.....	Nationwide Mutual Insurance Company	Ownership.....	100.000 ...	Nationwide Mutual Insurance Company NO.....
. 0140 ...	Nationwide	20-4939866 OH..... NIA.....	North of Thirld, LLC	Ownership.....	100.000 ...	Nationwide Mutual Insurance Company NO.....
. 0140 ...	Nationwide	31-1486309 OH..... NIA.....	NRI Arena, LLC	Ownership.....	100.000 ...	Nationwide Mutual Insurance Company NO.....
. 0140 ...	Nationwide	31-1486309 OH..... NIA.....	Nationwide Realty Investors, Ltd.	Ownership.....	100.000 ...	Nationwide Mutual Insurance Company NO.....
. 0140 ...	Nationwide	31-1486309 OH..... NIA.....	NRI Builders, LLC	Ownership.....	100.000 ...	Nationwide Mutual Insurance Company NO.....
. 0140 ...	Nationwide	31-1486309 OH..... NIA.....	Nationwide Realty Investors, Ltd.	Ownership.....	100.000 ...	Nationwide Mutual Insurance Company NO.....

STATEMENT AS OF MARCH 31, 2025 OF THE NATIONWIDE INDEMNITY COMPANY

SCHEDULE Y

PART 1A - DETAILS OF INSURANCE HOLDING COMPANY SYSTEM

1	2	3	4	5	6	7	8	9	10	11	12	13	14	15	16
Group Code	Group Name	NAIC Company Code	ID Number	Federal RSSD	CIK	Name of Securities Exchange if Publicly Traded (U.S. or International)	Names of Parent, Subsidiaries Or Affiliates	Domi-ciliary Location	Relation-ship to Reporting Entity	Directly Controlled by (Name of Entity/Person)	Type of Control (Ownership, Board, Management, Attorney-in-Fact, Influence, Other)	If Control is Owner-ship Provide Percen-tage	Ultimate Controlling Entity(ies)/Person(s)	Is an SCA Filing Re-quired? (Yes/No)	*
.0140	Nationwide		31-1486309				NRI Corporate Housing, LLC	..OH.....	NIA.....	Nationwide Realty Investors, Ltd.	Ownership.....	100.000	Nationwide Mutual Insurance Company	...NO.....	
.0140	Nationwide		31-1486309				NRI Cramer Creek, LLC	..OH.....	NIA.....	Nationwide Realty Investors, Ltd.	Ownership.....	100.000	Nationwide Mutual Insurance Company	...NO.....	
.0140	Nationwide		20-4939866				NRI Equity Land Investments, LLC	..OH.....	NIA.....	Nationwide Realty Investors, Ltd.	Ownership.....	80.000	Nationwide Mutual Insurance Company	...NO.....	
.0140	Nationwide		26-0212217				NRI Equity Tampa, LLC	..OH.....	NIA.....	Nationwide Realty Investors, Ltd.	Ownership.....	100.000	Nationwide Mutual Insurance Company	...NO.....	
.0140	Nationwide		31-1486309				NRI Office Ventures, Ltd	..OH.....	NIA.....	Nationwide Realty Investors, Ltd.	Ownership.....	100.000	Nationwide Mutual Insurance Company	...NO.....	
.0140	Nationwide		31-1580283				NRI Telecom, LLC	..OH.....	NIA.....	NID Investments, LLC	Ownership.....	100.000	Nationwide Mutual Insurance Company	...NO.....	
.0140	Nationwide		31-1486309				NRI-Rivulon, LLC	..OH.....	NIA.....	Nationwide Realty Investors, Ltd.	Ownership.....	100.000	Nationwide Mutual Insurance Company	...NO.....	
.0140	Nationwide		90-0729552				NTCIF-2011, LLC	..OH.....	NIA.....	Nationwide Mutual Insurance Company	Ownership.....	100.000	Nationwide Mutual Insurance Company	...NO.....	
.0140	Nationwide		27-4700627				NTCP 2011-A, LLC	..OH.....	OTH.....	Nationwide Life Insurance Company	Other.....	0.010	Nationwide Mutual Insurance Company	...NO.....	1
.0140	Nationwide		46-0741029				NTCP 2012-A, LLC	..OH.....	OTH.....	Nationwide Life Insurance Company	Other.....	0.010	Nationwide Mutual Insurance Company	...NO.....	1
.0140	Nationwide		46-3309896				NTCP 2013-C, LLC	..OH.....	OTH.....	Nationwide Life Insurance Company	Other.....	0.010	Nationwide Mutual Insurance Company	...NO.....	1
.0140	Nationwide		46-4111078				NTCP 2014-A, LLC	..OH.....	OTH.....	Nationwide Life Insurance Company	Other.....	0.010	Nationwide Mutual Insurance Company	...NO.....	1
.0140	Nationwide		47-1404116				NTCP 2014-B, LLC	..OH.....	OTH.....	Nationwide Life Insurance Company	Other.....	0.010	Nationwide Mutual Insurance Company	...NO.....	1
.0140	Nationwide		47-1413242				NTCP 2014-C, LLC	..OH.....	NIA.....	Nationwide Life Insurance Company	Ownership.....	100.000	Nationwide Mutual Insurance Company	...NO.....	
.0140	Nationwide		47-3909345				NTCP 2015-A, LLC	..OH.....	OTH.....	Nationwide Life Insurance Company	Other.....	0.010	Nationwide Mutual Insurance Company	...NO.....	1
.0140	Nationwide		47-4148470				NTCP 2015-B, LLC	..OH.....	OTH.....	Nationwide Life Insurance Company	Other.....	0.010	Nationwide Mutual Insurance Company	...NO.....	1
.0140	Nationwide		81-3836925				NTCP 2016-A, LLC	..OH.....	OTH.....	Nationwide Life Insurance Company	Other.....	0.010	Nationwide Mutual Insurance Company	...NO.....	1
.0140	Nationwide		82-2015065				NTCP 2017-A, LLC	..OH.....	OTH.....	Nationwide Life Insurance Company	Other.....	0.010	Nationwide Mutual Insurance Company	...NO.....	1
.0140	Nationwide		84-1969518				NW Fyrebyrd, LLC	..OH.....	NIA.....	NNOV8, LLC	Ownership.....	100.000	Nationwide Mutual Insurance Company	...NO.....	
.0140	Nationwide		85-3363961				NW Next, LLC	..OH.....	NIA.....	NNOV8, LLC	Ownership.....	100.000	Nationwide Mutual Insurance Company	...NO.....	
.0140	Nationwide		81-0936428				NW Private Debt, LLC	..OH.....	NIA.....	Nationwide Mutual Insurance Company	Ownership.....	100.000	Nationwide Mutual Insurance Company	...NO.....	
.0140	Nationwide		26-1903919				NW REI, LLC	..DE.....	NIA.....	Nationwide Mutual Insurance Company	Ownership.....	100.000	Nationwide Mutual Insurance Company	...NO.....	
.0140	Nationwide		92-1294202				NW-Adams, LLC	..OH.....	NIA.....	NW REI, LLC	Ownership.....	100.000	Nationwide Mutual Insurance Company	...NO.....	
.0140	Nationwide		99-3508624				NW-Aureum, LLC	..OH.....	NIA.....	NW REI (NLIC), LLC	Ownership.....	100.000	Nationwide Mutual Insurance Company	...NO.....	
.0140	Nationwide		92-2674633				NW-Brandon LLC	..OH.....	NIA.....	NW REI (NLIC), LLC	Ownership.....	100.000	Nationwide Mutual Insurance Company	...NO.....	
.0140	Nationwide		87-0847675				NW-Broadway at Surf, LLC	..OH.....	NIA.....	NMIC REO Holdings, LLC	Ownership.....	100.000	Nationwide Mutual Insurance Company	...NO.....	
.0140	Nationwide		88-2152576				NW-Colfax, LLC	..OH.....	NIA.....	NW REI (NLAIC), LLC	Ownership.....	100.000	Nationwide Mutual Insurance Company	...NO.....	
.0140	Nationwide		92-0292630				NW-Conroe, LLC	..OH.....	NIA.....	Nationwide Life Insurance Company	Ownership.....	100.000	Nationwide Mutual Insurance Company	...NO.....	
.0140	Nationwide		87-3648595				NW-Corazon, LLC	..OH.....	NIA.....	Nationwide Life Insurance Company	Ownership.....	100.000	Nationwide Mutual Insurance Company	...NO.....	
.0140	Nationwide		99-3065627				NW-Denton, LLC	..OH.....	NIA.....	NW REI, LLC	Ownership.....	100.000	Nationwide Mutual Insurance Company	...NO.....	
.0140	Nationwide		86-3529884				NW-Englewood, LLC	..OH.....	NIA.....	NW REI (NLIC), LLC	Ownership.....	100.000	Nationwide Mutual Insurance Company	...NO.....	
.0140	Nationwide		84-4388876				NW-Escalante, LLC	..OH.....	NIA.....	NW REI, LLC	Ownership.....	100.000	Nationwide Mutual Insurance Company	...NO.....	
.0140	Nationwide		86-1538532				NW-Escalante II, LLC	..OH.....	NIA.....	NW REI, LLC	Ownership.....	100.000	Nationwide Mutual Insurance Company	...NO.....	
.0140	Nationwide		92-3310596				NW-FSU, LLC	..OH.....	NIA.....	NW REI (NLIC), LLC	Ownership.....	100.000	Nationwide Mutual Insurance Company	...NO.....	
.0140	Nationwide		31-1580283				NWD 205 Vine, LLC	..OH.....	NIA.....	NWD Investments, LLC	Ownership.....	100.000	Nationwide Mutual Insurance Company	...NO.....	
.0140	Nationwide		31-1580283				NWD 225 Nationwide, LLC	..OH.....	NIA.....	NWD Investments, LLC	Ownership.....	100.000	Nationwide Mutual Insurance Company	...NO.....	
.0140	Nationwide		31-1580283				NWD 230 West, LLC	..OH.....	NIA.....	NWD Investments, LLC	Ownership.....	100.000	Nationwide Mutual Insurance Company	...NO.....	
.0140	Nationwide		31-1580283				NWD 240 Nationwide, LLC	..OH.....	NIA.....	NWD Investments, LLC	Ownership.....	100.000	Nationwide Mutual Insurance Company	...NO.....	
.0140	Nationwide		31-1580283				NWD 250 Brodbelt, LLC	..OH.....	NIA.....	NWD Investments, LLC	Ownership.....	100.000	Nationwide Mutual Insurance Company	...NO.....	
.0140	Nationwide		31-1580283				NWD 250 West, LLC	..OH.....	NIA.....	NWD Investments, LLC	Ownership.....	100.000	Nationwide Mutual Insurance Company	...NO.....	
.0140	Nationwide		31-1580283				NWD 265 Neil, LLC	..OH.....	NIA.....	NWD Investments, LLC	Ownership.....	100.000	Nationwide Mutual Insurance Company	...NO.....	
.0140	Nationwide		31-1580283				NWD 275 Marconi, LLC	..OH.....	NIA.....	NWD Investments, LLC	Ownership.....	100.000	Nationwide Mutual Insurance Company	...NO.....	
.0140	Nationwide		31-1580283				NWD 300 Neil, LLC	..OH.....	NIA.....	NWD Investments, LLC	Ownership.....	100.000	Nationwide Mutual Insurance Company	...NO.....	
.0140	Nationwide		31-1580283				NWD 300 Spring, LLC	..OH.....	NIA.....	NWD Investments, LLC	Ownership.....	100.000	Nationwide Mutual Insurance Company	...NO.....	
.0140	Nationwide		31-1580283				NWD 355 McConnell, LLC	..OH.....	NIA.....	NWD Investments, LLC	Ownership.....	100.000	Nationwide Mutual Insurance Company	...NO.....	
.0140	Nationwide		31-1580283				NWD 425 Nationwide, LLC	..OH.....	NIA.....	NWD Investments, LLC	Ownership.....	100.000	Nationwide Mutual Insurance Company	...NO.....	
.0140	Nationwide		31-1580283				NWD 500 Nationwide, LLC	..OH.....	NIA.....	NWD Investments, LLC	Ownership.....	100.000	Nationwide Mutual Insurance Company	...NO.....	
.0140	Nationwide		31-1580283				NWD Arena Crossing, LLC	..OH.....	NIA.....	NWD Investments, LLC	Ownership.....	100.000	Nationwide Mutual Insurance Company	...NO.....	
.0140	Nationwide		31-1580283				NWD Arena District I, LLC	..OH.....	NIA.....	NWD Investments, LLC	Ownership.....	100.000	Nationwide Mutual Insurance Company	...NO.....	

STATEMENT AS OF MARCH 31, 2025 OF THE NATIONWIDE INDEMNITY COMPANY

SCHEDULE Y
PART 1A - DETAILS OF INSURANCE HOLDING COMPANY SYSTEM

1	2	3	4	5	6	7	8	9	10	11	12	13	14	15	16
Group Code	Group Name	NAIC Company Code	ID Number	Federal RSSD	CIK	Name of Securities Exchange if Publicly Traded (U.S. or International)	Names of Parent, Subsidiaries Or Affiliates	Domi-ciliary Location	Relation-ship to Reporting Entity	Directly Controlled by (Name of Entity/Person)	Type of Control (Ownership, Board, Management, Attorney-in-Fact, Influence, Other)	If Control is Owner-ship Provide Percen-tage	Ultimate Controlling Entity(ies)/Person(s)	Is an SCA Filing Re-quired? (Yes/No)	*
. 0140 ...	Nationwide	31-1580283	NWD Arena District II, LLC OH.....NIA.....	NWD Investments, LLC	Ownership.....	100.000 ...	Nationwide Mutual Insurance Company NO.....
. 0140 ...	Nationwide	31-1580283	NWD Arena District MM, LLC OH.....NIA.....	NWD Investments, LLC	Ownership.....	100.000 ...	Nationwide Mutual Insurance Company NO.....
. 0140 ...	Nationwide	31-1580283	NWD Arena District PW, LLC OH.....NIA.....	NWD Investments, LLC	Ownership.....	100.000 ...	Nationwide Mutual Insurance Company NO.....
. 0140 ...	Nationwide	31-1580283	NWD Arena District V, LLC OH.....NIA.....	NWD Investments, LLC	Ownership.....	100.000 ...	Nationwide Mutual Insurance Company NO.....
. 0140 ...	Nationwide	31-1580283	NWD Athletic Club, LLC OH.....NIA.....	NWD Investments, LLC	Ownership.....	100.000 ...	Nationwide Mutual Insurance Company NO.....
. 0140 ...	Nationwide	88-2975730	NW-Boise, LLC OH.....NIA.....	Nationwide Life Insurance Company	Ownership.....	100.000 ...	Nationwide Mutual Insurance Company NO.....
. 0140 ...	Nationwide	31-1580283	NWD Brodbelt, LLC OH.....NIA.....	NWD Investments, LLC	Ownership.....	100.000 ...	Nationwide Mutual Insurance Company NO.....
. 0140 ...	Nationwide	30-0876022	NWD Franklinton, LLC OH.....NIA.....	Nationwide Realty Investors, Ltd.	Ownership.....	80.000 ...	Nationwide Mutual Insurance Company NO.....
. 0140 ...	Nationwide	31-4118665	NWD HP, LLC OH.....NIA.....	NWD Investments, LLC	Ownership.....	75.000 ...	Nationwide Mutual Insurance Company NO.....
. 0140 ...	Nationwide	31-1580283	NWD Investments, LLC OH.....NIA.....	Nationwide Realty Investors, Ltd.	Ownership.....	80.000 ...	Nationwide Mutual Insurance Company NO.....
. 0140 ...	Nationwide	31-1486309	NWGH, LLC OH.....NIA.....	Nationwide Realty Investors, Ltd.	Ownership.....	75.000 ...	Nationwide Mutual Insurance Company NO.....
. 0140 ...	Nationwide	87-3124154	NW-Gallatin, LLC OH.....NIA.....	Nationwide Life Insurance Company	Ownership.....	100.000 ...	Nationwide Mutual Insurance Company NO.....
. 0140 ...	Nationwide	92-2943602	NW-Holly Springs, LLC OH.....NIA.....	Nationwide Mutual Insurance Company	Ownership.....	100.000 ...	Nationwide Mutual Insurance Company NO.....
. 0140 ...	Nationwide	86-2431839	NW-Hub13, LLC OH.....NIA.....	NW REI, LLC	Ownership.....	100.000 ...	Nationwide Mutual Insurance Company NO.....
. 0140 ...	Nationwide	92-3558072	NW-Huntersville, LLC OH.....NIA.....	NW REI, LLC	Ownership.....	100.000 ...	Nationwide Mutual Insurance Company NO.....
. 0140 ...	Nationwide	47-2482818	NW-Jasper WAG, LLC OH.....NIA.....	NW REI, LLC	Ownership.....	100.000 ...	Nationwide Mutual Insurance Company NO.....
. 0140 ...	Nationwide	87-3767006	NW-Kingsbury, LLC OH.....NIA.....	Nationwide Life Insurance Company	Ownership.....	100.000 ...	Nationwide Mutual Insurance Company NO.....
. 0140 ...	Nationwide	81-5146596	NW-Logan, LLC OH.....NIA.....	NW REI, LLC	Ownership.....	100.000 ...	Nationwide Mutual Insurance Company NO.....
. 0140 ...	Nationwide	87-1565013	NW-Midtown, LLC OH.....NIA.....	NW REI, LLC	Ownership.....	100.000 ...	Nationwide Mutual Insurance Company NO.....
. 0140 ...	Nationwide	88-2595124	NW-OG, LLC OH.....NIA.....	NW REI, LLC	Ownership.....	100.000 ...	Nationwide Mutual Insurance Company NO.....
. 0140 ...	Nationwide	83-2260477	NW-ORBDP, LLC OH.....NIA.....	NW REI (NMIFC), LLC	Ownership.....	100.000 ...	Nationwide Mutual Insurance Company NO.....
. 0140 ...	Nationwide	93-1728625	NW-Pleasant Prairie, LLC OH.....NIA.....	NW REI (NLIC), LLC	Ownership.....	100.000 ...	Nationwide Mutual Insurance Company NO.....
. 0140 ...	Nationwide	47-2449044	NW-Promenade at Madison, LLC OH.....NIA.....	NW REI, LLC	Ownership.....	100.000 ...	Nationwide Mutual Insurance Company NO.....
. 0140 ...	Nationwide	87-1367836	NW-Rancho, LLC OH.....NIA.....	NW REI, LLC	Ownership.....	100.000 ...	Nationwide Mutual Insurance Company NO.....
. 0140 ...	Nationwide	88-1405151	NW-Riverchase, LLC OH.....NIA.....	Nationwide Life Insurance Company	Ownership.....	100.000 ...	Nationwide Mutual Insurance Company NO.....
. 0140 ...	Nationwide	86-3702669	NW-RPG Cranberry, LLC OH.....NIA.....	NW REI, LLC	Ownership.....	100.000 ...	Nationwide Mutual Insurance Company NO.....
. 0140 ...	Nationwide	87-3273918	NW-San Marco, LLC OH.....NIA.....	Nationwide Life Insurance Company	Ownership.....	100.000 ...	Nationwide Mutual Insurance Company NO.....
. 0140 ...	Nationwide	87-3289289	NW-San Pablo, LLC OH.....NIA.....	NW REI, LLC	Ownership.....	100.000 ...	Nationwide Mutual Insurance Company NO.....
. 0140 ...	Nationwide	81-3212025	NW-Springfield, LLC OH.....NIA.....	NW REI, LLC	Ownership.....	100.000 ...	Nationwide Mutual Insurance Company NO.....
. 0140 ...	Nationwide	93-2022585	NW-Spring Hill, LLC OH.....NIA.....	NW REI, LLC	Ownership.....	100.000 ...	Nationwide Mutual Insurance Company NO.....
. 0140 ...	Nationwide	92-2878794	NW-SR-16, LLC OH.....NIA.....	NW REI, LLC	Ownership.....	100.000 ...	Nationwide Mutual Insurance Company NO.....
. 0140 ...	Nationwide	92-0677233	NW-UNCC, LLC OH.....NIA.....	NW REI (NLIC), LLC	Ownership.....	100.000 ...	Nationwide Mutual Insurance Company NO.....
. 0140 ...	Nationwide	81-1603024	NW REI (NLAIC), LLC OH.....NIA.....	Nationwide Life and Annuity Insurance Company	Ownership.....	100.000 ...	Nationwide Mutual Insurance Company NO.....
. 0140 ...	Nationwide	81-1619428	NW REI (NLIC), LLC OH.....NIA.....	Nationwide Life Insurance Company	Ownership.....	100.000 ...	Nationwide Mutual Insurance Company NO.....
. 0140 ...	Nationwide	81-1861190	NW REI (NMIC), LLC OH.....NIA.....	Nationwide Mutual Insurance Company	Ownership.....	100.000 ...	Nationwide Mutual Insurance Company NO.....
. 0140 ...	Nationwide	31-0947092	OCH Company, LLC OH.....NIA.....	Nationwide Realty Investors, Ltd.	Ownership.....	100.000 ...	Nationwide Mutual Insurance Company NO.....
. 0140 ...	Nationwide	26-0263012	Old Track Street Owners Association, Inc. OH.....OTH.....	Other non-Nationwide	Other.....	0.000 ...	Other non-Nationwide NO.....	2
. 0140 ...	Nationwide ...	13999 ..	27-1712056	Olentangy Reinsurance, LLC VT.....IA.....	Company	Ownership.....	100.000 ...	Nationwide Mutual Insurance Company NO.....
. 0140 ...	Nationwide	31-1486309	Perimeter A, Ltd. OH.....NIA.....	Nationwide Realty Investors, Ltd.	Ownership.....	100.000 ...	Nationwide Mutual Insurance Company NO.....
. 0140 ...	Nationwide	20-4939866	Rail Street Parking, LLC OH.....NIA.....	NRI Equity Land Investments, LLC	Ownership.....	100.000 ...	Nationwide Mutual Insurance Company NO.....
. 0140 ...	Nationwide	75-2938844	Registered Investment Advisors Services, Inc.
. 0140 ...	Nationwide	82-0549218	Retention Alternatives Ltd. TX.....NIA.....	Nationwide Financial Services, Inc.	Ownership.....	100.000 ...	Nationwide Mutual Insurance Company NO.....
. 0140 ...	Nationwide ...	15580 ..	31-1117969	Scottsdale Indemnity CompanyIA.....	Nationwide Mutual Insurance Company	Ownership.....	100.000 ...	Nationwide Mutual Insurance Company NO.....
. 0140 ...	Nationwide ...	41297 ..	31-1024978	Scottsdale Insurance CompanyIA.....	Nationwide Mutual Insurance Company	Ownership.....	100.000 ...	Nationwide Mutual Insurance Company NO.....
. 0140 ...	Nationwide ...	10672 ..	86-0835870	Scottsdale Surplus Lines Insurance Company AZ.....IA.....	Scottsdale Insurance Company	Ownership.....	100.000 ...	Nationwide Mutual Insurance Company NO.....
. 0140 ...	Nationwide	31-1610040	The Waterfront Partners, LLC OH.....NIA.....	Nationwide Realty Investors, Ltd.	Ownership.....	50.000 ...	Nationwide Mutual Insurance Company NO.....

STATEMENT AS OF MARCH 31, 2025 OF THE NATIONWIDE INDEMNITY COMPANY

SCHEDULE Y

PART 1A - DETAILS OF INSURANCE HOLDING COMPANY SYSTEM

1	2	3	4	5	6	7	8	9	10	11	12	13	14	15	16
Group Code	Group Name	NAIC Company Code	ID Number	Federal RSSD	CIK	Name of Securities Exchange if Publicly Traded (U.S. or International)	Names of Parent, Subsidiaries Or Affiliates	Domi-ciliary Loca-tion	Relation-ship to Reporting Entity	Directly Controlled by (Name of Entity/Person)	Type of Control (Ownership, Board, Management, Attorney-in-Fact, Influence, Other)	If Control is Owner-ship Provide Percen-tage	Ultimate Controlling Entity(ies)/Person(s)	Is an SCA Filing Re-quired? (Yes/No)	*
. 0140 ...	Nationwide 36269	86-0619597	Titan Insurance Company MI..... IA.....	Nationwide Mutual Insurance Company	Ownership.....	.. 100.000 ...	Nationwide Mutual Insurance Company NO.....
. 0140 ...	Nationwide	75-1284530	Titan Insurance Services, Inc. TX..... IA.....	Nationwide Mutual Insurance Company	Ownership.....	.. 100.000 ...	Nationwide Mutual Insurance Company NO.....
. 0140 ...	Nationwide	33-0160222	V.P.I. Services, Inc. CA..... IA.....	Veterinary Pet Insurance Company	Ownership.....	.. 100.000 ...	Nationwide Mutual Insurance Company NO.....
. 0140 ...	Nationwide 42285	95-3750113	Veterinary Pet Insurance Company OH..... IA.....	Scottsdale Insurance Company	Ownership.....	.. 100.000 ...	Nationwide Mutual Insurance Company NO.....
. 0140 ...	Nationwide 42889	34-1394913	Victoria Fire & Casualty Company OH..... IA.....	Nationwide Mutual Insurance Company	Ownership.....	.. 100.000 ...	Nationwide Mutual Insurance Company NO.....
. 0140 ...	Nationwide 10105	34-1777972	Victoria Select Insurance Company OH..... IA.....	Victoria Fire & Casualty Insurance Company	Ownership.....	.. 100.000 ...	Nationwide Mutual Insurance Company NO.....

Asterisk	Explanation
1	Nationwide retains management responsibility for these entities, despite a minority ownership stake.
2	Other ownership indicates a non-ownership circumstance by a Nationwide entity.

Part 1 - Loss Experience

N O N E

Part 2 - Direct Premiums Written

N O N E

STATEMENT AS OF MARCH 31, 2025 OF THE NATIONWIDE INDEMNITY COMPANY

PART 3 (\$000 OMITTED)

LOSS AND LOSS ADJUSTMENT EXPENSE RESERVES SCHEDULE

	1	2	3	4	5	6	7	8	9	10	11	12	13
Years in Which Losses Occurred	Prior Year-End Known Case Loss and LAE Reserves	Prior Year-End IBNR Loss and LAE Reserves	Total Prior Year-End Loss and LAE Reserves (Cols. 1+2)	2025 Loss and LAE Payments on Claims Reported as of Prior Year-End	2025 Loss and LAE Payments on Claims Unreported as of Prior Year-End	Total 2025 Loss and LAE Payments (Cols. 4+5)	Q.S. Date Known Case Loss and LAE Reserves on Claims Reported and Open as of Prior Year End	Q.S. Date Known Case Loss and LAE Reserves on Claims Reported or Reopened Subsequent to Prior Year End	Q.S. Date IBNR Loss and LAE Reserves	Total Q.S. Loss and LAE Reserves (Cols.7+8+9)	Prior Year-End Known Case Loss and LAE Reserves Developed (Savings)/ Deficiency (Cols.4+7 minus Col. 1)	Prior Year-End IBNR Loss and LAE Reserves Developed (Savings)/ Deficiency (Cols. 5+8+9 minus Col. 2)	Prior Year-End Total Loss and LAE Reserve Developed (Savings)/ Deficiency (Cols. 11+12)
1. 2022 + Prior
2. 2023
3. Subtotals 2023 + Prior
4. 2024
5. Subtotals 2024 + Prior
6. 2025XXX.....XXX.....XXX.....XXX.....XXX.....XXX.....XXX.....XXX.....
7. Totals
8. Prior Year-End Surplus As Regards Policyholders	270,918										Col. 11, Line 7 As % of Col. 1 Line 7	Col. 12, Line 7 As % of Col. 2 Line 7	Col. 13, Line 7 As % of Col. 3 Line 7
											1.	2.	3.
											Col. 13, Line 7 As a % of Col. 1 Line 8		
		4.											

STATEMENT AS OF MARCH 31, 2025 OF THE NATIONWIDE INDEMNITY COMPANY

SUPPLEMENTAL EXHIBITS AND SCHEDULES INTERROGATORIES

The following supplemental reports are required to be filed as part of your statement filing. However, in the event that your company does not transact the type of business for which the special report must be filed, your response of NO to the specific interrogatory will be accepted in lieu of filing a "NONE" report and a bar code will be printed below. If the supplement is required of your company but is not being filed for whatever reason enter SEE EXPLANATION and provide an explanation following the interrogatory questions.

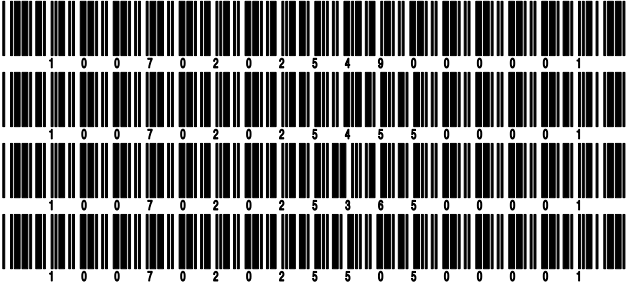
	Response
1. Will the Trusteed Surplus Statement be filed with the state of domicile and the NAIC with this statement?	NO
2. Will Supplement A to Schedule T (Medical Professional Liability Supplement) be filed with this statement?	NO
3. Will the Medicare Part D Coverage Supplement be filed with the state of domicile and the NAIC with this statement?	NO
4. Will the Director and Officer Insurance Coverage Supplement be filed with the state of domicile and the NAIC with this statement?	NO
AUGUST FILING	
5. Will the regulator-only (non-public) Communication of Internal Control Related Matters Noted in Audit be filed with the state of domicile and electronically with the NAIC (as a regulator-only non-public document) by August 1? The response for 1st and 3rd quarters should be N/A. A NO response resulting with a bar code is only appropriate in the 2nd quarter.	N/A

Explanations:

1.
2.
3.
4.

Bar Codes:

1. Trusteed Surplus Statement [Document Identifier 490]
2. Supplement A to Schedule T [Document Identifier 455]
3. Medicare Part D Coverage Supplement [Document Identifier 365]
4. Director and Officer Supplement [Document Identifier 505]



STATEMENT AS OF MARCH 31, 2025 OF THE NATIONWIDE INDEMNITY COMPANY
OVERFLOW PAGE FOR WRITE-INS

NONE

SCHEDULE A - VERIFICATION

Real Estate

	1	2
	Year to Date	Prior Year Ended December 31
1. Book/adjusted carrying value, December 31 of prior year		
2. Cost of acquired:		
2.1 Actual cost at time of acquisition		
2.2 Additional investment made after acquisition		
3. Current year change in encumbrances		
4. Total gain (loss) on disposals		
5. Deduct amounts received on disposals		
6. Total foreign exchange change in book/adjusted carrying value		
7. Deduct current year's other than temporary impairment recognized		
8. Deduct current year's depreciation		
9. Book/adjusted carrying value at the end of current period (Lines 1+2+3+4-5+6-7-8)		
10. Deduct total nonadmitted amounts		
11. Statement value at end of current period (Line 9 minus Line 10)		

SCHEDULE B - VERIFICATION

Mortgage Loans

	1	2
	Year to Date	Prior Year Ended December 31
1. Book value/recorded investment excluding accrued interest, December 31 of prior year		
2. Cost of acquired:		
2.1 Actual cost at time of acquisition		
2.2 Additional investment made after acquisition		
3. Capitalized deferred interest and other		
4. Accrual of discount		
5. Unrealized valuation increase/(decrease)		
6. Total gain (loss) on disposals		
7. Deduct amounts received on disposals		
8. Deduct amortization of premium and mortgage interest paid and commitment fees		
9. Total foreign exchange change in book value/recorded investment excluding accrued interest		
10. Deduct current year's other than temporary impairment recognized		
11. Book value/recorded investment excluding accrued interest at end of current period (Lines 1+2+3+4+5+6-7-8+9-10)		
12. Total valuation allowance		
13. Subtotal (Line 11 plus Line 12)		
14. Deduct total nonadmitted amounts		
15. Statement value at end of current period (Line 13 minus Line 14)		

SCHEDULE BA - VERIFICATION

Other Long-Term Invested Assets

	1	2
	Year to Date	Prior Year Ended December 31
1. Book/adjusted carrying value, December 31 of prior year	93,971,745	96,514,196
2. Cost of acquired:		
2.1 Actual cost at time of acquisition		
2.2 Additional investment made after acquisition		
3. Capitalized deferred interest and other		
4. Accrual of discount		
5. Unrealized valuation increase/(decrease)	(1,046,261)	(2,542,451)
6. Total gain (loss) on disposals		
7. Deduct amounts received on disposals		
8. Deduct amortization of premium, depreciation and proportional amortization		
9. Total foreign exchange change in book/adjusted carrying value		
10. Deduct current year's other than temporary impairment recognized		
11. Book/adjusted carrying value at end of current period (Lines 1+2+3+4+5+6-7-8+9-10)	92,925,484	93,971,745
12. Deduct total nonadmitted amounts		
13. Statement value at end of current period (Line 11 minus Line 12)	92,925,484	93,971,745

SCHEDULE D - VERIFICATION

Bonds and Stocks

	1	2
	Year to Date	Prior Year Ended December 31
1. Book/adjusted carrying value of bonds and stocks, December 31 of prior year	208,786,851	188,242,930
2. Cost of bonds and stocks acquired	8,319,354	31,849,362
3. Accrual of discount	154,411	610,876
4. Unrealized valuation increase/(decrease)	19,657	64,674
5. Total gain (loss) on disposals	(6,919)	(144,055)
6. Deduct consideration for bonds and stocks disposed of	2,949,266	11,288,096
7. Deduct amortization of premium	138,483	579,050
8. Total foreign exchange change in book/adjusted carrying value		
9. Deduct current year's other than temporary impairment recognized		
10. Total investment income recognized as a result of prepayment penalties and/or acceleration fees	683	30,210
11. Book/adjusted carrying value at end of current period (Lines 1+2+3+4+5-6-7+8-9+10)	214,186,288	208,786,851
12. Deduct total nonadmitted amounts		
13. Statement value at end of current period (Line 11 minus Line 12)	214,186,288	208,786,851

STATEMENT AS OF MARCH 31, 2025 OF THE NATIONWIDE INDEMNITY COMPANY

SCHEDULE D - PART 1B

Showing the Acquisitions, Dispositions and Non-Trading Activity
During the Current Quarter for all Bonds and Preferred Stock by NAIC Designation

NAIC Designation	1 Book/Adjusted Carrying Value Beginning of Current Quarter	2 Acquisitions During Current Quarter	3 Dispositions During Current Quarter	4 Non-Trading Activity During Current Quarter	5 Book/Adjusted Carrying Value End of First Quarter	6 Book/Adjusted Carrying Value End of Second Quarter	7 Book/Adjusted Carrying Value End of Third Quarter	8 Book/Adjusted Carrying Value December 31 Prior Year
ISSUER CREDIT OBLIGATIONS (ICO)								
1. NAIC 1 (a)	83,843,119	1,522,713	776,941	(6,500)	84,582,391			83,843,119
2. NAIC 2 (a)	67,760,605	6,498,960		9,465	74,269,030			67,760,605
3. NAIC 3 (a)	2,412,623		240,904	(68,429)	2,103,290			2,412,623
4. NAIC 4 (a)	2,135,769		553,183	81,103	1,663,689			2,135,769
5. NAIC 5 (a)	38,777			497	39,274			38,777
6. NAIC 6 (a)								
7. Total ICO	156,190,893	8,021,673	1,571,028	16,136	162,657,674			156,190,893
ASSET-BACKED SECURITIES (ABS)								
8. NAIC 1	52,275,979	297,681	1,371,101	18,467	51,221,026			52,275,979
9. NAIC 2	319,742		13,349	982	307,375			319,742
10. NAIC 3	232		24		208			232
11. NAIC 4								
12. NAIC 5								
13. NAIC 6								
14. Total ABS	52,595,953	297,681	1,384,474	19,449	51,528,609			52,595,953
PREFERRED STOCK								
15. NAIC 1								
16. NAIC 2								
17. NAIC 3								
18. NAIC 4								
19. NAIC 5								
20. NAIC 6								
21. Total Preferred Stock								
22. Total ICO, ABS & Preferred Stock	208,786,846	8,319,354	2,955,502	35,585	214,186,283			208,786,846

(a) Book/Adjusted Carrying Value column for the end of the current reporting period includes the following amount of short-term and cash equivalent bonds by NAIC designation:

NAIC 1 \$; NAIC 2 \$; NAIC 3 \$ NAIC 4 \$; NAIC 5 \$; NAIC 6 \$

Schedule DA - Part 1 - Short-Term Investments

N O N E

Schedule DA - Verification - Short-Term Investments

N O N E

Schedule DB - Part A - Verification - Options, Caps, Floors, Collars, Swaps and Forwards

N O N E

Schedule DB - Part B - Verification - Futures Contracts

N O N E

Schedule DB - Part C - Section 1 - Replication (Synthetic Asset) Transactions (RSATs) Open

N O N E

Schedule DB-Part C-Section 2-Reconciliation of Replication (Synthetic Asset) Transactions Open

N O N E

Schedule DB - Verification - Book/Adjusted Carrying Value, Fair Value and Potential Exposure of
Derivatives

N O N E

SCHEDULE E - PART 2 - VERIFICATION

(Cash Equivalents)

	1	2
	Year To Date	Prior Year Ended December 31
1. Book/adjusted carrying value, December 31 of prior year	5,725,831	19,546,232
2. Cost of cash equivalents acquired	14,492,615	72,185,875
3. Accrual of discount		
4. Unrealized valuation increase/(decrease)		
5. Total gain (loss) on disposals		
6. Deduct consideration received on disposals	18,135,174	86,006,276
7. Deduct amortization of premium		
8. Total foreign exchange change in book/adjusted carrying value		
9. Deduct current year's other than temporary impairment recognized		
10. Book/adjusted carrying value at end of current period (Lines 1+2+3+4+5-6-7+8-9)	2,083,272	5,725,831
11. Deduct total nonadmitted amounts		
12. Statement value at end of current period (Line 10 minus Line 11)	2,083,272	5,725,831

Schedule A - Part 2 - Real Estate Acquired and Additions Made

N O N E

Schedule A - Part 3 - Real Estate Disposed

N O N E

Schedule B - Part 2 - Mortgage Loans Acquired and Additions Made

N O N E

Schedule B - Part 3 - Mortgage Loans Disposed, Transferred or Repaid

N O N E

Schedule BA - Part 2 - Other Long-Term Invested Assets Acquired and Additions Made

N O N E

Schedule BA - Part 3 - Other Long-Term Invested Assets Disposed, Transferred or Repaid

N O N E

STATEMENT AS OF MARCH 31, 2025 OF THE NATIONWIDE INDEMNITY COMPANY

SCHEDULE D - PART 3

Show All Long-Term Bonds and Stock Acquired During the Current Quarter

1	2	3	4	5	6	7	8	9
CUSIP Identification	Description	Date Acquired	Name of Vendor	Number of Shares of Stock	Actual Cost	Par Value	Paid for Accrued Interest and Dividends	NAIC Designation, NAIC Designation Modifier and SVO Administrative Symbol
91282C-MM-0	US Treasury Nt 4.625% 02/15/3503/18/2025	Bank of America B1SD Dealer		1,522,713	1,500,000	2,734	1.A
0019999999.	Subtotal - Issuer Credit Obligations - U.S. Government Obligations (Exempt from RBC)				1,522,713	1,500,000	2,734	XXX
871607-AC-1	Synopsys Inc Sr Nt 4.850% 04/01/3003/03/2025	Bank of America B1SD Dealer		6,498,960	6,500,000		2.A FE
0089999999.	Subtotal - Issuer Credit Obligations - Corporate Bonds (Unaffiliated)				6,498,960	6,500,000		XXX
0489999999.	Total - Issuer Credit Obligations (Unaffiliated)				8,021,673	8,000,000	2,734	XXX
0499999999.	Total - Issuer Credit Obligations (Affiliated)							XXX
0509999997.	Total - Issuer Credit Obligations - Part 3				8,021,673	8,000,000	2,734	XXX
0509999998.	Total - Issuer Credit Obligations - Part 5				XXX	XXX	XXX	XXX
0509999999.	Total - Issuer Credit Obligations				8,021,673	8,000,000	2,734	XXX
43789K-AB-8	Homeward Opportunities Fund RMBS Ser 22-1 CL A2 5.082% 07/25/6701/15/2025	Wells Fargo Securities LLC		80,469	81,215	171	1.C FE
69378K-AB-0	PRP Advisors, LLC RMBS Ser 22-NQM1 CL A2 5.500% 08/25/6701/14/2025	Nomura Securities Intl LLC		98,253	98,746	211	1.C FE
69392F-AA-5	Pretium Mort Cred Partnership RMBS Ser 2025-RPL1 CI A1 4.000% 07/25/6901/16/2025	Nomura Securities Intl LLC		118,959	125,000	375	1.A FE
1059999999.	Subtotal - Asset-Backed Securities - Financial Asset-Backed - Self-Liquidating - Non-Agency Residential Mortgage-Backed Securities (Unaffiliated)				297,681	304,961	757	XXX
1889999999.	Total - Asset-Backed Securities (Unaffiliated)				297,681	304,961	757	XXX
1899999999.	Total - Asset-Backed Securities (Affiliated)							XXX
1909999997.	Total - Asset-Backed Securities - Part 3				297,681	304,961	757	XXX
1909999998.	Total - Asset-Backed Securities - Part 5				XXX	XXX	XXX	XXX
1909999999.	Total - Asset-Backed Securities				297,681	304,961	757	XXX
2009999999.	Total - Issuer Credit Obligations and Asset-Backed Securities				8,319,354	8,304,961	3,491	XXX
4509999997.	Total - Preferred Stocks - Part 3					XXX		XXX
4509999998.	Total - Preferred Stocks - Part 5				XXX	XXX	XXX	XXX
4509999999.	Total - Preferred Stocks					XXX		XXX
5989999997.	Total - Common Stocks - Part 3					XXX		XXX
5989999998.	Total - Common Stocks - Part 5				XXX	XXX	XXX	XXX
5989999999.	Total - Common Stocks					XXX		XXX
5999999999.	Total - Preferred and Common Stocks					XXX		XXX
6009999999.	Totals				8,319,354	XXX	3,491	XXX

STATEMENT AS OF MARCH 31, 2025 OF THE NATIONWIDE INDEMNITY COMPANY

SCHEDULE D - PART 4

Show All Long-Term Bonds and Stock Sold, Redeemed or Otherwise Disposed of During the Current Quarter

1	2	3	4	5	6	7	8	9	Change In Book/Adjusted Carrying Value					15	16	17	18	19	20	21
									10	11	12	13	14							
CUSIP Identification	Description	Disposal Date	Name of Purchaser	Number of Shares of Stock	Consideration	Par Value	Actual Cost	Prior Year Book/ Adjusted Carrying Value	Unrealized Valuation Increase/ (Decrease)	Current Year's (Amortization)/ Accretion	Current Year's Other Than Temporary Impairment Recognized	Total Change in Book/ Adjusted Carrying Value (10 + 11 - 12)	Total Foreign Exchange Change in Book /Adjusted Carrying Value	Book/ Adjusted Carrying Value at Disposal Date	Foreign Exchange Gain (Loss) on Disposal	Realized Gain (Loss) on Disposal	Total Gain (Loss) on Disposal	Bond Interest/ Stock Dividends Received During Year	Stated Contractual Maturity Date	NAIC Designation, NAIC Designation Modifier and SVO Administrative Symbol
..34459R-AB-1	Morocco AID Gtd SF Bd 7.550% 07/15/26	02/27/2025	Redemption 100.0000		42,115	42,115	50,432	42,848		(733)		(733)		42,115				1,590	07/15/2026	1.A FE
..34459R-AB-1	Morocco AID Gtd SF Bd 7.550% 07/15/26	02/27/2025	Redemption 100.0000		(1)	(1)	(1)	346		(347)		(347)		(1)					07/15/2026	1.B FE
0019999999. Subtotal - Issuer Credit Obligations - U.S. Government Obligations (Exempt from RBC)					42,114	42,114	50,431	43,194		(1,080)		(1,080)		42,114				1,590	XXX	XXX
..032177-AH-0	Amsted Industries Sr Nt 5.625% 07/01/27 ...	03/06/2025	Call 100.0680		2,001	2,000	2,088	1,981	19			19		2,000				78	07/01/2027	3.C FE
..032177-AH-0	Amsted Industries Sr Nt 5.625% 07/01/27 ...	03/24/2025	Redemption 100.0000		121	121	126	120	1			1		121				5	07/01/2027	3.C FE
..235825-AG-1	DANA Inc Sr Nt 5.625% 06/15/28	03/13/2025	Bank of America BLSO Dealer ...		197,750	200,000	200,250	197,262	2,778	(18)		2,760		200,023		(2,273)	(2,273)	2,781	06/15/2028	3.C FE
..410345-AL-6	Hanesbrands Ind Sr Nt 4.875% 05/15/26	03/17/2025	Call 100.1549		440,682	440,000	462,000	432,758	12,223	(737)		11,486		444,245		(4,245)	(4,245)	7,951	05/15/2026	4.C FE
..57629W-CG-3	Mass Mutual Global Funding Nt 2.950%	01/11/2025	Maturity		475,000	475,000	486,015	475,058		(58)		(58)		475,000				7,008	01/11/2025	1.B FE
..86765L-AT-4	Sunoco Finance Corp Sr Nt 4.500% 05/15/29 ..	02/26/2025	Truist Financial		38,306	40,000	38,034	37,592	1,127	41		1,168		38,760		(455)	(455)	510	05/15/2029	3.A FE
..36168Q-AN-4	GFL Environmental Inc Sr Nt 4.750% 06/15/29 ..	03/26/2025	Various		88,625	92,000	86,595	88,415	12	158		170		88,584		41	41	1,186	06/15/2029	4.C FE
0089999999. Subtotal - Issuer Credit Obligations - Corporate Bonds (Unaffiliated)					1,242,485	1,249,121	1,275,108	1,233,186	16,160	(614)		15,546		1,248,733		(6,932)	(6,932)	19,517	XXX	XXX
..03334A-AA-7	AnchoragePermit Ctr Bldg Ls Tr CTL 6.340% 02/15/25	02/15/2025	Redemption 100.0000		28,389	28,389	28,389	28,389						28,389				225	02/15/2025	1.D
..12644*-AC-1	CTL Cap Tr CTL Ser 2002-3 Anchorage 7.290% 12/15/26	03/15/2025	Redemption 100.0000		144,293	144,293	144,293	144,293						144,293				1,755	12/15/2026	1.D
..64508Q-AA-3	New Haven Fed Office Bldg Ls CTL GSA Gtd Tr 2002 3.000% 01/15/27	03/15/2025	Redemption 100.0000		52,534	52,534	52,534	52,534						52,534				263	01/15/2027	1.A
..78402C-AA-1	SC Commercial Mtg Pass Through CTL Ser 2003-1 7.060% 11/10/28	03/01/2025	Redemption 100.0000		20,354	20,354	21,283	20,154	239	(39)		200		20,354				236	11/10/2028	4.A
..94978#-AT-4	Wells Fargo Bank Northwest NA CTL Ser 2002 CI 20 6.650% 08/01/27	03/01/2025	Redemption 100.0000		34,610	34,610	34,610	34,610						34,610				384	08/01/2027	1.D
0129999999. Subtotal - Issuer Credit Obligations - Single Entity Backed Obligations (Unaffiliated)					280,180	280,180	281,109	279,980	239	(39)		200		280,180				2,863	XXX	XXX
0489999999. Total - Issuer Credit Obligations (Unaffiliated)					1,564,779	1,571,415	1,606,648	1,556,360	16,399	(1,733)		14,666		1,571,027		(6,932)	(6,932)	23,970	XXX	XXX
0499999999. Total - Issuer Credit Obligations (Affiliated)																			XXX	XXX
0509999997. Total - Issuer Credit Obligations - Part 4					1,564,779	1,571,415	1,606,648	1,556,360	16,399	(1,733)		14,666		1,571,027		(6,932)	(6,932)	23,970	XXX	XXX
0509999998. Total - Issuer Credit Obligations - Part 5					XXX	XXX	XXX	XXX	XXX	XXX	XXX	XXX	XXX	XXX	XXX	XXX	XXX	XXX	XXX	XXX
0509999999. Total - Issuer Credit Obligations					1,564,779	1,571,415	1,606,648	1,556,360	16,399	(1,733)		14,666		1,571,027		(6,932)	(6,932)	23,970	XXX	XXX
..36179Y-RK-2	Multiple G2 MA9016 Pool# MA9490 6.500% 03/11/54	03/20/2025	Paydown		113,283	113,283	115,420	115,433		(2,150)		(2,150)		113,283				1,122	03/11/2054	1.A
..91176Q-HH-2	Vendee Mtg Tr RMBS REMIC Ser 1996-2 12 6.750% 06/15/26	03/01/2025	Paydown		28,583	28,583	28,441	28,499		84		84		28,583				324	06/15/2026	1.A
1019999999. Subtotal - Asset-Backed Securities - Financial Asset-Backed - Self-Liquidating - Agency Residential Mortgage-Backed Securities - Guaranteed (Exempt from RBC)					141,866	141,866	143,861	143,932		(2,066)		(2,066)		141,866				1,446	XXX	XXX
..3132DN-RC-9	FHLMC Pool #SD1383 2.000% 02/25/52	03/01/2025	Paydown		6,060	6,060	4,770	4,829		1,231		1,231		6,060				20	02/25/2052	1.A
..3132DS-SH-1	FHLMC Pool# SD5348 5.500% 11/25/53	03/01/2025	Paydown		80,531	80,531	79,238	79,252	1,279			1,279		80,531				424	11/25/2053	1.A
..3132DS-E8-1	Fr SD4659 Pool# SD4659 5.000% 06/25/53	03/01/2025	Paydown		62,268	62,268	60,020	60,048	2,220			2,220		62,268				510	06/25/2053	1.A
..3132DI-DS-9	FHLMC Pool #SD8213 3.000% 05/25/52	03/01/2025	Paydown		702	702	595	600	102			102		702				3	05/25/2052	1.A
..3132DI-DT-7	FHLMC Pool #SD8214 3.500% 05/25/52	03/01/2025	Paydown		1,667	1,667	1,466	1,474	193			193		1,667				10	05/25/2052	1.A
..3132DI-E7-4	FHLMC Pool #SD8258 5.000% 10/25/52	03/01/2025	Paydown		5,158	5,158	4,965	4,971	187			187		5,158				41	10/25/2052	1.A
..3132DI-ER-0	FHLMC Pool #SD8244 4.000% 09/25/52	03/01/2025	Paydown		2,185	2,185	2,123	2,126	59			59		2,185				15	09/25/2052	1.A
..3132DI-GZ-0	FHLMC Pool #SD8316 5.500% 04/25/53	03/01/2025	Paydown		57,150	57,150	56,552	56,557	593			593		57,150				574	04/25/2053	1.A
..3132DI-JG-9	FHLMC Pool# SD8363 6.000% 09/25/53	03/01/2025	Paydown		73,659	73,659	73,803	73,796	(137)			(137)		73,659				704	09/25/2053	1.A
..3140NG-GP-9	FN BY0205 Pool# BY0205 5.500% 05/25/53	03/01/2025	Paydown		47,573	47,573	47,558	47,556	17			17		47,573				533	05/25/2053	1.A FE
..3140XG-U9-8	FNMA Pool #FS1507 3.000% 02/25/52	03/01/2025	Paydown		5,622	5,622	5,164	5,185	438			438		5,622				28	02/25/2052	1.A
..3140XG-WN-5	FNMA Pool# FS1552 2.500% 11/25/51	03/01/2025	Paydown		4,961	4,961	4,407	4,431	530			530		4,961				20	11/25/2051	1.A
..3140XH-Y7-6	FNMA Pool# FS2533 2.000% 07/25/52	03/01/2025	Paydown		6,166	6,166	5,265	5,312	855			855		6,166				16	07/25/2052	1.A

STATEMENT AS OF MARCH 31, 2025 OF THE NATIONWIDE INDEMNITY COMPANY

SCHEDULE D - PART 4

Show All Long-Term Bonds and Stock Sold, Redeemed or Otherwise Disposed of During the Current Quarter

1	2	3	4	5	6	7	8	9	Change In Book/Adjusted Carrying Value					15	16	17	18	19	20	21
									10	11	12	13	14							
CUSIP Identification	Description	Disposal Date	Name of Purchaser	Number of Shares of Stock	Consideration	Par Value	Actual Cost	Prior Year Book/ Adjusted Carrying Value	Unrealized Valuation Increase/ (Decrease)	Current Year's (Amortization)/ Accretion	Current Year's Other Than Temporary Impairment Recognized	Total Change in Book/ Adjusted Carrying Value (10 + 11 - 12)	Total Foreign Exchange Change in Book /Adjusted Carrying Value	Book/ Adjusted Carrying Value at Disposal Date	Foreign Exchange Gain (Loss) on Disposal	Realized Gain (Loss) on Disposal	Total Gain (Loss) on Disposal	Bond Interest/ Stock Dividends Received During Year	Stated Contractual Maturity Date	NAIC Designation, NAIC Designation Modifier and SVO Administrative Symbol
..3140XN-M5-0	Fannie Mae Super Pool #FS6679 6.000% 12/25/53	03/01/2025	Paydown		79,786	79,786	80,247	80,239		(453)		(453)		79,786				737	12/25/2053	1.A
..3140XN-T7-9	Fannie Mae Super Pool #FS6873 6.500% 01/25/54	03/01/2025	Paydown		25,240	25,240	25,817	25,807		(568)		(568)		25,240				246	01/25/2054	1.A
..31418E-3E-8	Fn MA5192 Pool #MA5296 5.500% 03/25/54	03/01/2025	Paydown		10,014	10,014	9,954	9,954		60		60		10,014				91	03/25/2054	1.A
..31418E-CU-2	Fn MA5192 Pool #MA4582 2.000% 04/25/37	03/01/2025	Paydown		5,176	5,176	4,536	4,609		567		567		5,176				17	04/25/2037	1.A
..31418E-D5-6	Fn MA5192 Pool #MA4623 2.500% 06/25/52	03/01/2025	Paydown		3,270	3,270	2,668	2,695		575		575		3,270				12	06/25/2052	1.A
..31418E-E6-3	Fn MA5192 Pool #MA4656 4.500% 07/01/52	03/01/2025	Paydown		2,441	2,441	2,421	2,422		19		19		2,441				18	07/01/2052	1.A
..31418E-KS-8	Fn MA5192 Pool #MA4804 4.000% 11/25/52	03/01/2025	Paydown		4,309	4,309	3,909	3,925		383		383		4,309				25	11/25/2052	1.A
..31418E-KT-6	Fn MA5192 Pool #MA4805 4.500% 11/25/52	03/01/2025	Paydown		2,781	2,781	2,602	2,608		172		172		2,781				21	11/25/2052	1.A
..31418E-LY-4	Fn MA5192 Pool #MA4842 5.500% 12/01/52	03/01/2025	Paydown		4,377	4,377	4,310	4,312		65		65		4,377				39	12/01/2052	1.A
1039999999. Subtotal - Asset-Backed Securities - Financial Asset-Backed - Self-Liquidating - Agency Residential Mortgage-Backed Securities - Not/Partially Guaranteed (Not Exempt from RBC)					491,096	491,096	482,390	482,708		8,387		8,387		491,096				4,104	XXX	XXX
..126686-AC-8	CWABS Inc RMBS Ser 2006-H CI 2A1B 4.584% 11/15/36	03/17/2025	Paydown		7,681	7,681	2,659	2,659		5,022		5,022		7,681				65	11/15/2036	1.A FM
..126694-NS-3	CIHL Inc RMBS Ser 2005-27 CI 1A3 5.500% 12/25/35	03/01/2025	Paydown		1,477	1,477	1,437	1,082	376	19		395		1,477				13	12/25/2035	1.A FM
..12669G-R3-7	Countrywide Home Loans RMBS Ser 2005-15 CI A7 5.500% 08/25/35	03/25/2025	Paydown		1,395	1,395	1,373	709	674			674		1,383		12	12	7	08/25/2035	1.A FM
..251563-CB-6	Deutsche Mtg Sec Inc RMBS Ser 2004-1 CI A6 5.240% 12/25/33	03/01/2025	Paydown		417	417	417	418		(1)		(1)		417				2	12/25/2033	1.A FM
..36157R-3X-1	GE Cap Mtg Serv Inc RMBS Ser 1999-HE2 CI M 7.560% 07/25/29	03/01/2025	Paydown		3,778	3,778	3,778	3,778						3,778				56	07/25/2029	1.B FM
..36157R-D8-5	GE Cap Mtg Serv Inc RMBS Ser 1999-HE1 CI A7 6.265% 04/25/29	03/01/2025	Paydown		1	1	1	1						1					04/25/2029	1.A FM
..36242D-7Q-0	GS Mortgage Securities Corp RMBS Ser 2005-5F CI BA6 5.250% 06/25/35	03/01/2025	Paydown		1,668	1,668	1,585	1,631		37		37		1,668				13	06/25/2035	1.A FM
..43739E-AP-2	Homebanc Mortgage Tr RMBS Ser 2005-1 CI A1 4.935% 03/25/35	03/25/2025	Paydown		13,111	13,111	12,121	12,121		990		990		13,111				73	03/25/2035	2.C FM
..43789K-AB-8	Homeward Opportunities Fund RMBS Ser 22-1 CL A2 5.082% 07/25/67	03/01/2025	Paydown		2,609	2,609	2,585			24		24		2,609				19	07/25/2067	1.C FE
..45254N-JG-3	IMPAC CMB Tr RMBS Ser 2004-5 CI 1A1 5.155% 10/25/34	03/25/2025	Paydown		3,946	3,946	3,953	3,949		(3)		(3)		3,946				40	10/25/2034	1.A FM
..45254N-KX-4	IMPAC CMB Tr RMBS Ser 2004-9 CI 1A1 5.195% 01/25/35	03/25/2025	Paydown		1,898	1,898	1,903	1,900		(2)		(2)		1,898				17	01/25/2035	1.A FM
..55265W-CA-9	Master Seasoned Securities Tr RMBS Ser 2004-2 CI A1 6.500% 08/25/32	03/01/2025	Paydown		238	238	246	243		(4)		(4)		238				3	08/25/2032	2.B FM
..69378K-AB-0	PRP Advisors, LLC RMBS Ser 22-NQM1 CL A2 5.500% 08/25/67	03/01/2025	Paydown		2,116	2,116	2,106			11		11		2,116				15	08/25/2067	1.C FE
..69392F-AA-5	Pretium Mort Cred Partnership RMBS Ser 2025-RPL1 CI A1 4.000% 07/25/69	03/01/2025	Paydown		1,464	1,464	1,393			71		71		1,464				8	07/25/2069	1.A FE
..79548K-ZJ-0	Salomon Bros Mtg Sec VII Inc RMBS Ser 1998-AQ1 CI A6 6.630% 06/25/28	03/01/2025	Paydown		24	24	24	24						24					06/25/2028	3.A FM
1059999999. Subtotal - Asset-Backed Securities - Financial Asset-Backed - Self-Liquidating - Non-Agency Residential Mortgage-Backed Securities (Unaffiliated)					41,823	41,823	35,581	28,515	1,050	6,164		7,214		41,811		12	12	331	XXX	XXX
..61691G-AQ-3	Morgan Stanley BAML Tr CMBS Ser 2016-C32 CI ASB 3.514% 12/15/49	03/01/2025	Paydown		209,514	209,514	215,787	210,016		(501)		(501)		209,514				1,267	12/15/2049	1.A
..94989J-BA-3	Wells Fargo Comm Mtg Tr CMBS Ser 2015-C28 CI ASB 3.306% 05/15/48	02/01/2025	Paydown		5,834	5,834	5,987	5,829		5		5		5,834				16	05/15/2048	1.A

STATEMENT AS OF MARCH 31, 2025 OF THE NATIONWIDE INDEMNITY COMPANY

SCHEDULE D - PART 4

Show All Long-Term Bonds and Stock Sold, Redeemed or Otherwise Disposed of During the Current Quarter

1	2	3	4	5	6	7	8	9	Change In Book/Adjusted Carrying Value					15	16	17	18	19	20	21
									10	11	12	13	14							
CUSIP Ident- ification	Description	Disposal Date	Name of Purchaser	Number of Shares of Stock	Consid- eration	Par Value	Actual Cost	Prior Year Book/ Adjusted Carrying Value	Unrealized Valuation Increase/ (Decrease)	Current Year's (Amor- tization)/ Accretion	Current Year's Other Than Temporary Impairment Recog- nized	Total Change in Book/ Adjusted Carrying Value (10 + 11 - 12)	Total Foreign Exchange Change in Book /Adjusted Carrying Value	Book/ Adjusted Carrying Value at Disposal Date	Foreign Exchange Gain (Loss) on Disposal	Realized Gain (Loss) on Disposal	Total Gain (Loss) on Disposal	Bond Interest/ Stock Dividends Received During Year	Stated Con- tractual Maturity Date	NAIC Desig- nation, NAIC Desig- nation Modifier and SVO Admini- strative Symbol
1079999999	Subtotal - Asset-Backed Securities - Financial Asset-Backed - Self-Liquidating - Non-Agency Commercial Mortgage-Backed Securities (Unaffiliated)				215,348	215,348	221,774	215,845		(496)		(496)		215,348				1,283	XXX	XXX
..38218G-AA-0	Goodgreen Trust LBASS Ser 2018-1A C1 A 3.930% 10/15/53	03/15/2025	Paydown		4,751	4,751	4,987	4,942		(191)		(191)		4,751				28	10/15/2053	1.A FE
1099999999	Subtotal - Asset-Backed Securities - Financial Asset-Backed - Self-Liquidating - Non-Agency - CLOs/CBOs/CDOs (Unaffiliated)				4,751	4,751	4,987	4,942		(191)		(191)		4,751				28	XXX	XXX
..03237C-AB-8	AXIS Equipment Finance Ser 2024-1A C1 A2 5.380% 01/21/31	03/21/2025	Paydown		134,363	134,363	134,348	134,352		10		10		134,363				1,173	01/21/2031	1.A FE
..31568A-AB-2	First Help Financial LLC Ser 2024-1A C1 A2 5.690% 02/15/30	03/15/2025	Paydown		173,914	173,914	173,901	173,904		9		9		173,914				1,624	02/15/2030	1.C FE
..35105A-AB-3	Foursight Capital Auto Rec Tr Ser 2024-1 C1 A2 5.490% 01/16/29	03/15/2025	Paydown		88,490	88,490	88,487	88,488		2		2		88,490				810	01/16/2029	1.A FE
..37988X-AB-1	GLS Auto Select Receivables Tr Ser 2024-1A C1 A2 5.240% 03/15/30	03/15/2025	Paydown		52,358	52,358	52,357	52,357		1		1		52,358				458	03/15/2030	1.A FE
1119999999	Subtotal - Asset-Backed Securities - Financial Asset-Backed - Self-Liquidating - Other Financial Asset-Backed Securities - Self-Liquidating (Unaffiliated)				449,125	449,125	449,093	449,101		22		22		449,125				4,065	XXX	XXX
..737473-AB-4	Post Road Equipment Finance Ser 2024-1A C1 A2 5.590% 11/15/29	03/15/2025	Paydown		40,482	40,482	40,479	40,480		2		2		40,482				365	11/15/2029	1.A FE
1519999999	Subtotal - Asset-Backed Securities - Non-Financial Asset-Backed Securities - Practical Expedient - Lease-Backed Securities - Practical Expedient (Unaffiliated)				40,482	40,482	40,479	40,480		2		2		40,482				365	XXX	XXX
1889999999	Total - Asset-Backed Securities (Unaffiliated)				1,384,491	1,384,491	1,378,165	1,365,523	1,050	11,822		12,872		1,384,479		12	12	11,622	XXX	XXX
1899999999	Total - Asset-Backed Securities (Affiliated)																		XXX	XXX
1909999997	Total - Asset-Backed Securities - Part 4				1,384,491	1,384,491	1,378,165	1,365,523	1,050	11,822		12,872		1,384,479		12	12	11,622	XXX	XXX
1909999998	Total - Asset-Backed Securities - Part 5				XXX	XXX	XXX	XXX	XXX	XXX	XXX	XXX	XXX	XXX	XXX	XXX	XXX	XXX	XXX	XXX
1909999999	Total - Asset-Backed Securities				1,384,491	1,384,491	1,378,165	1,365,523	1,050	11,822		12,872		1,384,479		12	12	11,622	XXX	XXX
2009999999	Total - Issuer Credit Obligations and Asset-Backed Securities				2,949,270	2,955,906	2,984,813	2,921,883	17,449	10,089		27,538		2,955,506		(6,920)	(6,920)	35,592	XXX	XXX
4509999997	Total - Preferred Stocks - Part 4					XXX													XXX	XXX
4509999998	Total - Preferred Stocks - Part 5				XXX	XXX	XXX	XXX	XXX	XXX	XXX	XXX	XXX	XXX	XXX	XXX	XXX	XXX	XXX	XXX
4509999999	Total - Preferred Stocks					XXX													XXX	XXX
5989999997	Total - Common Stocks - Part 4					XXX													XXX	XXX
5989999998	Total - Common Stocks - Part 5				XXX	XXX	XXX	XXX	XXX	XXX	XXX	XXX	XXX	XXX	XXX	XXX	XXX	XXX	XXX	XXX
5989999999	Total - Common Stocks					XXX													XXX	XXX
5999999999	Total - Preferred and Common Stocks					XXX													XXX	XXX
6009999999	Totals				2,949,270	XXX	2,984,813	2,921,883	17,449	10,089		27,538		2,955,506		(6,920)	(6,920)	35,592	XXX	XXX

Schedule DB - Part A - Section 1 - Options, Caps, Floors, Collars, Swaps and Forwards Open
N O N E

Schedule DB - Part B - Section 1 - Futures Contracts Open
N O N E

Schedule DB - Part B - Section 1B - Brokers with whom cash deposits have been made
N O N E

Schedule DB - Part D - Section 1 - Counterparty Exposure for Derivative Instruments Open
N O N E

Schedule DB - Part D-Section 2 - Collateral for Derivative Instruments Open - Pledged By
N O N E

Schedule DB - Part D-Section 2 - Collateral for Derivative Instruments Open - Pledged To
N O N E

Schedule DB - Part E - Derivatives Hedging Variable Annuity Guarantees
N O N E

SCHEDULE DL - PART 1
SECURITIES LENDING COLLATERAL ASSETS

Reinvested Collateral Assets Owned Current Statement Date
(Securities lending collateral assets reported in aggregate on Line 10 of the Assets page (Line 9 for Separate Accounts)
and not included on Schedules A, B, BA, D, DB and E)

1	2	3	4	5	6	7
CUSIP Identification	Description	Restricted Asset Code	NAIC Designation, NAIC Designation Modifier and SVO Administrative Symbol	Fair Value	Book/Adjusted Carrying Value	Maturity Date
0489999999.	Total - Issuer Credit Obligations (Schedule D, Part 1, Section 1 type) - (Unaffiliated)					XXX
0499999999.	Total - Issuer Credit Obligations (Schedule D, Part 1, Section 1 type) - (Affiliated)					XXX
0509999999.	Total - Issuer Credit Obligations (Schedule D, Part 1, Section 1 type)					XXX
04012M-AP-4	Argent Securities Inc RMBS Ser 2006-M1 C 1.A FM 91,971 91,971 07/25/2036
14454A-AE-9	Carrington Mtg Loan Tr RMBS Ser 2006-FRE 1.A FM 763,668 520,613 10/25/2036
362351-AA-6	GSAA Home Equity Tr RMBS Ser 2006-20 CI 1.A FM 197,075 197,075 12/25/2046
617487-AB-9	Morgan Stanley Mtg Tr RMBS Ser 2006-16AX 1.A FM 207,872 207,872 11/25/2036
81378E-AA-1	Securitized AB Receivables LLC RMBS Ser 1.A FM 1,466,410 1,466,410 05/25/2037
1059999999.	Subtotal - Asset-Backed Securities (Schedule D, Part 1, Section 2 type) - Financial Asset-Backed - Self-Liquidating - Non-Agency Residential Mortgage-Backed Securities (Unaffiliated)			2,726,996	2,483,941	XXX
1889999999.	Total - Asset-Backed Securities (Schedule D, Part 1, Section 2 type) - (Unaffiliated)			2,726,996	2,483,941	XXX
1899999999.	Total - Asset-Backed Securities (Schedule D, Part 1, Section 2 type) - (Affiliated)					XXX
1909999999.	Total - Asset-Backed Securities (Schedule D, Part 1, Section 2 type)			2,726,996	2,483,941	XXX
2009999999.	Total - Issuer Credit Obligations and Asset-Backed Securities			2,726,996	2,483,941	XXX
4109999999.	Total - Preferred Stocks (Schedule D, Part 2, Section 1 type) - Industrial and Miscellaneous (Unaffiliated)					XXX
4409999999.	Total - Preferred Stocks (Schedule D, Part 2, Section 1 type) - Parent, Subsidiaries and Affiliates					XXX
4509999999.	Total - Preferred Stocks (Schedule D, Part 2, Section 1 type)					XXX
5109999999.	Total - Common Stocks (Schedule D, Part 2, Section 2 type) - Industrial and Miscellaneous (Unaffiliated)					XXX
5409999999.	Total - Common Stocks (Schedule D, Part 2, Section 2 type) - Mutual Funds					XXX
5609999999.	Total - Common Stocks (Schedule D, Part 2, Section 2 type) - Unit Investment Trusts					XXX
5809999999.	Total - Common Stocks (Schedule D, Part 2, Section 2 type) - Closed-End Funds					XXX
5979999999.	Total - Common Stocks (Schedule D, Part 2, Section 2 type) - Parent, Subsidiaries and Affiliates					XXX
5989999999.	Total - Common Stocks (Schedule D, Part 2, Section 2 type)					XXX
5999999999.	Total - Preferred and Common Stocks					XXX
000000-00-0	Overnight Repos SEC LENDING ONLY 1.A 1,229,610 1,229,610 04/01/2025
9709999999.	Subtotal - Cash Equivalents (Schedule E Part 2 type)			1,229,610	1,229,610	XXX
9999999999.	Totals			3,956,606	3,713,551	XXX

General Interrogatories:

1. Total activity for the year Fair Value \$ (6,680,081) Book/Adjusted Carrying Value \$ (6,723,918)
2. Average balance for the year Fair Value \$ 5,814,737 Book/Adjusted Carrying Value \$ 5,584,241
3. Reinvested securities lending collateral assets book/adjusted carrying value included in this schedule by NAIC designation:
- NAIC 1 \$ 3,713,550 NAIC 2 \$ NAIC 3 \$ NAIC 4 \$ NAIC 5 \$ NAIC 6 \$

SCHEDULE DL - PART 2
SECURITIES LENDING COLLATERAL ASSETS

1	2	3	4	5	6	7
CUSIP Identification	Description	Restricted Asset Code	NAIC Designation, NAIC Designation Modifier and SVO Administrative Symbol	Fair Value	Book/Adjusted Carrying Value	Maturity Date
NONE						
999999999 - Totals						XXX

Fair Value \$	Book/Adjusted Carrying Value \$
Fair Value \$	Book/Adjusted Carrying Value \$

SCHEDULE E - PART 1 - CASH

[illegible]

SCHEDULE E - PART 2 - CASH EQUIVALENTS

[illegible]