



PROPERTY AND CASUALTY COMPANIES - ASSOCIATION EDITION

QUARTERLY STATEMENT

AS OF SEPTEMBER 30, 2024

OF THE CONDITION AND AFFAIRS OF THE

HOME AND FARM INSURANCE COMPANY

NAIC Group Code 0046 (Current)0046 (Prior)NAIC Company Code 17639Employer's ID Number 35-1630739

Organized under the Laws of OH, State of Domicile or Port of Entry OH

Country of Domicile United States of America

Incorporated/Organized 01/29/1985Commenced Business 03/05/1985

Statutory Home OfficeOne Heritage Place (Street and Number),Piqua, OH, US 45356 (City or Town, State, Country and Zip Code)

Main Administrative OfficeOne Heritage Place (Street and Number),Piqua, OH, US 45356 (City or Town, State, Country and Zip Code),937-778-5000 (Area Code) (Telephone Number)

Mail AddressOne Heritage Place (Street and Number or P.O. Box),Piqua, OH, US 45356 (City or Town, State, Country and Zip Code)

Primary Location of Books and RecordsOne Heritage Place (Street and Number),Piqua, OH, US 45356 (City or Town, State, Country and Zip Code),937-778-5000 (Area Code) (Telephone Number)

Internet Website Address N/A

Statutory Statement ContactCraig Allen Curcio (Name),937-778-5000 (Area Code) (Telephone Number)craig.curcio@buckeye-ins.com (E-mail Address),937-778-5019 (FAX Number)

OFFICERS

President John Michael Brooks

Treasurer Jerry Christopher Collins

Secretary Lisa Lyn Wesner

OTHER

DIRECTORS OR TRUSTEES

William L. Sweet Jr.	Zahid Afzal	Julie A. Covault
Tim Hein	Jean M. Bratton	Oyauma M. Garrison
Joe W. Dickerson		

State of Ohio

County of Miami

SS:

The officers of this reporting entity being duly sworn, each depose and say that they are the described officers of said reporting entity, and that on the reporting period stated above, all of the herein described assets were the absolute property of the said reporting entity, free and clear from any liens or claims thereon, except as herein stated, and that this statement, together with related exhibits, schedules and explanations therein contained, annexed or referred to, is a full and true statement of all the assets and liabilities and of the condition and affairs of the said reporting entity as of the reporting period stated above, and of its income and deductions therefrom for the period ended, and have been completed in accordance with the NAIC Annual Statement Instructions and Accounting Practices and Procedures manual except to the extent that: (1) state law may differ; or, (2) that state rules or regulations require differences in reporting not related to accounting practices and procedures, according to the best of their information, knowledge and belief, respectively. Furthermore, the scope of this attestation by the described officers also includes the related corresponding electronic filing with the NAIC, when required, that is an exact copy (except for formatting differences due to electronic filing) of the enclosed statement. The electronic filing may be requested by various regulators in lieu of or in addition to the enclosed statement.

John Michael Brooks
President

Lisa Lyn Wesner
Secretary

Jerry Christopher Collins
Treasurer

Subscribed and sworn to before me this day of

a. Is this an original filing? Yes [X] No []

b. If no,
1. State the amendment number.....
2. Date filed
3. Number of pages attached.....

STATEMENT AS OF SEPTEMBER 30, 2024 OF THE HOME AND FARM INSURANCE COMPANY

ASSETS

	Current Statement Date			4 December 31 Prior Year Net Admitted Assets
	1 Assets	2 Nonadmitted Assets	3 Net Admitted Assets (Cols. 1 - 2)	
1. Bonds	6,057,488		6,057,488	6,554,822
2. Stocks:				
2.1 Preferred stocks			0	0
2.2 Common stocks			0	0
3. Mortgage loans on real estate:				
3.1 First liens			0	0
3.2 Other than first liens.....			0	0
4. Real estate:				
4.1 Properties occupied by the company (less \$ encumbrances)			0	0
4.2 Properties held for the production of income (less \$ encumbrances)			0	0
4.3 Properties held for sale (less \$ encumbrances)			0	0
5. Cash (\$ 480,153), cash equivalents (\$ 351,190) and short-term investments (\$)	831,347		831,347	202,972
6. Contract loans (including \$ premium notes)			0	0
7. Derivatives			0	0
8. Other invested assets			0	0
9. Receivables for securities			0	0
10. Securities lending reinvested collateral assets			0	0
11. Aggregate write-ins for invested assets	0	0	0	0
12. Subtotals, cash and invested assets (Lines 1 to 11)	6,888,835	0	6,888,835	6,757,794
13. Title plants less \$ charged off (for Title insurers only)			0	0
14. Investment income due and accrued	41,145		41,145	36,666
15. Premiums and considerations:				
15.1 Uncollected premiums and agents' balances in the course of collection	690,439		690,439	611,203
15.2 Deferred premiums, agents' balances and installments booked but deferred and not yet due (including \$ earned but unbilled premiums)	273,152		273,152	281,189
15.3 Accrued retrospective premiums (\$) and contracts subject to redetermination (\$)			0	0
16. Reinsurance:				
16.1 Amounts recoverable from reinsurers	290,339		290,339	369,575
16.2 Funds held by or deposited with reinsured companies	2,000,000		2,000,000	2,000,000
16.3 Other amounts receivable under reinsurance contracts			0	0
17. Amounts receivable relating to uninsured plans			0	0
18.1 Current federal and foreign income tax recoverable and interest thereon	28,796		28,796	28,796
18.2 Net deferred tax asset	129,469	33,562	95,907	89,688
19. Guaranty funds receivable or on deposit			0	0
20. Electronic data processing equipment and software			0	0
21. Furniture and equipment, including health care delivery assets (\$)	5,500	5,500	0	0
22. Net adjustment in assets and liabilities due to foreign exchange rates			0	0
23. Receivables from parent, subsidiaries and affiliates	99,663		99,663	127,894
24. Health care (\$) and other amounts receivable			0	0
25. Aggregate write-ins for other than invested assets	0	0	0	0
26. Total assets excluding Separate Accounts, Segregated Accounts and Protected Cell Accounts (Lines 12 to 25)	10,447,338	39,062	10,408,276	10,302,805
27. From Separate Accounts, Segregated Accounts and Protected Cell Accounts			0	0
28. Total (Lines 26 and 27)	10,447,338	39,062	10,408,276	10,302,805
DETAILS OF WRITE-INS				
1101.				
1102.				
1103.				
1198. Summary of remaining write-ins for Line 11 from overflow page	0	0	0	0
1199. Totals (Lines 1101 through 1103 plus 1198)(Line 11 above)	0	0	0	0
2501.				
2502.				
2503.				
2598. Summary of remaining write-ins for Line 25 from overflow page	0	0	0	0
2599. Totals (Lines 2501 through 2503 plus 2598)(Line 25 above)	0	0	0	0

STATEMENT AS OF SEPTEMBER 30, 2024 OF THE HOME AND FARM INSURANCE COMPANY

LIABILITIES, SURPLUS AND OTHER FUNDS

	1 Current Statement Date	2 December 31, Prior Year
1. Losses (current accident year \$ 219,656)	322,623	259,719
2. Reinsurance payable on paid losses and loss adjustment expenses	328,641	343,885
3. Loss adjustment expenses	58,542	57,312
4. Commissions payable, contingent commissions and other similar charges	55,131	58,549
5. Other expenses (excluding taxes, licenses and fees)	113,572	101,036
6. Taxes, licenses and fees (excluding federal and foreign income taxes)	20,462	19,836
7.1 Current federal and foreign income taxes (including \$ on realized capital gains (losses))		
7.2 Net deferred tax liability		
8. Borrowed money \$ and interest thereon \$		
9. Unearned premiums (after deducting unearned premiums for ceded reinsurance of \$ 1,102,688 and including warranty reserves of \$ and accrued accident and health experience rating refunds including \$0 for medical loss ratio rebate per the Public Health Service Act)	1,116,818	1,018,676
10. Advance premium	18,221	28,751
11. Dividends declared and unpaid:		
11.1 Stockholders		
11.2 Policyholders		
12. Ceded reinsurance premiums payable (net of ceding commissions)	550,649	530,342
13. Funds held by company under reinsurance treaties	312,587	312,587
14. Amounts withheld or retained by company for account of others		
15. Remittances and items not allocated		
16. Provision for reinsurance (including \$ certified)		0
17. Net adjustments in assets and liabilities due to foreign exchange rates		
18. Drafts outstanding		
19. Payable to parent, subsidiaries and affiliates	152,313	162,064
20. Derivatives	0	0
21. Payable for securities		
22. Payable for securities lending		
23. Liability for amounts held under uninsured plans		
24. Capital notes \$ and interest thereon \$		
25. Aggregate write-ins for liabilities	1,619	1,585
26. Total liabilities excluding protected cell liabilities (Lines 1 through 25)	3,051,178	2,894,342
27. Protected cell liabilities		
28. Total liabilities (Lines 26 and 27)	3,051,178	2,894,342
29. Aggregate write-ins for special surplus funds	0	0
30. Common capital stock	1,000,000	1,000,000
31. Preferred capital stock		
32. Aggregate write-ins for other than special surplus funds	0	0
33. Surplus notes		
34. Gross paid in and contributed surplus	7,454,463	7,454,463
35. Unassigned funds (surplus)	(1,097,365)	(1,046,000)
36. Less treasury stock, at cost:		
36.1 shares common (value included in Line 30 \$)		
36.2 shares preferred (value included in Line 31 \$)		
37. Surplus as regards policyholders (Lines 29 to 35, less 36)	7,357,098	7,408,463
38. Totals (Page 2, Line 28, Col. 3)	10,408,276	10,302,805
DETAILS OF WRITE-INS		
2501. Ceded commissions in excess of costs	1,619	1,585
2502.		
2503.		
2598. Summary of remaining write-ins for Line 25 from overflow page	0	0
2599. Totals (Lines 2501 through 2503 plus 2598)(Line 25 above)	1,619	1,585
2901. Additional admitted deferred tax assets		0
2902.		
2903.		
2998. Summary of remaining write-ins for Line 29 from overflow page	0	0
2999. Totals (Lines 2901 through 2903 plus 2998)(Line 29 above)	0	0
3201.		
3202.		
3203.		
3298. Summary of remaining write-ins for Line 32 from overflow page	0	0
3299. Totals (Lines 3201 through 3203 plus 3298)(Line 32 above)	0	0

STATEMENT OF INCOME

	1	2	3
	Current Year to Date	Prior Year to Date	Prior Year Ended December 31
UNDERWRITING INCOME			
1. Premiums earned:			
1.1 Direct (written \$ 1,707,374)	1,565,030	1,272,030	1,761,455
1.2 Assumed (written \$ 1,568,651)	1,470,509	1,347,883	1,828,648
1.3 Ceded (written \$ 1,707,374)	1,565,030	1,272,030	1,761,455
1.4 Net (written \$ 1,568,651)	1,470,509	1,347,883	1,828,648
DEDUCTIONS:			
2. Losses incurred (current accident year \$ 1,057,126):			
2.1 Direct	968,470	666,213	872,459
2.2 Assumed	1,059,639	1,009,397	1,241,038
2.3 Ceded	968,470	666,213	872,459
2.4 Net	1,059,639	1,009,397	1,241,038
3. Loss adjustment expenses incurred	74,170	81,437	106,262
4. Other underwriting expenses incurred	522,697	499,204	665,020
5. Aggregate write-ins for underwriting deductions	0	0	0
6. Total underwriting deductions (Lines 2 through 5)	1,656,506	1,590,038	2,012,320
7. Net income of protected cells			
8. Net underwriting gain (loss) (Line 1 minus Line 6 + Line 7)	(185,997)	(242,155)	(183,672)
INVESTMENT INCOME			
9. Net investment income earned	120,498	107,425	147,226
10. Net realized capital gains (losses) less capital gains tax of \$	(2,579)	0	0
11. Net investment gain (loss) (Lines 9 + 10)	117,919	107,425	147,226
OTHER INCOME			
12. Net gain or (loss) from agents' or premium balances charged off (amount recovered \$ amount charged off \$)	0	0	0
13. Finance and service charges not included in premiums	5,993	6,017	8,080
14. Aggregate write-ins for miscellaneous income	0	0	0
15. Total other income (Lines 12 through 14)	5,993	6,017	8,080
16. Net income before dividends to policyholders, after capital gains tax and before all other federal and foreign income taxes (Lines 8 + 11 + 15)	(62,085)	(128,713)	(28,366)
17. Dividends to policyholders			
18. Net income, after dividends to policyholders, after capital gains tax and before all other federal and foreign income taxes (Line 16 minus Line 17)	(62,085)	(128,713)	(28,366)
19. Federal and foreign income taxes incurred			
20. Net income (Line 18 minus Line 19)(to Line 22)	(62,085)	(128,713)	(28,366)
CAPITAL AND SURPLUS ACCOUNT			
21. Surplus as regards policyholders, December 31 prior year	7,408,463	7,422,455	7,422,455
22. Net income (from Line 20)	(62,085)	(128,713)	(28,366)
23. Net transfers (to) from Protected Cell accounts			
24. Change in net unrealized capital gains (losses) less capital gains tax of \$			0
25. Change in net unrealized foreign exchange capital gain (loss)			
26. Change in net deferred income tax	13,093	5,139	4,381
27. Change in nonadmitted assets	(2,373)	6,596	9,993
28. Change in provision for reinsurance			0
29. Change in surplus notes			
30. Surplus (contributed to) withdrawn from protected cells			
31. Cumulative effect of changes in accounting principles			
32. Capital changes:			
32.1 Paid in			
32.2 Transferred from surplus (Stock Dividend)			
32.3 Transferred to surplus			
33. Surplus adjustments:			
33.1 Paid in	0	0	0
33.2 Transferred to capital (Stock Dividend)			
33.3 Transferred from capital			
34. Net remittances from or (to) Home Office			
35. Dividends to stockholders			
36. Change in treasury stock			0
37. Aggregate write-ins for gains and losses in surplus	0	0	0
38. Change in surplus as regards policyholders (Lines 22 through 37)	(51,365)	(116,978)	(13,992)
39. Surplus as regards policyholders, as of statement date (Lines 21 plus 38)	7,357,098	7,305,477	7,408,463
DETAILS OF WRITE-INS			
0501.			
0502.			
0503.			
0598. Summary of remaining write-ins for Line 5 from overflow page	0	0	0
0599. Totals (Lines 0501 through 0503 plus 0598)(Line 5 above)	0	0	0
1401.			0
1402. Proceeds from book of business		0	
1403.			
1498. Summary of remaining write-ins for Line 14 from overflow page	0	0	0
1499. Totals (Lines 1401 through 1403 plus 1498)(Line 14 above)	0	0	0
3701.			
3702.			
3703.			
3798. Summary of remaining write-ins for Line 37 from overflow page	0	0	0
3799. Totals (Lines 3701 through 3703 plus 3798)(Line 37 above)	0	0	0

STATEMENT AS OF SEPTEMBER 30, 2024 OF THE HOME AND FARM INSURANCE COMPANY

CASH FLOW

	1 Current Year To Date	2 Prior Year To Date	3 Prior Year Ended December 31
Cash from Operations			
1. Premiums collected net of reinsurance	1,507,229	1,529,796	1,867,601
2. Net investment income	114,267	109,122	155,352
3. Miscellaneous income	5,993	6,017	8,080
4. Total (Lines 1 to 3)	1,627,489	1,644,935	2,031,033
5. Benefit and loss related payments	932,743	731,617	1,261,835
6. Net transfers to Separate Accounts, Segregated Accounts and Protected Cell Accounts	0	0	0
7. Commissions, expenses paid and aggregate write-ins for deductions	585,893	559,746	743,461
8. Dividends paid to policyholders	0	0	0
9. Federal and foreign income taxes paid (recovered) net of \$ tax on capital gains (losses)	(1)0	0	0
10. Total (Lines 5 through 9)	1,518,635	1,291,363	2,005,296
11. Net cash from operations (Line 4 minus Line 10)	108,854	353,572	25,737
Cash from Investments			
12. Proceeds from investments sold, matured or repaid:			
12.1 Bonds	761,843	553,165	717,651
12.2 Stocks	0	0	0
12.3 Mortgage loans	0	0	0
12.4 Real estate	0	0	0
12.5 Other invested assets	0	0	0
12.6 Net gains or (losses) on cash, cash equivalents and short-term investments	0	0	0
12.7 Miscellaneous proceeds	0	0	0
12.8 Total investment proceeds (Lines 12.1 to 12.7)	761,843	553,165	717,651
13. Cost of investments acquired (long-term only):			
13.1 Bonds	265,336	475,698	675,359
13.2 Stocks	0	0	0
13.3 Mortgage loans	0	0	0
13.4 Real estate	0	0	0
13.5 Other invested assets	0	0	0
13.6 Miscellaneous applications	0	0	0
13.7 Total investments acquired (Lines 13.1 to 13.6)	265,336	475,698	675,359
14. Net increase (or decrease) in contract loans and premium notes	0	0	0
15. Net cash from investments (Line 12.8 minus Line 13.7 and Line 14)	496,507	77,467	42,292
Cash from Financing and Miscellaneous Sources			
16. Cash provided (applied):			
16.1 Surplus notes, capital notes	0	0	0
16.2 Capital and paid in surplus, less treasury stock	0	0	0
16.3 Borrowed funds	0	0	0
16.4 Net deposits on deposit-type contracts and other insurance liabilities	0	0	0
16.5 Dividends to stockholders	0	0	0
16.6 Other cash provided (applied)	23,014	41,529	24,665
17. Net cash from financing and miscellaneous sources (Line 16.1 through Line 16.4 minus Line 16.5 plus Line 16.6)	23,014	41,529	24,665
RECONCILIATION OF CASH, CASH EQUIVALENTS AND SHORT-TERM INVESTMENTS			
18. Net change in cash, cash equivalents and short-term investments (Line 11, plus Lines 15 and 17) .	628,375	472,568	92,694
19. Cash, cash equivalents and short-term investments:			
19.1 Beginning of year	202,972	110,278	110,278
19.2 End of period (Line 18 plus Line 19.1)	831,347	582,846	202,972

Note: Supplemental disclosures of cash flow information for non-cash transactions:

--	--	--	--

NOTES TO FINANCIAL STATEMENTS

NOTE 1 Summary of Significant Accounting Policies and Going Concern

A. Accounting Practices
The accompanying financial statements of the Home and Farm Insurance Company have been prepared on the basis of accounting practices prescribed or permitted by the Ohio Insurance Department.
The state of Ohio requires insurance companies domiciled in the state of Ohio to prepare their statutory financial statements in accordance with the National Association of Insurance Commissioners' (NAIC) Accounting Practices and Procedures Manual subject to any deviations prescribed or permitted by the Ohio Insurance Department

	SSAP #	F/S Page	F/S Line #		2024		2023
NET INCOME							
(1) State basis (Page 4, Line 20, Columns 1 & 3)	XXX	XXX	XXX	\$	(62,085)	\$	(28,366)
(2) State Prescribed Practices that are an increase/ (decrease) from NAIC SAP:							
(3) State Permitted Practices that are an increase/(decrease) from NAIC SAP:							
(4) NAIC SAP (1-2-3=4)	XXX	XXX	XXX	\$	(62,085)	\$	(28,366)
SURPLUS							
(5) State basis (Page 3, Line 37, Columns 1 & 2)	XXX	XXX	XXX	\$	7,357,098	\$	7,408,463
(6) State Prescribed Practices that are an increase/(decrease) from NAIC SAP:							
(7) State Permitted Practices that are an increase/(decrease) from NAIC SAP:							
(8) NAIC SAP (5-6-7=8)	XXX	XXX	XXX	\$	7,357,098	\$	7,408,463

C. Accounting Policy

(2) Basis for Bonds, Mandatory Convertible Securities, SVO-Identified Investments and Amortization Method
Bonds not backed by other loans are stated at amortized value using the interest method. Non-investment grade bonds are stated at the lower of amortized value or fair value.

(6) Basis for Loan-Backed Securities and Adjustment Methodology
Loan-backed securities are stated at amortized value. The retrospective adjustment method is used to value all loan-backed securities. Non-investment grade loan-backed securities are stated at the lower of amortized value or fair value.

D. Going Concern
Not applicable

NOTE 2 Accounting Changes and Corrections of Errors
No significant changes

NOTE 3 Business Combinations and Goodwill
No significant changes

NOTE 4 Discontinued Operations
No significant changes

NOTES TO FINANCIAL STATEMENTS

R. Reporting Entity’s Share of Cash Pool by Asset Type

	Asset Type	Percent Share
(1)	Cash	
(2)	Cash Equivalents	
(3)	Short-Term Investments	
(4)	Total	

NOTE 6 Joint Ventures, Partnerships and Limited Liability Companies
No significant changes

NOTE 7 Investment Income
No significant changes

NOTE 8 Derivative Instruments
No significant changes

NOTE 9 Income Taxes
No significant changes

NOTE 10 Information Concerning Parent, Subsidiaries, Affiliates and Other Related Parties
No significant changes

NOTE 11 Debt
Not applicable

NOTE 12 Retirement Plans, Deferred Compensation, Postemployment Benefits and Compensated Absences and Other Postretirement Benefit Plans
Not applicable

NOTE 13 Capital and Surplus, Dividend Restrictions and Quasi-Reorganizations
No significant changes

NOTE 14 Liabilities, Contingencies and Assessments
No significant changes

NOTE 15 Leases
No significant changes

NOTE 16 Information About Financial Instruments With Off-Balance Sheet Risk and Financial Instruments With Concentrations of Credit Risk
No significant changes

NOTE 17 Sale, Transfer and Servicing of Financial Assets and Extinguishments of Liabilities

B. Transfer and Servicing of Financial Assets

- (2) Servicing Assets and Servicing Liabilities
Not applicable
- (4) Securitizations, Asset-Based Financing Arrangements and Similar Transfers Accounted for as Sales

(a) Not applicable

(b) Not applicable

C. Wash Sales

- (1) Description of the Objectives Regarding These Transactions
In the course of the Company’s asset management, securities are sold and reacquired within 30 days of the sale date to enhance the yield on the
- (2) The details by NAIC designation 3 or below, or unrated of securities sold during the current quarter and reacquired within 30 days of the sale date are:
The Company did not during the year reacquire within 30 days of the sales date any securities with a NAIC designation 3 or below.

Description	NAIC Designation	Number of Transactions	Book Value of Securities Sold	Cost of Securities Repurchased	Gain/(Loss)
-------------	------------------	------------------------	-------------------------------	--------------------------------	-------------

NOTE 18 Gain or Loss to the Reporting Entity from Uninsured Plans and the Uninsured Portion of Partially Insured Plans
No significant changes

NOTE 19 Direct Premium Written/Produced by Managing General Agents/Third Party Administrators
No significant changes

NOTES TO FINANCIAL STATEMENTS

NOTE 20 Fair Value Measurements

Not applicable
A.

(1) Fair Value Measurements at Reporting Date

Description for each class of asset or liability	(Level 1)	(Level 2)	(Level 3)	Net Asset Value (NAV)	Total
a. Assets at fair value					
Total assets at fair value/NAV	\$ -	\$ -	\$ -	\$ -	\$ -

Description for each class of asset or liability	(Level 1)	(Level 2)	(Level 3)	Net Asset Value (NAV)	Total
b. Liabilities at fair value					
Total liabilities at fair value	\$ -	\$ -	\$ -	\$ -	\$ -

(2) Fair Value Measurements in (Level 3) of the Fair Value hierarchy

Description	Ending Balance as of Prior Quarter End	Transfers into Level 3	Transfers out of Level 3	Total gains and (losses) included in Net Income	Total gains and (losses) included in Surplus	Purchases	Issuances	Sales	Settlements	Ending Balance for Current Quarter End
a. Assets										
Total Assets	\$ -	\$ -	\$ -	\$ -	\$ -	\$ -	\$ -	\$ -	\$ -	\$ -

Description	Ending Balance as of Prior Quarter End	Transfers into Level 3	Transfers out of Level 3	Total gains and (losses) included in Net Income	Total gains and (losses) included in Surplus	Purchases	Issuances	Sales	Settlements	Ending Balance for Current Quarter End
b. Liabilities										
Total Liabilities	\$ -	\$ -	\$ -	\$ -	\$ -	\$ -	\$ -	\$ -	\$ -	\$ -

- (3) Policies when Transfers Between Levels are Recognized
- (4) Description of Valuation Techniques and Inputs Used in Fair Value Measurement
- (5) Fair Value Disclosures for Derivative Assets and Liabilities

B. Fair Value Reporting under SSAP 100 and Other Accounting Pronouncements

C. Aggregate fair value for all financial instruments and the level within the fair value hierarchy in which the fair value measurements in their entirety fall.
Not applicable

Type of Financial Instrument	Aggregate Fair Value	Admitted Assets	(Level 1)	(Level 2)	(Level 3)	Net Asset Value (NAV)	Not Practicable (Carrying Value)

D. Not Practicable to Estimate Fair Value
Not applicable

Type or Class of Financial Instrument	Carrying Value	Effective Interest Rate	Maturity Date	Explanation

E. NAV Practical Expedient Investments
Not applicable

NOTE 21 Other Items
No significant changes

NOTE 22 Events Subsequent
Subsequent events have been considered through 11/12/2024 for these statutory financial statements which are to be issued on 11/12/2024.

NOTE 23 Reinsurance
No significant changes

NOTE 24 Retrospectively Rated Contracts & Contracts Subject to Redetermination
F. Risk Sharing Provisions of the Affordable Care Act

(1) Did the reporting entity write accident and health insurance premium which is subject to the Affordable Care Act risk sharing provisions (YES/NO)?
Yes [] No [X]

NOTES TO FINANCIAL STATEMENTS

NOTE 25 Change in Incurred Losses and Loss Adjustment Expenses

A. Change in Incurred Losses and Loss Adjustment Expenses
Reserves as of December 31, 2023 were \$317,000. As of September 30, 2024, \$176,000 has been paid for incurred losses and loss adjusting expense attributable to insured events of prior years. Reserves remaining for prior years are now \$127,000 as a result of re-estimation of unpaid claims and claim adjustment expenses. Therefore, there has been a \$14,000 favorable prior year development since December 31, 2023 to September 30, 2024. This change is generally the result of ongoing analysis of recent loss development trends. Original estimates are increased or decreased as additional information becomes known regarding individual claims. The Company does not have retrospectively rated policies.

B. Information about Significant Changes in Methodologies and Assumptions
No changes in methodology.

NOTE 26 Intercompany Pooling Arrangements

No significant changes

NOTE 27 Structured Settlements

No significant changes

NOTE 28 Health Care Receivables

No significant changes

NOTE 29 Participating Policies

No significant changes

NOTE 30 Premium Deficiency Reserves

No significant changes

NOTE 31 High Deductibles

No significant changes

NOTE 32 Discounting of Liabilities for Unpaid Losses or Unpaid Loss Adjustment Expenses

No significant changes

NOTE 33 Asbestos/Environmental Reserves

No significant changes

NOTE 34 Subscriber Savings Accounts

No significant changes

NOTE 35 Multiple Peril Crop Insurance

No significant changes

NOTE 36 Financial Guaranty Insurance

Not applicable - This type of business is not written by the company.

STATEMENT AS OF SEPTEMBER 30, 2024 OF THE HOME AND FARM INSURANCE COMPANY

GENERAL INTERROGATORIES

PART 1 - COMMON INTERROGATORIES

GENERAL

- 1.1

Did the reporting entity experience any material transactions requiring the filing of Disclosure of Material Transactions with the State of Domicile, as required by the Model Act?

Yes [] No [X]
- 1.2

If yes, has the report been filed with the domiciliary state?

Yes [] No []
- 2.1

Has any change been made during the year of this statement in the charter, by-laws, articles of incorporation, or deed of settlement of the reporting entity?

Yes [] No [X]
- 2.2

If yes, date of change:
- 3.1

Is the reporting entity a member of an Insurance Holding Company System consisting of two or more affiliated persons, one or more of which is an insurer?
If yes, complete Schedule Y, Parts 1 and 1A.

Yes [X] No []
- 3.2

Have there been any substantial changes in the organizational chart since the prior quarter end?

Yes [] No [X]
- 3.3

If the response to 3.2 is yes, provide a brief description of those changes.
.....
- 3.4

Is the reporting entity publicly traded or a member of a publicly traded group?

Yes [] No [X]
- 3.5

If the response to 3.4 is yes, provide the CIK (Central Index Key) code issued by the SEC for the entity/group.
- 4.1

Has the reporting entity been a party to a merger or consolidation during the period covered by this statement?

Yes [] No [X]
- 4.2

If yes, provide the name of the entity, NAIC Company Code, and state of domicile (use two letter state abbreviation) for any entity that has ceased to exist as a result of the merger or consolidation.

1	2	3
Name of Entity	NAIC Company Code	State of Domicile
5.

If the reporting entity is subject to a management agreement, including third-party administrator(s), managing general agent(s), attorney-in-fact, or similar agreement, have there been any significant changes regarding the terms of the agreement or principals involved?
If yes, attach an explanation.
.....

Yes [] No [X] N/A []
- 6.1

State as of what date the latest financial examination of the reporting entity was made or is being made.

12/31/2023
- 6.2

State the as of date that the latest financial examination report became available from either the state of domicile or the reporting entity. This date should be the date of the examined balance sheet and not the date the report was completed or released.

12/31/2020
- 6.3

State as of what date the latest financial examination report became available to other states or the public from either the state of domicile or the reporting entity. This is the release date or completion date of the examination report and not the date of the examination (balance sheet date).

10/28/2021
- 6.4

By what department or departments?
Ohio
- 6.5

Have all financial statement adjustments within the latest financial examination report been accounted for in a subsequent financial statement filed with Departments?

Yes [] No [] N/A [X]
- 6.6

Have all of the recommendations within the latest financial examination report been complied with?

Yes [X] No [] N/A []
- 7.1

Has this reporting entity had any Certificates of Authority, licenses or registrations (including corporate registration, if applicable) suspended or revoked by any governmental entity during the reporting period?

Yes [] No [X]
- 7.2

If yes, give full information:
.....
- 8.1

Is the company a subsidiary of a bank holding company regulated by the Federal Reserve Board?

Yes [] No [X]
- 8.2

If response to 8.1 is yes, please identify the name of the bank holding company.
.....
- 8.3

Is the company affiliated with one or more banks, thrifts or securities firms?

Yes [] No [X]
- 8.4

If response to 8.3 is yes, please provide below the names and location (city and state of the main office) of any affiliates regulated by a federal regulatory services agency [i.e. the Federal Reserve Board (FRB), the Office of the Comptroller of the Currency (OCC), the Federal Deposit Insurance Corporation (FDIC) and the Securities Exchange Commission (SEC)] and identify the affiliate's primary federal regulator.

1	2	3	4	5	6
Affiliate Name	Location (City, State)	FRB	OCC	FDIC	SEC

STATEMENT AS OF SEPTEMBER 30, 2024 OF THE HOME AND FARM INSURANCE COMPANY

GENERAL INTERROGATORIES

- 9.1

Are the senior officers (principal executive officer, principal financial officer, principal accounting officer or controller, or persons performing similar functions) of the reporting entity subject to a code of ethics, which includes the following standards?
(a) Honest and ethical conduct, including the ethical handling of actual or apparent conflicts of interest between personal and professional relationships;
(b) Full, fair, accurate, timely and understandable disclosure in the periodic reports required to be filed by the reporting entity;
(c) Compliance with applicable governmental laws, rules and regulations;
(d) The prompt internal reporting of violations to an appropriate person or persons identified in the code; and
(e) Accountability for adherence to the code.

Yes [X] No []
- 9.11

If the response to 9.1 is No, please explain:
.....
- 9.2

Has the code of ethics for senior managers been amended?

Yes [] No [X]
- 9.21

If the response to 9.2 is Yes, provide information related to amendment(s).
.....
- 9.3

Have any provisions of the code of ethics been waived for any of the specified officers?

Yes [] No [X]
- 9.31

If the response to 9.3 is Yes, provide the nature of any waiver(s).
.....

FINANCIAL

- 10.1

Does the reporting entity report any amounts due from parent, subsidiaries or affiliates on Page 2 of this statement?

Yes [X] No []
- 10.2

If yes, indicate any amounts receivable from parent included in the Page 2 amount:\$.....

99,663

INVESTMENT

- 11.1

Were any of the stocks, bonds, or other assets of the reporting entity loaned, placed under option agreement, or otherwise made available for use by another person? (Exclude securities under securities lending agreements.)

Yes [] No [X]
- 11.2

If yes, give full and complete information relating thereto:
.....
12.

Amount of real estate and mortgages held in other invested assets in Schedule BA:

\$.....
13.

Amount of real estate and mortgages held in short-term investments:

\$.....
- 14.1

Does the reporting entity have any investments in parent, subsidiaries and affiliates?

Yes [X] No []
- 14.2

If yes, please complete the following:

	1	2
	Prior Year-End Book/Adjusted Carrying Value	Current Quarter Book/Adjusted Carrying Value
14.21 Bonds	\$.....0	\$.....
14.22 Preferred Stock	\$.....0	\$.....
14.23 Common Stock	\$.....0	\$.....
14.24 Short-Term Investments	\$.....0	\$.....
14.25 Mortgage Loans on Real Estate	\$.....0	\$.....
14.26 All Other	\$.....0	\$.....
14.27 Total Investment in Parent, Subsidiaries and Affiliates (Subtotal Lines 14.21 to 14.26)	\$.....0	\$.....0
14.28 Total Investment in Parent included in Lines 14.21 to 14.26 above	\$.....	\$.....
- 15.1

Has the reporting entity entered into any hedging transactions reported on Schedule DB?

Yes [] No [X]
- 15.2

If yes, has a comprehensive description of the hedging program been made available to the domiciliary state? Yes [] No [] N/A []
If no, attach a description with this statement.
.....
16.

For the reporting entity's security lending program, state the amount of the following as of the current statement date:

16.1

Total fair value of reinvested collateral assets reported on Schedule DL, Parts 1 and 2.

\$.....0

16.2

Total book/adjusted carrying value of reinvested collateral assets reported on Schedule DL, Parts 1 and 2

\$.....0

16.3

Total payable for securities lending reported on the liability page.

\$.....0

STATEMENT AS OF SEPTEMBER 30, 2024 OF THE HOME AND FARM INSURANCE COMPANY

GENERAL INTERROGATORIES

17. Excluding items in Schedule E - Part 3 - Special Deposits, real estate, mortgage loans and investments held physically in the reporting entity's offices, vaults or safety deposit boxes, were all stocks, bonds and other securities, owned throughout the current year held pursuant to a custodial agreement with a qualified bank or trust company in accordance with Section 1, III - General Examination Considerations, F. Outsourcing of Critical Functions, Custodial or Safekeeping Agreements of the NAIC Financial Condition Examiners Handbook? Yes [X] No []
- 17.1 For all agreements that comply with the requirements of the NAIC Financial Condition Examiners Handbook, complete the following:

1 Name of Custodian(s)	2 Custodian Address
US Bank	50 S. 16th Street Suite 2000, Philadelphia, PA 19102

- 17.2 For all agreements that do not comply with the requirements of the NAIC Financial Condition Examiners Handbook, provide the name, location and a complete explanation:

1 Name(s)	2 Location(s)	3 Complete Explanation(s)

- 17.3 Have there been any changes, including name changes, in the custodian(s) identified in 17.1 during the current quarter? Yes [] No [X]
- 17.4 If yes, give full information relating thereto:

1 Old Custodian	2 New Custodian	3 Date of Change	4 Reason

- 17.5 Investment management – Identify all investment advisors, investment managers, broker/dealers, including individuals that have the authority to make investment decisions on behalf of the reporting entity. For assets that are managed internally by employees of the reporting entity, note as such. ["...that have access to the investment accounts"; "...handle securities"]

1 Name of Firm or Individual	2 Affiliation
Sun Life Capital Management (U.S.) LLC	U.....

- 17.5097 For those firms/individuals listed in the table for Question 17.5, do any firms/individuals unaffiliated with the reporting entity (i.e. designated with a "U") manage more than 10% of the reporting entity's invested assets?..... Yes [X] No []

- 17.5098 For firms/individuals unaffiliated with the reporting entity (i.e. designated with a "U") listed in the table for Question 17.5, does the total assets under management aggregate to more than 50% of the reporting entity's invested assets?..... Yes [X] No []

- 17.6 For those firms or individuals listed in the table for 17.5 with an affiliation code of "A" (affiliated) or "U" (unaffiliated), provide the information for the table below.

1	2	3	4	5
Central Registration Depository Number	Name of Firm or Individual	Legal Entity Identifier (LEI)	Registered With	Investment Management Agreement (IMA) Filed
109684	Sun Life Capital Management (U.S.) LLC	5493001YLOMBHINPEN55	SEC	NO.....

- 18.1 Have all the filing requirements of the Purposes and Procedures Manual of the NAIC Investment Analysis Office been followed? Yes [X] No []
- 18.2 If no, list exceptions:

.....

19. By self-designating 5GI securities, the reporting entity is certifying the following elements for each self-designated 5GI security:
- a. Documentation necessary to permit a full credit analysis of the security does not exist or an NAIC CRP credit rating for an FE or PL security is not available.
 - b. Issuer or obligor is current on all contracted interest and principal payments.
 - c. The insurer has an actual expectation of ultimate payment of all contracted interest and principal.
- Has the reporting entity self-designated 5GI securities? Yes [] No [X]

20. By self-designating PLGI securities, the reporting entity is certifying the following elements of each self-designated PLGI security:
- a. The security was purchased prior to January 1, 2018.
 - b. The reporting entity is holding capital commensurate with the NAIC Designation reported for the security.
 - c. The NAIC Designation was derived from the credit rating assigned by an NAIC CRP in its legal capacity as a NRSRO which is shown on a current private letter rating held by the insurer and available for examination by state insurance regulators.
 - d. The reporting entity is not permitted to share this credit rating of the PL security with the SVO.
- Has the reporting entity self-designated PLGI securities? Yes [] No [X]

21. By assigning FE to a Schedule BA non-registered private fund, the reporting entity is certifying the following elements of each self-designated FE fund:
- a. The shares were purchased prior to January 1, 2019.
 - b. The reporting entity is holding capital commensurate with the NAIC Designation reported for the security.
 - c. The security had a public credit rating(s) with annual surveillance assigned by an NAIC CRP in its legal capacity as an NRSRO prior to January 1, 2019.
 - d. The fund only or predominantly holds bonds in its portfolio.
 - e. The current reported NAIC Designation was derived from the public credit rating(s) with annual surveillance assigned by an NAIC CRP in its legal capacity as an NRSRO.
 - f. The public credit rating(s) with annual surveillance assigned by an NAIC CRP has not lapsed.
- Has the reporting entity assigned FE to Schedule BA non-registered private funds that complied with the above criteria? Yes [] No [X]

STATEMENT AS OF SEPTEMBER 30, 2024 OF THE HOME AND FARM INSURANCE COMPANY

GENERAL INTERROGATORIES

PART 2 - PROPERTY & CASUALTY INTERROGATORIES

1.

If the reporting entity is a member of a pooling arrangement, did the agreement or the reporting entity's participation change?
If yes, attach an explanation.
.....

Yes [] No [X] N/A []
2.

Has the reporting entity reinsured any risk with any other reporting entity and agreed to release such entity from liability, in whole or in part, from any loss that may occur on the risk, or portion thereof, reinsured?
If yes, attach an explanation.
.....

Yes [] No [X]
- 3.1

Have any of the reporting entity's primary reinsurance contracts been canceled?

Yes [] No [X]
- 3.2

If yes, give full and complete information thereto.
.....
- 4.1

Are any of the liabilities for unpaid losses and loss adjustment expenses other than certain workers' compensation tabular reserves (see Annual Statement Instructions pertaining to disclosure of discounting for definition of " tabular reserves") discounted at a rate of interest greater than zero?

Yes [] No [X]
- 4.2

If yes, complete the following schedule:

			TOTAL DISCOUNT				DISCOUNT TAKEN DURING PERIOD			
1	2	3	4	5	6	7	8	9	10	11
Line of Business	Maximum Interest	Discount Rate	Unpaid Losses	Unpaid LAE	IBNR	TOTAL	Unpaid Losses	Unpaid LAE	IBNR	TOTAL
TOTAL			0	0	0	0	0	0	0	0

5.

Operating Percentages:
- 5.1

A&H loss percent

%
- 5.2

A&H cost containment percent

%
- 5.3

A&H expense percent excluding cost containment expenses

%
- 6.1

Do you act as a custodian for health savings accounts?

Yes [] No [X]
- 6.2

If yes, please provide the amount of custodial funds held as of the reporting date\$.....
- 6.3

Do you act as an administrator for health savings accounts?

Yes [] No [X]
- 6.4

If yes, please provide the balance of the funds administered as of the reporting date\$.....
7.

Is the reporting entity licensed or chartered, registered, qualified, eligible or writing business in at least two states?

Yes [X] No []
- 7.1

If no, does the reporting entity assume reinsurance business that covers risks residing in at least one state other than the state of domicile of the reporting entity?

Yes [] No [X]

STATEMENT AS OF SEPTEMBER 30, 2024 OF THE HOME AND FARM INSURANCE COMPANY

SCHEDULE F - CEDED REINSURANCE

Showing All New Reinsurers - Current Year to Date

[illegible]

SCHEDULE T - EXHIBIT OF PREMIUMS WRITTEN

Current Year to Date - Allocated by States and Territories

States, etc.	1 Active Status (a)	Direct Premiums Written		Direct Losses Paid (Deducting Salvage)		Direct Losses Unpaid	
		2 Current Year To Date	3 Prior Year To Date	4 Current Year To Date	5 Prior Year To Date	6 Current Year To Date	7 Prior Year To Date
1. Alabama	AL	N					
2. Alaska	AK	N					
3. Arizona	AZ	N					
4. Arkansas	AR	N					
5. California	CA	N					
6. Colorado	CO	N					
7. Connecticut	CT	N					
8. Delaware	DE	N					
9. District of Columbia	DC	N					
10. Florida	FL	N					
11. Georgia	GA	N					
12. Hawaii	HI	N					
13. Idaho	ID	N					
14. Illinois	IL	N					
15. Indiana	IN	L					
16. Iowa	IA	N					
17. Kansas	KS	N					
18. Kentucky	KY	N					
19. Louisiana	LA	N					
20. Maine	ME	N					
21. Maryland	MD	N					
22. Massachusetts	MA	N					
23. Michigan	MI	N					
24. Minnesota	MN	N					
25. Mississippi	MS	N					
26. Missouri	MO	N					
27. Montana	MT	N					
28. Nebraska	NE	N					
29. Nevada	NV	N					
30. New Hampshire	NH	N					
31. New Jersey	NJ	N					
32. New Mexico	NM	N					
33. New York	NY	N					
34. North Carolina	NC	N					
35. North Dakota	ND	N					
36. Ohio	OH	L	1,707,374	1,474,959	828,733	663,875	521,585
37. Oklahoma	OK	N					
38. Oregon	OR	N					
39. Pennsylvania	PA	N					
40. Rhode Island	RI	N					
41. South Carolina	SC	N					
42. South Dakota	SD	N					
43. Tennessee	TN	N					
44. Texas	TX	N					
45. Utah	UT	N					
46. Vermont	VT	N					
47. Virginia	VA	N					
48. Washington	WA	N					
49. West Virginia	WV	N					
50. Wisconsin	WI	N					
51. Wyoming	WY	N					
52. American Samoa	AS	N					
53. Guam	GU	N					
54. Puerto Rico	PR	N					
55. U.S. Virgin Islands	VI	N					
56. Northern Mariana Islands	MP	N					
57. Canada	CAN	N					
58. Aggregate Other Alien OT	XXX	0	0	0	0	0	0
59. Totals	XXX	1,707,374	1,474,959	828,733	663,875	521,585	529,310
DETAILS OF WRITE-INS							
58001.	XXX						
58002.	XXX						
58003.	XXX						
58998. Summary of remaining write-ins for Line 58 from overflow page	XXX	0	0	0	0	0	0
58999. Totals (Lines 58001 through 58003 plus 58998)(Line 58 above)	XXX	0	0	0	0	0	0

(a) Active Status Counts:

1. L - Licensed or Chartered - Licensed insurance carrier or domiciled RRG..... 2

2. R - Registered - Non-domiciled RRGs..... 0

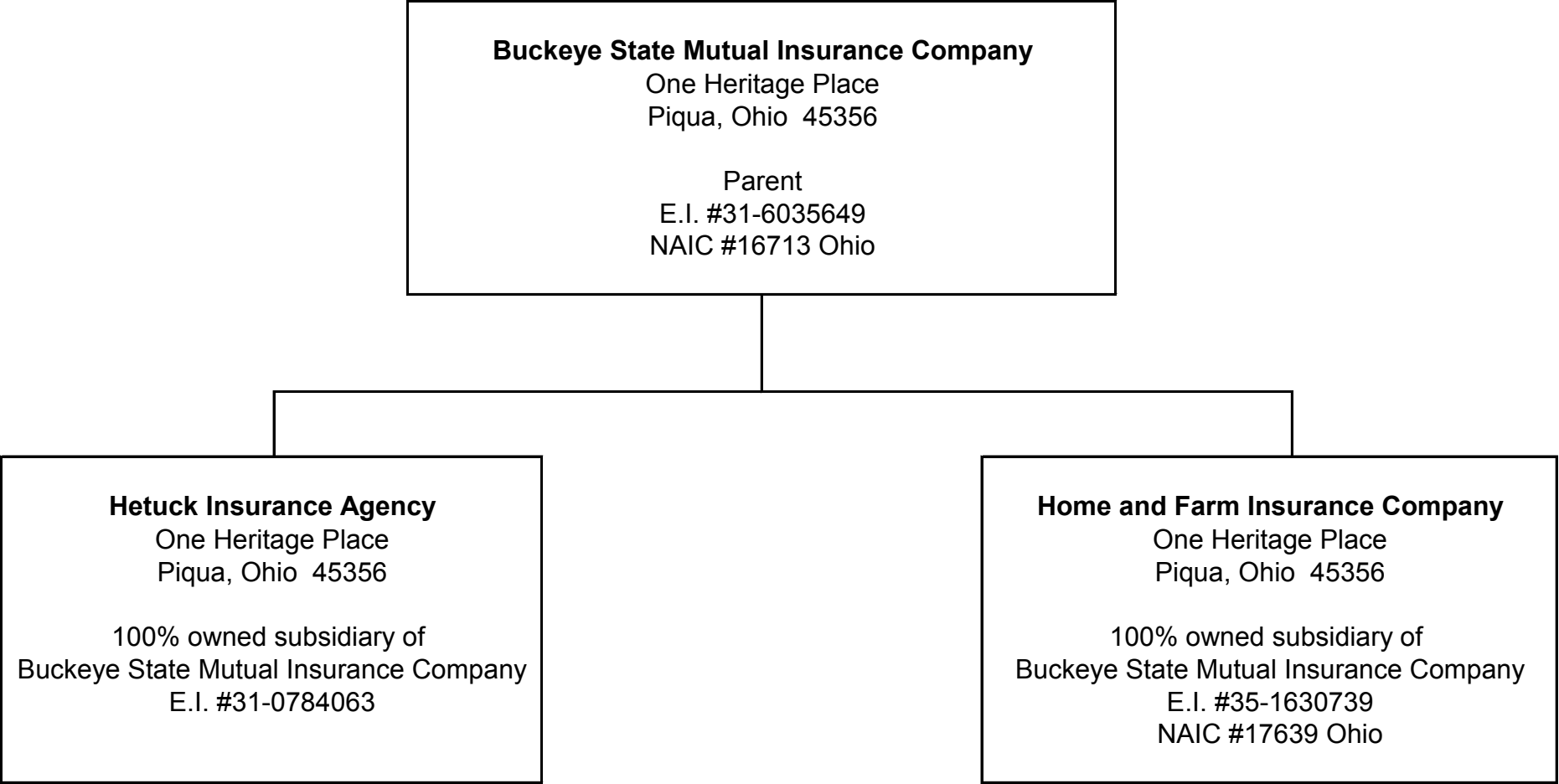
3. E - Eligible - Reporting entities eligible or approved to write surplus lines in the state (other than their state of domicile - see DSLI)..... 0

4. Q - Qualified - Qualified or accredited reinsurer..... 0

5. D - Domestic Surplus Lines Insurer (DSLII) - Reporting entities authorized to write surplus lines in the state of domicile..... 0

6. N - None of the above - Not allowed to write business in the state... 55

SCHEDULE Y - INFORMATION CONCERNING ACTIVITIES OF INSURER MEMBERS OF A HOLDING COMPANY GROUP
PART 1 - ORGANIZATIONAL CHART



SCHEDULE Y

PART 1A - DETAIL OF INSURANCE HOLDING COMPANY SYSTEM

Asterisk	Explanation

STATEMENT AS OF SEPTEMBER 30, 2024 OF THE HOME AND FARM INSURANCE COMPANY

PART 1 - LOSS EXPERIENCE

Line of Business		Current Year to Date			4
		1 Direct Premiums Earned	2 Direct Losses Incurred	3 Direct Loss Percentage	Prior Year to Date Direct Loss Percentage
1.	Fire			0.0	0.0
2.1	Allied Lines			0.0	0.0
2.2	Multiple peril crop			0.0	0.0
2.3	Federal flood			0.0	0.0
2.4	Private crop			0.0	0.0
2.5	Private flood	373	0	0.0	0.0
3.	Farmowners multiple peril	1,050,032	697,413	66.4	52.9
4.	Homeowners multiple peril			0.0	0.0
5.1	Commercial multiple peril (non-liability portion)			0.0	0.0
5.2	Commercial multiple peril (liability portion)			0.0	0.0
6.	Mortgage guaranty			0.0	0.0
8.	Ocean marine			0.0	0.0
9.1	Inland marine	6,020	0	0.0	99.4
9.2	Pet insurance			0.0	0.0
10.	Financial guaranty			0.0	0.0
11.1	Medical professional liability - occurrence			0.0	0.0
11.2	Medical professional liability - claims-made			0.0	0.0
12.	Earthquake			0.0	0.0
13.1	Comprehensive (hospital and medical) individual			0.0	0.0
13.2	Comprehensive (hospital and medical) group			0.0	0.0
14.	Credit accident and health			0.0	0.0
15.1	Vision only			0.0	0.0
15.2	Dental only			0.0	0.0
15.3	Disability income			0.0	0.0
15.4	Medicare supplement			0.0	0.0
15.5	Medicaid Title XIX			0.0	0.0
15.6	Medicare Title XVIII			0.0	0.0
15.7	Long-term care			0.0	0.0
15.8	Federal employees health benefits plan			0.0	0.0
15.9	Other health			0.0	0.0
16.	Workers' compensation			0.0	0.0
17.1	Other liability - occurrence			0.0	0.0
17.2	Other liability - claims-made			0.0	0.0
17.3	Excess workers' compensation			0.0	0.0
18.1	Products liability - occurrence			0.0	0.0
18.2	Products liability - claims-made			0.0	0.0
19.1	Private passenger auto no-fault (personal injury protection)			0.0	0.0
19.2	Other private passenger auto liability	223,206	106,221	47.6	17.6
19.3	Commercial auto no-fault (personal injury protection)			0.0	0.0
19.4	Other commercial auto liability			0.0	0.0
21.1	Private passenger auto physical damage	285,399	164,836	57.8	81.8
21.2	Commercial auto physical damage			0.0	0.0
22.	Aircraft (all perils)			0.0	0.0
23.	Fidelity			0.0	0.0
24.	Surety			0.0	0.0
26.	Burglary and theft			0.0	0.0
27.	Boiler and machinery			0.0	0.0
28.	Credit			0.0	0.0
29.	International			0.0	0.0
30.	Warranty			0.0	0.0
31.	Reinsurance - Nonproportional Assumed Property	XXX	XXX	XXX	XXX
32.	Reinsurance - Nonproportional Assumed Liability	XXX	XXX	XXX	XXX
33.	Reinsurance - Nonproportional Assumed Financial Lines	XXX	XXX	XXX	XXX
34.	Aggregate write-ins for other lines of business	0	0	0.0	0.0
35.	Totals	1,565,030	968,470	61.9	52.4
DETAILS OF WRITE-INS					
3401.				
3402.				
3403.				
3498.	Summary of remaining write-ins for Line 34 from overflow page	0	0	0.0	0.0
3499.	Totals (Lines 3401 through 3403 plus 3498)(Line 34 above)	0	0	0.0	0.0

STATEMENT AS OF SEPTEMBER 30, 2024 OF THE HOME AND FARM INSURANCE COMPANY

PART 2 - DIRECT PREMIUMS WRITTEN

Line of Business		1 Current Quarter	2 Current Year to Date	3 Prior Year Year to Date
1.	Fire	0		
2.1	Allied Lines	0		
2.2	Multiple peril crop	0		
2.3	Federal flood	0		
2.4	Private crop	0		
2.5	Private flood	0	420	491
3.	Farmowners multiple peril	363,366	1,142,937	964,276
4.	Homeowners multiple peril	0		
5.1	Commercial multiple peril (non-liability portion)	0		
5.2	Commercial multiple peril (liability portion)	0		
6.	Mortgage guaranty	0		
8.	Ocean marine	0		
9.1	Inland marine	1,774	5,751	5,856
9.2	Pet insurance	0		
10.	Financial guaranty	0		
11.1	Medical professional liability - occurrence	0		
11.2	Medical professional liability - claims-made	0		
12.	Earthquake	0		
13.1	Comprehensive (hospital and medical) individual	0		
13.2	Comprehensive (hospital and medical) group	0		
14.	Credit accident and health	0		
15.1	Vision only	0		
15.2	Dental only	0		
15.3	Disability income	0		
15.4	Medicare supplement	0		
15.5	Medicaid Title XIX	0		
15.6	Medicare Title XVIII	0		
15.7	Long-term care	0		
15.8	Federal employees health benefits plan	0		
15.9	Other health	0		
16.	Workers' compensation	0		
17.1	Other liability - occurrence	0		
17.2	Other liability - claims-made	0		
17.3	Excess workers' compensation	0		
18.1	Products liability - occurrence	0		
18.2	Products liability - claims-made	0		
19.1	Private passenger auto no-fault (personal injury protection)	0		
19.2	Other private passenger auto liability	86,074	231,790	230,765
19.3	Commercial auto no-fault (personal injury protection)	0		
19.4	Other commercial auto liability	0		
21.1	Private passenger auto physical damage	112,353	326,476	273,571
21.2	Commercial auto physical damage	0		
22.	Aircraft (all perils)	0		
23.	Fidelity	0		
24.	Surety	0		
26.	Burglary and theft	0		
27.	Boiler and machinery	0		
28.	Credit	0		
29.	International	0		
30.	Warranty	0		
31.	Reinsurance - Nonproportional Assumed Property	XXX	XXX	XXX
32.	Reinsurance - Nonproportional Assumed Liability	XXX	XXX	XXX
33.	Reinsurance - Nonproportional Assumed Financial Lines	XXX	XXX	XXX
34.	Aggregate write-ins for other lines of business	0	0	0
35.	Totals	563,567	1,707,374	1,474,959
DETAILS OF WRITE-INS				
3401.			
3402.			
3403.			
3498.	Summary of remaining write-ins for Line 34 from overflow page	0	0	0
3499.	Totals (Lines 3401 through 3403 plus 3498)(Line 34 above)	0	0	0

STATEMENT AS OF SEPTEMBER 30, 2024 OF THE HOME AND FARM INSURANCE COMPANY

PART 3 (\$000 OMITTED)

LOSS AND LOSS ADJUSTMENT EXPENSE RESERVES SCHEDULE

	1	2	3	4	5	6	7	8	9	10	11	12	13	
Years in Which Losses Occurred	Prior Year-End Known Case Loss and LAE Reserves	Prior Year-End IBNR Loss and LAE Reserves	Total Prior Year-End Loss and LAE Reserves (Cols. 1+2)	2024 Loss and LAE Payments on Claims Reported as of Prior Year-End	2024 Loss and LAE Payments on Claims Unreported as of Prior Year-End	Total 2024 Loss and LAE Payments (Cols. 4+5)	Q.S. Date Known Case Loss and LAE Reserves on Claims Reported and Open as of Prior Year End	Q.S. Date Known Case Loss and LAE Reserves on Claims Reported or Reopened Subsequent to Prior Year End	Q.S. Date IBNR Loss and LAE Reserves	Total Q.S. Loss and LAE Reserves (Cols.7+8+9)	Prior Year-End Known Case Loss and LAE Reserves Developed (Savings)/ Deficiency (Cols.4+7 minus Col. 1)	Prior Year-End IBNR Loss and LAE Reserves Developed (Savings)/ Deficiency (Cols. 5+8+9 minus Col. 2)	Prior Year-End Total Loss and LAE Reserve Developed (Savings)/ Deficiency (Cols. 11+12)	
1. 2021 + Prior	37	13	50	17	2	19	23	0	3	26	3	(8)	(5)	
2. 2022	42	22	64	29	3	32	20	3	17	40	7	1	8	
3. Subtotals 2022 + Prior	79	35	114	46	5	51	43	3	20	66	10	(7)	3	
4. 2023	100	103	203	102	23	125	7	11	43	61	9	(26)	(17)	
5. Subtotals 2023 + Prior	179	138	317	148	28	176	50	14	63	127	19	(33)	(14)	
6. 2024	XXX	XXX	XXX	XXX	893	893	XXX	179	75	254	XXX	XXX	XXX	
7. Totals	179	138	317	148	921	1,069	50	193	138	381	19	(33)	(14)	
8. Prior Year-End Surplus As Regards Policyholders	7,408											Col. 11, Line 7 As % of Col. 1 Line 7	Col. 12, Line 7 As % of Col. 2 Line 7	Col. 13, Line 7 As % of Col. 3 Line 7
												1. 10.6	2. (23.9)	3. (4.4)
												Col. 13, Line 7 As a % of Col. 1 Line 8 4. (0.2)		

STATEMENT AS OF SEPTEMBER 30, 2024 OF THE HOME AND FARM INSURANCE COMPANY

SUPPLEMENTAL EXHIBITS AND SCHEDULES INTERROGATORIES

The following supplemental reports are required to be filed as part of your statement filing. However, in the event that your company does not transact the type of business for which the special report must be filed, your response of NO to the specific interrogatory will be accepted in lieu of filing a "NONE" report and a bar code will be printed below. If the supplement is required of your company but is not being filed for whatever reason enter SEE EXPLANATION and provide an explanation following the interrogatory questions.

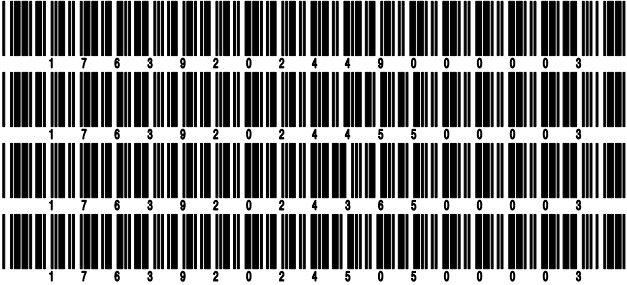
	Response
1. Will the Trusteed Surplus Statement be filed with the state of domicile and the NAIC with this statement?	NO
2. Will Supplement A to Schedule T (Medical Professional Liability Supplement) be filed with this statement?	NO
3. Will the Medicare Part D Coverage Supplement be filed with the state of domicile and the NAIC with this statement?	NO
4. Will the Director and Officer Insurance Coverage Supplement be filed with the state of domicile and the NAIC with this statement?	NO
AUGUST FILING	
5. Will the regulator-only (non-public) Communication of Internal Control Related Matters Noted in Audit be filed with the state of domicile and electronically with the NAIC (as a regulator-only non-public document) by August 1? The response for 1st and 3rd quarters should be N/A. A NO response resulting with a bar code is only appropriate in the 2nd quarter.	N/A

Explanations:

1.
2.
3.
4.

Bar Codes:

1. Trusteed Surplus Statement [Document Identifier 490]
2. Supplement A to Schedule T [Document Identifier 455]
3. Medicare Part D Coverage Supplement [Document Identifier 365]
4. Director and Officer Supplement [Document Identifier 505]



NONE

SCHEDULE A - VERIFICATION

Real Estate

	1	2
	Year to Date	Prior Year Ended December 31
1. Book/adjusted carrying value, December 31 of prior year		
2. Cost of acquired:		
2.1 Actual cost at time of acquisition		
2.2 Additional investment made after acquisition		
3. Current year change in encumbrances		
4. Total gain (loss) on disposals		
5. Deduct amounts received on disposals		
6. Total foreign exchange change in book/adjusted carrying value		
7. Deduct current year's other than temporary impairment recognized		
8. Deduct current year's depreciation		
9. Book/adjusted carrying value at the end of current period (Lines 1+2+3+4-5+6-7-8)		
10. Deduct total nonadmitted amounts		
11. Statement value at end of current period (Line 9 minus Line 10)		

SCHEDULE B - VERIFICATION

Mortgage Loans

	1	2
	Year to Date	Prior Year Ended December 31
1. Book value/recorded investment excluding accrued interest, December 31 of prior year		
2. Cost of acquired:		
2.1 Actual cost at time of acquisition		
2.2 Additional investment made after acquisition		
3. Capitalized deferred interest and other		
4. Accrual of discount		
5. Unrealized valuation increase/(decrease)		
6. Total gain (loss) on disposals		
7. Deduct amounts received on disposals		
8. Deduct amortization of premium and mortgage interest paid and commitment fees		
9. Total foreign exchange change in book value/recorded investment excluding accrued interest		
10. Deduct current year's other than temporary impairment recognized		
11. Book value/recorded investment excluding accrued interest at end of current period (Lines 1+2+3+4+5+6-7-8+9-10)		
12. Total valuation allowance		
13. Subtotal (Line 11 plus Line 12)		
14. Deduct total nonadmitted amounts		
15. Statement value at end of current period (Line 13 minus Line 14)		

SCHEDULE BA - VERIFICATION

Other Long-Term Invested Assets

	1	2
	Year to Date	Prior Year Ended December 31
1. Book/adjusted carrying value, December 31 of prior year		
2. Cost of acquired:		
2.1 Actual cost at time of acquisition		
2.2 Additional investment made after acquisition		
3. Capitalized deferred interest and other		
4. Accrual of discount		
5. Unrealized valuation increase/(decrease)		
6. Total gain (loss) on disposals		
7. Deduct amounts received on disposals		
8. Deduct amortization of premium and depreciation		
9. Total foreign exchange change in book/adjusted carrying value		
10. Deduct current year's other than temporary impairment recognized		
11. Book/adjusted carrying value at end of current period (Lines 1+2+3+4+5+6-7-8+9-10)		
12. Deduct total nonadmitted amounts		
13. Statement value at end of current period (Line 11 minus Line 12)		

SCHEDULE D - VERIFICATION

Bonds and Stocks

	1	2
	Year to Date	Prior Year Ended December 31
1. Book/adjusted carrying value of bonds and stocks, December 31 of prior year	6,554,825	6,604,363
2. Cost of bonds and stocks acquired	265,336	675,359
3. Accrual of discount	16,064	16,771
4. Unrealized valuation increase/(decrease)	0	
5. Total gain (loss) on disposals	(2,579)	
6. Deduct consideration for bonds and stocks disposed of	761,843	717,651
7. Deduct amortization of premium	14,312	24,017
8. Total foreign exchange change in book/adjusted carrying value	0	
9. Deduct current year's other than temporary impairment recognized	0	
10. Total investment income recognized as a result of prepayment penalties and/or acceleration fees	0	
11. Book/adjusted carrying value at end of current period (Lines 1+2+3+4+5-6-7+8-9+10)	6,057,491	6,554,825
12. Deduct total nonadmitted amounts	0	
13. Statement value at end of current period (Line 11 minus Line 12)	6,057,491	6,554,825

STATEMENT AS OF SEPTEMBER 30, 2024 OF THE HOME AND FARM INSURANCE COMPANY

SCHEDULE D - PART 1B

Showing the Acquisitions, Dispositions and Non-Trading Activity
During the Current Quarter for all Bonds and Preferred Stock by NAIC Designation

NAIC Designation	1 Book/Adjusted Carrying Value Beginning of Current Quarter	2 Acquisitions During Current Quarter	3 Dispositions During Current Quarter	4 Non-Trading Activity During Current Quarter	5 Book/Adjusted Carrying Value End of First Quarter	6 Book/Adjusted Carrying Value End of Second Quarter	7 Book/Adjusted Carrying Value End of Third Quarter	8 Book/Adjusted Carrying Value December 31 Prior Year
BONDS								
1. NAIC 1 (a)	5,224,618	213,258	453,471	(56,398)	5,392,146	5,224,618	4,928,007	5,508,322
2. NAIC 2 (a)	1,019,983	52,027	0	57,472	1,045,756	1,019,983	1,129,482	1,046,500
3. NAIC 3 (a)	0	0	0	0	0	0	0	
4. NAIC 4 (a)	0	0	0	0	0	0	0	
5. NAIC 5 (a)	0	0	0	0	0	0	0	
6. NAIC 6 (a)	0	0	0	0	0	0	0	
7. Total Bonds	6,244,601	265,285	453,471	1,074	6,437,902	6,244,601	6,057,489	6,554,822
PREFERRED STOCK								
8. NAIC 1	0	0	0	0	0	0	0	0
9. NAIC 2	0	0	0	0	0	0	0	0
10. NAIC 3	0	0	0	0	0	0	0	0
11. NAIC 4	0	0	0	0	0	0	0	0
12. NAIC 5	0	0	0	0	0	0	0	0
13. NAIC 6	0	0	0	0	0	0	0	0
14. Total Preferred Stock	0	0	0	0	0	0	0	0
15. Total Bonds and Preferred Stock	6,244,601	265,285	453,471	1,074	6,437,902	6,244,601	6,057,489	6,554,822

(a) Book/Adjusted Carrying Value column for the end of the current reporting period includes the following amount of short-term and cash equivalent bonds by NAIC designation:

NAIC 1 \$0 ; NAIC 2 \$0 ; NAIC 3 \$0 NAIC 4 \$0 ; NAIC 5 \$0 ; NAIC 6 \$0

SCHEDULE DA - PART 1

Short-Term Investments

	1	2	3	4	5
	Book/Adjusted Carrying Value	Par Value	Actual Cost	Interest Collected Year-to-Date	Paid for Accrued Interest Year-to-Date
7709999999 Totals	0	xxx	0	0	0

SCHEDULE DA - VERIFICATION

Short-Term Investments

	1	2
	Year To Date	Prior Year Ended December 31
1. Book/adjusted carrying value, December 31 of prior year		
2. Cost of short-term investments acquired		
3. Accrual of discount		
4. Unrealized valuation increase/(decrease)		
5. Total gain (loss) on disposals		
6. Deduct consideration received on disposals		
7. Deduct amortization of premium		
8. Total foreign exchange change in book/adjusted carrying value		
9. Deduct current year's other than temporary impairment recognized		
10. Book/adjusted carrying value at end of current period (Lines 1+2+3+4+5-6-7+8-9)		
11. Deduct total nonadmitted amounts		
12. Statement value at end of current period (Line 10 minus Line 11)		

NONE

Schedule DB - Part A - Verification - Options, Caps, Floors, Collars, Swaps and Forwards

N O N E

Schedule DB - Part B - Verification - Futures Contracts

N O N E

Schedule DB - Part C - Section 1 - Replication (Synthetic Asset) Transactions (RSATs) Open

N O N E

Schedule DB-Part C-Section 2-Reconciliation of Replication (Synthetic Asset) Transactions Open

N O N E

Schedule DB - Verification - Book/Adjusted Carrying Value, Fair Value and Potential Exposure of
Derivatives

N O N E

SCHEDULE E - PART 2 - VERIFICATION

(Cash Equivalents)

	1	2
	Year To Date	Prior Year Ended December 31
1. Book/adjusted carrying value, December 31 of prior year	37,224	9,384
2. Cost of cash equivalents acquired	810,042	883,089
3. Accrual of discount	0	0
4. Unrealized valuation increase/(decrease)	0	0
5. Total gain (loss) on disposals	0	0
6. Deduct consideration received on disposals	496,076	855,249
7. Deduct amortization of premium	0	0
8. Total foreign exchange change in book/adjusted carrying value	0	0
9. Deduct current year's other than temporary impairment recognized	0	0
10. Book/adjusted carrying value at end of current period (Lines 1+2+3+4+5-6-7+8-9)	351,190	37,224
11. Deduct total nonadmitted amounts	0	0
12. Statement value at end of current period (Line 10 minus Line 11)	351,190	37,224

Schedule A - Part 2 - Real Estate Acquired and Additions Made

N O N E

Schedule A - Part 3 - Real Estate Disposed

N O N E

Schedule B - Part 2 - Mortgage Loans Acquired and Additions Made

N O N E

Schedule B - Part 3 - Mortgage Loans Disposed, Transferred or Repaid

N O N E

Schedule BA - Part 2 - Other Long-Term Invested Assets Acquired and Additions Made

N O N E

Schedule BA - Part 3 - Other Long-Term Invested Assets Disposed, Transferred or Repaid

N O N E

STATEMENT AS OF SEPTEMBER 30, 2024 OF THE HOME AND FARM INSURANCE COMPANY

SCHEDULE D - PART 3

Show All Long-Term Bonds and Stock Acquired During the Current Quarter

1	2	3	4	5	6	7	8	9	10
CUSIP Identification	Description	Foreign	Date Acquired	Name of Vendor	Number of Shares of Stock	Actual Cost	Par Value	Paid for Accrued Interest and Dividends	NAIC Designation, NAIC Designation Modifier and SVO Admini- strative Symbol
91282C-LC-3	US TREASURY N/B08/12/2024	JP MORGAN		70,733	70,000	99	1.A
0109999999. Subtotal - Bonds - U.S. Governments						70,733	70,000	99	XXX
05522R-DH-8	BACCT 2023-A2 A208/12/2024	WAC		70,905	70,000	271	1.A FE
23242M-AD-3	CWL 2006-S3 A409/27/2024	ADJUSTMENT		39	39	0	1.A FM
38013K-AE-0	GMCAR 2024-3 A408/12/2024	WAC		71,580	70,000	327	1.A FE
47233W-EJ-4	JEFFERIES GRP INC08/09/2024	MAR		52,027	50,000	999	2.B FE
1109999999. Subtotal - Bonds - Industrial and Miscellaneous (Unaffiliated)						194,551	190,039	1,597	XXX
2509999997. Total - Bonds - Part 3						265,284	260,039	1,696	XXX
2509999998. Total - Bonds - Part 5						XXX	XXX	XXX	XXX
2509999999. Total - Bonds						265,284	260,039	1,696	XXX
4509999997. Total - Preferred Stocks - Part 3						0	XXX	0	XXX
4509999998. Total - Preferred Stocks - Part 5						XXX	XXX	XXX	XXX
4509999999. Total - Preferred Stocks						0	XXX	0	XXX
5989999997. Total - Common Stocks - Part 3						0	XXX	0	XXX
5989999998. Total - Common Stocks - Part 5						XXX	XXX	XXX	XXX
5989999999. Total - Common Stocks						0	XXX	0	XXX
5999999999. Total - Preferred and Common Stocks						0	XXX	0	XXX
.....
.....
.....
.....
6009999999 - Totals						265,284	XXX	1,696	XXX

STATEMENT AS OF SEPTEMBER 30, 2024 OF THE HOME AND FARM INSURANCE COMPANY

SCHEDULE D - PART 4

Show All Long-Term Bonds and Stock Sold, Redeemed or Otherwise Disposed of During the Current Quarter

1	2	3	4	5	6	7	8	9	10	Change In Book/Adjusted Carrying Value					16	17	18	19	20	21	22
										11	12	13	14	15							
CUSIP Identification	Description	For- eign	Disposal Date	Name of Purchaser	Number of Shares of Stock	Consid- eration	Par Value	Actual Cost	Prior Year Book/ Adjusted Carrying Value	Unrealized Valuation Increase/ (Decrease)	Current Year's (Amor- tization)/ Accretion	Current Year's Other Than Temporary Impairment Recogn- ized	Total Change in Book/ Adjusted Carrying Value (11 + 12 - 13)	Total Foreign Exchange Change in Book /Adjusted Carrying Value	Book/ Adjusted Carrying Value at Disposal Date	Foreign Exchange Gain (Loss) on Disposal	Realized Gain (Loss) on Disposal	Total Gain (Loss) on Disposal	Bond Interest/ Stock Dividends Received During Year	Stated Con- tractual Maturity Date	NAIC Desig- nation, NAIC Desig- nation Modifier and SVO Admini- strative Symbol
..38378T-AL-4	GNMA 2013-71 LA		09/01/2024	MBS PMT		68	68	70	68	0	0	0	0	0	68	0	0	0	1	10/20/2042	1.A
..91282B-3J-7	US TREASURY N/B		08/08/2024	JP MORGAN		99,082	100,000	98,863	99,841	0	105	0	105	0	99,946	0	(864)	(864)	1,469	11/30/2024	1.A
0109999999. Subtotal - Bonds - U.S. Governments						99,150	100,068	98,933	99,909	0	105	0	105	0	100,014	0	(864)	(864)	1,470	XXX	XXX
..160429-TN-6	CHARLESTON CNTY SC WTR & SWR		08/09/2024	MOS		25,130	25,000	30,217	25,613	0	(375)	0	(375)	0	25,238	0	(109)	(109)	1,392	01/01/2026	1.A FE
..162393-EG-3	CHATTANOOGA TN ELEC		08/09/2024	WAC		20,002	20,000	24,310	20,350	0	(322)	0	(322)	0	20,028	0	(26)	(26)	947	09/01/2024	1.D FE
..3128KT-D8-0	FHLNC A62827		09/01/2024	MBS PMT		9	9	9	9	0	0	0	0	0	9	0	0	0	0	06/01/2037	1.A
..3128M5-GJ-8	FHLNC G03511		09/01/2024	MBS PMT		5	5	5	5	0	0	0	0	0	5	0	0	0	0	10/01/2037	1.A
..3128MJ-V2-3	FHLNC G08632		09/01/2024	MBS PMT		283	283	297	284	0	(1)	0	(1)	0	283	0	0	0	7	03/01/2045	1.A
..3128MJ-XK-1	FHLNC G08681		09/01/2024	MBS PMT		314	314	328	315	0	(1)	0	(1)	0	314	0	0	0	7	12/01/2045	1.A
..3128PR-JV-0	FHLNC J12077		09/01/2024	MBS PMT		34	34	35	34	0	0	0	0	0	34	0	0	0	1	04/01/2025	1.A
..3132L6-AK-7	FHLNC V80910		09/01/2024	MBS PMT		254	254	270	254	0	(1)	0	(1)	0	254	0	0	0	6	12/01/2043	1.A
..31339S-E2-7	FHLNC QA2853		09/01/2024	MBS PMT		924	924	935	924	0	0	0	0	0	924	0	0	0	19	09/01/2049	1.A
..3133KL-UB-4	FHLNC RA4758		09/01/2024	MBS PMT		1,004	1,004	797	1,004	0	7	0	7	0	1,004	0	0	0	10	03/01/2046	1.A
..3136A1-X8-3	FNMA 2011-115 KE		08/26/2024	MBS PMT		101	101	102	101	0	0	0	0	0	101	0	0	0	2	10/25/2039	1.A
..3136AP-EE-8	FNMA 2015-47 GA		09/01/2024	MBS PMT		169	169	174	170	0	(1)	0	(1)	0	169	0	0	0	4	06/25/2044	1.A
..3138EG-RR-8	FNMA #AL0239		09/01/2024	MBS PMT		335	335	335	335	0	0	0	0	0	335	0	0	0	9	04/01/2041	1.A
..3138YR-GY-9	FNMA #AZ0886		09/01/2024	MBS PMT		697	697	723	700	0	(3)	0	(3)	0	697	0	0	0	14	07/01/2030	1.A
..3140KE-J8-2	FNMA #BP6586		09/01/2024	MBS PMT		2,929	2,929	3,048	2,939	0	(11)	0	(11)	0	2,929	0	0	0	39	08/01/2035	1.A
..3140X7-JV-8	FNMA #FM4227		09/01/2024	MBS PMT		631	631	631	631	0	(2)	0	(2)	0	631	0	0	0	11	09/01/2050	1.A
..31416W-GG-2	FNMA #AB1770		09/01/2024	MBS PMT		131	131	126	130	0	0	0	0	0	131	0	0	0	3	11/01/2025	1.A
..31417S-BP-4	FNMA #AC5445		09/01/2024	MBS PMT		99	99	107	99	0	0	0	0	0	99	0	0	0	3	11/01/2039	1.A
..31418D-ET-5	FNMA #MA3745		09/01/2024	MBS PMT		655	655	675	655	0	(1)	0	(1)	0	655	0	0	0	15	08/01/2049	1.A
..31418D-FE-7	FNMA #MA3764		09/01/2024	MBS PMT		1,108	1,108	1,125	1,110	0	(2)	0	(2)	0	1,108	0	0	0	18	09/01/2034	1.A
0909999999. Subtotal - Bonds - U.S. Special Revenues						54,814	54,682	64,283	55,658	0	(713)	0	(713)	0	54,948	0	(135)	(135)	2,507	XXX	XXX
..002824-BB-5	ABBOTT LABS		08/08/2024	MOS		24,697	25,000	25,414	25,047	0	(30)	0	(30)	0	25,017	0	(320)	(320)	664	03/15/2025	1.D FE
..025816-BR-9	AMERICAN EXPRESS CO		09/30/2024	CALL at 100.000		60,000	60,000	58,533	59,471	0	475	0	475	0	59,947	0	54	54	1,650	10/30/2024	1.F FE
..20826F-AD-8	CONOCOPHILLIPS		08/08/2024	MTA		74,506	75,000	77,437	75,238	0	(231)	0	(231)	0	75,006	0	(501)	(501)	1,843	11/15/2024	1.F FE
..23242M-AD-3	CIVIL 2006-S3 A4		09/01/2024	MBS PMT		53	53	45	40	0	13	0	13	0	53	0	0	0	2	01/25/2029	1.A FM
..345286-AC-2	FORDO 2022-A A3		09/15/2024	MBS PMT		6,558	6,558	6,545	6,553	0	5	0	5	0	6,558	0	0	0	56	06/15/2026	1.A FE
..617446-BJ-1	MORGAN STANLEY		07/22/2024	CALL at 100.000		75,000	75,000	77,426	75,522	0	(522)	0	(522)	0	75,000	0	0	0	2,040	07/22/2025	1.E FE
..637432-ND-3	NATIONAL RURAL UTILS		08/08/2024	MAR		49,407	50,000	53,148	50,828	0	(609)	0	(609)	0	50,219	0	(812)	(812)	1,473	01/27/2025	1.E FE
..98164G-AC-4	WOART 2022-A A3		09/15/2024	MBS PMT		6,710	6,710	6,708	6,707	0	3	0	3	0	6,710	0	0	0	74	05/17/2027	1.A FE
1109999999. Subtotal - Bonds - Industrial and Miscellaneous (Unaffiliated)						296,931	298,321	305,256	299,406	0	(896)	0	(896)	0	298,510	0	(1,579)	(1,579)	7,802	XXX	XXX
2509999997. Total - Bonds - Part 4						450,895	453,071	468,472	454,973	0	(1,504)	0	(1,504)	0	453,472	0	(2,578)	(2,578)	11,779	XXX	XXX
2509999998. Total - Bonds - Part 5						XXX	XXX	XXX	XXX	XXX	XXX	XXX	XXX	XXX	XXX	XXX	XXX	XXX	XXX	XXX	XXX
2509999999. Total - Bonds						450,895	453,071	468,472	454,973	0	(1,504)	0	(1,504)	0	453,472	0	(2,578)	(2,578)	11,779	XXX	XXX
4509999997. Total - Preferred Stocks - Part 4						0	XXX	0	0	0	0	0	0	0	0	0	0	0	0	XXX	XXX
4509999998. Total - Preferred Stocks - Part 5						XXX	XXX	XXX	XXX	XXX	XXX	XXX	XXX	XXX	XXX	XXX	XXX	XXX	XXX	XXX	XXX
4509999999. Total - Preferred Stocks						0	XXX	0	0	0	0	0	0	0	0	0	0	0	0	XXX	XXX
5989999997. Total - Common Stocks - Part 4						0	XXX	0	0	0	0	0	0	0	0	0	0	0	0	XXX	XXX
5989999998. Total - Common Stocks - Part 5						XXX	XXX	XXX	XXX	XXX	XXX	XXX	XXX	XXX	XXX	XXX	XXX	XXX	XXX	XXX	XXX
5989999999. Total - Common Stocks						0	XXX	0	0	0	0	0	0	0	0	0	0	0	0	XXX	XXX
5999999999. Total - Preferred and Common Stocks						0	XXX	0	0	0	0	0	0	0	0	0	0	0	0	XXX	XXX
6009999999 - Totals						450,895	XXX	468,472	454,973	0	(1,504)	0	(1,504)	0	453,472	0	(2,578)	(2,578)	11,779	XXX	XXX

Schedule DB - Part A - Section 1 - Options, Caps, Floors, Collars, Swaps and Forwards Open
N O N E

Schedule DB - Part B - Section 1 - Futures Contracts Open
N O N E

Schedule DB - Part B - Section 1B - Brokers with whom cash deposits have been made
N O N E

Schedule DB - Part D - Section 1 - Counterparty Exposure for Derivative Instruments Open
N O N E

Schedule DB - Part D-Section 2 - Collateral for Derivative Instruments Open - Pledged By
N O N E

Schedule DB - Part D-Section 2 - Collateral for Derivative Instruments Open - Pledged To
N O N E

Schedule DB - Part E - Derivatives Hedging Variable Annuity Guarantees
N O N E

Schedule DL - Part 1 - Reinvested Collateral Assets Owned
N O N E

Schedule DL - Part 2 - Reinvested Collateral Assets Owned
N O N E

SCHEDULE E - PART 1 - CASH

E13

SCHEDULE E - PART 2 - CASH EQUIVALENTS

[illegible]