



PROPERTY AND CASUALTY COMPANIES - ASSOCIATION EDITION

QUARTERLY STATEMENT

AS OF SEPTEMBER 30, 2024

OF THE CONDITION AND AFFAIRS OF THE

United Mutual Insurance Company

NAIC Group Code09630963NAIC Company Code10719Employer's ID Number39-0274490  
(Current)(Prior)

Organized under the Laws ofOhio, State of Domicile or Port of EntryOH

Country of DomicileUnited States of America

Incorporated/Organized06/16/1878Commenced Business06/16/1878

Statutory Home Office1725 Hopley AvenueBucyrus, OH, US 44820-0111  
(Street and Number)(City or Town, State, Country and Zip Code)

Main Administrative Office1725 Hopley AvenueBucyrus, OH, US 44820-0111419-563-0697  
(Street and Number)(City or Town, State, Country and Zip Code)(Area Code) (Telephone Number)

Mail Address1725 Hopley AvenueBucyrus, OH, US 44820-0111  
(Street and Number or P.O. Box)(City or Town, State, Country and Zip Code)

Primary Location of Books and Records1725 Hopley AvenueBucyrus, OH, US 44820-0111419-563-0697  
(Street and Number)(City or Town, State, Country and Zip Code)(Area Code) (Telephone Number)

Internet Website Addresswww.unitedmutualinsurance.com

Statutory Statement ContactTeri Ann Miller419-563-0697  
(Name)(Area Code) (Telephone Number)  
tmiller@omig.com877-753-0580  
(E-mail Address)(FAX Number)

OFFICERS

PresidentMark Clarence RussellSecretaryThomas Eugene Woolley

TreasurerAndrew Michael Wallen

OTHER

Todd Marshall Boyer, Vice President Corporate Communications	Chad Philip Combs, Vice President Personal Lines Underwriting	John Richard DeLucia, Vice President Claims
David Alan Grove, Vice President Product Management	Gary Thomas Johnson, Vice President Commercial Lines Underwriting	Susan Elizabeth Kent, Vice President Business Analytics
James Bradly McCormack, Vice President Information Systems	Mendi Harris Riddle, Vice President Sales	Marcella Slone Smith, Chief Administrative Officer

DIRECTORS OR TRUSTEES

Neeru Arora	Karen Riley Haeffling	Albert Michael Heister
Dawn Marie Kink	Susan Porter	John Redon Purse
Mark Clarence Russell	Charles Henry Self	Thomas Eugene Woolley

State ofOhioSS:

County ofCrawford

The officers of this reporting entity being duly sworn, each depose and say that they are the described officers of said reporting entity, and that on the reporting period stated above, all of the herein described assets were the absolute property of the said reporting entity, free and clear from any liens or claims thereon, except as herein stated, and that this statement, together with related exhibits, schedules and explanations therein contained, annexed or referred to, is a full and true statement of all the assets and liabilities and of the condition and affairs of the said reporting entity as of the reporting period stated above, and of its income and deductions therefrom for the period ended, and have been completed in accordance with the NAIC Annual Statement Instructions and Accounting Practices and Procedures manual except to the extent that: (1) state law may differ; or, (2) that state rules or regulations require differences in reporting not related to accounting practices and procedures, according to the best of their information, knowledge and belief, respectively. Furthermore, the scope of this attestation by the described officers also includes the related corresponding electronic filing with the NAIC, when required, that is an exact copy (except for formatting differences due to electronic filing) of the enclosed statement. The electronic filing may be requested by various regulators in lieu of or in addition to the enclosed statement.

Mark Clarence RussellPresident and CEOAndrew Michael WallenTreasurer and CFOMarcella Slone SmithAssistant Secretary

Subscribed and sworn to before me thisday of

a. Is this an original filing? .....Yes [ X ] No [ ]

b. If no,  
1. State the amendment number.....  
2. Date filed .....  
3. Number of pages attached.....

ASSETS

	Current Statement Date			4 December 31 Prior Year Net Admitted Assets
	1 Assets	2 Nonadmitted Assets	3 Net Admitted Assets (Cols. 1 - 2)	
1. Bonds .....	13,336,066		13,336,066	2,063,937
2. Stocks:				
2.1 Preferred stocks .....				
2.2 Common stocks .....	71,419		71,419	501,826
3. Mortgage loans on real estate:				
3.1 First liens .....				
3.2 Other than first liens.....				
4. Real estate:				
4.1 Properties occupied by the company (less \$ encumbrances) .....	150,238		150,238	156,044
4.2 Properties held for the production of income (less \$ ..... encumbrances) .....				
4.3 Properties held for sale (less \$ ..... encumbrances) .....				
5. Cash (\$ ..... 890,218 ), cash equivalents (\$ ..... 4,593,471 ) and short-term investments (\$ ..... ) .....	5,483,689		5,483,689	6,997,194
6. Contract loans (including \$ ..... premium notes) .....				
7. Derivatives .....				
8. Other invested assets .....				
9. Receivables for securities .....				
10. Securities lending reinvested collateral assets .....				
11. Aggregate write-ins for invested assets .....				
12. Subtotals, cash and invested assets (Lines 1 to 11) .....	19,041,412		19,041,412	9,719,001
13. Title plants less \$ ..... charged off (for Title insurers only) .....				
14. Investment income due and accrued .....	91,467		91,467	24,429
15. Premiums and considerations:				
15.1 Uncollected premiums and agents' balances in the course of collection .....	383,939		383,939	25,551
15.2 Deferred premiums, agents' balances and installments booked but deferred and not yet due (including \$ ..... earned but unbilled premiums) .....	2,862,692		2,862,692	746,486
15.3 Accrued retrospective premiums (\$ ..... ) and contracts subject to redetermination (\$ ..... ) .....				
16. Reinsurance:				
16.1 Amounts recoverable from reinsurers .....				6,173
16.2 Funds held by or deposited with reinsured companies .....				
16.3 Other amounts receivable under reinsurance contracts .....				
17. Amounts receivable relating to uninsured plans .....				
18.1 Current federal and foreign income tax recoverable and interest thereon ....				
18.2 Net deferred tax asset .....	345,010		345,010	179,149
19. Guaranty funds receivable or on deposit .....				
20. Electronic data processing equipment and software .....				
21. Furniture and equipment, including health care delivery assets (\$ ..... ) .....				
22. Net adjustment in assets and liabilities due to foreign exchange rates .....				
23. Receivables from parent, subsidiaries and affiliates .....				
24. Health care (\$ ..... ) and other amounts receivable .....				
25. Aggregate write-ins for other than invested assets .....	456,725	52,890	403,835	383,613
26. Total assets excluding Separate Accounts, Segregated Accounts and Protected Cell Accounts (Lines 12 to 25) .....	23,181,245	52,890	23,128,355	11,084,402
27. From Separate Accounts, Segregated Accounts and Protected Cell Accounts .....				
28. Total (Lines 26 and 27)	23,181,245	52,890	23,128,355	11,084,402
DETAILS OF WRITE-INS				
1101. ....				
1102. ....				
1103. ....				
1198. Summary of remaining write-ins for Line 11 from overflow page .....				
1199. Totals (Lines 1101 through 1103 plus 1198)(Line 11 above)				
2501. Cash Surrender Value of Life Insurance .....	403,835		403,835	383,613
2502. Vehicles .....	52,890	52,890		
2503. ....				
2598. Summary of remaining write-ins for Line 25 from overflow page .....				
2599. Totals (Lines 2501 through 2503 plus 2598)(Line 25 above)	456,725	52,890	403,835	383,613

LIABILITIES, SURPLUS AND OTHER FUNDS

	1 Current Statement Date	2 December 31, Prior Year
1. Losses (current accident year \$ .....2,012,501 ) .....	4,288,319	1,016,853
2. Reinsurance payable on paid losses and loss adjustment expenses .....		
3. Loss adjustment expenses .....	980,304	12,000
4. Commissions payable, contingent commissions and other similar charges .....	320,383	150,175
5. Other expenses (excluding taxes, licenses and fees) .....	6,313	47,804
6. Taxes, licenses and fees (excluding federal and foreign income taxes) .....	36,004	3,007
7.1 Current federal and foreign income taxes (including \$ ..... 15,940 on realized capital gains (losses)) .....	259,501	
7.2 Net deferred tax liability .....		
8. Borrowed money \$ ..... and interest thereon \$ .....		
9. Unearned premiums (after deducting unearned premiums for ceded reinsurance of \$ .....4,001,012 and including warranty reserves of \$ ..... and accrued accident and health experience rating refunds including \$ ..... for medical loss ratio rebate per the Public Health Service Act) .....	6,100,677	3,511,290
10. Advance premium .....	119,173	117,061
11. Dividends declared and unpaid:		
11.1 Stockholders .....		
11.2 Policyholders .....		
12. Ceded reinsurance premiums payable (net of ceding commissions) .....	81,805	87,610
13. Funds held by company under reinsurance treaties .....	32,601	
14. Amounts withheld or retained by company for account of others .....		
15. Remittances and items not allocated .....		
16. Provision for reinsurance (including \$ ..... certified) .....		
17. Net adjustments in assets and liabilities due to foreign exchange rates .....		
18. Drafts outstanding .....		
19. Payable to parent, subsidiaries and affiliates .....	167,005	
20. Derivatives .....		
21. Payable for securities .....	172,062	
22. Payable for securities lending .....		
23. Liability for amounts held under uninsured plans .....		
24. Capital notes \$ ..... and interest thereon \$ .....		
25. Aggregate write-ins for liabilities .....		
26. Total liabilities excluding protected cell liabilities (Lines 1 through 25) .....	12,564,147	4,945,800
27. Protected cell liabilities .....		
28. Total liabilities (Lines 26 and 27) .....	12,564,147	4,945,800
29. Aggregate write-ins for special surplus funds .....		
30. Common capital stock .....	5,000,000	5,000,000
31. Preferred capital stock .....		
32. Aggregate write-ins for other than special surplus funds .....		
33. Surplus notes .....		
34. Gross paid in and contributed surplus .....	6,000,000	2,000,000
35. Unassigned funds (surplus) .....	(435,792)	(861,398)
36. Less treasury stock, at cost:		
36.1 ..... shares common (value included in Line 30 \$ ..... ) .....		
36.2 ..... shares preferred (value included in Line 31 \$ ..... ) .....		
37. Surplus as regards policyholders (Lines 29 to 35, less 36) .....	10,564,208	6,138,602
38. Totals (Page 2, Line 28, Col. 3)	23,128,355	11,084,402
DETAILS OF WRITE-INS		
2501. ....		
2502. ....		
2503. ....		
2598. Summary of remaining write-ins for Line 25 from overflow page .....		
2599. Totals (Lines 2501 through 2503 plus 2598)(Line 25 above)		
2901. ....		
2902. ....		
2903. ....		
2998. Summary of remaining write-ins for Line 29 from overflow page .....		
2999. Totals (Lines 2901 through 2903 plus 2998)(Line 29 above)		
3201. ....		
3202. ....		
3203. ....		
3298. Summary of remaining write-ins for Line 32 from overflow page .....		
3299. Totals (Lines 3201 through 3203 plus 3298)(Line 32 above)		

STATEMENT OF INCOME

	1	2	3
	Current Year to Date	Prior Year to Date	Prior Year Ended December 31
UNDERWRITING INCOME			
1. Premiums earned:			
1.1 Direct (written \$ ..... 5,666,630 ) .....	5,283,287	4,867,506	6,635,565
1.2 Assumed (written \$ ..... 9,162,089 ) .....	8,495,884		
1.3 Ceded (written \$ ..... 5,666,630 ) .....	5,283,287	2,330,684	3,275,313
1.4 Net (written \$ ..... 9,162,089 ) .....	8,495,884	2,536,822	3,360,252
DEDUCTIONS:			
2. Losses incurred (current accident year \$ ..... 5,811,186 ):			
2.1 Direct .....	2,570,279	3,501,226	3,785,418
2.2 Assumed .....	5,553,215		
2.3 Ceded .....	2,570,279	342,993	189,089
2.4 Net .....	5,553,215	3,158,233	3,596,329
3. Loss adjustment expenses incurred .....	647,050	352,071	450,630
4. Other underwriting expenses incurred .....	2,671,283	1,767,558	2,321,650
5. Aggregate write-ins for underwriting deductions .....			
6. Total underwriting deductions (Lines 2 through 5) .....	8,871,548	5,277,862	6,368,609
7. Net income of protected cells .....			
8. Net underwriting gain (loss) (Line 1 minus Line 6 + Line 7) .....	(375,664)	(2,741,040)	(3,008,357)
INVESTMENT INCOME			
9. Net investment income earned .....	547,599	90,780	167,651
10. Net realized capital gains (losses) less capital gains tax of \$ ..... 15,940 .....	59,964	(1,989)	(956,050)
11. Net investment gain (loss) (Lines 9 + 10) .....	607,563	88,791	(788,399)
OTHER INCOME			
12. Net gain or (loss) from agents' or premium balances charged off (amount recovered \$ ..... 4,226 amount charged off \$ ..... 37,683 ) .....	(33,457)		
13. Finance and service charges not included in premiums .....	236,462	207,925	301,336
14. Aggregate write-ins for miscellaneous income .....	35,158	93,387	(4,874)
15. Total other income (Lines 12 through 14) .....	238,163	301,312	296,462
16. Net income before dividends to policyholders, after capital gains tax and before all other federal and foreign income taxes (Lines 8 + 11 + 15) .....	470,062	(2,350,937)	(3,500,294)
17. Dividends to policyholders .....			
18. Net income, after dividends to policyholders, after capital gains tax and before all other federal and foreign income taxes (Line 16 minus Line 17) .....	470,062	(2,350,937)	(3,500,294)
19. Federal and foreign income taxes incurred .....	243,561	(540)	(540)
20. Net income (Line 18 minus Line 19)(to Line 22) .....	226,501	(2,350,397)	(3,499,754)
CAPITAL AND SURPLUS ACCOUNT			
21. Surplus as regards policyholders, December 31 prior year .....	6,138,602	5,416,574	5,416,574
22. Net income (from Line 20) .....	226,501	(2,350,397)	(3,499,754)
23. Net transfers (to) from Protected Cell accounts .....			
24. Change in net unrealized capital gains (losses) less capital gains tax of \$ ..... 1,920 .....	7,222	(3,906,369)	(2,794,887)
25. Change in net unrealized foreign exchange capital gain (loss) .....			
26. Change in net deferred income tax .....	167,781	950,914	(832,101)
27. Change in nonadmitted assets .....	24,102	(1,040,006)	848,770
28. Change in provision for reinsurance .....			
29. Change in surplus notes .....			
30. Surplus (contributed to) withdrawn from protected cells .....			
31. Cumulative effect of changes in accounting principles .....			
32. Capital changes:			
32.1 Paid in .....			5,000,000
32.2 Transferred from surplus (Stock Dividend) .....			
32.3 Transferred to surplus .....			
33. Surplus adjustments:			
33.1 Paid in .....	4,000,000		2,000,000
33.2 Transferred to capital (Stock Dividend) .....			
33.3 Transferred from capital .....			
34. Net remittances from or (to) Home Office .....			
35. Dividends to stockholders .....			
36. Change in treasury stock .....			
37. Aggregate write-ins for gains and losses in surplus .....			
38. Change in surplus as regards policyholders (Lines 22 through 37).....	4,425,606	(6,345,858)	722,028
39. Surplus as regards policyholders, as of statement date (Lines 21 plus 38)	10,564,208	(929,284)	6,138,602
DETAILS OF WRITE-INS			
0501. ....			
0502. ....			
0503. ....			
0598. Summary of remaining write-ins for Line 5 from overflow page .....			
0599. Totals (Lines 0501 through 0503 plus 0598)(Line 5 above)			
1401. Gain / (Loss) on sale of non-admitted assets .....	21,658	2,581	(2,419)
1402. Other income .....		1,167	(2,455)
1403. Rental and Related Services .....	13,500		
1498. Summary of remaining write-ins for Line 14 from overflow page .....		89,639	
1499. Totals (Lines 1401 through 1403 plus 1498)(Line 14 above)	35,158	93,387	(4,874)
3701. ....			
3702. ....			
3703. ....			
3798. Summary of remaining write-ins for Line 37 from overflow page .....			
3799. Totals (Lines 3701 through 3703 plus 3798)(Line 37 above)			

CASH FLOW

	1 Current Year To Date	2 Prior Year To Date	3 Prior Year Ended December 31
<b>Cash from Operations</b>			
1. Premiums collected net of reinsurance .....	8,607,754	2,236,455	3,362,045
2. Net investment income .....	450,288	115,961	196,008
3. Miscellaneous income .....	250,773	211,673	296,462
4. Total (Lines 1 to 3) .....	9,308,815	2,564,089	3,854,515
5. Benefit and loss related payments .....	2,275,576	2,449,823	3,162,562
6. Net transfers to Separate Accounts, Segregated Accounts and Protected Cell Accounts .....			
7. Commissions, expenses paid and aggregate write-ins for deductions .....	2,171,296	2,078,145	2,766,445
8. Dividends paid to policyholders .....			
9. Federal and foreign income taxes paid (recovered) net of \$ ..... 15,940 tax on capital gains (losses) .....			(540)
10. Total (Lines 5 through 9) .....	4,446,872	4,527,968	5,928,467
11. Net cash from operations (Line 4 minus Line 10) .....	4,861,943	(1,963,879)	(2,073,952)
<b>Cash from Investments</b>			
12. Proceeds from investments sold, matured or repaid:			
12.1 Bonds .....	3,522,266	1,206,789	1,656,787
12.2 Stocks .....	475,114	286,156	286,159
12.3 Mortgage loans .....			
12.4 Real estate .....		108,266	108,266
12.5 Other invested assets .....			
12.6 Net gains or (losses) on cash, cash equivalents and short-term investments .....			
12.7 Miscellaneous proceeds .....	172,062		
12.8 Total investment proceeds (Lines 12.1 to 12.7) .....	4,169,442	1,601,211	2,051,212
13. Cost of investments acquired (long-term only):			
13.1 Bonds .....	14,743,056	261,098	261,098
13.2 Stocks .....			
13.3 Mortgage loans .....			
13.4 Real estate .....	1,440		
13.5 Other invested assets .....			
13.6 Miscellaneous applications .....			
13.7 Total investments acquired (Lines 13.1 to 13.6) .....	14,744,496	261,098	261,098
14. Net increase (or decrease) in contract loans and premium notes .....			
15. Net cash from investments (Line 12.8 minus Line 13.7 and Line 14) .....	(10,575,054)	1,340,113	1,790,114
<b>Cash from Financing and Miscellaneous Sources</b>			
16. Cash provided (applied):			
16.1 Surplus notes, capital notes .....			
16.2 Capital and paid in surplus, less treasury stock .....	4,000,000		7,000,000
16.3 Borrowed funds .....			
16.4 Net deposits on deposit-type contracts and other insurance liabilities .....			
16.5 Dividends to stockholders .....			
16.6 Other cash provided (applied) .....	199,606	(41,953)	(19,778)
17. Net cash from financing and miscellaneous sources (Line 16.1 through Line 16.4 minus Line 16.5 plus Line 16.6) .....	4,199,606	(41,953)	6,980,222
<b>RECONCILIATION OF CASH, CASH EQUIVALENTS AND SHORT-TERM INVESTMENTS</b>			
18. Net change in cash, cash equivalents and short-term investments (Line 11, plus Lines 15 and 17) .....	(1,513,505)	(665,719)	6,696,384
19. Cash, cash equivalents and short-term investments:			
19.1 Beginning of year .....	6,997,194	300,810	300,810
19.2 End of period (Line 18 plus Line 19.1) .....	5,483,689	(364,909)	6,997,194

Note: Supplemental disclosures of cash flow information for non-cash transactions:

--	--	--	--

NOTES TO FINANCIAL STATEMENTS

NOTE 1 Summary of Significant Accounting Policies and Going Concern

A. Accounting Practices  
The financial statements of United Mutual Insurance Company (the Company) are presented on the basis of accounting practices prescribed or permitted by the Ohio Department of Insurance (ODI).

The ODI recognizes only statutory accounting practices prescribed or permitted by the State of Ohio for determining and reporting the financial condition and results of operations of an insurance company. The National Association of Insurance Commissioners' (NAIC) Accounting Practices and Procedures Manual has been adopted as a component of prescribed or permitted accounting practices by the State of Ohio.

A reconciliation of the Company's net income and capital and surplus between NAIC Statutory Accounting Practices and practices prescribed and permitted by the State of Ohio is shown below:

	SSAP #	F/S Page	F/S Line #	2024	2023
NET INCOME					
1. State basis (Page 4, Line 20, Columns 1 & 3)	XXX	XXX	XXX	\$ 226,501	\$ (3,499,754)
2. State Prescribed Practices that are an increase/ (decrease) from NAIC SAP:					
3. State Permitted Practices that are an increase/(decrease) from NAIC SAP:					
4. NAIC SAP (1-2-3=4)	XXX	XXX	XXX	\$ 226,501	\$ (3,499,754)
SURPLUS					
5. State basis (Page 3, Line 37, Columns 1 & 2)	XXX	XXX	XXX	\$ 10,564,208	\$ 6,138,602
6. State Prescribed Practices that are an increase/(decrease) from NAIC SAP:					
7. State Permitted Practices that are an increase/(decrease) from NAIC SAP:					
8. NAIC SAP (5-6-7=8)	XXX	XXX	XXX	\$ 10,564,208	\$ 6,138,602

- B. Use of Estimates in the Preparation of the Financial Statements  
No change.
- C. Accounting Policy
1. No change.
2. Bonds not backed by other loans are stated at either amortized cost, using the scientific interest method or the lower of amortized cost or fair market value. The company holds no SVO-Identified bond ETFs reported on Schedule D-1.
- 3-5. No change.
6. Loan-backed securities are stated at either amortized cost, using the interest method or the lower of amortized cost or fair market value. The retrospective adjustment method is used to value all securities except for interest only securities, EITF 99-20 eligible securities or securities where the yield has become negative are valued using the prospective method.
- 7-13. No change.
- D. Going Concern  
Not applicable.

NOTE 2 Accounting Changes and Corrections of Errors  
Not applicable.

NOTE 3 Business Combinations and Goodwill  
No change.

NOTE 4 Discontinued Operations  
Not applicable.

NOTE 5 Investments

- A. Mortgage Loans, including Mezzanine Real Estate Loans  
Not applicable.
- B. Debt Restructuring  
Not applicable.
- C. Reverse Mortgages  
Not applicable.
- D. Loan-Backed Securities
1. Prepayment assumptions for Mortgage-backed securities, Collateralized Mortgage Obligations and Other Structured Securities were generated using a purchased prepayment model. The prepayment model uses a number of factors to estimate prepayment activity including the time of year (seasonality), current levels of interest rates (refinancing incentive), economic activity (including housing turnover) and term and age of the underlying collateral (burnout, seasoning). On an ongoing basis, we monitor the rate of prepayment and calibrate the model to reflect actual experience, market factors, and viewpoint.
2. Not applicable.
3. Not applicable.
4. All temporarily impaired securities for which an other-than-temporary impairment has not been recognized in earnings as a realized loss during the year are as follows:
- a) The aggregate amount of unrealized losses:
- |                        |            |
|------------------------|------------|
| 1. Less than 12 Months | \$ (4,055) |
| 2. 12 Months or Longer |            |
- b)The aggregate related fair value of securities with unrealized losses:
- |                        |            |
|------------------------|------------|
| 1. Less than 12 Months | \$ 640,736 |
| 2. 12 Months or Longer |            |

NOTES TO FINANCIAL STATEMENTS

5. Management regularly reviews the value of the Company's investments. If the value of any investment falls below its cost basis, the decline is analyzed to determine whether it is an other-than-temporary decline in value. To make this determination for each security, the following is considered:

- The length of time and the extent to which the fair value has been below cost;
- The financial condition and near-term prospects of the issuer of the security, including any specific events that may affect its operations or earnings potential;
- Management's intent and ability to hold the security long enough for it to recover its value;

Management concluded that the remaining investments within the loaned backed securities portfolio held with unrealized losses were not other-than-temporarily impaired on the basis that the Company had the ability and intent to hold the investments for a period of time sufficient for a forecasted market price recovery up to or beyond the cost of the investment. Also, in management's opinion, evidence indicating the cost of the investment was recoverable within a reasonable period of time outweighed evidence to the contrary in considering the severity and duration of the impairment in relation to the forecasted market price recovery.

- E. Dollar Repurchase Agreements and/or Securities Lending Transactions  
Not applicable.
- F. Repurchase Agreements Transactions Accounted for as Secured Borrowing  
Not applicable.
- G. Reverse Repurchase Agreements Transactions Accounted for as Secured Borrowing  
Not applicable.
- H. Repurchase Agreements Transactions Accounted for as a Sale  
Not applicable.
- I. Reverse Repurchase Agreements Transactions Accounted for as a Sale  
Not applicable.
- J. Real Estate  
No change.
- K. Low Income Housing tax Credits (LIHTC)  
Not applicable.
- L. Restricted Assets  
No change.
- M. Working Capital Finance Investments  
Not applicable.
- N. Offsetting and Netting of Assets and Liabilities  
Not applicable.
- O. 5GI Securities  
Not applicable.
- P. Short Sales  
Not applicable.
- Q. Prepayment Penalty and Acceleration Fees  
Not applicable.
- R. Reporting Entity's Share of Cash Pool by Asset Type  
Not applicable.

**NOTE 6 Joint Ventures, Partnerships and Limited Liability Companies**  
Not applicable.

**NOTE 7 Investment Income**  
No change.

**NOTE 8 Derivative Instruments**  
Not applicable.

**NOTE 9 Income Taxes**  
No change.

**NOTE 10 Information Concerning Parent, Subsidiaries, Affiliates and Other Related Parties**

- A. No change.
- B. In June 2024 the Ohio Mutual Insurance Company made a capital contribution to the Company of \$ 4,000,000.
- C-O. No change.

**NOTE 11 Debt**  
Not applicable.

**NOTE 12 Retirement Plans, Deferred Compensation, Postemployment Benefits and Compensated Absences and Other Postretirement Benefit Plans**  
Not applicable.

**NOTE 13 Capital and Surplus, Dividend Restrictions and Quasi-Reorganizations**  
No change.

**NOTE 14 Liabilities, Contingencies and Assessments**  
No change.

**NOTE 15 Leases**  
No change.

NOTES TO FINANCIAL STATEMENTS

**NOTE 16 Information About Financial Instruments With Off-Balance Sheet Risk and Financial Instruments With Concentrations of Credit Risk**  
Not applicable.

**NOTE 17 Sale, Transfer and Servicing of Financial Assets and Extinguishments of Liabilities**  
Not applicable.

**NOTE 18 Gain or Loss to the Reporting Entity from Uninsured Plans and the Uninsured Portion of Partially Insured Plans**  
Not applicable.

**NOTE 19 Direct Premium Written/Produced by Managing General Agents/Third Party Administrators**  
Not applicable.

**NOTE 20 Fair Value Measurements**

A. Fair value measurements for fixed income and equity securities are based on valuations from independent pricing services that have been approved and monitored periodically by a pricing policy committee.

Generally, the pricing services use a pricing methodology involving the market approach, including pricing models, which use prices and relevant market information regarding a particular security or securities with similar characteristics to establish a valuation. Under certain circumstances, if a vendor price is unavailable, a price may be obtained from a broker.

Documentation from each pricing vendor is reviewed periodically to ensure consistency with pricing policies and procedures.

Investments issued one year or less to maturity, including short-term investments and cash equivalents (less than 90 days to maturity), are valued at amortized cost, which approximates fair value.

Equity securities and perpetual preferred stocks are carried at fair value, while other assets such as bonds or redeemable preferred stocks may periodically be carried at fair value based on factors such as the NAIC's "lower of amortized cost or fair value" rule or an investment that was impaired to fair value.

Fair Value Hierarchy:

Assets recorded at fair value are categorized based on an evaluation of the various inputs used to measure the fair value. Supporting documentation received from pricing vendors detailing the inputs, models and processes used in the vendor's evaluation process is used to determine the appropriate fair value hierarchy. Market Information obtained from brokers with respect to security valuations is also considered in the pricing hierarchy.

Fair value hierarchy Levels include:

Level 1: Fair value is observable in an active market and based on quoted prices in active markets for identical assets.

Level 2: Fair value is based on quoted prices for similar assets in active markets, quoted prices for identical or similar assets in markets that are not active, or prices derived from valuation models that consider various observable market inputs in active markets. Prices obtained from independent pricing services are generally considered Level 2.

Level 3: Unobservable inputs reflecting assumptions that market participants would use, including assumptions about risk. Generally, prices obtained from a broker are considered Level 3.

Net Asset Value:

Under certain circumstances, as defined in SSAP 100R, an entity may use NAV as a practical expedient to measure fair value. Investments reported at NAV as a practical expedient are excluded from the fair value hierarchy described above. For reconciliation purposes, these investments are identified separately in Footnote 20A and 20C. As of the most recent measurement period, there are no assets that utilize NAV as a practical expedient to measure fair value.

Assets held at fair value as of the reporting date are summarized in the table below. The Company did not hold any liabilities at fair value as of the reporting date.

Description for each class of asset or liability	(Level 1)	(Level 2)	(Level 3)	Net Asset Value (NAV)	Total
a. Assets at fair value					
Common Stock-Industrial & Misc	\$ -	\$ -	\$ 71,419	\$ -	\$ 71,419
Total assets at fair value/NAV	\$ -	\$ -	\$ 71,419	\$ -	\$ 71,419

A reconciliation from the beginning balance to the reporting date for fair value measurements categorized within Level 3 of the fair value hierarchy is below.

Description	Ending Balance as of Prior Quarter End	Transfers into Level 3	Transfers out of Level 3	Total gains and (losses) included in Net Income	Total gains and (losses) included in Surplus	Purchases	Issuances	Sales	Settlements	Ending Balance for Current Quarter End
a. Assets										
Common Stock-Industrial & Misc	\$ 62,277	\$ -	\$ -	\$ -	\$ 9,141	\$ -	\$ -	\$ -	\$ -	\$ 71,418
Total Assets	\$ 62,277	\$ -	\$ -	\$ -	\$ 9,141	\$ -	\$ -	\$ -	\$ -	\$ 71,418

Transfers between levels are recognized on the actual date of the event or change in circumstances that caused the transfer.

B-C. The aggregate fair value for all financial instruments and their corresponding level within the fair value hierarchy are summarized in the tabel below.

Type of Financial Instrument	Aggregate Fair Value	Admitted Assets	(Level 1)	(Level 2)	(Level 3)	Net Asset Value (NAV)	Not Practicable (Carrying Value)
Bonds	\$ 13,743,451	\$ 13,336,066	\$ 149,617	\$ 13,593,834	\$ -	\$ -	\$ -
Common Stock	\$ 71,419	\$ 71,419	\$ -	\$ -	\$ 71,419	\$ -	\$ -

D. Not Practicable to Estimate Fair Value  
Not applicable.

E. NAV as a Practical Expedient  
Not applicable.

**NOTE 21 Other Items**  
No change.



NOTES TO FINANCIAL STATEMENTS

NOTE 22 Events Subsequent

Type I – Recognized Subsequent Events:  
Subsequent events have been considered through November 8, 2024 for the statutory statement available to be issued on November 15, 2024.

There were no material Type I events occurring subsequent to the end of the period that merited recognition in these statements that have not already been reflected as required.

Type II – Nonrecognized Subsequent Events:  
Subsequent events have been considered through November 8, 2024 for the statutory statement available to be issued on November 15, 2024.

There were no material Type II events occurring subsequent to the end of the period that merited disclosure in these statements that have not already been reflected as required.

NOTE 23 Reinsurance

No change.

NOTE 24 Retrospectively Rated Contracts & Contracts Subject to Redetermination

Not applicable.

NOTE 25 Change in Incurred Losses and Loss Adjustment Expenses

A. The Company's portion of pooled loss reserves as of December 31, 2023, was \$4.9 million. On a pooled basis as of September 30, 2024, \$1.7 million has been paid for incurred claims and claim adjustment expenses attributable to insured events of prior years. Pooled reserves remaining for prior years are now \$2.8 million. There has been a \$0.4 million favorable prior-year development, on a pooled basis, from December 31, 2023 to September 30, 2024 as a result of re-estimation of unpaid claims and claim adjustment expenses principally on private passenger auto physical damage, commercial multi-peril, commercial auto liability and homeowners lines of business. The decrease is generally the result of ongoing analysis of recent loss development trends. Original estimates are increased or decreased, as additional information becomes known regarding individual claims. The Company does not have any retrospectively rated policies which would be included in the favorable development.

NOTE 26 Intercompany Pooling Arrangements

A. Effective January 1, 2024, the Company requested and received permission from the ODI to pool the underwriting results of the Company with those of its insurance parent, Ohio Mutual and affiliates United Ohio and Casco. Through the Pooling Agreement, Ohio Mutual, NAIC #10202, retains 23% of the group's pooled underwriting results, cedes 65% to United Ohio, NAIC #13072, cedes 9% to Casco, NAIC #25950, and 3% to the Company, NAIC #10719. In 2023, the Pooling Agreement had Ohio Mutual retaining 27% and United Ohio assuming 65% and Casco assuming 8%. United Mutual was not included.

B-F. No change.

G. The following underwriting results were assumed/ceded between the companies in:

	9/30/2024	12/31/2023
Premium earned ceded to Ohio Mutual from United Mutual	\$ (4,847,420)	\$ -
Premium earned assumed by United Mutual	8,495,884	-
Change in premium earned due to pooling	\$ 3,648,464	\$ -
Losses incurred ceded to Ohio Mutual from United Mutual	\$ (2,570,241)	\$ -
Losses incurred assumed by United Mutual	5,553,215	-
Change in losses incurred due to pooling	\$ 2,982,974	\$ -
Net loss adjustment expenses ceded to Ohio Mutual	\$ 462,342	\$ -
Net other underwriting expenses ceded to Ohio Mutual	1,562,395	-
Change in expenses incurred due to pooling	\$ 2,024,737	\$ -
Change in income before taxes due to pooling	\$ (1,359,247)	\$ -

NOTE 27 Structured Settlements

Not applicable.

NOTE 28 Health Care Receivables

Not applicable.

NOTE 29 Participating Policies

Not applicable.

NOTE 30 Premium Deficiency Reserves

No change.

NOTE 31 High Deductibles

Not applicable.

NOTE 32 Discounting of Liabilities for Unpaid Losses or Unpaid Loss Adjustment Expenses

Not applicable.

NOTE 33 Asbestos/Environmental Reserves

No change.

NOTE 34 Subscriber Savings Accounts

Not applicable.

NOTE 35 Multiple Peril Crop Insurance

Not applicable.

NOTE 36 Financial Guaranty Insurance

Not applicable.

GENERAL INTERROGATORIES

PART 1 - COMMON INTERROGATORIES

GENERAL

1.1

Did the reporting entity experience any material transactions requiring the filing of Disclosure of Material Transactions with the State of Domicile, as required by the Model Act?

Yes [ ] No [ X ]

1.2

If yes, has the report been filed with the domiciliary state?

Yes [ ] No [ ]

2.1

Has any change been made during the year of this statement in the charter, by-laws, articles of incorporation, or deed of settlement of the reporting entity?

Yes [ ] No [ X ]

2.2

If yes, date of change:

3.1

Is the reporting entity a member of an Insurance Holding Company System consisting of two or more affiliated persons, one or more of which is an insurer?  
If yes, complete Schedule Y, Parts 1 and 1A.

Yes [ X ] No [ ]

3.2

Have there been any substantial changes in the organizational chart since the prior quarter end?

Yes [ ] No [ X ]

3.3

If the response to 3.2 is yes, provide a brief description of those changes.

3.4

Is the reporting entity publicly traded or a member of a publicly traded group?

Yes [ ] No [ X ]

3.5

If the response to 3.4 is yes, provide the CIK (Central Index Key) code issued by the SEC for the entity/group.

4.1

Has the reporting entity been a party to a merger or consolidation during the period covered by this statement?

Yes [ ] No [ X ]

4.2

If yes, provide the name of the entity, NAIC Company Code, and state of domicile (use two letter state abbreviation) for any entity that has ceased to exist as a result of the merger or consolidation.

1	2	3
Name of Entity	NAIC Company Code	State of Domicile

5.

If the reporting entity is subject to a management agreement, including third-party administrator(s), managing general agent(s), attorney-in-fact, or similar agreement, have there been any significant changes regarding the terms of the agreement or principals involved?  
If yes, attach an explanation.

Yes [ ] No [ ] N/A [ X ]

6.1

State as of what date the latest financial examination of the reporting entity was made or is being made.

12/31/2020

6.2

State the as of date that the latest financial examination report became available from either the state of domicile or the reporting entity. This date should be the date of the examined balance sheet and not the date the report was completed or released.

12/31/2020

6.3

State as of what date the latest financial examination report became available to other states or the public from either the state of domicile or the reporting entity. This is the release date or completion date of the examination report and not the date of the examination (balance sheet date).

01/17/2022

6.4

By what department or departments?  
Office of the Commissioner of Insurance - State of Wisconsin

6.5

Have all financial statement adjustments within the latest financial examination report been accounted for in a subsequent financial statement filed with Departments?

Yes [ X ] No [ ] N/A [ ]

6.6

Have all of the recommendations within the latest financial examination report been complied with?

Yes [ X ] No [ ] N/A [ ]

7.1

Has this reporting entity had any Certificates of Authority, licenses or registrations (including corporate registration, if applicable) suspended or revoked by any governmental entity during the reporting period?

Yes [ ] No [ X ]

7.2

If yes, give full information:

8.1

Is the company a subsidiary of a bank holding company regulated by the Federal Reserve Board?

Yes [ ] No [ X ]

8.2

If response to 8.1 is yes, please identify the name of the bank holding company.

8.3

Is the company affiliated with one or more banks, thrifts or securities firms?

Yes [ ] No [ X ]

8.4

If response to 8.3 is yes, please provide below the names and location (city and state of the main office) of any affiliates regulated by a federal regulatory services agency [i.e. the Federal Reserve Board (FRB), the Office of the Comptroller of the Currency (OCC), the Federal Deposit Insurance Corporation (FDIC) and the Securities Exchange Commission (SEC)] and identify the affiliate's primary federal regulator.

1	2	3	4	5	6
Affiliate Name	Location (City, State)	FRB	OCC	FDIC	SEC

STATEMENT AS OF SEPTEMBER 30, 2024 OF THE United Mutual Insurance Company

GENERAL INTERROGATORIES

- 9.1

Are the senior officers (principal executive officer, principal financial officer, principal accounting officer or controller, or persons performing similar functions) of the reporting entity subject to a code of ethics, which includes the following standards? .....  
(a) Honest and ethical conduct, including the ethical handling of actual or apparent conflicts of interest between personal and professional relationships;  
(b) Full, fair, accurate, timely and understandable disclosure in the periodic reports required to be filed by the reporting entity;  
(c) Compliance with applicable governmental laws, rules and regulations;  
(d) The prompt internal reporting of violations to an appropriate person or persons identified in the code; and  
(e) Accountability for adherence to the code.

Yes [ X ] No [ ]
- 9.11

If the response to 9.1 is No, please explain:  
.....
- 9.2

Has the code of ethics for senior managers been amended? .....

Yes [ ] No [ X ]
- 9.21

If the response to 9.2 is Yes, provide information related to amendment(s).  
.....
- 9.3

Have any provisions of the code of ethics been waived for any of the specified officers? .....

Yes [ ] No [ X ]
- 9.31

If the response to 9.3 is Yes, provide the nature of any waiver(s).  
.....

FINANCIAL

- 10.1

Does the reporting entity report any amounts due from parent, subsidiaries or affiliates on Page 2 of this statement? .....

Yes [ ] No [ X ]
- 10.2

If yes, indicate any amounts receivable from parent included in the Page 2 amount: .....\$ .....

INVESTMENT

- 11.1

Were any of the stocks, bonds, or other assets of the reporting entity loaned, placed under option agreement, or otherwise made available for use by another person? (Exclude securities under securities lending agreements.) .....

Yes [ ] No [ X ]
- 11.2

If yes, give full and complete information relating thereto:  
.....
12.

Amount of real estate and mortgages held in other invested assets in Schedule BA: .....

\$ .....
13.

Amount of real estate and mortgages held in short-term investments: .....

\$ .....
- 14.1

Does the reporting entity have any investments in parent, subsidiaries and affiliates? .....

Yes [ ] No [ X ]
- 14.2

If yes, please complete the following:

	1	2
	Prior Year-End Book/Adjusted Carrying Value	Current Quarter Book/Adjusted Carrying Value
14.21 Bonds .....	\$ .....	\$ .....
14.22 Preferred Stock .....	\$ .....	\$ .....
14.23 Common Stock .....	\$ .....	\$ .....
14.24 Short-Term Investments .....	\$ .....	\$ .....
14.25 Mortgage Loans on Real Estate .....	\$ .....	\$ .....
14.26 All Other .....	\$ .....	\$ .....
14.27 Total Investment in Parent, Subsidiaries and Affiliates (Subtotal Lines 14.21 to 14.26) .....	\$ .....	\$ .....
14.28 Total Investment in Parent included in Lines 14.21 to 14.26 above .....	\$ .....	\$ .....

15.1

Has the reporting entity entered into any hedging transactions reported on Schedule DB? .....

Yes [ ] No [ X ]

15.2

If yes, has a comprehensive description of the hedging program been made available to the domiciliary state? ..... Yes [ ] No [ ] N/A [ ]  
If no, attach a description with this statement.  
.....

16.

For the reporting entity's security lending program, state the amount of the following as of the current statement date:

16.1

Total fair value of reinvested collateral assets reported on Schedule DL, Parts 1 and 2. ....

\$ .....

16.2

Total book/adjusted carrying value of reinvested collateral assets reported on Schedule DL, Parts 1 and 2 .....

\$ .....

16.3

Total payable for securities lending reported on the liability page. ....

\$ .....
- 7.1

STATEMENT AS OF SEPTEMBER 30, 2024 OF THE United Mutual Insurance Company

GENERAL INTERROGATORIES

17. Excluding items in Schedule E - Part 3 - Special Deposits, real estate, mortgage loans and investments held physically in the reporting entity's offices, vaults or safety deposit boxes, were all stocks, bonds and other securities, owned throughout the current year held pursuant to a custodial agreement with a qualified bank or trust company in accordance with Section 1, III - General Examination Considerations, F. Outsourcing of Critical Functions, Custodial or Safekeeping Agreements of the NAIC Financial Condition Examiners Handbook? ..... Yes [ X ] No [ ]
- 17.1 For all agreements that comply with the requirements of the NAIC Financial Condition Examiners Handbook, complete the following:

1 Name of Custodian(s)	2 Custodian Address
FIFTH THIRD BANK .....	38 Fountain Square Plaza, Cincinnati, Ohio 45263 .....

- 17.2 For all agreements that do not comply with the requirements of the NAIC Financial Condition Examiners Handbook, provide the name, location and a complete explanation:

1 Name(s)	2 Location(s)	3 Complete Explanation(s)

- 17.3 Have there been any changes, including name changes, in the custodian(s) identified in 17.1 during the current quarter? ..... Yes [ ] No [ X ]
- 17.4 If yes, give full information relating thereto:

1 Old Custodian	2 New Custodian	3 Date of Change	4 Reason

- 17.5 Investment management – Identify all investment advisors, investment managers, broker/dealers, including individuals that have the authority to make investment decisions on behalf of the reporting entity. For assets that are managed internally by employees of the reporting entity, note as such. ["...that have access to the investment accounts"; "...handle securities"]

1 Name of Firm or Individual	2 Affiliation
NEW ENGLAND ASSET MANAGEMENT .....	U.....

- 17.5097 For those firms/individuals listed in the table for Question 17.5, do any firms/individuals unaffiliated with the reporting entity (i.e. designated with a "U") manage more than 10% of the reporting entity's invested assets?..... Yes [ X ] No [ ]

- 17.5098 For firms/individuals unaffiliated with the reporting entity (i.e. designated with a "U") listed in the table for Question 17.5, does the total assets under management aggregate to more than 50% of the reporting entity's invested assets?..... Yes [ X ] No [ ]

- 17.6 For those firms or individuals listed in the table for 17.5 with an affiliation code of "A" (affiliated) or "U" (unaffiliated), provide the information for the table below.

1 Central Registration Depository Number	2 Name of Firm or Individual	3 Legal Entity Identifier (LEI)	4 Registered With	5 Investment Management Agreement (IMA) Filed
105900 .....	NEW ENGLAND ASSET MANAGEMENT .....	KUR85E5PS4GQFZTFC130 .....	New England Asset Management is a SEC registered Investment Advisor .....	NO.....

- 18.1 Have all the filing requirements of the Purposes and Procedures Manual of the NAIC Investment Analysis Office been followed? ..... Yes [ X ] No [ ]
- 18.2 If no, list exceptions: .....

19. By self-designating 5GI securities, the reporting entity is certifying the following elements for each self-designated 5GI security:
- a. Documentation necessary to permit a full credit analysis of the security does not exist or an NAIC CRP credit rating for an FE or PL security is not available.
  - b. Issuer or obligor is current on all contracted interest and principal payments.
  - c. The insurer has an actual expectation of ultimate payment of all contracted interest and principal.
- Has the reporting entity self-designated 5GI securities? ..... Yes [ ] No [ X ]

20. By self-designating PLGI securities, the reporting entity is certifying the following elements of each self-designated PLGI security:
- a. The security was purchased prior to January 1, 2018.
  - b. The reporting entity is holding capital commensurate with the NAIC Designation reported for the security.
  - c. The NAIC Designation was derived from the credit rating assigned by an NAIC CRP in its legal capacity as a NRSRO which is shown on a current private letter rating held by the insurer and available for examination by state insurance regulators.
  - d. The reporting entity is not permitted to share this credit rating of the PL security with the SVO.
- Has the reporting entity self-designated PLGI securities? ..... Yes [ ] No [ X ]

21. By assigning FE to a Schedule BA non-registered private fund, the reporting entity is certifying the following elements of each self-designated FE fund:
- a. The shares were purchased prior to January 1, 2019.
  - b. The reporting entity is holding capital commensurate with the NAIC Designation reported for the security.
  - c. The security had a public credit rating(s) with annual surveillance assigned by an NAIC CRP in its legal capacity as an NRSRO prior to January 1, 2019.
  - d. The fund only or predominantly holds bonds in its portfolio.
  - e. The current reported NAIC Designation was derived from the public credit rating(s) with annual surveillance assigned by an NAIC CRP in its legal capacity as an NRSRO.
  - f. The public credit rating(s) with annual surveillance assigned by an NAIC CRP has not lapsed.
- Has the reporting entity assigned FE to Schedule BA non-registered private funds that complied with the above criteria? ..... Yes [ ] No [ X ]

GENERAL INTERROGATORIES

PART 2 - PROPERTY & CASUALTY INTERROGATORIES

1.

If the reporting entity is a member of a pooling arrangement, did the agreement or the reporting entity's participation change? .....  
If yes, attach an explanation.  
Company was added to pooling agreement effective 1/1/24 as part of merger with Ohio Mutual Insurance Group. UMI pooling percentage is 3% as of 1/1/24. ....

Yes [ X ] No [ ] N/A [ ]
2.

Has the reporting entity reinsured any risk with any other reporting entity and agreed to release such entity from liability, in whole or in part, from any loss that may occur on the risk, or portion thereof, reinsured? .....  
If yes, attach an explanation.  
.....

Yes [ ] No [ X ]
- 3.1

Have any of the reporting entity's primary reinsurance contracts been canceled? .....

Yes [ ] No [ X ]
- 3.2

If yes, give full and complete information thereto.  
.....
- 4.1

Are any of the liabilities for unpaid losses and loss adjustment expenses other than certain workers' compensation tabular reserves (see Annual Statement Instructions pertaining to disclosure of discounting for definition of " tabular reserves" ) discounted at a rate of interest greater than zero? .....

Yes [ ] No [ X ]
- 4.2

If yes, complete the following schedule:

			TOTAL DISCOUNT				DISCOUNT TAKEN DURING PERIOD			
1	2	3	4	5	6	7	8	9	10	11
Line of Business	Maximum Interest	Discount Rate	Unpaid Losses	Unpaid LAE	IBNR	TOTAL	Unpaid Losses	Unpaid LAE	IBNR	TOTAL
TOTAL										

5.

Operating Percentages:

5.1 A&H loss percent ..... %

5.2 A&H cost containment percent ..... %

5.3 A&H expense percent excluding cost containment expenses ..... 37.570 %
- 6.1

Do you act as a custodian for health savings accounts? .....

Yes [ ] No [ X ]
- 6.2

If yes, please provide the amount of custodial funds held as of the reporting date .....\$.....
- 6.3

Do you act as an administrator for health savings accounts? .....

Yes [ ] No [ X ]
- 6.4

If yes, please provide the balance of the funds administered as of the reporting date .....\$.....
7.

Is the reporting entity licensed or chartered, registered, qualified, eligible or writing business in at least two states? .....

Yes [ X ] No [ ]
- 7.1

If no, does the reporting entity assume reinsurance business that covers risks residing in at least one state other than the state of domicile of the reporting entity? .....

Yes [ ] No [ ]

## SCHEDULE F - CEDED REINSURANCE

CO

CO

STATEMENT AS OF SEPTEMBER 30, 2024 OF THE United Mutual Insurance Company

SCHEDULE T - EXHIBIT OF PREMIUMS WRITTEN

Current Year to Date - Allocated by States and Territories							
States, etc.	1 Active Status (a)	Direct Premiums Written		Direct Losses Paid (Deducting Salvage)		Direct Losses Unpaid	
		2 Current Year To Date	3 Prior Year To Date	4 Current Year To Date	5 Prior Year To Date	6 Current Year To Date	7 Prior Year To Date
1. Alabama .....	N						
2. Alaska .....	N						
3. Arizona .....	N						
4. Arkansas .....	N						
5. California .....	N						
6. Colorado .....	N						
7. Connecticut .....	N						
8. Delaware .....	N						
9. District of Columbia .....	N						
10. Florida .....	N						
11. Georgia .....	N						
12. Hawaii .....	N						
13. Idaho .....	N						
14. Illinois .....	N						
15. Indiana .....	N						
16. Iowa .....	N						
17. Kansas .....	N						
18. Kentucky .....	N						
19. Louisiana .....	N						
20. Maine .....	N						
21. Maryland .....	N						
22. Massachusetts .....	N						
23. Michigan .....	N						
24. Minnesota .....	N						
25. Mississippi .....	N						
26. Missouri .....	N						
27. Montana .....	N						
28. Nebraska .....	N						
29. Nevada .....	N						
30. New Hampshire .....	N						
31. New Jersey .....	N						
32. New Mexico .....	N						
33. New York .....	N						
34. North Carolina .....	N						
35. North Dakota .....	N						
36. Ohio .....	L						
37. Oklahoma .....	N						
38. Oregon .....	N						
39. Pennsylvania .....	N						
40. Rhode Island .....	N						
41. South Carolina .....	N						
42. South Dakota .....	N						
43. Tennessee .....	N						
44. Texas .....	N						
45. Utah .....	N						
46. Vermont .....	N						
47. Virginia .....	N						
48. Washington .....	N						
49. West Virginia .....	N						
50. Wisconsin .....	L	5,666,630	4,879,836	2,749,938	3,777,294	847,194	1,476,402
51. Wyoming .....	N						
52. American Samoa .....	N						
53. Guam .....	N						
54. Puerto Rico .....	N						
55. U.S. Virgin Islands .....	N						
56. Northern Mariana Islands .....	N						
57. Canada .....	N						
58. Aggregate Other Alien OT .....	XXX						
59. Totals	XXX	5,666,630	4,879,836	2,749,938	3,777,294	847,194	1,476,402
DETAILS OF WRITE-INS							
58001. ....	XXX						
58002. ....	XXX						
58003. ....	XXX						
58998. Summary of remaining write-ins for Line 58 from overflow page .....	XXX						
58999. Totals (Lines 58001 through 58003 plus 58998)(Line 58 above) .....	XXX						

- (a) Active Status Counts:
1. L - Licensed or Chartered - Licensed insurance carrier or domiciled RRG.....

2. R - Registered - Non-domiciled RRGs.....

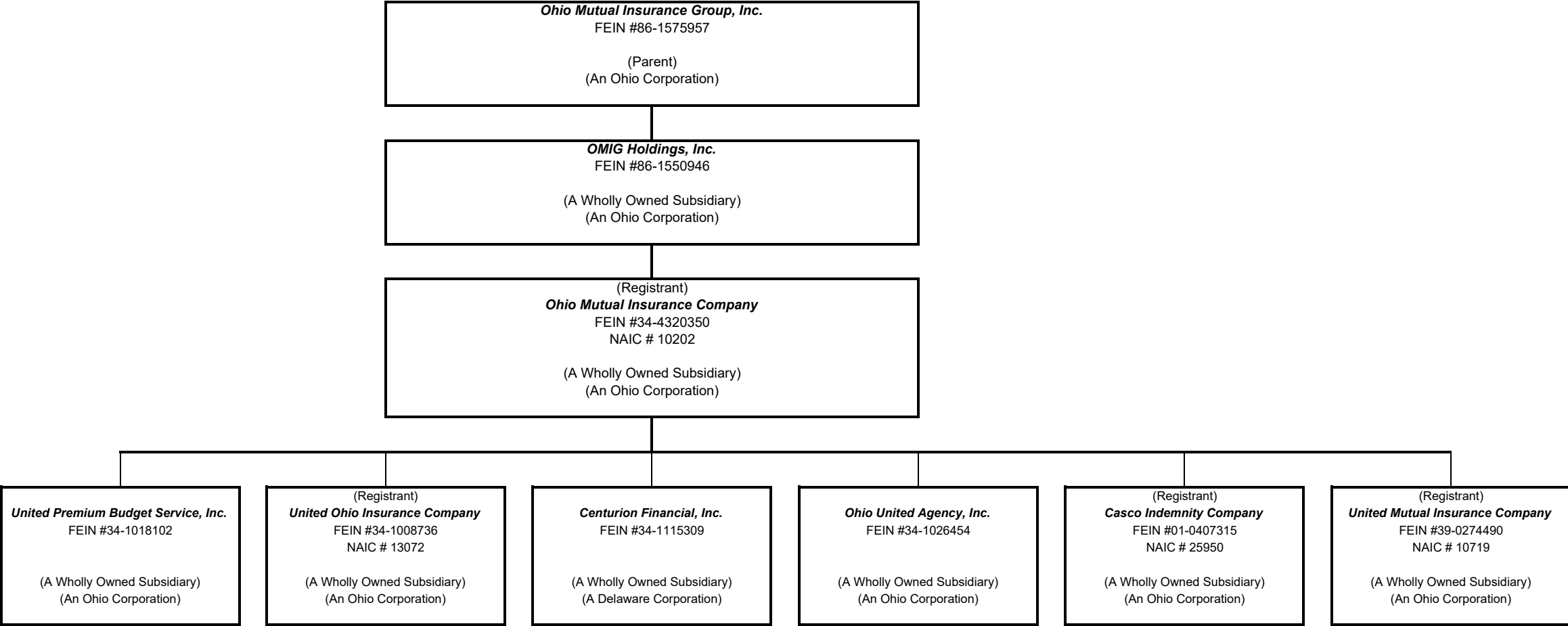
3. E - Eligible - Reporting entities eligible or approved to write surplus lines in the state (other than their state of domicile - see DSLI).....
2. Q - Qualified - Qualified or accredited reinsurer.....

5. D - Domestic Surplus Lines Insurer (DSLII) - Reporting entities authorized to write surplus lines in the state of domicile.....

6. N - None of the above - Not allowed to write business in the state... ..
- 55

SCHEDULE Y - INFORMATION CONCERNING ACTIVITIES OF INSURER MEMBERS OF A HOLDING COMPANY GROUP  
PART 1 - ORGANIZATIONAL CHART

Ohio Mutual Insurance Group





STATEMENT AS OF SEPTEMBER 30, 2024 OF THE United Mutual Insurance Company

## SCHEDULE Y

## PART 1A - DETAIL OF INSURANCE HOLDING COMPANY SYSTEM

[illegible]

# NONE

Asterisk	

PART 1 - LOSS EXPERIENCE

Line of Business		Current Year to Date			4 Prior Year to Date Direct Loss Percentage
		1 Direct Premiums Earned	2 Direct Losses Incurred	3 Direct Loss Percentage	
1.	Fire .....	344,962	248,139	71.9	206.8
2.1	Allied Lines .....	579,097	114,319	19.7	27.4
2.2	Multiple peril crop .....				
2.3	Federal flood .....				
2.4	Private crop .....				
2.5	Private flood .....				
3.	Farmowners multiple peril .....	1,812,133	1,019,944	56.3	53.8
4.	Homeowners multiple peril .....	2,293,779	1,148,042	50.1	97.1
5.1	Commercial multiple peril (non-liability portion) .....	218,811	22,889	10.5	(2.0)
5.2	Commercial multiple peril (liability portion) .....				
6.	Mortgage guaranty .....				
8.	Ocean marine .....				
9.1	Inland marine .....				
9.2	Pet insurance .....				
10.	Financial guaranty .....				
11.1	Medical professional liability - occurrence .....				
11.2	Medical professional liability - claims-made .....				
12.	Earthquake .....				
13.1	Comprehensive (hospital and medical) individual .....				
13.2	Comprehensive (hospital and medical) group .....				
14.	Credit accident and health .....				
15.1	Vision only .....				
15.2	Dental only .....				
15.3	Disability income .....				
15.4	Medicare supplement .....				
15.5	Medicaid Title XIX .....				
15.6	Medicare Title XVIII .....				
15.7	Long-term care .....				
15.8	Federal employees health benefits plan .....				
15.9	Other health .....				
16.	Workers' compensation .....				
17.1	Other liability - occurrence .....	27,096			
17.2	Other liability - claims-made .....				
17.3	Excess workers' compensation .....				
18.1	Products liability - occurrence .....				
18.2	Products liability - claims-made .....				
19.1	Private passenger auto no-fault (personal injury protection) .....				
19.2	Other private passenger auto liability .....	3,239	8,216	253.7	
19.3	Commercial auto no-fault (personal injury protection) .....				
19.4	Other commercial auto liability .....				
21.1	Private passenger auto physical damage .....	4,170	8,730	209.4	
21.2	Commercial auto physical damage .....				
22.	Aircraft (all perils) .....				
23.	Fidelity .....				
24.	Surety .....				
26.	Burglary and theft .....				
27.	Boiler and machinery .....				
28.	Credit .....				
29.	International .....				
30.	Warranty .....				
31.	Reinsurance - Nonproportional Assumed Property .....	XXX	XXX	XXX	XXX
32.	Reinsurance - Nonproportional Assumed Liability .....	XXX	XXX	XXX	XXX
33.	Reinsurance - Nonproportional Assumed Financial Lines .....	XXX	XXX	XXX	XXX
34.	Aggregate write-ins for other lines of business .....				
35.	Totals	5,283,287	2,570,279	48.6	71.9
DETAILS OF WRITE-INS					
3401.	.....				
3402.	.....				
3403.	.....				
3498.	Summary of remaining write-ins for Line 34 from overflow page .....				
3499.	Totals (Lines 3401 through 3403 plus 3498)(Line 34 above)				

STATEMENT AS OF SEPTEMBER 30, 2024 OF THE United Mutual Insurance Company

PART 2 - DIRECT PREMIUMS WRITTEN

Line of Business		1 Current Quarter	2 Current Year to Date	3 Prior Year Year to Date
1.	Fire .....	127,199	349,279	240,962
2.1	Allied Lines .....	244,296	615,470	562,245
2.2	Multiple peril crop .....			
2.3	Federal flood .....			
2.4	Private crop .....			
2.5	Private flood .....			
3.	Farmowners multiple peril .....	659,638	1,839,250	1,871,792
4.	Homeowners multiple peril .....	1,044,296	2,500,783	1,825,528
5.1	Commercial multiple peril (non-liability portion) .....	79,627	253,594	233,798
5.2	Commercial multiple peril (liability portion) .....			
6.	Mortgage guaranty .....			
8.	Ocean marine .....			
9.1	Inland marine .....			
9.2	Pet insurance .....			
10.	Financial guaranty .....			
11.1	Medical professional liability - occurrence .....			
11.2	Medical professional liability - claims-made .....			
12.	Earthquake .....			
13.1	Comprehensive (hospital and medical) individual .....			
13.2	Comprehensive (hospital and medical) group .....			
14.	Credit accident and health .....			
15.1	Vision only .....			
15.2	Dental only .....			
15.3	Disability income .....			
15.4	Medicare supplement .....			
15.5	Medicaid Title XIX .....			
15.6	Medicare Title XVIII .....			
15.7	Long-term care .....			
15.8	Federal employees health benefits plan .....			
15.9	Other health .....			
16.	Workers' compensation .....			
17.1	Other liability - occurrence .....	14,201	22,043	
17.2	Other liability - claims-made .....			
17.3	Excess workers' compensation .....			
18.1	Products liability - occurrence .....			
18.2	Products liability - claims-made .....			
19.1	Private passenger auto no-fault (personal injury protection) .....			
19.2	Other private passenger auto liability .....	34,736	34,736	
19.3	Commercial auto no-fault (personal injury protection) .....			
19.4	Other commercial auto liability .....			
21.1	Private passenger auto physical damage .....	51,475	51,475	
21.2	Commercial auto physical damage .....			
22.	Aircraft (all perils) .....			
23.	Fidelity .....			
24.	Surety .....			
26.	Burglary and theft .....			
27.	Boiler and machinery .....			145,511
28.	Credit .....			
29.	International .....			
30.	Warranty .....			
31.	Reinsurance - Nonproportional Assumed Property .....	XXX	XXX	XXX
32.	Reinsurance - Nonproportional Assumed Liability .....	XXX	XXX	XXX
33.	Reinsurance - Nonproportional Assumed Financial Lines .....	XXX	XXX	XXX
34.	Aggregate write-ins for other lines of business .....			
35.	Totals	2,255,468	5,666,630	4,879,836
DETAILS OF WRITE-INS				
3401.	.....			
3402.	.....			
3403.	.....			
3498.	Summary of remaining write-ins for Line 34 from overflow page .....			
3499.	Totals (Lines 3401 through 3403 plus 3498)(Line 34 above)			

STATEMENT AS OF SEPTEMBER 30, 2024 OF THE United Mutual Insurance Company

PART 3 (\$000 OMITTED)

LOSS AND LOSS ADJUSTMENT EXPENSE RESERVES SCHEDULE

	1	2	3	4	5	6	7	8	9	10	11	12	13											
Years in Which Losses Occurred	Prior Year-End Known Case Loss and LAE Reserves	Prior Year-End IBNR Loss and LAE Reserves	Total Prior Year-End Loss and LAE Reserves (Cols. 1+2)	2024 Loss and LAE Payments on Claims Reported as of Prior Year-End	2024 Loss and LAE Payments on Claims Unreported as of Prior Year-End	Total 2024 Loss and LAE Payments (Cols. 4+5)	Q.S. Date Known Case Loss and LAE Reserves on Claims Reported and Open as of Prior Year End	Q.S. Date Known Case Loss and LAE Reserves on Claims Reported or Reopened Subsequent to Prior Year End	Q.S. Date IBNR Loss and LAE Reserves	Total Q.S. Loss and LAE Reserves (Cols.7+8+9)	Prior Year-End Known Case Loss and LAE Reserves Developed (Savings)/ Deficiency (Cols.4+7 minus Col. 1)	Prior Year-End IBNR Loss and LAE Reserves Developed (Savings)/ Deficiency (Cols. 5+8+9 minus Col. 2)	Prior Year-End Total Loss and LAE Reserve Developed (Savings)/ Deficiency (Cols. 11+12)											
1. 2021 + Prior .....	443	676	1,119	290	1	291	282	3	392	677	129	(280)	(151)											
2. 2022 .....	354	691	1,045	287	2	289	202	4	417	623	135	(268)	(133)											
3. Subtotals 2022 + Prior .....	797	1,367	2,164	577	3	580	484	7	809	1,300	264	(548)	(284)											
4. 2023 .....	1,113	1,659	2,772	1,103	41	1,144	485	12	988	1,485	475	(618)	(143)											
5. Subtotals 2023 + Prior .....	1,910	3,026	4,936	1,680	44	1,724	969	19	1,797	2,785	739	(1,166)	(427)											
6. 2024 .....	XXX	XXX	XXX	XXX	4,143	4,143	XXX	962	1,522	2,484	XXX	XXX	XXX											
7. Totals .....	1,910	3,026	4,936	1,680	4,187	5,867	969	981	3,319	5,269	739	(1,166)	(427)											
8. Prior Year-End Surplus As Regards Policyholders	6,139											Col. 11, Line 7 As % of Col. 1 Line 7	Col. 12, Line 7 As % of Col. 2 Line 7	Col. 13, Line 7 As % of Col. 3 Line 7										
												1. 38.7	2. (38.5)	3. (8.7)										
													Col. 13, Line 7 As a % of Col. 1 Line 8	4. (7.0)										

STATEMENT AS OF SEPTEMBER 30, 2024 OF THE United Mutual Insurance Company

SUPPLEMENTAL EXHIBITS AND SCHEDULES INTERROGATORIES

The following supplemental reports are required to be filed as part of your statement filing. However, in the event that your company does not transact the type of business for which the special report must be filed, your response of NO to the specific interrogatory will be accepted in lieu of filing a "NONE" report and a bar code will be printed below. If the supplement is required of your company but is not being filed for whatever reason enter SEE EXPLANATION and provide an explanation following the interrogatory questions.

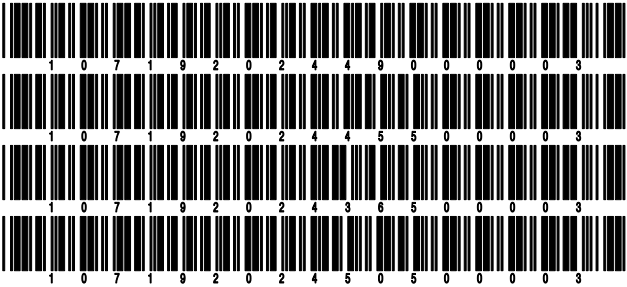
	Response
1. Will the Trusteed Surplus Statement be filed with the state of domicile and the NAIC with this statement? .....	NO
2. Will Supplement A to Schedule T (Medical Professional Liability Supplement) be filed with this statement? .....	NO
3. Will the Medicare Part D Coverage Supplement be filed with the state of domicile and the NAIC with this statement? .....	NO
4. Will the Director and Officer Insurance Coverage Supplement be filed with the state of domicile and the NAIC with this statement? .....	NO
AUGUST FILING	
5. Will the regulator-only (non-public) Communication of Internal Control Related Matters Noted in Audit be filed with the state of domicile and electronically with the NAIC (as a regulator-only non-public document) by August 1? The response for 1st and 3rd quarters should be N/A. A NO response resulting with a bar code is only appropriate in the 2nd quarter. ....	N/A

Explanations:

1.
2.
3.
4.

Bar Codes:

1. Trusteed Surplus Statement [Document Identifier 490]
2. Supplement A to Schedule T [Document Identifier 455]
3. Medicare Part D Coverage Supplement [Document Identifier 365]
4. Director and Officer Supplement [Document Identifier 505]



STATEMENT AS OF SEPTEMBER 30, 2024 OF THE United Mutual Insurance Company

OVERFLOW PAGE FOR WRITE-INS

Additional Write-ins for Statement of Income Line 14

	1 Current Year to Date	2 Prior Year to Date	3 Prior Year Ended December 31
1404. Gain on sale of assets .....		89,639	
1497. Summary of remaining write-ins for Line 14 from overflow page		89,639	

SCHEDULE A - VERIFICATION

Real Estate

	1	2
	Year to Date	Prior Year Ended December 31
1. Book/adjusted carrying value, December 31 of prior year .....	156,044	185,081
2. Cost of acquired:		
2.1 Actual cost at time of acquisition .....	1,440	
2.2 Additional investment made after acquisition .....		
3. Current year change in encumbrances .....		
4. Total gain (loss) on disposals .....		89,639
5. Deduct amounts received on disposals .....		108,266
6. Total foreign exchange change in book/adjusted carrying value .....		
7. Deduct current year's other than temporary impairment recognized .....		
8. Deduct current year's depreciation .....	7,246	10,410
9. Book/adjusted carrying value at the end of current period (Lines 1+2+3+4-5+6-7-8) .....	150,238	156,044
10. Deduct total nonadmitted amounts .....		
11. Statement value at end of current period (Line 9 minus Line 10)	150,238	156,044

SCHEDULE B - VERIFICATION

Mortgage Loans

	1	2
	Year to Date	Prior Year Ended December 31
1. Book value/recorded investment excluding accrued interest, December 31 of prior year .....		
2. Cost of acquired:		
2.1 Actual cost at time of acquisition .....		
2.2 Additional investment made after acquisition .....		
3. Capitalized deferred interest and other .....		
4. Accrual of discount .....		
5. Unrealized valuation increase/(decrease) .....		
6. Total gain (loss) on disposals .....		
7. Deduct amounts received on disposals .....		
8. Deduct amortization of premium and mortgage interest points and commitment fees .....		
9. Total foreign exchange change in book value/recorded investment excluding accrued interest .....		
10. Deduct current year's other than temporary impairment recognized .....		
11. Book value/recorded investment excluding accrued interest at end of current period (Lines 1+2+3+4+5+6-7-8+9-10) .....		
12. Total valuation allowance .....		
13. Subtotal (Line 11 plus Line 12) .....		
14. Deduct total nonadmitted amounts .....		
15. Statement value at end of current period (Line 13 minus Line 14)		

NONE

SCHEDULE BA - VERIFICATION

Other Long-Term Invested Assets

	1	2
	Year to Date	Prior Year Ended December 31
1. Book/adjusted carrying value, December 31 of prior year .....		
2. Cost of acquired:		
2.1 Actual cost at time of acquisition .....		
2.2 Additional investment made after acquisition .....		
3. Capitalized deferred interest and other .....		
4. Accrual of discount .....		
5. Unrealized valuation increase/(decrease) .....		
6. Total gain (loss) on disposals .....		
7. Deduct amounts received on disposals .....		
8. Deduct amortization of premium and depreciation .....		
9. Total foreign exchange change in book/adjusted carrying value .....		
10. Deduct current year's other than temporary impairment recognized .....		
11. Book/adjusted carrying value at end of current period (Lines 1+2+3+4+5+6-7-8+9-10) .....		
12. Deduct total nonadmitted amounts .....		
13. Statement value at end of current period (Line 11 minus Line 12)		

NONE

SCHEDULE D - VERIFICATION

Bonds and Stocks

	1	2
	Year to Date	Prior Year Ended December 31
1. Book/adjusted carrying value of bonds and stocks, December 31 of prior year .....	2,565,763	8,087,374
2. Cost of bonds and stocks acquired .....	14,743,056	261,098
3. Accrual of discount .....	47,576	16,397
4. Unrealized valuation increase/(decrease) .....	(23,690)	(2,794,887)
5. Total gain (loss) on disposals .....	75,904	(17,033)
6. Deduct consideration for bonds and stocks disposed of .....	3,997,380	1,942,946
7. Deduct amortization of premium .....	3,744	15,584
8. Total foreign exchange change in book/adjusted carrying value .....		
9. Deduct current year's other than temporary impairment recognized .....		1,028,656
10. Total investment income recognized as a result of prepayment penalties and/or acceleration fees .....		
11. Book/adjusted carrying value at end of current period (Lines 1+2+3+4+5-6-7+8-9+10) .....	13,407,485	2,565,763
12. Deduct total nonadmitted amounts .....		
13. Statement value at end of current period (Line 11 minus Line 12)	13,407,485	2,565,763

SCHEDULE D - PART 1B

Showing the Acquisitions, Dispositions and Non-Trading Activity  
During the Current Quarter for all Bonds and Preferred Stock by NAIC Designation

NAIC Designation	1 Book/Adjusted Carrying Value Beginning of Current Quarter	2 Acquisitions During Current Quarter	3 Dispositions During Current Quarter	4 Non-Trading Activity During Current Quarter	5 Book/Adjusted Carrying Value End of First Quarter	6 Book/Adjusted Carrying Value End of Second Quarter	7 Book/Adjusted Carrying Value End of Third Quarter	8 Book/Adjusted Carrying Value December 31 Prior Year
BONDS								
1. NAIC 1 (a) .....	7,089,031	5,934,930	105,461	7,172	594,067	7,089,031	12,925,672	508,111
2. NAIC 2 (a) .....	411,455			(1,062)	1,013,055	411,455	410,393	1,425,634
3. NAIC 3 (a) .....					130,000			130,192
4. NAIC 4 (a) .....								
5. NAIC 5 (a) .....								
6. NAIC 6 (a) .....								
7. Total Bonds	7,500,486	5,934,930	105,461	6,110	1,737,122	7,500,486	13,336,065	2,063,937
PREFERRED STOCK								
8. NAIC 1 .....								
9. NAIC 2 .....								
10. NAIC 3 .....								
11. NAIC 4 .....								
12. NAIC 5 .....								
13. NAIC 6 .....								
14. Total Preferred Stock .....								
15. Total Bonds and Preferred Stock	7,500,486	5,934,930	105,461	6,110	1,737,122	7,500,486	13,336,065	2,063,937

(a) Book/Adjusted Carrying Value column for the end of the current reporting period includes the following amount of short-term and cash equivalent bonds by NAIC designation:  
NAIC 1 \$ ..... ; NAIC 2 \$ ..... ; NAIC 3 \$ ..... NAIC 4 \$ ..... ; NAIC 5 \$ ..... ; NAIC 6 \$ .....



Schedule DA - Part 1 - Short-Term Investments

**N O N E**

Schedule DA - Verification - Short-Term Investments

**N O N E**

Schedule DB - Part A - Verification - Options, Caps, Floors, Collars, Swaps and Forwards

**N O N E**

Schedule DB - Part B - Verification - Futures Contracts

**N O N E**

Schedule DB - Part C - Section 1 - Replication (Synthetic Asset) Transactions (RSATs) Open

**N O N E**

Schedule DB-Part C-Section 2-Reconciliation of Replication (Synthetic Asset) Transactions Open

**N O N E**

Schedule DB - Verification - Book/Adjusted Carrying Value, Fair Value and Potential Exposure of  
Derivatives

**N O N E**

SCHEDULE E - PART 2 - VERIFICATION

(Cash Equivalents)

	1	2
	Year To Date	Prior Year Ended December 31
1. Book/adjusted carrying value, December 31 of prior year .....	7,121,864	312,128
2. Cost of cash equivalents acquired .....	69,574,729	8,706,151
3. Accrual of discount .....		
4. Unrealized valuation increase/(decrease) .....		
5. Total gain (loss) on disposals .....		
6. Deduct consideration received on disposals .....	72,103,122	1,896,415
7. Deduct amortization of premium .....		
8. Total foreign exchange change in book/adjusted carrying value .....		
9. Deduct current year's other than temporary impairment recognized .....		
10. Book/adjusted carrying value at end of current period (Lines 1+2+3+4+5-6-7+8-9) .....	4,593,471	7,121,864
11. Deduct total nonadmitted amounts .....		
12. Statement value at end of current period (Line 10 minus Line 11)	4,593,471	7,121,864

Schedule A - Part 2 - Real Estate Acquired and Additions Made

**N O N E**

Schedule A - Part 3 - Real Estate Disposed

**N O N E**

Schedule B - Part 2 - Mortgage Loans Acquired and Additions Made

**N O N E**

Schedule B - Part 3 - Mortgage Loans Disposed, Transferred or Repaid

**N O N E**

Schedule BA - Part 2 - Other Long-Term Invested Assets Acquired and Additions Made

**N O N E**

Schedule BA - Part 3 - Other Long-Term Invested Assets Disposed, Transferred or Repaid

**N O N E**

STATEMENT AS OF SEPTEMBER 30, 2024 OF THE United Mutual Insurance Company

SCHEDULE D - PART 3

Show All Long-Term Bonds and Stock Acquired During the Current Quarter

1	2	3	4	5	6	7	8	9	10
CUSIP Identification	Description	Foreign	Date Acquired	Name of Vendor	Number of Shares of Stock	Actual Cost	Par Value	Paid for Accrued Interest and Dividends	NAIC Designation, NAIC Designation Modifier and SVO Administrative Symbol
36179Y-IV4-2 .....	GNMA 11 POOL MA9667 .....	.....	.....07/26/2024 .....	J.P. MORGAN SECURITIES LLC .....	.....	1,665,509	1,693,828	6,587	1.A FE .....
0109999999. Subtotal - Bonds - U.S. Governments						1,665,509	1,693,828	6,587	XXX
34074M-6C-0 .....	FLORIDA ST HSG FIN CORP REVENU .....	.....	.....07/19/2024 .....	ROBERT W. BAIRD & CO. INCORPORATED .....	.....	222,596	215,000	1,530	1.A FE .....
0909999999. Subtotal - Bonds - U.S. Special Revenues						222,596	215,000	1,530	XXX
053015-AH-6 .....	AUTOMATIC DATA PROCESSNG .....	.....	.....09/04/2024 .....	BOFA SECURITIES INC. ....	.....	99,641	100,000	.....	1.D FE .....
07336W-BA-6 .....	BARCLAYS COMMERCIAL MORTGAGE S 24-C28 A5 .....	.....	.....08/08/2024 .....	BARCLAYS CAPITAL INC. ....	.....	231,740	225,000	.....946	1.A FE .....
12510H-AZ-3 .....	CAPITAL AUTOMOTIVE REIT 24-3A A1 .....	.....	.....09/27/2024 .....	MORGAN STANLEY & CO. LLC .....	.....	172,062	175,000	.....	1.A FE .....
29379V-CG-6 .....	ENTERPRISE PRODUCTS OPER .....	.....	.....08/01/2024 .....	MIZUHO SECURITIES USA LLC .....	.....	99,400	100,000	.....	1.G FE .....
437300-AA-4 .....	HOME PARTNERS OF AMERICA TRUST 21-1 A .....	.....	.....09/23/2024 .....	J.P. MORGAN SECURITIES LLC .....	.....	268,944	305,198	.....331	1.A FE .....
43730X-AB-0 .....	HOME PARTNERS OF AMERICA TRUST 21-3 B .....	.....	.....09/23/2024 .....	J.P. MORGAN SECURITIES LLC .....	.....	125,720	136,583	.....231	1.D FE .....
438516-CS-3 .....	HONEYWELL INTERNATIONAL .....	.....	.....07/29/2024 .....	CITIGROUP GLOBAL MARKETS INC. ....	.....	225,504	225,000	.....4,688	1.F FE .....
46647P-EK-8 .....	JPMORGAN CHASE & CO .....	.....	.....07/15/2024 .....	J.P. MORGAN SECURITIES LLC .....	.....	150,000	150,000	.....	1.E FE .....
57636Q-BC-7 .....	MASTERCARD INC .....	.....	.....09/03/2024 .....	BOFA SECURITIES INC. ....	.....	149,664	150,000	.....	1.D FE .....
61747Y-FT-7 .....	MORGAN STANLEY .....	.....	.....07/17/2024 .....	MORGAN STANLEY & CO. LLC .....	.....	250,000	250,000	.....	1.E FE .....
693475-BZ-7 .....	PNC FINANCIAL SERVICES .....	.....	.....07/18/2024 .....	PNC CAPITAL MARKETS LLC .....	.....	250,000	250,000	.....	1.G FE .....
713448-FY-9 .....	PEPSICO INC .....	.....	.....07/15/2024 .....	CITIGROUP GLOBAL MARKETS INC. ....	.....	249,353	250,000	.....	1.E FE .....
74340X-CN-9 .....	PROLOGIS LP .....	.....	.....08/05/2024 .....	MARKETAXESS .....	.....	101,442	100,000	.....194	1.G FE .....
74456Q-CS-3 .....	PUBLIC SERVICE ENTERPRIS .....	.....	.....08/01/2024 .....	CITIGROUP GLOBAL MARKETS INC. ....	.....	99,719	100,000	.....	1.F FE .....
85520A-AC-3 .....	STAR 2024-SFR4 TRUST 24-SFR4 B .....	.....	.....09/18/2024 .....	CITIGROUP GLOBAL MARKETS INC. ....	.....	250,000	250,000	.....	1.D FE .....
857477-CA-9 .....	STATE STREET CORP .....	.....	.....07/02/2024 .....	CITIGROUP GLOBAL MARKETS INC. ....	.....	241,565	250,000	.....5,256	1.E FE .....
87612E-BS-4 .....	TARGET CORP .....	.....	.....09/03/2024 .....	WELLS FARGO SECURITIES LLC .....	.....	124,281	125,000	.....	1.F FE .....
89616Y-AB-0 .....	TRICON RESIDENTIAL 24-SFR3 B .....	.....	.....07/26/2024 .....	BOFA SECURITIES INC. ....	.....	244,323	250,000	.....	1.D FE .....
91324P-FJ-6 .....	UNITEDHEALTH GROUP INC .....	.....	.....07/23/2024 .....	WELLS FARGO SECURITIES LLC .....	.....	249,985	250,000	.....	1.F FE .....
94990F-AE-1 .....	WELLS FARGO COMMERCIAL MORTGAG 24-C63 A5 .....	.....	.....08/16/2024 .....	WELLS FARGO SECURITIES LLC .....	.....	463,482	450,000	.....1,858	1.A FE .....
1109999999. Subtotal - Bonds - Industrial and Miscellaneous (Unaffiliated)						4,046,825	4,091,781	13,504	XXX
2509999997. Total - Bonds - Part 3						5,934,930	6,000,609	21,621	XXX
2509999998. Total - Bonds - Part 5						XXX	XXX	XXX	XXX
2509999999. Total - Bonds						5,934,930	6,000,609	21,621	XXX
4509999997. Total - Preferred Stocks - Part 3							XXX		XXX
4509999998. Total - Preferred Stocks - Part 5						XXX	XXX	XXX	XXX
4509999999. Total - Preferred Stocks							XXX		XXX
5989999997. Total - Common Stocks - Part 3							XXX		XXX
5989999998. Total - Common Stocks - Part 5						XXX	XXX	XXX	XXX
5989999999. Total - Common Stocks							XXX		XXX
5999999999. Total - Preferred and Common Stocks							XXX		XXX
6009999999 - Totals						5,934,930	XXX	21,621	XXX

STATEMENT AS OF SEPTEMBER 30, 2024 OF THE United Mutual Insurance Company

SCHEDULE D - PART 4

Show All Long-Term Bonds and Stock Sold, Redeemed or Otherwise Disposed of During the Current Quarter

1	2	3	4	5	6	7	8	9	10	Change In Book/Adjusted Carrying Value					16	17	18	19	20	21	22
										11	12	13	14	15							
CUSIP Ident- ification	Description	For- eign	Disposal Date	Name of Purchaser	Number of Shares of Stock	Consid- eration	Par Value	Actual Cost	Prior Year Book/ Adjusted Carrying Value	Unrealized Valuation Increase/ (Decrease)	Current Year's (Amor- tization)/ Accretion	Current Year's Other Than Temporary Impairment Recog- nized	Total Change in Book/ Adjusted Carrying Value (11 + 12 - 13)	Total Foreign Exchange Change in Book /Adjusted Carrying Value	Book/ Adjusted Carrying Value at Disposal Date	Foreign Exchange Gain (Loss) on Disposal	Realized Gain (Loss) on Disposal	Total Gain (Loss) on Disposal	Bond Interest/ Stock Dividends Received During Year	Stated Con- tractual Maturity Date	NAIC Desig- nation, NAIC Desig- nation Modifier and SVO Admini- strative Symbol
..36179Y-KR-4	GNMA 11 POOL MA9304 .....	.....	09/01/2024	MBS PAYDOWN .....	.....	49,802	49,802	47,624	.....	.....	58	.....	58	.....	49,802	.....	.....	.....	850	11/20/2053	1.A FE
..36179Y-W4-2	GNMA 11 POOL MA9667 .....	.....	09/01/2024	MBS PAYDOWN .....	.....	5,959	5,959	5,859	.....	.....	.....	.....	.....	.....	5,959	.....	.....	.....	36	05/20/2054	1.A FE
0109999999. Subtotal - Bonds - U.S. Governments						55,761	55,761	53,483	.....	.....	58	.....	58	.....	55,761	.....	.....	.....	886	XXX	XXX
..3142GR-KX-7	UMBS - POOL RJ1209 .....	.....	09/01/2024	MBS PAYDOWN .....	.....	37,965	37,965	37,384	.....	.....	22	.....	22	.....	37,965	.....	.....	.....	791	04/01/2054	1.A FE
0909999999. Subtotal - Bonds - U.S. Special Revenues						37,965	37,965	37,384	.....	.....	22	.....	22	.....	37,965	.....	.....	.....	791	XXX	XXX
..034944-AA-6	ANGEL OAK MORTGAGE TRUST 24-6 A1 .....	.....	09/01/2024	MBS PAYDOWN .....	.....	11,734	11,734	11,320	.....	.....	6	.....	6	.....	11,734	.....	.....	.....	84	11/25/2067	1.A FE
1109999999. Subtotal - Bonds - Industrial and Miscellaneous (Unaffiliated)						11,734	11,734	11,320	.....	.....	6	.....	6	.....	11,734	.....	.....	.....	84	XXX	XXX
2509999997. Total - Bonds - Part 4						105,460	105,460	102,187	.....	.....	86	.....	86	.....	105,460	.....	.....	.....	1,761	XXX	XXX
2509999998. Total - Bonds - Part 5						XXX	XXX	XXX	XXX	XXX	XXX	XXX	XXX	XXX	XXX	XXX	XXX	XXX	XXX	XXX	XXX
2509999999. Total - Bonds						105,460	105,460	102,187	.....	.....	86	.....	86	.....	105,460	.....	.....	.....	1,761	XXX	XXX
4509999997. Total - Preferred Stocks - Part 4						XXX	XXX	XXX	XXX	XXX	XXX	XXX	XXX	XXX	XXX	XXX	XXX	XXX	XXX	XXX	XXX
4509999998. Total - Preferred Stocks - Part 5						XXX	XXX	XXX	XXX	XXX	XXX	XXX	XXX	XXX	XXX	XXX	XXX	XXX	XXX	XXX	XXX
4509999999. Total - Preferred Stocks						XXX	XXX	XXX	XXX	XXX	XXX	XXX	XXX	XXX	XXX	XXX	XXX	XXX	XXX	XXX	XXX
5989999997. Total - Common Stocks - Part 4						XXX	XXX	XXX	XXX	XXX	XXX	XXX	XXX	XXX	XXX	XXX	XXX	XXX	XXX	XXX	XXX
5989999998. Total - Common Stocks - Part 5						XXX	XXX	XXX	XXX	XXX	XXX	XXX	XXX	XXX	XXX	XXX	XXX	XXX	XXX	XXX	XXX
5989999999. Total - Common Stocks						XXX	XXX	XXX	XXX	XXX	XXX	XXX	XXX	XXX	XXX	XXX	XXX	XXX	XXX	XXX	XXX
5999999999. Total - Preferred and Common Stocks						XXX	XXX	XXX	XXX	XXX	XXX	XXX	XXX	XXX	XXX	XXX	XXX	XXX	XXX	XXX	XXX
.....	.....	.....	.....	.....	.....	.....	.....	.....	.....	.....	.....	.....	.....	.....	.....	.....	.....	.....	.....	.....	.....
.....	.....	.....	.....	.....	.....	.....	.....	.....	.....	.....	.....	.....	.....	.....	.....	.....	.....	.....	.....	.....	.....
.....	.....	.....	.....	.....	.....	.....	.....	.....	.....	.....	.....	.....	.....	.....	.....	.....	.....	.....	.....	.....	.....
.....	.....	.....	.....	.....	.....	.....	.....	.....	.....	.....	.....	.....	.....	.....	.....	.....	.....	.....	.....	.....	.....
6009999999 - Totals						105,460	XXX	102,187	.....	.....	86	.....	86	.....	105,460	.....	.....	.....	1,761	XXX	XXX

Schedule DB - Part A - Section 1 - Options, Caps, Floors, Collars, Swaps and Forwards Open  
**N O N E**

Schedule DB - Part B - Section 1 - Futures Contracts Open  
**N O N E**

Schedule DB - Part B - Section 1B - Brokers with whom cash deposits have been made  
**N O N E**

Schedule DB - Part D - Section 1 - Counterparty Exposure for Derivative Instruments Open  
**N O N E**

Schedule DB - Part D-Section 2 - Collateral for Derivative Instruments Open - Pledged By  
**N O N E**

Schedule DB - Part D-Section 2 - Collateral for Derivative Instruments Open - Pledged To  
**N O N E**

Schedule DB - Part E - Derivatives Hedging Variable Annuity Guarantees  
**N O N E**

Schedule DL - Part 1 - Reinvested Collateral Assets Owned  
**N O N E**

Schedule DL - Part 2 - Reinvested Collateral Assets Owned  
**N O N E**

## SCHEDULE E - PART 1 - CASH

[illegible]

## SCHEDULE E - PART 2 - CASH EQUIVALENTS

[illegible]