



PROPERTY AND CASUALTY COMPANIES - ASSOCIATION EDITION

QUARTERLY STATEMENT

AS OF JUNE 30, 2024  
OF THE CONDITION AND AFFAIRS OF THE

NATIONWIDE ASSURANCE COMPANY

NAIC Group Code01400140NAIC Company Code10723Employer's ID Number95-0639970  
(Current)(Prior)

Organized under the Laws ofOHIO, State of Domicile or Port of EntryOH

Country of DomicileUnited States of America

Incorporated/Organized02/13/1942Commenced Business04/15/1942

Statutory Home OfficeONE WEST NATIONWIDE BLVD.COLUMBUS, OH, US 43215-2220  
(Street and Number)(City or Town, State, Country and Zip Code)

Main Administrative OfficeONE WEST NATIONWIDE BLVD.  
(Street and Number)  
COLUMBUS, OH, US 43215-2220614-249-1545  
(City or Town, State, Country and Zip Code)(Area Code) (Telephone Number)

Mail AddressONE WEST NATIONWIDE BLVD., 1-14-301COLUMBUS, OH, US 43215-2220  
(Street and Number or P.O. Box)(City or Town, State, Country and Zip Code)

Primary Location of Books and RecordsONE WEST NATIONWIDE BLVD., 1-14-301  
(Street and Number)  
COLUMBUS, OH, US 43215-2220614-249-1545  
(City or Town, State, Country and Zip Code)(Area Code) (Telephone Number)

Internet Website AddressWWW.NATIONWIDE.COM

Statutory Statement ContactANDREA D. IACOBONI614-249-1545  
(Name)(Area Code) (Telephone Number)  
FINRPT@NATIONWIDE.COM866-315-1430  
(E-mail Address)(FAX Number)

OFFICERS

PRESIDENT & COO  
SVP & SECRETARY

MARK ALLEN BERVEN  
DENISE LYNN SKINGLE

VP & TREASURER  
PETER JUSTIN ROTHERMEL

OTHER

PAMELA ANN BIESECKER, SVP-HEAD OF TAXATION

DIRECTORS OR TRUSTEES

CHARLES ANTHONY BEAL  
CASEY ELLEN KEMPTON #

MARK ALLEN BERVEN  
GEORGE MIDDLETON WILLIAMS III

OSCAR GUERRERO

State ofOHIO  
County ofFRANKLINSS:

The officers of this reporting entity being duly sworn, each depose and say that they are the described officers of said reporting entity, and that on the reporting period stated above, all of the herein described assets were the absolute property of the said reporting entity, free and clear from any liens or claims thereon, except as herein stated, and that this statement, together with related exhibits, schedules and explanations therein contained, annexed or referred to, is a full and true statement of all the assets and liabilities and of the condition and affairs of the said reporting entity as of the reporting period stated above, and of its income and deductions therefrom for the period ended, and have been completed in accordance with the NAIC Annual Statement Instructions and Accounting Practices and Procedures manual except to the extent that: (1) state law may differ; or, (2) that state rules or regulations require differences in reporting not related to accounting practices and procedures, according to the best of their information, knowledge and belief, respectively. Furthermore, the scope of this attestation by the described officers also includes the related corresponding electronic filing with the NAIC, when required, that is an exact copy (except for formatting differences due to electronic filing) of the enclosed statement. The electronic filing may be requested by various regulators in lieu of or in addition to the enclosed statement.

MARK ALLEN BERVEN  
PRESIDENT & COO

DENISE LYNN SKINGLE  
SVP & SECRETARY

PETER JUSTIN ROTHERMEL  
VP & TREASURER

Subscribed and sworn to before me this23 day ofJULY 2024

- a. Is this an original filing? ..... Yes [ X ] No [ ]
- b. If no,
1. State the amendment number.....
2. Date filed .....
3. Number of pages attached.....



ANDREW SWARTZEL  
NOTARY PUBLIC • STATE OF OHIO  
Comm. No. 2021-RE-839107  
My Commission Expires Oct. 24, 2026

STATEMENT AS OF JUNE 30, 2024 OF THE NATIONWIDE ASSURANCE COMPANY

ASSETS

	Current Statement Date			4 December 31 Prior Year Net Admitted Assets
	1 Assets	2 Nonadmitted Assets	3 Net Admitted Assets (Cols. 1 - 2)	
1. Bonds .....	61,057,251		61,057,251	60,052,913
2. Stocks:				
2.1 Preferred stocks .....				
2.2 Common stocks .....				
3. Mortgage loans on real estate:				
3.1 First liens .....				
3.2 Other than first liens.....				
4. Real estate:				
4.1 Properties occupied by the company (less \$ .....0 encumbrances) .....				
4.2 Properties held for the production of income (less \$ .....0 encumbrances) .....				
4.3 Properties held for sale (less \$ .....0 encumbrances) .....				
5. Cash (\$ ..... 121,813 ), cash equivalents (\$ .....447,817 ) and short-term investments (\$ ..... ) .....	569,630		569,630	662,201
6. Contract loans (including \$ .....0 premium notes) .....				
7. Derivatives .....				
8. Other invested assets .....	500,000		500,000	500,000
9. Receivables for securities .....				
10. Securities lending reinvested collateral assets .....				
11. Aggregate write-ins for invested assets .....				
12. Subtotals, cash and invested assets (Lines 1 to 11) .....	62,126,881		62,126,881	61,215,114
13. Title plants less \$ .....0 charged off (for Title insurers only) .....				
14. Investment income due and accrued .....	427,446		427,446	408,005
15. Premiums and considerations:				
15.1 Uncollected premiums and agents' balances in the course of collection .....	7,624,720		7,624,720	9,101,863
15.2 Deferred premiums, agents' balances and installments booked but deferred and not yet due (including \$ .....0 earned but unbilled premiums) .....	111,100,356	523,581	110,576,775	121,268,967
15.3 Accrued retrospective premiums (\$ .....0 ) and contracts subject to redetermination (\$ .....0 ) .....				
16. Reinsurance:				
16.1 Amounts recoverable from reinsurers .....	12,255,977		12,255,977	14,238,822
16.2 Funds held by or deposited with reinsured companies .....	53		53	30
16.3 Other amounts receivable under reinsurance contracts .....	7,877,070		7,877,070	9,157,562
17. Amounts receivable relating to uninsured plans .....				
18.1 Current federal and foreign income tax recoverable and interest thereon ....	116,928		116,928	
18.2 Net deferred tax asset .....	101,748		101,748	274,004
19. Guaranty funds receivable or on deposit .....				
20. Electronic data processing equipment and software .....				
21. Furniture and equipment, including health care delivery assets (\$ .....0 ) .....				
22. Net adjustment in assets and liabilities due to foreign exchange rates .....				
23. Receivables from parent, subsidiaries and affiliates .....	29,634,510		29,634,510	33,480,787
24. Health care (\$ .....0 ) and other amounts receivable .....				
25. Aggregate write-ins for other than invested assets .....	607,212		607,212	1,667
26. Total assets excluding Separate Accounts, Segregated Accounts and Protected Cell Accounts (Lines 12 to 25) .....	231,872,901	523,581	231,349,320	249,146,821
27. From Separate Accounts, Segregated Accounts and Protected Cell Accounts .....				
28. Total (Lines 26 and 27)	231,872,901	523,581	231,349,320	249,146,821
DETAILS OF WRITE-INS				
1101. ....				
1102. ....				
1103. ....				
1198. Summary of remaining write-ins for Line 11 from overflow page .....				
1199. Totals (Lines 1101 through 1103 plus 1198)(Line 11 above)				
2501. Miscellaneous .....	607,212		607,212	1,667
2502. ....				
2503. ....				
2598. Summary of remaining write-ins for Line 25 from overflow page .....				
2599. Totals (Lines 2501 through 2503 plus 2598)(Line 25 above)	607,212		607,212	1,667

STATEMENT AS OF JUNE 30, 2024 OF THE NATIONWIDE ASSURANCE COMPANY

LIABILITIES, SURPLUS AND OTHER FUNDS

	1 Current Statement Date	2 December 31, Prior Year
1. Losses (current accident year \$ .....0 ) .....		
2. Reinsurance payable on paid losses and loss adjustment expenses .....		
3. Loss adjustment expenses .....		
4. Commissions payable, contingent commissions and other similar charges .....		
5. Other expenses (excluding taxes, licenses and fees) .....		
6. Taxes, licenses and fees (excluding federal and foreign income taxes) .....		
7.1 Current federal and foreign income taxes (including \$ .....0 on realized capital gains (losses)) .....		270,734
7.2 Net deferred tax liability .....		
8. Borrowed money \$ .....0 and interest thereon \$ .....0 .....		
9. Unearned premiums (after deducting unearned premiums for ceded reinsurance of \$ .....183,801,093 and including warranty reserves of \$ .....0 and accrued accident and health experience rating refunds including \$ ..... for medical loss ratio rebate per the Public Health Service Act) .....		
10. Advance premium .....		
11. Dividends declared and unpaid:		
11.1 Stockholders .....		
11.2 Policyholders .....		
12. Ceded reinsurance premiums payable (net of ceding commissions) .....	141,898,159	158,300,454
13. Funds held by company under reinsurance treaties .....	53	30
14. Amounts withheld or retained by company for account of others .....		
15. Remittances and items not allocated .....		
16. Provision for reinsurance (including \$ .....0 certified) .....		
17. Net adjustments in assets and liabilities due to foreign exchange rates .....		
18. Drafts outstanding .....		
19. Payable to parent, subsidiaries and affiliates .....	25,896,746	28,724,991
20. Derivatives .....		
21. Payable for securities .....	603,044	
22. Payable for securities lending .....		
23. Liability for amounts held under uninsured plans .....		
24. Capital notes \$ .....0 and interest thereon \$ .....0 .....		
25. Aggregate write-ins for liabilities .....		
26. Total liabilities excluding protected cell liabilities (Lines 1 through 25) .....	168,398,002	187,296,209
27. Protected cell liabilities .....		
28. Total liabilities (Lines 26 and 27) .....	168,398,002	187,296,209
29. Aggregate write-ins for special surplus funds .....		
30. Common capital stock .....	3,500,000	3,500,000
31. Preferred capital stock .....		
32. Aggregate write-ins for other than special surplus funds .....		
33. Surplus notes .....		
34. Gross paid in and contributed surplus .....	55,687,983	55,687,983
35. Unassigned funds (surplus) .....	3,763,334	2,662,629
36. Less treasury stock, at cost:		
36.1 .....0 shares common (value included in Line 30 \$ .....0 ) .....		
36.2 .....0 shares preferred (value included in Line 31 \$ .....0 ) .....		
37. Surplus as regards policyholders (Lines 29 to 35, less 36) .....	62,951,317	61,850,612
38. Totals (Page 2, Line 28, Col. 3)	231,349,319	249,146,821
DETAILS OF WRITE-INS		
2501. ....		
2502. ....		
2503. ....		
2598. Summary of remaining write-ins for Line 25 from overflow page .....		
2599. Totals (Lines 2501 through 2503 plus 2598)(Line 25 above)		
2901. ....		
2902. ....		
2903. ....		
2998. Summary of remaining write-ins for Line 29 from overflow page .....		
2999. Totals (Lines 2901 through 2903 plus 2998)(Line 29 above)		
3201. ....		
3202. ....		
3203. ....		
3298. Summary of remaining write-ins for Line 32 from overflow page .....		
3299. Totals (Lines 3201 through 3203 plus 3298)(Line 32 above)		

STATEMENT OF INCOME

	1 Current Year to Date	2 Prior Year to Date	3 Prior Year Ended December 31
UNDERWRITING INCOME			
1. Premiums earned:			
1.1 Direct (written \$ .....178,912,119 ) .....	201,220,511	194,243,761	415,103,171
1.2 Assumed (written \$ .....815,998 ) .....	653,457	13,222	31,583
1.3 Ceded (written \$ .....179,728,117 ) .....	201,873,968	194,256,983	415,134,754
1.4 Net (written \$ ..... ) .....			
DEDUCTIONS:			
2. Losses incurred (current accident year \$ .....0 ):			
2.1 Direct .....	114,335,115	137,738,243	250,940,135
2.2 Assumed .....	252,852	3,821	19,466
2.3 Ceded .....	114,587,967	137,742,064	250,959,601
2.4 Net .....			
3. Loss adjustment expenses incurred .....			
4. Other underwriting expenses incurred .....			
5. Aggregate write-ins for underwriting deductions .....			
6. Total underwriting deductions (Lines 2 through 5) .....			
7. Net income of protected cells .....			
8. Net underwriting gain (loss) (Line 1 minus Line 6 + Line 7) .....			
INVESTMENT INCOME			
9. Net investment income earned .....	1,199,140	666,360	1,300,384
10. Net realized capital gains (losses) less capital gains tax of \$ .....489 .....	(43,595)	1,341	1,657
11. Net investment gain (loss) (Lines 9 + 10) .....	1,155,545	667,701	1,302,041
OTHER INCOME			
12. Net gain or (loss) from agents' or premium balances charged off (amount recovered \$ .....0 amount charged off \$ .....0 ) .....			
13. Finance and service charges not included in premiums .....			
14. Aggregate write-ins for miscellaneous income .....			8
15. Total other income (Lines 12 through 14) .....			8
16. Net income before dividends to policyholders, after capital gains tax and before all other federal and foreign income taxes (Lines 8 + 11 + 15) .....	1,155,545	667,701	1,302,049
17. Dividends to policyholders .....			
18. Net income, after dividends to policyholders, after capital gains tax and before all other federal and foreign income taxes (Line 16 minus Line 17) .....	1,155,545	667,701	1,302,049
19. Federal and foreign income taxes incurred .....	(117,417)	144,323	274,293
20. Net income (Line 18 minus Line 19)(to Line 22) .....	1,272,962	523,378	1,027,756
CAPITAL AND SURPLUS ACCOUNT			
21. Surplus as regards policyholders, December 31 prior year .....	61,850,611	37,633,101	37,633,101
22. Net income (from Line 20) .....	1,272,962	523,378	1,027,756
23. Net transfers (to) from Protected Cell accounts .....			
24. Change in net unrealized capital gains (losses) less capital gains tax of \$ .....0 .....			
25. Change in net unrealized foreign exchange capital gain (loss) .....			
26. Change in net deferred income tax .....	(382,148)	(10,119)	46,206
27. Change in nonadmitted assets .....	316,807	53,553	(85,761)
28. Change in provision for reinsurance .....			
29. Change in surplus notes .....			
30. Surplus (contributed to) withdrawn from protected cells .....			
31. Cumulative effect of changes in accounting principles .....			
32. Capital changes:			
32.1 Paid in .....			
32.2 Transferred from surplus (Stock Dividend) .....			
32.3 Transferred to surplus .....			
33. Surplus adjustments:			
33.1 Paid in .....			23,000,000
33.2 Transferred to capital (Stock Dividend) .....			
33.3 Transferred from capital .....			
34. Net remittances from or (to) Home Office .....			
35. Dividends to stockholders .....			
36. Change in treasury stock .....			
37. Aggregate write-ins for gains and losses in surplus .....	(106,915)	(54,981)	229,309
38. Change in surplus as regards policyholders (Lines 22 through 37).....	1,100,706	511,831	24,217,510
39. Surplus as regards policyholders, as of statement date (Lines 21 plus 38)	62,951,317	38,144,932	61,850,611
DETAILS OF WRITE-INS			
0501. ....			
0502. ....			
0503. ....			
0598. Summary of remaining write-ins for Line 5 from overflow page .....			
0599. Totals (Lines 0501 through 0503 plus 0598)(Line 5 above)			
1401. Other .....			8
1402. ....			
1403. ....			
1498. Summary of remaining write-ins for Line 14 from overflow page .....			
1499. Totals (Lines 1401 through 1403 plus 1498)(Line 14 above)			8
3701. Change in surplus – pooled nonadmitted premiums in the course of collection offset .....	(106,915)	(54,981)	229,309
3702. ....			
3703. ....			
3798. Summary of remaining write-ins for Line 37 from overflow page .....			
3799. Totals (Lines 3701 through 3703 plus 3798)(Line 37 above)	(106,915)	(54,981)	229,309

STATEMENT AS OF JUNE 30, 2024 OF THE NATIONWIDE ASSURANCE COMPANY

CASH FLOW

	1 Current Year To Date	2 Prior Year To Date	3 Prior Year Ended December 31
<b>Cash from Operations</b>			
1. Premiums collected net of reinsurance .....	(4,232,960)	5,399,230	2,387,946
2. Net investment income .....	1,192,876	574,134	1,186,776
3. Miscellaneous income .....	(23)	1	(9)
4. Total (Lines 1 to 3) .....	(3,040,107)	5,973,365	3,574,713
5. Benefit and loss related payments .....	(1,982,845)	6,960,326	5,047,622
6. Net transfers to Separate Accounts, Segregated Accounts and Protected Cell Accounts .....			
7. Commissions, expenses paid and aggregate write-ins for deductions .....	(1,280,492)	3,859,457	3,995,543
8. Dividends paid to policyholders .....			
9. Federal and foreign income taxes paid (recovered) net of \$ ..... 3,560 tax on capital gains (losses) .....	270,734	169,224	169,224
10. Total (Lines 5 through 9) .....	(2,992,603)	10,989,007	9,212,389
11. Net cash from operations (Line 4 minus Line 10) .....	(47,504)	(5,015,642)	(5,637,676)
<b>Cash from Investments</b>			
12. Proceeds from investments sold, matured or repaid:			
12.1 Bonds .....	1,397,907	739,305	1,389,894
12.2 Stocks .....			
12.3 Mortgage loans .....			
12.4 Real estate .....			
12.5 Other invested assets .....			
12.6 Net gains or (losses) on cash, cash equivalents and short-term investments .....			
12.7 Miscellaneous proceeds .....	603,044		
12.8 Total investment proceeds (Lines 12.1 to 12.7) .....	2,000,951	739,305	1,389,894
13. Cost of investments acquired (long-term only):			
13.1 Bonds .....	2,458,530	1,114,019	25,857,113
13.2 Stocks .....			
13.3 Mortgage loans .....			
13.4 Real estate .....			
13.5 Other invested assets .....			
13.6 Miscellaneous applications .....			
13.7 Total investments acquired (Lines 13.1 to 13.6) .....	2,458,530	1,114,019	25,857,113
14. Net increase (or decrease) in contract loans and premium notes .....			
15. Net cash from investments (Line 12.8 minus Line 13.7 and Line 14) .....	(457,579)	(374,714)	(24,467,219)
<b>Cash from Financing and Miscellaneous Sources</b>			
16. Cash provided (applied):			
16.1 Surplus notes, capital notes .....			
16.2 Capital and paid in surplus, less treasury stock .....			23,000,000
16.3 Borrowed funds .....			
16.4 Net deposits on deposit-type contracts and other insurance liabilities .....			
16.5 Dividends to stockholders .....			
16.6 Other cash provided (applied) .....	412,512	5,295,912	6,479,189
17. Net cash from financing and miscellaneous sources (Line 16.1 through Line 16.4 minus Line 16.5 plus Line 16.6) .....	412,512	5,295,912	29,479,189
<b>RECONCILIATION OF CASH, CASH EQUIVALENTS AND SHORT-TERM INVESTMENTS</b>			
18. Net change in cash, cash equivalents and short-term investments (Line 11, plus Lines 15 and 17) .	(92,571)	(94,444)	(625,706)
19. Cash, cash equivalents and short-term investments:			
19.1 Beginning of year .....	662,201	1,287,907	1,287,907
19.2 End of period (Line 18 plus Line 19.1) .....	569,630	1,193,463	662,201

Note: Supplemental disclosures of cash flow information for non-cash transactions:

20.0001. Exchange of bond investment to bond investment .....	270,107		335,205
---	---------	--	---------

NOTES TO THE FINANCIAL STATEMENTS

Note 1 – Summary of Significant Accounting Policies and Going Concern

A. Accounting Practices

The accompanying statutory financial statements of Nationwide Assurance Company (the Company) have been prepared in conformity with accounting practices prescribed or permitted by the National Association of Insurance Commissioners (NAIC) and the State of Ohio.

The Ohio Department of Insurance (Department) recognizes only statutory accounting practices (SAP) prescribed or permitted by the State of Ohio for determining and reporting the financial condition and results of operations of an insurance company, as well as, determining its solvency under the Ohio Insurance law. The NAIC’s *Accounting Practices and Procedures Manual* (NAIC SAP) has been adopted as a component of prescribed or permitted practices by the State of Ohio. The Company has no statutory accounting practices that differ from the NAIC SAP.

A reconciliation of the Company’s net income and capital and surplus between NAIC SAP and practices prescribed and permitted by the State of Ohio is shown below:

	SSAP #	F/S Page	F/S Line #		2024		2023
<b>Net Income</b>							
(1) Nationwide Assurance Company state basis (Page 4, Line 20, Columns 1 & 3)	XXX	XXX	XXX	\$	1,272,962	\$	1,027,756
(2) State Prescribed Practices that are an increase/(decrease) from NAIC SAP					-		-
(3) State Permitted Practices that are an increase/(decrease) from NAIC SAP					-		-
(4) NAIC SAP (1-2-3=4)	XXX	XXX	XXX	\$	1,272,962	\$	1,027,756
<b>Surplus</b>							
(5) Nationwide Assurance Company state basis (Page 3, Line 37, Columns 1 & 2)	XXX	XXX	XXX	\$	62,951,317	\$	61,850,612
(6) State Prescribed Practices that are an increase/(decrease) from NAIC SAP					-		-
(7) State Permitted Practices that are an increase/(decrease) from NAIC SAP					-		-
(8) NAIC SAP (5-6-7=8)	XXX	XXX	XXX	\$	62,951,317	\$	61,850,612

B. Use of Estimates in the Preparation of the Financial Statements

There were no changes that were considered significant to the Company from prior year end.

C. Accounting Policies

1. There were no changes that were considered significant to the Company from prior year end.
2. Bonds, excluding loan-backed and structured securities, are stated at amortized cost except those with a NAIC designation of “3” through “6”, which are stated at the lower of amortized cost or fair value. Amortization of premiums and discounts is calculated using the effective yield method. The Company does not hold any mandatory convertible securities or Securities Valuation Office (SVO) identified investments.
- 3-5. There were no changes that were considered significant to the Company from prior year end.
6. Loan-backed and structured securities (collectively, loan-backed securities) are stated at amortized cost or the lower of amortized cost or fair value in accordance with the provisions of Statement of Statutory Accounting Principles (SSAP) No. 43 Revised – *Loan-Backed and Structured Securities* and the *Purposes and Procedures Manual* of the NAIC SVO. The retrospective adjustment method is used to value loan-backed securities where the collection of all contractual cash flows is probable. For all other loan-backed securities, the Company uses the prospective adjustment method. Refer to Note 5(D) for a discussion of the other-than-temporary impairment policy for loan-backed securities.
- 7-13. There were no changes that were considered significant to the Company from prior year end.

D. Going Concern

Not applicable.

Note 2 – Accounting Changes and Corrections of Errors

Not applicable.

Note 3 – Business Combinations and Goodwill

Not applicable.

Note 4 – Discontinued Operations

Not applicable.

Note 5 – Investments

- A. Mortgage Loans, including Mezzanine Real Estate Loans
- Not applicable.
- B. Debt Restructuring
- Not applicable.
- C. Reverse Mortgages
- Not applicable.

NOTES TO THE FINANCIAL STATEMENTS

D. Loan-Backed Securities

1. Prepayment assumptions are generally obtained using a model provided by a third-party vendor.
2. Not applicable.
3. Not applicable.
4. All impaired securities (fair value is less than cost or amortized cost) for which an other-than-temporary impairment has not been recognized in earnings as a realized loss (including securities with a recognized other-than-temporary impairment for non-interest related declines when a non-recognized interest related impairment remains):

a. The aggregate amount of unrealized losses:	1. Less than 12 Months	\$ (6,610)
	2. 12 Months or Longer	\$ (1,801,504)
b. The aggregate related fair value of securities with unrealized losses:	1. Less than 12 Months	\$ 2,180,395
	2. 12 Months or Longer	\$ 8,547,598

5. The Company periodically reviews loan-backed and structured securities in an unrealized loss position by comparing the present value of cash flows, including estimated prepayments, expected to be collected from the security to the amortized cost basis of the security. If the present value of cash flows expected to be collected, discounted at the security's effective interest rate, is less than the amortized cost basis of the security, the impairment is considered other-than-temporary and a realized loss is recorded.

E. Dollar Repurchase Agreements and/or Securities Lending Transactions

Not applicable.

F. Repurchase Agreements Transactions Accounted for as Secured Borrowing

Not applicable.

G. Reverse Repurchase Agreements Transactions Accounted for as Secured Borrowing

Not applicable.

H. Repurchase Agreements Transactions Accounted for as a Sale

Not applicable.

I. Reverse Repurchase Agreements Transactions Accounted for as a Sale

Not applicable.

J. Real Estate

Not applicable.

K. Low-Income Housing Tax Credits (LIHTC)

Not applicable.

L. Restricted Assets

There were no changes that were considered significant to the Company from prior year end.

M. Working Capital Finance Investments

Not applicable.

N. Offsetting and Netting of Assets and Liabilities

No assets or liabilities are offset and reported net in accordance with a valid right to offset per SSAP No. 64 – *Offsetting and Netting of Assets and Liabilities*.

O. 5GI Securities

Not applicable.

P. Short Sales

Not applicable.

Q. Prepayment Penalty and Acceleration Fees

Not applicable.

R. Reporting Entity's Share of Cash Pool by Asset Type

Asset Type	Percent Share
(1) Cash	0%
(2) Cash equivalents	82%
(3) Short-term investments	18%
(4) Total	100%

**Note 6 – Joint Ventures, Partnerships and Limited Liability Companies**

There were no changes that were considered significant to the Company from prior year end.

# NOTES TO THE FINANCIAL STATEMENTS

**Note 7 – Investment Income**

There were no changes that were considered significant to the Company from prior year end.

**Note 8 – Derivative Instruments**

Not applicable.

**Note 9 – Income Taxes**

There were no changes that were considered significant to the Company from prior year end.

**Note 10 – Information Concerning Parent, Subsidiaries, Affiliates and Other Related Parties**

There were no changes that were considered significant to the Company from prior year end.

**Note 11 – Debt**

Not applicable.

**Note 12 – Retirement Plans, Deferred Compensation, Postemployment Benefits and Compensated Absences and Other Postretirement Benefit Plans**

Not applicable.

**Note 13 – Capital and Surplus, Dividend Restrictions and Quasi-Reorganizations**

There were no changes that were considered significant to the Company from prior year end.

**Note 14 – Liabilities, Contingencies and Assessments**

There were no changes that were considered significant to the Company from prior year end.

**Note 15 – Leases**

Not applicable.

**Note 16 – Information about Financial Instruments with Off-Balance Sheet Risk and Financial Instruments with Concentrations of Credit Risk**

Not applicable.

**Note 17 – Sale, Transfer and Servicing of Financial Assets and Extinguishments of Liabilities**

A. Transfers of Receivables Reported as Sales

Not applicable.

B. Transfers and Servicing of Financial Assets

Not applicable.

C. Wash Sales

Not applicable.

**Note 18 – Gain or Loss to the Reporting Entity from Uninsured Plans and the Uninsured Portion of Partially Insured Plans**

Not applicable.

**Note 19 – Direct Premium Written/Produced by Managing General Agents/Third-Party Administrators**

Not applicable.

**Note 20 – Fair Value Measurements**

A. Fair value is defined as the price that would be received to sell an asset or paid to transfer a liability in an orderly transaction between market participants at the measurement date. Fair value measurements are based upon observable and unobservable inputs. Observable inputs reflect market data obtained from independent sources while unobservable inputs reflect the Company's view of market assumptions in the absence of observable market information. The Company utilizes valuation techniques that maximize the use of observable inputs and minimize the use of unobservable inputs. In determining fair value, the Company uses various methods including market, income and cost approaches.

The Company categorizes its financial instruments into a three-level hierarchy based on the priority of the inputs to the valuation technique. The fair value hierarchy gives the highest priority to quoted prices in active markets for identical assets or liabilities (Level 1) and the lowest priority to unobservable inputs (Level 3). If the inputs used to measure fair value fall within different levels of the hierarchy, the category level is based on the lowest priority level input that is significant to the fair value measurement of the instrument in its entirety.

The Company categorizes assets and liabilities held at fair value in the statutory statements of assets and liabilities, surplus and other funds as follows:

*Level 1.* Unadjusted quoted prices accessible in active markets for identical assets or liabilities at the measurement date and mutual funds where the value per share (unit) is determined and published daily and is the basis for current transactions.

*Level 2.* Unadjusted quoted prices for similar assets or liabilities in active markets, quoted prices for identical or similar assets or liabilities in markets that are not active or inputs (other than quoted prices) that are observable or that are derived principally from or corroborated by observable market data through correlation or other means. Primary inputs to this valuation technique may include comparative trades, bid/asks, interest rate movements, U.S. Treasury rates, Secured Overnight Financing Rate, prime rates, cash flows, maturity dates, call ability, estimated prepayments and/or underlying collateral values.

*Level 3.* Prices or valuation techniques that require inputs that are both unobservable and significant to the overall fair value measurement. Inputs reflect management's best estimates of the assumptions market participants would use at the measurement date in pricing the asset or liability. Consideration is given to the risk inherent in both the method of valuation and the valuation inputs. Primary inputs to this valuation technique include broker quotes and comparative trades.



NOTES TO THE FINANCIAL STATEMENTS

The Company reviews its fair value hierarchy classifications for assets and liabilities quarterly. Changes in the observability of significant valuation inputs identified during these reviews may trigger reclassifications. Reclassifications are reported as transfers at the beginning of the reporting period in which the change occurs.

Independent pricing services are most often utilized, and compared to pricing from additional sources when available, to determine the fair value of bonds and stocks for which market quotations or quotations on comparable securities or models are used. For these bonds and stocks, the Company obtains the pricing services' methodologies and classifies the investments accordingly in the fair value hierarchy.

Corporate pricing matrices are used in valuing certain bonds. The corporate pricing matrices were developed using publicly and privately available spreads segmented by various weighted average lives and credit quality ratings. Certain private placement bonds have adjusted spreads to capture the impacts of liquidity premium based on industry sector. The weighted average life and credit quality rating of a particular bond to be priced using those matrices are important inputs into the model and are used to determine a corresponding spread that is added to the appropriate industry sector or U.S. Treasury yield to create an estimated market yield for that bond. The estimated market yield and other relevant factors are then used to estimate the fair value of the particular bond.

Non-binding broker quotes are also utilized to determine the fair value of certain bonds when deemed appropriate or when valuations are not available from independent pricing services or corporate pricing matrices. These bonds are classified with the lowest priority in the fair value hierarchy as only one broker quote is ordinarily obtained, the investment is not traded on an exchange, the pricing is not available to other entities and/or the transaction volume in the same or similar investments has decreased. Inputs used in the development of prices are not provided to the Company by the brokers, as the brokers often do not provide the necessary transparency into their quotes and methodologies. At least annually, the Company performs reviews and tests to ensure that quotes are a reasonable estimate of the investments' fair value. Price movements of broker quotes are subject to validation and require approval from the Company's management. Management uses its knowledge of the investment and current market conditions to determine if the price is indicative of the investment's fair value.

The Company carries short-term investments at amortized cost, which approximates fair value.

No assets or liabilities were held at fair value as of June 30, 2024.

B. & C. The following table summarizes the carrying value and fair value of the Company's assets not held at fair value as of June 30, 2024:

	Aggregate Fair Value	Admitted Assets	Level 1	Level 2	Level 3	Net Asset Value (NAV)	Not Practicable (Carrying Value)
Assets							
Bonds	\$58,192,113	\$61,057,251	\$34,806,482	\$23,385,631		\$-	\$-
Cash, cash equivalents and short-term investments	569,630	569,630	121,813	447,817	-	-	-
Total Assets	\$58,761,743	\$61,626,881	\$34,928,295	\$23,833,448		\$-	\$-

D. Not Practicable to Estimate Fair Value

Not applicable.

E. Measured Using Net Asset Value

Not applicable.

Note 21 – Other Items

There were no changes that were considered significant to the Company from prior year end.

Note 22 – Events Subsequent

Type I – Recognized Subsequent Events:

Subsequent events have been considered through August 2, 2024, for the statutory statement available to be issued on August 8, 2024.

There were no material Type I events occurring subsequent to the end of the period that merited recognition or disclosure in these statements that have not already been reflected as required.

Type II – Nonrecognized Subsequent Events:

Subsequent events have been considered through August 2, 2024, for the statutory statement available to be issued on August 8, 2024.

There were no material Type II events occurring subsequent to the end of the period that merited recognition or disclosure in these statements that have not already been reflected as required.

Note 23 – Reinsurance

There were no changes that were considered significant to the Company from prior year end.

Note 24 – Retrospectively Rated Contracts and Contracts Subject to Redetermination

Not applicable.

Note 25 – Changes in Incurred Losses and Loss Adjustment Expenses

The Company is a participant in a 100% pooling reinsurance agreement with Nationwide Mutual Insurance Company, and as such has zero net incurred losses and loss adjustment expenses.

Note 26 – Intercompany Pooling Arrangements

There were no changes that were considered significant to the Company from prior year end, except for the following:

Effective January 1, 2024, in conjunction with the merger of Harleysville Lake States Insurance Company with and into Harleysville Insurance Company, Harleysville Lake States Insurance Company is no longer a participant in the Nationwide Pool by operation of law.

Effective January 1, 2024, in conjunction with the voluntary dissolution and statutory merger of Nationwide Lloyds, Nationwide Lloyds is no longer a participant in the Nationwide Pool by operation of law. The voluntary dissolution of Nationwide Lloyds is treated as a statutory merger of Nationwide Lloyds with and into Nationwide Mutual Insurance Company for statutory accounting purposes.

NOTES TO THE FINANCIAL STATEMENTS

**Note 27 – Structured Settlements**

Not applicable.

**Note 28 – Health Care Receivables**

Not applicable.

**Note 29 – Participating Policies**

Not applicable.

**Note 30 – Premium Deficiency Reserves**

There were no changes that were considered significant to the Company from prior year end.

**Note 31 – High Deductibles**

Not applicable.

**Note 32 – Discounting of Liabilities for Unpaid Losses or Unpaid Loss Adjustment Expenses**

Not applicable.

**Note 33 – Asbestos/Environmental Reserves**

Not applicable.

**Note 34 – Subscriber Savings Accounts**

Not applicable.

**Note 35 – Multiple Peril Crop Insurance**

Not applicable.

**Note 36 – Financial Guaranty Insurance**

Not applicable.

STATEMENT AS OF JUNE 30, 2024 OF THE NATIONWIDE ASSURANCE COMPANY

GENERAL INTERROGATORIES

PART 1 - COMMON INTERROGATORIES

GENERAL

- 1.1

Did the reporting entity experience any material transactions requiring the filing of Disclosure of Material Transactions with the State of Domicile, as required by the Model Act? .....

Yes [ ] No [ X ]
- 1.2

If yes, has the report been filed with the domiciliary state? .....

Yes [ ] No [ ]
- 2.1

Has any change been made during the year of this statement in the charter, by-laws, articles of incorporation, or deed of settlement of the reporting entity? .....

Yes [ ] No [ X ]
- 2.2

If yes, date of change: .....
- 3.1

Is the reporting entity a member of an Insurance Holding Company System consisting of two or more affiliated persons, one or more of which is an insurer? .....

If yes, complete Schedule Y, Parts 1 and 1A.

Yes [ X ] No [ ]
- 3.2

Have there been any substantial changes in the organizational chart since the prior quarter end? .....

Yes [ ] No [ X ]
- 3.3

If the response to 3.2 is yes, provide a brief description of those changes. ....
- 3.4

Is the reporting entity publicly traded or a member of a publicly traded group? .....

Yes [ ] No [ X ]
- 3.5

If the response to 3.4 is yes, provide the CIK (Central Index Key) code issued by the SEC for the entity/group. ....
- 4.1

Has the reporting entity been a party to a merger or consolidation during the period covered by this statement? .....

Yes [ ] No [ X ]
- 4.2

If yes, provide the name of the entity, NAIC Company Code, and state of domicile (use two letter state abbreviation) for any entity that has ceased to exist as a result of the merger or consolidation.
- |                |                   |                   |
|----------------|-------------------|-------------------|
| 1              | 2                 | 3                 |
| Name of Entity | NAIC Company Code | State of Domicile |
|                |                   |                   |
5.

If the reporting entity is subject to a management agreement, including third-party administrator(s), managing general agent(s), attorney-in-fact, or similar agreement, have there been any significant changes regarding the terms of the agreement or principals involved? .....

If yes, attach an explanation. ....

Yes [ ] No [ X ] N/A [ ]
- 6.1

State as of what date the latest financial examination of the reporting entity was made or is being made. ....

12/31/2021
- 6.2

State the as of date that the latest financial examination report became available from either the state of domicile or the reporting entity. This date should be the date of the examined balance sheet and not the date the report was completed or released. ....

12/31/2021
- 6.3

State as of what date the latest financial examination report became available to other states or the public from either the state of domicile or the reporting entity. This is the release date or completion date of the examination report and not the date of the examination (balance sheet date). ....

05/31/2023
- 6.4

By what department or departments?  
OH .....
- 6.5

Have all financial statement adjustments within the latest financial examination report been accounted for in a subsequent financial statement filed with Departments? .....

Yes [ ] No [ ] N/A [ X ]
- 6.6

Have all of the recommendations within the latest financial examination report been complied with? .....

Yes [ ] No [ ] N/A [ X ]
- 7.1

Has this reporting entity had any Certificates of Authority, licenses or registrations (including corporate registration, if applicable) suspended or revoked by any governmental entity during the reporting period? .....

Yes [ ] No [ X ]
- 7.2

If yes, give full information: ....
- 8.1

Is the company a subsidiary of a bank holding company regulated by the Federal Reserve Board? .....

Yes [ ] No [ X ]
- 8.2

If response to 8.1 is yes, please identify the name of the bank holding company. ....
- 8.3

Is the company affiliated with one or more banks, thrifts or securities firms? .....

Yes [ X ] No [ ]
- 8.4

If response to 8.3 is yes, please provide below the names and location (city and state of the main office) of any affiliates regulated by a federal regulatory services agency [i.e. the Federal Reserve Board (FRB), the Office of the Comptroller of the Currency (OCC), the Federal Deposit Insurance Corporation (FDIC) and the Securities Exchange Commission (SEC)] and identify the affiliate's primary federal regulator.

1 Affiliate Name	2 Location (City, State)	3 FRB	4 OCC	5 FDIC	6 SEC
Nationwide Trust Company, FSB .....	Columbus, OH .....	..NO...	..YES...	..NO...	..NO...
Nationwide Investment Services Corp. ....	Columbus, OH .....	..NO...	..NO...	..NO...	..YES...
Nationwide Investment Advisors, LLC .....	Columbus, OH .....	..NO...	..NO...	..NO...	..YES...
Nationwide Securities, LLC .....	Columbus, OH .....	..NO...	..NO...	..NO...	..YES...
Nationwide Fund Advisors .....	Columbus, OH .....	..NO...	..NO...	..NO...	..YES...
Nationwide Fund Distributors, LLC .....	Columbus, OH .....	..NO...	..NO...	..NO...	..YES...
Nationwide Asset Management, LLC .....	Columbus, OH .....	..NO...	..NO...	..NO...	..YES...

STATEMENT AS OF JUNE 30, 2024 OF THE NATIONWIDE ASSURANCE COMPANY

GENERAL INTERROGATORIES

- 9.1

Are the senior officers (principal executive officer, principal financial officer, principal accounting officer or controller, or persons performing similar functions) of the reporting entity subject to a code of ethics, which includes the following standards? .....  
(a) Honest and ethical conduct, including the ethical handling of actual or apparent conflicts of interest between personal and professional relationships;  
(b) Full, fair, accurate, timely and understandable disclosure in the periodic reports required to be filed by the reporting entity;  
(c) Compliance with applicable governmental laws, rules and regulations;  
(d) The prompt internal reporting of violations to an appropriate person or persons identified in the code; and  
(e) Accountability for adherence to the code.

Yes [ X ] No [ ]
- 9.11

If the response to 9.1 is No, please explain:  
.....
- 9.2

Has the code of ethics for senior managers been amended? .....

Yes [ ] No [ X ]
- 9.21

If the response to 9.2 is Yes, provide information related to amendment(s).  
.....
- 9.3

Have any provisions of the code of ethics been waived for any of the specified officers? .....

Yes [ ] No [ X ]
- 9.31

If the response to 9.3 is Yes, provide the nature of any waiver(s).  
.....

FINANCIAL

- 10.1

Does the reporting entity report any amounts due from parent, subsidiaries or affiliates on Page 2 of this statement? .....

Yes [ X ] No [ ]
- 10.2

If yes, indicate any amounts receivable from parent included in the Page 2 amount: .....\$ .....

INVESTMENT

- 11.1

Were any of the stocks, bonds, or other assets of the reporting entity loaned, placed under option agreement, or otherwise made available for use by another person? (Exclude securities under securities lending agreements.) .....

Yes [ ] No [ X ]
- 11.2

If yes, give full and complete information relating thereto:  
.....
12.

Amount of real estate and mortgages held in other invested assets in Schedule BA: .....

\$ .....
13.

Amount of real estate and mortgages held in short-term investments: .....

\$ .....
- 14.1

Does the reporting entity have any investments in parent, subsidiaries and affiliates? .....

Yes [ X ] No [ ]
- 14.2

If yes, please complete the following:

	1	2
	Prior Year-End Book/Adjusted Carrying Value	Current Quarter Book/Adjusted Carrying Value
14.21 Bonds .....	\$ .....	\$ .....
14.22 Preferred Stock .....	\$ .....	\$ .....
14.23 Common Stock .....	\$ .....	\$ .....
14.24 Short-Term Investments .....	\$ .....	\$ .....
14.25 Mortgage Loans on Real Estate .....	\$ .....	\$ .....
14.26 All Other .....	\$ 500,000	\$ 500,000
14.27 Total Investment in Parent, Subsidiaries and Affiliates (Subtotal Lines 14.21 to 14.26) .....	\$ 500,000	\$ 500,000
14.28 Total Investment in Parent included in Lines 14.21 to 14.26 above .....	\$ .....	\$ .....
- 15.1

Has the reporting entity entered into any hedging transactions reported on Schedule DB? .....

Yes [ ] No [ X ]
- 15.2

If yes, has a comprehensive description of the hedging program been made available to the domiciliary state? ..... Yes [ ] No [ ] N/A [ X ]  
If no, attach a description with this statement.  
.....
16.

For the reporting entity's security lending program, state the amount of the following as of the current statement date:

16.1

Total fair value of reinvested collateral assets reported on Schedule DL, Parts 1 and 2. ....

\$ .....

16.2

Total book/adjusted carrying value of reinvested collateral assets reported on Schedule DL, Parts 1 and 2 .....

\$ .....

16.3

Total payable for securities lending reported on the liability page. ....

\$ .....

STATEMENT AS OF JUNE 30, 2024 OF THE NATIONWIDE ASSURANCE COMPANY

GENERAL INTERROGATORIES

17. Excluding items in Schedule E - Part 3 - Special Deposits, real estate, mortgage loans and investments held physically in the reporting entity's offices, vaults or safety deposit boxes, were all stocks, bonds and other securities, owned throughout the current year held pursuant to a custodial agreement with a qualified bank or trust company in accordance with Section 1, III - General Examination Considerations, F. Outsourcing of Critical Functions, Custodial or Safekeeping Agreements of the NAIC Financial Condition Examiners Handbook? ..... Yes [ X ] No [ ]
- 17.1 For all agreements that comply with the requirements of the NAIC Financial Condition Examiners Handbook, complete the following:

1 Name of Custodian(s)	2 Custodian Address
The Bank of New York Mellon .....	1 Wall Street, New York, NY 10286 .....

- 17.2 For all agreements that do not comply with the requirements of the NAIC Financial Condition Examiners Handbook, provide the name, location and a complete explanation:

1 Name(s)	2 Location(s)	3 Complete Explanation(s)

- 17.3 Have there been any changes, including name changes, in the custodian(s) identified in 17.1 during the current quarter? ..... Yes [ ] No [ X ]
- 17.4 If yes, give full information relating thereto:

1 Old Custodian	2 New Custodian	3 Date of Change	4 Reason

- 17.5 Investment management – Identify all investment advisors, investment managers, broker/dealers, including individuals that have the authority to make investment decisions on behalf of the reporting entity. For assets that are managed internally by employees of the reporting entity, note as such. ["...that have access to the investment accounts"; "...handle securities"]

1 Name of Firm or Individual	2 Affiliation
Members of the investment staff designated by the Chief Investment Officer as detailed in the Corporate Resolution .....	I.....

- 17.5097 For those firms/individuals listed in the table for Question 17.5, do any firms/individuals unaffiliated with the reporting entity (i.e. designated with a "U") manage more than 10% of the reporting entity's invested assets?..... Yes [ ] No [ X ]

- 17.5098 For firms/individuals unaffiliated with the reporting entity (i.e. designated with a "U") listed in the table for Question 17.5, does the total assets under management aggregate to more than 50% of the reporting entity's invested assets?..... Yes [ ] No [ X ]

- 17.6 For those firms or individuals listed in the table for 17.5 with an affiliation code of "A" (affiliated) or "U" (unaffiliated), provide the information for the table below.

1	2	3	4	5
Central Registration Depository Number	Name of Firm or Individual	Legal Entity Identifier (LEI)	Registered With	Investment Management Agreement (IMA) Filed

- 18.1 Have all the filing requirements of the Purposes and Procedures Manual of the NAIC Investment Analysis Office been followed? ..... Yes [ X ] No [ ]
- 18.2 If no, list exceptions: .....

19. By self-designating 5GI securities, the reporting entity is certifying the following elements for each self-designated 5GI security:
- a. Documentation necessary to permit a full credit analysis of the security does not exist or an NAIC CRP credit rating for an FE or PL security is not available.
  - b. Issuer or obligor is current on all contracted interest and principal payments.
  - c. The insurer has an actual expectation of ultimate payment of all contracted interest and principal.
- Has the reporting entity self-designated 5GI securities? ..... Yes [ ] No [ X ]

20. By self-designating PLGI securities, the reporting entity is certifying the following elements of each self-designated PLGI security:
- a. The security was purchased prior to January 1, 2018.
  - b. The reporting entity is holding capital commensurate with the NAIC Designation reported for the security.
  - c. The NAIC Designation was derived from the credit rating assigned by an NAIC CRP in its legal capacity as a NRSRO which is shown on a current private letter rating held by the insurer and available for examination by state insurance regulators.
  - d. The reporting entity is not permitted to share this credit rating of the PL security with the SVO.
- Has the reporting entity self-designated PLGI securities? ..... Yes [ ] No [ X ]

21. By assigning FE to a Schedule BA non-registered private fund, the reporting entity is certifying the following elements of each self-designated FE fund:
- a. The shares were purchased prior to January 1, 2019.
  - b. The reporting entity is holding capital commensurate with the NAIC Designation reported for the security.
  - c. The security had a public credit rating(s) with annual surveillance assigned by an NAIC CRP in its legal capacity as an NRSRO prior to January 1, 2019.
  - d. The fund only or predominantly holds bonds in its portfolio.
  - e. The current reported NAIC Designation was derived from the public credit rating(s) with annual surveillance assigned by an NAIC CRP in its legal capacity as an NRSRO.
  - f. The public credit rating(s) with annual surveillance assigned by an NAIC CRP has not lapsed.
- Has the reporting entity assigned FE to Schedule BA non-registered private funds that complied with the above criteria? ..... Yes [ ] No [ X ]

GENERAL INTERROGATORIES

PART 2 - PROPERTY & CASUALTY INTERROGATORIES

1.

If the reporting entity is a member of a pooling arrangement, did the agreement or the reporting entity's participation change? .....  
If yes, attach an explanation.  
.....

Yes [ ] No [ X ] N/A [ ]
2.

Has the reporting entity reinsured any risk with any other reporting entity and agreed to release such entity from liability, in whole or in part, from any loss that may occur on the risk, or portion thereof, reinsured? .....  
If yes, attach an explanation.  
.....

Yes [ ] No [ X ]
- 3.1

Have any of the reporting entity's primary reinsurance contracts been canceled? .....

Yes [ ] No [ X ]
- 3.2

If yes, give full and complete information thereto.  
.....
- 4.1

Are any of the liabilities for unpaid losses and loss adjustment expenses other than certain workers' compensation tabular reserves (see Annual Statement Instructions pertaining to disclosure of discounting for definition of " tabular reserves" ) discounted at a rate of interest greater than zero? .....

Yes [ ] No [ X ]

4.2 If yes, complete the following schedule:

			TOTAL DISCOUNT				DISCOUNT TAKEN DURING PERIOD			
1	2	3	4	5	6	7	8	9	10	11
Line of Business	Maximum Interest	Discount Rate	Unpaid Losses	Unpaid LAE	IBNR	TOTAL	Unpaid Losses	Unpaid LAE	IBNR	TOTAL
TOTAL										

5.

Operating Percentages:

5.1 A&H loss percent .....0.000 %

5.2 A&H cost containment percent .....0.000 %

5.3 A&H expense percent excluding cost containment expenses .....0.000 %
- 6.1

Do you act as a custodian for health savings accounts? .....

Yes [ ] No [ X ]
- 6.2

If yes, please provide the amount of custodial funds held as of the reporting date .....\$.....
- 6.3

Do you act as an administrator for health savings accounts? .....

Yes [ ] No [ X ]
- 6.4

If yes, please provide the balance of the funds administered as of the reporting date .....\$.....
7.

Is the reporting entity licensed or chartered, registered, qualified, eligible or writing business in at least two states? .....

Yes [ X ] No [ ]
- 7.1

If no, does the reporting entity assume reinsurance business that covers risks residing in at least one state other than the state of domicile of the reporting entity? .....

Yes [ ] No [ ]

## SCHEDULE F - CEDED REINSURANCE

# NONE

[illegible]

STATEMENT AS OF JUNE 30, 2024 OF THE NATIONWIDE ASSURANCE COMPANY

SCHEDULE T - EXHIBIT OF PREMIUMS WRITTEN

Current Year to Date - Allocated by States and Territories									
States, etc.		1 Active Status (a)	Direct Premiums Written		Direct Losses Paid (Deducting Salvage)		Direct Losses Unpaid		
			2 Current Year To Date	3 Prior Year To Date	4 Current Year To Date	5 Prior Year To Date	6 Current Year To Date	7 Prior Year To Date	
1.	Alabama .....	AL	L	5,314,383	9,602,110	1,450,195	2,744,644	6,901,794	3,895,865
2.	Alaska .....	AK	L						
3.	Arizona .....	AZ	L	4,209,879	5,929,168	4,857,525	2,216,527	4,919,755	4,769,446
4.	Arkansas .....	AR	L	1,487,157	2,383,911	890,373	2,616,028	2,823,467	2,408,631
5.	California .....	CA	L	56,173	(953)	22,411	13,949	301,570	20,000
6.	Colorado .....	CO	L	5,502,779	11,681,375	5,468,152	2,776,396	7,374,887	7,573,583
7.	Connecticut .....	CT	L	3,155,909	3,803,988	999,585	1,069,020	3,668,055	3,615,624
8.	Delaware .....	DE	L	1,193,847	1,297,926	120,675	427,559	634,448	1,595,559
9.	District of Columbia .....	DC	L	1,394,627	1,722,969	352,447	304,460	870,187	380,612
10.	Florida .....	FL	L	10,003,992	12,214,227	2,186,757	96,015	8,815,186	760,911
11.	Georgia .....	GA	L	5,218,545	4,003,912	1,521,765	86,556	3,072,058	207,515
12.	Hawaii .....	HI	N						
13.	Idaho .....	ID	L	1,727,558	2,011,584	491,177	730,082	975,271	953,903
14.	Illinois .....	IL	L	1,672,587	2,341,583	720,510	1,113,070	3,503,857	2,477,267
15.	Indiana .....	IN	L	1,052,875	967,470	156,308	271,351	647,639	503,647
16.	Iowa .....	IA	L	4,633,104	7,997,069	1,466,675	3,194,363	6,778,949	5,206,321
17.	Kansas .....	KS	L	2,182,945	2,981,389	1,362,340	591,939	1,381,667	1,224,631
18.	Kentucky .....	KY	L	2,996,493	5,271,687	1,568,181	3,789,442	3,278,785	4,211,870
19.	Louisiana .....	LA	L						
20.	Maine .....	ME	L	189,096	156,580	140,556	3,769	206,280	24,043
21.	Maryland .....	MD	L	6,807,809	9,334,201	3,419,336	4,250,980	8,182,125	6,697,129
22.	Massachusetts .....	MA	L	1,247,697	929,241	385,558	674,332	1,161,362	348,143
23.	Michigan .....	MI	L	2,012,935	2,686,019	937,752	373,877	2,102,050	573,750
24.	Minnesota .....	MN	L	1,539,953	1,431,562	257,801	220,223	905,982	565,409
25.	Mississippi .....	MS	L	3,174,373	7,525,889	2,880,107	3,702,077	4,248,427	5,342,513
26.	Missouri .....	MO	L	6,602,026	13,363,723	5,083,532	5,179,918	9,600,657	6,701,570
27.	Montana .....	MT	L	3,086,539	3,495,691	1,238,998	471,394	1,681,150	557,610
28.	Nebraska .....	NE	L	5,209,009	9,418,591	2,208,974	2,032,549	8,481,692	3,655,903
29.	Nevada .....	NV	L	3,900,319	5,430,193	2,033,962	3,038,723	8,252,146	7,140,107
30.	New Hampshire .....	NH	L	385,592	696,158	54,284	126,486	344,096	259,418
31.	New Jersey .....	NJ	L	4,166,866	3,126,524	415,163	64,244	3,625,879	121,664
32.	New Mexico .....	NM	L	1,428,656	2,021,106	1,268,205	473,172	1,476,998	1,817,630
33.	New York .....	NY	L	5,515,598	1,546,206	291,012	573,751	702,392	500,343
34.	North Carolina .....	NC	L	8,414,426	14,219,981	3,135,710	4,572,207	8,448,116	5,891,962
35.	North Dakota .....	ND	L	720,165	1,078,978	98,316	173,202	291,243	284,489
36.	Ohio .....	OH	L	7,759,813	9,617,345	1,937,906	3,364,599	6,066,346	5,352,792
37.	Oklahoma .....	OK	L						
38.	Oregon .....	OR	L	3,364,970	3,212,252	2,212,293	660,340	2,239,380	882,433
39.	Pennsylvania .....	PA	L	12,746,688	19,128,732	6,083,206	5,698,884	14,469,736	9,469,388
40.	Rhode Island .....	RI	L	1,639,893	2,225,383	398,460	354,225	1,304,130	864,070
41.	South Carolina .....	SC	L	3,480,402	6,033,423	1,302,395	1,164,875	2,799,316	1,735,383
42.	South Dakota .....	SD	L	1,563,477	1,317,794	65,554	227,521	1,150,772	634,096
43.	Tennessee .....	TN	L	4,317,694	7,124,457	2,314,599	3,702,868	3,821,716	5,110,166
44.	Texas .....	TX	L	11,003,947	20,358,881	8,803,045	10,042,250	22,313,683	12,938,155
45.	Utah .....	UT	L	3,016,510	4,159,314	1,111,907	696,823	1,913,497	1,422,821
46.	Vermont .....	VT	L	755,125	872,437	86,676	267,835	241,866	167,806
47.	Virginia .....	VA	L	8,664,402	10,887,466	1,082,453	2,825,627	5,181,049	4,322,802
48.	Washington .....	WA	L	6,010,069	107	443,861		943,702	33
49.	West Virginia .....	WV	L	4,408,310	7,229,882	1,553,166	2,113,215	3,785,634	3,173,786
50.	Wisconsin .....	WI	L	974,544	1,659,735	103,023	159,518	694,574	598,419
51.	Wyoming .....	WY	L	3,002,363	5,048,424	1,090,143	464,371	1,489,196	1,307,229
52.	American Samoa .....	AS	N						
53.	Guam .....	GU	N						
54.	Puerto Rico .....	PR	N						
55.	U.S. Virgin Islands .....	VI	N						
56.	Northern Mariana Islands .....	MP	N						
57.	Canada .....	CAN	N						
58.	Aggregate Other Alien OT .....	XXX							
59.	Totals	XXX		178,912,119	249,545,690	76,073,029	79,715,256	184,072,767	128,266,447
DETAILS OF WRITE-INS									
58001.	.....	XXX							
58002.	.....	XXX							
58003.	.....	XXX							
58998.	Summary of remaining write-ins for Line 58 from overflow page .....	XXX							
58999.	Totals (Lines 58001 through 58003 plus 58998)(Line 58 above)	XXX							

- (a) Active Status Counts:
1. L - Licensed or Chartered - Licensed insurance carrier or domiciled RRG..... 50

2. R - Registered - Non-domiciled RRGs.....

3. E - Eligible - Reporting entities eligible or approved to write surplus lines in the state (other than their state of domicile - see DSLI).....

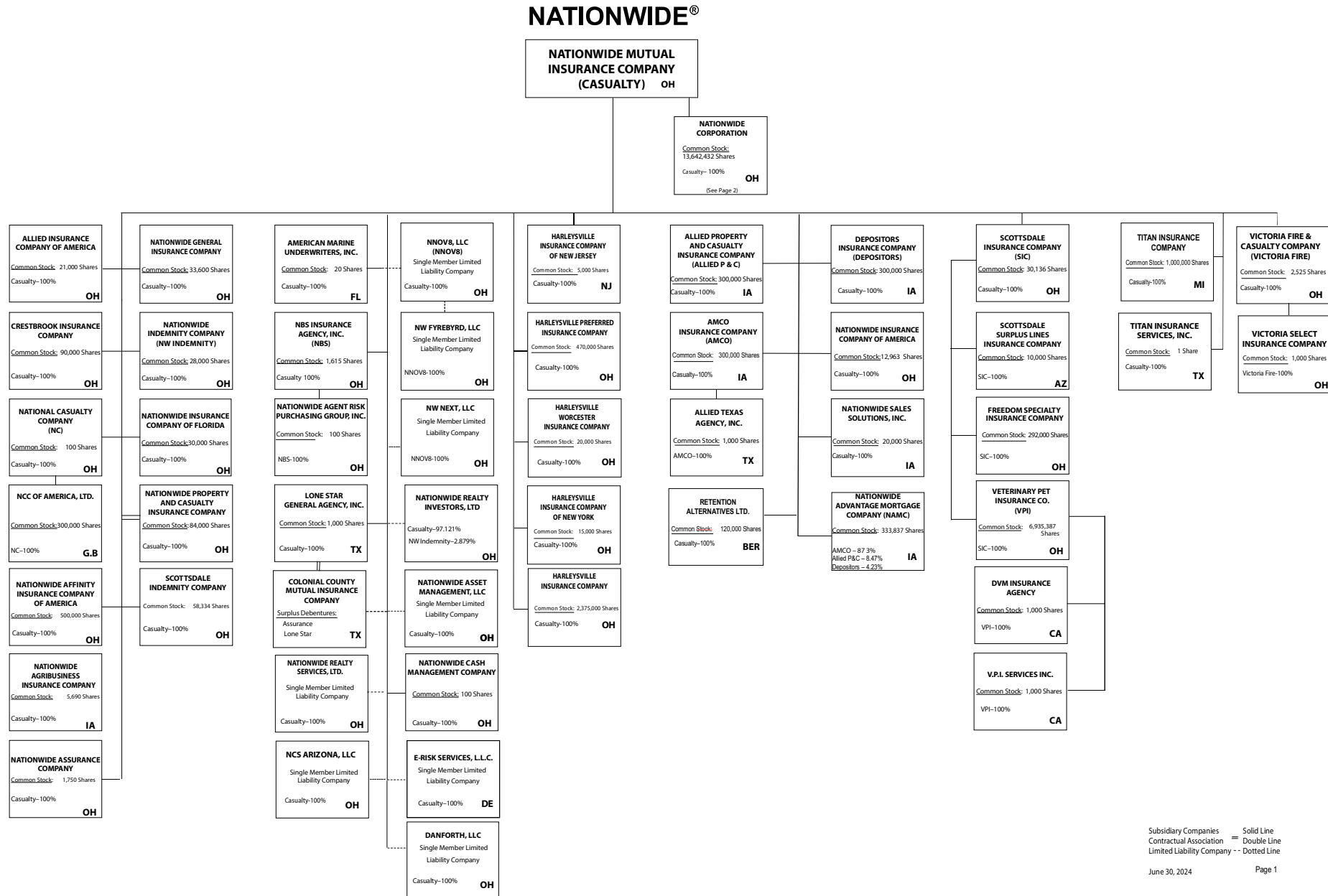
4. Q - Qualified - Qualified or accredited reinsurer.....

5. D - Domestic Surplus Lines Insurer (DSLII) - Reporting entities authorized to write surplus lines in the state of domicile.....

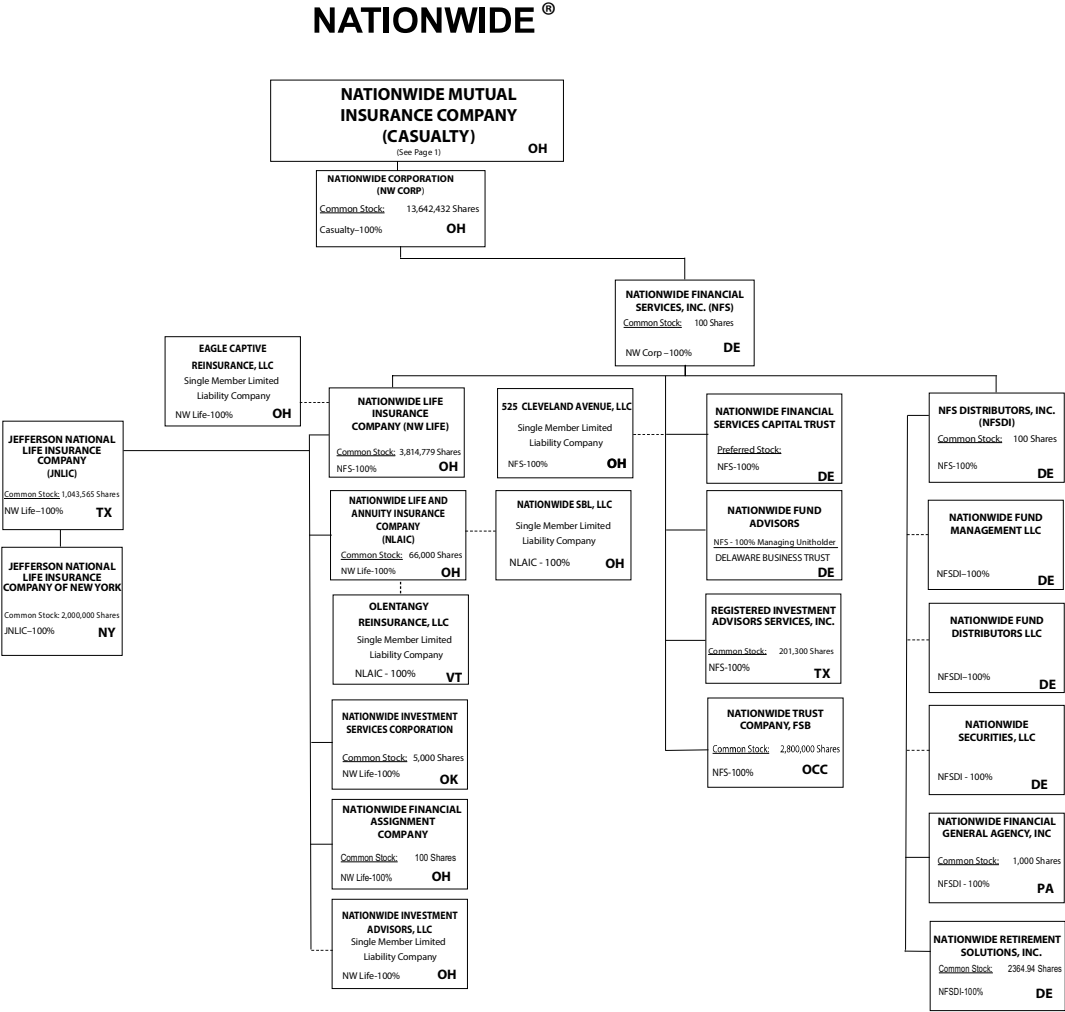
6. N - None of the above - Not allowed to write business in the state... 7



## 11



11.1



NATIONWIDE INSURANCE COMPANIES

NAIC Group Code	Group Name	NAIC Company Code	State of Domicile	Federal ID Number	Name of Company
0140	Nationwide	10127	OH	27-0114983	Allied Insurance Company of America
0140	Nationwide	42579	IA	42-1201931	Allied Property and Casualty Insurance Company
0140	Nationwide	19100	IA	42-6054959	AMCO Insurance Company
0140	Nationwide	29262	TX	74-1061659	Colonial County Mutual Insurance Company
0140	Nationwide	18961	OH	68-0066866	Crestbrook Insurance Company
0140	Nationwide	42587	IA	42-1207150	Depositors Insurance Company
0140	Nationwide	15821	OH	42-4523959	Eagle Captive Reinsurance, LLC
0140	Nationwide	22209	OH	75-6013587	Freedom Specialty Insurance Company
0140	Nationwide	23582	OH	41-0417250	Harleysville Insurance Company
0140	Nationwide	42900	NJ	23-2253669	Harleysville Insurance Company of New Jersey
0140	Nationwide	10674	OH	23-2864924	Harleysville Insurance Company of New York
0140	Nationwide	35696	OH	23-2384978	Harleysville Preferred Insurance Company
0140	Nationwide	26182	OH	04-1989660	Harleysville Worcester Insurance Company
0140	Nationwide	64017	TX	75-0300900	Jefferson National Life Insurance Company
0140	Nationwide	15727	NY	47-1180302	Jefferson National Life Insurance Company of New York
0140	Nationwide	11991	OH	38-0865250	National Casualty Company
0140	Nationwide	26093	OH	48-0470690	Nationwide Affinity Insurance Company of America
0140	Nationwide	28223	IA	42-1015537	Nationwide Agribusiness Insurance Company
0140	Nationwide	10723	OH	95-0639970	Nationwide Assurance Company
0140	Nationwide	23760	OH	31-4425763	Nationwide General Insurance Company
0140	Nationwide	10070	OH	31-1399201	Nationwide Indemnity Company
0140	Nationwide	25453	OH	95-2130882	Nationwide Insurance Company of America
0140	Nationwide	10948	OH	31-1613686	Nationwide Insurance Company of Florida
0140	Nationwide	92657	OH	31-1000740	Nationwide Life and Annuity Insurance Company
0140	Nationwide	66869	OH	31-4156830	Nationwide Life Insurance Company
0140	Nationwide	23787	OH	31-4177100	Nationwide Mutual Insurance Company
0140	Nationwide	37877	OH	31-0970750	Nationwide Property & Casualty Insurance Company
0140	Nationwide	13999	VT	27-1712056	Olentangy Reinsurance, LLC
0140	Nationwide	15580	OH	31-1117969	Scottsdale Indemnity Company
0140	Nationwide	41297	OH	31-1024978	Scottsdale Insurance Company
0140	Nationwide	10672	AZ	86-0835870	Scottsdale Surplus Lines Insurance Company
0140	Nationwide	36269	MI	86-0619597	Titan Insurance Company
0140	Nationwide	42285	OH	95-3750113	Veterinary Pet Insurance Company
0140	Nationwide	42889	OH	34-1394913	Victoria Fire & Casualty Company
0140	Nationwide	10105	OH	34-1777972	Victoria Select Insurance Company

STATEMENT AS OF JUNE 30, 2024 OF THE NATIONWIDE ASSURANCE COMPANY

SCHEDULE Y  
PART 1A - DETAIL OF INSURANCE HOLDING COMPANY SYSTEM

1	2	3	4	5	6	7	8	9	10	11	12	13	14	15	16
Group Code	Group Name	NAIC Company Code	ID Number	Federal RSSD	CIK	Name of Securities Exchange if Publicly Traded (U.S. or International)	Names of Parent, Subsidiaries Or Affiliates	Domi-ciliary Location	Relation-ship to Reporting Entity	Directly Controlled by (Name of Entity/Person)	Type of Control (Ownership, Board, Management, Attorney-in-Fact, Influence, Other)	If Control is Owner-ship Provide Percen-tage	Ultimate Controlling Entity(ies)/Person(s)	Is an SCA Filing Re-quired? (Yes/No)	*
. 0140 ...	Nationwide ...	.....	31-1486309 ..	.....	.....	.....	10 W. Nationwide, LLC .....	.. OH.....	NIA.....	Nationwide Realty Investors, Ltd. ....	Ownership.....	100.000 ...	Nationwide Mutual Insurance Company ...	... NO.....	.....
. 0140 ...	Nationwide ...	.....	31-1486309 ..	.....	.....	.....	100 Green Meadows Drive, LLC .....	.. OH.....	NIA.....	Nationwide Realty Investors, Ltd. ....	Ownership.....	100.000 ...	Nationwide Mutual Insurance Company ...	... NO.....	.....
. 0140 ...	Nationwide ...	.....	31-1486309 ..	.....	.....	.....	1000 Yard Street, LLC .....	.. OH.....	NIA.....	Nationwide Realty Investors, Ltd. ....	Ownership.....	100.000 ...	Nationwide Mutual Insurance Company ...	... NO.....	.....
. 0140 ...	Nationwide ...	.....	31-1486309 ..	.....	.....	.....	1015 Long Street, LLC .....	.. OH.....	NIA.....	Nationwide Realty Investors, Ltd. ....	Ownership.....	100.000 ...	Nationwide Mutual Insurance Company ...	... NO.....	.....
. 0140 ...	Nationwide ...	.....	31-1486309 ..	.....	.....	.....	1050 Yard Street, LLC .....	.. OH.....	NIA.....	Nationwide Realty Investors, Ltd. ....	Ownership.....	100.000 ...	Nationwide Mutual Insurance Company ...	... NO.....	.....
. 0140 ...	Nationwide ...	.....	31-1486309 ..	.....	.....	.....	1125 Rail Street, LLC .....	.. OH.....	NIA.....	Nationwide Realty Investors, Ltd. ....	Ownership.....	100.000 ...	Nationwide Mutual Insurance Company ...	... NO.....	.....
. 0140 ...	Nationwide ...	.....	31-1733036 ..	.....	.....	.....	120 Acre Partners, LLC .....	.. DE.....	NIA.....	Nationwide Realty Investors, Ltd. ....	Ownership.....	95.000 ...	Nationwide Mutual Insurance Company ...	... NO.....	.....
. 0140 ...	Nationwide ...	.....	20-4939866 ..	.....	.....	.....	1125 Yard Street, LLC .....	.. OH.....	NIA.....	NRI Equity Land Investments, LLC .....	Ownership.....	100.000 ...	Nationwide Mutual Insurance Company ...	... NO.....	.....
. 0140 ...	Nationwide ...	.....	20-4939867 ..	.....	.....	.....	1175 Bobcat, LLC .....	.. OH.....	NIA.....	NRI Equity Land Investments, LLC .....	Ownership.....	100.000 ...	Nationwide Mutual Insurance Company ...	... NO.....	.....
. 0140 ...	Nationwide ...	.....	26-2451988 ..	.....	.....	.....	1492 Capital, LLC .....	.. OH.....	NIA.....	Nationwide Mutual Insurance Company .....	Ownership.....	100.000 ...	Nationwide Mutual Insurance Company ...	... NO.....	.....
. 0140 ...	Nationwide ...	.....	31-1486309 ..	.....	.....	.....	111 Rivulon Boulevard, LLC .....	.. OH.....	NIA.....	NRI-Rivulon, LLC .....	Ownership.....	100.000 ...	Nationwide Mutual Insurance Company ...	... NO.....	.....
. 0140 ...	Nationwide ...	.....	31-1486309 ..	.....	.....	.....	155 Rivulon Boulevard, LLC .....	.. OH.....	NIA.....	NRI-Rivulon, LLC .....	Ownership.....	100.000 ...	Nationwide Mutual Insurance Company ...	... NO.....	.....
. 0140 ...	Nationwide ...	.....	31-1486309 ..	.....	.....	.....	161 Rivulon Boulevard, LLC .....	.. OH.....	NIA.....	NRI-Rivulon, LLC .....	Ownership.....	100.000 ...	Nationwide Mutual Insurance Company ...	... NO.....	.....
. 0140 ...	Nationwide ...	.....	31-1580283 ..	.....	.....	.....	170 Marconi, LLC .....	.. OH.....	NIA.....	NWD Investments, LLC .....	Ownership.....	100.000 ...	Nationwide Mutual Insurance Company ...	... NO.....	.....
. 0140 ...	Nationwide ...	.....	38-4118665 ..	.....	.....	.....	220 Vine St., LLC .....	.. OH.....	NIA.....	NWD HP, LLC .....	Ownership.....	100.000 ...	Nationwide Mutual Insurance Company ...	... NO.....	.....
. 0140 ...	Nationwide ...	.....	31-1580283 ..	.....	.....	.....	245 Parks Edge Place, LLC .....	.. OH.....	NIA.....	NWD Investments, LLC .....	Ownership.....	100.000 ...	Nationwide Mutual Insurance Company ...	... NO.....	.....
. 0140 ...	Nationwide ...	.....	31-1486309 ..	.....	.....	.....	275 Rivulon Boulevard, LLC .....	.. OH.....	NIA.....	NRI-Rivulon, LLC .....	Ownership.....	100.000 ...	Nationwide Mutual Insurance Company ...	... NO.....	.....
. 0140 ...	Nationwide ...	.....	31-1486309 ..	.....	.....	.....	300 Rivulon Boulevard, LLC .....	.. OH.....	NIA.....	NRI-Rivulon, LLC .....	Ownership.....	100.000 ...	Nationwide Mutual Insurance Company ...	... NO.....	.....
. 0140 ...	Nationwide ...	.....	31-1486309 ..	.....	.....	.....	310 Rivulon Boulevard, LLC .....	.. OH.....	NIA.....	NRI-Rivulon, LLC .....	Ownership.....	100.000 ...	Nationwide Mutual Insurance Company ...	... NO.....	.....
. 0140 ...	Nationwide ...	.....	31-1486309 ..	.....	.....	.....	343 N. Front, LLC .....	.. OH.....	NIA.....	Nationwide Realty Investors, Ltd. ....	Ownership.....	100.000 ...	Nationwide Mutual Insurance Company ...	... NO.....	.....
. 0140 ...	Nationwide ...	.....	31-1486309 ..	.....	.....	.....	400 Rivulon Boulevard, LLC .....	.. OH.....	NIA.....	NRI-Rivulon, LLC .....	Ownership.....	100.000 ...	Nationwide Mutual Insurance Company ...	... NO.....	.....
. 0140 ...	Nationwide ...	.....	31-1580283 ..	.....	.....	.....	400 West Nationwide Boulevard, LLC .....	.. OH.....	NIA.....	NWD Investments, LLC .....	Ownership.....	100.000 ...	Nationwide Mutual Insurance Company ...	... NO.....	.....
. 0140 ...	Nationwide ...	.....	31-1486309 ..	.....	.....	.....	410 Rivulon Boulevard, LLC .....	.. OH.....	NIA.....	NRI-Rivulon, LLC .....	Ownership.....	100.000 ...	Nationwide Mutual Insurance Company ...	... NO.....	.....
. 0140 ...	Nationwide ...	.....	31-1580283 ..	.....	.....	.....	425 West Nationwide Boulevard, LLC .....	.. OH.....	NIA.....	NWD Investments, LLC .....	Ownership.....	100.000 ...	Nationwide Mutual Insurance Company ...	... NO.....	.....
. 0140 ...	Nationwide ...	.....	31-1486309 ..	.....	.....	.....	44 Chestnut, LLC .....	.. OH.....	NIA.....	Nationwide Realty Investors, Ltd. ....	Ownership.....	100.000 ...	Nationwide Mutual Insurance Company ...	... NO.....	.....
. 0140 ...	Nationwide ...	.....	38-4118665 ..	.....	.....	.....	500 Neil Avenue, LLC .....	.. OH.....	NIA.....	NWD HP, LLC .....	Ownership.....	100.000 ...	Nationwide Mutual Insurance Company ...	... NO.....	.....
. 0140 ...	Nationwide ...	.....	38-4118665 ..	.....	.....	.....	515 Kilbourne Street, LLC .....	.. OH.....	NIA.....	NWD HP, LLC .....	Ownership.....	100.000 ...	Nationwide Mutual Insurance Company ...	... NO.....	.....
. 0140 ...	Nationwide ...	.....	87-1954007 ..	.....	.....	.....	525 Cleveland Avenue, LLC .....	.. OH.....	NIA.....	Nationwide Financial Services, Inc. ....	Ownership.....	100.000 ...	Nationwide Mutual Insurance Company ...	... NO.....	.....
. 0140 ...	Nationwide ...	.....	31-1486309 ..	.....	.....	.....	75 Rivulon Boulevard, LLC .....	.. OH.....	NIA.....	NRI-Rivulon, LLC .....	Ownership.....	100.000 ...	Nationwide Mutual Insurance Company ...	... NO.....	.....
. 0140 ...	Nationwide ...	.....	20-4939866 ..	.....	.....	.....	775 Yard Street, LLC .....	.. OH.....	NIA.....	NRI Equity Land Investments, LLC .....	Ownership.....	100.000 ...	Nationwide Mutual Insurance Company ...	... NO.....	.....
. 0140 ...	Nationwide ...	.....	20-4939866 ..	.....	.....	.....	777 Swan Street, LLC .....	.. OH.....	NIA.....	NRI Equity Land Investments, LLC .....	Ownership.....	100.000 ...	Nationwide Mutual Insurance Company ...	... NO.....	.....
. 0140 ...	Nationwide ...	.....	20-4939866 ..	.....	.....	.....	780 Yard Street, LLC .....	.. OH.....	NIA.....	NRI Equity Land Investments, LLC .....	Ownership.....	100.000 ...	Nationwide Mutual Insurance Company ...	... NO.....	.....
. 0140 ...	Nationwide ...	.....	20-4939866 ..	.....	.....	.....	795 Rail Street, LLC .....	.. OH.....	NIA.....	NRI Equity Land Investments, LLC .....	Ownership.....	100.000 ...	Nationwide Mutual Insurance Company ...	... NO.....	.....
. 0140 ...	Nationwide ...	.....	20-4939866 ..	.....	.....	.....	800 Bobcat Avenue, LLC .....	.. OH.....	NIA.....	NRI Equity Land Investments, LLC .....	Ownership.....	100.000 ...	Nationwide Mutual Insurance Company ...	... NO.....	.....
. 0140 ...	Nationwide ...	.....	20-4939866 ..	.....	.....	.....	800 Goodale Boulevard, LLC .....	.. OH.....	NIA.....	NRI Equity Land Investments, LLC .....	Ownership.....	100.000 ...	Nationwide Mutual Insurance Company ...	... NO.....	.....
. 0140 ...	Nationwide ...	.....	20-4939866 ..	.....	.....	.....	800 Yard Street, LLC .....	.. OH.....	NIA.....	NRI Equity Land Investments, LLC .....	Ownership.....	100.000 ...	Nationwide Mutual Insurance Company ...	... NO.....	.....
. 0140 ...	Nationwide ...	.....	20-4939866 ..	.....	.....	.....	805 Bobcat Avenue, LLC .....	.. OH.....	NIA.....	GVY Residential, LLC .....	Ownership.....	100.000 ...	Nationwide Mutual Insurance Company ...	... NO.....	.....
. 0140 ...	Nationwide ...	.....	20-4939866 ..	.....	.....	.....	808 Yard Street, LLC .....	.. OH.....	NIA.....	GVY Residential, LLC .....	Ownership.....	100.000 ...	Nationwide Mutual Insurance Company ...	... NO.....	.....
. 0140 ...	Nationwide ...	.....	20-4939866 ..	.....	.....	.....	820 Goodale Boulevard, LLC .....	.. OH.....	NIA.....	NRI Equity Land Investments, LLC .....	Ownership.....	100.000 ...	Nationwide Mutual Insurance Company ...	... NO.....	.....
. 0140 ...	Nationwide ...	.....	20-4939866 ..	.....	.....	.....	822 Williams Avenue, LLC .....	.. OH.....	NIA.....	GVY Residential, LLC .....	Ownership.....	100.000 ...	Nationwide Mutual Insurance Company ...	... NO.....	.....
. 0140 ...	Nationwide ...	.....	20-4939866 ..	.....	.....	.....	825 Junction Way, LLC .....	.. OH.....	NIA.....	GVY Residential, LLC .....	Ownership.....	100.000 ...	Nationwide Mutual Insurance Company ...	... NO.....	.....
. 0140 ...	Nationwide ...	.....	20-4939866 ..	.....	.....	.....	828 Bobcat Avenue, LLC .....	.. OH.....	NIA.....	NRI Equity Land Investments, LLC .....	Ownership.....	100.000 ...	Nationwide Mutual Insurance Company ...	... NO.....	.....
. 0140 ...	Nationwide ...	.....	20-4939866 ..	.....	.....	.....	840 Third Avenue, LLC .....	.. OH.....	NIA.....	NRI Equity Land Investments, LLC .....	Ownership.....	100.000 ...	Nationwide Mutual Insurance Company ...	... NO.....	.....
. 0140 ...	Nationwide ...	.....	20-4939866 ..	.....	.....	.....	840 Yard Street, LLC .....	.. OH.....	NIA.....	NRI Equity Land Investments, LLC .....	Ownership.....	100.000 ...	Nationwide Mutual Insurance Company ...	... NO.....	.....
. 0140 ...	Nationwide ...	.....	20-4939866 ..	.....	.....	.....	845 Yard Street, LLC .....	.. OH.....	NIA.....	GVY Residential, LLC .....	Ownership.....	100.000 ...	Nationwide Mutual Insurance Company ...	... NO.....	.....
. 0140 ...	Nationwide ...	.....	20-4939866 ..	.....	.....	.....	855 Third Avenue, LLC .....	.. OH.....	NIA.....	NRI Equity Land Investments, LLC .....	Ownership.....	100.000 ...	Nationwide Mutual Insurance Company ...	... NO.....	.....
. 0140 ...	Nationwide ...	.....	20-4939866 ..	.....	.....	.....	860 Third Avenue, LLC .....	.. OH.....	NIA.....	NRI Equity Land Investments, LLC .....	Ownership.....	100.000 ...	Nationwide Mutual Insurance Company ...	... NO.....	.....
. 0140 ...	Nationwide ...	.....	20-4939866 ..	.....	.....	.....	875 First Avenue, LLC .....	.. OH.....	NIA.....	GVY Residential, LLC .....	Ownership.....	100.000 ...	Nationwide Mutual Insurance Company ...	... NO.....	.....
. 0140 ...	Nationwide ...	.....	20-4939866 ..	.....	.....	.....	880 Third Avenue, LLC .....	.. OH.....	NIA.....	NRI Equity Land Investments, LLC .....	Ownership.....	100.000 ...	Nationwide Mutual Insurance Company ...	... NO.....	.....

STATEMENT AS OF JUNE 30, 2024 OF THE NATIONWIDE ASSURANCE COMPANY

SCHEDULE Y

PART 1A - DETAIL OF INSURANCE HOLDING COMPANY SYSTEM

1	2	3	4	5	6	7	8	9	10	11	12	13	14	15	16
Group Code	Group Name	NAIC Company Code	ID Number	Federal RSSD	CIK	Name of Securities Exchange if Publicly Traded (U.S. or International)	Names of Parent, Subsidiaries Or Affiliates	Domi-ciliary Location	Relation-ship to Reporting Entity	Directly Controlled by (Name of Entity/Person)	Type of Control (Ownership, Board, Management, Attorney-in-Fact, Influence, Other)	If Control is Ownership Provide Percen-tage	Ultimate Controlling Entity(ies)/Person(s)	Is an SCA Filing Re-quired? (Yes/No)	*
. 0140	Nationwide		20-4939866				880 Yard Street, LLC	.. OH.....	NIA.....	GVY Residential, LLC	Ownership.....	100.000	Nationwide Mutual Insurance Company	... NO.....	.....
. 0140	Nationwide		20-4939866				895 W. Third Avenue, LLC	.. OH.....	NIA.....	NRI Equity Land Investments, LLC	Ownership.....	100.000	Nationwide Mutual Insurance Company	... NO.....	.....
. 0140	Nationwide		20-4939866				950 Dorchester Way, LLC	.. OH.....	NIA.....	GVY Residential, LLC	Ownership.....	100.000	Nationwide Mutual Insurance Company	... NO.....	.....
. 0140	Nationwide		20-4939866				950 Goodale Boulevard, LLC	.. OH.....	NIA.....	NRI Equity Land Investments, LLC	Ownership.....	100.000	Nationwide Mutual Insurance Company	... NO.....	.....
. 0140	Nationwide		31-1486309				960 Bobcat Avenue, LLC	.. OH.....	NIA.....	Nationwide Realty Investors, Ltd.	Ownership.....	100.000	Nationwide Mutual Insurance Company	... NO.....	.....
. 0140	Nationwide		31-1486309				975 Rail Street, LLC	.. OH.....	NIA.....	Nationwide Realty Investors, Ltd.	Ownership.....	100.000	Nationwide Mutual Insurance Company	... NO.....	.....
. 0140	Nationwide		31-1486309				995 Yard Street, LLC	.. OH.....	NIA.....	Nationwide Realty Investors, Ltd.	Ownership.....	100.000	Nationwide Mutual Insurance Company	... NO.....	.....
. 0140	Nationwide		31-1486309				12062 Sycamore Trace, LLC	.. OH.....	NIA.....	Jerome Village Company, LLC	Ownership.....	100.000	Nationwide Mutual Insurance Company	... NO.....	.....
. 0140	Nationwide		31-1486309				18615 Claret Drive, LLC	.. OH.....	NIA.....	NRI Cavasson, LLC	Ownership.....	100.000	Nationwide Mutual Insurance Company	... NO.....	.....
. 0140	Nationwide		31-1486309				18655 Claret Drive, LLC	.. OH.....	NIA.....	NRI Cavasson, LLC	Ownership.....	100.000	Nationwide Mutual Insurance Company	... NO.....	.....
. 0140	Nationwide		31-1486309				18700 Hayden Road, LLC	.. OH.....	NIA.....	NRI Cavasson, LLC	Ownership.....	100.000	Nationwide Mutual Insurance Company	... NO.....	.....
. 0140	Nationwide		31-1486309				18750 Hayden Road, LLC	.. OH.....	NIA.....	NRI Cavasson, LLC	Ownership.....	100.000	Nationwide Mutual Insurance Company	... NO.....	.....
. 0140	Nationwide		31-1580283				AD DORA, LLC	.. OH.....	NIA.....	NWD Investments, LLC	Ownership.....	100.000	Nationwide Mutual Insurance Company	... NO.....	.....
. 0140	Nationwide		31-1580283				ADTV, LLC	.. OH.....	NIA.....	NWD Investments, LLC	Ownership.....	100.000	Nationwide Mutual Insurance Company	... NO.....	.....
. 0140	Nationwide	10127	27-0114983				ALLIED Insurance Company of America	.. OH.....	IA.....	Nationwide Mutual Insurance Company	Ownership.....	100.000	Nationwide Mutual Insurance Company	... NO.....	.....
. 0140	Nationwide	42579	42-1201931				ALLIED Property and Casualty Insurance Company	.. IA.....	IA.....	Nationwide Mutual Insurance Company	Ownership.....	100.000	Nationwide Mutual Insurance Company	... NO.....	.....
. 0140	Nationwide	19100	42-1527863				ALLIED Texas Agency, Inc.	.. TX.....	IA.....	AMCO Insurance Company	Ownership.....	100.000	Nationwide Mutual Insurance Company	... NO.....	.....
. 0140	Nationwide		42-6054959				AMCO Insurance Company	.. IA.....	IA.....	Nationwide Mutual Insurance Company	Ownership.....	100.000	Nationwide Mutual Insurance Company	... NO.....	.....
. 0140	Nationwide		59-1031596				American Marine Underwriters, Inc.	.. FL.....	NIA.....	Nationwide Mutual Insurance Company	Ownership.....	100.000	Nationwide Mutual Insurance Company	... NO.....	.....
. 0140	Nationwide		81-4532504				American Tax Credit Fund 2017-A, LLC	.. OH.....	OTH.....	Nationwide Life Insurance Company	Other.....	0.010	Nationwide Mutual Insurance Company	... NO.....	1 .....
. 0140	Nationwide		82-2001573				American Tax Credit Fund 2017-B, LLC	.. OH.....	OTH.....	Nationwide Life Insurance Company	Other.....	0.010	Nationwide Mutual Insurance Company	... NO.....	1 .....
. 0140	Nationwide		82-4591498				American Tax Credit Fund 2018-A, LLC	.. OH.....	OTH.....	Nationwide Life Insurance Company	Other.....	0.010	Nationwide Mutual Insurance Company	... NO.....	1 .....
. 0140	Nationwide		83-0606592				American Tax Credit Fund 2018-B, LLC	.. OH.....	OTH.....	Nationwide Life Insurance Company	Other.....	12.990	Nationwide Mutual Insurance Company	... NO.....	1 .....
. 0140	Nationwide		83-0620232				American Tax Credit Fund 2018-C, LLC	.. OH.....	OTH.....	Nationwide Life Insurance Company	Other.....	0.010	Nationwide Mutual Insurance Company	... NO.....	1 .....
. 0140	Nationwide		83-3900932				American Tax Credit Fund 2019-A, LLC	.. OH.....	OTH.....	Nationwide Life Insurance Company	Other.....	0.010	Nationwide Mutual Insurance Company	... NO.....	1 .....
. 0140	Nationwide		83-3953721				American Tax Credit Fund 2019-B, LLC	.. OH.....	OTH.....	Nationwide Life Insurance Company	Other.....	0.010	Nationwide Mutual Insurance Company	... NO.....	1 .....
. 0140	Nationwide		84-3443067				American Tax Credit Fund 2020-A, LLC	.. OH.....	OTH.....	Nationwide Life Insurance Company	Other.....	0.010	Nationwide Mutual Insurance Company	... NO.....	1 .....
. 0140	Nationwide		85-2359702				American Tax Credit Fund 2020-B, LLC	.. OH.....	OTH.....	Nationwide Life Insurance Company	Other.....	0.010	Nationwide Mutual Insurance Company	... NO.....	1 .....
. 0140	Nationwide		85-2649655				American Tax Credit Fund 2021-A, LLC (fka	.. OH.....	OTH.....	Nationwide Life Insurance Company	Other.....	0.010	Nationwide Mutual Insurance Company	... NO.....	1 .....
. 0140	Nationwide		86-2502912				American Tax Credit Fund 2020-C, LLC)	.. OH.....	OTH.....	Nationwide Life Insurance Company	Other.....	0.010	Nationwide Mutual Insurance Company	... NO.....	1 .....
. 0140	Nationwide		87-1349942				American Tax Credit Fund 2021-B, LLC	.. OH.....	OTH.....	Nationwide Life Insurance Company	Other.....	0.010	Nationwide Mutual Insurance Company	... NO.....	1 .....
. 0140	Nationwide		87-4753681				American Tax Credit Fund 2021-C, LLC	.. OH.....	OTH.....	Nationwide Life Insurance Company	Other.....	0.010	Nationwide Mutual Insurance Company	... NO.....	1 .....
. 0140	Nationwide		87-4753681				American Tax Credit Fund 2023-B, LLC (fka	.. OH.....	OTH.....	Nationwide Life Insurance Company	Other.....	0.010	Nationwide Mutual Insurance Company	... NO.....	1 .....
. 0140	Nationwide		87-4771309				American Tax Credit Fund 2022-A, LLC)	.. OH.....	OTH.....	Nationwide Life Insurance Company	Other.....	0.010	Nationwide Mutual Insurance Company	... NO.....	1 .....
. 0140	Nationwide		92-1389304				American Tax Credit Fund 2022-B, LLC)	.. OH.....	OTH.....	Nationwide Life Insurance Company	Other.....	0.010	Nationwide Mutual Insurance Company	... NO.....	1 .....
. 0140	Nationwide		99-0672884				American Tax Credit Fund 2023-A, LLC	.. OH.....	OTH.....	Nationwide Life Insurance Company	Other.....	0.010	Nationwide Mutual Insurance Company	... NO.....	1 .....
. 0140	Nationwide		99-0698188				American Tax Credit Fund 2024-A, LLC	.. OH.....	NIA.....	Nationwide Life Insurance Company	Ownership.....	100.000	Nationwide Mutual Insurance Company	... NO.....	.....
. 0140	Nationwide		31-1580283				American Tax Credit Fund 2024-B, LLC	.. OH.....	NIA.....	Nationwide Life Insurance Company	Ownership.....	100.000	Nationwide Mutual Insurance Company	... NO.....	.....
. 0140	Nationwide		90-0280710				Arena District CA I, LLC	.. OH.....	NIA.....	NWD Investments, LLC	Ownership.....	100.000	Nationwide Mutual Insurance Company	... NO.....	.....
. 0140	Nationwide		31-1486309				Arena District Owners Association	.. OH.....	OTH.....	Other non-Nationwide	Other.....		Other non-Nationwide	... NO.....	2 .....
. 0140	Nationwide		31-1486309				Cavasson Hotel, LLC	.. OH.....	NIA.....	Cavasson Hotel Holdings, LLC	Ownership.....	100.000	Nationwide Mutual Insurance Company	... NO.....	.....
. 0140	Nationwide		31-1486309				Cavasson Hotel Holdings, LLC	.. OH.....	NIA.....	NRI Cavasson, LLC	Ownership.....	100.000	Nationwide Mutual Insurance Company	... NO.....	.....
. 0140	Nationwide		20-1618232				CNRI-Cannonsport Condominium, LLC	.. OH.....	NIA.....	CNRI-Cannonsport, LLC	Ownership.....	100.000	Nationwide Mutual Insurance Company	... NO.....	.....
. 0140	Nationwide		20-1618232				CNRI-Cannonsport, LLC	.. OH.....	NIA.....	Nationwide Realty Investors, Ltd.	Ownership.....	100.000	Nationwide Mutual Insurance Company	... NO.....	.....
. 0140	Nationwide	29262	74-1061659				Colonial County Mutual Insurance Company	.. TX.....	IA.....	Other non-Nationwide	Other.....		Other non-Nationwide	... NO.....	2 .....
. 0140	Nationwide	18961	68-0068866				Crestbrook Insurance Company	.. OH.....	IA.....	Nationwide Mutual Insurance Company	Ownership.....	100.000	Nationwide Mutual Insurance Company	... NO.....	.....
. 0140	Nationwide		31-1486309				Crewville, Ltd.	.. OH.....	NIA.....	Nationwide Realty Investors, Ltd.	Ownership.....	100.000	Nationwide Mutual Insurance Company	... NO.....	.....
. 0140	Nationwide		84-5052608				Danforth, LLC	.. OH.....	NIA.....	Nationwide Mutual Insurance Company	Ownership.....	100.000	Nationwide Mutual Insurance Company	... NO.....	.....

STATEMENT AS OF JUNE 30, 2024 OF THE NATIONWIDE ASSURANCE COMPANY

SCHEDULE Y  
PART 1A - DETAIL OF INSURANCE HOLDING COMPANY SYSTEM

1	2	3	4	5	6	7	8	9	10	11	12	13	14	15	16
Group Code	Group Name	NAIC Company Code	ID Number	Federal RSSD	CIK	Name of Securities Exchange if Publicly Traded (U.S. or International)	Names of Parent, Subsidiaries Or Affiliates	Domi-ciliary Location	Relation-ship to Reporting Entity	Directly Controlled by (Name of Entity/Person)	Type of Control (Ownership, Board, Management, Attorney-in-Fact, Influence, Other)	If Control is Ownership Provide Percen-tage	Ultimate Controlling Entity(ies)/Person(s)	Is an SCA Filing Re-quired? (Yes/No)	*
. 0140 ...	Nationwide .....	.... 42587 ....	42-1207150 ..	.....	.....	.....	Depositors Insurance Company .....	.. IA.....	.. IA.....	Nationwide Mutual Insurance Company .....	Ownership.....	100.000 ...	Nationwide Mutual Insurance Company ...	... NO.....	.....
.....	.....	.....	46-4104813 ..	.....	.....	.....	Discover Affordable Housing Investment Fund I LLC .....	.. OH.....	.. OTH.....	Other non-Nationwide .....	Other.....	.. 0.000 ...	Other non-Nationwide .....	... NO.....	.... 2 ....
. 0140 ...	Nationwide .....	.....	33-0096671 ..	.....	.....	.....	DVM Insurance Agency .....	.. CA.....	.. NIA.....	Veterinary Pet Insurance Company .....	Ownership.....	100.000 ...	Nationwide Mutual Insurance Company ...	... NO.....	.....
. 0140 ...	Nationwide .....	.... 15821 ....	47-4523959 ..	.....	.....	.....	Eagle Captive Reinsurance, LLC .....	.. OH.....	.. IA.....	Nationwide Life Insurance Company .....	Ownership.....	100.000 ...	Nationwide Mutual Insurance Company ...	... NO.....	.....
. 0140 ...	Nationwide .....	.....	26-3260559 ..	.....	.....	.....	E-Risk Services, L.L.C. ....	.. DE.....	.. NIA.....	Nationwide Mutual Insurance Company .....	Ownership.....	100.000 ...	Nationwide Mutual Insurance Company ...	... NO.....	.....
. 0140 ...	Nationwide .....	.... 22209 ....	75-6013587 ..	.....	.....	.....	Freedom Specialty Insurance Company .....	.. OH.....	.. IA.....	Scottsdale Insurance Company .....	Ownership.....	100.000 ...	Nationwide Mutual Insurance Company ...	... NO.....	.....
. 0140 ...	Nationwide .....	.....	20-4939866 ..	.....	.....	.....	Grandview Yard Hotel Holdings, LLC .....	.. OH.....	.. NIA.....	NRI Equity Land Investments, LLC .....	Ownership.....	100.000 ...	Nationwide Mutual Insurance Company ...	... NO.....	.....
. 0140 ...	Nationwide .....	.....	20-4939866 ..	.....	.....	.....	Grandview Yard Hotel, LLC .....	.. OH.....	.. NIA.....	Grandview Yard Hotel Holdings, LLC .....	Ownership.....	100.000 ...	Nationwide Mutual Insurance Company ...	... NO.....	.....
. 0140 ...	Nationwide .....	.....	20-4939866 ..	.....	.....	.....	GVY Residential, LLC .....	.. OH.....	.. NIA.....	NRI Equity Land Investments, LLC .....	Ownership.....	100.000 ...	Nationwide Mutual Insurance Company ...	... NO.....	.....
. 0140 ...	Nationwide .....	.... 23582 ....	41-0417250 ..	.....	.....	.....	Harleysville Insurance Company .....	.. OH.....	.. IA.....	Nationwide Mutual Insurance Company .....	Ownership.....	100.000 ...	Nationwide Mutual Insurance Company ...	... NO.....	.....
.....	.....	.....	.....	.....	.....	.....	Harleysville Insurance Company of New Jersey .....	.....	.....	.....	.....	.....	.....	.....	.....
. 0140 ...	Nationwide .....	.... 42900 ....	23-2253669 ..	.....	.....	.....	.....	.. NJ.....	.. IA.....	Nationwide Mutual Insurance Company .....	Ownership.....	100.000 ...	Nationwide Mutual Insurance Company ...	... NO.....	.....
. 0140 ...	Nationwide .....	.... 10674 ....	23-2864924 ..	.....	.....	.....	Harleysville Insurance Company of New York ..	.. OH.....	.. IA.....	Nationwide Mutual Insurance Company .....	Ownership.....	100.000 ...	Nationwide Mutual Insurance Company ...	... NO.....	.....
. 0140 ...	Nationwide .....	.... 35696 ....	23-2384978 ..	.....	.....	.....	Harleysville Preferred Insurance Company ...	.. OH.....	.. IA.....	Nationwide Mutual Insurance Company .....	Ownership.....	100.000 ...	Nationwide Mutual Insurance Company ...	... NO.....	.....
. 0140 ...	Nationwide .....	.... 26182 ....	04-1989660 ..	.....	.....	.....	Harleysville Worcester Insurance Company .....	.. OH.....	.. IA.....	Nationwide Mutual Insurance Company .....	Ownership.....	100.000 ...	Nationwide Mutual Insurance Company ...	... NO.....	.....
. 0140 ...	Nationwide .....	.... 64017 ....	75-0300900 ..	.....	.....	.....	Jefferson National Life Insurance Company ..	.. TX.....	.. IA.....	Nationwide Life Insurance Company .....	Ownership.....	100.000 ...	Nationwide Mutual Insurance Company ...	... NO.....	.....
.....	.....	.....	.....	.....	.....	.....	Jefferson National Life Insurance Company of New York .....	.. NY.....	.. IA.....	Jefferson National Life Insurance Company ..	Ownership.....	100.000 ...	Nationwide Mutual Insurance Company ...	... NO.....	.....
. 0140 ...	Nationwide .....	.... 15727 ....	47-1180302 ..	.....	.....	.....	Jerome Village Company, LLC .....	.. OH.....	.. NIA.....	Nationwide Realty Investors, Ltd. ....	Ownership.....	100.000 ...	Nationwide Mutual Insurance Company ...	... NO.....	.....
. 0140 ...	Nationwide .....	.....	31-1486309 ..	.....	.....	.....	Lone Star General Agency, Inc. ....	.. TX.....	.. IA.....	Nationwide Mutual Insurance Company .....	Ownership.....	100.000 ...	Nationwide Mutual Insurance Company ...	... NO.....	.....
. 0140 ...	Nationwide .....	.... 11991 ....	38-0865250 ..	.....	.....	.....	National Casualty Company .....	.. OH.....	.. IA.....	Nationwide Mutual Insurance Company .....	Ownership.....	100.000 ...	Nationwide Mutual Insurance Company ...	... NO.....	.....
. 0140 ...	Nationwide .....	.....	.....	.....	.....	.....	National Casualty Company of America, Ltd. .	.. GBR.....	.. IA.....	National Casualty Company .....	Ownership.....	100.000 ...	Nationwide Mutual Insurance Company ...	... NO.....	.....
. 0140 ...	Nationwide .....	.....	42-1154244 ..	.....	.....	.....	Nationwide Advantage Mortgage Company .....	.. IA.....	.. NIA.....	AMCO Insurance Company .....	Ownership.....	..87.300 ...	Nationwide Mutual Insurance Company ...	... YES.....	.....
.....	.....	.....	.....	.....	.....	.....	.....	.....	.....	ALLIED Property & Casualty Insurance Company .....	Ownership.....	.. 8.470 ...	Nationwide Mutual Insurance Company ...	... YES.....	.....
. 0140 ...	Nationwide .....	.....	42-1154244 ..	.....	.....	.....	Nationwide Advantage Mortgage Company .....	.. IA.....	.. NIA.....	Depositors Insurance Company .....	Ownership.....	.. 4.230 ...	Nationwide Mutual Insurance Company ...	... YES.....	.....
. 0140 ...	Nationwide .....	.... 26093 ....	48-0470690 ..	.....	.....	.....	Nationwide Affinity Insurance Company of America .....	.. OH.....	.. IA.....	Nationwide Mutual Insurance Company .....	Ownership.....	100.000 ...	Nationwide Mutual Insurance Company ...	... NO.....	.....
.....	.....	.....	.....	.....	.....	.....	Nationwide Agent Risk Purchasing Group, Inc. (fka On Your Side Nationwide Insurance Agency, Inc.) .....	.. OH.....	.. NIA.....	Nationwide Mutual Insurance Company .....	Ownership.....	100.000 ...	Nationwide Mutual Insurance Company ...	... NO.....	.....
. 0140 ...	Nationwide .....	.... 28223 ....	42-1015537 ..	.....	.....	.....	Nationwide Agribusiness Insurance Company ...	.. IA.....	.. IA.....	Nationwide Mutual Insurance Company .....	Ownership.....	100.000 ...	Nationwide Mutual Insurance Company ...	... NO.....	.....
. 0140 ...	Nationwide .....	.....	31-1578869 ..	.....	.....	.....	Nationwide Arena, LLC .....	.. OH.....	.. NIA.....	NRI Arena, LLC .....	Ownership.....	..90.000 ...	Nationwide Mutual Insurance Company ...	... NO.....	.....
. 0140 ...	Nationwide .....	.....	20-8670712 ..	.....	.....	.....	Nationwide Asset Management, LLC .....	.. OH.....	.. NIA.....	Nationwide Mutual Insurance Company .....	Ownership.....	100.000 ...	Nationwide Mutual Insurance Company ...	... NO.....	.....
. 0140 ...	Nationwide .....	.... 10723 ....	95-0639970 ..	.....	.....	.....	Nationwide Assurance Company .....	.. OH.....	.. RE.....	Nationwide Mutual Insurance Company .....	Ownership.....	100.000 ...	Nationwide Mutual Insurance Company ...	... NO.....	.....
. 0140 ...	Nationwide .....	.....	31-1036287 ..	.....	.....	.....	Nationwide Cash Management Company .....	.. OH.....	.. NIA.....	Nationwide Mutual Insurance Company .....	Ownership.....	100.000 ...	Nationwide Mutual Insurance Company ...	... NO.....	.....
. 0140 ...	Nationwide .....	.....	31-4416546 ..	.....	.....	.....	Nationwide Corporation .....	.. OH.....	.. NIA.....	Nationwide Mutual Insurance Company .....	Ownership.....	100.000 ...	Nationwide Mutual Insurance Company ...	... YES.....	.....
. 0140 ...	Nationwide .....	.....	31-1667326 ..	.....	.....	.....	Nationwide Financial Assignment Company .....	.. OH.....	.. NIA.....	Nationwide Life Insurance Company .....	Ownership.....	100.000 ...	Nationwide Mutual Insurance Company ...	... NO.....	.....
. 0140 ...	Nationwide .....	.....	23-2412039 ..	.....	.....	.....	Nationwide Financial General Agency, Inc. ....	.. PA.....	.. NIA.....	NFS Distributors, Inc. ....	Ownership.....	100.000 ...	Nationwide Mutual Insurance Company ...	... NO.....	.....
. 0140 ...	Nationwide .....	.....	31-6554353 ..	.....	.....	.....	Nationwide Financial Services Capital Trust ..	.. DE.....	.. NIA.....	Nationwide Financial Services, Inc. ....	Ownership.....	100.000 ...	Nationwide Mutual Insurance Company ...	... NO.....	.....
. 0140 ...	Nationwide .....	.....	31-1486870 ..	.....	.....	.....	Nationwide Financial Services, Inc. ....	.. DE.....	.. NIA.....	Nationwide Corporation .....	Ownership.....	100.000 ...	Nationwide Mutual Insurance Company ...	... NO.....	.....
. 0140 ...	Nationwide .....	.....	52-6969857 ..	.....	.....	.....	Nationwide Fund Advisors .....	.. DE.....	.. NIA.....	Nationwide Financial Services, Inc. ....	Ownership.....	100.000 ...	Nationwide Mutual Insurance Company ...	... NO.....	.....
. 0140 ...	Nationwide .....	.....	31-1748721 ..	.....	.....	.....	Nationwide Fund Distributors LLC .....	.. DE.....	.. NIA.....	NFS Distributors, Inc. ....	Ownership.....	100.000 ...	Nationwide Mutual Insurance Company ...	... NO.....	.....
. 0140 ...	Nationwide .....	.....	31-0900518 ..	.....	.....	.....	Nationwide Fund Management LLC .....	.. DE.....	.. NIA.....	NFS Distributors, Inc. ....	Ownership.....	100.000 ...	Nationwide Mutual Insurance Company ...	... NO.....	.....
. 0140 ...	Nationwide .....	.... 23760 ....	31-4425763 ..	.....	.....	.....	Nationwide General Insurance Company .....	.. OH.....	.. IA.....	Nationwide Mutual Insurance Company .....	Ownership.....	100.000 ...	Nationwide Mutual Insurance Company ...	... NO.....	.....
. 0140 ...	Nationwide .....	.... 10070 ....	31-1399201 ..	.....	.....	.....	Nationwide Indemnity Company .....	.. OH.....	.. IA.....	Nationwide Mutual Insurance Company .....	Ownership.....	100.000 ...	Nationwide Mutual Insurance Company ...	... NO.....	.....
. 0140 ...	Nationwide .....	.... 25453 ....	95-2130882 ..	.....	.....	.....	Nationwide Insurance Company of America ..	.. OH.....	.. IA.....	Nationwide Mutual Insurance Company .....	Ownership.....	100.000 ...	Nationwide Mutual Insurance Company ...	... NO.....	.....
. 0140 ...	Nationwide .....	.... 10948 ....	31-1613686 ..	.....	.....	.....	Nationwide Insurance Company of Florida .....	.. OH.....	.. IA.....	Nationwide Mutual Insurance Company .....	Ownership.....	100.000 ...	Nationwide Mutual Insurance Company ...	... NO.....	.....
. 0140 ...	Nationwide .....	.....	41-2206199 ..	.....	.....	.....	Nationwide Investment Advisors, LLC .....	.. OH.....	.. NIA.....	Nationwide Life Insurance Company .....	Ownership.....	100.000 ...	Nationwide Mutual Insurance Company ...	... NO.....	.....

STATEMENT AS OF JUNE 30, 2024 OF THE NATIONWIDE ASSURANCE COMPANY

SCHEDULE Y  
PART 1A - DETAIL OF INSURANCE HOLDING COMPANY SYSTEM

1	2	3	4	5	6	7	8	9	10	11	12 Type of Control (Ownership, Board, Management, Attorney-in-Fact, Influence, Other)	13 If Control is Owner- ship Provide Percen- tage	14	15	16
Group Code	Group Name	NAIC Company Code	ID Number	Federal RSSD	CIK	Name of Securities Exchange if Publicly Traded (U.S. or International)	Names of Parent, Subsidiaries Or Affiliates	Domi- ciliary Loca- tion	Rela- tion- ship to Reporting Entity	Directly Controlled by (Name of Entity/Person)			Ultimate Controlling Entity(ies)/Person(s)	Is an SCA Filing Re- quired? (Yes/No)	*
. 0140 ...	Nationwide .....	.....	73-0988442 ..	.....	.....	.....	Nationwide Investment Services Corporation .. Nationwide Life and Annuity Insurance Company	.. OK.....	..... NIA.....	Nationwide Life Insurance Company .....	Ownership.....	100.000 ...	Nationwide Mutual Insurance Company ...	... YES.....	.....
. 0140 ...	Nationwide .....	92657 ..	31-1000740 ..	.....	.....	.....	.....	.. OH.....	..... IA.....	Nationwide Life Insurance Company .....	Ownership.....	100.000 ...	Nationwide Mutual Insurance Company ...	... NO.....	.....
. 0140 ...	Nationwide .....	66869 ..	31-4156830 ..	.....	.....	.....	.....	.. OH.....	..... IA.....	Nationwide Financial Services, Inc. ....	Ownership.....	100.000 ...	Nationwide Mutual Insurance Company ...	... NO.....	.....
. 0140 ...	Nationwide .....	.....	45-0469525 ..	.....	.....	.....	.....	.. OH.....	..... OTH.....	Nationwide Life Insurance Company .....	Other.....	0.010 ...	Nationwide Mutual Insurance Company ...	... NO.....	... 1 .....
. 0140 ...	Nationwide .....	.....	54-2113175 ..	.....	.....	.....	.....	.. OH.....	..... OTH.....	Nationwide Life Insurance Company .....	Other.....	0.010 ...	Nationwide Mutual Insurance Company ...	... NO.....	... 1 .....
. 0140 ...	Nationwide .....	.....	58-2672725 ..	.....	.....	.....	.....	.. OH.....	..... OTH.....	Nationwide Life Insurance Company .....	Other.....	0.010 ...	Nationwide Mutual Insurance Company ...	... NO.....	... 1 .....
. 0140 ...	Nationwide .....	.....	20-0382144 ..	.....	.....	.....	.....	.. OH.....	..... OTH.....	Nationwide Life Insurance Company .....	Other.....	0.010 ...	Nationwide Mutual Insurance Company ...	... NO.....	... 1 .....
. 0140 ...	Nationwide .....	.....	20-1918935 ..	.....	.....	.....	.....	.. OH.....	..... OTH.....	Nationwide Life Insurance Company .....	Other.....	0.010 ...	Nationwide Mutual Insurance Company ...	... NO.....	... 1 .....
. 0140 ...	Nationwide .....	.....	20-2303694 ..	.....	.....	.....	.....	.. OH.....	..... OTH.....	Nationwide Life Insurance Company .....	Other.....	0.010 ...	Nationwide Mutual Insurance Company ...	... NO.....	... 1 .....
. 0140 ...	Nationwide .....	.....	20-2303602 ..	.....	.....	.....	.....	.. OH.....	..... OTH.....	Nationwide Life Insurance Company .....	Other.....	0.010 ...	Nationwide Mutual Insurance Company ...	... NO.....	... 1 .....
. 0140 ...	Nationwide .....	.....	27-1362364 ..	.....	.....	.....	.....	.. OH.....	..... OTH.....	Nationwide Life Insurance Company .....	Other.....	0.010 ...	Nationwide Mutual Insurance Company ...	... NO.....	... 1 .....
. 0140 ...	Nationwide .....	.....	42-1373380 ..	.....	.....	.....	.....	.. IA.....	..... NIA.....	Nationwide Mutual Insurance Company .....	Ownership.....	100.000 ...	Nationwide Mutual Insurance Company ...	... NO.....	.....
. 0140 ...	Nationwide .....	.....	75-3191025 ..	.....	.....	.....	.....	.. OH.....	..... NIA.....	Nationwide Mutual Insurance Company .....	Ownership.....	100.000 ...	Nationwide Mutual Insurance Company ...	... NO.....	.....
. 0140 ...	Nationwide .....	23787 ..	31-4177100 ..	.....	.....	.....	.....	.. OH.....	..... UDP.....	Other non-Nationwide .....	Ownership.....	.....	Other non-Nationwide .....	... NO.....	.....
. 0140 ...	Nationwide .....	.....	34-2012765 ..	.....	.....	.....	.....	.. OH.....	..... NIA.....	Nationwide Mutual Insurance Company .....	Ownership.....	100.000 ...	Nationwide Mutual Insurance Company ...	... NO.....	.....
. 0140 ...	Nationwide .....	37877 ..	31-0970750 ..	.....	.....	.....	.....	.. OH.....	..... IA.....	Nationwide Mutual Insurance Company .....	Ownership.....	100.000 ...	Nationwide Mutual Insurance Company ...	... NO.....	.....
. 0140 ...	Nationwide .....	.....	31-1486309 ..	.....	.....	.....	.....	.. OH.....	..... NIA.....	Nationwide Mutual Insurance Company .....	Ownership.....	97.120 ...	Nationwide Mutual Insurance Company ...	... NO.....	.....
. 0140 ...	Nationwide .....	.....	31-1486309 ..	.....	.....	.....	.....	.. OH.....	..... NIA.....	Nationwide Indemnity Company .....	Ownership.....	2.880 ...	Nationwide Mutual Insurance Company ...	... NO.....	.....
. 0140 ...	Nationwide .....	.....	31-1486309 ..	.....	.....	.....	.....	.. OH.....	..... NIA.....	Nationwide Realty Investors, Ltd. ....	Ownership.....	100.000 ...	Nationwide Mutual Insurance Company ...	... NO.....	.....
. 0140 ...	Nationwide .....	.....	.....	.....	.....	.....	.....	.. OH.....	..... NIA.....	Nationwide Realty Services, Ltd. ....	Ownership.....	100.000 ...	Nationwide Mutual Insurance Company ...	... NO.....	.....
. 0140 ...	Nationwide .....	.....	73-0948330 ..	.....	.....	.....	.....	.. DE.....	..... NIA.....	NFS Distributors, Inc. ....	Ownership.....	100.000 ...	Nationwide Mutual Insurance Company ...	... NO.....	.....
. 0140 ...	Nationwide .....	.....	83-2250056 ..	.....	.....	.....	.....	.. OH.....	..... NIA.....	Nationwide Life and Annuity Insurance Company .....	Ownership.....	100.000 ...	Nationwide Mutual Insurance Company ...	... NO.....	.....
. 0140 ...	Nationwide .....	.....	36-2434406 ..	.....	.....	.....	.....	.. OH.....	..... NIA.....	NFS Distributors, Inc. ....	Ownership.....	100.000 ...	Nationwide Mutual Insurance Company ...	... NO.....	.....
. 0140 ...	Nationwide .....	.....	46-1952215 ..	.....	.....	.....	.....	.. OH.....	..... OTH.....	Nationwide Life Insurance Company .....	Other.....	0.010 ...	Nationwide Mutual Insurance Company ...	... NO.....	... 1 .....
. 0140 ...	Nationwide .....	.....	46-1971926 ..	.....	.....	.....	.....	.. OH.....	..... OTH.....	Nationwide Life Insurance Company .....	Other.....	0.010 ...	Nationwide Mutual Insurance Company ...	... NO.....	... 1 .....
. 0140 ...	Nationwide .....	.....	31-1592130 ..	2729677 ..	.....	.....	.....	.. US.....	..... NIA.....	Nationwide Financial Services, Inc. ....	Ownership.....	100.000 ...	Nationwide Mutual Insurance Company ...	... NO.....	.....
. 0140 ...	Nationwide .....	.....	20-5976272 ..	.....	.....	.....	.....	.. OH.....	..... NIA.....	Nationwide Mutual Insurance Company .....	Ownership.....	100.000 ...	Nationwide Mutual Insurance Company ...	... NO.....	.....
. 0140 ...	Nationwide .....	.....	31-0871532 ..	.....	.....	.....	.....	.. OH.....	..... IA.....	Nationwide Mutual Insurance Company .....	Ownership.....	100.000 ...	Nationwide Mutual Insurance Company ...	... NO.....	.....
. 0140 ...	Nationwide .....	.....	85-4193218 ..	.....	.....	.....	.....	.. OH.....	..... NIA.....	Nationwide Mutual Insurance Company .....	Ownership.....	100.000 ...	Nationwide Mutual Insurance Company ...	... NO.....	.....
. 0140 ...	Nationwide .....	.....	11-3651828 ..	.....	.....	.....	.....	.. DE.....	..... NIA.....	Nationwide Realty Investors, Ltd. ....	Ownership.....	95.000 ...	Nationwide Mutual Insurance Company ...	... NO.....	.....
. 0140 ...	Nationwide .....	.....	31-1630871 ..	.....	.....	.....	.....	.. DE.....	..... NIA.....	Nationwide Financial Services, Inc. .... Nationwide Life and Annuity Insurance Company .....	Ownership.....	100.000 ...	Nationwide Mutual Insurance Company ...	... NO.....	.....
. 0140 ...	Nationwide .....	.....	93-4557312 ..	.....	.....	.....	.....	.. OH.....	..... NIA.....	NLAIC REO Holdings, LLC .....	Ownership.....	100.000 ...	Nationwide Mutual Insurance Company ...	... NO.....	.....
. 0140 ...	Nationwide .....	.....	82-5195340 ..	.....	.....	.....	.....	.. OH.....	..... NIA.....	NLIC REO Holdings, LLC .....	Ownership.....	100.000 ...	Nationwide Mutual Insurance Company ...	... NO.....	.....
. 0140 ...	Nationwide .....	.....	82-5194959 ..	.....	.....	.....	.....	.. OH.....	..... NIA.....	NMIC REO Holdings, LLC .....	Ownership.....	100.000 ...	Nationwide Mutual Insurance Company ...	... NO.....	.....
. 0140 ...	Nationwide .....	.....	46-3762545 ..	.....	.....	.....	.....	.. OH.....	..... NIA.....	NNV8, LLC .....	Ownership.....	100.000 ...	Nationwide Mutual Insurance Company ...	... NO.....	.....
. 0140 ...	Nationwide .....	.....	20-4939866 ..	.....	.....	.....	.....	.. OH.....	..... NIA.....	North of Third, LLC .....	Ownership.....	100.000 ...	Nationwide Mutual Insurance Company ...	... NO.....	.....
. 0140 ...	Nationwide .....	.....	31-1486309 ..	.....	.....	.....	.....	.. OH.....	..... NIA.....	NRI Arena, LLC .....	Ownership.....	100.000 ...	Nationwide Mutual Insurance Company ...	... NO.....	.....
. 0140 ...	Nationwide .....	.....	31-1486309 ..	.....	.....	.....	.....	.. OH.....	..... NIA.....	NRI Brookside, LLC .....	Ownership.....	100.000 ...	Nationwide Mutual Insurance Company ...	... NO.....	.....

STATEMENT AS OF JUNE 30, 2024 OF THE NATIONWIDE ASSURANCE COMPANY

SCHEDULE Y  
PART 1A - DETAIL OF INSURANCE HOLDING COMPANY SYSTEM

1	2	3	4	5	6	7	8	9	10	11	12 Type of Control (Ownership, Board, Management, Attorney-in-Fact, Influence, Other)	13 If Control is Owner- ship Provide Percent- age	14 Ultimate Controlling Entity(ies)/Person(s)	15 Is an SCA Filing Re- quired? (Yes/No)	16 *
Group Code	Group Name	NAIC Company Code	ID Number	Federal RSSD	CIK	Name of Securities Exchange if Publicly Traded (U.S. or International)	Names of Parent, Subsidiaries Or Affiliates	Domi- ciliary Loca- tion	Relation- ship to Reporting Entity	Directly Controlled by (Name of Entity/Person)					
.0140	Nationwide		31-1486309				NRI Builders, LLC	..OH....	NIA.....	Nationwide Realty Investors, Ltd.	Ownership.....	100.000	Nationwide Mutual Insurance Company	...NO.....	
.0140	Nationwide		31-1486309				NRI Cavasson, LLC	..OH....	NIA.....	Nationwide Realty Investors, Ltd.	Ownership.....	100.000	Nationwide Mutual Insurance Company	...NO.....	
.0140	Nationwide		31-1486309				NRI Corporate Housing, LLC	..OH....	NIA.....	Nationwide Realty Investors, Ltd.	Ownership.....	100.000	Nationwide Mutual Insurance Company	...NO.....	
.0140	Nationwide		31-1486309				NRI Cramer Creek, LLC	..OH....	NIA.....	Nationwide Realty Investors, Ltd.	Ownership.....	100.000	Nationwide Mutual Insurance Company	...NO.....	
.0140	Nationwide		20-4939866				NRI Equity Land Investments, LLC	..OH....	NIA.....	Nationwide Realty Investors, Ltd.	Ownership.....	80.000	Nationwide Mutual Insurance Company	...NO.....	
.0140	Nationwide		26-0212217				NRI Equity Tampa, LLC	..OH....	NIA.....	Nationwide Realty Investors, Ltd.	Ownership.....	100.000	Nationwide Mutual Insurance Company	...NO.....	
.0140	Nationwide		31-1486309				NRI Office Ventures, Ltd	..OH....	NIA.....	Nationwide Realty Investors, Ltd.	Ownership.....	100.000	Nationwide Mutual Insurance Company	...NO.....	
.0140	Nationwide		31-1580283				NRI Telecom, LLC	..OH....	NIA.....	NID Investments, LLC	Ownership.....	100.000	Nationwide Mutual Insurance Company	...NO.....	
.0140	Nationwide		31-1486309				NRI-Rivulon, LLC	..OH....	NIA.....	Nationwide Realty Investors, Ltd.	Ownership.....	100.000	Nationwide Mutual Insurance Company	...NO.....	
.0140	Nationwide		90-0729552				NTCIF-2011, LLC	..OH....	NIA.....	Nationwide Mutual Insurance Company	Ownership.....	100.000	Nationwide Mutual Insurance Company	...NO.....	
.0140	Nationwide		27-4700627				NTCP 2011-A, LLC	..OH....	OTH.....	Nationwide Life Insurance Company	Other.....	0.010	Nationwide Mutual Insurance Company	...NO.....	1
.0140	Nationwide		46-0741029				NTCP 2012-A, LLC	..OH....	OTH.....	Nationwide Life Insurance Company	Other.....	0.010	Nationwide Mutual Insurance Company	...NO.....	1
.0140	Nationwide		46-3309896				NTCP 2013-C, LLC	..OH....	OTH.....	Nationwide Life Insurance Company	Other.....	0.010	Nationwide Mutual Insurance Company	...NO.....	1
.0140	Nationwide		46-4111078				NTCP 2014-A, LLC	..OH....	OTH.....	Nationwide Life Insurance Company	Other.....	0.010	Nationwide Mutual Insurance Company	...NO.....	1
.0140	Nationwide		47-1404116				NTCP 2014-B, LLC	..OH....	OTH.....	Nationwide Life Insurance Company	Other.....	0.010	Nationwide Mutual Insurance Company	...NO.....	1
.0140	Nationwide		47-1413242				NTCP 2014-C, LLC	..OH....	NIA.....	Nationwide Life Insurance Company	Ownership.....	100.000	Nationwide Mutual Insurance Company	...NO.....	
.0140	Nationwide		47-3908345				NTCP 2015-A, LLC	..OH....	OTH.....	Nationwide Life Insurance Company	Other.....	0.010	Nationwide Mutual Insurance Company	...NO.....	1
.0140	Nationwide		47-4148470				NTCP 2015-B, LLC	..OH....	OTH.....	Nationwide Life Insurance Company	Other.....	0.010	Nationwide Mutual Insurance Company	...NO.....	1
.0140	Nationwide		81-3836925				NTCP 2016-A, LLC	..OH....	OTH.....	Nationwide Life Insurance Company	Other.....	0.010	Nationwide Mutual Insurance Company	...NO.....	1
.0140	Nationwide		82-2015065				NTCP 2017-A, LLC	..OH....	NIA.....	Nationwide Life Insurance Company	Ownership.....	100.000	Nationwide Mutual Insurance Company	...NO.....	
.0140	Nationwide		84-1969518				NW Fyrebyrd, LLC	..OH....	NIA.....	NNOV8, LLC	Ownership.....	100.000	Nationwide Mutual Insurance Company	...NO.....	
.0140	Nationwide		85-3363961				NW Next, LLC	..OH....	NIA.....	NNOV8, LLC	Ownership.....	100.000	Nationwide Mutual Insurance Company	...NO.....	
.0140	Nationwide		81-0936428				NW Private Debt, LLC	..OH....	NIA.....	Nationwide Mutual Insurance Company	Ownership.....	100.000	Nationwide Mutual Insurance Company	...NO.....	
.0140	Nationwide		26-1903919				NW REI, LLC	..DE....	NIA.....	Nationwide Mutual Insurance Company	Ownership.....	100.000	Nationwide Mutual Insurance Company	...NO.....	
.0140	Nationwide		92-1294202				NW-Adams, LLC	..OH....	NIA.....	NW REI, LLC	Ownership.....	100.000	Nationwide Mutual Insurance Company	...NO.....	
.0140	Nationwide		92-1294202				NW-Aureum, LLC	..OH....	NIA.....	NW REI (NLIC), LLC	Ownership.....	100.000	Nationwide Mutual Insurance Company	...NO.....	
.0140	Nationwide		92-2674633				NW-Brandon LLC	..OH....	NIA.....	NW REI (NLIC), LLC	Ownership.....	100.000	Nationwide Mutual Insurance Company	...NO.....	
.0140	Nationwide		87-0847675				NW-Broadway at Surf, LLC	..OH....	NIA.....	NMIC REO Holdings, LLC	Ownership.....	100.000	Nationwide Mutual Insurance Company	...NO.....	
.0140	Nationwide		88-2152576				NW-Colfax, LLC	..OH....	NIA.....	NW REI (NLAIC), LLC	Ownership.....	100.000	Nationwide Mutual Insurance Company	...NO.....	
.0140	Nationwide		92-0292630				NW-Conroe, LLC	..OH....	NIA.....	Nationwide Life Insurance Company	Ownership.....	100.000	Nationwide Mutual Insurance Company	...NO.....	
.0140	Nationwide		87-3648595				NW-Corazon, LLC	..OH....	NIA.....	Nationwide Life Insurance Company	Ownership.....	100.000	Nationwide Mutual Insurance Company	...NO.....	
.0140	Nationwide		99-3065627				NW-Denton, LLC	..OH....	NIA.....	NW REI, LLC	Ownership.....	100.000	Nationwide Mutual Insurance Company	...NO.....	
.0140	Nationwide		86-3529884				NW-Englewood, LLC	..OH....	NIA.....	NW REI (NLIC), LLC	Ownership.....	100.000	Nationwide Mutual Insurance Company	...NO.....	
.0140	Nationwide		84-4388876				NW-Escalante, LLC	..OH....	NIA.....	NW REI, LLC	Ownership.....	100.000	Nationwide Mutual Insurance Company	...NO.....	
.0140	Nationwide		86-1538532				NW-Escalante II, LLC	..OH....	NIA.....	NW REI, LLC	Ownership.....	100.000	Nationwide Mutual Insurance Company	...NO.....	
.0140	Nationwide		92-3310596				NW-FSU, LLC	..OH....	NIA.....	NW REI (NLIC), LLC	Ownership.....	100.000	Nationwide Mutual Insurance Company	...NO.....	
.0140	Nationwide		31-1580283				NWD 205 Vine, LLC	..OH....	NIA.....	NWD Investments, LLC	Ownership.....	100.000	Nationwide Mutual Insurance Company	...NO.....	
.0140	Nationwide		31-1580283				NWD 225 Nationwide, LLC	..OH....	NIA.....	NWD Investments, LLC	Ownership.....	100.000	Nationwide Mutual Insurance Company	...NO.....	
.0140	Nationwide		31-1580283				NWD 230 West, LLC	..OH....	NIA.....	NWD Investments, LLC	Ownership.....	100.000	Nationwide Mutual Insurance Company	...NO.....	
.0140	Nationwide		31-1580283				NWD 240 Nationwide, LLC	..OH....	NIA.....	NWD Investments, LLC	Ownership.....	100.000	Nationwide Mutual Insurance Company	...NO.....	
.0140	Nationwide		31-1580283				NWD 250 Brodbelt, LLC	..OH....	NIA.....	NWD Investments, LLC	Ownership.....	100.000	Nationwide Mutual Insurance Company	...NO.....	
.0140	Nationwide		31-1580283				NWD 250 West, LLC	..OH....	NIA.....	NWD Investments, LLC	Ownership.....	100.000	Nationwide Mutual Insurance Company	...NO.....	
.0140	Nationwide		31-1580283				NWD 265 Neil, LLC	..OH....	NIA.....	NWD Investments, LLC	Ownership.....	100.000	Nationwide Mutual Insurance Company	...NO.....	
.0140	Nationwide		31-1580283				NWD 275 Marconi, LLC	..OH....	NIA.....	NWD Investments, LLC	Ownership.....	100.000	Nationwide Mutual Insurance Company	...NO.....	
.0140	Nationwide		31-1580283				NWD 300 Neil, LLC	..OH....	NIA.....	NWD Investments, LLC	Ownership.....	100.000	Nationwide Mutual Insurance Company	...NO.....	
.0140	Nationwide		31-1580283				NWD 300 Spring, LLC	..OH....	NIA.....	NWD Investments, LLC	Ownership.....	100.000	Nationwide Mutual Insurance Company	...NO.....	
.0140	Nationwide		31-1580283				NWD 355 McConnell, LLC	..OH....	NIA.....	NWD Investments, LLC	Ownership.....	100.000	Nationwide Mutual Insurance Company	...NO.....	
.0140	Nationwide		31-1580283				NWD 425 Nationwide, LLC	..OH....	NIA.....	NWD Investments, LLC	Ownership.....	100.000	Nationwide Mutual Insurance Company	...NO.....	
.0140	Nationwide		31-1580283				NWD 500 Nationwide, LLC	..OH....	NIA.....	NWD Investments, LLC	Ownership.....	100.000	Nationwide Mutual Insurance Company	...NO.....	



STATEMENT AS OF JUNE 30, 2024 OF THE NATIONWIDE ASSURANCE COMPANY

SCHEDULE Y  
PART 1A - DETAIL OF INSURANCE HOLDING COMPANY SYSTEM

1	2	3	4	5	6	7	8	9	10	11	12	13	14	15	16
Group Code	Group Name	NAIC Company Code	ID Number	Federal RSSD	CIK	Name of Securities Exchange if Publicly Traded (U.S. or International)	Names of Parent, Subsidiaries Or Affiliates	Domi-ciliary Location	Relation-ship to Reporting Entity	Directly Controlled by (Name of Entity/Person)	Type of Control (Ownership, Board, Management, Attorney-in-Fact, Influence, Other)	If Control is Owner-ship Provide Percen-tage	Ultimate Controlling Entity(ies)/Person(s)	Is an SCA Filing Re-quired? (Yes/No)	*
. 0140 ...	Nationwide ...	.....	31-1580283 .....	.....	.....	.....	NWD Arena Crossing, LLC .....	.. OH.....	.. NIA.....	NWD Investments, LLC .....	Ownership.....	.. 100.000 ...	Nationwide Mutual Insurance Company ...	... NO.....	.....
. 0140 ...	Nationwide ...	.....	31-1580283 .....	.....	.....	.....	NWD Arena District I, LLC .....	.. OH.....	.. NIA.....	NWD Investments, LLC .....	Ownership.....	.. 100.000 ...	Nationwide Mutual Insurance Company ...	... NO.....	.....
. 0140 ...	Nationwide ...	.....	31-1580283 .....	.....	.....	.....	NWD Arena District II, LLC .....	.. OH.....	.. NIA.....	NWD Investments, LLC .....	Ownership.....	.. 100.000 ...	Nationwide Mutual Insurance Company ...	... NO.....	.....
. 0140 ...	Nationwide ...	.....	31-1580283 .....	.....	.....	.....	NWD Arena District MM, LLC .....	.. OH.....	.. NIA.....	NWD Investments, LLC .....	Ownership.....	.. 100.000 ...	Nationwide Mutual Insurance Company ...	... NO.....	.....
. 0140 ...	Nationwide ...	.....	31-1580283 .....	.....	.....	.....	NWD Arena District PW, LLC .....	.. OH.....	.. NIA.....	NWD Investments, LLC .....	Ownership.....	.. 100.000 ...	Nationwide Mutual Insurance Company ...	... NO.....	.....
. 0140 ...	Nationwide ...	.....	31-1580283 .....	.....	.....	.....	NWD Arena District V, LLC .....	.. OH.....	.. NIA.....	NWD Investments, LLC .....	Ownership.....	.. 100.000 ...	Nationwide Mutual Insurance Company ...	... NO.....	.....
. 0140 ...	Nationwide ...	.....	31-1580283 .....	.....	.....	.....	NWD Athletic Club, LLC .....	.. OH.....	.. NIA.....	NWD Investments, LLC .....	Ownership.....	.. 100.000 ...	Nationwide Mutual Insurance Company ...	... NO.....	.....
. 0140 ...	Nationwide ...	.....	88-2975730 .....	.....	.....	.....	NW-Boise, LLC .....	.. OH.....	.. NIA.....	Nationwide Life Insurance Company .....	Ownership.....	.. 100.000 ...	Nationwide Mutual Insurance Company ...	... NO.....	.....
. 0140 ...	Nationwide ...	.....	31-1580283 .....	.....	.....	.....	NWD Brodbelt, LLC .....	.. OH.....	.. NIA.....	NWD Investments, LLC .....	Ownership.....	.. 100.000 ...	Nationwide Mutual Insurance Company ...	... NO.....	.....
. 0140 ...	Nationwide ...	.....	30-0876022 .....	.....	.....	.....	NWD Franklinton, LLC .....	.. OH.....	.. NIA.....	Nationwide Realty Investors, Ltd. ....	Ownership.....	.. 80.000 ...	Nationwide Mutual Insurance Company ...	... NO.....	.....
. 0140 ...	Nationwide ...	.....	31-4118665 .....	.....	.....	.....	NWD HP, LLC .....	.. OH.....	.. NIA.....	NWD Investments, LLC .....	Ownership.....	.. 75.000 ...	Nationwide Mutual Insurance Company ...	... NO.....	.....
. 0140 ...	Nationwide ...	.....	31-1580283 .....	.....	.....	.....	NWD Investments, LLC .....	.. OH.....	.. NIA.....	Nationwide Realty Investors, Ltd. ....	Ownership.....	.. 80.000 ...	Nationwide Mutual Insurance Company ...	... NO.....	.....
. 0140 ...	Nationwide ...	.....	31-1486309 .....	.....	.....	.....	NWGH, LLC .....	.. OH.....	.. NIA.....	Nationwide Realty Investors, Ltd. ....	Ownership.....	.. 75.000 ...	Nationwide Mutual Insurance Company ...	... NO.....	.....
. 0140 ...	Nationwide ...	.....	87-3124154 .....	.....	.....	.....	NW-Gallatin, LLC .....	.. OH.....	.. NIA.....	Nationwide Life Insurance Company .....	Ownership.....	.. 100.000 ...	Nationwide Mutual Insurance Company ...	... NO.....	.....
. 0140 ...	Nationwide ...	.....	92-2943602 .....	.....	.....	.....	NW-Holly Springs, LLC .....	.. OH.....	.. NIA.....	Nationwide Mutual Insurance Company .....	Ownership.....	.. 100.000 ...	Nationwide Mutual Insurance Company ...	... NO.....	.....
. 0140 ...	Nationwide ...	.....	86-2431839 .....	.....	.....	.....	NW-Hub13, LLC .....	.. OH.....	.. NIA.....	NW REI, LLC .....	Ownership.....	.. 100.000 ...	Nationwide Mutual Insurance Company ...	... NO.....	.....
. 0140 ...	Nationwide ...	.....	92-3558072 .....	.....	.....	.....	NW-Huntersville, LLC .....	.. OH.....	.. NIA.....	NW REI, LLC .....	Ownership.....	.. 100.000 ...	Nationwide Mutual Insurance Company ...	... NO.....	.....
. 0140 ...	Nationwide ...	.....	47-2482818 .....	.....	.....	.....	NW-Jasper WAG, LLC .....	.. OH.....	.. NIA.....	NW REI, LLC .....	Ownership.....	.. 100.000 ...	Nationwide Mutual Insurance Company ...	... NO.....	.....
. 0140 ...	Nationwide ...	.....	87-3767006 .....	.....	.....	.....	NW-Kingsbury, LLC .....	.. OH.....	.. NIA.....	Nationwide Life Insurance Company .....	Ownership.....	.. 100.000 ...	Nationwide Mutual Insurance Company ...	... NO.....	.....
. 0140 ...	Nationwide ...	.....	81-5146596 .....	.....	.....	.....	NW-Logan, LLC .....	.. OH.....	.. NIA.....	NW REI, LLC .....	Ownership.....	.. 100.000 ...	Nationwide Mutual Insurance Company ...	... NO.....	.....
. 0140 ...	Nationwide ...	.....	87-1565013 .....	.....	.....	.....	NW-Midtown, LLC .....	.. OH.....	.. NIA.....	NW REI, LLC .....	Ownership.....	.. 100.000 ...	Nationwide Mutual Insurance Company ...	... NO.....	.....
. 0140 ...	Nationwide ...	.....	88-2595124 .....	.....	.....	.....	NW-OG, LLC .....	.. OH.....	.. NIA.....	NW REI, LLC .....	Ownership.....	.. 100.000 ...	Nationwide Mutual Insurance Company ...	... NO.....	.....
. 0140 ...	Nationwide ...	.....	83-2260477 .....	.....	.....	.....	NW-ORBD, LLC .....	.. OH.....	.. NIA.....	NW REI (NMFIC), LLC .....	Ownership.....	.. 100.000 ...	Nationwide Mutual Insurance Company ...	... NO.....	.....
. 0140 ...	Nationwide ...	.....	93-1728625 .....	.....	.....	.....	NW-Pleasant Prairie, LLC .....	.. OH.....	.. NIA.....	NW REI (NLIC), LLC .....	Ownership.....	.. 100.000 ...	Nationwide Mutual Insurance Company ...	... NO.....	.....
. 0140 ...	Nationwide ...	.....	47-2449044 .....	.....	.....	.....	NW-Promenade at Madison, LLC .....	.. OH.....	.. NIA.....	NW REI, LLC .....	Ownership.....	.. 100.000 ...	Nationwide Mutual Insurance Company ...	... NO.....	.....
. 0140 ...	Nationwide ...	.....	87-1367836 .....	.....	.....	.....	NW-Rancho, LLC .....	.. OH.....	.. NIA.....	NW REI, LLC .....	Ownership.....	.. 100.000 ...	Nationwide Mutual Insurance Company ...	... NO.....	.....
. 0140 ...	Nationwide ...	.....	88-1405151 .....	.....	.....	.....	NW-Riverchase, LLC .....	.. OH.....	.. NIA.....	Nationwide Life Insurance Company .....	Ownership.....	.. 100.000 ...	Nationwide Mutual Insurance Company ...	... NO.....	.....
. 0140 ...	Nationwide ...	.....	86-3702669 .....	.....	.....	.....	NW-RPG Cranberry, LLC .....	.. OH.....	.. NIA.....	NW REI, LLC .....	Ownership.....	.. 100.000 ...	Nationwide Mutual Insurance Company ...	... NO.....	.....
. 0140 ...	Nationwide ...	.....	87-3273918 .....	.....	.....	.....	NW-San Marco, LLC .....	.. OH.....	.. NIA.....	Nationwide Life Insurance Company .....	Ownership.....	.. 100.000 ...	Nationwide Mutual Insurance Company ...	... NO.....	.....
. 0140 ...	Nationwide ...	.....	87-3289289 .....	.....	.....	.....	NW-San Pablo, LLC .....	.. OH.....	.. NIA.....	NW REI, LLC .....	Ownership.....	.. 100.000 ...	Nationwide Mutual Insurance Company ...	... NO.....	.....
. 0140 ...	Nationwide ...	.....	81-3212025 .....	.....	.....	.....	NW-Springfield, LLC .....	.. OH.....	.. NIA.....	NW REI, LLC .....	Ownership.....	.. 100.000 ...	Nationwide Mutual Insurance Company ...	... NO.....	.....
. 0140 ...	Nationwide ...	.....	93-2022585 .....	.....	.....	.....	NW-Spring Hill, LLC .....	.. OH.....	.. NIA.....	NW REI, LLC .....	Ownership.....	.. 100.000 ...	Nationwide Mutual Insurance Company ...	... NO.....	.....
. 0140 ...	Nationwide ...	.....	92-2878794 .....	.....	.....	.....	NW-SR-16, LLC .....	.. OH.....	.. NIA.....	NW REI, LLC .....	Ownership.....	.. 100.000 ...	Nationwide Mutual Insurance Company ...	... NO.....	.....
. 0140 ...	Nationwide ...	.....	92-0677233 .....	.....	.....	.....	NW-UNCC, LLC .....	.. OH.....	.. NIA.....	NW REI (NLIC), LLC .....	Ownership.....	.. 100.000 ...	Nationwide Mutual Insurance Company ...	... NO.....	.....
. 0140 ...	Nationwide ...	.....	81-1603024 .....	.....	.....	.....	NW REI (NLAIC), LLC .....	.. OH.....	.. NIA.....	Nationwide Life and Annuity Insurance Company .....	Ownership.....	.. 100.000 ...	Nationwide Mutual Insurance Company ...	... NO.....	.....
. 0140 ...	Nationwide ...	.....	81-1619428 .....	.....	.....	.....	NW REI (NLIC), LLC .....	.. OH.....	.. NIA.....	Nationwide Life Insurance Company .....	Ownership.....	.. 100.000 ...	Nationwide Mutual Insurance Company ...	... NO.....	.....
. 0140 ...	Nationwide ...	.....	81-1861190 .....	.....	.....	.....	NW REI (NMIC), LLC .....	.. OH.....	.. NIA.....	Nationwide Mutual Insurance Company .....	Ownership.....	.. 100.000 ...	Nationwide Mutual Insurance Company ...	... NO.....	.....
. 0140 ...	Nationwide ...	.....	31-0947092 .....	.....	.....	.....	OCH Company, LLC .....	.. OH.....	.. NIA.....	Nationwide Realty Investors, Ltd. ....	Ownership.....	.. 100.000 ...	Nationwide Mutual Insurance Company ...	... NO.....	.....
.....	.....	.....	26-0263012 .....	.....	.....	.....	Old Track Street Owners Association, Inc. ...	.. OH.....	.. OTH.....	Other non-Nationwide .....	Other.....	.....	Other non-Nationwide .....	... NO.....	2 .....
. 0140 ...	Nationwide ...	13999 .....	27-1712056 .....	.....	.....	.....	Olentangy Reinsurance, LLC .....	.. VT.....	.. IA.....	Company .....	Ownership.....	.. 100.000 ...	Nationwide Mutual Insurance Company .....	... NO.....	.....
. 0140 ...	Nationwide ...	.....	31-1486309 .....	.....	.....	.....	Perimeter A, Ltd. ....	.. OH.....	.. NIA.....	Nationwide Realty Investors, Ltd. ....	Ownership.....	.. 100.000 ...	Nationwide Mutual Insurance Company ...	... NO.....	.....
. 0140 ...	Nationwide ...	.....	20-4939866 .....	.....	.....	.....	Rail Street Parking, LLC .....	.. OH.....	.. NIA.....	NRI Equity Land Investments, LLC .....	Ownership.....	.. 100.000 ...	Nationwide Mutual Insurance Company ...	... NO.....	.....
.....	.....	.....	.....	.....	.....	.....	Registered Investment Advisors Services, Inc.	.....	.....	.....	.....	.....	.....	.....	.....
. 0140 ...	Nationwide ...	.....	75-2938844 .....	.....	.....	.....	.....	.. TX.....	.. NIA.....	Nationwide Financial Services, Inc. ....	Ownership.....	.. 100.000 ...	Nationwide Mutual Insurance Company ...	... NO.....	.....
. 0140 ...	Nationwide ...	.....	82-0549218 .....	.....	.....	.....	Retention Alternatives Ltd. ....	.. BMJ.....	.. IA.....	Nationwide Mutual Insurance Company .....	Ownership.....	.. 100.000 ...	Nationwide Mutual Insurance Company ...	... NO.....	.....
. 0140 ...	Nationwide ...	15580 .....	31-1117969 .....	.....	.....	.....	Scottsdale Indemnity Company .....	.. OH.....	.. IA.....	Nationwide Mutual Insurance Company .....	Ownership.....	.. 100.000 ...	Nationwide Mutual Insurance Company ...	... NO.....	.....
. 0140 ...	Nationwide ...	41297 .....	31-1024978 .....	.....	.....	.....	Scottsdale Insurance Company .....	.. OH.....	.. IA.....	Nationwide Mutual Insurance Company .....	Ownership.....	.. 100.000 ...	Nationwide Mutual Insurance Company ...	... NO.....	.....

STATEMENT AS OF JUNE 30, 2024 OF THE NATIONWIDE ASSURANCE COMPANY

SCHEDULE Y  
PART 1A - DETAIL OF INSURANCE HOLDING COMPANY SYSTEM

1	2	3	4	5	6	7	8	9	10	11	12	13	14	15	16
Group Code	Group Name	NAIC Company Code	ID Number	Federal RSSD	CIK	Name of Securities Exchange if Publicly Traded (U.S. or International)	Names of Parent, Subsidiaries Or Affiliates	Domi-ciliary Loca-tion	Relation-ship to Reporting Entity	Directly Controlled by (Name of Entity/Person)	Type of Control (Ownership, Board, Management, Attorney-in-Fact, Influence, Other)	If Control is Owner-ship Provide Percen-tage	Ultimate Controlling Entity(ies)/Person(s)	Is an SCA Filing Re-quired? (Yes/No)	*
. 0140 ...	Nationwide .....	..... 10672 ....	86-0835870 ..	.....	.....	.....	Scottsdale Surplus Lines Insurance Company ..	.. AZ.....	..... IA.....	Scottsdale Insurance Company .....	Ownership.....	100.000 ...	Nationwide Mutual Insurance Company ...	.... NO.....	.....
. 0140 ...	Nationwide .....	..... 31-1610040 ..	31-1610040 ..	.....	.....	.....	The Waterfront Partners, LLC .....	.. OH.....	..... NIA.....	Nationwide Realty Investors, Ltd. ....	Ownership.....	50.000 ...	Nationwide Mutual Insurance Company ...	.... NO.....	.....
. 0140 ...	Nationwide .....	..... 36269 .....	86-0619597 ..	.....	.....	.....	Titan Insurance Company .....	.. MI.....	..... IA.....	Nationwide Mutual Insurance Company .....	Ownership.....	100.000 ...	Nationwide Mutual Insurance Company ...	.... NO.....	.....
. 0140 ...	Nationwide .....	..... 75-1284530 ..	75-1284530 ..	.....	.....	.....	Titan Insurance Services, Inc. ....	.. TX.....	..... IA.....	Nationwide Mutual Insurance Company .....	Ownership.....	100.000 ...	Nationwide Mutual Insurance Company ...	.... NO.....	.....
. 0140 ...	Nationwide .....	..... 33-0160222 ..	33-0160222 ..	.....	.....	.....	V.P.I. Services, Inc. ....	.. CA.....	..... IA.....	Veterinary Pet Insurance Company .....	Ownership.....	100.000 ...	Nationwide Mutual Insurance Company ...	.... NO.....	.....
. 0140 ...	Nationwide .....	..... 42285 ....	95-3750113 ..	.....	.....	.....	Veterinary Pet Insurance Company .....	.. OH.....	..... IA.....	Scottsdale Insurance Company .....	Ownership.....	100.000 ...	Nationwide Mutual Insurance Company ...	.... NO.....	.....
. 0140 ...	Nationwide .....	..... 42889 ....	34-1394913 ..	.....	.....	.....	Victoria Fire & Casualty Company .....	.. OH.....	..... IA.....	Nationwide Mutual Insurance Company .....	Ownership.....	100.000 ...	Nationwide Mutual Insurance Company ...	.... NO.....	.....
. 0140 ...	Nationwide .....	..... 10105 ....	34-1777972 ..	.....	.....	.....	Victoria Select Insurance Company .....	.. OH.....	..... IA.....	Victoria Fire & Casualty Insurance Company .....	Ownership.....	100.000 ...	Nationwide Mutual Insurance Company ...	.... NO.....	.....
. 0140 ...	Nationwide .....	..... 31-1486309 ..	31-1486309 ..	.....	.....	.....	Wellington Park, LLC .....	.. OH.....	..... NIA.....	Nationwide Realty Investors, Ltd. ....	Ownership.....	100.000 ...	Nationwide Mutual Insurance Company ...	.... NO.....	.....

Asterisk	Explanation
1 .....	Nationwide retains management responsibility for these entities, despite a minority ownership stake. ....
2 .....	Other ownership indicates a non-ownership circumstance by a Nationwide entity. ....

PART 1 - LOSS EXPERIENCE

Line of Business		Current Year to Date			4
		1 Direct Premiums Earned	2 Direct Losses Incurred	3 Direct Loss Percentage	Prior Year to Date Direct Loss Percentage
1.	Fire .....	1,213,534	1,900,128	156.6	74.9
2.1	Allied Lines .....	2,689,302	2,109,572	78.4	97.0
2.2	Multiple peril crop .....				
2.3	Federal flood .....				
2.4	Private crop .....				
2.5	Private flood .....	32,124	(604)	(1.9)	4.4
3.	Farmowners multiple peril .....				
4.	Homeowners multiple peril .....	25,362	13,279	52.4	80.7
5.1	Commercial multiple peril (non-liability portion) .....	97,580,242	58,365,761	59.8	79.0
5.2	Commercial multiple peril (liability portion) .....	38,595,775	14,949,534	38.7	58.0
6.	Mortgage guaranty .....				
8.	Ocean marine .....				
9.1	Inland marine .....	80	(116)	(145.0)	101.2
9.2	Pet insurance .....				
10.	Financial guaranty .....				
11.1	Medical professional liability - occurrence .....				
11.2	Medical professional liability - claims-made .....				
12.	Earthquake .....	381,189			
13.1	Comprehensive (hospital and medical) individual .....				
13.2	Comprehensive (hospital and medical) group .....				
14.	Credit accident and health .....				
15.1	Vision only .....				
15.2	Dental only .....				
15.3	Disability income .....				
15.4	Medicare supplement .....				
15.5	Medicaid Title XIX .....				
15.6	Medicare Title XVIII .....				
15.7	Long-term care .....				
15.8	Federal employees health benefits plan .....				
15.9	Other health .....				
16.	Workers' compensation .....	2,640,087	1,615,941	61.2	85.1
17.1	Other liability - occurrence .....	12,796,714	8,526,146	66.6	66.1
17.2	Other liability - claims-made .....	694,393	90,000	13.0	
17.3	Excess workers' compensation .....				
18.1	Products liability - occurrence .....				
18.2	Products liability - claims-made .....				
19.1	Private passenger auto no-fault (personal injury protection) .....	23,224	(5,366)	(23.1)	1.4
19.2	Other private passenger auto liability .....	369,936	162,905	44.0	24.7
19.3	Commercial auto no-fault (personal injury protection) .....	320,162	258,651	80.8	83.2
19.4	Other commercial auto liability .....	29,360,548	20,527,008	69.9	67.9
21.1	Private passenger auto physical damage .....	843,280	173,296	20.6	56.5
21.2	Commercial auto physical damage .....	10,676,505	5,043,850	47.2	57.0
22.	Aircraft (all perils) .....				
23.	Fidelity .....				
24.	Surety .....				
26.	Burglary and theft .....	36,206	293	0.8	9.0
27.	Boiler and machinery .....	2,941,848	604,837	20.6	28.3
28.	Credit .....				
29.	International .....				
30.	Warranty .....				
31.	Reinsurance - Nonproportional Assumed Property .....	XXX	XXX	XXX	XXX
32.	Reinsurance - Nonproportional Assumed Liability .....	XXX	XXX	XXX	XXX
33.	Reinsurance - Nonproportional Assumed Financial Lines .....	XXX	XXX	XXX	XXX
34.	Aggregate write-ins for other lines of business .....				
35.	Totals	201,220,511	114,335,115	56.8	70.9
DETAILS OF WRITE-INS					
3401.	.....				
3402.	.....				
3403.	.....				
3498.	Summary of remaining write-ins for Line 34 from overflow page .....				
3499.	Totals (Lines 3401 through 3403 plus 3498)(Line 34 above)				

STATEMENT AS OF JUNE 30, 2024 OF THE NATIONWIDE ASSURANCE COMPANY

PART 2 - DIRECT PREMIUMS WRITTEN

Line of Business		1 Current Quarter	2 Current Year to Date	3 Prior Year Year to Date
1.	Fire .....	473,189	1,022,187	1,537,861
2.1	Allied Lines .....	987,580	2,009,545	3,547,969
2.2	Multiple peril crop .....			
2.3	Federal flood .....			
2.4	Private crop .....			
2.5	Private flood .....	27,160	40,285	14,963
3.	Farmowners multiple peril .....			
4.	Homeowners multiple peril .....		30,512	26,900
5.1	Commercial multiple peril (non-liability portion) .....	41,936,230	86,544,615	123,686,174
5.2	Commercial multiple peril (liability portion) .....	18,540,625	37,486,075	43,818,831
6.	Mortgage guaranty .....			
8.	Ocean marine .....			
9.1	Inland marine .....	78	123	120
9.2	Pet insurance .....			
10.	Financial guaranty .....			
11.1	Medical professional liability - occurrence .....			
11.2	Medical professional liability - claims-made .....			
12.	Earthquake .....	103,609	257,815	602,656
13.1	Comprehensive (hospital and medical) individual .....			
13.2	Comprehensive (hospital and medical) group .....			
14.	Credit accident and health .....			
15.1	Vision only .....			
15.2	Dental only .....			
15.3	Disability income .....			
15.4	Medicare supplement .....			
15.5	Medicaid Title XIX .....			
15.6	Medicare Title XVIII .....			
15.7	Long-term care .....			
15.8	Federal employees health benefits plan .....			
15.9	Other health .....			
16.	Workers' compensation .....	507,513	2,118,354	4,596,687
17.1	Other liability - occurrence .....	6,453,729	12,811,354	14,598,202
17.2	Other liability - claims-made .....	310,579	605,843	817,622
17.3	Excess workers' compensation .....			
18.1	Products liability - occurrence .....			
18.2	Products liability - claims-made .....			
19.1	Private passenger auto no-fault (personal injury protection) .....	12,860	24,631	23,333
19.2	Other private passenger auto liability .....	231,370	394,321	453,864
19.3	Commercial auto no-fault (personal injury protection) .....	154,368	269,789	462,606
19.4	Other commercial auto liability .....	11,625,330	23,742,090	36,257,828
21.1	Private passenger auto physical damage .....	502,446	933,194	1,036,753
21.2	Commercial auto physical damage .....	3,875,348	7,983,387	14,196,714
22.	Aircraft (all perils) .....			
23.	Fidelity .....			
24.	Surety .....			
26.	Burglary and theft .....	12,951	36,672	35,661
27.	Boiler and machinery .....	1,308,528	2,601,327	3,830,946
28.	Credit .....			
29.	International .....			
30.	Warranty .....			
31.	Reinsurance - Nonproportional Assumed Property .....	XXX	XXX	XXX
32.	Reinsurance - Nonproportional Assumed Liability .....	XXX	XXX	XXX
33.	Reinsurance - Nonproportional Assumed Financial Lines .....	XXX	XXX	XXX
34.	Aggregate write-ins for other lines of business .....			
35.	Totals	87,063,493	178,912,119	249,545,690
DETAILS OF WRITE-INS				
3401.	.....			
3402.	.....			
3403.	.....			
3498.	Summary of remaining write-ins for Line 34 from overflow page .....			
3499.	Totals (Lines 3401 through 3403 plus 3498)(Line 34 above)			

STATEMENT AS OF JUNE 30, 2024 OF THE NATIONWIDE ASSURANCE COMPANY

PART 3 (\$000 OMITTED)

LOSS AND LOSS ADJUSTMENT EXPENSE RESERVES SCHEDULE

	1	2	3	4	5	6	7	8	9	10	11	12	13
Years in Which Losses Occurred	Prior Year-End Known Case Loss and LAE Reserves	Prior Year-End IBNR Loss and LAE Reserves	Total Prior Year-End Loss and LAE Reserves (Cols. 1+2)	2024 Loss and LAE Payments on Claims Reported as of Prior Year-End	2024 Loss and LAE Payments on Claims Unreported as of Prior Year-End	Total 2024 Loss and LAE Payments (Cols. 4+5)	Q.S. Date Known Case Loss and LAE Reserves on Claims Reported and Open as of Prior Year End	Q.S. Date Known Case Loss and LAE Reserves on Claims Reported or Reopened Subsequent to Prior Year End	Q.S. Date IBNR Loss and LAE Reserves	Total Q.S. Loss and LAE Reserves (Cols.7+8+9)	Prior Year-End Known Case Loss and LAE Reserves Developed (Savings)/ Deficiency (Cols.4+7 minus Col. 1)	Prior Year-End IBNR Loss and LAE Reserves Developed (Savings)/ Deficiency (Cols. 5+8+9 minus Col. 2)	Prior Year-End Total Loss and LAE Reserve Developed (Savings)/ Deficiency (Cols. 11+12)
1. 2021 + Prior .....	.....	.....	.....	.....	.....	.....	.....	.....	.....	.....	.....	.....	.....
2. 2022 .....	.....	.....	.....	.....	.....	.....	.....	.....	.....	.....	.....	.....	.....
3. Subtotals 2022 + Prior .....	.....	.....	.....	.....	.....	.....	.....	.....	.....	.....	.....	.....	.....
4. 2023 .....	.....	.....	.....	.....	.....	.....	.....	.....	.....	.....	.....	.....	.....
5. Subtotals 2023 + Prior .....	.....	.....	.....	.....	.....	.....	.....	.....	.....	.....	.....	.....	.....
6. 2024 .....	...XXX.....	...XXX.....	...XXX.....	...XXX.....	.....	.....	...XXX.....	.....	.....	.....	...XXX.....	...XXX.....	...XXX.....
7. Totals .....	.....	.....	.....	.....	.....	.....	.....	.....	.....	.....	.....	.....	.....
8. Prior Year-End Surplus As Regards Policyholders	61,851										Col. 11, Line 7 As % of Col. 1 Line 7	Col. 12, Line 7 As % of Col. 2 Line 7	Col. 13, Line 7 As % of Col. 3 Line 7
											1.	2.	3.
													Col. 13, Line 7 As a % of Col. 1 Line 8
													4.

STATEMENT AS OF JUNE 30, 2024 OF THE NATIONWIDE ASSURANCE COMPANY

SUPPLEMENTAL EXHIBITS AND SCHEDULES INTERROGATORIES

The following supplemental reports are required to be filed as part of your statement filing. However, in the event that your company does not transact the type of business for which the special report must be filed, your response of NO to the specific interrogatory will be accepted in lieu of filing a "NONE" report and a bar code will be printed below. If the supplement is required of your company but is not being filed for whatever reason enter SEE EXPLANATION and provide an explanation following the interrogatory questions.

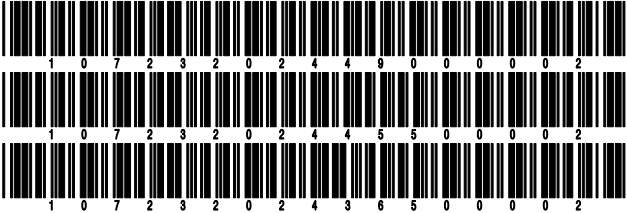
	Response
1. Will the Trusteed Surplus Statement be filed with the state of domicile and the NAIC with this statement? .....	NO
2. Will Supplement A to Schedule T (Medical Professional Liability Supplement) be filed with this statement? .....	NO
3. Will the Medicare Part D Coverage Supplement be filed with the state of domicile and the NAIC with this statement? .....	NO
4. Will the Director and Officer Insurance Coverage Supplement be filed with the state of domicile and the NAIC with this statement? .....	YES
AUGUST FILING	
5. Will the regulator-only (non-public) Communication of Internal Control Related Matters Noted in Audit be filed with the state of domicile and electronically with the NAIC (as a regulator-only non-public document) by August 1? The response for 1st and 3rd quarters should be N/A. A NO response resulting with a bar code is only appropriate in the 2nd quarter. ....	YES

Explanations:

1.
2.
3.

Bar Codes:

1. Trusteed Surplus Statement [Document Identifier 490]
2. Supplement A to Schedule T [Document Identifier 455]
3. Medicare Part D Coverage Supplement [Document Identifier 365]



**NONE**

SCHEDULE A - VERIFICATION

Real Estate

	1	2
	Year to Date	Prior Year Ended December 31
1. Book/adjusted carrying value, December 31 of prior year .....		
2. Cost of acquired:		
2.1 Actual cost at time of acquisition .....		
2.2 Additional investment made after acquisition .....		
3. Current year change in encumbrances .....		
4. Total gain (loss) on disposals .....		
5. Deduct amounts received on disposals .....		
6. Total foreign exchange change in book/adjusted carrying value .....		
7. Deduct current year's other than temporary impairment recognized .....		
8. Deduct current year's depreciation .....		
9. Book/adjusted carrying value at the end of current period (Lines 1+2+3+4-5+6-7-8) .....		
10. Deduct total nonadmitted amounts .....		
11. Statement value at end of current period (Line 9 minus Line 10)		

SCHEDULE B - VERIFICATION

Mortgage Loans

	1	2
	Year to Date	Prior Year Ended December 31
1. Book value/recorded investment excluding accrued interest, December 31 of prior year .....		
2. Cost of acquired:		
2.1 Actual cost at time of acquisition .....		
2.2 Additional investment made after acquisition .....		
3. Capitalized deferred interest and other .....		
4. Accrual of discount .....		
5. Unrealized valuation increase/(decrease) .....		
6. Total gain (loss) on disposals .....		
7. Deduct amounts received on disposals .....		
8. Deduct amortization of premium and mortgage interest points and commitment fees .....		
9. Total foreign exchange change in book value/recorded investment excluding accrued interest .....		
10. Deduct current year's other than temporary impairment recognized .....		
11. Book value/recorded investment excluding accrued interest at end of current period (Lines 1+2+3+4+5+6-7-8+9-10) .....		
12. Total valuation allowance .....		
13. Subtotal (Line 11 plus Line 12) .....		
14. Deduct total nonadmitted amounts .....		
15. Statement value at end of current period (Line 13 minus Line 14)		

SCHEDULE BA - VERIFICATION

Other Long-Term Invested Assets

	1	2
	Year to Date	Prior Year Ended December 31
1. Book/adjusted carrying value, December 31 of prior year .....	500,000	500,000
2. Cost of acquired:		
2.1 Actual cost at time of acquisition .....		
2.2 Additional investment made after acquisition .....		
3. Capitalized deferred interest and other .....		
4. Accrual of discount .....		
5. Unrealized valuation increase/(decrease) .....		
6. Total gain (loss) on disposals .....		
7. Deduct amounts received on disposals .....		
8. Deduct amortization of premium and depreciation .....		
9. Total foreign exchange change in book/adjusted carrying value .....		
10. Deduct current year's other than temporary impairment recognized .....		
11. Book/adjusted carrying value at end of current period (Lines 1+2+3+4+5+6-7-8+9-10) .....	500,000	500,000
12. Deduct total nonadmitted amounts .....		
13. Statement value at end of current period (Line 11 minus Line 12)	500,000	500,000

SCHEDULE D - VERIFICATION

Bonds and Stocks

	1	2
	Year to Date	Prior Year Ended December 31
1. Book/adjusted carrying value of bonds and stocks, December 31 of prior year .....	60,052,916	35,618,972
2. Cost of bonds and stocks acquired .....	2,728,637	26,192,318
3. Accrual of discount .....	26,193	30,774
4. Unrealized valuation increase/(decrease) .....		
5. Total gain (loss) on disposals .....	(43,106)	(1,902)
6. Deduct consideration for bonds and stocks disposed of .....	1,668,014	1,725,094
7. Deduct amortization of premium .....	39,370	62,152
8. Total foreign exchange change in book/adjusted carrying value .....		
9. Deduct current year's other than temporary impairment recognized .....		
10. Total investment income recognized as a result of prepayment penalties and/or acceleration fees .....		
11. Book/adjusted carrying value at end of current period (Lines 1+2+3+4+5-6-7+8-9+10) .....	61,057,256	60,052,916
12. Deduct total nonadmitted amounts .....		
13. Statement value at end of current period (Line 11 minus Line 12)	61,057,256	60,052,916



STATEMENT AS OF JUNE 30, 2024 OF THE NATIONWIDE ASSURANCE COMPANY

SCHEDULE D - PART 1B

Showing the Acquisitions, Dispositions and Non-Trading Activity  
During the Current Quarter for all Bonds and Preferred Stock by NAIC Designation

NAIC Designation	1 Book/Adjusted Carrying Value Beginning of Current Quarter	2 Acquisitions During Current Quarter	3 Dispositions During Current Quarter	4 Non-Trading Activity During Current Quarter	5 Book/Adjusted Carrying Value End of First Quarter	6 Book/Adjusted Carrying Value End of Second Quarter	7 Book/Adjusted Carrying Value End of Third Quarter	8 Book/Adjusted Carrying Value December 31 Prior Year
BONDS								
1. NAIC 1 (a) .....	55,885,537	997,406	226,877	(5,806)	55,885,537	56,650,260		54,354,680
2. NAIC 2 (a) .....	4,420,304		12,915	(399)	4,420,304	4,406,990		5,698,231
3. NAIC 3 (a) .....								
4. NAIC 4 (a) .....								
5. NAIC 5 (a) .....								
6. NAIC 6 (a) .....								
7. Total Bonds	60,305,841	997,406	239,792	(6,205)	60,305,841	61,057,250		60,052,911
PREFERRED STOCK								
8. NAIC 1 .....								
9. NAIC 2 .....								
10. NAIC 3 .....								
11. NAIC 4 .....								
12. NAIC 5 .....								
13. NAIC 6 .....								
14. Total Preferred Stock .....								
15. Total Bonds and Preferred Stock	60,305,841	997,406	239,792	(6,205)	60,305,841	61,057,250		60,052,911

(a) Book/Adjusted Carrying Value column for the end of the current reporting period includes the following amount of short-term and cash equivalent bonds by NAIC designation:  
NAIC 1 \$ ..... ; NAIC 2 \$ ..... ; NAIC 3 \$ ..... NAIC 4 \$ ..... ; NAIC 5 \$ ..... ; NAIC 6 \$ .....

Schedule DA - Part 1 - Short-Term Investments

**N O N E**

Schedule DA - Verification - Short-Term Investments

**N O N E**

Schedule DB - Part A - Verification - Options, Caps, Floors, Collars, Swaps and Forwards

**N O N E**

Schedule DB - Part B - Verification - Futures Contracts

**N O N E**

Schedule DB - Part C - Section 1 - Replication (Synthetic Asset) Transactions (RSATs) Open

**N O N E**

Schedule DB-Part C-Section 2-Reconciliation of Replication (Synthetic Asset) Transactions Open

**N O N E**

Schedule DB - Verification - Book/Adjusted Carrying Value, Fair Value and Potential Exposure of  
Derivatives

**N O N E**

SCHEDULE E - PART 2 - VERIFICATION

(Cash Equivalents)

	1	2
	Year To Date	Prior Year Ended December 31
1. Book/adjusted carrying value, December 31 of prior year .....	438,877	1,130,430
2. Cost of cash equivalents acquired .....	187,158,678	425,690,232
3. Accrual of discount .....		
4. Unrealized valuation increase/(decrease) .....		
5. Total gain (loss) on disposals .....		
6. Deduct consideration received on disposals .....	187,149,738	426,381,785
7. Deduct amortization of premium .....		
8. Total foreign exchange change in book/adjusted carrying value .....		
9. Deduct current year's other than temporary impairment recognized .....		
10. Book/adjusted carrying value at end of current period (Lines 1+2+3+4+5-6-7+8-9) .....	447,817	438,877
11. Deduct total nonadmitted amounts .....		
12. Statement value at end of current period (Line 10 minus Line 11)	447,817	438,877

Schedule A - Part 2 - Real Estate Acquired and Additions Made

**N O N E**

Schedule A - Part 3 - Real Estate Disposed

**N O N E**

Schedule B - Part 2 - Mortgage Loans Acquired and Additions Made

**N O N E**

Schedule B - Part 3 - Mortgage Loans Disposed, Transferred or Repaid

**N O N E**

Schedule BA - Part 2 - Other Long-Term Invested Assets Acquired and Additions Made

**N O N E**

Schedule BA - Part 3 - Other Long-Term Invested Assets Disposed, Transferred or Repaid

**N O N E**

STATEMENT AS OF JUNE 30, 2024 OF THE NATIONWIDE ASSURANCE COMPANY

SCHEDULE D - PART 3

Show All Long-Term Bonds and Stock Acquired During the Current Quarter

1	2	3	4	5	6	7	8	9	10
CUSIP Identification	Description	Foreign	Date Acquired	Name of Vendor	Number of Shares of Stock	Actual Cost	Par Value	Paid for Accrued Interest and Dividends	NAIC Designation, NAIC Designation Modifier and SVO Administrative Symbol
36179Y-RK-2 .....	Multiple G2 MA9016 Pool# MA9490 6.500% 03/11/54 .....	.....	.....05/06/2024 .....	Morgan Stanley & Co LLC .....	.....	177,922	174,628	189	1.A .....
0109999999. Subtotal - Bonds - U.S. Governments						177,922	174,628	189	XXX
3132DS-5H-1 .....	FHLMC Pool# SD5348 5.500% 11/25/53 .....	.....	.....05/06/2024 .....	Nomura Securities Intl LLC .....	.....	114,977	116,853	107	1.A .....
3132DS-E8-1 .....	Fr SD4659 Pool# SD4659 5.000% 06/25/53 .....	.....	.....05/06/2024 .....	Morgan Stanley & Co LLC .....	.....	101,792	105,603	88	1.A .....
3140XM-5S-1 .....	Fannie Mae Super Pool# F56256 3.500% 08/25/52 .....	.....	.....06/05/2024 .....	Goldman Sachs & Company .....	.....	602,716	675,785	329	1.A .....
0909999999. Subtotal - Bonds - U.S. Special Revenues						819,485	898,241	524	XXX
2509999997. Total - Bonds - Part 3						997,407	1,072,869	713	XXX
2509999998. Total - Bonds - Part 5						XXX	XXX	XXX	XXX
2509999999. Total - Bonds						997,407	1,072,869	713	XXX
4509999997. Total - Preferred Stocks - Part 3							XXX		XXX
4509999998. Total - Preferred Stocks - Part 5						XXX	XXX	XXX	XXX
4509999999. Total - Preferred Stocks							XXX		XXX
5989999997. Total - Common Stocks - Part 3							XXX		XXX
5989999998. Total - Common Stocks - Part 5						XXX	XXX	XXX	XXX
5989999999. Total - Common Stocks							XXX		XXX
5999999999. Total - Preferred and Common Stocks							XXX		XXX
.....	.....	.....	.....	.....	.....	.....	.....	.....	.....
.....	.....	.....	.....	.....	.....	.....	.....	.....	.....
.....	.....	.....	.....	.....	.....	.....	.....	.....	.....
.....	.....	.....	.....	.....	.....	.....	.....	.....	.....
6009999999 - Totals						997,407	XXX	713	XXX

STATEMENT AS OF JUNE 30, 2024 OF THE NATIONWIDE ASSURANCE COMPANY

SCHEDULE D - PART 4

Show All Long-Term Bonds and Stock Sold, Redeemed or Otherwise Disposed of During the Current Quarter

1	2	3	4	5	6	7	8	9	10	Change In Book/Adjusted Carrying Value					16	17	18	19	20	21	22
										11	12	13	14	15							
CUSIP Ident- ification	Description	For- eign	Disposal Date	Name of Purchaser	Number of Shares of Stock	Consid- eration	Par Value	Actual Cost	Prior Year Book/ Adjusted Carrying Value	Unrealized Valuation Increase/ (Decrease)	Current Year's (Amor- tization)/ Accretion	Current Year's Other Than Temporary Impairment Recogn- ized	Total Change in Book/ Adjusted Carrying Value (11 + 12 - 13)	Total Foreign Exchange Change in Book /Adjusted Carrying Value	Book/ Adjusted Carrying Value at Disposal Date	Foreign Exchange Gain (Loss) on Disposal	Realized Gain (Loss) on Disposal	Total Gain (Loss) on Disposal	Bond Interest/ Stock Dividends Received During Year	Stated Con- tractual Maturity Date	NAIC Desig- nation, NAIC Desig- nation Modifier and SVO Admini- strative Symbol
..36179Y-RK-2	Multiple G2 MA9016 Pool# MA9490 6.500% 03/11/54		06/20/2024	Paydown		651	651	663			(12)		(12)		651				4	03/11/2054	1.A
0109999999. Subtotal - Bonds - U.S. Governments						651	651	663					(12)		651				4	XXX	XXX
..3132CW-AU-8	FHLMC Pool #B0019 3.500% 06/25/34		06/01/2024	Paydown		5,838	5,838	6,055	6,032		(193)		(193)		5,838				86	06/25/2034	1.A
..3132D5-6D-9	FHLMC Pool #SB8068 1.500% 10/25/35		06/01/2024	Paydown		33,649	33,649	34,412	34,297		(649)		(649)		33,649				210	10/25/2035	1.A
..3132D5-5H-1	FHLMC Pool# SD5348 5.500% 11/25/53		06/01/2024	Paydown		140	140	138			2		2		140				1	11/25/2053	1.A
..3132DS-E8-1	Fr SD4659 Pool# SD4659 5.000% 06/25/53		06/01/2024	Paydown		385	385	371			14		14		385				2	06/25/2053	1.A
..3132DW-C6-8	FHLMC Pool #SD8193 2.000% 02/25/52		06/01/2024	Paydown		96,930	96,930	95,832	95,879		1,051		1,051		96,930				814	02/25/2052	1.A
..3132DW-ER-0	FHLMC Pool #SD8244 4.000% 09/25/52		06/01/2024	Paydown		717	717	697			20		20		717				13	09/25/2052	1.A
..31359U-YS-8	FNMA REMIC Ser 1998-58 CI ZB 6.000% 10/25/28		06/01/2024	Paydown		460	460	449	455		5		5		460				12	10/25/2028	1.A
..3138EA-MJ-3	FNMA Pool #AK5760 3.000% 04/25/42		06/01/2024	Paydown		12,257	12,257	12,747	12,662		(405)		(405)		12,257				154	04/25/2042	1.A
..3138YK-HF-3	FNMA Pool #AY5629 3.000% 06/25/45		06/01/2024	Paydown		4,371	4,371	4,403	4,400		(28)		(28)		4,371				58	06/25/2045	1.A
..3140KD-G4-6	FNMA Pool #BP5618 2.500% 06/25/50		06/01/2024	Paydown		11,986	11,986	12,467	12,448		(461)		(461)		11,986				114	06/25/2050	1.A
..3140XG-U9-8	FNMA Pool #FS1507 3.000% 02/25/52		06/01/2024	Paydown		1,620	1,620	1,488	1,491		128		128		1,620				20	02/25/2052	1.A
..3140XG-WN-5	FNMA Pool# FS1552 2.500% 11/25/51		06/01/2024	Paydown		1,808	1,808	1,606	1,611		197		197		1,808				19	11/25/2051	1.A
..3140XH-Y7-6	FNMA Pool# FS2533 2.000% 07/25/52		06/01/2024	Paydown		2,136	2,136	1,824	1,834		302		302		2,136				18	07/25/2052	1.A
..31418E-E6-3	Fannie Mae Super Pool #MA4656 4.500% 07/01/52		06/01/2024	Paydown		902	902	894	894		7		7		902				17	07/01/2052	1.A
..31418E-WA-4	Fannie Mae Super Pool #MA5140 6.500% 09/25/53		06/01/2024	Paydown		53,027	53,027	54,048			(1,021)		(1,021)		53,027				547	09/25/2053	1.A
0909999999. Subtotal - Bonds - U.S. Special Revenues						226,226	226,226	227,431	172,700		(1,031)		(1,031)		226,226				2,085	XXX	XXX
..126650-BS-8	CVS Health Corp LBASS PTC Nt 7.507% 01/10/32		06/10/2024	Redemption	100.0000																
..126650-BS-8			06/10/2024			12,915	12,915	16,630	14,679		(1,764)		(1,764)		12,915				404	01/10/2032	2.B FE
1109999999. Subtotal - Bonds - Industrial and Miscellaneous (Unaffiliated)						12,915	12,915	16,630	14,679		(1,764)		(1,764)		12,915				404	XXX	XXX
2509999997. Total - Bonds - Part 4						239,792	239,792	244,724	187,379		(2,807)		(2,807)		239,792				2,493	XXX	XXX
2509999998. Total - Bonds - Part 5						XXX	XXX	XXX	XXX	XXX	XXX	XXX	XXX	XXX	XXX	XXX	XXX	XXX	XXX	XXX	XXX
2509999999. Total - Bonds						239,792	239,792	244,724	187,379		(2,807)		(2,807)		239,792				2,493	XXX	XXX
4509999997. Total - Preferred Stocks - Part 4							XXX													XXX	XXX
4509999998. Total - Preferred Stocks - Part 5						XXX	XXX	XXX	XXX	XXX	XXX	XXX	XXX	XXX	XXX	XXX	XXX	XXX	XXX	XXX	XXX
4509999999. Total - Preferred Stocks							XXX													XXX	XXX
5989999997. Total - Common Stocks - Part 4							XXX													XXX	XXX
5989999998. Total - Common Stocks - Part 5						XXX	XXX	XXX	XXX	XXX	XXX	XXX	XXX	XXX	XXX	XXX	XXX	XXX	XXX	XXX	XXX
5989999999. Total - Common Stocks							XXX													XXX	XXX
5999999999. Total - Preferred and Common Stocks							XXX													XXX	XXX
6009999999 - Totals						239,792	XXX	244,724	187,379		(2,807)		(2,807)		239,792				2,493	XXX	XXX

Schedule DB - Part A - Section 1 - Options, Caps, Floors, Collars, Swaps and Forwards Open  
**N O N E**

Schedule DB - Part B - Section 1 - Futures Contracts Open  
**N O N E**

Schedule DB - Part B - Section 1B - Brokers with whom cash deposits have been made  
**N O N E**

Schedule DB - Part D - Section 1 - Counterparty Exposure for Derivative Instruments Open  
**N O N E**

Schedule DB - Part D-Section 2 - Collateral for Derivative Instruments Open - Pledged By  
**N O N E**

Schedule DB - Part D-Section 2 - Collateral for Derivative Instruments Open - Pledged To  
**N O N E**

Schedule DB - Part E - Derivatives Hedging Variable Annuity Guarantees  
**N O N E**

Schedule DL - Part 1 - Reinvested Collateral Assets Owned  
**N O N E**

Schedule DL - Part 2 - Reinvested Collateral Assets Owned  
**N O N E**

## SCHEDULE E - PART 1 - CASH

E13



## SCHEDULE E - PART 2 - CASH EQUIVALENTS

[illegible]



SUPPLEMENT FOR THE QUARTER ENDING JUNE 30, 2024 OF THE NATIONWIDE ASSURANCE COMPANY

DIRECTOR AND OFFICER INSURANCE COVERAGE SUPPLEMENT

Year To Date For The Period Ended JUNE 30, 2024

NAIC Group Code0140NAIC Company Code10723

Company NameNATIONWIDE ASSURANCE COMPANY

If the reporting entity writes any director and officer (D&O) business, please provide the following:

1. Monoline Policies

1 Direct Written Premium	2 Direct Earned Premium	3 Direct Losses Incurred
\$ 31,257	\$ 34,315	\$

2. Commercial Multiple Peril (CMP) Packaged Policies

- 2.1 Does the reporting entity provide D&O liability coverage as part of a CMP packaged policy? Yes [ X ] No [ ]
- 2.2 Can the direct premium earned for D&O liability coverage provided as part of a CMP packaged policy be quantified or estimated? Yes [ X ] No [ ]
- 2.3 If the answer to question 2.2 is yes, provide the quantified or estimated direct premium earned amount for D&O liability coverage in CMP packaged policies

2.31 Amount quantified:\$ 751,958

2.32 Amount estimated using reasonable assumptions:\$
- 2.4 If the answer to question 2.1 is yes, provide direct losses incurred (losses paid plus change in case reserves) for the D&O liability coverage provided in CMP packaged policies. \$ 45,199