



PROPERTY AND CASUALTY COMPANIES—ASSOCIATION EDITION

QUARTERLY STATEMENT
AS OF JUNE 30, 2024
OF THE CONDITION AND AFFAIRS OF THE
SONNENBERG MUTUAL INSURANCE COMPANY

NAIC Group Code	00207	(Current Period)	00207	(Prior Period)	NAIC Company Code	10271	Employer's ID Number	34-0541185
Organized under the Laws of	Ohio				State of Domicile or Port of Entry	Ohio		
Country of Domicile	United States							
Incorporated/Organized	01/01/1905				Commenced Business	01/01/1859		
Statutory Home Office	2865 Benden Drive				Wooster, OH, US 44691			
	(Street and Number)				(City or Town, State, Country and Zip Code)			
Main Administrative Office	2865 Benden Drive				Wooster, OH, US 44691		330-262-9060	
	(Street and Number)				(City or Town, State, Country and Zip Code)		(Area Code) (Telephone Number)	
Mail Address	2865 Benden Drive				Wooster, OH, US 44691			
	(Street and Number or P.O. Box)				(City or Town, State, Country and Zip Code)			
Primary Location of Books and Records	2865 Benden Drive				Wooster, OH, US 44691		330-262-9060	
	(Street and Number)				(City or Town, State, Country and Zip Code)		(Area Code) (Telephone Number)	
Internet Web Site Address	www.wrg-ins.com							
Statutory Statement Contact	Christopher M. Racz, CPA				330-262-9060-2446			
	(Name)				(Area Code) (Telephone Number) (Extension)			
	Christopher.Racz@wrginsurance.com				800-563-9896			
	(E-Mail Address)				(Fax Number)			

OFFICERS

Name	Title	Name	Title
GREGORY A. BRUNN	PRESIDENT AND SECRETARY - CHIEF EXECUTIVE OFFICER	MICHAEL A. SHUTT	VICE PRESIDENT AND TREASURER -CHIEF FINANCIAL OFFICER

OTHER OFFICERS

WILLIAM J. GALONSKI	VICE PRESIDENT-CHIEF CLAIMS OFFICER	GLEND K. RISNER	VICE PRESIDENT-INSURANCE OPERATIONS
DAVID E. FREETAGE	VICE PRESIDENT-CHIEF INFORMATION OFFICER		

DIRECTORS OR TRUSTEES

KEVIN W. DAY	GREGORY A. BRUNN	JEFFREY P. HASTINGS	DOROTHY C. BAUNACH
JOHN P. MURPHY	MARY L. LEGERSKI	EDDIE L. STEINER	KENNETH L. VAGNINI
FLOYD A. TROUTEN III			

State ofOhio.....

County ofWayne.....ss

The officers of this reporting entity being duly sworn, each depose and say that they are the described officers of said reporting entity, and that on the reporting period stated above, all of the herein described assets were the absolute property of the said reporting entity, free and clear from any liens or claims thereon, except as herein stated, and that this statement, together with related exhibits, schedules and explanations therein contained, annexed or referred to, is a full and true statement of all the assets and liabilities and of the condition and affairs of the said reporting entity as of the reporting period stated above, and of its income and deductions therefrom for the period ended, and have been completed in accordance with the NAIC Annual Statement Instructions and Accounting Practices and Procedures manual except to the extent that: (1) state law may differ; or, (2) that state rules or regulations require differences in reporting not related to accounting practices and procedures, according to the best of their information, knowledge and belief, respectively. Furthermore, the scope of this attestation by the described officers also includes the related corresponding electronic filing with the NAIC, when required, that is an exact copy (except for formatting differences due to electronic filing) of the enclosed statement. The electronic filing may be requested by various regulators in lieu of or in addition to the enclosed statement.

GREGORY A. BRUNN PRESIDENT AND SECRETARY -CHIEF EXECUTIVE OFFICER	MICHAEL A. SHUTT VICE PRESIDENT AND TREASURER -CHIEF FINANCIAL OFFICER
--	---

a. Is this an original filing? Yes [X] No []

b. If no:

1. State the amendment number

2. Date filed

3. Number of pages attached

Subscribed and sworn to before me this 7th day of August, 2024

Stacey Ludington, Notary Public
March 12, 2029

STATEMENT AS OF JUNE 30, 2024 OF THE SONNENBERG MUTUAL INSURANCE COMPANY

ASSETS

	Current Statement Date			4 December 31 Prior Year Net Admitted Assets
	1	2	3	
	Assets	Nonadmitted Assets	Net Admitted Assets (Cols. 1 - 2)	
1. Bonds	16,108,273	0	16,108,273	16,234,433
2. Stocks:				
2.1 Preferred stocks	0	0	0	0
2.2 Common stocks	6,518,068	29,059	6,489,009	6,474,903
3. Mortgage loans on real estate:				
3.1 First liens	0	0	0	0
3.2 Other than first liens	0	0	0	0
4. Real estate:				
4.1 Properties occupied by the company (less \$ encumbrances)	0	0	0	0
4.2 Properties held for the production of income (less \$ encumbrances)	0	0	0	0
4.3 Properties held for sale (less \$ encumbrances)	0	0	0	0
5. Cash (\$(18,087,413)), cash equivalents (\$615,702) and short-term investments (\$583,998)	(16,887,713)	0	(16,887,713)	(17,635,851)
6. Contract loans (including \$ premium notes)	0	0	0	0
7. Derivatives	0	0	0	0
8. Other invested assets	1,092,276	0	1,092,276	1,116,237
9. Receivables for securities	0	0	0	0
10. Securities lending reinvested collateral assets	0	0	0	0
11. Aggregate write-ins for invested assets	0	0	0	0
12. Subtotals, cash and invested assets (Lines 1 to 11)	6,830,904	29,059	6,801,845	6,189,721
13. Title plants less \$ charged off (for Title insurers only)	0	0	0	0
14. Investment income due and accrued	140,058	0	140,058	128,143
15. Premiums and considerations:				
15.1 Uncollected premiums and agents' balances in the course of collection	16,910,373	60,965	16,849,408	17,073,690
15.2 Deferred premiums, agents' balances and installments booked but deferred and not yet due (including \$earned but unbilled premiums)	8,428,024	0	8,428,024	8,209,573
15.3 Accrued retrospective premiums (\$) and contracts subject to redetermination (\$)	0	0	0	0
16. Reinsurance:				
16.1 Amounts recoverable from reinsurers	203	0	203	56,228
16.2 Funds held by or deposited with reinsured companies	0	0	0	0
16.3 Other amounts receivable under reinsurance contracts	0	0	0	0
17. Amounts receivable relating to uninsured plans	0	0	0	0
18.1 Current federal and foreign income tax recoverable and interest thereon	188,319	0	188,319	304,461
18.2 Net deferred tax asset	30,898	0	30,898	0
19. Guaranty funds receivable or on deposit	0	0	0	0
20. Electronic data processing equipment and software	0	0	0	0
21. Furniture and equipment, including health care delivery assets (\$)	0	0	0	0
22. Net adjustment in assets and liabilities due to foreign exchange rates	0	0	0	0
23. Receivables from parent, subsidiaries and affiliates	0	0	0	0
24. Health care (\$) and other amounts receivable	0	0	0	0
25. Aggregate write-ins for other-than-invested assets	0	0	0	0
26. Total assets excluding Separate Accounts, Segregated Accounts and Protected Cell Accounts (Lines 12 to 25)	32,528,779	90,024	32,438,755	31,961,816
27. From Separate Accounts, Segregated Accounts and Protected Cell Accounts	0	0	0	0
28. Total (Lines 26 and 27)	32,528,779	90,024	32,438,755	31,961,816
DETAILS OF WRITE-INS				
1101.	0	0	0	0
1102.	0	0	0	0
1103.	0	0	0	0
1198. Summary of remaining write-ins for Line 11 from overflow page	0	0	0	0
1199. Totals (Lines 1101 through 1103 plus 1198) (Line 11 above)	0	0	0	0
2501.	0	0	0	0
2502.	0	0	0	0
2503.	0	0	0	0
2598. Summary of remaining write-ins for Line 25 from overflow page	0	0	0	0
2599. Totals (Lines 2501 through 2503 plus 2598) (Line 25 above)	0	0	0	0

LIABILITIES, SURPLUS AND OTHER FUNDS

	1 Current Statement Date	2 December 31, Prior Year
1. Losses (current accident year \$ 1,864,818)	4,521,576	4,273,620
2. Reinsurance payable on paid losses and loss adjustment expenses	0	0
3. Loss adjustment expenses	866,405	866,405
4. Commissions payable, contingent commissions and other similar charges	374,936	433,086
5. Other expenses (excluding taxes, licenses and fees)	273,643	328,107
6. Taxes, licenses and fees (excluding federal and foreign income taxes)	104,720	190,366
7.1 Current federal and foreign income taxes (including \$ on realized capital gains (losses))	0	0
7.2 Net deferred tax liability	0	6,156
8. Borrowed money \$ and interest thereon \$	0	0
9. Unearned premiums (after deducting unearned premiums for ceded reinsurance of \$ and including warranty reserves of \$ and accrued accident and health experience rating refunds including \$ for medical loss ratio rebate per the Public Health Service Act)	7,836,289	7,423,044
10. Advance premium	110,286	93,440
11. Dividends declared and unpaid:		
11.1 Stockholders	0	0
11.2 Policyholders	0	0
12. Ceded reinsurance premiums payable (net of ceding commissions)	(10,297)	108,735
13. Funds held by company under reinsurance treaties	0	0
14. Amounts withheld or retained by company for account of others	303,055	365,076
15. Remittances and items not allocated	0	0
16. Provision for reinsurance (including \$ certified)	0	0
17. Net adjustments in assets and liabilities due to foreign exchange rates	0	0
18. Drafts outstanding	0	0
19. Payable to parent, subsidiaries and affiliates	0	0
20. Derivatives	0	0
21. Payable for securities	0	0
22. Payable for securities lending	0	0
23. Liability for amounts held under uninsured plans	0	0
24. Capital notes \$ and interest thereon \$	0	0
25. Aggregate write-ins for liabilities	0	0
26. Total liabilities excluding protected cell liabilities (Lines 1 through 25)	14,380,613	14,088,035
27. Protected cell liabilities	0	0
28. Total liabilities (Lines 26 and 27)	14,380,613	14,088,035
29. Aggregate write-ins for special surplus funds	0	0
30. Common capital stock	0	0
31. Preferred capital stock	0	0
32. Aggregate write-ins for other than special surplus funds	0	0
33. Surplus notes	0	0
34. Gross paid in and contributed surplus	0	0
35. Unassigned funds (surplus)	18,058,142	17,873,781
36. Less treasury stock, at cost:		
36.1 shares common (value included in Line 30 \$)	0	0
36.2 shares preferred (value included in Line 31 \$)	0	0
37. Surplus as regards policyholders (Lines 29 to 35, less 36)	18,058,142	17,873,781
38. Totals (Page 2, Line 28, Col. 3)	32,438,755	31,961,816
DETAILS OF WRITE-INS		
2501.	0	0
2502.	0	0
2503.		0
2598. Summary of remaining write-ins for Line 25 from overflow page	0	0
2599. Totals (Lines 2501 through 2503 plus 2598) (Line 25 above)	0	0
2901.		0
2902.		0
2903.		0
2998. Summary of remaining write-ins for Line 29 from overflow page	0	0
2999. Totals (Lines 2901 through 2903 plus 2998) (Line 29 above)	0	0
3201.	0	0
3202.	0	0
3203.	0	0
3298. Summary of remaining write-ins for Line 32 from overflow page	0	0
3299. Totals (Lines 3201 through 3203 plus 3298) (Line 32 above)	0	0

STATEMENT OF INCOME

	1	2	3
	Current Year	Prior Year	Prior Year Ended
	to Date	to Date	December 31
UNDERWRITING INCOME			
1. Premiums earned:			
1.1 Direct (written \$ 42,289,700)	42,557,529	32,481,097	70,240,711
1.2 Assumed (written \$ 8,206,905)	7,793,661	6,563,200	13,782,436
1.3 Ceded (written \$ 42,289,700)	42,557,529	32,481,097	70,240,711
1.4 Net (written \$ 8,206,905)	7,793,661	6,563,200	13,782,436
DEDUCTIONS:			
2. Losses incurred (current accident year \$):			
2.1 Direct	28,441,235	24,295,525	53,473,952
2.2 Assumed	4,728,466	5,104,836	9,896,443
2.3 Ceded	28,441,235	24,295,525	53,473,952
2.4 Net	4,728,466	5,104,836	9,896,443
3. Loss adjustment expenses incurred	770,508	619,558	1,305,950
4. Other underwriting expenses incurred	2,757,763	2,254,647	4,678,119
5. Aggregate write-ins for underwriting deductions	0	0	0
6. Total underwriting deductions (Lines 2 through 5)	8,256,737	7,979,041	15,880,513
7. Net income of protected cells	0	0	0
8. Net underwriting gain (loss) (Line 1 minus Line 6 + Line 7)	(463,076)	(1,415,841)	(2,098,077)
INVESTMENT INCOME			
9. Net investment income earned	370,035	299,534	647,482
10. Net realized capital gains (losses) less capital gains tax of \$ 87,731	330,037	356,813	346,872
11. Net investment gain (loss) (Lines 9 + 10)	700,072	656,347	994,354
OTHER INCOME			
12. Net gain or (loss) from agents' or premium balances charged off (amount recovered \$ amount charged off \$ 13,625)	(13,625)	(5,059)	(12,330)
13. Finance and service charges not included in premiums	63,823	63,487	127,027
14. Aggregate write-ins for miscellaneous income	2,066	199	(7)
15. Total other income (Lines 12 through 14)	52,264	58,627	114,690
16. Net income before dividends to policyholders, after capital gains tax and before all other federal and foreign income taxes (Lines 8 + 11 + 15)	289,260	(700,867)	(989,032)
17. Dividends to policyholders	0	0	0
18. Net income, after dividends to policyholders, after capital gains tax and before all other federal and foreign income taxes (Line 16 minus Line 17)	289,260	(700,867)	(989,032)
19. Federal and foreign income taxes incurred	68,411	(94,849)	(92,207)
20. Net income (Line 18 minus Line 19)(to Line 22)	220,849	(606,018)	(896,826)
CAPITAL AND SURPLUS ACCOUNT			
21. Surplus as regards policyholders, December 31 prior year	17,873,781	19,117,002	19,117,002
22. Net income (from Line 20)	220,849	(606,018)	(896,826)
23. Net transfers (to) from Protected Cell accounts	0	0	0
24. Change in net unrealized capital gains or (losses) less capital gains tax of \$ (6,171)	(23,214)	(204,492)	(314,704)
25. Change in net unrealized foreign exchange capital gain (loss)	0	0	0
26. Change in net deferred income tax	30,884	(46,012)	171,969
27. Change in nonadmitted assets	(44,157)	1,811	14,205
28. Change in provision for reinsurance	0	0	0
29. Change in surplus notes	0	0	0
30. Surplus (contributed to) withdrawn from protected cells	0	0	0
31. Cumulative effect of changes in accounting principles	0	0	0
32. Capital changes:			
32.1 Paid in	0	0	0
32.2 Transferred from surplus (Stock Dividend)	0	0	0
32.3 Transferred to surplus	0	0	0
33. Surplus adjustments:			
33.1 Paid in	0	0	0
33.2 Transferred to capital (Stock Dividend)	0	0	0
33.3 Transferred from capital	0	0	0
34. Net remittances from or (to) Home Office	0	0	0
35. Dividends to stockholders	0	0	0
36. Change in treasury stock	0	0	0
37. Aggregate write-ins for gains and losses in surplus	0	0	(217,865)
38. Change in surplus as regards policyholders (Lines 22 through 37)	184,362	(854,711)	(1,243,221)
39. Surplus as regards policyholders, as of statement date (Lines 21 plus 38)	18,058,142	18,262,291	17,873,781
DETAILS OF WRITE-INS			
0501.		0	0
0502.		0	0
0503.		0	0
0598. Summary of remaining write-ins for Line 5 from overflow page	0	0	0
0599. TOTALS (Lines 0501 through 0503 plus 0598) (Line 5 above)	0	0	0
1401. Other Income/(Expense)	2,066	199	(7)
1402.		0	0
1403.			
1498. Summary of remaining write-ins for Line 14 from overflow page	0	0	0
1499. TOTALS (Lines 1401 through 1403 plus 1498) (Line 14 above)	2,066	199	(7)
3701. Correction of an error in a previously issued financial statement	0	0	(217,865)
3702.	0	0	0
3703.	0	0	0
3798. Summary of remaining write-ins for Line 37 from overflow page	0	0	0
3799. TOTALS (Lines 3701 through 3703 plus 3798) (Line 37 above)	0	0	(217,865)

CASH FLOW

	1 Current Year To Date	2 Prior Year To Date	3 Prior Year Ended December 31
Cash from Operations			
1. Premiums collected net of reinsurance.....	8,061,107	4,752,161	7,826,036
2. Net investment income	330,955	345,560	685,743
3. Miscellaneous income	52,264	58,627	114,690
4. Total (Lines 1 to 3)	8,444,327	5,156,348	8,626,469
5. Benefit and loss related payments	4,424,485	5,282,129	9,833,272
6. Net transfers to Separate Accounts, Segregated Accounts and Protected Cell Accounts.....	0	0	0
7. Commissions, expenses paid and aggregate write-ins for deductions	3,726,531	3,082,428	5,893,503
8. Dividends paid to policyholders	0	0	0
9. Federal and foreign income taxes paid (recovered) net of \$ tax on capital gains (losses).....	40,000	(49,200)	(49,200)
10. Total (Lines 5 through 9)	8,191,015	8,315,358	15,677,575
11. Net cash from operations (Line 4 minus Line 10)	253,311	(3,159,010)	(7,051,106)
Cash from Investments			
12. Proceeds from investments sold, matured or repaid:			
12.1 Bonds	2,513,242	3,882,032	8,398,076
12.2 Stocks	1,215,337	1,741,202	2,146,144
12.3 Mortgage loans	0	0	0
12.4 Real estate	0	0	0
12.5 Other invested assets	43,666	39,204	74,613
12.6 Net gains or (losses) on cash, cash equivalents and short-term investments	0	0	0
12.7 Miscellaneous proceeds	0	0	0
12.8 Total investment proceeds (Lines 12.1 to 12.7)	3,772,245	5,662,438	10,618,834
13. Cost of investments acquired (long-term only):			
13.1 Bonds	2,409,371	3,438,113	8,571,429
13.2 Stocks	768,269	0	133,391
13.3 Mortgage loans	0	0	0
13.4 Real estate	0	0	0
13.5 Other invested assets	37,755	134,527	244,327
13.6 Miscellaneous applications	1	0	1
13.7 Total investments acquired (Lines 13.1 to 13.6)	3,215,396	3,572,640	8,949,149
14. Net increase/(decrease) in contract loans and premium notes	0	0	0
15. Net cash from investments (Line 12.8 minus Line 13.7 and Line 14)	556,849	2,089,797	1,669,685
Cash from Financing and Miscellaneous Sources			
16. Cash provided (applied):			
16.1 Surplus notes, capital notes	0	0	0
16.2 Capital and paid in surplus, less treasury stock.....	0	0	0
16.3 Borrowed funds	0	0	0
16.4 Net deposits on deposit-type contracts and other insurance liabilities	0	0	0
16.5 Dividends to stockholders	0	0	0
16.6 Other cash provided (applied).....	(62,021)	(83,296)	(7,581)
17. Net cash from financing and miscellaneous sources (Line 16.1 through Line 16.4 minus Line 16.5 plus Line 16.6).....	(62,021)	(83,296)	(7,581)
RECONCILIATION OF CASH, CASH EQUIVALENTS AND SHORT-TERM INVESTMENTS			
18. Net change in cash, cash equivalents and short-term investments (Line 11, plus Lines 15 and 17)	748,139	(1,152,508)	(5,389,002)
19. Cash, cash equivalents and short-term investments:			
19.1 Beginning of year.....	(17,635,851)	(12,246,850)	(12,246,849)
19.2 End of period (Line 18 plus Line 19.1)	(16,887,712)	(13,399,358)	(17,635,851)

Note: Supplemental disclosures of cash flow information for non-cash transactions:			
20.0001. Investments acquired in non-cash transactions.....	0	0	2,666
20.0002. Investments disposed in non-cash transactions.....	0	0	2,666

NOTES TO FINANCIAL STATEMENTS

1. Summary of Significant Accounting Policies

A. Accounting Practices

The financial statements of Sonnenberg Mutual Insurance Company (SMIC) are presented on the basis of accounting principles prescribed or permitted by the Ohio Department of Insurance.

The Ohio Department of Insurance recognizes only statutory accounting practices prescribed or permitted by the State of Ohio for determining and reporting the financial condition and results of operations of an insurance company for determining its solvency under Ohio Insurance Law. The National Association of Insurance Commissioners' (NAIC) *Accounting Practices and Procedures Manual* (NAIC SAP) has been adopted as a component of prescribed or permitted practices by the State of Ohio.

The financial statements of the Company are presented solely on the basis of accounting principles prescribed by the Ohio Department of Insurance. As such, there are no increases or decreases to net income or surplus on a statutory accounting basis as shown by the reconciliation below:

	State of Domicile	2024	2023
<u>NET INCOME</u>			
(1) SMIC state basis (Page 4, Line 20, Columns 1 & 3)	Ohio	\$ 220,849	\$ (896,826)
(2) State Prescribed Practices that increase/(decrease) NAIC SAP:		—	—
(3) State Permitted Practices that increase/(decrease) NAIC SAP:		—	—
(4) NAIC SAP (1-2-3=4)		<u>\$ 220,849</u>	<u>\$ (896,826)</u>
<u>SURPLUS</u>			
(5) SMIC state basis (Page 3, Line 37, Columns 1 & 2)	Ohio	\$ 18,058,142	\$ 17,873,781
(6) State Prescribed Practices that increase/(decrease) NAIC SAP:		—	—
(7) State Permitted Practices that increase/(decrease) NAIC SAP:		—	—
(8) NAIC SAP (5-6-7=8)		<u>\$ 18,058,142</u>	<u>\$ 17,873,781</u>

B. Use of Estimates in the Preparation of the Financial Statements

No significant changes from December 31, 2023.

C. Accounting Policy

No significant changes from December 31, 2023.

D. Going Concern

Management has evaluated the Company's viability and has no doubt as to the Company's ability to continue as a going concern.

2. Accounting Changes and Corrections of Errors

Not applicable.

3. Business Combinations and Goodwill

Not applicable.

4. Discontinued Operations

Not applicable.

5. Investments

A. Mortgage Loans, including Mezzanine Real Estate Loans

Not applicable.

B. Debt Restructuring

Not applicable.

C. Reverse Mortgages

Not applicable.

NOTES TO FINANCIAL STATEMENTS

D. Loan-Backed Securities

- 1. Prepayment assumptions are generally obtained using a model provided by a third-party vendor.
- 2. None.
- 3. None.
- 4. All impaired securities (fair value is less than cost or amortized cost) for which an other-than-temporary impairment has not been recognized in earnings as a realized loss (including securities with a recognized other-than temporary impairment for non-interest related declines when a non-recognized interest related impairment remains):

a. The aggregate amount of unrealized losses:	
	1. Less than 12 months \$ (17,663)
	2. 12 months or Longer \$ (4,076)

b. The aggregate related fair value of securities with unrealized losses:	
	1. Less than 12 months \$ 1,625,229
	2. 12 months or longer \$ 171,099

- 5. The Company reviews all loan-backed and structured securities in which the fair value of a given security is less than the amortized cost to determine if a given security is other-than-temporarily impaired. The Company examines characteristics of the underlying collateral, such as delinquency and default rates, the quality of the underlying borrower, the type of collateral in the pool, the vintage year of the collateral, subordination levels within the structure of the collateral pool, and the quality of any credit guarantors, to determine the cash flows expected to be received for the security.

If the severity and duration of the security’s unrealized loss indicates a risk of other-than-temporary impairment, then the Company will evaluate if the amortized cost basis of the security will be recovered by comparing the present value of the cash flows expected to be received for the given security with the amortized basis of the security. If the present value of cash flows is greater than the amortized cost basis of a security then the security is deemed not to be other-than-temporarily impaired.

E. Dollar Repurchase Agreements and/or Securities Lending Transactions

Not applicable.

F. Repurchase Agreements Transactions Accounted for as Secured Borrowing

Not applicable.

G. Reverse Repurchase Agreements Transactions Accounted for as Secured Borrowing

Not applicable.

H. Repurchase Agreements Transactions Accounted for as a Sale

Not applicable.

I. Reverse Repurchase Agreements Transactions Accounted for as a Sale

Not applicable.

J. Real Estate

Not applicable.

K. Low-income Housing Tax Credits (LIHTC)

Not applicable.

L. Restricted Assets

Not applicable.

M. Working Capital Finance Investments

Not applicable.

N. Offsetting and Netting of Assets and Liabilities

Not applicable.

O. 5* Securities

Not applicable.

P. Short Sales

Not applicable.

NOTES TO FINANCIAL STATEMENTS

Q. Prepayment Penalty and Accelerated Fees

Not applicable.

R. Reporting Entity's Share of Cash Pool by Asset Type

Not applicable.

6. Joint Ventures, Partnerships and Limited Liability Companies

No significant changes from December 31, 2023.

7. Investment Income

No significant changes from December 31, 2023.

8. Derivative Instruments

Not applicable.

9. Income Taxes

No significant changes from December 31, 2023.

10. Information Concerning Parent, Subsidiaries, Affiliates and Other Related Parties

A. Not applicable.

B. Not applicable.

C. Not applicable.

D. No significant changes from December 31, 2023.

E. Not applicable.

F. No significant changes from December 31, 2023.

G. No significant changes from December 31, 2023.

H. Not applicable.

I. Not applicable.

J. Not applicable.

K. Not applicable.

L. No significant changes from December 31, 2023.

M. No significant changes from December 31, 2023.

N. Not applicable.

O. Not applicable.

11. Debt

Not applicable.

12. Retirement Plans, Deferred Compensation, Postemployment Benefits and Compensated Absences and Other Postretirement Benefit Plans

A. Defined Benefit Plan

The Company has a non-qualified, unfunded, retiree healthcare plan that was closed to new participants. The related liabilities and expenses are not material to the Company's financial position.

The Company also has a non-qualified voluntary deferred compensation plan for senior executive officers. The plan allows for deferral of payouts from the Annual Cash Bonus Plan and Performance Share Plan for Key Executives. As of June 30, 2024 and December 31, 2023, amounts held for these deferrals were \$0.3 million, respectively.

B. Investment Policies and Strategies

Not applicable.

C. Fair Value of Plan Assets

Not applicable.

D. Basis of Rates of Returns on Assets

Not applicable.

NOTES TO FINANCIAL STATEMENTS

E. Defined Contribution Plans

No significant changes from December 31, 2023.

F. Multiemployer Plans

Not applicable.

G. Consolidated/Holding Company Plans

Not applicable.

H. Postemployment Benefits and Compensated Absences

Not applicable.

I. Impact of Medicare Modernization Act on Postretirement Benefits (INT 04—17)

Not applicable.

13. Capital and Surplus, Dividend Restrictions and Quasi—Reorganizations

No significant changes from December 31, 2023.

14. Liabilities, Contingencies and Assessments

No significant changes from December 31, 2023.

15. Leases

No significant changes from December 31, 2023.

16. Information about Financial Instruments With Off—Balance—Sheet Risk and Financial Instruments With Concentrations of Credit Risk

Not applicable.

17. Sale, Transfer, and Servicing of Financial Assets and Extinguishment of Liabilities

Not applicable.

18. Gain or Loss to the Reporting Entity from Uninsured Plans and the Uninsured Portion of Partially Insured Plans

Not applicable.

19. Direct Premium Written/Produced by Managing General Agents/Third Party Administrators

Not applicable.

20. Fair Value Measurements

- A. The Company's financial assets and liabilities carried at fair value have been classified, for disclosure purposes, based on a hierarchy defined by FASB ASC 820 (SFAS No. 157), *Fair Value Measurements*. The hierarchy gives the highest ranking to fair values determined using unadjusted quoted prices in active markets for identical assets and liabilities (Level 1) and the lowest ranking to fair values determined using methodologies and models with unobservable inputs (Level 3). An asset's or a liability's classification is based on the lowest level input that is significant to its measurement. For example, a Level 3 fair value measurement may include inputs that are both observable (Levels 1 and 2) and unobservable (Level 3). The levels of the fair value hierarchy are as follows:

Level 1:

Values are unadjusted quoted prices for identical assets and liabilities in active markets accessible at the measurement date.

Level 2:

Inputs include quoted prices for similar assets or liabilities in active markets, quoted prices from those willing to trade in markets that are not active, or other inputs that are observable or can be corroborated by market data for the term of the instrument. Such inputs include market interest rates and volatilities, spreads and yield curves.

Level 3:

Certain inputs are unobservable (supported by little or no market activity) and significant to the fair value measurement. Unobservable inputs reflect the Company's best estimate of what hypothetical market participants would use to determine a transaction price for the asset or liability at the reporting date.

NOTES TO FINANCIAL STATEMENTS

(1) Fair Value Measurements at June 30, 2024:

Description of each class of asset or liability	(Level 1)	(Level 2)	(Level 3)	Net Asset Value (NAV)	Total
a. Assets at fair value					
Cash equivalents:					
Exempt MM Mutual Funds	\$ 615,702	\$ --	\$ --	\$ --	\$ 615,702
Total Cash Equivalents	615,702	--	--	--	615,702
Common Stock:					
Mutual Funds	2,151,589	--	--	--	2,151,589
Industrial and Misc	4,234,766	--	102,654	--	4,337,420
Total Common Stocks	6,386,355	--	102,654	--	6,489,009
Total assets at fair value/NAV	\$ 7,002,057	\$ --	\$ 102,654	\$ --	\$ 7,104,711
b. Liabilities at fair value:					
Not applicable.					

Fair Value Measurements at December 31, 2023:

Description of each class of asset or liability	(Level 1)	(Level 2)	(Level 3)	Net Asset Value (NAV)	Total
a. Assets at fair value					
Cash equivalents:					
Exempt MM Mutual Funds	\$ 330,548	\$ --	\$ --	\$ --	\$ 330,548
Total Cash Equivalents	330,548	--	--	--	330,548
Common Stock:					
Mutual Funds	2,582,975	--	--	--	2,582,975
Industrial and Misc	3,789,274	--	102,654	--	3,821,928
Total Common Stocks	6,372,249	--	102,654	--	6,474,903
Total assets at fair value/NAV	\$ 6,702,797	\$ --	\$ 102,654	\$ --	\$ 6,805,451
b. Liabilities at fair value:					
Not applicable.					

(2) Fair Value Measurements in (Level 3) of the Fair Value Hierarchy:

	Beginning Balance at 03/31/2024	Transfers In/(out) Level 3	Total Gain/(Loss) Included in Net Income	Total Gain/(Loss) Included in Surplus	Purchases (Sales)	Ending Balance at 06/30/2024
a. Assets:						
Common Stock:						
Industrial and Misc	\$ 102,654	\$ --	\$ --	\$ --	\$ --	\$ 102,654
b. Liabilities:						
Not applicable.						

(3) As of June 30, 2024, the reported fair value of the entity's investments categorized within Level 3 of the fair value hierarchy is as follows:

Common Stocks – The Company holds an investment in NAMIC common stock.

B. Not applicable.

C. Fair Value of All Financial Instruments:

Type of Financial Instrument	Aggregate Fair Value	Admitted Assets	(Level 1)	(Level 2)	(Level 3)	Net Asset Value (NAV)	Not Practicable (Carrying Value)
Bonds	\$15,536,886	\$16,108,273	\$ 999,901	\$14,536,985	\$ --	\$ --	\$ --
Common Stock	6,489,009	6,489,009	6,386,355	--	102,654	--	--
Other Invested Assets	1,092,276	1,092,276	--	--	1,092,276	--	--
Cash Equivalents	615,702	615,702	615,702	--	--	--	--
Short-Term Investments	583,969	583,998	583,969	--	--	--	--

D. The Company has no assets for which it was not practicable to estimate fair value.

21. Other Items

Not applicable.

NOTES TO FINANCIAL STATEMENTS

22. Events Subsequent

Type I – Recognized Subsequent Events:

Subsequent events have been considered through August 15, 2024 for the statutory statement issued on August 15, 2024 for the quarter ending June 30, 2024. No Type I events were identified that would have a material effect on the financial condition of the Company.

Type II – Nonrecognized Subsequent Events:

Subsequent events have been considered through August 15, 2024 for the statutory statement issued on August 15, 2024 for the quarter ending June 30, 2024. No Type II events were identified that would have a material effect on the financial condition of the Company.

23. Reinsurance

No significant changes from December 31, 2023.

24. Retrospectively Rated Contracts and Contracts Subject to Redetermination

Not applicable.

25. Changes in Incurred Losses and Loss Adjustment Expense

Reserves as of December 31, 2023 were \$5.1 million. During 2024, \$1.9 million has been paid for incurred losses and loss adjustment expenses attributable to insured events of prior years. Reserves remaining for prior years are now \$3.2 million as a result of re-estimation of unpaid claims and claim adjusting expenses. Therefore, there has been no favorable or unfavorable prior year development from December 31, 2023 to June 30, 2024. The re-estimation is generally the result of ongoing analysis of recent loss development trends. Original estimates are increased or decreased as additional information becomes known regarding individual claims. The estimates are not affected by prior year loss development on retrospectively rated policies, as the Company does not write this type of policy.

26. Intercompany Pooling Agreements

No significant changes from December 31, 2023.

27. Structured Settlements

Not applicable.

28. Health Care Receivables

Not applicable.

29. Participating Policies

Not applicable.

30. Premium Deficiency Reserves

No significant changes from December 31, 2023.

31. High Deductibles

Not applicable.

32. Discounting of Liabilities for Unpaid Losses or Unpaid Loss Adjustment Expenses

No significant changes from December 31, 2023.

33. Asbestos/Environmental Reserves

No significant changes.

34. Subscriber Savings Accounts

Not applicable.

35. Multiple Peril Crop Insurance

Not applicable.

36. Financial Guaranty Insurance

Not applicable.

GENERAL INTERROGATORIES

PART 1 - COMMON INTERROGATORIES

GENERAL

1.1

Did the reporting entity experience any material transactions requiring the filing of Disclosure of Material Transactions with the State of Domicile, as required by the Model Act?

Yes ☐ No ☒

1.2

If yes, has the report been filed with the domiciliary state?

Yes ☐ No ☐

2.1

Has any change been made during the year of this statement in the charter, by-laws, articles of incorporation, or deed of settlement of the reporting entity?

Yes ☐ No ☒

2.2

If yes, date of change:

3.1

Is the reporting entity a member of an Insurance Holding Company System consisting of two or more affiliated persons, one or more of which is an insurer?

Yes ☒ No ☐

If yes, complete Schedule Y, Parts 1 and 1A.

3.2

Have there been any substantial changes in the organizational chart since the prior quarter end?

Yes ☐ No ☒

3.3

If the response to 3.2 is yes, provide a brief description of those changes.

3.4

Is the reporting entity publicly traded or a member of a publicly traded group?

Yes ☐ No ☒

3.5

If the response to 3.4 is yes, provide the CIK (Central Index Key) code issued by the SEC for the entity/group.

4.1

Has the reporting entity been a party to a merger or consolidation during the period covered by this statement?

Yes ☐ No ☒

4.2

If yes, provide the name of entity, NAIC Company Code, and state of domicile (use two letter state abbreviation) for any entity that has ceased to exist as a result of the merger or consolidation.

1	2	3
Name of Entity	NAIC Company Code	State of Domicile

5.

If the reporting entity is subject to a management agreement, including third-party administrator(s), managing general agent(s), attorney-in-fact, or similar agreement, have there been any significant changes regarding the terms of the agreement or principals involved?

If yes, attach an explanation.

Yes ☐ No ☐ NA ☒

6.1

State as of what date the latest financial examination of the reporting entity was made or is being made.

12/31/2021

6.2

State the as of date that the latest financial examination report became available from either the state of domicile or the reporting entity. This date should be the date of the examined balance sheet and not the date the report was completed or released.

12/31/2021

6.3

State as of what date the latest financial examination report became available to other states or the public from either the state of domicile or the reporting entity. This is the release date or completion date of the examination report and not the date of the examination (balance sheet date).

03/23/2023

6.4

By what department or departments?

Ohio Department of Insurance

6.5

Have all financial statement adjustments within the latest financial examination report been accounted for in a subsequent financial statement filed with Departments?

Yes ☐ No ☐ NA ☒

6.6

Have all of the recommendations within the latest financial examination report been complied with?

Yes ☒ No ☐ NA ☐

7.1

Has this reporting entity had any Certificates of Authority, licenses or registrations (including corporate registration, if applicable) suspended or revoked by any governmental entity during the reporting period?

Yes ☐ No ☒

7.2

If yes, give full information:

8.1

Is the company a subsidiary of a bank holding company regulated by the Federal Reserve Board?

Yes ☐ No ☒

8.2

If response to 8.1 is yes, please identify the name of the bank holding company.

8.3

Is the company affiliated with one or more banks, thrifts or securities firms?

Yes ☐ No ☒

8.4

If response to 8.3 is yes, please provide below the names and location (city and state of the main office) of any affiliates regulated by a federal regulatory services agency [i.e. the Federal Reserve Board (FRB), the Office of the Comptroller of the Currency (OCC), the Federal Deposit Insurance Corporation (FDIC) and the Securities Exchange Commission (SEC)] and identify the affiliate's primary federal regulator.].

1	2	3	4	5	6
Affiliate Name	Location (City, State)	FRB	OCC	FDIC	SEC

9.1

Are the senior officers (principal executive officer, principal financial officer, principal accounting officer or controller, or persons performing similar functions) of the reporting entity subject to a code of ethics, which includes the following standards?

(a) Honest and ethical conduct, including the ethical handling of actual or apparent conflicts of interest between personal and professional relationships;
(b) Full, fair, accurate, timely and understandable disclosure in the periodic reports required to be filed by the reporting entity;
(c) Compliance with applicable governmental laws, rules and regulations;
(d) The prompt internal reporting of violations to an appropriate person or persons identified in the code; and
(e) Accountability for adherence to the code.

Yes ☒ No ☐

9.11

If the response to 9.1 is No, please explain:

9.2

Has the code of ethics for senior managers been amended?

Yes ☐ No ☒

9.21

If the response to 9.2 is Yes, provide information related to amendment(s).

9.3

Have any provisions of the code of ethics been waived for any of the specified officers?

Yes ☐ No ☒

9.31

If the response to 9.3 is Yes, provide the nature of any waiver(s).

FINANCIAL

10.1

Does the reporting entity report any amounts due from parent, subsidiaries or affiliates on Page 2 of this statement?

Yes ☐ No ☒

10.2

If yes, indicate any amounts receivable from parent included in the Page 2 amount:

\$

GENERAL INTERROGATORIES

INVESTMENT

11.1 Were any of the stocks, bonds, or other assets of the reporting entity loaned, placed under option agreement, or otherwise made available for use by another person? (Exclude securities under securities lending agreements.) Yes [] No [X]

11.2 If yes, give full and complete information relating thereto:

12. Amount of real estate and mortgages held in other invested assets in Schedule BA:\$0

13. Amount of real estate and mortgages held in short-term investments:\$0

14.1 Does the reporting entity have any investments in parent, subsidiaries and affiliates? Yes [X] No []

14.2 If yes, please complete the following:

	1 Prior Year-End Book/Adjusted Carrying Value	2 Current Quarter Book/Adjusted Carrying Value
14.21 Bonds	\$0	\$0
14.22 Preferred Stock	\$0	\$0
14.23 Common Stock	\$34,347	\$29,059
14.24 Short-Term Investments	\$0	\$0
14.25 Mortgage Loans on Real Estate	\$0	\$0
14.26 All Other	\$0	\$0
14.27 Total Investment in Parent, Subsidiaries and Affiliates (Subtotal Lines 14.21 to 14.26).....	\$34,347	\$29,059
14.28 Total Investment in Parent included in Lines 14.21 to 14.26 above	\$0	\$0

15.1 Has the reporting entity entered into any hedging transactions reported on Schedule DB? Yes [] No [X]

15.2 If yes, has a comprehensive description of the hedging program been made available to the domiciliary state? Yes [] No [] NA [X]
If no, attach a description with this statement.

16. For the reporting entity's security lending program, state the amount of the following as of the current statement date:
16.1 Total fair value of reinvested collateral assets reported on Schedule DL, Parts 1 and 2\$0
16.2 Total book/adjusted carrying value of reinvested collateral assets reported on Schedule DL, Parts 1 and 2\$0
16.3 Total payable for securities lending reported on the liability page\$0

17. Excluding items in Schedule E – Part 3 – Special Deposits, real estate, mortgage loans and investments held physically in the reporting entity's offices, vaults or safety deposit boxes, were all stocks, bonds and other securities, owned throughout the current year held pursuant to a custodial agreement with a qualified bank or trust company in accordance with Section 1, III – General Examination Considerations, F. Outsourcing of Critical Functions, Custodial or Safekeeping Agreements of the NAIC *Financial Condition Examiners Handbook*? Yes [] No [X]

17.1 For all agreements that comply with the requirements of the NAIC *Financial Condition Examiners Handbook*, complete the following:

1 Name of Custodian(s)	2 Custodian Address
Northern Trust Company.....	50 South Lasalle Street Chicago, IL 60603.....

17.2 For all agreements that do not comply with the requirements of the NAIC *Financial Condition Examiners Handbook*, provide the name, location and a complete explanation:

1 Name(s)	2 Location(s)	3 Complete Explanation(s)
Monroe Capital LLC.....	311 South Wacker Dr, Suite 6400 Chicago, IL 60606.....	Investment in Monroe Capital Private Credit (Delaware) Feeder Fund IV LP in 2021, not accounted for by Northern Trust Company.....
HarbourVest Partners LLC.....	One Financial Center Boston, MA 02111.....	Investment in HarbourVest Direct Lending Fund (L) L.P. in 2021; not accounted for by Northern Trust Company.....
First Eagle Alternative Credit LLC.....	1345 Avenue of the Americas, New York, NY 10105.....	Investment in First Eagle Direct Lending V-B, LLC; not accounted for by Northern Trust.....

17.3 Have there been any changes, including name changes, in the custodian(s) identified in 17.1 during the current quarter? Yes [] No [X]

17.4 If yes, give full and complete information relating thereto:

1 Old Custodian	2 New Custodian	3 Date of Change	4 Reason

17.5 Investment management – Identify all investment advisors, investment managers, broker/dealers, including individuals that have the authority to make investment decisions on behalf of the reporting entity. For assets that are managed internally by employees of the reporting entity, note as such: ["...that have access to the investment accounts"; "...handle securities"]

1 Name of Firm or Individual	2 Affiliation
Michael Shutt.....	I.....
Wellington Management Company LLP.....	U.....
Northern Trust Investments, Inc.....	U.....

17.5097 For those firms/individuals listed in the table for Question 17.5, do any firms/individuals unaffiliated with the reporting entity (i.e., designated with a "U") manage more than 10% of the reporting entity's invested assets? Yes [X] No []

17.5098 For firms/individuals unaffiliated with the reporting entity (i.e., designated with a "U") listed in the table for Question 17.5, does the total assets under management aggregate to more than 50% of the reporting entity's invested assets? Yes [X] No []

17.6 For those firms or individuals listed in the table for 17.5 with an affiliation code of "A" (affiliated) or "U" (unaffiliated), provide the information for the table below.

1 Central Registration Depository Number	2 Name of Firm or Individual	3 Legal Entity Identifier (LEI)	4 Registered With	5 Investment Management Agreement (IMA) Filed
106595.....	Wellington Management Company LLP.....	549300YHP12TEZNL CX41.....	SEC # 801-106595.....	NO.....
105780.....	Northern Trust Investments, Inc.....	BEL4B8X7EHJU845Y2N39.....	SEC # 801-33358.....	NO.....

18.1 Have all the filing requirements of the *Purposes and Procedures Manual of the NAIC Investment Analysis Office* been followed? Yes [X] No []

18.2 If no, list exceptions:

GENERAL INTERROGATORIES

19. By self-designating 5GI securities, the reporting entity is certifying the following elements for each self-designated 5GI security:

a. Documentation necessary to permit a full credit analysis of the security does not exist or an NAIC CRP credit rating for an FE or PL security is not available.

b. Issuer or obligor is current on all contracted interest and principal payments.

c. The insurer has an actual expectation of ultimate payment of all contracted interest and principal.

Has the reporting entity self-designated 5GI securities?.....

Yes [] No [X]

20. By self-designating PLGI securities, the reporting entity is certifying the following elements of each self-designated PLGI security:

a. The security was purchased prior to January 1, 2018.

b. The reporting entity is holding capital commensurate with the NAIC Designation reported for the security.

c. The NAIC Designation was derived from the credit rating assigned by an NAIC CRP in its legal capacity as a NRSRO which is shown on a current private letter rating held by the insurer and available for examination by state insurance regulators.

d. The reporting entity is not permitted to share this credit rating of the PL security with the SVO.

Has the reporting entity self-designated PLGI securities?.....

Yes [] No [X]

21. By assigning FE to a Schedule BA non-registered private fund, the reporting entity is certifying the following elements of each self-designated FE fund:

a. The shares were purchased prior to January 1, 2019.

b. The reporting entity is holding capital commensurate with the NAIC Designation reported for the security.

c. The security had a public credit rating(s) with annual surveillance assigned by an NAIC CRP in its legal capacity as an NRSRO prior to January 1, 2019.

d. The fund only or predominantly holds bonds in its portfolio.

e. The current reported NAIC Designation was derived from the public credit rating(s) with annual surveillance assigned by an NAIC CRP in its legal capacity as an NRSRO.

f. The public credit rating(s) with annual surveillance assigned by an NAIC CRP has not lapsed.

Has the reporting entity assigned FE to Schedule BA non-registered private funds that complied with the above criteria?.....

Yes [] No [X]

7.2

GENERAL INTERROGATORIES
PART 2 - PROPERTY & CASUALTY INTERROGATORIES

1. If the reporting entity is a member of a pooling arrangement, did the agreement or the reporting entity's participation change? Yes [] No [X] NA []
If yes, attach an explanation.

2. Has the reporting entity reinsured any risk with any other reporting entity and agreed to release such entity from liability, in whole or in part, from any loss that may occur on the risk, or portion thereof, reinsured? Yes [] No [X]
If yes, attach an explanation.

3.1 Have any of the reporting entity's primary reinsurance contracts been canceled? Yes [] No [X]

3.2 If yes, give full and complete information thereto.
.....

4.1 Are any of the liabilities for unpaid losses and loss adjustment expenses other than certain workers' compensation tabular reserves (see *Annual Statement Instructions* pertaining to disclosure of discounting for definition of "tabular reserves,") discounted at a rate of interest greater than zero? Yes [] No [X]

4.2 If yes, complete the following schedule:

			TOTAL DISCOUNT				DISCOUNT TAKEN DURING PERIOD			
1	2	3	4	5	6	7	8	9	10	11
Line of Business	Maximum Interest	Discount Rate	Unpaid Losses	Unpaid LAE	IBNR	TOTAL	Unpaid Losses	Unpaid LAE	IBNR	TOTAL
TOTAL			0	0	0	0	0	0	0	0

5. Operating Percentages:

5.1 A&H loss percent

0.0 %

5.2 A&H cost containment percent

0.0 %

5.3 A&H expense percent excluding cost containment expenses.....

0.0 %

6.1 Do you act as a custodian for health savings accounts?..... Yes [] No [X]

6.2 If yes, please provide the amount of custodial funds held as of the reporting date..... \$

6.3 Do you act as an administrator for health savings accounts?..... Yes [] No [X]

6.4 If yes, please provide the balance of the funds administered as of the reporting date..... \$

7. Is the reporting entity licensed or chartered, registered, qualified, eligible or writing business in at least two states?..... Yes [X] No []

7.1 If no, does the reporting entity assume reinsurance business that covers risks residing in at least one state other than the state of domicile of the reporting entity?..... Yes [] No []

၆

6

6

6

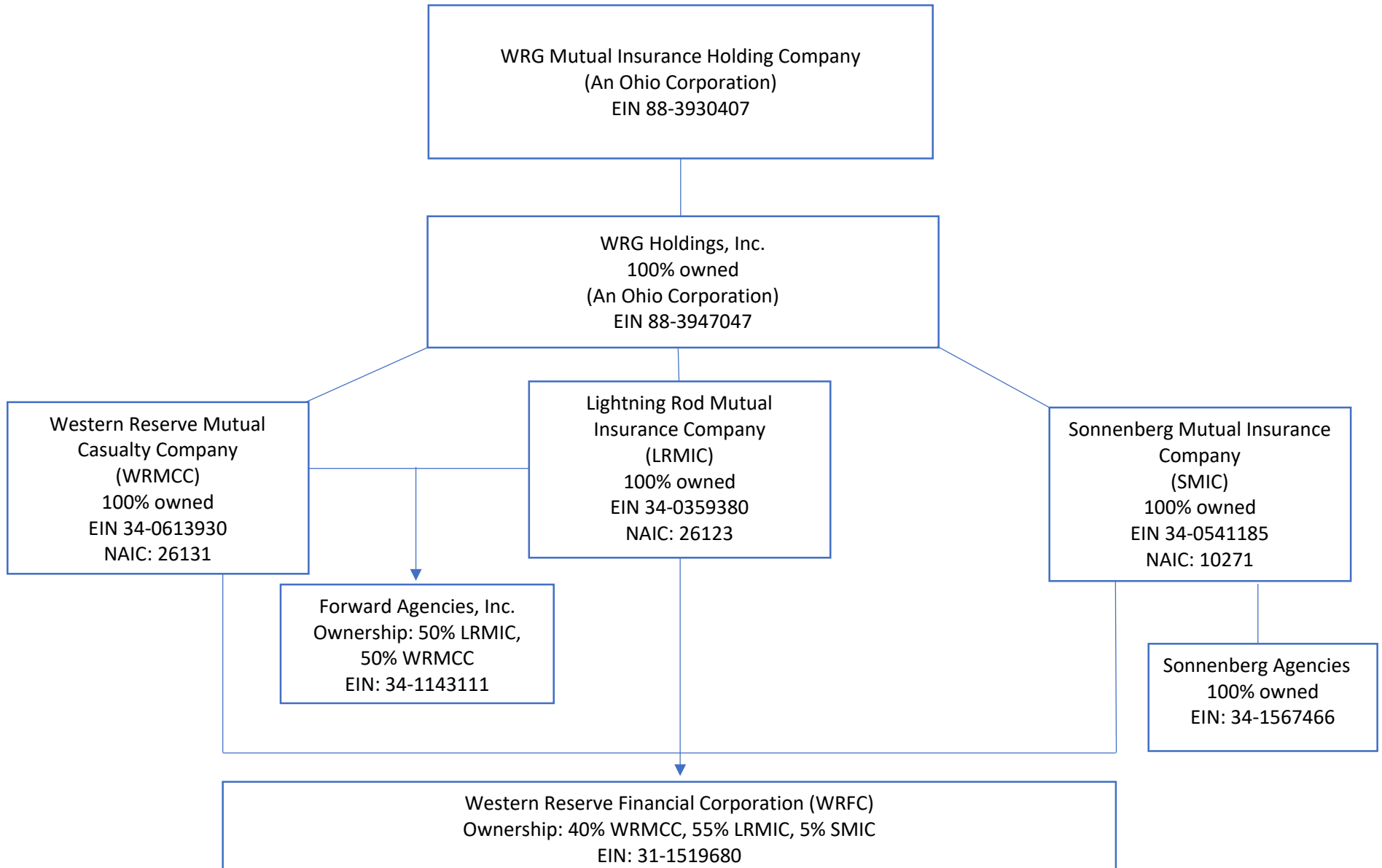
SCHEDULE T - EXHIBIT OF PREMIUMS WRITTEN

Current Year to Date – Allocated by States and Territories								
States, etc.	1	Direct Premiums Written		Direct Losses Paid (Deducting Salvage)		Direct Losses Unpaid		
		2	3	4	5	6	7	
	Active Status (a)	Current Year To Date	Prior Year To Date	Current Year To Date	Prior Year To Date	Current Year To Date	Prior Year To Date	
1. Alabama	AL	N	0	0	0	0	0	
2. Alaska	AK	N	0	0	0	0	0	
3. Arizona	AZ	N	0	0	0	0	0	
4. Arkansas	AR	N	0	0	0	0	0	
5. California	CA	N	0	0	0	0	0	
6. Colorado	CO	N	0	0	0	0	0	
7. Connecticut	CT	N	0	0	0	0	0	
8. Delaware	DE	N	0	0	0	0	0	
9. Dist. Columbia	DC	N	0	0	0	0	0	
10. Florida	FL	N	0	0	0	0	0	
11. Georgia	GA	N	0	0	0	0	0	
12. Hawaii	HI	N	0	0	0	0	0	
13. Idaho	ID	N	0	0	0	0	0	
14. Illinois	IL	N	0	0	0	0	0	
15. Indiana	IN	L	10,589,879	8,649,402	6,139,650	6,155,352	4,871,301	4,070,876
16. Iowa	IA	N	0	0	0	0	0	0
17. Kansas	KS	N	0	0	0	0	0	0
18. Kentucky	KY	N	0	0	0	0	0	0
19. Louisiana	LA	N	0	0	0	0	0	0
20. Maine	ME	N	0	0	0	0	0	0
21. Maryland	MD	N	0	0	0	0	0	0
22. Massachusetts	MA	N	0	0	0	0	0	0
23. Michigan	MI	N	0	0	0	0	0	0
24. Minnesota	MN	N	0	0	0	0	0	0
25. Mississippi	MS	N	0	0	0	0	0	0
26. Missouri	MO	N	0	0	0	0	0	0
27. Montana	MT	N	0	0	0	0	0	0
28. Nebraska	NE	N	0	0	0	0	0	0
29. Nevada	NV	N	0	0	0	0	0	0
30. New Hampshire	NH	N	0	0	0	0	0	0
31. New Jersey	NJ	N	0	0	0	0	0	0
32. New Mexico	NM	N	0	0	0	0	0	0
33. New York	NY	N	0	0	0	0	0	0
34. No. Carolina	NC	N	0	0	0	0	0	0
35. No. Dakota	ND	N	0	0	0	0	0	0
36. Ohio	OH	L	31,699,821	27,937,295	19,891,651	19,422,007	17,677,792	15,861,583
37. Oklahoma	OK	N	0	0	0	0	0	0
38. Oregon	OR	N	0	0	0	0	0	0
39. Pennsylvania	PA	N	0	0	0	0	0	0
40. Rhode Island	RI	N	0	0	0	0	0	0
41. So. Carolina	SC	N	0	0	0	0	0	0
42. So. Dakota	SD	N	0	0	0	0	0	0
43. Tennessee	TN	N	0	0	0	0	0	0
44. Texas	TX	N	0	0	0	0	0	0
45. Utah	UT	N	0	0	0	0	0	0
46. Vermont	VT	N	0	0	0	0	0	0
47. Virginia	VA	N	0	0	0	0	0	0
48. Washington	WA	N	0	0	0	0	0	0
49. West Virginia	WV	N	0	0	0	0	0	0
50. Wisconsin	WI	N	0	0	0	0	0	0
51. Wyoming	WY	N	0	0	0	0	0	0
52. American Samoa	AS	N	0	0	0	0	0	0
53. Guam	GU	N	0	0	0	0	0	0
54. Puerto Rico	PR	N	0	0	0	0	0	0
55. U.S. Virgin Islands	VI	N	0	0	0	0	0	0
56. Northern Mariana Islands	MP	N	0	0	0	0	0	0
57. Canada	CAN	N	0	0	0	0	0	0
58. Aggregate Other Alien	OT	XXX	0	0	0	0	0	0
59. Totals	XXX		42,289,700	36,586,697	26,031,301	25,577,359	22,549,093	19,932,459
DETAILS OF WRITE-INS								
58001.	XXX							
58002.	XXX							
58003.	XXX							
58998.	Summary of remaining write-ins for Line 58 from overflow page.	XXX	0	0	0	0	0	0
58999.	TOTALS (Lines 58001 through 58003 plus 58998) (Line 58 above)	XXX	0	0	0	0	0	0

(a) Active Status Counts

1. L – Licensed or Chartered – Licensed insurance carrier or domiciled RRG	2	4. Q – Qualified – Qualified or accredited reinsurer	0
2. R – Registered – Non-domiciled RRGs	0	5. D – Domestic Surplus Lines Insurer (DSLII) – Reporting entities authorized to write surplus lines in the state of domicile	0
3. E – Eligible – Reporting entities eligible or approved to write surplus lines in the state (other than their state of domicile – See DSLI)	0	6. N – None of the above – Not allowed to write business in the state	55

SCHEDULE Y- INFORMATION CONCERNING ACTIVITIES OF INSURER MEMBERS OF A HOLDING COMPANY GROUP
PART I- ORGANIZATIONAL CHART



SCHEDULE Y

PART 1A – DETAIL OF INSURANCE HOLDING COMPANY SYSTEM

Asterisk	Explanation
----------	-------------

PART 1 - LOSS EXPERIENCE

Line of Business		Current Year to Date			4 Prior Year to Date Direct Loss Percentage
		1 Direct Premiums Earned	2 Direct Losses Incurred	3 Direct Loss Percentage	
1.	Fire	8,284		0.0	0.0
2.1	Allied lines	3,736		0.0	0.0
2.2	Multiple peril crop			0.0	0.0
2.3	Federal flood			0.0	0.0
2.4	Private crop			0.0	0.0
2.5	Private flood			0.0	0.0
3.	Farmowners multiple peril	1,259,025	282,400	22.4	250.4
4.	Homeowners multiple peril			0.0	0.0
5.1	Commercial multiple peril (non-liability portion)			0.0	0.0
5.2	Commercial multiple peril (liability portion)			0.0	0.0
6.	Mortgage guaranty			0.0	0.0
8.	Ocean marine			0.0	0.0
9.1.	Inland marine			0.0	0.0
9.2.	Pet insurance			0.0	
10.	Financial guaranty			0.0	0.0
11.1	Medical professional liability -occurrence			0.0	0.0
11.2	Medical professional liability -claims made			0.0	0.0
12.	Earthquake			0.0	0.0
13.1	Comprehensive (hospital and medical) individual			0.0	0.0
13.2	Comprehensive (hospital and medical) group			0.0	0.0
14.	Credit accident and health			0.0	0.0
15.1	Vision only			0.0	0.0
15.2	Dental only			0.0	0.0
15.3	Disability income			0.0	0.0
15.4	Medicare supplement			0.0	0.0
15.5	Medicaid Title XIX			0.0	0.0
15.6	Medicare Title XVIII			0.0	0.0
15.7	Long-term care			0.0	0.0
15.8	Federal employees health benefits plan			0.0	0.0
15.9	Other health			0.0	0.0
16.	Workers' compensation			0.0	0.0
17.1	Other liability occurrence	197		0.0	0.0
17.2	Other liability-claims made			0.0	0.0
17.3	Excess Workers' Compensation			0.0	0.0
18.1	Products liability-occurrence			0.0	0.0
18.2	Products liability-claims made			0.0	0.0
19.1	Private passenger auto no-fault (personal injury protection)			0.0	0.0
19.2	Other private passenger auto liability	19,847,113	14,081,860	71.0	60.6
19.3	Commercial auto no-fault (personal injury protection)			0.0	0.0
19.4	Other commercial auto liability	0		0.0	0.0
21.1	Private passenger auto physical damage	21,391,927	14,058,928	65.7	80.1
21.2	Commercial auto physical damage			0.0	0.0
22.	Aircraft (all perils)			0.0	0.0
23.	Fidelity			0.0	0.0
24.	Surety			0.0	0.0
26.	Burglary and theft	47,247	18,047	38.2	0.0
27.	Boiler and machinery			0.0	294.6
28.	Credit			0.0	0.0
29.	International			0.0	0.0
30.	Warranty			0.0	0.0
31.	Reinsurance - Nonproportional Assumed Property	XXX	XXX	XXX	XXX
32.	Reinsurance - Nonproportional Assumed Liability	XXX	XXX	XXX	XXX
33.	Reinsurance - Nonproportional Assumed Financial Lines	XXX	XXX	XXX	XXX
34.	Aggregate write-ins for other lines of business	0	0	0.0	0.0
35.	TOTALS	42,557,529	28,441,235	66.8	74.8
DETAILS OF WRITE-INS					
3401.			0.0	0.0
3402.			0.0	0.0
3403.			0.0	0.0
3498.	Sum. of remaining write-ins for Line 34 from overflow page	0	0	0.0	0.0
3499.	Totals (Lines 3401 through 3403 plus 3498) (Line 34)	0	0	0.0	0.0

PART 2 - DIRECT PREMIUMS WRITTEN

Line of Business		1 Current Quarter	2 Current Year to Date	3 Prior Year Year to Date
1.	Fire	(959)		6,148
2.1	Allied lines	(508)		2,658
2.2	Multiple peril crop	0		0
2.3	Federal flood	0		0
2.4	Private crop	7,100	7,100	0
2.5	Private flood	3,295	3,295	0
3.	Farmowners multiple peril	802,557	1,508,108	1,093,674
4.	Homeowners multiple peril	0		0
5.1	Commercial multiple peril (non-liability portion)	0		0
5.2	Commercial multiple peril (liability portion)	0		0
6.	Mortgage guaranty	0		0
8.	Ocean marine	0		0
9.1.	Inland marine	0		0
9.2.	Pet insurance	0		0
10.	Financial guaranty	0		0
11.1	Medical professional liability-occurrence	0		0
11.2	Medical professional liability-claims made	0		0
12.	Earthquake	0		0
13.1	Comprehensive (hospital and medical) individual	0		0
13.2	Comprehensive (hospital and medical) group	0		0
14.	Credit accident and health	0		0
15.1	Vision only	0		0
15.2	Dental only	0		0
15.3	Disability income	0		0
15.4	Medicare supplement	0		0
15.5	Medicaid Title XIX	0		0
15.6	Medicare Title XVIII	0		0
15.7	Long-term care	0		0
15.8	Federal employee health benefits plan	0		0
15.9	Other health	0		0
16.	Workers' compensation	0		0
17.1	Other liability occurrence	48	69	70
17.2	Other liability-claims made	0		0
17.3	Excess Workers' Compensation	0		0
18.1	Products liability-occurrence	0		0
18.2	Products liability-claims made	0		0
19.1	Private passenger auto no-fault (personal injury protection)	0		0
19.2	Other private passenger auto liability	8,958,377	18,906,673	17,946,224
19.3	Commercial auto no-fault (personal injury protection)	0		0
19.4	Other commercial auto liability	0		0
21.1	Private passenger auto physical damage	10,398,281	21,807,991	17,496,879
21.2	Commercial auto physical damage	0		0
22.	Aircraft (all perils)	0		0
23.	Fidelity	0		0
24.	Surety	0		0
26.	Burglary and theft	0		0
27.	Boiler and machinery	32,804	56,464	41,044
28.	Credit	0		0
29.	International	0		0
30.	Warranty	0		0
31.	Reinsurance - Nonproportional Assumed Property	XXX	XXX	XXX
32.	Reinsurance - Nonproportional Assumed Liability	XXX	XXX	XXX
33.	Reinsurance - Nonproportional Assumed Financial Lines	XXX	XXX	XXX
34.	Aggregate write-ins for other lines of business	0	0	0
35.	TOTALS	20,200,995	42,289,700	36,586,697
DETAILS OF WRITE-INS				
3401.	0		0
3402.	0		0
3403.	0		0
3498.	Sum. of remaining write-ins for Line 34 from overflow page	0	0	0
3499.	Totals (Lines 3401 through 3403 plus 3498) (Line 34)	0	0	0

PART 3 (\$000 OMITTED)

LOSS AND LOSS ADJUSTMENT EXPENSE RESERVES SCHEDULE

	1	2	3	4	5	6	7	8	9	10	11	12	13
Years in Which Losses Occurred	Prior Year-End Known Case Loss and LAE Reserves	Prior Year-End IBNR Loss and LAE Reserves	Total Prior Year-End Loss and LAE Reserves (Cols. 1 + 2)	2024 Loss and LAE Payments on Claims Reported as of Prior Year-End	2024 Loss and LAE Payments on Claims Unreported as of Prior Year-End	Total 2024 Loss and LAE Payments (Cols. 4 + 5)	Q.S. Date Known Case Loss and LAE Reserves on Claims Reported and Open as of Prior Year End	Q.S. Date Known Case Loss and LAE Reserves on Claims Reported or Reopened Subsequent to Prior Year End	Q.S. Date IBNR Loss and LAE Reserves	Total Q.S. Loss and LAE Reserves (Cols.7 + 8 + 9)	Prior Year-End Known Case Loss and LAE Reserves Developed (Savings)/ Deficiency (Cols. 4 + 7 minus Col. 1)	Prior Year-End IBNR Loss and LAE Reserves Developed (Savings)/ Deficiency (Cols. 5 + 8 + 9 minus Col. 2)	Prior Year-End Total Loss and LAE Reserve Developed (Savings)/ Deficiency (Cols. 11 + 12)
1. 2021 + Prior67625893426142654511820066936(36)0
2. 20228653001,1652211423561053266929(34)33(1)
3. Subtotals 2022 + prior1,5415582,099482185001,061714661,5982(3)(1)
4. 20231,8011,2403,0419604381,3981,0103952381,643169(169)0
5. Subtotals 2023 + prior3,3421,7985,1401,4424561,8982,0714667043,241171(172)(1)
6. 2024XXXXXXXXXXXX3,3533,353XXX1,0421,1032,145XXXXXXXXX
7. Totals	3,342	1,798	5,140	1,442	3,809	5,251	2,071	1,508	1,807	5,386	171	(172)	(1)
8. Prior Year-End Surplus As Regards Policy-holders	17,874										Col. 11, Line 7 As % of Col. 1, Line 7	Col. 12, Line 7 As % of Col. 2, Line 7	Col. 13, Line 7 As % of Col. 3, Line 7
											1. 5.1	2. (9.6)	3. 0.0
											Col. 13, Line 7 Line 8		
											4. 0.0		

SUPPLEMENTAL EXHIBITS AND SCHEDULES INTERROGATORIES

The following supplemental reports are required to be filed as part of your statement filing. However, in the event that your company does not transact the type of business for which the special report must be filed, your response of **NO** to the specific interrogatory will be accepted in lieu of filing a "NONE" report and a bar code will be printed below. If the supplement is required of your company but is not being filed for whatever reason enter **SEE EXPLANATION** and provide an explanation following the interrogatory questions.

	Response
1. Will the Trusteed Surplus Statement be filed with the state of domicile and the NAIC with this statement?NO.....
2. Will Supplement A to Schedule T (Medical Professional Liability Supplement) be filed with this statement?NO.....
3. Will the Medicare Part D Coverage Supplement be filed with the state of domicile and the NAIC with this statement?NO.....
4. Will the Director and Officer Insurance Coverage Supplement be filed with the state of domicile and the NAIC with this statement?NO.....






AUGUST FILING

5. Will the regulator-only (non-public) Communication of Internal Control Related Matters Noted in Audit be filed with the state of domicile and electronically with the NAIC (as a regulator-only non-public document) by August 1? The response for 1st and 3rd quarters should be N/A. A NO response resulting with a bar code is only appropriate in the 2nd quarter.NO.....
---	--------------

Explanation:

5. The Company is not required to file the report.

Bar Code:

1.	 1 0 2 7 1 2 0 2 4 4 9 0 0 0 0 0 2
2.	 1 0 2 7 1 2 0 2 4 4 5 5 0 0 0 0 2
3.	 1 0 2 7 1 2 0 2 4 3 6 5 0 0 0 0 2
4.	 1 0 2 7 1 2 0 2 4 5 0 5 0 0 0 0 2
5.	 1 0 2 7 1 2 0 2 3 2 2 2 0 0 1 0 0

OVERFLOW PAGE FOR WRITE-INS

SCHEDULE A – VERIFICATION

Real Estate

	1	2
	Year To Date	Prior Year Ended December 31
1. Book/adjusted carrying value, December 31 of prior year	0	0
2. Cost of acquired:		
2.1 Actual cost at time of acquisition		0
2.2 Additional investment made after acquisition		0
3. Current year change in encumbrances		0
4. Total gain (loss) on disposals		0
5. Deduct amounts received on disposals		0
6. Total foreign exchange change in book/adjusted carrying value		0
7. Deduct current year's other-than-temporary impairment recognized		0
8. Deduct current year's depreciation		0
9. Book/adjusted carrying value at the end of current period (Lines 1+2+3+4-5+6-7-8)	0	0
10. Deduct total nonadmitted amounts	0	0
11. Statement value at end of current period (Line 9 minus Line 10)	0	0

SCHEDULE B – VERIFICATION

Mortgage Loans

	1	2
	Year To Date	Prior Year Ended December 31
1. Book value/recorded investment excluding accrued interest, December 31 of prior year	0	0
2. Cost of acquired:		
2.1 Actual cost at time of acquisition		0
2.2 Additional investment made after acquisition		0
3. Capitalized deferred interest and other		0
4. Accrual of discount		0
5. Unrealized valuation increase/(decrease)		0
6. Total gain (loss) on disposals		0
7. Deduct amounts received on disposals		0
8. Deduct amortization of premium and mortgage interest points and commitment fees		0
9. Total foreign exchange change in book value/recorded investment excluding accrued interest		0
10. Deduct current year's other-than-temporary impairment recognized		0
11. Book value/recorded investment excluding accrued interest at end of current period (Lines 1+2+3+4+5+6-7-8+9-10)	0	0
12. Total valuation allowance		0
13. Subtotal (Line 11 plus Line 12)	0	0
14. Deduct total nonadmitted amounts	0	0
15. Statement value at end of current period (Line 13 minus Line 14)	0	0

SCHEDULE BA – VERIFICATION

Other Long-Term Invested Assets

	1	2
	Year To Date	Prior Year Ended December 31
1. Book/adjusted carrying value, December 31 of prior year	1,116,237	968,952
2. Cost of acquired:		
2.1 Actual cost at time of acquisition		0
2.2 Additional investment made after acquisition	37,755	244,327
3. Capitalized deferred interest and other		0
4. Accrual of discount		0
5. Unrealized valuation increase/(decrease)	(18,050)	(22,430)
6. Total gain (loss) on disposals		0
7. Deduct amounts received on disposals	43,666	74,613
8. Deduct amortization of premium and depreciation		0
9. Total foreign exchange change in book/adjusted carrying value		0
10. Deduct current year's other-than-temporary impairment recognized		0
11. Book/adjusted carrying value at end of current period (Lines 1+2+3+4+5+6-7-8+9-10)	1,092,276	1,116,237
12. Deduct total nonadmitted amounts	0	0
13. Statement value at end of current period (Line 11 minus Line 12)	1,092,276	1,116,237

SCHEDULE D – VERIFICATION

Bonds and Stocks

	1	2
	Year To Date	Prior Year Ended December 31
1. Book/adjusted carrying value of bonds and stocks, December 31 of prior year	22,743,683	24,557,544
2. Cost of bonds and stocks acquired	3,177,640	8,707,487
3. Accrual of discount	45,845	37,232
4. Unrealized valuation increase/(decrease)	(11,335)	(375,930)
5. Total gain (loss) on disposals	417,769	439,079
6. Deduct consideration for bonds and stocks disposed of	3,728,579	10,546,886
7. Deduct amortization of premium	18,681	74,842
8. Total foreign exchange change in book/adjusted carrying value		0
9. Deduct current year's other-than-temporary impairment recognized		0
10. Total investment income recognized as a result of prepayment penalties and/or acceleration fees		0
11. Book/adjusted carrying value at end of current period (Lines 1+2+3+4+5-6-7+8-9+10)	22,626,341	22,743,683
12. Deduct total nonadmitted amounts	29,059	34,347
13. Statement value at end of current period (Line 11 minus Line 12)	22,597,282	22,709,336

STATEMENT AS OF JUNE 30, 2024 OF THE SONNENBERG MUTUAL INSURANCE COMPANY

SCHEDULE D - PART 1B

Showing the Acquisitions, Dispositions and Non-Trading Activity
During the Current Quarter for all Bonds and Preferred Stock by NAIC Designation

NAIC Designation	1 Book/Adjusted Carrying Value Beginning of Current Quarter	2 Acquisitions During Current Quarter	3 Dispositions During Current Quarter	4 Non-Trading Activity During Current Quarter	5 Book/Adjusted Carrying Value End of First Quarter	6 Book/Adjusted Carrying Value End of Second Quarter	7 Book/Adjusted Carrying Value End of Third Quarter	8 Book/Adjusted Carrying Value December 31 Prior Year
BONDS								
1. NAIC 1 (a).....	14,261,880	2,307,527	2,083,704	17,369	14,261,880	14,503,072	0	14,036,660
2. NAIC 2 (a).....	2,098,965	184,516	100,000	5,718	2,098,965	2,189,199	0	2,197,773
3. NAIC 3 (a).....	0				0	0	0	0
4. NAIC 4 (a).....	0				0	0	0	0
5. NAIC 5 (a).....	0				0	0	0	0
6. NAIC 6 (a).....	0				0	0	0	0
7. Total Bonds	16,360,844	2,492,043	2,183,704	23,087	16,360,844	16,692,271	0	16,234,433
PREFERRED STOCK								
8. NAIC 1	0				0	0	0	0
9. NAIC 2	0				0	0	0	0
10. NAIC 3	0				0	0	0	0
11. NAIC 4	0				0	0	0	0
12. NAIC 5	0				0	0	0	0
13. NAIC 6	0				0	0	0	0
14. Total Preferred Stock.....	0	0	0	0	0	0	0	0
15. Total Bonds & Preferred Stock	16,360,844	2,492,043	2,183,704	23,087	16,360,844	16,692,271	0	16,234,433

(a) Book/Adjusted Carrying Value column for the end of the current reporting period includes the following amount of short-term and cash equivalent bonds by NAIC designation: NAIC 1 \$583,998 ; NAIC 2 \$;

NAIC 3 \$; NAIC 4 \$; NAIC 5 \$; NAIC 6 \$

SCHEDULE DA - PART 1
Short-Term Investments

	1	2	3	4	5
	Book/Adjusted Carrying Value	Par Value	Actual Cost	Interest Collected Year To Date	Paid for Accrued Interest Year To Date
7709999999 Totals	583,998	XXX	582,000		1,688

SCHEDULE DA - VERIFICATION
Short-Term Investments

	1	2
	Year To Date	Prior Year Ended December 31
1. Book/adjusted carrying value, December 31 of prior year.....	0	0
2. Cost of short-term investments acquired	582,000	0
3. Accrual of discount	1,998	0
4. Unrealized valuation increase/(decrease).....		0
5. Total gain (loss) on disposals		0
6. Deduct consideration received on disposals		0
7. Deduct amortization of premium.....		0
8. Total foreign exchange change in book/adjusted carrying value.....		0
9. Deduct current year's other-than-temporary impairment recognized.....		0
10. Book/adjusted carrying value at end of current period (Lines 1+2+3+4+5-6-7+8-9).....	583,998	0
11. Deduct total nonadmitted amounts.....		0
12. Statement value at end of current period (Line 10 minus Line 11)	583,998	0

Schedule DB - Part A - Verification

NONE

Schedule DB - Part B - Verification

NONE

Schedule DB - Part C - Section 1

NONE

Schedule DB - Part C - Section 2

NONE

Schedule DB - Verification

NONE

SCHEDULE E – PART 2 – VERIFICATION
(Cash Equivalents)

	1 Year To Date	2 Prior Year Ended December 31
1. Book/adjusted carrying value, December 31 of prior year.....	330,548	794,662
2. Cost of cash equivalents acquired	2,898,088	8,492,240
3. Accrual of discount		0
4. Unrealized valuation increase/(decrease)		0
5. Total gain (loss) on disposals.....		0
6. Deduct consideration received on disposals	2,612,934	8,956,354
7. Deduct amortization of premium		0
8. Total foreign exchange change in book/adjusted carrying value		0
9. Deduct current year's other-than-temporary impairment recognized		0
10. Book/adjusted carrying value at end of current period (Lines 1+2+3+4+5-6-7+8-9)	615,702	330,548
11. Deduct total nonadmitted amounts		0
12. Statement value at end of current period (Line 10 minus Line 11)	615,702	330,548

Schedule A - Part 2

NONE

Schedule A - Part 3

NONE

Schedule B - Part 2

NONE

Schedule B - Part 3

NONE

SCHEDULE BA - PART 2

[illegible]

1 CUSIP Identification	2 Name or Description	Location		5 Name of Purchaser or Nature of Disposal	6 Date Originally Acquired	7 Disposal Date	8 Book/ Adjusted Carrying Value Less Encumbrances Prior Year	Change in Book/Adjusted Carrying Value						15 Book/Adjusted Carrying Value Less Encumbrances on Disposal	16 Consideration	17 Foreign Exchange Gain (Loss) on Disposal	18 Realized Gain (Loss) on Disposal	19 Total Gain (Loss) on Disposal	20 Investment Income
		3 City	4 State					9 Unrealized Valuation Increase/(Decrease)	10 Current Year's (Depreciation) or (Amortization)/ Accretion	11 Current Year's Other-Than-Temporary Impairment Recognized	12 Capitalized Deferred Interest and Other	13 Total Change in B./A.C.V. (9+10-11+12)	14 Total Foreign Exchange Change in B./A.C.V.						
Joint Venture, Partnership or Limited Liability Company Interests with Underlying Assets Having the Characteristics of: Common Stocks - Unaffiliated													.0		14,528	14,528		.0	
000000-00-0.....	First Eagle Direct Lending V-B, LLC,	USA		First Eagle Direct Lending V-B, LLC,	.._07/27/2022]	_05/03/2024..	14,528		0	0	0	0	0	0	14,528	14,528	0	0	0
1999999 - Joint Venture, Partnership or Limited Liability Company Interests with Underlying Assets Having the Characteristics of: Common Stocks - Unaffiliated								14,528	0	0	0	0	0	0	14,528	14,528	0	0	0
6099999 – Subtotals - Unaffiliated								14,528	0	0	0	0	0	0	14,528	14,528	0	0	0
6199999 – Subtotals - Affiliated								0	0	0	0	0	0	0	0	0	0	0	0
6299999 Totals								14,528	0	0	0	0	0	0	14,528	14,528	0	0	0

E03

STATEMENT AS OF JUNE 30, 2024 OF THE SONNENBERG MUTUAL INSURANCE COMPANY

SCHEDULE D - PART 3

Show All Long-Term Bonds and Stock Acquired During the Current Quarter

1	2	3	4	5	6	7	8	9	10
CUSIP Identification	Description	Foreign	Date Acquired	Name of Vendor	Number of Shares of Stock	Actual Cost	Par Value	Paid for Accrued Interest and Dividends	NAIC Designation, NAIC Designation Modifier and SVO Administrative Symbol
Bonds - U.S. Governments									
91282C-JZ-5	UNITED STATES TREASURY		04/30/2024	GOLDMAN	XXX	333,020	350,000	2,923	1 A
0109999999 - Bonds - U.S. Governments						333,020	350,000	2,923	XXX
Bonds - U.S. Special Revenue and Special Assessment and all Non-Guaranteed Obligations of Agencies and Authorities of Governments and Their Political Subdivisions									
3132DW-JG-9	FH SD8363 - RMBS		06/04/2024	Montgomery	XXX	160,138	160,000	.80	1 A
3133KM-EM-3	FH RA5540 - RMBS		05/30/2024	Morgan Stanley	XXX	163,269	209,194	139	1 A
3140XN-2H-6	FN FS7075 - RMBS		02/29/2024	Wachovia Bank	XXX	(636)	(768)	.0	1 A
3140XN-TX-2	FN FS6865 - RMBS		05/30/2024	SALOMON BROTHERS INC	XXX	159,077	158,928	79	1 A
0909999999 - Bonds - U.S. Special Revenue and Special Assessment and all Non-Guaranteed Obligations of Agencies and Authorities of Governments and Their Political Subdivisions						481,848	527,353	299	XXX
Bonds - Industrial and Miscellaneous (Unaffiliated)									
06051G-LG-2	BANK OF AMERICA CORP		06/13/2024	CHASE SECURITIES INC	XXX	100,288	100,000	708	1 G FE
06051G-MA-4	BANK OF AMERICA CORP		05/23/2024	Montgomery	XXX	24,865	25,000	475	1 G FE
06406R-BP-1	BANK OF NEW YORK MELLON CORP		05/30/2024	Morgan Stanley	XXX	57,094	60,000	941	1 E FE
096919-AB-1	BMWOT 2024-A A2A - ABS		06/04/2024	CHASE SECURITIES INC	XXX	114,998	115,000		1 A FE
15189X-BB-3	CENTERPOINT ENERGY HOUSTON ELECTRIC LLC		05/30/2024	Montgomery	XXX	48,457	50,000	413	1 F FE
174610-AW-5	CITIZENS FINANCIAL GROUP INC		05/30/2024	Morgan Stanley	XXX	37,923	50,000	220	2 B FE
209111-GA-5	CONSOLIDATED EDISON COMPANY OF NEW YORK		05/30/2024	Jane Street	XXX	45,990	55,000	609	1 G FE
38141G-A9-5	GOLDMAN SACHS GROUP INC		05/23/2024	Jane Street	XXX	51,075	50,000	268	2 A FE
38141G-WZ-3	GOLDMAN SACHS GROUP INC		06/13/2024	SALOMON BROTHERS INC	XXX	96,736	100,000	504	1 F FE
46647P-EC-6	JPMORGAN CHASE & CO		05/23/2024	RBC Dain Rauscher (US)	XXX	24,731	25,000	463	1 G FE
61747Y-FA-8	MORGAN STANLEY		06/13/2024	CHASE SECURITIES INC	XXX	99,947	100,000	1,893	1 E FE
61747Y-FR-1	MORGAN STANLEY		05/23/2024	BNP PARIBAS SECURITIES BOND	XXX	25,530	25,000	158	1 E FE
637417-AS-5	NNN REIT INC		05/30/2024	MILLENNIUM ADVISORS, LLC	XXX	49,589	50,000	358	2 A FE
74456Q-CJ-3	PUBLIC SERVICE ELECTRIC AND GAS CO		05/30/2024	HILLTOP SECURITIES	XXX	47,490	55,000	360	1 F FE
756109-CG-7	REALTY INCOME CORP		05/30/2024	Montgomery	XXX	48,169	50,000	961	1 G FE
78437V-AE-0	SBALT 24B A3 - ABS		06/06/2024	RBC Dain Rauscher (US)	XXX	50,188	50,000	116	1 A FE
95000U-3E-1	WELLS FARGO & CO		06/13/2024	Montgomery	XXX	101,391	100,000	2,152	1 E FE
95000U-3K-7	WELLS FARGO & CO		05/23/2024	US BANCORP INVESTMENTS INC	XXX	24,788	25,000	477	1 E FE
95040Q-AP-9	WELLTOWER OP LLC		05/31/2024	DAIWA SECURITIES AMERICA INC	XXX	45,930	55,000	580	2 A FE
1109999999 - Bonds - Industrial and Miscellaneous (Unaffiliated)						1,095,176	1,140,000	11,655	XXX
2509999997 - Bonds - Subtotals - Bonds - Part 3						1,910,043	2,017,353	14,877	XXX
2509999999 - Bonds - Subtotals - Bonds						1,910,043	2,017,353	14,877	XXX
Common Stocks - Industrial and Miscellaneous (Unaffiliated) Publicly Traded									
00724F-10-1	ADOBE ORD		05/14/2024	MERRILL LYNCH	27.000	13.075	XXX		XXX
02079K-10-7	ALPHABET CL C ORD		05/14/2024	MERRILL LYNCH	424.000	67,163	XXX		XXX
02079K-30-5	ALPHABET CL A ORD		05/14/2024	MERRILL LYNCH	325.000	50,656	XXX		XXX
03073E-10-5	CENCORA ORD		05/14/2024	MERRILL LYNCH	14.000	3,093	XXX		XXX
037833-10-0	APPLE ORD		06/28/2024	MERRILL LYNCH	294.000	61,915	XXX		XXX
084670-70-2	BERKSHIRE HATHAWAY CL B ORD		05/14/2024	MERRILL LYNCH	10.000	4,084	XXX		XXX
101137-10-7	BOSTON SCIENTIFIC ORD		05/14/2024	MERRILL LYNCH	56.000	4,085	XXX		XXX
11135F-10-1	BROADCOM ORD		05/14/2024	MERRILL LYNCH	15.000	20,348	XXX		XXX
127387-10-8	CADENCE DESIGN SYSTEMS ORD		04/05/2024	MERRILL LYNCH	33.000	10,225	XXX		XXX
169656-10-5	CHIPOTLE MEXICAN GRILL ORD		05/14/2024	MERRILL LYNCH	3.000	9,266	XXX		XXX
217204-10-6	COPART ORD		04/05/2024	MERRILL LYNCH	177.000	10,066	XXX		XXX
22160K-10-5	COSTCO WHOLESALE ORD		05/14/2024	MERRILL LYNCH	46.000	33,553	XXX		XXX
243537-10-7	DECKERS OUTDOOR ORD		04/05/2024	MERRILL LYNCH	2.000	1,762	XXX		XXX
30303M-10-2	META PLATFORMS CL A ORD		04/05/2024	MERRILL LYNCH	29.000	15,292	XXX		XXX
418100-10-3	HASHICORP CL A ORD		05/14/2024	MERRILL LYNCH	3.000	99	XXX		XXX
437076-10-2	HOME DEPOT ORD		04/05/2024	MERRILL LYNCH	14.000	5,011	XXX		XXX
562750-10-9	MANHATTAN ASSOCIATES ORD		04/05/2024	MERRILL LYNCH	7.000	1,710	XXX		XXX
57636Q-10-4	MASTERCARD CL A ORD		04/05/2024	MERRILL LYNCH	39.000	18,648	XXX		XXX
58155Q-10-3	MCKESSON ORD		04/05/2024	MERRILL LYNCH	13.000	7,022	XXX		XXX
594918-10-4	MICROSOFT ORD		04/05/2024	MERRILL LYNCH	41.000	17,442	XXX		XXX
68389X-10-5	ORACLE ORD		05/14/2024	MERRILL LYNCH	51.000	6,074	XXX		XXX
78409V-10-4	S&P GLOBAL ORD		05/14/2024	MERRILL LYNCH	17.000	7,173	XXX		XXX
902252-10-5	TYLER TECHNOLOGIES ORD		05/14/2024	MERRILL LYNCH	3.000	1,448	XXX		XXX
91324P-10-2	UNITEDHEALTH GRP ORD		05/14/2024	MERRILL LYNCH	40.000	19,822	XXX		XXX

STATEMENT AS OF JUNE 30, 2024 OF THE SONNENBERG MUTUAL INSURANCE COMPANY

SCHEDULE D - PART 3

Show All Long-Term Bonds and Stock Acquired During the Current Quarter

[illegible]

E04.1

STATEMENT AS OF JUNE 30, 2024 OF THE SONNENBERG MUTUAL INSURANCE COMPANY

SCHEDULE D - PART 4

Show All Long-Term Bonds and Stock Sold, Redeemed or Otherwise Disposed of During the Current Quarter

1	2	3 F o r e i g n	4	5	6	7	8	9	10	Change in Book/Adjusted Carrying Value					16	17	18	19	20	21	22 NAIC Designation, NAIC Desig. Modifier and SVO Administrative Symbol
										11	12	13	14	15							
CUSIP Identi- fication	Description		Disposal Date	Name of Purchaser	Number of Shares of Stock	Consideration	Par Value	Actual Cost	Prior Year Book/Adjusted Carrying Value	Unrealized Valuation Increase/ (Decrease)	Current Year's (Amortization)/ Accretion	Current Year's Other Than Temporary Impairment Recognized	Total Change in B./A.C.V. (11+12-13)	Total Foreign Exchange Change in B./A.C.V.	Book/ Adjusted Carrying Value at Disposal Date	Foreign Exchange Gain (Loss) on Disposal	Realized Gain (Loss) on Disposal	Total Gain (Loss) on Disposal	Bond Interest/Stock Dividends Received During Year	Stated Contractual Maturity Date	
Bonds - U.S. States, Territories and Possessions																					
452153-HN-2	ILLINOIS ST.....		05/30/2024	Merrill Lynch.....	XXX	100,938	95,000	99,785	99,771		(162)		(162)		99,609		1,328	1,328	2,138	12/01/2042	1.G FE
0509999999 - Bonds - U.S. States, Territories and Possessions						100,938	95,000	99,785	99,771	0	(162)	0	(162)	0	99,609	0	1,328	1,328	2,138	XXX	XXX
Bonds - U.S. Political Subdivisions of States, Territories and Possessions																					
101547-WF-0	BOULDER VALLEY COLO SCH DIST NO RE 2 BOUL GRANVILLE OHIO EXMP VLG		05/30/2024	Morgan Stanley.....	XXX	101,420	100,000	111,197	104,117		(477)		(477)		103,641		(2,221)	(2,221)	2,000	12/01/2027	1.C FE
388568-HZ-3	SCH DIST.....		05/30/2024	HILLTOP SECURITIES.....	XXX	101,929	100,000	119,078	103,897		(821)		(821)		103,077		(1,148)	(1,148)	2,500	12/01/2025	1.C FE
454326-GT-0	INDIAN LAKE OHIO LOC SCH DIST.....		05/30/2024	TMC BONDS, LLC.....	XXX	103,212	100,000	118,500	106,089		(831)		(831)		105,258		(2,046)	(2,046)	2,500	12/01/2027	1.D FE
498062-QD-3	KITSAP CNTY WASH SCH DIST NO 303 BAINBR		05/30/2024	Morgan Stanley.....	XXX	100,847	100,000	114,116	105,453		(636)		(636)		104,818		(3,971)	(3,971)	2,000	12/01/2027	1.A FE
691616-PZ-3	OXFORD MISS.....		05/30/2024	Adjustment..... DONALDSON LUFKIN & JENRETTE.....	XXX	96,005	100,000	107,111	102,992		(301)		(301)		102,691		(6,686)	(6,686)	1,500	12/01/2027	1.C FE
848797-PL-4	SPOKANE CNTY WASH SCH DIST NO 356 CENT V.....		05/30/2024	BAIRD, ROBERT W., & COMPANY INC.....	XXX	100,381	100,000	111,503	103,235		(538)		(538)		102,697		(2,316)	(2,316)	2,000	12/01/2027	1.B FE
984392-FB-1	YAKIMA CNTY WASH SCH DIST NO 90 EAST VAL.....		05/30/2024		XXX	101,726	100,000	122,966	104,846		(1,024)		(1,024)		103,821		(2,095)	(2,095)	2,500	12/01/2026	1.A FE
0709999999 - Bonds - U.S. Political Subdivisions of States, Territories and Possessions						705,520	700,000	804,471	730,630	0	(4,628)	0	(4,628)	0	726,002	0	(20,482)	(20,482)	15,000	XXX	XXX
Bonds - U.S. Special Revenue and Special Assessment and all Non-Guaranteed Obligations of Agencies and Authorities of Governments and Their Political Subdivisions																					
196480-RB-5	COLORADO HOUSING AND FINANCE AUTHORITY..... COLUMBIA S c WTRWKS & SWR		05/30/2024	Various.....	XXX	86,618	90,000	86,603	86,648		31		31		86,680		(62)	(62)	1,555	05/01/2051	1.A FE
198504-WJ-7	SYS REV.....		05/30/2024	NATIFISE.....	XXX	102,388	100,000	121,053	105,191		(1,011)		(1,011)		104,180		(1,792)	(1,792)	4,167	02/01/2026	1.B FE
3133AN-K7-8	FH QC3918 - RMBS.....		06/01/2024	Paydown.....	XXX	5,864	5,864	4,973	892		892		892		5,864		0	0	41	07/01/2051	1.A
3137FY-C2-0	FHR 5092 EP - CMO/RMBS.....		06/01/2024	Paydown.....	XXX	1,194	1,194	970	223		223		223		1,194		0	0	12	01/25/2051	1.A
3140QN-Q5-4	FN CB3175 - RMBS.....		06/01/2024	Paydown.....	XXX	6,273	6,273	5,500	779		779		779		6,273		0	0	105	03/01/2052	1.A
3140XD-6H-4	FN FM9871 - RMBS.....		06/01/2024	Paydown.....	XXX	191	191	159	33		33		33		191		0	0	1	12/01/2051	1.A
3140XM-J4-9	FN FS5682 - RMBS.....		06/01/2024	Paydown.....	XXX	3,374	3,374	2,810	560		560		560		3,374		0	0	43	10/01/2050	1.A
3140XM-Q9-0	FN FS5879 - RMBS.....		06/01/2024	Paydown.....	XXX	6,229	6,229	5,553	678		678		678		6,229		0	0	93	11/01/2051	1.A
3140XN-2H-6	FN FS7075 - RMBS.....		06/01/2024	Paydown.....	XXX	947	947	148	31		31		31		947		768	768	5	01/01/2052	1.A
3140XN-UT-9	FN FS6893 - RMBS.....		06/01/2024	Paydown.....	XXX	1,324	1,324	1,046	278		278		278		1,324		0	0	7	08/01/2051	1.A
34074M-P7-0	FLORIDA HSG FIN CORP REV..... IDAHO HSG & FIN ASSN		05/30/2024	DIVL..... DONALDSON LUFKIN & JENRETTE.....	XXX	105,825	100,000	108,387	108,107		(326)		(326)		107,781		(1,956)	(1,956)	4,408	01/01/2054	1.A FE
45129Y-3S-3	SINGLE FAMILY MTG R..... IDAHO HSG & FIN ASSN		05/30/2024		XXX	105,880	100,000	107,659	107,430		(277)		(277)		107,153		(1,273)	(1,273)	4,313	01/01/2053	1.B FE
45129Y-S6-4	SINGLE FAMILY MTG R.....		05/30/2024	RBC Dain Rauscher (US).....	XXX	78,745	80,000	80,322	80,320		(3)		(3)		80,317		(1,573)	(1,573)	2,924	01/01/2050	1.B FE
499818-K5-0	KNOXVILLE TENN WTR REV..... LAWRENCE KANS WTR & SEW		05/30/2024	Fifth Third Securities.....	XXX	136,727	135,000	152,532	141,080		(765)		(765)		140,315		(3,588)	(3,588)	4,050	03/01/2027	1.B FE
520192-QE-8	SYS REV.....		05/30/2024	FIRST UNION CAPITAL.....	XXX	115,391	115,000	128,605	119,692		(665)		(665)		119,027		(3,636)	(3,636)	2,683	11/01/2028	1.C FE
594654-RG-2	MICHIGAN ST HSG DEV AUTH SINGLE FAMILY M.....		06/01/2024	Call @ 100.00.....	XXX	5,000	5,000	5,216	5,203		(9)		(9)		5,194		(194)	(194)	125	06/01/2053	1.C FE
83756C-S8-9	SOUTH DAKOTA HOUSING DEVELOPMENT AUTHORI.....		05/30/2024	Various.....	XXX	95,578	100,000	96,411	96,417		33		33		96,449		(871)	(871)	1,730	11/01/2052	1.A FE
0909999999 - Bonds - U.S. Special Revenue and Special Assessment and all Non-Guaranteed Obligations of Agencies and Authorities of Governments and Their Political Subdivisions						857,548	849,629	907,947	862,106	0	481	0	481	0	871,726	0	(14,178)	(14,178)	26,262	XXX	XXX
Bonds - Industrial and Miscellaneous (Unaffiliated)																					
06211F-AV-0	BANK5 2023-5YR4 A3 - CMBS.....		05/01/2024	Paydown.....	XXX	6,719	6,719	6,921	6,919		(200)		(200)		6,719		0	0	242	12/15/2056	1.A FE
17252M-AQ-3	CINTAS NO 2 CORP.....		04/03/2024	Morgan Stanley.....	XXX	93,327	100,000	99,592	99,651		9		9		99,661		(6,334)	(6,334)	1,711	05/01/2032	1.G FE
19688R-AA-7	COLT 233 A1 - RMBS.....		06/01/2024	Paydown.....	XXX	6,362	6,362	6,441	6,438		(76)		(76)		6,362		0	0	182	09/25/2068	Z
232989-AB-9	DLTMT 231 A2 - ABS.....		06/20/2024	Paydown.....	XXX	15,645	15,645	15,591	15,603		42		42		15,645		0	0	379	11/20/2025	1.A FE
29375N-AB-1	EFF 232 A2 - ABS.....		06/20/2024	Paydown.....	XXX	5,875	5,875	5,874	5,873		2		2		5,875		0	0	133	04/22/2030	1.A FE
30040W-AS-7	EVERSOURCE ENERGY.....		06/27/2024	Maturity @ 100.00.....	XXX	50,000	50,000	49,243	49,633		367		367		50,000		0	0	1,050	06/27/2024	2.A FE
36260K-AD-6	GMCAR 2020-4 A4 - ABS.....		06/16/2024	Paydown.....	XXX	26,650	26,650	25,202	25,775		775		775		26,650		0	0	60	02/17/2026	1.A FE
380140-AC-7	GMCAR 2021-3 A3 - ABS.....		06/16/2024	Paydown.....	XXX	12,508	12,508	12,005	12,137		371		371		12,508		0	0	25	06/16/2026	1.A FE
39154T-CB-2	GALC 231 A2 - ABS.....		06/15/2024	Paydown.....	XXX	5,245	5,245	5,244	5,245		0		0		5,245		0	0	117	02/17/2026	1.A FE
437927-AB-2	HAROT 2023-2 A2 - ABS.....		06/15/2024	Paydown.....	XXX	11,810	11,810	11,810	11,810		0		0		11,810		0	0	266	04/15/2026	1.A FE
46657C-AD-4	JPWMT 238 A4 - RMBS..... MFRA 2022-NQM2 A1 -		06/25/2024	Paydown.....	XXX	2,568	2,568	2,526	2,526		42		42		2,568		0	0	59	02/25/2054	Z
55285Q-AA-0	CMO/RMBS.....		06/01/2024	Paydown.....	XXX	2,629	2,629	2,429	2,429		200		200		2,629		0	0	44	05/25/2067	1.A FE
58768R-AB-6	MBALT 2023-A A2 - ABS.....		06/15/2024	Paydown.....	XXX	11,021	11,021	11,021	11,021		0		0		11,021		0	0	242	11/17/2025	1.A FE
58772W-AC-7	MBART 2021-1 A3 - ABS..... NRZT 2021-NQM3 A1 -		06/15/2024	Paydown.....	XXX	12,019	12,019	11,567	11,664		355		355		12,019		0	0	23	06/15/2026	1.A FE
64831T-AA-5	CMO/RMBS.....		06/01/2024	Paydown.....	XXX	2,016	2,016	1,608	1,737		279		279		2,016		0	0	9	11/27/2056	Z

STATEMENT AS OF JUNE 30, 2024 OF THE SONNENBERG MUTUAL INSURANCE COMPANY

SCHEDULE D - PART 4

Show All Long-Term Bonds and Stock Sold, Redeemed or Otherwise Disposed of During the Current Quarter

1	2	3 F o r e i g n	4	5	6	7	8	9	10	Change in Book/Adjusted Carrying Value					16	17	18	19	20	21	22 NAIC Designation, NAIC Desig. Modifier and SVO Administrative Symbol
										11	12	13	14	15							
CUSIP Identi- fication	Description		Disposal Date	Name of Purchaser	Number of Shares of Stock	Consideration	Par Value	Actual Cost	Prior Year Book/Adjusted Carrying Value	Unrealized Valuation Increase/ (Decrease)	Current Year's (Amortization)/ Accretion	Current Year's Other Than Temporary Impairment Recognized	Total Change in B./A.C.V. (11+12-13)	Total Foreign Exchange Change in B./A.C.V.	Book/ Adjusted Carrying Value at Disposal Date	Foreign Exchange Gain (Loss) on Disposal	Realized Gain (Loss) on Disposal	Total Gain (Loss) on Disposal	Bond Interest/Stock Dividends Received During Year	Stated Contractual Maturity Date	
67449C-AA-9.	OBX 23N010 A1 - RMBS.....		06/25/2024.	Paydown.....	.XXX.	5,747	5,747	5,747	5,753		(6)		(6)		5,747			.0	146	10/25/2063.	Z.....
73328Q-AB-0.	PFAST 231 A2 - ABS.....		06/22/2024.	Paydown.....	.XXX.	23,019	23,019	23,017	23,017		.1		.1		23,019		.0	.0	522	12/22/2026.	1.A FE.....
74332V-AA-3.	PROG 2022-SFR2 A - CMBS. PUBLIC SERVICE ENTERPRISE		06/01/2024.	Paydown.....	.XXX.	366		334	334		.32		.32		366			.0	.4	03/18/2039.	1.A FE.....
744573-AN-6.	GROUP INC.		06/15/2024.	Maturity @ 100.00.	.XXX.	50,000	50,000	48,550	49,320		.680		.680		50,000			.0	719	06/15/2024.	2.B FE.....
79466L-AF-1.	SALESFORCE INC.		04/03/2024.	Barclays Bank	.XXX.	96,715	100,000	100,800	100,377		(22)		(22)		100,355		(3,640)	(3,640)	1,788	04/11/2028.	1.E FE.....
891941-AB-2.	TAOT 2023-B A2A - ABS.....		06/15/2024.	Paydown.....	.XXX.	4,978		4,978	.0		.0		.0		4,978		.0	.0	109	05/15/2026.	1.A FE.....
89239B-AC-5.	TAOT 2021-C A3 - ABS.....		06/15/2024.	Paydown.....	.XXX.	13,689	13,689	13,143	13,299		.390		.390		13,689			.0	24	01/15/2026.	1.A FE.....
92539D-AA-6.	VERUS 232 A1 - CMO/RMBS.....		06/01/2024.	Paydown.....	.XXX.	5,071	5,071	5,028	5,033		.38		.38		5,071			.0	131	03/26/2068.	Z.....
96328G-AS-6.	WFLF 231 A - ABS.....		06/18/2024.	Paydown.....	.XXX.	6,883	6,883	6,883	.0		.0		.0		6,883			.0	183	04/19/2038.	1.A FE.....
981944-AB-7.	WOLS 2023-A A2A - ABS.....		06/15/2024.	Paydown.....	.XXX.	5,532	5,532	5,531	5,531		.0		.0		5,532			.0	128	11/17/2025.	1.A FE.....
1109999999 - Bonds - Industrial and Miscellaneous (Unaffiliated)						476,393	486,351	481,083	483,086	0	3,280	0	3,280	0	486,366	0	(9,974)	(9,974)	8,297	XXX	XXX
2509999997 - Bonds - Subtotals - Bonds - Part 4						2,140,398	2,130,980	2,293,286	2,175,592	0	(1,028)	0	(1,028)	0	2,183,704	0	(43,305)	(43,305)	51,696	XXX	XXX
2509999999 - Bonds - Subtotals - Bonds						2,140,398	2,130,980	2,293,286	2,175,592	0	(1,028)	0	(1,028)	0	2,183,704	0	(43,305)	(43,305)	51,696	XXX	XXX
Common Stocks - Industrial and Miscellaneous (Unaffiliated) - Publicly Traded																					
00287Y-10-9.	ABBVIE ORD.....		05/14/2024.	MERRILL LYNCH	1.000	160	.XXX.	19	155	(136)			(136)		19		141	141	3	XXX	XXX
025537-10-1.	AMERICAN ELECTRIC POWER ORD.....		04/05/2024.	MERRILL LYNCH	45.000	3,777	.XXX.	1,735	3,655	(1,920)			(1,920)		1,735		2,042	2,042	40	XXX	XXX
03073E-10-5.	CENCORA ORD.....		06/28/2024.	MERRILL LYNCH	14.000	3,144	.XXX.	3,093		.0			.0		3,093		52	52		XXX	XXX
038222-10-5.	APPLIED MATERIAL ORD.....		04/05/2024.	MERRILL LYNCH	420.000	87,653	.XXX.	4,255	68,069	(63,815)			(63,815)		4,255		83,398	83,398	134	XXX	XXX
084670-10-2.	BERKSHIRE HATHAWAY CL B ORD.....		06/28/2024.	MERRILL LYNCH	10.000	4,066	.XXX.	4,084		.0			.0		4,084		(18)	(18)		XXX	XXX
101137-10-7.	BOSTON SCIENTIFIC ORD.....		06/28/2024.	MERRILL LYNCH	42.000	3,234	.XXX.	3,064		.0			.0		3,064		170	170		XXX	XXX
127387-10-8.	CADENCE DESIGN SYSTEMS ORD.		05/14/2024.	MERRILL LYNCH	33.000	9,328	.XXX.	10,225		.0			.0		10,225		(898)	(898)		XXX	XXX
17275R-10-2.	CISCO SYSTEMS ORD.....		04/05/2024.	MERRILL LYNCH	226.000	10,981	.XXX.	5,047	11,418	(6,371)			(6,371)		5,047		5,934	5,934	179	XXX	XXX
217204-10-6.	COPART ORD.....		06/28/2024.	MERRILL LYNCH	177.000	9,668	.XXX.	10,066		.0			.0		10,066		(399)	(399)		XXX	XXX
243537-10-7.	DECKERS OUTDOOR ORD.....		05/14/2024.	MERRILL LYNCH	2.000	1,759	.XXX.	1,762		.0			.0		1,762		(4)	(4)		XXX	XXX
30303M-10-2.	META PLATFORMS CL A ORD.....		06/28/2024.	MERRILL LYNCH	33.000	15,650	.XXX.	17,282		.0			.0		17,282		(1,632)	(1,632)	2	XXX	XXX
369550-10-8.	GENERAL DYNAMICS ORD.....		04/05/2024.	MERRILL LYNCH	259.000	76,321	.XXX.	9,803	67,255	(57,451)			(57,451)		9,803		66,518	66,518	342	XXX	XXX
370334-10-4.	GENERAL MILLS ORD.....		04/05/2024.	MERRILL LYNCH	464.000	32,381	.XXX.	10,904	30,225	(19,321)			(19,321)		10,904		21,477	21,477	274	XXX	XXX
418100-10-3.	HASHICORP CL A ORD.....		06/28/2024.	MERRILL LYNCH	3.000	101	.XXX.	99		.0			.0		99		3	3		XXX	XXX
437076-10-2.	HOME DEPOT ORD.....		05/14/2024.	MERRILL LYNCH	14.000	4,719	.XXX.	5,011		.0			.0		5,011		(292)	(292)		XXX	XXX
446150-10-4.	HUNTINGTON BANCSHARES ORD.....		04/05/2024.	MERRILL LYNCH	655.000	8,906	.XXX.	680	8,332	(7,652)			(7,652)		680		8,226	8,226	203	XXX	XXX
458140-10-0.	INTEL ORD.....		05/14/2024.	MERRILL LYNCH	275.000	8,475	.XXX.	4,032	13,819	(9,787)			(9,787)		4,032		4,443	4,443	69	XXX	XXX
532457-10-8.	ELI LILLY ORD.....		05/14/2024.	MERRILL LYNCH	15.000	11,357	.XXX.	11,364		.0			.0		11,364		(6)	(6)		XXX	XXX
562750-10-9.	MANHATTAN ASSOCIATES ORD.....		05/14/2024.	MERRILL LYNCH	7.000	1,514	.XXX.	1,710		.0			.0		1,710		(196)	(196)		XXX	XXX
57636Q-10-4.	MASTERCARD CL A ORD.....		05/14/2024.	MERRILL LYNCH	39.000	17,542	.XXX.	18,648		.0			.0		18,648		(1,106)	(1,106)	26	XXX	XXX
594918-10-4.	MICROSOFT ORD.....		05/14/2024.	MERRILL LYNCH	35.000	14,449	.XXX.	14,889		.0			.0		14,889		(441)	(441)		XXX	XXX
665859-10-4.	NORTHERN TRUST ORD.....		03/13/2024.	MERRILL LYNCH	.XXX.		.XXX.			.0			.0					.0	7	XXX	XXX
78409V-10-4.	S&P GLOBAL ORD.....		06/28/2024.	MERRILL LYNCH	17.000	7,528	.XXX.	7,173		.0			.0		7,173		355	355	15	XXX	XXX
806857-10-8.	SCHLUMBERGER ORD.....		03/13/2024.	MERRILL LYNCH	.XXX.		.XXX.			.0			.0					.0	446	XXX	XXX
842587-10-7.	SOUTHERN ORD.....		04/05/2024.	MERRILL LYNCH	188.000	13,175	.XXX.	5,375	13,183	(7,808)			(7,808)		5,375		7,800	7,800	132	XXX	XXX
902252-10-5.	TYLER TECHNOLOGIES ORD.....		06/28/2024.	MERRILL LYNCH	3.000	1,497	.XXX.	1,448		.0			.0		1,448		49	49		XXX	XXX
91324P-10-2.	UNITEDHEALTH GRP ORD.....		06/28/2024.	MERRILL LYNCH	29.000	14,275	.XXX.	14,805		.0			.0		14,805		(530)	(530)	61	XXX	XXX
5019999999 - Common Stocks - Industrial and Miscellaneous (Unaffiliated) - Publicly Traded						361,658	XXX	166,571	216,109	(174,261)	0	0	(174,261)	0	166,571	0	195,087	195,087	1,931	XXX	XXX
Common Stocks - Mutual Funds - Designations Not Assigned by the SVO																					
00766Y-19-0.	CHAMPLAIN SM CO INST.....		06/20/2024.	Not Available.....	3,000.000	63,390	.XXX.	59,940	63,930	(3,990)			(3,990)		59,940		3,450	3,450	10	XXX	
19766Q-78-3.	COLUMBIA PYRFORD IS ADV.....		06/20/2024.	Not Available.....	6,600.000	94,050	.XXX.	91,080	92,136	(1,056)			(1,056)		91,080		2,970	2,970	12	XXX	
969251-71-9.	WM BLAIR INTL LDRS I.....		06/20/2024.	Not Available.....	4,500.000	94,230	.XXX.	79,020	88,200	(9,180)			(9,180)		79,020		15,210	15,210	11	XXX	
5329999999 - Common Stocks - Mutual Funds - Designations Not Assigned by the SVO						251,670	XXX	230,040	244,266	(14,226)	0	0	(14,226)	0	230,040	0	21,630	21,630	32	XXX	XXX
5989999997 - Common Stocks - Subtotals - Common Stocks - Part 4						613,328	XXX	396,611	460,375	(188,487)	0	0	(188,487)	0	396,611	0	216,717	216,717	1,963	XXX	XXX
5989999999 - Common Stocks - Subtotals - Common Stocks						613,328	XXX	396,611	460,375	(188,487)	0	0	(188,487)	0	396,611	0	216,717	216,717	1,963	XXX	XXX
5999999999 - Common Stocks - Subtotals - Preferred and Common Stocks						613,328	XXX	396,611	460,375	(188,487)	0	0	(188,487)	0	396,611	0	216,717	216,717	1,963	XXX	XXX
6009999999 Totals						2,753,726	XXX	2,689,897	2,635,968	(188,487)	(1,028)	0	(189,515)	0	2,580,315	0	173,412	173,412	53,660	XXX	XXX

Schedule DB - Part A - Section 1

NONE

Schedule DB - Part B - Section 1

NONE

Schedule DB - Part D - Section 1

NONE

Schedule DB - Part D - Section 2

NONE

Schedule DB - Part E

NONE

Schedule DL - Part 1

NONE

Schedule DL - Part 2

NONE

STATEMENT AS OF JUNE 30, 2024 OF THE SONNENBERG MUTUAL INSURANCE COMPANY

SCHEDULE E - PART 1 - CASH

[illegible]

STATEMENT AS OF JUNE 30, 2024 OF THE SONNENBERG MUTUAL INSURANCE COMPANY

SCHEDULE E - PART 2 - CASH EQUIVALENTS

[illegible]