



LIFE, ACCIDENT AND HEALTH COMPANIES/FRATERNAL BENEFIT SOCIETIES — ASSOCIATION EDITION

QUARTERLY STATEMENT

AS OF MARCH 31, 2024
OF THE CONDITION AND AFFAIRS OF THE

Grange Life Insurance Company

NAIC Group Code00588, 00588NAIC Company Code71218Employer's ID Number31-0739286

(Current Period)(Prior Period)

Organized under the Laws ofOhio, State of Domicile or Port of EntryOhio

Country of DomicileUnited States

Licensed as business type: Life, Accident and Health [x]Fraternal Benefit Societies []

Incorporated/Organized03/05/1968Commenced Business07/01/1968

Statutory Home Office671 South High Street, Columbus, OH, US 43206-1066

(Street and Number)(City or Town, State, Country and Zip Code)

Main Administrative Office671 South High Street, Columbus, OH, US 43206-1066800-399-3797

(Street and Number)(City or Town, State, Country and Zip Code)(Area Code) (Telephone Number)

Mail AddressP.O. Box 182828, Columbus, OH, US 43218-2828

(Street and Number or P.O. Box)(City or Town, State, Country and Zip Code)

Primary Location of Books and Records3520 Broadway, Kansas City, MO, US 64111-2565800-399-3797

(Street and Number)(City or Town, State, Country and Zip Code)(Area Code) (Telephone Number)

Internet Web Site Addresswww.grangeinsurance.com

Statutory Statement ContactJennifer Kay Pieper, 816-856-8519

(Name)(Area Code) (Telephone Number) (Extension)

Jenny.Pieper@kclife.com, 816-531-8979

(E-mail Address)(FAX Number)

OFFICERS

Name	Title	Name	Title
WALTER EDWIN BIXBY	PRESIDENT AND CHIEF EXECUTIVE OFFICER	ALAN CRAIG MASON Jr.	GENERAL COUNSEL & SECRETARY
JENNIFER KAY PIEPER	CONTROLLER		

OTHER OFFICERS

ROBERT PHILIP BIXBY	CHAIRMAN OF THE BOARD	DAVID ARNOLD LAIRD	CHIEF FINANCIAL OFFICER
MARK ALAN MILTON	ACTUARY		

DIRECTORS OR TRUSTEES

ROBERT PHILIP BIXBY	WALTER EDWIN BIXBY	DAVID ARNOLD LAIRD	MARK ALAN MILTON
STEPHEN EDWARD ROPP			

State ofMissouri.....
County ofJackson.....

The officers of this reporting entity being duly sworn, each depose and say that they are the described officers of said reporting entity, and that on the reporting period stated above, all of the herein described assets were the absolute property of the said reporting entity, free and clear from any liens or claims thereon, except as herein stated, and that this statement, together with related exhibits, schedules and explanations therein contained, annexed or referred to, is a full and true statement of all the assets and liabilities and of the condition and affairs of the said reporting entity as of the reporting period stated above, and of its income and deductions therefrom for the period ended, and have been completed in accordance with the NAIC Annual Statement Instructions and Accounting Practices and Procedures manual except to the extent that: (1) state law may differ; or, (2) that state rules or regulations require differences in reporting not related to accounting practices and procedures, according to the best of their information, knowledge and belief, respectively. Furthermore, the scope of this attestation by the described officers also includes the related corresponding electronic filing with the NAIC, when required, that is an exact copy (except for formatting differences due to electronic filing) of the enclosed statement. The electronic filing may be requested by various regulators in lieu of or in addition to the enclosed statement.

WALTER EDWIN BIXBY
PRESIDENT AND CHIEF EXECUTIVE OFFICER

ALAN CRAIG MASON Jr.
GENERAL COUNSEL & SECRETARY

JENNIFER KAY PIEPER
CONTROLLER

Subscribed and sworn to before me this _____ day of _____,

a. Is this an original filing? Yes [X] No []

b. If no:
1. State the amendment number _____
2. Date filed _____
3. Number of pages attached _____

Janice L. Poe, Legal Assistant
July 19, 2024

STATEMENT AS OF MARCH 31, 2024 OF THE Grange Life Insurance Company

ASSETS

	Current Statement Date			4 December 31 Prior Year Net Admitted Assets
	1	2	3	
	Assets	Nonadmitted Assets	Net Admitted Assets (Cols. 1 - 2)	
1. Bonds	407,284,876	0	407,284,876	400,948,902
2. Stocks:				
2.1 Preferred stocks	0	0	0	0
2.2 Common stocks	0	0	0	0
3. Mortgage loans on real estate:				
3.1 First liens	5,479,803	0	5,479,803	5,483,477
3.2 Other than first liens	0	0	0	0
4. Real estate:				
4.1 Properties occupied by the company (less \$ encumbrances)	0	0	0	0
4.2 Properties held for the production of income (less \$ encumbrances)	0	0	0	0
4.3 Properties held for sale (less \$ encumbrances)	0	0	0	0
5. Cash (\$2,102,687), cash equivalents (\$6,423,550) and short-term investments (\$0)	8,526,237	0	8,526,237	14,256,520
6. Contract loans (including \$premium notes)	14,204,499	0	14,204,499	14,325,951
7. Derivatives	0	0	0	0
8. Other invested assets	0	0	0	0
9. Receivables for securities	0	0	0	0
10. Securities lending reinvested collateral assets	0	0	0	0
11. Aggregate write-ins for invested assets	0	0	0	0
12. Subtotals, cash and invested assets (Lines 1 to 11)	435,495,415	0	435,495,415	435,014,850
13. Title plants less \$charged off (for Title insurers only)	0	0	0	0
14. Investment income due and accrued	3,735,304	0	3,735,304	3,780,194
15. Premiums and considerations:				
15.1 Uncollected premiums and agents' balances in the course of collection	1,111,443	17,594	1,093,849	1,293,228
15.2 Deferred premiums, agents' balances and installments booked but deferred and not yet due (including \$earned but unbilled premiums)	37,426,295	0	37,426,295	37,174,708
15.3 Accrued retrospective premiums (\$) and contracts subject to redetermination (\$)	0	0	0	0
16. Reinsurance:				
16.1 Amounts recoverable from reinsurers	3,954,911	67,529	3,887,382	1,332,673
16.2 Funds held by or deposited with reinsured companies	0	0	0	0
16.3 Other amounts receivable under reinsurance contracts	0	0	0	223,187
17. Amounts receivable relating to uninsured plans	0	0	0	0
18.1 Current federal and foreign income tax recoverable and interest thereon	0	0	0	222,879
18.2 Net deferred tax asset	12,746,705	10,073,628	2,673,077	2,566,586
19. Guaranty funds receivable or on deposit	455,313	454,983	330	330
20. Electronic data processing equipment and software	0	0	0	0
21. Furniture and equipment, including health care delivery assets (\$)	0	0	0	0
22. Net adjustment in assets and liabilities due to foreign exchange rates	0	0	0	0
23. Receivables from parent, subsidiaries and affiliates	0	0	0	0
24. Health care (\$) and other amounts receivable	0	0	0	0
25. Aggregate write-ins for other-than-invested assets	155,022	26,130	128,892	349,184
26. Total assets excluding Separate Accounts, Segregated Accounts and Protected Cell Accounts (Lines 12 to 25)	495,080,408	10,639,864	484,440,544	481,957,819
27. From Separate Accounts, Segregated Accounts and Protected Cell Accounts	0	0	0	0
28. Total (Lines 26 and 27)	495,080,408	10,639,864	484,440,544	481,957,819
DETAILS OF WRITE-INS				
1101.			0	0
1102.			0	0
1103.			0	0
1198. Summary of remaining write-ins for Line 11 from overflow page	0	0	0	0
1199. Totals (Lines 1101 through 1103 plus 1198) (Line 11 above)	0	0	0	0
2501. INTEREST MAINTENANCE RESERVE	66,669	0	66,669	228,195
2502. MISCELLANEOUS ASSETS	88,353	26,130	62,223	120,989
2503.			0	0
2598. Summary of remaining write-ins for Line 25 from overflow page	0	0	0	0
2599. Totals (Lines 2501 through 2503 plus 2598) (Line 25 above)	155,022	26,130	128,892	349,184

LIABILITIES, SURPLUS AND OTHER FUNDS

	1 Current Statement Date	2 December 31 Prior Year
1. Aggregate reserve for life contracts \$441,989,081 less \$0 included in Line 6.3 (including \$ Modco Reserve)	441,989,081	439,785,614
2. Aggregate reserve for accident and health contracts (including \$ Modco Reserve)	336,102	372,588
3. Liability for deposit-type contracts (including \$ Modco Reserve)	756,952	2,643,199
4. Contract claims:		
4.1 Life	4,680,929	4,182,734
4.2 Accident and health	1,089	1,089
5. Policyholders' dividends/refunds to members \$ and coupons \$ due and unpaid	0	0
6. Provision for policyholders' dividends, refunds to members and coupons payable in following calendar year—estimated amounts:		
6.1 Policyholders' dividends and refunds to members apportioned for payment (including \$ Modco)	54,295	54,295
6.2 Policyholders' dividends and refunds to members not yet apportioned (including \$ Modco)	0	0
6.3 Coupons and similar benefits (including \$ Modco)	0	0
7. Amount provisionally held for deferred dividend policies not included in Line 6	0	0
8. Premiums and annuity considerations for life and accident and health contracts received in advance less \$ discount; including \$ accident and health premiums	426,355	334,823
9. Contract liabilities not included elsewhere:		
9.1 Surrender values on canceled contracts	0	0
9.2 Provision for experience rating refunds, including the liability of \$ accident and health experience rating refunds of which \$ is for medical loss ratio rebate per the Public Health Service Act.....	0	0
9.3 Other amounts payable on reinsurance, including \$ assumed and \$ ceded.....	0	0
9.4 Interest Maintenance Reserve	0	0
10. Commissions to agents due or accrued-life and annuity contracts \$306,516 , accident and health \$0 and deposit-type contract funds \$0	306,516	288,351
11. Commissions and expense allowances payable on reinsurance assumed	0	0
12. General expenses due or accrued	67,775	65,875
13. Transfers to Separate Accounts due or accrued (net) (including \$ accrued for expense allowances recognized in reserves, net of reinsured allowances)	0	0
14. Taxes, licenses and fees due or accrued, excluding federal income taxes	712,370	1,025,370
15.1 Current federal and foreign income taxes, including \$ on realized capital gains (losses)	185,744	0
15.2 Net deferred tax liability	0	0
16. Unearned investment income	581,339	547,460
17. Amounts withheld or retained by reporting entity as agent or trustee	0	0
18. Amounts held for agents' account, including \$ agents' credit balances	0	0
19. Remittances and items not allocated	3,741,277	2,708,701
20. Net adjustment in assets and liabilities due to foreign exchange rates	0	0
21. Liability for benefits for employees and agents if not included above	0	0
22. Borrowed money \$ and interest thereon \$	0	0
23. Dividends to stockholders declared and unpaid	0	0
24. Miscellaneous liabilities:		
24.01 Asset valuation reserve	2,775,000	2,450,000
24.02 Reinsurance in unauthorized and certified (\$) companies	0	0
24.03 Funds held under reinsurance treaties with unauthorized and certified (\$) reinsurers	0	0
24.04 Payable to parent, subsidiaries and affiliates	308,894	527,601
24.05 Drafts outstanding	0	0
24.06 Liability for amounts held under uninsured plans	0	0
24.07 Funds held under coinsurance	0	0
24.08 Derivatives	0	0
24.09 Payable for securities	0	0
24.10 Payable for securities lending.....	0	0
24.11 Capital notes \$ and interest thereon \$	0	0
25. Aggregate write-ins for liabilities	516,605	579,690
26. Total liabilities excluding Separate Accounts business (Lines 1 to 25)	457,440,323	455,567,390
27. From Separate Accounts statement	0	0
28. Total liabilities (Lines 26 and 27)	457,440,323	455,567,390
29. Common capital stock	1,893,750	1,893,750
30. Preferred capital stock	0	0
31. Aggregate write-ins for other than special surplus funds	0	0
32. Surplus notes	0	0
33. Gross paid in and contributed surplus	40,202,189	40,202,189
34. Aggregate write-ins for special surplus funds	0	0
35. Unassigned funds (surplus)	(15,095,718)	(15,705,509)
36. Less treasury stock, at cost:		
36.1 shares common (value included in Line 29 \$)	0	0
36.2 shares preferred (value included in Line 30 \$)	0	0
37. Surplus (Total Lines 31 + 32 + 33 + 34 + 35 - 36) (including \$ in Separate Accounts Statement)	25,106,471	24,496,680
38. Totals of Lines 29, 30 and 37	27,000,221	26,390,430
39. Totals of Lines 28 and 38 (Page 2, Line 28, Col. 3)	484,440,544	481,957,820
DETAILS OF WRITE-INS		
2501. UNCASHED CHECKS PENDING ESCHEATMENT	516,605	579,690
2502.		
2503.		
2598. Summary of remaining write-ins for Line 25 from overflow page	0	0
2599. Totals (Lines 2501 through 2503 plus 2598) (Line 25 above)	516,605	579,690
3101.		0
3102.		0
3103.		0
3198. Summary of remaining write-ins for Line 31 from overflow page	0	0
3199. Totals (Lines 3101 through 3103 plus 3198) (Line 31 above)	0	0
3401.		0
3402.		0
3403.		0
3498. Summary of remaining write-ins for Line 34 from overflow page	0	0
3499. Totals (Lines 3401 through 3403 plus 3498) (Line 34 above)	0	0

STATEMENT AS OF MARCH 31, 2024 OF THE Grange Life Insurance Company

SUMMARY OF OPERATIONS

	1 Current Year To Date	2 Prior Year Year to Date	3 Prior Year Ended December 31
1. Premiums and annuity considerations for life and accident and health contracts	10,809,871	10,555,903	40,879,534
2. Considerations for supplementary contracts with life contingencies	0	0	0
3. Net investment income	4,203,567	3,965,056	16,620,043
4. Amortization of Interest Maintenance Reserve (IMR)	(161,526)	(127,809)	(127,480)
5. Separate Accounts net gain from operations excluding unrealized gains or losses	0	0	0
6. Commissions and expense allowances on reinsurance ceded	584,030	554,265	2,210,292
7. Reserve adjustments on reinsurance ceded	0	0	0
8. Miscellaneous Income:			
8.1 Income from fees associated with investment management, administration and contract guarantees from Separate Accounts	0	0	0
8.2 Charges and fees for deposit-type contracts	0	0	0
8.3 Aggregate write-ins for miscellaneous income	1,763	(8,845)	(3,734)
9. Totals (Lines 1 to 8.3)	15,437,705	14,938,570	59,578,655
10. Death benefits	7,911,527	8,724,444	30,559,661
11. Matured endowments (excluding guaranteed annual pure endowments)	0	0	0
12. Annuity benefits	975,138	980,145	8,656,638
13. Disability benefits and benefits under accident and health contracts	79,110	76,183	297,685
14. Coupons, guaranteed annual pure endowments and similar benefits	0	0	0
15. Surrender benefits and withdrawals for life contracts	1,588,729	1,561,084	7,356,156
16. Group conversions	0	0	0
17. Interest and adjustments on contract or deposit-type contract funds	56,993	33,799	220,578
18. Payments on supplementary contracts with life contingencies	11,740	12,311	47,532
19. Increase in aggregate reserves for life and accident and health contracts	2,166,981	2,232,487	4,264,104
20. Totals (Lines 10 to 19)	12,790,218	13,620,453	51,402,354
21. Commissions on premiums, annuity considerations, and deposit-type contract funds (direct business only)	255,123	295,872	1,094,997
22. Commissions and expense allowances on reinsurance assumed	27,605	24,140	122,274
23. General insurance expenses and fraternal expenses	1,175,529	1,074,724	4,548,779
24. Insurance taxes, licenses and fees, excluding federal income taxes	(14,743)	22,292	1,609,208
25. Increase in loading on deferred and uncollected premiums	(37,209)	(127,983)	(84,072)
26. Net transfers to or (from) Separate Accounts net of reinsurance	0	0	0
27. Aggregate write-ins for deductions	269	1,091	3,964
28. Totals (Lines 20 to 27)	14,196,792	14,910,589	58,697,504
29. Net gain from operations before dividends to policyholders and federal income taxes (Line 9 minus Line 28)	1,240,913	27,981	881,150
30. Dividends to policyholders and refunds to members	13,296	13,015	54,668
31. Net gain from operations after dividends to policyholders, refunds to members and before federal income taxes (Line 29 minus Line 30)	1,227,617	14,966	826,482
32. Federal and foreign income taxes incurred (excluding tax on capital gains)	408,623	31,145	223,918
33. Net gain from operations after dividends to policyholders, refunds to members and federal income taxes and before realized capital gains or (losses) (Line 31 minus Line 32)	818,994	(16,179)	602,564
34. Net realized capital gains (losses) (excluding gains (losses) transferred to the IMR) less capital gains tax of \$ (excluding taxes of \$ transferred to the IMR)	0	(210,000)	(183,749)
35. Net income (Line 33 plus Line 34)	818,994	(226,179)	418,815
CAPITAL AND SURPLUS ACCOUNT			
36. Capital and surplus, December 31, prior year	26,390,430	25,943,258	25,943,259
37. Net income (Line 35)	818,994	(226,179)	418,815
38. Change in net unrealized capital gains (losses) less capital gains tax of \$	0	0	0
39. Change in net unrealized foreign exchange capital gain (loss)	0	0	0
40. Change in net deferred income tax	114,229	54,823	35,223
41. Change in nonadmitted assets	1,568	84,878	202,133
42. Change in liability for reinsurance in unauthorized and certified companies	0	0	0
43. Change in reserve on account of change in valuation basis, (increase) or decrease	0	0	0
44. Change in asset valuation reserve	(325,000)	(219,000)	(209,001)
45. Change in treasury stock	0	0	0
46. Surplus (contributed to) withdrawn from Separate Accounts during period	0	0	0
47. Other changes in surplus in Separate Accounts Statement	0	0	0
48. Change in surplus notes	0	0	0
49. Cumulative effect of changes in accounting principles	0	0	0
50. Capital changes:			
50.1 Paid in	0	0	0
50.2 Transferred from surplus (Stock Dividend)	0	0	0
50.3 Transferred to surplus	0	0	0
51. Surplus adjustment:			
51.1 Paid in	0	0	0
51.2 Transferred to capital (Stock Dividend)	0	0	0
51.3 Transferred from capital	0	0	0
51.4 Change in surplus as a result of reinsurance	0	0	0
52. Dividends to stockholders	0	0	0
53. Aggregate write-ins for gains and losses in surplus	0	0	0
54. Net change in capital and surplus (Lines 37 through 53)	609,791	(305,478)	447,171
55. Capital and surplus as of statement date (Lines 36 + 54)	27,000,221	25,637,780	26,390,430
DETAILS OF WRITE-INS			
08.301. MISCELLANEOUS INCOME:	1,763	(8,845)	(3,734)
08.302.			
08.303.			
08.398. Summary of remaining write-ins for Line 8.3 from overflow page	0	0	0
08.399. Totals (Lines 08.301 through 08.303 plus 08.398) (Line 8.3 above)	1,763	(8,845)	(3,734)
2701. MISCELLANEOUS EXPENSES	269	1,091	3,964
2702.			
2703.			
2798. Summary of remaining write-ins for Line 27 from overflow page	0	0	0
2799. Totals (Lines 2701 through 2703 plus 2798) (Line 27 above)	269	1,091	3,964
5301.			
5302.			
5303.			
5398. Summary of remaining write-ins for Line 53 from overflow page	0	0	0
5399. Totals (Lines 5301 through 5303 plus 5398) (Line 53 above)	0	0	0

CASH FLOW

	1 Current Year To Date	2 Prior Year To Date	3 Prior Year Ended December 31
Cash from Operations			
1. Premiums collected net of reinsurance.....	10,888,137	11,038,023	41,931,562
2. Net investment income	4,487,715	4,272,504	17,097,622
3. Miscellaneous income	585,794	545,420	2,206,557
4. Total (Lines 1 to 3)	15,961,646	15,855,947	61,235,741
5. Benefit and loss related payments	12,670,503	10,343,555	44,489,877
6. Net transfers to Separate Accounts, Segregated Accounts and Protected Cell Accounts.....	0	0	0
7. Commissions, expenses paid and aggregate write-ins for deductions	1,486,795	1,544,505	7,241,159
8. Dividends paid to policyholders	13,296	13,015	54,295
9. Federal and foreign income taxes paid (recovered) net of \$ tax on capital gains (losses).....	0	0	395,365
10. Total (Lines 5 through 9)	14,170,594	11,901,075	52,180,696
11. Net cash from operations (Line 4 minus Line 10)	1,791,052	3,954,872	9,055,045
Cash from Investments			
12. Proceeds from investments sold, matured or repaid:			
12.1 Bonds	1,566,987	2,883,114	10,849,891
12.2 Stocks	0	0	0
12.3 Mortgage loans	0	0	0
12.4 Real estate	0	0	0
12.5 Other invested assets	0	0	0
12.6 Net gains or (losses) on cash, cash equivalents and short-term investments	0	0	0
12.7 Miscellaneous proceeds	0	0	0
12.8 Total investment proceeds (Lines 12.1 to 12.7)	1,566,987	2,883,114	10,849,891
13. Cost of investments acquired (long-term only):			
13.1 Bonds	8,108,341	9,017,188	16,604,422
13.2 Stocks	0	0	0
13.3 Mortgage loans	0	0	4,500,000
13.4 Real estate	0	0	0
13.5 Other invested assets	0	0	0
13.6 Miscellaneous applications	0	0	0
13.7 Total investments acquired (Lines 13.1 to 13.6)	8,108,341	9,017,188	21,104,422
14. Net increase/(decrease) in contract loans and premium notes	(121,452)	148,282	516,431
15. Net cash from investments (Line 12.8 minus Line 13.7 and Line 14)	(6,419,902)	(6,282,356)	(10,770,962)
Cash from Financing and Miscellaneous Sources			
16. Cash provided (applied):			
16.1 Surplus notes, capital notes	0	0	0
16.2 Capital and paid in surplus, less treasury stock.....	0	0	0
16.3 Borrowed funds	0	0	0
16.4 Net deposits on deposit-type contracts and other insurance liabilities	(1,896,194)	(32,732)	1,687,046
16.5 Dividends to stockholders	0	0	0
16.6 Other cash provided (applied).....	794,760	(368,317)	(722,211)
17. Net cash from financing and miscellaneous sources (Line 16.1 through Line 16.4 minus Line 16.5 plus Line 16.6).....	(1,101,434)	(401,049)	964,835
RECONCILIATION OF CASH, CASH EQUIVALENTS AND SHORT-TERM INVESTMENTS			
18. Net change in cash, cash equivalents and short-term investments (Line 11, plus Lines 15 and 17)	(5,730,284)	(2,728,533)	(751,082)
19. Cash, cash equivalents and short-term investments:			
19.1 Beginning of year.....	14,256,520	15,007,602	15,007,602
19.2 End of period (Line 18 plus Line 19.1)	8,526,236	12,279,069	14,256,520

EXHIBIT 1

DIRECT PREMIUMS AND DEPOSIT-TYPE CONTRACTS			
	1 Current Year to Date	2 Prior Year to Date	3 Prior Year Ended December 31
1. Individual life	18,817,230	19,635,983	76,253,938
2. Group life0	.0	.0
3. Individual annuities	96,142	92,555	334,834
4. Group annuities0	.0	.0
5. Accident & health	20,364	22,721	86,187
6. Fraternal0	.0	.0
7. Other lines of business0	.0	.0
8. Subtotal (Lines 1 through 7)	18,933,736	19,751,259	76,674,959
9. Deposit-type contracts0	.0	.0
10. Total (Lines 8 and 9)	18,933,736	19,751,259	76,674,959

STATEMENT AS OF MARCH 31, 2024 OF THE Grange Life Insurance Company

NOTES TO FINANCIAL STATEMENTS

1. Summary of Significant Accounting Policies and Going Concern

- A.

Accounting Practices
The financial statements of Grange Life Insurance Company (Grange or the Company) are presented on the basis of accounting practices prescribed or permitted by the Ohio Department of Insurance.

The Ohio Department of Insurance recognizes only statutory accounting practices prescribed or permitted by the State of Ohio for determining and reporting the financial condition and results of operations of an insurance company and for determining its solvency under the Ohio Insurance Law. Unless otherwise indicated, the National Association of Insurance Commissioners' (NAIC) Accounting Practices and Procedures Manual (NAIC SAP) has been adopted as the prescribed or permitted practices by the State of Ohio.

	SSAP #	F/S Page	F/S Line #	2024	2023
NET INCOME					
(1) Company state basis (Page 4, Line 35, Columns 1 & 3)	XXX	XXX	XXX	\$ 818,994	\$ 418,815
(2) State Prescribed Practices that are an increase/(decrease) from NAIC SAP:					
(3) State Permitted Practices that are an increase/(decrease) from NAIC SAP:					
(4) NAIC SAP (1-2-3=4)	XXX	XXX	XXX	\$ 818,994	\$ 418,815
SURPLUS					
(5) Company state basis (Page 3, Line 38, Columns 1 & 2)	XXX	XXX	XXX	\$ 27,000,221	\$ 26,390,430
(6) State Prescribed Practices that are an increase/(decrease) from NAIC SAP:					
(7) State Permitted Practices that are an increase/(decrease) from NAIC SAP:					
(8) NAIC SAP (5-6-7=8)	XXX	XXX	XXX	\$ 27,000,221	\$ 26,390,430

- B.

Use of Estimates in the Preparation of the Financial Statements

No significant changes
- C.

Accounting Policy

Life premiums are recognized as income over the premium-paying period of the related policies. Annuity considerations are recognized as revenue when received. Health premiums are earned ratably over the terms of the related insurance contracts or policies. Policyholder benefits are recognized either as established in the contracts or upon receipt of notice as defined within the contractual terms of the agreement. Expenses incurred in connection with acquiring new insurance business, including acquisition costs such as sales commissions, are charged to operations as incurred.

The amount of dividends to be paid to policyholders is determined annually by the Company's Board of Directors. Provision has been made on the basis of dividend scales contemplated at the time the policies were issued. Additional provisions have been made for policyholder dividends in excess of the original scale which have been declared by the Board of Directors.

In addition, the Company uses the following accounting policies:

(1) Basis for Short-Term Investments
No significant changes

(2) Basis for Bonds and Amortization Schedule
Bonds, excluding loan-backed and structured securities, are stated at amortized cost using the scientific interest method. Bonds rated "6" are reported at the lower of amortized cost or fair value.

(3) Basis for Common Stocks
No significant changes

(4) Basis for Preferred Stocks
No significant changes

(5) Basis for Mortgage Loans
No significant changes

(6) Basis for Loan-Backed Securities and Adjustment Methodology
Loan-backed and structured securities are stated at either amortized cost or the lower of amortized cost or fair value. The interest method is used to amortize any purchase premium or discount. The retrospective adjustment method is used to recognize changes in the estimated yield-to-maturity, with the exception of the following: adjustable rate mortgages (ARM), securities where the yield became negative, or securities that have had an other-than-temporary impairment recorded. These are adjusted using the prospective method.

(7) Accounting Policies for Investments in Subsidiaries, Controlled and Affiliated Entities
No significant changes

(8) Accounting Policies for Investments in Joint Ventures, Partnerships and Limited Liability Entities
No significant changes

(9) Accounting Policies for Derivatives
No significant changes

(10) Anticipated Investment Income Used in Premium Deficiency Calculation
No significant changes

(11) Management's Policies and Methodologies for Estimating Liabilities for Losses and Loss/Claim Adjustment Expenses
No significant changes

(12) Changes in the Capitalization Policy and Predefined Threshold from Prior Period
No significant changes

(13) Method Used to Estimate Pharmaceutical Rebate Receivables
No significant changes
- D.

Going Concern

After evaluating the entity's ability to continue as a going concern, management was not aware of any conditions or events which raised substantial doubts concerning the entity's ability to continue as a going concern as of the date of this statement.

2.

Accounting Changes and Corrections of Errors
There were no material changes in accounting principles or corrections of errors during the year.

3.

Business Combinations and Goodwill
Not Applicable

4.

Discontinued Operations
Not Applicable

5.

Investments

A. Mortgage Loans, including Mezzanine Real Estate Loans
No significant changes

B. Debt Restructuring
No significant changes

C. Reverse Mortgages
No significant changes

D. Loan-Backed Securities

(1) Description of Sources Used to Determine Prepayment Assumptions
Prepayment assumptions for single and multi-class mortgage-backed/asset-backed securities were obtained from external vendors or internal estimates.

STATEMENT AS OF MARCH 31, 2024 OF THE Grange Life Insurance Company

	(2) OTTI Recognized
	None
	(3) Recognized OTTI Securities
	None
	(4) All impaired securities (fair value is less than amortized cost) for which an other-than-temporary impairment has not been recognized in earning as a realized loss (including securities with a recognized other-than-temporary impairment for non-interest related declines when a non-recognized interest related impairment remains):
	None
	(5) Information Investor Considered in Reaching Conclusion that Impairments are Not Other-Than-Temporary
	None
E.	Dollar Repurchase Agreements and/or Securities Lending Transactions
	Not Applicable
F.	Repurchase Agreements Transactions Accounted for as Secured Borrowing
	Not Applicable
G.	Reverse Repurchase Agreements Transactions Accounted for as Secured Borrowing
	Not Applicable
H.	Repurchase Agreements Transactions Accounted for as a Sale
	Not Applicable
I.	Reverse Repurchase Agreements Transactions Accounted for as a Sale
	Not Applicable
J.	Real Estate
	Not Applicable
K.	Low-Income Housing Tax Credits (LIHTC)
	No significant changes
L.	Restricted Assets
	No significant changes
M.	Working Capital Finance Investments
	Not Applicable
N.	Offsetting and Netting of Assets and Liabilities
	Not Applicable
O.	5GI Securities
	Not Applicable
P.	Short Sales
	Not Applicable
Q.	Prepayment Penalty and Acceleration Fees
	No significant changes
R.	Reporting Entity's Share of Cash Pool by Asset type.
	Not Applicable
6.	Joint Ventures, Partnerships and Limited Liability Companies
	Not Applicable
7.	Investment Income
	No significant changes
8.	Derivative Instruments
	Not Applicable
9.	Income Taxes
	No significant changes
10.	Information Concerning Parent, Subsidiaries, Affiliates and Other Related Parties
A.	Nature of the Relationship Involved
	During the first quarter of 2024 the Company had no transactions that exceeded one-half of one percent of the Company's total admitted assets with its parent or affiliates, except as noted in 10E below.
B.	Detail of Transactions
	See "A" above.
C.	Transactions with related party who are not reported on Schedule Y
	None
D.	Amounts Due From or To Related Parties
	The Company had a \$308,894 payable to its parent at March 31, 2024.
E.	Material Management or Service Contracts and Cost-Sharing Arrangements
	The Company receives certain administrative, investment, and collection services from its parent. For the first quarter ended March 31, 2024, the Company incurred \$914,739 for management fees and administrative services to Kansas City Life Insurance Company.
F.	Guarantees or Undertakings
	The Company has not guaranteed any affiliated company debt.
G.	Nature of the Control Relationship
	All of the outstanding common and preferred shares of stock of the Company are owned by Kansas City Life, an insurance holding company domiciled in the state of Missouri.
H.	Amount Deducted for Investment in Upstream Intermediate Entity or Ultimate Parent Owned
	The Company has no intermediate entities.
I.	Investments in SCA that Exceed 10% of Admitted Assets
	The Company has no SCA entities.

STATEMENT AS OF MARCH 31, 2024 OF THE Grange Life Insurance Company

J.	Investments in Impaired SCAs	The Company has no SCA entities.							
K.	Investment in Foreign Insurance Subsidiary	The Company has no foreign insurance subsidiaries.							
L.	Investment in Downstream Noninsurance Holding Company	The Company does not have any investments in downstream noninsurance holding companies.							
M.	All SCA Investments	Not Applicable							
N.	Investment in Insurance SCAs	Not Applicable							
O.	SCA or SSAP No. 48 Entity Loss Tracking	Not Applicable							
11.	Debt								
A.	All Other Debt	The Company had no capital notes or debentures outstanding at March 31, 2024. The Company has a \$20,000,000 revolving line of credit with a major commercial bank to borrow as needed. The line of credit, which was renewed in June of 2023, is at a variable interest rate based upon short-term indices and will mature in June of 2024. At March 31, 2024 the Company had no borrowings outstanding from this line of credit. The line of credit is guaranteed by the Company's parent, and the Company expects to renew the line of credit at maturity.							
B.	FHLB (Federal Home Loan Bank) Agreements	None							
12.	Retirement Plans, Deferred Compensation, Postemployment Benefits and Compensated Absences and Other Postretirement Benefit Plans	None							
13.	Capital and Surplus, Dividend Restrictions and Quasi-Reorganizations	No significant changes							
14.	Liabilities, Contingencies and Assessments	No significant changes							
15.	Leases	Not Applicable							
16.	Information About Financial Instruments With Off-Balance-Sheet Risk And Financial Instruments With Concentrations of Credit Risk	Not Applicable							
17.	Sale, Transfer and Servicing of Financial Assets and Extinguishments of Liabilities	Not Applicable							
18.	Gain or Loss to the Reporting Entity from Uninsured Plans and the Uninsured Portion of Partially Insured Plans	Not Applicable							
19.	Direct Premium Written/Produced by Managing General Agents/Third-Party Administrators	Not Applicable							
20.	Fair Value Measurements								
A.	Assets and Liabilities Measured at Fair Value								
(1)	Fair Value Measurements at Reporting Date	None							
(2)	Fair Value Measurements in (Level 3) of the Fair Value Hierarchy	Not Applicable							
(3)	Policies when Transfers Between Levels are Recognized	Not Applicable							
(4)	Description of Valuation Techniques and Inputs Used in Fair Value Measurement	Level 1 - This category includes securities valued at the lower of cost or fair value. The estimated fair values are based on quoted market prices in active markets and traded on an exchange. Level 2 – This category includes common stock. Valuations are based upon quoted prices for similar instruments in active markets, quoted prices for identical or similar instruments in markets that are not active, and model-based valuation techniques for which all significant assumptions are observable in the market. Valuations are obtained from third-party pricing services or inputs that are observable or derived principally from or corroborated by observable market data. Level 3 – This category includes 6 rated NAIC bonds. Valuations are generated from techniques that use significant assumptions not observable in the market. These unobservable assumptions reflect the Company's assumptions that market participants would use in pricing the asset or liability. Valuation techniques include the use of discounted cash flow models, spread-based models, and similar techniques, using the best information available in the circumstances.							
(5)	Fair Value Disclosures	The Company did not have any derivatives as of the end of the reporting period.							
B.	Other Fair Value Disclosures	Not Applicable							
C.	Fair Value of Financial Instruments								
	Type of Financial Instrument	Aggregate Fair Value	Admitted Assets	(Level 1)	(Level 2)	(Level 3)	Net Asset Value (NAV)	Not Practicable (Carrying Value)	
	Bonds	\$ 367,021,784	\$ 407,284,876	\$ 2,384,542	\$ 363,637,242	\$ 1,000,000	\$	\$	
	Mortgage	\$ 5,444,000	\$ 5,479,803	\$	\$	\$ 5,444,000	\$	\$	
	Policy Loans	\$ 14,204,499	\$ 14,204,499	\$	\$	\$ 14,204,499	\$	\$	
	Cash and cash equivalents	\$ 8,526,236	\$ 8,526,236	\$ 8,526,236	\$	\$	\$	\$	
	The Company utilizes external independent third-party pricing services to determine its fair values on investments when available. In the event a price is not available from a third-party pricing service, the Company pursues external pricing from brokers. If a broker price is not available, the Company determines a fair value through various valuation techniques that may include discounted cash flows, spread-based models, or similar techniques, depending upon the specific security to be priced.								
	Fair value measurements for assets and liabilities where there exists limited or no observable market data are calculated using the Company's own estimates and are categorized as Level 3. These estimates are based on current interest rates, credit spreads, liquidity premium or discount, the economic and competitive environment, unique characteristics of the asset or liability, and other pertinent factors.								
D.	Not Practicable to Estimate Fair Value	Not Applicable							
E.	Investments Measured using the NAV as Practical Expedient	Not Applicable							
21.	Other Items	No significant changes							

STATEMENT AS OF MARCH 31, 2024 OF THE Grange Life Insurance Company

22. Events Subsequent
Subsequent events have been considered through May 3, 2024, the date these statutory financial statements were issued.

23. Reinsurance
No significant changes

24. Retrospectively Rated Contracts & Contracts Subject to Redetermination
Not Applicable

25. Changes in Incurred Losses and Loss Adjustment Expenses

A. Reasons for changes in the Provision for Incurred Loss and Loss Adjustment Expenses

Reserves as of December 31, 2023 for Individual accident and health lines were \$106,000. As of March 31, 2024, \$6,000 was paid for incurred claims and claim adjustment expenses attributable to insured events of prior years. Reserves remaining for prior years are now \$99,000 as a result of reestimation of unpaid claims and claim adjustment expenses. The decrease of \$1,000 is generally the result of ongoing analysis of recent loss development trends. Original estimates are increased or decreased as additional information becomes known regarding individual claims.

B. Information about Significant Changes in Methodologies and Assumptions

There were no significant changes in methodologies or assumptions.

26. Intercompany Pooling Arrangements
Not Applicable

27. Structured Settlements
Not Applicable

28. Health Care Receivables
Not Applicable

29. Participating Policies
No significant changes

30. Premium Deficiency Reserves
Not Applicable

31. Reserves for Life Contracts and Annuity Contracts

(1) Reserve Practices
The Company waives deduction of deferred fractional premium upon the death of an insured and returns any portion of the final premium beyond the date of the death. Surrender values are not promised in excess of the legally computed reserves.

(2) Valuation of Substandard Policies
On substandard policies issued with extra premiums, the Company holds standard reserves plus one-half the gross annual extra premium except universal life.

(3) Amount of insurance for which the gross premiums are less than the net premiums according to valuation standards
As of March 31, 2024, the Company had \$819,775,466 of insurance in force for which the gross premiums were less than the net premiums according to the standard valuation set by the State of Ohio.

(4) Method Used to Determine Tabular Interest, Reserves Released, and Cost
Tabular interest, tabular less actual reserve released, and tabular cost have been determined by formula in accordance with the instructions.

(5) Method of Determination of Tabular Interest on Funds not Involving Life Contingencies
The tabular interest on funds no involving life contingencies is the current balance plus funds added, reserve basis increase, and other increases minus funds withdrawn and the previous balance.

(6) Details for Other Changes
The Company did not have any other reserve changes.

32. Analysis of Annuity Actuarial Reserves and Deposit-Type Contract Liabilities by Withdrawal Characteristics

A. INDIVIDUAL ANNUITIES:

	General Account	Separate Account with Guarantees	Separate Account Nonguaranteed	Total	% of Total
(1) Subject to discretionary withdrawal:					
a. With market value adjustment	\$ 0	\$ 0	\$ 0	0	0.000 %
b. At book value less current surrender charge of 5% or more	0	0	0	0	0.000
c. At fair value	0	0	0	0	0.000
d. Total with market value adjustment or at fair value (total of a through c)	0	0	0	0	0.000
e. At book value without adjustment (minimal or no charge or adjustment)	34,500,550	0	0	34,500,550	98.815
(2) Not subject to discretionary withdrawal	413,613	0	0	413,613	1.185
(3) Total (gross: direct + assumed)	34,914,163	0	0	34,914,163	100.000
(4) Reinsurance ceded	0	0	0	0	
(5) Total (net) (3) - (4)	\$ 34,914,163	\$ 0	\$ 0	34,914,163	
(6) Amount included in A(1)b above that will move to A(1)e for the first time within the year after the statement date:	\$ 0	\$ 0	\$ 0	0	

B. GROUP ANNUITIES

None

C. DEPOSIT-TYPE CONTRACTS
(no life contingencies):

	General Account	Separate Account with Guarantees	Separate Account Nonguaranteed	Total	% of Total
(1) Subject to discretionary withdrawal:					
a. With market value adjustment	\$ 0	\$ 0	\$ 0	0	0.000 %
b. At book value less current surrender charge of 5% or more	0	0	0	0	0.000
c. At fair value	0	0	0	0	0.000
d. Total with market value adjustment or at fair value (total of a through c)	0	0	0	0	0.000
e. At book value without adjustment (minimal or no charge or adjustment)	49,632	0	0	49,632	6.557
(2) Not subject to discretionary withdrawal	707,320	0	0	707,320	93.443
(3) Total (gross: direct + assumed)	756,952	0	0	756,952	100.000
(4) Reinsurance ceded	0	0	0	0	
(5) Total (net) (3) - (4)	\$ 756,952	\$ 0	\$ 0	756,952	
(6) Amount included in C(1)b above that will move to C(1)e for the first time within the year after the statement date:	\$ 0	\$ 0	\$ 0	0	

D.

Life & Accident & Health Annual Statement:	Amount
(1) Exhibit 5, Annuities Section, Total (net)	\$ 34,516,247
(2) Exhibit 5, Supplementary Contracts with Life Contingencies Section, Total (net)	397,916
(3) Exhibit 7, Deposit-Type Contracts, Line 14, Column 1	756,952
(4) Subtotal (1+2+3)	35,671,115
Separate Accounts Annual Statement:	

STATEMENT AS OF MARCH 31, 2024 OF THE Grange Life Insurance Company

(5) Exhibit 3, Line 0299999, Column 2	0
(6) Exhibit 3, Line 0399999, Column 2	0
(7) Policyholder dividend and coupon accumulations	0
(8) Policyholder premiums	0
(9) Guaranteed interest contracts	0
(10) Other contract deposit funds	0
(11) Subtotal (5+6+7+8+9+10)	0
(12) Combined Total (4+11)	<u>\$ 35,671,115</u>

33. Analysis of Life Actuarial Reserves by Withdrawal Characteristics

A. General Account			
	<u>Account Value</u>	<u>Cash Value</u>	<u>Reserve</u>
(1) Subject to discretionary withdrawal, surrender values, or policy loans:			
a. Term Policies with Cash Value	0	8,919,879	30,939,690
b. Universal Life	152,718,140	150,552,683	152,065,237
c. Universal Life with Secondary Guarantees	15,183,018	9,245,568	62,132,879
d. Indexed Universal Life	0	0	0
e. Indexed Universal Life with Secondary Guarantees	0	0	0
f. Indexed Life	0	0	0
g. Other Permanent Cash Value Life Insurance	0	101,102,383	141,266,320
h. Variable Life	0	0	0
i. Variable Universal Life	0	0	0
j. Miscellaneous Reserves	0	0	0
(2) Not subject to discretionary withdrawal or no cash values			
a. Term Policies without Cash Value	XXX	XXX	371,391,378
b. Accidental Death Benefits	XXX	XXX	167,941
c. Disability – Active Lives	XXX	XXX	1,391,043
d. Disability – Disabled Lives	XXX	XXX	2,275,842
e. Miscellaneous Reserves	XXX	XXX	0
(3) Total (gross: direct + assumed)	167,901,158	269,820,513	761,630,330
(4) Reinsurance Ceded	0	0	354,555,412
(5) Total (net) (3) – (4)	167,901,158	269,820,513	407,074,918
B. Separate Account with Guarantees			
None			
C. Separate Account Nonguaranteed			
None			
D.			
Life & Accident & Health Annual Statement:		<u>Amount</u>	
(1) Exhibit 5, Life Insurance Section, Total (net)		\$ 394,525,548	
(2) Exhibit 5, Accidental Death Benefits Section, Total (net)		167,941	
(3) Exhibit 5, Disability – Active Lives Section, Total (net)		1,391,043	
(4) Exhibit 5, Disability – Disabled Lives Section, Total (net)		2,275,842	
(5) Exhibit 5, Miscellaneous Reserves Section, Total (net)		8,714,544	
(6) Subtotal (1+2+3+4+5)		407,074,918	
Separate Accounts Annual Statement:			
(7) Exhibit 3, Line 0199999, Column 2		0	
(8) Exhibit 3, Line 0499999, Column 2		0	
(9) Exhibit 3, Line 0599999, Column 2		0	
(10) Subtotal (7+8+9)		0	
(11) Combined Total (6+10)		\$ 407,074,918	

34. Premiums and Annuity Considerations Deferred and Uncollected
No significant changes

35. Separate Accounts
Not Applicable

36. Loss/Claim Adjustment Expenses
Not Applicable

GENERAL INTERROGATORIES

PART 1 - COMMON INTERROGATORIES

GENERAL

- 1.1

Did the reporting entity experience any material transactions requiring the filing of Disclosure of Material Transactions with the State of Domicile, as required by the Model Act?

Yes ☐ No ☒
- 1.2

If yes, has the report been filed with the domiciliary state?

Yes ☐ No ☐
- 2.1

Has any change been made during the year of this statement in the charter, by-laws, articles of incorporation, or deed of settlement of the reporting entity?

Yes ☐ No ☒
- 2.2

If yes, date of change:
- 3.1

Is the reporting entity a member of an Insurance Holding Company System consisting of two or more affiliated persons, one or more of which is an insurer?

Yes ☒ No ☐
- If yes, complete Schedule Y, Parts 1 and 1A.
- 3.2

Have there been any substantial changes in the organizational chart since the prior quarter end?

Yes ☐ No ☒
- 3.3

If the response to 3.2 is yes, provide a brief description of those changes.
- 3.4

Is the reporting entity publicly traded or a member of a publicly traded group?

Yes ☐ No ☒
- 3.5

If the response to 3.4 is yes, provide the CIK (Central Index Key) code issued by the SEC for the entity/group.
- 4.1

Has the reporting entity been a party to a merger or consolidation during the period covered by this statement?

Yes ☐ No ☒
- 4.2

If yes, provide the name of entity, NAIC Company Code, and state of domicile (use two letter state abbreviation) for any entity that has ceased to exist as a result of the merger or consolidation.

1	2	3
Name of Entity	NAIC Company Code	State of Domicile

5.

If the reporting entity is subject to a management agreement, including third-party administrator(s), managing general agent(s), attorney-in-fact, or similar agreement, have there been any significant changes regarding the terms of the agreement or principals involved?

Yes ☐ No ☒ NA ☐
- If yes, attach an explanation.
- 6.1

State as of what date the latest financial examination of the reporting entity was made or is being made.

12/31/2023
- 6.2

State the as of date that the latest financial examination report became available from either the state of domicile or the reporting entity. This date should be the date of the examined balance sheet and not the date the report was completed or released.

12/31/2019
- 6.3

State as of what date the latest financial examination report became available to other states or the public from either the state of domicile or the reporting entity. This is the release date or completion date of the examination report and not the date of the examination (balance sheet date).

12/29/2020
- 6.4

By what department or departments?

OHIO
- 6.5

Have all financial statement adjustments within the latest financial examination report been accounted for in a subsequent financial statement filed with Departments?

Yes ☐ No ☐ NA ☒
- 6.6

Have all of the recommendations within the latest financial examination report been complied with?

Yes ☐ No ☐ NA ☒
- 7.1

Has this reporting entity had any Certificates of Authority, licenses or registrations (including corporate registration, if applicable) suspended or revoked by any governmental entity during the reporting period?

Yes ☐ No ☒
- 7.2

If yes, give full information:
- 8.1

Is the company a subsidiary of a bank holding company regulated by the Federal Reserve Board?

Yes ☐ No ☒
- 8.2

If response to 8.1 is yes, please identify the name of the bank holding company.
- 8.3

Is the company affiliated with one or more banks, thrifts or securities firms?

Yes ☒ No ☐
- 8.4

If response to 8.3 is yes, please provide below the names and location (city and state of the main office) of any affiliates regulated by a federal regulatory services agency [i.e. the Federal Reserve Board (FRB), the Office of the Comptroller of the Currency (OCC), the Federal Deposit Insurance Corporation (FDIC) and the Securities Exchange Commission (SEC)] and identify the affiliate's primary federal regulator.]
- | 1 | 2 | 3 | 4 | 5 | 6 |
|---------------------------------|---------------------------|-----|-----|------|-----|
| Affiliate Name | Location
(City, State) | FRB | OCC | FDIC | SEC |
| Sunset Financial Services, Inc. | Kansas City, MO | | | | YES |
- 9.1

Are the senior officers (principal executive officer, principal financial officer, principal accounting officer or controller, or persons performing similar functions) of the reporting entity subject to a code of ethics, which includes the following standards?

Yes ☒ No ☐
- (a) Honest and ethical conduct, including the ethical handling of actual or apparent conflicts of interest between personal and professional relationships;
- (b) Full, fair, accurate, timely and understandable disclosure in the periodic reports required to be filed by the reporting entity;
- (c) Compliance with applicable governmental laws, rules and regulations;
- (d) The prompt internal reporting of violations to an appropriate person or persons identified in the code; and
- (e) Accountability for adherence to the code.
- 9.11

If the response to 9.1 is No, please explain:
- 9.2

Has the code of ethics for senior managers been amended?

Yes ☐ No ☒
- 9.21

If the response to 9.2 is Yes, provide information related to amendment(s).
- 9.3

Have any provisions of the code of ethics been waived for any of the specified officers?

Yes ☐ No ☒
- 9.31

If the response to 9.3 is Yes, provide the nature of any waiver(s).

FINANCIAL

- 10.1

Does the reporting entity report any amounts due from parent, subsidiaries or affiliates on Page 2 of this statement?

Yes ☐ No ☒
- 10.2

If yes, indicate any amounts receivable from parent included in the Page 2 amount:

\$

GENERAL INTERROGATORIES

INVESTMENT

11.1 Were any of the stocks, bonds, or other assets of the reporting entity loaned, placed under option agreement, or otherwise made available for use by another person? (Exclude securities under securities lending agreements.) Yes [] No [X]

11.2 If yes, give full and complete information relating thereto:

12. Amount of real estate and mortgages held in other invested assets in Schedule BA:\$0

13. Amount of real estate and mortgages held in short-term investments:\$0

14.1 Does the reporting entity have any investments in parent, subsidiaries and affiliates? Yes [] No [X]

14.2 If yes, please complete the following:

	1	2
	Prior Year-End Book/Adjusted Carrying Value	Current Quarter Book/Adjusted Carrying Value
14.21 Bonds	\$0	\$0
14.22 Preferred Stock	\$0	\$0
14.23 Common Stock	\$0	\$0
14.24 Short-Term Investments	\$0	\$0
14.25 Mortgage Loans on Real Estate	\$0	\$0
14.26 All Other	\$0	\$0
14.27 Total Investment in Parent, Subsidiaries and Affiliates (Subtotal Lines 14.21 to 14.26).....	\$0	\$0
14.28 Total Investment in Parent included in Lines 14.21 to 14.26 above	\$0	\$0

15.1 Has the reporting entity entered into any hedging transactions reported on Schedule DB? Yes [] No [X]

15.2 If yes, has a comprehensive description of the hedging program been made available to the domiciliary state? Yes [] No [] NA []
If no, attach a description with this statement.

16. For the reporting entity's security lending program, state the amount of the following as of the current statement date:
16.1 Total fair value of reinvested collateral assets reported on Schedule DL, Parts 1 and 2\$0
16.2 Total book/adjusted carrying value of reinvested collateral assets reported on Schedule DL, Parts 1 and 2\$0
16.3 Total payable for securities lending reported on the liability page\$0

17. Excluding items in Schedule E – Part 3 – Special Deposits, real estate, mortgage loans and investments held physically in the reporting entity's offices, vaults or safety deposit boxes, were all stocks, bonds and other securities, owned throughout the current year held pursuant to a custodial agreement with a qualified bank or trust company in accordance with Section 1, III – General Examination Considerations, F. Outsourcing of Critical Functions, Custodial or Safekeeping Agreements of the NAIC *Financial Condition Examiners Handbook*? Yes [X] No []

17.1 For all agreements that comply with the requirements of the NAIC *Financial Condition Examiners Handbook*, complete the following:

1	2
Name of Custodian(s)	Custodian Address
UMB TRUST SERVICES DEPT.....	P.O. BOX 419226 KANSAS CITY, MO 64141-6226.....

17.2 For all agreements that do not comply with the requirements of the NAIC *Financial Condition Examiners Handbook*, provide the name, location and a complete explanation:

1	2	3
Name(s)	Location(s)	Complete Explanation(s)

17.3 Have there been any changes, including name changes, in the custodian(s) identified in 17.1 during the current quarter? Yes [] No [X]

17.4 If yes, give full and complete information relating thereto:

1	2	3	4
Old Custodian	New Custodian	Date of Change	Reason

17.5 Investment management – Identify all investment advisors, investment managers, broker/dealers, including individuals that have the authority to make investment decisions on behalf of the reporting entity. For assets that are managed internally by employees of the reporting entity, note as such. ["...that have access to the investment accounts"; "...handle securities"]

1	2
Name of Firm or Individual	Affiliation

17.5097 For those firms/individuals listed in the table for Question 17.5, do any firms/individuals unaffiliated with the reporting entity (i.e., designated with a "U") manage more than 10% of the reporting entity's invested assets? Yes [] No [X]

17.5098 For firms/individuals unaffiliated with the reporting entity (i.e., designated with a "U") listed in the table for Question 17.5, does the total assets under management aggregate to more than 50% of the reporting entity's invested assets? Yes [] No [X]

17.6 For those firms or individuals listed in the table for 17.5 with an affiliation code of "A" (affiliated) or "U" (unaffiliated), provide the information for the table below.

1	2	3	4	5
Central Registration Depository Number	Name of Firm or Individual	Legal Entity Identifier (LEI)	Registered With	Investment Management Agreement (IMA) Filed

18.1 Have all the filing requirements of the *Purposes and Procedures Manual of the NAIC Investment Analysis Office* been followed? Yes [X] No []

18.2 If no, list exceptions:

19. By self-designating 5GI securities, the reporting entity is certifying the following elements for each self-designated 5GI security:

- a. Documentation necessary to permit a full credit analysis of the security does not exist or an NAIC CRP credit rating for an FE or PL security is not available.
- b. Issuer or obligor is current on all contracted interest and principal payments.
- c. The insurer has an actual expectation of ultimate payment of all contracted interest and principal.

Has the reporting entity self-designated 5GI securities?..... Yes [] No [X]

20. By self-designating PLGI securities, the reporting entity is certifying the following elements of each self-designated PLGI security:

- a. The security was purchased prior to January 1, 2018.
- b. The reporting entity is holding capital commensurate with the NAIC Designation reported for the security.
- c. The NAIC Designation was derived from the credit rating assigned by an NAIC CRP in its legal capacity as a NRSRO which is shown on a current private letter rating held by the insurer and available for examination by state insurance regulators.
- d. The reporting entity is not permitted to share this credit rating of the PL security with the SVO.

Has the reporting entity self-designated PLGI securities?..... Yes [] No [X]

STATEMENT AS OF MARCH 31, 2024 OF THE Grange Life Insurance Company

GENERAL INTERROGATORIES

21. By assigning FE to a Schedule BA non-registered private fund, the reporting entity is certifying the following elements of each self-designated FE fund:
- a. The shares were purchased prior to January 1, 2019.
 - b. The reporting entity is holding capital commensurate with the NAIC Designation reported for the security.
 - c. The security had a public credit rating(s) with annual surveillance assigned by an NAIC CRP in its legal capacity as an NRSRO prior to January 1, 2019.
 - d. The fund only or predominantly holds bonds in its portfolio.
 - e. The current reported NAIC Designation was derived from the public credit rating(s) with annual surveillance assigned by an NAIC CRP in its legal capacity as an NRSRO.
 - f. The public credit rating(s) with annual surveillance assigned by an NAIC CRP has not lapsed.

Has the reporting entity assigned FE to Schedule BA non-registered private funds that complied with the above criteria?..... Yes [] No [X]

GENERAL INTERROGATORIES

PART 2 - LIFE AND ACCIDENT AND HEALTH COMPANIES/FRATERNAL BENEFIT SOCIETIES

Life and Accident Health Companies/Fraternal Benefit Societies:

1.

Report the statement value of mortgage loans at the end of this reporting period for the following categories:

1

Amount

1.1

Long-Term Mortgages in Good Standing

1.11

Farm Mortgages

\$

1.12

Residential Mortgages

\$

1.13

Commercial Mortgages

\$

5,479,803

1.14

Total Mortgages in Good Standing

\$

5,479,803

1.2

Long-Term Mortgages in Good Standing with Restructured Terms

1.21

Total Mortgages in Good Standing with Restructured Terms

\$

1.3

Long-Term Mortgage Loans upon which Interest is Overdue more than Three Months

1.31

Farm Mortgages

\$

1.32

Residential Mortgages

\$

1.33

Commercial Mortgages

\$

1.34

Total Mortgages with Interest Overdue more than Three Months

\$

0

1.4

Long-Term Mortgage Loans in Process of Foreclosure

1.41

Farm Mortgages

\$

1.42

Residential Mortgages

\$

1.43

Commercial Mortgages

\$

1.44

Total Mortgages in Process of Foreclosure

\$

0

1.5

Total Mortgage Loans (Lines 1.14 + 1.21 + 1.34 + 1.44) (Page 2, Column 3, Lines 3.1 + 3.2)

\$

5,479,803

1.6

Long-Term Mortgages Foreclosed, Properties Transferred to Real Estate in Current Quarter

1.61

Farm Mortgages

\$

1.62

Residential Mortgages

\$

1.63

Commercial Mortgages

\$

1.64

Total Mortgages Foreclosed and Transferred to Real Estate

\$

0

2.

Operating Percentages:

2.1

A&H loss percent

(841.8) %

2.2

A&H cost containment percent

0.0 %

2.3

A&H expense percent excluding cost containment expenses

(8.5) %

3.1

Do you act as a custodian for health savings accounts?

Yes [] No [X]

3.2

If yes, please provide the amount of custodial funds held as of the reporting date

\$

3.3

Do you act as an administrator for health savings accounts?

Yes [] No [X]

3.4

If yes, please provide the balance of the funds administered as of the reporting date

\$

4.

Is the reporting entity licensed or chartered, registered, qualified, eligible or writing business in at least two states?

Yes [X] No []

4.1

If no, does the reporting entity assume reinsurance business that covers risks residing in at least one state other than the state of domicile of the reporting entity?

Yes [] No []

Fraternal Benefit Societies Only:

5.1

In all cases where the reporting entity has assumed accident and health risks from another company, provisions should be made in this statement on account of such reinsurances for reserve equal to that which the original company would have been required to establish had it retained the risks. Has this been done?

Yes [] No [] NA []

5.2

If no, explain:

6.1

Does the reporting entity have outstanding assessments in the form of liens against policy benefits that have increased surplus?

Yes [] No []

6.2

If yes, what is the date(s) of the original lien and the total outstanding balance of liens that remain in surplus?

Date	Outstanding Lien Amount
	\$
	\$
	\$

Showing All New Reinsurance Treaties – Current Year to Date

[illegible]

SCHEDULE T – PREMIUMS AND ANNUITY CONSIDERATIONS

Current Year To Date - Allocated by States and Territories								
States, Etc.	1	Direct Business Only						
		Life Contracts		4	5	6	7	
		2	3					
	Active Status (a)	Life Insurance Premiums	Annuity Considerations	Accident and Health Insurance Premiums, Including Policy, Membership and Other Fees	Other Considerations	Total Columns 2 Through 5	Deposit - Type Contracts	
1. Alabama	AL N	49,664	.0	.0	.0	49,664	.0	
2. Alaska	AK N	3,003	.0	.0	.0	3,003	.0	
3. Arizona	AZ N	36,803	.0	.0	.0	36,803	.0	
4. Arkansas	AR N	14,079	.0	.0	.0	14,079	.0	
5. California	CA N	35,419	.0	158	.0	35,577	.0	
6. Colorado	CO N	23,821	.0	.0	.0	23,821	.0	
7. Connecticut	CT N	4,311	.0	.0	.0	4,311	.0	
8. Delaware	DE N	1,866	.0	.0	.0	1,866	.0	
9. District of Columbia	DC N	559	.0	.0	.0	559	.0	
10. Florida	FL N	275,921	.0	1,128	.0	277,049	.0	
11. Georgia	GA L	1,813,076	280	2,379	.0	1,815,735	.0	
12. Hawaii	HI N	2,579	.0	.0	.0	2,579	.0	
13. Idaho	ID N	3,067	.0	.0	.0	3,067	.0	
14. Illinois	IL L	687,522	1,650	235	.0	689,407	.0	
15. Indiana	IN L	1,384,600	.0	.0	.0	1,384,600	.0	
16. Iowa	IA L	28,038	.0	.0	.0	28,038	.0	
17. Kansas	KS L	8,025	.0	.0	.0	8,025	.0	
18. Kentucky	KY L	2,227,048	17,801	3,964	.0	2,248,813	.0	
19. Louisiana	LA N	5,414	.0	.0	.0	5,414	.0	
20. Maine	ME N	2,503	.0	.0	.0	2,503	.0	
21. Maryland	MD N	16,052	.0	.0	.0	16,052	.0	
22. Massachusetts	MA N	2,909	.0	.0	.0	2,909	.0	
23. Michigan	MI L	1,009,807	225	.0	.0	1,010,032	.0	
24. Minnesota	MN L	123,264	.0	.0	.0	123,264	.0	
25. Mississippi	MS N	23,897	.0	.0	.0	23,897	.0	
26. Missouri	MO L	30,577	.0	.0	.0	30,577	.0	
27. Montana	MT N	1,914	.0	.0	.0	1,914	.0	
28. Nebraska	NE N	3,041	.0	.0	.0	3,041	.0	
29. Nevada	NV N	11,454	.0	.0	.0	11,454	.0	
30. New Hampshire	NH N	5,256	.0	.0	.0	5,256	.0	
31. New Jersey	NJ N	20,868	.0	.0	.0	20,868	.0	
32. New Mexico	NM N	2,392	.0	.0	.0	2,392	.0	
33. New York	NY N	10,894	.0	.0	.0	10,894	.0	
34. North Carolina	NC N	82,895	.0	107	.0	83,002	.0	
35. North Dakota	ND N	757	.0	.0	.0	757	.0	
36. Ohio	OH L	7,542,850	48,565	10,577	.0	7,601,992	.0	
37. Oklahoma	OK N	7,275	.0	.0	.0	7,275	.0	
38. Oregon	OR N	4,776	.0	.0	.0	4,776	.0	
39. Pennsylvania	PA L	530,110	.0	.0	.0	530,110	.0	
40. Rhode Island	RI N	475	.0	.0	.0	475	.0	
41. South Carolina	SC L	507,895	.0	.0	.0	507,895	.0	
42. South Dakota	SD N	1,660	.0	.0	.0	1,660	.0	
43. Tennessee	TN L	1,729,691	22,788	2,009	.0	1,754,488	.0	
44. Texas	TX N	66,588	.0	.0	.0	66,588	.0	
45. Utah	UT N	7,224	.0	.0	.0	7,224	.0	
46. Vermont	VT N	2,778	.0	.0	.0	2,778	.0	
47. Virginia	VA L	224,481	1,800	99	.0	226,380	.0	
48. Washington	WA N	11,323	.0	.0	.0	11,323	.0	
49. West Virginia	WV N	26,844	3,033	39	.0	29,916	.0	
50. Wisconsin	WI L	276,281	.0	.0	.0	276,281	.0	
51. Wyoming	WY N	711	.0	.0	.0	711	.0	
52. American Samoa	AS N	.0	.0	.0	.0	.0	.0	
53. Guam	GU N	.0	.0	.0	.0	.0	.0	
54. Puerto Rico	PR N	2,411	.0	.0	.0	2,411	.0	
55. U.S. Virgin Islands	VI N	349	.0	.0	.0	349	.0	
56. Northern Mariana Islands	MP N	.0	.0	.0	.0	.0	.0	
57. Canada	CAN N	.0	.0	.0	.0	.0	.0	
58. Aggregate Other Alien	OT XXX	3,218	.0	.0	.0	3,218	.0	
59. Subtotal	XXX	18,900,236	96,142	20,695	.0	19,017,072	.0	
90. Reporting entity contributions for employee benefits plans	XXX	.0	.0	.0	.0	.0	.0	
91. Dividends or refunds applied to purchase paid-up additions and annuities	XXX	.0	.0	.0	.0	.0	.0	
92. Dividends or refunds applied to shorten endowment or premium paying period	XXX	.0	.0	.0	.0	.0	.0	
93. Premium or annuity considerations waived under disability or other contract provisions	XXX	.0	.0	.0	.0	.0	.0	
94. Aggregate other amounts not allocable by State	XXX	.0	.0	.0	.0	.0	.0	
95. Totals (Direct Business)	XXX	18,900,236	96,142	20,695	.0	19,017,072	.0	
96. Plus Reinsurance Assumed	XXX	582,036	.0	.0	.0	582,036	.0	
97. Totals (All Business)	XXX	19,482,272	96,142	20,695	.0	19,599,108	.0	
98. Less Reinsurance Ceded	XXX	8,697,149	.0	14,690	.0	8,711,838	.0	
99. Totals (All Business) less Reinsurance Ceded	XXX	10,785,123	96,142	6,005	0	10,887,270	0	
DETAILS OF WRITE-INS								
58001. ZZZ Other Alien	XXX	3,218	.0	.0	.0	3,218	.0	
58002.	XXX							
58003.	XXX							
58998. Summary of remaining write-ins for Line 58 from overflow page	XXX	.0	.0	.0	.0	.0	.0	
58999. Total (Lines 58001 through 58003 + 58998) (Line 58 above)	XXX	3,218	0	0	0	3,218	0	
9401.	XXX							
9402.	XXX							
9403.	XXX							
9498. Summary of remaining write-ins for Line 94 from overflow page	XXX	.0	.0	.0	.0	.0	.0	
9499. Total (Lines 9401 through 9403 + 9498) (Line 94 above)	XXX	0	0	0	0	0	0	

(a) Active Status Counts:

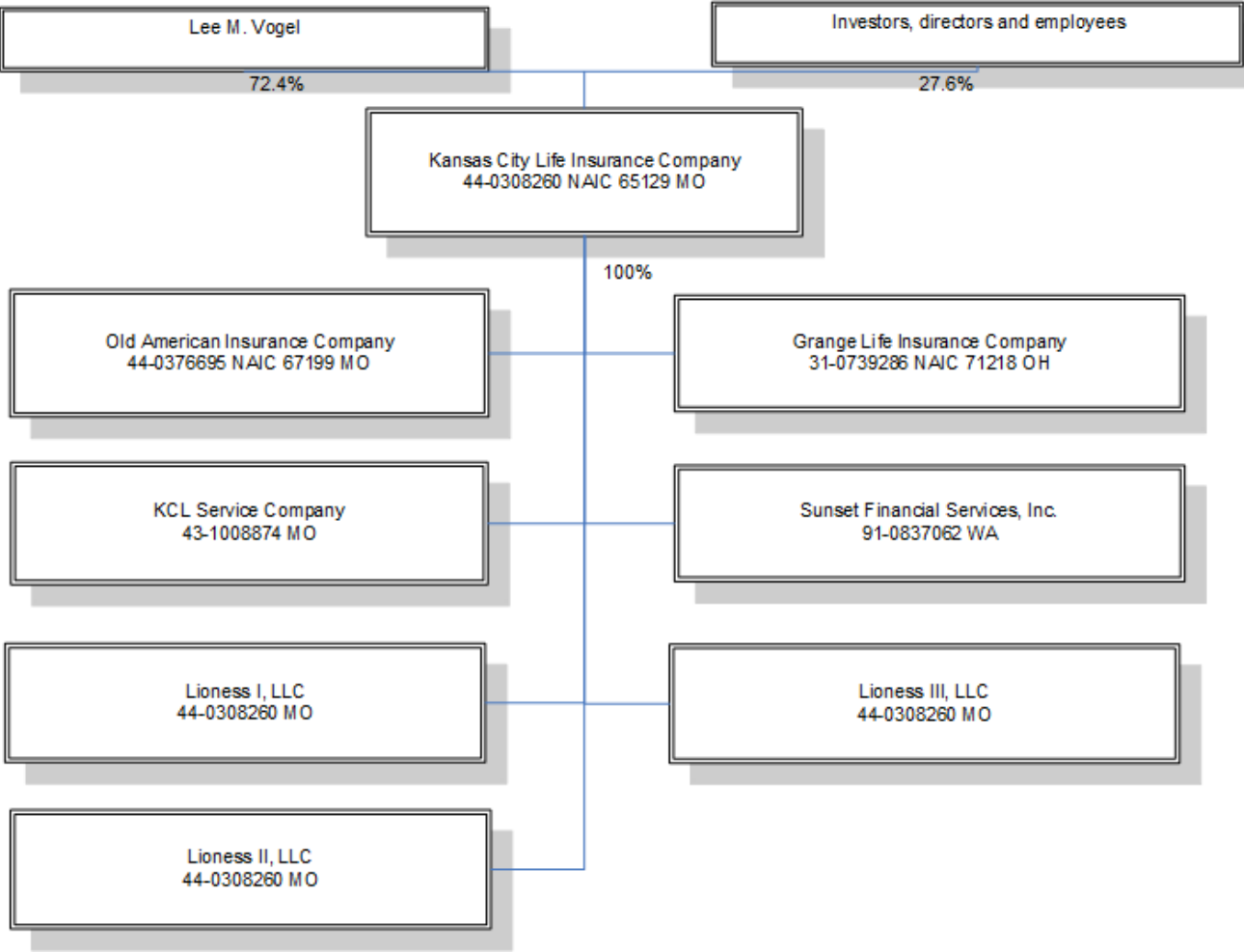
1. L – Licensed or Chartered – Licensed insurance carrier or domiciled RRG15

2. R – Registered – Non-domiciled RRGs0

3. E – Eligible – Reporting entities eligible or approved to write surplus lines in the state0
4. Q – Qualified – Qualified or accredited reinsurer0

5. N – None of the above – Not allowed to write business in the state.....42

SCHEDULE Y - INFORMATION CONCERNING ACTIVITIES OF INSURER MEMBERS OF A HOLDING COMPANY GROUP
PART 1 - ORGANIZATIONAL CHART



13

PART 1A – DETAIL OF INSURANCE HOLDING COMPANY SYSTEM

Asterisk	Explanation
----------	-------------

Explanation

SUPPLEMENTAL EXHIBITS AND SCHEDULES INTERROGATORIES

The following supplemental reports are required to be filed as part of your statement filing. However, in the event that your company does not transact the type of business for which the special report must be filed, your response of **NO** to the specific interrogatory will be accepted in lieu of filing a "NONE" report and a bar code will be printed below. If the supplement is required of your company but is not being filed for whatever reason enter **SEE EXPLANATION** and provide an explanation following the interrogatory questions.



	Response
1. Will the Trusteed Surplus Statement be filed with the state of domicile and the NAIC with this statement?NO.....
2. Will the Medicare Part D Coverage Supplement be filed with the state of domicile and the NAIC with this statement?NO.....
3. Will the Reasonableness of Assumptions Certification required by Actuarial Guideline XXXV be filed with the state of domicile and electronically with the NAIC?NO.....
4. Will the Reasonableness and Consistency of Assumptions Certification required by Actuarial Guideline XXXV be filed with the state of domicile and electronically with the NAIC?NO.....
5. Will the Reasonableness of Assumptions Certification for Implied Guaranteed Rate Method required by Actuarial Guideline XXXVI be filed with the state of domicile and electronically with the NAIC?NO.....
6. Will the Reasonableness and Consistency of Assumptions Certification required by Actuarial Guideline XXXVI (Updated Average Market Value) be filed with the state of domicile and electronically with the NAIC?NO.....
7. Will the Reasonableness and Consistency of Assumptions Certification required by Actuarial Guideline XXXVI (Updated Market Value) be filed with the state of domicile and electronically with the NAIC?NO.....
8. Will the Life PBR Statement of Exemption be filed with the state of domicile by July 1st and electronically with the NAIC with the second quarterly filing per the Valuation Manual (by August 15)? (2nd Quarter Only) The response for 1st and 3rd quarters should be N/A. A NO response resulting with a bar code is only appropriate in the 2nd quarter. In the case of an ongoing statement of exemption, enter "SEE EXPLANATION" and provide as an explanation that the company is utilizing an ongoing statement of exemption.N/A.....

AUGUST FILING

9. Will the regulator-only (non-public) Communication of Internal Control Related Matters Noted in Audit be filed with the state of domicile and electronically with the NAIC (as a regulator-only non-public document) by August 1? The response for 1st and 3rd quarters should be N/A. A NO response resulting with a bar code is only appropriate in the 2nd quarter.N/A.....
---------------------------------------------------------------------------------------------------------------------------------------------------------------------------------------------------------------------------------------------------------------------------------------------------------------------------------------------------------------------------	---------------

Explanation:

Bar Code:

1.	 7 1 2 1 8 2 0 2 4 4 9 0 0 0 0 0 1
2.	 7 1 2 1 8 2 0 2 4 3 6 5 0 0 0 0 1
3.	 7 1 2 1 8 2 0 2 4 4 4 5 0 0 0 0 1
4.	 7 1 2 1 8 2 0 2 4 4 4 6 0 0 0 0 1
5.	 7 1 2 1 8 2 0 2 4 4 4 7 0 0 0 0 1
6.	 7 1 2 1 8 2 0 2 4 4 4 8 0 0 0 0 1
7.	 7 1 2 1 8 2 0 2 4 4 4 9 0 0 0 0 1

OVERFLOW PAGE FOR WRITE-INS

SCHEDULE A – VERIFICATION

Real Estate

	1	2
	Year To Date	Prior Year Ended December 31
1. Book/adjusted carrying value, December 31 of prior year0	.0
2. Cost of acquired:		
2.1 Actual cost at time of acquisition0
2.2 Additional investment made after acquisition0
3. Current year change in encumbrances0
4. Total gain (loss) on disposals0
5. Deduct amounts received on disposals0
6. Total foreign exchange change in book/adjusted carrying value0
7. Deduct current year's other-than-temporary impairment recognized0
8. Deduct current year's depreciation0
9. Book/adjusted carrying value at the end of current period (Lines 1+2+3+4-5+6-7-8)0	.0
10. Deduct total nonadmitted amounts0	.0
11. Statement value at end of current period (Line 9 minus Line 10)	0	0

SCHEDULE B – VERIFICATION

Mortgage Loans

	1	2
	Year To Date	Prior Year Ended December 31
1. Book value/recorded investment excluding accrued interest, December 31 of prior year	5,483,477	997,701
2. Cost of acquired:		
2.1 Actual cost at time of acquisition		4,500,000
2.2 Additional investment made after acquisition0
3. Capitalized deferred interest and other0
4. Accrual of discount0
5. Unrealized valuation increase/(decrease)0
6. Total gain (loss) on disposals0
7. Deduct amounts received on disposals	3,674	14,224
8. Deduct amortization of premium and mortgage interest points and commitment fees0
9. Total foreign exchange change in book value/recorded investment excluding accrued interest0
10. Deduct current year's other-than-temporary impairment recognized0
11. Book value/recorded investment excluding accrued interest at end of current period (Lines 1+2+3+4+5+6-7-8+9-10)	5,479,803	5,483,477
12. Total valuation allowance0
13. Subtotal (Line 11 plus Line 12)	5,479,803	5,483,477
14. Deduct total nonadmitted amounts0	.0
15. Statement value at end of current period (Line 13 minus Line 14)	5,479,803	5,483,477

SCHEDULE BA – VERIFICATION

Other Long-Term Invested Assets

	1	2
	Year To Date	Prior Year Ended December 31
1. Book/adjusted carrying value, December 31 of prior year0	.0
2. Cost of acquired:		
2.1 Actual cost at time of acquisition0
2.2 Additional investment made after acquisition0
3. Capitalized deferred interest and other0
4. Accrual of discount0
5. Unrealized valuation increase/(decrease)0
6. Total gain (loss) on disposals0
7. Deduct amounts received on disposals0
8. Deduct amortization of premium and depreciation0
9. Total foreign exchange change in book/adjusted carrying value0
10. Deduct current year's other-than-temporary impairment recognized0
11. Book/adjusted carrying value at end of current period (Lines 1+2+3+4+5+6-7-8+9-10)0	.0
12. Deduct total nonadmitted amounts0	.0
13. Statement value at end of current period (Line 11 minus Line 12)	0	0

SCHEDULE D – VERIFICATION

Bonds and Stocks

	1	2
	Year To Date	Prior Year Ended December 31
1. Book/adjusted carrying value of bonds and stocks, December 31 of prior year	400,948,901	396,009,477
2. Cost of bonds and stocks acquired	8,108,341	16,604,423
3. Accrual of discount	83,616	352,390
4. Unrealized valuation increase/(decrease)0
5. Total gain (loss) on disposals		26,250
6. Deduct consideration for bonds and stocks disposed of	1,566,987	10,849,895
7. Deduct amortization of premium	288,995	983,744
8. Total foreign exchange change in book/adjusted carrying value0
9. Deduct current year's other-than-temporary impairment recognized		210,000
10. Total investment income recognized as a result of prepayment penalties and/or acceleration fees0
11. Book/adjusted carrying value at end of current period (Lines 1+2+3+4+5-6-7+8-9+10)	407,284,876	400,948,901
12. Deduct total nonadmitted amounts0	.0
13. Statement value at end of current period (Line 11 minus Line 12)	407,284,876	400,948,901

STATEMENT AS OF MARCH 31, 2024 OF THE Grange Life Insurance Company

SCHEDULE D - PART 1B

Showing the Acquisitions, Dispositions and Non-Trading Activity
During the Current Quarter for all Bonds and Preferred Stock by NAIC Designation

NAIC Designation	1 Book/Adjusted Carrying Value Beginning of Current Quarter	2 Acquisitions During Current Quarter	3 Dispositions During Current Quarter	4 Non-Trading Activity During Current Quarter	5 Book/Adjusted Carrying Value End of First Quarter	6 Book/Adjusted Carrying Value End of Second Quarter	7 Book/Adjusted Carrying Value End of Third Quarter	8 Book/Adjusted Carrying Value December 31 Prior Year
BONDS								
1. NAIC 1 (a).....	254,361,758	4,389,161	1,495,689	560,256	257,815,485	0	0	254,361,758
2. NAIC 2 (a).....	142,790,436	3,719,180	71,298	(260,279)	146,178,039	0	0	142,790,436
3. NAIC 3 (a).....	3,796,708			(505,356)	3,291,352	0	0	3,796,708
4. NAIC 4 (a).....	0				0	0	0	0
5. NAIC 5 (a).....	0				0	0	0	0
6. NAIC 6 (a).....	0				0	0	0	0
7. Total Bonds	400,948,902	8,108,341	1,566,987	(205,379)	407,284,876	0	0	400,948,902
PREFERRED STOCK								
8. NAIC 1	0				0	0	0	0
9. NAIC 2	0				0	0	0	0
10. NAIC 3	0				0	0	0	0
11. NAIC 4	0				0	0	0	0
12. NAIC 5	0				0	0	0	0
13. NAIC 6	0				0	0	0	0
14. Total Preferred Stock.....	0	0	0	0	0	0	0	0
15. Total Bonds & Preferred Stock	400,948,902	8,108,341	1,566,987	(205,379)	407,284,876	0	0	400,948,902

(a) Book/Adjusted Carrying Value column for the end of the current reporting period includes the following amount of short-term and cash equivalent bonds by NAIC designation: NAIC 1 \$; NAIC 2 \$;
NAIC 3 \$; NAIC 4 \$; NAIC 5 \$; NAIC 6 \$

Schedule DA - Part 1

NONE

Schedule DA - Verification

NONE

Schedule DB - Part A - Verification

NONE

Schedule DB - Part B - Verification

NONE

Schedule DB - Part C - Section 1

NONE

Schedule DB - Part C - Section 2

NONE

Schedule DB - Verification

NONE

SCHEDULE E – PART 2 – VERIFICATION
(Cash Equivalents)

	1 Year To Date	2 Prior Year Ended December 31
1. Book/adjusted carrying value, December 31 of prior year.....	12,064,117	12,671,058
2. Cost of cash equivalents acquired	56,980,215	235,561,943
3. Accrual of discount	0	0
4. Unrealized valuation increase/(decrease)	0	0
5. Total gain (loss) on disposals.....	0	0
6. Deduct consideration received on disposals	62,620,782	236,168,884
7. Deduct amortization of premium	0	0
8. Total foreign exchange change in book/adjusted carrying value	0	0
9. Deduct current year's other-than-temporary impairment recognized	0	0
10. Book/adjusted carrying value at end of current period (Lines 1+2+3+4+5-6-7+8-9)	6,423,550	12,064,117
11. Deduct total nonadmitted amounts	0	0
12. Statement value at end of current period (Line 10 minus Line 11)	6,423,550	12,064,117

EO1

NONE

NONE

[illegible]

E02

NONE

[illegible]

Showing All Mortgage Loans DISPOSED, Transferred or Repaid During the Current Quarter

[illegible]

STATEMENT AS OF MARCH 31, 2024 OF THE Grange Life Insurance Company

SCHEDULE BA - PART 2

Showing Other Long-Term Invested Assets ACQUIRED AND ADDITIONS MADE During the Current Quarter

[illegible]

SCHEDULE BA - PART 3

Showing Other Long-Term Invested Assets DISPOSED, Transferred or Repaid During the Current Quarter

[illegible]

E04

E04

E04

E04

STATEMENT AS OF MARCH 31, 2024 OF THE Grange Life Insurance Company

SCHEDULE D - PART 4

Show All Long-Term Bonds and Stock Sold, Redeemed or Otherwise Disposed of During the Current Quarter

1	2	3 F o r e i g n	4	5	6	7	8	9	10	Change in Book/Adjusted Carrying Value					16	17	18	19	20	21	22 NAIC Designation, NAIC Desig. Modifier and SVO Administrative Symbol
										11	12	13	14	15							
CUSIP Identi- fication	Description		Disposal Date	Name of Purchaser	Number of Shares of Stock	Consideration	Par Value	Actual Cost	Prior Year Book/Adjusted Carrying Value	Unrealized Valuation Increase/ (Decrease)	Current Year's (Amortization)/ Accretion	Current Year's Other Than Temporary Impairment Recognized	Total Change in B./A.C.V. (11+12-13)	Total Foreign Exchange Change in B./A.C.V.	Book/ Adjusted Carrying Value at Disposal Date	Foreign Exchange Gain (Loss) on Disposal	Realized Gain (Loss) on Disposal	Total Gain (Loss) on Disposal	Bond Interest/Stock Dividends Received During Year	Stated Contractual Maturity Date	
Bonds - U.S. Special Revenue and Special Assessment and all Non-Guaranteed Obligations of Agencies and Authorities of Governments and Their Political Subdivisions																					
3128HX-SS-5.	FHS 268 30.		03/01/2024.	MBS PAYDOWN.	XXX.	5,329	5,329	5,549	5,330		(1)		(1)		5,329			.0	.23	08/15/2042.	1 A
3128KJ-CZ-3.	FG A55488.		03/01/2024.	MBS PAYDOWN.	XXX.	.197	.197	.196	.197						.0	.2		.0	.12	01/20/2036.	1 A FE
3128MJ-BW-9.	FG G08052.		03/01/2024.	MBS PAYDOWN.	XXX.	1,257	1,257	1,251	1,257					.0	1,257			.0	.9	04/01/2035.	1 A FE
3128P7-RY-1.	FG C91403.		03/01/2024.	MBS PAYDOWN.	XXX.	6,016	6,016	6,477	6,016					.0	6,016			.0	.35	03/01/2032.	1 A
3128P7-S2-0.	FG C91437.		03/01/2024.	MBS PAYDOWN.	XXX.	4,595	4,595	4,831	4,598		(3)		(3)		4,595			.0	.28	04/01/2032.	1 A
31294M-A7-6.	FG E02730.		03/01/2024.	MBS PAYDOWN.	XXX.	1,368	1,368	1,423	1,370		(2)		(2)		1,368			.0	.9	10/01/2025.	1 A FE
3136A7-ZV-7.	FNR 2012-83 BA.		03/01/2024.	MBS PAYDOWN.	XXX.	1,380	1,380	1,415	1,380					.0	1,380			.0	.8	03/25/2041.	1 A
3136AJ-E9-3.	FNR 2014-26 BL.		03/01/2024.	MBS PAYDOWN.	XXX.	20,316	20,316	20,775	20,319		(3)		(3)		20,316			.0	.119	11/25/2042.	1 A FE
3136AP-ZK-7.	FNR 2015-68 BW.		03/01/2024.	MBS PAYDOWN.	XXX.	48,264	48,264	48,257	48,264					.0	48,264			.0	.259	08/25/2035.	1 A FE
3136AP-GW-6.	FNR 2015-52 VB.		03/01/2024.	MBS PAYDOWN.	XXX.	161,349	161,349	165,761	161,349					.0	161,349			.0	.800	09/25/2038.	1 A
3136AQ-LX-6.	FNR 2015-80 VM.		03/01/2024.	MBS PAYDOWN.	XXX.	230,531	230,531	231,647	230,531					.0	230,531			.0	.1,160	08/25/2034.	1 B
3136AR-ZA-9.	FNR 2016-21 GV.		03/01/2024.	MBS PAYDOWN.	XXX.	227,331	227,331	230,279	227,331					.0	227,331			.0	.1,151	03/25/2036.	1 B
31371N-CM-5.	FN 256676.		03/01/2024.	MBS PAYDOWN.	XXX.	3,033	3,033	3,291	3,041		(8)		(8)		3,033			.0	.30	04/01/2027.	1 A FE
3137A3-JW-0.	FHR 3753 AS.		03/01/2024.	MBS PAYDOWN.	XXX.	7,699	7,699	7,943	7,706		(7)		(7)		7,699			.0	.44	11/15/2025.	1 A
3137AG-CA-6.	FHR 3947 BC.		03/01/2024.	MBS PAYDOWN.	XXX.	1,845	1,845	1,908	1,846		(1)		(1)		1,845			.0	.8	10/15/2026.	1 B
3137AM-K7-1.	FHR 4020 EJ.		03/01/2024.	MBS PAYDOWN.	XXX.	13,347	13,347	13,347	13,347					.0	13,347			.0	.69	02/15/2042.	1 B
3137BS-FA-6.	FHR 4622 TQ.		03/01/2024.	MBS PAYDOWN.	XXX.	61,753	61,753	60,441	61,743		10		10		61,753			.0	.326	03/15/2045.	1 B
3137BS-FF-5.	FHR 4622 VB.		03/01/2024.	MBS PAYDOWN.	XXX.	122,164	122,164	121,706	122,137		27		27		122,164			.0	.620	12/15/2039.	1 B
3138L4-2C-6.	FN AM4370.		03/01/2024.	MBS PAYDOWN.	XXX.	4,680	4,680	5,398	4,684		(5)		(5)		4,680			.0	.40	09/01/2031.	1 A FE
3138L4-6B-4.	FN AM4465.		03/01/2024.	MBS PAYDOWN.	XXX.	28,909	28,909	32,089	28,937		(28)		(28)		28,909			.0	.217	10/01/2033.	1 A FE
31393M-W9-8.	FHR 2586 WG.		03/01/2024.	MBS PAYDOWN.	XXX.	5,952	5,952	6,110	5,954		(2)		(2)		5,952			.0	.35	03/15/2033.	1 B
31395E-YP-6.	FHR 2835 HB.		03/01/2024.	MBS PAYDOWN.	XXX.	1,227	1,227	1,276	1,228					.0	1,227			.0	.1	08/15/2024.	1 B
31396J-ZL-8.	FHR 3127 CY.		03/01/2024.	MBS PAYDOWN.	XXX.	2,473	2,473	2,571	2,474		(1)		(1)		2,473			.0	.23	03/15/2026.	1 B
31397S-SN-0.	FNR 2011-43 B.		03/01/2024.	MBS PAYDOWN.	XXX.	10,078	10,078	10,706	10,086		(8)		(8)		10,078			.0	.61	05/25/2031.	1 B
31398L-BJ-6.	FHR 3597 LE.		03/01/2024.	MBS PAYDOWN.	XXX.	3,912	3,912	4,093	3,917		(5)		(5)		3,912			.0	.29	07/15/2039.	1 B
31402R-JV-2.	FN 735676.		03/01/2024.	MBS PAYDOWN.	XXX.	1,499	1,499	1,553	1,500		(1)		(1)		1,499			.0	.12	07/01/2035.	1 A FE
31403D-BW-8.	FN 745353.		03/01/2024.	MBS PAYDOWN.	XXX.	1,752	1,752	1,704	1,751		1		1		1,752			.0	.16	03/01/2036.	1 A FE
31404S-GD-1.	FN 776996.		03/01/2024.	MBS PAYDOWN.	XXX.	650	650	675	651					.0	650			.0	.5	04/01/2034.	1 A FE
31417G-VK-9.	FN AB9617.		03/01/2024.	MBS PAYDOWN.	XXX.	5,798	5,798	5,807	5,799					.0	5,798			.0	.24	06/01/2033.	1 A
31417Y-ZJ-5.	FN MA0776.		03/01/2024.	MBS PAYDOWN.	XXX.	4,925	4,925	5,190	4,930		(5)		(5)		4,925			.0	.35	06/01/2031.	1 A FE
31417Y-3N-5.	FN MA0804.		03/01/2024.	MBS PAYDOWN.	XXX.	2,064	2,064	2,125	2,065		(1)		(1)		2,064			.0	.13	07/01/2031.	1 A
31417Y-TV-9.	FN MA0563.		03/01/2024.	MBS PAYDOWN.	XXX.	3,075	3,075	3,172	3,075					.0	3,075			.0	.20	11/01/2030.	1 A
31418A-E9-5.	FN MA1059.		03/01/2024.	MBS PAYDOWN.	XXX.	4,684	4,684	4,958	4,688		(4)		(4)		4,684			.0	.28	05/01/2032.	1 A
31418A-EB-0.	FN MA1029.		03/01/2024.	MBS PAYDOWN.	XXX.	4,386	4,386	4,612	4,390		(4)		(4)		4,386			.0	.26	04/01/2032.	1 A
31418A-TA-6.	FN MA1444.		03/01/2024.	MBS PAYDOWN.	XXX.	6,747	6,747	6,979	6,750		(3)		(3)		6,747			.0	.27	05/01/2033.	1 A
31418B-TK-2.	FN MA2353.		03/01/2024.	MBS PAYDOWN.	XXX.	29,351	29,351	30,076	29,361		(10)		(10)		29,351			.0	.139	08/01/2035.	1 A
38373Q-HL-8.	GNR 2003-34 OG.		03/01/2024.	MBS PAYDOWN.	XXX.	26,470	26,470	30,742	26,509		(39)		(39)		26,470			.0	.255	04/20/2033.	1 B
38377Y-AP-5.	GNR 2011-128 PE.		03/01/2024.	MBS PAYDOWN.	XXX.	34,675	34,675	36,397	34,682		(8)		(8)		34,675			.0	.178	09/20/2041.	1 A
38378C-RT-6.	GNR 2012-13 EG.		03/01/2024.	MBS PAYDOWN.	XXX.	2,894	2,894	2,927	2,894					.0	2,894			.0	.9	10/20/2040.	1 B
38378G-CY-2.	GNR 2012-134 EA.		03/01/2024.	MBS PAYDOWN.	XXX.	872	872	914	873					.0	872			.0	.4	11/20/2042.	1 A
38378K-SX-3.	GNR 2013-161 B.		03/01/2024.	MBS PAYDOWN.	XXX.	11,039	11,039	11,556	11,042		(3)		(3)		11,039			.0	.51	11/16/2054.	1 A
38378K-RS-0.	GNR 2013-78 AG.		03/01/2024.	MBS PAYDOWN.	XXX.	1,961	1,961	1,888	1,959		1		1		1,961			.0	.8	07/16/2043.	1 A
38378T-X2-1.	GNR 2013-109 TW.		03/01/2024.	MBS PAYDOWN.	XXX.	41,476	41,476	40,524	41,469		7		7		41,476			.0	.187	07/20/2041.	1 A
38378W-3A-9.	GNR 2013-134 LB.		03/01/2024.	MBS PAYDOWN.	XXX.	45,279	45,279	45,166	45,278		1		1		45,279			.0	.214	09/20/2043.	1 B
38379F-VF-3.	GNR 2015-161 MB.		03/01/2024.	MBS PAYDOWN.	XXX.	3,984	3,984	4,032	3,985		(1)		(1)		3,984			.0	.30	07/20/2045.	1 A
38379U-6F-8.	GNR 2017-24 BC.		03/01/2024.	MBS PAYDOWN.	XXX.	12,239	12,239	11,677	12,238		1		1		12,239			.0	.49	07/16/2050.	1 A
38380J-HK-7.	GNR 2017-181 AB.		03/01/2024.	MBS PAYDOWN.	XXX.	15,601	15,601	15,110	15,595		6		6		15,601			.0	.61	04/16/2052.	1 B
38380J-XC-7.	GNR 2018-45 A.		03/01/2024.	MBS PAYDOWN.	XXX.	7,427	7,427	7,165	7,426		1		1		7,427			.0	.31	11/16/2048.	1 A
38380U-QZ-9.	GNR 2018-15 GZ.		03/01/2024.	MBS PAYDOWN.	XXX.	17,281	17,281	16,596	17,276		5		5		17,281			.0	.66	01/20/2048.	1 B
38381A-XQ-4.	GNR 2018-154 NB.		03/01/2024.	MBS PAYDOWN.	XXX.	39,932	39,932	38,734	39,927		5		5		39,932			.0	.309	11/20/2048.	1 A
38381B-X3-3.	GNR 2019-18 PZ.		03/01/2024.	MBS PAYDOWN.	XXX.	13,619	13,619	13,313	13,617		2		2		13,619			.0	.80	02/20/2049.	1 A
0909999999 - Bonds - U.S. Special Revenue and Special Assessment and all Non-Guaranteed Obligations of Agencies and Authorities of Governments and Their Political Subdivisions						1,314,683	1,314,683	1,332,328	1,314,769	0	(86)	0	(86)	0	1,314,683	0	0	0	6,995	XXX	XXX
Bonds - Industrial and Miscellaneous (Unaffiliated)																					
126650-BQ-2.	CVS PASS-THROUGH.		03/10/2024.	SINKING FUND REDEMPTION.	XXX.	7,336	7,336	7,483	7,338		(1)		(1)		7,336			.0	.85	11/10/2030.	2 B FE
25512V-AA-7.	DIVERSIFIED ABS VI, LLC.		03/28/2024.	MBS PAYDOWN.	XXX.	47,872	47,872	46,614	47,561		311		311		47,872			.0	.589	11/28/2039.	2 A FE
33803W-AA-7.	FISHERS LANE ASSOC LLC.		03/05/2024.	SINKING FUND REDEMPTION.	XXX.	15,068	15,068	15,457	15,072		(4)		(4)		15,068			.0	.92	08/05/2030.	1 B
52678@-AB-6.	LERADO INVESTMENTS LLC.		12/31/2023.	SINKING FUND REDEMPTION.	XXX.	3,677	3,677	3,677	3,677					.0	3,677			.0	.101	03/31/2036.	2 B PL
89657B-AA-2.	TRL 2019-1A A.		03/17/2024.	VARIOUS.	XXX.	9,675	9,675	9,670	9,664		11		11		9,675			.0	.61	04/17/2026.	1 F FE

E05.1

E05.1

E05.1

E05.1

Schedule DB - Part A - Section 1

NONE

Schedule DB - Part B - Section 1

NONE

Schedule DB - Part D - Section 1

NONE

Schedule DB - Part D - Section 2

NONE

Schedule DB - Part E

NONE

Schedule DL - Part 1

NONE

Schedule DL - Part 2

NONE

SCHEDULE E - PART 1 - CASH

E13

SCHEDULE E - PART 2 - CASH EQUIVALENTS

E14