



PROPERTY AND CASUALTY COMPANIES—ASSOCIATION EDITION

QUARTERLY STATEMENT

AS OF MARCH 31, 2024
OF THE CONDITION AND AFFAIRS OF THE

LIGHTNING ROD MUTUAL INSURANCE COMPANY

NAIC Group Code00207, 00207NAIC Company Code26123Employer's ID Number34-0359380

(Current Period)(Prior Period)

Organized under the Laws ofOhio, State of Domicile or Port of EntryOhio

Country of DomicileUnited States

Incorporated/Organized01/01/1906Commenced Business03/01/1906

Statutory Home Office2865 Benden Drive, Wooster, OH, US 44691

(Street and Number)(City or Town, State, Country and Zip Code)

Main Administrative Office2865 Benden DriveWooster, OH, US 44691330-262-9060

(Street and Number)(City or Town, State, Country and Zip Code)(Area Code) (Telephone Number)

Mail Address2865 Benden DriveWooster, OH, US 44691

(Street and Number or P.O. Box)(City or Town, State, Country and Zip Code)

Primary Location of Books and Records2865 Benden DriveWooster, OH, US 44691330-262-9060

(Street and Number)(City or Town, State, Country and Zip Code)(Area Code) (Telephone Number)

Internet Web Site Addresswww.wrg-ins.com

Statutory Statement ContactChristopher M. Racz, CPA330-262-9060-2446

(Name)(Area Code) (Telephone Number) (Extension)

Christopher.Racz@wrginsurance.com800-563-9896

(E-Mail Address)(Fax Number)

OFFICERS

Name	Title	Name	Title
GREGORY A. BRUNN	PRESIDENT AND SECRETARY - CHIEF EXECUTIVE OFFICER	MICHAEL A. SHUTT	VICE PRESIDENT AND TREASURER -CHIEF FINANCIAL OFFICER

OTHER OFFICERS

WILLIAM J. GALONSKI	VICE PRESIDENT-CHIEF CLAIMS OFFICER	GLEND A. K. RISNER	VICE PRESIDENT-INSURANCE OPERATIONS
DAVID E. FREETAGE	VICE PRESIDENT-CHIEF INFORMATION OFFICER		

DIRECTORS OR TRUSTEES

KEVIN W. DAY	GREGORY A. BRUNN	JEFFREY P. HASTINGS	DOROTHY C. BAUNACH
JOHN P. MURPHY	MARY L. LEGERSKI	EDDIE L. STEINER	KENNETH L. VAGNINI
FLOYD A. TROUTEN III			

State ofOhio

County ofWayne.ss

The officers of this reporting entity being duly sworn, each depose and say that they are the described officers of said reporting entity, and that on the reporting period stated above, all of the herein described assets were the absolute property of the said reporting entity, free and clear from any liens or claims thereon, except as herein stated, and that this statement, together with related exhibits, schedules and explanations therein contained, annexed or referred to, is a full and true statement of all the assets and liabilities and of the condition and affairs of the said reporting entity as of the reporting period stated above, and of its income and deductions therefrom for the period ended, and have been completed in accordance with the NAIC Annual Statement Instructions and Accounting Practices and Procedures manual except to the extent that: (1) state law may differ; or, (2) that state rules or regulations require differences in reporting not related to accounting practices and procedures, according to the best of their information, knowledge and belief, respectively. Furthermore, the scope of this attestation by the described officers also includes the related corresponding electronic filing with the NAIC, when required, that is an exact copy (except for formatting differences due to electronic filing) of the enclosed statement. The electronic filing may be requested by various regulators in lieu of or in addition to the enclosed statement.

GREGORY A. BRUNN
PRESIDENT AND SECRETARY -CHIEF
EXECUTIVE OFFICER

MICHAEL A. SHUTT
VICE PRESIDENT AND TREASURER -CHIEF
FINANCIAL OFFICER

Subscribed and sworn to before me this13th day ofMay, 2024

a. Is this an original filing?Yes [X] No []

b. If no:
1. State the amendment number
2. Date filed
3. Number of pages attached

Stacey Ludington, Notary Public
March 12, 2029

STATEMENT AS OF MARCH 31, 2024 OF THE LIGHTNING ROD MUTUAL INSURANCE COMPANY

ASSETS

	Current Statement Date			4 December 31 Prior Year Net Admitted Assets
	1	2	3	
	Assets	Nonadmitted Assets	Net Admitted Assets (Cols. 1 - 2)	
1. Bonds	151,393,826	0	151,393,826	151,519,678
2. Stocks:				
2.1 Preferred stocks	0	0	0	0
2.2 Common stocks	82,681,709	573,440	82,108,269	76,952,852
3. Mortgage loans on real estate:				
3.1 First liens	0	0	0	0
3.2 Other than first liens	0	0	0	0
4. Real estate:				
4.1 Properties occupied by the company (less \$ encumbrances)	24,218,918	0	24,218,918	24,314,396
4.2 Properties held for the production of income (less \$ encumbrances)	0	0	0	0
4.3 Properties held for sale (less \$ encumbrances)	0	0	0	0
5. Cash (\$58,532,402), cash equivalents (\$4,093,852) and short-term investments (\$0)	62,626,254	0	62,626,254	62,167,716
6. Contract loans (including \$premium notes)	0	0	0	0
7. Derivatives	0	0	0	0
8. Other invested assets	11,891,642	0	11,891,642	12,268,523
9. Receivables for securities	0	0	0	0
10. Securities lending reinvested collateral assets	0	0	0	0
11. Aggregate write-ins for invested assets	0	0	0	0
12. Subtotals, cash and invested assets (Lines 1 to 11)	332,812,349	573,440	332,238,909	327,223,165
13. Title plants less \$charged off (for Title insurers only)	0	0	0	0
14. Investment income due and accrued	1,292,964	0	1,292,964	1,338,533
15. Premiums and considerations:				
15.1 Uncollected premiums and agents' balances in the course of collection	11,465,553	61,627	11,403,926	12,634,951
15.2 Deferred premiums, agents' balances and installments booked but deferred and not yet due (including \$earned but unbilled premiums)	11,565,353	0	11,565,353	8,927,070
15.3 Accrued retrospective premiums (\$) and contracts subject to redetermination (\$)	0	0	0	0
16. Reinsurance:				
16.1 Amounts recoverable from reinsurers	(60,865)	0	(60,865)	618,506
16.2 Funds held by or deposited with reinsured companies	0	0	0	0
16.3 Other amounts receivable under reinsurance contracts	0	0	0	0
17. Amounts receivable relating to uninsured plans	0	0	0	0
18.1 Current federal and foreign income tax recoverable and interest thereon	2,128,548	0	2,128,548	2,482,513
18.2 Net deferred tax asset	0	0	0	0
19. Guaranty funds receivable or on deposit	0	0	0	0
20. Electronic data processing equipment and software	2,100	0	2,100	4,201
21. Furniture and equipment, including health care delivery assets (\$)	1,437,629	1,437,629	0	0
22. Net adjustment in assets and liabilities due to foreign exchange rates	0	0	0	0
23. Receivables from parent, subsidiaries and affiliates	0	0	0	0
24. Health care (\$) and other amounts receivable	0	0	0	0
25. Aggregate write-ins for other-than-invested assets	0	0	0	0
26. Total assets excluding Separate Accounts, Segregated Accounts and Protected Cell Accounts (Lines 12 to 25)	360,643,632	2,072,697	358,570,935	353,228,939
27. From Separate Accounts, Segregated Accounts and Protected Cell Accounts	0	0	0	0
28. Total (Lines 26 and 27)	360,643,632	2,072,697	358,570,935	353,228,939
DETAILS OF WRITE-INS				
1101.	0	0	0	0
1102.	0	0	0	0
1103.	0	0	0	0
1198. Summary of remaining write-ins for Line 11 from overflow page	0	0	0	0
1199. Totals (Lines 1101 through 1103 plus 1198) (Line 11 above)	0	0	0	0
2501.	0	0	0	0
2502.	0	0	0	0
2503.	0	0	0	0
2598. Summary of remaining write-ins for Line 25 from overflow page	0	0	0	0
2599. Totals (Lines 2501 through 2503 plus 2598) (Line 25 above)	0	0	0	0

STATEMENT AS OF MARCH 31, 2024 OF THE LIGHTNING ROD MUTUAL INSURANCE COMPANY

LIABILITIES, SURPLUS AND OTHER FUNDS

	1 Current Statement Date	2 December 31, Prior Year
1. Losses (current accident year \$ 15,937,926)	51,541,975	47,009,822
2. Reinsurance payable on paid losses and loss adjustment expenses	0	0
3. Loss adjustment expenses	9,530,450	9,530,450
4. Commissions payable, contingent commissions and other similar charges	3,582,788	4,763,947
5. Other expenses (excluding taxes, licenses and fees)	2,360,068	3,712,508
6. Taxes, licenses and fees (excluding federal and foreign income taxes)	2,604,388	2,094,031
7.1 Current federal and foreign income taxes (including \$ on realized capital gains (losses))	0	0
7.2 Net deferred tax liability	1,671,545	1,501,977
8. Borrowed money \$ and interest thereon \$	8,269,173	8,639,947
9. Unearned premiums (after deducting unearned premiums for ceded reinsurance of \$ and including warranty reserves of \$ and accrued accident and health experience rating refunds including \$ for medical loss ratio rebate per the Public Health Service Act)	83,550,460	81,653,488
10. Advance premium	1,511,671	1,027,835
11. Dividends declared and unpaid:		
11.1 Stockholders	0	0
11.2 Policyholders	0	0
12. Ceded reinsurance premiums payable (net of ceding commissions)	215,280	1,196,086
13. Funds held by company under reinsurance treaties	0	0
14. Amounts withheld or retained by company for account of others	3,338,911	3,982,665
15. Remittances and items not allocated	0	0
16. Provision for reinsurance (including \$ certified)	0	0
17. Net adjustments in assets and liabilities due to foreign exchange rates	0	0
18. Drafts outstanding	0	0
19. Payable to parent, subsidiaries and affiliates	0	0
20. Derivatives	0	0
21. Payable for securities	0	0
22. Payable for securities lending	0	0
23. Liability for amounts held under uninsured plans	0	0
24. Capital notes \$ and interest thereon \$	0	0
25. Aggregate write-ins for liabilities	0	33,167
26. Total liabilities excluding protected cell liabilities (Lines 1 through 25)	168,176,708	165,145,923
27. Protected cell liabilities	0	0
28. Total liabilities (Lines 26 and 27)	168,176,708	165,145,923
29. Aggregate write-ins for special surplus funds	0	0
30. Common capital stock	0	0
31. Preferred capital stock	0	0
32. Aggregate write-ins for other than special surplus funds	0	0
33. Surplus notes	0	0
34. Gross paid in and contributed surplus	0	0
35. Unassigned funds (surplus)	190,394,227	188,083,016
36. Less treasury stock, at cost:		
36.1 shares common (value included in Line 30 \$)	0	0
36.2 shares preferred (value included in Line 31 \$)	0	0
37. Surplus as regards policyholders (Lines 29 to 35, less 36)	190,394,227	188,083,016
38. Totals (Page 2, Line 28, Col. 3)	358,570,935	353,228,939
DETAILS OF WRITE-INS		
2501. Other Liabilities	0	33,167
2502.	0	0
2503.		
2598. Summary of remaining write-ins for Line 25 from overflow page	0	0
2599. Totals (Lines 2501 through 2503 plus 2598) (Line 25 above)	0	33,167
2901.		0
2902.		
2903.		
2998. Summary of remaining write-ins for Line 29 from overflow page	0	0
2999. Totals (Lines 2901 through 2903 plus 2998) (Line 29 above)	0	0
3201.	0	0
3202.	0	0
3203.	0	0
3298. Summary of remaining write-ins for Line 32 from overflow page	0	0
3299. Totals (Lines 3201 through 3203 plus 3298) (Line 32 above)	0	0

STATEMENT OF INCOME

	1	2	3
	Current Year	Prior Year	Prior Year Ended
	to Date	to Date	December 31
UNDERWRITING INCOME			
1. Premiums earned:			
1.1 Direct (written \$ 28,207,516)	26,564,214	23,794,616	99,484,264
1.2 Assumed (written \$ 54,207,827)	52,409,812	42,095,041	182,725,899
1.3 Ceded (written \$ 38,085,016)	36,540,674	30,511,216	130,603,370
1.4 Net (written \$ 44,330,327)	42,433,353	35,378,441	151,606,793
DEDUCTIONS:			
2. Losses incurred (current accident year \$)::			
2.1 Direct	14,085,880	15,391,319	66,470,888
2.2 Assumed	34,267,544	33,087,283	136,964,725
2.3 Ceded	21,674,073	22,023,429	94,574,740
2.4 Net	26,679,351	26,455,173	108,860,873
3. Loss adjustment expenses incurred	4,168,942	3,314,053	14,365,448
4. Other underwriting expenses incurred	15,331,696	12,006,033	51,459,316
5. Aggregate write-ins for underwriting deductions	0	0	0
6. Total underwriting deductions (Lines 2 through 5)	46,179,989	41,775,259	174,685,636
7. Net income of protected cells	0	0	0
8. Net underwriting gain (loss) (Line 1 minus Line 6 + Line 7)	(3,746,636)	(6,396,818)	(23,078,843)
INVESTMENT INCOME			
9. Net investment income earned	1,511,995	990,439	5,666,380
10. Net realized capital gains (losses) less capital gains tax of \$ 564,764	2,124,590	1,889,879	5,113,300
11. Net investment gain (loss) (Lines 9 + 10)	3,636,585	2,880,318	10,779,680
OTHER INCOME			
12. Net gain or (loss) from agents' or premium balances charged off (amount recovered \$ amount charged off \$ 47,459)	(47,459)	(25,947)	(135,631)
13. Finance and service charges not included in premiums	354,246	356,039	1,397,301
14. Aggregate write-ins for miscellaneous income	4,861	1,113	72,266
15. Total other income (Lines 12 through 14)	311,648	331,205	1,333,936
16. Net income before dividends to policyholders, after capital gains tax and before all other federal and foreign income taxes (Lines 8 + 11 + 15)	201,597	(3,185,295)	(10,965,228)
17. Dividends to policyholders	0	0	0
18. Net income, after dividends to policyholders, after capital gains tax and before all other federal and foreign income taxes (Line 16 minus Line 17)	201,597	(3,185,295)	(10,965,228)
19. Federal and foreign income taxes incurred	(210,799)	(917,351)	(1,359,232)
20. Net income (Line 18 minus Line 19)(to Line 22)	412,395	(2,267,945)	(9,605,996)
CAPITAL AND SURPLUS ACCOUNT			
21. Surplus as regards policyholders, December 31 prior year	188,083,024	199,389,074	199,389,074
22. Net income (from Line 20)	412,395	(2,267,945)	(9,605,996)
23. Net transfers (to) from Protected Cell accounts	0	0	0
24. Change in net unrealized capital gains or (losses) less capital gains tax of \$ 408,034	1,534,984	223,406	(1,835,920)
25. Change in net unrealized foreign exchange capital gain (loss)	0	0	0
26. Change in net deferred income tax	238,466	227,105	2,256,526
27. Change in nonadmitted assets	125,357	70,376	275,856
28. Change in provision for reinsurance	0	0	0
29. Change in surplus notes	0	0	0
30. Surplus (contributed to) withdrawn from protected cells	0	0	0
31. Cumulative effect of changes in accounting principles	0	0	0
32. Capital changes:			
32.1 Paid in	0	0	0
32.2 Transferred from surplus (Stock Dividend)	0	0	0
32.3 Transferred to surplus	0	0	0
33. Surplus adjustments:			
33.1 Paid in	0	0	0
33.2 Transferred to capital (Stock Dividend)	0	0	0
33.3 Transferred from capital	0	0	0
34. Net remittances from or (to) Home Office	0	0	0
35. Dividends to stockholders	0	0	0
36. Change in treasury stock	0	0	0
37. Aggregate write-ins for gains and losses in surplus	0	0	(2,396,516)
38. Change in surplus as regards policyholders (Lines 22 through 37)	2,311,202	(1,747,058)	(11,306,050)
39. Surplus as regards policyholders, as of statement date (Lines 21 plus 38)	190,394,227	197,642,016	188,083,024
DETAILS OF WRITE-INS			
0501.	0	0	0
0502.			
0503.			
0598. Summary of remaining write-ins for Line 5 from overflow page	0	0	0
0599. TOTALS (Lines 0501 through 0503 plus 0598) (Line 5 above)	0	0	0
1401. Other Income/(Expense)	4,861	1,113	(83)
1402. Gain/(Loss) on Sale of Equipment	0	0	72,349
1403.			
1498. Summary of remaining write-ins for Line 14 from overflow page	0	0	0
1499. TOTALS (Lines 1401 through 1403 plus 1498) (Line 14 above)	4,861	1,113	72,266
3701. Correction of an error in a previously issued financial statement	0	0	(2,396,516)
3702.	0	0	0
3703.	0	0	0
3798. Summary of remaining write-ins for Line 37 from overflow page	0	0	0
3799. TOTALS (Lines 3701 through 3703 plus 3798) (Line 37 above)	0	0	(2,396,516)

CASH FLOW

	1	2	3
	Current Year	Prior Year	Prior Year Ended
	To Date	To Date	December 31
Cash from Operations			
1. Premiums collected net of reinsurance	42,420,373	36,664,397	163,010,409
2. Net investment income	1,628,145	1,345,186	6,880,891
3. Miscellaneous income	311,648	331,205	1,333,936
4. Total (Lines 1 to 3)	44,360,166	38,340,788	171,225,235
5. Benefit and loss related payments	21,467,826	24,147,258	108,165,995
6. Net transfers to Separate Accounts, Segregated Accounts and Protected Cell Accounts	0	0	0
7. Commissions, expenses paid and aggregate write-ins for deductions	21,460,953	17,783,547	64,828,539
8. Dividends paid to policyholders	0	0	0
9. Federal and foreign income taxes paid (recovered) net of \$ tax on capital gains (losses)	0	0	(1,470,409)
10. Total (Lines 5 through 9)	42,928,779	41,930,804	171,524,125
11. Net cash from operations (Line 4 minus Line 10)	1,431,387	(3,590,016)	(298,889)
Cash from Investments			
12. Proceeds from investments sold, matured or repaid:			
12.1 Bonds	8,091,671	2,190,276	56,574,023
12.2 Stocks	4,394,563	5,391,430	18,400,805
12.3 Mortgage loans	0	0	0
12.4 Real estate	0	0	0
12.5 Other invested assets	320,519	0	820,746
12.6 Net gains or (losses) on cash, cash equivalents and short-term investments	0	0	0
12.7 Miscellaneous proceeds	1	0	63
12.8 Total investment proceeds (Lines 12.1 to 12.7)	12,806,753	7,581,706	75,795,638
13. Cost of investments acquired (long-term only):			
13.1 Bonds	8,036,662	477,027	57,464,819
13.2 Stocks	4,559,974	0	1,248,421
13.3 Mortgage loans	0	0	0
13.4 Real estate	74,281	0	33,167
13.5 Other invested assets	160,009	394,019	2,687,599
13.6 Miscellaneous applications	1	0	0
13.7 Total investments acquired (Lines 13.1 to 13.6)	12,830,927	871,046	61,434,006
14. Net increase/(decrease) in contract loans and premium notes	0	0	0
15. Net cash from investments (Line 12.8 minus Line 13.7 and Line 14)	(24,173)	6,710,660	14,361,631
Cash from Financing and Miscellaneous Sources			
16. Cash provided (applied):			
16.1 Surplus notes, capital notes	0	0	0
16.2 Capital and paid in surplus, less treasury stock	0	0	0
16.3 Borrowed funds	(370,775)	(360,607)	(1,457,590)
16.4 Net deposits on deposit-type contracts and other insurance liabilities	0	0	0
16.5 Dividends to stockholders	0	0	0
16.6 Other cash provided (applied)	(577,900)	(824,566)	76,021
17. Net cash from financing and miscellaneous sources (Line 16.1 through Line 16.4 minus Line 16.5 plus Line 16.6)	(948,675)	(1,185,173)	(1,381,568)
RECONCILIATION OF CASH, CASH EQUIVALENTS AND SHORT-TERM INVESTMENTS			
18. Net change in cash, cash equivalents and short-term investments (Line 11, plus Lines 15 and 17)	458,539	1,935,471	12,681,174
19. Cash, cash equivalents and short-term investments:			
19.1 Beginning of year	62,167,716	49,486,542	49,486,542
19.2 End of period (Line 18 plus Line 19.1)	62,626,255	51,422,013	62,167,716

Note:	Supplemental disclosures of cash flow information for non-cash transactions:		
20.0001. Investments acquired in non-cash transactions	0	0	17,544
20.0002. Investments disposed in non-cash transactions	0	0	17,544

NOTES TO FINANCIAL STATEMENTS

1. Summary of Significant Accounting Policies

A. Accounting Practices

The financial statements of Lightning Rod Mutual Insurance Company (LRMIC) are presented on the basis of accounting principles prescribed or permitted by the Ohio Department of Insurance.

The Ohio Department of Insurance recognizes only statutory accounting practices prescribed or permitted by the State of Ohio for determining and reporting the financial condition and results of operations of an insurance company for determining its solvency under Ohio Insurance Law. The National Association of Insurance Commissioners' (NAIC) *Accounting Practices and Procedures Manual* (NAIC SAP) has been adopted as a component of prescribed or permitted practices by the State of Ohio.

The financial statements of the Company are presented solely on the basis of accounting principles prescribed by the Ohio Department of Insurance. As such, there are no increases or decreases to net income or surplus on a statutory accounting basis as shown by the reconciliation below:

	State of Domicile	2024	2023
<u>NET INCOME</u>			
(1) LRMIC state basis (Page 4, Line 20, Columns 1 & 2)	Ohio	\$ 412,394	\$ (9,605,996)
(2) State Prescribed Practices that increase/(decrease) NAIC SAP:		—	—
(3) State Permitted Practices that increase/(decrease) NAIC SAP:		—	—
(4) NAIC SAP (1-2-3=4)		<u>\$ 412,394</u>	<u>\$ (9,605,996)</u>
<u>SURPLUS</u>			
(5) LRMIC state basis (Page 3, Line 37, Columns 1 & 2)	Ohio	\$ 190,394,227	\$ 188,083,024
(6) State Prescribed Practices that increase/(decrease) NAIC SAP:		—	—
(7) State Permitted Practices that increase/(decrease) NAIC SAP:		—	—
(8) NAIC SAP (5-6-7=8)		<u>\$ 190,394,227</u>	<u>\$ 188,083,024</u>

B. Use of Estimates in the Preparation of the Financial Statements

No significant changes from December 31, 2023.

C. Accounting Policy

No significant changes from December 31, 2023.

D. Going Concern

Management has evaluated the Company's viability and has no doubt as to the Company's ability to continue as a going concern.

2. Accounting Changes and Corrections of Errors

Not applicable.

3. Business Combinations and Goodwill

Not applicable.

4. Discontinued Operations

Not applicable.

5. Investments

A. Mortgage Loans, including Mezzanine Real Estate Loans

Not applicable.

B. Debt Restructuring

Not applicable.

C. Reverse Mortgages

Not applicable.

NOTES TO FINANCIAL STATEMENTS

- D. Loan—Backed Securities
- 1. Prepayment assumptions are generally obtained using a model provided by a third-party vendor.
 - 2. None.
 - 3. None.
 - 4. All impaired securities (fair value is less than cost or amortized cost) for which an other-than-temporary impairment has not been recognized in earnings as a realized loss (including securities with a recognized other-than temporary impairment for non-interest related declines when a non-recognized interest related impairment remains):
 - a. The aggregate amount of unrealized losses:

1. Less than 12 months	\$ (123,935)
2. 12 months or Longer	\$ (563,433)
 - b. The aggregate related fair value of securities with unrealized losses:

1. Less than 12 months	\$ 16,272,722
2. 12 months or longer	\$ 8,821,991
 - 5. The Company reviews all loan-backed and structured securities in which the fair value of a given security is less than the amortized cost to determine if a given security is other-than-temporarily impaired. The Company examines characteristics of the underlying collateral, such as delinquency and default rates, the quality of the underlying borrower, the type of collateral in the pool, the vintage year of the collateral, subordination levels within the structure of the collateral pool, and the quality of any credit guarantors, to determine the cash flows expected to be received for the security.

If the severity and duration of the security’s unrealized loss indicates a risk of other-than-temporary impairment, then the Company will evaluate if the amortized cost basis of the security will be recovered by comparing the present value of the cash flows expected to be received for the given security with the amortized basis of the security. If the present value of cash flows is greater than the amortized cost basis of a security then the security is deemed not to be other-than-temporarily impaired.
- E. Dollar Repurchase Agreements and/or Securities Lending Transactions
- Not applicable.
- F. Repurchase Agreements Transactions Accounted for as Secured Borrowing
- Not applicable.
- G. Reverse Repurchase Agreements Transactions Accounted for as Secured Borrowing
- Not applicable.
- H. Repurchase Agreements Transactions Accounted for as a Sale
- Not applicable.
- I. Reverse Repurchase Agreements Transactions Accounted for as a Sale
- Not applicable.
- J. Real Estate
- Not applicable.
- K. Low—income Housing Tax Credits (LIHTC)
- Not applicable.
- L. Restricted Assets
- No significant changes from December 31, 2023.
- M. Working Capital Finance Investments
- Not applicable.
- N. Offsetting and Netting of Assets and Liabilities
- Not applicable.
- O. 5* Securities
- Not applicable.

NOTES TO FINANCIAL STATEMENTS

- P. Short Sales
Not applicable.
- Q. Prepayment Penalty and Accelerated Fees
Not applicable.
- R. Reporting Entity's Share of Cash Pool by Asset Type
Not applicable.

6. Joint Ventures, Partnerships and Limited Liability Companies

No significant changes from December 31, 2023.

7. Investment Income

No significant changes from December 31, 2023.

8. Derivative Instruments

Not applicable.

9. Income Taxes

No significant changes from December 31, 2023.

10. Information Concerning Parent, Subsidiaries, Affiliates and Other Related Parties

- A. Not applicable.
- B. Not applicable.
- C. Not applicable.
- D. No significant changes from December 31, 2023.
- E. Not applicable.
- F. No significant changes from December 31, 2023.
- G. No significant changes from December 31, 2023.
- H. Not applicable.
- I. Not applicable.
- J. Not applicable.
- K. Not applicable.
- L. No significant changes from December 31, 2023.
- M. No significant changes from December 31, 2023.
- N. Not applicable.
- O. Not applicable.

11. Debt

- A. Apart from the item Note 11B immediately below, the Company did not have any outstanding debentures at March 31, 2024 nor December 31, 2023.
- B. FHLB (Federal Home Loan Bank) Agreements
 - 1. The Company is a member of the Federal Home Loan Bank (FHLB) of Cincinnati. In April 2019, through its membership, the Company borrowed funds in the form of three, 10-year fixed term, fixed rate advances at 2.83%, 2.60% and 2.60%. The three advances were \$12.0 million, \$2.0 million, and \$1.0 million, respectively, for a total of \$15.0 million to be used for construction of an addition to the Company's home office. The Company has determined the estimated maximum borrowing capacity as \$29,692,679. The Company calculated this amount in accordance with the Company's holdings of U.S. Treasuries, U.S. Agencies, U.S. Agency residential and commercial mortgage-backed securities, and eligible municipal securities including both revenue and general obligation bonds that meet minimum FHLB credit risk requirements.

NOTES TO FINANCIAL STATEMENTS

2. FHLB Capital Stock

a. Aggregate Totals

1. Current Year	(1)	(2)	(3)
	Total 2 + 3	General Account	Separate Accounts
a. Membership Stock – Class A	\$ —	\$ —	\$ —
b. Membership Stock – Class B	\$ 280,457	\$ 280,457	\$ —
c. Activity Stock	\$ 300,067	\$ 300,067	\$ —
d. Excess Stock	\$ 62,776	\$ 62,776	\$ —
e. Aggregate Total	<u>\$ 643,300</u>	<u>\$ 643,300</u>	<u>\$ —</u>
f. Actual or Estimated Borrowing Capacity as Determined by the Insurer	<u>\$ 29,692,679</u>	<u>\$ XXX</u>	<u>\$ XXX</u>

2. Prior Year-End	(1)	(2)	(3)
	Total 2 + 3	General Account	Separate Accounts
g. Membership Stock – Class A	\$ —	\$ —	\$ —
h. Membership Stock – Class B	\$ 280,457	\$ 280,457	\$ —
i. Activity Stock	\$ 300,067	\$ 300,067	\$ —
j. Excess Stock	\$ 93,876	\$ 93,876	\$ —
k. Aggregate Total (a+b+c+d)	<u>\$ 674,400</u>	<u>\$ 674,400</u>	<u>\$ —</u>
l. Actual or Estimated Borrowing Capacity as Determined by the Insurer	<u>\$ 23,613,858</u>	<u>\$ XXX</u>	<u>\$ XXX</u>

3. Membership Stock Eligible for Redemption

Membership Stock	Current Year Total	Not Eligible For Redemption	Less Than Six Months	Six Months to Less Than a Year	1 to Less Than 3 Years	3 to 5 Years
1. Class A	\$ —	\$ —	\$ —	\$ —	\$ —	\$ —
2. Class B	\$ 280,457	\$ 280,457	\$ —	\$ —	\$ —	\$ —

3. Collateral Pledged to the FHLB

a. Amount Pledged as of Reporting Date

	Fair Value	Carrying Value	Aggregate Total Borrowing
1. Current year total general account collateral pledged	\$12,337,187	\$12,706,878	\$ 15,000,000
2. Current year protected cell account collateral pledged	—	—	—
3. Current year total general and protected cell accounts collateral pledged	12,337,187	12,706,878	15,000,000
4. Prior year total general and protected cell accounts collateral pledged	—	—	—

b. Maximum Amount Pledged During Reporting Period

	Fair Value	Carrying Value	Amount Borrowed at Time of Maximum Collateral
1. Current year total general account maximum collateral pledged	\$12,640,407	\$12,960,513	\$ 15,000,000
2. Current year protected cell account maximum collateral pledged	—	—	—
3. Current year total general and protected cell accounts maximum collateral pledged	12,640,407	12,960,513	15,000,000
4. Prior year total general and protected cell accounts maximum collateral pledged	—	—	—

NOTES TO FINANCIAL STATEMENTS

4. Borrowing from FHLB

a. Amount as of the Reporting Date

		1. Current Year			2. Prior Year		
		<u>Total</u>	<u>General Account</u>	<u>Protected Cell Account</u>	<u>Total</u>	<u>General Account</u>	<u>Protected Cell Account</u>
a.	Debt	\$8,269,173	\$8,269,173	\$ —	\$8,639,947	\$ 8,639,947	\$ —
b.	Funding Agreements	—	—	—	—	—	—
c.	Other	—	—	—	—	—	—
d.	Total (a+b+c)	8,269,173	8,269,173	—	8,639,947	8,639,947	—

b. Maximum Amount during the Reporting Period (Current Year)

	<u>Total</u>	<u>General Account</u>	<u>Protected Cell Account</u>
a. Debt	\$ 8,639,947	\$ 8,639,947	\$ —
b. Funding Agreements	—	—	—
c. Other	—	—	—
d. Total (a+b+c)	8,639,947	8,639,947	—

c. The Company has no prepayment obligations under its debt arrangement.

12. Retirement Plans, Deferred Compensation, Postemployment Benefits and Compensated Absences and Other Postretirement Benefit Plans

A. Defined Benefit Plans

The Company has a non-qualified, unfunded, retiree healthcare plan. The retiree health care plan was closed to new participants. The related liabilities and expenses are not material to the Company's financial position.

The Company also has a non-qualified voluntary deferred compensation plan for senior executive officers. The plan allows for deferral of payouts from the Annual Cash Bonus Plan and Performance Share Plan for Key Executives. As of March 31, 2024 and December 31, 2023, amounts held for these deferrals were \$3.2 million and \$3.1 million, respectively.

B. Investment Policies and Strategies

Not applicable.

C. Fair Value of Plan Assets

Not applicable.

D. Basis of Rates of Returns on Assets

Not applicable.

E. Defined Contribution Plans

No significant changes from December 31, 2023.

F. Multiemployer Plans

Not applicable.

G. Consolidated/Holding Company Plans

Not applicable.

H. Postemployment Benefits and Compensated Absences

Not applicable.

I. Impact of Medicare Modernization Act on Postretirement Benefits (INT 04—17)

Not applicable.

13. Capital and Surplus, Dividend Restrictions and Quasi—Reorganizations

No significant changes from December 31, 2023.

14. Liabilities, Contingencies and Assessments

No significant changes from December 31, 2023.

15. Leases

No significant changes from December 31, 2023.

NOTES TO FINANCIAL STATEMENTS

16. Information about Financial Instruments With Off—Balance—Sheet Risk and Financial Instruments With Concentrations of Credit Risk

Not applicable.

17. Sale, Transfer and Servicing of Financial Assets and Extinguishment of Liabilities

Not applicable.

18. Gain or Loss to the Reporting Entity from Uninsured Plans and the Uninsured Portion of Partially Insured Plans

Not applicable.

19. Direct Premium Written/Produced by Managing General Agents/Third Party Administrators

Not applicable.

20. Fair Value Measurements

A. The Company's financial assets and liabilities carried at fair value have been classified, for disclosure purposes, based on a hierarchy defined by FASB ASC 820 (SFAS No. 157), *Fair Value Measurements*. The hierarchy gives the highest ranking to fair values determined using unadjusted quoted prices in active markets for identical assets and liabilities (Level 1) and the lowest ranking to fair values determined using methodologies and models with unobservable inputs (Level 3). An asset's or a liability's classification is based on the lowest level input that is significant to its measurement. For example, a Level 3 fair value measurement may include inputs that are both observable (Levels 1 and 2) and unobservable (Level 3). The levels of the fair value hierarchy are as follows:

Level 1:

Values are unadjusted quoted prices for identical assets and liabilities in active markets accessible at the measurement date.

Level 2:

Inputs include quoted prices for similar assets or liabilities in active markets, quoted prices from those willing to trade in markets that are not active, or other inputs that are observable or can be corroborated by market data for the term of the instrument. Such inputs include market interest rates and volatilities, spreads and yield curves.

Level 3:

Certain inputs are unobservable (supported by little or no market activity) and significant to the fair value measurement. Unobservable inputs reflect the Company's best estimate of what hypothetical market participants would use to determine a transaction price for the asset or liability at the reporting date.

(1) Fair Value Measurements at March 31, 2024:

Description of each class of asset or liability	(Level 1)	(Level 2)	(Level 3)	Net Asset Value (NAV)	Total
a. Assets at fair value					
Cash equivalents:					
Exempt MM Mutual Funds	\$ 4,093,852	\$ --	\$ --	\$ --	\$ 4,093,852
Total Cash Equivalents	4,093,852	--	--	--	4,093,852
Common Stock:					
Mutual Funds	25,533,117	--	--	--	25,533,117
Industrial and Misc	55,656,055	643,300	275,797	--	56,575,152
Total Common Stocks	81,189,172	643,300	275,797	--	82,108,269
Total assets at fair value/NAV	\$ 85,283,024	\$ 643,300	\$ 275,797	\$ --	\$ 86,202,121
b. Liabilities at fair value:					
Not applicable.					

NOTES TO FINANCIAL STATEMENTS

Fair Value Measurements at December 31, 2023:

Description of each class of asset or liability	(Level 1)	(Level 2)	(Level 3)	Net Asset Value (NAV)	Total
a. Assets at fair value					
Cash equivalents:					
Exempt MM Mutual Funds	\$ 2,174,264	\$ --	\$ --	\$ --	\$ 2,174,264
Total Cash Equivalents	2,174,264	--	--	--	2,174,264
Common Stock:					
Mutual Funds	24,654,258	--	--	--	24,654,258
Industrial and Misc	51,348,397	674,400	275,797	--	52,298,594
Total Common Stocks	76,002,655	674,400	275,797	--	76,952,852
Total assets at fair value/NAV	\$ 78,176,919	\$ 674,400	\$ 275,797	\$ --	\$ 79,127,116
b. Liabilities at fair value:					
Not applicable.					

(2) Fair Value Measurements in (Level 3) of the Fair Value Hierarchy:

	Beginning Balance at 01/01/2024	Transfers In/(out) Level 3	Total Gains/(Losses) Included in Net Income	Total Gains/(Losses) Included in Surplus	Purchases (Sales)	Ending Balance at 03/31/2024
a. Assets:						
Common Stock:						
Industrial and Misc	\$ 275,797	\$ --	\$ --	\$ --	\$ --	\$ 275,797
b. Liabilities:						
Not applicable.						

- (3) The Company’s policy is to recognize transfers in and out as of the end of the reporting period.
- (4) As of March 31, 2024, the reported fair value of the entity’s investments categorized within Level 3 of the fair value hierarchy is as follows:

Common Stocks – The Company holds an investment in NAMIC common stock.

- B. Not applicable.
- C. Fair Value of All Financial Instruments:

Type of Financial Instrument	Aggregate Fair Value	Admitted Assets	(Level 1)	(Level 2)	(Level 3)	Net Asset Value (NAV)	Not Practicable (Carrying Value)
Bonds	\$ 146,273,014	\$ 151,393,826	\$ 8,225,873	\$ 138,047,141	\$ --	\$ --	\$ --
Common Stock	82,108,269	82,108,269	81,189,172	643,300	275,797	--	--
Other Invested Assets	11,891,642	11,891,642	--	--	11,891,642	--	--
Cash Equivalents	4,093,852	4,093,852	4,093,852	--	--	--	--

D. The Company has no assets for which it was not practicable to estimate fair value.

21. Other Items
- Not applicable.

NOTES TO FINANCIAL STATEMENTS

22. Events Subsequent

Type I – Recognized Subsequent Events:

Subsequent events have been considered through May 15, 2024 for the statutory statement issued on May 15, 2024 for the quarter ending March 31, 2024. No Type I events were identified that would have a material effect on the financial condition of the Company.

Type II – Non-recognized Subsequent Events:

Subsequent events have been considered through May 15, 2024 for the statutory statement issued on May 15, 2024 for the quarter ending March 31, 2024. No Type II events were identified that would have a material effect on the financial condition of the Company.

23. Reinsurance

No significant changes from December 31, 2023.

24. Retrospectively Rated Contracts and Contracts Subject to Redetermination

Not applicable.

25. Changes in Incurred Losses and Loss Adjustment Expense

Reserves as of December 31, 2023 were \$56.5 million. During 2024, \$13.7 million has been paid for incurred losses and loss adjustment expenses attributable to insured events of prior years. Reserves remaining for prior years are now \$42.8 million as a result of re-estimation of unpaid claims and claim adjusting expenses. Therefore, there has been no favorable or unfavorable prior year development from December 31, 2023 to March 31, 2024. The re-estimation is generally the result of ongoing analysis of recent loss development trends. Original estimates are increased or decreased as additional information becomes known regarding individual claims. The estimates are not affected by prior year loss development on retrospectively rated policies, as the Company does not write this type of policy.

26. Intercompany Pooling Agreements

No significant changes from December 31, 2023.

27. Structured Settlements

Not applicable.

28. Health Care Receivables

Not applicable.

29. Participating Policies

Not applicable.

30. Premium Deficiency Reserves

No significant changes from December 31, 2022.

31. High Deductibles

Not applicable.

32. Discounting of Liabilities for Unpaid Losses or Unpaid Loss Adjustment Expenses

No significant changes from December 31, 2023.

33. Asbestos/Environmental Reserves

No significant changes from December 31, 2023.

34. Subscriber Savings Accounts

Not applicable.

35. Multiple Peril Crop Insurance

Not applicable.

36. Financial Guaranty Insurance

Not applicable.

GENERAL INTERROGATORIES

PART 1 - COMMON INTERROGATORIES

GENERAL

- 1.1

Did the reporting entity experience any material transactions requiring the filing of Disclosure of Material Transactions with the State of Domicile, as required by the Model Act?

Yes ☐ No ☒
- 1.2

If yes, has the report been filed with the domiciliary state?

Yes ☐ No ☐
- 2.1

Has any change been made during the year of this statement in the charter, by-laws, articles of incorporation, or deed of settlement of the reporting entity?

Yes ☐ No ☒
- 2.2

If yes, date of change:
- 3.1

Is the reporting entity a member of an Insurance Holding Company System consisting of two or more affiliated persons, one or more of which is an insurer?

Yes ☒ No ☐
- If yes, complete Schedule Y, Parts 1 and 1A.
- 3.2

Have there been any substantial changes in the organizational chart since the prior quarter end?

Yes ☐ No ☒
- 3.3

If the response to 3.2 is yes, provide a brief description of those changes.
- 3.4

Is the reporting entity publicly traded or a member of a publicly traded group?

Yes ☐ No ☒
- 3.5

If the response to 3.4 is yes, provide the CIK (Central Index Key) code issued by the SEC for the entity/group.
- 4.1

Has the reporting entity been a party to a merger or consolidation during the period covered by this statement?

Yes ☐ No ☒
- 4.2

If yes, provide the name of entity, NAIC Company Code, and state of domicile (use two letter state abbreviation) for any entity that has ceased to exist as a result of the merger or consolidation.

1	2	3
Name of Entity	NAIC Company Code	State of Domicile

5.

If the reporting entity is subject to a management agreement, including third-party administrator(s), managing general agent(s), attorney-in-fact, or similar agreement, have there been any significant changes regarding the terms of the agreement or principals involved?

Yes ☐ No ☐ NA ☒
- If yes, attach an explanation.
- 6.1

State as of what date the latest financial examination of the reporting entity was made or is being made.

12/31/2021
- 6.2

State the as of date that the latest financial examination report became available from either the state of domicile or the reporting entity. This date should be the date of the examined balance sheet and not the date the report was completed or released.

12/31/2021
- 6.3

State as of what date the latest financial examination report became available to other states or the public from either the state of domicile or the reporting entity. This is the release date or completion date of the examination report and not the date of the examination (balance sheet date).

03/23/2023
- 6.4

By what department or departments?

Ohio Department of Insurance
- 6.5

Have all financial statement adjustments within the latest financial examination report been accounted for in a subsequent financial statement filed with Departments?

Yes ☐ No ☐ NA ☒
- 6.6

Have all of the recommendations within the latest financial examination report been complied with?

Yes ☒ No ☐ NA ☐
- 7.1

Has this reporting entity had any Certificates of Authority, licenses or registrations (including corporate registration, if applicable) suspended or revoked by any governmental entity during the reporting period?

Yes ☐ No ☒
- 7.2

If yes, give full information:
- 8.1

Is the company a subsidiary of a bank holding company regulated by the Federal Reserve Board?

Yes ☐ No ☒
- 8.2

If response to 8.1 is yes, please identify the name of the bank holding company.
- 8.3

Is the company affiliated with one or more banks, thrifts or securities firms?

Yes ☐ No ☒
- 8.4

If response to 8.3 is yes, please provide below the names and location (city and state of the main office) of any affiliates regulated by a federal regulatory services agency [i.e. the Federal Reserve Board (FRB), the Office of the Comptroller of the Currency (OCC), the Federal Deposit Insurance Corporation (FDIC) and the Securities Exchange Commission (SEC)] and identify the affiliate's primary federal regulator.]

1	2	3	4	5	6
Affiliate Name	Location (City, State)	FRB	OCC	FDIC	SEC

- 9.1

Are the senior officers (principal executive officer, principal financial officer, principal accounting officer or controller, or persons performing similar functions) of the reporting entity subject to a code of ethics, which includes the following standards?

Yes ☒ No ☐
- (a) Honest and ethical conduct, including the ethical handling of actual or apparent conflicts of interest between personal and professional relationships;
- (b) Full, fair, accurate, timely and understandable disclosure in the periodic reports required to be filed by the reporting entity;
- (c) Compliance with applicable governmental laws, rules and regulations;
- (d) The prompt internal reporting of violations to an appropriate person or persons identified in the code; and
- (e) Accountability for adherence to the code.
- 9.11

If the response to 9.1 is No, please explain:
- 9.2

Has the code of ethics for senior managers been amended?

Yes ☐ No ☒
- 9.21

If the response to 9.2 is Yes, provide information related to amendment(s).
- 9.3

Have any provisions of the code of ethics been waived for any of the specified officers?

Yes ☐ No ☒
- 9.31

If the response to 9.3 is Yes, provide the nature of any waiver(s).

FINANCIAL

- 10.1

Does the reporting entity report any amounts due from parent, subsidiaries or affiliates on Page 2 of this statement?

Yes ☐ No ☒
- 10.2

If yes, indicate any amounts receivable from parent included in the Page 2 amount:

\$

GENERAL INTERROGATORIES

INVESTMENT

11.1 Were any of the stocks, bonds, or other assets of the reporting entity loaned, placed under option agreement, or otherwise made available for use by another person? (Exclude securities under securities lending agreements.) Yes [] No [X]

11.2 If yes, give full and complete information relating thereto:

12. Amount of real estate and mortgages held in other invested assets in Schedule BA:\$0

13. Amount of real estate and mortgages held in short-term investments:\$0

14.1 Does the reporting entity have any investments in parent, subsidiaries and affiliates? Yes [X] No []

14.2 If yes, please complete the following:

	1	2
	Prior Year-End Book/Adjusted Carrying Value	Current Quarter Book/Adjusted Carrying Value
14.21 Bonds	\$0	\$0
14.22 Preferred Stock	\$0	\$0
14.23 Common Stock	\$607,609	\$573,440
14.24 Short-Term Investments	\$0	\$0
14.25 Mortgage Loans on Real Estate	\$0	\$0
14.26 All Other	\$0	\$0
14.27 Total Investment in Parent, Subsidiaries and Affiliates (Subtotal Lines 14.21 to 14.26).....	\$607,609	\$573,440
14.28 Total Investment in Parent included in Lines 14.21 to 14.26 above	\$0	\$0

15.1 Has the reporting entity entered into any hedging transactions reported on Schedule DB? Yes [] No [X]

15.2 If yes, has a comprehensive description of the hedging program been made available to the domiciliary state? Yes [] No [] NA [X]
If no, attach a description with this statement.

16. For the reporting entity's security lending program, state the amount of the following as of the current statement date:
16.1 Total fair value of reinvested collateral assets reported on Schedule DL, Parts 1 and 2\$0
16.2 Total book/adjusted carrying value of reinvested collateral assets reported on Schedule DL, Parts 1 and 2\$0
16.3 Total payable for securities lending reported on the liability page\$0

17. Excluding items in Schedule E – Part 3 – Special Deposits, real estate, mortgage loans and investments held physically in the reporting entity's offices, vaults or safety deposit boxes, were all stocks, bonds and other securities, owned throughout the current year held pursuant to a custodial agreement with a qualified bank or trust company in accordance with Section 1, III – General Examination Considerations, F. Outsourcing of Critical Functions, Custodial or Safekeeping Agreements of the NAIC *Financial Condition Examiners Handbook*? Yes [] No [X]

17.1 For all agreements that comply with the requirements of the NAIC *Financial Condition Examiners Handbook*, complete the following:

1	2
Name of Custodian(s)	Custodian Address
Northern Trust Company.....	50 South LaSalle Street Chicago, IL 60603.....

17.2 For all agreements that do not comply with the requirements of the NAIC *Financial Condition Examiners Handbook*, provide the name, location and a complete explanation:

1	2	3
Name(s)	Location(s)	Complete Explanation(s)
Monroe Capital LLC.....	311 South Wacker Dr, Suite 6400 Chicago, IL 60606.....	Investment in Monroe Capital Private Credit (Delaware) Feeder Fund IV LP in 2021; not accounted for by Northern Trust.
HarbourVest Partners LLC.....	One Financial Center Boston, MA 02111.....	Investment in HarbourVest Direct Lending Fund (L) L.P. in 2021; not accounted for by Northern Trust.
First Eagle Alternative Credit LLC.....	1345 Avenue of the Americas, New York, NY 10105.....	Investment in First Eagle Direct Lending V-B, LLC; not accounted for by Northern Trust.

17.3 Have there been any changes, including name changes, in the custodian(s) identified in 17.1 during the current quarter? Yes [] No [X]

17.4 If yes, give full and complete information relating thereto:

1	2	3	4
Old Custodian	New Custodian	Date of Change	Reason

17.5 Investment management – Identify all investment advisors, investment managers, broker/dealers, including individuals that have the authority to make investment decisions on behalf of the reporting entity. For assets that are managed internally by employees of the reporting entity, note as such. ["...that have access to the investment accounts"; "...handle securities"]

1	2
Name of Firm or Individual	Affiliation
Michael Shutt.....	I.....
Wellington Management Company LLP.....	U.....
Northern Trust Investments, Inc.....	U.....

17.5097 For those firms/individuals listed in the table for Question 17.5, do any firms/individuals unaffiliated with the reporting entity (i.e., designated with a "U") manage more than 10% of the reporting entity's invested assets? Yes [X] No []

17.5098 For firms/individuals unaffiliated with the reporting entity (i.e., designated with a "U") listed in the table for Question 17.5, does the total assets under management aggregate to more than 50% of the reporting entity's invested assets? Yes [X] No []

17.6 For those firms or individuals listed in the table for 17.5 with an affiliation code of "A" (affiliated) or "U" (unaffiliated), provide the information for the table below.

1	2	3	4	5
Central Registration Depository Number	Name of Firm or Individual	Legal Entity Identifier (LEI)	Registered With	Investment Management Agreement (IMA) Filed
106595.....	Wellington Management Company LLP.....	549300YHP12TEZNL CX41.....	SEC # 801-106595.....	NO.....
105780.....	Northern Trust Investments, Inc.....	BEL4B8X7EHJU845Y2N39.....	SEC # 801-33358.....	NO.....

18.1 Have all the filing requirements of the *Purposes and Procedures Manual of the NAIC Investment Analysis Office* been followed? Yes [X] No []

18.2 If no, list exceptions:

GENERAL INTERROGATORIES

19. By self-designating 5GI securities, the reporting entity is certifying the following elements for each self-designated 5GI security:

a. Documentation necessary to permit a full credit analysis of the security does not exist or an NAIC CRP credit rating for an FE or PL security is not available.

b. Issuer or obligor is current on all contracted interest and principal payments.

c. The insurer has an actual expectation of ultimate payment of all contracted interest and principal.

Has the reporting entity self-designated 5GI securities?.....

Yes [] No [X]
20. By self-designating PLGI securities, the reporting entity is certifying the following elements of each self-designated PLGI security:

a. The security was purchased prior to January 1, 2018.

b. The reporting entity is holding capital commensurate with the NAIC Designation reported for the security.

c. The NAIC Designation was derived from the credit rating assigned by an NAIC CRP in its legal capacity as a NRSRO which is shown on a current private letter rating held by the insurer and available for examination by state insurance regulators.

d. The reporting entity is not permitted to share this credit rating of the PL security with the SVO.

Has the reporting entity self-designated PLGI securities?.....

Yes [] No [X]
21. By assigning FE to a Schedule BA non-registered private fund, the reporting entity is certifying the following elements of each self-designated FE fund:

a. The shares were purchased prior to January 1, 2019.

b. The reporting entity is holding capital commensurate with the NAIC Designation reported for the security.

c. The security had a public credit rating(s) with annual surveillance assigned by an NAIC CRP in its legal capacity as an NRSRO prior to January 1, 2019.

d. The fund only or predominantly holds bonds in its portfolio.

e. The current reported NAIC Designation was derived from the public credit rating(s) with annual surveillance assigned by an NAIC CRP in its legal capacity as an NRSRO.

f. The public credit rating(s) with annual surveillance assigned by an NAIC CRP has not lapsed.

Has the reporting entity assigned FE to Schedule BA non-registered private funds that complied with the above criteria?.....

Yes [] No [X]

GENERAL INTERROGATORIES
PART 2 - PROPERTY & CASUALTY INTERROGATORIES

1. If the reporting entity is a member of a pooling arrangement, did the agreement or the reporting entity's participation change? Yes [] No [X] NA []
If yes, attach an explanation.

2. Has the reporting entity reinsured any risk with any other reporting entity and agreed to release such entity from liability, in whole or in part, from any loss that may occur on the risk, or portion thereof, reinsured? Yes [] No [X]
If yes, attach an explanation.

3.1 Have any of the reporting entity's primary reinsurance contracts been canceled? Yes [] No [X]

3.2 If yes, give full and complete information thereto.
.....

4.1 Are any of the liabilities for unpaid losses and loss adjustment expenses other than certain workers' compensation tabular reserves (see *Annual Statement Instructions* pertaining to disclosure of discounting for definition of "tabular reserves,") discounted at a rate of interest greater than zero? Yes [] No [X]

4.2 If yes, complete the following schedule:

			TOTAL DISCOUNT				DISCOUNT TAKEN DURING PERIOD			
1	2	3	4	5	6	7	8	9	10	11
Line of Business	Maximum Interest	Discount Rate	Unpaid Losses	Unpaid LAE	IBNR	TOTAL	Unpaid Losses	Unpaid LAE	IBNR	TOTAL
TOTAL			0	0	0	0	0	0	0	0

5. Operating Percentages:

5.1 A&H loss percent

0.0 %

5.2 A&H cost containment percent

0.0 %

5.3 A&H expense percent excluding cost containment expenses.....

0.0 %

6.1 Do you act as a custodian for health savings accounts?..... Yes [] No [X]

6.2 If yes, please provide the amount of custodial funds held as of the reporting date..... \$

6.3 Do you act as an administrator for health savings accounts?..... Yes [] No [X]

6.4 If yes, please provide the balance of the funds administered as of the reporting date..... \$

7. Is the reporting entity licensed or chartered, registered, qualified, eligible or writing business in at least two states?..... Yes [X] No []

7.1 If no, does the reporting entity assume reinsurance business that covers risks residing in at least one state other than the state of domicile of the reporting entity?..... Yes [] No []

6

6

၆

၆

SCHEDULE T - EXHIBIT OF PREMIUMS WRITTEN

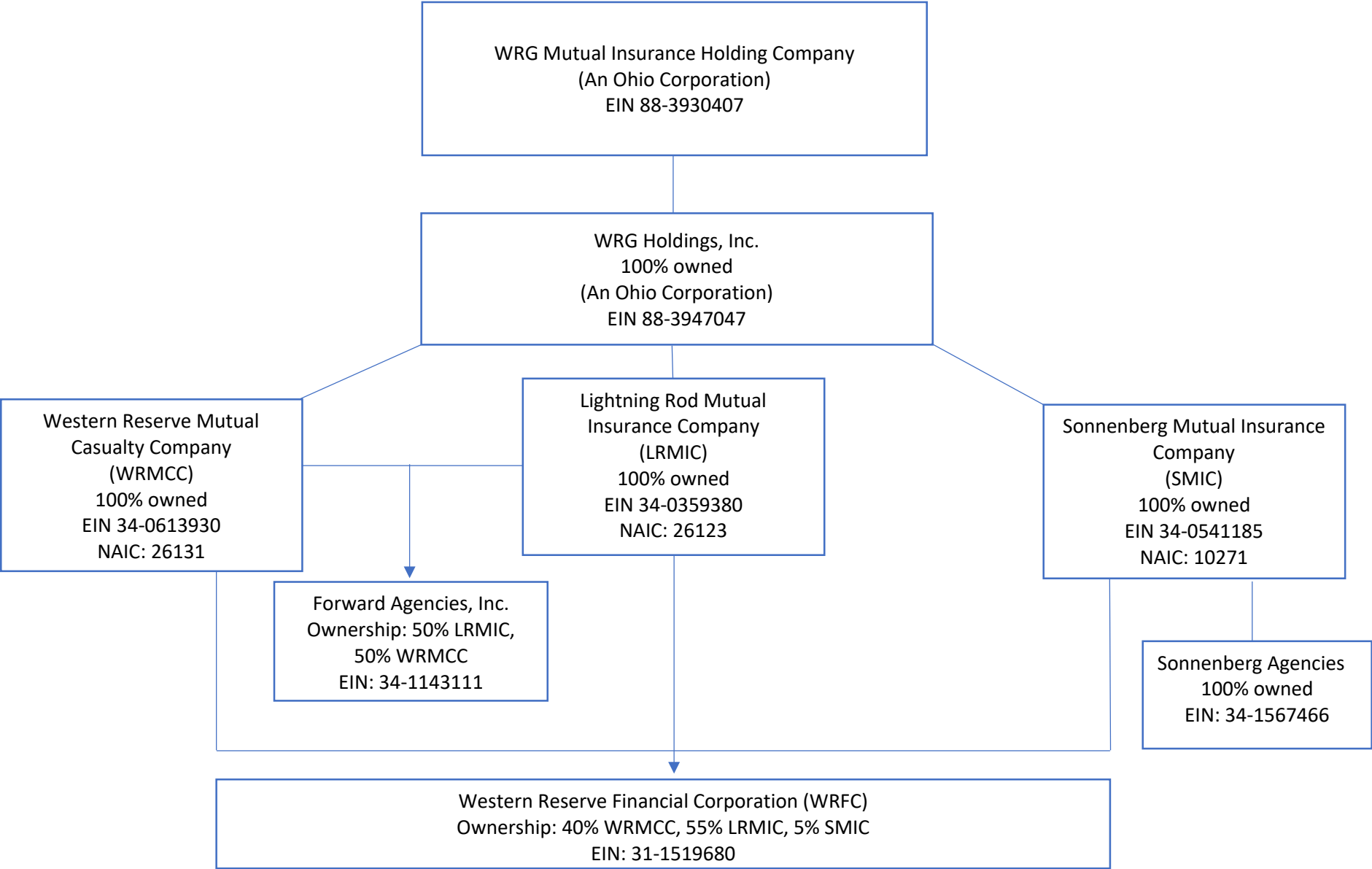
Current Year to Date – Allocated by States and Territories								
States, etc.	1	Direct Premiums Written		Direct Losses Paid (Deducting Salvage)		Direct Losses Unpaid		
		2	3	4	5	6	7	
	Active Status (a)	Current Year To Date	Prior Year To Date	Current Year To Date	Prior Year To Date	Current Year To Date	Prior Year To Date	
1. Alabama	AL	N	.0		.0		.0	
2. Alaska	AK	N	.0		.0		.0	
3. Arizona	AZ	N	.0		.0		.0	
4. Arkansas	AR	N	.0		.0		.0	
5. California	CA	N	.0		.0		.0	
6. Colorado	CO	N	.0		.0		.0	
7. Connecticut	CT	N	.0		.0		.0	
8. Delaware	DE	N	.0		.0		.0	
9. Dist. Columbia	DC	N	.0		.0		.0	
10. Florida	FL	N	.0		.0		.0	
11. Georgia	GA	N	.0		.0		.0	
12. Hawaii	HI	N	.0		.0		.0	
13. Idaho	ID	N	.0		.0		.0	
14. Illinois	IL	L	.0		.0		.0	
15. Indiana	IN	L	6,740,338	6,131,702	2,444,705	2,544,209	6,274,721	6,331,416
16. Iowa	IA	N	.0		.0		.0	
17. Kansas	KS	N	.0		.0		.0	
18. Kentucky	KY	N	.0		.0		.0	
19. Louisiana	LA	N	.0		.0		.0	
20. Maine	ME	N	.0		.0		.0	
21. Maryland	MD	N	.0		.0		.0	
22. Massachusetts	MA	N	.0		.0		.0	
23. Michigan	MI	N	.0		.0		.0	
24. Minnesota	MN	N	.0		.0		.0	
25. Mississippi	MS	N	.0		.0		.0	
26. Missouri	MO	N	.0		.0		.0	
27. Montana	MT	N	.0		.0		.0	
28. Nebraska	NE	N	.0		.0		.0	
29. Nevada	NV	N	.0		.0		.0	
30. New Hampshire	NH	N	.0		.0		.0	
31. New Jersey	NJ	N	.0		.0		.0	
32. New Mexico	NM	N	.0		.0		.0	
33. New York	NY	N	.0		.0		.0	
34. No. Carolina	NC	N	.0		.0		.0	
35. No. Dakota	ND	N	.0		.0		.0	
36. Ohio	OH	L	21,467,178	19,625,960	7,160,790	10,135,097	25,272,863	25,670,895
37. Oklahoma	OK	N	.0		.0		.0	
38. Oregon	OR	N	.0		.0		.0	
39. Pennsylvania	PA	N	.0		.0		.0	
40. Rhode Island	RI	N	.0		.0		.0	
41. So. Carolina	SC	N	.0		.0		.0	
42. So. Dakota	SD	N	.0		.0		.0	
43. Tennessee	TN	L	.0		.0		.0	
44. Texas	TX	N	.0		.0		.0	
45. Utah	UT	N	.0		.0		.0	
46. Vermont	VT	N	.0		.0		.0	
47. Virginia	VA	N	.0		.0		.0	
48. Washington	WA	N	.0		.0		.0	
49. West Virginia	WV	N	.0		.0		.0	
50. Wisconsin	WI	N	.0		.0		.0	
51. Wyoming	WY	N	.0		.0		.0	
52. American Samoa	AS	N	.0		.0		.0	
53. Guam	GU	N	.0		.0		.0	
54. Puerto Rico	PR	N	.0		.0		.0	
55. U.S. Virgin Islands	VI	N	.0		.0		.0	
56. Northern Mariana Islands	MP	N	.0		.0		.0	
57. Canada	CAN	N	.0		.0		.0	
58. Aggregate Other Alien	OT	XXX	.0	.0	.0	.0	.0	
59. Totals	XXX		28,207,516	25,757,662	9,605,495	12,679,306	31,547,584	32,002,311
DETAILS OF WRITE-INS								
58001.	XXX							
58002.	XXX							
58003.	XXX							
58998.	Summary of remaining write-ins for Line 58 from overflow page.	XXX	.0	.0	.0	.0	.0	
58999.	TOTALS (Lines 58001 through 58003 plus 58998) (Line 58 above)	XXX	0	0	0	0	0	

(a) Active Status Counts

1. L – Licensed or Chartered – Licensed insurance carrier or domiciled RRG	4	4. Q – Qualified – Qualified or accredited reinsurer	0
2. R – Registered – Non-domiciled RRGs	0	5. D – Domestic Surplus Lines Insurer (DSLII) – Reporting entities authorized to write surplus lines in the state of domicile	0
3. E – Eligible – Reporting entities eligible or approved to write surplus lines in the state (other than their state of domicile – See DSLI)	0	6. N – None of the above – Not allowed to write business in the state	53

SCHEDULE Y- INFORMATION CONCERNING ACTIVITIES OF INSURER MEMBERS OF A HOLDING COMPANY GROUP
PART I- ORGANIZATIONAL CHART

11



SCHEDULE Y
PART 1A – DETAIL OF INSURANCE HOLDING COMPANY SYSTEM

Asterisk	Explanation
----------	-------------

PART 1 - LOSS EXPERIENCE

Line of Business		Current Year to Date			4 Prior Year to Date Direct Loss Percentage
		1 Direct Premiums Earned	2 Direct Losses Incurred	3 Direct Loss Percentage	
1.	Fire	(61,903)		0.0	0.0
2.1	Allied lines	(76,810)		0.0	0.0
2.2	Multiple peril crop			0.0	0.0
2.3	Federal flood			0.0	0.0
2.4	Private crop			0.0	0.0
2.5	Private flood			0.0	0.0
3.	Farmowners multiple peril	7,309,354	5,912,152	80.9	73.6
4.	Homeowners multiple peril	5,108,199	3,352,510	65.6	97.6
5.1	Commercial multiple peril (non-liability portion)	3,365,935	476,415	14.2	89.0
5.2	Commercial multiple peril (liability portion)	2,806,586	632,025	22.5	35.3
6.	Mortgage guaranty			0.0	0.0
8.	Ocean marine			0.0	0.0
9.1.	Inland marine	689,749	47,658	6.9	14.7
9.2.	Pet insurance			0.0	
10.	Financial guaranty			0.0	0.0
11.1	Medical professional liability -occurrence			0.0	0.0
11.2	Medical professional liability -claims made			0.0	0.0
12.	Earthquake			0.0	0.0
13.1	Comprehensive (hospital and medical) individual			0.0	0.0
13.2	Comprehensive (hospital and medical) group			0.0	0.0
14.	Credit accident and health			0.0	0.0
15.1	Vision only			0.0	0.0
15.2	Dental only			0.0	0.0
15.3	Disability income			0.0	0.0
15.4	Medicare supplement			0.0	0.0
15.5	Medicaid Title XIX			0.0	0.0
15.6	Medicare Title XVIII			0.0	0.0
15.7	Long-term care			0.0	0.0
15.8	Federal employees health benefits plan			0.0	0.0
15.9	Other health			0.0	0.0
16.	Workers' compensation			0.0	0.0
17.1	Other liability occurrence	170,763		0.0	0.0
17.2	Other liability-claims made	97,205		0.0	17.2
17.3	Excess Workers' Compensation			0.0	0.0
18.1	Products liability-occurrence	15,244	16,250	106.6	(15.2)
18.2	Products liability-claims made			0.0	0.0
19.1	Private passenger auto no-fault (personal injury protection)			0.0	0.0
19.2	Other private passenger auto liability	1,432,777	1,204,411	84.1	38.4
19.3	Commercial auto no-fault (personal injury protection)			0.0	0.0
19.4	Other commercial auto liability	2,650,871	637,747	24.1	12.1
21.1	Private passenger auto physical damage	1,614,199	920,454	57.0	65.6
21.2	Commercial auto physical damage	1,024,286	873,477	85.3	100.3
22.	Aircraft (all perils)			0.0	0.0
23.	Fidelity			0.0	0.0
24.	Surety			0.0	0.0
26.	Burglary and theft	23,031		0.0	0.0
27.	Boiler and machinery	394,728	12,781	3.2	6.7
28.	Credit			0.0	0.0
29.	International			0.0	0.0
30.	Warranty			0.0	0.0
31.	Reinsurance - Nonproportional Assumed Property	XXX	XXX	XXX	XXX
32.	Reinsurance - Nonproportional Assumed Liability	XXX	XXX	XXX	XXX
33.	Reinsurance - Nonproportional Assumed Financial Lines	XXX	XXX	XXX	XXX
34.	Aggregate write-ins for other lines of business	0	0	0.0	0.0
35.	TOTALS	26,564,214	14,085,880	53.0	64.7
DETAILS OF WRITE-INS					
3401.				0.0	0.0
3402.				0.0	0.0
3403.				0.0	0.0
3498.	Sum. of remaining write-ins for Line 34 from overflow page	0	0	0.0	0.0
3499.	Totals (Lines 3401 through 3403 plus 3498) (Line 34)	0	0	0.0	0.0

PART 2 - DIRECT PREMIUMS WRITTEN

Line of Business		1 Current Quarter	2 Current Year to Date	3 Prior Year Year to Date
1.	Fire	12,920	12,920	5,299
2.1	Allied lines	14,570	14,570	5,746
2.2	Multiple peril crop	0		0
2.3	Federal flood	0		0
2.4	Private crop	0		0
2.5	Private flood	0		0
3.	Farmowners multiple peril	7,734,955	7,734,955	7,058,043
4.	Homeowners multiple peril	4,697,097	4,697,097	4,178,688
5.1	Commercial multiple peril (non-liability portion)	3,613,754	3,613,754	3,322,785
5.2	Commercial multiple peril (liability portion)	2,928,657	2,928,657	2,562,196
6.	Mortgage guaranty	0		0
8.	Ocean marine	0		0
9.1.	Inland marine	796,505	796,505	763,947
9.2.	Pet insurance	0		0
10.	Financial guaranty	0		0
11.1	Medical professional liability-occurrence	0		0
11.2	Medical professional liability-claims made	0		0
12.	Earthquake	0		0
13.1	Comprehensive (hospital and medical) individual	0		0
13.2	Comprehensive (hospital and medical) group	0		0
14.	Credit accident and health	0		0
15.1	Vision only	0		0
15.2	Dental only	0		0
15.3	Disability income	0		0
15.4	Medicare supplement	0		0
15.5	Medicaid Title XIX	0		0
15.6	Medicare Title XVIII	0		0
15.7	Long-term care	0		0
15.8	Federal employee health benefits plan	0		0
15.9	Other health	0		0
16.	Workers' compensation	0		0
17.1	Other liability occurrence	425,329	425,329	289,474
17.2	Other liability-claims made	97,244	97,244	91,965
17.3	Excess Workers' Compensation	0		0
18.1	Products liability-occurrence	17,284	17,284	10,480
18.2	Products liability-claims made	0		0
19.1	Private passenger auto no-fault (personal injury protection)	0		0
19.2	Other private passenger auto liability	1,571,805	1,571,805	1,685,589
19.3	Commercial auto no-fault (personal injury protection)	0	0	0
19.4	Other commercial auto liability	2,859,840	2,859,840	2,777,338
21.1	Private passenger auto physical damage	1,870,010	1,870,010	1,525,214
21.2	Commercial auto physical damage	1,124,970	1,124,970	1,056,537
22.	Aircraft (all perils)	0		0
23.	Fidelity	0		0
24.	Surety	0		0
26.	Burglary and theft	27,781	27,781	29,264
27.	Boiler and machinery	414,795	414,795	395,097
28.	Credit	0		0
29.	International	0		0
30.	Warranty	0		0
31.	Reinsurance - Nonproportional Assumed Property	XXX	XXX	XXX
32.	Reinsurance - Nonproportional Assumed Liability	XXX	XXX	XXX
33.	Reinsurance - Nonproportional Assumed Financial Lines	XXX	XXX	XXX
34.	Aggregate write-ins for other lines of business	0	0	0
35.	TOTALS	28,207,516	28,207,516	25,757,662
DETAILS OF WRITE-INS				
3401.	0		0
3402.	0		0
3403.	0		0
3498.	Sum. of remaining write-ins for Line 34 from overflow page	0	0	0
3499.	Totals (Lines 3401 through 3403 plus 3498) (Line 34)	0	0	0

STATEMENT AS OF MARCH 31, 2024 OF THE LIGHTNING ROD MUTUAL INSURANCE COMPANY

PART 3 (\$000 OMITTED)

LOSS AND LOSS ADJUSTMENT EXPENSE RESERVES SCHEDULE

	1	2	3	4	5	6	7	8	9	10	11	12	13
Years in Which Losses Occurred	Prior Year-End Known Case Loss and LAE Reserves	Prior Year-End IBNR Loss and LAE Reserves	Total Prior Year-End Loss and LAE Reserves (Cols. 1 + 2)	2024 Loss and LAE Payments on Claims Reported as of Prior Year-End	2024 Loss and LAE Payments on Claims Unreported as of Prior Year-End	Total 2024 Loss and LAE Payments (Cols. 4 + 5)	Q.S. Date Known Case Loss and LAE Reserves on Claims Reported and Open as of Prior Year End	Q.S. Date Known Case Loss and LAE Reserves on Claims Reported or Reopened Subsequent to Prior Year End	Q.S. Date IBNR Loss and LAE Reserves	Total Q.S. Loss and LAE Reserves (Cols.7 + 8 + 9)	Prior Year-End Known Case Loss and LAE Reserves Developed (Savings)/ Deficiency (Cols. 4 + 7 minus Col. 1)	Prior Year-End IBNR Loss and LAE Reserves Developed (Savings)/ Deficiency (Cols. 5 + 8 + 9 minus Col. 2)	Prior Year-End Total Loss and LAE Reserve Developed (Savings)/ Deficiency (Cols. 11 + 12)
1. 2021 + Prior	7,440	2,840	10,280	1,252	19	1,271	6,438	187	2,385	9,010	250	(249)	1
2. 2022	9,512	3,299	12,811	1,169	66	1,235	8,086	216	3,273	11,575	(257)	256	(1)
3. Subtotals 2022 + prior	16,952	6,139	23,091	2,421	85	2,506	14,524	403	5,658	20,585	(7)	7	0
4. 2023	19,807	13,643	33,450	8,050	3,144	11,194	13,570	4,283	4,402	22,255	1,813	(1,814)	(1)
5. Subtotals 2023 + prior	36,759	19,782	56,541	10,471	3,229	13,700	28,094	4,686	10,060	42,840	1,806	(1,807)	(1)
6. 2024	XXX	XXX	XXX	XXX	12,615	12,615	XXX	6,500	11,734	18,234	XXX	XXX	XXX
7. Totals	36,759	19,782	56,541	10,471	15,844	26,315	28,094	11,186	21,794	61,074	1,806	(1,807)	(1)
8. Prior Year-End Surplus As Regards Policy-holders	188,083										Col. 11, Line 7 As % of Col. 1, Line 7	Col. 12, Line 7 As % of Col. 2, Line 7	Col. 13, Line 7 As % of Col. 3, Line 7
											1. 4.9	2. (9.1)	3. 0.0
											Col. 13, Line 7 Line 8		
											4. 0.0		

SUPPLEMENTAL EXHIBITS AND SCHEDULES INTERROGATORIES

The following supplemental reports are required to be filed as part of your statement filing. However, in the event that your company does not transact the type of business for which the special report must be filed, your response of **NO** to the specific interrogatory will be accepted in lieu of filing a "NONE" report and a bar code will be printed below. If the supplement is required of your company but is not being filed for whatever reason enter **SEE EXPLANATION** and provide an explanation following the interrogatory questions.

	Response
1. Will the Trusteed Surplus Statement be filed with the state of domicile and the NAIC with this statement?NO.....
2. Will Supplement A to Schedule T (Medical Professional Liability Supplement) be filed with this statement?NO.....
3. Will the Medicare Part D Coverage Supplement be filed with the state of domicile and the NAIC with this statement?NO.....
4. Will the Director and Officer Insurance Coverage Supplement be filed with the state of domicile and the NAIC with this statement?YES.....
AUGUST FILING	
5. Will the regulator-only (non-public) Communication of Internal Control Related Matters Noted in Audit be filed with the state of domicile and electronically with the NAIC (as a regulator-only non-public document) by August 1? The response for 1st and 3rd quarters should be N/A. A NO response resulting with a bar code is only appropriate in the 2nd quarter.N/A.....

Explanation:

Bar Code:

1.

26123202449000001

2.

26123202445500001

3.

26123202436500001

OVERFLOW PAGE FOR WRITE-INS

SCHEDULE A – VERIFICATION

Real Estate

	1	2
	Year To Date	Prior Year Ended December 31
1. Book/adjusted carrying value, December 31 of prior year	24,314,396	24,959,388
2. Cost of acquired:		
2.1 Actual cost at time of acquisition	74,281	33,167
2.2 Additional investment made after acquisition		0
3. Current year change in encumbrances		0
4. Total gain (loss) on disposals		0
5. Deduct amounts received on disposals		0
6. Total foreign exchange change in book/adjusted carrying value		0
7. Deduct current year's other-than-temporary impairment recognized		0
8. Deduct current year's depreciation	169,759	678,159
9. Book/adjusted carrying value at the end of current period (Lines 1+2+3+4-5+6-7-8)	24,218,918	24,314,396
10. Deduct total nonadmitted amounts	0	0
11. Statement value at end of current period (Line 9 minus Line 10)	24,218,918	24,314,396

SCHEDULE B – VERIFICATION

Mortgage Loans

	1	2
	Year To Date	Prior Year Ended December 31
1. Book value/recorded investment excluding accrued interest, December 31 of prior year	0	0
2. Cost of acquired:		
2.1 Actual cost at time of acquisition		0
2.2 Additional investment made after acquisition		0
3. Capitalized deferred interest and other		0
4. Accrual of discount		0
5. Unrealized valuation increase/(decrease)		0
6. Total gain (loss) on disposals		0
7. Deduct amounts received on disposals		0
8. Deduct amortization of premium and mortgage interest points and commitment fees		0
9. Total foreign exchange change in book value/recorded investment excluding accrued interest		0
10. Deduct current year's other-than-temporary impairment recognized		0
11. Book value/recorded investment excluding accrued interest at end of current period (Lines 1+2+3+4+5+6-7-8+9-10)	0	0
12. Total valuation allowance		0
13. Subtotal (Line 11 plus Line 12)	0	0
14. Deduct total nonadmitted amounts	0	0
15. Statement value at end of current period (Line 13 minus Line 14)	0	0

NONE

SCHEDULE BA – VERIFICATION

Other Long-Term Invested Assets

	1	2
	Year To Date	Prior Year Ended December 31
1. Book/adjusted carrying value, December 31 of prior year	12,268,523	10,653,938
2. Cost of acquired:		
2.1 Actual cost at time of acquisition		0
2.2 Additional investment made after acquisition	160,009	2,687,599
3. Capitalized deferred interest and other		0
4. Accrual of discount		0
5. Unrealized valuation increase/(decrease)	(216,372)	(252,268)
6. Total gain (loss) on disposals		0
7. Deduct amounts received on disposals	320,519	820,746
8. Deduct amortization of premium and depreciation		0
9. Total foreign exchange change in book/adjusted carrying value		0
10. Deduct current year's other-than-temporary impairment recognized		0
11. Book/adjusted carrying value at end of current period (Lines 1+2+3+4+5+6-7-8+9-10)	11,891,642	12,268,523
12. Deduct total nonadmitted amounts	0	0
13. Statement value at end of current period (Line 11 minus Line 12)	11,891,642	12,268,523

SCHEDULE D – VERIFICATION

Bonds and Stocks

	1	2
	Year To Date	Prior Year Ended December 31
1. Book/adjusted carrying value of bonds and stocks, December 31 of prior year	229,080,139	241,397,979
2. Cost of bonds and stocks acquired	12,596,636	58,730,784
3. Accrual of discount	146,268	268,300
4. Unrealized valuation increase/(decrease)	2,159,389	(2,071,744)
5. Total gain (loss) on disposals	2,689,355	6,472,532
6. Deduct consideration for bonds and stocks disposed of	12,486,234	74,992,372
7. Deduct amortization of premium	110,017	725,340
8. Total foreign exchange change in book/adjusted carrying value		0
9. Deduct current year's other-than-temporary impairment recognized		0
10. Total investment income recognized as a result of prepayment penalties and/or acceleration fees		0
11. Book/adjusted carrying value at end of current period (Lines 1+2+3+4+5-6-7+8-9+10)	234,075,535	229,080,139
12. Deduct total nonadmitted amounts	573,440	607,609
13. Statement value at end of current period (Line 11 minus Line 12)	233,502,096	228,472,530

STATEMENT AS OF MARCH 31, 2024 OF THE LIGHTNING ROD MUTUAL INSURANCE COMPANY

SCHEDULE D - PART 1B

Showing the Acquisitions, Dispositions and Non-Trading Activity
During the Current Quarter for all Bonds and Preferred Stock by NAIC Designation

NAIC Designation	1 Book/Adjusted Carrying Value Beginning of Current Quarter	2 Acquisitions During Current Quarter	3 Dispositions During Current Quarter	4 Non-Trading Activity During Current Quarter	5 Book/Adjusted Carrying Value End of First Quarter	6 Book/Adjusted Carrying Value End of Second Quarter	7 Book/Adjusted Carrying Value End of Third Quarter	8 Book/Adjusted Carrying Value December 31 Prior Year
BONDS								
1. NAIC 1 (a).....	136,979,298	8,036,662	7,007,915	(170,786)	137,837,258	0	0	136,979,298
2. NAIC 2 (a).....	14,540,380		1,199,852	216,040	13,556,568	0	0	14,540,380
3. NAIC 3 (a).....	0				0	0	0	0
4. NAIC 4 (a).....	0				0	0	0	0
5. NAIC 5 (a).....	0				0	0	0	0
6. NAIC 6 (a).....	0				0	0	0	0
7. Total Bonds	151,519,678	8,036,662	8,207,767	45,254	151,393,826	0	0	151,519,678
PREFERRED STOCK								
8. NAIC 1	0				0	0	0	0
9. NAIC 2	0				0	0	0	0
10. NAIC 3	0				0	0	0	0
11. NAIC 4	0				0	0	0	0
12. NAIC 5	0				0	0	0	0
13. NAIC 6	0				0	0	0	0
14. Total Preferred Stock.....	0	0	0	0	0	0	0	0
15. Total Bonds & Preferred Stock	151,519,678	8,036,662	8,207,767	45,254	151,393,826	0	0	151,519,678

(a) Book/Adjusted Carrying Value column for the end of the current reporting period includes the following amount of short-term and cash equivalent bonds by NAIC designation: NAIC 1 \$; NAIC 2 \$;

NAIC 3 \$; NAIC 4 \$; NAIC 5 \$; NAIC 6 \$

Schedule DA - Part 1
NONE

Schedule DA - Verification
NONE

Schedule DB - Part A - Verification
NONE

Schedule DB - Part B - Verification
NONE

Schedule DB - Part C - Section 1
NONE

Schedule DB - Part C - Section 2
NONE

Schedule DB - Verification
NONE

SCHEDULE E – PART 2 – VERIFICATION
(Cash Equivalents)

	1 Year To Date	2 Prior Year Ended December 31
1. Book/adjusted carrying value, December 31 of prior year.....	2,174,264	2,993,973
2. Cost of cash equivalents acquired	10,296,230	61,939,063
3. Accrual of discount		0
4. Unrealized valuation increase/(decrease)		0
5. Total gain (loss) on disposals.....		0
6. Deduct consideration received on disposals	8,376,642	62,758,772
7. Deduct amortization of premium		0
8. Total foreign exchange change in book/adjusted carrying value		0
9. Deduct current year's other-than-temporary impairment recognized		0
10. Book/adjusted carrying value at end of current period (Lines 1+2+3+4+5-6-7+8-9)	4,093,852	2,174,264
11. Deduct total nonadmitted amounts		0
12. Statement value at end of current period (Line 10 minus Line 11)	4,093,852	2,174,264

EO1

NONE

[illegible]

NONE

[illegible]

STATEMENT AS OF MARCH 31, 2024 OF THE LIGHTNING ROD MUTUAL INSURANCE COMPANY

SCHEDULE B - PART 2

Showing All Mortgage Loans ACQUIRED AND ADDITIONS MADE During the Current Quarter

[illegible]

SCHEDULE B - PART 3

Showing All Mortgage Loans DISPOSED, Transferred or Repaid During the Current Quarter

[illegible]

STATEMENT AS OF MARCH 31, 2024 OF THE LIGHTNING ROD MUTUAL INSURANCE COMPANY

SCHEDULE BA - PART 2

Showing Other Long-Term Invested Assets ACQUIRED AND ADDITIONS MADE During the Current Quarter

[illegible]

SCHEDULE BA - PART 3

Showing Other Long-Term Invested Assets DISPOSED, Transferred or Repaid During the Current Quarter

1 CUSIP Identification	2 Name or Description	Location		5 Name of Purchaser or Nature of Disposal	6 Date Originally Acquired	7 Disposal Date	8 Book/ Adjusted Carrying Value Less Encumbrances Prior Year	Change in Book/Adjusted Carrying Value						15 Book/Adjusted Carrying Value Less Encumbrances on Disposal	16 Consideration	17 Foreign Exchange Gain (Loss) on Disposal	18 Realized Gain (Loss) on Disposal	19 Total Gain (Loss) on Disposal	20 Investment Income
		3 City	4 State					9 Unrealized Valuation Increase/ (Decrease)	10 Current Year's (Depreciation) or (Amortization)/ Accretion	11 Current Year's Other-Than- Temporary Impairment Recognized	12 Capitalized Deferred Interest and Other	13 Total Change in B./A.C.V. (9+10-11+12)	14 Total Foreign Exchange Change in B./A.C.V.						
Joint Venture, Partnership or Limited Liability Company Interests with Underlying Assets Having the Characteristics of: Common Stocks - Unaffiliated																			
000000-00-0.....	HarbourVest Direct Lending Fund (L)LP.....	USA.....		HarbourVest Private Credit Fund.....	..08/30/2021..	..03/18/2024..	320,519					0		320,519	320,519			0	
1999999 - Joint Venture, Partnership or Limited Liability Company Interests with Underlying Assets Having the Characteristics of: Common Stocks - Unaffiliated							320,519	0	0	0	0	0	0	320,519	320,519	0	0	0	
6099999 – Subtotals - Unaffiliated							320,519	0	0	0	0	0	0	320,519	320,519	0	0	0	
6199999 – Subtotals - Affiliated							0	0	0	0	0	0	0	0	0	0	0	0	0
6299999 Totals							320,519	0	0	0	0	0	0	320,519	320,519	0	0	0	

STATEMENT AS OF MARCH 31, 2024 OF THE LIGHTNING ROD MUTUAL INSURANCE COMPANY

SCHEDULE D - PART 3

Show All Long-Term Bonds and Stock Acquired During the Current Quarter

1	2	3	4	5	6	7	8	9	10
CUSIP Identification	Description	Foreign	Date Acquired	Name of Vendor	Number of Shares of Stock	Actual Cost	Par Value	Paid for Accrued Interest and Dividends	NAIC Designation, NAIC Designation Modifier and SVO Administrative Symbol
Bonds - U.S. Governments									
91282C-JZ-5	UNITED STATES TREASURY		03/28/2024	Montgomery	XXX	638,473	650,000	3,286	1 A
0109999999 - Bonds - U.S. Governments						638,473	650,000	3,286	XXX
Bonds - U.S. Special Revenue and Special Assessment and all Non-Guaranteed Obligations of Agencies and Authorities of Governments and Their Political Subdivisions									
3132DQ-H3-3	FH SD2950 - RMBS		03/15/2024	Montgomery	XXX	1,282,194	1,264,998	4,006	1 A
3133AN-K7-8	FH QC3918 - RMBS		01/31/2024	Barclays Bank	XXX	1,015,363	1,197,406	333	1 A
3133KJ-3Y-6	FH RA3515 - RMBS		03/15/2024	Wachovia Bank	XXX	2,558,458	3,109,997	4,103	1 A
3140XD-6H-4	FN FM9871 - RMBS		02/29/2024	Barclays Bank	XXX	105,977	127,773	35	1 A
3140XM-J4-9	FN FS5682 - RMBS		02/01/2024	SALOMON BROTHERS INC	XXX	(402)		0	1 A
3140XN-2H-6	FN FS7075 - RMBS		02/29/2024	Wachovia Bank	XXX	804,186	953,212		1 A
3140XN-UT-9	FN FS6893 - RMBS		02/16/2024	Montgomery	XXX	671,265	849,997	992	1 A
0909999999 - Bonds - U.S. Special Revenue and Special Assessment and all Non-Guaranteed Obligations of Agencies and Authorities of Governments and Their Political Subdivisions						6,437,041	7,503,382	9,469	XXX
Bonds - Industrial and Miscellaneous (Unaffiliated)									
693342-AD-9	PCG 2022-A A4 - ABS		03/20/2024	SALOMON BROTHERS INC	XXX	469,324	525,000	7,205	1 A FE
693342-AJ-6	PCG 2022-B A4 - ABS		03/19/2024	SALOMON BROTHERS INC	XXX	491,825	500,000	7,963	1 A FE
1109999999 - Bonds - Industrial and Miscellaneous (Unaffiliated)						961,149	1,025,000	15,168	XXX
2509999997 - Bonds - Subtotals - Bonds - Part 3						8,036,662	9,178,382	27,922	XXX
2509999999 - Bonds - Subtotals - Bonds						8,036,662	9,178,382	27,922	XXX
Common Stocks - Industrial and Miscellaneous (Unaffiliated) Publicly Traded									
00724F-10-1	ADOBE ORD		03/13/2024	MERRILL LYNCH	289.000	168,167	XXX		XXX
02079K-10-7	ALPHABET CL C ORD		03/13/2024	MERRILL LYNCH	7,293.000	1,036,279	XXX		XXX
02079K-30-5	ALPHABET CL A ORD		03/13/2024	MERRILL LYNCH	2,909.000	410,225	XXX		XXX
11135F-10-1	BROADCOM ORD		03/13/2024	MERRILL LYNCH	137.000	173,199	XXX		XXX
127387-10-8	CADENCE DESIGN SYSTEMS ORD		03/13/2024	MERRILL LYNCH	129.000	39,358	XXX		XXX
217204-10-6	COPART ORD		03/13/2024	MERRILL LYNCH	12.000	673	XXX		XXX
22160K-10-5	COSTCO WHOLESALE ORD		03/13/2024	MERRILL LYNCH	19.000	13,938	XXX		XXX
30303M-10-2	META PLATFORMS CL A ORD		03/13/2024	MERRILL LYNCH	592.000	294,456	XXX		XXX
532457-10-8	ELI LILLY ORD		03/13/2024	MERRILL LYNCH	1,482.000	1,122,729	XXX		XXX
562750-10-9	MANHATTAN ASSOCIATES ORD		03/13/2024	MERRILL LYNCH	60.000	15,201	XXX		XXX
58506Q-10-9	MEDPACE HOLDINGS ORD		03/13/2024	MERRILL LYNCH	28.000	11,342	XXX		XXX
594918-10-4	MICROSOFT ORD		03/13/2024	MERRILL LYNCH	2,826.000	1,173,710	XXX		XXX
82489T-10-4	SHOCKWAVE MEDICAL ORD		03/13/2024	MERRILL LYNCH	6.000	1,619	XXX		XXX
922475-10-8	VEEVA SYSTEMS ORD		03/13/2024	MERRILL LYNCH	131.000	30,626	XXX		XXX
92532F-10-0	VERTEX PHARMACEUTICALS ORD		03/13/2024	MERRILL LYNCH	165.000	68,451	XXX		XXX
5019999999 - Common Stocks - Industrial and Miscellaneous (Unaffiliated) Publicly Traded						4,559,974	XXX	0	XXX
5989999997 - Common Stocks - Subtotals - Common Stocks - Part 3						4,559,974	XXX	0	XXX
5989999999 - Common Stocks - Subtotals - Common Stocks						4,559,974	XXX	0	XXX
5999999999 - Common Stocks - Subtotals - Preferred and Common Stocks						4,559,974	XXX	0	XXX
6009999999 Totals						12,596,636	XXX	27,922	XXX

STATEMENT AS OF MARCH 31, 2024 OF THE LIGHTNING ROD MUTUAL INSURANCE COMPANY

SCHEDULE D - PART 4

Show All Long-Term Bonds and Stock Sold, Redeemed or Otherwise Disposed of During the Current Quarter

1	2	3 F o r e i g n	4	5	6	7	8	9	10	Change in Book/Adjusted Carrying Value					16	17	18	19	20	21	22 NAIC Designation, NAIC Desig. Modifier and SVO Administrative Symbol
										11	12	13	14	15							
CUSIP Identi- fication	Description		Disposal Date	Name of Purchaser	Number of Shares of Stock	Consideration	Par Value	Actual Cost	Prior Year Book/Adjusted Carrying Value	Unrealized Valuation Increase/ (Decrease)	Current Year's (Amortization)/ Accretion	Current Year's Other Than Temporary Impairment Recognized	Total Change in B./A.C.V.	Total Foreign Exchange Change in B./A.C.V.	Book/ Adjusted Carrying Value at Disposal Date	Foreign Exchange Gain (Loss) on Disposal	Realized Gain (Loss) on Disposal	Total Gain (Loss) on Disposal	Bond Interest/Stock Dividends Received During Year	Stated Contractual Maturity Date	
Bonds - U.S. Governments																					
36179U-ZH-8.	G2 IA6144 - RMBS.		03/01/2024.	Paydown.....	XXX.	.829		.829	.888		(.58)		(.58)		.829			.0	.5	09/20/2049.	1 A
38379U-ZS-8.	GNR 2016-096 HA - CMBS.		03/01/2024.	Paydown.....	XXX.	2,213	2,213	2,202	2,201		13				2,213			.9	.9	12/16/2057.	1 A
38380R-VC-1.	GNR 2021-033 V - CMBS.		03/01/2024.	Paydown.....	XXX.	8,109	8,109	7,808	7,848		261		261		8,109	.0		.0	.17	06/16/2040.	1 A
38380Y-3C-7.	GNR 2018-124 QC - CMO/RMBS.		03/01/2024.	Paydown.....	XXX.	2,323	2,323	2,315	2,315		8		8		2,323			.0	.17	10/20/2046.	1 A
38381A-GK-6.	GNR 2018-147 EV - CMO/RMBS.		02/20/2024.	Paydown.....	XXX.	56,711	56,711	58,271	56,685		27		27		56,711			.0	259	01/20/2030.	1 A
831641-FJ-9.	SBIC 2017-10 B B - ABS.		03/01/2024.	Paydown.....	XXX.	46,933	46,933	46,931	46,912		21		21		46,933			.0	589	09/10/2027.	1 A
831641-FK-6.	SBIC 2018-10 A A - ABS.		03/01/2024.	Paydown.....	XXX.	13,643	13,643	13,660	(2)		(2)		(2)		13,643			.0	217	03/10/2028.	1 A
831641-FL-4.	SBIC 2018-10 B B - ABS.		03/01/2024.	Paydown.....	XXX.	2,180	2,180	2,190	2,189		(9)		(9)		2,180			.0	.39	09/10/2028.	1 A
831641-FT-7.	SBIC 2022-10 A A - ABS.		03/11/2024.	Paydown.....	XXX.	1,332		1,343	1,340		(8)		(8)		1,332			.0	.20	03/01/2032.	1 A
0109999999 - Bonds - U.S. Governments						134,274	134,274	135,561	134,021	0	253	0	253	0	134,274	0	0	0	1,170	XXX	XXX
Bonds - U.S. Political Subdivisions of States, Territories and Possessions																					
388046-JM-7.	GRANT CNTY WASH SCH DIST																				
388046-JM-7.	NO 161 MOSES LA.		03/15/2024.	FUNB-FUNDS I I.	XXX.	.612,228		.600,000	724,200				(2,967)	(2,967)	.617,009		(4,781)	(4,781)	.9,000	12/01/2026.	1 A FE
406087-JO-7.	JOPLIN MO SCHS.			DAVIDSON (D.A.) & CO. INC.	XXX.	.594,222	.600,000	624,522	600,000					.0	600,000		(5,778)	(5,778)	.9,900	03/01/2027.	1 B FE
0709999999 - Bonds - U.S. Political Subdivisions of States, Territories and Possessions						1,206,450	1,200,000	1,348,722	1,219,976	0	(2,967)	0	(2,967)	0	1,217,009	0	(10,559)	(10,559)	18,900	XXX	XXX
Bonds - U.S. Special Revenue and Special Assessment and all Non-Guaranteed Obligations of Agencies and Authorities of Governments and Their Political Subdivisions																					
3128P8-GM-7.	FH C92004 - RMBS.		03/01/2024.	Paydown.....	XXX.	4,156	4,156	4,298	4,408		(252)		(252)		4,156		.0	.0	.25	07/01/2038.	1 A
3128Q0-N9-4.	FH J19416 - RMBS.		03/01/2024.	Paydown.....	XXX.	3,870	3,870	3,977	3,909		(39)		(39)		3,870		.0	.0	.19	06/01/2027.	1 A
3128S2-OQ-7.	FH T61363 - RMBS.		03/01/2024.	Paydown.....	XXX.	.302	.302	.316	.331		(30)		(30)		.302		.0	.0	.2	09/01/2042.	1 A
31326F-Y9-3.	FH 2B1636 - RMBS.		03/01/2024.	Paydown.....	XXX.	1,448	1,448	1,433	1,493		(45)		(45)		1,448		.0	.0	.31	08/01/2043.	1 A
3133AN-K7-8.	FH QC3918 - RMBS.		03/01/2024.	Paydown.....	XXX.	5,891	5,891	4,995	896				896		5,891		.0	.0	.12	07/01/2051.	1 A
3133KY-SE-0.	FH RB5017 - RMBS.		03/01/2024.	Paydown.....	XXX.	4,391	4,391	4,487	4,582		(191)		(191)		4,391		.0	.0	.20	11/01/2039.	1 A
3133KY-XR-5.	FH RB5188 - RMBS.		03/01/2024.	Paydown.....	XXX.	15,614	15,614	15,082	15,116		498		498		15,614	.0		.0	.101	10/01/2042.	1 A
3136A1-4P-7.	FNR 2011-117 MA - CMO/RMBS.		03/01/2024.	Paydown.....	XXX.	3,125	3,125	3,133	2		2		2		3,125		.0	.0	.11	08/25/2040.	1 A
3136AE-Z4-2.	FNR 2013-70 VA - CMO/RMBS.		03/01/2024.	Paydown.....	XXX.	13,027	13,027	13,695	13,116		(89)		(89)		13,027		.0	.0	.65	08/25/2026.	1 A
3136AW-BD-8.	FNR 2017-25 OH - CMO/RMBS.		03/01/2024.	Paydown.....	XXX.	.847		.847	.842		5		5		.847		.0	.0	.4	04/25/2047.	1 A
3137BY-L3-2.	FHR 4683 PD - CMO/RMBS.		03/01/2024.	Paydown.....	XXX.	1,853	1,853	1,848	1,847		6		6		1,853		.0	.0	.9	04/15/2046.	1 A
3137F1-VB-1.	FHR 4700 VH - CMO/RMBS.		03/01/2024.	Paydown.....	XXX.	11,441	11,441	11,806	11,521		(79)		(79)		11,441	.0		.0	.57	12/15/2028.	1 A
3137F3-JK-1.	FHR 4768 VL - CMO/RMBS.		01/16/2024.	Paydown.....	XXX.	9,141	9,141	9,609	9,141						9,141		.0	.0	.30	01/15/2031.	1 A
3137FY-C2-0.	FHR 5092 EP - CMO/RMBS.		03/01/2024.	Paydown.....	XXX.	4,696	4,696	3,817	3,821		876		876		4,696	.0		.0	.19	01/25/2051.	1 A
3137H9-GK-9.	FHR 5275 KA - CMO/RMBS.		03/01/2024.	Paydown.....	XXX.	23,645	23,645	23,516	23,526		119		119		23,645		.0	.0	.229	09/25/2047.	1 A
3138LK-ER-4.	FN AN6443 - CMBS/RMBS.		03/01/2024.	Paydown.....	XXX.	2,410	2,410	2,427	2,408		3		3		2,410		.0	.0	.11	09/01/2024.	1 A
3138LL-TH-8.	FN AN7751 - CMBS/RMBS.		03/01/2024.	Paydown.....	XXX.	3,167	3,167	3,013	3,075		92		92		3,167		.0	.0	.17	12/01/2029.	1 A
3140QN-Q5-4.	FN CB3175 - RMBS.		03/01/2024.	Paydown.....	XXX.	23,607	23,607	20,701	20,677		2,930		2,930		23,607	.0		.0	.138	03/01/2052.	1 A
3140XK-BS-8.	FN FS3648 - RMBS.		03/01/2024.	Paydown.....	XXX.	8,735	8,735	7,800	7,800		935		935		8,735		.0	.0	.59	03/01/2046.	1 A
3140XM-J4-9.	FN FS5682 - RMBS.		03/01/2024.	Paydown.....	XXX.	2,640	2,640	2,195	302		(827)		302		2,640		.0	.0	(.599)	10/01/2050.	1 A
3140XM-Q9-0.	FN FS5879 - RMBS.		03/01/2024.	Paydown.....	XXX.	39,117	39,117	34,869	34,858		4,259		4,259		39,117		.0	.0	.235	11/01/2051.	1 A
3140XN-UT-9.	FN FS6893 - RMBS.		03/01/2024.	Paydown.....	XXX.	3,949	3,949	3,119	830				830		3,949		.0	.0	.7	08/01/2051.	1 A
31416X-HY-9.	FN AB2046 - RMBS.		03/01/2024.	Paydown.....	XXX.	2,289	2,289	2,250	2,273		15		15		2,289		.0	.0	.11	01/01/2026.	1 A
31418A-LY-2.	FN MA1242 - RMBS.		03/01/2024.	Paydown.....	XXX.	476	476	498	515		(38)		(38)		476	.0		.0	.3	11/01/2042.	1 A
31418A-WS-3.	FN MA1556 - RMBS.		03/01/2024.	Paydown.....	XXX.	7,918	7,918	7,859	7,889		29		29		7,918		.0	.0	.40	08/01/2028.	1 A
31418C-5A-8.	FN MA3540 - RMBS.		03/01/2024.	Paydown.....	XXX.	4,083	4,083	4,187	4,268		(186)		(186)		4,083		.0	.0	.25	12/01/2033.	1 A
31418D-HH-8.	FN MA3831 - RMBS.		03/01/2024.	Paydown.....	XXX.	3,464	3,464	3,571	3,685		(220)		(220)		3,464	.0		.0	.18	11/01/2039.	1 A
31418E-KP-4.	FN MA4801 - RMBS.		03/01/2024.	Paydown.....	XXX.	16,034	16,034	15,758	15,767		267		267		16,034		.0	.0	.125	11/01/2042.	1 A
34074M-VP-3.	FLORIDA HSG FIN CORP REV.		01/01/2024.	Call @ 100.00.	XXX.	50,000	50,000	48,300	48,322				.0		48,322		1,678	1,678	.750	07/01/2051.	1 A FE
45129Y-S6-4.	SINGLE FAMILY MTG R.		01/01/2024.	Call @ 100.00.	XXX.	.65,000	.65,000	.65,261	.65,260				.0		.65,260		(260)	(260)	1,300	01/01/2050.	1 B FE
462467-5S-6.	FAMILY MTG REV.		01/02/2024.	Paydown.....	XXX.	10,000	10,000	10,568	10,546				.0		10,546		(546)	(546)	.281	07/01/2053.	1 A FE
658207-2F-1.	HOMEOWNERSHIP.		01/01/2024.	Call @ 100.00.	XXX.	5,000	5,000	5,405	5,390				.0		5,390		(390)	(390)	.113	01/01/2054.	1 B FE
658909-PF-7.	AGY - RMBS.		01/01/2024.	Call @ 100.00.	XXX.	45,000	45,000	44,645	44,649				.0		44,649		.351	.351	.900	07/01/2048.	1 B FE
67756Q-T9-8.	OHIO ST HSG FIN AGY			Call @ 100.00.	XXX.	15,000	15,000	14,572	14,576		1		1		14,578		.422	.422	.244	09/01/2052.	1 A FE
799204-KV-3.	RESIDENTIAL MTG REV.		03/01/2024.	Call @ 100.00.	XXX.																
83756C-S8-9.	SAN PATRICIO TEX MUN WTR																				
799204-KV-3.	DIST WTRKWS REV.		03/15/2024.	WEDBUSH.	XXX.	343,740	340,000	404,600	347,685		(1,593)		(1,593)		346,092		(2,352)	(2,352)	.11,758	07/10/2025.	1 C FE
83756C-S8-9.	SOUTH DAKOTA HSG DEV AUTH.		02/07/2024.	Call @ 100.00.	XXX.	5,000	5,000	4,821	4,821		0		0		4,821		.179	.179	.0	11/01/2052.	1 A FE
914460-JS-0.	UNIVERSITY MINN.		03/15/2024.	NATIFISE.	XXX.	500,035	500,000	540,150	500,000				0		500,000		35	35	.12,667	02/01/2027.	1 C FE

STATEMENT AS OF MARCH 31, 2024 OF THE LIGHTNING ROD MUTUAL INSURANCE COMPANY

SCHEDULE D - PART 4

Show All Long-Term Bonds and Stock Sold, Redeemed or Otherwise Disposed of During the Current Quarter

CUSIP Identification	Description	3 F o r e i g n Disposal Date	4 Name of Purchaser	5 Number of Shares of Stock	6 Consideration	7 Par Value	8 Actual Cost	9 Prior Year Book/Adjusted Carrying Value	Change in Book/Adjusted Carrying Value					16 Book/ Adjusted Carrying Value at Disposal Date	17 Foreign Exchange Gain (Loss) on Disposal	18 Realized Gain (Loss) on Disposal	19 Total Gain (Loss) on Disposal	20 Bond Interest/Stock Dividends Received During Year	21 Stated Contractual Maturity Date	22 NAIC Designation, NAIC Desig. Modifier and SVO Administrative Symbol	
									11 Unrealized Valuation Increase/ (Decrease)	12 Current Year's (Amortization)/ Accretion	13 Current Year's Other Than Temporary Impairment Recognized	14 Total Change in B./A.C.V. (11+12-13)	15 Total Foreign Exchange Change in B./A.C.V.								
0909999999 - Bonds - U.S. Special Revenue and Special Assessment and all Non-Guaranteed Obligations of Agencies and Authorities of Governments and Their Political Subdivisions						1,260,111	1,256,336	1,349,420	1,240,414	0	9,303	0	9,303	0	1,260,995	0	(884)	(884)	28,739	XXX	XXX
Bonds - Industrial and Miscellaneous (Unaffiliated)																					
194160-EG-1	COLGATE-PALMOLIVE CO.....	03/15/2024	Maturity @ 100.00.....	.XXX.	.600,000	.600,000	.600,000	.600,000					.0	.600,000			.0	9,750	.03/15/2024	.1 D FE	
19688R-AA-7	COLT 233 A1 - RMBS.....	03/01/2024	Paydown.....	.XXX.	.10,358	.10,358	.10,487	.10,482			(124)		(124)	.10,358		.0	.0	.117	.09/25/2068	.Z	
232989-AB-9	DLLMT 231 A2 - ABS.....	03/20/2024	Paydown.....	.XXX.	.36,835	.36,835	.36,708	.36,737			.98		.98	.36,835			.0	.500	.11/20/2025	.1 A FE	
24703G-AB-0	DEFT 232 A2 - ABS.....	03/22/2024	Paydown.....	.XXX.	.4,162	.4,162	.4,162	.4,162			.0		.0	.4,162			.0	.61	.01/22/2029	.1 A FE	
29003E-AL-9	ELMWB VIII B2 - CDO.....	03/22/2024	Paydown.....	.XXX.	.725,000	.725,000	.725,000	.725,000					.0	.725,000			.0	.21,987	.01/20/2034	.1 C FE	
29375N-AB-1	EFF 232 A2 - ABS.....	03/20/2024	Paydown.....	.XXX.	.10,045	.10,045	.10,043	.10,042			.3		.3	.10,045			.0	.140	.04/22/2030	.1 A FE	
34533G-AF-6	FORDO 2020-B B - ABS.....	03/15/2024	Paydown.....	.XXX.	.500,000	.500,000	.482,051	.489,742			.10,258		.10,258	.500,000			.0	.1,487	.01/15/2026	.1 A FE	
375558-AZ-6	GILEAD SCIENCES INC.....	03/15/2024	Barclays Bank.....	.XXX.	.590,034	.600,000	.598,500	.599,817			.36		.36	.599,852		(9,818)	(9,818)	.13,300	.02/01/2025	.2 A FE	
380140-AC-7	GMCAR 2021-3 A3 - ABS.....	03/16/2024	Paydown.....	.XXX.	.75,876	.75,876	.72,826	.73,624			.2,252		.2,252	.75,876			.0	.60	.06/16/2026	.1 A FE	
38141G-VM-3	GOLDMAN SACHS GROUP INC.....	03/03/2024	Maturity @ 100.00.....	.XXX.	.600,000	.600,000	.612,360	.600,283			(283)		(283)	.600,000			.0	.12,000	.03/03/2024	.2 A FE	
39154T-CB-2	GALC 231 A2 - ABS.....	03/15/2024	Paydown.....	.XXX.	.7,652	.7,652	.7,651	.7,651			.1		.1	.7,652		.0	.0	.102	.02/17/2026	.1 A FE	
43792T-AB-2	HAROT 2023-2 A2 - ABS.....	03/15/2024	Paydown.....	.XXX.	.43,662	.43,662	.43,659	.43,660			.2		.2	.43,662		.0	.0	.463	.04/15/2026	.1 A FE	
448980-AB-8	HALST 2023-B A2A - ABS.....	03/15/2024	Paydown.....	.XXX.	.14,717	.14,717	.14,716	.14,717			.0		.0	.14,717		.0	.0	.138	.09/15/2025	.1 A FE	
44933M-AD-3	HALST 21C A4 - ABS.....	03/15/2024	Paydown.....	.XXX.	.775,000	.775,000	.745,574	.770,248			.4,752		.4,752	.775,000			.0	.700	.08/15/2025	.1 A FE	
46657C-AD-4	JPMT-238-A4 - CMBS.....	01/25/2024	Paydown.....	.XXX.	.1,432	.1,432	.1,408	.1,409			.24		.24	.1,432			.0	.7	.02/25/2054	.Z	
46657C-AD-4	JPMT 238 A4 - RMBS.....	03/25/2024	Paydown.....	.XXX.	.6,067	.6,067	.5,967	.5,967			.100		.100	.6,067			.0	.69	.02/25/2054	.Z	
53245T-AZ-1	ELI LILLY AND CO.....	03/15/2024	RBC Dain Rauscher (US).....	.XXX.	.612,684	.600,000	.697,020	.637,728			(2,387)		(2,387)	.635,340		(22,656)	(22,656)	.16,867	.03/15/2027	.1 E FE	
55285Q-AA-0	MFRA 2022-NQM2 A1 - RMBS.....	03/01/2024	Paydown.....	.XXX.	.7,653	.7,653	.7,070	.7,071			.583		.583	.7,653			.0	.33	.05/25/2067	.1 A FE	
571676-AB-1	MARS INC.....	02/29/2024	INC.....	.XXX.	.450,845	.500,000	.536,780	.523,656			(632)		(632)	.523,024		(72,179)	(72,179)	.6,800	.04/01/2030	.1 E FE	
58768R-AB-6	MBALT 2023-A A2 - ABS.....	03/15/2024	Paydown.....	.XXX.	.43,571	.43,571	.43,570	.43,570			.0		.0	.43,571		.0	.0	.386	.11/17/2025	.1 A FE	
58772W-AC-7	MBART 2021-1 A3 - ABS.....	03/15/2024	Paydown.....	.XXX.	.64,924	.64,924	.62,482	.63,009			.1,916		.1,916	.64,924			.0	.50	.06/15/2026	.1 A FE	
64831T-AA-5	CMO/RMBS.....	03/01/2024	Paydown.....	.XXX.	.19,232	.19,232	.15,338	.16,571			.2,661		.2,661	.19,232		.0	.0	.35	.11/27/2056	.Z	
67449C-AA-9	OBX 23NQ10 A1 - RMBS.....	03/25/2024	Paydown.....	.XXX.	.23,456	.23,456	.23,456	.23,481			(25)		(25)	.23,456			.0	.258	.10/25/2063	.Z	
733280-AB-0	PFAST 231 A2 - ABS.....	03/22/2024	Paydown.....	.XXX.	.100,643	.100,643	.100,636	.100,639			.5		.5	.100,643			.0	.900	.12/22/2026	.1 A FE	
891941-AB-2	TAOT 2023-B A2A - ABS.....	03/15/2024	Paydown.....	.XXX.	.21,298	.21,298	.21,298	.21,298			.0		.0	.21,298		.0	.0	.188	.05/15/2026	.1 A FE	
89239B-AC-5	TAOT 2021-C A3 - ABS.....	03/15/2024	Paydown.....	.XXX.	.75,142	.75,142	.72,148	.73,001			.2,141		.2,141	.75,142			.0	.54	.01/15/2026	.1 A FE	
92539D-AA-6	VERUS 232 A1 - CMO/RMBS.....	03/01/2024	Paydown.....	.XXX.	.22,998	.22,998	.22,804	.22,825			.173		.173	.22,998			.0	.230	.03/26/2068	.Z	
92867W-AB-4	VALET 2023-1 A2A - ABS.....	03/20/2024	Paydown.....	.XXX.	.28,395	.28,395	.28,393	.28,394			.1		.1	.28,395		.0	.0	.259	.12/21/2026	.1 A FE	
981944-AB-7	WOLS 2023-A A2A - ABS.....	03/15/2024	Paydown.....	.XXX.	.19,153	.19,153	.19,151	.19,152			.1		.1	.19,153		.0	.0	.181	.11/17/2025	.1 A FE	
1109999999 - Bonds - Industrial and Miscellaneous (Unaffiliated)					5,490,836	5,537,273	5,621,259	5,573,936	0	21,554	0	21,554	0	5,595,490	0	(104,654)	(104,654)	87,121	XXX	XXX	
2509999997 - Bonds - Subtotals - Bonds - Part 4					8,091,671	8,127,883	8,454,962	8,168,346	0	28,143	0	28,143	0	8,207,767	0	(116,097)	(116,097)	135,930	XXX	XXX	
2509999999 - Bonds - Subtotals - Bonds					8,091,671	8,127,883	8,454,962	8,168,346	0	28,143	0	28,143	0	8,207,767	0	(116,097)	(116,097)	135,930	XXX	XXX	
Common Stocks - Industrial and Miscellaneous (Unaffiliated) - Publicly Traded																					
009158-10-6	AIR PRODUCTS AND CHEMICALS ORD.....	03/13/2024	MERRILL LYNCH.....	.725,000	.180,285	.XXX.	.56,641	.198,505			(141,864)		(141,864)	.56,641		.123,644	123,644	.1,269	.XXX.	.XXX.	
038222-10-5	APPLIED MATERIAL ORD.....	03/13/2024	MERRILL LYNCH.....	.4,163,000	.835,335	.XXX.	.42,171	.674,697			(632,526)		(632,526)	.42,171		.793,164	793,164	.1,332	.XXX.	.XXX.	
166764-10-0	CHEVRON ORD.....	03/13/2024	MERRILL LYNCH.....	.1,374,000	.211,980	.XXX.	.8,924	.204,946			(196,022)		(196,022)	.8,924		.203,056	203,056	.2,240	.XXX.	.XXX.	
172062-10-1	CINCINNATI FINANCIAL ORD.....	03/13/2024	MERRILL LYNCH.....	.2,277,000	.271,572	.XXX.	.164,974	.235,578			(70,604)		(70,604)	.164,974		.106,598	106,598	.1,708	.XXX.	.XXX.	
17275R-10-2	CISCO SYSTEMS ORD.....	03/13/2024	MERRILL LYNCH.....	.6,679,000	.334,496	.XXX.	.149,142	.337,423			(188,281)		(188,281)	.149,142		.185,354	185,354	.2,605	.XXX.	.XXX.	
30231G-10-2	EXXON MOBIL ORD.....	03/13/2024	MERRILL LYNCH.....	.1,977,000	.217,349	.XXX.	.5,021	.197,660			(192,639)		(192,639)	.5,021		.212,328	212,328	.1,878	.XXX.	.XXX.	
370334-10-4	GENERAL MILLS ORD.....	03/13/2024	MERRILL LYNCH.....	.3,325,000	.220,027	.XXX.	.74,646	.216,591			(141,944)		(141,944)	.74,646		.145,381	145,381	.1,962	.XXX.	.XXX.	
46625H-10-0	JPMORGAN CHASE ORD.....	03/13/2024	MERRILL LYNCH.....	.442,000	.84,504	.XXX.	.16,224	.75,184			(58,961)		(58,961)	.16,224		.68,281	68,281	.464	.XXX.	.XXX.	
487836-10-8	KELLANOVA ORD.....	03/13/2024	MERRILL LYNCH.....	.9,278,000	.501,278	.XXX.	.270,601	.518,733			(248,132)		(248,132)	.270,601		.230,677	230,677	.5,196	.XXX.	.XXX.	
58933Y-10-5	MERCK & CO ORD.....	03/13/2024	MERRILL LYNCH.....	.2,041,000	.248,332	.XXX.	.157,360	.222,510			(65,150)		(65,150)	.157,360		.90,973	90,973	.1,572	.XXX.	.XXX.	
665859-10-4	NORTHERN TRUST ORD.....	03/13/2024	MERRILL LYNCH.....	.30,000	.2,460	.XXX.	.1,995	.2,531			(536)		(536)	.1,995		.465	.465	.68	.XXX.	.XXX.	
	PNC FINANCIAL SERVICES GROUP ORD.....	03/13/2024	MERRILL LYNCH.....	.215,000	.32,838	.XXX.	.9,824	.33,293			(23,469)		(23,469)	.9,824		.23,014	23,014	.333	.XXX.	.XXX.	
75513E-10-1	RTX ORD.....	03/13/2024	MERRILL LYNCH.....	.400,000	.36,151	.XXX.	.10,082	.33,656			(23,574)		(23,574)	.10,082		.26,068	26,068	.236	.XXX.	.XXX.	
756109-10-4	REALTY INCOME REIT ORD.....	03/13/2024	MERRILL LYNCH.....	.4,230,000	.222,398	.XXX.	.164,653	.242,887			(78,234)		(78,234)	.164,653		.57,745	57,745	.3,255	.XXX.	.XXX.	
806857-10-8	SCHLUMBERGER ORD.....	03/13/2024	MERRILL LYNCH.....	.7,335,000	.383,122	.XXX.	.50,724	.381,713			(330,990)		(330,990)	.50,724		.332,398	332,398	.1,834	.XXX.	.XXX.	
842587-10-7	SOUTHERN ORD.....	03/13/2024	MERRILL LYNCH.....	.8,000	.561	.XXX.	.229	.561			(332)		(332)	.229		.332	.332	.6	.XXX.	.XXX.	
	FEDERAL HOME LOAN BANK OF CINCINNATI.....	03/12/2024	Unknown.....	.311,000	.31,100	.XXX.	.31,100	.31,100			.0		.0	.31,100			.0		.XXX.	.XXX.	
	UNITED PARCEL SERVICE CL B ORD.....	03/13/2024	MERRILL LYNCH.....	.3,325,000	.521,261	.XXX.	.329,975	.522,790			(192,814)		(192,814)	.329,975		.191,286	191,286	.5,420	.XXX.	.XXX.	

E05.2

E05.2

E05.2

E05.2

Schedule DB - Part A - Section 1

NONE

Schedule DB - Part B - Section 1

NONE

Schedule DB - Part D - Section 1

NONE

Schedule DB - Part D - Section 2

NONE

Schedule DB - Part E

NONE

Schedule DL - Part 1

NONE

Schedule DL - Part 2

NONE

STATEMENT AS OF MARCH 31, 2024 OF THE LIGHTNING ROD MUTUAL INSURANCE COMPANY

SCHEDULE E - PART 2 - CASH EQUIVALENTS

Show Investments Owned End of Current Quarter

[illegible]



SUPPLEMENT FOR THE QUARTER ENDING MARCH 31, 2024 OF THE LIGHTNING ROD MUTUAL INSURANCE COMPANY

DIRECTOR AND OFFICER INSURANCE COVERAGE SUPPLEMENT

NAIC Group Code 00207 Year To Date For The Period Ended 2024 NAIC Company Code 26123

If the reporting entity writes any director and officer (D&O) business, please provide the following:

1. Monoline Policies

1 Direct Written Premium	2 Direct Earned Premium	3 Direct Losses Incurred
\$ 0	\$ 0	\$ 0

2. Commercial Multiple Peril (CMP) Packaged Policies

- 2.1 Does the reporting entity provide D&O liability coverage as part of a CMP packaged policy?

Yes ☒ No ☐
- 2.2 Can the direct premium earned for D&O liability coverage provided as part of a CMP packaged policy be quantified or estimated?

Yes ☒ No ☐
- 2.3 If the answer to question 2.2 is yes, provide the quantified or estimated direct premium earned amount for D&O liability coverage in CMP packaged policies

2.31 Amount quantified:

\$15,061

2.32 Amount estimated using reasonable assumptions:

\$0
- 2.4 If the answer to question 2.1 is yes, provide direct losses incurred (losses paid plus change in case reserves) for the D&O liability coverage provided in CMP packaged policies.

\$0