



PROPERTY AND CASUALTY COMPANIES - ASSOCIATION EDITION

QUARTERLY STATEMENT

AS OF MARCH 31, 2024
OF THE CONDITION AND AFFAIRS OF THE

NATIONWIDE GENERAL INSURANCE COMPANY

NAIC Group Code 0140 (Current) 0140 (Prior) NAIC Company Code 23760 Employer's ID Number 31-4425763

Organized under the Laws of OHIO, State of Domicile or Port of Entry OH

Country of Domicile United States of America

Incorporated/Organized 08/22/1957 Commenced Business 09/03/1958

Statutory Home Office ONE WEST NATIONWIDE BLVD. COLUMBUS, OH, US 43215-2220
(Street and Number) (City or Town, State, Country and Zip Code)

Main Administrative Office ONE WEST NATIONWIDE BLVD. COLUMBUS, OH, US 43215-2220
(Street and Number) (City or Town, State, Country and Zip Code) 614-249-1545
(Area Code) (Telephone Number)

Mail Address ONE WEST NATIONWIDE BLVD., 1-14-301 COLUMBUS, OH, US 43215-2220
(Street and Number or P.O. Box) (City or Town, State, Country and Zip Code)

Primary Location of Books and Records ONE WEST NATIONWIDE BLVD., 1-14-301 COLUMBUS, OH, US 43215-2220
(Street and Number) (City or Town, State, Country and Zip Code) 614-249-1545
(Area Code) (Telephone Number)

Internet Website Address WWW.NATIONWIDE.COM

Statutory Statement Contact ANDREA D. IACOBONI 614-249-1545
(Name) (Area Code) (Telephone Number)
FINRPT@NATIONWIDE.COM 866-315-1430
(E-mail Address) (FAX Number)

OFFICERS

PRESIDENT & COO MARK ALLEN BERVEN VP & TREASURER PETER JUSTIN ROTHERMEL

SVP & SECRETARY DENISE LYNN SKINGLE

OTHER

PAMELA ANN BIESECKER, SVP-HEAD OF TAXATION

DIRECTORS OR TRUSTEES

CHARLES ANTHONY BEAL MARK ALLEN BERVEN OSCAR GUERRERO

CASEY ELLEN KEMPTON # GEORGE MIDDLETON WILLIAMS III

State of OHIO SS:

County of FRANKLIN

The officers of this reporting entity being duly sworn, each depose and say that they are the described officers of said reporting entity, and that on the reporting period stated above, all of the herein described assets were the absolute property of the said reporting entity, free and clear from any liens or claims thereon, except as herein stated, and that this statement, together with related exhibits, schedules and explanations therein contained, annexed or referred to, is a full and true statement of all the assets and liabilities and of the condition and affairs of the said reporting entity as of the reporting period stated above, and of its income and deductions therefrom for the period ended, and have been completed in accordance with the NAIC Annual Statement Instructions and Accounting Practices and Procedures manual except to the extent that: (1) state law may differ; or, (2) that state rules or regulations require differences in reporting not related to accounting practices and procedures, according to the best of their information, knowledge and belief, respectively. Furthermore, the scope of this attestation by the described officers also includes the related corresponding electronic filing with the NAIC, when required, that is an exact copy (except for formatting differences due to electronic filing) of the enclosed statement. The electronic filing may be requested by various regulators in lieu of or in addition to the enclosed statement.

MARK ALLEN BERVEN
PRESIDENT & COO

DENISE LYNN SKINGLE
SVP & SECRETARY

PETER JUSTIN ROTHERMEL
VP & TREASURER

Subscribed and sworn to before me this 26 day of APRIL 2024

a. Is this an original filing? Yes [X] No []

b. If no,
1. State the amendment number.....
2. Date filed
3. Number of pages attached.....



ANDREW SWARTZEL
NOTARY PUBLIC - STATE OF OHIO
Comm. No. 2021-RE-839107
My Commission Expires Oct. 24, 2026

STATEMENT AS OF MARCH 31, 2024 OF THE NATIONWIDE GENERAL INSURANCE COMPANY

ASSETS

	Current Statement Date			4 December 31 Prior Year Net Admitted Assets
	1 Assets	2 Nonadmitted Assets	3 Net Admitted Assets (Cols. 1 - 2)	
1. Bonds	480,923,892		480,923,892	504,658,685
2. Stocks:				
2.1 Preferred stocks				
2.2 Common stocks				
3. Mortgage loans on real estate:				
3.1 First liens				
3.2 Other than first liens.....				
4. Real estate:				
4.1 Properties occupied by the company (less \$ encumbrances)				
4.2 Properties held for the production of income (less \$ encumbrances)				
4.3 Properties held for sale (less \$ encumbrances)				
5. Cash (\$ 20,673), cash equivalents (\$ 2,037,654) and short-term investments (\$)	2,058,327		2,058,327	1,516,333
6. Contract loans (including \$ premium notes)				
7. Derivatives				
8. Other invested assets	15,578,406		15,578,406	12,704,159
9. Receivables for securities				
10. Securities lending reinvested collateral assets				
11. Aggregate write-ins for invested assets				
12. Subtotals, cash and invested assets (Lines 1 to 11)	498,560,625		498,560,625	518,879,177
13. Title plants less \$ charged off (for Title insurers only)				
14. Investment income due and accrued	4,649,410	3,569	4,645,841	4,513,739
15. Premiums and considerations:				
15.1 Uncollected premiums and agents' balances in the course of collection	96,545,013	682,062	95,862,951	102,294,476
15.2 Deferred premiums, agents' balances and installments booked but deferred and not yet due (including \$ earned but unbilled premiums)	416,258,962	1,207,072	415,051,890	398,277,220
15.3 Accrued retrospective premiums (\$) and contracts subject to redetermination (\$)				
16. Reinsurance:				
16.1 Amounts recoverable from reinsurers	123,920,945		123,920,945	124,997,244
16.2 Funds held by or deposited with reinsured companies	501,511		501,511	455,723
16.3 Other amounts receivable under reinsurance contracts	29,087,215		29,087,215	39,663,658
17. Amounts receivable relating to uninsured plans				
18.1 Current federal and foreign income tax recoverable and interest thereon	749,505		749,505	1,715,695
18.2 Net deferred tax asset	8,797,664	4,542,172	4,255,492	3,874,242
19. Guaranty funds receivable or on deposit	39,709		39,709	44,836
20. Electronic data processing equipment and software				
21. Furniture and equipment, including health care delivery assets (\$)				
22. Net adjustment in assets and liabilities due to foreign exchange rates				
23. Receivables from parent, subsidiaries and affiliates	38,131,634		38,131,634	31,483,482
24. Health care (\$) and other amounts receivable				
25. Aggregate write-ins for other than invested assets	29,686,569	279,929	29,406,640	2,379,577
26. Total assets excluding Separate Accounts, Segregated Accounts and Protected Cell Accounts (Lines 12 to 25)	1,246,928,762	6,714,804	1,240,213,958	1,228,579,069
27. From Separate Accounts, Segregated Accounts and Protected Cell Accounts				
28. Total (Lines 26 and 27)	1,246,928,762	6,714,804	1,240,213,958	1,228,579,069
DETAILS OF WRITE-INS				
1101.				
1102.				
1103.				
1198. Summary of remaining write-ins for Line 11 from overflow page				
1199. Totals (Lines 1101 through 1103 plus 1198)(Line 11 above)				
2501. Miscellaneous	27,257,393	77,950	27,179,443	275,220
2502. Third party administrator receivable	681,091	140,491	540,600	506,013
2503. Deposits and prepaid assets	59,257	59,257		
2598. Summary of remaining write-ins for Line 25 from overflow page	1,688,828	2,231	1,686,597	1,598,344
2599. Totals (Lines 2501 through 2503 plus 2598)(Line 25 above)	29,686,569	279,929	29,406,640	2,379,577

STATEMENT AS OF MARCH 31, 2024 OF THE NATIONWIDE GENERAL INSURANCE COMPANY

LIABILITIES, SURPLUS AND OTHER FUNDS

	1 Current Statement Date	2 December 31, Prior Year
1. Losses (current accident year \$ 17,996,044)	143,263,023	145,317,871
2. Reinsurance payable on paid losses and loss adjustment expenses	7,901,318	7,470,558
3. Loss adjustment expenses	32,480,053	32,890,919
4. Commissions payable, contingent commissions and other similar charges	2,335,099	3,556,595
5. Other expenses (excluding taxes, licenses and fees)	2,135,345	2,643,644
6. Taxes, licenses and fees (excluding federal and foreign income taxes)	634,766	866,376
7.1 Current federal and foreign income taxes (including \$ on realized capital gains (losses))		
7.2 Net deferred tax liability		
8. Borrowed money \$ and interest thereon \$		
9. Unearned premiums (after deducting unearned premiums for ceded reinsurance of \$876,441,212 and including warranty reserves of \$ 104,999 and accrued accident and health experience rating refunds including \$ for medical loss ratio rebate per the Public Health Service Act)	82,019,643	84,884,632
10. Advance premium	2,033,474	1,460,035
11. Dividends declared and unpaid:		
11.1 Stockholders		
11.2 Policyholders	39,980	40,184
12. Ceded reinsurance premiums payable (net of ceding commissions)	604,424,554	594,308,055
13. Funds held by company under reinsurance treaties	802	806
14. Amounts withheld or retained by company for account of others	2,971,799	5,277,369
15. Remittances and items not allocated	329,095	530,193
16. Provision for reinsurance (including \$ certified)		
17. Net adjustments in assets and liabilities due to foreign exchange rates		
18. Drafts outstanding		
19. Payable to parent, subsidiaries and affiliates	55,569,294	49,781,020
20. Derivatives		
21. Payable for securities		
22. Payable for securities lending		
23. Liability for amounts held under uninsured plans		
24. Capital notes \$ and interest thereon \$		
25. Aggregate write-ins for liabilities	11,113,007	11,148,205
26. Total liabilities excluding protected cell liabilities (Lines 1 through 25)	947,251,252	940,176,462
27. Protected cell liabilities		
28. Total liabilities (Lines 26 and 27)	947,251,252	940,176,462
29. Aggregate write-ins for special surplus funds		
30. Common capital stock	4,200,000	4,200,000
31. Preferred capital stock		
32. Aggregate write-ins for other than special surplus funds		
33. Surplus notes		
34. Gross paid in and contributed surplus	290,760,974	290,760,974
35. Unassigned funds (surplus)	(1,998,268)	(6,558,367)
36. Less treasury stock, at cost:		
36.1 shares common (value included in Line 30 \$)		
36.2 shares preferred (value included in Line 31 \$)		
37. Surplus as regards policyholders (Lines 29 to 35, less 36)	292,962,706	288,402,607
38. Totals (Page 2, Line 28, Col. 3)	1,240,213,958	1,228,579,069
DETAILS OF WRITE-INS		
2501. Contingent suit liability	53,202	58,407
2502. Miscellaneous liabilities	10,758,195	10,695,468
2503. Escrow liability	7,635	4,052
2598. Summary of remaining write-ins for Line 25 from overflow page	293,975	390,278
2599. Totals (Lines 2501 through 2503 plus 2598)(Line 25 above)	11,113,007	11,148,205
2901.		
2902.		
2903.		
2998. Summary of remaining write-ins for Line 29 from overflow page		
2999. Totals (Lines 2901 through 2903 plus 2998)(Line 29 above)		
3201.		
3202.		
3203.		
3298. Summary of remaining write-ins for Line 32 from overflow page		
3299. Totals (Lines 3201 through 3203 plus 3298)(Line 32 above)		

STATEMENT OF INCOME

	1	2	3
	Current Year to Date	Prior Year to Date	Prior Year Ended December 31
UNDERWRITING INCOME			
1. Premiums earned:			
1.1 Direct (written \$ 521,408,402)	530,407,073	545,530,538	2,222,081,060
1.2 Assumed (written \$ 46,435,159)	50,073,102	41,510,806	210,447,614
1.3 Ceded (written \$ 524,377,826)	534,148,664	538,593,935	2,237,598,260
1.4 Net (written \$ 43,465,735)	46,331,511	48,447,409	194,930,414
DEDUCTIONS:			
2. Losses incurred (current accident year \$ 26,965,547):			
2.1 Direct	354,582,384	470,683,750	1,831,153,985
2.2 Assumed	30,261,391	30,959,879	151,643,348
2.3 Ceded	357,406,793	468,434,012	1,843,297,377
2.4 Net	27,436,982	33,209,617	139,499,956
3. Loss adjustment expenses incurred	3,779,504	4,861,672	19,395,813
4. Other underwriting expenses incurred	14,681,474	15,405,493	60,646,516
5. Aggregate write-ins for underwriting deductions			
6. Total underwriting deductions (Lines 2 through 5)	45,897,960	53,476,782	219,542,285
7. Net income of protected cells			
8. Net underwriting gain (loss) (Line 1 minus Line 6 + Line 7)	433,551	(5,029,373)	(24,611,871)
INVESTMENT INCOME			
9. Net investment income earned	4,676,647	4,152,741	15,349,531
10. Net realized capital gains (losses) less capital gains tax of \$ 3,275	(288,076)	(47,197)	348,626
11. Net investment gain (loss) (Lines 9 + 10)	4,388,571	4,105,544	15,698,157
OTHER INCOME			
12. Net gain or (loss) from agents' or premium balances charged off (amount recovered \$ (763) amount charged off \$ 163,244)	(164,007)	(140,941)	(541,165)
13. Finance and service charges not included in premiums	264,151	270,423	1,178,521
14. Aggregate write-ins for miscellaneous income	286,241	313,788	1,362,106
15. Total other income (Lines 12 through 14)	386,385	443,270	1,999,462
16. Net income before dividends to policyholders, after capital gains tax and before all other federal and foreign income taxes (Lines 8 + 11 + 15)	5,208,507	(480,559)	(6,914,252)
17. Dividends to policyholders	8,011	10,601	49,062
18. Net income, after dividends to policyholders, after capital gains tax and before all other federal and foreign income taxes (Line 16 minus Line 17)	5,200,496	(491,160)	(6,963,314)
19. Federal and foreign income taxes incurred	962,915	(131,953)	(1,112,022)
20. Net income (Line 18 minus Line 19)(to Line 22)	4,237,581	(359,207)	(5,851,292)
CAPITAL AND SURPLUS ACCOUNT			
21. Surplus as regards policyholders, December 31 prior year	288,402,607	267,814,582	267,814,581
22. Net income (from Line 20)	4,237,581	(359,207)	(5,851,292)
23. Net transfers (to) from Protected Cell accounts			
24. Change in net unrealized capital gains (losses) less capital gains tax of \$ 2,654	9,912	113,154	1,198,072
25. Change in net unrealized foreign exchange capital gain (loss)	72	64	161
26. Change in net deferred income tax	(88,768)	117,631	(356,484)
27. Change in nonadmitted assets	391,070	(1,720,039)	(2,515,067)
28. Change in provision for reinsurance			
29. Change in surplus notes			
30. Surplus (contributed to) withdrawn from protected cells			
31. Cumulative effect of changes in accounting principles			
32. Capital changes:			
32.1 Paid in			
32.2 Transferred from surplus (Stock Dividend)			
32.3 Transferred to surplus			
33. Surplus adjustments:			
33.1 Paid in			28,000,000
33.2 Transferred to capital (Stock Dividend)			
33.3 Transferred from capital			
34. Net remittances from or (to) Home Office			
35. Dividends to stockholders			
36. Change in treasury stock			
37. Aggregate write-ins for gains and losses in surplus	10,232	285,520	112,636
38. Change in surplus as regards policyholders (Lines 22 through 37).....	4,560,099	(1,562,877)	20,588,026
39. Surplus as regards policyholders, as of statement date (Lines 21 plus 38)	292,962,706	266,251,705	288,402,607
DETAILS OF WRITE-INS			
0501.			
0502.			
0503.			
0598. Summary of remaining write-ins for Line 5 from overflow page			
0599. Totals (Lines 0501 through 0503 plus 0598)(Line 5 above)			
1401. Other	281,035	319,496	1,335,160
1402. Change in contingent suit liability	5,206	(5,708)	26,946
1403.			
1498. Summary of remaining write-ins for Line 14 from overflow page			
1499. Totals (Lines 1401 through 1403 plus 1498)(Line 14 above)	286,241	313,788	1,362,106
3701. Change in surplus pooled nonadmitted premiums in the course of collection offset	10,232	285,520	112,636
3702.			
3703.			
3798. Summary of remaining write-ins for Line 37 from overflow page			
3799. Totals (Lines 3701 through 3703 plus 3798)(Line 37 above)	10,232	285,520	112,636

STATEMENT AS OF MARCH 31, 2024 OF THE NATIONWIDE GENERAL INSURANCE COMPANY

CASH FLOW

	1 Current Year To Date	2 Prior Year To Date	3 Prior Year Ended December 31
Cash from Operations			
1. Premiums collected net of reinsurance	43,822,680	55,985,218	185,947,154
2. Net investment income	4,686,625	4,175,888	16,943,701
3. Miscellaneous income	340,597	579,919	2,242,871
4. Total (Lines 1 to 3)	48,849,902	60,741,025	205,133,727
5. Benefit and loss related payments	27,981,023	47,072,618	122,777,213
6. Net transfers to Separate Accounts, Segregated Accounts and Protected Cell Accounts			
7. Commissions, expenses paid and aggregate write-ins for deductions	10,251,679	9,245,249	82,004,123
8. Dividends paid to policyholders	8,215	14,841	69,327
9. Federal and foreign income taxes paid (recovered) net of \$ tax on capital gains (losses)			(630,051)
10. Total (Lines 5 through 9)	38,240,917	56,332,708	204,220,612
11. Net cash from operations (Line 4 minus Line 10)	10,608,985	4,408,317	913,115
Cash from Investments			
12. Proceeds from investments sold, matured or repaid:			
12.1 Bonds	34,746,527	18,046,518	48,334,868
12.2 Stocks			
12.3 Mortgage loans			
12.4 Real estate			
12.5 Other invested assets			
12.6 Net gains or (losses) on cash, cash equivalents and short-term investments			
12.7 Miscellaneous proceeds			
12.8 Total investment proceeds (Lines 12.1 to 12.7)	34,746,527	18,046,518	48,334,868
13. Cost of investments acquired (long-term only):			
13.1 Bonds	11,426,049	51,688,724	101,153,983
13.2 Stocks			
13.3 Mortgage loans			
13.4 Real estate			
13.5 Other invested assets	2,874,246		2,824,723
13.6 Miscellaneous applications			
13.7 Total investments acquired (Lines 13.1 to 13.6)	14,300,295	51,688,724	103,978,705
14. Net increase (or decrease) in contract loans and premium notes			
15. Net cash from investments (Line 12.8 minus Line 13.7 and Line 14)	20,446,232	(33,642,206)	(55,643,837)
Cash from Financing and Miscellaneous Sources			
16. Cash provided (applied):			
16.1 Surplus notes, capital notes			
16.2 Capital and paid in surplus, less treasury stock			28,000,000
16.3 Borrowed funds			
16.4 Net deposits on deposit-type contracts and other insurance liabilities			
16.5 Dividends to stockholders			
16.6 Other cash provided (applied)	(30,513,223)	6,703,678	2,895,328
17. Net cash from financing and miscellaneous sources (Line 16.1 through Line 16.4 minus Line 16.5 plus Line 16.6)	(30,513,223)	6,703,678	30,895,328
RECONCILIATION OF CASH, CASH EQUIVALENTS AND SHORT-TERM INVESTMENTS			
18. Net change in cash, cash equivalents and short-term investments (Line 11, plus Lines 15 and 17) .	541,994	(22,530,211)	(23,835,395)
19. Cash, cash equivalents and short-term investments:			
19.1 Beginning of year	1,516,333	25,351,728	25,351,728
19.2 End of period (Line 18 plus Line 19.1)	2,058,327	2,821,518	1,516,333

Note: Supplemental disclosures of cash flow information for non-cash transactions:

20.0001. Exchange of Bond Investment to Bond Investment	2,752,489		4,334,182
20.0002. Tax Credit Commitment Liabilities			4,288,811

NOTES TO THE FINANCIAL STATEMENTS

Note 1 – Summary of Significant Accounting Policies and Going Concern

A. Accounting Practices

The accompanying statutory financial statements of Nationwide General Insurance Company (the Company) have been prepared in conformity with accounting practices prescribed or permitted by the National Association of Insurance Commissioners (NAIC) and the State of Ohio.

The Ohio Department of Insurance (Department) recognizes only statutory accounting practices (SAP) prescribed or permitted by the State of Ohio for determining and reporting the financial condition and results of operations of an insurance company, as well as, determining its solvency under the Ohio Insurance law. The NAIC’s *Accounting Practices and Procedures Manual* (NAIC SAP) has been adopted as a component of prescribed or permitted practices by the State of Ohio. The Company has no statutory accounting practices that differ from the NAIC SAP.

A reconciliation of the Company’s net income and capital and surplus between NAIC SAP and practices prescribed and permitted by the State of Ohio is shown below:

	SSAP #	F/S Page	F/S Line #		2024		2023
Net Income							
(1) Nationwide General Insurance Company state basis (Page 4, Line 20, Columns 1 & 3)	XXX	XXX	XXX	\$	4,237,581	\$	(5,851,292)
(2) State Prescribed Practices that are an increase/(decrease) from NAIC SAP					-		-
(3) State Permitted Practices that are an increase/(decrease) from NAIC SAP					-		-
(4) NAIC SAP (1-2-3=4)	XXX	XXX	XXX	\$	<u>4,237,581</u>	\$	<u>(5,851,292)</u>
Surplus							
(5) Nationwide General Insurance Company state basis (Page 3, Line 37, Columns 1 & 2)	XXX	XXX	XXX	\$	292,962,706	\$	288,402,607
(6) State Prescribed Practices that are an increase/(decrease) from NAIC SAP					-		-
(7) State Permitted Practices that are an increase/(decrease) from NAIC SAP					-		-
(8) NAIC SAP (5-6-7=8)	XXX	XXX	XXX	\$	<u>292,962,706</u>	\$	<u>288,402,607</u>

B. Use of Estimates in the Preparation of the Financial Statements

There were no changes that were considered significant to the Company from prior year end.

C. Accounting Policies

1. There were no changes that were considered significant to the Company from prior year end.
2. Bonds, excluding loan-backed and structured securities, are stated at amortized cost except those with an NAIC designation of “3” through “6”, which are stated at the lower of amortized cost or fair value. Amortization of premiums and discounts is calculated using the effective yield method. The Company does not hold any mandatory convertible securities or Securities Valuation Office (SVO) identified investments.
- 3-5. There were no changes that were considered significant to the Company from prior year end.
6. Loan-backed and structured securities (collectively, loan-backed securities) are stated at amortized cost or the lower of amortized cost or fair value in accordance with the provisions of Statement of Statutory Accounting Principles (SSAP) No. 43 Revised – *Loan-Backed and Structured Securities* and the *Purposes and Procedures Manual* of the NAIC SVO. The retrospective adjustment method is used to value loan-backed securities where the collection of all contractual cash flows is probable. For all other loan-backed securities, the Company uses the prospective adjustment method. Refer to Note 5(D) for a discussion of the other-than-temporary impairment policy for loan-backed securities.
- 7-13. There were no changes that were considered significant to the Company from prior year end.

D. Going Concern

Not applicable.

Note 2 – Accounting Changes and Corrections of Errors

Not applicable.

Note 3 – Business Combinations and Goodwill

Not applicable.

Note 4 – Discontinued Operations

Not applicable.

Note 5 – Investments

- A. Mortgage Loans, including Mezzanine Real Estate Loans
- Not applicable.
- B. Debt Restructuring
- Not applicable.
- C. Reverse Mortgages
- Not applicable.

NOTES TO THE FINANCIAL STATEMENTS

D. Loan-Backed Securities

1. Prepayment assumptions are generally obtained using a model provided by a third-party vendor.
2. Not applicable.
3. Not applicable.
4. All impaired securities (fair value is less than cost or amortized cost) for which an other-than-temporary impairment has not been recognized in earnings as a realized loss (including securities with a recognized other-than-temporary impairment for non-interest related declines when a non-recognized interest related impairment remains):

a. The aggregate amount of unrealized losses:	1. Less than 12 Months	\$ (22,986)
	2. 12 Months or Longer	\$ (10,260,176)
b. The aggregate related fair value of securities with unrealized losses:	1. Less than 12 Months	\$ 4,686,527
	2. 12 Months or Longer	\$ 89,030,005

5. The Company periodically reviews loan-backed and structured securities in an unrealized loss position by comparing the present value of cash flows, including estimated prepayments, expected to be collected from the security to the amortized cost basis of the security. If the present value of cash flows expected to be collected, discounted at the security's effective interest rate, is less than the amortized cost basis of the security, the impairment is considered other-than-temporary and a realized loss is recorded.

E. Dollar Repurchase Agreements and/or Securities Lending Transactions

Not applicable.

F. Repurchase Agreements Transactions Accounted for as Secured Borrowing

Not applicable.

G. Reverse Repurchase Agreements Transactions Accounted for as Secured Borrowing

Not applicable.

H. Repurchase Agreements Transactions Accounted for as a Sale

Not applicable.

I. Reverse Repurchase Agreements Transactions Accounted for as a Sale

Not applicable.

J. Real Estate

Not applicable.

K. Low-Income Housing Tax Credits (LIHTC)

There were no changes that were considered significant to the Company from prior year end.

L. Restricted Assets

There were no changes that were considered significant to the Company from prior year end.

M. Working Capital Finance Investments

Not applicable.

N. Offsetting and Netting of Assets and Liabilities

No assets or liabilities are offset and reported net in accordance with a valid right to offset per SSAP No. 64 – *Offsetting and Netting of Assets and Liabilities*.

O. 5GI Securities

Not applicable.

P. Short Sales

Not applicable.

Q. Prepayment Penalty and Acceleration Fees

Not applicable.

R. Reporting Entity's Share of Cash Pool by Asset Type

Asset Type	Percent Share
(1) Cash	0%
(2) Cash equivalents	78%
(3) Short-term investments	22%
(4) Total	100%

Note 6 – Joint Ventures, Partnerships and Limited Liability Companies

There were no changes that were considered significant to the Company from prior year end.

NOTES TO THE FINANCIAL STATEMENTS

Note 7 – Investment Income

There were no changes that were considered significant to the Company from prior year end.

Note 8 – Derivative Instruments

Not applicable.

Note 9 – Income Taxes

There were no changes that were considered significant to the Company from prior year end.

Note 10 – Information Concerning Parent, Subsidiaries, Affiliates and Other Related Parties

There were no changes that were considered significant to the Company from prior year end.

Note 11 – Debt

Not applicable.

Note 12 – Retirement Plans, Deferred Compensation, Postemployment Benefits and Compensated Absences and Other Postretirement Benefit Plans

There were no changes that were considered significant to the Company from prior year end.

Note 13 – Capital and Surplus, Dividend Restrictions and Quasi-Reorganizations

There were no changes that were considered significant to the Company from prior year end.

Note 14 – Liabilities, Contingencies and Assessments

There were no changes that were considered significant to the Company from prior year end.

Note 15 – Leases

Not applicable.

Note 16 – Information about Financial Instruments with Off-Balance Sheet Risk and Financial Instruments with Concentrations of Credit Risk

Not applicable.

Note 17 – Sale, Transfer and Servicing of Financial Assets and Extinguishments of Liabilities

A. Transfers of Receivables Reported as Sales

Not applicable.

B. Transfers and Servicing of Financial Assets

Not applicable.

C. Wash Sales

Not applicable.

Note 18 – Gain or Loss to the Reporting Entity from Uninsured Plans and the Uninsured Portion of Partially Insured Plans

Not applicable.

Note 19 – Direct Premium Written/Produced by Managing General Agents/Third-Party Administrators

Not applicable.

Note 20 – Fair Value Measurements

A. Fair value is defined as the price that would be received to sell an asset or paid to transfer a liability in an orderly transaction between market participants at the measurement date. Fair value measurements are based upon observable and unobservable inputs. Observable inputs reflect market data obtained from independent sources while unobservable inputs reflect the Company's view of market assumptions in the absence of observable market information. The Company utilizes valuation techniques that maximize the use of observable inputs and minimize the use of unobservable inputs. In determining fair value, the Company uses various methods including market, income and cost approaches.

The Company categorizes its financial instruments into a three-level hierarchy based on the priority of the inputs to the valuation technique. The fair value hierarchy gives the highest priority to quoted prices in active markets for identical assets or liabilities (Level 1) and the lowest priority to unobservable inputs (Level 3). If the inputs used to measure fair value fall within different levels of the hierarchy, the category level is based on the lowest priority level input that is significant to the fair value measurement of the instrument in its entirety.

The Company categorizes assets and liabilities held at fair value in the statutory statements of assets and liabilities, surplus and other funds as follows:

Level 1. Unadjusted quoted prices accessible in active markets for identical assets or liabilities at the measurement date and mutual funds where the value per share (unit) is determined and published daily and is the basis for current transactions.

Level 2. Unadjusted quoted prices for similar assets or liabilities in active markets, quoted prices for identical or similar assets or liabilities in markets that are not active or inputs (other than quoted prices) that are observable or that are derived principally from or corroborated by observable market data through correlation or other means. Primary inputs to this valuation technique may include comparative trades, bid/asks, interest rate movements, U.S. Treasury rates, Secured Overnight Financing Rate, prime rates, cash flows, maturity dates, call ability, estimated prepayments and/or underlying collateral values.

Level 3. Prices or valuation techniques that require inputs that are both unobservable and significant to the overall fair value measurement. Inputs reflect management's best estimates of the assumptions market participants would use at the measurement date in pricing the asset or liability. Consideration is given to the risk inherent in both the method of valuation and the valuation inputs. Primary inputs to this valuation technique include broker quotes and comparative trades.

NOTES TO THE FINANCIAL STATEMENTS

The Company reviews its fair value hierarchy classifications for assets and liabilities quarterly. Changes in the observability of significant valuation inputs identified during these reviews may trigger reclassifications. Reclassifications are reported as transfers at the beginning of the reporting period in which the change occurs.

Independent pricing services are most often utilized, and compared to pricing from additional sources when available, to determine the fair value of bonds and stocks for which market quotations or quotations on comparable securities or models are used. For these bonds and stocks, the Company obtains the pricing services' methodologies and classifies the investments accordingly in the fair value hierarchy.

Corporate pricing matrices are used in valuing certain bonds. The corporate pricing matrices were developed using publicly and privately available spreads segmented by various weighted average lives and credit quality ratings. Certain private placement bonds have adjusted spreads to capture the impacts of liquidity premium based on industry sector. The weighted average life and credit quality rating of a particular bond to be priced using those matrices are important inputs into the model and are used to determine a corresponding spread that is added to the appropriate industry sector or U.S. Treasury yield to create an estimated market yield for that bond. The estimated market yield and other relevant factors are then used to estimate the fair value of the particular bond.

Non-binding broker quotes are also utilized to determine the fair value of certain bonds when deemed appropriate or when valuations are not available from independent pricing services or corporate pricing matrices. These bonds are classified with the lowest priority in the fair value hierarchy as only one broker quote is ordinarily obtained, the investment is not traded on an exchange, the pricing is not available to other entities and/or the transaction volume in the same or similar investments has decreased. Inputs used in the development of prices are not provided to the Company by the brokers, as the brokers often do not provide the necessary transparency into their quotes and methodologies. At least annually, the Company performs reviews and tests to ensure that quotes are a reasonable estimate of the investments' fair value. Price movements of broker quotes are subject to validation and require approval from the Company's management. Management uses its knowledge of the investment and current market conditions to determine if the price is indicative of the investment's fair value.

The Company carries short-term investments at amortized cost, which approximates fair value.

The following table summarizes assets held at fair value as of March 31, 2024:

	Level 1	Level 2	Level 3	Net Asset Value (NAV)	Total
Assets at Fair Value					
Bonds	\$ -	\$ 3,932,682	\$ -	\$ -	\$ 3,932,682
Total Assets at Fair Value/(NAV)	\$ -	\$ 3,932,682	\$ -	\$ -	\$ 3,932,682

B. & C. The following table summarizes the carrying value and fair value of the Company's assets not held at fair value as of March 31, 2024:

	Aggregate Fair Value	Admitted Assets	Level 1	Level 2	Level 3	Net Asset Value (NAV)	Not Practicable (Carrying Value)
Assets							
Bonds	\$450,225,932	\$476,991,210	\$47,438,201	\$402,136,695	\$651,036	\$-	\$-
Cash, cash equivalents and short-term investments	2,058,327	2,058,327	20,673	2,037,654	-	-	-
Total Assets	\$452,284,259	\$479,049,537	\$47,458,874	\$404,174,349	\$651,036	\$-	\$-

D. Not Practicable to Estimate Fair Value

Not applicable.

E. Measured using net asset value

Not applicable.

Note 21 – Other Items

There were no changes that were considered significant to the Company from prior year end.

Note 22 – Events Subsequent

Type I – Recognized Subsequent Events:

Subsequent events have been considered through May 3, 2024, for the statutory statement available to be issued on May 8, 2024.

There were no material Type I events occurring subsequent to the end of the period that merited recognition or disclosure in these statements that have not already been reflected as required.

Type II – Nonrecognized Subsequent Events:

Subsequent events have been considered through May 3, 2024, for the statutory statement available to be issued on May 8, 2024.

There were no material Type II events occurring subsequent to the end of the period that merited recognition or disclosure in these statements that have not already been reflected as required.

Note 23 – Reinsurance

There were no changes that were considered significant to the Company from prior year end.

Note 24 – Retrospectively Rated Contracts and Contracts Subject to Redetermination

There were no changes that were considered significant to the Company from prior year end.

Note 25 – Changes in Incurred Losses and Loss Adjustment Expenses

- A. As of December 31, 2023, loss and loss adjustment expense reserves, net of reinsurance recoveries, were \$178.2 million. Payments for incurred claims and claim adjustment expenses attributable to insured events of prior years were \$23.4 million for the three months ended March 31, 2024. As of March 31, 2024, remaining loss and loss adjustment expense reserves attributable to insured events of prior years were \$155.6 million. For the quarter ended March 31, 2024, unfavorable prior-year development of \$821.8 thousand in incurred losses was primarily driven by higher than expected severity in Standard Commercial lines and adjusting and other loss related expenses.
- B. During 2024, the Company did not make any significant changes in methodologies and assumptions used in calculating the liability for unpaid losses and loss adjustment expenses.

NOTES TO THE FINANCIAL STATEMENTS

Note 26 – Intercompany Pooling Arrangements

There were no changes that were considered significant to the Company from prior year end, except for the following:

Effective January 1, 2024, in conjunction with the merger of Harleysville Lake States Insurance Company with and into Harleysville Insurance Company, Harleysville Lake States Insurance Company is no longer a participant in the Nationwide Pool by operation of law.

Effective January 1, 2024, in conjunction with the voluntary dissolution and statutory merger of Nationwide Lloyds, Nationwide Lloyds is no longer a participant in the Nationwide Pool by operation of law. The voluntary dissolution of Nationwide Lloyds is treated as a statutory merger of Nationwide Lloyds with and into Nationwide Mutual Insurance Company for statutory accounting purposes.

Note 27 – Structured Settlements

There were no changes that were considered significant to the Company from prior year end.

Note 28 – Health Care Receivables

Not applicable.

Note 29 – Participating Policies

Not applicable.

Note 30 – Premium Deficiency Reserves

There were no changes that were considered significant to the Company from prior year end.

Note 31 – High Deductibles

Not applicable.

Note 32 – Discounting of Liabilities for Unpaid Losses or Unpaid Loss Adjustment Expenses

There were no changes that were considered significant to the Company from prior year end.

Note 33 – Asbestos/Environmental Reserves

There were no changes that were considered significant to the Company from prior year end.

Note 34 – Subscriber Savings Accounts

Not applicable.

Note 35 – Multiple Peril Crop Insurance

Not applicable.

Note 36 – Financial Guaranty Insurance

Not applicable.

STATEMENT AS OF MARCH 31, 2024 OF THE NATIONWIDE GENERAL INSURANCE COMPANY

GENERAL INTERROGATORIES

PART 1 - COMMON INTERROGATORIES

GENERAL

1.1

Did the reporting entity experience any material transactions requiring the filing of Disclosure of Material Transactions with the State of Domicile, as required by the Model Act?

Yes [] No [X]

1.2

If yes, has the report been filed with the domiciliary state?

Yes [] No []

2.1

Has any change been made during the year of this statement in the charter, by-laws, articles of incorporation, or deed of settlement of the reporting entity?

Yes [] No [X]

2.2

If yes, date of change:

3.1

Is the reporting entity a member of an Insurance Holding Company System consisting of two or more affiliated persons, one or more of which is an insurer?
If yes, complete Schedule Y, Parts 1 and 1A.

Yes [X] No []

3.2

Have there been any substantial changes in the organizational chart since the prior quarter end?

Yes [X] No []

3.3

If the response to 3.2 is yes, provide a brief description of those changes.
Nationwide Lloyds removed due to its dissolution effective 1/1/2024. Harleysville Lake States Insurance Company removed due to its elimination by merger into Harleysville Insurance Company, effective 1/1/2024

3.4

Is the reporting entity publicly traded or a member of a publicly traded group?

Yes [] No [X]

3.5

If the response to 3.4 is yes, provide the CIK (Central Index Key) code issued by the SEC for the entity/group.

4.1

Has the reporting entity been a party to a merger or consolidation during the period covered by this statement?

Yes [] No [X]

4.2

If yes, provide the name of the entity, NAIC Company Code, and state of domicile (use two letter state abbreviation) for any entity that has ceased to exist as a result of the merger or consolidation.

1	2	3
Name of Entity	NAIC Company Code	State of Domicile

5.

If the reporting entity is subject to a management agreement, including third-party administrator(s), managing general agent(s), attorney-in-fact, or similar agreement, have there been any significant changes regarding the terms of the agreement or principals involved?
If yes, attach an explanation.

Yes [] No [X] N/A []

6.1

State as of what date the latest financial examination of the reporting entity was made or is being made.

12/31/2021

6.2

State the as of date that the latest financial examination report became available from either the state of domicile or the reporting entity. This date should be the date of the examined balance sheet and not the date the report was completed or released.

12/31/2021

6.3

State as of what date the latest financial examination report became available to other states or the public from either the state of domicile or the reporting entity. This is the release date or completion date of the examination report and not the date of the examination (balance sheet date).

05/31/2023

6.4

By what department or departments?
OH

6.5

Have all financial statement adjustments within the latest financial examination report been accounted for in a subsequent financial statement filed with Departments?

Yes [] No [] N/A [X]

6.6

Have all of the recommendations within the latest financial examination report been complied with?

Yes [] No [] N/A [X]

7.1

Has this reporting entity had any Certificates of Authority, licenses or registrations (including corporate registration, if applicable) suspended or revoked by any governmental entity during the reporting period?

Yes [] No [X]

7.2

If yes, give full information:

8.1

Is the company a subsidiary of a bank holding company regulated by the Federal Reserve Board?

Yes [] No [X]

8.2

If response to 8.1 is yes, please identify the name of the bank holding company.

8.3

Is the company affiliated with one or more banks, thrifts or securities firms?

Yes [X] No []

8.4

If response to 8.3 is yes, please provide below the names and location (city and state of the main office) of any affiliates regulated by a federal regulatory services agency [i.e. the Federal Reserve Board (FRB), the Office of the Comptroller of the Currency (OCC), the Federal Deposit Insurance Corporation (FDIC) and the Securities Exchange Commission (SEC)] and identify the affiliate's primary federal regulator.

1	2	3	4	5	6
Affiliate Name	Location (City, State)	FRB	OCC	FDIC	SEC
Nationwide Trust Company, FSB	Columbus, OH	NO	YES	NO	NO
Nationwide Investment Services Corp.	Columbus, OH	NO	NO	NO	YES
Nationwide Investment Advisors, LLC	Columbus, OH	NO	NO	NO	YES
Nationwide Securities, LLC	Columbus, OH	NO	NO	NO	YES
Nationwide Fund Advisors	Columbus, OH	NO	NO	NO	YES
Nationwide Fund Distributors, LLC	Columbus, OH	NO	NO	NO	YES
Nationwide Asset Management, LLC	Columbus, OH	NO	NO	NO	YES

STATEMENT AS OF MARCH 31, 2024 OF THE NATIONWIDE GENERAL INSURANCE COMPANY

GENERAL INTERROGATORIES

- 9.1

Are the senior officers (principal executive officer, principal financial officer, principal accounting officer or controller, or persons performing similar functions) of the reporting entity subject to a code of ethics, which includes the following standards?
(a) Honest and ethical conduct, including the ethical handling of actual or apparent conflicts of interest between personal and professional relationships;
(b) Full, fair, accurate, timely and understandable disclosure in the periodic reports required to be filed by the reporting entity;
(c) Compliance with applicable governmental laws, rules and regulations;
(d) The prompt internal reporting of violations to an appropriate person or persons identified in the code; and
(e) Accountability for adherence to the code.

Yes [X] No []
- 9.11

If the response to 9.1 is No, please explain:
.....
- 9.2

Has the code of ethics for senior managers been amended?

Yes [] No [X]
- 9.21

If the response to 9.2 is Yes, provide information related to amendment(s).
.....
- 9.3

Have any provisions of the code of ethics been waived for any of the specified officers?

Yes [] No [X]
- 9.31

If the response to 9.3 is Yes, provide the nature of any waiver(s).
.....

FINANCIAL

- 10.1

Does the reporting entity report any amounts due from parent, subsidiaries or affiliates on Page 2 of this statement?

Yes [X] No []
- 10.2

If yes, indicate any amounts receivable from parent included in the Page 2 amount:\$

INVESTMENT

- 11.1

Were any of the stocks, bonds, or other assets of the reporting entity loaned, placed under option agreement, or otherwise made available for use by another person? (Exclude securities under securities lending agreements.)

Yes [] No [X]
- 11.2

If yes, give full and complete information relating thereto:
.....
12.

Amount of real estate and mortgages held in other invested assets in Schedule BA:

\$2,485,300
13.

Amount of real estate and mortgages held in short-term investments:

\$
- 14.1

Does the reporting entity have any investments in parent, subsidiaries and affiliates?

Yes [] No [X]
- 14.2

If yes, please complete the following:

	1	2
	Prior Year-End Book/Adjusted Carrying Value	Current Quarter Book/Adjusted Carrying Value
14.21 Bonds	\$	\$
14.22 Preferred Stock	\$	\$
14.23 Common Stock	\$	\$
14.24 Short-Term Investments	\$	\$
14.25 Mortgage Loans on Real Estate	\$	\$
14.26 All Other	\$	\$
14.27 Total Investment in Parent, Subsidiaries and Affiliates (Subtotal Lines 14.21 to 14.26)	\$	\$
14.28 Total Investment in Parent included in Lines 14.21 to 14.26 above	\$	\$

15.1

Has the reporting entity entered into any hedging transactions reported on Schedule DB?

Yes [] No [X]

15.2

If yes, has a comprehensive description of the hedging program been made available to the domiciliary state? Yes [] No [] N/A [X]
If no, attach a description with this statement.
.....

16.

For the reporting entity's security lending program, state the amount of the following as of the current statement date:

16.1

Total fair value of reinvested collateral assets reported on Schedule DL, Parts 1 and 2.

\$

16.2

Total book/adjusted carrying value of reinvested collateral assets reported on Schedule DL, Parts 1 and 2

\$

16.3

Total payable for securities lending reported on the liability page.

\$
- 7.1

STATEMENT AS OF MARCH 31, 2024 OF THE NATIONWIDE GENERAL INSURANCE COMPANY

GENERAL INTERROGATORIES

17. Excluding items in Schedule E - Part 3 - Special Deposits, real estate, mortgage loans and investments held physically in the reporting entity's offices, vaults or safety deposit boxes, were all stocks, bonds and other securities, owned throughout the current year held pursuant to a custodial agreement with a qualified bank or trust company in accordance with Section 1, III - General Examination Considerations, F. Outsourcing of Critical Functions, Custodial or Safekeeping Agreements of the NAIC Financial Condition Examiners Handbook? Yes [X] No []
- 17.1 For all agreements that comply with the requirements of the NAIC Financial Condition Examiners Handbook, complete the following:

1 Name of Custodian(s)	2 Custodian Address
The Bank of New York Mellon	1 Wall Street, New York, NY 10286

- 17.2 For all agreements that do not comply with the requirements of the NAIC Financial Condition Examiners Handbook, provide the name, location and a complete explanation:

1 Name(s)	2 Location(s)	3 Complete Explanation(s)

- 17.3 Have there been any changes, including name changes, in the custodian(s) identified in 17.1 during the current quarter? Yes [] No [X]
- 17.4 If yes, give full information relating thereto:

1 Old Custodian	2 New Custodian	3 Date of Change	4 Reason

- 17.5 Investment management – Identify all investment advisors, investment managers, broker/dealers, including individuals that have the authority to make investment decisions on behalf of the reporting entity. For assets that are managed internally by employees of the reporting entity, note as such. ["...that have access to the investment accounts"; "...handle securities"]

1 Name of Firm or Individual	2 Affiliation
Members of the investment staff designated by the Chief Investment Officer as detailed in the Corporate Resolution	I.....

- 17.5097 For those firms/individuals listed in the table for Question 17.5, do any firms/individuals unaffiliated with the reporting entity (i.e. designated with a "U") manage more than 10% of the reporting entity's invested assets?..... Yes [] No [X]
- 17.5098 For firms/individuals unaffiliated with the reporting entity (i.e. designated with a "U") listed in the table for Question 17.5, does the total assets under management aggregate to more than 50% of the reporting entity's invested assets?..... Yes [] No [X]

- 17.6 For those firms or individuals listed in the table for 17.5 with an affiliation code of "A" (affiliated) or "U" (unaffiliated), provide the information for the table below.

1	2	3	4	5
Central Registration Depository Number	Name of Firm or Individual	Legal Entity Identifier (LEI)	Registered With	Investment Management Agreement (IMA) Filed

- 18.1 Have all the filing requirements of the Purposes and Procedures Manual of the NAIC Investment Analysis Office been followed? Yes [X] No []
- 18.2 If no, list exceptions:

19. By self-designating 5GI securities, the reporting entity is certifying the following elements for each self-designated 5GI security:
- a. Documentation necessary to permit a full credit analysis of the security does not exist or an NAIC CRP credit rating for an FE or PL security is not available.
 - b. Issuer or obligor is current on all contracted interest and principal payments.
 - c. The insurer has an actual expectation of ultimate payment of all contracted interest and principal.
- Has the reporting entity self-designated 5GI securities? Yes [] No [X]

20. By self-designating PLGI securities, the reporting entity is certifying the following elements of each self-designated PLGI security:
- a. The security was purchased prior to January 1, 2018.
 - b. The reporting entity is holding capital commensurate with the NAIC Designation reported for the security.
 - c. The NAIC Designation was derived from the credit rating assigned by an NAIC CRP in its legal capacity as a NRSRO which is shown on a current private letter rating held by the insurer and available for examination by state insurance regulators.
 - d. The reporting entity is not permitted to share this credit rating of the PL security with the SVO.
- Has the reporting entity self-designated PLGI securities? Yes [] No [X]

21. By assigning FE to a Schedule BA non-registered private fund, the reporting entity is certifying the following elements of each self-designated FE fund:
- a. The shares were purchased prior to January 1, 2019.
 - b. The reporting entity is holding capital commensurate with the NAIC Designation reported for the security.
 - c. The security had a public credit rating(s) with annual surveillance assigned by an NAIC CRP in its legal capacity as an NRSRO prior to January 1, 2019.
 - d. The fund only or predominantly holds bonds in its portfolio.
 - e. The current reported NAIC Designation was derived from the public credit rating(s) with annual surveillance assigned by an NAIC CRP in its legal capacity as an NRSRO.
 - f. The public credit rating(s) with annual surveillance assigned by an NAIC CRP has not lapsed.
- Has the reporting entity assigned FE to Schedule BA non-registered private funds that complied with the above criteria? Yes [] No [X]

GENERAL INTERROGATORIES

PART 2 - PROPERTY & CASUALTY INTERROGATORIES

1.

If the reporting entity is a member of a pooling arrangement, did the agreement or the reporting entity's participation change?
If yes, attach an explanation.
.....

Yes [] No [X] N/A []
2.

Has the reporting entity reinsured any risk with any other reporting entity and agreed to release such entity from liability, in whole or in part, from any loss that may occur on the risk, or portion thereof, reinsured?
If yes, attach an explanation.
.....

Yes [] No [X]
- 3.1

Have any of the reporting entity's primary reinsurance contracts been canceled?

Yes [] No [X]
- 3.2

If yes, give full and complete information thereto.
.....
- 4.1

Are any of the liabilities for unpaid losses and loss adjustment expenses other than certain workers' compensation tabular reserves (see Annual Statement Instructions pertaining to disclosure of discounting for definition of " tabular reserves") discounted at a rate of interest greater than zero?

Yes [X] No []

4.2 If yes, complete the following schedule:

			TOTAL DISCOUNT				DISCOUNT TAKEN DURING PERIOD			
1	2	3	4	5	6	7	8	9	10	11
Line of Business	Maximum Interest	Discount Rate	Unpaid Losses	Unpaid LAE	IBNR	TOTAL	Unpaid Losses	Unpaid LAE	IBNR	TOTAL
Non-renewable for stated reasons only .	0.1	0.040	187	8		195				
TOTAL			187	8		195				

5. Operating Percentages:

- 5.1

A&H loss percent

74.000 %
- 5.2

A&H cost containment percent

0.000 %
- 5.3

A&H expense percent excluding cost containment expenses

30.000 %
- 6.1

Do you act as a custodian for health savings accounts?

Yes [] No [X]
- 6.2

If yes, please provide the amount of custodial funds held as of the reporting date\$.....
- 6.3

Do you act as an administrator for health savings accounts?

Yes [] No [X]
- 6.4

If yes, please provide the balance of the funds administered as of the reporting date\$.....
7.

Is the reporting entity licensed or chartered, registered, qualified, eligible or writing business in at least two states?

Yes [X] No []
- 7.1

If no, does the reporting entity assume reinsurance business that covers risks residing in at least one state other than the state of domicile of the reporting entity?

Yes [] No []

STATEMENT AS OF MARCH 31, 2024 OF THE NATIONWIDE GENERAL INSURANCE COMPANY

SCHEDULE F - CEDED REINSURANCE

Showing All New Reinsurers - Current Year to Date

[illegible]

STATEMENT AS OF MARCH 31, 2024 OF THE NATIONWIDE GENERAL INSURANCE COMPANY

SCHEDULE T - EXHIBIT OF PREMIUMS WRITTEN

Current Year to Date - Allocated by States and Territories									
		1 Active Status (a)	Direct Premiums Written		Direct Losses Paid (Deducting Salvage)		Direct Losses Unpaid		
			2 Current Year To Date	3 Prior Year To Date	4 Current Year To Date	5 Prior Year To Date	6 Current Year To Date	7 Prior Year To Date	
States, etc.									
1.	Alabama	AL	L	8,115,633	10,748,854	6,300,061	7,077,192	10,688,685	12,855,138
2.	Alaska	AK	L						
3.	Arizona	AZ	L	8,812,526	11,135,836	9,763,369	5,966,618	17,553,881	12,659,596
4.	Arkansas	AR	L	7,289,348	9,238,478	4,872,496	6,787,485	9,706,370	9,346,411
5.	California	CA	L	36,036,620		201,644		2,242,824	
6.	Colorado	CO	L	11,458,489	14,791,124	6,913,245	2,763,688	14,792,311	6,615,597
7.	Connecticut	CT	L	12,962,906	13,617,801	10,063,519	11,340,964	32,465,580	31,518,354
8.	Delaware	DE	L	6,348,938	6,855,284	5,062,192	3,215,065	7,217,833	6,492,662
9.	District of Columbia	DC	L	1,038,015	1,365,123	803,343	713,893	1,266,541	743,687
10.	Florida	FL	L	12,482,766	17,245,397	5,398,302	5,006,857	47,109,775	26,912,012
11.	Georgia	GA	L	24,943,088	33,173,335	25,747,360	31,989,882	49,495,986	48,862,327
12.	Hawaii	HI	N						
13.	Idaho	ID	L	1,218,949	1,277,813	1,200,401	990,897	2,642,161	2,136,122
14.	Illinois	IL	L	7,523,953	11,741,538	7,359,131	9,518,035	23,571,898	19,993,818
15.	Indiana	IN	L	1,192,753	1,880,931	440,836	1,170,990	4,105,108	3,938,943
16.	Iowa	IA	L	959,666	1,355,022	397,751	744,954	3,270,613	2,287,552
17.	Kansas	KS	L	1,415,282	3,051,144	2,091,316	1,592,082	2,682,591	3,650,863
18.	Kentucky	KY	L	4,233,168	5,237,767	2,719,221	7,765,416	9,055,923	18,022,247
19.	Louisiana	LA	L						
20.	Maine	ME	L	155,438	196,442	122,174	364,048	455,602	352,789
21.	Maryland	MD	L	16,617,093	16,589,005	10,799,471	11,655,986	22,602,956	20,389,747
22.	Massachusetts	MA	L	410,326	472,990	205,490	196,451	1,934,696	1,599,361
23.	Michigan	MI	L	8,837,546	11,911,560	5,874,049	7,684,871	15,812,955	12,629,505
24.	Minnesota	MN	L	783,909	1,095,165	844,972	975,027	1,036,531	2,076,390
25.	Mississippi	MS	L	14,501,705	16,354,518	11,509,851	11,764,787	20,647,358	22,329,827
26.	Missouri	MO	L	15,876,470	21,111,275	13,524,238	13,908,205	33,639,803	23,282,779
27.	Montana	MT	L	1,011,262	1,425,508	164,284	609,250	947,918	626,283
28.	Nebraska	NE	L	3,409,316	3,778,473	1,271,117	1,879,305	3,624,534	4,203,142
29.	Nevada	NV	L	2,551,340	3,906,337	2,225,025	2,850,333	9,411,274	8,491,841
30.	New Hampshire	NH	L	680,904	730,490	216,802	365,950	592,054	905,041
31.	New Jersey	NJ	L	1,023,319	2,169,258	125,400	257,320	3,688,872	1,124,140
32.	New Mexico	NM	L	442,077	613,321	232,984	118,639	2,534,159	831,838
33.	New York	NY	L	41,645,968	50,193,662	46,628,350	53,012,996	161,388,105	143,747,989
34.	North Carolina	NC	L	58,160,063	69,229,874	31,736,924	43,450,231	61,148,222	66,632,084
35.	North Dakota	ND	L	323,787	400,568	43,872	75,759	219,384	251,420
36.	Ohio	OH	L	37,547,043	42,290,397	19,914,816	31,449,157	45,285,433	55,915,242
37.	Oklahoma	OK	L						
38.	Oregon	OR	L	6,219,386	7,071,518	7,924,288	4,379,111	17,180,710	14,162,987
39.	Pennsylvania	PA	L	81,413,748	82,019,000	66,390,472	65,116,925	129,073,571	106,848,497
40.	Rhode Island	RI	L	8,880,029	9,653,819	6,248,462	7,435,509	19,999,116	17,555,227
41.	South Carolina	SC	L	13,169,215	14,631,237	9,194,711	12,850,393	18,572,184	19,228,852
42.	South Dakota	SD	L	979,901	1,036,669	2,057,712	568,792	1,751,322	1,405,362
43.	Tennessee	TN	L	9,406,131	11,838,604	8,021,706	10,363,405	18,821,868	20,011,061
44.	Texas	TX	L	7,231,963	20,617,305	8,341,439	18,644,083	27,239,290	31,529,111
45.	Utah	UT	L	4,907,053	6,342,057	3,506,435	3,095,505	7,835,562	7,502,744
46.	Vermont	VT	L	456,218	531,943	102,370	256,365	193,539	574,408
47.	Virginia	VA	L	21,200,565	22,843,828	14,780,084	11,259,592	26,596,416	20,368,019
48.	Washington	WA	L	9,994,553	9,965,726	9,362,170	7,987,259	18,628,245	10,211,747
49.	West Virginia	WV	L	3,162,247	3,598,715	1,375,187	2,221,813	2,860,666	3,634,542
50.	Wisconsin	WI	L	3,716,508	4,031,479	3,310,163	3,403,525	6,521,127	4,950,379
51.	Wyoming	WY	L	661,219	907,496	169,198	341,190	557,459	530,894
52.	American Samoa	AS	N						
53.	Guam	GU	N						
54.	Puerto Rico	PR	N						
55.	U.S. Virgin Islands	VI	N						
56.	Northern Mariana Islands	MP	N						
57.	Canada	CAN	N						
58.	Aggregate Other Alien OT	XXX							
59.	Totals	XXX		521,408,402	580,273,686	375,558,403	425,185,800	918,669,011	829,938,577
DETAILS OF WRITE-INS									
58001.		XXX							
58002.		XXX							
58003.		XXX							
58998.	Summary of remaining write-ins for Line 58 from overflow page	XXX							
58999.	Totals (Lines 58001 through 58003 plus 58998)(Line 58 above)	XXX							

- (a) Active Status Counts:
1. L - Licensed or Chartered - Licensed insurance carrier or domiciled RRG..... 50

2. R - Registered - Non-domiciled RRGs.....

3. E - Eligible - Reporting entities eligible or approved to write surplus lines in the state (other than their state of domicile - see DSLI).....

4. Q - Qualified - Qualified or accredited reinsurer.....

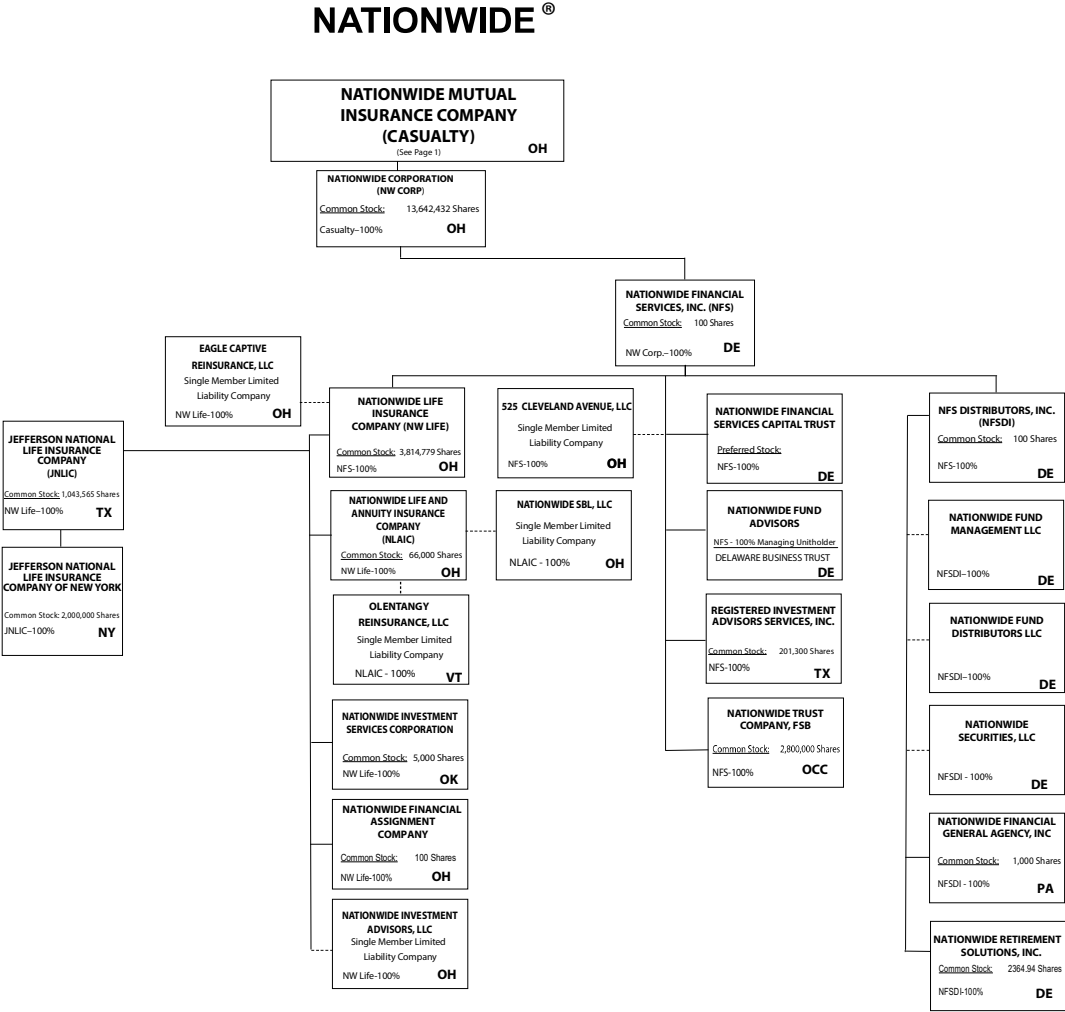
5. D - Domestic Surplus Lines Insurer (DSLII) - Reporting entities authorized to write surplus lines in the state of domicile.....

6. N - None of the above - Not allowed to write business in the state... 7

11



11.1



Subsidiary Companies — Solid Line
Contractual Association = Double Line
Limited Liability Company - - Dotted Line

NATIONWIDE INSURANCE COMPANIES

NAIC Group Code	Group Name	NAIC Company Code	State of Domicile	Federal ID Number	Name of Company
0140	Nationwide	10127	OH	27-0114983	Allied Insurance Company of America
0140	Nationwide	42579	IA	42-1201931	Allied Property and Casualty Insurance Company
0140	Nationwide	19100	IA	42-6054959	AMCO Insurance Company
0140	Nationwide	29262	TX	74-1061659	Colonial County Mutual Insurance Company
0140	Nationwide	18961	OH	68-0066866	Crestbrook Insurance Company
0140	Nationwide	42587	IA	42-1207150	Depositors Insurance Company
0140	Nationwide	15821	OH	42-4523959	Eagle Captive Reinsurance, LLC
0140	Nationwide	22209	OH	75-6013587	Freedom Specialty Insurance Company
0140	Nationwide	23582	OH	41-0417250	Harleysville Insurance Company
0140	Nationwide	42900	NJ	23-2253669	Harleysville Insurance Company of New Jersey
0140	Nationwide	10674	OH	23-2864924	Harleysville Insurance Company of New York
0140	Nationwide	35696	OH	23-2384978	Harleysville Preferred Insurance Company
0140	Nationwide	26182	OH	04-1989660	Harleysville Worcester Insurance Company
0140	Nationwide	64017	TX	75-0300900	Jefferson National Life Insurance Company
0140	Nationwide	15727	NY	47-1180302	Jefferson National Life Insurance Company of New York
0140	Nationwide	11991	OH	38-0865250	National Casualty Company
0140	Nationwide	26093	OH	48-0470690	Nationwide Affinity Insurance Company of America
0140	Nationwide	28223	IA	42-1015537	Nationwide Agribusiness Insurance Company
0140	Nationwide	10723	OH	95-0639970	Nationwide Assurance Company
0140	Nationwide	23760	OH	31-4425763	Nationwide General Insurance Company
0140	Nationwide	10070	OH	31-1399201	Nationwide Indemnity Company
0140	Nationwide	25453	OH	95-2130882	Nationwide Insurance Company of America
0140	Nationwide	10948	OH	31-1613686	Nationwide Insurance Company of Florida
0140	Nationwide	92657	OH	31-1000740	Nationwide Life and Annuity Insurance Company
0140	Nationwide	66869	OH	31-4156830	Nationwide Life Insurance Company
0140	Nationwide	23787	OH	31-4177100	Nationwide Mutual Insurance Company
0140	Nationwide	37877	OH	31-0970750	Nationwide Property & Casualty Insurance Company
0140	Nationwide	13999	VT	27-1712056	Olentangy Reinsurance, LLC
0140	Nationwide	15580	OH	31-1117969	Scottsdale Indemnity Company
0140	Nationwide	41297	OH	31-1024978	Scottsdale Insurance Company
0140	Nationwide	10672	AZ	86-0835870	Scottsdale Surplus Lines Insurance Company
0140	Nationwide	36269	MI	86-0619597	Titan Insurance Company
0140	Nationwide	42285	OH	95-3750113	Veterinary Pet Insurance Company
0140	Nationwide	42889	OH	34-1394913	Victoria Fire & Casualty Company
0140	Nationwide	10105	OH	34-1777972	Victoria Select Insurance Company

STATEMENT AS OF MARCH 31, 2024 OF THE NATIONWIDE GENERAL INSURANCE COMPANY

SCHEDULE Y
PART 1A - DETAIL OF INSURANCE HOLDING COMPANY SYSTEM

1	2	3	4	5	6	7	8	9	10	11	12	13	14	15	16
Group Code	Group Name	NAIC Company Code	ID Number	Federal RSSD	CIK	Name of Securities Exchange if Publicly Traded (U.S. or International)	Names of Parent, Subsidiaries Or Affiliates	Domi-ciliary Location	Relation-ship to Reporting Entity	Directly Controlled by (Name of Entity/Person)	Type of Control (Ownership, Board, Management, Attorney-in-Fact, Influence, Other)	If Control is Ownership Provide Percen-tage	Ultimate Controlling Entity(ies)/Person(s)	Is an SCA Filing Re-quired? (Yes/No)	*
.0140	Nationwide		31-1486309				10 W. Nationwide, LLC	..OH....	NIA.....	Nationwide Realty Investors, Ltd.	Ownership.....	100.000	Nationwide Mutual Insurance Company	...NO.....	
.0140	Nationwide		31-1486309				100 Green Meadows Drive, LLC	..OH....	NIA.....	Nationwide Realty Investors, Ltd.	Ownership.....	100.000	Nationwide Mutual Insurance Company	...NO.....	
.0140	Nationwide		31-1486309				1000 Yard Street, LLC	..OH....	NIA.....	Nationwide Realty Investors, Ltd.	Ownership.....	100.000	Nationwide Mutual Insurance Company	...NO.....	
.0140	Nationwide		31-1486309				1015 Long Street, LLC	..OH....	NIA.....	Nationwide Realty Investors, Ltd.	Ownership.....	100.000	Nationwide Mutual Insurance Company	...NO.....	
.0140	Nationwide		31-1486309				1050 Yard Street, LLC	..OH....	NIA.....	Nationwide Realty Investors, Ltd.	Ownership.....	100.000	Nationwide Mutual Insurance Company	...NO.....	
.0140	Nationwide		31-1486309				1125 Rail Street, LLC	..OH....	NIA.....	Nationwide Realty Investors, Ltd.	Ownership.....	100.000	Nationwide Mutual Insurance Company	...NO.....	
.0140	Nationwide		31-1733036				120 Acre Partners, LLC	..DE....	NIA.....	Nationwide Realty Investors, Ltd.	Ownership.....	95.000	Nationwide Mutual Insurance Company	...NO.....	1
.0140	Nationwide		20-4939866				1125 Yard Street, LLC	..OH....	NIA.....	NRI Equity Land Investments, LLC	Ownership.....	100.000	Nationwide Mutual Insurance Company	...NO.....	
.0140	Nationwide		20-4939867				1175 Bobcat, LLC	..OH....	NIA.....	NRI Equity Land Investments, LLC	Ownership.....	100.000	Nationwide Mutual Insurance Company	...NO.....	
.0140	Nationwide		26-2451988				1492 Capital, LLC	..OH....	NIA.....	Nationwide Mutual Insurance Company	Ownership.....	100.000	Nationwide Mutual Insurance Company	...NO.....	
.0140	Nationwide		31-1486309				111 Rivulon Boulevard, LLC	..OH....	NIA.....	NRI-Rivulon, LLC	Ownership.....	100.000	Nationwide Mutual Insurance Company	...NO.....	
.0140	Nationwide		31-1486309				155 Rivulon Boulevard, LLC	..OH....	NIA.....	NRI-Rivulon, LLC	Ownership.....	100.000	Nationwide Mutual Insurance Company	...NO.....	
.0140	Nationwide		31-1486309				161 Rivulon Boulevard, LLC	..OH....	NIA.....	NRI-Rivulon, LLC	Ownership.....	100.000	Nationwide Mutual Insurance Company	...NO.....	
.0140	Nationwide		31-1580283				170 Marconi, LLC	..OH....	NIA.....	NWD Investments, LLC	Ownership.....	100.000	Nationwide Mutual Insurance Company	...NO.....	
.0140	Nationwide		38-4118665				220 Vine St., LLC	..OH....	NIA.....	NWD HP, LLC	Ownership.....	100.000	Nationwide Mutual Insurance Company	...NO.....	
.0140	Nationwide		31-1580283				245 Parks Edge Place, LLC	..OH....	NIA.....	NWD Investments, LLC	Ownership.....	100.000	Nationwide Mutual Insurance Company	...NO.....	
.0140	Nationwide		31-1486309				275 Rivulon Boulevard, LLC	..OH....	NIA.....	NRI-Rivulon, LLC	Ownership.....	100.000	Nationwide Mutual Insurance Company	...NO.....	
.0140	Nationwide		31-1486309				300 Rivulon Boulevard, LLC	..OH....	NIA.....	NRI-Rivulon, LLC	Ownership.....	100.000	Nationwide Mutual Insurance Company	...NO.....	
.0140	Nationwide		31-1486309				310 Rivulon Boulevard, LLC	..OH....	NIA.....	NRI-Rivulon, LLC	Ownership.....	100.000	Nationwide Mutual Insurance Company	...NO.....	
.0140	Nationwide		31-1486309				343 N. Front, LLC	..OH....	NIA.....	Nationwide Realty Investors, Ltd.	Ownership.....	100.000	Nationwide Mutual Insurance Company	...NO.....	
.0140	Nationwide		31-1486309				400 Rivulon Boulevard, LLC	..OH....	NIA.....	NRI-Rivulon, LLC	Ownership.....	100.000	Nationwide Mutual Insurance Company	...NO.....	
.0140	Nationwide		31-1580283				400 West Nationwide Boulevard, LLC	..OH....	NIA.....	NWD Investments, LLC	Ownership.....	100.000	Nationwide Mutual Insurance Company	...NO.....	
.0140	Nationwide		31-1486309				410 Rivulon Boulevard, LLC	..OH....	NIA.....	NRI-Rivulon, LLC	Ownership.....	100.000	Nationwide Mutual Insurance Company	...NO.....	
.0140	Nationwide		31-1580283				425 West Nationwide Boulevard, LLC	..OH....	NIA.....	NWD Investments, LLC	Ownership.....	100.000	Nationwide Mutual Insurance Company	...NO.....	
.0140	Nationwide		31-1486309				44 Chestnut, LLC	..OH....	NIA.....	Nationwide Realty Investors, Ltd.	Ownership.....	100.000	Nationwide Mutual Insurance Company	...NO.....	
.0140	Nationwide		38-4118665				500 Neil Avenue, LLC	..OH....	NIA.....	NWD HP, LLC	Ownership.....	100.000	Nationwide Mutual Insurance Company	...NO.....	
.0140	Nationwide		38-4118665				515 Kilbourne Street, LLC	..OH....	NIA.....	NWD HP, LLC	Ownership.....	100.000	Nationwide Mutual Insurance Company	...NO.....	
.0140	Nationwide		87-1954007				525 Cleveland Avenue, LLC	..OH....	NIA.....	Nationwide Financial Services, Inc.	Ownership.....	100.000	Nationwide Mutual Insurance Company	...NO.....	
.0140	Nationwide		31-1486309				75 Rivulon Boulevard, LLC	..OH....	NIA.....	NRI-Rivulon, LLC	Ownership.....	100.000	Nationwide Mutual Insurance Company	...NO.....	
.0140	Nationwide		20-4939866				775 Yard Street, LLC	..OH....	NIA.....	NRI Equity Land Investments, LLC	Ownership.....	100.000	Nationwide Mutual Insurance Company	...NO.....	
.0140	Nationwide		20-4939866				777 Swan Street, LLC	..OH....	NIA.....	NRI Equity Land Investments, LLC	Ownership.....	100.000	Nationwide Mutual Insurance Company	...NO.....	
.0140	Nationwide		20-4939866				780 Yard Street, LLC	..OH....	NIA.....	NRI Equity Land Investments, LLC	Ownership.....	100.000	Nationwide Mutual Insurance Company	...NO.....	
.0140	Nationwide		20-4939866				795 Rail Street, LLC	..OH....	NIA.....	NRI Equity Land Investments, LLC	Ownership.....	100.000	Nationwide Mutual Insurance Company	...NO.....	
.0140	Nationwide		20-4939866				800 Bobcat Avenue, LLC	..OH....	NIA.....	NRI Equity Land Investments, LLC	Ownership.....	100.000	Nationwide Mutual Insurance Company	...NO.....	
.0140	Nationwide		20-4939866				800 Goodale Boulevard, LLC	..OH....	NIA.....	NRI Equity Land Investments, LLC	Ownership.....	100.000	Nationwide Mutual Insurance Company	...NO.....	
.0140	Nationwide		20-4939866				800 Yard Street, LLC	..OH....	NIA.....	NRI Equity Land Investments, LLC	Ownership.....	100.000	Nationwide Mutual Insurance Company	...NO.....	
.0140	Nationwide		20-4939866				805 Bobcat Avenue, LLC	..OH....	NIA.....	GVY Residential, LLC	Ownership.....	100.000	Nationwide Mutual Insurance Company	...NO.....	
.0140	Nationwide		20-4939866				808 Yard Street, LLC	..OH....	NIA.....	GVY Residential, LLC	Ownership.....	100.000	Nationwide Mutual Insurance Company	...NO.....	
.0140	Nationwide		20-4939866				820 Goodale Boulevard, LLC	..OH....	NIA.....	NRI Equity Land Investments, LLC	Ownership.....	100.000	Nationwide Mutual Insurance Company	...NO.....	
.0140	Nationwide		20-4939866				822 Williams Avenue, LLC	..OH....	NIA.....	GVY Residential, LLC	Ownership.....	100.000	Nationwide Mutual Insurance Company	...NO.....	
.0140	Nationwide		20-4939866				825 Junction Way, LLC	..OH....	NIA.....	GVY Residential, LLC	Ownership.....	100.000	Nationwide Mutual Insurance Company	...NO.....	
.0140	Nationwide		20-4939866				828 Bobcat Avenue, LLC	..OH....	NIA.....	NRI Equity Land Investments, LLC	Ownership.....	100.000	Nationwide Mutual Insurance Company	...NO.....	
.0140	Nationwide		20-4939866				840 Third Avenue, LLC	..OH....	NIA.....	NRI Equity Land Investments, LLC	Ownership.....	100.000	Nationwide Mutual Insurance Company	...NO.....	
.0140	Nationwide		20-4939866				840 Yard Street, LLC	..OH....	NIA.....	NRI Equity Land Investments, LLC	Ownership.....	100.000	Nationwide Mutual Insurance Company	...NO.....	
.0140	Nationwide		20-4939866				845 Yard Street, LLC	..OH....	NIA.....	GVY Residential, LLC	Ownership.....	100.000	Nationwide Mutual Insurance Company	...NO.....	
.0140	Nationwide		20-4939866				855 Third Avenue, LLC	..OH....	NIA.....	NRI Equity Land Investments, LLC	Ownership.....	100.000	Nationwide Mutual Insurance Company	...NO.....	
.0140	Nationwide		20-4939866				860 Third Avenue, LLC	..OH....	NIA.....	NRI Equity Land Investments, LLC	Ownership.....	100.000	Nationwide Mutual Insurance Company	...NO.....	
.0140	Nationwide		20-4939866				875 First Avenue, LLC	..OH....	NIA.....	GVY Residential, LLC	Ownership.....	100.000	Nationwide Mutual Insurance Company	...NO.....	
.0140	Nationwide		20-4939866				880 Third Avenue, LLC	..OH....	NIA.....	NRI Equity Land Investments, LLC	Ownership.....	100.000	Nationwide Mutual Insurance Company	...NO.....	

STATEMENT AS OF MARCH 31, 2024 OF THE NATIONWIDE GENERAL INSURANCE COMPANY

SCHEDULE Y

PART 1A - DETAIL OF INSURANCE HOLDING COMPANY SYSTEM

1	2	3	4	5	6	7	8	9	10	11	12	13	14	15	16
Group Code	Group Name	NAIC Company Code	ID Number	Federal RSSD	CIK	Name of Securities Exchange if Publicly Traded (U.S. or International)	Names of Parent, Subsidiaries Or Affiliates	Domi-ciliary Loca-tion	Relation-ship to Reporting Entity	Directly Controlled by (Name of Entity/Person)	Type of Control (Ownership, Board, Management, Attorney-in-Fact, Influence, Other)	If Control is Owner-ship Provide Percen-tage	Ultimate Controlling Entity(ies)/Person(s)	Is an SCA Filing Re-quired? (Yes/No)	*
. 0140	Nationwide		20-4939866				880 Yard Street, LLC	.. OH.....	NIA.....	GVY Residential, LLC	Ownership.....	100.000	Nationwide Mutual Insurance Company	... NO.....
. 0140	Nationwide		20-4939866				895 W. Third Avenue, LLC	.. OH.....	NIA.....	NRI Equity Land Investments, LLC	Ownership.....	100.000	Nationwide Mutual Insurance Company	... NO.....
. 0140	Nationwide		20-4939866				950 Dorchester Way, LLC	.. OH.....	NIA.....	GVY Residential, LLC	Ownership.....	100.000	Nationwide Mutual Insurance Company	... NO.....
. 0140	Nationwide		20-4939866				950 Goodale Boulevard, LLC	.. OH.....	NIA.....	NRI Equity Land Investments, LLC	Ownership.....	100.000	Nationwide Mutual Insurance Company	... NO.....
. 0140	Nationwide		31-1486309				960 Bobcat Avenue, LLC	.. OH.....	NIA.....	Nationwide Realty Investors, Ltd.	Ownership.....	100.000	Nationwide Mutual Insurance Company	... NO.....
. 0140	Nationwide		31-1486309				975 Rail Street, LLC	.. OH.....	NIA.....	Nationwide Realty Investors, Ltd.	Ownership.....	100.000	Nationwide Mutual Insurance Company	... NO.....
. 0140	Nationwide		31-1486309				995 Yard Street, LLC	.. OH.....	NIA.....	Nationwide Realty Investors, Ltd.	Ownership.....	100.000	Nationwide Mutual Insurance Company	... NO.....
. 0140	Nationwide		31-1486309				12062 Sycamore Trace, LLC	.. OH.....	NIA.....	Jerome Village Company, LLC	Ownership.....	100.000	Nationwide Mutual Insurance Company	... NO.....
. 0140	Nationwide		31-1486309				18615 Claret Drive, LLC	.. OH.....	NIA.....	NRI Cavasson, LLC	Ownership.....	100.000	Nationwide Mutual Insurance Company	... NO.....
. 0140	Nationwide		31-1486309				18655 Claret Drive, LLC	.. OH.....	NIA.....	NRI Cavasson, LLC	Ownership.....	100.000	Nationwide Mutual Insurance Company	... NO.....
. 0140	Nationwide		31-1486309				18700 Hayden Road, LLC	.. OH.....	NIA.....	NRI Cavasson, LLC	Ownership.....	100.000	Nationwide Mutual Insurance Company	... NO.....
. 0140	Nationwide		31-1486309				18750 Hayden Road, LLC	.. OH.....	NIA.....	NRI Cavasson, LLC	Ownership.....	100.000	Nationwide Mutual Insurance Company	... NO.....
. 0140	Nationwide		31-1580283				AD DORA, LLC	.. OH.....	NIA.....	NWD Investments, LLC	Ownership.....	100.000	Nationwide Mutual Insurance Company	... NO.....
. 0140	Nationwide		31-1580283				ADTV, LLC	.. OH.....	NIA.....	NWD Investments, LLC	Ownership.....	100.000	Nationwide Mutual Insurance Company	... NO.....
. 0140	Nationwide	10127	27-0114983				ALLIED Insurance Company of America	.. OH.....	IA.....	Nationwide Mutual Insurance Company	Ownership.....	100.000	Nationwide Mutual Insurance Company	... NO.....
. 0140	Nationwide	42579	42-1201931				ALLIED Property and Casualty Insurance Company	.. IA.....	IA.....	Nationwide Mutual Insurance Company	Ownership.....	100.000	Nationwide Mutual Insurance Company	... NO.....
. 0140	Nationwide	19100	42-1527863				ALLIED Texas Agency, Inc.	.. TX.....	IA.....	AMCO Insurance Company	Ownership.....	100.000	Nationwide Mutual Insurance Company	... NO.....
. 0140	Nationwide		42-6054959				AMCO Insurance Company	.. IA.....	IA.....	Nationwide Mutual Insurance Company	Ownership.....	100.000	Nationwide Mutual Insurance Company	... NO.....
. 0140	Nationwide		59-1031596				American Marine Underwriters, Inc.	.. FL.....	NIA.....	Nationwide Mutual Insurance Company	Ownership.....	100.000	Nationwide Mutual Insurance Company	... NO.....
. 0140	Nationwide		81-4532504				American Tax Credit Fund 2017-A, LLC	.. OH.....	NIA.....	Nationwide Life Insurance Company	Ownership.....	0.010	Nationwide Mutual Insurance Company	... NO.....	1
. 0140	Nationwide		82-2001573				American Tax Credit Fund 2017-B, LLC	.. OH.....	NIA.....	Nationwide Life Insurance Company	Ownership.....	0.010	Nationwide Mutual Insurance Company	... NO.....	1
. 0140	Nationwide		82-4591498				American Tax Credit Fund 2018-A, LLC	.. OH.....	NIA.....	Nationwide Life Insurance Company	Ownership.....	0.010	Nationwide Mutual Insurance Company	... NO.....	1
. 0140	Nationwide		83-0606592				American Tax Credit Fund 2018-B, LLC	.. OH.....	NIA.....	Nationwide Life Insurance Company	Ownership.....	12.990	Nationwide Mutual Insurance Company	... NO.....	1
. 0140	Nationwide		83-0620232				American Tax Credit Fund 2018-C, LLC	.. OH.....	NIA.....	Nationwide Life Insurance Company	Ownership.....	0.010	Nationwide Mutual Insurance Company	... NO.....	1
. 0140	Nationwide		83-3900932				American Tax Credit Fund 2019-A, LLC	.. OH.....	NIA.....	Nationwide Life Insurance Company	Ownership.....	0.010	Nationwide Mutual Insurance Company	... NO.....	1
. 0140	Nationwide		83-3953721				American Tax Credit Fund 2019-B, LLC	.. OH.....	NIA.....	Nationwide Life Insurance Company	Ownership.....	0.010	Nationwide Mutual Insurance Company	... NO.....	1
. 0140	Nationwide		84-3443067				American Tax Credit Fund 2020-A, LLC	.. OH.....	NIA.....	Nationwide Life Insurance Company	Ownership.....	0.010	Nationwide Mutual Insurance Company	... NO.....	1
. 0140	Nationwide		85-2359702				American Tax Credit Fund 2020-B, LLC	.. OH.....	NIA.....	Nationwide Life Insurance Company	Ownership.....	0.010	Nationwide Mutual Insurance Company	... NO.....	1
. 0140	Nationwide		85-2649655				American Tax Credit Fund 2021-A, LLC (fka American Tax Credit Fund 2021-A, LLC)	.. OH.....	NIA.....	Nationwide Life Insurance Company	Ownership.....	0.010	Nationwide Mutual Insurance Company	... NO.....	1
. 0140	Nationwide		86-2502912				American Tax Credit Fund 2021-B, LLC	.. OH.....	NIA.....	Nationwide Life Insurance Company	Ownership.....	0.010	Nationwide Mutual Insurance Company	... NO.....	1
. 0140	Nationwide		87-1349942				American Tax Credit Fund 2021-C, LLC	.. OH.....	NIA.....	Nationwide Life Insurance Company	Ownership.....	0.010	Nationwide Mutual Insurance Company	... NO.....	1
. 0140	Nationwide		87-4753681				American Tax Credit Fund 2023-B, LLC (fka American Tax Credit Fund 2022-A, LLC)	.. OH.....	NIA.....	Nationwide Life Insurance Company	Ownership.....	0.010	Nationwide Mutual Insurance Company	... NO.....	1
. 0140	Nationwide		87-4771309				American Tax Credit Fund 2023-C, LLC (fka American Tax Credit Fund 2023-C, LLC)	.. OH.....	NIA.....	Nationwide Life Insurance Company	Ownership.....	0.010	Nationwide Mutual Insurance Company	... NO.....	1
. 0140	Nationwide		87-4771309				American Tax Credit Fund 2022-B, LLC)	.. OH.....	NIA.....	Nationwide Life Insurance Company	Ownership.....	0.010	Nationwide Mutual Insurance Company	... NO.....	1
. 0140	Nationwide		92-1389304				American Tax Credit Fund 2023-A, LLC	.. OH.....	NIA.....	Nationwide Life Insurance Company	Ownership.....	0.010	Nationwide Mutual Insurance Company	... NO.....	1
. 0140	Nationwide		99-0672884				American Tax Credit Fund 2024-A, LLC	.. OH.....	NIA.....	Nationwide Life Insurance Company	Ownership.....	100.000	Nationwide Mutual Insurance Company	... NO.....
. 0140	Nationwide		99-0698188				American Tax Credit Fund 2024-B, LLC	.. OH.....	NIA.....	Nationwide Life Insurance Company	Ownership.....	100.000	Nationwide Mutual Insurance Company	... NO.....
. 0140	Nationwide		31-1580283				Arena District CA I, LLC	.. OH.....	NIA.....	NWD Investments, LLC	Ownership.....	100.000	Nationwide Mutual Insurance Company	... NO.....
. 0140	Nationwide		90-0280710				Arena District Owners Association	.. OH.....	OTH.....	Other non-Nationwide	n/a	0.000	Other non-Nationwide	... NO.....	2
. 0140	Nationwide		31-1486309				Cavasson Hotel, LLC	.. OH.....	NIA.....	Cavasson Hotel Holdings, LLC	Ownership.....	100.000	Nationwide Mutual Insurance Company	... NO.....
. 0140	Nationwide		31-1486309				Cavasson Hotel Holdings, LLC	.. OH.....	NIA.....	NRI Cavasson, LLC	Ownership.....	100.000	Nationwide Mutual Insurance Company	... NO.....
. 0140	Nationwide		20-1618232				CNRI-Cannonsport Condominium, LLC	.. OH.....	NIA.....	CNRI-Cannonsport, LLC	Ownership.....	100.000	Nationwide Mutual Insurance Company	... NO.....
. 0140	Nationwide		20-1618232				CNRI-Cannonsport, LLC	.. OH.....	NIA.....	Nationwide Realty Investors, Ltd.	Ownership.....	100.000	Nationwide Mutual Insurance Company	... NO.....
. 0140	Nationwide	29262	74-1061659				Colonial County Mutual Insurance Company	.. TX.....	IA.....	Other non-Nationwide	contract	0.000	Other non-Nationwide	... NO.....	2
. 0140	Nationwide	18961	68-0068866				Crestbrook Insurance Company	.. OH.....	IA.....	Nationwide Mutual Insurance Company	Ownership.....	100.000	Nationwide Mutual Insurance Company	... NO.....
. 0140	Nationwide		31-1486309				Crewville, Ltd.	.. OH.....	NIA.....	Nationwide Realty Investors, Ltd.	Ownership.....	100.000	Nationwide Mutual Insurance Company	... NO.....
. 0140	Nationwide		84-5052608				Danforth, LLC	.. OH.....	NIA.....	Nationwide Mutual Insurance Company	Ownership.....	100.000	Nationwide Mutual Insurance Company	... NO.....

STATEMENT AS OF MARCH 31, 2024 OF THE NATIONWIDE GENERAL INSURANCE COMPANY

SCHEDULE Y
PART 1A - DETAIL OF INSURANCE HOLDING COMPANY SYSTEM

1	2	3	4	5	6	7	8	9	10	11	12	13	14	15	16
Group Code	Group Name	NAIC Company Code	ID Number	Federal RSSD	CIK	Name of Securities Exchange if Publicly Traded (U.S. or International)	Names of Parent, Subsidiaries Or Affiliates	Domi-ciliary Location	Relation-ship to Reporting Entity	Directly Controlled by (Name of Entity/Person)	Type of Control (Ownership, Board, Management, Attorney-in-Fact, Influence, Other)	If Control is Ownership Provide Per-centage	Ultimate Controlling Entity(ies)/Person(s)	Is an SCA Filing Re-quired? (Yes/No)	*
. 0140 ...	Nationwide 42587	42-1207150	Depositors Insurance Company IA..... IA.....	Nationwide Mutual Insurance Company	Ownership.....	100.000 ...	Nationwide Mutual Insurance Company NO.....
.....	46-4104813	Discover Affordable Housing Investment Fund I LLC OH..... OTH.....	Other non-Nationwide	n/a 0.000 ...	Other non-Nationwide NO..... 2
. 0140 ...	Nationwide	33-0096671	DVM Insurance Agency CA..... NIA.....	Veterinary Pet Insurance Company	Ownership.....	100.000 ...	Nationwide Mutual Insurance Company NO.....
. 0140 ...	Nationwide 15821	47-4523959	Eagle Captive Reinsurance, LLC OH..... IA.....	Nationwide Life Insurance Company	Ownership.....	100.000 ...	Nationwide Mutual Insurance Company NO.....
. 0140 ...	Nationwide	26-3260559	E-Risk Services, L.L.C. DE..... NIA.....	Nationwide Mutual Insurance Company	Ownership.....	100.000 ...	Nationwide Mutual Insurance Company NO.....
. 0140 ...	Nationwide 22209	75-6013587	Freedom Specialty Insurance Company OH..... IA.....	Scottsdale Insurance Company	Ownership.....	100.000 ...	Nationwide Mutual Insurance Company NO.....
. 0140 ...	Nationwide	20-4939866	Grandview Yard Hotel Holdings, LLC OH..... NIA.....	NRI Equity Land Investments, LLC	Ownership.....	100.000 ...	Nationwide Mutual Insurance Company NO.....
. 0140 ...	Nationwide	20-4939866	Grandview Yard Hotel, LLC OH..... NIA.....	Grandview Yard Hotel Holdings, LLC	Ownership.....	100.000 ...	Nationwide Mutual Insurance Company NO.....
. 0140 ...	Nationwide	20-4939866	GVY Residential, LLC OH..... NIA.....	NRI Equity Land Investments, LLC	Ownership.....	100.000 ...	Nationwide Mutual Insurance Company NO.....
. 0140 ...	Nationwide 23582	41-0417250	Harleysville Insurance Company OH..... IA.....	Nationwide Mutual Insurance Company	Ownership.....	100.000 ...	Nationwide Mutual Insurance Company NO.....
.....	Harleysville Insurance Company of New Jersey
. 0140 ...	Nationwide 42900	23-2253669 NJ..... IA.....	Nationwide Mutual Insurance Company	Ownership.....	100.000 ...	Nationwide Mutual Insurance Company NO.....
. 0140 ...	Nationwide 10674	23-2864924	Harleysville Insurance Company of New York OH..... IA.....	Nationwide Mutual Insurance Company	Ownership.....	100.000 ...	Nationwide Mutual Insurance Company NO.....
. 0140 ...	Nationwide 35696	23-2384978	Harleysville Preferred Insurance Company OH..... IA.....	Nationwide Mutual Insurance Company	Ownership.....	100.000 ...	Nationwide Mutual Insurance Company NO.....
. 0140 ...	Nationwide 26182	04-1989660	Harleysville Worcester Insurance Company OH..... IA.....	Nationwide Mutual Insurance Company	Ownership.....	100.000 ...	Nationwide Mutual Insurance Company NO.....
. 0140 ...	Nationwide 64017	75-0300900	Jefferson National Life Insurance Company TX..... IA.....	Nationwide Life Insurance Company	Ownership.....	100.000 ...	Nationwide Mutual Insurance Company NO.....
.....	Jefferson National Life Insurance Company of New York NY..... IA.....	Jefferson National Life Insurance Company ..	Ownership.....	100.000 ...	Nationwide Mutual Insurance Company NO.....
. 0140 ...	Nationwide 15727	47-1180302	Jerome Village Company, LLC OH..... NIA.....	Nationwide Realty Investors, Ltd.	Ownership.....	100.000 ...	Nationwide Mutual Insurance Company NO.....
. 0140 ...	Nationwide	31-1486309	Lone Star General Agency, Inc. TX..... IA.....	Nationwide Mutual Insurance Company	Ownership.....	100.000 ...	Nationwide Mutual Insurance Company NO.....
. 0140 ...	Nationwide 11991	38-0865250	National Casualty Company OH..... IA.....	Nationwide Mutual Insurance Company	Ownership.....	100.000 ...	Nationwide Mutual Insurance Company NO.....
. 0140 ...	Nationwide	National Casualty Company of America, Ltd. .	.. GBR..... IA.....	National Casualty Company	Ownership.....	100.000 ...	Nationwide Mutual Insurance Company NO.....
. 0140 ...	Nationwide	42-1154244	Nationwide Advantage Mortgage Company IA..... NIA.....	AMCO Insurance Company	Ownership.....	..87.300 ...	Nationwide Mutual Insurance Company YES..... 1
.....	ALLIED Property & Casualty Insurance Company	Ownership.....	.. 8.470 ...	Nationwide Mutual Insurance Company YES..... 1
. 0140 ...	Nationwide	42-1154244	Nationwide Advantage Mortgage Company IA..... NIA.....	Depositors Insurance Company	Ownership.....	.. 4.230 ...	Nationwide Mutual Insurance Company YES..... 1
. 0140 ...	Nationwide 26093	48-0470690	Nationwide Affinity Insurance Company of America OH..... IA.....	Nationwide Mutual Insurance Company	Ownership.....	100.000 ...	Nationwide Mutual Insurance Company NO.....
.....	Nationwide Agent Risk Purchasing Group, Inc. (fka On Your Side Nationwide Insurance Agency, Inc.) OH..... NIA.....	Nationwide Mutual Insurance Company	Ownership.....	100.000 ...	Nationwide Mutual Insurance Company NO.....
. 0140 ...	Nationwide 28223	42-1015537	Nationwide Agribusiness Insurance Company IA..... IA.....	Nationwide Mutual Insurance Company	Ownership.....	100.000 ...	Nationwide Mutual Insurance Company NO.....
. 0140 ...	Nationwide	31-1578869	Nationwide Arena, LLC OH..... NIA.....	NRI Arena, LLC	Ownership.....	..90.000 ...	Nationwide Mutual Insurance Company NO..... 1
. 0140 ...	Nationwide	20-8670712	Nationwide Asset Management, LLC OH..... NIA.....	Nationwide Mutual Insurance Company	Ownership.....	100.000 ...	Nationwide Mutual Insurance Company NO.....
. 0140 ...	Nationwide 10723	95-0639970	Nationwide Assurance Company OH..... IA.....	Nationwide Mutual Insurance Company	Ownership.....	100.000 ...	Nationwide Mutual Insurance Company NO.....
. 0140 ...	Nationwide	31-1036287	Nationwide Cash Management Company OH..... NIA.....	Nationwide Mutual Insurance Company	Ownership.....	100.000 ...	Nationwide Mutual Insurance Company NO.....
. 0140 ...	Nationwide	31-4416546	Nationwide Corporation OH..... NIA.....	Nationwide Mutual Insurance Company	Ownership.....	100.000 ...	Nationwide Mutual Insurance Company YES.....
. 0140 ...	Nationwide	31-1667326	Nationwide Financial Assignment Company OH..... NIA.....	Nationwide Life Insurance Company	Ownership.....	100.000 ...	Nationwide Mutual Insurance Company NO.....
. 0140 ...	Nationwide	23-2412039	Nationwide Financial General Agency, Inc. PA..... NIA.....	NFS Distributors, Inc.	Ownership.....	100.000 ...	Nationwide Mutual Insurance Company NO.....
. 0140 ...	Nationwide 31-6554353 ..	31-6554353	Nationwide Financial Services Capital Trust DE..... NIA.....	Nationwide Financial Services, Inc.	Ownership.....	100.000 ...	Nationwide Mutual Insurance Company NO.....
. 0140 ...	Nationwide	31-1486870	Nationwide Financial Services, Inc. DE..... NIA.....	Nationwide Corporation	Ownership.....	100.000 ...	Nationwide Mutual Insurance Company NO.....
. 0140 ...	Nationwide	52-6969857	Nationwide Fund Advisors DE..... NIA.....	Nationwide Financial Services, Inc.	Ownership.....	100.000 ...	Nationwide Mutual Insurance Company NO.....
. 0140 ...	Nationwide	31-1748721	Nationwide Fund Distributors LLC DE..... NIA.....	NFS Distributors, Inc.	Ownership.....	100.000 ...	Nationwide Mutual Insurance Company NO.....
. 0140 ...	Nationwide	31-0900518	Nationwide Fund Management LLC DE..... NIA.....	NFS Distributors, Inc.	Ownership.....	100.000 ...	Nationwide Mutual Insurance Company NO.....
. 0140 ...	Nationwide 23760	31-4425763	Nationwide General Insurance Company OH..... RE.....	Nationwide Mutual Insurance Company	Ownership.....	100.000 ...	Nationwide Mutual Insurance Company NO.....
. 0140 ...	Nationwide 10070	31-1399201	Nationwide Indemnity Company OH..... IA.....	Nationwide Mutual Insurance Company	Ownership.....	100.000 ...	Nationwide Mutual Insurance Company NO.....
. 0140 ...	Nationwide 25453	95-2130882	Nationwide Insurance Company of America OH..... IA.....	Nationwide Mutual Insurance Company	Ownership.....	100.000 ...	Nationwide Mutual Insurance Company NO.....
. 0140 ...	Nationwide 10948	31-1613686	Nationwide Insurance Company of Florida OH..... IA.....	Nationwide Mutual Insurance Company	Ownership.....	100.000 ...	Nationwide Mutual Insurance Company NO.....
. 0140 ...	Nationwide	41-2206199	Nationwide Investment Advisors, LLC OH..... NIA.....	Nationwide Life Insurance Company	Ownership.....	100.000 ...	Nationwide Mutual Insurance Company NO.....

STATEMENT AS OF MARCH 31, 2024 OF THE NATIONWIDE GENERAL INSURANCE COMPANY

SCHEDULE Y
PART 1A - DETAIL OF INSURANCE HOLDING COMPANY SYSTEM

1	2	3	4	5	6	7	8	9	10	11	12 Type of Control (Ownership, Board, Management, Attorney-in-Fact, Influence, Other)	13 If Control is Owner- ship Provide Percen- tage	14	15	16
Group Code	Group Name	NAIC Company Code	ID Number	Federal RSSD	CIK	Name of Securities Exchange if Publicly Traded (U.S. or International)	Names of Parent, Subsidiaries Or Affiliates	Domi- ciliary Loca- tion	Rela- ship to Reporting Entity	Directly Controlled by (Name of Entity/Person)			Ultimate Controlling Entity(ies)/Person(s)	Is an SCA Filing Re- quired? (Yes/No)	*
. 0140 ...	Nationwide	73-0988442	Nationwide Investment Services Corporation .. Nationwide Life and Annuity Insurance Company	.. OK..... NIA.....	Nationwide Life Insurance Company	Ownership.....	100.000 ...	Nationwide Mutual Insurance Company YES.....
. 0140 ...	Nationwide	92657 ..	31-1000740 OH..... IA.....	Nationwide Life Insurance Company	Ownership.....	100.000 ...	Nationwide Mutual Insurance Company NO.....
. 0140 ...	Nationwide	66869 ..	31-4156830 OH..... IA.....	Nationwide Financial Services, Inc.	Ownership.....	100.000 ...	Nationwide Mutual Insurance Company NO.....
. 0140 ...	Nationwide	13-4212969 OH..... NIA.....	Nationwide Life Insurance Company	Other.....	0.010 ...	Nationwide Mutual Insurance Company NO.....	... 1
. 0140 ...	Nationwide	01-0749754 OH..... NIA.....	Nationwide Life Insurance Company	Other.....	0.010 ...	Nationwide Mutual Insurance Company NO.....	... 1
. 0140 ...	Nationwide	54-2113175 OH..... NIA.....	Nationwide Life Insurance Company	Other.....	0.010 ...	Nationwide Mutual Insurance Company NO.....	... 1
. 0140 ...	Nationwide	58-2672725 OH..... NIA.....	Nationwide Life Insurance Company	Other.....	0.010 ...	Nationwide Mutual Insurance Company NO.....	... 1
. 0140 ...	Nationwide	20-0382144 OH..... NIA.....	Nationwide Life Insurance Company	Other.....	0.010 ...	Nationwide Mutual Insurance Company NO.....	... 1
. 0140 ...	Nationwide	20-1918935 OH..... NIA.....	Nationwide Life Insurance Company	Other.....	0.010 ...	Nationwide Mutual Insurance Company NO.....	... 1
. 0140 ...	Nationwide	20-2303694 OH..... NIA.....	Nationwide Life Insurance Company	Other.....	0.010 ...	Nationwide Mutual Insurance Company NO.....	... 1
. 0140 ...	Nationwide	20-2303602 OH..... NIA.....	Nationwide Life Insurance Company	Other.....	0.010 ...	Nationwide Mutual Insurance Company NO.....	... 1
. 0140 ...	Nationwide	27-1362364 OH..... NIA.....	Nationwide Life Insurance Company	Other.....	0.010 ...	Nationwide Mutual Insurance Company NO.....	... 1
. 0140 ...	Nationwide	42-1373380 IA..... NIA.....	Nationwide Mutual Insurance Company	Ownership.....	100.000 ...	Nationwide Mutual Insurance Company NO.....
. 0140 ...	Nationwide	75-3191025 OH..... NIA.....	Nationwide Mutual Insurance Company	Ownership.....	100.000 ...	Nationwide Mutual Insurance Company NO.....
. 0140 ...	Nationwide	23787 ..	31-4177100 OH..... UDP.....	Other non-Nationwide	n/a	0.000 ...	Other non-Nationwide NO.....	... 2
. 0140 ...	Nationwide	34-2012765 OH..... NIA.....	Nationwide Mutual Insurance Company	Ownership.....	100.000 ...	Nationwide Mutual Insurance Company NO.....
. 0140 ...	Nationwide	37877 ..	31-0970750 OH..... IA.....	Nationwide Mutual Insurance Company	Ownership.....	100.000 ...	Nationwide Mutual Insurance Company NO.....
. 0140 ...	Nationwide	31-1486309 OH..... NIA.....	Nationwide Mutual Insurance Company	Ownership.....	97.130 ...	Nationwide Mutual Insurance Company NO.....	... 1
. 0140 ...	Nationwide	31-1486309 OH..... NIA.....	Nationwide Indemnity Company	Ownership.....	2.870 ...	Nationwide Mutual Insurance Company NO.....	... 1
. 0140 ...	Nationwide	31-1486309 OH..... NIA.....	Nationwide Realty Management, LLC	Ownership.....	100.000 ...	Nationwide Mutual Insurance Company NO.....
. 0140 ...	Nationwide OH..... NIA.....	Nationwide Realty Services, Ltd.	Ownership.....	100.000 ...	Nationwide Mutual Insurance Company NO.....
. 0140 ...	Nationwide	73-0948330 DE..... NIA.....	NFS Distributors, Inc. Nationwide Life and Annuity Insurance	Ownership.....	100.000 ...	Nationwide Mutual Insurance Company NO.....
. 0140 ...	Nationwide	83-2250056 OH..... NIA.....	Company	Ownership.....	100.000 ...	Nationwide Mutual Insurance Company NO.....
. 0140 ...	Nationwide	36-2434406 OH..... NIA.....	NFS Distributors, Inc.	Ownership.....	100.000 ...	Nationwide Mutual Insurance Company NO.....
. 0140 ...	Nationwide	46-1952215 OH..... NIA.....	Nationwide Life Insurance Company	Other.....	0.010 ...	Nationwide Mutual Insurance Company NO.....	... 1
. 0140 ...	Nationwide	46-1971926 OH..... NIA.....	Nationwide Tax Credit Partners 2013-B, LLC ..	Other.....	0.010 ...	Nationwide Mutual Insurance Company NO.....	... 1
. 0140 ...	Nationwide	31-1592130 ..	2729677 US..... OTH.....	Nationwide Trust Company, FSB	Ownership.....	100.000 ...	Nationwide Mutual Insurance Company NO.....	... 2
. 0140 ...	Nationwide	20-5976272 OH..... NIA.....	Nationwide Ventures, LLC	Ownership.....	100.000 ...	Nationwide Mutual Insurance Company NO.....
. 0140 ...	Nationwide	31-0871532 OH..... IA.....	NBS Insurance Agency, Inc.	Ownership.....	100.000 ...	Nationwide Mutual Insurance Company NO.....
. 0140 ...	Nationwide	85-4193218 OH..... NIA.....	NCS Arizona, LLC	Ownership.....	100.000 ...	Nationwide Mutual Insurance Company NO.....
. 0140 ...	Nationwide	11-3651828 DE..... NIA.....	ND La Quinta Partners, LLC	Ownership.....	95.000 ...	Nationwide Mutual Insurance Company NO.....	... 1
. 0140 ...	Nationwide	31-1630871 DE..... NIA.....	NFS Distributors, Inc. Nationwide Life and Annuity Insurance	Ownership.....	100.000 ...	Nationwide Mutual Insurance Company NO.....
. 0140 ...	Nationwide	93-4557312 OH..... NIA.....	Company	Ownership.....	100.000 ...	Nationwide Mutual Insurance Company NO.....
. 0140 ...	Nationwide	82-5195340 OH..... NIA.....	NLIC REO Holdings, LLC	Ownership.....	100.000 ...	Nationwide Mutual Insurance Company NO.....
. 0140 ...	Nationwide	82-5194959 OH..... NIA.....	NMIC REO Holdings, LLC	Ownership.....	100.000 ...	Nationwide Mutual Insurance Company NO.....
. 0140 ...	Nationwide	46-3762545 OH..... NIA.....	NNOV8, LLC	Ownership.....	100.000 ...	Nationwide Mutual Insurance Company NO.....
. 0140 ...	Nationwide	20-4939866 OH..... NIA.....	North of Third, LLC	Ownership.....	100.000 ...	Nationwide Mutual Insurance Company NO.....

STATEMENT AS OF MARCH 31, 2024 OF THE NATIONWIDE GENERAL INSURANCE COMPANY

SCHEDULE Y
PART 1A - DETAIL OF INSURANCE HOLDING COMPANY SYSTEM

1	2	3	4	5	6	7	8	9	10	11	12	13	14	15	16
Group Code	Group Name	NAIC Company Code	ID Number	Federal RSSD	CIK	Name of Securities Exchange if Publicly Traded (U.S. or International)	Names of Parent, Subsidiaries Or Affiliates	Domi-ciliary Location	Relation-ship to Reporting Entity	Directly Controlled by (Name of Entity/Person)	Type of Control (Ownership, Board, Management, Attorney-in-Fact, Influence, Other)	If Control is Owner-ship Provide Percen-tage	Ultimate Controlling Entity(ies)/Person(s)	Is an SCA Filing Re-quired? (Yes/No)	*
.0140	Nationwide		31-1486309				NRI Arena, LLC	..OH....	NIA.....	Nationwide Realty Investors, Ltd.	Ownership.....	100.000	Nationwide Mutual Insurance Company	...NO.....	
.0140	Nationwide		31-1486309				NRI Brookside, LLC	..OH....	NIA.....	Nationwide Realty Investors, Ltd.	Ownership.....	100.000	Nationwide Mutual Insurance Company	...NO.....	
.0140	Nationwide		31-1486309				NRI Builders, LLC	..OH....	NIA.....	Nationwide Realty Investors, Ltd.	Ownership.....	100.000	Nationwide Mutual Insurance Company	...NO.....	
.0140	Nationwide		31-1486309				NRI Cavasson, LLC	..OH....	NIA.....	Nationwide Realty Investors, Ltd.	Ownership.....	100.000	Nationwide Mutual Insurance Company	...NO.....	
.0140	Nationwide		31-1486309				NRI Corporate Housing, LLC	..OH....	NIA.....	Nationwide Realty Investors, Ltd.	Ownership.....	100.000	Nationwide Mutual Insurance Company	...NO.....	
.0140	Nationwide		31-1486309				NRI Cramer Creek, LLC	..OH....	NIA.....	Nationwide Realty Investors, Ltd.	Ownership.....	100.000	Nationwide Mutual Insurance Company	...NO.....	
.0140	Nationwide		20-4939866				NRI Equity Land Investments, LLC	..OH....	NIA.....	Nationwide Realty Investors, Ltd.	Ownership.....	80.000	Nationwide Mutual Insurance Company	...NO.....	1
.0140	Nationwide		26-0212217				NRI Equity Tampa, LLC	..OH....	NIA.....	Nationwide Realty Investors, Ltd.	Ownership.....	100.000	Nationwide Mutual Insurance Company	...NO.....	
.0140	Nationwide		31-1486309				NRI Office Ventures, Ltd	..OH....	NIA.....	Nationwide Realty Investors, Ltd.	Ownership.....	100.000	Nationwide Mutual Insurance Company	...NO.....	
.0140	Nationwide		31-1580283				NRI Telecom, LLC	..OH....	NIA.....	NID Investments, LLC	Ownership.....	100.000	Nationwide Mutual Insurance Company	...NO.....	
.0140	Nationwide		31-1486309				NRI-Rivulon, LLC	..OH....	NIA.....	Nationwide Realty Investors, Ltd.	Ownership.....	100.000	Nationwide Mutual Insurance Company	...NO.....	
.0140	Nationwide		90-0729552				NTCIF-2011, LLC	..OH....	NIA.....	Nationwide Mutual Insurance Company	Ownership.....	100.000	Nationwide Mutual Insurance Company	...NO.....	1
.0140	Nationwide		27-4700627				NTCP 2011-A, LLC	..OH....	OTH.....	Nationwide Life Insurance Company	Other.....	0.010	Nationwide Mutual Insurance Company	...NO.....	2
.0140	Nationwide		46-0741029				NTCP 2012-A, LLC	..OH....	OTH.....	Nationwide Life Insurance Company	Other.....	0.010	Nationwide Mutual Insurance Company	...NO.....	2
.0140	Nationwide		46-3309896				NTCP 2013-C, LLC	..OH....	OTH.....	Nationwide Life Insurance Company	Other.....	0.010	Nationwide Mutual Insurance Company	...NO.....	2
.0140	Nationwide		46-4111078				NTCP 2014-A, LLC	..OH....	OTH.....	Nationwide Life Insurance Company	Other.....	0.010	Nationwide Mutual Insurance Company	...NO.....	2
.0140	Nationwide		47-1404116				NTCP 2014-B, LLC	..OH....	OTH.....	Nationwide Life Insurance Company	Other.....	0.010	Nationwide Mutual Insurance Company	...NO.....	2
.0140	Nationwide		47-1413242				NTCP 2014-C, LLC	..OH....	OTH.....	Nationwide Life Insurance Company	Other.....	100.000	Nationwide Mutual Insurance Company	...NO.....	
.0140	Nationwide		47-3909345				NTCP 2015-A, LLC	..OH....	OTH.....	Nationwide Life Insurance Company	Other.....	0.010	Nationwide Mutual Insurance Company	...NO.....	2
.0140	Nationwide		47-4148470				NTCP 2015-B, LLC	..OH....	OTH.....	Nationwide Life Insurance Company	Other.....	0.010	Nationwide Mutual Insurance Company	...NO.....	2
.0140	Nationwide		81-3836925				NTCP 2016-A, LLC	..OH....	NIA.....	Nationwide Life Insurance Company	Ownership.....	0.010	Nationwide Mutual Insurance Company	...NO.....	2
.0140	Nationwide		82-2015065				NTCP 2017-A, LLC	..OH....	NIA.....	Nationwide Life Insurance Company	Ownership.....	100.000	Nationwide Mutual Insurance Company	...NO.....	
.0140	Nationwide		84-1969518				NW Fyrebyrd, LLC	..OH....	NIA.....	NNOV8, LLC	Ownership.....	100.000	Nationwide Mutual Insurance Company	...NO.....	
.0140	Nationwide		85-3363961				NW Next, LLC	..OH....	NIA.....	NNOV8, LLC	Ownership.....	100.000	Nationwide Mutual Insurance Company	...NO.....	
.0140	Nationwide		81-0936428				NW Private Debt, LLC	..OH....	NIA.....	NW REI (NLIC), LLC	Ownership.....	100.000	Nationwide Mutual Insurance Company	...NO.....	
.0140	Nationwide		26-1903919				NW REI, LLC	..DE....	NIA.....	Nationwide Mutual Insurance Company	Ownership.....	100.000	Nationwide Mutual Insurance Company	...NO.....	
.0140	Nationwide		92-1294202				NW-Adams, LLC	..OH....	NIA.....	NW REI, LLC	Ownership.....	100.000	Nationwide Mutual Insurance Company	...NO.....	
.0140	Nationwide		92-2674633				NW-Brandon LLC	..OH....	NIA.....	NW REI (NLIC), LLC	Ownership.....	100.000	Nationwide Mutual Insurance Company	...NO.....	
.0140	Nationwide		87-0847675				NW-Broadway at Surf, LLC	..OH....	NIA.....	NMIC REO Holdings, LLC	Ownership.....	100.000	Nationwide Mutual Insurance Company	...NO.....	
.0140	Nationwide		88-2152576				NW-Colfax, LLC	..OH....	NIA.....	NW REI (NLAIC), LLC	Ownership.....	100.000	Nationwide Mutual Insurance Company	...NO.....	
.0140	Nationwide		92-0292630				NW-Conroe, LLC	..OH....	NIA.....	Nationwide Life Insurance Company	Ownership.....	100.000	Nationwide Mutual Insurance Company	...NO.....	
.0140	Nationwide		87-3648595				NW-Corazon, LLC	..OH....	NIA.....	Nationwide Life Insurance Company	Ownership.....	100.000	Nationwide Mutual Insurance Company	...NO.....	
.0140	Nationwide		86-3529884				NW-Englewood, LLC	..OH....	NIA.....	NW REI (NLIC), LLC	Ownership.....	100.000	Nationwide Mutual Insurance Company	...NO.....	
.0140	Nationwide		84-4388876				NW-Escalante, LLC	..OH....	NIA.....	NW REI, LLC	Ownership.....	100.000	Nationwide Mutual Insurance Company	...NO.....	
.0140	Nationwide		86-1538532				NW-Escalante II, LLC	..OH....	NIA.....	NW REI, LLC	Ownership.....	100.000	Nationwide Mutual Insurance Company	...NO.....	
.0140	Nationwide		92-3310596				NW-FSU, LLC	..OH....	NIA.....	NW REI (NLIC), LLC	Ownership.....	100.000	Nationwide Mutual Insurance Company	...NO.....	
.0140	Nationwide		31-1580283				NWD 205 Vine, LLC	..OH....	NIA.....	NWD Investments, LLC	Ownership.....	100.000	Nationwide Mutual Insurance Company	...NO.....	
.0140	Nationwide		31-1580283				NWD 225 Nationwide, LLC	..OH....	NIA.....	NWD Investments, LLC	Ownership.....	100.000	Nationwide Mutual Insurance Company	...NO.....	
.0140	Nationwide		31-1580283				NWD 230 West, LLC	..OH....	NIA.....	NWD Investments, LLC	Ownership.....	100.000	Nationwide Mutual Insurance Company	...NO.....	
.0140	Nationwide		31-1580283				NWD 240 Nationwide, LLC	..OH....	NIA.....	NWD Investments, LLC	Ownership.....	100.000	Nationwide Mutual Insurance Company	...NO.....	
.0140	Nationwide		31-1580283				NWD 250 Brodbelt, LLC	..OH....	NIA.....	NWD Investments, LLC	Ownership.....	100.000	Nationwide Mutual Insurance Company	...NO.....	
.0140	Nationwide		31-1580283				NWD 250 West, LLC	..OH....	NIA.....	NWD Investments, LLC	Ownership.....	100.000	Nationwide Mutual Insurance Company	...NO.....	
.0140	Nationwide		31-1580283				NWD 265 Neil, LLC	..OH....	NIA.....	NWD Investments, LLC	Ownership.....	100.000	Nationwide Mutual Insurance Company	...NO.....	
.0140	Nationwide		31-1580283				NWD 275 Marconi, LLC	..OH....	NIA.....	NWD Investments, LLC	Ownership.....	100.000	Nationwide Mutual Insurance Company	...NO.....	
.0140	Nationwide		31-1580283				NWD 300 Neil, LLC	..OH....	NIA.....	NWD Investments, LLC	Ownership.....	100.000	Nationwide Mutual Insurance Company	...NO.....	
.0140	Nationwide		31-1580283				NWD 300 Spring, LLC	..OH....	NIA.....	NWD Investments, LLC	Ownership.....	100.000	Nationwide Mutual Insurance Company	...NO.....	
.0140	Nationwide		31-1580283				NWD 355 McConnell, LLC	..OH....	NIA.....	NWD Investments, LLC	Ownership.....	100.000	Nationwide Mutual Insurance Company	...NO.....	
.0140	Nationwide		31-1580283				NWD 425 Nationwide, LLC	..OH....	NIA.....	NWD Investments, LLC	Ownership.....	100.000	Nationwide Mutual Insurance Company	...NO.....	
.0140	Nationwide		31-1580283				NWD 500 Nationwide, LLC	..OH....	NIA.....	NWD Investments, LLC	Ownership.....	100.000	Nationwide Mutual Insurance Company	...NO.....	

STATEMENT AS OF MARCH 31, 2024 OF THE NATIONWIDE GENERAL INSURANCE COMPANY

SCHEDULE Y
PART 1A - DETAIL OF INSURANCE HOLDING COMPANY SYSTEM

1	2	3	4	5	6	7	8	9	10	11	12 Type of Control (Ownership, Board, Management, Attorney-in-Fact, Influence, Other)	13 If Control is Owner- ship Provide Percen- tage	14 Ultimate Controlling Entity(ies)/Person(s)	15 Is an SCA Filing Re- quired? (Yes/No)	16 *
Group Code	Group Name	NAIC Company Code	ID Number	Federal RSSD	CIK	Name of Securities Exchange if Publicly Traded (U.S. or International)	Names of Parent, Subsidiaries Or Affiliates	Domi- ciliary Loca- tion	Relation- ship to Reporting Entity	Directly Controlled by (Name of Entity/Person)					
. 0140 ...	Nationwide	31-1580283	NWD Arena Crossing, LLC OH.....	.. NIA.....	NWD Investments, LLC	Ownership.....	.. 100.000 ...	Nationwide Mutual Insurance Company NO.....
. 0140 ...	Nationwide	31-1580283	NWD Arena District I, LLC OH.....	.. NIA.....	NWD Investments, LLC	Ownership.....	.. 100.000 ...	Nationwide Mutual Insurance Company NO.....
. 0140 ...	Nationwide	31-1580283	NWD Arena District II, LLC OH.....	.. NIA.....	NWD Investments, LLC	Ownership.....	.. 100.000 ...	Nationwide Mutual Insurance Company NO.....
. 0140 ...	Nationwide	31-1580283	NWD Arena District MM, LLC OH.....	.. NIA.....	NWD Investments, LLC	Ownership.....	.. 100.000 ...	Nationwide Mutual Insurance Company NO.....
. 0140 ...	Nationwide	31-1580283	NWD Arena District PW, LLC OH.....	.. NIA.....	NWD Investments, LLC	Ownership.....	.. 100.000 ...	Nationwide Mutual Insurance Company NO.....
. 0140 ...	Nationwide	31-1580283	NWD Arena District V, LLC OH.....	.. NIA.....	NWD Investments, LLC	Ownership.....	.. 100.000 ...	Nationwide Mutual Insurance Company NO.....
. 0140 ...	Nationwide	31-1580283	NWD Athletic Club, LLC OH.....	.. NIA.....	NWD Investments, LLC	Ownership.....	.. 100.000 ...	Nationwide Mutual Insurance Company NO.....
. 0140 ...	Nationwide	88-2975730	NW-Boise, LLC OH.....	.. NIA.....	Nationwide Life Insurance Company	Ownership.....	.. 100.000 ...	Nationwide Mutual Insurance Company NO.....
. 0140 ...	Nationwide	31-1580283	NWD Brodbelt, LLC OH.....	.. NIA.....	NWD Investments, LLC	Ownership.....	.. 100.000 ...	Nationwide Mutual Insurance Company NO.....
. 0140 ...	Nationwide	30-0876022	NWD Franklinton, LLC OH.....	.. NIA.....	Nationwide Realty Investors, Ltd.	Ownership.....	.. 80.000 ...	Nationwide Mutual Insurance Company NO.....	1
. 0140 ...	Nationwide	31-4118665	NWD HP, LLC OH.....	.. NIA.....	NWD Investments, LLC	Ownership.....	.. 75.000 ...	Nationwide Mutual Insurance Company NO.....	1
. 0140 ...	Nationwide	31-1580283	NWD Investments, LLC OH.....	.. NIA.....	Nationwide Realty Investors, Ltd.	Ownership.....	.. 80.000 ...	Nationwide Mutual Insurance Company NO.....	1
. 0140 ...	Nationwide	31-1486309	NWGH, LLC OH.....	.. NIA.....	Nationwide Realty Investors, Ltd.	Ownership.....	.. 75.000 ...	Nationwide Mutual Insurance Company NO.....	1
. 0140 ...	Nationwide	87-3124154	NW-Gallatin, LLC OH.....	.. NIA.....	Nationwide Life Insurance Company	Ownership.....	.. 100.000 ...	Nationwide Mutual Insurance Company NO.....
. 0140 ...	Nationwide	92-2943602	NW-Holly Springs, LLC OH.....	.. NIA.....	Nationwide Mutual Insurance Company	Ownership.....	.. 100.000 ...	Nationwide Mutual Insurance Company NO.....
. 0140 ...	Nationwide	86-2431839	NW-Hub13, LLC OH.....	.. NIA.....	NW REI, LLC	Ownership.....	.. 100.000 ...	Nationwide Mutual Insurance Company NO.....
. 0140 ...	Nationwide	92-3558072	NW-Huntersville, LLC OH.....	.. NIA.....	NW REI, LLC	Ownership.....	.. 100.000 ...	Nationwide Mutual Insurance Company NO.....
. 0140 ...	Nationwide	47-2482818	NW-Jasper WAG, LLC OH.....	.. NIA.....	NW REI, LLC	Ownership.....	.. 100.000 ...	Nationwide Mutual Insurance Company NO.....
. 0140 ...	Nationwide	87-3767006	NW-Kingsbury, LLC OH.....	.. NIA.....	Nationwide Life Insurance Company	Ownership.....	.. 100.000 ...	Nationwide Mutual Insurance Company NO.....
. 0140 ...	Nationwide	81-5146596	NW-Logan, LLC OH.....	.. NIA.....	NW REI, LLC	Ownership.....	.. 100.000 ...	Nationwide Mutual Insurance Company NO.....
. 0140 ...	Nationwide	87-1565013	NW-Midtown, LLC OH.....	.. NIA.....	NW REI, LLC	Ownership.....	.. 100.000 ...	Nationwide Mutual Insurance Company NO.....
. 0140 ...	Nationwide	85-1246853	NW-Oakbrook, LLC OH.....	.. NIA.....	NW REI (NLAIC), LLC	Ownership.....	.. 100.000 ...	Nationwide Mutual Insurance Company NO.....
. 0140 ...	Nationwide	88-2595124	NW-OG, LLC OH.....	.. NIA.....	NW REI, LLC	Ownership.....	.. 100.000 ...	Nationwide Mutual Insurance Company NO.....
. 0140 ...	Nationwide	83-2260477	NW-ORBD, LLC OH.....	.. NIA.....	NW REI (NWIFC), LLC	Ownership.....	.. 100.000 ...	Nationwide Mutual Insurance Company NO.....
. 0140 ...	Nationwide	93-1728625	NW-Pleasant Prairie, LLC OH.....	.. NIA.....	NW REI (NLIIC), LLC	Ownership.....	.. 100.000 ...	Nationwide Mutual Insurance Company NO.....
. 0140 ...	Nationwide	47-2449044	NW-Promenade at Madison, LLC OH.....	.. NIA.....	NW REI, LLC	Ownership.....	.. 100.000 ...	Nationwide Mutual Insurance Company NO.....
. 0140 ...	Nationwide	87-1367836	NW-Rancho, LLC OH.....	.. NIA.....	NW REI, LLC	Ownership.....	.. 100.000 ...	Nationwide Mutual Insurance Company NO.....
. 0140 ...	Nationwide	88-1405151	NW-Riverchase, LLC OH.....	.. NIA.....	Nationwide Life Insurance Company	Ownership.....	.. 100.000 ...	Nationwide Mutual Insurance Company NO.....
. 0140 ...	Nationwide	86-3702669	NW-RPG Cranberry, LLC OH.....	.. NIA.....	NW REI, LLC	Ownership.....	.. 100.000 ...	Nationwide Mutual Insurance Company NO.....
. 0140 ...	Nationwide	87-0890277	NW-Ruby, LLC OH.....	.. NIA.....	NW REI (NLIIC), LLC	Ownership.....	.. 100.000 ...	Nationwide Mutual Insurance Company NO.....
. 0140 ...	Nationwide	87-3273918	NW-San Marco, LLC OH.....	.. NIA.....	Nationwide Life Insurance Company	Ownership.....	.. 100.000 ...	Nationwide Mutual Insurance Company NO.....
. 0140 ...	Nationwide	87-3289289	NW-San Pablo, LLC OH.....	.. NIA.....	NW REI, LLC	Ownership.....	.. 100.000 ...	Nationwide Mutual Insurance Company NO.....
. 0140 ...	Nationwide	81-3212025	NW-Springfield, LLC OH.....	.. NIA.....	NW REI, LLC	Ownership.....	.. 100.000 ...	Nationwide Mutual Insurance Company NO.....
. 0140 ...	Nationwide	93-2022585	NW-Spring Hill, LLC OH.....	.. NIA.....	NW REI, LLC	Ownership.....	.. 100.000 ...	Nationwide Mutual Insurance Company NO.....
. 0140 ...	Nationwide	92-2878794	NW-SR-16, LLC OH.....	.. NIA.....	NW REI, LLC	Ownership.....	.. 100.000 ...	Nationwide Mutual Insurance Company NO.....
. 0140 ...	Nationwide	92-0677233	NW-UNCC, LLC OH.....	.. NIA.....	NW REI (NLIIC), LLC	Ownership.....	.. 100.000 ...	Nationwide Mutual Insurance Company NO.....
. 0140 ...	Nationwide	81-1603024	NW REI (NLAIC), LLC OH.....	.. NIA.....	Nationwide Life and Annuity Insurance Company	Ownership.....	.. 100.000 ...	Nationwide Mutual Insurance Company NO.....
. 0140 ...	Nationwide	81-1619428	NW REI (NLIIC), LLC OH.....	.. NIA.....	Nationwide Life Insurance Company	Ownership.....	.. 100.000 ...	Nationwide Mutual Insurance Company NO.....
. 0140 ...	Nationwide	81-1861190	NW REI (NMIC), LLC OH.....	.. NIA.....	Nationwide Mutual Insurance Company	Ownership.....	.. 100.000 ...	Nationwide Mutual Insurance Company NO.....
. 0140 ...	Nationwide	93-4060860	NW-Townsend, LLC OH.....	.. NIA.....	NW REI (NLAIC), LLC	Ownership.....	.. 100.000 ...	Nationwide Mutual Insurance Company NO.....
. 0140 ...	Nationwide	31-0947092	OCH Company, LLC OH.....	.. NIA.....	Nationwide Realty Investors, Ltd.	Ownership.....	.. 100.000 ...	Nationwide Mutual Insurance Company NO.....
.....	26-0263012	Old Track Street Owners Association, Inc. OH.....	.. OTH.....	Other non-Nationwide	n/a 0.000 ...	Other non-Nationwide NO.....	2
. 0140 ...	Nationwide ...	13999	27-1712056	Olentangy Reinsurance, LLC VT.....	.. IA.....	Nationwide Life and Annuity Insurance Company	Ownership.....	.. 100.000 ...	Nationwide Mutual Insurance Company NO.....
. 0140 ...	Nationwide	31-1486309	Perimeter A, Ltd. OH.....	.. NIA.....	Nationwide Realty Investors, Ltd.	Ownership.....	.. 100.000 ...	Nationwide Mutual Insurance Company NO.....
. 0140 ...	Nationwide	20-4939866	Rail Street Parking, LLC OH.....	.. NIA.....	NRI Equity Land Investments, LLC	Ownership.....	.. 100.000 ...	Nationwide Mutual Insurance Company NO.....
. 0140 ...	Nationwide	75-2938844	Registered Investment Advisors Services, Inc.	.. TX.....	.. NIA.....	Nationwide Financial Services, Inc.	Ownership.....	.. 100.000 ...	Nationwide Mutual Insurance Company NO.....

STATEMENT AS OF MARCH 31, 2024 OF THE NATIONWIDE GENERAL INSURANCE COMPANY

SCHEDULE Y

PART 1A - DETAIL OF INSURANCE HOLDING COMPANY SYSTEM

1	2	3	4	5	6	7	8	9	10	11	12	13	14	15	16
Group Code	Group Name	NAIC Company Code	ID Number	Federal RSSD	CIK	Name of Securities Exchange if Publicly Traded (U.S. or International)	Names of Parent, Subsidiaries Or Affiliates	Domi-ciliary Loca-tion	Relation-ship to Reporting Entity	Directly Controlled by (Name of Entity/Person)	Type of Control (Ownership, Board, Management, Attorney-in-Fact, Influence, Other)	If Control is Owner-ship Provide Percen-tage	Ultimate Controlling Entity(ies)/Person(s)	Is an SCA Filing Re-quired? (Yes/No)	*
. 0140 ...	Nationwide	82-0549218	Retention Alternatives Ltd.BMJ..... IA.....	Nationwide Mutual Insurance Company	Ownership.....	100.000 ...	Nationwide Mutual Insurance Company NO.....
. 0140 ...	Nationwide 15580	31-1117969	Scottsdale Indemnity Company OH..... IA.....	Nationwide Mutual Insurance Company	Ownership.....	100.000 ...	Nationwide Mutual Insurance Company NO.....
. 0140 ...	Nationwide 41297	31-1024978	Scottsdale Insurance Company OH..... IA.....	Nationwide Mutual Insurance Company	Ownership.....	100.000 ...	Nationwide Mutual Insurance Company NO.....
. 0140 ...	Nationwide 10672	86-0835870	Scottsdale Surplus Lines Insurance Company AZ..... IA.....	Scottsdale Insurance Company	Ownership.....	100.000 ...	Nationwide Mutual Insurance Company NO.....
. 0140 ...	Nationwide	31-1610040	The Waterfront Partners, LLC OH..... NIA.....	Nationwide Realty Investors, Ltd.	Ownership.....	50.000 ...	Nationwide Mutual Insurance Company NO..... 1
. 0140 ...	Nationwide 36269	86-0619597	Titan Insurance Company MI..... IA.....	Nationwide Mutual Insurance Company	Ownership.....	100.000 ...	Nationwide Mutual Insurance Company NO.....
. 0140 ...	Nationwide	75-1284530	Titan Insurance Services, Inc. TX..... IA.....	Nationwide Mutual Insurance Company	Ownership.....	100.000 ...	Nationwide Mutual Insurance Company NO.....
. 0140 ...	Nationwide	33-0160222	V.P.I. Services, Inc. CA..... IA.....	Veterinary Pet Insurance Company	Ownership.....	100.000 ...	Nationwide Mutual Insurance Company NO.....
. 0140 ...	Nationwide 42285	95-3750113	Veterinary Pet Insurance Company OH..... IA.....	Scottsdale Insurance Company	Ownership.....	100.000 ...	Nationwide Mutual Insurance Company NO.....
. 0140 ...	Nationwide 42889	34-1394913	Victoria Fire & Casualty Company OH..... IA.....	Nationwide Mutual Insurance Company	Ownership.....	100.000 ...	Nationwide Mutual Insurance Company NO.....
. 0140 ...	Nationwide 10105	34-1777972	Victoria Select Insurance Company OH..... IA.....	Victoria Fire & Casualty Insurance Company	Ownership.....	100.000 ...	Nationwide Mutual Insurance Company NO.....
. 0140 ...	Nationwide	31-1486309	Wellington Park, LLC OH..... NIA.....	Nationwide Realty Investors, Ltd.	Ownership.....	100.000 ...	Nationwide Mutual Insurance Company NO.....

Asterisk	Explanation
1	For the purposes of this schedule, Nationwide presumed control of these entities because they are owned by at least 10% and are not wholly-owned by a Nationwide entity.
2	Other ownership indicates a non-ownership circumstance by a Nationwide entity.

PART 1 - LOSS EXPERIENCE

Line of Business		Current Year to Date			4
		1 Direct Premiums Earned	2 Direct Losses Incurred	3 Direct Loss Percentage	Prior Year to Date Direct Loss Percentage
1.	Fire	248,347	47,263	19.0	22.7
2.1	Allied Lines	472,845	297,098	62.8	46.6
2.2	Multiple peril crop				
2.3	Federal flood				
2.4	Private crop				
2.5	Private flood	25,500	(2,446)	(9.6)	1.8
3.	Farmowners multiple peril				
4.	Homeowners multiple peril	184,670,152	116,838,100	63.3	91.9
5.1	Commercial multiple peril (non-liability portion)	50,218,861	32,885,580	65.5	109.4
5.2	Commercial multiple peril (liability portion)	19,905,037	18,226,200	91.6	95.7
6.	Mortgage guaranty				
8.	Ocean marine				
9.1	Inland marine	2,579,529	679,420	26.3	27.3
9.2	Pet insurance				
10.	Financial guaranty				
11.1	Medical professional liability - occurrence				
11.2	Medical professional liability - claims-made				
12.	Earthquake	1,269,044	141,448	11.1	21.8
13.1	Comprehensive (hospital and medical) individual				
13.2	Comprehensive (hospital and medical) group				
14.	Credit accident and health				
15.1	Vision only				
15.2	Dental only				
15.3	Disability income				
15.4	Medicare supplement				
15.5	Medicaid Title XIX				
15.6	Medicare Title XVIII				
15.7	Long-term care				
15.8	Federal employees health benefits plan				
15.9	Other health				
16.	Workers' compensation	1,025,522	621,430	60.6	76.5
17.1	Other liability - occurrence	9,713,333	6,390,955	65.8	23.0
17.2	Other liability - claims-made	311,101	9,000	2.9	
17.3	Excess workers' compensation				
18.1	Products liability - occurrence				
18.2	Products liability - claims-made				
19.1	Private passenger auto no-fault (personal injury protection)	9,593,910	6,756,333	70.4	75.3
19.2	Other private passenger auto liability	118,251,597	82,690,461	69.9	83.5
19.3	Commercial auto no-fault (personal injury protection)	120,639	246,123	204.0	59.7
19.4	Other commercial auto liability	9,930,405	9,244,918	93.1	61.8
21.1	Private passenger auto physical damage	117,293,118	76,714,647	65.4	79.0
21.2	Commercial auto physical damage	3,166,466	2,456,538	77.6	70.6
22.	Aircraft (all perils)				
23.	Fidelity				
24.	Surety				
26.	Burglary and theft	11,443	(9)	(0.1)	1.1
27.	Boiler and machinery	1,600,224	339,325	21.2	46.3
28.	Credit				
29.	International				
30.	Warranty				
31.	Reinsurance - Nonproportional Assumed Property	XXX	XXX	XXX	XXX
32.	Reinsurance - Nonproportional Assumed Liability	XXX	XXX	XXX	XXX
33.	Reinsurance - Nonproportional Assumed Financial Lines	XXX	XXX	XXX	XXX
34.	Aggregate write-ins for other lines of business				
35.	Totals	530,407,073	354,582,384	66.9	86.3
DETAILS OF WRITE-INS					
3401.				
3402.				
3403.				
3498.	Summary of remaining write-ins for Line 34 from overflow page				
3499.	Totals (Lines 3401 through 3403 plus 3498)(Line 34 above)				

STATEMENT AS OF MARCH 31, 2024 OF THE NATIONWIDE GENERAL INSURANCE COMPANY

PART 2 - DIRECT PREMIUMS WRITTEN

Line of Business		1 Current Quarter	2 Current Year to Date	3 Prior Year Year to Date
1.	Fire	567,006	567,006	201,373
2.1	Allied Lines	909,050	909,050	505,722
2.2	Multiple peril crop			
2.3	Federal flood			
2.4	Private crop			
2.5	Private flood	2,514	2,514	28,863
3.	Farmowners multiple peril			
4.	Homeowners multiple peril	162,870,226	162,870,226	181,678,920
5.1	Commercial multiple peril (non-liability portion)	56,009,172	56,009,172	67,689,067
5.2	Commercial multiple peril (liability portion)	23,688,645	23,688,645	26,346,904
6.	Mortgage guaranty			
8.	Ocean marine			
9.1	Inland marine	2,032,397	2,032,397	2,512,475
9.2	Pet insurance			
10.	Financial guaranty			
11.1	Medical professional liability - occurrence			
11.2	Medical professional liability - claims-made			
12.	Earthquake	1,010,031	1,010,031	1,248,287
13.1	Comprehensive (hospital and medical) individual			
13.2	Comprehensive (hospital and medical) group			
14.	Credit accident and health			
15.1	Vision only			
15.2	Dental only			
15.3	Disability income			
15.4	Medicare supplement			
15.5	Medicaid Title XIX			
15.6	Medicare Title XVIII			
15.7	Long-term care			
15.8	Federal employees health benefits plan			
15.9	Other health			
16.	Workers' compensation	886,438	886,438	1,292,433
17.1	Other liability - occurrence	10,288,203	10,288,203	10,724,670
17.2	Other liability - claims-made	381,113	381,113	348,171
17.3	Excess workers' compensation			
18.1	Products liability - occurrence			
18.2	Products liability - claims-made			
19.1	Private passenger auto no-fault (personal injury protection)	8,949,251	8,949,251	10,752,486
19.2	Other private passenger auto liability	115,556,809	115,556,809	134,219,279
19.3	Commercial auto no-fault (personal injury protection)	72,332	72,332	197,862
19.4	Other commercial auto liability	15,718,373	15,718,373	12,589,519
21.1	Private passenger auto physical damage	117,164,101	117,164,101	123,307,249
21.2	Commercial auto physical damage	3,593,617	3,593,617	4,298,259
22.	Aircraft (all perils)			
23.	Fidelity			
24.	Surety			
26.	Burglary and theft	24,203	24,203	10,680
27.	Boiler and machinery	1,684,921	1,684,921	2,321,466
28.	Credit			
29.	International			
30.	Warranty			
31.	Reinsurance - Nonproportional Assumed Property	XXX	XXX	XXX
32.	Reinsurance - Nonproportional Assumed Liability	XXX	XXX	XXX
33.	Reinsurance - Nonproportional Assumed Financial Lines	XXX	XXX	XXX
34.	Aggregate write-ins for other lines of business			
35.	Totals	521,408,402	521,408,402	580,273,685
DETAILS OF WRITE-INS				
3401.			
3402.			
3403.			
3498.	Summary of remaining write-ins for Line 34 from overflow page			
3499.	Totals (Lines 3401 through 3403 plus 3498)(Line 34 above)			

STATEMENT AS OF MARCH 31, 2024 OF THE NATIONWIDE GENERAL INSURANCE COMPANY

PART 3 (\$000 OMITTED)

LOSS AND LOSS ADJUSTMENT EXPENSE RESERVES SCHEDULE

	1	2	3	4	5	6	7	8	9	10	11	12	13
Years in Which Losses Occurred	Prior Year-End Known Case Loss and LAE Reserves	Prior Year-End IBNR Loss and LAE Reserves	Total Prior Year-End Loss and LAE Reserves (Cols. 1+2)	2024 Loss and LAE Payments on Claims Reported as of Prior Year-End	2024 Loss and LAE Payments on Claims Unreported as of Prior Year-End	Total 2024 Loss and LAE Payments (Cols. 4+5)	Q.S. Date Known Case Loss and LAE Reserves on Claims Reported and Open as of Prior Year End	Q.S. Date Known Case Loss and LAE Reserves on Claims Reported or Reopened Subsequent to Prior Year End	Q.S. Date IBNR Loss and LAE Reserves	Total Q.S. Loss and LAE Reserves (Cols.7+8+9)	Prior Year-End Known Case Loss and LAE Reserves Developed (Savings)/ Deficiency (Cols.4+7 minus Col. 1)	Prior Year-End IBNR Loss and LAE Reserves Developed (Savings)/ Deficiency (Cols. 5+8+9 minus Col. 2)	Prior Year-End Total Loss and LAE Reserve Developed (Savings)/ Deficiency (Cols. 11+12)
1. 2021 + Prior	39,116	36,331	75,447	6,795	124	6,919	35,661	399	33,431	69,491	3,340	(2,377)	963
2. 2022	16,295	20,719	37,014	3,831	164	3,995	13,880	599	18,630	33,109	1,416	(1,326)	90
3. Subtotals 2022 + Prior	55,411	57,050	112,461	10,626	288	10,914	49,541	998	52,061	102,600	4,756	(3,703)	1,053
4. 2023	23,179	42,569	65,748	10,733	1,789	12,522	17,470	2,051	33,474	52,995	5,024	(5,255)	(231)
5. Subtotals 2023 + Prior	78,590	99,619	178,209	21,359	2,077	23,436	67,011	3,049	85,535	155,595	9,780	(8,958)	822
6. 2024	XXX	XXX	XXX	XXX	10,246	10,246	XXX	5,401	14,747	20,148	XXX	XXX	XXX
7. Totals	78,590	99,619	178,209	21,359	12,323	33,682	67,011	8,450	100,282	175,743	9,780	(8,958)	822
8. Prior Year-End Surplus As Regards Policyholders	288,403										Col. 11, Line 7 As % of Col. 1 Line 7	Col. 12, Line 7 As % of Col. 2 Line 7	Col. 13, Line 7 As % of Col. 3 Line 7
											1. 12.4	2. (9.0)	3. 0.5
													Col. 13, Line 7 As a % of Col. 1 Line 8
													4. 0.3

STATEMENT AS OF MARCH 31, 2024 OF THE NATIONWIDE GENERAL INSURANCE COMPANY

SUPPLEMENTAL EXHIBITS AND SCHEDULES INTERROGATORIES

The following supplemental reports are required to be filed as part of your statement filing. However, in the event that your company does not transact the type of business for which the special report must be filed, your response of NO to the specific interrogatory will be accepted in lieu of filing a "NONE" report and a bar code will be printed below. If the supplement is required of your company but is not being filed for whatever reason enter SEE EXPLANATION and provide an explanation following the interrogatory questions.

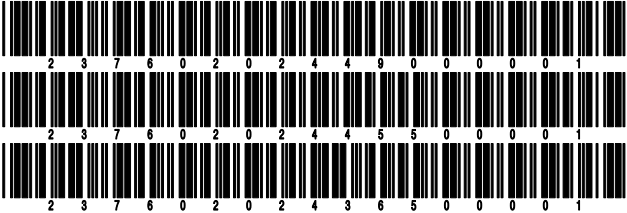
	Response
1. Will the Trusteed Surplus Statement be filed with the state of domicile and the NAIC with this statement?	NO
2. Will Supplement A to Schedule T (Medical Professional Liability Supplement) be filed with this statement?	NO
3. Will the Medicare Part D Coverage Supplement be filed with the state of domicile and the NAIC with this statement?	NO
4. Will the Director and Officer Insurance Coverage Supplement be filed with the state of domicile and the NAIC with this statement?	YES
AUGUST FILING	
5. Will the regulator-only (non-public) Communication of Internal Control Related Matters Noted in Audit be filed with the state of domicile and electronically with the NAIC (as a regulator-only non-public document) by August 1? The response for 1st and 3rd quarters should be N/A. A NO response resulting with a bar code is only appropriate in the 2nd quarter.	N/A

Explanations:

1.
2.
3.

Bar Codes:

1. Trusteed Surplus Statement [Document Identifier 490]
2. Supplement A to Schedule T [Document Identifier 455]
3. Medicare Part D Coverage Supplement [Document Identifier 365]



STATEMENT AS OF MARCH 31, 2024 OF THE NATIONWIDE GENERAL INSURANCE COMPANY

OVERFLOW PAGE FOR WRITE-INS

Additional Write-ins for Assets Line 25

		Current Statement Date			4 December 31 Prior Year Net Admitted Assets
		1 Assets	2 Nonadmitted Assets	3 Net Admitted Assets (Cols. 1 - 2)	
2504.	Other assets nonadmitted	178	178		
2505.	Recoupment receivable	188,083		188,083	189,123
2506.	Funds held equity pools & associations	1,470,671		1,470,671	1,378,962
2507.	Deductible receivables	29,896	2,053	27,843	30,259
2597.	Summary of remaining write-ins for Line 25 from overflow page	1,688,828	2,231	1,686,597	1,598,344

Additional Write-ins for Liabilities Line 25

		1 Current Statement Date	2 December 31, Prior Year
2504.	State surcharge/recoupment payable	119,564	224,372
2505.	TPA assumed payable summary	174,411	165,906
2597.	Summary of remaining write-ins for Line 25 from overflow page	293,975	390,278

SCHEDULE A - VERIFICATION

Real Estate

	1	2
	Year to Date	Prior Year Ended December 31
1. Book/adjusted carrying value, December 31 of prior year		
2. Cost of acquired:		
2.1 Actual cost at time of acquisition		
2.2 Additional investment made after acquisition		
3. Current year change in encumbrances		
4. Total gain (loss) on disposals		
5. Deduct amounts received on disposals		
6. Total foreign exchange change in book/adjusted carrying value		
7. Deduct current year's other than temporary impairment recognized		
8. Deduct current year's depreciation		
9. Book/adjusted carrying value at the end of current period (Lines 1+2+3+4-5+6-7-8)		
10. Deduct total nonadmitted amounts		
11. Statement value at end of current period (Line 9 minus Line 10)		

SCHEDULE B - VERIFICATION

Mortgage Loans

	1	2
	Year to Date	Prior Year Ended December 31
1. Book value/recorded investment excluding accrued interest, December 31 of prior year		
2. Cost of acquired:		
2.1 Actual cost at time of acquisition		
2.2 Additional investment made after acquisition		
3. Capitalized deferred interest and other		
4. Accrual of discount		
5. Unrealized valuation increase/(decrease)		
6. Total gain (loss) on disposals		
7. Deduct amounts received on disposals		
8. Deduct amortization of premium and mortgage interest paid and commitment fees		
9. Total foreign exchange change in book value/recorded investment excluding accrued interest		
10. Deduct current year's other than temporary impairment recognized		
11. Book value/recorded investment excluding accrued interest at end of current period (Lines 1+2+3+4+5+6-7-8+9-10)		
12. Total valuation allowance		
13. Subtotal (Line 11 plus Line 12)		
14. Deduct total nonadmitted amounts		
15. Statement value at end of current period (Line 13 minus Line 14)		

SCHEDULE BA - VERIFICATION

Other Long-Term Invested Assets

	1	2
	Year to Date	Prior Year Ended December 31
1. Book/adjusted carrying value, December 31 of prior year	12,704,160	7,378,400
2. Cost of acquired:		
2.1 Actual cost at time of acquisition		7,113,435
2.2 Additional investment made after acquisition	2,874,246	98
3. Capitalized deferred interest and other		
4. Accrual of discount		
5. Unrealized valuation increase/(decrease)		
6. Total gain (loss) on disposals		
7. Deduct amounts received on disposals		
8. Deduct amortization of premium and depreciation		1,787,773
9. Total foreign exchange change in book/adjusted carrying value		
10. Deduct current year's other than temporary impairment recognized		
11. Book/adjusted carrying value at end of current period (Lines 1+2+3+4+5+6-7-8+9-10)	15,578,406	12,704,160
12. Deduct total nonadmitted amounts		
13. Statement value at end of current period (Line 11 minus Line 12)	15,578,406	12,704,160

SCHEDULE D - VERIFICATION

Bonds and Stocks

	1	2
	Year to Date	Prior Year Ended December 31
1. Book/adjusted carrying value of bonds and stocks, December 31 of prior year	504,658,689	451,780,624
2. Cost of bonds and stocks acquired	14,178,538	105,488,162
3. Accrual of discount	274,831	839,394
4. Unrealized valuation increase/(decrease)	12,566	1,516,587
5. Total gain (loss) on disposals	(284,801)	(820,976)
6. Deduct consideration for bonds and stocks disposed of	37,499,016	52,669,050
7. Deduct amortization of premium	416,911	1,476,052
8. Total foreign exchange change in book/adjusted carrying value		
9. Deduct current year's other than temporary impairment recognized		
10. Total investment income recognized as a result of prepayment penalties and/or acceleration fees		
11. Book/adjusted carrying value at end of current period (Lines 1+2+3+4+5-6-7+8-9+10)	480,923,896	504,658,689
12. Deduct total nonadmitted amounts		
13. Statement value at end of current period (Line 11 minus Line 12)	480,923,896	504,658,689

STATEMENT AS OF MARCH 31, 2024 OF THE NATIONWIDE GENERAL INSURANCE COMPANY

SCHEDULE D - PART 1B

Showing the Acquisitions, Dispositions and Non-Trading Activity
During the Current Quarter for all Bonds and Preferred Stock by NAIC Designation

NAIC Designation	1 Book/Adjusted Carrying Value Beginning of Current Quarter	2 Acquisitions During Current Quarter	3 Dispositions During Current Quarter	4 Non-Trading Activity During Current Quarter	5 Book/Adjusted Carrying Value End of First Quarter	6 Book/Adjusted Carrying Value End of Second Quarter	7 Book/Adjusted Carrying Value End of Third Quarter	8 Book/Adjusted Carrying Value December 31 Prior Year
BONDS								
1. NAIC 1 (a)	312,034,641	3,748,081	29,896,120	2,567,225	288,453,827			312,034,641
2. NAIC 2 (a)	187,974,984	10,430,457	7,887,697	(2,479,892)	188,037,852			187,974,984
3. NAIC 3 (a)	3,091,654			(172,088)	2,919,566			3,091,654
4. NAIC 4 (a)	1,557,405			(44,759)	1,512,646			1,557,405
5. NAIC 5 (a)								
6. NAIC 6 (a)								
7. Total Bonds	504,658,684	14,178,538	37,783,817	(129,514)	480,923,891			504,658,684
PREFERRED STOCK								
8. NAIC 1								
9. NAIC 2								
10. NAIC 3								
11. NAIC 4								
12. NAIC 5								
13. NAIC 6								
14. Total Preferred Stock								
15. Total Bonds and Preferred Stock	504,658,684	14,178,538	37,783,817	(129,514)	480,923,891			504,658,684

(a) Book/Adjusted Carrying Value column for the end of the current reporting period includes the following amount of short-term and cash equivalent bonds by NAIC designation:

NAIC 1 \$; NAIC 2 \$; NAIC 3 \$ NAIC 4 \$; NAIC 5 \$; NAIC 6 \$

Schedule DA - Part 1 - Short-Term Investments

N O N E

Schedule DA - Verification - Short-Term Investments

N O N E

Schedule DB - Part A - Verification - Options, Caps, Floors, Collars, Swaps and Forwards

N O N E

Schedule DB - Part B - Verification - Futures Contracts

N O N E

Schedule DB - Part C - Section 1 - Replication (Synthetic Asset) Transactions (RSATs) Open

N O N E

Schedule DB-Part C-Section 2-Reconciliation of Replication (Synthetic Asset) Transactions Open

N O N E

Schedule DB - Verification - Book/Adjusted Carrying Value, Fair Value and Potential Exposure of
Derivatives

N O N E

SCHEDULE E - PART 2 - VERIFICATION

(Cash Equivalents)

	1	2
	Year To Date	Prior Year Ended December 31
1. Book/adjusted carrying value, December 31 of prior year	1,510,664	25,347,045
2. Cost of cash equivalents acquired	86,892,259	496,069,221
3. Accrual of discount		
4. Unrealized valuation increase/(decrease)		
5. Total gain (loss) on disposals		
6. Deduct consideration received on disposals	86,365,269	519,905,602
7. Deduct amortization of premium		
8. Total foreign exchange change in book/adjusted carrying value		
9. Deduct current year's other than temporary impairment recognized		
10. Book/adjusted carrying value at end of current period (Lines 1+2+3+4+5-6-7+8-9)	2,037,654	1,510,664
11. Deduct total nonadmitted amounts		
12. Statement value at end of current period (Line 10 minus Line 11)	2,037,654	1,510,664

Schedule A - Part 2 - Real Estate Acquired and Additions Made

N O N E

Schedule A - Part 3 - Real Estate Disposed

N O N E

Schedule B - Part 2 - Mortgage Loans Acquired and Additions Made

N O N E

Schedule B - Part 3 - Mortgage Loans Disposed, Transferred or Repaid

N O N E

SCHEDULE BA - PART 2

1 CUSIP Identification	2 Name or Description	3 Location		5 Name of Vendor or General Partner	6 NAIC Designation, NAIC Designation Modifier and SVO Administrative Symbol	7 Date Originally Acquired	8 Type and Strategy	9 Actual Cost at Time of Acquisition	10 Additional Investment Made After Acquisition	11 Amount of Encumbrances	12 Commitment for Additional Investment	13 Percentage of Ownership
		City	State									
	810 Grandview LLC	Columbus	OH.....	810 Grandview LLC		11/17/2023 ..			2,400			0.320
	Liberty Heights SP LLC	Norfolk	VA.....	Liberty Heights SP MM LLC		12/27/2018 ..			335			13.270
	Model Tobacco Development Group LLC	Vienna	VA.....	Model Tobacco Master Tenant LLC		10/27/2020 ..			675			0.080
2199999. Joint Venture Interests - Real Estate - Unaffiliated									3,410			XXX
	Sugar Creek Housing Tax Credit Fund LLC GA 2022	Webster Groves	MO.....	Sugar Creek Realty LLC		10/14/2022 ..			1,386,244			51.000
	Sugar Creek Housing Tax Credit Fund LLC GA 2023	Webster Groves	MO.....	Sugar Creek Realty LLC		10/05/2023 ..			1,484,592			47.000
4199999. Non-Guaranteed State Low Income Housing Tax Credit - Unaffiliated									2,870,836			XXX
6099999. Total - Unaffiliated									2,874,246			XXX
6199999. Total - Affiliated												XXX
6299999 - Totals									2,874,246			XXX

SCHEDULE BA - PART 3

[illegible]

STATEMENT AS OF MARCH 31, 2024 OF THE NATIONWIDE GENERAL INSURANCE COMPANY

SCHEDULE D - PART 3

Show All Long-Term Bonds and Stock Acquired During the Current Quarter

1	2	3	4	5	6	7	8	9	10
CUSIP Identification	Description	Foreign	Date Acquired	Name of Vendor	Number of Shares of Stock	Actual Cost	Par Value	Paid for Accrued Interest and Dividends	NAIC Designation, NAIC Designation Modifier and SVO Administrative Symbol
3140NG-GP-9	FN BY0205 Pool# BY0205 5.500% 05/25/5301/22/2024	Bank of America BISC Dealer	1,246,481	1,246,8714,191	1.A FE
3140XN-M5-0	Fannie Mae Super Pool #FS6679 6.000% 12/25/5302/23/2024	Morgan Stanley & Co LLC	989,332	984,4104,102	1.A
0909999999	Subtotal - Bonds - U.S. Special Revenues					2,235,813	2,231,281	8,293	XXX
013817-AK-7	Alcoa Inc Nt 5.950% 02/02/3702/01/2024	Barclays Capital Inc	80,828	77,00051	2.C FE
015271-BC-2	Alexandria Real Estate Equity Sr Nt 5.250% 05/15/3602/01/2024	Various	1,815,342	1,818,000	2.A FE
31568A-AB-2	First Help Financial LLC Ser 2024-1A CI A2 5.690% 02/15/3002/12/2024	Goldman Sachs & Company	134,990	135,000	1.C FE
35105A-AB-3	Foursight Capital Auto Rec Tr Ser 2024-1 CI A2 5.490% 01/16/2901/24/2024	JP Morgan Securities LLC	399,988	400,000	1.A FE
35105A-AC-1	Foursight Capital Auto Rec Tr Ser 2024-1 CI B 5.550% 05/15/2901/24/2024	JP Morgan Securities LLC	164,974	165,000	1.C FE
37988X-AB-1	GLS Auto Select Receivables Tr Ser 2024-1A CI A2 5.240% 03/15/3001/12/2024	Deutsche Bank Capital	199,996	200,000	1.A FE
42250P-AE-3	Healthpeak Properties Sr Nt 5.250% 12/15/3202/05/2024	Various	1,444,118	1,455,00010,921	2.A FE
68233J-CS-1	Oncor Electric Delivery Sec Nt 5.650% 11/15/3301/25/2024	Tax Free Exchange	612,319	590,0006,667	1.F FE
756109-BY-9	Realty Income Corp Sr Nt 4.450% 09/15/2601/23/2024	Tax Free Exchange	730,850	750,00011,867	1.G FE
756109-CA-0	Realty Income Corp Sr Nt 2.100% 03/15/2801/23/2024	Tax Free Exchange	370,495	420,0003,136	1.G FE
756109-CB-8	Realty Income Corp Sr Nt 4.000% 07/15/2901/23/2024	Tax Free Exchange	586,293	625,000556	1.G FE
756109-CE-2	Realty Income Corp Sr Nt 2.700% 02/15/3201/23/2024	Tax Free Exchange	452,532	550,0006,518	1.G FE
202712-BV-6	Commonwealth Bank Aust Sub Nt 5.837% 03/13/34	D.....03/04/2024	Goldman Sachs & Company	4,950,000	4,950,000	2.A FE
1109999999	Subtotal - Bonds - Industrial and Miscellaneous (Unaffiliated)					11,942,725	12,135,000	39,716	XXX
2509999997	Total - Bonds - Part 3					14,178,538	14,366,281	48,009	XXX
2509999998	Total - Bonds - Part 5					XXX	XXX	XXX	XXX
2509999999	Total - Bonds					14,178,538	14,366,281	48,009	XXX
4509999997	Total - Preferred Stocks - Part 3						XXX		XXX
4509999998	Total - Preferred Stocks - Part 5					XXX	XXX	XXX	XXX
4509999999	Total - Preferred Stocks						XXX		XXX
5989999997	Total - Common Stocks - Part 3						XXX		XXX
5989999998	Total - Common Stocks - Part 5					XXX	XXX	XXX	XXX
5989999999	Total - Common Stocks						XXX		XXX
5999999999	Total - Preferred and Common Stocks						XXX		XXX
6009999999	Totals					14,178,538	XXX	48,009	XXX

STATEMENT AS OF MARCH 31, 2024 OF THE NATIONWIDE GENERAL INSURANCE COMPANY

SCHEDULE D - PART 4

Show All Long-Term Bonds and Stock Sold, Redeemed or Otherwise Disposed of During the Current Quarter

1	2	3	4	5	6	7	8	9	10	Change In Book/Adjusted Carrying Value					16	17	18	19	20	21	22
										11	12	13	14	15							
CUSIP Identification	Description	For- eign	Disposal Date	Name of Purchaser	Number of Shares of Stock	Consid- eration	Par Value	Actual Cost	Prior Year Book/ Adjusted Carrying Value	Unrealized Valuation Increase/ (Decrease)	Current Year's (Amor- tization)/ Accretion	Current Year's Other Than Temporary Impairment Recogn- ized	Total Change in Book/ Adjusted Carrying Value (11 + 12 - 13)	Total Foreign Exchange Change in Book /Adjusted Carrying Value	Book/ Adjusted Carrying Value at Disposal Date	Foreign Exchange Gain (Loss) on Disposal	Realized Gain (Loss) on Disposal	Total Gain (Loss) on Disposal	Bond Interest/ Stock Dividends Received During Year	Stated Con- tractual Maturity Date	NAIC Desig- nation, NAIC Desig- nation Modifier and SVO Admini- strative Symbol
..911760-EJ-1	Vendee Mtg Tr RMBS REMIC Ser 1994-2 32B																				
..912828-W7-1	U S Treasury NT 6.500% 06/15/24		03/01/2024	Paydown		12,332	12,332	12,879	12,364				(32)		12,332				122	06/15/2024	1.A
	U S Treasury NT 2.125% 03/31/24		03/31/2024	Maturity		27,000,000	27,000,000	27,165,694	27,006,256				(6,256)		27,000,000				286,875	03/31/2024	1.A
0109999999. Subtotal - Bonds - U.S. Governments						27,012,332	27,012,332	27,178,573	27,018,620				(6,288)		27,012,332				286,997	XXX	XXX
..31320W-AU-8	FHLMC Pool #B0019 3.500% 06/25/34		03/01/2024	Paydown		53,981	53,981	55,988	55,770		(1,789)		(1,789)		53,981				316	06/25/2034	1.A
..313205-6D-9	FHLMC Pool #SB8068 1.500% 10/25/35		03/01/2024	Paydown		110,204	110,204	112,705	112,328		(2,124)		(2,124)		110,204				275	10/25/2035	1.A
..31320N-RC-9	FHLMC Pool #SD1383 2.000% 02/25/52		03/01/2024	Paydown		3,322	3,322	2,615	2,634		689		689		3,322				14	02/25/2052	1.A
..31320W-A6-0	FHLMC Pool #SD8129 2.500% 02/25/51		03/01/2024	Paydown		87,899	87,899	92,572	92,405		(4,507)		(4,507)		87,899				351	02/25/2051	1.A
..31320W-CT-8	FHLMC Pool #SD8182 2.000% 12/25/51		03/01/2024	Paydown		28,540	28,540	25,178	25,296		3,243		3,243		28,540				97	12/25/2051	1.A
..31320W-DD-2	FHLMC Pool #SD8200 2.500% 03/25/52		03/01/2024	Paydown		37,098	37,098	36,350	36,377		721		721		37,098				158	03/25/2052	1.A
..31320W-DK-6	FHLMC Pool #SD8206 3.000% 04/25/52		03/01/2024	Paydown		33,295	33,295	33,383	33,377		(82)		(82)		33,295				176	04/25/2052	1.A
..31320W-DS-9	FHLMC Pool #SD8213 3.000% 05/25/52		03/01/2024	Paydown		216	216	183	184		32		32		216				1	05/25/2052	1.A
..31320W-DT-7	FHLMC Pool #SD8214 3.500% 05/25/52		03/01/2024	Paydown		700	700	616	618		83		83		700				4	05/25/2052	1.A
..31320W-E7-4	FHLMC Pool #SD8258 5.000% 10/25/52		03/01/2024	Paydown		2,075	2,075	1,998	1,999		76		76		2,075				17	10/25/2052	1.A
..31320W-ER-0	FHLMC Pool #SD8244 4.000% 09/25/52		03/01/2024	Paydown		3,082	3,082	2,995	2,997		85		85		3,082				20	09/25/2052	1.A
..31320W-ET-6	FHLMC Pool# SD8246 5.000% 09/25/52		03/01/2024	Paydown		25,618	25,618	25,146	25,154		464		464		25,618				228	09/25/2052	1.A
..3138M4-D8-2	FNMA Pool #AP1026 3.000% 07/25/42		03/01/2024	Paydown		3,960	3,960	3,809	3,821		139		139		3,960				20	07/25/2042	1.A
..3138W9-LM-0	FNMA Pool #AS0331 3.000% 08/25/43		03/01/2024	Paydown		17,959	17,959	17,253	17,308		652		652		17,959				89	08/25/2043	1.A
..3138X0-Y2-8	FNMA Pool #AU1628 3.000% 07/25/43		03/01/2024	Paydown		30,986	30,986	29,764	29,859		1,126		1,126		30,986				160	07/25/2043	1.A
..3138Y7-DT-7	FNMA Pool #AZ6413 3.000% 11/25/45		03/01/2024	Paydown		7,144	7,144	6,823	6,840		305		305		7,144				36	11/25/2045	1.A
..3140KD-G4-6	FNMA Pool #BP5618 2.500% 06/25/50		03/01/2024	Paydown		25,581	25,581	26,606	26,565		(984)		(984)		25,581				106	06/25/2050	1.A
..3140NG-GP-9	FN BY0205 Pool# BY0205 5.500% 05/25/53		03/01/2024	Paydown		31,627	31,627	31,617			10		10		31,627				151	05/25/2053	1.A FE
..31400D-6N-9	FNMA Pool #CA6276 2.000% 07/25/50		03/01/2024	Paydown		31,267	31,267	31,975	31,941		(674)		(674)		31,267				124	07/25/2050	1.A
..3140XG-5K-1	FNMA Pool #FS1749 2.500% 04/25/52		03/01/2024	Paydown		10,894	10,894	9,961	9,993		901		901		10,894				46	04/25/2052	1.A
..3140XG-PS-2	FNMA Pool #FS1332 3.500% 03/25/52		03/01/2024	Paydown		46,140	46,140	44,216	44,255		1,886		1,886		46,140				247	03/25/2052	1.A
..3140XG-U9-8	FNMA Pool #FS1507 3.000% 02/25/52		03/01/2024	Paydown		7,791	7,791	7,156	7,173		618		618		7,791				41	02/25/2052	1.A
..3140XG-WN-5	FNMA Pool# FS1552 2.500% 11/25/51		03/01/2024	Paydown		9,073	9,073	8,059	8,085		988		988		9,073				35	11/25/2051	1.A
..3140XH-Y7-6	FNMA Pool# FS2533 2.000% 07/25/52		03/01/2024	Paydown		6,307	6,307	5,385	5,415		892		892		6,307				21	07/25/2052	1.A
	Fannie Mae Super Pool #FS6679 6.000%																				
..3140XN-M5-0	12/25/53		03/01/2024	Paydown		12,277	12,277	12,338			(61)		(61)		12,277				61	12/25/2053	1.A
..31416X-YZ-7	FNMA Pool #AB2527 4.000% 03/25/41		03/01/2024	Paydown		63,264	63,264	63,724	63,643		(379)		(379)		63,264				367	03/25/2041	1.A
..31418B-TJ-5	FNMA Pool #MA2352 3.500% 08/01/45		03/01/2024	Paydown		20,641	20,641	21,423	21,361		(720)		(720)		20,641				117	08/01/2045	1.A
..31418D-ZL-5	FNMA Pool #MA4378 2.000% 07/25/51		03/01/2024	Paydown		107,946	108,689	108,641			(695)		(695)		107,946				366	07/25/2051	1.A
..31418D-4X-7	FNMA Pool #MA4437 2.000% 10/25/51		03/01/2024	Paydown		41,877	41,877	39,870	39,950		1,927		1,927		41,877				141	10/25/2051	1.A
..31418D-CA-8	FNMA Pool #MA3664 4.000% 05/25/49		03/01/2024	Paydown		26,193	26,193	27,143	27,105		(912)		(912)		26,193				181	05/25/2049	1.A
..31418D-CB-6	FNMA Pool #MA3665 4.500% 05/25/49		03/01/2024	Paydown		25,970	25,970	27,137	25,970		(1,168)		(1,168)		25,970				161	05/25/2049	1.A
..31418D-WR-9	FNMA Pool #MA4255 2.000% 02/25/51		03/01/2024	Paydown		101,540	101,540	104,757	104,578		(3,037)		(3,037)		101,540				338	02/25/2051	1.A
	Fannie Mae Super Pool #MA4582 2.000%																				
..31418E-CU-2	04/25/37		03/01/2024	Paydown		2,273	2,273	1,992	2,010		263		263		2,273				8	04/25/2037	1.A
	Fannie Mae Super Pool #MA4623 2.500%																				
..31418E-D5-6	06/25/52		03/01/2024	Paydown		1,474	1,474	1,203	1,210		264		264		1,474				6	06/25/2052	1.A
	Fannie Mae Super Pool #MA4656 4.500%																				
..31418E-E6-3	07/01/52		03/01/2024	Paydown		55,445	55,445	55,293	55,299		146		146		55,445				416	07/01/2052	1.A
	Fannie Mae Super Pool #MA4732 4.000%																				
..31418E-HJ-2	09/01/52		03/01/2024	Paydown		54,758	54,758	53,292	53,329		1,429		1,429		54,758				373	09/01/2052	1.A
	Fannie Mae Super Pool # MA4733 4.500%																				
..31418E-HK-9	09/25/52		03/01/2024	Paydown		9,208	9,208	8,838	8,845		363		363		9,208				71	09/25/2052	1.A

SCHEDULE D - PART 4

E05.1

CUSIP Ident- ification	Description	For- eign	Disposal Date	Name of Purchaser	Number of Shares of Stock	Consid- eration	Par Value	Actual Cost	Prior Year Book/ Adjusted Carrying Value	Change In Book/Adjusted Carrying Value					Book/ Adjusted Carrying Value at Disposal Date	Foreign Exchange Gain (Loss) on Disposal	Realized Gain (Loss) on Disposal	Total Gain (Loss) on Disposal	Bond Interest/ Stock Dividends Received During Year	Stated Con- tractual Maturity Date	22 NAIC Design- ation, NAIC Design- ation Modifier and SVO Admini- strative Symbol
										11	12	13	14	15							
										Unrealized Valuation Increase/ (Decrease)	Current Year's (Amor- tization)/ Accretion	Current Year's Other Than Temporary Impairment Recog- nized	Total Change in Book/ Adjusted Carrying Value (11 + 12 - 13)	Total Foreign Exchange Change in Book /Adjusted Carrying Value							
.31418E-KS-8	Fannie Mae Super Pool #MA4804 4.000% 11/25/52		03/01/2024	Paydown		1,566	1,566	1,421	1,425		142		142	1,566				11	11/25/2052	1.A	
.31418E-KT-6	Fannie Mae Super Pool #MA4805 4.500% 11/25/52		03/01/2024	Paydown		944	944	884	885		59		59	944				7	11/25/2052	1.A	
.31418E-LY-4	Fannie Mae Super Pool #MA4842 5.500% 11/25/52		03/01/2024	Paydown		1,694	1,694	1,669	1,669		25		25	1,694				16	11/25/2052	1.A	
.31419B-CT-0	FNMA Pool #AE0981 3.500% 03/25/41		03/01/2024	Paydown		19,566	19,566	20,174	20,080	(514)			(514)	19,566				118	03/25/2041	1.A	
.31419L-3D-3	FNMA Pool #AE9795 3.500% 11/25/40		03/01/2024	Paydown		3,058	3,058	3,225	3,203	(145)			(145)	3,058				18	11/25/2040	1.A	
.54628C-G3-0	LA LOCAL GOVT ENVRMIN TXBL-LA Util Rstr Crp Prj/Eno 5.197% 09/01/39		03/01/2024	Redemption 100.0000		93,153	93,153	88,889	88,964		4,189		4,189	93,153				2,421	09/01/2039	1.B FE	
0909999999. Subtotal - Bonds - U.S. Special Revenues						1,257,606	1,257,606	1,254,352	1,209,728		3,926		3,926	1,257,606				7,930	XXX	XXX	
.03040W-AK-1	American Water Cap Corp Sr Nt 3.850% 03/01/24		03/01/2024	Maturity		5,000,000	5,000,000	4,980,050	4,999,612		388		388	5,000,000				96,250	03/01/2024	2.A FE	
.03464R-AA-1	Angel Oak Mortgage Trust RMBS Series 2020-1 CI A1 2.466% 12/25/59		03/01/2024	Paydown		2,039	2,039	2,039	2,038		1		1	2,039				9	12/25/2059	1.A	
.23338V-AB-2	DTE Electric Co Sr Nt 3.650% 03/15/24		03/15/2024	Maturity		500,000	500,000	500,621	500,027	(27)			(27)	500,000				9,125	03/15/2024	1.F FE	
.61748H-LC-3	Morgan Stanley Mtg Tr RMBS Ser 2005-5AR CI 3A1 5.329% 09/25/35		03/01/2024	Paydown		16,814	16,823	15,433	15,433					15,433		1,381	1,381	148	09/25/2035	1.A FM	
.61765L-AS-9	Morgan Stanley BAML Tr CMBS Ser 2015-C24 CI ASB 3.479% 05/15/48		03/01/2024	Paydown		260,174	260,174	267,965	260,589	(415)			(415)	260,174				1,541	05/15/2048	1.A	
.64830B-AA-5	New Residential Mtg Ln Tr RMBS Ser 2017-6A CI A1 4.000% 08/27/57		03/01/2024	Paydown		54,530	54,530	56,370	55,570	(1,040)			(1,040)	54,530				364	08/27/2057	1.A	
.68233J-CR-3	Oncor Electric Delivery Sec Nt 5.650% 11/15/33		01/25/2024	Tax Free Exchange		612,319	590,000	612,520	612,434	(115)			(115)	612,319				6,667	11/15/2033	1.F FE	
.75973F-AA-9	Renew LBASS Ser 2018-1 CI A 3.950% 09/20/53		03/29/2024	Paydown		21,742	21,742	21,695	21,623		119		119	21,742				(160)	09/20/2053	1.A FE	
.84861T-AC-2	Spirit Realty LP Sr Nt 4.450% 09/15/26		01/23/2024	Tax Free Exchange		731,600	750,000	827,543	792,937	(1,030)			(1,030)	791,906	(60,306)	(60,306)	11,867	09/15/2026	2.B FE		
.84861T-AD-0	Spirit Realty LP Sr Nt 4.000% 07/15/29		01/23/2024	Tax Free Exchange		586,918	625,000	695,138	672,146	(501)			(501)	671,646	(84,728)	(84,728)	13,056	07/15/2029	2.B FE		
.84861T-AH-1	Spirit Realty LP Sr Nt 2.100% 03/15/28		01/23/2024	Tax Free Exchange		370,915	420,000	417,329	418,356	23			23	418,378	(47,464)	(47,464)	3,136	03/15/2028	2.B FE		
.84861T-AJ-7	Spirit Realty LP Sr Nt 2.700% 02/15/32		01/23/2024	Tax Free Exchange		453,082	550,000	546,392	547,219	18			18	547,237	(94,155)	(94,155)	6,518	02/15/2032	2.B FE		
.89177B-AA-3	Towd Point Mortgage Tr RMBS Ser 2019-1 CI A1 3.750% 03/25/58		03/01/2024	Paydown		73,803	73,803	73,354	73,428		375		375	73,803				492	03/25/2058	1.A	
.90931G-AA-7	United Airlines Inc 1st Lien 5.875% 10/15/27		01/15/2024	Redemption 100.0000		66,257	66,257	73,521	71,020	(4,763)			(4,763)	66,257				973	10/15/2027	1.E FE	
.67222G-AA-2	Preferred Term Secs XVII LBASS Sec Nt 5.991% 06/23/35		03/25/2024	Paydown		4,611	4,611	4,457	4,999	(388)			(388)	4,611				70	06/23/2035	1.B FE	
.29250N-BQ-7	Enbridge Inc Sr Nt 5.969% 03/08/26	A	03/08/2024	Call 100.0000		458,000	459,000	458,426	458,449	80			80	458,529		471	471	13,699	03/08/2026	2.A FE	
.11042C-AA-8	British Airways PTC Ser 2021-1 A PPT 2.900% 09/15/36	C	03/15/2024	Redemption 100.0000		15,270	15,270	15,331	15,318		(48)		(48)	15,270				111	09/15/2036	1.E FE	
1109999999. Subtotal - Bonds - Industrial and Miscellaneous (Unaffiliated)						9,229,074	9,409,249	9,568,184	9,521,198	(7,323)			(7,323)	9,513,874		(284,801)	(284,801)	163,866	XXX	XXX	
2509999997. Total - Bonds - Part 4						37,499,012	37,679,187	38,001,109	37,749,546	(9,685)			(9,685)	37,783,812		(284,801)	(284,801)	458,793	XXX	XXX	
2509999998. Total - Bonds - Part 5						XXX	XXX	XXX	XXX	XXX	XXX	XXX	XXX	XXX	XXX	XXX	XXX	XXX	XXX	XXX	
2509999999. Total - Bonds						37,499,012	37,679,187	38,001,109	37,749,546	(9,685)			(9,685)	37,783,812		(284,801)	(284,801)	458,793	XXX	XXX	
4509999997. Total - Preferred Stocks - Part 4							XXX											XXX	XXX		
4509999998. Total - Preferred Stocks - Part 5						XXX	XXX	XXX	XXX	XXX	XXX	XXX	XXX	XXX	XXX	XXX	XXX	XXX	XXX	XXX	
4509999999. Total - Preferred Stocks							XXX											XXX	XXX		
5989999997. Total - Common Stocks - Part 4							XXX											XXX	XXX		
5989999998. Total - Common Stocks - Part 5						XXX	XXX	XXX	XXX	XXX	XXX	XXX	XXX	XXX	XXX	XXX	XXX	XXX	XXX	XXX	

STATEMENT AS OF MARCH 31, 2024 OF THE NATIONWIDE GENERAL INSURANCE COMPANY

SCHEDULE D - PART 4

Show All Long-Term Bonds and Stock Sold, Redeemed or Otherwise Disposed of During the Current Quarter

1	2	3	4	5	6	7	8	9	10	Change In Book/Adjusted Carrying Value					16	17	18	19	20	21	22
										11	12	13	14	15							
CUSIP Ident- ification	Description	For- eign	Disposal Date	Name of Purchaser	Number of Shares of Stock	Consid- eration	Par Value	Actual Cost	Prior Year Book/ Adjusted Carrying Value	Unrealized Valuation Increase/ (Decrease)	Current Year's (Amor- tization)/ Accretion	Current Year's Other Than Temporary Impairment Recogn- ized	Total Change in Book/ Adjusted Carrying Value (11 + 12 - 13)	Total Foreign Exchange Change in Book /Adjusted Carrying Value	Book/ Adjusted Carrying Value at Disposal Date	Foreign Exchange Gain (Loss) on Disposal	Realized Gain (Loss) on Disposal	Total Gain (Loss) on Disposal	Bond Interest/ Stock Dividends Received During Year	Stated Con- tractual Maturity Date	NAIC Desig- nation, NAIC Desig- nation Modifier and SVO Admini- strative Symbol
5989999999. Total - Common Stocks							XXX													XXX	XXX
5999999999. Total - Preferred and Common Stocks							XXX													XXX	XXX
6009999999 - Totals						37,499,012	XXX	38,001,109	37,749,546		(9,685)		(9,685)		37,783,812		(284,801)	(284,801)	458,793	XXX	XXX

Schedule DB - Part A - Section 1 - Options, Caps, Floors, Collars, Swaps and Forwards Open
N O N E

Schedule DB - Part B - Section 1 - Futures Contracts Open
N O N E

Schedule DB - Part B - Section 1B - Brokers with whom cash deposits have been made
N O N E

Schedule DB - Part D - Section 1 - Counterparty Exposure for Derivative Instruments Open
N O N E

Schedule DB - Part D-Section 2 - Collateral for Derivative Instruments Open - Pledged By
N O N E

Schedule DB - Part D-Section 2 - Collateral for Derivative Instruments Open - Pledged To
N O N E

Schedule DB - Part E - Derivatives Hedging Variable Annuity Guarantees
N O N E

Schedule DL - Part 1 - Reinvested Collateral Assets Owned
N O N E

Schedule DL - Part 2 - Reinvested Collateral Assets Owned
N O N E

SCHEDULE E - PART 1 - CASH

E13

SCHEDULE E - PART 2 - CASH EQUIVALENTS

[illegible]



SUPPLEMENT FOR THE QUARTER ENDING MARCH 31, 2024 OF THE NATIONWIDE GENERAL INSURANCE COMPANY

DIRECTOR AND OFFICER INSURANCE COVERAGE SUPPLEMENT
Year To Date For The Period Ended MARCH 31, 2024

NAIC Group Code 0140 NAIC Company Code 23760
Company Name NATIONWIDE GENERAL INSURANCE COMPANY

If the reporting entity writes any director and officer (D&O) business, please provide the following:

1. Monoline Policies

Table with 3 columns: 1 Direct Written Premium, 2 Direct Earned Premium, 3 Direct Losses Incurred. Row 1: \$ 3,928, \$ 2,911, \$

2. Commercial Multiple Peril (CMP) Packaged Policies

- 2.1 Does the reporting entity provide D&O liability coverage as part of a CMP packaged policy? Yes [X] No []
- 2.2 Can the direct premium earned for D&O liability coverage provided as part of a CMP packaged policy be quantified or estimated? Yes [X] No []
- 2.3 If the answer to question 2.2 is yes, provide the quantified or estimated direct premium earned amount for D&O liability coverage in CMP packaged policies
2.31 Amount quantified: \$ 134,069
2.32 Amount estimated using reasonable assumptions: \$
- 2.4 If the answer to question 2.1 is yes, provide direct losses incurred (losses paid plus change in case reserves) for the D&O liability coverage provided in CMP packaged policies. \$ 143,051