



Department
of Insurance

Mike DeWine, Governor
Jon Husted, Lt Governor

Judith L. French, Director

Electronic Filing Authenticity Affidavit

Office of Risk Assessment, 50 W Town Street, 3rd Floor - Suite 300, Columbus OH 43215
614-644-2647 | 614-644-3256 (Fax) | insurance.ohio.gov

Ohio Domestic Insurers Only

Company Name: Element Insurance Company

NAIC No. 16867

We, the undersigned executive officers of Element Insurance Company (herein referred to as the "Company"), an insurance company organized under the laws of Ohio, hereby certify that the documents indicated below by an "X" were filed electronically with the National Association of Insurance Commissioners ("NAIC") and that the electronic filing or filings, including ".PDF" filings, are exact copies of the original documents, except for formatting differences due to electronic filing. The original documents are maintained in this Company's office and are available for inspection upon request by the Ohio Department of Insurance for at least five years following the date of filing. An executed, notarized NAIC Annual Statement or Quarterly Statement jurat page or an original, notarized signature page (if this filing relates to a supplemental filing without a jurat page) attesting to the accuracy and authenticity of the corresponding NAIC Annual Statement or Quarterly Statement or supplemental schedule is attached to this Affidavit.

Company Type: ☐ Fraternal ☐ Title ☒ Property & Casualty ☐ Life & Health ☐ Health ☐ Other _____

Applicable documents:

☐ The documents referred to in the *General Instructions* to the *NAIC Checklist* as "Annual Statement Electronic Filing[s]," which include "the annual statement data and all supplements due March 1, per the *Annual Statement instructions*. This includes all detail investment schedules and other supplements for which the Annual Statement Instructions exempt printed detail."
Date of filing with the NAIC: _____. ☐ An original jurat page is attached.
☐ Original filing. ☐ Amended filing.

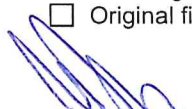

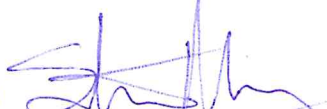
☐ The documents referred to in the *General Instructions* to the *NAIC Checklist* as "Risk-Based Capital Electronic Filing," which "includes all risk-based capital data" due March 1.
Date of filing with the NAIC: _____. ☐ An original, notarized signature page is attached.
☐ Original filing. ☐ Amended filing.

☐ The documents referred to in the *General Instructions* to the *NAIC Checklist* as "Supplemental Electronic Filing," which "includes all supplements due April 1, per the *Annual Statement Instructions*."
Date of filing with the NAIC: _____.
List of supplemental documents included in this Affidavit: _____.
☐ All original notarized signature pages are attached, as applicable.
☐ Original filing. ☐ Amended filing.

☒ The documents referred to in the *General Instructions* to the *NAIC Checklist* as "Quarterly Statement Electronic Filing," which "includes the complete quarterly statement data" due May 15, August 15, and November 15.
Date of filing with the NAIC: 5/3/2024.
☒ Original filing. ☐ Amended filing.

☐ The documents referred to in the *General Instructions* to the *NAIC Checklist* as "Combined Annual Statement Electronic Filing," which "includes the required pages of the combined annual statement and the combined Insurance Expense Exhibit" due May 1.
Date of filing with the NAIC: _____.

☐ The documents referred to in the *General Instructions* to the *NAIC Checklist* as "June. PDF Filing," which includes "the Audited Financial Statements" due June 1.
Date of filing with the NAIC: _____.
☐ Original filing. ☐ Amended filing.

 _____ Signature	<u>5/3/24</u> _____ Date	 _____ Signature	<u>5/3/24</u> _____ Date	 _____ Signature	<u>5/3/24</u> _____ Date
(Name) <u>Matthew J Brands</u>		(Name) <u>Alison Brands Rice</u>		(Name) <u>Steven J Murry</u>	
(Title)* <u>CEO</u>		(Title)* <u>CFO</u>		(Title)* <u>COO</u>	

*Signers must be principal executive officers of the Company (Chairman, President, CEO, CFO, Treasurer, Secretary)

ASSETS

		Current Statement Date			4 December 31 Prior Year Net Admitted Assets
		1 Assets	2 Nonadmitted Assets	3 Net Admitted Assets (Cols. 1 - 2)	
1.	Bonds	921,279		921,279	781,097
2.	Stocks:				
	2.1 Preferred stocks				
	2.2 Common stocks	123,957		123,957	111,373
3.	Mortgage loans on real estate:				
	3.1 First liens				
	3.2 Other than first liens				
4.	Real estate:				
	4.1 Properties occupied by the company (less \$..... encumbrances)				
	4.2 Properties held for the production of income (less \$..... encumbrances)				
	4.3 Properties held for sale (less \$..... encumbrances)				
5.	Cash (\$.....1,114,725), cash equivalents (\$.....673,504) and short-term investments (\$.....672,087)	2,460,315		2,460,315	2,440,177
6.	Contract loans (including \$..... premium notes)				
7.	Derivatives				
8.	Other invested assets				
9.	Receivables for securities				
10.	Securities lending reinvested collateral assets				
11.	Aggregate write-ins for invested assets				
12.	Subtotals, cash and invested assets (Lines 1 to 11)	3,505,551		3,505,551	3,332,647
13.	Title plants less \$..... charged off (for Title insurers only)				
14.	Investment income due and accrued	11,636		11,636	12,129
15.	Premiums and considerations:				
	15.1 Uncollected premiums and agents' balances in the course of collection	625,532		625,532	584,971
	15.2 Deferred premiums, agents' balances and installments booked but deferred and not yet due (including \$..... earned but unbilled premiums)				
	15.3 Accrued retrospective premiums (\$.....) and contracts subject to redetermination (\$.....)				
16.	Reinsurance:				
	16.1 Amounts recoverable from reinsurers				
	16.2 Funds held by or deposited with reinsured companies				
	16.3 Other amounts receivable under reinsurance contracts				
17.	Amounts receivable relating to uninsured plans				
18.1	Current federal and foreign income tax recoverable and interest thereon				
18.2	Net deferred tax asset				
19.	Guaranty funds receivable or on deposit				
20.	Electronic data processing equipment and software				
21.	Furniture and equipment, including health care delivery assets (\$.....)				
22.	Net adjustment in assets and liabilities due to foreign exchange rates				
23.	Receivables from parent, subsidiaries and affiliates				
24.	Health care (\$.....) and other amounts receivable				
25.	Aggregate write-ins for other-than-invested assets				
26.	Total assets excluding Separate Accounts, Segregated Accounts and Protected Cell Accounts (Lines 12 to 25)	4,142,719		4,142,719	3,929,746
27.	From Separate Accounts, Segregated Accounts and Protected Cell Accounts				
28.	Total (Lines 26 and 27)	4,142,719		4,142,719	3,929,746
Details of Write-Ins					
1101.				
1102.				
1103.				
1198.	Summary of remaining write-ins for Line 11 from overflow page				
1199.	Totals (Lines 1101 through 1103 plus 1198) (Line 11 above)				
2501.				
2502.				
2503.				
2598.	Summary of remaining write-ins for Line 25 from overflow page				
2599.	Totals (Lines 2501 through 2503 plus 2598) (Line 25 above)				

LIABILITIES, SURPLUS AND OTHER FUNDS

		1	2
		Current Statement Date	December 31, Prior Year
1.	Losses (current accident year \$.....10,424).....	10,424	–
2.	Reinsurance payable on paid losses and loss adjustment expenses		
3.	Loss adjustment expenses.....		
4.	Commissions payable, contingent commissions and other similar charges.....	62,553	58,497
5.	Other expenses (excluding taxes, licenses and fees)		
6.	Taxes, licenses and fees (excluding federal and foreign income taxes).....		
7.1	Current federal and foreign income taxes (including \$..... on realized capital gains (losses)).....	136,243	89,770
7.2	Net deferred tax liability.....		
8.	Borrowed money \$..... and interest thereon \$.....		
9.	Unearned premiums (after deducting unearned premiums for ceded reinsurance of \$..... and including warranty reserves of \$..... and accrued accident and health experience rating refunds including \$..... for medical loss ratio rebate per the Public Health Service Act).....	583,168	565,898
10.	Advance premium.....		
11.	Dividends declared and unpaid:		
11.1	Stockholders.....		
11.2	Policyholders.....		
12.	Ceded reinsurance premiums payable (net of ceding commissions)		
13.	Funds held by company under reinsurance treaties		
14.	Amounts withheld or retained by company for account of others.....		
15.	Remittances and items not allocated.....		
16.	Provision for reinsurance (including \$..... certified).....		
17.	Net adjustments in assets and liabilities due to foreign exchange rates		
18.	Drafts outstanding.....		
19.	Payable to parent, subsidiaries and affiliates.....		
20.	Derivatives.....		
21.	Payable for securities.....		
22.	Payable for securities lending.....		
23.	Liability for amounts held under uninsured plans.....		
24.	Capital notes \$..... and interest thereon \$.....		
25.	Aggregate write-ins for liabilities.....		
26.	Total liabilities excluding protected cell liabilities (Lines 1 through 25).....	792,388	714,165
27.	Protected cell liabilities.....		
28.	Total liabilities (Lines 26 and 27).....	792,388	714,165
29.	Aggregate write-ins for special surplus funds.....		
30.	Common capital stock.....	1,000,000	1,000,000
31.	Preferred capital stock.....		
32.	Aggregate write-ins for other-than-special surplus funds.....		
33.	Surplus notes.....		
34.	Gross paid in and contributed surplus.....	1,602,000	1,602,000
35.	Unassigned funds (surplus).....	748,331	613,581
36.	Less treasury stock, at cost:		
36.1	... shares common (value included in Line 30 \$.....)		
36.2	... shares preferred (value included in Line 31 \$.....)		
37.	Surplus as regards policyholders (Lines 29 to 35, less 36).....	3,350,331	3,215,581
38.	Totals (Page 2, Line 28, Col. 3).....	4,142,719	3,929,746
Details of Write-Ins			
2501.		
2502.		
2503.		
2598.	Summary of remaining write-ins for Line 25 from overflow page.....		
2599.	Totals (Lines 2501 through 2503 plus 2598) (Line 25 above).....		
2901.		
2902.		
2903.		
2998.	Summary of remaining write-ins for Line 29 from overflow page.....		
2999.	Totals (Lines 2901 through 2903 plus 2998) (Line 29 above).....		
3201.		
3202.		
3203.		
3298.	Summary of remaining write-ins for Line 32 from overflow page.....		
3299.	Totals (Lines 3201 through 3203 plus 3298) (Line 32 above).....		

STATEMENT OF INCOME

		1	2	3
		Current Year to Date	Prior Year to Date	Prior Year Ended December 31
Underwriting Income				
1.	Premiums earned:			
1.1.	Direct (written \$.....294,440)	277,170	186,370	862,994
1.2.	Assumed (written \$.....)			
1.3.	Ceded (written \$.....)			
1.4.	Net (written \$.....294,440)	277,170	186,370	862,994
Deductions:				
2.	Losses incurred (current accident year \$112,567):			
2.1	Direct	74,368	100,120	271,754
2.2	Assumed			
2.3	Ceded			
2.4	Net	74,368	100,120	271,754
3.	Loss adjustment expenses incurred		2,605	
4.	Other underwriting expenses incurred	63,848	41,132	259,045
5.	Aggregate write-ins for underwriting deductions			
6.	Total underwriting deductions (Lines 2 through 5)	138,216	143,857	530,799
7.	Net income of protected cells			
8.	Net underwriting gain (loss) (Line 1 minus Line 6 + Line 7)	138,954	42,512	332,195
Investment Income				
9.	Net investment income earned	35,207	15,548	96,832
10.	Net realized capital gains (losses) less capital gains tax of \$.....	–		(1,551)
11.	Net investment gain (loss) (Lines 9 + 10)	35,207	15,548	95,281
Other Income				
12.	Net gain or (loss) from agents' or premium balances charged off (amount recovered \$..... amount charged off \$.....)			
13.	Finance and service charges not included in premiums			
14.	Aggregate write-ins for miscellaneous income			
15.	Total other income (Lines 12 through 14)			
16.	Net income before dividends to policyholders, after capital gains tax and before all other federal and foreign income taxes (Lines 8 + 11 + 15)	174,161	58,060	427,476
17.	Dividends to policyholders			
18.	Net income, after dividends to policyholders, after capital gains tax and before all other federal and foreign income taxes (Line 16 minus Line 17)	174,161	58,060	427,476
19.	Federal and foreign income taxes incurred	36,574	12,193	89,770
20.	Net income (Line 18 minus Line 19) (to Line 22)	137,587	45,868	337,706
Capital and Surplus Account				
21.	Surplus as regards policyholders, December 31 prior year	3,215,620	2,875,697	2,864,797
22.	Net income (from Line 20)	137,587	45,868	337,706
23.	Net transfers (to) from Protected Cell accounts			
24.	Change in net unrealized capital gains or (losses) less capital gains tax of \$.....1,475	5,548		13,117
25.	Change in net unrealized foreign exchange capital gain (loss)			
26.	Change in net deferred income tax			
27.	Change in nonadmitted assets			
28.	Change in provision for reinsurance			
29.	Change in surplus notes			
30.	Surplus (contributed to) withdrawn from protected cells			
31.	Cumulative effect of changes in accounting principles			
32.	Capital changes:			
32.1.	Paid in			
32.2.	Transferred from surplus (Stock Dividend)			
32.3.	Transferred to surplus			
33.	Surplus adjustments:			
33.1.	Paid in	–	–	–
33.2.	Transferred to capital (Stock Dividend)			
33.3.	Transferred from capital			
34.	Net remittances from or (to) Home Office			
35.	Dividends to stockholders			
36.	Change in treasury stock			
37.	Aggregate write-ins for gains and losses in surplus	(8,424)		
38.	Change in surplus as regards policyholders (Lines 22 through 37)	134,711	45,868	350,823
39.	Surplus as regards policyholders, as of statement date (Lines 21 plus 38)	3,350,331	2,921,565	3,215,620
Details of Write-Ins				
0501.				
0502.				
0503.				
0598.	Summary of remaining write-ins for Line 5 from overflow page			
0599.	Totals (Lines 0501 through 0503 plus 0598) (Line 5 above)			
1401.				
1402.				
1403.				
1498.	Summary of remaining write-ins for Line 14 from overflow page			
1499.	Totals (Lines 1401 through 1403 plus 1498) (Line 14 above)			
3701.	Adjustment to Estimated taxes incurred in 2023	(8,424)		
3702.				
3703.				
3798.	Summary of remaining write-ins for Line 37 from overflow page			
3799.	Totals (Lines 3701 through 3703 plus 3798) (Line 37 above)	(8,424)		

CASH FLOW

	1	2	3
	Current Year To Date	Prior Year To Date	Prior Year Ended December 31
Cash from Operations			
1. Premiums collected net of reinsurance	253,879	169,507	861,338
2. Net investment income	35,700	10,159	99,233
3. Miscellaneous income			
4. Total (Lines 1 to 3)	289,578	179,665	960,571
5. Benefit and loss related payments	63,944	–	271,754
6. Net transfers to Separate Accounts, Segregated Accounts and Protected Cell Accounts			
7. Commissions, expenses paid and aggregate write-ins for deductions	59,792	40,505	240,938
8. Dividends paid to policyholders			
9. Federal and foreign income taxes paid (recovered) net of \$..... tax on capital gains (losses)	(8,424)	–	70,684
10. Total (Lines 5 through 9)	115,312	40,505	583,376
11. Net cash from operations (Line 4 minus Line 10)	174,266	139,160	377,195
Cash from Investments			
12. Proceeds from investments sold, matured or repaid:			
12.1 Bonds	150,000	210,000	965,000
12.2 Stocks			
12.3 Mortgage loans			
12.4 Real estate			
12.5 Other invested assets			
12.6 Net gains or (losses) on cash, cash equivalents and short-term investments			–
12.7 Miscellaneous proceeds	–	–	–
12.8 Total investment proceeds (Lines 12.1 to 12.7)	150,000	210,000	965,000
13. Cost of investments acquired (long-term only):			
13.1 Bonds	295,799		616,180
13.2 Stocks	504	488	1,567
13.3 Mortgage loans			
13.4 Real estate			
13.5 Other invested assets			
13.6 Miscellaneous applications	–	–	–
13.7 Total investments acquired (Lines 13.1 to 13.6)	296,303	488	617,747
14. Net increase (or decrease) in contract loans and premium notes			
15. Net cash from investments (Line 12.8 minus Line 13.7 and Line 14)	(146,303)	209,512	347,253
Cash from Financing and Miscellaneous Sources			
16. Cash provided (applied):			
16.1 Surplus notes, capital notes			
16.2 Capital and paid in surplus, less treasury stock	–	–	–
16.3 Borrowed funds			
16.4 Net deposits on deposit-type contracts and other insurance liabilities			
16.5 Dividends to stockholders			
16.6 Other cash provided (applied)	(8,424)		–
17. Net cash from financing and miscellaneous sources (Line 16.1 through Line 16.4 minus Line 16.5 plus Line 16.6)	(8,424)	–	–
Reconciliation of Cash, Cash Equivalents and Short-Term Investments			
18. Net change in cash, cash equivalents and short-term investments (Line 11, plus Lines 15 and 17)	19,539	348,672	724,448
19. Cash, cash equivalents and short-term investments:			
19.1 Beginning of year	2,440,776	1,716,060	1,716,328
19.2 End of period (Line 18 plus Line 19.1)	2,460,315	2,064,732	2,440,776
Note: Supplemental disclosures of cash flow information for non-cash transactions:			
20.0001.			

Notes to the Financial Statements

1. Summary of Significant Accounting Policies and Going Concern

A. Accounting Practices

This statement has been completed in accordance with the *Accounting Practices and Procedures Manual*, and all transactions detailed in this statement comply with the NAIC SAP the best of the preparer's knowledge and ability.

	SSAP #	F/S Page	F/S Line #	03/31/2024	12/31/2023
Net Income					
(1) State basis (Page 4, Line 20, Columns 1 & 3)	XXX	XXX	XXX	\$ 137,587	\$ 337,706
(2) State prescribed practices that are an increase / (decrease) from NAIC SAP:					
(3) State permitted practices that are an increase / (decrease) from NAIC SAP:					
(4) NAIC SAP (1-2-3=4)	XXX	XXX	XXX	<u>\$ 137,587</u>	<u>\$ 337,706</u>
Surplus					
(5) State basis (Page 3, Line 37, Columns 1 & 2)	XXX	XXX	XXX	\$ 3,350,331	\$ 3,215,581
(6) State prescribed practices that are an increase / (decrease) from NAIC SAP:					
(7) State permitted practices that are an increase / (decrease) from NAIC SAP:					
(8) NAIC SAP (5-6-7=8)	XXX	XXX	XXX	<u>\$ 3,350,331</u>	<u>\$ 3,215,581</u>

B. Use of Estimates in the Preparation of the Financial Statements

The preparation of this financial statement is in conformity with the *Annual Statement Instructions and Accounting Practices and Procedures Manual* and requires the use of management's estimates and the reported amounts of revenue and expenses during the period. Actual Results could differ from the estimates.

C. Accounting Policy

Premiums are earned over the terms of the related insurance policies. Unearned premium reserves are established to cover the unexpired portion of premiums written should the need arise. Such reserves are computed by pro rata methods for direct business.

All expenses incurred in connection with acquiring new insurance business, included such acquisition costs as sales commissions, are charged to operations as incurred.

- (1) Short term investments are reported at amortized costs
- (2) All bonds are reported at amortized value using the interest method.
- (3) Common Stocks are reported at market based upon the market price as reported by our broker/dealer Vanguard at the close of business at the end of the reported period.
- (4) Preferred stocks - None
- (5) Mortgage loans - None
- (6) Loan-backed securities - None
- (7) Investments in subsidiaries, controlled and affiliated entities - None
- (8) Investments in joint ventures, partnerships and limited liability companies - None
- (9) Derivatives - None
- (10) Investment income as a factor in the premium deficiency calculation - None
- (11) Management reserves claims as they are reported based upon industry experience and knowledge. Since the Company's insured risks are all first party property, management has determined that a loss development factor is not appropriate at this time, and therefore has not established any LDF or IBNR.
- (12) Changes in capitalization policy - None
- (13) Pharmaceutical rebate receivables - None

D. Going Concern - None

2. Accounting Changes and Corrections of Errors - No Significant Changes
3. Business Combinations and Goodwill - None
4. Discontinued Operations - None
5. Investments - None
6. Joint Ventures, Partnerships and Limited Liability Companies - None
7. Investment Income - No Significant Changes
8. Derivative Instruments - None

Notes to the Financial Statements

9. Income Taxes

A. Components of the Net Deferred Tax Asset/(Liability)

(1) Change between years by tax character

	03/31/2024			12/31/2023			Change		
	(1)	(2)	(3)	(4)	(5)	(6)	(7)	(8)	(9)
	Ordinary	Capital	Total (Col 1+2)	Ordinary	Capital	Total (Col 4+5)	Ordinary (Col 1-4)	Capital (Col 2-5)	Total (Col 7+8)
(a) Gross deferred tax assets	\$	\$	\$	\$	\$	\$	\$	\$	\$
(b) Statutory valuation allowance adjustments									
(c) Adjusted gross deferred tax assets (1a - 1b)									
(d) Deferred tax assets nonadmitted									
(e) Subtotal net admitted deferred tax asset (1c - 1d)	\$	\$	\$	\$	\$	\$	\$	\$	\$
(f) Deferred tax liabilities									
(g) Net admitted deferred tax asset/(net deferred tax liability) (1e - 1f)	\$	\$	\$	\$	\$	\$	\$	\$	\$

(2) Admission calculation components SSAP No. 101 - None

(3) Ratio used as basis of admissibility - None

(4) Impact of tax-planning strategies - None

B. Regarding Deferred Tax Liabilities That Are Not Recognized - None

C. Major Components of Current Income Taxes Incurred

Current income taxes incurred consist of the following major components:

Current income taxes incurred consist of the following major components:	(1)	(2)	(3)
	03/31/2024	12/31/2023	Change (1-2)
1. Current Income Tax			
(a) Federal	\$ 136,243	\$ 89,770	\$ 46,473
(b) Foreign			
(c) Subtotal (1a+1b)	\$ 136,243	\$ 89,770	\$ 46,473
(d) Federal income tax on net capital gains			
(e) Utilization of capital loss carry-forwards			
(f) Other			
(g) Federal and foreign income taxes incurred (1c+1d+1e+1f)	\$ 136,243	\$ 89,770	\$ 46,473

Notes to the Financial Statements

9. Income Taxes (Continued)

	(1) 03/31/2024	(2) 12/31/2023	(3) Change (1-2)
2. Deferred Tax Assets			
(a) Ordinary			
(1) Discounting of unpaid losses	\$	\$	\$
(2) Unearned premium reserve			
(3) Policyholder reserves			
(4) Investments			
(5) Deferred acquisition costs			
(6) Policyholder dividends accrual			
(7) Fixed assets			
(8) Compensation and benefits accrual			
(9) Pension accrual			
(10) Receivables - nonadmitted			
(11) Net operating loss carry-forward			
(12) Tax credit carry-forward			
(13) Other			
(99) Subtotal (Sum of 2a1 through 2a13)	\$	\$	\$
(b) Statutory valuation allowance adjustment			
(c) Nonadmitted			
(d) Admitted ordinary deferred tax assets (2a99 - 2b - 2c)	\$	\$	\$
(e) Capital			
(1) Investments	\$	\$	\$
(2) Net capital loss carry-forward			
(3) Real estate			
(4) Other			
(99) Subtotal (2e1+2e2+2e3+2e4)	\$	\$	\$
(f) Statutory valuation allowance adjustment			
(g) Nonadmitted			
(h) Admitted capital deferred tax assets (2e99 - 2f - 2g)			
(i) Admitted deferred tax assets (2d + 2h)	\$	\$	\$
	(1) 03/31/2024	(2) 12/31/2023	(3) Change (1-2)
3. Deferred Tax Liabilities			
(a) Ordinary			
(1) Investments	\$	\$	\$
(2) Fixed assets			
(3) Deferred and uncollected premium			
(4) Policyholder reserves			
(5) Other			
(99) Subtotal (3a1+3a2+3a3+3a4+3a5)	\$	\$	\$
(b) Capital			
(1) Investments	\$	\$	\$
(2) Real estate			
(3) Other			
(99) Subtotal (3b1+3b2+3b3)	\$	\$	\$
(c) Deferred tax liabilities (3a99 + 3b99)	\$	\$	\$
4. Net deferred tax assets/liabilities (2i - 3c)	\$	\$	\$
D. Among the More Significant Book to Tax Adjustments - None			
E. Operating Loss and Tax Credit Carryforwards - None			
F. Consolidated Federal Income Tax Return - None			
G. Federal or Foreign Income Tax Loss Contingencies - None			
H. Repatriation Transition Tax (RTT) - None			
I. Alternative Minimum Tax (AMT) Credit - None			
10. Information Concerning Parent, Subsidiaries, Affiliates and Other Related Parties - No Significant Changes			
11. Debt - None			
12. Retirement Plans, Deferred Compensation, Postemployment Benefits and Compensated Absences and Other Postretirement Benefit Plans - None			

Notes to the Financial Statements

13. Capital and Surplus, Dividend Restrictions and Quasi-Reorganizations

- A. Outstanding Shares - No Significant Changes
- B. Dividend Rate of Preferred Stock - None
- C. Dividend Restrictions - None
- D. Ordinary Dividends - None
- E. Company Profits Paid as Ordinary Dividends - None
- F. Surplus Restrictions - None
- G. Surplus Advances - None
- H. Stock Held for Special Purposes - None
- I. Changes in Special Surplus Funds - None
- J. Unassigned Funds (Surplus)

The Unassigned Funds (Surplus) is increased by \$6950 of cumulative unrealized gains.

- K. Company-Issued Surplus Debentures or Similar Obligations - None
- L. Impact of Any Restatement Due to Prior Quasi-Reorganizations - None
- M. Effective Date(s) of Quasi-Reorganizations in the Prior 10 Years - None

14. Liabilities, Contingencies and Assessments - No Significant Changes

15. Leases - None

16. Information About Financial Instruments With Off-Balance-Sheet Risk And Financial Instruments With Concentrations of Credit Risk - None

17. Sale, Transfer and Servicing of Financial Assets and Extinguishments of Liabilities - None

18. Gain or Loss to the Reporting Entity from Uninsured Plans and the Uninsured Portion of Partially Insured Plans - None

19. Direct Premium Written/Produced by Managing General Agents/Third Party Administrators

All premiums written by the Company are done so through the affiliated company Brands Insurance Agency, Inc, an independent Insurance Broker and Agent.

Name and Address of Managing General Agent or Third Party Administration	FEIN Number	Exclusive Contract	Types of Business Written	Type of Authority Granted	Total Direct Premium Written / Produced By
Brands Insurance Agency, Inc PO Box 62267 Cincinnati, OH 45262	31-1403760	YES	Property and Casualty	B	\$ 294,440
Total					\$ 294,440

20. Fair Value Measurements

A. Fair Value Measurement

The company reports its common stock holdings at Fair Market Value as determined by price data provided on the NYSE Acra exchange at the close of business on the reporting date. No other assets are reported at fair value, in accordance with NAIC SAPP.

(1) Fair value at reporting date

Description for each class of asset or liability	Level 1	Level 2	Level 3	Net Asset Value (NAV)	Total
a. Assets at fair value					
Common Stock - Industrial and Misc	\$ 123,957			\$	\$ 123,957
Total assets at fair value/NAV	\$ 123,957			\$	\$ 123,957
b. Liabilities at fair value					
Total liabilities at fair value				\$	\$

(2) Fair value measurements in Level 3 of the fair value hierarchy - None

(3) Policy on transfers into and out of Level 3 - None

(4) Inputs and techniques used for Level 2 and Level 3 fair values - None

(5) Derivatives - None

B. Other Fair Value Disclosures - None

C. Fair Values for All Financial Instruments by Level 1, 2 and 3

Type of Financial Instrument	Aggregate Fair Value	Admitted Assets	Level 1	Level 2	Level 3	Net Asset Value (NAV)	Not Practicable (Carrying Value)
Common Stocks - Industrial and Misc	\$	\$ 123,957	\$	\$	\$	\$	\$

D. Not Practicable to Estimate Fair Value - None

E. Nature and Risk of Investments Reported at NAV - None

21. Other Items - No Significant Changes

Notes to the Financial Statements

22. Events Subsequent

Subsequent events have been considered through May 2, 2024 for the statutory statement issued on May 3, 2024

No events have occurred that meet the criteria of a Type I or Type II event.

23. Reinsurance - None

24. Retrospectively Rated Contracts & Contracts Subject to Redetermination - None

25. Changes in Incurred Losses and Loss Adjustment Expenses - Not Applicable

26. Intercompany Pooling Arrangements - None

27. Structured Settlements - None

28. Health Care Receivables - None

29. Participating Policies - None

30. Premium Deficiency Reserves - None

31. High Deductibles - None

32. Discounting of Liabilities For Unpaid Losses or Unpaid Loss Adjustment Expenses - None

33. Asbestos/Environmental Reserves - None

34. Subscriber Savings Accounts - None

35. Multiple Peril Crop Insurance - None

36. Financial Guaranty Insurance - None

GENERAL INTERROGATORIES
PART 1 - COMMON INTERROGATORIES

GENERAL

- 1.1 Did the reporting entity experience any material transactions requiring the filing of Disclosure of Material Transactions with the State of Domicile, as required by the Model Act?.....NO
- 1.2 If yes, has the report been filed with the domiciliary state?.....NO
- 2.1 Has any change been made during the year of this statement in the charter, by-laws, articles of incorporation, or deed of settlement of the reporting entity?.....NO
- 2.2 If yes, date of change:.....
- 3.1 Is the reporting entity a member of an Insurance Holding Company System consisting of two or more affiliated persons, one or more of which is an insurer?.....YES
- If yes, complete Schedule Y, Parts 1 and 1A.
- 3.2 Have there been any substantial changes in the organizational chart since the prior quarter end?.....NO
- 3.3 If the response to 3.2 is yes, provide a brief description of those changes.
.....
- 3.4 Is the reporting entity publicly traded or a member of a publicly traded group?.....NO
- 3.5 If the response to 3.4 is yes, provide the CIK (Central Index Key) code issued by the SEC for the entity/group.....
- 4.1 Has the reporting entity been a party to a merger or consolidation during the period covered by this statement?.....NO
- 4.2 If yes, provide the name of entity, NAIC Company Code, and state of domicile (use two letter state abbreviation) for any entity that has ceased to exist as a result of the merger or consolidation.

1	2	3
Name of Entity	NAIC Company Code	State of Domicile

5. If the reporting entity is subject to a management agreement, including third-party administrator(s), managing general agent(s), attorney-in-fact, or similar agreement, have there been any significant changes regarding the terms of the agreement or principals involved?.....NO
- If yes, attach an explanation.
.....
- 6.1 State as of what date the latest financial examination of the reporting entity was made or is being made.....
- 6.2 State the as of date that the latest financial examination report became available from either the state of domicile or the reporting entity. This date should be the date of the examined balance sheet and not the date the report was completed or released.....
- 6.3 State as of what date the latest financial examination report became available to other states or the public from either the state of domicile or the reporting entity. This is the release date or completion date of the examination report and not the date of the examination (balance sheet date).....
- 6.4 By what department or departments?
.....
- 6.5 Have all financial statement adjustments within the latest financial examination report been accounted for in a subsequent financial statement filed with Departments?.....N/A
- 6.6 Have all of the recommendations within the latest financial examination report been complied with?.....N/A
- 7.1 Has this reporting entity had any Certificates of Authority, licenses or registrations (including corporate registration, if applicable) suspended or revoked by any governmental entity during the reporting period?.....NO
- 7.2 If yes, give full information
.....
- 8.1 Is the company a subsidiary of a bank holding company regulated by the Federal Reserve Board?.....NO
- 8.2 If response to 8.1 is yes, please identify the name of the bank holding company.
.....
- 8.3 Is the company affiliated with one or more banks, thrifts or securities firms?.....NO
- 8.4 If response to 8.3 is yes, please provide below the names and location (city and state of the main office) of any affiliates regulated by a federal regulatory services agency [i.e. the Federal Reserve Board (FRB), the Office of the Comptroller of the Currency (OCC), the Federal Deposit Insurance Corporation (FDIC) and the Securities Exchange Commission (SEC)] and identify the affiliates primary federal regulator.

1	2	3	4	5	6
Affiliate Name	Location (City, State)	FRB	OCC	FDIC	SEC

- 9.1 Are the senior officers (principal executive officer, principal financial officer, principal accounting officer or controller, or persons performing similar functions) of the reporting entity subject to a code of ethics, which includes the following standards?.....YES
- (a) Honest and ethical conduct, including the ethical handling of actual or apparent conflicts of interest between personal and professional relationships;
- (b) Full, fair, accurate, timely and understandable disclosure in the periodic reports required to be filed by the reporting entity;
- (c) Compliance with applicable governmental laws, rules and regulations;
- (d) The prompt internal reporting of violations to an appropriate person or persons identified in the code; and
- (e) Accountability for adherence to the code.
- 9.11 If the response to 9.1 is No, please explain:
.....
- 9.2 Has the code of ethics for senior managers been amended?.....NO
- 9.21 If the response to 9.2 is Yes, provide information related to amendment(s).
.....
- 9.3 Have any provisions of the code of ethics been waived for any of the specified officers?.....NO
- 9.31 If the response to 9.3 is Yes, provide the nature of any waiver(s).
.....

FINANCIAL

- 10.1 Does the reporting entity report any amounts due from parent, subsidiaries or affiliates on Page 2 of this statement?.....NO
- 10.2 If yes, indicate any amounts receivable from parent included in the Page 2 amount:.....\$

GENERAL INTERROGATORIES
PART 1 - COMMON INTERROGATORIES

INVESTMENT

- 11.1 Were any of the stocks, bonds, or other assets of the reporting entity loaned, placed under option agreement, or otherwise made available for use by another person? (Exclude securities under securities lending agreements.) NO
- 11.2 If yes, give full and complete information relating thereto:
12. Amount of real estate and mortgages held in other invested assets in Schedule BA: \$
13. Amount of real estate and mortgages held in short-term investments: \$
- 14.1 Does the reporting entity have any investments in parent, subsidiaries and affiliates? NO
- 14.2 If yes, please complete the following:

	1	2
	Prior Year-End Book / Adjusted Carrying Value	Current Quarter Book / Adjusted Carrying Value
14.21 Bonds	\$	\$
14.22 Preferred Stock		
14.23 Common Stock		
14.24 Short-Term Investments		
14.25 Mortgage Loans on Real Estate		
14.26 All Other		
14.27 Total Investment in Parent, Subsidiaries and Affiliates (Subtotal Lines 14.21 to 14.26)		
14.28 Total Investment in Parent included in Lines 14.21 to 14.26 above		

- 15.1 Has the reporting entity entered into any hedging transactions reported on Schedule DB? NO
- 15.2 If yes, has a comprehensive description of the hedging program been made available to the domiciliary state? N/A
- If no, attach a description with this statement.

16. For the reporting entity's security lending program, state the amount of the following as of the current statement date:
- 16.1 Total fair value of reinvested collateral assets reported on Schedule DL, Parts 1 and 2 \$
- 16.2 Total book adjusted/carrying value of reinvested collateral assets reported on Schedule DL, Parts 1 and 2 \$
- 16.3 Total payable for securities lending reported on the liability page \$

17. Excluding items in Schedule E - Part 3 - Special Deposits, real estate, mortgage loans and investments held physically in the reporting entity's offices, vaults or safety deposit boxes, were all stocks, bonds and other securities, owned throughout the current year held pursuant to a custodial agreement with a qualified bank or trust company in accordance with Section 1, III - General Examination Considerations, F. Outsourcing of Critical Functions, Custodial or Safekeeping Agreements of the NAIC *Financial Condition Examiners Handbook*? NO

- 17.1 For all agreements that comply with the requirements of the *Financial Condition Examiners Handbook*, complete the following:

1	2
Name of Custodian(s)	Custodian Address

- 17.2 For all agreements that do not comply with the requirements of the NAIC *Financial Condition Examiners Handbook*, provide the name, location and a complete explanation:

1	2	3
Name(s)	Location(s)	Complete Explanation(s)

- 17.3 Have there been any changes, including name changes, in the custodian(s) identified in 17.1 during the current quarter?
- 17.4 If yes, give full and complete information relating thereto:

1	2	3	4
Old Custodian	New Custodian	Date of Change	Reason

- 17.5 Investment management - Identify all investment advisors, investment managers, broker/dealers, including individuals that have the authority to make investment decisions on behalf of the reporting entity. For assets that are managed internally by employees of the reporting entity, note as such. ["...that have access to the investment accounts"; "...handle securities"]

1	2
Name of Firm or Individual	Affiliation
Vanguard (Broker) - No decision making authority	U
Matthew J Brands - access to investment accounts	I
Alison Brands Rice - access to investment accounts	I
Steven J Murry - Has access to investment accounts	I

- 17.5097 For those firms/individuals listed in the table for Question 17.5, do any firms/individuals unaffiliated with the reporting entity (i.e., designated with a "U") manage more than 10% of the reporting entity's invested assets? YES
- 17.5098 For firms/individuals unaffiliated with the reporting entity (i.e., designated with a "U") listed in the table for Question 17.5, does the total assets under management aggregate to more than 50% of the reporting entity's invested assets? YES

- 17.6 For those firms or individuals listed in the table for 17.5 with an affiliation code of "A" (affiliated) or "U" (unaffiliated), provide the information for the table below.

1	2	3	4	5
Central Registration Depository Number	Name of Firm or Individual	Legal Entity Identifier (LEI)	Registered With	Investment Management Agreement (IMA) Filed

GENERAL INTERROGATORIES
PART 1 - COMMON INTERROGATORIES

- 18.1 Have all the filing requirements of the *Purposes and Procedures Manual of the NAIC Investment Analysis Office* been followed?YES.....
- 18.2 If no, list exceptions:
.....
19. By self-designating 5GI securities, the reporting entity is certifying the following elements for each self-designated 5GI security:
a. Documentation necessary to permit a full credit analysis of the security does not exist or an NAIC CRP credit rating for an FE or PL security is not available.
b. Issuer or obligor is current on all contracted interest and principal payments.
c. The insurer has an actual expectation of ultimate payment of all contracted interest and principal.
Has the reporting entity self-designated 5GI securities?NO.....
20. By self-designating PLGI securities, the reporting entity is certifying the following elements of each self-designated PLGI security:
a. The security was purchased prior to January 1, 2018.
b. The reporting entity is holding capital commensurate with the NAIC Designation reported for the security.
c. The NAIC Designation was derived from the credit rating assigned by an NAIC CRP in its legal capacity as a NRSRO which is shown on a current private letter rating held by the insurer and available for examination by state insurance regulators.
d. The reporting entity is not permitted to share this credit rating of the PL security with the SVO.
Has the reporting entity self-designated PLGI securities?NO.....
21. By assigning FE to a Schedule BA non-registered private fund, the reporting entity is certifying the following elements of each self-designated FE fund:
a. The shares were purchased prior to January 1, 2019.
b. The reporting entity is holding capital commensurate with the NAIC Designation reported for the security.
c. The security had a public credit rating(s) with annual surveillance assigned by an NAIC CRP in its legal capacity as an NRSRO prior to January 1, 2019.
d. The fund only or predominantly holds bonds in its portfolio.
e. The current reported NAIC Designation was derived from the public credit rating(s) with annual surveillance assigned by an NAIC CRP in its legal capacity as an NRSRO.
f. The public credit rating(s) with annual surveillance assigned by an NAIC CRP has not lapsed.
Has the reporting entity assigned FE to Schedule BA non-registered private funds that complied with the above criteria?NO.....

GENERAL INTERROGATORIES
PART 2 – PROPERTY & CASUALTY INTERROGATORIES

1. If the reporting entity is a member of a pooling arrangement, did the agreement or the reporting entity's participation change?.....N/A.....
If yes, attach an explanation.

2. Has the reporting entity reinsured any risk with any other reporting entity and agreed to release such entity from liability, in whole or in part, from any loss that may occur on the risk, or portion thereof, reinsured?.....NO.....
If yes, attach an explanation.

3.1 Have any of the reporting entity's primary reinsurance contracts been canceled?.....NO.....
3.2 If yes, give full and complete information thereto

4.1 Are any of the liabilities for unpaid losses and loss adjustment expenses other than certain workers' compensation tabular reserves (see Annual Statement Instructions pertaining to disclosure of discounting for definition of "tabular reserves,") discounted at a rate of interest greater than zero?.....NO.....

4.2 If yes, complete the following schedule:

			Total Discount				Discount Taken During Period			
1	2	3	4	5	6	7	8	9	10	11
Line of Business	Maximum Interest	Disc. Rate	Unpaid Losses	Unpaid LAE	IBNR	Total	Unpaid Losses	Unpaid LAE	IBNR	Total
Total.....										

5. Operating Percentages:
5.1 A&H loss percent.....%
5.2 A&H cost containment percent.....%
5.3 A&H expense percent excluding cost containment expenses.....%

6.1 Do you act as a custodian for health savings accounts?.....NO.....
6.2 If yes, please provide the amount of custodial funds held as of the reporting date.....\$.....
6.3 Do you act as an administrator for health savings accounts?.....NO.....
6.4 If yes, please provide the balance of the funds administered as of the reporting date.....\$.....
7. Is the reporting entity licensed or chartered, registered, qualified, eligible or writing business in at least two states?.....YES.....
7.1 If no, does the reporting entity assume reinsurance business that covers risks residing in at least one state other than the state of domicile of the reporting entity?.....NO.....

SCHEDULE F - CEDED REINSURANCE
Showing All New Reinsurers - Current Year to Date

1	2	3	4	5	6	7
NAIC Company Code	ID Number	Name of Reinsurer	Domiciliary Jurisdiction	Type of Reinsurer	Certified Reinsurer Rating (1 through 6)	Effective Date of Certified Reinsurer Rating

NONE

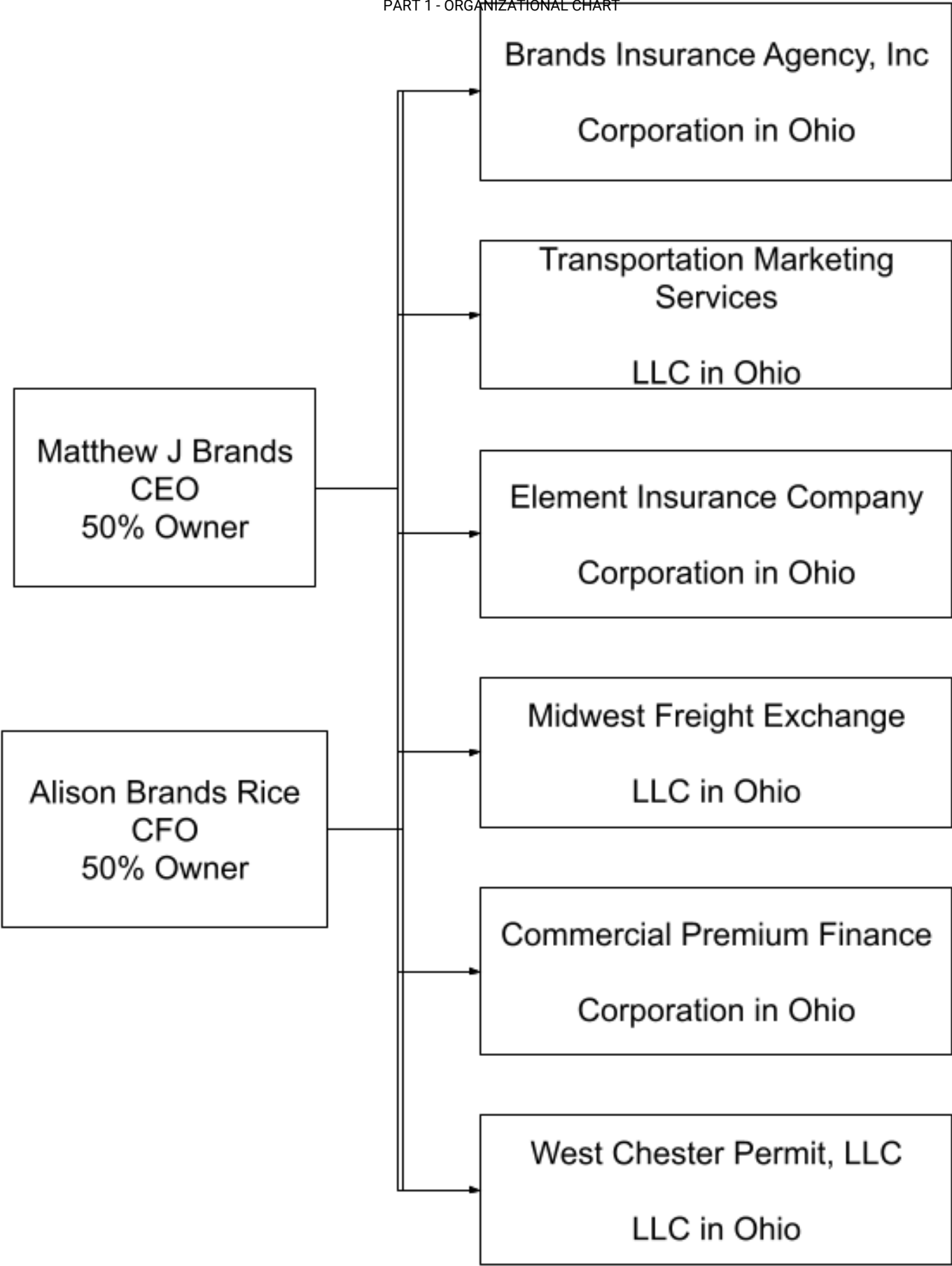
SCHEDULE T – EXHIBIT OF PREMIUMS WRITTEN
Current Year to Date - Allocated by States and Territories

			1	Direct Premiums Written		Direct Losses Paid (Deducting Salvage)		Direct Losses Unpaid	
			Active Status (a)	2	3	4	5	6	7
				Current Year To Date	Prior Year To Date	Current Year To Date	Prior Year To Date	Current Year To Date	Prior Year To Date
States, Etc.									
1.	Alabama.....	AL	N						
2.	Alaska.....	AK	N						
3.	Arizona.....	AZ	N						
4.	Arkansas.....	AR	N						
5.	California.....	CA	N						
6.	Colorado.....	CO	N						
7.	Connecticut.....	CT	N						
8.	Delaware.....	DE	N						
9.	District of Columbia.....	DC	N						
10.	Florida.....	FL	N						
11.	Georgia.....	GA	N						
12.	Hawaii.....	HI	N						
13.	Idaho.....	ID	N						
14.	Illinois.....	IL	N						
15.	Indiana.....	IN	L	—	35,272	—		—	
16.	Iowa.....	IA	N						
17.	Kansas.....	KS	N						
18.	Kentucky.....	KY	N						
19.	Louisiana.....	LA	N						
20.	Maine.....	ME	N						
21.	Maryland.....	MD	N						
22.	Massachusetts.....	MA	N						
23.	Michigan.....	MI	N						
24.	Minnesota.....	MN	N						
25.	Mississippi.....	MS	N						
26.	Missouri.....	MO	N						
27.	Montana.....	MT	N						
28.	Nebraska.....	NE	N						
29.	Nevada.....	NV	N						
30.	New Hampshire.....	NH	N						
31.	New Jersey.....	NJ	N						
32.	New Mexico.....	NM	N						
33.	New York.....	NY	N						
34.	North Carolina.....	NC	N						
35.	North Dakota.....	ND	N						
36.	Ohio.....	OH	L	294,440	166,553	63,944		10,425	100,120
37.	Oklahoma.....	OK	N						
38.	Oregon.....	OR	N						
39.	Pennsylvania.....	PA	N						
40.	Rhode Island.....	RI	N						
41.	South Carolina.....	SC	N						
42.	South Dakota.....	SD	N						
43.	Tennessee.....	TN	N						
44.	Texas.....	TX	N						
45.	Utah.....	UT	N						
46.	Vermont.....	VT	N						
47.	Virginia.....	VA	N						
48.	Washington.....	WA	N						
49.	West Virginia.....	WV	N						
50.	Wisconsin.....	WI	N						
51.	Wyoming.....	WY	N						
52.	American Samoa.....	AS	N						
53.	Guam.....	GU	N						
54.	Puerto Rico.....	PR	N						
55.	U.S. Virgin Islands.....	VI	N						
56.	Northern Mariana Islands.....	MP	N						
57.	Canada.....	CAN	N						
58.	Aggregate Other Alien.....	OT	XXX						
59.	Totals.....		XXX	294,440	201,825	63,944		10,425	100,120
Details of Write-Ins									
58001.			XXX						
58002.			XXX						
58003.			XXX						
58998.	Summary of remaining write-ins for Line 58 from overflow page.....		XXX						
58999.	Totals (Lines 58001 through 58003 plus 58998) (Line 58 above).....		XXX						

(a) Active Status Counts
1. L – Licensed or Chartered - Licensed insurance carrier or domiciled RRG..... 2..... 4. Q – Qualified - Qualified or accredited reinsurer..... —
Domestic Surplus Lines Insurer (DSLJ) – Reporting entities
2. R – Registered – Non-domiciled RRGs..... — 5. D – authorized to write surplus lines in the state of domicile..... —
3. E – Eligible - Reporting entities eligible or approved to write surplus lines in the state (other than the state of domicile - see DSLJ)..... — 6. N – None of the above - Not allowed to write business in the state..... 55.....

SCHEDULE Y - INFORMATION CONCERNING ACTIVITIES OF INSURER MEMBERS OF A HOLDING COMPANY GROUP

PART 1 - ORGANIZATIONAL CHART



SCHEDULE Y

PART 1A - DETAIL OF INSURANCE HOLDING COMPANY SYSTEM

1	2	3	4	5	6	7	8	9	10	11	12	13	14	15	16
Group Code	Group Name	NAIC Company Code	ID Number	Federal RSSD	CIK	Name of Securities Exchange if Publicly Traded (U.S. or International)	Names of Parent, Subsidiaries Or Affiliates	Domiciliary Location	Relationship to Reporting Entity	Directly Controlled by (Name of Entity/Person)	Type of Control (Ownership, Board, Management, Attorney-in-Fact, Influence, Other)	If Control is Ownership Provide Percentage	Ultimate Controlling Entity(ies) / Person(s)	Is an SCA Filing Required? (Yes/No)	*
		16867	84-3656054				Element Insurance Company	OH	RE	Matthew Brands	Ownership	50.000	Matthew Brands/Alison Brands Rice	No	1
		16867	84-3656054				Element Insurance Company	OH	RE	Alison Brands Rice	Ownership	50.000	Matthew Brands/Alison Brands Rice	No	2
			31-1403760				Brands Insurance Agency, Inc	OH	NIA	Matthew Brands	Ownership	50.000	Matthew Brands/Alison Brands Rice	No	3
			31-1403760				Brands Insurance Agency, Inc	OH	NIA	Alison Brands Rice	Ownership	50.000	Matthew Brands/Alison Brands Rice	No	4
			31-1673712				Transportation Marketing Services, LLC	OH	NIA	Matthew Brands	Ownership	50.000	Matthew Brands/Alison Brands Rice	No	5
			31-1673712				Transportation Marketing Services, LLC	OH	NIA	Alison Brands Rice	Ownership	50.000	Matthew Brands/Alison Brands Rice	No	6
			43-1947516				Commercial Premium Finance, Inc	OH	NIA	Matthew Brands	Ownership	50.000	Matthew Brands/Alison Brands Rice	No	7
			43-1947516				Commercial Premium Finance, Inc	OH	NIA	Alison Brands Rice	Ownership	50.000	Matthew Brands/Alison Brands Rice	No	8
			02-0585003				Midwest Freight Exchange, LLC	OH	NIA	Matthew Brands	Ownership	50.000	Matthew Brands/Alison Brands Rice	No	9
			02-0585003				Midwest Freight Exchange, LLC	OH	NIA	Alison Brands Rice	Ownership	50.000	Matthew Brands/Alison Brands Rice	No	10
			31-1699688				West Chester Permit, LLC	OH	NIA	Matthew Brands	Ownership	50.000	Matthew Brands/Alison Brands Rice	No	11
			31-1699688				West Chester Permit, LLC	OH	NIA	Alison Brands Rice	Ownership	50.000	Matthew Brands/Alison Brands Rice	No	12
Asterisk	Explanation														
1	There are no voting rights preferences among the two 50/50 owners.														
2	There are no voting rights preferences among the two 50/50 owners.														
3	There are no voting rights preferences among the two 50/50 owners.														
4	There are no voting rights preferences among the two 50/50 owners.														
5	There are no voting rights preferences among the two 50/50 owners.														
6	There are no voting rights preferences among the two 50/50 owners.														
7	There are no voting rights preferences among the two 50/50 owners.														
8	There are no voting rights preferences among the two 50/50 owners.														
9	There are no voting rights preferences among the two 50/50 owners.														
10	There are no voting rights preferences among the two 50/50 owners.														
11	There are no voting rights preferences among the two 50/50 owners.														
12	There are no voting rights preferences among the two 50/50 owners.														

PART 1 – LOSS EXPERIENCE

Line of Business		Current Year to Date			4
		1 Direct Premiums Earned	2 Direct Losses Incurred	3 Direct Loss Percentage	Prior Year to Date Direct Loss Percentage
1.	Fire				
2.1.	Allied lines				
2.2.	Multiple peril crop				
2.3.	Federal flood				
2.4.	Private crop				
2.5.	Private flood				
3.	Farmowners multiple peril				
4.	Homeowners multiple peril				
5.1	Commercial multiple peril (non-liability portion)				
5.2	Commercial multiple peril (liability portion)				
6.	Mortgage guaranty				
8.	Ocean marine				
9.1	Inland marine	5,697	-	-	-
9.2	Pet insurance				
10.	Financial guaranty				
11.1.	Medical professional liability - occurrence				
11.2.	Medical professional liability - claims made				
12.	Earthquake				
13.1.	Comprehensive (hospital and medical) individual				
13.2.	Comprehensive (hospital and medical) group				
14.	Credit accident and health				
15.1.	Vision only				
15.2.	Dental only				
15.3.	Disability income				
15.4.	Medicare supplement				
15.5.	Medicaid Title XIX				
15.6.	Medicare Title XVIII				
15.7.	Long-term care				
15.8.	Federal employees health benefits plan				
15.9.	Other health				
16.	Workers' compensation				
17.1.	Other liability occurrence				
17.2.	Other liability-claims made				
17.3.	Excess workers' compensation				
18.1.	Products liability - occurrence				
18.2.	Products liability - claims made				
19.1.	Private passenger auto no-fault (personal injury protection)				
19.2.	Other private passenger auto liability				
19.3.	Commercial auto no-fault (personal injury protection)				
19.4.	Other commercial auto liability				
21.1.	Private passenger auto physical damage				
21.2.	Commercial auto physical damage	271,473	74,368	27.394	53.923
22.	Aircraft (all perils)				
23.	Fidelity				
24.	Surety				
26.	Burglary and theft				
27.	Boiler and machinery				
28.	Credit				
29.	International				
30.	Warranty				
31.	Reinsurance - nonproportional assumed property	XXX	XXX	XXX	XXX
32.	Reinsurance - nonproportional assumed liability	XXX	XXX	XXX	XXX
33.	Reinsurance - nonproportional assumed financial lines	XXX	XXX	XXX	XXX
34.	Aggregate write-ins for other lines of business				
35.	Totals	277,170	74,368	26.831	53.721
Details of Write-Ins					
3401.				
3402.				
3403.				
3498.	Summary of remaining write-ins for Line 34 from overflow page				
3499.	Summary of remaining write-ins for Line 34 from overflow page				

PART 2 – DIRECT PREMIUMS WRITTEN

		1	2	3
Line of Business		Current Quarter	Current Year to Date	Prior Year Year to Date
1.	Fire			
2.1	Allied lines			
2.2	Multiple peril crop			
2.3	Federal flood			
2.4	Private crop			
2.5	Private flood			
3.	Farmowners multiple peril			
4.	Homeowners multiple peril			
5.1	Commercial multiple peril (non-liability portion)			
5.2	Commercial multiple peril (liability portion)			
6.	Mortgage guaranty			
8.	Ocean marine			
9.1	Inland marine	13,903	13,903	–
9.2	Pet insurance			
10.	Financial guaranty			
11.1.	Medical professional liability - occurrence			
11.2.	Medical professional liability - claims made			
12.	Earthquake			
13.1	Comprehensive (hospital and medical) individual			
13.2	Comprehensive (hospital and medical) group			
14.	Credit accident and health			
15.1	Vision only			
15.2	Dental only			
15.3	Disability income			
15.4	Medicare supplement			
15.5	Medicaid Title XIX			
15.6	Medicare Title XVIII			
15.7	Long-term care			
15.8	Federal employees health benefits plan			
15.9	Other health			
16.	Workers' compensation			
17.1.	Other liability occurrence			
17.2.	Other liability-claims made			
17.3.	Excess workers' compensation			
18.1.	Products liability - occurrence			
18.2.	Products liability - claims made			
19.1	Private passenger auto no-fault (personal injury protection)			
19.2	Other private passenger auto liability			
19.3	Commercial auto no-fault (personal injury protection)			
19.4	Other commercial auto liability			
21.1	Private passenger auto physical damage			
21.2	Commercial auto physical damage	280,537	280,537	201,825
22.	Aircraft (all perils)			
23.	Fidelity			
24.	Surety			
26.	Burglary and theft			
27.	Boiler and machinery			
28.	Credit			
29.	International			
30.	Warranty			
31.	Reinsurance - nonproportional assumed property	XXX	XXX	XXX
32.	Reinsurance - nonproportional assumed liability	XXX	XXX	XXX
33.	Reinsurance - nonproportional assumed financial lines	XXX	XXX	XXX
34.	Aggregate write-ins for other lines of business			
35.	Totals	294,440	294,440	201,825
Details of Write-Ins				
3401.			
3402.			
3403.			
3498.	Summary of remaining write-ins for Line 34 from overflow page			
3499.	Summary of remaining write-ins for Line 34 from overflow page			

PART 3 (000 OMITTED)
LOSS AND LOSS ADJUSTMENT EXPENSE RESERVES SCHEDULE

	1	2	3	4	5	6	7	8	9	10	11	12	13
								Q.S. Date Known Case Loss and LAE Reserves on Claims Reported or Reopened Subsequent to Prior Year End			Prior Year-End Known Case Loss and LAE Reserves Developed (Savings) / Deficiency (Cols.4+7 minus Col. 1)	Prior Year-End IBNR Loss and LAE Reserves Developed (Savings) / Deficiency (Cols. 5+8+9 minus Col. 2)	Prior Year-End Total Loss and LAE Reserve Developed (Savings) / Deficiency (Cols. 11+12)
Years in Which Losses Occurred	Prior Year End Known Case Loss and LAE Reserves	Prior Year End IBNR Loss and LAE Reserves	Total Prior Year End Loss and LAE Reserves (Cols. 1+2)	2024 Loss and LAE Payments on Claims Reported as of Prior Year End	2024 Loss and LAE Payments on Claims Unreported as of Prior Year End	Total 2024 Loss and LAE Payments (Cols. 4+5)	Q.S. Date Known Case Loss and LAE Reserves on Claims Reported and Open as of Prior Year End		Q.S. Date IBNR Loss and LAE Reserves	Total Q.S. Loss and LAE Reserves (Cols.7+8+9)			
1. 2021 + Prior.....													
2. 2022.....													
3. Subtotals 2022 + prior.....													
4. 2023.....				—	—	—					—	—	—
5. Subtotals 2023 + prior.....				—	—	—					—	—	—
6. 2024.....	XXX	XXX	XXX	XXX	64	64	XXX	10		10	XXX	XXX	XXX
7. Totals.....				—	64	64		10		10	—	—	—
8. Prior Year-End Surplus As Regards Policyholders.....	3,216										Col. 11, Line 7 As % of Col. 1, Line 7%	Col. 12, Line 7 As % of Col. 2, Line 7%	Col. 13, Line 7 As % of Col. 3, Line 7% Col. 13, Line 7 / Line 8 — %

SUPPLEMENTAL EXHIBITS AND SCHEDULES INTERROGATORIES

The following supplemental reports are required to be filed as part of your statement filing. However, in the event that your company does not transact the type of business for which the special report must be filed, your response of **NO** to the specific interrogatory will be accepted in lieu of filing a “NONE” report and a bar code will be printed below. If the supplement is required of your company but is not being filed for whatever reason enter **SEE EXPLANATION** and provide an explanation following the interrogatory questions.

	Response
1. Will the Trusteed Surplus Statement be filed with the state of domicile and the NAIC with this statement?.....	NO
2. Will Supplement A to Schedule T (Medical Professional Liability Supplement) be filed with this statement?.....	NO
3. Will the Medicare Part D Coverage Supplement be filed with the state of domicile and the NAIC with this statement?.....	NO
4. Will the Director and Officer Insurance Coverage Supplement be filed with the state of domicile and the NAIC with this statement?.....	NO

August Filing

5. Will the regulator-only (non-public) Communication of Internal Control Related Matters Noted in Audit be filed with the state of domicile and electronically with the NAIC (as a regulator-only non-public document) by August 1? The response for 1st and 3rd quarters should be N/A. A NO response resulting with a bar code is only appropriate in the 2nd quarter.....
- N/A.....

EXPLANATION:

1. Not applicable.....
2. Not applicable.....
3. Not applicable.....
4.
5.

BARCODES:

1.

16867202449000001
2.

16867202445500001
3.

16867202436500001
4.

16867202450500001
5.

OVERFLOW PAGE FOR WRITE-INS

SCHEDULE A – VERIFICATION

Real Estate

		1	2
		Year to Date	Prior Year Ended December 31
1.	Book/adjusted carrying value, December 31 of prior year		
2.	Cost of acquired:		
2.1	Actual cost at time of acquisition		
2.2	Additional investment made after acquisition		
3.	Current year change in encumbrances		
4.	Total gain (loss) on disposals		
5.	Deduct amounts received on disposals		
6.	Total foreign exchange change in book / adjusted carrying value		
7.	Deduct current year's other-than-temporary impairment recognized		
8.	Deduct current year's depreciation		
9.	Book/adjusted carrying value at the end of current period (Lines 1+2+3+4-5+6-7-8)		
10.	Deduct total nonadmitted amounts		
11.	Statement value at end of current period (Line 9 minus Line 10)		

SCHEDULE B – VERIFICATION

Mortgage Loans

		1	2
		Year to Date	Prior Year Ended December 31
1.	Book value/recorded investment excluding accrued interest, December 31 of prior year		
2.	Cost of acquired:		
2.1	Actual cost at time of acquisition		
2.2	Additional investment made after acquisition		
3.	Capitalized deferred interest and other		
4.	Accrual of discount		
5.	Unrealized valuation increase / (decrease)		
6.	Total gain (loss) on disposals		
7.	Deduct amounts received on disposals		
8.	Deduct amortization of premium and mortgage interest points and comm		
9.	Total foreign exchange change in book value/recorded investment excluding accrued interest		
10.	Deduct current year's other-than-temporary impairment recognized		
11.	Book value/recorded investment excluding accrued interest at end of current period (Lines 1+2+3+4+5+6-7-8+9-10)		
12.	Total valuation allowance		
13.	Subtotal (Line 11 plus Line 12)		
14.	Deduct total nonadmitted amounts		
15.	Statement value at end of current period (Line 13 minus Line 14)		

SCHEDULE BA - VERIFICATION

Other Long-Term Invested Assets

		1	2
		Year to Date	Prior Year Ended December 31
1.	Book/adjusted carrying value, December 31 of prior year		
2.	Cost of acquired:		
2.1	Actual cost at time of acquisition		
2.2	Additional investment made after acquisition		
3.	Capitalized deferred interest and other		
4.	Accrual of discount		
5.	Unrealized valuation increase / (decrease)		
6.	Total gain (loss) on disposals		
7.	Deduct amounts received on disposals		
8.	Deduct amortization of premium and depreciation		
9.	Total foreign exchange change in book / adjusted carrying value		
10.	Deduct current year's other-than-temporary impairment recognized		
11.	Book/adjusted carrying value at end of current period (Lines 1+2+3+4+5+6-7-8+9-10)		
12.	Deduct total nonadmitted amounts		
13.	Statement value at end of current period (Line 11 minus Line 12)		

SCHEDULE D - VERIFICATION

Bonds and Stocks

		1	2
		Year to Date	Prior Year Ended December 31
1.	Book/adjusted carrying value of bonds and stocks, December 31 of prior year	892,471	1,237,570
2.	Cost of bonds and stocks acquired	296,303	617,747
3.	Accrual of discount	—	4,751
4.	Unrealized valuation increase / (decrease)		13,117
5.	Total gain (loss) on disposals	6,462	(1,134)
6.	Deduct consideration for bonds and stocks disposed of	150,000	965,000
7.	Deduct amortization of premium	—	14,581
8.	Total foreign exchange change in book / adjusted carrying value		
9.	Deduct current year's other-than-temporary impairment recognized		
10.	Total investment income recognized as a result of prepayment penalties and/or acceleration fees		
11.	Book/adjusted carrying value at end of current period (Lines 1+2+3+4+5-6-7+8-9+10)	1,045,236	892,471
12.	Deduct total nonadmitted amounts		
13.	Statement value at end of current period (Line 11 minus Line 12)	1,045,236	892,471

SCHEDULE D – PART 1B

Showing the Acquisitions, Dispositions and Non-Trading Activity
During the Current Quarter for all Bonds and Preferred Stock by NAIC Designation

	1	2	3	4	5	6	7	8
NAIC Designation	Book / Adjusted Carrying Value Beginning of Current Quarter	Acquisitions During Current Quarter	Dispositions During Current Quarter	Non-Trading Activity During Current Quarter	Book / Adjusted Carrying Value End of First Quarter	Book / Adjusted Carrying Value End of Second Quarter	Book / Adjusted Carrying Value End of Third Quarter	Book / Adjusted Carrying Value December 31 Prior Year
Bonds								
1. NAIC 1 (a).....	1,946,702	295,799	656,000	6,864	1,593,365			1,946,702
2. NAIC 2 (a).....								
3. NAIC 3 (a).....								
4. NAIC 4 (a).....								
5. NAIC 5 (a).....								
6. NAIC 6 (a).....								
7. Total Bonds.....	1,946,702	295,799	656,000	6,864	1,593,365			1,946,702
Preferred Stock								
8. NAIC 1.....								
9. NAIC 2.....								
10. NAIC 3.....								
11. NAIC 4.....								
12. NAIC 5.....								
13. NAIC 6.....								
14. Total Preferred Stock.....								
15. Total Bonds & Preferred Stock.....	1,946,702	295,799	656,000	6,864	1,593,365			1,946,702

(a) Book/Adjusted Carrying Value column for the end of the current reporting period includes the following amount of short-term and cash equivalent bonds by NAIC designation:
NAIC 1 \$ 672,086; NAIC 2 \$...; NAIC 3 \$...; NAIC 4 \$...; NAIC 5 \$...; NAIC 6 \$...

SCHEDULE DA - PART 1

Short-Term Investments

	1	2	3	4	5
	Book / Adjusted Carrying Value	Par Value	Actual Cost	Interest Collected Year To Date	Paid for Accrued Interest Year To Date
7709999999 Total.....	672,087	XXX.....	654,489	3,678	—

SCHEDULE DA - VERIFICATION

Short-Term Investments

	1	2
	Year to Date	Prior Year Ended December 31
1. Book/adjusted carrying value, December 31 of prior year.....	1,165,605	158,357
2. Cost of short-term investments acquired.....	—	2,142,082
3. Accrual of discount.....	13,000	35,166
4. Unrealized valuation increase / (decrease).....		
5. Total gain (loss) on disposals.....		—
6. Deduct consideration received on disposals.....	506,000	1,170,000
7. Deduct amortization of premium.....	517	
8. Total foreign exchange change in book / adjusted carrying value.....		
9. Deduct current year's other-than-temporary impairment recognized.....		
10. Book/adjusted carrying value at end of current period (Lines 1+2+3+4+5-6-7+8-9).....	672,087	1,165,605
11. Deduct total nonadmitted amounts.....		
12. Statement value at end of current period (Line 10 minus Line 11).....	672,087	1,165,605

(SI-04) Schedule DB - Part A - Verification - Options, Caps, Floors, Collars, Swaps and Forwards

NONE

(SI-04) Schedule DB - Part B - Verification - Futures Contracts

NONE

(SI-05) Schedule DB - Part C - Section 1

NONE

(SI-06) Schedule DB - Part C - Section 2

NONE

(SI-07) Schedule DB - Verification

NONE

SCHEDULE E – PART 2 – VERIFICATION
(Cash Equivalents)

		1	2
		Year to Date	Prior Year Ended December 31
1.	Book/adjusted carrying value, December 31 of prior year.....	298,790	2,790
2.	Cost of cash equivalents acquired.....	672,118	4,069,808
3.	Accrual of discount.....		11,736
4.	Unrealized valuation increase / (decrease).....		
5.	Total gain (loss) on disposals.....		
6.	Deduct consideration received on disposals.....	297,404	3,785,544
7.	Deduct amortization of premium.....		
8.	Total foreign exchange change in book / adjusted carrying value.....		
9.	Deduct current year's other-than-temporary impairment recognized.....		
10.	Book/adjusted carrying value at end of current period (Lines 1+2+3+4+5-6-7+8-9).....	673,504	298,790
11.	Deduct total nonadmitted amounts.....		
12.	Statement value at end of current period (Line 10 minus Line 11).....	673,504	298,790

(E-01) Schedule A - Part 2

NONE

(E-01) Schedule A - Part 3

NONE

(E-02) Schedule B - Part 2

NONE

(E-02) Schedule B - Part 3

NONE

(E-03) Schedule BA - Part 2

NONE

(E-03) Schedule BA - Part 3

NONE

SCHEDULE D - PART 3

Show All Long-Term Bonds and Stock Acquired During the Current Quarter

1	2	3	4	5	6	7	8	9	10
CUSIP Identification	Description	Foreign	Date Acquired	Name of Vendor	Number of Shares of Stock	Actual Cost	Par Value	Paid for Accrued Interest and Dividends	NAIC Designation, NAIC Designation Modifier and SVO Administrative Symbol
Bonds: U.S. Governments									
91282C-DS-7	UNITED STATES TREASURY		02/01/2024	Unknown	XXX	295,799	307,000	1,605	1.A
0109999999 – Bonds: U.S. Governments						295,799	307,000	1,605	XXX
2509999997 – Subtotals - Bonds - Part 3						295,799	307,000	1,605	XXX
2509999998 – Summary Item from Part 5 for Bonds (N/A to Quarterly)									
2509999999 – Subtotals - Bonds						295,799	307,000	1,605	XXX
Common Stocks: Exchange Traded Funds									
921908-84-4	VANGUARD DIV A I ETF		03/27/2024	Unknown	0.444	80	XXX		
921946-40-6	VANGUARD HI DV YLD ETF		03/20/2024	Unknown	1.780	210	XXX		
92204A-60-3	VANGUARD INDUS IDX ETF		03/27/2024	Unknown	0.133	32	XXX		
922908-41-3	VANGUARD S&P 500 ETF		03/27/2024	Unknown	0.085	41	XXX		
922908-76-9	VANGUARD TSM IDX ETF		03/27/2024	Unknown	0.544	141	XXX		
5819999999 – Common Stocks: Exchange Traded Funds						504	XXX		XXX
5989999997 – Subtotals - Common Stocks - Part 3						504	XXX		XXX
5989999998 – Summary Item from Part 5 for Common Stocks (N/A to Quarterly)									
5989999999 – Subtotals Common Stocks						504	XXX		XXX
5999999999 – Subtotals Preferred and Common Stocks						504	XXX		XXX
6009999999 – Totals						296,303	XXX	1,605	XXX

SCHEDULE D - PART 4

Show All Long-Term Bonds and Stock Sold, Redeemed or Otherwise Disposed of During the Current Quarter

1	2	3	4	5	6	7	8	9	10	Change in Book / Adjusted Carrying Value					16	17	18	19	20	21	22
										11	12	13	14	15							
CUSIP Identification	Description	Foreign	Disposal Date	Name of Purchaser	Number of Shares of Stock	Consideration	Par Value	Actual Cost	Prior Year Book / Adjusted Carrying Value	Unrealized Valuation Increase / (Decrease)	Current Year's (Amortization) / Accretion	Current Year's Other-Than- Temporary Impairment Recognized	Total Change in B. / A.C.V. (11+12-13)	Total Foreign Exchange Change in B./A.C.V.	Book / Adjusted Carrying Value at Disposal Date	Foreign Exchange Gain (Loss) on Disposal	Realized Gain (Loss) on Disposal	Total Gain (Loss) on Disposal	Bond Interest / Stock Dividends Received During Year	Stated Contractual Maturity Date	NAIC Designation, NAIC Designation Modifier and SVO Administrative Symbol
Bonds: Unaffiliated Certificates of Deposit																					
46656M-KF-7	JPMorgan Chase Bank, National Associatio		02/22/2024	Maturity @ 100.00	XXX	150,000	150,000	150,000	150,000						150,000				4,197	09/24/2024	1.E FE
2019999999 – Unaffiliated Certificates of Deposit						150,000	150,000	150,000	150,000						150,000				4,197	XXX	XXX
2509999997 – Subtotals - Bonds - Part 4						150,000	150,000	150,000	150,000						150,000				4,197	XXX	XXX
2509999998 – Summary Item from Part 5 for Bonds (N/A to Quarterly)																					
2509999999 – Subtotals - Bonds						150,000	150,000	150,000	150,000						150,000				4,197	XXX	XXX
6009999999 – Totals						150,000	XXX	150,000	150,000						150,000				4,197	XXX	XXX

(E-06) Schedule DB - Part A - Section 1

NONE

(E-06) Schedule DB - Part A - Section 1 - Description of Hedged Risk(s)

NONE

(E-06) Schedule DB - Part A - Section 1 - Financial or Economic Impact of The Hedge at the End of the Reporting Period

NONE

(E-07) Schedule DB - Part B - Section 1

NONE

(E-07) Schedule DB - Part B - Section 1 - Broker Name

NONE

(E-07) Schedule DB - Part B - Section 1 - Description of Hedged Risk(s)

NONE

(E-07) Schedule DB - Part B - Section 1 - Financial or Economic Impact of The Hedge at the End of the Reporting Period

NONE

(E-08) Schedule DB - Part D - Section 1

NONE

(E-09) Schedule DB - Part D - Section 2 - Collateral Pledged By Reporting Entity

NONE

(E-09) Schedule DB - Part D - Section 2 - Collateral Pledged To Reporting Entity

NONE

(E-10) Schedule DB - Part E

NONE

(E-11) Schedule DL - Part 1

NONE

(E-12) Schedule DL - Part 2

NONE

SCHEDULE E - PART 1 - CASH
Month End Depository Balances

1 Depository	2 Code	3 Rate of Interest	4 Amount of Interest Received During Current Quarter	5 Amount of Interest Accrued at Current Statement Date	Book Balance at End of Each Month During Current Quarter			9 *
					6	7	8	
					First Month	Second Month	Third Month	
Regions Bank –			–	–	625	625	625	XXX
Cross River Bank 09/27/2024 –		5.397	–	4,288	150,000	150,000	150,000	XXX
Huntington Bank –			685	–	316,925	330,908	338,619	XXX
Republic Bank –		2.488	1,968	2,529	605,053	578,855	625,481	XXX
0199998 – Deposits in ... depositories that do not exceed the allowable limit in any one depository (see Instructions) - Open Depositories								XXX
0199999 – Total Open Depositories			2,654	6,816	1,072,603	1,060,388	1,114,725	XXX
0299998 – Deposits in ... depositories that do not exceed the allowable limit in any one depository (see Instructions) - Suspended Depositories								XXX
0299999 – Total Suspended Depositories								XXX
0399999 – Total Cash on Deposit			2,654	6,816	1,072,603	1,060,388	1,114,725	XXX
0499999 – Cash in Company's Office			XXX	XXX				XXX
0599999 – Total			2,654	6,816	1,072,603	1,060,388	1,114,725	XXX

SCHEDULE E - PART 2 - CASH EQUIVALENTS

Show Investments Owned End of Current Quarter

1	2	3	4	5	6	7	8	9
CUSIP	Description	Code	Date Acquired	Rate of Interest	Maturity Date	Book / Adjusted Carrying Value	Amount of Interest Due and Accrued	Amount Received During Year
All Other Money Market Mutual Funds								
922906-30-0.....	VANGUARD FED MM INV.....		03/28/2024.....	5.280.....	XXX.....	673,503.....		5,138.....
8309999999 – All Other Money Market Mutual Funds.....						673,503.....		5,138.....
8609999999 – Total Cash Equivalents.....						673,503.....		5,138.....