



PROPERTY AND CASUALTY COMPANIES - ASSOCIATION EDITION

ANNUAL STATEMENT  
FOR THE YEAR ENDED DECEMBER 31, 2024  
OF THE CONDITION AND AFFAIRS OF THE  
Century Surety Company

NAIC Group Code05720572NAIC Company Code36951Employer's ID Number31-0936702  
(Current)(Prior)

Organized under the Laws ofOhio, State of Domicile or Port of EntryOH  
Country of DomicileUnited States of America

Incorporated/Organized06/22/1978Commenced Business08/11/1978

Statutory Home Office550 Polaris ParkwayWesterville, OH, US 43082  
(Street and Number)(City or Town, State, Country and Zip Code)

Main Administrative Office550 Polaris Parkway  
(Street and Number)  
Westerville, OH, US 43082614-895-2000  
(City or Town, State, Country and Zip Code)(Area Code) (Telephone Number)

Mail Address550 Polaris ParkwayWesterville, OH, US 43082  
(Street and Number or P.O. Box)(City or Town, State, Country and Zip Code)

Primary Location of Books and Records26255 American Drive  
(Street and Number)  
Southfield, MI, US 48034248-358-1100  
(City or Town, State, Country and Zip Code)(Area Code) (Telephone Number)

Internet Website Addresswww.ameritrustgroup.com

Statutory Statement ContactMartin Joseph Chapko517-708-5355  
(Name)(Area Code) (Telephone Number)  
Marty.Chapko@accidentfund.com517-367-7531  
(E-mail Address)(FAX Number)

OFFICERS

PresidentCheung KwanSecretaryBobbi Jo Elliott

TreasurerAnthony George Phillips

OTHER

DIRECTORS OR TRUSTEES

Lisa Marie CorlessTricia Ann KeithCheung Kwan

Anthony George PhillipsJohn Stephen Roberts

State ofMichiganSS

County ofIngham

The officers of this reporting entity being duly sworn, each depose and say that they are the described officers of said reporting entity, and that on the reporting period stated above, all of the herein described assets were the absolute property of the said reporting entity, free and clear from any liens or claims thereon, except as herein stated, and that this statement, together with related exhibits, schedules and explanations therein contained, annexed or referred to, is a full and true statement of all the assets and liabilities and of the condition and affairs of the said reporting entity as of the reporting period stated above, and of its income and deductions therefrom for the period ended, and have been completed in accordance with the NAIC Annual Statement Instructions and Accounting Practices and Procedures manual except to the extent that: (1) state law may differ; or, (2) that state rules or regulations require differences in reporting not related to accounting practices and procedures, according to the best of their information, knowledge and belief, respectively. Furthermore, the scope of this attestation by the described officers also includes the related corresponding electronic filing with the NAIC, when required, that is an exact copy (except for formatting differences due to electronic filing) of the enclosed statement. The electronic filing may be requested by various regulators in lieu of or in addition to the enclosed statement.

Cheung KwanBobbi Jo ElliottAnthony George Phillips  
PresidentSecretaryTreasurer

Subscribed and sworn to before me thisa. Is this an original filing? .....Yes [ X ] No [ ]  
27 day of February 2025b. If no,  
1. State the amendment number.....  
2. Date filed .....  
3. Number of pages attached.....

Jeannette Uwimana  
Notary Public - State of Michigan, County of Ingham  
My Commission Expires May 28, 2029

ASSETS

	Current Year			Prior Year
	1 Assets	2 Nonadmitted Assets	3 Net Admitted Assets (Cols. 1 - 2)	4 Net Admitted Assets
1. Bonds (Schedule D) .....	38,481,666		38,481,666	40,558,465
2. Stocks (Schedule D):				
2.1 Preferred stocks .....				
2.2 Common stocks .....	41,357,126		41,357,126	40,833,447
3. Mortgage loans on real estate (Schedule B):				
3.1 First liens .....				
3.2 Other than first liens.....				
4. Real estate (Schedule A):				
4.1 Properties occupied by the company (less \$ ..... encumbrances) .....				
4.2 Properties held for the production of income (less \$ ..... encumbrances) .....				
4.3 Properties held for sale (less \$ ..... encumbrances) .....				
5. Cash (\$ ..... 59,932,639 , Schedule E - Part 1), cash equivalents (\$ ..... 5,399,784 , Schedule E - Part 2) and short-term investments (\$ ..... , Schedule DA) .....	65,332,423		65,332,423	16,764,984
6. Contract loans (including \$ ..... premium notes) .....				
7. Derivatives (Schedule DB) .....				
8. Other invested assets (Schedule BA) .....				
9. Receivable for securities .....	32,468		32,468	
10. Securities lending reinvested collateral assets (Schedule DL) .....				
11. Aggregate write-ins for invested assets .....				
12. Subtotals, cash and invested assets (Lines 1 to 11) .....	145,203,683		145,203,683	98,156,896
13. Title plants less \$ ..... charged off (for Title insurers only) .....				
14. Investment income due and accrued .....	253,843		253,843	286,255
15. Premiums and considerations:				
15.1 Uncollected premiums and agents' balances in the course of collection .....				
15.2 Deferred premiums, agents' balances and installments booked but deferred and not yet due (including \$ ..... earned but unbilled premiums) .....				
15.3 Accrued retrospective premiums (\$ ..... ) and contracts subject to redetermination (\$ ..... ) .....				
16. Reinsurance:				
16.1 Amounts recoverable from reinsurers .....				1,581,059
16.2 Funds held by or deposited with reinsured companies .....				
16.3 Other amounts receivable under reinsurance contracts .....				
17. Amounts receivable relating to uninsured plans .....				
18.1 Current federal and foreign income tax recoverable and interest thereon ....	20,600		20,600	
18.2 Net deferred tax asset .....	50,075	50,075		
19. Guaranty funds receivable or on deposit .....				
20. Electronic data processing equipment and software .....				
21. Furniture and equipment, including health care delivery assets (\$ ..... ) .....				
22. Net adjustment in assets and liabilities due to foreign exchange rates .....				
23. Receivables from parent, subsidiaries and affiliates .....	5,483,514		5,483,514	3,874
24. Health care (\$ ..... ) and other amounts receivable .....				
25. Aggregate write-ins for other-than-invested assets .....	1,254,143	78,729	1,175,415	1,020,613
26. Total assets excluding Separate Accounts, Segregated Accounts and Protected Cell Accounts (Lines 12 to 25) .....	152,265,859	128,804	152,137,055	101,048,697
27. From Separate Accounts, Segregated Accounts and Protected Cell Accounts .....				
28. Total (Lines 26 and 27)	152,265,859	128,804	152,137,055	101,048,697
DETAILS OF WRITE-INS				
1101. ....				
1102. ....				
1103. ....				
1198. Summary of remaining write-ins for Line 11 from overflow page .....				
1199. Totals (Lines 1101 through 1103 plus 1198)(Line 11 above)				
2501. Miscellaneous Receivables .....	1,175,415		1,175,415	1,020,613
2502. Prepaid Expenses .....	78,729	78,729		
2503. ....				
2598. Summary of remaining write-ins for Line 25 from overflow page .....				
2599. Totals (Lines 2501 through 2503 plus 2598)(Line 25 above)	1,254,143	78,729	1,175,415	1,020,613

ANNUAL STATEMENT FOR THE YEAR 2024 OF THE Century Surety Company

LIABILITIES, SURPLUS AND OTHER FUNDS

	1 Current Year	2 Prior Year
1. Losses (Part 2A, Line 35, Column 8) .....		
2. Reinsurance payable on paid losses and loss adjustment expenses (Schedule F, Part 1, Column 6) .....		
3. Loss adjustment expenses (Part 2A, Line 35, Column 9) .....		
4. Commissions payable, contingent commissions and other similar charges .....	15,984,006	4,999,666
5. Other expenses (excluding taxes, licenses and fees) .....	816,177	47,729
6. Taxes, licenses and fees (excluding federal and foreign income taxes) .....	32,100	67,200
7.1 Current federal and foreign income taxes (including \$ ..... on realized capital gains (losses)) .....		46,134
7.2 Net deferred tax liability .....	27,310	5,029
8. Borrowed money \$ ..... and interest thereon \$ .....		
9. Unearned premiums (Part 1A, Line 38, Column 5) (after deducting unearned premiums for ceded reinsurance of \$ .....217,888,509 and including warranty reserves of \$ ..... and accrued accident and health experience rating refunds including \$ ..... for medical loss ratio rebate per the Public Health Service Act) .....		
10. Advance premium .....		
11. Dividends declared and unpaid:		
11.1 Stockholders .....		
11.2 Policyholders .....		
12. Ceded reinsurance premiums payable (net of ceding commissions) .....	5,479,879	
13. Funds held by company under reinsurance treaties (Schedule F, Part 3, Column 20) .....		
14. Amounts withheld or retained by company for account of others .....		
15. Remittances and items not allocated .....		
16. Provision for reinsurance (including \$ ..... certified) (Schedule F, Part 3, Column 78) .....		
17. Net adjustments in assets and liabilities due to foreign exchange rates .....		
18. Drafts outstanding .....		
19. Payable to parent, subsidiaries and affiliates .....	32,514,323	657,791
20. Derivatives .....		
21. Payable for securities .....		
22. Payable for securities lending .....		
23. Liability for amounts held under uninsured plans .....		
24. Capital notes \$ ..... and interest thereon \$ .....		
25. Aggregate write-ins for liabilities .....	116,205	70,035
26. Total liabilities excluding protected cell liabilities (Lines 1 through 25) .....	54,970,000	5,893,584
27. Protected cell liabilities .....		
28. Total liabilities (Lines 26 and 27) .....	54,970,000	5,893,584
29. Aggregate write-ins for special surplus funds .....		
30. Common capital stock .....	3,000,000	3,000,000
31. Preferred capital stock .....		
32. Aggregate write-ins for other-than-special surplus funds .....		
33. Surplus notes .....		
34. Gross paid in and contributed surplus .....	86,467,199	86,467,199
35. Unassigned funds (surplus) .....	7,699,856	5,687,914
36. Less treasury stock, at cost:		
36.1 ..... shares common (value included in Line 30 \$ ..... ) .....		
36.2 ..... shares preferred (value included in Line 31 \$ ..... ) .....		
37. Surplus as regards policyholders (Lines 29 to 35, less 36) (Page 4, Line 39) .....	97,167,055	95,155,113
38. TOTALS (Page 2, Line 28, Col. 3) .....	152,137,055	101,048,697
DETAILS OF WRITE-INS		
2501. Escheat Claims .....	85,273	46,711
2502. Miscellaneous Payables .....	30,932	23,324
2503. ....		
2598. Summary of remaining write-ins for Line 25 from overflow page .....		
2599. Totals (Lines 2501 through 2503 plus 2598)(Line 25 above) .....	116,205	70,035
2901. ....		
2902. ....		
2903. ....		
2998. Summary of remaining write-ins for Line 29 from overflow page .....		
2999. Totals (Lines 2901 through 2903 plus 2998)(Line 29 above) .....		
3201. ....		
3202. ....		
3203. ....		
3298. Summary of remaining write-ins for Line 32 from overflow page .....		
3299. Totals (Lines 3201 through 3203 plus 3298)(Line 32 above) .....		

STATEMENT OF INCOME

	1 Current Year	2 Prior Year
UNDERWRITING INCOME		
1. Premiums earned (Part 1, Line 35, Column 4).....		
DEDUCTIONS:		
2. Losses incurred (Part 2, Line 35, Column 7) .....		
3. Loss adjustment expenses incurred (Part 3, Line 25, Column 1) .....		
4. Other underwriting expenses incurred (Part 3, Line 25, Column 2) .....		
5. Aggregate write-ins for underwriting deductions .....		
6. Total underwriting deductions (Lines 2 through 5) .....		
7. Net income of protected cells .....		
8. Net underwriting gain (loss) (Line 1 minus Line 6 plus Line 7) .....		
INVESTMENT INCOME		
9. Net investment income earned (Exhibit of Net Investment Income, Line 17) .....	1,766,679	990,649
10. Net realized capital gains (losses) less capital gains tax of \$ ..... (4,162) (Exhibit of Capital Gains (Losses) ) .....	(15,659)	(3,318)
11. Net investment gain (loss) (Lines 9 + 10) .....	1,751,020	987,331
OTHER INCOME		
12. Net gain (loss) from agents' or premium balances charged off (amount recovered \$ ..... 1,203 amount charged off \$ ..... ) .....	1,203	
13. Finance and service charges not included in premiums .....		
14. Aggregate write-ins for miscellaneous income .....		258,109
15. Total other income (Lines 12 through 14) .....	1,203	258,109
16. Net income before dividends to policyholders, after capital gains tax and before all other federal and foreign income taxes (Lines 8 + 11 + 15) .....	1,752,223	1,245,440
17. Dividends to policyholders .....		
18. Net income, after dividends to policyholders, after capital gains tax and before all other federal and foreign income taxes (Line 16 minus Line 17) .....	1,752,223	1,245,440
19. Federal and foreign income taxes incurred .....	174,075	219,889
20. Net income (Line 18 minus Line 19)(to Line 22) .....	1,578,148	1,025,551
CAPITAL AND SURPLUS ACCOUNT		
21. Surplus as regards policyholders, December 31 prior year (Page 4, Line 39, Column 2) .....	95,155,113	93,275,519
22. Net income (from Line 20) .....	1,578,148	1,025,551
23. Net transfers (to) from Protected Cell accounts .....		
24. Change in net unrealized capital gains or (losses) less capital gains tax of \$ ..... 2,337 .....	532,467	834,515
25. Change in net unrealized foreign exchange capital gain (loss) .....		
26. Change in net deferred income tax .....	(21,381)	(18,762)
27. Change in nonadmitted assets (Exhibit of Nonadmitted Assets, Line 28, Col. 3) .....	(77,292)	38,290
28. Change in provision for reinsurance (Page 3, Line 16, Column 2 minus Column 1) .....		
29. Change in surplus notes .....		
30. Surplus (contributed to) withdrawn from protected cells .....		
31. Cumulative effect of changes in accounting principles .....		
32. Capital changes:		
32.1 Paid in .....		
32.2 Transferred from surplus (Stock Dividend) .....		
32.3 Transferred to surplus .....		
33. Surplus adjustments:		
33.1 Paid in .....		
33.2 Transferred to capital (Stock Dividend) .....		
33.3 Transferred from capital .....		
34. Net remittances from or (to) Home Office .....		
35. Dividends to stockholders .....		
36. Change in treasury stock (Page 3, Lines 36.1 and 36.2, Column 2 minus Column 1) .....		
37. Aggregate write-ins for gains and losses in surplus .....		
38. Change in surplus as regards policyholders for the year (Lines 22 through 37) .....	2,011,942	1,879,594
39. Surplus as regards policyholders, December 31 current year (Line 21 plus Line 38) (Page 3, Line 37)	97,167,055	95,155,113
DETAILS OF WRITE-INS		
0501. ....		
0502. ....		
0503. ....		
0598. Summary of remaining write-ins for Line 5 from overflow page .....		
0599. Totals (Lines 0501 through 0503 plus 0598)(Line 5 above)		
1401. Miscellaneous Income .....		258,109
1402. ....		
1403. ....		
1498. Summary of remaining write-ins for Line 14 from overflow page .....		
1499. Totals (Lines 1401 through 1403 plus 1498)(Line 14 above)		258,109
3701. ....		
3702. ....		
3703. ....		
3798. Summary of remaining write-ins for Line 37 from overflow page .....		
3799. Totals (Lines 3701 through 3703 plus 3798)(Line 37 above)		

CASH FLOW

	1	2
	Current Year	Prior Year
Cash from Operations		
1. Premiums collected net of reinsurance .....	5,479,879	
2. Net investment income .....	2,006,414	1,284,332
3. Miscellaneous income .....	1,203	258,109
4. Total (Lines 1 through 3) .....	7,487,497	1,542,441
5. Benefit and loss related payments .....	(1,581,059)	(4,787,258)
6. Net transfers to Separate Accounts, Segregated Accounts and Protected Cell Accounts .....		
7. Commissions, expenses paid and aggregate write-ins for deductions .....	(11,717,688)	(3,002,429)
8. Dividends paid to policyholders .....		
9. Federal and foreign income taxes paid (recovered) net of \$ ..... (4,162) tax on capital gains (losses) .....	236,647	179,697
10. Total (Lines 5 through 9) .....	(13,062,100)	(7,609,991)
11. Net cash from operations (Line 4 minus Line 10) .....	20,549,597	9,152,431
Cash from Investments		
12. Proceeds from investments sold, matured or repaid:		
12.1 Bonds .....	7,059,200	7,049,584
12.2 Stocks .....		
12.3 Mortgage loans .....		
12.4 Real estate .....		
12.5 Other invested assets .....		
12.6 Net gains or (losses) on cash, cash equivalents and short-term investments .....		
12.7 Miscellaneous proceeds .....		22
12.8 Total investment proceeds (Lines 12.1 to 12.7) .....	7,059,200	7,049,606
13. Cost of investments acquired (long-term only):		
13.1 Bonds .....	5,198,301	2,872,428
13.2 Stocks .....		
13.3 Mortgage loans .....		
13.4 Real estate .....		
13.5 Other invested assets .....		
13.6 Miscellaneous applications .....	32,468	
13.7 Total investments acquired (Lines 13.1 to 13.6) .....	5,230,769	2,872,428
14. Net increase/(decrease) in contract loans and premium notes .....		
15. Net cash from investments (Line 12.8 minus Line 13.7 minus Line 14) .....	1,828,430	4,177,178
Cash from Financing and Miscellaneous Sources		
16. Cash provided (applied):		
16.1 Surplus notes, capital notes .....		
16.2 Capital and paid in surplus, less treasury stock .....		
16.3 Borrowed funds .....		
16.4 Net deposits on deposit-type contracts and other insurance liabilities .....		
16.5 Dividends to stockholders .....		
16.6 Other cash provided (applied) .....	26,189,412	(670,876)
17. Net cash from financing and miscellaneous sources (Lines 16.1 to 16.4 minus Line 16.5 plus Line 16.6) .....	26,189,412	(670,876)
RECONCILIATION OF CASH, CASH EQUIVALENTS AND SHORT-TERM INVESTMENTS		
18. Net change in cash, cash equivalents and short-term investments (Line 11, plus Lines 15 and 17) .....	48,567,439	12,658,734
19. Cash, cash equivalents and short-term investments:		
19.1 Beginning of year .....	16,764,984	4,106,250
19.2 End of period (Line 18 plus Line 19.1) .....	65,332,423	16,764,984

Note: Supplemental disclosures of cash flow information for non-cash transactions:

--	--	--

Underwriting and Investment Exhibit - Part 1 - Premiums Earned

**N O N E**

Underwriting and Investment Exhibit - Part 1A - Recapitulation of all Premiums

**N O N E**

ANNUAL STATEMENT FOR THE YEAR 2024 OF THE Century Surety Company

UNDERWRITING AND INVESTMENT EXHIBIT

PART 1B - PREMIUMS WRITTEN

Line of Business	1	Reinsurance Assumed		Reinsurance Ceded		6
	Direct Business (a)	2	3	4	5	Net Premiums Written Cols. 1+2+3-4-5
1. Fire .....	100,541,892			100,541,892		
2.1 Allied lines .....	26,317,889			26,317,889		
2.2 Multiple peril crop .....						
2.3 Federal flood .....						
2.4 Private crop .....						
2.5 Private flood .....						
3. Farmowners multiple peril .....						
4. Homeowners multiple peril .....						
5.1 Commercial multiple peril (non-liability portion) .....	108,176,178			108,176,178		
5.2 Commercial multiple peril (liability portion) .....	64,629,616			64,629,616		
6. Mortgage guaranty .....						
8. Ocean marine .....	12,402,611			12,402,611		
9.1 Inland marine .....	5,679,060			5,679,060		
9.2 Pet insurance plans .....						
10. Financial guaranty .....						
11.1 Medical professional liability - occurrence .....						
11.2 Medical professional liability - claims-made .....						
12. Earthquake .....						
13.1 Comprehensive (hospital and medical) individual .....						
13.2 Comprehensive (hospital and medical) group .....						
14. Credit accident and health (group and individual) .....						
15.1 Vision only .....						
15.2 Dental only .....						
15.3 Disability income .....						
15.4 Medicare supplement .....						
15.5 Medicaid Title XIX .....						
15.6 Medicare Title XVIII .....						
15.7 Long-term care .....						
15.8 Federal employees health benefits plan .....						
15.9 Other health .....						
16. Workers' compensation .....						
17.1 Other liability - occurrence .....	149,595,237			149,595,237		
17.2 Other liability - claims-made .....	966,408			966,408		
17.3 Excess workers' compensation .....						
18.1 Products liability - occurrence .....	794,373			794,373		
18.2 Products liability - claims-made .....	(483)			(483)		
19.1 Private passenger auto no-fault (personal injury protection) .....						
19.2 Other private passenger auto liability.....						
19.3 Commercial auto no-fault (personal injury protection) .....	103,858			103,858		
19.4 Other commercial auto liability.....	17,413,089			17,413,089		
21.1 Private passenger auto physical damage .....						
21.2 Commercial auto physical damage .....	10,161,390			10,161,390		
22. Aircraft (all perils) .....						
23. Fidelity .....						
24. Surety .....	19,121			19,121		
26. Burglary and theft .....						
27. Boiler and machinery .....						
28. Credit .....						
29. International .....						
30. Warranty .....						
31. Reinsurance - nonproportional assumed property .....	XXX					
32. Reinsurance - nonproportional assumed liability .....	XXX					
33. Reinsurance - nonproportional assumed financial lines .....	XXX					
34. Aggregate write-ins for other lines of business .....						
35. TOTALS	496,800,238			496,800,238		
DETAILS OF WRITE-INS						
3401. ....						
3402. ....						
3403. ....						
3498. Summary of remaining write-ins for Line 34 from overflow page .....						
3499. Totals (Lines 3401 through 3403 plus 3498)(Line 34 above)						

(a) Does the company's direct premiums written include premiums recorded on an installment basis?    Yes [    ]    No [ X ]

If yes:    1. The amount of such installment premiums \$    .....

              2. Amount at which such installment premiums would have been reported had they been reported on an annualized basis \$    .....

ANNUAL STATEMENT FOR THE YEAR 2024 OF THE Century Surety Company

UNDERWRITING AND INVESTMENT EXHIBIT

PART 2 - LOSSES PAID AND INCURRED

Line of Business	Losses Paid Less Salvage				5	6	7	8
	1	2	3	4				
	Direct Business	Reinsurance Assumed	Reinsurance Recovered	Net Payments (Cols. 1 + 2 - 3 )	Net Losses Unpaid Current Year (Part 2A , Col. 8)	Net Losses Unpaid Prior Year	Losses Incurred Current Year (Cols. 4 + 5 - 6)	Percentage of Losses Incurred (Col. 7, Part 2) to Premiums Earned (Col. 4, Part 1)
1. Fire .....	16,724,040		16,724,040					
2.1 Allied lines .....	16,351,810		16,351,810					
2.2 Multiple peril crop .....								
2.3 Federal flood .....								
2.4 Private crop .....								
2.5 Private flood .....								
3. Farmowners multiple peril .....								
4. Homeowners multiple peril .....								
5.1 Commercial multiple peril (non-liability portion) .....	37,255,394		37,255,394					
5.2 Commercial multiple peril (liability portion) .....	13,158,782		13,158,782					
6. Mortgage guaranty .....								
8. Ocean marine .....	2,053,241		2,053,241					
9.1 Inland marine .....	673,666		673,666					
9.2 Pet insurance plans .....								
10. Financial guaranty .....								
11.1 Medical professional liability - occurrence .....								
11.2 Medical professional liability - claims-made .....								
12. Earthquake .....								
13.1 Comprehensive (hospital and medical) individual .....								
13.2 Comprehensive (hospital and medical) group .....								
14. Credit accident and health (group and individual) .....								
15.1 Vision only .....								
15.2 Dental only .....								
15.3 Disability income .....								
15.4 Medicare supplement .....								
15.5 Medicaid Title XIX .....								
15.6 Medicare Title XVIII .....								
15.7 Long-term care .....								
15.8 Federal employees health benefits plan .....								
15.9 Other health .....								
16. Workers' compensation .....								
17.1 Other liability - occurrence .....	43,982,612		43,982,612					
17.2 Other liability - claims-made .....	47,055		47,055					
17.3 Excess workers' compensation .....								
18.1 Products liability - occurrence .....	74,000		74,000					
18.2 Products liability - claims-made .....								
19.1 Private passenger auto no-fault (personal injury protection) .....								
19.2 Other private passenger auto liability.....								
19.3 Commercial auto no-fault (personal injury protection) .....	135,109		135,109					
19.4 Other commercial auto liability.....	6,363,053		6,363,053					
21.1 Private passenger auto physical damage .....								
21.2 Commercial auto physical damage .....	3,958,224		3,958,224					
22. Aircraft (all perils) .....								
23. Fidelity .....								
24. Surety .....								
26. Burglary and theft .....								
27. Boiler and machinery .....								
28. Credit .....								
29. International .....								
30. Warranty .....								
31. Reinsurance - nonproportional assumed property .....	XXX							
32. Reinsurance - nonproportional assumed liability .....	XXX							
33. Reinsurance - nonproportional assumed financial lines .....	XXX							
34. Aggregate write-ins for other lines of business .....								
35. TOTALS	140,776,985		140,776,985					
DETAILS OF WRITE-INS								
3401. ....								
3402. ....								
3403. ....								
3498. Summary of remaining write-ins for Line 34 from overflow page .....								
3499. Totals (Lines 3401 through 3403 plus 3498)(Line 34 above)								



ANNUAL STATEMENT FOR THE YEAR 2024 OF THE Century Surety Company

**UNDERWRITING AND INVESTMENT EXHIBIT**

PART 2A - UNPAID LOSSES AND LOSS ADJUSTMENT EXPENSES

Line of Business	Reported Losses				Incurred But Not Reported			8	9
	1	2	3	4	5	6	7		
	Direct	Reinsurance Assumed	Deduct Reinsurance Recoverable	Net Losses Excl. Incurred But Not Reported (Cols. 1 + 2 - 3)	Direct	Reinsurance Assumed	Reinsurance Ceded	Net Losses Unpaid (Cols. 4 + 5 + 6 - 7)	Net Unpaid Loss Adjustment Expenses
1. Fire .....	3,366,446		3,366,446		27,628,985		27,628,985		
2.1 Allied lines .....	4,888,883		4,888,883		12,114,866		12,114,866		
2.2 Multiple peril crop .....									
2.3 Federal flood .....									
2.4 Private crop .....									
2.5 Private flood .....									
3. Farmowners multiple peril .....									
4. Homeowners multiple peril .....									
5.1 Commercial multiple peril (non-liability portion) .....	10,075,429		10,075,429		39,780,923		39,780,923		
5.2 Commercial multiple peril (liability portion) .....	15,630,167		15,630,167		56,270,285		56,270,285		
6. Mortgage guaranty .....									
8. Ocean marine .....	1,662,803		1,662,803		5,699,156		5,699,156		
9.1 Inland marine .....	298,461		298,461		2,582,496		2,582,496		
9.2 Pet insurance plans .....									
10. Financial guaranty .....									
11.1 Medical professional liability - occurrence .....									
11.2 Medical professional liability - claims-made .....									
12. Earthquake .....									
13.1 Comprehensive (hospital and medical) individual .....								(a)	
13.2 Comprehensive (hospital and medical) group .....								(a)	
14. Credit accident and health (group and individual) .....									
15.1 Vision only .....								(a)	
15.2 Dental only .....								(a)	
15.3 Disability income .....								(a)	
15.4 Medicare supplement .....								(a)	
15.5 Medicaid Title XIX .....								(a)	
15.6 Medicare Title XVIII .....								(a)	
15.7 Long-term care .....								(a)	
15.8 Federal employees health benefits plan .....								(a)	
15.9 Other health .....								(a)	
16. Workers' compensation .....									
17.1 Other liability - occurrence .....	45,726,979		45,726,979		147,789,127		147,789,127		
17.2 Other liability - claims-made .....	48,009		48,009		2,843,420	660,722	3,504,141		
17.3 Excess workers' compensation .....									
18.1 Products liability - occurrence .....	47,501		47,501		536,689		536,689		
18.2 Products liability - claims-made .....					184		184		
19.1 Private passenger auto no-fault (personal injury protection) .....									
19.2 Other private passenger auto liability.....									
19.3 Commercial auto no-fault (personal injury protection) .....	32,528		32,528		133,435		133,435		
19.4 Other commercial auto liability.....	4,253,497		4,253,497		16,192,569		16,192,569		
21.1 Private passenger auto physical damage .....									
21.2 Commercial auto physical damage .....	745,204		745,204		2,132,118		2,132,118		
22. Aircraft (all perils) .....									
23. Fidelity .....					8,267		8,267		
24. Surety .....	10,500		10,500		410,417		410,417		
26. Burglary and theft .....									
27. Boiler and machinery .....									
28. Credit .....									
29. International .....									
30. Warranty .....									
31. Reinsurance - nonproportional assumed property .....	XXX				XXX				
32. Reinsurance - nonproportional assumed liability .....	XXX				XXX				
33. Reinsurance - nonproportional assumed financial lines .....	XXX				XXX				
34. Aggregate write-ins for other lines of business .....									
35. TOTALS .....	86,786,407		86,786,407		314,122,937	660,722	314,783,658		
DETAILS OF WRITE-INS									
3401. ....									
3402. ....									
3403. ....									
3498. Summary of remaining write-ins for Line 34 from overflow page .....									
3499. Totals (Lines 3401 through 3403 plus 3498)(Line 34 above)									

(a) Including \$ ..... for present value of life indemnity claims reported in Lines 13 and 15.

ANNUAL STATEMENT FOR THE YEAR 2024 OF THE Century Surety Company

**UNDERWRITING AND INVESTMENT EXHIBIT**

PART 3 - EXPENSES

	1	2	3	4
	Loss Adjustment Expenses	Other Underwriting Expenses	Investment Expenses	Total
1. Claim adjustment services:				
1.1 Direct .....	71,138,685			71,138,685
1.2 Reinsurance assumed .....	313,032			313,032
1.3 Reinsurance ceded .....	71,451,717			71,451,717
1.4 Net claim adjustment service (1.1 + 1.2 - 1.3) .....				
2. Commission and brokerage:				
2.1 Direct excluding contingent .....		101,308,581		101,308,581
2.2 Reinsurance assumed, excluding contingent .....				
2.3 Reinsurance ceded, excluding contingent .....		101,308,581		101,308,581
2.4 Contingent - direct .....		6,191,002		6,191,002
2.5 Contingent - reinsurance assumed .....				
2.6 Contingent - reinsurance ceded .....		6,191,002		6,191,002
2.7 Policy and membership fees .....				
2.8 Net commission and brokerage (2.1 + 2.2 - 2.3 + 2.4 + 2.5 - 2.6 + 2.7) ..				
3. Allowances to managers and agents .....				
4. Advertising .....				
5. Boards, bureaus and associations .....				
6. Surveys and underwriting reports .....				
7. Audit of assureds' records .....				
8. Salary and related items:				
8.1 Salaries .....			30,085	30,085
8.2 Payroll taxes .....			2,064	2,064
9. Employee relations and welfare .....			3,709	3,709
10. Insurance .....			210	210
11. Directors' fees .....				
12. Travel and travel items .....			392	392
13. Rent and rent items .....			799	799
14. Equipment .....			1,243	1,243
15. Cost or depreciation of EDP equipment and software .....			4	4
16. Printing and stationery .....			119	119
17. Postage, telephone and telegraph, exchange and express .....			325	325
18. Legal and auditing .....				
19. Totals (Lines 3 to 18) .....			38,951	38,951
20. Taxes, licenses and fees:				
20.1 State and local insurance taxes deducting guaranty association credits of \$ .....				
20.2 Insurance department licenses and fees .....				
20.3 Gross guaranty association assessments .....				
20.4 All other (excluding federal and foreign income and real estate) .....				
20.5 Total taxes, licenses and fees (20.1 + 20.2 + 20.3 + 20.4) .....				
21. Real estate expenses .....				
22. Real estate taxes .....				
23. Reimbursements by uninsured plans .....				
24. Aggregate write-ins for miscellaneous expenses .....			51,362	51,362
25. Total expenses incurred .....			90,313 (a)	90,313
26. Less unpaid expenses - current year .....		16,832,283		16,832,283
27. Add unpaid expenses - prior year .....		5,114,595		5,114,595
28. Amounts receivable relating to uninsured plans, prior year .....				
29. Amounts receivable relating to uninsured plans, current year .....				
30. TOTAL EXPENSES PAID (Lines 25 - 26 + 27 - 28 + 29)		(11,717,688)	90,313	(11,627,375)
<b>DETAILS OF WRITE-INS</b>				
2401. Management Fees – External .....			51,362	51,362
2402. ....				
2403. ....				
2498. Summary of remaining write-ins for Line 24 from overflow page .....				
2499. Totals (Lines 2401 through 2403 plus 2498)(Line 24 above)			51,362	51,362

(a) Includes management fees of \$ 38,951 to affiliates and \$ 51,362 to non-affiliates.

ANNUAL STATEMENT FOR THE YEAR 2024 OF THE Century Surety Company

EXHIBIT OF NET INVESTMENT INCOME

		1	2
		Collected During Year	Earned During Year
1.	U.S. Government bonds .....	(a) ..... 115,612	..... 135,290
1.1	Bonds exempt from U.S. tax .....	(a) ..... 21,881	..... 19,442
1.2	Other bonds (unaffiliated) .....	(a) ..... 728,822	..... 696,911
1.3	Bonds of affiliates .....	(a) .....	.....
2.1	Preferred stocks (unaffiliated) .....	(b) .....	.....
2.11	Preferred stocks of affiliates .....	(b) .....	.....
2.2	Common stocks (unaffiliated) .....	.....	.....
2.21	Common stocks of affiliates .....	.....	.....
3.	Mortgage loans .....	(c) .....	.....
4.	Real estate .....	(d) .....	.....
5	Contract loans .....	.....	.....
6	Cash, cash equivalents and short-term investments .....	(e) ..... 217,701	..... 199,961
7	Derivative instruments .....	(f) .....	.....
8.	Other invested assets .....	.....	.....
9.	Aggregate write-ins for investment income .....	..... 805,387	..... 805,387
10.	Total gross investment income .....	1,889,403	1,856,992
11.	Investment expenses .....		(g) ..... 90,313
12.	Investment taxes, licenses and fees, excluding federal income taxes .....		(g) .....
13.	Interest expense .....		(h) .....
14.	Depreciation on real estate and other invested assets .....		(i) .....
15.	Aggregate write-ins for deductions from investment income .....		.....
16.	Total deductions (Lines 11 through 15) .....		..... 90,313
17.	Net investment income (Line 10 minus Line 16)		1,766,678
DETAILS OF WRITE-INS			
0901.	Corporate Ins Investment Proceeds .....	..... 745,598	..... 745,598
0902.	Other Income .....	..... 59,790	..... 59,790
0903.	.....		
0998.	Summary of remaining write-ins for Line 9 from overflow page .....		
0999.	Totals (Lines 0901 through 0903 plus 0998) (Line 9, above)	805,387	805,387
1501.	.....		
1502.	.....		
1503.	.....		
1598.	Summary of remaining write-ins for Line 15 from overflow page .....		
1599.	Totals (Lines 1501 through 1503 plus 1598) (Line 15, above)		

- (a) Includes \$ .....68,483 accrual of discount less \$ .....275,807 amortization of premium and less \$ .....27,868 paid for accrued interest on purchases.
- (b) Includes \$ ..... accrual of discount less \$ ..... amortization of premium and less \$ ..... paid for accrued dividends on purchases.
- (c) Includes \$ ..... accrual of discount less \$ ..... amortization of premium and less \$ ..... paid for accrued interest on purchases.
- (d) Includes \$ ..... for company's occupancy of its own buildings; and excludes \$ ..... interest on encumbrances.
- (e) Includes \$ ..... accrual of discount less \$ ..... amortization of premium and less \$ ..... paid for accrued interest on purchases.
- (f) Includes \$ ..... accrual of discount less \$ ..... amortization of premium.
- (g) Includes \$ ..... investment expenses and \$ ..... investment taxes, licenses and fees, excluding federal income taxes, attributable to segregated and Separate Accounts.
- (h) Includes \$ ..... interest on surplus notes and \$ ..... interest on capital notes.
- (i) Includes \$ ..... depreciation on real estate and \$ ..... depreciation on other invested assets.

EXHIBIT OF CAPITAL GAINS (LOSSES)

		1	2	3	4	5
		Realized Gain (Loss) On Sales or Maturity	Other Realized Adjustments	Total Realized Capital Gain (Loss) (Columns 1 + 2)	Change in Unrealized Capital Gain (Loss)	Change in Unrealized Foreign Exchange Capital Gain (Loss)
1.	U.S. Government bonds .....					
1.1	Bonds exempt from U.S. tax .....	..... (1,132)	.....	..... (1,132)	.....	.....
1.2	Other bonds (unaffiliated) .....	..... (18,689)	.....	..... (18,689)	..... 11,244	.....
1.3	Bonds of affiliates .....	.....	.....	.....	.....	.....
2.1	Preferred stocks (unaffiliated) .....	.....	.....	.....	.....	.....
2.11	Preferred stocks of affiliates .....	.....	.....	.....	.....	.....
2.2	Common stocks (unaffiliated) .....	.....	.....	.....	.....	.....
2.21	Common stocks of affiliates .....	.....	.....	.....	..... 523,679	.....
3.	Mortgage loans .....	.....	.....	.....	.....	.....
4.	Real estate .....	.....	.....	.....	.....	.....
5.	Contract loans .....	.....	.....	.....	.....	.....
6.	Cash, cash equivalents and short-term investments .....	.....	.....	.....	.....	.....
7.	Derivative instruments .....	.....	.....	.....	.....	.....
8.	Other invested assets .....	.....	.....	.....	.....	.....
9.	Aggregate write-ins for capital gains (losses) .....	.....	.....	.....	..... (119)	.....
10.	Total capital gains (losses)	(19,821)		(19,821)	534,804	
DETAILS OF WRITE-INS						
0901.	Miscellaneous .....	.....	.....	.....	..... (119)	.....
0902.	.....	.....	.....	.....	.....	.....
0903.	.....	.....	.....	.....	.....	.....
0998.	Summary of remaining write-ins for Line 9 from overflow page .....	.....	.....	.....	.....	.....
0999.	Totals (Lines 0901 through 0903 plus 0998) (Line 9, above)				(119)	

ANNUAL STATEMENT FOR THE YEAR 2024 OF THE Century Surety Company

EXHIBIT OF NON-ADMITTED ASSETS

	1	2	3
	Current Year Total Nonadmitted Assets	Prior Year Total Nonadmitted Assets	Change in Total Nonadmitted Assets (Col. 2 - Col. 1)
1. Bonds (Schedule D) .....			
2. Stocks (Schedule D):			
2.1 Preferred stocks .....			
2.2 Common stocks .....			
3. Mortgage loans on real estate (Schedule B):			
3.1 First liens .....			
3.2 Other than first liens.....			
4. Real estate (Schedule A):			
4.1 Properties occupied by the company .....			
4.2 Properties held for the production of income.....			
4.3 Properties held for sale .....			
5. Cash (Schedule E - Part 1), cash equivalents (Schedule E - Part 2) and short-term investments (Schedule DA) .....			
6. Contract loans .....			
7. Derivatives (Schedule DB) .....			
8. Other invested assets (Schedule BA) .....			
9. Receivables for securities .....			
10. Securities lending reinvested collateral assets (Schedule DL) .....			
11. Aggregate write-ins for invested assets .....			
12. Subtotals, cash and invested assets (Lines 1 to 11) .....			
13. Title plants (for Title insurers only) .....			
14. Investment income due and accrued .....			
15. Premiums and considerations:			
15.1 Uncollected premiums and agents' balances in the course of collection .....			
15.2 Deferred premiums, agents' balances and installments booked but deferred and not yet due ..			
15.3 Accrued retrospective premiums and contracts subject to redetermination .....			
16. Reinsurance:			
16.1 Amounts recoverable from reinsurers .....			
16.2 Funds held by or deposited with reinsured companies .....			
16.3 Other amounts receivable under reinsurance contracts .....			
17. Amounts receivable relating to uninsured plans .....			
18.1 Current federal and foreign income tax recoverable and interest thereon .....			
18.2 Net deferred tax asset .....	50,075	51,512	1,437
19. Guaranty funds receivable or on deposit .....			
20. Electronic data processing equipment and software .....			
21. Furniture and equipment, including health care delivery assets .....			
22. Net adjustment in assets and liabilities due to foreign exchange rates .....			
23. Receivables from parent, subsidiaries and affiliates .....			
24. Health care and other amounts receivable .....			
25. Aggregate write-ins for other-than-invested assets .....	78,729		(78,729)
26. Total assets excluding Separate Accounts, Segregated Accounts and Protected Cell Accounts (Lines 12 to 25) .....	128,804	51,512	(77,292)
27. From Separate Accounts, Segregated Accounts and Protected Cell Accounts .....			
28. Total (Lines 26 and 27)	128,804	51,512	(77,292)
DETAILS OF WRITE-INS			
1101. ....			
1102. ....			
1103. ....			
1198. Summary of remaining write-ins for Line 11 from overflow page .....			
1199. Totals (Lines 1101 through 1103 plus 1198)(Line 11 above)			
2501. Prepaid Expenses .....	78,729		(78,729)
2502. ....			
2503. ....			
2598. Summary of remaining write-ins for Line 25 from overflow page .....			
2599. Totals (Lines 2501 through 2503 plus 2598)(Line 25 above)	78,729		(78,729)

NOTES TO FINANCIAL STATEMENTS

NOTE 1 Summary of Significant Accounting Policies and Going Concern

A. Accounting Practices  
The accompanying financial statements of Century Surety Company ("Company") have been completed in accordance with the National Association of Insurance Commissioners' (NAIC) Accounting Practices and Procedures Manual except to the extent that Ohio state laws and regulations differ.

The Ohio Department of Insurance recognizes only statutory accounting practices prescribed or permitted by the state of Ohio for determining and reporting the financial condition and results of operations of an insurance company, for determining its solvency under the Ohio Insurance Law. The NAIC Accounting Practices and Procedures Manual – Effective January 1, 2001 (NAIC SAP) has been adopted as a component of prescribed or permitted practices by the state of Ohio. The state has adopted certain prescribed accounting practices that differ from those found in NAIC SAP. The Company has no such deviations as of December 31, 2024.

A reconciliation of the Company's surplus between NAIC SAP and practices prescribed and permitted by the state of Ohio is shown below.

	SSAP #	F/S Page	F/S Line #		2024		2023
NET INCOME							
(1) State basis (Page 4, Line 20, Columns 1 & 2)	XXX	XXX	XXX	\$	1,578,148	\$	1,025,551
(2) State Prescribed Practices that are an increase/ (decrease) from NAIC SAP:							
(3) State Permitted Practices that are an increase/(decrease) from NAIC SAP:							
(4) NAIC SAP (1-2-3=4)	XXX	XXX	XXX	\$	1,578,148	\$	1,025,551
SURPLUS							
(5) State basis (Page 3, Line 37, Columns 1 & 2)	XXX	XXX	XXX	\$	97,167,055	\$	95,155,113
(6) State Prescribed Practices that are an increase/(decrease) from NAIC SAP:							
(7) State Permitted Practices that are an increase/(decrease) from NAIC SAP:							
(8) NAIC SAP (5-6-7=8)	XXX	XXX	XXX	\$	97,167,055	\$	95,155,113

- B. Use of Estimates in the Preparation of the Financial Statements  
The preparation of financial statements in conformity with Statutory Accounting Principles requires management to make estimates and assumptions that affect the reported amounts of assets and liabilities. It also requires disclosure of contingent assets and liabilities at the date of the financial statements and the reported amounts of revenue and expenses during the period. Actual results could differ from those estimates.
- C. Accounting Policy  
Premiums are earned over the terms of the related insurance policies and reinsurance contracts. Unearned premium reserves are established to cover the unexpired portion of premiums written. Expenses incurred in connection with acquiring new insurance business, including such acquisition costs as sales commissions, are charged to operations as incurred. Expenses incurred are reduced for ceding allowances received or receivable.
- In addition, the Company uses the following accounting policies:
- Short-term investments are stated at amortized cost.
  - Bonds not backed by other loans are stated at amortized cost using the scientific method. Bonds with NAIC designations of 3 through 6 are stated at the lower of amortized cost or fair value.
  - Common stocks are stated at fair market value, except for investments in stocks of unconsolidated subsidiaries and affiliates in which the Company has an interest of 10% or more which are reported in accordance with Note 1-C7 below.
  - The Company has no investments in preferred stock.
  - The Company has no mortgage loans.
  - Loan-backed securities are stated at amortized cost. Significant changes in estimated cash flows from the original purchase assumptions are accounted for using the prospective method. Loan-backed securities with NAIC designations of 3 through 6 are stated at the lower of amortized cost or fair value.
- The carrying value and final NAIC designation for non-agency residential mortgage backed securities and commercial mortgage backed securities are determined using a special two-step NAIC process. In the first step, those assigned a NAIC designation of 1 or 2 are stated at amortized cost and those assigned a 3 through 6 designation are stated at the lower of amortized cost or fair value. The NAIC designation assigned under the second step of the process is reported for those securities in Schedule D and is used in the risk-based capital calculation.
- The Company owns 100% of the common stock of ProCentury Insurance Company ("ProCentury"). All aforementioned stock is valued at the statutory net worth of the underlying insurance company. Affiliated investments are reported in accordance with SSAP 97 - Investment in Subsidiary Controlled and Affiliated Entities.
  - The Company does not have any ownership interests in joint ventures, partnerships, or limited liability companies.
  - The Company does not hold or issue derivative financial instruments.
  - The Company utilizes anticipated investment income as a factor in premium deficiency calculations.
  - Unpaid losses and loss adjustment expenses include an amount determined from individual case estimates and loss reports and an amount, based on past experience, for losses incurred but not reported. Such liabilities are necessarily based on assumptions and estimates and while management believes the amount is adequate, the ultimate liability may be in excess of or less than the amount provided. The methods for making such estimates and for establishing the resulting liabilities are continually reviewed and any adjustments are reflected in the period determined.
  - Capitalization Policy - Not Applicable.
  - Pharmaceutical Rebate Receivables – Not Applicable.
- D. Going Concern  
After consideration by management, there is no substantial doubt about the Company's ability to continue as a going concern.

NOTE 2 Accounting Changes and Corrections of Errors

There were no material accounting changes or corrections of errors in the 2024 financial statements.

NOTE 3 Business Combinations and Goodwill

Not applicable

NOTE 4 Discontinued Operations

Not applicable

NOTE 5 Investments

- A. Mortgage Loans, including Mezzanine Real Estate Loans - Not applicable
- B. Debt Restructuring - Not applicable
- C. Reverse Mortgages - Not applicable
- D. Loan-Backed Securities
- Our asset manager uses a proprietary model for loss assumptions and widely accepted models for prepayment assumptions in valuing mortgage-backed and asset-backed securities; inputs come from major third party data providers. The effect of interest rates, volatility, and prepayment speeds are derived using Monte Carlo simulation. Credit loss analysis, resulting effective analytics (spreads, duration, convexity) and cash-flows are reported to clients on a monthly basis. Model assumptions are specific to asset class and collateral types and are regularly evaluated and adjusted where appropriate.
  - Securities where the Company has either the intent to sell or lacks the ability to retain the securities - Not applicable.
  - Loan-backed securities with a historical or current period other-than-temporary impairment ("OTTI"), currently held by the reporting entity where the present value of the discounted cash flows was/is less than the amortized cost basis of the securities - Not applicable.
  - All impaired securities (fair value is less than cost or amortized cost) for which an OTTI has not been recognized in earnings as a realized loss (including securities with a recognized other-than-temporary impairment for non-interest related declines when a non-recognized interest related impairment remains):
    - The aggregate amount of unrealized losses:
      - Less than 12 Months\$53,782
      - 12 Months or Longer\$725,234
    - The aggregate related fair value of securities with unrealized losses:
      - Less than 12 Months\$1,154,880
      - 12 Months or Longer\$2,638,194
  - There are a number of factors that are considered in determining if there is not an OTTI on an investment, including but not limited to, debt burden, credit ratings, sector, liquidity, financial flexibility, company management, expected earnings and cash flow stream, and economic prospects associated with the investment.

NOTES TO FINANCIAL STATEMENTS

- E. Dollar Repurchase Agreements and/or Securities Lending Transactions - Not applicable
- F. Repurchase Agreements Transactions Accounted for as Secured Borrowing - Not applicable
- G. Reverse Repurchase Agreements Transactions Accounted for as Secured Borrowing - Not applicable
- H. Repurchase Agreements Transactions Accounted for as a Sale - Not applicable
- I. Reverse Repurchase Agreements Transactions Accounted for as a Sale - Not applicable
- J. Real Estate - Not applicable
- K. Low Income Housing Tax Credits (LIHTC) - Not applicable
- L. Restricted Assets

1. Restricted Assets (Including Pledged)

Restricted Asset Category	Gross (Admitted & Nonadmitted) Restricted						
	Current Year					6	7
	1	2	3	4	5		
	Total General Account (G/A)	G/A Supporting Protected Cell Account Activity (a)	Total Protected Cell Account Restricted Assets	Protected Cell Account Assets Supporting G/A Activity (b)	Total (1 plus 3)	Total From Prior Year	Increase/ (Decrease) (5 minus 6)
a. Subject to contractual obligation for which liability is not shown					\$ -	\$ -	\$ -
b. Collateral held under security lending agreements					\$ -	\$ -	\$ -
c. Subject to repurchase agreements					\$ -	\$ -	\$ -
d. Subject to reverse repurchase agreements					\$ -	\$ -	\$ -
e. Subject to dollar repurchase agreements					\$ -	\$ -	\$ -
f. Subject to dollar reverse repurchase agreements					\$ -	\$ -	\$ -
g. Placed under option contracts					\$ -	\$ -	\$ -
h. Letter stock or securities restricted as to sale - excluding FHLB capital stock					\$ -	\$ -	\$ -
i. FHLB capital stock					\$ -	\$ -	\$ -
j. On deposit with states	\$ 7,396,631				\$ 7,396,631	\$ 7,297,331	\$ 99,300
k. On deposit with other regulatory bodies					\$ -	\$ -	\$ -
l. Pledged collateral to FHLB (including assets backing funding agreements)					\$ -	\$ -	\$ -
m. Pledged as collateral not captured in other categories					\$ -	\$ -	\$ -
n. Other restricted assets					\$ -	\$ -	\$ -
o. Total Restricted Assets (Sum of a through n)	\$ 7,396,631	\$ -	\$ -	\$ -	\$ 7,396,631	\$ 7,297,331	\$ 99,300

(a) Subset of Column 1

(b) Subset of Column 3

Restricted Asset Category	Current Year			
	8	9	Percentage	
			10	11
			Gross (Admitted & Non-admitted) Restricted to Total Assets (c)	Admitted Restricted to Total Admitted Assets (d)
a. Subject to contractual obligation for which liability is not shown		\$ -	0.000%	0.000%
b. Collateral held under security lending agreements		\$ -	0.000%	0.000%
c. Subject to repurchase agreements		\$ -	0.000%	0.000%
d. Subject to reverse repurchase agreements		\$ -	0.000%	0.000%
e. Subject to dollar repurchase agreements		\$ -	0.000%	0.000%
f. Subject to dollar reverse repurchase agreements		\$ -	0.000%	0.000%
g. Placed under option contracts		\$ -	0.000%	0.000%
h. Letter stock or securities restricted as to sale - excluding FHLB capital stock		\$ -	0.000%	0.000%
i. FHLB capital stock		\$ -	0.000%	0.000%
j. On deposit with states		\$ 7,396,631	4.858%	4.862%
k. On deposit with other regulatory bodies		\$ -	0.000%	0.000%
l. Pledged collateral to FHLB (including assets backing funding agreements)		\$ -	0.000%	0.000%
m. Pledged as collateral not captured in other categories		\$ -	0.000%	0.000%
n. Other restricted assets		\$ -	0.000%	0.000%
o. Total Restricted Assets (Sum of a through n)	\$ -	\$ 7,396,631	4.858%	4.862%

(c) Column 5 divided by Asset Page, Column 1, Line 28

(d) Column 9 divided by Asset Page, Column 3, Line 28

- 2. Detail of Assets Pledged as Collateral Not Captured in Other Categories (Contracts That Share Similar Characteristics, Such as Reinsurance and Derivatives, Are Reported in the Aggregate)  
Not applicable
- 3. Detail of Other Restricted Assets (Contracts That Share Similar Characteristics, Such as Reinsurance and Derivatives, Are Reported in the Aggregate)  
Not applicable
- 4. Collateral Received and Reflected as Assets Within the Reporting Entity's Financial Statements  
Not applicable

- M. Working Capital Finance Investments - Not applicable
- N. Offsetting and Netting of Assets and Liabilities - Not applicable
- O. 5GI Securities - Not applicable
- P. Short Sales - Not applicable
- Q. Prepayment Penalty and Acceleration Fees - Not applicable
- R. Reporting Entity's Share of Cash Pool by Asset Type - Not applicable
- S. Aggregate Collateral Loans by Qualifying Investment Collateral - Not Applicable

NOTE 6 Joint Ventures, Partnerships and Limited Liability Companies  
Not applicable

NOTES TO FINANCIAL STATEMENTS

NOTE 7 Investment Income

A. Accrued Investment Income

All investment income due and accrued amounts that are determined to be in default are written-off and future accruals cease to be reported/admitted. The Company did not have any such amounts as of December 31, 2024.

B. Amounts Nonadmitted - Not applicable

C. The gross, nonadmitted and admitted amounts for interest income due and accrued.

Interest Income Due and Accrued	Amount
1. Gross	\$ 253,843
2. Nonadmitted	
3. Admitted	\$ 253,843

D. The aggregate deferred interest.

Aggregate Deferred Interest	Amount

E. The cumulative amounts of paid-in-kind (PIK) interest included in the current principal balance.

Cumulative amounts of PIK interest included in the current principal balance	Amount

NOTE 8 Derivative Instruments

The Company does not hold or issue derivative instruments.

NOTE 9 Income Taxes

A. The components of the net deferred tax asset/(liability) at the end of current period are as follows:

1.

	As of End of Current Period			12/31/2023			Change		
	(1)	(2)	(3)	(4)	(5)	(6)	(7)	(8)	(9)
	Ordinary	Capital	(Col. 1 + 2) Total	Ordinary	Capital	(Col. 4 + 5) Total	(Col. 1 - 4) Ordinary	(Col. 2 - 5) Capital	(Col. 7 + 8) Total
(a) Gross Deferred Tax Assets	\$ 16,533	\$ 363,255	\$ 379,788	\$ 8,400	\$ 364,692	\$ 373,092	\$ 8,133	\$ (1,437)	\$ 6,696
(b) Statutory Valuation Allowance Adjustment			\$ -	\$ -	\$ -	\$ -	\$ -	\$ -	\$ -
(c) Adjusted Gross Deferred Tax Assets (1a - 1b)	\$ 16,533	\$ 363,255	\$ 379,788	\$ 8,400	\$ 364,692	\$ 373,092	\$ 8,133	\$ (1,437)	\$ 6,696
(d) Deferred Tax Assets Nonadmitted		\$ 50,075	\$ 50,075		\$ 51,512	\$ 51,512	\$ -	\$ (1,437)	\$ (1,437)
(e) Subtotal Net Admitted Deferred Tax Asset (1c - 1d)	\$ 16,533	\$ 313,180	\$ 329,713	\$ 8,400	\$ 313,180	\$ 321,580	\$ 8,133	\$ -	\$ 8,133
(f) Deferred Tax Liabilities	\$ 43,843	\$ 313,180	\$ 357,023	\$ 13,429	\$ 313,180	\$ 326,609	\$ 30,414	\$ -	\$ 30,414
(g) Net Admitted Deferred Tax Asset/(Net Deferred Tax Liability) (1e - 1f)	\$ (27,310)	\$ -	\$ (27,310)	\$ (5,029)	\$ -	\$ (5,029)	\$ (22,281)	\$ -	\$ (22,281)

2.

	As of End of Current Period			12/31/2023			Change		
	(1)	(2)	(3)	(4)	(5)	(6)	(7)	(8)	(9)
	Ordinary	Capital	(Col. 1 + 2) Total	Ordinary	Capital	(Col. 4 + 5) Total	(Col. 1 - 4) Ordinary	(Col. 2 - 5) Capital	(Col. 7 + 8) Total
Admission Calculation Components SSAP No. 101									
(a) Federal Income Taxes Paid In Prior Years Recoverable Through Loss Carrybacks	\$ 16,533		\$ 16,533		\$ -	\$ -	\$ 16,533	\$ -	\$ 16,533
(b) Adjusted Gross Deferred Tax Assets Expected To Be Realized (Excluding The Amount Of Deferred Tax Assets From 2(a) above) After Application of the Threshold Limitation. (The Lesser of 2(b)1 and 2(b)2 Below)			\$ -	\$ 8,400	\$ -	\$ 8,400	\$ (8,400)	\$ -	\$ (8,400)
1. Adjusted Gross Deferred Tax Assets Expected to be Realized Following the Balance Sheet Date.			\$ -	\$ -	\$ -	\$ -	\$ -	\$ -	\$ -
2. Adjusted Gross Deferred Tax Assets Allowed per Limitation Threshold.	XXX	XXX	\$14,579,155	XXX	XXX	\$14,273,267	XXX	XXX	\$ 305,888
(c) Adjusted Gross Deferred Tax Assets (Excluding The Amount Of Deferred Tax Assets From 2(a) and 2(b) above) Offset by Gross Deferred Tax Liabilities.		\$ 313,180	\$ 313,180	\$ -	\$ 313,180	\$ 313,180	\$ -	\$ -	\$ -
(d) Deferred Tax Assets Admitted as the result of application of SSAP No. 101. Total (2(a) + 2(b) + 2(c))	\$ 16,533	\$ 313,180	\$ 329,713	\$ 8,400	\$ 313,180	\$ 321,580	\$ 8,133	\$ -	\$ 8,133

3.

	2024	2023
a. Ratio Percentage Used To Determine Recovery Period And Threshold Limitation Amount.	7592.000%	11300.000%
b. Amount Of Adjusted Capital And Surplus Used To Determine Recovery Period And Threshold Limitation In 2(b)2 Above.	\$ 97,194,365	\$ 95,155,113

4.

	As of End of Current Period		12/31/2023		Change	
	(1)	(2)	(3)	(4)	(5)	(6)
	Ordinary	Capital	Ordinary	Capital	(Col. 1 - 3) Ordinary	(Col. 2 - 4) Capital
Impact of Tax Planning Strategies:						
(a) Determination of adjusted gross deferred tax assets and net admitted deferred tax assets, by tax character as a percentage.						
1. Adjusted Gross DTAs amount from Note 9A1(c)	\$ 16,533	\$ 363,255	\$ 8,400	\$ 364,692	\$ 8,133	\$ (1,437)
2. Percentage of adjusted gross DTAs by tax character attributable to the impact of tax planning strategies			0.000%	0.000%	0.000%	0.000%
3. Net Admitted Adjusted Gross DTAs amount from Note 9A1(e)	\$ 16,533	\$ 313,180	\$ 8,400	\$ 313,180	\$ 8,133	\$ -
4. Percentage of net admitted adjusted gross DTAs by tax character admitted because of the impact of tax planning strategies			0.000%	0.000%	0.000%	0.000%

b. Do the Company's tax-planning strategies include the use of reinsurance? Yes [ ] No [X]

NOTES TO FINANCIAL STATEMENTS

- B. Deferred Tax Liabilities Not Recognized: Not applicable
- C. Current income taxes incurred consist of the following major components:

1. Current Income Tax
- (a) Federal
- (b) Foreign
- (c) Subtotal (1a+1b)
- (d) Federal income tax on net capital gains
- (e) Utilization of capital loss carry-forwards
- (f) Other
- (g) Federal and foreign income taxes incurred (1c+1d+1e+1f)

(1) As of End of Current Period	(2) 12/31/2023	(3) (Col. 1 - 2) Change
\$ 174,075	\$ 219,889	\$ (45,814)
\$ 174,075	\$ 219,889	\$ (45,814)
\$ (4,162)	\$ (882)	\$ (3,280)
	\$ -	\$ -
	\$ -	\$ -
\$ 169,913	\$ 219,007	\$ (49,094)

2. Deferred Tax Assets:
- (a) Ordinary:
- (1) Discounting of unpaid losses
- (2) Unearned premium reserve
- (3) Policyholder reserves
- (4) Investments
- (5) Deferred acquisition costs
- (6) Policyholder dividends accrual
- (7) Fixed assets
- (8) Compensation and benefits accrual
- (9) Pension accrual
- (10) Receivables - nonadmitted
- (11) Net operating loss carry-forward
- (12) Tax credit carry-forward
- (13) Other
- (99) Subtotal (sum of 2a1 through 2a13)
- (b) Statutory valuation allowance adjustment
- (c) Nonadmitted
- (d) Admitted ordinary deferred tax assets (2a99 - 2b - 2c)
- (e) Capital:
- (1) Investments
- (2) Net capital loss carry-forward
- (3) Real estate
- (4) Other
- (99) Subtotal (2e1+2e2+2e3+2e4)
- (f) Statutory valuation allowance adjustment
- (g) Nonadmitted
- (h) Admitted capital deferred tax assets (2e99 - 2f - 2g)
- (i) Admitted deferred tax assets (2d + 2h)

	\$ -	\$ -
	\$ -	\$ -
	\$ -	\$ -
	\$ -	\$ -
	\$ -	\$ -
	\$ -	\$ -
	\$ -	\$ -
	\$ -	\$ -
	\$ -	\$ -
\$ 16,533	\$ -	\$ 16,533
	\$ -	\$ -
	\$ -	\$ -
	\$ 8,400	\$ (8,400)
\$ 16,533	\$ 8,400	\$ 8,133
	\$ -	\$ -
	\$ -	\$ -
\$ 16,533	\$ 8,400	\$ 8,133
\$ 363,255	\$ 364,692	\$ (1,437)
	\$ -	\$ -
	\$ -	\$ -
	\$ -	\$ -
\$ 363,255	\$ 364,692	\$ (1,437)
	\$ -	\$ -
\$ 50,075	\$ 51,512	\$ (1,437)
\$ 313,180	\$ 313,180	\$ -
\$ 329,713	\$ 321,580	\$ 8,133

3. Deferred Tax Liabilities:
- (a) Ordinary:
- (1) Investments
- (2) Fixed assets
- (3) Deferred and uncollected premium
- (4) Policyholder reserves
- (5) Other
- (99) Subtotal (3a1+3a2+3a3+3a4+3a5)
- (b) Capital:
- (1) Investments
- (2) Real estate
- (3) Other
- (99) Subtotal (3b1+3b2+3b3)
- (c) Deferred tax liabilities (3a99 + 3b99)
4. Net deferred tax assets (2i - 3c)

\$ 43,843	\$ 13,429	\$ 30,414
	\$ -	\$ -
	\$ -	\$ -
	\$ -	\$ -
	\$ -	\$ -
\$ 43,843	\$ 13,429	\$ 30,414
\$ 313,180	\$ 313,180	\$ -
	\$ -	\$ -
	\$ -	\$ -
\$ 313,180	\$ 313,180	\$ -
\$ 357,023	\$ 326,609	\$ 30,414
\$ (27,310)	\$ (5,029)	\$ (22,281)

- D. Reconciliation of Federal Income Tax Rate to Actual Effective Rate Among the more significant book to tax adjustments were the following:

Among the more significant book to tax adjustments were the following:

	Gross Amount	Tax Effect at 21%	Effective Tax Rate
Provision computed at statutory rate	\$ 1,748,061	\$ 367,093	21.0%
Permanent Differences:			
Proration of tax exempt investment income	4,861	1,021	0.1%
Tax exempt income deduction	(19,443)	(4,083)	-0.2%
Nonadmitted assets	(78,729)	(16,533)	-1.0%
Other			
Accrual adjustment - prior year			
Other	(743,830)	(156,204)	-8.9%
Totals	\$ 910,921	\$ 191,294	10.9%
Federal income taxes incurred		\$ 174,075	10.0%
Realized capital gains (losses) tax		(4,162)	-0.2%
Change in net deferred income taxes		21,381	1.2%
Total Statutory Income Taxes		\$ 191,294	10.9%

- E. Operating Loss Carry Forwards and Income Taxes Available for Recoupment

1. The amounts, origination dates and expiration dates of operating loss and tax credit carry forwards available for tax purposes: None
2. The following is income tax expense for current year and proceeding years that is available for recoupment in the event of future net losses:

Year	Amount
2024	\$ 169,913
2023	\$ 233,526

3. The Company did not have any protective tax deposits under Section 6603 of the Internal Revenue Code.

- F. 1. The Company's federal income tax return is consolidated with the following entities:The Company, as a qualifying taxable subsidiary, files as part of a consolidated federal income tax return with Blue Cross Blue Shield of Michigan (BCBSM). Each taxable subsidiary is responsible for its own federal tax liability and BCBSM has a master tax-sharing agreement in place with each respective subsidiary



NOTES TO FINANCIAL STATEMENTS

2. The manner in which the Board of Directors sets forth for allocating the consolidated federal income tax:  
The method of allocation among companies is subject to a written agreement, approved by the Board of Directors, whereby allocation is made primarily on a separate return basis with current credit for any net operating losses or other items utilized in the consolidated tax return.
- G. Federal or Foreign Federal Income Tax Loss Contingencies:  
The Company does not have any tax loss contingencies for which it is reasonably possible that the total liability will significantly increase within twelve months of the reporting date.
- H. Repatriation Transition Tax (RTT) - Not applicable
- I. Alternative Minimum Tax (AMT) Credit - Not applicable

NOTE 10 Information Concerning Parent, Subsidiaries, Affiliates and Other Related Parties

- A. The Company is a wholly owned subsidiary of Star Insurance Company ("Star"), a company domiciled in the state of Michigan.
- B. There were no transactions in 2024 between the Company and its affiliates on a pre-pooled basis, excluding reinsurance transactions and any non-insurance transactions which involved less than 1/2 of 1% of total assets of the reporting entity.  
  
Effective November 1, 2018, the Company entered into a new Management Services Agreement ("Agreement"). The Agreement is effective through October 31, 2021 and automatically extends for additional three (3) year periods, if not terminated by the parties. The Company's parent company was purchased by Accident Fund Insurance Company of America ("AFICA") effective December 31, 2022. The reporting entities have been added to AFICA's Intercompany Services Agreements.
- C. Transactions with related parties who are not reported on Schedule Y - Not applicable
- D. At December 31, 2024 and December 31, 2023, the Company reported \$5,483,514 and \$1,584,933, respectively due from parent, subsidiaries and affiliates and \$37,994,202, and \$657,791 respectively due to parent, subsidiaries and affiliates pursuant to the Intercompany Loan Agreement. Intercompany balances between parent, subsidiaries and affiliates are settled subsequent to the reporting period.
- E. The Company does not directly hire employees. Rather, the Company entered into the Agreement with Meadowbrook, Inc. and its affiliates, which provides the accounting, financial reporting, underwriting, compliance, reinsurance, sales, claims, loss prevention, and general management services for the Company. Fees paid to Meadowbrook, Inc. and affiliates are determined on a monthly basis, based on the actual costs associated with overall administration of all programs. On a pre-pooled basis, the Company directly incurred \$44,050,301 and \$40,442,484 of such expenses as of December 31, 2024 and December 31, 2023, respectively.  
  
Effective October 1, 2009, the Company entered into a new Agency Agreement with Meadowbrook, Inc. and its affiliates or subsidiaries (the "Agent") whereby the Company pays the Agent a commission for the production of premium. As of December 31, 2024 and December 31, 2023, the Company has paid the Agent \$260,499 and \$257,790 respectively in commissions.  
  
In addition, the Company's federal income tax return is consolidated with the entities referenced in Note 9(F) above. Pursuant to the Tax Allocation Agreement, the Company recognized a tax expense of \$174,075 and a tax expense of \$219,007, in the current and prior year end, respectively, to be received from or remitted to the ultimate parent, BCBSM.
- F. Guarantees or Undertakings for Related Parties - Not applicable (see Note 14A)
- G. All outstanding shares of the Company are owned by Star.
- H. The Company does not own any shares of stock of its ultimate parent, BCBSM. Therefore, there are no amounts to deduct for investment in an upstream company.
- I. The Company owns 100% interest in of the common stock of ProCentury Insurance Company ("ProCentury"), whose carrying value is equal to or exceeds 10% of the admitted assets of the Company. The Company carries ProCentury at Statutory equity.  
  
The statement value of ProCentury assets and liabilities as of 12/31/2024 were \$43,001,161 and \$1,644,034 respectively.  
  
The Company's share of net income of ProCentury was \$553,272 for the year ended 12/31/2024.
- J. Investments in Impaired SCA Entities - Not applicable
- K. Investments in Foreign SCA Entities - Not applicable
- L. Valuation of Downstream Holding Companies - Not applicable
- M. All SCA Investments - Not applicable
- N. Investment in Insurance SCAs - Not applicable
- O. SCA or SSAP 48 Entity Loss Tracking - Not applicable

NOTE 11 Debt

- A. The Company has no capital note obligations, debentures, commercial paper, bank loans or lines of credit outstanding at December 31, 2024.
- B. FHLB (Federal Home Loan Bank) Agreements - Not applicable

NOTE 12 Retirement Plans, Deferred Compensation, Postemployment Benefits and Compensated Absences and Other Postretirement Benefit Plans

Not applicable

NOTE 13 Capital and Surplus, Dividend Restrictions and Quasi-Reorganizations

- A. The Company has 500 shares of \$10,000 par value common stock authorized and 300 shares issued and outstanding. The Company has no preferred stock authorized, issued, or outstanding.
- B. The dividend rate, liquidation value and redemption schedule (including prices and dates) of any preferred issues - Not applicable.
- C. Dividends on common stock are paid as declared by the Board of Directors of the Company. Without prior approval of its domiciliary commissioner, Ohio law limits dividends to shareholders to the greater of 10% of the prior year policyholders' surplus less dividends paid in the prior twelve months or the prior year net income (excluding realized capital gains) less dividends paid in the prior twelve months. These dividends are further limited by a clause in the Ohio law, which prohibits an insurer from declaring dividends unless the value of assets remaining is at least equal to the aggregate amount of debts and liabilities, including capital.
- D. The Company did not make a dividend payment to Star as of December 31, 2024.
- E. Within the limitations of (C) above, the maximum ordinary dividend payment allowed to shareholders as of December 31, 2024, without prior regulatory approval, is \$7,673,439 after considering the ordinary dividend payment per (D) above.
- F. There are no restrictions on the unassigned funds of the Company other than those described above in paragraphs (C) and (E) and these unassigned funds are held for the benefit of the owner and policyholders.
- G. Mutual Surplus Advances - Not applicable.
- H. There is no stock held by the Company, including stock of affiliated companies, for special purposes.
- I. Changes in balances of special surplus funds from the prior year - Not applicable.
- J. The portion of unassigned funds (surplus) represented by cumulative unrealized capital gains is \$6,762,453. This cumulative unrealized gain includes the valuation of the Company's subsidiary ProCentury Insurance Company.
- K. The Company has no surplus notes outstanding.
- L. The Company has not been involved in any quasi-reorganizations.
- M. The Company has not been involved in any quasi-reorganizations.

NOTE 14 Liabilities, Contingencies and Assessments

- A. Contingent Commitments  
The Company has no material contingent commitments to a SCA entity, joint venture, partnership, or limited liability company, nor any contingent commitments attributable to low income housing tax credit properties as of December 31, 2024.

NOTES TO FINANCIAL STATEMENTS

B. Assessments

(1) Liability and Related Assets

The Company is subject to guaranty fund and other assessments by the states in which it writes business. Guaranty fund assessments should be accrued at the time of the insolvencies. These assessments do not have a material impact on the financial statements. Other assessments should be accrued either at the time the assessments are levied or in the case of premium-based assessments, at the time the premiums are written, or in the case of loss-based assessments, at the time the losses are incurred.

The Company has accrued a liability for guaranty fund and other assessments of \$13,229 and a related premium tax benefit asset of \$0. The liability is included in the taxes, licenses and fees liability and is typically paid within 1 to 3 years. The asset is included in the guaranty funds receivable asset, and is typically recovered within 10 years. The amounts represent management's best estimates based on information received from the states in which the Company writes business and may change due to many factors including the Company's share of the ultimate cost of current insolvencies.

(2) Assets Recognized From Paid and Accrued Premium Tax Offsets and Policy Surcharges - Not applicable \$ -

(3) Undiscounted and Discounted Guaranty Fund Assessments - Not Applicable

C. Gain Contingencies

The Company is unaware of any gain contingencies that could have a material financial effect.

D. Claims related extra contractual obligations and bad faith losses stemming from lawsuits

	Direct
(1) The company paid the following amounts in the reporting period to settle claims related extra contractual obligations or bad faith claims stemming from lawsuits	\$ 100,000
(2) Number of claims where amounts were paid to settle claims related extra contractual obligations or bad faith claims resulting from lawsuits during the reporting period	0-25 Claims
(3) Indicate whether claim count information is disclosed per claim or per claimant	Per Claim

E. Product Warranties - Not applicable

F. Joint and Several Liabilities - Not applicable

G. All Other Contingencies

At the end of the current and prior year, the Company had \$0.00 and \$0.00, respectively in admitted premiums receivable due from policyholders, agents and ceding insurers. The Company routinely assesses the collectability of these receivables. Based upon Company experience, any uncollectible premiums receivable as of the end of the current year are not expected to exceed the nonadmitted amounts totaling \$0.

The Company is involved in litigation arising in the ordinary course of operations. While the results of litigation cannot be predicted with certainty, management is of the opinion, after reviewing these matters with legal counsel, that the final outcome of such litigation will not have a material effect upon the Company's combined financial position, results of operations, or cash flows.

NOTE 15 Leases

Not applicable

NOTE 16 Information About Financial Instruments With Off-Balance Sheet Risk and Financial Instruments With Concentrations of Credit Risk

Not applicable

NOTE 17 Sale, Transfer and Servicing of Financial Assets and Extinguishments of Liabilities

Not applicable

NOTE 18 Gain or Loss to the Reporting Entity from Uninsured Plans and the Uninsured Portion of Partially Insured Plans

Not applicable

NOTE 19 Direct Premium Written/Produced by Managing General Agents/Third Party Administrators

Not applicable

NOTE 20 Fair Value Measurements

A. Inputs Used for Assets and Liabilities Measured at Fair Value

(1) Fair Value Measurements at Reporting Date

The Company has categorized its assets and liabilities that are measured at fair value into the three-level fair value hierarchy as reflected in the following table.

Level 1 - Valuations that are based on unadjusted quoted market prices in active markets for identical securities. The fair value of exchange-traded equities and mutual funds included in the Level 1 category were based on quoted prices that are readily and regularly available in an active market and are thus classified as Level 1.

Level 2 - Valuations that are based on observable inputs (other than Level 1 prices), such as quoted prices for similar assets at the measurement date; quoted prices in markets that are not active; or other inputs that are observable, either directly or indirectly. The fair value of securities included in the Level 2 category were based on market values obtained from a third-party pricing service. They were evaluated using pricing models that vary by asset class and incorporate available trade, bid and other observable market information. The third-party service monitors market indicators as well as industry and economic events. The Level 2 category includes corporate bonds, government and agency bonds, asset-backed, residential mortgage-backed and commercial mortgage-backed securities and municipal bonds.

Level 3 - Valuations that are derived from techniques in which one or more of the significant inputs are unobservable and/or involve management judgment and/or are based on non-binding broker quotes.

Description for each class of asset or liability	(Level 1)	(Level 2)	(Level 3)	Net Asset Value (NAV)	Total
a. Assets at fair value					
MM Mutual Fund, Exempt	\$ 1,810,796	\$ -	\$ -		\$ 1,810,796
MM Mutual Fund, Other	\$ 3,588,987	\$ -	\$ -		\$ 3,588,987
Bonds, Indust. & Misc.			\$ 1,056,631		\$ 1,056,631
Total assets at fair value/NAV	\$ 5,399,783	\$ -	\$ 1,056,631	\$ -	\$ 6,456,414

At the end of each reporting period, the Company evaluates whether or not any event has occurred or circumstances have changed that would cause an instrument to be transferred between Levels. During the current year, no transfers into or out of Levels 1 and 2 were required.

(2) Fair Value Measurements in (Level 3) of the Fair Value hierarchy

Description	Beginning Balance at 01/01/2024	Transfers into Level 3	Transfers out of Level 3	Total gains and (losses) included in Net Income	Total gains and (losses) included in Surplus	Purchases	Issuances	Sales	Settlements	Ending Balance at 12/31/2024
a. Assets										
Indust. & Misc.	\$ 1,045,508				\$ 11,121					\$ 1,056,629
Total Assets	\$ 1,045,508	\$ -	\$ -	\$ -	\$ 11,121	\$ -	\$ -	\$ -	\$ -	\$ 1,056,629

(3) At the end of each reporting period, the Company evaluates whether or not any event has occurred or circumstances have changed that would cause an instrument to be transferred into or out of Level 3. During the current year, no transfers into or out of Level 3 were required.

NOTES TO FINANCIAL STATEMENTS

- (4) The estimated fair values of the Company's investments are based on prices provided by a third party pricing service and a third party investment manager. The prices provided by these services are based on quoted market prices, when available; non-binding broker quotes, or matrix pricing. The Company has not historically adjusted security prices.
- For corporate, government and municipal bonds, the third party pricing service utilizes a pricing model with standard inputs that include benchmark yields, reported trades, issuer spreads, two-sided markets, benchmark securities, market bids / offers, and other reference data observable in the marketplace. The model uses the option adjusted spread methodology and is a multi-dimensional relational model. All bonds valued under these techniques are classified as Level 2.
- For asset-backed, residential mortgage-backed and commercial mortgage-backed securities, the third party pricing service valuation methodology includes consideration of interest rate movements, new issue data, monthly remittance reports and other pertinent data that is observable in the marketplace. This information is used to determine the cash flows for each tranche and identifies the inputs to be used such as benchmark yields, prepayment assumptions and collateral performance. All asset-backed, residential mortgage-backed and commercial mortgage-backed securities valued under these methods are classified as Level 2.
- For all assets where readily observable pricing methods are not available the third party investment manager will price the asset using a combination of non-binding broker / dealer quotes, benchmarking techniques, and sector specific knowledge. All assets priced by using this methodology are classified as Level 3.

(5) Not applicable.

- B. Not applicable.
- C. Aggregate fair value for all financial instruments and the level within the fair value hierarchy in which the fair value measurements in their entirety fall. The table below reflects the fair values and admitted values of all admitted assets and liabilities that are financial instruments excluding those accounted for under the equity method (subsidiaries, joint ventures and ventures). The fair values are also categorized into the three-level fair value hierarchy as described above in Note 20A.

Type of Financial Instrument	Aggregate Fair Value	Admitted Assets	(Level 1)	(Level 2)	(Level 3)	Net Asset Value (NAV)	Not Practicable (Carrying Value)
Cash, Cash Equivalents	\$ 65,332,423	\$ 65,332,423	\$ 65,332,423				
Bonds, Indust. & Misc.	\$ 35,996,927	\$ 38,481,666		\$ 34,518,940	\$ 1,477,987		

- D. Not Practicable to Estimate Fair Value - Not applicable
- E. Not applicable.

NOTE 21 Other Items

- A. Unusual or Infrequent Items  
The Company has no unusual or infrequent items to report for the year ending December 31, 2024.
- B. Troubled Debt Restructuring: Debtors  
The Company has no debt with restructured terms as of December 31, 2024.
- C. Other Disclosures  
The Company elected to use rounding in reporting amounts in the Annual Statement. Certain amounts from prior years may be restated in the Notes to financials to conform to current guidance.
- D. Business Interruption Insurance Recoveries  
The Company had no business interruption insurance recoveries in 2024.
- E. State Transferable and Non-transferable Tax Credits - Not applicable
- F. Subprime Mortgage Related Risk Exposure
- (1) Defined exposure to subprime mortgage related risk.

(2) Direct exposure through investments in subprime mortgage loans. - Not applicable

(3) Direct exposure through other investments.

	Actual Cost	Book/Adjusted Carrying Value (excluding interest)	Fair Value	Other-Than-Temporary Impairment Losses Recognized
a. Residential mortgage backed securities	\$ 16,423	\$ 16,423	\$ 33,865	
b. Commercial mortgage backed securities				
c. Collateralized debt obligations				
d. Structured securities				
e. Equity investment in SCAs *				
f. Other assets				
g. Total (a+b+c+d+e+f)	\$ 16,423	\$ 16,423	\$ 33,865	\$ -

\* These investments comprise of the companies invested assets.

- (4) Underwriting Exposure to Subprime Mortgage Risk Through Mortgage Guaranty or Financial Guaranty Insurance Coverage - Not applicable
- G. Insurance-Linked Securities (ILS) Contracts - Not applicable
- H. The Amount that Could be Realized on Life Insurance Where the Reporting Entity is Owner and Beneficiary or has Otherwise Obtained Rights to Control the Policy - Not applicable.

NOTE 22 Events Subsequent

Type I – Recognized Subsequent Events:  
There were no events occurring subsequent to the end of the year that merited recognition or disclosure in these statements.

Type II – Nonrecognized Subsequent Events:  
As of January 31, 2025, AFICA received approval of its proposed Intercompany Reinsurance and Pooling Agreement ("Pooling Agreement") from the California Department of Insurance, the Michigan Department of Insurance and Financial Services, the Office of the Commissioner of Insurance of the State of Wisconsin, and the Ohio Department of Insurance. The proposed Pooling Agreement was being amended to add Star Insurance Company, AmeriTrust Insurance Corporation, Century Surety Insurance Company, ProCentury Insurance Company, and Williamsburg National Insurance Company as new members to the existing Pool. The new members will cede 100% of its underwriting liabilities to AFICA. AFICA will in return retrocede 26% of the total pooled underwriting liabilities to Star Insurance Company. The agreement is effective January 1, 2025. Additionally, the Intercompany Pooling Agreement in effect as of December 31, 2024, disclosed in Note 26, will be terminated effective January 1, 2025.

NOTE 23 Reinsurance

- A. Unsecured Reinsurance Recoverables  
Individual Reinsurers with Unsecured Reinsurance Recoverables Exceeding 3% of Policyholder Surplus

Individual Reinsurers Who Are Members of a Group

Group Code	ID Number	Reinsurer Name	Unsecured Amount
0572	38-2626205	Star Insurance Company	\$ 761,148,498

NOTES TO FINANCIAL STATEMENTS

All Members of the Groups Shown above with Unsecured Reinsurance Recoverables

Group Code	ID Number	Reinsurer Name	Unsecured Amount
0572	38-2626205	Star Insurance Company	\$ 761,148,498
Total			\$ 761,148,498

B. Reinsurance Recoverable in Dispute  
Not applicable.

C. Reinsurance Assumed and Ceded  
(1) The following table summarizes ceded and assumed unearned premiums and the related commission equity at December 31, 2024:

	Assumed Reinsurance		Ceded Reinsurance		Net	
	Premium Reserve	Commission Equity	Premium Reserve	Commission Equity	Premium Reserve	Commission Equity
a. Affiliates	\$ -	\$ -	\$ 217,888,509	\$ -	\$(217,888,509)	\$ -
b. All Other	\$ -	\$ -	\$ -	\$ -	\$ -	\$ -
c. Total (a+b)	\$ -	\$ -	\$ 217,888,509	\$ -	\$(217,888,509)	\$ -
d. Direct Unearned Premium Reserve						\$ 217,888,509

(2) Additional or Return Commission

	Direct	Assumed	Ceded	Net
a. Contingent Commission	\$ 5,942,139	\$ -	\$ -	\$ 5,942,139
b. Sliding Scale Adjustments	\$ -	\$ -	\$ -	\$ -
c. Other Profit Commission Arrangements	\$ -	\$ -	\$ -	\$ -
d. TOTAL (a+b+c)	\$ 5,942,139	\$ -	\$ -	\$ 5,942,139

(3) The Company does not use protected cells as an alternative to traditional reinsurance.

- D. Uncollectible Reinsurance  
Not applicable.
- E. Commutation of Reinsurance Reflected in Income and Expenses.  
Not applicable.
- F. Retroactive Reinsurance  
Not applicable.
- G. Reinsurance Accounted for as a Deposit  
Not applicable.
- H. Disclosures for the Transfer of Property and Casualty Run-off Agreements  
Not applicable.
- I. Certified Reinsurer Rating Downgraded or Status Subject to Revocation  
Not applicable.
- J. Reinsurance Agreements Qualifying for Reinsurer Aggregation  
Not applicable.
- K. Reinsurance Credit  
Not applicable.

NOTE 24 Retrospectively Rated Contracts & Contracts Subject to Redetermination  
Not applicable

NOTE 25 Change in Incurred Losses and Loss Adjustment Expenses  
Refer to Note 26 regarding the details of the Intercompany Pooling Arrangement. The Company is reporting zero Net Premiums Earned, Losses and LAE Incurred, Underwriting Expenses, Unpaid Losses and LAE, and Unearned Premiums.

NOTE 26 Intercompany Pooling Arrangements  
A. Identification of the Lead Entity and all Affiliated Entities Participating in the Intercompany Pool  
The Company participates in an intercompany reinsurance pooling agreement in which Star Insurance Company is the lead company. Per the agreement, the participants cede its business to the lead company and the other companies will not assume any business back.

Lead Entity and all Affiliates	NAIC Company Code	Pooling Percentage
Star Insurance Company (Le:	18023	100%
Ameritrust Insurance Corpora:	10665	0%
Century Surety Company	36951	0%
ProCentury Insurance Comp:	21903	0%
Williamsburg National Insura:	25780	0%

- B. Description of Lines and Types of Business Subject to the Pooling Agreement  
All of the Company's lines and underwritten business are subject to the pooling agreement.
- C. Description of Cessions to Non-Affiliated Reinsurance Subject to Pooling Agreement  
Cessions are made to non-affiliated reinsurers subsequent to the cession of pooled business to the lead entity and are allocated to the pool members based on each member's participation percentage.
- D. Identification of all Pool Members that are Parties to Reinsurance Agreements with Non-Affiliated Reinsurers  
Under the Intercompany Reinsurance Agreement, only Star has contractual rights of direct recovery from the excess of loss, catastrophe, quota share, facultative and umbrella agreements.
- E. Explanation of Discrepancies Between Entries of Pooled Business  
There are no discrepancies between entries on the assumed and ceded reinsurance schedule of the lead company and the corresponding entries on the assumed and ceded reinsurance schedules of other pooled participants.
- F. Description of Intercompany Sharing  
The provision for reinsurance, if applicable, is not shared in accordance with the pool participation percentages.

NOTES TO FINANCIAL STATEMENTS

G. Amounts Due To/From Lead Entity and all Affiliated Entities Participating in the Intercompany Pool

Name of Insurer	Amounts Receivable	Amounts Payable	Net Receivable/(Payable)
Star Insurance Co. (Lead insurer)	\$ 10,779,907	\$ 0	\$ 10,779,907
Century Surety Co.	\$ 0	\$ (5,479,879)	\$ (5,479,879)
Williamsburg National Ins. Co.	\$ 0	\$ (1,835,931)	\$ (1,835,931)
ProCentury Insurance Co.	\$ 0	\$ (730,865)	\$ (730,865)
Ameritrust Insurance Co.	\$ 0	\$ (2,733,232)	\$ (2,733,232)

NOTE 27 Structured Settlements

The Company is part of a structured settlement associated with the November 2021 settlement resolution of Florida claim litigation (Claims ALDY20003941 primary and GLDY20004217 umbrella) whereby Century will pay \$4,848,338.34 to Independent Assignment Company for the funding of an annuity through Independent Life insurance Company yielding periodic payments to numerous payees.

The Company is part of a structured settlement associated with the March 2022 settlement resolution of Florida claim litigation (Claim 01-099988) whereby Century paid \$26,077.33 to Mutual of Omaha Structured Settlement Company for the funding of an annuity through Mutual of Omaha Structured Settlement Company yielding periodic payments to a payee.

The Company is part of a structured settlement associated with the May 2022 settlement resolution of New York claim litigation (Claim 01-098814) whereby Century paid \$15,000 to Pacific Life & Annuity Services for the funding of an annuity through Pacific Life & Annuity Company yielding periodic payments to payees.

The Company is part of a structured settlement associated with the August 2022 settlement resolution of Florida claim litigation (Claim No. 01-103248) whereby Century paid \$225,000 to The Prudential Assigned Settlement Services Corporation for the funding of annuity through The Prudential Assigned Settlement Services Corporation yielding periodic payments to payees.

The Company is part of a structured settlement associated with the October 2022 settlement resolution of Texas litigation (Claim 01-109422) whereby Century paid \$135,958.10 to Pacific Life & Annuity Services, Inc. for the funding of an annuity through Pacific Life & Annuity Services, Inc. yielding periodic payments to payees.

The Company is part of a structured settlement associated with the November 2022 settlement resolution of Texas litigation (Claim 01-103140) whereby Century paid \$56,638.90 to USAA Annuity Services Corporation for the funding of an annuity through USAA Annuity Services Corporation yielding periodic payments to payees.

The Company is part of a structured settlement associated with the December 2022 settlement resolution of Texas claim litigation (Claim 01-102513) whereby Century paid \$250,000 to Pacific Life & Annuity Services, Inc. for the funding of an annuity through Pacific Life & Annuity Services, Inc. yielding periodic payments to a payee. In addition, as part of this same settlement Century paid \$41,406.05 to Legacy Enhancement Pooled Trust f/b/o Heaven Mbagi for the funding of a trust for Health, Education, Maintenance and Support of the beneficiary [minor] after the beneficiary attains twenty-five years of age.

The Company is part of a structured settlement associated with the January 2023 resolution of Arkansas claim (Claim No. 01-106485) whereby Century paid \$700,000 to Pacific Life & Annuity Services for the funding of an annuity through Pacific Life & Annuity Company yielding periodic payments to payees.

The Company is part of a structured settlement associated with the April 2023 settlement resolution of Texas claim litigation (Claim 01-108747) whereby Century will pay \$44,952.81 to MetLife Assignment Company, Inc. for the funding of an annuity through Metropolitan Tower Life Insurance Company yielding periodic payments to Plaintiff as the payee.

The Company is part of a structured settlement associated with the August 2023 resolution of New Mexico claim (Claim No. 01-107552) whereby Century paid \$1,602,068.93 to Pacific Life & Annuity Services for the funding of an annuity through Pacific Life & Annuity Company yielding periodic payments to payees.

The Company is part of a structured settlement associated with the October 2023 settlement resolution of Texas claim litigation (Claim 01-103380) whereby Century paid \$15,000.00 to Pacific Life & Annuity Services for the funding of an annuity through Pacific Life yielding periodic payments for the benefit of Plaintiff, with Plaintiff's guardian as the payee.

The Company is part of a structured settlement associated with the December 2023 resolution of Texas claim (Claim No. 01-109422) whereby Century paid \$109,059.96 to Independent Life Insurance Company for the funding of an annuity through Independent Life yielding periodic payments to payees.

The Company is part of a structured settlement associated with the August 2024 resolution of Florida claim (Claim No. 01-114876) whereby Century Surety paid \$50,000 to Mutual of Omaha Structured Settlement Company for the funding of an annuity through Mutual of Omaha Structured Settlement Company yielding periodic payments to payees.

The Company is part of a structured settlement associated with the October 2024 settlement resolution of Texas claim litigation (Claim 01-104037) whereby Century paid \$80,345.23 to Pacific Life & Annuity Services for the funding of an annuity through Pacific Life yielding periodic payments for the benefit of Plaintiff, with Plaintiff as the payee; with payments to begin on Plaintiff's 18th birthdate.

The Company is part of a structured settlement associated with the July 2024 settlement resolution of Texas claim litigation (Claim 01-109361) whereby Century paid \$8,090.75 to Structures Assignments, SCC for the funding of an annuity through Independent Life Insurance Company yielding periodic payments for the benefit of Plaintiff, with Plaintiff as the payee; with payments to begin on Plaintiff's 18th birthdate.

The Company is part of a structured settlement associated with the December 2023 settlement resolution of Florida claim litigation (Claim 01-111374) whereby Century paid \$15,506.67 to Pacific Life & Annuity Services for the funding of an annuity through Pacific Life yielding periodic payments for the benefit of Plaintiff, with Plaintiff as the payee; with payments to begin on Plaintiff's 18th birthdate.

The Company is part of a structured settlement associated with the January 2024 settlement resolution of Georgia claim litigation (Claim 01-112878) whereby Century paid \$111,220.26 to Pacific Life & Annuity Services for the funding of an annuity through Pacific Life yielding periodic payments for the benefit of three separate Plaintiffs, with Plaintiffs' guardian as the payee for the initial periodic payment and with each individual Plaintiff as the payee for any and all payments thereafter.

The Company is part of a structured settlement associated with the September 2024 settlement resolution of California claim litigation (Claim 01-114115) whereby Century paid \$85,000.00 to Pacific Life & Annuity Services for the funding of an annuity through Pacific Life yielding periodic payments for the benefit of Plaintiff, with Plaintiff as the payee; with payments to begin on November 1, 2029.

The Company is part of a structured settlement associated with the November 2024 settlement resolution of California claim litigation (Claim GLMD23004783) whereby Century paid \$65,210.36 to Pacific Life & Annuity Services for the funding of an annuity through Pacific Life yielding periodic payments for the benefit of Plaintiff, with Plaintiff as the payee; with payments to begin on Plaintiff's 18th birthdate.

The Company was part of a structured settlement associated with the November 2024 resolution of a Texas claim (Claim No. 01-115654), whereby Century paid \$1,499,999.00 to New York Life Insurance Company for the funding of an annuity through New York Life Insurance & Annuity Corp., yielding periodic payments to payee.

The Company is part of a structured settlement associated with the October 2024 resolution of a Florida claim (Claim no. 01-110902) whereby Century paid \$313,309.35 to Prudential Assigned Settlement Services Corp. for the funding of an annuity through Prudential Assigned Settlement Services Corp. yielding periodic payments to payee.

NOTE 28 Health Care Receivables

Not applicable

NOTE 29 Participating Policies

Not applicable

NOTE 30 Premium Deficiency Reserves

1. Liability carried for premium deficiency reserves

2. Date of the most recent evaluation of this liability

3. Was anticipated investment income utilized in the calculation?
- 12/31/2024

Yes [X] No [ ]

NOTE 31 High Deductibles

The Company has no high deductibles as of December 31, 2024.

NOTE 32 Discounting of Liabilities for Unpaid Losses or Unpaid Loss Adjustment Expenses

Not applicable

NOTES TO FINANCIAL STATEMENTS

NOTE 33 Asbestos/Environmental Reserves

The Company currently writes coverage in lines of business such as general liability and workers compensation which are often associated with the property and casualty industry's exposure to asbestos and environmental claims. However, with the exception of the business underwritten through our Environmental division, the Company's policies exclude coverage for asbestos and limit environmental exposure. The Company has written Environmental business through an Environmental division started in 2008. The Company's environmental division underwrites liability coverage, including pollution liability, for a wide range of environmental and non-environmental contractors and environmental engineers and consultants.

These risks are tightly underwritten by specialized underwriters who have a long history of success in writing environmental liability coverage. Therefore such liabilities assumed by the company are anticipated, underwritten, engineered and priced for. In addition, policies are issued with policy provisions intended to limit the coverage trigger and exposure to such liabilities. The Company is aware of a minimal amount of past insureds for which exposure exists due to these types of claims. The Company has disclosed the loss or loss adjustment expense reserves for these asbestos and environmental liabilities. The Company estimates the full impact of the asbestos exposure by establishing full case basis reserves on all known losses and computing incurred but not reported losses based on previous experience.

A. Does the company have on the books, or has it ever written an insured for which you have identified a potential for the existence of a liability due to asbestos losses?

Yes (X) No ( )

If yes, describe the lines of business written for which there is potential exposure, the nature of the exposure or exposures and the company's methodology for reserving both reported and IBNR losses, and complete the following information.

The Company's exposure to asbestos losses arises from the sale of general liability insurance, particularly within an Environmental program. The Company estimates the full impact of the asbestos exposure by establishing full case basis reserves on all known losses and computing incurred but not reported losses based on previous experience.

- (1) Direct - NONE
- (2) Assumed Reinsurance - NONE
- (3) Net of Ceded Reinsurance - NONE

B. State the amount of the ending reserves for Bulk + IBNR included in A (Loss & LAE): NONE

C. State the amount of the ending reserves for loss adjustment expenses included in A (Case, Bulk + IBNR): NONE

D. Does the company have on the books, or has it ever written an insured for which you have identified a potential for the existence of a liability due to environmental losses?

Yes (X) No

The Company's exposure to environmental losses arises from the sale of general liability insurance, particularly within an Environmental program. The Company estimates the full impact of the environmental exposure by establishing full case basis reserves on all known losses and computing incurred but not reported losses based on previous experience.

- (1) Direct - NONE
- (2) Assumed Reinsurance - NONE
- (3) Net of Ceded Reinsurance - NONE

E. State the amount of the ending reserves for Bulk + IBNR included in D (Loss & LAE): NONE

F. State the amount of the ending reserves for loss adjustment expenses included in D (Case, Bulk + IBNR): NONE

NOTE 34 Subscriber Savings Accounts

Not applicable

NOTE 35 Multiple Peril Crop Insurance

Not applicable

NOTE 36 Financial Guaranty Insurance

Not applicable

ANNUAL STATEMENT FOR THE YEAR 2024 OF THE Century Surety Company

GENERAL INTERROGATORIES

PART 1 - COMMON INTERROGATORIES

GENERAL

1.1

Is the reporting entity a member of an Insurance Holding Company System consisting of two or more affiliated persons, one or more of which is an insurer? .....  
If yes, complete Schedule Y, Parts 1, 1A, 2 and 3.

Yes [ X ] No [ ]

1.2

If yes, did the reporting entity register and file with its domiciliary State Insurance Commissioner, Director or Superintendent or with such regulatory official of the state of domicile of the principal insurer in the Holding Company System, a registration statement providing disclosure substantially similar to the standards adopted by the National Association of Insurance Commissioners (NAIC) in its Model Insurance Holding Company System Regulatory Act and model regulations pertaining thereto, or is the reporting entity subject to standards and disclosure requirements substantially similar to those required by such Act and regulations? .....

Yes [ X ] No [ ] N/A [ ]

1.3

State Regulating? .....

Ohio

1.4

Is the reporting entity publicly traded or a member of a publicly traded group? .....

Yes [ ] No [ X ]

1.5

If the response to 1.4 is yes, provide the CIK (Central Index Key) code issued by the SEC for the entity/group. ....

2.1

Has any change been made during the year of this statement in the charter, by-laws, articles of incorporation, or deed of settlement of the reporting entity? .....

Yes [ ] No [ X ]

2.2

If yes, date of change: .....

3.1

State as of what date the latest financial examination of the reporting entity was made or is being made. ....

12/31/2023

3.2

State the as of date that the latest financial examination report became available from either the state of domicile or the reporting entity. This date should be the date of the examined balance sheet and not the date the report was completed or released. ....

12/31/2019

3.3

State as of what date the latest financial examination report became available to other states or the public from either the state of domicile or the reporting entity. This is the release date or completion date of the examination report and not the date of the examination (balance sheet date). ....

01/20/2021

3.4

By what department or departments?  
Ohio Department of Insurance .....

3.5

Have all financial statement adjustments within the latest financial examination report been accounted for in a subsequent financial statement filed with Departments? .....

Yes [ ] No [ ] N/A [ X ]

3.6

Have all of the recommendations within the latest financial examination report been complied with? .....

Yes [ ] No [ ] N/A [ X ]

4.1

During the period covered by this statement, did any agent, broker, sales representative, non-affiliated sales/service organization or any combination thereof under common control (other than salaried employees of the reporting entity) receive credit or commissions for or control a substantial part (more than 20 percent of any major line of business measured on direct premiums) of:  
4.11 sales of new business? .....  
4.12 renewals? .....

Yes [ X ] No [ ]  
Yes [ X ] No [ ]

4.2

During the period covered by this statement, did any sales/service organization owned in whole or in part by the reporting entity or an affiliate, receive credit or commissions for or control a substantial part (more than 20 percent of any major line of business measured on direct premiums) of:  
4.21 sales of new business? .....  
4.22 renewals? .....

Yes [ ] No [ X ]  
Yes [ ] No [ X ]

5.1

Has the reporting entity been a party to a merger or consolidation during the period covered by this statement? .....  
If yes, complete and file the merger history data file with the NAIC.

Yes [ ] No [ X ]

5.2

If yes, provide the name of the entity, NAIC company code, and state of domicile (use two letter state abbreviation) for any entity that has ceased to exist as a result of the merger or consolidation.

1 Name of Entity	2 NAIC Company Code	3 State of Domicile

6.1

Has the reporting entity had any Certificates of Authority, licenses or registrations (including corporate registration, if applicable) suspended or revoked by any governmental entity during the reporting period? .....

Yes [ ] No [ X ]

6.2

If yes, give full information  
.....

7.1

Does any foreign (non-United States) person or entity directly or indirectly control 10% or more of the reporting entity? .....

Yes [ ] No [ X ]

7.2

If yes,  
7.21 State the percentage of foreign control ..... %  
7.22 State the nationality(s) of the foreign person(s) or entity(s); or if the entity is a mutual or reciprocal, the nationality of its manager or attorney-in-fact and identify the type of entity(s) (e.g., individual, corporation, government, manager or attorney-in-fact).

1 Nationality	2 Type of Entity

ANNUAL STATEMENT FOR THE YEAR 2024 OF THE Century Surety Company

GENERAL INTERROGATORIES

- 8.1

Is the company a subsidiary of a depository institution holding company (DIHC) or a DIHC itself, regulated by the Federal Reserve Board? .....

Yes [   ] No [ X ]
- 8.2

If the response to 8.1 is yes, please identify the name of the DIHC.

.....
- 8.3

Is the company affiliated with one or more banks, thrifts or securities firms? .....

Yes [ X ] No [   ]
- 8.4

If response to 8.3 is yes, please provide below the names and locations (city and state of the main office) of any affiliates regulated by a federal financial regulatory services agency [i.e. the Federal Reserve Board (FRB), the Office of the Comptroller of the Currency (OCC), the Federal Deposit Insurance Corporation (FDIC) and the Securities Exchange Commission (SEC)] and identify the affiliate's primary federal regulator.

.....

1 Affiliate Name	2 Location (City, State)	3 FRB	4 OCC	5 FDIC	6 SEC
Bricktown Capital, LLC .....	Detroit, Michigan .....	...NO...	...NO...	...NO...	...YES...
.....	.....	.....	.....	.....	.....

- 8.5

Is the reporting entity a depository institution holding company with significant insurance operations as defined by the Board of Governors of Federal Reserve System or a subsidiary of the depository institution holding company? .....

Yes [   ] No [ X ]
- 8.6

If response to 8.5 is no, is the reporting entity a company or subsidiary of a company that has otherwise been made subject to the Federal Reserve Board's capital rule? .....

Yes [   ] No [ X ] N/A [   ]
9.

What is the name and address of the independent certified public accountant or accounting firm retained to conduct the annual audit?  
Deloitte & Touche LLP 1001 Woodward Suite 700, Detroit, MI 48226 .....

.....
- 10.1

Has the insurer been granted any exemptions to the prohibited non-audit services provided by the certified independent public accountant requirements as allowed in Section 7H of the Annual Financial Reporting Model Regulation (Model Audit Rule), or substantially similar state law or regulation? .....

Yes [   ] No [ X ]
- 10.2

If the response to 10.1 is yes, provide information related to this exemption:

.....
- 10.3

Has the insurer been granted any exemptions related to the other requirements of the Annual Financial Reporting Model Regulation as allowed for in Section 18A of the Model Regulation, or substantially similar state law or regulation? .....

Yes [   ] No [ X ]
- 10.4

If the response to 10.3 is yes, provide information related to this exemption:

.....
- 10.5

Has the reporting entity established an Audit Committee in compliance with the domiciliary state insurance laws? .....

Yes [ X ] No [   ] N/A [   ]
- 10.6

If the response to 10.5 is no or n/a, please explain.

.....
11.

What is the name, address and affiliation (officer/employee of the reporting entity or actuary/consultant associated with an actuarial consulting firm) of the individual providing the statement of actuarial opinion/certification?  
Amy M. Fournier, FCAS, MAAA, Accident Fund Holdings, Inc.  
200 N. Grand Ave., Lansing MI 48933 .....

.....
- 12.1

Does the reporting entity own any securities of a real estate holding company or otherwise hold real estate indirectly? .....

Yes [   ] No [ X ]

12.11

Name of real estate holding company ...

.....

12.12

Number of parcels involved .....

.....

12.13

Total book/adjusted carrying value .....

\$ .....
- 12.2

If yes, provide explanation

.....
13.

FOR UNITED STATES BRANCHES OF ALIEN REPORTING ENTITIES ONLY:
- 13.1

What changes have been made during the year in the United States manager or the United States trustees of the reporting entity?

.....
- 13.2

Does this statement contain all business transacted for the reporting entity through its United States Branch on risks wherever located? .....

Yes [   ] No [   ]
- 13.3

Have there been any changes made to any of the trust indentures during the year? .....

Yes [   ] No [   ]
- 13.4

If answer to (13.3) is yes, has the domiciliary or entry state approved the changes? .....

Yes [   ] No [   ] N/A [   ]
- 14.1

Are the senior officers (principal executive officer, principal financial officer, principal accounting officer or controller, or persons performing similar functions) of the reporting entity subject to a code of ethics, which includes the following standards? .....

Yes [ X ] No [   ]

a.

Honest and ethical conduct, including the ethical handling of actual or apparent conflicts of interest between personal and professional relationships;

b.

Full, fair, accurate, timely and understandable disclosure in the periodic reports required to be filed by the reporting entity;

c.

Compliance with applicable governmental laws, rules and regulations;

d.

The prompt internal reporting of violations to an appropriate person or persons identified in the code; and

e.

Accountability for adherence to the code.
- 14.11

If the response to 14.1 is No, please explain:

.....
- 14.2

Has the code of ethics for senior managers been amended? .....

Yes [   ] No [ X ]
- 14.21

If the response to 14.2 is yes, provide information related to amendment(s).

.....
- 14.3

Have any provisions of the code of ethics been waived for any of the specified officers? .....

Yes [   ] No [ X ]
- 14.31

If the response to 14.3 is yes, provide the nature of any waiver(s).

.....



## GENERAL INTERROGATORIES

- 15.1 Is the reporting entity the beneficiary of a Letter of Credit that is unrelated to reinsurance where the issuing or confirming bank is not on the SVO Bank List? ..... Yes [ ] No [ X ]
- 15.2 If the response to 15.1 is yes, indicate the American Bankers Association (ABA) Routing Number and the name of the issuing or confirming bank of the Letter of Credit and describe the circumstances in which the Letter of Credit is triggered.

1	2	3	4
American Bankers Association (ABA) Routing Number	Issuing or Confirming Bank Name	Circumstances That Can Trigger the Letter of Credit	Amount

## BOARD OF DIRECTORS

- |     |   |   |
|-----|---|---|
| 16. | Is the purchase or sale of all investments of the reporting entity passed upon either by the board of directors or a subordinate committee thereof? .....   | Yes [ <input checked="" type="checkbox"/> ] No [ <input type="checkbox"/> ] |
| 17. | Does the reporting entity keep a complete permanent record of the proceedings of its board of directors and all subordinate committees thereof? .....   | Yes [ <input checked="" type="checkbox"/> ] No [ <input type="checkbox"/> ] |
| 18. | Has the reporting entity an established procedure for disclosure to its board of directors or trustees of any material interest or affiliation on the part of any of its officers, directors, trustees or responsible employees that is in conflict or is likely to conflict with the official duties of such person? ..... | Yes [ <input checked="" type="checkbox"/> ] No [ <input type="checkbox"/> ] |

## FINANCIAL

- |      |  |  |  |
|------|--|--|--|
| 19.  | Has this statement been prepared using a basis of accounting other than Statutory Accounting Principles (e.g., Generally Accepted Accounting Principles)? .....                              | Yes [ <input type="checkbox"/> ]                           | No [ <input checked="" type="checkbox"/> ] |
| 20.1 | Total amount loaned during the year (inclusive of Separate Accounts, exclusive of policy loans):   | 20.11 To directors or other officers.....                  | \$ .....\$ .....                           |
|      |  | 20.12 To stockholders not officers.....                    | \$ .....                                   |
|      |  | 20.13 Trustees, supreme or grand<br>(Fraternal Only) ..... | \$ .....                                   |
| 20.2 | Total amount of loans outstanding at the end of year (inclusive of Separate Accounts, exclusive of policy loans):  | 20.21 To directors or other officers.....                  | \$ .....                                   |
|      |  | 20.22 To stockholders not officers.....                    | \$ .....                                   |
|      |  | 20.23 Trustees, supreme or grand<br>(Fraternal Only) ..... | \$ .....                                   |
| 21.1 | Were any assets reported in this statement subject to a contractual obligation to transfer to another party without the liability for such obligation being reported in the statement? ..... | Yes [ <input type="checkbox"/> ]                           | No [ <input checked="" type="checkbox"/> ] |
| 21.2 | If yes, state the amount thereof at December 31 of the current year:   | 21.21 Rented from others.....                              | \$ .....                                   |
|      |  | 21.22 Borrowed from others.....                            | \$ .....                                   |
|      |  | 21.23 Leased from others .....                             | \$ .....                                   |
|      |  | 21.24 Other .....  | \$ .....                                   |
| 22.1 | Does this statement include payments for assessments as described in the Annual Statement Instructions other than guaranty fund or guaranty association assessments? .....                   | Yes [ <input type="checkbox"/> ]                           | No [ <input checked="" type="checkbox"/> ] |
| 22.2 | If answer is yes:  | 22.21 Amount paid as losses or risk adjustment \$ .....    | \$ .....                                   |
|      |  | 22.22 Amount paid as expenses .....                        | \$ .....                                   |
|      |  | 22.23 Other amounts paid .....                             | \$ .....                                   |
| 23.1 | Does the reporting entity report any amounts due from parent, subsidiaries or affiliates on Page 2 of this statement? .....  | Yes [ <input checked="" type="checkbox"/> ]                | No [ <input type="checkbox"/> ]            |
| 23.2 | If yes, indicate any amounts receivable from parent included in the Page 2 amount: .....   |  | \$ .....                                   |
| 24.1 | Does the insurer utilize third parties to pay agent commissions in which the amounts advanced by the third parties are not settled in full within 90 days? .....                             | Yes [ <input type="checkbox"/> ]                           | No [ <input checked="" type="checkbox"/> ] |
| 24.2 | If the response to 24.1 is yes, identify the third-party that pays the agents and whether they are a related party.  |  |  |

Name of Third-Party	Is the Third-Party Agent a Related Party (Yes/No)
.....	

## INVESTMENT

- 25.01 Were all the stocks, bonds and other securities owned December 31 of current year, over which the reporting entity has exclusive control, in the actual possession of the reporting entity on said date? (other than securities lending programs addressed in 25.03)..... Yes [ X ] No [ ]

ANNUAL STATEMENT FOR THE YEAR 2024 OF THE Century Surety Company

GENERAL INTERROGATORIES

25.02 If no, give full and complete information, relating thereto

25.03 For securities lending programs, provide a description of the program including value for collateral and amount of loaned securities, and whether collateral is carried on or off-balance sheet. (an alternative is to reference Note 17 where this information is also provided)

25.04 For the reporting entity's securities lending program, report amount of collateral for conforming programs as outlined in the Risk-Based Capital Instructions. \$

25.05 For the reporting entity's securities lending program, report amount of collateral for other programs. \$

25.06 Does your securities lending program require 102% (domestic securities) and 105% (foreign securities) from the counterparty at the outset of the contract? Yes [ ] No [ ] N/A [ X ]

25.07 Does the reporting entity non-admit when the collateral received from the counterparty falls below 100%? Yes [ ] No [ ] N/A [ X ]

25.08 Does the reporting entity or the reporting entity's securities lending agent utilize the Master Securities lending Agreement (MSLA) to conduct securities lending? Yes [ ] No [ ] N/A [ X ]

25.09 For the reporting entity's securities lending program state the amount of the following as of December 31 of the current year:

25.091 Total fair value of reinvested collateral assets reported on Schedule DL, Parts 1 and 2 \$

25.092 Total book/adjusted carrying value of reinvested collateral assets reported on Schedule DL, Parts 1 and 2 \$

25.093 Total payable for securities lending reported on the liability page \$

26.1 Were any of the stocks, bonds or other assets of the reporting entity owned at December 31 of the current year not exclusively under the control of the reporting entity or has the reporting entity sold or transferred any assets subject to a put option contract that is currently in force? (Exclude securities subject to Interrogatory 21.1 and 25.03). Yes [ X ] No [ ]

26.2 If yes, state the amount thereof at December 31 of the current year:

26.21 Subject to repurchase agreements \$

26.22 Subject to reverse repurchase agreements \$

26.23 Subject to dollar repurchase agreements \$

26.24 Subject to reverse dollar repurchase agreements \$

26.25 Placed under option agreements \$

26.26 Letter stock or securities restricted as to sale - excluding FHLB Capital Stock \$

26.27 FHLB Capital Stock \$

26.28 On deposit with states 7,396,631

26.29 On deposit with other regulatory bodies \$

26.30 Pledged as collateral - excluding collateral pledged to an FHLB \$

26.31 Pledged as collateral to FHLB - including assets backing funding agreements \$

26.32 Other \$

26.3 For category (26.26) provide the following:

1 Nature of Restriction	2 Description	3 Amount

27.1 Does the reporting entity have any hedging transactions reported on Schedule DB? Yes [ ] No [ X ]

27.2 If yes, has a comprehensive description of the hedging program been made available to the domiciliary state? Yes [ ] No [ ] N/A [ X ]  
If no, attach a description with this statement.

LINES 27.3 through 27.5: FOR LIFE/FRATERNAL REPORTING ENTITIES ONLY:

27.3 Does the reporting entity utilize derivatives to hedge variable annuity guarantees subject to fluctuations as a result of interest rate sensitivity? Yes [ ] No [ X ]

27.4 If the response to 27.3 is YES, does the reporting entity utilize:

27.41 Special accounting provision of SSAP No. 108 Yes [ ] No [ ]

27.42 Permitted accounting practice Yes [ ] No [ ]

27.43 Other accounting guidance Yes [ ] No [ ]

27.5 By responding YES to 27.41 regarding utilizing the special accounting provisions of SSAP No. 108, the reporting entity attests to the following:

The reporting entity has obtained explicit approval from the domiciliary state.

Hedging strategy subject to the special accounting provisions is consistent with the requirements of VM-21.

Actuarial certification has been obtained which indicates that the hedging strategy is incorporated within the establishment of VM-21 reserves and provides the impact of the hedging strategy within the Actuarial Guideline Conditional Tail Expectation Amount.

Financial Officer Certification has been obtained which indicates that the hedging strategy meets the definition of a Clearly Defined Hedging Strategy within VM-21 and that the Clearly Defined Hedging Strategy is the hedging strategy being used by the company in its actual day-to-day risk mitigation efforts.

28.1 Were any preferred stocks or bonds owned as of December 31 of the current year mandatorily convertible into equity, or, at the option of the issuer, convertible into equity? Yes [ ] No [ X ]

28.2 If yes, state the amount thereof at December 31 of the current year. \$

29. Excluding items in Schedule E, Part 3 - Special Deposits, real estate, mortgage loans and investments held physically in the reporting entity's offices, vaults or safety deposit boxes, were all stocks, bonds and other securities, owned throughout the current year held pursuant to a custodial agreement with a qualified bank or trust company in accordance with Section 1, III - General Examination Considerations, F. Outsourcing of Critical Functions, Custodial or Safekeeping Agreements of the NAIC Financial Condition Examiners Handbook? Yes [ X ] No [ ]

29.01 For agreements that comply with the requirements of the NAIC Financial Condition Examiners Handbook, complete the following:

1 Name of Custodian(s)	2 Custodian's Address
The Northern Trust Company	333 South Wabash Avenue, Chicago, IL 60604
U.S. Bank Trust & Custody Services	50 South 16th Street, Philadelphia, PA 19102

ANNUAL STATEMENT FOR THE YEAR 2024 OF THE Century Surety Company

GENERAL INTERROGATORIES

29.02 For all agreements that do not comply with the requirements of the NAIC Financial Condition Examiners Handbook, provide the name, location and a complete explanation:

1 Name(s)	2 Location(s)	3 Complete Explanation(s)

29.03 Have there been any changes, including name changes, in the custodian(s) identified in 29.01 during the current year?..... Yes [ X ] No [ ]

29.04 If yes, give full and complete information relating thereto:

1 Old Custodian	2 New Custodian	3 Date of Change	4 Reason
U.S. Bank Trust & Custody Services .....	The Northern Trust Company .....	.....03/01/2024 .....	

29.05 Investment management – Identify all investment advisors, investment managers, broker/dealers, including individuals that have the authority to make investment decisions on behalf of the reporting entity. This includes both primary and sub-advisors. For assets that are managed internally by employees of the reporting entity, note as such. ["...that have access to the investment accounts"; "...handle securities"]

1 Name of Firm or Individual	2 Affiliation
Bricktown Capital, LLC .....	A.....

29.0597 For those firms/individuals listed in the table for Question 29.05, do any firms/individuals unaffiliated with the reporting entity (i.e., designated with a "U") manage more than 10% of the reporting entity's invested assets?..... Yes [ ] No [ X ]

29.0598 For firms/individuals unaffiliated with the reporting entity (i.e., designated with a "U") listed in the table for Question 29.05, does the total assets under management aggregate to more than 50% of the reporting entity's invested assets?..... Yes [ ] No [ X ]

29.06 For those firms or individuals listed in the table for 29.05 with an affiliation code of "A" (affiliated) or "U" (unaffiliated), provide the information for the table below.

1 Central Registration Depository Number	2 Name of Firm or Individual	3 Legal Entity Identifier (LEI)	4 Registered With	5 Investment Management Agreement (IMA) Filed
319290 .....	Bricktown Capital, LLC .....	25490000B61KVCB6LOU24 .....	SEC .....	NO.....

30.1 Does the reporting entity have any diversified mutual funds reported in Schedule D - Part 2 (diversified according to the Securities and Exchange Commission (SEC) in the Investment Company Act of 1940 [Section 5(b)(1)])? ..... Yes [ ] No [ X ]

30.2 If yes, complete the following schedule:

1 CUSIP #	2 Name of Mutual Fund	3 Book/Adjusted Carrying Value
30.2999 - Total		

30.3 For each mutual fund listed in the table above, complete the following schedule:

1 Name of Mutual Fund (from above table)	2 Name of Significant Holding of the Mutual Fund	3 Amount of Mutual Fund's Book/Adjusted Carrying Value Attributable to the Holding	4 Date of Valuation

ANNUAL STATEMENT FOR THE YEAR 2024 OF THE Century Surety Company

GENERAL INTERROGATORIES

31. Provide the following information for all short-term and long-term bonds and all preferred stocks. Do not substitute amortized value or statement value for fair value.

	1	2	3
	Statement (Admitted) Value	Fair Value	Excess of Statement over Fair Value (-), or Fair Value over Statement (+)
31.1 Bonds .....	38,481,666	35,996,927	(2,484,739)
31.2 Preferred stocks .....			
31.3 Totals	38,481,666	35,996,927	(2,484,739)

- 31.4 Describe the sources or methods utilized in determining the fair values:  
The fair value is primarily determined by widely accepted third party vendors, followed by a hierarchy using broker / dealer quotes, index pricing, analytical models, and historical pricing. ....
- 32.1 Was the rate used to calculate fair value determined by a broker or custodian for any of the securities in Schedule D? ..... Yes [ X ] No [ ]
- 32.2 If the answer to 32.1 is yes, does the reporting entity have a copy of the broker's or custodian's pricing policy (hard copy or electronic copy) for all brokers or custodians used as a pricing source? ..... Yes [ X ] No [ ]
- 32.3 If the answer to 32.2 is no, describe the reporting entity's process for determining a reliable pricing source for purposes of disclosure of fair value for Schedule D:  
.....
- 33.1 Have all the filing requirements of the Purposes and Procedures Manual of the NAIC Investment Analysis Office been followed? ..... Yes [ X ] No [ ]
- 33.2 If no, list exceptions:  
.....
34. By self-designating 5GI securities, the reporting entity is certifying the following elements of each self-designated 5GI security:  
a. Documentation necessary to permit a full credit analysis of the security does not exist or an NAIC CRP credit rating for an FE or PL security is not available.  
b. Issuer or obligor is current on all contracted interest and principal payments.  
c. The insurer has an actual expectation of ultimate payment of all contracted interest and principal.  
Has the reporting entity self-designated 5GI securities? ..... Yes [ ] No [ X ]
35. By self-designating PLGI securities, the reporting entity is certifying its compliance with the requirements as specified in the Purposes and Procedures Manual of the NAIC Investment Analysis Office (P&P Manual) for private letter rating (PLR) securities and the following elements of each self-designated PLGI security:  
a. The security was either:  
i. issued prior to January 1, 2018 (which is exempt from PLR filing requirements pursuant to the P&P Manual), or  
ii. issued from January 1, 2018 to December 31, 2021 and subject to a confidentiality agreement executed prior to January 1, 2022 which confidentiality agreement remains in force, for which an insurance company cannot provide a copy of a private letter rating rationale report to the SVO due to confidentiality or other contractual reasons ("waived submission PLR securities").  
b. The reporting entity is holding capital commensurate with the NAIC Designation and NAIC Designation Category reported for the security.  
c. The NAIC Designation and NAIC Designation Category were derived from the credit rating assigned by an NAIC CRP in its legal capacity as a NRSRO which is shown on a current private letter rating, dated during the financial statement year, held by the insurer and available for examination by state insurance regulators.  
d. Other than for waived submission PLR securities, defined above, on or after January 1, 2024 for any PLR securities issued on or after January 1, 2022, if the reporting entity is not permitted to share this private credit rating or the private rating letter rationale report of the PL security with the SVO, it certifies that it is reporting it as an NAIC 5.B GI and may not assign any other self-designation.  
Has the reporting entity self-designated PLGI to securities, all of which meet the above requirement and as specified in the P&P Manual? ..... Yes [ ] No [ X ]
36. By assigning FE to a Schedule BA non-registered private fund, the reporting entity is certifying the following elements of each self-designated FE fund:  
a. The shares were purchased prior to January 1, 2019.  
b. The reporting entity is holding capital commensurate with the NAIC Designation reported for the security.  
c. The security had a public credit rating(s) with annual surveillance assigned by an NAIC CRP in its legal capacity as an NRSRO prior to January 1, 2019.  
d. The fund only or predominantly holds bonds in its portfolio.  
e. The current reported NAIC Designation was derived from the public credit rating(s) with annual surveillance assigned by an NAIC CRP in its legal capacity as an NRSRO.  
f. The public credit rating(s) with annual surveillance assigned by an NAIC CRP has not lapsed.  
Has the reporting entity assigned FE to Schedule BA non-registered private funds that complied with the above criteria? ..... Yes [ ] No [ X ]
37. By rolling/renewing short-term or cash equivalent investments with continued reporting on Schedule DA, Part 1 or Schedule E Part 2 (identified through a code (%) in those investment schedules), the reporting entity is certifying to the following:  
a. The investment is a liquid asset that can be terminated by the reporting entity on the current maturity date.  
b. If the investment is with a nonrelated party or nonaffiliate, then it reflects an arms-length transaction with renewal completed at the discretion of all involved parties.  
c. If the investment is with a related party or affiliate, then the reporting entity has completed robust re-underwriting of the transaction for which documentation is available for regulator review.  
d. Short-term and cash equivalent investments that have been renewed/rolled from the prior period that do not meet the criteria in 37.a - 37.c are reported as long-term investments.  
Has the reporting entity rolled/renewed short-term or cash equivalent investments in accordance with these criteria? ..... Yes [ X ] No [ ] N/A [ ]

ANNUAL STATEMENT FOR THE YEAR 2024 OF THE Century Surety Company

GENERAL INTERROGATORIES

- 38.1

Does the reporting entity directly hold cryptocurrencies? .....

Yes [ ] No [ X ]
- 38.2

If the response to 38.1 is yes, on what schedule are they reported?  
.....
- 39.1

Does the reporting entity directly or indirectly accept cryptocurrencies as payments for premiums on policies? .....

Yes [ ] No [ X ]
- 39.2

If the response to 39.1 is yes, are the cryptocurrencies held directly or are they immediately converted to U.S. dollars?  
39.21 Held directly ..... Yes [ ] No [ ]  
39.22 Immediately converted to U.S. dollars ..... Yes [ ] No [ ]
- 39.3

If the response to 38.1 or 39.1 is yes, list all cryptocurrencies accepted for payments of premiums or that are held directly.

1	2	3
Name of Cryptocurrency	Immediately Converted to USD, Directly Held, or Both	Accepted for Payment of Premiums

OTHER

- 40.1

Amount of payments to trade associations, service organizations and statistical or rating bureaus, if any? .....

\$ ..... 594,114
- 40.2

List the name of the organization and the amount paid if any such payment represented 25% or more of the total payments to trade associations, service organizations, and statistical or rating bureaus during the period covered by this statement.
- | 1                                   | 2             |
|-------------------------------------|---------------|
| Name                                | Amount Paid   |
| INSURANCE SERVICES OFFICE INC ..... | ..... 410,124 |
|                                     |               |
- 41.1

Amount of payments for legal expenses, if any? .....

\$ ..... 17,454
- 41.2

List the name of the firm and the amount paid if any such payment represented 25% or more of the total payments for legal expenses during the period covered by this statement.
- | 1                                 | 2            |
|-----------------------------------|--------------|
| Name                              | Amount Paid  |
| HUTCHINSON WARREN AND ASSOC ..... | ..... 12,333 |
|                                   |              |
- 42.1

Amount of payments for expenditures in connection with matters before legislative bodies, officers, or departments of government, if any? .....

\$ .....
- 42.2

List the name of the firm and the amount paid if any such payment represented 25% or more of the total payment expenditures in connection with matters before legislative bodies, officers, or departments of government during the period covered by this statement.
- | 1    | 2           |
|------|-------------|
| Name | Amount Paid |
|      |             |

ANNUAL STATEMENT FOR THE YEAR 2024 OF THE Century Surety Company

GENERAL INTERROGATORIES

PART 2 - PROPERTY AND CASUALTY INTERROGATORIES

1.1

Does the reporting entity have any direct Medicare Supplement Insurance in force? .....

Yes [ ] No [ X ]

1.2

If yes, indicate premium earned on U. S. business only. ....

\$ .....

1.3

What portion of Item (1.2) is not reported on the Medicare Supplement Insurance Experience Exhibit? .....

\$ .....

1.31

Reason for excluding .....

1.4

Indicate amount of earned premium attributable to Canadian and/or Other Alien not included in Item (1.2) above. ....

\$ .....

1.5

Indicate total incurred claims on all Medicare Supplement insurance. ....

\$ .....

1.6

Individual policies:

Most current three years:

1.61

Total premium earned .....

\$ .....

1.62

Total incurred claims .....

\$ .....

1.63

Number of covered lives .....

.....

All years prior to most current three years:

1.64

Total premium earned .....

\$ .....

1.65

Total incurred claims .....

\$ .....

1.66

Number of covered lives .....

.....

1.7

Group policies:

Most current three years:

1.71

Total premium earned .....

\$ .....

1.72

Total incurred claims .....

\$ .....

1.73

Number of covered lives .....

.....

All years prior to most current three years:

1.74

Total premium earned .....

\$ .....

1.75

Total incurred claims .....

\$ .....

1.76

Number of covered lives .....

.....

2.

Health Test:

1

Current Year

2

Prior Year

2.1

Premium Numerator .....

.....

.....

2.2

Premium Denominator .....

.....

.....

2.3

Premium Ratio (2.1/2.2) .....

.....0.000

.....0.000

2.4

Reserve Numerator .....

.....

.....

2.5

Reserve Denominator .....

.....

.....

2.6

Reserve Ratio (2.4/2.5) .....

.....0.000

.....0.000

3.1

Did the reporting entity issue participating policies during the calendar year? .....

Yes [ ] No [ X ]

3.2

If yes, provide the amount of premium written for participating and/or non-participating policies during the calendar year:

3.21

Participating policies .....

\$ .....

3.22

Non-participating policies .....

\$ .....

4.

For mutual reporting Entities and Reciprocal Exchanges only:

4.1

Does the reporting entity issue assessable policies? .....

Yes [ ] No [ ]

4.2

Does the reporting entity issue non-assessable policies? .....

Yes [ ] No [ ]

4.3

If assessable policies are issued, what is the extent of the contingent liability of the policyholders? .....

% .....

4.4

Total amount of assessments paid or ordered to be paid during the year on deposit notes or contingent premiums. ....

\$ .....

5.

For Reciprocal Exchanges Only:

5.1

Does the Exchange appoint local agents? .....

Yes [ ] No [ ]

5.2

If yes, is the commission paid:

5.21

Out of Attorney's-in-fact compensation.....

Yes [ ] No [ ] N/A [ ]

5.22

As a direct expense of the exchange.....

Yes [ ] No [ ] N/A [ ]

5.3

What expenses of the Exchange are not paid out of the compensation of the Attorney-in-fact? .....

.....

5.4

Has any Attorney-in-fact compensation, contingent on fulfillment of certain conditions, been deferred? .....

Yes [ ] No [ ]

5.5

If yes, give full information .....

.....

16

ANNUAL STATEMENT FOR THE YEAR 2024 OF THE Century Surety Company

GENERAL INTERROGATORIES

PART 2 - PROPERTY AND CASUALTY INTERROGATORIES

6.1

What provision has this reporting entity made to protect itself from an excessive loss in the event of a catastrophe under a workers' compensation contract issued without limit of loss?  
The Company is part of an Intercompany Reinsurance Agreement. See Note 26 for details on the coverage under this agreement. ....

6.2

Describe the method used to estimate this reporting entity's probable maximum insurance loss, and identify the type of insured exposures comprising that probable maximum loss, the locations of concentrations of those exposures and the external resources (such as consulting firms or computer software models), if any, used in the estimation process:  
The Company is part of an Intercompany Reinsurance Agreement. See Note 26 for details on the coverage under this agreement. ....

6.3

What provision has this reporting entity made (such as a catastrophic reinsurance program) to protect itself from an excessive loss arising from the types and concentrations of insured exposures comprising its probable maximum property insurance loss?  
The Company is part of an Intercompany Reinsurance Agreement. See Note 26 for details on the coverage under this agreement. ....

6.4

Does the reporting entity carry catastrophe reinsurance protection for at least one reinstatement, in an amount sufficient to cover its estimated probable maximum loss attributable to a single loss event or occurrence? .....

Yes [ ☐ ] No [ ☒ ]

6.5

If no, describe any arrangements or mechanisms employed by the reporting entity to supplement its catastrophe reinsurance program or to hedge its exposure to uninsured catastrophic loss  
The Company is part of an Intercompany Reinsurance Agreement. See Note 26 for details on the coverage under this agreement. ....

7.1

Has this reporting entity reinsured any risk with any other entity under a quota share reinsurance contract that includes a provision that would limit the reinsurer's losses below the stated quota share percentage (e.g., a deductible, a loss ratio corridor, a loss cap, an aggregate limit or any similar provisions)?.....

Yes [ ☐ ] No [ ☒ ]

7.2

If yes, indicate the number of reinsurance contracts containing such provisions. ....

7.3

If yes, does the amount of reinsurance credit taken reflect the reduction in quota share coverage caused by any applicable limiting provision(s)?.....

Yes [ ☐ ] No [ ☐ ]

8.1

Has this reporting entity reinsured any risk with any other entity and agreed to release such entity from liability, in whole or in part, from any loss that may occur on this risk, or portion thereof, reinsured? .....

Yes [ ☐ ] No [ ☒ ]

8.2

If yes, give full information  
.....

9.1

Has the reporting entity ceded any risk under any reinsurance contract (or under multiple contracts with the same reinsurer or its affiliates) for which during the period covered by the statement: (i) it recorded a positive or negative underwriting result greater than 5% of prior year-end surplus as regards policyholders or it reported calendar year written premium ceded or year-end loss and loss expense reserves ceded greater than 5% of prior year-end surplus as regards policyholders; (ii) it accounted for that contract as reinsurance and not as a deposit; and (iii) the contract(s) contain one or more of the following features or other features that would have similar results:  
(a) A contract term longer than two years and the contract is noncancellable by the reporting entity during the contract term;  
(b) A limited or conditional cancellation provision under which cancellation triggers an obligation by the reporting entity, or an affiliate of the reporting entity, to enter into a new reinsurance contract with the reinsurer, or an affiliate of the reinsurer;  
(c) Aggregate stop loss reinsurance coverage;  
(d) A unilateral right by either party (or both parties) to commute the reinsurance contract, whether conditional or not, except for such provisions which are only triggered by a decline in the credit status of the other party;  
(e) A provision permitting reporting of losses, or payment of losses, less frequently than on a quarterly basis (unless there is no activity during the period); or  
(f) Payment schedule, accumulating retentions from multiple years or any features inherently designed to delay timing of the reimbursement to the ceding entity. ....

Yes [ ☐ ] No [ ☒ ]

9.2

Has the reporting entity during the period covered by the statement ceded any risk under any reinsurance contract (or under multiple contracts with the same reinsurer or its affiliates), for which, during the period covered by the statement, it recorded a positive or negative underwriting result greater than 5% of prior year-end surplus as regards policyholders or it reported calendar year written premium ceded or year-end loss and loss expense reserves ceded greater than 5% of prior year-end surplus as regards policyholders; excluding cessions to approved pooling arrangements or to captive insurance companies that are directly or indirectly controlling, controlled by, or under common control with (i) one or more unaffiliated policyholders of the reporting entity, or (ii) an association of which one or more unaffiliated policyholders of the reporting entity is a member where:  
(a) The written premium ceded to the reinsurer by the reporting entity or its affiliates represents fifty percent (50%) or more of the entire direct and assumed premium written by the reinsurer based on its most recently available financial statement; or  
(b) Twenty-five percent (25%) or more of the written premium ceded to the reinsurer has been retroceded back to the reporting entity or its affiliates in a separate reinsurance contract. ....

Yes [ ☐ ] No [ ☒ ]

9.3

If yes to 9.1 or 9.2, please provide the following information in the Reinsurance Summary Supplemental Filing for General Interrogatory 9:  
(a) The aggregate financial statement impact gross of all such ceded reinsurance contracts on the balance sheet and statement of income;  
(b) A summary of the reinsurance contract terms and indicate whether it applies to the contracts meeting the criteria in 9.1 or 9.2; and  
(c) A brief discussion of management's principle objectives in entering into the reinsurance contract including the economic purpose to be achieved.

9.4

Except for transactions meeting the requirements of paragraph 36 of SSAP No. 62R - Property and Casualty Reinsurance, has the reporting entity ceded any risk under any reinsurance contract (or multiple contracts with the same reinsurer or its affiliates) during the period covered by the financial statement, and either:  
(a) Accounted for that contract as reinsurance (either prospective or retroactive) under statutory accounting principles ("SAP") and as a deposit under generally accepted accounting principles ("GAAP"); or  
(b) Accounted for that contract as reinsurance under GAAP and as a deposit under SAP? .....

Yes [ ☐ ] No [ ☒ ]

9.5

If yes to 9.4, explain in the Reinsurance Summary Supplemental Filing for General Interrogatory 9 (Section D) why the contract(s) is treated differently for GAAP and SAP.

9.6

The reporting entity is exempt from the Reinsurance Attestation Supplement under one or more of the following criteria:  
(a) The entity does not utilize reinsurance; or, .....  
(b) The entity only engages in a 100% quota share contract with an affiliate and the affiliated or lead company has filed an attestation supplement; or .....  
(c) The entity has no external cessions and only participates in an intercompany pool and the affiliated or lead company has filed an attestation supplement. ....

Yes [ ☐ ] No [ ☒ ]  
Yes [ ☐ ] No [ ☒ ]  
Yes [ ☒ ] No [ ☐ ]

10.

If the reporting entity has assumed risks from another entity, there should be charged on account of such reinsurances a reserve equal to that which the original entity would have been required to charge had it retained the risks. Has this been done? .....

Yes [ ☐ ] No [ ☐ ] N/A [ ☒ ]

ANNUAL STATEMENT FOR THE YEAR 2024 OF THE Century Surety Company

GENERAL INTERROGATORIES

PART 2 - PROPERTY AND CASUALTY INTERROGATORIES

11.1Has the reporting entity guaranteed policies issued by any other entity and now in force? .....Yes [ ] No [ X ]

11.2If yes, give full information  
.....

12.1If the reporting entity recorded accrued retrospective premiums on insurance contracts on Line 15.3 of the asset schedule, Page 2, state the amount of corresponding liabilities recorded for:

12.11 Unpaid losses .....\$ .....

12.12 Unpaid underwriting expenses (including loss adjustment expenses) .....\$ .....

12.2Of the amount on Line 15.3, Page 2, state the amount which is secured by letters of credit, collateral and other funds. ....\$ .....

12.3If the reporting entity underwrites commercial insurance risks, such as workers' compensation, are premium notes or promissory notes accepted from its insureds covering unpaid premiums and/or unpaid losses? .....Yes [ X ] No [ ] N/A [ ]

12.4If yes, provide the range of interest rates charged under such notes during the period covered by this statement:

12.41 From .....%

12.42 To.....%

12.5Are letters of credit or collateral and other funds received from insureds being utilized by the reporting entity to secure premium notes or promissory notes taken by a reporting entity, or to secure any of the reporting entity's reported direct unpaid loss reserves , including unpaid losses under loss deductible features of commercial policies? .....Yes [ ] No [ X ]

12.6If yes, state the amount thereof at December 31 of the current year:

12.61 Letters of Credit .....\$ .....

12.62 Collateral and other funds.....\$ .....

13.1Largest net aggregate amount insured in any one risk (excluding workers' compensation): .....\$ .....

13.2Does any reinsurance contract considered in the calculation of this amount include an aggregate limit of recovery without also including a reinstatement provision? .....Yes [ ] No [ X ]

13.3State the number of reinsurance contracts (excluding individual facultative risk certificates, but including facultative programs, automatic facilities or facultative obligatory contracts) considered in the calculation of the amount. ....1

14.1Is the company a cedant in a multiple cedant reinsurance contract? .....Yes [ ] No [ X ]

14.2If yes, please describe the method of allocating and recording reinsurance among the cedants:  
.....

14.3If the answer to 14.1 is yes, are the methods described in item 14.2 entirely contained in the respective multiple cedant reinsurance contracts? .....Yes [ ] No [ ]

14.4If the answer to 14.3 is no, are all the methods described in 14.2 entirely contained in written agreements? .....Yes [ ] No [ ]

14.5If the answer to 14.4 is no, please explain:  
.....

15.1Has the reporting entity guaranteed any financed premium accounts? .....Yes [ ] No [ X ]

15.2If yes, give full information  
.....

16.1Does the reporting entity write any warranty business? .....Yes [ ] No [ X ]  
If yes, disclose the following information for each of the following types of warranty coverage:

	1 Direct Losses Incurred	2 Direct Losses Unpaid	3 Direct Written Premium	4 Direct Premium Unearned	5 Direct Premium Earned
16.11 Home .....					
16.12 Products .....					
16.13 Automobile .....					
16.14 Other*					

\* Disclose type of coverage:

.....

17.1Does the reporting entity include amounts recoverable on unauthorized reinsurance in Schedule F - Part 3 that is exempt from the statutory provision for unauthorized reinsurance? .....Yes [ ] No [ X ]

Incurred but not reported losses on contracts in force prior to July 1, 1984, and not subsequently renewed are exempt from the statutory provision for unauthorized reinsurance. Provide the following information for this exemption:

17.11 Gross amount of unauthorized reinsurance in Schedule F - Part 3 exempt from the statutory provision for unauthorized reinsurance .....\$ .....

17.12 Unfunded portion of Interrogatory 17.11 .....\$ .....

17.13 Paid losses and loss adjustment expenses portion of Interrogatory 17.11....\$ .....

17.14 Case reserves portion of Interrogatory 17.11 .....\$ .....

17.15 Incurred but not reported portion of Interrogatory 17.11 .....\$ .....

17.16 Unearned premium portion of Interrogatory 17.11 .....\$ .....

17.17 Contingent commission portion of Interrogatory 17.11 .....\$ .....



ANNUAL STATEMENT FOR THE YEAR 2024 OF THE Century Surety Company

GENERAL INTERROGATORIES

PART 2 - PROPERTY AND CASUALTY INTERROGATORIES

- 18.1

Do you act as a custodian for health savings accounts? .....

Yes [ ☐ ] No [ ☒ ]
- 18.2

If yes, please provide the amount of custodial funds held as of the reporting date. ....

\$ .....
- 18.3

Do you act as an administrator for health savings accounts? .....

Yes [ ☐ ] No [ ☒ ]
- 18.4

If yes, please provide the balance of funds administered as of the reporting date. ....

\$ .....
19.

Is the reporting entity licensed or chartered, registered, qualified, eligible or writing business in at least two states? .....

Yes [ ☒ ] No [ ☐ ]
- 19.1

If no, does the reporting entity assume reinsurance business that covers risks residing in at least one state other than the state of domicile of the reporting entity? .....

Yes [ ☐ ] No [ ☐ ]

ANNUAL STATEMENT FOR THE YEAR 2024 OF THE Century Surety Company

FIVE-YEAR HISTORICAL DATA

Show amounts in whole dollars only, no cents; show percentages to one decimal place, i.e. 17.6.

	1 2024	2 2023	3 2022	4 2021	5 2020
<b>Gross Premiums Written (Page 8, Part 1B Cols. 1, 2 &amp; 3)</b>					
1. Liability lines (Lines 11, 16, 17, 18 & 19) .....	168,872,481	148,504,050	136,928,806	126,134,086	109,999,606
2. Property lines (Lines 1, 2, 9, 12, 21 & 26) .....	142,700,231	134,565,125	95,254,962	84,914,529	67,934,236
3. Property and liability combined lines (Lines 3, 4, 5, 8, 22 & 27) .....	185,208,405	163,435,862	111,876,593	99,328,926	83,361,753
4. All other lines (Lines 6, 10, 13, 14, 15, 23, 24, 28, 29, 30 & 34) .....	19,121	26,639	68,790	178,056	143,081
5. Nonproportional reinsurance lines (Lines 31, 32 & 33) .....					
6. Total (Line 35) .....	496,800,238	446,531,676	344,129,151	310,555,597	261,438,676
<b>Net Premiums Written (Page 8, Part 1B, Col. 6)</b>					
7. Liability lines (Lines 11, 16, 17, 18 & 19) .....					
8. Property lines (Lines 1, 2, 9, 12, 21 & 26) .....					
9. Property and liability combined lines (Lines 3, 4, 5, 8, 22 & 27) .....					
10. All other lines (Lines 6, 10, 13, 14, 15, 23, 24, 28, 29, 30 & 34) .....					
11. Nonproportional reinsurance lines (Lines 31, 32 & 33) .....					
12. Total (Line 35) .....					
<b>Statement of Income (Page 4)</b>					
13. Net underwriting gain (loss) (Line 8) .....					
14. Net investment gain (loss) (Line 11) .....	1,751,020	987,331	884,878	270,593	596,859
15. Total other income (Line 15) .....	1,203	258,109	684	9,343	303
16. Dividends to policyholders (Line 17) .....					
17. Federal and foreign income taxes incurred (Line 19) .....	174,075	219,889	71,364	79,778	(3,678,767)
18. Net income (Line 20) .....	1,578,148	1,025,551	814,198	200,158	4,275,929
<b>Balance Sheet Lines (Pages 2 and 3)</b>					
19. Total admitted assets excluding protected cell business (Page 2, Line 26, Col. 3) .....	152,137,055	101,048,697	96,423,100	94,696,701	92,085,826
20. Premiums and considerations (Page 2, Col. 3)					
20.1 In course of collection (Line 15.1) .....					
20.2 Deferred and not yet due (Line 15.2) .....					
20.3 Accrued retrospective premiums (Line 15.3) .....					
21. Total liabilities excluding protected cell business (Page 3, Line 26) .....	54,970,000	5,893,584	3,147,581	2,499,546	3,456,690
22. Losses (Page 3, Line 1) .....					
23. Loss adjustment expenses (Page 3, Line 3) .....					
24. Unearned premiums (Page 3, Line 9) .....					
25. Capital paid up (Page 3, Lines 30 & 31) .....	3,000,000	3,000,000	3,000,000	3,000,000	3,000,000
26. Surplus as regards policyholders (Page 3, Line 37) .....	97,167,055	95,155,113	93,275,519	92,197,156	88,629,136
<b>Cash Flow (Page 5)</b>					
27. Net cash from operations (Line 11) .....	20,549,597	9,152,431	193,421	(3,406,424)	11,419,396
<b>Risk-Based Capital Analysis</b>					
28. Total adjusted capital .....	97,167,055	95,155,113	93,275,519	92,197,156	88,629,136
29. Authorized control level risk-based capital .....	1,280,162	842,072	1,503,522	1,666,414	850,151
<b>Percentage Distribution of Cash, Cash Equivalents and Invested Assets (Page 2, Col. 3) (Line divided by Page 2, Line 12, Col. 3) x100.0</b>					
30. Bonds (Line 1) .....	26.5	41.3	50.4	49.1	27.9
31. Stocks (Lines 2.1 & 2.2) .....	28.5	41.6	45.0	44.4	42.5
32. Mortgage loans on real estate (Lines 3.1 and 3.2) .....					
33. Real estate (Lines 4.1, 4.2 & 4.3) .....					
34. Cash, cash equivalents and short-term investments (Line 5) .....	45.0	17.1	4.6	6.5	29.6
35. Contract loans (Line 6) .....					
36. Derivatives (Line 7) .....					
37. Other invested assets (Line 8) .....					
38. Receivables for securities (Line 9) .....	0.0		0.0		0.0
39. Securities lending reinvested collateral assets (Line 10) .....					
40. Aggregate write-ins for invested assets (Line 11) .....					
41. Cash, cash equivalents and invested assets (Line 12) .....	100.0	100.0	100.0	100.0	100.0
<b>Investments in Parent, Subsidiaries and Affiliates</b>					
42. Affiliated bonds (Schedule D, Summary, Line 12, Col. 1) .....					
43. Affiliated preferred stocks (Schedule D, Summary, Line 18, Col. 1) .....					
44. Affiliated common stocks (Schedule D, Summary, Line 24, Col. 1) .....	41,357,126	40,833,447	40,071,435	39,552,773	36,306,289
45. Affiliated short-term investments (subtotals included in Schedule DA Verification, Col. 5, Line 10) .....					
46. Affiliated mortgage loans on real estate .....					
47. All other affiliated .....					
48. Total of above Lines 42 to 47 .....	41,357,126	40,833,447	40,071,435	39,552,773	36,306,289
49. Total Investment in Parent included in Lines 42 to 47 above .....					
50. Percentage of investments in parent, subsidiaries and affiliates to surplus as regards policyholders (Line 48 above divided by Page 3, Col. 1, Line 37 x 100.0) .....	42.6	42.9	43.0	42.9	41.0

ANNUAL STATEMENT FOR THE YEAR 2024 OF THE Century Surety Company

**FIVE-YEAR HISTORICAL DATA**

(Continued)

	1 2024	2 2023	3 2022	4 2021	5 2020
<b>Capital and Surplus Accounts (Page 4)</b>					
51. Net unrealized capital gains (losses) (Line 24) .....	532,467	834,515	325,103	3,344,301	(1,870,822)
52. Dividends to stockholders (Line 35) .....					
53. Change in surplus as regards policyholders for the year (Line 38) .....	2,011,942	1,879,594	1,078,364	3,568,019	7,559,524
<b>Gross Losses Paid (Page 9, Part 2, Cols. 1 &amp; 2)</b>					
54. Liability lines (Lines 11, 16, 17, 18 & 19) .....	50,601,829	38,455,718	33,159,757	15,475,678	11,299,717
55. Property lines (Lines 1, 2, 9, 12, 21 & 26) .....	37,707,740	38,946,328	36,851,700	58,380,025	11,172,511
56. Property and liability combined lines (Lines 3, 4, 5, 8, 22 & 27) .....	52,467,417	52,082,223	49,444,867	49,238,362	13,898,693
57. All other lines (Lines 6, 10, 13, 14, 15, 23, 24, 28, 29, 30 & 34) .....				5,000	
58. Nonproportional reinsurance lines (Lines 31, 32 & 33) .....					
59. Total (Line 35) .....	140,776,985	129,484,269	119,456,324	123,099,064	36,370,921
<b>Net Losses Paid (Page 9, Part 2, Col. 4)</b>					
60. Liability lines (Lines 11, 16, 17, 18 & 19) .....					
61. Property lines (Lines 1, 2, 9, 12, 21 & 26) .....					
62. Property and liability combined lines (Lines 3, 4, 5, 8, 22 & 27) .....					
63. All other lines (Lines 6, 10, 13, 14, 15, 23, 24, 28, 29, 30 & 34) .....					
64. Nonproportional reinsurance lines (Lines 31, 32 & 33) .....					
65. Total (Line 35) .....					
<b>Operating Percentages (Page 4) (Line divided by Page 4, Line 1) x 100.0</b>					
66. Premiums earned (Line 1) .....	100.0	100.0	100.0	100.0	100.0
67. Losses incurred (Line 2) .....					
68. Loss expenses incurred (Line 3) .....					
69. Other underwriting expenses incurred (Line 4) .....					
70. Net underwriting gain (loss) (Line 8) .....					
<b>Other Percentages</b>					
71. Other underwriting expenses to net premiums written (Page 4, Lines 4 + 5 - 15 divided by Page 8, Part 1B, Col. 6, Line 35 x 100.0) .....					
72. Losses and loss expenses incurred to premiums earned (Page 4, Lines 2 + 3 divided by Page 4, Line 1 x 100.0) .....					
73. Net premiums written to policyholders' surplus (Page 8, Part 1B, Col. 6, Line 35 divided by Page 3, Line 37, Col. 1 x 100.0) .....					
<b>One Year Loss Development (\$000 omitted)</b>					
74. Development in estimated losses and loss expenses incurred prior to current year (Schedule P - Part 2 - Summary, Line 12, Col. 11) .....					
75. Percent of development of losses and loss expenses incurred to policyholders' surplus of prior year end (Line 74 above divided by Page 4, Line 21, Col. 1 x 100.0).....					
<b>Two Year Loss Development (\$000 omitted)</b>					
76. Development in estimated losses and loss expenses incurred two years before the current year and prior year (Schedule P, Part 2 - Summary, Line 12, Col. 12) .....					
77. Percent of development of losses and loss expenses incurred to reported policyholders' surplus of second prior year end (Line 76 above divided by Page 4, Line 21, Col. 2 x 100.0) .....					

NOTE: If a party to a merger, have the two most recent years of this exhibit been restated due to a merger in compliance with the disclosure requirements of SSAP No. 3, Accounting Changes and Correction of Errors? ..... Yes [        ] No [        ]

If no, please explain: .....

Schedule P - Part 1 - Summary  
**N O N E**

Schedule P - Part 2 - Summary  
**N O N E**

Schedule P - Part 3 - Summary  
**N O N E**

Schedule P - Part 4 - Summary  
**N O N E**

ANNUAL STATEMENT FOR THE YEAR 2024 OF THE Century Surety Company

SCHEDULE T - EXHIBIT OF PREMIUMS WRITTEN

Allocated by States and Territories									
States, Etc.	1	Gross Premiums, Including Policy and Membership Fees, Less Return Premiums and Premiums on Policies Not Taken		4	5	6	7	8	9
		2	3						
	Active Status (a)	Direct Premiums Written	Direct Premiums Earned	Dividends Paid or Credited to Policyholders on Direct Business	Direct Losses Paid (Deducting Salvage)	Direct Losses Incurred	Direct Losses Unpaid	Finance and Service Charges Not Included in Premiums	Direct Premiums Written for Federal Purchasing Groups (Included in Column 2)
1. Alabama .....	AL	E	8,988,260	7,437,115	573,985	2,250,627	5,538,653		
2. Alaska .....	AK	E	827,846	700,457	3,876	21,497	370,552		
3. Arizona .....	AZ	L	57,141	90,756	(100)	(55,084)	198,442		
4. Arkansas .....	AR	E	4,599,974	4,562,877	1,775,326	2,085,802	2,605,368		
5. California .....	CA	E	117,147,159	106,051,475	19,822,997	40,791,537	74,649,862		
6. Colorado .....	CO	E	7,403,628	7,437,420	3,421,855	4,135,121	5,632,446		
7. Connecticut .....	CT	E	4,071,889	3,946,248	1,974,021	2,637,985	2,907,259		
8. Delaware .....	DE	E	391,011	406,919	4,671,264	6,934,259	2,575,047		
9. District of Columbia .....	DC	E	670,805	643,220	19,260	249,822	504,048		
10. Florida .....	FL	E	116,667,183	116,135,034	34,542,406	49,004,681	89,259,692		
11. Georgia .....	GA	E	12,070,853	11,331,537	2,931,085	4,139,953	9,749,782		
12. Hawaii .....	HI	E	799,906	776,872	679,895	794,141	867,504		
13. Idaho .....	ID	E	1,372,072	1,453,622	554,871	717,580	965,693		
14. Illinois .....	IL	E	3,658,375	4,364,135	824,571	1,661,737	3,697,579		
15. Indiana .....	IN	E	2,731,829	2,584,226	268,402	1,395,587	2,455,247		
16. Iowa .....	IA	E	1,784,171	1,585,376	621,082	551,656	698,844		
17. Kansas .....	KS	E	2,323,060	1,781,687	511,705	532,258	918,743		
18. Kentucky .....	KY	E	3,006,958	2,914,459	650,826	1,977,047	3,324,884		
19. Louisiana .....	LA	E	10,952,635	11,451,588	4,090,887	4,996,465	10,140,936		
20. Maine .....	ME	E	966,357	967,486	650,390	988,022	1,012,054		
21. Maryland .....	MD	E	2,825,613	2,766,397	262,255	1,262,393	2,796,754		
22. Massachusetts .....	MA	E	4,647,222	4,838,051	1,607,275	2,275,503	3,193,827		
23. Michigan .....	MI	E	5,007,819	3,573,197	926,427	420,866	3,510,532		
24. Minnesota .....	MN	E	2,262,943	1,982,103	966,172	1,163,148	1,121,850		
25. Mississippi .....	MS	E	4,311,008	4,489,107	1,453,653	1,814,514	3,166,874		
26. Missouri .....	MO	E	1,678,079	1,708,580	812,412	375,959	2,005,136		
27. Montana .....	MT	E	2,108,509	2,052,531	1,025,929	1,314,759	1,335,251		
28. Nebraska .....	NE	E	1,728,760	1,542,451	486,490	723,227	1,080,635		
29. Nevada .....	NV	E	3,772,791	3,208,370	328,624	681,514	2,564,846		
30. New Hampshire .....	NH	E	889,359	916,932	345,533	770,843	1,064,725		
31. New Jersey .....	NJ	E	5,950,344	6,244,980	1,220,175	902,102	6,461,155		
32. New Mexico .....	NM	E	3,022,794	2,865,385	777,116	1,330,705	2,272,984		
33. New York .....	NY	E	27,766,721	29,327,922	10,367,345	18,989,745	52,056,764		
34. North Carolina .....	NC	E	8,691,992	7,787,938	1,340,423	1,696,133	4,773,352		
35. North Dakota .....	ND	E	1,056,093	926,732	1,007,854	1,157,897	516,911		
36. Ohio .....	OH	L	144,341	131,031	(3,500)	(7,487)	506,166		
37. Oklahoma .....	OK	E	3,146,415	3,186,391	173,647	1,762,292	3,347,695		
38. Oregon .....	OR	E	3,555,277	3,636,860	569,098	723,407	2,455,274		
39. Pennsylvania .....	PA	E	8,662,571	8,373,226	1,513,238	2,253,434	6,793,814		
40. Rhode Island .....	RI	E	985,423	868,020	170,994	248,428	587,257		
41. South Carolina .....	SC	E	6,988,592	6,967,572	1,323,161	2,554,481	3,979,656		
42. South Dakota .....	SD	E	638,556	583,456	1,057,648	409,832	409,538		
43. Tennessee .....	TN	E	4,108,131	4,359,391	1,442,349	2,224,310	3,324,232		
44. Texas .....	TX	E	79,370,172	77,766,600	29,123,963	43,600,825	62,628,236		
45. Utah .....	UT	E	1,951,800	1,926,117	1,149,784	635,077	1,895,163		
46. Vermont .....	VT	E	916,879	942,881	167,657	432,153	1,039,710		
47. Virginia .....	VA	E	4,054,966	3,923,891	1,073,003	2,925,365	4,339,397		
48. Washington .....	WA	E	2,856,735	2,564,562	1,073,114	301,839	1,540,905		
49. West Virginia .....	WV	E	948,892	932,490	22,599	260,265	394,894		
50. Wisconsin .....	WI	E	1,229,371	1,190,323	280,996	387,222	952,537		
51. Wyoming .....	WY	E	1,030,957	1,001,216	122,945	248,467	720,636		
52. American Samoa .....	AS	N							
53. Guam .....	GU	N							
54. Puerto Rico .....	PR	N							
55. U.S. Virgin Islands .....	VI	N							
56. Northern Mariana Islands .....	MP	N							
57. Canada .....	CAN	N							
58. Aggregate other alien ..	OT	XXX							
59. Totals	XXX	496,800,238	479,207,209		140,776,985	219,649,911	400,909,344		
DETAILS OF WRITE-INS									
58001. ....	XXX								
58002. ....	XXX								
58003. ....	XXX								
58998. Summary of remaining write-ins for Line 58 from overflow page	XXX								
58999. Totals (Lines 58001 through 58003 plus 58998)(Line 58 above)	XXX								

(a) Active Status Counts:

1. L - Licensed or Chartered - Licensed insurance carrier or domiciled RRG..... 2

2. R - Registered - Non-domiciled RRGs.....

3. E - Eligible - Reporting entities eligible or approved to write surplus lines in the state (other than their state of domicile - see DSLI)..... 49

4. Q - Qualified - Qualified or accredited reinsurer.....

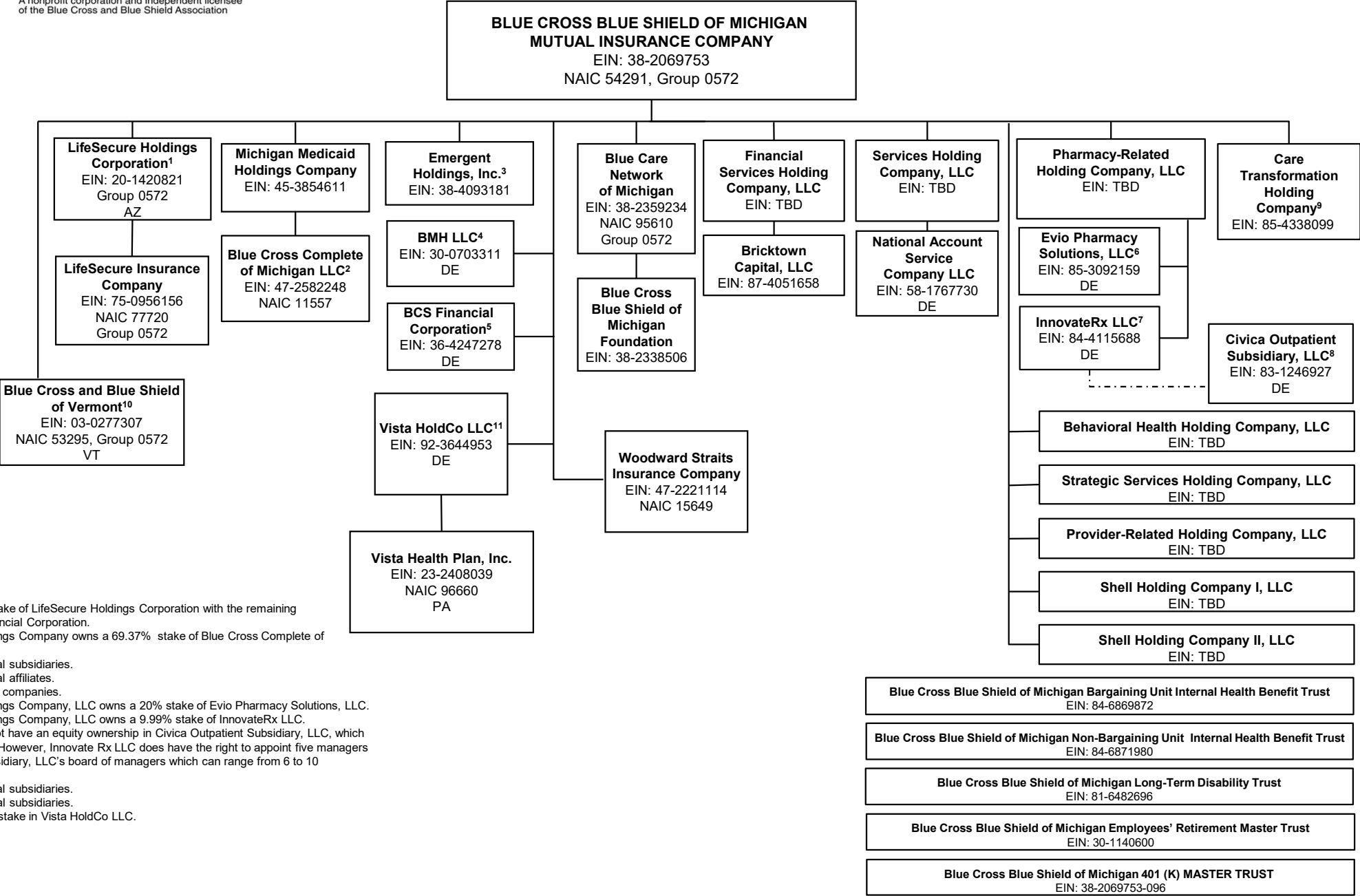
5. D - Domestic Surplus Lines Insurer (DSLII) - Reporting entities authorized to write surplus lines in the state of domicile.....

6. N - None of the above - Not allowed to write business in the state... .. 6

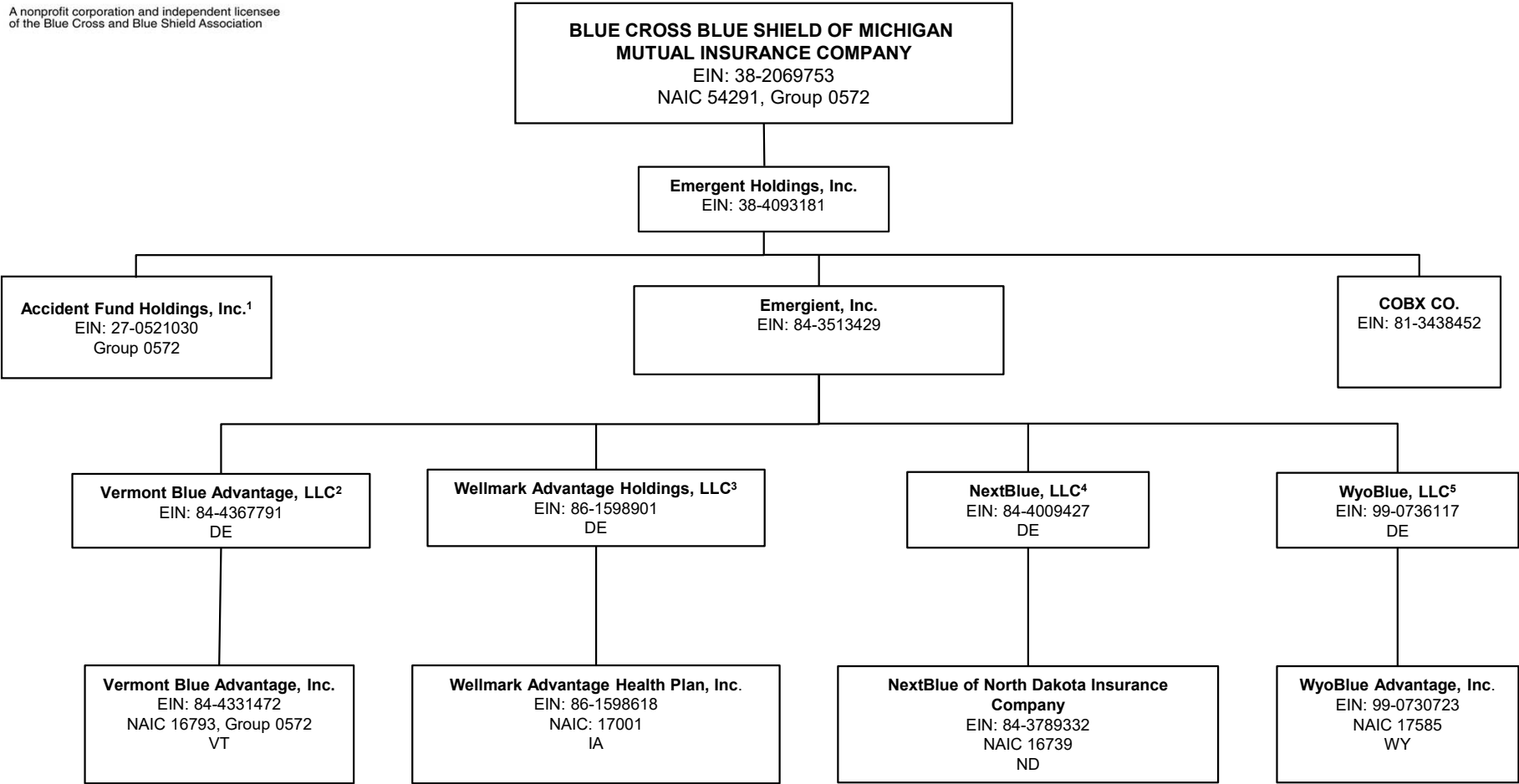
(b) Explanation of basis of allocation of premiums by states, etc.

Location of property: Fire, Allied lines, Commercial multiple peril, Inland marine, Boiler and machinery Location of risk: Other liability, Products liability Location of primary garage: Auto liability, Auto physical damage Location of contractor: Surety - contract bonds Location of court: Surety - judicial bonds, license and permit bonds Location of insured: Ocean marine, Fidelity

# SUBSIDIARY & AFFILIATE ORGANIZATION CHART



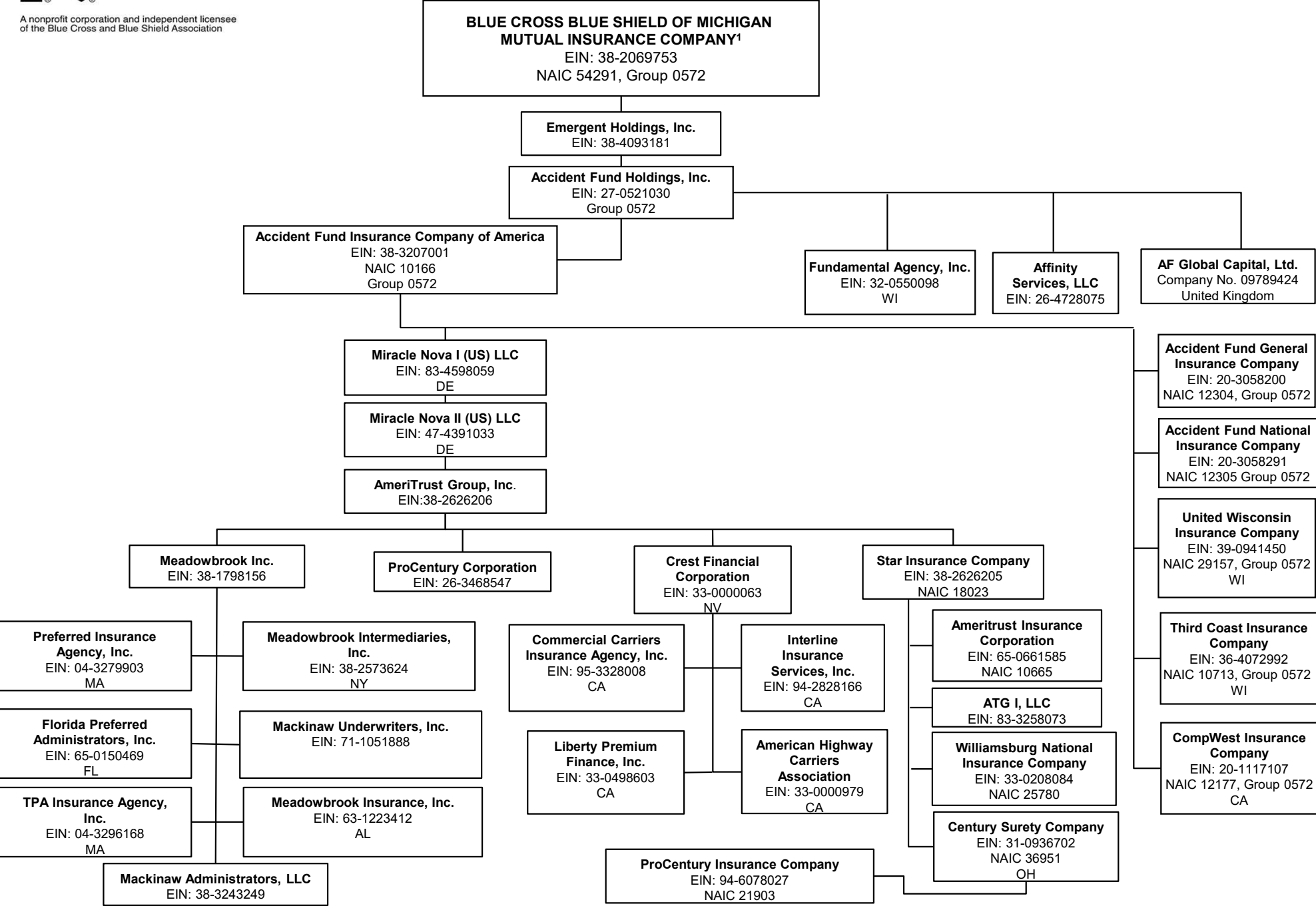
# SUBSIDIARY & AFFILIATE ORGANIZATION CHART



1 See page 40.2 for additional subsidiaries and affiliates.  
2 Emergent, Inc. owns a 91.2% stake in Vermont Blue Advantage LLC with the remaining 8.8% owned by Blue Cross and Blue Shield of Vermont.  
3 Emergent, Inc. owns a 51% stake in Wellmark Advantage Holdings, LLC.  
4 Emergent, Inc. owns a 51% stake in NextBlue, LLC.  
5 Emergent, Inc. owns a 51% stake in WyoBlue, LLC.

All entities that do not reflect a particular state name or abbreviation are domiciled in Michigan.

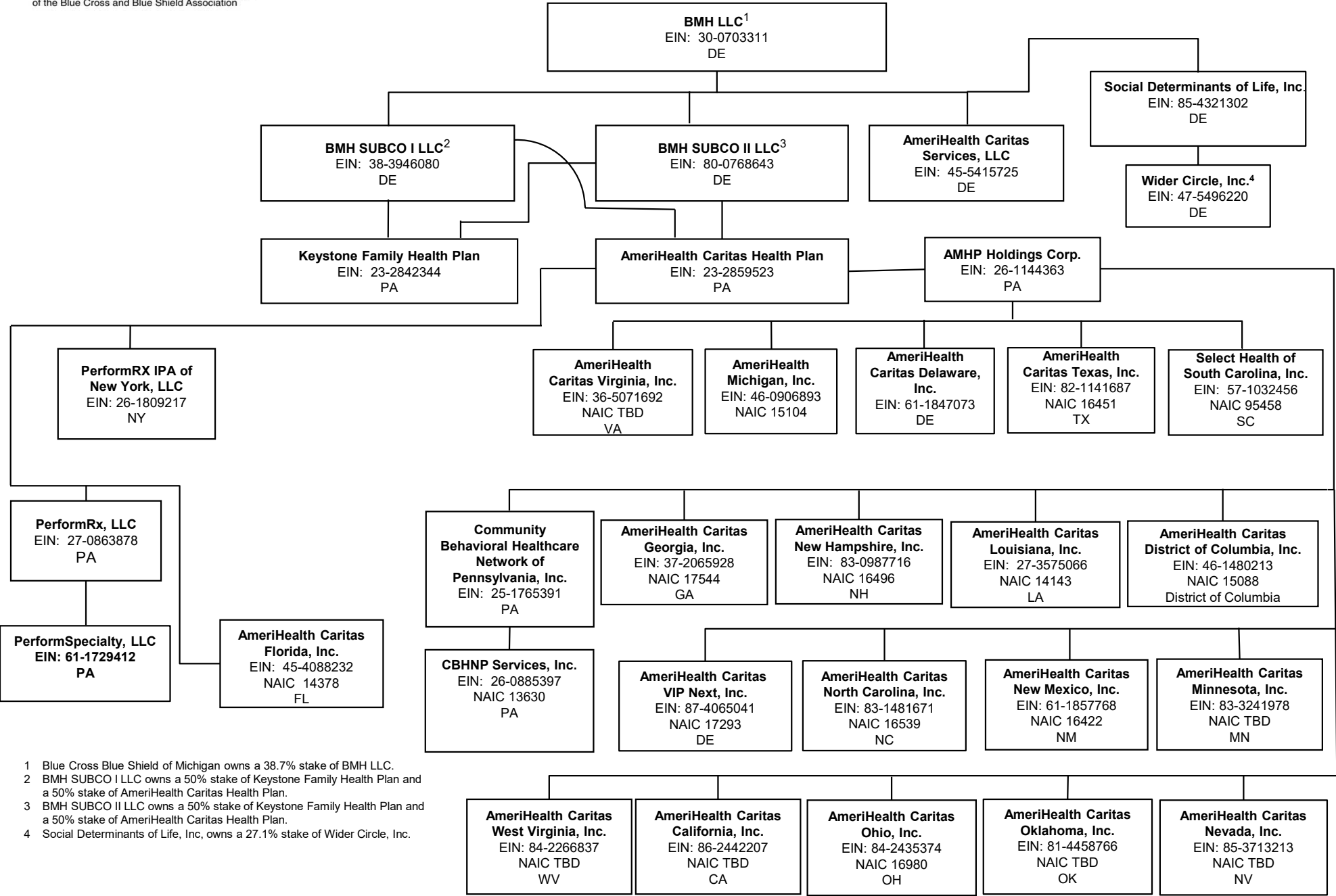
# SUBSIDIARY & AFFILIATE ORGANIZATION CHART



All entities that do not reflect a particular state name or abbreviation are domiciled in Michigan



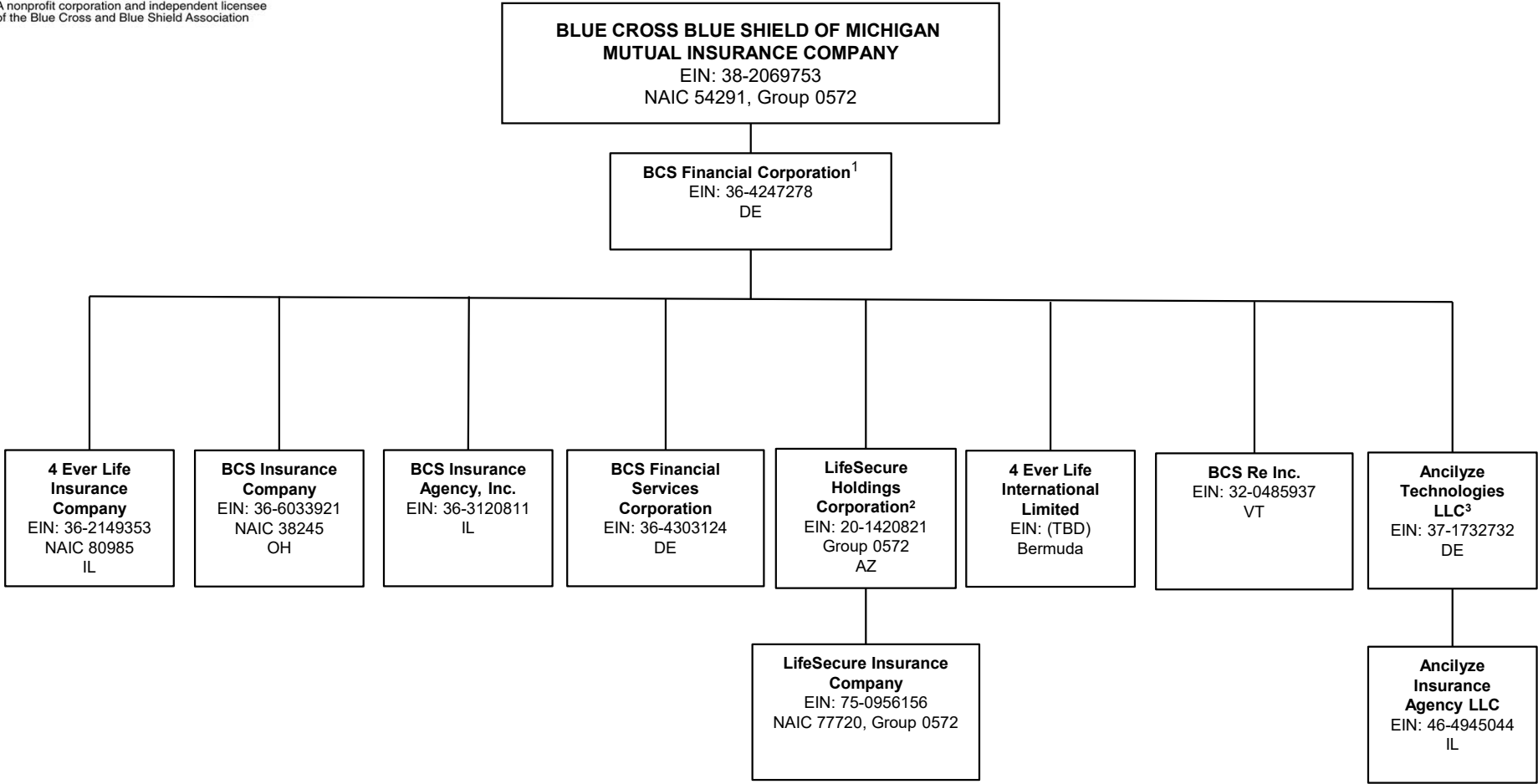
SUBSIDIARY & AFFILIATE ORGANIZATION CHART



1 Blue Cross Blue Shield of Michigan owns a 38.7% stake of BMH LLC.  
2 BMH SUBCO I LLC owns a 50% stake of Keystone Family Health Plan and a 50% stake of AmeriHealth Caritas Health Plan.  
3 BMH SUBCO II LLC owns a 50% stake of Keystone Family Health Plan and a 50% stake of AmeriHealth Caritas Health Plan.  
4 Social Determinants of Life, Inc. owns a 27.1% stake of Wider Circle, Inc.

All entities that do not reflect a particular state name or abbreviation are domiciled in Michigan.

# SUBSIDIARY & AFFILIATE ORGANIZATION CHART



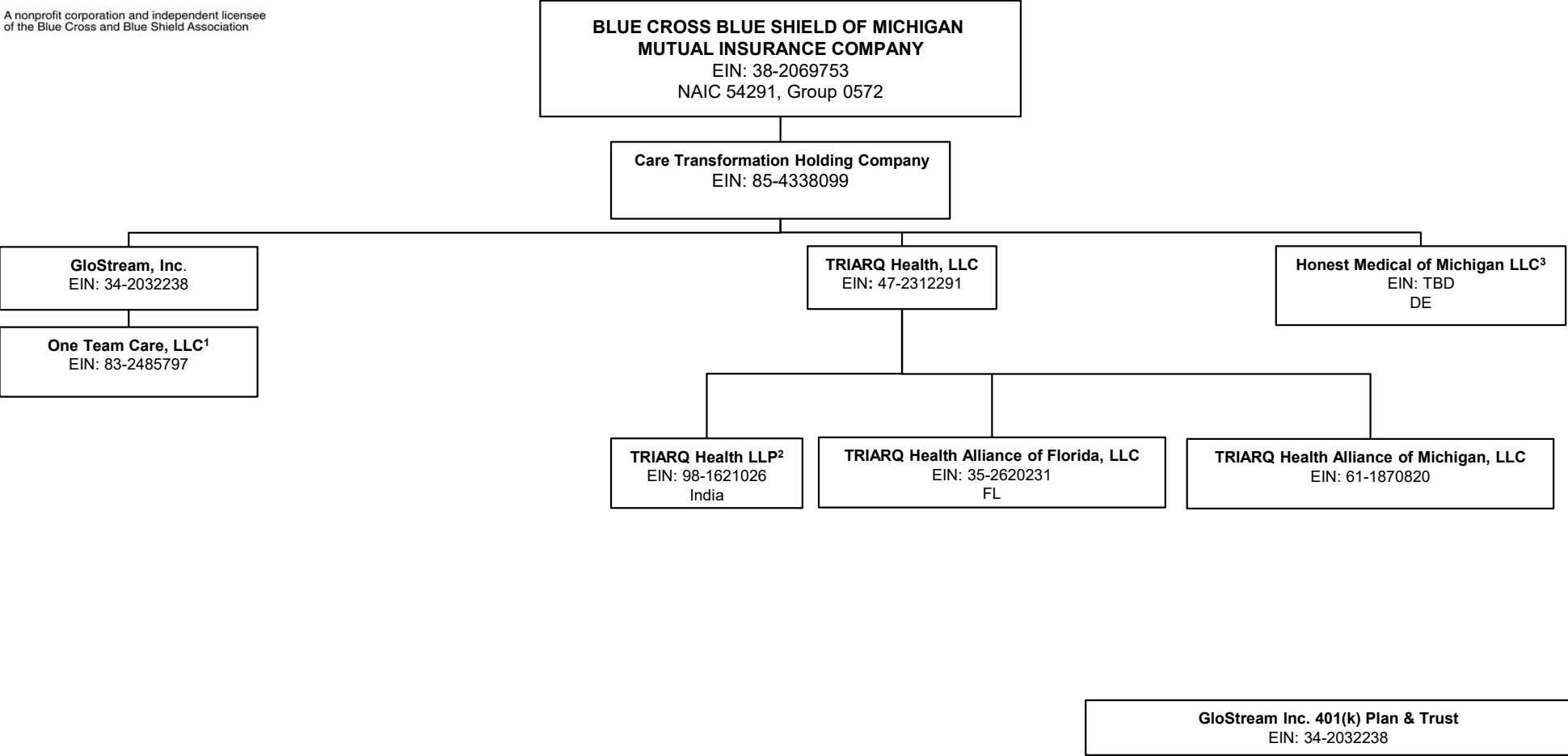
1 Blue Cross Blue Shield of Michigan owns 10.1% of BCS Financial Corporation Accident Fund Insurance Company of America owns 3.56% of BCS Financial Corporation.

2 BCS Financial owns a 20% stake in LifeSecure Holdings Corporation with the remaining 80% owned by BCBSM.

3 BCS Financial Corporation owns 50% of Ancilyze Technologies LLC.

All entities that do not reflect a particular state name or abbreviation are domiciled in Michigan.

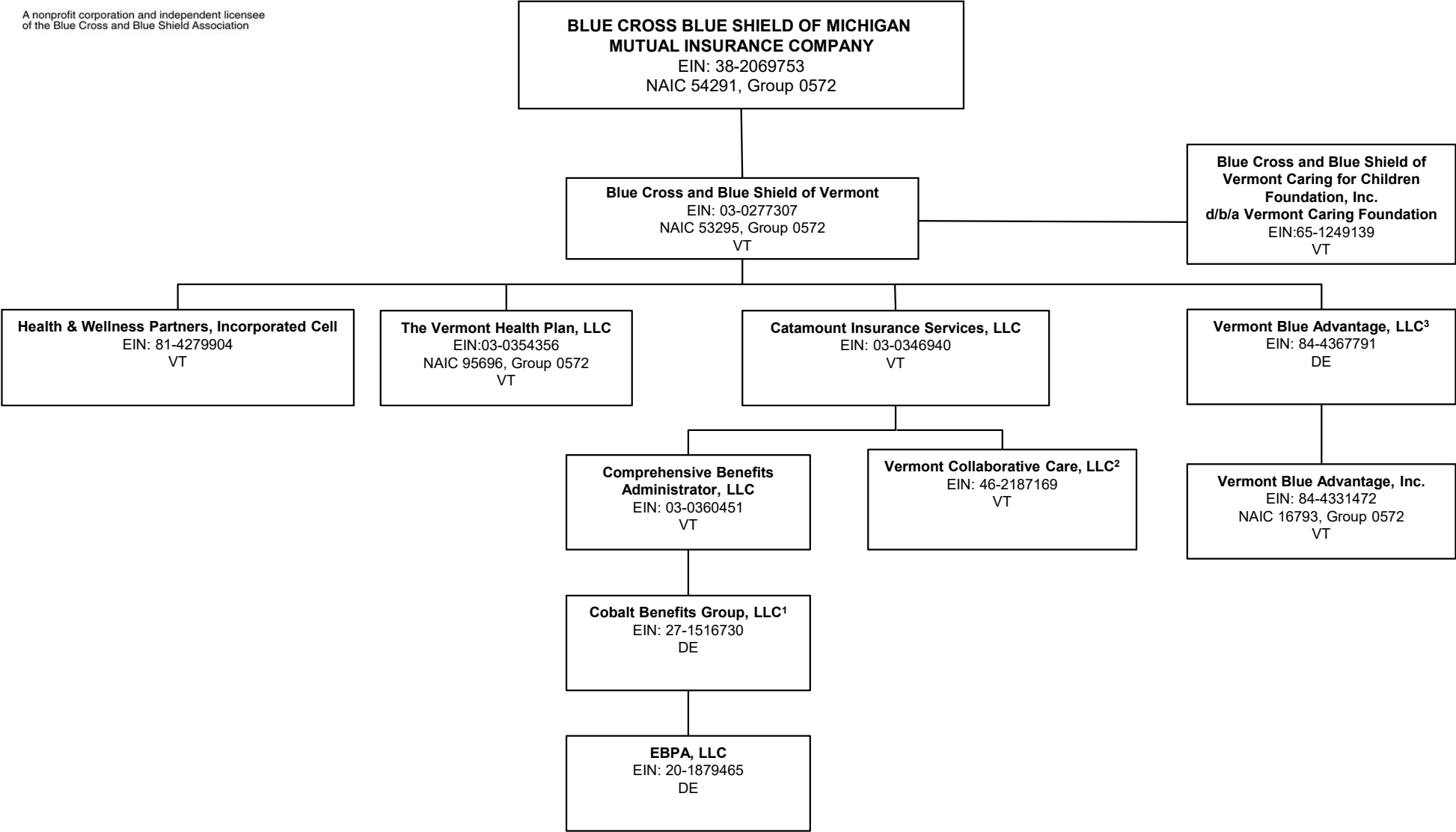
# SUBSIDIARY & AFFILIATE ORGANIZATION CHART



1 GloStream Inc. owns a 50% stake in One Team Care, LLC.  
2 TRIARQ Health, LLC owns a 99.9999% stake in TRIARQ Health LLP and Glostream, Inc. owns 0.0001%.  
3 Care Transformation Holding Company owns a 19.9% stake in Honest Medical of Michigan LLC

All entities that do not reflect a particular state name or abbreviation are domiciled in Michigan

# SUBSIDIARY & AFFILIATE ORGANIZATION CHART



1 Comprehensive Benefits Administrator, LLC owns a 50% stake in Cobalt Benefits Group, LLC.  
2 Catamount Insurance Services, LLC owns a 50% stake in Vermont Collaborative Care, LLC.  
3 Blue Cross and Blue Shield of Vermont owns an 8.8% stake in Vermont Blue Advantage, LLC with the remaining 91.2% owned by Emergent, Inc.

**NONE**