



PROPERTY AND CASUALTY COMPANIES - ASSOCIATION EDITION

ANNUAL STATEMENT

FOR THE YEAR ENDED DECEMBER 31, 2023
OF THE CONDITION AND AFFAIRS OF THE

WILSON MUTUAL INSURANCE COMPANY

NAIC Group Code	0291 (Current)	0291 (Prior)	NAIC Company Code	19950	Employer's ID Number	39-0739760
Organized under the Laws of	Ohio			State of Domicile or Port of Entry	OH	
Country of Domicile	United States of America					
Incorporated/Organized	01/01/1872			Commenced Business	05/01/1872	
Statutory Home Office	471 EAST BROAD STREET (Street and Number)			COLUMBUS, OH, US 43215 (City or Town, State, Country and Zip Code)		
Main Administrative Office	471 EAST BROAD STREET (Street and Number)			COLUMBUS, OH, US 43215 (City or Town, State, Country and Zip Code)		
				614-225-8211 (Area Code) (Telephone Number)		
Mail Address	471 EAST BROAD STREET (Street and Number or P.O. Box)			COLUMBUS, OH, US 43215 (City or Town, State, Country and Zip Code)		
Primary Location of Books and Records	471 EAST BROAD STREET (Street and Number)			COLUMBUS, OH, US 43215 (City or Town, State, Country and Zip Code)		
				614-225-8211 (Area Code) (Telephone Number)		
Internet Website Address	ENCOVA.COM					
Statutory Statement Contact	AMY E KUHLMAN (Name)			614-225-8285 (Area Code) (Telephone Number)		
	ACCOUNTING@ENCOVA.COM (E-mail Address)			614-225-8330 (FAX Number)		

OFFICERS

PRESIDENT & CHIEF EXECUTIVE OFFICER	THOMAS JOSEPH OBROKTA JR.	TREASURER	JAMES CHRISTOPHER HOWAT
SECRETARY	WILLIAM JOSEPH MCGEE JR.		

OTHER

DIRECTORS OR TRUSTEES

JEFFREY LEIGH BENINTENDI	GRADY BRENDAN CAMPBELL	JAMES CHRISTOPHER HOWAT
THOMAS JOSEPH OBROKTA JR.	MATTHEW CARL WILCOX	

State of OH
County of FRANKLIN SS

The officers of this reporting entity being duly sworn, each depose and say that they are the described officers of said reporting entity, and that on the reporting period stated above, all of the herein described assets were the absolute property of the said reporting entity, free and clear from any liens or claims thereon, except as herein stated, and that this statement, together with related exhibits, schedules and explanations therein contained, annexed or referred to, is a full and true statement of all the assets and liabilities and of the condition and affairs of the said reporting entity as of the reporting period stated above, and of its income and deductions therefrom for the period ended, and have been completed in accordance with the NAIC Annual Statement Instructions and Accounting Practices and Procedures manual except to the extent that: (1) state law may differ; or, (2) that state rules or regulations require differences in reporting not related to accounting practices and procedures, according to the best of their information, knowledge and belief, respectively. Furthermore, the scope of this attestation by the described officers also includes the related corresponding electronic filing with the NAIC, when required, that is an exact copy (except for formatting differences due to electronic filing) of the enclosed statement. The electronic filing may be requested by various regulators in lieu of or in addition to the enclosed statement.

THOMAS JOSEPH OBROKTA JR. PRESIDENT & CHIEF EXECUTIVE OFFICER	WILLIAM JOSEPH MCGEE JR. SECRETARY	JAMES CHRISTOPHER HOWAT TREASURER

Subscribed and sworn to before me this
15th day of February 2024

- a. Is this an original filing? Yes [X] No []
b. If no,
1. State the amendment number.....
2. Date filed
3. Number of pages attached.....



CHRISTINE LYNN YONUT
Notary Public
State of Ohio
My Comm. Expires
January 16, 2025

ASSETS

	Current Year			Prior Year
	1 Assets	2 Nonadmitted Assets	3 Net Admitted Assets (Cols. 1 - 2)	4 Net Admitted Assets
1. Bonds (Schedule D)	41,068,089		41,068,089	39,730,588
2. Stocks (Schedule D):				
2.1 Preferred stocks			0	0
2.2 Common stocks	7,630,172	0	7,630,172	7,268,862
3. Mortgage loans on real estate (Schedule B):				
3.1 First liens			0	0
3.2 Other than first liens.....			0	0
4. Real estate (Schedule A):				
4.1 Properties occupied by the company (less \$ encumbrances)	0	0	0	0
4.2 Properties held for the production of income (less \$ encumbrances)	0		0	0
4.3 Properties held for sale (less \$ encumbrances)	0	0	0	0
5. Cash (\$237,776 , Schedule E - Part 1), cash equivalents (\$ 2,478,932 , Schedule E - Part 2) and short-term investments (\$, Schedule DA)	2,716,708		2,716,708	3,270,865
6. Contract loans (including \$ premium notes)			0	0
7. Derivatives (Schedule DB)			0	0
8. Other invested assets (Schedule BA)	0	0	0	0
9. Receivable for securities	75,000		75,000	50,000
10. Securities lending reinvested collateral assets (Schedule DL)	0		0	0
11. Aggregate write-ins for invested assets	0	0	0	0
12. Subtotals, cash and invested assets (Lines 1 to 11)	51,489,968	0	51,489,968	50,320,315
13. Title plants less \$ charged off (for Title insurers only)			0	0
14. Investment income due and accrued	326,542		326,542	294,850
15. Premiums and considerations:				
15.1 Uncollected premiums and agents' balances in the course of collection.....	1,146,735	0	1,146,735	2,318,597
15.2 Deferred premiums, agents' balances and installments booked but deferred and not yet due (including \$232,072 earned but unbilled premiums)	2,687,415	0	2,687,415	2,085,352
15.3 Accrued retrospective premiums (\$) and contracts subject to redetermination (\$)			0	0
16. Reinsurance:				
16.1 Amounts recoverable from reinsurers	2,097,619	0	2,097,619	2,957,185
16.2 Funds held by or deposited with reinsured companies	6,276,229		6,276,229	5,578,866
16.3 Other amounts receivable under reinsurance contracts			0	0
17. Amounts receivable relating to uninsured plans			0	0
18.1 Current federal and foreign income tax recoverable and interest thereon	0		0	52,941
18.2 Net deferred tax asset	570,191	0	570,191	631,035
19. Guaranty funds receivable or on deposit			0	0
20. Electronic data processing equipment and software	0	0	0	0
21. Furniture and equipment, including health care delivery assets (\$)	0	0	0	0
22. Net adjustment in assets and liabilities due to foreign exchange rates			0	0
23. Receivables from parent, subsidiaries and affiliates	57,924		57,924	0
24. Health care (\$) and other amounts receivable			0	0
25. Aggregate write-ins for other than invested assets	3,502,319	0	3,502,319	3,828,404
26. Total assets excluding Separate Accounts, Segregated Accounts and Protected Cell Accounts (Lines 12 to 25)	68,154,943	0	68,154,943	68,067,545
27. From Separate Accounts, Segregated Accounts and Protected Cell Accounts			0	0
28. Total (Lines 26 and 27)	68,154,943	0	68,154,943	68,067,545
DETAILS OF WRITE-INS				
1101.				
1102.				
1103.				
1198. Summary of remaining write-ins for Line 11 from overflow page	0	0	0	0
1199. Totals (Lines 1101 thru 1103 plus 1198)(Line 11 above)	0	0	0	0
2501. ICOLI cash surrender value	3,427,117		3,427,117	3,426,336
2502. Misc Other Assets	75,202		75,202	402,068
2503.				
2598. Summary of remaining write-ins for Line 25 from overflow page	0	0	0	0
2599. Totals (Lines 2501 thru 2503 plus 2598)(Line 25 above)	3,502,319	0	3,502,319	3,828,404

ANNUAL STATEMENT FOR THE YEAR 2023 OF THE WILSON MUTUAL INSURANCE COMPANY

LIABILITIES, SURPLUS AND OTHER FUNDS

	1 Current Year	2 Prior Year
1. Losses (Part 2A, Line 35, Column 8)	23,181,053	22,072,357
2. Reinsurance payable on paid losses and loss adjustment expenses (Schedule F, Part 1, Column 6)	952,683	1,064,941
3. Loss adjustment expenses (Part 2A, Line 35, Column 9)	3,596,970	3,722,517
4. Commissions payable, contingent commissions and other similar charges	261,204	302,627
5. Other expenses (excluding taxes, licenses and fees)	1,975,214	1,876,341
6. Taxes, licenses and fees (excluding federal and foreign income taxes)	233,876	104,796
7.1 Current federal and foreign income taxes (including \$ on realized capital gains (losses))	65,202	
7.2 Net deferred tax liability		
8. Borrowed money \$ and interest thereon \$	0	
9. Unearned premiums (Part 1A, Line 38, Column 5) (after deducting unearned premiums for ceded reinsurance of \$6,092,198 and including warranty reserves of \$ and accrued accident and health experience rating refunds including \$0 for medical loss ratio rebate per the Public Health Service Act)	7,696,264	6,935,212
10. Advance premium	3,408	154,507
11. Dividends declared and unpaid:		
11.1 Stockholders	0	
11.2 Policyholders		
12. Ceded reinsurance premiums payable (net of ceding commissions)	525,370	704,172
13. Funds held by company under reinsurance treaties (Schedule F, Part 3, Column 20)	2,673,307	3,338,505
14. Amounts withheld or retained by company for account of others	0	
15. Remittances and items not allocated	88,722	109,878
16. Provision for reinsurance (including \$0 certified) (Schedule F, Part 3, Column 78)	30,958	34,933
17. Net adjustments in assets and liabilities due to foreign exchange rates		
18. Drafts outstanding	0	
19. Payable to parent, subsidiaries and affiliates	253,025	2,082,340
20. Derivatives	0	0
21. Payable for securities	0	
22. Payable for securities lending	0	
23. Liability for amounts held under uninsured plans		
24. Capital notes \$ and interest thereon \$		
25. Aggregate write-ins for liabilities	(13,621)	(143,776)
26. Total liabilities excluding protected cell liabilities (Lines 1 through 25)	41,523,635	42,359,350
27. Protected cell liabilities		
28. Total liabilities (Lines 26 and 27)	41,523,635	42,359,350
29. Aggregate write-ins for special surplus funds	0	0
30. Common capital stock	5,000,000	5,000,000
31. Preferred capital stock	0	
32. Aggregate write-ins for other than special surplus funds	0	0
33. Surplus notes	0	
34. Gross paid in and contributed surplus	13,000,000	13,000,000
35. Unassigned funds (surplus)	8,631,308	7,708,192
36. Less treasury stock, at cost:		
36.1 shares common (value included in Line 30 \$)		
36.2 shares preferred (value included in Line 31 \$)		
37. Surplus as regards policyholders (Lines 29 to 35, less 36) (Page 4, Line 39)	26,631,308	25,708,192
38. TOTALS (Page 2, Line 28, Col. 3)	68,154,943	68,067,542
DETAILS OF WRITE-INS		
2501. Miscellaneous liabilities	(13,621)	(143,776)
2502.		
2503.		
2598. Summary of remaining write-ins for Line 25 from overflow page	0	0
2599. Totals (Lines 2501 thru 2503 plus 2598)(Line 25 above)	(13,621)	(143,776)
2901.		
2902.		
2903.		
2998. Summary of remaining write-ins for Line 29 from overflow page	0	0
2999. Totals (Lines 2901 thru 2903 plus 2998)(Line 29 above)	0	0
3201.		
3202.		
3203.		
3298. Summary of remaining write-ins for Line 32 from overflow page	0	0
3299. Totals (Lines 3201 thru 3203 plus 3298)(Line 32 above)	0	0

STATEMENT OF INCOME

	1 Current Year	2 Prior Year
UNDERWRITING INCOME		
1. Premiums earned (Part 1, Line 35, Column 4).....	15,936,671	14,735,383
DEDUCTIONS:		
2. Losses incurred (Part 2, Line 35, Column 7)	9,084,457	7,640,320
3. Loss adjustment expenses incurred (Part 3, Line 25, Column 1)	2,275,231	2,312,163
4. Other underwriting expenses incurred (Part 3, Line 25, Column 2)	5,040,433	4,637,234
5. Aggregate write-ins for underwriting deductions	0	0
6. Total underwriting deductions (Lines 2 through 5)	16,400,121	14,589,717
7. Net income of protected cells		
8. Net underwriting gain (loss) (Line 1 minus Line 6 plus Line 7)	(463,450)	145,666
INVESTMENT INCOME		
9. Net investment income earned (Exhibit of Net Investment Income, Line 17)	1,408,607	1,213,856
10. Net realized capital gains (losses) less capital gains tax of \$ (4,502) (Exhibit of Capital Gains (Losses))	(16,938)	(35,454)
11. Net investment gain (loss) (Lines 9 + 10)	1,391,669	1,178,402
OTHER INCOME		
12. Net gain (loss) from agents' or premium balances charged off (amount recovered \$ amount charged off \$ 64,889)	(64,889)	(54,976)
13. Finance and service charges not included in premiums	31,067	25,798
14. Aggregate write-ins for miscellaneous income	(2,501)	32,129
15. Total other income (Lines 12 through 14)	(36,323)	2,951
16. Net income before dividends to policyholders, after capital gains tax and before all other federal and foreign income taxes (Lines 8 + 11 + 15)	891,896	1,327,019
17. Dividends to policyholders	52,431	47,491
18. Net income, after dividends to policyholders, after capital gains tax and before all other federal and foreign income taxes (Line 16 minus Line 17)	839,465	1,279,528
19. Federal and foreign income taxes incurred	151,577	(118,736)
20. Net income (Line 18 minus Line 19)(to Line 22)	687,888	1,398,264
CAPITAL AND SURPLUS ACCOUNT		
21. Surplus as regards policyholders, December 31 prior year (Page 4, Line 39, Column 2)	25,708,194	25,619,261
22. Net income (from Line 20)	687,888	1,398,264
23. Net transfers (to) from Protected Cell accounts		
24. Change in net unrealized capital gains or (losses) less capital gains tax of \$ 61,341	230,759	(999,377)
25. Change in net unrealized foreign exchange capital gain (loss)		
26. Change in net deferred income tax	496	(354,232)
27. Change in nonadmitted assets (Exhibit of Nonadmitted Assets, Line 28, Col. 3)	0	0
28. Change in provision for reinsurance (Page 3, Line 16, Column 2 minus Column 1)	3,975	44,278
29. Change in surplus notes		
30. Surplus (contributed to) withdrawn from protected cells		
31. Cumulative effect of changes in accounting principles		
32. Capital changes:		
32.1 Paid in		
32.2 Transferred from surplus (Stock Dividend)		
32.3 Transferred to surplus		
33. Surplus adjustments:		
33.1 Paid in	0	0
33.2 Transferred to capital (Stock Dividend)		
33.3 Transferred from capital		
34. Net remittances from or (to) Home Office		
35. Dividends to stockholders		
36. Change in treasury stock (Page 3, Lines 36.1 and 36.2, Column 2 minus Column 1)	0	0
37. Aggregate write-ins for gains and losses in surplus	0	0
38. Change in surplus as regards policyholders for the year (Lines 22 through 37)	923,118	88,933
39. Surplus as regards policyholders, December 31 current year (Line 21 plus Line 38) (Page 3, Line 37)	26,631,312	25,708,194
DETAILS OF WRITE-INS		
0501.		
0502.		
0503.		
0598. Summary of remaining write-ins for Line 5 from overflow page	0	0
0599. Totals (Lines 0501 thru 0503 plus 0598)(Line 5 above)	0	0
1401. Miscellaneous income or expense	(2,501)	32,129
1402. Change in ICOLI cash surrender value		0
1403.		
1498. Summary of remaining write-ins for Line 14 from overflow page	0	0
1499. Totals (Lines 1401 thru 1403 plus 1498)(Line 14 above)	(2,501)	32,129
3701. Miscellaneous gains / losses		0
3702. Reclass for organizational restructure		0
3703.		
3798. Summary of remaining write-ins for Line 37 from overflow page	0	0
3799. Totals (Lines 3701 thru 3703 plus 3798)(Line 37 above)	0	0

ANNUAL STATEMENT FOR THE YEAR 2023 OF THE WILSON MUTUAL INSURANCE COMPANY

CASH FLOW

	1	2
	Current Year	Prior Year
Cash from Operations		
1. Premiums collected net of reinsurance	16,124,736	13,764,946
2. Net investment income	1,510,218	1,307,376
3. Miscellaneous income	(36,323)	2,951
4. Total (Lines 1 through 3)	17,598,631	15,075,273
5. Benefit and loss related payments	7,863,940	7,954,176
6. Net transfers to Separate Accounts, Segregated Accounts and Protected Cell Accounts	0	0
7. Commissions, expenses paid and aggregate write-ins for deductions	7,324,862	7,060,589
8. Dividends paid to policyholders	52,431	47,491
9. Federal and foreign income taxes paid (recovered) net of \$ tax on capital gains (losses)	28,933	423,810
10. Total (Lines 5 through 9)	15,270,166	15,486,066
11. Net cash from operations (Line 4 minus Line 10)	2,328,465	(410,793)
Cash from Investments		
12. Proceeds from investments sold, matured or repaid:		
12.1 Bonds	2,768,232	10,578,530
12.2 Stocks	28,996	43,004
12.3 Mortgage loans	0	0
12.4 Real estate	0	0
12.5 Other invested assets	0	0
12.6 Net gains or (losses) on cash, cash equivalents and short-term investments	0	0
12.7 Miscellaneous proceeds	0	0
12.8 Total investment proceeds (Lines 12.1 to 12.7)	2,797,228	10,621,534
13. Cost of investments acquired (long-term only):		
13.1 Bonds	4,253,023	9,573,388
13.2 Stocks	102,488	105,221
13.3 Mortgage loans	0	0
13.4 Real estate	0	0
13.5 Other invested assets	0	0
13.6 Miscellaneous applications	25,000	106,842
13.7 Total investments acquired (Lines 13.1 to 13.6)	4,380,510	9,785,451
14. Net increase/(decrease) in contract loans and premium notes	0	0
15. Net cash from investments (Line 12.8 minus Line 13.7 minus Line 14)	(1,583,283)	836,083
Cash from Financing and Miscellaneous Sources		
16. Cash provided (applied):		
16.1 Surplus notes, capital notes	0	0
16.2 Capital and paid in surplus, less treasury stock	0	0
16.3 Borrowed funds	0	0
16.4 Net deposits on deposit-type contracts and other insurance liabilities	0	0
16.5 Dividends to stockholders	0	0
16.6 Other cash provided (applied)	(1,299,334)	(6,301,778)
17. Net cash from financing and miscellaneous sources (Lines 16.1 to 16.4 minus Line 16.5 plus Line 16.6)	(1,299,334)	(6,301,778)
RECONCILIATION OF CASH, CASH EQUIVALENTS AND SHORT-TERM INVESTMENTS		
18. Net change in cash, cash equivalents and short-term investments (Line 11, plus Lines 15 and 17)	(554,152)	(5,876,488)
19. Cash, cash equivalents and short-term investments:		
19.1 Beginning of year	3,270,866	9,147,354
19.2 End of period (Line 18 plus Line 19.1)	2,716,714	3,270,866
Note: Supplemental disclosures of cash flow information for non-cash transactions:		
20.0001. Non-cash investment exchanges	64,176	18,724

UNDERWRITING AND INVESTMENT EXHIBIT

PART 1 - PREMIUMS EARNED

	1	2	3	4
Line of Business	Net Premiums Written per Column 6, Part 1B	Unearned Premiums Dec. 31 Prior Year - per Col. 3, Last Year's Part 1	Unearned Premiums Dec. 31 Current Year - per Col. 5 Part 1A	Premiums Earned During Year (Cols. 1 + 2 - 3)
1. Fire	37,561	17,835	19,001	36,396
2.1 Allied lines	46,877	20,867	24,924	42,820
2.2 Multiple peril crop	0	0	0	0
2.3 Federal flood	0	0	0	0
2.4 Private crop	0	0	0	0
2.5 Private flood	0	0	(14)	14
3. Farmowners multiple peril	(38)	448	0	411
4. Homeowners multiple peril	1,009,002	481,056	576,402	913,656
5.1 Commercial multiple peril (non-liability portion)	1,549,625	681,690	841,766	1,389,549
5.2 Commercial multiple peril (liability portion)	1,250,854	508,287	570,323	1,188,819
6. Mortgage guaranty	0	0	0	0
8. Ocean marine	0	6	0	6
9. Inland marine	277,850	125,920	133,543	270,227
10. Financial guaranty	0	0	0	0
11.1 Medical professional liability - occurrence	0	0	0	0
11.2 Medical professional liability - claims-made	0	0	0	0
12. Earthquake	15,952	7,729	9,354	14,327
13.1 Comprehensive (hospital and medical) individual	0	0	0	0
13.2 Comprehensive (hospital and medical) group	0	0	0	0
14. Credit accident and health (group and individual)	0	0	0	0
15.1 Vision only	0	0	0	0
15.2 Dental only	0	0	0	0
15.3 Disability income	0	0	0	0
15.4 Medicare supplement	0	0	0	0
15.5 Medicaid Title XIX	0	0	0	0
15.6 Medicare Title XVIII	0	0	0	0
15.7 Long-term care	0	0	0	0
15.8 Federal employees health benefits plan	0	0	0	0
15.9 Other health	0	0	0	0
16. Workers' compensation	7,704,080	3,220,295	3,363,004	7,561,371
17.1 Other liability - occurrence	791,693	318,397	372,141	737,949
17.2 Other liability - claims-made	47,522	26,935	26,525	47,932
17.3 Excess workers' compensation	0	0	0	0
18.1 Products liability - occurrence	8,308	3,909	3,843	8,374
18.2 Products liability - claims-made	0	0	0	0
19.1 Private passenger auto no-fault (personal injury protection)	21,558	6,115	10,619	17,053
19.2 Other private passenger auto liability.....	741,756	240,123	330,870	651,008
19.3 Commercial auto no-fault (personal injury protection)	12,266	5,939	5,861	12,344
19.4 Other commercial auto liability.....	1,581,290	768,863	781,593	1,568,559
21.1 Private passenger auto physical damage	742,937	234,327	347,272	629,991
21.2 Commercial auto physical damage	559,863	252,405	268,119	544,149
22. Aircraft (all perils)	0	0	0	0
23. Fidelity	0	0	0	0
24. Surety	0	0	0	0
26. Burglary and theft	17,546	9,754	8,844	18,456
27. Boiler and machinery	(847)	467	(967)	587
28. Credit	0	0	0	0
29. International	0	0	0	0
30. Warranty	0	0	0	0
31. Reinsurance - nonproportional assumed property	117,291	1,979	1,114	118,155
32. Reinsurance - nonproportional assumed liability	164,779	1,865	2,127	164,517
33. Reinsurance - nonproportional assumed financial lines	0	0	0	0
34. Aggregate write-ins for other lines of business	0	0	0	0
35. TOTALS	16,697,723	6,935,212	7,696,265	15,936,671
DETAILS OF WRITE-INS				
3401. Miscellaneous		0		0
3402.				
3403.				
3498. Summary of remaining write-ins for Line 34 from overflow page	0	0	0	0
3499. Totals (Lines 3401 thru 3403 plus 3498)(Line 34 above)	0	0	0	0

UNDERWRITING AND INVESTMENT EXHIBIT

PART 1A - RECAPITULATION OF ALL PREMIUMS

	1	2	3	4	5
Line of Business	Amount Unearned (Running One Year or Less from Date of Policy) (a)	Amount Unearned (Running More Than One Year from Date of Policy) (a)	Earned But Unbilled Premium	Reserve for Rate Credits and Retrospective Adjustments Based on Experience	Total Reserve for Unearned Premiums Cols. 1 + 2 + 3 + 4
1. Fire	19,001				19,001
2.1 Allied lines	24,924				24,924
2.2 Multiple peril crop					0
2.3 Federal flood					0
2.4 Private crop					0
2.5 Private flood	(14)				(14)
3. Farmowners multiple peril					0
4. Homeowners multiple peril	576,402				576,402
5.1 Commercial multiple peril (non-liability portion)	841,766				841,766
5.2 Commercial multiple peril (liability portion)	570,323				570,323
6. Mortgage guaranty					0
8. Ocean marine					0
9. Inland marine	133,543				133,543
10. Financial guaranty					0
11.1 Medical professional liability - occurrence					0
11.2 Medical professional liability - claims-made					0
12. Earthquake	9,354				9,354
13.1 Comprehensive (hospital and medical) individual					0
13.2 Comprehensive (hospital and medical) group					0
14. Credit accident and health (group and individual)					0
15.1 Vision only					0
15.2 Dental only					0
15.3 Disability income					0
15.4 Medicare supplement					0
15.5 Medicaid Title XIX					0
15.6 Medicare Title XVIII					0
15.7 Long-term care					0
15.8 Federal employees health benefits plan					0
15.9 Other health					0
16. Workers' compensation	3,363,004				3,363,004
17.1 Other liability - occurrence	372,141				372,141
17.2 Other liability - claims-made	26,525				26,525
17.3 Excess workers' compensation					0
18.1 Products liability - occurrence	3,843				3,843
18.2 Products liability - claims-made					0
19.1 Private passenger auto no-fault (personal injury protection)	10,619				10,619
19.2 Other private passenger auto liability.....	330,870				330,870
19.3 Commercial auto no-fault (personal injury protection)	5,861				5,861
19.4 Other commercial auto liability.....	781,593				781,593
21.1 Private passenger auto physical damage	347,272				347,272
21.2 Commercial auto physical damage	268,119				268,119
22. Aircraft (all perils)					0
23. Fidelity					0
24. Surety					0
26. Burglary and theft	8,844				8,844
27. Boiler and machinery	(967)				(967)
28. Credit					0
29. International					0
30. Warranty					0
31. Reinsurance - nonproportional assumed property	1,114				1,114
32. Reinsurance - nonproportional assumed liability	2,127				2,127
33. Reinsurance - nonproportional assumed financial lines					0
34. Aggregate write-ins for other lines of business	0	0	0	0	0
35. TOTALS	7,696,265	0	0	0	7,696,265
36. Accrued retrospective premiums based on experience					0
37. Earned but unbilled premiums					0
38. Balance (Sum of Line 35 through 37)					7,696,265
DETAILS OF WRITE-INS					
3401.					
3402.					
3403.					
3498. Summary of remaining write-ins for Line 34 from overflow page	0	0	0	0	0
3499. Totals (Lines 3401 thru 3403 plus 3498)(Line 34 above)	0	0	0	0	0

(a) State here basis of computation used in each case Daily Method

UNDERWRITING AND INVESTMENT EXHIBIT

PART 1B - PREMIUMS WRITTEN

Line of Business	1 Direct Business (a)	Reinsurance Assumed		Reinsurance Ceded		6 Net Premiums Written Cols. 1+2+3-4-5
		2 From Affiliates	3 From Non-Affiliates	4 To Affiliates	5 To Non-Affiliates	
1. Fire	63,968	37,561		54,635	9,333	37,561
2.1 Allied lines	49,430	46,877		43,069	6,361	46,877
2.2 Multiple peril crop	0					0
2.3 Federal flood	0					0
2.4 Private crop	0					0
2.5 Private flood	0	0				0
3. Farmowners multiple peril	(2,578)	(38)		(2,891)	313	(38)
4. Homeowners multiple peril	6,119,445	1,009,002		5,799,841	319,604	1,009,002
5.1 Commercial multiple peril (non-liability portion)	0	1,549,625				1,549,625
5.2 Commercial multiple peril (liability portion)	0	1,250,854				1,250,854
6. Mortgage guaranty	0					0
8. Ocean marine	0	0				0
9. Inland marine	362,070	277,850		354,593	7,477	277,850
10. Financial guaranty	0					0
11.1 Medical professional liability - occurrence	0					0
11.2 Medical professional liability - claims- made	0					0
12. Earthquake	300	15,952		300	0	15,952
13.1 Comprehensive (hospital and medical) individual	0					0
13.2 Comprehensive (hospital and medical) group	0					0
14. Credit accident and health (group and individual)	0					0
15.1 Vision only	0					0
15.2 Dental only	0					0
15.3 Disability income	0					0
15.4 Medicare supplement	0					0
15.5 Medicaid Title XIX	0					0
15.6 Medicare Title XVIII	0					0
15.7 Long-term care	0					0
15.8 Federal employees health benefits plan ...	0					0
15.9 Other health	0					0
16. Workers' compensation	0	7,704,080				7,704,080
17.1 Other liability - occurrence	284,806	791,693		279,275	5,531	791,693
17.2 Other liability - claims-made	0	47,522				47,522
17.3 Excess workers' compensation	0					0
18.1 Products liability - occurrence	0	8,308				8,308
18.2 Products liability - claims-made	0					0
19.1 Private passenger auto no-fault (personal injury protection)	54,710	21,558		54,626	84	21,558
19.2 Other private passenger auto liability.....	2,507,803	741,756		2,504,301	3,502	741,756
19.3 Commercial auto no-fault (personal injury protection)	0	12,266				12,266
19.4 Other commercial auto liability.....	0	1,581,290	(7)	(7)		1,581,290
21.1 Private passenger auto physical damage ..	2,703,126	742,937		2,668,291	34,835	742,937
21.2 Commercial auto physical damage	0	559,863				559,863
22. Aircraft (all perils)	0					0
23. Fidelity	0					0
24. Surety	0					0
26. Burglary and theft	0	17,546				17,546
27. Boiler and machinery	(2)	(847)		(2)	0	(847)
28. Credit	0					0
29. International	0					0
30. Warranty	0					0
31. Reinsurance - nonproportional assumed property	XXX	117,291				117,291
32. Reinsurance - nonproportional assumed liability	XXX	164,779				164,779
33. Reinsurance - nonproportional assumed financial lines	XXX					0
34. Aggregate write-ins for other lines of business	0	0	0	0	0	0
35. TOTALS	12,143,077	16,697,723	(7)	11,756,032	387,039	16,697,723
DETAILS OF WRITE-INS						
3401.						
3402.						
3403.						
3498. Summary of remaining write-ins for Line 34 from overflow page	0	0	0	0	0	0
3499. Totals (Lines 3401 thru 3403 plus 3498)(Line 34 above)	0	0	0	0	0	0

(a) Does the company's direct premiums written include premiums recorded on an installment basis? Yes [] No [X]

If yes: 1. The amount of such installment premiums \$
 2. Amount at which such installment premiums would have been reported had they been reported on an annualized basis \$

ANNUAL STATEMENT FOR THE YEAR 2023 OF THE WILSON MUTUAL INSURANCE COMPANY

UNDERWRITING AND INVESTMENT EXHIBIT

PART 2 - LOSSES PAID AND INCURRED

Line of Business	Losses Paid Less Salvage				5	6	7	8
	1	2	3	4				
	Direct Business	Reinsurance Assumed	Reinsurance Recovered	Net Payments (Cols. 1 + 2 -3)	Net Losses Unpaid Current Year (Part 2A , Col. 8)	Net Losses Unpaid Prior Year	Losses Incurred Current Year (Cols. 4 + 5 - 6)	Percentage of Losses Incurred (Col. 7, Part 2) to Premiums Earned (Col. 4, Part 1)
1. Fire	157,245	12,930	157,245	12,930	4,044	8,708	8,266	22.7
2.1 Allied lines	698,528	23,686	698,528	23,686	4,044	10,410	17,320	40.4
2.2 Multiple peril crop	0			0	0	0	0	0.0
2.3 Federal flood	0			0	0	0	0	0.0
2.4 Private crop	0			0	0	0	0	0.0
2.5 Private flood	0			0	0	0	0	(0.2)
3. Farmowners multiple peril	180,976	2,367	180,976	2,367	705	3,659	(588)	(143.0)
4. Homeowners multiple peril	3,287,368	683,783	3,287,368	683,783	202,431	185,641	700,573	76.7
5.1 Commercial multiple peril (non-liability portion)	(9,268)	853,898	(9,268)	853,898	533,741	508,622	879,017	63.3
5.2 Commercial multiple peril (liability portion)	197,978	402,405	197,978	402,405	1,778,013	1,198,699	981,719	82.6
6. Mortgage guaranty	0			0	0	0	0	0.0
8. Ocean marine	0	10		10	11	39	(18)	(290.1)
9. Inland marine	157,065	87,802	157,065	87,802	28,885	15,634	101,053	37.4
10. Financial guaranty	0			0	0	0	0	0.0
11.1 Medical professional liability - occurrence	0			0	0	0	0	0.0
11.2 Medical professional liability - claims-made	0			0	0	0	0	0.0
12. Earthquake	0			0	0	0	0	0.0
13.1 Comprehensive (hospital and medical) individual	0			0	0	0	0	0.0
13.2 Comprehensive (hospital and medical) group	0			0	0	0	0	0.0
14. Credit accident and health (group and individual)	0			0	0	0	0	0.0
15.1 Vision only	0			0	0	0	0	0.0
15.2 Dental only	0			0	0	0	0	0.0
15.3 Disability income	0			0	0	0	0	0.0
15.4 Medicare supplement	0			0	0	0	0	0.0
15.5 Medicaid Title XIX	0			0	0	0	0	0.0
15.6 Medicare Title XVIII	0			0	0	0	0	0.0
15.7 Long-term care	0			0	0	0	0	0.0
15.8 Federal employees health benefits plan	0			0	0	0	0	0.0
15.9 Other health	0			0	0	0	0	0.0
16. Workers' compensation	1,000,626	3,044,112	1,000,626	3,044,112	15,973,150	15,481,408	3,535,854	46.8
17.1 Other liability - occurrence	943,531	509,951	943,531	509,951	1,219,390	1,336,777	392,564	53.2
17.2 Other liability - claims-made	0	9,473		9,473	52,417	30,703	31,187	65.1
17.3 Excess workers' compensation	0			0	0	0	0	0.0
18.1 Products liability - occurrence	0	4,648		4,648	38,444	117,496	(74,404)	(888.5)
18.2 Products liability - claims-made	0			0	0	0	0	0.0
19.1 Private passenger auto no-fault (personal injury protection)	58,532	8,381	58,532	8,381	13,158	17,142	4,396	25.8
19.2 Other private passenger auto liability.....	3,078,062	415,305	3,078,062	415,305	496,531	435,288	476,548	73.2
19.3 Commercial auto no-fault (personal injury protection)	0	3,709	8	3,701	7,076	11,386	(609)	(4.9)
19.4 Other commercial auto liability.....	1,625,610	989,501	1,627,393	987,718	2,107,187	2,059,345	1,035,561	66.0
21.1 Private passenger auto physical damage	1,684,852	398,898	1,684,852	398,898	28,988	24,098	403,788	64.1
21.2 Commercial auto physical damage	(2,258)	360,882	(2,258)	360,882	37,559	42,304	356,137	65.4
22. Aircraft (all perils)	0			0	0	0	0	0.0
23. Fidelity	0	(80)		(80)	0	0	(80)	0.0
24. Surety	0			0	0	0	0	0.0
26. Burglary and theft	(1,847)	8,328	(1,847)	8,328	2,817	3,280	7,865	42.6
27. Boiler and machinery	0	(500)		(500)	9,441	4,503	4,438	755.7
28. Credit	0			0	0	0	0	0.0
29. International	0			0	0	0	0	0.0
30. Warranty	0			0	0	0	0	0.0
31. Reinsurance - nonproportional assumed property	XXX	83,418		83,418	100,360	109,636	74,142	62.7
32. Reinsurance - nonproportional assumed liability	XXX	74,646		74,646	542,543	467,579	149,610	90.9
33. Reinsurance - nonproportional assumed financial lines	XXX			0	0	0	0	0.0
34. Aggregate write-ins for other lines of business	0	0	0	0	117	0	117	0.0
35. TOTALS	13,057,000	7,977,553	13,058,791	7,975,762	23,181,052	22,072,357	9,084,457	57.0
DETAILS OF WRITE-INS								
3401.				0	117		117	
3402.								
3403.								
3498. Summary of remaining write-ins for Line 34 from overflow page	0	0	0	0	0	0	0	
3499. Totals (Lines 3401 thru 3403 plus 3498)(Line 34 above)	0	0	0	0	117	0	117	0.0

ANNUAL STATEMENT FOR THE YEAR 2023 OF THE WILSON MUTUAL INSURANCE COMPANY

UNDERWRITING AND INVESTMENT EXHIBIT

PART 2A - UNPAID LOSSES AND LOSS ADJUSTMENT EXPENSES

Line of Business	Reported Losses				Incurred But Not Reported			8	9
	1	2	3	4	5	6	7		
	Direct	Reinsurance Assumed	Deduct Reinsurance Recoverable	Net Losses Excl. Incurred But Not Reported (Cols. 1 + 2 - 3)	Direct	Reinsurance Assumed	Reinsurance Ceded	Net Losses Unpaid (Cols. 4 + 5 + 6 - 7)	Net Unpaid Loss Adjustment Expenses
1. Fire	19,673	1,470	19,673	1,470	37,616	2,574	37,616	4,044	1,439
2.1 Allied lines	28,818	1,739	28,818	1,739	33,806	2,305	33,806	4,044	1,423
2.2 Multiple peril crop									
2.3 Federal flood									
2.4 Private crop									
2.5 Private flood									
3. Farmowners multiple peril	23,761	319	23,761	319	29,702	386	29,702	705	189
4. Homeowners multiple peril	808,980	160,658	808,980	160,658	265,185	41,773	265,185	202,431	36,423
5.1 Commercial multiple peril (non-liability portion)	0	389,127	0	389,127	0	144,614	0	533,741	152,268
5.2 Commercial multiple peril (liability portion)	10,000	1,228,895	10,000	1,228,895	0	549,118	0	1,778,013	400,193
6. Mortgage guaranty									
8. Ocean marine		1		1		10		11	7
9. Inland marine	5,337	9,536	5,337	9,536	34,920	19,349	34,920	28,885	10,175
10. Financial guaranty									
11.1 Medical professional liability - occurrence									
11.2 Medical professional liability - claims-made									
12. Earthquake									
13.1 Comprehensive (hospital and medical) individual								(a) 0	
13.2 Comprehensive (hospital and medical) group								(a) 0	
14. Credit accident and health (group and individual)									
15.1 Vision only								(a) 0	
15.2 Dental only								(a) 0	
15.3 Disability income								(a) 0	
15.4 Medicare supplement								(a) 0	
15.5 Medicaid Title XIX								(a) 0	
15.6 Medicare Title XVIII								(a) 0	
15.7 Long-term care								(a) 0	
15.8 Federal employees health benefits plan								(a) 0	
15.9 Other health								(a) 0	
16. Workers' compensation	2,948,942	8,613,565	2,948,942	8,613,565	926,972	7,359,585	926,972	15,973,150	2,054,940
17.1 Other liability - occurrence	644,000	635,415	644,000	635,415	743,616	583,975	743,616	1,219,390	312,666
17.2 Other liability - claims-made		21,820		21,820		30,597		52,417	11,364
17.3 Excess workers' compensation									
18.1 Products liability - occurrence	0	25,376	0	25,376	6,840	13,068	6,840	38,444	11,131
18.2 Products liability - claims-made									
19.1 Private passenger auto no-fault (personal injury protection)	23,112	12,265	23,112	12,265		893		13,158	697
19.2 Other private passenger auto liability.....	2,832,474	434,659	2,832,474	434,659	400,393	61,872	400,393	496,531	76,870
19.3 Commercial auto no-fault (personal injury protection)		5,871	5	5,866		1,219	9	7,076	986
19.4 Other commercial auto liability.....	225,000	1,481,114	227,322	1,478,792	30,514	628,875	30,994	2,107,187	459,191
21.1 Private passenger auto physical damage	70,090	21,990	70,090	21,990	26,660	6,998	26,660	28,988	20,314
21.2 Commercial auto physical damage	0	32,132	0	32,132	0	5,427	0	37,559	26,594
22. Aircraft (all perils)									
23. Fidelity									
24. Surety									
26. Burglary and theft	0	1,454	0	1,454		1,363		2,817	633
27. Boiler and machinery	0	9,042	0	9,042		399		9,441	0
28. Credit									
29. International									
30. Warranty									
31. Reinsurance - nonproportional assumed property	XXX	65,595		65,595	XXX	34,765		100,360	2,677
32. Reinsurance - nonproportional assumed liability	XXX	240,921		240,921	XXX	301,622		542,543	16,791
33. Reinsurance - nonproportional assumed financial lines	XXX				XXX				
34. Aggregate write-ins for other lines of business	0	117	0	117	0	0	0	117	0
35. TOTALS	7,640,187	13,393,081	7,642,514	13,390,754	2,536,224	9,790,787	2,536,713	23,181,052	3,596,971
DETAILS OF WRITE-INS									
3401. Aggregate write-ins for other lines of business		117		117				117	
3402.									
3403.									
3498. Summary of remaining write-ins for Line 34 from overflow page	0	0	0	0	0	0	0	0	0
3499. Totals (Lines 3401 thru 3403 plus 3498)(Line 34 above)	0	117	0	117	0	0	0	117	0

(a) Including \$ for present value of life indemnity claims reported in Lines 13 and 15.

UNDERWRITING AND INVESTMENT EXHIBIT

PART 3 - EXPENSES

	1	2	3	4
	Loss Adjustment Expenses	Other Underwriting Expenses	Investment Expenses	Total
1. Claim adjustment services:				
1.1 Direct	(1,286,219)			(1,286,219)
1.2 Reinsurance assumed	509,389			509,389
1.3 Reinsurance ceded	(1,286,364)			(1,286,364)
1.4 Net claim adjustment service (1.1 + 1.2 - 1.3)	509,534	0	0	509,534
2. Commission and brokerage:				
2.1 Direct excluding contingent		2,172,929		2,172,929
2.2 Reinsurance assumed, excluding contingent		2,164,237		2,164,237
2.3 Reinsurance ceded, excluding contingent		2,176,423		2,176,423
2.4 Contingent - direct		80,587		80,587
2.5 Contingent - reinsurance assumed		144,500		144,500
2.6 Contingent - reinsurance ceded		80,587		80,587
2.7 Policy and membership fees				0
2.8 Net commission and brokerage (2.1 + 2.2 - 2.3 + 2.4 + 2.5 - 2.6 + 2.7) ..	0	2,305,243	0	2,305,243
3. Allowances to managers and agents		65		65
4. Advertising		54,228		54,228
5. Boards, bureaus and associations	79,917	104,931		184,848
6. Surveys and underwriting reports	11,035	83,710		94,745
7. Audit of assureds' records	765	16,474		17,239
8. Salary and related items:				
8.1 Salaries	800,430	1,027,975	20,331	1,848,736
8.2 Payroll taxes	52,520	64,002	961	117,483
9. Employee relations and welfare	202,350	214,621	2,423	419,394
10. Insurance	11,663	11,571		23,234
11. Directors' fees	9,632	21,939	3,334	34,905
12. Travel and travel items	22,013	150,473	2,368	174,854
13. Rent and rent items	36,424	27,104	38,818	102,346
14. Equipment	10,300	10,067	4,483	24,850
15. Cost or depreciation of EDP equipment and software	332,081	407,257	3,815	743,153
16. Printing and stationery	4,964	6,675	235	11,874
17. Postage, telephone and telegraph, exchange and express	33,825	42,452	1,278	77,555
18. Legal and auditing	14,913	17,250	1,439	33,602
19. Totals (Lines 3 to 18)	1,622,832	2,260,794	79,485	3,963,111
20. Taxes, licenses and fees:				
20.1 State and local insurance taxes deducting guaranty association credits of \$		297,854		297,854
20.2 Insurance department licenses and fees		8,318		8,318
20.3 Gross guaranty association assessments		7,937		7,937
20.4 All other (excluding federal and foreign income and real estate)			61,381	61,381
20.5 Total taxes, licenses and fees (20.1 + 20.2 + 20.3 + 20.4)	0	314,109	61,381	375,490
21. Real estate expenses				0
22. Real estate taxes				0
23. Reimbursements by uninsured plans				0
24. Aggregate write-ins for miscellaneous expenses	142,865	160,287	2,465	305,617
25. Total expenses incurred	2,275,231	5,040,433	143,331	(a) 7,458,995
26. Less unpaid expenses - current year	3,596,971	2,068,511	15,882	5,681,364
27. Add unpaid expenses - prior year	3,722,517	2,271,053	12,711	6,006,280
28. Amounts receivable relating to uninsured plans, prior year				0
29. Amounts receivable relating to uninsured plans, current year				0
30. TOTAL EXPENSES PAID (Lines 25 - 26 + 27 - 28 + 29)	2,400,777	5,242,975	140,160	7,783,911
DETAILS OF WRITE-INS				
2401. Aggregate write-ins for miscellaneous expenses	142,865	160,287	2,465	305,617
2402.				
2403.				
2498. Summary of remaining write-ins for Line 24 from overflow page	0	0	0	0
2499. Totals (Lines 2401 thru 2403 plus 2498)(Line 24 above)	142,865	160,287	2,465	305,617

(a) Includes management fees of \$ to affiliates and \$ to non-affiliates.

ANNUAL STATEMENT FOR THE YEAR 2023 OF THE WILSON MUTUAL INSURANCE COMPANY

EXHIBIT OF NET INVESTMENT INCOME

		1	2
		Collected During Year	Earned During Year
1.	U.S. Government bonds	(a) 1,089 1,078
1.1	Bonds exempt from U.S. tax	(a) 183,268 170,074
1.2	Other bonds (unaffiliated)	(a) 1,066,879 1,112,174
1.3	Bonds of affiliates	(a) 0 0
2.1	Preferred stocks (unaffiliated)	(b) 0 0
2.11	Preferred stocks of affiliates	(b) 0 0
2.2	Common stocks (unaffiliated) 177,079 177,369
2.21	Common stocks of affiliates 0 0
3.	Mortgage loans	(c) 0 0
4.	Real estate	(d) 0 0
5	Contract loans 0 0
6	Cash, cash equivalents and short-term investments	(e) 91,213 90,526
7	Derivative instruments	(f) 0 0
8.	Other invested assets 0 0
9.	Aggregate write-ins for investment income 717 717
10.	Total gross investment income	1,520,246	1,551,938
11.	Investment expenses		(g) 81,950
12.	Investment taxes, licenses and fees, excluding federal income taxes		(g) 61,381
13.	Interest expense		(h) 0
14.	Depreciation on real estate and other invested assets		(i) 0
15.	Aggregate write-ins for deductions from investment income 0
16.	Total deductions (Lines 11 through 15) 143,331
17.	Net investment income (Line 10 minus Line 16)		1,408,607
DETAILS OF WRITE-INS			
0901.	Miscellaneous income 717 717
0902.		
0903.		
0998.	Summary of remaining write-ins for Line 9 from overflow page 0 0
0999.	Totals (Lines 0901 thru 0903 plus 0998) (Line 9, above)	717	717
1501.		
1502.		
1503.		
1598.	Summary of remaining write-ins for Line 15 from overflow page 0
1599.	Totals (Lines 1501 thru 1503 plus 1598) (Line 15, above)		0

- (a) Includes \$ 5,268 accrual of discount less \$ 135,401 amortization of premium and less \$ 13,839 paid for accrued interest on purchases.
- (b) Includes \$ 0 accrual of discount less \$ 0 amortization of premium and less \$ 0 paid for accrued dividends on purchases.
- (c) Includes \$ 0 accrual of discount less \$ 0 amortization of premium and less \$ 0 paid for accrued interest on purchases.
- (d) Includes \$ 0 for company's occupancy of its own buildings; and excludes \$ 0 interest on encumbrances.
- (e) Includes \$ 0 accrual of discount less \$ 0 amortization of premium and less \$ 0 paid for accrued interest on purchases.
- (f) Includes \$ 0 accrual of discount less \$ 0 amortization of premium.
- (g) Includes \$ 0 investment expenses and \$ 0 investment taxes, licenses and fees, excluding federal income taxes, attributable to segregated and Separate Accounts.
- (h) Includes \$ 0 interest on surplus notes and \$ 0 interest on capital notes.
- (i) Includes \$ 0 depreciation on real estate and \$ 0 depreciation on other invested assets.

EXHIBIT OF CAPITAL GAINS (LOSSES)

		1	2	3	4	5
		Realized Gain (Loss) On Sales or Maturity	Other Realized Adjustments	Total Realized Capital Gain (Loss) (Columns 1 + 2)	Change in Unrealized Capital Gain (Loss)	Change in Unrealized Foreign Exchange Capital Gain (Loss)
1.	U.S. Government bonds 0 0 0 0 0
1.1	Bonds exempt from U.S. tax 3,851 0 3,851 0 0
1.2	Other bonds (unaffiliated) (21,008) 0 (21,008) 0 0
1.3	Bonds of affiliates 0 0 0 0 0
2.1	Preferred stocks (unaffiliated) 0 0 0 0 0
2.11	Preferred stocks of affiliates 0 0 0 0 0
2.2	Common stocks (unaffiliated) (4,283) 0 (4,283) 292,100 0
2.21	Common stocks of affiliates 0 0 0 0 0
3.	Mortgage loans 0 0 0 0 0
4.	Real estate 0 0 0 0 0
5.	Contract loans 0 0 0 0 0
6.	Cash, cash equivalents and short-term investments 0 0 0 0 0
7.	Derivative instruments 0 0 0 0 0
8.	Other invested assets 0 0 0 0 0
9.	Aggregate write-ins for capital gains (losses) 0 0 0 0 0
10.	Total capital gains (losses)	(21,440)	0	(21,440)	292,100	0
DETAILS OF WRITE-INS						
0901.					
0902.					
0903.					
0998.	Summary of remaining write-ins for Line 9 from overflow page 0 0 0 0 0
0999.	Totals (Lines 0901 thru 0903 plus 0998) (Line 9, above)	0	0	0	0	0

ANNUAL STATEMENT FOR THE YEAR 2023 OF THE WILSON MUTUAL INSURANCE COMPANY

EXHIBIT OF NON-ADMITTED ASSETS

	1	2	3
	Current Year Total Nonadmitted Assets	Prior Year Total Nonadmitted Assets	Change in Total Nonadmitted Assets (Col. 2 - Col. 1)
1. Bonds (Schedule D)			0
2. Stocks (Schedule D):			
2.1 Preferred stocks			0
2.2 Common stocks	0		0
3. Mortgage loans on real estate (Schedule B):			
3.1 First liens		0	0
3.2 Other than first liens.....		0	0
4. Real estate (Schedule A):			
4.1 Properties occupied by the company	0	0	0
4.2 Properties held for the production of income.....		0	0
4.3 Properties held for sale	0	0	0
5. Cash (Schedule E - Part 1), cash equivalents (Schedule E - Part 2) and short-term investments (Schedule DA)			0
6. Contract loans		0	0
7. Derivatives (Schedule DB)			0
8. Other invested assets (Schedule BA)	0		0
9. Receivables for securities		0	0
10. Securities lending reinvested collateral assets (Schedule DL)			0
11. Aggregate write-ins for invested assets	0	0	0
12. Subtotals, cash and invested assets (Lines 1 to 11)	0	0	0
13. Title plants (for Title insurers only)		0	0
14. Investment income due and accrued		0	0
15. Premiums and considerations:			
15.1 Uncollected premiums and agents' balances in the course of collection	0	0	0
15.2 Deferred premiums, agents' balances and installments booked but deferred and not yet due ..	0	0	0
15.3 Accrued retrospective premiums and contracts subject to redetermination		0	0
16. Reinsurance:			
16.1 Amounts recoverable from reinsurers	0	0	0
16.2 Funds held by or deposited with reinsured companies		0	0
16.3 Other amounts receivable under reinsurance contracts		0	0
17. Amounts receivable relating to uninsured plans		0	0
18.1 Current federal and foreign income tax recoverable and interest thereon		0	0
18.2 Net deferred tax asset	0	0	0
19. Guaranty funds receivable or on deposit		0	0
20. Electronic data processing equipment and software	0	0	0
21. Furniture and equipment, including health care delivery assets	0	0	0
22. Net adjustment in assets and liabilities due to foreign exchange rates		0	0
23. Receivables from parent, subsidiaries and affiliates		0	0
24. Health care and other amounts receivable		0	0
25. Aggregate write-ins for other than invested assets	0	0	0
26. Total assets excluding Separate Accounts, Segregated Accounts and Protected Cell Accounts (Lines 12 to 25)	0	0	0
27. From Separate Accounts, Segregated Accounts and Protected Cell Accounts			0
28. Total (Lines 26 and 27)	0	0	0
DETAILS OF WRITE-INS			
1101.			
1102.			
1103.			
1198. Summary of remaining write-ins for Line 11 from overflow page	0	0	0
1199. Totals (Lines 1101 thru 1103 plus 1198)(Line 11 above)	0	0	0
2501. Automobiles		0	0
2502. Prepaid expenses		0	0
2503.			
2598. Summary of remaining write-ins for Line 25 from overflow page	0	0	0
2599. Totals (Lines 2501 thru 2503 plus 2598)(Line 25 above)	0	0	0

NOTES TO FINANCIAL STATEMENTS

NOTE 1 Summary of Significant Accounting Policies and Going Concern

A. Accounting Practices
This statement has been completed in accordance with the accounting practices and procedures prescribed or permitted by the National Association of Insurance Commissioners (NAIC) and the State of Ohio. A reconciliation of the company's net income and capital and surplus between NAIC SAP and practices prescribed and permitted by the State of Ohio is shown below.

	SSAP #	F/S Page	F/S Line #	2023	2022
NET INCOME					
(1) State basis (Page 4, Line 20, Columns 1 & 2)	XXX	XXX	XXX	\$ 687,888	\$ 1,398,264
(2) State Prescribed Practices that are an increase/ (decrease) from NAIC SAP:					
(3) State Permitted Practices that are an increase/(decrease) from NAIC SAP:					
(4) NAIC SAP (1-2-3=4)	XXX	XXX	XXX	\$ 687,888	\$ 1,398,264
SURPLUS					
(5) State basis (Page 3, Line 37, Columns 1 & 2)	XXX	XXX	XXX	\$ 26,631,308	\$ 25,708,192
(6) State Prescribed Practices that are an increase/(decrease) from NAIC SAP:					
(7) State Permitted Practices that are an increase/(decrease) from NAIC SAP:					
(8) NAIC SAP (5-6-7=8)	XXX	XXX	XXX	\$ 26,631,308	\$ 25,708,192

B. Use of Estimates in the Preparation of the Financial Statements
The preparation of financial statements in conformity with Statutory Accounting Principles as described in the NAIC Annual Statement Instructions and the Accounting Policies and Procedures Manual requires management to make estimates and assumptions that affect the reported amounts of assets and liabilities and disclosures of contingent assets and liabilities at the date of the financial statements and the reported amounts of revenue and expenses during the period. Actual results could differ from those estimates.

C. Accounting Policy
Premiums are earned over the terms of the related insurance policies and reinsurance contracts. Unearned premium reserves are established to cover the unexpired portion of premiums written. Such reserves are computed by daily and pro rata methods for direct business and are based on reports received from ceding companies and/or pools for assumed business.

- (1) Basis for Short-Term Investments
Short-term investments consist of class 1 money market mutual funds, agencies, and treasury bonds. Short term investments are stated at amortized cost.
- (2) Basis for Bonds and Amortization Schedule
Bonds not back by other loans are stated at amortized cost using the scientific amortization method.
- (3) Basis for Common Stocks
Common Stocks are valued at market. However, investments in stocks of uncombined subsidiaries and affiliates in which the company has an interest of 20% or more are valued using the equity basis.
- (4) Basis for Preferred Stocks
Preferred stocks are stated in accordance with the guidance provided in SSAP No. 32: Investments in Preferred Stock.
- (5) Basis for Mortgage Loans
The Company did not have any mortgage loans.
- (6) Basis for Loan-Backed Securities and Adjustment Methodology
Loan-backed securities are stated in accordance with the guidance provided in SSAP No. 43R: Loan-backed and Structured Securities. The restrospective adjustment method is used to value these securities
- (7) Accounting Policies for Investments in Subsidiaries, Controlled and Affiliated Entities
The Company does not have any investments in subsidiaries, controlled or affiliated entities.
- (8) Accounting Policies for Investments in Joint Ventures, Partnerships and Limited Liability Entities
The Company does not have any investments in joint ventures, partnerships or limited liability entities.
- (9) Accounting Policies for Derivatives
The Company does not hold any derivative instruments.
- (10) Anticipated Investment Income Used in Premium Deficiency Calculation
The Company anticipates investment income as a factor in the premium deficiency calculation, in accordance with SSAP No. 53: Property/Casualty Contracts-Premiums
- (11) Management's Policies and Methodologies for Estimating Liabilities for Losses and Loss/Claim Adjustment Expenses
Unpaid loss and loss adjustment expenses include an amount determined from individual case estimates and loss reports and an amount, based upon past experience, for losses incurred but not reported. Such liabilities are necessarily based on assumptions and estimates. While management believes the amount is adequate, the ultimate liability may be in excess of or less than the amount provided. The methods for making such estimates and for establishing the resulting liability is continually reviewed and any adjustments reflected in the period determined.
- (12) Changes in the Capitalization Policy and Predefined Thresholds from Prior Period
The Encova Insurance Group standardized its thresholds for capitalization across all member companies. The Group also implemented updates for software licenses and maintenance agreements that allow amortization over service periods for material transactions.
- (13) Method Used to Estimate Pharmaceutical Rebate Receivables
The Company has no pharmaceutical rebate receivables to report.

D. Going Concern
Management has concluded that there is no substantial doubt about the Company's ability to continue as a going concern.

NOTE 2 Accounting Changes and Corrections of Errors
Not Applicable

NOTE 3 Business Combinations and Goodwill
Not Applicable

NOTE 4 Discontinued Operations
Not Applicable

NOTES TO FINANCIAL STATEMENTS

NOTE 5 Investments

A. - C. Not Applicable

D. Loan-Backed Securities

(1) Prepayment assumptions for mortgage-backed/loan-backed and structured securities were obtained from Broker dealer survey values and internal estimates.

(2) - (3) Not Applicable

(4) At December 31, 2023, the estimated fair value and gross unrealized losses for loan-backed securities, aggregated 'by length of time the securities have been in a continuous loss position were as follows:

a) The aggregate amount of unrealized losses:		
1. Less than 12 Months	\$	8,356
2. 12 Months or Longer	\$	1,131,522
b) The aggregate related fair value of securities with unrealized losses:		
1. Less than 12 Months	\$	1,193,952
2. 12 Months or Longer	\$	10,579,215

(5) The Company performed an analysis of loan-backed securities and determined that exposure to credit risk was not a factor and did not warrant any other-than-temporary impairments.

E. - K. Not Applicable

L. Restricted Assets

(1) Restricted Assets (Including Pledged)

Restricted Asset Category	Gross (Admitted & Nonadmitted) Restricted						
	Current Year					6	7
	1	2	3	4	5		
	Total General Account (G/A)	G/A Supporting Protected Cell Account Activity (a)	Total Protected Cell Account Restricted Assets	Protected Cell Account Assets Supporting G/A Activity (b)	Total (1 plus 3)	Total From Prior Year	Increase/ (Decrease) (5 minus 6)
a. Subject to contractual obligation for which liability is not shown					\$ -	\$ -	\$ -
b. Collateral held under security lending agreements					\$ -	\$ -	\$ -
c. Subject to repurchase agreements					\$ -	\$ -	\$ -
d. Subject to reverse repurchase agreements					\$ -	\$ -	\$ -
e. Subject to dollar repurchase agreements					\$ -	\$ -	\$ -
f. Subject to dollar reverse repurchase agreements					\$ -	\$ -	\$ -
g. Placed under option contracts					\$ -	\$ -	\$ -
h. Letter stock or securities restricted as to sale - excluding FHLB capital stock					\$ -	\$ -	\$ -
i. FHLB capital stock					\$ -	\$ -	\$ -
j. On deposit with states	\$ 2,808,717				\$ 2,808,717	\$ 1,325,888	\$ 1,482,829
k. On deposit with other regulatory bodies					\$ -	\$ -	\$ -
l. Pledged collateral to FHLB (including assets backing funding agreements)					\$ -	\$ -	\$ -
m. Pledged as collateral not captured in other categories					\$ -	\$ -	\$ -
n. Other restricted assets					\$ -	\$ -	\$ -
o. Total Restricted Assets (Sum of a through n)	\$ 2,808,717	\$ -	\$ -	\$ -	\$ 2,808,717	\$ 1,325,888	\$ 1,482,829

(a) Subset of Column 1

(b) Subset of Column 3

NOTES TO FINANCIAL STATEMENTS

Restricted Asset Category	Current Year			
	8	9	Percentage	
			10	11
	Total Non-admitted Restricted	Total Admitted Restricted (5 minus 8)	Gross (Admitted & Non-admitted) Restricted to Total Assets (c)	Admitted Restricted to Total Admitted Assets (d)
a. Subject to contractual obligation for which liability is not shown		\$ -	0.000%	0.000%
b. Collateral held under security lending agreements		\$ -	0.000%	0.000%
c. Subject to repurchase agreements		\$ -	0.000%	0.000%
d. Subject to reverse repurchase agreements		\$ -	0.000%	0.000%
e. Subject to dollar repurchase agreements		\$ -	0.000%	0.000%
f. Subject to dollar reverse repurchase agreements		\$ -	0.000%	0.000%
g. Placed under option contracts		\$ -	0.000%	0.000%
h. Letter stock or securities restricted as to sale - excluding FHLB capital stock		\$ -	0.000%	0.000%
i. FHLB capital stock		\$ -	0.000%	0.000%
j. On deposit with states		\$ 2,808,717	4.121%	4.121%
k. On deposit with other regulatory bodies		\$ -	0.000%	0.000%
l. Pledged collateral to FHLB (including assets backing funding agreements)		\$ -	0.000%	0.000%
m. Pledged as collateral not captured in other categories		\$ -	0.000%	0.000%
n. Other restricted assets		\$ -	0.000%	0.000%
o. Total Restricted Assets (Sum of a through n)	\$ -	\$ 2,808,717	4.121%	4.121%

(c) Column 5 divided by Asset Page, Column 1, Line 28
(d) Column 9 divided by Asset Page, Column 3, Line 28

(2) - (4) Not Applicable

M. - R. Not Applicable

NOTE 6 Joint Ventures, Partnerships and Limited Liability Companies

- A. The Company has no investments in Joint Ventures, Partnerships or Limited Liability Companies that exceed 10% of its admitted assets.
- B. The Company did not recognize any impairment write down for its investments in Joint Ventures, Partnerships or Limited Liability Companies.

NOTE 7 Investment Income

- A. The Company nonadmits investment income due and accrued if amounts are over 90 days past due with the exception of mortgage loans in default which are nonadmitted if amounts are over 180 days past due.
- B. The total amount of investment income nonadmitted at December 31, 2023 and December 31, 2022 was \$0 and \$0, respectively.
- C. The gross, nonadmitted and admitted amounts for interest income due and accrued.

Interest Income Due and Accrued	2023	2022
1. Gross	\$ 326,542	\$ 294,850
2. Nonadmitted		
3. Admitted	\$ 326,542	\$ 294,850

D. - E. Not Applicable

NOTE 8 Derivative Instruments

Not Applicable

NOTE 9 Income Taxes

- A. Deferred Tax Assets/(Liabilities)
- (1) The components of the net deferred tax assets/(liabilities)

	2023			2022			Change		
	(1) Ordinary	(2) Capital	(3) (Col. 1 + 2) Total	(4) Ordinary	(5) Capital	(6) (Col. 4 + 5) Total	(7) (Col. 1 - 4) Ordinary	(8) (Col. 2 - 5) Capital	(9) (Col. 7 + 8) Total
(a) Gross Deferred Tax Assets	\$ 1,212,751	\$ 45,595	\$ 1,258,346	\$ 1,227,089	\$ 87,598	\$ 1,314,687	\$ (14,338)	\$ (42,003)	\$ (56,341)
(b) Statutory Valuation Allowance Adjustment	\$ -	\$ -	\$ -			\$ -	\$ -	\$ -	\$ -
(c) Adjusted Gross Deferred Tax Assets (1a - 1b)	\$ 1,212,751	\$ 45,595	\$ 1,258,346	\$ 1,227,089	\$ 87,598	\$ 1,314,687	\$ (14,338)	\$ (42,003)	\$ (56,341)
(d) Deferred Tax Assets Nonadmitted	\$ -	\$ -	\$ -			\$ -	\$ -	\$ -	\$ -
(e) Subtotal Net Admitted Deferred Tax Asset (1c - 1d)	\$ 1,212,751	\$ 45,595	\$ 1,258,346	\$ 1,227,089	\$ 87,598	\$ 1,314,687	\$ (14,338)	\$ (42,003)	\$ (56,341)
(f) Deferred Tax Liabilities	\$ 37,637	\$ 650,518	\$ 688,155	\$ 52,322	\$ 631,330	\$ 683,652	\$ (14,685)	\$ 19,188	\$ 4,503
(g) Net Admitted Deferred Tax Asset/(Net Deferred Tax Liability) (1e - 1f)	\$ 1,175,114	\$ (604,923)	\$ 570,191	\$ 1,174,767	\$ (543,732)	\$ 631,035	\$ 347	\$ (61,191)	\$ (60,844)

NOTES TO FINANCIAL STATEMENTS

(2) Admission Calculation Components SSAP No. 101

	2023			2022			Change		
	(1) Ordinary	(2) Capital	(3) (Col. 1 + 2) Total	(4) Ordinary	(5) Capital	(6) (Col. 4 + 5) Total	(7) (Col. 1 - 4) Ordinary	(8) (Col. 2 - 5) Capital	(9) (Col. 7 + 8) Total
(a) Federal Income Taxes Paid In Prior Years Recoverable Through Loss Carrybacks	\$ 160,342	\$ -	\$ 160,342	\$ 537,671		\$ 537,671	\$ (377,329)	\$ -	\$ (377,329)
(b) Adjusted Gross Deferred Tax Assets Expected To Be Realized (Excluding The Amount Of Deferred Tax Assets From 2(a) above) After Application of the Threshold Limitation. (The Lesser of 2(b)1 and 2(b)2 Below)	\$ 578,981	\$ -	\$ 578,981	\$ 204,732		\$ 204,732	\$ 374,249	\$ -	\$ 374,249
1. Adjusted Gross Deferred Tax Assets Expected to be Realized Following the Balance Sheet Date.	\$ 578,981	\$ -	\$ 578,981	\$ 204,732		\$ 204,732	\$ 374,249	\$ -	\$ 374,249
2. Adjusted Gross Deferred Tax Assets Allowed per Limitation Threshold.	XXX	XXX	\$ 3,810,994	XXX	XXX	\$ 3,666,555	XXX	XXX	\$ 144,439
(c) Adjusted Gross Deferred Tax Assets (Excluding The Amount Of Deferred Tax Assets From 2(a) and 2(b) above) Offset by Gross Deferred Tax Liabilities.	\$ 473,428	\$ 45,595	\$ 519,023	\$ 484,686	\$ 87,598	\$ 572,284	\$ (11,258)	\$ (42,003)	\$ (53,261)
(d) Deferred Tax Assets Admitted as the result of application of SSAP No. 101. Total (2(a) + 2(b) + 2(c))	\$ 1,212,751	\$ 45,595	\$ 1,258,346	\$ 1,227,089	\$ 87,598	\$ 1,314,687	\$ (14,338)	\$ (42,003)	\$ (56,341)

(3) Other Admissibility Criteria

	2023	2022
a. Ratio Percentage Used To Determine Recovery Period And Threshold Limitation Amount.	1068.000%	1093.000%
b. Amount Of Adjusted Capital And Surplus Used To Determine Recovery Period And Threshold Limitation In 2(b)2 Above.	\$ 25,406,624	\$ 24,443,701

(4) Impact of Tax Planning Strategies

	2023		2022		Change	
	(1) Ordinary	(2) Capital	(3) Ordinary	(4) Capital	(5) (Col. 1 - 3) Ordinary	(6) (Col. 2 - 4) Capital
(a) Determination of adjusted gross deferred tax assets and net admitted deferred tax assets, by tax character as a percentage.						
1. Adjusted Gross DTAs amount from Note 9A1(c)	\$ 1,212,751	\$ 45,595	\$ 1,227,089	\$ 87,598	\$ (14,338)	\$ (42,003)
2. Percentage of adjusted gross DTAs by tax character attributable to the impact of tax planning strategies	0.000%	0.000%			0.000%	0.000%
3. Net Admitted Adjusted Gross DTAs amount from Note 9A1(e)	\$ 1,212,751	\$ 45,595	\$ 1,227,089	\$ 87,598	\$ (14,338)	\$ (42,003)
4. Percentage of net admitted adjusted gross DTAs by tax character admitted because of the impact of tax planning strategies	0.000%	0.000%			0.000%	0.000%

b. Do the Company's tax-planning strategies include the use of reinsurance? Yes [] No [X]

B. Deferred Tax Liabilities that are not recognized
Not Applicable

C. Current income taxes incurred consist of the following major components:

(1) Current Income Tax

- (a) Federal
- (b) Foreign
- (c) Subtotal (1a+1b)
- (d) Federal income tax on net capital gains
- (e) Utilization of capital loss carry-forwards
- (f) Other
- (g) Federal and foreign income taxes incurred (1c+1d+1e+1f)

(1) 2023	(2) 2022	(3) (Col. 1 - 2) Change
\$ 164,844	\$ (106,785)	\$ 271,629
\$ -		\$ -
\$ 164,844	\$ (106,785)	\$ 271,629
\$ (4,502)	\$ (685)	\$ (3,817)
\$ -		\$ -
\$ (13,267)	\$ (11,951)	\$ (1,316)
\$ 147,074	\$ (119,421)	\$ 266,495

NOTES TO FINANCIAL STATEMENTS

(2) Deferred Tax Assets:

(a) Ordinary:

- (1) Discounting of unpaid losses
- (2) Unearned premium reserve
- (3) Policyholder reserves
- (4) Investments
- (5) Deferred acquisition costs
- (6) Policyholder dividends accrual
- (7) Fixed assets
- (8) Compensation and benefits accrual
- (9) Pension accrual
- (10) Receivables - nonadmitted
- (11) Net operating loss carry-forward
- (12) Tax credit carry-forward
- (13) Other

(99) Subtotal (sum of 2a1 through 2a13)

(b) Statutory valuation allowance adjustment

(c) Nonadmitted

(d) Admitted ordinary deferred tax assets (2a99 - 2b - 2c)

(e) Capital:

- (1) Investments
- (2) Net capital loss carry-forward
- (3) Real estate
- (4) Other

(99) Subtotal (2e1+2e2+2e3+2e4)

(f) Statutory valuation allowance adjustment

(g) Nonadmitted

(h) Admitted capital deferred tax assets (2e99 - 2f - 2g)

(i) Admitted deferred tax assets (2d + 2h)

(1)	(2)	(3)
2023	2022	(Col. 1 - 2) Change
\$ 672,888	\$ 669,937	\$ 2,951
\$ 323,386	\$ 297,768	\$ 25,618
\$ 3,789	\$ 4,440	\$ (651)
\$ -		\$ -
\$ 0	\$ 1,030	\$ (1,030)
\$ 212,688	\$ 253,914	\$ (41,226)
		\$ -
\$ -		\$ -
\$ -		\$ -
\$ -		\$ -
\$ 1,212,751	\$ 1,227,089	\$ (14,338)
\$ -		\$ -
\$ -		\$ -
\$ 1,212,751	\$ 1,227,089	\$ (14,338)
\$ 45,595	\$ 87,598	\$ (42,003)
\$ 45,595	\$ 87,598	\$ (42,003)
\$ -		\$ -
\$ -		\$ -
\$ 45,595	\$ 87,598	\$ (42,003)
\$ 1,258,346	\$ 1,314,687	\$ (56,341)

(3) Deferred Tax Liabilities:

(a) Ordinary:

- (1) Investments
- (2) Fixed assets
- (3) Deferred and uncollected premium
- (4) Policyholder reserves
- (5) Other

(99) Subtotal (3a1+3a2+3a3+3a4+3a5)

(b) Capital:

- (1) Investments
- (2) Real estate
- (3) Other

(99) Subtotal (3b1+3b2+3b3)

(c) Deferred tax liabilities (3a99 + 3b99)

(4) Net deferred tax assets/liabilities (2i - 3c)

(1)	(2)	(3)
2023	2022	(Col. 1 - 2) Change
\$ 16,999	\$ 21,365	\$ (4,366)
	\$ 30,957	\$ (30,957)
\$ 20,638		\$ 20,638
\$ 37,637	\$ 52,322	\$ (14,685)
\$ 650,518	\$ 631,330	\$ 19,188
\$ 650,518	\$ 631,330	\$ 19,188
\$ 688,155	\$ 683,652	\$ 4,503
\$ 570,191	\$ 631,035	\$ (60,844)

D. Reconciliation of Federal Income Tax Rate to Actual Effective Rate

Among the more significant book to tax adjustments were the following:

Provision computed at statutory rate
Tax exempt interest income deduction
Dividends received deduction
ICOLI
Other
Total statutory income taxes

Federal and foreign income taxes incurred
Realized capital gains (losses) tax
Change in net deferred income taxes
Total statutory income taxes

2023	
Amount	Effective Tax Rate (%)
\$ 175,342	21.0%
\$ (26,743)	-3.2%
\$ (2,515)	-0.3%
\$ (164)	0.0%
\$ 658	0.1%
\$ 146,578	17.6%
\$ 147,074	17.6%
\$ -	%
\$ (497)	-0.1%
\$ 146,578	17.6%

E. Operating Loss and Tax Carry Forwards and Protective Tax Deposits

(1) At December 31, 2023, the Company did not have any operating loss or tax credit carry forwards.

(2) The following is income tax expense for current and preceding years that is available for recoupment in the event of future net losses:

Year Generated	Ordinary	Capital
2023	\$ 160,342	\$ -

(3) The Company did not have any protective tax deposits under Section 6603 of the Internal Revenue Code.

NOTES TO FINANCIAL STATEMENTS

F. Consolidated Federal Income Tax Return

(1) The Company's Federal income tax return is consolidated with the following entities:

- AlleghenyPoint Insurance Company
- BrickStreet Mutual Insurance Company
- Consumers Insurance USA, Inc.
- Encova Holdings, Inc.
- Encova Insurance Agency, Inc.
- Encova Mutual Insurance Group, Inc.
- Encova Service Corporation
- Iowa American Insurance Company
- Iowa Mutual Insurance Company
- MCM Insurance Agency Inc of MA
- MICO Insurance Company
- Motorists Commercial Mutual Insurance Company
- Motorists Mutual Insurance Company
- NorthStone Insurance Company
- Phenix Mutual Fire Insurance Company
- PinnaclePoint Insurance Company
- SummitPoint Insurance Company

(2) The method of allocation between the companies is subject to written agreement, approved by the Board of Directors. Allocation is based upon separate return calculations with current credit for net losses. Intercompany tax balances are settled annually when the federal income tax return is filed.

G. Federal or Foreign Federal Income Tax Loss Contingencies

As of December 31, 2023, the Company had no unrecognized tax benefits.

H. Repatriation Transition Tax (RTT)

The Company is not subject to the Repatriation Transition Tax.

I. Alternative Minimum Tax (AMT) Credit

Not Applicable

NOTE 10 Information Concerning Parent, Subsidiaries, Affiliates and Other Related Parties

A. Nature of the Relationship Involved

Effective January 1, 2021, a mutual holding company structure went into effect. Through this conversion, the Company and its mutual affiliates became stock companies under Encova Holdings, Inc., which is 100% owned by Encova Mutual Insurance Group, Inc.

The Company is a member of an affiliated group of companies and is party to various transactions and agreements with other members of the group. Primarily those transactions are composed of:

- IT and Payroll processing services are provided by a non-insurance member of the group.
- The P&C Companies within the group participate in a pooling arrangement.
- The lead company to the pool provides management services to the other members of the Group. All Companies in the Group are parties to a cost sharing.
- The Various companies have entered into a tax sharing agreement with each company that qualifies to be included in a consolidated return.
- Selected members of the group participated in intercompany loan agreements.

B. - C. Not Applicable

D. Amounts Due From or To Related Parties

As of December 31, 2023 and 2022, the Company reported net amounts due from/(due to) affiliates of \$(195,101) and \$(2,082,340) respectively. All amounts were settled within 60 days.

E. Material Management or Service Contracts and Cost-Sharing Arrangements

See Note A

F. Guarantees or Undertakings

The Company had no guarantees or undertakings for the benefit of an affiliate or related party that resulted in a material contingency exposure to the Company or any related parties during the periods reported.

G. Nature of the Control Relationship

The Company is a mutual property/casualty insurer that controls its operations. As the lead Company of The Encova Insurance Group, Motorists Mutual Insurance Company also controls its affiliated companies' operations through interlocking boards of directors.

H. Amount Deducted from the Value of Upstream Intermediate Entity or Ultimate Parent Owned

The Company did not own any shares, directly or indirectly, of an upstream intermediate entity or ultimate parent during the periods reported.

I. Investments in SCA that Exceed 10% of Admitted Assets

The Company did not have any investments in subsidiary, controlled, or affiliated entities that exceed 10% of admitted assets during the periods reported.

J. Investments in Impaired SCAs

The Company did not recognize any impairment write-downs for investments in subsidiary, controlled, or affiliated entities during the periods reported.

K. Investment in Foreign Insurance Subsidiary

The Company did not have any investments in foreign insurance subsidiaries during the periods reported.

L. Investment in Downstream Noninsurance Holding Company

The Company did not have any investments in downstream non-insurance holding companies.

M. - O. Not Applicable

NOTE 11 Debt

Not Applicable

NOTES TO FINANCIAL STATEMENTS

NOTE 12 Retirement Plans, Deferred Compensation, Postemployment Benefits and Compensated Absences and Other Postretirement Benefit Plans

A. - D. Not Applicable

- E. Defined Contribution Plan
The Company participates in an Incentive Savings Plan under Section 401(k) of the Internal Revenue Code sponsored by its parent, Motorists Mutual Insurance Company covering substantially all of its employees. The Plan matches employee contributions of 7% of total eligible compensation for 2023 and 2022, respectively. Employer contributions are immediately vested. The Company contributions to the plan were \$71,612 and \$114,373 for 2023 and 2022, respectively. All of the expenses associated with this Plan are allocated to the Group via the cost allocation model. The Company also participates in two Non-qualified Supplemental Retirement Plans, sponsored by BrickStreet Insurance, for selected employees. One plan provides for contributions at the Group's discretion on a yearly basis. The other was composed of a single contribution for selected employees. Employees vest at age 60 or when certain vesting events occur. The Company participates in a long term incentive deferred compensation plan, sponsored by BrickStreet Insurance, that provides for deferred bonuses for selected executives and other employees. Employees are credited with deferred amounts when the Group hits certain targets and, if they remain with the Group for the required time periods, the amounts will be paid out. All of the expenses associated with this Plan are allocated to the Group via the cost allocation model.
- F. Multiemployer Plans
Not Applicable
- G. Consolidated/Holding Company Plans
The Company participated in a non-contributory defined pension plan sponsored by Motorists, until Motorists elected to freeze its benefit plans effective December 31, 2017. In addition, the Company shares in certain other post-retirement benefits provided through a plan sponsored by Motorists Mutual. The Company has no legal obligation for benefits under these plans. Motorists Mutual allocates amounts to the Company based on a cost sharing agreement. In 2023 and 2022, the Company was allocated \$(259) and \$(57,969), respectively, as a portion of the periodic pension costs and post-retirement benefits.
- H. Postemployment Benefits and Compensated Absences
The Company generally has no obligations to current or former employees for benefits after their employment but before their retirement other than for compensation related to earned paid time off. The liability for earned but unused paid time off has been accrued.
- I. Impact of Medicare Modernization Act on Postretirement Benefits (INT 04-17)
Not Applicable

NOTE 13 Capital and Surplus, Dividend Restrictions and Quasi-Reorganizations

- A. Number of Share and Par or State Value of Each Class
As of December 31, 2023, the Company had 1,000 capital stock shares authorized, issued, and outstanding, with a par value of \$5,000.
- B. - I. Not Applicable
- J. The portion of unassigned funds (surplus) represented or reduced by cumulative unrealized gains and losses is \$3,097,704.
- K. - M. Not Applicable

NOTE 14 Liabilities, Contingencies and Assessments

- A. Contingent Commitments
Not Applicable
- B. Assessments
(1) Nature of Any Assets That Could Have a Material Financial Effect
The Company is subject to guaranty fund and other assessments by the states in which it conducts business. Guaranty fund assessments are accrued upon notification of the insolvency. Other assessments are recognized 1) when assessed by a state, 2) when premiums are written for premium-based assessments, or 3) when losses are incurred for loss based assessments. Incurred assessments are subject to the intercompany pooling arrangement described in Note 26. The company's net paid guaranty fund assessments totaled \$7,937 and \$(1,468) for the years ended December 31, 2023 and 2022, respectively. The company's net accrued liabilities for guaranty funds were \$6,667 and \$7,599 as of December 31, 2023 and 2022, respectively. Per the accounting practices and procedures prescribed by the company's state of domicile, receivables for premium tax credits are not reflected in the accompanying financial statements.
- (2) - (3) Not Applicable
- C. Gain Contingencies
Not Applicable
- D. Claims related extra contractual obligations and bad faith losses stemming from lawsuits

The company paid the following amounts in the reporting period to settle claims related extra contractual obligations or bad faith claims stemming from lawsuits

	Direct
Claims related ECO and bad faith losses paid during the reporting period	\$ -

Number of claims where amounts were paid to settle claims related extra contractual obligations or bad faith claims resulting from lawsuits during the reporting period.

(a) 0-25 Claims	(b) 26-50 Claims	(c) 51-100 Claims	(d) 101-500 Claims	(e) More than 500 Claims
X				

Indicate whether claim count information is disclosed per claim or per claimant.

(f) Per Claim [X] (g) Per Claimant []

- E. Product Warranties
- (1) Not Applicable
- (2) Reconciliation of aggregate product warranty liability
- | | | |
|--|----|---|
| a. Product warranty liability beginning balance | \$ | - |
| b. Reductions for payments made under the warranty | \$ | - |
| c. Liability accrual for product warranties issued during the current period | \$ | - |
| d. Change in liability accrual for product warranties issued in previous periods | \$ | - |
| e. Product warranty liability ending balance | \$ | - |

NOTES TO FINANCIAL STATEMENTS

F. Joint and Several Liabilities
Not Applicable

G. All Other Contingencies
Contingent liabilities arising from litigation, income taxes and other matters are not considered material in relation to the financial position of the Company. The Company has no asset that it considers to be impaired.

NOTE 15 Leases

- A. Lessee Operating Lease:
(1) The Company has allocated expenses related to leases of building space, vehicles, and various office equipment. The Company recognized expense for the years ending December 31, 2023 and 2022 of \$34,421 and \$46,460 respectively.

(2) - (3) Not Applicable
- B. Lessor Leases
Not Applicable

NOTE 16 Information About Financial Instruments With Off-Balance Sheet Risk and Financial Instruments With Concentrations of Credit Risk
Not Applicable

NOTE 17 Sale, Transfer and Servicing of Financial Assets and Extinguishments of Liabilities
Not Applicable

NOTE 18 Gain or Loss to the Reporting Entity from Uninsured Plans and the Uninsured Portion of Partially Insured Plans
Not Applicable

NOTE 19 Direct Premium Written/Produced by Managing General Agents/Third Party Administrators
Not Applicable

NOTE 20 Fair Value Measurements

- A. Fair Value Measurements
SSAP No. 100, Fair Value Measurements, clarifies the definition of estimated fair value and establishes a hierarchy for measuring estimated fair value. The hierarchy established by this standard consists of three levels to indicate the quality of the estimated fair value measurements as described below.

Level 1 - Quoted Prices in Active Markets for Identical Assets and Liabilities: Unadjusted quoted prices for identical assets or liabilities in active markets that are readily and regularly obtainable.

Level 2 - Significant Other Observable Inputs: Quoted prices in markets that are not active or inputs that are observable either directly or indirectly. These inputs can include quoted prices for similar but not identical assets or liabilities other than quoted prices in Level 1.

Level 3 - Significant Unobservable Inputs: Prices or valuation techniques that require inputs that are both unobservable and significant to the overall fair value measurement. Inputs reflect management's best estimates of the assumptions market participants would use at the measurement date in pricing the asset or liability. Consideration is given to the risk inherent in both the method of valuation and the valuation inputs. Primary inputs to this valuation technique include broker quotes, comparative trades, and independent third-party providers.

The Company reviews its fair value heirarchy classifications for assets and liabilities quarterly. Changes in observability of significant valuation inputs identified during these reviews may trigger reclassifications in or out of Level 3. Reclassifications are reported as transfers at the beginning of the period in which the change occurs.

The estimated fair values for substantially all bonds, including loan-backed and structured securities, unaffiliated common stock and certain short-term investments are based on quoted prices or quotations on comparable securities in active markets that are readily and regularly obtainable. Valuation of these securities does not involve management's judgement.

When quoted prices in active markets are not available, the determination of estimated fair value is based on market standard valuation methodologies, giving priority to observable inputs. The significant inputs to the market standard valuation methodologies for certain types of securities with reasonable levels of price transparency are inputs that are observable in the market or can be derived principally from or corroborated by observable market data.

When observable inputs are not available, the market standard valuation methodologies for determining the estimated fair value of certain types of securities that trade infrequently, and therefore have little or no price transparency, rely on inputs that are significant to the estimated fair value that are not observable in the market or cannot be derived principally from or corroborated by observable market data. These observable inputs can be based in large part on management's judgement or estimation, and cannot be supported by reference or maket activity. Even though these inputs are unobservable, management believes they are consistent with what other market participants would use when pricing such securities and are considered appropriate given the circumstances.

Fair Value Measurements at Reporting Date

Description for each class of asset or liability	(Level 1)	(Level 2)	(Level 3)	Net Asset Value (NAV)	Total
a. Assets at fair value					
Common Stocks, unaffiliated	\$ 7,151,327		\$ 478,845		\$ 7,630,172
Total assets at fair value/NAV	\$ 7,151,327	\$ -	\$ 478,845	\$ -	\$ 7,630,172

Fair Value Measurements in (Level 3) of the Fair Value hierarchy

Description	Beginning Balance at 01/01/2023	Transfers into Level 3	Transfers out of Level 3	Total gains and (losses) included in Net Income	Total gains and (losses) included in Surplus	Purchases	Issuances	Sales	Settlements	Ending Balance at 12/31/2023
a. Assets										
Common Stocks, unaffiliated	\$ 1,413,402				\$ (934,557)					\$ 478,845
Total Assets	\$ 1,413,402	\$ -	\$ -	\$ -	\$ (934,557)	\$ -	\$ -	\$ -	\$ -	\$ 478,845

NOTES TO FINANCIAL STATEMENTS

B. & C. The following table summarizes the carrying value and fair value of the Company's assets and liabilities not held at fair value as of December 31, 2023.

Type of Financial Instrument	Aggregate Fair Value	Admitted Assets	(Level 1)	(Level 2)	(Level 3)	Net Asset Value (NAV)	Not Practicable (Carrying Value)
Bonds	\$ 38,251,310	\$ 41,068,089		\$ 38,251,310			
Common Stocks, unaffiliated	\$ 7,630,172	\$ 7,630,172	\$ 7,151,327		\$ 478,845		

D. - E. Not Applicable

NOTE 21 Other Items

A. - E. Not Applicable

F. Subprime Mortgage Related Risk Exposure

(1) Description of the Subprime-Mortgage-Related Exposure and Related Risk Management Policies

The Company does not engage in subprime residential mortgage lending.

The Company's exposure to subprime lending is limited to investments within the fixed maturity investment portfolio which may contain securities collateralized by mortgages that might have characteristics of subprime lending such as adjustable rate mortgages and alternative documentation mortgages.

(2) Not Applicable

(3) Direct exposure through other investments.

	Actual Cost	Book/Adjusted Carrying Value (excluding interest)	Fair Value	Other-Than-Temporary Impairment Losses Recognized
a. Residential mortgage backed securities				
b. Commercial mortgage backed securities				
c. Collateralized debt obligations				
d. Structured securities				
e. Equity investment in SCAs *				
f. Other assets	\$ 299,908	\$ 299,916	\$ 303,091	
g. Total (a+b+c+d+e+f)	\$ 299,908	\$ 299,916	\$ 303,091	\$ -

* These investments comprise 0.025% of the companies invested assets.

(4) Not Applicable

G. Insurance-Linked Securities (ILS) Contracts

Not Applicable

H. The Amount That Could Be Realized on Life Insurance Where the Reporting Entity is Owner and Beneficiary or Has Otherwise Obtained Rights to Control the Policy

- (1) Amount of admitted balance that could be realized from an investment vehicle\$ 3,427,117
- (2) Percentage Bonds100.000%
- (3) Percentage Stocks
- (4) Percentage Mortgage Loans
- (5) Percentage Real Estate
- (6) Percentage Cash and Short-Term Investments
- (7) Percentage Derivatives
- (8) Percentage Other Invested Assets

NOTE 22 Events Subsequent

The Company did not have any recognized subsequent events for the periods reported.

Subsequent events have been considered through February 23, 2024 for these statutory financial statements which are to be issued on March 1, 2024.

A. Federal Affordable Care Act (YES/NO)?Yes [] No [X]

	2023	2022
B. ACA Fee Assessment Payable for the Upcoming Year	\$ -	\$ -
C. ACA Fee Assessment Paid	\$ -	\$ -
D. Premium Written Subject to ACA 9010 Assessment	\$ -	\$ -
E. Total Adjusted Capital Before Surplus Adjustment (Five-Year Historical Line 28)	\$ 26,631,308	\$ 25,708,192
F. Total Adjusted Capital After Surplus Adjustment (Five-Year Historical Line 28 minus 22B above)	\$ 26,631,308	\$ 25,708,192
G. Authorized Control Level (Five-Year Historical Line 29)	\$ 2,492,555	\$ 2,351,821

H. Would reporting the ACA assessment as of December 31, 2023 have triggered an RBC action level (YES/NO)?Yes [] No [X]

NOTE 23 Reinsurance

A. Unsecured Reinsurance Recoverables

Individual Reinsurers with Unsecured Reinsurance Recoverables Exceeding 3% of Policyholder Surplus

Individual Reinsurers Who Are Members of a Group

Group Code	FEIN	Reinsurer Name	Unsecured Amount
14621	31-4259550	Motorists Mutual Insurance Company	\$ 16,826,728

NOTES TO FINANCIAL STATEMENTS

B. Reinsurance Recoverable in Dispute
Not Applicable

C. Reinsurance Assumed and Ceded
(1)

	Assumed Reinsurance		Ceded Reinsurance		Net	
	Premium Reserve	Commission Equity	Premium Reserve	Commission Equity	Premium Reserve	Commission Equity
a. Affiliates	\$ 7,597,122	\$ 1,003,559	\$ 6,092,029	\$ 974,573	\$ 1,505,093	\$ 28,986
b. All Other	\$ 99,143	\$ 27,019	\$ 169	\$ 55	\$ 98,974	\$ 26,964
c. Total (a+b)	\$ 7,696,265	\$ 1,030,578	\$ 6,092,198	\$ 974,628	\$ 1,604,067	\$ 55,950
d. Direct Unearned Premium Reserve						\$ 6,092,198

(2)

	Direct	Assumed	Ceded	Net
a. Contingent Commission	\$ 142,631	\$ 176,939	\$ 142,631	\$ 176,939
b. Sliding Scale Adjustments				\$ -
c. Other Profit Commission Arrangements				\$ -
d. TOTAL (a+b+c)	\$ 142,631	\$ 176,939	\$ 142,631	\$ 176,939

(3) Not Applicable

D. - K. Not Applicable

NOTE 24 Retrospectively Rated Contracts & Contracts Subject to Redetermination
Not Applicable

NOTE 25 Change in Incurred Losses and Loss Adjustment Expenses
Reserves for the Company's incurred losses and loss adjustment expenses (after intercompany pooling) attributable to insured events of prior years reflect favorable development totaling \$592,052. The development can be attributed primarily to the re-estimation of unpaid losses and loss adjustment expenses in the workers' compensation and products liability lines of business. The favorable development in these lines was slightly offset by losses in commercial multi perils, commercial auto liability, homeowners and farmowners, private passenger auto liability, auto physical damage, other liability, and other lines of business. The changes reflected in these lines were generally the result of recent development trends. There were not any premium adjustments made as a result of this loss and loss adjustment expense development.

NOTE 26 Intercompany Pooling Arrangements

A. Identification of the Lead Entity and all Affiliated Entities Participating in the Intercompany Pool
Motorists Mutual Insurance Company is the lead company in the Encova Pool. Each member contributes 100% of its applicable results to the Encova Pool through the reinsurance pooling agreement.

Effective January 1, 2022, the reinsurance pooling agreement was revised to adjust the percentages assumed back by each member of the Encova Pool. The companies in the Encova Pool and their portion assumed as of December 31, 2023 and December 31, 2022 are:

	NAIC Company Code	Pooling Percentage	
		2023	2022
Lead Entity and all Affiliated Entities			
Motorists Mutual Insurance Company (Lead Entity)	14621	24.1%	24.1%
BrickStreet Mutual Insurance Company	12372	48.2%	48.2%
Motorists Commercial Mutual Insurance Company	13331	13.4%	13.4%
Consumers Insurance USA, Inc.	10204	1.9%	1.9%
Iowa Mutual Insurance Company	14338	1.9%	1.9%
PinnaclePoint Insurance Company	15137	1.7%	1.7%
SummitPoint Insurance Company	15136	1.7%	1.7%
MICO Insurance Company	40932	1.7%	1.7%
Phenix Mutual Fire Insurance Company	23175	1.4%	1.4%
AlleghenyPoint Insurance Company	13016	1.4%	1.4%
Wilson Mutual Insurance Company	19950	1.3%	1.3%
NorthStone Insurance Company	13045	1.3%	1.3%
Iowa American Insurance Company	31577	%	%

B. Description of Lines and Types of Business Subject to the Pooling Agreement
The pooling arrangement covered premiums, losses and underwriting expenses for all lines during the year. Related finance and service charge income, agent and premium balance charge-offs, deficiency reserves, and policyholder dividends were also subject to the pooling arrangement.

C. Description of Cessions to Non-Affiliated Reinsurance Subject to Pooling Agreement
Each Company recognized facultative and treaty reinsurance cessions with unaffiliated reinsurers prior to the administration of the intercompany pooling agreement.

D. Identification of all Pool Members that are Parties to Reinsurance Agreements with Non-Affiliated Reinsurers
As the lead insurer, Motorists Mutual assumed all net premiums, losses, loss adjustment expenses, and underwriting expenses and then ceded each pool participant its share of the pool.

E. Explanation of Discrepancies Between Entries of Pooled Business
There are no discrepancies between any entries regarding pooled business on the assumed and ceded reinsurance schedules of other pooled participants.

F. Description of Intercompany Sharing
Underwriting-related balance sheet items such as premiums receivable, installments, reinsurance assumed premium receivables and loss payables, reinsurance ceded premium payables and loss receivables, general expense receivables and payables, funds held balances, advanced premiums, and outstanding drafts were also pooled.

G. Amounts Due To/From Lead Entity and all Affiliated Entities Participating in the Intercompany Pool
As of December 31, 2023, the lead company reported an aggregate pooling-related balance of \$4,764,828 receivable from the other pool participants.

NOTE 27 Structured Settlements
Not Applicable

NOTE 28 Health Care Receivables
Not Applicable

NOTES TO FINANCIAL STATEMENTS

NOTE 29 Participating Policies
Not Applicable

NOTE 30 Premium Deficiency Reserves
As of December 31, 2023 the Company reported no premium deficiency reserves.

- (1) Liability carried for premium deficiency reserves\$-
- (2) Date of the most recent evaluation of this liability11/30/2023
- (3) Was anticipated investment income utilized in the calculation?Yes [] No [X]

NOTE 31 High Deductibles
Not Applicable

NOTE 32 Discounting of Liabilities for Unpaid Losses or Unpaid Loss Adjustment Expenses
Not Applicable

NOTE 33 Asbestos/Environmental Reserves
A. Does the company have on the books, or has it ever written an insured for which you have identified a potential for the existence of a liability due to asbestos losses?

Yes. The Company had exposure to asbestos losses during the periods reported. Direct exposure arose from the sale of general liability business. The Company also had exposure through its unaffiliated reinsurance assumed operations and an intercompany pooling arrangement (reference Note 26). The Company estimates the impact of its direct exposure by establishing case reserves on all known losses and by computing IBNR losses based on previous experience. The Company relies on case and IBNR reserves established by the Excess Casualty Reinsurance Association and the Mutual Reinsurance Bureau to measure its exposure from unaffiliated reinsurance assumed operations.

The Company's asbestos and environmental related losses for calendar years 2018-2021 have been restated to reflect the pooling changes that were effective January 1, 2022. See Note 26 for details.

(1) Direct					
	2019	2020	2021	2022	2023
a. Beginning reserves:	\$ 119,011	\$ 154,936	\$ 229,192	\$ 115,327	\$ 112,979
b. Incurred losses and loss adjustment expense:	\$ 43,582	\$ 100,667	\$ (22,667)	\$ 9,627	\$ (14,194)
c. Calendar year payments for losses and loss adjustment expenses:	\$ 7,657	\$ 26,411	\$ 91,198	\$ 11,975	\$ 14,257
d. Ending reserves (a+b-c):	\$ 154,936	\$ 229,192	\$ 115,327	\$ 112,979	\$ 84,528
(2) Assumed Reinsurance					
	2019	2020	2021	2022	2023
a. Beginning reserves:	\$ 41,498	\$ 40,810	\$ 33,203	\$ 32,336	\$ 31,235
b. Incurred losses and loss adjustment expense:	\$ 783	\$ (6,257)	\$ 44	\$ 7	\$ (75)
c. Calendar year payments for losses and loss adjustment expenses:	\$ 1,471	\$ 1,350	\$ 911	\$ 1,108	\$ 929
d. Ending reserves (a+b-c):	\$ 40,810	\$ 33,203	\$ 32,336	\$ 31,235	\$ 30,231
(3) Net of Ceded Reinsurance					
	2019	2020	2021	2022	2023
a. Beginning reserves:	\$ 160,121	\$ 194,908	\$ 213,647	\$ 122,025	\$ 121,072
b. Incurred losses and loss adjustment expense:	\$ 43,951	\$ 46,492	\$ (22,630)	\$ 10,455	\$ (14,192)
c. Calendar year payments for losses and loss adjustment expenses:	\$ 9,164	\$ 27,753	\$ 68,992	\$ 11,408	\$ 14,975
d. Ending reserves (a+b-c):	\$ 194,908	\$ 213,647	\$ 122,025	\$ 121,072	\$ 91,905
B. State the amount of the ending reserves for Bulk + IBNR included in A (Loss + LAE):					
(1) Direct Basis:				\$ 64,860	
(2) Assumed Reinsurance Basis:				\$ 21,380	
(3) Net of Ceded Reinsurance Basis:				\$ 86,133	
C. State the amount of the ending reserves for loss adjustment expenses included in A (Case, Bulk + IBNR):					
(1) Direct Basis:				\$ 26,114	
(2) Assumed Reinsurance Basis:				\$ 1,140	
(3) Net of Ceded Reinsurance Basis:				\$ 27,201	

D. Does the company have on the books, or has it ever written an insured for which you have identified a potential for the existence of a liability due to environmental losses?

Yes. The Company had exposure to environmental losses during the periods reported. Direct exposure arose from the sale of general liability, commercial autoliability, and homeowners business. The Company also had exposure through its unaffiliated reinsurance assumed operations and an intercompany pooling arrangement (reference Note 26). The Company estimates the impact of its direct exposure by establishing case reserves on all known losses and by computing IBNR losses based on previous experience. The Company relies on case and IBNR reserves established by the Excess Casualty Reinsurance Association and the Mutual Reinsurance Bureau to measure its exposure from unaffiliated reinsurance assumed operations.

The Company's asbestos and environmental related losses for calendar years 2018-2021 have been restated to reflect the pooling changes that were effective January 1, 2022. See Note 26 for details.

(1) Direct					
	2019	2020	2021	2022	2023
a. Beginning reserves:	\$ 50,851	\$ 45,559	\$ 29,702	\$ 16,388	\$ 14,432
b. Incurred losses and loss adjustment expense:	\$ (2,537)	\$ (9,195)	\$ (12,807)	\$ (1,400)	\$ 15,782
c. Calendar year payments for losses and loss adjustment expenses:	\$ 2,755	\$ 6,662	\$ 507	\$ 556	\$ 339
d. Ending reserves (a+b-c):	\$ 45,559	\$ 29,702	\$ 16,388	\$ 14,432	\$ 29,875

NOTES TO FINANCIAL STATEMENTS

(2) Assumed Reinsurance					
	2019	2020	2021	2022	2023
a. Beginning reserves:	\$ 9,162	\$ 8,548	\$ 11,811	\$ 8,942	\$ 10,428
b. Incurred losses and loss adjustment expense:	\$ 16	\$ 3,793	\$ (2,276)	\$ 1,937	\$ (1,102)
c. Calendar year payments for losses and loss adjustment expenses:	\$ 630	\$ 530	\$ 593	\$ 451	\$ 794
d. Ending reserves (a+b-c):	\$ 8,548	\$ 11,811	\$ 8,942	\$ 10,428	\$ 8,532

(3) Net of Ceded Reinsurance					
	2019	2020	2021	2022	2023
a. Beginning reserves:	\$ 55,831	\$ 50,262	\$ 37,239	\$ 22,649	\$ 21,057
b. Incurred losses and loss adjustment expense:	\$ (1,900)	\$ (6,027)	\$ (13,534)	\$ (735)	\$ 14,983
c. Calendar year payments for losses and loss adjustment expenses:	\$ 3,669	\$ 6,996	\$ 1,056	\$ 857	\$ 84
d. Ending reserves (a+b-c):	\$ 50,262	\$ 37,239	\$ 22,649	\$ 21,057	\$ 35,956

E.	State the amount of the ending reserves for Bulk + IBNR included in D (Loss & LAE):		
	(1) Direct Basis:	\$	24,486
	(2) Assumed Reinsurance Basis:	\$	6,950
	(3) Net of Ceded Reinsurance Basis:	\$	29,276
F.	State the amount of the ending reserves for loss adjustment expenses included in D (Case, Bulk + IBNR):		
	(1) Direct Basis:	\$	6,445
	(2) Assumed Reinsurance Basis:	\$	1,876
	(3) Net of Ceded Reinsurance Basis:	\$	7,241

NOTE 34 Subscriber Savings Accounts
Not Applicable

NOTE 35 Multiple Peril Crop Insurance
Not Applicable

NOTE 36 Financial Guaranty Insurance
Not Applicable

ANNUAL STATEMENT FOR THE YEAR 2023 OF THE WILSON MUTUAL INSURANCE COMPANY

GENERAL INTERROGATORIES

PART 1 - COMMON INTERROGATORIES

GENERAL

1.1

Is the reporting entity a member of an Insurance Holding Company System consisting of two or more affiliated persons, one or more of which is an insurer?
If yes, complete Schedule Y, Parts 1, 1A, 2 and 3.

Yes [X] No []

1.2

If yes, did the reporting entity register and file with its domiciliary State Insurance Commissioner, Director or Superintendent or with such regulatory official of the state of domicile of the principal insurer in the Holding Company System, a registration statement providing disclosure substantially similar to the standards adopted by the National Association of Insurance Commissioners (NAIC) in its Model Insurance Holding Company System Regulatory Act and model regulations pertaining thereto, or is the reporting entity subject to standards and disclosure requirements substantially similar to those required by such Act and regulations?

Yes [X] No [] N/A []

1.3

State Regulating?

OHIO

1.4

Is the reporting entity publicly traded or a member of a publicly traded group?

Yes [] No [X]

1.5

If the response to 1.4 is yes, provide the CIK (Central Index Key) code issued by the SEC for the entity/group.

2.1

Has any change been made during the year of this statement in the charter, by-laws, articles of incorporation, or deed of settlement of the reporting entity?

Yes [] No [X]

2.2

If yes, date of change:

3.1

State as of what date the latest financial examination of the reporting entity was made or is being made.

12/31/2022

3.2

State the as of date that the latest financial examination report became available from either the state of domicile or the reporting entity. This date should be the date of the examined balance sheet and not the date the report was completed or released.

12/31/2018

3.3

State as of what date the latest financial examination report became available to other states or the public from either the state of domicile or the reporting entity. This is the release date or completion date of the examination report and not the date of the examination (balance sheet date).

06/03/2020

3.4

By what department or departments?

3.5

Have all financial statement adjustments within the latest financial examination report been accounted for in a subsequent financial statement filed with Departments?

Yes [] No [] N/A [X]

3.6

Have all of the recommendations within the latest financial examination report been complied with?

Yes [X] No [] N/A []

4.1

During the period covered by this statement, did any agent, broker, sales representative, non-affiliated sales/service organization or any combination thereof under common control (other than salaried employees of the reporting entity), receive credit or commissions for or control a substantial part (more than 20 percent of any major line of business measured on direct premiums) of:
4.11 sales of new business?
4.12 renewals?

Yes [] No [X]
Yes [] No [X]

4.2

During the period covered by this statement, did any sales/service organization owned in whole or in part by the reporting entity or an affiliate, receive credit or commissions for or control a substantial part (more than 20 percent of any major line of business measured on direct premiums) of:
4.21 sales of new business?
4.22 renewals?

Yes [] No [X]
Yes [] No [X]

5.1

Has the reporting entity been a party to a merger or consolidation during the period covered by this statement?
If yes, complete and file the merger history data file with the NAIC.

Yes [] No [X]

5.2

If yes, provide the name of the entity, NAIC Company Code, and state of domicile (use two letter state abbreviation) for any entity that has ceased to exist as a result of the merger or consolidation.

1 Name of Entity	2 NAIC Company Code	3 State of Domicile

6.1

Has the reporting entity had any Certificates of Authority, licenses or registrations (including corporate registration, if applicable) suspended or revoked by any governmental entity during the reporting period?

Yes [] No [X]

6.2

If yes, give full information:

7.1

Does any foreign (non-United States) person or entity directly or indirectly control 10% or more of the reporting entity?

Yes [] No [X]

7.2

If yes,
7.21 State the percentage of foreign control; %
7.22 State the nationality(s) of the foreign person(s) or entity(s); or if the entity is a mutual or reciprocal, the nationality of its manager or attorney-in-fact and identify the type of entity(s) (e.g., individual, corporation, government, manager or attorney-in-fact).

1 Nationality	2 Type of Entity

ANNUAL STATEMENT FOR THE YEAR 2023 OF THE WILSON MUTUAL INSURANCE COMPANY

GENERAL INTERROGATORIES

8.1

Is the company a subsidiary of a depository institution holding company (DIHC) or a DIHC itself, regulated by the Federal Reserve Board?

Yes [] No [X]

8.2

If the response to 8.1 is yes, please identify the name of the DIHC.

8.3

Is the company affiliated with one or more banks, thrifts or securities firms?

Yes [] No [X]

8.4

If response to 8.3 is yes, please provide below the names and location (city and state of the main office) of any affiliates regulated by a federal regulatory services agency [i.e. the Federal Reserve Board (FRB), the Office of the Comptroller of the Currency (OCC), the Federal Deposit Insurance Corporation (FDIC) and the Securities Exchange Commission (SEC)] and identify the affiliate's primary federal regulator.

1	2	3	4	5	6
Affiliate Name	Location (City, State)	FRB	OCC	FDIC	SEC

8.5

Is the reporting entity a depository institution holding company with significant insurance operations as defined by the Board of Governors of Federal Reserve System or a subsidiary of the depository institution holding company?

Yes [] No [X]

8.6

If response to 8.5 is no, is the reporting entity a company or subsidiary of a company that has otherwise been made subject to the Federal Reserve Board's capital rule?

Yes [] No [X] N/A []

9.

What is the name and address of the independent certified public accountant or accounting firm retained to conduct the annual audit?
KPMG LLP 191 W. NATIONWIDE BLVD., SUITE 500, COLUMBUS OH 43215

10.1

Has the insurer been granted any exemptions to the prohibited non-audit services provided by the certified independent public accountant requirements as allowed in Section 7H of the Annual Financial Reporting Model Regulation (Model Audit Rule), or substantially similar state law or regulation?

Yes [] No [X]

10.2

If the response to 10.1 is yes, provide information related to this exemption:

10.3

Has the insurer been granted any exemptions related to the other requirements of the Annual Financial Reporting Model Regulation as allowed for in Section 18A of the Model Regulation, or substantially similar state law or regulation?

Yes [] No [X]

10.4

If the response to 10.3 is yes, provide information related to this exemption:

10.5

Has the reporting entity established an Audit Committee in compliance with the domiciliary state insurance laws?

Yes [X] No [] N/A []

10.6

If the response to 10.5 is no or n/a, please explain.

11.

What is the name, address and affiliation (officer/employee of the reporting entity or actuary/consultant associated with an actuarial consulting firm) of the individual providing the statement of actuarial opinion/certification?
Derek A. Jones, FCAS, MAAA, Milliman, One Pennsylvania Plaza, 38th Floor, New York, NY 10119, who is a consulting actuary for the Encova Mutual Insurance Group

12.1

Does the reporting entity own any securities of a real estate holding company or otherwise hold real estate indirectly?

Yes [] No [X]

12.11

Name of real estate holding company ...

12.12

Number of parcels involved

12.13

Total book/adjusted carrying value

\$

12.2

If yes, provide explanation

13.

FOR UNITED STATES BRANCHES OF ALIEN REPORTING ENTITIES ONLY:

13.1

What changes have been made during the year in the United States manager or the United States trustees of the reporting entity?

13.2

Does this statement contain all business transacted for the reporting entity through its United States Branch on risks wherever located?

Yes [] No []

13.3

Have there been any changes made to any of the trust indentures during the year?

Yes [] No []

13.4

If answer to (13.3) is yes, has the domiciliary or entry state approved the changes?

Yes [] No [] N/A []

14.1

Are the senior officers (principal executive officer, principal financial officer, principal accounting officer or controller, or persons performing similar functions) of the reporting entity subject to a code of ethics, which includes the following standards?

Yes [X] No []

a.

Honest and ethical conduct, including the ethical handling of actual or apparent conflicts of interest between personal and professional relationships;

b.

Full, fair, accurate, timely and understandable disclosure in the periodic reports required to be filed by the reporting entity;

c.

Compliance with applicable governmental laws, rules and regulations;

d.

The prompt internal reporting of violations to an appropriate person or persons identified in the code; and

e.

Accountability for adherence to the code.

14.11

If the response to 14.1 is No, please explain:

14.2

Has the code of ethics for senior managers been amended?

Yes [] No [X]

14.21

If the response to 14.2 is yes, provide information related to amendment(s).

14.3

Have any provisions of the code of ethics been waived for any of the specified officers?

Yes [] No [X]

14.31

If the response to 14.3 is yes, provide the nature of any waiver(s).

ANNUAL STATEMENT FOR THE YEAR 2023 OF THE WILSON MUTUAL INSURANCE COMPANY

GENERAL INTERROGATORIES

- 15.1 Is the reporting entity the beneficiary of a Letter of Credit that is unrelated to reinsurance where the issuing or confirming bank is not on the SVO Bank List? Yes [] No [X]
- 15.2 If the response to 15.1 is yes, indicate the American Bankers Association (ABA) Routing Number and the name of the issuing or confirming bank of the Letter of Credit and describe the circumstances in which the Letter of Credit is triggered.

1 American Bankers Association (ABA) Routing Number	2 Issuing or Confirming Bank Name	3 Circumstances That Can Trigger the Letter of Credit	4 Amount

BOARD OF DIRECTORS

16. Is the purchase or sale of all investments of the reporting entity passed upon either by the board of directors or a subordinate committee thereof? Yes [X] No []
17. Does the reporting entity keep a complete permanent record of the proceedings of its board of directors and all subordinate committees thereof? Yes [X] No []
18. Has the reporting entity an established procedure for disclosure to its board of directors or trustees of any material interest or affiliation on the part of any of its officers, directors, trustees or responsible employees that is in conflict or is likely to conflict with the official duties of such person? Yes [X] No []

FINANCIAL

19. Has this statement been prepared using a basis of accounting other than Statutory Accounting Principles (e.g., Generally Accepted Accounting Principles)? Yes [] No [X]
- 20.1 Total amount loaned during the year (inclusive of Separate Accounts, exclusive of policy loans):

20.11 To directors or other officers\$

20.12 To stockholders not officers\$

20.13 Trustees, supreme or grand (Fraternal Only) \$
- 20.2 Total amount of loans outstanding at the end of year (inclusive of Separate Accounts, exclusive of policy loans):

20.21 To directors or other officers\$

20.22 To stockholders not officers\$

20.23 Trustees, supreme or grand (Fraternal Only) \$
- 21.1 Were any assets reported in this statement subject to a contractual obligation to transfer to another party without the liability for such obligation being reported in the statement? Yes [] No [X]
- 21.2 If yes, state the amount thereof at December 31 of the current year:

21.21 Rented from others\$

21.22 Borrowed from others\$

21.23 Leased from others \$

21.24 Other \$
- 22.1 Does this statement include payments for assessments as described in the Annual Statement Instructions other than guaranty fund or guaranty association assessments? Yes [] No [X]
- 22.2 If answer is yes:

22.21 Amount paid as losses or risk adjustment \$

22.22 Amount paid as expenses \$

22.23 Other amounts paid \$
- 23.1 Does the reporting entity report any amounts due from parent, subsidiaries or affiliates on Page 2 of this statement? Yes [] No [X]
- 23.2 If yes, indicate any amounts receivable from parent included in the Page 2 amount: \$
- 24.1 Does the insurer utilize third parties to pay agent commissions in which the amounts advanced by the third parties are not settled in full within 90 days? Yes [] No [X]
- 24.2 If the response to 24.1 is yes, identify the third-party that pays the agents and whether they are a related party.

Name of Third-Party	Is the Third-Party Agent a Related Party (Yes/No)

INVESTMENT

- 25.01 Were all the stocks, bonds and other securities owned December 31 of current year, over which the reporting entity has exclusive control, in the actual possession of the reporting entity on said date? (other than securities lending programs addressed in 25.03) Yes [X] No []

ANNUAL STATEMENT FOR THE YEAR 2023 OF THE WILSON MUTUAL INSURANCE COMPANY

GENERAL INTERROGATORIES

25.02 If no, give full and complete information, relating thereto

25.03 For securities lending programs, provide a description of the program including value for collateral and amount of loaned securities, and whether collateral is carried on or off-balance sheet. (an alternative is to reference Note 17 where this information is also provided)

25.04 For the reporting entity's securities lending program, report amount of collateral for conforming programs as outlined in the Risk-Based Capital Instructions. \$

25.05 For the reporting entity's securities lending program, report amount of collateral for other programs. \$

25.06 Does your securities lending program require 102% (domestic securities) and 105% (foreign securities) from the counterparty at the outset of the contract? Yes [] No [] N/A [X]

25.07 Does the reporting entity non-admit when the collateral received from the counterparty falls below 100%? Yes [] No [] N/A [X]

25.08 Does the reporting entity or the reporting entity's securities lending agent utilize the Master Securities lending Agreement (MSLA) to conduct securities lending? Yes [] No [] N/A [X]

25.09 For the reporting entity's securities lending program state the amount of the following as of December 31 of the current year:

25.091 Total fair value of reinvested collateral assets reported on Schedule DL, Parts 1 and 2. \$ 0

25.092 Total book/adjusted carrying value of reinvested collateral assets reported on Schedule DL, Parts 1 and 2 \$ 0

25.093 Total payable for securities lending reported on the liability page. \$ 0

26.1 Were any of the stocks, bonds or other assets of the reporting entity owned at December 31 of the current year not exclusively under the control of the reporting entity or has the reporting entity sold or transferred any assets subject to a put option contract that is currently in force? (Exclude securities subject to Interrogatory 21.1 and 25.03). Yes [X] No []

26.2 If yes, state the amount thereof at December 31 of the current year:

26.21 Subject to repurchase agreements \$ 0

26.22 Subject to reverse repurchase agreements \$ 0

26.23 Subject to dollar repurchase agreements \$ 0

26.24 Subject to reverse dollar repurchase agreements \$ 0

26.25 Placed under option agreements \$ 0

26.26 Letter stock or securities restricted as to sale - excluding FHLB Capital Stock \$ 0

26.27 FHLB Capital Stock \$ 0

26.28 On deposit with states 2,808,717

26.29 On deposit with other regulatory bodies \$ 0

26.30 Pledged as collateral - excluding collateral pledged to an FHLB \$ 0

26.31 Pledged as collateral to FHLB - including assets backing funding agreements \$ 0

26.32 Other \$ 0

26.3 For category (26.26) provide the following:

1 Nature of Restriction	2 Description	3 Amount

27.1 Does the reporting entity have any hedging transactions reported on Schedule DB? Yes [] No [X]

27.2 If yes, has a comprehensive description of the hedging program been made available to the domiciliary state? Yes [] No [] N/A [X]
If no, attach a description with this statement.

LINES 27.3 through 27.5: FOR LIFE/FRATERNAL REPORTING ENTITIES ONLY:

27.3 Does the reporting entity utilize derivatives to hedge variable annuity guarantees subject to fluctuations as a result of interest rate sensitivity? Yes [] No []

27.4 If the response to 27.3 is YES, does the reporting entity utilize:

27.41 Special accounting provision of SSAP No. 108 Yes [] No []

27.42 Permitted accounting practice Yes [] No []

27.43 Other accounting guidance Yes [] No []

27.5 By responding YES to 27.41 regarding utilizing the special accounting provisions of SSAP No. 108, the reporting entity attests to the following:

The reporting entity has obtained explicit approval from the domiciliary state.

Hedging strategy subject to the special accounting provisions is consistent with the requirements of VM-21.

Actuarial certification has been obtained which indicates that the hedging strategy is incorporated within the establishment of VM-21 reserves and provides the impact of the hedging strategy within the Actuarial Guideline Conditional Tail Expectation Amount.

Financial Officer Certification has been obtained which indicates that the hedging strategy meets the definition of a Clearly Defined Hedging Strategy within VM-21 and that the Clearly Defined Hedging Strategy is the hedging strategy being used by the company in its actual day-to-day risk mitigation efforts.

28.1 Were any preferred stocks or bonds owned as of December 31 of the current year mandatorily convertible into equity, or, at the option of the issuer, convertible into equity? Yes [] No [X]

28.2 If yes, state the amount thereof at December 31 of the current year. \$

29. Excluding items in Schedule E - Part 3 - Special Deposits, real estate, mortgage loans and investments held physically in the reporting entity's offices, vaults or safety deposit boxes, were all stocks, bonds and other securities, owned throughout the current year held pursuant to a custodial agreement with a qualified bank or trust company in accordance with Section 1, III - General Examination Considerations, F. Outsourcing of Critical Functions, Custodial or Safekeeping Agreements of the NAIC Financial Condition Examiners Handbook? Yes [X] No []

29.01 For agreements that comply with the requirements of the NAIC Financial Condition Examiners Handbook, complete the following:

1 Name of Custodian(s)	2 Custodian's Address
BNY Mellon	500 Grant Street One Mellon Center, Suite #1035., Pittsburgh, PA 15258

ANNUAL STATEMENT FOR THE YEAR 2023 OF THE WILSON MUTUAL INSURANCE COMPANY

GENERAL INTERROGATORIES

29.02 For all agreements that do not comply with the requirements of the NAIC Financial Condition Examiners Handbook, provide the name, location and a complete explanation:

1 Name(s)	2 Location(s)	3 Complete Explanation(s)

29.03 Have there been any changes, including name changes, in the custodian(s) identified in 29.01 during the current year?..... Yes [] No [X]

29.04 If yes, give full and complete information relating thereto:

1 Old Custodian	2 New Custodian	3 Date of Change	4 Reason

29.05 Investment management – Identify all investment advisors, investment managers, broker/dealers, including individuals that have the authority to make investment decisions on behalf of the reporting entity. For assets that are managed internally by employees of the reporting entity, note as such. ["...that have access to the investment accounts"; "...handle securities"]

1 Name of Firm or Individual	2 Affiliation
New England Asset Management, Inc.	U.....
Northern Trust Investments, Inc.	U.....

29.0597 For those firms/individuals listed in the table for Question 29.05, do any firms/individuals unaffiliated with the reporting entity (i.e. designated with a "U") manage more than 10% of the reporting entity's invested assets?..... Yes [X] No []

29.0598 For firms/individuals unaffiliated with the reporting entity (i.e. designated with a "U") listed in the table for Question 29.05, does the total assets under management aggregate to more than 50% of the reporting entity's invested assets?..... Yes [X] No []

29.06 For those firms or individuals listed in the table for 29.05 with an affiliation code of "A" (affiliated) or "U" (unaffiliated), provide the information for the table below.

1 Central Registration Depository Number	2 Name of Firm or Individual	3 Legal Entity Identifier (LEI)	4 Registered With	5 Investment Management Agreement (IMA) Filed
109846	New England Asset Management, Inc.	KUR85E5PS4GQFZTFC130	SEC	NO.....
105900	Northern Trust Investments, Inc.	BEL4B8X7EHJU845Y2N39	SEC	NO.....

30.1 Does the reporting entity have any diversified mutual funds reported in Schedule D, Part 2 (diversified according to the Securities and Exchange Commission (SEC) in the Investment Company Act of 1940 [Section 5(b)(1)])? Yes [X] No []

30.2 If yes, complete the following schedule:

1 CUSIP #	2 Name of Mutual Fund	3 Book/Adjusted Carrying Value
04314H-85-7	Artisan Intl Val Fund 1	3,394,793
04314H-66-7	Artisan Intl Val ADV	1,220,669
464287-65-5	ISHARES Russ 2000 ETF	137,286
30.2999 - Total		4,752,748

30.3 For each mutual fund listed in the table above, complete the following schedule:

1 Name of Mutual Fund (from above table)	2 Name of Significant Holding of the Mutual Fund	3 Amount of Mutual Fund's Book/Adjusted Carrying Value Attributable to the Holding	4 Date of Valuation
Artisan Intl Val Fund 1	Blackrock T-Fund - Ints Shares Fund 30	347,287	12/31/2023 ..
Artisan Intl Val Fund 1	ABS Group AG	164,647	12/31/2023 ..
Artisan Intl Val Fund 1	Novartis AG Registered Shares	161,592	12/31/2023 ..
Artisan Intl Val Fund 1	Samsung Electronics Co Ltd	152,766	12/31/2023 ..
Artisan Intl Val Fund 1	Danone SA	152,766	12/31/2023 ..
Artisan Intl Val ADV	Blackrock T-Fund - Ints Shares Fund 30	124,874	12/31/2023 ..
Artisan Intl Val ADV	ABS Group AG	59,202	12/31/2023 ..
Artisan Intl Val ADV	Novartis AG Registered Shares	58,104	12/31/2023 ..
Artisan Intl Val ADV	Samsung Electronics Co Ltd	54,930	12/31/2023 ..
Artisan Intl Val ADV	Danone SA	54,930	12/31/2023 ..
ISHARES Russ 2000 ETF	Super Micro Computer Inc	109,829	12/31/2023 ..
ISHARES Russ 2000 ETF	e.l.f Beauty Inc.	48,050	12/31/2023 ..
ISHARES Russ 2000 ETF	Rambus Inc.	45,304	12/31/2023 ..
ISHARES Russ 2000 ETF	Onto Innovation Inc	45,304	12/31/2023 ..
ISHARES Russ 2000 ETF	Simpson Manufacturing Co Inc.	43,931	12/31/2023 ..

ANNUAL STATEMENT FOR THE YEAR 2023 OF THE WILSON MUTUAL INSURANCE COMPANY

GENERAL INTERROGATORIES

31. Provide the following information for all short-term and long-term bonds and all preferred stocks. Do not substitute amortized value or statement value for fair value.

	1	2	3
	Statement (Admitted) Value	Fair Value	Excess of Statement over Fair Value (-), or Fair Value over Statement (+)
31.1 Bonds	41,068,089	38,251,310	(2,816,779)
31.2 Preferred stocks	0		0
31.3 Totals	41,068,089	38,251,310	(2,816,779)

31.4 Describe the sources or methods utilized in determining the fair values:
The Fair Value of securities is determined using quoted market prices when available, external pricing service, SVO pricing, fair values available from custodians or investment managers.

32.1 Was the rate used to calculate fair value determined by a broker or custodian for any of the securities in Schedule D? Yes [X] No []

32.2 If the answer to 32.1 is yes, does the reporting entity have a copy of the broker's or custodian's pricing policy (hard copy or electronic copy) for all brokers or custodians used as a pricing source? Yes [X] No []

32.3 If the answer to 32.2 is no, describe the reporting entity's process for determining a reliable pricing source for purposes of disclosure of fair value for Schedule D:
.....

33.1 Have all the filing requirements of the Purposes and Procedures Manual of the NAIC Investment Analysis Office been followed? Yes [X] No []

33.2 If no, list exceptions:
.....

34. By self-designating 5GI securities, the reporting entity is certifying the following elements of each self-designated 5GI security:
a. Documentation necessary to permit a full credit analysis of the security does not exist or an NAIC CRP credit rating for an FE or PL security is not available.
b. Issuer or obligor is current on all contracted interest and principal payments.
c. The insurer has an actual expectation of ultimate payment of all contracted interest and principal.
Has the reporting entity self-designated 5GI securities? Yes [] No [X]

35. By self-designating PLGI securities, the reporting entity is certifying the following elements of each self-designated PLGI security:
a. The security was purchased prior to January 1, 2018.
b. The reporting entity is holding capital commensurate with the NAIC Designation reported for the security.
c. The NAIC Designation was derived from the credit rating assigned by an NAIC CRP in its legal capacity as a NRSRO which is shown on a current private letter rating held by the insurer and available for examination by state insurance regulators.
d. The reporting entity is not permitted to share this credit rating of the PL security with the SVO.
Has the reporting entity self-designated PLGI securities? Yes [] No [X]

36. By assigning FE to a Schedule BA non-registered private fund, the reporting entity is certifying the following elements of each self-designated FE fund:
a. The shares were purchased prior to January 1, 2019.
b. The reporting entity is holding capital commensurate with the NAIC Designation reported for the security.
c. The security had a public credit rating(s) with annual surveillance assigned by an NAIC CRP in its legal capacity as an NRSRO prior to January 1, 2019.
d. The fund only or predominantly holds bonds in its portfolio.
e. The current reported NAIC Designation was derived from the public credit rating(s) with annual surveillance assigned by an NAIC CRP in its legal capacity as an NRSRO.
f. The public credit rating(s) with annual surveillance assigned by an NAIC CRP has not lapsed.
Has the reporting entity assigned FE to Schedule BA non-registered private funds that complied with the above criteria? Yes [] No [X]

37. By rolling/renewing short-term or cash equivalent investments with continued reporting on Schedule DA, Part 1 or Schedule E Part 2 (identified through a code (%) in those investment schedules), the reporting entity is certifying to the following:
a. The investment is a liquid asset that can be terminated by the reporting entity on the current maturity date.
b. If the investment is with a nonrelated party or nonaffiliate, then it reflects an arms-length transaction with renewal completed at the discretion of all involved parties.
c. If the investment is with a related party or affiliate, then the reporting entity has completed robust re-underwriting of the transaction for which documentation is available for regulator review.
d. Short-term and cash equivalent investments that have been renewed/rolled from the prior period that do not meet the criteria in 37.a - 37.c are reported as long-term investments.
Has the reporting entity rolled/renewed short-term or cash equivalent investments in accordance with these criteria? Yes [] No [] N/A [X]

ANNUAL STATEMENT FOR THE YEAR 2023 OF THE WILSON MUTUAL INSURANCE COMPANY

GENERAL INTERROGATORIES

- 38.1

Does the reporting entity directly hold cryptocurrencies?

Yes [] No [X]
- 38.2

If the response to 38.1 is yes, on what schedule are they reported?
.....
- 39.1

Does the reporting entity directly or indirectly accept cryptocurrencies as payments for premiums on policies?

Yes [] No [X]
- 39.2

If the response to 39.1 is yes, are the cryptocurrencies held directly or are they immediately converted to U.S. dollars?
39.21 Held directly Yes [] No []
39.22 Immediately converted to U.S. dollars Yes [] No []
- 39.3

If the response to 38.1 or 39.1 is yes, list all cryptocurrencies accepted for payments of premiums or that are held directly.

1	2	3
Name of Cryptocurrency	Immediately Converted to USD, Directly Held, or Both	Accepted for Payment of Premiums
.....

OTHER

- 40.1

Amount of payments to trade associations, service organizations and statistical or rating bureaus, if any?

\$
- 40.2

List the name of the organization and the amount paid if any such payment represented 25% or more of the total payments to trade associations, service organizations and statistical or rating bureaus during the period covered by this statement.

1	2
Name	Amount Paid
.....
- 41.1

Amount of payments for legal expenses, if any?

\$
- 41.2

List the name of the firm and the amount paid if any such payment represented 25% or more of the total payments for legal expenses during the period covered by this statement.

1	2
Name	Amount Paid
.....
- 42.1

Amount of payments for expenditures in connection with matters before legislative bodies, officers or departments of government, if any?

\$
- 42.2

List the name of the firm and the amount paid if any such payment represented 25% or more of the total payment expenditures in connection with matters before legislative bodies, officers, or departments of government during the period covered by this statement.

1	2
Name	Amount Paid
.....

ANNUAL STATEMENT FOR THE YEAR 2023 OF THE WILSON MUTUAL INSURANCE COMPANY

GENERAL INTERROGATORIES

PART 2 - PROPERTY AND CASUALTY INTERROGATORIES

1.1

Does the reporting entity have any direct Medicare Supplement Insurance in force?

Yes [] No [X]

1.2

If yes, indicate premium earned on U. S. business only.

\$

1.3

What portion of Item (1.2) is not reported on the Medicare Supplement Insurance Experience Exhibit?

\$

1.31

Reason for excluding

1.4

Indicate amount of earned premium attributable to Canadian and/or Other Alien not included in Item (1.2) above.

\$

1.5

Indicate total incurred claims on all Medicare Supplement Insurance.

\$

0

1.6

Individual policies:

Most current three years:

1.61

Total premium earned

\$

0

1.62

Total incurred claims

\$

0

1.63

Number of covered lives

0

All years prior to most current three years

1.64

Total premium earned

\$

0

1.65

Total incurred claims

\$

0

1.66

Number of covered lives

0

1.7

Group policies:

Most current three years:

1.71

Total premium earned

\$

0

1.72

Total incurred claims

\$

0

1.73

Number of covered lives

0

All years prior to most current three years

1.74

Total premium earned

\$

0

1.75

Total incurred claims

\$

0

1.76

Number of covered lives

0

2.

Health Test:

1

Current Year

2

Prior Year

2.1

Premium Numerator

0

2.2

Premium Denominator

15,936,671

14,735,383

2.3

Premium Ratio (2.1/2.2)

0.000

0.000

2.4

Reserve Numerator

0

2.5

Reserve Denominator

35,426,971

33,795,026

2.6

Reserve Ratio (2.4/2.5)

0.000

0.000

3.1

Did the reporting entity issue participating policies during the calendar year?

Yes [] No [X]

3.2

If yes, provide the amount of premium written for participating and/or non-participating policies during the calendar year:

3.21

Participating policies

\$

3.22

Non-participating policies

\$

4.

For mutual reporting Entities and Reciprocal Exchanges Only:

4.1

Does the reporting entity issue assessable policies?

Yes [] No []

4.2

Does the reporting entity issue non-assessable policies?

Yes [] No []

4.3

If assessable policies are issued, what is the extent of the contingent liability of the policyholders?

%

4.4

Total amount of assessments paid or ordered to be paid during the year on deposit notes or contingent premiums.

\$

5.

For Reciprocal Exchanges Only:

5.1

Does the Exchange appoint local agents?

Yes [] No []

5.2

If yes, is the commission paid:

5.21

Out of Attorney's-in-fact compensation.....

Yes [] No [] N/A []

5.22

As a direct expense of the exchange.....

Yes [] No [] N/A []

5.3

What expenses of the Exchange are not paid out of the compensation of the Attorney-in-fact?

5.4

Has any Attorney-in-fact compensation, contingent on fulfillment of certain conditions, been deferred?

Yes [] No []

5.5

If yes, give full information

16

GENERAL INTERROGATORIES

PART 2 - PROPERTY AND CASUALTY INTERROGATORIES

6.1

What provision has this reporting entity made to protect itself from an excessive loss in the event of a catastrophe under a workers' compensation contract issued without limit of loss?
Those Companies that concentrate in the Workers Compensation business, and which the Company has exposure to through the intercompany pooling arrangement, purchase catastrophic reinsurance at levels that are deemed adequate to protect against excessive loss. In addition, losses arising from claims under the federal black lung programs for dates of injury prior to 2016 are subject to ADC arrangement related to black lung claims. In addition, single locations, where excessive concentration of potential losses have been identified, are subject to facultative reinsurance above the layers contained in the catastrophic policies.

6.2

Describe the method used to estimate this reporting entity's probable maximum insurance loss, and identify the type of insured exposures comprising that probable maximum loss, the locations of concentrations of those exposures and the external resources (such as consulting firms or computer software models), if any, used in the estimation process.
The Lead Company in the pooling arrangement performs a concentration of risk study using modeling software to determine the probable maximum insurance loss. The software utilized includes Risk Management Solutions (RMS) RiskLink and Verisk Touchstone catastrophe models. Analysis is performed for the perils of hurricane, severe convective storm, winter storm, and earthquake. The PML driver on low return periods (~20 years) is severe convective storm. Starting around the 100 year return period, hurricane becomes the largest driver of the PML. The highest concentration of exposure (total insured value) is in Ohio. Ohio also has the highest gross average annual loss (Gross AAL). Several of the top 10 county concentrations are in Ohio, with the other top counties being in Kentucky, Nebraska, Indiana, and West Virginia. The Encova Mutual Insurance Group utilizes Guy Carpenter's AdvantagePoint tool to analyze and manage property risk. The Group to which this Company is a party through its pooling arrangement works with reinsurer brokers to assist in developing maximum probable losses. Both Property and Casualty exposures are analyzed for probable maximum loss and include various scenarios.

6.3

What provision has this reporting entity made (such as a catastrophic reinsurance program) to protect itself from an excessive loss arising from the types and concentrations of insured exposures comprising its probable maximum property insurance loss?
The Company purchases catastrophic reinsurance at levels that are deemed adequate to protect against excessive loss.

6.4

Does the reporting entity carry catastrophe reinsurance protection for at least one reinstatement, in an amount sufficient to cover its estimated probable maximum loss attributable to a single loss event or occurrence?

Yes [X] No []

6.5

If no, describe any arrangements or mechanisms employed by the reporting entity to supplement its catastrophe reinsurance program or to hedge its exposure to uninsured catastrophic loss.
.....

7.1

Has this reporting entity reinsured any risk with any other entity under a quota share reinsurance contract that includes a provision that would limit the reinsurer's losses below the stated quota share percentage (e.g., a deductible, a loss ratio corridor, a loss cap, an aggregate limit or any similar provisions)?.....

Yes [] No [X]

7.2

If yes, indicate the number of reinsurance contracts containing such provisions:

7.3

If yes, does the amount of reinsurance credit taken reflect the reduction in quota share coverage caused by any applicable limiting provision(s)?.....

Yes [] No []

8.1

Has this reporting entity reinsured any risk with any other entity and agreed to release such entity from liability, in whole or in part, from any loss that may occur on this risk, or portion thereof, reinsured?

Yes [] No [X]

8.2

If yes, give full information
.....

9.1

Has the reporting entity ceded any risk under any reinsurance contract (or under multiple contracts with the same reinsurer or its affiliates) for which during the period covered by the statement: (i) it recorded a positive or negative underwriting result greater than 5% of prior year-end surplus as regards policyholders or it reported calendar year written premium ceded or year-end loss and loss expense reserves ceded greater than 5% of prior year-end surplus as regards policyholders; (ii) it accounted for that contract as reinsurance and not as a deposit; and (iii) the contract(s) contain one or more of the following features or other features that would have similar results:
(a) A contract term longer than two years and the contract is noncancellable by the reporting entity during the contract term;
(b) A limited or conditional cancellation provision under which cancellation triggers an obligation by the reporting entity, or an affiliate of the reporting entity, to enter into a new reinsurance contract with the reinsurer, or an affiliate of the reinsurer;
(c) Aggregate stop loss reinsurance coverage;
(d) A unilateral right by either party (or both parties) to commute the reinsurance contract, whether conditional or not, except for such provisions which are only triggered by a decline in the credit status of the other party;
(e) A provision permitting reporting of losses, or payment of losses, less frequently than on a quarterly basis (unless there is no activity during the period); or
(f) Payment schedule, accumulating retentions from multiple years or any features inherently designed to delay timing of the reimbursement to the ceding entity.

Yes [] No [X]

9.2

Has the reporting entity during the period covered by the statement ceded any risk under any reinsurance contract (or under multiple contracts with the same reinsurer or its affiliates), for which, during the period covered by the statement, it recorded a positive or negative underwriting result greater than 5% of prior year-end surplus as regards policyholders or it reported calendar year written premium ceded or year-end loss and loss expense reserves ceded greater than 5% of prior year-end surplus as regards policyholders; excluding cessions to approved pooling arrangements or to captive insurance companies that are directly or indirectly controlling, controlled by, or under common control with (i) one or more unaffiliated policyholders of the reporting entity, or (ii) an association of which one or more unaffiliated policyholders of the reporting entity is a member where:
(a) The written premium ceded to the reinsurer by the reporting entity or its affiliates represents fifty percent (50%) or more of the entire direct and assumed premium written by the reinsurer based on its most recently available financial statement; or
(b) Twenty-five percent (25%) or more of the written premium ceded to the reinsurer has been retroceded back to the reporting entity or its affiliates in a separate reinsurance contract.

Yes [] No [X]

9.3

If yes to 9.1 or 9.2, please provide the following information in the Reinsurance Summary Supplemental Filing for General Interrogatory 9:
(a) The aggregate financial statement impact gross of all such ceded reinsurance contracts on the balance sheet and statement of income;
(b) A summary of the reinsurance contract terms and indicate whether it applies to the contracts meeting the criteria in 9.1 or 9.2; and
(c) A brief discussion of management's principle objectives in entering into the reinsurance contract including the economic purpose to be achieved.

9.4

Except for transactions meeting the requirements of paragraph 36 of SSAP No. 62R - Property and Casualty Reinsurance, has the reporting entity ceded any risk under any reinsurance contract (or multiple contracts with the same reinsurer or its affiliates) during the period covered by the financial statement, and either:
(a) Accounted for that contract as reinsurance (either prospective or retroactive) under statutory accounting principles ("SAP") and as a deposit under generally accepted accounting principles ("GAAP"); or
(b) Accounted for that contract as reinsurance under GAAP and as a deposit under SAP?

Yes [] No [X]

9.5

If yes to 9.4, explain in the Reinsurance Summary Supplemental Filing for General Interrogatory 9 (Section D) why the contract(s) is treated differently for GAAP and SAP.

9.6

The reporting entity is exempt from the Reinsurance Attestation Supplement under one or more of the following criteria:
(a) The entity does not utilize reinsurance; or,
(b) The entity only engages in a 100% quota share contract with an affiliate and the affiliated or lead company has filed an attestation supplement; or
(c) The entity has no external cessions and only participates in an intercompany pool and the affiliated or lead company has filed an attestation supplement.

Yes [] No [X]
Yes [] No [X]
Yes [] No [X]

10.

If the reporting entity has assumed risks from another entity, there should be charged on account of such reinsurances a reserve equal to that which the original entity would have been required to charge had it retained the risks. Has this been done?

Yes [X] No [] N/A []

ANNUAL STATEMENT FOR THE YEAR 2023 OF THE WILSON MUTUAL INSURANCE COMPANY

GENERAL INTERROGATORIES

PART 2 - PROPERTY AND CASUALTY INTERROGATORIES

11.1 Has the reporting entity guaranteed policies issued by any other entity and now in force? Yes [] No [X]

11.2 If yes, give full information
.....

12.1 If the reporting entity recorded accrued retrospective premiums on insurance contracts on Line 15.3 of the asset schedule, Page 2, state the amount of corresponding liabilities recorded for:

12.11 Unpaid losses\$

12.12 Unpaid underwriting expenses (including loss adjustment expenses)\$

12.2 Of the amount on Line 15.3, Page 2, state the amount which is secured by letters of credit, collateral and other funds\$

12.3 If the reporting entity underwrites commercial insurance risks, such as workers' compensation, are premium notes or promissory notes accepted from its insureds covering unpaid premiums and/or unpaid losses? Yes [] No [X] N/A []

12.4 If yes, provide the range of interest rates charged under such notes during the period covered by this statement:

12.41 From %

12.42 To..... %

12.5 Are letters of credit or collateral and other funds received from insureds being utilized by the reporting entity to secure premium notes or promissory notes taken by a reporting entity, or to secure any of the reporting entity's reported direct unpaid loss reserves , including unpaid losses under loss deductible features of commercial policies? Yes [] No [X]

12.6 If yes, state the amount thereof at December 31 of the current year:

12.61 Letters of credit\$

12.62 Collateral and other funds.....\$

13.1 Largest net aggregate amount insured in any one risk (excluding workers' compensation):\$ 52,000

13.2 Does any reinsurance contract considered in the calculation of this amount include an aggregate limit of recovery without also including a reinstatement provision? Yes [] No [X]

13.3 State the number of reinsurance contracts (excluding individual facultative risk certificates, but including facultative programs, automatic facilities or facultative obligatory contracts) considered in the calculation of the amount. 2

14.1 Is the company a cedant in a multiple cedant reinsurance contract? Yes [X] No []

14.2 If yes, please describe the method of allocating and recording reinsurance among the cedants:
Premiums are allocated to cedant based on experience weighted earned premiums subject to the contract. Reinsurance recoveries are distributed based on each cedant's share of the aggregate losses subject to the contract.

14.3 If the answer to 14.1 is yes, are the methods described in item 14.2 entirely contained in the respective multiple cedant reinsurance contracts? Yes [] No [X]

14.4 If the answer to 14.3 is no, are all the methods described in 14.2 entirely contained in written agreements? Yes [X] No []

14.5 If the answer to 14.4 is no, please explain:
.....

15.1 Has the reporting entity guaranteed any financed premium accounts? Yes [] No [X]

15.2 If yes, give full information
.....

16.1 Does the reporting entity write any warranty business? Yes [] No [X]
If yes, disclose the following information for each of the following types of warranty coverage:

	1 Direct Losses Incurred	2 Direct Losses Unpaid	3 Direct Written Premium	4 Direct Premium Unearned	5 Direct Premium Earned
16.11 Home
16.12 Products
16.13 Automobile
16.14 Other*

* Disclose type of coverage:
.....

ANNUAL STATEMENT FOR THE YEAR 2023 OF THE WILSON MUTUAL INSURANCE COMPANY

GENERAL INTERROGATORIES

PART 2 - PROPERTY AND CASUALTY INTERROGATORIES

17.1

Does the reporting entity include amounts recoverable on unauthorized reinsurance in Schedule F - Part 3 that is exempt from the statutory provision for unauthorized reinsurance?

Yes [] No [☒]

Incurred but not reported losses on contracts in force prior to July 1, 1984, and not subsequently renewed are exempt from the statutory provision for unauthorized reinsurance. Provide the following information for this exemption:

17.11

Gross amount of unauthorized reinsurance in Schedule F - Part 3 exempt from the statutory provision for unauthorized reinsurance

\$

17.12

Unfunded portion of Interrogatory 17.11

\$

17.13

Paid losses and loss adjustment expenses portion of Interrogatory 17.11.....

\$

17.14

Case reserves portion of Interrogatory 17.11

\$

17.15

Incurred but not reported portion of Interrogatory 17.11

\$

17.16

Unearned premium portion of Interrogatory 17.11

\$

17.17

Contingent commission portion of Interrogatory 17.11

\$

18.1

Do you act as a custodian for health savings accounts?

Yes [] No [☒]

18.2

If yes, please provide the amount of custodial funds held as of the reporting date.

\$

18.3

Do you act as an administrator for health savings accounts?

Yes [] No [☒]

18.4

If yes, please provide the balance of funds administered as of the reporting date.

\$

19.

Is the reporting entity licensed or chartered, registered, qualified, eligible or writing business in at least two states?

Yes [☒] No []

19.1

If no, does the reporting entity assume reinsurance business that covers risks residing in at least one state other than the state of domicile of the reporting entity?

Yes [] No []

ANNUAL STATEMENT FOR THE YEAR 2023 OF THE WILSON MUTUAL INSURANCE COMPANY

FIVE-YEAR HISTORICAL DATA

Show amounts in whole dollars only, no cents; show percentages to one decimal place, i.e. 17.6.

	1 2023	2 2022	3 2021	4 2020	5 2019
Gross Premiums Written (Page 8, Part 1B Cols. 1, 2 & 3)					
1. Liability lines (Lines 11, 16, 17, 18 & 19)	13,755,785	13,742,297	18,150,402	20,043,117	23,822,590
2. Property lines (Lines 1, 2, 9, 12, 21 & 26)	4,877,478	6,229,185	8,894,388	11,032,127	14,646,915
3. Property and liability combined lines (Lines 3, 4, 5, 8, 22 & 27)	9,925,461	10,420,858	16,205,380	18,850,872	23,234,897
4. All other lines (Lines 6, 10, 13, 14, 15, 23, 24, 28, 29, 30 & 34)	0	0	0	(157)	11,318
5. Nonproportional reinsurance lines (Lines 31, 32 & 33)	282,070	283,850	336,592	259,590	229,473
6. Total (Line 35)	28,840,794	30,676,190	43,586,762	50,185,549	61,945,193
Net Premiums Written (Page 8, Part 1B, Col. 6)					
7. Liability lines (Lines 11, 16, 17, 18 & 19)	10,908,472	10,024,049	12,058,610	11,872,641	12,355,795
8. Property lines (Lines 1, 2, 9, 12, 21 & 26)	1,698,585	1,493,743	1,927,479	2,019,601	2,385,683
9. Property and liability combined lines (Lines 3, 4, 5, 8, 22 & 27)	3,808,597	3,248,144	4,304,018	4,098,334	3,594,749
10. All other lines (Lines 6, 10, 13, 14, 15, 23, 24, 28, 29, 30 & 34)	0	0	0	(157)	11,318
11. Nonproportional reinsurance lines (Lines 31, 32 & 33)	282,070	283,850	336,592	259,590	229,473
12. Total (Line 35)	16,697,723	15,049,787	18,626,699	18,250,009	18,577,018
Statement of Income (Page 4)					
13. Net underwriting gain (loss) (Line 8)	(463,450)	145,666	598,632	72,663	(373,701)
14. Net investment gain (loss) (Line 11)	1,391,669	1,178,402	1,730,890	250,178	1,939,340
15. Total other income (Line 15)	(36,323)	2,951	204,148	(261,089)	138,221
16. Dividends to policyholders (Line 17)	52,431	47,491	67,128	20,879	47,656
17. Federal and foreign income taxes incurred (Line 19)	151,577	(118,736)	(79,136)	120,841	(619)
18. Net income (Line 20)	687,888	1,398,264	2,545,678	(79,968)	1,656,823
Balance Sheet Lines (Pages 2 and 3)					
19. Total admitted assets excluding protected cell business (Page 2, Line 26, Col. 3)	68,154,943	68,067,545	84,014,116	88,613,369	82,657,561
20. Premiums and considerations (Page 2, Col. 3)					
20.1 In course of collection (Line 15.1)	1,146,735	2,318,597	3,629,439	13,394,006	5,854,575
20.2 Deferred and not yet due (Line 15.2)	2,687,415	2,085,352	2,861,545	3,518,302	5,227,570
20.3 Accrued retrospective premiums (Line 15.3)	0	0	0	0	0
21. Total liabilities excluding protected cell business (Page 3, Line 26)	41,523,635	42,359,350	58,394,855	65,485,142	60,106,189
22. Losses (Page 3, Line 1)	23,181,053	22,072,357	28,553,083	27,869,896	26,820,661
23. Loss adjustment expenses (Page 3, Line 3)	3,596,970	3,722,517	4,863,949	4,761,346	4,677,984
24. Unearned premiums (Page 3, Line 9)	7,696,264	6,935,212	8,657,981	8,470,123	8,467,095
25. Capital paid up (Page 3, Lines 30 & 31)	5,000,000	5,000,000	5,000,000	0	0
26. Surplus as regards policyholders (Page 3, Line 37)	26,631,308	25,708,192	25,619,260	23,128,227	22,551,373
Cash Flow (Page 5)					
27. Net cash from operations (Line 11)	2,328,465	(410,793)	5,340,398	(1,216,782)	3,593,500
Risk-Based Capital Analysis					
28. Total adjusted capital	26,631,308	25,708,192	25,619,260	23,128,227	22,551,373
29. Authorized control level risk-based capital	2,492,555	2,351,821	2,961,739	3,442,096	3,296,332
Percentage Distribution of Cash, Cash Equivalents and Invested Assets (Page 2, Col. 3) (Line divided by Page 2, Line 12, Col. 3) x100.0					
30. Bonds (Line 1)	79.8	79.0	70.0	59.0	60.3
31. Stocks (Lines 2.1 & 2.2)	14.8	14.4	14.4	22.4	22.3
32. Mortgage loans on real estate (Lines 3.1 and 3.2)	0.0	0.0	0.0	0.0	0.0
33. Real estate (Lines 4.1, 4.2 & 4.3)	0.0	0.0	0.0	6.8	7.4
34. Cash, cash equivalents and short-term investments (Line 5)	5.3	6.5	15.6	6.7	4.9
35. Contract loans (Line 6)	0.0	0.0	0.0	0.0	0.0
36. Derivatives (Line 7)	0.0	0.0	0.0	0.0	0.0
37. Other invested assets (Line 8)	0.0	0.0	0.0	5.0	5.1
38. Receivables for securities (Line 9)	0.1	0.1	0.0	0.0	0.0
39. Securities lending reinvested collateral assets (Line 10)	0.0	0.0	0.0	0.0	0.0
40. Aggregate write-ins for invested assets (Line 11)	0.0	0.0	0.0	0.0	0.0
41. Cash, cash equivalents and invested assets (Line 12)	100.0	100.0	100.0	100.0	100.0
Investments in Parent, Subsidiaries and Affiliates					
42. Affiliated bonds (Schedule D, Summary, Line 12, Col. 1)				0	0
43. Affiliated preferred stocks (Schedule D, Summary, Line 18, Col. 1)			0	0	0
44. Affiliated common stocks (Schedule D, Summary, Line 24, Col. 1)			0	0	0
45. Affiliated short-term investments (subtotals included in Schedule DA Verification, Col. 5, Line 10)			0	0	0
46. Affiliated mortgage loans on real estate					
47. All other affiliated					
48. Total of above Lines 42 to 47	0	0	0	0	0
49. Total Investment in Parent included in Lines 42 to 47 above					
50. Percentage of investments in parent, subsidiaries and affiliates to surplus as regards policyholders (Line 48 above divided by Page 3, Col. 1, Line 37 x 100.0)	0.0	0.0	0.0	0.0	0.0

FIVE-YEAR HISTORICAL DATA

(Continued)

	1 2023	2 2022	3 2021	4 2020	5 2019
Capital and Surplus Accounts (Page 4)					
51. Net unrealized capital gains (losses) (Line 24)	230,759	(999,377)	(1,465,118)	1,909,356	1,602,190
52. Dividends to stockholders (Line 35)				0	0
53. Change in surplus as regards policyholders for the year (Line 38)	923,118	88,933	2,491,034	576,855	3,292,385
Gross Losses Paid (Page 9, Part 2, Cols. 1 & 2)					
54. Liability lines (Lines 11, 16, 17, 18 & 19)	11,691,441	10,646,979	15,842,766	16,982,759	21,708,064
55. Property lines (Lines 1, 2, 9, 12, 21 & 26)	3,586,110	5,289,002	5,339,424	6,593,828	8,953,724
56. Property and liability combined lines (Lines 3, 4, 5, 8, 22 & 27)	5,599,017	11,433,469	7,835,920	13,408,673	19,596,664
57. All other lines (Lines 6, 10, 13, 14, 15, 23, 24, 28, 29, 30 & 34)	(80)	(163)	(166)	5,039	5,134
58. Nonproportional reinsurance lines (Lines 31, 32 & 33)	158,064	186,426	151,563	159,206	134,720
59. Total (Line 35)	21,034,553	27,555,713	29,169,507	37,149,505	50,398,306
Net Losses Paid (Page 9, Part 2, Col. 4)					
60. Liability lines (Lines 11, 16, 17, 18 & 19)	4,983,289	4,683,608	5,705,973	5,355,396	5,875,517
61. Property lines (Lines 1, 2, 9, 12, 21 & 26)	892,525	949,438	1,049,796	1,030,052	1,414,467
62. Property and liability combined lines (Lines 3, 4, 5, 8, 22 & 27)	1,941,963	1,583,362	1,576,200	1,994,959	1,902,777
63. All other lines (Lines 6, 10, 13, 14, 15, 23, 24, 28, 29, 30 & 34)	(80)	(163)	(166)	5,039	5,134
64. Nonproportional reinsurance lines (Lines 31, 32 & 33)	158,064	186,426	151,563	159,206	134,720
65. Total (Line 35)	7,975,762	7,402,671	8,483,365	8,544,652	9,332,615
Operating Percentages (Page 4) (Line divided by Page 4, Line 1) x 100.0					
66. Premiums earned (Line 1)	100.0	100.0	100.0	100.0	100.0
67. Losses incurred (Line 2)	57.0	51.9	50.3	52.6	54.0
68. Loss expenses incurred (Line 3)	14.3	15.7	15.1	15.0	15.1
69. Other underwriting expenses incurred (Line 4)	31.6	31.5	31.4	32.0	33.0
70. Net underwriting gain (loss) (Line 8)	(2.9)	1.0	3.2	0.4	(2.0)
Other Percentages					
71. Other underwriting expenses to net premiums written (Page 4, Lines 4 + 5 - 15 divided by Page 8, Part 1B, Col. 6, Line 35 x 100.0)	30.4	30.8	30.0	33.4	31.8
72. Losses and loss expenses incurred to premiums earned (Page 4, Lines 2 + 3 divided by Page 4, Line 1 x 100.0)	71.3	67.5	65.4	67.6	69.0
73. Net premiums written to policyholders' surplus (Page 8, Part 1B, Col. 6, Line 35 divided by Page 3, Line 37, Col. 1 x 100.0)	62.7	58.5	72.7	78.9	82.4
One Year Loss Development (\$000 omitted)					
74. Development in estimated losses and loss expenses incurred prior to current year (Schedule P - Part 2 - Summary, Line 12, Col. 11)	(449)	(1,401)	(3,622)	(1,822)	(1,210)
75. Percent of development of losses and loss expenses incurred to policyholders' surplus of prior year end (Line 74 above divided by Page 4, Line 21, Col. 1 x 100.0).....	(1.7)	(5.5)	(15.7)	(8.1)	(6.3)
Two Year Loss Development (\$000 omitted)					
76. Development in estimated losses and loss expenses incurred two years before the current year and prior year (Schedule P, Part 2 - Summary, Line 12, Col. 12)	(1,781)	(3,329)	(5,184)	(2,994)	(4,015)
77. Percent of development of losses and loss expenses incurred to reported policyholders' surplus of second prior year end (Line 76 above divided by Page 4, Line 21, Col. 2 x 100.0)	(7.0)	(14.4)	(23.0)	(15.5)	(21.0)

NOTE: If a party to a merger, have the two most recent years of this exhibit been restated due to a merger in compliance with the disclosure requirements of SSAP No. 3, Accounting Changes and Correction of Errors?

Yes [] No []

If no, please explain:

ANNUAL STATEMENT FOR THE YEAR 2023 OF THE WILSON MUTUAL INSURANCE COMPANY

SCHEDULE P - ANALYSIS OF LOSSES AND LOSS EXPENSES

SCHEDULE P - PART 1 - SUMMARY

(\$000 OMITTED)

Years in Which Premiums Were Earned and Losses Were Incurred	Premiums Earned			Loss and Loss Expense Payments								12
	1 Direct and Assumed	2 Ceded	3 Net (1 - 2)	Loss Payments		Defense and Cost Containment Payments		Adjusting and Other Payments		10	11	Number of Claims Reported Direct and Assumed
				4 Direct and Assumed	5 Ceded	6 Direct and Assumed	7 Ceded	8 Direct and Assumed	9 Ceded	Salvage and Subrogation Received	Total Net Paid Cols (4 - 5 + 6 - 7 + 8 - 9)	
1. Prior.....	XXX.....	XXX.....	XXX.....	237.....	39.....	25.....	(3).....	8.....	(1).....	36.....	234.....	XXX.....
2. 2014.....	12,972.....	1,554.....	11,418.....	6,772.....	736.....	792.....	165.....	1,000.....	69.....	129.....	7,594.....	XXX.....
3. 2015.....	12,690.....	1,906.....	10,784.....	6,400.....	958.....	773.....	154.....	924.....	66.....	114.....	6,920.....	XXX.....
4. 2016.....	13,003.....	1,555.....	11,448.....	5,938.....	555.....	726.....	92.....	987.....	69.....	120.....	6,936.....	XXX.....
5. 2017.....	13,289.....	969.....	12,320.....	6,301.....	387.....	705.....	24.....	1,102.....	60.....	103.....	7,637.....	XXX.....
6. 2018.....	12,362.....	317.....	12,045.....	6,137.....	270.....	613.....	8.....	908.....	0.....	120.....	7,379.....	XXX.....
7. 2019.....	14,368.....	377.....	13,991.....	7,119.....	305.....	722.....	2.....	1,143.....	0.....	260.....	8,677.....	XXX.....
8. 2020.....	14,386.....	433.....	13,954.....	6,267.....	161.....	400.....	2.....	1,611.....	1.....	222.....	8,115.....	XXX.....
9. 2021.....	14,635.....	535.....	14,100.....	5,929.....	151.....	380.....	2.....	1,616.....	0.....	260.....	7,772.....	XXX.....
10. 2022.....	15,276.....	541.....	14,735.....	5,410.....	112.....	659.....	0.....	1,667.....	0.....	205.....	7,623.....	XXX.....
11. 2023.....	16,492.....	555.....	15,937.....	3,273.....	29.....	258.....	0.....	488.....	(1).....	96.....	3,990.....	XXX.....
12. Totals.....	XXX.....	XXX.....	XXX.....	59,784.....	3,703.....	6,054.....	446.....	11,454.....	265.....	1,663.....	72,877.....	XXX.....

	Losses Unpaid				Defense and Cost Containment Unpaid				Adjusting and Other Unpaid		23	24	25
	Case Basis		Bulk + IBNR		Case Basis		Bulk + IBNR						
	13	14	15	16	17	18	19	20	21	22			
	Direct and Assumed	Ceded	Direct and Assumed	Ceded	Direct and Assumed	Ceded	Direct and Assumed	Ceded	Direct and Assumed	Ceded			
1. Prior.....	3,185	588	1,808	578	82	3	151	81	193	0	0	4,170	XXX
2. 2014.....	526	1	443	248	23	0	49	35	27	0	0	783	XXX
3. 2015.....	425	7	434	39	23	0	46	6	31	0	0	908	XXX
4. 2016.....	368	44	419	0	12	0	44	0	33	0	0	832	XXX
5. 2017.....	493	59	389	0	26	0	31	0	50	0	0	931	XXX
6. 2018.....	479	24	465	0	32	0	48	0	56	0	0	1,056	XXX
7. 2019.....	630	16	552	0	39	0	56	0	70	0	0	1,331	XXX
8. 2020.....	1,133	196	652	0	39	0	73	0	111	0	0	1,812	XXX
9. 2021.....	1,566	35	956	0	49	0	153	0	195	0	0	2,884	XXX
10. 2022.....	2,108	27	1,425	0	81	0	233	0	290	0	0	4,111	XXX
11. 2023.....	3,556	83	3,112	0	163	0	569	0	644	0	0	7,962	XXX
12. Totals.....	14,470	1,079	10,655	865	569	4	1,453	121	1,700	0	0	26,778	XXX

	Total Losses and Loss Expenses Incurred			Loss and Loss Expense Percentage (Incurred /Premiums Earned)			Nontabular Discount		34	Net Balance Sheet Reserves After Discount	
	26	27	28	29	30	31	32	33	Inter- Company Pooling Participation Percentage	35	36
	Direct and Assumed	Ceded	Net	Direct and Assumed	Ceded	Net	Loss	Loss Expense		Losses Unpaid	Loss Expenses Unpaid
1. Prior.....	XXX.....	XXX.....	XXX.....	XXX.....	XXX.....	XXX.....	0.....	0.....	XXX.....	3,827.....	342.....
2. 2014.....	9,631.....	1,254.....	8,377.....	74.2.....	80.7.....	73.4.....	0.....	0.....	0.0.....	719.....	63.....
3. 2015.....	9,057.....	1,228.....	7,828.....	71.4.....	64.5.....	72.6.....	0.....	0.....	0.0.....	814.....	94.....
4. 2016.....	8,528.....	760.....	7,768.....	65.6.....	48.9.....	67.9.....	0.....	0.....	0.0.....	743.....	89.....
5. 2017.....	9,098.....	530.....	8,568.....	68.5.....	54.8.....	69.5.....	0.....	0.....	0.0.....	823.....	107.....
6. 2018.....	8,738.....	303.....	8,435.....	70.7.....	95.4.....	70.0.....	0.....	0.....	0.0.....	920.....	136.....
7. 2019.....	10,332.....	325.....	10,007.....	71.9.....	86.0.....	71.5.....	0.....	0.....	0.0.....	1,166.....	165.....
8. 2020.....	10,286.....	359.....	9,927.....	71.5.....	82.9.....	71.1.....	0.....	0.....	0.0.....	1,589.....	223.....
9. 2021.....	10,844.....	188.....	10,655.....	74.1.....	35.2.....	75.6.....	0.....	0.....	0.0.....	2,487.....	396.....
10. 2022.....	11,874.....	140.....	11,734.....	77.7.....	25.9.....	79.6.....	0.....	0.....	0.0.....	3,506.....	604.....
11. 2023.....	12,063.....	111.....	11,952.....	73.1.....	20.0.....	75.0.....	0.....	0.....	0.0.....	6,586.....	1,376.....
12. Totals.....	XXX.....	XXX.....	XXX.....	XXX.....	XXX.....	XXX.....	0.....	0.....	XXX.....	23,181.....	3,597.....

Note: Parts 2 and 4 are gross of all discounting, including tabular discounting. Part 1 is gross of only nontabular discounting, which is reported in Columns 32 and 33 of Part 1. The tabular discount, if any, is reported in the Notes to Financial Statements which will reconcile Part 1 with Parts 2 and 4.

ANNUAL STATEMENT FOR THE YEAR 2023 OF THE WILSON MUTUAL INSURANCE COMPANY

SCHEDULE P - PART 2 - SUMMARY

Years in Which Losses Were Incurred	INCURRED NET LOSSES AND DEFENSE AND COST CONTAINMENT EXPENSES REPORTED AT YEAR END (\$000 OMITTED)										DEVELOPMENT	
	1 2014	2 2015	3 2016	4 2017	5 2018	6 2019	7 2020	8 2021	9 2022	10 2023	11 One Year	12 Two Year
1. Prior.....	14,446	13,136	12,320	11,078	11,233	10,577	10,623	10,323	10,328	10,401	73	77
2. 2014.....	7,702	7,779	7,724	7,604	7,440	7,449	7,573	7,409	7,401	7,419	18	10
3. 2015.....	XXX	7,405	7,362	7,282	7,064	6,919	6,881	6,923	6,835	6,939	104	16
4. 2016.....	XXX	XXX	7,640	7,926	7,408	7,101	6,814	6,750	6,818	6,816	(1)	66
5. 2017.....	XXX	XXX	XXX	9,654	8,680	8,388	7,761	7,402	7,510	7,477	(33)	74
6. 2018.....	XXX	XXX	XXX	XXX	8,377	8,788	8,203	7,548	7,569	7,472	(97)	(76)
7. 2019.....	XXX	XXX	XXX	XXX	XXX	9,972	9,943	8,873	8,762	8,795	33	(78)
8. 2020.....	XXX	XXX	XXX	XXX	XXX	XXX	9,158	8,959	8,405	8,206	(199)	(753)
9. 2021.....	XXX	XXX	XXX	XXX	XXX	XXX	XXX	9,963	9,121	8,845	(276)	(1,118)
10. 2022.....	XXX	XXX	XXX	XXX	XXX	XXX	XXX	XXX	9,847	9,777	(69)	XXX
11. 2023.....	XXX	XXX	XXX	XXX	XXX	XXX	XXX	XXX	XXX	10,819	XXX	XXX
12. Totals											(449)	(1,781)

SCHEDULE P - PART 3 - SUMMARY

Years in Which Losses Were Incurred	CUMULATIVE PAID NET LOSSES AND DEFENSE AND COST CONTAINMENT EXPENSES REPORTED AT YEAR END (\$000 OMITTED)										11 Number of Claims Closed With Loss Payment	12 Number of Claims Closed Without Loss Payment
	1	2	3	4	5	6	7	8	9	10		
	2014	2015	2016	2017	2018	2019	2020	2021	2022	2023		
1. Prior.....	000	1,935	3,369	4,247	4,755	5,229	5,698	5,934	6,198	6,424	XXX	XXX
2. 2014.....	2,767	4,491	5,302	5,880	6,193	6,364	6,476	6,552	6,603	6,663	XXX	XXX
3. 2015.....	XXX	2,444	4,022	4,871	5,339	5,642	5,782	5,908	5,994	6,061	XXX	XXX
4. 2016.....	XXX	XXX	3,368	5,175	6,092	6,545	6,764	5,838	5,916	6,018	XXX	XXX
5. 2017.....	XXX	XXX	XXX	3,877	5,859	6,656	7,042	6,194	6,401	6,596	XXX	XXX
6. 2018.....	XXX	XXX	XXX	XXX	3,462	5,423	6,375	5,799	6,233	6,472	XXX	XXX
7. 2019.....	XXX	XXX	XXX	XXX	XXX	3,780	5,543	6,399	6,994	7,534	XXX	XXX
8. 2020.....	XXX	XXX	XXX	XXX	XXX	XXX	3,082	4,939	5,888	6,504	XXX	XXX
9. 2021.....	XXX	XXX	XXX	XXX	XXX	XXX	XXX	2,908	5,022	6,156	XXX	XXX
10. 2022.....	XXX	XXX	XXX	XXX	XXX	XXX	XXX	XXX	3,529	5,957	XXX	XXX
11. 2023.....	XXX	XXX	XXX	XXX	XXX	XXX	XXX	XXX	XXX	3,501	XXX	XXX

SCHEDULE P - PART 4 - SUMMARY

Years in Which Losses Were Incurred	BULK AND IBNR RESERVES ON NET LOSSES AND DEFENSE AND COST CONTAINMENT EXPENSES REPORTED AT YEAR END (\$000 OMITTED)									
	1	2	3	4	5	6	7	8	9	10
	2014	2015	2016	2017	2018	2019	2020	2021	2022	2023
1. Prior.....	8,386	6,392	4,823	3,067	2,826	2,045	1,861	1,374	1,365	1,300
2. 2014.....	2,698	1,838	1,233	881	562	472	480	267	224	208
3. 2015.....	XXX	2,863	2,051	1,362	973	609	500	431	382	436
4. 2016.....	XXX	XXX	3,078	2,156	1,491	993	619	504	530	462
5. 2017.....	XXX	XXX	XXX	4,199	2,484	1,896	1,047	568	571	421
6. 2018.....	XXX	XXX	XXX	XXX	3,499	2,847	1,662	827	695	513
7. 2019.....	XXX	XXX	XXX	XXX	XXX	3,832	2,777	1,217	897	608
8. 2020.....	XXX	XXX	XXX	XXX	XXX	XXX	3,255	2,119	1,209	725
9. 2021.....	XXX	XXX	XXX	XXX	XXX	XXX	XXX	3,981	1,907	1,109
10. 2022.....	XXX	XXX	XXX	XXX	XXX	XXX	XXX	XXX	3,346	1,659
11. 2023.....	XXX	XXX	XXX	XXX	XXX	XXX	XXX	XXX	XXX	3,681

ANNUAL STATEMENT FOR THE YEAR 2023 OF THE WILSON MUTUAL INSURANCE COMPANY

SCHEDULE T - EXHIBIT OF PREMIUMS WRITTEN

Allocated by States and Territories									
States, Etc.	1	Gross Premiums, Including Policy and Membership Fees, Less Return Premiums and Premiums on Policies Not Taken		4	5	6	7	8	9
		2	3						
	Active Status (a)	Direct Premiums Written	Direct Premiums Earned	Dividends Paid or Credited to Policyholders on Direct Business	Direct Losses Paid (Deducting Salvage)	Direct Losses Incurred	Direct Losses Unpaid	Finance and Service Charges Not Included in Premiums	Direct Premiums Written for Federal Purchasing Groups (Included in Column 2)
1. Alabama	AL	N							
2. Alaska	AK	N							
3. Arizona	AZ	N							
4. Arkansas	AR	N							
5. California	CA	N							
6. Colorado	CO	N							
7. Connecticut	CT	N							
8. Delaware	DE	N							
9. District of Columbia	DC	N							
10. Florida	FL	N							
11. Georgia	GA	N	0	0	0	0	0	0	
12. Hawaii	HI	N							
13. Idaho	ID	N							
14. Illinois	IL	N	0	0	0	0	0	0	
15. Indiana	IN	N	0	0	0	0	0	0	
16. Iowa	IA	N	0	0	0	0	0	0	
17. Kansas	KS	N	0	0	0	0	0	0	
18. Kentucky	KY	N	0	0	0	0	0	0	
19. Louisiana	LA	N							
20. Maine	ME	N	0	0	0	0	0	0	
21. Maryland	MD	N	0	0	0	0	0	0	
22. Massachusetts	MA	N	0	0	0	0	0	0	
23. Michigan	MI	N	0	0	0	0	0	0	
24. Minnesota	MN	L	1,199,122	1,691,161	0	1,933,585	1,661,471	1,034,557	3,514
25. Mississippi	MS	N							
26. Missouri	MO	N	0	0	0	0	0	0	
27. Montana	MT	N							
28. Nebraska	NE	N	0	0	0	0	0	0	
29. Nevada	NV	N							
30. New Hampshire	NH	N	0	0	0	0	0	0	
31. New Jersey	NJ	N							
32. New Mexico	NM	N							
33. New York	NY	N							
34. North Carolina	NC	N	0	0	0	0	0	0	
35. North Dakota	ND	N							
36. Ohio	OH	Q	0	0	0	0	0	0	
37. Oklahoma	OK	N							
38. Oregon	OR	N							
39. Pennsylvania	PA	N	0	0	0	0	0	0	
40. Rhode Island	RI	N	0	0	0	0	0	0	
41. South Carolina	SC	N	0	0	0	0	0	0	
42. South Dakota	SD	N							
43. Tennessee	TN	N	0	0	0	0	0	0	
44. Texas	TX	N							
45. Utah	UT	N							
46. Vermont	VT	N	0	0	0	0	0	0	
47. Virginia	VA	N	0	0	0	0	0	0	
48. Washington	WA	N							
49. West Virginia	WV	N	0	0	0	0	0	0	
50. Wisconsin	WI	L	10,943,955	11,913,939	0	11,123,415	3,350,044	9,141,854	32,440
51. Wyoming	WY	N							
52. American Samoa	AS	N							
53. Guam	GU	N							
54. Puerto Rico	PR	N							
55. U.S. Virgin Islands	VI	N							
56. Northern Mariana Islands	MP	N							
57. Canada	CAN	N							
58. Aggregate other alien	OT	XXX	0	0	0	0	0	0	0
59. Totals	XXX	12,143,077	13,605,100	0	13,057,000	5,011,515	10,176,411	35,954	0
DETAILS OF WRITE-INS									
58001.	XXX								
58002.	XXX								
58003.	XXX								
58998. Summary of remaining write-ins for Line 58 from overflow page	XXX	0	0	0	0	0	0	0	0
58999. Totals (Lines 58001 through 58003 plus 58998)(Line 58 above)	XXX	0	0	0	0	0	0	0	0

(a) Active Status Counts:

1. L - Licensed or Chartered - Licensed insurance carrier or domiciled RRG.....

2. R - Registered - Non-domiciled RRGs.....

3. E - Eligible - Reporting entities eligible or approved to write surplus lines in the state (other than their state of domicile - see DSLI).....

4. Q - Qualified - Qualified or accredited reinsurer.....

5. D - Domestic Surplus Lines Insurer (DSLII) - Reporting entities authorized to write surplus lines in the state of domicile.....

6. N - None of the above - Not allowed to write business in the state.....

1

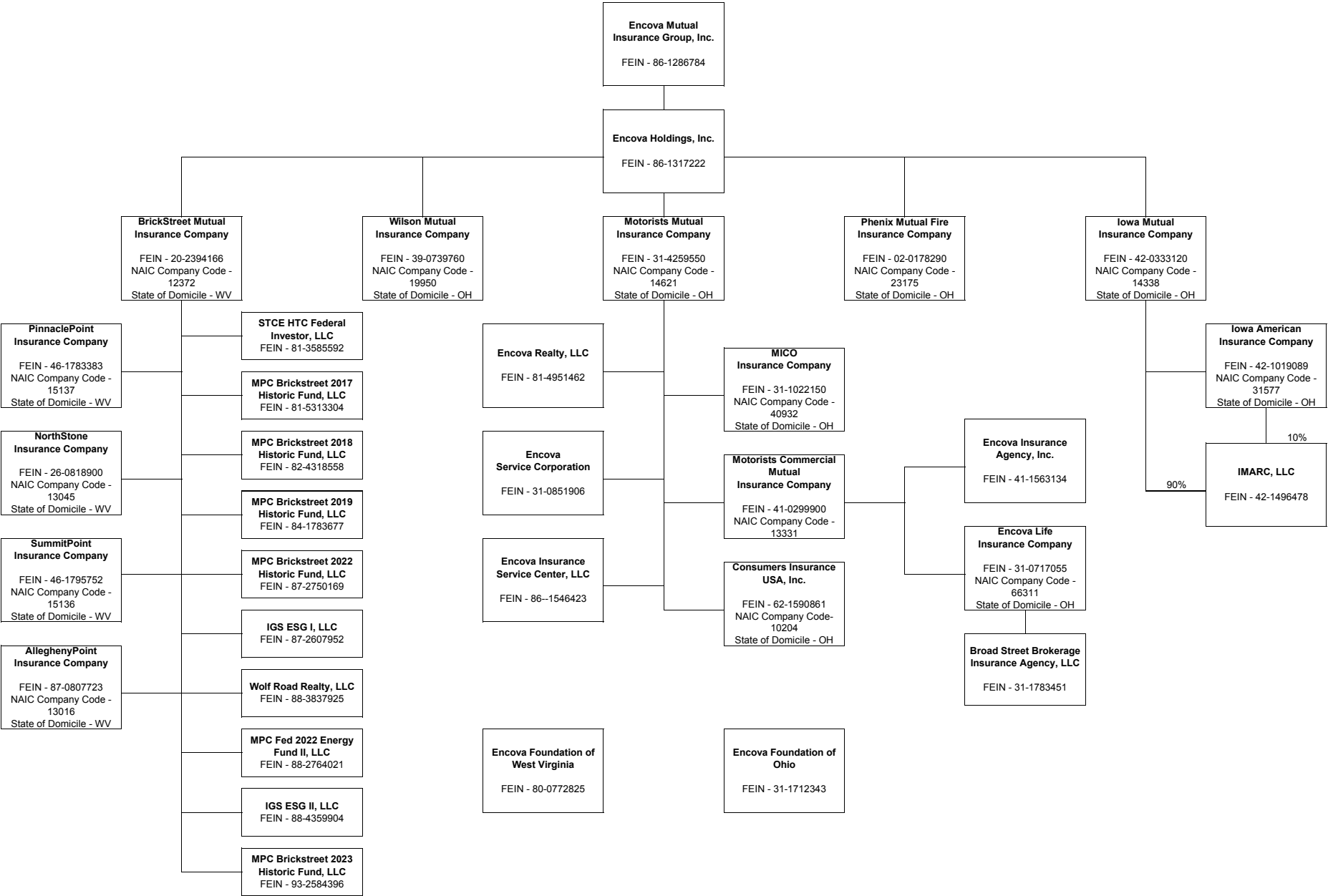
0

54

(b) Explanation of basis of allocation of premiums by states, etc.

Premiums are assigned to state based on the following methods: 1) the location of the risk for lines 1, 2, 3, 4, 5, 9, 12, 16, 26, and 27 2) the location of the insured's operation for line 17 and 18 3) the principal garaging location for lines 19 and 21

SCHEDULE Y - INFORMATION CONCERNING ACTIVITIES OF INSURER MEMBERS OF A HOLDING COMPANY GROUP
PART 1 - ORGANIZATIONAL CHART



NONE