



PROPERTY AND CASUALTY COMPANIES - ASSOCIATION EDITION

ANNUAL STATEMENT

FOR THE YEAR ENDED DECEMBER 31, 2023
OF THE CONDITION AND AFFAIRS OF THE

PROGRESSIVE DIRECT INSURANCE COMPANY

NAIC Group Code

0155

0155

NAIC Company Code

16322

Employer's ID Number

34-1524319

(Current)

(Prior)

Organized under the Laws of

OH

State of Domicile or Port of Entry

OH

Country of Domicile

United States of America

Incorporated/Organized

09/29/1986

Commenced Business

01/14/1987

Statutory Home Office

6300 WILSON MILLS ROAD, W33

CLEVELAND, OH, US 44143-2182

(Street and Number)

(City or Town, State, Country and Zip Code)

Main Administrative Office

6300 WILSON MILLS ROAD, W33

CLEVELAND, OH, US 44143-2182

(Street and Number)

(City or Town, State, Country and Zip Code)

440-461-5000

(Area Code) (Telephone Number)

Mail Address

P.O. BOX 89490

CLEVELAND, OH, US 44101-6490

(Street and Number or P.O. Box)

(City or Town, State, Country and Zip Code)

Primary Location of Books and Records

6300 WILSON MILLS ROAD, W33

CLEVELAND, OH, US 44143-2182

(Street and Number)

(City or Town, State, Country and Zip Code)

440-395-4460

(Area Code) (Telephone Number)

Internet Website Address

PROGRESSIVE.COM

Statutory Statement Contact

MICHELLE CRISTEN CAVELL

440-395-4460

(Name)

(Area Code) (Telephone Number)

FINANCIAL_REPORTING@PROGRESSIVE.COM

440-603-5500

(E-mail Address)

(FAX Number)

OFFICERS

PRESIDENT

CHARLOTTE MARIE ELEK #

TREASURER

DANIEL JOSEPH WITALEC

SECRETARY

MICHAEL ROBERT UTH

OTHER

ADAM PORTER BRADFORD, (VICE PRESIDENT)

MICHAEL VINCENT ESPOSITO, (VICE PRESIDENT)

CARL GORDON JOYCE, (VICE PRESIDENT)

GREGORY FRANK MISCHLICH #, (ASST. SECRETARY)

KEVIN PATRICK MCGRATH, (VICE PRESIDENT)

SANDRA LEE RIHVALSKY, (ASST. TREASURER)

DIRECTORS OR TRUSTEES

CHARLOTTE MARIE ELEK #

MICHAEL VINCENT ESPOSITO

BRIAN JACOB GURA

MEGHAN LOUISE MCARDLE FRIESEN

FREDERICK LEE STADELBAUER JR. #

State of

OHIO

County of

CUYAHOGA

SS

The officers of this reporting entity being duly sworn, each depose and say that they are the described officers of said reporting entity, and that on the reporting period stated above, all of the herein described assets were the absolute property of the said reporting entity, free and clear from any liens or claims thereon, except as herein stated, and that this statement, together with related exhibits, schedules and explanations therein contained, annexed or referred to, is a full and true statement of all the assets and liabilities and of the condition and affairs of the said reporting entity as of the reporting period stated above, and of its income and deductions therefrom for the period ended, and have been completed in accordance with the NAIC Annual Statement Instructions and Accounting Practices and Procedures manual except to the extent that: (1) state law may differ; or, (2) that state rules or regulations require differences in reporting not related to accounting practices and procedures, according to the best of their information, knowledge and belief, respectively. Furthermore, the scope of this attestation by the described officers also includes the related corresponding electronic filing with the NAIC, when required, that is an exact copy (except for formatting differences due to electronic filing) of the enclosed statement. The electronic filing may be requested by various regulators in lieu of or in addition to the enclosed statement.

Charlotte Marie Elek

CHARLOTTE MARIE ELEK #

PRESIDENT

Gregory F. Mischlich

GREGORY FRANK MISCHLICH #

ASSISTANT SECRETARY

Sandra L. Rihvalsky

SANDRA LEE RIHVALSKY

ASSISTANT TREASURER

Subscribed and sworn to before me this

9TH

day of

FEBRUARY, 2024

- a. Is this an original filing?

Yes [X] No []
- b. If no,

1. State the amendment number.....

2. Date filed

3. Number of pages attached.....

DIANA M PISTONE

Notary Public, State of Ohio

My Comm. Exp. Jan. 16, 2026

Recorded in Cuyahoga County



ANNUAL STATEMENT FOR THE YEAR 2023 OF THE PROGRESSIVE DIRECT INSURANCE COMPANY

ASSETS

	Current Year			Prior Year
	1 Assets	2 Nonadmitted Assets	3 Net Admitted Assets (Cols. 1 - 2)	4 Net Admitted Assets
1. Bonds (Schedule D)	12,573,880,401		12,573,880,401	10,747,180,188
2. Stocks (Schedule D):				
2.1 Preferred stocks	66,569,871		66,569,871	65,923,557
2.2 Common stocks	976,338,588		976,338,588	966,813,891
3. Mortgage loans on real estate (Schedule B):				
3.1 First liens				
3.2 Other than first liens.....				
4. Real estate (Schedule A):				
4.1 Properties occupied by the company (less \$ encumbrances)	86,086,580		86,086,580	135,182,923
4.2 Properties held for the production of income (less \$ encumbrances)				
4.3 Properties held for sale (less \$ encumbrances)	24,367,814		24,367,814	8,669,970
5. Cash (\$5,165 , Schedule E - Part 1), cash equivalents (\$28,060,957 , Schedule E - Part 2) and short-term investments (\$2,352,714 , Schedule DA)	30,418,836		30,418,836	54,713,293
6. Contract loans (including \$ premium notes)				
7. Derivatives (Schedule DB)				
8. Other invested assets (Schedule BA)	9,004,966	9,004,966		
9. Receivable for securities	16,031,344		16,031,344	8,623,073
10. Securities lending reinvested collateral assets (Schedule DL)				
11. Aggregate write-ins for invested assets				
12. Subtotals, cash and invested assets (Lines 1 to 11)	13,782,698,400	9,004,966	13,773,693,434	11,987,106,895
13. Title plants less \$ charged off (for Title insurers only)				
14. Investment income due and accrued	80,057,749		80,057,749	55,149,658
15. Premiums and considerations:				
15.1 Uncollected premiums and agents' balances in the course of collection.....	530,841,536	40,480,358	490,361,178	294,298,446
15.2 Deferred premiums, agents' balances and installments booked but deferred and not yet due (including \$ earned but unbilled premiums)	2,589,433,594		2,589,433,594	1,670,173,165
15.3 Accrued retrospective premiums (\$) and contracts subject to redetermination (\$)				
16. Reinsurance:				
16.1 Amounts recoverable from reinsurers	16,895,151		16,895,151	18,397,611
16.2 Funds held by or deposited with reinsured companies				
16.3 Other amounts receivable under reinsurance contracts				
17. Amounts receivable relating to uninsured plans				
18.1 Current federal and foreign income tax recoverable and interest thereon				
18.2 Net deferred tax asset	92,283,103		92,283,103	53,907,932
19. Guaranty funds receivable or on deposit	274,572		274,572	70,200
20. Electronic data processing equipment and software				
21. Furniture and equipment, including health care delivery assets (\$)				
22. Net adjustment in assets and liabilities due to foreign exchange rates				
23. Receivables from parent, subsidiaries and affiliates	532,791,763		532,791,763	
24. Health care (\$) and other amounts receivable				
25. Aggregate write-ins for other than invested assets	7,764,398	847,818	6,916,580	5,780,911
26. Total assets excluding Separate Accounts, Segregated Accounts and Protected Cell Accounts (Lines 12 to 25)	17,633,040,266	50,333,142	17,582,707,124	14,084,884,818
27. From Separate Accounts, Segregated Accounts and Protected Cell Accounts				
28. Total (Lines 26 and 27)	17,633,040,266	50,333,142	17,582,707,124	14,084,884,818
DETAILS OF WRITE-INS				
1101.				
1102.				
1103.				
1198. Summary of remaining write-ins for Line 11 from overflow page				
1199. Totals (Lines 1101 thru 1103 plus 1198)(Line 11 above)				
2501. STATE UNEARNED SURCHARGE RECOVERABLE	4,814,505		4,814,505	4,370,008
2502. STATE TAX CREDITS	2,102,075		2,102,075	1,392,917
2503. PREPAID EXPENSES	831,318	831,318		
2598. Summary of remaining write-ins for Line 25 from overflow page	16,500	16,500		17,986
2599. Totals (Lines 2501 thru 2503 plus 2598)(Line 25 above)	7,764,398	847,818	6,916,580	5,780,911

ANNUAL STATEMENT FOR THE YEAR 2023 OF THE PROGRESSIVE DIRECT INSURANCE COMPANY

LIABILITIES, SURPLUS AND OTHER FUNDS

	1 Current Year	2 Prior Year
1. Losses (Part 2A, Line 35, Column 8)	5,334,658,163	4,429,237,289
2. Reinsurance payable on paid losses and loss adjustment expenses (Schedule F, Part 1, Column 6)	788,850,485	324,511,591
3. Loss adjustment expenses (Part 2A, Line 35, Column 9)	1,051,361,690	971,945,981
4. Commissions payable, contingent commissions and other similar charges	2,224,731	4,337,571
5. Other expenses (excluding taxes, licenses and fees)	3,441,816	4,642,996
6. Taxes, licenses and fees (excluding federal and foreign income taxes)	171,885,004	124,667,047
7.1 Current federal and foreign income taxes (including \$ (427,918) on realized capital gains (losses))	158,039,640	43,398,116
7.2 Net deferred tax liability		
8. Borrowed money \$0 and interest thereon \$		
9. Unearned premiums (Part 1A, Line 38, Column 5) (after deducting unearned premiums for ceded reinsurance of \$ 1,326,453,653 and including warranty reserves of \$ and accrued accident and health experience rating refunds including \$ for medical loss ratio rebate per the Public Health Service Act)	4,440,676,316	3,644,402,714
10. Advance premium	28,661,378	23,132,492
11. Dividends declared and unpaid:		
11.1 Stockholders		
11.2 Policyholders		
12. Ceded reinsurance premiums payable (net of ceding commissions)	13,879,765	6,578,512
13. Funds held by company under reinsurance treaties (Schedule F, Part 3, Column 20)		
14. Amounts withheld or retained by company for account of others		
15. Remittances and items not allocated		
16. Provision for reinsurance (including \$ certified) (Schedule F, Part 3, Column 78)		
17. Net adjustments in assets and liabilities due to foreign exchange rates		
18. Drafts outstanding	191,214,505	168,593,762
19. Payable to parent, subsidiaries and affiliates		21,244,676
20. Derivatives		
21. Payable for securities		552,597
22. Payable for securities lending		
23. Liability for amounts held under uninsured plans		
24. Capital notes \$0 and interest thereon \$		
25. Aggregate write-ins for liabilities	10,220,531	10,774,846
26. Total liabilities excluding protected cell liabilities (Lines 1 through 25)	12,195,114,024	9,778,020,190
27. Protected cell liabilities		
28. Total liabilities (Lines 26 and 27)	12,195,114,024	9,778,020,190
29. Aggregate write-ins for special surplus funds		
30. Common capital stock	3,000,480	3,000,480
31. Preferred capital stock		
32. Aggregate write-ins for other than special surplus funds		
33. Surplus notes		
34. Gross paid in and contributed surplus	1,124,645,775	1,124,645,775
35. Unassigned funds (surplus)	4,259,946,845	3,179,218,373
36. Less treasury stock, at cost:		
36.10 shares common (value included in Line 30 \$)		
36.20 shares preferred (value included in Line 31 \$)		
37. Surplus as regards policyholders (Lines 29 to 35, less 36) (Page 4, Line 39)	5,387,593,100	4,306,864,628
38. TOTALS (Page 2, Line 28, Col. 3)	17,582,707,124	14,084,884,818
DETAILS OF WRITE-INS		
2501. MISCELLANEOUS OTHER LIABILITIES	6,689,592	5,640,762
2502. ESCHEATABLE PROPERTY	1,783,725	2,867,922
2503. STATE PLAN LIABILITY	1,747,214	2,266,162
2598. Summary of remaining write-ins for Line 25 from overflow page		
2599. Totals (Lines 2501 thru 2503 plus 2598)(Line 25 above)	10,220,531	10,774,846
2901.		
2902.		
2903.		
2998. Summary of remaining write-ins for Line 29 from overflow page		
2999. Totals (Lines 2901 thru 2903 plus 2998)(Line 29 above)		
3201.		
3202.		
3203.		
3298. Summary of remaining write-ins for Line 32 from overflow page		
3299. Totals (Lines 3201 thru 3203 plus 3298)(Line 32 above)		

STATEMENT OF INCOME

	1 Current Year	2 Prior Year
UNDERWRITING INCOME		
1. Premiums earned (Part 1, Line 35, Column 4).....	15,799,179,742	12,923,150,588
DEDUCTIONS:		
2. Losses incurred (Part 2, Line 35, Column 7)	10,874,619,258	8,920,254,065
3. Loss adjustment expenses incurred (Part 3, Line 25, Column 1)	1,486,254,006	1,254,017,127
4. Other underwriting expenses incurred (Part 3, Line 25, Column 2)	2,372,033,863	2,390,220,493
5. Aggregate write-ins for underwriting deductions		
6. Total underwriting deductions (Lines 2 through 5)	14,732,907,127	12,564,491,685
7. Net income of protected cells		
8. Net underwriting gain (loss) (Line 1 minus Line 6 plus Line 7)	1,066,272,615	358,658,903
INVESTMENT INCOME		
9. Net investment income earned (Exhibit of Net Investment Income, Line 17)	378,463,558	278,891,489
10. Net realized capital gains (losses) less capital gains tax of \$ 8,931,170 (Exhibit of Capital Gains (Losses))	35,851,152	139,024,650
11. Net investment gain (loss) (Lines 9 + 10)	414,314,710	417,916,139
OTHER INCOME		
12. Net gain (loss) from agents' or premium balances charged off (amount recovered \$ 14,987,394 amount charged off \$ 122,498,381)	(107,510,987)	(102,142,053)
13. Finance and service charges not included in premiums	95,096,040	72,788,589
14. Aggregate write-ins for miscellaneous income	73,003,124	48,111,840
15. Total other income (Lines 12 through 14)	60,588,177	18,758,376
16. Net income before dividends to policyholders, after capital gains tax and before all other federal and foreign income taxes (Lines 8 + 11 + 15)	1,541,175,502	795,333,418
17. Dividends to policyholders		
18. Net income, after dividends to policyholders, after capital gains tax and before all other federal and foreign income taxes (Line 16 minus Line 17)	1,541,175,502	795,333,418
19. Federal and foreign income taxes incurred	368,464,230	154,482,711
20. Net income (Line 18 minus Line 19)(to Line 22)	1,172,711,272	640,850,707
CAPITAL AND SURPLUS ACCOUNT		
21. Surplus as regards policyholders, December 31 prior year (Page 4, Line 39, Column 2)	4,306,864,628	3,938,913,149
22. Net income (from Line 20)	1,172,711,272	640,850,707
23. Net transfers (to) from Protected Cell accounts		
24. Change in net unrealized capital gains or (losses) less capital gains tax of \$ 16,468,968	62,081,813	(539,161,545)
25. Change in net unrealized foreign exchange capital gain (loss)		
26. Change in net deferred income tax	54,844,139	16,788,693
27. Change in nonadmitted assets (Exhibit of Nonadmitted Assets, Line 28, Col. 3)	(8,908,752)	(526,376)
28. Change in provision for reinsurance (Page 3, Line 16, Column 2 minus Column 1)		
29. Change in surplus notes		
30. Surplus (contributed to) withdrawn from protected cells		
31. Cumulative effect of changes in accounting principles		
32. Capital changes:		
32.1 Paid in		
32.2 Transferred from surplus (Stock Dividend)		
32.3 Transferred to surplus		
33. Surplus adjustments:		
33.1 Paid in		250,000,000
33.2 Transferred to capital (Stock Dividend)		
33.3 Transferred from capital		
34. Net remittances from or (to) Home Office		
35. Dividends to stockholders	(200,000,000)	
36. Change in treasury stock (Page 3, Lines 36.1 and 36.2, Column 2 minus Column 1)		
37. Aggregate write-ins for gains and losses in surplus		
38. Change in surplus as regards policyholders for the year (Lines 22 through 37)	1,080,728,472	367,951,479
39. Surplus as regards policyholders, December 31 current year (Line 21 plus Line 38) (Page 3, Line 37)	5,387,593,100	4,306,864,628
DETAILS OF WRITE-INS		
0501.		
0502.		
0503.		
0598. Summary of remaining write-ins for Line 5 from overflow page		
0599. Totals (Lines 0501 thru 0503 plus 0598)(Line 5 above)		
1401. FINANCE & SERVICE CHARGE REVENUE ASSUMED	43,784,869	36,773,420
1402. INTEREST INCOME ON INTERCOMPANY BALANCES	25,547,008	8,289,817
1403. MISCELLANEOUS OTHER INCOME (EXPENSE)	3,671,247	3,048,603
1498. Summary of remaining write-ins for Line 14 from overflow page		
1499. Totals (Lines 1401 thru 1403 plus 1498)(Line 14 above)	73,003,124	48,111,840
3701.		
3702.		
3703.		
3798. Summary of remaining write-ins for Line 37 from overflow page		
3799. Totals (Lines 3701 thru 3703 plus 3798)(Line 37 above)		

ANNUAL STATEMENT FOR THE YEAR 2023 OF THE PROGRESSIVE DIRECT INSURANCE COMPANY

CASH FLOW

	1	2
	Current Year	Prior Year
Cash from Operations		
1. Premiums collected net of reinsurance	15,489,210,957	13,062,342,913
2. Net investment income	409,165,207	283,291,577
3. Miscellaneous income	54,512,415	28,649,114
4. Total (Lines 1 through 3)	15,952,888,579	13,374,283,604
5. Benefit and loss related payments	9,503,357,030	8,819,712,500
6. Net transfers to Separate Accounts, Segregated Accounts and Protected Cell Accounts		
7. Commissions, expenses paid and aggregate write-ins for deductions	3,735,189,865	3,619,435,026
8. Dividends paid to policyholders		
9. Federal and foreign income taxes paid (recovered) net of \$ 5,520,861 tax on capital gains (losses)	262,753,876	159,667,476
10. Total (Lines 5 through 9)	13,501,300,771	12,598,815,002
11. Net cash from operations (Line 4 minus Line 10)	2,451,587,808	775,468,602
Cash from Investments		
12. Proceeds from investments sold, matured or repaid:		
12.1 Bonds	2,820,224,750	3,342,747,819
12.2 Stocks	218,706,155	432,162,336
12.3 Mortgage loans		
12.4 Real estate		3,185,499
12.5 Other invested assets	268,178	454,953
12.6 Net gains or (losses) on cash, cash equivalents and short-term investments		(6,585)
12.7 Miscellaneous proceeds		
12.8 Total investment proceeds (Lines 12.1 to 12.7)	3,039,199,083	3,778,544,022
13. Cost of investments acquired (long-term only):		
13.1 Bonds	4,751,572,127	4,713,178,741
13.2 Stocks	21,439,102	49,993,001
13.3 Mortgage loans		
13.4 Real estate	1,778,895	2,889,223
13.5 Other invested assets		
13.6 Miscellaneous applications	7,960,868	9,431,878
13.7 Total investments acquired (Lines 13.1 to 13.6)	4,782,750,992	4,775,492,843
14. Net increase/(decrease) in contract loans and premium notes		
15. Net cash from investments (Line 12.8 minus Line 13.7 minus Line 14)	(1,743,551,909)	(996,948,821)
Cash from Financing and Miscellaneous Sources		
16. Cash provided (applied):		
16.1 Surplus notes, capital notes		
16.2 Capital and paid in surplus, less treasury stock		250,000,000
16.3 Borrowed funds		
16.4 Net deposits on deposit-type contracts and other insurance liabilities		
16.5 Dividends to stockholders	200,000,000	
16.6 Other cash provided (applied)	(532,330,357)	8,839,711
17. Net cash from financing and miscellaneous sources (Lines 16.1 to 16.4 minus Line 16.5 plus Line 16.6)	(732,330,357)	258,839,711
RECONCILIATION OF CASH, CASH EQUIVALENTS AND SHORT-TERM INVESTMENTS		
18. Net change in cash, cash equivalents and short-term investments (Line 11, plus Lines 15 and 17)	(24,294,458)	37,359,492
19. Cash, cash equivalents and short-term investments:		
19.1 Beginning of year	54,713,293	17,353,801
19.2 End of period (Line 18 plus Line 19.1)	30,418,835	54,713,293

Note: Supplemental disclosures of cash flow information for non-cash transactions:

--	--	--

UNDERWRITING AND INVESTMENT EXHIBIT

PART 1 - PREMIUMS EARNED

	1	2	3	4
Line of Business	Net Premiums Written per Column 6, Part 1B	Unearned Premiums Dec. 31 Prior Year - per Col. 3, Last Year's Part 1	Unearned Premiums Dec. 31 Current Year - per Col. 5 Part 1A	Premiums Earned During Year (Cols. 1 + 2 - 3)
1. Fire				
2.1 Allied lines				
2.2 Multiple peril crop				
2.3 Federal flood				
2.4 Private crop				
2.5 Private flood				
3. Farmowners multiple peril				
4. Homeowners multiple peril				
5.1 Commercial multiple peril (non-liability portion)	177,056		92,138	84,918
5.2 Commercial multiple peril (liability portion)	687,514		357,940	329,574
6. Mortgage guaranty				
8. Ocean marine				
9. Inland marine	149,357,668	62,391,727	70,472,697	141,276,698
10. Financial guaranty				
11.1 Medical professional liability - occurrence				
11.2 Medical professional liability - claims-made				
12. Earthquake				
13.1 Comprehensive (hospital and medical) individual				
13.2 Comprehensive (hospital and medical) group				
14. Credit accident and health (group and individual)				
15.1 Vision only				
15.2 Dental only				
15.3 Disability income				
15.4 Medicare supplement				
15.5 Medicaid Title XIX				
15.6 Medicare Title XVIII				
15.7 Long-term care				
15.8 Federal employees health benefits plan				
15.9 Other health				
16. Workers' compensation				
17.1 Other liability - occurrence	43,609,615	18,611,626	20,619,508	41,601,734
17.2 Other liability - claims-made	79,978	6,751	6,748	79,980
17.3 Excess workers' compensation				
18.1 Products liability - occurrence				
18.2 Products liability - claims-made				
19.1 Private passenger auto no-fault (personal injury protection)	1,207,035,388	271,331,617	292,415,551	1,185,951,454
19.2 Other private passenger auto liability.....	8,736,183,704	1,887,138,221	2,264,409,518	8,358,912,407
19.3 Commercial auto no-fault (personal injury protection)				
19.4 Other commercial auto liability.....	63,436,153	22,193,546	27,901,421	57,728,277
21.1 Private passenger auto physical damage	6,378,809,580	1,377,110,068	1,757,418,717	5,998,500,931
21.2 Commercial auto physical damage	16,076,687	5,619,160	6,982,078	14,713,769
22. Aircraft (all perils)				
23. Fidelity				
24. Surety				
26. Burglary and theft				
27. Boiler and machinery				
28. Credit				
29. International				
30. Warranty				
31. Reinsurance - nonproportional assumed property				
32. Reinsurance - nonproportional assumed liability				
33. Reinsurance - nonproportional assumed financial lines				
34. Aggregate write-ins for other lines of business				
35. TOTALS	16,595,453,342	3,644,402,715	4,440,676,316	15,799,179,741
DETAILS OF WRITE-INS				
3401.				
3402.				
3403.				
3498. Summary of remaining write-ins for Line 34 from overflow page				
3499. Totals (Lines 3401 thru 3403 plus 3498)(Line 34 above)				

UNDERWRITING AND INVESTMENT EXHIBIT

PART 1A - RECAPITULATION OF ALL PREMIUMS

	1	2	3	4	5
Line of Business	Amount Unearned (Running One Year or Less from Date of Policy) (a)	Amount Unearned (Running More Than One Year from Date of Policy) (a)	Earned But Unbilled Premium	Reserve for Rate Credits and Retrospective Adjustments Based on Experience	Total Reserve for Unearned Premiums Cols. 1 + 2 + 3 + 4
1. Fire					
2.1 Allied lines					
2.2 Multiple peril crop					
2.3 Federal flood					
2.4 Private crop					
2.5 Private flood					
3. Farmowners multiple peril					
4. Homeowners multiple peril					
5.1 Commercial multiple peril (non-liability portion)	92,138				92,138
5.2 Commercial multiple peril (liability portion)	357,940				357,940
6. Mortgage guaranty					
8. Ocean marine					
9. Inland marine	70,472,697				70,472,697
10. Financial guaranty					
11.1 Medical professional liability - occurrence					
11.2 Medical professional liability - claims-made					
12. Earthquake					
13.1 Comprehensive (hospital and medical) individual					
13.2 Comprehensive (hospital and medical) group					
14. Credit accident and health (group and individual)					
15.1 Vision only					
15.2 Dental only					
15.3 Disability income					
15.4 Medicare supplement					
15.5 Medicaid Title XIX					
15.6 Medicare Title XVIII					
15.7 Long-term care					
15.8 Federal employees health benefits plan					
15.9 Other health					
16. Workers' compensation					
17.1 Other liability - occurrence	20,619,508				20,619,508
17.2 Other liability - claims-made	6,748				6,748
17.3 Excess workers' compensation					
18.1 Products liability - occurrence					
18.2 Products liability - claims-made					
19.1 Private passenger auto no-fault (personal injury protection)	292,415,551				292,415,551
19.2 Other private passenger auto liability.....	2,264,409,518				2,264,409,518
19.3 Commercial auto no-fault (personal injury protection)					
19.4 Other commercial auto liability.....	27,901,421				27,901,421
21.1 Private passenger auto physical damage	1,757,418,717				1,757,418,717
21.2 Commercial auto physical damage	6,982,078				6,982,078
22. Aircraft (all perils)					
23. Fidelity					
24. Surety					
26. Burglary and theft					
27. Boiler and machinery					
28. Credit					
29. International					
30. Warranty					
31. Reinsurance - nonproportional assumed property					
32. Reinsurance - nonproportional assumed liability					
33. Reinsurance - nonproportional assumed financial lines					
34. Aggregate write-ins for other lines of business					
35. TOTALS	4,440,676,316				4,440,676,316
36. Accrued retrospective premiums based on experience					
37. Earned but unbilled premiums					
38. Balance (Sum of Line 35 through 37)					4,440,676,316
DETAILS OF WRITE-INS					
3401.					
3402.					
3403.					
3498. Summary of remaining write-ins for Line 34 from overflow page					
3499. Totals (Lines 3401 thru 3403 plus 3498)(Line 34 above)					

(a) State here basis of computation used in each case Pro Rata

UNDERWRITING AND INVESTMENT EXHIBIT

PART 1B - PREMIUMS WRITTEN

Line of Business	1	Reinsurance Assumed		Reinsurance Ceded		6
	Direct Business (a)	2	3	4	5	Net Premiums Written Cols. 1+2+3-4-5
1. Fire						
2.1 Allied lines						
2.2 Multiple peril crop						
2.3 Federal flood						
2.4 Private crop						
2.5 Private flood						
3. Farmowners multiple peril						
4. Homeowners multiple peril						
5.1 Commercial multiple peril (non-liability portion)		229,942		52,887		177,056
5.2 Commercial multiple peril (liability portion)		892,875		205,361		687,514
6. Mortgage guaranty						
8. Ocean marine						
9. Inland marine	71,598,464	122,372,533		44,613,329		149,357,668
10. Financial guaranty						
11.1 Medical professional liability - occurrence						
11.2 Medical professional liability - claims-made						
12. Earthquake						
13.1 Comprehensive (hospital and medical) individual						
13.2 Comprehensive (hospital and medical) group						
14. Credit accident and health (group and individual)						
15.1 Vision only						
15.2 Dental only						
15.3 Disability income						
15.4 Medicare supplement						
15.5 Medicaid Title XIX						
15.6 Medicare Title XVIII						
15.7 Long-term care						
15.8 Federal employees health benefits plan						
15.9 Other health						
16. Workers' compensation						
17.1 Other liability - occurrence	24,188,919	32,482,453		13,026,249	35,509	43,609,615
17.2 Other liability - claims-made	100,000	3,868		23,890		79,978
17.3 Excess workers' compensation						
18.1 Products liability - occurrence						
18.2 Products liability - claims-made						
19.1 Private passenger auto no-fault (personal injury protection)	154,261,190	1,413,317,235		360,543,038		1,207,035,388
19.2 Other private passenger auto liability.....	3,683,069,989	7,662,623,134		2,609,509,418		8,736,183,704
19.3 Commercial auto no-fault (personal injury protection)						
19.4 Other commercial auto liability.....		82,384,615		18,948,461		63,436,153
21.1 Private passenger auto physical damage	2,645,445,889	5,638,722,397		1,905,358,706		6,378,809,580
21.2 Commercial auto physical damage		20,878,814		4,802,127		16,076,687
22. Aircraft (all perils)						
23. Fidelity						
24. Surety						
26. Burglary and theft						
27. Boiler and machinery						
28. Credit						
29. International						
30. Warranty						
31. Reinsurance - nonproportional assumed property	XXX					
32. Reinsurance - nonproportional assumed liability	XXX					
33. Reinsurance - nonproportional assumed financial lines	XXX					
34. Aggregate write-ins for other lines of business						
35. TOTALS	6,578,664,451	14,973,907,866		4,957,083,466	35,509	16,595,453,342
DETAILS OF WRITE-INS						
3401.						
3402.						
3403.						
3498. Summary of remaining write-ins for Line 34 from overflow page						
3499. Totals (Lines 3401 thru 3403 plus 3498)(Line 34 above)						

(a) Does the company's direct premiums written include premiums recorded on an installment basis? Yes [] No [X]

If yes: 1. The amount of such installment premiums \$
 2. Amount at which such installment premiums would have been reported had they been reported on an annualized basis \$

ANNUAL STATEMENT FOR THE YEAR 2023 OF THE PROGRESSIVE DIRECT INSURANCE COMPANY

UNDERWRITING AND INVESTMENT EXHIBIT

PART 2 - LOSSES PAID AND INCURRED

Line of Business	Losses Paid Less Salvage				5	6	7	8
	1	2	3	4				
	Direct Business	Reinsurance Assumed	Reinsurance Recovered	Net Payments (Cols. 1 + 2 - 3)	Net Losses Unpaid Current Year (Part 2A , Col. 8)	Net Losses Unpaid Prior Year	Losses Incurred Current Year (Cols. 4 + 5 - 6)	Percentage of Losses Incurred (Col. 7, Part 2) to Premiums Earned (Col. 4, Part 1)
1. Fire								
2.1 Allied lines								
2.2 Multiple peril crop								
2.3 Federal flood								
2.4 Private crop								
2.5 Private flood								
3. Farmowners multiple peril								
4. Homeowners multiple peril								
5.1 Commercial multiple peril (non-liability portion)		9,807	2,256	7,551	20,485		28,037	33.0
5.2 Commercial multiple peril (liability portion)		5,168	1,189	3,979	155,976		159,956	48.5
6. Mortgage guaranty								
8. Ocean marine								
9. Inland marine	35,615,983	53,029,127	20,388,375	68,256,734	6,783,118	12,043,617	62,996,236	44.6
10. Financial guaranty								
11.1 Medical professional liability - occurrence								
11.2 Medical professional liability - claims-made								
12. Earthquake								
13.1 Comprehensive (hospital and medical) individual								
13.2 Comprehensive (hospital and medical) group								
14. Credit accident and health (group and individual)								
15.1 Vision only								
15.2 Dental only								
15.3 Disability income								
15.4 Medicare supplement								
15.5 Medicaid Title XIX								
15.6 Medicare Title XVIII								
15.7 Long-term care								
15.8 Federal employees health benefits plan								
15.9 Other health								
16. Workers' compensation								
17.1 Other liability - occurrence	10,173,254	12,188,895	5,210,669	17,151,480	13,765,200	13,335,065	17,581,615	42.3
17.2 Other liability - claims-made					2,694,986	1,925,008	769,978	962.7
17.3 Excess workers' compensation								
18.1 Products liability - occurrence								
18.2 Products liability - claims-made								
19.1 Private passenger auto no-fault (personal injury protection)	105,374,761	770,075,081	201,353,464	674,096,378	646,058,908	588,797,344	731,357,942	61.7
19.2 Other private passenger auto liability.....	1,862,638,940	3,936,125,715	1,333,715,871	4,465,048,784	4,473,632,034	3,598,816,242	5,339,864,577	63.9
19.3 Commercial auto no-fault (personal injury protection)								
19.4 Other commercial auto liability.....		38,511,089	8,857,551	29,653,539	68,868,035	56,963,194	41,558,380	72.0
21.1 Private passenger auto physical damage	1,985,237,985	4,130,092,003	1,406,525,897	4,708,804,091	122,406,439	157,033,572	4,674,176,958	77.9
21.2 Commercial auto physical damage		8,020,583	1,844,734	6,175,849	272,980	323,247	6,125,582	41.6
22. Aircraft (all perils)								
23. Fidelity								
24. Surety								
26. Burglary and theft								
27. Boiler and machinery								
28. Credit								
29. International								
30. Warranty								
31. Reinsurance - nonproportional assumed property	XXX							
32. Reinsurance - nonproportional assumed liability	XXX							
33. Reinsurance - nonproportional assumed financial lines	XXX							
34. Aggregate write-ins for other lines of business								
35. TOTALS	3,999,040,922	8,948,057,468	2,977,900,005	9,969,198,386	5,334,658,161	4,429,237,289	10,874,619,258	68.8
DETAILS OF WRITE-INS								
3401.								
3402.								
3403.								
3498. Summary of remaining write-ins for Line 34 from overflow page								
3499. Totals (Lines 3401 thru 3403 plus 3498)(Line 34 above)								

ANNUAL STATEMENT FOR THE YEAR 2023 OF THE PROGRESSIVE DIRECT INSURANCE COMPANY

UNDERWRITING AND INVESTMENT EXHIBIT

PART 2A - UNPAID LOSSES AND LOSS ADJUSTMENT EXPENSES

Line of Business	Reported Losses				Incurred But Not Reported			8	9
	1	2	3	4	5	6	7	Net Losses Unpaid (Cols. 4 + 5 + 6 - 7)	Net Unpaid Loss Adjustment Expenses
	Direct	Reinsurance Assumed	Deduct Reinsurance Recoverable	Net Losses Excl. Incurred But Not Reported (Cols. 1 + 2 - 3)	Direct	Reinsurance Assumed	Reinsurance Ceded		
1. Fire									
2.1 Allied lines									
2.2 Multiple peril crop									
2.3 Federal flood									
2.4 Private crop									
2.5 Private flood									
3. Farmowners multiple peril									
4. Homeowners multiple peril									
5.1 Commercial multiple peril (non-liability portion)		7,860	1,808	6,052		18,744	4,311	20,485	5,559
5.2 Commercial multiple peril (liability portion)		25,000	5,750	19,250		177,567	40,840	155,976	36,802
6. Mortgage guaranty									
8. Ocean marine									
9. Inland marine	2,514,713	3,147,784	1,302,374	4,360,122	1,094,524	2,052,224	723,752	6,783,118	1,708,013
10. Financial guaranty									
11.1 Medical professional liability - occurrence									
11.2 Medical professional liability - claims-made									
12. Earthquake									
13.1 Comprehensive (hospital and medical) individual								(a)	
13.2 Comprehensive (hospital and medical) group								(a)	
14. Credit accident and health (group and individual)									
15.1 Vision only								(a)	
15.2 Dental only								(a)	
15.3 Disability income								(a)	
15.4 Medicare supplement								(a)	
15.5 Medicaid Title XIX								(a)	
15.6 Medicare Title XVIII								(a)	
15.7 Long-term care								(a)	
15.8 Federal employees health benefits plan								(a)	
15.9 Other health								(a)	
16. Workers' compensation									
17.1 Other liability - occurrence	7,382,161	5,328,535	2,924,232	9,786,465	2,357,350	2,842,737	1,221,352	13,765,200	3,077,855
17.2 Other liability - claims-made					3,499,982		804,996	2,694,986	58,763
17.3 Excess workers' compensation									
18.1 Products liability - occurrence									
18.2 Products liability - claims-made									
19.1 Private passenger auto no-fault (personal injury protection)	41,504,790	405,122,324	102,724,236	343,902,878	(13,915,584)	406,326,013	90,254,399	646,058,908	322,335,270
19.2 Other private passenger auto liability.....	1,409,304,422	2,926,367,204	997,204,474	3,338,467,152	441,234,003	1,033,006,103	339,075,224	4,473,632,034	636,294,727
19.3 Commercial auto no-fault (personal injury protection)									
19.4 Other commercial auto liability.....		77,523,767	17,830,466	59,693,300		11,915,240	2,740,505	68,868,035	6,619,031
21.1 Private passenger auto physical damage	191,386,455	356,307,922	125,969,707	421,724,670	(118,539,733)	(270,185,243)	(89,406,744)	122,406,439	80,962,872
21.2 Commercial auto physical damage		652,939	150,176	502,763		(298,420)	(68,637)	272,980	262,798
22. Aircraft (all perils)									
23. Fidelity									
24. Surety									
26. Burglary and theft									
27. Boiler and machinery									
28. Credit									
29. International									
30. Warranty									
31. Reinsurance - nonproportional assumed property	XXX				XXX				
32. Reinsurance - nonproportional assumed liability	XXX				XXX				
33. Reinsurance - nonproportional assumed financial lines	XXX				XXX				
34. Aggregate write-ins for other lines of business									
35. TOTALS	1,652,092,542	3,774,483,335	1,248,113,223	4,178,462,653	315,730,542	1,185,854,964	345,389,998	5,334,658,161	1,051,361,690
DETAILS OF WRITE-INS									
3401.									
3402.									
3403.									
3498. Summary of remaining write-ins for Line 34 from overflow page									
3499. Totals (Lines 3401 thru 3403 plus 3498)(Line 34 above)									

(a) Including \$ for present value of life indemnity claims reported in Lines 13 and 15.

ANNUAL STATEMENT FOR THE YEAR 2023 OF THE PROGRESSIVE DIRECT INSURANCE COMPANY

UNDERWRITING AND INVESTMENT EXHIBIT

PART 3 - EXPENSES

	1	2	3	4
	Loss Adjustment Expenses	Other Underwriting Expenses	Investment Expenses	Total
1. Claim adjustment services:				
1.1 Direct	59,478,083			59,478,083
1.2 Reinsurance assumed	251,947,068			251,947,068
1.3 Reinsurance ceded	71,627,009			71,627,009
1.4 Net claim adjustment service (1.1 + 1.2 - 1.3)	239,798,142			239,798,142
2. Commission and brokerage:				
2.1 Direct excluding contingent		12,417,677		12,417,677
2.2 Reinsurance assumed, excluding contingent		(14,678,191)		(14,678,191)
2.3 Reinsurance ceded, excluding contingent		(519,918)		(519,918)
2.4 Contingent - direct		1,647,711		1,647,711
2.5 Contingent - reinsurance assumed		2,326,183		2,326,183
2.6 Contingent - reinsurance ceded		913,995		913,995
2.7 Policy and membership fees				
2.8 Net commission and brokerage (2.1 + 2.2 - 2.3 + 2.4 + 2.5 - 2.6 + 2.7) ..		1,319,302		1,319,302
3. Allowances to managers and agents		11,733		11,733
4. Advertising	22,244	692,389,602		692,411,846
5. Boards, bureaus and associations	3,211,516	2,826,663	219,174	6,257,352
6. Surveys and underwriting reports		97,108,084		97,108,084
7. Audit of assureds' records				
8. Salary and related items:				
8.1 Salaries	874,935,228	713,768,619	3,328,924	1,592,032,771
8.2 Payroll taxes	62,557,147	51,071,315	124,456	113,752,917
9. Employee relations and welfare	147,809,998	104,537,523	170,152	252,517,673
10. Insurance	1,902,976	1,788,681		3,691,657
11. Directors' fees				
12. Travel and travel items	20,823,040	6,384,327	24,654	27,232,021
13. Rent and rent items	21,516,981	35,970,414	143,840	57,631,236
14. Equipment	2,218,962	10,628,643		12,847,605
15. Cost or depreciation of EDP equipment and software	66,777,512	124,772,174	5,131	191,554,817
16. Printing and stationery	1,169,093	6,025,916	1,487	7,196,496
17. Postage, telephone and telegraph, exchange and express	30,013,416	129,501,551	23,354	159,538,322
18. Legal and auditing	7,823,082	15,592,416	463,202	23,878,701
19. Totals (Lines 3 to 18)	1,240,781,195	1,992,377,660	4,504,375	3,237,663,230
20. Taxes, licenses and fees:				
20.1 State and local insurance taxes deducting guaranty association credits of \$ 867,109		266,582,310		266,582,310
20.2 Insurance department licenses and fees	2,609,209	18,297,117		20,906,326
20.3 Gross guaranty association assessments		4,708,597		4,708,597
20.4 All other (excluding federal and foreign income and real estate)	172,942	85,969,987		86,142,929
20.5 Total taxes, licenses and fees (20.1 + 20.2 + 20.3 + 20.4)	2,782,151	375,558,011		378,340,162
21. Real estate expenses			14,270,933	14,270,933
22. Real estate taxes			4,271,525	4,271,525
23. Reimbursements by uninsured plans				
24. Aggregate write-ins for miscellaneous expenses	2,892,518	2,778,890	825,768	6,497,176
25. Total expenses incurred	1,486,254,006	2,372,033,864	23,872,600	(a) 3,882,160,470
26. Less unpaid expenses - current year	1,051,361,690	173,052,665	4,498,889	1,228,913,243
27. Add unpaid expenses - prior year	971,945,980	128,472,995	4,481,619	1,104,900,594
28. Amounts receivable relating to uninsured plans, prior year				
29. Amounts receivable relating to uninsured plans, current year				
30. TOTAL EXPENSES PAID (Lines 25 - 26 + 27 - 28 + 29)	1,406,838,296	2,327,454,194	23,855,330	3,758,147,821
DETAILS OF WRITE-INS				
2401. MISCELLANEOUS EXPENSES	2,892,518	2,778,890	825,768	6,497,176
2402.				
2403.				
2498. Summary of remaining write-ins for Line 24 from overflow page				
2499. Totals (Lines 2401 thru 2403 plus 2498)(Line 24 above)	2,892,518	2,778,890	825,768	6,497,176

(a) Includes management fees of \$ 3,244,160,406 to affiliates and \$ to non-affiliates.

EXHIBIT OF NET INVESTMENT INCOME

		1	2
		Collected During Year	Earned During Year
1.	U.S. Government bonds	(a) 149,651,912 168,805,932
1.1	Bonds exempt from U.S. tax	(a) 147,800 124,838
1.2	Other bonds (unaffiliated)	(a) 186,053,831 191,775,242
1.3	Bonds of affiliates	(a)
2.1	Preferred stocks (unaffiliated)	(b) 4,389,792 4,389,792
2.11	Preferred stocks of affiliates	(b)
2.2	Common stocks (unaffiliated) 13,896,445 13,942,414
2.21	Common stocks of affiliates
3.	Mortgage loans	(c)
4.	Real estate	(d) 30,675,619 30,675,619
5	Contract loans
6	Cash, cash equivalents and short-term investments	(e) 1,472,917 1,482,570
7	Derivative instruments	(f)
8.	Other invested assets 114,676 114,676
9.	Aggregate write-ins for investment income
10.	Total gross investment income	386,402,992	411,311,083
11.	Investment expenses		(g) 23,872,601
12.	Investment taxes, licenses and fees, excluding federal income taxes		(g)
13.	Interest expense		(h)
14.	Depreciation on real estate and other invested assets		(i) 8,974,924
15.	Aggregate write-ins for deductions from investment income
16.	Total deductions (Lines 11 through 15) 32,847,525
17.	Net investment income (Line 10 minus Line 16)		378,463,558
DETAILS OF WRITE-INS			
0901.		
0902.		
0903.		
0998.	Summary of remaining write-ins for Line 9 from overflow page		
0999.	Totals (Lines 0901 thru 0903 plus 0998) (Line 9, above)		
1501.		
1502.		
1503.		
1598.	Summary of remaining write-ins for Line 15 from overflow page		
1599.	Totals (Lines 1501 thru 1503 plus 1598) (Line 15, above)		

(a) Includes \$ 16,041,634 accrual of discount less \$ 62,645,055 amortization of premium and less \$ 10,071,388 paid for accrued interest on purchases.

(b) Includes \$ accrual of discount less \$ 14,125 amortization of premium and less \$ paid for accrued dividends on purchases.

(c) Includes \$ accrual of discount less \$ amortization of premium and less \$ paid for accrued interest on purchases.

(d) Includes \$ 30,675,619 for company's occupancy of its own buildings; and excludes \$ interest on encumbrances.

(e) Includes \$ 1,350,461 accrual of discount less \$ amortization of premium and less \$ 3,861 paid for accrued interest on purchases.

(f) Includes \$ accrual of discount less \$ amortization of premium.

(g) Includes \$ investment expenses and \$ investment taxes, licenses and fees, excluding federal income taxes, attributable to segregated and Separate Accounts.

(h) Includes \$ interest on surplus notes and \$ interest on capital notes.

(i) Includes \$ 8,974,924 depreciation on real estate and \$ depreciation on other invested assets.

EXHIBIT OF CAPITAL GAINS (LOSSES)

		1	2	3	4	5
		Realized Gain (Loss) On Sales or Maturity	Other Realized Adjustments	Total Realized Capital Gain (Loss) (Columns 1 + 2)	Change in Unrealized Capital Gain (Loss)	Change in Unrealized Foreign Exchange Capital Gain (Loss)
1.	U.S. Government bonds (6,765,776) (6,765,776)
1.1	Bonds exempt from U.S. tax
1.2	Other bonds (unaffiliated) (82,577,644) (82,577,644) 31,299,677
1.3	Bonds of affiliates 660,440
2.1	Preferred stocks (unaffiliated)
2.11	Preferred stocks of affiliates
2.2	Common stocks (unaffiliated) 160,391,896 (63,685) 160,328,211 46,463,538
2.21	Common stocks of affiliates
3.	Mortgage loans
4.	Real estate (26,202,469) (26,202,469)
5.	Contract loans
6.	Cash, cash equivalents and short-term investments
7.	Derivative instruments
8.	Other invested assets 127,125
9.	Aggregate write-ins for capital gains (losses)
10.	Total capital gains (losses)	71,048,476	(26,266,154)	44,782,322	78,550,780	
DETAILS OF WRITE-INS						
0901.					
0902.					
0903.					
0998.	Summary of remaining write-ins for Line 9 from overflow page					
0999.	Totals (Lines 0901 thru 0903 plus 0998) (Line 9, above)					

ANNUAL STATEMENT FOR THE YEAR 2023 OF THE PROGRESSIVE DIRECT INSURANCE COMPANY

EXHIBIT OF NON-ADMITTED ASSETS

	1	2	3
	Current Year Total Nonadmitted Assets	Prior Year Total Nonadmitted Assets	Change in Total Nonadmitted Assets (Col. 2 - Col. 1)
1. Bonds (Schedule D)			
2. Stocks (Schedule D):			
2.1 Preferred stocks			
2.2 Common stocks			
3. Mortgage loans on real estate (Schedule B):			
3.1 First liens			
3.2 Other than first liens.....			
4. Real estate (Schedule A):			
4.1 Properties occupied by the company			
4.2 Properties held for the production of income.....			
4.3 Properties held for sale			
5. Cash (Schedule E - Part 1), cash equivalents (Schedule E - Part 2) and short-term investments (Schedule DA)			
6. Contract loans			
7. Derivatives (Schedule DB)			
8. Other invested assets (Schedule BA)	9,004,966	9,146,019	141,053
9. Receivables for securities			
10. Securities lending reinvested collateral assets (Schedule DL)			
11. Aggregate write-ins for invested assets			
12. Subtotals, cash and invested assets (Lines 1 to 11)	9,004,966	9,146,019	141,053
13. Title plants (for Title insurers only)			
14. Investment income due and accrued			
15. Premiums and considerations:			
15.1 Uncollected premiums and agents' balances in the course of collection	40,480,358	31,330,448	(9,149,910)
15.2 Deferred premiums, agents' balances and installments booked but deferred and not yet due ..			
15.3 Accrued retrospective premiums and contracts subject to redetermination			
16. Reinsurance:			
16.1 Amounts recoverable from reinsurers			
16.2 Funds held by or deposited with reinsured companies			
16.3 Other amounts receivable under reinsurance contracts			
17. Amounts receivable relating to uninsured plans			
18.1 Current federal and foreign income tax recoverable and interest thereon			
18.2 Net deferred tax asset			
19. Guaranty funds receivable or on deposit			
20. Electronic data processing equipment and software			
21. Furniture and equipment, including health care delivery assets			
22. Net adjustment in assets and liabilities due to foreign exchange rates			
23. Receivables from parent, subsidiaries and affiliates			
24. Health care and other amounts receivable			
25. Aggregate write-ins for other than invested assets	847,818	947,923	100,105
26. Total assets excluding Separate Accounts, Segregated Accounts and Protected Cell Accounts (Lines 12 to 25)	50,333,142	41,424,390	(8,908,752)
27. From Separate Accounts, Segregated Accounts and Protected Cell Accounts			
28. Total (Lines 26 and 27)	50,333,142	41,424,390	(8,908,752)
DETAILS OF WRITE-INS			
1101.			
1102.			
1103.			
1198. Summary of remaining write-ins for Line 11 from overflow page			
1199. Totals (Lines 1101 thru 1103 plus 1198)(Line 11 above)			
2501. PREPAID EXPENSES	831,318	887,430	56,112
2502. MISCELLANEOUS OTHER ASSETS	16,500	60,493	43,993
2503.			
2598. Summary of remaining write-ins for Line 25 from overflow page			
2599. Totals (Lines 2501 thru 2503 plus 2598)(Line 25 above)	847,818	947,923	100,105

NOTES TO FINANCIAL STATEMENTS

NOTE 1 Summary of Significant Accounting Policies and Going Concern

A. Accounting Practices

The accompanying statutory-basis financial statements of Progressive Direct Insurance Company (the “Company”) were prepared on the basis of accounting practices prescribed or permitted by the Ohio Department of Insurance (“DOI”).

The DOI requires insurance companies domiciled in the state of Ohio to prepare their statutory-basis financial statements in accordance with the National Association of Insurance Commissioners’ (“NAIC”) Accounting Practices and Procedures Manual subject to any deviations prescribed or permitted by the DOI. No deviations from NAIC statutory accounting practices (“NAIC SAP”) were used in preparing these statutory-basis financial statements as illustrated in the table below:

	SSAP #	F/S Page	F/S Line #		2023		2022
NET INCOME							
(1) State basis (Page 4, Line 20, Columns 1 & 2)	XXX	XXX	XXX	\$	1,172,711,272	\$	640,850,707
(2) State Prescribed Practices that are an increase/ (decrease) from NAIC SAP:							
(3) State Permitted Practices that are an increase/(decrease) from NAIC SAP:							
(4) NAIC SAP (1-2-3=4)	XXX	XXX	XXX	\$	1,172,711,272	\$	640,850,707
SURPLUS							
(5) State basis (Page 3, Line 37, Columns 1 & 2)	XXX	XXX	XXX	\$	5,387,593,100	\$	4,306,864,628
(6) State Prescribed Practices that are an increase/(decrease) from NAIC SAP:							
(7) State Permitted Practices that are an increase/(decrease) from NAIC SAP:							
(8) NAIC SAP (5-6-7=8)	XXX	XXX	XXX	\$	5,387,593,100	\$	4,306,864,628

B. Use of Estimates in the Preparation of the Financial Statements

The Company is required to make estimates and assumptions when preparing its financial statements and accompanying notes in conformity with NAIC SAP. Actual results may differ from those estimates. Material estimates that are susceptible to significant changes in the near term include the loss and loss adjustment expense (“LAE”) reserves and the Company’s adjustment to realized losses for other-than-temporary impairment (“OTTI”).

C. Accounting Policy

Premiums, Acquisition Costs, Other Income, and Nonadmitted Assets:

Insurance premiums written are being earned into income on a pro rata basis over the period of risk based on a daily earnings convention. Unearned premiums are established to cover the unexpired portion of premiums written. The Company offers a variety of payment plans to meet individual customer needs. Generally, insurance premiums are collected in advance of providing risk coverage, minimizing the Company’s exposure to credit risk.

Acquisition costs, such as agents’ commissions, premium taxes, and other policy initiation costs, as well as advertising costs are charged to operations as incurred.

Other income includes finance and service charges collected on premiums receivable and assumed under quota-share reinsurance agreements with the Company’s non-pooled insurance company affiliates.

Certain assets designated as “nonadmitted assets,” in accordance with Statement of Statutory Accounting Principles (“SSAP”) No. 4, Assets and Nonadmitted Assets, are reported on page 2 - Assets in column 2. The change in nonadmitted assets is charged directly against surplus as regards policyholders on page 4, Statement of Income, Capital and Surplus section.

Investment Policies:

(1) Cash, Cash Equivalents, and Short-term Investments

Cash and cash equivalents include bank accounts and short-term investments with original maturities of three months or less and securities acquired with remaining maturities of three months or less that are reported at amortized cost which approximates market value. Also includes money market mutual funds valued at fair value or net asset value (NAV) as a practical expedient.

Short-term investments include securities acquired within one year of maturity, excluding those with maturities of three months or less (see cash and cash equivalents above) and are reported at amortized cost which approximates market value.

(2) Bonds

Investment-grade bond valuations are based on NAIC designations or NAIC Credit Rating Provider (“CRP”) designations and are reported at amortized cost using the scientific method which closely approximates the effective interest method. Non-investment-grade bond valuations are also based on NAIC designations or NAIC CRP designations and are reported at the lower of amortized cost or fair market value. Loan-backed and structured securities follow the guidance prescribed by SSAP No. 43R, Loan-backed and Structured Securities (“SSAP No. 43R”), for the determination of the bond valuation and reporting designation. The difference between the original cost and redemption value of these securities is recognized over the lives of the respective issues and included in net investment gain.

(3) Common Stocks

Common stocks, other than investments in stocks of subsidiaries and affiliates, are reported at fair market values based on active market closing quotations from a regulated exchange. Changes in the fair market values of these securities are reflected directly as unrealized gains or losses in statutory surplus, net of deferred income taxes.

(4) Preferred Stocks

Nonredeemable preferred stocks are reported at fair market values and are not to exceed currently effective call price. Changes in the fair market values of these securities are reflected directly as unrealized gains or losses in statutory surplus, net of deferred income taxes. Investment-grade redeemable preferred stocks are reported at amortized cost, while non-investment-grade redeemable preferred stocks are reported at the lower of amortized cost or fair market value. The difference between the original cost and redemption value of the redeemable preferred securities is recognized using the scientific method, which closely approximates the effective interest method, over the lives of the respective issues and included in net investment gain.

NOTES TO FINANCIAL STATEMENTS

(5) Mortgage Loans

Not applicable

(6) Loan-backed Securities

Loan-backed and structured securities are accounted for as prescribed by SSAP No. 43R. These securities are generally stated at amortized cost as determined by the estimated value of future cash flows. Prepayment assumptions for loan-backed and structured debt securities are obtained from available market data, broker/dealers, and/or internal estimates, and are consistent with current interest rate and economic trends (see Note 5.D).

(7) Investments in Subsidiaries, Controlled and Affiliated Entities

Not applicable

(8) Investments in Joint Ventures, Partnerships and Limited Liability Companies

The Company owns 100% of the surplus of Gadsden, AL, LLC (“Gadsden”), a non-insurance affiliate organized in Ohio that owns investment real estate. In accordance with SSAP No. 4 – Assets and Nonadmitted Assets, this investment is reported as other invested assets in the Company’s statutory-basis financial statements (see Schedule BA) and nonadmitted. This investment is reported on the equity basis as prescribed in the Accounting Practices and Procedures Manual of the NAIC (see Note 21.C.1).

The Company owns a 99.99% interest of the Churchill Stateside Solar Tax Credit Fund VI, LLC., an unaffiliated non-insurance company organized in Florida. In accordance with SSAP No. 4 – Assets and Nonadmitted Assets, this investment is reported as other invested assets in the Company’s statutory-basis financial statements (see Schedule BA) and nonadmitted. This investment is reported on the equity basis as prescribed in the Accounting Practices and Procedures Manual of the NAIC (see Note 21.C.1).

(9) Derivatives

Not applicable

Repurchase Agreements and Reverse Repurchase Commitment Transactions:

The Company may enter into repurchase agreements in which it borrows cash by providing certain underlying securities as collateral for the arrangement. The cash borrowed is invested in cash equivalents and an offsetting liability is established. The cash equivalent investment maturities and the term of the borrowing arrangement on the collateralized securities match, eliminating duration risk exposure to the Company. The Company did not have any open repurchase agreements at either balance sheet date presented in the accompanying financial statements.

The Company may enter into reverse repurchase commitment transactions. In these transactions, the Company loans cash to an accredited bank and receives U.S. Treasury Notes pledged as general collateral against the cash borrowed. The Company chooses to enter into these transactions as rates on general collateral are more attractive than other short-term rates available in the market. The Company’s exposure to credit risk is limited, as these internally managed transactions are typically overnight arrangements. The income generated on these transactions is calculated at the then applicable general collateral rates on the value of U.S. Treasury securities received. The Company has counterparty exposure on reverse repurchase agreements in the event of a counterparty default to the extent the general collateral security’s value is below the cash which was delivered to acquire the collateral. The short-term duration of the transactions (primarily overnight investing) reduces that default exposure. The Company did not have any open reverse repurchase commitment transactions at either balance sheet date presented in the accompanying financial statements.

Fair Market Values, Realized Gains and Losses, and Other-Than-Temporary Impairment:

The fair market values reported are derived from independent and observable market input evaluations provided by reputable pricing services, independent broker/dealer bid lists, independent broker/dealer quotations, independent broker/dealer pricing services, or active market closing quotations from a regulated exchange. In very rare cases, if none of the aforementioned primary sources are available, matrix pricing using the reporting entity’s own market-based assumptions may be utilized. The approved methods for computation of fair market value are prescribed in the Securities Valuation Office Purposes and Procedures Manual.

Realized gains and losses on sales of securities are computed based on the first-in, first-out method.

The Company’s management routinely monitors individual securities in its investment portfolio for pricing changes that might indicate potential impairments and performs detailed reviews of securities with unrealized losses based on predetermined guidelines to determine whether a decline in the value of a security is other-than-temporary. A review for OTTI requires making certain judgments regarding the materiality of the decline, its effect on the financial statements, the probability, extent, and timing of a valuation recovery, and the Company’s ability and intent to hold the security. The scope of this review is broad and requires a forward-looking assessment of the fundamental characteristics of a security, as well as the market-related prospects of the issuer and its industry.

Management assesses valuation declines to determine the extent to which such changes are attributable to (i) fundamental factors specific to the issuer, such as financial conditions, business prospects or other factors, or (ii) market-related factors such as interest rates or equity market declines (i.e., negative returns at either a sector index level or the broader market level), or (iii) credit-related losses where the present value of cash flows expected to be collected are lower than the amortized cost basis of the security (includes only those securities covered under SSAP No. 43R). This evaluation reflects management’s assessment of current conditions, as well as predictions of uncertain future events that may have a material effect on the financial statements related to security valuation.

When persuasive evidence exists that causes management to conclude that a decline in fair value is other-than-temporary, the book value of such security is written down and recognized as a realized loss. All other unrealized gains or losses are reflected in statutory surplus.

Real Estate, Electronic Data Processing Equipment, and Furniture and Equipment Fixtures:

Company occupied real estate along with the Company’s data centers, which have a highly specialized purpose, are reported at book/adjusted carrying value, less any related encumbrances. Property held for sale is reported at the lower of book/adjusted carrying value or fair market value, less any related encumbrances.

For properties held for sale, the Company engages the services of independent firms or the Company’s internal real estate department to issue summary reports indicating the properties’ fair market value. The valuations are completed using various methods of valuation including the cost approach, sales comparison approach, or income approach. For occupied properties, the Company uses book/adjusted carrying value to report fair market value.

All real estate except land is depreciated over its estimated useful life using the straight-line method.

Electronic data processing equipment and furniture and equipment are reported at depreciated cost and are depreciated over the estimated useful lives of the assets using accelerated methods for computers and the straight-line method for furniture and equipment. The resulting net book value of furniture and equipment is nonadmitted. Application software is capitalized and depreciated over its estimated useful life using the straight-line method, and the resulting net book value is nonadmitted.

NOTES TO FINANCIAL STATEMENTS

Loss, LAE, and Premium Deficiency Reserves:

Loss reserves represent the estimated liability on claims reported to the Company, plus reserves for losses incurred but not yet reported ("IBNR"). These estimates are reported net of amounts recoverable from salvage and subrogation. LAE reserves represent the estimated expenses required to settle reported claims and IBNR losses. Such loss and LAE reserves could be susceptible to significant change in the near term. The Company reviews a large majority of its reserves by product/state subset combinations on a quarterly time frame, with the remaining reserves generally reviewed on a semiannual basis. A change in the Company's scheduled reviews of a particular subset of the business depends on the size of the subset or emerging issues relating to the product or state (see Note 25).

The Company does not anticipate investment income when evaluating the need for premium deficiency reserves (see Note 30).

Capitalization of Assets:

The Company has written capitalization policies for its various asset classes. The capitalization policy thresholds have not materially changed from the prior year.

Pharmaceutical Rebate Receivables:

Not applicable

D. Going Concern

Management regularly monitors the Company's financial results and compliance with regulatory requirements. There are currently no circumstances that could call into question the Company's ability to continue as a going concern.

NOTE 2 Accounting Changes and Corrections of Errors

Not applicable

NOTE 3 Business Combinations and Goodwill

Not applicable

NOTE 4 Discontinued Operations

Not applicable

NOTE 5 Investments

A. Mortgage Loans, including Mezzanine Real Estate Loans

Not applicable

B. Debt Restructuring

Not applicable

C. Reverse Mortgages

Not applicable

D. Loan-Backed Securities

- (1)

The sources used to determine prepayment assumptions are derived from updated cash flows from widely utilized reputable industry sources. The Company's portfolio managers review the available cash flow data and prepayment assumptions and make adjustments based on current performance indicators on the underlying assets (e.g., delinquency rates, foreclosure rates, and default rates), credit support (via current levels of subordination), and historical credit ratings. The Company uses a retrospective adjustment methodology to revalue most loan-backed securities. For primarily interest-only securities, loan-backed securities below high investment-grade status (i.e., below AA-), and certain loan-backed securities with sub-prime loan exposure, the Company uses the prospective method.
- (2)

The Company has not recorded an OTTI for loan-backed and structured debt securities during the current year.
- (3)

The Company has not recorded an OTTI for loan-backed and structured debt securities during the current year.
- (4)

At the end of the reporting period, the composition of fair value and gross unrealized losses on loan-backed and structured debt securities by the length of time that individual securities have been in a continuous unrealized loss position is as follows:

a)

The aggregate amount of unrealized losses:

1.

Less than 12 Months

\$

425,354

2.

12 Months or Longer

\$

254,395,097

b)

The aggregate related fair value of securities with unrealized losses:

1.

Less than 12 Months

\$

207,771,038

2.

12 Months or Longer

\$

2,075,568,965

(5)

Under SSAP No. 43R, the Company analyzes its structured debt securities to determine if the Company intends to sell, or if it is more likely than not that the Company will be required to sell, the security prior to recovery and, if so, the Company writes down the security to its current fair market value with the entire amount of the write-down recorded as a realized loss. To the extent that it is more likely than not that the Company will hold the debt security until recovery (which could be maturity), the Company determines if any of the decline in value is due to a credit loss (i.e., where the present value of cash flows expected to be collected is lower than the amortized cost basis of the security) and, if so, the Company recognizes that portion of the impairment as a realized loss.
- E. Dollar Repurchase Agreements and/or Securities Lending Transactions
- Not applicable
- F. Repurchase Agreements Transactions Accounted for as Secured Borrowing
- Not applicable
- 14.2

NOTES TO FINANCIAL STATEMENTS

G. Reverse Repurchase Agreements Transactions Accounted for as Secured Borrowing

Not applicable

H. Repurchase Agreements Transactions Accounted for as a Sale

Not applicable

I. Reverse Repurchase Agreements Transactions Accounted for as a Sale

Not applicable

J. Real Estate

(1) Recognized Impairment Loss

The Company recognized impairment write-downs for its investments in real estate during the statement period. The amount of impairment recognized of \$26,202,469 (see Schedule A - Verification) is reflected in realized capital gains (losses) in the Company's Statement of Income. See Note 1.C - Accounting Policy for the basis upon which fair market value is determined. The impairment losses primarily reflect write-downs associated with various office buildings.

(2) Sold or Classified Real Estate Investments as Held for Sale

The Company has various property holdings classified as "Property Held for Sale" that are measured at the lower of their book/adjusted carrying value or fair market value. Some of the properties have executed purchase agreements and are undergoing a due diligence process and others are still being marketed. Any gain or loss on the sale will be recognized when the sale closes.

(3) Changes to a Plan of Sale for an Investment in Real Estate

Not applicable

(4) Retail Land Sales Operations

Not applicable

(5) Real Estate Investments with Participating Mortgage Loan Features

Not applicable

K. Low Income Housing Tax Credits

Not applicable

NOTES TO FINANCIAL STATEMENTS

L. Restricted Assets

1. Restricted Assets (Including Pledged)

Restricted Asset Category	Gross (Admitted & Nonadmitted) Restricted						
	Current Year					6	7
	1	2	3	4	5		
	Total General Account (G/A)	G/A Supporting Protected Cell Account Activity (a)	Total Protected Cell Account Restricted Assets	Protected Cell Account Assets Supporting G/A Activity (b)	Total (1 plus 3)	Total From Prior Year	Increase/ (Decrease) (5 minus 6)
a. Subject to contractual obligation for which liability is not shown							
b. Collateral held under security lending agreements							
c. Subject to repurchase agreements							
d. Subject to reverse repurchase agreements							
e. Subject to dollar repurchase agreements							
f. Subject to dollar reverse repurchase agreements							
g. Placed under option contracts							
h. Letter stock or securities restricted as to sale - excluding FHLB capital stock							
i. FHLB capital stock							
j. On deposit with states	\$ 6,163,118				\$ 6,163,118	\$ 5,235,282	\$ 927,836
k. On deposit with other regulatory bodies							
l. Pledged collateral to FHLB (including assets backing funding agreements)							
m. Pledged as collateral not captured in other categories							
n. Other restricted assets							
o. Total Restricted Assets (Sum of a through n)	\$ 6,163,118	\$ -	\$ -	\$ -	\$ 6,163,118	\$ 5,235,282	\$ 927,836

(a) Subset of Column 1

(b) Subset of Column 3

Restricted Asset Category	Current Year			
	8	9	Percentage	
			10	11
	Total Non-admitted Restricted	Total Admitted Restricted (5 minus 8)	Gross (Admitted & Non-admitted) Restricted to Total Assets (c)	Admitted Restricted to Total Admitted Assets (d)
a. Subject to contractual obligation for which liability is not shown			0.000%	0.000%
b. Collateral held under security lending agreements			0.000%	0.000%
c. Subject to repurchase agreements			0.000%	0.000%
d. Subject to reverse repurchase agreements			0.000%	0.000%
e. Subject to dollar repurchase agreements			0.000%	0.000%
f. Subject to dollar reverse repurchase agreements			0.000%	0.000%
g. Placed under option contracts			0.000%	0.000%
h. Letter stock or securities restricted as to sale - excluding FHLB capital stock			0.000%	0.000%
i. FHLB capital stock			0.000%	0.000%
j. On deposit with states		\$ 6,163,118	0.035%	0.035%
k. On deposit with other regulatory bodies			0.000%	0.000%
l. Pledged collateral to FHLB (including assets backing funding agreements)			0.000%	0.000%
m. Pledged as collateral not captured in other categories			0.000%	0.000%
n. Other restricted assets			0.000%	0.000%
o. Total Restricted Assets (Sum of a through n)	\$ -	\$ 6,163,118	0.035%	0.035%

(c) Column 5 divided by Asset Page, Column 1, Line 28

(d) Column 9 divided by Asset Page, Column 3, Line 28

2. Detail of Assets Pledged as Collateral Not Captured in Other Categories (Contracts That Share Similar Characteristics, Such as Reinsurance and Derivatives, Are Reported in the Aggregate)

Not applicable

3. Detail of Other Restricted Assets (Contracts That Share Similar Characteristics, Such as Reinsurance and Derivatives, Are Reported in the Aggregate)

Not applicable

4. Collateral Received and Reflected as Assets Within the Reporting Entity's Financial Statements

Not applicable

NOTES TO FINANCIAL STATEMENTS

Not applicable

Not applicable

Not applicable

Not applicable

Not applicable

Not applicable

Not applicable

The Company nonadmits investment income due and accrued if the amounts are greater than 90 days past due.

Not applicable

Interest Income Due and Accrued	Amount
1. Gross	\$ 80,057,749
2. Nonadmitted	
3. Admitted	\$ 80,057,749

Not applicable

Not applicable

Not applicable

1. Components of Net Deferred Tax Asset/(Liability)

	As of End of Current Period			12/31/2022			Change		
	(1)	(2)	(3)	(4)	(5)	(6)	(7)	(8)	(9)
	Ordinary	Capital	(Col. 1 + 2) Total	Ordinary	Capital	(Col. 4 + 5) Total	(Col. 1 - 4) Ordinary	(Col. 2 - 5) Capital	(Col. 7 + 8) Total
(a) Gross Deferred Tax Assets	\$ 260,381,161	\$ 17,673,814	\$ 278,054,975	\$ 214,807,760	\$ 25,343,258	\$ 240,151,018	\$ 45,573,401	\$ (7,669,444)	\$ 37,903,957
(b) Statutory Valuation Allowance Adjustment	\$ -	\$ -	\$ -			\$ -	\$ -	\$ -	\$ -
(c) Adjusted Gross Deferred Tax Assets (1a - 1b)	\$ 260,381,161	\$ 17,673,814	\$ 278,054,975	\$ 214,807,760	\$ 25,343,258	\$ 240,151,018	\$ 45,573,401	\$ (7,669,444)	\$ 37,903,957
(d) Deferred Tax Assets Nonadmitted	\$ -	\$ -	\$ -			\$ -	\$ -	\$ -	\$ -
(e) Subtotal Net Admitted Deferred Tax Asset (1c - 1d)	\$ 260,381,161	\$ 17,673,814	\$ 278,054,975	\$ 214,807,760	\$ 25,343,258	\$ 240,151,018	\$ 45,573,401	\$ (7,669,444)	\$ 37,903,957
(f) Deferred Tax Liabilities	\$ 19,499,279	\$ 166,272,593	\$ 185,771,872	\$ 29,056,231	\$ 157,186,855	\$ 186,243,086	\$ (9,556,952)	\$ 9,085,738	\$ (471,214)
(g) Net Admitted Deferred Tax Asset/(Net Deferred Tax Liability) (1e - 1f)	\$ 240,881,882	\$ (148,598,779)	\$ 92,283,103	\$ 185,751,529	\$ (131,843,597)	\$ 53,907,932	\$ 55,130,353	\$ (16,755,182)	\$ 38,375,171

NOTES TO FINANCIAL STATEMENTS

2. Admission Calculation Components SSAP No. 101

	As of End of Current Period			12/31/2022			Change		
	(1) Ordinary	(2) Capital	(3) (Col. 1 + 2) Total	(4) Ordinary	(5) Capital	(6) (Col. 4 + 5) Total	(7) (Col. 1 - 4) Ordinary	(8) (Col. 2 - 5) Capital	(9) (Col. 7 + 8) Total
Admission Calculation Components SSAP No. 101									
(a) Federal Income Taxes Paid In Prior Years Recoverable Through Loss Carrybacks	\$247,689,789	\$ -	\$247,689,789	\$204,357,493	\$ -	\$204,357,493	\$ 43,332,296	\$ -	\$ 43,332,296
(b) Adjusted Gross Deferred Tax Assets Expected To Be Realized (Excluding The Amount Of Deferred Tax Assets From 2(a) above) After Application of the Threshold Limitation. (The Lesser of 2(b)1 and 2(b)2 Below)	\$ 6,749,398	\$ -	\$ 6,749,398	\$ 5,706,493	\$ -	\$ 5,706,493	\$ 1,042,905	\$ -	\$ 1,042,905
1. Adjusted Gross Deferred Tax Assets Expected to be Realized Following the Balance Sheet Date.	\$ 6,749,398	\$ -	\$ 6,749,398	\$ 5,706,493	\$ -	\$ 5,706,493	\$ 1,042,905	\$ -	\$ 1,042,905
2. Adjusted Gross Deferred Tax Assets Allowed per Limitation Threshold.	XXX	XXX	\$794,296,500	XXX	XXX	\$637,943,504	XXX	XXX	\$156,352,996
(c) Adjusted Gross Deferred Tax Assets (Excluding The Amount Of Deferred Tax Assets From 2(a) and 2(b) above) Offset by Gross Deferred Tax Liabilities.	\$ 5,941,974	\$ 17,673,814	\$ 23,615,788	\$ 4,743,774	\$ 25,343,258	\$ 30,087,032	\$ 1,198,200	\$ (7,669,444)	\$ (6,471,244)
(d) Deferred Tax Assets Admitted as the result of application of SSAP No. 101. Total (2(a) + 2(b) + 2(c))	\$260,381,161	\$ 17,673,814	\$278,054,975	\$214,807,760	\$ 25,343,258	\$240,151,018	\$ 45,573,401	\$ (7,669,444)	\$ 37,903,957

3. Other Admissibility Criteria

	2023	2022
a. Ratio Percentage Used To Determine Recovery Period And Threshold Limitation Amount.	1291.000%	1262.000%
b. Amount Of Adjusted Capital And Surplus Used To Determine Recovery Period And Threshold Limitation In 2(b)2 Above.	\$ 5,295,309,997	\$ 4,252,956,696

4. Impact of Tax Planning Strategies

	As of End of Current Period		12/31/2022		Change	
	(1) Ordinary	(2) Capital	(3) Ordinary	(4) Capital	(5) (Col. 1 - 3) Ordinary	(6) (Col. 2 - 4) Capital
Impact of Tax Planning Strategies:						
(a) Determination of adjusted gross deferred tax assets and net admitted deferred tax assets, by tax character as a percentage.						
1. Adjusted Gross DTAs amount from Note 9A1(c)	\$ 260,381,161	\$ 17,673,814	\$ 214,807,760	\$ 25,343,258	\$ 45,573,401	\$ (7,669,444)
2. Percentage of adjusted gross DTAs by tax character attributable to the impact of tax planning strategies	0.000%	0.000%	0.000%	0.000%	0.000%	0.000%
3. Net Admitted Adjusted Gross DTAs amount from Note 9A1(e)	\$ 260,381,161	\$ 17,673,814	\$ 214,807,760	\$ 25,343,258	\$ 45,573,401	\$ (7,669,444)
4. Percentage of net admitted adjusted gross DTAs by tax character admitted because of the impact of tax planning strategies	0.000%	0.000%	0.000%	0.000%	0.000%	0.000%

b. Do the Company's tax-planning strategies include the use of reinsurance? Yes [] No [X]

B. Deferred Tax Liabilities Not Recognized

Not applicable

NOTES TO FINANCIAL STATEMENTS

C. Current and Deferred Income Taxes

	(1) As of End of Current Period	(2) 12/31/2022	(3) (Col. 1 - 2) Change
1. Current Income Tax			
(a) Federal	\$ 368,464,230	\$ 154,482,711	\$ 213,981,519
(b) Foreign	\$ -		\$ -
(c) Subtotal (1a+1b)	\$ 368,464,230	\$ 154,482,711	\$ 213,981,519
(d) Federal income tax on net capital gains	\$ 8,931,170	\$ 33,413,043	\$ (24,481,873)
(e) Utilization of capital loss carry-forwards	\$ -		\$ -
(f) Other	\$ -		\$ -
(g) Federal and foreign income taxes incurred (1c+1d+1e+1f)	\$ 377,395,400	\$ 187,895,754	\$ 189,499,646
2. Deferred Tax Assets:			
(a) Ordinary:			
(1) Discounting of unpaid losses	\$ 59,436,835	\$ 48,900,400	\$ 10,536,435
(2) Unearned premium reserve	\$ 187,798,744	\$ 154,234,254	\$ 33,564,490
(3) Policyholder reserves	\$ -		\$ -
(4) Investments	\$ -		\$ -
(5) Deferred acquisition costs	\$ -		\$ -
(6) Policyholder dividends accrual	\$ -		\$ -
(7) Fixed assets	\$ -		\$ -
(8) Compensation and benefits accrual	\$ 2,546	\$ 2,546	\$ -
(9) Pension accrual	\$ -		\$ -
(10) Receivables - nonadmitted	\$ 8,500,875	\$ 6,579,394	\$ 1,921,481
(11) Net operating loss carry-forward	\$ -		\$ -
(12) Tax credit carry-forward	\$ -		\$ -
(13) Other	\$ 4,642,161	\$ 5,091,166	\$ (449,005)
(99) Subtotal (sum of 2a1 through 2a13)	\$ 260,381,161	\$ 214,807,760	\$ 45,573,401
(b) Statutory valuation allowance adjustment	\$ -		\$ -
(c) Nonadmitted	\$ -		\$ -
(d) Admitted ordinary deferred tax assets (2a99 - 2b - 2c)	\$ 260,381,161	\$ 214,807,760	\$ 45,573,401
(e) Capital:			
(1) Investments	\$ 17,673,814	\$ 25,343,258	\$ (7,669,444)
(2) Net capital loss carry-forward	\$ -		\$ -
(3) Real estate	\$ -		\$ -
(4) Other	\$ -		\$ -
(99) Subtotal (2e1+2e2+2e3+2e4)	\$ 17,673,814	\$ 25,343,258	\$ (7,669,444)
(f) Statutory valuation allowance adjustment	\$ -		\$ -
(g) Nonadmitted	\$ -		\$ -
(h) Admitted capital deferred tax assets (2e99 - 2f - 2g)	\$ 17,673,814	\$ 25,343,258	\$ (7,669,444)
(i) Admitted deferred tax assets (2d + 2h)	\$ 278,054,975	\$ 240,151,018	\$ 37,903,957
3. Deferred Tax Liabilities:			
(a) Ordinary:			
(1) Investments	\$ 6,133,097	\$ 7,362,349	\$ (1,229,252)
(2) Fixed assets	\$ 5,837,387	\$ 12,965,141	\$ (7,127,754)
(3) Deferred and uncollected premium	\$ -		\$ -
(4) Policyholder reserves	\$ -		\$ -
(5) Other	\$ 7,528,795	\$ 8,728,741	\$ (1,199,946)
(99) Subtotal (3a1+3a2+3a3+3a4+3a5)	\$ 19,499,279	\$ 29,056,231	\$ (9,556,952)
(b) Capital:			
(1) Investments	\$ 166,272,593	\$ 157,186,855	\$ 9,085,738
(2) Real estate	\$ -		\$ -
(3) Other	\$ -		\$ -
(99) Subtotal (3b1+3b2+3b3)	\$ 166,272,593	\$ 157,186,855	\$ 9,085,738
(c) Deferred tax liabilities (3a99 + 3b99)	\$ 185,771,872	\$ 186,243,086	\$ (471,214)
4. Net deferred tax assets/liabilities (2i - 3c)	\$ 92,283,103	\$ 53,907,932	\$ 38,375,171

The change in net deferred income tax is comprised of the following (this analysis excludes nonadmitted assets; the change in nonadmitted assets is reported separately from the change in net deferred income tax in the Statement of Income, Surplus section):

Description	As of End of Current Period	December 31, 2022	Change
Total deferred tax assets	\$ 278,054,975	\$ 240,151,018	\$ 37,903,957
Total deferred tax liabilities	\$ 185,771,872	\$ 186,243,086	\$ (471,214)
Net deferred tax asset (liability)	\$ 92,283,103	\$ 53,907,932	\$ 38,375,171
Tax effect of unrealized gains (losses)			\$ (16,468,968)
Change in net deferred income tax			\$ 54,844,139

D. Reconciliation of Federal Income Tax Rate to Actual Effective Rate

Description	Tax Effect Amount	Effect Tax Rate
Provision computed at statutory rate	\$ 325,522,401	21.0%
Exempt interest income	\$ (19,662)	0.0%
Dividends received deduction	\$ (971,341)	-0.1%
Impact of nonadmitted assets	\$ (1,862,971)	-0.1%
Change in valuation allowance	\$ -	0.0%
Non-taxable gains	\$ -	0.0%
Other	\$ (117,166)	0.0%
Total	\$ 322,551,261	20.8%
Federal and foreign income taxes incurred	\$ 377,395,400	
Change in net deferred income tax	\$ (54,844,139)	
Total statutory income taxes	\$ 322,551,261	

NOTES TO FINANCIAL STATEMENTS

E. Operating Loss Carry Forwards and Income Taxes Available for Recoupment

1. During the reporting period, the Company did not have any unused operating loss carryforwards available to offset against future taxable income.
2. The amount of Federal income taxes incurred in the current year and the preceding year that are available for recoupment in the event of future net losses is:

Period	Amount
Current tax year	\$ 378,086,878
First preceding tax year	\$ 188,651,150

3. The Company did not have any tax deposits under Section 6603 of the Internal Revenue Code.

F. Consolidated Federal Income Tax Return

1. The Company's Federal income tax return is consolidated with The Progressive Corporation ("TPC") and all of its eligible subsidiaries (the "Group").
2. The method of allocation between the companies is subject to written agreement and is jointly approved by an officer of TPC and the Company. The allocation is based upon separate tax return calculations with current credit for net losses or other items utilized in the consolidated tax return. Intercompany tax balances are settled quarterly.
3. The Inflation Reduction Act ("IRA") was enacted on August 16, 2022 and includes a new corporate alternative minimum tax (CAMT). The controlled group of corporations of which the Company is a member is an "applicable corporation" as defined in the IRA and therefore is subject to the CAMT, and the Company is an "applicable reporting entity". However, the controlled group of corporations of which the company is a member does not expect to be liable for CAMT in 2023.

G. Federal or Foreign Federal Income Tax Loss Contingencies

The Company does not have any tax loss contingencies for which it is reasonably possible that the total liability will significantly increase within twelve months of the reporting date.

H. Repatriation Transition Tax (RTT)

Not applicable

I. Alternative Minimum Tax (AMT) Credit

Not applicable

NOTE 10 Information Concerning Parent, Subsidiaries, Affiliates and Other Related Parties

A. Nature of Relationships

The Company is wholly owned by Progressive Direct Holdings, Inc. ("PDH"), a holding company incorporated in Delaware. The structure of the holding company organization is shown on Schedule Y, Part 1.

B. Significant Transactions and Changes in Terms of Intercompany Arrangements

All significant transactions by the Company or any affiliated insurer with any affiliate are summarized in Schedule Y, Part 2. See Note 13.

On December 23, 2022 the Company received a capital contribution of \$250,000,000 from PDH.

C. Transactions with related party who are not reported on Schedule Y

Not applicable

D. Amounts Due to or from Related Parties

The Company reported a \$532,791,763 receivable from parent, subsidiaries, and affiliates at December 31, 2023 and \$21,244,676 payable to parent, subsidiaries, and affiliates at December 31, 2022. These balances are due to cash collections and disbursements on behalf of the Company under the Group's centralized cash management system and the reinsurance and management agreements in which the Company participates. The Company also reported a \$158,039,640 and \$43,398,116 current Federal income tax payable at December 31, 2023 and 2022, respectively. These balances are due to TPC for the Company's Federal income tax liability. The intercompany balances are settled by the end of the following quarter depending on the timing of investment cash transactions. These transactions are dependent upon market timing, investment needs and overall portfolio strategy as to the timing of such settlement transactions.

E. Management, Service Contracts, Cost Sharing Arrangements

The Company participates in management agreements with Gadsden and several of its insurance affiliates. Under the terms of the agreements, the affiliates are provided underwriting and loss adjustment services for business produced in exchange for a management fee based on their use of services.

The Company participates in joint management service agreements with several of its insurance affiliates and two non-insurance affiliates. Under the terms of the agreements, the Company provides these affiliates with underwriting and loss adjustment services for specific business produced, and these affiliates may, from time to time, provide the Company with similar services for other specific business produced. In exchange for these services, the companies charge management fees based on each company's use of the other's services.

The Company participates in an investment services agreement with Progressive Capital Management Corp., a non-insurance affiliate. Under the terms of the agreement, the Company is provided investment and capital management services in exchange for an investment management fee based on its use of services.

All intercompany agreements are approved by the participating insurance companies' states of domicile when established.

F. Guarantees or Contingencies for Related Parties

Not applicable

G. Nature of Relationships that Could Affect Operations

All outstanding shares of the Company are owned by PDH.

NOTES TO FINANCIAL STATEMENTS

- H.

Amount Deducted for Investment in Upstream Company

Not applicable
- I.

Detail of Investments in Affiliates Greater than 10% of Admitted Assets

Not applicable
- J.

Write-Downs for Impairment of Investments in Affiliates

Not applicable
- K.

Investment in Foreign Insurance Subsidiary

Not applicable
- L.

Investment in Downstream Non-Insurance Holding Company

Not applicable
- M.

All SCA Investments

Not applicable
- N.

Investment in Insurance SCAs

Not applicable
- O.

SCA or SSAP 48 Entity Loss Tracking

Not applicable

NOTE 11 Debt

Not applicable

NOTE 12 Retirement Plans, Deferred Compensation, Postemployment Benefits and Compensated Absences and Other Postretirement Benefit Plans

Not applicable

NOTE 13 Capital and Surplus, Dividend Restrictions and Quasi-Reorganizations

- A.

Outstanding Shares

The Company has 532 shares of \$5,640 par value common stock authorized and 532 shares issued, and outstanding. The Company has no preferred stock authorized, issued, or outstanding.
- B.

Dividend Rate of Preferred Stock

Not applicable
- C.

Dividend Restrictions

The maximum amount of dividends the Company can pay to PDH in 2024 without prior regulatory approval is limited by insurance laws in Ohio. Based on the dividend laws currently in effect, the Company may pay dividends of \$1,172,711,272 in 2024 without prior approval from the Ohio DOI, provided the dividend payment is not made within 12 months of the previous payment.
- D.

Dates and Amounts of Dividends Paid

Date Paid	Amount Paid	Dividend Type
December 18, 2023	\$200,000,000	Ordinary
- E.

Amount of Ordinary Dividends That May Be Paid

Within the limitations described in section C, there are no additional restrictions placed on the portion of Company profits that may be paid as ordinary dividends to stockholders.
- F.

Restrictions on Unassigned Funds

There were no restrictions on the unassigned funds of the Company other than those described in section C and E, including for whom the surplus is being held.
- G.

Mutual Surplus Advances

Not applicable
- H.

Company Stock Held for Special Purposes

Not applicable
- I.

Changes in Special Surplus Funds

Not applicable

NOTES TO FINANCIAL STATEMENTS

J.	Changes in Unassigned Funds	
	The portion of unassigned funds (surplus) represented or reduced by cumulative unrealized gains and losses is	\$ 710,648,504
K.	Surplus Notes	
	Not applicable	
L.	Impact of Quasi Reorganizations	
	Not applicable	
M.	Dates of Quasi Reorganizations	
	Not applicable	

NOTE 14 Liabilities, Contingencies and Assessments

A.	Contingent Commitments	
	Not applicable	
B.	Assessments	
	(1) Nature and Amount of Assessments	
	The Company is subject to state guaranty fund and other assessments by the states in which it writes business. State guaranty fund assessments are accrued at the time of any known insolvencies. Other assessments are accrued either at the time of assessment or at the time the premiums are written. These accruals are based on information received from the states in which the Company writes business and may change due to many factors including the Company's share of the ultimate cost of current insolvencies.	
	As of December 31, 2023 and 2022, the Company's estimated liability for state guaranty fund and other assessments was \$2,234,151 and \$1,821,567, respectively.	
	As of December 31, 2023 and 2022, the Company's estimated liability for various surcharges was \$5,079,181 and \$4,223,243, respectively.	
	(2) Assets Recognized for Premium Tax Offsets	
	a. Assets recognized from paid and accrued premium tax offsets prior year-end	\$ 70,200
	b. Decreases current year:	
	Premium tax offsets used	\$ 70,200
	c. Increases current year:	
	Premium tax offsets accrued	\$ 274,572
	d. Assets recognized from paid and accrued premium tax offsets and policy surcharges current year-end **	\$ 274,572
	**The Company anticipates using these credits in 2024.	
	(3) Guaranty Fund Liabilities and Assets Related to Assessments from Insolvencies of Entities that Wrote Long-Term Care Contracts	
	Not applicable	
C.	Gain Contingencies	
	Not applicable	
D.	Claims Related Extra Contractual Obligation and Bad Faith Losses Stemming from Lawsuits	
	(1) The company paid the following amounts in the reporting period to settle claims related extra contractual obligations or bad faith claims stemming from lawsuits	<div>Direct</div> <div>\$ 1,837,538</div>
	(2) Number of claims where amounts were paid to settle claims related extra contractual obligations or bad faith claims resulting from lawsuits during the reporting period	0-25 Claims
	(3) Indicate whether claim count information is disclosed per claim or per claimant	Per Claimant
E.	Product Warranties	
	Not applicable	
F.	Joint and Several Liabilities	
	Not applicable	

NOTES TO FINANCIAL STATEMENTS

G. All Other Contingencies

The Company routinely assesses the collectibility of premiums and agents' balances receivable and records a bad debt reserve for amounts exceeding the nonadmitted balance that the Company believes are uncollectible.

The Company is named as defendant in various lawsuits arising out of its insurance operations. All legal actions relating to claims made under insurance policies are considered by the Company in establishing its loss and LAE reserves. The Company also has potential exposure relating to lawsuits due to its participation in various management agreements and a 100% pooling reinsurance agreement for which it is allocated litigation expenses (see Note 26).

The pending lawsuits summarized below are in various stages of development, and the outcomes are uncertain or, if probable and estimable, are accrued in these statutory-basis financial statements. At the statement date, except to the extent an accrual has been established, the Company does not consider the losses from these pending cases to be both probable and estimable and is unable to estimate a range of loss at this time.

There was a lawsuit conditionally certified for settlement alleging that that the Company's underinsured coverage is illusory. The Company does consider a loss from this case to be probable and a loss accrual was established accordingly.

There was a putative class action lawsuit alleging that the Company's stacked uninsured/underinsured motorist coverage on a single vehicle policy is illusory.

There was a certified class action lawsuit alleging the Company improperly terminates personal injury protection ("PIP") benefits by using the concept of maximum medical improvement. The Company does consider a loss from this case to be probable and a loss reserve was established accordingly.

There was a certified class action lawsuit alleging that the Company improperly reduces or terminates PIP benefits based on the calculation of wage loss payments under New York Economic Loss (i.e., PIP) coverage.

There were ten putative class action lawsuits alleging that the Company improperly values total loss vehicle physical damage claims through the application of a negotiation adjustment in calculating such valuations. While not probable or estimable, it is reasonably possible that a loss may be incurred on these lawsuits.

There were two putative class action lawsuits challenging the Company's reimbursement to Medicare Advantage Plans or Medicaid on first party and/or third-party medical claims and settlements with insureds and claimants.

There was a qui tam lawsuit challenging the Company's reimbursement to Medicare Advantage Plans on first-party and/or third-party medical claims and settlements with insureds and claimants.

There was a putative class action lawsuit alleging that the Company failed to pay post-arbitration award interest.

There were two putative class action lawsuits challenging the evaluation of physical damage claims regarding diminution of value.

NOTE 15 Leases

Not applicable

NOTE 16 Information About Financial Instruments With Off-Balance Sheet Risk and Financial Instruments With Concentrations of Credit Risk

Not applicable

NOTE 17 Sale, Transfer and Servicing of Financial Assets and Extinguishments of Liabilities

Not applicable

NOTE 18 Gain or Loss to the Reporting Entity from Uninsured Plans and the Uninsured Portion of Partially Insured Plans

Not applicable

NOTE 19 Direct Premium Written/Produced by Managing General Agents/Third Party Administrators

Not applicable

NOTES TO FINANCIAL STATEMENTS

NOTE 20 Fair Value Measurements

A. Inputs Used for Assets and Liabilities Measured at Fair Value

(1) Fair Value Measurements by Levels 1, 2, and 3

The Company categorizes its financial instruments, based on the degree of subjectivity inherent in the method by which they are valued, into a fair value hierarchy of three levels, as follows:

Level 1 - Inputs are unadjusted, quoted prices in active markets for identical instruments at the measurement date (e.g., U.S. government obligations, which are continually priced on a daily basis, active exchange-traded equity securities, and certain short-term securities).

Level 2 - Inputs (other than quoted prices included within Level 1) that are observable for the instrument either directly or indirectly (e.g., certain corporate and municipal bonds and certain preferred stocks). This includes: (i) quoted prices for similar instruments in active markets, (ii) quoted prices for identical or similar instruments in markets that are not active, (iii) inputs other than quoted prices that are observable for the instruments, and (iv) inputs that are derived principally from or corroborated by observable market data by correlation or other means.

Level 3 - Inputs that are unobservable. Unobservable inputs reflect the Company's subjective evaluation about the assumptions market participants would use in pricing the financial instrument (e.g., certain structured securities and privately held investments).

Determining the fair value of the investment portfolio is the responsibility of the Company's management. As part of the responsibility, management evaluates whether a market is distressed or inactive in determining the fair value for the Company's portfolio. Management reviews certain market level inputs to evaluate whether sufficient activity, volume, and new issuances exist to create an active market. Based on this evaluation, management concluded that there was sufficient activity related to the sectors and securities for which they obtained valuations.

Certain securities are carried at fair market value in the statutory financial statements. Other securities are periodically measured at fair value, such as when impaired, or for certain bonds which are carried at the lower of amortized cost or fair market value.

See Note 1.C for further information regarding methods used to determine fair market value.

The valuations classified as either Level 1 or Level 2 in the table below are priced exclusively by external sources, including: pricing vendors, dealers/market makers, and exchange-quoted prices. The Company did not have any transfers between Level 1 and Level 2. At the end of each reporting period, the Company evaluates whether or not any event has occurred or circumstances have changed that would cause an instrument to be transferred into or out of Level 3.

Fair Value Measurements at Reporting Date:

Description for each class of asset or liability	(Level 1)	(Level 2)	(Level 3)	Net Asset Value (NAV)	Total
a. Assets at fair value					
Bonds industrial & miscellaneous	\$ -	\$ 225,225,265	\$ -		\$ 225,225,265
Common stock industrial & miscellaneous	\$ 976,338,588	\$ -	\$ -		\$ 976,338,588
Preferred stock industrial & miscellaneous	\$ -	\$ 17,375,160	\$ -		\$ 17,375,160
Total assets at fair value/NAV	\$ 976,338,588	\$ 242,600,425	\$ -	\$ -	\$ 1,218,939,013

The Company does not have any liabilities measured at fair value on the balance sheet.

(2) Fair Value Measurements in Level 3 of the Fair Value Hierarchy

Not applicable

(3) Policy on Transfers Into and Out of Level 3

At the end of each reporting period, the Company evaluates whether or not any event has occurred or circumstances have changed that would cause an instrument to be transferred into or out of Level 3.

(4) Inputs and Techniques Used for Level 2 and Level 3 Fair Values

See Note 20.A.1 above.

(5) Derivative Fair Values

Not applicable

B. Other Fair Value Disclosures

Not applicable

C. Fair Values for all Financial Instruments by Levels 1, 2, and 3

The table below represents the fair value of all financial instruments at the reporting date, however, not all financial instruments are reported at fair value in the Company's financial statements.

Type of Financial Instrument	Aggregate Fair Value	Admitted Assets	(Level 1)	(Level 2)	(Level 3)	Net Asset Value (NAV)	Not Practicable (Carrying Value)
Bonds	\$ 12,050,499,953	\$ 12,573,880,401	\$ 7,389,940,370	\$ 4,660,559,583	\$ -		
Preferred stock	\$ 66,398,500	\$ 66,569,871	\$ -	\$ 66,398,500	\$ -		
Common stock	\$ 976,338,588	\$ 976,338,588	\$ 976,338,588	\$ -	\$ -		
Cash equivalents	\$ 28,060,957	\$ 28,060,957	\$ 28,060,957	\$ -	\$ -		
Short-term investments	\$ 2,362,433	\$ 2,352,714	\$ -	\$ 2,362,433	\$ -		

D. Not Practicable to Estimate Fair Value

Not applicable

E. NAV Practical Expedient Investments

Not applicable

NOTES TO FINANCIAL STATEMENTS

NOTE 21 Other Items

A. Unusual or Infrequent Items

Not applicable

B. Troubled Debt Restructuring: Debtors

Not applicable

C. Other Disclosures

(1) Nonadmitted Other Invested Assets

In accordance with reporting and admissibility requirements of SSAP No. 48, Joint Ventures, Partnerships, and Limited Liability Companies and SSAP No. 97, Investments in Subsidiary, Controlled, and Affiliated Entities, the Company nonadmits its investments in Gadsden and Churchill Stateside Solar Tax Credit Fund, VI, LLC (see Note 1.C).

D. Business Interruption Insurance Recoveries

Not applicable

E. State Transferable and Non-transferable Tax Credits

(1) Carrying Value of Transferable and Non-transferable State Tax Credits Gross of any Related Tax Liabilities and Total Unused Transferable and Non-transferable State Tax Credits by State and in Total

Description of State Transferable and Non-transferable Tax Credits	State	Carrying Value	Unused Amount
Digital Media Production Tax Credit (T)	CT	\$ 2,101,875	\$ 2,375,000
Total		\$ 2,101,875	\$ 2,375,000

(2) The Company estimated the utilization of the remaining Transferable and Non-transferable State Tax Credits by projecting future premium taking into account policy growth and rate changes, projecting future tax liability based on projected premium, tax rates, and tax credits, and comparing projected future tax liability to the availability of remaining Transferable and Non-transferable State Tax Credits.

(3) The Company recognized an impairment loss of \$0 related to the write down as a result of impairment analysis of the carrying amount for State Transferable and Non-transferable Tax Credits.

(4) State Tax Credits Admitted and Nonadmitted

	Total Admitted	Total Nonadmitted
a. Transferable	\$ 2,101,875	\$ -
b. Non-transferable	\$ -	\$ -

F. Subprime Mortgage Related Risk Exposure

(1) Description of the Subprime-Mortgage-Related Risk Exposure and Related Risk Management Practices

The following subprime disclosure and the review and procedures described within are completed at a consolidated level for all the Progressive companies. To the extent the Company had any direct subprime exposure, those securities would be listed in Note 21.F.3.

Management's review of the investment portfolio for securities with direct subprime exposure, such as Alt-A residential mortgage loan-backed bonds and home equity loan-backed bonds is performed in conjunction with the OTTI analysis and procedures (see Note 1.C). Additionally, securities that were determined to have an indirect subprime exposure were also reviewed as part of the OTTI process.

The Company's management continues to perform a detailed review of its investment portfolio, paying particular attention to the credit profile of the issuers to identify the extent to which any asset values may have been impacted by direct or indirect exposure to the subprime mortgage loan disruption, as well as broader credit and financial market events.

In the reporting period, the Company recorded no OTTI write-downs on any securities as a result of direct subprime exposure.

(2) Direct Exposure Through Investments in Subprime Mortgage Loans

Not applicable

(3) Direct Exposure Through Other Investments

	Actual Cost	Book/Adjusted Carrying Value (excluding interest)	Fair Value	Other-Than-Temporary Impairment Losses Recognized
a. Residential mortgage backed securities	\$ 11,472,963	\$ 12,901,416	\$ 12,756,273	\$ -
b. Commercial mortgage backed securities	\$ -	\$ -	\$ -	\$ -
c. Collateralized debt obligations	\$ -	\$ -	\$ -	\$ -
d. Structured securities	\$ -	\$ -	\$ -	\$ -
e. Equity investment in SCAs *	\$ -	\$ -	\$ -	\$ -
f. Other assets	\$ -	\$ -	\$ -	\$ -
g. Total (a+b+c+d+e+f)	\$ 11,472,963	\$ 12,901,416	\$ 12,756,273	\$ -

(4) Underwriting Exposure to Subprime Mortgage Risk Through Mortgage Guaranty or Financial Guaranty Insurance Coverage

Not applicable

NOTES TO FINANCIAL STATEMENTS

G. Insurance-Linked Securities (ILS) Contracts

Not applicable

H. The Amount That Could Be Realized on Life Insurance Where the Reporting Entity is Owner and Beneficiary or Has Otherwise Obtained Rights to Control the Policy

Not applicable

NOTE 22 Events Subsequent

Subsequent events have been considered through February 9, 2024 for these statutory-basis financial statements that were available for issuance by March 1, 2024. There were no events occurring subsequent to the current balance sheet date that merited recognition or disclosure in these statements.

NOTE 23 Reinsurance

A. Unsecured Reinsurance Recoverables

Individual Reinsurers with Unsecured Reinsurance Recoverables Exceeding 3% of Policyholder Surplus

NAIC Code	Federal ID #	Reinsurer	Amount
11851	62-0484104	Progressive Advanced Insurance Company	\$ 556,159,000
37605	33-0350911	Progressive Marathon Insurance Company	830,086,000
24279	34-0472535	Progressive Max Insurance Company	824,502,000
21735	36-3789786	Progressive Premier Insurance Company of Illinois	278,081,000
21727	36-3789787	Progressive Universal Insurance Company	556,159,000
Total			\$ 3,044,987,000

B. Reinsurance Recoverable in Dispute

Not applicable

C. Reinsurance Assumed and Ceded

(1) The table below summarizes ceded and assumed unearned premiums and the related commission equity at reporting date.

	Assumed Reinsurance		Ceded Reinsurance		Net	
	Premium Reserve	Commission Equity	Premium Reserve	Commission Equity	Premium Reserve	Commission Equity
a. Affiliates	\$3,958,132,000		\$1,326,436,000		\$2,631,696,000	\$ -
b. All Other			\$ 18,000		\$ (18,000)	\$ -
c. Total (a+b)	\$3,958,132,000	\$ -	\$1,326,454,000	\$ -	\$2,631,678,000	\$ -
d. Direct Unearned Premium Reserve						\$1,808,999,000

(2) The Company has no return commission or profit sharing arrangements.

D. Uncollectible Reinsurance

Not applicable

E. Commutation of Ceded Reinsurance

Not applicable

F. Retroactive Reinsurance

Not applicable

G. Reinsurance Accounted for as a Deposit

Not applicable

H. Disclosures for the Transfer of Property and Casualty Run-off Agreements

Not applicable

I. Certified Reinsurer Rating Downgraded or Status Subject to Revocation

Not applicable

J. Reinsurance Agreements Qualifying for Reinsurer Aggregation

Not applicable

K. Reinsurance Credit on Contracts Covering Health Business

Not applicable

NOTES TO FINANCIAL STATEMENTS

NOTE 24 Retrospectively Rated Contracts & Contracts Subject to Redetermination

- A.

Method Used to Estimate

Not applicable
- B.

Method Used to Record

Not applicable
- C.

Amount and Percent of Net Retrospective Premiums

Not applicable
- D.

Medical Loss Ratio Rebates

Not applicable
- E.

Calculation of Nonadmitted Accrued Retrospective Premiums

Not applicable
- F.

Risk Sharing Provisions of the Affordable Care Act

(1)

Did the reporting entity write accident and health insurance premium which is subject to the Affordable Care Act risk sharing provisions (YES/NO)?

Yes [] No [X]

(2)

Impact of Risk Sharing Provisions of the Affordable Care Act on Admitted Assets, Liabilities and Revenue for the Current Year

Not applicable

(3)

Roll-Forward of Prior Year ACA Risk Sharing Provisions

Not applicable

(4)

Roll-Forward of Risk Corridors Asset and Liability Balances by Program Benefit Year

Not applicable

(5)

ACA Risk Corridors Receivable as of Reporting Date

Not applicable

NOTE 25 Change in Incurred Losses and Loss Adjustment Expenses

- A.

Change in Incurred Losses and Loss Adjustment Expenses

Incurred losses and LAE attributable to insured events of prior accident years increased by \$281,744,399 in 2023, which is 5.2% of the total prior year net unpaid losses and LAE of \$5,401,183,270. The unfavorable development is primarily due to more supplemental payments on previously closed features than anticipated in private passenger auto liability and auto physical damage.
- B.

Information about Significant Changes in Methodologies and Assumptions

Not applicable

NOTE 26 Intercompany Pooling Arrangements

The Company participates in a pooling reinsurance agreement with the property-casualty affiliates listed below (the “Direct Pool”) under which 100% of the underwriting business of each member company, net of external reinsurance, is ceded to the Company, the Direct Pool manager and a Direct Pool participant. The combined premiums, losses, and expenses are then retroceded to each Direct Pool member based on pre-determined pooling percentages.

Mountain Laurel Assurance Company (“Mountain Laurel”), an insurance affiliate domiciled in Ohio, terminated its future participation in the Direct Pool effective November 5, 2005. Mountain Laurel has a zero percent retrocession participation in the Direct Pool for all policies written prior to that date.

The pooling percentages for each Direct Pool participant were as follows:

Company	NAIC Code	2023 Pool %	2022 Pool %
Progressive Direct Insurance Company (Lead)	16322	77.0%	77.0%
Progressive Marathon Insurance Company	37605	6.0	6.0
Progressive Max Insurance Company	24279	6.0	6.0
Progressive Advanced Insurance Company	11851	4.0	4.0
Progressive Universal Insurance Company	21727	4.0	4.0
Progressive Premier Insurance Company of Illinois	21735	2.0	2.0
Progressive Paloverde Insurance Company	44695	0.5	0.5
Progressive Choice Insurance Company	44288	0.5	0.5
Mountain Laurel Assurance Company	44180	--	--
		100.0%	100.0%

All business written by each Direct Pool member is subject to pooling with the exception of loss reserves from Progressive Max Insurance Company’s assumed asbestos and environmental claims, for which the Company has no exposure. Business ceded by Direct Pool members to non-affiliated reinsurers prior to pooling, is primarily due to state-provided reinsurance programs. The Direct Pool does not participate in any intercompany sharing of the provision for reinsurance and the write-offs of uncollectible reinsurance.

NOTES TO FINANCIAL STATEMENTS

At the end of the reporting period amounts recoverable from and payable to the Company and all affiliates participating in the Direct Pool are as follows:

Company	Amounts Recoverable	Amounts Payable
Progressive Direct Insurance Company (Lead)	\$ 89,273,408	\$ 41,924,595
Progressive Marathon Insurance Company	4,154,851	6,001,107
Progressive Max Insurance Company	10,955,521	4,407,430
Progressive Advanced Insurance Company	9,126,450	31,809,231
Progressive Universal Insurance Company	4,153,964	18,043,716
Progressive Premier Insurance Company of Illinois	6,456,780	17,627,779
Progressive Paloverde Insurance Company	4,799,455	9,052,330
Progressive Choice Insurance Company	2,277,574	2,331,815
Mountain Laurel Assurance Company	--	--
Total	\$ 131,198,003	\$ 131,198,003

NOTE 27 Structured Settlements

Not applicable

NOTE 28 Health Care Receivables

Not applicable

NOTE 29 Participating Policies

Not applicable

NOTE 30 Premium Deficiency Reserves

- (1)

Liability carried for premium deficiency reserves

\$0
- (2)

Date of the most recent evaluation of this liability

12/31/2023
- (3)

Was anticipated investment income utilized in the calculation?

Yes [] No [X]

NOTE 31 High Deductibles

Not applicable

NOTE 32 Discounting of Liabilities for Unpaid Losses or Unpaid Loss Adjustment Expenses

Not applicable

NOTE 33 Asbestos/Environmental Reserves

Not applicable

NOTE 34 Subscriber Savings Accounts

Not applicable

NOTE 35 Multiple Peril Crop Insurance

Not applicable

NOTE 36 Financial Guaranty Insurance

Not applicable

GENERAL INTERROGATORIES

PART 1 - COMMON INTERROGATORIES
GENERAL

1.1

Is the reporting entity a member of an Insurance Holding Company System consisting of two or more affiliated persons, one or more of which is an insurer?
If yes, complete Schedule Y, Parts 1, 1A, 2 and 3.

Yes ☒ No ☐

1.2

If yes, did the reporting entity register and file with its domiciliary State Insurance Commissioner, Director or Superintendent or with such regulatory official of the state of domicile of the principal insurer in the Holding Company System, a registration statement providing disclosure substantially similar to the standards adopted by the National Association of Insurance Commissioners (NAIC) in its Model Insurance Holding Company System Regulatory Act and model regulations pertaining thereto, or is the reporting entity subject to standards and disclosure requirements substantially similar to those required by such Act and regulations?

Yes ☒ No ☐ N/A ☐

1.3

State Regulating?

OHIO

1.4

Is the reporting entity publicly traded or a member of a publicly traded group?

Yes ☒ No ☐

1.5

If the response to 1.4 is yes, provide the CIK (Central Index Key) code issued by the SEC for the entity/group.

0000080661

2.1

Has any change been made during the year of this statement in the charter, by-laws, articles of incorporation, or deed of settlement of the reporting entity?

Yes ☐ No ☒

2.2

If yes, date of change:

3.1

State as of what date the latest financial examination of the reporting entity was made or is being made.

12/31/2022

3.2

State the as of date that the latest financial examination report became available from either the state of domicile or the reporting entity. This date should be the date of the examined balance sheet and not the date the report was completed or released.

12/31/2017

3.3

State as of what date the latest financial examination report became available to other states or the public from either the state of domicile or the reporting entity. This is the release date or completion date of the examination report and not the date of the examination (balance sheet date).

05/08/2019

3.4

By what department or departments?
OHIO

3.5

Have all financial statement adjustments within the latest financial examination report been accounted for in a subsequent financial statement filed with Departments?

Yes ☐ No ☐ N/A ☒

3.6

Have all of the recommendations within the latest financial examination report been complied with?

Yes ☒ No ☐ N/A ☐

4.1

During the period covered by this statement, did any agent, broker, sales representative, non-affiliated sales/service organization or any combination thereof under common control (other than salaried employees of the reporting entity), receive credit or commissions for or control a substantial part (more than 20 percent of any major line of business measured on direct premiums) of:
4.11 sales of new business?
4.12 renewals?

Yes ☐ No ☒
Yes ☐ No ☒

4.2

During the period covered by this statement, did any sales/service organization owned in whole or in part by the reporting entity or an affiliate, receive credit or commissions for or control a substantial part (more than 20 percent of any major line of business measured on direct premiums) of:
4.21 sales of new business?
4.22 renewals?

Yes ☐ No ☒
Yes ☐ No ☒

5.1

Has the reporting entity been a party to a merger or consolidation during the period covered by this statement?
If yes, complete and file the merger history data file with the NAIC.

Yes ☐ No ☒

5.2

If yes, provide the name of the entity, NAIC Company Code, and state of domicile (use two letter state abbreviation) for any entity that has ceased to exist as a result of the merger or consolidation.

1 Name of Entity	2 NAIC Company Code	3 State of Domicile

6.1

Has the reporting entity had any Certificates of Authority, licenses or registrations (including corporate registration, if applicable) suspended or revoked by any governmental entity during the reporting period?

Yes ☐ No ☒

6.2

If yes, give full information:

7.1

Does any foreign (non-United States) person or entity directly or indirectly control 10% or more of the reporting entity?

Yes ☐ No ☒

7.2

If yes,
7.21 State the percentage of foreign control;
7.22 State the nationality(s) of the foreign person(s) or entity(s); or if the entity is a mutual or reciprocal, the nationality of its manager or attorney-in-fact and identify the type of entity(s) (e.g., individual, corporation, government, manager or attorney-in-fact).

1 Nationality	2 Type of Entity

%

ANNUAL STATEMENT FOR THE YEAR 2023 OF THE PROGRESSIVE DIRECT INSURANCE COMPANY

GENERAL INTERROGATORIES

8.1

Is the company a subsidiary of a depository institution holding company (DIHC) or a DIHC itself, regulated by the Federal Reserve Board?

Yes [] No [X]

8.2

If the response to 8.1 is yes, please identify the name of the DIHC.

8.3

Is the company affiliated with one or more banks, thrifts or securities firms?

Yes [] No [X]

8.4

If response to 8.3 is yes, please provide below the names and location (city and state of the main office) of any affiliates regulated by a federal regulatory services agency [i.e. the Federal Reserve Board (FRB), the Office of the Comptroller of the Currency (OCC), the Federal Deposit Insurance Corporation (FDIC) and the Securities Exchange Commission (SEC)] and identify the affiliate's primary federal regulator.

1	2	3	4	5	6
Affiliate Name	Location (City, State)	FRB	OCC	FDIC	SEC

8.5

Is the reporting entity a depository institution holding company with significant insurance operations as defined by the Board of Governors of Federal Reserve System or a subsidiary of the depository institution holding company?

Yes [] No [X]

8.6

If response to 8.5 is no, is the reporting entity a company or subsidiary of a company that has otherwise been made subject to the Federal Reserve Board's capital rule?

Yes [] No [X] N/A []

9.

What is the name and address of the independent certified public accountant or accounting firm retained to conduct the annual audit?

PriceWaterHouse Coopers, LLP, 200 Public Square, 19th Floor Cleveland, OH 44114

10.1

Has the insurer been granted any exemptions to the prohibited non-audit services provided by the certified independent public accountant requirements as allowed in Section 7H of the Annual Financial Reporting Model Regulation (Model Audit Rule), or substantially similar state law or regulation?

Yes [] No [X]

10.2

If the response to 10.1 is yes, provide information related to this exemption:

10.3

Has the insurer been granted any exemptions related to the other requirements of the Annual Financial Reporting Model Regulation as allowed for in Section 18A of the Model Regulation, or substantially similar state law or regulation?

Yes [] No [X]

10.4

If the response to 10.3 is yes, provide information related to this exemption:

10.5

Has the reporting entity established an Audit Committee in compliance with the domiciliary state insurance laws?

Yes [X] No [] N/A []

10.6

If the response to 10.5 is no or n/a, please explain.

11.

What is the name, address and affiliation (officer/employee of the reporting entity or actuary/consultant associated with an actuarial consulting firm) of the individual providing the statement of actuarial opinion/certification?

GARY S. TRAIKOFF, FCAS, MAAA CORPORATE ACTUARY 6300 WILSON MILLS ROAD MAYFIELD VILLAGE, OH, 44143-2182

12.1

Does the reporting entity own any securities of a real estate holding company or otherwise hold real estate indirectly?

Yes [X] No []

12.11

Name of real estate holding company ...

AMERICAN TOWER CORP, APPLE HOSPITALITY REIT INC, BOSTON PROPERTIES INC, BRIXMOR PROPERTY GROUP INC, CROWN CASTLE INTL CORP, CUBESMART LP, EPR PROPERTIES, EQUINIX INC, EQUITY RESIDENTIAL, GAMING AND LEISURE PROPERTIES, IRON MOUNTAIN INC, LAMAR ADVERTISING CO, PROLOGIS, PUBLIC STORAGE, SBA COMMUNICATIONS CORP, VICI PROPERTIES INC, SAFEHOLD INC,

12.12

Number of parcels involved

12.13

Total book/adjusted carrying value

\$ 155,072,308

12.2

If yes, provide explanation

WE HOLD COMMON STOCK INTEREST AND CORPORATE DEBT ISSUED BY SEVERAL REAL ESTATE HOLDING COMPANIES. THE NUMBER OF PARCELS IS UNKNOWN.

13.

FOR UNITED STATES BRANCHES OF ALIEN REPORTING ENTITIES ONLY:

13.1

What changes have been made during the year in the United States manager or the United States trustees of the reporting entity?

13.2

Does this statement contain all business transacted for the reporting entity through its United States Branch on risks wherever located?

Yes [] No []

13.3

Have there been any changes made to any of the trust indentures during the year?

Yes [] No []

13.4

If answer to (13.3) is yes, has the domiciliary or entry state approved the changes?

Yes [] No [] N/A []

14.1

Are the senior officers (principal executive officer, principal financial officer, principal accounting officer or controller, or persons performing similar functions) of the reporting entity subject to a code of ethics, which includes the following standards?

Yes [X] No []

a.

Honest and ethical conduct, including the ethical handling of actual or apparent conflicts of interest between personal and professional relationships;

b.

Full, fair, accurate, timely and understandable disclosure in the periodic reports required to be filed by the reporting entity;

c.

Compliance with applicable governmental laws, rules and regulations;

d.

The prompt internal reporting of violations to an appropriate person or persons identified in the code; and

e.

Accountability for adherence to the code.

14.11

If the response to 14.1 is No, please explain:

14.2

Has the code of ethics for senior managers been amended?

Yes [] No [X]

14.21

If the response to 14.2 is yes, provide information related to amendment(s).

14.3

Have any provisions of the code of ethics been waived for any of the specified officers?

Yes [] No [X]

14.31

If the response to 14.3 is yes, provide the nature of any waiver(s).

GENERAL INTERROGATORIES

- 15.1 Is the reporting entity the beneficiary of a Letter of Credit that is unrelated to reinsurance where the issuing or confirming bank is not on the SVO Bank List? Yes [] No [X]
- 15.2 If the response to 15.1 is yes, indicate the American Bankers Association (ABA) Routing Number and the name of the issuing or confirming bank of the Letter of Credit and describe the circumstances in which the Letter of Credit is triggered.

1	2	3	4
American Bankers Association (ABA) Routing Number	Issuing or Confirming Bank Name	Circumstances That Can Trigger the Letter of Credit	Amount

BOARD OF DIRECTORS

- | | | |
|-----|---|---|
| 16. | Is the purchase or sale of all investments of the reporting entity passed upon either by the board of directors or a subordinate committee thereof? | Yes [<input checked="" type="checkbox"/>] No [<input type="checkbox"/>] |
| 17. | Does the reporting entity keep a complete permanent record of the proceedings of its board of directors and all subordinate committees thereof? | Yes [<input checked="" type="checkbox"/>] No [<input type="checkbox"/>] |
| 18. | Has the reporting entity an established procedure for disclosure to its board of directors or trustees of any material interest or affiliation on the part of any of its officers, directors, trustees or responsible employees that is in conflict or is likely to conflict with the official duties of such person? | Yes [<input checked="" type="checkbox"/>] No [<input type="checkbox"/>] |

FINANCIAL

- | | | | |
|------|--|--|--|
| 19. | Has this statement been prepared using a basis of accounting other than Statutory Accounting Principles (e.g., Generally Accepted Accounting Principles)? | Yes [<input type="checkbox"/>] | No [<input checked="" type="checkbox"/>] |
| 20.1 | Total amount loaned during the year (inclusive of Separate Accounts, exclusive of policy loans): | 20.11 To directors or other officers..... | \$ |
| | | 20.12 To stockholders not officers..... | \$ |
| | | 20.13 Trustees, supreme or grand
(Fraternal Only) | \$ |
| 20.2 | Total amount of loans outstanding at the end of year (inclusive of Separate Accounts, exclusive of policy loans): | 20.21 To directors or other officers..... | \$ |
| | | 20.22 To stockholders not officers..... | \$ |
| | | 20.23 Trustees, supreme or grand
(Fraternal Only) | \$ |
| 21.1 | Were any assets reported in this statement subject to a contractual obligation to transfer to another party without the liability for such obligation being reported in the statement? | Yes [<input type="checkbox"/>] | No [<input checked="" type="checkbox"/>] |
| 21.2 | If yes, state the amount thereof at December 31 of the current year: | 21.21 Rented from others..... | \$ |
| | | 21.22 Borrowed from others..... | \$ |
| | | 21.23 Leased from others | \$ |
| | | 21.24 Other | \$ |
| 22.1 | Does this statement include payments for assessments as described in the Annual Statement Instructions other than guaranty fund or guaranty association assessments? | Yes [<input type="checkbox"/>] | No [<input checked="" type="checkbox"/>] |
| 22.2 | If answer is yes: | 22.21 Amount paid as losses or risk adjustment \$ | |
| | | 22.22 Amount paid as expenses | \$ |
| | | 22.23 Other amounts paid | \$ |
| 23.1 | Does the reporting entity report any amounts due from parent, subsidiaries or affiliates on Page 2 of this statement? | Yes [<input checked="" type="checkbox"/>] | No [<input type="checkbox"/>] |
| 23.2 | If yes, indicate any amounts receivable from parent included in the Page 2 amount: | | \$ |
| 24.1 | Does the insurer utilize third parties to pay agent commissions in which the amounts advanced by the third parties are not settled in full within 90 days? | Yes [<input type="checkbox"/>] | No [<input checked="" type="checkbox"/>] |
| 24.2 | If the response to 24.1 is yes, identify the third-party that pays the agents and whether they are a related party. | | |

Name of Third-Party	Is the Third-Party Agent a Related Party (Yes/No)
.....	

INVESTMENT

- 25.01 Were all the stocks, bonds and other securities owned December 31 of current year, over which the reporting entity has exclusive control, in the actual possession of the reporting entity on said date? (other than securities lending programs addressed in 25.03)..... Yes [X] No []

ANNUAL STATEMENT FOR THE YEAR 2023 OF THE PROGRESSIVE DIRECT INSURANCE COMPANY

GENERAL INTERROGATORIES

25.02 If no, give full and complete information, relating thereto

25.03 For securities lending programs, provide a description of the program including value for collateral and amount of loaned securities, and whether collateral is carried on or off-balance sheet. (an alternative is to reference Note 17 where this information is also provided)
N/A

25.04 For the reporting entity's securities lending program, report amount of collateral for conforming programs as outlined in the Risk-Based Capital Instructions.

25.05 For the reporting entity's securities lending program, report amount of collateral for other programs.

25.06 Does your securities lending program require 102% (domestic securities) and 105% (foreign securities) from the counterparty at the outset of the contract?

25.07 Does the reporting entity non-admit when the collateral received from the counterparty falls below 100%?

25.08 Does the reporting entity or the reporting entity's securities lending agent utilize the Master Securities lending Agreement (MSLA) to conduct securities lending?

25.09 For the reporting entity's securities lending program state the amount of the following as of December 31 of the current year:

25.091 Total fair value of reinvested collateral assets reported on Schedule DL, Parts 1 and 2.

25.092 Total book/adjusted carrying value of reinvested collateral assets reported on Schedule DL, Parts 1 and 2

25.093 Total payable for securities lending reported on the liability page.

26.1 Were any of the stocks, bonds or other assets of the reporting entity owned at December 31 of the current year not exclusively under the control of the reporting entity or has the reporting entity sold or transferred any assets subject to a put option contract that is currently in force? (Exclude securities subject to Interrogatory 21.1 and 25.03).

26.2 If yes, state the amount thereof at December 31 of the current year:

26.21 Subject to repurchase agreements

26.22 Subject to reverse repurchase agreements

26.23 Subject to dollar repurchase agreements

26.24 Subject to reverse dollar repurchase agreements

26.25 Placed under option agreements

26.26 Letter stock or securities restricted as to sale - excluding FHLB Capital Stock

26.27 FHLB Capital Stock

26.28 On deposit with states

26.29 On deposit with other regulatory bodies

26.30 Pledged as collateral - excluding collateral pledged to an FHLB

26.31 Pledged as collateral to FHLB - including assets backing funding agreements

26.32 Other

26.3 For category (26.26) provide the following:

1 Nature of Restriction	2 Description	3 Amount

27.1 Does the reporting entity have any hedging transactions reported on Schedule DB?

27.2 If yes, has a comprehensive description of the hedging program been made available to the domiciliary state? If no, attach a description with this statement.

LINES 27.3 through 27.5: FOR LIFE/FRATERNAL REPORTING ENTITIES ONLY:

27.3 Does the reporting entity utilize derivatives to hedge variable annuity guarantees subject to fluctuations as a result of interest rate sensitivity?

27.4 If the response to 27.3 is YES, does the reporting entity utilize:

27.41 Special accounting provision of SSAP No. 108

27.42 Permitted accounting practice

27.43 Other accounting guidance

27.5 By responding YES to 27.41 regarding utilizing the special accounting provisions of SSAP No. 108, the reporting entity attests to the following:

The reporting entity has obtained explicit approval from the domiciliary state.

Hedging strategy subject to the special accounting provisions is consistent with the requirements of VM-21.

Actuarial certification has been obtained which indicates that the hedging strategy is incorporated within the establishment of VM-21 reserves and provides the impact of the hedging strategy within the Actuarial Guideline Conditional Tail Expectation Amount.

Financial Officer Certification has been obtained which indicates that the hedging strategy meets the definition of a Clearly Defined Hedging Strategy within VM-21 and that the Clearly Defined Hedging Strategy is the hedging strategy being used by the company in its actual day-to-day risk mitigation efforts.

28.1 Were any preferred stocks or bonds owned as of December 31 of the current year mandatorily convertible into equity, or, at the option of the issuer, convertible into equity?

28.2 If yes, state the amount thereof at December 31 of the current year.

29. Excluding items in Schedule E - Part 3 - Special Deposits, real estate, mortgage loans and investments held physically in the reporting entity's offices, vaults or safety deposit boxes, were all stocks, bonds and other securities, owned throughout the current year held pursuant to a custodial agreement with a qualified bank or trust company in accordance with Section 1, III - General Examination Considerations, F. Outsourcing of Critical Functions, Custodial or Safekeeping Agreements of the NAIC Financial Condition Examiners Handbook?

29.01 For agreements that comply with the requirements of the NAIC Financial Condition Examiners Handbook, complete the following:

1 Name of Custodian(s)	2 Custodian's Address
CITIBANK, N.A.	338 GREENWICH STREET, NEW YORK, NY 10013
STATE STREET	801 PENNSYLVANIA AVE, KANSAS CITY, MO 64105

ANNUAL STATEMENT FOR THE YEAR 2023 OF THE PROGRESSIVE DIRECT INSURANCE COMPANY

GENERAL INTERROGATORIES

29.02 For all agreements that do not comply with the requirements of the NAIC Financial Condition Examiners Handbook, provide the name, location and a complete explanation:

1 Name(s)	2 Location(s)	3 Complete Explanation(s)
.....

29.03 Have there been any changes, including name changes, in the custodian(s) identified in 29.01 during the current year?..... Yes [] No [X]

29.04 If yes, give full and complete information relating thereto:

1 Old Custodian	2 New Custodian	3 Date of Change	4 Reason
.....

29.05 Investment management – Identify all investment advisors, investment managers, broker/dealers, including individuals that have the authority to make investment decisions on behalf of the reporting entity. For assets that are managed internally by employees of the reporting entity, note as such. ["...that have access to the investment accounts"; "...handle securities"]

1 Name of Firm or Individual	2 Affiliation
PROGRESSIVE CAPITAL MANAGEMENT CORP	A.....
STATE STREET GLOBAL ADVISORS	U.....
.....

29.0597 For those firms/individuals listed in the table for Question 29.05, do any firms/individuals unaffiliated with the reporting entity (i.e. designated with a "U") manage more than 10% of the reporting entity's invested assets?..... Yes [] No [X]

29.0598 For firms/individuals unaffiliated with the reporting entity (i.e. designated with a "U") listed in the table for Question 29.05, does the total assets under management aggregate to more than 50% of the reporting entity's invested assets?..... Yes [] No [X]

29.06 For those firms or individuals listed in the table for 29.05 with an affiliation code of "A" (affiliated) or "U" (unaffiliated), provide the information for the table below.

1 Central Registration Depository Number	2 Name of Firm or Individual	3 Legal Entity Identifier (LEI)	4 Registered With	5 Investment Management Agreement (IMA) Filed
N/A	PROGRESSIVE CAPITAL MANAGEMENT CORP	5493001ZR2ZQPS7K1G26	N/A	DS.....
30107	STATE STREET GLOBAL ADVISORS	549300BYW0XNH286YR10	SEC	DS.....
.....

30.1 Does the reporting entity have any diversified mutual funds reported in Schedule D, Part 2 (diversified according to the Securities and Exchange Commission (SEC) in the Investment Company Act of 1940 [Section 5(b)(1)])? Yes [] No [X]

30.2 If yes, complete the following schedule:

1 CUSIP #	2 Name of Mutual Fund	3 Book/Adjusted Carrying Value
.....
30.2999 - Total		

30.3 For each mutual fund listed in the table above, complete the following schedule:

1 Name of Mutual Fund (from above table)	2 Name of Significant Holding of the Mutual Fund	3 Amount of Mutual Fund's Book/Adjusted Carrying Value Attributable to the Holding	4 Date of Valuation
.....

ANNUAL STATEMENT FOR THE YEAR 2023 OF THE PROGRESSIVE DIRECT INSURANCE COMPANY

GENERAL INTERROGATORIES

31. Provide the following information for all short-term and long-term bonds and all preferred stocks. Do not substitute amortized value or statement value for fair value.

	1	2	3
	Statement (Admitted) Value	Fair Value	Excess of Statement over Fair Value (-), or Fair Value over Statement (+)
31.1 Bonds	12,603,721,235	12,080,350,506	(523,370,729)
31.2 Preferred stocks	66,569,871	66,398,500	(171,371)
31.3 Totals	12,670,291,106	12,146,749,006	(523,542,100)

31.4 Describe the sources or methods utilized in determining the fair values:
THE FAIR MARKET VALUES REPORTED ARE DERIVED FROM INDEPENDENT AND OBSERVABLE MARKET INPUT EVALUATIONS PROVIDED BY WIDELY UTILIZED REPUTABLE PRICING SERVICES, INDEPENDENT BROKER/DEALER BID LISTS, INDEPENDENT BROKER/DEALER QUOTATIONS, INDEPENDENT BROKER/DEALER PRICING SERVICES, OR ACTIVE MARKET CLOSING QUOTATIONS FROM A REGULATED EXCHANGE. IN VERY RARE CASES, IF NONE OF THE AFOREMENTIONED PRIMARY SOURCES ARE AVAILABLE, MATRIX PRICING USING THE REPORTING ENTITY'S OWN MARKET BASED ASSUMPTIONS MAY BE UTILIZED. THE APPROVED METHODS FOR COMPUTATION OF FAIR MARKET VALUE ARE PRESCRIBED IN THE SECURITIES VALUATION OFFICE PURPOSES AND PROCEDURES MANUAL.

32.1 Was the rate used to calculate fair value determined by a broker or custodian for any of the securities in Schedule D? Yes [] No [X]

32.2 If the answer to 32.1 is yes, does the reporting entity have a copy of the broker's or custodian's pricing policy (hard copy or electronic copy) for all brokers or custodians used as a pricing source? Yes [] No []

32.3 If the answer to 32.2 is no, describe the reporting entity's process for determining a reliable pricing source for purposes of disclosure of fair value for Schedule D:

33.1 Have all the filing requirements of the Purposes and Procedures Manual of the NAIC Investment Analysis Office been followed? Yes [X] No []

33.2 If no, list exceptions:

34. By self-designating 5GI securities, the reporting entity is certifying the following elements of each self-designated 5GI security:
a. Documentation necessary to permit a full credit analysis of the security does not exist or an NAIC CRP credit rating for an FE or PL security is not available.
b. Issuer or obligor is current on all contracted interest and principal payments.
c. The insurer has an actual expectation of ultimate payment of all contracted interest and principal.
Has the reporting entity self-designated 5GI securities? Yes [] No [X]

35. By self-designating PLGI securities, the reporting entity is certifying the following elements of each self-designated PLGI security:
a. The security was purchased prior to January 1, 2018.
b. The reporting entity is holding capital commensurate with the NAIC Designation reported for the security.
c. The NAIC Designation was derived from the credit rating assigned by an NAIC CRP in its legal capacity as a NRSRO which is shown on a current private letter rating held by the insurer and available for examination by state insurance regulators.
d. The reporting entity is not permitted to share this credit rating of the PL security with the SVO.
Has the reporting entity self-designated PLGI securities? Yes [] No [X]

36. By assigning FE to a Schedule BA non-registered private fund, the reporting entity is certifying the following elements of each self-designated FE fund:
a. The shares were purchased prior to January 1, 2019.
b. The reporting entity is holding capital commensurate with the NAIC Designation reported for the security.
c. The security had a public credit rating(s) with annual surveillance assigned by an NAIC CRP in its legal capacity as an NRSRO prior to January 1, 2019.
d. The fund only or predominantly holds bonds in its portfolio.
e. The current reported NAIC Designation was derived from the public credit rating(s) with annual surveillance assigned by an NAIC CRP in its legal capacity as an NRSRO.
f. The public credit rating(s) with annual surveillance assigned by an NAIC CRP has not lapsed.
Has the reporting entity assigned FE to Schedule BA non-registered private funds that complied with the above criteria? Yes [] No [X]

37. By rolling/renewing short-term or cash equivalent investments with continued reporting on Schedule DA, Part 1 or Schedule E Part 2 (identified through a code (%) in those investment schedules), the reporting entity is certifying to the following:
a. The investment is a liquid asset that can be terminated by the reporting entity on the current maturity date.
b. If the investment is with a nonrelated party or nonaffiliate, then it reflects an arms-length transaction with renewal completed at the discretion of all involved parties.
c. If the investment is with a related party or affiliate, then the reporting entity has completed robust re-underwriting of the transaction for which documentation is available for regulator review.
d. Short-term and cash equivalent investments that have been renewed/rolled from the prior period that do not meet the criteria in 37.a - 37.c are reported as long-term investments.
Has the reporting entity rolled/renewed short-term or cash equivalent investments in accordance with these criteria? Yes [] No [] N/A [X]

ANNUAL STATEMENT FOR THE YEAR 2023 OF THE PROGRESSIVE DIRECT INSURANCE COMPANY

GENERAL INTERROGATORIES

- 38.1 Does the reporting entity directly hold cryptocurrencies? Yes [] No [X]
- 38.2 If the response to 38.1 is yes, on what schedule are they reported?
.....
- 39.1 Does the reporting entity directly or indirectly accept cryptocurrencies as payments for premiums on policies? Yes [] No [X]
- 39.2 If the response to 39.1 is yes, are the cryptocurrencies held directly or are they immediately converted to U.S. dollars?

39.21 Held directly Yes [] No []

39.22 Immediately converted to U.S. dollars Yes [] No []
- 39.3 If the response to 38.1 or 39.1 is yes, list all cryptocurrencies accepted for payments of premiums or that are held directly.

1	2	3
Name of Cryptocurrency	Immediately Converted to USD, Directly Held, or Both	Accepted for Payment of Premiums
.....

OTHER

- 40.1 Amount of payments to trade associations, service organizations and statistical or rating bureaus, if any?\$183,721
- 40.2 List the name of the organization and the amount paid if any such payment represented 25% or more of the total payments to trade associations, service organizations and statistical or rating bureaus during the period covered by this statement.

1	2
Name	Amount Paid
INDEPENDENT STATISTICAL SERVICES INC183,721
.....

- 41.1 Amount of payments for legal expenses, if any?\$
- 41.2 List the name of the firm and the amount paid if any such payment represented 25% or more of the total payments for legal expenses during the period covered by this statement.

1	2
Name	Amount Paid
.....

- 42.1 Amount of payments for expenditures in connection with matters before legislative bodies, officers or departments of government, if any?\$
- 42.2 List the name of the firm and the amount paid if any such payment represented 25% or more of the total payment expenditures in connection with matters before legislative bodies, officers, or departments of government during the period covered by this statement.

1	2
Name	Amount Paid
.....

GENERAL INTERROGATORIES

PART 2 - PROPERTY AND CASUALTY INTERROGATORIES

1.1

Does the reporting entity have any direct Medicare Supplement Insurance in force?

Yes [] No [X]

1.2

If yes, indicate premium earned on U. S. business only.

\$

1.3

What portion of Item (1.2) is not reported on the Medicare Supplement Insurance Experience Exhibit?

\$

1.31

Reason for excluding

1.4

Indicate amount of earned premium attributable to Canadian and/or Other Alien not included in Item (1.2) above.

\$

1.5

Indicate total incurred claims on all Medicare Supplement Insurance.

\$

1.6

Individual policies:

Most current three years:

1.61

Total premium earned

\$

1.62

Total incurred claims

\$

1.63

Number of covered lives

.....

All years prior to most current three years

1.64

Total premium earned

\$

1.65

Total incurred claims

\$

1.66

Number of covered lives

.....

1.7

Group policies:

Most current three years:

1.71

Total premium earned

\$

1.72

Total incurred claims

\$

1.73

Number of covered lives

.....

All years prior to most current three years

1.74

Total premium earned

\$

1.75

Total incurred claims

\$

1.76

Number of covered lives

.....

2.

Health Test:

1

Current Year

2

Prior Year

2.1

Premium Numerator

.....

.....

2.2

Premium Denominator

15,799,179,742

12,923,150,588

2.3

Premium Ratio (2.1/2.2)

0.000

0.000

2.4

Reserve Numerator

.....

.....

2.5

Reserve Denominator

11,615,546,654

9,370,097,576

2.6

Reserve Ratio (2.4/2.5)

0.000

0.000

3.1

Did the reporting entity issue participating policies during the calendar year?

Yes [] No [X]

3.2

If yes, provide the amount of premium written for participating and/or non-participating policies during the calendar year:

3.21

Participating policies

\$

3.22

Non-participating policies

\$

4.

For mutual reporting Entities and Reciprocal Exchanges Only:

4.1

Does the reporting entity issue assessable policies?

Yes [] No []

4.2

Does the reporting entity issue non-assessable policies?

Yes [] No []

4.3

If assessable policies are issued, what is the extent of the contingent liability of the policyholders?

%

4.4

Total amount of assessments paid or ordered to be paid during the year on deposit notes or contingent premiums.

\$

5.

For Reciprocal Exchanges Only:

5.1

Does the Exchange appoint local agents?

Yes [] No []

5.2

If yes, is the commission paid:

5.21

Out of Attorney's-in-fact compensation.....

Yes [] No [] N/A []

5.22

As a direct expense of the exchange.....

Yes [] No [] N/A []

5.3

What expenses of the Exchange are not paid out of the compensation of the Attorney-in-fact?

.....

5.4

Has any Attorney-in-fact compensation, contingent on fulfillment of certain conditions, been deferred?

Yes [] No []

5.5

If yes, give full information

.....

16

GENERAL INTERROGATORIES

PART 2 - PROPERTY AND CASUALTY INTERROGATORIES

6.1

What provision has this reporting entity made to protect itself from an excessive loss in the event of a catastrophe under a workers' compensation contract issued without limit of loss?
The company does not write Worker's Compensation Insurance.

6.2

Describe the method used to estimate this reporting entity's probable maximum insurance loss, and identify the type of insured exposures comprising that probable maximum loss, the locations of concentrations of those exposures and the external resources (such as consulting firms or computer software models), if any, used in the estimation process.
THE COMPANY'S PROBABLE MAXIMUM LOSS (PML) IS ESTIMATED BY ANALYZING HISTORICAL MAJOR OCCURRENCES AND ESTIMATING FREQUENCY OF LOSS AND SEVERITY BASED ON THE POTENTIAL FORCE OF AN OCCURRENCE AND THE TOTAL NUMBER OF AUTOS AND BOATS EXPOSED. THE ESTIMATE OF THE PML WAS COMPLETED BY PROGRESSIVE EMPLOYEES. THE COMPANY'S NET COMPREHENSIVE EXPOSURE IN THE CATASTROPHE PRONE STATES OF FLORIDA, LOUISIANA, TEXAS, MISSISSIPPI, NEW JERSEY, NEW YORK, AND CALIFORNIA IS LIMITED SINCE THE COMPANY IS A MEMBER OF A 100% POOLING REINSURANCE ARRANGEMENT WITH 7 OF ITS PROPERTY AND CASUALTY AFFILIATES. THE PRIMARY PROPERTY COVERAGE SOLD BY THE COMPANY IS COMPREHENSIVE FOR AUTOMOBILE AND INLAND MARINE FOR BOATS. THE ESTIMATE OF THE PML IS 7% OF THE SURPLUS.

6.3

What provision has this reporting entity made (such as a catastrophic reinsurance program) to protect itself from an excessive loss arising from the types and concentrations of insured exposures comprising its probable maximum property insurance loss?
THE COMPANY'S ESTIMATED PML IS 7% OF THE SURPLUS. THE COMPANY CARRIES NO EXTERNAL CATASTROPHE REINSURANCE TO COVER ITS LIMITED CATASTROPHE EXPOSURE. THE COMPANY PARTICIPATES IN A POOLING ARRANGEMENT WHICH SPREADS THE UNDERWRITING RISK INCLUDING THE CATASTROPHE EXPOSURE AMONG ALL PARTIES TO THE POOLING AGREEMENT.

6.4

Does the reporting entity carry catastrophe reinsurance protection for at least one reinstatement, in an amount sufficient to cover its estimated probable maximum loss attributable to a single loss event or occurrence?

Yes [☐] No [☒]

6.5

If no, describe any arrangements or mechanisms employed by the reporting entity to supplement its catastrophe reinsurance program or to hedge its exposure to uninsured catastrophic loss.
NONE

7.1

Has this reporting entity reinsured any risk with any other entity under a quota share reinsurance contract that includes a provision that would limit the reinsurer's losses below the stated quota share percentage (e.g., a deductible, a loss ratio corridor, a loss cap, an aggregate limit or any similar provisions)?.....

Yes [☐] No [☒]

7.2

If yes, indicate the number of reinsurance contracts containing such provisions:

7.3

If yes, does the amount of reinsurance credit taken reflect the reduction in quota share coverage caused by any applicable limiting provision(s)?.....

Yes [☐] No [☐]

8.1

Has this reporting entity reinsured any risk with any other entity and agreed to release such entity from liability, in whole or in part, from any loss that may occur on this risk, or portion thereof, reinsured?

Yes [☐] No [☒]

8.2

If yes, give full information
.....

9.1

Has the reporting entity ceded any risk under any reinsurance contract (or under multiple contracts with the same reinsurer or its affiliates) for which during the period covered by the statement: (i) it recorded a positive or negative underwriting result greater than 5% of prior year-end surplus as regards policyholders or it reported calendar year written premium ceded or year-end loss and loss expense reserves ceded greater than 5% of prior year-end surplus as regards policyholders; (ii) it accounted for that contract as reinsurance and not as a deposit; and (iii) the contract(s) contain one or more of the following features or other features that would have similar results:
(a) A contract term longer than two years and the contract is noncancellable by the reporting entity during the contract term;
(b) A limited or conditional cancellation provision under which cancellation triggers an obligation by the reporting entity, or an affiliate of the reporting entity, to enter into a new reinsurance contract with the reinsurer, or an affiliate of the reinsurer;
(c) Aggregate stop loss reinsurance coverage;
(d) A unilateral right by either party (or both parties) to commute the reinsurance contract, whether conditional or not, except for such provisions which are only triggered by a decline in the credit status of the other party;
(e) A provision permitting reporting of losses, or payment of losses, less frequently than on a quarterly basis (unless there is no activity during the period); or
(f) Payment schedule, accumulating retentions from multiple years or any features inherently designed to delay timing of the reimbursement to the ceding entity.

Yes [☐] No [☒]

9.2

Has the reporting entity during the period covered by the statement ceded any risk under any reinsurance contract (or under multiple contracts with the same reinsurer or its affiliates), for which, during the period covered by the statement, it recorded a positive or negative underwriting result greater than 5% of prior year-end surplus as regards policyholders or it reported calendar year written premium ceded or year-end loss and loss expense reserves ceded greater than 5% of prior year-end surplus as regards policyholders; excluding cessions to approved pooling arrangements or to captive insurance companies that are directly or indirectly controlling, controlled by, or under common control with (i) one or more unaffiliated policyholders of the reporting entity, or (ii) an association of which one or more unaffiliated policyholders of the reporting entity is a member where:
(a) The written premium ceded to the reinsurer by the reporting entity or its affiliates represents fifty percent (50%) or more of the entire direct and assumed premium written by the reinsurer based on its most recently available financial statement; or
(b) Twenty-five percent (25%) or more of the written premium ceded to the reinsurer has been retroceded back to the reporting entity or its affiliates in a separate reinsurance contract.

Yes [☐] No [☒]

9.3

If yes to 9.1 or 9.2, please provide the following information in the Reinsurance Summary Supplemental Filing for General Interrogatory 9:
(a) The aggregate financial statement impact gross of all such ceded reinsurance contracts on the balance sheet and statement of income;
(b) A summary of the reinsurance contract terms and indicate whether it applies to the contracts meeting the criteria in 9.1 or 9.2; and
(c) A brief discussion of management's principle objectives in entering into the reinsurance contract including the economic purpose to be achieved.

9.4

Except for transactions meeting the requirements of paragraph 36 of SSAP No. 62R - Property and Casualty Reinsurance, has the reporting entity ceded any risk under any reinsurance contract (or multiple contracts with the same reinsurer or its affiliates) during the period covered by the financial statement, and either:
(a) Accounted for that contract as reinsurance (either prospective or retroactive) under statutory accounting principles ("SAP") and as a deposit under generally accepted accounting principles ("GAAP"); or
(b) Accounted for that contract as reinsurance under GAAP and as a deposit under SAP?

Yes [☐] No [☒]

9.5

If yes to 9.4, explain in the Reinsurance Summary Supplemental Filing for General Interrogatory 9 (Section D) why the contract(s) is treated differently for GAAP and SAP.

9.6

The reporting entity is exempt from the Reinsurance Attestation Supplement under one or more of the following criteria:
(a) The entity does not utilize reinsurance; or,
(b) The entity only engages in a 100% quota share contract with an affiliate and the affiliated or lead company has filed an attestation supplement; or
(c) The entity has no external cessions and only participates in an intercompany pool and the affiliated or lead company has filed an attestation supplement.

Yes [☐] No [☒]
Yes [☐] No [☒]
Yes [☐] No [☒]

10.

If the reporting entity has assumed risks from another entity, there should be charged on account of such reinsurances a reserve equal to that which the original entity would have been required to charge had it retained the risks. Has this been done?

Yes [☒] No [☐] N/A [☐]

ANNUAL STATEMENT FOR THE YEAR 2023 OF THE PROGRESSIVE DIRECT INSURANCE COMPANY

GENERAL INTERROGATORIES

PART 2 - PROPERTY AND CASUALTY INTERROGATORIES

11.1 Has the reporting entity guaranteed policies issued by any other entity and now in force? Yes [] No [X]

11.2 If yes, give full information
.....

12.1 If the reporting entity recorded accrued retrospective premiums on insurance contracts on Line 15.3 of the asset schedule, Page 2, state the amount of corresponding liabilities recorded for:

12.11 Unpaid losses\$

12.12 Unpaid underwriting expenses (including loss adjustment expenses)\$

12.2 Of the amount on Line 15.3, Page 2, state the amount which is secured by letters of credit, collateral and other funds\$

12.3 If the reporting entity underwrites commercial insurance risks, such as workers' compensation, are premium notes or promissory notes accepted from its insureds covering unpaid premiums and/or unpaid losses? Yes [] No [] N/A [X]

12.4 If yes, provide the range of interest rates charged under such notes during the period covered by this statement:

12.41 From %

12.42 To..... %

12.5 Are letters of credit or collateral and other funds received from insureds being utilized by the reporting entity to secure premium notes or promissory notes taken by a reporting entity, or to secure any of the reporting entity's reported direct unpaid loss reserves , including unpaid losses under loss deductible features of commercial policies? Yes [] No [X]

12.6 If yes, state the amount thereof at December 31 of the current year:

12.61 Letters of credit\$

12.62 Collateral and other funds.....\$

13.1 Largest net aggregate amount insured in any one risk (excluding workers' compensation):\$ 154,000,000

13.2 Does any reinsurance contract considered in the calculation of this amount include an aggregate limit of recovery without also including a reinstatement provision? Yes [] No [X]

13.3 State the number of reinsurance contracts (excluding individual facultative risk certificates, but including facultative programs, automatic facilities or facultative obligatory contracts) considered in the calculation of the amount. 1

14.1 Is the company a cedant in a multiple cedant reinsurance contract? Yes [X] No []

14.2 If yes, please describe the method of allocating and recording reinsurance among the cedants:
Losses and loss adjustment expenses recorded and reinsured by individual company are on the per risk/per event basis.

14.3 If the answer to 14.1 is yes, are the methods described in item 14.2 entirely contained in the respective multiple cedant reinsurance contracts? Yes [X] No []

14.4 If the answer to 14.3 is no, are all the methods described in 14.2 entirely contained in written agreements? Yes [] No []

14.5 If the answer to 14.4 is no, please explain:
.....

15.1 Has the reporting entity guaranteed any financed premium accounts? Yes [] No [X]

15.2 If yes, give full information
.....

16.1 Does the reporting entity write any warranty business? Yes [] No [X]
If yes, disclose the following information for each of the following types of warranty coverage:

	1 Direct Losses Incurred	2 Direct Losses Unpaid	3 Direct Written Premium	4 Direct Premium Unearned	5 Direct Premium Earned
16.11 Home					
16.12 Products					
16.13 Automobile					
16.14 Other*					

* Disclose type of coverage:
.....

ANNUAL STATEMENT FOR THE YEAR 2023 OF THE PROGRESSIVE DIRECT INSURANCE COMPANY

GENERAL INTERROGATORIES

PART 2 - PROPERTY AND CASUALTY INTERROGATORIES

17.1

Does the reporting entity include amounts recoverable on unauthorized reinsurance in Schedule F - Part 3 that is exempt from the statutory provision for unauthorized reinsurance?

Yes [☐] No [☒]

Incurred but not reported losses on contracts in force prior to July 1, 1984, and not subsequently renewed are exempt from the statutory provision for unauthorized reinsurance. Provide the following information for this exemption:

17.11

Gross amount of unauthorized reinsurance in Schedule F - Part 3 exempt from the statutory provision for unauthorized reinsurance

\$

17.12

Unfunded portion of Interrogatory 17.11

\$

17.13

Paid losses and loss adjustment expenses portion of Interrogatory 17.11.....

\$

17.14

Case reserves portion of Interrogatory 17.11

\$

17.15

Incurred but not reported portion of Interrogatory 17.11

\$

17.16

Unearned premium portion of Interrogatory 17.11

\$

17.17

Contingent commission portion of Interrogatory 17.11

\$

18.1

Do you act as a custodian for health savings accounts?

Yes [☐] No [☒]

18.2

If yes, please provide the amount of custodial funds held as of the reporting date.

\$

18.3

Do you act as an administrator for health savings accounts?

Yes [☐] No [☒]

18.4

If yes, please provide the balance of funds administered as of the reporting date.

\$

19.

Is the reporting entity licensed or chartered, registered, qualified, eligible or writing business in at least two states?

Yes [☒] No [☐]

19.1

If no, does the reporting entity assume reinsurance business that covers risks residing in at least one state other than the state of domicile of the reporting entity?

Yes [☐] No [☐]

ANNUAL STATEMENT FOR THE YEAR 2023 OF THE PROGRESSIVE DIRECT INSURANCE COMPANY

FIVE-YEAR HISTORICAL DATA

Show amounts in whole dollars only, no cents; show percentages to one decimal place, i.e. 17.6.

	1 2023	2 2022	3 2021	4 2020	5 2019
Gross Premiums Written (Page 8, Part 1B Cols. 1, 2 & 3)					
1. Liability lines (Lines 11, 16, 17, 18 & 19)	13,052,431,403	10,843,822,975	10,261,101,758	9,417,235,405	8,613,350,995
2. Property lines (Lines 1, 2, 9, 12, 21 & 26)	8,499,018,097	6,550,058,630	5,575,399,917	5,024,703,888	4,640,165,743
3. Property and liability combined lines (Lines 3, 4, 5, 8, 22 & 27)	1,122,817				
4. All other lines (Lines 6, 10, 13, 14, 15, 23, 24, 28, 29, 30 & 34)					
5. Nonproportional reinsurance lines (Lines 31, 32 & 33)					
6. Total (Line 35)	21,552,572,317	17,393,881,605	15,836,501,675	14,441,939,294	13,253,516,738
Net Premiums Written (Page 8, Part 1B, Col. 6)					
7. Liability lines (Lines 11, 16, 17, 18 & 19)	10,050,344,838	8,349,712,731	7,901,012,997	7,251,236,283	6,622,056,019
8. Property lines (Lines 1, 2, 9, 12, 21 & 26)	6,544,243,934	5,043,545,145	4,293,057,936	3,869,021,994	3,567,358,891
9. Property and liability combined lines (Lines 3, 4, 5, 8, 22 & 27)	864,569				
10. All other lines (Lines 6, 10, 13, 14, 15, 23, 24, 28, 29, 30 & 34)					
11. Nonproportional reinsurance lines (Lines 31, 32 & 33)					
12. Total (Line 35)	16,595,453,342	13,393,257,876	12,194,070,932	11,120,258,277	10,189,414,910
Statement of Income (Page 4)					
13. Net underwriting gain (loss) (Line 8)	1,066,272,615	358,658,903	252,361,141	1,371,078,956	808,423,748
14. Net investment gain (loss) (Line 11)	414,314,710	417,916,139	255,115,480	374,145,170	293,795,799
15. Total other income (Line 15)	60,588,177	18,758,376	15,263,880	(341,395)	(3,324,021)
16. Dividends to policyholders (Line 17)					
17. Federal and foreign income taxes incurred (Line 19)	368,464,230	154,482,711	109,347,161	348,728,656	237,435,511
18. Net income (Line 20)	1,172,711,272	640,850,707	413,393,340	1,396,154,075	861,460,015
Balance Sheet Lines (Pages 2 and 3)					
19. Total admitted assets excluding protected cell business (Page 2, Line 26, Col. 3)	17,582,707,124	14,084,884,818	13,179,488,418	11,614,335,313	10,479,030,293
20. Premiums and considerations (Page 2, Col. 3)					
20.1 In course of collection (Line 15.1)	490,361,178	294,298,446	230,785,529	220,748,129	228,831,675
20.2 Deferred and not yet due (Line 15.2)	2,589,433,594	1,670,173,165	1,404,487,436	1,275,832,679	1,243,724,975
20.3 Accrued retrospective premiums (Line 15.3)					
21. Total liabilities excluding protected cell business (Page 3, Line 26)	12,195,114,024	9,778,020,190	9,240,575,269	7,776,686,185	7,160,633,566
22. Losses (Page 3, Line 1)	5,334,658,163	4,429,237,289	3,963,199,546	3,162,555,812	2,945,184,390
23. Loss adjustment expenses (Page 3, Line 3)	1,051,361,690	971,945,981	941,485,165	830,052,568	729,031,388
24. Unearned premiums (Page 3, Line 9)	4,440,676,316	3,644,402,714	3,174,295,427	2,906,284,218	2,667,637,273
25. Capital paid up (Page 3, Lines 30 & 31)	3,000,480	3,000,480	3,000,480	3,000,480	3,000,480
26. Surplus as regards policyholders (Page 3, Line 37)	5,387,593,100	4,306,864,628	3,938,913,149	3,837,649,128	3,318,396,727
Cash Flow (Page 5)					
27. Net cash from operations (Line 11)	2,451,587,808	775,468,602	1,595,531,948	1,789,328,053	1,412,757,970
Risk-Based Capital Analysis					
28. Total adjusted capital	5,387,593,100	4,306,864,628	3,938,913,149	3,837,649,128	3,318,396,727
29. Authorized control level risk-based capital	410,094,656	337,035,759	437,641,536	521,646,912	407,574,645
Percentage Distribution of Cash, Cash Equivalents and Invested Assets (Page 2, Col. 3) (Line divided by Page 2, Line 12, Col. 3) x100.0					
30. Bonds (Line 1)	91.3	89.7	82.9	83.7	84.0
31. Stocks (Lines 2.1 & 2.2)	7.6	8.6	15.6	13.9	12.9
32. Mortgage loans on real estate (Lines 3.1 and 3.2)					
33. Real estate (Lines 4.1, 4.2 & 4.3)	0.8	1.2	1.3	1.8	2.1
34. Cash, cash equivalents and short-term investments (Line 5)	0.2	0.5	0.2	0.5	0.9
35. Contract loans (Line 6)					
36. Derivatives (Line 7)					
37. Other invested assets (Line 8)					
38. Receivables for securities (Line 9)	0.1	0.1			0.1
39. Securities lending reinvested collateral assets (Line 10)					
40. Aggregate write-ins for invested assets (Line 11)					
41. Cash, cash equivalents and invested assets (Line 12)	100.0	100.0	100.0	100.0	100.0
Investments in Parent, Subsidiaries and Affiliates					
42. Affiliated bonds (Schedule D, Summary, Line 12, Col. 1)					
43. Affiliated preferred stocks (Schedule D, Summary, Line 18, Col. 1)					
44. Affiliated common stocks (Schedule D, Summary, Line 24, Col. 1)					
45. Affiliated short-term investments (subtotals included in Schedule DA Verification, Col. 5, Line 10)					
46. Affiliated mortgage loans on real estate					
47. All other affiliated	4,974,841	4,937,379	5,187,883	5,327,449	5,468,428
48. Total of above Lines 42 to 47	4,974,841	4,937,379	5,187,883	5,327,449	5,468,428
49. Total Investment in Parent included in Lines 42 to 47 above					
50. Percentage of investments in parent, subsidiaries and affiliates to surplus as regards policyholders (Line 48 above divided by Page 3, Col. 1, Line 37 x 100.0)	0.1	0.1	0.1	0.1	0.2

FIVE-YEAR HISTORICAL DATA

(Continued)

	1 2023	2 2022	3 2021	4 2020	5 2019
Capital and Surplus Accounts (Page 4)					
51. Net unrealized capital gains (losses) (Line 24)	62,081,813	(539,161,545)	296,357,881	175,723,718	187,052,487
52. Dividends to stockholders (Line 35)	(200,000,000)		(630,000,000)	(1,064,000,000)	(575,000,000)
53. Change in surplus as regards policyholders for the year (Line 38)	1,080,728,472	367,951,479	101,264,021	519,252,401	489,157,550
Gross Losses Paid (Page 9, Part 2, Cols. 1 & 2)					
54. Liability lines (Lines 11, 16, 17, 18 & 19)	6,735,087,735	5,629,677,935	4,831,294,792	4,185,632,695	4,299,714,030
55. Property lines (Lines 1, 2, 9, 12, 21 & 26)	6,211,995,681	5,349,823,782	4,490,097,506	3,038,704,072	3,100,080,164
56. Property and liability combined lines (Lines 3, 4, 5, 8, 22 & 27)	14,975				
57. All other lines (Lines 6, 10, 13, 14, 15, 23, 24, 28, 29, 30 & 34)					
58. Nonproportional reinsurance lines (Lines 31, 32 & 33)					
59. Total (Line 35)	12,947,098,391	10,979,501,718	9,321,392,298	7,224,336,767	7,399,794,195
Net Losses Paid (Page 9, Part 2, Col. 4)					
60. Liability lines (Lines 11, 16, 17, 18 & 19)	5,185,950,181	4,334,852,010	3,719,996,890	3,222,937,176	3,314,262,762
61. Property lines (Lines 1, 2, 9, 12, 21 & 26)	4,783,236,674	4,119,364,312	3,457,375,079	2,339,802,135	2,387,065,242
62. Property and liability combined lines (Lines 3, 4, 5, 8, 22 & 27)	11,531				
63. All other lines (Lines 6, 10, 13, 14, 15, 23, 24, 28, 29, 30 & 34)					
64. Nonproportional reinsurance lines (Lines 31, 32 & 33)					
65. Total (Line 35)	9,969,198,386	8,454,216,323	7,177,371,969	5,562,739,311	5,701,328,004
Operating Percentages (Page 4) (Line divided by Page 4, Line 1) x 100.0					
66. Premiums earned (Line 1)	100.0	100.0	100.0	100.0	100.0
67. Losses incurred (Line 2)	68.8	69.0	66.9	53.1	60.9
68. Loss expenses incurred (Line 3)	9.4	9.7	10.3	9.9	10.2
69. Other underwriting expenses incurred (Line 4)	15.0	18.5	20.7	24.4	20.7
70. Net underwriting gain (loss) (Line 8)	6.7	2.8	2.1	12.6	8.2
Other Percentages					
71. Other underwriting expenses to net premiums written (Page 4, Lines 4 + 5 - 15 divided by Page 8, Part 1B, Col. 6, Line 35 x 100.0)	13.9	17.7	20.1	23.9	20.2
72. Losses and loss expenses incurred to premiums earned (Page 4, Lines 2 + 3 divided by Page 4, Line 1 x 100.0)	78.2	78.7	77.2	63.0	71.1
73. Net premiums written to policyholders' surplus (Page 8, Part 1B, Col. 6, Line 35 divided by Page 3, Line 37, Col. 1 x 100.0)	308.0	311.0	309.6	289.8	307.1
One Year Loss Development (\$000 omitted)					
74. Development in estimated losses and loss expenses incurred prior to current year (Schedule P - Part 2 - Summary, Line 12, Col. 11)	334,046	29,285	19,824	32,598	60,413
75. Percent of development of losses and loss expenses incurred to policyholders' surplus of prior year end (Line 74 above divided by Page 4, Line 21, Col. 1 x 100.0).....	7.8	0.7	0.5	1.0	2.1
Two Year Loss Development (\$000 omitted)					
76. Development in estimated losses and loss expenses incurred two years before the current year and prior year (Schedule P, Part 2 - Summary, Line 12, Col. 12)	77,228	17,718	83,206	83,605	54,887
77. Percent of development of losses and loss expenses incurred to reported policyholders' surplus of second prior year end (Line 76 above divided by Page 4, Line 21, Col. 2 x 100.0)	2.0	0.5	2.5	3.0	2.3

NOTE: If a party to a merger, have the two most recent years of this exhibit been restated due to a merger in compliance with the disclosure requirements of SSAP No. 3, Accounting Changes and Correction of Errors? Yes [] No []

If no, please explain:

SCHEDULE P - ANALYSIS OF LOSSES AND LOSS EXPENSES
SCHEDULE P - PART 1 - SUMMARY

(\$000 OMITTED)

Years in Which Premiums Were Earned and Losses Were Incurred	Premiums Earned			Loss and Loss Expense Payments								12
	1 Direct and Assumed	2 Ceded	3 Net (1 - 2)	Loss Payments		Defense and Cost Containment Payments		Adjusting and Other Payments		10	11	Number of Claims Reported Direct and Assumed
				4 Direct and Assumed	5 Ceded	6 Direct and Assumed	7 Ceded	8 Direct and Assumed	9 Ceded	Salvage and Subrogation Received	Total Net Paid Cols (4 - 5 + 6 - 7 + 8 - 9)	
1. Prior.....	XXX.....	XXX.....	XXX.....	8,069.....	6,820.....	1,108.....	61.....	598.....		914.....	2,894.....	XXX.....
2. 2014.....	4,893,759.....	76,579.....	4,817,181.....	3,034,683.....	35,905.....	82,837.....	242.....	438,369.....		348,538.....	3,519,742.....	XXX.....
3. 2015.....	5,382,293.....	91,095.....	5,291,198.....	3,470,777.....	42,730.....	105,458.....	123.....	500,928.....		383,362.....	4,034,310.....	XXX.....
4. 2016.....	6,204,301.....	97,012.....	6,107,289.....	4,065,723.....	56,975.....	119,126.....	73.....	585,396.....		446,581.....	4,713,197.....	XXX.....
5. 2017.....	7,132,834.....	125,811.....	7,007,024.....	4,453,437.....	75,355.....	132,085.....	963.....	648,599.....		503,007.....	5,157,803.....	XXX.....
6. 2018.....	8,614,399.....	137,738.....	8,476,661.....	5,305,167.....	83,914.....	145,348.....	256.....	720,802.....		637,075.....	6,087,147.....	XXX.....
7. 2019.....	10,086,506.....	169,529.....	9,916,977.....	6,008,206.....	59,058.....	160,380.....	120.....	810,273.....		735,748.....	6,919,681.....	XXX.....
8. 2020.....	11,061,336.....	179,724.....	10,881,612.....	5,636,902.....	64,068.....	128,182.....	128.....	789,735.....		793,493.....	6,490,624.....	XXX.....
9. 2021.....	12,053,665.....	127,605.....	11,926,060.....	7,698,320.....	73,386.....	123,838.....	93.....	945,504.....		1,220,863.....	8,694,184.....	XXX.....
10. 2022.....	13,058,520.....	135,369.....	12,923,151.....	8,150,095.....	69,287.....	69,996.....	23.....	993,569.....		1,201,087.....	9,144,350.....	XXX.....
11. 2023.....	15,970,017.....	170,837.....	15,799,180.....	7,009,090.....	47,797.....	16,282.....	9.....	990,928.....		823,144.....	7,968,494.....	XXX.....
12. Totals.....	XXX.....	XXX.....	XXX.....	54,840,468.....	615,294.....	1,084,641.....	2,090.....	7,424,700.....		7,093,812.....	62,732,425.....	XXX.....

	Losses Unpaid				Defense and Cost Containment Unpaid				Adjusting and Other Unpaid		23	24	25
	Case Basis		Bulk + IBNR		Case Basis		Bulk + IBNR						
	13	14	15	16	17	18	19	20	21	22			
	Direct and Assumed	Ceded	Direct and Assumed	Ceded	Direct and Assumed	Ceded	Direct and Assumed	Ceded	Direct and Assumed	Ceded			
1. Prior.....	110,623	107,905	326		1,544				2,349			6,937	XXX
2. 2014.....	8,592	7,593	333		396				552			2,280	XXX
3. 2015.....	12,405	10,731	16,266	15,935	566				778			3,349	XXX
4. 2016.....	21,948	17,284	69,311	68,958	1,123				1,395			7,535	XXX
5. 2017.....	37,394	29,001	86,620	86,224	2,230				2,303			13,321	XXX
6. 2018.....	57,771	34,397	77,991	77,574	5,538				5,106			34,434	XXX
7. 2019.....	60,066	10,589	77,918	77,650	10,671	1			7,459			67,876	XXX
8. 2020.....	139,822	34,864	191,041	133,057	21,922	1	24,821	1	24,704		30,732	234,388	XXX
9. 2021.....	357,879	20,617	154,096	62,018	69,967		24,578		41,210		33,672	565,096	XXX
10. 2022.....	909,409	34,678	263,870	52,931	128,394		40,385		85,719		78,147	1,340,168	XXX
11. 2023.....	2,823,307	53,097	920,445	127,674	190,870		80,144		276,639		671,688	4,110,635	XXX
12. Totals.....	4,539,218	360,756	1,858,216	702,020	433,221	1	169,928	1	448,215		814,238	6,386,020	XXX

	Total Losses and Loss Expenses Incurred			Loss and Loss Expense Percentage (Incurred /Premiums Earned)			Nontabular Discount		34 Inter-Company Pooling Participation Percentage	Net Balance Sheet Reserves After Discount	
	26	27	28	29	30	31	32	33		35	36
	Direct and Assumed	Ceded	Net	Direct and Assumed	Ceded	Net	Loss	Loss Expense		Losses Unpaid	Loss Expenses Unpaid
1. Prior.....	XXX.....	XXX.....	XXX.....	XXX.....	XXX.....	XXX.....			XXX.....	3,044.....	3,893.....
2. 2014.....	3,565,762.....	43,740.....	3,522,022.....	72.9.....	57.1.....	73.1.....			77.0.....	1,332.....	948.....
3. 2015.....	4,107,179.....	69,520.....	4,037,659.....	76.3.....	76.3.....	76.3.....			77.0.....	2,005.....	1,344.....
4. 2016.....	4,864,021.....	143,289.....	4,720,732.....	78.4.....	147.7.....	77.3.....			77.0.....	5,017.....	2,518.....
5. 2017.....	5,362,666.....	191,543.....	5,171,124.....	75.2.....	152.2.....	73.8.....			77.0.....	8,788.....	4,533.....
6. 2018.....	6,317,722.....	196,141.....	6,121,582.....	73.3.....	142.4.....	72.2.....			77.0.....	23,791.....	10,644.....
7. 2019.....	7,134,974.....	147,417.....	6,987,557.....	70.7.....	87.0.....	70.5.....			77.0.....	49,746.....	18,130.....
8. 2020.....	6,957,130.....	232,117.....	6,725,012.....	62.9.....	129.2.....	61.8.....			77.0.....	162,943.....	71,445.....
9. 2021.....	9,415,393.....	156,113.....	9,259,279.....	78.1.....	122.3.....	77.6.....			77.0.....	429,340.....	135,756.....
10. 2022.....	10,641,436.....	156,919.....	10,484,518.....	81.5.....	115.9.....	81.1.....			77.0.....	1,085,670.....	254,498.....
11. 2023.....	12,307,706.....	228,577.....	12,079,129.....	77.1.....	133.8.....	76.5.....			77.0.....	3,562,981.....	547,654.....
12. Totals.....	XXX.....	XXX.....	XXX.....	XXX.....	XXX.....	XXX.....			XXX.....	5,334,658.....	1,051,362.....

Note: Parts 2 and 4 are gross of all discounting, including tabular discounting. Part 1 is gross of only nontabular discounting, which is reported in Columns 32 and 33 of Part 1. The tabular discount, if any, is reported in the Notes to Financial Statements which will reconcile Part 1 with Parts 2 and 4.

ANNUAL STATEMENT FOR THE YEAR 2023 OF THE PROGRESSIVE DIRECT INSURANCE COMPANY

SCHEDULE P - PART 2 - SUMMARY

Years in Which Losses Were Incurred	INCURRED NET LOSSES AND DEFENSE AND COST CONTAINMENT EXPENSES REPORTED AT YEAR END (\$000 OMITTED)										DEVELOPMENT	
	1 2014	2 2015	3 2016	4 2017	5 2018	6 2019	7 2020	8 2021	9 2022	10 2023	11 One Year	12 Two Year
1. Prior.....	653,951	644,549	636,995	618,160	620,507	623,254	626,760	627,246	628,796	630,046	1,250	2,800
2. 2014.....	3,133,613	3,077,879	3,083,422	3,093,292	3,074,546	3,079,112	3,080,480	3,081,178	3,080,708	3,083,101	2,393	1,923
3. 2015.....	XXX	3,509,866	3,497,680	3,512,609	3,544,371	3,525,056	3,530,113	3,531,406	3,535,325	3,535,953	628	4,547
4. 2016.....	XXX	XXX	4,109,843	4,099,267	4,122,122	4,138,659	4,118,587	4,132,537	4,134,961	4,133,941	(1,020)	1,404
5. 2017.....	XXX	XXX	XXX	4,502,091	4,501,390	4,514,227	4,531,119	4,508,722	4,515,476	4,520,222	4,746	11,500
6. 2018.....	XXX	XXX	XXX	XXX	5,318,980	5,362,021	5,378,460	5,413,449	5,383,937	5,395,674	11,738	(17,775)
7. 2019.....	XXX	XXX	XXX	XXX	XXX	6,159,604	6,169,010	6,190,599	6,213,134	6,169,825	(43,309)	(20,774)
8. 2020.....	XXX	XXX	XXX	XXX	XXX	XXX	5,923,134	5,892,350	5,883,045	5,910,573	27,529	18,223
9. 2021.....	XXX	XXX	XXX	XXX	XXX	XXX	XXX	8,197,186	8,228,577	8,272,565	43,988	75,379
10. 2022.....	XXX	XXX	XXX	XXX	XXX	XXX	XXX	XXX	9,119,127	9,405,230	286,103	XXX
11. 2023.....	XXX	XXX	XXX	XXX	XXX	XXX	XXX	XXX	XXX	10,811,562	XXX	XXX
12. Totals											334,046	77,228

SCHEDULE P - PART 3 - SUMMARY

Years in Which Losses Were Incurred	CUMULATIVE PAID NET LOSSES AND DEFENSE AND COST CONTAINMENT EXPENSES REPORTED AT YEAR END (\$000 OMITTED)										11 Number of Claims Closed With Loss Payment	12 Number of Claims Closed Without Loss Payment
	1	2	3	4	5	6	7	8	9	10		
	2014	2015	2016	2017	2018	2019	2020	2021	2022	2023		
1. Prior.....	000	342,921	504,211	571,916	595,122	608,493	616,371	619,951	623,162	625,458	XXX	XXX
2. 2014.....	2,104,005	2,670,420	2,896,805	3,003,003	3,046,361	3,065,325	3,072,974	3,077,432	3,078,710	3,081,373	XXX	XXX
3. 2015.....	XXX	2,307,005	3,019,669	3,288,032	3,435,005	3,492,797	3,511,123	3,522,955	3,530,813	3,533,382	XXX	XXX
4. 2016.....	XXX	XXX	2,725,899	3,526,050	3,849,895	4,013,054	4,071,587	4,108,205	4,121,702	4,127,801	XXX	XXX
5. 2017.....	XXX	XXX	XXX	2,948,931	3,853,570	4,225,069	4,380,453	4,457,270	4,490,812	4,509,204	XXX	XXX
6. 2018.....	XXX	XXX	XXX	XXX	3,497,133	4,608,125	5,019,924	5,229,956	5,322,869	5,366,346	XXX	XXX
7. 2019.....	XXX	XXX	XXX	XXX	XXX	4,076,302	5,265,601	5,772,355	6,008,793	6,109,408	XXX	XXX
8. 2020.....	XXX	XXX	XXX	XXX	XXX	XXX	3,849,515	5,027,001	5,488,072	5,700,889	XXX	XXX
9. 2021.....	XXX	XXX	XXX	XXX	XXX	XXX	XXX	5,317,705	7,077,025	7,748,680	XXX	XXX
10. 2022.....	XXX	XXX	XXX	XXX	XXX	XXX	XXX	XXX	6,021,388	8,150,781	XXX	XXX
11. 2023.....	XXX	XXX	XXX	XXX	XXX	XXX	XXX	XXX	XXX	6,977,566	XXX	XXX

SCHEDULE P - PART 4 - SUMMARY

Years in Which Losses Were Incurred	BULK AND IBNR RESERVES ON NET LOSSES AND DEFENSE AND COST CONTAINMENT EXPENSES REPORTED AT YEAR END (\$000 OMITTED)									
	1	2	3	4	5	6	7	8	9	10
	2014	2015	2016	2017	2018	2019	2020	2021	2022	2023
1. Prior.....	117,609	57,607	27,486	2	2	7		(4)	297	326
2. 2014.....	203,098	74,003	29,292	24,954	2	6	2		100	333
3. 2015.....	XXX	209,828	79,540	32,230	28,309			576	932	331
4. 2016.....	XXX	XXX	255,413	89,434	38,653	34,567		576	1,038	353
5. 2017.....	XXX	XXX	XXX	310,201	104,356	46,761	39,489	255	1,049	395
6. 2018.....	XXX	XXX	XXX	XXX	378,405	127,878	57,890	50,231	1,034	417
7. 2019.....	XXX	XXX	XXX	XXX	XXX	397,763	151,646	59,527	60,450	268
8. 2020.....	XXX	XXX	XXX	XXX	XXX	XXX	441,072	162,402	82,873	82,805
9. 2021.....	XXX	XXX	XXX	XXX	XXX	XXX	XXX	461,095	197,642	116,656
10. 2022.....	XXX	XXX	XXX	XXX	XXX	XXX	XXX	XXX	529,747	251,324
11. 2023.....	XXX	XXX	XXX	XXX	XXX	XXX	XXX	XXX	XXX	872,915

SCHEDULE T - EXHIBIT OF PREMIUMS WRITTEN

Allocated by States and Territories									
States, Etc.	1	Gross Premiums, Including Policy and Membership Fees, Less Return Premiums and Premiums on Policies Not Taken		4	5	6	7	8	9
		2	3						
	Active Status (a)	Direct Premiums Written	Direct Premiums Earned	Dividends Paid or Credited to Policyholders on Direct Business	Direct Losses Paid (Deducting Salvage)	Direct Losses Incurred	Direct Losses Unpaid	Finance and Service Charges Not Included in Premiums	Direct Premiums Written for Federal Purchasing Groups (Included in Column 2)
1. Alabama	AL	L	296,322,186	287,383,774	169,167,384	181,271,563	77,286,820	4,712,795	
2. Alaska	AK	L	49,036,572	46,387,254	24,763,434	27,991,885	17,807,959	607,550	
3. Arizona	AZ	Q							
4. Arkansas	AR	L	153,582,659	146,857,040	94,005,645	100,684,494	30,165,695	2,977,867	
5. California	CA	L	89,350,144	81,190,371	55,747,142	58,417,756	16,666,780	1,189,198	
6. Colorado	CO	L	613,917,133	584,796,156	377,505,221	402,210,312	173,279,347	7,186,481	
7. Connecticut	CT	L	279,600,663	264,593,814	164,387,933	186,263,656	118,740,290	3,450,070	
8. Delaware	DE	L	103,019,694	98,891,608	58,721,750	63,624,662	34,918,062	1,088,040	
9. District of Columbia	DC	L	36,766,635	34,946,906	21,817,179	25,529,118	9,350,771	446,491	
10. Florida	FL	Q							
11. Georgia	GA	L	3,333,835	3,376,128	1,167,859	1,218,136	1,097,477	14,363	
12. Hawaii	HI	L	3,154,195	3,041,134	2,772,438	2,953,110	718,791	43,524	
13. Idaho	ID	L	107,338,356	101,455,560	57,824,058	63,639,560	26,729,142	2,052,886	
14. Illinois	IL	L	10,741,198	10,633,157	4,996,619	5,172,616	2,904,727	93,741	
15. Indiana	IN	L			(9,547)	(9,547)		21	
16. Iowa	IA	L			(250)	(250)			
17. Kansas	KS	L	193,701,481	182,378,196	107,947,848	115,488,779	38,793,305	3,384,498	
18. Kentucky	KY	L	272,177,381	265,997,015	159,091,966	172,245,408	67,521,882	4,761,405	
19. Louisiana	LA	L							
20. Maine	ME	L			(765)	(765)			
21. Maryland	MD	L			202,935	172,244			
22. Massachusetts	MA	L	396,780,349	361,374,182	220,704,999	248,159,699	107,473,132	6,062,555	
23. Michigan	MI	Q							
24. Minnesota	MN	L	488,123,856	472,435,563	336,568,892	350,825,478	136,470,533	7,935,784	
25. Mississippi	MS	L							
26. Missouri	MO	L	(39)	(39)	502,801	84,054	407,784		
27. Montana	MT	L	109,967,929	104,731,090	59,194,933	62,882,877	25,211,287	1,744,689	
28. Nebraska	NE	L							
29. Nevada	NV	L	349,472,139	332,451,444	221,662,495	245,163,217	142,733,498	3,427,444	
30. New Hampshire	NH	L			(941)	(941)			
31. New Jersey	NJ	Q							
32. New Mexico	NM	L	205,156,468	198,320,404	124,139,481	136,577,276	75,057,872	3,273,871	
33. New York	NY	L	34,044,555	32,195,269	20,928,934	21,918,605	8,235,201	544,350	
34. North Carolina	NC	L							
35. North Dakota	ND	L	57,182,203	54,975,869	33,798,352	34,521,617	9,278,197	936,158	
36. Ohio	OH	L	764,382,002	733,325,752	464,148,667	483,618,114	183,687,537	14,491,209	
37. Oklahoma	OK	L	270,887,598	253,323,064	160,891,279	178,622,651	61,924,419	5,220,062	
38. Oregon	OR	L			(972)	(972)			
39. Pennsylvania	PA	L	22,084,697	21,947,308	12,841,364	14,002,112	7,295,275	173,232	
40. Rhode Island	RI	L	188,422,518	181,164,723	115,352,095	129,364,632	70,627,099	1,753,772	
41. South Carolina	SC	L	545,476,705	517,661,220	312,501,362	359,105,042	182,893,659	6,789,206	
42. South Dakota	SD	L	61,686,997	57,792,718	34,198,681	34,903,586	9,203,886	942,141	
43. Tennessee	TN	L	106,924,175	95,218,830	60,304,902	71,966,259	26,840,186	1,559,838	
44. Texas	TX	N							
45. Utah	UT	L	92,818,338	87,906,685	49,134,130	51,719,383	27,368,370	1,058,309	
46. Vermont	VT	L	51,517,878	49,592,710	31,004,061	33,176,558	11,213,901	908,490	
47. Virginia	VA	L	37,569,312	23,895,193	13,022,513	19,154,043	9,168,881	462,817	
48. Washington	WA	L	584,124,638	564,325,835	428,039,481	453,158,454	256,751,321	5,803,186	
49. West Virginia	WV	L							
50. Wisconsin	WI	L			(5,435)	(5,435)			
51. Wyoming	WY	L							
52. American Samoa	AS	N							
53. Guam	GU	N							
54. Puerto Rico	PR	N							
55. U.S. Virgin Islands	VI	N							
56. Northern Mariana Islands	MP	N							
57. Canada	CAN	N							
58. Aggregate other alien	OT	XXX							
59. Totals	XXX	6,578,664,451	6,254,565,929		3,999,040,922	4,335,789,044	1,967,823,084	95,096,040	
DETAILS OF WRITE-INS									
58001.	XXX								
58002.	XXX								
58003.	XXX								
58998. Summary of remaining write-ins for Line 58 from overflow page	XXX								
58999. Totals (Lines 58001 through 58003 plus 58998)(Line 58 above)	XXX								

(a) Active Status Counts:

1. L - Licensed or Chartered - Licensed insurance carrier or domiciled RRG..... 46

2. R - Registered - Non-domiciled RRGs.....

3. E - Eligible - Reporting entities eligible or approved to write surplus lines in the state (other than their state of domicile - see DSLI).....

4. Q - Qualified - Qualified or accredited reinsurer..... 4

5. D - Domestic Surplus Lines Insurer (DSLII) - Reporting entities authorized to write surplus lines in the state of domicile.....

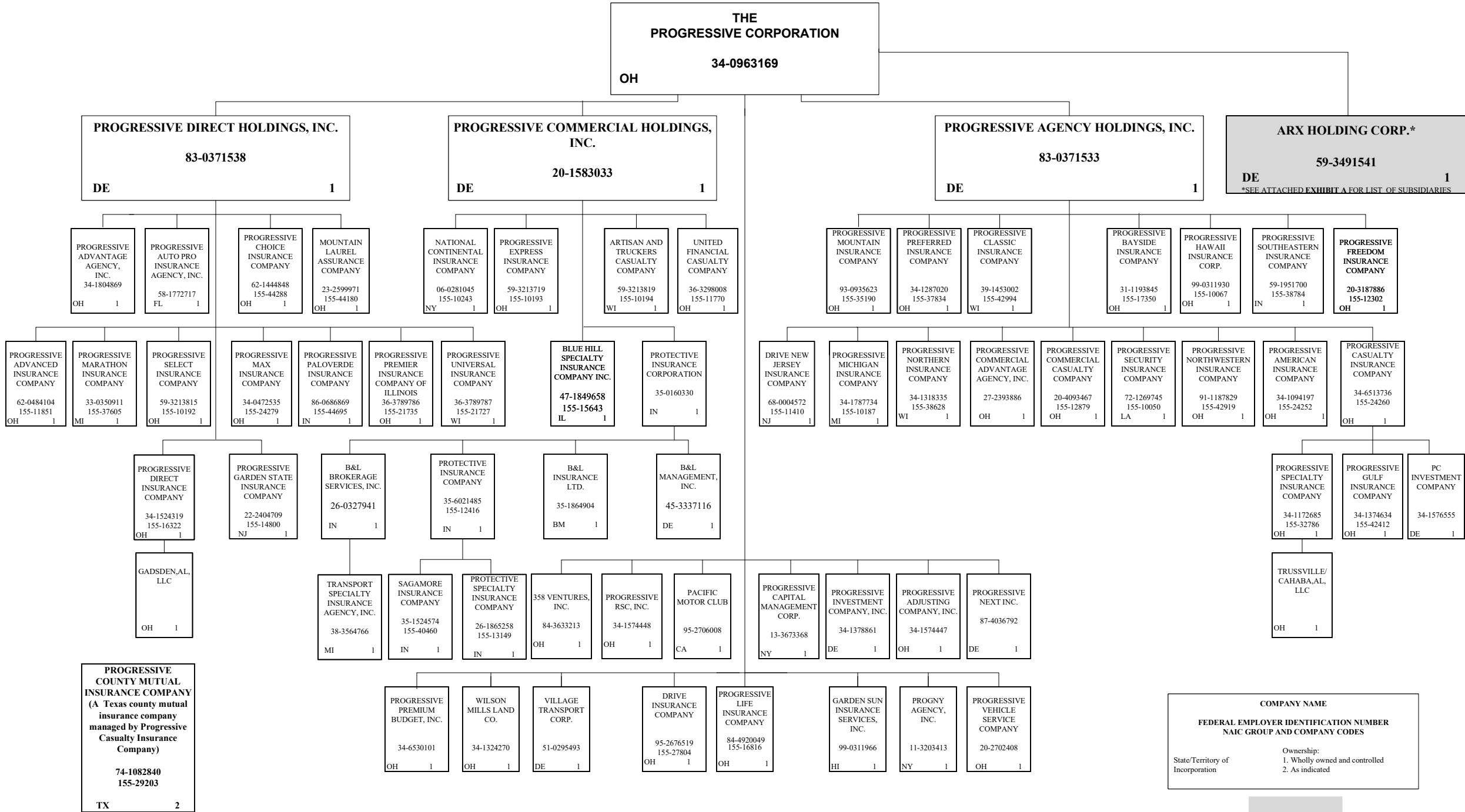
6. N - None of the above - Not allowed to write business in the state... 7

(b) Explanation of basis of allocation of premiums by states, etc.
Allocation on the basis of the location where the vehicle is principally garaged and used.

ANNUAL STATEMENT FOR THE YEAR 2023 OF THE PROGRESSIVE DIRECT INSURANCE COMPANY

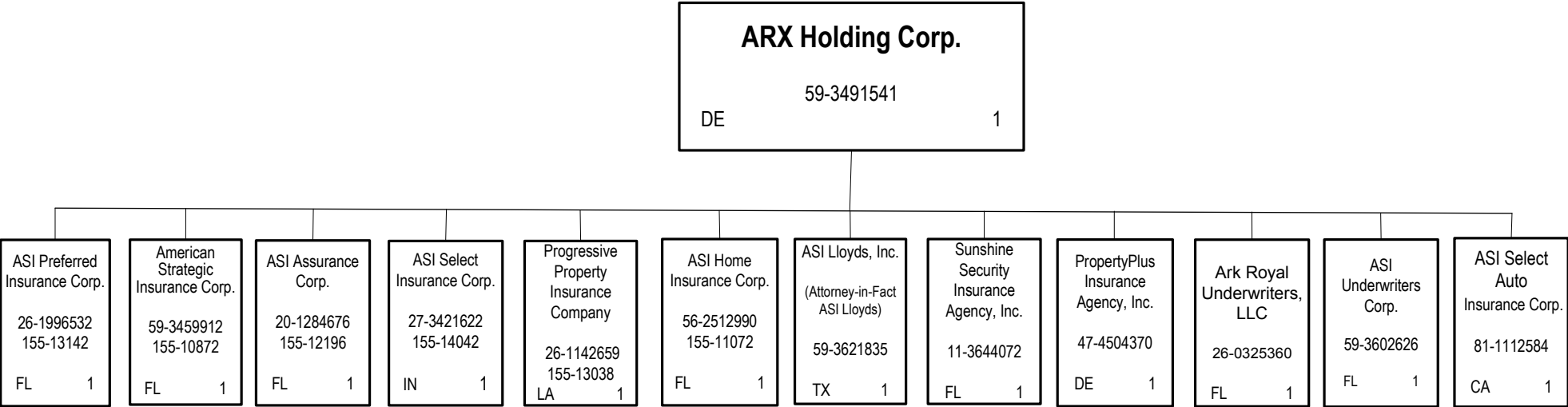
SCHEDULE Y – INFORMATION CONCERNING ACTIVITIES OF INSURER MEMBERS OF A HOLDING COMPANY GROUP -- PART 1 – ORGANIZATIONAL CHART

96



12/31/23

SCHEDULE Y – INFORMATION CONCERNING ACTIVITIES OF INSURER MEMBERS OF A HOLDING COMPANY GROUP -- PART 1 – ORGANIZATIONAL CHART



ASI Lloyds
(a Texas Lloyds insurance company managed by ASI Lloyds, Inc.)

75-2904629
155-11059

TX 2

COMPANY NAME	
FEDERAL EMPLOYER IDENTIFICATION NUMBER NAIC GROUP AND COMPANY CODES	
State/Territory of Incorporation	Ownership: 1. Wholly owned and controlled 2. As indicated

ANNUAL STATEMENT FOR THE YEAR 2023 OF THE PROGRESSIVE DIRECT INSURANCE COMPANY

OVERFLOW PAGE FOR WRITE-INS

Additional Write-ins for Assets Line 25

		Current Year			Prior Year
		1	2	3	4
		Assets	Nonadmitted Assets	Net Admitted Assets (Cols. 1 - 2)	Net Admitted Assets
2504.	MISCELLANEOUS OTHER ASSETS	16,500	16,500		
2505.	VIRGINIA UNINSURED MOTORIST REFUND				17,986
2597.	Summary of remaining write-ins for Line 25 from overflow page	16,500	16,500		17,986