



PROPERTY AND CASUALTY COMPANIES - ASSOCIATION EDITION

QUARTERLY STATEMENT
AS OF SEPTEMBER 30, 2023
OF THE CONDITION AND AFFAIRS OF THE
BUCKEYE STATE MUTUAL INSURANCE COMPANY

NAIC Group Code00460046NAIC Company Code16713Employer's ID Number31-6035649
(Current)(Prior)

Organized under the Laws ofOhio, State of Domicile or Port of EntryOH

Country of DomicileUnited States of America

Incorporated/Organized01/28/1897Commenced Business04/30/1879

Statutory Home OfficeOne Heritage PlacePiqua, OH, US 45356-4888
(Street and Number)(City or Town, State, Country and Zip Code)

Main Administrative OfficeOne Heritage Place
(Street and Number)
Piqua, OH, US 45356937-778-5000
(City or Town, State, Country and Zip Code)(Area Code) (Telephone Number)

Mail AddressOne Heritage PlacePiqua, OH, US 45356
(Street and Number or P.O. Box)(City or Town, State, Country and Zip Code)

Primary Location of Books and RecordsOne Heritage Place
(Street and Number)
Piqua, OH, US 45356937-778-5000
(City or Town, State, Country and Zip Code)(Area Code) (Telephone Number)

Internet Website Addresshttp://www.buckeye-ins.com

Statutory Statement ContactCraig A Curcio937-778-5000
(Name)(Area Code) (Telephone Number)
craig.curcio@buckeye-ins.com937-778-5019
(E-mail Address)(FAX Number)

OFFICERS

PresidentJohn Michael BrooksTreasurerJerry Christopher Collins

SecretaryLisa Lyn WesnerChief Underwriting OfficerRobert Edward Bornhorst

OTHER

Jon Allen DeHass, VP - Claims

DIRECTORS OR TRUSTEES

William L. Sweet Jr.Zahid AfzalJulie A. Covault

Tim HeinJean M. BrattonOyauma M. Garrison

Joe W. Dickerson

State ofOhioSS:

County ofMiami

The officers of this reporting entity being duly sworn, each depose and say that they are the described officers of said reporting entity, and that on the reporting period stated above, all of the herein described assets were the absolute property of the said reporting entity, free and clear from any liens or claims thereon, except as herein stated, and that this statement, together with related exhibits, schedules and explanations therein contained, annexed or referred to, is a full and true statement of all the assets and liabilities and of the condition and affairs of the said reporting entity as of the reporting period stated above, and of its income and deductions therefrom for the period ended, and have been completed in accordance with the NAIC Annual Statement Instructions and Accounting Practices and Procedures manual except to the extent that: (1) state law may differ; or, (2) that state rules or regulations require differences in reporting not related to accounting practices and procedures, according to the best of their information, knowledge and belief, respectively. Furthermore, the scope of this attestation by the described officers also includes the related corresponding electronic filing with the NAIC, when required, that is an exact copy (except for formatting differences due to electronic filing) of the enclosed statement. The electronic filing may be requested by various regulators in lieu of or in addition to the enclosed statement.

John Michael Brooks
President & CEO

Lisa Lyn Wesner
VP & Secretary

Jerry Christopher Collins
CFO & Treasurer

Subscribed and sworn to before me this
day of

a. Is this an original filing? Yes [X] No []
b. If no,
1. State the amendment number.....
2. Date filed
3. Number of pages attached.....

STATEMENT AS OF SEPTEMBER 30, 2023 OF THE BUCKEYE STATE MUTUAL INSURANCE COMPANY

ASSETS

	Current Statement Date			4 December 31 Prior Year Net Admitted Assets
	1 Assets	2 Nonadmitted Assets	3 Net Admitted Assets (Cols. 1 - 2)	
1. Bonds	27,846,180		27,846,180	30,128,330
2. Stocks:				
2.1 Preferred stocks			0	0
2.2 Common stocks	12,565,998	53,958	12,512,040	12,418,610
3. Mortgage loans on real estate:				
3.1 First liens			0	0
3.2 Other than first liens.....			0	0
4. Real estate:				
4.1 Properties occupied by the company (less \$ encumbrances)			0	0
4.2 Properties held for the production of income (less \$ encumbrances)			0	0
4.3 Properties held for sale (less \$ encumbrances)			0	0
5. Cash (\$ 142,621), cash equivalents (\$ 157,228) and short-term investments (\$)	299,849		299,849	684,231
6. Contract loans (including \$ premium notes)			0	0
7. Derivatives			0	0
8. Other invested assets			0	0
9. Receivables for securities			0	0
10. Securities lending reinvested collateral assets			0	0
11. Aggregate write-ins for invested assets	0	0	0	0
12. Subtotals, cash and invested assets (Lines 1 to 11)	40,712,027	53,958	40,658,069	43,231,172
13. Title plants less \$ charged off (for Title insurers only)			0	0
14. Investment income due and accrued	157,777		157,777	181,932
15. Premiums and considerations:				
15.1 Uncollected premiums and agents' balances in the course of collection	3,088,550		3,088,550	2,465,032
15.2 Deferred premiums, agents' balances and installments booked but deferred and not yet due (including \$ earned but unbilled premiums)	7,301,535		7,301,535	6,184,507
15.3 Accrued retrospective premiums (\$) and contracts subject to redetermination (\$)			0	0
16. Reinsurance:				
16.1 Amounts recoverable from reinsurers	972,125		972,125	338,969
16.2 Funds held by or deposited with reinsured companies	300,000		300,000	300,000
16.3 Other amounts receivable under reinsurance contracts			0	0
17. Amounts receivable relating to uninsured plans			0	0
18.1 Current federal and foreign income tax recoverable and interest thereon			0	0
18.2 Net deferred tax asset	1,780,576	495,763	1,284,813	1,199,123
19. Guaranty funds receivable or on deposit			0	0
20. Electronic data processing equipment and software	27,912		27,912	31,600
21. Furniture and equipment, including health care delivery assets (\$)	3,117	3,117	0	0
22. Net adjustment in assets and liabilities due to foreign exchange rates			0	0
23. Receivables from parent, subsidiaries and affiliates	146,605		146,605	42,981
24. Health care (\$) and other amounts receivable			0	0
25. Aggregate write-ins for other than invested assets	569,477	512,606	56,871	0
26. Total assets excluding Separate Accounts, Segregated Accounts and Protected Cell Accounts (Lines 12 to 25)	55,059,701	1,065,444	53,994,257	53,975,316
27. From Separate Accounts, Segregated Accounts and Protected Cell Accounts			0	0
28. Total (Lines 26 and 27)	55,059,701	1,065,444	53,994,257	53,975,316
DETAILS OF WRITE-INS				
1101.				
1102.				
1103.				
1198. Summary of remaining write-ins for Line 11 from overflow page	0	0	0	0
1199. Totals (Lines 1101 through 1103 plus 1198)(Line 11 above)	0	0	0	0
2501. Other	395,142	338,271	56,871	0
2502. Company owned automobile	174,335	174,335	0	0
2503.				
2598. Summary of remaining write-ins for Line 25 from overflow page	0	0	0	0
2599. Totals (Lines 2501 through 2503 plus 2598)(Line 25 above)	569,477	512,606	56,871	0

STATEMENT AS OF SEPTEMBER 30, 2023 OF THE BUCKEYE STATE MUTUAL INSURANCE COMPANY

LIABILITIES, SURPLUS AND OTHER FUNDS

	1 Current Statement Date	2 December 31, Prior Year
1. Losses (current accident year \$4,559,983)	6,655,878	4,168,945
2. Reinsurance payable on paid losses and loss adjustment expenses	170,666	77,940
3. Loss adjustment expenses	1,028,642	1,034,154
4. Commissions payable, contingent commissions and other similar charges	1,025,786	847,250
5. Other expenses (excluding taxes, licenses and fees)	1,558,086	1,416,722
6. Taxes, licenses and fees (excluding federal and foreign income taxes)	353,100	285,600
7.1 Current federal and foreign income taxes (including \$ on realized capital gains (losses))		
7.2 Net deferred tax liability		
8. Borrowed money \$ and interest thereon \$33,852	33,852	34,076
9. Unearned premiums (after deducting unearned premiums for ceded reinsurance of \$3,692,877 and including warranty reserves of \$ and accrued accident and health experience rating refunds including \$0 for medical loss ratio rebate per the Public Health Service Act)	19,648,110	17,416,277
10. Advance premium	581,372	532,226
11. Dividends declared and unpaid:		
11.1 Stockholders		
11.2 Policyholders		
12. Ceded reinsurance premiums payable (net of ceding commissions)	706,159	1,546,670
13. Funds held by company under reinsurance treaties	2,053,430	2,053,430
14. Amounts withheld or retained by company for account of others		
15. Remittances and items not allocated		
16. Provision for reinsurance (including \$ certified)		0
17. Net adjustments in assets and liabilities due to foreign exchange rates		
18. Drafts outstanding		
19. Payable to parent, subsidiaries and affiliates	94,179	26,101
20. Derivatives	0	0
21. Payable for securities		
22. Payable for securities lending		
23. Liability for amounts held under uninsured plans		
24. Capital notes \$ and interest thereon \$		
25. Aggregate write-ins for liabilities	424,729	408,827
26. Total liabilities excluding protected cell liabilities (Lines 1 through 25)	34,333,989	29,848,218
27. Protected cell liabilities		
28. Total liabilities (Lines 26 and 27)	34,333,989	29,848,218
29. Aggregate write-ins for special surplus funds	1,294,554	1,374,905
30. Common capital stock		
31. Preferred capital stock		
32. Aggregate write-ins for other than special surplus funds	0	0
33. Surplus notes	5,600,000	5,600,000
34. Gross paid in and contributed surplus		
35. Unassigned funds (surplus)	12,765,714	17,152,193
36. Less treasury stock, at cost:		
36.1 shares common (value included in Line 30 \$)		
36.2 shares preferred (value included in Line 31 \$)		
37. Surplus as regards policyholders (Lines 29 to 35, less 36)	19,660,268	24,127,098
38. Totals (Page 2, Line 28, Col. 3)	53,994,257	53,975,316
DETAILS OF WRITE-INS		
2501. Ceded commissions in excess of costs	24,103	23,202
2502. SSAP 102 pension liability	317,292	317,292
2503. Deferred Rent	83,334	68,333
2598. Summary of remaining write-ins for Line 25 from overflow page	0	0
2599. Totals (Lines 2501 through 2503 plus 2598)(Line 25 above)	424,729	408,827
2901. Special Surplus from gain on sale and leaseback of building	1,294,554	1,374,905
2902.		
2903.		
2998. Summary of remaining write-ins for Line 29 from overflow page	0	0
2999. Totals (Lines 2901 through 2903 plus 2998)(Line 29 above)	1,294,554	1,374,905
3201.		
3202.		
3203.		
3298. Summary of remaining write-ins for Line 32 from overflow page	0	0
3299. Totals (Lines 3201 through 3203 plus 3298)(Line 32 above)	0	0

STATEMENT OF INCOME

	1	2	3
	Current Year to Date	Prior Year to Date	Prior Year Ended December 31
UNDERWRITING INCOME			
1. Premiums earned:			
1.1 Direct (written \$ 33,576,914)	30,912,855	28,804,007	38,777,945
1.2 Assumed (written \$ 1,474,959)	1,272,030	802,569	1,158,400
1.3 Ceded (written \$ 7,210,273)	6,575,114	5,947,083	8,009,094
1.4 Net (written \$ 27,841,600)	25,609,771	23,659,493	31,927,251
DEDUCTIONS:			
2. Losses incurred (current accident year \$ 19,732,457):			
2.1 Direct	24,690,870	17,573,634	24,594,258
2.2 Assumed	666,213	766,565	786,445
2.3 Ceded	6,178,548	3,322,857	5,502,974
2.4 Net	19,178,535	15,017,342	19,877,729
3. Loss adjustment expenses incurred	1,547,293	1,337,347	1,857,649
4. Other underwriting expenses incurred	9,484,877	8,859,003	11,509,045
5. Aggregate write-ins for underwriting deductions	0	0	0
6. Total underwriting deductions (Lines 2 through 5)	30,210,705	25,213,692	33,244,423
7. Net income of protected cells			
8. Net underwriting gain (loss) (Line 1 minus Line 6 + Line 7)	(4,600,934)	(1,554,199)	(1,317,172)
INVESTMENT INCOME			
9. Net investment income earned	63,380	167,421	191,668
10. Net realized capital gains (losses) less capital gains tax of \$	23,983	107,310	372,821
11. Net investment gain (loss) (Lines 9 + 10)	87,363	274,731	564,489
OTHER INCOME			
12. Net gain or (loss) from agents' or premium balances charged off (amount recovered \$ amount charged off \$)	0	0	0
13. Finance and service charges not included in premiums	160,775	164,852	222,066
14. Aggregate write-ins for miscellaneous income	80,352	80,352	107,135
15. Total other income (Lines 12 through 14)	241,127	245,204	329,201
16. Net income before dividends to policyholders, after capital gains tax and before all other federal and foreign income taxes (Lines 8 + 11 + 15)	(4,272,444)	(1,034,264)	(423,482)
17. Dividends to policyholders			
18. Net income, after dividends to policyholders, after capital gains tax and before all other federal and foreign income taxes (Line 16 minus Line 17)	(4,272,444)	(1,034,264)	(423,482)
19. Federal and foreign income taxes incurred			
20. Net income (Line 18 minus Line 19)(to Line 22)	(4,272,444)	(1,034,264)	(423,482)
CAPITAL AND SURPLUS ACCOUNT			
21. Surplus as regards policyholders, December 31 prior year	24,127,099	25,942,767	25,942,768
22. Net income (from Line 20)	(4,272,444)	(1,034,264)	(423,482)
23. Net transfers (to) from Protected Cell accounts			
24. Change in net unrealized capital gains (losses) less capital gains tax of \$ 23,165	(43,478)	(1,010,537)	(803,595)
25. Change in net unrealized foreign exchange capital gain (loss)			
26. Change in net deferred income tax	119,070	4,896	74,226
27. Change in nonadmitted assets	(189,627)	(428,928)	(276,517)
28. Change in provision for reinsurance			0
29. Change in surplus notes		(100,000)	(100,000)
30. Surplus (contributed to) withdrawn from protected cells			
31. Cumulative effect of changes in accounting principles			
32. Capital changes:			
32.1 Paid in			
32.2 Transferred from surplus (Stock Dividend)			
32.3 Transferred to surplus			
33. Surplus adjustments:			
33.1 Paid in	0	0	0
33.2 Transferred to capital (Stock Dividend)			
33.3 Transferred from capital			
34. Net remittances from or (to) Home Office			
35. Dividends to stockholders			0
36. Change in treasury stock			
37. Aggregate write-ins for gains and losses in surplus	(80,352)	(80,352)	(286,301)
38. Change in surplus as regards policyholders (Lines 22 through 37)	(4,466,831)	(2,649,185)	(1,815,669)
39. Surplus as regards policyholders, as of statement date (Lines 21 plus 38)	19,660,268	23,293,582	24,127,099
DETAILS OF WRITE-INS			
0501.			
0502.			
0503.			
0598. Summary of remaining write-ins for Line 5 from overflow page	0	0	0
0599. Totals (Lines 0501 through 0503 plus 0598)(Line 5 above)	0	0	0
1401. Building sale/leaseback recognition over lease period	80,352	80,352	107,135
1402. Paycheck Protection Program Loan Forgiveness		0	0
1403.			
1498. Summary of remaining write-ins for Line 14 from overflow page	0	0	0
1499. Totals (Lines 1401 through 1403 plus 1498)(Line 14 above)	80,352	80,352	107,135
3701. Change in SSAP No 102 minimum liability		0	(179,166)
3702. Special Surplus – Sale / Leaseback of Home Office Building	(80,352)	(80,352)	(107,135)
3703.			
3798. Summary of remaining write-ins for Line 37 from overflow page	0	0	0
3799. Totals (Lines 3701 through 3703 plus 3798)(Line 37 above)	(80,352)	(80,352)	(286,301)

STATEMENT AS OF SEPTEMBER 30, 2023 OF THE BUCKEYE STATE MUTUAL INSURANCE COMPANY

CASH FLOW

	1 Current Year To Date	2 Prior Year To Date	3 Prior Year Ended December 31
Cash from Operations			
1. Premiums collected net of reinsurance	25,309,693	23,491,410	32,400,183
2. Net investment income	148,824	269,093	293,076
3. Miscellaneous income	241,127	245,204	329,201
4. Total (Lines 1 to 3)	25,699,644	24,005,707	33,022,460
5. Benefit and loss related payments	17,232,032	16,318,366	22,291,978
6. Net transfers to Separate Accounts, Segregated Accounts and Protected Cell Accounts	0	0	0
7. Commissions, expenses paid and aggregate write-ins for deductions	10,650,282	10,153,847	13,428,847
8. Dividends paid to policyholders	0	0	0
9. Federal and foreign income taxes paid (recovered) net of \$ tax on capital gains (losses)	0	0	0
10. Total (Lines 5 through 9)	27,882,314	26,472,213	35,720,825
11. Net cash from operations (Line 4 minus Line 10)	(2,182,670)	(2,466,506)	(2,698,365)
Cash from Investments			
12. Proceeds from investments sold, matured or repaid:			
12.1 Bonds	2,223,483	4,351,477	4,945,846
12.2 Stocks	469,003	521,718	1,983,442
12.3 Mortgage loans	0	0	0
12.4 Real estate	0	0	0
12.5 Other invested assets	0	0	0
12.6 Net gains or (losses) on cash, cash equivalents and short-term investments	0	0	0
12.7 Miscellaneous proceeds	24,000	0	0
12.8 Total investment proceeds (Lines 12.1 to 12.7)	2,716,486	4,873,195	6,929,288
13. Cost of investments acquired (long-term only):			
13.1 Bonds	2,626	3,653,304	4,601,119
13.2 Stocks	582,763	885,297	2,136,677
13.3 Mortgage loans	0	0	0
13.4 Real estate	0	0	0
13.5 Other invested assets	0	0	0
13.6 Miscellaneous applications	0	0	0
13.7 Total investments acquired (Lines 13.1 to 13.6)	585,389	4,538,601	6,737,796
14. Net increase (or decrease) in contract loans and premium notes	0	0	0
15. Net cash from investments (Line 12.8 minus Line 13.7 and Line 14)	2,131,097	334,594	191,492
Cash from Financing and Miscellaneous Sources			
16. Cash provided (applied):			
16.1 Surplus notes, capital notes	0	(100,000)	(100,000)
16.2 Capital and paid in surplus, less treasury stock	0	0	0
16.3 Borrowed funds	(224)	3,452	15,251
16.4 Net deposits on deposit-type contracts and other insurance liabilities	0	0	0
16.5 Dividends to stockholders	0	0	0
16.6 Other cash provided (applied)	(332,585)	(273,478)	(12,246)
17. Net cash from financing and miscellaneous sources (Line 16.1 through Line 16.4 minus Line 16.5 plus Line 16.6)	(332,809)	(370,026)	(96,995)
RECONCILIATION OF CASH, CASH EQUIVALENTS AND SHORT-TERM INVESTMENTS			
18. Net change in cash, cash equivalents and short-term investments (Line 11, plus Lines 15 and 17) .	(384,382)	(2,501,938)	(2,603,868)
19. Cash, cash equivalents and short-term investments:			
19.1 Beginning of year	684,232	3,288,100	3,288,100
19.2 End of period (Line 18 plus Line 19.1)	299,850	786,162	684,232

Note: Supplemental disclosures of cash flow information for non-cash transactions:

--	--	--	--

NOTES TO FINANCIAL STATEMENTS

NOTE 1 Summary of Significant Accounting Policies and Going Concern

A. Accounting Practices

The accompanying financial statements of Buckeye State Mutual Insurance Company (The Company) have been prepared on the basis of accounting practices prescribed or permitted by the Ohio Insurance Department.

The state of Ohio requires insurance companies domiciled in the state of Ohio to prepare their statutory financial statements in accordance with the National Association of Insurance Commissioners' (NAIC) Accounting Practices and Procedures Manual subject to any deviations prescribed or permitted by the Ohio Insurance Department

	SSAP #	F/S Page	F/S Line #		2023		2022
NET INCOME							
(1) State basis (Page 4, Line 20, Columns 1 & 3)	XXX	XXX	XXX	\$	(4,272,444)	\$	(423,482)
(2) State Prescribed Practices that are an increase/ (decrease) from NAIC SAP:							
(3) State Permitted Practices that are an increase/(decrease) from NAIC SAP:							
(4) NAIC SAP (1-2-3=4)	XXX	XXX	XXX	\$	(4,272,444)	\$	(423,482)
SURPLUS							
(5) State basis (Page 3, Line 37, Columns 1 & 2)	XXX	XXX	XXX	\$	19,660,268	\$	24,127,098
(6) State Prescribed Practices that are an increase/(decrease) from NAIC SAP:							
(7) State Permitted Practices that are an increase/(decrease) from NAIC SAP:							
(8) NAIC SAP (5-6-7=8)	XXX	XXX	XXX	\$	19,660,268	\$	24,127,098

C. Accounting Policy

(2) Basis for Bonds, Mandatory Convertible Securities, SVO-Identified Investments and Amortization Method

Bonds not backed by other loans are stated at amortized value using the interest method. Non-investment grade bonds are stated at the lower of amortized value or fair value.

(6) Basis for Loan-Backed Securities and Adjustment Methodology

Loan-backed securities are stated at amortized value. The retrospective adjustment method is used to value all loan-backed securities. Non-investment grade loan-backed securities are stated at the lower of amortized value or fair value.

D. Going Concern

Not applicable

NOTE 2 Accounting Changes and Corrections of Errors

No significant changes

NOTE 3 Business Combinations and Goodwill

No significant changes

NOTE 4 Discontinued Operations

No significant changes

NOTES TO FINANCIAL STATEMENTS

NOTE 5 Investments

- D. Loan-Backed Securities
(1) Description of Sources Used to Determine Prepayment Assumptions

- (2) OTTI recognized 1st Quarter
- a. Intent to sell
 - b. Inability or lack of intent to retain the investment in the security for a period of time sufficient to recover the amortized cost basis
 - c. Total 1st Quarter
- OTTI recognized 2nd Quarter
- d. Intent to sell
 - e. Inability or lack of intent to retain the investment in the security for a period of time sufficient to recover the amortized cost basis
 - f. Total 2nd Quarter
- OTTI recognized 3rd Quarter
- g. Intent to sell
 - h. Inability or lack of intent to retain the investment in the security for a period of time sufficient to recover the amortized cost basis
 - i. Total 3rd Quarter
- OTTI recognized 4th Quarter
- j. Intent to sell
 - k. Inability or lack of intent to retain the investment in the security for a period of time sufficient to recover the amortized cost basis
 - l. Total 4th Quarter
- m. Annual Aggregate Total

1 Amortized Cost Basis Before Other-than- Temporary Impairment	2 Other-than- Temporary Impairment Recognized in Loss	3 Fair Value 1 - 2
		\$ -
		\$ -
\$ -	\$ -	\$ -
		\$ -
		\$ -
\$ -	\$ -	\$ -
		\$ -
		\$ -
\$ -	\$ -	\$ -
		\$ -
\$ -	\$ -	\$ -
		\$ -
		\$ -
\$ -	\$ -	\$ -
	\$ -	

(3)

1	2	3	4	5	6	7
CUSIP	Book/Adjusted Carrying Value Amortized Cost Before Current Period OTTI	Present Value of Projected Cash Flows	Recognized Other-Than- Temporary Impairment	Amortized Cost After Other-Than- Temporary Impairment	Fair Value at time of OTTI	Date of Financial Statement Where Reported
Total	XXX	XXX	\$ -	XXX	XXX	XXX

(4)

- a) The aggregate amount of unrealized losses:
- 1. Less than 12 Months \$ (2,423)
 - 2. 12 Months or Longer \$ (560,865)
- b)The aggregate related fair value of securities with unrealized losses:
- 1. Less than 12 Months \$ 222,838
 - 2. 12 Months or Longer \$ 4,527,675

(5) Information Describing General Categories that Investor Considered in Reaching Conclusion that Impairments are Not Other-Than-Temporary

- E. Dollar Repurchase Agreements and/or Securities Lending Transactions
Not applicable
- F. Repurchase Agreements Transactions Accounted for as Secured Borrowing
Not applicable
- G. Reverse Repurchase Agreements Transactions Accounted for as Secured Borrowing
Not applicable
- H. Repurchase Agreements Transactions Accounted for as a Sale
Not applicable
- I. Reverse Repurchase Agreements Transactions Accounted for as a Sale
Not applicable
- M. Working Capital Finance Investments
Not applicable
- N. Offsetting and Netting of Assets and Liabilities
Not applicable

NOTES TO FINANCIAL STATEMENTS

R. Reporting Entity’s Share of Cash Pool by Asset Type

	Asset Type	Percent Share
(1)	Cash	
(2)	Cash Equivalents	
(3)	Short-Term Investments	
(4)	Total	

NOTE 6 Joint Ventures, Partnerships and Limited Liability Companies
No significant changes

NOTE 7 Investment Income
No significant changes

NOTE 8 Derivative Instruments
No significant changes

NOTE 9 Income Taxes
No significant changes

NOTE 10 Information Concerning Parent, Subsidiaries, Affiliates and Other Related Parties
No significant changes

NOTE 11 Debt
A. Debt, Including Capital Notes
Not applicable

B. FHLB (Federal Home Loan Bank) Agreements

(1) Nature of the FHLB Agreement
The Company is a member of the Federal Home Loan Bank (FHLB) of Cincinnati. Through its membership, the Company has conducted business activity (borrowings) with the FHLB. It is part of the Company's strategy to utilize these funds for short term liquidity. The Company has determined the actual/estimated maximum borrowing capacity as \$1,820,801. The Company calculated this amount in accordance with current FHLB capital stock.

(2) FHLB Capital Stock
a. Aggregate Totals

	1 Total 2+3	2 General Account	3 Protected Cell Accounts
1. Current Year			
(a) Membership Stock - Class A	\$ 43,180	\$ 43,180	
(b) Membership Stock - Class B	\$ -		
(c) Activity Stock	\$ -		
(d) Excess Stock	\$ 43,020	\$ 43,020	
(e) Aggregate Total (a+b+c+d)	\$ 86,200	\$ 86,200	\$ -
(f) Actual or estimated Borrowing Capacity as Determined by the Insurer	\$ 2,000,000	XXX	XXX
2. Prior Year-end			
(a) Membership Stock - Class A	\$ 46,120	\$ 46,120	
(b) Membership Stock - Class B	\$ -		
(c) Activity Stock	\$ 40,080	\$ 40,080	
(d) Excess Stock	\$ -		
(e) Aggregate Total (a+b+c+d)	\$ 86,200	\$ 86,200	\$ -
(f) Actual or estimated Borrowing Capacity as Determined by the Insurer	\$ 2,000,000	XXX	XXX

11B(2)a1(f) should be equal to or greater than 11B(4)a1(d)
11B(2)a2(f) should be equal to or greater than 11B(4)a2(d)

b. Membership Stock (Class A and B) Eligible and Not Eligible for Redemption

	1 Current Year Total (2+3+4+5+6)	2 Not Eligible for Redemption	3 Less Than 6 Months	4 6 Months to Less Than 1 Year	5 1 to Less Than 3 Years	6 3 to 5 Years
Membership Stock						
1. Class A	\$ 43,180	\$ 43,180				
2. Class B	\$ -					

11B(2)b1 Current Year Total (Column 1) should equal 11B(2)a1(a) Total (Column 1)
11B(2)b2 Current Year Total (Column 1) should equal 11B(2)a1(b) Total (Column 1)

NOTES TO FINANCIAL STATEMENTS

(3) Collateral Pledged to FHLB
a. Amount Pledged as of Reporting Date

	1	2	3
	Fair Value	Carrying Value	Aggregate Total Borrowing
1. Current Year Total General and Protected Cell Account Total Collateral Pledged (Lines 2+3)	\$ 1,911,985	\$ 2,318,534	\$ -
2. Current Year General Account Total Collateral Pledged	\$ 1,911,985	\$ 2,318,534	
3. Current Year Protected Cell Account Total Collateral Pledged			
4. Prior Year-end Total General and Protected Cell Account Total Collateral Pledged	\$ 2,187,516	\$ 2,507,483	\$ -

11B(3)a1 (Columns 1, 2 and 3) should be equal to or less than 11B(3)b1 (Columns 1, 2 and 3 respectively)
11B(3)a2 (Columns 1, 2 and 3) should be equal to or less than 11B(3)b2 (Columns 1, 2 and 3 respectively)
11B(3)a3 (Columns 1, 2 and 3) should be equal to or less than 11B(3)b3 (Columns 1, 2 and 3 respectively)
11B(3)a4 (Columns 1, 2 and 3) should be equal to or less than 11B(3)b4 (Columns 1, 2 and 3 respectively)

b. Maximum Amount Pledged During Reporting Period

	1	2	3
	Fair Value	Carrying Value	Amount Borrowed at Time of Maximum Collateral
1. Current Year Total General and Protected Cell Account Maximum Collateral Pledged (Lines 2+3)	\$ 1,911,985	\$ 2,318,534	\$ -
2. Current Year General Account Maximum Collateral Pledged	\$ 1,911,985	\$ 2,318,534	
3. Current Year Protected Cell Account Maximum Collateral Pledged			
4. Prior Year-end Total General and Protected Cell Account Maximum Collateral Pledged	\$ 2,469,974	\$ 2,685,030	\$ -

(4) Borrowing from FHLB
a. Amount as of Reporting Date

	1	2	3	4
	Total 2+3	General Account	Protected Cell Account	Funding Agreements Reserves Established
1. Current Year				
(a) Debt	\$ -			XXX
(b) Funding Agreements	\$ -			
(c) Other	\$ -			XXX
(d) Aggregate Total (a+b+c)	\$ -	\$ -	\$ -	\$ -
2. Prior Year end				
(a) Debt	\$ -			XXX
(b) Funding Agreements	\$ -			
(c) Other	\$ -			XXX
(d) Aggregate Total (a+b+c)	\$ -	\$ -	\$ -	\$ -

b. Maximum Amount During Reporting Period (Current Year)

	1	2	3
	Total 2+3	General Account	Protected Cell Account
1. Debt	\$ -		
2. Funding Agreements	\$ -		
3. Other	\$ -		
4. Aggregate Total (1+2+3)	\$ -	\$ -	\$ -

11B(4)b4 (Columns 1, 2 and 3) should be equal to or greater than 11B(4)a1(d) (Columns 1, 2 and 3 respectively)

c. FHLB - Prepayment Obligations

	Does the company have prepayment obligations under the following arrangements (YES/NO)?
1. Debt	No
2. Funding Agreements	No
3. Other	No

NOTES TO FINANCIAL STATEMENTS

NOTE 12 Retirement Plans, Deferred Compensation, Postemployment Benefits and Compensated Absences and Other Postretirement Benefit Plans

A. Defined Benefit Plan

	Pension Benefits		Postretirement Benefits		Special or Contractual Benefits Per SSAP No. 11	
	2022	2021	2022	2021	2022	2021
(4) Components of net periodic benefit cost						
a. Service cost						
b. Interest cost		\$ 129,108				
c. Expected return on plan assets		\$ (180,319)				
d. Transition asset or obligation						
e. Gains and losses		\$ 27,637				
f. Prior service cost or credit						
g. Gain or loss recognized due to a settlement or curtailment		\$ 52,425				
h. Total net periodic benefit cost	\$ -	\$ 28,851	\$ -	\$ -	\$ -	\$ -

NOTE 13 Capital and Surplus, Dividend Restrictions and Quasi-Reorganizations

No significant changes.

NOTE 14 Liabilities, Contingencies and Assessments

No significant changes

NOTE 15 Leases

A. Lessee Operating Lease:

(3) For Sale-Leaseback Transactions	
The home office building was sold effective August 1, 2019. The company has agreed to lease back a portion of this building over a term of 15 years. The rental commitment over the next 5 years is as follows:	
2023	\$240,000
2024	\$248,333
2025	\$260,000
2026	\$260,000
2027	\$260,000
Total	\$1,268,333

NOTE 16 Information About Financial Instruments With Off-Balance Sheet Risk and Financial Instruments With Concentrations of Credit Risk

No significant changes

NOTE 17 Sale, Transfer and Servicing of Financial Assets and Extinguishments of Liabilities

B. Transfer and Servicing of Financial Assets

(2) Servicing Assets and Servicing Liabilities	Not applicable
(4) Securitizations, Asset-Based Financing Arrangements and Similar Transfers Accounted for as Sales	
(a)	Not applicable
(b)	Not applicable

C. Wash Sales

- (1) Description of the Objectives Regarding These Transactions
In the course of the Company's asset management, securities are sold and reacquired within 30 days of the sale date to enhance the yield on the investments.
- (2) The details by NAIC designation 3 or below, or unrated of securities sold during the current quarter and reacquired within 30 days of the sale date are:
There were no securities with an NAIC designation 3 or below that were sold during the year and reacquired within 30 days of the sale

Description	NAIC Designation	Number of Transactions	Book Value of Securities Sold	Cost of Securities Repurchased	Gain/(Loss)
-------------	------------------	------------------------	-------------------------------	--------------------------------	-------------

NOTE 18 Gain or Loss to the Reporting Entity from Uninsured Plans and the Uninsured Portion of Partially Insured Plans

No significant changes

NOTE 19 Direct Premium Written/Produced by Managing General Agents/Third Party Administrators

No significant changes

NOTES TO FINANCIAL STATEMENTS

NOTE 20 Fair Value Measurements

A.

(1) Fair Value Measurements at Reporting Date

Description for each class of asset or liability	(Level 1)	(Level 2)	(Level 3)	Net Asset Value (NAV)	Total
a. Assets at fair value					
Bonds I&M	\$ 332				\$ 332
Common Stock I&M	\$ 3,641,310				\$ 3,641,310
Common Stock - Mutual Funds	\$ 1,578,900				\$ 1,578,900
Common Stock - Affiliated	\$ 7,345,788				\$ 7,345,788
Total assets at fair value/NAV	\$ 12,566,330	\$ -	\$ -	\$ -	\$ 12,566,330

Description for each class of asset or liability	(Level 1)	(Level 2)	(Level 3)	Net Asset Value (NAV)	Total
b. Liabilities at fair value					
Total liabilities at fair value	\$ -	\$ -	\$ -	\$ -	\$ -

(2) Fair Value Measurements in (Level 3) of the Fair Value hierarchy

Description	Ending Balance as of Prior Quarter End	Transfers into Level 3	Transfers out of Level 3	Total gains and (losses) included in Net Income	Total gains and (losses) included in Surplus	Purchases	Issuances	Sales	Settlements	Ending Balance for Current Quarter End
a. Assets										
Total Assets	\$ -	\$ -	\$ -	\$ -	\$ -	\$ -	\$ -	\$ -	\$ -	\$ -

Description	Ending Balance as of Prior Quarter End	Transfers into Level 3	Transfers out of Level 3	Total gains and (losses) included in Net Income	Total gains and (losses) included in Surplus	Purchases	Issuances	Sales	Settlements	Ending Balance for Current Quarter End
b. Liabilities										
Total Liabilities	\$ -	\$ -	\$ -	\$ -	\$ -	\$ -	\$ -	\$ -	\$ -	\$ -

B. Fair Value Reporting under SSAP 100 and Other Accounting Pronouncements
Not applicable

C. Aggregate fair value for all financial instruments and the level within the fair value hierarchy in which the fair value measurements in their entirety fall.
Not applicable

Type of Financial Instrument	Aggregate Fair Value	Admitted Assets	(Level 1)	(Level 2)	(Level 3)	Net Asset Value (NAV)	Not Practicable (Carrying Value)

D. Not Practicable to Estimate Fair Value
Not applicable

Type or Class of Financial Instrument	Carrying Value	Effective Interest Rate	Maturity Date	Explanation

E. NAV Practical Expedient Investments
Not applicable

NOTE 21 Other Items
No significant changes

NOTE 22 Events Subsequent
Subsequent events have been considered through 11/12/2023 for these statutory financial statements which are to be issued on 11/13/2023.

NOTE 23 Reinsurance
No significant changes

NOTE 24 Retrospectively Rated Contracts & Contracts Subject to Redetermination

F. Risk Sharing Provisions of the Affordable Care Act

(1) Did the reporting entity write accident and health insurance premium which is subject to the Affordable Care Act risk sharing provisions (YES/NO)?
Yes [] No [X]

NOTES TO FINANCIAL STATEMENTS

NOTE 25 Change in Incurred Losses and Loss Adjustment Expenses

A. Change in Incurred Losses and Loss Adjustment Expenses

Reserves as of December 31, 2022 were \$5.203 million. As of September 30, 2023, \$1.873 million has been paid for incurred losses and loss adjusting expense attributable to insured events of prior years. Reserves remaining for prior years are now \$2.523 million as a result of re-estimation of unpaid claims and claim adjustment expenses. Therefore, there has been \$807,000 of favorable prior year development since December 31, 2022 to September 30, 2023. This change is generally the result on ongoing analysis of recent loss development trends. Original estimates are increased or decreased as additional information becomes known regarding individual claims. The Company does not have retrospectively rated policies.

B. Information about Significant Changes in Methodologies and Assumptions

No change in methodology.

NOTE 26 Intercompany Pooling Arrangements

No significant changes

NOTE 27 Structured Settlements

No significant changes

NOTE 28 Health Care Receivables

No significant changes

NOTE 29 Participating Policies

No significant changes

NOTE 30 Premium Deficiency Reserves

No significant changes

NOTE 31 High Deductibles

No significant changes

NOTE 32 Discounting of Liabilities for Unpaid Losses or Unpaid Loss Adjustment Expenses

No significant changes

NOTE 33 Asbestos/Environmental Reserves

No significant changes

NOTE 34 Subscriber Savings Accounts

No significant changes

NOTE 35 Multiple Peril Crop Insurance

No significant changes

NOTE 36 Financial Guaranty Insurance

Not applicable - This type of business is not written by the company.

GENERAL INTERROGATORIES

PART 1 - COMMON INTERROGATORIES

GENERAL

1.1

Did the reporting entity experience any material transactions requiring the filing of Disclosure of Material Transactions with the State of Domicile, as required by the Model Act?

Yes ☐ No ☒

1.2

If yes, has the report been filed with the domiciliary state?

Yes ☐ No ☐

2.1

Has any change been made during the year of this statement in the charter, by-laws, articles of incorporation, or deed of settlement of the reporting entity?

Yes ☒ No ☐

2.2

If yes, date of change:

03/15/2023

3.1

Is the reporting entity a member of an Insurance Holding Company System consisting of two or more affiliated persons, one or more of which is an insurer?
If yes, complete Schedule Y, Parts 1 and 1A.

Yes ☒ No ☐

3.2

Have there been any substantial changes in the organizational chart since the prior quarter end?

Yes ☐ No ☒

3.3

If the response to 3.2 is yes, provide a brief description of those changes.

3.4

Is the reporting entity publicly traded or a member of a publicly traded group?

Yes ☐ No ☒

3.5

If the response to 3.4 is yes, provide the CIK (Central Index Key) code issued by the SEC for the entity/group.

4.1

Has the reporting entity been a party to a merger or consolidation during the period covered by this statement?

Yes ☐ No ☒

4.2

If yes, provide the name of the entity, NAIC Company Code, and state of domicile (use two letter state abbreviation) for any entity that has ceased to exist as a result of the merger or consolidation.

1	2	3
Name of Entity	NAIC Company Code	State of Domicile

5.

If the reporting entity is subject to a management agreement, including third-party administrator(s), managing general agent(s), attorney-in-fact, or similar agreement, have there been any significant changes regarding the terms of the agreement or principals involved?
If yes, attach an explanation.

Yes ☐ No ☒ N/A ☐

6.1

State as of what date the latest financial examination of the reporting entity was made or is being made.

12/31/2020

6.2

State the as of date that the latest financial examination report became available from either the state of domicile or the reporting entity. This date should be the date of the examined balance sheet and not the date the report was completed or released.

12/31/2020

6.3

State as of what date the latest financial examination report became available to other states or the public from either the state of domicile or the reporting entity. This is the release date or completion date of the examination report and not the date of the examination (balance sheet date).

10/28/2021

6.4

By what department or departments?
Ohio

6.5

Have all financial statement adjustments within the latest financial examination report been accounted for in a subsequent financial statement filed with Departments?

Yes ☒ No ☐ N/A ☐

6.6

Have all of the recommendations within the latest financial examination report been complied with?

Yes ☒ No ☐ N/A ☐

7.1

Has this reporting entity had any Certificates of Authority, licenses or registrations (including corporate registration, if applicable) suspended or revoked by any governmental entity during the reporting period?

Yes ☐ No ☒

7.2

If yes, give full information:

8.1

Is the company a subsidiary of a bank holding company regulated by the Federal Reserve Board?

Yes ☐ No ☒

8.2

If response to 8.1 is yes, please identify the name of the bank holding company.

8.3

Is the company affiliated with one or more banks, thrifts or securities firms?

Yes ☐ No ☒

8.4

If response to 8.3 is yes, please provide below the names and location (city and state of the main office) of any affiliates regulated by a federal regulatory services agency [i.e. the Federal Reserve Board (FRB), the Office of the Comptroller of the Currency (OCC), the Federal Deposit Insurance Corporation (FDIC) and the Securities Exchange Commission (SEC)] and identify the affiliate's primary federal regulator.

1	2	3	4	5	6
Affiliate Name	Location (City, State)	FRB	OCC	FDIC	SEC

GENERAL INTERROGATORIES

- 9.1

Are the senior officers (principal executive officer, principal financial officer, principal accounting officer or controller, or persons performing similar functions) of the reporting entity subject to a code of ethics, which includes the following standards?
(a) Honest and ethical conduct, including the ethical handling of actual or apparent conflicts of interest between personal and professional relationships;
(b) Full, fair, accurate, timely and understandable disclosure in the periodic reports required to be filed by the reporting entity;
(c) Compliance with applicable governmental laws, rules and regulations;
(d) The prompt internal reporting of violations to an appropriate person or persons identified in the code; and
(e) Accountability for adherence to the code.

Yes [X] No []
- 9.11

If the response to 9.1 is No, please explain:
.....
- 9.2

Has the code of ethics for senior managers been amended?

Yes [] No [X]
- 9.21

If the response to 9.2 is Yes, provide information related to amendment(s).
.....
- 9.3

Have any provisions of the code of ethics been waived for any of the specified officers?

Yes [] No [X]
- 9.31

If the response to 9.3 is Yes, provide the nature of any waiver(s).
.....

FINANCIAL

- 10.1

Does the reporting entity report any amounts due from parent, subsidiaries or affiliates on Page 2 of this statement?

Yes [X] No []
- 10.2

If yes, indicate any amounts receivable from parent included in the Page 2 amount:\$

INVESTMENT

- 11.1

Were any of the stocks, bonds, or other assets of the reporting entity loaned, placed under option agreement, or otherwise made available for use by another person? (Exclude securities under securities lending agreements.)

Yes [] No [X]
- 11.2

If yes, give full and complete information relating thereto:
.....
12.

Amount of real estate and mortgages held in other invested assets in Schedule BA:

\$
13.

Amount of real estate and mortgages held in short-term investments:

\$
- 14.1

Does the reporting entity have any investments in parent, subsidiaries and affiliates?

Yes [X] No []
- 14.2

If yes, please complete the following:

	1	2
	Prior Year-End Book/Adjusted Carrying Value	Current Quarter Book/Adjusted Carrying Value
14.21 Bonds	\$0	\$
14.22 Preferred Stock	\$0	\$
14.23 Common Stock	\$7,476,413	\$7,345,788
14.24 Short-Term Investments	\$0	\$
14.25 Mortgage Loans on Real Estate	\$0	\$
14.26 All Other	\$0	\$
14.27 Total Investment in Parent, Subsidiaries and Affiliates (Subtotal Lines 14.21 to 14.26)	\$7,476,413	\$7,345,788
14.28 Total Investment in Parent included in Lines 14.21 to 14.26 above	\$	\$
- 15.1

Has the reporting entity entered into any hedging transactions reported on Schedule DB?

Yes [] No [X]
- 15.2

If yes, has a comprehensive description of the hedging program been made available to the domiciliary state? Yes [] No [] N/A []
If no, attach a description with this statement.
.....
16.

For the reporting entity's security lending program, state the amount of the following as of the current statement date:

16.1

Total fair value of reinvested collateral assets reported on Schedule DL, Parts 1 and 2.

\$0

16.2

Total book/adjusted carrying value of reinvested collateral assets reported on Schedule DL, Parts 1 and 2

\$0

16.3

Total payable for securities lending reported on the liability page.

\$0

STATEMENT AS OF SEPTEMBER 30, 2023 OF THE BUCKEYE STATE MUTUAL INSURANCE COMPANY

GENERAL INTERROGATORIES

17. Excluding items in Schedule E - Part 3 - Special Deposits, real estate, mortgage loans and investments held physically in the reporting entity's offices, vaults or safety deposit boxes, were all stocks, bonds and other securities, owned throughout the current year held pursuant to a custodial agreement with a qualified bank or trust company in accordance with Section 1, III - General Examination Considerations, F. Outsourcing of Critical Functions, Custodial or Safekeeping Agreements of the NAIC Financial Condition Examiners Handbook? Yes [] No [X]
- 17.1 For all agreements that comply with the requirements of the NAIC Financial Condition Examiners Handbook, complete the following:

1 Name of Custodian(s)	2 Custodian Address
US Bank	50 S. 16th Street Suite 2000, Philadelphia, PA 19102

- 17.2 For all agreements that do not comply with the requirements of the NAIC Financial Condition Examiners Handbook, provide the name, location and a complete explanation:

1 Name(s)	2 Location(s)	3 Complete Explanation(s)

- 17.3 Have there been any changes, including name changes, in the custodian(s) identified in 17.1 during the current quarter? Yes [] No [X]
- 17.4 If yes, give full information relating thereto:

1 Old Custodian	2 New Custodian	3 Date of Change	4 Reason

- 17.5 Investment management – Identify all investment advisors, investment managers, broker/dealers, including individuals that have the authority to make investment decisions on behalf of the reporting entity. For assets that are managed internally by employees of the reporting entity, note as such. ["...that have access to the investment accounts"; "...handle securities"]

1 Name of Firm or Individual	2 Affiliation
Sun Life Capital Management (U.S.) LLC	U.....
Prudent Man Advisors, LLC (DBA PMA Asset Management)	U.....
.....

- 17.5097 For those firms/individuals listed in the table for Question 17.5, do any firms/individuals unaffiliated with the reporting entity (i.e. designated with a "U") manage more than 10% of the reporting entity's invested assets?..... Yes [X] No []

- 17.5098 For firms/individuals unaffiliated with the reporting entity (i.e. designated with a "U") listed in the table for Question 17.5, does the total assets under management aggregate to more than 50% of the reporting entity's invested assets?..... Yes [X] No []

- 17.6 For those firms or individuals listed in the table for 17.5 with an affiliation code of "A" (affiliated) or "U" (unaffiliated), provide the information for the table below.

1	2	3	4	5
Central Registration Depository Number	Name of Firm or Individual	Legal Entity Identifier (LEI)	Registered With	Investment Management Agreement (IMA) Filed
109684	Sun Life Capital Management (U.S.) LLC	5493001YL0M8H1NPEN55	SEC	NO.....
301973	Prudent Man Advisors, LLC (DBA PMA Asset Management)	254900UUSQ6H8SOND073	SEC	NO.....
.....

- 18.1 Have all the filing requirements of the Purposes and Procedures Manual of the NAIC Investment Analysis Office been followed? Yes [X] No []
- 18.2 If no, list exceptions:
.....

19. By self-designating 5GI securities, the reporting entity is certifying the following elements for each self-designated 5GI security:
- a. Documentation necessary to permit a full credit analysis of the security does not exist or an NAIC CRP credit rating for an FE or PL security is not available.
- b. Issuer or obligor is current on all contracted interest and principal payments.
- c. The insurer has an actual expectation of ultimate payment of all contracted interest and principal.
- Has the reporting entity self-designated 5GI securities? Yes [] No [X]

20. By self-designating PLGI securities, the reporting entity is certifying the following elements of each self-designated PLGI security:
- a. The security was purchased prior to January 1, 2018.
- b. The reporting entity is holding capital commensurate with the NAIC Designation reported for the security.
- c. The NAIC Designation was derived from the credit rating assigned by an NAIC CRP in its legal capacity as a NRSRO which is shown on a current private letter rating held by the insurer and available for examination by state insurance regulators.
- d. The reporting entity is not permitted to share this credit rating of the PL security with the SVO.
- Has the reporting entity self-designated PLGI securities? Yes [] No [X]

21. By assigning FE to a Schedule BA non-registered private fund, the reporting entity is certifying the following elements of each self-designated FE fund:
- a. The shares were purchased prior to January 1, 2019.
- b. The reporting entity is holding capital commensurate with the NAIC Designation reported for the security.
- c. The security had a public credit rating(s) with annual surveillance assigned by an NAIC CRP in its legal capacity as an NRSRO prior to January 1, 2019.
- d. The fund only or predominantly holds bonds in its portfolio.
- e. The current reported NAIC Designation was derived from the public credit rating(s) with annual surveillance assigned by an NAIC CRP in its legal capacity as an NRSRO.
- f. The public credit rating(s) with annual surveillance assigned by an NAIC CRP has not lapsed.
- Has the reporting entity assigned FE to Schedule BA non-registered private funds that complied with the above criteria? Yes [] No [X]

GENERAL INTERROGATORIES

PART 2 - PROPERTY & CASUALTY INTERROGATORIES

1.

If the reporting entity is a member of a pooling arrangement, did the agreement or the reporting entity's participation change?
If yes, attach an explanation.
.....

Yes [] No [X] N/A []
2.

Has the reporting entity reinsured any risk with any other reporting entity and agreed to release such entity from liability, in whole or in part, from any loss that may occur on the risk, or portion thereof, reinsured?
If yes, attach an explanation.
.....

Yes [] No [X]
- 3.1

Have any of the reporting entity's primary reinsurance contracts been canceled?

Yes [] No [X]
- 3.2

If yes, give full and complete information thereto.
.....
- 4.1

Are any of the liabilities for unpaid losses and loss adjustment expenses other than certain workers' compensation tabular reserves (see Annual Statement Instructions pertaining to disclosure of discounting for definition of " tabular reserves") discounted at a rate of interest greater than zero?

Yes [] No [X]

4.2 If yes, complete the following schedule:

			TOTAL DISCOUNT				DISCOUNT TAKEN DURING PERIOD			
1	2	3	4	5	6	7	8	9	10	11
Line of Business	Maximum Interest	Discount Rate	Unpaid Losses	Unpaid LAE	IBNR	TOTAL	Unpaid Losses	Unpaid LAE	IBNR	TOTAL
TOTAL			0	0	0	0	0	0	0	0

5.

Operating Percentages:

5.1 A&H loss percent %

5.2 A&H cost containment percent %

5.3 A&H expense percent excluding cost containment expenses %
- 6.1

Do you act as a custodian for health savings accounts?

Yes [] No [X]
- 6.2

If yes, please provide the amount of custodial funds held as of the reporting date\$.....
- 6.3

Do you act as an administrator for health savings accounts?

Yes [] No [X]
- 6.4

If yes, please provide the balance of the funds administered as of the reporting date\$.....
7.

Is the reporting entity licensed or chartered, registered, qualified, eligible or writing business in at least two states?

Yes [X] No []
- 7.1

If no, does the reporting entity assume reinsurance business that covers risks residing in at least one state other than the state of domicile of the reporting entity?

Yes [] No [X]

SCHEDULE F - CEDED REINSURANCE

[illegible]

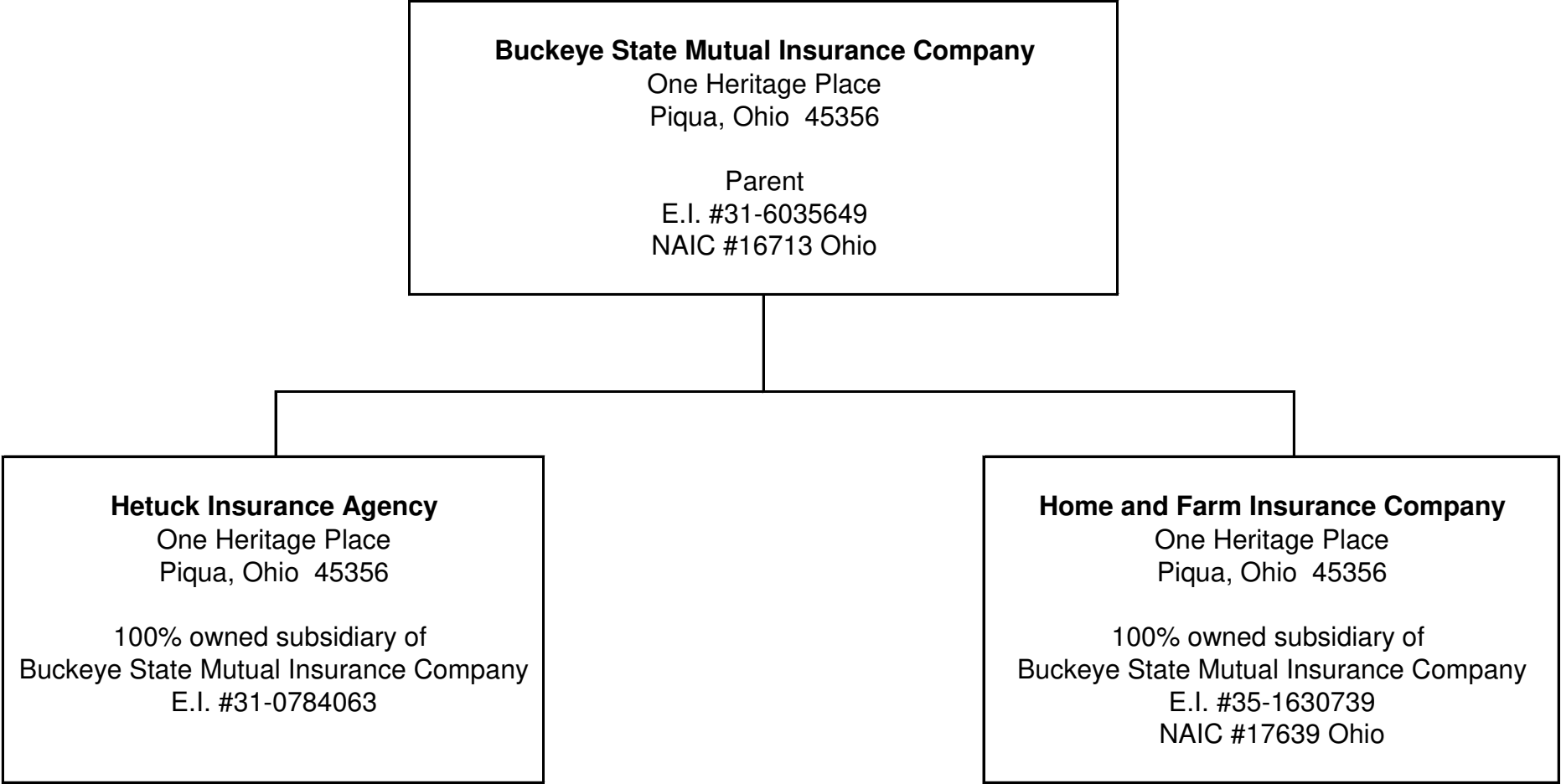
SCHEDULE T - EXHIBIT OF PREMIUMS WRITTEN

Current Year to Date - Allocated by States and Territories							
States, etc.	1 Active Status (a)	Direct Premiums Written		Direct Losses Paid (Deducting Salvage)		Direct Losses Unpaid	
		2 Current Year To Date	3 Prior Year To Date	4 Current Year To Date	5 Prior Year To Date	6 Current Year To Date	7 Prior Year To Date
1. Alabama	AL	N					
2. Alaska	AK	N					
3. Arizona	AZ	L					
4. Arkansas	AR	N					
5. California	CA	N					
6. Colorado	CO	L		(1,581)	(1,747)		
7. Connecticut	CT	N					
8. Delaware	DE	N					
9. District of Columbia	DC	N					
10. Florida	FL	N					
11. Georgia	GA	L		(360)	(327)		
12. Hawaii	HI	N					
13. Idaho	ID	N					
14. Illinois	IL	L					
15. Indiana	IN	L	6,320,497	6,330,168	4,906,361	4,256,759	2,835,068
16. Iowa	IA	L				(7,070)	
17. Kansas	KS	L	8,370,612	7,690,950	5,053,571	5,011,858	2,919,044
18. Kentucky	KY	N					2,559,975
19. Louisiana	LA	N					
20. Maine	ME	N					
21. Maryland	MD	N					
22. Massachusetts	MA	N					
23. Michigan	MI	L					
24. Minnesota	MN	L					
25. Mississippi	MS	N					
26. Missouri	MO	N					
27. Montana	MT	N					
28. Nebraska	NE	L					
29. Nevada	NV	N					
30. New Hampshire	NH	N					
31. New Jersey	NJ	N					
32. New Mexico	NM	L					
33. New York	NY	N					
34. North Carolina	NC	N					
35. North Dakota	ND	L					
36. Ohio	OH	L	18,885,806	16,413,990	12,831,984	11,008,723	4,295,861
37. Oklahoma	OK	N					3,373,324
38. Oregon	OR	N					
39. Pennsylvania	PA	N					
40. Rhode Island	RI	N					
41. South Carolina	SC	N					
42. South Dakota	SD	L		(2,355)	(67)		
43. Tennessee	TN	N					
44. Texas	TX	N					
45. Utah	UT	N					
46. Vermont	VT	N					
47. Virginia	VA	N					
48. Washington	WA	N					
49. West Virginia	WV	N					
50. Wisconsin	WI	L					
51. Wyoming	WY	N					
52. American Samoa	AS	N					
53. Guam	GU	N					
54. Puerto Rico	PR	N					
55. U.S. Virgin Islands	VI	N					
56. Northern Mariana Islands	MP	N					
57. Canada	CAN	N					
58. Aggregate Other Alien OT	XXX	0	0	0	0	0	0
59. Totals	XXX	33,576,915	30,435,108	22,787,620	20,268,129	10,049,973	7,612,197
DETAILS OF WRITE-INS							
58001.	XXX						
58002.	XXX						
58003.	XXX						
58998. Summary of remaining write-ins for Line 58 from overflow page	XXX	0	0	0	0	0	0
58999. Totals (Lines 58001 through 58003 plus 58998)(Line 58 above)	XXX	0	0	0	0	0	0

(a) Active Status Counts:

1. L - Licensed or Chartered - Licensed insurance carrier or domiciled RRG.....	15	4. Q - Qualified - Qualified or accredited reinsurer.....	0
2. R - Registered - Non-domiciled RRGs.....	0	5. D - Domestic Surplus Lines Insurer (DSLII) - Reporting entities authorized to write surplus lines in the state of domicile.....	0
3. E - Eligible - Reporting entities eligible or approved to write surplus lines in the state (other than their state of domicile - see DSLI).....	0	6. N - None of the above - Not allowed to write business in the state.....	42

SCHEDULE Y - INFORMATION CONCERNING ACTIVITIES OF INSURER MEMBERS OF A HOLDING COMPANY GROUP
PART 1 - ORGANIZATIONAL CHART



SCHEDULE Y

PART 1A - DETAIL OF INSURANCE HOLDING COMPANY SYSTEM

Asterisk	Explanation

PART 1 - LOSS EXPERIENCE

Line of Business		Current Year to Date			4 Prior Year to Date Direct Loss Percentage
		1 Direct Premiums Earned	2 Direct Losses Incurred	3 Direct Loss Percentage	
1.	Fire	1,646,177	1,093,809	66.4	45.4
2.1	Allied Lines			0.0	0.0
2.2	Multiple peril crop			0.0	0.0
2.3	Federal flood			0.0	0.0
2.4	Private crop			0.0	0.0
2.5	Private flood	3,536		0.0	0.0
3.	Farmowners multiple peril	8,503,124	8,867,955	104.3	79.3
4.	Homeowners multiple peril	7,414,396	6,334,810	85.4	49.6
5.1	Commercial multiple peril (non-liability portion)			0.0	
5.2	Commercial multiple peril (liability portion)			0.0	
6.	Mortgage guaranty			0.0	0.0
8.	Ocean marine			0.0	0.0
9.	Inland marine	181,329	13,382	7.4	13.0
10.	Financial guaranty			0.0	0.0
11.1	Medical professional liability - occurrence			0.0	0.0
11.2	Medical professional liability - claims-made			0.0	0.0
12.	Earthquake			0.0	0.0
13.1	Comprehensive (hospital and medical) individual			0.0	0.0
13.2	Comprehensive (hospital and medical) group			0.0	0.0
14.	Credit accident and health			0.0	0.0
15.1	Vision only			0.0	0.0
15.2	Dental only			0.0	0.0
15.3	Disability income			0.0	0.0
15.4	Medicare supplement			0.0	0.0
15.5	Medicaid Title XIX			0.0	0.0
15.6	Medicare Title XVIII			0.0	0.0
15.7	Long-term care			0.0	0.0
15.8	Federal employees health benefits plan			0.0	0.0
15.9	Other health			0.0	0.0
16.	Workers' compensation			0.0	0.0
17.1	Other liability - occurrence	513,016	1,000,000	194.9	0.1
17.2	Other liability - claims-made			0.0	0.0
17.3	Excess workers' compensation			0.0	0.0
18.1	Products liability - occurrence			0.0	0.0
18.2	Products liability - claims-made			0.0	0.0
19.1	Private passenger auto no-fault (personal injury protection)	174,850	65,558	37.5	24.1
19.2	Other private passenger auto liability	5,978,518	2,993,559	50.1	48.2
19.3	Commercial auto no-fault (personal injury protection)			0.0	0.0
19.4	Other commercial auto liability			0.0	0.0
21.1	Private passenger auto physical damage	6,497,909	4,321,797	66.5	73.7
21.2	Commercial auto physical damage			0.0	0.0
22.	Aircraft (all perils)			0.0	0.0
23.	Fidelity			0.0	0.0
24.	Surety			0.0	0.0
26.	Burglary and theft			0.0	0.0
27.	Boiler and machinery			0.0	0.0
28.	Credit			0.0	0.0
29.	International			0.0	0.0
30.	Warranty			0.0	0.0
31.	Reinsurance - Nonproportional Assumed Property	XXX	XXX	XXX	XXX
32.	Reinsurance - Nonproportional Assumed Liability	XXX	XXX	XXX	XXX
33.	Reinsurance - Nonproportional Assumed Financial Lines	XXX	XXX	XXX	XXX
34.	Aggregate write-ins for other lines of business	0	0	0.0	0.0
35.	Totals	30,912,855	24,690,870	79.9	61.0
DETAILS OF WRITE-INS					
3401.				
3402.				
3403.				
3498.	Summary of remaining write-ins for Line 34 from overflow page	0	0	0.0	0.0
3499.	Totals (Lines 3401 through 3403 plus 3498)(Line 34 above)	0	0	0.0	0.0

STATEMENT AS OF SEPTEMBER 30, 2023 OF THE BUCKEYE STATE MUTUAL INSURANCE COMPANY

PART 2 - DIRECT PREMIUMS WRITTEN

Line of Business		1 Current Quarter	2 Current Year to Date	3 Prior Year Year to Date
1.	Fire	498,943	1,601,076	1,658,529
2.1	Allied Lines	0		
2.2	Multiple peril crop	0		
2.3	Federal flood	0		
2.4	Private crop	0		
2.5	Private flood	1,584	3,799	3,813
3.	Farmowners multiple peril	2,822,219	9,040,974	8,464,207
4.	Homeowners multiple peril	3,052,077	8,283,212	7,293,858
5.1	Commercial multiple peril (non-liability portion)	0		
5.2	Commercial multiple peril (liability portion)	0		
6.	Mortgage guaranty	0		
8.	Ocean marine	0		
9.	Inland marine	58,332	185,622	184,896
10.	Financial guaranty	0		
11.1	Medical professional liability - occurrence	0		
11.2	Medical professional liability - claims-made	0		
12.	Earthquake	0		
13.1	Comprehensive (hospital and medical) individual	0		
13.2	Comprehensive (hospital and medical) group	0		
14.	Credit accident and health	0		
15.1	Vision only	0		
15.2	Dental only	0		
15.3	Disability income	0		
15.4	Medicare supplement	0		
15.5	Medicaid Title XIX	0		
15.6	Medicare Title XVIII	0		
15.7	Long-term care	0		
15.8	Federal employees health benefits plan	0		
15.9	Other health	0		
16.	Workers' compensation	0		
17.1	Other liability - occurrence	145,896	547,807	508,027
17.2	Other liability - claims-made	0		
17.3	Excess workers' compensation	0		
18.1	Products liability - occurrence	0		
18.2	Products liability - claims-made	0		
19.1	Private passenger auto no-fault (personal injury protection)	60,259	188,758	178,637
19.2	Other private passenger auto liability	2,089,213	6,272,951	6,015,644
19.3	Commercial auto no-fault (personal injury protection)	0		
19.4	Other commercial auto liability	0		
21.1	Private passenger auto physical damage	2,520,460	7,452,715	6,127,497
21.2	Commercial auto physical damage	0		
22.	Aircraft (all perils)	0		
23.	Fidelity	0		
24.	Surety	0		
26.	Burglary and theft	0		
27.	Boiler and machinery	0		
28.	Credit	0		
29.	International	0		
30.	Warranty	0		
31.	Reinsurance - Nonproportional Assumed Property	XXX	XXX	XXX
32.	Reinsurance - Nonproportional Assumed Liability	XXX	XXX	XXX
33.	Reinsurance - Nonproportional Assumed Financial Lines	XXX	XXX	XXX
34.	Aggregate write-ins for other lines of business	0	0	0
35.	Totals	11,248,983	33,576,914	30,435,108
DETAILS OF WRITE-INS				
3401.			
3402.			
3403.			
3498.	Summary of remaining write-ins for Line 34 from overflow page	0	0	0
3499.	Totals (Lines 3401 through 3403 plus 3498)(Line 34 above)	0	0	0

STATEMENT AS OF SEPTEMBER 30, 2023 OF THE BUCKEYE STATE MUTUAL INSURANCE COMPANY

PART 3 (000 omitted)

LOSS AND LOSS ADJUSTMENT EXPENSE RESERVES SCHEDULE

	1	2	3	4	5	6	7	8	9	10	11	12	13	
Years in Which Losses Occurred	Prior Year-End Known Case Loss and LAE Reserves	Prior Year-End IBNR Loss and LAE Reserves	Total Prior Year-End Loss and LAE Reserves (Cols. 1+2)	2023 Loss and LAE Payments on Claims Reported as of Prior Year-End	2023 Loss and LAE Payments on Claims Unreported as of Prior Year-End	Total 2023 Loss and LAE Payments (Cols. 4+5)	Q.S. Date Known Case Loss and LAE Reserves on Claims Reported and Open as of Prior Year End	Q.S. Date Known Case Loss and LAE Reserves on Claims Reported or Reopened Subsequent to Prior Year End	Q.S. Date IBNR Loss and LAE Reserves	Total Q.S. Loss and LAE Reserves (Cols.7+8+9)	Prior Year-End Known Case Loss and LAE Reserves Developed (Savings)/ Deficiency (Cols.4+7 minus Col. 1)	Prior Year-End IBNR Loss and LAE Reserves Developed (Savings)/ Deficiency (Cols. 5+8+9 minus Col. 2)	Prior Year-End Total Loss and LAE Reserve Developed (Savings)/ Deficiency (Cols. 11+12)	
1. 2020 + Prior	543	255	798	221	3	224	507	0	69	576	185	(183)	2	
2. 2021	757	521	1,278	616	8	624	333	0	356	689	192	(157)	35	
3. Subtotals 2021 + Prior	1,300	776	2,076	837	11	848	840	0	425	1,265	377	(340)	37	
4. 2022	985	2,142	3,127	718	307	1,025	255	84	919	1,258	(12)	(832)	(844)	
5. Subtotals 2022 + Prior	2,285	2,918	5,203	1,555	318	1,873	1,095	84	1,344	2,523	365	(1,172)	(807)	
6. 2023	XXX	XXX	XXX	XXX	16,371	16,371	XXX	3,597	1,565	5,162	XXX	XXX	XXX	
7. Totals	2,285	2,918	5,203	1,555	16,689	18,244	1,095	3,681	2,909	7,685	365	(1,172)	(807)	
8. Prior Year-End Surplus As Regards Policyholders	24,127										Col. 11, Line 7 As % of Col. 1 Line 7	Col. 12, Line 7 As % of Col. 2 Line 7	Col. 13, Line 7 As % of Col. 3 Line 7	
												1. 16.0	2. (40.2)	3. (15.5)
													Col. 13, Line 7 As a % of Col. 1 Line 8	
													4. (3.3)	

STATEMENT AS OF SEPTEMBER 30, 2023 OF THE BUCKEYE STATE MUTUAL INSURANCE COMPANY

SUPPLEMENTAL EXHIBITS AND SCHEDULES INTERROGATORIES

The following supplemental reports are required to be filed as part of your statement filing. However, in the event that your company does not transact the type of business for which the special report must be filed, your response of NO to the specific interrogatory will be accepted in lieu of filing a "NONE" report and a bar code will be printed below. If the supplement is required of your company but is not being filed for whatever reason enter SEE EXPLANATION and provide an explanation following the interrogatory questions.

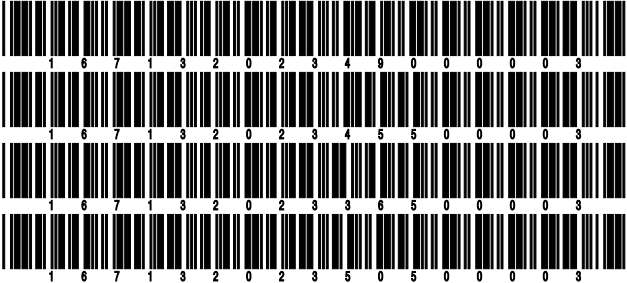
	Response
1. Will the Trusteed Surplus Statement be filed with the state of domicile and the NAIC with this statement?	NO
2. Will Supplement A to Schedule T (Medical Professional Liability Supplement) be filed with this statement?	NO
3. Will the Medicare Part D Coverage Supplement be filed with the state of domicile and the NAIC with this statement?	NO
4. Will the Director and Officer Insurance Coverage Supplement be filed with the state of domicile and the NAIC with this statement?	NO
AUGUST FILING	
5. Will the regulator-only (non-public) Communication of Internal Control Related Matters Noted in Audit be filed with the state of domicile and electronically with the NAIC (as a regulator-only non-public document) by August 1? The response for 1st and 3rd quarters should be N/A. A NO response resulting with a bar code is only appropriate in the 2nd quarter.	N/A

Explanations:

1.
2.
3.
4.

Bar Codes:

1. Trusteed Surplus Statement [Document Identifier 490]
2. Supplement A to Schedule T [Document Identifier 455]
3. Medicare Part D Coverage Supplement [Document Identifier 365]
4. Director and Officer Supplement [Document Identifier 505]



NONE

SCHEDULE A - VERIFICATION

Real Estate

	1	2
	Year to Date	Prior Year Ended December 31
1. Book/adjusted carrying value, December 31 of prior year		
2. Cost of acquired:		
2.1 Actual cost at time of acquisition		
2.2 Additional investment made after acquisition		
3. Current year change in encumbrances		
4. Total gain (loss) on disposals		
5. Deduct amounts received on disposals		
6. Total foreign exchange change in book/adjusted carrying value		
7. Deduct current year's other than temporary impairment recognized		
8. Deduct current year's depreciation		
9. Book/adjusted carrying value at the end of current period (Lines 1+2+3+4-5+6-7-8)		
10. Deduct total nonadmitted amounts		
11. Statement value at end of current period (Line 9 minus Line 10)		

SCHEDULE B - VERIFICATION

Mortgage Loans

	1	2
	Year to Date	Prior Year Ended December 31
1. Book value/recorded investment excluding accrued interest, December 31 of prior year		
2. Cost of acquired:		
2.1 Actual cost at time of acquisition		
2.2 Additional investment made after acquisition		
3. Capitalized deferred interest and other		
4. Accrual of discount		
5. Unrealized valuation increase (decrease)		
6. Total gain (loss) on disposals		
7. Deduct amounts received on disposals		
8. Deduct amortization of premium and mortgage interest paid and commitment fees		
9. Total foreign exchange change in book value/recorded investment excluding accrued interest		
10. Deduct current year's other than temporary impairment recognized		
11. Book value/recorded investment excluding accrued interest at end of current period (Lines 1+2+3+4+5+6-7-8+9-10)		
12. Total valuation allowance		
13. Subtotal (Line 11 plus Line 12)		
14. Deduct total nonadmitted amounts		
15. Statement value at end of current period (Line 13 minus Line 14)		

SCHEDULE BA - VERIFICATION

Other Long-Term Invested Assets

	1	2
	Year to Date	Prior Year Ended December 31
1. Book/adjusted carrying value, December 31 of prior year		
2. Cost of acquired:		
2.1 Actual cost at time of acquisition		
2.2 Additional investment made after acquisition		
3. Capitalized deferred interest and other		
4. Accrual of discount		
5. Unrealized valuation increase (decrease)		
6. Total gain (loss) on disposals		
7. Deduct amounts received on disposals		
8. Deduct amortization of premium and depreciation		
9. Total foreign exchange change in book/adjusted carrying value		
10. Deduct current year's other than temporary impairment recognized		
11. Book/adjusted carrying value at end of current period (Lines 1+2+3+4+5+6-7-8+9-10)		
12. Deduct total nonadmitted amounts		
13. Statement value at end of current period (Line 11 minus Line 12)		

SCHEDULE D - VERIFICATION

Bonds and Stocks

	1	2
	Year to Date	Prior Year Ended December 31
1. Book/adjusted carrying value of bonds and stocks, December 31 of prior year	42,600,895	43,561,664
2. Cost of bonds and stocks acquired	585,389	6,737,796
3. Accrual of discount	32,944	36,695
4. Unrealized valuation increase (decrease)	(20,313)	(1,036,454)
5. Total gain (loss) on disposals	(17)	371,263
6. Deduct consideration for bonds and stocks disposed of	2,692,486	6,939,936
7. Deduct amortization of premium	94,233	140,781
8. Total foreign exchange change in book/adjusted carrying value	0	
9. Deduct current year's other than temporary impairment recognized	0	
10. Total investment income recognized as a result of prepayment penalties and/or acceleration fees	0	10,648
11. Book/adjusted carrying value at end of current period (Lines 1+2+3+4+5-6-7+8-9+10)	40,412,179	42,600,895
12. Deduct total nonadmitted amounts	53,958	53,958
13. Statement value at end of current period (Line 11 minus Line 12)	40,358,221	42,546,937

STATEMENT AS OF SEPTEMBER 30, 2023 OF THE BUCKEYE STATE MUTUAL INSURANCE COMPANY

SCHEDULE D - PART 1B

Showing the Acquisitions, Dispositions and Non-Trading Activity
During the Current Quarter for all Bonds and Preferred Stock by NAIC Designation

NAIC Designation	1 Book/Adjusted Carrying Value Beginning of Current Quarter	2 Acquisitions During Current Quarter	3 Dispositions During Current Quarter	4 Non-Trading Activity During Current Quarter	5 Book/Adjusted Carrying Value End of First Quarter	6 Book/Adjusted Carrying Value End of Second Quarter	7 Book/Adjusted Carrying Value End of Third Quarter	8 Book/Adjusted Carrying Value December 31 Prior Year
BONDS								
1. NAIC 1 (a)	23,923,824	166	913,357	242,178	24,552,368	23,923,824	23,252,811	24,700,321
2. NAIC 2 (a)	4,855,076	0	0	(261,706)	5,422,213	4,855,076	4,593,370	5,428,009
3. NAIC 3 (a)	0	0	0	0	0	0	0	
4. NAIC 4 (a)	0	0	0	0	0	0	0	
5. NAIC 5 (a)	0	0	0	0	0	0	0	
6. NAIC 6 (a)	0	0	0	0	0	0	0	
7. Total Bonds	28,778,900	166	913,357	(19,528)	29,974,581	28,778,900	27,846,181	30,128,330
PREFERRED STOCK								
8. NAIC 1	0	0	0	0	0	0	0	0
9. NAIC 2	0	0	0	0	0	0	0	0
10. NAIC 3	0	0	0	0	0	0	0	0
11. NAIC 4	0	0	0	0	0	0	0	0
12. NAIC 5	0	0	0	0	0	0	0	0
13. NAIC 6	0	0	0	0	0	0	0	0
14. Total Preferred Stock	0	0	0	0	0	0	0	0
15. Total Bonds and Preferred Stock	28,778,900	166	913,357	(19,528)	29,974,581	28,778,900	27,846,181	30,128,330

(a) Book/Adjusted Carrying Value column for the end of the current reporting period includes the following amount of short-term and cash equivalent bonds by NAIC designation:

NAIC 1 \$0 ; NAIC 2 \$0 ; NAIC 3 \$0 NAIC 4 \$0 ; NAIC 5 \$0 ; NAIC 6 \$0

SCHEDULE DA - PART 1

Short-Term Investments

	1	2	3	4	5
	Book/Adjusted Carrying Value	Par Value	Actual Cost	Interest Collected Year-to-Date	Paid for Accrued Interest Year-to-Date
7709999999 Totals	0	xxx	0	0	0

SCHEDULE DA - VERIFICATION

Short-Term Investments

	1	2
	Year To Date	Prior Year Ended December 31
1. Book/adjusted carrying value, December 31 of prior year		
2. Cost of short-term investments acquired		
3. Accrual of discount		
4. Unrealized valuation increase (decrease)		
5. Total gain (loss) on disposals		
6. Deduct consideration received on disposals		
7. Deduct amortization of premium		
8. Total foreign exchange change in book/adjusted carrying value		
9. Deduct current year's other than temporary impairment recognized		
10. Book/adjusted carrying value at end of current period (Lines 1+2+3+4+5-6-7+8-9)		
11. Deduct total nonadmitted amounts		
12. Statement value at end of current period (Line 10 minus Line 11)		

NONE

Schedule DB - Part A - Verification - Options, Caps, Floors, Collars, Swaps and Forwards

N O N E

Schedule DB - Part B - Verification - Futures Contracts

N O N E

Schedule DB - Part C - Section 1 - Replication (Synthetic Asset) Transactions (RSATs) Open

N O N E

Schedule DB-Part C-Section 2-Reconciliation of Replication (Synthetic Asset) Transactions Open

N O N E

Schedule DB - Verification - Book/Adjusted Carrying Value, Fair Value and Potential Exposure of
Derivatives

N O N E

SCHEDULE E - PART 2 - VERIFICATION

(Cash Equivalents)

	1	2
	Year To Date	Prior Year Ended December 31
1. Book/adjusted carrying value, December 31 of prior year	550,993	596,649
2. Cost of cash equivalents acquired	2,669,820	6,662,539
3. Accrual of discount	0	0
4. Unrealized valuation increase (decrease)	0	0
5. Total gain (loss) on disposals	0	0
6. Deduct consideration received on disposals	3,063,585	6,708,195
7. Deduct amortization of premium	0	0
8. Total foreign exchange change in book/adjusted carrying value	0	0
9. Deduct current year's other than temporary impairment recognized	0	0
10. Book/adjusted carrying value at end of current period (Lines 1+2+3+4+5-6-7+8-9)	157,228	550,993
11. Deduct total nonadmitted amounts	0	0
12. Statement value at end of current period (Line 10 minus Line 11)	157,228	550,993

Schedule A - Part 2 - Real Estate Acquired and Additions Made

N O N E

Schedule A - Part 3 - Real Estate Disposed

N O N E

Schedule B - Part 2 - Mortgage Loans Acquired and Additions Made

N O N E

Schedule B - Part 3 - Mortgage Loans Disposed, Transferred or Repaid

N O N E

Schedule BA - Part 2 - Other Long-Term Invested Assets Acquired and Additions Made

N O N E

Schedule BA - Part 3 - Other Long-Term Invested Assets Disposed, Transferred or Repaid

N O N E

STATEMENT AS OF SEPTEMBER 30, 2023 OF THE BUCKEYE STATE MUTUAL INSURANCE COMPANY

SCHEDULE D - PART 3

Show All Long-Term Bonds and Stock Acquired During the Current Quarter

1	2	3	4	5	6	7	8	9	10
CUSIP Identification	Description	Foreign	Date Acquired	Name of Vendor	Number of Shares of Stock	Actual Cost	Par Value	Paid for Accrued Interest and Dividends	NAIC Designation, NAIC Designation Modifier and SVO Administrative Symbol
23242M-AD-3	CIVL 2006-S3 A409/27/2023	ADJUSTMENT1661660	1. A FM
1109999999. Subtotal - Bonds - Industrial and Miscellaneous (Unaffiliated)					1661660	XXX
2509999997. Total - Bonds - Part 3					1661660	XXX
2509999998. Total - Bonds - Part 5					XXXXXXXXX	XXX
2509999999. Total - Bonds					1661660	XXX
4509999997. Total - Preferred Stocks - Part 3					0XXX0	XXX
4509999998. Total - Preferred Stocks - Part 5					XXXXXXXXX	XXX
4509999999. Total - Preferred Stocks					0XXX0	XXX
00287Y-10-9	ABBVIE INC07/13/2023	US BANK23.0003.0720
036752-10-3	ANTHEM INC07/13/2023	US BANK5.0002.0820
099724-10-6	BORGWARNER INC07/13/2023	US BANK429.00019.9220
18539C-20-4	CLEARWAY ENERGY INC07/13/2023	US BANK799.00022.2070
191216-10-0	COCA-COLA CO/THE07/13/2023	US BANK139.0008.3730
224441-10-5	CRANE NXT CO07/13/2023	US BANK106.0006.0960
244199-10-5	DEERE & CO07/13/2023	US BANK47.00019.2850
253868-10-3	DIGITAL REALTY TRST INC07/13/2023	US BANK184.00021.6690
302491-30-3	FMC CORP07/13/2023	US BANK215.00020.6930
34965K-10-7	FORTREA HOLDINGS INC07/05/2023	SPIN OFF63.0002.0900
369550-10-8	GENERAL DYNAMICS CORP07/13/2023	US BANK99.00021.4490
45073V-10-8	ITT INC07/13/2023	US BANK180.00017.5770
46625H-10-0	JPMORGAN CHASE & CO07/13/2023	US BANK94.00014.0040
46982L-10-8	JACOBS SOLUTIONS INC07/13/2023	US BANK153.00019.0260
526057-10-4	LENNAR CORP CL A07/13/2023	US BANK167.00021.7190
580135-10-1	MCDONALD'S CORP07/13/2023	US BANK92.00027.2540
58933Y-10-5	MERCK & CO INC07/13/2023	US BANK25.0002.6690
742718-10-9	PROCTER & GAMBLE CO07/13/2023	US BANK63.0009.3690
74340W-10-3	PROLOGIS INC07/13/2023	US BANK59.0007.4320
747525-10-3	QUALCOMM INC07/13/2023	US BANK172.00020.8450
78409V-10-4	S&P GLOB INC07/13/2023	US BANK58.00023.7720
949746-10-1	WELLS FARGO & CO07/13/2023	US BANK228.0009.9180
5019999999. Subtotal - Common Stocks - Industrial and Miscellaneous (Unaffiliated) Publicly Traded					320.523XXX0	XXX
315793-57-0	FIDELITY FREEDOM INDEX 2050 FU09/15/2023	US BANK93.5032.0760
315793-58-8	FIDELITY FREEDOM INDEX 2045 FU09/15/2023	US BANK5.5101220
315793-59-6	FIDELITY FREEDOM INDEX 2040 FU09/15/2023	US BANK57.4331.2210
315793-61-2	FIDELITY FREEDOM INDEX 2035 FU09/15/2023	US BANK366.6067.5700
315793-62-0	FIDELITY FREEDOM INDEX 2030 FU09/15/2023	US BANK66.9791.2210
5329999999. Subtotal - Common Stocks - Mutual Funds - Designations Not Assigned by the SVO					12.210XXX0	XXX
5989999997. Total - Common Stocks - Part 3					332.733XXX0	XXX
5989999998. Total - Common Stocks - Part 5					XXXXXXXXX	XXX
5989999999. Total - Common Stocks					332.733XXX0	XXX
5999999999. Total - Preferred and Common Stocks					332.733XXX0	XXX
6009999999 - Totals					332.899XXX0	XXX

STATEMENT AS OF SEPTEMBER 30, 2023 OF THE BUCKEYE STATE MUTUAL INSURANCE COMPANY

SCHEDULE D - PART 4

Show All Long-Term Bonds and Stock Sold, Redeemed or Otherwise Disposed of During the Current Quarter

1	2	3	4	5	6	7	8	9	10	Change In Book/Adjusted Carrying Value					16	17	18	19	20	21	22
										11	12	13	14	15							
CUSIP Identification	Description	For- eign	Disposal Date	Name of Purchaser	Number of Shares of Stock	Consid- eration	Par Value	Actual Cost	Prior Year Book/ Adjusted Carrying Value	Unrealized Valuation Increase/ (Decrease)	Current Year's (Amor- tization)/ Accretion	Current Year's Other Than Temporary Impairment Recogn- ized	Total Change in Book/ Adjusted Carrying Value (11 + 12 - 13)	Total Foreign Exchange Change in Book /Adjusted Carrying Value	Book/ Adjusted Carrying Value at Disposal Date	Foreign Exchange Gain (Loss) on Disposal	Realized Gain (Loss) on Disposal	Total Gain (Loss) on Disposal	Bond Interest/ Stock Dividends Received During Year	Stated Con- tractual Maturity Date	NAIC Desig- nation, NAIC Desig- nation Modifier and SVO Admini- strative Symbol
..38378B-6L-8	GNMA 2013-12 B	09/01/2023	MBS PMT	4,525	4,525	4,621	4,5330(8)0(8)0	4,525000	62	11/16/2052	1.A
..38378B-OF-9	GNMA 2012-27 C	09/01/2023	MBS PMT	3,381	3,381	3,391	3,38100000	3,381000	70	03/16/2044	1.A
..38378B-RE-1	GNMA 2012-35 C	07/01/2023	MBS PMT	12,950	12,950	13,213	12,9970(47)0(47)0	12,950000	246	11/16/2052	1.A
..38378U-ZP-5	GNMA 2013-144 VX	09/01/2023	MBS PMT	5,226	5,226	5,408	5,2450(18)0(18)0	5,226000	105	01/20/2043	1.A
0109999999. Subtotal - Bonds - U.S. Governments						26,082	26,082	26,633	26,156	0	(73)	0	(73)	0	26,082	0	0	0	483	XXX	XXX
..3128M5-GU-8	FHLMC G03511	09/01/2023	MBS PMT	5	5	5	500000	5000	0	10/01/2037	1.A
..3128M7-YV-2	FHLMC G05824	09/01/2023	MBS PMT	378	378	407	37800000	378000	14	01/01/2040	1.A
..3128MD-W7-4	FHLMC G14970	09/01/2023	MBS PMT	3,554	3,554	3,729	3,5730(18)0(18)0	3,554000	84	12/01/2028	1.A
..3128MJ-V2-3	FHLMC G08632	09/01/2023	MBS PMT	1,392	1,392	1,459	1,3960(4)0(4)0	1,392000	32	03/01/2045	1.A
..3128MJ-WB-2	FHLMC G08641	09/01/2023	MBS PMT	1,278	1,278	1,342	1,2820(4)0(4)0	1,278000	30	05/01/2045	1.A
..3128MJ-X3-9	FHLMC G08697	09/01/2023	MBS PMT	2,084	2,084	2,139	2,0870(3)0(3)0	2,084000	42	03/01/2046	1.A
..3128MJ-XK-1	FHLMC G08681	09/01/2023	MBS PMT	1,960	1,960	2,043	1,9650(5)0(5)0	1,960000	45	12/01/2045	1.A
..3128MJ-YJ-3	FHLMC G08712	09/01/2023	MBS PMT	749	749	780	7500(2)0(2)0	749000	20	06/01/2046	1.A
..3128MJ-Z6-0	FHLMC G08764	09/01/2023	MBS PMT	1,047	1,047	1,131	1,0520(5)0(5)0	1,047000	31	05/01/2047	1.A
..3128O0-KX-4	FHLMC J19310	09/01/2023	MBS PMT	2,789	2,789	2,914	2,8000(11)0(11)0	2,789000	53	06/01/2027	1.A
..3129ZL-W6-8	FHLMC C04269	09/01/2023	MBS PMT	1,904	1,904	2,000	1,9080(4)0(4)0	1,904000	38	10/01/2042	1.A
..3132DV-5X-9	FHLMC SD8062	09/01/2023	MBS PMT	2,511	2,511	2,650	2,5190(8)0(8)0	2,511000	50	05/01/2050	1.A
..3132J4-QW-2	FHLMC G31168	09/01/2023	MBS PMT	910	910	942	9120(2)0(2)0	910000	24	02/01/2039	1.A
..3132J6-Z9-8	FHLMC Q15767	09/01/2023	MBS PMT	2,162	2,162	2,229	2,1650(3)0(3)0	2,162000	46	02/01/2043	1.A
..3133SB-FV-3	FHLMC G61080	09/01/2023	MBS PMT	4,294	4,294	4,495	4,3090(15)0(15)0	4,294000	128	03/01/2047	1.A
..31339S-E2-7	FHLMC QA2853	09/01/2023	MBS PMT	1,719	1,719	1,741	1,7200(1)0(1)0	1,719000	34	09/01/2049	1.A
..31339S-PU-3	FHLMC QA3135	09/01/2023	MBS PMT	360	360	376	3600(2)0(2)0	360000	10	09/01/2049	1.A
..3136A1-X8-3	FNMA 2011-115 KE	09/01/2023	MBS PMT	3,224	3,224	3,266	3,2280(4)0(4)0	3,224000	54	10/25/2039	1.A
..3136AG-DN-9	FNMA 2013-97 EK	09/01/2023	MBS PMT	8,413	8,413	8,676	8,4440(31)0(31)0	8,413000	168	11/25/2028	1.A
..31371M-UK-1	FNMA #256286	09/01/2023	MBS PMT	5	5	5	500000	5000	0	06/01/2036	1.A
..3137AT-6B-3	FHLMC 4098 HA	09/01/2023	MBS PMT	2,487	2,487	2,518	2,4890(2)0(2)0	2,487000	34	05/15/2041	1.A
..3138AX-XQ-9	FNMA #AJ6086	09/01/2023	MBS PMT	1,702	1,702	1,802	1,7120(10)0(10)0	1,702000	34	12/01/2026	1.A
..3138EJ-AV-0	FNMA #AL1819	09/01/2023	MBS PMT	1,963	1,963	2,114	1,9710(8)0(8)0	1,963000	46	05/01/2042	1.A
..3138EK-6P-5	FNMA #AL3577	09/01/2023	MBS PMT	3,239	3,239	3,476	3,2530(14)0(14)0	3,239000	77	04/01/2043	1.A
..3139SV-NZ-8	FHLMC 2985 LA	09/01/2023	MBS PMT	9	9	9	900000	9000	0	06/15/2035	1.A
..31408F-6D-6	FNMA #850568	09/01/2023	MBS PMT	4	4	4	400000	4000	0	01/01/2036	1.A
..3140FE-6B-5	FNMA #BD7165	09/01/2023	MBS PMT	1,360	1,360	1,438	1,3650(4)0(4)0	1,360000	35	04/01/2047	1.A
..3140J7-UL-7	FNMA #BM3286	09/01/2023	MBS PMT	2,627	2,627	2,739	2,6390(12)0(12)0	2,627000	82	11/01/2047	1.A
..3140JX-RN-0	FNMA #B03192	09/01/2023	MBS PMT	2,707	2,707	2,795	2,7130(6)0(6)0	2,707000	54	10/01/2049	1.A
..3140QE-BR-2	FNMA #CA6347	09/01/2023	MBS PMT	4,098	4,098	3,755	4,0780200200	4,098000	69	07/01/2050	1.A
..3140XA-RG-3	FNMA #FM1386	09/01/2023	MBS PMT	6,637	6,637	6,970	6,6680(30)0(30)0	6,637000	215	08/01/2049	1.A
..3140X7-7H-6	FNMA #FM4495	09/01/2023	MBS PMT	6,463	6,463	6,753	6,4790(16)0(16)0	6,463000	86	10/01/2050	1.A
..3140X7-VV-8	FNMA #FM4227	09/01/2023	MBS PMT	2,979	2,979	3,142	2,9860(7)0(7)0	2,979000	46	09/01/2050	1.A
..3140XA-SX-1	FNMA #FM6833	09/01/2023	MBS PMT	2,417	2,417	2,432	2,4170(1)0(1)0	2,417000	32	04/01/2051	1.A
..31414F-GG-0	FNMA #964699	07/25/2023	MBS PMT	4	4	4	400000	4000	0	08/01/2023	1.A
..31417A-QE-2	FNMA #AB4052	09/01/2023	MBS PMT	1,212	1,212	1,278	1,2150(2)0(2)0	1,212000	31	12/01/2041	1.A
..31417D-CZ-4	FNMA #AB6387	09/01/2023	MBS PMT	1,935	1,935	2,042	1,9400(5)0(5)0	1,935000	38	10/01/2042	1.A
..31418C-RD-8	FNMA #MA3183	09/01/2023	MBS PMT	1,263	1,263	1,325	1,2660(4)0(4)0	1,263000	33	11/01/2047	1.A
..31418D-CS-9	FNMA #MA3680	09/01/2023	MBS PMT	4,255	4,255	4,416	4,2820(27)0(27)0	4,255000	98	06/01/2029	1.A
..31418D-ET-5	FNMA #MA3745	09/01/2023	MBS PMT	2,535	2,535	2,608	2,5390(4)0(4)0	2,535000	59	08/01/2049	1.A
..31418D-GF-3	FNMA #MA3797	09/01/2023	MBS PMT	3,355	3,355	3,374	3,3570(2)0(2)0	3,355000	56	10/01/2034	1.A

STATEMENT AS OF SEPTEMBER 30, 2023 OF THE BUCKEYE STATE MUTUAL INSURANCE COMPANY

SCHEDULE D - PART 4

Show All Long-Term Bonds and Stock Sold, Redeemed or Otherwise Disposed of During the Current Quarter

1	2	3	4	5	6	7	8	9	10	Change In Book/Adjusted Carrying Value					16	17	18	19	20	21	22
										11	12	13	14	15							
CUSIP Identification	Description	For- eign	Disposal Date	Name of Purchaser	Number of Shares of Stock	Consid- eration	Par Value	Actual Cost	Prior Year Book/ Adjusted Carrying Value	Unrealized Valuation Increase/ (Decrease)	Current Year's (Amor- tization)/ Accretion	Current Year's Other Than Temporary Impairment Recogn- ized	Total Change in Book/ Adjusted Carrying Value (11 + 12 - 13)	Total Foreign Exchange Change in Book /Adjusted Carrying Value	Book/ Adjusted Carrying Value at Disposal Date	Foreign Exchange Gain (Loss) on Disposal	Realized Gain (Loss) on Disposal	Total Gain (Loss) on Disposal	Bond Interest/ Stock Dividends Received During Year	Stated Con- tractual Maturity Date	NAIC Desig- nation, NAIC Desig- nation Modifier and SVO Admini- strative Symbol
..31418E-CZ-1	FNMA #MA4587		09/01/2023	MBS PMT		2,982	2,982	2,770	2,966	0	16	0	16	0	2,982	0	0	0	49	04/01/2042	1.A
..345286-AC-2	FORDO 2022-A A3		09/15/2023	MBS PMT		23,124	23,124	23,078	23,101	0	23	0	23	0	23,124	0	0	0	216	06/15/2026	1.A FE
0909999999. Subtotal - Bonds - U.S. Special Revenues						120,095	120,095	123,171	120,313	0	(217)	0	(217)	0	120,095	0	0	0	2,293	XXX	XXX
..12667F-X9-1	CWALT 2005-3CB 1A11		09/01/2023	MBS PMT		10	11	10	10	2	0	0	2	0	10	0	0	0	0	03/25/2035	1.D FM
..17305E-FH-3	CCOIT 2013-A9 A9		09/07/2023	MBS PMT		250,000	250,000	275,029	255,674	0	(5,674)	0	(5,674)	0	250,000	0	0	0	9,300	09/08/2025	1.A FE
..23242M-AD-3	CIVL 2006-S3 A4		09/01/2023	MBS PMT		1,187	1,260	1,063	1,162	0	25	0	25	0	1,187	0	0	0	47	01/25/2029	1.A FM
..36258M-AE-4	GMCAR 2019-4 A4		07/01/2023	MBS PMT		79,577	79,577	81,999	80,218	0	(641)	0	(641)	0	79,577	0	0	0	817	01/16/2025	1.A FE
..44933F-AD-8	HART 2020-B A4		09/15/2023	MBS PMT		36,406	36,406	36,400	36,396	0	10	0	10	0	36,406	0	0	0	169	12/15/2025	1.A FE
..717081-EN-9	PFIZER INC		09/15/2023	MATURITY		150,000	150,000	162,711	152,478	0	(2,478)	0	(2,478)	0	150,000	0	0	0	4,800	09/15/2023	1.E FE
..13607R-AD-2	CANADIAN IMPERIAL BK		09/13/2023	MATURITY		250,000	250,000	268,558	253,753	0	(3,753)	0	(3,753)	0	250,000	0	0	0	8,750	09/13/2023	1.C FE
1109999999. Subtotal - Bonds - Industrial and Miscellaneous (Unaffiliated)						767,180	767,254	825,770	779,689	2	(12,511)	0	(12,509)	0	767,180	0	0	0	23,883	XXX	XXX
2509999997. Total - Bonds - Part 4						913,357	913,431	975,574	926,158	2	(12,801)	0	(12,799)	0	913,357	0	0	0	26,659	XXX	XXX
2509999998. Total - Bonds - Part 5						XXX	XXX	XXX	XXX	XXX	XXX	XXX	XXX	XXX	XXX	XXX	XXX	XXX	XXX	XXX	XXX
2509999999. Total - Bonds						913,357	913,431	975,574	926,158	2	(12,801)	0	(12,799)	0	913,357	0	0	0	26,659	XXX	XXX
4509999997. Total - Preferred Stocks - Part 4						0	XXX	0	0	0	0	0	0	0	0	0	0	0	0	XXX	XXX
4509999998. Total - Preferred Stocks - Part 5						XXX	XXX	XXX	XXX	XXX	XXX	XXX	XXX	XXX	XXX	XXX	XXX	XXX	XXX	XXX	XXX
4509999999. Total - Preferred Stocks						0	XXX	0	0	0	0	0	0	0	0	0	0	0	0	XXX	XXX
..00206R-10-2	AT&T INC		07/13/2023	VARIOUS	887,000	13,384		18,490	16,330	2,160	0	0	2,160	0	18,490	0	(5,106)	(5,106)	738		
..02079K-10-7	ALPHABET INC CL C		07/13/2023	US BANK	55,000	6,862		4,324	4,880	(557)	0	0	(557)	0	4,324	0	2,538	2,538	0		
..037833-10-0	APPLE INC		07/13/2023	APPLE INC	14,000	1,819		1,819	1,819	(429)	0	0	(429)	0	1,390	0	1,279	1,279	7		
..03990B-10-1	ARES MGMT CORP -		07/13/2023	US BANK	297,000	29,676		15,772	20,327	(4,555)	0	0	(4,555)	0	15,772	0	13,905	13,905	457		
..11135F-10-1	BROADCOM INC		07/13/2023	US BANK	8,000	7,104		2,502	4,473	(1,971)	0	0	(1,971)	0	2,502	0	4,602	4,602	74		
..166764-10-0	CHEVRON CORP		07/13/2023	US BANK	3,000	472		538	266	(273)	0	0	(273)	0	266	0	206	206	9		
..17275R-10-2	CISCO SYS INC		07/13/2023	US BANK	103,000	5,304		4,696	4,907	(210)	0	0	(210)	0	4,696	0	607	607	119		
..224408-10-4	CRANE CO		07/13/2023	US BANK	200,000	17,991		12,295	0	0	0	0	0	0	12,295	0	5,695	5,695	36		
..254687-10-6	WALT DISNEY CO/THE		07/13/2023	US BANK	211,000	19,093		25,793	18,332	7,461	0	0	7,461	0	25,793	0	(6,699)	(6,699)	0		
..25746U-10-9	DOMINION ENERGY INC		07/13/2023	US BANK	286,000	15,088		21,439	17,538	3,901	0	0	3,901	0	21,439	0	(6,351)	(6,351)	382		
..29261A-10-0	ENCOMPASS HLTH CORP		07/13/2023	US BANK	48,000	3,237		2,505	2,871	(366)	0	0	(366)	0	2,505	0	732	732	22		
..30190A-10-4	F&G ANNUITIES & LIFE INC		07/13/2023	US BANK	30,000	724		572	600	(28)	0	0	(28)	0	572	0	153	153	12		
..437076-10-2	HOME DEPOT INC		07/13/2023	US BANK	94,000	29,527		26,457	29,691	(3,234)	0	0	(3,234)	0	26,457	0	3,070	3,070	393		
..447011-10-7	HUNTSMAN CORP		07/13/2023	US BANK	564,000	15,999		11,861	15,499	(3,637)	0	0	(3,637)	0	11,861	0	4,137	4,137	268		
..46187W-10-7	INVITATION HOMES INC		07/13/2023	US BANK	549,000	19,336		15,873	16,272	(400)	0	0	(400)	0	15,873	0	3,463	3,463	285		
..50540R-40-9	LABORATORY CORP OF AMER		07/05/2023		0,000	2,090		2,090	2,090	0	0	0	0	0	2,090	0	0	0	0		
..512807-10-8	LAM RESEARCH CORP		07/13/2023	US BANK	8,000	5,105		2,710	3,362	(653)	0	0	(653)	0	2,710	0	2,395	2,395	41		
..513272-10-4	LAMB WESTON HLDGS INC		07/13/2023	US BANK	52,000	4,647		3,234	4,647	(1,412)	0	0	(1,412)	0	3,234	0	2,602	2,602	29		
..539830-10-9	LOCKHEED MARTIN CORP		07/13/2023	US BANK	41,000	19,074		15,443	19,946	(4,503)	0	0	(4,503)	0	15,443	0	3,631	3,631	246		
..56585A-10-2	MARATHON PETROLEUM CORP		07/13/2023	US BANK	37,000	4,419		1,363	4,306	(2,944)	0	0	(2,944)	0	1,363	0	3,056	3,056	56		
..594918-10-4	MICROSOFT CORP		07/13/2023	US BANK	8,000	2,734		1,723	1,919	(195)	0	0	(195)	0	1,723	0	1,010	1,010	11		
..617446-44-8	MORGAN STANLEY NEW		07/13/2023	US BANK	76,000	6,525		3,840	6,462	(2,622)	0	0	(2,622)	0	3,840	0	2,686	2,686	118		
..855244-10-9	STARBUCKS CORP		07/13/2023	US BANK	171,000	17,438		19,462	16,963	2,499	0	0	2,499	0	19,462	0	(2,024)	(2,024)	181		
..87612E-10-6	TARGET CORP		07/13/2023	US BANK	145,000	19,343		20,494	21,611	(1,116)	0	0	(1,116)	0	20,494	0	(1,152)	(1,152)	313		
..883556-10-2	THERMO FISHER SCIENTIFIC		07/13/2023	US BANK	7,000	3,680		2,743	3,855	(1,112)	0	0	(1,112)	0	2,743	0	937	937	7		
..92936U-10-9	JP CARREY INC		07/13/2023	US BANK	225,000	15,635		17,710	17,584	126	0	0	126	0	17,710	0	(2,075)	(2,075)	720		
5019999999. Subtotal - Common Stocks - Industrial and Miscellaneous (Unaffiliated) Publicly Traded						288,346	XXX	255,047	256,822	(14,070)	0	0	(14,070)	0	255,047	0	33,297	33,297	4,524	XXX	XXX

STATEMENT AS OF SEPTEMBER 30, 2023 OF THE BUCKEYE STATE MUTUAL INSURANCE COMPANY

SCHEDULE D - PART 4

Show All Long-Term Bonds and Stock Sold, Redeemed or Otherwise Disposed of During the Current Quarter

1	2	3	4	5	6	7	8	9	10	Change In Book/Adjusted Carrying Value					16	17	18	19	20	21	22
										11	12	13	14	15							
CUSIP Ident- ification	Description	For- eign	Disposal Date	Name of Purchaser	Number of Shares of Stock	Consid- eration	Par Value	Actual Cost	Prior Year Book/ Adjusted Carrying Value	Unrealized Valuation Increase/ (Decrease)	Current Year's (Amor- tization)/ Accretion	Current Year's Other Than Temporary Impairment Recog- nized	Total Change in Book/ Adjusted Carrying Value (11 + 12 - 13)	Total Foreign Exchange Change in Book /Adjusted Carrying Value	Book/ Adjusted Carrying Value at Disposal Date	Foreign Exchange Gain (Loss) on Disposal	Realized Gain (Loss) on Disposal	Total Gain (Loss) on Disposal	Bond Interest/ Stock Dividends Received During Year	Stated Con- tractual Maturity Date	NAIC Desig- nation, NAIC Desig- nation Modifier and SVO Admini- strative Symbol
5989999997. Total - Common Stocks - Part 4						288,346	XXX	255,047	256,822	(14,070)	0	0	(14,070)	0	255,047	0	33,297	33,297	4,524	XXX	XXX
5989999998. Total - Common Stocks - Part 5						XXX	XXX	XXX	XXX	XXX	XXX	XXX	XXX	XXX	XXX	XXX	XXX	XXX	XXX	XXX	XXX
5989999999. Total - Common Stocks						288,346	XXX	255,047	256,822	(14,070)	0	0	(14,070)	0	255,047	0	33,297	33,297	4,524	XXX	XXX
5999999999. Total - Preferred and Common Stocks						288,346	XXX	255,047	256,822	(14,070)	0	0	(14,070)	0	255,047	0	33,297	33,297	4,524	XXX	XXX
6009999999 - Totals						1,201,703	XXX	1,230,621	1,182,980	(14,068)	(12,801)	0	(26,869)	0	1,168,404	0	33,297	33,297	31,183	XXX	XXX

Schedule DB - Part A - Section 1 - Options, Caps, Floors, Collars, Swaps and Forwards Open
N O N E

Schedule DB - Part B - Section 1 - Futures Contracts Open
N O N E

Schedule DB - Part B - Section 1B - Brokers with whom cash deposits have been made
N O N E

Schedule DB - Part D - Section 1 - Counterparty Exposure for Derivative Instruments Open
N O N E

Schedule DB - Part D-Section 2 - Collateral for Derivative Instruments Open - Pledged By
N O N E

Schedule DB - Part D-Section 2 - Collateral for Derivative Instruments Open - Pledged To
N O N E

Schedule DB - Part E - Derivatives Hedging Variable Annuity Guarantees
N O N E

Schedule DL - Part 1 - Reinvested Collateral Assets Owned
N O N E

Schedule DL - Part 2 - Reinvested Collateral Assets Owned
N O N E

SCHEDULE E - PART 1 - CASH

Month End Depository Balances

1 Depository	2 Code	3 Rate of Interest	4 Amount of Interest Received During Current Quarter	5 Amount of Interest Accrued at Current Statement Date	Book Balance at End of Each Month During Current Quarter			9 *
					6	7	8	
					First Month	Second Month	Third Month	
Fifth Third Bank of Western (C) Piqua, OH(8,498)(6,998)(9,911)	..XXX.
Federal Home Loan Bank Cincinnati, OH91,145114,635144,094	..XXX.
Fifth Third Bank of Western (S) Piqua, OH32,82149,94149,789	..XXX.
First Financial Bank (S) Troy, OH375,249389,252292,247	..XXX.
Park National Bank Troy, OH(5,742)(5,139)(3,881)	..XXX.
Park National Bank Troy, OH(1,896,589)(2,466,493)(2,628,449)	..XXX.
Park National Bank Troy, OH10,46210,3469,300	..XXX.
Park National Bank Troy, OH13,259	1,362,8421,642,8912,289,041	..XXX.
0199998. Deposits in ... depositories that do not exceed the allowable limit in any one depository (See instructions) - Open Depositories	XXX	XXX						XXX
0199999. Totals - Open Depositories	XXX	XXX	13,259	0	(38,311)	(271,564)	142,231	XXX
0299998. Deposits in ... depositories that do not exceed the allowable limit in any one depository (See instructions) - Suspended Depositories	XXX	XXX						XXX
0299999. Totals - Suspended Depositories	XXX	XXX	0	0	0	0	0	XXX
0399999. Total Cash on Deposit	XXX	XXX	13,259	0	(38,311)	(271,564)	142,231	XXX
0499999. Cash in Company's Office	XXX	XXX	XXX	XXX	390	390	390	XXX
.....								
.....								
.....								
.....								
0599999. Total - Cash	XXX	XXX	13,259	0	(37,921)	(271,174)	142,621	XXX

SCHEDULE E - PART 2 - CASH EQUIVALENTS

[illegible]