



PROPERTY AND CASUALTY COMPANIES - ASSOCIATION EDITION

QUARTERLY STATEMENT
AS OF JUNE 30, 2023
OF THE CONDITION AND AFFAIRS OF THE
STATE AUTOMOBILE MUTUAL INSURANCE COMPANY

NAIC Group Code 0111 0175
(Current) (Prior)

NAIC Company Code 25135

Employer's ID Number 31-4316080

Organized under the Laws of , State of Domicile or Port of Entry OH

Country of Domicile United States of America

Incorporated/Organized 08/15/1921 Commenced Business 09/01/1921

Statutory Home Office 518 East Broad Street Columbus, OH, US 43215
(Street and Number) (City or Town, State, Country and Zip Code)

Main Administrative Office 518 East Broad Street
(Street and Number)

Columbus, OH, US 43215 833-724-3577
(City or Town, State, Country and Zip Code) (Area Code) (Telephone Number)

Mail Address 518 East Broad Street Columbus, OH, US 43215
(Street and Number or P.O. Box) (City or Town, State, Country and Zip Code)

Primary Location of Books and Records 518 East Broad Street
(Street and Number)

Columbus, OH, US 43215 614-464-5000
(City or Town, State, Country and Zip Code) (Area Code) (Telephone Number)

Internet Website Address www.stateauto.com

Statutory Statement Contact Rick McClenathan 614-917-4571
(Name) (Area Code) (Telephone Number)

corporateaccounting@stateauto.com 317-715-4519
(E-mail Address) (FAX Number)

OFFICERS

President and Chief Executive Officer Hamid Talal Mirza

Executive Vice President and Treasurer Nikos Vasilakos

Executive Vice President, Chief Legal Officer and Secretary Damon Paul Hart

OTHER

Christopher Locke Peirce, Executive Vice President and Chief Financial Officer

Paul Sanghera, EVP and Comptroller

Vlad Yakov Barbalat, EVP and Chief Investment Officer

DIRECTORS OR TRUSTEES

James Matthew Czapla Matthew Paul Dolan Alison Brooke Erbig

Michael Joseph Fallon Damon Paul Hart Hamid Talal Mirza

Elizabeth Julia Morahan Edward Jose Pena Paul Sanghera

State of Massachusetts SS:

County of Suffolk

The officers of this reporting entity being duly sworn, each depose and say that they are the described officers of said reporting entity, and that on the reporting period stated above, all of the herein described assets were the absolute property of the said reporting entity, free and clear from any liens or claims thereon, except as herein stated, and that this statement, together with related exhibits, schedules and explanations therein contained, annexed or referred to, is a full and true statement of all the assets and liabilities and of the condition and affairs of the said reporting entity as of the reporting period stated above, and of its income and deductions therefrom for the period ended, and have been completed in accordance with the NAIC Annual Statement Instructions and Accounting Practices and Procedures manual except to the extent that: (1) state law may differ; or, (2) that state rules or regulations require differences in reporting not related to accounting practices and procedures, according to the best of their information, knowledge and belief, respectively. Furthermore, the scope of this attestation by the described officers also includes the related corresponding electronic filing with the NAIC, when required, that is an exact copy (except for formatting differences due to electronic filing) of the enclosed statement. The electronic filing may be requested by various regulators in lieu of or in addition to the enclosed statement.

Hamid Talal Mirza Damon Paul Hart Nikos Vasilakos
President and Chief Executive Officer Executive Vice President, Chief Legal Officer and Executive Vice President and Treasurer
Secretary

Subscribed and sworn to before me this 11th day of August 2023

a. Is this an original filing? Yes [X] No []

b. If no,

1. State the amendment number.....

2. Date filed

3. Number of pages attached.....

STATEMENT AS OF JUNE 30, 2023 OF THE STATE AUTOMOBILE MUTUAL INSURANCE COMPANY

ASSETS

	Current Statement Date			4 December 31 Prior Year Net Admitted Assets
	1 Assets	2 Nonadmitted Assets	3 Net Admitted Assets (Cols. 1 - 2)	
1. Bonds	88,949,001	0	88,949,001	94,987,971
2. Stocks:				
2.1 Preferred stocks	0	0	0	0
2.2 Common stocks	969,810,730	26,294,482	943,516,248	934,864,971
3. Mortgage loans on real estate:				
3.1 First liens	0	0	0	0
3.2 Other than first liens.....	0	0	0	0
4. Real estate:				
4.1 Properties occupied by the company (less \$0 encumbrances)	67,395,339	0	67,395,339	65,499,834
4.2 Properties held for the production of income (less \$0 encumbrances)	0	0	0	0
4.3 Properties held for sale (less \$0 encumbrances)	0	0	0	0
5. Cash (\$(54,933,839)), cash equivalents (\$21,567) and short-term investments (\$2,240,741)	(52,671,531)	0	(52,671,531)	9,245,586
6. Contract loans (including \$0 premium notes)	0	0	0	0
7. Derivatives	0	0	0	0
8. Other invested assets	10,531,913	0	10,531,913	10,226,519
9. Receivables for securities	6,828	0	6,828	0
10. Securities lending reinvested collateral assets	0	0	0	0
11. Aggregate write-ins for invested assets	0	0	0	0
12. Subtotals, cash and invested assets (Lines 1 to 11)	1,084,022,280	26,294,482	1,057,727,798	1,114,824,880
13. Title plants less \$0 charged off (for Title insurers only)	0	0	0	0
14. Investment income due and accrued	(458,707)	0	(458,707)	924,567
15. Premiums and considerations:				
15.1 Uncollected premiums and agents' balances in the course of collection	1,490,117	0	1,490,117	829,412
15.2 Deferred premiums, agents' balances and installments booked but deferred and not yet due (including \$0 earned but unbilled premiums)	0	0	0	0
15.3 Accrued retrospective premiums (\$0) and contracts subject to redetermination (\$0)	0	0	0	0
16. Reinsurance:				
16.1 Amounts recoverable from reinsurers	776,754,290	0	776,754,290	438,257,298
16.2 Funds held by or deposited with reinsured companies	0	0	0	0
16.3 Other amounts receivable under reinsurance contracts	0	0	0	0
17. Amounts receivable relating to uninsured plans	0	0	0	0
18.1 Current federal and foreign income tax recoverable and interest thereon	910,042	0	910,042	45,002,139
18.2 Net deferred tax asset	20,782,581	10,318,724	10,463,857	11,125,328
19. Guaranty funds receivable or on deposit	0	0	0	0
20. Electronic data processing equipment and software	39,797,152	39,788,115	9,037	41,866
21. Furniture and equipment, including health care delivery assets (\$0)	3,361,475	3,361,475	0	0
22. Net adjustment in assets and liabilities due to foreign exchange rates	0	0	0	0
23. Receivables from parent, subsidiaries and affiliates	605,232,352	26,052,117	579,180,235	357,452,032
24. Health care (\$0) and other amounts receivable	0	0	0	0
25. Aggregate write-ins for other than invested assets	4,337,014	224,430	4,112,583	7,706,979
26. Total assets excluding Separate Accounts, Segregated Accounts and Protected Cell Accounts (Lines 12 to 25)	2,536,228,595	106,039,342	2,430,189,253	1,976,164,501
27. From Separate Accounts, Segregated Accounts and Protected Cell Accounts	0	0	0	0
28. Total (Lines 26 and 27)	2,536,228,595	106,039,342	2,430,189,253	1,976,164,501
DETAILS OF WRITE-INS				
1101.	0	0	0	0
1102.				
1103.				
1198. Summary of remaining write-ins for Line 11 from overflow page	0	0	0	0
1199. Totals (Lines 1101 through 1103 plus 1198)(Line 11 above)	0	0	0	0
2501. Accounts Receivable	4,337,014	224,430	4,112,583	7,706,979
2502.				
2503.				
2598. Summary of remaining write-ins for Line 25 from overflow page	0	0	0	0
2599. Totals (Lines 2501 through 2503 plus 2598)(Line 25 above)	4,337,014	224,430	4,112,583	7,706,979

STATEMENT AS OF JUNE 30, 2023 OF THE STATE AUTOMOBILE MUTUAL INSURANCE COMPANY

LIABILITIES, SURPLUS AND OTHER FUNDS

	1 Current Statement Date	2 December 31, Prior Year
1. Losses (current accident year \$0)	0	0
2. Reinsurance payable on paid losses and loss adjustment expenses	26,806,582	9,186,730
3. Loss adjustment expenses	0	0
4. Commissions payable, contingent commissions and other similar charges	0	0
5. Other expenses (excluding taxes, licenses and fees)	0	0
6. Taxes, licenses and fees (excluding federal and foreign income taxes)	343,840	317,000
7.1 Current federal and foreign income taxes (including \$0 on realized capital gains (losses))	0	0
7.2 Net deferred tax liability	0	0
8. Borrowed money \$0 and interest thereon \$0	0	70,473,795
9. Unearned premiums (after deducting unearned premiums for ceded reinsurance of \$526,877,006 and including warranty reserves of \$0 and accrued accident and health experience rating refunds including \$0 for medical loss ratio rebate per the Public Health Service Act)	0	0
10. Advance premium	0	0
11. Dividends declared and unpaid:		
11.1 Stockholders	0	0
11.2 Policyholders	0	0
12. Ceded reinsurance premiums payable (net of ceding commissions)	1,265,059,012	729,229,146
13. Funds held by company under reinsurance treaties	8,051	4,634
14. Amounts withheld or retained by company for account of others	257,989	139,436
15. Remittances and items not allocated	0	0
16. Provision for reinsurance (including \$0 certified)	0	0
17. Net adjustments in assets and liabilities due to foreign exchange rates	0	0
18. Drafts outstanding	4,700,337	12,458,522
19. Payable to parent, subsidiaries and affiliates	1,586,200	19,854,829
20. Derivatives	0	0
21. Payable for securities	0	399,285
22. Payable for securities lending	0	0
23. Liability for amounts held under uninsured plans	0	0
24. Capital notes \$0 and interest thereon \$0	0	0
25. Aggregate write-ins for liabilities	92,923	96,057
26. Total liabilities excluding protected cell liabilities (Lines 1 through 25)	1,298,854,933	842,159,434
27. Protected cell liabilities	0	0
28. Total liabilities (Lines 26 and 27)	1,298,854,933	842,159,434
29. Aggregate write-ins for special surplus funds	0	0
30. Common capital stock	5,000,000	5,000,000
31. Preferred capital stock	0	0
32. Aggregate write-ins for other than special surplus funds	0	0
33. Surplus notes	0	0
34. Gross paid in and contributed surplus	75,000,000	75,000,000
35. Unassigned funds (surplus)	1,051,334,320	1,054,005,067
36. Less treasury stock, at cost:		
36.10 shares common (value included in Line 30 \$0)	0	0
36.20 shares preferred (value included in Line 31 \$0)	0	0
37. Surplus as regards policyholders (Lines 29 to 35, less 36)	1,131,334,320	1,134,005,067
38. Totals (Page 2, Line 28, Col. 3)	2,430,189,253	1,976,164,501
DETAILS OF WRITE-INS		
2501. Miscellaneous liabilities	92,923	96,057
2502.		
2503.		
2598. Summary of remaining write-ins for Line 25 from overflow page	0	0
2599. Totals (Lines 2501 through 2503 plus 2598)(Line 25 above)	92,923	96,057
2901.	0	0
2902.		
2903.		
2998. Summary of remaining write-ins for Line 29 from overflow page	0	0
2999. Totals (Lines 2901 through 2903 plus 2998)(Line 29 above)	0	0
3201.		
3202.		
3203.		
3298. Summary of remaining write-ins for Line 32 from overflow page	0	0
3299. Totals (Lines 3201 through 3203 plus 3298)(Line 32 above)	0	0

STATEMENT OF INCOME

	1 Current Year to Date	2 Prior Year to Date	3 Prior Year Ended December 31
UNDERWRITING INCOME			
1. Premiums earned:			
1.1 Direct (written \$542,986,930)	490,740,199	411,401,330	878,018,353
1.2 Assumed (written \$1,725,878)	1,770,846	419,648,576	423,002,076
1.3 Ceded (written \$544,712,808)	492,511,045	619,977,135	1,089,947,658
1.4 Net (written \$0)	0	211,072,771	211,072,771
DEDUCTIONS:			
2. Losses incurred (current accident year \$0):			
2.1 Direct	379,733,777	279,311,582	678,795,203
2.2 Assumed	11,591,793	248,161,200	250,612,888
2.3 Ceded	391,325,570	404,003,163	805,938,472
2.4 Net	0	123,469,619	123,469,619
3. Loss adjustment expenses incurred	0	20,480,741	20,480,741
4. Other underwriting expenses incurred	0	67,314,001	67,314,001
5. Aggregate write-ins for underwriting deductions	0	0	0
6. Total underwriting deductions (Lines 2 through 5)	0	211,264,361	211,264,361
7. Net income of protected cells	0	0	0
8. Net underwriting gain (loss) (Line 1 minus Line 6 + Line 7)	0	(191,590)	(191,590)
INVESTMENT INCOME			
9. Net investment income earned	683,005	14,101,799	13,650,316
10. Net realized capital gains (losses) less capital gains tax of \$0	(128)	20,131,138	22,287,858
11. Net investment gain (loss) (Lines 9 + 10)	682,877	34,232,936	35,938,174
OTHER INCOME			
12. Net gain or (loss) from agents' or premium balances charged off (amount recovered \$0 amount charged off \$0)	0	(347,829)	(347,829)
13. Finance and service charges not included in premiums	0	327,418	327,418
14. Aggregate write-ins for miscellaneous income	(3,351)	(3,932,761)	(7,568,907)
15. Total other income (Lines 12 through 14)	(3,351)	(3,953,172)	(7,589,318)
16. Net income before dividends to policyholders, after capital gains tax and before all other federal and foreign income taxes (Lines 8 + 11 + 15)	679,526	30,088,175	28,157,266
17. Dividends to policyholders	0	17,562	17,562
18. Net income, after dividends to policyholders, after capital gains tax and before all other federal and foreign income taxes (Line 16 minus Line 17)	679,526	30,070,613	28,139,704
19. Federal and foreign income taxes incurred	(550,038)	(26,055,420)	(48,797,417)
20. Net income (Line 18 minus Line 19)(to Line 22)	1,229,564	56,126,033	76,937,121
CAPITAL AND SURPLUS ACCOUNT			
21. Surplus as regards policyholders, December 31 prior year	1,134,005,067	778,319,195	778,319,195
22. Net income (from Line 20)	1,229,564	56,126,033	76,937,121
23. Net transfers (to) from Protected Cell accounts	0	0	0
24. Change in net unrealized capital gains (losses) less capital gains tax of \$1,279,490	10,967,878	(140,529,033)	(164,777,148)
25. Change in net unrealized foreign exchange capital gain (loss)	0	0	0
26. Change in net deferred income tax	1,098,071	11,600,113	9,992,035
27. Change in nonadmitted assets	(15,966,260)	(16,326,705)	17,731,997
28. Change in provision for reinsurance	0	0	552,000
29. Change in surplus notes	0	0	0
30. Surplus (contributed to) withdrawn from protected cells	0	0	0
31. Cumulative effect of changes in accounting principles	0	0	0
32. Capital changes:			
32.1 Paid in	0	5,000,000	5,000,000
32.2 Transferred from surplus (Stock Dividend)	0	0	0
32.3 Transferred to surplus	0	0	0
33. Surplus adjustments:			
33.1 Paid in	0	5,000,000	75,000,000
33.2 Transferred to capital (Stock Dividend)	0	0	0
33.3 Transferred from capital	0	0	0
34. Net remittances from or (to) Home Office	0	0	0
35. Dividends to stockholders	0	0	0
36. Change in treasury stock	0	0	0
37. Aggregate write-ins for gains and losses in surplus	0	335,249,867	335,249,867
38. Change in surplus as regards policyholders (Lines 22 through 37).....	(2,670,748)	256,120,275	355,685,873
39. Surplus as regards policyholders, as of statement date (Lines 21 plus 38)	1,131,334,320	1,034,439,470	1,134,005,067
DETAILS OF WRITE-INS			
0501.	0	0	0
0502.			
0503.			
0598. Summary of remaining write-ins for Line 5 from overflow page	0	0	0
0599. Totals (Lines 0501 through 0503 plus 0598)(Line 5 above)	0	0	0
1401. Miscellaneous income (expense)	0	(3,936,205)	(6,124,702)
1402. Gain (loss) on sale of fixed assets	0	600	(1,437,516)
1403. Governmental fines and penalties	(3,351)	2,844	(6,689)
1498. Summary of remaining write-ins for Line 14 from overflow page	0	0	0
1499. Totals (Lines 1401 through 1403 plus 1498)(Line 14 above)	(3,351)	(3,932,761)	(7,568,907)
3701. Investment in subsidiary adjustment (STFC)	0	335,249,867	335,249,867
3702.			
3703.			
3798. Summary of remaining write-ins for Line 37 from overflow page	0	0	0
3799. Totals (Lines 3701 through 3703 plus 3798)(Line 37 above)	0	335,249,867	335,249,867

STATEMENT AS OF JUNE 30, 2023 OF THE STATE AUTOMOBILE MUTUAL INSURANCE COMPANY

CASH FLOW

	1 Current Year To Date	2 Prior Year To Date	3 Prior Year Ended December 31
Cash from Operations			
1. Premiums collected net of reinsurance	535,169,161	692,237,983	1,151,931,910
2. Net investment income	2,748,211	17,897,094	25,247,997
3. Miscellaneous income	(3,351)	(3,953,172)	(7,589,318)
4. Total (Lines 1 to 3)	537,914,021	706,181,906	1,169,590,589
5. Benefit and loss related payments	320,877,140	710,065,334	1,047,973,422
6. Net transfers to Separate Accounts, Segregated Accounts and Protected Cell Accounts	0	0	0
7. Commissions, expenses paid and aggregate write-ins for deductions	(26,840)	237,059,733	237,097,800
8. Dividends paid to policyholders	0	17,562	17,562
9. Federal and foreign income taxes paid (recovered) net of \$0 tax on capital gains (losses)	(44,642,135)	(602,750)	118,899
10. Total (Lines 5 through 9)	276,208,165	946,539,879	1,285,207,684
11. Net cash from operations (Line 4 minus Line 10)	261,705,856	(240,357,974)	(115,617,094)
Cash from Investments			
12. Proceeds from investments sold, matured or repaid:			
12.1 Bonds	5,842,115	386,349,588	386,851,701
12.2 Stocks	3,446,900	120,608,888	129,399,787
12.3 Mortgage loans	0	0	0
12.4 Real estate	0	0	0
12.5 Other invested assets	0	36,213,817	36,240,670
12.6 Net gains or (losses) on cash, cash equivalents and short-term investments	0	0	0
12.7 Miscellaneous proceeds	0	0	402,417
12.8 Total investment proceeds (Lines 12.1 to 12.7)	9,289,015	543,172,293	552,894,575
13. Cost of investments acquired (long-term only):			
13.1 Bonds	52,693	92,670,986	94,632,476
13.2 Stocks	212,561	61,063,939	487,168,092
13.3 Mortgage loans	0	0	0
13.4 Real estate	2,711,940	3,677,222	10,582,178
13.5 Other invested assets	0	1,034,472	1,048,447
13.6 Miscellaneous applications	406,113	972,711	0
13.7 Total investments acquired (Lines 13.1 to 13.6)	3,383,307	159,419,330	593,431,193
14. Net increase (or decrease) in contract loans and premium notes	0	0	0
15. Net cash from investments (Line 12.8 minus Line 13.7 and Line 14)	5,905,708	383,752,963	(40,536,618)
Cash from Financing and Miscellaneous Sources			
16. Cash provided (applied):			
16.1 Surplus notes, capital notes	0	0	0
16.2 Capital and paid in surplus, less treasury stock	0	0	80,000,000
16.3 Borrowed funds	(70,000,000)	0	(30,500,000)
16.4 Net deposits on deposit-type contracts and other insurance liabilities	0	0	0
16.5 Dividends to stockholders	0	0	0
16.6 Other cash provided (applied)	(259,528,682)	(164,853,746)	49,227,177
17. Net cash from financing and miscellaneous sources (Line 16.1 through Line 16.4 minus Line 16.5 plus Line 16.6)	(329,528,681)	(164,853,746)	98,727,177
RECONCILIATION OF CASH, CASH EQUIVALENTS AND SHORT-TERM INVESTMENTS			
18. Net change in cash, cash equivalents and short-term investments (Line 11, plus Lines 15 and 17) .	(61,917,117)	(21,458,757)	(57,426,535)
19. Cash, cash equivalents and short-term investments:			
19.1 Beginning of year	9,245,586	66,672,121	66,672,121
19.2 End of period (Line 18 plus Line 19.1)	(52,671,531)	45,213,363	9,245,586

Note: Supplemental disclosures of cash flow information for non-cash transactions:

--	--	--	--

NOTES TO FINANCIAL STATEMENTS

1. Summary of Significant Accounting Policies:

A. Accounting Practices:

The accompanying financial statements of State Automobile Mutual Insurance Company (the "Company" or "State Auto Mutual") are presented on the basis of accounting practices prescribed or permitted by the Ohio Department of Insurance, which has adopted the National Association of Insurance Commissioners' (NAIC) *Accounting Practices and Procedures* manual (NAIC SAP).

A reconciliation of the Company's net income and capital and surplus between the practices prescribed and permitted by the state of Ohio and NAIC SAP is shown below:

	SSAP #	F/S Page	F/S Line #	Amount (\$)	
				2023	2022
NET INCOME					
1. State Auto Mutual state basis (Page 4, Line 20, Columns 1 & 3)				1,229,564	76,937,121
2. State Prescribed Practices that are an increase/(decrease) from NAIC SAP:				—	—
3. State Permitted Practices that are an increase/(decrease) from NAIC SAP:				—	—
4. NAIC SAP (1 - 2 - 3 = 4)				1,229,564	76,937,121
SURPLUS					
5. State Auto Mutual state basis (Page 3, Line 37, Columns 1 & 2)				1,131,334,320	1,134,005,067
6. State Prescribed Practices that are an increase/(decrease) from NAIC SAP:				—	—
7. State Permitted Practices that are an increase/(decrease) from NAIC SAP:				—	—
8. NAIC SAP (5 - 6 - 7 = 8)				1,131,334,320	1,134,005,067

C. Accounting Policy:

2. Bonds are carried at cost, adjusted where appropriate for amortization of premium or discount, or fair value as specified by the SVO Manual.
6. Mortgage backed/asset backed securities are carried at amortized cost or fair value based on guidance in the SVO Manual. Prepayment assumptions for mortgage backed/asset backed securities are based on market expectations. The retrospective adjustment method is used to value all mortgage backed/asset backed securities.

D. Going Concern:

Management continuously monitors the Company's financial results and compliance with regulatory requirements. There are currently no circumstances that could call into question the Company's ability to continue as a going concern.

2. Accounting Changes and Corrections of Errors:

No substantial change from December 31, 2022.

3. Business Combinations and Goodwill:

B. Statutory Mergers

On July 12, 2021, State Automobile Mutual Insurance Company (SAM) entered into an agreement and Plan of Merger and Combination (Merger Agreement) with Liberty Mutual Holding Company Inc. (LMHC), and Andover Inc., a wholly-owned indirect subsidiary of LMHC. Pursuant to a Plan of Reorganization, on March 1, 2022, the reorganization was effectuated through a merger of Andover, Inc. with and into SAM, with SAM surviving the merger as an Ohio domiciled reorganized stock insurance subsidiary of LMHC.

4. Discontinued Operations:

No substantial change from December 31, 2022.

5. Investments:

A. Mortgage Loans: Not applicable.

B. Debt Restructuring: Not applicable.

C. Reverse Mortgages: Not applicable.

D. Loan-Backed Securities:

1. Prepayment speed assumptions are updated monthly with data sourced from the Bloomberg data service.
2. The Company has not recognized any other than temporary impairments on its loan-backed securities.
3. The Company has not recognized any other than temporary impairments on its loan-backed securities.
4. All impaired Loaned Backed Securities for which an other-than-temporary impairment has not been recognized in earnings as a realized loss as of June 30, 2023:

	Amount (\$)
a. The aggregate amount of unrealized losses	
1. Less than 12 Months	(4,711,843)
2. 12 Months or Longer	(9,585,313)
b. The aggregate related fair value of securities with unrealized losses	
1. Less than 12 Months	28,864,483
2. 12 Months or Longer	23,508,519

5. The Company reviews fixed income securities for impairment on a quarterly basis. Securities are reviewed for both quantitative and qualitative considerations including, but not limited to: (a) the extent of the decline in fair value below book value, (b) the duration of the decline, (c) significant adverse changes in the financial condition or near term prospects of the investment or issuer, (d) significant change in the business climate or credit ratings of the issuer, (e) general market conditions and volatility, (f) industry factors, and (g) the past impairment of the security holding or the issuer. If the Company believes a decline in the value of a particular investment is temporary, the decline is recorded as an unrealized loss in policyholders' equity. If the decline is believed to be "other-than-temporary," and the Company believes it will not be able to collect all cash flows due on its fixed income securities, then the carrying value of the investment is written down to the expected cash flow amount and a realized loss is recorded as a credit impairment.

5. Investments (continued):

- E. Dollar Repurchase Agreements: Not applicable.
- F. Repurchase Agreements Transactions Accounted for as Secured Borrowing: Not applicable.
- G. Reverse Repurchase Agreements Transactions Accounted for as Secured Borrowing: Not applicable.
- H. Repurchase Agreements Transactions Accounted for as a Sale: Not applicable.
- I. Reverse Repurchase Agreements Transactions Accounted for as a Sale: Not applicable.
- J. Real Estate: Not applicable.
- K. Investments in Low Income Housing Tax Credits: Not applicable.
- L. Restricted Assets: No substantial change from December 31, 2022.
- M. Working Capital Finance Investments: Not applicable.
- N. Offsetting and Netting of Assets and Liabilities: Not applicable.
- O. 5GI Securities: Not applicable.
- P. Short Sales: Not applicable.
- Q. Prepayment Penalty and Acceleration Fees: Not applicable.
- R. Reporting Entity's Share of Cash Pool by Asset Type: Not applicable.

6. Joint Ventures, Partnerships and Limited Liability Companies:

No substantial change from December 31, 2022.

7. Investment Income:

No substantial change from December 31, 2022.

8. Derivative Instruments:

No substantial change from December 31, 2022.

STATEMENT AS OF JUNE 30, 2023 OF THE STATE AUTOMOBILE MUTUAL INSURANCE COMPANY

9. Income Taxes:

F. Consolidated Federal Income Tax Return:

1. The Company's Federal income tax return is consolidated with the following entities:

America First Insurance Company	Liberty Financial Services, Inc.	Open Seas Solutions, Inc.
America First Lloyd's Insurance Company	Liberty Hospitality Group, Inc.	Oregon Automobile Insurance Company
American Compensation Insurance Company	Liberty Insurance Corporation	Peerless Indemnity Insurance Company
American Economy Insurance Company	Liberty Insurance Holdings, Inc.	Peerless Insurance Company
American Fire and Casualty Company	Liberty Insurance Underwriters Inc.	Plaza Insurance Company
American States Insurance Company	Liberty International Europe Inc.	Rianoc Research Corporation
American States Insurance Company of Texas	Liberty International Holdings Inc.	RTW, Inc.
American States Lloyds Insurance Company	Liberty Life Holdings Inc.	Rockhill Holding Company
American States Preferred Insurance Company	Liberty Lloyds of Texas Insurance Company	Rockhill Insurance Company
Barrier Ridge LLC	Liberty Management Services, Inc.	SAFECARE Company, Inc.
Berkeley Management Corporation	Liberty Mexico Holdings Inc.	Safeco Corporation
Bloomington Compensation Insurance Company	Liberty Mutual Agency Corporation	Safeco General Agency, Inc.
Colorado Casualty Insurance Company	Liberty Mutual Credit Risk Transfer PCC Inc.	Safeco Insurance Company of America
Consolidated Insurance Company	Liberty Mutual Fire Insurance Company	Safeco Insurance Company of Illinois
Diversified Settlements, Inc.	Liberty Mutual Group Asset Management Inc.	Safeco Insurance Company of Indiana
Eagle Development Corporation	Liberty Mutual Group Inc.	Safeco Insurance Company of Oregon
Emerald City Insurance Agency, Inc.	Liberty Mutual Holding Company Inc.	Safeco Lloyds Insurance Company
Employers Insurance Company of Wausau	Liberty Mutual Insurance Company	Safeco National Insurance Company
Excelsior Insurance Company	Liberty Mutual Personal Insurance Company	Safeco Properties, Inc.
Excess Risk Reinsurance Inc.	Liberty Mutual Technology Group, Inc.	Safeco Surplus Lines Insurance Company
F.B. Beattie & Co., Inc.	Liberty Northwest Insurance Corporation	San Diego Insurance Company
Facilitators, Inc.	Liberty Personal Insurance Company	SCIT, Inc.
First National Insurance Company of America	Liberty RE (Bermuda) Limited	State Auto Financial Corporation
First State Agency Inc.	Liberty Sponsored Insurance (Vermont), Inc.	State Auto Holdings, Inc.
General America Corporation	Liberty Surplus Insurance Corporation	State Auto Insurance Company of Ohio
General America Corporation of Texas	LIH-RE of America Corporation	State Auto Insurance Company of Wisconsin
General Insurance Company of America	LIU Specialty Insurance Agency Inc.	State Auto Labs Corporation
Golden Eagle Insurance Corporation	LM General Insurance Company	State Auto Property & Casualty Insurance Company
Gulf States AIF, Inc.	LM Insurance Corporation	State Automobile Mutual Insurance Company
Hawkeye-Security Insurance Company	LM Property and Casualty Insurance Company	Stateco Financial Services, Inc.
Indiana Insurance Company	LMCRT-FRE-01 IC	The First Liberty Insurance Corporation
Insurance Company of Illinois	LMHC Massachusetts Holdings Inc.	The Midwestern Indemnity Company
Ironshore Holdings (US) Inc.	Managed Care Associates Inc.	The National Corporation
Ironshore Indemnity Inc.	Meridian Security Insurance Company	The Netherlands Insurance Company
Liberty Specialty Markets Bermuda Limited	Mid-American Fire & Casualty Company	The Ohio Casualty Insurance Company
Ironshore Management Inc.	Milbank Insurance Company	Wausau Business Insurance Company
Ironshore Services Inc.	Nationale Borg Reinsurance N.V.	Wausau General Insurance Company
Ironshore Specialty Insurance Company	North Pacific Insurance Company	Wausau Underwriters Insurance Company
Ironshore Surety Holdings Inc.	Ocasco Budget, Inc.	West American Insurance Company
LEXCO Limited	OCI Printing, Inc.	Winmar Company, Inc.
Liberty-USA Corporation	Ohio Casualty Corporation	Workgrid Software, Inc.
Liberty Energy Canada, Inc.	Ohio Security Insurance Company	

2. The method of federal income tax allocation is subject to a written agreement. Allocation is based upon separate return calculations with credit applied for losses as appropriate. The Company has the enforceable right to recoup prior year payments in the event of future losses.

10. Information Concerning Parent, Subsidiaries and Affiliates:

A. Nature of the Relationships:

Pursuant to the Plan of Reorganization and approval of the State of Ohio, effective March 1, 2022, State Auto Mutual completed the conversion from a mutual company to a stock company. The reorganization did not change the assets or obligations of the Company.

B. Details of Transactions Greater than ½% of Admitted Assets:

On May 13, 2022, the Board of Directors of State Auto Labs Corp. declared a \$11,800,000 ordinary stockholders dividend to be paid to the Company. This dividend was paid in cash on June 3, 2022.

On August 17, 2022, the Board of Directors of State Auto Holdings, Inc. declared a \$7,500,000 ordinary stockholders dividend to be paid to the Company. This dividend was paid in cash on September 30, 2022.

On November 16, 2022, the Company made a \$13,500,000 cash contribution to State Auto Financial Corporation.

On December 9, 2022, Liberty Mutual Group, Inc. made a \$70,000,000 cash contribution to the Company.

STATEMENT AS OF JUNE 30, 2023 OF THE STATE AUTOMOBILE MUTUAL INSURANCE COMPANY

10. Information Concerning Parent, Subsidiaries and Affiliates (continued):

On December 9, 2022, the Company made a \$26,5000,000 cash contribution to State Auto Financial Corporation.

On December 9, 2022, the Company made a \$39,500,000 cash contribution to Rockhill Holding Company ("RHC").

E. Management, Service Contracts, Cost Sharing Arrangements:

On March 1, 2022 the following changes were effective:

The Company became a party to a management services agreement (the "Agreement") with Liberty Mutual Insurance Company ("LMIC").

The Company became a party to a cash management agreement with LMIC whereby LMIC provides services to the Company.

The Company became a party to an investment management agreement with Liberty Mutual Group Asset Management Inc. ("LMGAM"). Under the agreement, LMGAM provides services to the Company. This agreement replaced the Stateco Investment Management Agreement.

The Company became a party to a Federal Tax Sharing Agreement between Liberty Mutual Holding Company Inc. ("LMHC") and affiliates (refer to Note 9F).

G. Nature of Relationships that Could Affect Operations:

On July 12, 2021, State Auto Mutual ("SAM") entered into an agreement and Plan of Merger and Combination ("Merger Agreement") with Liberty Mutual Holding Company Inc. ("LMHC"), and Andover Inc., a wholly-owned indirect subsidiary of LMHC. Pursuant to a Plan of Reorganization, on March 1, 2022, the reorganization was effectuated through a merger of Andover, Inc. with and into SAM, with SAM surviving the merger as an Ohio domiciled reorganized stock insurance subsidiary of LMHC.

The Company is a member of the Liberty Mutual Group that is defined in Schedule Y – Information Concerning Activities of Insurer Members of a Holding Company Group. See Schedule Y Part 1 – Organizational Chart.

I. Detail of Investments in Affiliates Greater than 10% of Admitted Assets:

On July 12, 2021, State Auto Financial Corporation (STFC), an Ohio corporation, and the Company entered into the Merger Agreement with LMHC, Pymatuning, Inc., a wholly-owned indirect subsidiary of LMHC, and Andover, Inc. The Merger Agreement provides for LMHC to effect the acquisition of STFC through the merger of Pymatuning, Inc. with and into STFC (the "STFC Merger") with STFC the surviving corporation. Pursuant to a Plan of Reorganization, on March 1, 2022, the Company now owns 100% of the outstanding shares of STFC.

M. SCA Investments:

1. Balance Sheet Value (Admitted and Nonadmitted) SCAs (Except 8bi Entities):

SCA Entity	Percentage of SCA Ownership (%)	Gross Amount (\$)	Admitted Amount (\$)	Nonadmitted Amount (\$)
a. SSAP No. 97 8a Entities		—	—	—
b. SSAP No. 97 8b(ii) Entities				
State Auto Insurance Company of Wisconsin	100	13,200,104	13,200,104	—
Total SSAP No. 97 8b(ii) Entities		13,200,104	13,200,104	—
c. SSAP No. 97 8b(iii) Entities				
State Auto Financial	100.0	760,298,813	760,298,813	—
State Auto Holdings	100	71,113,477	71,065,746	47,731
RHC	100	97,042,780	97,042,780	—
Facilitators	100	9,833	—	9,833
Network	100	(1,632)	(2,402)	770
State Auto Labs	100	26,236,148	—	26,236,148
Total SSAP No. 97 8b(iii) Entities		954,699,419	928,404,937	26,294,482
d. SSAP No. 97 8b(iv) Entities		—	—	—
(except 8bi entities) (b+c+d)	—	967,899,523	941,605,041	26,294,482
f. Aggregate Total (a+e)	—	967,899,523	941,605,041	26,294,482

11. Debt:

A. In May 2009, the Company borrowed money in the amounts of \$50.0 million and \$20.0 million from State Auto P&C and Milbank, respectively. The principal amount was due in May 2019. The Company refinanced these loans with State Auto P&C and Milbank in May 2019. The principal amount is due in May 2029. At the option of the Company, early repayment may be made; \$20.0 million Affiliate Loan with Milbank was payoff on April 5, 2023, and \$50.0 million Affiliate Loan from State Auto P&C was payoff on June 13, 2023. Interest is due semi-annually at a fixed annual interest rate of 4.05%. The total loan interest incurred through June 30, 2023 and 2022, and December 31, 2022 was \$604,726, \$706,808 and \$2,835,000, respectively.

B. FHLB Agreements:

1. On January 22, 2019, the Company refinanced its \$19.0 million loan with the FHLB for a period of five years at a fixed rate of 3.16%. This was an interest-only loan with interest payments due monthly and principal due at the maturity date. The loan was repaid on September 21, 2022. The total loan interest incurred through June 30, 2023 and 2022, and December 31, 2022 was \$0, \$149,689 and \$383,269, respectively.

On September 2, 2021, the Company refinanced its \$11.5 million loan with the FHLB for one year at a fixed rate of 0.23%. This was an interest-only loan with interest payments due monthly and principal due in full at the maturity date. The loan was repaid on September 2, 2022. The total loan interest incurred through June 30, 2023 and 2022, and December 31, 2022 was \$0, \$6,594 and, \$17,754, respectively.

These loans were fully secured by a pledge of specific investment securities of the Company. The table below indicates the amount of the FHLB capital stock purchased, collateral pledged and assets and liabilities related to the agreements with the FHLB.

11. Debt (continued):

2. FHLB Capital Stock
- a. Aggregate Totals

	Amount (\$)	
	June 30, 2023	December 31, 2022
Membership stock - Class A	—	—
Membership stock - Class B	1,580,932	1,975,694
Activity stock	281,968	3,334,106
Excess stock	—	—
Aggregate total	1,862,900	5,309,800
Actual or estimated borrowing capacity as determined by the Company	—	—

The borrowing capacity for each security pledged is provided by FHLB, which is based on a factor of the market value based on the type of investment. Available borrowing capacity is determined by taking the total borrowing capacity provided by FHLB and reducing it by the Company's current total borrowing.

- b. Membership Stock (Class A and B) Eligible for Redemption

	Amount (\$)	
	Class A Stock	Class B Stock
Current year total	—	1,580,932
Not eligible for redemption	—	1,580,932
Less than 6 months	—	—
6 months to less than 1 year	—	—
1 year to less than 3 years	—	—
3 to 5 years	—	—

3. Collateral Pledged to FHLB

- a. Amount Pledged

General account	Amount (\$)	
	June 30, 2023	December 31, 2022
Fair value	—	—
Carrying value	—	—
Aggregate total borrowing	—	—

- b. Maximum Amount Pledged

General account	Amount (\$)	
	June 30, 2023	December 31, 2022
Fair value	—	—
Carrying value	—	—
Aggregate total borrowing	—	—

4. Borrowing from FHLB

- a. Amount Borrowed

General account	Amount (\$)	
	June 30, 2023	December 31, 2022
Debt	—	—
Funding agreements	—	—
Other	—	—
Aggregate total	—	—

- b. Maximum Amount Borrowed

General account	Amount (\$)
	June 30, 2023
Debt	—
Funding agreements	—
Other	—
Aggregate total	—

- c. The Company has no prepayment obligations under its debt arrangement.

12. Retirement Plans, Deferred Compensation, Postretirement Benefits and Compensated Absences and Other Postretirement Benefit Plans:

- A. Defined Benefit Plan:

4. The amount of net periodic benefit cost recognized:

State Auto P&C sponsors a defined benefit plan and a postretirement health care benefit plan.

13. Capital and Surplus, Shareholders' Dividend Restrictions and Quasi-Reorganizations:

- A. Capital Stock Authorized, Issued, and Outstanding as of the Balance Sheet Date:

The Company has 1,000 shares of common stock authorized with a par value of \$5,000 per share.

STATEMENT AS OF JUNE 30, 2023 OF THE STATE AUTOMOBILE MUTUAL INSURANCE COMPANY

13. Capital and Surplus, Shareholders' Dividend Restrictions and Quasi-Reorganizations (continued):

D. Dates and Amounts of Dividends Paid:

On May 13, 2022, the Board of Directors of State Auto Labs Corp. declared a \$11,800,000 ordinary stockholders dividend to be paid to the Company. This dividend was paid in cash on June 3, 2022.

On August 17,2022, the Board of Directors of State Auto Holdings, Inc. declared a \$7,500,000 ordinary stockholders dividend to be paid to the Company. This dividend was paid in cash on September 30, 2022.

14. Liabilities, Contingencies and Assessments:

No substantial change from December 31, 2022.

15. Leases:

No substantial change from December 31, 2022.

16. Information about Financial Instruments with Off-Balance-Sheet Risk and Financial Instruments with Concentrations of Credit Risk:

No substantial change from December 31, 2022.

17. Sale, Transfer and Servicing of Financial Instruments and Extinguishments of Liabilities:

No substantial change from December 31, 2022.

18. Gain or Loss to the Reporting Entity from Uninsured A&H Plans and the Uninsured Portion of Partially Insured Plans:

No substantial change from December 31, 2022.

19. Direct Premium Written/Produced by Managing General Agents/Third Party Administrators:

No substantial change from December 31, 2022.

20. Fair Value Measurement:

A. Inputs Used for Assets and Liabilities Measured and Reported at Fair Value or Net Asset Value:

The Company has categorized its assets and liabilities that are reported on the balance sheet at fair value into the three-level fair value hierarchy as reflected in the table below. The three-level fair value hierarchy is based on the degree of subjectivity inherent in the valuation method by which fair value was determined. The three levels are defined as follows.

Level 1 - Quoted Prices in Active Markets for Identical Assets and Liabilities: This category, for items measured at fair value on a recurring basis, includes exchange-traded common stocks and other invested assets. The estimated fair value of the equity securities within this category are based on unadjusted market prices provided by a nationally recognized pricing service and are thus classified as level 1. The Company's other invested assets include an investment that consists primarily of holdings in publicly-traded mutual funds. The Company believes that its prices for these publicly-traded mutual funds, which are based on an observable market price for an identical asset in an active market, reflect their fair values.

Level 2 - Significant Other Observable Inputs: The Company has no assets or liabilities measured and reported at fair value in this category.

Level 3 - Significant Unobservable Inputs: This category, for items measured at fair value on a recurring basis, includes common stocks that are not publicly traded. The estimated fair value of the equity securities within this category are based on per share cost and are thus classified as level 3. The Company holds equity securities as a member of Federal Home Loan Bank of Cincinnati (FHLB), which is not publicly traded.

Net asset value (NAV): The Company has no assets or liabilities measured and reported at fair value in this category.

1. The Company has categorized its assets that are measured at fair value or net asset value into the three-level fair value hierarchy as reflected in the following table. The Company has no liabilities that are measured and reported at fair value. See item 3 below for a discussion of the Company's transfer policy. See item 4 below for a discussion of Level 2 and Level 3 assets.

Fair Value Measurements at Reporting Date		Amount (\$)				
Description for each class of asset or liability		(Level 1)	(Level 2)	(Level 3)	Net Asset Value (NAV)	Total
a. Assets at fair value						
Common stock						
Industrial and misc		—	—	1,959,708	—	1,959,708
Total common stocks		—	—	1,959,708	—	1,959,708
Other invested assets						
Any other class of asset		—			—	—
Partnership interests		—	—	—	—	—
Total other invested assets		—	—	—	—	—
Total assets at fair value/(NAV)		—	—	1,959,708	—	1,959,708

2. Fair Value Measurements in (Level 3) of the Fair Value Hierarchy:

Description	Amount (\$)									
	Beginning Balance at 1/1/2022	Transfers into Level 3	Transfers out of Level 3	Total gains and (losses) included in Net Income	Total gains and (losses) included in Surplus	Purchases	Issuances	Sales	Settlements	Ending Balance at 9/30/2022
Assets:										
Common stock										
Industrial and misc	5,309,800	—	—	—		—	—	(3,350,092)	—	1,959,708
Total assets	5,309,800	—	—	—	—	—	—	(3,350,092)	—	1,959,708

STATEMENT AS OF JUNE 30, 2023 OF THE STATE AUTOMOBILE MUTUAL INSURANCE COMPANY

20. Fair Value Measurement (continued):

3. Transfers between level categorizations may occur due to changes in the availability of market observable inputs. Transfers in and out of level categorizations are reported as having occurred at the beginning of the quarter in which the transfer occurred. There were no transfers between level categorizations as of June 30, 2023.
4. As of June 30, 2023, and December 31, 2021, the reported fair value of the Company's investment in Level 3 equity securities of FHLB, was 1,959,708 and \$5,309,800, respectively. See item A above for a discussion of valuation techniques and inputs used in determining fair value. Since these equity securities are not publicly traded, they are classified as Level 3.
5. The Company has no derivative assets or liabilities.

B. Other Fair Value Disclosures: Not applicable.

C. Fair Values for All Financial Instruments by levels 1, 2, and 3:

See Item A for a discussion on valuation techniques for assets and liabilities that are measured and reported at fair value or net asset value.

The Company utilizes information provided by a nationally recognized pricing service to estimate fair value measurements for its fixed maturities.

The Company estimates the fair value of the notes payable to affiliates using market quotations for U.S. treasury securities with similar maturity dates and applies an appropriate credit spread.

June 30, 2023:

Type of Financial Instrument	Amount (\$)						
	Aggregate Fair Value	Admitted Assets	(Level 1)	(Level 2)	(Level 3)	Net Asset Value (NAV)	Not Practicable (Carrying Value)
Bonds	73,613,637	88,949,001	5,224,655	68,388,981	—	—	—
Common stocks	1,959,708	1,959,708	—	—	1,959,708	—	—
Other invested assets	10,531,913	10,531,913	—	—	—	—	10,531,913
Cash, cash equivalents, and short-term investments	(52,671,531)	(52,671,531)	(54,912,271)	2,240,741	—	—	—
Receivables for Securities	—	—	—	—	—	—	—
Borrowed money	—	—	—	—	—	—	—

December 31, 2022:

Type of Financial Instrument	Amount (\$)						
	Aggregate Fair Value	Admitted Assets	(Level 1)	(Level 2)	(Level 3)	Net Asset Value (NAV)	Not Practicable (Carrying Value)
Bonds	79,334,275	11,349,251	9,216,630	70,117,646	—	—	—
Common stocks	5,406,608	5,406,608	—	—	5,406,608	—	—
Other invested assets	10,226,519	10,226,519	—	—	—	—	10,226,519
Cash, cash equivalents, and short-term investments	10,550,550	10,550,550	10,528,982	21,567	—	—	—
Receivables for Securities	(399,285)	(399,285)	(399,285)	—	—	—	—
Borrowed money	65,534,954	70,000,000	—	65,534,954	—	—	—

D. Financial Instruments for which Not Practical to Estimate Fair Values:

Type of Class of Financial Instrument	Carrying Value	Effective Interest Rate	Maturity Date	Explanation
Joint venture or partnership interests that have underlying characteristics of common stock - unaffiliated - Stonehenge Opportunity Fund III, LLC	452,805	—	N/A	Investment value is based on 09/30/2022 statement provided by Stonehenge III with adjustments for activity incurred since the date of statement.
Joint venture or partnership interests that have underlying characteristics of common stock - unaffiliated - Stonehenge Opportunity Fund IV, LLC	9,256,533	—	N/A	Investment value is based on 09/30/2022 statement provided by Stonehenge IV with adjustments for activity incurred since the date of statement
Joint venture or partnership interests that have underlying characteristics of common stock - unaffiliated - Rev1 Ventures for Columbus Fund 1, LLC	389,507	—	N/A	Investment value is based on 09/30/2022 statement provided by Rev1 Ventures with adjustments for activity incurred since the date of statement.
Joint venture or partnership interests that have underlying characteristics of other - unaffiliated - NCT Ventures Fund I LP	427,929	—	N/A	Investment value is based on 09/30/2022 statement provided by NCT Ventures with adjustments for activity incurred since the date of statement.

E. Financial Instruments using the NAV Practical Expedient: Not applicable.

21. Other Items:

C. Other Disclosures:

Florida Statute 625.012(5) requires that the Company disclose the amount of Agents' balances or uncollected premiums and the premiums collected from "controlled" or "controlling" persons. The Company had \$1,490,117 and \$829,412 of uncollected premiums as of June 30, 2023 and December 31, 2022, respectively. No premiums were collected from "controlled" or "controlling persons" during the year-to-date periods ended June 30, 2023 and December 31, 2022.

Pursuant to Florida Statutes 624.424, the Company is required to disclose any credit in loss reserves taken for anticipated recoveries from the Special Disability Trust Fund. The Company took no credits in the determination of its loss reserves for the periods ended June 30, 2023 and December 31, 2022. Additionally, the Special Disability Trust Fund made no assessments and issued no payments to the Company during the year-to-date periods ended June 30, 2023 and December 31, 2022.

22. Events Subsequent:

Subsequent events have been considered through August 11, 2023 for the statutory statements issued on August 11, 2023.

23. Reinsurance:

No substantial change from December 31, 2022.

24. Retrospectively Rated Contracts and Contracts Subject to Redetermination:

No substantial change from December 31, 2022.

25. Changes in Incurred Losses and Loss Adjustment Expenses:

- A. The Company has no net exposure to changes in incurred losses and loss adjustment expenses. Refer to Note 26 for details regarding the Liberty Mutual Second Amended and Restated Intercompany Reinsurance Agreement.
- B. The Company had no significant changes in methodologies and assumptions used in calculating the liability for unpaid losses and loss adjustment expenses.

26. Intercompany Pooling Arrangements:

The Company previously participated in the State Auto intercompany pooling agreement which was commuted effective April 1, 2022. Also, effective April 1, 2022, and immediately after the commutation of the State Auto pooling agreement, the existing Liberty Mutual Second Amended and Restated Intercompany Reinsurance Agreement ("Reinsurance Agreement") was amended to add the Company as a party of the agreement. The Company's participation percentage in the Liberty Mutual agreement is 0.0%.

	Pool Participant	NAIC Company Code	Pooling Participation Percentages	Lines of Business
Lead Company:	Liberty Mutual Insurance Company	23043	50.0%	All Lines
Affiliated Pool Companies:	Peerless Insurance Company	24198	20.0%	All Lines
	Employers Insurance Company of Wausau	21458	8.0%	All Lines
	Liberty Mutual Fire Insurance Company	23035	8.0%	All Lines
	The Ohio Casualty Insurance Company	24074	8.0%	All Lines
	Safeco Insurance Company of America	24740	6.0%	All Lines
	American Compensation Insurance Company	45934	0.0%	All Lines
	American Economy Insurance Company	19690	0.0%	All Lines
	America First Insurance Company	12696	0.0%	All Lines
	America Fire and Casualty Company	24066	0.0%	All Lines
	America First Lloyd's Insurance Company	11526	0.0%	All Lines
	American States Insurance Company	19712	0.0%	All Lines
	American States Lloyd's Insurance Company	31933	0.0%	All Lines
	American States Preferred Insurance Company	37214	0.0%	All Lines
	Bloomington Compensation Insurance Company	12311	0.0%	All Lines
	Colorado Casualty Insurance Company	41785	0.0%	All Lines
	Consolidated Insurance Company	22640	0.0%	All Lines
	Excelsior Insurance Company	11045	0.0%	All Lines
	First National Insurance Company of America	24724	0.0%	All Lines
	The First Liberty Insurance Company	33588	0.0%	All Lines
	General Insurance Company of America	24732	0.0%	All Lines
	Golden Eagle Insurance Corporation	10836	0.0%	All Lines
	Hawkeye-Security Insurance Company	36919	0.0%	All Lines
	Insurance Company of Illinois	26700	0.0%	All Lines
	Indiana Insurance Company	22659	0.0%	All Lines
	Ironshore Indemnity Inc.	23647	0.0%	All Lines
	Ironshore Specialty Insurance Company	25445	0.0%	All Lines
	Liberty Insurance Company	42404	0.0%	All Lines
	Liberty Insurance Underwriters, Inc.	19917	0.0%	All Lines
	Liberty County Mutual Insurance Company	19544	0.0%	All Lines
	LM General Insurance Company	36447	0.0%	All Lines
	Liberty Lloyd's of Texas Insurance Company	11041	0.0%	All Lines
	LM Insurance Corporation	33600	0.0%	All Lines
	Liberty Mutual Mid-Atlantic Insurance Company	14486	0.0%	All Lines
	Liberty Mutual Personal Insurance Company	12484	0.0%	All Lines
	Liberty Northwest Insurance Company	41939	0.0%	All Lines
	Liberty Personal Insurance Company	11746	0.0%	All Lines
	Liberty Surplus Insurance Corporation	10725	0.0%	All Lines
	Meridian Security Insurance Company	23353	0.0%	All Lines
	Mid-American Fire & Casualty Company	23507	0.0%	All Lines
	Montgomery Mutual Insurance Company	14613	0.0%	All Lines
	The Midwestern Indemnity Company	23515	0.0%	All Lines
	Milbank Insurance Company	41653	0.0%	All Lines
	National Insurance Association	27944	0.0%	All Lines
	The Netherlands Insurance Company	24171	0.0%	All Lines
	North Pacific Insurance Company	23892	0.0%	All Lines
	Ohio Security Insurance Company	24082	0.0%	All Lines
	Oregon Automobile Insurance Company	23922	0.0%	All Lines
	Patrons Mutual Insurance Company of Connecticut	14923	0.0%	All Lines
	Peerless Indemnity Insurance Company	18333	0.0%	All Lines
	Plaza Insurance Company	30945	0.0%	All Lines
	Rockhill Insurance Company	28053	0.0%	All Lines
	Safeco Insurance Company of Illinois	39012	0.0%	All Lines
	Safeco Insurance Company of Indiana	11215	0.0%	All Lines
	Safeco Insurance Company of Oregon	11071	0.0%	All Lines
	Safeco Lloyds Insurance Company	11070	0.0%	All Lines
	Safeco National Insurance Company	24759	0.0%	All Lines
	Safeco Surplus Lines Insurance Company	11100	0.0%	All Lines
	State Auto Insurance Company of Ohio	11017	0.0%	All Lines
	State Auto Insurance Company of Wisconsin	31755	0.0%	All Lines
	State Automobile Mutual Insurance Company	25135	0.0%	All Lines
	State Auto Property & Casualty Insurance Company	25127	0.0%	All Lines
	Wausau Business Insurance Company	26069	0.0%	All Lines
	Wausau General Insurance Company	26425	0.0%	All Lines
	Wausau Underwriters Insurance Company	26042	0.0%	All Lines
	West American Insurance Company	44393	0.0%	All Lines
100% Quota Share Affiliated Companies: . . .	LM Property and Casualty Insurance Company	32352	0.0%	All Lines

26. Intercompany Pooling Arrangements (continued):

Under the terms of the Reinsurance Agreement, the Company cedes 100% of its underwriting activity to the lead company, Liberty Mutual Insurance Company ("LMIC").

The amount of ceded reinsurance written premiums between the Company and LMIC at June 30, 2023 is \$538,140,801.

The amount of ceded reinsurance loss and loss adjustment expenses between the Company and LMIC at June 30, 2023 is \$754,626,911.

The amount of all other intercompany amounts due to the Company from LMIC at June 30, 2023 is \$444,932,065.

27. Structured Settlements:

No substantial change from December 31, 2022.

28. Health Care Receivables:

No substantial change from December 31, 2022.

29. Participating Policies:

No substantial change from December 31, 2022.

30. Premium Deficiency Reserves:

No substantial change from December 31, 2022.

31. High Deductibles:

No substantial change from December 31, 2022.

32. Discounting of Liabilities for Unpaid Losses or Unpaid Loss Adjustment Expenses:

No substantial change from December 31, 2022.

33. Asbestos/Environmental Reserves:

The Company has no net exposure to asbestos and environmental claims. Refer to Note 26 for details regarding the Liberty Mutual Second Amended and Restated Intercompany Reinsurance Agreement.

34. Subscriber Savings Accounts:

The Company is not a reciprocal insurance company.

35. Multiple Peril Crop Insurance:

No substantial change from December 31, 2022.

36. Financial Guaranty Insurance:

No substantial change from December 31, 2022.

STATEMENT AS OF JUNE 30, 2023 OF THE STATE AUTOMOBILE MUTUAL INSURANCE COMPANY

GENERAL INTERROGATORIES

PART 1 - COMMON INTERROGATORIES

GENERAL

- 1.1

Did the reporting entity experience any material transactions requiring the filing of Disclosure of Material Transactions with the State of Domicile, as required by the Model Act?

Yes [] No [X]
- 1.2

If yes, has the report been filed with the domiciliary state?

Yes [] No []
- 2.1

Has any change been made during the year of this statement in the charter, by-laws, articles of incorporation, or deed of settlement of the reporting entity?

Yes [] No [X]
- 2.2

If yes, date of change:
- 3.1

Is the reporting entity a member of an Insurance Holding Company System consisting of two or more affiliated persons, one or more of which is an insurer?
If yes, complete Schedule Y, Parts 1 and 1A.

Yes [X] No []
- 3.2

Have there been any substantial changes in the organizational chart since the prior quarter end?

Yes [] No [X]
- 3.3

If the response to 3.2 is yes, provide a brief description of those changes.
.....
- 3.4

Is the reporting entity publicly traded or a member of a publicly traded group?

Yes [] No [X]
- 3.5

If the response to 3.4 is yes, provide the CIK (Central Index Key) code issued by the SEC for the entity/group.
- 4.1

Has the reporting entity been a party to a merger or consolidation during the period covered by this statement?

Yes [] No [X]
- 4.2

If yes, provide the name of the entity, NAIC Company Code, and state of domicile (use two letter state abbreviation) for any entity that has ceased to exist as a result of the merger or consolidation.

1	2	3
Name of Entity	NAIC Company Code	State of Domicile
5.

If the reporting entity is subject to a management agreement, including third-party administrator(s), managing general agent(s), attorney-in-fact, or similar agreement, have there been any significant changes regarding the terms of the agreement or principals involved?
If yes, attach an explanation.
.....

Yes [] No [X] N/A []
- 6.1

State as of what date the latest financial examination of the reporting entity was made or is being made.

12/31/2018
- 6.2

State the as of date that the latest financial examination report became available from either the state of domicile or the reporting entity. This date should be the date of the examined balance sheet and not the date the report was completed or released.

12/31/2018
- 6.3

State as of what date the latest financial examination report became available to other states or the public from either the state of domicile or the reporting entity. This is the release date or completion date of the examination report and not the date of the examination (balance sheet date).

01/09/2020
- 6.4

By what department or departments?
Ohio Department of Insurance
- 6.5

Have all financial statement adjustments within the latest financial examination report been accounted for in a subsequent financial statement filed with Departments?

Yes [] No [] N/A [X]
- 6.6

Have all of the recommendations within the latest financial examination report been complied with?

Yes [] No [] N/A [X]
- 7.1

Has this reporting entity had any Certificates of Authority, licenses or registrations (including corporate registration, if applicable) suspended or revoked by any governmental entity during the reporting period?

Yes [] No [X]
- 7.2

If yes, give full information:
.....
- 8.1

Is the company a subsidiary of a bank holding company regulated by the Federal Reserve Board?

Yes [] No [X]
- 8.2

If response to 8.1 is yes, please identify the name of the bank holding company.
.....
- 8.3

Is the company affiliated with one or more banks, thrifts or securities firms?

Yes [] No [X]
- 8.4

If response to 8.3 is yes, please provide below the names and location (city and state of the main office) of any affiliates regulated by a federal regulatory services agency [i.e. the Federal Reserve Board (FRB), the Office of the Comptroller of the Currency (OCC), the Federal Deposit Insurance Corporation (FDIC) and the Securities Exchange Commission (SEC)] and identify the affiliate's primary federal regulator.

1	2	3	4	5	6
Affiliate Name	Location (City, State)	FRB	OCC	FDIC	SEC

STATEMENT AS OF JUNE 30, 2023 OF THE STATE AUTOMOBILE MUTUAL INSURANCE COMPANY

GENERAL INTERROGATORIES

- 9.1

Are the senior officers (principal executive officer, principal financial officer, principal accounting officer or controller, or persons performing similar functions) of the reporting entity subject to a code of ethics, which includes the following standards?
(a) Honest and ethical conduct, including the ethical handling of actual or apparent conflicts of interest between personal and professional relationships;
(b) Full, fair, accurate, timely and understandable disclosure in the periodic reports required to be filed by the reporting entity;
(c) Compliance with applicable governmental laws, rules and regulations;
(d) The prompt internal reporting of violations to an appropriate person or persons identified in the code; and
(e) Accountability for adherence to the code.

Yes [X] No []
- 9.11

If the response to 9.1 is No, please explain:
.....
- 9.2

Has the code of ethics for senior managers been amended?

Yes [] No [X]
- 9.21

If the response to 9.2 is Yes, provide information related to amendment(s).
.....
- 9.3

Have any provisions of the code of ethics been waived for any of the specified officers?

Yes [] No [X]
- 9.31

If the response to 9.3 is Yes, provide the nature of any waiver(s).
.....

FINANCIAL

- 10.1

Does the reporting entity report any amounts due from parent, subsidiaries or affiliates on Page 2 of this statement?

Yes [X] No []
- 10.2

If yes, indicate any amounts receivable from parent included in the Page 2 amount:\$.....

445,319,200

INVESTMENT

- 11.1

Were any of the stocks, bonds, or other assets of the reporting entity loaned, placed under option agreement, or otherwise made available for use by another person? (Exclude securities under securities lending agreements.)

Yes [] No [X]
- 11.2

If yes, give full and complete information relating thereto:
.....
12.

Amount of real estate and mortgages held in other invested assets in Schedule BA:

\$.....0
13.

Amount of real estate and mortgages held in short-term investments:

\$.....0
- 14.1

Does the reporting entity have any investments in parent, subsidiaries and affiliates?

Yes [X] No []
- 14.2

If yes, please complete the following:

	1	2
	Prior Year-End Book/Adjusted Carrying Value	Current Quarter Book/Adjusted Carrying Value
14.21 Bonds	\$.....0	\$.....0
14.22 Preferred Stock	\$.....0	\$.....0
14.23 Common Stock	\$.....955,696,487	\$.....941,556,540
14.24 Short-Term Investments	\$.....0	\$.....0
14.25 Mortgage Loans on Real Estate	\$.....0	\$.....0
14.26 All Other	\$.....0	\$.....0
14.27 Total Investment in Parent, Subsidiaries and Affiliates (Subtotal Lines 14.21 to 14.26)	\$.....955,696,487	\$.....941,556,540
14.28 Total Investment in Parent included in Lines 14.21 to 14.26 above	\$.....0	\$.....0
- 15.1

Has the reporting entity entered into any hedging transactions reported on Schedule DB?

Yes [] No [X]
- 15.2

If yes, has a comprehensive description of the hedging program been made available to the domiciliary state? Yes [] No [] N/A [X]
If no, attach a description with this statement.
.....
16.

For the reporting entity's security lending program, state the amount of the following as of the current statement date:

16.1

Total fair value of reinvested collateral assets reported on Schedule DL, Parts 1 and 2.

\$0

16.2

Total book/adjusted carrying value of reinvested collateral assets reported on Schedule DL, Parts 1 and 2

\$0

16.3

Total payable for securities lending reported on the liability page.

\$0

STATEMENT AS OF JUNE 30, 2023 OF THE STATE AUTOMOBILE MUTUAL INSURANCE COMPANY

GENERAL INTERROGATORIES

17. Excluding items in Schedule E - Part 3 - Special Deposits, real estate, mortgage loans and investments held physically in the reporting entity's offices, vaults or safety deposit boxes, were all stocks, bonds and other securities, owned throughout the current year held pursuant to a custodial agreement with a qualified bank or trust company in accordance with Section 1, III - General Examination Considerations, F. Outsourcing of Critical Functions, Custodial or Safekeeping Agreements of the NAIC Financial Condition Examiners Handbook? Yes [X] No []
- 17.1 For all agreements that comply with the requirements of the NAIC Financial Condition Examiners Handbook, complete the following:

1 Name of Custodian(s)	2 Custodian Address
JP Morgan Chase	1 Chase Manhattan Plaza, New York, NY 10005
The Northern Trust Company	50 S. LaSalle Street, B-10, Chicago, Illinois 60675

- 17.2 For all agreements that do not comply with the requirements of the NAIC Financial Condition Examiners Handbook, provide the name, location and a complete explanation:

1 Name(s)	2 Location(s)	3 Complete Explanation(s)
Federal Home Loan Bank	Cincinnati, OH	Investment required as a provision of obtaining loans

- 17.3 Have there been any changes, including name changes, in the custodian(s) identified in 17.1 during the current quarter? Yes [] No [X]
- 17.4 If yes, give full information relating thereto:

1 Old Custodian	2 New Custodian	3 Date of Change	4 Reason

- 17.5 Investment management – Identify all investment advisors, investment managers, broker/dealers, including individuals that have the authority to make investment decisions on behalf of the reporting entity. For assets that are managed internally by employees of the reporting entity, note as such. ["...that have access to the investment accounts"; "...handle securities"]

1 Name of Firm or Individual	2 Affiliation
Liberty Mutual Group Asset Management Inc.	A.....
Liberty Mutual Investment Advisors, LLC	A.....

- 17.5097 For those firms/individuals listed in the table for Question 17.5, do any firms/individuals unaffiliated with the reporting entity (i.e. designated with a "U") manage more than 10% of the reporting entity's invested assets?..... Yes [] No [X]
- 17.5098 For firms/individuals unaffiliated with the reporting entity (i.e. designated with a "U") listed in the table for Question 17.5, does the total assets under management aggregate to more than 50% of the reporting entity's invested assets?..... Yes [] No [X]

- 17.6 For those firms or individuals listed in the table for 17.5 with an affiliation code of "A" (affiliated) or "U" (unaffiliated), provide the information for the table below.

1 Central Registration Depository Number	2 Name of Firm or Individual	3 Legal Entity Identifier (LEI)	4 Registered With	5 Investment Management Agreement (IMA) Filed
.....	Liberty Mutual Group Asset Management Inc.	N/A	N/A	DS.....
.....	Liberty Mutual Investment Advisors, LLC	N/A	N/A	DS.....

- 18.1 Have all the filing requirements of the Purposes and Procedures Manual of the NAIC Investment Analysis Office been followed? Yes [X] No []
- 18.2 If no, list exceptions:
.....

19. By self-designating 5GI securities, the reporting entity is certifying the following elements for each self-designated 5GI security:
- a. Documentation necessary to permit a full credit analysis of the security does not exist or an NAIC CRP credit rating for an FE or PL security is not available.
 - b. Issuer or obligor is current on all contracted interest and principal payments.
 - c. The insurer has an actual expectation of ultimate payment of all contracted interest and principal.
- Has the reporting entity self-designated 5GI securities? Yes [] No [X]

20. By self-designating PLGI securities, the reporting entity is certifying the following elements of each self-designated PLGI security:
- a. The security was purchased prior to January 1, 2018.
 - b. The reporting entity is holding capital commensurate with the NAIC Designation reported for the security.
 - c. The NAIC Designation was derived from the credit rating assigned by an NAIC CRP in its legal capacity as a NRSRO which is shown on a current private letter rating held by the insurer and available for examination by state insurance regulators.
 - d. The reporting entity is not permitted to share this credit rating of the PL security with the SVO.
- Has the reporting entity self-designated PLGI securities? Yes [] No [X]

21. By assigning FE to a Schedule BA non-registered private fund, the reporting entity is certifying the following elements of each self-designated FE fund:
- a. The shares were purchased prior to January 1, 2019.
 - b. The reporting entity is holding capital commensurate with the NAIC Designation reported for the security.
 - c. The security had a public credit rating(s) with annual surveillance assigned by an NAIC CRP in its legal capacity as an NRSRO prior to January 1, 2019.
 - d. The fund only or predominantly holds bonds in its portfolio.
 - e. The current reported NAIC Designation was derived from the public credit rating(s) with annual surveillance assigned by an NAIC CRP in its legal capacity as an NRSRO.
 - f. The public credit rating(s) with annual surveillance assigned by an NAIC CRP has not lapsed.
- Has the reporting entity assigned FE to Schedule BA non-registered private funds that complied with the above criteria? Yes [] No [X]

GENERAL INTERROGATORIES

PART 2 - PROPERTY & CASUALTY INTERROGATORIES

1.

If the reporting entity is a member of a pooling arrangement, did the agreement or the reporting entity's participation change?
If yes, attach an explanation.
.....

Yes [] No [X] N/A []
2.

Has the reporting entity reinsured any risk with any other reporting entity and agreed to release such entity from liability, in whole or in part, from any loss that may occur on the risk, or portion thereof, reinsured?
If yes, attach an explanation.
.....

Yes [] No [X]
- 3.1

Have any of the reporting entity's primary reinsurance contracts been canceled?

Yes [] No [X]
- 3.2

If yes, give full and complete information thereto.
.....
- 4.1

Are any of the liabilities for unpaid losses and loss adjustment expenses other than certain workers' compensation tabular reserves (see Annual Statement Instructions pertaining to disclosure of discounting for definition of " tabular reserves") discounted at a rate of interest greater than zero?

Yes [] No [X]

4.2 If yes, complete the following schedule:

			TOTAL DISCOUNT				DISCOUNT TAKEN DURING PERIOD			
1	2	3	4	5	6	7	8	9	10	11
Line of Business	Maximum Interest	Discount Rate	Unpaid Losses	Unpaid LAE	IBNR	TOTAL	Unpaid Losses	Unpaid LAE	IBNR	TOTAL
TOTAL			0	0	0	0	0	0	0	0

5.

Operating Percentages:
- 5.1

A&H loss percent

0.000 %
- 5.2

A&H cost containment percent

0.000 %
- 5.3

A&H expense percent excluding cost containment expenses

0.000 %
- 6.1

Do you act as a custodian for health savings accounts?

Yes [] No [X]
- 6.2

If yes, please provide the amount of custodial funds held as of the reporting date\$.....

0
- 6.3

Do you act as an administrator for health savings accounts?

Yes [] No [X]
- 6.4

If yes, please provide the balance of the funds administered as of the reporting date\$.....

0
7.

Is the reporting entity licensed or chartered, registered, qualified, eligible or writing business in at least two states?

Yes [X] No []
- 7.1

If no, does the reporting entity assume reinsurance business that covers risks residing in at least one state other than the state of domicile of the reporting entity?

Yes [] No []

STATEMENT AS OF JUNE 30, 2023 OF THE STATE AUTOMOBILE MUTUAL INSURANCE COMPANY

SCHEDULE F - CEDED REINSURANCE

Showing All New Reinsurers - Current Year to Date

[illegible]

SCHEDULE T - EXHIBIT OF PREMIUMS WRITTEN

Current Year to Date - Allocated by States and Territories

		1 Active Status (a)	Direct Premiums Written		Direct Losses Paid (Deducting Salvage)		Direct Losses Unpaid		
			2 Current Year To Date	3 Prior Year To Date	4 Current Year To Date	5 Prior Year To Date	6 Current Year To Date	7 Prior Year To Date	
States, etc.									
1.	Alabama	AL	L.....	16,887,188	12,927,997	7,950,564	2,311,200	15,697,910	7,323,654
2.	Alaska	AK	L.....	0	0	0	0	0	0
3.	Arizona	AZ	L.....	14,130,420	13,598,709	8,646,036	4,462,582	15,294,469	12,387,762
4.	Arkansas	AR	L.....	17,667,922	15,538,816	9,318,093	7,028,403	40,284,269	9,934,253
5.	California	CA	Q.....	0	0	0	0	0	0
6.	Colorado	CO	L.....	11,429,554	9,623,623	10,803,449	2,711,510	17,188,174	7,764,237
7.	Connecticut	CT	L.....	18,174,871	18,075,351	11,534,867	9,257,462	23,268,184	15,881,268
8.	Delaware	DE	L.....	68,217	139,805	36,219	54,949	61,519	454,792
9.	District of Columbia	DC	L.....	151,682	181,334	334	23,681	586,328	438,017
10.	Florida	FL	L.....	330,559	298,679	(14,782)	40,568	841,087	526,538
11.	Georgia	GA	L.....	21,205,408	17,052,461	8,876,837	4,779,668	21,707,630	24,022,797
12.	Hawaii	HI	L.....	0	0	0	0	0	0
13.	Idaho	ID	L.....	48,162	0	0	0	7,591	(32)
14.	Illinois	IL	L.....	15,562,449	13,687,532	11,128,779	4,652,713	24,152,643	23,287,639
15.	Indiana	IN	L.....	16,097,612	12,539,605	4,967,258	6,883,754	16,091,925	12,971,340
16.	Iowa	IA	L.....	5,451,755	4,309,890	2,997,400	5,888,018	5,435,484	6,584,390
17.	Kansas	KS	L.....	18,680,756	19,156,382	9,489,236	14,018,257	12,239,436	14,010,546
18.	Kentucky	KY	L.....	11,388,984	11,312,239	9,783,169	6,430,925	19,466,335	11,532,697
19.	Louisiana	LA	L.....	0	0	0	0	(38)	(38)
20.	Maine	ME	L.....	0	0	0	0	0	0
21.	Maryland	MD	L.....	16,150,805	16,176,606	7,246,778	5,963,030	19,385,112	20,540,536
22.	Massachusetts	MA	L.....	3,729,877	3,464,487	2,018,337	2,556,389	6,831,411	4,235,229
23.	Michigan	MI	L.....	14,706,460	13,741,829	9,843,822	7,175,145	58,373,054	51,977,747
24.	Minnesota	MN	L.....	15,191,703	13,011,429	8,055,785	8,481,323	14,880,728	18,768,942
25.	Mississippi	MS	L.....	16,247,012	13,016,272	8,928,870	5,101,584	14,823,055	10,976,604
26.	Missouri	MO	L.....	35,561,426	37,304,530	26,147,085	19,501,479	31,798,951	19,693,549
27.	Montana	MT	L.....	0	0	0	0	0	0
28.	Nebraska	NE	L.....	0	0	0	0	0	0
29.	Nevada	NV	L.....	0	(59,814)	2,942	1,961	21,671	26,003
30.	New Hampshire	NH	L.....	0	0	0	0	0	0
31.	New Jersey	NJ	L.....	0	0	0	0	(6)	(6)
32.	New Mexico	NM	L.....	0	0	0	0	0	0
33.	New York	NY	L.....	0	0	0	0	0	0
34.	North Carolina	NC	L.....	16,172,302	14,285,817	7,240,664	6,711,960	15,488,084	9,427,339
35.	North Dakota	ND	L.....	10,959,983	9,814,432	6,129,769	3,557,507	6,009,921	4,546,394
36.	Ohio	OH	L.....	34,286,229	35,658,066	31,605,981	17,469,968	66,894,643	50,296,588
37.	Oklahoma	OK	L.....	8,574,762	5,632,017	2,564,010	1,403,984	10,552,256	3,722,853
38.	Oregon	OR	L.....	0	0	0	0	0	0
39.	Pennsylvania	PA	L.....	18,927,132	18,066,798	6,887,416	7,675,715	30,006,502	19,228,457
40.	Rhode Island	RI	L.....	0	0	0	0	0	0
41.	South Carolina	SC	L.....	14,039,771	13,040,655	8,079,309	4,802,719	14,021,366	10,688,374
42.	South Dakota	SD	L.....	7,294,026	6,474,232	8,505,392	7,088,448	6,191,143	24,070,140
43.	Tennessee	TN	L.....	20,310,336	18,801,278	9,998,421	6,716,870	29,147,620	20,336,743
44.	Texas	TX	L.....	119,733,804	102,267,778	65,501,521	34,326,693	136,228,615	97,344,362
45.	Utah	UT	L.....	6,103,512	4,621,928	3,052,375	1,282,863	5,140,101	2,891,677
46.	Vermont	VT	L.....	0	0	0	0	0	0
47.	Virginia	VA	L.....	7,508,586	5,679,332	4,088,145	3,715,851	7,112,330	4,584,559
48.	Washington	WA	L.....	0	0	0	0	0	0
49.	West Virginia	WV	L.....	5,295,120	4,707,960	3,997,281	1,077,251	7,136,972	4,001,052
50.	Wisconsin	WI	L.....	4,918,546	4,767,153	2,961,427	2,737,627	4,542,672	4,297,083
51.	Wyoming	WY	L.....	0	0	0	0	0	0
52.	American Samoa	AS	N.....	0	0	0	0	0	0
53.	Guam	GU	N.....	0	0	0	0	0	0
54.	Puerto Rico	PR	N.....	0	0	0	0	0	0
55.	U.S. Virgin Islands	VI	N.....	0	0	0	0	0	0
56.	Northern Mariana Islands	MP	N.....	0	0	0	0	0	0
57.	Canada	CAN	N.....	0	0	0	0	0	0
58.	Aggregate Other Alien OT	OT	XXX.....	0	0	0	0	0	0
59.	Totals		XXX	542,986,930	488,915,206	318,372,789	215,892,057	696,909,148	528,774,085
DETAILS OF WRITE-INS									
58001.		XXX.....						
58002.		XXX.....						
58003.		XXX.....						
58998.	Summary of remaining write-ins for Line 58 from overflow page		XXX.....	0	0	0	0	0	0
58999.	Totals (Lines 58001 through 58003 plus 58998)(Line 58 above)		XXX	0	0	0	0	0	0

(a) Active Status Counts:

1. L - Licensed or Chartered - Licensed insurance carrier or domiciled RRG..... 50

2. R - Registered - Non-domiciled RRGs..... 0

3. E - Eligible - Reporting entities eligible or approved to write surplus lines in the state (other than their state of domicile - see DSLI)..... 0

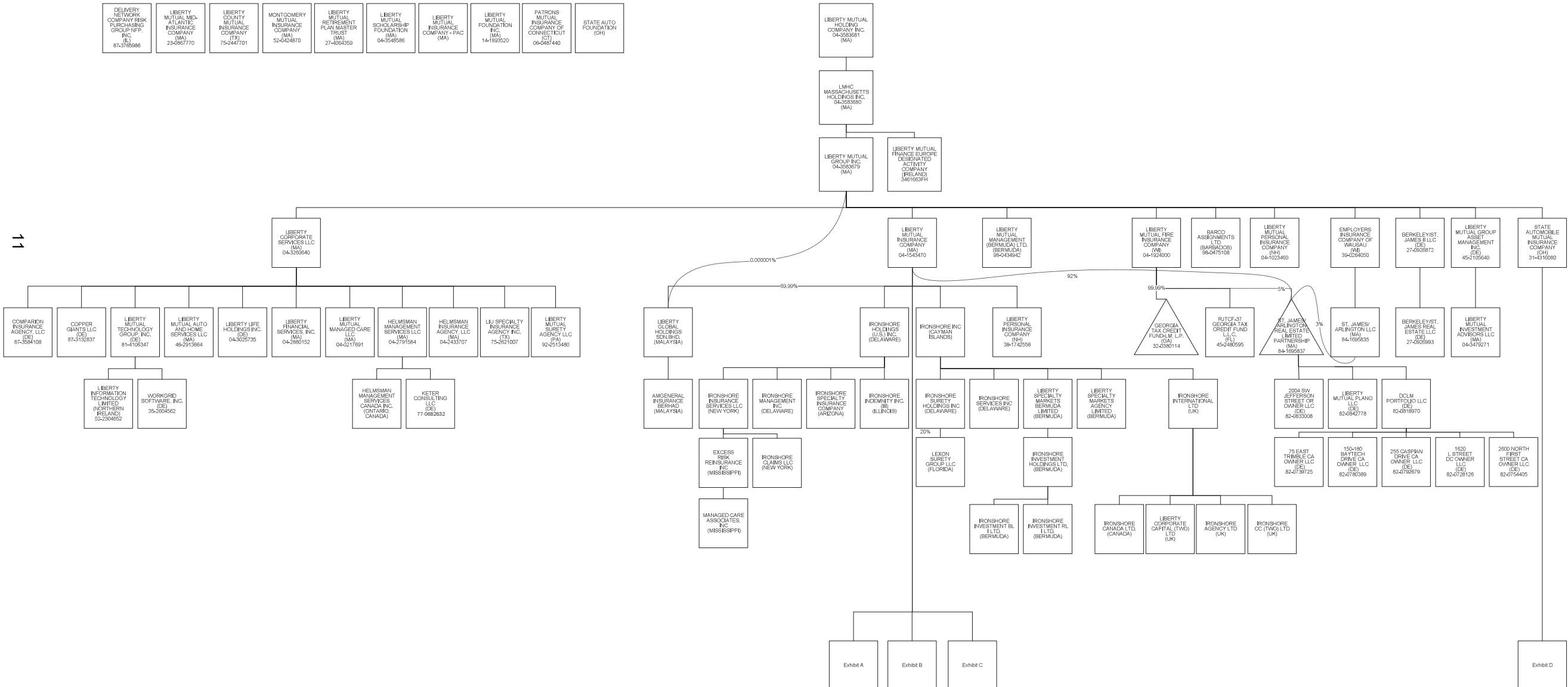
4. Q - Qualified - Qualified or accredited reinsurer..... 1

5. D - Domestic Surplus Lines Insurer (DSLII) - Reporting entities authorized to write surplus lines in the state of domicile..... 0

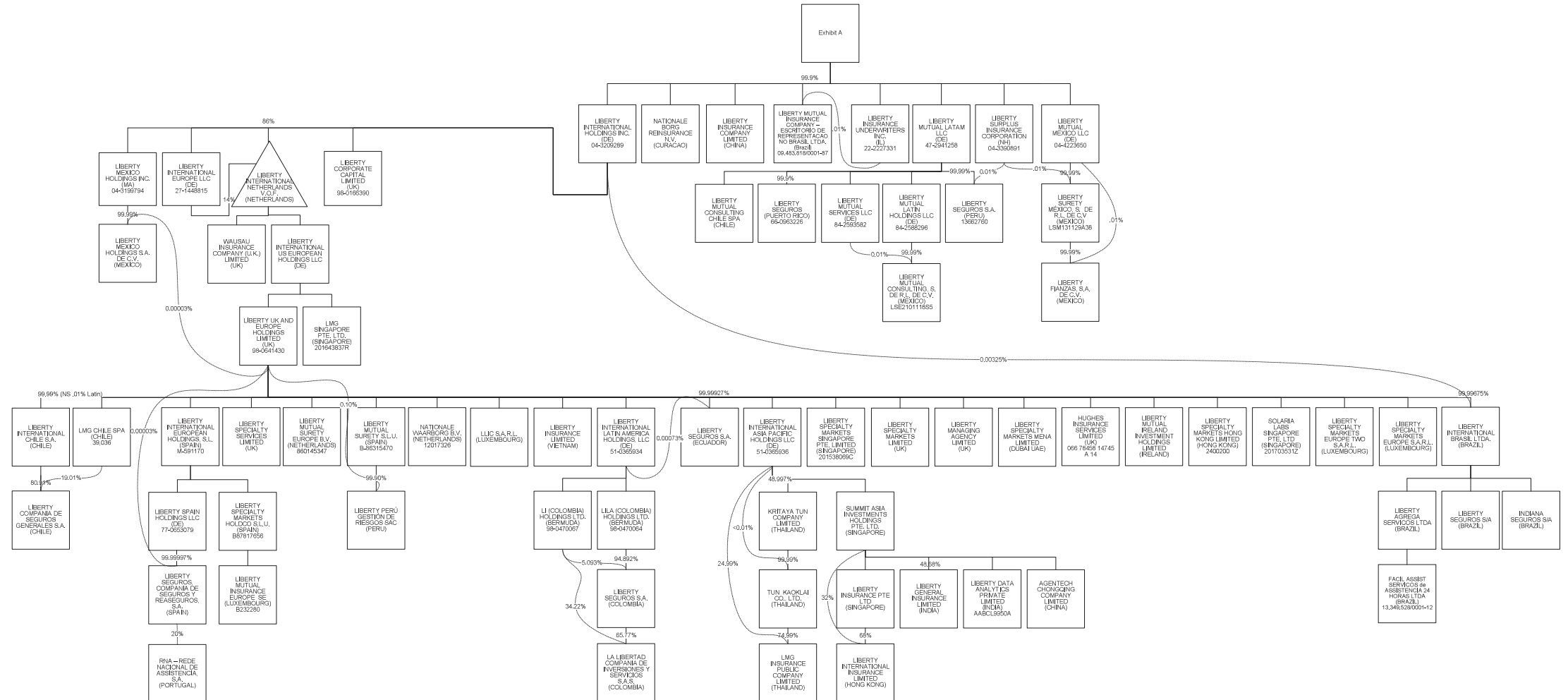
6. N - None of the above - Not allowed to write business in the state... 6

SCHEDULE Y - INFORMATION CONCERNING ACTIVITIES OF INSURER MEMBERS OF A HOLDING COMPANY GROUP

PART 1 - ORGANIZATIONAL CHART

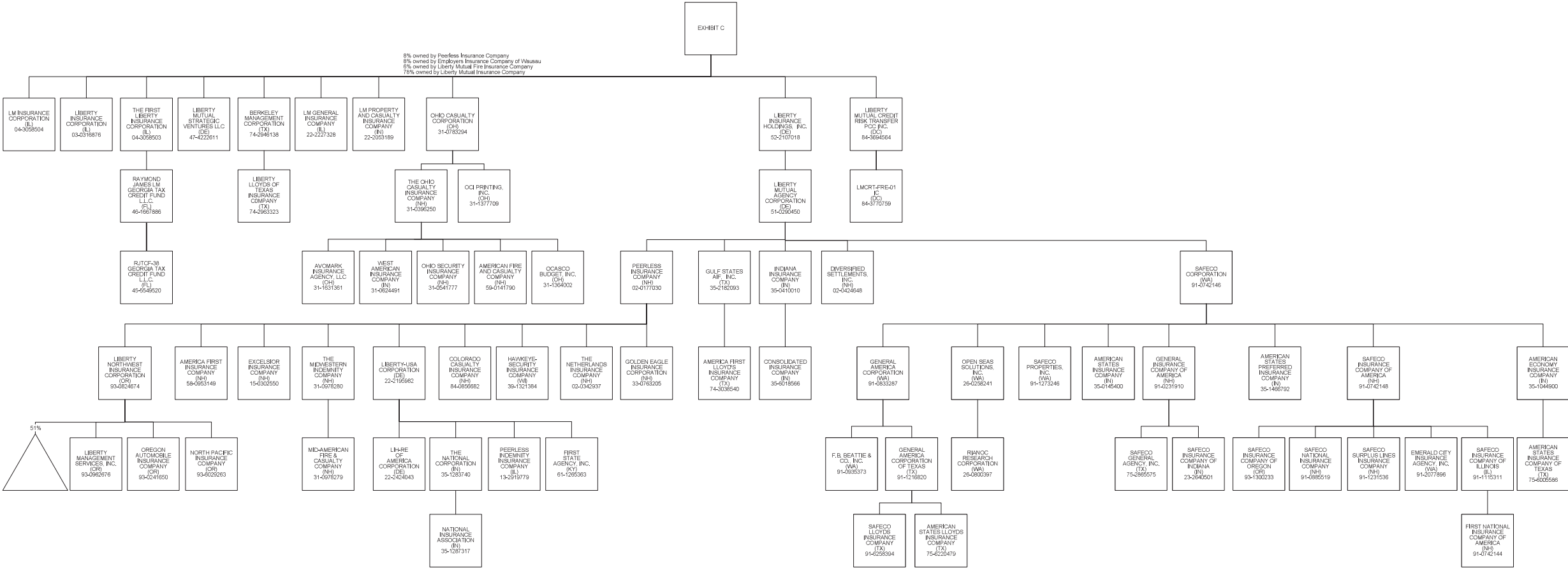


PART 1 - ORGANIZATIONAL CHART



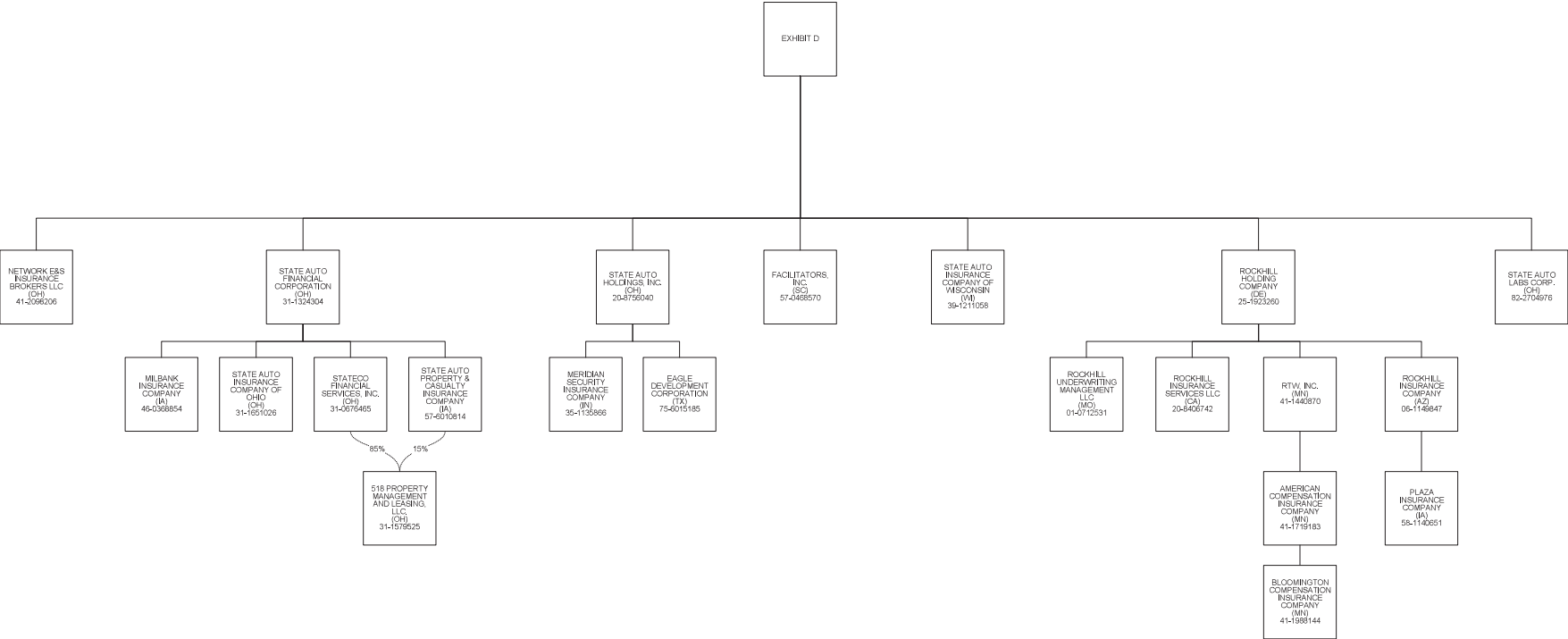
SCHEDULE Y - INFORMATION CONCERNING ACTIVITIES OF INSURER MEMBERES OF A HOLDING COMPANY GROUP

PART 1 - ORGANIZATIONAL CHART



SCHEDULE Y - INFORMATION CONCERNING ACTIVITIES OF INSURER MEMBERES OF A HOLDING COMPANY GROUP

PART 1 - ORGANIZATIONAL CHART



STATEMENT AS OF JUNE 30, 2023 OF THE STATE AUTOMOBILE MUTUAL INSURANCE COMPANY

SCHEDULE Y

PART 1A - DETAIL OF INSURANCE HOLDING COMPANY SYSTEM

1	2	3	4	5	6	7	8	9	10	11	12	13	14	15	16
Group Code	Group Name	NAIC Company Code	ID Number	Federal RSSD	CIK	Name of Securities Exchange if Publicly Traded (U.S. or International)	Names of Parent, Subsidiaries Or Affiliates	Domi-ciliary Location	Relation-ship to Reporting Entity	Directly Controlled by (Name of Entity/Person)	Type of Control (Ownership, Board, Management, Attorney-in-Fact, Influence, Other)	If Control is Ownership Provide Percen-tage	Ultimate Controlling Entity(ies)/Person(s)	Is an SCA Filing Re-quired? (Yes/No)	*
	 00000	82-0780389				150-180 Baytech Drive CA Owner LLC DE..... NIA.....	DGLM Portfolio LLC	Ownership, Board, Management	100.000 ...	Liberty Mutual Holding Company Inc. ...		
	 00000	82-0728126				1620 L Street DC Owner LLC DE..... NIA.....	DGLM Portfolio LLC	Ownership, Board, Management	100.000 ...	Liberty Mutual Holding Company Inc. ...		
	 00000	82-0833008				2004 SW Jefferson Street OR Owner LLC DE..... NIA.....	Partnership	Ownership, Board, Management	100.000 ...	Liberty Mutual Holding Company Inc. ...		
	 00000	82-0792679				255 Caspian Drive CA Owner LLC DE..... NIA.....	DGLM Portfolio LLC	Ownership, Board, Management	100.000 ...	Liberty Mutual Holding Company Inc. ...		
	 00000	82-0754405				2600 North First Street CA Owner LLC DE..... NIA.....	DGLM Portfolio LLC	Ownership, Board, Management	100.000 ...	Liberty Mutual Holding Company Inc. ...		
	 00000	31-1579525				518 Property Management and Leasing, LLC OH..... NIA.....	State Auto Property & Casualty Insurance Company	Ownership, Board, and Management	15.000 ...	Liberty Mutual Holding Company Inc. ...		
	 00000	31-1579525				518 Property Management and Leasing, LLC OH..... NIA.....	Stateco Financial Services, Inc.	Ownership, Board, and Management	85.000 ...	Liberty Mutual Holding Company Inc. ...		
	 00000	93-1200659				600 Holladay Limited Partnership OR..... DS.....	Liberty Northwest Insurance Corporation ...	Ownership.....	51.000 ...	Liberty Mutual Holding Company Inc. ...		
	 00000	82-0739725				75 East Trimble CA Owner LLC DE..... NIA.....	DGLM Portfolio LLC	Ownership, Board, Management	100.000 ...	Liberty Mutual Holding Company Inc. ...		
	 00000	86-1284407				9Yards Opportunities D LP DE..... NIA.....	Liberty Mutual Investment Holdings LLC	Ownership.....	100.000 ...	Liberty Mutual Holding Company Inc. ...		
	 00000	86-1284407				9Yards Opportunities E LP DE..... NIA.....	Liberty Mutual Investment Holdings LLC	Ownership.....	100.000 ...	Liberty Mutual Holding Company Inc. ...		
	 00000	86-2021706				9Yards Opportunities F LP DE..... NIA.....	Liberty Mutual Investment Holdings LLC	Ownership.....	100.000 ...	Liberty Mutual Holding Company Inc. ...		
	 00000	86-2021706				Agentech Chongqing Company Limited CHN..... NIA.....	Summit Asia Investments Holdings Pte.Ltd.	Ownership.....	100.000 ...	Liberty Mutual Holding Company Inc. ...		
. 0111 ...	Liberty Mutual Insurance Company and its Affiliated Insurers 12696	58-0953149				America First Insurance Company NH..... DS.....	Peerless Insurance Company	Ownership, Board and Management	100.000 ...	Liberty Mutual Holding Company Inc. ...		
. 0111 ...	Liberty Mutual Insurance Company and its Affiliated Insurers 11526	74-3038540				America First Lloyd's Insurance Company TX..... DS.....	Gulf States AIF, Inc.	Management and Attorney-in-Fact	0.000 ...	Liberty Mutual Holding Company Inc. ...		
. 0111 ...	Liberty Mutual Insurance Company and its Affiliated Insurers 45934	41-1719183				American Compensation Insurance Company MN..... IA.....	RTW, Inc.	Ownership, Board and Management	100.000 ...	Liberty Mutual Holding Company Inc. ...		
. 0111 ...	Liberty Mutual Insurance Company and its Affiliated Insurers 19690	35-1044900				American Economy Insurance Company IN..... DS.....	Safeco Corporation	Ownership, Board and Management	100.000 ...	Liberty Mutual Holding Company Inc. ...		
. 0111 ...	Liberty Mutual Insurance Company and its Affiliated Insurers 24066	59-0141790				American Fire and Casualty Company NH..... DS.....	The Ohio Casualty Insurance Company	Ownership, Board and Management	100.000 ...	Liberty Mutual Holding Company Inc. ...		
. 0111 ...	Liberty Mutual Insurance Company and its Affiliated Insurers 19704	35-0145400				American States Insurance Company IN..... DS.....	Safeco Corporation	Ownership, Board and Management	100.000 ...	Liberty Mutual Holding Company Inc. ...		
. 0111 ...	Liberty Mutual Insurance Company and its Affiliated Insurers 19712	75-6005586				American States Insurance Company of Texas TX..... DS.....	American Economy Insurance Company	Ownership, Board and Management	100.000 ...	Liberty Mutual Holding Company Inc. ...		
. 0111 ...	Liberty Mutual Insurance Company and its Affiliated Insurers 31933	75-6220479				American States Lloyds Insurance Company TX..... DS.....	General America Corporation of Texas	Management and Attorney-in-Fact	0.000 ...	Liberty Mutual Holding Company Inc. ...		
. 0111 ...	Liberty Mutual Insurance Company and its Affiliated Insurers 37214	35-1466792				American States Preferred Insurance Company IN..... DS.....	Safeco Corporation	Ownership, Board and Management	100.000 ...	Liberty Mutual Holding Company Inc. ...		
	 00000	98-0405213				AmGeneral Insurance Berhad MYS..... IA.....	Liberty Global Holdings SDN. BHD.	Ownership.....	100.000 ...	Liberty Mutual Holding Company Inc. ...		
	 00000	31-1631361				Arlington Insurance Company Ltd. BMU..... DS.....	Liberty Mutual Holdings (Bermuda) Ltd	Ownership, Board and Management	100.000 ...	Liberty Mutual Holding Company Inc. ...		
	 00000	98-0475108				Avomark Insurance Agency, LLC OH..... DS.....	The Ohio Casualty Insurance Company	Ownership, Board and Management	100.000 ...	Liberty Mutual Holding Company Inc. ...		
	 00000	74-2946138				BARCO Assignments Ltd. BRB..... DS.....	Liberty Mutual Group Inc.	Ownership.....	100.000 ...	Liberty Mutual Holding Company Inc. ...		
	 00000	27-0547748				Berkeley Management Corporation TX..... DS.....	Liberty Mutual Insurance Company	Ownership, Board and Management	100.000 ...	Liberty Mutual Holding Company Inc. ...		
	 00000	27-0547665				Berkeley/Columbus II LLC DE..... DS.....	Berkeley/Columbus III LLC	Ownership, Board and Management	100.000 ...	Liberty Mutual Holding Company Inc. ...		
	 00000	27-0547878				Berkeley/Columbus III LLC DE..... DS.....	Liberty Mutual Insurance Company	Ownership, Board and Management	100.000 ...	Liberty Mutual Holding Company Inc. ...		
	 00000	27-0926872				Berkeley/Columbus Real Estate LLC DE..... DS.....	Berkeley/Columbus II LLC	Ownership, Board and Management	100.000 ...	Liberty Mutual Holding Company Inc. ...		
	 00000	27-0926993				Berkeley/St. James II LLC DE..... NIA.....	Liberty Mutual Group Inc.	Ownership, Board and Management	100.000 ...	Liberty Mutual Holding Company Inc. ...		
	 00000	27-0926993				Berkeley/St. James Real Estate LLC DE..... NIA.....	Berkeley/St. James II LLC	Ownership, Board and Management	100.000 ...	Liberty Mutual Holding Company Inc. ...		
. 0111 ...	Liberty Mutual Insurance Company and its Affiliated Insurers 12311	41-1988144				Bloomington Compensation Insurance Company MN..... IA.....	American Compensation Insurance Company ..	Ownership, Board and Management	100.000 ...	Liberty Mutual Holding Company Inc. ...		
	 00000	52-2282902				Brooke Drilling, LLC DE..... DS.....	Liberty Energy Holdings, LLC	Ownership, Board and Management	100.000 ...	Liberty Mutual Holding Company Inc. ...		
	 00000	84-0856682				Camcor Oil Sands Fund 2, L.P. CAN..... DS.....	Liberty Energy Canada, Inc.	Ownership.....	99.900 ...	Liberty Mutual Holding Company Inc. ...		
. 0111 ...	Liberty Mutual Insurance Company and its Affiliated Insurers 41785	87-3584108				Colorado Casualty Insurance Company NH..... DS.....	Peerless Insurance Company	Ownership, Board and Management	100.000 ...	Liberty Mutual Holding Company Inc. ...		
	 00000	87-3584108				Comparion Insurance Agency, LLC DE..... IA.....	Liberty Corporate Services LLC	Ownership, Board and Management	100.000 ...	Liberty Mutual Holding Company Inc. ...		

STATEMENT AS OF JUNE 30, 2023 OF THE STATE AUTOMOBILE MUTUAL INSURANCE COMPANY

SCHEDULE Y

PART 1A - DETAIL OF INSURANCE HOLDING COMPANY SYSTEM

1	2	3	4	5	6	7	8	9	10	11	12	13	14	15	16
Group Code	Group Name	NAIC Company Code	ID Number	Federal RSSD	CIK	Name of Securities Exchange if Publicly Traded (U.S. or International)	Names of Parent, Subsidiaries Or Affiliates	Domi-ciliary Location	Relation-ship to Reporting Entity	Directly Controlled by (Name of Entity/Person)	Type of Control (Ownership, Board, Management, Attorney-in-Fact, Influence, Other)	If Control is Ownership Provide Percen-tage	Ultimate Controlling Entity(ies)/Person(s)	Is an SCA Filing Re-quired? (Yes/No)	*
.0111	Liberty Mutual Insurance Company and its Affiliated Insurers	22640	35-6018566				Consolidated Insurance Company	..IN.DS.....	Indiana Insurance Company	Ownership, Board and Management	100.000	Liberty Mutual Holding Company Inc.		
		00000					Contumil S.A.	..URY.NIA.....	LMAT Natural Resources International S.L.	Ownership.....	99.990	Liberty Mutual Holding Company Inc.		
		00000					Contumil S.A.	..URY.NIA.....	LMAT Arbol Holdings LLC	Ownership.....	0.010	Liberty Mutual Holding Company Inc.		
		00000	87-3132837				Copper Giants LLC	..DE.NIA.....	Liberty Corporate Services LLC	Ownership.....	100.000	Liberty Mutual Holding Company Inc.		
		00000	82-4323888				Cypress Coast Ranch LLC	..DE.NIA.....	PAGUS Holdings LLC	Ownership.....	100.000	Liberty Mutual Holding Company Inc.		
		00000	82-0818970				DCLM Portfolio LLC	..DE.NIA.....	St. James/Arlington Real Estate Limited Partnership	Ownership, Board and Management	100.000	Liberty Mutual Holding Company Inc.		
		00000	88-1284114				Definition Opportunity IB LP	..DE.NIA.....	Liberty Mutual Investment Holdings LLC	Ownership.....	99.010	Liberty Mutual Holding Company Inc.		
		00000	87-3765986				Delivery Network Company Risk Purchasing Group NFP, Inc.	..IL.NIA.....	Not Applicable	Board and Management	0.000	Liberty Mutual Holding Company Inc.		
		00000	02-0424648				Diversified Settlements, Inc.	..NH.DS.....	Liberty Mutual Agency Corporation	Ownership, Board and Management	100.000	Liberty Mutual Holding Company Inc.		
		00000	75-6015185				Eagle Development Corporation	..TX.NIA.....	State Auto Holdings, Inc.	Ownership, Board and Management	100.000	Liberty Mutual Holding Company Inc.		
		00000	91-2077896				Emerald City Insurance Agency, Inc.	..WA.DS.....	Safeco Insurance Company of America	Ownership, Board and Management	100.000	Liberty Mutual Holding Company Inc.		
		00000					Emerald Topco LP	..DE.NIA.....	Liberty Mutual Insurance Company	Ownership.....	40.000	Liberty Mutual Holding Company Inc.		
		00000					Emerald Topco LP	..DE.NIA.....	Peerless Insurance Company	Ownership.....	20.000	Liberty Mutual Holding Company Inc.		
		00000					Emerald Topco LP	..DE.NIA.....	Employers Insurance Company of Wausau	Ownership.....	10.000	Liberty Mutual Holding Company Inc.		
		00000					Emerald Topco LP	..DE.NIA.....	Liberty Mutual Fire Insurance Compay	Ownership.....	10.000	Liberty Mutual Holding Company Inc.		
		00000					Emerald Topco LP	..DE.NIA.....	The Ohio Casualty Insurance Company	Ownership.....	10.000	Liberty Mutual Holding Company Inc.		
		00000					Emerald Topco LP	..DE.NIA.....	Safeco Insurance Company of America	Ownership.....	10.000	Liberty Mutual Holding Company Inc.		
.0111	Liberty Mutual Insurance Company and its Affiliated Insurers	21458	39-0264050				Employers Insurance Company of Wausau	..WI.IA.....	Liberty Mutual Group Inc.	Ownership, Board and Management	100.000	Liberty Mutual Holding Company Inc.		
.0111	Liberty Mutual Insurance Company and its Affiliated Insurers	11045	15-0302550				Excelsior Insurance Company	..NH.DS.....	Peerless Insurance Company	Ownership, Board and Management	100.000	Liberty Mutual Holding Company Inc.		
		00000	41-2043790				Excess Risk Reinsurance, Inc.	..MS.DS.....	Ironshore Insurance Services LLC	Ownership.....	100.000	Liberty Mutual Holding Company Inc.		
		00000	91-0935373				F.B. Beattie & Co., Inc.	..WA.DS.....	General America Corporation	Ownership, Board and Management	100.000	Liberty Mutual Holding Company Inc.		
		00000					Facil Assist Servicios de Asistencia 24 horas Ltda	..BRA.NIA.....	Liberty Agrega Servicios Ltda	Ownership.....	100.000	Liberty Mutual Holding Company Inc.		
		00000	57-0468570				Facilitators, Inc.	..SC.IA.....	State Automobile Mutual Insurance Company	Ownership, Board and Management	100.000	Liberty Mutual Holding Company Inc.		
.0111	Liberty Mutual Insurance Company and its Affiliated Insurers	24724	91-0742144				First National Insurance Company of America	..NH.DS.....	Safeco Insurance Company of Illinois	Ownership, Board and Management	100.000	Liberty Mutual Holding Company Inc.		
		00000	61-1265363				First State Agency, Inc.	..KY.DS.....	Liberty-USA Corporation	Ownership, Board and Management	100.000	Liberty Mutual Holding Company Inc.		
		00000					Floresta Brasil Holdings Ltda.	..BRA.NIA.....	LMAT Natural Resources International, S.L.	Ownership.....	48.000	Liberty Mutual Holding Company Inc.		
		00000					Floresta Brasil Holdings Ltda.	..BRA.NIA.....	LMAT Arbol Holdings LLC	Ownership.....	1.000	Liberty Mutual Holding Company Inc.		
		00000	82-4360376				Four Palms Vineyards LLC	..DE.NIA.....	PAGUS Holdings LLC	Ownership.....	100.000	Liberty Mutual Holding Company Inc.		
		00000	91-0833287				General America Corporation	..WA.DS.....	Safeco Corporation	Ownership, Board and Management	100.000	Liberty Mutual Holding Company Inc.		
		00000	91-1216820				General America Corporation of Texas	..TX.DS.....	General America Corporation	Ownership, Board and Management	100.000	Liberty Mutual Holding Company Inc.		
.0111	Liberty Mutual Insurance Company and its Affiliated Insurers	24732	91-0231910				General Insurance Company of America	..NH.DS.....	Safeco Corporation	Ownership, Board and Management	100.000	Liberty Mutual Holding Company Inc.		
		00000	32-0380114				Georgia Tax Credit Fund-LM, L.P.	..GA.DS.....	Liberty Mutual Fire Insurance Company	Ownership.....	99.990	Liberty Mutual Holding Company Inc.		
.0111	Liberty Mutual Insurance Company and its Affiliated Insurers	10836	33-0763205				Golden Eagle Insurance Corporation	..NH.DS.....	Peerless Insurance Company	Ownership, Board and Management	100.000	Liberty Mutual Holding Company Inc.		
		00000	35-2182093				Gulf States AIF, Inc.	..TX.DS.....	Liberty Mutual Agency Corporation	Ownership, Board and Management	100.000	Liberty Mutual Holding Company Inc.		
.0111	Liberty Mutual Insurance Company and its Affiliated Insurers	36919	39-1321384				Hawkeye-Security Insurance Company	..WI.DS.....	Peerless Insurance Company	Ownership, Board and Management	100.000	Liberty Mutual Holding Company Inc.		
		00000	04-2433707				Helmsman Insurance Agency LLC	..MA.IA.....	Liberty Corporate Services LLC	Ownership, Board and Management	100.000	Liberty Mutual Holding Company Inc.		
		00000					Helmsman Management Services Canada Inc.	..CAN.NIA.....	Helmsman Management Services LLC	Ownership, Board and Management	100.000	Liberty Mutual Holding Company Inc.		
		00000	04-2791584				Helmsman Management Services LLC	..MA.NIA.....	Liberty Corporate Services LLC	Ownership, Board and Management	100.000	Liberty Mutual Holding Company Inc.		
		00000					Hughes Insurance Services Limited	..GBR.DS.....	Liberty UK and Europe Holdings Limited	Ownership, Board and Management	100.000	Liberty Mutual Holding Company Inc.		
		00000	93-2055387				Idear Borrower LLC	..DE.NIA.....	Idear Topco LLC	Ownership, Management	100.000	Liberty Mutual Holding Company Inc.		

STATEMENT AS OF JUNE 30, 2023 OF THE STATE AUTOMOBILE MUTUAL INSURANCE COMPANY

SCHEDULE Y

PART 1A - DETAIL OF INSURANCE HOLDING COMPANY SYSTEM

1	2	3	4	5	6	7	8	9	10	11	12	13	14	15	16
Group Code	Group Name	NAIC Company Code	ID Number	Federal RSSD	CIK	Name of Securities Exchange if Publicly Traded (U.S. or International)	Names of Parent, Subsidiaries Or Affiliates	Domi-ciliary Location	Relation-ship to Reporting Entity	Directly Controlled by (Name of Entity/Person)	Type of Control (Ownership, Board, Management, Attorney-in-Fact, Influence, Other)	If Control is Owner-ship Provide Percen-tage	Ultimate Controlling Entity(ies)/Person(s)	Is an SCA Filing Re-quired? (Yes/No)	*
	00000	93-2040588				Idear Topco LLCDE.....NIA.....	Liberty Mutual Insurance Company	Ownership, Management40.000	Liberty Mutual Holding Company Inc. ...		
	00000	93-2040588				Idear Topco LLCDE.....NIA.....	Peerless Insurance Company	Ownership, Management40.000	Liberty Mutual Holding Company Inc. ...		
	00000	93-2040588				Idear Topco LLCDE.....NIA.....	Safeco Insurance Company of America	Ownership, Management10.000	Liberty Mutual Holding Company Inc. ...		
	00000	93-2040588				Idear Topco LLCDE.....NIA.....	The Ohio Casualty Insurance Company	Ownership, Management10.000	Liberty Mutual Holding Company Inc. ...		
.0111	Liberty Mutual Insurance Company and its Affiliated Insurers22659	35-0410010				Indiana Insurance CompanyIN.....DS.....	Liberty Mutual Agency Corporation	Ownership, Board and Management100.000	Liberty Mutual Holding Company Inc. ...		
	00000					Indiana Seguros S/ABRA.....DS.....	Liberty International Brasil Ltda.	Ownership, Board and Management100.000	Liberty Mutual Holding Company Inc. ...		
.0111	Liberty Mutual Insurance Company and its Affiliated Insurers26700	36-2690333				Insurance Company of IllinoisIL.....IA.....	Liberty Mutual Insurance Company	Ownership, Board and Management100.000	Liberty Mutual Holding Company Inc. ...		
	00000					Ironshore Agency Ltd.GBR.....DS.....	Ironshore International Ltd.	Ownership.....	..100.000	Liberty Mutual Holding Company Inc. ...		
	00000					Ironshore Canada Ltd.CAN.....DS.....	Ironshore International Ltd.	Ownership.....	..100.000	Liberty Mutual Holding Company Inc. ...		
	00000					Ironshore CC (Two) Ltd.GBR.....DS.....	Ironshore International Ltd.	Ownership.....	..100.000	Liberty Mutual Holding Company Inc. ...		
	00000	26-0748152				Ironshore Claims LLCNY.....DS.....	Ironshore Insurance Services LLC	Ownership.....	..100.000	Liberty Mutual Holding Company Inc. ...		
	00000	20-8964631				Ironshore Holdings (US) Inc.DE.....DS.....	Liberty Mutual Insurance Company	Ownership.....	..100.000	Liberty Mutual Holding Company Inc. ...		
	00000	98-0579286				Ironshore Inc.CYM.....DS.....	Liberty Mutual Insurance Company	Ownership.....	..100.000	Liberty Mutual Holding Company Inc. ...		
.0111	Liberty Mutual Insurance Company and its Affiliated Insurers23647	41-0121640				Ironshore Indemnity Inc.IL.....DS.....	Ironshore Holdings (US) Inc.	Ownership.....	..100.000	Liberty Mutual Holding Company Inc. ...		
	00000	26-0542654				Ironshore Insurance Services LLCNY.....DS.....	Ironshore Holdings (US) Inc.	Ownership.....	..100.000	Liberty Mutual Holding Company Inc. ...		
	00000					Ironshore International Ltd.GBR.....DS.....	Ironshore Inc.	Ownership.....	..100.000	Liberty Mutual Holding Company Inc. ...		
	00000					Ironshore Investment BL I Ltd.BMU.....DS.....	Ironshore Investment Holdings Ltd.	Ownership.....	..100.000	Liberty Mutual Holding Company Inc. ...		
	00000					Ironshore Investment Holdings Ltd.BMU.....DS.....	Ironshore Insurance Ltd.	Ownership.....	..100.000	Liberty Mutual Holding Company Inc. ...		
	00000					Ironshore Investment RL I Ltd.BMU.....DS.....	Ironshore Investment Holdings Ltd.	Ownership.....	..100.000	Liberty Mutual Holding Company Inc. ...		
	00000	26-3835731				Ironshore Management Inc.DE.....DS.....	Ironshore Holdings (US) Inc.	Ownership.....	..100.000	Liberty Mutual Holding Company Inc. ...		
	00000	26-0412876				Ironshore Services Inc.DE.....DS.....	Ironshore Inc.	Ownership.....	..100.000	Liberty Mutual Holding Company Inc. ...		
.0111	Liberty Mutual Insurance Company and its Affiliated Insurers25445	94-1264187				Ironshore Specialty Insurance CompanyAZ.....DS.....	Ironshore Holdings (US) Inc.	Ownership.....	..100.000	Liberty Mutual Holding Company Inc. ...		
	00000	46-2678004				Ironshore Surety Holdings Inc.DE.....DS.....	Ironshore Inc.	Ownership.....	..100.000	Liberty Mutual Holding Company Inc. ...		
	00000	81-3584727				Kalgan LLCDE.....NIA.....	Solaria Labs LLC	Ownership, Board and Management100.000	Liberty Mutual Holding Company Inc. ...		
	00000	04-3545984				Kellen Holdings, LLCDE.....DS.....	Liberty Energy Holdings, LLC	Ownership, Board and Management100.000	Liberty Mutual Holding Company Inc. ...		
	00000	77-0682632				Keter Consulting LLCDE.....NIA.....	Helmsman Management Services LLC	Ownership, Board and Management100.000	Liberty Mutual Holding Company Inc. ...		
	00000					Kritaya Tun Company LimitedTHA.....DS.....	Liberty International Asia Pacific Holdings LLC	Influence.....	..48.990	Liberty Mutual Holding Company Inc. ...		
	00000					La Libertad Compania de Inversiones y Servicios S.A.S.COL.....DS.....	Liberty Seguros S.A.	Ownership, Board and Management65.770	Liberty Mutual Holding Company Inc. ...		
	00000					La Libertad Compania de Inversiones y Servicios S.A.S.COL.....DS.....	Li (Colombia) Holdings Ltd.	Ownership, Board and Management34.220	Liberty Mutual Holding Company Inc. ...		
	00000	98-0158209				LEXCO LimitedBMU.....DS.....	Liberty Mutual Captive Holdings LLC	Ownership, Board and Management100.000	Liberty Mutual Holding Company Inc. ...		
	00000	46-2678004				Lexon Surety Group, LLCFL.....DS.....	Ironshore Surety Holdings Inc.	Ownership.....	..20.000	Liberty Mutual Holding Company Inc. ...		
	00000	98-0470067				LI (Colombia) Holdings Ltd.BMU.....DS.....	Liberty International Latin America Holdings, LLC	Ownership, Board and Management100.000	Liberty Mutual Holding Company Inc. ...		
	00000					Liberty Agrega Servicios LtdaBRA.....NIA.....	Liberty International Brasil Ltda.	Ownership, Board and Management100.000	Liberty Mutual Holding Company Inc. ...		
	00000					Liberty Brasil Investimentos e Participacoes Ltda.BRA.....DS.....	Liberty Mutual Insurance Company	Ownership, Board and Management99.990	Liberty Mutual Holding Company Inc. ...		
	00000					Liberty Brasil Investimentos e Participacoes Ltda.BRA.....DS.....	Liberty Structured Holdings LLC	Ownership, Board and Management0.010	Liberty Mutual Holding Company Inc. ...		
	00000					Liberty Compania de Seguros Generales S.A. .	..CHL.....DS.....	Liberty International Chile S.A.	Ownership, Board and Management80.910	Liberty Mutual Holding Company Inc. ...		
	00000					Liberty Compania de Seguros Generales S.A. .	..CHL.....DS.....	LMG Chile SpA	Ownership, Board and Management19.010	Liberty Mutual Holding Company Inc. ...		
	00000					Liberty Corporate Capital (Two) Ltd.GBR.....DS.....	Ironshore International Ltd.	Ownership.....	..100.000	Liberty Mutual Holding Company Inc. ...		
	00000	98-0166390				Liberty Corporate Capital LimitedGBR.....DS.....	Liberty International Holdings Inc.	Ownership, Board and Management100.000	Liberty Mutual Holding Company Inc. ...		
	00000	04-3260640				Liberty Corporate Services LLCMA.....NIA.....	Liberty Mutual Group Inc.	Ownership, Board and Management100.000	Liberty Mutual Holding Company Inc. ...		

STATEMENT AS OF JUNE 30, 2023 OF THE STATE AUTOMOBILE MUTUAL INSURANCE COMPANY

SCHEDULE Y

PART 1A - DETAIL OF INSURANCE HOLDING COMPANY SYSTEM

1	2	3	4	5	6	7	8	9	10	11	12	13	14	15	16
Group Code	Group Name	NAIC Company Code	ID Number	Federal RSSD	CIK	Name of Securities Exchange if Publicly Traded (U.S. or International)	Names of Parent, Subsidiaries Or Affiliates	Domi-ciliary Location	Relation-ship to Reporting Entity	Directly Controlled by (Name of Entity/Person)	Type of Control (Ownership, Board, Management, Attorney-in-Fact, Influence, Other)	If Control is Owner-ship Provide Percen-tage	Ultimate Controlling Entity(ies)/Person(s)	Is an SCA Filing Re-quired? (Yes/No)	*
.0111	Liberty Mutual Insurance Company and its Affiliated Insurers	19544	75-2447701				Liberty County Mutual Insurance Company	TX	IA	Berkeley Management Corporation Summit Asia Investments Holdings Pte. Ltd.	Board and Management	0.000	Liberty Mutual Holding Company Inc.		
		00000					Liberty Data Analytics Private Limited	IND	DS		Ownership, Board and Management	100.000	Liberty Mutual Holding Company Inc.		
		00000	20-5996271				Liberty Energy Canada, Inc.	MA	DS	Liberty Energy Holdings, LLC	Ownership, Board and Management	100.000	Liberty Mutual Holding Company Inc.		
		00000	52-2282916				Liberty Energy Holdings, LLC	DE	DS	Liberty Mutual Insurance Company	Ownership, Board and Management	100.000	Liberty Mutual Holding Company Inc.		
		00000					Liberty Fianzas, S.A. de C.V.	MEX	IA	Liberty Surety Mexico, S. de R.L. de C.V.	Ownership, Board and Management	99.990	Liberty Mutual Holding Company Inc.		
		00000					Liberty Fianzas, S.A. de C.V.	MEX	IA	Liberty Mutual Mexico LLC	Ownership, Board and Management	0.010	Liberty Mutual Holding Company Inc.		
		00000	04-2880152				Liberty Financial Services, Inc.	MA	NIA	Liberty Corporate Services LLC Summit Asia Investments Holdings Pte. Ltd.	Ownership, Board and Management	100.000	Liberty Mutual Holding Company Inc.		
		00000					Liberty General Insurance Limited	IND	IA		Ownership, Management	48.680	Liberty Mutual Holding Company Inc.		
		00000					Liberty Global Holdings SDN. BHD.	MYS	DS	Liberty Mutual Insurance Company	Ownership, Board and Management	69.990	Liberty Mutual Holding Company Inc.		
		00000					Liberty Global Holdings SDN. BHD.	MYS	IA	Liberty Mutual Group Inc.	Ownership, Board and Management	0.000	Liberty Mutual Holding Company Inc.		
		00000	52-2304652				Liberty Information Technology Limited	GBR	NIA	Liberty Mutual Technology Group Inc.	Ownership, Board and Management	100.000	Liberty Mutual Holding Company Inc.		
		00000					Liberty Insurance Company Limited	CHN	DS	Liberty Mutual Insurance Company	Ownership, Board and Management	100.000	Liberty Mutual Holding Company Inc.		
.0111	Liberty Mutual Insurance Company and its Affiliated Insurers	42404	03-0316876				Liberty Insurance Corporation	IL	DS	Liberty Mutual Insurance Company	Ownership, Board and Management	100.000	Liberty Mutual Holding Company Inc.		
		00000	52-2107018				Liberty Insurance Holdings, Inc.	DE	DS	Liberty Mutual Insurance Company	Ownership, Board and Management	100.000	Liberty Mutual Holding Company Inc.		
		00000					Liberty Insurance Limited	VNM	DS	Liberty UK and Europe Holdings Limited Summit Asia Investments Holdings Pte. Ltd.	Ownership, Board and Management	100.000	Liberty Mutual Holding Company Inc.		
		00000					Liberty Insurance Pte Ltd	SGP	DS		Ownership, Board and Management	100.000	Liberty Mutual Holding Company Inc.		
.0111	Liberty Mutual Insurance Company and its Affiliated Insurers	19917	22-2227331				Liberty Insurance Underwriters Inc.	IL	DS	Liberty Mutual Insurance Company	Ownership, Board and Management	100.000	Liberty Mutual Holding Company Inc.		
		00000	51-0365936				Liberty International Asia Pacific Holdings LLC	DE	DS	Liberty UK and Europe Holdings Limited	Ownership, Board and Management	100.000	Liberty Mutual Holding Company Inc.		
		00000					Liberty International Brasil Ltda	BRA	DS	Liberty UK and Europe Holdings Limited	Ownership, Board and Management	99.996	Liberty Mutual Holding Company Inc.		
		00000					Liberty International Brasil Ltda	BRA	DS	Liberty International Holdings Inc.	Ownership, Board and Management	0.003	Liberty Mutual Holding Company Inc.		
		00000					Liberty International Chile S.A.	CHL	DS	Liberty UK and Europe Holdings Limited Liberty International Latin America	Ownership, Board and Management	99.900	Liberty Mutual Holding Company Inc.		
		00000					Liberty International Chile S.A.	CHL	DS	Holdings, LLC	Ownership, Board and Management	0.010	Liberty Mutual Holding Company Inc.		
		00000	27-1448815				Liberty International Europe LLC	DE	DS	Liberty International Holdings Inc.	Ownership, Board and Management	100.000	Liberty Mutual Holding Company Inc.		
		00000					Liberty International European Holdings, S.L.								
		00000						ESP	DS	Liberty UK and Europe Holdings Limited	Ownership, Board and Management	100.000	Liberty Mutual Holding Company Inc.		
		00000	04-3209289				Liberty International Holdings Inc.	DE	DS	Liberty Mutual Insurance Company	Ownership, Board and Management	100.000	Liberty Mutual Holding Company Inc.		
		00000					Liberty International Insurance Limited	HKG	DS	Liberty Insurance Pte Ltd Summit Asia Investments Holdings Pte. Ltd.	Ownership, Board and Management	68.000	Liberty Mutual Holding Company Inc.		
		00000					Liberty International Insurance Limited	HKG	DS		Ownership, Board and Management	32.000	Liberty Mutual Holding Company Inc.		
		00000	51-0365934				Liberty International Latin America Holdings, LLC	DE	DS	Liberty UK and Europe Holdings Limited	Ownership, Board and Management	100.000	Liberty Mutual Holding Company Inc.		
		00000					Liberty International Netherlands V.O.F.	NLD	DS	Liberty International Holdings Inc.	Ownership, Board and Management	86.000	Liberty Mutual Holding Company Inc.		
		00000					Liberty International Netherlands V.O.F.	NLD	DS	Liberty International Europe LLC	Ownership, Board and Management	14.000	Liberty Mutual Holding Company Inc.		
		00000					Liberty International US European Holdings LLC	DE	DS	Liberty International Netherlands V.O.F.	Ownership, Board and Management	100.000	Liberty Mutual Holding Company Inc.		
		00000	04-3025735				Liberty Life Holdings Inc.	DE	NIA	Liberty Corporate Services LLC	Ownership, Board and Management	100.000	Liberty Mutual Holding Company Inc.		
.0111	Liberty Mutual Insurance Company and its Affiliated Insurers	11041	74-2963323				Liberty Lloyds of Texas Insurance Company	TX	DS	Berkeley Management Corporation	Management and Attorney-in-Fact	0.000	Liberty Mutual Holding Company Inc.		
		00000	93-0962676				Liberty Management Services, Inc.	OR		Liberty Northwest Insurance Corporation	Ownership, Board and Management	100.000	Liberty Mutual Holding Company Inc.		
		00000					Liberty Managing Agency Limited	GBR	DS	Liberty UK and Europe Holdings Limited	Ownership, Board and Management	100.000	Liberty Mutual Holding Company Inc.		
		00000	27-0619441				Liberty Metals & Mining Holdings, LLC	DE	DS	Liberty Mutual Insurance Company	Ownership, Board and Management	100.000	Liberty Mutual Holding Company Inc.		
		00000	04-3199794				Liberty Mexico Holdings Inc.	MA	DS	Liberty International Holdings Inc.	Ownership, Board and Management	100.000	Liberty Mutual Holding Company Inc.		
		00000					Liberty Mexico Holdings S.A. de C.V.	MEX	DS	Liberty Mexico Holdings Inc.	Ownership, Board and Management	99.990	Liberty Mutual Holding Company Inc.		

STATEMENT AS OF JUNE 30, 2023 OF THE STATE AUTOMOBILE MUTUAL INSURANCE COMPANY

SCHEDULE Y

PART 1A - DETAIL OF INSURANCE HOLDING COMPANY SYSTEM

1	2	3	4	5	6	7	8	9	10	11	12	13	14	15	16
Group Code	Group Name	NAIC Company Code	ID Number	Federal RSSD	CIK	Name of Securities Exchange if Publicly Traded (U.S. or International)	Names of Parent, Subsidiaries Or Affiliates	Domi-ciliary Location	Relation-ship to Reporting Entity	Directly Controlled by (Name of Entity/Person)	Type of Control (Ownership, Board, Management, Attorney-in-Fact, Influence, Other)	If Control is Owner-ship Provide Percen-tage	Ultimate Controlling Entity(ies)/Person(s)	Is an SCA Filing Re-quired? (Yes/No)	*
		00000					Liberty Mexico Holdings S.A. de C.V.MEX.....	..DS.....	Liberty UK and Europe Holdings Limited	Ownership, Board and Management	...0.000	Liberty Mutual Holding Company Inc. ...		
		00000	51-0290450				Liberty Mutual Agency CorporationDE.....	..DS.....	Liberty Insurance Holdings, Inc.	Ownership, Board and Management	...100.000 ...	Liberty Mutual Holding Company Inc. ...		
		00000	46-2913664				Liberty Mutual Auto and Home Services LLCMA.....	..NIA.....	Liberty Corporate Services LLC	Ownership, Board and Management	...100.000 ...	Liberty Mutual Holding Company Inc. ...		
		00000	52-2272555				Liberty Mutual Captive Holdings LLCDE.....	..DS.....	Liberty Mutual Insurance Company	Ownership, Board and Management	...100.000 ...	Liberty Mutual Holding Company Inc. ...		
		00000					Liberty Mutual Consulting Chile SpACHL.....	..NIA.....	Liberty Mutual Latam LLC	Ownership, Management	...100.000 ...	Liberty Mutual Holding Company Inc. ...		
							Liberty Mutal Consulting, S. de R.L. de C.V.								
		00000					Liberty Mutual Consulting, S. de R.L. de C.V.MEX.....	..IA.....	Liberty Mutual Latin Holdings LLC	Ownership, Board and Management	...99.990	Liberty Mutual Holding Company Inc. ...		
		00000					Liberty Mutual Credit Risk Transfer PCC Inc.MEX.....	..IA.....	Liberty Mutual Services LLC	Ownership, Board and Management	...0.010	Liberty Mutual Holding Company Inc. ...		
		00000	84-3694564					..DC.....	..IA.....	Liberty Mutual Insurance Company	Ownership, Board, Management	...100.000	Liberty Mutual Holding Company Inc. ...		
		00000	04-3119508				Liberty Mutual Equity LLCDS.....	Liberty Mutual Insurance Company	Ownership, Board and Management	...100.000	Liberty Mutual Holding Company Inc. ...		
.0111	Liberty Mutual Insurance Company and its Affiliated Insurers	00000	34-61663FH				Liberty Mutual Finance Europe Designated Activity CompanyIRL.....	..UIP.....	LMHC Massachusetts Holdings Inc.	Ownership, Board and Management	...100.000	Liberty Mutual Holding Company Inc. ...		
		23035	04-1924000				Liberty Mutual Fire Insurance CompanyWI.....	..IA.....	Liberty Mutual Group Inc.	Ownership, Board and Management	...100.000	Liberty Mutual Holding Company Inc. ...		
		00000	14-1893520				Liberty Mutual Foundation Inc.MA.....	..DS.....	Liberty Mutual Insurance Company	Board and Management	...0.000	Liberty Mutual Holding Company Inc. ...		
		00000	45-2105640				Liberty Mutual Group Asset Management Inc.DE.....	..NIA.....	Liberty Mutual Group Inc.	Ownership, Board and Management	...100.000	Liberty Mutual Holding Company Inc. ...		
		00000	04-3583679				Liberty Mutual Group Inc.MA.....	..UDP.....	LMHC Massachusetts Holdings Inc.	Ownership, Board and Management	...100.000	Liberty Mutual Holding Company Inc. ...		
		00000	04-3583681				Liberty Mutual Holding Company Inc.MA.....	..UIP.....	N/A	Ultimate Controlling Parent	...0.000			
		00000	98-0434939				Liberty Mutual Holdings (Bermuda) LtdBMJ.....	..DS.....	Liberty Mutual Captive Holdings LLC	Ownership, Board and Management	...100.000	Liberty Mutual Holding Company Inc. ...		
		23043	04-1543470				Liberty Mutual Insurance CompanyMA.....		Liberty Mutual Group Inc.	Ownership, Board and Management	...100.000	Liberty Mutual Holding Company Inc. ...		
		00000					Liberty Mutual Insurance Company – Escritorio De Representacao No Brasil Ltda.BRA.....	..DS.....	Liberty Mutual Insurance Company	Ownership, Board and Management	...99.900	Liberty Mutual Holding Company Inc. ...		
		00000					Liberty Mutual Insurance Company – Escritorio De Representacao No Brasil Ltda.BRA.....	..DS.....	Liberty Insurance Underwriters Inc.	Ownership, Board and Management	...0.100	Liberty Mutual Holding Company Inc. ...		
.0111	Liberty Mutual Insurance Company and its Affiliated Insurers	00000					Liberty Mutual Insurance Company – PACMA.....	..NIA.....	Liberty Mutual Insurance Company	Board and Management	...0.000	Liberty Mutual Holding Company Inc. ...		
		00000					Liberty Mutual Insurance Europe SELUX.....	..DS.....	Liberty Specialty Markets Holdco S.L.U. ...	Ownership, Board and Management	...100.000	Liberty Mutual Holding Company Inc. ...		
		00000	04-3479271				Liberty Mutual Investment Advisors LLCMA.....	..NIA.....	Liberty Mutual Group Asset Management Inc.	Ownership, Board and Management	...100.000	Liberty Mutual Holding Company Inc. ...		
		00000	32-0177707				Liberty Mutual Investment Holdings LLCDE.....	..DS.....	Liberty Mutual Insurance Company	Ownership, Board and Management	...40.000	Liberty Mutual Holding Company Inc. ...		
		00000	32-0177707				Liberty Mutual Investment Holdings LLCDE.....	..DS.....	Peerless Insurance Company	Ownership, Board and Management	...22.000	Liberty Mutual Holding Company Inc. ...		
		00000	32-0177707				Liberty Mutual Investment Holdings LLCDE.....	..DS.....	Employers Insurance Company of Wausau	Ownership, Board and Management	...10.000	Liberty Mutual Holding Company Inc. ...		
		00000	32-0177707				Liberty Mutual Investment Holdings LLCDE.....	..DS.....	Liberty Mutual Fire Insurance Company	Ownership, Board and Management	...10.000	Liberty Mutual Holding Company Inc. ...		
		00000	32-0177707				Liberty Mutual Investment Holdings LLCDE.....	..DS.....	The Ohio Casualty Insurance Company	Ownership, Board and Management	...10.000	Liberty Mutual Holding Company Inc. ...		
		00000	32-0177707				Liberty Mutual Investment Holdings LLCDE.....	..DS.....	Safeco Insurance Company of America	Ownership, Board and Management	...8.000	Liberty Mutual Holding Company Inc. ...		
		00000					Liberty Mutual Ireland Investment Holdings LimitedIRL.....	..DS.....	Liberty UK and Europe Holdings Limited	Ownership, Board and Management	...100.000	Liberty Mutual Holding Company Inc. ...		
.0111	Liberty Mutual Insurance Company and its Affiliated Insurers	00000	47-2941258				Liberty Mutual Latam LLCDE.....	..NIA.....	Liberty Mutual Insurance Company	Ownership, Board and Management	...100.000	Liberty Mutual Holding Company Inc. ...		
		00000	84-2588296				Liberty Mutual Latin Holdings LLCDE.....	..NIA.....	Liberty Mutual Latam LLC	Ownership, Board, Management	...100.000	Liberty Mutual Holding Company Inc. ...		
		00000	04-3217691				Liberty Mutual Managed Care LLCMA.....	..NIA.....	Liberty Corporate Services LLC	Ownership, Board and Management	...100.000	Liberty Mutual Holding Company Inc. ...		
		00000	98-0434942				Liberty Mutual Management (Bermuda) LtdBMJ.....	..NIA.....	Liberty Mutual Group Inc.	Ownership, Board and Management	...100.000	Liberty Mutual Holding Company Inc. ...		
		00000	51-0529949				Liberty Mutual Management (South Carolina) LLCSC.....	..DS.....	Liberty Mutual Captive Holdings LLC	Ownership, Board and Management	...100.000	Liberty Mutual Holding Company Inc. ...		
		00000	06-1741899				Liberty Mutual Management (Vermont) LLCVT.....	..DS.....	Liberty Mutual Captive Holdings LLC	Ownership, Board and Management	...100.000	Liberty Mutual Holding Company Inc. ...		
		00000	04-4223650				Liberty Mutual Mexico LLCDE.....	..NIA.....	Liberty Mutual Insurance Company	Ownership, Board and Management	...100.000	Liberty Mutual Holding Company Inc. ...		
							Liberty Mutual Mid-Atlantic Insurance CompanyMA.....	..IA.....	Liberty Mutual Insurance Company	Board and Management	...0.000	Liberty Mutual Holding Company Inc. ...		
		14486	23-0867770												

STATEMENT AS OF JUNE 30, 2023 OF THE STATE AUTOMOBILE MUTUAL INSURANCE COMPANY

SCHEDULE Y

PART 1A - DETAIL OF INSURANCE HOLDING COMPANY SYSTEM

1	2	3	4	5	6	7	8	9	10	11	12	13	14	15	16
Group Code	Group Name	NAIC Company Code	ID Number	Federal RSSD	CIK	Name of Securities Exchange if Publicly Traded (U.S. or International)	Names of Parent, Subsidiaries Or Affiliates	Domi-ciliary Location	Relation-ship to Reporting Entity	Directly Controlled by (Name of Entity/Person)	Type of Control (Ownership, Board, Management, Attorney-in-Fact, Influence, Other)	If Control is Owner-ship Provide Percen-tage	Ultimate Controlling Entity(ies)/Person(s)	Is an SCA Filing Re-quired? (Yes/No)	*
							Liberty Mutual Opportunistic Investments LLC								
		00000	46-3043236					DE	DS	Liberty Mutual Insurance Company	Ownership, Board and Management	100.000	Liberty Mutual Holding Company Inc.		
.0111	Liberty Mutual Insurance Company and its Affiliated Insurers	12484	04-1023460				Liberty Mutual Personal Insurance Company	NH	IA	Liberty Mutual Group Inc. St. James/Arlington Real Estate Limited	Ownership, Board and Management	100.000	Liberty Mutual Holding Company Inc.		
		00000	82-0842778				Liberty Mutual Plano LLC	DE	NIA	Partnership	Ownership, Board and Management	100.000	Liberty Mutual Holding Company Inc.		
		00000	27-4064359				Liberty Mutual Retirement Plan Master Trust	MA	NIA	Liberty Mutual Group Inc.	Board	0.000	Liberty Mutual Holding Company Inc.		
		00000	04-3548586				Liberty Mutual Scholarship Foundation	MA	NIA	Liberty Mutual Insurance Company	Board and Management	0.000	Liberty Mutual Holding Company Inc.		
		00000	84-2593582				Liberty Mutual Services LLC	DE	NIA	Liberty Mutual Latam LLC	Ownership, Board, Management	100.000	Liberty Mutual Holding Company Inc.		
		00000	47-4222611				Liberty Mutual Strategic Ventures LLC	DE	DS	Liberty Mutual Insurance Company	Ownership, Board and Management	100.000	Liberty Mutual Holding Company Inc.		
		00000	92-2513480				Liberty Mutual Surety Agency LLC	PA	IA	Liberty Corporate Services LLC	Ownership, Board, Management	100.000	Liberty Mutual Holding Company Inc.		
		00000	86-0145347				Liberty Mutual Surety Europe B.V.	NLD	IA	Liberty UK and Europe Holdings Limited	Ownership	100.000	Liberty Mutual Holding Company Inc.		
		00000					Liberty Mutual Surety S.L.U.	ESP	IA	Liberty UK and Europe Holdings Limited	Ownership, Board, Management	100.000	Liberty Mutual Holding Company Inc.		
		00000	81-4106347				Liberty Mutual Technology Group, Inc.	DE	NIA	Liberty Corporate Services LLC	Ownership, Board and Management	100.000	Liberty Mutual Holding Company Inc.		
.0111	Liberty Mutual Insurance Company and its Affiliated Insurers	41939	93-0824674				Liberty Northwest Insurance Corporation	OR	DS	Peerless Insurance Company	Ownership, Board and Management	100.000	Liberty Mutual Holding Company Inc.		
		00000	26-3709536				Liberty Parkwood Crossing LLC	IN	DS	Liberty Real Estate Holdings LLC	Ownership, Board and Management	100.000	Liberty Mutual Holding Company Inc.		
.0111	Liberty Mutual Insurance Company and its Affiliated Insurers	11746	38-1742556				Liberty Personal Insurance Company	NH	DS	Liberty Mutual Insurance Company	Ownership, Board and Management	100.000	Liberty Mutual Holding Company Inc.		
		00000					Liberty Perú Gestión de Riesgos SAC	PER	NIA	Liberty Mutual Surety S.L.U.	Ownership, Board, Management	99.900	Liberty Mutual Holding Company Inc.		
		00000					Liberty Perú Gestión de Riesgos SAC	PER	NIA	Liberty UK and Europe Holdings Limited	Ownership, Board, Management	0.100	Liberty Mutual Holding Company Inc.		
		00000	98-0336014				Liberty Re (Bermuda) Limited	BMU	DS	Liberty Mutual Insurance Company	Ownership, Board and Management	100.000	Liberty Mutual Holding Company Inc.		
		00000					Liberty Real Estate Holdings LLC	DE	DS	Liberty Mutual Insurance Company	Ownership, Board and Management	100.000	Liberty Mutual Holding Company Inc.		
		00000	66-0963226				Liberty Seguros	PR	IA	Liberty Mutual Latam LLC	Ownership, Board and Management	99.900	Liberty Mutual Holding Company Inc.		
		00000					Liberty Seguros S.A.	COL	DS	LILA (Colombia) Holdings Ltd.	Ownership, Board and Management	94.892	Liberty Mutual Holding Company Inc.		
		00000					Liberty Seguros S.A.	COL	DS	Li (Colombia) Holdings Ltd.	Ownership, Board and Management	5.093	Liberty Mutual Holding Company Inc.		
		00000					Liberty Seguros S.A.	ECU	DS	Liberty UK and Europe Holdings Limited	Ownership, Board and Management	99.999	Liberty Mutual Holding Company Inc.		
		00000					Liberty Seguros S.A.	ECU	DS	Liberty International Latin America Holdings, LLC	Ownership, Board and Management	0.000	Liberty Mutual Holding Company Inc.		
		00000					Liberty Seguros S.A.	PER	IA	Liberty Mutual Latam LLC	Ownership, Board and Management	99.990	Liberty Mutual Holding Company Inc.		
		00000					Liberty Seguros S.A.	PER	IA	Liberty Surplus Insurance Corporation	Ownership, Board and Management	0.010	Liberty Mutual Holding Company Inc.		
		00000					Liberty Seguros S/A	BRA	DS	Liberty International Brasil Ltda.	Ownership, Board and Management	100.000	Liberty Mutual Holding Company Inc.		
		00000					Liberty Seguros, Compania de Seguros y Reaseguros, S.A.	ESP	DS	Liberty Spain Holdings LLC	Ownership, Board and Management	99.970	Liberty Mutual Holding Company Inc.		
		00000					Liberty Seguros, Compania de Seguros y Reaseguros, S.A.	ESP	DS	Liberty UK and Europe Holdings Limited	Ownership, Board and Management	0.030	Liberty Mutual Holding Company Inc.		
		00000	77-0653079				Liberty Spain Holdings LLC	DE	DS	Liberty International European Holdings S.L.	Ownership, Board and Management	100.000	Liberty Mutual Holding Company Inc.		
		00000					Liberty Specialty Markets Agency Limited	BMU	DS	Ironshore Inc.	Ownership	100.000	Liberty Mutual Holding Company Inc.		
		00000	98-0579287				Liberty Specialty Markets Bermuda Limited	BMU	DS	Ironshore Inc.	Ownership	100.000	Liberty Mutual Holding Company Inc.		
		00000					Liberty Specialty Markets Europe S.a.r.l.	LUX	NIA	Liberty UK and Europe Holdings Limited	Ownership, Board and Management	100.000	Liberty Mutual Holding Company Inc.		
		00000					Liberty Specialty Markets Europe Two Sarl	LUX	NIA	Liberty UK and Europe Holdings Limited	Ownership	100.000	Liberty Mutual Holding Company Inc.		
		00000					Liberty Specialty Markets Holdco S.L.U.	ESP	NIA	Liberty International European Holdings S.L.	Ownership, Board and Management	100.000	Liberty Mutual Holding Company Inc.		
		00000					Liberty Specialty Markets Hong Kong Limited	HKG	IA	Liberty UK and Europe Holdings Limited	Ownership, Board and Management	100.000	Liberty Mutual Holding Company Inc.		
		00000					Liberty Specialty Markets Limited	GBR	DS	Liberty UK and Europe Holdings Limited	Ownership, Board and Management	100.000	Liberty Mutual Holding Company Inc.		
		00000					Liberty Specialty Markets MENA Limited	ARE	DS	Liberty UK and Europe Holdings Limited	Ownership, Board and Management	100.000	Liberty Mutual Holding Company Inc.		
		00000					Liberty Specialty Markets Singapore Pte. Limited	SGP	IA	Liberty UK and Europe Holdings Limited	Ownership, Board and Management	100.000	Liberty Mutual Holding Company Inc.		
		00000					Liberty Specialty Services Limited	GBR	NIA	Liberty UK and Europe Holdings Limited	Ownership, Board and Management	100.000	Liberty Mutual Holding Company Inc.		
		00000	98-0336015				Liberty Sponsored Insurance (Vermont), Inc.	VT	DS	Liberty Mutual Insurance Company	Ownership, Board and Management	100.000	Liberty Mutual Holding Company Inc.		

STATEMENT AS OF JUNE 30, 2023 OF THE STATE AUTOMOBILE MUTUAL INSURANCE COMPANY

SCHEDULE Y

PART 1A - DETAIL OF INSURANCE HOLDING COMPANY SYSTEM

1	2	3	4	5	6	7	8	9	10	11	12	13	14	15	16
Group Code	Group Name	NAIC Company Code	ID Number	Federal RSSD	CIK	Name of Securities Exchange if Publicly Traded (U.S. or International)	Names of Parent, Subsidiaries Or Affiliates	Domi-ciliary Location	Relation-ship to Reporting Entity	Directly Controlled by (Name of Entity/Person)	Type of Control (Ownership, Board, Management, Attorney-in-Fact, Influence, Other)	If Control is Owner-ship Provide Percen-tage	Ultimate Controlling Entity(ies)/Person(s)	Is an SCA Filing Re-quired? (Yes/No)	*
.0111	Liberty Mutual Insurance Company and its Affiliated Insurers	00000	38-3760923				Liberty Structured Holdings LLC	..DE.....	..NIA.....	Liberty Mutual Insurance Company	Ownership, Board and Management	..20.000	Liberty Mutual Holding Company Inc.		
		00000	38-3760923				Liberty Structured Holdings LLC	..DE.....	..NIA.....	Peerless Insurance Company	Ownership, Board and Management	..45.000	Liberty Mutual Holding Company Inc.		
		00000	38-3760923				Liberty Structured Holdings LLC	..DE.....	..NIA.....	The Ohio Casualty Insurance Company	Ownership, Board and Management	..20.000	Liberty Mutual Holding Company Inc.		
		00000	38-3760923				Liberty Structured Holdings LLC	..DE.....	..NIA.....	Safeco Insurance Company of America	Ownership, Board and Management	..15.000	Liberty Mutual Holding Company Inc.		
		00000	38-3760923				Liberty Surety México, S. de R.L. de C.V.	..MEX.....	..DS.....	Liberty Mutual Mexico LLC	Ownership, Board and Management	..99.990	Liberty Mutual Holding Company Inc.		
		00000	38-3760923				Liberty Surety México, S. de R.L. de C.V.	..MEX.....	..DS.....	Liberty Surplus Insurance Corporation	Ownership, Board and Management	..0.010	Liberty Mutual Holding Company Inc.		
		10725	04-3390891				Liberty Surplus Insurance Corporation	..NH.....	..DS.....	Liberty Mutual Insurance Company	Ownership, Board and Management	..100.000	Liberty Mutual Holding Company Inc.		
		00000	98-0641430				Liberty UK and Europe Holdings Limited	..GBR.....	..DS.....	Liberty International US European Holdings LLC	Ownership, Board and Management	..100.000	Liberty Mutual Holding Company Inc.		
		00000	77-0670984				Liberty/Hoffman Estates LLC	..DE.....	..DS.....	Liberty Real Estate Holdings LLC	Ownership, Board and Management	..100.000	Liberty Mutual Holding Company Inc.		
		00000	77-0670984				Liberty/Kent LLC	..DE.....	..DS.....	Liberty Real Estate Holdings LLC	Ownership, Board and Management	..100.000	Liberty Mutual Holding Company Inc.		
		00000	65-1314055				Liberty/Milwaukee LLC	..DE.....	..DS.....	Liberty Real Estate Holdings LLC	Ownership, Board and Management	..100.000	Liberty Mutual Holding Company Inc.		
		00000	77-0670983				Liberty/Warrenville LLC	..DE.....	..DS.....	Liberty Real Estate Holdings LLC	Ownership, Board and Management	..100.000	Liberty Mutual Holding Company Inc.		
		00000	22-2195982				Liberty-USA Corporation	..DE.....	..DS.....	Peerless Insurance Company	Ownership, Board and Management	..100.000	Liberty Mutual Holding Company Inc.		
		00000	22-2424043				LIH-RE of America Corporation	..DE.....	..DS.....	Liberty-USA Corporation	Ownership, Board and Management	..100.000	Liberty Mutual Holding Company Inc.		
		00000	98-0470064				LILA (Colombia) Holdings Ltd.	..BMU.....	..DS.....	Liberty International Latin America Holdings, LLC	Ownership, Board and Management	..100.000	Liberty Mutual Holding Company Inc.		
.0111	Liberty Mutual Insurance Company and its Affiliated Insurers	00000	75-2621007				LIU Specialty Insurance Agency Inc.	..TX.....	..IA.....	Liberty Corporate Services LLC	Ownership, Board and Management	..100.000	Liberty Mutual Holding Company Inc.		
		00000					LLIC S.a. r.l.	..LUX.....	..DS.....	Liberty UK and Europe Holdings Limited	Ownership, Board and Management	..100.000	Liberty Mutual Holding Company Inc.		
.0111	Liberty Mutual Insurance Company and its Affiliated Insurers	36447	22-2227328				LM General Insurance Company	..IL.....	..DS.....	Liberty Mutual Insurance Company	Ownership, Board and Management	..100.000	Liberty Mutual Holding Company Inc.		
.0111	Liberty Mutual Insurance Company and its Affiliated Insurers	33600	04-3058504				LM Insurance Corporation	..IL.....	..DS.....	Liberty Mutual Insurance Company	Ownership, Board and Management	..100.000	Liberty Mutual Holding Company Inc.		
.0111	Liberty Mutual Insurance Company and its Affiliated Insurers	32352	22-2053189				LM Property and Casualty Insurance Company	..IN.....	..DS.....	Liberty Mutual Insurance Company	Ownership, Board and Management	..100.000	Liberty Mutual Holding Company Inc.		
		00000					LMAT Arbol Holdings LLC	..DE.....	..NIA.....	LMAT Natural Resources International S.L.	Ownership, Board and Management	..100.000	Liberty Mutual Holding Company Inc.		
		00000					LMAT Holdings LLC	..DE.....	..NIA.....	Liberty Mutual Insurance Company	Ownership.....	..30.000	Liberty Mutual Holding Company Inc.		
		00000					LMAT Holdings LLC	..DE.....	..NIA.....	Peerless Insurance Company	Ownership.....	..30.000	Liberty Mutual Holding Company Inc.		
		00000					LMAT Holdings LLC	..DE.....	..NIA.....	Liberty Mutual Fire Insurance Company	Ownership.....	..10.000	Liberty Mutual Holding Company Inc.		
		00000					LMAT Holdings LLC	..DE.....	..NIA.....	Employers Insurance Company of Wausau	Ownership.....	..10.000	Liberty Mutual Holding Company Inc.		
		00000					LMAT Holdings LLC	..DE.....	..NIA.....	Safeco Insurance Company of America	Ownership.....	..10.000	Liberty Mutual Holding Company Inc.		
		00000					LMAT Holdings LLC	..DE.....	..NIA.....	The Ohio Casualty Insurance Company	Ownership.....	..10.000	Liberty Mutual Holding Company Inc.		
		00000					LMAT Natural Resources International S.L.	..ESP.....	..NIA.....	Liberty Mutual Opportunistic Investments LLC	Ownership, Board and Management	..100.000	Liberty Mutual Holding Company Inc.		
		00000					LMAT Uruguay Holdings S.R.L.	..URY.....	..NIA.....	Contumil S.A.	Ownership.....	..85.560	Liberty Mutual Holding Company Inc.		
		00000					LMAT Uruguay Holdings S.R.L.	..URY.....	..NIA.....	LMAT Natural Resources International S.L.	Ownership.....	..14.440	Liberty Mutual Holding Company Inc.		
		00000					LMAT Uruguay Holdings S.R.L.	..URY.....	..NIA.....	LMAT Arbol Holdings LLC	Ownership.....	..0.001	Liberty Mutual Holding Company Inc.		
		00000	84-3770759				LMCRT-FRE-01 IC	..DC.....	..IA.....	Liberty Mutual Credit Risk Transfer PCC Inc.	Ownership, Board, Management	..100.000	Liberty Mutual Holding Company Inc.		
		00000					LMG Chile SpA	..CHL.....	..NIA.....	Liberty UK and Europe Holdings Limited	Ownership, Board and Management	..100.000	Liberty Mutual Holding Company Inc.		
		00000	61-1558756				LMG Film Productions, LLC	..MA.....	..DS.....	Liberty Mutual Insurance Company	Ownership, Board and Management	..100.000	Liberty Mutual Holding Company Inc.		
		00000					LMG Insurance Public Company Limited	..THA.....	..DS.....	Tun Kaoklai Co., Ltd.	Ownership, Board and Management	..74.990	Liberty Mutual Holding Company Inc.		
		00000					LMG Insurance Public Company Limited	..THA.....	..DS.....	Liberty International Asia Pacific Holdings LLC	Ownership, Board and Management	..24.990	Liberty Mutual Holding Company Inc.		
		00000					LMG Singapore Holdings Pte. Ltd.	..SGP.....	..NIA.....	Liberty International US European Holdings LLC	Ownership, Board and Management	..100.000	Liberty Mutual Holding Company Inc.		
		00000	04-3583680				LMHC Massachusetts Holdings Inc.	..MA.....	..UIP.....	Liberty Mutual Holding Company Inc.	Ownership, Board and Management	..100.000	Liberty Mutual Holding Company Inc.		
		00000					LMID, LLC	..DE.....	..NIA.....	Liberty Mutual Insurance Company	Ownership.....	..100.000	Liberty Mutual Holding Company Inc.		
		00000	81-2184892				LSH Real Estate Holdings LLC	..DE.....	..NIA.....	Liberty Structured Holdings LLC	Ownership, Board and Management	..100.000	Liberty Mutual Holding Company Inc.		

STATEMENT AS OF JUNE 30, 2023 OF THE STATE AUTOMOBILE MUTUAL INSURANCE COMPANY

SCHEDULE Y
PART 1A - DETAIL OF INSURANCE HOLDING COMPANY SYSTEM

1	2	3	4	5	6	7	8	9	10	11	12 Type of Control (Ownership, Board, Management, Attorney-in-Fact, Influence, Other)	13 If Control is Owner- ship Provide Percen- tage	14 Ultimate Controlling Entity(ies)/Person(s)	15 Is an SCA Filing Re- quired? (Yes/No)	16 *
Group Code	Group Name	NAIC Company Code	ID Number	Federal RSSD	CIK	Name of Securities Exchange if Publicly Traded (U.S. or International)	Names of Parent, Subsidiaries Or Affiliates	Domi- ciliary Loca- tion	Relation- ship to Reporting Entity	Directly Controlled by (Name of Entity/Person)					
		00000	71-0950057				Managed Care Associates, Inc.	..MS.....	..DS.....	Excess Risk Reinsurance Inc.	Ownership.....	100.000	Liberty Mutual Holding Company Inc.		
.0111	Liberty Mutual Insurance Company and its Affiliated Insurers	23353	35-1135866				Meridian Security Insurance Company	..IN.....	..IA.....	State Auto Holdings, Inc.	Ownership, Board and Management	100.000	Liberty Mutual Holding Company Inc.		
.0111	Liberty Mutual Insurance Company and its Affiliated Insurers	23507	31-0978279				Mid-American Fire & Casualty Company	..NH.....	..DS.....	The Midwestern Indemnity Company	Ownership, Board and Management	100.000	Liberty Mutual Holding Company Inc.		
.0111	Liberty Mutual Insurance Company and its Affiliated Insurers	41653	46-0368854				Milbank Insurance Company	..IA.....	..IA.....	State Auto Financial Corporation	Ownership, Board and Management	100.000	Liberty Mutual Holding Company Inc.		
.0111	Liberty Mutual Insurance Company and its Affiliated Insurers	14613	52-0424870				Montgomery Mutual Insurance Company	..MA.....	..IA.....	Liberty Mutual Insurance Company	Board and Management	0.000	Liberty Mutual Holding Company Inc.		
		00000	88-1727854				MVP1 Pooler, LLC	..DE.....	..NIA.....	Liberty Mutual Insurance Company	Ownership.....	40.000	Liberty Mutual Holding Company Inc.		
		00000	88-1727854				MVP1 Pooler, LLC	..DE.....	..NIA.....	Peerless Insurance Company	Ownership.....	20.000	Liberty Mutual Holding Company Inc.		
		00000	88-1727854				MVP1 Pooler, LLC	..DE.....	..NIA.....	Employers Insurance Company of Wausau	Ownership.....	10.000	Liberty Mutual Holding Company Inc.		
		00000	88-1727854				MVP1 Pooler, LLC	..DE.....	..NIA.....	Liberty Mutual Fire Insurance Company	Ownership.....	10.000	Liberty Mutual Holding Company Inc.		
		00000	88-1727854				MVP1 Pooler, LLC	..DE.....	..NIA.....	The Ohio Casualty Insurance Company	Ownership.....	10.000	Liberty Mutual Holding Company Inc.		
		00000	88-1727854				MVP1 Pooler, LLC	..DE.....	..NIA.....	Safeco Insurance Company of America	Ownership.....	10.000	Liberty Mutual Holding Company Inc.		
.0111	Liberty Mutual Insurance Company and its Affiliated Insurers	27944	35-1287317				National Insurance Association	..IN.....	..DS.....	The National Corporation	Management and Attorney-in-Fact	0.000	Liberty Mutual Holding Company Inc.		
		00000					Nationale Borg Reinsurance N.V.	..CJW.....	..IA.....	Liberty Mutual Insurance Company	Ownership, Board, Management	100.000	Liberty Mutual Holding Company Inc.		
		00000					Nationale Waarborg B.V.	..NLD.....	..IA.....	Liberty UK and Europe Holdings Limited	Ownership, Board, Management	100.000	Liberty Mutual Holding Company Inc.		
		00000	41-2098206				Network E&S Insurance Brokers, LLC	..OH.....	..IA.....	State Automobile Mutual Insurance Company	Ownership, Board and Management	100.000	Liberty Mutual Holding Company Inc.		
.0111	Liberty Mutual Insurance Company and its Affiliated Insurers	23892	93-6029263				North Pacific Insurance Company	..OR.....	..DS.....	Liberty Northwest Insurance Corporation	Ownership, Board and Management	100.000	Liberty Mutual Holding Company Inc.		
		00000	31-1364002				Ocasco Budget, Inc.	..OH.....	..DS.....	The Ohio Casualty Insurance Company	Ownership, Board and Management	100.000	Liberty Mutual Holding Company Inc.		
		00000	31-1377709				OCI Printing, Inc.	..OH.....	..DS.....	Ohio Casualty Corporation	Ownership, Board and Management	100.000	Liberty Mutual Holding Company Inc.		
		00000	31-0783294				Ohio Casualty Corporation	..OH.....	..DS.....	Liberty Mutual Insurance Company	Ownership, Board and Management	78.000	Liberty Mutual Holding Company Inc.		
		00000	31-0783294				Ohio Casualty Corporation	..OH.....	..DS.....	Employers Insurance Company of Wausau	Ownership, Board and Management	8.000	Liberty Mutual Holding Company Inc.		
		00000	31-0783294				Ohio Casualty Corporation	..OH.....	..DS.....	Peerless Insurance Company	Ownership, Board and Management	8.000	Liberty Mutual Holding Company Inc.		
		00000	31-0783294				Ohio Casualty Corporation	..OH.....	..DS.....	Liberty Mutual Fire Insurance Company	Ownership, Board and Management	6.000	Liberty Mutual Holding Company Inc.		
.0111	Liberty Mutual Insurance Company and its Affiliated Insurers	24082	31-0541777				Ohio Security Insurance Company	..NH.....	..DS.....	The Ohio Casualty Insurance Company	Ownership, Board and Management	100.000	Liberty Mutual Holding Company Inc.		
		00000	92-3955867				OIC Structured Equity LMI Fund L.P.	..DE.....	..NIA.....	Liberty Mutual Opportunistic Investments LLC	Ownership.....	99.000	Liberty Mutual Holding Company Inc.		
		00000	26-0258241				Open Seas Solutions, Inc.	..WA.....	..DS.....	Safeco Corporation	Ownership, Board and Management	100.000	Liberty Mutual Holding Company Inc.		
.0111	Liberty Mutual Insurance Company and its Affiliated Insurers	23922	93-0241650				Oregon Automobile Insurance Company	..OR.....	..DS.....	Liberty Northwest Insurance Corporation	Ownership, Board and Management	100.000	Liberty Mutual Holding Company Inc.		
		00000					PAGUS Holdings LLC	..DE.....	..NIA.....	LMAT Holdings LLC	Ownership, Board and Management	100.000	Liberty Mutual Holding Company Inc.		
.0111	Liberty Mutual Insurance Company and its Affiliated Insurers	14923	06-0487440				Patrons Mutual Insurance Company of Connecticut	..CT.....	..IA.....	State Automobile Mutual Insurance Company	Board, Management	0.000	Liberty Mutual Holding Company Inc.		
.0111	Liberty Mutual Insurance Company and its Affiliated Insurers	18333	13-2919779				Peerless Indemnity Insurance Company	..IL.....	..DS.....	Liberty-USA Corporation	Ownership, Board and Management	100.000	Liberty Mutual Holding Company Inc.		
.0111	Liberty Mutual Insurance Company and its Affiliated Insurers	24198	02-0177030				Peerless Insurance Company	..NH.....	..DS.....	Liberty Mutual Agency Corporation	Ownership, Board and Management	100.000	Liberty Mutual Holding Company Inc.		
.0111	Liberty Mutual Insurance Company and its Affiliated Insurers	30945	58-1140651				Plaza Insurance Company	..IA.....	..IA.....	Rockhill Insurance Company	Ownership, Board and Management	100.000	Liberty Mutual Holding Company Inc.		
		00000					PT Independence Energy Holdings LLC	..DE.....	..NIA.....	Liberty Energy Holdings, LLC	Ownership.....	100.000	Liberty Mutual Holding Company Inc.		
		00000	46-1667886				Raymond James LM Georgia Tax Credit Fund L.L.C.	..FL.....	..DS.....	The First Liberty Insurance Corporation	Ownership.....	100.000	Liberty Mutual Holding Company Inc.		
		00000	46-1680447				Raymond James LM Massachusetts Tax Credit Fund L.L.C.	..FL.....	..DS.....	Liberty Mutual Insurance Company	Ownership.....	100.000	Liberty Mutual Holding Company Inc.		
		00000	45-2635338				RBC State Credit Fund LLC	..DE.....	..NIA.....	Liberty Mutual Insurance Company	Ownership.....	100.000	Liberty Mutual Holding Company Inc.		
		00000	26-0800397				Rianoc Research Corporation	..WA.....	..DS.....	Open Seas Solutions, Inc.	Ownership, Board and Management	100.000	Liberty Mutual Holding Company Inc.		

STATEMENT AS OF JUNE 30, 2023 OF THE STATE AUTOMOBILE MUTUAL INSURANCE COMPANY

SCHEDULE Y

PART 1A - DETAIL OF INSURANCE HOLDING COMPANY SYSTEM

1	2	3	4	5	6	7	8	9	10	11	12	13	14	15	16
Group Code	Group Name	NAIC Company Code	ID Number	Federal RSSD	CIK	Name of Securities Exchange if Publicly Traded (U.S. or International)	Names of Parent, Subsidiaries Or Affiliates	Domi-ciliary Location	Relation-ship to Reporting Entity	Directly Controlled by (Name of Entity/Person)	Type of Control (Ownership, Board, Management, Attorney-in-Fact, Influence, Other)	If Control is Ownership Provide Percen-tage	Ultimate Controlling Entity(ies)/Person(s)	Is an SCA Filing Re-quired? (Yes/No)	*
		00000	45-2480595				RJTCF-37 Georgia Tax Credit Fund L.L.C.	..FL.....	..NIA.....	Liberty Mutual Fire Insurance Company	Ownership.....	100.000	Liberty Mutual Holding Company Inc.		
		00000	45-5549520				RJTCF-38 Georgia Tax Credit Fund L.L.C.	..FL.....	..DS.....	Raymond James LM Georgia Tax Credit Fund L.L.C.	Ownership.....	100.000	Liberty Mutual Holding Company Inc.		
		00000	50-9113010				RNA - Rede Nacional De Assistencia, S.A.	..PRT.....	..NIA.....	Liberty Seguros, Compania de Seguros y Reaseguros, S.A.	Ownership.....	20.000	Liberty Mutual Holding Company Inc.		
		00000	25-1923260				Rockhill Holding Company	..DE.....	..NIA.....	State Automobile Mutual Insurance Company	Ownership, Board and Management	100.000	Liberty Mutual Holding Company Inc.		
.0111	Liberty Mutual Insurance Company and its Affiliated Insurers	28053	06-1149847				Rockhill Insurance Company	..AZ.....	..IA.....	Rockhill Holding Company	Ownership, Board and Management	100.000	Liberty Mutual Holding Company Inc.		
		00000	20-8406742				Rockhill Insurance Services LLC	..CA.....	..NIA.....	Rockhill Holding Company	Ownership, Board and Management	100.000	Liberty Mutual Holding Company Inc.		
		00000	01-0712531				Rockhill Underwriting Management, LLC	..MO.....	..NIA.....	Rockhill Holding Company	Ownership, Board and Management	100.000	Liberty Mutual Holding Company Inc.		
		00000	41-1440870				RTW, Inc	..MN.....	..NIA.....	Rockhill Holding Company	Ownership, Board and Management	100.000	Liberty Mutual Holding Company Inc.		
		00000	91-0742146				Safeco Corporation	..WA.....	..DS.....	Liberty Mutual Agency Corporation	Ownership, Board and Management	100.000	Liberty Mutual Holding Company Inc.		
		00000	75-2865575				Safeco General Agency, Inc.	..TX.....	..DS.....	General Insurance Company of America	Ownership, Board and Management	100.000	Liberty Mutual Holding Company Inc.		
.0111	Liberty Mutual Insurance Company and its Affiliated Insurers	24740	91-0742148				Safeco Insurance Company of America	..NH.....	..DS.....	Safeco Corporation	Ownership, Board and Management	100.000	Liberty Mutual Holding Company Inc.		
.0111	Liberty Mutual Insurance Company and its Affiliated Insurers	39012	91-1115311				Safeco Insurance Company of Illinios	..IL.....	..DS.....	Safeco Insurance Company of America	Ownership, Board and Management	100.000	Liberty Mutual Holding Company Inc.		
.0111	Liberty Mutual Insurance Company and its Affiliated Insurers	11215	23-2640501				Safeco Insurance Company of Indiana	..IN.....	..DS.....	General Insurance Company of America	Ownership, Board and Management	100.000	Liberty Mutual Holding Company Inc.		
.0111	Liberty Mutual Insurance Company and its Affiliated Insurers	11071	93-1300233				Safeco Insurance Company of Oregon	..OR.....	..DS.....	Safeco Insurance Company of America	Ownership, Board and Management	100.000	Liberty Mutual Holding Company Inc.		
.0111	Liberty Mutual Insurance Company and its Affiliated Insurers	11070	91-6258394				Safeco Lloyds Insurance Company	..TX.....	..DS.....	General America Corporation of Texas	Management and Attorney-in-Fact	0.000	Liberty Mutual Holding Company Inc.		
.0111	Liberty Mutual Insurance Company and its Affiliated Insurers	24759	91-0885519				Safeco National Insurance Company	..NH.....	..DS.....	Safeco Insurance Company of America	Ownership, Board and Management	100.000	Liberty Mutual Holding Company Inc.		
		00000	91-1273246				Safeco Properties, Inc.	..WA.....	..DS.....	Safeco Corporation	Ownership, Board and Management	100.000	Liberty Mutual Holding Company Inc.		
.0111	Liberty Mutual Insurance Company and its Affiliated Insurers	11100	91-1231536				Safeco Surplus Lines Insurance Company	..NH.....	..DS.....	Safeco Insurance Company of America	Ownership, Board and Management	100.000	Liberty Mutual Holding Company Inc.		
.0111	Liberty Mutual Insurance Company and its Affiliated Insurers	10837	33-0763208				San Diego Insurance Company	..CA.....	..DS.....	Liberty Mutual Insurance Company	Ownership, Board and Management	100.000	Liberty Mutual Holding Company Inc.		
		00000					Santa Marta Floresta Brasil Ltda.	..BRA.....	..NIA.....	TECA Santa Marta Holdings, S.L.	Ownership.....	99.900	Liberty Mutual Holding Company Inc.		
		00000					Santa Marta Floresta Brasil Ltda.	..BRA.....	..NIA.....	TECA SM LLC	Ownership.....	0.010	Liberty Mutual Holding Company Inc.		
		00000					Santa Rita Arbol Holdings S.L.	..ESP.....	..NIA.....	LMAT Natural Resources International S.L.	Ownership.....	100.000	Liberty Mutual Holding Company Inc.		
		00000					Santa Rita Madeira e Floresta Ltda.	..BRA.....	..NIA.....	Santa Rita Arbol Holdings, S.L.	Ownership.....	99.900	Liberty Mutual Holding Company Inc.		
		00000					Santa Rita Madeira e Floresta Ltda.	..BRA.....	..NIA.....	TECA SR LLC	Ownership.....	0.010	Liberty Mutual Holding Company Inc.		
		00000	82-4345429				Shandon Valley Vineyards LLC	..DE.....	..NIA.....	PAGUS Holdings LLC	Ownership, Board and Management	100.000	Liberty Mutual Holding Company Inc.		
		00000					Solaria Labs Singapore Pte. Ltd	..SGP.....	..NIA.....	Liberty UK and Europe Holdings Limited	Ownership, Board and Management	100.000	Liberty Mutual Holding Company Inc.		
		00000	81-2854330				Solaria Labs, LLC	..DE.....	..NIA.....	Liberty Mutual Insurance Company	Ownership, Board and Management	100.000	Liberty Mutual Holding Company Inc.		
		00000	84-1695835				St. James/Arlington LLC	..MA.....	..NIA.....	Employers Insurance Company of Wausau	Ownership, Board and Management	100.000	Liberty Mutual Holding Company Inc.		
		00000	01-0854295				St. James/Arlington Management LLC	..MA.....	..DS.....	Liberty Mutual Insurance Company	Ownership, Board and Management	100.000	Liberty Mutual Holding Company Inc.		
		00000	84-1695837				St. James/Arlington Real Estate Limited Partnership	..MA.....	..DS.....	St. James/Arlington LLC	Ownership, Board and Management	3.000	Liberty Mutual Holding Company Inc.		
		00000	84-1695837				St. James/Arlington Real Estate Limited Partnership	..MA.....	..DS.....	Liberty Mutual Insurance Company	Ownership, Board and Management	92.000	Liberty Mutual Holding Company Inc.		
		00000	84-1695837				St. James/Arlington Real Estate Limited Partnership	..MA.....	..DS.....	Liberty Mutual Fire Insurance Company	Ownership, Board and Management	5.000	Liberty Mutual Holding Company Inc.		
		00000	31-1324304				State Auto Financial Corporation	..OH.....	..NIA.....	State Automobile Mutual Insurance Company	Ownership, Board and Management	100.000	Liberty Mutual Holding Company Inc.		
		00000					State Auto Foundation	..OH.....	..NIA.....	Liberty Mutual Insurance Company	Board, Management	0.000	Liberty Mutual Holding Company Inc.		
		00000	20-8756040				State Auto Holdings, Inc.	..OH.....	..NIA.....	State Automobile Mutual Insurance Company	Ownership, Board and Management	100.000	Liberty Mutual Holding Company Inc.		
.0111	Liberty Mutual Insurance Company and its Affiliated Insurers	11017	31-1651026				State Auto Insurance Company of Ohio	..OH.....	..IA.....	State Auto Financial Corporation	Ownership, Board and Management	100.000	Liberty Mutual Holding Company Inc.		

STATEMENT AS OF JUNE 30, 2023 OF THE STATE AUTOMOBILE MUTUAL INSURANCE COMPANY

SCHEDULE Y

PART 1A - DETAIL OF INSURANCE HOLDING COMPANY SYSTEM

1	2	3	4	5	6	7	8	9	10	11	12	13	14	15	16
Group Code	Group Name	NAIC Company Code	ID Number	Federal RSSD	CIK	Name of Securities Exchange if Publicly Traded (U.S. or International)	Names of Parent, Subsidiaries Or Affiliates	Domi-ciliary Location	Relation-ship to Reporting Entity	Directly Controlled by (Name of Entity/Person)	Type of Control (Ownership, Board, Management, Attorney-in-Fact, Influence, Other)	If Control is Owner-ship Provide Percen-tage	Ultimate Controlling Entity(ies)/Person(s)	Is an SCA Filing Re-quired? (Yes/No)	*
. 0111	Liberty Mutual Insurance Company and its Affiliated Insurers	31755	39-1211058				State Auto Insurance Company of Wisconsin	WI	IA	State Automobile Mutual Insurance Company	Ownership, Board and Management	100.000	Liberty Mutual Holding Company Inc.		
		00000	82-2704976				State Auto Labs Corp.	OH	NIA	State Automobile Mutual Insurance Company	Ownership, Board and Management	100.000	Liberty Mutual Holding Company Inc.		
. 0111	Liberty Mutual Insurance Company and its Affiliated Insurers	25127	57-6010814				State Auto Property & Casualty Insurance Company	IA	IA	State Auto Financial Corporation	Ownership, Board and Management	100.000	Liberty Mutual Holding Company Inc.		
. 0111	Liberty Mutual Insurance Company and its Affiliated Insurers	25135	31-4316080				State Automobile Mutual Insurance Company	OH	IA	Liberty Mutual Group Inc.	Ownership, Board and Management	100.000	Liberty Mutual Holding Company Inc.		
		00000	31-0676465				Stateco Financial Services, Inc.	OH	NIA	State Auto Financial Corporation	Ownership, Board and Management	100.000	Liberty Mutual Holding Company Inc.		
		00000					Summit Asia Investments Holdings Pte. Ltd.	SGP	DS	Liberty International Asia Pacific Holdings LLC	Ownership, Board and Management	100.000	Liberty Mutual Holding Company Inc.		
		00000	04-3545985				Tara Energy Investments, LLC	DE	DS	Liberty Energy Holdings, LLC	Ownership, Board and Management	100.000	Liberty Mutual Holding Company Inc.		
		00000					TECA Santa Marta Holdings S.L	ESP	NIA	LMAT Natural Resources International S.L.	Ownership	100.000	Liberty Mutual Holding Company Inc.		
		00000					TECA SM LLC	DE	NIA	Teca Santa Marta Holdings S.L.	Ownership	100.000	Liberty Mutual Holding Company Inc.		
		00000					TECA SR LLC	DE	NIA	Santa Rita Arbol Holdings S.L.	Ownership	100.000	Liberty Mutual Holding Company Inc.		
. 0111	Liberty Mutual Insurance Company and its Affiliated Insurers	33588	04-3058503				The First Liberty Insurance Corporation	IL	DS	Liberty Mutual Insurance Company	Ownership, Board and Management	100.000	Liberty Mutual Holding Company Inc.		
. 0111	Liberty Mutual Insurance Company and its Affiliated Insurers	23515	31-0978280				The Midwestern Indemnity Company	NH	DS	Peerless Insurance Company	Ownership, Board and Management	100.000	Liberty Mutual Holding Company Inc.		
		00000	35-1283740				The National Corporation	IN	DS	Liberty-USA Corporation	Ownership, Board and Management	100.000	Liberty Mutual Holding Company Inc.		
. 0111	Liberty Mutual Insurance Company and its Affiliated Insurers	24171	02-0342937				The Netherlands Insurance Company	NH	DS	Peerless Insurance Company	Ownership, Board and Management	100.000	Liberty Mutual Holding Company Inc.		
. 0111	Liberty Mutual Insurance Company and its Affiliated Insurers	24074	31-0396250				The Ohio Casualty Insurance Company	NH	DS	Ohio Casualty Corporation	Ownership, Board and Management	100.000	Liberty Mutual Holding Company Inc.		
		00000					Tun Kaoklai Co., Ltd.	THA	DS	Kritaya Tun Company Limited	Ownership, Board and Management	99.990	Liberty Mutual Holding Company Inc.		
		00000					Tun Kaoklai Co., Ltd.	THA	DS	Liberty International Asia Pacific Holdings LLC	Ownership, Board and Management	0.010	Liberty Mutual Holding Company Inc.		
		00000					Vitoria Floresta Brasil Ltda	BRA	NIA	LMAT Natural Resources International S.L.	Ownership	99.990	Liberty Mutual Holding Company Inc.		
		00000					Vitoria Floresta Brasil Ltda	BRA	NIA	LMAT Arbol Holdings LLC	Ownership	0.010	Liberty Mutual Holding Company Inc.		
. 0111	Liberty Mutual Insurance Company and its Affiliated Insurers	26069	36-3522250				Wausau Business Insurance Company	WI	DS	Liberty Mutual Insurance Company	Ownership, Board and Management	100.000	Liberty Mutual Holding Company Inc.		
. 0111	Liberty Mutual Insurance Company and its Affiliated Insurers	26425	36-2753986				Wausau General Insurance Company	WI	DS	Liberty Mutual Insurance Company	Ownership, Board and Management	100.000	Liberty Mutual Holding Company Inc.		
		00000					Wausau Insurance Company (U.K.) Limited	GBR	DS	Liberty International Netherlands V.O.F.	Ownership, Board and Management	100.000	Liberty Mutual Holding Company Inc.		
. 0111	Liberty Mutual Insurance Company and its Affiliated Insurers	26042	39-1341459				Wausau Underwriters Insurance Company	WI	DS	Liberty Mutual Insurance Company	Ownership, Board and Management	100.000	Liberty Mutual Holding Company Inc.		
. 0111	Liberty Mutual Insurance Company and its Affiliated Insurers	44393	31-0624491				West American Insurance Company	IN	DS	The Ohio Casualty Insurance Company	Ownership, Board and Management	100.000	Liberty Mutual Holding Company Inc.		
		00000	45-2396108				Wildcat Field Services, LLC	TX	DS	Wildcat Midstream Holdings II LLC	Ownership	100.000	Liberty Mutual Holding Company Inc.		
		00000	46-1637784				Wildcat Midstream Holdings II LLC	TX	DS	Kellen Holdings, LLC	Ownership	95.000	Liberty Mutual Holding Company Inc.		
		00000	35-2604562				Workgrid Software, Inc.	DE	NIA	Liberty Mutual Technology Group, Inc.	Ownership, Board and Management	100.000	Liberty Mutual Holding Company Inc.		

Asterisk	Explanation

NONE

STATEMENT AS OF JUNE 30, 2023 OF THE STATE AUTOMOBILE MUTUAL INSURANCE COMPANY

PART 1 - LOSS EXPERIENCE

Line of Business		Current Year to Date			4 Prior Year to Date Direct Loss Percentage
		1 Direct Premiums Earned	2 Direct Losses Incurred	3 Direct Loss Percentage	
1.	Fire	25,391,979	22,741,639	89.6	36.1
2.1	Allied Lines	30,305,307	39,045,108	128.8	84.0
2.2	Multiple peril crop	0	0	0.0	0.0
2.3	Federal flood	0	0	0.0	0.0
2.4	Private crop	0	0	0.0	0.0
2.5	Private flood	0	0	0.0	0.0
3.	Farmowners multiple peril	65,285,007	51,226,192	78.5	102.7
4.	Homeowners multiple peril	38,698,824	33,685,841	87.0	64.7
5.1	Commercial multiple peril (non-liability portion)	44,004,923	42,663,059	97.0	0.0
5.2	Commercial multiple peril (liability portion)	24,048,320	11,801,713	49.1	0.0
6.	Mortgage guaranty	0	0	0.0	0.0
8.	Ocean marine	1,254	37	2.9	2.6
9.	Inland marine	5,780,754	1,219,175	21.1	15.5
10.	Financial guaranty	0	0	0.0	0.0
11.1	Medical professional liability - occurrence	0	0	0.0	0.0
11.2	Medical professional liability - claims-made	0	0	0.0	0.0
12.	Earthquake	1,258,397	0	0.0	0.0
13.1	Comprehensive (hospital and medical) individual	0	0	0.0	0.0
13.2	Comprehensive (hospital and medical) group	0	0	0.0	0.0
14.	Credit accident and health	0	0	0.0	0.0
15.1	Vision only	0	0	0.0	0.0
15.2	Dental only	0	0	0.0	0.0
15.3	Disability income	0	0	0.0	0.0
15.4	Medicare supplement	0	0	0.0	0.0
15.5	Medicaid Title XIX	0	0	0.0	0.0
15.6	Medicare Title XVIII	0	0	0.0	0.0
15.7	Long-term care	0	0	0.0	0.0
15.8	Federal employees health benefits plan	0	0	0.0	0.0
15.9	Other health	552	0	0.0	(0.1)
16.	Workers' compensation	8,935,312	3,385,746	37.9	34.0
17.1	Other liability - occurrence	50,291,531	26,316,453	52.3	46.9
17.2	Other liability - claims-made	1,067,189	597,199	56.0	25.3
17.3	Excess workers' compensation	0	0	0.0	0.0
18.1	Products liability - occurrence	2,420,274	490,783	20.3	23.8
18.2	Products liability - claims-made	0	0	0.0	0.0
19.1	Private passenger auto no-fault (personal injury protection)	167,612	(256,174)	(152.8)	409.5
19.2	Other private passenger auto liability	12,220,993	11,135,142	91.1	81.3
19.3	Commercial auto no-fault (personal injury protection)	1,525,065	1,152,192	75.6	72.4
19.4	Other commercial auto liability	118,503,889	82,610,879	69.7	67.3
21.1	Private passenger auto physical damage	9,812,332	6,287,039	64.1	58.1
21.2	Commercial auto physical damage	48,742,329	44,911,968	92.1	71.2
22.	Aircraft (all perils)	0	0	0.0	0.0
23.	Fidelity	230,412	15,713	6.8	16.3
24.	Surety	28,271	1,785	6.3	6.5
26.	Burglary and theft	181,822	80,796	44.4	119.0
27.	Boiler and machinery	1,837,852	621,491	33.8	29.1
28.	Credit	0	0	0.0	0.0
29.	International	0	0	0.0	0.0
30.	Warranty	0	0	0.0	0.0
31.	Reinsurance - Nonproportional Assumed Property	XXX	XXX	XXX	XXX
32.	Reinsurance - Nonproportional Assumed Liability	XXX	XXX	XXX	XXX
33.	Reinsurance - Nonproportional Assumed Financial Lines	XXX	XXX	XXX	XXX
34.	Aggregate write-ins for other lines of business	0	0	0.0	0.0
35.	Totals	490,740,199	379,733,777	77.4	67.9
DETAILS OF WRITE-INS					
3401.				
3402.				
3403.				
3498.	Summary of remaining write-ins for Line 34 from overflow page	0	0	0.0	0.0
3499.	Totals (Lines 3401 through 3403 plus 3498)(Line 34 above)	0	0	0.0	0.0

STATEMENT AS OF JUNE 30, 2023 OF THE STATE AUTOMOBILE MUTUAL INSURANCE COMPANY

PART 2 - DIRECT PREMIUMS WRITTEN

Line of Business		1 Current Quarter	2 Current Year to Date	3 Prior Year Year to Date
1.	Fire	16,685,420	28,801,804	23,156,111
2.1	Allied Lines	19,543,583	33,958,273	27,916,535
2.2	Multiple peril crop	0	0	0
2.3	Federal flood	0	0	0
2.4	Private crop	0	0	0
2.5	Private flood	0	0	0
3.	Farmowners multiple peril	39,063,224	74,388,539	62,271,903
4.	Homeowners multiple peril	19,517,693	33,892,045	38,281,789
5.1	Commercial multiple peril (non-liability portion)	25,600,315	49,402,118	49,402,118
5.2	Commercial multiple peril (liability portion)	13,708,142	26,971,814	26,971,814
6.	Mortgage guaranty	0	0	0
8.	Ocean marine	751	1,768	1,768
9.	Inland marine	3,672,644	6,845,852	5,789,177
10.	Financial guaranty	0	0	0
11.1	Medical professional liability - occurrence	0	0	0
11.2	Medical professional liability - claims-made	0	0	0
12.	Earthquake	633,711	1,168,141	1,260,327
13.1	Comprehensive (hospital and medical) individual	0	0	0
13.2	Comprehensive (hospital and medical) group	0	0	0
14.	Credit accident and health	0	0	0
15.1	Vision only	0	0	0
15.2	Dental only	0	0	0
15.3	Disability income	0	0	0
15.4	Medicare supplement	0	0	0
15.5	Medicaid Title XIX	0	0	0
15.6	Medicare Title XVIII	0	0	0
15.7	Long-term care	0	0	0
15.8	Federal employees health benefits plan	0	0	0
15.9	Other health	0	0	256
16.	Workers' compensation	3,360,802	7,511,034	9,071,791
17.1	Other liability - occurrence	34,652,706	59,844,644	49,275,992
17.2	Other liability - claims-made	596,677	1,192,303	1,032,351
17.3	Excess workers' compensation	0	0	0
18.1	Products liability - occurrence	1,373,132	2,453,091	3,141,096
18.2	Products liability - claims-made	0	0	0
19.1	Private passenger auto no-fault (personal injury protection)	75,741	152,290	189,433
19.2	Other private passenger auto liability	5,447,585	10,752,427	13,733,611
19.3	Commercial auto no-fault (personal injury protection)	863,353	1,719,320	1,821,979
19.4	Other commercial auto liability	71,710,119	136,959,949	121,399,105
21.1	Private passenger auto physical damage	4,490,199	8,640,949	10,823,029
21.2	Commercial auto physical damage	29,162,777	55,934,074	49,545,198
22.	Aircraft (all perils)	0	0	0
23.	Fidelity	107,923	216,683	258,251
24.	Surety	2,034	18,862	26,396
26.	Burglary and theft	99,306	197,224	175,480
27.	Boiler and machinery	1,006,299	1,963,728	1,830,584
28.	Credit	0	0	0
29.	International	0	0	0
30.	Warranty	0	0	0
31.	Reinsurance - Nonproportional Assumed Property	XXX	XXX	XXX
32.	Reinsurance - Nonproportional Assumed Liability	XXX	XXX	XXX
33.	Reinsurance - Nonproportional Assumed Financial Lines	XXX	XXX	XXX
34.	Aggregate write-ins for other lines of business	0	0	0
35.	Totals	291,374,136	542,986,931	497,376,093
DETAILS OF WRITE-INS				
3401.			
3402.			
3403.			
3498.	Summary of remaining write-ins for Line 34 from overflow page	0	0	0
3499.	Totals (Lines 3401 through 3403 plus 3498)(Line 34 above)	0	0	0

STATEMENT AS OF JUNE 30, 2023 OF THE STATE AUTOMOBILE MUTUAL INSURANCE COMPANY

PART 3 (000 omitted)

LOSS AND LOSS ADJUSTMENT EXPENSE RESERVES SCHEDULE

	1	2	3	4	5	6	7	8	9	10	11	12	13
Years in Which Losses Occurred	Prior Year-End Known Case Loss and LAE Reserves	Prior Year-End IBNR Loss and LAE Reserves	Total Prior Year-End Loss and LAE Reserves (Cols. 1+2)	2023 Loss and LAE Payments on Claims Reported as of Prior Year-End	2023 Loss and LAE Payments on Claims Unreported as of Prior Year-End	Total 2023 Loss and LAE Payments (Cols. 4+5)	Q.S. Date Known Case Loss and LAE Reserves on Claims Reported and Open as of Prior Year End	Q.S. Date Known Case Loss and LAE Reserves on Claims Reported or Reopened Subsequent to Prior Year End	Q.S. Date IBNR Loss and LAE Reserves	Total Q.S. Loss and LAE Reserves (Cols.7+8+9)	Prior Year-End Known Case Loss and LAE Reserves Developed (Savings)/ Deficiency (Cols.4+7 minus Col. 1)	Prior Year-End IBNR Loss and LAE Reserves Developed (Savings)/ Deficiency (Cols. 5+8+9 minus Col. 2)	Prior Year-End Total Loss and LAE Reserve Developed (Savings)/ Deficiency (Cols. 11+12)
1. 2020 + Prior0000000000000
2. 20210000000000000
3. Subtotals 2021 + Prior0000000000000
4. 20220000000000000
5. Subtotals 2022 + Prior0000000000000
6. 2023XXXXXXXXXXXX00XXX000XXXXXXXXX
7. Totals0000000000000
8. Prior Year-End Surplus As Regards Policyholders	1,134,005										Col. 11, Line 7 As % of Col. 1 Line 7	Col. 12, Line 7 As % of Col. 2 Line 7	Col. 13, Line 7 As % of Col. 3 Line 7
											1. 0.0	2. 0.0	3. 0.0
											Col. 13, Line 7 As a % of Col. 1 Line 8		
		4. 0.0											

STATEMENT AS OF JUNE 30, 2023 OF THE STATE AUTOMOBILE MUTUAL INSURANCE COMPANY

SUPPLEMENTAL EXHIBITS AND SCHEDULES INTERROGATORIES

The following supplemental reports are required to be filed as part of your statement filing. However, in the event that your company does not transact the type of business for which the special report must be filed, your response of NO to the specific interrogatory will be accepted in lieu of filing a "NONE" report and a bar code will be printed below. If the supplement is required of your company but is not being filed for whatever reason enter SEE EXPLANATION and provide an explanation following the interrogatory questions.

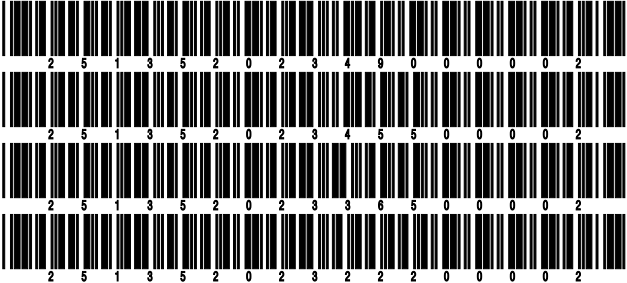
	Response
1. Will the Trusteed Surplus Statement be filed with the state of domicile and the NAIC with this statement?	NO
2. Will Supplement A to Schedule T (Medical Professional Liability Supplement) be filed with this statement?	NO
3. Will the Medicare Part D Coverage Supplement be filed with the state of domicile and the NAIC with this statement?	NO
4. Will the Director and Officer Insurance Coverage Supplement be filed with the state of domicile and the NAIC with this statement?	YES
AUGUST FILING	
5. Will the regulator-only (non-public) Communication of Internal Control Related Matters Noted in Audit be filed with the state of domicile and electronically with the NAIC (as a regulator-only non-public document) by August 1? The response for 1st and 3rd quarters should be N/A. A NO response resulting with a bar code is only appropriate in the 2nd quarter.	NO

Explanations:

1.
2.
3.
5.

Bar Codes:

1. Trusteed Surplus Statement [Document Identifier 490]
2. Supplement A to Schedule T [Document Identifier 455]
3. Medicare Part D Coverage Supplement [Document Identifier 365]
5. Communication of Internal Control Related Matters Noted in Audit (2nd Quarter Only) [Document Identifier 222]



STATEMENT AS OF JUNE 30, 2023 OF THE STATE AUTOMOBILE MUTUAL INSURANCE COMPANY
OVERFLOW PAGE FOR WRITE-INS

NONE

SCHEDULE A - VERIFICATION

Real Estate

	1	2
	Year to Date	Prior Year Ended December 31
1. Book/adjusted carrying value, December 31 of prior year	65,499,834	56,662,884
2. Cost of acquired:		
2.1 Actual cost at time of acquisition	0	0
2.2 Additional investment made after acquisition	2,711,940	10,582,178
3. Current year change in encumbrances	0	0
4. Total gain (loss) on disposals	0	(67,572)
5. Deduct amounts received on disposals	0	0
6. Total foreign exchange change in book/adjusted carrying value	0	0
7. Deduct current year's other than temporary impairment recognized	0	0
8. Deduct current year's depreciation	816,435	1,677,656
9. Book/adjusted carrying value at the end of current period (Lines 1+2+3+4-5+6-7-8)	67,395,339	65,499,834
10. Deduct total nonadmitted amounts	0	0
11. Statement value at end of current period (Line 9 minus Line 10)	67,395,339	65,499,834

SCHEDULE B - VERIFICATION

Mortgage Loans

	1	2
	Year to Date	Prior Year Ended December 31
1. Book value/recorded investment excluding accrued interest, December 31 of prior year		
2. Cost of acquired:		
2.1 Actual cost at time of acquisition		
2.2 Additional investment made after acquisition		
3. Capitalized deferred interest and other		
4. Accrual of discount		
5. Unrealized valuation increase (decrease)		
6. Total gain (loss) on disposals		
7. Deduct amounts received on disposals		
8. Deduct amortization of premium and mortgage interest paid and commitment fees		
9. Total foreign exchange change in book value/recorded investment excluding accrued interest		
10. Deduct current year's other than temporary impairment recognized		
11. Book value/recorded investment excluding accrued interest at end of current period (Lines 1+2+3+4+5+6-7-8+9-10)		
12. Total valuation allowance		
13. Subtotal (Line 11 plus Line 12)		
14. Deduct total nonadmitted amounts		
15. Statement value at end of current period (Line 13 minus Line 14)		

NONE

SCHEDULE BA - VERIFICATION

Other Long-Term Invested Assets

	1	2
	Year to Date	Prior Year Ended December 31
1. Book/adjusted carrying value, December 31 of prior year	10,226,519	46,745,329
2. Cost of acquired:		
2.1 Actual cost at time of acquisition	0	0
2.2 Additional investment made after acquisition	0	1,048,447
3. Capitalized deferred interest and other	0	0
4. Accrual of discount	0	0
5. Unrealized valuation increase (decrease)	305,395	(15,589,425)
6. Total gain (loss) on disposals	0	14,262,838
7. Deduct amounts received on disposals	0	36,240,670
8. Deduct amortization of premium and depreciation	0	0
9. Total foreign exchange change in book/adjusted carrying value	0	0
10. Deduct current year's other than temporary impairment recognized	0	0
11. Book/adjusted carrying value at end of current period (Lines 1+2+3+4+5+6-7-8+9-10)	10,531,914	10,226,519
12. Deduct total nonadmitted amounts	0	0
13. Statement value at end of current period (Line 11 minus Line 12)	10,531,914	10,226,519

SCHEDULE D - VERIFICATION

Bonds and Stocks

	1	2
	Year to Date	Prior Year Ended December 31
1. Book/adjusted carrying value of bonds and stocks, December 31 of prior year	1,056,091,066	1,147,107,102
2. Cost of bonds and stocks acquired	52,694	581,800,568
3. Accrual of discount	7,596	147,845
4. Unrealized valuation increase (decrease)	12,154,535	(160,159,686)
5. Total gain (loss) on disposals	0	12,703,340
6. Deduct consideration for bonds and stocks disposed of	9,289,015	516,445,934
7. Deduct amortization of premium	257,145	9,256,615
8. Total foreign exchange change in book/adjusted carrying value	0	0
9. Deduct current year's other than temporary impairment recognized	0	0
10. Total investment income recognized as a result of prepayment penalties and/or acceleration fees	0	194,446
11. Book/adjusted carrying value at end of current period (Lines 1+2+3+4+5-6-7+8-9+10)	1,058,759,731	1,056,091,066
12. Deduct total nonadmitted amounts	26,294,482	26,238,124
13. Statement value at end of current period (Line 11 minus Line 12)	1,032,465,249	1,029,852,942

STATEMENT AS OF JUNE 30, 2023 OF THE STATE AUTOMOBILE MUTUAL INSURANCE COMPANY

SCHEDULE D - PART 1B

Showing the Acquisitions, Dispositions and Non-Trading Activity
During the Current Quarter for all Bonds and Preferred Stock by NAIC Designation

NAIC Designation	1 Book/Adjusted Carrying Value Beginning of Current Quarter	2 Acquisitions During Current Quarter	3 Dispositions During Current Quarter	4 Non-Trading Activity During Current Quarter	5 Book/Adjusted Carrying Value End of First Quarter	6 Book/Adjusted Carrying Value End of Second Quarter	7 Book/Adjusted Carrying Value End of Third Quarter	8 Book/Adjusted Carrying Value December 31 Prior Year
BONDS								
1. NAIC 1 (a)	104,067,313	28,124	12,880,052	(22,092)	104,067,313	91,193,293	0	94,987,973
2. NAIC 2 (a)	0	0	0	0	0	0	0	0
3. NAIC 3 (a)	0	0	0	0	0	0	0	0
4. NAIC 4 (a)	0	0	0	0	0	0	0	0
5. NAIC 5 (a)	0	0	0	0	0	0	0	0
6. NAIC 6 (a)	0	0	0	0	0	0	0	0
7. Total Bonds	104,067,313	28,124	12,880,052	(22,092)	104,067,313	91,193,293	0	94,987,973
PREFERRED STOCK								
8. NAIC 1	0	0	0	0	0	0	0	0
9. NAIC 2	0	0	0	0	0	0	0	0
10. NAIC 3	0	0	0	0	0	0	0	0
11. NAIC 4	0	0	0	0	0	0	0	0
12. NAIC 5	0	0	0	0	0	0	0	0
13. NAIC 6	0	0	0	0	0	0	0	0
14. Total Preferred Stock	0	0	0	0	0	0	0	0
15. Total Bonds and Preferred Stock	104,067,313	28,124	12,880,052	(22,092)	104,067,313	91,193,293	0	94,987,973

(a) Book/Adjusted Carrying Value column for the end of the current reporting period includes the following amount of short-term and cash equivalent bonds by NAIC designation:

NAIC 1 \$ 2,240,741 ; NAIC 2 \$ 0 ; NAIC 3 \$ 0 NAIC 4 \$ 0 ; NAIC 5 \$ 0 ; NAIC 6 \$ 0

SCHEDULE DA - PART 1

Short-Term Investments

	1	2	3	4	5
	Book/Adjusted Carrying Value	Par Value	Actual Cost	Interest Collected Year-to-Date	Paid for Accrued Interest Year-to-Date
7709999999 Totals	2,240,741	xxx	2,214,456	0	0

SCHEDULE DA - VERIFICATION

Short-Term Investments

	1	2
	Year To Date	Prior Year Ended December 31
1. Book/adjusted carrying value, December 31 of prior year	1	1
2. Cost of short-term investments acquired	2,214,456	0
3. Accrual of discount	26,285	0
4. Unrealized valuation increase (decrease)	0	0
5. Total gain (loss) on disposals	0	0
6. Deduct consideration received on disposals	0	0
7. Deduct amortization of premium	0	0
8. Total foreign exchange change in book/adjusted carrying value	0	0
9. Deduct current year's other than temporary impairment recognized	0	0
10. Book/adjusted carrying value at end of current period (Lines 1+2+3+4+5-6-7+8-9)	2,240,742	1
11. Deduct total nonadmitted amounts	0	0
12. Statement value at end of current period (Line 10 minus Line 11)	2,240,742	1

Schedule DB - Part A - Verification - Options, Caps, Floors, Collars, Swaps and Forwards

N O N E

Schedule DB - Part B - Verification - Futures Contracts

N O N E

Schedule DB - Part C - Section 1 - Replication (Synthetic Asset) Transactions (RSATs) Open

N O N E

Schedule DB-Part C-Section 2-Reconciliation of Replication (Synthetic Asset) Transactions Open

N O N E

Schedule DB - Verification - Book/Adjusted Carrying Value, Fair Value and Potential Exposure of
Derivatives

N O N E

SCHEDULE E - PART 2 - VERIFICATION

(Cash Equivalents)

	1	2
	Year To Date	Prior Year Ended December 31
1. Book/adjusted carrying value, December 31 of prior year	21,567	15,024,325
2. Cost of cash equivalents acquired	0	1
3. Accrual of discount	0	266
4. Unrealized valuation increase (decrease)	0	0
5. Total gain (loss) on disposals	0	0
6. Deduct consideration received on disposals	0	15,003,025
7. Deduct amortization of premium	0	0
8. Total foreign exchange change in book/adjusted carrying value	0	0
9. Deduct current year's other than temporary impairment recognized	0	0
10. Book/adjusted carrying value at end of current period (Lines 1+2+3+4+5-6-7+8-9)	21,567	21,567
11. Deduct total nonadmitted amounts	0	0
12. Statement value at end of current period (Line 10 minus Line 11)	21,567	21,567

STATEMENT AS OF JUNE 30, 2023 OF THE STATE AUTOMOBILE MUTUAL INSURANCE COMPANY

SCHEDULE A - PART 2

Showing All Real Estate ACQUIRED AND ADDITIONS MADE During the Current Quarter

1	Location		4	5	6	7	8	9
	2	3						
Description of Property	City	State	Date Acquired	Name of Vendor	Actual Cost at Time of Acquisition	Amount of Encumbrances	Book/Adjusted Carrying Value Less Encumbrances	Additional Investment Made After Acquisition
Home Office - 518 E. Broad Street	Columbus	OH.....	06/30/2023	Various	0	0	1,809,307	1,809,307
0199999. Acquired by Purchase					0	0	1,809,307	1,809,307
.....
.....
.....
.....
.....
.....
.....
.....
0399999 - Totals					0	0	1,809,307	1,809,307

SCHEDULE A - PART 3

Showing All Real Estate DISPOSED During the Quarter, Including Payments During the Final Year on "Sales Under Contract"

1	Location		4	5	6	7	8	Change in Book/Adjusted Carrying Value Less Encumbrances					14	15	16	17	18	19	20
	2	3						9	10	11	12	13							
Description of Property	City	State	Disposal Date	Name of Purchaser	Actual Cost	Expended for Additions, Permanent Improvements and Changes in Encumbrances	Book/ Adjusted Carrying Value Less Encumbrances Prior Year	Current Year's Depreciation	Current Year's Other-Than-Temporary Impairment Recognized	Current Year's Change in Encumbrances	Total Change in Book/ Adjusted Carrying Value (11-9-10)	Total Foreign Exchange Change in Book/ Adjusted Carrying Value	Book/ Adjusted Carrying Value Less Encumbrances on Disposal	Amounts Received During Year	Foreign Exchange Gain (Loss) on Disposal	Realized Gain (Loss) on Disposal	Total Gain (Loss) on Disposal	Gross Income Earned Less Interest Incurred on Encumbrances	Taxes, Repairs and Expenses Incurred
.....
.....
.....
.....
.....
.....
.....
.....
.....
0399999 - Totals																			

Schedule B - Part 2 - Mortgage Loans Acquired and Additions Made

N O N E

Schedule B - Part 3 - Mortgage Loans Disposed, Transferred or Repaid

N O N E

Schedule BA - Part 2 - Other Long-Term Invested Assets Acquired and Additions Made

N O N E

Schedule BA - Part 3 - Other Long-Term Invested Assets Disposed, Transferred or Repaid

N O N E

STATEMENT AS OF JUNE 30, 2023 OF THE STATE AUTOMOBILE MUTUAL INSURANCE COMPANY

SCHEDULE D - PART 3

Show All Long-Term Bonds and Stock Acquired During the Current Quarter

1	2	3	4	5	6	7	8	9	10
CUSIP Identification	Description	Foreign	Date Acquired	Name of Vendor	Number of Shares of Stock	Actual Cost	Par Value	Paid for Accrued Interest and Dividends	NAIC Designation, NAIC Designation Modifier and SVO Admini- strative Symbol
38382N-HR-1	GNR 2021-27 ZL06/01/2023	CAPITALIZED INTEREST9,5439,5430	1.A FE
912810-PZ-5	TREASURY (CP1) NOTE06/30/2023	CAPITALIZED INTEREST7,5657,5650	1.A FE
0109999999. Subtotal - Bonds - U.S. Governments					17,10817,1080	XXX
3137FF-BG-1	FHLMC 5071Y06/01/2023	CAPITALIZED INTEREST11,01611,0160	1.A FE
0909999999. Subtotal - Bonds - U.S. Special Revenues					11,01611,0160	XXX
2509999997. Total - Bonds - Part 3					28,12428,1240	XXX
2509999998. Total - Bonds - Part 5						XXX	XXX	XXX	XXX
2509999999. Total - Bonds					28,12428,1240	XXX
4509999997. Total - Preferred Stocks - Part 3					0	XXX0	XXX
4509999998. Total - Preferred Stocks - Part 5						XXX	XXX	XXX	XXX
4509999999. Total - Preferred Stocks					0	XXX0	XXX
85572#-10-5	STATE AUTO LABS CORP04/30/2023	Unknown0.000212,561212,5610
5919999999. Subtotal - Common Stocks - Parent, Subsidiaries and Affiliates Publicly Traded					212,561	XXX0	XXX
5989999997. Total - Common Stocks - Part 3					212,561	XXX0	XXX
5989999998. Total - Common Stocks - Part 5						XXX	XXX	XXX	XXX
5989999999. Total - Common Stocks					212,561	XXX0	XXX
5999999999. Total - Preferred and Common Stocks					212,561	XXX0	XXX
.....
.....
.....
6009999999 - Totals					240,685	XXX0	XXX

STATEMENT AS OF JUNE 30, 2023 OF THE STATE AUTOMOBILE MUTUAL INSURANCE COMPANY

SCHEDULE D - PART 4

Show All Long-Term Bonds and Stock Sold, Redeemed or Otherwise Disposed of During the Current Quarter

1	2	3	4	5	6	7	8	9	10	Change In Book/Adjusted Carrying Value					16	17	18	19	20	21	22
										11	12	13	14	15							
CUSIP Identification	Description	For- eign	Disposal Date	Name of Purchaser	Number of Shares of Stock	Consid- eration	Par Value	Actual Cost	Prior Year Book/ Adjusted Carrying Value	Unrealized Valuation Increase/ (Decrease)	Current Year's (Amor- tization)/ Accretion	Current Year's Temporary Impairment Recogn- ized	Total Change in Book/ Adjusted Carrying Value (11 + 12 - 13)	Total Foreign Exchange Change in Book /Adjusted Carrying Value	Book/ Adjusted Carrying Value at Disposal Date	Foreign Exchange Gain (Loss) on Disposal	Realized Gain (Loss) on Disposal	Total Gain (Loss) on Disposal	Bond Interest/ Stock Dividends Received During Year	Stated Con- tractual Maturity Date	NAIC Desig- nation, NAIC Desig- nation Modifier and SVO Admini- strative Symbol
..36179V-4K-3	GNMA 11 30YR SF - JUMBO-CONFORMING	06/01/2023	MBS PAYMENT	114,391	114,391	115,570	114,425	0	(34)	0	(34)	0	114,391	0	0	0	956	01/20/2051	1.A FE
..36213F-ZS-5	GNMA 30YR	06/01/2023	MBS PAYMENT	14,926	14,926	15,756	14,962	0	(36)	0	(36)	0	14,926	0	0	0	228	01/15/2042	1.A FE
..912828-4S-6	TREASURY NOTE	05/31/2023	MATURITY	4,000,000	4,000,000	4,111,250	4,011,802	0	(11,802)	0	(11,802)	0	4,000,000	0	0	0	55,000	05/31/2023	1.A FE
0109999999. Subtotal - Bonds - U.S. Governments						4,129,317	4,129,317	4,242,576	4,141,189	0	(11,872)	0	(11,872)	0	4,129,317	0	0	0	56,184	XXX	XXX
..3128MJ-RJ-1	FGOLD 30YR GIANT	06/01/2023	MBS PAYMENT	14,046	14,046	14,661	14,068	0	(22)	0	(22)	0	14,046	0	0	0	206	04/01/2042	1.A FE
..3133AD-TX-4	FHLMC 30YR UMBS	06/01/2023	MBS PAYMENT	44,139	44,139	45,939	44,177	0	(38)	0	(38)	0	44,139	0	0	0	369	12/01/2050	1.A FE
..3133AE-BY-9	FHLMC 30YR UMBS	06/01/2023	MBS PAYMENT	26,344	26,344	27,509	26,366	0	(22)	0	(22)	0	26,344	0	0	0	220	01/01/2051	1.A FE
..3136AN-PL-5	FNMA 15-31B	06/01/2023	MBS PAYMENT	54,837	54,837	56,485	54,893	0	(55)	0	(55)	0	54,837	0	0	0	686	05/25/2045	1.A FE
..3136AR-2H-0	FNMA 16-30C	06/01/2023	MBS PAYMENT	76,788	76,788	80,268	77,006	0	(217)	0	(217)	0	76,788	0	0	0	936	02/25/2045	1.A FE
..3137BP-X9-5	FHLMC 4592A	06/01/2023	MBS PAYMENT	21,262	21,262	22,298	21,314	0	(52)	0	(52)	0	21,262	0	0	0	264	05/15/2046	1.A FE
..3138YU-H4-2	FNMA 30YR	06/01/2023	MBS PAYMENT	34,868	34,868	36,552	34,931	0	(63)	0	(63)	0	34,868	0	0	0	539	10/01/2045	1.A FE
..3140QF-NE-5	FNMA 30YR UMBS	06/01/2023	MBS PAYMENT	200,502	200,502	204,261	200,627	0	(125)	0	(125)	0	200,502	0	0	0	1,211	11/01/2050	1.A FE
..31418B-W9-3	FNMA 30YR	06/01/2023	MBS PAYMENT	46,806	46,806	49,205	46,880	0	(74)	0	(74)	0	46,806	0	0	0	705	12/01/2045	1.A FE
..31418D-VK-5	FNMA CONV LONG TERM 30YR - JUMBO-C	06/01/2023	MBS PAYMENT	141,684	141,684	142,171	141,695	0	(11)	0	(11)	0	141,684	0	0	0	860	12/01/2050	1.A FE
..38378B-SH-3	GNMA 12-45	06/01/2023	MBS PAYMENT	15,866	15,866	16,640	15,898	0	(32)	0	(32)	0	15,866	0	0	0	209	04/16/2053	1.B FE
..38378X-PU-9	GNMA 14-13S	06/01/2023	MBS PAYMENT	71,965	71,965	68,367	72,035	0	(70)	0	(70)	0	71,965	0	0	0	915	01/16/2055	1.B FE
..38379R-OP-1	GNMA 17-47	06/01/2023	MBS PAYMENT	6,231	6,231	6,146	6,218	0	12	0	12	0	6,231	0	0	0	65	08/16/2058	1.A FE
0909999999. Subtotal - Bonds - U.S. Special Revenues						755,338	755,338	770,502	756,108	0	(769)	0	(769)	0	755,338	0	0	0	7,185	XXX	XXX
2509999997. Total - Bonds - Part 4						4,884,655	4,884,655	5,013,078	4,897,297	0	(12,641)	0	(12,641)	0	4,884,655	0	0	0	63,369	XXX	XXX
2509999998. Total - Bonds - Part 5						XXX	XXX	XXX	XXX	XXX	XXX	XXX	XXX	XXX	XXX	XXX	XXX	XXX	XXX	XXX	XXX
2509999999. Total - Bonds						4,884,655	4,884,655	5,013,078	4,897,297	0	(12,641)	0	(12,641)	0	4,884,655	0	0	0	63,369	XXX	XXX
4509999997. Total - Preferred Stocks - Part 4						0	XXX	0	0	0	0	0	0	0	0	0	0	0	0	XXX	XXX
4509999998. Total - Preferred Stocks - Part 5						XXX	XXX	XXX	XXX	XXX	XXX	XXX	XXX	XXX	XXX	XXX	XXX	XXX	XXX	XXX	XXX
4509999999. Total - Preferred Stocks						0	XXX	0	0	0	0	0	0	0	0	0	0	0	0	XXX	XXX
..31337#-10-5	FEDERAL HOME LOAN BANK OF CINCINNA	06/26/2023	DIRECT	5,426,000	542,600	542,600	542,600	542,600	0	0	0	0	0	542,600	0	0	0	59,100
5029999999. Subtotal - Common Stocks - Industrial and Miscellaneous (Unaffiliated) Other						542,600	XXX	542,600	542,600	0	0	0	0	0	542,600	0	0	0	59,100	XXX	XXX
5989999997. Total - Common Stocks - Part 4						542,600	XXX	542,600	542,600	0	0	0	0	0	542,600	0	0	0	59,100	XXX	XXX
5989999998. Total - Common Stocks - Part 5						XXX	XXX	XXX	XXX	XXX	XXX	XXX	XXX	XXX	XXX	XXX	XXX	XXX	XXX	XXX	XXX
5989999999. Total - Common Stocks						542,600	XXX	542,600	542,600	0	0	0	0	0	542,600	0	0	0	59,100	XXX	XXX
5999999999. Total - Preferred and Common Stocks						542,600	XXX	542,600	542,600	0	0	0	0	0	542,600	0	0	0	59,100	XXX	XXX
6009999999 - Totals						5,427,255	XXX	5,555,678	5,439,897	0	(12,641)	0	(12,641)	0	5,427,255	0	0	0	122,469	XXX	XXX

Schedule DB - Part A - Section 1 - Options, Caps, Floors, Collars, Swaps and Forwards Open
N O N E

Schedule DB - Part B - Section 1 - Futures Contracts Open
N O N E

Schedule DB - Part B - Section 1B - Brokers with whom cash deposits have been made
N O N E

Schedule DB - Part D - Section 1 - Counterparty Exposure for Derivative Instruments Open
N O N E

Schedule DB - Part D-Section 2 - Collateral for Derivative Instruments Open - Pledged By
N O N E

Schedule DB - Part D-Section 2 - Collateral for Derivative Instruments Open - Pledged To
N O N E

Schedule DB - Part E - Derivatives Hedging Variable Annuity Guarantees
N O N E

Schedule DL - Part 1 - Reinvested Collateral Assets Owned
N O N E

Schedule DL - Part 2 - Reinvested Collateral Assets Owned
N O N E

SCHEDULE E - PART 1 - CASH

E13

STATEMENT AS OF JUNE 30, 2023 OF THE STATE AUTOMOBILE MUTUAL INSURANCE COMPANY

SCHEDULE E - PART 2 - CASH EQUIVALENTS

Show Investments Owned End of Current Quarter

[illegible]



SUPPLEMENT FOR THE QUARTER ENDING JUNE 30, 2023 OF THE STATE AUTOMOBILE MUTUAL INSURANCE COMPANY

DIRECTOR AND OFFICER INSURANCE COVERAGE SUPPLEMENT

Year To Date For The Period Ended JUNE 30, 2023

NAIC Group Code 0111 NAIC Company Code 25135

Company Name STATE AUTOMOBILE MUTUAL INSURANCE COMPANY

If the reporting entity writes any director and officer (D&O) business, please provide the following:

1. Monoline Policies

1 Direct Written Premium	2 Direct Earned Premium	3 Direct Losses Incurred
\$ 395	\$ 523	\$ 29,184

2. Commercial Multiple Peril (CMP) Packaged Policies

- 2.1 Does the reporting entity provide D&O liability coverage as part of a CMP packaged policy?

Yes ☒ No ☐
- 2.2 Can the direct premium earned for D&O liability coverage provided as part of a CMP packaged policy be quantified or estimated?

Yes ☒ No ☐
- 2.3 If the answer to question 2.2 is yes, provide the quantified or estimated direct premium earned amount for D&O liability coverage in CMP packaged policies

2.31 Amount quantified:

\$ 6,094

2.32 Amount estimated using reasonable assumptions:

\$ 0
- 2.4 If the answer to question 2.1 is yes, provide direct losses incurred (losses paid plus change in case reserves) for the D&O liability coverage provided in CMP packaged policies.

\$ 0