



PROPERTY AND CASUALTY COMPANIES - ASSOCIATION EDITION

QUARTERLY STATEMENT

AS OF JUNE 30, 2023

OF THE CONDITION AND AFFAIRS OF THE

FREEDOM SPECIALTY INSURANCE COMPANY

NAIC Group Code 0140 0140 NAIC Company Code 22209 Employer's ID Number 75-6013587
(Current) (Prior)

Organized under the Laws of OHIO, State of Domicile or Port of Entry OH

Country of Domicile United States of America

Incorporated/Organized 05/21/1929 Commenced Business 07/05/1929

Statutory Home Office ONE WEST NATIONWIDE BLVD. COLUMBUS, OH, US 43215-2220
(Street and Number) (City or Town, State, Country and Zip Code)

Main Administrative Office 18700 N. HAYDEN ROAD
(Street and Number)
SCOTTSDALE, AZ, US 85255 480-365-4000
(City or Town, State, Country and Zip Code) (Area Code) (Telephone Number)

Mail Address ONE WEST NATIONWIDE BLVD., 1-14-301 COLUMBUS, OH, US 43215-2220
(Street and Number or P.O. Box) (City or Town, State, Country and Zip Code)

Primary Location of Books and Records ONE WEST NATIONWIDE BLVD., 1-14-301
(Street and Number)
COLUMBUS, OH, US 43215-2220 614-249-1545
(City or Town, State, Country and Zip Code) (Area Code) (Telephone Number)

Internet Website Address WWW.NATIONWIDE.COM

Statutory Statement Contact ANDREA D. IACOBONI 614-249-1545
(Name) (Area Code) (Telephone Number)
FINRPT@NATIONWIDE.COM 866-315-1430
(E-mail Address) (FAX Number)

OFFICERS

PRESIDENT RUSSELL MARK JOHNSTON VP & TREASURER MELISSA NICOLE TOMITA #
SVP & SECRETARY DENISE LYNN SKINGLE

OTHER

PAMELA ANN BIESECKER, SVP-HEAD OF TAXATION

DIRECTORS OR TRUSTEES

MARK ALLEN BERVEN OSCAR GUERRERO THOMAS ANTHONY IORIO #
RUSSELL MARK JOHNSTON ELIZABETH MARGARET RICZKO

State of OHIO SS:
County of FRANKLIN

The officers of this reporting entity being duly sworn, each depose and say that they are the described officers of said reporting entity, and that on the reporting period stated above, all of the herein described assets were the absolute property of the said reporting entity, free and clear from any liens or claims thereon, except as herein stated, and that this statement, together with related exhibits, schedules and explanations therein contained, annexed or referred to, is a full and true statement of all the assets and liabilities and of the condition and affairs of the said reporting entity as of the reporting period stated above, and of its income and deductions therefrom for the period ended, and have been completed in accordance with the NAIC Annual Statement Instructions and Accounting Practices and Procedures manual except to the extent that: (1) state law may differ; or, (2) that state rules or regulations require differences in reporting not related to accounting practices and procedures, according to the best of their information, knowledge and belief, respectively. Furthermore, the scope of this attestation by the described officers also includes the related corresponding electronic filing with the NAIC, when required, that is an exact copy (except for formatting differences due to electronic filing) of the enclosed statement. The electronic filing may be requested by various regulators in lieu of or in addition to the enclosed statement.



RUSSELL MARK JOHNSTON
PRESIDENT



DENISE LYNN SKINGLE
SVP & SECRETARY



MELISSA NICOLE TOMITA
VP & TREASURER

Subscribed and sworn to before me this 17th day of JULY 2023

- a. Is this an original filing? Yes [X] No []
b. If no,
1. State the amendment number.....
2. Date filed
3. Number of pages attached.....



ANDREW SWARTZEL
NOTARY PUBLIC - STATE OF OHIO
Comm. No. 2021-RE-839107
My Commission Expires Oct. 24, 2026

STATEMENT AS OF JUNE 30, 2023 OF THE FREEDOM SPECIALTY INSURANCE COMPANY

ASSETS

	Current Statement Date			4 December 31 Prior Year Net Admitted Assets
	1 Assets	2 Nonadmitted Assets	3 Net Admitted Assets (Cols. 1 - 2)	
1. Bonds	23,155,176		23,155,176	23,406,975
2. Stocks:				
2.1 Preferred stocks				
2.2 Common stocks				
3. Mortgage loans on real estate:				
3.1 First liens				
3.2 Other than first liens.....				
4. Real estate:				
4.1 Properties occupied by the company (less \$0 encumbrances)				
4.2 Properties held for the production of income (less \$0 encumbrances)				
4.3 Properties held for sale (less \$0 encumbrances)				
5. Cash (\$(19,755)), cash equivalents (\$993,257) and short-term investments (\$)	973,502		973,502	2,215,187
6. Contract loans (including \$0 premium notes)				
7. Derivatives				
8. Other invested assets				
9. Receivables for securities				
10. Securities lending reinvested collateral assets				
11. Aggregate write-ins for invested assets				
12. Subtotals, cash and invested assets (Lines 1 to 11)	24,128,678		24,128,678	25,622,162
13. Title plants less \$0 charged off (for Title insurers only)				
14. Investment income due and accrued	177,747		177,747	161,179
15. Premiums and considerations:				
15.1 Uncollected premiums and agents' balances in the course of collection	35,491,959		35,491,959	29,841,388
15.2 Deferred premiums, agents' balances and installments booked but deferred and not yet due (including \$0 earned but unbilled premiums)				
15.3 Accrued retrospective premiums (\$0) and contracts subject to redetermination (\$0)				
16. Reinsurance:				
16.1 Amounts recoverable from reinsurers	9,112,955		9,112,955	12,724,315
16.2 Funds held by or deposited with reinsured companies				
16.3 Other amounts receivable under reinsurance contracts	2,177,575		2,177,575	4,800,462
17. Amounts receivable relating to uninsured plans				
18.1 Current federal and foreign income tax recoverable and interest thereon				30,018
18.2 Net deferred tax asset	74,816	35,532	39,284	223,704
19. Guaranty funds receivable or on deposit				
20. Electronic data processing equipment and software				
21. Furniture and equipment, including health care delivery assets (\$0)				
22. Net adjustment in assets and liabilities due to foreign exchange rates				
23. Receivables from parent, subsidiaries and affiliates	4,157,362		4,157,362	24,947,570
24. Health care (\$0) and other amounts receivable				
25. Aggregate write-ins for other than invested assets	845,000		845,000	
26. Total assets excluding Separate Accounts, Segregated Accounts and Protected Cell Accounts (Lines 12 to 25)	76,166,092	35,532	76,130,560	98,350,798
27. From Separate Accounts, Segregated Accounts and Protected Cell Accounts				
28. Total (Lines 26 and 27)	76,166,092	35,532	76,130,560	98,350,798
DETAILS OF WRITE-INS				
1101.				
1102.				
1103.				
1198. Summary of remaining write-ins for Line 11 from overflow page				
1199. Totals (Lines 1101 through 1103 plus 1198)(Line 11 above)				
2501. Miscellaneous assets	845,000		845,000	
2502.				
2503.				
2598. Summary of remaining write-ins for Line 25 from overflow page				
2599. Totals (Lines 2501 through 2503 plus 2598)(Line 25 above)	845,000		845,000	

STATEMENT AS OF JUNE 30, 2023 OF THE FREEDOM SPECIALTY INSURANCE COMPANY

LIABILITIES, SURPLUS AND OTHER FUNDS

	1 Current Statement Date	2 December 31, Prior Year
1. Losses (current accident year \$0)		
2. Reinsurance payable on paid losses and loss adjustment expenses		
3. Loss adjustment expenses		
4. Commissions payable, contingent commissions and other similar charges		
5. Other expenses (excluding taxes, licenses and fees)		
6. Taxes, licenses and fees (excluding federal and foreign income taxes)		
7.1 Current federal and foreign income taxes (including \$765 on realized capital gains (losses))	13,795	
7.2 Net deferred tax liability		
8. Borrowed money \$0 and interest thereon \$0		
9. Unearned premiums (after deducting unearned premiums for ceded reinsurance of \$121,394,991 and including warranty reserves of \$0 and accrued accident and health experience rating refunds including \$ for medical loss ratio rebate per the Public Health Service Act)		
10. Advance premium		
11. Dividends declared and unpaid:		
11.1 Stockholders		
11.2 Policyholders		
12. Ceded reinsurance premiums payable (net of ceding commissions)	50,870,507	60,431,481
13. Funds held by company under reinsurance treaties		
14. Amounts withheld or retained by company for account of others		
15. Remittances and items not allocated	2,031	
16. Provision for reinsurance (including \$0 certified)		
17. Net adjustments in assets and liabilities due to foreign exchange rates		
18. Drafts outstanding		
19. Payable to parent, subsidiaries and affiliates	765	12,818,826
20. Derivatives		
21. Payable for securities		
22. Payable for securities lending		
23. Liability for amounts held under uninsured plans		
24. Capital notes \$0 and interest thereon \$0		
25. Aggregate write-ins for liabilities		
26. Total liabilities excluding protected cell liabilities (Lines 1 through 25)	50,887,098	73,250,307
27. Protected cell liabilities		
28. Total liabilities (Lines 26 and 27)	50,887,098	73,250,307
29. Aggregate write-ins for special surplus funds		
30. Common capital stock	3,504,000	3,504,000
31. Preferred capital stock		
32. Aggregate write-ins for other than special surplus funds		
33. Surplus notes		
34. Gross paid in and contributed surplus	9,000,000	9,000,000
35. Unassigned funds (surplus)	12,739,462	12,596,491
36. Less treasury stock, at cost:		
36.10 shares common (value included in Line 30 \$0)		
36.20 shares preferred (value included in Line 31 \$0)		
37. Surplus as regards policyholders (Lines 29 to 35, less 36)	25,243,462	25,100,491
38. Totals (Page 2, Line 28, Col. 3)	76,130,560	98,350,798
DETAILS OF WRITE-INS		
2501.		
2502.		
2503.		
2598. Summary of remaining write-ins for Line 25 from overflow page		
2599. Totals (Lines 2501 through 2503 plus 2598)(Line 25 above)		
2901.		
2902.		
2903.		
2998. Summary of remaining write-ins for Line 29 from overflow page		
2999. Totals (Lines 2901 through 2903 plus 2998)(Line 29 above)		
3201.		
3202.		
3203.		
3298. Summary of remaining write-ins for Line 32 from overflow page		
3299. Totals (Lines 3201 through 3203 plus 3298)(Line 32 above)		

STATEMENT OF INCOME

	1 Current Year to Date	2 Prior Year to Date	3 Prior Year Ended December 31
UNDERWRITING INCOME			
1. Premiums earned:			
1.1 Direct (written \$ 102,030,618)	126,770,348	155,670,973	296,972,870
1.2 Assumed (written \$ 285)	1,523,342	1,466,442	2,942,159
1.3 Ceded (written \$ 102,030,903)	128,293,690	157,137,415	299,915,029
1.4 Net (written \$)			
DEDUCTIONS:			
2. Losses incurred (current accident year \$ 0):			
2.1 Direct	88,661,136	83,438,778	184,514,240
2.2 Assumed	5,892	(4,064)	(23,631)
2.3 Ceded	88,667,028	83,434,714	184,490,609
2.4 Net			
3. Loss adjustment expenses incurred			
4. Other underwriting expenses incurred			
5. Aggregate write-ins for underwriting deductions			
6. Total underwriting deductions (Lines 2 through 5)			
7. Net income of protected cells			
8. Net underwriting gain (loss) (Line 1 minus Line 6 + Line 7)			
INVESTMENT INCOME			
9. Net investment income earned	341,186	261,884	578,626
10. Net realized capital gains (losses) less capital gains tax of \$ 765	(765)	(652)	(3,747)
11. Net investment gain (loss) (Lines 9 + 10)	340,421	261,232	574,879
OTHER INCOME			
12. Net gain or (loss) from agents' or premium balances charged off (amount recovered \$ 0 amount charged off \$ 0)			
13. Finance and service charges not included in premiums			
14. Aggregate write-ins for miscellaneous income			
15. Total other income (Lines 12 through 14)			
16. Net income before dividends to policyholders, after capital gains tax and before all other federal and foreign income taxes (Lines 8 + 11 + 15)	340,421	261,232	574,879
17. Dividends to policyholders			
18. Net income, after dividends to policyholders, after capital gains tax and before all other federal and foreign income taxes (Line 16 minus Line 17)	340,421	261,232	574,879
19. Federal and foreign income taxes incurred	13,030	(16,212)	(19,810)
20. Net income (Line 18 minus Line 19)(to Line 22)	327,391	277,444	594,689
CAPITAL AND SURPLUS ACCOUNT			
21. Surplus as regards policyholders, December 31 prior year	25,100,491	24,930,890	24,930,890
22. Net income (from Line 20)	327,391	277,444	594,689
23. Net transfers (to) from Protected Cell accounts			
24. Change in net unrealized capital gains (losses) less capital gains tax of \$ 0			
25. Change in net unrealized foreign exchange capital gain (loss)			
26. Change in net deferred income tax	(191,917)	(326,617)	(386,026)
27. Change in nonadmitted assets	722,055	1,231,026	1,272,342
28. Change in provision for reinsurance			
29. Change in surplus notes			
30. Surplus (contributed to) withdrawn from protected cells			
31. Cumulative effect of changes in accounting principles			
32. Capital changes:			
32.1 Paid in			
32.2 Transferred from surplus (Stock Dividend)			
32.3 Transferred to surplus			
33. Surplus adjustments:			
33.1 Paid in			
33.2 Transferred to capital (Stock Dividend)			
33.3 Transferred from capital			
34. Net remittances from or (to) Home Office			
35. Dividends to stockholders			
36. Change in treasury stock			
37. Aggregate write-ins for gains and losses in surplus	(714,558)	(1,311,404)	(1,311,404)
38. Change in surplus as regards policyholders (Lines 22 through 37)	142,971	(129,551)	169,601
39. Surplus as regards policyholders, as of statement date (Lines 21 plus 38)	25,243,462	24,801,339	25,100,491
DETAILS OF WRITE-INS			
0501.			
0502.			
0503.			
0598. Summary of remaining write-ins for Line 5 from overflow page			
0599. Totals (Lines 0501 through 0503 plus 0598)(Line 5 above)			
1401.			
1402.			
1403.			
1498. Summary of remaining write-ins for Line 14 from overflow page			
1499. Totals (Lines 1401 through 1403 plus 1498)(Line 14 above)			
3701. Change in surplus - pooled nonadmitted premiums in the course of collection offset	(714,558)	(1,311,404)	(1,311,404)
3702.			
3703.			
3798. Summary of remaining write-ins for Line 37 from overflow page			
3799. Totals (Lines 3701 through 3703 plus 3798)(Line 37 above)	(714,558)	(1,311,404)	(1,311,404)

CASH FLOW

	1 Current Year To Date	2 Prior Year To Date	3 Prior Year Ended December 31
Cash from Operations			
1. Premiums collected net of reinsurance	(15,211,545)	(13,221,560)	(4,414,614)
2. Net investment income	349,412	300,642	661,290
3. Miscellaneous income			
4. Total (Lines 1 to 3)	(14,862,133)	(12,920,918)	(3,753,324)
5. Benefit and loss related payments	(3,611,360)	(7,280,630)	(3,416,443)
6. Net transfers to Separate Accounts, Segregated Accounts and Protected Cell Accounts			
7. Commissions, expenses paid and aggregate write-ins for deductions	(2,622,887)	(2,322,847)	(2,138,926)
8. Dividends paid to policyholders			
9. Federal and foreign income taxes paid (recovered) net of \$9,871 tax on capital gains (losses)	(30,018)	(39,984)	(39,647)
10. Total (Lines 5 through 9)	(6,264,265)	(9,643,461)	(5,595,016)
11. Net cash from operations (Line 4 minus Line 10)	(8,597,868)	(3,277,457)	1,841,692
Cash from Investments			
12. Proceeds from investments sold, matured or repaid:			
12.1 Bonds	3,144,584	317,964	1,506,718
12.2 Stocks			
12.3 Mortgage loans			
12.4 Real estate			
12.5 Other invested assets			
12.6 Net gains or (losses) on cash, cash equivalents and short-term investments			
12.7 Miscellaneous proceeds			
12.8 Total investment proceeds (Lines 12.1 to 12.7)	3,144,584	317,964	1,506,718
13. Cost of investments acquired (long-term only):			
13.1 Bonds	2,917,581	3,744,538	6,191,847
13.2 Stocks			
13.3 Mortgage loans			
13.4 Real estate			
13.5 Other invested assets			
13.6 Miscellaneous applications			
13.7 Total investments acquired (Lines 13.1 to 13.6)	2,917,581	3,744,538	6,191,847
14. Net increase (or decrease) in contract loans and premium notes			
15. Net cash from investments (Line 12.8 minus Line 13.7 and Line 14)	227,003	(3,426,574)	(4,685,129)
Cash from Financing and Miscellaneous Sources			
16. Cash provided (applied):			
16.1 Surplus notes, capital notes			
16.2 Capital and paid in surplus, less treasury stock			
16.3 Borrowed funds			
16.4 Net deposits on deposit-type contracts and other insurance liabilities			
16.5 Dividends to stockholders			
16.6 Other cash provided (applied)	7,129,180	8,627,104	1,350,781
17. Net cash from financing and miscellaneous sources (Line 16.1 through Line 16.4 minus Line 16.5 plus Line 16.6)	7,129,180	8,627,104	1,350,781
RECONCILIATION OF CASH, CASH EQUIVALENTS AND SHORT-TERM INVESTMENTS			
18. Net change in cash, cash equivalents and short-term investments (Line 11, plus Lines 15 and 17) .	(1,241,685)	1,923,073	(1,492,656)
19. Cash, cash equivalents and short-term investments:			
19.1 Beginning of year	2,215,187	3,707,843	3,707,843
19.2 End of period (Line 18 plus Line 19.1)	973,502	5,630,916	2,215,187

Note: Supplemental disclosures of cash flow information for non-cash transactions:

--	--	--	--

NOTES TO THE FINANCIAL STATEMENTS

Note 1 – Summary of Significant Accounting Policies and Going Concern

A. Accounting Practices

The accompanying statutory financial statements of Freedom Specialty Insurance Company (the Company) have been prepared in conformity with accounting practices prescribed or permitted by the National Association of Insurance Commissioners (NAIC) and the State of Ohio.

The Ohio Department of Insurance (Department) recognizes only statutory accounting practices (SAP) prescribed or permitted by the State of Ohio for determining and reporting the financial condition and results of operations of an insurance company, as well as, determining its solvency under the Ohio Insurance law. The NAIC’s *Accounting Practices and Procedures Manual* (NAIC SAP) has been adopted as a component of prescribed or permitted practices by the State of Ohio. The Company has no statutory accounting practices that differ from the NAIC SAP.

A reconciliation of the Company’s net income and capital and surplus between NAIC SAP and practices prescribed and permitted by the State of Ohio is shown below:

	SSAP #	F/S Page	F/S Line #	2023	2022
Net Income					
Freedom Specialty Insurance Company state basis (Page 4, Line 20,					
(1) Columns 1 & 3)	XXX	XXX	XXX	\$ 327,391	\$ 594,689
(2) State Prescribed Practice that is an increase/(decrease) from NAIC SAP				-	-
(3) State Permitted Practice that is an increase/(decrease) from NAIC SAP				-	-
(4) NAIC SAP (1-2-3=4)	XXX	XXX	XXX	\$ 327,391	\$ 594,689
Surplus					
Freedom Specialty Insurance Company state basis (Page 3, Line 37,					
(5) Columns 1 & 2)	XXX	XXX	XXX	\$ 25,243,462	\$ 25,100,491
(6) State Prescribed Practice that is an increase/(decrease) from NAIC SAP				-	-
(7) State Permitted Practice that is an increase/(decrease) from NAIC SAP				-	-
(8) NAIC SAP (5-6-7=8)	XXX	XXX	XXX	\$ 25,243,462	\$ 25,100,491

B. Use of Estimates in the Preparation of the Financial Statements

There were no changes that were considered significant to the Company from prior year end.

C. Accounting Policies

1. There were no changes that were considered significant to the Company from prior year end.
2. Bonds, excluding loan-backed and structured securities, are stated at amortized cost except those with an NAIC designation of “3” through “6”, which are stated at the lower of amortized cost or fair value. Amortization of premiums and discounts is calculated using the effective yield method. The Company does not hold any mandatory convertible securities or Securities Valuation Office (SVO) identified investments.
- 3-5. There were no changes that were considered significant to the Company from prior year end.
6. Loan-backed and structured securities (collectively, loan-backed securities) are stated at amortized cost or the lower of amortized cost or fair value in accordance with the provisions of Statement of Statutory Accounting Principles (SSAP) No. 43 Revised – Loan-Backed and Structured Securities and the Purposes and Procedures Manual of the NAIC SVO. The retrospective adjustment method is used to value loan-backed securities where the collection of all contractual cash flows is probable. For all other loan-backed securities, the Company uses the prospective adjustment method. Refer to Note 5(D) for a discussion of the other-than-temporary impairment policy for loan-backed securities.
- 7-13. There were no changes that were considered significant to the Company from prior year end.

D. Going Concern

Not applicable.

Note 2 – Accounting Changes and Corrections of Errors

Not applicable.

Note 3 – Business Combinations and Goodwill

Not applicable.

Note 4 – Discontinued Operations

Not applicable.

Note 5 – Investments

A. Mortgage Loans

Not applicable.

B. Troubled Debt Restructuring

Not applicable.

C. Reverse Mortgages

Not applicable.

D. Loan-Backed Securities

1. Prepayment assumptions are generally obtained using a model provided by a third-party vendor.
2. Not applicable.

NOTES TO THE FINANCIAL STATEMENTS

3. Not applicable.
4. All impaired securities (fair value is less than cost or amortized cost) for which an other-than-temporary impairment has not been recognized in earnings as a realized loss (including securities with a recognized other-than-temporary impairment for non-interest related declines when a non-recognized interest related impairment remains):

a. The aggregate amount of unrealized losses:	1. Less than 12 Months	\$ (9,725)
	2. 12 Months or Longer	\$ (384,248)

b. The aggregate related fair value of securities with unrealized losses:	1. Less than 12 Months	\$ 1,081,834
	2. 12 Months or Longer	\$ 2,246,119

5. The Company reviews all loan-backed and structured securities in which the fair value of the given security is less than the amortized cost to determine if a given security is other-than-temporarily impaired. The Company examines characteristics of the underlying collateral, such as delinquency and default rates, the quality of the underlying borrower, the type of collateral in the pool, the vintage year of the collateral, subordination levels within the structure of the collateral pool, and the quality of any credit guarantors, to determine the cash flows expected to be received for the security. If the severity and duration of the security's unrealized loss indicates a risk of an other-than-temporary impairment, then the Company will evaluate if the amortized cost basis of the security will be recovered by comparing the present value of the cash flows expected to be received for the given security with the amortized cost basis of the security. If the present value of cash flows is greater than the amortized cost basis of a security, then the security is deemed not to be other-than-temporarily impaired.

E. Dollar Repurchase Agreements and/or Securities Lending Transactions

Not applicable, as the Company does not participate in a securities lending program and has no open dollar repurchase agreements.

F. Repurchase Agreements Transactions Accounted for as Secured Borrowing

Not applicable.

G. Reverse Repurchase Agreements Transactions Accounted for as Secured Borrowing

Not applicable.

H. Repurchase Agreements Transactions Accounted for as a Sale

Not applicable.

I. Reverse Repurchase Agreements Transactions Accounted for as a Sale

Not applicable.

J. Real Estate

Not applicable.

K. Low-Income Housing Tax Credits

Not applicable.

L. Restricted Assets

There were no changes that were considered significant to the Company from prior year end.

M. Working Capital Finance Investments

Not applicable.

N. Offsetting and Netting of Assets and Liabilities

No assets or liabilities are offset and reported net in accordance with a valid right to offset per SSAP No 64, *Offsetting and Netting of Assets and Liabilities*.

O. 5GI Securities

Not applicable.

P. Short Sales

Not applicable.

Q. Prepayment Penalty and Acceleration Fees

Not applicable.

R. Reporting Entity's Share of Cash Pool by Asset Type

Asset Type	Percent Share
(1) Cash	1%
(2) Cash equivalents	90%
(3) Short-term investments	9%
(4) Total	100%

Note 6 – Joint Ventures, Partnerships and Limited Liability Companies

There were no changes that were considered significant to the Company from prior year end.

Note 7 – Investment Income

There were no changes that were considered significant to the Company from prior year end.

NOTES TO THE FINANCIAL STATEMENTS

Note 8 – Derivative Instruments

Not applicable.

Note 9 – Income Taxes

There were no changes that were considered significant to the Company from prior year end, except for the following.

In August 2022, the Inflation Reduction Act of 2022 (“Act”) was passed by the US Congress and signed into law. The Act includes a new Federal corporate alternative minimum tax (“CAMT”), effective in 2023, that is based on the adjusted financial statement income (“AFSI”) set forth on the applicable financial statement (“AFS”) of an applicable corporation. A corporation is an applicable corporation if its rolling average pre-tax AFSI over three prior years (starting with 2020-2022) is greater than \$1 billion. For a group of related entities, the \$1 billion threshold is determined on a group basis, and the group’s AFS is generally treated as the AFS for all separate taxpayers in the group. Except under limited circumstances, once a corporation is an applicable corporation, it is an applicable corporation in all future years.

An applicable corporation is not automatically subject to a CAMT liability. The corporation’s tentative CAMT liability is equal to 15% of its adjusted AFSI, and CAMT is payable to the extent the tentative CAMT liability exceeds regular corporate income tax. However, any CAMT paid would be indefinitely available as a credit carryover that could reduce future regular tax in excess of CAMT.

The Company comprises a controlled group of corporations and has determined that it likely will be an applicable corporation in 2023. In making such determination, the group has made certain interpretations of, and assumptions regarding, the CAMT provisions of the Act. The US Treasury Department is expected to issue guidance throughout 2023 that may differ from the group’s interpretations and assumptions and that could alter the group’s determination.

In accordance with INT 22-02, the Company did not include an estimate of the impacts of the CAMT because a reasonable estimate cannot be made as of June 30, 2023.

Note 10 – Information Concerning Parent, Subsidiaries, Affiliates and Other Related Parties

There were no changes that were considered significant to the Company from prior year end.

Note 11 – Debt

Not applicable.

Note 12 – Retirement Plans, Deferred Compensation, Postemployment Benefits and Compensated Absences and Other Postretirement Benefit Plans

Not applicable.

Note 13 – Capital and Surplus, Dividend Restrictions and Quasi-Reorganizations

There were no changes that were considered significant to the Company from prior year end.

Note 14 – Liabilities, Contingencies and Assessments

There were no changes that were considered significant to the Company from prior year end.

Note 15 – Leases

Not applicable.

Note 16 – Information about Financial Instruments with Off-Balance Sheet Risk and Financial Instruments with Concentrations of Credit Risk

Not applicable.

Note 17 – Sale, Transfer and Servicing of Financial Assets and Extinguishments of Liabilities

A. Transfers of Receivables Reported as Sales

Not applicable.

B. Transfers and Servicing of Financial Assets

Not applicable.

C. Wash Sales

Not applicable.

Note 18 – Gain or Loss to the Reporting Entity from Uninsured Plans and the Uninsured Portion of Partially Insured Plans

Not applicable.

Note 19 – Direct Premium Written/Produced by Managing General Agents/Third Party Administrators

There were no changes that were considered significant to the Company from prior year end.

Note 20 – Fair Value Measurements

A. Fair value is defined as the price that would be received to sell an asset or paid to transfer a liability in an orderly transaction between market participants at the measurement date. Fair value measurements are based upon observable and unobservable inputs. Observable inputs reflect market data obtained from independent sources while unobservable inputs reflect the Company’s view of market assumptions in the absence of observable market information. The Company utilizes valuation techniques that maximize the use of observable inputs and minimize the use of unobservable inputs. In determining fair value, the Company uses various methods including market, income and cost approaches.

The Company categorizes its financial instruments into a three-level hierarchy based on the priority of the inputs to the valuation technique. The fair value hierarchy gives the highest priority to quoted prices in active markets for identical assets or liabilities (Level 1) and the lowest priority to unobservable inputs (Level 3). If the inputs used to measure fair value fall within different levels of the hierarchy, the category level is based on the lowest priority level input that is significant to the fair value measurement of the instrument in its entirety.

The Company categorizes assets and liabilities held at fair value in the statutory statements of assets and liabilities, surplus and other funds as follows:

NOTES TO THE FINANCIAL STATEMENTS

Level 1. Unadjusted quoted prices accessible in active markets for identical assets or liabilities at the measurement date and mutual funds where the value per share (unit) is determined and published daily and is the basis for current transactions.

Level 2. Unadjusted quoted prices for similar assets or liabilities in active markets, quoted prices for identical or similar assets or liabilities in markets that are not active or inputs (other than quoted prices) that are observable or that are derived principally from or corroborated by observable market data through correlation or other means. Primary inputs to this valuation technique may include comparative trades, bid/asks, interest rate movements, U.S. Treasury rates, London Interbank Offered Rate, Secured Overnight Finance Rate, prime rates, cash flows, maturity dates, call ability, estimated prepayments and/or underlying collateral values.

Level 3. Prices or valuation techniques that require inputs that are both unobservable and significant to the overall fair value measurement. Inputs reflect management's best estimates of the assumptions market participants would use at the measurement date in pricing the asset or liability. Consideration is given to the risk inherent in both the method of valuation and the valuation inputs. Primary inputs to this valuation technique include broker quotes and comparative trades.

The Company reviews its fair value hierarchy classifications for assets and liabilities quarterly. Changes in the observability of significant valuation inputs identified during these reviews may trigger reclassifications. Reclassifications are reported as transfers at the beginning of the reporting period in which the change occurs.

Independent pricing services are most often utilized, and compared to pricing from additional sources when available, to determine the fair value of bonds and stocks for which market quotations or quotations on comparable securities or models are used. For these bonds and stocks, the Company obtains the pricing services' methodologies and classifies the investments accordingly in the fair value hierarchy.

A corporate pricing matrix is used in valuing certain corporate bonds. The corporate pricing matrix was developed using publicly available spreads for certain privately placed corporate bonds with varying weighted average lives and credit quality ratings. The weighted average life and credit quality rating of a particular bond to be priced using the corporate pricing matrix are important inputs into the model and are used to determine a corresponding spread that is added to the appropriate U.S. Treasury yield to create an estimated market yield for that bond. The estimated market yield and other relevant factors are then used to estimate the fair value of the particular bond.

Non-binding broker quotes are also utilized to determine the fair value of certain bonds when deemed appropriate or when valuations are not available from independent pricing services or a corporate pricing matrix. These bonds are classified with the lowest priority in the fair value hierarchy as only one broker quote is ordinarily obtained, the investment is not traded on an exchange, the pricing is not available to other entities and/or the transaction volume in the same or similar investments has decreased. Inputs used in the development of prices are not provided to the Company by the brokers as the brokers often do not provide the necessary transparency into their quotes and methodologies. At least annually, the Company performs reviews and tests to ensure that quotes are a reasonable estimate of the investments' fair value. Price movements of broker quotes are subject to validation and require approval from the Company's management. Management uses its knowledge of the investment and current market conditions to determine if the price is indicative of the investment's fair value.

The Company carries short-term investments at amortized cost, which approximates fair value.

No assets or liabilities were held at fair value as of June 30, 2023.

B. & C. The following table summarizes the carrying value and fair value of the Company's assets not held at fair value as of June 30, 2023:

	Aggregate Fair Value	Admitted Assets	Level 1	Level 2	Level 3	Net Asset Value (NAV)	Not Practicable (Carrying Value)
Assets							
Bonds	\$21,927,312	\$23,155,176	\$8,728,767	\$13,198,545	\$-	\$-	\$-
Cash, cash equivalents and short-term investments	973,502	973,502	(19,755)	993,257	-	-	-
Total Assets	\$22,900,814	\$24,128,678	\$8,709,012	\$14,191,802	\$-	\$-	\$-

D. Not Practicable to Estimate Fair Value

Not applicable.

E. Measured using net asset value

Not applicable.

Note 21 – Other Items

There were no changes that were considered significant to the Company from prior year end.

Note 22 – Events Subsequent

Type I – Recognized Subsequent Events:

Subsequent events have been considered through August 4, 2023, for the statutory statement available to be issued on August 8, 2023.

There were no material Type I events occurring subsequent to the end of the period that merited recognition or disclosure in these statements that have not already been reflected as required.

Type II – Nonrecognized Subsequent Events:

Subsequent events have been considered through August 4, 2023, for the statutory statement available to be issued on August 8, 2023.

There were no material Type II events occurring subsequent to the end of the period that merited recognition or disclosure in these statements that have not already been reflected as required.

Note 23 – Reinsurance

There were no changes that were considered significant to the Company from prior year end.

Note 24 – Retrospectively Rated Contracts and Contracts Subject to Redetermination

Not applicable.

Note 25 – Changes in Incurred Losses and Loss Adjustment Expenses

The Company is a participant in a 100% quota share reinsurance agreement with Scottsdale Insurance Company, and as such has zero net incurred losses and loss adjustment expenses.

NOTES TO THE FINANCIAL STATEMENTS

Note 26 – Intercompany Pooling Arrangements

There were no changes that were considered significant to the Company from prior year end, except for the following:

Effective January 1, 2023, Nationwide Mutual Insurance Company (NMIC) completed a merger agreement with Nationwide Mutual Fire Insurance Company (Fire). Pursuant to the merger agreement, the operations of Fire were merged with and into NMIC, with NMIC continuing as the surviving entity. NMIC’s assumed pooling percentage increased from 71% to 94% as a result of the merger agreement.

NMIC is the lead company in the Nationwide Pool. Each pool member company contributes 100% of its underwriting results to the Nationwide Pool through the reinsurance pooling agreement.

As of June 30, 2023 and December 31, 2022, the companies in the Nationwide Pool assuming a proportionate share of the pool are:

	NAIC #	2023 Pool	2022 Pool
Nationwide Mutual Insurance Company	23787	94.0%	71.0%
Nationwide Mutual Fire Insurance Company	23779	0.0%	23.0%
Nationwide Agribusiness Insurance Company	28223	3.0%	3.0%
Nationwide Insurance Company of America	25453	1.0%	1.0%
National Casualty Company	11991	1.0%	1.0%
Nationwide General Insurance Company	23760	1.0%	1.0%

The following represents amounts due to/from the lead entity and pool participants as of June 30, 2023:

Name of Insurer	Amounts Receivable	Amounts Payable
Nationwide Mutual Insurance Company (Lead Insurer)	\$ 5,281,860,782	\$ 1,327,348,295
Nationwide General Insurance Company	\$ 206,745,130	\$ 679,971,388
Nationwide Property & Casualty Insurance Company	\$ 141,943,485	\$ 456,171,865
Nationwide Assurance Company	\$ 15,829,105	\$ 184,896,097
Nationwide Lloyds	\$ 5,354	\$ (97,947)
Nationwide Insurance Company of Florida	\$ 7,044,893	\$ 47,729,241
Nationwide Affinity Insurance Company of America	\$ 19,725,523	\$ 106,812,621
Crestbrook Insurance Company	\$ 31,855,283	\$ 182,009,222
Nationwide Insurance Company of America	\$ 196,499,099	\$ 612,073,725
Allied Insurance Company of America	\$ 12,625,680	\$ 43,732,990
AMCO Insurance Company	\$ 42,939,285	\$ 290,218,136
Allied Property & Casualty Insurance Company	\$ 36,218,007	\$ 146,535,397
Depositors Insurance Company	\$ 40,215,440	\$ 171,163,567
Nationwide Agribusiness Insurance Company	\$ 241,161,000	\$ 530,136,443
Victoria Fire & Casualty Company	\$ 463,254	\$ (546,919)
National Casualty Company	\$ 150,563,505	\$ 405,016,575
Scottsdale Insurance Company	\$ 118,743,283	\$ 1,098,472,690
Veterinary Pet Insurance Company	\$ 15,910,769	\$ 95,076,689
Nationwide Indemnity Company	\$ 11,445,152	\$ 206,051
Harleysville Insurance Company of New York	\$ 4,001,248	\$ 32,901,983
Harleysville Lake States Insurance Company	\$ (3,388,874)	\$ 1,283,464
Harleysville Insurance Company of New Jersey	\$ 5,886,039	\$ 35,501,832
Harleysville Worcester Insurance Company	\$ 8,775,441	\$ 57,047,781
Harleysville Insurance Company	\$ 15,600,669	\$ 80,266,250
Harleysville Preferred Insurance Company	\$ 6,629,890	\$ 25,281,642

Note 27 – Structured Settlements

Not applicable.

Note 28 – Health Care Receivables

Not applicable.

Note 29 – Participating Policies

Not applicable.

Note 30 – Premium Deficiency Reserves

There were no changes that were considered significant to the Company from prior year end.

Note 31 – High Deductibles

Not applicable.

Note 32 – Discounting of Liabilities for Unpaid Losses or Unpaid Loss Adjustment Expenses

Not applicable.

Note 33 – Asbestos/Environmental Reserves

Not applicable.

Note 34 – Subscriber Savings Accounts

Not applicable.

Note 35 – Multiple Peril Crop Insurance

Not applicable.

Note 36 – Financial Guaranty Insurance

Not applicable.

STATEMENT AS OF JUNE 30, 2023 OF THE FREEDOM SPECIALTY INSURANCE COMPANY

GENERAL INTERROGATORIES

PART 1 - COMMON INTERROGATORIES

GENERAL

- 1.1

Did the reporting entity experience any material transactions requiring the filing of Disclosure of Material Transactions with the State of Domicile, as required by the Model Act?

Yes [] No [X]
- 1.2

If yes, has the report been filed with the domiciliary state?

Yes [] No []
- 2.1

Has any change been made during the year of this statement in the charter, by-laws, articles of incorporation, or deed of settlement of the reporting entity?

Yes [] No [X]
- 2.2

If yes, date of change:
- 3.1

Is the reporting entity a member of an Insurance Holding Company System consisting of two or more affiliated persons, one or more of which is an insurer?

Yes [X] No []

If yes, complete Schedule Y, Parts 1 and 1A.
- 3.2

Have there been any substantial changes in the organizational chart since the prior quarter end?

Yes [] No [X]
- 3.3

If the response to 3.2 is yes, provide a brief description of those changes.
- 3.4

Is the reporting entity publicly traded or a member of a publicly traded group?

Yes [] No [X]
- 3.5

If the response to 3.4 is yes, provide the CIK (Central Index Key) code issued by the SEC for the entity/group.
- 4.1

Has the reporting entity been a party to a merger or consolidation during the period covered by this statement?

Yes [] No [X]
- 4.2

If yes, provide the name of the entity, NAIC Company Code, and state of domicile (use two letter state abbreviation) for any entity that has ceased to exist as a result of the merger or consolidation.
- | 1 | 2 | 3 |
|----------------|-------------------|-------------------|
| Name of Entity | NAIC Company Code | State of Domicile |
| | | |
5.

If the reporting entity is subject to a management agreement, including third-party administrator(s), managing general agent(s), attorney-in-fact, or similar agreement, have there been any significant changes regarding the terms of the agreement or principals involved?

Yes [] No [X]

If yes, attach an explanation.

N/A []
- 6.1

State as of what date the latest financial examination of the reporting entity was made or is being made.

12/31/2021
- 6.2

State the as of date that the latest financial examination report became available from either the state of domicile or the reporting entity. This date should be the date of the examined balance sheet and not the date the report was completed or released.

12/31/2021
- 6.3

State as of what date the latest financial examination report became available to other states or the public from either the state of domicile or the reporting entity. This is the release date or completion date of the examination report and not the date of the examination (balance sheet date).

05/31/2023
- 6.4

By what department or departments?
OH
- 6.5

Have all financial statement adjustments within the latest financial examination report been accounted for in a subsequent financial statement filed with Departments?

Yes [] No []

N/A [X]
- 6.6

Have all of the recommendations within the latest financial examination report been complied with?

Yes [] No []

N/A [X]
- 7.1

Has this reporting entity had any Certificates of Authority, licenses or registrations (including corporate registration, if applicable) suspended or revoked by any governmental entity during the reporting period?

Yes [] No [X]
- 7.2

If yes, give full information:
- 8.1

Is the company a subsidiary of a bank holding company regulated by the Federal Reserve Board?

Yes [] No [X]
- 8.2

If response to 8.1 is yes, please identify the name of the bank holding company.
- 8.3

Is the company affiliated with one or more banks, thrifts or securities firms?

Yes [X] No []
- 8.4

If response to 8.3 is yes, please provide below the names and location (city and state of the main office) of any affiliates regulated by a federal regulatory services agency [i.e. the Federal Reserve Board (FRB), the Office of the Comptroller of the Currency (OCC), the Federal Deposit Insurance Corporation (FDIC) and the Securities Exchange Commission (SEC)] and identify the affiliate's primary federal regulator.

1	2	3	4	5	6
Affiliate Name	Location (City, State)	FRB	OCC	FDIC	SEC
Nationwide Trust Company, FSB	Columbus, OH	NO	YES	NO	NO
Nationwide Investment Services Corp.	Columbus, OH	NO	NO	NO	YES
Nationwide Investment Advisors, LLC	Columbus, OH	NO	NO	NO	YES
Nationwide Securities, LLC	Columbus, OH	NO	NO	NO	YES
Nationwide Fund Advisors	Columbus, OH	NO	NO	NO	YES
Nationwide Fund Distributors, LLC	Columbus, OH	NO	NO	NO	YES
Nationwide Asset Management, LLC	Columbus, OH	NO	NO	NO	YES

STATEMENT AS OF JUNE 30, 2023 OF THE FREEDOM SPECIALTY INSURANCE COMPANY

GENERAL INTERROGATORIES

- 9.1

Are the senior officers (principal executive officer, principal financial officer, principal accounting officer or controller, or persons performing similar functions) of the reporting entity subject to a code of ethics, which includes the following standards?
(a) Honest and ethical conduct, including the ethical handling of actual or apparent conflicts of interest between personal and professional relationships;
(b) Full, fair, accurate, timely and understandable disclosure in the periodic reports required to be filed by the reporting entity;
(c) Compliance with applicable governmental laws, rules and regulations;
(d) The prompt internal reporting of violations to an appropriate person or persons identified in the code; and
(e) Accountability for adherence to the code.

Yes [X] No []
- 9.11

If the response to 9.1 is No, please explain:
.....
- 9.2

Has the code of ethics for senior managers been amended?

Yes [] No [X]
- 9.21

If the response to 9.2 is Yes, provide information related to amendment(s).
.....
- 9.3

Have any provisions of the code of ethics been waived for any of the specified officers?

Yes [] No [X]
- 9.31

If the response to 9.3 is Yes, provide the nature of any waiver(s).
.....

FINANCIAL

- 10.1

Does the reporting entity report any amounts due from parent, subsidiaries or affiliates on Page 2 of this statement?

Yes [X] No []
- 10.2

If yes, indicate any amounts receivable from parent included in the Page 2 amount:\$.....

4,106,319

INVESTMENT

- 11.1

Were any of the stocks, bonds, or other assets of the reporting entity loaned, placed under option agreement, or otherwise made available for use by another person? (Exclude securities under securities lending agreements.)

Yes [] No [X]
- 11.2

If yes, give full and complete information relating thereto:
.....
12.

Amount of real estate and mortgages held in other invested assets in Schedule BA:

\$.....
13.

Amount of real estate and mortgages held in short-term investments:

\$.....
- 14.1

Does the reporting entity have any investments in parent, subsidiaries and affiliates?

Yes [] No [X]
- 14.2

If yes, please complete the following:

	1	2
	Prior Year-End Book/Adjusted Carrying Value	Current Quarter Book/Adjusted Carrying Value
14.21 Bonds	\$	\$.....
14.22 Preferred Stock	\$	\$.....
14.23 Common Stock	\$	\$.....
14.24 Short-Term Investments	\$	\$.....
14.25 Mortgage Loans on Real Estate	\$	\$.....
14.26 All Other	\$	\$.....
14.27 Total Investment in Parent, Subsidiaries and Affiliates (Subtotal Lines 14.21 to 14.26)	\$	\$.....
14.28 Total Investment in Parent included in Lines 14.21 to 14.26 above	\$	\$.....

15.1

Has the reporting entity entered into any hedging transactions reported on Schedule DB?

Yes [] No [X]

15.2

If yes, has a comprehensive description of the hedging program been made available to the domiciliary state?

Yes [] No []

N/A [X]

If no, attach a description with this statement.
.....

16.

For the reporting entity's security lending program, state the amount of the following as of the current statement date:

16.1

Total fair value of reinvested collateral assets reported on Schedule DL, Parts 1 and 2.

\$

16.2

Total book/adjusted carrying value of reinvested collateral assets reported on Schedule DL, Parts 1 and 2

\$

16.3

Total payable for securities lending reported on the liability page.

\$
- 7.1

STATEMENT AS OF JUNE 30, 2023 OF THE FREEDOM SPECIALTY INSURANCE COMPANY

GENERAL INTERROGATORIES

17. Excluding items in Schedule E - Part 3 - Special Deposits, real estate, mortgage loans and investments held physically in the reporting entity's offices, vaults or safety deposit boxes, were all stocks, bonds and other securities, owned throughout the current year held pursuant to a custodial agreement with a qualified bank or trust company in accordance with Section 1, III - General Examination Considerations, F. Outsourcing of Critical Functions, Custodial or Safekeeping Agreements of the NAIC Financial Condition Examiners Handbook? Yes [☒] No [☐]
- 17.1 For all agreements that comply with the requirements of the NAIC Financial Condition Examiners Handbook, complete the following:

1 Name of Custodian(s)	2 Custodian Address
The Bank of New York Mellon	1 Wall Street, New York, NY 10286

- 17.2 For all agreements that do not comply with the requirements of the NAIC Financial Condition Examiners Handbook, provide the name, location and a complete explanation:

1 Name(s)	2 Location(s)	3 Complete Explanation(s)

- 17.3 Have there been any changes, including name changes, in the custodian(s) identified in 17.1 during the current quarter? Yes [☐] No [☒]
- 17.4 If yes, give full information relating thereto:

1 Old Custodian	2 New Custodian	3 Date of Change	4 Reason

- 17.5 Investment management – Identify all investment advisors, investment managers, broker/dealers, including individuals that have the authority to make investment decisions on behalf of the reporting entity. For assets that are managed internally by employees of the reporting entity, note as such. ["...that have access to the investment accounts"; "...handle securities"]

1 Name of Firm or Individual	2 Affiliation
Members of the investment staff designated by the Chief Investment Officer as detailed in the Corporate Resolution	I.....

- 17.5097 For those firms/individuals listed in the table for Question 17.5, do any firms/individuals unaffiliated with the reporting entity (i.e. designated with a "U") manage more than 10% of the reporting entity's invested assets?..... Yes [☐] No [☒]

- 17.5098 For firms/individuals unaffiliated with the reporting entity (i.e. designated with a "U") listed in the table for Question 17.5, does the total assets under management aggregate to more than 50% of the reporting entity's invested assets?..... Yes [☐] No [☒]

- 17.6 For those firms or individuals listed in the table for 17.5 with an affiliation code of "A" (affiliated) or "U" (unaffiliated), provide the information for the table below.

1 Central Registration Depository Number	2 Name of Firm or Individual	3 Legal Entity Identifier (LEI)	4 Registered With	5 Investment Management Agreement (IMA) Filed

- 18.1 Have all the filing requirements of the Purposes and Procedures Manual of the NAIC Investment Analysis Office been followed? Yes [☒] No [☐]

- 18.2 If no, list exceptions:
.....

19. By self-designating 5GI securities, the reporting entity is certifying the following elements for each self-designated 5GI security:
- a. Documentation necessary to permit a full credit analysis of the security does not exist or an NAIC CRP credit rating for an FE or PL security is not available.
- b. Issuer or obligor is current on all contracted interest and principal payments.
- c. The insurer has an actual expectation of ultimate payment of all contracted interest and principal.
- Has the reporting entity self-designated 5GI securities? Yes [☐] No [☒]

20. By self-designating PLGI securities, the reporting entity is certifying the following elements of each self-designated PLGI security:
- a. The security was purchased prior to January 1, 2018.
- b. The reporting entity is holding capital commensurate with the NAIC Designation reported for the security.
- c. The NAIC Designation was derived from the credit rating assigned by an NAIC CRP in its legal capacity as a NRSRO which is shown on a current private letter rating held by the insurer and available for examination by state insurance regulators.
- d. The reporting entity is not permitted to share this credit rating of the PL security with the SVO.
- Has the reporting entity self-designated PLGI securities? Yes [☐] No [☒]

21. By assigning FE to a Schedule BA non-registered private fund, the reporting entity is certifying the following elements of each self-designated FE fund:
- a. The shares were purchased prior to January 1, 2019.
- b. The reporting entity is holding capital commensurate with the NAIC Designation reported for the security.
- c. The security had a public credit rating(s) with annual surveillance assigned by an NAIC CRP in its legal capacity as an NRSRO prior to January 1, 2019.
- d. The fund only or predominantly holds bonds in its portfolio.
- e. The current reported NAIC Designation was derived from the public credit rating(s) with annual surveillance assigned by an NAIC CRP in its legal capacity as an NRSRO.
- f. The public credit rating(s) with annual surveillance assigned by an NAIC CRP has not lapsed.
- Has the reporting entity assigned FE to Schedule BA non-registered private funds that complied with the above criteria? Yes [☐] No [☒]

STATEMENT AS OF JUNE 30, 2023 OF THE FREEDOM SPECIALTY INSURANCE COMPANY

GENERAL INTERROGATORIES

PART 2 - PROPERTY & CASUALTY INTERROGATORIES

1.

If the reporting entity is a member of a pooling arrangement, did the agreement or the reporting entity's participation change?

Yes ☐ No ☐
N/A ☒

If yes, attach an explanation.
.....
2.

Has the reporting entity reinsured any risk with any other reporting entity and agreed to release such entity from liability, in whole or in part, from any loss that may occur on the risk, or portion thereof, reinsured?

Yes ☐ No ☒

If yes, attach an explanation.
.....
- 3.1

Have any of the reporting entity's primary reinsurance contracts been canceled?

Yes ☐ No ☒
- 3.2

If yes, give full and complete information thereto.
.....
- 4.1

Are any of the liabilities for unpaid losses and loss adjustment expenses other than certain workers' compensation tabular reserves (see Annual Statement Instructions pertaining to disclosure of discounting for definition of " tabular reserves") discounted at a rate of interest greater than zero?

Yes ☐ No ☒
- 4.2

If yes, complete the following schedule:

			TOTAL DISCOUNT				DISCOUNT TAKEN DURING PERIOD			
1	2	3	4	5	6	7	8	9	10	11
Line of Business	Maximum Interest	Discount Rate	Unpaid Losses	Unpaid LAE	IBNR	TOTAL	Unpaid Losses	Unpaid LAE	IBNR	TOTAL
TOTAL										

5.

Operating Percentages:

5.1 A&H loss percent

0.000 %

5.2 A&H cost containment percent

0.000 %

5.3 A&H expense percent excluding cost containment expenses

0.000 %
- 6.1

Do you act as a custodian for health savings accounts?

Yes ☐ No ☒
- 6.2

If yes, please provide the amount of custodial funds held as of the reporting date

\$.....
- 6.3

Do you act as an administrator for health savings accounts?

Yes ☐ No ☒
- 6.4

If yes, please provide the balance of the funds administered as of the reporting date

\$.....
7.

Is the reporting entity licensed or chartered, registered, qualified, eligible or writing business in at least two states?

Yes ☒ No ☐
- 7.1

If no, does the reporting entity assume reinsurance business that covers risks residing in at least one state other than the state of domicile of the reporting entity?

Yes ☐ No ☐

SCHEDULE F - CEDED REINSURANCE

[illegible]

SCHEDULE T - EXHIBIT OF PREMIUMS WRITTEN

Current Year to Date - Allocated by States and Territories							
States, etc.	1 Active Status (a)	Direct Premiums Written		Direct Losses Paid (Deducting Salvage)		Direct Losses Unpaid	
		2 Current Year To Date	3 Prior Year To Date	4 Current Year To Date	5 Prior Year To Date	6 Current Year To Date	7 Prior Year To Date
1. Alabama	L	995,104	1,118,368	10,000,000	96,225	6,918,981	16,360,800
2. Alaska	L	68	4,436			22,976	30,274
3. Arizona	L	1,131,373	1,282,627	701,409	500,000	5,451,743	4,852,820
4. Arkansas	L	1,432,767	1,344,409			9,065,342	8,391,134
5. California	L	21,399,537	25,332,671	22,983,049	17,677,692	125,654,589	104,741,548
6. Colorado	L	1,466,263	1,610,156	1,150,000	50,000	7,599,379	6,685,014
7. Connecticut	L						
8. Delaware	L	1,232,660	2,134,316	22,243	11,443	4,869,441	4,147,560
9. District of Columbia	L	1,563,575	1,560,704	173,476		5,476,490	4,738,139
10. Florida	L	5,272,490	5,612,891	96,823	2,332,055	38,795,600	19,901,226
11. Georgia	L	2,781,101	3,673,585	10,770,086	185,204	18,452,402	26,648,690
12. Hawaii	L	48,702	47,044			41,249	41,828
13. Idaho	L	65,215	543,439		6,410	691,010	495,461
14. Illinois	L	6,865,172	7,895,924	10,344,028	662,179	27,267,025	21,642,247
15. Indiana	L	1,668,605	1,174,713			5,639,129	4,806,422
16. Iowa	L	1,217,187	2,131,353	220,473	209,255	2,854,929	1,898,292
17. Kansas	L	1,287,111	1,661,173	10,675	57,623	3,007,326	2,205,409
18. Kentucky	L	236,056	159,478	2,981	60,000	1,762,963	1,745,888
19. Louisiana	L	255,795	217,545			2,319,721	2,158,099
20. Maine	L	1,381,194		20,214		129,783	71,436
21. Maryland	L	2,489,222	4,543,393	413,128	400,315	16,787,735	29,702,776
22. Massachusetts	L	5,385,876	7,348,223	175,064	15,656	37,121,327	32,067,977
23. Michigan	L	1,347,540	2,540,001	1,254,096	318,666	15,024,750	10,423,330
24. Minnesota	L	2,077,704	3,169,423	16,752	126,995	14,315,608	12,302,265
25. Mississippi	L	97,604	100,489			432,205	385,631
26. Missouri	L	599,982	472,344			6,808,276	5,907,175
27. Montana	L	77,950	270,619	1,000,000		756,973	594,677
28. Nebraska	L	140,078	392,477	3,171	7,000	976,570	996,321
29. Nevada	L	779,070	687,384	40,245	5,105	4,583,349	4,212,550
30. New Hampshire	L	248,463	252,218			337,901	270,149
31. New Jersey	L	4,197,746	6,412,888	159,547	589,283	29,444,947	36,105,441
32. New Mexico	L	3,164	(3,952)	7,995		74,968	153,467
33. New York	L	672,045	606,219	6,001,990	9,510,214	44,179,327	41,118,747
34. North Carolina	L	4,005,360	3,917,640	296,808	123,184	19,056,249	17,483,520
35. North Dakota	L	39,800	38,350			56,882	43,080
36. Ohio	L	2,997,872	4,658,927	16,055,258	225,876	12,480,733	25,163,211
37. Oklahoma	L	538,035	501,363			3,108,169	2,565,191
38. Oregon	L	83,000	161,179	15,500		710,160	10,630,091
39. Pennsylvania	L	3,077,441	4,636,531	117,959	392,862	24,865,135	23,406,323
40. Rhode Island	L	1,070,275	571,069			1,671,366	1,465,618
41. South Carolina	L	621,286	482,533	2,180	60,955	2,181,939	1,507,421
42. South Dakota	L	295,138	353,123			760,834	386,509
43. Tennessee	L	3,582,371	4,914,033	3,656,290	100,000	10,875,688	13,817,674
44. Texas	L	11,837,543	18,060,225	120,900	75,000	81,762,215	60,089,639
45. Utah	L	50,869	1,216,609	30,538	120,089	3,659,676	3,083,239
46. Vermont	L	(8,604)	12,217	300,000	191,482	74,077	80,502
47. Virginia	L	3,735,819	4,112,341			15,582,083	13,796,814
48. Washington	L	1,683,211	2,421,462	4,962,679	96,310	7,017,350	7,169,767
49. West Virginia	L	4,782	2,953	33,855		1,146,087	967,287
50. Wisconsin	L						1,000,000
51. Wyoming	L						
52. American Samoa	N						
53. Guam	N						
54. Puerto Rico	N						
55. U.S. Virgin Islands	N						
56. Northern Mariana Islands	N						
57. Canada	N					23,330	23,330
58. Aggregate Other Alien OT	XXX					1,390,262	1,702,266
59. Totals	XXX	102,030,617	130,357,113	91,159,412	34,207,078	623,286,249	590,184,275
DETAILS OF WRITE-INS							
58001. Bermuda	XXX					1,390,262	1,702,266
58002.	XXX						
58003.	XXX						
58998. Summary of remaining write-ins for Line 58 from overflow page	XXX						
58999. Totals (Lines 58001 through 58003 plus 58998)(Line 58 above)	XXX					1,390,262	1,702,266

(a) Active Status Counts:

1. L - Licensed or Chartered - Licensed insurance carrier or domiciled RRG.....

2. R - Registered - Non-domiciled RRGs.....

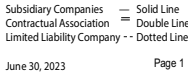
3. E - Eligible - Reporting entities eligible or approved to write surplus lines in the state (other than their state of domicile - see DSLI).....
- 51

4. Q - Qualified - Qualified or accredited reinsurer.....

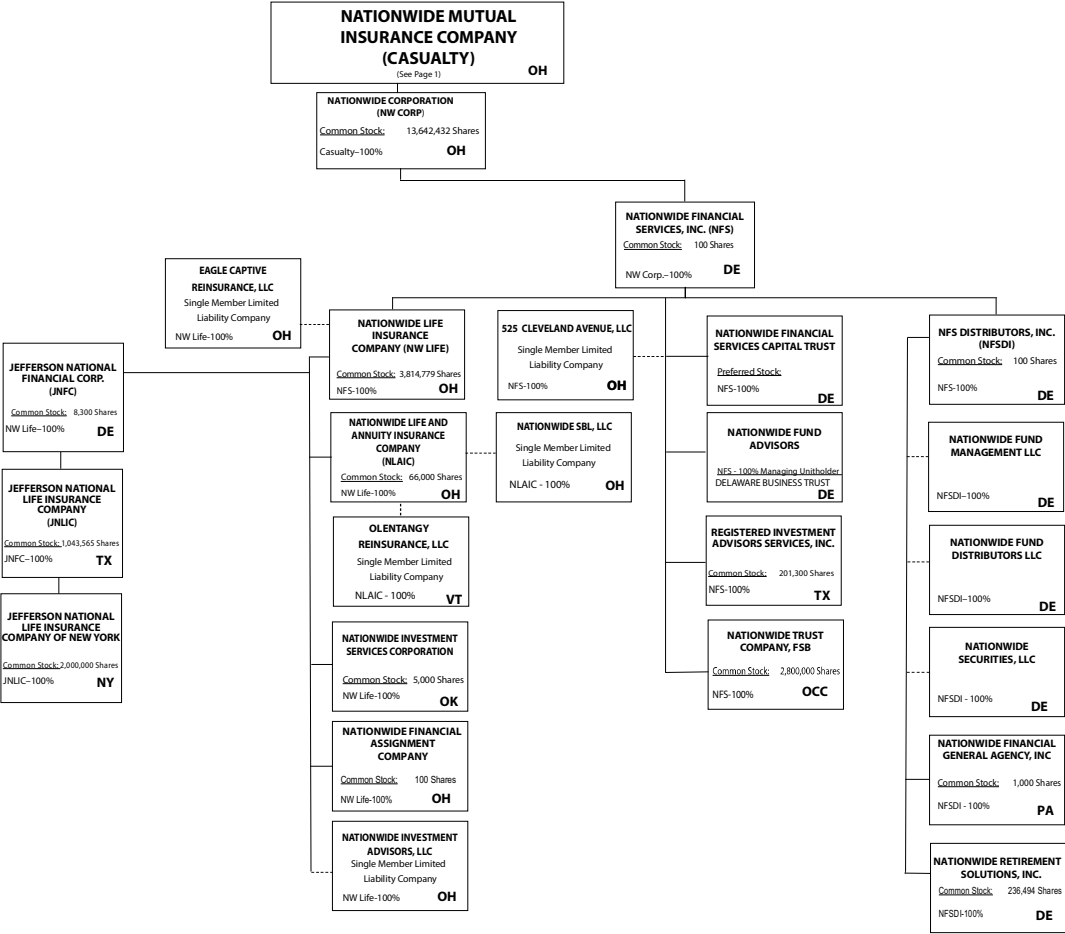
5. D - Domestic Surplus Lines Insurer (DSLII) - Reporting entities authorized to write surplus lines in the state of domicile.....

6. N - None of the above - Not allowed to write business in the state... ..
- 6

11



NATIONWIDE®



Subsidiary Companies — Solid Line
Contractual Association = Double Line
Limited Liability Company - - Dotted Line

NATIONWIDE INSURANCE COMPANIES

NAIC Group Code	Group Name	NAIC Company Code	State of Domicile	Federal ID Number	Name of Company
0140	Nationwide	10127	OH	27-0114983	Allied Insurance Company of America
0140	Nationwide	42579	IA	42-1201931	Allied Property and Casualty Insurance Company
0140	Nationwide	19100	IA	42-6054959	AMCO Insurance Company
0140	Nationwide	29262	TX	74-1061659	Colonial County Mutual Insurance Company
0140	Nationwide	18961	OH	68-0066866	Crestbrook Insurance Company
0140	Nationwide	42587	IA	42-1207150	Depositors Insurance Company
0140	Nationwide	15821	OH	42-4523959	Eagle Captive Reinsurance, LLC
0140	Nationwide	22209	OH	75-6013587	Freedom Specialty Insurance Company
0140	Nationwide	23582	OH	41-0417250	Harleysville Insurance Company
0140	Nationwide	42900	NJ	23-2253669	Harleysville Insurance Company of New Jersey
0140	Nationwide	10674	OH	23-2864924	Harleysville Insurance Company of New York
0140	Nationwide	14516	MI	38-3198542	Harleysville Lake States Insurance Company
0140	Nationwide	35696	OH	23-2384978	Harleysville Preferred Insurance Company
0140	Nationwide	26182	OH	04-1989660	Harleysville Worcester Insurance Company
0140	Nationwide	64017	TX	75-0300900	Jefferson National Life Insurance Company
0140	Nationwide	15727	NY	47-1180302	Jefferson National Life Insurance Company of New York
0140	Nationwide	11991	OH	38-0865250	National Casualty Company
0140	Nationwide	26093	OH	48-0470690	Nationwide Affinity Insurance Company of America
0140	Nationwide	28223	IA	42-1015537	Nationwide Agribusiness Insurance Company
0140	Nationwide	10723	OH	95-0639970	Nationwide Assurance Company
0140	Nationwide	23760	OH	31-4425763	Nationwide General Insurance Company
0140	Nationwide	10070	OH	31-1399201	Nationwide Indemnity Company
0140	Nationwide	25453	OH	95-2130882	Nationwide Insurance Company of America
0140	Nationwide	10948	OH	31-1613686	Nationwide Insurance Company of Florida
0140	Nationwide	92657	OH	31-1000740	Nationwide Life and Annuity Insurance Company
0140	Nationwide	66869	OH	31-4156830	Nationwide Life Insurance Company
0140	Nationwide	42110	TX	75-1780981	Nationwide Lloyds
0140	Nationwide	23787	OH	31-4177100	Nationwide Mutual Insurance Company
0140	Nationwide	37877	OH	31-0970750	Nationwide Property & Casualty Insurance Company
0140	Nationwide	13999	VT	27-1712056	Olentangy Reinsurance, LLC
0140	Nationwide	15580	OH	31-1117969	Scottsdale Indemnity Company
0140	Nationwide	41297	OH	31-1024978	Scottsdale Insurance Company
0140	Nationwide	10672	AZ	86-0835870	Scottsdale Surplus Lines Insurance Company
0140	Nationwide	36269	MI	86-0619597	Titan Insurance Company
0140	Nationwide	42285	OH	95-3750113	Veterinary Pet Insurance Company
0140	Nationwide	42889	OH	34-1394913	Victoria Fire & Casualty Company
0140	Nationwide	10105	OH	34-1777972	Victoria Select Insurance Company

STATEMENT AS OF JUNE 30, 2023 OF THE FREEDOM SPECIALTY INSURANCE COMPANY

SCHEDULE Y

PART 1A - DETAIL OF INSURANCE HOLDING COMPANY SYSTEM

1	2	3	4	5	6	7	8	9	10	11	12	13	14	15	16
Group Code	Group Name	NAIC Company Code	ID Number	Federal RSSD	CIK	Name of Securities Exchange if Publicly Traded (U.S. or International)	Names of Parent, Subsidiaries Or Affiliates	Domi-ciliary Location	Relation-ship to Reporting Entity	Directly Controlled by (Name of Entity/Person)	Type of Control (Ownership, Board, Management, Attorney-in-Fact, Influence, Other)	If Control is Owner-ship Provide Percen-tage	Ultimate Controlling Entity(ies)/Person(s)	Is an SCA Filing Re-quired? (Yes/No)	*
.0140 ..	Nationwide		31-1486309 ...				10 W. Nationwide, LLC	OH....	NIA.....	Nationwide Realty Investors, Ltd.	Ownership.....	100.000 ..	Nationwide Mutual Insurance Company NO.....	
.0140 ..	Nationwide		31-1486309 ...				1000 Yard Street, LLC	OH....	NIA.....	Nationwide Realty Investors, Ltd.	Ownership.....	100.000 ..	Nationwide Mutual Insurance Company NO.....	
.0140 ..	Nationwide		31-1486309 ...				1015 Long Street, LLC	OH....	NIA.....	Nationwide Realty Investors, Ltd.	Ownership.....	100.000 ..	Nationwide Mutual Insurance Company NO.....	
.0140 ..	Nationwide		31-1486309 ...				1050 Yard Street, LLC	OH....	NIA.....	Nationwide Realty Investors, Ltd.	Ownership.....	100.000 ..	Nationwide Mutual Insurance Company NO.....	
.0140 ..	Nationwide		31-1486309 ...				1125 Rail Street, LLC	OH....	NIA.....	Nationwide Realty Investors, Ltd.	Ownership.....	100.000 ..	Nationwide Mutual Insurance Company NO.....	
.0140 ..	Nationwide		1733036 20-				120 Acre Partners, LLC	DE....	NIA.....	Nationwide Realty Investors, Ltd.	Ownership.....	95.000 ..	Nationwide Mutual Insurance Company NO.....	1
.0140 ..	Nationwide		4939866 20-				1125 Yard Street, LLC	OH....	NIA.....	NRI Equity Land Investments, LLC	Ownership.....	100.000 ..	Nationwide Mutual Insurance Company NO.....	
.0140 ..	Nationwide		4939867 26-				1175 Bobcat, LLC	OH....	NIA.....	NRI Equity Land Investments, LLC	Ownership.....	100.000 ..	Nationwide Mutual Insurance Company NO.....	
.0140 ..	Nationwide		2451988 31-				1492 Capital, LLC	OH....	NIA.....	Nationwide Mutual Insurance Company	Ownership.....	100.000 ..	Nationwide Mutual Insurance Company NO.....	
.0140 ..	Nationwide		1486309 31-				111 Rivulon Boulevard, LLC	OH....	NIA.....	NRI-Rivulon, LLC	Ownership.....	100.000 ..	Nationwide Mutual Insurance Company NO.....	
.0140 ..	Nationwide		1486309 31-				155 Rivulon Boulevard, LLC	OH....	NIA.....	NRI-Rivulon, LLC	Ownership.....	100.000 ..	Nationwide Mutual Insurance Company NO.....	
.0140 ..	Nationwide		1486309 31-				161 Rivulon Boulevard, LLC	OH....	NIA.....	NRI-Rivulon, LLC	Ownership.....	100.000 ..	Nationwide Mutual Insurance Company NO.....	
.0140 ..	Nationwide		1580283 31-				170 Marconi, LLC	OH....	NIA.....	NWD Investments, LLC	Ownership.....	100.000 ..	Nationwide Mutual Insurance Company NO.....	
.0140 ..	Nationwide		1580283 31-				245 Parks Edge Place, LLC	OH....	NIA.....	NWD Investments, LLC	Ownership.....	100.000 ..	Nationwide Mutual Insurance Company NO.....	
.0140 ..	Nationwide		1486309 31-				275 Rivulon Boulevard, LLC	OH....	NIA.....	NRI-Rivulon, LLC	Ownership.....	100.000 ..	Nationwide Mutual Insurance Company NO.....	
.0140 ..	Nationwide		1486309 31-				300 Rivulon Boulevard, LLC	OH....	NIA.....	NRI-Rivulon, LLC	Ownership.....	100.000 ..	Nationwide Mutual Insurance Company NO.....	
.0140 ..	Nationwide		1486309 31-				310 Rivulon Boulevard, LLC	OH....	NIA.....	NRI-Rivulon, LLC	Ownership.....	100.000 ..	Nationwide Mutual Insurance Company NO.....	
.0140 ..	Nationwide		1486309 31-				343 N. Front, LLC	OH....	NIA.....	Nationwide Realty Investors, Ltd.	Ownership.....	100.000 ..	Nationwide Mutual Insurance Company NO.....	
.0140 ..	Nationwide		1486309 31-				400 Rivulon Boulevard, LLC	OH....	NIA.....	NRI-Rivulon, LLC	Ownership.....	100.000 ..	Nationwide Mutual Insurance Company NO.....	
.0140 ..	Nationwide		1580283 31-				400 West Nationwide Boulevard, LLC ...	OH....	NIA.....	NWD Investments, LLC	Ownership.....	100.000 ..	Nationwide Mutual Insurance Company NO.....	
.0140 ..	Nationwide		1486309 31-				410 Rivulon Boulevard, LLC	OH....	NIA.....	NRI-Rivulon, LLC	Ownership.....	100.000 ..	Nationwide Mutual Insurance Company NO.....	
.0140 ..	Nationwide		1580283 31-				425 West Nationwide Boulevard, LLC ...	OH....	NIA.....	NWD Investments, LLC	Ownership.....	100.000 ..	Nationwide Mutual Insurance Company NO.....	
.0140 ..	Nationwide		1486309 38-				44 Chestnut, LLC	OH....	NIA.....	Nationwide Realty Investors, Ltd.	Ownership.....	100.000 ..	Nationwide Mutual Insurance Company NO.....	
.0140 ..	Nationwide		4118665 38-				500 Neil Avenue, LLC	OH....	NIA.....	NWD HP, LLC	Ownership.....	100.000 ..	Nationwide Mutual Insurance Company NO.....	
.0140 ..	Nationwide		4118665				515 Kilbourne Street, LLC	OH....	NIA.....	NWD HP, LLC	Ownership.....	100.000 ..	Nationwide Mutual Insurance Company NO.....	

STATEMENT AS OF JUNE 30, 2023 OF THE FREEDOM SPECIALTY INSURANCE COMPANY

SCHEDULE Y

PART 1A - DETAIL OF INSURANCE HOLDING COMPANY SYSTEM

1	2	3	4	5	6	7	8	9	10	11	12	13	14	15	16
Group Code	Group Name	NAIC Company Code	ID Number	Federal RSSD	CIK	Name of Securities Exchange if Publicly Traded (U.S. or International)	Names of Parent, Subsidiaries Or Affiliates	Domi-ciliary Loca-tion	Rela-tion-ship to Reporting Entity	Directly Controlled by (Name of Entity/Person)	Type of Control (Ownership, Board, Management, Attorney-in-Fact, Influence, Other)	If Control is Owner-ship Provide Percen-tage	Ultimate Controlling Entity(ies)/Person(s)	Is an SCA Filing Re-quired? (Yes/No)	*
.0140 ..	Nationwide		87-1954007 ...				525 Cleveland Avenue, LLC	OH....	NIA.....	Nationwide Financial Services, Inc.	Ownership.....	100.000 ..	Nationwide Mutual Insurance Company NO.....	
.0140 ..	Nationwide		31-1486309 ...				75 Rivulon Boulevard, LLC	OH....	NIA.....	NRI-Rivulon, LLC	Ownership.....	100.000 ..	Nationwide Mutual Insurance Company NO.....	
.0140 ..	Nationwide		20-4939866 ...				775 Yard Street, LLC	OH....	NIA.....	NRI Equity Land Investments, LLC	Ownership.....	100.000 ..	Nationwide Mutual Insurance Company NO.....	
.0140 ..	Nationwide		20-4939866 ...				777 Swan Street, LLC	OH....	NIA.....	NRI Equity Land Investments, LLC	Ownership.....	100.000 ..	Nationwide Mutual Insurance Company NO.....	
.0140 ..	Nationwide		20-4939866 ...				780 Yard Street, LLC	OH....	NIA.....	NRI Equity Land Investments, LLC	Ownership.....	100.000 ..	Nationwide Mutual Insurance Company NO.....	
.0140 ..	Nationwide		20-4939866 ...				795 Rail Street, LLC	OH....	NIA.....	NRI Equity Land Investments, LLC	Ownership.....	100.000 ..	Nationwide Mutual Insurance Company NO.....	
.0140 ..	Nationwide		20-4939866 ...				800 Bobcat Avenue, LLC	OH....	NIA.....	NRI Equity Land Investments, LLC	Ownership.....	100.000 ..	Nationwide Mutual Insurance Company NO.....	
.0140 ..	Nationwide		20-4939866 ...				800 Goodale Boulevard, LLC	OH....	NIA.....	NRI Equity Land Investments, LLC	Ownership.....	100.000 ..	Nationwide Mutual Insurance Company NO.....	
.0140 ..	Nationwide		20-4939866 ...				800 Yard Street, LLC	OH....	NIA.....	NRI Equity Land Investments, LLC	Ownership.....	100.000 ..	Nationwide Mutual Insurance Company NO.....	
.0140 ..	Nationwide		20-4939866 ...				805 Bobcat Avenue, LLC	OH....	NIA.....	GVY Residential, LLC	Ownership.....	100.000 ..	Nationwide Mutual Insurance Company NO.....	
.0140 ..	Nationwide		20-4939866 ...				808 Yard Street, LLC	OH....	NIA.....	GVY Residential, LLC	Ownership.....	100.000 ..	Nationwide Mutual Insurance Company NO.....	
.0140 ..	Nationwide		20-4939866 ...				820 Goodale Boulevard, LLC	OH....	NIA.....	NRI Equity Land Investments, LLC	Ownership.....	100.000 ..	Nationwide Mutual Insurance Company NO.....	
.0140 ..	Nationwide		20-4939866 ...				822 Williams Avenue, LLC	OH....	NIA.....	GVY Residential, LLC	Ownership.....	100.000 ..	Nationwide Mutual Insurance Company NO.....	
.0140 ..	Nationwide		20-4939866 ...				825 Junction Way, LLC	OH....	NIA.....	GVY Residential, LLC	Ownership.....	100.000 ..	Nationwide Mutual Insurance Company NO.....	
.0140 ..	Nationwide		20-4939866 ...				828 Bobcat Avenue, LLC	OH....	NIA.....	NRI Equity Land Investments, LLC	Ownership.....	100.000 ..	Nationwide Mutual Insurance Company NO.....	
.0140 ..	Nationwide		20-4939866 ...				840 Third Avenue, LLC	OH....	NIA.....	NRI Equity Land Investments, LLC	Ownership.....	100.000 ..	Nationwide Mutual Insurance Company NO.....	
.0140 ..	Nationwide		20-4939866 ...				840 Yard Street, LLC	OH....	NIA.....	NRI Equity Land Investments, LLC	Ownership.....	100.000 ..	Nationwide Mutual Insurance Company NO.....	
.0140 ..	Nationwide		20-4939866 ...				845 Yard Street, LLC	OH....	NIA.....	GVY Residential, LLC	Ownership.....	100.000 ..	Nationwide Mutual Insurance Company NO.....	
.0140 ..	Nationwide		20-4939866 ...				855 Third Avenue, LLC	OH....	NIA.....	NRI Equity Land Investments, LLC	Ownership.....	100.000 ..	Nationwide Mutual Insurance Company NO.....	
.0140 ..	Nationwide		20-4939866 ...				860 Third Avenue, LLC	OH....	NIA.....	NRI Equity Land Investments, LLC	Ownership.....	100.000 ..	Nationwide Mutual Insurance Company NO.....	
.0140 ..	Nationwide		20-4939866 ...				875 First Avenue, LLC	OH....	NIA.....	GVY Residential, LLC	Ownership.....	100.000 ..	Nationwide Mutual Insurance Company NO.....	
.0140 ..	Nationwide		20-4939866 ...				880 Third Avenue, LLC	OH....	NIA.....	NRI Equity Land Investments, LLC	Ownership.....	100.000 ..	Nationwide Mutual Insurance Company NO.....	
.0140 ..	Nationwide		20-4939866 ...				880 Yard Street, LLC	OH....	NIA.....	GVY Residential, LLC	Ownership.....	100.000 ..	Nationwide Mutual Insurance Company NO.....	
.0140 ..	Nationwide		20-4939866 ...				895 W. Third Avenue, LLC	OH....	NIA.....	NRI Equity Land Investments, LLC	Ownership.....	100.000 ..	Nationwide Mutual Insurance Company NO.....	
.0140 ..	Nationwide		20-4939866 ...				950 Dorchester Way, LLC	OH....	NIA.....	GVY Residential, LLC	Ownership.....	100.000 ..	Nationwide Mutual Insurance Company NO.....	

STATEMENT AS OF JUNE 30, 2023 OF THE FREEDOM SPECIALTY INSURANCE COMPANY

SCHEDULE Y

PART 1A - DETAIL OF INSURANCE HOLDING COMPANY SYSTEM

1	2	3	4	5	6	7	8	9	10	11	12	13	14	15	16
Group Code	Group Name	NAIC Company Code	ID Number	Federal RSSD	CIK	Name of Securities Exchange if Publicly Traded (U.S. or International)	Names of Parent, Subsidiaries Or Affiliates	Domi-ciliary Location	Relation-ship to Reporting Entity	Directly Controlled by (Name of Entity/Person)	Type of Control (Ownership, Board, Management, Attorney-in-Fact, Influence, Other)	If Control is Owner-ship Provide Percen-tage	Ultimate Controlling Entity(ies)/Person(s)	Is an SCA Filing Re-quired? (Yes/No)	*
.0140 ..	Nationwide		20-4939866 ...				950 Goodale Boulevard, LLCOH.....	NIA.....	NRI Equity Land Investments, LLC	Ownership.....	100.000 ..	Nationwide Mutual Insurance Company NO.....	
.0140 ..	Nationwide		31-1486309 ...				960 Bobcat Avenue, LLCOH.....	NIA.....	Nationwide Realty Investors, Ltd.	Ownership.....	100.000 ..	Nationwide Mutual Insurance Company NO.....	
.0140 ..	Nationwide		31-1486309 ...				975 Rail Street, LLCOH.....	NIA.....	Nationwide Realty Investors, Ltd.	Ownership.....	100.000 ..	Nationwide Mutual Insurance Company NO.....	
.0140 ..	Nationwide		31-1486309 ...				995 Yard Street, LLCOH.....	NIA.....	Nationwide Realty Investors, Ltd.	Ownership.....	100.000 ..	Nationwide Mutual Insurance Company NO.....	
.0140 ..	Nationwide		31-1486309 ...				18615 Claret Drive, LLCOH.....	NIA.....	NRI Cavasson, LLC	Ownership.....	100.000 ..	Nationwide Mutual Insurance Company NO.....	
.0140 ..	Nationwide		31-1486309 ...				18655 Claret Drive, LLCOH.....	NIA.....	NRI Cavasson, LLC	Ownership.....	100.000 ..	Nationwide Mutual Insurance Company NO.....	
.0140 ..	Nationwide		31-1486309 ...				18700 Hayden Road, LLCOH.....	NIA.....	NRI Cavasson, LLC	Ownership.....	100.000 ..	Nationwide Mutual Insurance Company NO.....	
.0140 ..	Nationwide		31-1486309 ...				18750 Hayden Road, LLCOH.....	NIA.....	NRI Cavasson, LLC	Ownership.....	100.000 ..	Nationwide Mutual Insurance Company NO.....	
.0140 ..	Nationwide		31-1580283 ...				AD DORA, LLCOH.....	NIA.....	NWD Investments, LLC	Ownership.....	100.000 ..	Nationwide Mutual Insurance Company NO.....	
.0140 ..	Nationwide		31-1580283 ...				ADTV, LLCOH.....	NIA.....	NWD Investments, LLC	Ownership.....	100.000 ..	Nationwide Mutual Insurance Company NO.....	
.0140 ..	Nationwide		52-2227314 ...				AGMC Reinsurance, Ltd.	TCA...	NIA.....	Nationwide Advantage Mortgage Company	Ownership.....	100.000 ..	Nationwide Mutual Insurance Company NO.....	
.0140 ..	Nationwide	10127 ..	27-0114983 ...				ALLIED Insurance Company of America	.OH.....	IA.....	Nationwide Mutual Insurance Company	Ownership.....	100.000 ..	Nationwide Mutual Insurance Company NO.....	
.0140 ..	Nationwide	42579 ..	42-1201931 ...				ALLIED Property and Casualty Insurance Company IA.....	IA.....	Nationwide Mutual Insurance Company	Ownership.....	100.000 ..	Nationwide Mutual Insurance Company NO.....	
.0140 ..	Nationwide		42-1527863 ...				ALLIED Texas Agency, Inc.TX.....	IA.....	AMCO Insurance Company	Ownership.....	100.000 ..	Nationwide Mutual Insurance Company NO.....	
.0140 ..	Nationwide	19100 ..	42-6054959 ...				AMCO Insurance Company IA.....	IA.....	Nationwide Mutual Insurance Company	Ownership.....	100.000 ..	Nationwide Mutual Insurance Company NO.....	
.0140 ..	Nationwide		59-1031596 ...				American Marine Underwriters, Inc.FL.....	NIA.....	Nationwide Mutual Insurance Company	Ownership.....	100.000 ..	Nationwide Mutual Insurance Company NO.....	
.0140 ..	Nationwide		81-4532504 ...				American Tax Credit Fund 2017-A, LLC	.OH.....	NIA.....	Nationwide Life Insurance Company ..	Ownership.....	100.000 ..	Nationwide Mutual Insurance Company NO.....	
.0140 ..	Nationwide		82-2001573 ...				American Tax Credit Fund 2017-B, LLC	.OH....	NIA.....	Nationwide Life Insurance Company ..	Ownership.....	100.000 ..	Nationwide Mutual Insurance Company NO.....	
.0140 ..	Nationwide		82-4591498 ...				American Tax Credit Fund 2018-A, LLC	.OH.....	NIA.....	Nationwide Life Insurance Company ..	Ownership.....	100.000 ..	Nationwide Mutual Insurance Company NO.....	
.0140 ..	Nationwide		83-0606592 ...				American Tax Credit Fund 2018-B, LLC	.OH.....	NIA.....	Nationwide Life Insurance Company ..	Ownership.....	100.000 ..	Nationwide Mutual Insurance Company NO.....	
.0140 ..	Nationwide		83-0620232 ...				American Tax Credit Fund 2018-C, LLC	.OH.....	NIA.....	Nationwide Life Insurance Company ..	Ownership.....	100.000 ..	Nationwide Mutual Insurance Company NO.....	
.0140 ..	Nationwide		83-3900932 ...				American Tax Credit Fund 2019-A, LLC	.OH....	NIA.....	Nationwide Life Insurance Company ..	Ownership.....	100.000 ..	Nationwide Mutual Insurance Company NO.....	
.0140 ..	Nationwide		83-3953721 ...				American Tax Credit Fund 2019-B, LLC	.OH.....	NIA.....	Nationwide Life Insurance Company ..	Ownership.....	100.000 ..	Nationwide Mutual Insurance Company NO.....	
.0140 ..	Nationwide		84-3443067 ...				American Tax Credit Fund 2020-A, LLC	.OH.....	NIA.....	Nationwide Life Insurance Company ..	Ownership.....	100.000 ..	Nationwide Mutual Insurance Company NO.....	
.0140 ..	Nationwide		85-2359702 ...				American Tax Credit Fund 2020-B, LLC	.OH.....	NIA.....	Nationwide Life Insurance Company ..	Ownership.....	100.000 ..	Nationwide Mutual Insurance Company NO.....	

STATEMENT AS OF JUNE 30, 2023 OF THE FREEDOM SPECIALTY INSURANCE COMPANY

SCHEDULE Y

PART 1A - DETAIL OF INSURANCE HOLDING COMPANY SYSTEM

1	2	3	4	5	6	7	8	9	10	11	12	13	14	15	16
Group Code	Group Name	NAIC Company Code	ID Number	Federal RSSD	CIK	Name of Securities Exchange if Publicly Traded (U.S. or International)	Names of Parent, Subsidiaries Or Affiliates	Domi-ciliary Loca-tion	Relation-ship to Reporting Entity	Directly Controlled by (Name of Entity/Person)	Type of Control (Ownership, Board, Management, Attorney-in-Fact, Influence, Other)	If Control is Owner-ship Provide Percen-tage	Ultimate Controlling Entity(ies)/Person(s)	Is an SCA Filing Re-quired? (Yes/No)	*
.0140 ..	Nationwide		85-2649655 ...				American Tax Credit Fund 2021-A, LLC (fka American Tax Credit Fund 2020-C, LLC)OH.... NIA.....	Nationwide Life Insurance Company ..	Ownership.....	100.000 ..	Nationwide Mutual Insurance Company NO....
.0140 ..	Nationwide		86-2502912 ...				American Tax Credit Fund 2021-B, LLCOH.... NIA.....	Nationwide Life Insurance Company ..	Ownership.....	100.000 ..	Nationwide Mutual Insurance Company NO....
.0140 ..	Nationwide		87-1349942 ...				American Tax Credit Fund 2021-C, LLC American Tax Credit Fund 2023-B, LLC (fka American Tax Credit Fund 2022-A, LLC)OH.... NIA.....	Nationwide Life Insurance Company ..	Ownership.....	100.000 ..	Nationwide Mutual Insurance Company NO....
.0140 ..	Nationwide		87-4753681 ...				American Tax Credit Fund 2022-B, LLCOH.... NIA.....	Nationwide Life Insurance Company ..	Ownership.....	100.000 ..	Nationwide Mutual Insurance Company NO....
.0140 ..	Nationwide		87-47711309 ...				American Tax Credit Fund 2022-B, LLCOH.... NIA.....	Nationwide Life Insurance Company ..	Ownership.....	100.000 ..	Nationwide Mutual Insurance Company NO....
.0140 ..	Nationwide		92-1389304 ...				American Tax Credit Fund 2023-A, LLCOH.... NIA.....	Nationwide Life Insurance Company ..	Ownership.....	100.000 ..	Nationwide Mutual Insurance Company NO....
.0140 ..	Nationwide		31-1580283 ...				Arena District CA I, LLCOH.... NIA.....	NWD Investments, LLC	Ownership.....	100.000 ..	Nationwide Mutual Insurance Company NO....
.....		90-0280710 ...				Arena District Owners AssociationOH.... OTH.....	Other non-Nationwide	n/a	Other non-Nationwide NO.... 2
.0140 ..	Nationwide		31-1486309 ...				Cavasson Hotel, LLCOH.... NIA.....	Cavasson Hotel Holdings, LLC	Ownership.....	100.000 ..	Nationwide Mutual Insurance Company NO....
.0140 ..	Nationwide		31-1486309 ...				Cavasson Hotel Holdings, LLCOH.... NIA.....	NRI Cavasson, LLC	Ownership.....	100.000 ..	Nationwide Mutual Insurance Company NO....
.0140 ..	Nationwide		20-1618232 ...				CNRI-Cannonsport Condominium, LLC .	.OH.... NIA.....	CNRI-Cannonsport, LLC	Ownership.....	100.000 ..	Nationwide Mutual Insurance Company NO....
.0140 ..	Nationwide		20-1618232 ...				CNRI-Cannonsport, LLCOH.... NIA.....	Nationwide Realty Investors, Ltd.	Ownership.....	100.000 ..	Nationwide Mutual Insurance Company NO....
.0140 ..	Nationwide	29262 ..	74-1061659 ...				Colonial County Mutual Insurance CompanyTX.... IA.....	Other non-Nationwide	contract	Other non-Nationwide NO.... 2
.0140 ..	Nationwide	18961 ...	68-0066866 ...				Crestbrook Insurance CompanyOH.... IA.....	Nationwide Mutual Insurance Company	Ownership.....	100.000 ..	Nationwide Mutual Insurance Company NO....
.0140 ..	Nationwide		31-1486309 ...				Crewville, Ltd.OH.... NIA.....	Nationwide Realty Investors, Ltd.	Ownership.....	100.000 ..	Nationwide Mutual Insurance Company NO....
.0140 ..	Nationwide		84-5052608 ...				Danforth, LLCOH.... NIA.....	Nationwide Mutual Insurance Company	Ownership.....	100.000 ..	Nationwide Mutual Insurance Company NO....
.0140 ..	Nationwide	42587 ...	42-1207150 ...				Depositors Insurance Company IA.... IA.....	Nationwide Mutual Insurance Company	Ownership.....	100.000 ..	Nationwide Mutual Insurance Company NO....
.....		46-4104813 ...				Discover Affordable Housing Investment Fund I LLCOH.... OTH.....	Other non-Nationwide	n/a	0.000	Other non-Nationwide NO.... 2
.0140 ..	Nationwide		33-0096671 ...				DVM Insurance AgencyCA.... NIA.....	Veterinary Pet Insurance Company	Ownership.....	100.000 ..	Nationwide Mutual Insurance Company NO....
.0140 ..	Nationwide	15821 ...	47-4523959 ...				Eagle Captive Reinsurance, LLCOH.... IA.....	Nationwide Life Insurance Company ..	Ownership.....	100.000 ..	Nationwide Mutual Insurance Company NO....
.0140 ..	Nationwide		26-3260559 ...				E-Risk Services, L.L.C.DE.... NIA.....	Nationwide Mutual Insurance Company	Ownership.....	100.000 ..	Nationwide Mutual Insurance Company NO....
.0140 ..	Nationwide	22209 ...	75-6013587 ...				Freedom Specialty Insurance Company	.OH.... RE.....	Scottsdale Insurance Company	Ownership.....	100.000 ..	Nationwide Mutual Insurance Company NO....
.0140 ..	Nationwide		20-4939866 ...				Grandview Yard Hotel Holdings, LLCOH.... NIA.....	NRI Equity Land Investments, LLC	Ownership.....	100.000 ..	Nationwide Mutual Insurance Company NO....
.0140 ..	Nationwide		20-4939866 ...				Grandview Yard Hotel, LLCOH.... NIA.....	Grandview Yard Hotel Holdings, LLC .	Ownership.....	100.000 ..	Nationwide Mutual Insurance Company NO....

STATEMENT AS OF JUNE 30, 2023 OF THE FREEDOM SPECIALTY INSURANCE COMPANY

SCHEDULE Y

PART 1A - DETAIL OF INSURANCE HOLDING COMPANY SYSTEM

1	2	3	4	5	6	7	8	9	10	11	12	13	14	15	16
Group Code	Group Name	NAIC Company Code	ID Number	Federal RSSD	CIK	Name of Securities Exchange if Publicly Traded (U.S. or International)	Names of Parent, Subsidiaries Or Affiliates	Domi-ciliary Loca-tion	Rela-tion-ship to Reporting Entity	Directly Controlled by (Name of Entity/Person)	Type of Control (Ownership, Board, Management, Attorney-in-Fact, Influence, Other)	If Control is Owner-ship Provide Percen-tage	Ultimate Controlling Entity(ies)/Person(s)	Is an SCA Filing Re-quired? (Yes/No)	*
.0140 ..	Nationwide	20-4939866	GVY Residential, LLCOH..... NIA.....	NRI Equity Land Investments, LLC	Ownership.....	100.000 ..	Nationwide Mutual Insurance Company NO.....
.0140 ..	Nationwide	23582 ..	41-0417250	Harleysville Insurance CompanyOH..... IA.....	Nationwide Mutual Insurance Company	Ownership.....	100.000 ..	Nationwide Mutual Insurance Company NO.....
.0140 ..	Nationwide	42900 ..	23-2253669	Harleysville Insurance Company of New JerseyNJ..... IA.....	Nationwide Mutual Insurance Company	Ownership.....	100.000 ..	Nationwide Mutual Insurance Company NO.....
.0140 ..	Nationwide	10674 ..	23-2864924	Harleysville Insurance Company of New YorkOH..... IA.....	Nationwide Mutual Insurance Company	Ownership.....	100.000 ..	Nationwide Mutual Insurance Company NO.....
.0140 ..	Nationwide	14516 ..	38-3198542	Harleysville Lake States Insurance CompanyMI..... IA.....	Nationwide Mutual Insurance Company	Ownership.....	100.000 ..	Nationwide Mutual Insurance Company NO.....
.0140 ..	Nationwide	35696 ..	23-2384978	Harleysville Preferred Insurance CompanyOH..... IA.....	Nationwide Mutual Insurance Company	Ownership.....	100.000 ..	Nationwide Mutual Insurance Company NO.....
.0140 ..	Nationwide	26182 ..	04-1989660	Harleysville Worcester Insurance CompanyOH..... IA.....	Nationwide Mutual Insurance Company	Ownership.....	100.000 ..	Nationwide Mutual Insurance Company NO.....
.0140 ..	Nationwide	20-3289512	Jefferson National Financial Corp.DE..... NIA.....	Nationwide Life Insurance Company ..	Ownership.....	100.000 ..	Nationwide Mutual Insurance Company YES.....
.0140 ..	Nationwide	64017 ..	75-0300900	Jefferson National Life Insurance CompanyTX..... IA.....	Jefferson National Financial Corporation	Ownership.....	100.000 ..	Nationwide Mutual Insurance Company NO.....
.0140 ..	Nationwide	15727 ..	47-1180302	Jefferson National Life Insurance Company of New YorkNY..... IA.....	Jefferson National Life Insurance Company	Ownership.....	100.000 ..	Nationwide Mutual Insurance Company NO.....
.0140 ..	Nationwide	31-1486309	Jerome Village Company, LLCOH..... NIA.....	Nationwide Realty Investors, Ltd.	Ownership.....	100.000 ..	Nationwide Mutual Insurance Company NO.....
.0140 ..	Nationwide	74-1395229	Lone Star General Agency, Inc.TX..... IA.....	Nationwide Mutual Insurance Company	Ownership.....	100.000 ..	Nationwide Mutual Insurance Company NO.....
.0140 ..	Nationwide	11991 ..	38-0865250	National Casualty CompanyOH..... IA.....	Nationwide Mutual Insurance Company	Ownership.....	100.000 ..	Nationwide Mutual Insurance Company NO.....
.0140 ..	Nationwide	National Casualty Company of America, Ltd.	GBR... IA.....	National Casualty Company	Ownership.....	100.000 ..	Nationwide Mutual Insurance Company NO.....
.0140 ..	Nationwide	42-1154244	Nationwide Advantage Mortgage CompanyIA..... NIA.....	AMCO Insurance Company	Ownership.....	87.300 ..	Nationwide Mutual Insurance Company YES.....	1
.0140 ..	Nationwide	42-1154244	Nationwide Advantage Mortgage CompanyIA..... NIA.....	ALLIED Property & Casualty Insurance Company	Ownership.....	8.470 ..	Nationwide Mutual Insurance Company YES.....	1
.0140 ..	Nationwide	42-1154244	Nationwide Advantage Mortgage CompanyIA..... NIA.....	Depositors Insurance Company	Ownership.....	4.230 ..	Nationwide Mutual Insurance Company YES.....	1
.0140 ..	Nationwide	26093 ..	48-0470690	Nationwide Affinity Insurance Company of AmericaOH..... IA.....	Nationwide Mutual Insurance Company	Ownership.....	100.000 ..	Nationwide Mutual Insurance Company NO.....
.0140 ..	Nationwide	47-1923444	Nationwide Agent Risk Purchasing Group, Inc. (fka On Your Side	Nationwide Mutual Insurance Company	Ownership.....	100.000 ..	Nationwide Mutual Insurance Company NO.....
.0140 ..	Nationwide	28223 ..	42-1015537	Nationwide Insurance Agency, Inc.)OH..... NIA.....	Nationwide Mutual Insurance Company	Ownership.....	100.000 ..	Nationwide Mutual Insurance Company NO.....
.0140 ..	Nationwide	31-1578869	Nationwide Agribusiness Insurance CompanyIA..... IA.....	Nationwide Mutual Insurance Company	Ownership.....	100.000 ..	Nationwide Mutual Insurance Company NO.....
.0140 ..	Nationwide	20-1578869	Nationwide Arena, LLCOH..... NIA.....	NRI Arena, LLC	Ownership.....	90.000 ..	Nationwide Mutual Insurance Company NO.....	1
.0140 ..	Nationwide	20-8670712	Nationwide Asset Management, LLCOH..... NIA.....	Nationwide Mutual Insurance Company	Ownership.....	100.000 ..	Nationwide Mutual Insurance Company NO.....
.0140 ..	Nationwide	10723 ..	95-0639970	Nationwide Assurance CompanyOH..... IA.....	Nationwide Mutual Insurance Company	Ownership.....	100.000 ..	Nationwide Mutual Insurance Company NO.....
.0140 ..	Nationwide	31-1036287	Nationwide Cash Management CompanyOH..... NIA.....	Nationwide Mutual Insurance Company	Ownership.....	100.000 ..	Nationwide Mutual Insurance Company NO.....

STATEMENT AS OF JUNE 30, 2023 OF THE FREEDOM SPECIALTY INSURANCE COMPANY

SCHEDULE Y

PART 1A - DETAIL OF INSURANCE HOLDING COMPANY SYSTEM

1	2	3	4	5	6	7	8	9	10	11	12	13	14	15	16
Group Code	Group Name	NAIC Company Code	ID Number	Federal RSSD	CIK	Name of Securities Exchange if Publicly Traded (U.S. or International)	Names of Parent, Subsidiaries Or Affiliates	Domi-ciliary Loca-tion	Rela-tion-ship to Reporting Entity	Directly Controlled by (Name of Entity/Person)	Type of Control (Ownership, Board, Management, Attorney-in-Fact, Influence, Other)	If Control is Owner-ship Provide Percen-tage	Ultimate Controlling Entity(ies)/Person(s)	Is an SCA Filing Re-quired? (Yes/No)	*
.0140 ..	Nationwide		31-4416546 ...				Nationwide CorporationOH.....	NIA.....	Nationwide Mutual Insurance Company	Ownership.....	100.000 ..	Nationwide Mutual Insurance Company YES.....	1
.0140 ..	Nationwide		31-1667326 ...				Nationwide Financial Assignment CompanyOH.....	NIA.....	Nationwide Life Insurance Company ..	Ownership.....	100.000 ..	Nationwide Mutual Insurance Company NO.....	
.0140 ..	Nationwide		23-2412039 ...				Nationwide Financial General Agency, Inc.PA.....	NIA.....	NFS Distributors, Inc.	Ownership.....	100.000 ..	Nationwide Mutual Insurance Company NO.....	
.0140 ..	Nationwide		31-6554353 ...				Nationwide Financial Services Capital TrustDE.....	NIA.....	Nationwide Financial Services, Inc.	Ownership.....	100.000 ..	Nationwide Mutual Insurance Company NO.....	
.0140 ..	Nationwide		31-1486870 ...				Nationwide Financial Services, Inc.DE.....	NIA.....	Nationwide Corporation	Ownership.....	100.000 ..	Nationwide Mutual Insurance Company NO.....	
.0140 ..	Nationwide		52-6969857 ...				Nationwide Fund AdvisorsDE.....	NIA.....	Nationwide Financial Services, Inc.	Ownership.....	100.000 ..	Nationwide Mutual Insurance Company NO.....	
.0140 ..	Nationwide		31-1748721 ...				Nationwide Fund Distributors LLCDE....	NIA.....	NFS Distributors, Inc.	Ownership.....	100.000 ..	Nationwide Mutual Insurance Company NO.....	
.0140 ..	Nationwide		31-0900518 ...				Nationwide Fund Management LLCDE.....	NIA.....	NFS Distributors, Inc.	Ownership.....	100.000 ..	Nationwide Mutual Insurance Company NO.....	
.0140 ..	Nationwide		31-4425763 ...				Nationwide General Insurance CompanyOH.....	IA.....	Nationwide Mutual Insurance Company	Ownership.....	100.000 ..	Nationwide Mutual Insurance Company NO.....	
.0140 ..	Nationwide	23760 ..	31-1399201 ...				Nationwide Indemnity CompanyOH.....	IA.....	Nationwide Mutual Insurance Company	Ownership.....	100.000 ..	Nationwide Mutual Insurance Company NO.....	
.0140 ..	Nationwide	10070 ..	95-2130882 ...				Nationwide Insurance Company of AmericaOH.....	IA.....	Nationwide Mutual Insurance Company	Ownership.....	100.000 ..	Nationwide Mutual Insurance Company NO.....	
.0140 ..	Nationwide	25453 ..	31-1613686 ...				Nationwide Insurance Company of FloridaOH.....	IA.....	Nationwide Mutual Insurance Company	Ownership.....	100.000 ..	Nationwide Mutual Insurance Company NO.....	
.0140 ..	Nationwide	10948 ..	41-2206199 ...				Nationwide Investment Advisors, LLCOH.....	NIA.....	Nationwide Life Insurance Company ..	Ownership.....	100.000 ..	Nationwide Mutual Insurance Company NO.....	
.0140 ..	Nationwide		73-0988442 ...				Nationwide Investment Services CorporationOK.....	NIA.....	Nationwide Life Insurance Company ..	Ownership.....	100.000 ..	Nationwide Mutual Insurance Company YES.....	
.0140 ..	Nationwide		31-1000740 ...				Nationwide Life and Annuity Insurance CompanyOH.....	IA.....	Nationwide Life Insurance Company ..	Ownership.....	100.000 ..	Nationwide Mutual Insurance Company NO.....	
.0140 ..	Nationwide	92657 ..	31-4156830 ...				Nationwide Life Insurance CompanyOH.....	IA.....	Nationwide Financial Services, Inc.	Ownership.....	100.000 ..	Nationwide Mutual Insurance Company NO.....	
.0140 ..	Nationwide	66869 ..	13-4212969 ...				Nationwide Life Tax Credit Partners 2002-A, LLCOH.....	NIA.....	Nationwide Life Insurance Company ..	Other.....	0.010 ..	Nationwide Mutual Insurance Company NO.....	1
.0140 ..	Nationwide		01-0749754 ...				Nationwide Life Tax Credit Partners 2002-B, LLCOH.....	NIA.....	Nationwide Life Insurance Company ..	Other.....	0.010 ..	Nationwide Mutual Insurance Company NO.....	1
.0140 ..	Nationwide		54-2113175 ...				Nationwide Life Tax Credit Partners 2003-A, LLCOH.....	NIA.....	Nationwide Life Insurance Company ..	Other.....	0.010 ..	Nationwide Mutual Insurance Company NO.....	1
.0140 ..	Nationwide		58-2672725 ...				Nationwide Life Tax Credit Partners 2003-B, LLCOH.....	NIA.....	Nationwide Life Insurance Company ..	Other.....	0.010 ..	Nationwide Mutual Insurance Company NO.....	1
.0140 ..	Nationwide		20-0382144 ...				Nationwide Life Tax Credit Partners 2004-A, LLCOH.....	NIA.....	Nationwide Life Insurance Company ..	Other.....	0.010 ..	Nationwide Mutual Insurance Company NO.....	1
.0140 ..	Nationwide		20-0745965 ...				Nationwide Life Tax Credit Partners 2004-C, LLCOH.....	NIA.....	Nationwide Life Insurance Company ..	Other.....	0.010 ..	Nationwide Mutual Insurance Company NO.....	1
.0140 ..	Nationwide		20-1918935 ...				Nationwide Life Tax Credit Partners 2004-F, LLCOH.....	NIA.....	Nationwide Life Insurance Company ..	Other.....	0.010 ..	Nationwide Mutual Insurance Company NO.....	1
.0140 ..	Nationwide		20-2303694 ...				Nationwide Life Tax Credit Partners 2005-A, LLCOH.....	NIA.....	Nationwide Life Insurance Company ..	Other.....	0.010 ..	Nationwide Mutual Insurance Company NO.....	1
.0140 ..	Nationwide		20-2303602 ...				Nationwide Life Tax Credit Partners 2005-B, LLCOH.....	NIA.....	Nationwide Life Insurance Company ..	Other.....	0.010 ..	Nationwide Mutual Insurance Company NO.....	1

STATEMENT AS OF JUNE 30, 2023 OF THE FREEDOM SPECIALTY INSURANCE COMPANY

SCHEDULE Y

PART 1A - DETAIL OF INSURANCE HOLDING COMPANY SYSTEM

1	2	3	4	5	6	7	8	9	10	11	12	13	14	15	16
Group Code	Group Name	NAIC Company Code	ID Number	Federal RSSD	CIK	Name of Securities Exchange if Publicly Traded (U.S. or International)	Names of Parent, Subsidiaries Or Affiliates	Domi-ciliary Loca-tion	Relation-ship to Reporting Entity	Directly Controlled by (Name of Entity/Person)	Type of Control (Ownership, Board, Management, Attorney-in-Fact, Influence, Other)	If Control is Owner-ship Provide Percen-tage	Ultimate Controlling Entity(ies)/Person(s)	Is an SCA Filing Re-quired? (Yes/No)	*
.0140 ..	Nationwide		20-2450960 ...				Nationwide Life Tax Credit Partners 2005-C, LLCOH.....	NIA.....	Nationwide Life Insurance Company ..	Other.....	..0.010	Nationwide Mutual Insurance Company NO.....	... 1
.0140 ..	Nationwide		20-2774223 ...				Nationwide Life Tax Credit Partners 2005-E, LLCOH.....	NIA.....	Nationwide Life Insurance Company ..	Other.....	..0.010	Nationwide Mutual Insurance Company NO.....	... 1
.0140 ..	Nationwide		21-1288836 ...				Nationwide Life Tax Credit Partners 2007-A, LLCOH.....	NIA.....	Nationwide Life Insurance Company ..	Other.....	..0.010	Nationwide Mutual Insurance Company NO.....	... 1
.0140 ..	Nationwide		27-1362364 ...				Nationwide Life Tax Credit Partners 2009-I, LLCOH.....	NIA.....	Nationwide Life Insurance Company ..	Other.....	..0.010	Nationwide Mutual Insurance Company NO.....	... 1
.0140 ..	Nationwide		45-0469525 ...				Nationwide Life Tax Credit Partners No. 1, LLCOH.....	NIA.....	Nationwide Life Insurance Company ..	Other.....	..0.010	Nationwide Mutual Insurance Company NO.....	... 1
.0140 ..	Nationwide	42110 ..	75-1780981 ...				Nationwide LloydsTX.....	..IA.....	n/a	contract		Nationwide Mutual Insurance Company NO.....	... 2
.0140 ..	Nationwide		42-1373380 ...				Nationwide Sales Solutions, Inc. (fka Nationwide Member Solutions Agency Inc.)IA.....	NIA.....	Nationwide Mutual Insurance Company	Ownership.....	100.000 ..	Nationwide Mutual Insurance Company NO.....
.0140 ..	Nationwide		75-3191025 ...				Nationwide Mutual Capital, LLCOH.....	NIA.....	Nationwide Mutual Insurance Company	Ownership.....	100.000 ..	Nationwide Mutual Insurance Company NO.....
.0140 ..	Nationwide	23787 ..	31-4177100 ...				Nationwide Mutual Insurance CompanyOH.....	..UIP.....	Other non-Nationwide	n/a		Other non-Nationwide NO.....	... 2
.0140 ..	Nationwide		34-2012765 ...				Nationwide Private Equity Fund, LLCOH.....	NIA.....	Nationwide Mutual Insurance Company	Ownership.....	100.000 ..	Nationwide Mutual Insurance Company NO.....
.0140 ..	Nationwide	37877 ..	31-0970750 ...				Nationwide Property and Casualty Insurance CompanyOH.....	..IA.....	Nationwide Mutual Insurance Company	Ownership.....	100.000 ..	Nationwide Mutual Insurance Company NO.....
.0140 ..	Nationwide		31-1486309 ...				Nationwide Realty Investors, Ltd.OH.....	NIA.....	Nationwide Mutual Insurance Company	Ownership.....	97.000 ..	Nationwide Mutual Insurance Company NO.....	... 1
.0140 ..	Nationwide		31-1486309 ...				Nationwide Realty Investors, Ltd.OH.....	NIA.....	Nationwide Indemnity Company	Ownership.....	3.000	Nationwide Mutual Insurance Company NO.....	... 1
.0140 ..	Nationwide		31-1486309 ...				Nationwide Realty Management, LLCOH.....	NIA.....	Nationwide Realty Investors, Ltd.	Ownership.....	100.000 ..	Nationwide Mutual Insurance Company NO.....
.0140 ..	Nationwide		31-1486309 ...				Nationwide Realty Services, Ltd.OH.....	NIA.....	Nationwide Mutual Insurance Company	Ownership.....	100.000 ..	Nationwide Mutual Insurance Company NO.....
.0140 ..	Nationwide		73-0948330 ...				Nationwide Retirement Solutions, Inc.DE.....	NIA.....	NFS Distributors, Inc.	Ownership.....	100.000 ..	Nationwide Mutual Insurance Company NO.....
.0140 ..	Nationwide		83-2250056 ...				Nationwide SBL, LLCOH.....	NIA.....	Nationwide Life and Annuity Insurance Company	Ownership.....	100.000 ..	Nationwide Mutual Insurance Company NO.....
.0140 ..	Nationwide		36-2434406 ...				Nationwide Securities, LLCOH.....	NIA.....	NFS Distributors, Inc.	Ownership.....	100.000 ..	Nationwide Mutual Insurance Company NO.....
.0140 ..	Nationwide		46-1952215 ...				Nationwide Tax Credit Partners 2013-A, LLCOH.....	NIA.....	Nationwide Life Insurance Company ..	Other.....	..0.010	Nationwide Mutual Insurance Company NO.....	... 1
.0140 ..	Nationwide		46-1971926 ...				Nationwide Tax Credit Partners 2013-B, LLCOH.....	NIA.....	Nationwide Life Insurance Company ..	Other.....	..0.010	Nationwide Mutual Insurance Company NO.....	... 1
.0140 ..	Nationwide		31-1592130 ...	2729677 ..			Nationwide Trust Company, FSBUS.....	..OTH.....	Nationwide Financial Services, Inc.	Ownership.....	100.000 ..	Nationwide Mutual Insurance Company NO.....	... 2
.0140 ..	Nationwide		20-5976272 ...				Nationwide Ventures, LLCOH.....	NIA.....	Nationwide Mutual Insurance Company	Ownership.....	100.000 ..	Nationwide Mutual Insurance Company NO.....
.0140 ..	Nationwide		31-0871532 ...				NBS Insurance Agency, Inc.OH.....	..IA.....	Nationwide Mutual Insurance Company	Ownership.....	100.000 ..	Nationwide Mutual Insurance Company NO.....
.0140 ..	Nationwide		85-4193218 ...				NCS Arizona, LLCOH.....	NIA.....	Nationwide Mutual Insurance Company	Ownership.....	100.000 ..	Nationwide Mutual Insurance Company NO.....

STATEMENT AS OF JUNE 30, 2023 OF THE FREEDOM SPECIALTY INSURANCE COMPANY

SCHEDULE Y

PART 1A - DETAIL OF INSURANCE HOLDING COMPANY SYSTEM

1	2	3	4	5	6	7	8	9	10	11	12 Type of Control (Ownership, Board, Management, Attorney-in-Fact, Influence, Other)	13 If Control is Owner- ship Provide Percent- age	14	15	16
Group Code	Group Name	NAIC Company Code	ID Number	Federal RSSD	CIK	Name of Securities Exchange if Publicly Traded (U.S. or International)	Names of Parent, Subsidiaries Or Affiliates	Domi- ciliary Loca- tion	Relation- ship to Reporting Entity	Directly Controlled by (Name of Entity/Person)			Ultimate Controlling Entity(ies)/Person(s)	Is an SCA Filing Re- quired? (Yes/No)	*
.0140 ..	Nationwide		11- 3651828 ... 31-				ND La Quinta Partners, LLCDE....	NIA.....	Nationwide Realty Investors, Ltd.	Ownership.....	.95.000 ..	Nationwide Mutual Insurance Company NO.....	1
.0140 ..	Nationwide		1630871 ... 82-				NFS Distributors, Inc.DE....	NIA.....	Nationwide Financial Services, Inc.	Ownership.....	100.000 ..	Nationwide Mutual Insurance Company NO.....	
.0140 ..	Nationwide		5195340 ... 82-				NLIC REO Holdings, LLCOH....	NIA.....	Nationwide Life Insurance Company .. Nationwide Mutual Insurance Company	Ownership.....	100.000 ..	Nationwide Mutual Insurance Company NO.....	
.0140 ..	Nationwide		5194959 ... 46-				NMIC REO Holdings, LLCOH....	NIA.....	Nationwide Mutual Insurance Company	Ownership.....	100.000 ..	Nationwide Mutual Insurance Company NO.....	
.0140 ..	Nationwide		3762545 ... 20-				NNOV8, LLCOH....	NIA.....	Nationwide Mutual Insurance Company	Ownership.....	100.000 ..	Nationwide Mutual Insurance Company NO.....	
.0140 ..	Nationwide		4939866 ... 31-				North of Third, LLCOH....	NIA.....	NRI Equity Land Investments, LLC	Ownership.....	100.000 ..	Nationwide Mutual Insurance Company NO.....	
.0140 ..	Nationwide		1486309 ... 31-				NRI Arena, LLCOH....	NIA.....	Nationwide Realty Investors, Ltd.	Ownership.....	100.000 ..	Nationwide Mutual Insurance Company NO.....	
.0140 ..	Nationwide		1486309 ... 31-				NRI Brookside, LLCOH....	NIA.....	Nationwide Realty Investors, Ltd.	Ownership.....	100.000 ..	Nationwide Mutual Insurance Company NO.....	
.0140 ..	Nationwide		1486309 ... 31-				NRI Builders, LLCOH....	NIA.....	Nationwide Realty Investors, Ltd.	Ownership.....	100.000 ..	Nationwide Mutual Insurance Company NO.....	
.0140 ..	Nationwide		1486309 ... 31-				NRI Cavasson, LLCOH....	NIA.....	Nationwide Realty Investors, Ltd.	Ownership.....	100.000 ..	Nationwide Mutual Insurance Company NO.....	
.0140 ..	Nationwide		1486309 ... 31-				NRI Corporate Housing, LLCOH....	NIA.....	Nationwide Realty Investors, Ltd.	Ownership.....	100.000 ..	Nationwide Mutual Insurance Company NO.....	
.0140 ..	Nationwide		1486309 ... 20-				NRI Cramer Creek, LLCOH....	NIA.....	Nationwide Realty Investors, Ltd.	Ownership.....	100.000 ..	Nationwide Mutual Insurance Company NO.....	
.0140 ..	Nationwide		4939866 ... 26-				NRI Equity Land Investments, LLCOH....	NIA.....	Nationwide Realty Investors, Ltd.	Ownership.....	.80.000 ..	Nationwide Mutual Insurance Company NO.....	1
.0140 ..	Nationwide		0212217 ... 31-				NRI Equity Tampa, LLCOH....	NIA.....	Nationwide Realty Investors, Ltd.	Ownership.....	100.000 ..	Nationwide Mutual Insurance Company NO.....	
.0140 ..	Nationwide		1486309 ... 31-				NRI Office Ventures, LtdOH....	NIA.....	Nationwide Realty Investors, Ltd.	Ownership.....	100.000 ..	Nationwide Mutual Insurance Company NO.....	
.0140 ..	Nationwide		1580283 ... 31-				NRI Telecom, LLCOH....	NIA.....	NWD Investments, LLC	Ownership.....	100.000 ..	Nationwide Mutual Insurance Company NO.....	
.0140 ..	Nationwide		1486309 ... 90-				NRI-Rivulon, LLCOH....	NIA.....	Nationwide Realty Investors, Ltd. Nationwide Mutual Insurance Company	Ownership.....	100.000 ..	Nationwide Mutual Insurance Company NO.....	
.0140 ..	Nationwide		0729552 ... 27-				NTCIF-2011, LLCOH....	NIA.....	Nationwide Mutual Insurance Company	Ownership.....	100.000 ..	Nationwide Mutual Insurance Company NO.....	1
.0140 ..	Nationwide		4700627 ... 46-				NTCP 2011-A, LLCOH....	OTH.....	Nationwide Life Insurance Company ..	Other.....	.0.010 ..	Nationwide Mutual Insurance Company NO.....	2
.0140 ..	Nationwide		0741029 ... 46-				NTCP 2012-A, LLCOH....	OTH.....	Nationwide Life Insurance Company ..	Other.....	.0.010 ..	Nationwide Mutual Insurance Company NO.....	2
.0140 ..	Nationwide		3309896 ... 46-				NTCP 2013-C, LLCOH....	OTH.....	Nationwide Life Insurance Company ..	Other.....	.0.010 ..	Nationwide Mutual Insurance Company NO.....	2
.0140 ..	Nationwide		4111078 ... 47-				NTCP 2014-A, LLCOH....	OTH.....	Nationwide Life Insurance Company ..	Other.....	.0.010 ..	Nationwide Mutual Insurance Company NO.....	2
.0140 ..	Nationwide		1404116 ... 47-				NTCP 2014-B, LLCOH....	OTH.....	Nationwide Life Insurance Company ..	Other.....	.0.010 ..	Nationwide Mutual Insurance Company NO.....	2
.0140 ..	Nationwide		1413242 ... 47-				NTCP 2014-C, LLCOH....	OTH.....	Nationwide Life Insurance Company ..	Other.....	.0.010 ..	Nationwide Mutual Insurance Company NO.....	2
.0140 ..	Nationwide		3909345 ...				NTCP 2015-A, LLCOH....	OTH.....	Nationwide Life Insurance Company ..	Other.....	.0.010 ..	Nationwide Mutual Insurance Company NO.....	2

STATEMENT AS OF JUNE 30, 2023 OF THE FREEDOM SPECIALTY INSURANCE COMPANY

SCHEDULE Y

PART 1A - DETAIL OF INSURANCE HOLDING COMPANY SYSTEM

1	2	3	4	5	6	7	8	9	10	11	12	13	14	15	16
Group Code	Group Name	NAIC Company Code	ID Number	Federal RSSD	CIK	Name of Securities Exchange if Publicly Traded (U.S. or International)	Names of Parent, Subsidiaries Or Affiliates	Domi-ciliary Loca-tion	Rela-tion-ship to Reporting Entity	Directly Controlled by (Name of Entity/Person)	Type of Control (Ownership, Board, Management, Attorney-in-Fact, Influence, Other)	If Control is Owner-ship Provide Percen-tage	Ultimate Controlling Entity(ies)/Person(s)	Is an SCA Filing Re-quired? (Yes/No)	*
.0140 ..	Nationwide		47-4148470 ...				NTCP 2015-B, LLC	OH....	...OTH.....	Nationwide Life Insurance Company ..	Other.....	..0.010	Nationwide Mutual Insurance Company NO.....	... 2
.0140 ..	Nationwide		81-3836925 ...				NTCP 2016-A, LLC	OH....	... NIA.....	Nationwide Life Insurance Company ..	Ownership.....	100.000	Nationwide Mutual Insurance Company NO.....	
.0140 ..	Nationwide		82-2015065 ...				NTCP 2017-A, LLC	OH....	... NIA.....	Nationwide Life Insurance Company ..	Ownership.....	100.000	Nationwide Mutual Insurance Company NO.....	
.0140 ..	Nationwide		84-1969518 ...				NW Fyrebyrd, LLC	OH....	... NIA.....	NNOV8, LLC	Ownership.....	100.000	Nationwide Mutual Insurance Company NO.....	
.0140 ..	Nationwide		85-3363961 ...				NW Next, LLC	OH....	... NIA.....	NNOV8, LLC	Ownership.....	100.000	Nationwide Mutual Insurance Company NO.....	
.0140 ..	Nationwide		81-0936428 ...				NW Private Debt, LLC	OH....	... NIA.....	Nationwide Mutual Insurance Company	Ownership.....	100.000	Nationwide Mutual Insurance Company NO.....	
.0140 ..	Nationwide		26-1903919 ...				NW REI, LLC	DE....	... NIA.....	Nationwide Mutual Insurance Company	Ownership.....	100.000	Nationwide Mutual Insurance Company NO.....	
.0140 ..	Nationwide		92-1294202 ...				NW-Adams, LLC	OH....	... NIA.....	NW REI, LLC	Ownership.....	100.000	Nationwide Mutual Insurance Company NO.....	
.0140 ..	Nationwide		87-1087011 ...				NW-Asheville, LLC	OH....	... NIA.....	Nationwide Mutual Insurance Company	Ownership.....	100.000	Nationwide Mutual Insurance Company NO.....	
.0140 ..	Nationwide		84-3942108 ...				NW-Beloit, LLC	OH....	... NIA.....	NW REI (NMFIC), LLC	Ownership.....	100.000	Nationwide Mutual Insurance Company NO.....	
.0140 ..	Nationwide		92-2674633 ...				NW-Brandon LLC	OH....	... NIA.....	Nationwide Life Insurance Company ..	Ownership.....	100.000	Nationwide Mutual Insurance Company NO.....	
.0140 ..	Nationwide		87-0847675 ...				NW-Broadway at Surf, LLC	OH....	... NIA.....	NMIC REO Holdings, LLC	Ownership.....	100.000	Nationwide Mutual Insurance Company NO.....	
.0140 ..	Nationwide		88-2152576 ...				NW-Colfax, LLC	OH....	... NIA.....	NW REI (NLAIC), LLC	Ownership.....	100.000	Nationwide Mutual Insurance Company NO.....	
.0140 ..	Nationwide		92-0292630 ...				NW-Conroe, LLC	OH....	... NIA.....	Nationwide Life Insurance Company ..	Ownership.....	100.000	Nationwide Mutual Insurance Company NO.....	
.0140 ..	Nationwide		87-3648595 ...				NW-Corazon, LLC	OH....	... NIA.....	Nationwide Life Insurance Company ..	Ownership.....	100.000	Nationwide Mutual Insurance Company NO.....	
.0140 ..	Nationwide		84-2920247 ...				NW-Cranberry, LLC	OH....	... NIA.....	NW REI (NLIC), LLC	Ownership.....	100.000	Nationwide Mutual Insurance Company NO.....	
.0140 ..	Nationwide		86-3529884 ...				NW-Englewood, LLC	OH....	... NIA.....	NW REI (NLIC), LLC	Ownership.....	100.000	Nationwide Mutual Insurance Company NO.....	
.0140 ..	Nationwide		84-4388876 ...				NW-Escalante, LLC	OH....	... NIA.....	NW REI, LLC	Ownership.....	100.000	Nationwide Mutual Insurance Company NO.....	
.0140 ..	Nationwide		86-1538532 ...				NW-Escalante II, LLC	OH....	... NIA.....	NW REI, LLC	Ownership.....	100.000	Nationwide Mutual Insurance Company NO.....	
.0140 ..	Nationwide		92-3310596 ...				NW-FSU, LLC	OH....	... NIA.....	Nationwide Life Insurance Company ..	Ownership.....	100.000	Nationwide Mutual Insurance Company NO.....	
.0140 ..	Nationwide		31-1580283 ...				NWD 205 Vine, LLC	OH....	... NIA.....	NWD Investments, LLC	Ownership.....	100.000	Nationwide Mutual Insurance Company NO.....	
.0140 ..	Nationwide		31-1580283 ...				NWD 225 Nationwide, LLC	OH....	... NIA.....	NWD Investments, LLC	Ownership.....	100.000	Nationwide Mutual Insurance Company NO.....	
.0140 ..	Nationwide		31-1580283 ...				NWD 230 West, LLC	OH....	... NIA.....	NWD Investments, LLC	Ownership.....	100.000	Nationwide Mutual Insurance Company NO.....	
.0140 ..	Nationwide		31-1580283 ...				NWD 240 Nationwide, LLC	OH....	... NIA.....	NWD Investments, LLC	Ownership.....	100.000	Nationwide Mutual Insurance Company NO.....	
.0140 ..	Nationwide		31-1580283 ...				NWD 250 Brodbelt, LLC	OH....	... NIA.....	NWD Investments, LLC	Ownership.....	100.000	Nationwide Mutual Insurance Company NO.....	

STATEMENT AS OF JUNE 30, 2023 OF THE FREEDOM SPECIALTY INSURANCE COMPANY

SCHEDULE Y

PART 1A - DETAIL OF INSURANCE HOLDING COMPANY SYSTEM

1	2	3	4	5	6	7	8	9	10	11	12	13	14	15	16
Group Code	Group Name	NAIC Company Code	ID Number	Federal RSSD	CIK	Name of Securities Exchange if Publicly Traded (U.S. or International)	Names of Parent, Subsidiaries Or Affiliates	Domi-ciliary Loca-tion	Relation-ship to Reporting Entity	Directly Controlled by (Name of Entity/Person)	Type of Control (Ownership, Board, Management, Attorney-in-Fact, Influence, Other)	If Control is Owner-ship Provide Percen-tage	Ultimate Controlling Entity(ies)/Person(s)	Is an SCA Filing Re-quired? (Yes/No)	*
.0140 ..	Nationwide		31-1580283 ...				NWD 250 West, LLCOH....	NIA.....	NWD Investments, LLC	Ownership.....	100.000 ..	Nationwide Mutual Insurance Company NO.....	
.0140 ..	Nationwide		31-1580283 ...				NWD 265 Neil, LLCOH....	NIA.....	NWD Investments, LLC	Ownership.....	100.000 ..	Nationwide Mutual Insurance Company NO.....	
.0140 ..	Nationwide		31-1580283 ...				NWD 275 Marconi, LLCOH....	NIA.....	NWD Investments, LLC	Ownership.....	100.000 ..	Nationwide Mutual Insurance Company NO.....	
.0140 ..	Nationwide		31-1580283 ...				NWD 300 Neil, LLCOH....	NIA.....	NWD Investments, LLC	Ownership.....	100.000 ..	Nationwide Mutual Insurance Company NO.....	
.0140 ..	Nationwide		31-1580283 ...				NWD 300 Spring, LLCOH....	NIA.....	NWD Investments, LLC	Ownership.....	100.000 ..	Nationwide Mutual Insurance Company NO.....	
.0140 ..	Nationwide		31-1580283 ...				NWD 355 McConnell, LLCOH....	NIA.....	NWD Investments, LLC	Ownership.....	100.000 ..	Nationwide Mutual Insurance Company NO.....	
.0140 ..	Nationwide		31-1580283 ...				NWD 425 Nationwide, LLCOH....	NIA.....	NWD Investments, LLC	Ownership.....	100.000 ..	Nationwide Mutual Insurance Company NO.....	
.0140 ..	Nationwide		31-1580283 ...				NWD 500 Nationwide, LLCOH....	NIA.....	NWD Investments, LLC	Ownership.....	100.000 ..	Nationwide Mutual Insurance Company NO.....	
.0140 ..	Nationwide		31-1580283 ...				NWD Arena Crossing, LLCOH....	NIA.....	NWD Investments, LLC	Ownership.....	100.000 ..	Nationwide Mutual Insurance Company NO.....	
.0140 ..	Nationwide		31-1580283 ...				NWD Arena District I, LLCOH....	NIA.....	NWD Investments, LLC	Ownership.....	100.000 ..	Nationwide Mutual Insurance Company NO.....	
.0140 ..	Nationwide		31-1580283 ...				NWD Arena District II, LLCOH....	NIA.....	NWD Investments, LLC	Ownership.....	100.000 ..	Nationwide Mutual Insurance Company NO.....	
.0140 ..	Nationwide		31-1580283 ...				NWD Arena District MM, LLCOH....	NIA.....	NWD Investments, LLC	Ownership.....	100.000 ..	Nationwide Mutual Insurance Company NO.....	
.0140 ..	Nationwide		31-1580283 ...				NWD Arena District PW, LLCOH....	NIA.....	NWD Investments, LLC	Ownership.....	100.000 ..	Nationwide Mutual Insurance Company NO.....	
.0140 ..	Nationwide		31-1580283 ...				NWD Arena District V, LLCOH....	NIA.....	NWD Investments, LLC	Ownership.....	100.000 ..	Nationwide Mutual Insurance Company NO.....	
.0140 ..	Nationwide		31-1580283 ...				NWD Athletic Club, LLCOH....	NIA.....	NWD Investments, LLC	Ownership.....	100.000 ..	Nationwide Mutual Insurance Company NO.....	
.0140 ..	Nationwide		88-2975730 ...				NW-Boise, LLCOH....	NIA.....	Nationwide Life Insurance Company ..	Ownership.....	100.000 ..	Nationwide Mutual Insurance Company NO.....	
.0140 ..	Nationwide		31-1580283 ...				NWD Brodbelt, LLCOH....	NIA.....	NWD Investments, LLC	Ownership.....	100.000 ..	Nationwide Mutual Insurance Company NO.....	
.0140 ..	Nationwide		30-0876022 ...				NWD Franklinton, LLCOH....	NIA.....	Nationwide Realty Investors, Ltd.	Ownership.....	80.000 ..	Nationwide Mutual Insurance Company NO.....	1
.0140 ..	Nationwide		31-4118665 ...				NWD HP, LLCOH....	NIA.....	NWD Investments, LLC	Ownership.....	75.000 ..	Nationwide Mutual Insurance Company NO.....	1
.0140 ..	Nationwide		31-1580283 ...				NWD Investments, LLCOH....	NIA.....	Nationwide Realty Investors, Ltd.	Ownership.....	80.000 ..	Nationwide Mutual Insurance Company NO.....	1
.0140 ..	Nationwide		31-1486309 ...				NWGH, LLCOH....	NIA.....	Nationwide Realty Investors, Ltd.	Ownership.....	75.000 ..	Nationwide Mutual Insurance Company NO.....	1
.0140 ..	Nationwide		87-3124154 ...				NW-Gallatin, LLCOH....	NIA.....	Nationwide Life Insurance Company ..	Ownership.....	100.000 ..	Nationwide Mutual Insurance Company NO.....	
.0140 ..	Nationwide		85-1262262 ...				NW-Gator Walk, LLCOH....	NIA.....	NW REI (NMFIC), LLC	Ownership.....	100.000 ..	Nationwide Mutual Insurance Company NO.....	
.0140 ..	Nationwide		92-2943602 ...				NW-Holly Springs, LLCOH....	NIA.....	Nationwide Mutual Insurance Company ..	Ownership.....	100.000 ..	Nationwide Mutual Insurance Company NO.....	
.0140 ..	Nationwide		86-2431839 ...				NW-Hub13, LLCOH....	NIA.....	NW REI, LLC	Ownership.....	100.000 ..	Nationwide Mutual Insurance Company NO.....	

STATEMENT AS OF JUNE 30, 2023 OF THE FREEDOM SPECIALTY INSURANCE COMPANY

SCHEDULE Y

PART 1A - DETAIL OF INSURANCE HOLDING COMPANY SYSTEM

1	2	3	4	5	6	7	8	9	10	11	12	13	14	15	16
Group Code	Group Name	NAIC Company Code	ID Number	Federal RSSD	CIK	Name of Securities Exchange if Publicly Traded (U.S. or International)	Names of Parent, Subsidiaries Or Affiliates	Domi-ciliary Loca-tion	Rela-tion-ship to Reporting Entity	Directly Controlled by (Name of Entity/Person)	Type of Control (Ownership, Board, Management, Attorney-in-Fact, Influence, Other)	If Control is Owner-ship Provide Percen-tage	Ultimate Controlling Entity(ies)/Person(s)	Is an SCA Filing Re-quired? (Yes/No)	*
.0140 ..	Nationwide		92-3558072 ...				NW-Huntersville, LLCOH....	NIA.....	Nationwide Mutual Insurance Company	Ownership.....	100.000 ..	Nationwide Mutual Insurance Company NO.....	
.0140 ..	Nationwide		47-2482818 ...				NW-Jasper WAG, LLCOH....	NIA.....	NW REI, LLC	Ownership.....	100.000 ..	Nationwide Mutual Insurance Company NO.....	
.0140 ..	Nationwide		87-3767006 ...				NW-Kingsbury, LLCOH....	NIA.....	Nationwide Life Insurance Company ..	Ownership.....	100.000 ..	Nationwide Mutual Insurance Company NO.....	
.0140 ..	Nationwide		81-5146596 ...				NW-Logan, LLCOH....	NIA.....	NW REI, LLC	Ownership.....	100.000 ..	Nationwide Mutual Insurance Company NO.....	
.0140 ..	Nationwide		87-1565013 ...				NW-Midtown, LLCOH....	NIA.....	NW REI, LLC	Ownership.....	100.000 ..	Nationwide Mutual Insurance Company NO.....	
.0140 ..	Nationwide		85-1246853 ...				NW-Oakbrook, LLCOH....	NIA.....	NW REI (NLAIC), LLC	Ownership.....	100.000 ..	Nationwide Mutual Insurance Company NO.....	
.0140 ..	Nationwide		88-2595124 ...				NW-OG, LLCOH....	NIA.....	NW REI, LLC	Ownership.....	100.000 ..	Nationwide Mutual Insurance Company NO.....	
.0140 ..	Nationwide		83-2260477 ...				NW-ORBPD, LLCOH....	NIA.....	NW REI (NMFIC), LLC	Ownership.....	100.000 ..	Nationwide Mutual Insurance Company NO.....	
.0140 ..	Nationwide		93-1728625 ...				NW-Pleasant Prairie, LLCOH....	NIA.....	Nationwide Life Insurance Company ..	Ownership.....	100.000 ..	Nationwide Mutual Insurance Company NO.....	
.0140 ..	Nationwide		47-2449044 ...				NW-Promenade at Madison, LLCOH....	NIA.....	NW REI, LLC	Ownership.....	100.000 ..	Nationwide Mutual Insurance Company NO.....	
.0140 ..	Nationwide		83-2173918 ...				NW-Radius, LLCOH....	NIA.....	NW REI (NLIC), LLC	Ownership.....	100.000 ..	Nationwide Mutual Insurance Company NO.....	
.0140 ..	Nationwide		87-1367836 ...				NW-Rancho, LLCOH....	NIA.....	NW REI, LLC	Ownership.....	100.000 ..	Nationwide Mutual Insurance Company NO.....	
.0140 ..	Nationwide		88-1405151 ...				NW-Riverchase, LLCOH....	NIA.....	Nationwide Life Insurance Company ..	Ownership.....	100.000 ..	Nationwide Mutual Insurance Company NO.....	
.0140 ..	Nationwide		86-3702669 ...				NW-RPG Cranberry, LLCOH....	NIA.....	NW REI, LLC	Ownership.....	100.000 ..	Nationwide Mutual Insurance Company NO.....	
.0140 ..	Nationwide		87-0890277 ...				NW-Ruby, LLCOH....	NIA.....	NW REI (NLIC), LLC	Ownership.....	100.000 ..	Nationwide Mutual Insurance Company NO.....	
.0140 ..	Nationwide		87-3273918 ...				NW-San Marco, LLCOH....	NIA.....	Nationwide Life Insurance Company ..	Ownership.....	100.000 ..	Nationwide Mutual Insurance Company NO.....	
.0140 ..	Nationwide		87-3289289 ...				NW-San Pablo, LLCOH....	NIA.....	NW REI, LLC	Ownership.....	100.000 ..	Nationwide Mutual Insurance Company NO.....	
.0140 ..	Nationwide		84-4326171 ...				NW-Southbank, LLCOH....	NIA.....	NW REI, LLC	Ownership.....	100.000 ..	Nationwide Mutual Insurance Company NO.....	
.0140 ..	Nationwide		81-3212025 ...				NW-Springfield, LLCOH....	NIA.....	NW REI, LLC	Ownership.....	100.000 ..	Nationwide Mutual Insurance Company NO.....	
.0140 ..	Nationwide		93-2022585 ...				NW-Spring Hill, LLCOH....	NIA.....	Nationwide Mutual Insurance Company ..	Ownership.....	100.000 ..	Nationwide Mutual Insurance Company NO.....	
.0140 ..	Nationwide		92-2878794 ...				NW-SR-16, LLCOH....	NIA.....	Nationwide Mutual Insurance Company ..	Ownership.....	100.000 ..	Nationwide Mutual Insurance Company NO.....	
.0140 ..	Nationwide		85-0536537 ...				NW-Sweetwater, LLCOH....	NIA.....	NW REI (NLIC), LLC	Ownership.....	100.000 ..	Nationwide Mutual Insurance Company NO.....	
.0140 ..	Nationwide		92-0677233 ...				NW-UNCC, LLCOH....	NIA.....	NW REI (NLIC), LLC	Ownership.....	100.000 ..	Nationwide Mutual Insurance Company NO.....	
.0140 ..	Nationwide		81-1603024 ...				NW REI (NLAIC), LLCOH....	NIA.....	Nationwide Life and Annuity Insurance Company	Ownership.....	100.000 ..	Nationwide Mutual Insurance Company NO.....	
.0140 ..	Nationwide		81-1619428 ...				NW REI (NLIC), LLCOH....	NIA.....	Nationwide Life Insurance Company ..	Ownership.....	100.000 ..	Nationwide Mutual Insurance Company NO.....	

STATEMENT AS OF JUNE 30, 2023 OF THE FREEDOM SPECIALTY INSURANCE COMPANY

SCHEDULE Y

PART 1A - DETAIL OF INSURANCE HOLDING COMPANY SYSTEM

1	2	3	4	5	6	7	8	9	10	11	12	13	14	15	16
Group Code	Group Name	NAIC Company Code	ID Number	Federal RSSD	CIK	Name of Securities Exchange if Publicly Traded (U.S. or International)	Names of Parent, Subsidiaries Or Affiliates	Domi-ciliary Loca-tion	Rela-tion-ship to Reporting Entity	Directly Controlled by (Name of Entity/Person)	Type of Control (Ownership, Board, Management, Attorney-in-Fact, Influence, Other)	If Control is Owner-ship Provide Percen-tage	Ultimate Controlling Entity(ies)/Person(s)	Is an SCA Filing Re-quired? (Yes/No)	*
.0140 ..	Nationwide		81-1861190 ...				NW REI (NMIC), LLCOH....	NIA.....	Nationwide Mutual Insurance Company	Ownership.....	100.000 ..	Nationwide Mutual Insurance Company NO.....	
.0140 ..	Nationwide		31-0947092 ...				OCH Company, LLCOH....	NIA.....	Nationwide Realty Investors, Ltd.	Ownership.....	100.000 ..	Nationwide Mutual Insurance Company NO.....	
....			26-0263012 ...				Old Track Street Owners Association, Inc.OH....	OTH.....	Other non-Nationwide	n/a		Other non-Nationwide NO.....	2
.0140 ..	Nationwide	13999 ..	27-1712056 ...				Olentangy Reinsurance, LLCVT....	IA.....	Nationwide Life and Annuity Insurance Company	Ownership.....	100.000 ..	Nationwide Mutual Insurance Company NO.....	
.0140 ..	Nationwide		31-1486309 ...				Perimeter A, Ltd.OH....	NIA.....	Nationwide Realty Investors, Ltd.	Ownership.....	100.000 ..	Nationwide Mutual Insurance Company NO.....	
.0140 ..	Nationwide		20-4939866 ...				Rail Street Parking, LLCOH....	NIA.....	NRI Equity Land Investments, LLC	Ownership.....	100.000 ..	Nationwide Mutual Insurance Company NO.....	
.0140 ..	Nationwide		75-2938844 ...				Registered Investment Advisors Services, Inc.TX....	NIA.....	Nationwide Financial Services, Inc.	Ownership.....	100.000 ..	Nationwide Mutual Insurance Company NO.....	
.0140 ..	Nationwide		82-0549218 ...				Retention Alternatives Ltd.BMU...	IA.....	Nationwide Mutual Insurance Company	Ownership.....	100.000 ..	Nationwide Mutual Insurance Company NO.....	
.0140 ..	Nationwide	15580 ..	31-1117969 ...				Scottsdale Indemnity CompanyOH....	IA.....	Nationwide Mutual Insurance Company	Ownership.....	100.000 ..	Nationwide Mutual Insurance Company NO.....	
.0140 ..	Nationwide	41297 ..	86-1024978 ...				Scottsdale Insurance CompanyOH....	UDP.....	Nationwide Mutual Insurance Company	Ownership.....	100.000 ..	Nationwide Mutual Insurance Company NO.....	
.0140 ..	Nationwide	10672 ..	31-0835870 ...				Scottsdale Surplus Lines Insurance CompanyAZ....	IA.....	Scottsdale Insurance Company	Ownership.....	100.000 ..	Nationwide Mutual Insurance Company NO.....	
.0140 ..	Nationwide		86-1610040 ...				The Waterfront Partners, LLCOH....	NIA.....	Nationwide Realty Investors, Ltd.	Ownership.....	.50.000 ...	Nationwide Mutual Insurance Company NO.....	1
.0140 ..	Nationwide	36269 ..	75-0619597 ...				Titan Insurance CompanyMI....	IA.....	Nationwide Mutual Insurance Company	Ownership.....	100.000 ..	Nationwide Mutual Insurance Company NO.....	
.0140 ..	Nationwide		33-1284530 ...				Titan Insurance Services, Inc.TX....	IA.....	Nationwide Mutual Insurance Company	Ownership.....	100.000 ..	Nationwide Mutual Insurance Company NO.....	
.0140 ..	Nationwide		95-0160222 ...				V.P.I. Services, Inc.CA....	IA.....	Veterinary Pet Insurance Company	Ownership.....	100.000 ..	Nationwide Mutual Insurance Company NO.....	
.0140 ..	Nationwide	42285 ..	34-3750113 ...				Veterinary Pet Insurance CompanyOH....	IA.....	Scottsdale Insurance Company	Ownership.....	100.000 ..	Nationwide Mutual Insurance Company NO.....	
.0140 ..	Nationwide	42889 ..	34-1394913 ...				Victoria Fire & Casualty CompanyOH....	IA.....	Nationwide Mutual Insurance Company	Ownership.....	100.000 ..	Nationwide Mutual Insurance Company NO.....	
.0140 ..	Nationwide	10105 ..	34-1777972 ...				Victoria Select Insurance CompanyOH....	IA.....	Victoria Fire & Casualty Insurance Company	Ownership.....	100.000 ..	Nationwide Mutual Insurance Company NO.....	
.0140 ..	Nationwide		31-1486309 ...				Wellington Park, LLCOH....	NIA.....	Nationwide Realty Investors, Ltd.	Ownership.....	100.000 ..	Nationwide Mutual Insurance Company NO.....	

Asterisk	Explanation
1	For the purposes of this schedule, Nationwide presumed control of these entities because they are owned by at least 10% and are not wholly-owned by a Nationwide entity.
2	Other ownership indicates a non-ownership circumstance by a Nationwide entity.

PART 1 - LOSS EXPERIENCE

Line of Business		Current Year to Date			4 Prior Year to Date Direct Loss Percentage
		1 Direct Premiums Earned	2 Direct Losses Incurred	3 Direct Loss Percentage	
1.	Fire	(317)	(12)	3.8	78.4
2.1	Allied Lines	2	(195)	(9,750.0)	3,562.5
2.2	Multiple peril crop				
2.3	Federal flood				
2.4	Private crop				
2.5	Private flood				
3.	Farmowners multiple peril				
4.	Homeowners multiple peril		(2)		
5.1	Commercial multiple peril (non-liability portion)	(1)	(7)	700.0	954,283.3
5.2	Commercial multiple peril (liability portion)	(1)	(17,876)	1,787,600.0	(56,550,100.0)
6.	Mortgage guaranty				
8.	Ocean marine				
9.	Inland marine		(1)		
10.	Financial guaranty				
11.1	Medical professional liability - occurrence				
11.2	Medical professional liability - claims-made		3,848		
12.	Earthquake				
13.1	Comprehensive (hospital and medical) individual				
13.2	Comprehensive (hospital and medical) group				
14.	Credit accident and health				
15.1	Vision only				
15.2	Dental only				
15.3	Disability income				
15.4	Medicare supplement				
15.5	Medicaid Title XIX				
15.6	Medicare Title XVIII				
15.7	Long-term care				
15.8	Federal employees health benefits plan				
15.9	Other health				
16.	Workers' compensation				
17.1	Other liability - occurrence		5,797,559		
17.2	Other liability - claims-made	116,119,944	75,745,077	65.2	34.8
17.3	Excess workers' compensation				
18.1	Products liability - occurrence		(15)		
18.2	Products liability - claims-made				
19.1	Private passenger auto no-fault (personal injury protection)				
19.2	Other private passenger auto liability				
19.3	Commercial auto no-fault (personal injury protection)	172,216	178,619	103.7	340.6
19.4	Other commercial auto liability	10,044,000	7,028,019	70.0	50.5
21.1	Private passenger auto physical damage				
21.2	Commercial auto physical damage	377,496	90,124	23.9	41.6
22.	Aircraft (all perils)				
23.	Fidelity	57,009	7,026	12.3	
24.	Surety				
26.	Burglary and theft				
27.	Boiler and machinery		2		
28.	Credit		(171,030)		
29.	International				
30.	Warranty				
31.	Reinsurance - Nonproportional Assumed Property	XXX	XXX	XXX	XXX
32.	Reinsurance - Nonproportional Assumed Liability	XXX	XXX	XXX	XXX
33.	Reinsurance - Nonproportional Assumed Financial Lines	XXX	XXX	XXX	XXX
34.	Aggregate write-ins for other lines of business				
35.	Totals	126,770,348	88,661,136	69.9	53.6
DETAILS OF WRITE-INS					
3401.				
3402.				
3403.				
3498.	Summary of remaining write-ins for Line 34 from overflow page				
3499.	Totals (Lines 3401 through 3403 plus 3498)(Line 34 above)				

STATEMENT AS OF JUNE 30, 2023 OF THE FREEDOM SPECIALTY INSURANCE COMPANY

PART 2 - DIRECT PREMIUMS WRITTEN

Line of Business		1 Current Quarter	2 Current Year to Date	3 Prior Year Year to Date
1.	Fire	1,819	(317)	(124)
2.1	Allied Lines	185	2	(27)
2.2	Multiple peril crop			
2.3	Federal flood			
2.4	Private crop			
2.5	Private flood			
3.	Farmowners multiple peril	1		
4.	Homeowners multiple peril			
5.1	Commercial multiple peril (non-liability portion)	3	(1)	
5.2	Commercial multiple peril (liability portion)	3	(1)	
6.	Mortgage guaranty			
8.	Ocean marine			
9.	Inland marine			
10.	Financial guaranty			
11.1	Medical professional liability - occurrence			
11.2	Medical professional liability - claims-made			
12.	Earthquake			
13.1	Comprehensive (hospital and medical) individual			
13.2	Comprehensive (hospital and medical) group			
14.	Credit accident and health			
15.1	Vision only			
15.2	Dental only			
15.3	Disability income			
15.4	Medicare supplement			
15.5	Medicaid Title XIX			
15.6	Medicare Title XVIII			
15.7	Long-term care			
15.8	Federal employees health benefits plan			
15.9	Other health			
16.	Workers' compensation			
17.1	Other liability - occurrence			
17.2	Other liability - claims-made	57,767,806	95,230,782	117,376,797
17.3	Excess workers' compensation			
18.1	Products liability - occurrence			
18.2	Products liability - claims-made			
19.1	Private passenger auto no-fault (personal injury protection)			
19.2	Other private passenger auto liability			472
19.3	Commercial auto no-fault (personal injury protection)	(763)	32,185	62,357
19.4	Other commercial auto liability	4,795,417	6,561,592	12,528,295
21.1	Private passenger auto physical damage			
21.2	Commercial auto physical damage	71,710	183,108	391,843
22.	Aircraft (all perils)			
23.	Fidelity	23,268	23,268	(2,500)
24.	Surety			
26.	Burglary and theft			
27.	Boiler and machinery			
28.	Credit			
29.	International			
30.	Warranty			
31.	Reinsurance - Nonproportional Assumed Property	XXX	XXX	XXX
32.	Reinsurance - Nonproportional Assumed Liability	XXX	XXX	XXX
33.	Reinsurance - Nonproportional Assumed Financial Lines	XXX	XXX	XXX
34.	Aggregate write-ins for other lines of business			
35.	Totals	62,659,449	102,030,618	130,357,113
DETAILS OF WRITE-INS				
3401.			
3402.			
3403.			
3498.	Summary of remaining write-ins for Line 34 from overflow page			
3499.	Totals (Lines 3401 through 3403 plus 3498)(Line 34 above)			

STATEMENT AS OF JUNE 30, 2023 OF THE FREEDOM SPECIALTY INSURANCE COMPANY

PART 3 (000 omitted)

LOSS AND LOSS ADJUSTMENT EXPENSE RESERVES SCHEDULE

	1	2	3	4	5	6	7	8	9	10	11	12	13
Years in Which Losses Occurred	Prior Year-End Known Case Loss and LAE Reserves	Prior Year- End IBNR Loss and LAE Reserves	Total Prior Year-End Loss and LAE Reserves (Cols. 1+2)	2023 Loss and LAE Payments on Claims Reported as of Prior Year-End	2023 Loss and LAE Payments on Claims Unreported as of Prior Year-End	Total 2023 Loss and LAE Payments (Cols. 4+5)	Q.S. Date Known Case Loss and LAE Reserves on Claims Reported and Open as of Prior Year End	Q.S. Date Known Case Loss and LAE Reserves on Claims Reported or Reopened Subsequent to Prior Year End	Q.S. Date IBNR Loss and LAE Reserves	Total Q.S. Loss and LAE Reserves (Cols.7+8+9)	Prior Year-End Known Case Loss and LAE Reserves Developed (Savings)/ Deficiency (Cols.4+7 minus Col. 1)	Prior Year-End IBNR Loss and LAE Reserves Developed (Savings)/ Deficiency (Cols. 5+8+9 minus Col. 2)	Prior Year-End Total Loss and LAE Reserve Developed (Savings)/ Deficiency (Cols. 11+12)
1. 2020 + Prior
2. 2021
3. Subtotals 2021 + Prior
4. 2022
5. Subtotals 2022 + Prior
6. 2023XXX.....XXX.....XXX.....XXX.....XXX.....XXX.....XXX.....XXX.....
7. Totals
8. Prior Year-End Surplus As Regards Policyholders	25,100										Col. 11, Line 7 As % of Col. 1 Line 7	Col. 12, Line 7 As % of Col. 2 Line 7	Col. 13, Line 7 As % of Col. 3 Line 7
											1.	2.	3.
											Col. 13, Line 7 As a % of Col. 1 Line 8		
											4.		

STATEMENT AS OF JUNE 30, 2023 OF THE FREEDOM SPECIALTY INSURANCE COMPANY

SUPPLEMENTAL EXHIBITS AND SCHEDULES INTERROGATORIES

The following supplemental reports are required to be filed as part of your statement filing. However, in the event that your company does not transact the type of business for which the special report must be filed, your response of NO to the specific interrogatory will be accepted in lieu of filing a "NONE" report and a bar code will be printed below. If the supplement is required of your company but is not being filed for whatever reason enter SEE EXPLANATION and provide an explanation following the interrogatory questions.

	Response
1. Will the Trusteed Surplus Statement be filed with the state of domicile and the NAIC with this statement?	NO
2. Will Supplement A to Schedule T (Medical Professional Liability Supplement) be filed with this statement?	NO
3. Will the Medicare Part D Coverage Supplement be filed with the state of domicile and the NAIC with this statement?	NO
4. Will the Director and Officer Insurance Coverage Supplement be filed with the state of domicile and the NAIC with this statement?	YES
AUGUST FILING	
5. Will the regulator-only (non-public) Communication of Internal Control Related Matters Noted in Audit be filed with the state of domicile and electronically with the NAIC (as a regulator-only non-public document) by August 1? The response for 1st and 3rd quarters should be N/A. A NO response resulting with a bar code is only appropriate in the 2nd quarter.	YES

Explanations:

1.
2.
3.

Bar Codes:

1. Trusteed Surplus Statement [Document Identifier 490]

*2220920234900

0002*

2. Supplement A to Schedule T [Document Identifier 455]

*2220920234550

0002*

3. Medicare Part D Coverage Supplement [Document Identifier 365]

*2220920233650

0002*

NONE

SCHEDULE A - VERIFICATION

Real Estate

	1	2
	Year to Date	Prior Year Ended December 31
1. Book/adjusted carrying value, December 31 of prior year		
2. Cost of acquired:		
2.1 Actual cost at time of acquisition		
2.2 Additional investment made after acquisition		
3. Current year change in encumbrances		
4. Total gain (loss) on disposals		
5. Deduct amounts received on disposals		
6. Total foreign exchange change in book/adjusted carrying value		
7. Deduct current year's other than temporary impairment recognized		
8. Deduct current year's depreciation		
9. Book/adjusted carrying value at the end of current period (Lines 1+2+3+4-5+6-7-8)		
10. Deduct total nonadmitted amounts		
11. Statement value at end of current period (Line 9 minus Line 10)		

SCHEDULE B - VERIFICATION

Mortgage Loans

	1	2
	Year to Date	Prior Year Ended December 31
1. Book value/recorded investment excluding accrued interest, December 31 of prior year		
2. Cost of acquired:		
2.1 Actual cost at time of acquisition		
2.2 Additional investment made after acquisition		
3. Capitalized deferred interest and other		
4. Accrual of discount		
5. Unrealized valuation increase (decrease)		
6. Total gain (loss) on disposals		
7. Deduct amounts received on disposals		
8. Deduct amortization of premium and mortgage interest points and commitment fees		
9. Total foreign exchange change in book value/recorded investment excluding accrued interest		
10. Deduct current year's other than temporary impairment recognized		
11. Book value/recorded investment excluding accrued interest at end of current period (Lines 1+2+3+4+5+6-7-8+9-10)		
12. Total valuation allowance		
13. Subtotal (Line 11 plus Line 12)		
14. Deduct total nonadmitted amounts		
15. Statement value at end of current period (Line 13 minus Line 14)		

SCHEDULE BA - VERIFICATION

Other Long-Term Invested Assets

	1	2
	Year to Date	Prior Year Ended December 31
1. Book/adjusted carrying value, December 31 of prior year		
2. Cost of acquired:		
2.1 Actual cost at time of acquisition		
2.2 Additional investment made after acquisition		
3. Capitalized deferred interest and other		
4. Accrual of discount		
5. Unrealized valuation increase (decrease)		
6. Total gain (loss) on disposals		
7. Deduct amounts received on disposals		
8. Deduct amortization of premium and depreciation		
9. Total foreign exchange change in book/adjusted carrying value		
10. Deduct current year's other than temporary impairment recognized		
11. Book/adjusted carrying value at end of current period (Lines 1+2+3+4+5+6-7-8+9-10)		
12. Deduct total nonadmitted amounts		
13. Statement value at end of current period (Line 11 minus Line 12)		

SCHEDULE D - VERIFICATION

Bonds and Stocks

	1	2
	Year to Date	Prior Year Ended December 31
1. Book/adjusted carrying value of bonds and stocks, December 31 of prior year	23,406,976	18,825,931
2. Cost of bonds and stocks acquired	2,917,580	6,191,847
3. Accrual of discount	36,897	46,382
4. Unrealized valuation increase (decrease)		
5. Total gain (loss) on disposals		(13,618)
6. Deduct consideration for bonds and stocks disposed of	3,144,584	1,506,717
7. Deduct amortization of premium	61,691	136,849
8. Total foreign exchange change in book/adjusted carrying value		
9. Deduct current year's other than temporary impairment recognized		
10. Total investment income recognized as a result of prepayment penalties and/or acceleration fees		
11. Book/adjusted carrying value at end of current period (Lines 1+2+3+4+5-6-7+8-9+10)	23,155,178	23,406,976
12. Deduct total nonadmitted amounts		
13. Statement value at end of current period (Line 11 minus Line 12)	23,155,178	23,406,976

STATEMENT AS OF JUNE 30, 2023 OF THE FREEDOM SPECIALTY INSURANCE COMPANY

SCHEDULE D - PART 1B

Showing the Acquisitions, Dispositions and Non-Trading Activity
During the Current Quarter for all Bonds and Preferred Stock by NAIC Designation

NAIC Designation	1 Book/Adjusted Carrying Value Beginning of Current Quarter	2 Acquisitions During Current Quarter	3 Dispositions During Current Quarter	4 Non-Trading Activity During Current Quarter	5 Book/Adjusted Carrying Value End of First Quarter	6 Book/Adjusted Carrying Value End of Second Quarter	7 Book/Adjusted Carrying Value End of Third Quarter	8 Book/Adjusted Carrying Value December 31 Prior Year
BONDS								
1. NAIC 1 (a)	23,334,198	1,644,324	2,094,461	(12,798)	23,334,198	22,871,263		23,406,974
2. NAIC 2 (a)	283,546			368	283,546	283,914		
3. NAIC 3 (a)								
4. NAIC 4 (a)								
5. NAIC 5 (a)								
6. NAIC 6 (a)								
7. Total Bonds	23,617,744	1,644,324	2,094,461	(12,430)	23,617,744	23,155,177		23,406,974
PREFERRED STOCK								
8. NAIC 1								
9. NAIC 2								
10. NAIC 3								
11. NAIC 4								
12. NAIC 5								
13. NAIC 6								
14. Total Preferred Stock								
15. Total Bonds and Preferred Stock	23,617,744	1,644,324	2,094,461	(12,430)	23,617,744	23,155,177		23,406,974

(a) Book/Adjusted Carrying Value column for the end of the current reporting period includes the following amount of short-term and cash equivalent bonds by NAIC designation:

NAIC 1 \$; NAIC 2 \$; NAIC 3 \$ NAIC 4 \$; NAIC 5 \$; NAIC 6 \$

Schedule DA - Part 1 - Short-Term Investments

N O N E

Schedule DA - Verification - Short-Term Investments

N O N E

Schedule DB - Part A - Verification - Options, Caps, Floors, Collars, Swaps and Forwards

N O N E

Schedule DB - Part B - Verification - Futures Contracts

N O N E

Schedule DB - Part C - Section 1 - Replication (Synthetic Asset) Transactions (RSATs) Open

N O N E

Schedule DB-Part C-Section 2-Reconciliation of Replication (Synthetic Asset) Transactions Open

N O N E

Schedule DB - Verification - Book/Adjusted Carrying Value, Fair Value and Potential Exposure of
Derivatives

N O N E

SCHEDULE E - PART 2 - VERIFICATION

(Cash Equivalents)

	1	2
	Year To Date	Prior Year Ended December 31
1. Book/adjusted carrying value, December 31 of prior year	1,327,377	3,671,675
2. Cost of cash equivalents acquired	45,815,840	160,918,592
3. Accrual of discount		
4. Unrealized valuation increase (decrease)		
5. Total gain (loss) on disposals		
6. Deduct consideration received on disposals	46,149,960	163,262,890
7. Deduct amortization of premium		
8. Total foreign exchange change in book/adjusted carrying value		
9. Deduct current year's other than temporary impairment recognized		
10. Book/adjusted carrying value at end of current period (Lines 1+2+3+4+5-6-7+8-9)	993,257	1,327,377
11. Deduct total nonadmitted amounts		
12. Statement value at end of current period (Line 10 minus Line 11)	993,257	1,327,377

Schedule A - Part 2 - Real Estate Acquired and Additions Made

N O N E

Schedule A - Part 3 - Real Estate Disposed

N O N E

Schedule B - Part 2 - Mortgage Loans Acquired and Additions Made

N O N E

Schedule B - Part 3 - Mortgage Loans Disposed, Transferred or Repaid

N O N E

Schedule BA - Part 2 - Other Long-Term Invested Assets Acquired and Additions Made

N O N E

Schedule BA - Part 3 - Other Long-Term Invested Assets Disposed, Transferred or Repaid

N O N E

STATEMENT AS OF JUNE 30, 2023 OF THE FREEDOM SPECIALTY INSURANCE COMPANY

SCHEDULE D - PART 3

Show All Long-Term Bonds and Stock Acquired During the Current Quarter

1	2	3	4	5	6	7	8	9	10
CUSIP Identification	Description	Foreign	Date Acquired	Name of Vendor	Number of Shares of Stock	Actual Cost	Par Value	Paid for Accrued Interest and Dividends	NAIC Designation, NAIC Designation Modifier and SVO Admini- strative Symbol
91282C-HC-8	US Treasury Nt 3.375% 05/15/33 06/27/2023	Citigroup	923,211	950,000	3,834	1.A FE
0109999999. Subtotal - Bonds - U.S. Governments						923,211	950,000	3,834	XXX
3137FG-ZT-5	FHLMC Ser K079 Cl A2 3.926% 06/25/28 05/26/2023	Wells Fargo Securities LLC	244,141	250,000	1.A
3137FL-N9-1	FHLMC Ser K091 Cl A2 3.505% 03/25/29 05/25/2023	Goldman Sachs & Company	476,973	500,000	1,460	1.A FE
0909999999. Subtotal - Bonds - U.S. Special Revenues						721,114	750,000	1,460	XXX
2509999997. Total - Bonds - Part 3						1,644,325	1,700,000	5,294	XXX
2509999998. Total - Bonds - Part 5						XXX	XXX	XXX	XXX
2509999999. Total - Bonds						1,644,325	1,700,000	5,294	XXX
4509999997. Total - Preferred Stocks - Part 3						XXX	XXX
4509999998. Total - Preferred Stocks - Part 5						XXX	XXX	XXX	XXX
4509999999. Total - Preferred Stocks						XXX	XXX
5989999997. Total - Common Stocks - Part 3						XXX	XXX
5989999998. Total - Common Stocks - Part 5						XXX	XXX	XXX	XXX
5989999999. Total - Common Stocks						XXX	XXX
5999999999. Total - Preferred and Common Stocks						XXX	XXX
.....
.....
.....
.....
.....
.....
6009999999 - Totals						1,644,325	XXX	5,294	XXX

STATEMENT AS OF JUNE 30, 2023 OF THE FREEDOM SPECIALTY INSURANCE COMPANY

SCHEDULE D - PART 4

Show All Long-Term Bonds and Stock Sold, Redeemed or Otherwise Disposed of During the Current Quarter

1	2	3	4	5	6	7	8	9	10	Change In Book/Adjusted Carrying Value					16	17	18	19	20	21	22
										11	12	13	14	15							
CUSIP Ident- ification	Description	For- eign	Disposal Date	Name of Purchaser	Number of Shares of Stock	Consid- eration	Par Value	Actual Cost	Prior Year Book/ Adjusted Carrying Value	Unrealized Valuation Increase/ (Decrease)	Current Year's (Amor- tization)/ Accretion	Current Year's Other Than Temporary Impairment Recog- nized	Total Change in Book/ Adjusted Carrying Value (11 + 12 - 13)	Total Foreign Exchange Change in Book /Adjusted Carrying Value	Book/ Adjusted Carrying Value at Disposal Date	Foreign Exchange Gain (Loss) on Disposal	Realized Gain (Loss) on Disposal	Total Gain (Loss) on Disposal	Bond Interest/ Stock Dividends Received During Year	Stated Con- tractual Maturity Date	NAIC Desig- nation, NAIC Desig- nation Modifier and SVO Admini- strative Symbol
912828-R6-9	U S Treasury Nt 1.625% 05/31/23	05/31/2023	Maturity	1,000,000	1,000,000	1,010,707	1,000,664	(664)	(664)	1,000,000	8,133	05/31/2023	1.A
912828-S3-5	U S Treasury Nt 1.375% 06/30/23	06/30/2023	Maturity	1,040,000	1,040,000	972,891	1,032,918	7,082	7,082	1,040,000	7,150	06/30/2023	1.A
0109999999. Subtotal - Bonds - U.S. Governments						2,040,000	2,040,000	1,983,598	2,033,582	6,418	6,418	2,040,000	15,283	XXX	XXX
3132DW-C6-8	FHLMC Pool #SD8193 2.000% 01/25/52	06/01/2023	Paydown	25,339	25,339	25,052	25,058	281	281	25,339	214	01/25/2052	1.A
3140H5-JW-2	FNMA Pool #BJ3876 3.000% 01/25/48	06/01/2023	Paydown	4,595	4,595	4,452	4,457	138	138	4,595	51	01/25/2048	1.A
0909999999. Subtotal - Bonds - U.S. Special Revenues						29,934	29,934	29,504	29,515	419	419	29,934	265	XXX	XXX
64830C-AA-3	New Residential Mtg Ln Tr RMBS Ser 2019-1A CI A1 3.908% 09/25/57	06/01/2023	Paydown	24,527	24,527	24,616	24,550	(23)	(23)	24,527	414	09/25/2057	1.A
1109999999. Subtotal - Bonds - Industrial and Miscellaneous (Unaffiliated)						24,527	24,527	24,616	24,550	(23)	(23)	24,527	414	XXX	XXX
2509999997. Total - Bonds - Part 4						2,094,461	2,094,461	2,037,718	2,087,647	6,814	6,814	2,094,461	15,962	XXX	XXX
2509999998. Total - Bonds - Part 5						XXX	XXX	XXX	XXX	XXX	XXX	XXX	XXX	XXX	XXX	XXX	XXX	XXX	XXX	XXX	XXX
2509999999. Total - Bonds						2,094,461	2,094,461	2,037,718	2,087,647	6,814	6,814	2,094,461	15,962	XXX	XXX
4509999997. Total - Preferred Stocks - Part 4						XXX	XXX	XXX	XXX	XXX	XXX	XXX	XXX	XXX	XXX	XXX	XXX	XXX	XXX	XXX	XXX
4509999998. Total - Preferred Stocks - Part 5						XXX	XXX	XXX	XXX	XXX	XXX	XXX	XXX	XXX	XXX	XXX	XXX	XXX	XXX	XXX	XXX
4509999999. Total - Preferred Stocks						XXX	XXX	XXX	XXX	XXX	XXX	XXX	XXX	XXX	XXX	XXX	XXX	XXX	XXX	XXX	XXX
5989999997. Total - Common Stocks - Part 4						XXX	XXX	XXX	XXX	XXX	XXX	XXX	XXX	XXX	XXX	XXX	XXX	XXX	XXX	XXX	XXX
5989999998. Total - Common Stocks - Part 5						XXX	XXX	XXX	XXX	XXX	XXX	XXX	XXX	XXX	XXX	XXX	XXX	XXX	XXX	XXX	XXX
5989999999. Total - Common Stocks						XXX	XXX	XXX	XXX	XXX	XXX	XXX	XXX	XXX	XXX	XXX	XXX	XXX	XXX	XXX	XXX
5999999999. Total - Preferred and Common Stocks						XXX	XXX	XXX	XXX	XXX	XXX	XXX	XXX	XXX	XXX	XXX	XXX	XXX	XXX	XXX	XXX
.....
.....
6009999999 - Totals						2,094,461	XXX	2,037,718	2,087,647	6,814	6,814	2,094,461	15,962	XXX	XXX

Schedule DB - Part A - Section 1 - Options, Caps, Floors, Collars, Swaps and Forwards Open
N O N E

Schedule DB - Part B - Section 1 - Futures Contracts Open
N O N E

Schedule DB - Part B - Section 1B - Brokers with whom cash deposits have been made
N O N E

Schedule DB - Part D - Section 1 - Counterparty Exposure for Derivative Instruments Open
N O N E

Schedule DB - Part D-Section 2 - Collateral for Derivative Instruments Open - Pledged By
N O N E

Schedule DB - Part D-Section 2 - Collateral for Derivative Instruments Open - Pledged To
N O N E

Schedule DB - Part E - Derivatives Hedging Variable Annuity Guarantees
N O N E

Schedule DL - Part 1 - Reinvested Collateral Assets Owned
N O N E

Schedule DL - Part 2 - Reinvested Collateral Assets Owned
N O N E

SCHEDULE E - PART 1 - CASH

[illegible]

SCHEDULE E - PART 2 - CASH EQUIVALENTS

[illegible]

SUPPLEMENT FOR THE QUARTER ENDING JUNE 30, 2023 OF THE FREEDOM SPECIALTY INSURANCE COMPANY

DIRECTOR AND OFFICER INSURANCE COVERAGE SUPPLEMENT

Year To Date For The Period Ended JUNE 30, 2023

NAIC Group Code 0140NAIC Company Code 22209

Company Name FREEDOM SPECIALTY INSURANCE COMPANY

If the reporting entity writes any director and officer (D&O) business, please provide the following:

1. Monoline Policies

1 Direct Written Premium	2 Direct Earned Premium	3 Direct Losses Incurred
\$ 73,097,589	\$ 87,926,970	\$ 63,142,751

2. Commercial Multiple Peril (CMP) Packaged Policies

2.1 Does the reporting entity provide D&O liability coverage as part of a CMP packaged policy? Yes [] No [X]

2.2 Can the direct premium earned for D&O liability coverage provided as part of a CMP packaged policy be quantified or estimated? Yes [] No [X]

2.3 If the answer to question 2.2 is yes, provide the quantified or estimated direct premium earned amount for D&O liability coverage in CMP packaged policies

2.31 Amount quantified:.....\$

2.32 Amount estimated using reasonable assumptions:..... \$

2.4 If the answer to question 2.1 is yes, provide direct losses incurred (losses paid plus change in case reserves) for the D&O liability coverage provided in CMP packaged policies. \$