



PROPERTY AND CASUALTY COMPANIES - ASSOCIATION EDITION

QUARTERLY STATEMENT
AS OF JUNE 30, 2023
OF THE CONDITION AND AFFAIRS OF THE
CRESTBROOK INSURANCE COMPANY

NAIC Group Code 0140 0140 NAIC Company Code 18961 Employer's ID Number 68-0066866
(Current) (Prior)

Organized under the Laws of OHIO, State of Domicile or Port of Entry OH

Country of Domicile United States of America

Incorporated/Organized 07/09/1985 Commenced Business 06/05/1985

Statutory Home Office ONE WEST NATIONWIDE BLVD., COLUMBUS, OH, US 43215-2220
(Street and Number) (City or Town, State, Country and Zip Code)

Main Administrative Office 18700 N. HAYDEN ROAD
(Street and Number)
SCOTTSDALE, AZ, US 85255, 480-365-4000
(City or Town, State, Country and Zip Code) (Area Code) (Telephone Number)

Mail Address ONE WEST NATIONWIDE BLVD., 1-14-301, COLUMBUS, OH, US 43215-2220
(Street and Number or P.O. Box) (City or Town, State, Country and Zip Code)

Primary Location of Books and Records ONE WEST NATIONWIDE BLVD., 1-14-301
(Street and Number)
COLUMBUS, OH, US 43215-2220, 614-249-1545
(City or Town, State, Country and Zip Code) (Area Code) (Telephone Number)

Internet Website Address WWW.NATIONWIDE.COM

Statutory Statement Contact ANDREA D. IACOBONI, 614-249-1545
(Name) (Area Code) (Telephone Number)
FINRPT@NATIONWIDE.COM, 866-315-1430
(E-mail Address) (FAX Number)

OFFICERS

PRESIDENT ELIZABETH MARGARET RICZKO VP & TREASURER PETER JUSTIN ROTHERMEL
SVP & SECRETARY DENISE LYNN SKINGLE

OTHER

PAMELA ANN BIESECKER, SVP-HEAD OF TAXATION

DIRECTORS OR TRUSTEES

CHARLES ANTHONY BEAL # MARK ALLEN BERVEN OSCAR GUERRERO
BRADLEY HIATT LEMONS ELIZABETH MARGARET RICZKO

State of OHIO SS:
County of FRANKLIN

The officers of this reporting entity being duly sworn, each depose and say that they are the described officers of said reporting entity, and that on the reporting period stated above, all of the herein described assets were the absolute property of the said reporting entity, free and clear from any liens or claims thereon, except as herein stated, and that this statement, together with related exhibits, schedules and explanations therein contained, annexed or referred to, is a full and true statement of all the assets and liabilities and of the condition and affairs of the said reporting entity as of the reporting period stated above, and of its income and deductions therefrom for the period ended, and have been completed in accordance with the NAIC Annual Statement Instructions and Accounting Practices and Procedures manual except to the extent that: (1) state law may differ; or, (2) that state rules or regulations require differences in reporting not related to accounting practices and procedures, according to the best of their information, knowledge and belief, respectively. Furthermore, the scope of this attestation by the described officers also includes the related corresponding electronic filing with the NAIC, when required, that is an exact copy (except for formatting differences due to electronic filing) of the enclosed statement. The electronic filing may be requested by various regulators in lieu of or in addition to the enclosed statement.

ELIZABETH MARGARET RICZKO
PRESIDENT

DENISE LYNN SKINGLE
SVP & SECRETARY

PETER JUSTIN ROTHERMEL
VP & TREASURER

Subscribed and sworn to before me this 24th day of JULY 2023

- a. Is this an original filing? Yes [X] No []
- b. If no,
1. State the amendment number.....
2. Date filed
3. Number of pages attached.....



ANDREW SWARTZEL
NOTARY PUBLIC • STATE OF OHIO
Comm. No. 2021-RE-839107
My Commission Expires Oct. 24, 2026

STATEMENT AS OF JUNE 30, 2023 OF THE CRESTBROOK INSURANCE COMPANY

ASSETS

	Current Statement Date			4 December 31 Prior Year Net Admitted Assets
	1 Assets	2 Nonadmitted Assets	3 Net Admitted Assets (Cols. 1 - 2)	
1. Bonds	66,681,602		66,681,602	62,770,355
2. Stocks:				
2.1 Preferred stocks				
2.2 Common stocks				
3. Mortgage loans on real estate:				
3.1 First liens				
3.2 Other than first liens.....				
4. Real estate:				
4.1 Properties occupied by the company (less \$0 encumbrances)				
4.2 Properties held for the production of income (less \$0 encumbrances)				
4.3 Properties held for sale (less \$0 encumbrances)				
5. Cash (\$ 201,858), cash equivalents (\$ 1,085,620) and short-term investments (\$)	1,287,478		1,287,478	2,305,682
6. Contract loans (including \$0 premium notes)				
7. Derivatives				
8. Other invested assets				
9. Receivables for securities				
10. Securities lending reinvested collateral assets				
11. Aggregate write-ins for invested assets				
12. Subtotals, cash and invested assets (Lines 1 to 11)	67,969,080		67,969,080	65,076,037
13. Title plants less \$0 charged off (for Title insurers only)				
14. Investment income due and accrued	496,081	5,594	490,487	433,749
15. Premiums and considerations:				
15.1 Uncollected premiums and agents' balances in the course of collection	10,911,102	98,416	10,812,686	12,350,842
15.2 Deferred premiums, agents' balances and installments booked but deferred and not yet due (including \$0 earned but unbilled premiums)	143,080,546		143,080,546	124,425,376
15.3 Accrued retrospective premiums (\$0) and contracts subject to redetermination (\$0)				
16. Reinsurance:				
16.1 Amounts recoverable from reinsurers	31,855,283		31,855,283	21,483,204
16.2 Funds held by or deposited with reinsured companies	7,291		7,291	4,559
16.3 Other amounts receivable under reinsurance contracts	9,006,029		9,006,029	7,916,531
17. Amounts receivable relating to uninsured plans				
18.1 Current federal and foreign income tax recoverable and interest thereon				
18.2 Net deferred tax asset	505,377	484,004	21,373	79,957
19. Guaranty funds receivable or on deposit				
20. Electronic data processing equipment and software				
21. Furniture and equipment, including health care delivery assets (\$0)				
22. Net adjustment in assets and liabilities due to foreign exchange rates				
23. Receivables from parent, subsidiaries and affiliates	4,437,860		4,437,860	9,609,548
24. Health care (\$0) and other amounts receivable				
25. Aggregate write-ins for other than invested assets				
26. Total assets excluding Separate Accounts, Segregated Accounts and Protected Cell Accounts (Lines 12 to 25)	268,268,649	588,014	267,680,635	241,379,803
27. From Separate Accounts, Segregated Accounts and Protected Cell Accounts				
28. Total (Lines 26 and 27)	268,268,649	588,014	267,680,635	241,379,803
DETAILS OF WRITE-INS				
1101.				
1102.				
1103.				
1198. Summary of remaining write-ins for Line 11 from overflow page				
1199. Totals (Lines 1101 through 1103 plus 1198)(Line 11 above)				
2501.				
2502.				
2503.				
2598. Summary of remaining write-ins for Line 25 from overflow page				
2599. Totals (Lines 2501 through 2503 plus 2598)(Line 25 above)				

STATEMENT AS OF JUNE 30, 2023 OF THE CRESTBROOK INSURANCE COMPANY

LIABILITIES, SURPLUS AND OTHER FUNDS

	1 Current Statement Date	2 December 31, Prior Year
1. Losses (current accident year \$0)		
2. Reinsurance payable on paid losses and loss adjustment expenses		
3. Loss adjustment expenses		
4. Commissions payable, contingent commissions and other similar charges		
5. Other expenses (excluding taxes, licenses and fees)		
6. Taxes, licenses and fees (excluding federal and foreign income taxes)		
7.1 Current federal and foreign income taxes (including \$ (5,775) on realized capital gains (losses))	205,872	455,896
7.2 Net deferred tax liability		
8. Borrowed money \$0 and interest thereon \$0		
9. Unearned premiums (after deducting unearned premiums for ceded reinsurance of \$312,480,877 and including warranty reserves of \$0 and accrued accident and health experience rating refunds including \$ for medical loss ratio rebate per the Public Health Service Act)		
10. Advance premium		
11. Dividends declared and unpaid:		
11.1 Stockholders		
11.2 Policyholders		
12. Ceded reinsurance premiums payable (net of ceding commissions)	198,147,263	175,683,890
13. Funds held by company under reinsurance treaties	7,291	4,559
14. Amounts withheld or retained by company for account of others		
15. Remittances and items not allocated	1,844,977	70,726
16. Provision for reinsurance (including \$0 certified)		
17. Net adjustments in assets and liabilities due to foreign exchange rates		
18. Drafts outstanding		
19. Payable to parent, subsidiaries and affiliates	1,512,446	3,548
20. Derivatives		
21. Payable for securities		
22. Payable for securities lending		
23. Liability for amounts held under uninsured plans		
24. Capital notes \$0 and interest thereon \$0		
25. Aggregate write-ins for liabilities	(39,360)	(39,360)
26. Total liabilities excluding protected cell liabilities (Lines 1 through 25)	201,678,489	176,179,259
27. Protected cell liabilities		
28. Total liabilities (Lines 26 and 27)	201,678,489	176,179,259
29. Aggregate write-ins for special surplus funds		
30. Common capital stock	4,500,000	4,500,000
31. Preferred capital stock		
32. Aggregate write-ins for other than special surplus funds		
33. Surplus notes		
34. Gross paid in and contributed surplus	41,080,796	41,080,796
35. Unassigned funds (surplus)	20,421,350	19,619,748
36. Less treasury stock, at cost:		
36.10 shares common (value included in Line 30 \$0)		
36.20 shares preferred (value included in Line 31 \$0)		
37. Surplus as regards policyholders (Lines 29 to 35, less 36)	66,002,146	65,200,544
38. Totals (Page 2, Line 28, Col. 3)	267,680,635	241,379,803
DETAILS OF WRITE-INS		
2501. Miscellaneous liabilities	(39,360)	(39,360)
2502.		
2503.		
2598. Summary of remaining write-ins for Line 25 from overflow page		
2599. Totals (Lines 2501 through 2503 plus 2598)(Line 25 above)	(39,360)	(39,360)
2901.		
2902.		
2903.		
2998. Summary of remaining write-ins for Line 29 from overflow page		
2999. Totals (Lines 2901 through 2903 plus 2998)(Line 29 above)		
3201.		
3202.		
3203.		
3298. Summary of remaining write-ins for Line 32 from overflow page		
3299. Totals (Lines 3201 through 3203 plus 3298)(Line 32 above)		

STATEMENT AS OF JUNE 30, 2023 OF THE CRESTBROOK INSURANCE COMPANY

STATEMENT OF INCOME

	1 Current Year to Date	2 Prior Year to Date	3 Prior Year Ended December 31
UNDERWRITING INCOME			
1. Premiums earned:			
1.1 Direct (written \$313,893,996)	290,474,591	263,516,670	544,177,383
1.2 Assumed (written \$82,754)	71,579	32,686	76,006
1.3 Ceded (written \$313,976,750)	290,546,170	263,549,356	544,253,389
1.4 Net (written \$)			
DEDUCTIONS:			
2. Losses incurred (current accident year \$0):			
2.1 Direct	217,533,749	176,023,929	396,361,065
2.2 Assumed	57,179	22,195	54,479
2.3 Ceded	217,590,928	176,046,124	396,415,544
2.4 Net			
3. Loss adjustment expenses incurred			
4. Other underwriting expenses incurred			
5. Aggregate write-ins for underwriting deductions			
6. Total underwriting deductions (Lines 2 through 5)			
7. Net income of protected cells			
8. Net underwriting gain (loss) (Line 1 minus Line 6 + Line 7)			
INVESTMENT INCOME			
9. Net investment income earned	904,555	820,413	1,676,703
10. Net realized capital gains (losses) less capital gains tax of \$(5,775)	4,545	(5,644)	(116,260)
11. Net investment gain (loss) (Lines 9 + 10)	909,100	814,769	1,560,443
OTHER INCOME			
12. Net gain or (loss) from agents' or premium balances charged off (amount recovered \$0 amount charged off \$0)			
13. Finance and service charges not included in premiums			
14. Aggregate write-ins for miscellaneous income			
15. Total other income (Lines 12 through 14)			
16. Net income before dividends to policyholders, after capital gains tax and before all other federal and foreign income taxes (Lines 8 + 11 + 15)	909,100	814,769	1,560,443
17. Dividends to policyholders			
18. Net income, after dividends to policyholders, after capital gains tax and before all other federal and foreign income taxes (Line 16 minus Line 17)	909,100	814,769	1,560,443
19. Federal and foreign income taxes incurred	211,647	231,382	477,379
20. Net income (Line 18 minus Line 19)(to Line 22)	697,453	583,387	1,083,064
CAPITAL AND SURPLUS ACCOUNT			
21. Surplus as regards policyholders, December 31 prior year	65,200,544	68,060,393	68,060,393
22. Net income (from Line 20)	697,453	583,387	1,083,064
23. Net transfers (to) from Protected Cell accounts			
24. Change in net unrealized capital gains (losses) less capital gains tax of \$34,174	128,560	296,321	508,212
25. Change in net unrealized foreign exchange capital gain (loss)			
26. Change in net deferred income tax	(42,410)	116,463	161,007
27. Change in nonadmitted assets	296,973	(531,300)	(441,260)
28. Change in provision for reinsurance			
29. Change in surplus notes			
30. Surplus (contributed to) withdrawn from protected cells			
31. Cumulative effect of changes in accounting principles			
32. Capital changes:			
32.1 Paid in			
32.2 Transferred from surplus (Stock Dividend)			
32.3 Transferred to surplus			
33. Surplus adjustments:			
33.1 Paid in			2,500,000
33.2 Transferred to capital (Stock Dividend)			
33.3 Transferred from capital			
34. Net remittances from or (to) Home Office			
35. Dividends to stockholders			(6,800,000)
36. Change in treasury stock			
37. Aggregate write-ins for gains and losses in surplus	(278,974)	234,373	129,128
38. Change in surplus as regards policyholders (Lines 22 through 37).....	801,602	699,244	(2,859,849)
39. Surplus as regards policyholders, as of statement date (Lines 21 plus 38)	66,002,146	68,759,637	65,200,544
DETAILS OF WRITE-INS			
0501.			
0502.			
0503.			
0598. Summary of remaining write-ins for Line 5 from overflow page			
0599. Totals (Lines 0501 through 0503 plus 0598)(Line 5 above)			
1401.			
1402.			
1403.			
1498. Summary of remaining write-ins for Line 14 from overflow page			
1499. Totals (Lines 1401 through 1403 plus 1498)(Line 14 above)			
3701. Change in surplus – pooled nonadmitted premiums in the course of collection offset	(278,974)	234,373	129,128
3702.			
3703.			
3798. Summary of remaining write-ins for Line 37 from overflow page			
3799. Totals (Lines 3701 through 3703 plus 3798)(Line 37 above)	(278,974)	234,373	129,128

STATEMENT AS OF JUNE 30, 2023 OF THE CRESTBROOK INSURANCE COMPANY

CASH FLOW

	1 Current Year To Date	2 Prior Year To Date	3 Prior Year Ended December 31
Cash from Operations			
1. Premiums collected net of reinsurance	5,346,358	2,014,680	1,377,134
2. Net investment income	924,163	725,332	1,685,738
3. Miscellaneous income	(2,732)	(1,071)	(2,358)
4. Total (Lines 1 to 3)	6,267,789	2,738,941	3,060,514
5. Benefit and loss related payments	10,372,079	7,211,373	6,430,596
6. Net transfers to Separate Accounts, Segregated Accounts and Protected Cell Accounts			
7. Commissions, expenses paid and aggregate write-ins for deductions	1,089,498	711,953	195,136
8. Dividends paid to policyholders			
9. Federal and foreign income taxes paid (recovered) net of \$ 21,483 tax on capital gains (losses)	455,896	298,032	298,032
10. Total (Lines 5 through 9)	11,917,473	8,221,358	6,923,764
11. Net cash from operations (Line 4 minus Line 10)	(5,649,684)	(5,482,417)	(3,863,250)
Cash from Investments			
12. Proceeds from investments sold, matured or repaid:			
12.1 Bonds	522,782	1,370,161	6,652,843
12.2 Stocks			
12.3 Mortgage loans			
12.4 Real estate			
12.5 Other invested assets			
12.6 Net gains or (losses) on cash, cash equivalents and short-term investments			
12.7 Miscellaneous proceeds			
12.8 Total investment proceeds (Lines 12.1 to 12.7)	522,782	1,370,161	6,652,843
13. Cost of investments acquired (long-term only):			
13.1 Bonds	4,348,870	22,629,610	26,538,492
13.2 Stocks			
13.3 Mortgage loans			
13.4 Real estate			
13.5 Other invested assets			
13.6 Miscellaneous applications			1
13.7 Total investments acquired (Lines 13.1 to 13.6)	4,348,870	22,629,610	26,538,493
14. Net increase (or decrease) in contract loans and premium notes			
15. Net cash from investments (Line 12.8 minus Line 13.7 and Line 14)	(3,826,088)	(21,259,449)	(19,885,650)
Cash from Financing and Miscellaneous Sources			
16. Cash provided (applied):			
16.1 Surplus notes, capital notes			
16.2 Capital and paid in surplus, less treasury stock			2,500,000
16.3 Borrowed funds			
16.4 Net deposits on deposit-type contracts and other insurance liabilities			
16.5 Dividends to stockholders			6,800,000
16.6 Other cash provided (applied)	8,457,568	5,016,616	4,880,630
17. Net cash from financing and miscellaneous sources (Line 16.1 through Line 16.4 minus Line 16.5 plus Line 16.6)	8,457,568	5,016,616	580,630
RECONCILIATION OF CASH, CASH EQUIVALENTS AND SHORT-TERM INVESTMENTS			
18. Net change in cash, cash equivalents and short-term investments (Line 11, plus Lines 15 and 17) .	(1,018,204)	(21,725,250)	(23,168,270)
19. Cash, cash equivalents and short-term investments:			
19.1 Beginning of year	2,305,682	25,473,952	25,473,952
19.2 End of period (Line 18 plus Line 19.1)	1,287,478	3,748,702	2,305,682

Note: Supplemental disclosures of cash flow information for non-cash transactions:

--	--	--	--

NOTES TO THE FINANCIAL STATEMENTS

Note 1 – Summary of Significant Accounting Policies and Going Concern

A. Accounting Practices

The accompanying statutory financial statements of Crestbrook Insurance Company (the Company) have been prepared in conformity with accounting practices prescribed or permitted by the National Association of Insurance Commissioners (NAIC) and the State of Ohio.

The Ohio Department of Insurance (Department) recognizes only statutory accounting practices (SAP) prescribed or permitted by the State of Ohio for determining and reporting the financial condition and results of operations of an insurance company, as well as, determining its solvency under the Ohio Insurance law. The NAIC’s *Accounting Practices and Procedures Manual* (NAIC SAP) has been adopted as a component of prescribed or permitted practices by the State of Ohio. The Company has no statutory accounting practices that differ from the NAIC SAP.

A reconciliation of the Company’s net income and capital and surplus between NAIC SAP and practices prescribed and permitted by the State of Ohio is shown below:

	SSAP #	F/S Page	F/S Line #	2023	2022
Net Income					
(1) Crestbrook Insurance Company state basis (Page 4, Line 20, Columns 1 & 3)	XXX	XXX	XXX	\$ 697,453	\$ 1,083,064
(2) State Prescribed Practice that is an increase/(decrease) from NAIC SAP				-	-
(3) State Permitted Practice that is an increase/(decrease) from NAIC SAP				-	-
(4) NAIC SAP (1-2-3=4)	XXX	XXX	XXX	\$ 697,453	\$ 1,083,064
Surplus					
(5) Crestbrook Insurance Company state basis (Page 3, Line 37, Columns 1 & 2)	XXX	XXX	XXX	\$ 66,002,146	\$ 65,200,544
(6) State Prescribed Practice that is an increase/(decrease) from NAIC SAP				-	-
(7) State Permitted Practice that is an increase/(decrease) from NAIC SAP				-	-
(8) NAIC SAP (5-6-7=8)	XXX	XXX	XXX	\$ 66,002,146	\$ 65,200,544

B. Use of Estimates in the Preparation of the Financial Statements

There were no changes that were considered significant to the Company from prior year end.

C. Accounting Policies

1. There were no changes that were considered significant to the Company from prior year end.
2. Bonds, excluding loan-backed and structured securities, are stated at amortized cost except those with an NAIC designation of “3” through “6”, which are stated at the lower of amortized cost or fair value. Amortization of premiums and discounts is calculated using the effective yield method. The Company does not hold any mandatory convertible securities or Securities Valuation Office (SVO) identified investments.
- 3-5. There were no changes that were considered significant to the Company from prior year end.
6. Loan-backed and structured securities (collectively, loan-backed securities) are stated at amortized cost or the lower of amortized cost or fair value in accordance with the provisions of Statement of Statutory Accounting Principles (SSAP) No. 43 Revised – Loan-Backed and Structured Securities and the Purposes and Procedures Manual of the NAIC SVO. The retrospective adjustment method is used to value loan-backed securities where the collection of all contractual cash flows is probable. For all other loan-backed securities, the Company uses the prospective adjustment method. Refer to Note 5(D) for a discussion of the other-than-temporary impairment policy for loan-backed securities.
- 7-13. There were no changes that were considered significant to the Company from prior year end.

D. Going Concern

Not applicable.

Note 2 – Accounting Changes and Corrections of Errors

Not applicable.

Note 3 – Business Combinations and Goodwill

Not applicable.

Note 4 – Discontinued Operations

Not applicable.

Note 5 – Investments

A. Mortgage Loans

Not applicable.

B. Troubled Debt Restructuring

Not applicable.

C. Reverse Mortgages

Not applicable.

D. Loan-Backed Securities

1. Prepayment assumptions are generally obtained using a model provided by a third-party vendor.
2. Not applicable.

NOTES TO THE FINANCIAL STATEMENTS

3. Not applicable.
4. All impaired securities (fair value is less than cost or amortized cost) for which an other-than-temporary impairment has not been recognized in earnings as a realized loss (including securities with a recognized other-than-temporary impairment for non-interest related declines when a non-recognized interest related impairment remains):

a. The aggregate amount of unrealized losses:	1. Less than 12 Months	\$ (29,220)
	2. 12 Months or Longer	\$ (1,474,976)

b. The aggregate related fair value of securities with unrealized losses:	1. Less than 12 Months	\$ 683,468
	2. 12 Months or Longer	\$ 9,737,049

5. The Company reviews all loan-backed and structured securities in which the fair value of the given security is less than the amortized cost to determine if a given security is other-than-temporarily impaired. The Company examines characteristics of the underlying collateral, such as delinquency and default rates, the quality of the underlying borrower, the type of collateral in the pool, the vintage year of the collateral, subordination levels within the structure of the collateral pool, and the quality of any credit guarantors, to determine the cash flows expected to be received for the security. If the severity and duration of the security's unrealized loss indicates a risk of an other-than-temporary impairment, then the Company will evaluate if the amortized cost basis of the security will be recovered by comparing the present value of the cash flows expected to be received for the given security with the amortized cost basis of the security. If the present value of cash flows is greater than the amortized cost basis of a security, then the security is deemed not to be other-than-temporarily impaired.

E. Dollar Repurchase Agreements and/or Securities Lending Transactions

Not applicable, as the Company does not participate in a securities lending program and has no open dollar repurchase agreements.

F. Repurchase Agreements Transactions Accounted for as Secured Borrowing

Not applicable.

G. Reverse Repurchase Agreements Transactions Accounted for as Secured Borrowing

Not applicable.

H. Repurchase Agreements Transactions Accounted for as a Sale

Not applicable.

I. Reverse Repurchase Agreements Transactions Accounted for as a Sale

Not applicable.

J. Real Estate

Not applicable.

K. Low-Income Housing Tax Credits

Not applicable.

L. Restricted Assets

There were no changes that were considered significant to the Company from prior year end.

M. Working Capital Finance Investments

Not applicable.

N. Offsetting and Netting of Assets and Liabilities

No assets or liabilities are offset and reported net in accordance with a valid right to offset per SSAP No 64, *Offsetting and Netting of Assets and Liabilities*.

O. 5GI Securities

Not applicable.

P. Short Sales

Not applicable.

Q. Prepayment Penalty and Acceleration Fees

Not applicable.

R. Reporting Entity's Share of Cash Pool by Asset Type

Asset Type	Percent Share
(1) Cash	1%
(2) Cash equivalents	90%
(3) Short-term investments	9%
(4) Total	100%

Note 6 – Joint Ventures, Partnerships and Limited Liability Companies

There were no changes that were considered significant to the Company from prior year end.

Note 7 – Investment Income

There were no changes that were considered significant to the Company from prior year end.

NOTES TO THE FINANCIAL STATEMENTS

Note 8 – Derivative Instruments

Not applicable.

Note 9 – Income Taxes

There were no changes that were considered significant to the Company from prior year end, except for the following.

In August 2022, the Inflation Reduction Act of 2022 (“Act”) was passed by the US Congress and signed into law. The Act includes a new Federal corporate alternative minimum tax (“CAMT”), effective in 2023, that is based on the adjusted financial statement income (“AFSI”) set forth on the applicable financial statement (“AFS”) of an applicable corporation. A corporation is an applicable corporation if its rolling average pre-tax AFSI over three prior years (starting with 2020-2022) is greater than \$1 billion. For a group of related entities, the \$1 billion threshold is determined on a group basis, and the group’s AFS is generally treated as the AFS for all separate taxpayers in the group. Except under limited circumstances, once a corporation is an applicable corporation, it is an applicable corporation in all future years.

An applicable corporation is not automatically subject to a CAMT liability. The corporation’s tentative CAMT liability is equal to 15% of its adjusted AFSI, and CAMT is payable to the extent the tentative CAMT liability exceeds regular corporate income tax. However, any CAMT paid would be indefinitely available as a credit carryover that could reduce future regular tax in excess of CAMT.

The Company comprises a controlled group of corporations and has determined that it likely will be an applicable corporation in 2023. In making such determination, the group has made certain interpretations of, and assumptions regarding, the CAMT provisions of the Act. The US Treasury Department is expected to issue guidance throughout 2023 that may differ from the group’s interpretations and assumptions and that could alter the group’s determination.

In accordance with INT 22-02, the Company did not include an estimate of the impacts of the CAMT because a reasonable estimate cannot be made as of June 30, 2023.

Note 10 – Information Concerning Parent, Subsidiaries, Affiliates and Other Related Parties

There were no changes that were considered significant to the Company from prior year end.

Note 11 – Debt

Not applicable.

Note 12 – Retirement Plans, Deferred Compensation, Postemployment Benefits and Compensated Absences and Other Postretirement Benefit Plans

Not applicable.

Note 13 – Capital and Surplus, Dividend Restrictions and Quasi-Reorganizations

There were no changes that were considered significant to the Company from prior year end.

Note 14 – Liabilities, Contingencies and Assessments

There were no changes that were considered significant to the Company from prior year end.

Note 15 – Leases

Not applicable.

Note 16 – Information about Financial Instruments with Off-Balance Sheet Risk and Financial Instruments with Concentrations of Credit Risk

Not applicable.

Note 17 – Sale, Transfer and Servicing of Financial Assets and Extinguishments of Liabilities

A. Transfers of Receivables Reported as Sales

Not applicable.

B. Transfers and Servicing of Financial Assets

Not applicable.

C. Wash Sales

Not applicable.

Note 18 – Gain or Loss to the Reporting Entity from Uninsured Plans and the Uninsured Portion of Partially Insured Plans

Not applicable.

Note 19 – Direct Premium Written/Produced by Managing General Agents/Third Party Administrators

Not applicable.

Note 20 – Fair Value Measurements

A. Fair value is defined as the price that would be received to sell an asset or paid to transfer a liability in an orderly transaction between market participants at the measurement date. Fair value measurements are based upon observable and unobservable inputs. Observable inputs reflect market data obtained from independent sources while unobservable inputs reflect the Company’s view of market assumptions in the absence of observable market information. The Company utilizes valuation techniques that maximize the use of observable inputs and minimize the use of unobservable inputs. In determining fair value, the Company uses various methods including market, income and cost approaches.

The Company categorizes its financial instruments into a three-level hierarchy based on the priority of the inputs to the valuation technique. The fair value hierarchy gives the highest priority to quoted prices in active markets for identical assets or liabilities (Level 1) and the lowest priority to unobservable inputs (Level 3). If the inputs used to measure fair value fall within different levels of the hierarchy, the category level is based on the lowest priority level input that is significant to the fair value measurement of the instrument in its entirety.

The Company categorizes assets and liabilities held at fair value in the statutory statements of assets and liabilities, surplus and other funds as follows:

NOTES TO THE FINANCIAL STATEMENTS

Level 1. Unadjusted quoted prices accessible in active markets for identical assets or liabilities at the measurement date and mutual funds where the value per share (unit) is determined and published daily and is the basis for current transactions.

Level 2. Unadjusted quoted prices for similar assets or liabilities in active markets, quoted prices for identical or similar assets or liabilities in markets that are not active or inputs (other than quoted prices) that are observable or that are derived principally from or corroborated by observable market data through correlation or other means. Primary inputs to this valuation technique may include comparative trades, bid/asks, interest rate movements, U.S. Treasury rates, London Interbank Offered Rate, Secured Overnight Finance Rate, prime rates, cash flows, maturity dates, call ability, estimated prepayments and/or underlying collateral values.

Level 3. Prices or valuation techniques that require inputs that are both unobservable and significant to the overall fair value measurement. Inputs reflect management's best estimates of the assumptions market participants would use at the measurement date in pricing the asset or liability. Consideration is given to the risk inherent in both the method of valuation and the valuation inputs. Primary inputs to this valuation technique include broker quotes and comparative trades.

The Company reviews its fair value hierarchy classifications for assets and liabilities quarterly. Changes in the observability of significant valuation inputs identified during these reviews may trigger reclassifications. Reclassifications are reported as transfers at the beginning of the reporting period in which the change occurs.

Independent pricing services are most often utilized, and compared to pricing from additional sources when available, to determine the fair value of bonds and stocks for which market quotations or quotations on comparable securities or models are used. For these bonds and stocks, the Company obtains the pricing services' methodologies and classifies the investments accordingly in the fair value hierarchy.

A corporate pricing matrix is used in valuing certain corporate bonds. The corporate pricing matrix was developed using publicly available spreads for certain privately placed corporate bonds with varying weighted average lives and credit quality ratings. The weighted average life and credit quality rating of a particular bond to be priced using the corporate pricing matrix are important inputs into the model and are used to determine a corresponding spread that is added to the appropriate U.S. Treasury yield to create an estimated market yield for that bond. The estimated market yield and other relevant factors are then used to estimate the fair value of the particular bond.

Non-binding broker quotes are also utilized to determine the fair value of certain bonds when deemed appropriate or when valuations are not available from independent pricing services or a corporate pricing matrix. These bonds are classified with the lowest priority in the fair value hierarchy as only one broker quote is ordinarily obtained, the investment is not traded on an exchange, the pricing is not available to other entities and/or the transaction volume in the same or similar investments has decreased. Inputs used in the development of prices are not provided to the Company by the brokers as the brokers often do not provide the necessary transparency into their quotes and methodologies. At least annually, the Company performs reviews and tests to ensure that quotes are a reasonable estimate of the investments' fair value. Price movements of broker quotes are subject to validation and require approval from the Company's management. Management uses its knowledge of the investment and current market conditions to determine if the price is indicative of the investment's fair value.

The Company carries short-term investments at amortized cost, which approximates fair value.

No assets or liabilities were held at fair value as of June 30, 2023.

B. & C. The following table summarizes the carrying value and fair value of the Company's assets not held at fair value as of June 30, 2023:

	Aggregate Fair Value	Admitted Assets	Level 1	Level 2	Level 3	Net Asset Value (NAV)	Not Practicable (Carrying Value)
Assets							
Bonds	\$60,070,442	\$66,681,602	\$22,356,886	\$37,713,556	\$-	\$-	\$-
Cash, cash equivalents and short-term investments	1,287,478	1,287,478	201,858	1,085,620	-	-	-
Total Assets	\$61,357,920	\$67,969,080	\$22,558,744	\$38,799,176	\$-	\$-	\$-

D. Not Practicable to Estimate Fair Value

Not applicable.

E. Measured using net asset value

Not applicable.

Note 21 – Other Items

There were no changes that were considered significant to the Company from prior year end.

Note 22 – Events Subsequent

Type I – Recognized Subsequent Events:

Subsequent events have been considered through August 4, 2023, for the statutory statement available to be issued on August 8, 2023.

There were no material Type I events occurring subsequent to the end of the period that merited recognition or disclosure in these statements that have not already been reflected as required.

Type II – Nonrecognized Subsequent Events:

Subsequent events have been considered through August 4, 2023, for the statutory statement available to be issued on August 8, 2023.

There were no material Type II events occurring subsequent to the end of the period that merited recognition or disclosure in these statements that have not already been reflected as required.

Note 23 – Reinsurance

There were no changes that were considered significant to the Company from prior year end.

Note 24 – Retrospectively Rated Contracts and Contracts Subject to Redetermination

Not applicable.

Note 25 – Changes in Incurred Losses and Loss Adjustment Expenses

The Company is a participant in a 100% pooling reinsurance agreement with Nationwide Mutual Insurance Company (as disclosed in Note 26), and as such has zero net incurred losses and loss adjustment expenses.

NOTES TO THE FINANCIAL STATEMENTS

Note 26 – Intercompany Pooling Arrangements

There were no changes that were considered significant to the Company from prior year end, except for the following:

Effective January 1, 2023, Nationwide Mutual Insurance Company (NMIC) completed a merger agreement with Nationwide Mutual Fire Insurance Company (Fire). Pursuant to the merger agreement, the operations of Fire were merged with and into NMIC, with NMIC continuing as the surviving entity. NMIC’s assumed pooling percentage increased from 71% to 94% as a result of the merger agreement.

NMIC is the lead company in the Nationwide Pool. Each pool member company contributes 100% of its underwriting results to the Nationwide Pool through the reinsurance pooling agreement.

As of June 30, 2023 and December 31, 2022, the companies in the Nationwide Pool assuming a proportionate share of the pool are:

	NAIC #	2023 Pool	2022 Pool
Nationwide Mutual Insurance Company	23787	94.0%	71.0%
Nationwide Mutual Fire Insurance Company	23779	0.0%	23.0%
Nationwide Agribusiness Insurance Company	28223	3.0%	3.0%
Nationwide Insurance Company of America	25453	1.0%	1.0%
National Casualty Company	11991	1.0%	1.0%
Nationwide General Insurance Company	23760	1.0%	1.0%

The following represents amounts due to/from the lead entity and pool participants as of June 30, 2023:

Name of Insurer	Amounts Receivable	Amounts Payable
Nationwide Mutual Insurance Company (Lead Insurer)	\$ 5,281,860,782	\$ 1,327,348,295
Nationwide General Insurance Company	\$ 206,745,130	\$ 679,971,388
Nationwide Property & Casualty Insurance Company	\$ 141,943,485	\$ 456,171,865
Nationwide Assurance Company	\$ 15,829,105	\$ 184,896,097
Nationwide Lloyds	\$ 5,354	\$ (97,947)
Nationwide Insurance Company of Florida	\$ 7,044,893	\$ 47,729,241
Nationwide Affinity Insurance Company of America	\$ 19,725,523	\$ 106,812,621
Crestbrook Insurance Company	\$ 31,855,283	\$ 182,009,222
Nationwide Insurance Company of America	\$ 196,499,099	\$ 612,073,725
Allied Insurance Company of America	\$ 12,625,680	\$ 43,732,990
AMCO Insurance Company	\$ 42,939,285	\$ 290,218,136
Allied Property & Casualty Insurance Company	\$ 36,218,007	\$ 146,535,397
Depositors Insurance Company	\$ 40,215,440	\$ 171,163,567
Nationwide Agribusiness Insurance Company	\$ 241,161,000	\$ 530,136,443
Victoria Fire & Casualty Company	\$ 463,254	\$ (546,919)
National Casualty Company	\$ 150,563,505	\$ 405,016,575
Scottsdale Insurance Company	\$ 118,743,283	\$ 1,098,472,690
Veterinary Pet Insurance Company	\$ 15,910,769	\$ 95,076,689
Nationwide Indemnity Company	\$ 11,445,152	\$ 206,051
Harleysville Insurance Company of New York	\$ 4,001,248	\$ 32,901,983
Harleysville Lake States Insurance Company	\$ (3,388,874)	\$ 1,283,464
Harleysville Insurance Company of New Jersey	\$ 5,886,039	\$ 35,501,832
Harleysville Worcester Insurance Company	\$ 8,775,441	\$ 57,047,781
Harleysville Insurance Company	\$ 15,600,669	\$ 80,266,250
Harleysville Preferred Insurance Company	\$ 6,629,890	\$ 25,281,642

Note 27 – Structured Settlements

Not applicable.

Note 28 – Health Care Receivables

Not applicable.

Note 29 – Participating Policies

Not applicable.

Note 30 – Premium Deficiency Reserves

There were no changes that were considered significant to the Company from prior year end.

Note 31 – High Deductibles

Not applicable.

Note 32 – Discounting of Liabilities for Unpaid Losses or Unpaid Loss Adjustment Expenses

Not applicable.

Note 33 – Asbestos/Environmental Reserves

Not applicable.

Note 34 – Subscriber Savings Accounts

Not applicable.

Note 35 – Multiple Peril Crop Insurance

Not applicable.

Note 36 – Financial Guaranty Insurance

Not applicable.

STATEMENT AS OF JUNE 30, 2023 OF THE CRESTBROOK INSURANCE COMPANY

GENERAL INTERROGATORIES

PART 1 - COMMON INTERROGATORIES

GENERAL

- 1.1

Did the reporting entity experience any material transactions requiring the filing of Disclosure of Material Transactions with the State of Domicile, as required by the Model Act?

Yes [] No [X]
- 1.2

If yes, has the report been filed with the domiciliary state?

Yes [] No []
- 2.1

Has any change been made during the year of this statement in the charter, by-laws, articles of incorporation, or deed of settlement of the reporting entity?

Yes [] No [X]
- 2.2

If yes, date of change:
- 3.1

Is the reporting entity a member of an Insurance Holding Company System consisting of two or more affiliated persons, one or more of which is an insurer?

If yes, complete Schedule Y, Parts 1 and 1A.

Yes [X] No []
- 3.2

Have there been any substantial changes in the organizational chart since the prior quarter end?

Yes [] No [X]
- 3.3

If the response to 3.2 is yes, provide a brief description of those changes.
- 3.4

Is the reporting entity publicly traded or a member of a publicly traded group?

Yes [] No [X]
- 3.5

If the response to 3.4 is yes, provide the CIK (Central Index Key) code issued by the SEC for the entity/group.
- 4.1

Has the reporting entity been a party to a merger or consolidation during the period covered by this statement?

Yes [] No [X]
- 4.2

If yes, provide the name of the entity, NAIC Company Code, and state of domicile (use two letter state abbreviation) for any entity that has ceased to exist as a result of the merger or consolidation.
- | | | |
|----------------|-------------------|-------------------|
| 1 | 2 | 3 |
| Name of Entity | NAIC Company Code | State of Domicile |
| | | |
5.

If the reporting entity is subject to a management agreement, including third-party administrator(s), managing general agent(s), attorney-in-fact, or similar agreement, have there been any significant changes regarding the terms of the agreement or principals involved?

If yes, attach an explanation.

Yes [] No [X] N/A []
- 6.1

State as of what date the latest financial examination of the reporting entity was made or is being made.

12/31/2021
- 6.2

State the as of date that the latest financial examination report became available from either the state of domicile or the reporting entity. This date should be the date of the examined balance sheet and not the date the report was completed or released.

12/31/2021
- 6.3

State as of what date the latest financial examination report became available to other states or the public from either the state of domicile or the reporting entity. This is the release date or completion date of the examination report and not the date of the examination (balance sheet date).

05/31/2023
- 6.4

By what department or departments?
OH
- 6.5

Have all financial statement adjustments within the latest financial examination report been accounted for in a subsequent financial statement filed with Departments?

Yes [] No [] N/A [X]
- 6.6

Have all of the recommendations within the latest financial examination report been complied with?

Yes [] No [] N/A [X]
- 7.1

Has this reporting entity had any Certificates of Authority, licenses or registrations (including corporate registration, if applicable) suspended or revoked by any governmental entity during the reporting period?

Yes [] No [X]
- 7.2

If yes, give full information:
- 8.1

Is the company a subsidiary of a bank holding company regulated by the Federal Reserve Board?

Yes [] No [X]
- 8.2

If response to 8.1 is yes, please identify the name of the bank holding company.
- 8.3

Is the company affiliated with one or more banks, thrifts or securities firms?

Yes [X] No []
- 8.4

If response to 8.3 is yes, please provide below the names and location (city and state of the main office) of any affiliates regulated by a federal regulatory services agency [i.e. the Federal Reserve Board (FRB), the Office of the Comptroller of the Currency (OCC), the Federal Deposit Insurance Corporation (FDIC) and the Securities Exchange Commission (SEC)] and identify the affiliate's primary federal regulator.

1 Affiliate Name	2 Location (City, State)	3 FRB	4 OCC	5 FDIC	6 SEC
Nationwide Trust Company, FSB	Columbus, OHNO...	..YES...	..NO...	..NO...
Nationwide Investment Services Corp.	Columbus, OHNO...	..NO...	..NO...	..YES...
Nationwide Investment Advisors, LLC	Columbus, OHNO...	..NO...	..NO...	..YES...
Nationwide Securities, LLC	Columbus, OHNO...	..NO...	..NO...	..YES...
Nationwide Fund Advisors	Columbus, OHNO...	..NO...	..NO...	..YES...
Nationwide Fund Distributors, LLC	Columbus, OHNO...	..NO...	..NO...	..YES...
Nationwide Asset Management, LLC	Columbus, OHNO...	..NO...	..NO...	..YES...

STATEMENT AS OF JUNE 30, 2023 OF THE CRESTBROOK INSURANCE COMPANY

GENERAL INTERROGATORIES

- 9.1

Are the senior officers (principal executive officer, principal financial officer, principal accounting officer or controller, or persons performing similar functions) of the reporting entity subject to a code of ethics, which includes the following standards?
(a) Honest and ethical conduct, including the ethical handling of actual or apparent conflicts of interest between personal and professional relationships;
(b) Full, fair, accurate, timely and understandable disclosure in the periodic reports required to be filed by the reporting entity;
(c) Compliance with applicable governmental laws, rules and regulations;
(d) The prompt internal reporting of violations to an appropriate person or persons identified in the code; and
(e) Accountability for adherence to the code.

Yes [X] No []
- 9.11

If the response to 9.1 is No, please explain:
.....
- 9.2

Has the code of ethics for senior managers been amended?

Yes [] No [X]
- 9.21

If the response to 9.2 is Yes, provide information related to amendment(s).
.....
- 9.3

Have any provisions of the code of ethics been waived for any of the specified officers?

Yes [] No [X]
- 9.31

If the response to 9.3 is Yes, provide the nature of any waiver(s).
.....

FINANCIAL

- 10.1

Does the reporting entity report any amounts due from parent, subsidiaries or affiliates on Page 2 of this statement?

Yes [X] No []
- 10.2

If yes, indicate any amounts receivable from parent included in the Page 2 amount:\$

INVESTMENT

- 11.1

Were any of the stocks, bonds, or other assets of the reporting entity loaned, placed under option agreement, or otherwise made available for use by another person? (Exclude securities under securities lending agreements.)

Yes [] No [X]
- 11.2

If yes, give full and complete information relating thereto:
.....
12.

Amount of real estate and mortgages held in other invested assets in Schedule BA:

\$
13.

Amount of real estate and mortgages held in short-term investments:

\$
- 14.1

Does the reporting entity have any investments in parent, subsidiaries and affiliates?

Yes [] No [X]
- 14.2

If yes, please complete the following:

	1	2
	Prior Year-End Book/Adjusted Carrying Value	Current Quarter Book/Adjusted Carrying Value
14.21 Bonds	\$	\$
14.22 Preferred Stock	\$	\$
14.23 Common Stock	\$	\$
14.24 Short-Term Investments	\$	\$
14.25 Mortgage Loans on Real Estate	\$	\$
14.26 All Other	\$	\$
14.27 Total Investment in Parent, Subsidiaries and Affiliates (Subtotal Lines 14.21 to 14.26)	\$	\$
14.28 Total Investment in Parent included in Lines 14.21 to 14.26 above	\$	\$

15.1

Has the reporting entity entered into any hedging transactions reported on Schedule DB?

Yes [] No [X]

15.2

If yes, has a comprehensive description of the hedging program been made available to the domiciliary state? Yes [] No [] N/A [X]
If no, attach a description with this statement.
.....

16.

For the reporting entity's security lending program, state the amount of the following as of the current statement date:

16.1

Total fair value of reinvested collateral assets reported on Schedule DL, Parts 1 and 2.

\$

16.2

Total book/adjusted carrying value of reinvested collateral assets reported on Schedule DL, Parts 1 and 2

\$

16.3

Total payable for securities lending reported on the liability page.

\$
- 7.1

STATEMENT AS OF JUNE 30, 2023 OF THE CRESTBROOK INSURANCE COMPANY

GENERAL INTERROGATORIES

17. Excluding items in Schedule E - Part 3 - Special Deposits, real estate, mortgage loans and investments held physically in the reporting entity's offices, vaults or safety deposit boxes, were all stocks, bonds and other securities, owned throughout the current year held pursuant to a custodial agreement with a qualified bank or trust company in accordance with Section 1, III - General Examination Considerations, F. Outsourcing of Critical Functions, Custodial or Safekeeping Agreements of the NAIC Financial Condition Examiners Handbook? Yes [X] No []
- 17.1 For all agreements that comply with the requirements of the NAIC Financial Condition Examiners Handbook, complete the following:

1 Name of Custodian(s)	2 Custodian Address
The Bank of New York Mellon	1 Wall Street, New York, NY 10286

- 17.2 For all agreements that do not comply with the requirements of the NAIC Financial Condition Examiners Handbook, provide the name, location and a complete explanation:

1 Name(s)	2 Location(s)	3 Complete Explanation(s)

- 17.3 Have there been any changes, including name changes, in the custodian(s) identified in 17.1 during the current quarter? Yes [] No [X]
- 17.4 If yes, give full information relating thereto:

1 Old Custodian	2 New Custodian	3 Date of Change	4 Reason

- 17.5 Investment management – Identify all investment advisors, investment managers, broker/dealers, including individuals that have the authority to make investment decisions on behalf of the reporting entity. For assets that are managed internally by employees of the reporting entity, note as such. ["...that have access to the investment accounts"; "...handle securities"]

1 Name of Firm or Individual	2 Affiliation
Members of the investment staff designated by the Chief Investment Officer as detailed in the Corporate Resolution	I.....

- 17.5097 For those firms/individuals listed in the table for Question 17.5, do any firms/individuals unaffiliated with the reporting entity (i.e. designated with a "U") manage more than 10% of the reporting entity's invested assets?..... Yes [] No [X]

- 17.5098 For firms/individuals unaffiliated with the reporting entity (i.e. designated with a "U") listed in the table for Question 17.5, does the total assets under management aggregate to more than 50% of the reporting entity's invested assets?..... Yes [] No [X]

- 17.6 For those firms or individuals listed in the table for 17.5 with an affiliation code of "A" (affiliated) or "U" (unaffiliated), provide the information for the table below.

1	2	3	4	5
Central Registration Depository Number	Name of Firm or Individual	Legal Entity Identifier (LEI)	Registered With	Investment Management Agreement (IMA) Filed

- 18.1 Have all the filing requirements of the Purposes and Procedures Manual of the NAIC Investment Analysis Office been followed? Yes [X] No []
- 18.2 If no, list exceptions:

.....

19. By self-designating 5GI securities, the reporting entity is certifying the following elements for each self-designated 5GI security:

a. Documentation necessary to permit a full credit analysis of the security does not exist or an NAIC CRP credit rating for an FE or PL security is not available.
b. Issuer or obligor is current on all contracted interest and principal payments.
c. The insurer has an actual expectation of ultimate payment of all contracted interest and principal.

Has the reporting entity self-designated 5GI securities? Yes [] No [X]

20. By self-designating PLGI securities, the reporting entity is certifying the following elements of each self-designated PLGI security:

a. The security was purchased prior to January 1, 2018.
b. The reporting entity is holding capital commensurate with the NAIC Designation reported for the security.
c. The NAIC Designation was derived from the credit rating assigned by an NAIC CRP in its legal capacity as a NRSRO which is shown on a current private letter rating held by the insurer and available for examination by state insurance regulators.
d. The reporting entity is not permitted to share this credit rating of the PL security with the SVO.

Has the reporting entity self-designated PLGI securities? Yes [] No [X]

21. By assigning FE to a Schedule BA non-registered private fund, the reporting entity is certifying the following elements of each self-designated FE fund:

a. The shares were purchased prior to January 1, 2019.
b. The reporting entity is holding capital commensurate with the NAIC Designation reported for the security.
c. The security had a public credit rating(s) with annual surveillance assigned by an NAIC CRP in its legal capacity as an NRSRO prior to January 1, 2019.
d. The fund only or predominantly holds bonds in its portfolio.
e. The current reported NAIC Designation was derived from the public credit rating(s) with annual surveillance assigned by an NAIC CRP in its legal capacity as an NRSRO.
f. The public credit rating(s) with annual surveillance assigned by an NAIC CRP has not lapsed.

Has the reporting entity assigned FE to Schedule BA non-registered private funds that complied with the above criteria? Yes [] No [X]

GENERAL INTERROGATORIES

PART 2 - PROPERTY & CASUALTY INTERROGATORIES

1.

If the reporting entity is a member of a pooling arrangement, did the agreement or the reporting entity's participation change?
If yes, attach an explanation.
.....

Yes [] No [X] N/A []
2.

Has the reporting entity reinsured any risk with any other reporting entity and agreed to release such entity from liability, in whole or in part, from any loss that may occur on the risk, or portion thereof, reinsured?
If yes, attach an explanation.
.....

Yes [] No [X]
- 3.1

Have any of the reporting entity's primary reinsurance contracts been canceled?

Yes [] No [X]
- 3.2

If yes, give full and complete information thereto.
.....
- 4.1

Are any of the liabilities for unpaid losses and loss adjustment expenses other than certain workers' compensation tabular reserves (see Annual Statement Instructions pertaining to disclosure of discounting for definition of " tabular reserves") discounted at a rate of interest greater than zero?

Yes [] No [X]

4.2 If yes, complete the following schedule:

			TOTAL DISCOUNT				DISCOUNT TAKEN DURING PERIOD			
1	2	3	4	5	6	7	8	9	10	11
Line of Business	Maximum Interest	Discount Rate	Unpaid Losses	Unpaid LAE	IBNR	TOTAL	Unpaid Losses	Unpaid LAE	IBNR	TOTAL
TOTAL										

5.

Operating Percentages:

5.1 A&H loss percent0.000 %

5.2 A&H cost containment percent0.000 %

5.3 A&H expense percent excluding cost containment expenses0.000 %
- 6.1

Do you act as a custodian for health savings accounts?

Yes [] No [X]
- 6.2

If yes, please provide the amount of custodial funds held as of the reporting date\$.....
- 6.3

Do you act as an administrator for health savings accounts?

Yes [] No [X]
- 6.4

If yes, please provide the balance of the funds administered as of the reporting date\$.....
7.

Is the reporting entity licensed or chartered, registered, qualified, eligible or writing business in at least two states?

Yes [X] No []
- 7.1

If no, does the reporting entity assume reinsurance business that covers risks residing in at least one state other than the state of domicile of the reporting entity?

Yes [] No []

STATEMENT AS OF JUNE 30, 2023 OF THE CRESTBROOK INSURANCE COMPANY

SCHEDULE F - CEDED REINSURANCE

Showing All New Reinsurers - Current Year to Date

[illegible]

STATEMENT AS OF JUNE 30, 2023 OF THE CRESTBROOK INSURANCE COMPANY

SCHEDULE T - EXHIBIT OF PREMIUMS WRITTEN

Current Year to Date - Allocated by States and Territories								
States, etc.	1 Active Status (a)	Direct Premiums Written		Direct Losses Paid (Deducting Salvage)		Direct Losses Unpaid		
		2 Current Year To Date	3 Prior Year To Date	4 Current Year To Date	5 Prior Year To Date	6 Current Year To Date	7 Prior Year To Date	
1. Alabama	AL	L	1,387,492	1,447,505	69,618	6,306,919	1,407,190	750,839
2. Alaska	AK	L	126,917	151,894	225,992	78,218	210,099	315,704
3. Arizona	AZ	L	12,256,262	11,577,119	7,911,790	12,487,039	15,447,586	12,127,742
4. Arkansas	AR	L	1,337,960	676,957	666,906	480,811	2,286,545	1,575,557
5. California	CA	L	47,790,525	50,457,131	36,243,075	43,525,797	111,075,303	94,144,249
6. Colorado	CO	L	15,004,064	11,322,042	9,411,797	14,535,473	22,257,096	17,795,043
7. Connecticut	CT	L	1,994,297	1,791,980	1,074,256	1,324,563	3,626,301	3,163,964
8. Delaware	DE	L						
9. District of Columbia	DC	L	1,100,915	973,660	198,965	450,443	671,264	489,069
10. Florida	FL	L	1,451,781	2,141,267	1,527,335	215,900	3,879,244	2,373,644
11. Georgia	GA	L	9,111,455	6,876,495	9,489,864	2,978,557	14,358,478	7,281,846
12. Hawaii	HI	L	169,191	134,733	13,468	5,179	111,505	73,076
13. Idaho	ID	L	2,802,073	2,272,870	1,168,558	1,167,794	3,047,264	3,099,670
14. Illinois	IL	L	16,786,987	15,497,437	11,020,321	9,586,893	29,368,827	18,733,289
15. Indiana	IN	L	7,304,956	7,250,838	2,933,082	4,513,958	8,893,237	7,531,826
16. Iowa	IA	L	3,596,235	5,422,346	4,178,514	2,157,959	11,017,161	6,824,686
17. Kansas	KS	L	17,671,951	16,505,016	6,486,736	8,990,015	16,326,442	12,930,658
18. Kentucky	KY	L	1,734,872	2,823,429	1,744,559	1,013,618	3,416,173	2,182,935
19. Louisiana	LA	L	6,622	967			190	132
20. Maine	ME	L						
21. Maryland	MD	L	8,449,095	6,979,688	5,523,758	3,425,426	7,976,021	5,684,984
22. Massachusetts	MA	L						
23. Michigan	MI	L	857,632	870,139	43,877	79,594	480,544	164,036
24. Minnesota	MN	L	11,536,436	7,094,408	4,427,114	3,933,029	10,123,152	8,243,922
25. Mississippi	MS	L	2,567,910	3,118,662	914,960	211,299	2,034,114	1,037,475
26. Missouri	MO	L	15,820,657	17,359,820	10,249,834	13,507,916	21,064,235	15,816,598
27. Montana	MT	L	829,075	888,173		7,648	188,454	122,183
28. Nebraska	NE	L	18,205,954	7,846,184	3,800,321	2,285,175	8,688,728	5,262,659
29. Nevada	NV	L	4,681,520	4,414,565	2,713,267	1,254,558	7,771,343	4,727,400
30. New Hampshire	NH	L	509	957			13	40
31. New Jersey	NJ	L	2,835,815	2,492,636	1,686,482	2,680,954	2,924,346	3,032,440
32. New Mexico	NM	L	1,590,882	1,472,796	381,278	1,410,368	1,644,043	1,169,432
33. New York	NY	L	3,162,122	2,049,372	719,165	676,792	1,487,964	566,861
34. North Carolina	NC	L	1,432,212	1,194,665	89,286	125,364	418,016	540,889
35. North Dakota	ND	L	2,809,787	702,320	232,609	53,384	505,958	498,857
36. Ohio	OH	L	3,647,426	3,086,689	1,576,097	1,089,579	4,233,574	2,756,740
37. Oklahoma	OK	L	1,665,911	1,442,454	2,738,416	1,351,868	2,699,715	1,140,761
38. Oregon	OR	L	3,876,386	3,662,671	1,477,724	2,283,488	5,352,324	4,405,939
39. Pennsylvania	PA	L	5,583,712	5,095,863	2,952,145	1,885,439	5,930,452	3,210,478
40. Rhode Island	RI	L						
41. South Carolina	SC	L	1,375,192	1,296,720	318,576	333,353	838,436	471,272
42. South Dakota	SD	L	6,302,573	1,578,981	384,678	160,968	1,587,952	694,764
43. Tennessee	TN	L	9,872,040	9,835,247	6,914,201	6,548,345	12,245,897	13,904,595
44. Texas	TX	L	34,685,956	29,530,336	21,448,251	19,465,397	48,448,135	34,595,090
45. Utah	UT	L	4,452,280	4,632,016	837,825	948,885	4,944,781	2,597,019
46. Vermont	VT	L	95,517				1	
47. Virginia	VA	L	6,126,638	5,640,660	3,396,853	2,604,469	9,175,916	12,106,611
48. Washington	WA	L	17,233,257	15,602,091	11,964,320	8,286,567	20,439,026	16,078,050
49. West Virginia	WV	L	75,209	100,943	14,345		103,501	20,136
50. Wisconsin	WI	L	1,381,122	1,589,797	573,049	511,933	1,099,554	801,402
51. Wyoming	WY	L	1,106,617	964,242	24,128	11,915	565,236	253,992
52. American Samoa	AS	N						
53. Guam	GU	N						
54. Puerto Rico	PR	N						
55. U.S. Virgin Islands	VI	N						
56. Northern Mariana Islands	MP	N						
57. Canada	CAN	N						
58. Aggregate Other Alien OT	XXX							
59. Totals	XXX		313,893,997	277,866,781	179,767,395	184,952,849	430,371,336	331,298,554
DETAILS OF WRITE-INS								
58001.	XXX							
58002.	XXX							
58003.	XXX							
58998. Summary of remaining write-ins for Line 58 from overflow page	XXX							
58999. Totals (Lines 58001 through 58003 plus 58998)(Line 58 above)	XXX							

- (a) Active Status Counts:
1. L - Licensed or Chartered - Licensed insurance carrier or domiciled RRG..... 51

2. R - Registered - Non-domiciled RRGs.....

3. E - Eligible - Reporting entities eligible or approved to write surplus lines in the state (other than their state of domicile - see DSLI).....

4. Q - Qualified - Qualified or accredited reinsurer.....

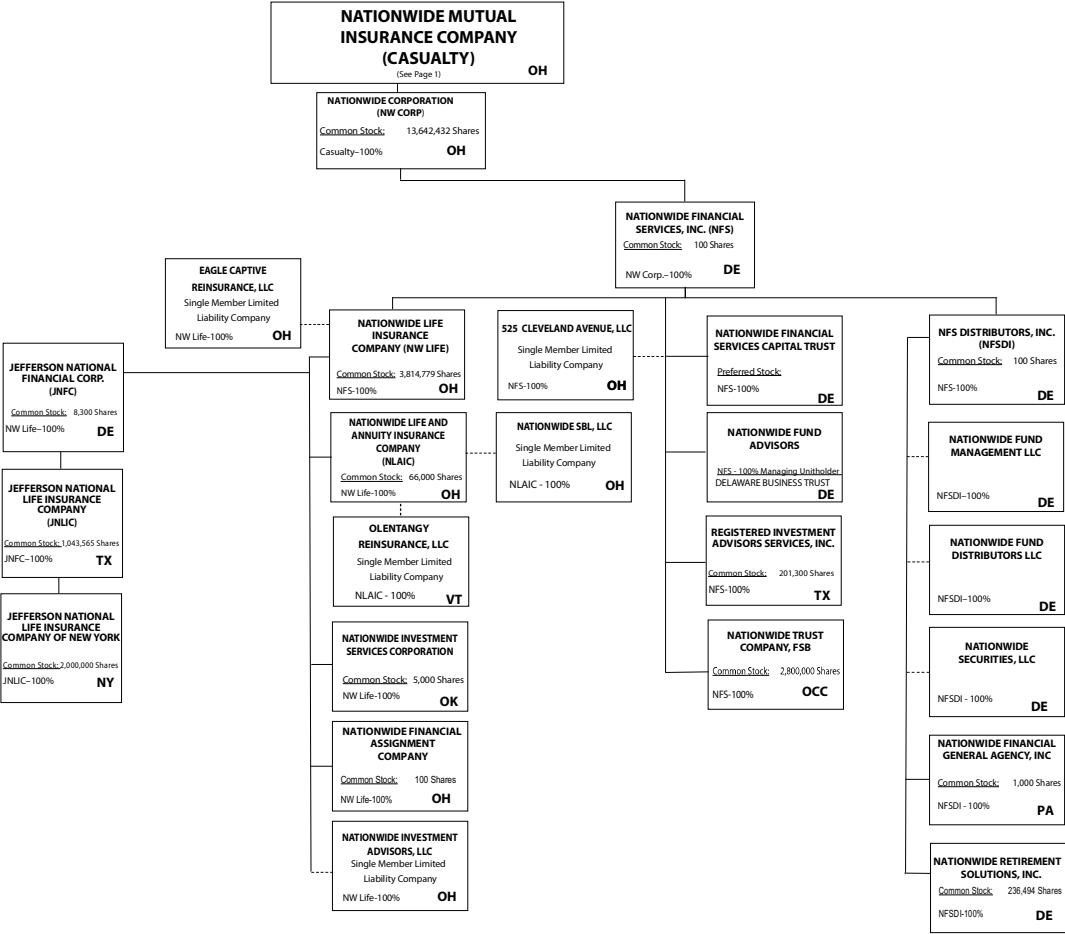
5. D - Domestic Surplus Lines Insurer (DSLI) - Reporting entities authorized to write surplus lines in the state of domicile.....

6. N - None of the above - Not allowed to write business in the state... 6

11



NATIONWIDE®



Subsidiary Companies — Solid Line
Contractual Association = Double Line
Limited Liability Company - - Dotted Line

NATIONWIDE INSURANCE COMPANIES

NAIC Group Code	Group Name	NAIC Company Code	State of Domicile	Federal ID Number	Name of Company
0140	Nationwide	10127	OH	27-0114983	Allied Insurance Company of America
0140	Nationwide	42579	IA	42-1201931	Allied Property and Casualty Insurance Company
0140	Nationwide	19100	IA	42-6054959	AMCO Insurance Company
0140	Nationwide	29262	TX	74-1061659	Colonial County Mutual Insurance Company
0140	Nationwide	18961	OH	68-0066866	Crestbrook Insurance Company
0140	Nationwide	42587	IA	42-1207150	Depositors Insurance Company
0140	Nationwide	15821	OH	42-4523959	Eagle Captive Reinsurance, LLC
0140	Nationwide	22209	OH	75-6013587	Freedom Specialty Insurance Company
0140	Nationwide	23582	OH	41-0417250	Harleysville Insurance Company
0140	Nationwide	42900	NJ	23-2253669	Harleysville Insurance Company of New Jersey
0140	Nationwide	10674	OH	23-2864924	Harleysville Insurance Company of New York
0140	Nationwide	14516	MI	38-3198542	Harleysville Lake States Insurance Company
0140	Nationwide	35696	OH	23-2384978	Harleysville Preferred Insurance Company
0140	Nationwide	26182	OH	04-1989660	Harleysville Worcester Insurance Company
0140	Nationwide	64017	TX	75-0300900	Jefferson National Life Insurance Company
0140	Nationwide	15727	NY	47-1180302	Jefferson National Life Insurance Company of New York
0140	Nationwide	11991	OH	38-0865250	National Casualty Company
0140	Nationwide	26093	OH	48-0470690	Nationwide Affinity Insurance Company of America
0140	Nationwide	28223	IA	42-1015537	Nationwide Agribusiness Insurance Company
0140	Nationwide	10723	OH	95-0639970	Nationwide Assurance Company
0140	Nationwide	23760	OH	31-4425763	Nationwide General Insurance Company
0140	Nationwide	10070	OH	31-1399201	Nationwide Indemnity Company
0140	Nationwide	25453	OH	95-2130882	Nationwide Insurance Company of America
0140	Nationwide	10948	OH	31-1613686	Nationwide Insurance Company of Florida
0140	Nationwide	92657	OH	31-1000740	Nationwide Life and Annuity Insurance Company
0140	Nationwide	66869	OH	31-4156830	Nationwide Life Insurance Company
0140	Nationwide	42110	TX	75-1780981	Nationwide Lloyds
0140	Nationwide	23787	OH	31-4177100	Nationwide Mutual Insurance Company
0140	Nationwide	37877	OH	31-0970750	Nationwide Property & Casualty Insurance Company
0140	Nationwide	13999	VT	27-1712056	Olentangy Reinsurance, LLC
0140	Nationwide	15580	OH	31-1117969	Scottsdale Indemnity Company
0140	Nationwide	41297	OH	31-1024978	Scottsdale Insurance Company
0140	Nationwide	10672	AZ	86-0835870	Scottsdale Surplus Lines Insurance Company
0140	Nationwide	36269	MI	86-0619597	Titan Insurance Company
0140	Nationwide	42285	OH	95-3750113	Veterinary Pet Insurance Company
0140	Nationwide	42889	OH	34-1394913	Victoria Fire & Casualty Company
0140	Nationwide	10105	OH	34-1777972	Victoria Select Insurance Company

STATEMENT AS OF JUNE 30, 2023 OF THE CRESTBROOK INSURANCE COMPANY

SCHEDULE Y
PART 1A - DETAIL OF INSURANCE HOLDING COMPANY SYSTEM

1	2	3	4	5	6	7	8	9	10	11	12	13	14	15	16
Group Code	Group Name	NAIC Company Code	ID Number	Federal RSSD	CIK	Name of Securities Exchange if Publicly Traded (U.S. or International)	Names of Parent, Subsidiaries Or Affiliates	Domi-ciliary Location	Relation-ship to Reporting Entity	Directly Controlled by (Name of Entity/Person)	Type of Control (Ownership, Board, Management, Attorney-in-Fact, Influence, Other)	If Control is Owner-ship Provide Percen-tage	Ultimate Controlling Entity(ies)/Person(s)	Is an SCA Filing Re-quired? (Yes/No)	*
. 0140 ...	Nationwide	31-1486309	10 W. Nationwide, LLC OH.....	NIA.....	Nationwide Realty Investors, Ltd.	Ownership.....	100.000 ...	Nationwide Mutual Insurance Company NO.....
. 0140 ...	Nationwide	31-1486309	1000 Yard Street, LLC OH.....	NIA.....	Nationwide Realty Investors, Ltd.	Ownership.....	100.000 ...	Nationwide Mutual Insurance Company NO.....
. 0140 ...	Nationwide	31-1486309	1015 Long Street, LLC OH.....	NIA.....	Nationwide Realty Investors, Ltd.	Ownership.....	100.000 ...	Nationwide Mutual Insurance Company NO.....
. 0140 ...	Nationwide	31-1486309	1050 Yard Street, LLC OH.....	NIA.....	Nationwide Realty Investors, Ltd.	Ownership.....	100.000 ...	Nationwide Mutual Insurance Company NO.....
. 0140 ...	Nationwide	31-1486309	1125 Rail Street, LLC OH.....	NIA.....	Nationwide Realty Investors, Ltd.	Ownership.....	100.000 ...	Nationwide Mutual Insurance Company NO.....
. 0140 ...	Nationwide	31-1733036	120 Acre Partners, LLC DE.....	NIA.....	Nationwide Realty Investors, Ltd.	Ownership.....	95.000 ...	Nationwide Mutual Insurance Company NO.....	1
. 0140 ...	Nationwide	20-4939866	1125 Yard Street, LLC OH.....	NIA.....	NRI Equity Land Investments, LLC	Ownership.....	100.000 ...	Nationwide Mutual Insurance Company NO.....
. 0140 ...	Nationwide	20-4939867	1175 Bobcat, LLC OH.....	NIA.....	NRI Equity Land Investments, LLC	Ownership.....	100.000 ...	Nationwide Mutual Insurance Company NO.....
. 0140 ...	Nationwide	26-2451988	1492 Capital, LLC OH.....	NIA.....	Nationwide Mutual Insurance Company	Ownership.....	100.000 ...	Nationwide Mutual Insurance Company NO.....
. 0140 ...	Nationwide	31-1486309	111 Rivulon Boulevard, LLC OH.....	NIA.....	NRI-Rivulon, LLC	Ownership.....	100.000 ...	Nationwide Mutual Insurance Company NO.....
. 0140 ...	Nationwide	31-1486309	155 Rivulon Boulevard, LLC OH.....	NIA.....	NRI-Rivulon, LLC	Ownership.....	100.000 ...	Nationwide Mutual Insurance Company NO.....
. 0140 ...	Nationwide	31-1486309	161 Rivulon Boulevard, LLC OH.....	NIA.....	NRI-Rivulon, LLC	Ownership.....	100.000 ...	Nationwide Mutual Insurance Company NO.....
. 0140 ...	Nationwide	31-1580283	170 Marconi, LLC OH.....	NIA.....	NID Investments, LLC	Ownership.....	100.000 ...	Nationwide Mutual Insurance Company NO.....
. 0140 ...	Nationwide	31-1580283	245 Parks Edge Place, LLC OH.....	NIA.....	NID Investments, LLC	Ownership.....	100.000 ...	Nationwide Mutual Insurance Company NO.....
. 0140 ...	Nationwide	31-1486309	275 Rivulon Boulevard, LLC OH.....	NIA.....	NRI-Rivulon, LLC	Ownership.....	100.000 ...	Nationwide Mutual Insurance Company NO.....
. 0140 ...	Nationwide	31-1486309	300 Rivulon Boulevard, LLC OH.....	NIA.....	NRI-Rivulon, LLC	Ownership.....	100.000 ...	Nationwide Mutual Insurance Company NO.....
. 0140 ...	Nationwide	31-1486309	310 Rivulon Boulevard, LLC OH.....	NIA.....	NRI-Rivulon, LLC	Ownership.....	100.000 ...	Nationwide Mutual Insurance Company NO.....
. 0140 ...	Nationwide	31-1486309	343 N. Front, LLC OH.....	NIA.....	Nationwide Realty Investors, Ltd.	Ownership.....	100.000 ...	Nationwide Mutual Insurance Company NO.....
. 0140 ...	Nationwide	31-1486309	400 Rivulon Boulevard, LLC OH.....	NIA.....	NRI-Rivulon, LLC	Ownership.....	100.000 ...	Nationwide Mutual Insurance Company NO.....
. 0140 ...	Nationwide	31-1580283	400 West Nationwide Boulevard, LLC OH.....	NIA.....	NID Investments, LLC	Ownership.....	100.000 ...	Nationwide Mutual Insurance Company NO.....
. 0140 ...	Nationwide	31-1486309	410 Rivulon Boulevard, LLC OH.....	NIA.....	NRI-Rivulon, LLC	Ownership.....	100.000 ...	Nationwide Mutual Insurance Company NO.....
. 0140 ...	Nationwide	31-1580283	425 West Nationwide Boulevard, LLC OH.....	NIA.....	NID Investments, LLC	Ownership.....	100.000 ...	Nationwide Mutual Insurance Company NO.....
. 0140 ...	Nationwide	31-1486309	44 Chestnut, LLC OH.....	NIA.....	Nationwide Realty Investors, Ltd.	Ownership.....	100.000 ...	Nationwide Mutual Insurance Company NO.....
. 0140 ...	Nationwide	38-4118665	500 Neil Avenue, LLC OH.....	NIA.....	NID HP, LLC	Ownership.....	100.000 ...	Nationwide Mutual Insurance Company NO.....
. 0140 ...	Nationwide	38-4118665	515 Kilbourne Street, LLC OH.....	NIA.....	NID HP, LLC	Ownership.....	100.000 ...	Nationwide Mutual Insurance Company NO.....
. 0140 ...	Nationwide	87-1954007	525 Cleveland Avenue, LLC OH.....	NIA.....	Nationwide Financial Services, Inc.	Ownership.....	100.000 ...	Nationwide Mutual Insurance Company NO.....
. 0140 ...	Nationwide	31-1486309	75 Rivulon Boulevard, LLC OH.....	NIA.....	NRI-Rivulon, LLC	Ownership.....	100.000 ...	Nationwide Mutual Insurance Company NO.....
. 0140 ...	Nationwide	20-4939866	775 Yard Street, LLC OH.....	NIA.....	NRI Equity Land Investments, LLC	Ownership.....	100.000 ...	Nationwide Mutual Insurance Company NO.....
. 0140 ...	Nationwide	20-4939866	777 Swan Street, LLC OH.....	NIA.....	NRI Equity Land Investments, LLC	Ownership.....	100.000 ...	Nationwide Mutual Insurance Company NO.....
. 0140 ...	Nationwide	20-4939866	780 Yard Street, LLC OH.....	NIA.....	NRI Equity Land Investments, LLC	Ownership.....	100.000 ...	Nationwide Mutual Insurance Company NO.....
. 0140 ...	Nationwide	20-4939866	795 Rail Street, LLC OH.....	NIA.....	NRI Equity Land Investments, LLC	Ownership.....	100.000 ...	Nationwide Mutual Insurance Company NO.....
. 0140 ...	Nationwide	20-4939866	800 Bobcat Avenue, LLC OH.....	NIA.....	NRI Equity Land Investments, LLC	Ownership.....	100.000 ...	Nationwide Mutual Insurance Company NO.....
. 0140 ...	Nationwide	20-4939866	800 Goodale Boulevard, LLC OH.....	NIA.....	NRI Equity Land Investments, LLC	Ownership.....	100.000 ...	Nationwide Mutual Insurance Company NO.....
. 0140 ...	Nationwide	20-4939866	800 Yard Street, LLC OH.....	NIA.....	NRI Equity Land Investments, LLC	Ownership.....	100.000 ...	Nationwide Mutual Insurance Company NO.....
. 0140 ...	Nationwide	20-4939866	805 Bobcat Avenue, LLC OH.....	NIA.....	GVY Residential, LLC	Ownership.....	100.000 ...	Nationwide Mutual Insurance Company NO.....
. 0140 ...	Nationwide	20-4939866	808 Yard Street, LLC OH.....	NIA.....	GVY Residential, LLC	Ownership.....	100.000 ...	Nationwide Mutual Insurance Company NO.....
. 0140 ...	Nationwide	20-4939866	820 Goodale Boulevard, LLC OH.....	NIA.....	NRI Equity Land Investments, LLC	Ownership.....	100.000 ...	Nationwide Mutual Insurance Company NO.....
. 0140 ...	Nationwide	20-4939866	822 Williams Avenue, LLC OH.....	NIA.....	GVY Residential, LLC	Ownership.....	100.000 ...	Nationwide Mutual Insurance Company NO.....
. 0140 ...	Nationwide	20-4939866	825 Junction Way, LLC OH.....	NIA.....	GVY Residential, LLC	Ownership.....	100.000 ...	Nationwide Mutual Insurance Company NO.....
. 0140 ...	Nationwide	20-4939866	828 Bobcat Avenue, LLC OH.....	NIA.....	NRI Equity Land Investments, LLC	Ownership.....	100.000 ...	Nationwide Mutual Insurance Company NO.....
. 0140 ...	Nationwide	20-4939866	840 Third Avenue, LLC OH.....	NIA.....	NRI Equity Land Investments, LLC	Ownership.....	100.000 ...	Nationwide Mutual Insurance Company NO.....
. 0140 ...	Nationwide	20-4939866	840 Yard Street, LLC OH.....	NIA.....	NRI Equity Land Investments, LLC	Ownership.....	100.000 ...	Nationwide Mutual Insurance Company NO.....
. 0140 ...	Nationwide	20-4939866	845 Yard Street, LLC OH.....	NIA.....	GVY Residential, LLC	Ownership.....	100.000 ...	Nationwide Mutual Insurance Company NO.....
. 0140 ...	Nationwide	20-4939866	855 Third Avenue, LLC OH.....	NIA.....	NRI Equity Land Investments, LLC	Ownership.....	100.000 ...	Nationwide Mutual Insurance Company NO.....
. 0140 ...	Nationwide	20-4939866	860 Third Avenue, LLC OH.....	NIA.....	NRI Equity Land Investments, LLC	Ownership.....	100.000 ...	Nationwide Mutual Insurance Company NO.....
. 0140 ...	Nationwide	20-4939866	875 First Avenue, LLC OH.....	NIA.....	GVY Residential, LLC	Ownership.....	100.000 ...	Nationwide Mutual Insurance Company NO.....
. 0140 ...	Nationwide	20-4939866	880 Third Avenue, LLC OH.....	NIA.....	NRI Equity Land Investments, LLC	Ownership.....	100.000 ...	Nationwide Mutual Insurance Company NO.....
. 0140 ...	Nationwide	20-4939866	880 Yard Street, LLC OH.....	NIA.....	GVY Residential, LLC	Ownership.....	100.000 ...	Nationwide Mutual Insurance Company NO.....
. 0140 ...	Nationwide	20-4939866	895 W. Third Avenue, LLC OH.....	NIA.....	NRI Equity Land Investments, LLC	Ownership.....	100.000 ...	Nationwide Mutual Insurance Company NO.....

STATEMENT AS OF JUNE 30, 2023 OF THE CRESTBROOK INSURANCE COMPANY

SCHEDULE Y

PART 1A - DETAIL OF INSURANCE HOLDING COMPANY SYSTEM

1	2	3	4	5	6	7	8	9	10	11	12	13	14	15	16
Group Code	Group Name	NAIC Company Code	ID Number	Federal RSSD	CIK	Name of Securities Exchange if Publicly Traded (U.S. or International)	Names of Parent, Subsidiaries Or Affiliates	Domi-ciliary Location	Relation-ship to Reporting Entity	Directly Controlled by (Name of Entity/Person)	Type of Control (Ownership, Board, Management, Attorney-in-Fact, Influence, Other)	If Control is Owner-ship Provide Percen-tage	Ultimate Controlling Entity(ies)/Person(s)	Is an SCA Filing Re-quired? (Yes/No)	*
.0140	Nationwide		20-4939866				950 Dorchester Way, LLC	..OH.....	..NIA.....	GVY Residential, LLC	Ownership.....	100.000	Nationwide Mutual Insurance CompanyNO.....	
.0140	Nationwide		20-4939866				950 Goodale Boulevard, LLC	..OH.....	..NIA.....	NRI Equity Land Investments, LLC	Ownership.....	100.000	Nationwide Mutual Insurance CompanyNO.....	
.0140	Nationwide		31-1486309				960 Bobcat Avenue, LLC	..OH.....	..NIA.....	Nationwide Realty Investors, Ltd.	Ownership.....	100.000	Nationwide Mutual Insurance CompanyNO.....	
.0140	Nationwide		31-1486309				975 Rail Street, LLC	..OH.....	..NIA.....	Nationwide Realty Investors, Ltd.	Ownership.....	100.000	Nationwide Mutual Insurance CompanyNO.....	
.0140	Nationwide		31-1486309				995 Yard Street, LLC	..OH.....	..NIA.....	Nationwide Realty Investors, Ltd.	Ownership.....	100.000	Nationwide Mutual Insurance CompanyNO.....	
.0140	Nationwide		31-1486309				18615 Claret Drive, LLC	..OH.....	..NIA.....	NRI Cavasson, LLC	Ownership.....	100.000	Nationwide Mutual Insurance CompanyNO.....	
.0140	Nationwide		31-1486309				18655 Claret Drive, LLC	..OH.....	..NIA.....	NRI Cavasson, LLC	Ownership.....	100.000	Nationwide Mutual Insurance CompanyNO.....	
.0140	Nationwide		31-1486309				18700 Hayden Road, LLC	..OH.....	..NIA.....	NRI Cavasson, LLC	Ownership.....	100.000	Nationwide Mutual Insurance CompanyNO.....	
.0140	Nationwide		31-1486309				18750 Hayden Road, LLC	..OH.....	..NIA.....	NRI Cavasson, LLC	Ownership.....	100.000	Nationwide Mutual Insurance CompanyNO.....	
.0140	Nationwide		31-1580283				AD DORA, LLC	..OH.....	..NIA.....	NWD Investments, LLC	Ownership.....	100.000	Nationwide Mutual Insurance CompanyNO.....	
.0140	Nationwide		31-1580283				ADTV, LLC	..OH.....	..NIA.....	NWD Investments, LLC	Ownership.....	100.000	Nationwide Mutual Insurance CompanyNO.....	
.0140	Nationwide		52-2227314				AGMC Reinsurance, Ltd.	..TCA.....	..NIA.....	Nationwide Advantage Mortgage Company	Ownership.....	100.000	Nationwide Mutual Insurance CompanyNO.....	
.0140	Nationwide	10127	27-0114983				ALLIED Insurance Company of America	..OH.....	..IA.....	Nationwide Mutual Insurance Company	Ownership.....	100.000	Nationwide Mutual Insurance CompanyNO.....	
.0140	Nationwide	42579	42-1201931				ALLIED Property and Casualty Insurance Company	..IA.....	..IA.....	Nationwide Mutual Insurance Company	Ownership.....	100.000	Nationwide Mutual Insurance CompanyNO.....	
.0140	Nationwide		42-1527863				ALLIED Texas Agency, Inc.	..TX.....	..IA.....	AMCO Insurance Company	Ownership.....	100.000	Nationwide Mutual Insurance CompanyNO.....	
.0140	Nationwide	19100	42-6054959				AMCO Insurance Company	..IA.....	..IA.....	Nationwide Mutual Insurance Company	Ownership.....	100.000	Nationwide Mutual Insurance CompanyNO.....	
.0140	Nationwide		59-1031596				American Marine Underwriters, Inc.	..FL.....	..NIA.....	Nationwide Mutual Insurance Company	Ownership.....	100.000	Nationwide Mutual Insurance CompanyNO.....	
.0140	Nationwide		81-4532504				American Tax Credit Fund 2017-A, LLC	..OH.....	..NIA.....	Nationwide Life Insurance Company	Ownership.....	100.000	Nationwide Mutual Insurance CompanyNO.....	
.0140	Nationwide		82-2001573				American Tax Credit Fund 2017-B, LLC	..OH.....	..NIA.....	Nationwide Life Insurance Company	Ownership.....	100.000	Nationwide Mutual Insurance CompanyNO.....	
.0140	Nationwide		82-4591498				American Tax Credit Fund 2018-A, LLC	..OH.....	..NIA.....	Nationwide Life Insurance Company	Ownership.....	100.000	Nationwide Mutual Insurance CompanyNO.....	
.0140	Nationwide		83-0606592				American Tax Credit Fund 2018-B, LLC	..OH.....	..NIA.....	Nationwide Life Insurance Company	Ownership.....	100.000	Nationwide Mutual Insurance CompanyNO.....	
.0140	Nationwide		83-0620232				American Tax Credit Fund 2018-C, LLC	..OH.....	..NIA.....	Nationwide Life Insurance Company	Ownership.....	100.000	Nationwide Mutual Insurance CompanyNO.....	
.0140	Nationwide		83-3900932				American Tax Credit Fund 2019-A, LLC	..OH.....	..NIA.....	Nationwide Life Insurance Company	Ownership.....	100.000	Nationwide Mutual Insurance CompanyNO.....	
.0140	Nationwide		83-3953721				American Tax Credit Fund 2019-B, LLC	..OH.....	..NIA.....	Nationwide Life Insurance Company	Ownership.....	100.000	Nationwide Mutual Insurance CompanyNO.....	
.0140	Nationwide		84-3443067				American Tax Credit Fund 2020-A, LLC	..OH.....	..NIA.....	Nationwide Life Insurance Company	Ownership.....	100.000	Nationwide Mutual Insurance CompanyNO.....	
.0140	Nationwide		85-2359702				American Tax Credit Fund 2020-B, LLC	..OH.....	..NIA.....	Nationwide Life Insurance Company	Ownership.....	100.000	Nationwide Mutual Insurance CompanyNO.....	
.0140	Nationwide		85-2649655				American Tax Credit Fund 2021-A, LLC (fka American Tax Credit Fund 2020-C, LLC)	..OH.....	..NIA.....	Nationwide Life Insurance Company	Ownership.....	100.000	Nationwide Mutual Insurance CompanyNO.....	
.0140	Nationwide		86-2502912				American Tax Credit Fund 2021-B, LLC	..OH.....	..NIA.....	Nationwide Life Insurance Company	Ownership.....	100.000	Nationwide Mutual Insurance CompanyNO.....	
.0140	Nationwide		87-1349942				American Tax Credit Fund 2021-C, LLC	..OH.....	..NIA.....	Nationwide Life Insurance Company	Ownership.....	100.000	Nationwide Mutual Insurance CompanyNO.....	
.0140	Nationwide		87-4753681				American Tax Credit Fund 2022-A, LLC	..OH.....	..NIA.....	Nationwide Life Insurance Company	Ownership.....	100.000	Nationwide Mutual Insurance CompanyNO.....	
.0140	Nationwide		87-4771309				American Tax Credit Fund 2022-B, LLC	..OH.....	..NIA.....	Nationwide Life Insurance Company	Ownership.....	100.000	Nationwide Mutual Insurance CompanyNO.....	
.0140	Nationwide		92-1389304				American Tax Credit Fund 2023-A, LLC	..OH.....	..NIA.....	Nationwide Life Insurance Company	Ownership.....	100.000	Nationwide Mutual Insurance CompanyNO.....	
.0140	Nationwide		31-1580283				Arena District CA I, LLC	..OH.....	..NIA.....	NWD Investments, LLC	Ownership.....	100.000	Nationwide Mutual Insurance CompanyNO.....	
.....	90-0280710				Arena District Owners Association	..OH.....	..OTH.....	Other non-Nationwide	n/a	Other non-NationwideNO.....	2
.0140	Nationwide		31-1486309				Cavasson Hotel, LLC	..OH.....	..NIA.....	Cavasson Hotel Holdings, LLC	Ownership.....	100.000	Nationwide Mutual Insurance CompanyNO.....	
.0140	Nationwide		31-1486309				Cavasson Hotel Holdings, LLC	..OH.....	..NIA.....	NRI Cavasson, LLC	Ownership.....	100.000	Nationwide Mutual Insurance CompanyNO.....	
.0140	Nationwide		20-1618232				CNRI-Cannonsport Condominium, LLC	..OH.....	..NIA.....	CNRI-Cannonsport, LLC	Ownership.....	100.000	Nationwide Mutual Insurance CompanyNO.....	
.0140	Nationwide		20-1618232				CNRI-Cannonsport, LLC	..OH.....	..NIA.....	Nationwide Realty Investors, Ltd.	Ownership.....	100.000	Nationwide Mutual Insurance CompanyNO.....	
.0140	Nationwide	29262	74-1061659				Colonial County Mutual Insurance Company	..TX.....	..IA.....	Other non-Nationwide	contract	Other non-NationwideNO.....	2
.0140	Nationwide	18961	68-0066866				Crestbrook Insurance Company	..OH.....	..RE.....	Nationwide Mutual Insurance Company	Ownership.....	100.000	Nationwide Mutual Insurance CompanyNO.....	
.0140	Nationwide		31-1486309				Crewville, Ltd.	..OH.....	..NIA.....	Nationwide Realty Investors, Ltd.	Ownership.....	100.000	Nationwide Mutual Insurance CompanyNO.....	
.0140	Nationwide		84-5052608				Danforth, LLC	..OH.....	..NIA.....	Nationwide Mutual Insurance Company	Ownership.....	100.000	Nationwide Mutual Insurance CompanyNO.....	
.0140	Nationwide	42587	42-1207150				Depositors Insurance Company	..IA.....	..IA.....	Nationwide Mutual Insurance Company	Ownership.....	100.000	Nationwide Mutual Insurance CompanyNO.....	
.....	46-4104813				Discover Affordable Housing Investment Fund I LLC	..OH.....	..OTH.....	Other non-Nationwide	n/a	0.000	Other non-NationwideNO.....	2
.0140	Nationwide		33-0096671				DVM Insurance Agency	..CA.....	..NIA.....	Veterinary Pet Insurance Company	Ownership.....	100.000	Nationwide Mutual Insurance CompanyNO.....	
.0140	Nationwide	15821	47-4523959				Eagle Captive Reinsurance, LLC	..OH.....	..IA.....	Nationwide Life Insurance Company	Ownership.....	100.000	Nationwide Mutual Insurance CompanyNO.....	

STATEMENT AS OF JUNE 30, 2023 OF THE CRESTBROOK INSURANCE COMPANY

SCHEDULE Y
PART 1A - DETAIL OF INSURANCE HOLDING COMPANY SYSTEM

1	2	3	4	5	6	7	8	9	10	11	12	13	14	15	16
Group Code	Group Name	NAIC Company Code	ID Number	Federal RSSD	CIK	Name of Securities Exchange if Publicly Traded (U.S. or International)	Names of Parent, Subsidiaries Or Affiliates	Domi-ciliary Location	Relation-ship to Reporting Entity	Directly Controlled by (Name of Entity/Person)	Type of Control (Ownership, Board, Management, Attorney-in-Fact, Influence, Other)	If Control is Owner-ship Provide Percen-tage	Ultimate Controlling Entity(ies)/Person(s)	Is an SCA Filing Re-quired? (Yes/No)	*
. 0140 ...	Nationwide	26-3260559	E-Risk Services, L.L.C. DE.....	.. NIA.....	Nationwide Mutual Insurance Company	Ownership.....	100.000 ...	Nationwide Mutual Insurance Company NO.....
. 0140 ...	Nationwide 22209 ..	75-6013587	Freedom Specialty Insurance Company OH.....	.. IA.....	Scottsdale Insurance Company	Ownership.....	100.000 ...	Nationwide Mutual Insurance Company NO.....
. 0140 ...	Nationwide	20-4939866	Grandview Yard Hotel Holdings, LLC OH.....	.. NIA.....	NRI Equity Land Investments, LLC	Ownership.....	100.000 ...	Nationwide Mutual Insurance Company NO.....
. 0140 ...	Nationwide	20-4939866	Grandview Yard Hotel, LLC OH.....	.. NIA.....	Grandview Yard Hotel Holdings, LLC	Ownership.....	100.000 ...	Nationwide Mutual Insurance Company NO.....
. 0140 ...	Nationwide	20-4939866	GVY Residential, LLC OH.....	.. NIA.....	NRI Equity Land Investments, LLC	Ownership.....	100.000 ...	Nationwide Mutual Insurance Company NO.....
. 0140 ...	Nationwide 23582 ..	41-0417250	Harleysville Insurance Company OH.....	.. IA.....	Nationwide Mutual Insurance Company	Ownership.....	100.000 ...	Nationwide Mutual Insurance Company NO.....
.....	Harleysville Insurance Company of New Jersey
. 0140 ...	Nationwide 42900 ..	23-2253669 NJ.....	.. IA.....	Nationwide Mutual Insurance Company	Ownership.....	100.000 ...	Nationwide Mutual Insurance Company NO.....
. 0140 ...	Nationwide 10674 ..	23-2864924	Harleysville Insurance Company of New York OH.....	.. IA.....	Nationwide Mutual Insurance Company	Ownership.....	100.000 ...	Nationwide Mutual Insurance Company NO.....
. 0140 ...	Nationwide 14516 ..	38-3198542	Harleysville Lake States Insurance Company MI.....	.. IA.....	Nationwide Mutual Insurance Company	Ownership.....	100.000 ...	Nationwide Mutual Insurance Company NO.....
. 0140 ...	Nationwide 35696 ..	23-2384978	Harleysville Preferred Insurance Company OH.....	.. IA.....	Nationwide Mutual Insurance Company	Ownership.....	100.000 ...	Nationwide Mutual Insurance Company NO.....
. 0140 ...	Nationwide 26182 ..	04-1989660	Harleysville Worcester Insurance Company OH.....	.. IA.....	Nationwide Mutual Insurance Company	Ownership.....	100.000 ...	Nationwide Mutual Insurance Company NO.....
. 0140 ...	Nationwide	20-3289512	Jefferson National Financial Corp. DE.....	.. NIA.....	Nationwide Life Insurance Company	Ownership.....	100.000 ...	Nationwide Mutual Insurance Company YES.....
. 0140 ...	Nationwide 64017 ..	75-0300900	Jefferson National Life Insurance Company TX.....	.. IA.....	Jefferson National Financial Corporation ..	Ownership.....	100.000 ...	Nationwide Mutual Insurance Company NO.....
.....	Jefferson National Life Insurance Company of New York
. 0140 ...	Nationwide 15727 ..	47-1180302 NY.....	.. IA.....	Jefferson National Life Insurance Company ..	Ownership.....	100.000 ...	Nationwide Mutual Insurance Company NO.....
. 0140 ...	Nationwide	31-1486309	Jerome Village Company, LLC OH.....	.. NIA.....	Nationwide Realty Investors, Ltd.	Ownership.....	100.000 ...	Nationwide Mutual Insurance Company NO.....
. 0140 ...	Nationwide	74-1395229	Lone Star General Agency, Inc. TX.....	.. IA.....	Nationwide Mutual Insurance Company	Ownership.....	100.000 ...	Nationwide Mutual Insurance Company NO.....
. 0140 ...	Nationwide 11991 ..	38-0865250	National Casualty Company OH.....	.. IA.....	Nationwide Mutual Insurance Company	Ownership.....	100.000 ...	Nationwide Mutual Insurance Company NO.....
. 0140 ...	Nationwide	National Casualty Company of America, Ltd. GBR.....	.. IA.....	National Casualty Company	Ownership.....	100.000 ...	Nationwide Mutual Insurance Company NO.....
. 0140 ...	Nationwide	42-1154244	Nationwide Advantage Mortgage Company IA.....	.. NIA.....	AMCO Insurance Company	Ownership.....	87.300 ...	Nationwide Mutual Insurance Company YES.....	... 1
.....
. 0140 ...	Nationwide	42-1154244	Nationwide Advantage Mortgage Company IA.....	.. NIA.....	ALLIED Property & Casualty Insurance Company	Ownership.....	8.470 ...	Nationwide Mutual Insurance Company YES.....	... 1
. 0140 ...	Nationwide	42-1154244	Nationwide Advantage Mortgage Company IA.....	.. NIA.....	Depositors Insurance Company	Ownership.....	4.230 ...	Nationwide Mutual Insurance Company YES.....	... 1
.....	Nationwide Affinity Insurance Company of America
. 0140 ...	Nationwide 26093 ..	48-0470690	Nationwide Agent Risk Purchasing Group, Inc. (fka On Your Side Nationwide Insurance Agency, Inc.) OH.....	.. IA.....	Nationwide Mutual Insurance Company	Ownership.....	100.000 ...	Nationwide Mutual Insurance Company NO.....
.....
. 0140 ...	Nationwide	47-1923444 OH.....	.. NIA.....	Nationwide Mutual Insurance Company	Ownership.....	100.000 ...	Nationwide Mutual Insurance Company NO.....
. 0140 ...	Nationwide 28223 ..	42-1015537	Nationwide Agribusiness Insurance Company IA.....	.. IA.....	Nationwide Mutual Insurance Company	Ownership.....	100.000 ...	Nationwide Mutual Insurance Company NO.....
. 0140 ...	Nationwide	31-1578869	Nationwide Arena, LLC OH.....	.. NIA.....	NRI Arena, LLC	Ownership.....	90.000 ...	Nationwide Mutual Insurance Company NO.....	... 1
. 0140 ...	Nationwide	20-8670712	Nationwide Asset Management, LLC OH.....	.. NIA.....	Nationwide Mutual Insurance Company	Ownership.....	100.000 ...	Nationwide Mutual Insurance Company NO.....
. 0140 ...	Nationwide 10723 ..	95-0639970	Nationwide Assurance Company OH.....	.. IA.....	Nationwide Mutual Insurance Company	Ownership.....	100.000 ...	Nationwide Mutual Insurance Company NO.....
. 0140 ...	Nationwide	31-1036287	Nationwide Cash Management Company OH.....	.. NIA.....	Nationwide Mutual Insurance Company	Ownership.....	100.000 ...	Nationwide Mutual Insurance Company NO.....
. 0140 ...	Nationwide	31-4416546	Nationwide Corporation OH.....	.. NIA.....	Nationwide Mutual Insurance Company	Ownership.....	100.000 ...	Nationwide Mutual Insurance Company YES.....	... 1
. 0140 ...	Nationwide	31-1667326	Nationwide Financial Assignment Company OH.....	.. NIA.....	Nationwide Life Insurance Company	Ownership.....	100.000 ...	Nationwide Mutual Insurance Company NO.....
. 0140 ...	Nationwide	23-2412039	Nationwide Financial General Agency, Inc. PA.....	.. NIA.....	NFS Distributors, Inc.	Ownership.....	100.000 ...	Nationwide Mutual Insurance Company NO.....
. 0140 ...	Nationwide	31-6554353	Nationwide Financial Services Capital Trust DE.....	.. NIA.....	Nationwide Financial Services, Inc.	Ownership.....	100.000 ...	Nationwide Mutual Insurance Company NO.....
. 0140 ...	Nationwide	31-1486870	Nationwide Financial Services, Inc. DE.....	.. NIA.....	Nationwide Corporation	Ownership.....	100.000 ...	Nationwide Mutual Insurance Company NO.....
. 0140 ...	Nationwide	52-6969857	Nationwide Fund Advisors DE.....	.. NIA.....	Nationwide Financial Services, Inc.	Ownership.....	100.000 ...	Nationwide Mutual Insurance Company NO.....
. 0140 ...	Nationwide	31-1748721	Nationwide Fund Distributors LLC DE.....	.. NIA.....	NFS Distributors, Inc.	Ownership.....	100.000 ...	Nationwide Mutual Insurance Company NO.....
. 0140 ...	Nationwide	31-0900518	Nationwide Fund Management LLC DE.....	.. NIA.....	NFS Distributors, Inc.	Ownership.....	100.000 ...	Nationwide Mutual Insurance Company NO.....
. 0140 ...	Nationwide 23760 ..	31-4425763	Nationwide General Insurance Company OH.....	.. IA.....	Nationwide Mutual Insurance Company	Ownership.....	100.000 ...	Nationwide Mutual Insurance Company NO.....
. 0140 ...	Nationwide 10070 ..	31-1399201	Nationwide Indemnity Company OH.....	.. IA.....	Nationwide Mutual Insurance Company	Ownership.....	100.000 ...	Nationwide Mutual Insurance Company NO.....
. 0140 ...	Nationwide 25453 ..	95-2130882	Nationwide Insurance Company of America OH.....	.. IA.....	Nationwide Mutual Insurance Company	Ownership.....	100.000 ...	Nationwide Mutual Insurance Company NO.....
. 0140 ...	Nationwide 10948 ..	31-1613686	Nationwide Insurance Company of Florida OH.....	.. IA.....	Nationwide Mutual Insurance Company	Ownership.....	100.000 ...	Nationwide Mutual Insurance Company NO.....
. 0140 ...	Nationwide	41-2206199	Nationwide Investment Advisors, LLC OH.....	.. NIA.....	Nationwide Life Insurance Company	Ownership.....	100.000 ...	Nationwide Mutual Insurance Company NO.....
. 0140 ...	Nationwide	73-0988442	Nationwide Investment Services Corporation OK.....	.. NIA.....	Nationwide Life Insurance Company	Ownership.....	100.000 ...	Nationwide Mutual Insurance Company YES.....
.....	Nationwide Life and Annuity Insurance Company
. 0140 ...	Nationwide 92657	31-1000740 OH.....	.. IA.....	Nationwide Life Insurance Company	Ownership.....	100.000 ...	Nationwide Mutual Insurance Company NO.....

STATEMENT AS OF JUNE 30, 2023 OF THE CRESTBROOK INSURANCE COMPANY

SCHEDULE Y
PART 1A - DETAIL OF INSURANCE HOLDING COMPANY SYSTEM

1	2	3	4	5	6	7	8	9	10	11	12	13	14	15	16
Group Code	Group Name	NAIC Company Code	ID Number	Federal RSSD	CIK	Name of Securities Exchange if Publicly Traded (U.S. or International)	Names of Parent, Subsidiaries Or Affiliates	Domi-ciliary Location	Relation-ship to Reporting Entity	Directly Controlled by (Name of Entity/Person)	Type of Control (Ownership, Board, Management, Attorney-in-Fact, Influence, Other)	If Control is Owner-ship Provide Percen-tage	Ultimate Controlling Entity(ies)/Person(s)	Is an SCA Filing Re-quired? (Yes/No)	*
. 0140 ...	Nationwide	66869	31-4156830 ..				Nationwide Life Insurance Company OH.....	.. IA.....	Nationwide Financial Services, Inc.	Ownership.....	100.000 ...	Nationwide Mutual Insurance Company NO.....
. 0140 ...	Nationwide		13-4212969 ..				Nationwide Life Tax Credit Partners 2002-A, LLC OH.....	.. NIA.....	Nationwide Life Insurance Company	Other.....	0.010 ...	Nationwide Mutual Insurance Company NO.....	... 1
. 0140 ...	Nationwide		01-0749754 ..				Nationwide Life Tax Credit Partners 2002-B, LLC OH.....	.. NIA.....	Nationwide Life Insurance Company	Other.....	0.010 ...	Nationwide Mutual Insurance Company NO.....	... 1
. 0140 ...	Nationwide		54-2113175 ..				Nationwide Life Tax Credit Partners 2003-A, LLC OH.....	.. NIA.....	Nationwide Life Insurance Company	Other.....	0.010 ...	Nationwide Mutual Insurance Company NO.....	... 1
. 0140 ...	Nationwide		58-2672725 ..				Nationwide Life Tax Credit Partners 2003-B, LLC OH.....	.. NIA.....	Nationwide Life Insurance Company	Other.....	0.010 ...	Nationwide Mutual Insurance Company NO.....	... 1
. 0140 ...	Nationwide		20-0382144 ..				Nationwide Life Tax Credit Partners 2004-A, LLC OH.....	.. NIA.....	Nationwide Life Insurance Company	Other.....	0.010 ...	Nationwide Mutual Insurance Company NO.....	... 1
. 0140 ...	Nationwide		20-0745965 ..				Nationwide Life Tax Credit Partners 2004-C, LLC OH.....	.. NIA.....	Nationwide Life Insurance Company	Other.....	0.010 ...	Nationwide Mutual Insurance Company NO.....	... 1
. 0140 ...	Nationwide		20-1918935 ..				Nationwide Life Tax Credit Partners 2004-F, LLC OH.....	.. NIA.....	Nationwide Life Insurance Company	Other.....	0.010 ...	Nationwide Mutual Insurance Company NO.....	... 1
. 0140 ...	Nationwide		20-2303694 ..				Nationwide Life Tax Credit Partners 2005-A, LLC OH.....	.. NIA.....	Nationwide Life Insurance Company	Other.....	0.010 ...	Nationwide Mutual Insurance Company NO.....	... 1
. 0140 ...	Nationwide		20-2303602 ..				Nationwide Life Tax Credit Partners 2005-B, LLC OH.....	.. NIA.....	Nationwide Life Insurance Company	Other.....	0.010 ...	Nationwide Mutual Insurance Company NO.....	... 1
. 0140 ...	Nationwide		20-2450960 ..				Nationwide Life Tax Credit Partners 2005-C, LLC OH.....	.. NIA.....	Nationwide Life Insurance Company	Other.....	0.010 ...	Nationwide Mutual Insurance Company NO.....	... 1
. 0140 ...	Nationwide		20-2774223 ..				Nationwide Life Tax Credit Partners 2005-E, LLC OH.....	.. NIA.....	Nationwide Life Insurance Company	Other.....	0.010 ...	Nationwide Mutual Insurance Company NO.....	... 1
. 0140 ...	Nationwide		21-1288836 ..				Nationwide Life Tax Credit Partners 2007-A, LLC OH.....	.. NIA.....	Nationwide Life Insurance Company	Other.....	0.010 ...	Nationwide Mutual Insurance Company NO.....	... 1
. 0140 ...	Nationwide		27-1362364 ..				Nationwide Life Tax Credit Partners 2009-I, LLC OH.....	.. NIA.....	Nationwide Life Insurance Company	Other.....	0.010 ...	Nationwide Mutual Insurance Company NO.....	... 1
. 0140 ...	Nationwide		45-0469525 ..				Nationwide Life Tax Credit Partners No. 1, LLC OH.....	.. NIA.....	Nationwide Life Insurance Company	Other.....	0.010 ...	Nationwide Mutual Insurance Company NO.....	... 1
. 0140 ...	Nationwide	42110	75-1780981 ..				Nationwide Lloyds TX.....	.. IA.....	n/a	contract		Nationwide Mutual Insurance Company NO.....	... 2
. 0140 ...	Nationwide		42-1373380 ..				Nationwide Sales Solutions, Inc. (fka IA.....	.. NIA.....	Nationwide Mutual Insurance Company	Ownership.....	100.000 ...	Nationwide Mutual Insurance Company NO.....
. 0140 ...	Nationwide		75-3191025 ..				Nationwide Member Solutions Agency Inc.) OH.....	.. NIA.....	Nationwide Mutual Insurance Company	Ownership.....	100.000 ...	Nationwide Mutual Insurance Company NO.....
. 0140 ...	Nationwide	23787	31-4177100 ..				Nationwide Mutual Capital, LLC OH.....	.. UDP.....	Other non-Nationwide	n/a		Other non-Nationwide NO.....	... 2
. 0140 ...	Nationwide		34-2012765 ..				Nationwide Mutual Insurance Company OH.....	.. NIA.....	Nationwide Mutual Insurance Company	Ownership.....	100.000 ...	Nationwide Mutual Insurance Company NO.....
. 0140 ...	Nationwide		31-0970750 ..				Nationwide Private Equity Fund, LLC OH.....	.. NIA.....	Nationwide Mutual Insurance Company	Ownership.....	100.000 ...	Nationwide Mutual Insurance Company NO.....
. 0140 ...	Nationwide	37877	31-0970750 ..				Nationwide Property and Casualty Insurance Company OH.....	.. IA.....	Nationwide Mutual Insurance Company	Ownership.....	100.000 ...	Nationwide Mutual Insurance Company NO.....
. 0140 ...	Nationwide		31-1486309 ..				Nationwide Realty Investors, Ltd. OH.....	.. NIA.....	Nationwide Mutual Insurance Company	Ownership.....	97.000 ...	Nationwide Mutual Insurance Company NO.....	... 1
. 0140 ...	Nationwide		31-1486309 ..				Nationwide Realty Investors, Ltd. OH.....	.. NIA.....	Nationwide Indemnity Company	Ownership.....	3.000 ...	Nationwide Mutual Insurance Company NO.....	... 1
. 0140 ...	Nationwide		31-1486309 ..				Nationwide Realty Management, LLC OH.....	.. NIA.....	Nationwide Realty Investors, Ltd.	Ownership.....	100.000 ...	Nationwide Mutual Insurance Company NO.....
. 0140 ...	Nationwide		31-1592130 ..	2729677			Nationwide Realty Services, Ltd. OH.....	.. NIA.....	Nationwide Mutual Insurance Company	Ownership.....	100.000 ...	Nationwide Mutual Insurance Company NO.....
. 0140 ...	Nationwide		73-0948330 ..				Nationwide Retirement Solutions, Inc. DE.....	.. NIA.....	NFS Distributors, Inc.	Ownership.....	100.000 ...	Nationwide Mutual Insurance Company NO.....
. 0140 ...	Nationwide		83-2250056 ..				Nationwide Life and Annuity Insurance Company OH.....	.. NIA.....	Company	Ownership.....	100.000 ...	Nationwide Mutual Insurance Company NO.....
. 0140 ...	Nationwide		36-2434406 ..				Nationwide SBL, LLC OH.....	.. NIA.....	Nationwide Securities, LLC	Ownership.....	100.000 ...	Nationwide Mutual Insurance Company NO.....
. 0140 ...	Nationwide		46-1952215 ..				Nationwide Tax Credit Partners 2013-A, LLC OH.....	.. NIA.....	NFS Distributors, Inc.	Ownership.....	100.000 ...	Nationwide Mutual Insurance Company NO.....
. 0140 ...	Nationwide		46-1971926 ..				Nationwide Tax Credit Partners 2013-B, LLC OH.....	.. NIA.....	Nationwide Life Insurance Company	Other.....	0.010 ...	Nationwide Mutual Insurance Company NO.....	... 1
. 0140 ...	Nationwide		31-1592130 ..				Nationwide Tax Credit Partners 2013-B, LLC OH.....	.. NIA.....	Nationwide Life Insurance Company	Other.....	0.010 ...	Nationwide Mutual Insurance Company NO.....	... 1
. 0140 ...	Nationwide		20-5976272 ..				Nationwide Trust Company, FSB US.....	.. OTH.....	Nationwide Financial Services, Inc.	Ownership.....	100.000 ...	Nationwide Mutual Insurance Company NO.....	... 2
. 0140 ...	Nationwide		31-0871532 ..				Nationwide Ventures, LLC OH.....	.. NIA.....	Nationwide Mutual Insurance Company	Ownership.....	100.000 ...	Nationwide Mutual Insurance Company NO.....
. 0140 ...	Nationwide		85-4193218 ..				NBS Insurance Agency, Inc. OH.....	.. IA.....	Nationwide Mutual Insurance Company	Ownership.....	100.000 ...	Nationwide Mutual Insurance Company NO.....
. 0140 ...	Nationwide		11-3651828 ..				NCS Arizona, LLC OH.....	.. NIA.....	Nationwide Mutual Insurance Company	Ownership.....	100.000 ...	Nationwide Mutual Insurance Company NO.....
. 0140 ...	Nationwide						ND La Quinta Partners, LLC DE.....	.. NIA.....	Nationwide Realty Investors, Ltd.	Ownership.....	95.000 ...	Nationwide Mutual Insurance Company NO.....	... 1

STATEMENT AS OF JUNE 30, 2023 OF THE CRESTBROOK INSURANCE COMPANY

SCHEDULE Y
PART 1A - DETAIL OF INSURANCE HOLDING COMPANY SYSTEM

1	2	3	4	5	6	7	8	9	10	11	12	13	14	15	16
Group Code	Group Name	NAIC Company Code	ID Number	Federal RSSD	CIK	Name of Securities Exchange if Publicly Traded (U.S. or International)	Names of Parent, Subsidiaries Or Affiliates	Domi-ciliary Location	Relation-ship to Reporting Entity	Directly Controlled by (Name of Entity/Person)	Type of Control (Ownership, Board, Management, Attorney-in-Fact, Influence, Other)	If Control is Owner-ship Provide Percen-tage	Ultimate Controlling Entity(ies)/Person(s)	Is an SCA Filing Re-quired? (Yes/No)	*
.0140	Nationwide		31-1630871				NFS Distributors, Inc.	..DE....	..NIA.....	Nationwide Financial Services, Inc.	Ownership.....	100.000	Nationwide Mutual Insurance Company	...NO.....	
.0140	Nationwide		82-5195340				NLIC REO Holdings, LLC	..OH....	..NIA.....	Nationwide Life Insurance Company	Ownership.....	100.000	Nationwide Mutual Insurance Company	...NO.....	
.0140	Nationwide		82-5194959				NMIC REO Holdings, LLC	..OH....	..NIA.....	Nationwide Mutual Insurance Company	Ownership.....	100.000	Nationwide Mutual Insurance Company	...NO.....	
.0140	Nationwide		46-3762545				NNOV8, LLC	..OH....	..NIA.....	Nationwide Mutual Insurance Company	Ownership.....	100.000	Nationwide Mutual Insurance Company	...NO.....	
.0140	Nationwide		20-4939866				North of Third, LLC	..OH....	..NIA.....	NRI Equity Land Investments, LLC	Ownership.....	100.000	Nationwide Mutual Insurance Company	...NO.....	
.0140	Nationwide		31-1486309				NRI Arena, LLC	..OH....	..NIA.....	Nationwide Realty Investors, Ltd.	Ownership.....	100.000	Nationwide Mutual Insurance Company	...NO.....	
.0140	Nationwide		31-1486309				NRI Brookside, LLC	..OH....	..NIA.....	Nationwide Realty Investors, Ltd.	Ownership.....	100.000	Nationwide Mutual Insurance Company	...NO.....	
.0140	Nationwide		31-1486309				NRI Builders, LLC	..OH....	..NIA.....	Nationwide Realty Investors, Ltd.	Ownership.....	100.000	Nationwide Mutual Insurance Company	...NO.....	
.0140	Nationwide		31-1486309				NRI Cavasson, LLC	..OH....	..NIA.....	Nationwide Realty Investors, Ltd.	Ownership.....	100.000	Nationwide Mutual Insurance Company	...NO.....	
.0140	Nationwide		31-1486309				NRI Corporate Housing, LLC	..OH....	..NIA.....	Nationwide Realty Investors, Ltd.	Ownership.....	100.000	Nationwide Mutual Insurance Company	...NO.....	
.0140	Nationwide		31-1486309				NRI Cramer Creek, LLC	..OH....	..NIA.....	Nationwide Realty Investors, Ltd.	Ownership.....	100.000	Nationwide Mutual Insurance Company	...NO.....	
.0140	Nationwide		20-4939866				NRI Equity Land Investments, LLC	..OH....	..NIA.....	Nationwide Realty Investors, Ltd.	Ownership.....	80.000	Nationwide Mutual Insurance Company	...NO.....	1
.0140	Nationwide		26-0212217				NRI Equity Tampa, LLC	..OH....	..NIA.....	Nationwide Realty Investors, Ltd.	Ownership.....	100.000	Nationwide Mutual Insurance Company	...NO.....	
.0140	Nationwide		31-1486309				NRI Office Ventures, Ltd	..OH....	..NIA.....	Nationwide Realty Investors, Ltd.	Ownership.....	100.000	Nationwide Mutual Insurance Company	...NO.....	
.0140	Nationwide		31-1580283				NRI Telecom, LLC	..OH....	..NIA.....	NID Investments, LLC	Ownership.....	100.000	Nationwide Mutual Insurance Company	...NO.....	
.0140	Nationwide		31-1486309				NRI-Rivulon, LLC	..OH....	..NIA.....	Nationwide Realty Investors, Ltd.	Ownership.....	100.000	Nationwide Mutual Insurance Company	...NO.....	
.0140	Nationwide		90-0729552				NTCIF-2011, LLC	..OH....	..NIA.....	Nationwide Mutual Insurance Company	Ownership.....	100.000	Nationwide Mutual Insurance Company	...NO.....	1
.0140	Nationwide		27-4700627				NTCP 2011-A, LLC	..OH....	..OTH.....	Nationwide Life Insurance Company	Other.....	0.010	Nationwide Mutual Insurance Company	...NO.....	2
.0140	Nationwide		46-0741029				NTCP 2012-A, LLC	..OH....	..OTH.....	Nationwide Life Insurance Company	Other.....	0.010	Nationwide Mutual Insurance Company	...NO.....	2
.0140	Nationwide		46-3309896				NTCP 2013-C, LLC	..OH....	..OTH.....	Nationwide Life Insurance Company	Other.....	0.010	Nationwide Mutual Insurance Company	...NO.....	2
.0140	Nationwide		46-4111078				NTCP 2014-A, LLC	..OH....	..OTH.....	Nationwide Life Insurance Company	Other.....	0.010	Nationwide Mutual Insurance Company	...NO.....	2
.0140	Nationwide		47-1404116				NTCP 2014-B, LLC	..OH....	..OTH.....	Nationwide Life Insurance Company	Other.....	0.010	Nationwide Mutual Insurance Company	...NO.....	2
.0140	Nationwide		47-1413242				NTCP 2014-C, LLC	..OH....	..OTH.....	Nationwide Life Insurance Company	Other.....	0.010	Nationwide Mutual Insurance Company	...NO.....	2
.0140	Nationwide		47-3909345				NTCP 2015-A, LLC	..OH....	..OTH.....	Nationwide Life Insurance Company	Other.....	0.010	Nationwide Mutual Insurance Company	...NO.....	2
.0140	Nationwide		47-4148470				NTCP 2015-B, LLC	..OH....	..OTH.....	Nationwide Life Insurance Company	Other.....	0.010	Nationwide Mutual Insurance Company	...NO.....	2
.0140	Nationwide		81-3836925				NTCP 2016-A, LLC	..OH....	..NIA.....	Nationwide Life Insurance Company	Ownership.....	100.000	Nationwide Mutual Insurance Company	...NO.....	
.0140	Nationwide		82-2015065				NTCP 2017-A, LLC	..OH....	..NIA.....	Nationwide Life Insurance Company	Ownership.....	100.000	Nationwide Mutual Insurance Company	...NO.....	
.0140	Nationwide		84-1969518				NW Fyrebyrd, LLC	..OH....	..NIA.....	NNOV8, LLC	Ownership.....	100.000	Nationwide Mutual Insurance Company	...NO.....	
.0140	Nationwide		85-3363961				NW Next, LLC	..OH....	..NIA.....	NNOV8, LLC	Ownership.....	100.000	Nationwide Mutual Insurance Company	...NO.....	
.0140	Nationwide		81-0936428				NW Private Debt, LLC	..OH....	..NIA.....	Nationwide Mutual Insurance Company	Ownership.....	100.000	Nationwide Mutual Insurance Company	...NO.....	
.0140	Nationwide		26-1903919				NW REI, LLC	..DE....	..NIA.....	Nationwide Mutual Insurance Company	Ownership.....	100.000	Nationwide Mutual Insurance Company	...NO.....	
.0140	Nationwide		92-1294202				NW-Adams, LLC	..OH....	..NIA.....	NW REI, LLC	Ownership.....	100.000	Nationwide Mutual Insurance Company	...NO.....	
.0140	Nationwide		87-1087011				NW-Asheville, LLC	..OH....	..NIA.....	Nationwide Mutual Insurance Company	Ownership.....	100.000	Nationwide Mutual Insurance Company	...NO.....	
.0140	Nationwide		84-3942108				NW-Beloit, LLC	..OH....	..NIA.....	NW REI (MIFIC), LLC	Ownership.....	100.000	Nationwide Mutual Insurance Company	...NO.....	
.0140	Nationwide		92-2674633				NW-Brandon LLC	..OH....	..NIA.....	Nationwide Life Insurance Company	Ownership.....	100.000	Nationwide Mutual Insurance Company	...NO.....	
.0140	Nationwide		87-0847675				NW-Broadway at Surf, LLC	..OH....	..NIA.....	NMIC REO Holdings, LLC	Ownership.....	100.000	Nationwide Mutual Insurance Company	...NO.....	
.0140	Nationwide		88-2152576				NW-Colfax, LLC	..OH....	..NIA.....	NW REI (MLAIC), LLC	Ownership.....	100.000	Nationwide Mutual Insurance Company	...NO.....	
.0140	Nationwide		92-0292630				NW-Conroe, LLC	..OH....	..NIA.....	Nationwide Life Insurance Company	Ownership.....	100.000	Nationwide Mutual Insurance Company	...NO.....	
.0140	Nationwide		87-3648595				NW-Corazon, LLC	..OH....	..NIA.....	Nationwide Life Insurance Company	Ownership.....	100.000	Nationwide Mutual Insurance Company	...NO.....	
.0140	Nationwide		84-2920247				NW-Cranberry, LLC	..OH....	..NIA.....	NW REI (NLIC), LLC	Ownership.....	100.000	Nationwide Mutual Insurance Company	...NO.....	
.0140	Nationwide		86-3529884				NW-Englewood, LLC	..OH....	..NIA.....	NW REI (NLIC), LLC	Ownership.....	100.000	Nationwide Mutual Insurance Company	...NO.....	
.0140	Nationwide		84-4388876				NW-Escalante, LLC	..OH....	..NIA.....	NW REI, LLC	Ownership.....	100.000	Nationwide Mutual Insurance Company	...NO.....	
.0140	Nationwide		86-1538532				NW-Escalante II, LLC	..OH....	..NIA.....	NW REI, LLC	Ownership.....	100.000	Nationwide Mutual Insurance Company	...NO.....	
.0140	Nationwide		92-3310596				NW-FSU, LLC	..OH....	..NIA.....	Nationwide Life Insurance Company	Ownership.....	100.000	Nationwide Mutual Insurance Company	...NO.....	
.0140	Nationwide		31-1580283				NWD 205 Vine, LLC	..OH....	..NIA.....	NWD Investments, LLC	Ownership.....	100.000	Nationwide Mutual Insurance Company	...NO.....	
.0140	Nationwide		31-1580283				NWD 225 Nationwide, LLC	..OH....	..NIA.....	NWD Investments, LLC	Ownership.....	100.000	Nationwide Mutual Insurance Company	...NO.....	
.0140	Nationwide		31-1580283				NWD 230 West, LLC	..OH....	..NIA.....	NWD Investments, LLC	Ownership.....	100.000	Nationwide Mutual Insurance Company	...NO.....	
.0140	Nationwide		31-1580283				NWD 240 Nationwide, LLC	..OH....	..NIA.....	NWD Investments, LLC	Ownership.....	100.000	Nationwide Mutual Insurance Company	...NO.....	
.0140	Nationwide		31-1580283				NWD 250 Brodbelt, LLC	..OH....	..NIA.....	NWD Investments, LLC	Ownership.....	100.000	Nationwide Mutual Insurance Company	...NO.....	

STATEMENT AS OF JUNE 30, 2023 OF THE CRESTBROOK INSURANCE COMPANY

SCHEDULE Y
PART 1A - DETAIL OF INSURANCE HOLDING COMPANY SYSTEM

1	2	3	4	5	6	7	8	9	10	11	12 Type of Control (Ownership, Board, Management, Attorney-in-Fact, Influence, Other)	13 If Control is Owner- ship Provide Percent- age	14 Ultimate Controlling Entity(ies)/Person(s)	15 Is an SCA Filing Re- quired? (Yes/No)	16 *
Group Code	Group Name	NAIC Company Code	ID Number	Federal RSSD	CIK	Name of Securities Exchange if Publicly Traded (U.S. or International)	Names of Parent, Subsidiaries Or Affiliates	Domi- ciliary Loca- tion	Relation- ship to Reporting Entity	Directly Controlled by (Name of Entity/Person)					
.0140	Nationwide		31-1580283				NWD 250 West, LLC	..OH....	NIA.....	NWD Investments, LLC	Ownership.....	100.000	Nationwide Mutual Insurance Company	...NO.....	
.0140	Nationwide		31-1580283				NWD 265 Neil, LLC	..OH....	NIA.....	NWD Investments, LLC	Ownership.....	100.000	Nationwide Mutual Insurance Company	...NO.....	
.0140	Nationwide		31-1580283				NWD 275 Marconi, LLC	..OH....	NIA.....	NWD Investments, LLC	Ownership.....	100.000	Nationwide Mutual Insurance Company	...NO.....	
.0140	Nationwide		31-1580283				NWD 300 Neil, LLC	..OH....	NIA.....	NWD Investments, LLC	Ownership.....	100.000	Nationwide Mutual Insurance Company	...NO.....	
.0140	Nationwide		31-1580283				NWD 300 Spring, LLC	..OH....	NIA.....	NWD Investments, LLC	Ownership.....	100.000	Nationwide Mutual Insurance Company	...NO.....	
.0140	Nationwide		31-1580283				NWD 355 McConnell, LLC	..OH....	NIA.....	NWD Investments, LLC	Ownership.....	100.000	Nationwide Mutual Insurance Company	...NO.....	
.0140	Nationwide		31-1580283				NWD 425 Nationwide, LLC	..OH....	NIA.....	NWD Investments, LLC	Ownership.....	100.000	Nationwide Mutual Insurance Company	...NO.....	
.0140	Nationwide		31-1580283				NWD 500 Nationwide, LLC	..OH....	NIA.....	NWD Investments, LLC	Ownership.....	100.000	Nationwide Mutual Insurance Company	...NO.....	
.0140	Nationwide		31-1580283				NWD Arena Crossing, LLC	..OH....	NIA.....	NWD Investments, LLC	Ownership.....	100.000	Nationwide Mutual Insurance Company	...NO.....	
.0140	Nationwide		31-1580283				NWD Arena District I, LLC	..OH....	NIA.....	NWD Investments, LLC	Ownership.....	100.000	Nationwide Mutual Insurance Company	...NO.....	
.0140	Nationwide		31-1580283				NWD Arena District II, LLC	..OH....	NIA.....	NWD Investments, LLC	Ownership.....	100.000	Nationwide Mutual Insurance Company	...NO.....	
.0140	Nationwide		31-1580283				NWD Arena District MM, LLC	..OH....	NIA.....	NWD Investments, LLC	Ownership.....	100.000	Nationwide Mutual Insurance Company	...NO.....	
.0140	Nationwide		31-1580283				NWD Arena District PW, LLC	..OH....	NIA.....	NWD Investments, LLC	Ownership.....	100.000	Nationwide Mutual Insurance Company	...NO.....	
.0140	Nationwide		31-1580283				NWD Arena District V, LLC	..OH....	NIA.....	NWD Investments, LLC	Ownership.....	100.000	Nationwide Mutual Insurance Company	...NO.....	
.0140	Nationwide		31-1580283				NWD Athletic Club, LLC	..OH....	NIA.....	NWD Investments, LLC	Ownership.....	100.000	Nationwide Mutual Insurance Company	...NO.....	
.0140	Nationwide		88-2975730				NW-Boise, LLC	..OH....	NIA.....	Nationwide Life Insurance Company	Ownership.....	100.000	Nationwide Mutual Insurance Company	...NO.....	
.0140	Nationwide		31-1580283				NWD Brodbelt, LLC	..OH....	NIA.....	NWD Investments, LLC	Ownership.....	100.000	Nationwide Mutual Insurance Company	...NO.....	
.0140	Nationwide		30-0876022				NWD Franklinton, LLC	..OH....	NIA.....	Nationwide Realty Investors, Ltd.	Ownership.....	80.000	Nationwide Mutual Insurance Company	...NO.....	1
.0140	Nationwide		31-4118665				NWD HP, LLC	..OH....	NIA.....	NWD Investments, LLC	Ownership.....	75.000	Nationwide Mutual Insurance Company	...NO.....	1
.0140	Nationwide		31-1580283				NWD Investments, LLC	..OH....	NIA.....	Nationwide Realty Investors, Ltd.	Ownership.....	80.000	Nationwide Mutual Insurance Company	...NO.....	1
.0140	Nationwide		31-1486309				NWGH, LLC	..OH....	NIA.....	Nationwide Realty Investors, Ltd.	Ownership.....	75.000	Nationwide Mutual Insurance Company	...NO.....	1
.0140	Nationwide		87-3124154				NW-Gallatin, LLC	..OH....	NIA.....	Nationwide Life Insurance Company	Ownership.....	100.000	Nationwide Mutual Insurance Company	...NO.....	
.0140	Nationwide		85-1262262				NW-Gator Walk, LLC	..OH....	NIA.....	NW REI (NMFIC), LLC	Ownership.....	100.000	Nationwide Mutual Insurance Company	...NO.....	
.0140	Nationwide		92-2943602				NW-Holly Springs, LLC	..OH....	NIA.....	Nationwide Mutual Insurance Company	Ownership.....	100.000	Nationwide Mutual Insurance Company	...NO.....	
.0140	Nationwide		86-2431839				NW-Hub13, LLC	..OH....	NIA.....	NW REI, LLC	Ownership.....	100.000	Nationwide Mutual Insurance Company	...NO.....	
.0140	Nationwide		92-3558072				NW-Huntersville, LLC	..OH....	NIA.....	Nationwide Mutual Insurance Company	Ownership.....	100.000	Nationwide Mutual Insurance Company	...NO.....	
.0140	Nationwide		47-2482818				NW-Jasper WAG, LLC	..OH....	NIA.....	NW REI, LLC	Ownership.....	100.000	Nationwide Mutual Insurance Company	...NO.....	
.0140	Nationwide		87-3767006				NW-Kingsbury, LLC	..OH....	NIA.....	Nationwide Life Insurance Company	Ownership.....	100.000	Nationwide Mutual Insurance Company	...NO.....	
.0140	Nationwide		81-5146596				NW-Logan, LLC	..OH....	NIA.....	NW REI, LLC	Ownership.....	100.000	Nationwide Mutual Insurance Company	...NO.....	
.0140	Nationwide		87-1565013				NW-Midtown, LLC	..OH....	NIA.....	NW REI, LLC	Ownership.....	100.000	Nationwide Mutual Insurance Company	...NO.....	
.0140	Nationwide		85-1246853				NW-Oakbrook, LLC	..OH....	NIA.....	NW REI (NLAIC), LLC	Ownership.....	100.000	Nationwide Mutual Insurance Company	...NO.....	
.0140	Nationwide		88-2595124				NW-OG, LLC	..OH....	NIA.....	NW REI, LLC	Ownership.....	100.000	Nationwide Mutual Insurance Company	...NO.....	
.0140	Nationwide		83-2260477				NW-ORBDP, LLC	..OH....	NIA.....	NW REI (NMFIC), LLC	Ownership.....	100.000	Nationwide Mutual Insurance Company	...NO.....	
.0140	Nationwide		93-1728625				NW-Pleasant Prairie, LLC	..OH....	NIA.....	Nationwide Life Insurance Company	Ownership.....	100.000	Nationwide Mutual Insurance Company	...NO.....	
.0140	Nationwide		47-2449044				NW-Promenade at Madison, LLC	..OH....	NIA.....	NW REI, LLC	Ownership.....	100.000	Nationwide Mutual Insurance Company	...NO.....	
.0140	Nationwide		83-2173918				NW-Radius, LLC	..OH....	NIA.....	NW REI (NLIC), LLC	Ownership.....	100.000	Nationwide Mutual Insurance Company	...NO.....	
.0140	Nationwide		87-1367836				NW-Rancho, LLC	..OH....	NIA.....	NW REI, LLC	Ownership.....	100.000	Nationwide Mutual Insurance Company	...NO.....	
.0140	Nationwide		88-1405151				NW-Riverchase, LLC	..OH....	NIA.....	Nationwide Life Insurance Company	Ownership.....	100.000	Nationwide Mutual Insurance Company	...NO.....	
.0140	Nationwide		86-3702669				NW-RPG Cranberry, LLC	..OH....	NIA.....	NW REI, LLC	Ownership.....	100.000	Nationwide Mutual Insurance Company	...NO.....	
.0140	Nationwide		87-0890277				NW-Ruby, LLC	..OH....	NIA.....	NW REI (NLIC), LLC	Ownership.....	100.000	Nationwide Mutual Insurance Company	...NO.....	
.0140	Nationwide		87-3273918				NW-San Marco, LLC	..OH....	NIA.....	Nationwide Life Insurance Company	Ownership.....	100.000	Nationwide Mutual Insurance Company	...NO.....	
.0140	Nationwide		87-3289289				NW-San Pablo, LLC	..OH....	NIA.....	NW REI, LLC	Ownership.....	100.000	Nationwide Mutual Insurance Company	...NO.....	
.0140	Nationwide		84-4326171				NW-Southbank, LLC	..OH....	NIA.....	NW REI, LLC	Ownership.....	100.000	Nationwide Mutual Insurance Company	...NO.....	
.0140	Nationwide		81-3212025				NW-Springfield, LLC	..OH....	NIA.....	NW REI, LLC	Ownership.....	100.000	Nationwide Mutual Insurance Company	...NO.....	
.0140	Nationwide		93-2022585				NW-Spring Hill, LLC	..OH....	NIA.....	Nationwide Mutual Insurance Company	Ownership.....	100.000	Nationwide Mutual Insurance Company	...NO.....	
.0140	Nationwide		92-2878794				NW-SR-16, LLC	..OH....	NIA.....	Nationwide Mutual Insurance Company	Ownership.....	100.000	Nationwide Mutual Insurance Company	...NO.....	
.0140	Nationwide		85-0536537				NW-Sweetwater, LLC	..OH....	NIA.....	NW REI (NLIC), LLC	Ownership.....	100.000	Nationwide Mutual Insurance Company	...NO.....	
.0140	Nationwide		92-0677233				NW-UNCC, LLC	..OH....	NIA.....	NW REI (NLIC), LLC	Ownership.....	100.000	Nationwide Mutual Insurance Company	...NO.....	

STATEMENT AS OF JUNE 30, 2023 OF THE CRESTBROOK INSURANCE COMPANY

SCHEDULE Y
PART 1A - DETAIL OF INSURANCE HOLDING COMPANY SYSTEM

1	2	3	4	5	6	7	8	9	10	11	12	13	14	15	16
Group Code	Group Name	NAIC Company Code	ID Number	Federal RSSD	CIK	Name of Securities Exchange if Publicly Traded (U.S. or International)	Names of Parent, Subsidiaries Or Affiliates	Domi-ciliary Location	Relation-ship to Reporting Entity	Directly Controlled by (Name of Entity/Person)	Type of Control (Ownership, Board, Management, Attorney-in-Fact, Influence, Other)	If Control is Owner-ship Provide Percen-tage	Ultimate Controlling Entity(ies)/Person(s)	Is an SCA Filing Re-quired? (Yes/No)	*
. 0140 ...	Nationwide	81-1603024	NW REI (NLAIC), LLC OH.....NIA.....	Nationwide Life and Annuity Insurance Company	Ownership.....	100.000 ...	Nationwide Mutual Insurance Company NO.....
. 0140 ...	Nationwide	81-1619428	NW REI (NLIC), LLC OH.....NIA.....	Nationwide Life Insurance Company	Ownership.....	100.000 ...	Nationwide Mutual Insurance Company NO.....
. 0140 ...	Nationwide	81-1861190	NW REI (NMIC), LLC OH.....NIA.....	Nationwide Mutual Insurance Company	Ownership.....	100.000 ...	Nationwide Mutual Insurance Company NO.....
. 0140 ...	Nationwide	31-0947092	OCH Company, LLC OH.....NIA.....	Nationwide Realty Investors, Ltd.	Ownership.....	100.000 ...	Nationwide Mutual Insurance Company NO.....
.....	26-0263012	Old Track Street Owners Association, Inc. OH.....OTH.....	Other non-Nationwide	n/a	Other non-Nationwide NO.....	... 2
. 0140 ...	Nationwide	13999	27-1712056	Olentangy Reinsurance, LLC VT.....IA.....	Nationwide Life and Annuity Insurance Company	Ownership.....	100.000 ...	Nationwide Mutual Insurance Company NO.....
. 0140 ...	Nationwide	31-1486309	Perimeter A, Ltd. OH.....NIA.....	Nationwide Realty Investors, Ltd.	Ownership.....	100.000 ...	Nationwide Mutual Insurance Company NO.....
. 0140 ...	Nationwide	20-4939866	Rail Street Parking, LLC OH.....NIA.....	NRI Equity Land Investments, LLC	Ownership.....	100.000 ...	Nationwide Mutual Insurance Company NO.....
.....	Registered Investment Advisors Services, Inc.
. 0140 ...	Nationwide	75-2938844 TX.....NIA.....	Nationwide Financial Services, Inc.	Ownership.....	100.000 ...	Nationwide Mutual Insurance Company NO.....
. 0140 ...	Nationwide	82-0549218	Retention Alternatives Ltd.BMJ.....IA.....	Nationwide Mutual Insurance Company	Ownership.....	100.000 ...	Nationwide Mutual Insurance Company NO.....
. 0140 ...	Nationwide	15580	31-1117969	Scottsdale Indemnity Company OH.....IA.....	Nationwide Mutual Insurance Company	Ownership.....	100.000 ...	Nationwide Mutual Insurance Company NO.....
. 0140 ...	Nationwide	41297	31-1024978	Scottsdale Insurance Company OH.....IA.....	Nationwide Mutual Insurance Company	Ownership.....	100.000 ...	Nationwide Mutual Insurance Company NO.....
. 0140 ...	Nationwide	10672	86-0835870	Scottsdale Surplus Lines Insurance Company .	.. AZ.....IA.....	Scottsdale Insurance Company	Ownership.....	100.000 ...	Nationwide Mutual Insurance Company NO.....
. 0140 ...	Nationwide	31-1610040	The Waterfront Partners, LLC OH.....NIA.....	Nationwide Realty Investors, Ltd.	Ownership.....	50.000 ...	Nationwide Mutual Insurance Company NO.....	... 1
. 0140 ...	Nationwide	36269	86-0619597	Titan Insurance Company MI.....IA.....	Nationwide Mutual Insurance Company	Ownership.....	100.000 ...	Nationwide Mutual Insurance Company NO.....
. 0140 ...	Nationwide	75-1284530	Titan Insurance Services, Inc. TX.....IA.....	Nationwide Mutual Insurance Company	Ownership.....	100.000 ...	Nationwide Mutual Insurance Company NO.....
. 0140 ...	Nationwide	33-0160222	V.P.I. Services, Inc. CA.....IA.....	Veterinary Pet Insurance Company	Ownership.....	100.000 ...	Nationwide Mutual Insurance Company NO.....
. 0140 ...	Nationwide	42285	95-3750113	Veterinary Pet Insurance Company OH.....IA.....	Scottsdale Insurance Company	Ownership.....	100.000 ...	Nationwide Mutual Insurance Company NO.....
. 0140 ...	Nationwide	42889	34-1394913	Victoria Fire & Casualty Company OH.....IA.....	Nationwide Mutual Insurance Company	Ownership.....	100.000 ...	Nationwide Mutual Insurance Company NO.....
.....	Victoria Fire & Casualty Insurance Company
. 0140 ...	Nationwide	10105	34-1777972	Victoria Select Insurance Company OH.....IA.....	Ownership.....	100.000 ...	Nationwide Mutual Insurance Company NO.....
. 0140 ...	Nationwide	31-1486309	Wellington Park, LLC OH.....NIA.....	Nationwide Realty Investors, Ltd.	Ownership.....	100.000 ...	Nationwide Mutual Insurance Company NO.....

Asterisk	Explanation
1	For the purposes of this schedule, Nationwide presumed control of these entities because they are owned by at least 10% and are not wholly-owned by a Nationwide entity.
2	Other ownership indicates a non-ownership circumstance by a Nationwide entity.

STATEMENT AS OF JUNE 30, 2023 OF THE CRESTBROOK INSURANCE COMPANY

PART 1 - LOSS EXPERIENCE

Line of Business		Current Year to Date			4
		1 Direct Premiums Earned	2 Direct Losses Incurred	3 Direct Loss Percentage	Prior Year to Date Direct Loss Percentage
1.	Fire	926,897	199,208	21.5	71.0
2.1	Allied Lines	111,425	84,228	75.6	(957.6)
2.2	Multiple peril crop				
2.3	Federal flood				
2.4	Private crop				
2.5	Private flood	557,609	233,479	41.9	(2.5)
3.	Farmowners multiple peril	7,531,626	4,424,570	58.7	215.8
4.	Homeowners multiple peril	99,289,371	98,500,539	99.2	80.5
5.1	Commercial multiple peril (non-liability portion)	29,785,369	8,877,501	29.8	26.3
5.2	Commercial multiple peril (liability portion)	1,908	(6,007)	(314.8)	0.1
6.	Mortgage guaranty				
8.	Ocean marine				
9.	Inland marine	15,563,010	5,457,751	35.1	32.2
10.	Financial guaranty				
11.1	Medical professional liability - occurrence				
11.2	Medical professional liability - claims-made				
12.	Earthquake	2,039,895	(3)	0.0	
13.1	Comprehensive (hospital and medical) individual				
13.2	Comprehensive (hospital and medical) group				
14.	Credit accident and health				
15.1	Vision only				
15.2	Dental only				
15.3	Disability income				
15.4	Medicare supplement				
15.5	Medicaid Title XIX				
15.6	Medicare Title XVIII				
15.7	Long-term care				
15.8	Federal employees health benefits plan				
15.9	Other health				
16.	Workers' compensation	4,534,070	2,223,031	49.0	68.9
17.1	Other liability - occurrence	33,578,009	22,331,659	66.5	80.7
17.2	Other liability - claims-made	96			
17.3	Excess workers' compensation				
18.1	Products liability - occurrence	5,275,426	1,969,358	37.3	43.2
18.2	Products liability - claims-made				
19.1	Private passenger auto no-fault (personal injury protection)	1,227,688	717,491	58.4	14.3
19.2	Other private passenger auto liability	27,207,782	18,936,353	69.6	68.3
19.3	Commercial auto no-fault (personal injury protection)	74,387	25,251	33.9	25.0
19.4	Other commercial auto liability	20,846,130	21,753,231	104.4	84.9
21.1	Private passenger auto physical damage	31,798,412	27,479,045	86.4	64.0
21.2	Commercial auto physical damage	8,515,181	3,971,933	46.6	63.7
22.	Aircraft (all perils)				
23.	Fidelity	154,536	81,043	52.4	66.5
24.	Surety				
26.	Burglary and theft	14,821	2,052	13.8	4.0
27.	Boiler and machinery	1,440,943	272,036	18.9	2.7
28.	Credit				
29.	International				
30.	Warranty				
31.	Reinsurance - Nonproportional Assumed Property	XXX	XXX	XXX	XXX
32.	Reinsurance - Nonproportional Assumed Liability	XXX	XXX	XXX	XXX
33.	Reinsurance - Nonproportional Assumed Financial Lines	XXX	XXX	XXX	XXX
34.	Aggregate write-ins for other lines of business				
35.	Totals	290,474,591	217,533,749	74.9	66.8
DETAILS OF WRITE-INS					
3401.				
3402.				
3403.				
3498.	Summary of remaining write-ins for Line 34 from overflow page				
3499.	Totals (Lines 3401 through 3403 plus 3498)(Line 34 above)				

STATEMENT AS OF JUNE 30, 2023 OF THE CRESTBROOK INSURANCE COMPANY

PART 2 - DIRECT PREMIUMS WRITTEN

Line of Business		1 Current Quarter	2 Current Year to Date	3 Prior Year Year to Date
1.	Fire	1,962,443	1,159,987	1,193,345
2.1	Allied Lines	272,642	123,071	(45)
2.2	Multiple peril crop			
2.3	Federal flood			
2.4	Private crop			
2.5	Private flood	315,774	583,469	543,277
3.	Farmowners multiple peril	5,741,465	11,722,382	1,707,776
4.	Homeowners multiple peril	60,693,865	107,160,135	94,744,761
5.1	Commercial multiple peril (non-liability portion)	18,872,256	30,908,673	26,671,215
5.2	Commercial multiple peril (liability portion)	(367,815)	52	134,126
6.	Mortgage guaranty			
8.	Ocean marine			
9.	Inland marine	8,874,858	15,942,214	15,299,409
10.	Financial guaranty			
11.1	Medical professional liability - occurrence			
11.2	Medical professional liability - claims-made			
12.	Earthquake	1,153,311	2,072,407	1,990,404
13.1	Comprehensive (hospital and medical) individual			
13.2	Comprehensive (hospital and medical) group			
14.	Credit accident and health			
15.1	Vision only			
15.2	Dental only			
15.3	Disability income			
15.4	Medicare supplement			
15.5	Medicaid Title XIX			
15.6	Medicare Title XVIII			
15.7	Long-term care			
15.8	Federal employees health benefits plan			
15.9	Other health			
16.	Workers' compensation	5,070,513	6,384,773	4,582,231
17.1	Other liability - occurrence	19,002,501	35,307,842	31,590,389
17.2	Other liability - claims-made			578
17.3	Excess workers' compensation			
18.1	Products liability - occurrence	3,232,364	6,268,743	5,115,616
18.2	Products liability - claims-made			
19.1	Private passenger auto no-fault (personal injury protection)	656,705	1,209,610	1,205,665
19.2	Other private passenger auto liability	14,675,031	27,398,810	27,387,985
19.3	Commercial auto no-fault (personal injury protection)	35,420	75,738	91,845
19.4	Other commercial auto liability	13,887,177	23,038,636	23,271,036
21.1	Private passenger auto physical damage	18,398,254	33,465,056	31,649,345
21.2	Commercial auto physical damage	5,650,333	9,400,173	9,022,736
22.	Aircraft (all perils)			
23.	Fidelity	80,972	147,262	146,133
24.	Surety			
26.	Burglary and theft	7,972	14,503	13,192
27.	Boiler and machinery	811,904	1,510,460	1,505,759
28.	Credit			
29.	International			
30.	Warranty			
31.	Reinsurance - Nonproportional Assumed Property	XXX	XXX	XXX
32.	Reinsurance - Nonproportional Assumed Liability	XXX	XXX	XXX
33.	Reinsurance - Nonproportional Assumed Financial Lines	XXX	XXX	XXX
34.	Aggregate write-ins for other lines of business			
35.	Totals	179,027,945	313,893,996	277,866,778
DETAILS OF WRITE-INS				
3401.			
3402.			
3403.			
3498.	Summary of remaining write-ins for Line 34 from overflow page			
3499.	Totals (Lines 3401 through 3403 plus 3498)(Line 34 above)			

STATEMENT AS OF JUNE 30, 2023 OF THE CRESTBROOK INSURANCE COMPANY

PART 3 (000 omitted)

LOSS AND LOSS ADJUSTMENT EXPENSE RESERVES SCHEDULE

	1	2	3	4	5	6	7	8	9	10	11	12	13									
Years in Which Losses Occurred	Prior Year-End Known Case Loss and LAE Reserves	Prior Year-End IBNR Loss and LAE Reserves	Total Prior Year-End Loss and LAE Reserves (Cols. 1+2)	2023 Loss and LAE Payments on Claims Reported as of Prior Year-End	2023 Loss and LAE Payments on Claims Unreported as of Prior Year-End	Total 2023 Loss and LAE Payments (Cols. 4+5)	Q.S. Date Known Case Loss and LAE Reserves on Claims Reported and Open as of Prior Year End	Q.S. Date Known Case Loss and LAE Reserves on Claims Reported or Reopened Subsequent to Prior Year End	Q.S. Date IBNR Loss and LAE Reserves	Total Q.S. Loss and LAE Reserves (Cols.7+8+9)	Prior Year-End Known Case Loss and LAE Reserves Developed (Savings)/ Deficiency (Cols.4+7 minus Col. 1)	Prior Year-End IBNR Loss and LAE Reserves Developed (Savings)/ Deficiency (Cols. 5+8+9 minus Col. 2)	Prior Year-End Total Loss and LAE Reserve Developed (Savings)/ Deficiency (Cols. 11+12)									
1. 2020 + Prior									
2. 2021									
3. Subtotals 2021 + Prior									
4. 2022									
5. Subtotals 2022 + Prior									
6. 2023XXX.....XXX.....XXX.....XXX.....XXX.....XXX.....XXX.....XXX.....									
7. Totals									
8. Prior Year-End Surplus As Regards Policyholders	65,201										Col. 11, Line 7 As % of Col. 1 Line 7	Col. 12, Line 7 As % of Col. 2 Line 7	Col. 13, Line 7 As % of Col. 3 Line 7									
											1.	2.	3.									
											Col. 13, Line 7 As a % of Col. 1 Line 8											
											4.											

STATEMENT AS OF JUNE 30, 2023 OF THE CRESTBROOK INSURANCE COMPANY

SUPPLEMENTAL EXHIBITS AND SCHEDULES INTERROGATORIES

The following supplemental reports are required to be filed as part of your statement filing. However, in the event that your company does not transact the type of business for which the special report must be filed, your response of NO to the specific interrogatory will be accepted in lieu of filing a "NONE" report and a bar code will be printed below. If the supplement is required of your company but is not being filed for whatever reason enter SEE EXPLANATION and provide an explanation following the interrogatory questions.

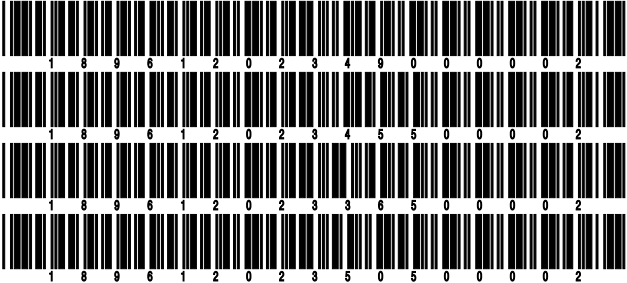
	Response
1. Will the Trusteed Surplus Statement be filed with the state of domicile and the NAIC with this statement?	NO
2. Will Supplement A to Schedule T (Medical Professional Liability Supplement) be filed with this statement?	NO
3. Will the Medicare Part D Coverage Supplement be filed with the state of domicile and the NAIC with this statement?	NO
4. Will the Director and Officer Insurance Coverage Supplement be filed with the state of domicile and the NAIC with this statement?	NO
AUGUST FILING	
5. Will the regulator-only (non-public) Communication of Internal Control Related Matters Noted in Audit be filed with the state of domicile and electronically with the NAIC (as a regulator-only non-public document) by August 1? The response for 1st and 3rd quarters should be N/A. A NO response resulting with a bar code is only appropriate in the 2nd quarter.	YES

Explanations:

1.
2.
3.
4.

Bar Codes:

1. Trusteed Surplus Statement [Document Identifier 490]
2. Supplement A to Schedule T [Document Identifier 455]
3. Medicare Part D Coverage Supplement [Document Identifier 365]
4. Director and Officer Supplement [Document Identifier 505]



STATEMENT AS OF JUNE 30, 2023 OF THE CRESTBROOK INSURANCE COMPANY
OVERFLOW PAGE FOR WRITE-INS

NONE

SCHEDULE A - VERIFICATION

Real Estate

	1	2
	Year to Date	Prior Year Ended December 31
1. Book/adjusted carrying value, December 31 of prior year		
2. Cost of acquired:		
2.1 Actual cost at time of acquisition		
2.2 Additional investment made after acquisition		
3. Current year change in encumbrances		
4. Total gain (loss) on disposals		
5. Deduct amounts received on disposals		
6. Total foreign exchange change in book/adjusted carrying value		
7. Deduct current year's other than temporary impairment recognized		
8. Deduct current year's depreciation		
9. Book/adjusted carrying value at the end of current period (Lines 1+2+3+4-5+6-7-8)		
10. Deduct total nonadmitted amounts		
11. Statement value at end of current period (Line 9 minus Line 10)		

SCHEDULE B - VERIFICATION

Mortgage Loans

	1	2
	Year to Date	Prior Year Ended December 31
1. Book value/recorded investment excluding accrued interest, December 31 of prior year		
2. Cost of acquired:		
2.1 Actual cost at time of acquisition		
2.2 Additional investment made after acquisition		
3. Capitalized deferred interest and other		
4. Accrual of discount		
5. Unrealized valuation increase (decrease)		
6. Total gain (loss) on disposals		
7. Deduct amounts received on disposals		
8. Deduct amortization of premium and mortgage interest paid and commitment fees		
9. Total foreign exchange change in book value/recorded investment excluding accrued interest		
10. Deduct current year's other than temporary impairment recognized		
11. Book value/recorded investment excluding accrued interest at end of current period (Lines 1+2+3+4+5+6-7-8+9-10)		
12. Total valuation allowance		
13. Subtotal (Line 11 plus Line 12)		
14. Deduct total nonadmitted amounts		
15. Statement value at end of current period (Line 13 minus Line 14)		

SCHEDULE BA - VERIFICATION

Other Long-Term Invested Assets

	1	2
	Year to Date	Prior Year Ended December 31
1. Book/adjusted carrying value, December 31 of prior year		
2. Cost of acquired:		
2.1 Actual cost at time of acquisition		
2.2 Additional investment made after acquisition		
3. Capitalized deferred interest and other		
4. Accrual of discount		
5. Unrealized valuation increase (decrease)		
6. Total gain (loss) on disposals		
7. Deduct amounts received on disposals		
8. Deduct amortization of premium and depreciation		
9. Total foreign exchange change in book/adjusted carrying value		
10. Deduct current year's other than temporary impairment recognized		
11. Book/adjusted carrying value at end of current period (Lines 1+2+3+4+5+6-7-8+9-10)		
12. Deduct total nonadmitted amounts		
13. Statement value at end of current period (Line 11 minus Line 12)		

SCHEDULE D - VERIFICATION

Bonds and Stocks

	1	2
	Year to Date	Prior Year Ended December 31
1. Book/adjusted carrying value of bonds and stocks, December 31 of prior year	62,770,356	42,574,584
2. Cost of bonds and stocks acquired	4,348,870	26,538,490
3. Accrual of discount	40,309	52,430
4. Unrealized valuation increase (decrease)	162,734	643,306
5. Total gain (loss) on disposals	(1,230)	(137,741)
6. Deduct consideration for bonds and stocks disposed of	522,782	6,652,843
7. Deduct amortization of premium	116,655	247,870
8. Total foreign exchange change in book/adjusted carrying value		
9. Deduct current year's other than temporary impairment recognized		
10. Total investment income recognized as a result of prepayment penalties and/or acceleration fees		
11. Book/adjusted carrying value at end of current period (Lines 1+2+3+4+5-6-7+8-9+10)	66,681,602	62,770,356
12. Deduct total nonadmitted amounts		
13. Statement value at end of current period (Line 11 minus Line 12)	66,681,602	62,770,356

STATEMENT AS OF JUNE 30, 2023 OF THE CRESTBROOK INSURANCE COMPANY

SCHEDULE D - PART 1B

Showing the Acquisitions, Dispositions and Non-Trading Activity
During the Current Quarter for all Bonds and Preferred Stock by NAIC Designation

NAIC Designation	1 Book/Adjusted Carrying Value Beginning of Current Quarter	2 Acquisitions During Current Quarter	3 Dispositions During Current Quarter	4 Non-Trading Activity During Current Quarter	5 Book/Adjusted Carrying Value End of First Quarter	6 Book/Adjusted Carrying Value End of Second Quarter	7 Book/Adjusted Carrying Value End of Third Quarter	8 Book/Adjusted Carrying Value December 31 Prior Year
BONDS								
1. NAIC 1 (a)	47,316,921	3,775,140	272,925	95,934	47,316,921	50,915,070		47,121,012
2. NAIC 2 (a)	15,775,014			(8,482)	15,775,014	15,766,532		13,922,756
3. NAIC 3 (a)								1,726,589
4. NAIC 4 (a)								
5. NAIC 5 (a)								
6. NAIC 6 (a)								
7. Total Bonds	63,091,935	3,775,140	272,925	87,452	63,091,935	66,681,602		62,770,357
PREFERRED STOCK								
8. NAIC 1								
9. NAIC 2								
10. NAIC 3								
11. NAIC 4								
12. NAIC 5								
13. NAIC 6								
14. Total Preferred Stock								
15. Total Bonds and Preferred Stock	63,091,935	3,775,140	272,925	87,452	63,091,935	66,681,602		62,770,357

(a) Book/Adjusted Carrying Value column for the end of the current reporting period includes the following amount of short-term and cash equivalent bonds by NAIC designation:
NAIC 1 \$; NAIC 2 \$; NAIC 3 \$ NAIC 4 \$; NAIC 5 \$; NAIC 6 \$

Schedule DA - Part 1 - Short-Term Investments

N O N E

Schedule DA - Verification - Short-Term Investments

N O N E

Schedule DB - Part A - Verification - Options, Caps, Floors, Collars, Swaps and Forwards

N O N E

Schedule DB - Part B - Verification - Futures Contracts

N O N E

Schedule DB - Part C - Section 1 - Replication (Synthetic Asset) Transactions (RSATs) Open

N O N E

Schedule DB-Part C-Section 2-Reconciliation of Replication (Synthetic Asset) Transactions Open

N O N E

Schedule DB - Verification - Book/Adjusted Carrying Value, Fair Value and Potential Exposure of
Derivatives

N O N E

SCHEDULE E - PART 2 - VERIFICATION

(Cash Equivalents)

	1	2
	Year To Date	Prior Year Ended December 31
1. Book/adjusted carrying value, December 31 of prior year	2,233,736	25,467,573
2. Cost of cash equivalents acquired	19,770,871	39,129,636
3. Accrual of discount		
4. Unrealized valuation increase (decrease)		
5. Total gain (loss) on disposals		
6. Deduct consideration received on disposals	20,918,987	62,363,473
7. Deduct amortization of premium		
8. Total foreign exchange change in book/adjusted carrying value		
9. Deduct current year's other than temporary impairment recognized		
10. Book/adjusted carrying value at end of current period (Lines 1+2+3+4+5-6-7+8-9)	1,085,620	2,233,736
11. Deduct total nonadmitted amounts		
12. Statement value at end of current period (Line 10 minus Line 11)	1,085,620	2,233,736

Schedule A - Part 2 - Real Estate Acquired and Additions Made

N O N E

Schedule A - Part 3 - Real Estate Disposed

N O N E

Schedule B - Part 2 - Mortgage Loans Acquired and Additions Made

N O N E

Schedule B - Part 3 - Mortgage Loans Disposed, Transferred or Repaid

N O N E

Schedule BA - Part 2 - Other Long-Term Invested Assets Acquired and Additions Made

N O N E

Schedule BA - Part 3 - Other Long-Term Invested Assets Disposed, Transferred or Repaid

N O N E

STATEMENT AS OF JUNE 30, 2023 OF THE CRESTBROOK INSURANCE COMPANY

SCHEDULE D - PART 3

Show All Long-Term Bonds and Stock Acquired During the Current Quarter

1	2	3	4	5	6	7	8	9	10 NAIC Designation, NAIC Designation Modifier and SVO Administrative Symbol
CUSIP Identification	Description	Foreign	Date Acquired	Name of Vendor	Number of Shares of Stock	Actual Cost	Par Value	Paid for Accrued Interest and Dividends	
91282C-BS-9	US Treasury Nt 1.250% 03/31/2804/10/2023	Bank of America BISD Dealer537,775600,000225	1.A
91282C-HC-8	US Treasury Nt 3.375% 05/15/3306/01/2023	Citigroup3,237,3653,300,0005,448	1.A FE
0109999999. Subtotal - Bonds - U.S. Governments						3,775,140	3,900,000	5,673	XXX
2509999997. Total - Bonds - Part 3						3,775,140	3,900,000	5,673	XXX
2509999998. Total - Bonds - Part 5						XXX	XXX	XXX	XXX
2509999999. Total - Bonds						3,775,140	3,900,000	5,673	XXX
4509999997. Total - Preferred Stocks - Part 3							XXX		XXX
4509999998. Total - Preferred Stocks - Part 5						XXX	XXX	XXX	XXX
4509999999. Total - Preferred Stocks							XXX		XXX
5989999997. Total - Common Stocks - Part 3							XXX		XXX
5989999998. Total - Common Stocks - Part 5						XXX	XXX	XXX	XXX
5989999999. Total - Common Stocks							XXX		XXX
5999999999. Total - Preferred and Common Stocks							XXX		XXX
.....
.....
.....
.....
.....
.....
.....
.....
6009999999 - Totals						3,775,140	XXX	5,673	XXX

STATEMENT AS OF JUNE 30, 2023 OF THE CRESTBROOK INSURANCE COMPANY

SCHEDULE D - PART 4

Show All Long-Term Bonds and Stock Sold, Redeemed or Otherwise Disposed of During the Current Quarter

1	2		3	4	5	6	7	8	9	10	Change In Book/Adjusted Carrying Value					16	17	18	19	20	21	22
											11	12	13	14	15							
CUSIP Ident- ification	Description		For- eign	Disposal Date	Name of Purchaser	Number of Shares of Stock	Consid- eration	Par Value	Actual Cost	Prior Year Book/ Adjusted Carrying Value	Unrealized Valuation Increase/ (Decrease)	Current Year's (Amor- tization)/ Accretion	Current Year's Other Than Temporary Impairment Recog- nized	Total Change in Book/ Adjusted Carrying Value (11 + 12 - 13)	Total Foreign Exchange Change in Book /Adjusted Carrying Value	Book/ Adjusted Carrying Value at Disposal Date	Foreign Exchange Gain (Loss) on Disposal	Realized Gain (Loss) on Disposal	Total Gain (Loss) on Disposal	Bond Interest/ Stock Dividends Received During Year	Stated Con- tractual Maturity Date	NAIC Desig- nation, NAIC Desig- nation Modifier and SVO Admini- strative Symbol
..3132DW--BC-6	FHLMC Pool #SD8135	2.500% 03/25/51		06/01/2023	Paydown		17,505	17,505	18,229	18,207		(702)		(702)		17,505				179	03/25/2051	1.A
..3132DW--DD-2	FHLMC Pool #SD8200	2.500% 03/25/52		06/01/2023	Paydown		21,619	21,619	21,183	21,191		428		428		21,619				226	03/25/2052	1.A
..3132DW--DK-6	FHLMC Pool #SD8206	3.000% 04/25/52		06/01/2023	Paydown		20,818	20,818	20,874	20,872		(53)		(53)		20,818				262	04/25/2052	1.A
..3138A2--SL-4	FNMA Pool #AH1422	4.000% 01/25/41		06/01/2023	Paydown		3,305	3,305	3,297	3,297		8		8		3,305				47	01/25/2041	1.A
..3138YK--HF-3	FNMA Pool #AY5629	3.000% 06/25/45		06/01/2023	Paydown		9,247	9,247	9,315	9,308		(62)		(62)		9,247				114	06/25/2045	1.A
	FNMA REMIC Ser 2003-38 CI MP	5.500%																				
..31393A--2V-8	05/25/23			05/01/2023	Paydown		141	141	144	140						141				3	05/25/2023	1.A
..3140KD--G4-6	FNMA Pool #BP5618	2.500% 06/25/50		06/01/2023	Paydown		17,825	17,825	18,539	18,522		(697)		(697)		17,825				180	06/25/2050	1.A
..3140OD--6N-9	FNMA Pool #CA6276	2.000% 07/25/50		06/01/2023	Paydown		9,830	9,830	10,052	10,046		(216)		(216)		9,830				78	07/25/2050	1.A
..3140X9--6Y-6	FNMA Pool #FM6286	2.500% 01/25/51		06/01/2023	Paydown		11,545	11,545	12,040	12,026		(480)		(480)		11,545				122	01/25/2051	1.A
..3140XG--PS-2	FNMA Pool #FS1332	3.500% 03/25/52		06/01/2023	Paydown		2,711	2,711	2,598	2,599		112		112		2,711				40	03/25/2052	1.A
..31418D--4X-7	FNMA Pool #MA4437	2.000% 10/25/51		06/01/2023	Paydown		27,321	27,321	26,012	26,037		1,284		1,284		27,321				229	10/25/2051	1.A
..31418D--XJ-6	FNMA Pool #MA4280	1.500% 03/25/51		06/01/2023	Paydown		5,155	5,155	5,088	5,090		65		65		5,155				33	03/25/2051	1.A
..31418D--XL-1	FNMA Pool #MA4282	2.500% 03/25/51		06/01/2023	Paydown		9,113	9,113	9,487	9,475		(363)		(363)		9,113				95	03/25/2051	1.A
..31418E--E6-3	FNMA Pool #MA4656	4.500% 07/01/52		06/01/2023	Paydown		3,947	3,947	3,938	3,939		9		9		3,947				74	07/01/2052	1.A
..31418E--HJ-2	FNMA Pool #MA4732	4.000% 09/01/52		06/01/2023	Paydown		3,286	3,286	3,220	3,221		65		65		3,286				54	09/01/2052	1.A
..31419L--3D-3	FNMA Pool #AE9795	3.500% 11/25/40		06/01/2023	Paydown		2,772	2,772	2,923	2,906		(134)		(134)		2,772				40	11/25/2040	1.A
0909999999. Subtotal - Bonds - U.S. Special Revenues							166,140	166,140	166,939	166,876		(736)		(736)		166,140				1,776	XXX	XXX
..46641W--AW-7	JPMBB Comm Mtg Sec Tr CMBS Ser 2014-C19 CI ASB	3.584% 04/15/47		06/01/2023	Paydown		81,089	81,089	83,521	81,172		1,087		1,087		82,259		(1,170)	(1,170)	1,298	04/15/2047	1.A
..64830C--AA-3	New Residential Mtg Ln Tr RMBS Ser 2019-1A CI A1	3.908% 09/25/57		06/01/2023	Paydown		24,527	24,527	24,616	24,550		(23)		(23)		24,527				414	09/25/2057	1.A
1109999999. Subtotal - Bonds - Industrial and Miscellaneous (Unaffiliated)							105,616	105,616	108,137	105,722		1,064		1,064		106,786		(1,170)	(1,170)	1,712	XXX	XXX
2509999997. Total - Bonds - Part 4							271,756	271,756	275,076	272,598		328		328		272,926		(1,170)	(1,170)	3,488	XXX	XXX
2509999998. Total - Bonds - Part 5							XXX	XXX	XXX	XXX	XXX	XXX	XXX	XXX	XXX	XXX	XXX	XXX	XXX	XXX	XXX	XXX
2509999999. Total - Bonds							271,756	271,756	275,076	272,598		328		328		272,926		(1,170)	(1,170)	3,488	XXX	XXX
4509999997. Total - Preferred Stocks - Part 4							XXX	XXX												XXX	XXX	
4509999998. Total - Preferred Stocks - Part 5							XXX	XXX	XXX	XXX	XXX	XXX	XXX	XXX	XXX	XXX	XXX	XXX	XXX	XXX	XXX	XXX
4509999999. Total - Preferred Stocks							XXX	XXX												XXX	XXX	
5989999997. Total - Common Stocks - Part 4							XXX	XXX												XXX	XXX	
5989999998. Total - Common Stocks - Part 5							XXX	XXX	XXX	XXX	XXX	XXX	XXX	XXX	XXX	XXX	XXX	XXX	XXX	XXX	XXX	XXX
5989999999. Total - Common Stocks							XXX	XXX													XXX	XXX
5999999999. Total - Preferred and Common Stocks							XXX	XXX													XXX	XXX
6009999999 - Totals							271,756	XXX	275,076	272,598		328		328		272,926		(1,170)	(1,170)	3,488	XXX	XXX

Schedule DB - Part A - Section 1 - Options, Caps, Floors, Collars, Swaps and Forwards Open

N O N E

Schedule DB - Part B - Section 1 - Futures Contracts Open

N O N E

Schedule DB - Part B - Section 1B - Brokers with whom cash deposits have been made

N O N E

Schedule DB - Part D - Section 1 - Counterparty Exposure for Derivative Instruments Open

N O N E

Schedule DB - Part D-Section 2 - Collateral for Derivative Instruments Open - Pledged By

N O N E

Schedule DB - Part D-Section 2 - Collateral for Derivative Instruments Open - Pledged To

N O N E

Schedule DB - Part E - Derivatives Hedging Variable Annuity Guarantees

N O N E

Schedule DL - Part 1 - Reinvested Collateral Assets Owned

N O N E

Schedule DL - Part 2 - Reinvested Collateral Assets Owned

N O N E

SCHEDULE E - PART 1 - CASH

[illegible]

SCHEDULE E - PART 2 - CASH EQUIVALENTS

[illegible]