



PROPERTY AND CASUALTY COMPANIES—ASSOCIATION EDITION

QUARTERLY STATEMENT
AS OF JUNE 30, 2023
OF THE CONDITION AND AFFAIRS OF THE
SONNENBERG MUTUAL INSURANCE COMPANY

NAIC Group Code	00207	(Current Period)	00207	(Prior Period)	NAIC Company Code	10271	Employer's ID Number	34-0541185
Organized under the Laws of	Ohio				State of Domicile or Port of Entry	Ohio		
Country of Domicile	United States							
Incorporated/Organized	01/01/1905				Commenced Business	01/01/1859		
Statutory Home Office	2865 Benden Drive				Wooster, OH, US 44691			
	(Street and Number)				(City or Town, State, Country and Zip Code)			
Main Administrative Office	2865 Benden Drive				Wooster, OH, US 44691		330-262-9060	
	(Street and Number)				(City or Town, State, Country and Zip Code)		(Area Code) (Telephone Number)	
Mail Address	2865 Benden Drive				Wooster, OH, US 44691			
	(Street and Number or P.O. Box)				(City or Town, State, Country and Zip Code)			
Primary Location of Books and Records	2865 Benden Drive				Wooster, OH, US 44691		330-262-9060	
	(Street and Number)				(City or Town, State, Country and Zip Code)		(Area Code) (Telephone Number)	
Internet Web Site Address	www.wrg-ins.com							
Statutory Statement Contact	Christopher M. Racz, CPA				330-262-9060-2446			
	(Name)				(Area Code) (Telephone Number) (Extension)			
	Christopher.Racz@wrginsurance.com				800-563-9896			
	(E-Mail Address)				(Fax Number)			

OFFICERS

Name	Title	Name	Title
GREGORY A. BRUNN	PRESIDENT AND SECRETARY - CHIEF EXECUTIVE OFFICER	MICHAEL A. SHUTT	VICE PRESIDENT AND TREASURER -CHIEF FINANCIAL OFFICER

OTHER OFFICERS

WILLIAM J. GALONSKI	VICE PRESIDENT-CHIEF CLAIMS OFFICER	DAVID E. FREETAGE #	VICE PRESIDENT-CHIEF INFORMATION OFFICER
GLEND A. RISNER	VICE PRESIDENT-INSURANCE OPERATIONS		

DIRECTORS OR TRUSTEES

KEVIN W. DAY	GREGORY A. BRUNN	JEFFREY P. HASTINGS	DOROTHY C. BAUNACH #
JOHN P. MURPHY	MARY L. LEGERSKI #	EDDIE L. STEINER	KENNETH L. VAGNINI
FLOYD A. TROUTEN III			

State ofOhio.....

County ofWayne.....ss

The officers of this reporting entity being duly sworn, each depose and say that they are the described officers of said reporting entity, and that on the reporting period stated above, all of the herein described assets were the absolute property of the said reporting entity, free and clear from any liens or claims thereon, except as herein stated, and that this statement, together with related exhibits, schedules and explanations therein contained, annexed or referred to, is a full and true statement of all the assets and liabilities and of the condition and affairs of the said reporting entity as of the reporting period stated above, and of its income and deductions therefrom for the period ended, and have been completed in accordance with the NAIC Annual Statement Instructions and Accounting Practices and Procedures manual except to the extent that: (1) state law may differ; or, (2) that state rules or regulations require differences in reporting not related to accounting practices and procedures, according to the best of their information, knowledge and belief, respectively. Furthermore, the scope of this attestation by the described officers also includes the related corresponding electronic filing with the NAIC, when required, that is an exact copy (except for formatting differences due to electronic filing) of the enclosed statement. The electronic filing may be requested by various regulators in lieu of or in addition to the enclosed statement.

GREGORY A. BRUNN PRESIDENT AND SECRETARY -CHIEF EXECUTIVE OFFICER	MICHAEL A. SHUTT VICE PRESIDENT AND TREASURER -CHIEF FINANCIAL OFFICER
---	--

Subscribed and sworn to before me this 9th day of August, 2023	a. Is this an original filing? Yes [X] No []
	b. If no: 1. State the amendment number 2. Date filed 3. Number of pages attached

David Lee Jarrett, Attorney At Law
No expiration date

STATEMENT AS OF JUNE 30, 2023 OF THE SONNENBERG MUTUAL INSURANCE COMPANY

ASSETS

	Current Statement Date			4 December 31 Prior Year Net Admitted Assets
	1 Assets	2 Nonadmitted Assets	3 Net Admitted Assets (Cols. 1 - 2)	
1. Bonds	15,918,881	0	15,918,881	16,440,418
2. Stocks:				
2.1 Preferred stocks	0	0	0	0
2.2 Common stocks	6,609,156	24,483	6,584,673	8,089,528
3. Mortgage loans on real estate:				
3.1 First liens	0	0	0	0
3.2 Other than first liens	0	0	0	0
4. Real estate:				
4.1 Properties occupied by the company (less \$ encumbrances)	0	0	0	0
4.2 Properties held for the production of income (less \$ encumbrances)	0	0	0	0
4.3 Properties held for sale (less \$ encumbrances)	0	0	0	0
5. Cash (\$(14,250,786)), cash equivalents (\$851,428) and short-term investments (\$0)	(13,399,358)	0	(13,399,358)	(12,246,849)
6. Contract loans (including \$premium notes)	0	0	0	0
7. Derivatives	0	0	0	0
8. Other invested assets	1,057,364	0	1,057,364	968,952
9. Receivables for securities	0	0	0	0
10. Securities lending reinvested collateral assets	0	0	0	0
11. Aggregate write-ins for invested assets	0	0	0	0
12. Subtotals, cash and invested assets (Lines 1 to 11)	10,186,042	24,483	10,161,559	13,252,049
13. Title plants less \$charged off (for Title insurers only)	0	0	0	0
14. Investment income due and accrued	126,880	0	126,880	128,794
15. Premiums and considerations:				
15.1 Uncollected premiums and agents' balances in the course of collection	12,547,461	25,824	12,521,637	11,995,362
15.2 Deferred premiums, agents' balances and installments booked but deferred and not yet due (including \$earned but unbilled premiums)	8,014,952	0	8,014,952	6,025,915
15.3 Accrued retrospective premiums (\$) and contracts subject to redetermination (\$)	0	0	0	0
16. Reinsurance:				
16.1 Amounts recoverable from reinsurers	122,694	0	122,694	52,422
16.2 Funds held by or deposited with reinsured companies	0	0	0	0
16.3 Other amounts receivable under reinsurance contracts	0	0	0	0
17. Amounts receivable relating to uninsured plans	0	0	0	0
18.1 Current federal and foreign income tax recoverable and interest thereon	304,461	0	304,461	353,661
18.2 Net deferred tax asset	0	0	0	0
19. Guaranty funds receivable or on deposit	0	0	0	0
20. Electronic data processing equipment and software	0	0	0	0
21. Furniture and equipment, including health care delivery assets (\$)	0	0	0	0
22. Net adjustment in assets and liabilities due to foreign exchange rates	0	0	0	0
23. Receivables from parent, subsidiaries and affiliates	0	0	0	0
24. Health care (\$) and other amounts receivable	0	0	0	0
25. Aggregate write-ins for other-than-invested assets	7,954	7,954	0	0
26. Total assets excluding Separate Accounts, Segregated Accounts and Protected Cell Accounts (Lines 12 to 25)	31,310,444	58,261	31,252,183	31,808,204
27. From Separate Accounts, Segregated Accounts and Protected Cell Accounts	0	0	0	0
28. Total (Lines 26 and 27)	31,310,444	58,261	31,252,183	31,808,204
DETAILS OF WRITE-INS				
1101.	0	0	0	0
1102.	0	0	0	0
1103.	0	0	0	0
1198. Summary of remaining write-ins for Line 11 from overflow page	0	0	0	0
1199. Totals (Lines 1101 through 1103 plus 1198) (Line 11 above)	0	0	0	0
2501. Prepaid Expenses	7,954	7,954	0	0
2502.	0	0	0	0
2503.	0	0	0	0
2598. Summary of remaining write-ins for Line 25 from overflow page	0	0	0	0
2599. Totals (Lines 2501 through 2503 plus 2598) (Line 25 above)	7,954	7,954	0	0

LIABILITIES, SURPLUS AND OTHER FUNDS

	1 Current Statement Date	2 December 31, Prior Year
1. Losses (current accident year \$1,537,231)	4,099,622	4,206,643
2. Reinsurance payable on paid losses and loss adjustment expenses	0	0
3. Loss adjustment expenses	839,669	839,669
4. Commissions payable, contingent commissions and other similar charges	363,415	380,100
5. Other expenses (excluding taxes, licenses and fees)	220,657	352,361
6. Taxes, licenses and fees (excluding federal and foreign income taxes)	95,433	155,267
7.1 Current federal and foreign income taxes (including \$ on realized capital gains (losses))	0	0
7.2 Net deferred tax liability	35,569	43,916
8. Borrowed money \$ and interest thereon \$	0	0
9. Unearned premiums (after deducting unearned premiums for ceded reinsurance of \$ and including warranty reserves of \$ and accrued accident and health experience rating refunds including \$ for medical loss ratio rebate per the Public Health Service Act)	6,913,594	6,150,948
10. Advance premium	127,456	72,305
11. Dividends declared and unpaid:		
11.1 Stockholders	0	0
11.2 Policyholders	0	0
12. Ceded reinsurance premiums payable (net of ceding commissions)	(2,840)	109,381
13. Funds held by company under reinsurance treaties	0	0
14. Amounts withheld or retained by company for account of others	297,317	380,611
15. Remittances and items not allocated	0	0
16. Provision for reinsurance (including \$ certified)	0	0
17. Net adjustments in assets and liabilities due to foreign exchange rates	0	0
18. Drafts outstanding	0	0
19. Payable to parent, subsidiaries and affiliates	0	0
20. Derivatives	0	0
21. Payable for securities	0	0
22. Payable for securities lending	0	0
23. Liability for amounts held under uninsured plans	0	0
24. Capital notes \$ and interest thereon \$	0	0
25. Aggregate write-ins for liabilities	0	0
26. Total liabilities excluding protected cell liabilities (Lines 1 through 25)	12,989,892	12,691,202
27. Protected cell liabilities	0	0
28. Total liabilities (Lines 26 and 27)	12,989,892	12,691,202
29. Aggregate write-ins for special surplus funds	0	0
30. Common capital stock	0	0
31. Preferred capital stock	0	0
32. Aggregate write-ins for other than special surplus funds	0	0
33. Surplus notes	0	0
34. Gross paid in and contributed surplus	0	0
35. Unassigned funds (surplus)	18,262,291	19,117,002
36. Less treasury stock, at cost:		
36.1 shares common (value included in Line 30 \$)	0	0
36.2 shares preferred (value included in Line 31 \$)	0	0
37. Surplus as regards policyholders (Lines 29 to 35, less 36)	18,262,291	19,117,002
38. Totals (Page 2, Line 28, Col. 3)	31,252,183	31,808,204
DETAILS OF WRITE-INS		
2501.	0	0
2502.	0	0
2503.		0
2598. Summary of remaining write-ins for Line 25 from overflow page	0	0
2599. Totals (Lines 2501 through 2503 plus 2598) (Line 25 above)	0	0
2901.		0
2902.		0
2903.		0
2998. Summary of remaining write-ins for Line 29 from overflow page	0	0
2999. Totals (Lines 2901 through 2903 plus 2998) (Line 29 above)	0	0
3201.	0	0
3202.	0	0
3203.	0	0
3298. Summary of remaining write-ins for Line 32 from overflow page	0	0
3299. Totals (Lines 3201 through 3203 plus 3298) (Line 32 above)	0	0

STATEMENT OF INCOME

	1	2	3
	Current Year	Prior Year	Prior Year Ended
	to Date	to Date	December 31
UNDERWRITING INCOME			
1. Premiums earned:			
1.1 Direct (written \$ 36,586,697)	32,481,097	26,163,074	55,119,331
1.2 Assumed (written \$ 7,325,847)	6,563,200	5,856,832	11,947,397
1.3 Ceded (written \$ 36,586,697)	32,481,097	26,163,074	55,119,331
1.4 Net (written \$ 7,325,847)	6,563,200	5,856,832	11,947,397
DEDUCTIONS:			
2. Losses incurred (current accident year \$):			
2.1 Direct	24,295,525	19,388,012	46,738,826
2.2 Assumed	5,104,836	4,208,458	8,390,493
2.3 Ceded	24,295,525	19,388,011	46,738,826
2.4 Net	5,104,836	4,208,459	8,390,493
3. Loss adjustment expenses incurred	619,558	594,090	1,225,586
4. Other underwriting expenses incurred	2,254,647	2,071,228	4,115,139
5. Aggregate write-ins for underwriting deductions	0	0	0
6. Total underwriting deductions (Lines 2 through 5)	7,979,041	6,873,777	13,731,218
7. Net income of protected cells	0	0	0
8. Net underwriting gain (loss) (Line 1 minus Line 6 + Line 7)	(1,415,841)	(1,016,945)	(1,783,821)
INVESTMENT INCOME			
9. Net investment income earned	299,534	223,112	524,127
10. Net realized capital gains (losses) less capital gains tax of \$ 94,849	356,813	133,961	124,721
11. Net investment gain (loss) (Lines 9 + 10)	656,347	357,072	648,848
OTHER INCOME			
12. Net gain or (loss) from agents' or premium balances charged off (amount recovered \$ amount charged off \$ 5,059)	(5,059)	(6,722)	(12,967)
13. Finance and service charges not included in premiums	63,487	62,378	125,450
14. Aggregate write-ins for miscellaneous income	199	2,280	3,918
15. Total other income (Lines 12 through 14)	58,627	57,937	116,401
16. Net income before dividends to policyholders, after capital gains tax and before all other federal and foreign income taxes (Lines 8 + 11 + 15)	(700,867)	(601,936)	(1,018,571)
17. Dividends to policyholders	0	0	0
18. Net income, after dividends to policyholders, after capital gains tax and before all other federal and foreign income taxes (Line 16 minus Line 17)	(700,867)	(601,936)	(1,018,571)
19. Federal and foreign income taxes incurred	(94,849)	(161,859)	(269,901)
20. Net income (Line 18 minus Line 19)(to Line 22)	(606,018)	(440,077)	(748,670)
CAPITAL AND SURPLUS ACCOUNT			
21. Surplus as regards policyholders, December 31 prior year	19,117,002	20,903,410	20,903,409
22. Net income (from Line 20)	(606,018)	(440,077)	(748,670)
23. Net transfers (to) from Protected Cell accounts	0	0	0
24. Change in net unrealized capital gains or (losses) less capital gains tax of \$ (54,359)	(204,492)	(1,472,733)	(1,289,728)
25. Change in net unrealized foreign exchange capital gain (loss)	0	0	0
26. Change in net deferred income tax	(46,012)	15,317	255,013
27. Change in nonadmitted assets	1,811	185	(3,022)
28. Change in provision for reinsurance	0	0	0
29. Change in surplus notes	0	0	0
30. Surplus (contributed to) withdrawn from protected cells	0	0	0
31. Cumulative effect of changes in accounting principles	0	0	0
32. Capital changes:			
32.1 Paid in	0	0	0
32.2 Transferred from surplus (Stock Dividend)	0	0	0
32.3 Transferred to surplus	0	0	0
33. Surplus adjustments:			
33.1 Paid in	0	0	0
33.2 Transferred to capital (Stock Dividend)	0	0	0
33.3 Transferred from capital	0	0	0
34. Net remittances from or (to) Home Office	0	0	0
35. Dividends to stockholders	0	0	0
36. Change in treasury stock	0	0	0
37. Aggregate write-ins for gains and losses in surplus	0	0	0
38. Change in surplus as regards policyholders (Lines 22 through 37)	(854,711)	(1,897,308)	(1,786,407)
39. Surplus as regards policyholders, as of statement date (Lines 21 plus 38)	18,262,291	19,006,101	19,117,002
DETAILS OF WRITE-INS			
0501.		0	0
0502.		0	0
0503.		0	0
0598. Summary of remaining write-ins for Line 5 from overflow page	0	0	0
0599. TOTALS (Lines 0501 through 0503 plus 0598) (Line 5 above)	0	0	0
1401. Other Income/(Expense)	199	2,280	3,918
1402.		0	0
1403.			
1498. Summary of remaining write-ins for Line 14 from overflow page	0	0	0
1499. TOTALS (Lines 1401 through 1403 plus 1498) (Line 14 above)	199	2,280	3,918
3701.	0	0	0
3702.	0	0	0
3703.	0	0	0
3798. Summary of remaining write-ins for Line 37 from overflow page	0	0	0
3799. TOTALS (Lines 3701 through 3703 plus 3798) (Line 37 above)	0	0	0

CASH FLOW

	1 Current Year To Date	2 Prior Year To Date	3 Prior Year Ended December 31
Cash from Operations			
1. Premiums collected net of reinsurance.....	4,752,161	5,280,720	9,215,637
2. Net investment income	345,560	273,731	632,486
3. Miscellaneous income	58,627	57,937	116,401
4. Total (Lines 1 to 3)	5,156,348	5,612,387	9,964,524
5. Benefit and loss related payments	5,282,129	4,062,917	8,073,317
6. Net transfers to Separate Accounts, Segregated Accounts and Protected Cell Accounts	0	0	0
7. Commissions, expenses paid and aggregate write-ins for deductions	3,082,428	3,004,422	5,471,285
8. Dividends paid to policyholders	0	0	0
9. Federal and foreign income taxes paid (recovered) net of \$ tax on capital gains (losses).....	(49,200)	70,000	70,000
10. Total (Lines 5 through 9)	8,315,358	7,137,338	13,614,602
11. Net cash from operations (Line 4 minus Line 10)	(3,159,010)	(1,524,950)	(3,650,078)
Cash from Investments			
12. Proceeds from investments sold, matured or repaid:			
12.1 Bonds	3,882,032	318,980	1,036,327
12.2 Stocks	1,741,202	669,152	4,299,760
12.3 Mortgage loans	0	0	0
12.4 Real estate	0	0	0
12.5 Other invested assets	39,204	232,445	280,765
12.6 Net gains or (losses) on cash, cash equivalents and short-term investments	0	0	0
12.7 Miscellaneous proceeds	0	1	1
12.8 Total investment proceeds (Lines 12.1 to 12.7)	5,662,438	1,220,577	5,616,853
13. Cost of investments acquired (long-term only):			
13.1 Bonds	3,438,113	380,852	577,833
13.2 Stocks	0	14,983	2,975,826
13.3 Mortgage loans	0	0	0
13.4 Real estate	0	0	0
13.5 Other invested assets	134,527	178,494	707,349
13.6 Miscellaneous applications	0	0	0
13.7 Total investments acquired (Lines 13.1 to 13.6)	3,572,640	574,329	4,261,009
14. Net increase (or decrease) in contract loans and premium notes	0	0	0
15. Net cash from investments (Line 12.8 minus Line 13.7 and Line 14)	2,089,797	646,249	1,355,844
Cash from Financing and Miscellaneous Sources			
16. Cash provided (applied):			
16.1 Surplus notes, capital notes	0	0	0
16.2 Capital and paid in surplus, less treasury stock.....	0	0	0
16.3 Borrowed funds	0	0	0
16.4 Net deposits on deposit-type contracts and other insurance liabilities	0	0	0
16.5 Dividends to stockholders	0	0	0
16.6 Other cash provided (applied).....	(83,296)	60,266	159,292
17. Net cash from financing and miscellaneous sources (Line 16.1 through Line 16.4 minus Line 16.5 plus Line 16.6).....	(83,296)	60,266	159,292
RECONCILIATION OF CASH, CASH EQUIVALENTS AND SHORT-TERM INVESTMENTS			
18. Net change in cash, cash equivalents and short-term investments (Line 11, plus Lines 15 and 17)	(1,152,508)	(818,436)	(2,134,942)
19. Cash, cash equivalents and short-term investments:			
19.1 Beginning of year.....	(12,246,850)	(10,111,908)	(10,111,908)
19.2 End of period (Line 18 plus Line 19.1)	(13,399,358)	(10,930,344)	(12,246,850)

Note: Supplemental disclosures of cash flow information for non-cash transactions:			
20.0001. Investments acquired in non-cash transactions.....		0	97,440
20.0002. Investments disposed in non-cash transactions.....		0	97,440

NOTES TO FINANCIAL STATEMENTS

1. Summary of Significant Accounting Policies

A. Accounting Practices

The financial statements of Sonnenberg Mutual Insurance Company (SMIC) are presented on the basis of accounting principles prescribed or permitted by the Ohio Department of Insurance.

The Ohio Department of Insurance recognizes only statutory accounting practices prescribed or permitted by the State of Ohio for determining and reporting the financial condition and results of operations of an insurance company for determining its solvency under Ohio Insurance Law. The National Association of Insurance Commissioners' (NAIC) *Accounting Practices and Procedures Manual* (NAIC SAP) has been adopted as a component of prescribed or permitted practices by the State of Ohio.

The financial statements of the Company are presented solely on the basis of accounting principles prescribed by the Ohio Department of Insurance. As such, there are no increases or decreases to net income or surplus on a statutory accounting basis as shown by the reconciliation below:

	State of Domicile	2023	2022
<u>NET INCOME</u>			
(1) SMIC state basis (Page 4, Line 20, Columns 1 & 3)	Ohio	\$ (606,018)	\$ (748,670)
(2) State Prescribed Practices that increase/(decrease) NAIC SAP:		—	—
(3) State Permitted Practices that increase/(decrease) NAIC SAP:		—	—
(4) NAIC SAP (1-2-3=4)		<u>\$ (606,018)</u>	<u>\$ (748,670)</u>
<u>SURPLUS</u>			
(5) SMIC state basis (Page 3, Line 37, Columns 1 & 2)	Ohio	\$ 18,262,291	\$ 19,117,002
(6) State Prescribed Practices that increase/(decrease) NAIC SAP:		—	—
(7) State Permitted Practices that increase/(decrease) NAIC SAP:		—	—
(8) NAIC SAP (5-6-7=8)		<u>\$ 18,262,291</u>	<u>\$ 19,117,002</u>

B. Use of Estimates in the Preparation of the Financial Statements

No significant changes from December 31, 2022.

C. Accounting Policy

No significant changes from December 31, 2022.

D. Going Concern

Management has evaluated the Company's viability and has no doubt as to the Company's ability to continue as a going concern.

2. Accounting Changes and Corrections of Errors

Not applicable.

3. Business Combinations and Goodwill

Not applicable.

4. Discontinued Operations

Not applicable.

5. Investments

A. Mortgage Loans, including Mezzanine Real Estate Loans

Not applicable.

B. Debt Restructuring

Not applicable.

C. Reverse Mortgages

Not applicable.

NOTES TO FINANCIAL STATEMENTS

D. Loan-Backed Securities

1. Prepayment assumptions are generally obtained using a model provided by a third-party vendor.
2. None.
3. None.
4. All impaired securities (fair value is less than cost or amortized cost) for which an other-than-temporary impairment has not been recognized in earnings as a realized loss (including securities with a recognized other-than temporary impairment for non-interest related declines when a non-recognized interest related impairment remains):

a. The aggregate amount of unrealized losses:

1. Less than 12 months	\$ <u>(6,228)</u>
2. 12 months or Longer	\$ <u>(6,405)</u>

b. The aggregate related fair value of securities with unrealized losses:

1. Less than 12 months	\$ <u>1,208,947</u>
2. 12 months or longer	\$ <u>94,661</u>

5. The Company reviews all loan-backed and structured securities in which the fair value of a given security is less than the amortized cost to determine if a given security is other-than-temporarily impaired. The Company examines characteristics of the underlying collateral, such as delinquency and default rates, the quality of the underlying borrower, the type of collateral in the pool, the vintage year of the collateral, subordination levels within the structure of the collateral pool, and the quality of any credit guarantors, to determine the cash flows expected to be received for the security.

If the severity and duration of the security's unrealized loss indicates a risk of other-than-temporary impairment, then the Company will evaluate if the amortized cost basis of the security will be recovered by comparing the present value of the cash flows expected to be received for the given security with the amortized basis of the security. If the present value of cash flows is greater than the amortized cost basis of a security then the security is deemed not to be other-than-temporarily impaired.

E. Dollar Repurchase Agreements and/or Securities Lending Transactions

Not applicable.

F. Repurchase Agreements Transactions Accounted for as Secured Borrowing

Not applicable.

G. Reverse Repurchase Agreements Transactions Accounted for as Secured Borrowing

Not applicable.

H. Repurchase Agreements Transactions Accounted for as a Sale

Not applicable.

I. Reverse Repurchase Agreements Transactions Accounted for as a Sale

Not applicable.

J. Real Estate

Not applicable.

K. Low-income Housing Tax Credits (LIHTC)

Not applicable.

L. Restricted Assets

Not applicable.

M. Working Capital Finance Investments

Not applicable.

N. Offsetting and Netting of Assets and Liabilities

Not applicable.

O. 5* Securities

Not applicable.

P. Short Sales

Not applicable.

NOTES TO FINANCIAL STATEMENTS

Q. Prepayment Penalty and Accelerated Fees

Not applicable.

R. Reporting Entity's Share of Cash Pool by Asset Type

Not applicable.

6. Joint Ventures, Partnerships and Limited Liability Companies

No significant changes from December 31, 2022.

7. Investment Income

No significant changes from December 31, 2022.

8. Derivative Instruments

Not applicable.

9. Income Taxes

No significant changes from December 31, 2022.

10. Information Concerning Parent, Subsidiaries, Affiliates and Other Related Parties

A. Not applicable.

B. Not applicable.

C. Not applicable.

D. No significant changes from December 31, 2022.

E. Not applicable.

F. No significant changes from December 31, 2022.

G. No significant changes from December 31, 2022.

H. Not applicable.

I. Not applicable.

J. Not applicable.

K. Not applicable.

L. No significant changes from December 31, 2022.

M. No significant changes from December 31, 2022.

N. Not applicable.

O. Not applicable.

11. Debt

Not applicable.

12. Retirement Plans, Deferred Compensation, Postemployment Benefits and Compensated Absences and Other Postretirement Benefit Plans

A. Defined Benefit Plan

The Company has a non-qualified, unfunded, retiree healthcare plan that was closed to new participants. The related liabilities and expenses are not material to the Company's financial position.

The Company also has a non-qualified voluntary deferred compensation plan for senior executive officers. The plan allows for deferral of payouts from the Annual Cash Bonus Plan and Performance Share Plan for Key Executives. As of June 30, 2023 and December 31, 2022, amounts held for these deferrals were \$0.3 million, respectively.

B. Investment Policies and Strategies

Not applicable.

C. Fair Value of Plan Assets

Not applicable.

D. Basis of Rates of Returns on Assets

Not applicable.

NOTES TO FINANCIAL STATEMENTS

E. Defined Contribution Plans

No significant changes from December 31, 2022.

F. Multiemployer Plans

Not applicable.

G. Consolidated/Holding Company Plans

Not applicable.

H. Postemployment Benefits and Compensated Absences

Not applicable.

I. Impact of Medicare Modernization Act on Postretirement Benefits (INT 04—17)

Not applicable.

13. Capital and Surplus, Dividend Restrictions and Quasi—Reorganizations

No significant changes from December 31, 2022.

14. Liabilities, Contingencies and Assessments

No significant changes from December 31, 2022.

15. Leases

No significant changes from December 31, 2022.

16. Information about Financial Instruments With Off—Balance—Sheet Risk and Financial Instruments With Concentrations of Credit Risk

Not applicable.

17. Sale, Transfer, and Servicing of Financial Assets and Extinguishment of Liabilities

Not applicable.

18. Gain or Loss to the Reporting Entity from Uninsured Plans and the Uninsured Portion of Partially Insured Plans

Not applicable.

19. Direct Premium Written/Produced by Managing General Agents/Third Party Administrators

Not applicable.

20. Fair Value Measurements

- A. The Company's financial assets and liabilities carried at fair value have been classified, for disclosure purposes, based on a hierarchy defined by FASB ASC 820 (SFAS No. 157), *Fair Value Measurements*. The hierarchy gives the highest ranking to fair values determined using unadjusted quoted prices in active markets for identical assets and liabilities (Level 1) and the lowest ranking to fair values determined using methodologies and models with unobservable inputs (Level 3). An asset's or a liability's classification is based on the lowest level input that is significant to its measurement. For example, a Level 3 fair value measurement may include inputs that are both observable (Levels 1 and 2) and unobservable (Level 3). The levels of the fair value hierarchy are as follows:

Level 1:

Values are unadjusted quoted prices for identical assets and liabilities in active markets accessible at the measurement date.

Level 2:

Inputs include quoted prices for similar assets or liabilities in active markets, quoted prices from those willing to trade in markets that are not active, or other inputs that are observable or can be corroborated by market data for the term of the instrument. Such inputs include market interest rates and volatilities, spreads and yield curves.

Level 3:

Certain inputs are unobservable (supported by little or no market activity) and significant to the fair value measurement. Unobservable inputs reflect the Company's best estimate of what hypothetical market participants would use to determine a transaction price for the asset or liability at the reporting date.

NOTES TO FINANCIAL STATEMENTS

(1) Fair Value Measurements at June 30, 2023:

Description of each class of asset or liability	(Level 1)	(Level 2)	(Level 3)	Net Asset Value (NAV)	Total
a. Assets at fair value					
Cash equivalents:					
Exempt MM Mutual Funds	\$ 851,428	\$ --	\$ --	\$ --	\$ 851,428
Total Cash Equivalents	851,428	--	--	--	851,428
Common Stock:					
Mutual Funds	2,694,049	--	--	--	2,694,049
Industrial and Misc	3,776,305	--	114,318	--	3,890,623
Total Common Stocks	6,470,354	--	114,318	--	6,584,672
Total assets at fair value/NAV	\$ 7,321,782	\$ --	\$ 114,318	\$ --	\$ 7,436,100
b. Liabilities at fair value:					
Not applicable.					

Fair Value Measurements at December 31, 2022:

Description of each class of asset or liability	(Level 1)	(Level 2)	(Level 3)	Net Asset Value (NAV)	Total
a. Assets at fair value					
Cash equivalents:					
Exempt MM Mutual Funds	\$ 794,662	\$ --	\$ --	\$ --	\$ 794,662
Total Cash Equivalents	794,662	--	--	--	794,662
Common Stock:					
Mutual Funds	3,527,425	--	--	--	3,527,425
Industrial and Misc	4,467,687	--	94,416	--	4,562,103
Total Common Stocks	7,995,112	--	94,416	--	8,089,528
Total assets at fair value/NAV	\$ 8,789,774	\$ --	\$ 94,416	\$ --	\$ 8,884,190
b. Liabilities at fair value:					
Not applicable.					

(2) Fair Value Measurements in (Level 3) of the Fair Value Hierarchy:

	Beginning Balance at 03/31/2023	Transfers In/(out) Level 3	Total Gain/(Loss) Included in Net Income	Total Gain/(Loss) Included in Surplus	Purchases (Sales)	Ending Balance at 06/30/2023
a. Assets:						
Common Stock:						
Industrial and Misc	\$ 94,416	\$ --	\$ --	\$ 19,902	\$ --	\$ 114,318
b. Liabilities:						
Not applicable.						

(3) As of June 30, 2023, the reported fair value of the entity's investments categorized within Level 3 of the fair value hierarchy is as follows:

Common Stocks – The Company holds an investment in NAMIC common stock.

B. Not applicable.

C. Fair Value of All Financial Instruments:

Type of Financial Instrument	Aggregate Fair Value	Admitted Assets	(Level 1)	(Level 2)	(Level 3)	Net Asset Value (NAV)	Not Practicable (Carrying Value)
Bonds	\$14,886,594	\$15,918,881	\$ 1,198,335	\$14,720,546	\$ --	\$ --	\$ --
Common Stock	6,609,156	6,584,672	6,470,354	--	114,318	--	--
Other Invested Assets	1,057,364	1,057,364	--	--	1,057,364	--	--
Cash Equivalents	851,428	851,428	851,428	--	--	--	--

D. The Company has no assets for which it was not practicable to estimate fair value.

21. Other Items

Not applicable.

NOTES TO FINANCIAL STATEMENTS

22. Events Subsequent

Type I – Recognized Subsequent Events:

Subsequent events have been considered through August 15, 2023 for the statutory statement issued on August 15, 2023 for the quarter ending June 30, 2023. No Type I events were identified that would have a material effect on the financial condition of the Company.

Type II – Nonrecognized Subsequent Events:

Subsequent events have been considered through August 15, 2023 for the statutory statement issued on August 15, 2023 for the quarter ending June 30, 2023. No Type II events were identified that would have a material effect on the financial condition of the Company.

23. Reinsurance

No significant changes from December 31, 2022.

24. Retrospectively Rated Contracts and Contracts Subject to Redetermination

Not applicable.

25. Changes in Incurred Losses and Loss Adjustment Expense

Reserves as of December 31, 2022 were \$5.0 million. During 2023, \$2.1 million has been paid for incurred losses and loss adjustment expenses attributable to insured events of prior years. Reserves remaining for prior years are now \$2.9 million as a result of re-estimation of unpaid claims and claim adjusting expenses. Therefore, there has been no favorable or unfavorable prior year development from December 31, 2022 to June 30, 2023. The re-estimation is generally the result of ongoing analysis of recent loss development trends. Original estimates are increased or decreased as additional information becomes known regarding individual claims. The estimates are not affected by prior year loss development on retrospectively rated policies, as the Company does not write this type of policy.

26. Intercompany Pooling Agreements

No significant changes from December 31, 2022.

27. Structured Settlements

Not applicable.

28. Health Care Receivables

Not applicable.

29. Participating Policies

Not applicable.

30. Premium Deficiency Reserves

No significant changes from December 31, 2022.

31. High Deductibles

Not applicable.

32. Discounting of Liabilities for Unpaid Losses or Unpaid Loss Adjustment Expenses

No significant changes from December 31, 2022.

33. Asbestos/Environmental Reserves

No significant changes.

34. Subscriber Savings Accounts

Not applicable.

35. Multiple Peril Crop Insurance

Not applicable.

36. Financial Guaranty Insurance

Not applicable.

GENERAL INTERROGATORIES

PART 1 - COMMON INTERROGATORIES

GENERAL

1.1

Did the reporting entity experience any material transactions requiring the filing of Disclosure of Material Transactions with the State of Domicile, as required by the Model Act?

Yes ☐ No ☒

1.2

If yes, has the report been filed with the domiciliary state?

Yes ☐ No ☐

2.1

Has any change been made during the year of this statement in the charter, by-laws, articles of incorporation, or deed of settlement of the reporting entity?

Yes ☐ No ☒

2.2

If yes, date of change:

3.1

Is the reporting entity a member of an Insurance Holding Company System consisting of two or more affiliated persons, one or more of which is an insurer?

Yes ☒ No ☐

If yes, complete Schedule Y, Parts 1 and 1A.

3.2

Have there been any substantial changes in the organizational chart since the prior quarter end?

Yes ☐ No ☒

3.3

If the response to 3.2 is yes, provide a brief description of those changes.

3.4

Is the reporting entity publicly traded or a member of a publicly traded group?

Yes ☐ No ☒

3.5

If the response to 3.4 is yes, provide the CIK (Central Index Key) code issued by the SEC for the entity/group.

4.1

Has the reporting entity been a party to a merger or consolidation during the period covered by this statement?

Yes ☐ No ☒

4.2

If yes, provide the name of entity, NAIC Company Code, and state of domicile (use two letter state abbreviation) for any entity that has ceased to exist as a result of the merger or consolidation.

1	2	3
Name of Entity	NAIC Company Code	State of Domicile

5.

If the reporting entity is subject to a management agreement, including third-party administrator(s), managing general agent(s), attorney-in-fact, or similar agreement, have there been any significant changes regarding the terms of the agreement or principals involved?

If yes, attach an explanation.

Yes ☐ No ☐ NA ☒

6.1

State as of what date the latest financial examination of the reporting entity was made or is being made.

12/31/2021

6.2

State the as of date that the latest financial examination report became available from either the state of domicile or the reporting entity. This date should be the date of the examined balance sheet and not the date the report was completed or released.

12/31/2021

6.3

State as of what date the latest financial examination report became available to other states or the public from either the state of domicile or the reporting entity. This is the release date or completion date of the examination report and not the date of the examination (balance sheet date).

03/23/2023

6.4

By what department or departments?

Ohio Department of Insurance

6.5

Have all financial statement adjustments within the latest financial examination report been accounted for in a subsequent financial statement filed with Departments?

Yes ☐ No ☐ NA ☒

6.6

Have all of the recommendations within the latest financial examination report been complied with?

Yes ☒ No ☐ NA ☐

7.1

Has this reporting entity had any Certificates of Authority, licenses or registrations (including corporate registration, if applicable) suspended or revoked by any governmental entity during the reporting period?

Yes ☐ No ☒

7.2

If yes, give full information:

8.1

Is the company a subsidiary of a bank holding company regulated by the Federal Reserve Board?

Yes ☐ No ☒

8.2

If response to 8.1 is yes, please identify the name of the bank holding company.

8.3

Is the company affiliated with one or more banks, thrifts or securities firms?

Yes ☐ No ☒

8.4

If response to 8.3 is yes, please provide below the names and location (city and state of the main office) of any affiliates regulated by a federal regulatory services agency [i.e. the Federal Reserve Board (FRB), the Office of the Comptroller of the Currency (OCC), the Federal Deposit Insurance Corporation (FDIC) and the Securities Exchange Commission (SEC)] and identify the affiliate's primary federal regulator.]

1	2	3	4	5	6
Affiliate Name	Location (City, State)	FRB	OCC	FDIC	SEC

9.1

Are the senior officers (principal executive officer, principal financial officer, principal accounting officer or controller, or persons performing similar functions) of the reporting entity subject to a code of ethics, which includes the following standards?

(a) Honest and ethical conduct, including the ethical handling of actual or apparent conflicts of interest between personal and professional relationships;
(b) Full, fair, accurate, timely and understandable disclosure in the periodic reports required to be filed by the reporting entity;
(c) Compliance with applicable governmental laws, rules and regulations;
(d) The prompt internal reporting of violations to an appropriate person or persons identified in the code; and
(e) Accountability for adherence to the code.

Yes ☒ No ☐

9.11

If the response to 9.1 is No, please explain:

9.2

Has the code of ethics for senior managers been amended?

Yes ☐ No ☒

9.21

If the response to 9.2 is Yes, provide information related to amendment(s).

9.3

Have any provisions of the code of ethics been waived for any of the specified officers?

Yes ☐ No ☒

9.31

If the response to 9.3 is Yes, provide the nature of any waiver(s).

FINANCIAL

10.1

Does the reporting entity report any amounts due from parent, subsidiaries or affiliates on Page 2 of this statement?

Yes ☐ No ☒

10.2

If yes, indicate any amounts receivable from parent included in the Page 2 amount:

\$

GENERAL INTERROGATORIES

INVESTMENT

11.1 Were any of the stocks, bonds, or other assets of the reporting entity loaned, placed under option agreement, or otherwise made available for use by another person? (Exclude securities under securities lending agreements.) Yes [] No [X]

11.2 If yes, give full and complete information relating thereto:
.....

12. Amount of real estate and mortgages held in other invested assets in Schedule BA:\$0

13. Amount of real estate and mortgages held in short-term investments:\$0

14.1 Does the reporting entity have any investments in parent, subsidiaries and affiliates? Yes [X] No []

14.2 If yes, please complete the following:

	1 Prior Year-End Book/Adjusted Carrying Value	2 Current Quarter Book/Adjusted Carrying Value
14.21 Bonds	\$0	\$0
14.22 Preferred Stock	\$0	\$0
14.23 Common Stock	\$27,598	\$24,483
14.24 Short-Term Investments	\$0	\$0
14.25 Mortgage Loans on Real Estate	\$0	\$0
14.26 All Other	\$0	\$0
14.27 Total Investment in Parent, Subsidiaries and Affiliates (Subtotal Lines 14.21 to 14.26).....	\$27,598	\$24,483
14.28 Total Investment in Parent included in Lines 14.21 to 14.26 above	\$0	\$0

15.1 Has the reporting entity entered into any hedging transactions reported on Schedule DB? Yes [] No [X]

15.2 If yes, has a comprehensive description of the hedging program been made available to the domiciliary state? Yes [] No [] NA [X]
If no, attach a description with this statement.

16. For the reporting entity's security lending program, state the amount of the following as of the current statement date:

16.1 Total fair value of reinvested collateral assets reported on Schedule DL, Parts 1 and 2	\$0
16.2 Total book/adjusted carrying value of reinvested collateral assets reported on Schedule DL, Parts 1 and 2	\$0
16.3 Total payable for securities lending reported on the liability page	\$0

17. Excluding items in Schedule E – Part 3 – Special Deposits, real estate, mortgage loans and investments held physically in the reporting entity's offices, vaults or safety deposit boxes, were all stocks, bonds and other securities, owned throughout the current year held pursuant to a custodial agreement with a qualified bank or trust company in accordance with Section 1, III – General Examination Considerations, F. Outsourcing of Critical Functions, Custodial or Safekeeping Agreements of the NAIC *Financial Condition Examiners Handbook*? Yes [] No [X]

17.1 For all agreements that comply with the requirements of the NAIC *Financial Condition Examiners Handbook*, complete the following:

1 Name of Custodian(s)	2 Custodian Address
Northern Trust Company.....	50 South LaSalle Street Chicago, IL 60603.....

17.2 For all agreements that do not comply with the requirements of the NAIC *Financial Condition Examiners Handbook*, provide the name, location and a complete explanation:

1 Name(s)	2 Location(s)	3 Complete Explanation(s)
Monroe Capital LLC.....	311 South Wacker Dr., Suite 6400 Chicago, IL 60606.....	Investment in Monroe Capital Private Credit (Delaware) Feeder Fund IV LP in 2021; not accounted for by Northern Trust.
HarbourVest Partners LLC.....	One Financial Center Boston, MA 02111.....	Investment in HarbourVest Direct Lending Fund (L) L.P. in 2021; not accounted for by Northern Trust.
First Eagle Alternative Credit LLC.....	1345 Avenue of the Americas, New York, NY 10105.....	Investment in First Eagle Direct Lending V-B, LLC; not accounted for by Northern Trust.

17.3 Have there been any changes, including name changes, in the custodian(s) identified in 17.1 during the current quarter? Yes [] No [X]

17.4 If yes, give full and complete information relating thereto:

1 Old Custodian	2 New Custodian	3 Date of Change	4 Reason

17.5 Investment management – Identify all investment advisors, investment managers, broker/dealers, including individuals that have the authority to make investment decisions on behalf of the reporting entity. For assets that are managed internally by employees of the reporting entity, note as such. ["...that have access to the investment accounts"; "...handle securities"]

1 Name of Firm or Individual	2 Affiliation
Michael Shutt.....	I.....
Wellington Management Company LLP.....	U.....

17.5097 For those firms/individuals listed in the table for Question 17.5, do any firms/individuals unaffiliated with the reporting entity (i.e., designated with a "U") manage more than 10% of the reporting entity's invested assets? Yes [X] No []

17.5098 For firms/individuals unaffiliated with the reporting entity (i.e., designated with a "U") listed in the table for Question 17.5, does the total assets under management aggregate to more than 50% of the reporting entity's invested assets? Yes [X] No []

17.6 For those firms or individuals listed in the table for 17.5 with an affiliation code of "A" (affiliated) or "U" (unaffiliated), provide the information for the table below.

1 Central Registration Depository Number	2 Name of Firm or Individual	3 Legal Entity Identifier (LEI)	4 Registered With	5 Investment Management Agreement (IMA) Filed
106595.....	Wellington Management Company LLP.....	549300YHP12TEZNL CX41.....	SEC # 801-106595.....	NO.....

18.1 Have all the filing requirements of the *Purposes and Procedures Manual of the NAIC Investment Analysis Office* been followed? Yes [X] No []

18.2 If no, list exceptions:
.....

19. By self-designating 5GI securities, the reporting entity is certifying the following elements for each self-designated 5GI security:

- a. Documentation necessary to permit a full credit analysis of the security does not exist or an NAIC CRP credit rating for an FE or PL security is not available.

GENERAL INTERROGATORIES

- b. Issuer or obligor is current on all contracted interest and principal payments.
- c. The insurer has an actual expectation of ultimate payment of all contracted interest and principal.

Has the reporting entity self-designated 5GI securities?..... Yes [] No [X]

20. By self-designating PLGI securities, the reporting entity is certifying the following elements of each self-designated PLGI security:

- a. The security was purchased prior to January 1, 2018.
- b. The reporting entity is holding capital commensurate with the NAIC Designation reported for the security.
- c. The NAIC Designation was derived from the credit rating assigned by an NAIC CRP in its legal capacity as a NRSRO which is shown on a current private letter rating held by the insurer and available for examination by state insurance regulators.
- d. The reporting entity is not permitted to share this credit rating of the PL security with the SVO.

Has the reporting entity self-designated PLGI securities?..... Yes [] No [X]

21. By assigning FE to a Schedule BA non-registered private fund, the reporting entity is certifying the following elements of each self-designated FE fund:

- a. The shares were purchased prior to January 1, 2019.
- b. The reporting entity is holding capital commensurate with the NAIC Designation reported for the security.
- c. The security had a public credit rating(s) with annual surveillance assigned by an NAIC CRP in its legal capacity as an NRSRO prior to January 1, 2019.
- d. The fund only or predominantly holds bonds in its portfolio.
- e. The current reported NAIC Designation was derived from the public credit rating(s) with annual surveillance assigned by an NAIC CRP in its legal capacity as an NRSRO.
- f. The public credit rating(s) with annual surveillance assigned by an NAIC CRP has not lapsed.

Has the reporting entity assigned FE to Schedule BA non-registered private funds that complied with the above criteria?..... Yes [] No [X]

GENERAL INTERROGATORIES
PART 2 - PROPERTY & CASUALTY INTERROGATORIES

1. If the reporting entity is a member of a pooling arrangement, did the agreement or the reporting entity's participation change? Yes [] No [X] NA []
If yes, attach an explanation.

2. Has the reporting entity reinsured any risk with any other reporting entity and agreed to release such entity from liability, in whole or in part, from any loss that may occur on the risk, or portion thereof, reinsured? Yes [] No [X]
If yes, attach an explanation.

3.1 Have any of the reporting entity's primary reinsurance contracts been canceled? Yes [] No [X]

3.2 If yes, give full and complete information thereto.
.....

4.1 Are any of the liabilities for unpaid losses and loss adjustment expenses other than certain workers' compensation tabular reserves (see *Annual Statement Instructions* pertaining to disclosure of discounting for definition of "tabular reserves,") discounted at a rate of interest greater than zero? Yes [] No [X]

4.2 If yes, complete the following schedule:

			TOTAL DISCOUNT				DISCOUNT TAKEN DURING PERIOD			
1	2	3	4	5	6	7	8	9	10	11
Line of Business	Maximum Interest	Discount Rate	Unpaid Losses	Unpaid LAE	IBNR	TOTAL	Unpaid Losses	Unpaid LAE	IBNR	TOTAL
TOTAL			0	0	0	0	0	0	0	0

5. Operating Percentages:

5.1 A&H loss percent

0.0 %

5.2 A&H cost containment percent

0.0 %

5.3 A&H expense percent excluding cost containment expenses.....

0.0 %

6.1 Do you act as a custodian for health savings accounts?..... Yes [] No [X]

6.2 If yes, please provide the amount of custodial funds held as of the reporting date..... \$

6.3 Do you act as an administrator for health savings accounts?..... Yes [] No [X]

6.4 If yes, please provide the balance of the funds administered as of the reporting date..... \$

7. Is the reporting entity licensed or chartered, registered, qualified, eligible or writing business in at least two states?..... Yes [X] No []

7.1 If no, does the reporting entity assume reinsurance business that covers risks residing in at least one state other than the state of domicile of the reporting entity?..... Yes [] No []

STATEMENT AS OF JUNE 30, 2023 OF THE SONNENBERG MUTUAL INSURANCE COMPANY

SCHEDULE F - CEDED REINSURANCE

Showing All New Reinsurers - Current Year to Date

[illegible]

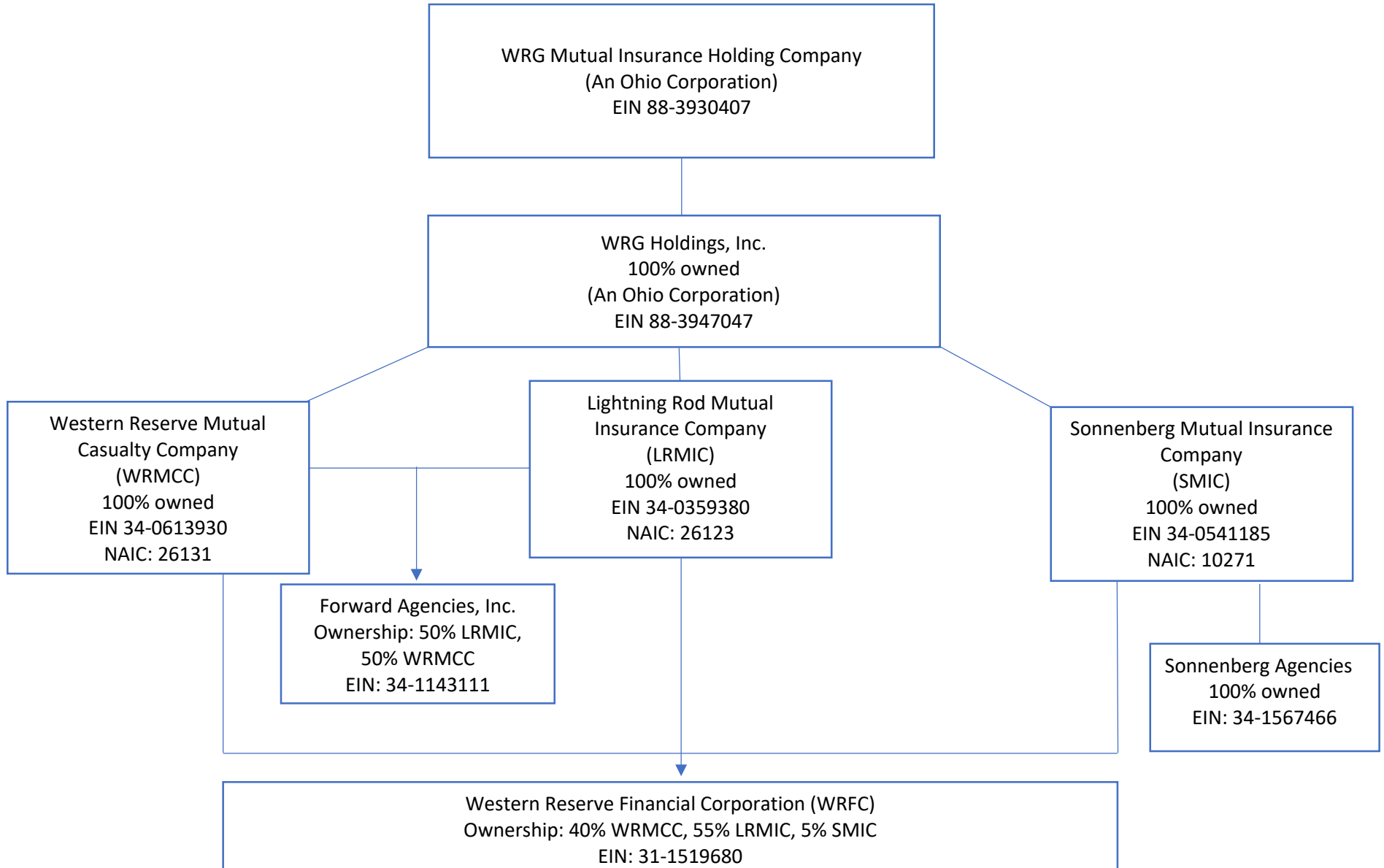
SCHEDULE T - EXHIBIT OF PREMIUMS WRITTEN

Current Year to Date – Allocated by States and Territories								
States, etc.	1	Direct Premiums Written		Direct Losses Paid (Deducting Salvage)		Direct Losses Unpaid		
		2	3	4	5	6	7	
	Active Status (a)	Current Year To Date	Prior Year To Date	Current Year To Date	Prior Year To Date	Current Year To Date	Prior Year To Date	
1. Alabama	AL	N	0		0		0	
2. Alaska	AK	N	0		0		0	
3. Arizona	AZ	N	0		0		0	
4. Arkansas	AR	N	0		0		0	
5. California	CA	N	0		0		0	
6. Colorado	CO	N	0		0		0	
7. Connecticut	CT	N	0		0		0	
8. Delaware	DE	N	0		0		0	
9. Dist. Columbia	DC	N	0		0		0	
10. Florida	FL	N	0		0		0	
11. Georgia	GA	N	0		0		0	
12. Hawaii	HI	N	0		0		0	
13. Idaho	ID	N	0		0		0	
14. Illinois	IL	N	0		0		0	
15. Indiana	IN	L	8,649,402	6,507,652	6,155,352	4,159,722	4,070,876	3,942,220
16. Iowa	IA	N	0		0		0	
17. Kansas	KS	N	0		0		0	
18. Kentucky	KY	N	0		0		0	
19. Louisiana	LA	N	0		0		0	
20. Maine	ME	N	0		0		0	
21. Maryland	MD	N	0		0		0	
22. Massachusetts	MA	N	0		0		0	
23. Michigan	MI	N	0		0		0	
24. Minnesota	MN	N	0		0		0	
25. Mississippi	MS	N	0		0		0	
26. Missouri	MO	N	0		0		0	
27. Montana	MT	N	0		0		0	
28. Nebraska	NE	N	0		0		0	
29. Nevada	NV	N	0		0		0	
30. New Hampshire	NH	N	0		0		0	
31. New Jersey	NJ	N	0		0		0	
32. New Mexico	NM	N	0		0		0	
33. New York	NY	N	0		0		0	
34. No. Carolina	NC	N	0		0		0	
35. No. Dakota	ND	N	0		0		0	
36. Ohio	OH	L	27,937,295	21,592,178	19,422,007	14,596,179	15,861,583	13,600,175
37. Oklahoma	OK	N	0		0		0	
38. Oregon	OR	N	0		0		0	
39. Pennsylvania	PA	N	0		0		0	
40. Rhode Island	RI	N	0		0		0	
41. So. Carolina	SC	N	0		0		0	
42. So. Dakota	SD	N	0		0		0	
43. Tennessee	TN	N	0		0		0	
44. Texas	TX	N	0		0		0	
45. Utah	UT	N	0		0		0	
46. Vermont	VT	N	0		0		0	
47. Virginia	VA	N	0		0		0	
48. Washington	WA	N	0		0		0	
49. West Virginia	WV	N	0		0		0	
50. Wisconsin	WI	N	0		0		0	
51. Wyoming	WY	N	0		0		0	
52. American Samoa	AS	N	0		0		0	
53. Guam	GU	N	0		0		0	
54. Puerto Rico	PR	N	0		0		0	
55. U.S. Virgin Islands	VI	N	0		0		0	
56. Northern Mariana Islands	MP	N	0		0		0	
57. Canada	CAN	N	0		0		0	
58. Aggregate Other Alien	OT	XXX	0	0	0	0	0	
59. Totals	XXX		36,586,697	28,099,830	25,577,359	18,755,901	19,932,459	17,542,395
DETAILS OF WRITE-INS								
58001.	XXX							
58002.	XXX							
58003.	XXX							
58998. Summary of remaining write-ins for Line 58 from overflow page.	XXX		0	0	0	0	0	0
58999. TOTALS (Lines 58001 through 58003 plus 58998) (Line 58 above)	XXX		0	0	0	0	0	0

(a) Active Status Counts

1. L – Licensed or Chartered – Licensed insurance carrier or domiciled RRG	2	4. Q – Qualified – Qualified or accredited reinsurer	0
2. R – Registered – Non-domiciled RRGs	0	5. D – Domestic Surplus Lines Insurer (DSLII) – Reporting entities authorized to write surplus lines in the state of domicile	0
3. E – Eligible – Reporting entities eligible or approved to write surplus lines in the state (other than their state of domicile – See DSLI)	0	6. N – None of the above – Not allowed to write business in the state	55

SCHEDULE Y- INFORMATION CONCERNING ACTIVITIES OF INSURER MEMBERS OF A HOLDING COMPANY GROUP
PART I- ORGANIZATIONAL CHART



SCHEDULE Y

PART 1A – DETAIL OF INSURANCE HOLDING COMPANY SYSTEM

Asterisk	Explanation
----------	-------------

PART 1 - LOSS EXPERIENCE

Line of Business		Current Year to Date			4 Prior Year to Date Direct Loss Percentage
		1 Direct Premiums Earned	2 Direct Losses Incurred	3 Direct Loss Percentage	
1.	Fire	7,736		0.0	0.0
2.1	Allied lines	3,484		0.0	0.0
2.2	Multiple peril crop			0.0	0.0
2.3	Federal flood			0.0	0.0
2.4	Private crop			0.0	0.0
2.5	Private flood			0.0	0.0
3.	Farmowners multiple peril	945,490	2,367,927	250.4	43.7
4.	Homeowners multiple peril		(148,337)	0.0	0.0
5.1	Commercial multiple peril (non-liability portion)			0.0	
5.2	Commercial multiple peril (liability portion)			0.0	
6.	Mortgage guaranty			0.0	0.0
8.	Ocean marine			0.0	0.0
9.	Inland marine			0.0	0.0
10.	Financial guaranty			0.0	0.0
11.1	Medical professional liability -occurrence			0.0	0.0
11.2	Medical professional liability -claims made			0.0	0.0
12.	Earthquake			0.0	0.0
13.1	Comprehensive (hospital and medical) individual			0.0	0.0
13.2	Comprehensive (hospital and medical) group			0.0	0.0
14.	Credit accident and health			0.0	0.0
15.1	Vision only			0.0	0.0
15.2	Dental only			0.0	0.0
15.3	Disability income			0.0	0.0
15.4	Medicare supplement			0.0	0.0
15.5	Medicaid Title XIX			0.0	0.0
15.6	Medicare Title XVIII			0.0	0.0
15.7	Long-term care			0.0	0.0
15.8	Federal employees health benefits plan			0.0	0.0
15.9	Other health			0.0	0.0
16.	Workers' compensation			0.0	0.0
17.1	Other liability occurrence	214		0.0	0.0
17.2	Other liability-claims made			0.0	0.0
17.3	Excess Workers' Compensation			0.0	0.0
18.1	Products liability-occurrence			0.0	0.0
18.2	Products liability-claims made			0.0	0.0
19.1	Private passenger auto no-fault (personal injury protection)			0.0	0.0
19.2	Other private passenger auto liability	16,644,839	10,081,166	60.6	58.2
19.3	Commercial auto no-fault (personal injury protection)			0.0	0.0
19.4	Other commercial auto liability	0		0.0	0.0
21.1	Private passenger auto physical damage	14,845,390	11,894,769	80.1	96.1
21.2	Commercial auto physical damage			0.0	0.0
22.	Aircraft (all perils)			0.0	0.0
23.	Fidelity			0.0	0.0
24.	Surety			0.0	0.0
26.	Burglary and theft			0.0	0.0
27.	Boiler and machinery	33,944	100,000	294.6	0.0
28.	Credit			0.0	0.0
29.	International			0.0	0.0
30.	Warranty			0.0	0.0
31.	Reinsurance - Nonproportional Assumed Property	XXX	XXX	XXX	XXX
32.	Reinsurance - Nonproportional Assumed Liability	XXX	XXX	XXX	XXX
33.	Reinsurance - Nonproportional Assumed Financial Lines	XXX	XXX	XXX	XXX
34.	Aggregate write-ins for other lines of business	0	0	0.0	0.0
35.	TOTALS	32,481,097	24,295,525	74.8	74.1
DETAILS OF WRITE-INS					
3401.			0.0	0.0
3402.			0.0	0.0
3403.			0.0	0.0
3498.	Sum. of remaining write-ins for Line 34 from overflow page	0	0	0.0	0.0
3499.	Totals (Lines 3401 through 3403 plus 3498) (Line 34)	0	0	0.0	0.0

PART 2 - DIRECT PREMIUMS WRITTEN

Line of Business		1 Current Quarter	2 Current Year to Date	3 Prior Year Year to Date
1.	Fire	5,852	6,148	7,584
2.1	Allied lines	2,636	2,658	3,373
2.2	Multiple peril crop	0		0
2.3	Federal flood	0		0
2.4	Private crop	0		0
2.5	Private flood	0		0
3.	Farmowners multiple peril	550,485	1,093,674	684,315
4.	Homeowners multiple peril	0		0
5.1	Commercial multiple peril (non-liability portion)	0	0	0
5.2	Commercial multiple peril (liability portion)	0	0	0
6.	Mortgage guaranty	0		0
8.	Ocean marine	0		0
9.	Inland marine	0		0
10.	Financial guaranty	0		0
11.1	Medical professional liability-occurrence	0		0
11.2	Medical professional liability-claims made	0		0
12.	Earthquake	0		0
13.1	Comprehensive (hospital and medical) individual	0		0
13.2	Comprehensive (hospital and medical) group	0		0
14.	Credit accident and health	0		0
15.1	Vision only	0		0
15.2	Dental only	0		0
15.3	Disability income	0		0
15.4	Medicare supplement	0		0
15.5	Medicaid Title XIX	0		0
15.6	Medicare Title XVIII	0		0
15.7	Long-term care	0		0
15.8	Federal employee health benefits plan	0		0
15.9	Other health	0		0
16.	Workers' compensation	0		0
17.1	Other liability occurrence	66	70	176
17.2	Other liability-claims made	0		0
17.3	Excess Workers' Compensation	0		0
18.1	Products liability-occurrence	0		0
18.2	Products liability-claims made	0		0
19.1	Private passenger auto no-fault (personal injury protection)	0		0
19.2	Other private passenger auto liability	9,205,972	17,946,224	15,067,934
19.3	Commercial auto no-fault (personal injury protection)	0		0
19.4	Other commercial auto liability	0		0
21.1	Private passenger auto physical damage	9,448,152	17,496,879	12,313,730
21.2	Commercial auto physical damage	0	0	0
22.	Aircraft (all perils)	0		0
23.	Fidelity	0		0
24.	Surety	0		0
26.	Burglary and theft	0		0
27.	Boiler and machinery	22,134	41,044	22,718
28.	Credit	0		0
29.	International	0		0
30.	Warranty	0		0
31.	Reinsurance - Nonproportional Assumed Property	XXX	XXX	XXX
32.	Reinsurance - Nonproportional Assumed Liability	XXX	XXX	XXX
33.	Reinsurance - Nonproportional Assumed Financial Lines	XXX	XXX	XXX
34.	Aggregate write-ins for other lines of business	0	0	0
35.	TOTALS	19,235,297	36,586,697	28,099,830
DETAILS OF WRITE-INS				
3401.	0		0
3402.	0		0
3403.	0		0
3498.	Sum. of remaining write-ins for Line 34 from overflow page	0	0	0
3499.	Totals (Lines 3401 through 3403 plus 3498) (Line 34)	0	0	0

STATEMENT AS OF JUNE 30, 2023 OF THE SONNENBERG MUTUAL INSURANCE COMPANY

PART 3 (000 omitted)

LOSS AND LOSS ADJUSTMENT EXPENSE RESERVES SCHEDULE

	1	2	3	4	5	6	7	8	9	10	11	12	13
Years in Which Losses Occurred	Prior Year-End Known Case Loss and LAE Reserves	Prior Year-End IBNR Loss and LAE Reserves	Total Prior Year-End Loss and LAE Reserves (Cols. 1 + 2)	2023 Loss and LAE Payments on Claims Reported as of Prior Year-End	2023 Loss and LAE Payments on Claims Unreported as of Prior Year-End	Total 2023 Loss and LAE Payments (Cols. 4 + 5)	Q.S. Date Known Case Loss and LAE Reserves on Claims Reported and Open as of Prior Year End	Q.S. Date Known Case Loss and LAE Reserves on Claims Reported or Reopened Subsequent to Prior Year End	Q.S. Date IBNR Loss and LAE Reserves	Total Q.S. Loss and LAE Reserves (Cols.7 + 8 + 9)	Prior Year-End Known Case Loss and LAE Reserves Developed (Savings)/ Deficiency (Cols. 4 + 7 minus Col. 1)	Prior Year-End IBNR Loss and LAE Reserves Developed (Savings)/ Deficiency (Cols. 5 + 8 + 9 minus Col. 2)	Prior Year-End Total Loss and LAE Reserve Developed (Savings)/ Deficiency (Cols. 11 + 12)
1. 2020 + Prior8102261,0362812283549819675320(20)0
2. 20217412369772481726544211259712(51)510
3. Subtotals 2021 + prior1,5514622,01352919548991194551,465(31)310
4. 20221,9191,1143,0331,1094681,5771,0053191321,456195(195)0
5. Subtotals 2022 + prior3,4701,5765,0461,6384872,1251,9963385872,921164(164)0
6. 2023XXXXXXXXXXXX3,7063,706XXX1,0569622,018XXXXXXXXX
7. Totals	3,470	1,576	5,046	1,638	4,193	5,831	1,996	1,394	1,549	4,939	164	(164)	0
8. Prior Year-End Surplus As Regards Policy-holders	19,117										Col. 11, Line 7 As % of Col. 1, Line 7	Col. 12, Line 7 As % of Col. 2, Line 7	Col. 13, Line 7 As % of Col. 3, Line 7
											1. 4.7	2. (10.4)	3. 0.0
											Col. 13, Line 7 Line 8		
											4. 0.0		

SUPPLEMENTAL EXHIBITS AND SCHEDULES INTERROGATORIES

The following supplemental reports are required to be filed as part of your statement filing. However, in the event that your company does not transact the type of business for which the special report must be filed, your response of **NO** to the specific interrogatory will be accepted in lieu of filing a "NONE" report and a bar code will be printed below. If the supplement is required of your company but is not being filed for whatever reason enter **SEE EXPLANATION** and provide an explanation following the interrogatory questions.

	Response
1. Will the Trusteed Surplus Statement be filed with the state of domicile and the NAIC with this statement?NO.....
2. Will Supplement A to Schedule T (Medical Professional Liability Supplement) be filed with this statement?NO.....
3. Will the Medicare Part D Coverage Supplement be filed with the state of domicile and the NAIC with this statement?NO.....
4. Will the Director and Officer Insurance Coverage Supplement be filed with the state of domicile and the NAIC with this statement?NO.....






AUGUST FILING

5. Will the regulator-only (non-public) Communication of Internal Control Related Matters Noted in Audit be filed with the state of domicile and electronically with the NAIC (as a regulator-only non-public document) by August 1? The response for 1st and 3rd quarters should be N/A. A NO response resulting with a bar code is only appropriate in the 2nd quarter.NO.....
---	--------------

Explanation:

5. The Company is not required to file the report

Bar Code:

1.	 1 0 2 7 1 2 0 2 3 4 9 0 0 0 0 0 2
2.	 1 0 2 7 1 2 0 2 3 4 5 5 0 0 0 0 2
3.	 1 0 2 7 1 2 0 2 3 3 6 5 0 0 0 0 2
4.	 1 0 2 7 1 2 0 2 3 5 0 5 0 0 0 0 2
5.	 1 0 2 7 1 2 0 2 2 2 2 2 0 0 1 0 0

OVERFLOW PAGE FOR WRITE-INS

SCHEDULE A – VERIFICATION

Real Estate

	1	2
	Year To Date	Prior Year Ended December 31
1. Book/adjusted carrying value, December 31 of prior year	0	0
2. Cost of acquired:		
2.1 Actual cost at time of acquisition		0
2.2 Additional investment made after acquisition		0
3. Current year change in encumbrances		0
4. Total gain (loss) on disposals		0
5. Deduct amounts received on disposals		0
6. Total foreign exchange change in book/adjusted carrying value		0
7. Deduct current year's other-than-temporary impairment recognized		0
8. Deduct current year's depreciation		0
9. Book/adjusted carrying value at the end of current period (Lines 1+2+3+4-5+6-7-8)	0	0
10. Deduct total nonadmitted amounts	0	0
11. Statement value at end of current period (Line 9 minus Line 10)	0	0

SCHEDULE B – VERIFICATION

Mortgage Loans

	1	2
	Year To Date	Prior Year Ended December 31
1. Book value/recorded investment excluding accrued interest, December 31 of prior year	0	0
2. Cost of acquired:		
2.1 Actual cost at time of acquisition		0
2.2 Additional investment made after acquisition		0
3. Capitalized deferred interest and other		0
4. Accrual of discount		0
5. Unrealized valuation increase (decrease)		0
6. Total gain (loss) on disposals		0
7. Deduct amounts received on disposals		0
8. Deduct amortization of premium and mortgage interest points and commitment fees		0
9. Total foreign exchange change in book value/recorded investment excluding accrued interest		0
10. Deduct current year's other-than-temporary impairment recognized		0
11. Book value/recorded investment excluding accrued interest at end of current period (Lines 1+2+3+4+5+6-7-8+9-10)	0	0
12. Total valuation allowance		0
13. Subtotal (Line 11 plus Line 12)	0	0
14. Deduct total nonadmitted amounts	0	0
15. Statement value at end of current period (Line 13 minus Line 14)	0	0

SCHEDULE BA – VERIFICATION

Other Long-Term Invested Assets

	1	2
	Year To Date	Prior Year Ended December 31
1. Book/adjusted carrying value, December 31 of prior year	968,952	562,374
2. Cost of acquired:		
2.1 Actual cost at time of acquisition		228,055
2.2 Additional investment made after acquisition	134,527	479,294
3. Capitalized deferred interest and other		0
4. Accrual of discount		0
5. Unrealized valuation increase (decrease)	(6,911)	(20,005)
6. Total gain (loss) on disposals		0
7. Deduct amounts received on disposals	39,204	280,765
8. Deduct amortization of premium and depreciation		0
9. Total foreign exchange change in book/adjusted carrying value		0
10. Deduct current year's other-than-temporary impairment recognized		0
11. Book/adjusted carrying value at end of current period (Lines 1+2+3+4+5+6-7-8+9-10)	1,057,364	968,952
12. Deduct total nonadmitted amounts	0	0
13. Statement value at end of current period (Line 11 minus Line 12)	1,057,364	968,952

SCHEDULE D – VERIFICATION

Bonds and Stocks

	1	2
	Year To Date	Prior Year Ended December 31
1. Book/adjusted carrying value of bonds and stocks, December 31 of prior year	24,557,544	27,902,847
2. Cost of bonds and stocks acquired	3,438,125	3,651,100
3. Accrual of discount	4,443	3,220
4. Unrealized valuation increase (decrease)	(251,940)	(1,612,562)
5. Total gain (loss) on disposals	451,662	157,874
6. Deduct consideration for bonds and stocks disposed of	5,623,234	5,433,527
7. Deduct amortization of premium	48,563	111,408
8. Total foreign exchange change in book/adjusted carrying value		0
9. Deduct current year's other-than-temporary impairment recognized		0
10. Total investment income recognized as a result of prepayment penalties and/or acceleration fees		0
11. Book/adjusted carrying value at end of current period (Lines 1+2+3+4+5-6-7+8-9+10)	22,528,037	24,557,544
12. Deduct total nonadmitted amounts	24,483	27,598
13. Statement value at end of current period (Line 11 minus Line 12)	22,503,554	24,529,946

STATEMENT AS OF JUNE 30, 2023 OF THE SONNENBERG MUTUAL INSURANCE COMPANY

SCHEDULE D - PART 1B

Showing the Acquisitions, Dispositions and Non-Trading Activity
During the Current Quarter for all Bonds and Preferred Stock by NAIC Designation

NAIC Designation	1 Book/Adjusted Carrying Value Beginning of Current Quarter	2 Acquisitions During Current Quarter	3 Dispositions During Current Quarter	4 Non-Trading Activity During Current Quarter	5 Book/Adjusted Carrying Value End of First Quarter	6 Book/Adjusted Carrying Value End of Second Quarter	7 Book/Adjusted Carrying Value End of Third Quarter	8 Book/Adjusted Carrying Value December 31 Prior Year
BONDS								
1. NAIC 1 (a).....	15,266,735	2,635,736	3,485,764	(3,139)	15,266,735	14,413,568	0	15,431,920
2. NAIC 2 (a).....	1,008,161	696,371	200,000	762	1,008,161	1,505,294	0	1,008,498
3. NAIC 3 (a).....	0				0	0	0	0
4. NAIC 4 (a).....	0				0	0	0	0
5. NAIC 5 (a).....	0				0	0	0	0
6. NAIC 6 (a).....	0				0	0	0	0
7. Total Bonds	16,274,895	3,332,107	3,685,764	(2,377)	16,274,895	15,918,862	0	16,440,418
PREFERRED STOCK								
8. NAIC 1	0				0	0	0	0
9. NAIC 2	0				0	0	0	0
10. NAIC 3	0				0	0	0	0
11. NAIC 4	0				0	0	0	0
12. NAIC 5	0				0	0	0	0
13. NAIC 6	0				0	0	0	0
14. Total Preferred Stock.....	0	0	0	0	0	0	0	0
15. Total Bonds & Preferred Stock	16,274,895	3,332,107	3,685,764	(2,377)	16,274,895	15,918,862	0	16,440,418

(a) Book/Adjusted Carrying Value column for the end of the current reporting period includes the following amount of short-term and cash equivalent bonds by NAIC designation: NAIC 1 \$; NAIC 2 \$;
NAIC 3 \$; NAIC 4 \$; NAIC 5 \$; NAIC 6 \$

Schedule DA - Part 1

NONE

Schedule DA - Verification

NONE

Schedule DB - Part A - Verification

NONE

Schedule DB - Part B - Verification

NONE

Schedule DB - Part C - Section 1

NONE

Schedule DB - Part C - Section 2

NONE

Schedule DB - Verification

NONE

SCHEDULE E – PART 2 – VERIFICATION
(Cash Equivalents)

	1 Year To Date	2 Prior Year Ended December 31
1. Book/adjusted carrying value, December 31 of prior year.....	794,662	401,665
2. Cost of cash equivalents acquired	6,223,720	4,349,693
3. Accrual of discount		0
4. Unrealized valuation increase (decrease)		0
5. Total gain (loss) on disposals.....		0
6. Deduct consideration received on disposals	6,166,953	3,956,696
7. Deduct amortization of premium		0
8. Total foreign exchange change in book/adjusted carrying value		0
9. Deduct current year's other-than-temporary impairment recognized		0
10. Book/adjusted carrying value at end of current period (Lines 1+2+3+4+5-6-7+8-9)	851,428	794,662
11. Deduct total nonadmitted amounts		0
12. Statement value at end of current period (Line 10 minus Line 11)	851,428	794,662

Schedule A - Part 2

NONE

Schedule A - Part 3

NONE

Schedule B - Part 2

NONE

Schedule B - Part 3

NONE

SCHEDULE BA - PART 2

[illegible]

SCHEDULE BA - PART 3

[illegible]

STATEMENT AS OF JUNE 30, 2023 OF THE SONNENBERG MUTUAL INSURANCE COMPANY

SCHEDULE D - PART 3

Show All Long-Term Bonds and Stock Acquired During the Current Quarter

1	2	3	4	5	6	7	8	9	10
CUSIP Identification	Description	Foreign	Date Acquired	Name of Vendor	Number of Shares of Stock	Actual Cost	Par Value	Paid for Accrued Interest and Dividends	NAIC Designation, NAIC Designation Modifier and SVO Administrative Symbol
Bonds - U.S. Special Revenue and Special Assessment and all Non-Guaranteed Obligations of Agencies and Authorities of Governments and Their Political Subdivisions									
196480-RB-5	COLORADO HSG & FIN AUTH.		06/06/2023	FUNB-FUNDS II	XXX	96,226	100,000	300	1 A FE
3137FB-U7-9	FHMS K-069 A2 - CMBS		06/06/2023	GOLDMAN	XXX	95,578	100,000	71	1 A FE
3137FK-ZZ-2	FHMS K-088 A2 - CMBS		06/06/2023	CANTOR FITZGERALD	XXX	96,793	100,000	82	1 A
34074M-VP-3	FLORIDA HSG FIN CORP REV		06/06/2023	FUNB-FUNDS II	XXX	91,770	95,000	1,235	1 A FE
45129Y-S6-4	IDAHO HSG & FIN ASSN SINGLE FAMILY MTG R		05/08/2023	RBC Dain Rauscher (US)	XXX	100,402	100,000	1,422	1 B FE
594654-RG-2	MICHIGAN ST HSG DEV AUTH SINGLE FAMILY M		05/10/2023	RBC Dain Rauscher (US)	XXX	104,325	100,000	2,208	1 C FE
594698-TD-4	MICHIGAN ST STRATEGIC FD LTD OBLIG REV		05/10/2023	Keybank	XXX	15,000	15,000		1 E FE
0909999999 - Bonds - U.S. Special Revenue and Special Assessment and all Non-Guaranteed Obligations of Agencies and Authorities of Governments and Their Political Subdivisions						600,094	610,000	5,318	XXX
Bonds - Industrial and Miscellaneous (Unaffiliated)									
00138C-AN-8	COREBRIDGE GLOBAL FUNDING		06/13/2023	GOLDMAN	XXX	45,054	50,000	104	1 F FE
020002-BH-3	ALLSTATE CORP		06/13/2023	GOLDMAN	XXX	44,909	50,000		1 G FE
06051G-HW-4	BANK OF AMERICA CORP		06/14/2023	Montgomery	XXX	47,212	50,000	848	1 G FE
142921-AD-7	CARMX 2032-2 A3 - ABS		06/14/2023	MITSUBISHI UFJ SECURITIES	XXX	99,547	100,000	14	1 A FE
232989-AB-9	DLLMT 231 A2 - ABS		05/17/2023	Montgomery	XXX	64,773	65,000	221	1 A FE
26884A-BM-4	ERP OPERATING LP		06/20/2023	Morgan Stanley	XXX	42,893	50,000	441	1 G FE
281020-AM-9	EDISON INTERNATIONAL		06/15/2023	MILLENNIUM ADVISORS, LLC	XXX	23,517	25,000	272	2 C FE
29375N-AB-1	EFF 232 A2 - ABS		05/23/2023	CHASE SECURITIES INC	XXX	54,991	55,000		1 A FE
30040W-AS-7	EVERSOURCE ENERGY		06/16/2023	GOLDMAN	XXX	49,243	50,000	1,015	2 A FE
30040W-AV-0	EVERSOURCE ENERGY		05/11/2023	SALOMON BROTHERS INC	XXX	34,979	35,000		2 A FE
34533G-AF-6	FORDO 2020-B B - ABS		05/09/2023	CHASE SECURITIES INC	XXX	96,410	100,000	86	1 A FE
36260K-AD-6	GMCAR 2020-4 A4 - ABS		05/05/2023	Barclays Bank	XXX	94,566	100,000	32	1 A FE
380140-AC-7	GMCAR 213 A3 - ABS		05/05/2023	FIRST UNION CAPITAL	XXX	90,146	93,921	29	1 A FE
38141G-WZ-3	GOLDMAN SACHS GROUP INC		06/13/2023	GOLDMAN	XXX	42,564	45,000	232	2 A FE
39154T-CB-2	GALC 231 A2 - ABS		05/17/2023	FIRST UNION CAPITAL	XXX	29,997	30,000		1 A FE
416515-BE-3	HARTFORD FINANCIAL SERVICES GROUP INC		04/20/2023	TORONTO DOMINION BK	XXX	263,511	300,000	1,517	2 A FE
437927-AB-2	HAROT 2023-2 A2 - ABS		05/23/2023	Barclays Bank	XXX	54,997	55,000		1 A FE
444859-BQ-4	HUMANA INC		06/20/2023	Morgan Stanley	XXX	48,139	55,000	287	2 B FE
44933V-AE-1	HALST 23A A4 - ABS		06/14/2023	MITSUBISHI UFJ SECURITIES	XXX	98,926	100,000	14	1 A FE
465685-AP-0	ITC HOLDINGS CORP		06/15/2023	CHASE SECURITIES INC	XXX	46,889	50,000	163	2 B FE
46647P-AV-8	JPMORGAN CHASE & CO		06/13/2023	RBC Dain Rauscher (US)	XXX	42,771	45,000	746	1 F FE
58768R-AB-6	MBALT 2023-A A2 - ABS		05/11/2023	CHASE SECURITIES INC	XXX	40,000	40,000		1 A FE
58772W-AC-7	MBART 2021-1 A3 - ABS		05/05/2023	FIRST UNION CAPITAL	XXX	93,629	97,289	30	1 A FE
61747Y-FD-2	MORGAN STANLEY		06/13/2023	CHASE SECURITIES INC	XXX	99,063	100,000	775	1 E FE
65473F-AD-9	NALT 2023-B A3 - ABS		06/21/2023	SALOMON BROTHERS INC	XXX	29,998	30,000		1 A FE
65473P-AH-8	NISOURCE INC		06/15/2023	Jane Street	XXX	44,037	50,000	447	2 B FE
65473P-AN-5	NISOURCE INC		05/30/2023	MITSUBISHI UFJ SECURITIES	XXX	20,056	20,000	216	2 B FE
716973-AE-2	PFIZER INVESTMENT ENTERPRISES PTE LTD	C	05/16/2023	Montgomery	XXX	69,895	70,000		1 E FE
73328Q-AB-0	PFAST 231 A2 - ABS		05/17/2023	FIRST UNION CAPITAL	XXX	99,992	100,000		1 A FE
74153W-CS-6	PRICOA GLOBAL FUNDING I		05/22/2023	Morgan Stanley	XXX	149,922	150,000		1 D FE
74382Q-AC-6	PROVIDENCE ST JOSEPH HEALTH		04/26/2023	Morgan Stanley	XXX	85,000	85,000		1 F FE
744573-AN-6	PUBLIC SERVICE ENTERPRISE GROUP INC		06/20/2023	GOLDMAN	XXX	48,550	50,000	28	2 B FE
84240Q-HW-6	SOUTHERN CALIFORNIA EDISON CO		05/17/2023	CHASE SECURITIES INC	XXX	59,934	60,000		1 G FE
842587-DQ-7	SOUTHERN CO		05/15/2023	Barclays Bank	XXX	74,886	75,000		2 B FE
857477-AN-3	STATE STREET CORP		06/13/2023	Jane Street	XXX	53,363	55,000	902	1 F FE
891941-AB-2	TAOT 2023-B A2A - ABS		05/16/2023	RBC Dain Rauscher (US)	XXX	24,999	25,000		1 A FE
89239B-AC-5	TAOT 2021-C A3 - ABS		06/14/2023	MITSUBISHI UFJ SECURITIES	XXX	87,716	91,356	1	1 A FE
89239H-AE-8	TAOT 2022-D A4 - ABS		06/28/2023	BNP PARIBAS SECURITIES BOND	XXX	101,566	100,000	226	1 A FE
96328G-AS-6	WFLF 231 A - ABS		06/08/2023	BNP PARIBAS SECURITIES BOND	XXX	99,995	100,000		1 A FE
981944-AB-7	WOLS 2023-A A2A - ABS		06/15/2023	MITSUBISHI UFJ SECURITIES	XXX	33,379	33,381		1 A FE
1109999999 - Bonds - Industrial and Miscellaneous (Unaffiliated)						2,732,013	2,835,947	8,645	XXX
2509999997 - Bonds - Subtotals - Bonds - Part 3						3,332,107	3,445,947	13,963	XXX
2509999999 - Bonds - Subtotals - Bonds						3,332,107	3,445,947	13,963	XXX
6009999999 Totals						3,332,107	XXX	13,963	XXX

STATEMENT AS OF JUNE 30, 2023 OF THE SONNENBERG MUTUAL INSURANCE COMPANY

SCHEDULE D - PART 4

Show All Long-Term Bonds and Stock Sold, Redeemed or Otherwise Disposed of During the Current Quarter

1	2	3 F o r e i g n	4	5	6	7	8	9	10	Change in Book/Adjusted Carrying Value					16	17	18	19	20	21	22 NAIC Designation, NAIC Desig. Modifier and SVO Administrative Symbol
										11	12	13	14	15							
CUSIP Identi- fication	Description		Disposal Date	Name of Purchaser	Number of Shares of Stock	Consideration	Par Value	Actual Cost	Prior Year Book/Adjusted Carrying Value	Unrealized Valuation Increase/ (Decrease)	Current Year's (Amortization)/ Accretion	Current Year's Other Than Temporary Impairment Recognized	Total Change in B./A.C.V. (11+12-13)	Total Foreign Exchange Change in B./A.C.V.	Book/ Adjusted Carrying Value at Disposal Date	Foreign Exchange Gain (Loss) on Disposal	Realized Gain (Loss) on Disposal	Total Gain (Loss) on Disposal	Bond Interest/Stock Dividends Received During Year	Stated Contractual Maturity Date	
Bonds - U.S. Governments																					
912828-4X-5	UNITED STATES TREASURY.....		06/08/2023	SCOTIA MCLEOD INC.	XXX	99,465	100,000	99,234	99,933		71		71		99,963		(498)	(498)	2,130	08/31/2023	1.A
912828-D5-6	UNITED STATES TREASURY.....		06/08/2023	DEUTSCHE BANK ALEX BROWN	XXX	48,453	50,000	49,719	49,944		18		18	(1,499)	49,952		(1,499)	(1,499)	968	08/15/2024	1.A
912828-WJ-5	UNITED STATES TREASURY.....		06/08/2023	TORONTO DOMINION BK.	XXX	97,578	100,000	101,203	100,195		(75)		(75)		100,165		(2,587)	(2,587)	1,420	05/15/2024	1.A
0109999999 - Bonds - U.S. Governments						245,496	250,000	250,156	250,073	0	14	0	14	0	250,080	0	(4,583)	(4,583)	4,517	XXX	XXX
Bonds - U.S. States, Territories and Possessions																					
574193-MV-7	MARYLAND ST.....		06/09/2023	CITIGROUP GLOBAL MARKETS INC.	XXX	100,743	100,000	109,890	101,665		(630)		(630)		101,395		(652)	(652)	2,133	06/01/2027	1.A FE
612103-UL-3	MONTANA ST.....		04/21/2023	CHASE SECURITIES INC.	XXX	150,198	150,000	171,096	150,842		(800)		(800)		150,693		(495)	(495)	4,400	08/01/2023	1.B FE
677522-PN-8	OHIO ST.....		06/09/2023	FUNB-FUNDS II	XXX	100,487	100,000	111,700	101,599		(777)		(777)		101,266		(779)	(779)	3,133	03/01/2026	1.B FE
0509999999 - Bonds - U.S. States, Territories and Possessions						351,428	350,000	392,686	354,105	0	(2,208)	0	(2,208)	0	353,354	0	(1,926)	(1,926)	9,667	XXX	XXX
Bonds - U.S. Political Subdivisions of States, Territories and Possessions																					
035438-EH-9	ANN ARBOR MICH. BRANDON VY S D SCH DIST NO 49-2.....		05/01/2023	Maturity @ 100.00	XXX	100,000	100,000	100,000	100,000				.0		100,000			.0	1,250	05/01/2023	1.B FE
105314-PH-5	CANADIAN CNTY OKLA INDPT		06/09/2023	FUNB-FUNDS II	XXX	104,398	100,000	124,533	107,282		(1,170)		(1,170)		106,781		(2,383)	(2,383)	2,472	12/15/2026	1.C FE
132285-4B-0	CAMBRIDGE		05/09/2023	Fidelity Capital Markets	XXX	109,557	100,000	123,559	109,817		(863)		(863)		109,571		(14)	(14)	3,694	02/15/2027	1.A FE
135591-GF-6	SCH DIST NO 069		05/10/2023	Merrill Lynch	XXX	129,823	130,000	130,883	130,032		(72)		(72)		130,011		(188)	(188)	1,890	06/01/2023	1.D FE
245869-JS-2	DELAWARE CNTY OHIO		05/02/2023	STIFEL NICOLAUS & CO	XXX	128,299	125,000	148,113	131,841		(845)		(845)		131,637		(3,338)	(3,338)	2,125	12/01/2026	1.A FE
462326-JW-0	IOWA CITY IOWA CMNTY SCH		05/02/2023	HILLTOP SECURITIES	XXX	101,904	100,000	113,440	104,097		(625)		(625)		103,946		(2,042)	(2,042)	1,700	06/01/2027	1.D FE
680616-D7-1	OHIO		05/02/2023	HILLTOP SECURITIES	XXX	62,222	60,000	71,602	63,909		(404)		(404)		63,812		(1,589)	(1,589)	1,020	12/01/2026	1.B FE
718814-X9-2	PHOENIX ARIZ		06/09/2023	FUNB-FUNDS II	XXX	95,787	95,000	106,575	96,597		(567)		(567)		96,355		(568)	(568)	3,610	07/01/2024	1.B FE
803770-RN-8	SARPY CNTY NEB SCH DIST NO 037.....		05/02/2023	CHASE SECURITIES INC.	XXX	153,998	150,000	177,168	158,293		(1,010)		(1,010)		158,047		(4,050)	(4,050)	2,317	12/15/2025	1.D FE
812626-4T-3	SEATTLE WASH		06/09/2023	FUNB-FUNDS II	XXX	103,738	100,000	123,551	105,530		(1,113)		(1,113)		105,054		(1,316)	(1,316)	2,667	12/01/2025	1.A FE
886155-MT-4	THURSTON CNTY WASH SCH		06/09/2023	FUNB-FUNDS II	XXX	102,168	100,000	113,959	104,032		(654)		(654)		103,753		(1,585)	(1,585)	2,133	12/01/2025	1.A FE
930863-SH-4	DIST NO 033 TUMWA		06/09/2023	STIFEL NICOLAUS & CO	XXX	114,195	115,000	123,982	116,426		(445)		(445)		116,236		(2,041)	(2,041)	2,703	09/01/2025	1.A FE
944233-LC-7	WAKE CNTY N C		06/09/2023	STIFEL NICOLAUS & CO	XXX	158,072	150,000	186,629	162,145		(1,709)		(1,709)		161,413		(3,341)	(3,341)	4,625	05/01/2026	1.C FE
985743-PW-7	WAYLAND MICH UN SCH DIST YELLOWSTONE CNTY MONT SCH		06/09/2023	STIFEL NICOLAUS & CO	XXX	140,743	135,000	165,633	142,509		(1,195)		(1,195)		142,164		(1,421)	(1,421)	2,756	06/15/2025	1.D FE
0709999999 - Bonds - U.S. Political Subdivisions of States, Territories and Possessions						1,604,903	1,560,000	1,809,624	1,632,511	0	(10,670)	0	(10,670)	0	1,628,778	0	(23,875)	(23,875)	34,962	XXX	XXX
Bonds - U.S. Special Revenue and Special Assessment and all Non-Guaranteed Obligations of Agencies and Authorities of Governments and Their Political Subdivisions																					
09845N-CF-4	BONNEY LAKE WASH WTR & SWR REV		05/09/2023	BOSC INC	XXX	103,438	100,000	118,024	106,263		(684)		(684)		106,070		(2,632)	(2,632)	1,778	12/01/2026	1.C FE
29933Q-AF-0	EVANSVILLE IND ECONOMIC DEV LEASE RENT R		06/09/2023	HEADLANDS HOLDINGS LLC	XXX	100,730	100,000	118,686	102,162		(1,102)		(1,102)		101,686		(956)	(956)	4,139	02/15/2024	1.C FE
438701-ZA-5	HONOLULU HAWAII CITY & CNTY WASTEWTR SYS		06/09/2023	JANNEY MONTGOMERY SCOTT INC.	XXX	103,697	100,000	122,731	105,664		(1,103)		(1,103)		105,192		(1,495)	(1,495)	4,750	07/01/2025	1.C FE
551702-BT-9	LYNNWOOD WASH UTIL SYS REV		06/09/2023	B.C. ZIEGLER & CO	XXX	158,867	155,000	191,301	162,152		(1,888)		(1,888)		161,344		(2,477)	(2,477)	4,133	12/01/2025	1.C FE
753387-CG-2	RAPID CITY S D WTR REV		05/10/2023	WEDBUSH	XXX	154,337	150,000	170,427	156,721		(914)		(914)		156,457		(2,120)	(2,120)	3,183	11/01/2028	1.D FE
0909999999 - Bonds - U.S. Special Revenue and Special Assessment and all Non-Guaranteed Obligations of Agencies and Authorities of Governments and Their Political Subdivisions						621,069	605,000	721,169	632,962	0	(5,692)	0	(5,692)	0	630,749	0	(9,680)	(9,680)	17,983	XXX	XXX
Bonds - Industrial and Miscellaneous (Unaffiliated)																					
06406H-CV-9	BANK OF NEW YORK MELLON CORP.		06/08/2023	MARKETTX	XXX	98,060	100,000	108,024	101,169		(500)		(500)		100,957		(2,897)	(2,897)	1,955	05/15/2024	1.F FE
110122-AW-8	BRISTOL-MYERS SQUIBB CO		06/08/2023	BONY CAPITAL MARKETS INC.	XXX	99,193	100,000	100,800	100,056		(42)		(42)		100,039		(846)	(846)	1,995	11/01/2023	1.F FE
380140-AC-7	GMCAR 213 A3 - ABS		06/16/2023	Paydown	XXX	10,420	10,420	10,001	10,420		.419		.419		.0		.0	.0	.6	06/16/2026	1.A FE
58772W-AC-7	MBART 2021-1 A3 - ABS		06/15/2023	Paydown	XXX	12,777	12,777	10,959	12,777		.428		.428		12,777		1,400	1,400	.7	06/15/2026	1.A FE
58933Y-AF-2	MERCK & CO INC.		05/18/2023	Maturity @ 100.00	XXX	100,000	100,000	101,028	100,014		(44)		(44)		100,000		.0	.0	1,400	05/18/2023	1.E FE
857477-AL-7	STATE STREET CORP.		05/15/2023	Maturity @ 100.00	XXX	100,000	100,000	99,900	99,985		.50		.50		100,000		.0	.0	1,550	05/15/2023	1.G FE
95000N-2K-4	WELLS FARGO & CO		06/06/2023	BARCLAY INVESTMENTS, INC.	XXX	91,180	100,000	100,000	100,000		.0		.0		100,000		(8,820)	(8,820)	1,648	06/23/2027	2.A FE
1109999999 - Bonds - Industrial and Miscellaneous (Unaffiliated)						511,630	523,197	529,812	501,224	0	311	0	311	0	524,193	0	(11,163)	(11,163)	8,562	XXX	XXX
Bonds - Unaffiliated Certificates of Deposit																					
17312Q-Y3-7	Citibank, N.A.		06/09/2023	CITIGROUP GLOBAL MARKETS INC.	XXX	98,875	100,000	100,000	100,000				.0		100,000		(1,125)	(1,125)	1,582	12/26/2023	1.D FE
38148P-T9-8	Goldman Sachs Bank USA		06/09/2023	Montgomery	XXX	99,650	100,000	100,000	100,000				.0		100,000		(350)	(350)	2,799	08/08/2023	1.E FE
949763-VU-7	Wells Fargo Bank, National Association		06/09/2023	FIRST UNION CAPITAL	XXX	99,156	100,000	100,000	100,000				.0		100,000		(844)	(844)	1,722	12/14/2023	2.A FE

E05.1

E05.1

E05.1

E05.1

Schedule DB - Part A - Section 1

NONE

Schedule DB - Part B - Section 1

NONE

Schedule DB - Part D - Section 1

NONE

Schedule DB - Part D - Section 2

NONE

Schedule DB - Part E

NONE

Schedule DL - Part 1

NONE

Schedule DL - Part 2

NONE

STATEMENT AS OF JUNE 30, 2023 OF THE SONNENBERG MUTUAL INSURANCE COMPANY

SCHEDULE E - PART 1 - CASH

[illegible]

STATEMENT AS OF JUNE 30, 2023 OF THE SONNENBERG MUTUAL INSURANCE COMPANY

SCHEDULE E - PART 2 - CASH EQUIVALENTS

[illegible]