



HEALTH QUARTERLY STATEMENT  
AS OF MARCH 31, 2023  
OF THE CONDITION AND AFFAIRS OF THE  
Medical Health Insuring Corporation of Ohio

NAIC Group Code 0730 (Current) 0730 (Prior) NAIC Company Code 95828 Employer's ID Number 34-1442712

Organized under the Laws of Ohio, State of Domicile or Port of Entry OH

Country of Domicile United States of America

Licensed as business type: Property/Casualty

Is HMO Federally Qualified? Yes [ ] No [ ]

Incorporated/Organized 07/13/1984 Commenced Business 01/01/1985

Statutory Home Office 100 American Road (Street and Number) Cleveland, OH, US 44144 (City or Town, State, Country and Zip Code)

Main Administrative Office 100 American Road (Street and Number) Cleveland, OH, US 44144 (City or Town, State, Country and Zip Code) 216-687-7000 (Area Code) (Telephone Number)

Mail Address 100 American Road (Street and Number or P.O. Box) Cleveland, OH, US 44144 (City or Town, State, Country and Zip Code)

Primary Location of Books and Records 100 American Road (Street and Number) Cleveland, OH, US 44144 (City or Town, State, Country and Zip Code) 216-687-7000 (Area Code) (Telephone Number)

Internet Website Address www.MedMutual.com

Statutory Statement Contact Kevin Spruch (Name) 216-687-2759 (Area Code) (Telephone Number) Kevin.Spruch@medmutual.com (E-mail Address) 216-360-4073 (FAX Number)

OFFICERS

President & CEO Steven Craig Glass Treasurer Raymond Karl Mueller

Secretary Patricia Bunn Decensi

OTHER

Thomas Parke Dewey

DIRECTORS OR TRUSTEES Steven Craig Glass

Raymond Karl Mueller

State of Ohio SS:

County of Cuyahoga

The officers of this reporting entity being duly sworn, each depose and say that they are the described officers of said reporting entity, and that on the reporting period stated above, all of the herein described assets were the absolute property of the said reporting entity, free and clear from any liens or claims thereon, except as herein stated, and that this statement, together with related exhibits, schedules and explanations therein contained, annexed or referred to, is a full and true statement of all the assets and liabilities and of the condition and affairs of the said reporting entity as of the reporting period stated above, and of its income and deductions therefrom for the period ended, and have been completed in accordance with the NAIC Annual Statement Instructions and Accounting Practices and Procedures manual except to the extent that: (1) state law may differ; or, (2) that state rules or regulations require differences in reporting not related to accounting practices and procedures, according to the best of their information, knowledge and belief, respectively. Furthermore, the scope of this attestation by the described officers also includes the related corresponding electronic filing with the NAIC, when required, that is an exact copy (except for formatting differences due to electronic filing) of the enclosed statement. The electronic filing may be requested by various regulators in lieu of or in addition to the enclosed statement.

Steven Craig Glass President & CEO Patricia Bunn Decensi Secretary Raymond Karl Mueller Treasurer

Subscribed and sworn to before me this day of

a. Is this an original filing? ..... Yes [ X ] No [ ]

b. If no, 1. State the amendment number..... 2. Date filed ..... 3. Number of pages attached.....

STATEMENT AS OF MARCH 31, 2023 OF THE Medical Health Insuring Corporation of Ohio

ASSETS

	Current Statement Date			4 December 31 Prior Year Net Admitted Assets
	1 Assets	2 Nonadmitted Assets	3 Net Admitted Assets (Cols. 1 - 2)	
1. Bonds .....	117,303,240		117,303,240	118,374,455
2. Stocks:				
2.1 Preferred stocks .....			0	0
2.2 Common stocks .....			0	0
3. Mortgage loans on real estate:				
3.1 First liens .....			0	0
3.2 Other than first liens.....			0	0
4. Real estate:				
4.1 Properties occupied by the company (less \$ ..... encumbrances) .....			0	0
4.2 Properties held for the production of income (less \$ ..... encumbrances) .....			0	0
4.3 Properties held for sale (less \$ ..... encumbrances) .....			0	0
5. Cash (\$ ..... 500,114 ), cash equivalents (\$ ..... 111,800,903 ) and short-term investments (\$ ..... ) .....	112,301,018		112,301,018	109,253,044
6. Contract loans (including \$ ..... premium notes) .....			0	0
7. Derivatives .....			0	0
8. Other invested assets .....			0	0
9. Receivables for securities .....			0	0
10. Securities lending reinvested collateral assets .....			0	0
11. Aggregate write-ins for invested assets .....	0	0	0	0
12. Subtotals, cash and invested assets (Lines 1 to 11) .....	229,604,257	0	229,604,257	227,627,499
13. Title plants less \$ ..... charged off (for Title insurers only) .....			0	0
14. Investment income due and accrued .....	878,524	0	878,524	657,316
15. Premiums and considerations:				
15.1 Uncollected premiums and agents' balances in the course of collection .....	2,346,886	0	2,346,886	1,601,157
15.2 Deferred premiums, agents' balances and installments booked but deferred and not yet due (including \$ ..... earned but unbilled premiums) .....			0	0
15.3 Accrued retrospective premiums (\$ ..... ) and contracts subject to redetermination (\$ ..... 48,763 ) .....	48,763	0	48,763	1,160,335
16. Reinsurance:				
16.1 Amounts recoverable from reinsurers .....	0	0	0	0
16.2 Funds held by or deposited with reinsured companies .....			0	0
16.3 Other amounts receivable under reinsurance contracts .....			0	0
17. Amounts receivable relating to uninsured plans .....	0	0	0	0
18.1 Current federal and foreign income tax recoverable and interest thereon ....	6,011,565	0	6,011,565	7,006,075
18.2 Net deferred tax asset .....	1,111,270	0	1,111,270	0
19. Guaranty funds receivable or on deposit .....	0	0	0	0
20. Electronic data processing equipment and software .....	0	0	0	0
21. Furniture and equipment, including health care delivery assets (\$ ..... ) .....	0	0	0	0
22. Net adjustment in assets and liabilities due to foreign exchange rates .....			0	0
23. Receivables from parent, subsidiaries and affiliates .....	0	0	0	0
24. Health care (\$ ..... 13,605,000 ) and other amounts receivable .....	24,040,534	10,435,534	13,605,000	14,189,000
25. Aggregate write-ins for other than invested assets .....	987,060	24,776	962,284	2,275,147
26. Total assets excluding Separate Accounts, Segregated Accounts and Protected Cell Accounts (Lines 12 to 25) .....	265,028,859	10,460,310	254,568,549	254,516,530
27. From Separate Accounts, Segregated Accounts and Protected Cell Accounts .....			0	0
28. Total (Lines 26 and 27)	265,028,859	10,460,310	254,568,549	254,516,530
DETAILS OF WRITE-INS				
1101. ....				
1102. ....				
1103. ....				
1198. Summary of remaining write-ins for Line 11 from overflow page .....	0	0	0	0
1199. Totals (Lines 1101 through 1103 plus 1198)(Line 11 above)	0	0	0	0
2501. Prepaid Assets .....	21,750	21,750	0	0
2502. Other Receivables .....	3,026	3,026	0	0
2503. Contraceptive Only Coverage Receivable .....	962,284	0	962,284	2,275,147
2598. Summary of remaining write-ins for Line 25 from overflow page .....	0	0	0	0
2599. Totals (Lines 2501 through 2503 plus 2598)(Line 25 above)	987,060	24,776	962,284	2,275,147

LIABILITIES, CAPITAL AND SURPLUS

	Current Period			Prior Year
	1 Covered	2 Uncovered	3 Total	4 Total
1. Claims unpaid (less \$ ..... reinsurance ceded) .....	74,005,000		74,005,000	74,473,750
2. Accrued medical incentive pool and bonus amounts .....	912,000		912,000	1,307,000
3. Unpaid claims adjustment expenses .....	1,980,445		1,980,445	1,977,395
4. Aggregate health policy reserves, including the liability of \$ .....0 for medical loss ratio rebate per the Public Health Service Act .....	60,083,000		60,083,000	56,075,000
5. Aggregate life policy reserves .....			0	0
6. Property/casualty unearned premium reserve .....			0	0
7. Aggregate health claim reserves .....			0	0
8. Premiums received in advance .....	15,351,675		15,351,675	13,066,205
9. General expenses due or accrued .....	14,365,658		14,365,658	12,390,905
10.1 Current federal and foreign income tax payable and interest thereon (including \$ ..... on realized gains (losses)) .....	0		0	0
10.2 Net deferred tax liability .....	0		0	0
11. Ceded reinsurance premiums payable .....	0		0	0
12. Amounts withheld or retained for the account of others.....	0		0	0
13. Remittances and items not allocated .....	0		0	0
14. Borrowed money (including \$ ..... current) and interest thereon \$ ..... (including \$ ..... current) .....			0	0
15. Amounts due to parent, subsidiaries and affiliates .....	231,737		231,737	8,969,303
16. Derivatives .....			0	0
17. Payable for securities .....	0		0	0
18. Payable for securities lending .....			0	0
19. Funds held under reinsurance treaties (with \$ ..... authorized reinsurers, \$ ..... unauthorized reinsurers and \$ ..... certified reinsurers).....			0	0
20. Reinsurance in unauthorized and certified (\$ .....0 ) companies .....	0		0	0
21. Net adjustments in assets and liabilities due to foreign exchange rates .....			0	0
22. Liability for amounts held under uninsured plans .....	0		0	0
23. Aggregate write-ins for other liabilities (including \$ .....6,219,104 current) .....	6,386,104	0	6,386,104	7,986,232
24. Total liabilities (Lines 1 to 23) .....	173,315,619	0	173,315,619	176,245,791
25. Aggregate write-ins for special surplus funds .....	XXX	XXX	0	0
26. Common capital stock .....	XXX	XXX	4,000,000	4,000,000
27. Preferred capital stock .....	XXX	XXX		
28. Gross paid in and contributed surplus .....	XXX	XXX	194,066,417	194,066,417
29. Surplus notes .....	XXX	XXX		
30. Aggregate write-ins for other than special surplus funds .....	XXX	XXX	0	0
31. Unassigned funds (surplus) .....	XXX	XXX	(116,813,488)	(119,795,678)
32. Less treasury stock, at cost:				
32.1 ..... shares common (value included in Line 26 \$ ..... ) .....	XXX	XXX		
32.2 ..... shares preferred (value included in Line 27 \$ ..... ) .....	XXX	XXX		
33. Total capital and surplus (Lines 25 to 31 minus Line 32) .....	XXX	XXX	81,252,930	78,270,739
34. Total liabilities, capital and surplus (Lines 24 and 33)	XXX	XXX	254,568,549	254,516,530
DETAILS OF WRITE-INS				
2301. Other Liabilities .....	564,187		564,187	1,650,232
2302. Drug Benefits Discount Liability .....	5,654,917		5,654,917	6,169,000
2303. Guaranty Fund Liability .....	167,000		167,000	167,000
2398. Summary of remaining write-ins for Line 23 from overflow page .....	0	0	0	0
2399. Totals (Lines 2301 through 2303 plus 2398)(Line 23 above)	6,386,104	0	6,386,104	7,986,232
2501. ....	XXX	XXX		0
2502. ....	XXX	XXX		
2503. ....	XXX	XXX		
2598. Summary of remaining write-ins for Line 25 from overflow page .....	XXX	XXX	0	0
2599. Totals (Lines 2501 through 2503 plus 2598)(Line 25 above)	XXX	XXX	0	0
3001. ....	XXX	XXX		
3002. ....	XXX	XXX		
3003. ....	XXX	XXX		
3098. Summary of remaining write-ins for Line 30 from overflow page .....	XXX	XXX	0	0
3099. Totals (Lines 3001 through 3003 plus 3098)(Line 30 above)	XXX	XXX	0	0

STATEMENT OF REVENUE AND EXPENSES

	Current Year To Date		Prior Year To Date	Prior Year Ended December 31
	1 Uncovered	2 Total	3 Total	4 Total
1. Member Months .....	XXX	600,543	602,118	2,450,791
2. Net premium income ( including \$ ..... non-health premium income).....	XXX	157,738,065	158,706,662	616,592,755
3. Change in unearned premium reserves and reserve for rate credits.....	XXX			0
4. Fee-for-service (net of \$ ..... medical expenses) .....	XXX			0
5. Risk revenue .....	XXX			0
6. Aggregate write-ins for other health care related revenues .....	XXX	0	0	0
7. Aggregate write-ins for other non-health revenues .....	XXX	0	0	0
8. Total revenues (Lines 2 to 7) .....	XXX	157,738,065	158,706,662	616,592,755
<b>Hospital and Medical:</b>				
9. Hospital/medical benefits .....		88,244,913	89,807,844	368,245,439
10. Other professional services .....		11,505,035	11,599,224	49,119,937
11. Outside referrals .....		5,255,578	4,494,147	18,444,745
12. Emergency room and out-of-area .....		7,298,227	7,720,904	32,924,189
13. Prescription drugs .....		12,898,584	13,870,512	72,468,690
14. Aggregate write-ins for other hospital and medical .....	0	0	0	0
15. Incentive pool, withhold adjustments and bonus amounts .....		372,276	832,751	1,233,434
16. Subtotal (Lines 9 to 15) .....	0	125,574,613	128,325,383	542,436,434
<b>Less:</b>				
17. Net reinsurance recoveries .....		243,244	216,186	911,210
18. Total hospital and medical (Lines 16 minus 17) .....	0	125,331,369	128,109,197	541,525,225
19. Non-health claims (net) .....				
20. Claims adjustment expenses, including \$ ..... 5,336,165 cost containment expenses .....		9,944,854	9,763,789	39,873,603
21. General administrative expenses .....		18,852,233	18,780,913	77,031,447
22. Increase in reserves for life and accident and health contracts (including \$ ..... increase in reserves for life only) .		0	0	4,807,000
23. Total underwriting deductions (Lines 18 through 22).....	0	154,128,456	156,653,898	663,237,275
24. Net underwriting gain or (loss) (Lines 8 minus 23) .....	XXX	3,609,609	2,052,763	(46,644,520)
25. Net investment income earned .....		1,593,224	433,991	3,175,509
26. Net realized capital gains (losses) less capital gains tax of \$ .....			0	(58,996)
27. Net investment gains (losses) (Lines 25 plus 26) .....	0	1,593,224	433,991	3,116,514
28. Net gain or (loss) from agents' or premium balances charged off [(amount recovered \$ ..... ) (amount charged off \$ ..... )].....				
29. Aggregate write-ins for other income or expenses .....	0	(349,799)	(792,271)	(1,974,737)
30. Net income or (loss) after capital gains tax and before all other federal income taxes (Lines 24 plus 27 plus 28 plus 29) .....	XXX	4,853,035	1,694,483	(45,502,744)
31. Federal and foreign income taxes incurred .....	XXX	994,510	464,924	(8,455,899)
32. Net income (loss) (Lines 30 minus 31) .....	XXX	3,858,525	1,229,559	(37,046,845)
<b>DETAILS OF WRITE-INS</b>				
0601. ....	XXX			
0602. ....	XXX			
0603. ....	XXX			
0698. Summary of remaining write-ins for Line 6 from overflow page .....	XXX	0	0	0
0699. Totals (Lines 0601 through 0603 plus 0698)(Line 6 above) .....	XXX	0	0	0
0701. ....	XXX			
0702. ....	XXX			
0703. ....	XXX			
0798. Summary of remaining write-ins for Line 7 from overflow page .....	XXX	0	0	0
0799. Totals (Lines 0701 through 0703 plus 0798)(Line 7 above) .....	XXX	0	0	0
1401. ....				
1402. ....				
1403. ....				
1498. Summary of remaining write-ins for Line 14 from overflow page .....	0	0	0	0
1499. Totals (Lines 1401 through 1403 plus 1498)(Line 14 above) .....	0	0	0	0
2901. Other Expense, net of Other Income .....		(349,799)	(792,271)	(1,974,737)
2902. ....				
2903. ....				
2998. Summary of remaining write-ins for Line 29 from overflow page .....	0	0	0	0
2999. Totals (Lines 2901 through 2903 plus 2998)(Line 29 above) .....	0	(349,799)	(792,271)	(1,974,737)

STATEMENT OF REVENUE AND EXPENSES (Continued)

	1 Current Year to Date	2 Prior Year to Date	3 Prior Year Ended December 31
CAPITAL AND SURPLUS ACCOUNT			
33. Capital and surplus prior reporting year.....	78,270,739	99,719,509	99,719,509
34. Net income or (loss) from Line 32 .....	3,858,525	1,229,559	(37,046,845)
35. Change in valuation basis of aggregate policy and claim reserves .....			
36. Change in net unrealized capital gains (losses) less capital gains tax of \$ .....			
37. Change in net unrealized foreign exchange capital gain or (loss) .....			
38. Change in net deferred income tax .....	1,111,270	(1,791,218)	(2,033,492)
39. Change in nonadmitted assets .....	(1,987,605)	(2,012,652)	(2,368,433)
40. Change in unauthorized and certified reinsurance .....	0	0	0
41. Change in treasury stock .....	0	0	0
42. Change in surplus notes .....	0	0	0
43. Cumulative effect of changes in accounting principles.....			
44. Capital Changes:			
44.1 Paid in .....			0
44.2 Transferred from surplus (Stock Dividend).....	0	0	0
44.3 Transferred to surplus.....			
45. Surplus adjustments:			
45.1 Paid in .....	0	0	20,000,000
45.2 Transferred to capital (Stock Dividend) .....			
45.3 Transferred from capital .....			
46. Dividends to stockholders .....			
47. Aggregate write-ins for gains or (losses) in surplus .....	0	0	0
48. Net change in capital & surplus (Lines 34 to 47) .....	2,982,191	(2,574,311)	(21,448,770)
49. Capital and surplus end of reporting period (Line 33 plus 48)	81,252,930	97,145,198	78,270,739
DETAILS OF WRITE-INS			
4701. ....			0
4702. ....			
4703. ....			
4798. Summary of remaining write-ins for Line 47 from overflow page .....	0	0	0
4799. Totals (Lines 4701 through 4703 plus 4798)(Line 47 above)	0	0	0

STATEMENT AS OF MARCH 31, 2023 OF THE Medical Health Insuring Corporation of Ohio

CASH FLOW

	1 Current Year To Date	2 Prior Year To Date	3 Prior Year Ended December 31
<b>Cash from Operations</b>			
1. Premiums collected net of reinsurance .....	164,397,379	156,961,474	618,634,497
2. Net investment income .....	1,443,318	324,359	3,409,326
3. Miscellaneous income .....	0	0	0
4. Total (Lines 1 to 3) .....	165,840,697	157,285,833	622,043,823
5. Benefit and loss related payments .....	128,410,267	121,225,712	529,908,455
6. Net transfers to Separate Accounts, Segregated Accounts and Protected Cell Accounts .....			
7. Commissions, expenses paid and aggregate write-ins for deductions .....	27,169,168	27,174,675	117,194,301
8. Dividends paid to policyholders .....			
9. Federal and foreign income taxes paid (recovered) net of \$ ..... tax on capital gains (losses) .....	0	0	0
10. Total (Lines 5 through 9) .....	155,579,434	148,400,387	647,102,756
11. Net cash from operations (Line 4 minus Line 10) .....	10,261,263	8,885,446	(25,058,933)
<b>Cash from Investments</b>			
12. Proceeds from investments sold, matured or repaid:			
12.1 Bonds .....	1,000,000	4,000,000	17,390,000
12.2 Stocks .....	0	0	0
12.3 Mortgage loans .....	0	0	0
12.4 Real estate .....	0	0	0
12.5 Other invested assets .....	0	0	0
12.6 Net gains or (losses) on cash, cash equivalents and short-term investments .....	0	0	0
12.7 Miscellaneous proceeds .....	0	0	0
12.8 Total investment proceeds (Lines 12.1 to 12.7) .....	1,000,000	4,000,000	17,390,000
13. Cost of investments acquired (long-term only):			
13.1 Bonds .....	0	0	7,228,165
13.2 Stocks .....	0	0	0
13.3 Mortgage loans .....	0	0	0
13.4 Real estate .....	0	0	0
13.5 Other invested assets .....	0	0	0
13.6 Miscellaneous applications .....	0	0	0
13.7 Total investments acquired (Lines 13.1 to 13.6) .....	0	0	7,228,165
14. Net increase (or decrease) in contract loans and premium notes .....	0	0	0
15. Net cash from investments (Line 12.8 minus Line 13.7 and Line 14) .....	1,000,000	4,000,000	10,161,835
<b>Cash from Financing and Miscellaneous Sources</b>			
16. Cash provided (applied):			
16.1 Surplus notes, capital notes .....	0	0	0
16.2 Capital and paid in surplus, less treasury stock .....	0	0	20,000,000
16.3 Borrowed funds .....	0	0	0
16.4 Net deposits on deposit-type contracts and other insurance liabilities .....	0	0	0
16.5 Dividends to stockholders .....	0	0	0
16.6 Other cash provided (applied) .....	(8,213,289)	1,621,959	13,439,522
17. Net cash from financing and miscellaneous sources (Line 16.1 through Line 16.4 minus Line 16.5 plus Line 16.6) .....	(8,213,289)	1,621,959	33,439,522
<b>RECONCILIATION OF CASH, CASH EQUIVALENTS AND SHORT-TERM INVESTMENTS</b>			
18. Net change in cash, cash equivalents and short-term investments (Line 11, plus Lines 15 and 17) .	3,047,974	14,507,405	18,542,424
19. Cash, cash equivalents and short-term investments:			
19.1 Beginning of year .....	109,253,044	90,710,620	90,710,620
19.2 End of period (Line 18 plus Line 19.1)	112,301,018	105,218,025	109,253,044

Note: Supplemental disclosures of cash flow information for non-cash transactions:

--	--	--	--

EXHIBIT OF PREMIUMS, ENROLLMENT AND UTILIZATION

	1	Comprehensive (Hospital & Medical)		4	5	6	7	8	9	10	11	12	13	14
		2	3											
	Total	Individual	Group	Medicare Supplement	Vision Only	Dental Only	Federal Employees Health Benefits Plan	Title XVIII Medicare	Title XIX Medicaid	Credit A&H	Disability Income	Long-Term Care	Other Health	Other Non-Health
Total Members at end of:														
1. Prior Year .....	203,451	49,722	0	124,447	11,700	17,582	0	0	0	0	0	0	0	0
2. First Quarter .....	200,633	49,759	0	121,115	11,679	18,080	0							
3. Second Quarter .....	0	0	0											
4. Third Quarter .....	0													
5. Current Year	0													
6. Current Year Member Months	600,543	149,156		362,411	35,031	53,945								
Total Member Ambulatory Encounters for Period:														
7 Physician .....	586,187	84,291		501,769	0	127								
8. Non-Physician .....	436,100	60,380		367,866	0	7,854								
9. Total	1,022,287	144,671	0	869,635	0	7,981	0	0	0	0	0	0	0	0
10. Hospital Patient Days Incurred	50,574	4,029		46,545										
11. Number of Inpatient Admissions	6,837	814		6,023										
12. Health Premiums Written (a) .....	157,990,369	89,950,370	0	66,211,324	306,998	1,521,676								
13. Life Premiums Direct .....	0													
14. Property/Casualty Premiums Written .....	0													
15. Health Premiums Earned.....	157,990,369	89,950,370		66,211,324	306,998	1,521,676								
16. Property/Casualty Premiums Earned	0													
17. Amount Paid for Provision of Health Care Services.....	128,139,428	68,580,608	(20,059)	58,479,022	146,226	953,631								
18. Amount Incurred for Provision of Health Care Services	125,574,613	63,741,583	(59)	60,753,232	146,226	933,631								

(a) For health premiums written: amount of Medicare Title XVIII exempt from state taxes or fees \$ .....

## CLAIMS UNPAID AND INCENTIVE POOL, WITHHOLD AND BONUS (Reported and Unreported)

[illegible]

∞



UNDERWRITING AND INVESTMENT EXHIBIT

ANALYSIS OF CLAIMS UNPAID - PRIOR YEAR - NET OF REINSURANCE

Line of Business	Claims Paid Year to Date		Liability End of Current Quarter		5  Claims Incurred in Prior Years (Columns 1 + 3)	6  Estimated Claim Reserve and Claim Liability December 31 of Prior Year
	1  On Claims Incurred Prior to January 1 of Current Year	2  On Claims Incurred During the Year	3  On Claims Unpaid Dec. 31 of Prior Year	4  On Claims Incurred During the Year		
1. Comprehensive (hospital and medical) individual .....	23,330,223	44,483,123	11,671,000	31,423,000	35,001,223	45,587,750
2. Comprehensive (hospital and medical) group .....	(20,059)				(20,059)	(20,000)
3. Medicare Supplement .....	23,588,924	34,793,066	4,529,000	26,042,000	28,117,924	28,546,000
4. Dental Only .....	172,812	780,819	40,000	300,000	212,812	360,000
5. Vision Only .....					0	0
6. Federal Employees Health Benefits Plan .....					0	0
7. Title XVIII - Medicare .....					0	0
8. Title XIX - Medicaid .....					0	0
9. Credit A&H .....					0	0
10. Disability Income .....					0	0
11. Long-term care .....					0	0
12. Other health .....					0	0
13. Health subtotal (Lines 1 to 12) .....	47,071,900	80,057,007	16,240,000	57,765,000	63,311,900	74,473,750
14. Health care receivables (a) .....	16,748,434	7,292,100			16,748,434	22,339,469
15. Other non-health .....					0	0
16. Medical incentive pools and bonus amounts .....	767,276		536,000	376,000	1,303,276	1,307,000
17. Totals (Lines 13 - 14 + 15 + 16)	31,090,742	72,764,907	16,776,000	58,141,000	47,866,742	53,441,281

(a) Excludes \$ loans or advances to providers not yet expensed.

NOTES TO FINANCIAL STATEMENTS

NOTE 1 Summary of Significant Accounting Policies and Going Concern

A. Accounting Practices  
The financial statements of the Medical Health Insuring Corporation of Ohio (the Company) are presented based on accounting practices prescribed or permitted by the Ohio Department of Insurance. The Ohio Department of Insurance recognizes only statutory accounting practices prescribed or permitted by the state of Ohio for determining and reporting the financial condition and results of operations of a health insuring corporation for determining its solvency under the Ohio Insurance Law. The National Association of Insurance Commissioners' (NAIC) Accounting Practices and Procedures Manual (NAIC SAP) has been adopted as a component of prescribed or permitted practices by the state of Ohio. The state has not adopted any prescribed practices that differ from those found in NAIC SAP.

	SSAP #	F/S Page	F/S Line #	2023	2022
NET INCOME					
(1) State basis (Page 4, Line 32, Columns 2 & 4)	XXX	XXX	XXX	\$ 3,858,525	\$ (37,046,845)
(2) State Prescribed Practices that are an increase/ (decrease) from NAIC SAP:					
(3) State Permitted Practices that are an increase/(decrease) from NAIC SAP:					
(4) NAIC SAP (1-2-3=4)	XXX	XXX	XXX	\$ 3,858,525	\$ (37,046,845)
SURPLUS					
(5) State basis (Page 3, Line 33, Columns 3 & 4)	XXX	XXX	XXX	\$ 81,252,930	\$ 78,270,739
(6) State Prescribed Practices that are an increase/(decrease) from NAIC SAP:					
(7) State Permitted Practices that are an increase/(decrease) from NAIC SAP:					
(8) NAIC SAP (5-6-7=8)	XXX	XXX	XXX	\$ 81,252,930	\$ 78,270,739

B. Use of Estimates in the Preparation of the Financial Statements  
No significant changes.

C. Accounting Policy  
No significant changes.

D. Going Concern  
Not applicable.

NOTE 2 Accounting Changes and Corrections of Errors  
No significant changes.

NOTE 3 Business Combinations and Goodwill  
Not Applicable.

NOTE 4 Discontinued Operations  
Not applicable.

NOTE 5 Investments

- A. Mortgage Loans, including Mezzanine Real Estate Loans  
Not Applicable.
- B. Debt Restructuring  
Not Applicable.
- C. Reverse Mortgages  
Not Applicable.
- D. Loan-Backed Securities  
Not Applicable.
- E. Dollar Repurchase Agreements and/or Securities Lending Transactions  
Not Applicable.
- F. Repurchase Agreements Transactions Accounted for as Secured Borrowing  
Not Applicable.
- G. Reverse Repurchase Agreements Transactions Accounted for as Secured Borrowing  
Not Applicable.
- H. Repurchase Agreements Transactions Accounted for as a Sale  
Not Applicable.
- I. Reverse Repurchase Agreements Transactions Accounted for as a Sale  
Not Applicable.
- J. Real Estate  
Not Applicable.
- K. Low Income Housing tax Credits (LIHTC)  
Not Applicable.
- L. Restricted Assets

NOTES TO FINANCIAL STATEMENTS

1. Restricted Assets (Including Pledged)

Restricted Asset Category	1  Total Gross (Admitted & Non- admitted) Restricted from Current Year	2  Total Gross (Admitted & Non- admitted) Restricted from Prior Year	3  Increase/ (Decrease) (1 minus 2)	4  Total Current Year Non- admitted Restricted	5  Total Current Year Admitted Restricted (1 minus 4)	6  Gross (Admitted & Non- admitted) Restricted to Total Assets (a)	7  Admitted Restricted to Total Admitted Assets (b)
a. Subject to contractual obligation for which liability is not shown			\$ -		\$ -	0.000%	0.000%
b. Collateral held under security lending agreements			\$ -		\$ -	0.000%	0.000%
c. Subject to repurchase agreements			\$ -		\$ -	0.000%	0.000%
d. Subject to reverse repurchase agreements			\$ -		\$ -	0.000%	0.000%
e. Subject to dollar repurchase agreements			\$ -		\$ -	0.000%	0.000%
f. Subject to dollar reverse repurchase agreements			\$ -		\$ -	0.000%	0.000%
g. Placed under option contracts			\$ -		\$ -	0.000%	0.000%
h. Letter stock or securities restricted as to sale - excluding FHLB capital stock			\$ -		\$ -	0.000%	0.000%
i. FHLB capital stock			\$ -		\$ -	0.000%	0.000%
j. On deposit with states	\$ 428,708	\$ 430,416	\$ (1,709)		\$ 428,708	0.162%	0.168%
k. On deposit with other regulatory bodies			\$ -		\$ -	0.000%	0.000%
l. Pledged collateral to FHLB (including assets backing funding agreements)			\$ -		\$ -	0.000%	0.000%
m. Pledged as collateral not captured in other categories			\$ -		\$ -	0.000%	0.000%
n. Other restricted assets			\$ -		\$ -	0.000%	0.000%
o. Total Restricted Assets (Sum of a through n)	\$ 428,708	\$ 430,416	\$ (1,709)	\$ -	\$ 428,708	0.162%	0.168%

(a) Column 1 divided by Asset Page, Column 1, Line 28

(b) Column 5 divided by Asset Page, Column 3, Line 28

2. Detail of Assets Pledged as Collateral Not Captured in Other Categories (Contracts That Share Similar Characteristics, Such as Reinsurance and Derivatives, Are Reported in the Aggregate)  
Not Applicable.

3. Detail of Other Restricted Assets (Contracts That Share Similar Characteristics, Such as Reinsurance and Derivatives, Are Reported in the Aggregate)  
Not Applicable.

4. Collateral Received and Reflected as Assets Within the Reporting Entity's Financial Statements  
Not Applicable.

M. Working Capital Finance Investments  
Not Applicable.

N. Offsetting and Netting of Assets and Liabilities  
Not Applicable.

O. 5GI Securities  
Not Applicable.

P. Short Sales  
Not Applicable.

Q. Prepayment Penalty and Acceleration Fees

General Account

1. Number of CUSIPs	0
2. Aggregate Amount of Investment Income	\$ -

R. Reporting Entity's Share of Cash Pool by Asset Type  
Not Applicable.

NOTE 6 Joint Ventures, Partnerships and Limited Liability Companies  
Not Applicable.

NOTE 7 Investment Income  
Not Applicable.

NOTE 8 Derivative Instruments  
Not Applicable.

NOTE 9 Income Taxes  
No significant changes.

NOTE 10 Information Concerning Parent, Subsidiaries, Affiliates and Other Related Parties  
No significant changes.

NOTE 11 Debt  
Not Applicable.

NOTE 12 Retirement Plans, Deferred Compensation, Postemployment Benefits and Compensated Absences and Other Postretirement Benefit Plans  
Not applicable.

NOTE 13 Capital and Surplus, Dividend Restrictions and Quasi-Reorganizations

NOTES TO FINANCIAL STATEMENTS

No significant changes.

NOTE 14 Liabilities, Contingencies and Assessments  
No significant changes.

NOTE 15 Leases  
Not applicable.

NOTE 16 Information About Financial Instruments With Off-Balance Sheet Risk and Financial Instruments With Concentrations of Credit Risk  
Not applicable.

NOTE 17 Sale, Transfer and Servicing of Financial Assets and Extinguishments of Liabilities  
Not Applicable.

NOTE 18 Gain or Loss to the Reporting Entity from Uninsured Plans and the Uninsured Portion of Partially Insured Plans  
Not applicable.

NOTE 19 Direct Premium Written/Produced by Managing General Agents/Third Party Administrators  
Not applicable.

NOTE 20 Fair Value Measurements  
A.

- (1) Fair Value Measurements at Reporting Date  
Not Applicable.
- (2) Fair Value Measurements in (Level 3) of the Fair Value hierarchy  
Not Applicable.
- (3) Not Applicable.
- (4) Assets recorded in the statutory statements of admitted assets, liabilities and capital and surplus are categorized based on the level of judgment associated with the inputs used to measure their fair value. Level inputs are as follows:  
  
Level 1- Values are unadjusted quoted prices for identical assets in active markets accessible at the measurement date.  
  
Level 2- Inputs include quoted prices for similar assets in active markets, quoted prices from those willing to trade in markets that are not active, or other inputs that are observable or can be corroborated by market data for the term of the instrument. Such inputs include market interest rates, volatilities, spreads, and yield curves.  
  
Level 3- Certain inputs are unobservable (supported by little or no market activity) and significant to the fair value measurement. Unobservable inputs reflect the Company's best estimate of what hypothetical market participants would use to determine a transaction price for the asset at the reporting date.
- (5) Not Applicable.

B. Not Applicable.

C. Aggregate fair value for all financial instruments and the level within the fair value hierarchy in which the fair value measurements in their entirety fall.

Type of Financial Instrument	Aggregate Fair Value	Admitted Assets	(Level 1)	(Level 2)	(Level 3)	Net Asset Value (NAV)	Not Practicable (Carrying Value)
BONDS	\$ 109,431,872	\$ 117,303,240		\$ 109,431,872			

D. Not Practicable to Estimate Fair Value  
Not Applicable.

E. Not Applicable.

NOTE 21 Other Items  
No significant changes.

NOTE 22 Events Subsequent  
No significant changes.

NOTE 23 Reinsurance  
Not applicable.

NOTE 24 Retrospectively Rated Contracts & Contracts Subject to Redetermination

- A. Method Used to Estimate Accrued Retrospective Premium Adjustments  
Not applicable.
- B. Retrospective Premiums Recorded Through Written Premium or Adjustment to Earned Premium  
Not applicable.
- C. Amount and Percentage of Net Premiums Written Subject to Retrospective Rating Features  
Not applicable.
- D. Medical loss ratio rebates required pursuant to the Public Health Service Act.  
Not applicable.
- E. Risk Sharing Provisions of the Affordable Care Act  

(1) Did the reporting entity write accident and health insurance premium which is subject to the Affordable Care Act risk sharing provisions (YES/NO)?

(2) Impact of Risk Sharing Provisions of the Affordable Care Act on Admitted Assets, Liabilities and Revenue for the Current Year

Yes [X] No [ ]

Amount

a. Permanent ACA Risk Adjustment Program		
Assets		
1. Premium adjustments receivable due to ACA Risk Adjustment (including high risk pool payments)	\$	48,763
Liabilities		
2. Risk adjustment user fees payable for ACA Risk Adjustment	\$	188,489

NOTES TO FINANCIAL STATEMENTS

3. Premium adjustments payable due to ACA Risk Adjustment (including high risk pool premium)	\$	21,575,000
Operations (Revenue & Expense)		
4. Reported as revenue in premium for accident and health contracts (written/collected) due to ACA Risk Adjustment	\$	(4,008,000)
5. Reported in expenses as ACA risk adjustment user fees (incurred/paid)	\$	32,814
b. Transitional ACA Reinsurance Program		
Assets		
1. Amounts recoverable for claims paid due to ACA Reinsurance		
2. Amounts recoverable for claims unpaid due to ACA Reinsurance (Contra Liability)		
3. Amounts receivable relating to uninsured plans for contributions for ACA Reinsurance		
Liabilities		
4. Liabilities for contributions payable due to ACA Reinsurance – not reported as ceded premium		
5. Ceded reinsurance premiums payable due to ACA Reinsurance		
6. Liabilities for amounts held under uninsured plans contributions for ACA Reinsurance		
Operations (Revenue & Expense)		
7. Ceded reinsurance premiums due to ACA Reinsurance		
8. Reinsurance recoveries (income statement) due to ACA Reinsurance payments or expected payments		
9. ACA Reinsurance contributions – not reported as ceded premium		
c. Temporary ACA Risk Corridors Program		
Assets		
1. Accrued retrospective premium due to ACA Risk Corridors		
Liabilities		
2. Reserve for rate credits or policy experience rating refunds due to ACA Risk Corridors		
Operations (Revenue & Expense)		
3. Effect of ACA Risk Corridors on net premium income (paid/received)		
4. Effect of ACA Risk Corridors on change in reserves for rate credits		

(3) Roll forward of prior year ACA risk sharing provisions for the following asset (gross of any nonadmission) and liability balances along with the reasons for adjustments to prior year balance.

	Accrued During the Prior Year on Business Written Before December 31 of the Prior Year		Received or Paid as of the Current Year on Business Written Before December 31 of the Prior Year		Differences		Adjustments			Unsettled Balances as of the Reporting Date	
					Prior Year Accrued Less Payments (Col 1 - 3)	Prior Year Accrued Less Payments (Col 2 - 4)	To Prior Year Balances	To Prior Year Balances		Cumulative Balance from Prior Years (Col 1-3+7)	Cumulative Balance from Prior Years (Col 2-4+8)
	1	2	3	4	5	6	7	8		9	10
	Receivable	Payable	Receivable	Payable	Receivable	Payable	Receivable	Payable	Ref	Receivable	Payable
a. Permanent ACA Risk Adjustment Program											
1. Premium adjustments receivable (including high risk pool payments)	\$ 1,160,335		\$ 1,111,572		\$ 48,763	\$ -			A	\$ 48,763	\$ -
2. Premium adjustments (payable) (including high risk pool premium)		\$ (17,567,000)		\$ -	\$ -	\$ (17,567,000)		\$ -	B	\$ -	\$ (17,567,000)
3. Subtotal ACA Permanent Risk Adjustment Program	\$ 1,160,335	\$ (17,567,000)	\$ 1,111,572	\$ -	\$ 48,763	\$ (17,567,000)	\$ -	\$ -		\$ 48,763	\$ (17,567,000)
b. Transitional ACA Reinsurance Program											
1. Amounts recoverable for claims paid					\$ -	\$ -			C	\$ -	\$ -
2. Amounts recoverable for claims unpaid (contra liability)					\$ -	\$ -			D	\$ -	\$ -
3. Amounts receivable relating to uninsured plans					\$ -	\$ -			E	\$ -	\$ -
4. Liabilities for contributions payable due to ACA Reinsurance - not reported as ceded premium					\$ -	\$ -			F	\$ -	\$ -
5. Ceded reinsurance premiums payable					\$ -	\$ -			G	\$ -	\$ -
6. Liability for amounts held under uninsured plans					\$ -	\$ -			H	\$ -	\$ -
7. Subtotal ACA Transitional Reinsurance Program	\$ -	\$ -	\$ -	\$ -	\$ -	\$ -	\$ -	\$ -		\$ -	\$ -
c. Temporary ACA Risk Corridors Program											
1. Accrued retrospective premium					\$ -	\$ -			I	\$ -	\$ -
2. Reserve for rate credits or policy experience rating refunds					\$ -	\$ -			J	\$ -	\$ -
3. Subtotal ACA Risk Corridors Program	\$ -	\$ -	\$ -	\$ -	\$ -	\$ -	\$ -	\$ -		\$ -	\$ -
d. Total for ACA Risk Sharing Provisions	\$ 1,160,335	\$ (17,567,000)	\$ 1,111,572	\$ -	\$ 48,763	\$ (17,567,000)	\$ -	\$ -		\$ 48,763	\$ (17,567,000)

Explanations of Adjustments

- A. ACA Risk Adjustment based on the final risk adjustment based on payments received through March 31,2023.
- B. ACA Risk Adjustment based on the final risk adjustment based on payments received through March 31,2023.
- C. Not applicable.
- D. Not applicable.
- E. Not applicable.
- F. Not applicable.
- G. Not applicable.

NOTES TO FINANCIAL STATEMENTS

H. Not applicable.

I. Not applicable.

J. Not applicable.

(4) Roll-Forward of Risk Corridors Asset and Liability Balances by Program Benefit Year  
Not applicable.

(5) ACA Risk Corridors Receivable as of Reporting Date

	1	2	3	4	5	6
Risk Corridors Program Year	Estimated Amount to be Filed or Final Amount Filed with CMS	Non-Accrued Amounts for Impairment or Other Reasons	Amounts received from CMS	Asset Balance (Gross of Non-admissions) (1-2-3)	Non-admitted Amount	Net Admitted Asset (4 - 5)
a. 2014	\$ 4,977,524		\$ 4,977,524	\$ -		\$ -
b. 2015	\$ 4,279,011		\$ 4,279,011	\$ -		\$ -
c. 2016	\$ 13,342,649		\$ 13,342,649	\$ -		\$ -
d. Total (a + b + c)	\$ 22,599,184	\$ -	\$ 22,599,184	\$ -	\$ -	\$ -

**NOTE 25 Change in Incurred Claims and Claim Adjustment Expenses**  
Reserves for unpaid claims and claims adjustment expenses net of health care receivables as of December 31, 2022 were \$55.4 million. As of March 31, 2023, \$56.0 million has been paid for incurred claims and claims adjustment expenses attributable to insured events of prior years, and \$6.2 million in health care receivables have been recovered. Reserves remaining for prior years are \$16.8 million based on the estimation of unpaid claims, claims adjustment expenses, and amounts expected to be received through subrogation at March 31, 2023. Health care receivables remaining to be recovered related to prior years are \$16.7 million. Therefore, there has been a \$5.6 million favorable prior year development since December 31, 2022. The redundancy that emerged resulted from differences in claims severity and utilization as compared to expectations.

**NOTE 26 Intercompany Pooling Arrangements**  
Not applicable.

**NOTE 27 Structured Settlements**  
Not applicable.

**NOTE 28 Health Care Receivables**  
A. Pharmaceutical Rebate Receivables

Date	Estimated Pharmacy Rebates as Reported on Financial Statements	Pharmacy Rebates as Billed or Otherwise Confirmed	Actual Rebates Received Within 90 Days of Billing	Actual Rebates Received Within 91 to 180 Days of Billing	Actual Rebates Received More Than 180 Days After Billing
03/31/2023	\$ 6,474,000		\$ -	\$ -	
12/31/2022	\$ 7,131,000	\$ 7,131,000	\$ -	\$ -	\$ -
09/30/2022	\$ 6,143,000	\$ 7,058,000	\$ 5,768,600	\$ -	\$ -
06/30/2022	\$ 5,974,000	\$ 6,680,000	\$ 6,095,653	\$ -	\$ (37,795)
03/31/2022	\$ 5,390,000	\$ 6,215,000	\$ 5,601,134	\$ (23,377)	\$ (5,940)
12/31/2021	\$ 5,139,000	\$ 5,139,000	\$ 1,104,144	\$ 5,378,659	\$ (49,507)
09/30/2021	\$ 4,791,000	\$ 5,233,000	\$ 5,277,047	\$ 933,305	\$ (110,780)
06/30/2021	\$ 4,349,000	\$ 4,734,000	\$ 5,093,976	\$ (12,065)	\$ 639,617
03/31/2021	\$ 2,612,000	\$ 4,263,000	\$ 4,740,672	\$ (11,897)	\$ 447,284

**NOTE 29 Participating Policies**  
Not applicable.

**NOTE 30 Premium Deficiency Reserves**  
No significant changes.

**NOTE 31 Anticipated Salvage and Subrogation**  
Not applicable.

GENERAL INTERROGATORIES

PART 1 - COMMON INTERROGATORIES

GENERAL

1.1

Did the reporting entity experience any material transactions requiring the filing of Disclosure of Material Transactions with the State of Domicile, as required by the Model Act?

Yes [ ] No [ X ]

1.2

If yes, has the report been filed with the domiciliary state?

Yes [ ] No [ ]

2.1

Has any change been made during the year of this statement in the charter, by-laws, articles of incorporation, or deed of settlement of the reporting entity?

Yes [ ] No [ X ]

2.2

If yes, date of change:

3.1

Is the reporting entity a member of an Insurance Holding Company System consisting of two or more affiliated persons, one or more of which is an insurer?  
If yes, complete Schedule Y, Parts 1 and 1A.

Yes [ X ] No [ ]

3.2

Have there been any substantial changes in the organizational chart since the prior quarter end?

Yes [ ] No [ X ]

3.3

If the response to 3.2 is yes, provide a brief description of those changes.

3.4

Is the reporting entity publicly traded or a member of a publicly traded group?

Yes [ ] No [ X ]

3.5

If the response to 3.4 is yes, provide the CIK (Central Index Key) code issued by the SEC for the entity/group.

4.1

Has the reporting entity been a party to a merger or consolidation during the period covered by this statement?

Yes [ ] No [ X ]

4.2

If yes, provide the name of the entity, NAIC Company Code, and state of domicile (use two letter state abbreviation) for any entity that has ceased to exist as a result of the merger or consolidation.

1	2	3
Name of Entity	NAIC Company Code	State of Domicile

5.

If the reporting entity is subject to a management agreement, including third-party administrator(s), managing general agent(s), attorney-in-fact, or similar agreement, have there been any significant changes regarding the terms of the agreement or principals involved?  
If yes, attach an explanation.

Yes [ ] No [ ] N/A [ X ]

6.1

State as of what date the latest financial examination of the reporting entity was made or is being made.

12/31/2019

6.2

State the as of date that the latest financial examination report became available from either the state of domicile or the reporting entity. This date should be the date of the examined balance sheet and not the date the report was completed or released.

12/31/2019

6.3

State as of what date the latest financial examination report became available to other states or the public from either the state of domicile or the reporting entity. This is the release date or completion date of the examination report and not the date of the examination (balance sheet date).

10/27/2020

6.4

By what department or departments?  
Ohio Department of Insurance

6.5

Have all financial statement adjustments within the latest financial examination report been accounted for in a subsequent financial statement filed with Departments?

Yes [ ] No [ ] N/A [ X ]

6.6

Have all of the recommendations within the latest financial examination report been complied with?

Yes [ ] No [ ] N/A [ X ]

7.1

Has this reporting entity had any Certificates of Authority, licenses or registrations (including corporate registration, if applicable) suspended or revoked by any governmental entity during the reporting period?

Yes [ ] No [ X ]

7.2

If yes, give full information:

8.1

Is the company a subsidiary of a bank holding company regulated by the Federal Reserve Board?

Yes [ ] No [ X ]

8.2

If response to 8.1 is yes, please identify the name of the bank holding company.

8.3

Is the company affiliated with one or more banks, thrifts or securities firms?

Yes [ ] No [ X ]

8.4

If response to 8.3 is yes, please provide below the names and location (city and state of the main office) of any affiliates regulated by a federal regulatory services agency [i.e. the Federal Reserve Board (FRB), the Office of the Comptroller of the Currency (OCC), the Federal Deposit Insurance Corporation (FDIC) and the Securities Exchange Commission (SEC)] and identify the affiliate's primary federal regulator.

1	2	3	4	5	6
Affiliate Name	Location (City, State)	FRB	OCC	FDIC	SEC

GENERAL INTERROGATORIES

9.1

Are the senior officers (principal executive officer, principal financial officer, principal accounting officer or controller, or persons performing similar functions) of the reporting entity subject to a code of ethics, which includes the following standards? .....  
(a) Honest and ethical conduct, including the ethical handling of actual or apparent conflicts of interest between personal and professional relationships;  
(b) Full, fair, accurate, timely and understandable disclosure in the periodic reports required to be filed by the reporting entity;  
(c) Compliance with applicable governmental laws, rules and regulations;  
(d) The prompt internal reporting of violations to an appropriate person or persons identified in the code; and  
(e) Accountability for adherence to the code.

Yes [ X ] No [ ]

9.11

If the response to 9.1 is No, please explain:  
.....

9.2

Has the code of ethics for senior managers been amended? .....

Yes [ ] No [ X ]

9.21

If the response to 9.2 is Yes, provide information related to amendment(s).  
.....

9.3

Have any provisions of the code of ethics been waived for any of the specified officers? .....

Yes [ ] No [ X ]

9.31

If the response to 9.3 is Yes, provide the nature of any waiver(s).  
.....

FINANCIAL

10.1

Does the reporting entity report any amounts due from parent, subsidiaries or affiliates on Page 2 of this statement? .....

Yes [ ] No [ X ]

10.2

If yes, indicate any amounts receivable from parent included in the Page 2 amount: .....\$ .....

INVESTMENT

11.1

Were any of the stocks, bonds, or other assets of the reporting entity loaned, placed under option agreement, or otherwise made available for use by another person? (Exclude securities under securities lending agreements.) .....

Yes [ ] No [ X ]

11.2

If yes, give full and complete information relating thereto:  
.....

12.

Amount of real estate and mortgages held in other invested assets in Schedule BA: .....

\$ .....

13.

Amount of real estate and mortgages held in short-term investments: .....

\$ .....

14.1

Does the reporting entity have any investments in parent, subsidiaries and affiliates? .....

Yes [ ] No [ X ]

14.2

If yes, please complete the following:

	1	2
	Prior Year-End Book/Adjusted Carrying Value	Current Quarter Book/Adjusted Carrying Value
14.21 Bonds .....	\$ .....0	\$ .....
14.22 Preferred Stock .....	\$ .....0	\$ .....
14.23 Common Stock .....	\$ .....0	\$ .....
14.24 Short-Term Investments .....	\$ .....0	\$ .....
14.25 Mortgage Loans on Real Estate .....	\$ .....0	\$ .....
14.26 All Other .....	\$ .....0	\$ .....
14.27 Total Investment in Parent, Subsidiaries and Affiliates (Subtotal Lines 14.21 to 14.26) .....	\$ .....0	\$ .....0
14.28 Total Investment in Parent included in Lines 14.21 to 14.26 above .....	\$ .....	\$ .....

15.1

Has the reporting entity entered into any hedging transactions reported on Schedule DB? .....

Yes [ ] No [ X ]

15.2

If yes, has a comprehensive description of the hedging program been made available to the domiciliary state? ..... Yes [ ] No [ ] N/A [ X ]  
If no, attach a description with this statement.  
.....

16.

For the reporting entity's security lending program, state the amount of the following as of the current statement date:

16.1

Total fair value of reinvested collateral assets reported on Schedule DL, Parts 1 and 2. ....

\$ .....0

16.2

Total book/adjusted carrying value of reinvested collateral assets reported on Schedule DL, Parts 1 and 2 .....

\$ .....0

16.3

Total payable for securities lending reported on the liability page. ....

\$ .....0



STATEMENT AS OF MARCH 31, 2023 OF THE Medical Health Insuring Corporation of Ohio

GENERAL INTERROGATORIES

17. Excluding items in Schedule E - Part 3 - Special Deposits, real estate, mortgage loans and investments held physically in the reporting entity's offices, vaults or safety deposit boxes, were all stocks, bonds and other securities, owned throughout the current year held pursuant to a custodial agreement with a qualified bank or trust company in accordance with Section 1, III - General Examination Considerations, F. Outsourcing of Critical Functions, Custodial or Safekeeping Agreements of the NAIC Financial Condition Examiners Handbook? ..... Yes [ X ] No [ ]
- 17.1 For all agreements that comply with the requirements of the NAIC Financial Condition Examiners Handbook, complete the following:

1 Name of Custodian(s)	2 Custodian Address
FIFTH THIRD BANK .....	5050 KINGSLEY DRIVE, CINCINNATI, OHIO 45263 .....

- 17.2 For all agreements that do not comply with the requirements of the NAIC Financial Condition Examiners Handbook, provide the name, location and a complete explanation:

1 Name(s)	2 Location(s)	3 Complete Explanation(s)

- 17.3 Have there been any changes, including name changes, in the custodian(s) identified in 17.1 during the current quarter? ..... Yes [ ] No [ X ]
- 17.4 If yes, give full information relating thereto:

1 Old Custodian	2 New Custodian	3 Date of Change	4 Reason

- 17.5 Investment management – Identify all investment advisors, investment managers, broker/dealers, including individuals that have the authority to make investment decisions on behalf of the reporting entity. For assets that are managed internally by employees of the reporting entity, note as such. ["...that have access to the investment accounts"; "...handle securities"]

1 Name of Firm or Individual	2 Affiliation
JAMES CELLURA .....	I.....

- 17.5097 For those firms/individuals listed in the table for Question 17.5, do any firms/individuals unaffiliated with the reporting entity (i.e. designated with a "U") manage more than 10% of the reporting entity's invested assets?..... Yes [ ] No [ X ]

- 17.5098 For firms/individuals unaffiliated with the reporting entity (i.e. designated with a "U") listed in the table for Question 17.5, does the total assets under management aggregate to more than 50% of the reporting entity's invested assets?..... Yes [ ] No [ X ]

- 17.6 For those firms or individuals listed in the table for 17.5 with an affiliation code of "A" (affiliated) or "U" (unaffiliated), provide the information for the table below.

1 Central Registration Depository Number	2 Name of Firm or Individual	3 Legal Entity Identifier (LEI)	4 Registered With	5 Investment Management Agreement (IMA) Filed

- 18.1 Have all the filing requirements of the Purposes and Procedures Manual of the NAIC Investment Analysis Office been followed? ..... Yes [ X ] No [ ]
- 18.2 If no, list exceptions: .....

19. By self-designating 5GI securities, the reporting entity is certifying the following elements for each self-designated 5GI security:
- a. Documentation necessary to permit a full credit analysis of the security does not exist or an NAIC CRP credit rating for an FE or PL security is not available.
  - b. Issuer or obligor is current on all contracted interest and principal payments.
  - c. The insurer has an actual expectation of ultimate payment of all contracted interest and principal.
- Has the reporting entity self-designated 5GI securities? ..... Yes [ ] No [ X ]

20. By self-designating PLGI securities, the reporting entity is certifying the following elements of each self-designated PLGI security:
- a. The security was purchased prior to January 1, 2018.
  - b. The reporting entity is holding capital commensurate with the NAIC Designation reported for the security.
  - c. The NAIC Designation was derived from the credit rating assigned by an NAIC CRP in its legal capacity as a NRSRO which is shown on a current private letter rating held by the insurer and available for examination by state insurance regulators.
  - d. The reporting entity is not permitted to share this credit rating of the PL security with the SVO.
- Has the reporting entity self-designated PLGI securities? ..... Yes [ ] No [ X ]

21. By assigning FE to a Schedule BA non-registered private fund, the reporting entity is certifying the following elements of each self-designated FE fund:
- a. The shares were purchased prior to January 1, 2019.
  - b. The reporting entity is holding capital commensurate with the NAIC Designation reported for the security.
  - c. The security had a public credit rating(s) with annual surveillance assigned by an NAIC CRP in its legal capacity as an NRSRO prior to January 1, 2019.
  - d. The fund only or predominantly holds bonds in its portfolio.
  - e. The current reported NAIC Designation was derived from the public credit rating(s) with annual surveillance assigned by an NAIC CRP in its legal capacity as an NRSRO.
  - f. The public credit rating(s) with annual surveillance assigned by an NAIC CRP has not lapsed.
- Has the reporting entity assigned FE to Schedule BA non-registered private funds that complied with the above criteria? ..... Yes [ ] No [ X ]

GENERAL INTERROGATORIES

PART 2 - HEALTH

1.

Operating Percentages:

1.1 A&H loss percent

82.8 %

1.2 A&H cost containment percent

3.4 %

1.3 A&H expense percent excluding cost containment expenses

14.9 %
- 2.1

Do you act as a custodian for health savings accounts?

Yes ☐ No ☒
- 2.2

If yes, please provide the amount of custodial funds held as of the reporting date

\$
- 2.3

Do you act as an administrator for health savings accounts?

Yes ☐ No ☒
- 2.4

If yes, please provide the balance of the funds administered as of the reporting date

\$
3.

Is the reporting entity licensed or chartered, registered, qualified, eligible or writing business in at least two states?

Yes ☐ No ☒
- 3.1

If no, does the reporting entity assume reinsurance business that covers risks residing in at least one state other than the state of domicile of the reporting entity?

Yes ☐ No ☒

## Showing All New Reinsurance Treaties - Current Year to Date

# NONE

STATEMENT AS OF MARCH 31, 2023 OF THE Medical Health Insuring Corporation of Ohio

SCHEDULE T - PREMIUMS AND OTHER CONSIDERATIONS

Current Year to Date - Allocated by States and Territories											
		1	Direct Business Only								
			2	3	4	5	6	7	8	9	10
States, etc.		Active Status (a)	Accident and Health Premiums	Medicare Title XVIII	Medicaid Title XIX	CHIP Title XXI	Federal Employees Health Benefits Program Premiums	Life and Annuity Premiums & Other Considerations	Property/Casualty Premiums	Total Columns 2 Through 8	Deposit-Type Contracts
1.	Alabama .....	AL ..N.								..0	
2.	Alaska .....	AK ..N.								..0	
3.	Arizona .....	AZ ..N.								..0	
4.	Arkansas .....	AR ..N.								..0	
5.	California .....	CA ..N.								..0	
6.	Colorado .....	CO ..N.								..0	
7.	Connecticut .....	CT ..N.								..0	
8.	Delaware .....	DE ..N.								..0	
9.	District of Columbia .....	DC ..N.								..0	
10.	Florida .....	FL ..N.								..0	
11.	Georgia .....	GA ..N.								..0	
12.	Hawaii .....	HI ..N.								..0	
13.	Idaho .....	ID ..N.								..0	
14.	Illinois .....	IL ..N.								..0	
15.	Indiana .....	IN ..N.								..0	
16.	Iowa .....	IA ..N.								..0	
17.	Kansas .....	KS ..N.								..0	
18.	Kentucky .....	KY ..N.								..0	
19.	Louisiana .....	LA ..N.								..0	
20.	Maine .....	ME ..N.								..0	
21.	Maryland .....	MD ..N.								..0	
22.	Massachusetts .....	MA ..N.								..0	
23.	Michigan .....	MI ..N.								..0	
24.	Minnesota .....	MN ..N.								..0	
25.	Mississippi .....	MS ..N.								..0	
26.	Missouri .....	MO ..N.								..0	
27.	Montana .....	MT ..N.								..0	
28.	Nebraska .....	NE ..N.								..0	
29.	Nevada .....	NV ..N.								..0	
30.	New Hampshire .....	NH ..N.								..0	
31.	New Jersey .....	NJ ..N.								..0	
32.	New Mexico .....	NM ..N.								..0	
33.	New York .....	NY ..N.								..0	
34.	North Carolina .....	NC ..N.								..0	
35.	North Dakota .....	ND ..N.								..0	
36.	Ohio .....	OH ..L.	157,990,369							157,990,369	
37.	Oklahoma .....	OK ..N.								..0	
38.	Oregon .....	OR ..N.								..0	
39.	Pennsylvania .....	PA ..N.								..0	
40.	Rhode Island .....	RI ..N.								..0	
41.	South Carolina .....	SC ..N.								..0	
42.	South Dakota .....	SD ..N.								..0	
43.	Tennessee .....	TN ..N.								..0	
44.	Texas .....	TX ..N.								..0	
45.	Utah .....	UT ..N.								..0	
46.	Vermont .....	VT ..N.								..0	
47.	Virginia .....	VA ..N.								..0	
48.	Washington .....	WA ..N.								..0	
49.	West Virginia .....	WV ..N.								..0	
50.	Wisconsin .....	WI ..N.								..0	
51.	Wyoming .....	WY ..N.								..0	
52.	American Samoa .....	AS ..N.								..0	
53.	Guam .....	GU ..N.								..0	
54.	Puerto Rico .....	PR ..N.								..0	
55.	U.S. Virgin Islands .....	VI ..N.								..0	
56.	Northern Mariana Islands .....	MP ..N.								..0	
57.	Canada .....	CAN ..N.								..0	
58.	Aggregate Other Aliens .....	OT XXX	..0	..0	..0	..0	..0	..0	..0	..0	..0
59.	Subtotal .....	XXX	157,990,369	..0	..0	..0	..0	..0	..0	157,990,369	..0
60.	Reporting Entity Contributions for Employee Benefit Plans .....	XXX								..0	
61.	Totals (Direct Business) .....	XXX	157,990,369	0	0	0	0	0	0	157,990,369	0
DETAILS OF WRITE-INS											
58001.	.....	XXX									
58002.	.....	XXX									
58003.	.....	XXX									
58998.	Summary of remaining write-ins for Line 58 from overflow page .....	XXX	..0	..0	..0	..0	..0	..0	..0	..0	..0
58999.	Totals (Lines 58001 through 58003 plus 58998)(Line 58 above) .....	XXX	0	0	0	0	0	0	0	0	0

(a) Active Status Counts:

1. L - Licensed or Chartered - Licensed insurance carrier or domiciled RRG..... 1

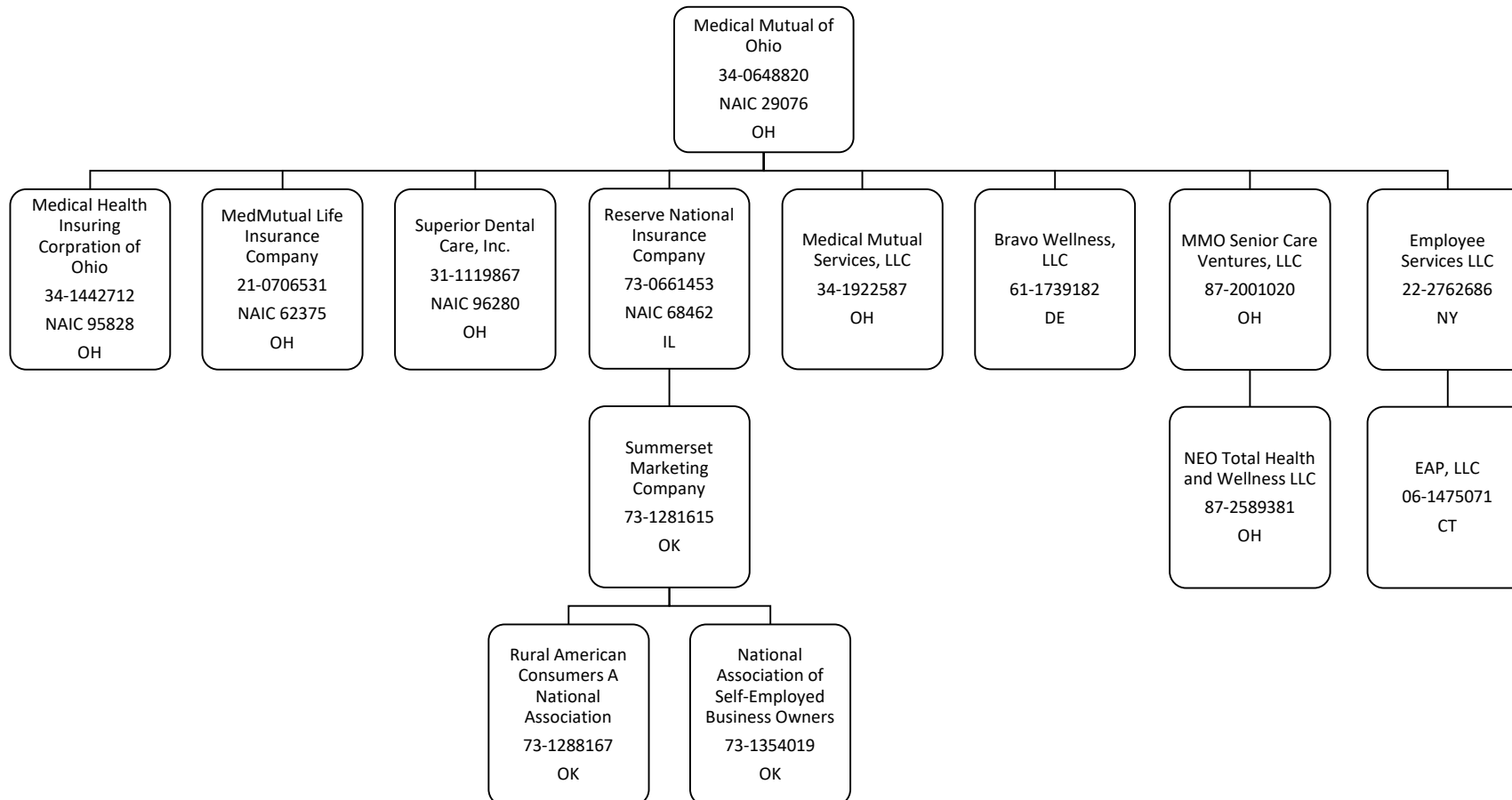
2. R - Registered - Non-domiciled RRGs..... 0

3. E - Eligible - Reporting entities eligible or approved to write surplus lines in the state. .... 0

4. Q - Qualified - Qualified or accredited reinsurer..... 0

5. N - None of the above - Not allowed to write business in the state..... 56

STATEMENT AS OF MARCH 31, 2023 OF THE Medical Health Insuring Corporation of Ohio  
**SCHEDULE Y - INFORMATION CONCERNING ACTIVITIES OF INSURER MEMBERS OF A HOLDING COMPANY GROUP**  
**PART 1 - ORGANIZATIONAL CHART**



STATEMENT AS OF MARCH 31, 2023 OF THE Medical Health Insuring Corporation of Ohio

## SCHEDULE Y

## PART 1A - DETAIL OF INSURANCE HOLDING COMPANY SYSTEM

[illegible]

Asterisk	

# NONE

STATEMENT AS OF MARCH 31, 2023 OF THE Medical Health Insuring Corporation of Ohio

SUPPLEMENTAL EXHIBITS AND SCHEDULES INTERROGATORIES

The following supplemental reports are required to be filed as part of your statement filing. However, in the event that your company does not transact the type of business for which the special report must be filed, your response of NO to the specific interrogatory will be accepted in lieu of filing a "NONE" report and a bar code will be printed below. If the supplement is required of your company but is not being filed for whatever reason enter SEE EXPLANATION and provide an explanation following the interrogatory questions.

	Response
1. Will the Medicare Part D Coverage Supplement be filed with the state of domicile and the NAIC with this statement? .....	NO

AUGUST FILING

2. Will the regulator-only (non-public) Communication of Internal Control Related Matters Noted in Audit be filed with the state of domicile and electronically with the NAIC (as a regulator-only non-public document) by August 1? The response for 1st and 3rd quarters should be N/A. A NO response resulting with a bar code is only appropriate in the 2nd quarter. ....	N/A
--	-----

Explanation:

1.

Bar Code:

1. Medicare Part D Coverage Supplement [Document Identifier 365]



**NONE**



SCHEDULE A - VERIFICATION

Real Estate

	1	2
	Year to Date	Prior Year Ended December 31
1. Book/adjusted carrying value, December 31 of prior year .....		
2. Cost of acquired:		
2.1 Actual cost at time of acquisition .....		
2.2 Additional investment made after acquisition .....		
3. Current year change in encumbrances .....		
4. Total gain (loss) on disposals .....		
5. Deduct amounts received on disposals .....		
6. Total foreign exchange change in book/adjusted carrying value .....		
7. Deduct current year's other than temporary impairment recognized .....		
8. Deduct current year's depreciation .....		
9. Book/adjusted carrying value at the end of current period (Lines 1+2+3+4-5+6-7-8) .....		
10. Deduct total nonadmitted amounts .....		
11. Statement value at end of current period (Line 9 minus Line 10)		

SCHEDULE B - VERIFICATION

Mortgage Loans

	1	2
	Year to Date	Prior Year Ended December 31
1. Book value/recorded investment excluding accrued interest, December 31 of prior year .....		
2. Cost of acquired:		
2.1 Actual cost at time of acquisition .....		
2.2 Additional investment made after acquisition .....		
3. Capitalized deferred interest and other .....		
4. Accrual of discount .....		
5. Unrealized valuation increase (decrease) .....		
6. Total gain (loss) on disposals .....		
7. Deduct amounts received on disposals .....		
8. Deduct amortization of premium and mortgage interest paid and commitment fees .....		
9. Total foreign exchange change in book value/recorded investment excluding accrued interest .....		
10. Deduct current year's other than temporary impairment recognized .....		
11. Book value/recorded investment excluding accrued interest at end of current period (Lines 1+2+3+4+5+6-7-8+9-10) .....		
12. Total valuation allowance .....		
13. Subtotal (Line 11 plus Line 12) .....		
14. Deduct total nonadmitted amounts .....		
15. Statement value at end of current period (Line 13 minus Line 14)		

SCHEDULE BA - VERIFICATION

Other Long-Term Invested Assets

	1	2
	Year to Date	Prior Year Ended December 31
1. Book/adjusted carrying value, December 31 of prior year .....		
2. Cost of acquired:		
2.1 Actual cost at time of acquisition .....		
2.2 Additional investment made after acquisition .....		
3. Capitalized deferred interest and other .....		
4. Accrual of discount .....		
5. Unrealized valuation increase (decrease) .....		
6. Total gain (loss) on disposals .....		
7. Deduct amounts received on disposals .....		
8. Deduct amortization of premium and depreciation .....		
9. Total foreign exchange change in book/adjusted carrying value .....		
10. Deduct current year's other than temporary impairment recognized .....		
11. Book/adjusted carrying value at end of current period (Lines 1+2+3+4+5+6-7-8+9-10) .....		
12. Deduct total nonadmitted amounts .....		
13. Statement value at end of current period (Line 11 minus Line 12)		

SCHEDULE D - VERIFICATION

Bonds and Stocks

	1	2
	Year to Date	Prior Year Ended December 31
1. Book/adjusted carrying value of bonds and stocks, December 31 of prior year .....	118,374,455	129,041,486
2. Cost of bonds and stocks acquired .....	0	7,228,165
3. Accrual of discount .....	24,212	78,930
4. Unrealized valuation increase (decrease) .....	0	
5. Total gain (loss) on disposals .....	0	(57,544)
6. Deduct consideration for bonds and stocks disposed of .....	1,000,000	17,454,456
7. Deduct amortization of premium .....	95,428	526,583
8. Total foreign exchange change in book/adjusted carrying value .....	0	
9. Deduct current year's other than temporary impairment recognized .....	0	
10. Total investment income recognized as a result of prepayment penalties and/or acceleration fees .....	0	64,456
11. Book/adjusted carrying value at end of current period (Lines 1+2+3+4+5-6-7+8-9+10) .....	117,303,240	118,374,455
12. Deduct total nonadmitted amounts .....	0	
13. Statement value at end of current period (Line 11 minus Line 12)	117,303,240	118,374,455

SCHEDULE D - PART 1B

Showing the Acquisitions, Dispositions and Non-Trading Activity  
During the Current Quarter for all Bonds and Preferred Stock by NAIC Designation

NAIC Designation	1 Book/Adjusted Carrying Value Beginning of Current Quarter	2 Acquisitions During Current Quarter	3 Dispositions During Current Quarter	4 Non-Trading Activity During Current Quarter	5 Book/Adjusted Carrying Value End of First Quarter	6 Book/Adjusted Carrying Value End of Second Quarter	7 Book/Adjusted Carrying Value End of Third Quarter	8 Book/Adjusted Carrying Value December 31 Prior Year
BONDS								
1. NAIC 1 (a) .....	111,865,176	0	0	(2,073,984)	109,791,192	0	0	111,865,176
2. NAIC 2 (a) .....	6,509,279	0	1,000,000	2,002,769	7,512,047	0	0	6,509,279
3. NAIC 3 (a) .....	0	0	0	0	0	0	0	
4. NAIC 4 (a) .....	0	0	0	0	0	0	0	
5. NAIC 5 (a) .....	0	0	0	0	0	0	0	
6. NAIC 6 (a) .....	0	0	0	0	0	0	0	
7. Total Bonds	118,374,455	0	1,000,000	(71,216)	117,303,240	0	0	118,374,455
PREFERRED STOCK								
8. NAIC 1 .....	0	0	0	0	0	0	0	0
9. NAIC 2 .....	0	0	0	0	0	0	0	0
10. NAIC 3 .....	0	0	0	0	0	0	0	0
11. NAIC 4 .....	0	0	0	0	0	0	0	0
12. NAIC 5 .....	0	0	0	0	0	0	0	0
13. NAIC 6 .....	0	0	0	0	0	0	0	0
14. Total Preferred Stock .....	0	0	0	0	0	0	0	0
15. Total Bonds and Preferred Stock	118,374,455	0	1,000,000	(71,216)	117,303,240	0	0	118,374,455

(a) Book/Adjusted Carrying Value column for the end of the current reporting period includes the following amount of short-term and cash equivalent bonds by NAIC designation:

NAIC 1 \$ .....0 ; NAIC 2 \$ .....0 ; NAIC 3 \$ .....0 NAIC 4 \$ .....0 ; NAIC 5 \$ .....0 ; NAIC 6 \$ .....0

Schedule DA - Part 1 - Short-Term Investments

**N O N E**

Schedule DA - Verification - Short-Term Investments

**N O N E**

Schedule DB - Part A - Verification - Options, Caps, Floors, Collars, Swaps and Forwards

**N O N E**

Schedule DB - Part B - Verification - Futures Contracts

**N O N E**

Schedule DB - Part C - Section 1 - Replication (Synthetic Asset) Transactions (RSATs) Open

**N O N E**

Schedule DB-Part C-Section 2-Reconciliation of Replication (Synthetic Asset) Transactions Open

**N O N E**

Schedule DB - Verification - Book/Adjusted Carrying Value, Fair Value and Potential Exposure of  
Derivatives

**N O N E**

SCHEDULE E - PART 2 - VERIFICATION

(Cash Equivalents)

	1	2
	Year To Date	Prior Year Ended December 31
1. Book/adjusted carrying value, December 31 of prior year .....	108,775,360	90,210,202
2. Cost of cash equivalents acquired .....	3,025,544	47,241,396
3. Accrual of discount .....		0
4. Unrealized valuation increase (decrease) .....		0
5. Total gain (loss) on disposals .....		0
6. Deduct consideration received on disposals .....		28,676,239
7. Deduct amortization of premium .....		0
8. Total foreign exchange change in book/adjusted carrying value .....		0
9. Deduct current year's other than temporary impairment recognized .....		0
10. Book/adjusted carrying value at end of current period (Lines 1+2+3+4+5-6-7+8-9) .....	111,800,903	108,775,360
11. Deduct total nonadmitted amounts .....		0
12. Statement value at end of current period (Line 10 minus Line 11)	111,800,903	108,775,360

Schedule A - Part 2 - Real Estate Acquired and Additions Made

**N O N E**

Schedule A - Part 3 - Real Estate Disposed

**N O N E**

Schedule B - Part 2 - Mortgage Loans Acquired and Additions Made

**N O N E**

Schedule B - Part 3 - Mortgage Loans Disposed, Transferred or Repaid

**N O N E**

Schedule BA - Part 2 - Other Long-Term Invested Assets Acquired and Additions Made

**N O N E**

Schedule BA - Part 3 - Other Long-Term Invested Assets Disposed, Transferred or Repaid

**N O N E**

Schedule D - Part 3 - Long-Term Bonds and Stocks Acquired

**N O N E**

STATEMENT AS OF MARCH 31, 2023 OF THE Medical Health Insuring Corporation of Ohio

SCHEDULE D - PART 4

Show All Long-Term Bonds and Stock Sold, Redeemed or Otherwise Disposed of During the Current Quarter

1	2	3	4	5	6	7	8	9	10	Change In Book/Adjusted Carrying Value					16	17	18	19	20	21	22
										11	12	13	14	15							
CUSIP Ident- ification	Description	For- eign	Disposal Date	Name of Purchaser	Number of Shares of Stock	Consid- eration	Par Value	Actual Cost	Prior Year Book/ Adjusted Carrying Value	Unrealized Valuation Increase/ (Decrease)	Current Year's (Amor- tization)/ Accretion	Current Year's Other Than Temporary Impairment Recog- nized	Total Change in Book/ Adjusted Carrying Value (11 + 12 - 13)	Total Foreign Exchange Change in Book /Adjusted Carrying Value	Book/ Adjusted Carrying Value at Disposal Date	Foreign Exchange Gain (Loss) on Disposal	Realized Gain (Loss) on Disposal	Total Gain (Loss) on Disposal	Bond Interest/ Stock Dividends Received During Year	Stated Con- tractual Maturity Date	NAIC Desig- nation, NAIC Desig- nation Modifier and SVO Admini- strative Symbol
..38141G-RD-8	GOLDMAN SACHS GROUP INC .....	.....	. 01/22/2023 .	MATURITY .....	.....	1,000,000	1,000,000	1,037,240	1,000,423	0	(423)	0	(423)	0	1,000,000	0	0	0	18,125	01/22/2023	2-A FE
1109999999. Subtotal - Bonds - Industrial and Miscellaneous (Unaffiliated)						1,000,000	1,000,000	1,037,240	1,000,423	0	(423)	0	(423)	0	1,000,000	0	0	0	18,125	XXX	XXX
2509999997. Total - Bonds - Part 4						1,000,000	1,000,000	1,037,240	1,000,423	0	(423)	0	(423)	0	1,000,000	0	0	0	18,125	XXX	XXX
2509999998. Total - Bonds - Part 5						XXX	XXX	XXX	XXX	XXX	XXX	XXX	XXX	XXX	XXX	XXX	XXX	XXX	XXX	XXX	XXX
2509999999. Total - Bonds						1,000,000	1,000,000	1,037,240	1,000,423	0	(423)	0	(423)	0	1,000,000	0	0	0	18,125	XXX	XXX
4509999997. Total - Preferred Stocks - Part 4						0	XXX	0	0	0	0	0	0	0	0	0	0	0	0	XXX	XXX
4509999998. Total - Preferred Stocks - Part 5						XXX	XXX	XXX	XXX	XXX	XXX	XXX	XXX	XXX	XXX	XXX	XXX	XXX	XXX	XXX	XXX
4509999999. Total - Preferred Stocks						0	XXX	0	0	0	0	0	0	0	0	0	0	0	0	XXX	XXX
5989999997. Total - Common Stocks - Part 4						0	XXX	0	0	0	0	0	0	0	0	0	0	0	0	XXX	XXX
5989999998. Total - Common Stocks - Part 5						XXX	XXX	XXX	XXX	XXX	XXX	XXX	XXX	XXX	XXX	XXX	XXX	XXX	XXX	XXX	XXX
5989999999. Total - Common Stocks						0	XXX	0	0	0	0	0	0	0	0	0	0	0	0	XXX	XXX
5999999999. Total - Preferred and Common Stocks						0	XXX	0	0	0	0	0	0	0	0	0	0	0	0	XXX	XXX
.....	.....	.....	.....	.....	.....	.....	.....	.....	.....	.....	.....	.....	.....	.....	.....	.....	.....	.....	.....	.....	.....
.....	.....	.....	.....	.....	.....	.....	.....	.....	.....	.....	.....	.....	.....	.....	.....	.....	.....	.....	.....	.....	.....
.....	.....	.....	.....	.....	.....	.....	.....	.....	.....	.....	.....	.....	.....	.....	.....	.....	.....	.....	.....	.....	.....
.....	.....	.....	.....	.....	.....	.....	.....	.....	.....	.....	.....	.....	.....	.....	.....	.....	.....	.....	.....	.....	.....
.....	.....	.....	.....	.....	.....	.....	.....	.....	.....	.....	.....	.....	.....	.....	.....	.....	.....	.....	.....	.....	.....
.....	.....	.....	.....	.....	.....	.....	.....	.....	.....	.....	.....	.....	.....	.....	.....	.....	.....	.....	.....	.....	.....
.....	.....	.....	.....	.....	.....	.....	.....	.....	.....	.....	.....	.....	.....	.....	.....	.....	.....	.....	.....	.....	.....
.....	.....	.....	.....	.....	.....	.....	.....	.....	.....	.....	.....	.....	.....	.....	.....	.....	.....	.....	.....	.....	.....
6009999999 - Totals						1,000,000	XXX	1,037,240	1,000,423	0	(423)	0	(423)	0	1,000,000	0	0	0	18,125	XXX	XXX

Schedule DB - Part A - Section 1 - Options, Caps, Floors, Collars, Swaps and Forwards Open  
**N O N E**

Schedule DB - Part B - Section 1 - Futures Contracts Open  
**N O N E**

Schedule DB - Part B - Section 1B - Brokers with whom cash deposits have been made  
**N O N E**

Schedule DB - Part D - Section 1 - Counterparty Exposure for Derivative Instruments Open  
**N O N E**

Schedule DB - Part D-Section 2 - Collateral for Derivative Instruments Open - Pledged By  
**N O N E**

Schedule DB - Part D-Section 2 - Collateral for Derivative Instruments Open - Pledged To  
**N O N E**

Schedule DB - Part E - Derivatives Hedging Variable Annuity Guarantees  
**N O N E**

Schedule DL - Part 1 - Reinvested Collateral Assets Owned  
**N O N E**

Schedule DL - Part 2 - Reinvested Collateral Assets Owned  
**N O N E**

SCHEDULE E - PART 1 - CASH

Month End Depository Balances

1  Depository	2  Code	3  Rate of Interest	4  Amount of Interest Received During Current Quarter	5  Amount of Interest Accrued at Current Statement Date	Book Balance at End of Each Month During Current Quarter			9  *
					6	7	8	
					First Month	Second Month	Third Month	
HUNTINGTON BANK CLEVELAND, OHIO					477,684	477,684	500,114	XXX
0199998. Deposits in ... 1 depositories that do not exceed the allowable limit in any one depository (See instructions) - Open Depositories	XXX	XXX			1	1	0	XXX
0199999. Totals - Open Depositories	XXX	XXX	0	0	477,685	477,685	500,114	XXX
0299998. Deposits in ... depositories that do not exceed the allowable limit in any one depository (See instructions) - Suspended Depositories	XXX	XXX						XXX
0299999. Totals - Suspended Depositories	XXX	XXX	0	0	0	0	0	XXX
0399999. Total Cash on Deposit	XXX	XXX	0	0	477,685	477,685	500,114	XXX
0499999. Cash in Company's Office	XXX	XXX	XXX	XXX				XXX
0599999. Total - Cash	XXX	XXX	0	0	477,685	477,685	500,114	XXX



## SCHEDULE E - PART 2 - CASH EQUIVALENTS

[illegible]