



QUARTERLY STATEMENT

AS OF MARCH 31, 2023  
OF THE CONDITION AND AFFAIRS OF THE

Elixir Insurance Company

NAIC Group Code00000,00000NAIC Company Code12747Employer's ID Number20-4308924

Organized under the Laws ofOhio, State of Domicile or Port of EntryOhio

Country of DomicileUnited States

Licensed as business type:Life, Accident & Health [X]Property/Casualty [ ]Hospital, Medical & Dental Service or Indemnity [ ]  
Dental Service Corporation [ ]Vision Service Corporation [ ]Health Maintenance Organization [ ]  
Other [ ]Is HMO Federally Qualified? Yes [ ] No [ ]

Incorporated/Organized02/08/2006Commenced Business01/01/2007

Statutory Home Office7835 Freedom Avenue NWNorth Canton, OH, US 44720

Main Administrative Office7835 Freedom Avenue NWNorth Canton, OH, US 44720330-405-8089

Mail Address7835 Freedom Avenue NWNorth Canton, OH, US 44720

Primary Location of Books and Records7835 Freedom Avenue NWNorth Canton, OH, US 44720330-405-8089

Internet Web Site Addresswww.elixirsolutions.com

Statutory Statement ContactChad Matthew Sullivan CPANorth Canton, OH, US 44720330-486-4811

eicaccounting@elixirsolutions.com330-486-4801

OFFICERS

Name	Title	Name	Title
Christopher DuPaul	President	Rand Greenblatt	Chief Financial Officer & Treasurer
Mitchell Kempker	Secretary		

OTHER OFFICERS


DIRECTORS OR TRUSTEES

Rand Greenblatt	Brian Todd Hoover	Susan Catherine Lowell	Karen Lesley Staniforth
Chris DuPaul	Steven Bixler		

State of Ohio

County of Stark

The officers of this reporting entity being duly sworn, each depose and say that they are the described officers of said reporting entity, and that on the reporting period stated above, all of the herein described assets were the absolute property of the said reporting entity, free and clear from any liens or claims thereon, except as herein stated, and that this statement, together with related exhibits, schedules and explanations therein contained, annexed or referred to, is a full and true statement of all the assets and liabilities and of the condition and affairs of the said reporting entity as of the reporting period stated above, and of its income and deductions therefrom for the period ended, and have been completed in accordance with the NAIC Annual Statement Instructions and Accounting Practices and Procedures manual except to the extent that: (1) state law may differ; or, (2) that state rules or regulations require differences in reporting not related to accounting practices and procedures, according to the best of their information, knowledge and belief, respectively. Furthermore, the scope of this attestation by the described officers also includes the related corresponding electronic filing with the NAIC, when required, that is an exact copy (except for formatting differences due to electronic filing) of the enclosed statement. The electronic filing may be requested by various regulators in lieu of or in addition to the enclosed statement.

Christopher DuPaul  
President

Rand Greenblatt  
Chief Financial Officer & Treasurer

Mitchell Kempker  
Secretary

Subscribed and sworn to before me this  
day of ,

a. Is this an original filing?Yes [X] No [ ]

b. If no:  
1. State the amendment number  
2. Date filed  
3. Number of pages attached

ASSETS

	Current Statement Date			4  December 31 Prior Year Net Admitted Assets
	1	2	3	
	Assets	Nonadmitted Assets	Net Admitted Assets (Cols. 1 - 2)	
1. Bonds .....	7,656,547		7,656,547	7,672,773
2. Stocks:				
2.1 Preferred stocks .....			0	0
2.2 Common stocks .....			0	0
3. Mortgage loans on real estate:				
3.1 First liens .....			0	0
3.2 Other than first liens .....			0	0
4. Real estate:				
4.1 Properties occupied by the company (less \$ ..... encumbrances) .....			0	0
4.2 Properties held for the production of income (less \$ ..... encumbrances) .....			0	0
4.3 Properties held for sale (less \$ ..... encumbrances) .....			0	0
5. Cash (\$ .....107,831,741 ), cash equivalents (\$ .....0 ) and short-term investments (\$ .....0 ) .....	107,831,741		107,831,741	93,438,769
6. Contract loans (including \$ ..... premium notes) .....			0	0
7. Derivatives .....	0		0	0
8. Other invested assets .....	0		0	0
9. Receivables for securities .....			0	0
10. Securities lending reinvested collateral assets .....			0	0
11. Aggregate write-ins for invested assets .....	0	0	0	0
12. Subtotals, cash and invested assets (Lines 1 to 11) .....	115,488,288	0	115,488,288	101,111,542
13. Title plants less \$ ..... charged off (for Title insurers only) .....			0	0
14. Investment income due and accrued .....	52,958		52,958	46,029
15. Premiums and considerations:				
15.1 Uncollected premiums and agents' balances in the course of collection .....	3,190,144	124,260	3,065,884	4,109,885
15.2 Deferred premiums, agents' balances and installments booked but deferred and not yet due (including \$ ..... earned but unbilled premiums) .....			0	0
15.3 Accrued retrospective premiums (\$ .....50,664,369 ) and contracts subject to redetermination (\$ ..... ) .....	50,664,369		50,664,369	85,346,945
16. Reinsurance:				
16.1 Amounts recoverable from reinsurers .....			0	0
16.2 Funds held by or deposited with reinsured companies .....	31,556		31,556	34,600
16.3 Other amounts receivable under reinsurance contracts .....			0	0
17. Amounts receivable relating to uninsured plans .....	3,719,288		3,719,288	227,332,555
18.1 Current federal and foreign income tax recoverable and interest thereon .....			0	0
18.2 Net deferred tax asset .....			0	0
19. Guaranty funds receivable or on deposit .....			0	0
20. Electronic data processing equipment and software .....			0	0
21. Furniture and equipment, including health care delivery assets (\$ ..... ) .....			0	0
22. Net adjustment in assets and liabilities due to foreign exchange rates .....			0	0
23. Receivables from parent, subsidiaries and affiliates .....			0	0
24. Health care (\$ ..... ) and other amounts receivable .....	355,360		355,360	130,743
25. Aggregate write-ins for other-than-invested assets .....	1,423,998	1,423,998	0	0
26. Total assets excluding Separate Accounts, Segregated Accounts and Protected Cell Accounts (Lines 12 to 25) .....	174,925,961	1,548,258	173,377,702	418,112,299
27. From Separate Accounts, Segregated Accounts and Protected Cell Accounts .....			0	0
28. Total (Lines 26 and 27) .....	174,925,961	1,548,258	173,377,702	418,112,299
DETAILS OF WRITE-INS				
1101. ....			0	0
1102. ....			0	0
1103. ....			0	0
1198. Summary of remaining write-ins for Line 11 from overflow page .....	0	0	0	0
1199. Totals (Lines 1101 through 1103 plus 1198) (Line 11 above) .....	0	0	0	0
2501. Prepaid Expenses .....	1,423,998	1,423,998	0	0
2502. ....			0	0
2503. ....			0	0
2598. Summary of remaining write-ins for Line 25 from overflow page .....	0	0	0	0
2599. Totals (Lines 2501 through 2503 plus 2598) (Line 25 above) .....	1,423,998	1,423,998	0	0

LIABILITIES, CAPITAL AND SURPLUS

	Current Period			Prior Year
	1 Covered	2 Uncovered	3 Total	4 Total
1. Claims unpaid (less \$ .....3,590,010 reinsurance ceded).....	24,911,085		24,911,085	90,133,855
2. Accrued medical incentive pool and bonus amounts .....			0	0
3. Unpaid claims adjustment expenses .....	1,013,472		1,013,472	2,323,256
4. Aggregate health policy reserves including the liability of \$ ..... for medical loss ratio rebate per the Public Health Service Act.....			0	0
5. Aggregate life policy reserves .....			0	0
6. Property/casualty unearned premium reserve .....			0	0
7. Aggregate health claim reserves .....			0	0
8. Premiums received in advance .....	9,253,519		9,253,519	907,221
9. General expenses due or accrued .....	882,972		882,972	757,016
10.1 Current federal and foreign income tax payable and interest thereon (including \$ ..... on realized gains (losses)) .....			0	0
10.2 Net deferred tax liability.....			0	0
11. Ceded reinsurance premiums payable .....	563,615		563,615	542,268
12. Amounts withheld or retained for the account of others .....			0	0
13. Remittances and items not allocated .....			0	0
14. Borrowed money (including \$ ..... current) and interest thereon \$ ..... (including \$ ..... current) .....			0	0
15. Amounts due to parent, subsidiaries and affiliates .....	46,660,996		46,660,996	240,593,967
16. Derivatives.....			0	0
17. Payable for securities .....			0	0
18. Payable for securities lending .....			0	0
19. Funds held under reinsurance treaties (with \$ ..... authorized reinsurers, \$ .....956,789 unauthorized reinsurers and \$ ..... certified reinsurers).....	956,789		956,789	3,016,968
20. Reinsurance in unauthorized and certified (\$ ..... ) companies .....			0	0
21. Net adjustments in assets and liabilities due to foreign exchange rates .....			0	0
22. Liability for amounts held under uninsured plans .....	15,794,457		15,794,457	10,009,091
23. Aggregate write-ins for other liabilities (including \$ ..... current) .....	0	0	0	0
24. Total liabilities (Lines 1 to 23).....	100,036,904	0	100,036,904	348,283,642
25. Aggregate write-ins for special surplus funds .....	XXX	XXX	0	0
26. Common capital stock .....	XXX	XXX	2,000,000	2,000,000
27. Preferred capital stock .....	XXX	XXX		0
28. Gross paid in and contributed surplus .....	XXX	XXX	154,200,000	154,200,000
29. Surplus notes .....	XXX	XXX		0
30. Aggregate write-ins for other-than-special surplus funds .....	XXX	XXX	0	0
31. Unassigned funds (surplus) .....	XXX	XXX	(82,859,202)	(86,371,343)
32. Less treasury stock, at cost:				
32.1 ..... shares common (value included in Line 26 \$ ..... ) .....	XXX	XXX		0
32.2 ..... shares preferred (value included in Line 27 \$ ..... ) .....	XXX	XXX		0
33. Total capital and surplus (Lines 25 to 31 minus Line 32) .....	XXX	XXX	73,340,798	69,828,657
34. Total liabilities, capital and surplus (Lines 24 and 33)	XXX	XXX	173,377,702	418,112,299
DETAILS OF WRITE-INS				
2301. ....			0	0
2302. ....			0	0
2303. ....			0	0
2398. Summary of remaining write-ins for Line 23 from overflow page .....	0	0	0	0
2399. Totals (Lines 2301 through 2303 plus 2398) (Line 23 above)	0	0	0	0
2501. ....	XXX	XXX		0
2502. ....	XXX	XXX		0
2503. ....	XXX	XXX		0
2598. Summary of remaining write-ins for Line 25 from overflow page .....	XXX	XXX	0	0
2599. Totals (Lines 2501 through 2503 plus 2598) (Line 25 above)	XXX	XXX	0	0
3001. ....	XXX	XXX		0
3002. ....	XXX	XXX		0
3003. ....	XXX	XXX		0
3098. Summary of remaining write-ins for Line 30 from overflow page .....	XXX	XXX	0	0
3099. Totals (Lines 3001 through 3003 plus 3098) (Line 30 above)	XXX	XXX	0	0

STATEMENT OF REVENUE AND EXPENSES

	Current Year To Date		Prior Year To Date	Prior Year Ended December 31
	1 Uncovered	2 Total	3 Total	4 Total
1. Member Months.....	XXX	893,622	1,995,033	7,879,281
2. Net premium income (including \$ non-health premium income).....	XXX	90,676,297	191,036,963	592,116,010
3. Change in unearned premium reserves and reserve for rate credits .....	XXX		0	0
4. Fee-for-service (net of \$ medical expenses) .....	XXX		0	0
5. Risk revenue .....	XXX		0	0
6. Aggregate write-ins for other health care related revenues .....	XXX	0	0	0
7. Aggregate write-ins for other non-health revenues .....	XXX	0	0	0
8. Total revenues (Lines 2 to 7) .....	XXX	90,676,297	191,036,963	592,116,010
<b>Hospital and Medical:</b>				
9. Hospital/medical benefits .....			0	0
10. Other professional services .....			0	0
11. Outside referrals .....			0	0
12. Emergency room and out-of-area .....			0	0
13. Prescription drugs .....		87,741,955	194,837,857	608,028,668
14. Aggregate write-ins for other hospital and medical.....	0	0	0	0
15. Incentive pool, withhold adjustments and bonus amounts.....			0	0
16. Subtotal (Lines 9 to 15) .....	0	87,741,955	194,837,857	608,028,668
<b>Less:</b>				
17. Net reinsurance recoveries .....		3,674,027	3,357,749	11,025,292
18. Total hospital and medical (Lines 16 minus 17) .....	0	84,067,928	191,480,108	597,003,376
19. Non-health claims (net).....			0	0
20. Claims adjustment expenses, including \$ cost containment expenses.....		413,119	698,921	2,779,513
21. General administrative expenses.....		1,964,019	2,588,483	10,544,294
22. Increase in reserves for life and accident and health contracts (including \$ increase in reserves for life only).....			(3,089,983)	(12,359,930)
23. Total underwriting deductions (Lines 18 through 22) .....	0	86,445,066	191,677,528	597,967,253
24. Net underwriting gain or (loss) (Lines 8 minus 23) .....	XXX	4,231,231	(640,565)	(5,851,243)
25. Net investment income earned .....		96,587	18,812	281,737
26. Net realized capital gains (losses) less capital gains tax of \$ .....			0	0
27. Net investment gains (losses) (Lines 25 plus 26) .....	0	96,587	18,812	281,737
28. Net gain or (loss) from agents' or premium balances charged off [(amount recovered \$ ) (amount charged off \$ 1,100,000 )] .....		(1,100,000)	(900,000)	(1,900,000)
29. Aggregate write-ins for other income or expenses .....	0	0	0	0
30. Net income or (loss) after capital gains tax and before all other federal income taxes (Lines 24 plus 27 plus 28 plus 29) .....	XXX	3,227,818	(1,521,753)	(7,469,506)
31. Federal and foreign income taxes incurred .....	XXX		0	0
32. Net income (loss) (Lines 30 minus 31) .....	XXX	3,227,818	(1,521,753)	(7,469,506)
<b>DETAILS OF WRITE-INS</b>				
0601. ....	XXX		0	0
0602. ....	XXX		0	0
0603. ....	XXX		0	0
0698. Summary of remaining write-ins for Line 6 from overflow page .....	XXX	0	0	0
0699. Totals (Lines 0601 through 0603 plus 0698) (Line 6 above) .....	XXX	0	0	0
0701. ....	XXX		0	0
0702. ....	XXX		0	0
0703. ....	XXX		0	0
0798. Summary of remaining write-ins for Line 7 from overflow page .....	XXX	0	0	0
0799. Totals (Lines 0701 through 0703 plus 0798) (Line 7 above) .....	XXX	0	0	0
1401. ....			0	0
1402. ....			0	0
1403. ....			0	0
1498. Summary of remaining write-ins for Line 14 from overflow page .....	0	0	0	0
1499. Totals (Lines 1401 through 1403 plus 1498) (Line 14 above) .....	0	0	0	0
2901. Discount on early claims payment.....		16,618,864	13,644,901	28,726,263
2902. Loss on sale of CMS receivables.....		(16,618,864)	(13,644,901)	(28,726,263)
2903. ....				
2998. Summary of remaining write-ins for Line 29 from overflow page .....	0	0	0	0
2999. Totals (Lines 2901 through 2903 plus 2998) (Line 29 above) .....	0	0	0	0

STATEMENT OF REVENUE AND EXPENSES (Continued)

	1	2	3
	Current Year To Date	Prior Year To Date	Prior Year Ended December 31
<b>CAPITAL &amp; SURPLUS ACCOUNT</b>			
33. Capital and surplus prior reporting year.....	69,828,657	83,319,242	83,319,242
34. Net income or (loss) from Line 32 .....	3,227,818	(1,521,753)	(7,469,506)
35. Change in valuation basis of aggregate policy and claim reserves .....		0	0
36. Change in net unrealized capital gains (losses) less capital gains tax of \$ .....		0	0
37. Change in net unrealized foreign exchange capital gain or (loss) .....		0	0
38. Change in net deferred income tax .....		(544,138)	(4,653,809)
39. Change in nonadmitted assets .....	284,324	(2,437,832)	(1,367,270)
40. Change in unauthorized and certified reinsurance .....	0	0	0
41. Change in treasury stock .....	0	0	0
42. Change in surplus notes .....	0	0	0
43. Cumulative effect of changes in accounting principles .....		0	0
44. Capital Changes:			
44.1 Paid in .....		0	0
44.2 Transferred from surplus (Stock Dividend) .....		0	0
44.3 Transferred to surplus .....		0	0
45. Surplus adjustments:			
45.1 Paid in .....		0	0
45.2 Transferred to capital (Stock Dividend) .....	0	0	0
45.3 Transferred from capital .....		0	0
46. Dividends to stockholders .....		0	0
47. Aggregate write-ins for gains or (losses) in surplus .....	0	0	0
48. Net change in capital and surplus (Lines 34 to 47) .....	3,512,142	(4,503,723)	(13,490,585)
49. Capital and surplus end of reporting period (Line 33 plus 48)	73,340,799	78,815,519	69,828,657
<b>DETAILS OF WRITE-INS</b>			
4701. ....		0	0
4702. ....		0	0
4703. ....		0	0
4798. Summary of remaining write-ins for Line 47 from overflow page .....	0	0	0
4799. Totals (Lines 4701 through 4703 plus 4798) (Line 47 above)	0	0	0

CASH FLOW

	1 Current Year To Date	2 Prior Year To Date	3 Prior Year Ended December 31
<b>Cash from Operations</b>			
1. Premiums collected net of reinsurance.....	134,646,259	162,158,007	575,725,678
2. Net investment income .....	114,166	25,777	362,676
3. Miscellaneous income .....	3,046	0	(34,603)
4. Total (Lines 1 to 3) .....	134,763,470	162,183,784	576,053,751
5. Benefit and loss related payments .....	149,290,699	269,973,849	633,262,457
6. Net transfers to Separate Accounts, Segregated Accounts and Protected Cell Accounts .....		0	0
7. Commissions, expenses paid and aggregate write-ins for deductions .....	(224,737,667)	(342,685,589)	(134,713,950)
8. Dividends paid to policyholders .....		0	0
9. Federal and foreign income taxes paid (recovered) net of \$ ..... tax on capital gains (losses).....	0	0	0
10. Total (Lines 5 through 9) .....	(75,446,969)	(72,711,740)	498,548,507
11. Net cash from operations (Line 4 minus Line 10) .....	210,210,439	234,895,524	77,505,244
<b>Cash from Investments</b>			
12. Proceeds from investments sold, matured or repaid:			
12.1 Bonds .....	200,000	0	200,000
12.2 Stocks .....	0	0	0
12.3 Mortgage loans .....	0	0	0
12.4 Real estate .....	0	0	0
12.5 Other invested assets .....	0	0	0
12.6 Net gains or (losses) on cash, cash equivalents and short-term investments .....	0	0	0
12.7 Miscellaneous proceeds .....	0	0	0
12.8 Total investment proceeds (Lines 12.1 to 12.7) .....	200,000	0	200,000
13. Cost of investments acquired (long-term only):			
13.1 Bonds .....	208,281	0	544,671
13.2 Stocks .....	0	0	0
13.3 Mortgage loans .....	0	0	0
13.4 Real estate .....	0	0	0
13.5 Other invested assets .....	0	0	0
13.6 Miscellaneous applications .....	0	0	0
13.7 Total investments acquired (Lines 13.1 to 13.6) .....	208,281	0	544,671
14. Net increase (or decrease) in contract loans and premium notes .....	0	0	0
15. Net cash from investments (Line 12.8 minus Line 13.7 and Line 14) .....	(8,281)	0	(344,671)
<b>Cash from Financing and Miscellaneous Sources</b>			
16. Cash provided (applied):			
16.1 Surplus notes, capital notes .....	0	0	0
16.2 Capital and paid in surplus, less treasury stock.....	0	0	0
16.3 Borrowed funds .....	0	0	0
16.4 Net deposits on deposit-type contracts and other insurance liabilities .....		0	0
16.5 Dividends to stockholders .....	0	0	0
16.6 Other cash provided (applied).....	(195,809,185)	(315,537,975)	(198,635,827)
17. Net cash from financing and miscellaneous sources (Line 16.1 through Line 16.4 minus Line 16.5 plus Line 16.6).....	(195,809,185)	(315,537,975)	(198,635,827)
<b>RECONCILIATION OF CASH, CASH EQUIVALENTS AND SHORT-TERM INVESTMENTS</b>			
18. Net change in cash, cash equivalents and short-term investments (Line 11, plus Lines 15 and 17) .....	14,392,973	(80,642,451)	(121,475,254)
19. Cash, cash equivalents and short-term investments:			
19.1 Beginning of year.....	93,438,768	214,914,022	214,914,022
19.2 End of period (Line 18 plus Line 19.1) .....	107,831,741	134,271,571	93,438,768

STATEMENT AS OF MARCH 31, 2023 OF THE Elixir Insurance Company

EXHIBIT OF PREMIUMS, ENROLLMENT AND UTILIZATION

	1	Comprehensive (Hospital & Medical)		4	5	6	7	8	9	10	11	12	13	14
		2	3											
	Total	Individual	Group	Medicare Supplement	Vision Only	Dental Only	Federal Employees Health Benefits Plan	Title XVIII Medicare	Title XIX Medicaid	Credit A&H	Disability Income	Long-Term Care	Other Health	Other Non- Health
Total Members at end of:														
1. Prior Year .....	650,713	.0	.0	.0	.0	.0	.0	.0	.0	.0	.0	.0	650,713	.0
2. First Quarter .....	294,520	.0	.0	.0	.0	.0	.0	.0	.0	.0	.0	.0	294,520	.0
3. Second Quarter .....	.0	.0	.0	.0	.0	.0	.0	.0	.0	.0	.0	.0	.0	.0
4. Third Quarter .....	.0	.0	.0	.0	.0	.0	.0	.0	.0	.0	.0	.0	.0	.0
5. Current Year	0													
6. Current Year Member Months	893,622												893,622	
Total Member Ambulatory Encounters for Period:														
7. Physician .....	.0													
8. Non-Physician .....	0													
9. Total	0	0	0	0	0	0	0	0	0	0	0	0	0	0
10. Hospital Patient Days Incurred	0													
11. Number of Inpatient Admissions	0													
12. Health Premiums Written (a).....	93,348,410												93,348,410	
13. Life Premiums Direct .....	.0													
14. Property/Casualty Premiums Written .....	.0													
15. Health Premiums Earned .....	93,348,410												93,348,410	
16. Property/Casualty Premiums Earned	0													
17. Amount Paid for Provision of Health Care Services .....	149,775,668												149,775,668	
18. Amount Incurred for Provision of Health Care Services	87,741,955												87,741,955	

(a) For health premiums written: amount of Medicare Title XVIII exempt from state taxes or fees \$ 93,241,453

## CLAIMS UNPAID AND INCENTIVE POOL, WITHHOLD AND BONUS (Reported and Unreported)

[illegible]



UNDERWRITING AND INVESTMENT EXHIBIT  
ANALYSIS OF CLAIMS UNPAID-PRIOR YEAR-NET OF REINSURANCE

Line of Business	Claims Paid Year to Date		Liability End of Current Quarter		5  Claims Incurred in Prior Years (Columns 1 + 3)	6  Estimated Claim Reserve and Claim Liability Dec. 31 of Prior Year
	1  On Claims Incurred Prior to January 1 of Current Year	2  On Claims Incurred During the Year	3  On Claims Unpaid Dec. 31 of Prior Year	4  On Claims Incurred During the Year		
1. Comprehensive (hospital and medical) individual .....					.0	.0
2. Comprehensive (hospital and medical) group .....					.0	.0
3. Medicare Supplement .....					.0	.0
4. Dental only .....					.0	.0
5. Vision only .....					.0	.0
6. Federal Employees Health Benefits Plan .....					.0	.0
7. Title XVIII - Medicare .....					.0	.0
8. Title XIX - Medicaid .....					.0	.0
9. Credit A&H .....					.0	.0
10. Disability income .....					.0	.0
11. Long-term care .....					.0	.0
12. Other health .....	83,277,185	66,012,197	6,133,741	18,777,344	89,410,926	90,133,855
13. Health subtotal (Lines 1 to 12).....	83,277,185	66,012,197	6,133,741	18,777,344	89,410,926	90,133,855
14. Health care receivables (a) .....					.0	.0
15. Other non-health .....					.0	.0
16. Medical incentive pools and bonus amounts .....					.0	.0
17. Totals (Lines 13-14+15+16)	83,277,185	66,012,197	6,133,741	18,777,344	89,410,926	90,133,855

(a) Excludes \$ ..... loans or advances to providers not yet expensed.

STATEMENT AS OF MARCH 31, 2023 OF THE ELIXIR INSURANCE COMPANY  
NOTES TO FINANCIAL STATEMENTS

1. Summary of Significant Accounting Policies

A. Accounting Practices

The financial statements of Elixir Insurance Company (Company) are presented on the basis of accounting practices prescribed or permitted by the Ohio Department of Insurance (ODI).

The ODI recognizes only statutory accounting practices prescribed or permitted by the state of Ohio for determining and reporting the financial condition and results of operations of an insurance company and for determining its solvency under the Ohio Insurance Law. The National Association of Insurance Commissioners' (NAIC) Accounting Practices and Procedures Manual, (NAIC SAP) has been adopted as a component of prescribed or permitted practices by the state of Ohio. There is no deviation from the NAIC Accounting Practices and Procedures Manual.

	<u>SSAP#</u>	<u>F/S</u> <u>Page</u>	<u>F/S</u> <u>Line</u> <u>#</u>	<u>2023</u>	<u>2022</u>
<b><u>NET INCOME</u></b>					
Elixir Insurance Company, state basis (Page 4, Line 32, Column 2 & 3)				\$3,227,818	\$(7,469,506)
State Prescribed Practices that are an increase/(decrease) from NAIC SAP				\$0	\$0
State Permitted Practices that are an increase/(decrease) from NAIC SAP				\$0	\$0
NAIC SAP				<u>\$3,227,818</u>	<u>\$(7,469,506)</u>
<b><u>SURPLUS</u></b>					
Elixir Insurance Company, state basis (Page 3, Line 33, Column 3 & 4)				\$73,340,798	\$69,828,657
State Prescribed Practices that are an increase/(decrease) from NAIC SAP				\$0	\$0
State Permitted Practices that are an increase/(decrease) from NAIC SAP				\$0	\$0
NAIC SAP				<u>\$73,340,798</u>	<u>\$69,828,657</u>

B. Use of Estimates in the Preparation of the Financial Statements

The preparation of financial statements in conformity with Statutory Accounting Principles requires management to make estimates and assumptions that affect the reported amounts of assets and liabilities. It also requires disclosure of contingent assets and liabilities at the date of the financial statements and the reported amounts of revenue and expenses during the period. Actual results could differ from those estimates.

C. Accounting Policy

No Change.

D. Going Concern

Management has no doubt about the Company's ability to continue as a going concern.

2. Accounting Changes and Corrections of Errors

A. New Accounting Principles

No Change.

B. Accounting Change

No Change.

3. Business Combination and Goodwill

Not applicable to the Company.

4. Discontinued Operations

Not applicable to the Company.

5. Investments

STATEMENT AS OF MARCH 31, 2023 OF THE ELIXIR INSURANCE COMPANY  
NOTES TO FINANCIAL STATEMENTS

- D. Loan-Backed Securities - Not applicable to the Company.
- E. Dollar Repurchase Agreements - Not applicable to the Company.
- F. Repurchase Agreements Transactions Accounted for as Secured Borrowing - Not applicable to the Company.
- G. Reverse Repurchase Agreements Transactions Accounted for as Secured Borrowing - Not applicable to the Company.
- H. Repurchase Agreements Transactions Accounted for as a Sale - Not applicable to the Company.
- I. Reverse Repurchase Agreements Transactions Accounted for as a Sale - Not applicable to the Company.
- M. Working Capital Finance Investments - Not applicable to the Company.
- N. Offsetting and Netting of Assets and Liabilities - Not applicable to the Company.
- R. Share of Cash Pool by Investment Type - Not applicable to the Company.

**6. Joint Ventures, Partnerships and Limited Liability Companies**

Not applicable to the Company.

**7. Investment Income**

No Change.

**8. Derivative Instruments**

- A. Derivatives under SSAP No. 86 - Not applicable to the Company.

**9. Income Taxes**

No Change.

**10. Information Concerning Parent, Subsidiaries and Affiliates**

- A. Nature of the relationship

Elixir Insurance Company is a wholly owned subsidiary of Elixir Holdings LLC. ("EH"). EH is a wholly owned subsidiary of Rite Aid Corporation ("Parent"). Elixir Rx Options, LLC ("ROI") and First Florida Insurers of Tampa, LLC ("FFI") are affiliates of EIC and wholly owned subsidiaries of EH.

- B. Transactions for each period

In February 2023, the Company used the proceeds from the sale of its 2022 CMS Medicare Part D receivables (See Note 17A.) to pay ROI for claims and other amounts outstanding for pharmacy benefit management services. According to the terms of the PBMSA with ROI, the Company was provided with an early payment discount in the amount of \$16.6 million. Additionally, the Company completed an exchange with ROI of an early payment discount applicable to payment of outstanding claims for the deferred purchase price receivable of \$19.2 million received from the sale of its 2022 CMS Medicare Part D receivables.

The Company has a pharmacy benefit management services agreement ("PBMSA") with ROI. The transactions under the agreement totaled \$355,065,667 for the year to date ended March 31, 2023.

The Company has a general insurance agency agreement with its affiliate, First Florida Insurers of Tampa, LLC ("FFI"). The Company incurred \$49,547 in commissions to FFI for the year to date ending March 31, 2023.

- C. The Company did not have any transactions with related parties who are not reported on Schedule Y for the years to date ended March 31, 2023 and December 31, 2022, respectively.

- D. Amounts Due to or from Related Parties

At March 31, 2023 and December 31, 2022, the Company reported \$46,660,996 and \$240,593,967 due to affiliates, respectively. Additionally, the amounts reported as unpaid claims and unpaid claims adjustment expenses are due to ROI under the PBMSA in the amounts of \$21,999,170 and \$1,013,472 as of March 31, 2023 and \$81,384,206 and \$2,323,256 as of December 31, 2022. The March 31, 2022 payable balances represent intercompany transactions that will be settled in accordance with the settlement terms of the PBMSA.

- E. Management, Service Contracts, Cost Sharing Arrangements

STATEMENT AS OF MARCH 31, 2023 OF THE ELIXIR INSURANCE COMPANY  
NOTES TO FINANCIAL STATEMENTS

Under the PBMSA, ROI has agreed to provide certain management services to the Company. These designated services include but are not limited to payroll, claims processing, facilities, customer service and other general administrative services. The PBMSA with ROI was extended to December 31, 2022.

The Company has a written tax sharing agreement with the Parent, and its allocation of the Parent's federal income and state income and premium tax liability is based on the Company's federal tax liability determined as if the Company were filing its own separate tax return each year. The Company's tax sharing agreement with the Parent provides that the Company will pay the Parent for its net operating losses to the extent that such net operating loss is used in the reduction of the Company's federal income tax liability. Furthermore, state income and premium tax that results from a combined/consolidated filing shall be allocated to each entity based on the aggregate apportionment of all participating members included within the respective filing. Intercompany tax balances are settled annually.

- F. The Company did not enter into guarantees or undertaking for the benefit of an affiliate which would result in a material contingent exposure of the Company's or any affiliated insurer's assets or liabilities.
- G. Nature of Relationships that Could Affect Operations  
  
All outstanding shares of the Company are owned by EPH.
- H. Amount Deducted for Investment in Upstream Company  
  
None
- I. Detail of Investments in Subsidiaries, Controlled or Affiliated Companies Greater than 10% of Admitted Assets  
  
None
- J. Write-down for Impairments of Investments in Subsidiaries, Controlled or Affiliated Companies  
  
None
- K. Investment in a Foreign Insurance Subsidiary  
  
None
- L. Investment in Downstream Noninsurance Holding Company  
  
None
- M. All Investments in Subsidiaries, Controlled or Affiliated Companies  
  
None
- N. Investments in Insurance Subsidiaries, Controlled or Affiliated Companies  
  
None
- O. Subsidiaries, Controlled or Affiliated Companies Loss Tracking  
  
None

**11. Debt**

- B. FHLB agreements - Not applicable to the Company.

**12. Retirement Plans, Deferred Compensation, Postemployment Benefits and Compensated Absences and Other Postretirement Benefit Plans.**

- A. Defined Benefit Plan - Not applicable to the Company.

**13. Capital and Surplus, Dividend Restrictions and Quasi-Reorganizations**

None

**14. Liabilities, Contingencies and Assessments**

Not applicable to the Company.

STATEMENT AS OF MARCH 31, 2023 OF THE ELIXIR INSURANCE COMPANY  
NOTES TO FINANCIAL STATEMENTS

**15. Leases**

Not applicable to the Company.

**16. Information about Financial Instruments with Off-Balance Sheet Risk and Financial Instruments with Concentrations of Credit Risk**

Not applicable to the Company.

**17. Sale, Transfer and Servicing of Financial Assets and Extinguishments of Liabilities**

A. Transfers of Receivables Reported as Sales

In February 2023, the Company sold its 2022 Plan Year Medicare Part D Risk Corridor, Low Income Cost Sharing Subsidies, and Catastrophic Reinsurance Subsidies receivables as of December 31, 2022 of \$278.4 million without recourse to an investor. The Company realized a loss of as a result of the sale of \$16.6 million. As discussed in Note 10B, in accordance to the terms of the PBMSA with ROI, the Company also earned a correlating early pay discount in the amount of \$16.6 million.

B. Transfer and Servicing of Financial Assets - Not applicable to the Company.

C. Wash Sales - Not applicable to the Company.

**18. Gain or Loss to the Reporting Entity from Uninsured Plans and the Uninsured Portion of Partially Insured Plans**

Not applicable to the Company.

**19. Direct Premium Written/Produced by Managing General Agents/Third Party Administrators**

Not applicable to the Company.

**20. Fair Value Measurements**

The Company has no assets or liabilities recorded at fair value as of March 31, 2022.

**21. Other Items**

C. Other Disclosures and Unusual Items

COVID-19 Pandemic

The U.S. and global economies have been transformed by the impact of the pandemic outbreak of the COVID-19 virus. The global environment has changed and organizations continue to adapt to the impacts of the virus, and how it has reshaped the global economy. While the Company has not identified any direct impacts associated with this new environment that is estimable, uncertainty does exist as to how this may impact the Company's operations in future periods.

**22. Events Subsequent**

Not applicable to the Company.

**23. Reinsurance**

Not applicable to the Company.

**24. Retrospectively Rated Contracts & Contracts Subject to Redetermination**

E. Risk-Sharing Provisions of the Affordable Care Act - Not applicable to the Company.

**25. Change in Incurred Claims and Claims Adjustment Expenses**

Unpaid claims and claims adjustment expenses were \$25,924,557 at March 31, 2022. In 2022, \$85,600,441 was paid for incurred claims and claims adjustment expenses attributable to insured events of 2022 and prior years. The reserves at March 31, 2022 are for current year activities except for a \$6.1M IBNR reserve for the 2022 and prior plan year settlements.

**26. Intercompany Pooling Arrangements**

Not applicable to the Company.

STATEMENT AS OF MARCH 31, 2023 OF THE ELIXIR INSURANCE COMPANY  
NOTES TO FINANCIAL STATEMENTS

**27. Structured Settlements**

Not applicable to the Company.

**28. Health Care Receivables**

Not applicable to the Company.

**29. Participating Policies**

Not applicable to the Company.

**30. Premium Deficiency Reserves**

Not applicable to the Company.

**31. Anticipated Subrogation and Other Receivables**

Not applicable to the Company.

GENERAL INTERROGATORIES

PART 1 - COMMON INTERROGATORIES

GENERAL

- 1.1

Did the reporting entity experience any material transactions requiring the filing of Disclosure of Material Transactions with the State of Domicile, as required by the Model Act?

Yes ☒ No ☐
- 1.2

If yes, has the report been filed with the domiciliary state?

Yes ☒ No ☐
- 2.1

Has any change been made during the year of this statement in the charter, by-laws, articles of incorporation, or deed of settlement of the reporting entity?

Yes ☐ No ☒
- 2.2

If yes, date of change:
- 3.1

Is the reporting entity a member of an Insurance Holding Company System consisting of two or more affiliated persons, one or more of which is an insurer?

Yes ☒ No ☐
- If yes, complete Schedule Y, Parts 1 and 1A.
- 3.2

Have there been any substantial changes in the organizational chart since the prior quarter end?

Yes ☐ No ☒
- 3.3

If the response to 3.2 is yes, provide a brief description of those changes.
- 3.4

Is the reporting entity publicly traded or a member of a publicly traded group?

Yes ☒ No ☐
- 3.5

If the response to 3.4 is yes, provide the CIK (Central Index Key) code issued by the SEC for the entity/group

84129
- 4.1

Has the reporting entity been a party to a merger or consolidation during the period covered by this statement?

Yes ☐ No ☒
- 4.2

If yes, provide the name of entity, NAIC Company Code, and state of domicile (use two letter state abbreviation) for any entity that has ceased to exist as a result of the merger or consolidation.

1	2	3
Name of Entity	NAIC Company Code	State of Domicile

5.

If the reporting entity is subject to a management agreement, including third-party administrator(s), managing general agent(s), attorney-in-fact, or similar agreement, have there been any significant changes regarding the terms of the agreement or principals involved?

Yes ☐ No ☒ NA ☐
- If yes, attach an explanation.
- 6.1

State as of what date the latest financial examination of the reporting entity was made or is being made.

12/31/2020
- 6.2

State the as of date that the latest financial examination report became available from either the state of domicile or the reporting entity. This date should be the date of the examined balance sheet and not the date the report was completed or released.

12/31/2020
- 6.3

State as of what date the latest financial examination report became available to other states or the public from either the state of domicile or the reporting entity. This is the release date or completion date of the examination report and not the date of the examination (balance sheet date).

06/30/2022
- 6.4

By what department or departments?

Ohio Department of Insurance
- 6.5

Have all financial statement adjustments within the latest financial examination report been accounted for in a subsequent financial statement filed with Departments?

Yes ☐ No ☐ NA ☒
- 6.6

Have all of the recommendations within the latest financial examination report been complied with?

Yes ☐ No ☐ NA ☒
- 7.1

Has this reporting entity had any Certificates of Authority, licenses or registrations (including corporate registration, if applicable) suspended or revoked by any governmental entity during the reporting period?

Yes ☐ No ☒
- 7.2

If yes, give full information:
- 8.1

Is the company a subsidiary of a bank holding company regulated by the Federal Reserve Board?

Yes ☐ No ☒
- 8.2

If response to 8.1 is yes, please identify the name of the bank holding company.
- 8.3

Is the company affiliated with one or more banks, thrifts or securities firms?

Yes ☐ No ☒
- 8.4

If response to 8.3 is yes, please provide below the names and location (city and state of the main office) of any affiliates regulated by a federal regulatory services agency [i.e. the Federal Reserve Board (FRB), the Office of the Comptroller of the Currency (OCC), the Federal Deposit Insurance Corporation (FDIC) and the Securities Exchange Commission (SEC)] and identify the affiliate's primary federal regulator.]

1	2	3	4	5	6
Affiliate Name	Location (City, State)	FRB	OCC	FDIC	SEC

- 9.1

Are the senior officers (principal executive officer, principal financial officer, principal accounting officer or controller, or persons performing similar functions) of the reporting entity subject to a code of ethics, which includes the following standards?

Yes ☒ No ☐
- (a) Honest and ethical conduct, including the ethical handling of actual or apparent conflicts of interest between personal and professional relationships;
- (b) Full, fair, accurate, timely and understandable disclosure in the periodic reports required to be filed by the reporting entity;
- (c) Compliance with applicable governmental laws, rules and regulations;
- (d) The prompt internal reporting of violations to an appropriate person or persons identified in the code; and
- (e) Accountability for adherence to the code.
- 9.11

If the response to 9.1 is No, please explain:
- 9.2

Has the code of ethics for senior managers been amended?

Yes ☐ No ☒
- 9.21

If the response to 9.2 is Yes, provide information related to amendment(s).
- 9.3

Have any provisions of the code of ethics been waived for any of the specified officers?

Yes ☐ No ☒
- 9.31

If the response to 9.3 is Yes, provide the nature of any waiver(s).

FINANCIAL

- 10.1

Does the reporting entity report any amounts due from parent, subsidiaries or affiliates on Page 2 of this statement?

Yes ☐ No ☒
- 10.2

If yes, indicate any amounts receivable from parent included in the Page 2 amount:

\$

GENERAL INTERROGATORIES

INVESTMENT

11.1 Were any of the stocks, bonds, or other assets of the reporting entity loaned, placed under option agreement, or otherwise made available for use by another person? (Exclude securities under securities lending agreements.) ..... Yes [ ] No [X]

11.2 If yes, give full and complete information relating thereto: .....  
.....

12. Amount of real estate and mortgages held in other invested assets in Schedule BA: .....\$ .....0

13. Amount of real estate and mortgages held in short-term investments: .....\$ .....0

14.1 Does the reporting entity have any investments in parent, subsidiaries and affiliates? ..... Yes [ ] No [X]

14.2 If yes, please complete the following:

	1	2
	Prior Year-End Book/Adjusted Carrying Value	Current Quarter Book/Adjusted Carrying Value
14.21 Bonds .....	\$ .....0	\$ .....0
14.22 Preferred Stock .....	\$ .....0	\$ .....0
14.23 Common Stock .....	\$ .....0	\$ .....0
14.24 Short-Term Investments .....	\$ .....0	\$ .....0
14.25 Mortgage Loans on Real Estate .....	\$ .....0	\$ .....0
14.26 All Other .....	\$ .....0	\$ .....0
14.27 Total Investment in Parent, Subsidiaries and Affiliates (Subtotal Lines 14.21 to 14.26).....	\$ .....0	\$ .....0
14.28 Total Investment in Parent included in Lines 14.21 to 14.26 above .....	\$ .....0	\$ .....0

15.1 Has the reporting entity entered into any hedging transactions reported on Schedule DB? ..... Yes [ ] No [X]

15.2 If yes, has a comprehensive description of the hedging program been made available to the domiciliary state? ..... Yes [ ] No [ ] NA [X]  
If no, attach a description with this statement.

16. For the reporting entity's security lending program, state the amount of the following as of the current statement date:  
16.1 Total fair value of reinvested collateral assets reported on Schedule DL, Parts 1 and 2 .....\$ .....0  
16.2 Total book/adjusted carrying value of reinvested collateral assets reported on Schedule DL, Parts 1 and 2 .....\$ .....0  
16.3 Total payable for securities lending reported on the liability page .....\$ .....0

17. Excluding items in Schedule E – Part 3 – Special Deposits, real estate, mortgage loans and investments held physically in the reporting entity's offices, vaults or safety deposit boxes, were all stocks, bonds and other securities, owned throughout the current year held pursuant to a custodial agreement with a qualified bank or trust company in accordance with Section 1, III – General Examination Considerations, F. Outsourcing of Critical Functions, Custodial or Safekeeping Agreements of the NAIC *Financial Condition Examiners Handbook*? ..... Yes [X] No [ ]

17.1 For all agreements that comply with the requirements of the NAIC *Financial Condition Examiners Handbook*, complete the following:

1	2
Name of Custodian(s)	Custodian Address
Huntington National Bank.....	300 Market Street, Akron, OH 44308.....

17.2 For all agreements that do not comply with the requirements of the NAIC *Financial Condition Examiners Handbook*, provide the name, location and a complete explanation:

1	2	3
Name(s)	Location(s)	Complete Explanation(s)

17.3 Have there been any changes, including name changes, in the custodian(s) identified in 17.1 during the current quarter? ..... Yes [ ] No [X]

17.4 If yes, give full and complete information relating thereto:

1	2	3	4
Old Custodian	New Custodian	Date of Change	Reason

17.5 Investment management – Identify all investment advisors, investment managers, broker/dealers, including individuals that have the authority to make investment decisions on behalf of the reporting entity. For assets that are managed internally by employees of the reporting entity, note as such. ["...that have access to the investment accounts"; "...handle securities"]

1	2
Name of Firm or Individual	Affiliation

17.5097 For those firms/individuals listed in the table for Question 17.5, do any firms/individuals unaffiliated with the reporting entity (i.e., designated with a "U") manage more than 10% of the reporting entity's invested assets? ..... Yes [ ] No [X]

17.5098 For firms/individuals unaffiliated with the reporting entity (i.e., designated with a "U") listed in the table for Question 17.5, does the total assets under management aggregate to more than 50% of the reporting entity's invested assets? ..... Yes [ ] No [X]

17.6 For those firms or individuals listed in the table for 17.5 with an affiliation code of "A" (affiliated) or "U" (unaffiliated), provide the information for the table below.

1	2	3	4	5
Central Registration Depository Number	Name of Firm or Individual	Legal Entity Identifier (LEI)	Registered With	Investment Management Agreement (IMA) Filed

18.1 Have all the filing requirements of the *Purposes and Procedures Manual of the NAIC Investment Analysis Office* been followed? ..... Yes [X] No [ ]

18.2 If no, list exceptions: .....  
.....

19. By self-designating 5GI securities, the reporting entity is certifying the following elements for each self-designated 5GI security:

- a. Documentation necessary to permit a full credit analysis of the security does not exist or an NAIC CRP credit rating for an FE or PL security is not available.
- b. Issuer or obligor is current on all contracted interest and principal payments.
- c. The insurer has an actual expectation of ultimate payment of all contracted interest and principal.

Has the reporting entity self-designated 5GI securities?..... Yes [ ] No [X]

20. By self-designating PLGI securities, the reporting entity is certifying the following elements of each self-designated PLGI security:

- a. The security was purchased prior to January 1, 2018.
- b. The reporting entity is holding capital commensurate with the NAIC Designation reported for the security.
- c. The NAIC Designation was derived from the credit rating assigned by an NAIC CRP in its legal capacity as a NRSRO which is shown on a current private letter rating held by the insurer and available for examination by state insurance regulators.
- d. The reporting entity is not permitted to share this credit rating of the PL security with the SVO.

Has the reporting entity self-designated PLGI securities?..... Yes [ ] No [X]



GENERAL INTERROGATORIES

21. By assigning FE to a Schedule BA non-registered private fund, the reporting entity is certifying the following elements of each self-designated FE fund:
- a. The shares were purchased prior to January 1, 2019.
  - b. The reporting entity is holding capital commensurate with the NAIC Designation reported for the security.
  - c. The security had a public credit rating(s) with annual surveillance assigned by an NAIC CRP in its legal capacity as an NRSRO prior to January 1, 2019.
  - d. The fund only or predominantly holds bonds in its portfolio.
  - e. The current reported NAIC Designation was derived from the public credit rating(s) with annual surveillance assigned by an NAIC CRP in its legal capacity as an NRSRO.
  - f. The public credit rating(s) with annual surveillance assigned by an NAIC CRP has not lapsed.

Has the reporting entity assigned FE to Schedule BA non-registered private funds that complied with the above criteria?..... Yes [ ] No [X]

GENERAL INTERROGATORIES  
PART 2 - HEALTH

1.

Operating Percentages:

1.1 A&H loss percent

92.7 %

1.2 A&H cost containment percent

0.0 %

1.3 A&H expense percent excluding cost containment expenses

%

2.1

Do you act as a custodian for health savings accounts?

Yes ☐ No ☒

2.2

If yes, please provide the amount of custodial funds held as of the reporting date

\$

2.3

Do you act as an administrator for health savings accounts?

Yes ☐ No ☒

2.4

If yes, please provide the balance of the funds administered as of the reporting date

\$

3.

Is the reporting entity licensed or chartered, registered, qualified, eligible or writing business in at least two states?

Yes ☒ No ☐

3.1

If no, does the reporting entity assume reinsurance business that covers risks residing in at least one state other than the state of domicile of the reporting entity?

Yes ☐ No ☐

**STATEMENT AS OF MARCH 31, 2023 OF THE Elixir Insurance Company**

## SCHEDULE S - CEDED REINSURANCE

Showing All New Reinsurance Treaties - Current Year to Date

[illegible]

NONE

SCHEDULE T - PREMIUMS AND OTHER CONSIDERATIONS

Current Year to Date - Allocated by States and Territories											
States, Etc.		1  Active Status (a)	Direct Business Only								
			2  Accident & Health Premiums	3  Medicare Title XVIII	4  Medicaid Title XIX	5  CHIP Title XXI	6  Federal Employees Health Benefits Program Premiums	7  Life & Annuity Premiums & Other Considerations	8  Property/ Casualty Premiums	9  Total Columns 2 Through 8	10  Deposit-Type Contracts
1.	Alabama	AL	L	1,327,792						1,327,792	
2.	Alaska	AK	L	229,502						229,502	
3.	Arizona	AZ	L	1,780,729						1,780,729	
4.	Arkansas	AR	L	158,130						158,130	
5.	California	CA	L	9,157,508						9,157,508	
6.	Colorado	CO	L	991,638						991,638	
7.	Connecticut	CT	L	1,302,359						1,302,359	
8.	Delaware	DE	L	1,012,924						1,012,924	
9.	Dist. Columbia	DC	L	135,913						135,913	
10.	Florida	FL	L	1,063,378						1,063,378	
11.	Georgia	GA	L	4,502,562						4,502,562	
12.	Hawaii	HI	L	9,233						9,233	
13.	Idaho	ID	L	198,892						198,892	
14.	Illinois	IL	L	5,276,037						5,276,037	
15.	Indiana	IN	L	773,424						773,424	
16.	Iowa	IA	L	97,553						97,553	
17.	Kansas	KS	L	54,498						54,498	
18.	Kentucky	KY	L	531,005						531,005	
19.	Louisiana	LA	L	162,697						162,697	
20.	Maine	ME	L	589,533						589,533	
21.	Maryland	MD	L	2,307,562						2,307,562	
22.	Massachusetts	MA	L	2,818,751						2,818,751	
23.	Michigan	MI	L	5,711,745						5,711,745	
24.	Minnesota	MN	L	116,891						116,891	
25.	Mississippi	MS	L	2,840,147						2,840,147	
26.	Missouri	MO	L	133,958						133,958	
27.	Montana	MT	L	65,317						65,317	
28.	Nebraska	NE	L	56,678						56,678	
29.	Nevada	NV	L	76,519						76,519	
30.	New Hampshire	NH	L	1,193,754						1,193,754	
31.	New Jersey	NJ	L	452,420						452,420	
32.	New Mexico	NM	L	825,466						825,466	
33.	New York	NY	L	5,349,891						5,349,891	
34.	North Carolina	NC	L	3,024,247						3,024,247	
35.	North Dakota	ND	L	35,318						35,318	
36.	Ohio	OH	L	4,940,879						4,940,879	
37.	Oklahoma	OK	L	71,676						71,676	
38.	Oregon	OR	L	3,404,511						3,404,511	
39.	Pennsylvania	PA	L	10,648,210						10,648,210	
40.	Rhode Island	RI	L	293,533						293,533	
41.	South Carolina	SC	L	4,421,211						4,421,211	
42.	South Dakota	SD	L	31,438						31,438	
43.	Tennessee	TN	L	1,730,473						1,730,473	
44.	Texas	TX	L	2,231,297						2,231,297	
45.	Utah	UT	L	125,567						125,567	
46.	Vermont	VT	L	746,208						746,208	
47.	Virginia	VA	L	898,010						898,010	
48.	Washington	WA	L	5,113,812						5,113,812	
49.	West Virginia	WV	L	1,627,265						1,627,265	
50.	Wisconsin	WI	L	2,655,519						2,655,519	
51.	Wyoming	WY	L	42,604						42,604	
52.	American Samoa	AS	N							0	
53.	Guam	GU	L	237						237	
54.	Puerto Rico	PR	L	1,988						1,988	
55.	U.S. Virgin Islands	VI	N							0	
56.	Northern Mariana Islands	MP	N							0	
57.	Canada	CAN	N							0	
58.	Aggregate other alien	OT	XXX	0	0	0	0	0	0	0	0
59.	Subtotal	XXX		93,348,410	0	0	0	0	0	93,348,410	0
60.	Reporting entity contributions for Employee Benefit Plans	XXX								0	
61.	Total (Direct Business)	XXX		93,348,410	0	0	0	0	0	93,348,410	0
DETAILS OF WRITE-INS											
58001.		XXX									
58002.		XXX									
58003.		XXX									
58998.	Summary of remaining write-ins for Line 58 from overflow page.	XXX		0	0	0	0	0	0	0	0
58999.	Totals (Lines 58001 through 58003 plus 58998) (Line 58 above)	XXX		0	0	0	0	0	0	0	0

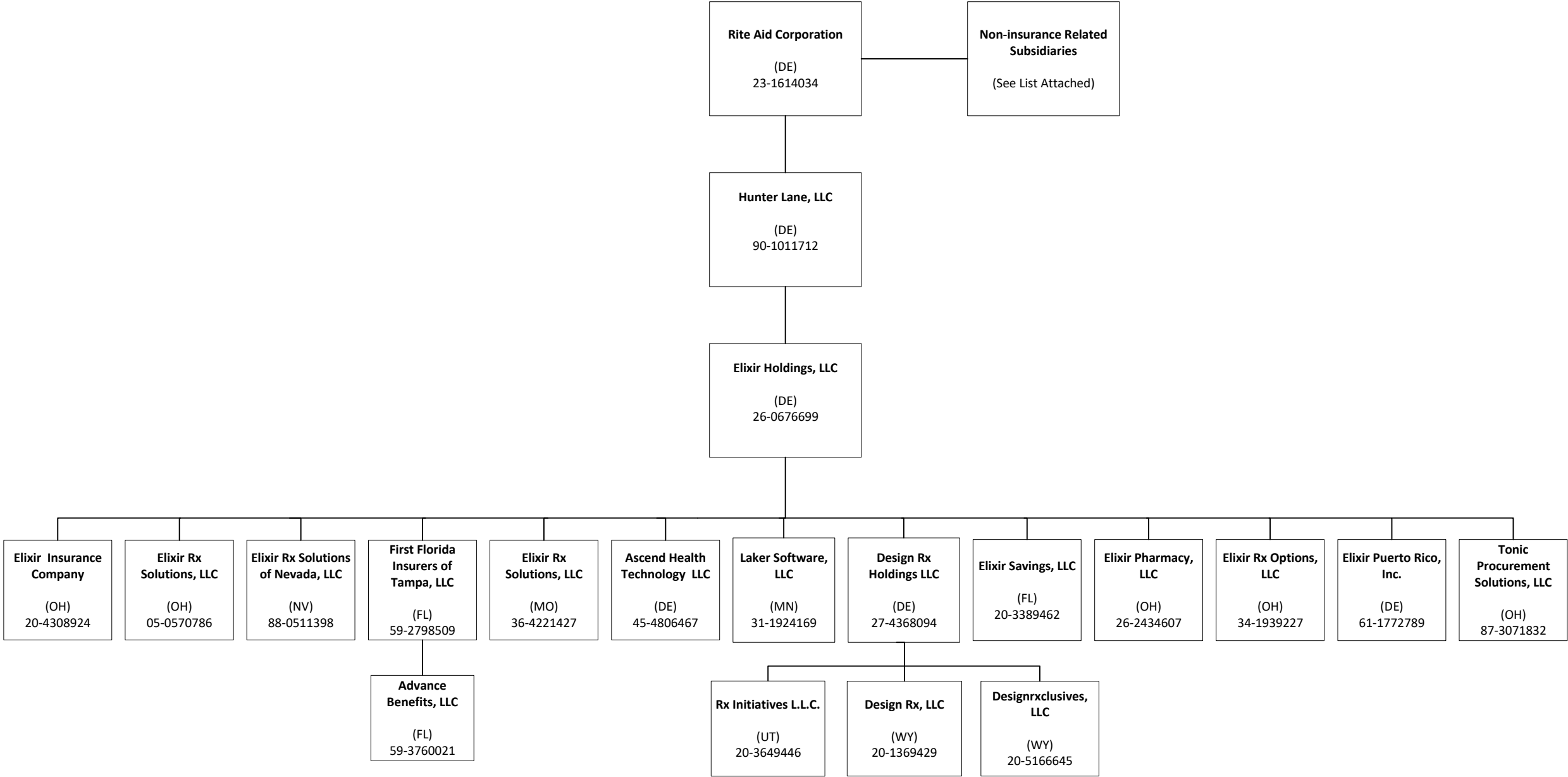
(a) Active Status Counts

1. L – Licensed or Chartered – Licensed insurance carrier or domiciled RRG .....53

2. R – Registered – Non-domiciled RRGs .....0

3. E – Eligible – Reporting entities eligible or approved to write surplus lines in the state .....0
4. Q – Qualified – Qualified or accredited reinsurer .....0

5. N – None of the above – Not allowed to write business in the state.....4



<b>Company</b> <b>(Name in which such subsidiary conducts business if other than corporate name):</b>	<b>State of Incorporation or Organization</b>
1515 West State Street Boise, Idaho, LLC	Delaware
1740 Associates, LLC	Michigan
4042 Warrensville Center Road—Warrensville Ohio, Inc.	Ohio
5277 Associates, Inc.	Washington
5600 Superior Properties, Inc.	Ohio
Apex Drug Stores, Inc.	Michigan
Broadview and Wallings—Broadview Heights Ohio, Inc.	Ohio
Drug Palace, Inc.	Maine
Eckerd Corporation	Delaware
EDC Drug Stores, Inc.	North Carolina
GDF, Inc.	Maryland
Genovese Drug Stores, Inc.	Delaware
Gettysburg and Hoover-Dayton, Ohio LLC	Ohio
Grand River & Fenkell, LLC	Delaware
Harco, Inc.	Alabama
Health Dialog Services Corporation	Delaware
ILG – 90 B Avenue Lake Oswego, LLC	Delaware
JCG (PJC) USA, LLC	Delaware
JCG Holdings (USA), Inc.	Delaware
Juniper Rx, LLC	Delaware
K&B Alabama Corporation	Alabama
K&B Louisiana Corporation	Louisiana
K&B Mississippi Corporation	Mississippi
K&B Services, Incorporated	Louisiana
K&B Tennessee Corporation	Tennessee
K&B Texas Corporation	Texas
K&B, Incorporated	Delaware
Lakehurst and Broadway Corporation	New Jersey
LMW – 90B Avenue Lake Oswego Inc.	Delaware
Maxi Drug North, Inc.	Delaware
Maxi Drug South, L.P.	Delaware
Maxi Drug, Inc.	Delaware
Maxi Green, Inc.	Vermont
Munson & Andrews, LLC	Delaware
Name Rite, LLC	Delaware
P.J.C. Distribution, Inc.	Delaware
P.J.C. Realty Co., Inc.	Delaware
PDS-1 Michigan, Inc.	Michigan
Perry Distributors, Inc.	Michigan
Perry Drug Stores Inc.	Michigan
PJC Lease Holdings, Inc.	Delaware
PJC Manchester Realty LLC	Delaware
PJC of Massachusetts, Inc.	Massachusetts
PJC of Rhode Island, Inc.	Rhode Island
PJC of Vermont, Inc.	Vermont
PJC Peterborough Realty LLC	Delaware
PJC Realty MA, Inc.	Massachusetts
PJC Revere Realty LLC	Delaware
PJC Special Realty Holdings, Inc.	Delaware
RCMH, LLC	Texas
RDS Detroit, Inc.	Michigan
READ’s Inc.	Maryland
RediClinic Associates, Inc.	Delaware
RediClinic LLC	Delaware
RediClinic of Dallas Forth-Worth, LLC	Delaware
RediClinic of DC, LLC	Delaware
RediClinic of DE, LLC	Delaware
RediClinic of MD, LLC	Delaware
RediClinic of PA, LLC	Delaware
RediClinic of VA, LLC	Delaware
RediClinic US, LLC	Delaware
Richfield Road – Flint, Michigan, LLC	Michigan
Rite Aid Drug Palace, Inc.	Delaware
Rite Aid Hdqtrs. Corp.	Delaware
Rite Aid Hdqtrs. Funding, Inc.	Delaware
Rite Aid Lease Management Company	California
Rite Aid of Connecticut, Inc.	Connecticut
Rite Aid of Delaware, Inc.	Delaware
Rite Aid of Georgia, Inc.	Georgia
Rite Aid of Indiana, Inc.	Indiana

Company (Name in which such subsidiary conducts business if other than corporate name):	State of Incorporation or Organization
Rite Aid of Kentucky, Inc.	Kentucky
Rite Aid of Maine, Inc.	Maine
Rite Aid of Maryland, Inc.	Maryland
Rite Aid of Michigan, Inc.	Michigan
Rite Aid of New Hampshire, Inc.	New Hampshire
Rite Aid of New Jersey, Inc.	New Jersey
Rite Aid of New York, Inc.	New York
Rite Aid of North Carolina, Inc.	North Carolina
Rite Aid of Ohio, Inc.	Ohio
Rite Aid of Pennsylvania, LLC	Pennsylvania
Rite Aid of South Carolina, Inc.	South Carolina
Rite Aid of Tennessee, Inc.	Tennessee
Rite Aid of Vermont, Inc.	Vermont
Rite Aid of Virginia, Inc.	Virginia
Rite Aid of Washington, D.C., Inc.	Washington DC
Rite Aid of West Virginia, Inc.	West Virginia
Rite Aid Online Store Inc.	Delaware
Rite Aid Payroll Management Inc.	Delaware
Rite Aid Realty Corp.	Delaware
Rite Aid Rome Distribution Center, Inc.	New York
Rite Aid Specialty Pharmacy LLC	Delaware
Rite Aid Transport, Inc.	Delaware
Rite Investments Corp.	Delaware
Rite Investments Corp., LLC	Delaware
Rx Choice, Inc.	Delaware
Rx USA, Inc.	Delaware
The Bartell Drug Company	Washington
The Jean Coutu Group (PJC) USA, Inc.	Delaware
The Lane Drug Company	Ohio
Thrift Drug Inc.	Delaware
Thrifty Corporation	California
Thrifty PayLess, Inc.	California

STATEMENT AS OF MARCH 31, 2023 OF THE Elixir Insurance Company

SCHEDULE Y  
PART 1A – DETAIL OF INSURANCE HOLDING COMPANY SYSTEM

1	2	3	4	5	6	7	8	9	10	11	12	13	14	15	16
Group Code	Group Name	NAIC Company Code	ID Number	Federal RSSD	CIK	Name of Securities Exchange if Publicly Traded (U.S. or International)	Names of Parent, Subsidiaries or Affiliates	Domiciliary Location	Relationship to Reporting Entity	Directly Controlled by (Name of Entity/Person)	Type of Control (Ownership, Board, Management, Attorney-in-Fact, Influence, Other)	If Control is Ownership Provide Percentage	Ultimate Controlling Entity(ies)/Person(s)	Is an SCA Filing Required? (Yes/No)	*
			23-1614034		84129	NYSE	Rite Aid Corporation	DE	UDP	Board of Directors	Board of Directors	100.0	Rite Aid Corporation	NO	.0
			90-1011712				Hunter Lane, LLC	DE	NIA	Rite Aid Corporation	Ownership	100.0	Rite Aid Corporation	NO	.0
			26-0676699				Elixir Holdings LLC	DE	NIA	Hunter Lane, LLC	Ownership	100.0	Rite Aid Corporation	NO	.0
		12747	20-4308924				Elixir Insurance Company	OH	RE	Elixir Holdings LLC	Ownership	100.0	Rite Aid Corporation	NO	.0
			34-1939227				Elixir Rx Options, LLC	OH	NIA	Elixir Holdings LLC	Ownership	100.0	Rite Aid Corporation	NO	.0
			36-4221427				Elixir Rx Solutions, LLC	MO	NIA	Elixir Holdings LLC	Ownership	100.0	Rite Aid Corporation	NO	.0
			05-0570786				Elixir Rx Solutions, LLC	OH	NIA	Elixir Holdings LLC	Ownership	100.0	Rite Aid Corporation	NO	.0
			88-0511398				Elixir Rx Solutions of Nevada, LLC	NV	NIA	Elixir Holdings LLC	Ownership	100.0	Rite Aid Corporation	NO	.0
			20-3389462				Elixir Savings, LLC	FL	NIA	Elixir Holdings LLC	Ownership	100.0	Rite Aid Corporation	NO	.0
			26-2434607				Elixir Pharmacy, LLC	OH	NIA	Elixir Holdings LLC	Ownership	100.0	Rite Aid Corporation	NO	.0
			61-1772789				Elixir Puerto Rico	DE	NIA	Elixir Holdings LLC	Ownership	100.0	Rite Aid Corporation	NO	.0
			87-3071832				Tonic Procurement Solutions	OH	NIA	Elixir Holdings LLC	Ownership	100.0	Rite Aid Corporation	NO	.0
			59-2798509				First Florida Insurers of Tampa, LLC	OH	NIA	Elixir Holdings LLC	Ownership	100.0	Rite Aid Corporation	NO	.0
			59-3760021				Advance Benefits, LLC	FL	NIA	Elixir Holdings LLC	Ownership	100.0	Rite Aid Corporation	NO	.0
			27-4368094				Design Rx Holdings LLC	DE	NIA	Elixir Holdings LLC	Ownership	100.0	Rite Aid Corporation	NO	.0
			20-1369429				Design Rx, LLC	WY	NIA	Design Rx Holdings Corporation, LLC	Ownership	100.0	Rite Aid Corporation	NO	.0
			20-5166645				Design Rxclusives, LLC	WY	NIA	Design Rx Holdings Corporation, LLC	Ownership	100.0	Rite Aid Corporation	NO	.0
			20-3649446				Rx Initiatives L.L.C	UT	NIA	Design Rx Holdings Corporation, LLC	Ownership	100.0	Rite Aid Corporation	NO	.0
			45-4806467				Ascend Health Technology LLC	DE	NIA	Elixir Holdings LLC	Ownership	100.0	Rite Aid Corporation	NO	.0

Asterisk	Explanation



SUPPLEMENTAL EXHIBITS AND SCHEDULES INTERROGATORIES

The following supplemental reports are required to be filed as part of your statement filing. However, in the event that your company does not transact the type of business for which the special report must be filed, your response of **NO** to the specific interrogatory will be accepted in lieu of filing a "NONE" report and a bar code will be printed below. If the supplement is required of your company but is not being filed for whatever reason enter **SEE EXPLANATION** and provide an explanation following the interrogatory questions.

	Response
1. Will the Medicare Part D Coverage Supplement be filed with the state of domicile and the NAIC with this statement?	.....YES.....
<b>AUGUST FILING</b>	
2. Will the regulator-only (non-public) Communication of Internal Control Related Matters Noted in Audit be filed with the state of domicile and electronically with the NAIC (as a regulator-only non-public document) by August 1? The response for 1st and 3rd quarters should be N/A. A NO response resulting with a bar code is only appropriate in the 2nd quarter.	.....N/A.....

Explanation:

Bar Code:

OVERFLOW PAGE FOR WRITE-INS

SCHEDULE A – VERIFICATION

Real Estate

	1	2
	Year To Date	Prior Year Ended December 31
1. Book/adjusted carrying value, December 31 of prior year .....	0	0
2. Cost of acquired:		
2.1 Actual cost at time of acquisition .....		0
2.2 Additional investment made after acquisition .....		0
3. Current year change in encumbrances .....		0
4. Total gain (loss) on disposals .....		0
5. Deduct amounts received on disposals .....		0
6. Total foreign exchange change in book/adjusted carrying value .....		0
7. Deduct current year's other-than-temporary impairment recognized .....		0
8. Deduct current year's depreciation .....		0
9. Book/adjusted carrying value at the end of current period (Lines 1+2+3+4-5+6-7-8) .....	0	0
10. Deduct total nonadmitted amounts .....	0	0
11. Statement value at end of current period (Line 9 minus Line 10) .....	0	0

SCHEDULE B – VERIFICATION

Mortgage Loans

	1	2
	Year To Date	Prior Year Ended December 31
1. Book value/recorded investment excluding accrued interest, December 31 of prior year .....	0	0
2. Cost of acquired:		
2.1 Actual cost at time of acquisition .....		0
2.2 Additional investment made after acquisition .....		0
3. Capitalized deferred interest and other .....		0
4. Accrual of discount .....		0
5. Unrealized valuation increase (decrease) .....		0
6. Total gain (loss) on disposals .....		0
7. Deduct amounts received on disposals .....		0
8. Deduct amortization of premium and mortgage interest points and commitment fees .....		0
9. Total foreign exchange change in book value/recorded investment excluding accrued interest .....		0
10. Deduct current year's other-than-temporary impairment recognized .....		0
11. Book value/recorded investment excluding accrued interest at end of current period (Lines 1+2+3+4+5+6-7-8+9-10) .....	0	0
12. Total valuation allowance .....		0
13. Subtotal (Line 11 plus Line 12) .....	0	0
14. Deduct total nonadmitted amounts .....	0	0
15. Statement value at end of current period (Line 13 minus Line 14) .....	0	0

SCHEDULE BA – VERIFICATION

Other Long-Term Invested Assets

	1	2
	Year To Date	Prior Year Ended December 31
1. Book/adjusted carrying value, December 31 of prior year .....	0	0
2. Cost of acquired:		
2.1 Actual cost at time of acquisition .....		0
2.2 Additional investment made after acquisition .....		0
3. Capitalized deferred interest and other .....		0
4. Accrual of discount .....		0
5. Unrealized valuation increase (decrease) .....		0
6. Total gain (loss) on disposals .....		0
7. Deduct amounts received on disposals .....		0
8. Deduct amortization of premium and depreciation .....		0
9. Total foreign exchange change in book/adjusted carrying value .....		0
10. Deduct current year's other-than-temporary impairment recognized .....		0
11. Book/adjusted carrying value at end of current period (Lines 1+2+3+4+5+6-7-8+9-10) .....	0	0
12. Deduct total nonadmitted amounts .....	0	0
13. Statement value at end of current period (Line 11 minus Line 12) .....	0	0

SCHEDULE D – VERIFICATION

Bonds and Stocks

	1	2
	Year To Date	Prior Year Ended December 31
1. Book/adjusted carrying value of bonds and stocks, December 31 of prior year .....	7,672,772	7,418,572
2. Cost of bonds and stocks acquired .....	208,281	544,671
3. Accrual of discount .....		200
4. Unrealized valuation increase (decrease) .....		0
5. Total gain (loss) on disposals .....		0
6. Deduct consideration for bonds and stocks disposed of .....	200,000	200,000
7. Deduct amortization of premium .....	24,506	90,671
8. Total foreign exchange change in book/adjusted carrying value .....		0
9. Deduct current year's other-than-temporary impairment recognized .....		0
10. Total investment income recognized as a result of prepayment penalties and/or acceleration fees .....		0
11. Book/adjusted carrying value at end of current period (Lines 1+2+3+4+5-6-7+8-9+10) .....	7,656,547	7,672,772
12. Deduct total nonadmitted amounts .....	0	0
13. Statement value at end of current period (Line 11 minus Line 12) .....	7,656,547	7,672,772

STATEMENT AS OF MARCH 31, 2023 OF THE Elixir Insurance Company

SCHEDULE D - PART 1B

Showing the Acquisitions, Dispositions and Non-Trading Activity  
During the Current Quarter for all Bonds and Preferred Stock by NAIC Designation

NAIC Designation	1 Book/Adjusted Carrying Value Beginning of Current Quarter	2 Acquisitions During Current Quarter	3 Dispositions During Current Quarter	4 Non-Trading Activity During Current Quarter	5 Book/Adjusted Carrying Value End of First Quarter	6 Book/Adjusted Carrying Value End of Second Quarter	7 Book/Adjusted Carrying Value End of Third Quarter	8 Book/Adjusted Carrying Value December 31 Prior Year
<b>BONDS</b>								
1. NAIC 1 (a).....	7,672,773	208,281	200,000	(24,507)	7,656,547	0	0	7,672,773
2. NAIC 2 (a).....	0				0	0	0	0
3. NAIC 3 (a).....	0				0	0	0	0
4. NAIC 4 (a).....	0				0	0	0	0
5. NAIC 5 (a).....	0				0	0	0	0
6. NAIC 6 (a).....	0				0	0	0	0
7. Total Bonds	7,672,773	208,281	200,000	(24,507)	7,656,547	0	0	7,672,773
<b>PREFERRED STOCK</b>								
8. NAIC 1 .....	0				0	0	0	0
9. NAIC 2 .....	0				0	0	0	0
10. NAIC 3 .....	0				0	0	0	0
11. NAIC 4 .....	0				0	0	0	0
12. NAIC 5 .....	0				0	0	0	0
13. NAIC 6 .....	0				0	0	0	0
14. Total Preferred Stock.....	0	0	0	0	0	0	0	0
15. Total Bonds & Preferred Stock	7,672,773	208,281	200,000	(24,507)	7,656,547	0	0	7,672,773

(a) Book/Adjusted Carrying Value column for the end of the current reporting period includes the following amount of short-term and cash equivalent bonds by NAIC designation: NAIC 1 \$ ..... ; NAIC 2 \$ ..... ;

NAIC 3 \$ ..... ; NAIC 4 \$ ..... ; NAIC 5 \$ ..... ; NAIC 6 \$ .....

Schedule DA - Part 1

NONE

Schedule DA - Verification

NONE

Schedule DB - Part A - Verification

NONE

Schedule DB - Part B - Verification

NONE

Schedule DB - Part C - Section 1

NONE

Schedule DB - Part C - Section 2

NONE

Schedule DB - Verification

NONE

Schedule E - Part 2 - Verification

NONE

Schedule A - Part 2

NONE

Schedule A - Part 3

NONE

Schedule B - Part 2

NONE

Schedule B - Part 3

NONE

Schedule BA - Part 2

NONE

Schedule BA - Part 3

NONE

**STATEMENT AS OF MARCH 31, 2023 OF THE Elixir Insurance Company**

## SCHEDULE D - PART 3

**Show All Long-Term Bonds and Stock Acquired During the Current Quarter**

[illegible]

E04

## STATEMENT AS OF MARCH 31, 2023 OF THE Elixir Insurance Company

## SCHEDULE D - PART 4

**Show All Long-Term Bonds and Stock Sold, Redeemed or Otherwise Disposed of During the Current Quarter**

[illegible]



Schedule DB - Part A - Section 1

NONE

Schedule DB - Part B - Section 1

NONE

Schedule DB - Part D - Section 1

NONE

Schedule DB - Part D - Section 2

NONE

Schedule DB - Part E

NONE

Schedule DL - Part 1

NONE

Schedule DL - Part 2

NONE



## SCHEDULE E - PART 2 - CASH EQUIVALENTS

[illegible]



SUPPLEMENT FOR THE QUARTER ENDING MARCH 31, 2023 OF THE Elixir Insurance Company

MEDICARE PART D COVERAGE SUPPLEMENT

(Net of Reinsurance)

NAIC Group Code.....00000

NAIC Company Code.....12747

	Individual Coverage		Group Coverage		5 Total Cash
	1 Insured	2 Uninsured	3 Insured	4 Uninsured	
1. Premiums Collected.....	132,086,260	xxx	2,559,998	xxx	134,646,258
2. Earned Premiums	88,116,299	xxx	2,559,998	xxx	xxx
3. Claims Paid.....	145,653,794	xxx	3,636,906	xxx	149,290,700
4. Claims Incurred.....	82,019,930	xxx	2,047,999	xxx	xxx
5. Reinsurance Coverage and Low Income Cost Sharing – Claims Paid Net of Reimbursements Applied (a).....	xxx	(222,922,187)	xxx	(6,476,446)	(229,398,633)
6. Aggregate Policy Reserves - Change.....		xxx		xxx	xxx
7. Expenses Paid.....	4,462,953	xxx	198,012	xxx	4,660,965
8. Expenses Incurred.....	2,276,150	xxx	100,988	xxx	xxx
9. Underwriting Gain or Loss.....	3,820,219	xxx	411,011	xxx	xxx
10. Cash Flow Result	xxx	xxx	xxx	xxx	210,093,226

(a) Uninsured Receivable/Payable with CMS at End of Quarter: \$ .....3,719,288 due from CMS or \$ .....due to CMS