



PROPERTY AND CASUALTY COMPANIES - ASSOCIATION EDITION

ANNUAL STATEMENT
 FOR THE YEAR ENDED DECEMBER 31, 2022
 OF THE CONDITION AND AFFAIRS OF THE
MICO INSURANCE COMPANY

NAIC Group Code 0291 0291 NAIC Company Code 40932 Employer's ID Number 31-1022150
(Current) (Prior)

Organized under the Laws of Ohio, State of Domicile or Port of Entry OH
 Country of Domicile United States of America

Incorporated/Organized 11/30/1981 Commenced Business 12/03/1981

Statutory Home Office 471 EAST BROAD STREET, COLUMBUS, OH, US 43215
(Street and Number) (City or Town, State, Country and Zip Code)

Main Administrative Office 471 EAST BROAD STREET
(Street and Number)
COLUMBUS, OH, US 43215 614-225-8211
(City or Town, State, Country and Zip Code) (Area Code) (Telephone Number)

Mail Address 471 EAST BROAD STREET, COLUMBUS, OH, US 43215
(Street and Number or P.O. Box) (City or Town, State, Country and Zip Code)

Primary Location of Books and Records 471 EAST BROAD STREET
(Street and Number)
COLUMBUS, OH, US 43215 614-225-8211
(City or Town, State, Country and Zip Code) (Area Code) (Telephone Number)

Internet Website Address ENCOVA.COM

Statutory Statement Contact AMY E KUHLMAN, 614-225-8285
(Name) (Area Code) (Telephone Number)
ACCOUNTING@ENCOVA.COM 614-225-8330
(E-mail Address) (FAX Number)

OFFICERS

PRESIDENT & CHIEF EXECUTIVE OFFICER THOMAS JOSEPH OBROKTA JR. TREASURER JAMES CHRISTOPHER HOWAT
 SECRETARY WILLIAM JOSEPH MCGEE JR. #

OTHER

JOHN JACOB BISHOP, EXECUTIVE CHAIR WILLIAM MARSTON BECKER, VICE CHAIR

DIRECTORS OR TRUSTEES

JEFFREY LEIGH BENINTENDI GRADY BRENDAN CAMPBELL JAMES CHRISTOPHER HOWAT
THOMAS JOSEPH OBROKTA JR. MATTHEW CARL WILCOX

State of OH SS
 County of FRANKLIN

The officers of this reporting entity being duly sworn, each depose and say that they are the described officers of said reporting entity, and that on the reporting period stated above, all of the herein described assets were the absolute property of the said reporting entity, free and clear from any liens or claims thereon, except as herein stated, and that this statement, together with related exhibits, schedules and explanations therein contained, annexed or referred to, is a full and true statement of all the assets and liabilities and of the condition and affairs of the said reporting entity as of the reporting period stated above, and of its income and deductions therefrom for the period ended, and have been completed in accordance with the NAIC Annual Statement Instructions and Accounting Practices and Procedures manual except to the extent that: (1) state law may differ; or, (2) that state rules or regulations require differences in reporting not related to accounting practices and procedures, according to the best of their information, knowledge and belief, respectively. Furthermore, the scope of this attestation by the described officers also includes the related corresponding electronic filing with the NAIC, when required, that is an exact copy (except for formatting differences due to electronic filing) of the enclosed statement. The electronic filing may be requested by various regulators in lieu of or in addition to the enclosed statement.

Thomas Joseph Obrokta Jr. William Joseph McGee Jr. James Christopher Howat
 PRESIDENT & CHIEF EXECUTIVE OFFICER SECRETARY TREASURER

Subscribed and sworn to before me this 1st day of February 2023

Deborah Dailey

a. Is this an original filing? Yes [X] No []
 b. If no,
 1. State the amendment number.....
 2. Date filed
 3. Number of pages attached.....



Deborah Dailey
 Notary Public, State of Ohio
 My Commission Expires 11-26-2027

ANNUAL STATEMENT FOR THE YEAR 2022 OF THE MICO INSURANCE COMPANY

ASSETS

	Current Year			Prior Year
	1 Assets	2 Nonadmitted Assets	3 Net Admitted Assets (Cols. 1 - 2)	4 Net Admitted Assets
1. Bonds (Schedule D)	15,124,581		15,124,581	9,192,389
2. Stocks (Schedule D):				
2.1 Preferred stocks			0	0
2.2 Common stocks	1,607,722		1,607,722	1,876,631
3. Mortgage loans on real estate (Schedule B):				
3.1 First liens	0	0	0	0
3.2 Other than first liens	0	0	0	0
4. Real estate (Schedule A):				
4.1 Properties occupied by the company (less \$ encumbrances)	0	0	0	0
4.2 Properties held for the production of income (less \$ encumbrances)	0	0	0	0
4.3 Properties held for sale (less \$ encumbrances)	0	0	0	0
5. Cash (\$4, Schedule E - Part 1), cash equivalents (\$59,615,435, Schedule E - Part 2) and short-term investments (\$, Schedule DA)	59,615,440		59,615,440	22,471,867
6. Contract loans (including \$ premium notes)	0	0	0	0
7. Derivatives (Schedule DB)	0	0	0	0
8. Other invested assets (Schedule BA)	0	0	0	0
9. Receivable for securities	0	0	0	0
10. Securities lending reinvested collateral assets (Schedule DL)	0	0	0	0
11. Aggregate write-ins for invested assets	0	0	0	0
12. Subtotals, cash and invested assets (Lines 1 to 11)	76,347,742	0	76,347,742	33,540,887
13. Title plants less \$ charged off (for Title insurers only)	0	0	0	0
14. Investment income due and accrued	195,502	0	195,502	54,869
15. Premiums and considerations:				
15.1 Uncollected premiums and agents' balances in the course of collection	2,400,568	0	2,400,568	486,214
15.2 Deferred premiums, agents' balances and installments booked but deferred and not yet due (including \$ earned but unbilled premiums)	8,341,443	0	8,341,443	2,926,345
15.3 Accrued retrospective premiums (\$) and contracts subject to redetermination (\$)	0	0	0	0
16. Reinsurance:				
16.1 Amounts recoverable from reinsurers	2,023,789	0	2,023,789	471,707
16.2 Funds held by or deposited with reinsured companies	7,295,440	0	7,295,440	0
16.3 Other amounts receivable under reinsurance contracts	0	0	0	0
17. Amounts receivable relating to uninsured plans	0	0	0	0
18.1 Current federal and foreign income tax recoverable and interest thereon	0	0	0	0
18.2 Net deferred tax asset	1,187,713	302,205	885,508	0
19. Guaranty funds receivable or on deposit	0	0	0	0
20. Electronic data processing equipment and software	0	0	0	0
21. Furniture and equipment, including health care delivery assets (\$)	0	0	0	0
22. Net adjustment in assets and liabilities due to foreign exchange rates	0	0	0	0
23. Receivables from parent, subsidiaries and affiliates	0	0	0	767,993
24. Health care (\$) and other amounts receivable	0	0	0	0
25. Aggregate write-ins for other than invested assets	1,248,063	0	1,248,063	104,058
26. Total assets excluding Separate Accounts, Segregated Accounts and Protected Cell Accounts (Lines 12 to 25)	99,040,260	302,205	98,738,055	38,352,073
27. From Separate Accounts, Segregated Accounts and Protected Cell Accounts	0	0	0	0
28. Total (Lines 26 and 27)	99,040,260	302,205	98,738,055	38,352,073
DETAILS OF WRITE-INS				
1101.				
1102.				
1103.				
1198. Summary of remaining write-ins for Line 11 from overflow page	0	0	0	0
1199. Totals (Lines 1101 thru 1103 plus 1198)(Line 11 above)	0	0	0	0
2501. Misc Other Assets	1,248,063	0	1,248,063	104,058
2502.				
2503.				
2598. Summary of remaining write-ins for Line 25 from overflow page	0	0	0	0
2599. Totals (Lines 2501 thru 2503 plus 2598)(Line 25 above)	1,248,063	0	1,248,063	104,058

ANNUAL STATEMENT FOR THE YEAR 2022 OF THE MICO INSURANCE COMPANY
LIABILITIES, SURPLUS AND OTHER FUNDS

	1 Current Year	2 Prior Year
1. Losses (Part 2A, Line 35, Column 8)	28,863,852
2. Reinsurance payable on paid losses and loss adjustment expenses (Schedule F, Part 1, Column 6)	1,382,970	0
3. Loss adjustment expenses (Part 2A, Line 35, Column 9)	4,867,907
4. Commissions payable, contingent commissions and other similar charges	395,743	0
5. Other expenses (excluding taxes, licenses and fees)	2,442,297	15,772
6. Taxes, licenses and fees (excluding federal and foreign income taxes)	137,041	0
7.1 Current federal and foreign income taxes (including \$ on realized capital gains (losses))	151,123	133,127
7.2 Net deferred tax liability	125,477
8. Borrowed money \$ and interest thereon \$
9. Unearned premiums (Part 1A, Line 38, Column 5) (after deducting unearned premiums for ceded reinsurance of \$ 17,084,082 and including warranty reserves of \$ and accrued accident and health experience rating refunds including \$0 for medical loss ratio rebate per the Public Health Service Act)	9,069,123
10. Advance premium
11. Dividends declared and unpaid:		
11.1 Stockholders
11.2 Policyholders
12. Ceded reinsurance premiums payable (net of ceding commissions)	2,159,620	1,284,415
13. Funds held by company under reinsurance treaties (Schedule F, Part 3, Column 20)	9,349,669	3,442,037
14. Amounts withheld or retained by company for account of others
15. Remittances and items not allocated	338,127	228,371
16. Provision for reinsurance (including \$0 certified) (Schedule F, Part 3, Column 78)	0	0
17. Net adjustments in assets and liabilities due to foreign exchange rates
18. Drafts outstanding
19. Payable to parent, subsidiaries and affiliates	1,500,759
20. Derivatives	0	0
21. Payable for securities	4,761,613	10,976
22. Payable for securities lending
23. Liability for amounts held under uninsured plans
24. Capital notes \$ and interest thereon \$
25. Aggregate write-ins for liabilities	351,731	59,920
26. Total liabilities excluding protected cell liabilities (Lines 1 through 25)	65,771,574	5,300,094
27. Protected cell liabilities
28. Total liabilities (Lines 26 and 27)	65,771,574	5,300,094
29. Aggregate write-ins for special surplus funds	0	0
30. Common capital stock	2,252,000	2,252,000
31. Preferred capital stock
32. Aggregate write-ins for other than special surplus funds	0	0
33. Surplus notes	0
34. Gross paid in and contributed surplus	21,126,000	21,126,000
35. Unassigned funds (surplus)	9,588,476	9,673,979
36. Less treasury stock, at cost:		
36.1 shares common (value included in Line 30 \$)
36.2 shares preferred (value included in Line 31 \$)
37. Surplus as regards policyholders (Lines 29 to 35, less 36) (Page 4, Line 39)	32,966,476	33,051,979
38. TOTALS (Page 2, Line 28, Col. 3)	98,738,050	38,352,073
DETAILS OF WRITE-INS		
2501. Miscellaneous liabilities	351,731	59,920
2502.
2503.
2598. Summary of remaining write-ins for Line 25 from overflow page	0	0
2599. Totals (Lines 2501 thru 2503 plus 2598)(Line 25 above)	351,731	59,920
2901.
2902.
2903.
2998. Summary of remaining write-ins for Line 29 from overflow page	0	0
2999. Totals (Lines 2901 thru 2903 plus 2998)(Line 29 above)	0	0
3201.
3202.
3203.
3298. Summary of remaining write-ins for Line 32 from overflow page	0	0
3299. Totals (Lines 3201 thru 3203 plus 3298)(Line 32 above)	0	0

ANNUAL STATEMENT FOR THE YEAR 2022 OF THE MICO INSURANCE COMPANY

STATEMENT OF INCOME

	1 Current Year	2 Prior Year
UNDERWRITING INCOME		
1. Premiums earned (Part 1, Line 35, Column 4).....	19,269,347	0
DEDUCTIONS:		
2. Losses incurred (Part 2, Line 35, Column 7)	9,991,185	0
3. Loss adjustment expenses incurred (Part 3, Line 25, Column 1)	3,023,598	
4. Other underwriting expenses incurred (Part 3, Line 25, Column 2)	6,064,078	
5. Aggregate write-ins for underwriting deductions	0	0
6. Total underwriting deductions (Lines 2 through 5)	19,078,861	0
7. Net income of protected cells		
8. Net underwriting gain (loss) (Line 1 minus Line 6 plus Line 7)	190,485	0
INVESTMENT INCOME		
9. Net investment income earned (Exhibit of Net Investment Income, Line 17)	449,102	260,474
10. Net realized capital gains (losses) less capital gains tax of \$ 301 (Exhibit of Capital Gains (Losses))	1,133	647,757
11. Net investment gain (loss) (Lines 9 + 10)	450,235	908,231
OTHER INCOME		
12. Net gain (loss) from agents' or premium balances charged off (amount recovered \$ amount charged off \$ 71,892)	(71,892)	0
13. Finance and service charges not included in premiums	33,736	
14. Aggregate write-ins for miscellaneous income	10,910	0
15. Total other income (Lines 12 through 14)	(27,246)	0
16. Net income before dividends to policyholders, after capital gains tax and before all other federal and foreign income taxes (Lines 8 + 11 + 15)	613,475	908,231
17. Dividends to policyholders	62,104	
18. Net income, after dividends to policyholders, after capital gains tax and before all other federal and foreign income taxes (Line 16 minus Line 17)	551,371	908,231
19. Federal and foreign income taxes incurred	1,366,561	(20,738)
20. Net income (Line 18 minus Line 19)(to Line 22)	(815,190)	928,969
CAPITAL AND SURPLUS ACCOUNT		
21. Surplus as regards policyholders, December 31 prior year (Page 4, Line 39, Column 2)	33,051,979	12,482,788
22. Net income (from Line 20)	(815,190)	928,969
23. Net transfers (to) from Protected Cell accounts		
24. Change in net unrealized capital gains or (losses) less capital gains tax of \$ (59,809)	(224,997)	(292,933)
25. Change in net unrealized foreign exchange capital gain (loss)		
26. Change in net deferred income tax	1,253,380	(66,845)
27. Change in nonadmitted assets (Exhibit of Nonadmitted Assets, Line 28, Col. 3)	(298,696)	0
28. Change in provision for reinsurance (Page 3, Line 16, Column 2 minus Column 1)	0	0
29. Change in surplus notes		
30. Surplus (contributed to) withdrawn from protected cells		
31. Cumulative effect of changes in accounting principles		
32. Capital changes:		
32.1 Paid in		
32.2 Transferred from surplus (Stock Dividend)		
32.3 Transferred to surplus		
33. Surplus adjustments:		
33.1 Paid in	0	20,000,000
33.2 Transferred to capital (Stock Dividend)		
33.3 Transferred from capital		
34. Net remittances from or (to) Home Office		
35. Dividends to stockholders		
36. Change in treasury stock (Page 3, Lines 36.1 and 36.2, Column 2 minus Column 1)	0	0
37. Aggregate write-ins for gains and losses in surplus	0	0
38. Change in surplus as regards policyholders for the year (Lines 22 through 37)	(85,503)	20,569,191
39. Surplus as regards policyholders, December 31 current year (Line 21 plus Line 38) (Page 3, Line 37)	32,966,476	33,051,979
DETAILS OF WRITE-INS		
0501.		
0502.		
0503.		
0598. Summary of remaining write-ins for Line 5 from overflow page	0	0
0599. Totals (Lines 0501 thru 0503 plus 0598)(Line 5 above)	0	0
1401. Miscellaneous Revenue	10,910	0
1402.		
1403.		
1498. Summary of remaining write-ins for Line 14 from overflow page	0	0
1499. Totals (Lines 1401 thru 1403 plus 1498)(Line 14 above)	10,910	0
3701.		
3702.		
3703.		
3798. Summary of remaining write-ins for Line 37 from overflow page	0	0
3799. Totals (Lines 3701 thru 3703 plus 3798)(Line 37 above)	0	0

ANNUAL STATEMENT FOR THE YEAR 2022 OF THE MICO INSURANCE COMPANY

CASH FLOW

	1	2
	Current Year	Prior Year
Cash from Operations		
1. Premiums collected net of reinsurance	18,000,314	340,859
2. Net investment income	304,229	281,395
3. Miscellaneous income	(27,246)	0
4. Total (Lines 1 through 3)	18,277,298	622,254
5. Benefit and loss related payments	10,401,615	31,053
6. Net transfers to Separate Accounts, Segregated Accounts and Protected Cell Accounts	0	0
7. Commissions, expenses paid and aggregate write-ins for deductions	9,238,321	0
8. Dividends paid to policyholders	62,104	0
9. Federal and foreign income taxes paid (recovered) net of \$ tax on capital gains (losses)	1,348,867	43,098
10. Total (Lines 5 through 9)	21,050,906	74,151
11. Net cash from operations (Line 4 minus Line 10)	(2,773,608)	548,103
Cash from Investments		
12. Proceeds from investments sold, matured or repaid:		
12.1 Bonds	1,432,057	2,486,331
12.2 Stocks	29,145	1,075,640
12.3 Mortgage loans	0	0
12.4 Real estate	0	0
12.5 Other invested assets	0	451,708
12.6 Net gains or (losses) on cash, cash equivalents and short-term investments	0	0
12.7 Miscellaneous proceeds	4,750,637	10,976
12.8 Total investment proceeds (Lines 12.1 to 12.7)	6,211,839	4,024,654
13. Cost of investments acquired (long-term only):		
13.1 Bonds	7,370,538	3,043,875
13.2 Stocks	43,608	105,541
13.3 Mortgage loans	0	0
13.4 Real estate	0	0
13.5 Other invested assets	0	3,969
13.6 Miscellaneous applications	0	0
13.7 Total investments acquired (Lines 13.1 to 13.6)	7,414,145	3,153,385
14. Net increase (decrease) in contract loans and premium notes	0	0
15. Net cash from investments (Line 12.8 minus Line 13.7 minus Line 14)	(1,202,306)	871,269
Cash from Financing and Miscellaneous Sources		
16. Cash provided (applied):		
16.1 Surplus notes, capital notes	0	0
16.2 Capital and paid in surplus, less treasury stock	0	20,000,000
16.3 Borrowed funds	0	0
16.4 Net deposits on deposit-type contracts and other insurance liabilities	0	0
16.5 Dividends to stockholders	0	0
16.6 Other cash provided (applied)	41,119,488	96,373
17. Net cash from financing and miscellaneous sources (Lines 16.1 to 16.4 minus Line 16.5 plus Line 16.6)	41,119,488	20,096,373
RECONCILIATION OF CASH, CASH EQUIVALENTS AND SHORT-TERM INVESTMENTS		
18. Net change in cash, cash equivalents and short-term investments (Line 11, plus Lines 15 and 17)	37,143,573	21,515,745
19. Cash, cash equivalents and short-term investments:		
19.1 Beginning of year	22,471,866	956,121
19.2 End of period (Line 18 plus Line 19.1)	59,615,440	22,471,866

Note: Supplemental disclosures of cash flow information for non-cash transactions:

20.0001. Non-cash investment exchanges	11,677	22,978
--	--------	--------

ANNUAL STATEMENT FOR THE YEAR 2022 OF THE MICO INSURANCE COMPANY

UNDERWRITING AND INVESTMENT EXHIBIT

PART 1 - PREMIUMS EARNED

Line of Business	1	2	3	4
	Net Premiums Written per Column 6, Part 1B	Unearned Premiums Dec. 31 Prior Year - per Col. 3, Last Year's Part 1	Unearned Premiums Dec. 31 Current Year - per Col. 5 Part 1A	Premiums Earned During Year (Cols. 1 + 2 - 3)
1. Fire	47,284	25,674	23,323	49,635
2.1 Allied lines	52,441	29,328	27,288	54,481
2.2 Multiple peril crop	0	0	0	0
2.3 Federal flood	0	0	0	0
2.4 Private crop	0	0	0	0
2.5 Private flood	(4)	1	0	(3)
3. Farmowners multiple peril	5,749	27,560	586	32,722
4. Homeowners multiple peril	1,157,782	662,979	629,073	1,191,687
5.1 Commercial multiple peril (non-liability portion)	1,611,711	801,645	891,441	1,521,915
5.2 Commercial multiple peril (liability portion)	1,470,483	633,031	664,684	1,438,830
6. Mortgage guaranty	0	0	0	0
8. Ocean marine	11	1,398	8	1,400
9. Inland marine	346,787	161,671	164,664	343,794
10. Financial guaranty	0	0	0	0
11.1 Medical professional liability - occurrence	0	0	0	0
11.2 Medical professional liability - claims-made	0	0	0	0
12. Earthquake	17,376	8,999	10,107	16,268
13.1 Comprehensive (hospital and medical) individual	0	0	0	0
13.2 Comprehensive (hospital and medical) group	0	0	0	0
14. Credit accident and health (group and individual)	0	0	0	0
15.1 Vision only	0	0	0	0
15.2 Dental only	0	0	0	0
15.3 Disability income	0	0	0	0
15.4 Medicare supplement	0	0	0	0
15.5 Medicaid Title XIX	0	0	0	0
15.6 Medicare Title XVIII	0	0	0	0
15.7 Long-term care	0	0	0	0
15.8 Federal employees health benefits plan	0	0	0	0
15.9 Other health	0	0	0	0
16. Workers' compensation	9,304,321	3,933,670	4,211,155	9,026,836
17.1 Other liability - occurrence	877,413	394,505	416,366	855,552
17.2 Other liability - claims-made	65,207	39,367	35,222	69,352
17.3 Excess workers' compensation	0	0	0	0
18.1 Products liability - occurrence	10,731	4,265	5,112	9,884
18.2 Products liability - claims-made	0	0	0	0
19.1 Private passenger auto no-fault (personal injury protection)	18,906	7,552	7,996	18,462
19.2 Other private passenger auto liability.....	796,309	296,981	314,007	779,283
19.3 Commercial auto no-fault (personal injury protection)	15,967	8,717	7,766	16,918
19.4 Other commercial auto liability.....	2,019,518	991,021	1,005,436	2,005,103
21.1 Private passenger auto physical damage	757,967	284,853	306,427	736,393
21.2 Commercial auto physical damage	704,779	324,375	330,068	699,086
22. Aircraft (all perils)	0	0	0	0
23. Fidelity	0	0	0	0
24. Surety	0	0	0	0
26. Burglary and theft	26,725	14,018	12,755	27,988
27. Boiler and machinery	1,838	1,274	611	2,501
28. Credit	0	0	0	0
29. International	0	0	0	0
30. Warranty	0	0	0	0
31. Reinsurance - nonproportional assumed property	149,929	2,353	2,587	149,695
32. Reinsurance - nonproportional assumed liability	221,260	2,743	2,439	221,565
33. Reinsurance - nonproportional assumed financial lines	0	0	0	0
34. Aggregate write-ins for other lines of business	0	0	0	0
35. TOTALS	19,680,490	8,657,980	9,069,123	19,269,347
DETAILS OF WRITE-INS				
3401.				
3402.				
3403.				
3498. Summary of remaining write-ins for Line 34 from overflow page	0	0	0	0
3499. Totals (Lines 3401 thru 3403 plus 3498)(Line 34 above)	0	0	0	0

ANNUAL STATEMENT FOR THE YEAR 2022 OF THE MICO INSURANCE COMPANY

UNDERWRITING AND INVESTMENT EXHIBIT

PART 1A - RECAPITULATION OF ALL PREMIUMS

Line of Business	1 Amount Unearned (Running One Year or Less from Date of Policy) (a)	2 Amount Unearned (Running More Than One Year from Date of Policy) (a)	3 Earned But Unbilled Premium	4 Reserve for Rate Credits and Retrospective Adjustments Based on Experience	5 Total Reserve for Unearned Premiums Cols. 1 + 2 + 3 + 4
1. Fire	23,323				23,323
2.1 Allied lines	27,288				27,288
2.2 Multiple peril crop					0
2.3 Federal flood					0
2.4 Private crop					0
2.5 Private flood	0				0
3. Farmowners multiple peril	586				586
4. Homeowners multiple peril	629,073				629,073
5.1 Commercial multiple peril (non-liability portion)	891,441				891,441
5.2 Commercial multiple peril (liability portion)	664,684				664,684
6. Mortgage guaranty					0
8. Ocean marine	8				8
9. Inland marine	164,664				164,664
10. Financial guaranty					0
11.1 Medical professional liability - occurrence					0
11.2 Medical professional liability - claims-made					0
12. Earthquake	10,107				10,107
13.1 Comprehensive (hospital and medical) individual					0
13.2 Comprehensive (hospital and medical) group					0
14. Credit accident and health (group and individual)					0
15.1 Vision only					0
15.2 Dental only					0
15.3 Disability income					0
15.4 Medicare supplement					0
15.5 Medicaid Title XIX					0
15.6 Medicare Title XVIII					0
15.7 Long-term care					0
15.8 Federal employees health benefits plan					0
15.9 Other health					0
16. Workers' compensation	4,211,155				4,211,155
17.1 Other liability - occurrence	416,366				416,366
17.2 Other liability - claims-made	35,222				35,222
17.3 Excess workers' compensation					0
18.1 Products liability - occurrence	5,112				5,112
18.2 Products liability - claims-made					0
19.1 Private passenger auto no-fault (personal injury protection)	7,996				7,996
19.2 Other private passenger auto liability.....	314,007				314,007
19.3 Commercial auto no-fault (personal injury protection)	7,766				7,766
19.4 Other commercial auto liability.....	1,005,436				1,005,436
21.1 Private passenger auto physical damage	306,427				306,427
21.2 Commercial auto physical damage	330,068				330,068
22. Aircraft (all perils)					0
23. Fidelity					0
24. Surety					0
26. Burglary and theft	12,755				12,755
27. Boiler and machinery	611				611
28. Credit					0
29. International					0
30. Warranty					0
31. Reinsurance - nonproportional assumed property	2,587				2,587
32. Reinsurance - nonproportional assumed liability	2,439				2,439
33. Reinsurance - nonproportional assumed financial lines					0
34. Aggregate write-ins for other lines of business	0	0	0	0	0
35. TOTALS	9,069,123	0	0	0	9,069,123
36. Accrued retrospective premiums based on experience					0
37. Earned but unbilled premiums					0
38. Balance (Sum of Line 35 through 37)					9,069,123
DETAILS OF WRITE-INS					
3401.					
3402.					
3403.					
3498. Summary of remaining write-ins for Line 34 from overflow page	0	0	0	0	0
3499. Totals (Lines 3401 thru 3403 plus 3498)(Line 34 above)	0	0	0	0	0

(a) State here basis of computation used in each case Daily Method

ANNUAL STATEMENT FOR THE YEAR 2022 OF THE MICO INSURANCE COMPANY

UNDERWRITING AND INVESTMENT EXHIBIT

PART 1B - PREMIUMS WRITTEN

Line of Business	1 Direct Business (a)	Reinsurance Assumed		Reinsurance Ceded		6 Net Premiums Written Cols. 1+2+3-4-5
		2 From Affiliates	3 From Non-Affiliates	4 To Affiliates	5 To Non-Affiliates	
1. Fire	106,573	47,284		104,611	1,962	47,284
2.1 Allied lines	167,835	52,441		164,732	3,103	52,441
2.2 Multiple peril crop	0					0
2.3 Federal flood	0					0
2.4 Private crop	0					0
2.5 Private flood	6,675	(4)		(216)	6,891	(4)
3. Farmowners multiple peril	0	5,749				5,749
4. Homeowners multiple peril	9,222,218	1,157,782		8,799,991	422,227	1,157,782
5.1 Commercial multiple peril (non-liability portion)	0	1,611,711				1,611,711
5.2 Commercial multiple peril (liability portion)	0	1,470,483				1,470,483
6. Mortgage guaranty	0					0
8. Ocean marine	0	11				11
9. Inland marine	271,247	346,787		267,793	3,454	346,787
10. Financial guaranty	0					0
11.1 Medical professional liability - occurrence	0					0
11.2 Medical professional liability - claims- made	0					0
12. Earthquake	118,039	17,376		114,943	3,096	17,376
13.1 Comprehensive (hospital and medical) individual	0					0
13.2 Comprehensive (hospital and medical) group	0					0
14. Credit accident and health (group and individual)	0					0
15.1 Vision only	0					0
15.2 Dental only	0					0
15.3 Disability income	0					0
15.4 Medicare supplement	0					0
15.5 Medicaid Title XIX	0					0
15.6 Medicare Title XVIII	0					0
15.7 Long-term care	0					0
15.8 Federal employees health benefits plan	0					0
15.9 Other health	0					0
16. Workers' compensation	0	9,304,321				9,304,321
17.1 Other liability - occurrence	618,545	877,413		590,548	27,997	877,413
17.2 Other liability - claims-made	0	65,207				65,207
17.3 Excess workers' compensation	0					0
18.1 Products liability - occurrence	0	10,731				10,731
18.2 Products liability - claims-made	0					0
19.1 Private passenger auto no-fault (personal injury protection)	323,185	18,906		322,963	222	18,906
19.2 Other private passenger auto liability	10,453,835	796,309		10,445,744	8,091	796,309
19.3 Commercial auto no-fault (personal injury protection)	0	15,967				15,967
19.4 Other commercial auto liability	0	2,019,518				2,019,518
21.1 Private passenger auto physical damage	10,421,900	757,967		10,364,484	57,416	757,967
21.2 Commercial auto physical damage	0	704,779				704,779
22. Aircraft (all perils)	0					0
23. Fidelity	0					0
24. Surety	0					0
26. Burglary and theft	0	26,725				26,725
27. Boiler and machinery	0	1,838				1,838
28. Credit	0					0
29. International	0					0
30. Warranty	0					0
31. Reinsurance - nonproportional assumed property	XXX	149,929				149,929
32. Reinsurance - nonproportional assumed liability	XXX	221,260				221,260
33. Reinsurance - nonproportional assumed financial lines	XXX					0
34. Aggregate write-ins for other lines of business	0	0	0	0	0	0
35. TOTALS	31,710,052	19,680,490	0	31,175,594	534,458	19,680,490
DETAILS OF WRITE-INS						
3401.						
3402.						
3403.						
3498. Summary of remaining write-ins for Line 34 from overflow page	0	0	0	0	0	0
3499. Totals (Lines 3401 thru 3403 plus 3498)(Line 34 above)	0	0	0	0	0	0

(a) Does the company's direct premiums written include premiums recorded on an installment basis? Yes [] No [X]

If yes: 1. The amount of such installment premiums \$

2. Amount at which such installment premiums would have been reported had they been reported on an annualized basis \$

ANNUAL STATEMENT FOR THE YEAR 2022 OF THE MICO INSURANCE COMPANY
UNDERWRITING AND INVESTMENT EXHIBIT
 PART 2 - LOSSES PAID AND INCURRED

Line of Business	Losses Paid Less Salvage				5 Net Losses Unpaid Current Year (Part 2A, Col. 8)	6 Net Losses Unpaid Prior Year	7 Losses Incurred Current Year (Cols. 4 + 5 - 6)	8 Percentage of Losses Incurred (Col. 7, Part 2) to Premiums Earned (Col. 4, Part 1)
	1 Direct Business	2 Reinsurance Assumed	3 Reinsurance Recovered	4 Net Payments (Cols. 1 + 2 - 3)				
1. Fire	22,183	50,317	22,183	50,317	11,387	19,853	41,851	84.3
2.1 Allied lines	0	29,932	0	29,932	13,614	6,623	36,923	67.8
2.2 Multiple peril crop	0	0	0	0	0	0	0	0.0
2.3 Federal flood	0	0	0	0	0	0	0	0.0
2.4 Private crop	0	0	0	0	0	0	0	0.0
2.5 Private flood	0	0	0	0	0	0	0	0.0
3. Farmowners multiple peril	0	30,647	0	30,647	4,785	8,265	27,168	83.0
4. Homeowners multiple peril	2,843,839	743,872	2,843,839	743,872	242,762	238,943	747,691	62.7
5.1 Commercial multiple peril (non-liability portion)	0	993,428	0	993,428	665,121	432,282	1,226,267	80.6
5.2 Commercial multiple peril (liability portion)	0	302,497	0	302,497	1,567,530	1,257,511	612,516	42.6
6. Mortgage guaranty	0	0	0	0	0	0	0	0.0
8. Ocean marine	0	0	0	0	51	79	(28)	(2.0)
9. Inland marine	36,110	155,266	36,110	155,266	20,444	38,811	136,899	39.8
10. Financial guaranty	0	0	0	0	0	0	0	0.0
11.1 Medical professional liability - occurrence	0	0	0	0	0	0	0	0.0
11.2 Medical professional liability - claims-made	0	0	0	0	0	0	0	0.0
12. Earthquake	0	0	0	0	0	0	0	0.0
13.1 Comprehensive (hospital and medical) individual	0	0	0	0	0	0	0	0.0
13.2 Comprehensive (hospital and medical) group	0	0	0	0	0	0	0	0.0
14. Credit accident and health (group and individual)	0	0	0	0	0	0	0	0.0
15.1 Vision only	0	0	0	0	0	0	0	0.0
15.2 Dental only	0	0	0	0	0	0	0	0.0
15.3 Disability income	0	0	0	0	0	0	0	0.0
15.4 Medicare supplement	0	0	0	0	0	0	0	0.0
15.5 Medicaid Title XIX	0	0	0	0	0	0	0	0.0
15.6 Medicare Title XVIII	0	0	0	0	0	0	0	0.0
15.7 Long-term care	0	0	0	0	0	0	0	0.0
15.8 Federal employees health benefits plan	0	0	0	0	0	0	0	0.0
15.9 Other health	0	0	0	0	0	0	0	0.0
16. Workers' compensation	0	3,797,417	0	3,797,417	20,244,918	20,223,135	3,819,201	42.3
17.1 Other liability - occurrence	1,673	695,907	1,673	695,907	1,748,093	1,944,450	499,549	58.4
17.2 Other liability - claims-made	0	12,396	0	12,396	40,150	66,873	(14,327)	(20.7)
17.3 Excess workers' compensation	0	0	0	0	0	0	0	0.0
18.1 Products liability - occurrence	0	35,794	0	35,794	153,648	177,071	12,371	125.2
18.2 Products liability - claims-made	0	0	0	0	0	0	0	0.0
19.1 Private passenger auto no-fault (personal injury protection)	76,928	7,897	76,928	7,897	22,417	20,473	9,841	53.3
19.2 Other private passenger auto liability	2,295,621	488,762	2,295,621	488,762	569,223	650,781	407,203	52.3
19.3 Commercial auto no-fault (personal injury protection)	0	9,706	0	9,706	14,889	18,896	5,699	33.7
19.4 Other commercial auto liability	0	1,076,840	0	1,076,840	2,692,989	2,719,764	1,050,065	52.4
21.1 Private passenger auto physical damage	6,348,535	477,457	6,348,535	477,457	31,513	26,826	482,144	65.5
21.2 Commercial auto physical damage	0	512,439	0	512,439	55,320	53,039	514,720	73.6
22. Aircraft (all perils)	0	0	0	0	0	0	0	0.0
23. Fidelity	0	(213)	0	(213)	0	0	(213)	0.0
24. Surety	0	0	0	0	0	850	(850)	0.0
26. Burglary and theft	0	16,161	0	16,161	4,289	1,906	18,544	66.3
27. Boiler and machinery	0	106	0	106	5,888	4,475	1,519	60.7
28. Credit	0	0	0	0	0	0	0	0.0
29. International	0	0	0	0	0	0	0	0.0
30. Warranty	0	0	0	0	0	0	0	0.0
31. Reinsurance - nonproportional assumed property	XXX	164,031	0	164,031	143,370	118,136	189,265	126.4
32. Reinsurance - nonproportional assumed liability	XXX	79,757	0	79,757	611,449	524,040	167,166	75.4
33. Reinsurance - nonproportional assumed financial lines	XXX	0	0	0	0	0	0	0.0
34. Aggregate write-ins for other lines of business	0	0	0	0	0	0	0	0.0
35. TOTALS	11,624,889	9,680,416	11,624,889	9,680,416	28,863,852	28,553,082	9,991,185	51.9
DETAILS OF WRITE-INS								
3401.								
3402.								
3403.								
3498. Summary of remaining write-ins for Line 34 from overflow page	0	0	0	0	0	0	0	0.0
3499. Totals (Lines 3401 thru 3403 plus 3498)(Line 34 above)	0	0	0	0	0	0	0	0.0

ANNUAL STATEMENT FOR THE YEAR 2022 OF THE MICO INSURANCE COMPANY

UNDERWRITING AND INVESTMENT EXHIBIT

PART 2A - UNPAID LOSSES AND LOSS ADJUSTMENT EXPENSES

Line of Business	Reported Losses				Incurred But Not Reported			8 Net Losses Unpaid (Cols. 4 + 5 + 6 - 7)	9 Net Unpaid Loss Adjustment Expenses
	1 Direct	2 Reinsurance Assumed	3 Deduct Reinsurance Recoverable	4 Net Losses Excl. Incurred But Not Reported (Cols. 1 + 2 - 3)	5 Direct	6 Reinsurance Assumed	7 Reinsurance Ceded		
1. Fire		9,923		9,923	2,525	1,464	2,525	11,387	2,481
2.1 Allied lines		12,389		12,389	3,792	1,224	3,792	13,614	2,685
2.2 Multiple peril crop				0				0	
2.3 Federal flood				0				0	
2.4 Private crop				0				0	
2.5 Private flood				0	2	0	2	0	
3. Farmowners multiple peril		2,660		2,660		2,125		4,785	938
4. Homeowners multiple peril	1,631,465	176,649	1,631,465	176,649	352,000	66,113	352,000	242,762	41,188
5.1 Commercial multiple peril (non-liability portion)		552,671		552,671		112,450		665,121	148,876
5.2 Commercial multiple peril (liability portion)		729,408		729,408		838,122		1,567,530	384,151
6. Mortgage guaranty				0				0	
8. Ocean marine		2		2		49		51	11
9. Inland marine		11,355		11,355	5,681	9,089	5,681	20,444	4,825
10. Financial guaranty				0				0	
11.1 Medical professional liability - occurrence				0				0	
11.2 Medical professional liability - claims-made				0				0	
12. Earthquake				0				0	
13.1 Comprehensive (hospital and medical) individual				0				(a) 0	
13.2 Comprehensive (hospital and medical) group				0				(a) 0	
14. Credit accident and health (group and individual)				0				0	
15.1 Vision only				0				(a) 0	
15.2 Dental only				0				(a) 0	
15.3 Disability income				0				(a) 0	
15.4 Medicare supplement				0				(a) 0	
15.5 Medicaid Title XIX				0				(a) 0	
15.6 Medicare Title XVIII				0				(a) 0	
15.7 Long-term care				0				(a) 0	
15.8 Federal employees health benefits plan				0				(a) 0	
15.9 Other health				0				(a) 0	
16. Workers' compensation		10,958,431		10,958,431		9,286,488		20,244,918	2,831,907
17.1 Other liability - occurrence	550,000	953,891	550,000	953,891	328,000	794,202	328,000	1,748,093	556,768
17.2 Other liability - claims-made		11,748		11,748		28,402		40,150	15,291
17.3 Excess workers' compensation				0				0	
18.1 Products liability - occurrence		99,668		99,668		53,980		153,648	49,327
18.2 Products liability - claims-made				0				0	
19.1 Private passenger auto no-fault (personal injury protection)	81,980	19,388	81,980	19,388	16,977	3,029	16,977	22,417	4,215
19.2 Other private passenger auto liability	2,908,138	439,226	2,908,138	439,226	990,023	129,996	990,023	569,223	133,374
19.3 Commercial auto no-fault (personal injury protection)		12,785		12,785		2,104		14,889	1,910
19.4 Other commercial auto liability		1,587,266		1,587,266		1,105,723		2,692,989	650,822
21.1 Private passenger auto physical damage	480,680	28,322	480,680	28,322	36,000	3,191	36,000	31,513	6,760
21.2 Commercial auto physical damage		52,399		52,399		2,921		55,320	9,960
22. Aircraft (all perils)				0				0	
23. Fidelity				0				0	
24. Surety				0				0	
26. Burglary and theft		3,545		3,545		745		4,289	778
27. Boiler and machinery		5,693		5,693		196		5,888	
28. Credit				0				0	
29. International				0				0	
30. Warranty				0				0	
31. Reinsurance - nonproportional assumed property	XXX	105,369		105,369	XXX	38,001		143,370	3,418
32. Reinsurance - nonproportional assumed liability	XXX	247,680		247,680	XXX	363,769		611,449	18,223
33. Reinsurance - nonproportional assumed financial lines	XXX			0	XXX			0	
34. Aggregate write-ins for other lines of business	0	0	0	0	0	0	0	0	0
35. TOTALS	5,652,263	16,020,469	5,652,263	16,020,469	1,735,000	12,843,382	1,735,000	28,863,852	4,867,907
DETAILS OF WRITE-INS									
3401.									
3402.									
3403.									
3498. Summary of remaining write-ins for Line 34 from overflow page	0	0	0	0	0	0	0	0	0
3499. Totals (Lines 3401 thru 3403 plus 3498)(Line 34 above)	0	0	0	0	0	0	0	0	0

(a) Including \$ for present value of life indemnity claims reported in Lines 13 and 15.

ANNUAL STATEMENT FOR THE YEAR 2022 OF THE MICO INSURANCE COMPANY

UNDERWRITING AND INVESTMENT EXHIBIT

PART 3 - EXPENSES

	1	2	3	4
	Loss Adjustment Expenses	Other Underwriting Expenses	Investment Expenses	Total
1. Claim adjustment services:				
1.1 Direct	1,142,710			1,142,710
1.2 Reinsurance assumed	817,769			817,769
1.3 Reinsurance ceded	1,142,710			1,142,710
1.4 Net claim adjustment service (1.1 + 1.2 - 1.3)	817,769	0	0	817,769
2. Commission and brokerage:				
2.1 Direct excluding contingent		4,734,684		4,734,684
2.2 Reinsurance assumed, excluding contingent		2,444,979		2,444,979
2.3 Reinsurance ceded, excluding contingent		4,734,684		4,734,684
2.4 Contingent - direct		106,825		106,825
2.5 Contingent - reinsurance assumed		217,425		217,425
2.6 Contingent - reinsurance ceded		106,825		106,825
2.7 Policy and membership fees				0
2.8 Net commission and brokerage (2.1 + 2.2 - 2.3 + 2.4 + 2.5 - 2.6 + 2.7) ..	0	2,662,404	0	2,662,404
3. Allowances to managers and agents	0	121		121
4. Advertising	0	72,977		72,977
5. Boards, bureaus and associations	83,543	106,035		189,578
6. Surveys and underwriting reports	14,466	93,374		107,840
7. Audit of assureds' records	1,029	17,637		18,666
8. Salary and related items:				
8.1 Salaries	1,011,525	1,309,275	31,931	2,352,731
8.2 Payroll taxes	67,418	80,891	1,623	149,932
9. Employee relations and welfare	270,948	278,048	3,717	552,713
10. Insurance	15,675	15,358	35	31,068
11. Directors' fees	16,063	36,507	6,528	59,098
12. Travel and travel items	29,374	193,465	3,505	226,344
13. Rent and rent items	51,529	37,106	64,388	153,023
14. Equipment	14,914	13,915	7,525	36,354
15. Cost or depreciation of EDP equipment and software	404,605	458,268	6,601	869,474
16. Printing and stationery	6,642	8,728	285	15,655
17. Postage, telephone and telegraph, exchange and express	31,758	33,773	23,562	89,093
18. Legal and auditing	17,476	19,887	1,952	39,315
19. Totals (Lines 3 to 18)	2,036,965	2,775,365	151,652	4,963,982
20. Taxes, licenses and fees:				
20.1 State and local insurance taxes deducting guaranty association credits of \$		383,607		383,607
20.2 Insurance department licenses and fees		22,946		22,946
20.3 Gross guaranty association assessments		(1,919)		(1,919)
20.4 All other (excluding federal and foreign income and real estate)		48	25,938	25,986
20.5 Total taxes, licenses and fees (20.1 + 20.2 + 20.3 + 20.4)	0	404,682	25,938	430,620
21. Real estate expenses				0
22. Real estate taxes				0
23. Reimbursements by uninsured plans				0
24. Aggregate write-ins for miscellaneous expenses	168,864	221,627	10,221	400,712
25. Total expenses incurred	3,023,598	6,064,078	187,811	9,275,487
26. Less unpaid expenses - current year	4,867,907	2,969,838	5,243	7,842,987
27. Add unpaid expenses - prior year	0	0	15,772	15,772
28. Amounts receivable relating to uninsured plans, prior year	0		0	0
29. Amounts receivable relating to uninsured plans, current year				0
30. TOTAL EXPENSES PAID (Lines 25 - 26 + 27 - 28 + 29)	(1,844,308)	3,094,240	198,341	1,448,272
DETAILS OF WRITE-INS				
2401. Misc Expenses	168,864	221,627	10,221	400,712
2402.				
2403.				
2498. Summary of remaining write-ins for Line 24 from overflow page	0	0	0	0
2499. Totals (Lines 2401 thru 2403 plus 2498)(Line 24 above)	168,864	221,627	10,221	400,712

(a) Includes management fees of \$ to affiliates and \$ to non-affiliates.

ANNUAL STATEMENT FOR THE YEAR 2022 OF THE MICO INSURANCE COMPANY

EXHIBIT OF NET INVESTMENT INCOME

		1	2
		Collected During Year	Earned During Year
1.	U.S. Government bonds	(a) 2,320 2,311
1.1	Bonds exempt from U.S. tax	(a) 7,527 13,569
1.2	Other bonds (unaffiliated)	(a) 210,503 228,646
1.3	Bonds of affiliates	(a) 0 0
2.1	Preferred stocks (unaffiliated)	(b) 0 0
2.11	Preferred stocks of affiliates	(b) 0 0
2.2	Common stocks (unaffiliated) 31,962 31,835
2.21	Common stocks of affiliates 0 0
3.	Mortgage loans	(c) 0 0
4.	Real estate	(d) 0 0
5.	Contract loans 0 0
6.	Cash, cash equivalents and short-term investments	(e) 243,914 360,498
7.	Derivative instruments	(f) 0 0
8.	Other invested assets 0 0
9.	Aggregate write-ins for investment income 54 54
10.	Total gross investment income	496,281	636,913
11.	Investment expenses		(g) 161,873
12.	Investment taxes, licenses and fees, excluding federal income taxes		(g) 25,938
13.	Interest expense		(h)
14.	Depreciation on real estate and other invested assets		(i)
15.	Aggregate write-ins for deductions from investment income 0
16.	Total deductions (Lines 11 through 15) 187,811
17.	Net investment income (Line 10 minus Line 16)		449,102
DETAILS OF WRITE-INS			
0901.	Miscellaneous income 54 54
0902.		
0903.		
0998.	Summary of remaining write-ins for Line 9 from overflow page 0 0
0999.	Totals (Lines 0901 thru 0903 plus 0998) (Line 9, above)	54	54
1501.		
1502.		
1503.		
1598.	Summary of remaining write-ins for Line 15 from overflow page 0
1599.	Totals (Lines 1501 thru 1503 plus 1598) (Line 15, above)		0

- (a) Includes \$ 15,775 accrual of discount less \$ 22,064 amortization of premium and less \$ 24,437 paid for accrued interest on purchases.
- (b) Includes \$ 0 accrual of discount less \$ 0 amortization of premium and less \$ 0 paid for accrued dividends on purchases.
- (c) Includes \$ 0 accrual of discount less \$ 0 amortization of premium and less \$ paid for accrued interest on purchases.
- (d) Includes \$ for company's occupancy of its own buildings; and excludes \$ interest on encumbrances.
- (e) Includes \$ 3 accrual of discount less \$ amortization of premium and less \$ paid for accrued interest on purchases.
- (f) Includes \$ accrual of discount less \$ amortization of premium.
- (g) Includes \$ investment expenses and \$ investment taxes, licenses and fees, excluding federal income taxes, attributable to segregated and Separate Accounts.
- (h) Includes \$ interest on surplus notes and \$ interest on capital notes.
- (i) Includes \$ 0 depreciation on real estate and \$ depreciation on other invested assets.

EXHIBIT OF CAPITAL GAINS (LOSSES)

		1	2	3	4	5
		Realized Gain (Loss) On Sales or Maturity	Other Realized Adjustments	Total Realized Capital Gain (Loss) (Columns 1 + 2)	Change in Unrealized Capital Gain (Loss)	Change in Unrealized Foreign Exchange Capital Gain (Loss)
1.	U.S. Government bonds 0 0 0 0 0
1.1	Bonds exempt from U.S. tax 0 0 0 0 0
1.2	Other bonds (unaffiliated) 0 0 0 0 0
1.3	Bonds of affiliates 0 0 0 0 0
2.1	Preferred stocks (unaffiliated) 0 0 0 0 0
2.11	Preferred stocks of affiliates 0 0 0 0 0
2.2	Common stocks (unaffiliated) 1,435 0 1,435 (284,806) 0
2.21	Common stocks of affiliates 0 0 0 0 0
3.	Mortgage loans 0 0 0 0 0
4.	Real estate 0 0 0 0 0
5.	Contract loans 0 0 0 0 0
6.	Cash, cash equivalents and short-term investments 0 0 0 0 0
7.	Derivative instruments 0 0 0 0 0
8.	Other invested assets 0 0 0 0 0
9.	Aggregate write-ins for capital gains (losses) 0 0 0 0 0
10.	Total capital gains (losses)	1,435	0	1,435	(284,806)	0
DETAILS OF WRITE-INS						
0901.					
0902.					
0903.					
0998.	Summary of remaining write-ins for Line 9 from overflow page 0 0 0 0 0
0999.	Totals (Lines 0901 thru 0903 plus 0998) (Line 9, above)	0	0	0	0	0

ANNUAL STATEMENT FOR THE YEAR 2022 OF THE MICO INSURANCE COMPANY

EXHIBIT OF NON-ADMITTED ASSETS

	1	2	3
	Current Year Total Nonadmitted Assets	Prior Year Total Nonadmitted Assets	Change in Total Nonadmitted Assets (Col. 2 - Col. 1)
1. Bonds (Schedule D)			0
2. Stocks (Schedule D):			
2.1 Preferred stocks			0
2.2 Common stocks			0
3. Mortgage loans on real estate (Schedule B):			
3.1 First liens	0		0
3.2 Other than first liens.....	0		0
4. Real estate (Schedule A):			
4.1 Properties occupied by the company	0		0
4.2 Properties held for the production of income.....	0		0
4.3 Properties held for sale	0		0
5. Cash (Schedule E - Part 1), cash equivalents (Schedule E - Part 2) and short-term investments (Schedule DA)			0
6. Contract loans	0		0
7. Derivatives (Schedule DB)			0
8. Other invested assets (Schedule BA)			0
9. Receivables for securities	0		0
10. Securities lending reinvested collateral assets (Schedule DL)			0
11. Aggregate write-ins for invested assets	0	0	0
12. Subtotals, cash and invested assets (Lines 1 to 11)	0	0	0
13. Title plants (for Title insurers only)	0		0
14. Investment income due and accrued	0		0
15. Premiums and considerations:			
15.1 Uncollected premiums and agents' balances in the course of collection	0		0
15.2 Deferred premiums, agents' balances and installments booked but deferred and not yet due ..	0	3,509	3,509
15.3 Accrued retrospective premiums and contracts subject to redetermination	0		0
16. Reinsurance:			
16.1 Amounts recoverable from reinsurers	0		0
16.2 Funds held by or deposited with reinsured companies	0		0
16.3 Other amounts receivable under reinsurance contracts	0		0
17. Amounts receivable relating to uninsured plans	0		0
18.1 Current federal and foreign income tax recoverable and interest thereon	0		0
18.2 Net deferred tax asset	302,205		(302,205)
19. Guaranty funds receivable or on deposit			0
20. Electronic data processing equipment and software	0		0
21. Furniture and equipment, including health care delivery assets	0		0
22. Net adjustment in assets and liabilities due to foreign exchange rates	0		0
23. Receivables from parent, subsidiaries and affiliates	0		0
24. Health care and other amounts receivable	0		0
25. Aggregate write-ins for other than invested assets	0	0	0
26. Total assets excluding Separate Accounts, Segregated Accounts and Protected Cell Accounts (Lines 12 to 25)	302,205	3,509	(298,696)
27. From Separate Accounts, Segregated Accounts and Protected Cell Accounts			0
28. Total (Lines 26 and 27)	302,205	3,509	(298,696)
DETAILS OF WRITE-INS			
1101.			
1102.			
1103.			
1198. Summary of remaining write-ins for Line 11 from overflow page	0	0	0
1199. Totals (Lines 1101 thru 1103 plus 1198)(Line 11 above)	0	0	0
2501.			
2502.			
2503.			
2598. Summary of remaining write-ins for Line 25 from overflow page	0	0	0
2599. Totals (Lines 2501 thru 2503 plus 2598)(Line 25 above)	0	0	0

NOTES TO FINANCIAL STATEMENTS

NOTE 1 Summary of Significant Accounting Policies and Going Concern
A. Accounting Practices

This statement has been completed in accordance with the accounting practices and procedures prescribed or permitted by the National Association of Insurance Commissioners (NAIC) and the State of Ohio. A reconciliation of the Company's net income and capital and surplus between NAIC SAP and practices prescribed and permitted by the State of Ohio is shown below.

	SSAP #	F/S Page	F/S Line #	2022	2021
NET INCOME					
(1) State basis (Page 4, Line 20, Columns 1 & 2)	XXX	XXX	XXX	\$ (815,190)	\$ 928,969
(2) State Prescribed Practices that are an increase/ (decrease) from NAIC SAP:					
(3) State Permitted Practices that are an increase/(decrease) from NAIC SAP:					
(4) NAIC SAP (1-2-3=4)	XXX	XXX	XXX	\$ (815,190)	\$ 928,969
SURPLUS					
(5) State basis (Page 3, Line 37, Columns 1 & 2)	XXX	XXX	XXX	\$ 32,966,476	\$ 33,051,979
(6) State Prescribed Practices that are an increase/(decrease) from NAIC SAP:					
(7) State Permitted Practices that are an increase/(decrease) from NAIC SAP:					
(8) NAIC SAP (5-6-7=8)	XXX	XXX	XXX	\$ 32,966,476	\$ 33,051,979

B. Use of Estimates in the Preparation of the Financial Statements

The preparation of financial statements in conformity with Statutory Accounting Principles as described in the NAIC Annual Statement Instructions and the Accounting Policies and Procedures Manual requires management to make estimates and assumptions that affect the reported amounts of assets and liabilities and disclosures of contingent assets and liabilities at the date of the financial statements and the reported amounts of revenue and expenses during the period. Actual results could differ from those estimates.

C. Accounting Policy

Premiums are earned over the terms of the related insurance policies and reinsurance contracts. Unearned premium reserves are established to cover the unexpired portion of premiums written. Such reserves are computed by daily and pro rata methods for direct business and are based on reports received from ceding companies and/or pools for assumed business.

(1) Basis for Short-Term Investments

Short-term investments consist of class 1 money market mutual funds, agencies, and treasury bonds. Short term investments are stated at amortized cost.

(2) Basis for Bonds and Amortization Schedule

Bonds not back by other loans are stated at amortized cost using the scientific amortization method.

(3) Basis for Common Stocks

Common Stocks are valued at market.

(4) Basis for Preferred Stocks

Preferred stocks are stated in accordance with the guidance provided in SSAP No. 32: Investments in Preferred Stock.

(5) Basis for Mortgage Loans

The Company did not have any mortgage loans.

(6) Basis for Loan-Backed Securities and Adjustment Methodology

Loan-backed securities are stated in accordance with the guidance provided in SSAP No. 43R: Loan-backed and Structured Securities. The retrospective adjustment method is used to value these securities

(7) Accounting Policies for Investments in Subsidiaries, Controlled and Affiliated Entities

The Company does not have any investments in subsidiaries, controlled or affiliated entities.

(8) Accounting Policies for Investments in Joint Ventures, Partnerships and Limited Liability Entities

The Company does not have any investments in joint ventures, partnerships or limited liability entities.

(9) Accounting Policies for Derivatives

The Company does not hold any derivative instruments.

(10) Anticipated Investment Income Used in Premium Deficiency Calculation

The Company anticipates investment income as a factor in the premium deficiency calculation, in accordance with SSAP No. 53: Property/Casualty Contracts-Premiums

(11) Management's Policies and Methodologies for Estimating Liabilities for Losses and Loss/Claim Adjustment Expenses

Unpaid loss and loss adjustment expenses include an amount determined from individual case estimates and loss reports and an amount, based upon past experience, for losses incurred but not reported. Such liabilities are necessarily based on assumptions and estimates. While management believes the amount is adequate, the ultimate liability may be in excess of or less than the amount provided. The methods for making such estimates and for establishing the resulting liability is continually reviewed and any adjustments reflected in the period determined.

(12) Changes in the Capitalization Policy and Predefined Thresholds from Prior Period

The Encova Insurance Group standardized its thresholds for capitalization across all member companies. The Group also implemented updates for software licenses and maintenance agreements that allow amortization over service periods for material transactions.

(13) Method Used to Estimate Pharmaceutical Rebate Receivables

The Company has no pharmaceutical rebate receivables to report.

D. Going Concern

Management has concluded that there is no substantial doubt about the Company's ability to continue as a going concern.

NOTE 2 Accounting Changes and Corrections of Errors

Not Applicable

NOTE 3 Business Combinations and Goodwill

Not Applicable

NOTES TO FINANCIAL STATEMENTS

NOTE 4 Discontinued Operations

Not Applicable

NOTE 5 Investments

A. - C. Not Applicable

D. Loan-Backed Securities

(1) Prepayment assumptions for mortgage-backed/loan-backed and structured securities were obtained from Broker dealer survey values and internal estimates.

(2) - (3) Not Applicable

(4) At December 31, 2022, the estimated fair value and gross unrealized losses for loan-backed securities, aggregated 'by length of time the securities have been in a continuous loss position were as follows:

a) The aggregate amount of unrealized losses:		
1. Less than 12 Months	\$	153,073
2. 12 Months or Longer	\$	178,570
b) The aggregate related fair value of securities with unrealized losses:		
1. Less than 12 Months	\$	6,262,751
2. 12 Months or Longer	\$	1,273,628

(5) The company performed an analysis of loan-backed securities and determined that exposure to credit risk was not a factor and did not warrant any other-than-temporary impairments.

E. - K. Not Applicable

L. Restricted Assets

(1) Restricted Assets (Including Pledged)

Restricted Asset Category	Gross (Admitted & Nonadmitted) Restricted						
	Current Year					6	7
	1	2	3	4	5		
	Total General Account (G/A)	G/A Supporting Protected Cell Account Activity (a)	Total Protected Cell Account Restricted Assets	Protected Cell Account Assets Supporting G/A Activity (b)	Total (1 plus 3)	Total From Prior Year	Increase/ (Decrease) (5 minus 6)
a. Subject to contractual obligation for which liability is not shown					\$ -	\$ -	\$ -
b. Collateral held under security lending agreements					\$ -	\$ -	\$ -
c. Subject to repurchase agreements					\$ -	\$ -	\$ -
d. Subject to reverse repurchase agreements					\$ -	\$ -	\$ -
e. Subject to dollar repurchase agreements					\$ -	\$ -	\$ -
f. Subject to dollar reverse repurchase agreements					\$ -	\$ -	\$ -
g. Placed under option contracts					\$ -	\$ -	\$ -
h. Letter stock or securities restricted as to sale - excluding FHLB capital stock					\$ -	\$ -	\$ -
i. FHLB capital stock					\$ -	\$ -	\$ -
j. On deposit with states	\$ 2,259,190				\$ 2,259,190	\$ 2,077,652	\$ 181,538
k. On deposit with other regulatory bodies					\$ -	\$ -	\$ -
l. Pledged collateral to FHLB (including assets backing funding agreements)					\$ -	\$ -	\$ -
m. Pledged as collateral not captured in other categories					\$ -	\$ -	\$ -
n. Other restricted assets					\$ -	\$ -	\$ -
o. Total Restricted Assets (Sum of a through n)	\$ 2,259,190	\$ -	\$ -	\$ -	\$ 2,259,190	\$ 2,077,652	\$ 181,538

(a) Subset of Column 1

(b) Subset of Column 3

NOTES TO FINANCIAL STATEMENTS

Restricted Asset Category	Current Year			
	8 Total Non- admitted Restricted	9 Total Admitted Restricted (5 minus 8)	Percentage	
			10 Gross (Admitted & Non- admitted) Restricted to Total Assets (c)	11 Admitted Restricted to Total Admitted Assets (d)
a. Subject to contractual obligation for which liability is not shown		\$ -	0.000%	0.000%
b. Collateral held under security lending agreements		\$ -	0.000%	0.000%
c. Subject to repurchase agreements		\$ -	0.000%	0.000%
d. Subject to reverse repurchase agreements		\$ -	0.000%	0.000%
e. Subject to dollar repurchase agreements		\$ -	0.000%	0.000%
f. Subject to dollar reverse repurchase agreements		\$ -	0.000%	0.000%
g. Placed under option contracts		\$ -	0.000%	0.000%
h. Letter stock or securities restricted as to sale - excluding FHLB capital stock		\$ -	0.000%	0.000%
i. FHLB capital stock		\$ -	0.000%	0.000%
j. On deposit with states		\$ 2,259,190	2.281%	2.288%
k. On deposit with other regulatory bodies		\$ -	0.000%	0.000%
l. Pledged collateral to FHLB (including assets backing funding agreements)		\$ -	0.000%	0.000%
m. Pledged as collateral not captured in other categories		\$ -	0.000%	0.000%
n. Other restricted assets		\$ -	0.000%	0.000%
o. Total Restricted Assets (Sum of a through n)	\$ -	\$ 2,259,190	2.281%	2.288%

(c) Column 5 divided by Asset Page, Column 1, Line 28

(d) Column 9 divided by Asset Page, Column 3, Line 28

(2) - (4) Not Applicable

M. - R. Not Applicable

NOTE 6 Joint Ventures, Partnerships and Limited Liability Companies

A. The Company has no investments in Joint Ventures, Partnerships or Limited Liability Companies that exceed 10% of its admitted assets.

B. The Company did not recognize any impairment write down for its investments in Joint Ventures, Partnerships or Limited Liability Companies.

NOTE 7 Investment Income

A. The Company does not admit investment income due and accrued if amounts are over 90 days past due.

B. No amount of investment income was excluded.

NOTE 8 Derivative Instruments

Not Applicable

NOTE 9 Income Taxes

A. Deferred Tax Assets/(Liabilities)

(1) The components of the net deferred tax assets/(liabilities)

	2022			2021			Change		
	(1) Ordinary	(2) Capital	(3) (Col. 1 + 2) Total	(4) Ordinary	(5) Capital	(6) (Col. 4 + 5) Total	(7) (Col. 1 - 4) Ordinary	(8) (Col. 2 - 5) Capital	(9) (Col. 7 + 8) Total
(a) Gross Deferred Tax Assets	\$ 1,256,953	\$ 203	\$ 1,257,156	\$ 10,005	\$ 203	\$ 10,208	\$ 1,246,948	\$ -	\$ 1,246,948
(b) Statutory Valuation Allowance Adjustment			\$ -			\$ -	\$ -	\$ -	\$ -
(c) Adjusted Gross Deferred Tax Assets (1a - 1b)	\$ 1,256,953	\$ 203	\$ 1,257,156	\$ 10,005	\$ 203	\$ 10,208	\$ 1,246,948	\$ -	\$ 1,246,948
(d) Deferred Tax Assets Nonadmitted	\$ 302,205		\$ 302,205			\$ -	\$ 302,205	\$ -	\$ 302,205
(e) Subtotal Net Admitted Deferred Tax Asset (1c - 1d)	\$ 954,748	\$ 203	\$ 954,951	\$ 10,005	\$ 203	\$ 10,208	\$ 944,743	\$ -	\$ 944,743
(f) Deferred Tax Liabilities	\$ 5,364	\$ 64,079	\$ 69,443	\$ 11,796	\$ 123,888	\$ 135,684	\$ (6,432)	\$ (59,809)	\$ (66,241)
(g) Net Admitted Deferred Tax Asset/(Net Deferred Tax Liability) (1e - 1f)	\$ 949,384	\$ (63,876)	\$ 885,508	\$ (1,791)	\$ (123,685)	\$ (125,476)	\$ 951,175	\$ 59,809	\$ 1,010,984

NOTES TO FINANCIAL STATEMENTS

(2) Admission Calculation Components SSAP No. 101

	2022			2021			Change		
	(1) Ordinary	(2) Capital	(3) (Col. 1 + 2) Total	(4) Ordinary	(5) Capital	(6) (Col. 4 + 5) Total	(7) (Col. 1 - 4) Ordinary	(8) (Col. 2 - 5) Capital	(9) (Col. 7 + 8) Total
(a) Federal Income Taxes Paid In Prior Years Recoverable Through Loss Carrybacks	\$ 863,180		\$ 863,180			\$ -	\$ 863,180	\$ -	\$ 863,180
(b) Adjusted Gross Deferred Tax Assets Expected To Be Realized (Excluding The Amount Of Deferred Tax Assets From 2(a) above) After Application of the Threshold Limitation. (The Lesser of 2(b)1 and 2(b)2 Below)	\$ 22,328		\$ 22,328			\$ -	\$ 22,328	\$ -	\$ 22,328
1. Adjusted Gross Deferred Tax Assets Expected to be Realized Following the Balance Sheet Date.	\$ 22,328		\$ 22,328			\$ -	\$ 22,328	\$ -	\$ 22,328
2. Adjusted Gross Deferred Tax Assets Allowed per Limitation Threshold.	XXX	XXX	\$ 4,802,533	XXX	XXX	\$ 4,934,276	XXX	XXX	\$ (131,743)
(c) Adjusted Gross Deferred Tax Assets (Excluding The Amount Of Deferred Tax Assets From 2(a) and 2(b) above) Offset by Gross Deferred Tax Liabilities.	\$ 69,240	\$ 203	\$ 69,443	\$ 10,005	\$ 203	\$ 10,208	\$ 59,235	\$ -	\$ 59,235
(d) Deferred Tax Assets Admitted as the result of application of SSAP No. 101. Total (2(a) + 2(b) + 2(c))	\$ 954,748	\$ 203	\$ 954,951	\$ 10,005	\$ 203	\$ 10,208	\$ 944,743	\$ -	\$ 944,743

(3) Other Admissibility Criteria

	2022	2021
a. Ratio Percentage Used To Determine Recovery Period And Threshold Limitation Amount.	1128.000%	16386.540%
b. Amount Of Adjusted Capital And Surplus Used To Determine Recovery Period And Threshold Limitation In 2(b)2 Above.	\$ 32,016,889	\$ 32,895,173

(4) Impact of Tax Planning Strategies

	2022		2021		Change	
	(1) Ordinary	(2) Capital	(3) Ordinary	(4) Capital	(5) (Col. 1 - 3) Ordinary	(6) (Col. 2 - 4) Capital
(a) Determination of adjusted gross deferred tax assets and net admitted deferred tax assets, by tax character as a percentage.						
1. Adjusted Gross DTAs amount from Note 9A1(c)	\$ 1,256,953	\$ 203	\$ 10,005	\$ 203	\$ 1,246,948	\$ -
2. Percentage of adjusted gross DTAs by tax character attributable to the impact of tax planning strategies	0.000%	0.000%			0.000%	0.000%
3. Net Admitted Adjusted Gross DTAs amount from Note 9A1(e)	\$ 954,748	\$ 203	\$ 10,005	\$ 203	\$ 944,743	\$ -
4. Percentage of net admitted adjusted gross DTAs by tax character admitted because of the impact of tax planning strategies	0.000%	0.000%			0.000%	0.000%

b. Do the Company's tax-planning strategies include the use of reinsurance? Yes No

B. Deferred Tax Liabilities that are not recognized
Not Applicable

C. Current income taxes incurred consist of the following major components:

	(1) 2022	(2) 2021	(3) (Col. 1 - 2) Change
(1) Current Income Tax			
(a) Federal	\$ 1,366,561	\$ (13,122)	\$ 1,379,683
(b) Foreign			\$ -
(c) Subtotal (1a+1b)	\$ 1,366,561	\$ (13,122)	\$ 1,379,683
(d) Federal income tax on net capital gains	\$ 301	\$ 172,188	\$ (171,887)
(e) Utilization of capital loss carry-forwards			\$ -
(f) Other		\$ (7,616)	\$ 7,616
(g) Federal and foreign income taxes incurred (1c+1d+1e+1f)	\$ 1,366,862	\$ 151,450	\$ 1,215,412

NOTES TO FINANCIAL STATEMENTS

	(1) 2022	(2) 2021	(3) (Col. 1 - 2) Change
(2) Deferred Tax Assets:			
(a) Ordinary:			
(1) Discounting of unpaid losses	\$ 1,256,953		\$ 1,256,953
(2) Unearned premium reserve			\$ -
(3) Policyholder reserves			\$ -
(4) Investments		\$ 9,268	\$ (9,268)
(5) Deferred acquisition costs			\$ -
(6) Policyholder dividends accrual			\$ -
(7) Fixed assets			\$ -
(8) Compensation and benefits accrual			\$ -
(9) Pension accrual			\$ -
(10) Receivables - nonadmitted		\$ 737	\$ (737)
(11) Net operating loss carry-forward			\$ -
(12) Tax credit carry-forward			\$ -
(13) Other			\$ -
(99) Subtotal (sum of 2a1 through 2a13)	\$ 1,256,953	\$ 10,005	\$ 1,246,948
(b) Statutory valuation allowance adjustment			\$ -
(c) Nonadmitted	\$ 302,205		\$ 302,205
(d) Admitted ordinary deferred tax assets (2a99 - 2b - 2c)	\$ 954,748	\$ 10,005	\$ 944,743
(e) Capital:			
(1) Investments	\$ 203	\$ 203	\$ -
(2) Net capital loss carry-forward			\$ -
(3) Real estate			\$ -
(4) Other			\$ -
(99) Subtotal (2e1+2e2+2e3+2e4)	\$ 203	\$ 203	\$ -
(f) Statutory valuation allowance adjustment			\$ -
(g) Nonadmitted			\$ -
(h) Admitted capital deferred tax assets (2e99 - 2f - 2g)	\$ 203	\$ 203	\$ -
(i) Admitted deferred tax assets (2d + 2h)	\$ 954,951	\$ 10,208	\$ 944,743

	(1) 2022	(2) 2021	(3) (Col. 1 - 2) Change
(3) Deferred Tax Liabilities:			
(a) Ordinary:			
(1) Investments	\$ 5,364	\$ 11,796	\$ (6,432)
(2) Fixed assets			\$ -
(3) Deferred and uncollected premium			\$ -
(4) Policyholder reserves			\$ -
(5) Other			\$ -
(99) Subtotal (3a1+3a2+3a3+3a4+3a5)	\$ 5,364	\$ 11,796	\$ (6,432)
(b) Capital:			
(1) Investments	\$ 64,079	\$ 123,888	\$ (59,809)
(2) Real estate			\$ -
(3) Other			\$ -
(99) Subtotal (3b1+3b2+3b3)	\$ 64,079	\$ 123,888	\$ (59,809)
(c) Deferred tax liabilities (3a99 + 3b99)	\$ 69,443	\$ 135,684	\$ (66,241)
(4) Net deferred tax assets/liabilities (2i - 3c)	\$ 885,508	\$ (125,476)	\$ 1,010,984

- D. Reconciliation of Federal Income Tax Rate to Actual Effective Rate
Among the more significant book to tax adjustments were the following:

	2022	
	Amount	Effective Tax Rate (%)
Provision computed at statutory rate	\$ 115,851	21.0%
Dividends received deduction	\$ (978)	-0.2%
Tax exempt interest income deduction	\$ (2,128)	-0.2%
Other	\$ 735	0.1%
Total statutory income taxes	\$ 113,482	20.6%
Federal and foreign income taxes incurred	\$ 1,366,862	247.8%
Realized capital gains (losses) tax	\$ -	%
Change in net deferred income taxes	\$ (1,253,380)	-227.2%
Total statutory income taxes	\$ 113,482	20.6%

- E. Operating Loss and Tax Carry Forwards and Protective Tax Deposits

- (1) At December 31, 2022, the Company did not have any operating loss or tax credit carry forwards.
- (2) The following is income tax expense for current and preceding years that is available for recoupment in the event of future net losses:

Year Generated	Ordinary	Capital
2022	\$ 1,366,561	\$ 301
2021	\$ 53,889	\$ 105,178
Totals	\$ 1,420,450	\$ 105,479

- (3) The Company did not have any protective tax deposits under Section 6603 of the Internal Revenue Code.

NOTES TO FINANCIAL STATEMENTS

F. Consolidated Federal Income Tax Return

(1) The Company's Federal income tax return is consolidated with the following entities:

AlleghenyPoint Insurance Company
 BrickStreet Mutual Insurance Company
 Consumers Insurance USA, Inc.
 Encova Holdings, Inc.
 Encova Insurance Agency, Inc.
 Encova Mutual Insurance Group, Inc.
 Encova Service Corporation
 Iowa American Insurance Company
 Iowa Mutual Insurance Company
 MCM Insurance Agency Inc of MA
 Motorists Commercial Mutual Insurance Company
 Motorists Mutual Insurance Company
 NorthStone Insurance Company
 Phenix Mutual Fire Insurance Company
 PinnaclePoint Insurance Company
 SummitPoint Insurance Company
 Wilson Mutual Insurance Company

(2) The method of allocation between the companies is subject to written agreement, approved by the Board of Directors. Allocation is based upon separate return calculations with current credit for net losses. Intercompany tax balances are settled annually when the federal income tax return is filed.

G. Federal or Foreign Federal Income Tax Loss Contingencies

As of December 31, 2022, the Company had no unrecognized tax benefits.

H. Repatriation Transition Tax (RTT)

The Company is not subject to the Repatriation Transition Tax.

I. Alternative Minimum Tax (AMT) Credit

Not Applicable

NOTE 10 Information Concerning Parent, Subsidiaries, Affiliates and Other Related Parties

A. Nature of the Relationship Involved

Effective January 1, 2021, a mutual holding company structure went into effect. Through this conversion, the Company's parent company and mutual affiliates became stock companies under Encova Holdings, Inc., which is 100% owned by Encova Mutual Insurance Group, Inc.

The Company is a member of an affiliated group of companies and is party to various transactions and agreements with other members of the group. Primarily those transactions are composed of:

- IT and Payroll processing services are provided by a non-insurance member of the group.
- The P&C Companies within the group participate in a pooling arrangement.
- The lead company to the pool provides management services to the other members of the Group. All Companies in the Group are parties to a cost sharing.
- The Various companies have entered into a tax sharing agreement with each company that qualifies to be included in a consolidated return.
- Selected members of the group participated in intercompany loan agreements.

B. Transactions

On November 30, 2021, the Company received a capital contribution from Motorists Mutual Insurance company of \$20.0 million.

C. Transactions with related party who are not reported on Schedule Y

Not Applicable

D. Amounts Due From or To Related Parties

As of December 31, 2022 and 2021, the Company reported net amounts due from/(due to) affiliates of \$(1,500,759) and \$767,993 respectively. All amounts were settled within 60 days.

E. Material Management or Service Contracts and Cost-Sharing Arrangements

See Note A

F. Guarantees or Undertakings

The Company had no guarantees or undertakings for the benefit of an affiliate or related party that resulted in a material contingency exposure to the Company or any related parties during the periods reported.

G. Nature of the Control Relationship

As of December 31, 2022, all outstanding shares of the Company were owned by Motorists Mutual Insurance Company, an Ohio-based property/casualty insurer.

H. Amount Deducted from the Value of Upstream Intermediate Entity or Ultimate Parent Owned

The Company did not own any shares, directly or indirectly, of an upstream intermediate entity or ultimate parent during the periods reported.

I. Investments in SCA that Exceed 10% of Admitted Assets

The Company did not have any investments in subsidiary, controlled, or affiliated entities that exceed 10% of admitted assets during the periods reported.

J. Investments in Impaired SCAs

The Company did not recognize any impairment write-downs for investments in subsidiary, controlled, or affiliated entities during the periods reported.

K. Investment in Foreign Insurance Subsidiary

The Company did not have any investments in foreign insurance subsidiaries during the periods reported.

L. Investment in Downstream Noninsurance Holding Company

The Company did not have any investments in downstream non-insurance holding companies.

M. - O. Not Applicable

NOTE 11 Debt

Not Applicable

NOTE 12 Retirement Plans, Deferred Compensation, Postemployment Benefits and Compensated Absences and Other Postretirement Benefit Plans

A. - D. Not Applicable

NOTES TO FINANCIAL STATEMENTS

E. Defined Contribution Plan

The Company participates in an Incentive Savings Plan under Section 401(k) of the Internal Revenue Code sponsored by Motorists Mutual Insurance Company covering substantially all of its employees. The Plan matches employee contributions of 7% of total eligible compensation for 2022 and 2021, respectively. Employer contributions are immediately vested. The Company's share of the contribution to the plan was \$163,055 and \$34,872, respectively. The Company participates in two Non-qualified supplemental retirement plans for selected employees. One plan provides for contributions at the Company's discretion on a yearly basis. The other is composed of a single contribution for selected employees. Employees vest at age 60 or when certain vesting events occur. The Company's share of the expenses is allocated through the cost allocation model.

F. Multiemployer Plans

Not Applicable

G. Consolidated/Holding Company Plans

The Company participated in a non-contributory defined pension plan sponsored by Motorists, until Motorists elected to freeze its benefit plans effective December 31, 2017. In addition, the Company shares in certain other post-retirement benefits provided through a plan sponsored by Motorists Mutual. The Company has no legal obligation for benefits under these plans. Motorists Mutual allocates amounts to the Company based on a cost sharing agreement. In 2022 and 2021, the Company was allocated (\$79,801) and (\$124,013), respectively, as a portion of the periodic pension costs and post-retirement benefits.

H. Postemployment Benefits and Compensated Absences

The Company generally has no obligations to current or former employees for benefits after their employment but before their retirement other than for compensation related to earned paid time off. The liability for earned but unused paid time off has been accrued.

I. Impact of Medicare Modernization Act on Postretirement Benefits (INT 04-17)

Not Applicable

NOTE 13 Capital and Surplus, Dividend Restrictions and Quasi-Reorganizations

A. Number of Share and Par or State Value of Each Class

As of December 31, 2022, the Company had 1,000 shares authorized and 563 shares issued and outstanding with a par value of \$4,000.

B. Dividend Rate, Liquidation Value and Redemption Schedule of Preferred Stock Issues

Not Applicable

C. Dividend Restrictions

Without prior approval of its domiciliary commissioner, dividends to shareholders are limited by the laws of the Company's state of incorporation to the lesser of either 10% of surplus as regards to the policyholders as of the preceding December 31, or the net income for the twelve month period ending December 31 of the previous calendar year.

D. - I. Not Applicable

J. The Portion of Unassigned Funds (Surplus) Represented or Reduced by Cumulative Unrealized Gains and Losses is \$305,136.

K. - M. Not Applicable

NOTE 14 Liabilities, Contingencies and Assessments

A. Contingent Commitments

Not Applicable

B. Assessments

(1) Nature of Any Assets That Could Have a Material Financial Effect

The Company is subject to guaranty fund and other assessments by the states in which it conducts business. Guaranty fund assessments are accrued upon notification of the insolvency. Other assessments are recognized 1) when assessed by a state, 2) when premiums are written for premium-based assessments, or 3) when losses are incurred for loss based assessments. Incurred assessments are subject to the intercompany pooling arrangement described in Note 26. The company's net paid guaranty fund assessments totaled \$(1919) and \$0 for the years ended December 31, 2022 and 2021, respectively. The company's net accrued liabilities for guaranty funds were \$9,937 and \$0 as of December 31, 2022 and 2021, respectively. Per the accounting practices and procedures prescribed by the company's state of domicile, receivables for premium tax credits are not reflected in the accompanying financial statements.

(2) - (3) Not Applicable

C. - G. Not Applicable

NOTE 15 Leases

A. Lessee Operating Lease:

(1) The Company has allocated expenses related to leases of building space, vehicles, and various office equipment. The Company recognized expense for the years ending December 31, 2022 and 2021 of \$62,702 and \$16,508 respectively.

(2) - (3) Not Applicable

B. Lessor Leases

Not Applicable

NOTE 16 Information About Financial Instruments With Off-Balance Sheet Risk and Financial Instruments With Concentrations of Credit Risk

Not Applicable

NOTE 17 Sale, Transfer and Servicing of Financial Assets and Extinguishments of Liabilities

Not Applicable

NOTE 18 Gain or Loss to the Reporting Entity from Uninsured Plans and the Uninsured Portion of Partially Insured Plans

Not Applicable

NOTE 19 Direct Premium Written/Produced by Managing General Agents/Third Party Administrators

Not Applicable

NOTE 20 Fair Value Measurements

A. Fair Value Measurements

SSAP No. 100, Fair Value Measurements, clarifies the definition of estimated fair value and establishes a hierarchy for measuring estimated fair value. The hierarchy established by this standard consists of three levels to indicate the quality of the estimated fair value measurements as described below.

Level 1 - Quoted Prices in Active Markets for Identical Assets and Liabilities: Unadjusted quoted prices for identical assets or liabilities in active markets that are readily and regularly obtainable.

NOTES TO FINANCIAL STATEMENTS

Level 2 - Significant Other Observable Inputs: Quoted prices in markets that are not active or inputs that are observable either directly or indirectly. These inputs can include quoted prices for similar but not identical assets or liabilities other than quoted prices in Level 1.

Level 3 - Significant Unobservable Inputs: Prices or valuation techniques that require inputs that are both unobservable and significant to the overall fair value measurement. Inputs reflect management's best estimates of the assumptions market participants would use at the measurement date in pricing the asset or liability. Consideration is given to the risk inherent in both the method of valuation and the valuation inputs. Primary inputs to this valuation technique include broker quotes, comparative trades, and independent third-party providers.

The Company reviews its fair value hierarchy classifications for assets and liabilities quarterly. Changes in observability of significant valuation inputs identified during these reviews may trigger reclassifications in or out of Level 3. Reclassifications are reported as transfers at the beginning of the period in which the change occurs.

The estimated fair values for substantially all bonds, including loan-backed and structured securities, unaffiliated common stock and certain short-term investments are based on quoted prices or quotations on comparable securities in active markets that are readily and regularly obtainable. Valuation of these securities does not involve management's judgement.

When quoted prices in active markets are not available, the determination of estimated fair value is based on market standard valuation methodologies, giving priority to observable inputs. The significant inputs to the market standard valuation methodologies for certain types of securities with reasonable levels of price transparency are inputs that are observable in the market or can be derived principally from or corroborated by observable market data.

When observable inputs are not available, the market standard valuation methodologies for determining the estimated fair value of certain types of securities that trade infrequently, and therefore have little or no price transparency, rely on inputs that are significant to the estimated fair value that are not observable in the market or cannot be derived principally from or corroborated by observable market data. These observable inputs can be based in large part on management's judgement or estimation, and cannot be supported by reference or market activity. Even though these inputs are unobservable, management believes they are consistent with what other market participants would use when pricing such securities and are considered appropriate given the circumstances.

Fair Value Measurements at Reporting Date

Description for each class of asset or liability	(Level 1)	(Level 2)	(Level 3)	Net Asset Value (NAV)	Total
a. Assets at fair value					
Common Stocks, unaffiliated	\$ 1,607,722				\$ 1,607,722
Total assets at fair value/NAV	\$ 1,607,722	\$ -	\$ -	\$ -	\$ 1,607,722

B. Fair Value Reporting under SSAP 100 and Other Accounting Pronouncements
Not Applicable

C. Fair Value Level

The following tables reflect the estimated fair values and admitted values of all admitted assets and liabilities that are financial instruments excluding those accounted for under the equity method (subsidiaries, joint ventures and ventures). The estimated fair values are categorized into the three-level fair value hierarchy as described above.

Type of Financial Instrument	Aggregate Fair Value	Admitted Assets	(Level 1)	(Level 2)	(Level 3)	Net Asset Value (NAV)	Not Practicable (Carrying Value)
Bonds	\$ 13,986,748	\$ 15,124,581	\$ 1,009,641	\$ 12,977,107			
Common Stocks, unaffiliated	\$ 1,607,722	\$ 1,607,722	\$ 1,607,722				

D. - E. Not Applicable

NOTE 21 Other Items

A. - E. Not Applicable

F. Subprime Mortgage Related Risk Exposure

(1) Description of the Subprime-Mortgage-Related Exposure and Related Risk Management Policies

The Company does not engage in subprime residential mortgage lending.

The Company's exposure to subprime lending is limited to investments within the fixed maturity investment portfolio which contains securities collateralized by mortgages that might have characteristics of subprime lending such as adjustable rate mortgages and alternative documentation mortgages. Currently the Company has no exposure to subprime loans within the fixed maturity investment portfolio.

(2) - (4) Not Applicable

G. - H. Not Applicable

NOTE 22 Events Subsequent

The Company did not have any recognized subsequent events for the periods reported.

Subsequent events have been considered through February 24, 2023 for these statutory financial statements which are to be issued on March 1, 2023.

A. Federal Affordable Care Act (YES/NO)?

Yes [] No [X]

	2022	2021
B. ACA Fee Assessment Payable for the Upcoming Year	\$ -	\$ -
C. ACA Fee Assessment Paid	\$ -	\$ -
D. Premium Written Subject to ACA 9010 Assessment	\$ -	\$ -
E. Total Adjusted Capital Before Surplus Adjustment (Five-Year Historical Line 28)	\$ 32,966,476	\$ 33,051,979
F. Total Adjusted Capital After Surplus Adjustment (Five-Year Historical Line 28 minus 22B above)	\$ 32,966,476	\$ 33,051,979
G. Authorized Control Level (Five-Year Historical Line 29)	\$ 2,921,461	\$ 201,702

H. Would reporting the ACA assessment as of December 31, 2021 have triggered an RBC action level (YES/NO)?

Yes [] No [X]

NOTES TO FINANCIAL STATEMENTS

NOTE 23 Reinsurance

- A. Unsecured Reinsurance Recoverables
Individual Reinsurers with Unsecured Reinsurance Recoverables Exceeding 3% of Policyholder Surplus

Individual Reinsurers Who Are Members of a Group

Group Code	FEIN	Reinsurer Name	Unsecured Amount
14621	31-4259550	Motorists Mutual Insurance Company	\$ 1,507,766

- B. Reinsurance Recoverable in Dispute
Not Applicable

- C. Reinsurance Assumed and Ceded

(1)

	Assumed Reinsurance		Ceded Reinsurance		Net	
	Premium Reserve	Commission Equity	Premium Reserve	Commission Equity	Premium Reserve	Commission Equity
a. Affiliates	\$ 8,983,958	\$ 1,118,847	\$ 16,975,699	\$ 3,886,921	\$ (7,991,740)	\$ (2,768,074)
b. All Other	\$ 85,165	\$ 18,440	\$ 108,383	\$ 37,339	\$ (23,218)	\$ (18,899)
c. Total (a+b)	\$ 9,069,123	\$ 1,137,288	\$ 17,084,082	\$ 3,924,260	\$ (8,014,958)	\$ (2,786,972)
d. Direct Unearned Premium Reserve						\$ 17,084,082

(2)

	Direct	Assumed	Ceded	Net
a. Contingent Commission	\$ 98,568	\$ (231,381)		\$ (132,813)
b. Sliding Scale Adjustments				\$ -
c. Other Profit Commission Arrangements				\$ -
d. TOTAL (a+b+c)	\$ 98,568	\$ (231,381)	\$ -	\$ (132,813)

(3) Not Applicable

- D. - K. Not Applicable

NOTE 24 Retrospectively Rated Contracts & Contracts Subject to Redetermination

Not Applicable

NOTE 25 Change in Incurred Losses and Loss Adjustment Expenses

Reserves for the Company's incurred losses and loss adjustment expenses (after intercompany pooling) attributable to insured events of prior years reflect favorable development totaling \$1,605,068. The development can be attributed primarily to the re-estimation of unpaid losses and loss adjustment expenses in the workers' compensation, commercial auto liability, private passenger auto liability, auto physical damage, and other lines of business. The favorable development in these lines was slightly offset by losses in commercial multi perils, products liability, homeowners and farmowners. The changes reflected in these lines were generally the result of recent development trends. There were not any premium adjustments made as a result of this loss and loss adjustment expense development.

NOTE 26 Intercompany Pooling Arrangements

- A. Identification of the Lead Entity and all Affiliated Entities Participating in the Intercompany Pool
Motorists Mutual Insurance Company is the lead company in the Encova Pool. Each member contributes 100% of its applicable results to the Encova Pool through the reinsurance pooling agreement.

Effective January 1, 2022, the reinsurance pooling agreement was revised to adjust the percentages assumed back by each member of the Encova Pool. The companies in the Encova Pool and their portion assumed as of December 31, 2022 and December 31, 2021 are:

Lead Entity and all Affiliated Entities	NAIC Company Code	Pooling Percentage	
		2022	2021
Motorists Mutual Insurance Company (Lead Entity)	14621	24.1%	32.4%
BrickStreet Mutual Insurance Company	12372	48.2%	48.0%
Motorists Commercial Mutual Insurance Company	13331	13.4%	10.3%
Consumers Insurance USA, Inc.	10204	1.9%	2.1%
Iowa Mutual Insurance Company	14338	1.9%	1.7%
PinnaclePoint Insurance Company	15137	1.7%	0.8%
SummitPoint Insurance Company	15136	1.7%	0.8%
MICO Insurance Company	40932	1.7%	%
Phenix Mutual Fire Insurance Company	23175	1.4%	1.6%
AlleghenyPoint Insurance Company	13016	1.4%	%
Wilson Mutual Insurance Company	19950	1.3%	1.7%
NorthStone Insurance Company	13045	1.3%	%
Iowa American Insurance Company	31577	%	0.6%

- B. Description of Lines and Types of Business Subject to the Pooling Agreement
The pooling arrangement covered premiums, losses and underwriting expenses for all lines during the year. Related finance and service charge income, agent and premium balance charge-offs, deficiency reserves, and policyholder dividends were also subject to the pooling arrangement.
- C. Description of Cessions to Non-Affiliated Reinsurance Subject to Pooling Agreement
Each Company recognized facultative and treaty reinsurance cessions with unaffiliated reinsurers prior to the administration of the intercompany pooling agreement.
- D. Identification of all Pool Members that are Parties to Reinsurance Agreements with Non-Affiliated Reinsurers
As the lead insurer, Motorists Mutual assumed all net premiums, losses, loss adjustment expenses, and underwriting expenses and then ceded each pool participant its share of the pool.
- E. Explanation of Discrepancies Between Entries of Pooled Business
There are no discrepancies between any entries regarding pooled business on the assumed and ceded reinsurance schedules of other pooled participants.
- F. Description of Intercompany Sharing
Underwriting-related balance sheet items such as premiums receivable, installments, reinsurance assumed premium receivables and loss payables, reinsurance ceded premium payables and loss receivables, general expense receivables and payables, funds held balances, advanced premiums, and outstanding drafts were also pooled.
- G. Amounts Due To/From Lead Entity and all Affiliated Entities Participating in the Intercompany Pool
As of December 31, 2022, the lead company reported an aggregate pooling-related balance of \$1,200,215 payable to the other pool participants.

NOTE 27 Structured Settlements

Not Applicable

NOTES TO FINANCIAL STATEMENTS

NOTE 28 Health Care Receivables

Not Applicable

NOTE 29 Participating Policies

Not Applicable

NOTE 30 Premium Deficiency Reserves

Not Applicable

NOTE 31 High Deductibles

Not Applicable

NOTE 32 Discounting of Liabilities for Unpaid Losses or Unpaid Loss Adjustment Expenses

Not Applicable

NOTE 33 Asbestos/Environmental Reserves

A. Does the company have on the books, or has it ever written an insured for which you have identified a potential for the existence of a liability due to asbestos losses?

Yes. The Company had exposure to asbestos losses during the periods reported. Direct exposure arose from the sale of general liability business. The Company also had exposure through its unaffiliated reinsurance assumed operations and an intercompany pooling arrangement (reference Note 26). The Company estimates the impact of its direct exposure by establishing case reserves on all known losses and by computing IBNR losses based on previous experience. The Company relies on case and IBNR reserves established by the Excess Casualty Reinsurance Association and the Mutual Reinsurance Bureau to measure its exposure from unaffiliated reinsurance assumed operations.

The Company's asbestos and environmental related losses for calendar years 2018-2021 have been restated to reflect the pooling changes that were effective January 1, 2022. See Note 26 for details.

(1) Direct

	2018	2019	2020	2021	2022
a. Beginning reserves:	\$ 179,727	\$ 155,630	\$ 202,609	\$ 299,712	\$ 150,812
b. Incurred losses and loss adjustment expense:	\$ (11,963)	\$ 56,992	\$ 131,640	\$ (29,641)	\$ 12,589
c. Calendar year payments for losses and loss adjustment expenses:	\$ 12,134	\$ 10,013	\$ 34,537	\$ 119,259	\$ 15,659
d. Ending reserves (a+b-c):	\$ 155,630	\$ 202,609	\$ 299,712	\$ 150,812	\$ 147,742

(2) Assumed Reinsurance

	2018	2019	2020	2021	2022
a. Beginning reserves:	\$ 56,029	\$ 54,266	\$ 53,366	\$ 43,419	\$ 42,286
b. Incurred losses and loss adjustment expense:	\$ (11)	\$ 1,023	\$ (8,182)	\$ 58	\$ 9
c. Calendar year payments for losses and loss adjustment expenses:	\$ 1,752	\$ 1,923	\$ 1,765	\$ 1,191	\$ 1,449
d. Ending reserves (a+b-c):	\$ 54,266	\$ 53,366	\$ 43,419	\$ 42,286	\$ 40,846

(3) Net of Ceded Reinsurance

	2018	2019	2020	2021	2022
a. Beginning reserves:	\$ 235,320	\$ 209,388	\$ 254,880	\$ 279,383	\$ 159,571
b. Incurred losses and loss adjustment expense:	\$ (12,124)	\$ 57,475	\$ 60,795	\$ (29,592)	\$ 13,672
c. Calendar year payments for losses and loss adjustment expenses:	\$ 13,808	\$ 11,983	\$ 36,292	\$ 90,220	\$ 14,918
d. Ending reserves (a+b-c):	\$ 209,388	\$ 254,880	\$ 279,383	\$ 159,571	\$ 158,325

B. State the amount of the ending reserves for Bulk + IBNR included in A (Loss & LAE):

(1) Direct Basis:	\$ 77,322
(2) Assumed Reinsurance Basis:	\$ 29,656
(3) Net of Ceded Reinsurance Basis:	\$ 106,764

C. State the amount of the ending reserves for loss adjustment expenses included in A (Case, Bulk + IBNR):

(1) Direct Basis:	\$ 34,655
(2) Assumed Reinsurance Basis:	\$ 1,612
(3) Net of Ceded Reinsurance Basis:	\$ 36,160

D. Does the company have on the books, or has it ever written an insured for which you have identified a potential for the existence of a liability due to environmental losses?

Yes. The Company had exposure to environmental losses during the periods reported. Direct exposure arose from the sale of general liability, commercial autoliability, and homeowners business. The Company also had exposure through its unaffiliated reinsurance assumed operations and an intercompany pooling arrangement (reference Note 26). The Company estimates the impact of its direct exposure by establishing case reserves on all known losses and by computing IBNR losses based on previous experience. The Company relies on case and IBNR reserves established by the Excess Casualty Reinsurance Association and the Mutual Reinsurance Bureau to measure its exposure from unaffiliated reinsurance assumed operations.

The Company' asbestos and environmental related losses for calendar years 2018-2021 have been restated to reflect the pooling changes that were effective January 1, 2022. See Note 26 for details.

(1) Direct

	2018	2019	2020	2021	2022
a. Beginning reserves:	\$ 85,539	\$ 66,497	\$ 59,577	\$ 38,841	\$ 21,431
b. Incurred losses and loss adjustment expense:	\$ (11,261)	\$ (3,318)	\$ (12,024)	\$ (16,747)	\$ (1,831)
c. Calendar year payments for losses and loss adjustment expenses:	\$ 7,781	\$ 3,602	\$ 8,712	\$ 663	\$ 727
d. Ending reserves (a+b-c):	\$ 66,497	\$ 59,577	\$ 38,841	\$ 21,431	\$ 18,873

NOTES TO FINANCIAL STATEMENTS

(2) Assumed Reinsurance

	2018	2019	2020	2021	2022
a. Beginning reserves:	\$ 8,234	\$ 11,981	\$ 11,178	\$ 15,445	\$ 11,693
b. Incurred losses and loss adjustment expense:	\$ 4,651	\$ 21	\$ 4,961	\$ (2,976)	\$ 2,534
c. Calendar year payments for losses and loss adjustment expenses:	\$ 904	\$ 824	\$ 694	\$ 776	\$ 590
d. Ending reserves (a+b-c):	\$ 11,981	\$ 11,178	\$ 15,445	\$ 11,693	\$ 13,637

(3) Net of Ceded Reinsurance

	2018	2019	2020	2021	2022
a. Beginning reserves:	\$ 90,962	\$ 73,009	\$ 65,727	\$ 48,697	\$ 29,618
b. Incurred losses and loss adjustment expense:	\$ (9,400)	\$ (2,484)	\$ (7,881)	\$ (17,697)	\$ (960)
c. Calendar year payments for losses and loss adjustment expenses:	\$ 8,553	\$ 4,798	\$ 9,149	\$ 1,382	\$ 1,121
d. Ending reserves (a+b-c):	\$ 73,009	\$ 65,727	\$ 48,697	\$ 29,618	\$ 27,537

E. State the amount of the ending reserves for Bulk + IBNR included in D (Loss & LAE):

(1) Direct Basis:	\$ 15,037
(2) Assumed Reinsurance Basis:	\$ 11,587
(3) Net of Ceded Reinsurance Basis:	\$ 22,055

F. State the amount of the ending reserves for loss adjustment expenses included in D (Case, Bulk + IBNR):

(1) Direct Basis:	\$ 4,888
(2) Assumed Reinsurance Basis:	\$ 3,669
(3) Net of Ceded Reinsurance Basis:	\$ 6,272

NOTE 34 Subscriber Savings Accounts

Not Applicable

NOTE 35 Multiple Peril Crop Insurance

Not Applicable

NOTE 36 Financial Guaranty Insurance

Not Applicable

GENERAL INTERROGATORIES

**PART 1 - COMMON INTERROGATORIES
GENERAL**

- 1.1 Is the reporting entity a member of an Insurance Holding Company System consisting of two or more affiliated persons, one or more of which is an insurer? Yes [X] No []
If yes, complete Schedule Y, Parts 1, 1A, 2 and 3.

- 1.2 If yes, did the reporting entity register and file with its domiciliary State Insurance Commissioner, Director or Superintendent or with such regulatory official of the state of domicile of the principal insurer in the Holding Company System, a registration statement providing disclosure substantially similar to the standards adopted by the National Association of Insurance Commissioners (NAIC) in its Model Insurance Holding Company System Regulatory Act and model regulations pertaining thereto, or is the reporting entity subject to standards and disclosure requirements substantially similar to those required by such Act and regulations? Yes [X] No [] N/A []

- 1.3 State Regulating? OHIO

- 1.4 Is the reporting entity publicly traded or a member of a publicly traded group? Yes [] No [X]

- 1.5 If the response to 1.4 is yes, provide the CIK (Central Index Key) code issued by the SEC for the entity/group.

- 2.1 Has any change been made during the year of this statement in the charter, by-laws, articles of incorporation, or deed of settlement of the reporting entity? Yes [] No [X]

- 2.2 If yes, date of change:

- 3.1 State as of what date the latest financial examination of the reporting entity was made or is being made. 12/31/2022

- 3.2 State the as of date that the latest financial examination report became available from either the state of domicile or the reporting entity. This date should be the date of the examined balance sheet and not the date the report was completed or released. 12/31/2018

- 3.3 State as of what date the latest financial examination report became available to other states or the public from either the state of domicile or the reporting entity. This is the release date or completion date of the examination report and not the date of the examination (balance sheet date). 06/03/2020

- 3.4 By what department or departments?
OHIO DEPARTMENT OF INSURANCE

- 3.5 Have all financial statement adjustments within the latest financial examination report been accounted for in a subsequent financial statement filed with Departments? Yes [] No [] N/A [X]

- 3.6 Have all of the recommendations within the latest financial examination report been complied with? Yes [] No [] N/A [X]

- 4.1 During the period covered by this statement, did any agent, broker, sales representative, non-affiliated sales/service organization or any combination thereof under common control (other than salaried employees of the reporting entity), receive credit or commissions for or control a substantial part (more than 20 percent of any major line of business measured on direct premiums) of:
4.11 sales of new business? Yes [] No [X]
4.12 renewals? Yes [] No [X]

- 4.2 During the period covered by this statement, did any sales/service organization owned in whole or in part by the reporting entity or an affiliate, receive credit or commissions for or control a substantial part (more than 20 percent of any major line of business measured on direct premiums) of:
4.21 sales of new business? Yes [] No [X]
4.22 renewals? Yes [] No [X]

- 5.1 Has the reporting entity been a party to a merger or consolidation during the period covered by this statement? Yes [] No [X]
If yes, complete and file the merger history data file with the NAIC.

- 5.2 If yes, provide the name of the entity, NAIC Company Code, and state of domicile (use two letter state abbreviation) for any entity that has ceased to exist as a result of the merger or consolidation.

1 Name of Entity	2 NAIC Company Code	3 State of Domicile

- 6.1 Has the reporting entity had any Certificates of Authority, licenses or registrations (including corporate registration, if applicable) suspended or revoked by any governmental entity during the reporting period? Yes [] No [X]

- 6.2 If yes, give full information:

- 7.1 Does any foreign (non-United States) person or entity directly or indirectly control 10% or more of the reporting entity? Yes [] No [X]

- 7.2 If yes,
7.21 State the percentage of foreign control; %
7.22 State the nationality(s) of the foreign person(s) or entity(s); or if the entity is a mutual or reciprocal, the nationality of its manager or attorney-in-fact and identify the type of entity(s) (e.g., individual, corporation, government, manager or attorney-in-fact).

1 Nationality	2 Type of Entity

ANNUAL STATEMENT FOR THE YEAR 2022 OF THE MICO INSURANCE COMPANY

GENERAL INTERROGATORIES

- 8.1 Is the company a subsidiary of a depository institution holding company (DIHC) or a DIHC itself, regulated by the Federal Reserve Board? Yes [] No [X]
- 8.2 If the response to 8.1 is yes, please identify the name of the DIHC.
.....
- 8.3 Is the company affiliated with one or more banks, thrifts or securities firms? Yes [] No [X]
- 8.4 If response to 8.3 is yes, please provide below the names and location (city and state of the main office) of any affiliates regulated by a federal regulatory services agency [i.e. the Federal Reserve Board (FRB), the Office of the Comptroller of the Currency (OCC), the Federal Deposit Insurance Corporation (FDIC) and the Securities Exchange Commission (SEC)] and identify the affiliate's primary federal regulator.

1 Affiliate Name	2 Location (City, State)	3 FRB	4 OCC	5 FDIC	6 SEC

- 8.5 Is the reporting entity a depository institution holding company with significant insurance operations as defined by the Board of Governors of Federal Reserve System or a subsidiary of the depository institution holding company? Yes [] No [X]
- 8.6 If response to 8.5 is no, is the reporting entity a company or subsidiary of a company that has otherwise been made subject to the Federal Reserve Board's capital rule? Yes [] No [X] N/A []
9. What is the name and address of the independent certified public accountant or accounting firm retained to conduct the annual audit?
KPMG LLP 191 W. Nationwide Blvd., Suite 500, Columbus OH 43215
- 10.1 Has the insurer been granted any exemptions to the prohibited non-audit services provided by the certified independent public accountant requirements as allowed in Section 7H of the Annual Financial Reporting Model Regulation (Model Audit Rule), or substantially similar state law or regulation? Yes [] No [X]
- 10.2 If the response to 10.1 is yes, provide information related to this exemption:
.....
- 10.3 Has the insurer been granted any exemptions related to the other requirements of the Annual Financial Reporting Model Regulation as allowed for in Section 18A of the Model Regulation, or substantially similar state law or regulation? Yes [] No [X]
- 10.4 If the response to 10.3 is yes, provide information related to this exemption:
.....
- 10.5 Has the reporting entity established an Audit Committee in compliance with the domiciliary state insurance laws? Yes [X] No [] N/A []
- 10.6 If the response to 10.5 is no or n/a, please explain
.....
11. What is the name, address and affiliation (officer/employee of the reporting entity or actuary/consultant associated with an actuarial consulting firm) of the individual providing the statement of actuarial opinion/certification?
Derek A. Jones, FCAS, MAAA, Milliman, One Pennsylvania Plaza, 38th Floor, New York, NY 10119, who is a consulting actuary for the Encova Mutual Insurance Group
- 12.1 Does the reporting entity own any securities of a real estate holding company or otherwise hold real estate indirectly? Yes [] No [X]
- 12.11 Name of real estate holding company ...
- 12.12 Number of parcels involved
- 12.13 Total book/adjusted carrying value \$
- 12.2 If, yes provide explanation:
.....
13. **FOR UNITED STATES BRANCHES OF ALIEN REPORTING ENTITIES ONLY:**
- 13.1 What changes have been made during the year in the United States manager or the United States trustees of the reporting entity?
.....
- 13.2 Does this statement contain all business transacted for the reporting entity through its United States Branch on risks wherever located? Yes [] No []
- 13.3 Have there been any changes made to any of the trust indentures during the year? Yes [] No []
- 13.4 If answer to (13.3) is yes, has the domiciliary or entry state approved the changes? Yes [] No [] N/A []
- 14.1 Are the senior officers (principal executive officer, principal financial officer, principal accounting officer or controller, or persons performing similar functions) of the reporting entity subject to a code of ethics, which includes the following standards? Yes [X] No []
- a. Honest and ethical conduct, including the ethical handling of actual or apparent conflicts of interest between personal and professional relationships;
- b. Full, fair, accurate, timely and understandable disclosure in the periodic reports required to be filed by the reporting entity;
- c. Compliance with applicable governmental laws, rules and regulations;
- d. The prompt internal reporting of violations to an appropriate person or persons identified in the code; and
- e. Accountability for adherence to the code.
- 14.11 If the response to 14.1 is No, please explain:
.....
- 14.2 Has the code of ethics for senior managers been amended? Yes [] No [X]
- 14.21 If the response to 14.2 is yes, provide information related to amendment(s).
.....
- 14.3 Have any provisions of the code of ethics been waived for any of the specified officers? Yes [] No [X]
- 14.31 If the response to 14.3 is yes, provide the nature of any waiver(s).
.....

ANNUAL STATEMENT FOR THE YEAR 2022 OF THE MICO INSURANCE COMPANY

GENERAL INTERROGATORIES

- 15.1 Is the reporting entity the beneficiary of a Letter of Credit that is unrelated to reinsurance where the issuing or confirming bank is not on the SVO Bank List? Yes [] No [X]
- 15.2 If the response to 15.1 is yes, indicate the American Bankers Association (ABA) Routing Number and the name of the issuing or confirming bank of the Letter of Credit and describe the circumstances in which the Letter of Credit is triggered.

1 American Bankers Association (ABA) Routing Number	2 Issuing or Confirming Bank Name	3 Circumstances That Can Trigger the Letter of Credit	4 Amount

BOARD OF DIRECTORS

16. Is the purchase or sale of all investments of the reporting entity passed upon either by the board of directors or a subordinate committee thereof? Yes [X] No []
17. Does the reporting entity keep a complete permanent record of the proceedings of its board of directors and all subordinate committees thereof? Yes [X] No []
18. Has the reporting entity an established procedure for disclosure to its board of directors or trustees of any material interest or affiliation on the part of any of its officers, directors, trustees or responsible employees that is in conflict or is likely to conflict with the official duties of such person? Yes [X] No []

FINANCIAL

19. Has this statement been prepared using a basis of accounting other than Statutory Accounting Principles (e.g., Generally Accepted Accounting Principles)? Yes [] No [X]
- 20.1 Total amount loaned during the year (inclusive of Separate Accounts, exclusive of policy loans):
- 20.11 To directors or other officers.....\$0
 - 20.12 To stockholders not officers.....\$0
 - 20.13 Trustees, supreme or grand (Fraternal Only)\$0
- 20.2 Total amount of loans outstanding at the end of year (inclusive of Separate Accounts, exclusive of policy loans):
- 20.21 To directors or other officers.....\$0
 - 20.22 To stockholders not officers.....\$0
 - 20.23 Trustees, supreme or grand (Fraternal Only)\$0
- 21.1 Were any assets reported in this statement subject to a contractual obligation to transfer to another party without the liability for such obligation being reported in the statement? Yes [] No [X]
- 21.2 If yes, state the amount thereof at December 31 of the current year:
- 21.21 Rented from others.....\$
 - 21.22 Borrowed from others.....\$
 - 21.23 Leased from others\$
 - 21.24 Other\$
- 22.1 Does this statement include payments for assessments as described in the Annual Statement Instructions other than guaranty fund or guaranty association assessments? Yes [] No [X]
- 22.2 If answer is yes:
- 22.21 Amount paid as losses or risk adjustment \$
 - 22.22 Amount paid as expenses\$
 - 22.23 Other amounts paid\$
- 23.1 Does the reporting entity report any amounts due from parent, subsidiaries or affiliates on Page 2 of this statement? Yes [] No [X]
- 23.2 If yes, indicate any amounts receivable from parent included in the Page 2 amount:\$
- 24.1 Does the insurer utilize third parties to pay agent commissions in which the amounts advanced by the third parties are not settled in full within 90 days? Yes [] No [X]
- 24.2 If the response to 24.1 is yes, identify the third-party that pays the agents and whether they are a related party.

Name of Third-Party	Is the Third-Party Agent a Related Party (Yes/No)

INVESTMENT

- 25.01 Were all the stocks, bonds and other securities owned December 31 of current year, over which the reporting entity has exclusive control, in the actual possession of the reporting entity on said date? (other than securities lending programs addressed in 25.03)..... Yes [X] No []

ANNUAL STATEMENT FOR THE YEAR 2022 OF THE MICO INSURANCE COMPANY

GENERAL INTERROGATORIES

- 25.02 If no, give full and complete information relating thereto
.....
- 25.03 For securities lending programs, provide a description of the program including value for collateral and amount of loaned securities, and whether collateral is carried on or off-balance sheet. (an alternative is to reference Note 17 where this information is also provided)
.....
- 25.04 For the reporting entity's securities lending program, report amount of collateral for conforming programs as outlined in the Risk-Based Capital Instructions. \$
- 25.05 For the reporting entity's securities lending program, report amount of collateral for other programs. \$
- 25.06 Does your securities lending program require 102% (domestic securities) and 105% (foreign securities) from the counterparty at the outset of the contract? Yes [] No [] N/A [X]
- 25.07 Does the reporting entity non-admit when the collateral received from the counterparty falls below 100%? Yes [] No [] N/A [X]
- 25.08 Does the reporting entity or the reporting entity's securities lending agent utilize the Master Securities lending Agreement (MSLA) to conduct securities lending? Yes [] No [] N/A [X]
- 25.09 For the reporting entity's securities lending program state the amount of the following as of December 31 of the current year:
- 25.091 Total fair value of reinvested collateral assets reported on Schedule DL, Parts 1 and 2. \$ 0
- 25.092 Total book adjusted/carrying value of reinvested collateral assets reported on Schedule DL, Parts 1 and 2 \$ 0
- 25.093 Total payable for securities lending reported on the liability page. \$ 0

- 26.1 Were any of the stocks, bonds or other assets of the reporting entity owned at December 31 of the current year not exclusively under the control of the reporting entity or has the reporting entity sold or transferred any assets subject to a put option contract that is currently in force? (Exclude securities subject to Interrogatory 21.1 and 25.03). Yes [X] No []
- 26.2 If yes, state the amount thereof at December 31 of the current year:
- 26.21 Subject to repurchase agreements \$
- 26.22 Subject to reverse repurchase agreements \$
- 26.23 Subject to dollar repurchase agreements \$
- 26.24 Subject to reverse dollar repurchase agreements \$
- 26.25 Placed under option agreements \$
- 26.26 Letter stock or securities restricted as to sale - excluding FHLB Capital Stock \$
- 26.27 FHLB Capital Stock \$
- 26.28 On deposit with states \$ 2,259,190
- 26.29 On deposit with other regulatory bodies \$
- 26.30 Pledged as collateral - excluding collateral pledged to an FHLB \$
- 26.31 Pledged as collateral to FHLB - including assets backing funding agreements \$
- 26.32 Other \$

26.3 For category (26.26) provide the following:

1 Nature of Restriction	2 Description	3 Amount

- 27.1 Does the reporting entity have any hedging transactions reported on Schedule DB? Yes [] No [X]
- 27.2 If yes, has a comprehensive description of the hedging program been made available to the domiciliary state? Yes [] No [] N/A [X]
If no, attach a description with this statement.

LINES 27.3 through 27.5: FOR LIFE/FRATERNAL REPORTING ENTITIES ONLY:

- 27.3 Does the reporting entity utilize derivatives to hedge variable annuity guarantees subject to fluctuations as a result of interest rate sensitivity? . Yes [] No []
- 27.4 If the response to 27.3 is YES, does the reporting entity utilize:
- 27.41 Special accounting provision of SSAP No. 108 Yes [] No []
- 27.42 Permitted accounting practice Yes [] No []
- 27.43 Other accounting guidance Yes [] No []
- 27.5 By responding YES to 27.41 regarding utilizing the special accounting provisions of SSAP No. 108, the reporting entity attests to the following: Yes [] No []
- The reporting entity has obtained explicit approval from the domiciliary state.
 - Hedging strategy subject to the special accounting provisions is consistent with the requirements of VM-21.
 - Actuarial certification has been obtained which indicates that the hedging strategy is incorporated within the establishment of VM-21 reserves and provides the impact of the hedging strategy within the Actuarial Guideline Conditional Tail Expectation Amount.
 - Financial Officer Certification has been obtained which indicates that the hedging strategy meets the definition of a Clearly Defined Hedging Strategy within VM-21 and that the Clearly Defined Hedging Strategy is the hedging strategy being used by the company in its actual day-to-day risk mitigation efforts.
- 28.1 Were any preferred stocks or bonds owned as of December 31 of the current year mandatorily convertible into equity, or, at the option of the issuer, convertible into equity? Yes [] No [X]
- 28.2 If yes, state the amount thereof at December 31 of the current year. \$
29. Excluding items in Schedule E - Part 3 - Special Deposits, real estate, mortgage loans and investments held physically in the reporting entity's offices, vaults or safety deposit boxes, were all stocks, bonds and other securities, owned throughout the current year held pursuant to a custodial agreement with a qualified bank or trust company in accordance with Section 1, III - General Examination Considerations, F. Outsourcing of Critical Functions, Custodial or Safekeeping Agreements of the NAIC Financial Condition Examiners Handbook?..... Yes [X] No []
- 29.01 For agreements that comply with the requirements of the NAIC Financial Condition Examiners Handbook, complete the following:

1 Name of Custodian(s)	2 Custodian's Address
BNY Mellon	500 Grant Street One Mellon Center, Suite #1035, Pittsburgh, PA 15258

**ANNUAL STATEMENT FOR THE YEAR 2022 OF THE MICO INSURANCE COMPANY
GENERAL INTERROGATORIES**

29.02 For all agreements that do not comply with the requirements of the NAIC Financial Condition Examiners Handbook, provide the name, location and a complete explanation:

1 Name(s)	2 Location(s)	3 Complete Explanation(s)

29.03 Have there been any changes, including name changes, in the custodian(s) identified in 29.01 during the current year?..... Yes [] No [X]

29.04 If yes, give full and complete information relating thereto:

1 Old Custodian	2 New Custodian	3 Date of Change	4 Reason

29.05 Investment management – Identify all investment advisors, investment managers, broker/dealers, including individuals that have the authority to make investment decisions on behalf of the reporting entity. For assets that are managed internally by employees of the reporting entity, note as such. ["...that have access to the investment accounts"; "...handle securities"]

1 Name of Firm or Individual	2 Affiliation
New England Asset Management, Inc.	U.....
Northern Trust Investments, Inc.	U.....

29.0597 For those firms/individuals listed in the table for Question 29.05, do any firms/individuals unaffiliated with the reporting entity (i.e. designated with a "U") manage more than 10% of the reporting entity's invested assets?..... Yes [X] No []

29.0598 For firms/individuals unaffiliated with the reporting entity (i.e. designated with a "U") listed in the table for Question 29.05, does the total assets under management aggregate to more than 50% of the reporting entity's invested assets?..... Yes [X] No []

29.06 For those firms or individuals listed in the table for 29.05 with an affiliation code of "A" (affiliated) or "U" (unaffiliated), provide the information for the table below.

1 Central Registration Depository Number	2 Name of Firm or Individual	3 Legal Entity Identifier (LEI)	4 Registered With	5 Investment Management Agreement (IMA) Filed
109846	New England Asset Management, Inc.	KUR85E5PS4GQFZTFC130	SEC	NO.....
105900	Northern Trust Investments, Inc.	BEL4B8X7EHJU845Y2N39	SEC	NO.....

30.1 Does the reporting entity have any diversified mutual funds reported in Schedule D, Part 2 (diversified according to the Securities and Exchange Commission (SEC) in the Investment Company Act of 1940 [Section 5(b)(1)])? Yes [X] No []

30.2 If yes, complete the following schedule:

1 CUSIP #	2 Name of Mutual Fund	3 Book/Adjusted Carrying Value
04314H-85-7	Artisan Intl Val Fund 1	794,128
464287-65-5	ISHARES Russ 2000 ETF	48,298
30.2999 - Total		842,426

30.3 For each mutual fund listed in the table above, complete the following schedule:

1 Name of Mutual Fund (from above table)	2 Name of Significant Holding of the Mutual Fund	3 Amount of Mutual Fund's Book/Adjusted Carrying Value Attributable to the Holding	4 Date of Valuation
Artisan Intl Val Fund 1	Novartis AG	40,659	12/31/2022 ..
Artisan Intl Val Fund 1	Danone S.A.	36,689	12/31/2022 ..
Artisan Intl Val Fund 1	Compass Group PLC	32,797	12/31/2022 ..
Artisan Intl Val Fund 1	Samsung Electronics Co. Ltd.	29,145	12/31/2022 ..
Artisan Intl Val Fund 1	ABB Ltd.	27,794	12/31/2022 ..
ISHARES Russ 2000 ETF	Blackrock Cash Funds:Institutional; SL Agency	4,786	12/31/2022 ..
ISHARES Russ 2000 ETF	Shockwave Medical Inc	179	12/31/2022 ..
ISHARES Russ 2000 ETF	Halozyme Therapeutics Inc	155	12/31/2022 ..
ISHARES Russ 2000 ETF	EMCOR Group Inc	150	12/31/2022 ..
ISHARES Russ 2000 ETF	Matador Resources Co	145	12/31/2022 ..

ANNUAL STATEMENT FOR THE YEAR 2022 OF THE MICO INSURANCE COMPANY
GENERAL INTERROGATORIES

31. Provide the following information for all short-term and long-term bonds and all preferred stocks. Do not substitute amortized value or statement value for fair value.

	1	2	3
	Statement (Admitted) Value	Fair Value	Excess of Statement over Fair Value (-), or Fair Value over Statement (+)
31.1 Bonds	15,124,581	13,986,747	(1,137,834)
31.2 Preferred stocks	0		0
31.3 Totals	15,124,581	13,986,747	(1,137,834)

31.4 Describe the sources or methods utilized in determining the fair values:

The Fair Value of securities is determined using quoted market prices when available, external pricing service, SVO pricing, fair values available from custodians or investment managers.

32.1 Was the rate used to calculate fair value determined by a broker or custodian for any of the securities in Schedule D? Yes [X] No []

32.2 If the answer to 32.1 is yes, does the reporting entity have a copy of the broker's or custodian's pricing policy (hard copy or electronic copy) for all brokers or custodians used as a pricing source? Yes [X] No []

32.3 If the answer to 32.2 is no, describe the reporting entity's process for determining a reliable pricing source for purposes of disclosure of fair value for Schedule D:

33.1 Have all the filing requirements of the Purposes and Procedures Manual of the NAIC Investment Analysis Office been followed? Yes [X] No []

33.2 If no, list exceptions:

34. By self-designating 5GI securities, the reporting entity is certifying the following elements of each self-designated 5GI security:
 a. Documentation necessary to permit a full credit analysis of the security does not exist or an NAIC CRP credit rating for an FE or PL security is not available.
 b. Issuer or obligor is current on all contracted interest and principal payments.
 c. The insurer has an actual expectation of ultimate payment of all contracted interest and principal.
 Has the reporting entity self-designated 5GI securities? Yes [] No [X]

35. By self-designating PLGI securities, the reporting entity is certifying the following elements of each self-designated PLGI security:
 a. The security was purchased prior to January 1, 2018.
 b. The reporting entity is holding capital commensurate with the NAIC Designation reported for the security.
 c. The NAIC Designation was derived from the credit rating assigned by an NAIC CRP in its legal capacity as a NRSRO which is shown on a current private letter rating held by the insurer and available for examination by state insurance regulators.
 d. The reporting entity is not permitted to share this credit rating of the PL security with the SVO.
 Has the reporting entity self-designated PLGI securities? Yes [] No [X]

36. By assigning FE to a Schedule BA non-registered private fund, the reporting entity is certifying the following elements of each self-designated FE fund:
 a. The shares were purchased prior to January 1, 2019.
 b. The reporting entity is holding capital commensurate with the NAIC Designation reported for the security.
 c. The security had a public credit rating(s) with annual surveillance assigned by an NAIC CRP in its legal capacity as an NRSRO prior to January 1, 2019.
 d. The fund only or predominantly holds bonds in its portfolio.
 e. The current reported NAIC Designation was derived from the public credit rating(s) with annual surveillance assigned by an NAIC CRP in its legal capacity as an NRSRO.
 f. The public credit rating(s) with annual surveillance assigned by an NAIC CRP has not lapsed.
 Has the reporting entity assigned FE to Schedule BA non-registered private funds that complied with the above criteria? Yes [] No [X]

37. By rolling/renewing short-term or cash equivalent investments with continued reporting on Schedule DA, Part 1 or Schedule E Part 2 (identified through a code (%) in those investment schedules), the reporting entity is certifying to the following:
 a. The investment is a liquid asset that can be terminated by the reporting entity on the current maturity date.
 b. If the investment is with a nonrelated party or nonaffiliate, then it reflects an arms-length transaction with renewal completed at the discretion of all involved parties.
 c. If the investment is with a related party or affiliate, then the reporting entity has completed robust re-underwriting of the transaction for which documentation is available for regulator review.
 d. Short-term and cash equivalent investments that have been renewed/rolled from the prior period that do not meet the criteria in 37.a - 37.c are reported as long-term investments.
 Has the reporting entity rolled/renewed short-term or cash equivalent investments in accordance with these criteria? Yes [] No [] N/A [X]

ANNUAL STATEMENT FOR THE YEAR 2022 OF THE MICO INSURANCE COMPANY
GENERAL INTERROGATORIES

38.1 Does the reporting entity directly hold cryptocurrencies? Yes [] No [X]

38.2 If the response to 38.1 is yes, on what schedule are they reported?

39.1 Does the reporting entity directly or indirectly accept cryptocurrencies as payments for premiums on policies? Yes [] No [X]

39.2 If the response to 39.1 is yes, are the cryptocurrencies held directly or are they immediately converted to U.S. dollars?
 39.21 Held directly Yes [] No []
 39.22 Immediately converted to U.S. dollars Yes [] No []

39.3 If the response to 38.1 or 39.1 is yes, list all cryptocurrencies accepted for payments of premiums or that are held directly.

1 Name of Cryptocurrency	2 Immediately Converted to USD, Directly Held, or Both	3 Accepted for Payment of Premiums

OTHER

40.1 Amount of payments to trade associations, service organizations and statistical or rating bureaus, if any? \$ 124,106

40.2 List the name of the organization and the amount paid if any such payment represented 25% or more of the total payments to trade associations, service organizations and statistical or rating bureaus during the period covered by this statement.

1 Name	2 Amount Paid
INSURANCE SERVICES OFFICE INC	98,359

41.1 Amount of payments for legal expenses, if any? \$ 0

41.2 List the name of the firm and the amount paid if any such payment represented 25% or more of the total payments for legal expenses during the period covered by this statement.

1 Name	2 Amount Paid

42.1 Amount of payments for expenditures in connection with matters before legislative bodies, officers or departments of government, if any? \$ 0

42.2 List the name of the firm and the amount paid if any such payment represented 25% or more of the total payment expenditures in connection with matters before legislative bodies, officers, or departments of government during the period covered by this statement.

1 Name	2 Amount Paid

GENERAL INTERROGATORIES

PART 2 - PROPERTY AND CASUALTY INTERROGATORIES

1.1 Does the reporting entity have any direct Medicare Supplement Insurance in force? Yes [] No [X]

1.2 If yes, indicate premium earned on U. S. business only. \$ _____

1.3 What portion of Item (1.2) is not reported on the Medicare Supplement Insurance Experience Exhibit? \$ _____
 1.31 Reason for excluding

1.4 Indicate amount of earned premium attributable to Canadian and/or Other Alien not included in Item (1.2) above. \$ _____

1.5 Indicate total incurred claims on all Medicare Supplement Insurance. \$ _____ 0

1.6 Individual policies:

	Most current three years:	
1.61 Total premium earned	\$	0
1.62 Total incurred claims	\$	0
1.63 Number of covered lives		0
All years prior to most current three years		
1.64 Total premium earned	\$	0
1.65 Total incurred claims	\$	0
1.66 Number of covered lives		0

1.7 Group policies:

	Most current three years:	
1.71 Total premium earned	\$	0
1.72 Total incurred claims	\$	0
1.73 Number of covered lives		0
All years prior to most current three years		
1.74 Total premium earned	\$	0
1.75 Total incurred claims	\$	0
1.76 Number of covered lives		0

2. Health Test:

	1 Current Year	2 Prior Year
2.1 Premium Numerator	0	0
2.2 Premium Denominator	19,269,347	0
2.3 Premium Ratio (2.1/2.2)	0.000	0.000
2.4 Reserve Numerator	0	0
2.5 Reserve Denominator	44,183,851	0
2.6 Reserve Ratio (2.4/2.5)	0.000	0.000

3.1 Did the reporting entity issue participating policies during the calendar year? Yes [] No [X]

3.2 If yes, provide the amount of premium written for participating and/or non-participating policies during the calendar year:

3.21 Participating policies	\$	
3.22 Non-participating policies	\$	

4. For mutual reporting Entities and Reciprocal Exchanges Only:

4.1 Does the reporting entity issue assessable policies? Yes [] No []

4.2 Does the reporting entity issue non-assessable policies? Yes [] No []

4.3 If assessable policies are issued, what is the extent of the contingent liability of the policyholders? % _____

4.4 Total amount of assessments paid or ordered to be paid during the year on deposit notes or contingent premiums. \$ _____

5. For Reciprocal Exchanges Only:

5.1 Does the Exchange appoint local agents? Yes [] No []

5.2 If yes, is the commission paid:

5.21 Out of Attorney's-in-fact compensation.....	Yes [] No [] N/A []	
5.22 As a direct expense of the exchange.....	Yes [] No [] N/A []	

5.3 What expenses of the Exchange are not paid out of the compensation of the Attorney-in-fact?

5.4 Has any Attorney-in-fact compensation, contingent on fulfillment of certain conditions, been deferred? Yes [] No []

5.5 If yes, give full information

GENERAL INTERROGATORIES

PART 2 - PROPERTY AND CASUALTY INTERROGATORIES

- 6.1 What provision has this reporting entity made to protect itself from an excessive loss in the event of a catastrophe under a workers' compensation contract issued without limit of loss?
 Those Companies that concentrate in the Workers Compensation business, and which the Company has exposure to through the intercompany pooling arrangement, purchase catastrophic reinsurance at levels that are deemed adequate to protect against excessive loss. In addition, losses arising from claims under the federal black lung programs for dates of injury prior to 2016 are subject to ADC arrangement related to black lung claims. In addition, single locations, where excessive concentration of potential losses have been identified, are subject to facultative reinsurance above the layers contained in the catastrophic policies.
- 6.2 Describe the method used to estimate this reporting entity's probable maximum insurance loss, and identify the type of insured exposures comprising that probable maximum loss, the locations of concentrations of those exposures and the external resources (such as consulting firms or computer software models), if any, used in the estimation process.
 The Lead Company in the pooling arrangement performs a concentration of risk study using modeling software to determine the probable maximum insurance loss. The software utilized includes Management Solutions (RMS) RiskLink and AIR Touchstone catastrophe models. Analysis is performed for the perils of hurricane, severe convective storm, winter storm, and earthquake. The PML driver on low return periods (~20 years) is severe convective storm. Starting around the 100 year return period, hurricane becomes the largest driver of the PML. The highest concentration of exposure (total insured value) is in Ohio. Ohio also has the highest gross average annual loss (Gross AAL). 7 of the top 10 counties for exposure are in Ohio. The other three counties are in Kentucky, Nebraska, and Rhode Island. 6 of the top 10 counties for Gross AAL are in Ohio. The other counties are in Indiana, Kentucky, Nebraska, and Rhode Island. The Encova Mutual Insurance Group utilizes Guy Carpenter's CATography tool to analyze and manage property risk. The Group to which this Company is a party through its pooling arrangement works with reinsurer brokers to assist in developing maximum probable losses. Both Property and Casualty exposures are analyzed for probable maximum loss and include various scenarios.
- 6.3 What provision has this reporting entity made (such as a catastrophic reinsurance program) to protect itself from an excessive loss arising from the types and concentrations of insured exposures comprising its probable maximum property insurance loss?
 The Company purchases catastrophic reinsurance at levels that are deemed adequate to protect against excessive loss.
- 6.4 Does the reporting entity carry catastrophe reinsurance protection for at least one reinstatement, in an amount sufficient to cover its estimated probable maximum loss attributable to a single loss event or occurrence? Yes [X] No []
- 6.5 If no, describe any arrangements or mechanisms employed by the reporting entity to supplement its catastrophe reinsurance program or to hedge its exposure to uninsured catastrophic loss.
- 7.1 Has this reporting entity reinsured any risk with any other entity under a quota share reinsurance contract that includes a provision that would limit the reinsurer's losses below the stated quota share percentage (e.g., a deductible, a loss ratio corridor, a loss cap, an aggregate limit or any similar provisions)? Yes [] No [X]
- 7.2 If yes, indicate the number of reinsurance contracts containing such provisions:
- 7.3 If yes, does the amount of reinsurance credit taken reflect the reduction in quota share coverage caused by any applicable limiting provision(s)? Yes [] No []
- 8.1 Has this reporting entity reinsured any risk with any other entity and agreed to release such entity from liability, in whole or in part, from any loss that may occur on this risk, or portion thereof, reinsured? Yes [] No [X]
- 8.2 If yes, give full information

- 9.1 Has the reporting entity ceded any risk under any reinsurance contract (or under multiple contracts with the same reinsurer or its affiliates) for which during the period covered by the statement: (i) it recorded a positive or negative underwriting result greater than 5% of prior year-end surplus as regards policyholders or it reported calendar year written premium ceded or year-end loss and loss expense reserves ceded greater than 5% of prior year-end surplus as regards policyholders; (ii) it accounted for that contract as reinsurance and not as a deposit; and (iii) the contract(s) contain one or more of the following features or other features that would have similar results:
 (a) A contract term longer than two years and the contract is noncancellable by the reporting entity during the contract term;
 (b) A limited or conditional cancellation provision under which cancellation triggers an obligation by the reporting entity, or an affiliate of the reporting entity, to enter into a new reinsurance contract with the reinsurer, or an affiliate of the reinsurer;
 (c) Aggregate stop loss reinsurance coverage;
 (d) A unilateral right by either party (or both parties) to commute the reinsurance contract, whether conditional or not, except for such provisions which are only triggered by a decline in the credit status of the other party;
 (e) A provision permitting reporting of losses, or payment of losses, less frequently than on a quarterly basis (unless there is no activity during the period); or
 (f) Payment schedule, accumulating retentions from multiple years or any features inherently designed to delay timing of the reimbursement to the ceding entity. Yes [] No [X]
- 9.2 Has the reporting entity during the period covered by the statement ceded any risk under any reinsurance contract (or under multiple contracts with the same reinsurer or its affiliates), for which, during the period covered by the statement, it recorded a positive or negative underwriting result greater than 5% of prior year-end surplus as regards policyholders or it reported calendar year written premium ceded or year-end loss and loss expense reserves ceded greater than 5% of prior year-end surplus as regards policyholders; excluding cessions to approved pooling arrangements or to captive insurance companies that are directly or indirectly controlling, controlled by, or under common control with (i) one or more unaffiliated policyholders of the reporting entity, or (ii) an association of which one or more unaffiliated policyholders of the reporting entity is a member where:
 (a) The written premium ceded to the reinsurer by the reporting entity or its affiliates represents fifty percent (50%) or more of the entire direct and assumed premium written by the reinsurer based on its most recently available financial statement; or
 (b) Twenty-five percent (25%) or more of the written premium ceded to the reinsurer has been retroceded back to the reporting entity or its affiliates in a separate reinsurance contract. Yes [] No [X]
- 9.3 If yes to 9.1 or 9.2, please provide the following information in the Reinsurance Summary Supplemental Filing for General Interrogatory 9:
 (a) The aggregate financial statement impact gross of all such ceded reinsurance contracts on the balance sheet and statement of income;
 (b) A summary of the reinsurance contract terms and indicate whether it applies to the contracts meeting the criteria in 9.1 or 9.2; and
 (c) A brief discussion of management's principle objectives in entering into the reinsurance contract including the economic purpose to be achieved.
- 9.4 Except for transactions meeting the requirements of paragraph 36 of SSAP No. 62R - Property and Casualty Reinsurance, has the reporting entity ceded any risk under any reinsurance contract (or multiple contracts with the same reinsurer or its affiliates) during the period covered by the financial statement, and either:
 (a) Accounted for that contract as reinsurance (either prospective or retroactive) under statutory accounting principles ("SAP") and as a deposit under generally accepted accounting principles ("GAAP"); or
 (b) Accounted for that contract as reinsurance under GAAP and as a deposit under SAP? Yes [] No [X]
- 9.5 If yes to 9.4, explain in the Reinsurance Summary Supplemental Filing for General Interrogatory 9 (Section D) why the contract(s) is treated differently for GAAP and SAP.
- 9.6 The reporting entity is exempt from the Reinsurance Attestation Supplement under one or more of the following criteria:
 (a) The entity does not utilize reinsurance; or, Yes [] No [X]
 (b) The entity only engages in a 100% quota share contract with an affiliate and the affiliated or lead company has filed an attestation supplement; or Yes [] No [X]
 (c) The entity has no external cessions and only participates in an intercompany pool and the affiliated or lead company has filed an attestation supplement Yes [] No [X]
10. If the reporting entity has assumed risks from another entity, there should be charged on account of such reinsurances a reserve equal to that which the original entity would have been required to charge had it retained the risks. Has this been done? Yes [X] No [] N/A []

GENERAL INTERROGATORIES

PART 2 - PROPERTY AND CASUALTY INTERROGATORIES

- 11.1 Has the reporting entity guaranteed policies issued by any other entity and now in force? Yes [] No [X]
- 11.2 If yes, give full information
.....
- 12.1 If the reporting entity recorded accrued retrospective premiums on insurance contracts on Line 15.3 of the asset schedule, Page 2, state the amount of corresponding liabilities recorded for:
- 12.11 Unpaid losses\$
- 12.12 Unpaid underwriting expenses (including loss adjustment expenses)\$
- 12.2 Of the amount on Line 15.3, Page 2, state the amount which is secured by letters of credit, collateral and other funds\$
- 12.3 If the reporting entity underwrites commercial insurance risks, such as workers' compensation, are premium notes or promissory notes accepted from its insureds covering unpaid premiums and/or unpaid losses? Yes [] No [X] N/A []
- 12.4 If yes, provide the range of interest rates charged under such notes during the period covered by this statement:
- 12.41 From %
- 12.42 To..... %
- 12.5 Are letters of credit or collateral and other funds received from insureds being utilized by the reporting entity to secure premium notes or promissory notes taken by a reporting entity, or to secure any of the reporting entity's reported direct unpaid loss reserves, including unpaid losses under loss deductible features of commercial policies? Yes [] No [X]
- 12.6 If yes, state the amount thereof at December 31 of the current year:
- 12.61 Letters of credit\$
- 12.62 Collateral and other funds.....\$
- 13.1 Largest net aggregate amount insured in any one risk (excluding workers' compensation):\$ 51,000
- 13.2 Does any reinsurance contract considered in the calculation of this amount include an aggregate limit of recovery without also including a reinstatement provision? Yes [] No [X]
- 13.3 State the number of reinsurance contracts (excluding individual facultative risk certificates, but including facultative programs, automatic facilities or facultative obligatory contracts) considered in the calculation of the amount. 2
- 14.1 Is the company a cedant in a multiple cedant reinsurance contract? Yes [X] No []
- 14.2 If yes, please describe the method of allocating and recording reinsurance among the cedants:
Premiums are allocated to cedant based on experience weighted earned premiums subject to the contract. Reinsurance recoveries are distributed based on each cedant's share of the aggregate losses subject to the contract.
- 14.3 If the answer to 14.1 is yes, are the methods described in item 14.2 entirely contained in the respective multiple cedant reinsurance contracts? Yes [] No [X]
- 14.4 If the answer to 14.3 is no, are all the methods described in 14.2 entirely contained in written agreements? Yes [X] No []
- 14.5 If the answer to 14.4 is no, please explain:
.....
- 15.1 Has the reporting entity guaranteed any financed premium accounts? Yes [] No [X]
- 15.2 If yes, give full information
.....
- 16.1 Does the reporting entity write any warranty business? Yes [] No [X]
If yes, disclose the following information for each of the following types of warranty coverage:

	1 Direct Losses Incurred	2 Direct Losses Unpaid	3 Direct Written Premium	4 Direct Premium Unearned	5 Direct Premium Earned
16.11 Home					
16.12 Products					
16.13 Automobile					
16.14 Other*	0	0	0	0	0

* Disclose type of coverage:
.....

GENERAL INTERROGATORIES

PART 2 - PROPERTY AND CASUALTY INTERROGATORIES

17.1 Does the reporting entity include amounts recoverable on unauthorized reinsurance in Schedule F - Part 3 that is exempt from the statutory provision for unauthorized reinsurance? Yes [] No [X]

Incurred but not reported losses on contracts in force prior to July 1, 1984, and not subsequently renewed are exempt from the statutory provision for unauthorized reinsurance. Provide the following information for this exemption:

- 17.11 Gross amount of unauthorized reinsurance in Schedule F - Part 3 exempt from the statutory provision for unauthorized reinsurance \$
- 17.12 Unfunded portion of Interrogatory 17.11 \$
- 17.13 Paid losses and loss adjustment expenses portion of Interrogatory 17.11... \$
- 17.14 Case reserves portion of Interrogatory 17.11 \$
- 17.15 Incurred but not reported portion of Interrogatory 17.11 \$
- 17.16 Unearned premium portion of Interrogatory 17.11 \$
- 17.17 Contingent commission portion of Interrogatory 17.11 \$

18.1 Do you act as a custodian for health savings accounts? Yes [] No [X]

18.2 If yes, please provide the amount of custodial funds held as of the reporting date. \$

18.3 Do you act as an administrator for health savings accounts? Yes [] No [X]

18.4 If yes, please provide the balance of funds administered as of the reporting date. \$

19. Is the reporting entity licensed or chartered, registered, qualified, eligible or writing business in at least two states? Yes [X] No []

19.1 If no, does the reporting entity assume reinsurance business that covers risks residing in at least one state other than the state of domicile of the reporting entity? Yes [] No []

ANNUAL STATEMENT FOR THE YEAR 2022 OF THE MICO INSURANCE COMPANY

FIVE-YEAR HISTORICAL DATA

Show amounts in whole dollars only, no cents; show percentages to one decimal place, i.e. 17.6.

	1 2022	2 2021	3 2020	4 2019	5 2018
Gross Premiums Written (Page 8, Part 1B Cols. 1, 2 & 3)					
1. Liability lines (Lines 11, 16, 17, 18 & 19)	24,503,937	4,052,226	209,753	0	0
2. Property lines (Lines 1, 2, 9, 12, 21 & 26)	13,045,626	3,682,264	187,473	0	0
3. Property and liability combined lines (Lines 3, 4, 5, 8, 22 & 27)	13,469,791	3,247,851	206,292	0	0
4. All other lines (Lines 6, 10, 13, 14, 15, 23, 24, 28, 29, 30 & 34)	0	0	0	0	0
5. Nonproportional reinsurance lines (Lines 31, 32 & 33)	371,189	0	0	0	0
6. Total (Line 35)	51,390,542	10,982,341	603,518	0	0
Net Premiums Written (Page 8, Part 1B, Col. 6)					
7. Liability lines (Lines 11, 16, 17, 18 & 19)	13,108,372	0	0	0	0
8. Property lines (Lines 1, 2, 9, 12, 21 & 26)	1,953,357	0	0	0	0
9. Property and liability combined lines (Lines 3, 4, 5, 8, 22 & 27)	4,247,573	0	0	0	0
10. All other lines (Lines 6, 10, 13, 14, 15, 23, 24, 28, 29, 30 & 34)	0	0	0	0	0
11. Nonproportional reinsurance lines (Lines 31, 32 & 33)	371,189	0	0	0	0
12. Total (Line 35)	19,680,490	0	0	0	0
Statement of Income (Page 4)					
13. Net underwriting gain (loss) (Line 8)	190,485	0	0	0	0
14. Net investment gain (loss) (Line 11)	450,235	908,231	209,489	303,046	568,263
15. Total other income (Line 15)	(27,246)	0	(3,664)	0	40
16. Dividends to policyholders (Line 17)	62,104	0	0	0	0
17. Federal and foreign income taxes incurred (Line 19)	1,366,561	(20,738)	49,019	60,120	62,106
18. Net income (Line 20)	(815,190)	928,969	156,806	242,926	506,197
Balance Sheet Lines (Pages 2 and 3)					
19. Total admitted assets excluding protected cell business (Page 2, Line 26, Col. 3)	98,738,055	38,352,073	12,876,452	12,094,010	11,536,074
20. Premiums and considerations (Page 2, Col. 3)					
20.1 In course of collection (Line 15.1)	2,400,568	486,214	55,463	0	0
20.2 Deferred and not yet due (Line 15.2)	8,341,443	2,926,345	272,851	0	0
20.3 Accrued retrospective premiums (Line 15.3)	0	0	0	0	0
21. Total liabilities excluding protected cell business (Page 3, Line 26)	65,771,574	5,300,094	393,664	26,234	68,178
22. Losses (Page 3, Line 1)	28,863,852	0	0	0	0
23. Loss adjustment expenses (Page 3, Line 3)	4,867,907	0	0	0	0
24. Unearned premiums (Page 3, Line 9)	9,069,123	0	0	0	0
25. Capital paid up (Page 3, Lines 30 & 31)	2,252,000	2,252,000	2,252,000	2,252,000	2,252,000
26. Surplus as regards policyholders (Page 3, Line 37)	32,966,476	33,051,979	12,482,789	12,067,776	11,467,898
Cash Flow (Page 5)					
27. Net cash from operations (Line 11)	(2,773,608)	548,103	6,383	221,567	220,036
Risk-Based Capital Analysis					
28. Total adjusted capital	32,966,476	33,051,979	12,482,789	12,067,776	11,467,898
29. Authorized control level risk-based capital	2,921,461	201,702	286,392	243,725	202,695
Percentage Distribution of Cash, Cash Equivalents and Invested Assets (Page 2, Col. 3) (Line divided by Page 2, Line 12, Col. 3) x100.0					
30. Bonds (Line 1)	19.8	27.4	69.3	71.9	73.3
31. Stocks (Lines 2.1 & 2.2)	2.1	5.6	19.5	17.3	14.4
32. Mortgage loans on real estate (Lines 3.1 and 3.2)	0.0	0.0	0.0	0.0	0.0
33. Real estate (Lines 4.1, 4.2 & 4.3)	0.0	0.0	0.0	0.0	0.0
34. Cash, cash equivalents and short-term investments (Line 5)	78.1	67.0	7.7	7.2	8.7
35. Contract loans (Line 6)	0.0	0.0	0.0	0.0	0.0
36. Derivatives (Line 7)	0.0	0.0	0.0	0.0	0.0
37. Other invested assets (Line 8)	0.0	0.0	3.5	3.5	3.5
38. Receivables for securities (Line 9)	0.0	0.0	0.0	0.0	0.0
39. Securities lending reinvested collateral assets (Line 10)	0.0	0.0	0.0	0.0	0.0
40. Aggregate write-ins for invested assets (Line 11)	0.0	0.0	0.0	0.0	0.0
41. Cash, cash equivalents and invested assets (Line 12)	100.0	100.0	100.0	100.0	100.0
Investments in Parent, Subsidiaries and Affiliates					
42. Affiliated bonds (Schedule D, Summary, Line 12, Col. 1)	0	0	0	0	0
43. Affiliated preferred stocks (Schedule D, Summary, Line 18, Col. 1)	0	0	0	0	0
44. Affiliated common stocks (Schedule D, Summary, Line 24, Col. 1)	0	0	0	0	0
45. Affiliated short-term investments (subtotals included in Schedule DA Verification, Col. 5, Line 10)	0	0	0	0	0
46. Affiliated mortgage loans on real estate	0	0	0	0	0
47. All other affiliated	0	0	0	0	0
48. Total of above Lines 42 to 47	0	0	0	0	0
49. Total Investment in Parent included in Lines 42 to 47 above	0	0	0	0	0
50. Percentage of investments in parent, subsidiaries and affiliates to surplus as regards policyholders (Line 48 above divided by Page 3, Col. 1, Line 37 x 100.0)	0.0	0.0	0.0	0.0	0.0

ANNUAL STATEMENT FOR THE YEAR 2022 OF THE MICO INSURANCE COMPANY

FIVE-YEAR HISTORICAL DATA

(Continued)

	1 2022	2 2021	3 2020	4 2019	5 2018
Capital and Surplus Accounts (Page 4)					
51. Net unrealized capital gains (losses) (Line 24)	(224,997)	(292,933)	342,785	335,147	(503,121)
52. Dividends to stockholders (Line 35)			0	0	0
53. Change in surplus as regards policyholders for the year (Line 38)	(85,503)	20,569,191	415,012	599,879	45,572
Gross Losses Paid (Page 9, Part 2, Cols. 1 & 2)					
54. Liability lines (Lines 11, 16, 17, 18 & 19)	8,498,940	426,424	(32,829)	(5,563)	7,358
55. Property lines (Lines 1, 2, 9, 12, 21 & 26)	7,648,400	1,301,252	10,771	(2,183)	(3,128)
56. Property and liability combined lines (Lines 3, 4, 5, 8, 22 & 27)	4,914,389	431,593	0	0	0
57. All other lines (Lines 6, 10, 13, 14, 15, 23, 24, 28, 29, 30 & 34)	(213)	0	0	0	0
58. Nonproportional reinsurance lines (Lines 31, 32 & 33)	243,788	0	0	0	0
59. Total (Line 35)	21,305,305	2,159,269	(22,058)	(7,746)	4,230
Net Losses Paid (Page 9, Part 2, Col. 4)					
60. Liability lines (Lines 11, 16, 17, 18 & 19)	6,124,718	0	0	0	0
61. Property lines (Lines 1, 2, 9, 12, 21 & 26)	1,241,572	0	0	0	0
62. Property and liability combined lines (Lines 3, 4, 5, 8, 22 & 27)	2,070,550	0	0	0	0
63. All other lines (Lines 6, 10, 13, 14, 15, 23, 24, 28, 29, 30 & 34)	(213)	0	0	0	0
64. Nonproportional reinsurance lines (Lines 31, 32 & 33)	243,788	0	0	0	0
65. Total (Line 35)	9,680,416	0	0	0	0
Operating Percentages (Page 4) (Line divided by Page 4, Line 1) x 100.0					
66. Premiums earned (Line 1)	100.0	100.0	100.0	100.0	100.0
67. Losses incurred (Line 2)	51.9	0.0	0.0	0.0	0.0
68. Loss expenses incurred (Line 3)	15.7	0.0	0.0	0.0	0.0
69. Other underwriting expenses incurred (Line 4)	31.5	0.0	0.0	0.0	0.0
70. Net underwriting gain (loss) (Line 8)	1.0	0.0	0.0	0.0	0.0
Other Percentages					
71. Other underwriting expenses to net premiums written (Page 4, Lines 4 + 5 - 15 divided by Page 8, Part 1B, Col. 6, Line 35 x 100.0)	31.0	0.0	0.0	0.0	0.0
72. Losses and loss expenses incurred to premiums earned (Page 4, Lines 2 + 3 divided by Page 4, Line 1 x 100.0)	67.5	0.0	0.0	0.0	0.0
73. Net premiums written to policyholders' surplus (Page 8, Part 1B, Col. 6, Line 35 divided by Page 3, Line 37, Col. 1 x 100.0)	59.7	0.0	0.0	0.0	0.0
One Year Loss Development (\$000 omitted)					
74. Development in estimated losses and loss expenses incurred prior to current year (Schedule P - Part 2 - Summary, Line 12, Col. 11)	(1,832)		0	0	0
75. Percent of development of losses and loss expenses incurred to policyholders' surplus of prior year end (Line 74 above divided by Page 4, Line 21, Col. 1 x 100.0).....	(5.5)	0.0	0.0	0.0	0.0
Two Year Loss Development (\$000 omitted)					
76. Development in estimated losses and loss expenses incurred two years before the current year and prior year (Schedule P, Part 2 - Summary, Line 12, Col. 12)	(4,354)		0	0	0
77. Percent of development of losses and loss expenses incurred to reported policyholders' surplus of second prior year end (Line 76 above divided by Page 4, Line 21, Col. 2 x 100.0)	(34.9)	0.0	0.0	0.0	0.0

NOTE: If a party to a merger, have the two most recent years of this exhibit been restated due to a merger in compliance with the disclosure requirements of SSAP No. 3, Accounting Changes and Correction of Errors? Yes [] No []
 If no, please explain:

ANNUAL STATEMENT FOR THE YEAR 2022 OF THE MICO INSURANCE COMPANY
SCHEDULE P - ANALYSIS OF LOSSES AND LOSS EXPENSES
SCHEDULE P - PART 1 - SUMMARY

(\$000 OMITTED)

Years in Which Premiums Were Earned and Losses Were Incurred	Premiums Earned			Loss and Loss Expense Payments						10 Salvage and Subrogation Received	11 Total Net Paid Cols (4 - 5 + 6 - 7 + 8 - 9)	12 Number of Claims Reported Direct and Assumed
	1 Direct and Assumed	2 Ceded	3 Net (1 - 2)	Loss Payments		Defense and Cost Containment Payments		Adjusting and Other Payments				
				4 Direct and Assumed	5 Ceded	6 Direct and Assumed	7 Ceded	8 Direct and Assumed	9 Ceded			
1. Prior.....	XXX	XXX	XXX	297	57	30	1	2	0	8	272	XXX
2. 2013.....	16,084	1,662	14,422	8,689	1,052	969	181	1,319	77	146	9,667	XXX
3. 2014.....	16,964	2,032	14,932	8,797	962	1,016	215	1,296	90	168	9,841	XXX
4. 2015.....	16,594	2,492	14,102	8,297	1,248	990	201	1,193	86	149	8,946	XXX
5. 2016.....	17,004	2,033	14,971	7,659	708	903	119	1,245	91	156	8,890	XXX
6. 2017.....	17,378	1,267	16,111	8,048	505	858	30	1,390	79	132	9,682	XXX
7. 2018.....	16,166	415	15,751	7,770	337	726	9	1,119	1	153	9,269	XXX
8. 2019.....	18,789	493	18,296	8,688	346	805	1	1,397	1	325	10,542	XXX
9. 2020.....	18,813	566	18,247	7,527	197	371	2	1,986	1	268	9,685	XXX
10. 2021.....	19,139	700	18,439	6,419	120	269	1	1,938	0	258	8,505	XXX
11. 2022.....	19,976	707	19,269	4,193	70	492	0	1,757	0	120	6,373	XXX
12. Totals	XXX	XXX	XXX	76,386	5,602	7,428	758	14,642	425	1,883	91,670	XXX

	Losses Unpaid				Defense and Cost Containment Unpaid				Adjusting and Other Unpaid		23 Salvage and Subrogation Anticipated	24 Total Net Losses and Expenses Unpaid	25 Number of Claims Outstanding Direct and Assumed
	Case Basis		Bulk + IBNR		Case Basis		Bulk + IBNR						
	13	14	15	16	17	18	19	20	21	22			
	Direct and Assumed	Ceded	Direct and Assumed	Ceded	Direct and Assumed	Ceded	Direct and Assumed	Ceded	Direct and Assumed	Ceded			
1. Prior.....	3,743	923	1,868	414	63	2	121	57	255	24	0	4,630	XXX
2. 2013.....	737	23	550	299	22	1	61	46	59	8	0	1,051	XXX
3. 2014.....	728	4	570	300	27	0	71	48	55	12	0	1,086	XXX
4. 2015.....	602	25	576	128	24	1	70	18	61	9	0	1,152	XXX
5. 2016.....	518	43	665	53	11	0	95	13	78	3	0	1,255	XXX
6. 2017.....	756	76	661	5	22	0	91	0	104	0	0	1,554	XXX
7. 2018.....	819	6	790	6	25	0	124	0	141	0	0	1,888	XXX
8. 2019.....	1,184	78	1,005	20	33	0	189	0	190	0	0	2,502	XXX
9. 2020.....	1,894	254	1,402	11	71	0	190	0	296	0	0	3,588	XXX
10. 2021.....	2,858	106	2,160	0	114	0	334	0	545	0	0	5,906	XXX
11. 2022.....	3,829	110	3,832	0	166	0	543	0	859	0	0	9,119	XXX
12. Totals	17,668	1,648	14,079	1,236	579	5	1,889	182	2,642	56	0	33,732	XXX

	Total Losses and Loss Expenses Incurred			Loss and Loss Expense Percentage (Incurred /Premiums Earned)			Nontabular Discount		34 Inter-Company Pooling Participation Percentage	Net Balance Sheet Reserves After Discount	
	26	27	28	29	30	31	32	33		35	36
	Direct and Assumed	Ceded	Net	Direct and Assumed	Ceded	Net	Loss	Loss Expense		Losses Unpaid	Loss Expenses Unpaid
1. Prior.....	XXX	XXX	XXX	XXX	XXX	XXX	0	0	XXX	4,274	356
2. 2013.....	12,404	1,686	10,718	77.1	101.4	74.3	0	0	0.0	965	87
3. 2014.....	12,559	1,632	10,927	74.0	80.3	73.2	0	0	0.0	994	92
4. 2015.....	11,813	1,716	10,097	71.2	68.8	71.6	0	0	0.0	1,025	127
5. 2016.....	11,174	1,029	10,145	65.7	50.6	67.8	0	0	0.0	1,087	168
6. 2017.....	11,930	695	11,235	68.6	54.8	69.7	0	0	0.0	1,336	217
7. 2018.....	11,515	358	11,157	71.2	86.2	70.8	0	0	0.0	1,598	290
8. 2019.....	13,490	446	13,044	71.8	90.3	71.3	0	0	0.0	2,090	412
9. 2020.....	13,738	465	13,273	73.0	82.2	72.7	0	0	0.0	3,031	557
10. 2021.....	14,638	227	14,411	76.5	32.5	78.2	0	0	0.0	4,912	994
11. 2022.....	15,672	180	15,492	78.5	25.4	80.4	0	0	0.0	7,552	1,568
12. Totals	XXX	XXX	XXX	XXX	XXX	XXX	0	0	XXX	28,864	4,868

Note: Parts 2 and 4 are gross of all discounting, including tabular discounting. Part 1 is gross of only nontabular discounting, which is reported in Columns 32 and 33 of Part 1. The tabular discount, if any, is reported in the Notes to Financial Statements which will reconcile Part 1 with Parts 2 and 4.

ANNUAL STATEMENT FOR THE YEAR 2022 OF THE MICO INSURANCE COMPANY

SCHEDULE P - PART 2 - SUMMARY

Years in Which Losses Were Incurred	INCURRED NET LOSSES AND DEFENSE AND COST CONTAINMENT EXPENSES REPORTED AT YEAR END (\$000 OMITTED)										DEVELOPMENT	
	1 2013	2 2014	3 2015	4 2016	5 2017	6 2018	7 2019	8 2020	9 2021	10 2022	11 One Year	12 Two Year
1. Prior.....	18,296	17,094	15,466	14,590	13,119	13,473	12,615	12,500	12,088	12,183	95	(317)
2. 2013.....	9,920	9,901	9,816	9,624	9,471	9,319	9,320	9,495	9,515	9,426	(89)	(69)
3. 2014.....	XXX	10,071	10,172	10,101	9,943	9,730	9,741	9,903	9,688	9,678	(10)	(225)
4. 2015.....	XXX	XXX	9,684	9,627	9,523	9,237	9,047	8,998	9,053	8,938	(115)	(60)
5. 2016.....	XXX	XXX	XXX	9,990	10,365	9,688	9,286	8,911	8,827	8,915	88	4
6. 2017.....	XXX	XXX	XXX	XXX	12,624	11,350	10,968	10,149	9,680	9,821	141	(329)
7. 2018.....	XXX	XXX	XXX	XXX	XXX	10,955	11,492	10,727	9,870	9,898	28	(829)
8. 2019.....	XXX	XXX	XXX	XXX	XXX	XXX	13,040	13,003	11,603	11,458	(145)	(1,545)
9. 2020.....	XXX	XXX	XXX	XXX	XXX	XXX	XXX	11,976	11,715	10,991	(724)	(984)
10. 2021.....	XXX	XXX	XXX	XXX	XXX	XXX	XXX	XXX	13,028	11,928	(1,101)	XXX
11. 2022	XXX	XXX	XXX	XXX	XXX	XXX	XXX	XXX	XXX	12,876	XXX	XXX
12. Totals											(1,832)	(4,354)

SCHEDULE P - PART 3 - SUMMARY

Years in Which Losses Were Incurred	CUMULATIVE PAID NET LOSSES AND DEFENSE AND COST CONTAINMENT EXPENSES REPORTED AT YEAR END (\$000 OMITTED)										11 Number of	12 Number of
	1 2013	2 2014	3 2015	4 2016	5 2017	6 2018	7 2019	8 2020	9 2021	10 2022	Claims Closed With Loss Payment	Claims Closed Without Loss Payment
1. Prior.....	000	2,586	4,034	5,180	5,917	6,365	6,798	7,301	7,514	7,784	XXX	XXX
2. 2013.....	3,331	5,517	6,600	7,329	7,740	7,957	8,144	8,253	8,349	8,425	XXX	XXX
3. 2014.....	XXX	3,618	5,872	6,933	7,689	8,098	8,322	8,469	8,569	8,635	XXX	XXX
4. 2015.....	XXX	XXX	3,195	5,259	6,369	6,981	7,378	7,561	7,726	7,838	XXX	XXX
5. 2016.....	XXX	XXX	XXX	4,404	6,767	7,967	8,559	8,845	7,634	7,736	XXX	XXX
6. 2017.....	XXX	XXX	XXX	XXX	5,070	7,662	8,704	9,209	8,100	8,371	XXX	XXX
7. 2018.....	XXX	XXX	XXX	XXX	XXX	4,527	7,091	8,336	7,583	8,150	XXX	XXX
8. 2019.....	XXX	XXX	XXX	XXX	XXX	XXX	4,942	7,248	8,368	9,146	XXX	XXX
9. 2020.....	XXX	XXX	XXX	XXX	XXX	XXX	XXX	4,031	6,459	7,700	XXX	XXX
10. 2021.....	XXX	XXX	XXX	XXX	XXX	XXX	XXX	XXX	3,802	6,567	XXX	XXX
11. 2022	XXX	XXX	XXX	XXX	XXX	XXX	XXX	XXX	XXX	4,615	XXX	XXX

SCHEDULE P - PART 4 - SUMMARY

Years in Which Losses Were Incurred	BULK AND IBNR RESERVES ON NET LOSSES AND DEFENSE AND COST CONTAINMENT EXPENSES REPORTED AT YEAR END (\$000 OMITTED)									
	1 2013	2 2014	3 2015	4 2016	5 2017	6 2018	7 2019	8 2020	9 2021	10 2022
1. Prior.....	11,212	8,802	6,780	5,248	3,314	3,217	2,323	2,041	1,437	1,519
2. 2013.....	3,697	2,164	1,579	1,059	696	478	351	393	360	267
3. 2014.....	XXX	3,528	2,404	1,612	1,153	735	618	627	349	293
4. 2015.....	XXX	XXX	3,743	2,682	1,781	1,273	796	654	563	500
5. 2016.....	XXX	XXX	XXX	4,025	2,819	1,950	1,299	809	659	693
6. 2017.....	XXX	XXX	XXX	XXX	5,491	3,248	2,480	1,369	742	747
7. 2018.....	XXX	XXX	XXX	XXX	XXX	4,575	3,723	2,173	1,081	909
8. 2019.....	XXX	XXX	XXX	XXX	XXX	XXX	5,011	3,631	1,592	1,173
9. 2020.....	XXX	XXX	XXX	XXX	XXX	XXX	XXX	4,256	2,771	1,581
10. 2021.....	XXX	XXX	XXX	XXX	XXX	XXX	XXX	XXX	5,206	2,494
11. 2022	XXX	XXX	XXX	XXX	XXX	XXX	XXX	XXX	XXX	4,375

ANNUAL STATEMENT FOR THE YEAR 2022 OF THE MICO INSURANCE COMPANY

SCHEDULE T - EXHIBIT OF PREMIUMS WRITTEN

Allocated by States and Territories

States, Etc.	1 Active Status (a)	Gross Premiums, Including Policy and Membership Fees, Less Return Premiums and Premiums on Policies Not Taken		4 Dividends Paid or Credited to Policyholders on Direct Business	5 Direct Losses Paid (Deducting Salvage)	6 Direct Losses Incurred	7 Direct Losses Unpaid	8 Finance and Service Charges Not Included in Premiums	9 Direct Premiums Written for Federal Purchasing Groups (Included in Column 2)
		2 Direct Premiums Written	3 Direct Premiums Earned						
1. Alabama	AL	N							
2. Alaska	AK	N							
3. Arizona	AZ	N							
4. Arkansas	AR	N							
5. California	CA	N							
6. Colorado	CO	N							
7. Connecticut	CT	N							
8. Delaware	DE	N							
9. District of Columbia	DC	N							
10. Florida	FL	N	0	0	0	832	832		
11. Georgia	GA	N							
12. Hawaii	HI	N							
13. Idaho	ID	N							
14. Illinois	IL	L	336,537	130,859	0	71,547	113,941	42,494	2,123
15. Indiana	IN	L	1,111,099	713,975	0	374,534	486,393	158,443	8,117
16. Iowa	IA	L	2,698,830	1,676,090	0	848,052	2,182,673	1,382,248	19,383
17. Kansas	KS	N							
18. Kentucky	KY	L	4,626,747	2,805,841	0	1,579,725	2,818,719	1,321,404	54,105
19. Louisiana	LA	N							
20. Maine	ME	N							
21. Maryland	MD	N							
22. Massachusetts	MA	N							
23. Michigan	MI	N	0	0	0	10	10		
24. Minnesota	MN	L	244,098	65,299	0	10,377	27,445	17,068	625
25. Mississippi	MS	N							
26. Missouri	MO	N							
27. Montana	MT	N							
28. Nebraska	NE	N							
29. Nevada	NV	N							
30. New Hampshire	NH	N							
31. New Jersey	NJ	N							
32. New Mexico	NM	N							
33. New York	NY	N							
34. North Carolina	NC	N							
35. North Dakota	ND	N							
36. Ohio	OH	L	13,663,405	9,233,414	0	5,192,732	7,276,108	2,846,423	124,365
37. Oklahoma	OK	N							
38. Oregon	OR	N							
39. Pennsylvania	PA	L	1,206,658	690,873	0	272,200	348,252	102,752	11,284
40. Rhode Island	RI	N							
41. South Carolina	SC	N							
42. South Dakota	SD	N							
43. Tennessee	TN	L	421,321	133,162	0	99,409	149,393	49,984	1,340
44. Texas	TX	N							
45. Utah	UT	N	0	0	0	608	608		
46. Vermont	VT	N							
47. Virginia	VA	L	0	0	0	0	0		
48. Washington	WA	N							
49. West Virginia	WV	L	4,620,201	3,551,433	0	1,920,497	2,400,304	820,206	38,283
50. Wisconsin	WI	L	2,781,156	1,809,286	0	1,255,815	1,828,179	644,789	19,114
51. Wyoming	WY	N							
52. American Samoa	AS	N							
53. Guam	GU	N							
54. Puerto Rico	PR	N							
55. U.S. Virgin Islands	VI	N							
56. Northern Mariana Islands	MP	N							
57. Canada	CAN	N							
58. Aggregate other alien	OT	XXX	0	0	0	0	0	0	0
59. Totals	XXX	31,710,052	20,810,231	0	11,624,889	17,632,857	7,387,263	278,739	0
DETAILS OF WRITE-INS									
58001.	XXX								
58002.	XXX								
58003.	XXX								
58998. Summary of remaining write-ins for Line 58 from overflow page	XXX	0	0	0	0	0	0	0	0
58999. Totals (Lines 58001 through 58003 plus 58998)(Line 58 above)	XXX	0	0	0	0	0	0	0	0

(a) Active Status Counts:

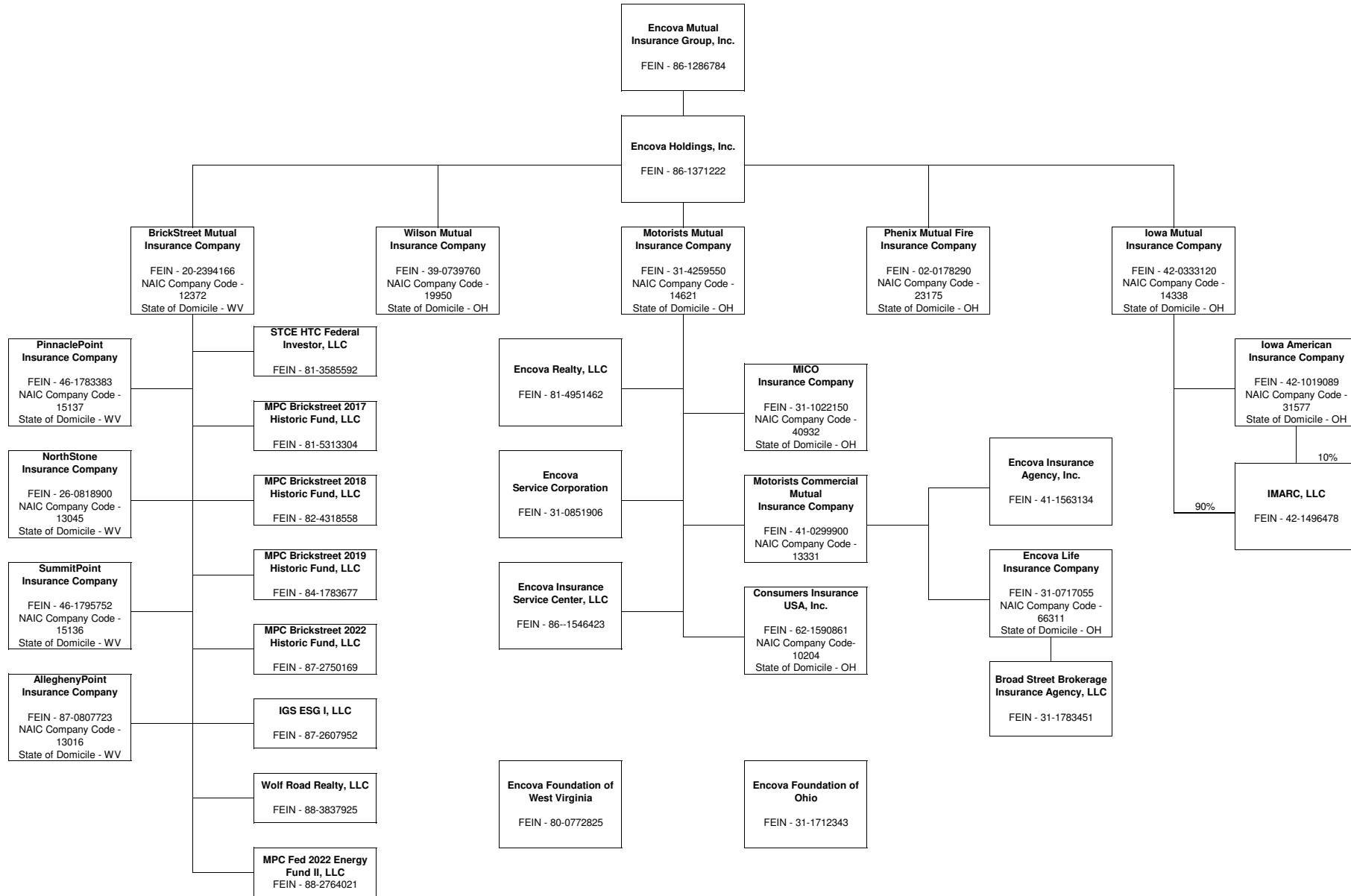
- 1. L - Licensed or Chartered - Licensed insurance carrier or domiciled RRG..... 11
- 2. R - Registered - Non-domiciled RRGs..... 0
- 3. E - Eligible - Reporting entities eligible or approved to write surplus lines in the state (other than their state of domicile - see DSLI)..... 0
- 4. Q - Qualified - Qualified or accredited reinsurer..... 0
- 5. D - Domestic Surplus Lines Insurer (DSLII) - Reporting entities authorized to write surplus lines in the state of domicile..... 0
- 6. N - None of the above - Not allowed to write business in the state..... 46

(b) Explanation of basis of allocation of premiums by states, etc.

Premiums are assigned to state based on the following methods: 1) the location of the risk for lines 1, 2, 4, 9, and 12 2) the location of the insured's operation for line 17 3) the principal garaging location for lines 19 and 21

ANNUAL STATEMENT FOR THE YEAR 2022 OF THE MICO INSURANCE COMPANY

SCHEDULE Y - INFORMATION CONCERNING ACTIVITIES OF INSURER MEMBERS OF A HOLDING COMPANY GROUP PART 1 - ORGANIZATIONAL CHART



NONE