



PROPERTY AND CASUALTY COMPANIES - ASSOCIATION EDITION

**ANNUAL STATEMENT**

FOR THE YEAR ENDED DECEMBER 31, 2022  
OF THE CONDITION AND AFFAIRS OF THE

**HARLEYSVILLE PREFERRED INSURANCE COMPANY**

NAIC Group Code 0140 0140 NAIC Company Code 35696 Employer's ID Number 23-2384978  
(Current) (Prior)

Organized under the Laws of OHIO, State of Domicile or Port of Entry OH  
Country of Domicile United States of America

Incorporated/Organized 10/30/1985 Commenced Business 10/30/1985

Statutory Home Office ONE WEST NATIONWIDE BLVD. COLUMBUS, OH, US 43215-2220  
(Street and Number) (City or Town, State, Country and Zip Code)

Main Administrative Office ONE WEST NATIONWIDE BLVD., 1-14-301  
(Street and Number)  
COLUMBUS, OH, US 43215-2220 614-249-1545  
(City or Town, State, Country and Zip Code) (Area Code) (Telephone Number)

Mail Address ONE WEST NATIONWIDE BLVD., 1-14-301 COLUMBUS, OH, US 43215-2220  
(Street and Number or P.O. Box) (City or Town, State, Country and Zip Code)

Primary Location of Books and Records ONE WEST NATIONWIDE BLVD., 1-14-301  
(Street and Number)  
COLUMBUS, OH, US 43215-2220 614-249-1545  
(City or Town, State, Country and Zip Code) (Area Code) (Telephone Number)

Internet Website Address WWW.NATIONWIDE.COM

Statutory Statement Contact ANDREA D. IACOBONI 614-249-1545  
(Name) (Area Code) (Telephone Number)  
FINRPT@NATIONWIDE.COM 866-315-1430  
(E-mail Address) (FAX Number)

**OFFICERS**

PRESIDENT & COO MARK ALLEN BERVEN VP & TREASURER PETER JUSTIN ROTHERMEL #  
SVP & SECRETARY DENISE LYNN SKINGLE

**OTHER**

PAMELA ANN BIESECKER, SVP-HEAD OF TAXATION

**DIRECTORS OR TRUSTEES**

CATHY A. ALLOCCO # MARK ALLEN BERVEN MARK ANTHONY GAETANO #  
OSCAR GUERRERO ELIZABETH MARGARET RICZKO

State of OHIO SS  
County of FRANKLIN

The officers of this reporting entity being duly sworn, each depose and say that they are the described officers of said reporting entity, and that on the reporting period stated above, all of the herein described assets were the absolute property of the said reporting entity, free and clear from any liens or claims thereon, except as herein stated, and that this statement, together with related exhibits, schedules and explanations therein contained, annexed or referred to, is a full and true statement of all the assets and liabilities and of the condition and affairs of the said reporting entity as of the reporting period stated above, and of its income and deductions therefrom for the period ended, and have been completed in accordance with the NAIC Annual Statement Instructions and Accounting Practices and Procedures manual except to the extent that: (1) state law may differ; or, (2) that state rules or regulations require differences in reporting not related to accounting practices and procedures, according to the best of their information, knowledge and belief, respectively. Furthermore, the scope of this attestation by the described officers also includes the related corresponding electronic filing with the NAIC, when required, that is an exact copy (except for formatting differences due to electronic filing) of the enclosed statement. The electronic filing may be requested by various regulators in lieu of or in addition to the enclosed statement.

*Mark Alen Berven*

MARK ALLEN BERVEN  
PRESIDENT & COO

*Denise Lynn Skingle*

DENISE LYNN SKINGLE  
SVP & SECRETARY

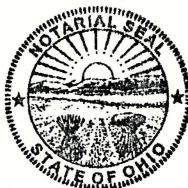
*Peter Justin Rothermel*

PETER JUSTIN ROTHERMEL  
VP & TREASURER

Subscribed and sworn to before me this 15<sup>th</sup> day of FEBRUARY 2023

*Andrew Swartzel*

- a. Is this an original filing? ..... Yes [ X ] No [ ]  
b. If no,  
1. State the amendment number.....  
2. Date filed .....  
3. Number of pages attached.....



ANDREW SWARTZEL  
NOTARY PUBLIC • STATE OF OHIO  
Comm. No. 2021-RE-839107  
My Commission Expires Oct. 24, 2026

ANNUAL STATEMENT FOR THE YEAR 2022 OF THE HARLEYSVILLE PREFERRED INSURANCE COMPANY

**ASSETS**

	Current Year			Prior Year
	1 Assets	2 Nonadmitted Assets	3 Net Admitted Assets (Cols. 1 - 2)	4 Net Admitted Assets
1. Bonds (Schedule D) .....	49,528,150		49,528,150	44,870,185
2. Stocks (Schedule D):				
2.1 Preferred stocks .....				
2.2 Common stocks .....				
3. Mortgage loans on real estate (Schedule B):				
3.1 First liens .....				
3.2 Other than first liens .....				
4. Real estate (Schedule A):				
4.1 Properties occupied by the company (less \$ encumbrances) .....				
4.2 Properties held for the production of income (less \$ ..... encumbrances) .....				
4.3 Properties held for sale (less \$ encumbrances) .....				
5. Cash (\$ .....9,744, Schedule E - Part 1), cash equivalents (\$ .....1,688,186, Schedule E - Part 2) and short-term investments (\$ ..... , Schedule DA) .....	1,697,930		1,697,930	5,318,769
6. Contract loans (including \$ ..... premium notes) .....				
7. Derivatives (Schedule DB) .....				
8. Other invested assets (Schedule BA) .....				
9. Receivable for securities .....				
10. Securities lending reinvested collateral assets (Schedule DL) .....				
11. Aggregate write-ins for invested assets .....				
12. Subtotals, cash and invested assets (Lines 1 to 11) .....	51,226,080		51,226,080	50,188,954
13. Title plants less \$ ..... charged off (for Title insurers only) .....				
14. Investment income due and accrued .....	266,517		266,517	243,793
15. Premiums and considerations:				
15.1 Uncollected premiums and agents' balances in the course of collection .....	5,664,163	325,998	5,338,165	5,384,239
15.2 Deferred premiums, agents' balances and installments booked but deferred and not yet due (including \$ ..... earned but unbilled premiums) .....	23,323,006		23,323,006	25,797,999
15.3 Accrued retrospective premiums (\$ ..... ) and contracts subject to redetermination (\$ ..... ) .....				
16. Reinsurance:				
16.1 Amounts recoverable from reinsurers .....	6,375,543		6,375,543	6,263,198
16.2 Funds held by or deposited with reinsured companies .....				
16.3 Other amounts receivable under reinsurance contracts .....	1,990,219		1,990,219	2,393,846
17. Amounts receivable relating to uninsured plans .....				
18.1 Current federal and foreign income tax recoverable and interest thereon .....				
18.2 Net deferred tax asset .....				
19. Guaranty funds receivable or on deposit .....				
20. Electronic data processing equipment and software .....				
21. Furniture and equipment, including health care delivery assets (\$ ..... ) .....				
22. Net adjustment in assets and liabilities due to foreign exchange rates .....				
23. Receivables from parent, subsidiaries and affiliates .....	1,148,847		1,148,847	1,006,021
24. Health care (\$ ..... ) and other amounts receivable .....				
25. Aggregate write-ins for other than invested assets .....				
26. Total assets excluding Separate Accounts, Segregated Accounts and Protected Cell Accounts (Lines 12 to 25) .....	89,994,375	325,998	89,668,377	91,278,050
27. From Separate Accounts, Segregated Accounts and Protected Cell Accounts .....				
28. Total (Lines 26 and 27)	89,994,375	325,998	89,668,377	91,278,050
<b>DETAILS OF WRITE-INS</b>				
1101. ....				
1102. ....				
1103. ....				
1198. Summary of remaining write-ins for Line 11 from overflow page .....				
1199. Totals (Lines 1101 thru 1103 plus 1198)(Line 11 above)				
2501. ....				
2502. ....				
2503. ....				
2598. Summary of remaining write-ins for Line 25 from overflow page .....				
2599. Totals (Lines 2501 thru 2503 plus 2598)(Line 25 above)				

**ANNUAL STATEMENT FOR THE YEAR 2022 OF THE HARLEYSVILLE PREFERRED INSURANCE COMPANY**  
**LIABILITIES, SURPLUS AND OTHER FUNDS**

	1 Current Year	2 Prior Year
1. Losses (Part 2A, Line 35, Column 8) .....		
2. Reinsurance payable on paid losses and loss adjustment expenses (Schedule F, Part 1, Column 6) .....		
3. Loss adjustment expenses (Part 2A, Line 35, Column 9) .....		
4. Commissions payable, contingent commissions and other similar charges .....		
5. Other expenses (excluding taxes, licenses and fees) .....		
6. Taxes, licenses and fees (excluding federal and foreign income taxes) .....		
7.1 Current federal and foreign income taxes (including \$ ..... 45,334 on realized capital gains (losses)) .....	643,814	236,770
7.2 Net deferred tax liability .....	49,328	489,860
8. Borrowed money \$ ..... and interest thereon \$ .....		
9. Unearned premiums (Part 1A, Line 38, Column 5) (after deducting unearned premiums for ceded reinsurance of \$ ..... 46,698,790 and including warranty reserves of \$ ..... and accrued accident and health experience rating refunds including \$ ..... for medical loss ratio rebate per the Public Health Service Act) .....		
10. Advance premium .....		
11. Dividends declared and unpaid:		
11.1 Stockholders .....		
11.2 Policyholders .....		
12. Ceded reinsurance premiums payable (net of ceding commissions) .....	38,128,018	39,287,963
13. Funds held by company under reinsurance treaties (Schedule F, Part 3, Column 20) .....		
14. Amounts withheld or retained by company for account of others .....		
15. Remittances and items not allocated .....		
16. Provision for reinsurance (including \$ ..... certified) (Schedule F, Part 3, Column 78) .....	164,200	177,000
17. Net adjustments in assets and liabilities due to foreign exchange rates .....		
18. Drafts outstanding .....		
19. Payable to parent, subsidiaries and affiliates .....	50,589	1,565,477
20. Derivatives .....		
21. Payable for securities .....		
22. Payable for securities lending .....		
23. Liability for amounts held under uninsured plans .....		
24. Capital notes \$ ..... and interest thereon \$ .....		
25. Aggregate write-ins for liabilities .....		
26. Total liabilities excluding protected cell liabilities (Lines 1 through 25) .....	39,035,949	41,757,070
27. Protected cell liabilities .....		
28. Total liabilities (Lines 26 and 27) .....	39,035,949	41,757,070
29. Aggregate write-ins for special surplus funds .....		
30. Common capital stock .....	4,230,000	4,230,000
31. Preferred capital stock .....		
32. Aggregate write-ins for other than special surplus funds .....		
33. Surplus notes .....		
34. Gross paid in and contributed surplus .....	21,925,835	21,925,835
35. Unassigned funds (surplus) .....	24,476,593	23,365,145
36. Less treasury stock, at cost:		
36.1 ..... shares common (value included in Line 30 \$ ..... ) .....		
36.2 ..... shares preferred (value included in Line 31 \$ ..... ) .....		
37. Surplus as regards policyholders (Lines 29 to 35, less 36) (Page 4, Line 39) .....	50,632,428	49,520,980
38. TOTALS (Page 2, Line 28, Col. 3) .....	89,668,377	91,278,050
<b>DETAILS OF WRITE-INS</b>		
2501. ....		
2502. ....		
2503. ....		
2598. Summary of remaining write-ins for Line 25 from overflow page .....		
2599. Totals (Lines 2501 thru 2503 plus 2598)(Line 25 above) .....		
2901. ....		
2902. ....		
2903. ....		
2998. Summary of remaining write-ins for Line 29 from overflow page .....		
2999. Totals (Lines 2901 thru 2903 plus 2998)(Line 29 above) .....		
3201. ....		
3202. ....		
3203. ....		
3298. Summary of remaining write-ins for Line 32 from overflow page .....		
3299. Totals (Lines 3201 thru 3203 plus 3298)(Line 32 above) .....		

ANNUAL STATEMENT FOR THE YEAR 2022 OF THE HARLEYSVILLE PREFERRED INSURANCE COMPANY

**STATEMENT OF INCOME**

	1 Current Year	2 Prior Year
<b>UNDERWRITING INCOME</b>		
1. Premiums earned (Part 1, Line 35, Column 4).....		
<b>DEDUCTIONS:</b>		
2. Losses incurred (Part 2, Line 35, Column 7) .....		
3. Loss adjustment expenses incurred (Part 3, Line 25, Column 1) .....		
4. Other underwriting expenses incurred (Part 3, Line 25, Column 2) .....		
5. Aggregate write-ins for underwriting deductions .....		
6. Total underwriting deductions (Lines 2 through 5) .....		
7. Net income of protected cells .....		
8. Net underwriting gain (loss) (Line 1 minus Line 6 plus Line 7) .....		
<b>INVESTMENT INCOME</b>		
9. Net investment income earned (Exhibit of Net Investment Income, Line 17) .....	1,302,808	1,140,596
10. Net realized capital gains (losses) less capital gains tax of \$ 45,334 (Exhibit of Capital Gains (Losses) ) .....	(46,212)	25,321
11. Net investment gain (loss) (Lines 9 + 10) .....	1,256,596	1,165,917
<b>OTHER INCOME</b>		
12. Net gain (loss) from agents' or premium balances charged off (amount recovered \$ ..... amount charged off \$ ..... ) .....		
13. Finance and service charges not included in premiums .....		
14. Aggregate write-ins for miscellaneous income .....		(1,132)
15. Total other income (Lines 12 through 14) .....		(1,132)
16. Net income before dividends to policyholders, after capital gains tax and before all other federal and foreign income taxes (Lines 8 + 11 + 15) .....	1,256,596	1,164,785
17. Dividends to policyholders .....		
18. Net income, after dividends to policyholders, after capital gains tax and before all other federal and foreign income taxes (Line 16 minus Line 17) .....	1,256,596	1,164,785
19. Federal and foreign income taxes incurred .....	598,480	268,188
20. Net income (Line 18 minus Line 19)(to Line 22) .....	658,116	896,597
<b>CAPITAL AND SURPLUS ACCOUNT</b>		
21. Surplus as regards policyholders, December 31 prior year (Page 4, Line 39, Column 2) .....	49,520,980	53,717,372
22. Net income (from Line 20) .....	658,116	896,597
23. Net transfers (to) from Protected Cell accounts .....		
24. Change in net unrealized capital gains or (losses) less capital gains tax of \$ .....		
25. Change in net unrealized foreign exchange capital gain (loss) .....		
26. Change in net deferred income tax .....	440,532	52,011
27. Change in nonadmitted assets (Exhibit of Nonadmitted Assets, Line 28, Col. 3) .....	(142,129)	(57,172)
28. Change in provision for reinsurance (Page 3, Line 16, Column 2 minus Column 1) .....	12,800	(145,000)
29. Change in surplus notes .....		
30. Surplus (contributed to) withdrawn from protected cells .....		
31. Cumulative effect of changes in accounting principles .....		
32. Capital changes:		
32.1 Paid in .....		
32.2 Transferred from surplus (Stock Dividend) .....		
32.3 Transferred to surplus .....		
33. Surplus adjustments:		
33.1 Paid in .....		
33.2 Transferred to capital (Stock Dividend) .....		
33.3 Transferred from capital .....		
34. Net remittances from or (to) Home Office .....		
35. Dividends to stockholders .....		(5,000,000)
36. Change in treasury stock (Page 3, Lines 36.1 and 36.2, Column 2 minus Column 1) .....		
37. Aggregate write-ins for gains and losses in surplus .....	142,129	57,172
38. Change in surplus as regards policyholders for the year (Lines 22 through 37) .....	1,111,448	(4,196,392)
39. Surplus as regards policyholders, December 31 current year (Line 21 plus Line 38) (Page 3, Line 37)	50,632,428	49,520,980
<b>DETAILS OF WRITE-INS</b>		
0501. ....		
0502. ....		
0503. ....		
0598. Summary of remaining write-ins for Line 5 from overflow page .....		
0599. Totals (Lines 0501 thru 0503 plus 0598)(Line 5 above)		
1401. Other income/(expenses) .....		(1,132)
1402. ....		
1403. ....		
1498. Summary of remaining write-ins for Line 14 from overflow page .....		
1499. Totals (Lines 1401 thru 1403 plus 1498)(Line 14 above)		(1,132)
3701. Change in surplus - pooled nonadmitted premiums in the course of collection offset .....	142,129	57,172
3702. ....		
3703. ....		
3798. Summary of remaining write-ins for Line 37 from overflow page .....		
3799. Totals (Lines 3701 thru 3703 plus 3798)(Line 37 above)	142,129	57,172

ANNUAL STATEMENT FOR THE YEAR 2022 OF THE HARLEYSVILLE PREFERRED INSURANCE COMPANY

**CASH FLOW**

	1	2
	Current Year	Prior Year
<b>Cash from Operations</b>		
1. Premiums collected net of reinsurance .....	1,361,122	(631,457)
2. Net investment income .....	1,364,356	1,379,913
3. Miscellaneous income .....		(1,132)
4. Total (Lines 1 through 3) .....	2,725,478	747,324
5. Benefit and loss related payments .....	112,345	(1,442,039)
6. Net transfers to Separate Accounts, Segregated Accounts and Protected Cell Accounts .....		
7. Commissions, expenses paid and aggregate write-ins for deductions .....	(403,627)	(51,282)
8. Dividends paid to policyholders .....		
9. Federal and foreign income taxes paid (recovered) net of \$ 31,423 tax on capital gains (losses) .....	236,770	420,591
10. Total (Lines 5 through 9) .....	(54,512)	(1,072,730)
11. Net cash from operations (Line 4 minus Line 10) .....	2,779,990	1,820,054
<b>Cash from Investments</b>		
12. Proceeds from investments sold, matured or repaid:		
12.1 Bonds .....	5,758,080	8,957,626
12.2 Stocks .....		
12.3 Mortgage loans .....		
12.4 Real estate .....		
12.5 Other invested assets .....		
12.6 Net gains or (losses) on cash, cash equivalents and short-term investments .....		
12.7 Miscellaneous proceeds .....		
12.8 Total investment proceeds (Lines 12.1 to 12.7) .....	5,758,080	8,957,626
13. Cost of investments acquired (long-term only):		
13.1 Bonds .....	10,501,198	4,127,266
13.2 Stocks .....		
13.3 Mortgage loans .....		
13.4 Real estate .....		
13.5 Other invested assets .....		
13.6 Miscellaneous applications .....		
13.7 Total investments acquired (Lines 13.1 to 13.6) .....	10,501,198	4,127,266
14. Net increase (decrease) in contract loans and premium notes .....		
15. Net cash from investments (Line 12.8 minus Line 13.7 minus Line 14) .....	(4,743,118)	4,830,360
<b>Cash from Financing and Miscellaneous Sources</b>		
16. Cash provided (applied):		
16.1 Surplus notes, capital notes .....		
16.2 Capital and paid in surplus, less treasury stock .....		
16.3 Borrowed funds .....		
16.4 Net deposits on deposit-type contracts and other insurance liabilities .....		
16.5 Dividends to stockholders .....		5,000,000
16.6 Other cash provided (applied) .....	(1,657,711)	(851,592)
17. Net cash from financing and miscellaneous sources (Lines 16.1 to 16.4 minus Line 16.5 plus Line 16.6) .....	(1,657,711)	(5,851,592)
<b>RECONCILIATION OF CASH, CASH EQUIVALENTS AND SHORT-TERM INVESTMENTS</b>		
18. Net change in cash, cash equivalents and short-term investments (Line 11, plus Lines 15 and 17) .....	(3,620,839)	798,822
19. Cash, cash equivalents and short-term investments:		
19.1 Beginning of year .....	5,318,769	4,519,947
19.2 End of period (Line 18 plus Line 19.1) .....	1,697,930	5,318,769

Note: Supplemental disclosures of cash flow information for non-cash transactions:

--	--	--

Underwriting and Investment Exhibit - Part 1 - Premiums Earned

**N O N E**

Underwriting and Investment Exhibit - Part 1A - Recapitulation of all Premiums

**N O N E**

ANNUAL STATEMENT FOR THE YEAR 2022 OF THE HARLEYSVILLE PREFERRED INSURANCE COMPANY

**UNDERWRITING AND INVESTMENT EXHIBIT**

PART 1B - PREMIUMS WRITTEN

Line of Business	1 Direct Business (a)	Reinsurance Assumed		Reinsurance Ceded		6 Net Premiums Written Cols. 1+2+3-4-5
		2 From Affiliates	3 From Non-Affiliates	4 To Affiliates	5 To Non-Affiliates	
1. Fire .....	434,707		6,652	427,469	13,890	
2.1 Allied lines .....	815,251		9,377	777,150	47,478	
2.2 Multiple peril crop .....						
2.3 Federal flood .....						
2.4 Private crop .....						
2.5 Private flood .....						
3. Farmowners multiple peril .....						
4. Homeowners multiple peril .....	586,034		26,256	612,074	216	
5.1 Commercial multiple peril (non-liability portion) .....	23,807,685			22,671,091	1,136,594	
5.2 Commercial multiple peril (liability portion) .....	34,533,021			34,256,157	276,864	
6. Mortgage guaranty .....						
8. Ocean marine .....						
9. Inland marine .....	431,890			425,395	6,495	
10. Financial guaranty .....						
11.1 Medical professional liability - occurrence .....						
11.2 Medical professional liability - claims- made .....						
12. Earthquake .....	168,924			163,870	5,054	
13.1 Comprehensive (hospital and medical) individual .....						
13.2 Comprehensive (hospital and medical) group .....						
14. Credit accident and health (group and individual) .....						
15.1 Vision only .....						
15.2 Dental only .....						
15.3 Disability income .....						
15.4 Medicare supplement .....						
15.5 Medicaid Title XIX .....						
15.6 Medicare Title XVIII .....						
15.7 Long-term care .....						
15.8 Federal employees health benefits plan ...						
15.9 Other health .....						
16. Workers' compensation .....	6,637,902		1	6,631,707	6,196	
17.1 Other liability - occurrence .....	7,469,418		1,957	7,413,303	58,072	
17.2 Other liability - claims-made .....	41,497			41,497		
17.3 Excess workers' compensation .....						
18.1 Products liability - occurrence .....	331,513			331,513		
18.2 Products liability - claims-made .....						
19.1 Private passenger auto no-fault (personal injury protection) .....	40,606			(13,662)	54,268	
19.2 Other private passenger auto liability.....	100,541			100,541		
19.3 Commercial auto no-fault (personal injury protection) .....	573,384			569,195	4,189	
19.4 Other commercial auto liability.....	17,691,188			17,660,857	30,331	
21.1 Private passenger auto physical damage ..	59,943			59,943		
21.2 Commercial auto physical damage .....	3,095,693			3,095,693		
22. Aircraft (all perils) .....						
23. Fidelity .....						
24. Surety .....						
26. Burglary and theft .....	11,472			11,472		
27. Boiler and machinery .....						
28. Credit .....						
29. International .....						
30. Warranty .....						
31. Reinsurance - nonproportional assumed property .....	XXX					
32. Reinsurance - nonproportional assumed liability .....	XXX					
33. Reinsurance - nonproportional assumed financial lines .....	XXX					
34. Aggregate write-ins for other lines of business .....						
35. TOTALS	96,830,669		44,243	95,235,265	1,639,647	
<b>DETAILS OF WRITE-INS</b>						
3401. ....						
3402. ....						
3403. ....						
3498. Summary of remaining write-ins for Line 34 from overflow page .....						
3499. Totals (Lines 3401 thru 3403 plus 3498)(Line 34 above)						

(a) Does the company's direct premiums written include premiums recorded on an installment basis? Yes [ ] No [ X ]

If yes: 1. The amount of such installment premiums \$ .....

2. Amount at which such installment premiums would have been reported had they been reported on an annualized basis \$ .....

ANNUAL STATEMENT FOR THE YEAR 2022 OF THE HARLEYSVILLE PREFERRED INSURANCE COMPANY

**UNDERWRITING AND INVESTMENT EXHIBIT**

PART 2 - LOSSES PAID AND INCURRED

Line of Business	Losses Paid Less Salvage				5 Net Losses Unpaid Current Year (Part 2A , Col. 8)	6 Net Losses Unpaid Prior Year	7 Losses Incurred Current Year (Cols. 4 + 5 - 6)	8 Percentage of Losses Incurred (Col. 7, Part 2) to Premiums Earned (Col. 4, Part 1)
	1 Direct Business	2 Reinsurance Assumed	3 Reinsurance Recovered	4 Net Payments (Cols. 1 + 2 -3 )				
1. Fire .....	518,733	4,124	522,857					
2.1 Allied lines .....	114,362	4,724	119,086					
2.2 Multiple peril crop .....								
2.3 Federal flood .....								
2.4 Private crop .....								
2.5 Private flood .....								
3. Farmowners multiple peril .....								
4. Homeowners multiple peril .....	829,705	12,341	842,046					
5.1 Commercial multiple peril (non-liability portion) .....	12,978,507		12,978,507					
5.2 Commercial multiple peril (liability portion) .....	28,187,980		28,187,980					
6. Mortgage guaranty .....								
8. Ocean marine .....								
9. Inland marine .....	99		99					
10. Financial guaranty .....								
11.1 Medical professional liability - occurrence .....								
11.2 Medical professional liability - claims-made .....								
12. Earthquake .....								
13.1 Comprehensive (hospital and medical) individual .....								
13.2 Comprehensive (hospital and medical) group .....								
14. Credit accident and health (group and individual) .....								
15.1 Vision only .....								
15.2 Dental only .....								
15.3 Disability income .....								
15.4 Medicare supplement .....								
15.5 Medicaid Title XIX .....								
15.6 Medicare Title XVIII .....								
15.7 Long-term care .....								
15.8 Federal employees health benefits plan .....								
15.9 Other health .....								
16. Workers' compensation .....	5,624,195	1,762	5,625,957					
17.1 Other liability - occurrence .....	5,158,563	1,189	5,159,752					
17.2 Other liability - claims-made .....								
17.3 Excess workers' compensation .....								
18.1 Products liability - occurrence .....								
18.2 Products liability - claims-made .....								
19.1 Private passenger auto no-fault (personal injury protection) .....	159,367		159,367					
19.2 Other private passenger auto liability.....	5,412,448		5,412,448					
19.3 Commercial auto no-fault (personal injury protection) .....	401,714		401,714					
19.4 Other commercial auto liability.....	19,552,742		19,552,742					
21.1 Private passenger auto physical damage .....	147,327		147,327					
21.2 Commercial auto physical damage .....	3,020,688		3,020,688					
22. Aircraft (all perils) .....								
23. Fidelity .....								
24. Surety .....								
26. Burglary and theft .....	3		3					
27. Boiler and machinery .....								
28. Credit .....								
29. International .....								
30. Warranty .....								
31. Reinsurance - nonproportional assumed property .....	XXX							
32. Reinsurance - nonproportional assumed liability .....	XXX							
33. Reinsurance - nonproportional assumed financial lines .....	XXX							
34. Aggregate write-ins for other lines of business .....								
35. TOTALS	82,106,433	24,140	82,130,573					
<b>DETAILS OF WRITE-INS</b>								
3401. ....								
3402. ....								
3403. ....								
3498. Summary of remaining write-ins for Line 34 from overflow page .....								
3499. Totals (Lines 3401 thru 3403 plus 3498)(Line 34 above)								

ANNUAL STATEMENT FOR THE YEAR 2022 OF THE HARLEYSVILLE PREFERRED INSURANCE COMPANY

**UNDERWRITING AND INVESTMENT EXHIBIT**

PART 2A - UNPAID LOSSES AND LOSS ADJUSTMENT EXPENSES

Line of Business	Reported Losses				Incurred But Not Reported			8 Net Losses Unpaid (Cols. 4 + 5 + 6 - 7)	9 Net Unpaid Loss Adjustment Expenses
	1 Direct	2 Reinsurance Assumed	3 Deduct Reinsurance Recoverable	4 Net Losses Excl. Incurred But Not Reported (Cols. 1 + 2 - 3)	5 Direct	6 Reinsurance Assumed	7 Reinsurance Ceded		
1. Fire	213,454	1,218	214,672		26,173	(443)	25,730		
2.1 Allied lines	26,918	1,238	28,156		37,023	285	37,308		
2.2 Multiple peril crop									
2.3 Federal flood									
2.4 Private crop									
2.5 Private flood									
3. Farmowners multiple peril									
4. Homeowners multiple peril	1,163,630	7,546	1,171,176		(38,653)	(203)	(38,856)		
5.1 Commercial multiple peril (non-liability portion)	4,781,765		4,781,765		2,047,389		2,047,389		
5.2 Commercial multiple peril (liability portion)	56,769,641		56,769,641		22,262,876		22,262,876		
6. Mortgage guaranty									
8. Ocean marine									
9. Inland marine	1		1		17,728		17,728		
10. Financial guaranty									
11.1 Medical professional liability - occurrence									
11.2 Medical professional liability - claims-made									
12. Earthquake					136		136		
13.1 Comprehensive (hospital and medical) individual								(a)	
13.2 Comprehensive (hospital and medical) group								(a)	
14. Credit accident and health (group and individual)									
15.1 Vision only								(a)	
15.2 Dental only								(a)	
15.3 Disability income								(a)	
15.4 Medicare supplement								(a)	
15.5 Medicaid Title XIX								(a)	
15.6 Medicare Title XVIII								(a)	
15.7 Long-term care								(a)	
15.8 Federal employees health benefits plan								(a)	
15.9 Other health								(a)	
16. Workers' compensation	20,639,769	22,702	20,662,471		3,517,770	7,109	3,524,879		
17.1 Other liability - occurrence	8,662,239	1,969	8,664,208		3,658,281	2,890	3,661,171		
17.2 Other liability - claims-made					9,103		9,103		
17.3 Excess workers' compensation									
18.1 Products liability - occurrence	39,075		39,075		269,046		269,046		
18.2 Products liability - claims-made									
19.1 Private passenger auto no-fault (personal injury protection)	443,582		443,582		97,748		97,748		
19.2 Other private passenger auto liability	3,484,649		3,484,649		947,211	(158)	947,053		
19.3 Commercial auto no-fault (personal injury protection)	150,555		150,555		7,972		7,972		
19.4 Other commercial auto liability	20,807,749		20,807,749		15,741,346	158	15,741,504		
21.1 Private passenger auto physical damage	420,158		420,158		(29,796)		(29,796)		
21.2 Commercial auto physical damage	255,755		255,755		(31,261)		(31,261)		
22. Aircraft (all perils)									
23. Fidelity									
24. Surety									
26. Burglary and theft	(1)		(1)		362		362		
27. Boiler and machinery									
28. Credit									
29. International									
30. Warranty									
31. Reinsurance - nonproportional assumed property	XXX				XXX		XXX		
32. Reinsurance - nonproportional assumed liability	XXX				XXX		XXX		
33. Reinsurance - nonproportional assumed financial lines	XXX				XXX		XXX		
34. Aggregate write-ins for other lines of business									
35. TOTALS	117,858,939	34,673	117,893,612		48,540,454	9,638	48,550,092		
<b>DETAILS OF WRITE-INS</b>									
3401.									
3402.									
3403.									
3498. Summary of remaining write-ins for Line 34 from overflow page									
3499. Totals (Lines 3401 thru 3403 plus 3498)(Line 34 above)									

(a) Including \$ ..... for present value of life indemnity claims reported in Lines 13 and 15.

ANNUAL STATEMENT FOR THE YEAR 2022 OF THE HARLEYSVILLE PREFERRED INSURANCE COMPANY

**UNDERWRITING AND INVESTMENT EXHIBIT**

PART 3 - EXPENSES

	1	2	3	4
	Loss Adjustment Expenses	Other Underwriting Expenses	Investment Expenses	Total
1. Claim adjustment services:				
1.1 Direct .....	8,430,937			8,430,937
1.2 Reinsurance assumed .....	2,337			2,337
1.3 Reinsurance ceded .....	8,433,274			8,433,274
1.4 Net claim adjustment service (1.1 + 1.2 - 1.3) .....				
2. Commission and brokerage:				
2.1 Direct excluding contingent .....		13,819,687		13,819,687
2.2 Reinsurance assumed, excluding contingent .....		7,548		7,548
2.3 Reinsurance ceded, excluding contingent .....		13,827,235		13,827,235
2.4 Contingent - direct .....		3,611,150		3,611,150
2.5 Contingent - reinsurance assumed .....				
2.6 Contingent - reinsurance ceded .....		3,611,150		3,611,150
2.7 Policy and membership fees .....				
2.8 Net commission and brokerage (2.1 + 2.2 - 2.3 + 2.4 + 2.5 - 2.6 + 2.7) ..				
3. Allowances to managers and agents .....				
4. Advertising .....			2	2
5. Boards, bureaus and associations .....				
6. Surveys and underwriting reports .....				
7. Audit of assureds' records .....				
8. Salary and related items:				
8.1 Salaries .....			2,588	2,588
8.2 Payroll taxes .....				
9. Employee relations and welfare .....			607	607
10. Insurance .....				
11. Directors' fees .....			255	255
12. Travel and travel items .....			130	130
13. Rent and rent items .....			27	27
14. Equipment .....			9	9
15. Cost or depreciation of EDP equipment and software .....			69	69
16. Printing and stationery .....			3	3
17. Postage, telephone and telegraph, exchange and express .....			5	5
18. Legal and auditing .....			75	75
19. Totals (Lines 3 to 18) .....			3,770	3,770
20. Taxes, licenses and fees:				
20.1 State and local insurance taxes deducting guaranty association credits of \$ .....				
20.2 Insurance department licenses and fees .....				
20.3 Gross guaranty association assessments .....				
20.4 All other (excluding federal and foreign income and real estate) .....				
20.5 Total taxes, licenses and fees (20.1 + 20.2 + 20.3 + 20.4) .....				
21. Real estate expenses .....				
22. Real estate taxes .....				
23. Reimbursements by uninsured plans .....				
24. Aggregate write-ins for miscellaneous expenses .....			41,675	41,675
25. Total expenses incurred .....			45,445 (a)	45,445
26. Less unpaid expenses - current year .....				
27. Add unpaid expenses - prior year .....				
28. Amounts receivable relating to uninsured plans, prior year .....				
29. Amounts receivable relating to uninsured plans, current year .....				
30. TOTAL EXPENSES PAID (Lines 25 - 26 + 27 - 28 + 29)			45,445	45,445
<b>DETAILS OF WRITE-INS</b>				
2401. Other Expenses Incurred .....			41,653	41,653
2402. Outside services and income incurred .....			22	22
2403. ....				
2498. Summary of remaining write-ins for Line 24 from overflow page .....				
2499. Totals (Lines 2401 thru 2403 plus 2498)(Line 24 above)			41,675	41,675

(a) Includes management fees of \$ ..... to affiliates and \$ ..... to non-affiliates.

ANNUAL STATEMENT FOR THE YEAR 2022 OF THE HARLEYSVILLE PREFERRED INSURANCE COMPANY

**EXHIBIT OF NET INVESTMENT INCOME**

		1	2
		Collected During Year	Earned During Year
1.	U.S. Government bonds .....	(a) .....551,029	.....577,493
1.1	Bonds exempt from U.S. tax .....	(a) .....183,802	.....182,890
1.2	Other bonds (unaffiliated) .....	(a) .....577,577	.....564,437
1.3	Bonds of affiliates .....	(a) .....	.....
2.1	Preferred stocks (unaffiliated) .....	(b) .....	.....
2.11	Preferred stocks of affiliates .....	(b) .....	.....
2.2	Common stocks (unaffiliated) .....	.....	.....
2.21	Common stocks of affiliates .....	.....	.....
3.	Mortgage loans .....	(c) .....	.....
4.	Real estate .....	(d) .....	.....
5.	Contract loans .....	.....	.....
6.	Cash, cash equivalents and short-term investments .....	(e) .....23,612	.....23,612
7.	Derivative instruments .....	(f) .....	.....
8.	Other invested assets .....	.....	.....
9.	Aggregate write-ins for investment income .....	.....(180)	.....(180)
10.	Total gross investment income .....	1,335,840	1,348,252
11.	Investment expenses .....	.....	(g) .....45,445
12.	Investment taxes, licenses and fees, excluding federal income taxes .....	.....	(g) .....
13.	Interest expense .....	.....	(h) .....
14.	Depreciation on real estate and other invested assets .....	.....	(i) .....
15.	Aggregate write-ins for deductions from investment income .....	.....	.....
16.	Total deductions (Lines 11 through 15) .....	.....	.....45,445
17.	Net investment income (Line 10 minus Line 16) .....	.....	1,302,807
<b>DETAILS OF WRITE-INS</b>			
0901.	Misc. Income .....	.....(180)	.....(180)
0902.	.....	.....	.....
0903.	.....	.....	.....
0998.	Summary of remaining write-ins for Line 9 from overflow page .....	.....	.....
0999.	Totals (Lines 0901 thru 0903 plus 0998) (Line 9, above) .....	.....(180)	.....(180)
1501.	.....	.....	.....
1502.	.....	.....	.....
1503.	.....	.....	.....
1598.	Summary of remaining write-ins for Line 15 from overflow page .....	.....	.....
1599.	Totals (Lines 1501 thru 1503 plus 1598) (Line 15, above) .....	.....	.....

- (a) Includes \$ .....79,266 accrual of discount less \$ .....163,538 amortization of premium and less \$ .....21,129 paid for accrued interest on purchases.
- (b) Includes \$ ..... accrual of discount less \$ ..... amortization of premium and less \$ ..... paid for accrued dividends on purchases.
- (c) Includes \$ ..... accrual of discount less \$ ..... amortization of premium and less \$ ..... paid for accrued interest on purchases.
- (d) Includes \$ ..... for company's occupancy of its own buildings; and excludes \$ ..... interest on encumbrances.
- (e) Includes \$ ..... accrual of discount less \$ ..... amortization of premium and less \$ ..... paid for accrued interest on purchases.
- (f) Includes \$ ..... accrual of discount less \$ ..... amortization of premium.
- (g) Includes \$ ..... investment expenses and \$ ..... investment taxes, licenses and fees, excluding federal income taxes, attributable to segregated and Separate Accounts.
- (h) Includes \$ ..... interest on surplus notes and \$ ..... interest on capital notes.
- (i) Includes \$ ..... depreciation on real estate and \$ ..... depreciation on other invested assets.

**EXHIBIT OF CAPITAL GAINS (LOSSES)**

		1	2	3	4	5
		Realized Gain (Loss) On Sales or Maturity	Other Realized Adjustments	Total Realized Capital Gain (Loss) (Columns 1 + 2)	Change in Unrealized Capital Gain (Loss)	Change in Unrealized Foreign Exchange Capital Gain (Loss)
1.	U.S. Government bonds .....	.....	.....	.....	.....	.....
1.1	Bonds exempt from U.S. tax .....	(4,145)	.....	(4,145)	.....	.....
1.2	Other bonds (unaffiliated) .....	3,266	.....	3,266	.....	.....
1.3	Bonds of affiliates .....	.....	.....	.....	.....	.....
2.1	Preferred stocks (unaffiliated) .....	.....	.....	.....	.....	.....
2.11	Preferred stocks of affiliates .....	.....	.....	.....	.....	.....
2.2	Common stocks (unaffiliated) .....	.....	.....	.....	.....	.....
2.21	Common stocks of affiliates .....	.....	.....	.....	.....	.....
3.	Mortgage loans .....	.....	.....	.....	.....	.....
4.	Real estate .....	.....	.....	.....	.....	.....
5.	Contract loans .....	.....	.....	.....	.....	.....
6.	Cash, cash equivalents and short-term investments .....	.....	.....	.....	.....	.....
7.	Derivative instruments .....	.....	.....	.....	.....	.....
8.	Other invested assets .....	.....	.....	.....	.....	.....
9.	Aggregate write-ins for capital gains (losses) .....	.....	.....	.....	.....	.....
10.	Total capital gains (losses) .....	(879)	.....	(879)	.....	.....
<b>DETAILS OF WRITE-INS</b>						
0901.	.....	.....	.....	.....	.....	.....
0902.	.....	.....	.....	.....	.....	.....
0903.	.....	.....	.....	.....	.....	.....
0998.	Summary of remaining write-ins for Line 9 from overflow page .....	.....	.....	.....	.....	.....
0999.	Totals (Lines 0901 thru 0903 plus 0998) (Line 9, above) .....	.....	.....	.....	.....	.....

ANNUAL STATEMENT FOR THE YEAR 2022 OF THE HARLEYSVILLE PREFERRED INSURANCE COMPANY

**EXHIBIT OF NON-ADMITTED ASSETS**

	1	2	3
	Current Year Total Nonadmitted Assets	Prior Year Total Nonadmitted Assets	Change in Total Nonadmitted Assets (Col. 2 - Col. 1)
1. Bonds (Schedule D) .....			
2. Stocks (Schedule D):			
2.1 Preferred stocks .....			
2.2 Common stocks .....			
3. Mortgage loans on real estate (Schedule B):			
3.1 First liens .....			
3.2 Other than first liens.....			
4. Real estate (Schedule A):			
4.1 Properties occupied by the company .....			
4.2 Properties held for the production of income.....			
4.3 Properties held for sale .....			
5. Cash (Schedule E - Part 1), cash equivalents (Schedule E - Part 2) and short-term investments (Schedule DA) .....			
6. Contract loans .....			
7. Derivatives (Schedule DB) .....			
8. Other invested assets (Schedule BA) .....			
9. Receivables for securities .....			
10. Securities lending reinvested collateral assets (Schedule DL) .....			
11. Aggregate write-ins for invested assets .....			
12. Subtotals, cash and invested assets (Lines 1 to 11) .....			
13. Title plants (for Title insurers only) .....			
14. Investment income due and accrued .....			
15. Premiums and considerations:			
15.1 Uncollected premiums and agents' balances in the course of collection .....	325,998	183,869	(142,129)
15.2 Deferred premiums, agents' balances and installments booked but deferred and not yet due ..			
15.3 Accrued retrospective premiums and contracts subject to redetermination .....			
16. Reinsurance:			
16.1 Amounts recoverable from reinsurers .....			
16.2 Funds held by or deposited with reinsured companies .....			
16.3 Other amounts receivable under reinsurance contracts .....			
17. Amounts receivable relating to uninsured plans .....			
18.1 Current federal and foreign income tax recoverable and interest thereon .....			
18.2 Net deferred tax asset .....			
19. Guaranty funds receivable or on deposit .....			
20. Electronic data processing equipment and software .....			
21. Furniture and equipment, including health care delivery assets .....			
22. Net adjustment in assets and liabilities due to foreign exchange rates .....			
23. Receivables from parent, subsidiaries and affiliates .....			
24. Health care and other amounts receivable .....			
25. Aggregate write-ins for other than invested assets .....			
26. Total assets excluding Separate Accounts, Segregated Accounts and Protected Cell Accounts (Lines 12 to 25) .....	325,998	183,869	(142,129)
27. From Separate Accounts, Segregated Accounts and Protected Cell Accounts .....			
28. Total (Lines 26 and 27)	325,998	183,869	(142,129)
<b>DETAILS OF WRITE-INS</b>			
1101. ....			
1102. ....			
1103. ....			
1198. Summary of remaining write-ins for Line 11 from overflow page .....			
1199. Totals (Lines 1101 thru 1103 plus 1198)(Line 11 above)			
2501. ....			
2502. ....			
2503. ....			
2598. Summary of remaining write-ins for Line 25 from overflow page .....			
2599. Totals (Lines 2501 thru 2503 plus 2598)(Line 25 above)			

## NOTES TO THE FINANCIAL STATEMENTS

### Note 1 – Summary of Significant Accounting Policies and Going Concern

#### A. Accounting Practices

The accompanying statutory financial statements of Harleysville Preferred Insurance Company (the Company) have been prepared in conformity with accounting practices prescribed or permitted by the National Association of Insurance Commissioners (NAIC) and the State of Ohio.

The Ohio Department of Insurance recognizes only statutory accounting practices (SAP) prescribed or permitted by the State of Ohio for determining and reporting the financial condition and results of operations of an insurance company, as well as, determining its solvency under the Ohio Insurance law. The NAIC's *Accounting Practices and Procedures Manual* (NAIC SAP) has been adopted as a component of prescribed or permitted practices by the State of Ohio. The Company has no statutory accounting practices that differ from NAIC SAP.

A reconciliation of the Company's net income and capital and surplus between NAIC SAP and practices prescribed and permitted by the State of Ohio is shown below:

	SSAP #	F/S Page	F/S Line #	2022	2021
<b>Net Income</b>					
Harleysville Preferred Insurance Company state basis (Page 4, Line 20, (1) Columns 1 & 2)	XXX	XXX	XXX	\$ 658,116	\$ 896,597
(2) State Prescribed Practices that increase/(decrease) NAIC SAP				-	-
(3) State Permitted Practices that increase/(decrease) NAIC SAP				-	-
(4) NAIC SAP (1-2-3=4)	XXX	XXX	XXX	<u>\$ 658,116</u>	<u>\$ 896,597</u>
<b>Surplus</b>					
Harleysville Preferred Insurance Company state basis (Page 3, Line 37, (5) Columns 1 & 2)	XXX	XXX	XXX	\$ 50,632,428	\$ 49,520,980
(6) State Prescribed Practices that increase/(decrease) NAIC SAP				-	-
(7) State Permitted Practices that increase/(decrease) NAIC SAP				-	-
(8) NAIC SAP (5-6-7=8)	XXX	XXX	XXX	<u>\$ 50,632,428</u>	<u>\$ 49,520,980</u>

#### B. Use of Estimates in the Preparation of the Financial Statements

The preparation of statutory financial statements in conformity with Statutory Accounting Principles requires management to make estimates and assumptions that affect the reported amounts of assets and liabilities. It also requires disclosure of contingent assets and liabilities at the date of the financial statements and the reported amounts of revenue and expenses during the period. Actual results could differ from those estimates.

#### C. Accounting Policies

**Federal Income Taxes.** The Company's parent, Nationwide Mutual Insurance Company (Mutual), files a consolidated federal income tax return, which includes all eligible U.S. subsidiaries and affiliates. In this regard, the included subsidiaries and affiliates pay to Mutual the amount which would have been payable on a separate return basis without regard to the alternative minimum tax. Mutual pays tax due on a consolidated basis.

The Company provides for federal income taxes based on amounts the Company believes it will ultimately owe. Inherent in the provision for federal income taxes are estimates regarding the deductibility of certain items and the realization of certain tax credits. In the event the ultimate deductibility of certain items or the realization of certain tax credits differs from estimates, the Company may be required to change the provision for federal income taxes recorded in the financial statements, which could be significant. Management has used best estimates to establish reserves based on current facts and circumstances regarding tax exposure items where the ultimate deductibility is open to interpretation.

In accordance with guidance specified in the NAIC SAP, the Company utilizes the asset and liability method of accounting for income taxes. Under this method, deferred tax assets (DTA), net of any non-admitted portion and statutory valuation allowance, and deferred tax liabilities are recognized for the future tax consequences attributable to differences between the financial statement carrying amounts of existing assets and liabilities and their respective tax basis. DTAs and liabilities are measured using enacted tax rates expected to apply to taxable income in the years in which those temporary differences are expected to be recovered or settled. The change in deferred taxes, excluding the impact of taxes on unrealized capital gains or losses and nonadmitted deferred taxes, is charged directly to surplus.

**Reinsurance Recoverables.** The Company cedes insurance to other companies in order to limit potential losses and diversify its exposure. Such agreements do not relieve the Company of its primary obligation to the policyholder in the event the reinsurer is unable to meet the obligations it has assumed. The Company monitors the financial condition of reinsurers on an ongoing basis and reviews its reinsurance agreements regularly in an attempt to minimize its exposure to significant losses from reinsurer insolvencies. Reinsurance recoverables include amounts billed to reinsurers on losses paid. Estimates of amounts expected to be recovered from reinsurers that have not yet been paid on losses are estimated in a manner consistent with the claim liability associated with the underlying policy. Such reinsurance recoverables and reserve deductions partially offset claim costs in the Company's statutory statements of operations and are included as an offset to losses and loss expense reserves in the accompanying statutory statements of admitted assets, liabilities and surplus. There were no contracts using deposit accounting as of December 31, 2022 and 2021.

Statutory accounting principles require recognition of a minimum liability for certain unsecured or overdue reinsurance recoverables. As of December 31, 2022 and 2021, the Company had conditional reserves of \$164,200 and \$177,000, respectively.

In addition, the Company uses the following accounting policies:

- Short-term investments consist of investments with maturities of twelve months or less at acquisition and are stated at amortized cost, which approximates fair value.
- Bonds, excluding loan-backed and structured securities, are stated at amortized cost except those with an NAIC designation of "3" through "6", which are stated at the lower of amortized cost or fair value. Amortization of premiums and discounts is calculated using the effective yield method. The Company does not hold any mandatory convertible securities or Securities Valuation Office (SVO) identified investments.
- Unaffiliated common stocks are reported at fair value.
- Not applicable – The Company does not have preferred stock.
- Not applicable – The Company does not have mortgage loans on real estate.
- Loan-backed and structured securities (collectively, loan-backed securities) are stated at amortized cost or the lower of amortized cost or fair value in accordance with the provisions of Statement of Statutory Accounting Principles (SSAP) No. 43 Revised – *Loan-Backed and Structured Securities* and *the Purposes and Procedures Manual* of the NAIC SVO. The retrospective adjustment method is used to value loan-backed securities where the collection of all contractual cash flows is probable. For all other loan-backed securities, the Company uses the prospective adjustment method. Refer to Note 5(D) for a discussion of the other-than-temporary impairment policy for loan-backed securities.

## NOTES TO THE FINANCIAL STATEMENTS

7. Not applicable – The Company does not have any subsidiaries.
8. Not applicable – The Company does not have any ownership interest in joint ventures, partnerships and limited liability companies.
9. Not applicable – The Company does not have derivatives.
10. Insurance premiums are generally earned ratably over the policy term. The liability for unearned premiums represents the portion of premiums written relating to the unexpired terms of coverage. Such reserves are computed by pro rata methods for direct business and are based on reports received from ceding companies for reinsurance assumed. Premiums in course of collection represent agent balances and uncollected premiums from policyholders for current policies in force and policy premiums assumed from others, including amounts placed with affiliates. As of December 31, 2022 and 2021, the Company had no liabilities related to premium deficiency reserves. The Company includes anticipated investment income when calculating its premium deficiency reserves, in accordance with SSAP No. 53, Property-Casualty Contracts – Premiums.
11. The Company establishes losses and loss expense reserves for reported claims and claims incurred but not yet reported (IBNR). Estimating the liability for losses and loss expense reserves involves significant judgment and multiple assumptions. Management considers the Company's experience with similar claims, historical trends, economic factors and judicial, legislative and regulatory changes in establishing reserves. The Company's losses and loss expense reserves are recorded net of reinsurance and amounts expected to be received from salvage (the amount recovered from property after the Company pays for a total loss) and subrogation (the right to recover payments from third parties).
- Assumptions and estimates for losses and loss expense reserves are updated as new information becomes available. Due to the inherent uncertainty in estimating losses and loss expense reserves, the actual cost of settling claims may differ materially from recorded amounts. Changes in losses and loss expense reserve estimates are included in results of operations in the period the estimates are revised.
- The Company has some exposure to asbestos and environmental claims arising primarily from the sale of general liability insurance. The total business is ceded to the Nationwide Pool according to the pooling arrangement.
12. The Company has a written capitalization policy for prepaid expenses and purchases of items such as electronic data processing equipment, software, furniture, vehicles, other equipment and leasehold improvements. The Company has not modified its capitalization policy from the prior period.
13. Not applicable – The Company does not write major medical insurance with prescription drug coverage.

D. Going Concern

Not applicable.

**Note 2 – Accounting Changes and Corrections of Errors**

Not applicable.

**Note 3 – Business Combinations and Goodwill**

Not applicable.

**Note 4 – Discontinued Operations**

Not applicable.

**Note 5 – Investments**

A. Mortgage Loans

Not applicable.

B. Troubled Debt Restructuring

Not applicable.

C. Reverse Mortgages

Not applicable.

D. Loan-Backed Securities

1. Prepayment assumptions are generally obtained using a model provided by a third-party vendor.

2. Not applicable.

3. Not applicable.

4. All impaired securities (fair value is less than cost or amortized cost) for which an other-than-temporary impairment has not been recognized in earnings as a realized loss (including securities with a recognized other-than-temporary impairment for non-interest related declines when a non-recognized interest related impairment remains):

a. The aggregate amount of unrealized losses:

	1. Less than 12 Months	\$ <u>(1,006,619)</u>
	2. 12 Months or Longer	\$ <u>(1,082,684)</u>

b. The aggregate related fair value of securities with unrealized losses:

	1. Less than 12 Months	\$ <u>10,228,553</u>
	2. 12 Months or Longer	\$ <u>6,106,772</u>

## NOTES TO THE FINANCIAL STATEMENTS

5. The Company reviews all loan-backed and structured securities in which the fair value of the given security is less than the amortized cost to determine if a given security is other-than-temporarily impaired. The Company examines characteristics of the underlying collateral, such as delinquency and default rates, the quality of the underlying borrower, the type of collateral in the pool, the vintage year of the collateral, subordination levels within the structure of the collateral pool, and the quality of any credit guarantors, to determine the cash flows expected to be received for the security. If the severity and duration of the security's unrealized loss indicates a risk of an other-than-temporary impairment, then the Company will evaluate if the amortized cost basis of the security will be recovered by comparing the present value of the cash flows expected to be received for the given security with the amortized cost basis of the security. If the present value of cash flows is greater than the amortized cost basis of a security, then the security is deemed not to be other-than-temporarily impaired.

E. Dollar Repurchase Agreements and/or Securities Lending Transactions

Not applicable, as the Company does not participate in a securities lending program and has no open dollar repurchase agreements as of year-end.

F. Repurchase Agreements Transactions Accounted for as Secured Borrowing

Not applicable.

G. Reverse Repurchase Agreements Transactions Accounted for as Secured Borrowing

Not applicable.

H. Repurchase Agreements Transactions Accounted for as a Sale

Not applicable.

I. Reverse Repurchase Agreements Transactions Accounted for as a Sale

Not applicable.

J. Real Estate

Not applicable.

K. Low-Income Housing Tax Credits

Not applicable.

## NOTES TO THE FINANCIAL STATEMENTS

## L. Restricted Assets

## 1. Restricted Assets (Including Pledged)

Restricted Asset Category	Gross (Admitted & Nonadmitted) Restricted						
	Current Year					6 Total From Prior Year	7 Increase/ (Decrease) (5 minus 6)
	1 Total General Account (G/A)	2 G/A Supporting Protected Cell Account Activity (a)	3 Total Protected Cell Account Restricted Assets	4 Protected Cell Account Supporting G/A Activity (b)	5 Total (1 plus 3)		
a. Subject to contractual obligation for which liability is not shown	\$-	\$-	\$-	\$-	\$-	\$-	\$-
b. Collateral held under security lending agreements	-	-	-	-	-	-	-
c. Subject to repurchase agreements	-	-	-	-	-	-	-
d. Subject to reverse repurchase agreements	-	-	-	-	-	-	-
e. Subject to dollar repurchase agreements	-	-	-	-	-	-	-
f. Subject to dollar reverse repurchase agreements	-	-	-	-	-	-	-
g. Placed under option contracts	-	-	-	-	-	-	-
h. Letter stock or securities restricted as to sale - excluding FHLB capital stock	-	-	-	-	-	-	-
i. FHLB capital stock	-	-	-	-	-	-	-
j. On deposit with states	7,095,401	-	-	-	7,095,401	7,086,380	9,021
k. On deposit with other regulatory bodies	-	-	-	-	-	-	-
l. Pledged as collateral to FHLB (including assets backing funding agreements)	-	-	-	-	-	-	-
m. Pledged as collateral not captured in other categories	-	-	-	-	-	-	-
n. Other restricted assets	-	-	-	-	-	-	-
<b>o. Total Restricted Assets</b>	<b>\$7,095,401</b>	<b>\$-</b>	<b>\$-</b>	<b>\$-</b>	<b>\$7,095,401</b>	<b>\$7,086,380</b>	<b>\$9,021</b>

(a) Subset of Column 1

(b) Subset of Column 3

## NOTES TO THE FINANCIAL STATEMENTS

Restricted Asset Category	Current Year			
	8 Total Nonadmitted Restricted	9 Total Admitted Restricted (5 minus 8)	Percentage	
			10 Gross (Admitted & Nonadmitted) Restricted to Total Assets (c)	11 Admitted Restricted to Total Admitted Assets (d)
a. Subject to contractual obligation for which liability is not shown	\$-	\$-	0.00%	0.00%
b. Collateral held under security lending agreements	-	-	0.00%	0.00%
c. Subject to repurchase agreements	-	-	0.00%	0.00%
d. Subject to reverse repurchase agreements	-	-	0.00%	0.00%
e. Subject to dollar repurchase agreements	-	-	0.00%	0.00%
f. Subject to dollar reverse repurchase agreements	-	-	0.00%	0.00%
g. Placed under option contracts	-	-	0.00%	0.00%
h. Letter stock or securities restricted as to sale - excluding FHLB capital stock	-	-	0.00%	0.00%
i. FHLB capital stock	-	-	0.00%	0.00%
j. On deposit with states	-	7,095,401	7.88%	7.91%
k. On deposit with other regulatory bodies	-	-	0.00%	0.00%
l. Pledged as collateral to FHLB (including assets backing funding agreements)	-	-	0.00%	0.00%
m. Pledged as collateral not captured in other categories	-	-	0.00%	0.00%
n. Other restricted assets	-	-	0.00%	0.00%
o. Total Restricted Assets	\$-	\$7,095,401	7.88%	7.91%

(c) Column 5 divided by Asset Page, Column 1, Line 28

(d) Column 9 divided by Asset Page, Column 3, Line 28

2. Detail of Assets Pledged as Collateral Not Captured in Other Categories (Contracts that Share Similar Characteristics, Such as Reinsurance and Derivatives, Are Reported in the Aggregate)

Not applicable.

3. Detail of Other Restricted Assets (Contracts that Share Similar Characteristics, Such as Reinsurance and Derivatives, Are Reported in the Aggregate)

Not applicable.

4. Collateral Received and Reflected as Assets Within the Reporting Entity's Financial Statements

Not applicable.

M. Working Capital Finance Investments

Not applicable.

N. Offsetting and Netting of Assets and Liabilities

No assets or liabilities are offset and reported net in accordance with a valid right to offset per SSAP No 64, *Offsetting and Netting of Assets and Liabilities*.

O. 5GI Securities

Not applicable.

P. Short Sales

Not applicable.

Q. Prepayment Penalty and Acceleration Fees

	<u>General Account</u>	<u>Protected Cell Account</u>
(1) Number of CUSIPs	2	-
(2) Aggregate Amount of Investment Income	\$ 32,711	\$ -

## NOTES TO THE FINANCIAL STATEMENTS

### R. Reporting Entity's Share of Cash Pool by Asset Type

Asset Type	Percent Share
(1) Cash	1%
(2) Cash Equivalents	79%
(3) Short-term Investments	20%
(4) Total	100%

### **Note 6 – Joint Ventures, Partnerships and Limited Liability Companies**

#### A. Detail for Those Greater than 10% of Admitted Assets

The Company has no investments in Joint Ventures, Partnerships or Limited Liability Companies that exceed 10% of its total admitted assets.

#### B. Write-downs for Impairments

The Company did not recognize any impairments for its investments in Joint Venture, Partnerships or Limited Liability Companies in 2022 or 2021.

### **Note 7 – Investment Income**

#### A. Accrued Investment Income

The Company nonadmits investment income due and accrued if amounts are over 90 days past due with the exception of mortgage loans in default which are nonadmitted if amounts are over 180 days past due.

#### B. Amounts Nonadmitted

The total amount of investment income nonadmitted at December 31, 2022 was \$352,033.

### **Note 8 – Derivative Instruments**

Not applicable.

### **Note 9 – Income Taxes**

In August 2022, the Inflation Reduction Act of 2022 ("Act") was passed by the US Congress and signed into law. The Act includes a new Federal corporate alternative minimum tax ("CAMT"), effective in 2023, that is based on the adjusted financial statement income ("AFSI") set forth on the applicable financial statement ("AFS") of an applicable corporation. A corporation is an applicable corporation if its rolling average pre-tax AFSI over three prior years (starting with 2020-2022) is greater than \$1 billion. For a group of related entities, the \$1 billion threshold is determined on a group basis, and the group's AFS is generally treated as the AFS for all separate taxpayers in the group. Except under limited circumstances, once a corporation is an applicable corporation, it is an applicable corporation in all future years.

An applicable corporation is not automatically subject to a CAMT liability. The corporation's tentative CAMT liability is equal to 15% of its adjusted AFSI, and CAMT is payable to the extent the tentative CAMT liability exceeds regular corporate income tax. However, any CAMT paid would be indefinitely available as a credit carryover that could reduce future regular tax in excess of CAMT.

The Company comprises a controlled group of corporations and has determined that it likely will be an applicable corporation in 2023. In making such determination, the group has made certain interpretations of, and assumptions regarding, the CAMT provisions of the Act. The US Treasury Department is expected to issue guidance throughout 2023 that may differ from the group's interpretations and assumptions and that could alter the group's determination.

In accordance with INT 22-02, the Company did not include an estimate of the impacts of the CAMT because a reasonable estimate cannot be made as of December 31, 2022.

## NOTES TO THE FINANCIAL STATEMENTS

A. The Components of the deferred tax asset/(liability) at December 31, 2022 are as follows:

	December 31, 2022		
	Ordinary	Capital	Total
(1a) Gross deferred tax assets	\$ 68,460	\$ -	\$ 68,460
(1b) Statutory valuation allowance adjustment	-	-	-
(1c) Adjusted gross deferred tax assets	\$ 68,460	\$ -	\$ 68,460
(1d) Deferred tax assets nonadmitted	-	-	-
(1e) Subtotal net admitted deferred tax asset	\$ 68,460	\$ -	\$ 68,460
(1f) Deferred tax liabilities	-	117,788	117,788
(1g) Net admitted deferred tax asset/(net deferred tax liability)	\$ 68,460	\$ (117,788)	\$ (49,328)

	December 31, 2021		
	Ordinary	Capital	Total
(1a) Gross deferred tax assets	\$ 38,612	\$ -	\$ 38,612
(1b) Statutory valuation allowance adjustment	-	-	-
(1c) Adjusted gross deferred tax assets	\$ 38,612	\$ -	\$ 38,612
(1d) Deferred tax assets nonadmitted	-	-	-
(1e) Subtotal net admitted deferred tax asset	\$ 38,612	\$ -	\$ 38,612
(1f) Deferred tax liabilities	-	528,473	528,473
(1g) Net admitted deferred tax asset/(net deferred tax liability)	\$ 38,612	\$ (528,473)	\$ (489,861)

	Change		
	Ordinary	Capital	Total
(1a) Gross deferred tax assets	\$ 29,848	\$ -	\$ 29,848
(1b) Statutory valuation allowance adjustment	-	-	-
(1c) Adjusted gross deferred tax assets	\$ 29,848	\$ -	\$ 29,848
(1d) Deferred tax assets nonadmitted	-	-	-
(1e) Subtotal net admitted deferred tax asset	\$ 29,848	\$ -	\$ 29,848
(1f) Deferred tax liabilities	-	(410,685)	(410,685)
(1g) Net admitted deferred tax asset/(net deferred tax liability)	\$ 29,848	\$ 410,685	\$ 440,533

## NOTES TO THE FINANCIAL STATEMENTS

### Admission Calculation Components SSAP No. 101

	December 31, 2022		
	Ordinary	Capital	Total
(2a) Federal income taxes paid in prior years recoverable through loss carrybacks	\$ -	\$ -	\$ -
(2b) Adjusted gross deferred tax assets expected to be realized (excluding the amount of deferred tax assets from (2a) above) after application of the threshold limitation (the less of (2b)1 and (2b)2 below)	\$ -	\$ -	\$ -
1. Adjusted gross deferred tax assets expected to be realized following the balance sheet date	\$ -	\$ -	\$ -
2. Adjusted gross deferred tax assets allowed per limit threshold	XXX	XXX	\$ -
(2c) Adjusted gross deferred tax assets (excluding the amount of deferred tax asset from 2(a) and 2(b) above) offset by gross deferred tax liabilities	\$ -	\$ -	\$ -
(2d) Deferred tax assets admitted as the result of application of SSAP No. 101 Total ((2a) + (2b) + (2c))	<u>\$ -</u>	<u>\$ -</u>	<u>\$ -</u>

	December 31, 2021		
	Ordinary	Capital	Total
(2a) Federal income taxes paid in prior years recoverable through loss carrybacks	\$ -	\$ -	\$ -
(2b) Adjusted gross deferred tax assets expected to be realized (excluding the amount of deferred tax assets from (2a) above) after application of the threshold limitation (the less of (2b)1 and (2b)2 below)	\$ -	\$ -	\$ -
1. Adjusted gross deferred tax assets expected to be realized following the balance sheet date	\$ -	\$ -	\$ -
2. Adjusted gross deferred tax assets allowed per limit threshold	XXX	XXX	\$ -
(2c) Adjusted gross deferred tax assets (excluding the amount of deferred tax asset from 2(a) and 2(b) above) offset by gross deferred tax liabilities	\$ -	\$ -	\$ -
(2d) Deferred tax assets admitted as the result of application of SSAP No. 101 Total ((2a) + (2b) + (2c))	<u>\$ -</u>	<u>\$ -</u>	<u>\$ -</u>

	Change		
	Ordinary	Capital	Total
(2a) Federal income taxes paid in prior years recoverable through loss carrybacks	\$ -	\$ -	\$ -
(2b) Adjusted gross deferred tax assets expected to be realized (excluding the amount of deferred tax assets from (2a) above) after application of the threshold limitation (the less of (2b)1 and (2b)2 below)	\$ -	\$ -	\$ -
1. Adjusted gross deferred tax assets expected to be realized following the balance sheet date	\$ -	\$ -	\$ -
2. Adjusted gross deferred tax assets allowed per limit threshold	XXX	XXX	\$ -
(2c) Adjusted gross deferred tax assets (excluding the amount of deferred tax asset from 2(a) and 2(b) above) offset by gross deferred tax liabilities	\$ -	\$ -	\$ -
(2d) Deferred tax assets admitted as the result of application of SSAP No. 101 Total ((2a) + (2b) + (2c))	<u>\$ -</u>	<u>\$ -</u>	<u>\$ -</u>

	December 31, 2022	December 31, 2021
(3a) Ratio percentage used to determine recovery period and threshold limitation amount	N/A	N/A
(3b) Amount of adjusted capital and surplus used to determine recovery period and threshold limitation in (2b)2 above	\$ N/A	\$ N/A

## NOTES TO THE FINANCIAL STATEMENTS

### Impact of Tax Planning Strategies

		December 31, 2022		
		Ordinary	Capital	Total
(4a)	Determination of adjusted gross deferred tax assets and net admitted deferred tax assets, by tax character as a percentage			
	(1) Adjusted Gross DTAs amount from Note 9A1(c)	\$ 68,460	\$ -	\$ 68,460
	(2) Percentage of adjusted gross DTAs by tax character attributable to the impact of tax planning strategies	0.00%	0.00%	0.00%
	(3) Net Admitted Adjusted Gross DTAs amount from Note 9A1(e)	\$ 68,460	\$ -	\$ 68,460
	(4) Percentage of net admitted adjusted gross DTAs by tax character admitted because of the impact of planning strategies	0.00%	0.00%	0.00%

		December 31, 2021		
		Ordinary	Capital	Total
(4a)	Determination of adjusted gross deferred tax assets and net admitted deferred tax assets, by tax character as a percentage			
	(1) Adjusted Gross DTAs amount from Note 9A1(c)	\$ 38,612	\$ -	\$ 38,612
	(2) Percentage of adjusted gross DTAs by tax character attributable to the impact of tax planning strategies	0.00%	0.00%	0.00%
	(3) Net Admitted Adjusted Gross DTAs amount from Note 9A1(e)	\$ 38,612	\$ -	\$ 38,612
	(4) Percentage of net admitted adjusted gross DTAs by tax character admitted because of the impact of planning strategies	0.00%	0.00%	0.00%

		Change		
		Ordinary	Capital	Total
(4a)	Determination of adjusted gross deferred tax assets and net admitted deferred tax assets, by tax character as a percentage			
	(1) Adjusted Gross DTAs amount from Note 9A1(c)	\$ 29,848	\$ -	\$ 29,848
	(2) Percentage of adjusted gross DTAs by tax character attributable to the impact of tax planning strategies	0.00%	0.00%	0.00%
	(3) Net Admitted Adjusted Gross DTAs amount from Note 9A1(e)	\$ 29,848	\$ -	\$ 29,848
	(4) Percentage of net admitted adjusted gross DTAs by tax character admitted because of the impact of planning strategies	0.00%	0.00%	0.00%

(4b) Does this Company's tax-planning strategies include the use of reinsurance?      Yes [  ]      No [  ]

B. There are no temporary differences for which deferred tax liabilities are not recognized.

C. Current income taxes incurred consist of the following major components:

		December 31, 2022	December 31, 2021	Change
<b>1.</b>	<b>Current Income Tax</b>			
	(a) Federal	\$ 598,480	\$ 268,188	\$ 330,292
	(b) Foreign		-	-
	(c) Subtotal	\$ 598,480	\$ 268,188	\$ 330,292
	(d) Federal income tax on net capital gains	45,334	(31,417)	76,751
	(e) Utilization of capital loss carry-forwards		-	-
	(f) Other		-	-
	(g) Federal and foreign income taxes incurred (1c+1d+1e+1f)	<u>\$ 643,814</u>	<u>\$ 236,771</u>	<u>\$ 407,043</u>

## NOTES TO THE FINANCIAL STATEMENTS

	December 31, 2022	December 31, 2021	Change
<b>2. Deferred Tax Assets</b>			
(a) Ordinary:			
(1) Discounting of unpaid losses	\$ -	\$ -	\$ -
(2) Unearned premium reserve	-	-	-
(3) Policyholder reserves	-	-	-
(4) Investments	-	-	-
(5) Deferred acquisition costs	-	-	-
(6) Policyholder dividends accrual	-	-	-
(7) Fixed Assets	-	-	-
(8) Compensation and benefits accrual	-	-	-
(9) Pension accrual	-	-	-
(10) Receivables - nonadmitted	-	-	-
(11) Net operating loss carry-forward	-	-	-
(12) Tax credit carry-forward	-	-	-
(13) Other	68,460	38,612	29,848
(99) Subtotal (sum of 2a1 through 2a13)	\$ 68,460	\$ 38,612	\$ 29,848
(b) Statutory valuation allowance adjustment	\$ -	\$ -	\$ -
(c) Nonadmitted	-	-	-
(d) Admitted ordinary deferred tax assets (2a99 - 2b - 2c)	\$ 68,460	\$ 38,612	\$ 29,848
(1) Investments	\$ -	\$ -	\$ -
(2) Net capital loss carry-forward	-	-	-
(3) Real estate	-	-	-
(4) Other	-	-	-
(99) Subtotal (2e1+2e2+2e3+2e4)	\$ -	\$ -	\$ -
(f) Statutory valuation allowance adjustment	\$ -	\$ -	\$ -
(g) Nonadmitted	-	-	-
(h) Admitted capital deferred tax assets (2e99 - 2f - 2g)	\$ -	\$ -	\$ -
(i) Admitted deferred tax assets (2d + 2h)	\$ 68,460	\$ 38,612	\$ 29,848
<b>3. Deferred Tax Liabilities</b>			
(a) Ordinary:			
(1) Investments	\$ -	\$ -	\$ -
(2) Fixed assets	-	-	-
(3) Deferred and uncollected premium	-	-	-
(4) Policyholder reserves	-	-	-
(5) Other	-	-	-
(99) Subtotal (3a1+3a2+3a3+3a4+3a5)	\$ -	\$ -	\$ -
(b) Capital:			
(1) Investments	\$ 117,788	\$ 528,473	\$ (410,685)
(2) Real estate	-	-	-
(3) Other	-	-	-
(99) Subtotal (3b1+3b2+3b3)	117,788	\$ 528,473	\$ (410,685)
(c) Deferred tax liabilities (3a99 + 3b99)	\$ 117,788	\$ 528,473	\$ (410,685)
<b>4. Net deferred tax asset/(liability) (2i - 3c)</b>	<b>\$ (49,328)</b>	<b>\$ (489,861)</b>	<b>\$ 440,533</b>

## NOTES TO THE FINANCIAL STATEMENTS

5. The change in deferred income taxes is comprised of the following (this analysis is exclusive of the nonadmitted assets as the Change in Nonadmitted Assets are reported separately from the Change in Net Deferred Income Taxes in the surplus section of the Annual Statement):

	December 31, 2022	December 31, 2021	Change
(a) Adjusted gross deferred tax assets	\$ 68,460	\$ 38,612	\$ 29,848
(b) Deferred tax liabilities	117,788	528,473	(410,685)
(c) Net deferred tax assets (liabilities)	\$ (49,328)	\$ (489,861)	\$ 440,533
(d) Tax effect of unrealized gains (losses)			-
(e) Tax effect of unrealized postretirement benefits			-
(f) Merger adjustment			-
(g) Change in deferred income tax			\$ 440,533

- D. The provision for federal income taxes incurred is different from that which would be obtained by applying the statutory Federal income tax rate to pre-tax income. The significant book to tax adjustments causing this difference are as follows:

	December 31, 2022	December 31, 2021
(a) Current income taxes incurred	\$ 643,814	\$ 236,771
(b) Change in deferred income tax	(440,532)	(52,011)
(c) Total income tax reported	\$ 203,282	\$ 184,760
(d) Income before taxes	\$ 1,301,929	\$ 1,133,368
(e) Federal statutory tax rate	21%	21%
(f) Expected income tax expense (benefit) at 21% statutory rate	\$ 273,405	\$ 238,007
(1) Tax-exempt income	\$ (40,276)	\$ (41,242)
(2) Dividends received deduction	-	-
(3) Nondeductible expenses	-	-
(4) Deferred tax benefit on nonadmitted assets	(29,847)	(12,005)
(5) Change in tax reserves	-	-
(6) Tax credits	-	-
(7) Other	-	-
(8) Extraordinary distribution	-	-
(9) COLI	-	-
(10) Dividends - Return of Capital	-	-
(11) Tax Attribute Expiration	-	-
(12) Impact of enacted tax law changes	-	-
(13) Investments	-	-
(14) Impact of CARES Act / NOL CB	-	-
(g) Total	\$ 203,282	\$ 184,760

- E. Operating Loss and Tax Credit Carryforwards and Protective Tax Deposits

1. As of December 31, 2022, there were no operating loss or tax credit carryforwards available.
2. There were no Federal income taxes incurred that are available for recoupment in the event of future net losses as of December 31, 2022.
3. The Company did not have any protective tax deposits under Section 6603 of the Internal Revenue Code.

## NOTES TO THE FINANCIAL STATEMENTS

### F. Consolidated Federal Income Tax Return

1. The Company's federal income tax return is consolidated with the following entities:

Nationwide Mutual Insurance Company	Nationwide Cash Management Company
AGMC Reinsurance, Ltd	Nationwide Corporation
Allied Group, Inc.	Nationwide Financial Assignment Company
Allied Holding (Delaware), Inc.	Nationwide Financial General Agency, Inc.
Allied Insurance Company of America	Nationwide Financial Services, Inc.
Allied Property & Casualty Insurance Company	Nationwide General Insurance Company
Allied Texas Agency, Inc.	Nationwide Indemnity Company
AMCO Insurance Company	Nationwide Insurance Company of America
American Marine Underwriters	Nationwide Insurance Company of Florida
Crestbrook Insurance Company	Nationwide Investment Services Corporation
Depositors Insurance Company	Nationwide Life and Annuity Insurance Company
DVM Insurance Agency, Inc.	Nationwide Life Insurance Company
Eagle Captive Reinsurance, LLC	Nationwide Lloyds
Freedom Specialty Insurance Company	Nationwide Property & Casualty Insurance Company
Harleysville Group Inc.	Nationwide Retirement Solutions, Inc.
Harleysville Insurance Co. of New York	Nationwide Sales Solutions, Inc.
Harleysville Insurance Company	Nationwide Trust Company, FSB
Harleysville Insurance Company of New Jersey	NBS Insurance Agency, Inc.
Harleysville Lake States Insurance Company	NFS Distributors, Inc.
Harleysville Life Insurance Company	Registered Investment Advisors Services, Inc.
Harleysville Preferred Insurance Company	Retention Alternatives SAC Ltd.
Harleysville Worcester Insurance Company	Scottsdale Indemnity Company
Jefferson National Financial Corporation	Scottsdale Insurance Company
Jefferson National Securities Corporation	Scottsdale Surplus Lines Insurance Company
Lone Star General Agency, Inc.	THI Holdings (Delaware), Inc.
National Casualty Company	Titan Insurance Company
Nationwide Advantage Mortgage Company	Titan Insurance Services, Inc.
Nationwide Affinity Insurance Company of America	Veterinary Pet Insurance Company
Nationwide Agent Risk Purchasing Group, Inc.	Victoria Fire & Casualty Company
Nationwide Agribusiness Insurance Company	Victoria Select Insurance Company
Nationwide Assurance Company	VPI Services, Inc.

2. The method of allocation among the companies is subject to the resolution approved by the Board of Directors. Allocation is based upon separate return or sub-group aggregated separate return calculations with the Company being reimbursed for the actual Federal income tax benefit of its net operating losses which are actually used to reduce the taxable income of other companies in the consolidated return.

### G. Federal or Foreign Federal Income Tax Loss Contingencies

The Company does not have any tax loss contingencies for which it is reasonably possible that the total liability will significantly increase within twelve months of the reporting date.

### H. Repatriation Transition Tax (RTT)

Not applicable.

### I. Alternative Minimum Tax (AMT)

Not applicable.

## **Note 10 - Information Concerning Parent, Subsidiaries, Affiliates and Other Related Parties**

### A. Nature of Relationships

The Company was a wholly owned subsidiary of Harleysville Group Inc. (HGI). HGI was owned by Allied Holdings (Delaware), Inc., who in turn was owned by Mutual, which, as a mutual entity, is not directly or indirectly owned or controlled by any other company, corporation, and group of companies, partnership or individual. Mutual is operated by and solely in the interests of its policyholders. Effective October 1, 2022, in conjunction with mergers of the holding companies, the Company became a wholly-owned subsidiary of Mutual.

Bonds and stocks, if any owned, acquired or disposed of in any year by the Company in any subsidiary or affiliate are set forth in Schedule D of either this statement or those of prior years. Intercompany relationships and specific holdings are detailed in the Nationwide Corporate Organizational Chart, which appears as Schedule Y of this statement.

The Company is a party to various reinsurance agreements including a pooling agreement with several affiliated companies. See Note 26.

The Company and various affiliates have entered into agreements with Nationwide Cash Management Company (NCMC) a subsidiary of Mutual, under which NCMC acts as a common agent in handling the purchases and sales of short-term investments for the respective accounts of the participants. Amounts on deposit with NCMC were \$1,688,186 and \$5,297,829 as of December 31, 2022 and 2021, respectively.

### B. Detail of Transactions Greater than ½ % of Admitted Assets

Not applicable.

### C. Transactions with Related Party who are not Reported on Schedule Y

Not applicable.

## NOTES TO THE FINANCIAL STATEMENTS

### D. Amounts Due to or from Related Parties

Affiliate receivables and payables are the result of cost sharing and intercompany service agreements between the Company and its affiliates in which settlement has not yet occurred. Affiliate receivables are presented gross of affiliate payables when the Company has the right to offset. The gross amounts due from affiliates were \$1,148,847 and \$1,006,021 as of December 31, 2022 and 2021, respectively. The gross amounts due to affiliates were \$50,589 and \$1,565,477 as of December 31, 2022 and 2021, respectively. These arrangements are subject to written agreements which require that intercompany balances be settled within 30 days.

### E. Guarantees or Undertakings for Related Parties

The Company has no guarantees or contingent commitments to affiliates other than indicated in Note 14 A.

### F. Management, Service Contracts, Cost Sharing Arrangements

The Company and various affiliates share a home office, other facilities, equipment, common management and administrative services. Pursuant to a cost sharing agreement between the companies, the amounts associated with these services are subject to allocation based on standard allocation techniques and procedures acceptable under general cost accounting techniques and procedures in conformity with the NAIC SAP. Measures used to determine the allocation among companies includes individual employee estimates of time spent, special cost studies, claims counts, policies in force, direct written premium, paid losses, pro rata share of employees or their salaries and other methods agreed to by the participating companies. The Company does not believe amounts recognized under the intercompany agreement are materially different than what would have been recognized had the Company operated on a stand-alone basis.

### G. Nature of Relationships that Could Affect Operations

All outstanding shares of the Company are owned by Harleysville Group Inc., and insurance holding company domiciled in the State of Delaware.

### H. Amount Deducted for Investment in Upstream Company

Not applicable.

### I. Detail of Investment in Affiliates Greater than 10% of Admitted Assets

The Company does not hold any investments in affiliates greater than 10% of Admitted Assets.

### J. Write-down for Impairments of Investments in Subsidiary, Controlled or Affiliated Companies

Not applicable.

### K. Investment in a Foreign Insurance Subsidiary

Not applicable.

### L. Downstream Holding Company

The Company does not hold any investments in affiliates.

### M. All SCA Investments

Not applicable.

### N. Investment in Insurance SCA Entities

Not applicable.

### O. SCA or SSAP Entity Loss Tracking

Not applicable.

### **Note 11 – Debt**

Not applicable.

### **Note 12 – Retirement Plans, Deferred Compensation, Postemployment Benefits and Compensated Absences and Other Postretirement Benefit Plans**

Not applicable.

### **Note 13 – Capital and Surplus, Shareholders' Dividend Restrictions and Quasi-Reorganizations**

#### A. Outstanding Shares

The Company has 470,000 shares of \$9 par value common stock authorized, 470,000 shares issued and 470,000 shares outstanding as of December 31, 2022.

#### B. Dividend Rate of Preferred Stock

Not applicable.

#### C. Dividend Restrictions

The maximum amount of dividends which can be paid to shareholders by a State of Ohio domiciled insurance company without prior approval of the Director of Insurance is limited to, together with that of other dividends or distributions made within the preceding twelve months, the greater of either 10% of surplus as regards policyholders as of the preceding December 31, or the net income for the twelve month period ending December 31 of the previous calendar year. Additionally, any dividend or distribution paid from other than earned surplus shall require prior approval of the Director of Insurance. Subject to applicable regulatory approval(s), dividends are paid as determined by the insurer's board of directors.

#### D. Dividends Paid

No dividends were paid by the Company during 2022. On December 8, 2021, the Company paid a dividend of \$5,000,000 to HGI.

## NOTES TO THE FINANCIAL STATEMENTS

### E. Profits Available for Ordinary Dividends

Within the limitations of (C) above, there are no restrictions placed on the portion of Company profits that may be paid as ordinary dividends to shareholders.

### F. Restrictions on Surplus

There is no restriction on the use of the Company's unassigned surplus and such surplus is held for the benefit of the shareholder.

### G. Advances to Surplus Not Repaid

Not applicable.

### H. Stock Held by Company for Special Purposes

Not applicable.

### I. Changes in Special Surplus Funds

Not applicable.

### J. Changes in Unassigned Funds

The portion of unassigned funds (surplus) represented by cumulative unrealized capital gains is \$0 less applicable deferred tax benefits of \$0 for a net unrealized capital gain of \$0.

### K. Surplus Notes

Not applicable.

### L. and M. Quasi Reorganizations

Not applicable.

## **Note 14 – Contingencies**

### A. Contingent Commitments

The Company has no commitments or contingent commitment to affiliates or other entities. As indicated in Note 10 E, the Company has made no guarantees on behalf of affiliates.

### B. Assessments

The Company is subject to guaranty fund and other assessments by the states in which it writes business. Guaranty fund assessments should be accrued at the time of insolvencies. Other assessments should be accrued either at the time of assessments or in the case of premium based assessments, at the time the premiums were written. In the case of loss-based assessments, the assessments should be accrued at the time the losses are incurred.

As outlined in Note 26, the Company participated in a 100% pooling reinsurance agreement with Mutual. Therefore, the accrued liability for guaranty fund and other assessments and the related premium tax benefit have been ceded to Mutual.

### C. Gain Contingencies

Not applicable.

### D. Claims Related Extra Contractual Obligations and Bad Faith Losses Stemming from Lawsuits

The Company paid the following amounts in the reporting period to settle claims related to extra contractual obligations or bad faith claims stemming from lawsuits.

Claims related to ECO and bad faith losses paid during the reporting period:	\$282,905
--	-----------

Number of claims where amounts were paid to settle claims related to extra contractual obligations or bad faith claims resulting from lawsuits during the reporting period.

(a) 0 - 25 claims	(b) 26 - 50 claims	(c) 51 - 100 claims	(d) 101 - 500 claims	(e) More than 500 claims
X				

(f) Per Claim [ X ]	Per Claimant [ ]
---------------------	------------------

### E. Product Warranties

Not applicable.

### F. Joint and Several Liabilities

Not applicable.

### G. All Other Contingencies

Various lawsuits arise against the Company in the normal course of the Company's business. Contingent liabilities arising from litigation and other matters are not considered material in relation to the financial position of the Company.

## **Note 15 – Leases**

Not applicable.

## NOTES TO THE FINANCIAL STATEMENTS

### Note 16 – Information about Financial Instruments with Off-Balance Sheet Risk and Financial Instruments with Concentrations of Credit Risk

Not applicable.

### Note 17 – Sale, Transfer and Servicing of Financial Assets and Extinguishments of Liabilities

A. Transfers of Receivables Reported as Sales

Not applicable.

B. Transfer and Servicing of Financial Assets

Not applicable.

C. Wash Sales

Not applicable.

### Note 18 – Gain or Loss to the Reporting Entity from Uninsured Plans and the Uninsured Portion of Partially Insured Plans

Not applicable.

### Note 19 – Direct Premium Written/Produced by Managing General Agents/Third Party Administrators

Not applicable.

### Note 20 – Fair Value Measurements

A. Fair value is defined as the price that would be received to sell an asset or paid to transfer a liability in an orderly transaction between market participants at the measurement date. Fair value measurements are based upon observable and unobservable inputs. Observable inputs reflect market data obtained from independent sources while unobservable inputs reflect the Company's view of market assumptions in the absence of observable market information. The Company utilizes valuation techniques that maximize the use of observable inputs and minimize the use of unobservable inputs. In determining fair value, the Company uses various methods including market, income and cost approaches.

The Company categorizes its financial instruments into a three-level hierarchy based on the priority of the inputs to the valuation technique. The fair value hierarchy gives the highest priority to quoted prices in active markets for identical assets or liabilities (Level 1) and the lowest priority to unobservable inputs (Level 3). If the inputs used to measure fair value fall within different levels of the hierarchy, the category level is based on the lowest priority level input that is significant to the fair value measurement of the instrument in its entirety.

The Company categorizes assets and liabilities held at fair value in the statutory statements of assets and liabilities, surplus and other funds as follows:

*Level 1.* Unadjusted quoted prices accessible in active markets for identical assets or liabilities at the measurement date and mutual funds where the value per share (unit) is determined and published daily and is the basis for current transactions.

*Level 2.* Unadjusted quoted prices for similar assets or liabilities in active markets, quoted prices for identical or similar assets or liabilities in markets that are not active or inputs (other than quoted prices) that are observable or that are derived principally from or corroborated by observable market data through correlation or other means. Primary inputs to this valuation technique may include comparative trades, bid/asks, interest rate movements, U.S. Treasury rates, London Interbank Offered Rate, Secured Overnight Financing Rate, prime rates, cash flows, maturity dates, call ability, estimated prepayments and/or underlying collateral values.

*Level 3.* Prices or valuation techniques that require inputs that are both unobservable and significant to the overall fair value measurement. Inputs reflect management's best estimates of the assumptions market participants would use at the measurement date in pricing the asset or liability. Consideration is given to the risk inherent in both the method of valuation and the valuation inputs. Primary inputs to this valuation technique include broker quotes and comparative trades.

The Company reviews its fair value hierarchy classifications for assets and liabilities quarterly. Changes in observability of significant valuation inputs identified during these reviews may trigger reclassifications. Reclassifications are reported as transfers at the beginning of the period in which the change occurs.

Independent pricing services are most often utilized to determine the fair value of bonds and stocks for which market quotations or quotations on comparable securities are available. For these bonds and stocks, the Company obtains the pricing services' methodologies, pricing from additional sources, inputs and assumptions and classifies the investments accordingly in the fair value hierarchy.

A corporate pricing matrix is used in valuing certain corporate bonds. The corporate pricing matrix was developed using publicly available spreads for privately placed corporate securities with varying weighted average lives and credit quality ratings. The weighted average life and credit quality rating of a particular bond to be priced using the corporate pricing matrix are important inputs into the model and are used to determine a corresponding spread that is added to the appropriate U.S. Treasury yield to create an estimated market yield for that bond. The estimated market yield and other relevant factors are then used to estimate the fair value of the particular bond.

Non-binding broker quotes are also utilized to determine the fair value of certain bonds when deemed appropriate or when quotes are not available from independent pricing services or a corporate pricing matrix. These bonds are classified with the lowest priority in the fair value hierarchy as only one broker quote is ordinarily obtained, the investment is not traded on an exchange, the pricing is not available to other entities and/or the transaction volume in the same or similar investments has decreased. Inputs used in the development of prices are not provided to the Company by the brokers as the brokers often do not provide the necessary transparency into their quotes and methodologies. At least annually, the Company performs reviews and tests to ensure that quotes are a reasonable estimate of the investments' fair value. Price movements of broker quotes are subject to validation and require approval from the Company's management. Management uses its knowledge of the investment and current market conditions to determine if the price is indicative of the investment's fair value.

The Company carries short-term investments at amortized cost, which approximates fair value.

No assets or liabilities were held at fair value as of December 31, 2022.

B. & C. The following table summarizes the carrying value and fair value of the Company's assets not held at fair value as of December 31, 2022:

	Aggregate Fair Value	Admitted Assets	Level 1	Level 2	Level 3	Net Asset Value (NAV)	Not Practicable (Carrying Value)
<b>Assets</b>							
Bonds	\$46,138,229	\$49,528,150	\$21,582,652	\$24,555,577	\$-	\$-	\$-
Cash, cash equivalents and short-term investments	1,697,930	1,697,930	9,744	1,688,186	-	-	-
<b>Total Assets</b>	<b>\$47,836,159</b>	<b>\$51,226,080</b>	<b>\$21,592,396</b>	<b>\$26,243,763</b>	<b>\$-</b>	<b>\$-</b>	<b>\$-</b>

## NOTES TO THE FINANCIAL STATEMENTS

D. Not Practicable to Estimate Fair Value

Not applicable.

E. Measured Using Net Asset Value

Not applicable.

**Note 21 – Other Items**

A. Unusual or Infrequent Items

Not applicable.

B. Troubled Debt Restructuring for Debtors

Not applicable.

C. Other Disclosures

Not applicable.

D. Business Interruption Insurance Recoveries

Not applicable.

E. State Transferable and Non-Transferable Tax Credits

Not applicable.

F. Subprime Mortgage Related Risk Exposure

1. The Company evaluates many characteristics when classifying collateral as subprime, including the credit quality of the borrower as defined by Fair Isaac Credit Organization (FICO) scores, as well as other factors, such as loan-to-value ratios and type of real estate.
2. The Company has no direct exposure through investments in subprime mortgage loans.
3. The Company had no subprime exposure through other investments or affiliates.
4. The Company has no exposure to subprime mortgage risk through Mortgage Guaranty or Financial Guaranty insurance coverage.

G. Insurance-Linked Securities (ILS) Contracts

Not applicable.

H. The Amount That Could Be Realized on Life Insurance Where the Reporting Entity is Owner and Beneficiary or Has Otherwise Obtained Rights to Control the Policy

Not applicable.

**Note 22 – Events Subsequent**

Type I – Recognized Subsequent Events:

Subsequent events have been considered through February 10, 2023 for the statutory statement available to be issued on February 15, 2023.

There were no material Type I events occurring subsequent to the end of the year that merited recognition or disclosure in these statements that have not already been reflected as required.

Type II – Nonrecognized Subsequent Events:

Subsequent events have been considered through February 10, 2023 for the statutory statement available to be issued on February 15, 2023.

There were no material Type II events occurring subsequent to the end of the year that merited disclosure in these statements that have not already been reflected as required.

**Note 23 – Reinsurance**

A. Unsecured Reinsurance Recoverables

The Company has unsecured aggregate reinsurance recoverable for paid and unpaid losses, including IBNR, loss adjustment expenses and unearned premiums, from an individual reinsurer that exceeds 3% of policyholders' surplus. The amount is shown below by reinsurer in thousands.

**Individual Reinsurers Who are not Members of a Group:**

FEIN #	Reinsurer	Unsecured Reinsurance
13-4924125	Munich Reins Amer Inc	\$2,046

**Individual Reinsurers Who are Members of a Group:**

NAIC Group	Reinsurer	FEIN #	Unsecured Reinsurance
0140	Nationwide Mutual Insurance Company	31-4177100	\$217,023

**All Members of the Groups Shown Above with Unsecured Recoverables:**

NAIC Group	Reinsurer	FEIN #	Unsecured Reinsurance
0140	Nationwide Mutual Insurance Company	31-4177100	\$217,023
<b>Total</b>			<b>\$ 217,023</b>

## NOTES TO THE FINANCIAL STATEMENTS

### B. Reinsurance Recoverable in Dispute

The Company does not have reinsurance recoverables in dispute for paid losses and loss adjustment expenses that exceed 5% of policyholders' surplus from an individual reinsurer or exceed 10% of policyholders' surplus in aggregate.

### C. Reinsurance Assumed and Ceded

- The following table summarizes ceded and assumed unearned premiums and the related commission equity at December 31, 2022.

	Assumed Reinsurance		Ceded Reinsurance		Net	
	Premium Reserve	Commission Equity	Premium Reserve	Commission Equity	Premium Reserve	Commission Equity
a. Affiliates	\$-	\$-	\$45,907,249	\$8,648,825	\$(45,907,249)	\$(8,648,825)
b. All Others	5,983	1,021	791,541	82,853	(785,558)	(81,832)
c. Total	\$5,983	\$1,021	\$46,698,790	\$8,731,678	\$(46,692,807)	\$(8,730,657)
d. Direct Unearned Premium Reserve			\$46,692,807			

2. Certain agency agreements and ceded reinsurance contracts provide for additional or return commissions based on the actual loss experience of the produced or reinsured business. Amounts accrued at December 31, 2022 are as follows:

Reinsurance	Direct	Assumed	Ceded	Net
a. Contingent Commissions	\$2,085,196	\$(931)	\$2,084,266	\$(1)
b. Sliding Scale Adjustments	-	-	-	-
c. Other Profit Commission Arrangements	-	-	-	-
d. Total	\$2,085,196	\$(931)	\$2,084,266	\$(1)

3. The Company does not use protected cells as an alternative to traditional reinsurance.

### D. Uncollectible Reinsurance

No reinsurance recoverables were written off during 2022.

### E. Commutation of Ceded Reinsurance

The Company did not enter into any commutation of reinsurance during 2022.

### F. Retroactive Reinsurance

There was no retroactive reinsurance affected during 2022.

### G. Reinsurance Accounted for as a Deposit

There were no reinsurance agreements that were accounted for as deposits during 2022.

### H. Disclosures for the Transfer of Property and Casualty Run-Off Agreements

There was no transfer of any property and casualty run-off agreements requiring approval of regulators and qualifying under SSAP No. 62R, Property and Casualty Reinsurance, to receive property & casualty run-off accounting treatment.

### I. Certified Reinsurer Rating Downgrades or Status Subject to Revocation

Not applicable.

### J. Reinsurance Agreements Qualifying for Reinsurer Aggregation

Not applicable.

### K. Reinsurance Credit

Not applicable.

### **Note 24 - Retrospectively Rated Contracts and Contracts Subject to Redetermination**

Not applicable.

### **Note 25 - Changes in Incurred Losses and Loss Adjustment Expenses**

The Company is a participant in a 100% pooling reinsurance agreement with Mutual (as disclosed in Note 26), and as such has zero net incurred losses and loss adjustment expenses.

### **Note 26 - Intercompany Pooling Arrangements**

Nationwide Mutual Insurance Company is the lead company in the Nationwide Pool. Each pool member company contributes 100% of its underwriting results to the Nationwide Pool through the reinsurance pooling agreement.

As of December 31, 2022 and December 31, 2021, the companies in the Nationwide Pool assuming a proportionate share of the pool are:

	NAIC #	2022 Pool	2021 Pool
Nationwide Mutual Insurance Company	23787	71.0%	71.0%
Nationwide Mutual Fire Insurance Company	23779	23.0%	23.0%
Nationwide Agribusiness Insurance Company	28223	3.0%	3.0%
Nationwide Insurance Company of America	25453	1.0%	1.0%
National Casualty Company	11991	1.0%	1.0%
Nationwide General Insurance Company	23760	1.0%	1.0%

Effective July 1, 2021, in conjunction with the merger of Victoria National with and into Victoria Fire and Casualty on July 1, 2021, Victoria National terminated its participation in the Nationwide Pool.

## NOTES TO THE FINANCIAL STATEMENTS

Effective January 1, 2021, Nationwide Indemnity Company (NAIC #10070) was added to the Nationwide Pool with 0% retrocession. Nationwide Indemnity Company ceded assets of \$32.5 million and liabilities of \$1.5 billion, primarily consisting of losses and loss expense reserves to the Nationwide Pool. Nationwide Indemnity Company transferred \$935.6 million of securities, \$35.0 million of commercial mortgage loans and \$78.9 million of cash to the Company to settle this transaction. The Company received assets of \$23.1 million and liabilities of \$1.07 billion, primarily consisting of loss and loss expense reserves of \$1.07 billion.

All of the other companies in the Nationwide Pool have a 0% retrocession. The zero percent participants in the Nationwide Pool as of December 31, 2022 are: Nationwide Property and Casualty Insurance Company (NAIC # 37877), Nationwide Affinity Insurance Company of America (NAIC # 26093), Crestbrook Insurance Company (NAIC # 18961), Allied Insurance Company of America (NAIC # 10127), Nationwide Assurance Company (NAIC #10723), Nationwide Lloyds (NAIC #42110), Nationwide Insurance Company of Florida (NAIC #10948), AMCO Insurance Company (NAIC # 19100), Depositors Insurance Company (NAIC # 42587), Allied Property & Casualty Insurance Company (NAIC #42579), Victoria Fire & Casualty Company (NAIC # 42889), Harleysville Preferred Insurance Company (NAIC #35696), Harleysville Insurance Company of New Jersey (NAIC #42900), Harleysville Worcester Insurance Company (NAIC #26182), Harleysville Insurance Company of New York (NAIC #10674), Harleysville Lake States Insurance Company (NAIC #14516), Harleysville Insurance Company (NAIC #23582), Veterinary Pet Insurance Company (NAIC #42285), Nationwide Indemnity Company (NAIC #10070), and Scottsdale Insurance Company (NAIC #41297).

All lines of business are subject to the pooling agreements.

There are no discrepancies related to the pooled business between the assumed and ceded reinsurance schedules of the pool participants.

Amounts due to/from the lead entity and pool participants as of December 31, 2022:

Name of Insurer	Amounts Receivable	Amounts Payable
Nationwide Mutual Insurance Company (Lead Insurer)	\$ 5,488,955,663	\$ 2,483,709,503
Nationwide Mutual Fire Insurance Company	\$ 1,309,575,585	\$ 293,863,542
Nationwide General Insurance Company	\$ 187,421,224	\$ 639,661,630
Nationwide Property & Casualty Insurance Company	\$ 84,160,883	\$ 453,497,703
Nationwide Assurance Company	\$ 8,934,569	\$ 139,572,593
Nationwide Lloyds	\$ 104,494	\$ (1,402)
Nationwide Insurance Company of Florida	\$ 3,231,037	\$ 37,701,309
Nationwide Affinity Insurance Company of America	\$ 20,492,713	\$ 87,742,210
Crestbrook Insurance Company	\$ 21,258,570	\$ 162,278,119
Nationwide Insurance Company of America	\$ 175,536,519	\$ 596,145,174
Allied Insurance Company of America	\$ 17,608,374	\$ 68,026,263
AMCO Insurance Company	\$ 26,167,694	\$ 284,812,279
Allied Property & Casualty Insurance Company	\$ 24,364,397	\$ 150,695,260
Depositors Insurance Company	\$ 27,866,405	\$ 198,235,465
Nationwide Agribusiness Insurance Company	\$ 240,061,587	\$ 483,818,777
Victoria Fire & Casualty Company	\$ 281,499	\$ (330)
National Casualty Company	\$ 146,892,394	\$ 437,160,498
Scottsdale Insurance Company	\$ 126,731,568	\$ 1,101,975,809
Veterinary Pet Insurance Company	\$ 12,786,876	\$ 95,725,099
Nationwide Indemnity Company	\$ 10,772,868	\$ (16,910)
Harleysville Insurance Company of New York	\$ 5,658,335	\$ 28,952,608
Harleysville Lake States Insurance Company	\$ (1,912,086)	\$ 675,116
Harleysville Insurance Company of New Jersey	\$ 4,650,977	\$ 39,103,296
Harleysville Worcester Insurance Company	\$ 11,926,751	\$ 65,443,728
Harleysville Insurance Company	\$ 12,959,927	\$ 85,816,882
Harleysville Preferred Insurance Company	\$ 6,199,443	\$ 38,070,943

As of December 31, 2022, Colonial County Mutual Insurance Company and Victoria Select Insurance Company remain covered under separate 100% quota share reinsurance agreements with Nationwide Mutual Insurance Company. Nationwide Mutual Insurance Company then cedes 100% of this business to the Nationwide Pool.

As of December 31, 2022, Scottsdale Surplus Lines Insurance Company, Scottsdale Indemnity Company and Freedom Specialty Insurance Company remain covered under a separate 100% quota share reinsurance agreement with Scottsdale Insurance Company. Scottsdale Insurance Company then cedes 100% of this business to the Nationwide Pool.

### **Note 27 - Structured Settlements**

Not applicable.

### **Note 28 - Health Care Receivables**

Not applicable.

### **Note 29 - Participating Policies**

Not applicable.

### **Note 30 - Premium Deficiency Reserves**

The Company's liability for premium deficiency reserves as of December 31, 2022 is as follows:

- |   |                  |
|---|------------------|
| 1. Liability carried for premium deficiency reserves              | \$0              |
| 2. Date of the most recent evaluation of this liability           | February 3, 2023 |
| 3. Was anticipated investment income utilized in the calculation? | Yes              |

### **Note 31 - High Deductibles**

Not applicable.

### **Note 32 - Discounting of Liabilities for Unpaid Losses or Unpaid Loss Adjustment Expenses**

Not applicable.

### **Note 33 - Asbestos/Environmental Reserves**

Not applicable.

## NOTES TO THE FINANCIAL STATEMENTS

**Note 34 – Subscriber Savings Accounts**

Not applicable.

**Note 35 – Multiple Peril Crop Insurance**

Not applicable.

**Note 36 – Financial Guaranty Insurance**

Not applicable.

ANNUAL STATEMENT FOR THE YEAR 2022 OF THE HARLEYSVILLE PREFERRED INSURANCE COMPANY  
**GENERAL INTERROGATORIES**

**PART 1 - COMMON INTERROGATORIES  
GENERAL**

- 1.1 Is the reporting entity a member of an Insurance Holding Company System consisting of two or more affiliated persons, one or more of which is an insurer? ..... Yes [ X ] No [ ]  
 If yes, complete Schedule Y, Parts 1, 1A, 2 and 3.
- 1.2 If yes, did the reporting entity register and file with its domiciliary State Insurance Commissioner, Director or Superintendent or with such regulatory official of the state of domicile of the principal insurer in the Holding Company System, a registration statement providing disclosure substantially similar to the standards adopted by the National Association of Insurance Commissioners (NAIC) in its Model Insurance Holding Company System Regulatory Act and model regulations pertaining thereto, or is the reporting entity subject to standards and disclosure requirements substantially similar to those required by such Act and regulations? ..... Yes [ X ] No [ ] N/A [ ]
- 1.3 State Regulating? ..... OH
- 1.4 Is the reporting entity publicly traded or a member of a publicly traded group? ..... Yes [ ] No [ X ]
- 1.5 If the response to 1.4 is yes, provide the CIK (Central Index Key) code issued by the SEC for the entity/group. ....
- 2.1 Has any change been made during the year of this statement in the charter, by-laws, articles of incorporation, or deed of settlement of the reporting entity? ..... Yes [ ] No [ X ]
- 2.2 If yes, date of change: .....
- 3.1 State as of what date the latest financial examination of the reporting entity was made or is being made. .... 12/31/2021
- 3.2 State the as of date that the latest financial examination report became available from either the state of domicile or the reporting entity. This date should be the date of the examined balance sheet and not the date the report was completed or released. .... 12/31/2016
- 3.3 State as of what date the latest financial examination report became available to other states or the public from either the state of domicile or the reporting entity. This is the release date or completion date of the examination report and not the date of the examination (balance sheet date). .... 06/28/2018
- 3.4 By what department or departments?  
 OH .....
- 3.5 Have all financial statement adjustments within the latest financial examination report been accounted for in a subsequent financial statement filed with Departments? ..... Yes [ ] No [ ] N/A [ X ]
- 3.6 Have all of the recommendations within the latest financial examination report been complied with? ..... Yes [ ] No [ ] N/A [ X ]
- 4.1 During the period covered by this statement, did any agent, broker, sales representative, non-affiliated sales/service organization or any combination thereof under common control (other than salaried employees of the reporting entity), receive credit or commissions for or control a substantial part (more than 20 percent of any major line of business measured on direct premiums) of:  
 4.11 sales of new business? ..... Yes [ ] No [ X ]  
 4.12 renewals? ..... Yes [ ] No [ X ]
- 4.2 During the period covered by this statement, did any sales/service organization owned in whole or in part by the reporting entity or an affiliate, receive credit or commissions for or control a substantial part (more than 20 percent of any major line of business measured on direct premiums) of:  
 4.21 sales of new business? ..... Yes [ ] No [ X ]  
 4.22 renewals? ..... Yes [ ] No [ X ]
- 5.1 Has the reporting entity been a party to a merger or consolidation during the period covered by this statement? ..... Yes [ ] No [ X ]  
 If yes, complete and file the merger history data file with the NAIC.
- 5.2 If yes, provide the name of the entity, NAIC Company Code, and state of domicile (use two letter state abbreviation) for any entity that has ceased to exist as a result of the merger or consolidation.

1 Name of Entity	2 NAIC Company Code	3 State of Domicile

- 6.1 Has the reporting entity had any Certificates of Authority, licenses or registrations (including corporate registration, if applicable) suspended or revoked by any governmental entity during the reporting period? ..... Yes [ ] No [ X ]
- 6.2 If yes, give full information: .....
- 7.1 Does any foreign (non-United States) person or entity directly or indirectly control 10% or more of the reporting entity? ..... Yes [ ] No [ X ]
- 7.2 If yes,  
 7.21 State the percentage of foreign control; ..... %  
 7.22 State the nationality(s) of the foreign person(s) or entity(s); or if the entity is a mutual or reciprocal, the nationality of its manager or attorney-in-fact and identify the type of entity(s) (e.g., individual, corporation, government, manager or attorney-in-fact).

1 Nationality	2 Type of Entity

**ANNUAL STATEMENT FOR THE YEAR 2022 OF THE HARLEYSVILLE PREFERRED INSURANCE COMPANY  
GENERAL INTERROGATORIES**

- 8.1 Is the company a subsidiary of a depository institution holding company (DIHC) or a DIHC itself, regulated by the Federal Reserve Board? ..... Yes [ ] No [ X ]
- 8.2 If the response to 8.1 is yes, please identify the name of the DIHC.  
.....
- 8.3 Is the company affiliated with one or more banks, thrifts or securities firms? ..... Yes [ X ] No [ ]
- 8.4 If response to 8.3 is yes, please provide below the names and location (city and state of the main office) of any affiliates regulated by a federal regulatory services agency [i.e. the Federal Reserve Board (FRB), the Office of the Comptroller of the Currency (OCC), the Federal Deposit Insurance Corporation (FDIC) and the Securities Exchange Commission (SEC)] and identify the affiliate's primary federal regulator.

1 Affiliate Name	2 Location (City, State)	3 FRB	4 OCC	5 FDIC	6 SEC
Nationwide Trust Company, FSB .....	Columbus, OH .....	..NO..	..YES..	..NO..	..NO..
Nationwide Investment Services Corp. ....	Columbus, OH .....	..NO..	..NO..	..NO..	..YES..
Nationwide Investment Advisors, LLC .....	Columbus, OH .....	..NO..	..NO..	..NO..	..YES..
Nationwide Securities, LLC .....	Columbus, OH .....	..NO..	..NO..	..NO..	..YES..
Nationwide Fund Advisors .....	Columbus, OH .....	..NO..	..NO..	..NO..	..YES..
Nationwide Fund Distributors, LLC .....	Columbus, OH .....	..NO..	..NO..	..NO..	..YES..
Nationwide Asset Management, LLC .....	Columbus, OH .....	..NO..	..NO..	..NO..	..YES..

- 8.5 Is the reporting entity a depository institution holding company with significant insurance operations as defined by the Board of Governors of Federal Reserve System or a subsidiary of the depository institution holding company? ..... Yes [ ] No [ X ]
- 8.6 If response to 8.5 is no, is the reporting entity a company or subsidiary of a company that has otherwise been made subject to the Federal Reserve Board's capital rule? ..... Yes [ ] No [ X ] N/A [ ]
9. What is the name and address of the independent certified public accountant or accounting firm retained to conduct the annual audit?  
KPMG LLP, 191 W NATIONWIDE BLVD. SUITE 500, COLUMBUS, OH 43215 .....
- 10.1 Has the insurer been granted any exemptions to the prohibited non-audit services provided by the certified independent public accountant requirements as allowed in Section 7H of the Annual Financial Reporting Model Regulation (Model Audit Rule), or substantially similar state law or regulation? ..... Yes [ ] No [ X ]
- 10.2 If the response to 10.1 is yes, provide information related to this exemption:  
.....
- 10.3 Has the insurer been granted any exemptions related to the other requirements of the Annual Financial Reporting Model Regulation as allowed for in Section 18A of the Model Regulation, or substantially similar state law or regulation? ..... Yes [ ] No [ X ]
- 10.4 If the response to 10.3 is yes, provide information related to this exemption:  
.....
- 10.5 Has the reporting entity established an Audit Committee in compliance with the domiciliary state insurance laws? ..... Yes [ X ] No [ ] N/A [ ]
- 10.6 If the response to 10.5 is no or n/a, please explain  
.....
11. What is the name, address and affiliation (officer/employee of the reporting entity or actuary/consultant associated with an actuarial consulting firm) of the individual providing the statement of actuarial opinion/certification?  
Richard D. Olsen, FCAS, MAAA, Nationwide Insurance, One Nationwide Blvd., Columbus, OH 43215 .....
- 12.1 Does the reporting entity own any securities of a real estate holding company or otherwise hold real estate indirectly? ..... Yes [ ] No [ X ]
- 12.11 Name of real estate holding company ...  
12.12 Number of parcels involved .....  
12.13 Total book/adjusted carrying value ..... \$ .....
- 12.2 If, yes provide explanation:  
.....
- 13. FOR UNITED STATES BRANCHES OF ALIEN REPORTING ENTITIES ONLY:**
- 13.1 What changes have been made during the year in the United States manager or the United States trustees of the reporting entity?  
.....
- 13.2 Does this statement contain all business transacted for the reporting entity through its United States Branch on risks wherever located? ..... Yes [ ] No [ ]
- 13.3 Have there been any changes made to any of the trust indentures during the year? ..... Yes [ ] No [ ]
- 13.4 If answer to (13.3) is yes, has the domiciliary or entry state approved the changes? ..... Yes [ ] No [ ] N/A [ ]
- 14.1 Are the senior officers (principal executive officer, principal financial officer, principal accounting officer or controller, or persons performing similar functions) of the reporting entity subject to a code of ethics, which includes the following standards? ..... Yes [ X ] No [ ]
- a. Honest and ethical conduct, including the ethical handling of actual or apparent conflicts of interest between personal and professional relationships;  
b. Full, fair, accurate, timely and understandable disclosure in the periodic reports required to be filed by the reporting entity;  
c. Compliance with applicable governmental laws, rules and regulations;  
d. The prompt internal reporting of violations to an appropriate person or persons identified in the code; and  
e. Accountability for adherence to the code.
- 14.11 If the response to 14.1 is No, please explain:  
.....
- 14.2 Has the code of ethics for senior managers been amended? ..... Yes [ ] No [ X ]
- 14.21 If the response to 14.2 is yes, provide information related to amendment(s).  
.....
- 14.3 Have any provisions of the code of ethics been waived for any of the specified officers? ..... Yes [ ] No [ X ]
- 14.31 If the response to 14.3 is yes, provide the nature of any waiver(s).  
.....

**ANNUAL STATEMENT FOR THE YEAR 2022 OF THE HARLEYSVILLE PREFERRED INSURANCE COMPANY  
GENERAL INTERROGATORIES**

- 15.1 Is the reporting entity the beneficiary of a Letter of Credit that is unrelated to reinsurance where the issuing or confirming bank is not on the SVO Bank List? ..... Yes [ ] No [ X ]
- 15.2 If the response to 15.1 is yes, indicate the American Bankers Association (ABA) Routing Number and the name of the issuing or confirming bank of the Letter of Credit and describe the circumstances in which the Letter of Credit is triggered.

1 American Bankers Association (ABA) Routing Number	2 Issuing or Confirming Bank Name	3 Circumstances That Can Trigger the Letter of Credit	4 Amount
.....	.....	.....	.....

**BOARD OF DIRECTORS**

16. Is the purchase or sale of all investments of the reporting entity passed upon either by the board of directors or a subordinate committee thereof? ..... Yes [ X ] No [ ]
17. Does the reporting entity keep a complete permanent record of the proceedings of its board of directors and all subordinate committees thereof? ..... Yes [ X ] No [ ]
18. Has the reporting entity an established procedure for disclosure to its board of directors or trustees of any material interest or affiliation on the part of any of its officers, directors, trustees or responsible employees that is in conflict or is likely to conflict with the official duties of such person? ..... Yes [ X ] No [ ]

**FINANCIAL**

19. Has this statement been prepared using a basis of accounting other than Statutory Accounting Principles (e.g., Generally Accepted Accounting Principles)? ..... Yes [ ] No [ X ]
- 20.1 Total amount loaned during the year (inclusive of Separate Accounts, exclusive of policy loans):
- 20.11 To directors or other officers.....\$ .....
  - 20.12 To stockholders not officers.....\$ .....
  - 20.13 Trustees, supreme or grand (Fraternal Only) ..... \$ .....
- 20.2 Total amount of loans outstanding at the end of year (inclusive of Separate Accounts, exclusive of policy loans):
- 20.21 To directors or other officers.....\$ .....
  - 20.22 To stockholders not officers.....\$ .....
  - 20.23 Trustees, supreme or grand (Fraternal Only) ..... \$ .....
- 21.1 Were any assets reported in this statement subject to a contractual obligation to transfer to another party without the liability for such obligation being reported in the statement? ..... Yes [ ] No [ X ]
- 21.2 If yes, state the amount thereof at December 31 of the current year:
- 21.21 Rented from others.....\$ .....
  - 21.22 Borrowed from others.....\$ .....
  - 21.23 Leased from others .....\$ .....
  - 21.24 Other .....\$ .....
- 22.1 Does this statement include payments for assessments as described in the Annual Statement Instructions other than guaranty fund or guaranty association assessments? ..... Yes [ ] No [ X ]
- 22.2 If answer is yes:
- 22.21 Amount paid as losses or risk adjustment \$ .....
  - 22.22 Amount paid as expenses .....\$ .....
  - 22.23 Other amounts paid .....\$ .....
- 23.1 Does the reporting entity report any amounts due from parent, subsidiaries or affiliates on Page 2 of this statement? ..... Yes [ X ] No [ ]
- 23.2 If yes, indicate any amounts receivable from parent included in the Page 2 amount: ..... \$ ..... 1,135,604
- 24.1 Does the insurer utilize third parties to pay agent commissions in which the amounts advanced by the third parties are not settled in full within 90 days? ..... Yes [ ] No [ X ]
- 24.2 If the response to 24.1 is yes, identify the third-party that pays the agents and whether they are a related party.

Name of Third-Party	Is the Third-Party Agent a Related Party (Yes/No)
.....	.....

**INVESTMENT**

- 25.01 Were all the stocks, bonds and other securities owned December 31 of current year, over which the reporting entity has exclusive control, in the actual possession of the reporting entity on said date? (other than securities lending programs addressed in 25.03)..... Yes [ X ] No [ ]

**ANNUAL STATEMENT FOR THE YEAR 2022 OF THE HARLEYSVILLE PREFERRED INSURANCE COMPANY**  
**GENERAL INTERROGATORIES**

- 25.02 If no, give full and complete information relating thereto  
 .....
- 25.03 For securities lending programs, provide a description of the program including value for collateral and amount of loaned securities, and whether collateral is carried on or off-balance sheet. (an alternative is to reference Note 17 where this information is also provided)  
 .....
- 25.04 For the reporting entity's securities lending program, report amount of collateral for conforming programs as outlined in the Risk-Based Capital Instructions. .... \$ .....
- 25.05 For the reporting entity's securities lending program, report amount of collateral for other programs. .... \$ .....
- 25.06 Does your securities lending program require 102% (domestic securities) and 105% (foreign securities) from the counterparty at the outset of the contract? ..... Yes [ ] No [ ] N/A [ X ]
- 25.07 Does the reporting entity non-admit when the collateral received from the counterparty falls below 100%? ..... Yes [ ] No [ ] N/A [ X ]
- 25.08 Does the reporting entity or the reporting entity's securities lending agent utilize the Master Securities lending Agreement (MSLA) to conduct securities lending? ..... Yes [ ] No [ ] N/A [ X ]
- 25.09 For the reporting entity's securities lending program state the amount of the following as of December 31 of the current year:
- 25.091 Total fair value of reinvested collateral assets reported on Schedule DL, Parts 1 and 2. .... \$ .....
- 25.092 Total book adjusted/carrying value of reinvested collateral assets reported on Schedule DL, Parts 1 and 2 ..... \$ .....
- 25.093 Total payable for securities lending reported on the liability page. .... \$ .....

- 26.1 Were any of the stocks, bonds or other assets of the reporting entity owned at December 31 of the current year not exclusively under the control of the reporting entity or has the reporting entity sold or transferred any assets subject to a put option contract that is currently in force? (Exclude securities subject to Interrogatory 21.1 and 25.03). .... Yes [ X ] No [ ]
- 26.2 If yes, state the amount thereof at December 31 of the current year:
- 26.21 Subject to repurchase agreements ..... \$ .....
- 26.22 Subject to reverse repurchase agreements ..... \$ .....
- 26.23 Subject to dollar repurchase agreements ..... \$ .....
- 26.24 Subject to reverse dollar repurchase agreements ..... \$ .....
- 26.25 Placed under option agreements ..... \$ .....
- 26.26 Letter stock or securities restricted as to sale - excluding FHLB Capital Stock ..... \$ .....
- 26.27 FHLB Capital Stock ..... \$ .....
- 26.28 On deposit with states ..... \$ ..... 7,095,401
- 26.29 On deposit with other regulatory bodies ..... \$ .....
- 26.30 Pledged as collateral - excluding collateral pledged to an FHLB ..... \$ .....
- 26.31 Pledged as collateral to FHLB - including assets backing funding agreements ..... \$ .....
- 26.32 Other ..... \$ .....

26.3 For category (26.26) provide the following:

1 Nature of Restriction	2 Description	3 Amount

- 27.1 Does the reporting entity have any hedging transactions reported on Schedule DB? ..... Yes [ ] No [ X ]
- 27.2 If yes, has a comprehensive description of the hedging program been made available to the domiciliary state? ..... Yes [ ] No [ ] N/A [ X ]  
 If no, attach a description with this statement.

**LINES 27.3 through 27.5: FOR LIFE/FRATERNAL REPORTING ENTITIES ONLY:**

- 27.3 Does the reporting entity utilize derivatives to hedge variable annuity guarantees subject to fluctuations as a result of interest rate sensitivity? . Yes [ ] No [ ]
- 27.4 If the response to 27.3 is YES, does the reporting entity utilize:
- 27.41 Special accounting provision of SSAP No. 108 ..... Yes [ ] No [ ]
- 27.42 Permitted accounting practice ..... Yes [ ] No [ ]
- 27.43 Other accounting guidance ..... Yes [ ] No [ ]
- 27.5 By responding YES to 27.41 regarding utilizing the special accounting provisions of SSAP No. 108, the reporting entity attests to the following: ..... Yes [ ] No [ ]
- The reporting entity has obtained explicit approval from the domiciliary state.
  - Hedging strategy subject to the special accounting provisions is consistent with the requirements of VM-21.
  - Actuarial certification has been obtained which indicates that the hedging strategy is incorporated within the establishment of VM-21 reserves and provides the impact of the hedging strategy within the Actuarial Guideline Conditional Tail Expectation Amount.
  - Financial Officer Certification has been obtained which indicates that the hedging strategy meets the definition of a Clearly Defined Hedging Strategy within VM-21 and that the Clearly Defined Hedging Strategy is the hedging strategy being used by the company in its actual day-to-day risk mitigation efforts.
- 28.1 Were any preferred stocks or bonds owned as of December 31 of the current year mandatorily convertible into equity, or, at the option of the issuer, convertible into equity? ..... Yes [ ] No [ X ]
- 28.2 If yes, state the amount thereof at December 31 of the current year. .... \$ .....
29. Excluding items in Schedule E - Part 3 - Special Deposits, real estate, mortgage loans and investments held physically in the reporting entity's offices, vaults or safety deposit boxes, were all stocks, bonds and other securities, owned throughout the current year held pursuant to a custodial agreement with a qualified bank or trust company in accordance with Section 1, III - General Examination Considerations, F. Outsourcing of Critical Functions, Custodial or Safekeeping Agreements of the NAIC Financial Condition Examiners Handbook?..... Yes [ X ] No [ ]

29.01 For agreements that comply with the requirements of the NAIC Financial Condition Examiners Handbook, complete the following:

1 Name of Custodian(s)	2 Custodian's Address
The Bank of New York Mellon .....	1 Wall Street, New York, NY 10286 .....

**ANNUAL STATEMENT FOR THE YEAR 2022 OF THE HARLEYSVILLE PREFERRED INSURANCE COMPANY  
GENERAL INTERROGATORIES**

29.02 For all agreements that do not comply with the requirements of the NAIC Financial Condition Examiners Handbook, provide the name, location and a complete explanation:

1 Name(s)	2 Location(s)	3 Complete Explanation(s)
.....	.....	.....

29.03 Have there been any changes, including name changes, in the custodian(s) identified in 29.01 during the current year?..... Yes [ ] No [ X ]

29.04 If yes, give full and complete information relating thereto:

1 Old Custodian	2 New Custodian	3 Date of Change	4 Reason
.....	.....	.....	.....

29.05 Investment management – Identify all investment advisors, investment managers, broker/dealers, including individuals that have the authority to make investment decisions on behalf of the reporting entity. For assets that are managed internally by employees of the reporting entity, note as such. ["...that have access to the investment accounts"; "...handle securities"]

1 Name of Firm or Individual	2 Affiliation
Members of the investment staff designated by the Chief Investment Officer as detailed in the Corporate Resolution .....	I.....

29.0597 For those firms/individuals listed in the table for Question 29.05, do any firms/individuals unaffiliated with the reporting entity (i.e. designated with a "U") manage more than 10% of the reporting entity's invested assets?..... Yes [ ] No [ X ]

29.0598 For firms/individuals unaffiliated with the reporting entity (i.e. designated with a "U") listed in the table for Question 29.05, does the total assets under management aggregate to more than 50% of the reporting entity's invested assets?..... Yes [ ] No [ X ]

29.06 For those firms or individuals listed in the table for 29.05 with an affiliation code of "A" (affiliated) or "U" (unaffiliated), provide the information for the table below.

1 Central Registration Depository Number	2 Name of Firm or Individual	3 Legal Entity Identifier (LEI)	4 Registered With	5 Investment Management Agreement (IMA) Filed
.....	.....	.....	.....	.....

30.1 Does the reporting entity have any diversified mutual funds reported in Schedule D, Part 2 (diversified according to the Securities and Exchange Commission (SEC) in the Investment Company Act of 1940 [Section 5(b)(1)])? ..... Yes [ ] No [ X ]

30.2 If yes, complete the following schedule:

1 CUSIP #	2 Name of Mutual Fund	3 Book/Adjusted Carrying Value
30.2999 - Total		

30.3 For each mutual fund listed in the table above, complete the following schedule:

1 Name of Mutual Fund (from above table)	2 Name of Significant Holding of the Mutual Fund	3 Amount of Mutual Fund's Book/Adjusted Carrying Value Attributable to the Holding	4 Date of Valuation
.....	.....	.....	.....

**ANNUAL STATEMENT FOR THE YEAR 2022 OF THE HARLEYSVILLE PREFERRED INSURANCE COMPANY**  
**GENERAL INTERROGATORIES**

31. Provide the following information for all short-term and long-term bonds and all preferred stocks. Do not substitute amortized value or statement value for fair value.

	1	2	3
	Statement (Admitted) Value	Fair Value	Excess of Statement over Fair Value (-), or Fair Value over Statement (+)
31.1 Bonds .....	49,528,150	46,138,229	(3,389,921)
31.2 Preferred stocks .....			
31.3 Totals	49,528,150	46,138,229	(3,389,921)

31.4 Describe the sources or methods utilized in determining the fair values:

For fixed maturity and marketable equity securities for which market quotations generally are available, Nationwide generally uses independent pricing services to assist in determining the fair value measurement. For certain fixed maturity securities not priced by independent services (generally private placement securities without quoted market prices), an internally developed pricing model or "corporate pricing matrix" is most often used. The corporate pricing matrix is developed by obtaining private spreads versus the U.S. Treasury yield for corporate securities with varying weighted average lives and bond ratings. The weighted average life and bond rating of a particular fixed maturity security to be priced using the corporate matrix are important inputs into the model and are used to determine a corresponding spread that is added to the U.S. Treasury yield to create an estimated market yield for that bond. The estimated market yield and other relevant factors are then used to estimate the fair value of the particular fixed maturity security. Nationwide also utilized broker quotes to assist in pricing securities or to validate modeled prices.

32.1 Was the rate used to calculate fair value determined by a broker or custodian for any of the securities in Schedule D? ..... Yes [ X ] No [ ]

32.2 If the answer to 32.1 is yes, does the reporting entity have a copy of the broker's or custodian's pricing policy (hard copy or electronic copy) for all brokers or custodians used as a pricing source? ..... Yes [ ] No [ X ]

32.3 If the answer to 32.2 is no, describe the reporting entity's process for determining a reliable pricing source for purposes of disclosure of fair value for Schedule D:  
 Nationwide relies on broker valuations only when an approved third-party vendor evaluation is not available. Any exceptions are approved by Risk Management and Middle Office and reviewed by the Investments Pricing Committee. The brokers used to value securities are deemed to be main market makers for each individual security and therefore have in depth knowledge of the particular issue.

33.1 Have all the filing requirements of the Purposes and Procedures Manual of the NAIC Investment Analysis Office been followed? ..... Yes [ X ] No [ ]

33.2 If no, list exceptions:  
 .....

34. By self-designating 5GI securities, the reporting entity is certifying the following elements of each self-designated 5GI security:  
 a. Documentation necessary to permit a full credit analysis of the security does not exist or an NAIC CRP credit rating for an FE or PL security is not available.  
 b. Issuer or obligor is current on all contracted interest and principal payments.  
 c. The insurer has an actual expectation of ultimate payment of all contracted interest and principal.  
 Has the reporting entity self-designated 5GI securities? ..... Yes [ ] No [ X ]

35. By self-designating PLGI securities, the reporting entity is certifying the following elements of each self-designated PLGI security:  
 a. The security was purchased prior to January 1, 2018.  
 b. The reporting entity is holding capital commensurate with the NAIC Designation reported for the security.  
 c. The NAIC Designation was derived from the credit rating assigned by an NAIC CRP in its legal capacity as a NRSRO which is shown on a current private letter rating held by the insurer and available for examination by state insurance regulators.  
 d. The reporting entity is not permitted to share this credit rating of the PL security with the SVO.  
 Has the reporting entity self-designated PLGI securities? ..... Yes [ ] No [ X ]

36. By assigning FE to a Schedule BA non-registered private fund, the reporting entity is certifying the following elements of each self-designated FE fund:  
 a. The shares were purchased prior to January 1, 2019.  
 b. The reporting entity is holding capital commensurate with the NAIC Designation reported for the security.  
 c. The security had a public credit rating(s) with annual surveillance assigned by an NAIC CRP in its legal capacity as an NRSRO prior to January 1, 2019.  
 d. The fund only or predominantly holds bonds in its portfolio.  
 e. The current reported NAIC Designation was derived from the public credit rating(s) with annual surveillance assigned by an NAIC CRP in its legal capacity as an NRSRO.  
 f. The public credit rating(s) with annual surveillance assigned by an NAIC CRP has not lapsed.  
 Has the reporting entity assigned FE to Schedule BA non-registered private funds that complied with the above criteria? ..... Yes [ ] No [ X ]

37. By rolling/renewing short-term or cash equivalent investments with continued reporting on Schedule DA, Part 1 or Schedule E Part 2 (identified through a code (%) in those investment schedules), the reporting entity is certifying the following:  
 a. The investment is a liquid asset that can be terminated by the reporting entity on the current maturity date.  
 b. If the investment is with a nonrelated party or nonaffiliate, then it reflects an arms-length transaction with renewal completed at the discretion of all involved parties.  
 c. If the investment is with a related party or affiliate, then the reporting entity has completed robust re-underwriting of the transaction for which documentation is available for regulator review.  
 d. Short-term and cash equivalent investments that have been renewed/rolled from the prior period that do not meet the criteria in 37.a - 37.c are reported as long-term investments.  
 Has the reporting entity rolled/renewed short-term or cash equivalent investments in accordance with these criteria? ..... Yes [ ] No [ X ] N/A [ ]

ANNUAL STATEMENT FOR THE YEAR 2022 OF THE HARLEYSVILLE PREFERRED INSURANCE COMPANY  
**GENERAL INTERROGATORIES**

38.1 Does the reporting entity directly hold cryptocurrencies? ..... Yes [ ] No [ X ]

38.2 If the response to 38.1 is yes, on what schedule are they reported?  
 .....

39.1 Does the reporting entity directly or indirectly accept cryptocurrencies as payments for premiums on policies? ..... Yes [ ] No [ X ]

39.2 If the response to 39.1 is yes, are the cryptocurrencies held directly or are they immediately converted to U.S. dollars?  
 39.21 Held directly ..... Yes [ ] No [ ]  
 39.22 Immediately converted to U.S. dollars ..... Yes [ ] No [ ]

39.3 If the response to 38.1 or 39.1 is yes, list all cryptocurrencies accepted for payments of premiums or that are held directly.

1	2	3
Name of Cryptocurrency	Immediately Converted to USD, Directly Held, or Both	Accepted for Payment of Premiums

**OTHER**

40.1 Amount of payments to trade associations, service organizations and statistical or rating bureaus, if any? ..... \$ .....

40.2 List the name of the organization and the amount paid if any such payment represented 25% or more of the total payments to trade associations, service organizations and statistical or rating bureaus during the period covered by this statement.

1	2
Name	Amount Paid

41.1 Amount of payments for legal expenses, if any? ..... \$ .....

41.2 List the name of the firm and the amount paid if any such payment represented 25% or more of the total payments for legal expenses during the period covered by this statement.

1	2
Name	Amount Paid

42.1 Amount of payments for expenditures in connection with matters before legislative bodies, officers or departments of government, if any? ..... \$ .....

42.2 List the name of the firm and the amount paid if any such payment represented 25% or more of the total payment expenditures in connection with matters before legislative bodies, officers, or departments of government during the period covered by this statement.

1	2
Name	Amount Paid

# GENERAL INTERROGATORIES

## PART 2 - PROPERTY AND CASUALTY INTERROGATORIES

1.1 Does the reporting entity have any direct Medicare Supplement Insurance in force? ..... Yes [ ] No [ X ]

1.2 If yes, indicate premium earned on U. S. business only. .... \$ \_\_\_\_\_

1.3 What portion of Item (1.2) is not reported on the Medicare Supplement Insurance Experience Exhibit? ..... \$ \_\_\_\_\_  
 1.31 Reason for excluding  
 .....

1.4 Indicate amount of earned premium attributable to Canadian and/or Other Alien not included in Item (1.2) above. .... \$ \_\_\_\_\_

1.5 Indicate total incurred claims on all Medicare Supplement Insurance. .... \$ \_\_\_\_\_

1.6 Individual policies:

	Most current three years:	
1.61 Total premium earned .....		\$ .....
1.62 Total incurred claims .....		\$ .....
1.63 Number of covered lives .....		.....
All years prior to most current three years		
1.64 Total premium earned .....		\$ .....
1.65 Total incurred claims .....		\$ .....
1.66 Number of covered lives .....		.....

1.7 Group policies:

	Most current three years:	
1.71 Total premium earned .....		\$ .....
1.72 Total incurred claims .....		\$ .....
1.73 Number of covered lives .....		.....
All years prior to most current three years		
1.74 Total premium earned .....		\$ .....
1.75 Total incurred claims .....		\$ .....
1.76 Number of covered lives .....		.....

2. Health Test:

	1 Current Year	2 Prior Year
2.1 Premium Numerator .....		
2.2 Premium Denominator .....		
2.3 Premium Ratio (2.1/2.2) .....	0.000	0.000
2.4 Reserve Numerator .....		
2.5 Reserve Denominator .....		
2.6 Reserve Ratio (2.4/2.5) .....	0.000	0.000

3.1 Did the reporting entity issue participating policies during the calendar year? ..... Yes [ X ] No [ ]

3.2 If yes, provide the amount of premium written for participating and/or non-participating policies during the calendar year:

3.21 Participating policies .....	\$ .....	635,102
3.22 Non-participating policies .....	\$ .....	96,195,566

4. For mutual reporting Entities and Reciprocal Exchanges Only:

4.1 Does the reporting entity issue assessable policies? ..... Yes [ ] No [ X ]

4.2 Does the reporting entity issue non-assessable policies? ..... Yes [ ] No [ X ]

4.3 If assessable policies are issued, what is the extent of the contingent liability of the policyholders? ..... % \_\_\_\_\_

4.4 Total amount of assessments paid or ordered to be paid during the year on deposit notes or contingent premiums. .... \$ \_\_\_\_\_

5. For Reciprocal Exchanges Only:

5.1 Does the Exchange appoint local agents? ..... Yes [ ] No [ ]

5.2 If yes, is the commission paid:

5.21 Out of Attorney's-in-fact compensation.....	Yes [ ]	No [ ]	N/A [ ]
5.22 As a direct expense of the exchange.....	Yes [ ]	No [ ]	N/A [ ]

5.3 What expenses of the Exchange are not paid out of the compensation of the Attorney-in-fact?  
 .....

5.4 Has any Attorney-in-fact compensation, contingent on fulfillment of certain conditions, been deferred? ..... Yes [ ] No [ ]

5.5 If yes, give full information  
 .....

# GENERAL INTERROGATORIES

## PART 2 - PROPERTY AND CASUALTY INTERROGATORIES

- 6.1 What provision has this reporting entity made to protect itself from an excessive loss in the event of a catastrophe under a workers' compensation contract issued without limit of loss?  
The company's net exposure if any ultimately is 100% ceded to the Nationwide Mutual Insurance Company Pool under a quota share reinsurance agreement. No retained exposure. ....
- 6.2 Describe the method used to estimate this reporting entity's probable maximum insurance loss, and identify the type of insured exposures comprising that probable maximum loss, the locations of concentrations of those exposures and the external resources (such as consulting firms or computer software models), if any, used in the estimation process.  
The company's net exposure if any ultimately is 100% ceded to the Nationwide Mutual Insurance Company Pool under a quota share reinsurance agreement. The company's property exposures are aggregated with the other Nationwide companies and modeled using Applied Insurance Research (AIR) software. ....
- 6.3 What provision has this reporting entity made (such as a catastrophic reinsurance program) to protect itself from an excessive loss arising from the types and concentrations of insured exposures comprising its probable maximum property insurance loss?  
The company's net property-catastrophe exposures, if any, are mitigated through managed coastal growth, purchase of excess of loss reinsurance, policy provisions such as higher deductibles, and enforcement of underwriting guidelines related to building construction, etc. ....
- 6.4 Does the reporting entity carry catastrophe reinsurance protection for at least one reinstatement, in an amount sufficient to cover its estimated probable maximum loss attributable to a single loss event or occurrence? ..... Yes [ X ] No [ ]
- 6.5 If no, describe any arrangements or mechanisms employed by the reporting entity to supplement its catastrophe reinsurance program or to hedge its exposure to uninsured catastrophe loss. ....
- 7.1 Has this reporting entity reinsured any risk with any other entity under a quota share reinsurance contract that includes a provision that would limit the reinsurer's losses below the stated quota share percentage (e.g., a deductible, a loss ratio corridor, a loss cap, an aggregate limit or any similar provisions)?..... Yes [ ] No [ X ]
- 7.2 If yes, indicate the number of reinsurance contracts containing such provisions: .....
- 7.3 If yes, does the amount of reinsurance credit taken reflect the reduction in quota share coverage caused by any applicable limiting provision(s)?..... Yes [ ] No [ ]
- 8.1 Has this reporting entity reinsured any risk with any other entity and agreed to release such entity from liability, in whole or in part, from any loss that may occur on this risk, or portion thereof, reinsured? ..... Yes [ ] No [ X ]
- 8.2 If yes, give full information  
.....
- 9.1 Has the reporting entity ceded any risk under any reinsurance contract (or under multiple contracts with the same reinsurer or its affiliates) for which during the period covered by the statement: (i) it recorded a positive or negative underwriting result greater than 5% of prior year-end surplus as regards policyholders or it reported calendar year written premium ceded or year-end loss and loss expense reserves ceded greater than 5% of prior year-end surplus as regards policyholders; (ii) it accounted for that contract as reinsurance and not as a deposit; and (iii) the contract(s) contain one or more of the following features or other features that would have similar results:  
(a) A contract term longer than two years and the contract is noncancellable by the reporting entity during the contract term;  
(b) A limited or conditional cancellation provision under which cancellation triggers an obligation by the reporting entity, or an affiliate of the reporting entity, to enter into a new reinsurance contract with the reinsurer, or an affiliate of the reinsurer;  
(c) Aggregate stop loss reinsurance coverage;  
(d) A unilateral right by either party (or both parties) to commute the reinsurance contract, whether conditional or not, except for such provisions which are only triggered by a decline in the credit status of the other party;  
(e) A provision permitting reporting of losses, or payment of losses, less frequently than on a quarterly basis (unless there is no activity during the period); or  
(f) Payment schedule, accumulating retentions from multiple years or any features inherently designed to delay timing of the reimbursement to the ceding entity. .... Yes [ ] No [ X ]
- 9.2 Has the reporting entity during the period covered by the statement ceded any risk under any reinsurance contract (or under multiple contracts with the same reinsurer or its affiliates), for which, during the period covered by the statement, it recorded a positive or negative underwriting result greater than 5% of prior year-end surplus as regards policyholders or it reported calendar year written premium ceded or year-end loss and loss expense reserves ceded greater than 5% of prior year-end surplus as regards policyholders; excluding cessions to approved pooling arrangements or to captive insurance companies that are directly or indirectly controlling, controlled by, or under common control with (i) one or more unaffiliated policyholders of the reporting entity, or (ii) an association of which one or more unaffiliated policyholders of the reporting entity is a member where:  
(a) The written premium ceded to the reinsurer by the reporting entity or its affiliates represents fifty percent (50%) or more of the entire direct and assumed premium written by the reinsurer based on its most recently available financial statement; or  
(b) Twenty-five percent (25%) or more of the written premium ceded to the reinsurer has been retroceded back to the reporting entity or its affiliates in a separate reinsurance contract. .... Yes [ ] No [ X ]
- 9.3 If yes to 9.1 or 9.2, please provide the following information in the Reinsurance Summary Supplemental Filing for General Interrogatory 9:  
(a) The aggregate financial statement impact gross of all such ceded reinsurance contracts on the balance sheet and statement of income;  
(b) A summary of the reinsurance contract terms and indicate whether it applies to the contracts meeting the criteria in 9.1 or 9.2; and  
(c) A brief discussion of management's principle objectives in entering into the reinsurance contract including the economic purpose to be achieved.
- 9.4 Except for transactions meeting the requirements of paragraph 36 of SSAP No. 62R - Property and Casualty Reinsurance, has the reporting entity ceded any risk under any reinsurance contract (or multiple contracts with the same reinsurer or its affiliates) during the period covered by the financial statement, and either:  
(a) Accounted for that contract as reinsurance (either prospective or retroactive) under statutory accounting principles ("SAP") and as a deposit under generally accepted accounting principles ("GAAP"); or  
(b) Accounted for that contract as reinsurance under GAAP and as a deposit under SAP? ..... Yes [ ] No [ X ]
- 9.5 If yes to 9.4, explain in the Reinsurance Summary Supplemental Filing for General Interrogatory 9 (Section D) why the contract(s) is treated differently for GAAP and SAP.
- 9.6 The reporting entity is exempt from the Reinsurance Attestation Supplement under one or more of the following criteria:  
(a) The entity does not utilize reinsurance; or, ..... Yes [ ] No [ X ]  
(b) The entity only engages in a 100% quota share contract with an affiliate and the affiliated or lead company has filed an attestation supplement; or ..... Yes [ ] No [ X ]  
(c) The entity has no external cessions and only participates in an intercompany pool and the affiliated or lead company has filed an attestation supplement. .... Yes [ ] No [ X ]
10. If the reporting entity has assumed risks from another entity, there should be charged on account of such reinsurances a reserve equal to that which the original entity would have been required to charge had it retained the risks. Has this been done? ..... Yes [ X ] No [ ] N/A [ ]

# GENERAL INTERROGATORIES

## PART 2 - PROPERTY AND CASUALTY INTERROGATORIES

- 11.1 Has the reporting entity guaranteed policies issued by any other entity and now in force? ..... Yes [ ] No [ X ]
- 11.2 If yes, give full information  
.....
- 12.1 If the reporting entity recorded accrued retrospective premiums on insurance contracts on Line 15.3 of the asset schedule, Page 2, state the amount of corresponding liabilities recorded for:
- 12.11 Unpaid losses ..... \$ .....
- 12.12 Unpaid underwriting expenses (including loss adjustment expenses) ..... \$ .....
- 12.2 Of the amount on Line 15.3, Page 2, state the amount which is secured by letters of credit, collateral and other funds ..... \$ .....
- 12.3 If the reporting entity underwrites commercial insurance risks, such as workers' compensation, are premium notes or promissory notes accepted from its insureds covering unpaid premiums and/or unpaid losses? ..... Yes [ ] No [ X ] N/A [ ]
- 12.4 If yes, provide the range of interest rates charged under such notes during the period covered by this statement:
- 12.41 From ..... %
- 12.42 To..... %
- 12.5 Are letters of credit or collateral and other funds received from insureds being utilized by the reporting entity to secure premium notes or promissory notes taken by a reporting entity, or to secure any of the reporting entity's reported direct unpaid loss reserves, including unpaid losses under loss deductible features of commercial policies? ..... Yes [ ] No [ X ]
- 12.6 If yes, state the amount thereof at December 31 of the current year:
- 12.61 Letters of credit ..... \$ .....
- 12.62 Collateral and other funds..... \$ .....
- 13.1 Largest net aggregate amount insured in any one risk (excluding workers' compensation): ..... \$ .....
- 13.2 Does any reinsurance contract considered in the calculation of this amount include an aggregate limit of recovery without also including a reinstatement provision? ..... Yes [ ] No [ X ]
- 13.3 State the number of reinsurance contracts (excluding individual facultative risk certificates, but including facultative programs, automatic facilities or facultative obligatory contracts) considered in the calculation of the amount. .... 1
- 14.1 Is the company a cedant in a multiple cedant reinsurance contract? ..... Yes [ X ] No [ ]
- 14.2 If yes, please describe the method of allocating and recording reinsurance among the cedants:  
Companies that are not part of the Nationwide Mutual Insurance Company Pooling and Quota Share Arrangements receive a fair and equitable allocation of ceded premium and loss. The terms of the Nationwide Pooling and Quota Share Agreements govern the allocation and recording of ceded premium and loss for the participating companies. ....
- 14.3 If the answer to 14.1 is yes, are the methods described in item 14.2 entirely contained in the respective multiple cedant reinsurance contracts? ..... Yes [ ] No [ X ]
- 14.4 If the answer to 14.3 is no, are all the methods described in 14.2 entirely contained in written agreements? ..... Yes [ ] No [ X ]
- 14.5 If the answer to 14.4 is no, please explain:  
Written agreements are in place for all multi-cedent reinsurance treaties that cover any company that does not participate in the Nationwide Mutual Insurance Company Pooling and Quota Share Arrangements. ....
- 15.1 Has the reporting entity guaranteed any financed premium accounts? ..... Yes [ ] No [ X ]
- 15.2 If yes, give full information  
.....
- 16.1 Does the reporting entity write any warranty business? ..... Yes [ ] No [ X ]  
If yes, disclose the following information for each of the following types of warranty coverage:

	1 Direct Losses Incurred	2 Direct Losses Unpaid	3 Direct Written Premium	4 Direct Premium Unearned	5 Direct Premium Earned
16.11 Home .....	.....	.....	.....	.....	.....
16.12 Products .....	.....	.....	.....	.....	.....
16.13 Automobile .....	.....	.....	.....	.....	.....
16.14 Other*	.....	.....	.....	.....	.....

\* Disclose type of coverage:  
.....

ANNUAL STATEMENT FOR THE YEAR 2022 OF THE HARLEYSVILLE PREFERRED INSURANCE COMPANY  
**GENERAL INTERROGATORIES**

**PART 2 - PROPERTY AND CASUALTY INTERROGATORIES**

17.1 Does the reporting entity include amounts recoverable on unauthorized reinsurance in Schedule F - Part 3 that is exempt from the statutory provision for unauthorized reinsurance? ..... Yes [ ] No [ X ]

Incurred but not reported losses on contracts in force prior to July 1, 1984, and not subsequently renewed are exempt from the statutory provision for unauthorized reinsurance. Provide the following information for this exemption:

- 17.11 Gross amount of unauthorized reinsurance in Schedule F - Part 3 exempt from the statutory provision for unauthorized reinsurance ..... \$ .....
- 17.12 Unfunded portion of Interrogatory 17.11 ..... \$ .....
- 17.13 Paid losses and loss adjustment expenses portion of Interrogatory 17.11... \$ .....
- 17.14 Case reserves portion of Interrogatory 17.11 ..... \$ .....
- 17.15 Incurred but not reported portion of Interrogatory 17.11 ..... \$ .....
- 17.16 Unearned premium portion of Interrogatory 17.11 ..... \$ .....
- 17.17 Contingent commission portion of Interrogatory 17.11 ..... \$ .....

18.1 Do you act as a custodian for health savings accounts? ..... Yes [ ] No [ X ]

18.2 If yes, please provide the amount of custodial funds held as of the reporting date. .... \$ .....

18.3 Do you act as an administrator for health savings accounts? ..... Yes [ ] No [ X ]

18.4 If yes, please provide the balance of funds administered as of the reporting date. .... \$ .....

19. Is the reporting entity licensed or chartered, registered, qualified, eligible or writing business in at least two states? ..... Yes [ X ] No [ ]

19.1 If no, does the reporting entity assume reinsurance business that covers risks residing in at least one state other than the state of domicile of the reporting entity? ..... Yes [ ] No [ ]

ANNUAL STATEMENT FOR THE YEAR 2022 OF THE HARLEYSVILLE PREFERRED INSURANCE COMPANY

**FIVE-YEAR HISTORICAL DATA**

Show amounts in whole dollars only, no cents; show percentages to one decimal place, i.e. 17.6.

	1 2022	2 2021	3 2020	4 2019	5 2018
<b>Gross Premiums Written (Page 8, Part 1B Cols. 1, 2 &amp; 3)</b>					
1. Liability lines (Lines 11, 16, 17, 18 & 19) .....	32,888,007	32,388,313	35,120,983	43,725,065	52,078,313
2. Property lines (Lines 1, 2, 9, 12, 21 & 26) .....	5,033,909	7,061,625	8,621,867	17,349,393	22,230,601
3. Property and liability combined lines (Lines 3, 4, 5, 8, 22 & 27) .....	58,952,996	63,902,591	63,427,614	75,060,459	92,122,508
4. All other lines (Lines 6, 10, 13, 14, 15, 23, 24, 28, 29, 30 & 34) .....					
5. Nonproportional reinsurance lines (Lines 31, 32 & 33) .....					
6. Total (Line 35) .....	96,874,912	103,352,529	107,170,464	136,134,917	166,431,422
<b>Net Premiums Written (Page 8, Part 1B, Col. 6)</b>					
7. Liability lines (Lines 11, 16, 17, 18 & 19) .....					
8. Property lines (Lines 1, 2, 9, 12, 21 & 26) .....					
9. Property and liability combined lines (Lines 3, 4, 5, 8, 22 & 27) .....					
10. All other lines (Lines 6, 10, 13, 14, 15, 23, 24, 28, 29, 30 & 34) .....					
11. Nonproportional reinsurance lines (Lines 31, 32 & 33) .....					
12. Total (Line 35) .....					
<b>Statement of Income (Page 4)</b>					
13. Net underwriting gain (loss) (Line 8) .....					
14. Net investment gain (loss) (Line 11) .....	1,256,596	1,165,917	1,176,573	925,968	1,132,950
15. Total other income (Line 15) .....		(1,132)	(235)	1,245	58,617
16. Dividends to policyholders (Line 17) .....					
17. Federal and foreign income taxes incurred (Line 19) .....	598,480	268,188	296,551	371,221	301,885
18. Net income (Line 20) .....	658,116	896,597	879,787	555,992	889,682
<b>Balance Sheet Lines (Pages 2 and 3)</b>					
19. Total admitted assets excluding protected cell business (Page 2, Line 26, Col. 3) .....	89,668,377	91,278,050	97,190,129	104,129,111	113,499,333
20. Premiums and considerations (Page 2, Col. 3)					
20.1 In course of collection (Line 15.1) .....	5,338,165	5,384,239	5,966,849	6,335,739	7,577,513
20.2 Deferred and not yet due (Line 15.2) .....	23,323,006	25,797,999	26,271,431	29,605,586	35,399,865
20.3 Accrued retrospective premiums (Line 15.3) .....					
21. Total liabilities excluding protected cell business (Page 3, Line 26) .....	39,035,949	41,757,070	43,472,757	50,452,114	61,126,749
22. Losses (Page 3, Line 1) .....					
23. Loss adjustment expenses (Page 3, Line 3) .....					
24. Unearned premiums (Page 3, Line 9) .....					
25. Capital paid up (Page 3, Lines 30 & 31) .....	4,230,000	4,230,000	4,230,000	4,230,000	4,230,000
26. Surplus as regards policyholders (Page 3, Line 37) .....	50,632,428	49,520,980	53,717,372	53,676,997	52,372,584
<b>Cash Flow (Page 5)</b>					
27. Net cash from operations (Line 11) .....	2,779,990	1,820,054	1,846,679	3,599,439	(4,381,199)
<b>Risk-Based Capital Analysis</b>					
28. Total adjusted capital .....	50,632,428	49,520,980	53,717,372	53,676,997	52,372,584
29. Authorized control level risk-based capital .....	335,958	626,769	326,764	313,459	359,329
<b>Percentage Distribution of Cash, Cash Equivalents and Invested Assets (Page 2, Col. 3) (Line divided by Page 2, Line 12, Col. 3) x100.0</b>					
30. Bonds (Line 1) .....	96.7	89.4	91.7	94.8	98.1
31. Stocks (Lines 2.1 & 2.2) .....					
32. Mortgage loans on real estate (Lines 3.1 and 3.2) .....					
33. Real estate (Lines 4.1, 4.2 & 4.3) .....					
34. Cash, cash equivalents and short-term investments (Line 5) .....	3.3	10.6	8.3	5.2	1.9
35. Contract loans (Line 6) .....					
36. Derivatives (Line 7) .....					
37. Other invested assets (Line 8) .....					
38. Receivables for securities (Line 9) .....					
39. Securities lending reinvested collateral assets (Line 10) .....					
40. Aggregate write-ins for invested assets (Line 11) .....					
41. Cash, cash equivalents and invested assets (Line 12) .....	100.0	100.0	100.0	100.0	100.0
<b>Investments in Parent, Subsidiaries and Affiliates</b>					
42. Affiliated bonds (Schedule D, Summary, Line 12, Col. 1) .....					
43. Affiliated preferred stocks (Schedule D, Summary, Line 18, Col. 1) .....					
44. Affiliated common stocks (Schedule D, Summary, Line 24, Col. 1) .....					
45. Affiliated short-term investments (subtotals included in Schedule DA Verification, Col. 5, Line 10) .....					
46. Affiliated mortgage loans on real estate .....					
47. All other affiliated .....					
48. Total of above Lines 42 to 47 .....					
49. Total Investment in Parent included in Lines 42 to 47 above .....					
50. Percentage of investments in parent, subsidiaries and affiliates to surplus as regards policyholders (Line 48 above divided by Page 3, Col. 1, Line 37 x 100.0)					

ANNUAL STATEMENT FOR THE YEAR 2022 OF THE HARLEYSVILLE PREFERRED INSURANCE COMPANY

**FIVE-YEAR HISTORICAL DATA**

(Continued)

	1 2022	2 2021	3 2020	4 2019	5 2018
<b>Capital and Surplus Accounts (Page 4)</b>					
51. Net unrealized capital gains (losses) (Line 24) .....					
52. Dividends to stockholders (Line 35) .....		(5,000,000)	(1,000,000)		
53. Change in surplus as regards policyholders for the year (Line 38) .....	1,111,448	(4,196,392)	40,375	1,304,413	1,129,475
<b>Gross Losses Paid (Page 9, Part 2, Cols. 1 &amp; 2)</b>					
54. Liability lines (Lines 11, 16, 17, 18 & 19) .....	36,311,980	34,122,630	38,168,069	49,827,664	61,564,102
55. Property lines (Lines 1, 2, 9, 12, 21 & 26) .....	3,810,060	4,881,732	5,762,891	11,491,447	14,668,823
56. Property and liability combined lines (Lines 3, 4, 5, 8, 22 & 27) .....	42,008,533	43,264,181	47,512,074	67,962,615	72,661,290
57. All other lines (Lines 6, 10, 13, 14, 15, 23, 24, 28, 29, 30 & 34) .....					
58. Nonproportional reinsurance lines (Lines 31, 32 & 33) .....					
59. Total (Line 35) .....	82,130,573	82,268,543	91,443,034	129,281,726	148,894,215
<b>Net Losses Paid (Page 9, Part 2, Col. 4)</b>					
60. Liability lines (Lines 11, 16, 17, 18 & 19) .....					
61. Property lines (Lines 1, 2, 9, 12, 21 & 26) .....					
62. Property and liability combined lines (Lines 3, 4, 5, 8, 22 & 27) .....					
63. All other lines (Lines 6, 10, 13, 14, 15, 23, 24, 28, 29, 30 & 34) .....					
64. Nonproportional reinsurance lines (Lines 31, 32 & 33) .....					
65. Total (Line 35) .....					
<b>Operating Percentages (Page 4) (Line divided by Page 4, Line 1) x 100.0</b>					
66. Premiums earned (Line 1) .....	100.0	100.0	100.0	100.0	100.0
67. Losses incurred (Line 2) .....					
68. Loss expenses incurred (Line 3) .....					
69. Other underwriting expenses incurred (Line 4) .....					
70. Net underwriting gain (loss) (Line 8) .....					
<b>Other Percentages</b>					
71. Other underwriting expenses to net premiums written (Page 4, Lines 4 + 5 - 15 divided by Page 8, Part 1B, Col. 6, Line 35 x 100.0) .....					
72. Losses and loss expenses incurred to premiums earned (Page 4, Lines 2 + 3 divided by Page 4, Line 1 x 100.0) .....					
73. Net premiums written to policyholders' surplus (Page 8, Part 1B, Col. 6, Line 35 divided by Page 3, Line 37, Col. 1 x 100.0) .....					
<b>One Year Loss Development (\$000 omitted)</b>					
74. Development in estimated losses and loss expenses incurred prior to current year (Schedule P - Part 2 - Summary, Line 12, Col. 11) .....					
75. Percent of development of losses and loss expenses incurred to policyholders' surplus of prior year end (Line 74 above divided by Page 4, Line 21, Col. 1 x 100.0).....					
<b>Two Year Loss Development (\$000 omitted)</b>					
76. Development in estimated losses and loss expenses incurred two years before the current year and prior year (Schedule P, Part 2 - Summary, Line 12, Col. 12) .....					
77. Percent of development of losses and loss expenses incurred to reported policyholders' surplus of second prior year end (Line 76 above divided by Page 4, Line 21, Col. 2 x 100.0) .....					

NOTE: If a party to a merger, have the two most recent years of this exhibit been restated due to a merger in compliance with the disclosure requirements of SSAP No. 3, Accounting Changes and Correction of Errors? ..... Yes [ ] No [ ]  
 If no, please explain: .....

Schedule P - Part 1 - Summary

**N O N E**

Schedule P - Part 2 - Summary

**N O N E**

Schedule P - Part 3 - Summary

**N O N E**

Schedule P - Part 4 - Summary

**N O N E**

**SCHEDULE T - EXHIBIT OF PREMIUMS WRITTEN**

Allocated by States and Territories

States, Etc.	1 Active Status (a)	Gross Premiums, Including Policy and Membership Fees, Less Return Premiums and Premiums on Policies Not Taken		4 Dividends Paid or Credited to Policyholders on Direct Business	5 Direct Losses Paid (Deducting Salvage)	6 Direct Losses Incurred	7 Direct Losses Unpaid	8 Finance and Service Charges Not Included in Premiums	9 Direct Premiums Written for Federal Purchasing Groups (Included in Column 2)
		2 Direct Premiums Written	3 Direct Premiums Earned						
1. Alabama	AL	L	893,421	864,901		54,460	(52,589)	309,422	336
2. Alaska	AK	N							
3. Arizona	AZ	N							
4. Arkansas	AR	L	313,347	296,615	(2)	1,034,664	79,263	117,315	562
5. California	CA	N							
6. Colorado	CO	N							
7. Connecticut	CT	L	3,376,890	3,255,951	(249)	7,213,399	4,468,785	7,067,095	2,609
8. Delaware	DE	L	580,483	1,042,888	(242)	581,414	5,470	866,373	612
9. District of Columbia	DC	L	894,608	642,352		180,247	948,020	1,273,474	237
10. Florida	FL	L	1,654,268	1,490,772		378,333	595,638	1,190,257	129
11. Georgia	GA	L	639,817	667,912	(74)	1,441,187	1,192,561	928,390	1,014
12. Hawaii	HI	N							
13. Idaho	ID	N							
14. Illinois	IL	L	7,071,534	6,792,250	(1,520)	3,127,233	3,289,460	7,253,648	1,891
15. Indiana	IN	L	1,720,358	1,949,370	(197)	1,400,299	(116,768)	1,499,549	957
16. Iowa	IA	L	16,540	27,390	(82)		(21,791)	26,809	
17. Kansas	KS	L							
18. Kentucky	KY	L							
19. Louisiana	LA	N							
20. Maine	ME	L	28,989	31,441	(68)		(2,192)	21,612	6
21. Maryland	MD	L	3,977,398	4,056,246	7,616	2,597,063	2,113,615	5,610,989	2,261
22. Massachusetts	MA	L	3,680,352	3,950,692	8,454	4,047,775	2,819,780	4,177,731	4,857
23. Michigan	MI	L	934,783	1,092,891	(330)	849,255	798,213	1,612,035	1,208
24. Minnesota	MN	L	1,019,369	1,172,506	(195)	996,081	234,283	841,928	795
25. Mississippi	MS	L							
26. Missouri	MO	L							
27. Montana	MT	N							
28. Nebraska	NE	L	30,984	9,841			(6,114)	14,232	
29. Nevada	NV	N							
30. New Hampshire	NH	L	78,866	83,042		572,559	433,887	195,113	153
31. New Jersey	NJ	L	25,158,770	27,789,673	82,517	19,324,989	14,744,867	44,208,829	34,867
32. New Mexico	NM	N							
33. New York	NY	L	24,260,120	24,574,555	79,240	25,849,699	22,288,575	53,366,461	18,117
34. North Carolina	NC	L	281,089	368,837	8	350,148	375,405	1,014,562	594
35. North Dakota	ND	L	38,171	56,490		29,989	(30,232)	13,073	59
36. Ohio	OH	L	422,526	395,947		116,181	40,062	125,313	380
37. Oklahoma	OK	N							
38. Oregon	OR	N							
39. Pennsylvania	PA	L	15,005,084	15,902,592	38,246	6,551,853	7,372,648	28,529,702	10,155
40. Rhode Island	RI	L	855,192	1,272,801	(96)	3,087,789	1,500,727	1,690,922	2,046
41. South Carolina	SC	L	721,199	728,724	(186)	241,149	(212,544)	713,771	456
42. South Dakota	SD	L	3,136	1,044		(450)	(2,354)	6,139	21
43. Tennessee	TN	L	1,061,530	1,279,729	(402)	700,361	292,351	1,129,221	576
44. Texas	TX	N							
45. Utah	UT	N							
46. Vermont	VT	L	161,862	149,259			11,392	44,492	60
47. Virginia	VA	L	1,667,037	1,840,224	(715)	1,089,272	799,873	2,351,269	4,079
48. Washington	WA	N							
49. West Virginia	WV	L					(13)	7	
50. Wisconsin	WI	L	282,945	271,882		291,485	(83,853)	199,663	249
51. Wyoming	WY	N							
52. American Samoa	AS	N							
53. Guam	GU	N							
54. Puerto Rico	PR	N							
55. U.S. Virgin Islands	VI	N							
56. Northern Mariana Islands	MP	N							
57. Canada	CAN	N							
58. Aggregate other alien	OT	XXX							
59. Totals	XXX	96,830,668	102,058,818	211,723	82,106,434	63,876,425	166,399,394	89,286	
DETAILS OF WRITE-INS									
58001.	XXX								
58002.	XXX								
58003.	XXX								
58998. Summary of remaining write-ins for Line 58 from overflow page	XXX								
58999. Totals (Lines 58001 through 58003 plus 58998)(Line 58 above)	XXX								

(a) Active Status Counts:

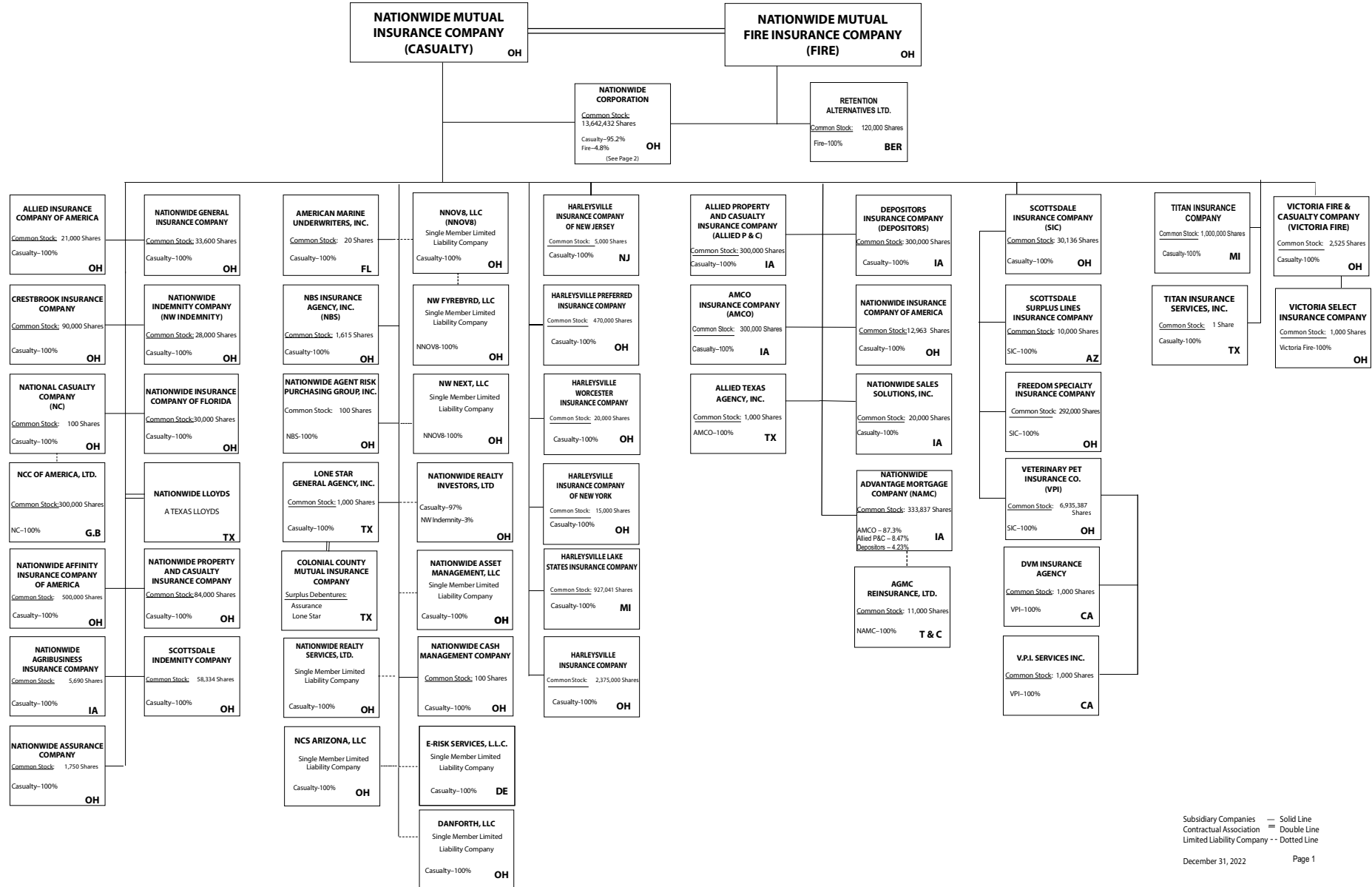
- 1. L - Licensed or Chartered - Licensed insurance carrier or domiciled RRG.....35
- 2. R - Registered - Non-domiciled RRGs.....
- 3. E - Eligible - Reporting entities eligible or approved to write surplus lines in the state (other than their state of domicile - see DSLI).....
- 4. Q - Qualified - Qualified or accredited reinsurer.....
- 5. D - Domestic Surplus Lines Insurer (DSLII) - Reporting entities authorized to write surplus lines in the state of domicile.....
- 6. N - None of the above - Not allowed to write business in the state..... 22

(b) Explanation of basis of allocation of premiums by states, etc.

Property coverage: O/T auto allocations are based on state where each property is physically located; auto coverage: premium associated with each vehicle is based on principal garage; worker's compensation: premium allocation is based on each employee'

ANNUAL STATEMENT FOR THE YEAR 2022 OF THE HARLEYSVILLE PREFERRED INSURANCE COMPANY

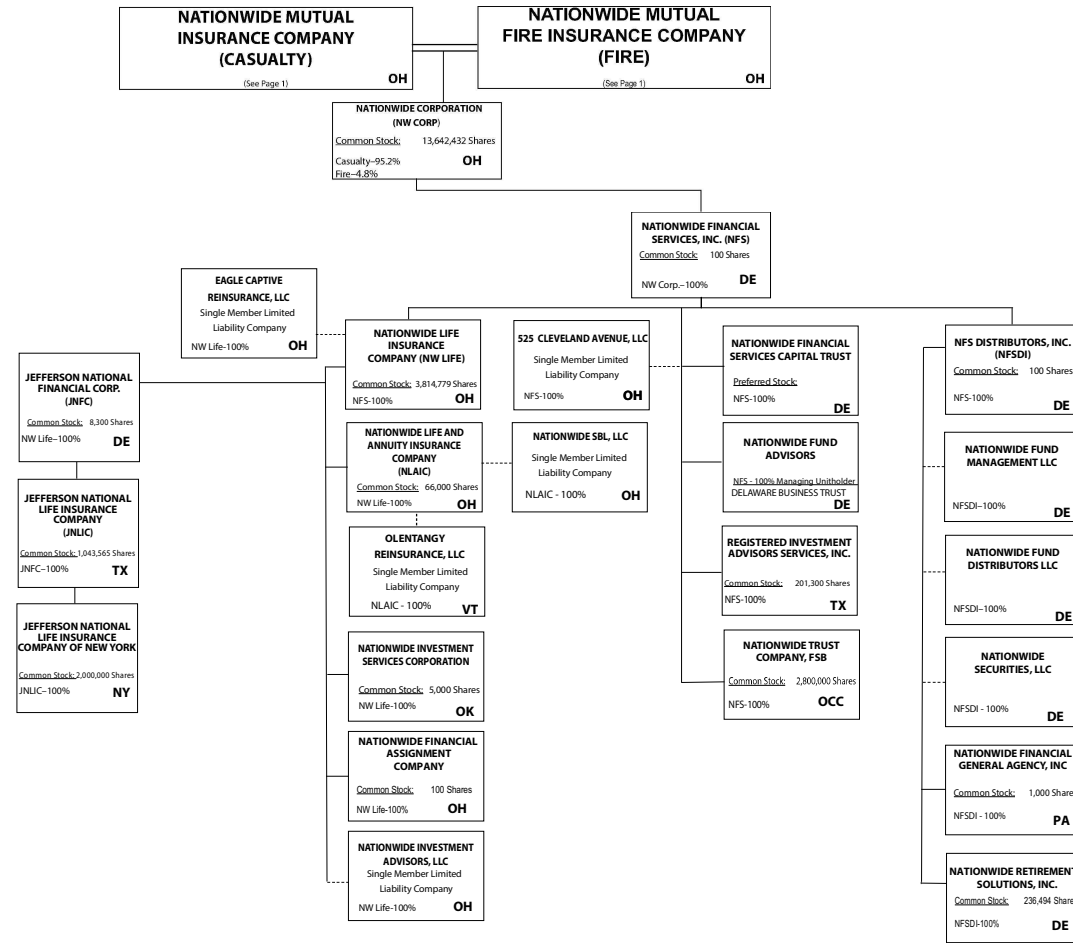
NATIONWIDE®



96

(Casualty/Fire subsidiaries)

**NATIONWIDE®**



96.1

Subsidiary Companies — Solid Line  
 Contractual Association = Double Line  
 Limited Liability Company - - Dotted Line  
 December 31, 2022 Page 2

(Nationwide Corp. subsidiaries)

ANNUAL STATEMENT FOR THE YEAR 2022 OF THE HARLEYSVILLE PREFERRED INSURANCE COMPANY

**NATIONWIDE INSURANCE COMPANIES**

NAIC Group Code	Group Name	NAIC Company Code	State of Domicile	Federal ID Number	Name of Company
0140	Nationwide	10127	OH	27-0114983	Allied Insurance Company of America
0140	Nationwide	42579	IA	42-1201931	Allied Property and Casualty Insurance Company
0140	Nationwide	19100	IA	42-6054959	AMCO Insurance Company
0140	Nationwide	29262	TX	74-1061659	Colonial County Mutual Insurance Company
0140	Nationwide	18961	OH	68-0066866	Crestbrook Insurance Company
0140	Nationwide	42587	IA	42-1207150	Depositors Insurance Company
0140	Nationwide	15821	OH	42-4523959	Eagle Captive Reinsurance, LLC
0140	Nationwide	22209	OH	75-6013587	Freedom Specialty Insurance Company
0140	Nationwide	23582	OH	41-0417250	Harleysville Insurance Company
0140	Nationwide	42900	NJ	23-2253669	Harleysville Insurance Company of New Jersey
0140	Nationwide	10674	OH	23-2864924	Harleysville Insurance Company of New York
0140	Nationwide	14516	MI	38-3198542	Harleysville Lake States Insurance Company
0140	Nationwide	35696	OH	23-2384978	Harleysville Preferred Insurance Company
0140	Nationwide	26182	OH	04-1989660	Harleysville Worcester Insurance Company
0140	Nationwide	64017	TX	75-0300900	Jefferson National Life Insurance Company
0140	Nationwide	15727	NY	47-1180302	Jefferson National Life Insurance Company of New York
0140	Nationwide	11991	OH	38-0865250	National Casualty Company
0140	Nationwide	26093	OH	48-0470690	Nationwide Affinity Insurance Company of America
0140	Nationwide	28223	IA	42-1015537	Nationwide Agribusiness Insurance Company
0140	Nationwide	10723	OH	95-0639970	Nationwide Assurance Company
0140	Nationwide	23760	OH	31-4425763	Nationwide General Insurance Company
0140	Nationwide	10070	OH	31-1399201	Nationwide Indemnity Company
0140	Nationwide	25453	OH	95-2130882	Nationwide Insurance Company of America
0140	Nationwide	10948	OH	31-1613686	Nationwide Insurance Company of Florida
0140	Nationwide	92657	OH	31-1000740	Nationwide Life and Annuity Insurance Company
0140	Nationwide	66869	OH	31-4156830	Nationwide Life Insurance Company
0140	Nationwide	42110	TX	75-1780981	Nationwide Lloyds
0140	Nationwide	23779	OH	31-4177110	Nationwide Mutual Fire Insurance Company
0140	Nationwide	23787	OH	31-4177100	Nationwide Mutual Insurance Company
0140	Nationwide	37877	OH	31-0970750	Nationwide Property & Casualty Insurance Company
0140	Nationwide	13999	VT	27-1712056	Olentangy Reinsurance, LLC
0140	Nationwide	15580	OH	31-1117969	Scottsdale Indemnity Company
0140	Nationwide	41297	OH	31-1024978	Scottsdale Insurance Company
0140	Nationwide	10672	AZ	86-0835870	Scottsdale Surplus Lines Insurance Company
0140	Nationwide	36269	MI	86-0619597	Titan Insurance Company
0140	Nationwide	42285	OH	95-3750113	Veterinary Pet Insurance Company
0140	Nationwide	42889	OH	34-1394913	Victoria Fire & Casualty Company
0140	Nationwide	10105	OH	34-1777972	Victoria Select Insurance Company

**NONE**