



PROPERTY AND CASUALTY COMPANIES - ASSOCIATION EDITION

ANNUAL STATEMENT

FOR THE YEAR ENDED DECEMBER 31, 2022
OF THE CONDITION AND AFFAIRS OF THE

PROGRESSIVE MAX INSURANCE COMPANY

NAIC Group Code 0155 0155 NAIC Company Code 24279 Employer's ID Number 34-0472535
(Current) (Prior)

Organized under the Laws of Ohio, State of Domicile or Port of Entry OH
Country of Domicile United States of America

Incorporated/Organized 03/12/1937 Commenced Business 05/10/1937

Statutory Home Office 6300 WILSON MILLS ROAD, W33, CLEVELAND, OH, US 44143-2182
(Street and Number) (City or Town, State, Country and Zip Code)

Main Administrative Office 6300 WILSON MILLS ROAD, W33
(Street and Number)
CLEVELAND, OH, US 44143-2182 440-461-5000
(City or Town, State, Country and Zip Code) (Area Code) (Telephone Number)

Mail Address P.O. BOX 89490, CLEVELAND, OH, US 44101-6490
(Street and Number or P.O. Box) (City or Town, State, Country and Zip Code)

Primary Location of Books and Records 6300 WILSON MILLS ROAD, W33
(Street and Number)
CLEVELAND, OH, US 44143-2182 440-395-4460
(City or Town, State, Country and Zip Code) (Area Code) (Telephone Number)

Internet Website Address PROGRESSIVE.COM

Statutory Statement Contact MICHELLE CRISTEN CAVELL, 440-395-4460
(Name) (Area Code) (Telephone Number)
FINANCIAL_REPORTING@PROGRESSIVE.COM 440-603-5500
(E-mail Address) (FAX Number)

OFFICERS

PRESIDENT MEGHAN LOUISE MCARDLE FRIESEN # TREASURER DANIEL JOSEPH WITALEC
SECRETARY MICHAEL ROBERT UTH

OTHER

PATRICK KEVIN CALLAHAN, (VICE PRESIDENT) MICHAEL VINCENT ESPOSITO, (VICE PRESIDENT) CARL GORDON JOYCE, (VICE PRESIDENT)
KAREN ANN KOSUDA, (ASST. SECRETARY) SANDRA LEE RIHVALSKY, (ASST. TREASURER)

DIRECTORS OR TRUSTEES

PATRICK KEVIN CALLAHAN MICHAEL VINCENT ESPOSITO MEGHAN LOUISE MCARDLE FRIESEN #
DANIEL JOSEPH WITALEC SCOTT WESLEY ZIEGLER

State of OHIO SS
County of CUYAHOGA

The officers of this reporting entity being duly sworn, each depose and say that they are the described officers of said reporting entity, and that on the reporting period stated above, all of the herein described assets were the absolute property of the said reporting entity, free and clear from any liens or claims thereon, except as herein stated, and that this statement, together with related exhibits, schedules and explanations therein contained, annexed or referred to, is a full and true statement of all the assets and liabilities and of the condition and affairs of the said reporting entity as of the reporting period stated above, and of its income and deductions therefrom for the period ended, and have been completed in accordance with the NAIC Annual Statement Instructions and Accounting Practices and Procedures manual except to the extent that: (1) state law may differ; or, (2) that state rules or regulations require differences in reporting not related to accounting practices and procedures, according to the best of their information, knowledge and belief, respectively. Furthermore, the scope of this attestation by the described officers also includes the related corresponding electronic filing with the NAIC, when required, that is an exact copy (except for formatting differences due to electronic filing) of the enclosed statement. The electronic filing may be requested by various regulators in lieu of or in addition to the enclosed statement.

MEGHAN LOUISE MCARDLE FRIESEN #
PRESIDENT

KAREN ANN KOSUDA
ASSISTANT SECRETARY

SANDRA LEE RIHVALSKY
ASSISTANT TREASURER

Subscribed and sworn to before me this
10TH day of FEBRUARY, 2023

- a. Is this an original filing? Yes [X] No []
b. If no,
1. State the amendment number.....
2. Date filed
3. Number of pages attached.....

ANNUAL STATEMENT FOR THE YEAR 2022 OF THE PROGRESSIVE MAX INSURANCE COMPANY

ASSETS

	Current Year			Prior Year
	1 Assets	2 Nonadmitted Assets	3 Net Admitted Assets (Cols. 1 - 2)	4 Net Admitted Assets
1. Bonds (Schedule D)	948,227,396		948,227,396	872,227,010
2. Stocks (Schedule D):				
2.1 Preferred stocks				
2.2 Common stocks				
3. Mortgage loans on real estate (Schedule B):				
3.1 First liens				
3.2 Other than first liens				
4. Real estate (Schedule A):				
4.1 Properties occupied by the company (less \$				
encumbrances)				
4.2 Properties held for the production of income (less				
\$				
encumbrances)				
4.3 Properties held for sale (less \$				
encumbrances)				
5. Cash (\$, Schedule E - Part 1), cash equivalents				
(\$, Schedule E - Part 2) and short-term				
investments (\$, Schedule DA)	15,092,257		15,092,257	
6. Contract loans (including \$				
premium notes)				
7. Derivatives (Schedule DB)				
8. Other invested assets (Schedule BA)				
9. Receivable for securities	3,129,567		3,129,567	
10. Securities lending reinvested collateral assets (Schedule DL)				
11. Aggregate write-ins for invested assets				
12. Subtotals, cash and invested assets (Lines 1 to 11)	966,449,220		966,449,220	872,227,010
13. Title plants less \$				
charged off (for Title insurers				
only)				
14. Investment income due and accrued	4,913,395		4,913,395	3,475,162
15. Premiums and considerations:				
15.1 Uncollected premiums and agents' balances in the course of collection	17,147,005	2,923,253	14,223,752	9,206,303
15.2 Deferred premiums, agents' balances and installments booked but				
deferred and not yet due (including \$				
earned but unbilled premiums)	53,577,327		53,577,327	53,680,880
15.3 Accrued retrospective premiums (\$				
) and				
contracts subject to redetermination (\$				
)				
16. Reinsurance:				
16.1 Amounts recoverable from reinsurers	2,577,916		2,577,916	1,094,820
16.2 Funds held by or deposited with reinsured companies				
16.3 Other amounts receivable under reinsurance contracts				
17. Amounts receivable relating to uninsured plans				
18.1 Current federal and foreign income tax recoverable and interest thereon				
18.2 Net deferred tax asset	16,185,466	16,456	16,169,010	14,740,051
19. Guaranty funds receivable or on deposit				
20. Electronic data processing equipment and software				
21. Furniture and equipment, including health care delivery assets				
(\$				
)				
22. Net adjustment in assets and liabilities due to foreign exchange rates				
23. Receivables from parent, subsidiaries and affiliates	13,212,940		13,212,940	10,432,987
24. Health care (\$				
) and other amounts receivable				
25. Aggregate write-ins for other than invested assets	1,629,634	1,524,311	105,323	87,741
26. Total assets excluding Separate Accounts, Segregated Accounts and				
Protected Cell Accounts (Lines 12 to 25)	1,075,692,903	4,464,020	1,071,228,883	964,944,954
27. From Separate Accounts, Segregated Accounts and Protected Cell				
Accounts				
28. Total (Lines 26 and 27)	1,075,692,903	4,464,020	1,071,228,883	964,944,954
DETAILS OF WRITE-INS				
1101.				
1102.				
1103.				
1198. Summary of remaining write-ins for Line 11 from overflow page				
1199. Totals (Lines 1101 thru 1103 plus 1198)(Line 11 above)				
2501. STATE UNEARNED SURCHARGE RECOVERABLE	105,323		105,323	87,741
2502. MISCELLANEOUS OTHER ASSETS	1,365,536	1,365,536		
2503. PREPAID EXPENSES	158,775	158,775		
2598. Summary of remaining write-ins for Line 25 from overflow page				
2599. Totals (Lines 2501 thru 2503 plus 2598)(Line 25 above)	1,629,634	1,524,311	105,323	87,741

ANNUAL STATEMENT FOR THE YEAR 2022 OF THE PROGRESSIVE MAX INSURANCE COMPANY

LIABILITIES, SURPLUS AND OTHER FUNDS

	1 Current Year	2 Prior Year
1. Losses (Part 2A, Line 35, Column 8)	345,135,374	308,820,744
2. Reinsurance payable on paid losses and loss adjustment expenses (Schedule F, Part 1, Column 6)	4,799,376	4,296,403
3. Loss adjustment expenses (Part 2A, Line 35, Column 9)	75,736,051	73,362,480
4. Commissions payable, contingent commissions and other similar charges	337,993	259,449
5. Other expenses (excluding taxes, licenses and fees)	356,749	243,254
6. Taxes, licenses and fees (excluding federal and foreign income taxes)	9,373,589	10,000,878
7.1 Current federal and foreign income taxes (including \$ (5,062) on realized capital gains (losses))	3,693,522	1,547,906
7.2 Net deferred tax liability		
8. Borrowed money \$0 and interest thereon \$		
9. Unearned premiums (Part 1A, Line 38, Column 5) (after deducting unearned premiums for ceded reinsurance of \$ 84,078,337 and including warranty reserves of \$ and accrued accident and health experience rating refunds including \$ for medical loss ratio rebate per the Public Health Service Act)	283,979,432	247,347,696
10. Advance premium	764,282	887,558
11. Dividends declared and unpaid:		
11.1 Stockholders		
11.2 Policyholders		
12. Ceded reinsurance premiums payable (net of ceding commissions)		(3,405,170)
13. Funds held by company under reinsurance treaties (Schedule F, Part 3, Column 20)		
14. Amounts withheld or retained by company for account of others		
15. Remittances and items not allocated		
16. Provision for reinsurance (including \$ certified) (Schedule F, Part 3, Column 78)		
17. Net adjustments in assets and liabilities due to foreign exchange rates		
18. Drafts outstanding	13,420,775	11,930,768
19. Payable to parent, subsidiaries and affiliates		
20. Derivatives		
21. Payable for securities		
22. Payable for securities lending		
23. Liability for amounts held under uninsured plans		
24. Capital notes \$0 and interest thereon \$		
25. Aggregate write-ins for liabilities	828,482	825,862
26. Total liabilities excluding protected cell liabilities (Lines 1 through 25)	738,425,625	656,117,828
27. Protected cell liabilities		
28. Total liabilities (Lines 26 and 27)	738,425,625	656,117,828
29. Aggregate write-ins for special surplus funds		
30. Common capital stock	3,604,824	3,604,824
31. Preferred capital stock		
32. Aggregate write-ins for other than special surplus funds		
33. Surplus notes		
34. Gross paid in and contributed surplus	42,166,521	42,166,521
35. Unassigned funds (surplus)	287,031,913	263,055,781
36. Less treasury stock, at cost:		
36.10 shares common (value included in Line 30 \$)		
36.20 shares preferred (value included in Line 31 \$)		
37. Surplus as regards policyholders (Lines 29 to 35, less 36) (Page 4, Line 39)	332,803,258	308,827,126
38. TOTALS (Page 2, Line 28, Col. 3)	1,071,228,883	964,944,954
DETAILS OF WRITE-INS		
2501. MISCELLANEOUS OTHER LIABILITIES	568,068	568,710
2502. STATE PLAN LIABILITY	238,101	211,875
2503. ESCHEATABLE PROPERTY	22,313	45,277
2598. Summary of remaining write-ins for Line 25 from overflow page		
2599. Totals (Lines 2501 thru 2503 plus 2598)(Line 25 above)	828,482	825,862
2901.		
2902.		
2903.		
2998. Summary of remaining write-ins for Line 29 from overflow page		
2999. Totals (Lines 2901 thru 2903 plus 2998)(Line 29 above)		
3201.		
3202.		
3203.		
3298. Summary of remaining write-ins for Line 32 from overflow page		
3299. Totals (Lines 3201 thru 3203 plus 3298)(Line 32 above)		

ANNUAL STATEMENT FOR THE YEAR 2022 OF THE PROGRESSIVE MAX INSURANCE COMPANY

STATEMENT OF INCOME

	1 Current Year	2 Prior Year
UNDERWRITING INCOME		
1. Premiums earned (Part 1, Line 35, Column 4).....	1,006,998,747	929,303,355
DEDUCTIONS:		
2. Losses incurred (Part 2, Line 35, Column 7)	695,084,732	621,663,561
3. Loss adjustment expenses incurred (Part 3, Line 25, Column 1)	97,715,620	95,665,359
4. Other underwriting expenses incurred (Part 3, Line 25, Column 2)	186,250,948	192,309,930
5. Aggregate write-ins for underwriting deductions		
6. Total underwriting deductions (Lines 2 through 5)	979,051,300	909,638,850
7. Net income of protected cells		
8. Net underwriting gain (loss) (Line 1 minus Line 6 plus Line 7)	27,947,447	19,664,505
INVESTMENT INCOME		
9. Net investment income earned (Exhibit of Net Investment Income, Line 17)	18,862,029	16,197,178
10. Net realized capital gains (losses) less capital gains tax of \$ (674,845) (Exhibit of Capital Gains (Losses))	(2,542,079)	3,494,918
11. Net investment gain (loss) (Lines 9 + 10)	16,319,950	19,692,096
OTHER INCOME		
12. Net gain (loss) from agents' or premium balances charged off (amount recovered \$ 1,224,908 amount charged off \$ 7,059,197)	(5,834,289)	(8,355,019)
13. Finance and service charges not included in premiums	5,036,130	5,270,637
14. Aggregate write-ins for miscellaneous income	726,766	270,265
15. Total other income (Lines 12 through 14)	(71,393)	(2,814,117)
16. Net income before dividends to policyholders, after capital gains tax and before all other federal and foreign income taxes (Lines 8 + 11 + 15)	44,196,004	36,542,484
17. Dividends to policyholders		
18. Net income, after dividends to policyholders, after capital gains tax and before all other federal and foreign income taxes (Line 16 minus Line 17)	44,196,004	36,542,484
19. Federal and foreign income taxes incurred	11,317,656	8,229,198
20. Net income (Line 18 minus Line 19)(to Line 22)	32,878,348	28,313,286
CAPITAL AND SURPLUS ACCOUNT		
21. Surplus as regards policyholders, December 31 prior year (Page 4, Line 39, Column 2)	308,827,126	297,290,670
22. Net income (from Line 20)	32,878,348	28,313,286
23. Net transfers (to) from Protected Cell accounts		
24. Change in net unrealized capital gains or (losses) less capital gains tax of \$ (839,490)	(3,158,082)	(75,433)
25. Change in net unrealized foreign exchange capital gain (loss)		
26. Change in net deferred income tax	586,098	943,525
27. Change in nonadmitted assets (Exhibit of Nonadmitted Assets, Line 28, Col. 3)	469,768	1,855,078
28. Change in provision for reinsurance (Page 3, Line 16, Column 2 minus Column 1)		
29. Change in surplus notes		
30. Surplus (contributed to) withdrawn from protected cells		
31. Cumulative effect of changes in accounting principles		
32. Capital changes:		
32.1 Paid in		
32.2 Transferred from surplus (Stock Dividend)		
32.3 Transferred to surplus		
33. Surplus adjustments:		
33.1 Paid in		
33.2 Transferred to capital (Stock Dividend)		
33.3 Transferred from capital		
34. Net remittances from or (to) Home Office		
35. Dividends to stockholders	(6,800,000)	(19,500,000)
36. Change in treasury stock (Page 3, Lines 36.1 and 36.2, Column 2 minus Column 1)		
37. Aggregate write-ins for gains and losses in surplus		
38. Change in surplus as regards policyholders for the year (Lines 22 through 37)	23,976,132	11,536,456
39. Surplus as regards policyholders, December 31 current year (Line 21 plus Line 38) (Page 3, Line 37)	332,803,258	308,827,126
DETAILS OF WRITE-INS		
0501.		
0502.		
0503.		
0598. Summary of remaining write-ins for Line 5 from overflow page		
0599. Totals (Lines 0501 thru 0503 plus 0598)(Line 5 above)		
1401. INTEREST INCOME ON INTERCOMPANY BALANCES	489,213	10,608
1402. MISCELLANEOUS OTHER INCOME	237,553	259,657
1403.		
1498. Summary of remaining write-ins for Line 14 from overflow page		
1499. Totals (Lines 1401 thru 1403 plus 1498)(Line 14 above)	726,766	270,265
3701.		
3702.		
3703.		
3798. Summary of remaining write-ins for Line 37 from overflow page		
3799. Totals (Lines 3701 thru 3703 plus 3798)(Line 37 above)		

ANNUAL STATEMENT FOR THE YEAR 2022 OF THE PROGRESSIVE MAX INSURANCE COMPANY

CASH FLOW

	1	2
	Current Year	Prior Year
Cash from Operations		
1. Premiums collected net of reinsurance	1,042,766,900	958,415,384
2. Net investment income	18,848,389	18,030,721
3. Miscellaneous income	(298,392)	(3,958,291)
4. Total (Lines 1 through 3)	1,061,316,897	972,487,814
5. Benefit and loss related payments	659,750,225	557,599,133
6. Net transfers to Separate Accounts, Segregated Accounts and Protected Cell Accounts		
7. Commissions, expenses paid and aggregate write-ins for deductions	282,028,552	277,112,740
8. Dividends paid to policyholders		
9. Federal and foreign income taxes paid (recovered) net of \$ (513,278) tax on capital gains (losses)	8,497,195	13,467,892
10. Total (Lines 5 through 9)	950,275,972	848,179,765
11. Net cash from operations (Line 4 minus Line 10)	111,040,925	124,308,049
Cash from Investments		
12. Proceeds from investments sold, matured or repaid:		
12.1 Bonds	341,543,590	354,524,434
12.2 Stocks		
12.3 Mortgage loans		
12.4 Real estate		
12.5 Other invested assets		
12.6 Net gains or (losses) on cash, cash equivalents and short-term investments	(1,520)	
12.7 Miscellaneous proceeds		
12.8 Total investment proceeds (Lines 12.1 to 12.7)	341,542,070	354,524,434
13. Cost of investments acquired (long-term only):		
13.1 Bonds	426,181,241	502,484,318
13.2 Stocks		
13.3 Mortgage loans		
13.4 Real estate		
13.5 Other invested assets		
13.6 Miscellaneous applications	3,129,567	
13.7 Total investments acquired (Lines 13.1 to 13.6)	429,310,808	502,484,318
14. Net increase (decrease) in contract loans and premium notes		
15. Net cash from investments (Line 12.8 minus Line 13.7 minus Line 14)	(87,768,738)	(147,959,884)
Cash from Financing and Miscellaneous Sources		
16. Cash provided (applied):		
16.1 Surplus notes, capital notes		
16.2 Capital and paid in surplus, less treasury stock		
16.3 Borrowed funds		
16.4 Net deposits on deposit-type contracts and other insurance liabilities		
16.5 Dividends to stockholders	6,800,000	19,500,000
16.6 Other cash provided (applied)	(1,379,930)	15,652,481
17. Net cash from financing and miscellaneous sources (Lines 16.1 to 16.4 minus Line 16.5 plus Line 16.6)	(8,179,930)	(3,847,519)
RECONCILIATION OF CASH, CASH EQUIVALENTS AND SHORT-TERM INVESTMENTS		
18. Net change in cash, cash equivalents and short-term investments (Line 11, plus Lines 15 and 17)	15,092,257	(27,499,354)
19. Cash, cash equivalents and short-term investments:		
19.1 Beginning of year		27,499,354
19.2 End of period (Line 18 plus Line 19.1)	15,092,257	

Note: Supplemental disclosures of cash flow information for non-cash transactions:

--	--	--

ANNUAL STATEMENT FOR THE YEAR 2022 OF THE PROGRESSIVE MAX INSURANCE COMPANY

UNDERWRITING AND INVESTMENT EXHIBIT

PART 1 - PREMIUMS EARNED

Line of Business	1 Net Premiums Written per Column 6, Part 1B	2 Unearned Premiums Dec. 31 Prior Year - per Col. 3, Last Year's Part 1	3 Unearned Premiums Dec. 31 Current Year - per Col. 5 Part 1A	4 Premiums Earned During Year (Cols. 1 + 2 - 3)
1. Fire				
2.1 Allied lines				
2.2 Multiple peril crop				
2.3 Federal flood				
2.4 Private crop				
2.5 Private flood				
3. Farmowners multiple peril				
4. Homeowners multiple peril				
5.1 Commercial multiple peril (non-liability portion)				
5.2 Commercial multiple peril (liability portion)				
6. Mortgage guaranty				
8. Ocean marine				
9. Inland marine	10,239,861	4,345,075	4,861,693	9,723,243
10. Financial guaranty				
11.1 Medical professional liability - occurrence				
11.2 Medical professional liability - claims-made				
12. Earthquake				
13.1 Comprehensive (hospital and medical) individual				
13.2 Comprehensive (hospital and medical) group				
14. Credit accident and health (group and individual)				
15.1 Vision only				
15.2 Dental only				
15.3 Disability income				
15.4 Medicare supplement				
15.5 Medicaid Title XIX				
15.6 Medicare Title XVIII				
15.7 Long-term care				
15.8 Federal employees health benefits plan				
15.9 Other health				
16. Workers' compensation				
17.1 Other liability - occurrence	3,053,046	1,345,503	1,450,257	2,948,292
17.2 Other liability - claims-made	6,000	510	526	5,984
17.3 Excess workers' compensation				
18.1 Products liability - occurrence				
18.2 Products liability - claims-made				
19.1 Private passenger auto no-fault (personal injury protection)	85,704,605	20,216,380	21,142,723	84,778,261
19.2 Other private passenger auto liability.....	557,924,707	132,683,801	147,049,731	543,558,776
19.3 Commercial auto no-fault (personal injury protection)				
19.4 Other commercial auto liability.....	3,938,609	1,339,971	1,729,367	3,549,212
21.1 Private passenger auto physical damage	381,772,727	87,104,497	107,307,278	361,569,946
21.2 Commercial auto physical damage	990,930	311,961	437,857	865,034
22. Aircraft (all perils)				
23. Fidelity				
24. Surety				
26. Burglary and theft				
27. Boiler and machinery				
28. Credit				
29. International				
30. Warranty				
31. Reinsurance - nonproportional assumed property				
32. Reinsurance - nonproportional assumed liability				
33. Reinsurance - nonproportional assumed financial lines				
34. Aggregate write-ins for other lines of business				
35. TOTALS	1,043,630,484	247,347,698	283,979,432	1,006,998,749
DETAILS OF WRITE-INS				
3401.				
3402.				
3403.				
3498. Summary of remaining write-ins for Line 34 from overflow page				
3499. Totals (Lines 3401 thru 3403 plus 3498)(Line 34 above)				

ANNUAL STATEMENT FOR THE YEAR 2022 OF THE PROGRESSIVE MAX INSURANCE COMPANY

UNDERWRITING AND INVESTMENT EXHIBIT

PART 1A - RECAPITULATION OF ALL PREMIUMS

Line of Business	1 Amount Unearned (Running One Year or Less from Date of Policy) (a)	2 Amount Unearned (Running More Than One Year from Date of Policy) (a)	3 Earned But Unbilled Premium	4 Reserve for Rate Credits and Retrospective Adjustments Based on Experience	5 Total Reserve for Unearned Premiums Cols. 1 + 2 + 3 + 4
1. Fire					
2.1 Allied lines					
2.2 Multiple peril crop					
2.3 Federal flood					
2.4 Private crop					
2.5 Private flood					
3. Farmowners multiple peril					
4. Homeowners multiple peril					
5.1 Commercial multiple peril (non-liability portion)					
5.2 Commercial multiple peril (liability portion)					
6. Mortgage guaranty					
8. Ocean marine					
9. Inland marine	4,861,693				4,861,693
10. Financial guaranty					
11.1 Medical professional liability - occurrence					
11.2 Medical professional liability - claims-made					
12. Earthquake					
13.1 Comprehensive (hospital and medical) individual					
13.2 Comprehensive (hospital and medical) group					
14. Credit accident and health (group and individual)					
15.1 Vision only					
15.2 Dental only					
15.3 Disability income					
15.4 Medicare supplement					
15.5 Medicaid Title XIX					
15.6 Medicare Title XVIII					
15.7 Long-term care					
15.8 Federal employees health benefits plan					
15.9 Other health					
16. Workers' compensation					
17.1 Other liability - occurrence	1,450,257				1,450,257
17.2 Other liability - claims-made	526				526
17.3 Excess workers' compensation					
18.1 Products liability - occurrence					
18.2 Products liability - claims-made					
19.1 Private passenger auto no-fault (personal injury protection)	21,142,723				21,142,723
19.2 Other private passenger auto liability.....	147,049,731				147,049,731
19.3 Commercial auto no-fault (personal injury protection)					
19.4 Other commercial auto liability.....	1,729,367				1,729,367
21.1 Private passenger auto physical damage	107,307,278				107,307,278
21.2 Commercial auto physical damage	437,857				437,857
22. Aircraft (all perils)					
23. Fidelity					
24. Surety					
26. Burglary and theft					
27. Boiler and machinery					
28. Credit					
29. International					
30. Warranty					
31. Reinsurance - nonproportional assumed property					
32. Reinsurance - nonproportional assumed liability					
33. Reinsurance - nonproportional assumed financial lines					
34. Aggregate write-ins for other lines of business					
35. TOTALS	283,979,432				283,979,432
36. Accrued retrospective premiums based on experience					
37. Earned but unbilled premiums					
38. Balance (Sum of Line 35 through 37)					283,979,432
DETAILS OF WRITE-INS					
3401.					
3402.					
3403.					
3498. Summary of remaining write-ins for Line 34 from overflow page					
3499. Totals (Lines 3401 thru 3403 plus 3498)(Line 34 above)					

(a) State here basis of computation used in each case Pro Rata

ANNUAL STATEMENT FOR THE YEAR 2022 OF THE PROGRESSIVE MAX INSURANCE COMPANY

UNDERWRITING AND INVESTMENT EXHIBIT

PART 1B - PREMIUMS WRITTEN

Line of Business	1	Reinsurance Assumed		Reinsurance Ceded		6 Net Premiums Written Cols. 1+2+3-4-5
	Direct Business (a)	2 From Affiliates	3 From Non-Affiliates	4 To Affiliates	5 To Non-Affiliates	
1. Fire						
2.1 Allied lines						
2.2 Multiple peril crop						
2.3 Federal flood						
2.4 Private crop						
2.5 Private flood						
3. Farmowners multiple peril						
4. Homeowners multiple peril						
5.1 Commercial multiple peril (non-liability portion)						
5.2 Commercial multiple peril (liability portion)						
6. Mortgage guaranty						
8. Ocean marine						
9. Inland marine	2,131,193	10,239,861		2,131,193		10,239,861
10. Financial guaranty						
11.1 Medical professional liability - occurrence						
11.2 Medical professional liability - claims- made						
12. Earthquake						
13.1 Comprehensive (hospital and medical) individual						
13.2 Comprehensive (hospital and medical) group						
14. Credit accident and health (group and individual)						
15.1 Vision only						
15.2 Dental only						
15.3 Disability income						
15.4 Medicare supplement						
15.5 Medicaid Title XIX						
15.6 Medicare Title XVIII						
15.7 Long-term care						
15.8 Federal employees health benefits plan ...						
15.9 Other health						
16. Workers' compensation						
17.1 Other liability - occurrence	594,397	3,053,046		594,397		3,053,046
17.2 Other liability - claims-made		6,000				6,000
17.3 Excess workers' compensation						
18.1 Products liability - occurrence						
18.2 Products liability - claims-made						
19.1 Private passenger auto no-fault (personal injury protection)	43,250,514	85,704,605		43,250,514		85,704,605
19.2 Other private passenger auto liability.....	181,214,074	557,924,707		181,214,074		557,924,707
19.3 Commercial auto no-fault (personal injury protection)						
19.4 Other commercial auto liability.....		3,938,609				3,938,609
21.1 Private passenger auto physical damage ..	95,650,668	381,772,727		95,650,668		381,772,727
21.2 Commercial auto physical damage		990,930				990,930
22. Aircraft (all perils)						
23. Fidelity						
24. Surety						
26. Burglary and theft						
27. Boiler and machinery						
28. Credit						
29. International						
30. Warranty						
31. Reinsurance - nonproportional assumed property	XXX					
32. Reinsurance - nonproportional assumed liability	XXX					
33. Reinsurance - nonproportional assumed financial lines	XXX					
34. Aggregate write-ins for other lines of business						
35. TOTALS	322,840,847	1,043,630,484		322,840,847		1,043,630,484
DETAILS OF WRITE-INS						
3401.						
3402.						
3403.						
3498. Summary of remaining write-ins for Line 34 from overflow page						
3499. Totals (Lines 3401 thru 3403 plus 3498)(Line 34 above)						

(a) Does the company's direct premiums written include premiums recorded on an installment basis? Yes [] No [X]

If yes: 1. The amount of such installment premiums \$

2. Amount at which such installment premiums would have been reported had they been reported on an annualized basis \$

ANNUAL STATEMENT FOR THE YEAR 2022 OF THE PROGRESSIVE MAX INSURANCE COMPANY

UNDERWRITING AND INVESTMENT EXHIBIT

PART 2 - LOSSES PAID AND INCURRED

Line of Business	Losses Paid Less Salvage				5 Net Losses Unpaid Current Year (Part 2A , Col. 8)	6 Net Losses Unpaid Prior Year	7 Losses Incurred Current Year (Cols. 4 + 5 - 6)	8 Percentage of Losses Incurred (Col. 7, Part 2) to Premiums Earned (Col. 4, Part 1)
	1 Direct Business	2 Reinsurance Assumed	3 Reinsurance Recovered	4 Net Payments (Cols. 1 + 2 -3)				
1. Fire								
2.1 Allied lines								
2.2 Multiple peril crop								
2.3 Federal flood								
2.4 Private crop								
2.5 Private flood								
3. Farmowners multiple peril								
4. Homeowners multiple peril								
5.1 Commercial multiple peril (non-liability portion)								
5.2 Commercial multiple peril (liability portion)								
6. Mortgage guaranty								
8. Ocean marine								
9. Inland marine	696,408	5,482,684	696,408	5,482,684	938,464	378,576	6,042,571	62.1
10. Financial guaranty								
11.1 Medical professional liability - occurrence								
11.2 Medical professional liability - claims-made								
12. Earthquake								
13.1 Comprehensive (hospital and medical) individual								
13.2 Comprehensive (hospital and medical) group								
14. Credit accident and health (group and individual)								
15.1 Vision only								
15.2 Dental only								
15.3 Disability income								
15.4 Medicare supplement								
15.5 Medicaid Title XIX								
15.6 Medicare Title XVIII								
15.7 Long-term care								
15.8 Federal employees health benefits plan								
15.9 Other health								
16. Workers' compensation								
17.1 Other liability - occurrence	189,822	1,254,392	189,822	1,254,392	1,039,096	967,351	1,326,137	45.0
17.2 Other liability - claims-made					150,001	44,232	105,769	1,767.5
17.3 Excess workers' compensation								
18.1 Products liability - occurrence								
18.2 Products liability - claims-made								
19.1 Private passenger auto no-fault (personal injury protection)	36,965,565	46,014,396	36,965,565	46,014,396	45,880,313	43,173,259	48,721,450	57.5
19.2 Other private passenger auto liability	92,214,124	288,935,603	92,214,124	288,935,603	280,427,240	247,161,516	322,201,327	59.3
19.3 Commercial auto no-fault (personal injury protection)								
19.4 Other commercial auto liability		1,576,284		1,576,284	4,438,690	3,360,407	2,654,568	74.8
21.1 Private passenger auto physical damage	87,127,687	315,074,107	87,127,687	315,074,107	12,236,382	13,695,394	313,615,095	86.7
21.2 Commercial auto physical damage		432,637		432,637	25,188	40,009	417,816	48.3
22. Aircraft (all perils)								
23. Fidelity								
24. Surety								
26. Burglary and theft								
27. Boiler and machinery								
28. Credit								
29. International								
30. Warranty								
31. Reinsurance - nonproportional assumed property	XXX							
32. Reinsurance - nonproportional assumed liability	XXX	3,883	3,883					
33. Reinsurance - nonproportional assumed financial lines	XXX							
34. Aggregate write-ins for other lines of business								
35. TOTALS	217,193,606	658,773,986	217,197,488	658,770,103	345,135,373	308,820,744	695,084,732	69.0
DETAILS OF WRITE-INS								
3401.								
3402.								
3403.								
3498. Summary of remaining write-ins for Line 34 from overflow page								
3499. Totals (Lines 3401 thru 3403 plus 3498)(Line 34 above)								

ANNUAL STATEMENT FOR THE YEAR 2022 OF THE PROGRESSIVE MAX INSURANCE COMPANY

UNDERWRITING AND INVESTMENT EXHIBIT

PART 2A - UNPAID LOSSES AND LOSS ADJUSTMENT EXPENSES

Line of Business	Reported Losses				Incurred But Not Reported			8 Net Losses Unpaid (Cols. 4 + 5 + 6 - 7)	9 Net Unpaid Loss Adjustment Expenses
	1 Direct	2 Reinsurance Assumed	3 Deduct Reinsurance Recoverable	4 Net Losses Excl. Incurred But Not Reported (Cols. 1 + 2 - 3)	5 Direct	6 Reinsurance Assumed	7 Reinsurance Ceded		
1. Fire									
2.1 Allied lines									
2.2 Multiple peril crop									
2.3 Federal flood									
2.4 Private crop									
2.5 Private flood									
3. Farmowners multiple peril									
4. Homeowners multiple peril									
5.1 Commercial multiple peril (non-liability portion)									
5.2 Commercial multiple peril (liability portion)									
6. Mortgage guaranty									
8. Ocean marine									
9. Inland marine	50,663	457,196	50,663	457,196	27,391	481,267	27,391	938,464	147,922
10. Financial guaranty									
11.1 Medical professional liability - occurrence									
11.2 Medical professional liability - claims-made									
12. Earthquake									
13.1 Comprehensive (hospital and medical) individual								(a)	
13.2 Comprehensive (hospital and medical) group								(a)	
14. Credit accident and health (group and individual)									
15.1 Vision only								(a)	
15.2 Dental only								(a)	
15.3 Disability income								(a)	
15.4 Medicare supplement								(a)	
15.5 Medicaid Title XIX								(a)	
15.6 Medicare Title XVIII								(a)	
15.7 Long-term care								(a)	
15.8 Federal employees health benefits plan								(a)	
15.9 Other health								(a)	
16. Workers' compensation									
17.1 Other liability - occurrence	186,341	749,419	186,341	749,419	52,577	289,677	52,577	1,039,096	262,850
17.2 Other liability - claims-made						150,001		150,001	3,295
17.3 Excess workers' compensation									
18.1 Products liability - occurrence									
18.2 Products liability - claims-made									
19.1 Private passenger auto no-fault (personal injury protection)	20,992,379	26,667,791	20,992,379	26,667,791	12,873,059	19,212,521	12,873,059	45,880,313	23,748,699
19.2 Other private passenger auto liability	70,498,456	221,264,593	70,498,456	221,264,593	15,937,927	59,162,646	15,937,927	280,427,240	45,310,837
19.3 Commercial auto no-fault (personal injury protection)									
19.4 Other commercial auto liability		3,946,384		3,946,384		492,306		4,438,690	455,231
21.1 Private passenger auto physical damage	9,100,708	33,783,926	9,100,708	33,783,926	(6,656,767)	(21,547,543)	(6,656,767)	12,236,382	5,790,750
21.2 Commercial auto physical damage		47,698		47,698		(22,510)		25,188	16,468
22. Aircraft (all perils)									
23. Fidelity									
24. Surety									
26. Burglary and theft									
27. Boiler and machinery									
28. Credit									
29. International									
30. Warranty									
31. Reinsurance - nonproportional assumed property	XXX				XXX				
32. Reinsurance - nonproportional assumed liability	XXX	870,911		870,911	XXX	197,352	1,068,263		
33. Reinsurance - nonproportional assumed financial lines	XXX				XXX				
34. Aggregate write-ins for other lines of business									
35. TOTALS	100,828,547	287,787,919	100,828,547	287,787,919	22,234,187	58,415,717	23,302,450	345,135,373	75,736,050
DETAILS OF WRITE-INS									
3401.									
3402.									
3403.									
3498. Summary of remaining write-ins for Line 34 from overflow page									
3499. Totals (Lines 3401 thru 3403 plus 3498)(Line 34 above)									

(a) Including \$ for present value of life indemnity claims reported in Lines 13 and 15.

ANNUAL STATEMENT FOR THE YEAR 2022 OF THE PROGRESSIVE MAX INSURANCE COMPANY

UNDERWRITING AND INVESTMENT EXHIBIT

PART 3 - EXPENSES

	1	2	3	4
	Loss Adjustment Expenses	Other Underwriting Expenses	Investment Expenses	Total
1. Claim adjustment services:				
1.1 Direct	7,864,707			7,864,707
1.2 Reinsurance assumed	15,728,900			15,728,900
1.3 Reinsurance ceded	7,864,707			7,864,707
1.4 Net claim adjustment service (1.1 + 1.2 - 1.3)	15,728,900			15,728,900
2. Commission and brokerage:				
2.1 Direct excluding contingent		413,400		413,400
2.2 Reinsurance assumed, excluding contingent		111,472		111,472
2.3 Reinsurance ceded, excluding contingent		413,400		413,400
2.4 Contingent - direct		105,300		105,300
2.5 Contingent - reinsurance assumed		437,020		437,020
2.6 Contingent - reinsurance ceded		105,300		105,300
2.7 Policy and membership fees				
2.8 Net commission and brokerage (2.1 + 2.2 - 2.3 + 2.4 + 2.5 - 2.6 + 2.7) ..		548,492		548,492
3. Allowances to managers and agents		1,166		1,166
4. Advertising	4,335	81,204,588		81,208,923
5. Boards, bureaus and associations	220,007	200,954	16,383	437,345
6. Surveys and underwriting reports		6,376,633		6,376,633
7. Audit of assureds' records				
8. Salary and related items:				
8.1 Salaries	56,696,508	41,969,362	255,218	98,921,088
8.2 Payroll taxes	3,903,885	3,041,731	9,582	6,955,198
9. Employee relations and welfare	9,732,329	6,581,272	12,849	16,326,450
10. Insurance	83,091	143,138		226,229
11. Directors' fees				
12. Travel and travel items	1,203,405	420,400	1,868	1,625,672
13. Rent and rent items	1,845,462	2,553,090	2,484	4,401,037
14. Equipment	181,287	773,654		954,941
15. Cost or depreciation of EDP equipment and software	4,898,208	9,537,481	788	14,436,478
16. Printing and stationery	80,804	413,507	226	494,536
17. Postage, telephone and telegraph, exchange and express	2,211,851	7,662,593	1,758	9,876,202
18. Legal and auditing	559,962	1,066,151	19,883	1,645,995
19. Totals (Lines 3 to 18)	81,621,134	161,945,720	321,039	243,887,893
20. Taxes, licenses and fees:				
20.1 State and local insurance taxes deducting guaranty association credits of \$ 112,092		16,642,862		16,642,862
20.2 Insurance department licenses and fees	166,924	1,119,978		1,286,902
20.3 Gross guaranty association assessments		558,860		558,860
20.4 All other (excluding federal and foreign income and real estate)	11,761	4,707,487		4,719,248
20.5 Total taxes, licenses and fees (20.1 + 20.2 + 20.3 + 20.4)	178,685	23,029,187		23,207,872
21. Real estate expenses				
22. Real estate taxes				
23. Reimbursements by uninsured plans				
24. Aggregate write-ins for miscellaneous expenses	186,901	727,548	65,225	979,674
25. Total expenses incurred	97,715,620	186,250,947	386,264 (a)	284,352,831
26. Less unpaid expenses - current year	75,736,050	10,010,883	3,448	85,750,381
27. Add unpaid expenses - prior year	73,362,481	10,500,438	3,143	83,866,062
28. Amounts receivable relating to uninsured plans, prior year				
29. Amounts receivable relating to uninsured plans, current year				
30. TOTAL EXPENSES PAID (Lines 25 - 26 + 27 - 28 + 29)	95,342,051	186,740,502	385,959	282,468,512
DETAILS OF WRITE-INS				
2401. MISCELLANEOUS EXPENSES	186,901	727,548	65,225	979,674
2402.				
2403.				
2498. Summary of remaining write-ins for Line 24 from overflow page				
2499. Totals (Lines 2401 thru 2403 plus 2498)(Line 24 above)	186,901	727,548	65,225	979,674

(a) Includes management fees of \$ 244,867,567 to affiliates and \$ to non-affiliates.

ANNUAL STATEMENT FOR THE YEAR 2022 OF THE PROGRESSIVE MAX INSURANCE COMPANY

EXHIBIT OF NET INVESTMENT INCOME

	1 Collected During Year	2 Earned During Year
1. U.S. Government bonds	(a) 4,014,232	5,349,330
1.1 Bonds exempt from U.S. tax	(a) 185,161	164,567
1.2 Other bonds (unaffiliated)	(a) 13,366,043	13,489,771
1.3 Bonds of affiliates	(a)	
2.1 Preferred stocks (unaffiliated)	(b)	
2.11 Preferred stocks of affiliates	(b)	
2.2 Common stocks (unaffiliated)		
2.21 Common stocks of affiliates		
3. Mortgage loans	(c)	
4. Real estate	(d)	
5. Contract loans		
6. Cash, cash equivalents and short-term investments	(e) 244,625	244,625
7. Derivative instruments	(f)	
8. Other invested assets		
9. Aggregate write-ins for investment income		
10. Total gross investment income	17,810,061	19,248,293
11. Investment expenses		(g) 386,264
12. Investment taxes, licenses and fees, excluding federal income taxes		(g)
13. Interest expense		(h)
14. Depreciation on real estate and other invested assets		(i)
15. Aggregate write-ins for deductions from investment income		
16. Total deductions (Lines 11 through 15)		386,264
17. Net investment income (Line 10 minus Line 16)		18,862,029
DETAILS OF WRITE-INS		
0901.		
0902.		
0903.		
0998. Summary of remaining write-ins for Line 9 from overflow page		
0999. Totals (Lines 0901 thru 0903 plus 0998) (Line 9, above)		
1501.		
1502.		
1503.		
1598. Summary of remaining write-ins for Line 15 from overflow page		
1599. Totals (Lines 1501 thru 1503 plus 1598) (Line 15, above)		

- (a) Includes \$ 1,016,758 accrual of discount less \$ 2,441,046 amortization of premium and less \$ 450,616 paid for accrued interest on purchases.
- (b) Includes \$ accrual of discount less \$ amortization of premium and less \$ paid for accrued dividends on purchases.
- (c) Includes \$ accrual of discount less \$ amortization of premium and less \$ paid for accrued interest on purchases.
- (d) Includes \$ for company's occupancy of its own buildings; and excludes \$ interest on encumbrances.
- (e) Includes \$ 244,617 accrual of discount less \$ amortization of premium and less \$ paid for accrued interest on purchases.
- (f) Includes \$ accrual of discount less \$ amortization of premium.
- (g) Includes \$ investment expenses and \$ investment taxes, licenses and fees, excluding federal income taxes, attributable to segregated and Separate Accounts.
- (h) Includes \$ interest on surplus notes and \$ interest on capital notes.
- (i) Includes \$ depreciation on real estate and \$ depreciation on other invested assets.

EXHIBIT OF CAPITAL GAINS (LOSSES)

	1	2	3	4	5
	Realized Gain (Loss) On Sales or Maturity	Other Realized Adjustments	Total Realized Capital Gain (Loss) (Columns 1 + 2)	Change in Unrealized Capital Gain (Loss)	Change in Unrealized Foreign Exchange Capital Gain (Loss)
1. U.S. Government bonds	(1,783,400)		(1,783,400)		
1.1 Bonds exempt from U.S. tax					
1.2 Other bonds (unaffiliated)	(1,432,004)		(1,432,004)	(3,997,572)	
1.3 Bonds of affiliates					
2.1 Preferred stocks (unaffiliated)					
2.11 Preferred stocks of affiliates					
2.2 Common stocks (unaffiliated)					
2.21 Common stocks of affiliates					
3. Mortgage loans					
4. Real estate					
5. Contract loans					
6. Cash, cash equivalents and short-term investments	(1,520)		(1,520)		
7. Derivative instruments					
8. Other invested assets					
9. Aggregate write-ins for capital gains (losses)					
10. Total capital gains (losses)	(3,216,924)		(3,216,924)	(3,997,572)	
DETAILS OF WRITE-INS					
0901.					
0902.					
0903.					
0998. Summary of remaining write-ins for Line 9 from overflow page					
0999. Totals (Lines 0901 thru 0903 plus 0998) (Line 9, above)					

ANNUAL STATEMENT FOR THE YEAR 2022 OF THE PROGRESSIVE MAX INSURANCE COMPANY

EXHIBIT OF NON-ADMITTED ASSETS

	1	2	3
	Current Year Total Nonadmitted Assets	Prior Year Total Nonadmitted Assets	Change in Total Nonadmitted Assets (Col. 2 - Col. 1)
1. Bonds (Schedule D)			
2. Stocks (Schedule D):			
2.1 Preferred stocks			
2.2 Common stocks			
3. Mortgage loans on real estate (Schedule B):			
3.1 First liens			
3.2 Other than first liens.....			
4. Real estate (Schedule A):			
4.1 Properties occupied by the company			
4.2 Properties held for the production of income.....			
4.3 Properties held for sale			
5. Cash (Schedule E - Part 1), cash equivalents (Schedule E - Part 2) and short-term investments (Schedule DA)			
6. Contract loans			
7. Derivatives (Schedule DB)			
8. Other invested assets (Schedule BA)			
9. Receivables for securities			
10. Securities lending reinvested collateral assets (Schedule DL)			
11. Aggregate write-ins for invested assets			
12. Subtotals, cash and invested assets (Lines 1 to 11)			
13. Title plants (for Title insurers only)			
14. Investment income due and accrued			
15. Premiums and considerations:			
15.1 Uncollected premiums and agents' balances in the course of collection	2,923,253	3,464,673	541,420
15.2 Deferred premiums, agents' balances and installments booked but deferred and not yet due ..			
15.3 Accrued retrospective premiums and contracts subject to redetermination			
16. Reinsurance:			
16.1 Amounts recoverable from reinsurers			
16.2 Funds held by or deposited with reinsured companies			
16.3 Other amounts receivable under reinsurance contracts			
17. Amounts receivable relating to uninsured plans			
18.1 Current federal and foreign income tax recoverable and interest thereon			
18.2 Net deferred tax asset	16,456	19,827	3,371
19. Guaranty funds receivable or on deposit			
20. Electronic data processing equipment and software			
21. Furniture and equipment, including health care delivery assets			
22. Net adjustment in assets and liabilities due to foreign exchange rates			
23. Receivables from parent, subsidiaries and affiliates			
24. Health care and other amounts receivable			
25. Aggregate write-ins for other than invested assets	1,524,311	1,449,288	(75,023)
26. Total assets excluding Separate Accounts, Segregated Accounts and Protected Cell Accounts (Lines 12 to 25)	4,464,020	4,933,788	469,768
27. From Separate Accounts, Segregated Accounts and Protected Cell Accounts			
28. Total (Lines 26 and 27)	4,464,020	4,933,788	469,768
DETAILS OF WRITE-INS			
1101.			
1102.			
1103.			
1198. Summary of remaining write-ins for Line 11 from overflow page			
1199. Totals (Lines 1101 thru 1103 plus 1198)(Line 11 above)			
2501. Miscellaneous Other Assets	1,365,536	1,365,536	
2502. Prepaid Expenses	158,775	83,752	(75,023)
2503.			
2598. Summary of remaining write-ins for Line 25 from overflow page			
2599. Totals (Lines 2501 thru 2503 plus 2598)(Line 25 above)	1,524,311	1,449,288	(75,023)

NOTES TO FINANCIAL STATEMENTS

NOTE 1 Summary of Significant Accounting Policies and Going Concern

A. Accounting Practices

The accompanying statutory-basis financial statements of Progressive Max Insurance Company (the "Company") were prepared on the basis of accounting practices prescribed or permitted by the Ohio Department of Insurance ("DOI").

The DOI requires insurance companies domiciled in the state of Ohio to prepare their statutory-basis financial statements in accordance with the National Association of Insurance Commissioners' ("NAIC") Accounting Practices and Procedures Manual subject to any deviations prescribed or permitted by the DOI. No deviations from NAIC statutory accounting practices ("NAIC SAP") were used in preparing these statutory-basis financial statements as illustrated in the table below:

	SSAP #	F/S Page	F/S Line #	2022	2021
NET INCOME					
(1) State basis (Page 4, Line 20, Columns 1 & 2)	XXX	XXX	XXX	\$ 32,878,348	\$ 28,313,286
(2) State Prescribed Practices that are an increase/ (decrease) from NAIC SAP:					
(3) State Permitted Practices that are an increase/(decrease) from NAIC SAP:					
(4) NAIC SAP (1-2-3=4)	XXX	XXX	XXX	\$ 32,878,348	\$ 28,313,286
SURPLUS					
(5) State basis (Page 3, Line 37, Columns 1 & 2)	XXX	XXX	XXX	\$ 332,803,258	\$ 308,827,126
(6) State Prescribed Practices that are an increase/(decrease) from NAIC SAP:					
(7) State Permitted Practices that are an increase/(decrease) from NAIC SAP:					
(8) NAIC SAP (5-6-7=8)	XXX	XXX	XXX	\$ 332,803,258	\$ 308,827,126

B. Use of Estimates in the Preparation of the Financial Statements

The Company is required to make estimates and assumptions when preparing its financial statements and accompanying notes in conformity with NAIC SAP. Actual results may differ from those estimates. Material estimates that are susceptible to significant changes in the near term include the loss and loss adjustment expense ("LAE") reserves.

C. Accounting Policy

Premiums, Acquisition Costs, and Nonadmitted Assets:

Insurance premiums written are being earned into income on a pro rata basis over the period of risk based on a daily earnings convention. Unearned premiums are established to cover the unexpired portion of premiums written. The Company offers a variety of payment plans to meet individual customer needs. Generally, insurance premiums are collected in advance of providing risk coverage, minimizing the Company's exposure to credit risk.

Acquisition costs, such as agents' commissions, premium taxes, and other policy initiation costs, are charged to operations as incurred. Advertising costs are expensed as incurred.

Certain assets designated as "nonadmitted assets", in accordance with Statement of Statutory Accounting Principles ("SSAP") No. 4, Assets and Nonadmitted Assets, are reported on page 13, Exhibit of Nonadmitted Assets. The change in nonadmitted assets is charged directly against surplus as regards policyholders on page 4, Statement of Income, capital and surplus section.

Investment Policies:

(1) Cash, Cash Equivalents, and Short-term Investments

Cash and cash equivalents include bank accounts and certificates of deposit as well as short-term investments with original maturities of three months or less and securities acquired with remaining maturities of three months or less that are reported at amortized cost which approximates market value. Also includes money market mutual funds valued at fair value or net asset value (NAV) as a practical expedient.

Short-term investments include securities acquired within one year of maturity, excluding those with maturities of three months or less (see cash and cash equivalents above) and are reported at amortized cost which approximates market value.

(2) Bonds

Investment-grade bond valuations are based on NAIC designations or NAIC Credit Rating Provider ("CRP") designations from the Acceptable Rating Organization ("ARO") list and are reported at amortized cost using the scientific method which closely approximates the effective interest method. Non-investment-grade bond valuations are also based on NAIC designations or NAIC CRP-ARO designations and are reported at the lower of amortized cost or fair market value. Loan-backed and structured securities follow the guidance prescribed by SSAP No. 43R for the determination of the bond valuation and reporting designation. The difference between the original cost and redemption value of these securities is recognized over the lives of the respective issues and included in net investment gain.

(3) Common Stocks

Common stocks, other than investments in stocks of subsidiaries and affiliates, are reported at fair market values based on active market closing quotations from a regulated exchange. Changes in the fair market values of these securities are reflected directly as unrealized gains or losses in statutory surplus, net of deferred income taxes.

(4) Preferred Stocks

Nonredeemable preferred stocks are reported at fair market values and are not to exceed currently effective call price. Changes in the fair market values of these securities are reflected directly as unrealized gains or losses in statutory surplus, net of deferred income taxes. Investment-grade redeemable preferred stocks are reported at amortized cost, while non-investment-grade redeemable preferred stocks are reported at the lower of amortized cost or fair market value. The difference between the original cost and redemption value of the redeemable preferred securities is recognized using the scientific method, which closely approximates the effective interest method, over the lives of the respective issues and included in net investment gain.

(5) Mortgage Loans

Not applicable

NOTES TO FINANCIAL STATEMENTS

(6) Loan-backed Securities

Loan-backed and structured securities are accounted for as prescribed by SSAP No. 43R. These securities are generally stated at amortized cost as determined by the estimated value of future cash flows. Prepayment assumptions for loan-backed and structured debt securities are obtained from available market data, broker/dealers, and/or internal estimates, and are consistent with current interest rate and economic trends (see Note 5.D).

(7) Investments in Subsidiaries, Controlled and Affiliated Entities

Not applicable

(8) Investments in Joint Ventures, Partnerships and Limited Liability Companies

Not applicable

(9) Derivatives

Not applicable

Repurchase Agreements and Reverse Repurchase Commitment Transactions:

The Company may enter into repurchase agreements in which it borrows cash by providing certain underlying securities as collateral for the arrangement. The cash borrowed is invested in cash equivalents and an offsetting liability is established. The cash equivalent investment maturities and the term of the borrowing arrangement on the collateralized securities match, eliminating duration risk exposure to the Company. The Company did not have any open repurchase agreements at December 31, 2022 and December 31, 2021.

The Company may enter into reverse repurchase commitment transactions. In these transactions, the Company loans cash to an accredited bank and receives U.S. Treasury Notes pledged as general collateral against the cash borrowed. The Company chooses to enter into these transactions as rates on general collateral are more attractive than other short-term rates available in the market. The Company's exposure to credit risk is limited, as these internally managed transactions are typically overnight arrangements. The income generated on these transactions is calculated at the then applicable general collateral rates on the value of U.S. Treasury securities received. The Company has counterparty exposure on reverse repurchase agreements in the event of a counterparty default to the extent the general collateral security's value is below the cash which was delivered to acquire the collateral. The short-term duration of the transactions (primarily overnight investing) reduces that default exposure. The Company did not have any open reverse repurchase commitment transactions at December 31, 2022 and December 31, 2021.

Fair Market Values, Realized Gains and Losses, and Other-Than-Temporary Impairment:

The fair market values reported are derived from independent and observable market input evaluations provided by reputable pricing services, independent broker/dealer bid lists, independent broker/dealer quotations, independent broker/dealer pricing services, or active market closing quotations from a regulated exchange. In very rare cases, if none of the aforementioned primary sources are available, matrix pricing using the reporting entity's own market based assumptions may be utilized. The approved methods for computation of fair market value are prescribed in the Securities Valuation Office Purposes and Procedures Manual.

Realized gains and losses on sales of securities are computed based on the first-in, first-out method.

The Company's management routinely monitors individual securities in its investment portfolio for pricing changes that might indicate potential impairments and performs detailed reviews of securities with unrealized losses based on predetermined guidelines to determine whether a decline in the value of a security is other-than-temporary. A review for other-than-temporary impairment ("OTTI") requires making certain judgments regarding the materiality of the decline, its effect on the financial statements, the probability, extent, and timing of a valuation recovery, and the Company's ability and intent to hold the security. The scope of this review is broad and requires a forward-looking assessment of the fundamental characteristics of a security, as well as the market-related prospects of the issuer and its industry.

Management assesses valuation declines to determine the extent to which such changes are attributable to (i) fundamental factors specific to the issuer, such as financial conditions, business prospects or other factors, or (ii) market-related factors such as interest rates or equity market declines (i.e., negative returns at either a sector index level or the broader market level), or (iii) credit-related losses where the present value of cash flows expected to be collected are lower than the amortized cost basis of the security (includes only those securities covered under SSAP No. 43R). This evaluation reflects management's assessment of current conditions, as well as predictions of uncertain future events that may have a material effect on the financial statements related to security valuation.

When persuasive evidence exists that causes management to conclude that a decline in fair value is other-than-temporary, the book value of such security is written down and recognized as a realized loss. All other unrealized gains or losses are reflected in statutory surplus.

Loss, LAE, and Premium Deficiency Reserves:

Loss reserves represent the estimated liability on claims reported to the Company, plus reserves for losses incurred but not yet reported ("IBNR"). These estimates are reported net of amounts recoverable from salvage and subrogation. LAE reserves represent the estimated expenses required to settle reported claims and IBNR losses. Such loss and LAE reserves could be susceptible to significant change in the near term. The Company conducts extensive reviews each month on portions of its business to help ensure that the Company is meeting its objective of always having reserves that are adequate with minimal variation. Results would differ if different assumptions were made (see Notes 25 and 33).

The Company does not anticipate investment income when evaluating the need for premium deficiency reserves (see Note 30).

Capitalization of Assets:

The Company has written capitalization policies for its various asset classes. The capitalization policy thresholds have not materially changed from the prior year.

Pharmaceutical Rebate Receivables:

Not applicable

D. Going Concern

Management continuously monitors the Company's financial results and compliance with regulatory requirements and found no reason to expect the Company to not continue as a going concern.

NOTE 2 Accounting Changes and Corrections of Errors

Not applicable

NOTES TO FINANCIAL STATEMENTS

NOTE 3 Business Combinations and Goodwill

Not applicable

NOTE 4 Discontinued Operations

Not applicable

NOTE 5 Investments**A. Mortgage Loans, including Mezzanine Real Estate Loans**

Not applicable

B. Debt Restructuring

Not applicable

C. Reverse Mortgages

Not applicable

D. Loan-Backed Securities

(1) The sources used to determine prepayment assumptions are derived from updated cash flows from widely utilized reputable industry sources. The Company's portfolio managers review the available cash flow data and prepayment assumptions and make adjustments based on current performance indicators on the underlying assets (e.g., delinquency rates, foreclosure rates, and default rates), credit support (via current levels of subordination), and historical credit ratings.

(2) The Company has not recorded an other-than-temporary impairment for loan-backed and structured debt securities during the current year.

(3) The Company has not recorded an other-than-temporary impairment for loan-backed and structured debt securities during the current year.

(4) At the end of the reporting period, the composition of fair value and gross unrealized losses on loan-backed and structured debt securities by the length of time that individual securities have been in a continuous unrealized loss position is as follows:

a) The aggregate amount of unrealized losses:

1. Less than 12 Months	\$ 1,970,789
2. 12 Months or Longer	\$ 8,738,199

b) The aggregate related fair value of securities with unrealized losses:

1. Less than 12 Months	\$ 48,527,755
2. 12 Months or Longer	\$ 76,954,584

(5) Under SSAP No. 43R, the Company analyzes its structured debt securities to determine if the Company intends to sell, or if it is more likely than not that the Company will be required to sell, the security prior to recovery and, if so, the Company writes down the security to its current fair market value with the entire amount of the write-down recorded as a realized loss. To the extent that it is more likely than not that the Company will hold the debt security until recovery (which could be maturity), the Company determines if any of the decline in value is due to a credit loss (i.e., where the present value of cash flows expected to be collected is lower than the amortized cost basis of the security) and, if so, the Company recognizes that portion of the impairment as a realized loss.

E. Dollar Repurchase Agreements and/or Securities Lending Transactions

Not applicable

F. Repurchase Agreements Transactions Accounted for as Secured Borrowing

Not applicable

G. Reverse Repurchase Agreements Transactions Accounted for as Secured Borrowing

Not applicable

H. Repurchase Agreements Transactions Accounted for as a Sale

Not applicable

I. Reverse Repurchase Agreements Transactions Accounted for as a Sale

Not applicable

J. Real Estate

Not applicable

K. Low Income Housing tax Credits (LIHTC)

Not applicable

NOTES TO FINANCIAL STATEMENTS

L. Restricted Assets

1. Restricted Assets (Including Pledged)

Restricted Asset Category	Gross (Admitted & Nonadmitted) Restricted						
	Current Year					6	7
	1	2	3	4	5		
	Total General Account (G/A)	G/A Supporting Protected Cell Account Activity (a)	Total Protected Cell Account Restricted Assets	Protected Cell Account Assets Supporting G/A Activity (b)	Total (1 plus 3)	Total From Prior Year	Increase/ (Decrease) (5 minus 6)
a. Subject to contractual obligation for which liability is not shown							
b. Collateral held under security lending agreements							
c. Subject to repurchase agreements							
d. Subject to reverse repurchase agreements							
e. Subject to dollar repurchase agreements							
f. Subject to dollar reverse repurchase agreements							
g. Placed under option contracts							
h. Letter stock or securities restricted as to sale - excluding FHLB capital stock							
i. FHLB capital stock							
j. On deposit with states	\$ 6,843,000				\$ 6,843,000	\$ 6,662,704	\$ 180,296
k. On deposit with other regulatory bodies							
l. Pledged collateral to FHLB (including assets backing funding agreements)							
m. Pledged as collateral not captured in other categories							
n. Other restricted assets							
o. Total Restricted Assets (Sum of a through n)	\$ 6,843,000	\$ -	\$ -	\$ -	\$ 6,843,000	\$ 6,662,704	\$ 180,296

(a) Subset of Column 1

(b) Subset of Column 3

Restricted Asset Category	Current Year			
	8	9	Percentage	
			10	11
	Total Non-admitted Restricted	Total Admitted Restricted (5 minus 8)	Gross (Admitted & Non-admitted) Restricted to Total Assets (c)	Admitted Restricted to Total Admitted Assets (d)
a. Subject to contractual obligation for which liability is not shown			0.000%	0.000%
b. Collateral held under security lending agreements			0.000%	0.000%
c. Subject to repurchase agreements			0.000%	0.000%
d. Subject to reverse repurchase agreements			0.000%	0.000%
e. Subject to dollar repurchase agreements			0.000%	0.000%
f. Subject to dollar reverse repurchase agreements			0.000%	0.000%
g. Placed under option contracts			0.000%	0.000%
h. Letter stock or securities restricted as to sale - excluding FHLB capital stock			0.000%	0.000%
i. FHLB capital stock			0.000%	0.000%
j. On deposit with states		\$ 6,843,000	0.636%	0.639%
k. On deposit with other regulatory bodies			0.000%	0.000%
l. Pledged collateral to FHLB (including assets backing funding agreements)			0.000%	0.000%
m. Pledged as collateral not captured in other categories			0.000%	0.000%
n. Other restricted assets			0.000%	0.000%
o. Total Restricted Assets (Sum of a through n)	\$ -	\$ 6,843,000	0.636%	0.639%

(c) Column 5 divided by Asset Page, Column 1, Line 28

(d) Column 9 divided by Asset Page, Column 3, Line 28

2. Detail of Assets Pledged as Collateral Not Captured in Other Categories (Contracts That Share Similar Characteristics, Such as Reinsurance and Derivatives, Are Reported in the Aggregate)

Not applicable

3. Detail of Other Restricted Assets (Contracts That Share Similar Characteristics, Such as Reinsurance and Derivatives, Are Reported in the Aggregate)

Not applicable

4. Collateral Received and Reflected as Assets Within the Reporting Entity's Financial Statements

Not applicable

M. Working Capital Finance Investments

Not applicable

NOTES TO FINANCIAL STATEMENTS

N. Offsetting and Netting of Assets and Liabilities

Not applicable

O. 5GI Securities

Not applicable

P. Short Sales

Not applicable

Q. Prepayment Penalty and Acceleration Fees

	General Account	Protected Cell
(1) Number of CUSIPs	1	
(2) Aggregate Amount of Investment Income	\$ 3,224	

R. Reporting Entity's Share of Cash Pool by Asset Type

Not applicable

NOTE 6 Joint Ventures, Partnerships and Limited Liability Companies

Not applicable

NOTE 7 Investment Income

A. Accrued Investment Income

The Company nonadmits investment income due and accrued if the amounts are greater than 90 days past due.

B. Amounts Nonadmitted

Not applicable

NOTE 8 Derivative Instruments

Not applicable

NOTE 9 Income Taxes

A. Deferred Tax Assets/(Liabilities)

1. Components of Net Deferred Tax Asset/(Liability)

	As of End of Current Period			12/31/2021			Change		
	(1) Ordinary	(2) Capital	(3) (Col. 1 + 2) Total	(4) Ordinary	(5) Capital	(6) (Col. 4 + 5) Total	(7) (Col. 1 - 4) Ordinary	(8) (Col. 2 - 5) Capital	(9) (Col. 7 + 8) Total
(a) Gross Deferred Tax Assets	\$17,091,746	\$ 861,357	\$17,953,103	\$15,638,154	\$ 20,536	\$15,658,690	\$ 1,453,592	\$ 840,821	\$ 2,294,413
(b) Statutory Valuation Allowance Adjustment	\$ -	\$ 844,901	\$ 844,901			\$ -	\$ -	\$ 844,901	\$ 844,901
(c) Adjusted Gross Deferred Tax Assets (1a - 1b)	\$17,091,746	\$ 16,456	\$17,108,202	\$15,638,154	\$ 20,536	\$15,658,690	\$ 1,453,592	\$ (4,080)	\$ 1,449,512
(d) Deferred Tax Assets Nonadmitted	\$ -	\$ 16,456	\$ 16,456	\$ -	\$ 19,827	\$ 19,827	\$ -	\$ (3,371)	\$ (3,371)
(e) Subtotal Net Admitted Deferred Tax Asset (1c - 1d)	\$17,091,746	\$ -	\$17,091,746	\$15,638,154	\$ 709	\$15,638,863	\$ 1,453,592	\$ (709)	\$ 1,452,883
(f) Deferred Tax Liabilities	\$ 922,736	\$ -	\$ 922,736	\$ 898,103	\$ 709	\$ 898,812	\$ 24,633	\$ (709)	\$ 23,924
(g) Net Admitted Deferred Tax Asset/(Net Deferred Tax Liability) (1e - 1f)	\$16,169,010	\$ -	\$16,169,010	\$14,740,051	\$ -	\$14,740,051	\$ 1,428,959	\$ -	\$ 1,428,959

NOTES TO FINANCIAL STATEMENTS

2. Admission Calculation Components SSAP No. 101

	As of End of Current Period			12/31/2021			Change		
	(1) Ordinary	(2) Capital	(3) (Col. 1 + 2) Total	(4) Ordinary	(5) Capital	(6) (Col. 4 + 5) Total	(7) (Col. 1 - 4) Ordinary	(8) (Col. 2 - 5) Capital	(9) (Col. 7 + 8) Total
Admission Calculation Components SSAP No. 101									
(a) Federal Income Taxes Paid In Prior Years Recoverable Through Loss Carrybacks	\$16,200,679	\$ -	\$16,200,679	\$14,773,697	\$ -	\$14,773,697	\$ 1,426,982	\$ -	\$ 1,426,982
(b) Adjusted Gross Deferred Tax Assets Expected To Be Realized (Excluding The Amount Of Deferred Tax Assets From 2(a) above) After Application of the Threshold Limitation. (The Lesser of 2(b)1 and 2(b)2 Below)	\$ 523,237	\$ -	\$ 523,237	\$ 513,551	\$ -	\$ 513,551	\$ 9,686	\$ -	\$ 9,686
1. Adjusted Gross Deferred Tax Assets Expected to be Realized Following the Balance Sheet Date.	\$ 523,237	\$ -	\$ 523,237	\$ 513,551	\$ -	\$ 513,551	\$ 9,686	\$ -	\$ 9,686
2. Adjusted Gross Deferred Tax Assets Allowed per Limitation Threshold.	XXX	XXX	\$47,495,137	XXX	XXX	\$44,113,061	XXX	XXX	\$ 3,382,076
(c) Adjusted Gross Deferred Tax Assets (Excluding The Amount Of Deferred Tax Assets From 2(a) and 2(b) above) Offset by Gross Deferred Tax Liabilities.	\$ 367,830	\$ -	\$ 367,830	\$ 350,906	\$ 709	\$ 351,615	\$ 16,924	\$ (709)	\$ 16,215
(d) Deferred Tax Assets Admitted as the result of application of SSAP No. 101. Total (2(a) + 2(b) + 2(c))	\$17,091,746	\$ -	\$17,091,746	\$15,638,154	\$ 709	\$15,638,863	\$ 1,453,592	\$ (709)	\$ 1,452,883

3. Other Admissibility Criteria

	2022	2021
a. Ratio Percentage Used To Determine Recovery Period And Threshold Limitation Amount.	1151.000%	879.000%
b. Amount Of Adjusted Capital And Surplus Used To Determine Recovery Period And Threshold Limitation In 2(b)2 Above.	\$ 316,634,248	\$ 294,087,075

4. Impact of Tax Planning Strategies

	As of End of Current Period		12/31/2021		Change	
	(1) Ordinary	(2) Capital	(3) Ordinary	(4) Capital	(5) (Col. 1 - 3) Ordinary	(6) (Col. 2 - 4) Capital
Impact of Tax Planning Strategies:						
(a) Determination of adjusted gross deferred tax assets and net admitted deferred tax assets, by tax character as a percentage.						
1. Adjusted Gross DTAs amount from Note 9A1(c)	\$ 17,091,746	\$ 16,456	\$ 15,638,154	\$ 20,536	\$ 1,453,592	\$ (4,080)
2. Percentage of adjusted gross DTAs by tax character attributable to the impact of tax planning strategies	0.000%	100.000%	0.000%	97.000%	0.000%	3.000%
3. Net Admitted Adjusted Gross DTAs amount from Note 9A1(e)	\$ 17,091,746	\$ -	\$ 15,638,154	\$ 709	\$ 1,453,592	\$ (709)
4. Percentage of net admitted adjusted gross DTAs by tax character admitted because of the impact of tax planning strategies	0.000%	0.000%	0.000%	0.000%	0.000%	0.000%

b. Do the Company's tax-planning strategies include the use of reinsurance? Yes No

B. Deferred Tax Liabilities Not Recognized

Not applicable

NOTES TO FINANCIAL STATEMENTS

C. Current and Deferred Income Taxes

	(1) As of End of Current Period	(2) 12/31/2021	(3) (Col. 1 - 2) Change
1. Current Income Tax			
(a) Federal	\$ 11,317,656	\$ 8,229,198	\$ 3,088,458
(b) Foreign	\$ -	\$ -	\$ -
(c) Subtotal (1a+1b)	\$ 11,317,656	\$ 8,229,198	\$ 3,088,458
(d) Federal income tax on net capital gains	\$ (674,845)	\$ 928,131	\$ (1,602,976)
(e) Utilization of capital loss carry-forwards	\$ -	\$ -	\$ -
(f) Other	\$ -	\$ -	\$ -
(g) Federal and foreign income taxes incurred (1c+1d+1e+1f)	\$ 10,642,811	\$ 9,157,329	\$ 1,485,482
2. Deferred Tax Assets:			
(a) Ordinary:			
(1) Discounting of unpaid losses	\$ 3,810,421	\$ 3,769,987	\$ 40,434
(2) Unearned premium reserve	\$ 12,018,254	\$ 10,475,923	\$ 1,542,331
(3) Policyholder reserves	\$ -	\$ -	\$ -
(4) Investments	\$ -	\$ -	\$ -
(5) Deferred acquisition costs	\$ -	\$ -	\$ -
(6) Policyholder dividends accrual	\$ -	\$ -	\$ -
(7) Fixed assets	\$ -	\$ -	\$ -
(8) Compensation and benefits accrual	\$ 198	\$ 198	\$ -
(9) Pension accrual	\$ -	\$ -	\$ -
(10) Receivables - nonadmitted	\$ 613,883	\$ 727,581	\$ (113,698)
(11) Net operating loss carry-forward	\$ -	\$ -	\$ -
(12) Tax credit carry-forward	\$ -	\$ -	\$ -
(13) Other	\$ 648,990	\$ 664,465	\$ (15,475)
(99) Subtotal (sum of 2a1 through 2a13)	\$ 17,091,746	\$ 15,638,154	\$ 1,453,592
(b) Statutory valuation allowance adjustment	\$ -	\$ -	\$ -
(c) Nonadmitted	\$ -	\$ -	\$ -
(d) Admitted ordinary deferred tax assets (2a99 - 2b - 2c)	\$ 17,091,746	\$ 15,638,154	\$ 1,453,592
(e) Capital:			
(1) Investments	\$ 861,357	\$ 20,536	\$ 840,821
(2) Net capital loss carry-forward	\$ -	\$ -	\$ -
(3) Real estate	\$ -	\$ -	\$ -
(4) Other	\$ -	\$ -	\$ -
(99) Subtotal (2e1+2e2+2e3+2e4)	\$ 861,357	\$ 20,536	\$ 840,821
(f) Statutory valuation allowance adjustment	\$ 844,901	\$ -	\$ 844,901
(g) Nonadmitted	\$ 16,456	\$ 19,827	\$ (3,371)
(h) Admitted capital deferred tax assets (2e99 - 2f - 2g)	\$ -	\$ 709	\$ (709)
(i) Admitted deferred tax assets (2d + 2h)	\$ 17,091,746	\$ 15,638,863	\$ 1,452,883
3. Deferred Tax Liabilities:			
(a) Ordinary:			
(1) Investments	\$ 246,260	\$ 107,611	\$ 138,649
(2) Fixed assets	\$ -	\$ -	\$ -
(3) Deferred and uncollected premium	\$ -	\$ -	\$ -
(4) Policyholder reserves	\$ -	\$ -	\$ -
(5) Other	\$ 676,476	\$ 790,492	\$ (114,016)
(99) Subtotal (3a1+3a2+3a3+3a4+3a5)	\$ 922,736	\$ 898,103	\$ 24,633
(b) Capital:			
(1) Investments	\$ -	\$ 709	\$ (709)
(2) Real estate	\$ -	\$ -	\$ -
(3) Other	\$ -	\$ -	\$ -
(99) Subtotal (3b1+3b2+3b3)	\$ -	\$ 709	\$ (709)
(c) Deferred tax liabilities (3a99 + 3b99)	\$ 922,736	\$ 898,812	\$ 23,924
4. Net deferred tax assets/liabilities (2i - 3c)	\$ 16,169,010	\$ 14,740,051	\$ 1,428,959

The change in net deferred income tax is comprised of the following (this analysis excludes nonadmitted assets; the change in nonadmitted assets is reported separately from the change in net deferred income tax in the Statement of Income, Surplus section):

Description	December 31, 2022	December 31, 2021	Change
Total deferred tax assets	\$ 17,108,202	\$ 15,658,690	\$ 1,449,512
Total deferred tax liabilities	\$ 922,736	\$ 898,812	\$ 23,924
Net deferred tax asset (liability)	\$ 16,185,466	\$ 14,759,878	\$ 1,425,588
Tax effect of unrealized gains (losses)			\$ 839,490
Change in net deferred income tax			\$ 586,098

D. Reconciliation of Federal Income Tax Rate to Actual Effective Rate

Description	Tax Effect Amount	Effect Tax Rate
Provision computed at statutory rate	\$ 9,139,443	21.0%
Exempt interest income	\$ (25,919)	-0.1%
Dividends received deduction	\$ -	0.0%
Impact of nonadmitted assets	\$ 97,943	0.2%
Change in valuation allowance	\$ 844,901	1.9%
Other	\$ 345	0.1%
Total	\$ 10,056,713	23.1%
Federal and foreign income taxes incurred	\$ 10,642,811	
Change in net deferred income tax	\$ (586,098)	
Total statutory income taxes	\$ 10,056,713	

NOTES TO FINANCIAL STATEMENTS

E. Operating Loss Carry Forwards and Income Taxes Available for Recoupment

1. During the reporting period, the Company did not have any unused operating loss carryforwards available to offset against future taxable income.
2. The amount of federal income taxes incurred in the current year and the preceding year that are available for recoupment in the event of future net losses is:

Period	Amount
Current tax year	\$ 10,736,489
First preceding tax year	\$ 9,058,822

3. The Company did not have any tax deposits under Section 6603 of the Internal Revenue Code.

F. Consolidated Federal Income Tax Return

1. The Company's Federal income tax return is consolidated with The Progressive Corporation ("TPC") and all of its eligible subsidiaries (the "Group").
2. The method of allocation between the companies is subject to written agreement and is jointly approved by an officer of TPC and the Company. The allocation is based upon separate tax return calculations with current credit for net losses or other items utilized in the consolidated tax return. Intercompany tax balances are settled quarterly.

G. Federal or Foreign Federal Income Tax Loss Contingencies

The Company does not have any tax loss contingencies for which it is reasonably possible that the total liability will significantly increase within twelve months of the reporting date.

H. Repatriation Transition Tax (RTT)

Not applicable

I. Alternative Minimum Tax (AMT) Credit

Not applicable

J. Inflation Reduction Act ("IRA")

The IRA was enacted on August 16, 2022 and includes a new corporate alternative minimum tax (CAMT). The Company is an "applicable corporation" as defined in the IRA and therefore it is subject to the CAMT. However, the Company does not expect to be liable for CAMT in 2023.

NOTE 10 Information Concerning Parent, Subsidiaries, Affiliates and Other Related Parties

A. Nature of Relationships

The Company is wholly owned by Progressive Direct Holdings, Inc. ("PDH"), a holding company incorporated in Delaware. The structure of the holding company organization is shown on Schedule Y, Part 1.

B. Significant Transactions and Changes in Terms of Intercompany Arrangements

All significant transactions by the Company or any affiliated insurer with any affiliate are summarized in Schedule Y, Part 2. See Note 13.

C. Transactions with related party who are not reported on Schedule Y

Not applicable

D. Amounts Due to or from Related Parties

The Company reported a \$13,212,940 and \$10,432,987 receivable from parent, subsidiaries, and affiliates at December 31, 2022 and 2021, respectively. These balances are due to cash collections and disbursements on behalf of the Company under the Group's centralized cash management system and the reinsurance and management agreements in which the Company participates. The Company also reported a \$3,693,522 and \$1,547,906 current Federal income tax payable at December 31, 2022 and 2021, respectively. These balances are due to TPC for the Company's Federal income tax liability. The intercompany balances are settled by the end of the following quarter depending on the timing of investment cash transactions. These transactions are dependent upon market timing, investment needs and overall portfolio strategy as to the timing of such settlement transactions.

E. Management, Service Contracts, Cost Sharing Arrangements

Management, operations and claims services are provided under a management agreement with Progressive Direct Insurance Company ("Progressive Direct"), an insurance affiliate domiciled in Ohio. Under the terms of the agreement, the Company is provided underwriting and loss adjustment services for business produced in exchange for a management fee based on the Company's use of services.

The Company participates in an investment services agreement with Progressive Capital Management Corp., a non-insurance affiliate. Under the terms of the agreement, the Company is provided investment and capital management services in exchange for an investment management fee based on its use of services.

The Company participates in an aggregate stop loss reinsurance agreement with Progressive Casualty Insurance Company ("Casualty"), an insurance affiliate domiciled in Ohio, for business assumed by the Company from various reinsurance pools from 1972 to 1974 which underwrote general liability insurance (see Note 33).

All intercompany agreements are approved by the participating insurance companies' states of domicile when established.

F. Guarantees or Contingencies for Related Parties

Not applicable

G. Nature of Relationships that Could Affect Operations

All outstanding shares of the Company are owned by PDH.

H. Amount Deducted for Investment in Upstream Company

Not applicable

NOTES TO FINANCIAL STATEMENTS

I. Detail of Investments in Affiliates Greater than 10% of Admitted Assets

Not applicable

J. Write-Downs for Impairment of Investments in Affiliates

Not applicable

K. Investment in Foreign Insurance Subsidiary

Not applicable

L. Investment in Downstream Non-Insurance Holding Company

Not applicable

M. All SCA Investments

Not applicable

N. Investment in Insurance SCAs

Not applicable

O. SCA or SSAP 48 Entity Loss Tracking

Not applicable

NOTE 11 Debt

Not applicable

NOTE 12 Retirement Plans, Deferred Compensation, Postemployment Benefits and Compensated Absences and Other Postretirement Benefit Plans

Not applicable

NOTE 13 Capital and Surplus, Dividend Restrictions and Quasi-Reorganizations

A. Outstanding Shares

The Company has 2,000,000 shares of \$3 par value common stock authorized and 1,201,608 shares issued and outstanding. The Company has no preferred stock authorized, issued, or outstanding.

B. Dividend Rate of Preferred Stock

Not applicable

C. Dividend Restrictions

The maximum amount of dividends the Company can pay to PDH in 2023 without prior regulatory approval is limited by insurance laws in Ohio. Based on the dividend laws currently in effect, the Company may pay dividends of \$33,280,326 in 2023 without prior approval from the Ohio DOI, provided the dividend payment is not made within 12 months of the previous payment.

D. Dates and Amounts of Dividends Paid

Date Paid	Amount Paid	Dividend Type
December 14, 2022	\$ 6,800,000	Ordinary
December 14, 2021	\$ 19,500,000	Ordinary

E. Amount of Ordinary Dividends That May Be Paid

Within the limitations described in section C, there are no additional restrictions placed on the portion of Company profits that may be paid as ordinary dividends to stockholders.

F. Restrictions on Unassigned Funds

There were no restrictions on the unassigned funds of the Company other than those described in section C and E, including for whom the surplus is being held.

G. Mutual Surplus Advances

Not applicable

H. Company Stock Held for Special Purposes

Not applicable

I. Changes in Special Surplus Funds

Not applicable

J. Changes in Unassigned Funds

The portion of unassigned funds (surplus) represented or reduced by cumulative unrealized gains and losses is \$ (4,093,057)

NOTES TO FINANCIAL STATEMENTS

K. Surplus Notes

Not applicable

L. Impact of Quasi Reorganizations

Not applicable

M. Dates of Quasi Reorganizations

Not applicable

NOTE 14 Liabilities, Contingencies and Assessments

A. Contingent Commitments

Not applicable

B. Assessments

(1) Nature and Amount of Assessments

The Company is subject to state guaranty fund and other assessments by the states in which it writes business. State guaranty fund assessments are accrued at the time of any known insolvencies. Other assessments are accrued either at the time of assessment or at the time the premiums are written. These accruals are based on information received from the states in which the Company writes business and may change due to many factors including the Company's share of the ultimate cost of current insolvencies.

As of December 31, 2022 and 2021, the Company's estimated liability for state guaranty fund and other assessments was \$2,351,916 and \$1,955,855, respectively.

As of December 31, 2022 and 2021, the Company's estimated liability for various surcharges was \$462,745 and \$422,575, respectively.

(2) Assets Recognized for Premium Tax Offsets

Not applicable

(3) Guaranty Fund Liabilities and Assets Related to Assessments from Insolvencies of Entities that Wrote Long-Term Care Contracts

Not applicable

C. Gain Contingencies

Not applicable

D. Claims Related Extra Contractual Obligation and Bad Faith Losses Stemming from Lawsuits

Not applicable

E. Product Warranties

Not applicable

F. Joint and Several Liabilities

Not applicable

G. All Other Contingencies

The Company routinely assesses the collectibility of premiums and agents' balances receivable and records a bad debt reserve for amounts exceeding the nonadmitted balance that the Company believes are uncollectible.

The Company is named as defendant in various lawsuits arising out of its insurance operations. All legal actions relating to claims made under insurance policies are considered by the Company in establishing its loss and LAE reserves. The Company also has, on a net basis, potential exposure relating to lawsuits due to its participation in a 100% pooling reinsurance agreement for which it is allocated litigation expenses (see Note 26).

The pending lawsuits summarized below are in various stages of development, and the outcomes are uncertain or, if probable and estimable, are accrued in these statutory-basis financial statements. At the statement date, except to the extent an accrual has been established, the Company does not consider the losses from these pending cases to be both probable and estimable and is unable to estimate a range of loss at this time.

There was an individual lawsuit brought by an auto body repair shop alleging breach of contract, unjust enrichment, unlawful interference with repair, or bad faith.

There was a putative class action lawsuit alleging the Company's underinsured motorist coverage is illusory.

There was a putative class action lawsuit alleging that the Company's stacked uninsured/underinsured motorist coverage on a single vehicle policy is illusory.

There were two putative class action lawsuits alleging the Company undervalues total loss claims through the use of certain valuation tools.

There was a qui tam lawsuit challenging the Company's reimbursement to Medicare Advantage Plans on first-party and/or third-party medical claims and settlements with insureds and claimants.

There was an individual lawsuit seeking a judicial declaration regarding the parties' rights and obligations under reinsurance agreements in connection with loss incurred under an insurance policy issued to the State of Montana.

NOTE 15 Leases

Not applicable

NOTES TO FINANCIAL STATEMENTS

NOTE 16 Information About Financial Instruments With Off-Balance Sheet Risk and Financial Instruments With Concentrations of Credit Risk

Not applicable

NOTE 17 Sale, Transfer and Servicing of Financial Assets and Extinguishments of Liabilities

Not applicable

NOTE 18 Gain or Loss to the Reporting Entity from Uninsured Plans and the Uninsured Portion of Partially Insured Plans

Not applicable

NOTE 19 Direct Premium Written/Produced by Managing General Agents/Third Party Administrators

Not applicable

NOTE 20 Fair Value Measurements
A. Inputs Used for Assets and Liabilities Measured at Fair Value
(1) Fair Value Measurements by Levels 1, 2, and 3

The Company categorizes its financial instruments, based on the degree of subjectivity inherent in the method by which they are valued, into a fair value hierarchy of three levels, as follows:

Level 1 - Inputs are unadjusted, quoted prices in active markets for identical instruments at the measurement date (e.g., U.S. government obligations, which are continually priced on a daily basis, active exchange-traded equity securities, and certain short-term securities).

Level 2 - Inputs (other than quoted prices included within Level 1) that are observable for the instrument either directly or indirectly (e.g., certain corporate and municipal bonds and certain preferred stocks). This includes: (i) quoted prices for similar instruments in active markets, (ii) quoted prices for identical or similar instruments in markets that are not active, (iii) inputs other than quoted prices that are observable for the instruments, and (iv) inputs that are derived principally from or corroborated by observable market data by correlation or other means.

Level 3 - Inputs that are unobservable. Unobservable inputs reflect the Company's subjective evaluation about the assumptions market participants would use in pricing the financial instrument (e.g., certain structured securities and privately held investments).

Determining the fair value of the investment portfolio is the responsibility of the Company's management. As part of the responsibility, management evaluates whether a market is distressed or inactive in determining the fair value for the Company's portfolio. Management reviews certain market level inputs to evaluate whether sufficient activity, volume, and new issuances exist to create an active market. Based on this evaluation, management concluded that there was sufficient activity related to the sectors and securities for which they obtained valuations.

See Note 1.C for further information regarding methods used to determine fair market value.

The valuations classified as either Level 1 or Level 2 in the table below are priced exclusively by external sources, including: pricing vendors, dealers/market makers, and exchange-quoted prices. The Company did not have any transfers between Level 1 and Level 2. At the end of each reporting period, the Company evaluates whether or not any event has occurred or circumstances have changed that would cause an instrument to be transferred into or out of Level 3.

Fair Value Measurements at Reporting Date:

Description for each class of asset or liability	(Level 1)	(Level 2)	(Level 3)	Net Asset Value (NAV)	Total
a. Assets at fair value					
Bonds industrial & miscellaneous	\$ -	\$ 21,167,787	\$ -		\$ 21,167,787
Common stock industrial & miscellaneous					\$ -
Preferred stock industrial & miscellaneous					\$ -
Total assets at fair value/NAV	\$ -	\$ 21,167,787	\$ -	\$ -	\$ 21,167,787

The Company does not have any liabilities measured at fair value on the balance sheet.

(2) Fair Value Measurements in Level 3 of the Fair Value Hierarchy

Not applicable

(3) Policy on Transfers Into and Out of Level 3

At the end of each reporting period, the Company evaluates whether or not any event has occurred or circumstances have changed that would cause an instrument to be transferred into or out of Level 3.

(4) Inputs and Techniques Used for Level 2 and Level 3 Fair Values

See Note 20.A.1 above.

(5) Derivative Fair Values

Not applicable

B. Other Fair Value Disclosures

Not applicable

NOTES TO FINANCIAL STATEMENTS

C. Fair Values for all Financial Instruments by Levels 1, 2, and 3

The table below represents the fair value of all financial instruments at the reporting date, however, not all financial instruments are reported at fair value in the Company's financial statements.

Type of Financial Instrument	Aggregate Fair Value	Admitted Assets	(Level 1)	(Level 2)	(Level 3)	Net Asset Value (NAV)	Not Practicable (Carrying Value)
Bonds	\$ 894,487,973	\$ 948,227,396	\$ 419,843,475	\$ 474,644,498	\$ -		
Preferred stock	\$ -	\$ -	\$ -	\$ -	\$ -		
Common stock	\$ -	\$ -	\$ -	\$ -	\$ -		
Cash equivalents	\$ 15,092,257	\$ 15,092,257	\$ 15,092,257	\$ -	\$ -		
Short-term investments							

D. Not Practicable to Estimate Fair Value

Not applicable

E. NAV Practical Expedient Investments

Not applicable

NOTE 21 Other Items

A. Unusual or Infrequent Items

Not applicable

B. Troubled Debt Restructuring: Debtors

Not applicable

C. Other Disclosures

Not applicable

D. Business Interruption Insurance Recoveries

Not applicable

E. State Transferable and Non-transferable Tax Credits

Not applicable

F. Subprime Mortgage Related Risk Exposure

(1) Description of the Subprime-Mortgage-Related Risk Exposure and Related Risk Management Practices

The following subprime disclosure and the review and procedures described within are completed at a consolidated level for all the Progressive companies. To the extent the Company had any direct subprime exposure, those securities would be listed in Note 21.F.3.

Management's review of the investment portfolio for securities with direct subprime exposure, such as Alt-A residential mortgage loan-backed bonds and home equity loan-backed bonds is performed in conjunction with the OTTI analysis and procedures (see Note 1.C). Additionally, securities that were determined to have an indirect subprime exposure were also reviewed as part of the OTTI process.

The Company's management continues to perform a detailed review of its investment portfolio, paying particular attention to the credit profile of the issuers to identify the extent to which any asset values may have been impacted by direct or indirect exposure to the subprime mortgage loan disruption, as well as broader credit and financial market events.

In the reporting period, the Company recorded no OTTI write-downs on any securities as a result of direct subprime exposure.

(2) Direct Exposure Through Investments in Subprime Mortgage Loans

Not applicable

(3) Direct Exposure Through Other Investments.

Not applicable

(4) Underwriting Exposure to Subprime Mortgage Risk Through Mortgage Guaranty or Financial Guaranty Insurance Coverage.

Not applicable

G. Insurance-Linked Securities (ILS) Contracts

Not applicable

H. The Amount That Could Be Realized on Life Insurance Where the Reporting Entity is Owner and Beneficiary or Has Otherwise Obtained Rights to Control the Policy

Not applicable

NOTE 22 Events Subsequent

Subsequent events have been considered through February 10, 2023 for these statutory-basis financial statements that were available for issuance by March 1, 2023. There were no events occurring subsequent to the end of the year that merited recognition or disclosure in these statements.

NOTES TO FINANCIAL STATEMENTS

NOTE 23 Reinsurance

A. Unsecured Reinsurance Recoverables

Individual Reinsurers with Unsecured Reinsurance Recoverables Exceeding 3% of Policyholder Surplus

NAIC Code	Federal ID #	Reinsurer	Amount
16322	34-1524319	Progressive Direct Insurance Company	\$ 253,616,000
Total			\$ 253,616,000

B. Reinsurance Recoverable in Dispute

Not applicable

C. Reinsurance Assumed and Ceded

(1) The table below summarizes ceded and assumed unearned premiums and the related commission equity at reporting date.

	Assumed Reinsurance		Ceded Reinsurance		Net	
	Premium Reserve	Commission Equity	Premium Reserve	Commission Equity	Premium Reserve	Commission Equity
a. Affiliates	\$ 283,979,000		\$ 84,078,000		\$ 199,901,000	\$ -
b. All Other						
c. Total (a+b)	\$ 283,979,000	\$ -	\$ 84,078,000	\$ -	\$ 199,901,000	\$ -
d. Direct Unearned Premium Reserve						\$ 84,078,000

(2) The Company has no return commission or profit sharing arrangements.

D. Uncollectible Reinsurance

Not applicable

E. Commutation of Ceded Reinsurance

Not applicable

F. Retroactive Reinsurance

Not applicable

G. Reinsurance Accounted for as a Deposit

Not applicable

H. Disclosures for the Transfer of Property and Casualty Run-off Agreements

Not applicable

I. Certified Reinsurer Rating Downgraded or Status Subject to Revocation

Not applicable

J. Reinsurance Agreements Qualifying for Reinsurer Aggregation

Not applicable

K. Reinsurance Credit on Contracts Covering Health Business

Not applicable

NOTE 24 Retrospectively Rated Contracts & Contracts Subject to Redetermination

A. Method Used to Estimate

Not applicable

B. Method Used to Record

Not applicable

C. Amount and Percent of Net Retrospective Premiums

Not applicable

D. Medical Loss Ratio Rebates

Not applicable

E. Calculation of Nonadmitted Accrued Retrospective Premiums

Not applicable

NOTES TO FINANCIAL STATEMENTS

F. Risk Sharing Provisions of the Affordable Care Act

- (1) Did the reporting entity write accident and health insurance premium which is subject to the Affordable Care Act risk sharing provisions (YES/NO)? Yes [] No [X]
- (2) Impact of Risk Sharing Provisions of the Affordable Care Act on Admitted Assets, Liabilities and Revenue for the Current Year
Not applicable
- (3) Roll-Forward of Prior Year ACA Risk Sharing Provisions
Not applicable
- (4) Roll-Forward of Risk Corridors Asset and Liability Balances by Program Benefit Year
Not applicable
- (5) ACA Risk Corridors Receivable as of Reporting Date
Not applicable

NOTE 25 Change in Incurred Losses and Loss Adjustment Expenses

A. Change in Incurred Losses and Loss Adjustment Expenses

Incurred losses and LAE attributable to insured events of prior accident years decreased by \$3,747,239 in 2022, which is 1.0% of the total prior year net unpaid losses and LAE of \$382,183,224. The favorable development is primarily due to more salvage and subrogation recoveries than expected in auto physical damage and lower than anticipated claims adjusting expenses, partially offset by more supplemental payments on previously closed features than anticipated in private passenger auto liability.

B. Information about Significant Changes in Methodologies and Assumptions

Not applicable

NOTE 26 Intercompany Pooling Arrangements

The Company participates in a pooling reinsurance agreement with the property-casualty affiliates listed below (the "Direct Pool") under which 100% of the underwriting business of each member company, net of external reinsurance, is ceded to Progressive Direct, the Direct Pool manager and a Direct Pool participant. The combined premiums, losses, and expenses are then retroceded to each Direct Pool member based on pre-determined pooling percentages.

Mountain Laurel Assurance Company ("Mountain Laurel"), an insurance affiliate domiciled in Ohio, terminated its future participation in the Direct Pool effective November 5, 2005. Mountain Laurel has a zero percent retrocession participation in the Direct Pool for all policies written prior to that date.

The pooling percentages for each Direct Pool participant were as follows:

Company	NAIC Code	2022 Pool %	2021 Pool %
Progressive Direct Insurance Company (Lead)	16322	77.0%	77.0%
Progressive Marathon Insurance Company	37605	6.0	6.0
Progressive Max Insurance Company	24279	6.0	6.0
Progressive Advanced Insurance Company	11851	4.0	4.0
Progressive Universal Insurance Company	21727	4.0	4.0
Progressive Premier Insurance Company of Illinois	21735	2.0	2.0
Progressive Paloverde Insurance Company	44695	0.5	0.5
Progressive Choice Insurance Company	44288	0.5	0.5
Mountain Laurel Assurance Company	44180	--	--
		100.0%	100.0%

All business written by each Direct Pool member is subject to pooling with the exception of loss reserves from the Company's assumed asbestos and environmental claims, for which the Company has no exposure (see Note 33). Business ceded by Direct Pool members to non-affiliated reinsurers prior to pooling, is primarily due to state-provided reinsurance programs. The Direct Pool does not participate in any intercompany sharing of the provision for reinsurance and the write-offs of uncollectible reinsurance.

At the end of the reporting period amounts recoverable from and payable to Progressive Direct and all affiliates participating in the Direct Pool are as follows:

Company	Amounts Recoverable	Amounts Payable
Progressive Direct Insurance Company (Lead)	\$ 35,926,417	\$ 71,579,166
Progressive Marathon Insurance Company	15,142,581	4,799,376
Progressive Max Insurance Company	7,311,066	4,799,376
Progressive Advanced Insurance Company	21,270,424	12,933,205
Progressive Universal Insurance Company	11,803,272	3,819,473
Progressive Premier Insurance Company of Illinois	7,403,434	6,370,786
Progressive Paloverde Insurance Company	8,426,695	2,024,274
Progressive Choice Insurance Company	221,694	1,177,812
Mountain Laurel Assurance Company	--	2,115
Total	\$ 107,505,583	\$ 107,505,583

NOTE 27 Structured Settlements

Not applicable

NOTES TO FINANCIAL STATEMENTS

NOTE 28 Health Care Receivables

Not applicable

NOTE 29 Participating Policies

Not applicable

NOTE 30 Premium Deficiency Reserves

- | | | |
|-----|--|---|
| (1) | Liability carried for premium deficiency reserves | \$0 |
| (2) | Date of the most recent evaluation of this liability | 12/19/2022 |
| (3) | Was anticipated investment income utilized in the calculation? | Yes <input type="checkbox"/> No <input checked="" type="checkbox"/> |

NOTE 31 High Deductibles

Not applicable

NOTE 32 Discounting of Liabilities for Unpaid Losses or Unpaid Loss Adjustment Expenses

Not applicable

NOTE 33 Asbestos/Environmental Reserves

The Company is primarily an insurer of motor vehicles, therefore it has limited exposure for asbestos and environmental claims. The Company's exposure arises from participation in various reinsurance pools from 1972 to 1974, which underwrote general liability insurance. These exposures are recorded by the Company as assumed business and are not subject to the pooling reinsurance agreement (see Note 26). During 2018, the Company entered commutation agreements to commute various reinsurance pool reserves from 1965 to 1975. The Company participates in an aggregate excess of loss reinsurance agreement with affiliate, Progressive Casualty Insurance Company, for business assumed by the Company from various pools from 1965 to 1975 (see Note 10).

The Company records case and DCC reserves based on financial information received from the various external reinsurance pool managers. IBNR reserves are established based on previous experience.

A. Asbestos Reserves Direct, Assumed, and Net of Reinsurance are as Follows:

(1) Direct

	2018	2019	2020	2021	2022
a. Beginning reserves:	\$ -	\$ -	\$ -	\$ -	\$ -
b. Incurred losses and loss adjustment expense:	\$ -	\$ -	\$ -	\$ -	\$ -
c. Calendar year payments for losses and loss adjustment expenses:	\$ -	\$ -	\$ -	\$ -	\$ -
d. Ending reserves (a+b-c):					

(2) Assumed Reinsurance

	2018	2019	2020	2021	2022
a. Beginning reserves:	\$ 453,810	\$ 277,068	\$ 234,020	\$ 230,360	\$ 214,760
b. Incurred losses and loss adjustment expense:	\$ 78,931	\$ (8,103)	\$ (309)	\$ 1,848	\$ 837,417
c. Calendar year payments for losses and loss adjustment expenses:	\$ 255,673	\$ 34,945	\$ 3,351	\$ 17,448	\$ 3,883
d. Ending reserves (a+b-c):	\$ 277,068	\$ 234,020	\$ 230,360	\$ 214,760	\$ 1,048,294

(3) Net of Ceded Reinsurance

	2018	2019	2020	2021	2022
a. Beginning reserves:	\$ -	\$ -	\$ -	\$ -	\$ -
b. Incurred losses and loss adjustment expense:	\$ -	\$ -	\$ -	\$ -	\$ -
c. Calendar year payments for losses and loss adjustment expenses:	\$ -	\$ -	\$ -	\$ -	\$ -
d. Ending reserves (a+b-c):					

B. Ending Reserves for Asbestos Claims for Bulk and IBNR Included in A above (Losses and LAE):

(1) Direct Basis:	\$	-
(2) Assumed Reinsurance Basis:	\$	178,442
(3) Net of Ceded Reinsurance Basis:	\$	(869,852)

C. Ending Reserves for Asbestos Claims for LAE Included in A above (Case, Bulk, and IBNR):

(1) Direct Basis:	\$	-
(2) Assumed Reinsurance Basis:	\$	-
(3) Net of Ceded Reinsurance Basis:	\$	-

NOTES TO FINANCIAL STATEMENTS

D. Environmental Reserves Direct, Assumed, and Net of Reinsurance are as Follows:

(1) Direct

	2018	2019	2020	2021	2022
a. Beginning reserves:	\$ -	\$ -	\$ -	\$ -	\$ -
b. Incurred losses and loss adjustment expense:	\$ -	\$ -	\$ -	\$ -	\$ -
c. Calendar year payments for losses and loss adjustment expenses:	\$ -	\$ -	\$ -	\$ -	\$ -
d. Ending reserves (a+b-c):					

(2) Assumed Reinsurance

	2018	2019	2020	2021	2022
a. Beginning reserves:	\$ 1,656,702	\$ 795	\$ 991	\$ 598	\$ 598
b. Incurred losses and loss adjustment expense:	\$ (507,908)	\$ 196	\$ (6)	\$ -	\$ -
c. Calendar year payments for losses and loss adjustment expenses:	\$ 1,147,999	\$ -	\$ 387	\$ -	\$ -
d. Ending reserves (a+b-c):	\$ 795	\$ 991	\$ 598	\$ 598	\$ 598

(3) Net of Ceded Reinsurance

	2018	2019	2020	2021	2022
a. Beginning reserves:	\$ -	\$ -	\$ -	\$ -	\$ -
b. Incurred losses and loss adjustment expense:	\$ -	\$ -	\$ -	\$ -	\$ -
c. Calendar year payments for losses and loss adjustment expenses:	\$ -	\$ -	\$ -	\$ -	\$ -
d. Ending reserves (a+b-c):					

E. Ending Reserves for Environmental Claims for Bulk and IBNR Included in D above (Losses and LAE):

(1) Direct Basis:	\$ -
(2) Assumed Reinsurance Basis:	\$ 596
(3) Net of Ceded Reinsurance Basis:	\$ (2)

F. Ending Reserves for Environmental Claims for LAE Included in D above (Case, Bulk + IBNR):

(1) Direct Basis:	\$ -
(2) Assumed Reinsurance Basis:	\$ -
(3) Net of Ceded Reinsurance Basis:	\$ -

NOTE 34 Subscriber Savings Accounts

Not applicable

NOTE 35 Multiple Peril Crop Insurance

Not applicable

NOTE 36 Financial Guaranty Insurance

Not applicable

GENERAL INTERROGATORIES

**PART 1 - COMMON INTERROGATORIES
GENERAL**

- 1.1 Is the reporting entity a member of an Insurance Holding Company System consisting of two or more affiliated persons, one or more of which is an insurer? Yes [X] No []
If yes, complete Schedule Y, Parts 1, 1A, 2 and 3.
- 1.2 If yes, did the reporting entity register and file with its domiciliary State Insurance Commissioner, Director or Superintendent or with such regulatory official of the state of domicile of the principal insurer in the Holding Company System, a registration statement providing disclosure substantially similar to the standards adopted by the National Association of Insurance Commissioners (NAIC) in its Model Insurance Holding Company System Regulatory Act and model regulations pertaining thereto, or is the reporting entity subject to standards and disclosure requirements substantially similar to those required by such Act and regulations? Yes [X] No [] N/A []
- 1.3 State Regulating? OHIO
- 1.4 Is the reporting entity publicly traded or a member of a publicly traded group? Yes [X] No []
- 1.5 If the response to 1.4 is yes, provide the CIK (Central Index Key) code issued by the SEC for the entity/group. 0000080661
- 2.1 Has any change been made during the year of this statement in the charter, by-laws, articles of incorporation, or deed of settlement of the reporting entity? Yes [] No [X]
- 2.2 If yes, date of change:
- 3.1 State as of what date the latest financial examination of the reporting entity was made or is being made. 12/31/2022
- 3.2 State the as of date that the latest financial examination report became available from either the state of domicile or the reporting entity. This date should be the date of the examined balance sheet and not the date the report was completed or released. 12/31/2017
- 3.3 State as of what date the latest financial examination report became available to other states or the public from either the state of domicile or the reporting entity. This is the release date or completion date of the examination report and not the date of the examination (balance sheet date). 05/08/2019
- 3.4 By what department or departments?
OHIO
- 3.5 Have all financial statement adjustments within the latest financial examination report been accounted for in a subsequent financial statement filed with Departments? Yes [] No [] N/A [X]
- 3.6 Have all of the recommendations within the latest financial examination report been complied with? Yes [X] No [] N/A []
- 4.1 During the period covered by this statement, did any agent, broker, sales representative, non-affiliated sales/service organization or any combination thereof under common control (other than salaried employees of the reporting entity), receive credit or commissions for or control a substantial part (more than 20 percent of any major line of business measured on direct premiums) of:
4.11 sales of new business? Yes [] No [X]
4.12 renewals? Yes [] No [X]
- 4.2 During the period covered by this statement, did any sales/service organization owned in whole or in part by the reporting entity or an affiliate, receive credit or commissions for or control a substantial part (more than 20 percent of any major line of business measured on direct premiums) of:
4.21 sales of new business? Yes [] No [X]
4.22 renewals? Yes [] No [X]
- 5.1 Has the reporting entity been a party to a merger or consolidation during the period covered by this statement? Yes [] No [X]
If yes, complete and file the merger history data file with the NAIC.
- 5.2 If yes, provide the name of the entity, NAIC Company Code, and state of domicile (use two letter state abbreviation) for any entity that has ceased to exist as a result of the merger or consolidation.

1 Name of Entity	2 NAIC Company Code	3 State of Domicile
.....

- 6.1 Has the reporting entity had any Certificates of Authority, licenses or registrations (including corporate registration, if applicable) suspended or revoked by any governmental entity during the reporting period? Yes [] No [X]
- 6.2 If yes, give full information:
.....
- 7.1 Does any foreign (non-United States) person or entity directly or indirectly control 10% or more of the reporting entity? Yes [] No [X]
- 7.2 If yes,
7.21 State the percentage of foreign control; %
7.22 State the nationality(s) of the foreign person(s) or entity(s); or if the entity is a mutual or reciprocal, the nationality of its manager or attorney-in-fact and identify the type of entity(s) (e.g., individual, corporation, government, manager or attorney-in-fact).

1 Nationality	2 Type of Entity
.....

ANNUAL STATEMENT FOR THE YEAR 2022 OF THE PROGRESSIVE MAX INSURANCE COMPANY

GENERAL INTERROGATORIES

- 8.1 Is the company a subsidiary of a depository institution holding company (DIHC) or a DIHC itself, regulated by the Federal Reserve Board? Yes [] No [X]
- 8.2 If the response to 8.1 is yes, please identify the name of the DIHC.
.....
- 8.3 Is the company affiliated with one or more banks, thrifts or securities firms? Yes [] No [X]
- 8.4 If response to 8.3 is yes, please provide below the names and location (city and state of the main office) of any affiliates regulated by a federal regulatory services agency [i.e. the Federal Reserve Board (FRB), the Office of the Comptroller of the Currency (OCC), the Federal Deposit Insurance Corporation (FDIC) and the Securities Exchange Commission (SEC)] and identify the affiliate's primary federal regulator.

1 Affiliate Name	2 Location (City, State)	3 FRB	4 OCC	5 FDIC	6 SEC
.....

- 8.5 Is the reporting entity a depository institution holding company with significant insurance operations as defined by the Board of Governors of Federal Reserve System or a subsidiary of the depository institution holding company? Yes [] No [X]
- 8.6 If response to 8.5 is no, is the reporting entity a company or subsidiary of a company that has otherwise been made subject to the Federal Reserve Board's capital rule? Yes [] No [X] N/A []
- 9. What is the name and address of the independent certified public accountant or accounting firm retained to conduct the annual audit?
PriceWaterHouse Coopers, LLP, 200 Public Square, 19th Floor Cleveland, OH 44114
- 10.1 Has the insurer been granted any exemptions to the prohibited non-audit services provided by the certified independent public accountant requirements as allowed in Section 7H of the Annual Financial Reporting Model Regulation (Model Audit Rule), or substantially similar state law or regulation? Yes [] No [X]
- 10.2 If the response to 10.1 is yes, provide information related to this exemption:
.....
- 10.3 Has the insurer been granted any exemptions related to the other requirements of the Annual Financial Reporting Model Regulation as allowed for in Section 18A of the Model Regulation, or substantially similar state law or regulation? Yes [] No [X]
- 10.4 If the response to 10.3 is yes, provide information related to this exemption:
.....
- 10.5 Has the reporting entity established an Audit Committee in compliance with the domiciliary state insurance laws? Yes [X] No [] N/A []
- 10.6 If the response to 10.5 is no or n/a, please explain
.....
- 11. What is the name, address and affiliation (officer/employee of the reporting entity or actuary/consultant associated with an actuarial consulting firm) of the individual providing the statement of actuarial opinion/certification?
GARY S. TRAIKOFF, FCAS, MAAA CORPORATE ACTUARY 6300 WILSON MILLS ROAD MAYFIELD VILLAGE, OH, 44143-2182
- 12.1 Does the reporting entity own any securities of a real estate holding company or otherwise hold real estate indirectly? Yes [X] No []
 - 12.11 Name of real estate holding company ... AMERICAN TOWER CORP, CROWN CASTLE INTL CORP, EQUINIX INC,
 - 12.12 Number of parcels involved
 - 12.13 Total book/adjusted carrying value \$ 13,819,975
- 12.2 If, yes provide explanation:
WE HOLD COMMON STOCK INTEREST AND CORPORATE DEBT ISSUED BY SEVERAL REAL ESTATE HOLDING COMPANIES. THE NUMBER OF PARCELS IS UNKNOWN.
- 13. **FOR UNITED STATES BRANCHES OF ALIEN REPORTING ENTITIES ONLY:**
- 13.1 What changes have been made during the year in the United States manager or the United States trustees of the reporting entity?
.....
- 13.2 Does this statement contain all business transacted for the reporting entity through its United States Branch on risks wherever located? Yes [] No []
- 13.3 Have there been any changes made to any of the trust indentures during the year? Yes [] No []
- 13.4 If answer to (13.3) is yes, has the domiciliary or entry state approved the changes? Yes [] No [] N/A []
- 14.1 Are the senior officers (principal executive officer, principal financial officer, principal accounting officer or controller, or persons performing similar functions) of the reporting entity subject to a code of ethics, which includes the following standards? Yes [X] No []
 - a. Honest and ethical conduct, including the ethical handling of actual or apparent conflicts of interest between personal and professional relationships;
 - b. Full, fair, accurate, timely and understandable disclosure in the periodic reports required to be filed by the reporting entity;
 - c. Compliance with applicable governmental laws, rules and regulations;
 - d. The prompt internal reporting of violations to an appropriate person or persons identified in the code; and
 - e. Accountability for adherence to the code.
- 14.11 If the response to 14.1 is No, please explain:
.....
- 14.2 Has the code of ethics for senior managers been amended? Yes [] No [X]
- 14.21 If the response to 14.2 is yes, provide information related to amendment(s).
.....
- 14.3 Have any provisions of the code of ethics been waived for any of the specified officers? Yes [] No [X]
- 14.31 If the response to 14.3 is yes, provide the nature of any waiver(s).
.....

GENERAL INTERROGATORIES

- 15.1 Is the reporting entity the beneficiary of a Letter of Credit that is unrelated to reinsurance where the issuing or confirming bank is not on the SVO Bank List? Yes [] No [X]
- 15.2 If the response to 15.1 is yes, indicate the American Bankers Association (ABA) Routing Number and the name of the issuing or confirming bank of the Letter of Credit and describe the circumstances in which the Letter of Credit is triggered.

1 American Bankers Association (ABA) Routing Number	2 Issuing or Confirming Bank Name	3 Circumstances That Can Trigger the Letter of Credit	4 Amount
.....

BOARD OF DIRECTORS

16. Is the purchase or sale of all investments of the reporting entity passed upon either by the board of directors or a subordinate committee thereof? Yes [X] No []
17. Does the reporting entity keep a complete permanent record of the proceedings of its board of directors and all subordinate committees thereof? Yes [X] No []
18. Has the reporting entity an established procedure for disclosure to its board of directors or trustees of any material interest or affiliation on the part of any of its officers, directors, trustees or responsible employees that is in conflict or is likely to conflict with the official duties of such person? Yes [X] No []

FINANCIAL

19. Has this statement been prepared using a basis of accounting other than Statutory Accounting Principles (e.g., Generally Accepted Accounting Principles)? Yes [] No [X]
- 20.1 Total amount loaned during the year (inclusive of Separate Accounts, exclusive of policy loans):
- 20.11 To directors or other officers.....\$
 - 20.12 To stockholders not officers.....\$
 - 20.13 Trustees, supreme or grand (Fraternal Only)\$
- 20.2 Total amount of loans outstanding at the end of year (inclusive of Separate Accounts, exclusive of policy loans):
- 20.21 To directors or other officers.....\$
 - 20.22 To stockholders not officers.....\$
 - 20.23 Trustees, supreme or grand (Fraternal Only)\$
- 21.1 Were any assets reported in this statement subject to a contractual obligation to transfer to another party without the liability for such obligation being reported in the statement? Yes [] No [X]
- 21.2 If yes, state the amount thereof at December 31 of the current year:
- 21.21 Rented from others.....\$
 - 21.22 Borrowed from others.....\$
 - 21.23 Leased from others\$
 - 21.24 Other\$
- 22.1 Does this statement include payments for assessments as described in the Annual Statement Instructions other than guaranty fund or guaranty association assessments? Yes [] No [X]
- 22.2 If answer is yes:
- 22.21 Amount paid as losses or risk adjustment \$
 - 22.22 Amount paid as expenses\$
 - 22.23 Other amounts paid\$
- 23.1 Does the reporting entity report any amounts due from parent, subsidiaries or affiliates on Page 2 of this statement? Yes [X] No []
- 23.2 If yes, indicate any amounts receivable from parent included in the Page 2 amount:\$
- 24.1 Does the insurer utilize third parties to pay agent commissions in which the amounts advanced by the third parties are not settled in full within 90 days? Yes [] No [X]
- 24.2 If the response to 24.1 is yes, identify the third-party that pays the agents and whether they are a related party.

Name of Third-Party	Is the Third-Party Agent a Related Party (Yes/No)
.....

INVESTMENT

- 25.01 Were all the stocks, bonds and other securities owned December 31 of current year, over which the reporting entity has exclusive control, in the actual possession of the reporting entity on said date? (other than securities lending programs addressed in 25.03)..... Yes [X] No []

GENERAL INTERROGATORIES

- 25.02 If no, give full and complete information relating thereto
.....
- 25.03 For securities lending programs, provide a description of the program including value for collateral and amount of loaned securities, and whether collateral is carried on or off-balance sheet. (an alternative is to reference Note 17 where this information is also provided)
N/A
- 25.04 For the reporting entity's securities lending program, report amount of collateral for conforming programs as outlined in the Risk-Based Capital Instructions. \$
- 25.05 For the reporting entity's securities lending program, report amount of collateral for other programs. \$
- 25.06 Does your securities lending program require 102% (domestic securities) and 105% (foreign securities) from the counterparty at the outset of the contract? Yes [] No [] N/A [X]
- 25.07 Does the reporting entity non-admit when the collateral received from the counterparty falls below 100%? Yes [] No [] N/A [X]
- 25.08 Does the reporting entity or the reporting entity's securities lending agent utilize the Master Securities lending Agreement (MSLA) to conduct securities lending? Yes [] No [] N/A [X]
- 25.09 For the reporting entity's securities lending program state the amount of the following as of December 31 of the current year:
- 25.091 Total fair value of reinvested collateral assets reported on Schedule DL, Parts 1 and 2. \$
- 25.092 Total book adjusted/carrying value of reinvested collateral assets reported on Schedule DL, Parts 1 and 2 \$
- 25.093 Total payable for securities lending reported on the liability page. \$

- 26.1 Were any of the stocks, bonds or other assets of the reporting entity owned at December 31 of the current year not exclusively under the control of the reporting entity or has the reporting entity sold or transferred any assets subject to a put option contract that is currently in force? (Exclude securities subject to Interrogatory 21.1 and 25.03). Yes [X] No []
- 26.2 If yes, state the amount thereof at December 31 of the current year:
- 26.21 Subject to repurchase agreements \$
- 26.22 Subject to reverse repurchase agreements \$
- 26.23 Subject to dollar repurchase agreements \$
- 26.24 Subject to reverse dollar repurchase agreements \$
- 26.25 Placed under option agreements \$
- 26.26 Letter stock or securities restricted as to sale - excluding FHLB Capital Stock \$
- 26.27 FHLB Capital Stock \$
- 26.28 On deposit with states \$ 6,843,000
- 26.29 On deposit with other regulatory bodies \$
- 26.30 Pledged as collateral - excluding collateral pledged to an FHLB \$
- 26.31 Pledged as collateral to FHLB - including assets backing funding agreements \$
- 26.32 Other \$

26.3 For category (26.26) provide the following:

1 Nature of Restriction	2 Description	3 Amount
.....
.....

- 27.1 Does the reporting entity have any hedging transactions reported on Schedule DB? Yes [] No [X]
- 27.2 If yes, has a comprehensive description of the hedging program been made available to the domiciliary state? Yes [] No [] N/A [X]
If no, attach a description with this statement.

LINES 27.3 through 27.5: FOR LIFE/FRATERNAL REPORTING ENTITIES ONLY:

- 27.3 Does the reporting entity utilize derivatives to hedge variable annuity guarantees subject to fluctuations as a result of interest rate sensitivity? . Yes [] No []
- 27.4 If the response to 27.3 is YES, does the reporting entity utilize:
- 27.41 Special accounting provision of SSAP No. 108 Yes [] No []
- 27.42 Permitted accounting practice Yes [] No []
- 27.43 Other accounting guidance Yes [] No []
- 27.5 By responding YES to 27.41 regarding utilizing the special accounting provisions of SSAP No. 108, the reporting entity attests to the following: Yes [] No []
- The reporting entity has obtained explicit approval from the domiciliary state.
 - Hedging strategy subject to the special accounting provisions is consistent with the requirements of VM-21.
 - Actuarial certification has been obtained which indicates that the hedging strategy is incorporated within the establishment of VM-21 reserves and provides the impact of the hedging strategy within the Actuarial Guideline Conditional Tail Expectation Amount.
 - Financial Officer Certification has been obtained which indicates that the hedging strategy meets the definition of a Clearly Defined Hedging Strategy within VM-21 and that the Clearly Defined Hedging Strategy is the hedging strategy being used by the company in its actual day-to-day risk mitigation efforts.
- 28.1 Were any preferred stocks or bonds owned as of December 31 of the current year mandatorily convertible into equity, or, at the option of the issuer, convertible into equity? Yes [] No [X]
- 28.2 If yes, state the amount thereof at December 31 of the current year. \$
29. Excluding items in Schedule E - Part 3 - Special Deposits, real estate, mortgage loans and investments held physically in the reporting entity's offices, vaults or safety deposit boxes, were all stocks, bonds and other securities, owned throughout the current year held pursuant to a custodial agreement with a qualified bank or trust company in accordance with Section 1, III - General Examination Considerations, F. Outsourcing of Critical Functions, Custodial or Safekeeping Agreements of the NAIC Financial Condition Examiners Handbook?..... Yes [X] No []
- 29.01 For agreements that comply with the requirements of the NAIC Financial Condition Examiners Handbook, complete the following:

1 Name of Custodian(s)	2 Custodian's Address
CITIBANK, N.A.	338 GREENWICH STREET, NEW YORK, NY 10013

ANNUAL STATEMENT FOR THE YEAR 2022 OF THE PROGRESSIVE MAX INSURANCE COMPANY
GENERAL INTERROGATORIES

29.02 For all agreements that do not comply with the requirements of the NAIC Financial Condition Examiners Handbook, provide the name, location and a complete explanation:

1 Name(s)	2 Location(s)	3 Complete Explanation(s)
.....

29.03 Have there been any changes, including name changes, in the custodian(s) identified in 29.01 during the current year?..... Yes [] No [X]

29.04 If yes, give full and complete information relating thereto:

1 Old Custodian	2 New Custodian	3 Date of Change	4 Reason
.....

29.05 Investment management – Identify all investment advisors, investment managers, broker/dealers, including individuals that have the authority to make investment decisions on behalf of the reporting entity. For assets that are managed internally by employees of the reporting entity, note as such. ["...that have access to the investment accounts"; "...handle securities"]

1 Name of Firm or Individual	2 Affiliation
PROGRESSIVE CAPITAL MANAGEMENT CORP	A.....

29.0597 For those firms/individuals listed in the table for Question 29.05, do any firms/individuals unaffiliated with the reporting entity (i.e. designated with a "U") manage more than 10% of the reporting entity's invested assets?..... Yes [] No [X]

29.0598 For firms/individuals unaffiliated with the reporting entity (i.e. designated with a "U") listed in the table for Question 29.05, does the total assets under management aggregate to more than 50% of the reporting entity's invested assets?..... Yes [] No [X]

29.06 For those firms or individuals listed in the table for 29.05 with an affiliation code of "A" (affiliated) or "U" (unaffiliated), provide the information for the table below.

1 Central Registration Depository Number	2 Name of Firm or Individual	3 Legal Entity Identifier (LEI)	4 Registered With	5 Investment Management Agreement (IMA) Filed
N/A	PROGRESSIVE CAPITAL MANAGEMENT CORP	5493001ZR2ZQPS7K1G26	N/A	DS.....

30.1 Does the reporting entity have any diversified mutual funds reported in Schedule D, Part 2 (diversified according to the Securities and Exchange Commission (SEC) in the Investment Company Act of 1940 [Section 5(b)(1)])? Yes [] No [X]

30.2 If yes, complete the following schedule:

1 CUSIP #	2 Name of Mutual Fund	3 Book/Adjusted Carrying Value
30.2999 - Total		

30.3 For each mutual fund listed in the table above, complete the following schedule:

1 Name of Mutual Fund (from above table)	2 Name of Significant Holding of the Mutual Fund	3 Amount of Mutual Fund's Book/Adjusted Carrying Value Attributable to the Holding	4 Date of Valuation
.....

GENERAL INTERROGATORIES

31. Provide the following information for all short-term and long-term bonds and all preferred stocks. Do not substitute amortized value or statement value for fair value.

	1	2	3
	Statement (Admitted) Value	Fair Value	Excess of Statement over Fair Value (-), or Fair Value over Statement (+)
31.1 Bonds	963,319,654	909,580,230	(53,739,424)
31.2 Preferred stocks			
31.3 Totals	963,319,654	909,580,230	(53,739,424)

31.4 Describe the sources or methods utilized in determining the fair values:

THE FAIR MARKET VALUES REPORTED ARE DERIVED FROM INDEPENDENT AND OBSERVABLE MARKET INPUT EVALUATIONS PROVIDED BY WIDELY UTILIZED REPUTABLE PRICING SERVICES, INDEPENDENT BROKER/DEALER BID LISTS, INDEPENDENT BROKER/DEALER QUOTATIONS, INDEPENDENT BROKER/DEALER PRICING SERVICES, OR ACTIVE MARKET CLOSING QUOTATIONS FROM A REGULATED EXCHANGE. IN VERY RARE CASES, IF NONE OF THE AFOREMENTIONED PRIMARY SOURCES ARE AVAILABLE, MATRIX PRICING USING THE REPORTING ENTITY'S OWN MARKET BASED ASSUMPTIONS MAY BE UTILIZED. THE APPROVED METHODS FOR COMPUTATION OF FAIR MARKET VALUE ARE PRESCRIBED IN THE SECURITIES VALUATION OFFICE PURPOSES AND PROCEDURES MANUAL.

32.1 Was the rate used to calculate fair value determined by a broker or custodian for any of the securities in Schedule D? Yes [X] No []

32.2 If the answer to 32.1 is yes, does the reporting entity have a copy of the broker's or custodian's pricing policy (hard copy or electronic copy) for all brokers or custodians used as a pricing source? Yes [] No [X]

32.3 If the answer to 32.2 is no, describe the reporting entity's process for determining a reliable pricing source for purposes of disclosure of fair value for Schedule D:
 THE COMPANY'S FAIR MARKET VALUATION PROCESS, REGARDLESS OF WHAT PRICING SOURCE IS USED, ANALYZES AND COMPARES INDEPENDENT VENDOR QUOTATIONS/SPREADS, INDEPENDENT BROKER/DEALER BID LISTS, INDEPENDENT BROKER/DEALER QUOTES, INDEPENDENT BROKER/DEALER PRICING SERVICES, INPUTS FROM THE PORTFOLIO MANAGEMENT TEAM, DISCUSSIONS WITH EXTERNAL AUDITORS, AND SECURITY SPECIFIC PARAMETERS TO ENSURE THAT THE VALUATION PROCESS REFLECTS THE MOST ACCURATE FAIR VALUE AT THE REPORTING DATE.

33.1 Have all the filing requirements of the Purposes and Procedures Manual of the NAIC Investment Analysis Office been followed? Yes [X] No []

33.2 If no, list exceptions:

34. By self-designating 5GI securities, the reporting entity is certifying the following elements of each self-designated 5GI security:
 a. Documentation necessary to permit a full credit analysis of the security does not exist or an NAIC CRP credit rating for an FE or PL security is not available.
 b. Issuer or obligor is current on all contracted interest and principal payments.
 c. The insurer has an actual expectation of ultimate payment of all contracted interest and principal.
 Has the reporting entity self-designated 5GI securities? Yes [] No [X]

35. By self-designating PLGI securities, the reporting entity is certifying the following elements of each self-designated PLGI security:
 a. The security was purchased prior to January 1, 2018.
 b. The reporting entity is holding capital commensurate with the NAIC Designation reported for the security.
 c. The NAIC Designation was derived from the credit rating assigned by an NAIC CRP in its legal capacity as a NRSRO which is shown on a current private letter rating held by the insurer and available for examination by state insurance regulators.
 d. The reporting entity is not permitted to share this credit rating of the PL security with the SVO.
 Has the reporting entity self-designated PLGI securities? Yes [] No [X]

36. By assigning FE to a Schedule BA non-registered private fund, the reporting entity is certifying the following elements of each self-designated FE fund:
 a. The shares were purchased prior to January 1, 2019.
 b. The reporting entity is holding capital commensurate with the NAIC Designation reported for the security.
 c. The security had a public credit rating(s) with annual surveillance assigned by an NAIC CRP in its legal capacity as an NRSRO prior to January 1, 2019.
 d. The fund only or predominantly holds bonds in its portfolio.
 e. The current reported NAIC Designation was derived from the public credit rating(s) with annual surveillance assigned by an NAIC CRP in its legal capacity as an NRSRO.
 f. The public credit rating(s) with annual surveillance assigned by an NAIC CRP has not lapsed.
 Has the reporting entity assigned FE to Schedule BA non-registered private funds that complied with the above criteria? Yes [] No [X]

37. By rolling/renewing short-term or cash equivalent investments with continued reporting on Schedule DA, Part 1 or Schedule E Part 2 (identified through a code (%) in those investment schedules), the reporting entity is certifying the following:
 a. The investment is a liquid asset that can be terminated by the reporting entity on the current maturity date.
 b. If the investment is with a nonrelated party or nonaffiliate, then it reflects an arms-length transaction with renewal completed at the discretion of all involved parties.
 c. If the investment is with a related party or affiliate, then the reporting entity has completed robust re-underwriting of the transaction for which documentation is available for regulator review.
 d. Short-term and cash equivalent investments that have been renewed/rolled from the prior period that do not meet the criteria in 37.a - 37.c are reported as long-term investments.
 Has the reporting entity rolled/renewed short-term or cash equivalent investments in accordance with these criteria? Yes [] No [] N/A [X]

GENERAL INTERROGATORIES

38.1 Does the reporting entity directly hold cryptocurrencies? Yes [] No [X]

38.2 If the response to 38.1 is yes, on what schedule are they reported?

39.1 Does the reporting entity directly or indirectly accept cryptocurrencies as payments for premiums on policies? Yes [] No [X]

39.2 If the response to 39.1 is yes, are the cryptocurrencies held directly or are they immediately converted to U.S. dollars?
 39.21 Held directly Yes [] No []
 39.22 Immediately converted to U.S. dollars Yes [] No []

39.3 If the response to 38.1 or 39.1 is yes, list all cryptocurrencies accepted for payments of premiums or that are held directly.

1 Name of Cryptocurrency	2 Immediately Converted to USD, Directly Held, or Both	3 Accepted for Payment of Premiums

OTHER

40.1 Amount of payments to trade associations, service organizations and statistical or rating bureaus, if any?\$ 16,302

40.2 List the name of the organization and the amount paid if any such payment represented 25% or more of the total payments to trade associations, service organizations and statistical or rating bureaus during the period covered by this statement.

1 Name	2 Amount Paid
INDEPENDENT STATISTICAL SERVICES INC	16,302

41.1 Amount of payments for legal expenses, if any?\$

41.2 List the name of the firm and the amount paid if any such payment represented 25% or more of the total payments for legal expenses during the period covered by this statement.

1 Name	2 Amount Paid

42.1 Amount of payments for expenditures in connection with matters before legislative bodies, officers or departments of government, if any?\$2,000

42.2 List the name of the firm and the amount paid if any such payment represented 25% or more of the total payment expenditures in connection with matters before legislative bodies, officers, or departments of government during the period covered by this statement.

1 Name	2 Amount Paid
FRIENDS OF SENATOR BRESLIN	2,000

GENERAL INTERROGATORIES

PART 2 - PROPERTY AND CASUALTY INTERROGATORIES

1.1 Does the reporting entity have any direct Medicare Supplement Insurance in force? Yes [] No [X]

1.2 If yes, indicate premium earned on U. S. business only. \$ _____

1.3 What portion of Item (1.2) is not reported on the Medicare Supplement Insurance Experience Exhibit? \$ _____
 1.31 Reason for excluding

1.4 Indicate amount of earned premium attributable to Canadian and/or Other Alien not included in Item (1.2) above. \$ _____

1.5 Indicate total incurred claims on all Medicare Supplement Insurance. \$ _____

1.6 Individual policies:

Most current three years:

1.61 Total premium earned \$ _____

1.62 Total incurred claims \$ _____

1.63 Number of covered lives

All years prior to most current three years

1.64 Total premium earned \$ _____

1.65 Total incurred claims \$ _____

1.66 Number of covered lives

1.7 Group policies:

Most current three years:

1.71 Total premium earned \$ _____

1.72 Total incurred claims \$ _____

1.73 Number of covered lives

All years prior to most current three years

1.74 Total premium earned \$ _____

1.75 Total incurred claims \$ _____

1.76 Number of covered lives

2. Health Test:

	1 Current Year	2 Prior Year
2.1 Premium Numerator		
2.2 Premium Denominator	1,006,998,747	929,303,355
2.3 Premium Ratio (2.1/2.2)	0.000	0.000
2.4 Reserve Numerator		
2.5 Reserve Denominator	709,650,233	633,827,323
2.6 Reserve Ratio (2.4/2.5)	0.000	0.000

3.1 Did the reporting entity issue participating policies during the calendar year? Yes [] No [X]

3.2 If yes, provide the amount of premium written for participating and/or non-participating policies during the calendar year:

3.21 Participating policies \$ _____

3.22 Non-participating policies \$ _____

4. For mutual reporting Entities and Reciprocal Exchanges Only:

4.1 Does the reporting entity issue assessable policies? Yes [] No []

4.2 Does the reporting entity issue non-assessable policies? Yes [] No []

4.3 If assessable policies are issued, what is the extent of the contingent liability of the policyholders? % _____

4.4 Total amount of assessments paid or ordered to be paid during the year on deposit notes or contingent premiums. \$ _____

5. For Reciprocal Exchanges Only:

5.1 Does the Exchange appoint local agents? Yes [] No []

5.2 If yes, is the commission paid:

5.21 Out of Attorney's-in-fact compensation..... Yes [] No [] N/A []

5.22 As a direct expense of the exchange..... Yes [] No [] N/A []

5.3 What expenses of the Exchange are not paid out of the compensation of the Attorney-in-fact?

5.4 Has any Attorney-in-fact compensation, contingent on fulfillment of certain conditions, been deferred? Yes [] No []

5.5 If yes, give full information

GENERAL INTERROGATORIES

PART 2 - PROPERTY AND CASUALTY INTERROGATORIES

- 6.1 What provision has this reporting entity made to protect itself from an excessive loss in the event of a catastrophe under a workers' compensation contract issued without limit of loss?
 THE COMPANY DOES NOT WRITE WORKERS' COMPENSATION INSURANCE.
- 6.2 Describe the method used to estimate this reporting entity's probable maximum insurance loss, and identify the type of insured exposures comprising that probable maximum loss, the locations of concentrations of those exposures and the external resources (such as consulting firms or computer software models), if any, used in the estimation process.
 THE COMPANY'S PROBABLE MAXIMUM LOSS (PML) IS ESTIMATED BY ANALYZING HISTORICAL MAJOR OCCURRENCES AND ESTIMATING FREQUENCY OF LOSS AND SEVERITY BASED ON THE POTENTIAL FORCE OF AN OCCURRENCE AND THE TOTAL NUMBER OF AUTOS AND BOATS EXPOSED. THE ESTIMATE OF THE PML WAS COMPLETED BY PROGRESSIVE EMPLOYEES. THE COMPANY'S NET COMPREHENSIVE EXPOSURE IN THE CATASTROPHE PRONE STATES OF FLORIDA, LOUISIANA, TEXAS, MISSISSIPPI, NEW JERSEY, NEW YORK, AND CALIFORNIA IS LIMITED SINCE THE COMPANY IS A MEMBER OF A 100% POOLING REINSURANCE ARRANGEMENT WITH 7 OF ITS PROPERTY AND CASUALTY AFFILIATES. THE PRIMARY PROPERTY COVERAGE SOLD BY THE COMPANY IS COMPREHENSIVE FOR AUTOMOBILE AND INLAND MARINE FOR BOATS. THE ESTIMATE OF THE PML IS 7% OF THE SURPLUS.
- 6.3 What provision has this reporting entity made (such as a catastrophic reinsurance program) to protect itself from an excessive loss arising from the types and concentrations of insured exposures comprising its probable maximum property insurance loss?
 THE COMPANY'S ESTIMATED PML IS 7% OF THE SURPLUS. THE COMPANY CARRIES NO EXTERNAL CATASTROPHE REINSURANCE TO COVER ITS LIMITED CATASTROPHE EXPOSURE. THE COMPANY PARTICIPATES IN A POOLING ARRANGEMENT WHICH SPREADS THE UNDERWRITING RISK INCLUDING THE CATASTROPHE EXPOSURE AMONG ALL PARTIES TO THE POOLING AGREEMENT.
- 6.4 Does the reporting entity carry catastrophe reinsurance protection for at least one reinstatement, in an amount sufficient to cover its estimated probable maximum loss attributable to a single loss event or occurrence? Yes [] No [X]
- 6.5 If no, describe any arrangements or mechanisms employed by the reporting entity to supplement its catastrophe reinsurance program or to hedge its exposure to uninsured catastrophic loss.
 NONE
- 7.1 Has this reporting entity reinsured any risk with any other entity under a quota share reinsurance contract that includes a provision that would limit the reinsurer's losses below the stated quota share percentage (e.g., a deductible, a loss ratio corridor, a loss cap, an aggregate limit or any similar provisions)? Yes [] No [X]
- 7.2 If yes, indicate the number of reinsurance contracts containing such provisions:
- 7.3 If yes, does the amount of reinsurance credit taken reflect the reduction in quota share coverage caused by any applicable limiting provision(s)? Yes [] No []
- 8.1 Has this reporting entity reinsured any risk with any other entity and agreed to release such entity from liability, in whole or in part, from any loss that may occur on this risk, or portion thereof, reinsured? Yes [] No [X]
- 8.2 If yes, give full information

- 9.1 Has the reporting entity ceded any risk under any reinsurance contract (or under multiple contracts with the same reinsurer or its affiliates) for which during the period covered by the statement: (i) it recorded a positive or negative underwriting result greater than 5% of prior year-end surplus as regards policyholders or it reported calendar year written premium ceded or year-end loss and loss expense reserves ceded greater than 5% of prior year-end surplus as regards policyholders; (ii) it accounted for that contract as reinsurance and not as a deposit; and (iii) the contract(s) contain one or more of the following features or other features that would have similar results:
 (a) A contract term longer than two years and the contract is noncancellable by the reporting entity during the contract term;
 (b) A limited or conditional cancellation provision under which cancellation triggers an obligation by the reporting entity, or an affiliate of the reporting entity, to enter into a new reinsurance contract with the reinsurer, or an affiliate of the reinsurer;
 (c) Aggregate stop loss reinsurance coverage;
 (d) A unilateral right by either party (or both parties) to commute the reinsurance contract, whether conditional or not, except for such provisions which are only triggered by a decline in the credit status of the other party;
 (e) A provision permitting reporting of losses, or payment of losses, less frequently than on a quarterly basis (unless there is no activity during the period); or
 (f) Payment schedule, accumulating retentions from multiple years or any features inherently designed to delay timing of the reimbursement to the ceding entity. Yes [] No [X]
- 9.2 Has the reporting entity during the period covered by the statement ceded any risk under any reinsurance contract (or under multiple contracts with the same reinsurer or its affiliates), for which, during the period covered by the statement, it recorded a positive or negative underwriting result greater than 5% of prior year-end surplus as regards policyholders or it reported calendar year written premium ceded or year-end loss and loss expense reserves ceded greater than 5% of prior year-end surplus as regards policyholders; excluding cessions to approved pooling arrangements or to captive insurance companies that are directly or indirectly controlling, controlled by, or under common control with (i) one or more unaffiliated policyholders of the reporting entity, or (ii) an association of which one or more unaffiliated policyholders of the reporting entity is a member where:
 (a) The written premium ceded to the reinsurer by the reporting entity or its affiliates represents fifty percent (50%) or more of the entire direct and assumed premium written by the reinsurer based on its most recently available financial statement; or
 (b) Twenty-five percent (25%) or more of the written premium ceded to the reinsurer has been retroceded back to the reporting entity or its affiliates in a separate reinsurance contract. Yes [] No [X]
- 9.3 If yes to 9.1 or 9.2, please provide the following information in the Reinsurance Summary Supplemental Filing for General Interrogatory 9:
 (a) The aggregate financial statement impact gross of all such ceded reinsurance contracts on the balance sheet and statement of income;
 (b) A summary of the reinsurance contract terms and indicate whether it applies to the contracts meeting the criteria in 9.1 or 9.2; and
 (c) A brief discussion of management's principle objectives in entering into the reinsurance contract including the economic purpose to be achieved.
- 9.4 Except for transactions meeting the requirements of paragraph 36 of SSAP No. 62R - Property and Casualty Reinsurance, has the reporting entity ceded any risk under any reinsurance contract (or multiple contracts with the same reinsurer or its affiliates) during the period covered by the financial statement, and either:
 (a) Accounted for that contract as reinsurance (either prospective or retroactive) under statutory accounting principles ("SAP") and as a deposit under generally accepted accounting principles ("GAAP"); or
 (b) Accounted for that contract as reinsurance under GAAP and as a deposit under SAP? Yes [] No [X]
- 9.5 If yes to 9.4, explain in the Reinsurance Summary Supplemental Filing for General Interrogatory 9 (Section D) why the contract(s) is treated differently for GAAP and SAP.
- 9.6 The reporting entity is exempt from the Reinsurance Attestation Supplement under one or more of the following criteria:
 (a) The entity does not utilize reinsurance; or, Yes [] No [X]
 (b) The entity only engages in a 100% quota share contract with an affiliate and the affiliated or lead company has filed an attestation supplement; or Yes [] No [X]
 (c) The entity has no external cessions and only participates in an intercompany pool and the affiliated or lead company has filed an attestation supplement Yes [] No [X]
10. If the reporting entity has assumed risks from another entity, there should be charged on account of such reinsurances a reserve equal to that which the original entity would have been required to charge had it retained the risks. Has this been done? Yes [X] No [] N/A []

GENERAL INTERROGATORIES

PART 2 - PROPERTY AND CASUALTY INTERROGATORIES

- 11.1 Has the reporting entity guaranteed policies issued by any other entity and now in force? Yes [] No [X]
- 11.2 If yes, give full information
.....
- 12.1 If the reporting entity recorded accrued retrospective premiums on insurance contracts on Line 15.3 of the asset schedule, Page 2, state the amount of corresponding liabilities recorded for:
- 12.11 Unpaid losses \$
- 12.12 Unpaid underwriting expenses (including loss adjustment expenses) \$
- 12.2 Of the amount on Line 15.3, Page 2, state the amount which is secured by letters of credit, collateral and other funds \$
- 12.3 If the reporting entity underwrites commercial insurance risks, such as workers' compensation, are premium notes or promissory notes accepted from its insureds covering unpaid premiums and/or unpaid losses? Yes [] No [] N/A [X]
- 12.4 If yes, provide the range of interest rates charged under such notes during the period covered by this statement:
- 12.41 From %
- 12.42 To..... %
- 12.5 Are letters of credit or collateral and other funds received from insureds being utilized by the reporting entity to secure premium notes or promissory notes taken by a reporting entity, or to secure any of the reporting entity's reported direct unpaid loss reserves, including unpaid losses under loss deductible features of commercial policies? Yes [] No [X]
- 12.6 If yes, state the amount thereof at December 31 of the current year:
- 12.61 Letters of credit \$
- 12.62 Collateral and other funds..... \$
- 13.1 Largest net aggregate amount insured in any one risk (excluding workers' compensation): \$ 12,000,000
- 13.2 Does any reinsurance contract considered in the calculation of this amount include an aggregate limit of recovery without also including a reinstatement provision? Yes [] No [X]
- 13.3 State the number of reinsurance contracts (excluding individual facultative risk certificates, but including facultative programs, automatic facilities or facultative obligatory contracts) considered in the calculation of the amount. 1
- 14.1 Is the company a cedant in a multiple cedant reinsurance contract? Yes [X] No []
- 14.2 If yes, please describe the method of allocating and recording reinsurance among the cedants:
Losses and loss adjustment expenses recorded and reinsured by individual company's are on the per risk/per event basis.
- 14.3 If the answer to 14.1 is yes, are the methods described in item 14.2 entirely contained in the respective multiple cedant reinsurance contracts? Yes [X] No []
- 14.4 If the answer to 14.3 is no, are all the methods described in 14.2 entirely contained in written agreements? Yes [X] No []
- 14.5 If the answer to 14.4 is no, please explain:
.....
- 15.1 Has the reporting entity guaranteed any financed premium accounts? Yes [] No [X]
- 15.2 If yes, give full information
.....
- 16.1 Does the reporting entity write any warranty business? Yes [] No [X]
If yes, disclose the following information for each of the following types of warranty coverage:

	1 Direct Losses Incurred	2 Direct Losses Unpaid	3 Direct Written Premium	4 Direct Premium Unearned	5 Direct Premium Earned
16.11 Home
16.12 Products
16.13 Automobile
16.14 Other*

* Disclose type of coverage:
.....

GENERAL INTERROGATORIES

PART 2 - PROPERTY AND CASUALTY INTERROGATORIES

17.1 Does the reporting entity include amounts recoverable on unauthorized reinsurance in Schedule F - Part 3 that is exempt from the statutory provision for unauthorized reinsurance? Yes [] No [X]

Incurred but not reported losses on contracts in force prior to July 1, 1984, and not subsequently renewed are exempt from the statutory provision for unauthorized reinsurance. Provide the following information for this exemption:

- 17.11 Gross amount of unauthorized reinsurance in Schedule F - Part 3 exempt from the statutory provision for unauthorized reinsurance \$
- 17.12 Unfunded portion of Interrogatory 17.11 \$
- 17.13 Paid losses and loss adjustment expenses portion of Interrogatory 17.11... \$
- 17.14 Case reserves portion of Interrogatory 17.11 \$
- 17.15 Incurred but not reported portion of Interrogatory 17.11 \$
- 17.16 Unearned premium portion of Interrogatory 17.11 \$
- 17.17 Contingent commission portion of Interrogatory 17.11 \$

18.1 Do you act as a custodian for health savings accounts? Yes [] No [X]

18.2 If yes, please provide the amount of custodial funds held as of the reporting date. \$

18.3 Do you act as an administrator for health savings accounts? Yes [] No [X]

18.4 If yes, please provide the balance of funds administered as of the reporting date. \$

19. Is the reporting entity licensed or chartered, registered, qualified, eligible or writing business in at least two states? Yes [X] No []

19.1 If no, does the reporting entity assume reinsurance business that covers risks residing in at least one state other than the state of domicile of the reporting entity? Yes [] No []

ANNUAL STATEMENT FOR THE YEAR 2022 OF THE PROGRESSIVE MAX INSURANCE COMPANY

FIVE-YEAR HISTORICAL DATA

Show amounts in whole dollars only, no cents; show percentages to one decimal place, i.e. 17.6.

	1 2022	2 2021	3 2020	4 2019	5 2018
Gross Premiums Written (Page 8, Part 1B Cols. 1, 2 & 3)					
1. Liability lines (Lines 11, 16, 17, 18 & 19)	875,685,951	857,132,737	808,219,733	728,868,061	645,734,561
2. Property lines (Lines 1, 2, 9, 12, 21 & 26)	490,785,379	430,731,416	395,164,912	366,682,893	321,968,956
3. Property and liability combined lines (Lines 3, 4, 5, 8, 22 & 27)					
4. All other lines (Lines 6, 10, 13, 14, 15, 23, 24, 28, 29, 30 & 34)					
5. Nonproportional reinsurance lines (Lines 31, 32 & 33)					
6. Total (Line 35)	1,366,471,331	1,287,864,153	1,203,384,645	1,095,550,954	967,703,517
Net Premiums Written (Page 8, Part 1B, Col. 6)					
7. Liability lines (Lines 11, 16, 17, 18 & 19)	650,626,966	615,663,350	565,031,399	516,774,560	448,818,347
8. Property lines (Lines 1, 2, 9, 12, 21 & 26)	393,003,518	334,523,995	301,482,233	278,409,945	240,357,856
9. Property and liability combined lines (Lines 3, 4, 5, 8, 22 & 27)					
10. All other lines (Lines 6, 10, 13, 14, 15, 23, 24, 28, 29, 30 & 34)					
11. Nonproportional reinsurance lines (Lines 31, 32 & 33)					
12. Total (Line 35)	1,043,630,484	950,187,345	866,513,632	795,184,505	689,176,203
Statement of Income (Page 4)					
13. Net underwriting gain (loss) (Line 8)	27,947,447	19,664,505	106,837,321	62,994,057	53,578,441
14. Net investment gain (loss) (Line 11)	16,319,950	19,692,096	34,130,105	21,533,862	12,412,912
15. Total other income (Line 15)	(71,393)	(2,814,117)	(2,383,066)	(155,513)	313,227
16. Dividends to policyholders (Line 17)					
17. Federal and foreign income taxes incurred (Line 19)	11,317,656	8,229,198	26,771,873	18,293,733	15,828,580
18. Net income (Line 20)	32,878,348	28,313,286	111,812,487	66,078,673	50,476,000
Balance Sheet Lines (Pages 2 and 3)					
19. Total admitted assets excluding protected cell business (Page 2, Line 26, Col. 3)	1,071,228,883	964,944,954	866,472,425	775,302,498	681,065,063
20. Premiums and considerations (Page 2, Col. 3)					
20.1 In course of collection (Line 15.1)	14,223,752	9,206,303	14,121,324	16,607,831	13,628,432
20.2 Deferred and not yet due (Line 15.2)	53,577,327	53,680,880	56,834,056	50,264,284	47,721,450
20.3 Accrued retrospective premiums (Line 15.3)					
21. Total liabilities excluding protected cell business (Page 3, Line 26)	738,425,625	656,117,828	569,181,755	518,626,245	463,629,657
22. Losses (Page 3, Line 1)	345,135,374	308,820,744	246,432,920	229,494,888	201,989,962
23. Loss adjustment expenses (Page 3, Line 3)	75,736,051	73,362,480	64,679,421	56,807,640	48,875,348
24. Unearned premiums (Page 3, Line 9)	283,979,432	247,347,696	226,463,705	207,867,839	185,434,761
25. Capital paid up (Page 3, Lines 30 & 31)	3,604,824	3,604,824	3,604,824	3,604,824	3,604,824
26. Surplus as regards policyholders (Page 3, Line 37)	332,803,258	308,827,126	297,290,670	256,676,253	217,435,406
Cash Flow (Page 5)					
27. Net cash from operations (Line 11)	111,040,925	124,308,049	133,334,434	116,019,465	108,348,395
Risk-Based Capital Analysis					
28. Total adjusted capital	332,803,258	308,827,126	297,290,670	256,676,253	217,435,406
29. Authorized control level risk-based capital	27,510,646	33,471,737	39,554,382	30,847,906	23,592,586
Percentage Distribution of Cash, Cash Equivalents and Invested Assets (Page 2, Col. 3) (Line divided by Page 2, Line 12, Col. 3) x100.0					
30. Bonds (Line 1)	98.1	100.0	96.3	100.0	99.3
31. Stocks (Lines 2.1 & 2.2)					
32. Mortgage loans on real estate (Lines 3.1 and 3.2)					
33. Real estate (Lines 4.1, 4.2 & 4.3)					
34. Cash, cash equivalents and short-term investments (Line 5)	1.6		3.7		
35. Contract loans (Line 6)					
36. Derivatives (Line 7)					
37. Other invested assets (Line 8)					
38. Receivables for securities (Line 9)	0.3				0.7
39. Securities lending reinvested collateral assets (Line 10)					
40. Aggregate write-ins for invested assets (Line 11)					
41. Cash, cash equivalents and invested assets (Line 12)	100.0	100.0	100.0	100.0	100.0
Investments in Parent, Subsidiaries and Affiliates					
42. Affiliated bonds (Schedule D, Summary, Line 12, Col. 1)					
43. Affiliated preferred stocks (Schedule D, Summary, Line 18, Col. 1)					
44. Affiliated common stocks (Schedule D, Summary, Line 24, Col. 1)					
45. Affiliated short-term investments (subtotals included in Schedule DA Verification, Col. 5, Line 10)					
46. Affiliated mortgage loans on real estate					
47. All other affiliated					
48. Total of above Lines 42 to 47					
49. Total Investment in Parent included in Lines 42 to 47 above					
50. Percentage of investments in parent, subsidiaries and affiliates to surplus as regards policyholders (Line 48 above divided by Page 3, Col. 1, Line 37 x 100.0)					

ANNUAL STATEMENT FOR THE YEAR 2022 OF THE PROGRESSIVE MAX INSURANCE COMPANY

FIVE-YEAR HISTORICAL DATA

(Continued)

	1 2022	2 2021	3 2020	4 2019	5 2018
Capital and Surplus Accounts (Page 4)					
51. Net unrealized capital gains (losses) (Line 24)	(3,158,082)	(75,433)	14,031	285,719	(272,489)
52. Dividends to stockholders (Line 35)	(6,800,000)	(19,500,000)	(73,000,000)	(27,600,000)	(10,500,000)
53. Change in surplus as regards policyholders for the year (Line 38)	23,976,132	11,536,456	40,614,417	39,240,847	39,227,846
Gross Losses Paid (Page 9, Part 2, Cols. 1 & 2)					
54. Liability lines (Lines 11, 16, 17, 18 & 19)	467,150,188	419,147,745	360,658,095	370,210,063	321,249,485
55. Property lines (Lines 1, 2, 9, 12, 21 & 26)	408,813,521	351,165,645	245,671,242	248,083,203	214,760,325
56. Property and liability combined lines (Lines 3, 4, 5, 8, 22 & 27)					751
57. All other lines (Lines 6, 10, 13, 14, 15, 23, 24, 28, 29, 30 & 34)					
58. Nonproportional reinsurance lines (Lines 31, 32 & 33)	3,883	17,478	3,737	35,484	1,772,014
59. Total (Line 35)	875,967,591	770,330,869	606,333,074	618,328,750	537,782,575
Net Losses Paid (Page 9, Part 2, Col. 4)					
60. Liability lines (Lines 11, 16, 17, 18 & 19)	337,780,676	289,869,888	251,137,962	256,943,809	217,425,821
61. Property lines (Lines 1, 2, 9, 12, 21 & 26)	320,989,427	269,405,850	182,322,244	186,003,893	158,678,532
62. Property and liability combined lines (Lines 3, 4, 5, 8, 22 & 27)					751
63. All other lines (Lines 6, 10, 13, 14, 15, 23, 24, 28, 29, 30 & 34)					
64. Nonproportional reinsurance lines (Lines 31, 32 & 33)				1	
65. Total (Line 35)	658,770,103	559,275,738	433,460,206	442,947,703	376,105,105
Operating Percentages (Page 4) (Line divided by Page 4, Line 1) x 100.0					
66. Premiums earned (Line 1)	100.0	100.0	100.0	100.0	100.0
67. Losses incurred (Line 2)	69.0	66.9	53.1	60.9	61.3
68. Loss expenses incurred (Line 3)	9.7	10.3	9.9	10.2	10.7
69. Other underwriting expenses incurred (Line 4)	18.5	20.7	24.4	20.7	20.0
70. Net underwriting gain (loss) (Line 8)	2.8	2.1	12.6	8.2	8.1
Other Percentages					
71. Other underwriting expenses to net premiums written (Page 4, Lines 4 + 5 - 15 divided by Page 8, Part 1B, Col. 6, Line 35 x 100.0)	17.9	20.5	24.1	20.2	19.0
72. Losses and loss expenses incurred to premiums earned (Page 4, Lines 2 + 3 divided by Page 4, Line 1 x 100.0)	78.7	77.2	63.0	71.1	72.0
73. Net premiums written to policyholders' surplus (Page 8, Part 1B, Col. 6, Line 35 divided by Page 3, Line 37, Col. 1 x 100.0)	313.6	307.7	291.5	309.8	317.0
One Year Loss Development (\$000 omitted)					
74. Development in estimated losses and loss expenses incurred prior to current year (Schedule P - Part 2 - Summary, Line 12, Col. 11)	2,282	1,545	2,540	4,707	2,923
75. Percent of development of losses and loss expenses incurred to policyholders' surplus of prior year end (Line 74 above divided by Page 4, Line 21, Col. 1 x 100.0).....	0.7	0.5	1.0	2.2	1.6
Two Year Loss Development (\$000 omitted)					
76. Development in estimated losses and loss expenses incurred two years before the current year and prior year (Schedule P, Part 2 - Summary, Line 12, Col. 12)	1,381	6,484	6,515	4,277	2,618
77. Percent of development of losses and loss expenses incurred to reported policyholders' surplus of second prior year end (Line 76 above divided by Page 4, Line 21, Col. 2 x 100.0)	0.5	2.5	3.0	2.4	1.6

NOTE: If a party to a merger, have the two most recent years of this exhibit been restated due to a merger in compliance with the disclosure requirements of SSAP No. 3, Accounting Changes and Correction of Errors? Yes [] No []
 If no, please explain:

ANNUAL STATEMENT FOR THE YEAR 2022 OF THE PROGRESSIVE MAX INSURANCE COMPANY
SCHEDULE P - ANALYSIS OF LOSSES AND LOSS EXPENSES
SCHEDULE P - PART 1 - SUMMARY

(\$000 OMITTED)

Years in Which Premiums Were Earned and Losses Were Incurred	Premiums Earned			Loss and Loss Expense Payments						12 Number of Claims Reported Direct and Assumed		
	1 Direct and Assumed	2 Ceded	3 Net (1 - 2)	Loss Payments		Defense and Cost Containment Payments		Adjusting and Other Payments			10 Salvage and Subrogation Received	11 Total Net Paid Cols (4 - 5 + 6 - 7 + 8 - 9)
				4	5	6	7	8	9			
				Direct and Assumed	Ceded	Direct and Assumed	Ceded	Direct and Assumed	Ceded			
1. Prior.....	XXX	XXX	XXX	304	274	84		41		69	154	XXX
2. 2013.....	343,354	4,879	338,475	212,443	3,445	5,808	15	31,192		24,272	245,982	XXX
3. 2014.....	381,332	5,967	375,365	236,090	2,612	6,428	6	34,141		27,130	274,040	XXX
4. 2015.....	419,399	7,098	412,301	270,253	3,263	8,147	9	39,009		29,809	314,137	XXX
5. 2016.....	483,452	7,559	475,893	316,230	4,225	9,171	5	45,549		34,699	366,720	XXX
6. 2017.....	555,805	9,803	546,002	345,511	5,534	10,013	57	50,391		39,098	400,324	XXX
7. 2018.....	671,252	10,733	660,519	410,213	6,075	10,650	19	55,782		49,446	470,551	XXX
8. 2019.....	785,961	13,210	772,751	461,450	4,332	11,107	7	62,567		56,921	530,785	XXX
9. 2020.....	861,922	14,004	847,918	424,539	4,489	7,602	9	60,532		61,072	488,174	XXX
10. 2021.....	939,247	9,943	929,303	551,494	4,949	4,918	7	70,917		91,546	622,373	XXX
11. 2022	1,017,547	10,548	1,006,999	471,184	2,968	983		65,493		55,430	534,692	XXX
12. Totals	XXX	XXX	XXX	3,699,711	42,166	74,911	135	515,612		469,493	4,247,933	XXX

	Losses Unpaid				Defense and Cost Containment Unpaid				Adjusting and Other Unpaid		23 Salvage and Subrogation Anticipated	24 Total Net Losses and Expenses Unpaid	25 Number of Claims Outstanding Direct and Assumed
	Case Basis		Bulk + IBNR		Case Basis		Bulk + IBNR		Unpaid				
	13	14	15	16	17	18	19	20	21	22			
	Direct and Assumed	Ceded	Direct and Assumed	Ceded	Direct and Assumed	Ceded	Direct and Assumed	Ceded	Direct and Assumed	Ceded			
1. Prior.....	7,894	6,804	219	1,068	104				165			510	XXX
2. 2013.....	1,671	1,609	2		31				45			139	XXX
3. 2014.....	851	743	1,309	1,302	39				51			207	XXX
4. 2015.....	1,128	921	5,260	5,187	72				88			440	XXX
5. 2016.....	2,425	1,634	5,454	5,373	161				166			1,199	XXX
6. 2017.....	3,356	1,880	4,857	4,775	364				329			2,250	XXX
7. 2018.....	6,298	2,500	4,753	4,673	879				701			5,460	XXX
8. 2019.....	10,394	1,248	13,563	10,259	2,066	1,407			2,051		2,342	17,974	XXX
9. 2020.....	22,724	2,771	15,792	10,730	4,366	1,396			3,023		1,922	33,801	XXX
10. 2021.....	66,629	2,250	17,826	4,959	9,952	2,533			7,304		5,812	97,035	XXX
11. 2022	190,270	3,494	46,068	9,430	13,327	4,641			20,474		45,773	261,856	XXX
12. Totals	313,641	25,853	115,104	57,756	31,362	9,976			34,398		55,850	420,871	XXX

	Total Losses and Loss Expenses Incurred			Loss and Loss Expense Percentage (Incurred /Premiums Earned)			Nontabular Discount		34 Inter-Company Pooling Participation Percentage	Net Balance Sheet Reserves After Discount	
	26	27	28	29	30	31	32	33		35	36
	Direct and Assumed	Ceded	Net	Direct and Assumed	Ceded	Net	Loss	Loss Expense		Losses Unpaid	Loss Expenses Unpaid
1. Prior.....	XXX	XXX	XXX	XXX	XXX	XXX			XXX	241	269
2. 2013.....	251,191	5,070	246,121	73.2	103.9	72.7			6.0	63	76
3. 2014.....	278,910	4,663	274,247	73.1	78.1	73.1			6.0	116	91
4. 2015.....	323,958	9,380	314,577	77.2	132.1	76.3			6.0	279	161
5. 2016.....	379,156	11,237	367,919	78.4	148.7	77.3			6.0	872	327
6. 2017.....	414,821	12,246	402,575	74.6	124.9	73.7			6.0	1,558	692
7. 2018.....	489,277	13,266	476,011	72.9	123.6	72.1			6.0	3,879	1,581
8. 2019.....	564,605	15,846	548,759	71.8	120.0	71.0			6.0	12,450	5,524
9. 2020.....	539,973	17,999	521,974	62.6	128.5	61.6			6.0	25,015	8,785
10. 2021.....	731,573	12,165	719,408	77.9	122.3	77.4			6.0	77,246	19,789
11. 2022	812,440	15,892	796,548	79.8	150.7	79.1			6.0	223,415	38,441
12. Totals	XXX	XXX	XXX	XXX	XXX	XXX			XXX	345,135	75,736

Note: Parts 2 and 4 are gross of all discounting, including tabular discounting. Part 1 is gross of only nontabular discounting, which is reported in Columns 32 and 33 of Part 1. The tabular discount, if any, is reported in the Notes to Financial Statements which will reconcile Part 1 with Parts 2 and 4.

ANNUAL STATEMENT FOR THE YEAR 2022 OF THE PROGRESSIVE MAX INSURANCE COMPANY

SCHEDULE P - PART 2 - SUMMARY

Years in Which Losses Were Incurred	INCURRED NET LOSSES AND DEFENSE AND COST CONTAINMENT EXPENSES REPORTED AT YEAR END (\$000 OMITTED)										DEVELOPMENT	
	1 2013	2 2014	3 2015	4 2016	5 2017	6 2018	7 2019	8 2020	9 2021	10 2022	11 One Year	12 Two Year
1. Prior.....	50,654	50,565	50,243	48,456	48,932	48,956	49,060	49,312	49,332	49,396	64	84
2. 2013.....	215,744	215,675	215,264	216,462	214,519	214,678	214,787	214,809	214,827	214,885	58	76
3. 2014.....	XXX	244,178	239,835	240,267	241,036	239,575	239,931	240,037	240,092	240,055	(37)	18
4. 2015.....	XXX	XXX	273,496	272,546	273,710	276,185	274,680	275,074	275,175	275,480	305	406
5. 2016.....	XXX	XXX	XXX	320,248	319,423	321,204	322,493	320,929	322,016	322,205	189	1,276
6. 2017.....	XXX	XXX	XXX	XXX	350,812	350,758	351,758	353,074	351,329	351,855	526	(1,219)
7. 2018.....	XXX	XXX	XXX	XXX	XXX	414,466	417,820	419,101	421,827	419,528	(2,299)	427
8. 2019.....	XXX	XXX	XXX	XXX	XXX	XXX	479,969	480,702	482,384	484,140	1,756	3,438
9. 2020.....	XXX	XXX	XXX	XXX	XXX	XXX	XXX	461,543	459,144	458,419	(725)	(3,124)
10. 2021.....	XXX	XXX	XXX	XXX	XXX	XXX	XXX	XXX	638,742	641,188	2,446	XXX
11. 2022.....	XXX	XXX	XXX	XXX	XXX	XXX	XXX	XXX	XXX	710,581	XXX	XXX
12. Totals											2,282	1,381

SCHEDULE P - PART 3 - SUMMARY

Years in Which Losses Were Incurred	CUMULATIVE PAID NET LOSSES AND DEFENSE AND COST CONTAINMENT EXPENSES REPORTED AT YEAR END (\$000 OMITTED)										11 Number of	12 Number of
	1 2013	2 2014	3 2015	4 2016	5 2017	6 2018	7 2019	8 2020	9 2021	10 2022	Claims Closed With Loss Payment	Claims Closed Without Loss Payment
1. Prior.....	000	28,484	40,004	44,895	47,177	47,912	48,395	48,775	48,937	49,051	XXX	XXX
2. 2013.....	142,400	186,799	202,000	209,677	212,671	213,744	214,303	214,536	214,654	214,791	XXX	XXX
3. 2014.....	XXX	163,948	208,085	225,725	234,000	237,379	238,857	239,452	239,800	239,899	XXX	XXX
4. 2015.....	XXX	XXX	179,767	235,299	256,210	267,663	272,166	273,594	274,516	275,128	XXX	XXX
5. 2016.....	XXX	XXX	XXX	212,408	274,757	299,992	312,706	317,267	320,120	321,172	XXX	XXX
6. 2017.....	XXX	XXX	XXX	XXX	229,787	300,278	329,226	341,334	347,320	349,933	XXX	XXX
7. 2018.....	XXX	XXX	XXX	XXX	XXX	272,504	359,075	391,163	407,529	414,769	XXX	XXX
8. 2019.....	XXX	XXX	XXX	XXX	XXX	XXX	317,634	410,307	449,794	468,218	XXX	XXX
9. 2020.....	XXX	XXX	XXX	XXX	XXX	XXX	XXX	299,962	391,714	427,642	XXX	XXX
10. 2021.....	XXX	XXX	XXX	XXX	XXX	XXX	XXX	XXX	414,367	551,456	XXX	XXX
11. 2022.....	XXX	XXX	XXX	XXX	XXX	XXX	XXX	XXX	XXX	469,199	XXX	XXX

SCHEDULE P - PART 4 - SUMMARY

Years in Which Losses Were Incurred	BULK AND IBNR RESERVES ON NET LOSSES AND DEFENSE AND COST CONTAINMENT EXPENSES REPORTED AT YEAR END (\$000 OMITTED)									
	1 2013	2 2014	3 2015	4 2016	5 2017	6 2018	7 2019	8 2020	9 2021	10 2022
1. Prior.....	8,541	3,654	2,190	(51)	(55)	(5)	(57)	(53)	(37)	(849)
2. 2013.....	16,612	5,446	2,236	2,132			1			2
3. 2014.....	XXX	15,826	5,766	2,282	1,944					8
4. 2015.....	XXX	XXX	16,350	6,198	2,511	2,206				45
5. 2016.....	XXX	XXX	XXX	19,902	6,969	3,012	2,694			45
6. 2017.....	XXX	XXX	XXX	XXX	24,172	8,132	3,644	3,077		20
7. 2018.....	XXX	XXX	XXX	XXX	XXX	29,486	9,964	4,511	3,914	81
8. 2019.....	XXX	XXX	XXX	XXX	XXX	XXX	30,995	11,817	4,638	4,710
9. 2020.....	XXX	XXX	XXX	XXX	XXX	XXX	XXX	34,369	12,655	6,458
10. 2021.....	XXX	XXX	XXX	XXX	XXX	XXX	XXX	XXX	35,930	15,401
11. 2022.....	XXX	XXX	XXX	XXX	XXX	XXX	XXX	XXX	XXX	41,279

SCHEDULE T - EXHIBIT OF PREMIUMS WRITTEN

Allocated by States and Territories

States, Etc.	1 Active Status (a)	Gross Premiums, Including Policy and Membership Fees, Less Return Premiums and Premiums on Policies Not Taken		4 Dividends Paid or Credited to Policyholders on Direct Business	5 Direct Losses Paid (Deducting Salvage)	6 Direct Losses Incurred	7 Direct Losses Unpaid	8 Finance and Service Charges Not Included in Premiums	9 Direct Premiums Written for Federal Purchasing Groups (Included in Column 2)
		2 Direct Premiums Written	3 Direct Premiums Earned						
1. Alabama	AL	L							
2. Alaska	AK	L							
3. Arizona	AZ	L							
4. Arkansas	AR	L							
5. California	CA	N							
6. Colorado	CO	L							
7. Connecticut	CT	L							
8. Delaware	DE	L							
9. District of Columbia	DC	L							
10. Florida	FL	N							
11. Georgia	GA	L			(459)	(459)			
12. Hawaii	HI	L							
13. Idaho	ID	L							
14. Illinois	IL	L							
15. Indiana	IN	L							
16. Iowa	IA	L							
17. Kansas	KS	L							
18. Kentucky	KY	L				9,352	9,352		
19. Louisiana	LA	N							
20. Maine	ME	N							
21. Maryland	MD	L							
22. Massachusetts	MA	N							
23. Michigan	MI	N							
24. Minnesota	MN	L							
25. Mississippi	MS	L	(799)	(799)					
26. Missouri	MO	L	6,453,072	6,921,734	2,600,155	2,456,300	921,805	87,845	
27. Montana	MT	L							
28. Nebraska	NE	L							
29. Nevada	NV	L							
30. New Hampshire	NH	L							
31. New Jersey	NJ	L	(2,376)	(2,376)	(3,527)	8,211			
32. New Mexico	NM	L							
33. New York	NY	L	233,446,190	234,939,978	166,671,005	161,461,731	100,848,114	4,204,919	
34. North Carolina	NC	L							
35. North Dakota	ND	L							
36. Ohio	OH	L	(2,510)	(2,510)	(21,484)	(21,484)			
37. Oklahoma	OK	L							
38. Oregon	OR	L							
39. Pennsylvania	PA	L							
40. Rhode Island	RI	L	4,802,111	4,841,715	3,255,685	2,594,038	1,527,274	35,839	
41. South Carolina	SC	L	7,773,317	7,643,537	6,284,192	6,591,707	3,856,747	65,772	
42. South Dakota	SD	L							
43. Tennessee	TN	N							
44. Texas	TX	N							
45. Utah	UT	L							
46. Vermont	VT	L							
47. Virginia	VA	L	(510)	(510)	(367)	(367)			
48. Washington	WA	L	1,436,612	1,525,819	745,861	573,128	343,484	13,013	
49. West Virginia	WV	L	68,935,740	65,727,515	37,662,544	39,164,919	15,555,958	628,743	
50. Wisconsin	WI	L							
51. Wyoming	WY	L							
52. American Samoa	AS	N							
53. Guam	GU	N							
54. Puerto Rico	PR	N							
55. U.S. Virgin Islands	VI	N							
56. Northern Mariana Islands	MP	N							
57. Canada	CAN	N							
58. Aggregate other alien	OT	XXX							
59. Totals	XXX		322,840,847	321,594,103	217,193,606	212,837,077	123,062,734	5,036,130	
DETAILS OF WRITE-INS									
58001.	XXX								
58002.	XXX								
58003.	XXX								
58998. Summary of remaining write-ins for Line 58 from overflow page	XXX								
58999. Totals (Lines 58001 through 58003 plus 58998)(Line 58 above)	XXX								

(a) Active Status Counts:

- 1. L - Licensed or Chartered - Licensed insurance carrier or domiciled RRG.....43
- 2. R - Registered - Non-domiciled RRGs.....
- 3. E - Eligible - Reporting entities eligible or approved to write surplus lines in the state (other than their state of domicile - see DSLI).....
- 4. Q - Qualified - Qualified or accredited reinsurer.....
- 5. D - Domestic Surplus Lines Insurer (DSLII) - Reporting entities authorized to write surplus lines in the state of domicile.....
- 6. N - None of the above - Not allowed to write business in the state..... 14

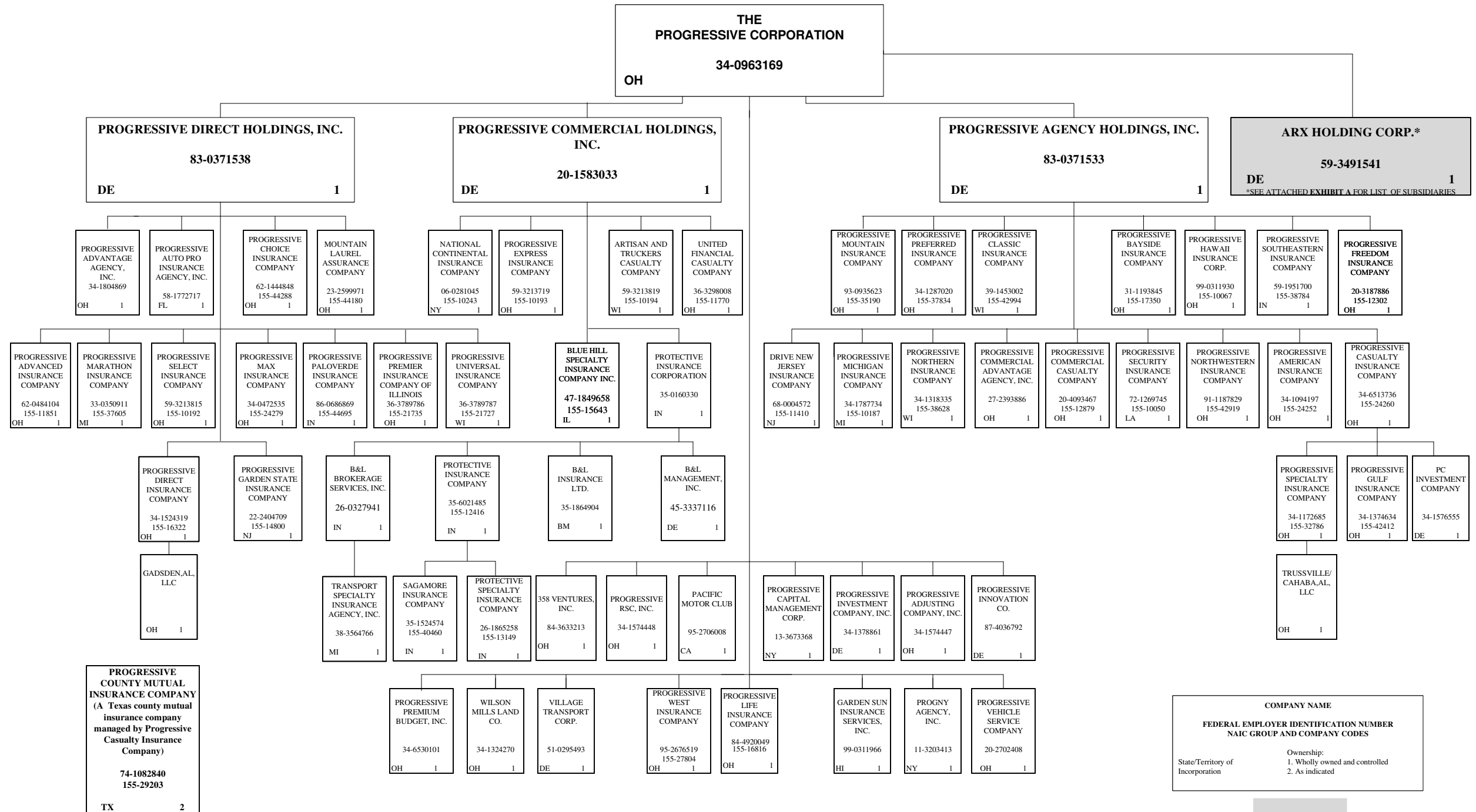
(b) Explanation of basis of allocation of premiums by states, etc.

Allocation on the basis of the location where the vehicle is principally garaged and used

ANNUAL STATEMENT FOR THE YEAR 2022 OF THE PROGRESSIVE MAX INSURANCE COMPANY

SCHEDULE Y – INFORMATION CONCERNING ACTIVITIES OF INSURER MEMBERS OF A HOLDING COMPANY GROUP -- PART 1 – ORGANIZATIONAL CHART

96

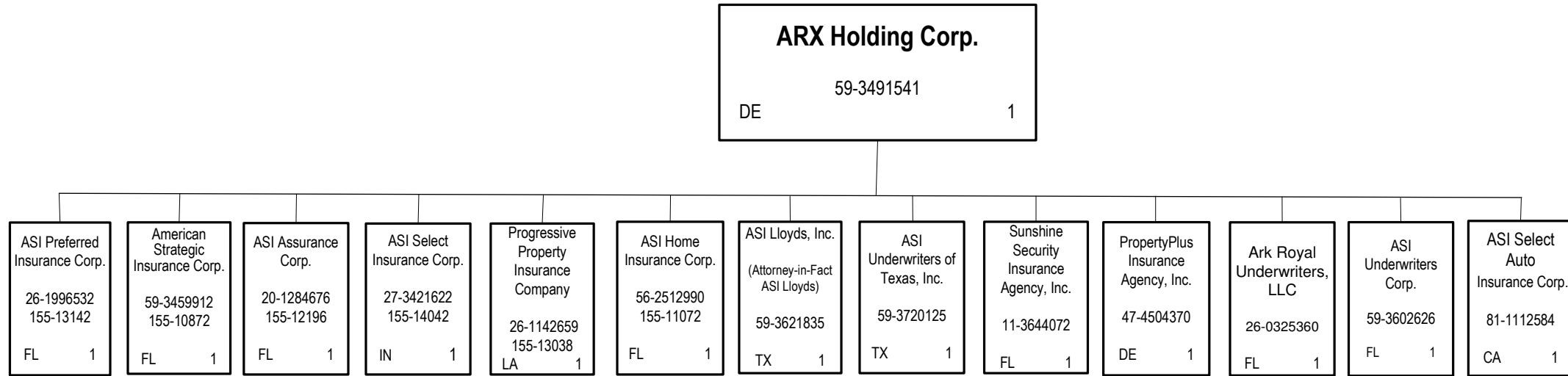


COMPANY NAME
FEDERAL EMPLOYER IDENTIFICATION NUMBER
NAIC GROUP AND COMPANY CODES

State/Territory of Incorporation

Ownership:
1. Wholly owned and controlled
2. As indicated

SCHEDULE Y – INFORMATION CONCERNING ACTIVITIES OF INSURER MEMBERS OF A HOLDING COMPANY GROUP -- PART 1 – ORGANIZATIONAL CHART



96.1

ASI Lloyds
(a Texas Lloyds insurance company managed by ASI Lloyds, Inc.)

75-2904629
155-11059

TX 2

COMPANY NAME	
FEDERAL EMPLOYER IDENTIFICATION NUMBER NAIC GROUP AND COMPANY CODES	
State/Territory of Incorporation	Ownership: 1. Wholly owned and controlled 2. As indicated

EXHIBIT A

NONE