

ASSETS

	Current Year			Prior Year
	1	2	3	4
	Assets	Nonadmitted Assets	Net Admitted Assets (Cols. 1 - 2)	Net Admitted Assets
1. Bonds (Schedule D)				
2. Stocks (Schedule D):				
2.1 Preferred stocks				
2.2 Common stocks				
3. Mortgage loans on real estate (Schedule B):				
3.1 First liens				
3.2 Other than first liens				
4. Real estate (Schedule A):				
4.1 Properties occupied by the company (less \$ encumbrances)				
4.2 Properties held for the production of income (less \$ encumbrances)				
4.3 Properties held for sale (less \$ encumbrances)				
5. Cash (\$ 901,207, Schedule E - Part 1), cash equivalents (\$ 20,718,260, Schedule E - Part 2) and short-term investments (\$, Schedule DA)	21,619,467		21,619,467	13,629,181
6. Contract loans (including \$ premium notes)				
7. Derivatives (Schedule DB)				
8. Other invested assets (Schedule BA)				
9. Receivables for securities				
10. Securities lending reinvested collateral assets (Schedule DL)				
11. Aggregate write-ins for invested assets				
12. Subtotals, cash and invested assets (Lines 1 to 11)	21,619,467		21,619,467	13,629,181
13. Title plants less \$ charged off (for Title insurers only)				
14. Investment income due and accrued				
15. Premiums and considerations:				
15.1 Uncollected premiums and agents' balances in the course of collection	52,001	34,620	17,381	3,819
15.2 Deferred premiums, agents' balances and installments booked but deferred and not yet due (including \$ earned but unbilled premiums)				
15.3 Accrued retrospective premiums (\$) and contracts subject to redetermination (\$ 1,146,995)	1,146,995		1,146,995	933,382
16. Reinsurance:				
16.1 Amounts recoverable from reinsurers				1,293
16.2 Funds held by or deposited with reinsured companies				
16.3 Other amounts receivable under reinsurance contracts				
17. Amounts receivable relating to uninsured plans	500,302		500,302	83,498
18.1 Current federal and foreign income tax recoverable and interest thereon				
18.2 Net deferred tax asset				
19. Guaranty funds receivable or on deposit				
20. Electronic data processing equipment and software				
21. Furniture and equipment, including health care delivery assets (\$)				
22. Net adjustment in assets and liabilities due to foreign exchange rates				
23. Receivables from parent, subsidiaries and affiliates	60,617		60,617	-
24. Health care (\$ 3,567,203) and other amounts receivable	4,707,593	1,140,390	3,567,203	1,324,686
25. Aggregate write-ins for other-than-invested assets	253,350	253,350	-	
26. Total assets excluding Separate Accounts, Segregated Accounts and Protected Cell Accounts (Lines 12 to 25)	28,340,325	1,428,360	26,911,965	15,975,859
27. From Separate Accounts, Segregated Accounts and Protected Cell Accounts				
28. Total (Lines 26 and 27)	28,340,325	1,428,360	26,911,965	15,975,859
Details of Write-Ins				
1101.				
1102.				
1103.				
1198. Summary of remaining write-ins for Line 11 from overflow page				
1199. Totals (Lines 1101 through 1103 plus 1198) (Line 11 above)				
2501. Prepaid benefit expenses	253,350	253,350	-	
2502.				
2503.				
2598. Summary of remaining write-ins for Line 25 from overflow page				
2599. Totals (Lines 2501 through 2503 plus 2598) (Line 25 above)	253,350	253,350	-	

LIABILITIES, CAPITAL AND SURPLUS

	Current Year			Prior Year
	1 Covered	2 Uncovered	3 Total	4 Total
1. Claims unpaid (less \$ reinsurance ceded)	6,527,281		6,527,281	2,423,833
2. Accrued medical incentive pool and bonus amounts				952
3. Unpaid claims adjustment expenses	186,441		186,441	67,809
4. Aggregate health policy reserves, including the liability of \$ for medical loss ratio rebate per the Public Health Service Act	1,927,844		1,927,844	1,321,087
5. Aggregate life policy reserves				
6. Property/casualty unearned premium reserves				
7. Aggregate health claim reserves				
8. Premiums received in advance	2,582		2,582	874
9. General expenses due or accrued	159,401		159,401	138,179
10.1 Current federal and foreign income tax payable and interest thereon (including \$ on realized capital gains (losses))				
10.2 Net deferred tax liability				
11. Ceded reinsurance premiums payable				
12. Amounts withheld or retained for the account of others				
13. Remittances and items not allocated				
14. Borrowed money (including \$ current) and interest thereon \$ (including \$ current)				
15. Amounts due to parent, subsidiaries and affiliates	1,198,784		1,198,784	370,835
16. Derivatives				
17. Payable for securities				
18. Payable for securities lending				
19. Funds held under reinsurance treaties (with \$ authorized reinsurers, \$ unauthorized reinsurers and \$ certified reinsurers)				
20. Reinsurance in unauthorized and certified (\$) companies				
21. Net adjustments in assets and liabilities due to foreign exchange rates				
22. Liability for amounts held under uninsured plans	3,190,869		3,190,869	1,343,652
23. Aggregate write-ins for other liabilities (including \$ current)				
24. Total liabilities (Lines 1 to 23)	13,193,202		13,193,202	5,667,221
25. Aggregate write-ins for special surplus funds	XXX	XXX		
26. Common capital stock	XXX	XXX	1,000,000	1,000,000
27. Preferred capital stock	XXX	XXX		
28. Gross paid in and contributed surplus	XXX	XXX	21,600,000	12,600,000
29. Surplus notes	XXX	XXX		
30. Aggregate write-ins for other-than-special surplus funds	XXX	XXX		
31. Unassigned funds (surplus)	XXX	XXX	(8,881,237)	(3,291,362)
32. Less treasury stock, at cost:				
32.1 shares common (value included in Line 26 \$)	XXX	XXX		
32.2 shares preferred (value included in Line 27 \$)	XXX	XXX		
33. Total capital and surplus (Lines 25 to 31 minus Line 32)	XXX	XXX	13,718,763	10,308,638
34. Total liabilities, capital and surplus (Lines 24 and 33)	XXX	XXX	26,911,965	15,975,859
Details of Write-Ins				
2301.				
2302.				
2303.				
2398. Summary of remaining write-ins for Line 23 from overflow page				
2399. Totals (Lines 2301 through 2303 plus 2398) (Line 23 above)				
2501.	XXX	XXX		
2502.	XXX	XXX		
2503.	XXX	XXX		
2598. Summary of remaining write-ins for Line 25 from overflow page	XXX	XXX		
2599. Totals (Lines 2501 through 2503 plus 2598) (Line 25 above)	XXX	XXX		
3001.	XXX	XXX		
3002.	XXX	XXX		
3003.	XXX	XXX		
3098. Summary of remaining write-ins for Line 30 from overflow page	XXX	XXX		
3099. Totals (Lines 3001 through 3003 plus 3098) (Line 30 above)	XXX	XXX		

STATEMENT OF REVENUE AND EXPENSES

	Current Year		Prior Year
	1 Uncovered	2 Total	3 Total
1. Member Months	XXX	82,000	28,074
2. Net premium income (including \$ non-health premium income)	XXX	76,845,369	25,876,576
3. Change in unearned premium reserves and reserve for rate credits	XXX	(586,587)	(442,333)
4. Fee-for-service (net of \$ medical expenses)	XXX		
5. Risk revenue	XXX		
6. Aggregate write-ins for other health care related revenues	XXX		
7. Aggregate write-ins for other non-health revenues	XXX		
8. Total revenues (Lines 2 to 7)	XXX	76,258,782	25,434,243
Hospital and Medical:			
9. Hospital/medical benefits		54,288,127	18,512,278
10. Other professional services		1,720,626	504,746
11. Outside referrals		273,130	115,716
12. Emergency room and out-of-area		2,648,468	830,058
13. Prescription drugs		9,463,637	3,659,866
14. Aggregate write-ins for other hospital and medical			
15. Incentive pool, withhold adjustments and bonus amounts		16,607	952
16. Subtotal (Lines 9 to 15)		68,410,595	23,623,616
Less:			
17. Net reinsurance recoveries		96,569	1,293
18. Total hospital and medical (Lines 16 minus 17)		68,314,026	23,622,323
19. Non-health claims (net)			
20. Claims adjustment expenses, including \$ 1,245,928 cost containment expenses		2,096,689	610,930
21. General administrative expenses		10,243,993	3,483,651
22. Increase in reserves for life and accident and health contracts (including \$ increase in reserves for life only)		20,171	(515,533)
23. Total underwriting deductions (Lines 18 through 22)		80,674,879	27,201,371
24. Net underwriting gain or (loss) (Lines 8 minus 23)	XXX	(4,416,097)	(1,767,128)
25. Net investment income earned (Exhibit of Net Investment Income, Line 17)		123,867	399
26. Net realized capital gains (losses) less capital gains tax of \$			
27. Net investment gains (losses) (Lines 25 plus 26)		123,867	399
28. Net gain or (loss) from agents' or premium balances charged off [(amount recovered \$) (amount charged off \$)]			
29. Aggregate write-ins for other income or expenses			
30. Net income or (loss) after capital gains tax and before all other federal income taxes (Lines 24 plus 27 plus 28 plus 29)	XXX	(4,292,230)	(1,766,729)
31. Federal and foreign income taxes incurred	XXX		
32. Net income (loss) (Lines 30 minus 31)	XXX	(4,292,230)	(1,766,729)
Details of Write-Ins			
0601.	XXX		
0602.	XXX		
0603.	XXX		
0698. Summary of remaining write-ins for Line 6 from overflow page	XXX		
0699. Totals (Lines 0601 through 0603 plus 0698) (Line 6 above)	XXX		
0701.	XXX		
0702.	XXX		
0703.	XXX		
0798. Summary of remaining write-ins for Line 7 from overflow page	XXX		
0799. Totals (Lines 0701 through 0703 plus 0798) (Line 7 above)	XXX		
1401.			
1402.			
1403.			
1498. Summary of remaining write-ins for Line 14 from overflow page			
1499. Totals (Lines 1401 through 1403 plus 1498) (Line 14 above)			
2901.			
2902.			
2903.			
2998. Summary of remaining write-ins for Line 29 from overflow page			
2999. Totals (Lines 2901 through 2903 plus 2998) (Line 29 above)			

STATEMENT OF REVENUE AND EXPENSES (CONTINUED)

	1	2
CAPITAL & SURPLUS ACCOUNT	Current Year	Prior Year
33. Capital and surplus prior reporting year.....	10,308,638	2,695,080
34. Net income or (loss) from Line 32.....	(4,292,230)	(1,766,729)
35. Change in valuation basis of aggregate policy and claim reserves.....		
36. Change in net unrealized capital gains (losses) less capital gains tax of \$.....		
37. Change in net unrealized foreign exchange capital gain or (loss).....		
38. Change in net deferred income tax.....		
39. Change in nonadmitted assets.....	(1,297,645)	(119,713)
40. Change in unauthorized and certified reinsurance.....		
41. Change in treasury stock.....		
42. Change in surplus notes.....		
43. Cumulative effect of changes in accounting principles.....		
44. Capital Changes:		
44.1 Paid in.....		
44.2 Transferred from surplus (Stock Dividend).....		999,999
44.3 Transferred to surplus.....		
45. Surplus adjustments:		
45.1 Paid in.....	9,000,000	9,500,000
45.2 Transferred to capital (Stock Dividend).....		(999,999)
45.3 Transferred from capital.....		
46. Dividends to stockholders.....		
47. Aggregate write-ins for gains or (losses) in surplus.....		
48. Net change in capital and surplus (Lines 34 to 47).....	3,410,125	7,613,558
49. Capital and surplus end of reporting year (Line 33 plus 48).....	13,718,763	10,308,638
Details of Write-Ins		
4701.....		
4702.....		
4703.....		
4798. Summary of remaining write-ins for Line 47 from overflow page.....		
4799. Totals (Lines 4701 through 4703 plus 4798) (Line 47 above).....		

CASH FLOW

	1	2
	Current Year	Prior Year
Cash from Operations		
1. Premiums collected net of reinsurance	76,598,491	24,927,041
2. Net investment income	123,867	399
3. Miscellaneous income		-
4. Total (Lines 1 to 3)	76,722,358	24,927,440
5. Benefit and loss related payments	67,475,910	22,629,751
6. Net transfers to Separate Accounts, Segregated Accounts and Protected Cell Accounts		
7. Commissions, expenses paid and aggregate write-ins for deductions	10,770,416	2,628,439
8. Dividends paid to policyholders		
9. Federal and foreign income taxes paid (recovered) net of \$ tax on capital gains (losses)		
10. Total (Lines 5 through 9)	78,246,326	25,258,190
11. Net cash from operations (Line 4 minus Line 10)	(1,523,968)	(330,750)
Cash from Investments		
12. Proceeds from investments sold, matured or repaid:		
12.1 Bonds		
12.2 Stocks		
12.3 Mortgage loans		
12.4 Real estate		
12.5 Other invested assets		
12.6 Net gains or (losses) on cash, cash equivalents and short-term investments		
12.7 Miscellaneous proceeds		-
12.8 Total investment proceeds (Lines 12.1 to 12.7)		-
13. Cost of investments acquired (long-term only):		
13.1 Bonds		
13.2 Stocks		
13.3 Mortgage loans		
13.4 Real estate		
13.5 Other invested assets		
13.6 Miscellaneous applications		-
13.7 Total investments acquired (Lines 13.1 to 13.6)		-
14. Net increase (decrease) in contract loans and premium notes		
15. Net cash from investments (Line 12.8 minus Line 13.7 minus Line 14)		-
Cash from Financing and Miscellaneous Sources		
16. Cash provided (applied):		
16.1 Surplus notes, capital notes		
16.2 Capital and paid in surplus, less treasury stock	9,000,000	9,500,000
16.3 Borrowed funds		
16.4 Net deposits on deposit-type contracts and other insurance liabilities		
16.5 Dividends to stockholders		
16.6 Other cash provided (applied)	514,254	359,594
17. Net cash from financing and miscellaneous sources (Lines 16.1 to 16.4 minus Line 16.5 plus Line 16.6)	9,514,254	9,859,594
Reconciliation of Cash, Cash Equivalents and Short-Term Investments		
18. Net change in cash, cash equivalents and short-term investments (Line 11, plus Lines 15 and 17)	7,990,286	9,528,844
19. Cash, cash equivalents and short-term investments:		
19.1 Beginning of year	13,629,181	4,100,337
19.2 End of year (Line 18 plus Line 19.1)	21,619,467	13,629,181

Note: Supplemental disclosures of cash flow information for non-cash transactions:

20.0001		
---------------	--	--

ANALYSIS OF OPERATIONS BY LINES OF BUSINESS

	1	2	3	4	5	6	7	8	9	10
	Total	Comprehensive (Hospital & Medical)	Medicare Supplement	Dental Only	Vision Only	Federal Employees Health Benefits Plan	Title XVIII Medicare	Title XIX Medicaid	Other Health	Other Non- Health
1. Net premium income	76,845,369						76,845,369			
2. Change in unearned premium reserves and reserve for rate credit	(586,587)						(586,587)			
3. Fee-for-service (net of \$ medical expenses)										XXX
4. Risk revenue										XXX
5. Aggregate write-ins for other health care related revenues										XXX
6. Aggregate write-ins for other non-health care related revenues		XXX	XXX	XXX	XXX	XXX	XXX	XXX	XXX	
7. Total revenues (Lines 1 to 6)	76,258,782						76,258,782			
8. Hospital/medical benefits	54,288,127						54,288,127			XXX
9. Other professional services	1,720,626						1,720,626			XXX
10. Outside referrals	273,130						273,130			XXX
11. Emergency room and out-of-area	2,648,468						2,648,468			XXX
12. Prescription drugs	9,463,637						9,463,637			XXX
13. Aggregate write-ins for other hospital and medical										XXX
14. Incentive pool, withhold adjustments and bonus amounts	16,607						16,607			XXX
15. Subtotal (Lines 8 to 14)	68,410,595						68,410,595			XXX
16. Net reinsurance recoveries	96,569						96,569			XXX
17. Total hospital and medical (Lines 15 minus 16)	68,314,026						68,314,026			XXX
18. Non-health claims (net)		XXX	XXX	XXX	XXX	XXX	XXX	XXX	XXX	
19. Claims adjustment expenses including \$ 1,245,928 cost containment expenses	2,096,689						2,096,689			
20. General administrative expenses	10,243,993						10,243,993			
21. Increase in reserves for accident and health contracts	20,171						20,171			XXX
22. Increase in reserves for life contracts		XXX	XXX	XXX	XXX	XXX	XXX	XXX	XXX	
23. Total underwriting deductions (Lines 17 to 22)	80,674,879						80,674,879			
24. Net underwriting gain or (loss) (Line 7 minus Line 23)	(4,416,097)						(4,416,097)			
Details of Write-Ins										
0501.										XXX
0502.										XXX
0503.										XXX
0598. Summary of remaining write-ins for Line 5 from overflow page										XXX
0599. Totals (Lines 0501 through 0503 plus 0598) (Line 5 above)										XXX
0601.		XXX	XXX	XXX	XXX	XXX	XXX	XXX	XXX	
0602.		XXX	XXX	XXX	XXX	XXX	XXX	XXX	XXX	
0603.		XXX	XXX	XXX	XXX	XXX	XXX	XXX	XXX	
0698. Summary of remaining write-ins for Line 6 from overflow page		XXX	XXX	XXX	XXX	XXX	XXX	XXX	XXX	
0699. Totals (Lines 0601 through 0603 plus 0698) (Line 6 above)		XXX	XXX	XXX	XXX	XXX	XXX	XXX	XXX	
1301.										XXX
1302.										XXX
1303.										XXX
1398. Summary of remaining write-ins for Line 13 from overflow page										XXX
1399. Totals (Lines 1301 through 1303 plus 1398) (Line 13 above)										XXX

UNDERWRITING AND INVESTMENT EXHIBIT

PART 1 – PREMIUMS

Line of Business		1 Direct Business	2 Reinsurance Assumed	3 Reinsurance Ceded	4 Net Premium Income (Cols. 1+2-3)
1.	Comprehensive (hospital and medical) individual.....				
2.	Comprehensive (hospital and medical) group.....				
3.	Medicare Supplement.....				
4.	Dental only.....				
5.	Vision only.....				
6.	Federal Employees Health Benefits Plan.....				
7.	Title XVIII – Medicare.....	77,302,897		457,528	76,845,369
8.	Title XIX – Medicaid.....				
9.	Credit A&H.....				
10.	Disability Income.....				
11.	Long-Term Care.....				
12.	Other health.....				
13.	Health subtotal (Lines 1 through 12).....	77,302,897		457,528	76,845,369
14.	Life.....				
15.	Property/casualty.....				
16.	Totals (Lines 13 to 15).....	77,302,897		457,528	76,845,369

UNDERWRITING AND INVESTMENT EXHIBIT

PART 2 – CLAIMS INCURRED DURING THE YEAR

	1 Total	Comprehensive (Hospital & Medical)		4 Medicare Supplement	5 Dental Only	6 Vision Only	7 Federal Employees Health Benefits Plan	8 Title XVIII Medicare	9 Title XIX Medicaid	10 Credit A&H	11 Disability Income	12 Long-Term Care	13 Other Health	14 Other Non-Health
		2 Individual	3 Group											
1. Payments during the year:														
1.1 Direct	67,553,213							67,553,213						
1.2 Reinsurance assumed														
1.3 Reinsurance ceded	97,862							97,862						
1.4 Net	67,455,351							67,455,351						
2. Paid medical incentive pools and bonuses	541,271							541,271						
3. Claim liability December 31, current year from Part 2A:														
3.1 Direct	6,527,281							6,527,281						
3.2 Reinsurance assumed														
3.3 Reinsurance ceded														
3.4 Net	6,527,281							6,527,281						
4. Claim reserve December 31, current year from Part 2D:														
4.1 Direct														
4.2 Reinsurance assumed														
4.3 Reinsurance ceded														
4.4 Net														
5. Accrued medical incentive pools and bonuses, current year														
6. Net health care receivables (a)	3,262,674							3,262,674						
7. Amounts recoverable from reinsurers December 31, current year														
8. Claim liability December 31, prior year from Part 2A:														
8.1 Direct	2,423,833							2,423,833						
8.2 Reinsurance assumed														
8.3 Reinsurance ceded														
8.4 Net	2,423,833							2,423,833						
9. Claim reserve December 31, prior year from Part 2D:														
9.1 Direct														
9.2 Reinsurance assumed														
9.3 Reinsurance ceded														
9.4 Net														
10. Accrued medical incentive pools and bonuses, prior year	952							952						
11. Amounts recoverable from reinsurers December 31, prior year	1,293							1,293						
12. Incurred benefits:														
12.1 Direct	68,393,987							68,393,987						
12.2 Reinsurance assumed														
12.3 Reinsurance ceded	96,569							96,569						
12.4 Net	68,297,418							68,297,418						
13. Incurred medical incentive pools and bonuses	540,319							540,319						

(a) Excludes \$ 14,000 loans or advances to providers not yet expensed.

UNDERWRITING AND INVESTMENT EXHIBIT

PART 2A – CLAIMS LIABILITY END OF CURRENT YEAR

	1 Total	Comprehensive (Hospital & Medical)		4 Medicare Supplement	5 Dental Only	6 Vision Only	7 Federal Employees Health Benefits Plan	8 Title XVIII Medicare	9 Title XIX Medicaid	10 Credit A&H	11 Disability Income	12 Long-Term Care	13 Other Health	14 Other Non-Health
		2 Individual	3 Group											
1. Reported in Process of Adjustment:														
1.1 Direct	414,000							414,000						
1.2 Reinsurance assumed														
1.3 Reinsurance ceded														
1.4 Net	414,000							414,000						
2. Incurred but Unreported:														
2.1 Direct	6,113,281							6,113,281						
2.2 Reinsurance assumed														
2.3 Reinsurance ceded														
2.4 Net	6,113,281							6,113,281						
3. Amounts Withheld from Paid Claims and Capitations:														
3.1 Direct														
3.2 Reinsurance assumed														
3.3 Reinsurance ceded														
3.4 Net														
4. TOTALS:														
4.1 Direct	6,527,281							6,527,281						
4.2 Reinsurance assumed														
4.3 Reinsurance ceded														
4.4 Net	6,527,281							6,527,281						

UNDERWRITING AND INVESTMENT EXHIBIT

PART 2B – ANALYSIS OF CLAIMS UNPAID – PRIOR YEAR-NET OF REINSURANCE

Line of Business	Claims Paid During the Year		Claim Reserve and Claim Liability December 31 of Current Year		5 Claims Incurred in Prior Years (Columns 1 + 3)	6 Estimated Claim Reserve and Claim Liability December 31 of Prior Year
	1 On Claims Incurred Prior to January 1 of Current Year	2 On Claims Incurred During the Year	3 On Claims Unpaid December 31 of Prior Year	4 On Claims Incurred During the Year		
1. Comprehensive (hospital and medical) individual						
2. Comprehensive (hospital and medical) group						
3. Medicare Supplement						
4. Dental Only						
5. Vision Only						
6. Federal Employees Health Benefits Plan						
7. Title XVIII – Medicare	620,473	66,312,459	17,312	6,509,969	637,785	2,423,833
8. Title XIX – Medicaid						
9. Credit A&H						
10. Disability Income						
11. Long-Term Care						
12. Other health						
13. Health subtotal (Lines 1 to 12)	620,473	66,312,459	17,312	6,509,969	637,785	2,423,833
14. Health care receivables (a)	54,074	4,639,519			54,074	1,430,919
15. Other non-health						
16. Medical incentive pools and bonus amounts	11,463	529,808			11,463	952
17. Totals (Lines 13 - 14 + 15 + 16)	577,862	62,202,748	17,312	6,509,969	595,174	993,866

(a) Excludes \$ 14,000 loans or advances to providers not yet expensed.

UNDERWRITING AND INVESTMENT EXHIBIT

PART 2C – DEVELOPMENT OF PAID AND INCURRED HEALTH CLAIMS

(\$000 Omitted)

GRAND TOTAL

Section A – Paid Health Claims

Year in Which Losses Were Incurred	Cumulative Net Amounts Paid				
	1 2018	2 2019	3 2020	4 2021	5 2022
1. Prior					
2. 2018					
3. 2019	XXX				
4. 2020	XXX	XXX	–		
5. 2021	XXX	XXX	XXX	22,628	23,260
6. 2022	XXX	XXX	XXX	XXX	66,842

Section B – Incurred Health Claims

Year in Which Losses Were Incurred	Sum of Cumulative Net Amount Paid and Claim Liability, Claim Reserve and Medical Incentive Pool and Bonuses Outstanding at End of Year				
	1 2018	2 2019	3 2020	4 2021	5 2022
1. Prior					
2. 2018					
3. 2019	XXX				
4. 2020	XXX	XXX	–		
5. 2021	XXX	XXX	XXX	25,053	23,278
6. 2022	XXX	XXX	XXX	XXX	73,352

Section C – Incurred Year Health Claims and Claims Adjustment Expense Ratio

Years in which Premiums were Earned and Claims were Incurred	1 Premiums Earned	2 Claims Payments	3 Claim Adjustment Expense Payments	4 (Col. 3/2) Percent	5 Claim and Claim Adjustment Expense Payments (Col. 2+3)	6 (Col. 5/1) Percent	7 Claims Unpaid	8 Unpaid Claims Adjustment Expenses	9 Total Claims and Claims Adjustment Expense Incurred (Col. 5+7+8)	10 (Col. 9/1) Percent
1. 2018										
2. 2019										
3. 2020										
4. 2021	25,434	23,260	562	2.416	23,822	93.662	18	–	23,840	93.733
5. 2022	76,259	66,842	1,960	2.932	68,802	90.221	6,510	186	75,498	99.002

12.GT

UNDERWRITING AND INVESTMENT EXHIBIT
 PART 2C – DEVELOPMENT OF PAID AND INCURRED HEALTH CLAIMS
 (\$000 Omitted)
 HOSPITAL & MEDICAL

Section A – Paid Health Claims

Year in Which Losses Were Incurred	Cumulative Net Amounts Paid				
	1 2018	2 2019	3 2020	4 2021	5 2022
1. Prior					
2. 2018					
3. 2019					
4. 2020		XXX			
5. 2021	XXX	XXX	XXX		
6. 2022	XXX	XXX	XXX	XXX	

Section B – Incurred Health Claims

Year in Which Losses Were Incurred	Sum of Cumulative Net Amount Paid and Claim Liability, Claim Reserve and Medical Incentive Pool and Bonuses Outstanding at End of Year				
	1 2018	2 2019	3 2020	4 2021	5 2022
1. Prior					
2. 2018					
3. 2019					
4. 2020		XXX			
5. 2021	XXX	XXX	XXX		
6. 2022	XXX	XXX	XXX	XXX	

Section C – Incurred Year Health Claims and Claims Adjustment Expense Ratio

Years in which Premiums were Earned and Claims were Incurred	1 Premiums Earned	2 Claims Payments	3 Claim Adjustment Expense Payments	4 (Col. 3/2) Percent	5 Claim and Claim Adjustment Expense Payments (Col. 2+3)	6 (Col. 5/1) Percent	7 Claims Unpaid	8 Unpaid Claims Adjustment Expenses	9 Total Claims and Claims Adjustment Expense Incurred (Col. 5+7+8)	10 (Col. 9/1) Percent
1. 2018										
2. 2019										
3. 2020										
4. 2021										
5. 2022										

12.HM

UNDERWRITING AND INVESTMENT EXHIBIT
 PART 2C – DEVELOPMENT OF PAID AND INCURRED HEALTH CLAIMS
 (\$000 Omitted)
 MEDICARE SUPPLEMENT

Section A – Paid Health Claims

Year in Which Losses Were Incurred	Cumulative Net Amounts Paid				
	1 2018	2 2019	3 2020	4 2021	5 2022
1. Prior					
2. 2018					
3. 2019					
4. 2020		XXX			
5. 2021	XXX	XXX	XXX		
6. 2022	XXX	XXX	XXX	XXX	

Section B – Incurred Health Claims

Year in Which Losses Were Incurred	Sum of Cumulative Net Amount Paid and Claim Liability, Claim Reserve and Medical Incentive Pool and Bonuses Outstanding at End of Year				
	1 2018	2 2019	3 2020	4 2021	5 2022
1. Prior					
2. 2018					
3. 2019					
4. 2020		XXX			
5. 2021	XXX	XXX	XXX		
6. 2022	XXX	XXX	XXX	XXX	

Section C – Incurred Year Health Claims and Claims Adjustment Expense Ratio

Years in which Premiums were Earned and Claims were Incurred	1	2	3	4	5	6	7	8	9	10
	Premiums Earned	Claims Payments	Claim Adjustment Expense Payments	(Col. 3/2) Percent	Claim and Claim Adjustment Expense Payments (Col. 2+3)	(Col. 5/1) Percent	Claims Unpaid	Unpaid Claims Adjustment Expenses	Total Claims and Claims Adjustment Expense Incurred (Col. 5+7+8)	(Col. 9/1) Percent
1. 2018										
2. 2019										
3. 2020										
4. 2021										
5. 2022										

12.MS

UNDERWRITING AND INVESTMENT EXHIBIT
 PART 2C – DEVELOPMENT OF PAID AND INCURRED HEALTH CLAIMS
 (\$000 Omitted)
 DENTAL ONLY

Section A – Paid Health Claims

Year in Which Losses Were Incurred	Cumulative Net Amounts Paid				
	1 2018	2 2019	3 2020	4 2021	5 2022
1. Prior.....					
2. 2018.....					
3. 2019.....					
4. 2020.....		XXX			
5. 2021.....	XXX	XXX	XXX		
6. 2022.....	XXX	XXX	XXX	XXX	

Section B – Incurred Health Claims

Year in Which Losses Were Incurred	Sum of Cumulative Net Amount Paid and Claim Liability, Claim Reserve and Medical Incentive Pool and Bonuses Outstanding at End of Year				
	1 2018	2 2019	3 2020	4 2021	5 2022
1. Prior.....					
2. 2018.....					
3. 2019.....					
4. 2020.....		XXX			
5. 2021.....	XXX	XXX	XXX		
6. 2022.....	XXX	XXX	XXX	XXX	

Section C – Incurred Year Health Claims and Claims Adjustment Expense Ratio

Years in which Premiums were Earned and Claims were Incurred	1 Premiums Earned	2 Claims Payments	3 Claim Adjustment Expense Payments	4 (Col. 3/2) Percent	5 Claim and Claim Adjustment Expense Payments (Col. 2+3)	6 (Col. 5/1) Percent	7 Claims Unpaid	8 Unpaid Claims Adjustment Expenses	9 Total Claims and Claims Adjustment Expense Incurred (Col. 5+7+8)	10 (Col. 9/1) Percent
1. 2018.....										
2. 2019.....										
3. 2020.....										
4. 2021.....										
5. 2022.....										

12.D0

UNDERWRITING AND INVESTMENT EXHIBIT
 PART 2C – DEVELOPMENT OF PAID AND INCURRED HEALTH CLAIMS
 (\$000 Omitted)
 VISION ONLY

Section A – Paid Health Claims

Year in Which Losses Were Incurred	Cumulative Net Amounts Paid				
	1 2018	2 2019	3 2020	4 2021	5 2022
1. Prior.....					
2. 2018.....					
3. 2019.....					
4. 2020.....		XXX			
5. 2021.....	XXX	XXX	XXX		
6. 2022.....	XXX	XXX	XXX	XXX	

Section B – Incurred Health Claims

Year in Which Losses Were Incurred	Sum of Cumulative Net Amount Paid and Claim Liability, Claim Reserve and Medical Incentive Pool and Bonuses Outstanding at End of Year				
	1 2018	2 2019	3 2020	4 2021	5 2022
1. Prior.....					
2. 2018.....					
3. 2019.....					
4. 2020.....		XXX			
5. 2021.....	XXX	XXX	XXX		
6. 2022.....	XXX	XXX	XXX	XXX	

Section C – Incurred Year Health Claims and Claims Adjustment Expense Ratio

Years in which Premiums were Earned and Claims were Incurred	1	2	3	4	5	6	7	8	9	10
	Premiums Earned	Claims Payments	Claim Adjustment Expense Payments	(Col. 3/2) Percent	Claim and Claim Adjustment Expense Payments (Col. 2+3)	(Col. 5/1) Percent	Claims Unpaid	Unpaid Claims Adjustment Expenses	Total Claims and Claims Adjustment Expense Incurred (Col. 5+7+8)	(Col. 9/1) Percent
1. 2018.....										
2. 2019.....										
3. 2020.....										
4. 2021.....										
5. 2022.....										

12.VO

UNDERWRITING AND INVESTMENT EXHIBIT
 PART 2C – DEVELOPMENT OF PAID AND INCURRED HEALTH CLAIMS
 (\$000 Omitted)

FEDERAL EMPLOYEES HEALTH BENEFITS PLAN

Section A – Paid Health Claims

Year in Which Losses Were Incurred	Cumulative Net Amounts Paid				
	1 2018	2 2019	3 2020	4 2021	5 2022
1. Prior					
2. 2018					
3. 2019					
4. 2020		XXX			
5. 2021	XXX	XXX	XXX		
6. 2022	XXX	XXX	XXX	XXX	

Section B – Incurred Health Claims

Year in Which Losses Were Incurred	Sum of Cumulative Net Amount Paid and Claim Liability, Claim Reserve and Medical Incentive Pool and Bonuses Outstanding at End of Year				
	1 2018	2 2019	3 2020	4 2021	5 2022
1. Prior					
2. 2018					
3. 2019					
4. 2020		XXX			
5. 2021	XXX	XXX	XXX		
6. 2022	XXX	XXX	XXX	XXX	

Section C – Incurred Year Health Claims and Claims Adjustment Expense Ratio

Years in which Premiums were Earned and Claims were Incurred	1	2	3	4	5	6	7	8	9	10
	Premiums Earned	Claims Payments	Claim Adjustment Expense Payments	(Col. 3/2) Percent	Claim and Claim Adjustment Expense Payments (Col. 2+3)	(Col. 5/1) Percent	Claims Unpaid	Unpaid Claims Adjustment Expenses	Total Claims and Claims Adjustment Expense Incurred (Col. 5+7+8)	(Col. 9/1) Percent
1. 2018										
2. 2019										
3. 2020										
4. 2021										
5. 2022										

12.FE

UNDERWRITING AND INVESTMENT EXHIBIT
 PART 2C – DEVELOPMENT OF PAID AND INCURRED HEALTH CLAIMS
 (\$000 Omitted)
 TITLE XVIII MEDICARE

Section A – Paid Health Claims

Year in Which Losses Were Incurred	Cumulative Net Amounts Paid				
	1 2018	2 2019	3 2020	4 2021	5 2022
1. Prior.....					
2. 2018.....					
3. 2019.....	XXX				
4. 2020.....	XXX	XXX			
5. 2021.....	XXX	XXX	XXX	22,628	23,260
6. 2022.....	XXX	XXX	XXX	XXX	66,842

Section B – Incurred Health Claims

Year in Which Losses Were Incurred	Sum of Cumulative Net Amount Paid and Claim Liability, Claim Reserve and Medical Incentive Pool and Bonuses Outstanding at End of Year				
	1 2018	2 2019	3 2020	4 2021	5 2022
1. Prior.....					
2. 2018.....					
3. 2019.....	XXX				
4. 2020.....	XXX	XXX			
5. 2021.....	XXX	XXX	XXX	25,053	23,278
6. 2022.....	XXX	XXX	XXX	XXX	73,352

Section C – Incurred Year Health Claims and Claims Adjustment Expense Ratio

Years in which Premiums were Earned and Claims were Incurred	1 Premiums Earned	2 Claims Payments	3 Claim Adjustment Expense Payments	4 (Col. 3/2) Percent	5 Claim and Claim Adjustment Expense Payments (Col. 2+3)	6 (Col. 5/1) Percent	7 Claims Unpaid	8 Unpaid Claims Adjustment Expenses	9 Total Claims and Claims Adjustment Expense Incurred (Col. 5+7+8)	10 (Col. 9/1) Percent
1. 2018.....										
2. 2019.....										
3. 2020.....										
4. 2021.....	25,434	23,260	562	2.416	23,822	93.662	18	–	23,840	93.733
5. 2022.....	76,259	66,842	1,960	2.932	68,802	90.221	6,510	186	75,498	99.002

UNDERWRITING AND INVESTMENT EXHIBIT
 PART 2C – DEVELOPMENT OF PAID AND INCURRED HEALTH CLAIMS
 (\$000 Omitted)
 TITLE XIX MEDICAID

Section A – Paid Health Claims

Year in Which Losses Were Incurred	Cumulative Net Amounts Paid				
	1 2018	2 2019	3 2020	4 2021	5 2022
1. Prior.....					
2. 2018.....					
3. 2019.....					
4. 2020.....		XXX			
5. 2021.....	XXX	XXX	XXX		
6. 2022.....	XXX	XXX	XXX	XXX	

Section B – Incurred Health Claims

Year in Which Losses Were Incurred	Sum of Cumulative Net Amount Paid and Claim Liability, Claim Reserve and Medical Incentive Pool and Bonuses Outstanding at End of Year				
	1 2018	2 2019	3 2020	4 2021	5 2022
1. Prior.....					
2. 2018.....					
3. 2019.....					
4. 2020.....		XXX			
5. 2021.....	XXX	XXX	XXX		
6. 2022.....	XXX	XXX	XXX	XXX	

Section C – Incurred Year Health Claims and Claims Adjustment Expense Ratio

Years in which Premiums were Earned and Claims were Incurred	1	2	3	4	5	6	7	8	9	10
	Premiums Earned	Claims Payments	Claim Adjustment Expense Payments	(Col. 3/2) Percent	Claim and Claim Adjustment Expense Payments (Col. 2+3)	(Col. 5/1) Percent	Claims Unpaid	Unpaid Claims Adjustment Expenses	Total Claims and Claims Adjustment Expense Incurred (Col. 5+7+8)	(Col. 9/1) Percent
1. 2018.....										
2. 2019.....										
3. 2020.....										
4. 2021.....										
5. 2022.....										

12 XI

UNDERWRITING AND INVESTMENT EXHIBIT
 PART 2C – DEVELOPMENT OF PAID AND INCURRED HEALTH CLAIMS
 (\$000 Omitted)
 OTHER HEALTH

Section A – Paid Health Claims

Year in Which Losses Were Incurred	Cumulative Net Amounts Paid				
	1 2018	2 2019	3 2020	4 2021	5 2022
1. Prior.....	NONE				
2. 2018.....					
3. 2019.....					
4. 2020.....			XXX		
5. 2021.....			XXX	XXX	
6. 2022.....			XXX	XXX	XXX

Section B – Incurred Health Claims

Year in Which Losses Were Incurred	Sum of Cumulative Net Amount Paid and Claim Liability, Claim Reserve and Medical Incentive Pool and Bonuses Outstanding at End of Year				
	1 2018	2 2019	3 2020	4 2021	5 2022
1. Prior.....	NONE				
2. 2018.....					
3. 2019.....					
4. 2020.....			XXX		
5. 2021.....			XXX	XXX	
6. 2022.....			XXX	XXX	XXX

Section C – Incurred Year Health Claims and Claims Adjustment Expense Ratio

Years in which Premiums were Earned and Claims were Incurred	1 Premiums Earned	2 Claims Payments	3 Claim Adjustment Expense Payments	4 (Col. 3/2) Percent	5 Claim and Claim Adjustment Expense Payments (Col. 2+3)	6 (Col. 5/1) Percent	7 Claims Unpaid	8 Unpaid Claims Adjustment Expenses	9 Total Claims and Claims Adjustment Expense Incurred (Col. 5+7+8)	10 (Col. 9/1) Percent
1. 2018.....	NONE									
2. 2019.....										
3. 2020.....										
4. 2021.....										
5. 2022.....										

12.01

UNDERWRITING AND INVESTMENT EXHIBIT

PART 2D – AGGREGATE RESERVE FOR ACCIDENT AND HEALTH CONTRACTS ONLY

	1 Total	Comprehensive (Hospital & Medical)		4 Medicare Supplement	5 Dental Only	6 Vision Only	7 Federal Employees Health Benefits Plan	8 Title XVIII Medicare	9 Title XIX Medicaid	10 Credit A&H	11 Disability Income	12 Long-Term Care	13 Other
		2 Individual	3 Group										
1. Unearned premium reserves													
2. Additional policy reserves (a)	898,924							898,924					
3. Reserve for future contingent benefits													
4. Reserve for rate credits or experience rating refunds (including \$ for investment income)	1,028,920							1,028,920					
5. Aggregate write-ins for other policy reserves													
6. Totals (gross)	1,927,844							1,927,844					
7. Reinsurance ceded													
8. Totals (Net) (Page 3, Line 4)	1,927,844							1,927,844					
9. Present value of amounts not yet due on claims													
10. Reserve for future contingent benefits													
11. Aggregate write-ins for other claim reserves													
12. Totals (gross)													
13. Reinsurance ceded													
14. Totals (Net) (Page 3, Line 7)													
Details of Write-Ins													
0501.													
0502.													
0503.													
0598. Summary of remaining write-ins for Line 5 from overflow page													
0599. Totals (Lines 0501 through 0503 plus 0598) (Line 5 above)													
1101.													
1102.													
1103.													
1198. Summary of remaining write-ins for Line 11 from overflow page													
1199. Totals (Lines 1101 through 1103 plus 1198) (Line 11 above)													

(a) Includes \$ 898,924 premium deficiency reserve.

UNDERWRITING AND INVESTMENT EXHIBIT

PART 3 – ANALYSIS OF EXPENSES

	Claim Adjustment Expenses		3 General Administrative Expenses	4 Investment Expenses	5 Total
	1 Cost Containment Expenses	2 Other Claim Adjustment Expenses			
1. Rent (\$ for occupancy of own building)	9,796	2,410	79,921		92,127
2. Salaries, wages and other benefits	724,613	178,267	5,912,028		6,814,908
3. Commissions (less \$ ceded plus \$ assumed)	20,843	5,128	170,057		196,028
4. Legal fees and expenses					
5. Certifications and accreditation fees					
6. Auditing, actuarial and other consulting services	333,758	82,110	2,723,087		3,138,955
7. Traveling expenses	14,303	3,519	116,693		134,515
8. Marketing and advertising	5,975	1,470	48,751		56,196
9. Postage, express and telephone	19,884	4,892	162,235		187,011
10. Printing and office supplies	5,188	1,276	42,329		48,793
11. Occupancy, depreciation and amortization	28	6	226		260
12. Equipment					
13. Cost or depreciation of EDP equipment and software					
14. Outsourced services including EDP, claims, and other services	94,127	567,399	517,724		1,179,250
15. Boards, bureaus and association fees	16,532	4,067	134,880		155,479
16. Insurance, except on real estate					
17. Collection and bank service charges	881	217	14,666		15,764
18. Group service and administration fees					
19. Reimbursements by uninsured plans					
20. Reimbursements from fiscal intermediaries					
21. Real estate expenses					
22. Real estate taxes					
23. Taxes, licenses and fees:					
23.1 State and local insurance taxes					
23.2 State premium taxes			250		250
23.3 Regulatory authority licenses and fees			321,146		321,146
23.4 Payroll taxes					
23.5 Other (excluding federal income and real estate taxes)					
24. Investment expenses not included elsewhere					
25. Aggregate write-ins for expenses					
26. Total expenses incurred (Lines 1 to 25)	1,245,928	850,761	10,243,993		(a) 12,340,682
27. Less expenses unpaid December 31, current year		186,441	159,401		345,842
28. Add expenses unpaid December 31, prior year		67,809	138,179		205,988
29. Amounts receivable relating to uninsured plans, prior year			83,498		83,498
30. Amounts receivable relating to uninsured plans, current year			500,302		500,302
31. Total expenses paid (Lines 26 minus 27 plus 28 minus 29 plus 30)	1,245,928	732,129	10,639,575		12,617,632
Details of Write-Ins					
2501.					
2502.					
2503.					
2598. Summary of remaining write-ins for Line 25 from overflow page					
2599. Totals (Lines 2501 through 2503 plus 2598) (Line 25 above)					

(a) Includes management fees of \$ 10,764,489 to affiliates and \$ 1,179,250 to non-affiliates.

EXHIBIT OF NET INVESTMENT INCOME

	1	2
	Collected During Year	Earned During Year
1. U.S. Government bonds	(a)	
1.1 Bonds exempt from U.S. tax	(a)	
1.2 Other bonds (unaffiliated)	(a)	
1.3 Bonds of affiliates	(a)	
2.1 Preferred stocks (unaffiliated)	(b)	
2.11 Preferred stocks of affiliates	(b)	
2.2 Common stocks (unaffiliated)		
2.21 Common stocks of affiliates		
3. Mortgage loans	(c)	
4. Real estate	(d)	
5. Contract loans		
6. Cash, cash equivalents and short-term investments	123,867	123,867
7. Derivative instruments	(f)	
8. Other invested assets		
9. Aggregate write-ins for investment income		
10. Total gross investment income	123,867	123,867
11. Investment expenses		(g)
12. Investment taxes, licenses and fees, excluding federal income taxes		(g)
13. Interest expense		(h)
14. Depreciation on real estate and other invested assets		(i)
15. Aggregate write-ins for deductions from investment income		
16. Total deductions (Lines 11 through 15)		
17. Net investment income (Line 10 minus Line 16)		123,867
Details of Write-Ins		
0901.		
0902.		
0903.		
0998. Summary of remaining write-ins for Line 9 from overflow page		
0999. Totals (Lines 0901 through 0903 plus 0998) (Line 9 above)		
1501.		
1502.		
1503.		
1598. Summary of remaining write-ins for Line 15 from overflow page		
1599. Totals (Lines 1501 through 1503 plus 1598) (Line 15 above)		

- (a) Includes \$ accrual of discount less \$ amortization of premium and less \$ paid for accrued interest on purchases.
- (b) Includes \$ accrual of discount less \$ amortization of premium and less \$ paid for accrued dividends on purchases.
- (c) Includes \$ accrual of discount less \$ amortization of premium and less \$ paid for accrued interest on purchases.
- (d) Includes \$ for company's occupancy of its own buildings; and excludes \$ interest on encumbrances.
- (e) Includes \$ accrual of discount less \$ amortization of premium and less \$ paid for accrued interest on purchases.
- (f) Includes \$ accrual of discount less \$ amortization of premium.
- (g) Includes \$ investment expenses and \$ investment taxes, licenses and fees, excluding federal income taxes, attributable to segregated and Separate Accounts.
- (h) Includes \$ interest on surplus notes and \$ interest on capital notes.
- (i) Includes \$ depreciation on real estate and \$ depreciation on other invested assets.

EXHIBIT OF CAPITAL GAINS (LOSSES)

	1	2	3	4	5
	Realized Gain (Loss) On Sales or Maturity	Other Realized Adjustments	Total Realized Capital Gain (Loss) (Columns 1 + 2)	Change in Unrealized Capital Gain (Loss)	Change in Unrealized Foreign Exchange Capital Gain (Loss)
1. U.S. Government bonds					
1.1 Bonds exempt from U.S. tax					
1.2 Other bonds (unaffiliated)					
1.3 Bonds of affiliates					
2.1 Preferred stocks (unaffiliated)					
2.11 Preferred stocks of affiliates					
2.2 Common stocks (unaffiliated)					
2.21 Common stocks of affiliates					
3. Mortgage loans					
4. Real estate					
5. Contract loans					
6. Cash, cash equivalents and short-term investments					
7. Derivative instruments					
8. Other invested assets					
9. Aggregate write-ins for capital gains (losses)					
10. Total capital gains (losses)					
NONE					
Details of Write-Ins					
0901.					
0902.					
0903.					
0998. Summary of remaining write-ins for Line 9 from overflow page					
0999. Totals (Lines 0901 through 0903 plus 0998) (Line 9 above)					

EXHIBIT OF NONADMITTED ASSETS

	1	2	3
	Current Year Total Nonadmitted Assets	Prior Year Total Nonadmitted Assets	Change in Total Nonadmitted Assets (Col. 2 – Col. 1)
1. Bonds (Schedule D).....			
2. Stocks (Schedule D):			
2.1 Preferred stocks.....			
2.2 Common stocks.....			
3. Mortgage loans on real estate (Schedule B):			
3.1 First liens.....			
3.2 Other than first liens.....			
4. Real estate (Schedule A):			
4.1 Properties occupied by the company.....			
4.2 Properties held for the production of income.....			
4.3 Properties held for sale.....			
5. Cash (Schedule E-Part 1), cash equivalents (Schedule E-Part 2) and short-term investments (Schedule DA).....			
6. Contract loans.....			
7. Derivatives (Schedule DB).....			
8. Other invested assets (Schedule BA).....			
9. Receivables for securities.....			
10. Securities lending reinvested collateral assets (Schedule DL).....			
11. Aggregate write-ins for invested assets.....			
12. Subtotals, cash and invested assets (Lines 1 to 11).....			
13. Title plants (for Title insurers only).....			
14. Investment income due and accrued.....			
15. Premiums and considerations:			
15.1 Uncollected premiums and agents' balances in the course of collection.....	34,620	13,209	(21,411)
15.2 Deferred premiums, agents' balances and installments booked but deferred and not yet due.....			
15.3 Accrued retrospective premiums and contracts subject to redetermination.....			
16. Reinsurance:			
16.1 Amounts recoverable from reinsurers.....			
16.2 Funds held by or deposited with reinsured companies.....			
16.3 Other amounts receivable under reinsurance contracts.....			
17. Amounts receivable relating to uninsured plans.....			
18.1 Current federal and foreign income tax recoverable and interest thereon.....			
18.2 Net deferred tax asset.....			
19. Guaranty funds receivable or on deposit.....			
20. Electronic data processing equipment and software.....			
21. Furniture and equipment, including health care delivery assets.....			
22. Net adjustment in assets and liabilities due to foreign exchange rates.....			
23. Receivables from parent, subsidiaries and affiliates.....		272	272
24. Health care and other amounts receivable.....	1,140,390	117,234	(1,023,156)
25. Aggregate write-ins for other-than-invested assets.....	253,350		(253,350)
26. Total assets excluding Separate Accounts, Segregated Accounts and Protected Cell Accounts (Lines 12 to 25).....	1,428,360	130,715	(1,297,645)
27. From Separate Accounts, Segregated Accounts and Protected Cell Accounts.....			
28. Total (Lines 26 and 27).....	1,428,360	130,715	(1,297,645)
Details of Write-Ins			
1101.....			
1102.....			
1103.....			
1198. Summary of remaining write-ins for Line 11 from overflow page.....			
1199. Totals (Lines 1101 through 1103 plus 1198) (Line 11 above).....			
2501. Prepaid benefit expenses.....	253,350		(253,350)
2502.....			
2503.....			
2598. Summary of remaining write-ins for Line 25 from overflow page.....			
2599. Totals (Lines 2501 through 2503 plus 2598) (Line 25 above).....	253,350		(253,350)

EXHIBIT 1 – ENROLLMENT BY PRODUCT TYPE FOR HEALTH BUSINESS ONLY

Source of Enrollment	Total Members at End of					6 Current Year Member Months
	1 Prior Year	2 First Quarter	3 Second Quarter	4 Third Quarter	5 Current Year	
1. Health Maintenance Organizations.....	2,774	6,635	6,839	6,973	7,204	82,000
2. Provider Service Organizations.....						
3. Preferred Provider Organizations.....						
4. Point of Service.....						
5. Indemnity Only.....						
6. Aggregate write-ins for other lines of business.....						
7. Total.....	2,774	6,635	6,839	6,973	7,204	82,000
Details of Write-Ins						
0601.....						
0602.....						
0603.....						
0698. Summary of remaining write-ins for Line 6 from overflow page.....						
0699. Totals (Lines 0601 through 0603 plus 0698) (Line 6 above).....						

Notes to the Financial Statements

1. Summary of Significant Accounting Policies and Going Concern

A. Accounting Practices

The financial statements of Devoted Health Plan of Ohio, Inc. (the "Company") are presented on the basis of accounting practices prescribed or permitted by the Ohio Department of Insurance (the "Department"). As of January 1, 2022, the Company was offering Medicare Advantage ("MA") benefit plans in 20 counties in Ohio. On January 1, 2023, the Company's MA offering in the State of Ohio was expanded to also include MA preferred provider organization benefit plan business.

The Department recognizes only statutory accounting practices prescribed or permitted by the State of Ohio for determining and reporting the financial condition and results of operations of an insurance company, for determining its solvency under the Ohio Insurance Law. The National Association of Insurance Commissioners' ("NAIC") Accounting Practices and Procedures Manual ("NAIC SAP") has been adopted as a component of prescribed or permitted practices by the State of Ohio. The state has adopted certain prescribed accounting practices that differ from those found in NAIC SAP. The Commissioner of Insurance has the right to permit other specific practices that deviate from prescribed practices. At this time, there are no prescribed or permitted practices that impact the Company's statutory basis financial statements.

A reconciliation of the Company's net income and capital and surplus between NAIC SAP and practices prescribed and permitted by the State of Ohio is shown below:

	SSAP #	F/S Page	F/S Line #	2022	2021
Net Income					
(1) State basis (Page 4, Line 32, Columns 2 & 3)	XXX	XXX	XXX	\$ (4,292,230)	\$ (1,766,729)
(2) State prescribed practices that are an increase / (decrease) from NAIC SAP:					
(3) State permitted practices that are an increase / (decrease) from NAIC SAP:					
(4) NAIC SAP (1-2-3=4)	XXX	XXX	XXX	\$ (4,292,230)	\$ (1,766,729)
Surplus					
(5) State basis (Page 3, Line 33, Columns 3 & 4)	XXX	XXX	XXX	\$ 13,718,763	\$ 10,308,638
(6) State prescribed practices that are an increase / (decrease) from NAIC SAP:					
(7) State permitted practices that are an increase / (decrease) from NAIC SAP:					
(8) NAIC SAP (5-6-7=8)	XXX	XXX	XXX	\$ 13,718,763	\$ 10,308,638

B. Use of Estimates in the Preparation of the Financial Statements

The preparation of financial statements in conformity with Statutory Accounting Principles requires management to make estimates and assumptions that affect the reported amounts of assets and liabilities. It also requires disclosure of contingent assets and liabilities at the date of the financial statements and the reported amounts of revenue and expenses during the period. Actual results could differ from those estimates.

C. Accounting Policy

- (1) Short-term investments - Not Applicable
- (2) Bonds, mandatory convertible securities, and SVO-identified investments per SSAP No. 26R - Not Applicable
- (3) Common stocks - Not Applicable
- (4) Preferred stocks - Not Applicable
- (5) Mortgage loans - Not Applicable
- (6) Loan-backed securities - Not Applicable
- (7) Investments in subsidiaries, controlled and affiliated entities - Not Applicable
- (8) Investments in joint ventures, partnerships and limited liability companies - Not Applicable
- (9) Derivatives - Not Applicable
- (10) Anticipated Investment Income Used in Premium Deficiency Calculation

To the extent the Company has entered into contracts in which the premiums received under such contracts are insufficient to cover estimated health care and other costs over the life of the contracts, an accrual for premium deficiency is provided. These reserves were recorded for the MA future contract period and are included in aggregate health policy reserves. Changes in premium deficiency reserves are recorded in change in reserves for health contracts. Prior to 2022, anticipated investment income was considered in the calculation of premium deficiency reserves. Beginning in 2022, anticipated investment income is no longer considered in the calculation of premium deficiency reserves as it is not at present significant to the calculation.

(11) Management's Policies and Methodologies for Estimating Liabilities for Losses and Loss/Claim Adjustment Expenses

The Company records claims unpaid for both reported and incurred but not reported claims, which are expected to be paid after year-end for services provided to members in the current year based on the Company's claims experience. This liability includes the estimated cost of services that will continue to be rendered after year-end for which the Company is obligated to pay in accordance with contract provisions or regulatory requirements. The amount of the estimated liability is actuarially determined based on historical claims data, current membership statistics, cost and utilization trends, and other related information and considers whether there are expected losses on existing contracts. This liability is an estimate, which is subject to the impact of changes in claim severity and frequency, as well as numerous other factors. Accordingly, this estimate is continuously reviewed and, as adjustments become necessary, they are reflected in current operations.

The Company records a related unpaid claims adjustment expense liability to reflect the cost to adjudicate the claims unpaid as of year-end. The unpaid claim adjustment expense liability is estimated as a percentage of the claims unpaid based on historical information on the administrative cost to adjudicate a claim.

(12) Changes in the Capitalization Policy and Predefined Thresholds from Prior Period

Notes to the Financial Statements

1. Summary of Significant Accounting Policies and Going Concern (Continued)

The Company capitalization policy is \$5,000.

(13) Method Used to Estimate Pharmaceutical Rebate Receivables

For the Company's pharmaceutical rebate receivables, Devoted Health, Inc. ("DHI") contracts with CVS Caremark Part D Services, L.L.C. ("CVS"), who contracts with pharmaceutical manufacturers, some of which provide rebates based on use of the manufacturers' products by the Company's members. CVS administers the pharmaceutical rebate program on behalf of the Company. The Company accrues rebates receivable on a monthly basis based on the terms of the applicable contracts, historical data, and current estimates. CVS bills these rebates to the manufacturers on a quarterly basis. The Company records rebates attributable to its members as a reduction in hospital and medical costs.

The Company also has the following additional significant accounting policies:

Cash and Cash Equivalents

Cash and cash equivalents include amounts on deposit with banks, and government and corporate debt issues with original maturities of three months or less. Money market mutual funds registered under the Investment Company Act (the "Act") of 1940 and regulated under Rule 2a-7 of the Act are accounted for and reported as cash equivalents. As of December 31, 2022, the fair value of the Company's cash equivalents approximated fair value due to the short-term nature of the investments.

Medicare Part C and D Premium Revenue and Expenses and Related Subsidies

Under the Medicare Part D program, there are seven separate elements of payment recognized by the Company during the plan year. These payment elements are as follows:

- *Centers for Medicare & Medicare Services ("CMS") Premium:* CMS pays a fixed monthly premium per member to the Company for the entire plan year.
- *Member Premium:* Additionally, certain members pay a fixed monthly premium to the Company for the entire plan year.
- *Low-Income Premium Subsidy:* For qualifying low-income members, CMS pays some or all of the member's monthly *premium to the Company on the member's behalf.*
- *Catastrophic Reinsurance Subsidy:* CMS pays the Company a cost reimbursement estimate monthly to fund the CMS obligation to pay approximately 80% of the costs incurred by individual members in excess of the individual out-of-pocket maximum. A settlement is made with CMS based on actual cost experience, after the end of the plan year.
- *Low-Income Member Cost Sharing Subsidy:* For qualifying low-income members, CMS pays on the member's behalf some or all of a member's cost sharing amounts, such as deductibles and coinsurance. The cost sharing subsidy is funded by CMS through monthly payments to the Company. The Company administers and pays the subsidized portion of the claims on behalf of CMS, and a final settlement takes place between CMS and the Company based on actual claims and premiums experience, after the end of the plan year.
- *CMS Risk-Share:* CMS payments are subject to risk sharing through the Medicare Part D risk corridor provisions. The risk corridor provisions compare costs targeted in the Company's bid to actual prescription drug costs, limited to actual costs that would have been incurred under the standard coverage as defined by CMS. Variances of more than 5% above or below the original bid submitted by the Company may result in CMS making additional payments to the Company or require the Company to refund to CMS a portion of the premiums it received. As risk corridor provisions are considered in the Company's overall annual bid process, it estimates and recognizes an adjustment to net premiums earned related to these provisions based upon pharmacy claims experience. The Company records its Medicare Part D risk corridor provisions in accordance with Statement of Statutory Accounting Principles ("SSAP") No. 66, *Retrospectively Rated Contracts* ("SSAP No. 66").
- *Coverage Gap Discount Program ("CGDP"):* CMS implemented a CGDP, in which drug manufacturers provide a discount on brand-name drugs to Part D members in the coverage gap. This discount is funded by CMS and pharmaceutical manufacturers, while the Company administers the application of these funds. Since the Company solely administers the application of the funds related to the CGDP, there is no insurance risk to the Company. Amounts receivable relating to uninsured plans include receivables from pharmaceutical manufacturers for reimbursement of discounts under the CGDP. Liability for amounts held under uninsured plans also includes CGDP discounts pre-funded by CMS for the applicable Medicare beneficiaries receiving this benefit. The pre-funded amounts are subject to recoupment by CMS pending a final reconciliation.

The CMS Premium, the Member Premium, and the Low-Income Premium Subsidy represent payments for the Company's insurance risk coverage under the Medicare Parts C and D programs and therefore are recorded as premium revenue. Premiums are recorded as revenue in the month for which members are entitled to service. Premium income collected prior to the month for which the member is entitled to service is recorded as premiums received in advance. As further described below, these premium payments are subject to adjustment in accordance with the CMS risk adjustment payment methodology.

The Catastrophic Reinsurance Subsidy and Low-Income Member Cost Sharing Subsidy represent a cost reimbursement under the Medicare Part D program. Amounts for these subsidies are recorded as liability for amounts held under uninsured plans or amounts receivable relating to uninsured plans. Pharmacy benefit costs are expensed as incurred and are recognized in hospital and medical costs.

Medicare Advantage Risk Adjustment

The Company's MA premium revenue is subject to adjustment based on the health risk of its members. Risk adjustment uses health status indicators to correlate the payments to the health acuity of the member, and consequently establish incentives for plans to enroll and treat less healthy Medicare beneficiaries. This process for adjusting premiums is referred to as the CMS risk adjustment payment methodology. Under the risk adjustment payment methodology, managed care plans must capture, collect, and report diagnosis code information to CMS. After reviewing the respective submissions, CMS establishes the payments to Medicare plans generally at the beginning of the calendar year, and then adjusts premium levels on two separate occasions on a retroactive basis. The first retroactive risk premium adjustment for a given fiscal year generally occurs during the third quarter of such fiscal year. This initial settlement represents the updating of risk scores for the current year based on the prior year's dates of service. CMS then issues a final retroactive risk premium adjustment settlement for the fiscal year in the following year. The Company estimates and records CMS settlement amounts on a monthly basis. All such estimated amounts are periodically updated as necessary as additional diagnosis code information is reported to CMS and adjusted to actual amounts when the ultimate adjustment settlements are either received from CMS or the Company receives notification from CMS of such settlement amounts.

As a result of the variability of factors, including plan risk scores, that determine such estimations, the actual amount of CMS's retroactive risk settlement adjustments could be materially more or less than the Company's estimates. The Company's risk adjustment payments are subject to review and audit by CMS, which can potentially take several years to resolve completely. Any adjustment to premium revenue and the related medical expense for risk-sharing arrangements with providers as a result of such review and audit would be recorded when estimable. There can be no assurance that any retroactive adjustment to previously recorded revenue or expenses will not have a material effect on future results of operations.

Notes to the Financial Statements

1. Summary of Significant Accounting Policies and Going Concern (Continued)

Retrospectively Rated Premium

The Company sells health policies for which the premiums vary based on loss experience. The Company estimates retrospective premium adjustments through the review of each retrospectively rated account, comparing the claim development with that anticipated in the policy contracts. Any accrued retrospective premiums are recorded through premium income. The Company also records its liability for Medical Loss Ratio ("MLR") rebates in aggregate health policy reserves based on the requirements of the Affordable Care Act ("ACA") in accordance with SSAP No. 66. SSAP No. 66 requires the Company to accrue for the estimated amount of premiums to be returned retrospectively on its MA plans as an adjustment to premium revenue. The ACA sets an MLR threshold of 85% for MA plans.

Health Care Receivables

In addition to pharmaceutical rebate receivables, the Company's health care receivables also include risk-sharing receivables as discussed with accrued medical incentive pool and also claim overpayment receivables, which result from claim overpayments to providers, hospitals and other health care organizations.

Nonadmitted Assets

Certain assets, principally prepaid expenses; receivables from affiliates; past due premium, and certain health care receivables; and net deferred tax assets in excess of the admissibility criteria, are nonadmitted and, as such, are not included in statutory capital and surplus.

Accrued Medical Incentive Pool

The Company records an accrued medical incentive pool liability based on contractual arrangements with various health care providers. Compensation arrangements vary by provider and contemplate medical and hospital expense including claims payments, capitation payments, and various other costs incurred to provide and manage medical care to members, as well as estimates of future payments to hospitals and others for medical care provided to members through year-end. Certain providers are paid on a fee-for-service basis and can be eligible for bonuses based on meeting prescribed quality performance measures. Certain providers have entered into risk-sharing arrangements with the Company, whereby a settlement is calculated by comparing actual medical claims experience to a budgeted amount based upon contractual arrangements. These settlements are estimated and accrued during the period the related services were rendered and adjusted in future periods as final settlements are determined. Estimated settlements for these risk-sharing arrangements are reflected either in the accrued medical incentive pool liability or health care receivables.

Reinsurance

Excess of loss reinsurance is used to cover high cost members with catastrophic claims. The Company pays a monthly premium for certain eligible expenses. When a member's claims for hospital and professional services exceed applicable retention, which is subject to claims valuation, the Company receives a credit, or recovery of 90% of the excess up to the contracted agreement, up to the maximum benefit for each covered member.

D. Going Concern

As of February 27, 2023, management evaluated whether there are conditions or events, considered in the aggregate, that raise substantial doubt about the Company's ability to continue as a going concern and management has determined that it is not probable that the Company will be unable to meet its obligations as they become due within one year after the financial statements are available to be issued. Management will continuously evaluate the Company's ability to continue as a going concern and will take appropriate action and will make appropriate disclosures if there is any change in any condition or events that would raise substantial doubt about the Company's ability to continue as a going concern.

2. Accounting Changes and Corrections of Errors - Not Applicable

3. Business Combinations and Goodwill - Not Applicable

4. Discontinued Operations - Not Applicable

5. Investments

- A. Mortgage Loans, including Mezzanine Real Estate Loans - Not Applicable
- B. Debt Restructuring - Not Applicable
- C. Reverse Mortgages - Not Applicable
- D. Loan-Backed Securities - Not Applicable
- E. Dollar Repurchase Agreements and/or Securities Lending Transactions - Not Applicable
- F. Repurchase Agreements Transactions Accounted for as Secured Borrowing - Not Applicable
- G. Reverse Repurchase Agreements Transactions Accounted for as Secured Borrowing - Not Applicable
- H. Repurchase Agreements Transactions Accounted for as a Sale - Not Applicable
- I. Reverse Repurchase Agreements Transactions Accounted for as a Sale - Not Applicable
- J. Real Estate - Not Applicable
- K. Low-Income Housing Tax Credits (LIHTC) - Not Applicable

Notes to the Financial Statements

5. Investments (Continued)

L. Restricted Assets

(1) Restricted assets (including pledged)

Restricted Asset Category	(1)	(2)	(3)	(4)	(5)	(6)	(7)
	Total Gross (Admitted & Nonadmitted) Restricted from Current Year	Total Gross (Admitted & Nonadmitted) Restricted From Prior Year	Increase / (Decrease) (1 - 2)	Total Current Year Nonadmitted Restricted	Total Current Year Admitted Restricted (1 - 4)	Gross (Admitted & Nonadmitted) Restricted to Total Assets	Admitted Restricted to Total Admitted Assets
a. Subject to contractual obligation for which liability is not shown	\$	\$	\$	\$	\$	%	%
b. Collateral held under security lending agreements							
c. Subject to repurchase agreements							
d. Subject to reverse repurchase agreements							
e. Subject to dollar repurchase agreements							
f. Subject to dollar reverse repurchase agreements							
g. Placed under option contracts							
h. Letter stock or securities restricted as to sale - excluding FHLB capital stock							
i. FHLB capital stock							
j. On deposit with states	400,000	400,000	-		400,000	1.411	1.486
k. On deposit with other regulatory bodies							
l. Pledged as collateral to FHLB (including assets backing funding agreements)							
m. Pledged as collateral not captured in other categories							
n. Other restricted assets							
o. Total restricted assets (Sum of a through n)	<u>\$ 400,000</u>	<u>\$ 400,000</u>	<u>\$ -</u>	<u>\$ -</u>	<u>\$ 400,000</u>	<u>1.411 %</u>	<u>1.486 %</u>

(2) Detail of assets pledged as collateral not captured in other categories (contracts that share similar characteristics, such as reinsurance and derivatives, are reported in the aggregate) - Not Applicable

(3) Detail of other restricted assets (contracts that share similar characteristics, such as reinsurance and derivatives, are reported in the aggregate) - Not Applicable

(4) Collateral received and reflected as assets within the reporting entity's financial statements - Not Applicable

M. Working Capital Finance Investments - Not Applicable

N. Offsetting and Netting of Assets and Liabilities - Not Applicable

O. 5GI Securities - Not Applicable

P. Short Sales - Not Applicable

Q. Prepayment Penalty and Acceleration Fees - Not Applicable

R. Reporting Entity's Share of Cash Pool by Asset type - Not Applicable

6. Joint Ventures, Partnerships and Limited Liability Companies - Not Applicable

7. Investment Income

A. Due and Accrued Income Excluded from Surplus

All investment income due and accrued with amounts that are over 90 days past due.

B. Total Amount Excluded

The total amount excluded was \$0.

8. Derivative Instruments - Not Applicable

9. Income Taxes

The Inflation Reduction Act was enacted on August 16, 2022, and included a new corporate alternative minimum tax ("CAMT"). The CAMT is effective for tax years beginning after December 31, 2022. The Company is not an "applicable corporation" for purposes of the CAMT and will therefore not be liable for CAMT in 2023.

A. Components of the Net Deferred Tax Asset/(Liability)

(1) Change between years by tax character

	2022			2021			Change		
	(1)	(2)	(3)	(4)	(5)	(6)	(7)	(8)	(9)
	Ordinary	Capital	Total (Col 1+2)	Ordinary	Capital	Total (Col 4+5)	Ordinary (Col 1-4)	Capital (Col 2-5)	Total (Col 7+8)
(a) Gross deferred tax assets	\$ 1,565,181	\$	\$ 1,565,181	\$ 663,813	\$	\$ 663,813	\$ 901,368	\$	\$ 901,368
(b) Statutory valuation allowance adjustments	1,565,181		1,565,181	663,813		663,813	901,368		901,368
(c) Adjusted gross deferred tax assets (1a - 1b)	-		-	-		-	-		-
(d) Deferred tax assets nonadmitted									
(e) Subtotal net admitted deferred tax asset (1c - 1d)	\$ -	\$	\$ -	\$ -	\$	\$ -	\$ -	\$	\$ -
(f) Deferred tax liabilities									
(g) Net admitted deferred tax asset/(net deferred tax liability) (1e - 1f)	<u>\$ -</u>	<u>\$</u>	<u>\$ -</u>	<u>\$ -</u>	<u>\$</u>	<u>\$ -</u>	<u>\$ -</u>	<u>\$</u>	<u>\$ -</u>

Notes to the Financial Statements

9. Income Taxes (Continued)

(2) Admission calculation components SSAP No. 101

	2022			2021			Change		
	(1) Ordinary	(2) Capital	(3) Total (Col 1+2)	(4) Ordinary	(5) Capital	(6) Total (Col 4+5)	(7) Ordinary (Col 1-4)	(8) Capital (Col 2-5)	(9) Total (Col 7+8)
(a) Federal income taxes paid in prior years recoverable through loss carrybacks.....	\$	\$	\$	\$	\$	\$	\$	\$	\$
(b) Adjusted gross deferred tax assets expected to be realized (excluding the amount of deferred tax assets from 2(a) above) after application of the threshold limitation (lesser of 2(b)1 and 2(b)2 below).....									
1. Adjusted gross deferred tax assets expected to be realized following the balance sheet date.....									
2. Adjusted gross deferred tax assets allowed per limitation threshold.....	XXX	XXX		XXX	XXX		XXX	XXX	
(c) Adjusted gross deferred tax assets (excluding the amount of deferred tax assets from 2(a) and 2(b) above) offset by gross deferred tax liabilities.....									
(d) Deferred tax assets admitted as the result of application of SSAP No. 101.									
Total (2(a) + 2(b) + 2(c)).....	\$	\$	\$	\$	\$	\$	\$	\$	\$

(3) Ratio used as basis of admissibility

	2022	2021
(a) Ratio percentage used to determine recovery period and threshold limitation amount.....	434.866 %	502.707 %
(b) Amount of adjusted capital and surplus used to determine recovery period and threshold limitation in 2(b)2 above.....	\$ 13,718,763	\$ 10,308,638

(4) Impact of tax-planning strategies - None

B. Regarding Deferred Tax Liabilities That Are Not Recognized - Not Applicable

C. Major Components of Current Income Taxes Incurred

	(1) 2022	(2) 2021	(3) Change (1-2)
Current income taxes incurred consist of the following major components:			
1. Current Income Tax			
(a) Federal.....	\$	\$	\$
(b) Foreign.....			
(c) Subtotal (1a+1b).....	\$	\$	\$
(d) Federal income tax on net capital gains.....			
(e) Utilization of capital loss carry-forwards.....			
(f) Other.....			
(g) Federal and foreign income taxes incurred (1c+1d+1e+1f).....	\$	\$	\$

Notes to the Financial Statements

9. Income Taxes (Continued)

	(1) 2022	(2) 2021	(3) Change (1-2)
2. Deferred Tax Assets			
(a) Ordinary			
(1) Discounting of unpaid losses	\$ 17,268	\$ 6,802	\$ 10,466
(2) Unearned premium reserve	109		109
(3) Policyholder reserves	188,774	184,538	4,236
(4) Investments			
(5) Deferred acquisition costs			
(6) Policyholder dividends accrual			
(7) Fixed assets			
(8) Compensation and benefits accrual			
(9) Pension accrual			
(10) Receivables - nonadmitted			
(11) Net operating loss carry-forward	1,359,030	472,436	886,594
(12) Tax credit carry-forward			
(13) Other		37	(37)
(99) Subtotal (sum of 2a1 through 2a13)	\$ 1,565,181	\$ 663,813	\$ 901,368
(b) Statutory valuation allowance adjustment	1,565,181	663,813	901,368
(c) Nonadmitted			
(d) Admitted ordinary deferred tax assets (2a99 - 2b - 2c)	\$ -	\$ -	\$ -
(e) Capital			
(1) Investments	\$ -	\$ -	\$ -
(2) Net capital loss carry-forward			
(3) Real estate			
(4) Other			
(99) Subtotal (2e1+2e2+2e3+2e4)	\$ -	\$ -	\$ -
(f) Statutory valuation allowance adjustment			
(g) Nonadmitted			
(h) Admitted capital deferred tax assets (2e99 - 2f - 2g)			
(i) Admitted deferred tax assets (2d + 2h)	\$ -	\$ -	\$ -
	(1) 2022	(2) 2021	(3) Change (1-2)
3. Deferred Tax Liabilities			
(a) Ordinary			
(1) Investments	\$ -	\$ -	\$ -
(2) Fixed assets			
(3) Deferred and uncollected premium			
(4) Policyholder reserves			
(5) Other			
(99) Subtotal (3a1+3a2+3a3+3a4+3a5)	\$ -	\$ -	\$ -
(b) Capital			
(1) Investments	\$ -	\$ -	\$ -
(2) Real estate			
(3) Other			
(99) Subtotal (3b1+3b2+3b3)	\$ -	\$ -	\$ -
(c) Deferred tax liabilities (3a99 + 3b99)	\$ -	\$ -	\$ -
4. Net deferred tax assets/liabilities (2i - 3c)	\$ -	\$ -	\$ -

Statutory valuation allowance disclosure

The Company has not had any history of operating income and has incurred losses since its inception. It is also uncertain as to when the Company will receive a tax benefit for these deferred tax asset items in future periods. Therefore, the Company has established a full valuation allowance against the balance of its net deferred tax assets as of December 31, 2022 and 2021.

D. Among the More Significant Book to Tax Adjustments

	2022	Effective Tax Rate
Provision computed at statutory rate	\$ (901,368)	21.000 %
Statutory valuation allowance adjustment	901,368	-21.000 %
Total	\$ -	- %

Notes to the Financial Statements

9. Income Taxes (Continued)

	2022	Effective Tax Rate
Federal income taxes incurred.....	\$.....%
Change in net deferred income taxes.....		
Total statutory income taxes.....	<u>\$.....</u>	<u>.....%</u>

	2021	Effective Tax Rate
Provision computed at statutory rate.....	\$.....(371,013)21.000 %
Statutory valuation allowance adjustment.....371,013-21.000 ...
Total.....	<u>\$.....</u>	<u>.....%</u>

	2021	Effective Tax Rate
Federal income taxes incurred.....	\$.....%
Change in net deferred income taxes.....		
Total statutory income taxes.....	<u>\$.....</u>	<u>.....%</u>

E. Operating Loss and Tax Credit Carryforwards

(1) At December 31, 2022, the Company has the following amount of available net operating loss carryforward available for use in future years: \$6,471,572.

(2) Income tax expense available for recoupment

The following is income tax expense for 2020, 2021, and 2022 that is available for recoupment in the event of future net losses:

	Total
2020.....	\$.....
2021.....	
2022.....	

(3) The Company did not have any protective tax deposits under Section 6603 of the Internal Revenue Code.

F. Consolidated Federal Income Tax Return

(1) The Company files a consolidated income tax return with its parent, Devoted Health, Inc. and the following entities:

- DEVOTED HEALTH HOLDCO, LLC
- DEVOTED HEALTH INSURANCE COMPANY
- DEVOTED MEDICAL GROUP, PLLC
- DEVOTED MEDICAL GROUP PROFESSIONAL CORPORATION
- DEVOTED MEDICAL PA, PC
- DEVOTED MEDICAL NC, PC
- DEVOTED HEALTH PLAN OF FLORIDA, INC.
- DEVOTED HEALTH MSC, INC.
- DEVOTED HEALTH SERVICES, INC.
- DEVOTED HEALTH PLAN OF ARIZONA, INC.
- DEVOTED HEALTH INSURANCE COMPANY OF SOUTH CAROLINA, INC.
- DEVOTED HEALTH PLAN OF ILLINOIS, INC.
- DEVOTED HEALTH PLAN OF NORTH CAROLINA, INC.
- DEVOTED HEALTH PLAN OF UTAH, INC.
- DEVOTED HEALTH PLAN OF ALABAMA, INC.
- DEVOTED HEALTH PLAN OF NEVADA, INC.
- DEVOTED MEDICAL GROUP, INC.
- DEVOTED MEDICAL GROUP, PC
- DEVOTED MEDICAL GROUP OF TEXAS, INC.
- DEVOTED HEALTH INSURANCE COMPANY OF ILLINOIS, INC.
- DEVOTED HEALTH INSURANCE COMPANY OF ALABAMA, INC.
- DEVOTED HEALTH INSURANCE COMPANY OF ARIZONA, INC.
- DEVOTED HEALTH INSURANCE COMPANY OF HAWAII, INC.
- DEVOTED HEALTH PLAN OF HAWAII, INC.
- DEVOTED MEDICAL, PC
- DEVOTED HEALTH PLAN OF WASHINGTON, INC.
- DEVOTED HEALTH PLAN OF OREGON, INC.
- DEVOTED HEALTH PLAN OF NEW YORK, INC.
- DEVOTED HEALTH PLAN OF PENNSYLVANIA, INC.
- DEVOTED HEALTH PLAN OF COLORADO, INC.
- DEVOTED HEALTH PLAN OF VIRGINIA, INC.
- DEVOTED HEALTH PLAN OF MISSOURI, INC.
- DEVOTED HEALTH PLAN OF SOUTH CAROLINA, INC.
- DEVOTED HEALTH PLAN OF TENNESSEE, INC.
- DEVOTED HEALTH INSURANCE COMPANY OF NEVADA, INC.
- DEVOTED HEALTH INSURANCE COMPANY OF MISSOURI, INC.
- DEVOTED HEALTH INSURANCE COMPANY OF COLORADO, INC.
- DEVOTED HEALTH INSURANCE COMPANY OF PENNSYLVANIA, INC.
- DEVOTED HEALTH PLAN OF TEXAS, INC.
- DEVOTED HEALTH INSURANCE COMPANY OF UTAH, INC.
- DEVOTED HEALTH INSURANCE COMPANY OF TENNESSEE, INC.
- DEVOTED HEALTH INSURANCE COMPANY OF WASHINGTON, INC.
- DEVOTED HEALTH INSURANCE COMPANY OF VIRGINIA, INC.
- DEVOTED HEALTH INSURANCE COMPANY OF TEXAS
- DEVOTED MEDICAL SERVICES, INC.
- MY ENROLLMENT HELPER, INC.
- DEVOTED HEALTH PLAN OF GEORGIA, INC.
- DEVOTED HEALTH PLAN OF INDIANA, INC.

Notes to the Financial Statements

9. Income Taxes (Continued)

DEVOTED HEALTH PLAN OF MICHIGAN, INC.
DEVOTED HEALTH PLAN OF MISSISSIPPI, INC.

(2) Method of allocation - Not Applicable

G. Federal or Foreign Income Tax Loss Contingencies

The Company does not have any tax loss contingencies for which it is reasonably possible that the total liability will significantly increase within twelve months of the reporting date.

H. Repatriation Transition Tax (RTT) - Not Applicable

I. Alternative Minimum Tax (AMT) Credit - Not Applicable

10. Information Concerning Parent, Subsidiaries, Affiliates and Other Related Parties

A. Nature of the Relationship Involved

The Company is a wholly-owned subsidiary of Devoted Health Holdco, LLC ("Holdco"), whose direct parent is DHI.

B. Transactions Greater than ½ of 1% of Total Admitted Assets

The Company recorded capital contributions for 2022 as follows:

- \$9,000,000 cash on December 30, 2022 from Holdco.

The Company recorded capital contributions for 2021 as follows:

- \$5,500,000 cash on December 29, 2021 from Holdco.
- \$1,000,000 cash on September 27, 2021 from Holdco.
- \$3,000,000 cash on January 29, 2021 from Holdco.

C. Transactions With Related Party Who Are Not Reported on Schedule Y

There are no transactions with related parties who are not reported on Schedule Y.

D. Amounts Due From or To Related Parties

At December 31, 2022, the Company reported \$60,617 as amounts due from Devoted Medical Group, Inc. At December 31, 2021, the Company reported \$272 as amounts due from DHI. The entire \$272 was nonadmitted in accordance with SSAP No. 25, *Affiliates and Other Related Parties*, since there was not a written agreement between the Company and DHI in 2021. At December 31, 2022, the Company reported \$1,198,784 as amounts due to Devoted Health Services, Inc. ("DHSI"). At December 31, 2021, the Company reported \$346,665 as amounts due to DHSI and \$24,170 as amounts due to Devoted Medical Group entities. Intercompany balances are settled in accordance with the terms of any management or service agreements the Company is a party to.

E. Material Management or Service Contracts and Cost-Sharing Arrangements

The Company has no employees, and accordingly, DHSI provides all administrative services to the Company, including premium billing and collection, claims payments, and operational management. Effective January 1, 2021, administrative and claim adjustment expenses are charged to the Company based on DHSI's Administrative Services Agreement ("ASA") with the Company. For the years ended December 31, 2022 and 2021, total administrative and claims adjustment expenses charged to the Company were \$10,764,489 and \$3,508,688, respectively, under the ASA. Intercompany balances are settled according to the terms of the ASA.

Effective January 1, 2021, Devoted Medical Group, PC, Devoted Medical Group of Texas, Inc. and Devoted Medical Group, Inc. (each a "Provider" and each affiliates of the Company) and certain affiliates of the Company, including the Company, entered into a Participation Agreement. This Participation Agreement has been amended from time to time to modify certain terms and conditions. Effective November 1, 2021, the Participation Agreement was amended to add Devoted Medical, PC (an affiliate of the Company) to the Participation Agreement as a Provider. Under the Participation Agreement, as may have been amended, Providers will provide the Company with certain medical services to members enrolled in a MA benefit plan offered by the Company. For the years ended December 31, 2022 and 2021, the Company incurred claims expense of \$1,491,378 and \$397,454, respectively, to Providers as compensation for these services.

F. Guarantees or Contingencies - Not Applicable

G. Nature of the Control Relationship

All outstanding shares of the Company are owned by Holdco, whose direct parent is DHI.

H. Amount Deducted for Investment in Upstream Company - Not Applicable

I. Detail of Investments in Affiliates Greater Than 10% of Admitted Assets - Not Applicable

J. Write-Down for Impairments of Investments in Subsidiary Controlled or Affiliated Companies - Not Applicable

K. Foreign Subsidiary Value Using CARVM - Not Applicable

L. Downstream Holding Company Value Using Look-Through Method - Not Applicable

M. All SCA Investments - Not Applicable

N. Investment in Insurance SCAs - Not Applicable

O. SCA and SSAP No. 48 Entity Loss Tracking - Not Applicable

11. Debt - Not Applicable

12. Retirement Plans, Deferred Compensation, Postemployment Benefits and Compensated Absences and Other Postretirement Benefit Plans - Not Applicable

Notes to the Financial Statements

13. Capital and Surplus, Dividend Restrictions and Quasi-Reorganizations

A. Number of Shares and Par or Stated Value of Each Class

The Company had 1,000 shares of \$1,000 par value common stock authorized, issued and outstanding as of December 31, 2022. All shares are owned by Holdco. No other classes of common or preferred shares are authorized, issued, or outstanding as of December 31, 2022.

B. Dividend Rate of Preferred Stock - Not Applicable

C. Dividend Restrictions

The maximum amount of dividends that may be paid by an insurer without prior approval of the Department of Insurance is subject to restrictions relating to statutory surplus and net income. The Company neither declared nor paid any dividends to its sole shareholder during the years ended December 31, 2022 and 2021.

D. Ordinary Dividends - Not Applicable

E. Company Profits Paid as Ordinary Dividends - Not Applicable

F. Surplus Restrictions - Not Applicable

G. Surplus Advances - Not Applicable

H. Stock Held for Special Purposes - Not Applicable

I. Changes in Special Surplus Funds - Not Applicable

J. Unassigned Funds (Surplus)

The portion of unassigned funds (surplus) represented or reduced by cumulative unrealized gains and losses is: \$0.

K. Company-Issued Surplus Debentures or Similar Obligations - Not Applicable

L. Impact of Any Restatement Due to Prior Quasi-Reorganizations - Not Applicable

M. Effective Date(s) of Quasi-Reorganizations in the Prior 10 Years - Not Applicable

14. Liabilities, Contingencies and Assessments

A. Contingent Commitments - Not Applicable

B. Assessments - Not Applicable

C. Gain Contingencies - Not Applicable

D. Claims Related Extra Contractual Obligation and Bad Faith Losses Stemming from Lawsuits - Not Applicable

E. Joint and Several Liabilities - Not Applicable

F. All Other Contingencies

The Company is involved in legal actions in the ordinary course of business. In the opinion of management, there are no legal proceedings pending against or involving the Company in which the outcome is likely to have a material adverse effect on the Company's financial position.

15. Leases - Not Applicable

16. Information About Financial Instruments With Off-Balance-Sheet Risk And Financial Instruments With Concentrations of Credit Risk - Not Applicable

17. Sale, Transfer and Servicing of Financial Assets and Extinguishments of Liabilities

The Company had no sale, transfer, or servicing of financial assets and extinguishments of liabilities.

A. Transfers of Receivables Reported as Sales - None

B. Transfer and Servicing of Financial Assets - None

C. Wash Sales - None

18. Gain or Loss to the Reporting Entity from Uninsured Plans and the Uninsured Portion of Partially Insured Plans

A. ASO Plans - Not Applicable

B. ASC Plans - Not Applicable

C. Medicare or Other Similarly Structured Cost Based Reimbursement Contract

(1) Revenue from the Company's Medicare (or similarly structured cost-based reimbursement contract) contract for the year ended December 31, 2022, consisted of \$76,515,225 for medical and hospital related services and administrative expenses.

(2) As of December 31, 2022, the Company has recorded receivables from the following payors whose account balances are greater than 10% of the Company's amounts receivable from uninsured accident and health plans or \$10,000:

- Pharmaceutical Manufacturers: \$500,302

(3) In connection with the Company's Medicare (or similarly structured cost based reimbursement contract) contract, the Company has not recorded any allowances and reserves for adjustment of recorded revenues at December 31, 2022.

(4) The Company has made no adjustment to revenue resulting from audit of receivables related to revenues recorded in the prior period.

19. Direct Premium Written/Produced by Managing General Agents/Third Party Administrators - Not Applicable

Notes to the Financial Statements

20. Fair Value Measurements

NAIC SAP defines fair value, establishes a framework for measuring fair value, and outlines the disclosure requirements related to fair value measurements. The fair value hierarchy is as follows:

Level 1 – Quoted (unadjusted) prices for identical assets in active markets.

Level 2 – Other observable inputs, either directly or indirectly, including:

- Quoted prices for similar assets in active markets;
- Quoted prices for identical or similar assets in nonactive markets (few transactions, limited information, noncurrent prices, high variability over time, etc.);
- Inputs other than quoted prices that are observable for the asset (interest rates, yield curves, volatilities, default rates, etc.);
- Inputs that are derived principally from or corroborated by other observable market data.

Level 3 – Unobservable inputs that cannot be corroborated by observable market data.

As of December 31, 2022, the Company's cash equivalents consisted of investments in money market mutual funds. As of December 31, 2022, the fair value of the money market mutual funds approximated fair value due to the short-term nature of the investments.

A. Fair Value Measurement

(1) Fair value measurements at reporting date

The following table presents information about the Company's financial assets that are measured and reported at fair value at December 31, 2022, in the statutory basis statements of admitted assets, liabilities, and capital and surplus according to the valuation techniques the Company used to determine their fair values:

Description for each class of asset or liability	Level 1	Level 2	Level 3	Net Asset Value (NAV)	Total
a. Assets at fair value					
Money market mutual funds	\$ 20,718,260	\$	\$	\$	\$ 20,718,260
Total assets at fair value/NAV	<u>\$ 20,718,260</u>	<u>\$</u>	<u>\$</u>	<u>\$</u>	<u>\$ 20,718,260</u>
b. Liabilities at fair value					
Total liabilities at fair value	<u>\$</u>	<u>\$</u>	<u>\$</u>	<u>\$</u>	<u>\$</u>

(2) Fair value measurements in Level 3 of the fair value hierarchy - None

(3) There were no transfers between Levels 1, 2 or 3 of any financial assets or liabilities during the year ended December 31, 2022.

(4) The Company has no investments reported with a fair value hierarchy of Level 2 or Level 3 as of December 31, 2022 and therefore has no valuation technique(s) to disclose.

(5) The Company has no derivative assets or liabilities as of December 31, 2022.

B. Other Fair Value Disclosures - Not Applicable

C. Fair Values for All Financial Instruments by Level 1, 2 and 3

The aggregate fair value by hierarchy of all financial instruments as of December 31, 2022 is presented in the table below:

Type of Financial Instrument	Aggregate Fair Value	Admitted Assets	Level 1	Level 2	Level 3	Net Asset Value (NAV)	Not Practicable (Carrying Value)
Money market mutual funds	\$ 20,718,260	\$ 20,718,260	\$ 20,718,260	\$	\$	\$	\$

D. Not Practicable to Estimate Fair Value - Not Applicable

E. Nature and Risk of Investments Reported at NAV - Not Applicable

21. Other Items - Not Applicable

22. Events Subsequent

Type I – Recognized Subsequent Events

Subsequent events have been considered through February 27, 2023, which was the date of issuance for these statutory financial statements. There are no subsequent events to be reported.

Type II – Nonrecognized Subsequent Events

Subsequent events have been considered through February 27, 2023, which was the date of issuance for these statutory financial statements. There are no subsequent events to be reported.

Notes to the Financial Statements

23. Reinsurance

A. Ceded Reinsurance Report

Section 1 – General Interrogatories

- (1) Are any of the reinsurers, listed in Schedule S as non-affiliated, owned in excess of 10% or controlled, either directly or indirectly, by the company or by any representative, officer, trustee, or director of the company?
Yes () No (X)
- (2) Have any policies issued by the company been reinsured with a company chartered in a country other than the United States (excluding U.S. Branches of such companies) that is owned in excess of 10% or controlled directly or indirectly by an insured, a beneficiary, a creditor or any other person not primarily engaged in the insurance business?
Yes () No (X)

Section 2 – Ceded Reinsurance Report – Part A

- (1) Does the company have any reinsurance agreements in effect under which the reinsurer may unilaterally cancel any reinsurance for reasons other than for nonpayment of premium or other similar credits?
Yes () No (X)
- (2) Does the reporting entity have any reinsurance agreements in effect such that the amount of losses paid or accrued through the statement date may result in a payment to the reinsurer of amounts that, in aggregate and allowing for offset of mutual credits from other reinsurance agreements with the same reinsurer, exceed the total direct premium collected under the reinsured policies?
Yes () No (X)

Section 3 – Ceded Reinsurance Report – Part B

- (1) What is the estimated amount of the aggregate reduction in surplus, (for agreements other than those under which the reinsurer may unilaterally cancel for reasons other than for nonpayment of premium or other similar credits that are reflected in Section 2 above) of termination of ALL reinsurance agreements, by either party, as of the date of this statement? Where necessary, the company may consider the current or anticipated experience of the business reinsured in making this estimate. \$ –
- (2) Have any new agreements been executed or existing agreements amended, since January 1 of the year of this statement, to include policies or contracts that were in force or which had existing reserves established by the company as of the effective date of the agreement?
Yes () No (X)
- If yes, what is the amount of reinsurance credits, whether an asset or a reduction of liability, taken for such new agreements or amendments? \$ –

B. Uncollectible Reinsurance - Not Applicable

C. Commutation of Reinsurance Reflected in Income and Expenses - Not Applicable

D. Certified Reinsurer Rating Downgraded or Status Subject to Revocation - Not Applicable

E. Reinsurance Credit

The Company's only reinsurance is excess of loss reinsurance used to cover high cost members with catastrophic claims. See Note 1C.

24. Retrospectively Rated Contracts & Contracts Subject to Redetermination

A. Method Used to Estimate

The Company estimates retrospective premium adjustments through the review of each retrospectively rated account, comparing the claim development with that anticipated in the policy contracts.

B. Method Used to Record

The Company records any accrued retrospective premiums through earned premium.

C. Amount and Percent of Net Retrospective Premiums

The amount of net premiums written by the Company at December 31, 2022 that are subject to retrospective rating features was \$76,845,369 that represented 100% of the total net premiums written.

D. Medical Loss Ratio Rebates Required Pursuant to the Public Health Service Act

There were no Medical Loss Ratio rebates required related to the Company's Medicare business pursuant to the Public Health Service Act requirements for the year ended December 31, 2022.

E. Risk-Sharing Provisions of the Affordable Care Act (ACA) - Not Applicable

25. Change in Incurred Claims and Claim Adjustment Expenses

A. Reasons for Changes in the Provision for Incurred Claim and Claim Adjustment Expenses Attributable to Insured Events of Prior Years

Claims unpaid and accrued medical incentive pool as of December 31, 2021 were \$2,424,785. As of December 31, 2022, \$2,008,781 has been paid for incurred claims attributable to insured events of prior years. Reserves remaining related to prior years are now \$17,312 as a result of re-estimation of claims unpaid and accrued medical incentive pool on the Company's MA business. Therefore, there has been a \$398,692 favorable prior year development since December 31, 2021 to December 31, 2022. The decrease is generally the result of ongoing analysis of recent loss development trends. Original estimates are increased or decreased, as additional information becomes known regarding individual claims.

Notes to the Financial Statements

25. Change in Incurred Claims and Claim Adjustment Expenses (Continued)

The Company incurred claims adjustment expenses of \$2,096,689 and \$610,930 for the years ended December 31, 2022 and 2021, respectively. A portion of these expenses for the years ended December 31, 2022 and 2021 are included in the administrative services fees charged as part of the ASA between the Company and DHSI. The Company's paid claims adjustment expenses for the year ended December 31, 2022 were \$1,978,057, of which \$18,526 are considered to be related to the prior year.

B. Significant Changes in Methodologies and Assumptions Used in Calculating the Liability for Unpaid Claims and Claim Adjustment Expenses

There have been no significant changes to the methodologies or assumptions used in calculating the Company's liability for unpaid claims and claim adjustment expenses.

26. Intercompany Pooling Arrangements - Not Applicable

27. Structured Settlements - Not Applicable

28. Health Care Receivables

A. Pharmaceutical Rebate Receivables

Quarter	Estimated Pharmacy Rebates as Reported on Financial Statements	Pharmacy Rebates as Billed or Otherwise Confirmed	Actual Rebates Received Within 90 Days of Billing	Actual Rebates Received Within 91 to 180 Days of Billing	Actual Rebates Received More Than 180 Days After Billing
12/31/2022	\$ 1,748,640	\$	\$	\$	\$
09/30/2022	1,961,608	1,818,542			
06/30/2022	1,534,085	1,715,429	1,601,776		
03/31/2022	1,409,036	1,625,496	1,470,526	92,652	
12/31/2021	670,071	661,389	592,493	44,299	4,771
09/30/2021	659,887	656,561	587,229	49,139	703
06/30/2021	414,690	495,631	424,788	57,168	9,030
03/31/2021	288,688	372,642	297,125	50,980	14,987

B. Risk-Sharing Receivables

Calendar Year	Evaluation Period Year Ending	Risk Sharing Receivable				Actual Risk Sharing Amounts Received			
		As Estimated in the Prior Year	As Estimated in the Current Year	Billed	Not Yet Billed	In Year Billed	First Year Subsequent	Second Year Subsequent	All Other
2022	2022	\$	\$	\$	\$	\$	\$	\$	\$
	2023		523,713		523,713				

29. Participating Policies - Not Applicable

30. Premium Deficiency Reserves

- Liability carried for premium deficiency reserves: \$898,924
- Date of the most recent evaluation of this liability: 02/16/2023
- Was anticipated investment income utilized in the calculation? NO

31. Anticipated Salvage and Subrogation - Not Applicable

GENERAL INTERROGATORIES
PART 1 - COMMON INTERROGATORIES

GENERAL

- 1.1. Is the reporting entity a member of an Insurance Holding Company System consisting of two or more affiliated persons, one or more of which is an insurer?..... YES
- If yes, complete Schedule Y, Parts 1, 1A, 2, and 3.
- 1.2. If yes, did the reporting entity register and file with its domiciliary State Insurance Commissioner, Director or Superintendent or with such regulatory official of the state of domicile of the principal insurer in the Holding Company System, a registration statement providing disclosure substantially similar to the standards adopted by the National Association of Insurance Commissioners (NAIC) in its Model Insurance Holding Company System Regulatory Act and model regulations pertaining thereto, or is the reporting entity subject to standards and disclosure requirements substantially similar to those required by such Act and regulations?..... YES
- 1.3. State Regulating?..... Ohio
- 1.4. Is the reporting entity publicly traded or a member of a publicly traded group?..... NO
- 1.5. If the response to 1.4 is yes, provide the CIK (Central Index Key) code issued by the SEC for the entity/group.....
- 2.1. Has any change been made during the year of this statement in the charter, by-laws, articles of incorporation, or deed of settlement of the reporting entity?..... NO
- 2.2. If yes, date of change:.....
- 3.1. State as of what date the latest financial examination of the reporting entity was made or is being made..... 12/31/2020
- 3.2. State the as of date that the latest financial examination report became available from either the state of domicile or the reporting entity. This date should be the date of the examined balance sheet and not the date the report was completed or released..... 12/31/2020
- 3.3. State as of what date the latest financial examination report became available to other states or the public from either the state of domicile or the reporting entity. This is the release date or completion date of the examination report and not the date of the examination (balance sheet date)..... 04/29/2022
- 3.4. By what department or departments?
Ohio Department of Insurance and Florida Office of Insurance Regulation
- 3.5. Have all financial statement adjustments within the latest financial examination report been accounted for in a subsequent financial statement filed with Departments?..... N/A
- 3.6. Have all of the recommendations within the latest financial examination report been complied with?..... N/A
- 4.1. During the period covered by this statement, did any agent, broker, sales representative, non-affiliated sales/service organization or any combination thereof under common control (other than salaried employees of the reporting entity) receive credit or commissions for or control a substantial part (more than 20 percent of any major line of business measured on direct premiums) of:.....
- 4.11. sales of new business?..... NO
- 4.12. renewals?..... NO
- 4.2. During the period covered by this statement, did any sales/service organization owned in whole or in part by the reporting entity or an affiliate, receive credit or commissions for or control a substantial part (more than 20 percent of any major line of business measured on direct premiums) of:.....
- 4.21. sales of new business?..... NO
- 4.22. renewals?..... NO
- 5.1. Has the reporting entity been a party to a merger or consolidation during the period covered by this statement?..... NO
- If yes, complete and file the merger history data file with the NAIC.
- 5.2. If yes, provide the name of the entity, NAIC company code, and state of domicile (use two letter state abbreviation) for any entity that has ceased to exist as a result of the merger or consolidation.

1	2	3
Name of Entity	NAIC Company Code	State of Domicile

- 6.1. Has the reporting entity had any Certificates of Authority, licenses or registrations (including corporate registration, if applicable) suspended or revoked by any governmental entity during the reporting period?..... NO
- 6.2. If yes, give full information
- 7.1. Does any foreign (non-United States) person or entity directly or indirectly control 10% or more of the reporting entity?..... NO
- 7.2. If yes,
 - 7.21. State the percentage of foreign control..... %
 - 7.22. State the nationality(s) of the foreign person(s) or entity(s); or if the entity is a mutual or reciprocal, the nationality of its manager or attorney-in-fact and identify the type of entity(s) (e.g., individual, corporation, government, manager or attorney-in-fact).

1	2
Nationality	Type of Entity

- 8.1. Is the company a subsidiary of a depository institution holding company (DIHC) or a DIHC itself, regulated by the Federal Reserve Board?..... NO
- 8.2. If response to 8.1 is yes, please identify the name of the DIHC.....
- 8.3. Is the company affiliated with one or more banks, thrifts or securities firms?..... NO
- 8.4. If response to 8.3 is yes, please provide the names and locations (city and state of the main office) of any affiliates regulated by a federal financial regulatory services agency [i.e. the Federal Reserve Board (FRB), the Office of the Comptroller of the Currency (OCC), the Federal Deposit Insurance Corporation (FDIC) and the Securities Exchange Commission (SEC)] and identify the affiliate's primary federal regulator.

1	2	3	4	5	6
Affiliate Name	Location (City, State)	FRB	OCC	FDIC	SEC

GENERAL INTERROGATORIES
PART 1 - COMMON INTERROGATORIES

- 8.5. Is the reporting entity a depository institution holding company with significant insurance operations as defined by the Board of Governors of Federal Reserve System or a subsidiary of the depository institution holding company?..... NO
- 8.6. If response to 8.5 is no, is the reporting entity a company or subsidiary of a company that has otherwise been made subject to the Federal Reserve Board's capital rule?..... NO
9. What is the name and address of the independent certified public accountant or accounting firm retained to conduct the annual audit?
Ernst & Young, 20 Church Street, 19th Floor Hartford, CT 06103
- 10.1. Has the insurer been granted any exemptions to the prohibited non-audit services provided by the certified independent public accountant requirements as allowed in Section 7H of the Annual Financial Reporting Model Regulation (Model Audit Rule), or substantially similar state law or regulation?..... NO
- 10.2. If the response to 10.1 is yes, provide information related to this exemption:
- 10.3. Has the insurer been granted any exemptions related to the other requirements of the Annual Financial Reporting Model Regulation as allowed for in Section 18A of the Model Regulation, or substantially similar state law or regulation?..... NO
- 10.4. If the response to 10.3 is yes, provide information related to this exemption:
- 10.5. Has the reporting entity established an Audit Committee in compliance with the domiciliary state insurance laws?..... YES
- 10.6. If the response to 10.5 is no or n/a, please explain.
11. What is the name, address and affiliation (officer/employee of the reporting entity or actuary/consultant associated with an actuarial consulting firm) of the individual providing the statement of actuarial opinion/certification?
Daniel Quinn, FSA, MAAA, Devoted Health, Inc. 221 Crescent Street, Suite 202 Waltham, MA 02453
- 12.1. Does the reporting entity own any securities of a real estate holding company or otherwise hold real estate indirectly?..... NO
- 12.11 Name of real estate holding company
- 12.12 Number of parcels involved.....
- 12.13 Total book / adjusted carrying value..... \$
- 12.2. If yes, provide explanation
13. FOR UNITED STATES BRANCHES OF ALIEN REPORTING ENTITIES ONLY:
- 13.1. What changes have been made during the year in the United States manager or the United States trustees of the reporting entity?.....
- 13.2. Does this statement contain all business transacted for the reporting entity through its United States Branch on risks wherever located?.....
- 13.3. Have there been any changes made to any of the trust indentures during the year?.....
- 13.4. If answer to (13.3) is yes, has the domiciliary or entry state approved the changes?.....
- 14.1. Are the senior officers (principal executive officer, principal financial officer, principal accounting officer or controller, or persons performing similar functions) of the reporting entity subject to a code of ethics, which includes the following standards?..... YES
- a. Honest and ethical conduct, including the ethical handling of actual or apparent conflicts of interest between personal and professional relationships;
- b. Full, fair, accurate, timely and understandable disclosure in the periodic reports required to be filed by the reporting entity;
- c. Compliance with applicable governmental laws, rules and regulations;
- d. The prompt internal reporting of violations to an appropriate person or persons identified in the code; and
- e. Accountability for adherence to the code.
- 14.11. If the response to 14.1 is no, please explain:
- 14.2. Has the code of ethics for senior managers been amended?..... NO
- 14.21. If the response to 14.2 is yes, provide information related to amendment(s).
- 14.3. Have any provisions of the code of ethics been waived for any of the specified officers?..... NO
- 14.31. If the response to 14.3 is yes, provide the nature of any waiver(s).
- 15.1. Is the reporting entity the beneficiary of a Letter of Credit that is unrelated to reinsurance where the issuing or confirming bank is not on the SVO Bank List?..... NO
- 15.2. If the response to 15.1 is yes, indicate the American Bankers Association (ABA) Routing Number and the name of the issuing or confirming bank of the Letter of Credit and describe the circumstances in which the Letter of Credit is triggered.

1	2	3	4
American Bankers Association (ABA) Routing Number	Issuing or Confirming Bank Name	Circumstances That Can Trigger the Letter of Credit	Amount
			\$

BOARD OF DIRECTORS

16. Is the purchase or sale of all investments of the reporting entity passed upon either by the board of directors or a subordinate committee thereof?..... YES
17. Does the reporting entity keep a complete permanent record of the proceedings of its board of directors and all subordinate committees thereof?..... YES
18. Has the reporting entity an established procedure for disclosure to its board of directors or trustees of any material interest or affiliation on the part of any of its officers, directors, trustees or responsible employees that is in conflict or is likely to conflict with the official duties of such person?..... YES

GENERAL INTERROGATORIES
PART 1 - COMMON INTERROGATORIES

FINANCIAL

- 19. Has this statement been prepared using a basis of accounting other than Statutory Accounting Principles (e.g., Generally Accepted Accounting Principles)?..... NO
- 20.1. Total amount loaned during the year (inclusive of Separate Accounts, exclusive of policy loans):
 - 20.11 To directors or other officers..... \$
 - 20.12 To stockholders not officers..... \$
 - 20.13 Trustees, supreme or grand (Fraternal only)..... \$
- 20.2. Total amount of loans outstanding at the end of year (inclusive of Separate Accounts, exclusive of policy loans):
 - 20.21 To directors or other officers..... \$
 - 20.22 To stockholders not officers..... \$
 - 20.23 Trustees, supreme or grand (Fraternal only)..... \$
- 21.1. Were any assets reported in this statement subject to a contractual obligation to transfer to another party without the liability for such obligation being reported in the statement?..... NO
- 21.2. If yes, state the amount thereof at December 31 of the current year:
 - 21.21 Rented from others..... \$
 - 21.22 Borrowed from others..... \$
 - 21.23 Leased from others..... \$
 - 21.24 Other..... \$
- 22.1. Does this statement include payments for assessments as described in the *Annual Statement Instructions* other than guaranty fund or guaranty association assessments?..... NO
- 22.2. If answer is yes:
 - 22.21 Amount paid as losses or risk adjustment..... \$
 - 22.22 Amount paid as expenses..... \$
 - 22.23 Other amounts paid..... \$
- 23.1. Does the reporting entity report any amounts due from parent, subsidiaries or affiliates on Page 2 of this statement?..... YES
- 23.2. If yes, indicate any amounts receivable from parent included in the Page 2 amount..... \$
- 24.1. Does the insurer utilize third parties to pay agent commissions in which the amounts advanced by the third parties are not settled in full within 90 days?..... NO
- 24.2. If the response to 24.1 is yes, identify the third-party that pays the agents and whether they are a related party.

1	2
Name of Third-Party	Is the Third-Party Agent a Related Party (Yes/No)

INVESTMENT

- 25.01. Were all the stocks, bonds and other securities owned December 31 of current year, over which the reporting entity has exclusive control, in the actual possession of the reporting entity on said date? (other than securities lending programs addressed in 25.03)..... YES
- 25.02. If no, give full and complete information, relating thereto
- 25.03. For securities lending programs, provide a description of the program including value for collateral and amount of loaned securities, and whether collateral is carried on or off-balance sheet. (an alternative is to reference Note 17 where this information is also provided)
- 25.04. For the reporting entity's securities lending program, report amount of collateral for conforming programs as outlined in the Risk-Based Capital Instructions..... \$
- 25.05. For the reporting entity's securities lending program, report amount of collateral for other programs..... \$
- 25.06. Does your securities lending program require 102% (domestic securities) and 105% (foreign securities) from the counterparty at the outset of the contract?..... N/A
- 25.07. Does the reporting entity non-admit when the collateral received from the counterparty falls below 100%?..... N/A
- 25.08. Does the reporting entity or the reporting entity's securities lending agent utilize the Master Securities Lending Agreement (MSLA) to conduct securities lending?..... N/A
- 25.09. For the reporting entity's securities lending program, state the amount of the following as of December 31 of the current year:
 - 25.091. Total fair value of reinvested collateral assets reported on Schedule DL, Parts 1 and 2..... \$
 - 25.092. Total book adjusted/carrying value of reinvested collateral assets reported on Schedule DL, Parts 1 and 2..... \$
 - 25.093. Total payable for securities lending reported on the liability page..... \$
- 26.1. Were any of the stocks, bonds or other assets of the reporting entity owned at December 31 of the current year not exclusively under the control of the reporting entity or has the reporting entity sold or transferred any assets subject to a put option contract that is currently in force? (Exclude securities subject to Interrogatory 21.1 and 25.03)..... YES
- 26.2. If yes, state the amount thereof at December 31 of the current year:
 - 26.21. Subject to repurchase agreements..... \$
 - 26.22. Subject to reverse repurchase agreements..... \$
 - 26.23. Subject to dollar repurchase agreements..... \$
 - 26.24. Subject to reverse dollar repurchase agreements..... \$
 - 26.25. Placed under option agreements..... \$
 - 26.26. Letter stock or securities restricted as to sale - excluding FHLB Capital Stock..... \$
 - 26.27. FHLB Capital Stock..... \$
 - 26.28. On deposit with states..... \$ 400,000
 - 26.29. On deposit with other regulatory bodies..... \$
 - 26.30. Pledged as collateral - excluding collateral pledged to an FHLB..... \$
 - 26.31. Pledged as collateral to FHLB - including assets backing funding agreements..... \$
 - 26.32. Other..... \$
- 26.3. For category (26.26) provide the following:

1	2	3
Nature of Restriction	Description	Amount
		\$

GENERAL INTERROGATORIES
PART 1 - COMMON INTERROGATORIES

- 27.1. Does the reporting entity have any hedging transactions reported on Schedule DB?..... NO
- 27.2. If yes, has a comprehensive description of the hedging program been made available to the domiciliary state? If no, attach a description with this statement..... N/A

LINES 27.3 through 27.5: FOR LIFE/FRATERNAL REPORTING ENTITIES ONLY:

- 27.3. Does the reporting entity utilize derivatives to hedge variable annuity guarantees subject to fluctuations as a result of interest rate sensitivity?.....
- 27.4. If the response to 27.3 is YES, does the reporting entity utilize:
- 27.41 Special accounting provision of SSAP No. 108.....
- 27.42 Permitted accounting practice.....
- 27.43 Other accounting guidance.....
- 27.5. By responding YES to 27.41 regarding utilizing the special accounting provisions of SSAP No. 108, the reporting entity attests to the following:.....
- The reporting entity has obtained explicit approval from the domiciliary state.
 - Hedging strategy subject to the special accounting provisions is consistent with the requirements of VM-21.
 - Actuarial certification has been obtained which indicates that the hedging strategy is incorporated within the establishment of VM-21 reserves and provides the impact of the hedging strategy within the Actuarial Guideline Conditional Tail Expectation Amount.
 - Financial Officer Certification has been obtained which indicates that the hedging strategy meets the definition of a Clearly Defined Hedging Strategy within VM-21 and that the Clearly Defined Hedging Strategy is the hedging strategy being used by the company in its actual day-to-day risk mitigation efforts.

- 28.1. Were any preferred stocks or bonds owned as of December 31 of the current year mandatorily convertible into equity, or, at the option of the issuer, convertible into equity?..... NO

28.2. If yes, state the amount thereof at December 31 of the current year..... \$

29. Excluding items in Schedule E- Part 3 - Special Deposits, real estate, mortgage loans and investments held physically in the reporting entity's offices, vaults or safety deposit boxes, were all stocks, bonds and other securities, owned throughout the current year held pursuant to a custodial agreement with a qualified bank or trust company in accordance with Section 1, III - General Examination Considerations, F. Outsourcing of Critical Functions, Custodial or Safekeeping Agreements of the *NAIC Financial Condition Examiners Handbook*?..... YES

29.01. For agreements that comply with the requirements of the *NAIC Financial Condition Examiners Handbook*, complete the following:

1 Name of Custodian(s)	2 Custodian's Address
Silicon Valley Bank	3003 Tasman Drive Santa Clara, CA 95054

29.02. For all agreements that do not comply with the requirements of the *NAIC Financial Condition Examiners Handbook*, provide the name, location and a complete explanation:

1 Name(s)	2 Location(s)	3 Complete Explanation(s)

- 29.03. Have there been any changes, including name changes, in the custodian(s) identified in 29.01 during the current year?..... NO

29.04. If yes, give full and complete information relating thereto:

1 Old Custodian	2 New Custodian	3 Date of Change	4 Reason

29.05. Investment management – Identify all investment advisors, investment managers, broker/dealers, including individuals that have the authority to make investment decisions on behalf of the reporting entity. For assets that are managed internally by employees of the reporting entity, note as such. ["...that have access to the investment accounts"; "...handle securities"]

1 Name of Firm or Individual	2 Affiliation
Internally Managed	

- 29.0597. For those firms/individuals listed in the table for Question 29.05, do any firms/individuals unaffiliated with the reporting entity (i.e., designated with a "U") manage more than 10% of the reporting entity's invested assets?..... NO

- 29.0598. For firms/individuals unaffiliated with the reporting entity (i.e., designated with a "U") listed in the table for Question 29.05, does the total assets under management aggregate to more than 50% of the reporting entity's invested assets?..... NO

29.06. For those firms or individuals listed in the table for 29.05 with an affiliation code of "A" (affiliated) or "U" (unaffiliated), provide the information for the table below.

1 Central Registration Depository Number	2 Name of Firm or Individual	3 Legal Entity Identifier (LEI)	4 Registered With	5 Investment Management Agreement (IMA) Filed

- 30.1. Does the reporting entity have any diversified mutual funds reported in Schedule D - Part 2 (diversified according to the Securities and Exchange Commission (SEC) in the Investment Company Act of 1940 [Section 5 (b) (1)])?..... NO

30.2. If yes, complete the following schedule:

1 CUSIP #	2 Name of Mutual Fund	3 Book/Adjusted Carrying Value
30.2999 TOTAL		\$.....

30.3. For each mutual fund listed in the table above, complete the following schedule:

1 Name of Mutual Fund (from above table)	2 Name of Significant Holding of the Mutual Fund	3 Amount of Mutual Fund's Book / Adjusted Carrying Value Attributable to the Holding	4 Date of Valuation

GENERAL INTERROGATORIES
PART 1 - COMMON INTERROGATORIES

31. Provide the following information for all short-term and long-term bonds and all preferred stocks. Do not substitute amortized value or statement value for fair value.

	1	2	3
	Statement (Admitted) Value	Fair Value	Excess of Statement over Fair Value (-), or Fair Value over Statement (+)
31.1. Bonds.....	\$.....	\$.....	\$.....
31.2. Preferred Stocks.....	\$.....	\$.....	\$.....
31.3. Totals.....	\$.....	\$.....	\$.....

31.4. Describe the sources or methods utilized in determining the fair values:

32.1. Was the rate used to calculate fair value determined by a broker or custodian for any of the securities in Schedule D?.....NO.....

32.2. If the answer to 32.1 is yes, does the reporting entity have a copy of the broker's or custodian's pricing policy (hard copy or electronic copy) for all brokers or custodians used as a pricing source?.....

32.3. If the answer to 32.2 is no, describe the reporting entity's process for determining a reliable pricing source for purposes of disclosure of fair value for Schedule D:

33.1. Have all the filing requirements of the *Purposes and Procedures Manual of the NAIC Investment Analysis Office* been followed?.....YES.....

33.2. If no, list exceptions:

34. By self-designating 5GI securities, the reporting entity is certifying the following elements of each self-designated 5GI security:
 a. Documentation necessary to permit a full credit analysis of the security does not exist or an NAIC CRP credit rating for an FE or PL security is not available.
 b. Issuer or obligor is current on all contracted interest and principal payments.
 c. The insurer has an actual expectation of ultimate payment of all contracted interest and principal.
 Has the reporting entity self-designated 5GI securities?.....NO.....

35. By self-designating PLGI securities, the reporting entity is certifying the following elements of each self-designated PLGI security:
 a. The security was purchased prior to January 1, 2018.
 b. The reporting entity is holding capital commensurate with the NAIC Designation reported for the security.
 c. The NAIC Designation was derived from the credit rating assigned by an NAIC CRP in its legal capacity as an NRSRO which is shown on a current private letter rating held by the insurer and available for examination by state insurance regulators.
 d. The reporting entity is not permitted to share this credit rating of the PL security with the SVO.
 Has the reporting entity self-designated PLGI securities?.....NO.....

36. By assigning FE to a Schedule BA non-registered private fund, the reporting entity is certifying the following elements of each self-designated FE fund:
 a. The shares were purchased prior to January 1, 2019.
 b. The reporting entity is holding capital commensurate with the NAIC Designation reported for the security.
 c. The security had a public credit rating(s) with annual surveillance assigned by an NAIC CRP in its legal capacity as an NRSRO prior to January 1, 2019.
 d. The fund only or predominantly holds bonds in its portfolio.
 e. The current reported NAIC Designation was derived from the public credit rating(s) with annual surveillance assigned by an NAIC CRP in its legal capacity as an NRSRO.
 f. The public credit rating(s) with annual surveillance assigned by an NAIC CRP has not lapsed.
 Has the reporting entity assigned FE to Schedule BA non-registered private funds that complied with the above criteria?.....NO.....

37. By rolling/renewing short-term or cash equivalent investments with continued reporting on Schedule DA, Part 1 or Schedule E Part 2 (identified through a code (%) in those investment schedules), the reporting entity is certifying to the following:
 a. The investment is a liquid asset that can be terminated by the reporting entity on the current maturity date.
 b. If the investment is with a nonrelated party or nonaffiliate, then it reflects an arms-length transaction with renewal completed at the discretion of all involved parties.
 c. If the investment is with a related party or affiliate, then the reporting entity has completed robust re-underwriting of the transaction for which documentation is available for regulator review.
 d. Short-term and cash equivalent investments that have been renewed/rolled from the prior period that do not meet the criteria in 37.a - 37.c are reported as long-term investments.
 Has the reporting entity rolled/renewed short-term or cash equivalent investments in accordance with these criteria?.....N/A.....

38.1 Does the reporting entity directly hold cryptocurrencies?.....NO.....

38.2 If the response to 38.1 is yes, on what schedule are they reported?.....

39.1 Does the reporting entity directly or indirectly accept cryptocurrencies as payments for premiums on policies?.....NO.....

39.2 If the response to 39.1 is yes, are the cryptocurrencies held directly or are they immediately converted to U.S. dollars?

39.21 Held directly.....

39.22 Immediately converted to U.S. dollars.....

39.3. If the response to 38.1 or 39.1 is yes, list all cryptocurrencies accepted for payments of premiums or that are held directly.

1	2	3
Name of Cryptocurrency	Immediately Converted to USD, Directly Held, or Both	Accepted for Payment of Premiums
.....

OTHER

40.1. Amount of payments to trade associations, service organizations and statistical or rating bureaus, if any?.....\$.....

40.2. List the name of the organization and the amount paid if any such payment represented 25% or more of the total payments to trade associations, service organizations, and statistical or rating bureaus during the period covered by this statement.

1	2
Name	Amount Paid
.....	\$.....

41.1. Amount of payments for legal expenses, if any?.....\$.....

GENERAL INTERROGATORIES

PART 1 - COMMON INTERROGATORIES

41.2. List the name of the firm and the amount paid if any such payment represented 25% or more of the total payments for legal expenses during the period covered by this statement.

1	2
Name	Amount Paid
	\$

42.1. Amount of payments for expenditures in connection with matters before legislative bodies, officers, or departments of government, if any?

\$

42.2. List the name of the firm and the amount paid if any such payment represented 25% or more of the total payment expenditures in connection with matters before legislative bodies, officers, or departments of government during the period covered by this statement.

1	2
Name	Amount Paid
	\$

GENERAL INTERROGATORIES
PART 2 - HEALTH INTERROGATORIES

- 1.1 Does the reporting entity have any direct Medicare Supplement Insurance in force? NO
- 1.2 If yes, indicate premium earned on U.S. business only \$
- 1.3 What portion of Item (1.2) is not reported on the Medicare Supplement Insurance Experience Exhibit? \$
- 1.31 Reason for excluding

- 1.4 Indicate amount of earned premium attributable to Canadian and/or Other Alien not included in Item (1.2) above \$
- 1.5 Indicate total incurred claims on all Medicare Supplement insurance \$
- 1.6 Individual policies:
Most current three years:
1.61 Total premium earned \$
1.62 Total incurred claims \$
1.63 Number of covered lives
- All years prior to most current three years:
1.64 Total premium earned \$
1.65 Total incurred claims \$
1.66 Number of covered lives
- 1.7 Group policies:
Most current three years:
1.71 Total premium earned \$
1.72 Total incurred claims \$
1.73 Number of covered lives
- All years prior to most current three years:
1.74 Total premium earned \$
1.75 Total incurred claims \$
1.76 Number of covered lives

2. Health Test:

	1	2
	Current Year	Prior Year
2.1 Premium Numerator	\$ 76,845,369	\$ 25,876,576
2.2 Premium Denominator	\$ 76,845,369	\$ 25,876,576
2.3 Premium Ratio (2.1/2.2)	100.000	100.000
2.4 Reserve Numerator	\$ 8,455,125	\$ 3,745,872
2.5 Reserve Denominator	\$ 8,455,125	\$ 3,745,872
2.6 Reserve Ratio (2.4/2.5)	100.000 %	100.000 %

- 3.1 Has the reporting entity received any endowment or gift from contracting hospitals, physicians, dentists, or others that is agreed will be returned when, as and if the earnings of the reporting entity permits? NO
- 3.2 If yes, give particulars:

- 4.1 Have copies of all agreements stating the period and nature of hospitals', physicians', and dentists' care offered to subscribers and dependents been filed with the appropriate regulatory agency? YES
- 4.2 If not previously filed, furnish herewith a copy(ies) of such agreement(s). Do these agreements include additional benefits offered? NO
- 5.1 Does the reporting entity have stop-loss reinsurance? YES
- 5.2 If no, explain:

- 5.3 Maximum retained risk (see instructions)

 - 5.31 Comprehensive Medical \$
 - 5.32 Medical Only \$
 - 5.33 Medicare Supplement \$
 - 5.34 Dental and Vision \$
 - 5.35 Other Limited Benefit Plan \$
 - 5.36 Other \$

- 6. Describe arrangement which the reporting entity may have to protect subscribers and their dependents against the risk of insolvency including hold harmless provisions, conversion privileges with other carriers, agreements with providers to continue rendering services, and any other agreements:
The Company has hold harmless provisions in its contracts with providers.
- 7.1 Does the reporting entity set up its claim liability for provider services on a service date basis? YES
- 7.2 If no, give details

GENERAL INTERROGATORIES
PART 2 - HEALTH INTERROGATORIES

- 8. Provide the following information regarding participating providers:
 - 8.1 Number of providers at start of reporting year 20,906
 - 8.2 Number of providers at end of reporting year 24,301
- 9.1 Does the reporting entity have business subject to premium rate guarantees? NO
- 9.2 If yes, direct premium earned:
 - 9.21 Business with rate guarantees between 15-36 months \$
 - 9.22 Business with rate guarantees over 36 months \$
- 10.1 Does the reporting entity have Incentive Pool, Withhold or Bonus Arrangements in its provider contracts? YES
- 10.2 If yes:
 - 10.21 Maximum amount payable bonuses \$ 541,271
 - 10.22 Amount actually paid for year bonuses \$ 541,271
 - 10.23 Maximum amount payable withholds \$
 - 10.24 Amount actually paid for year withholds \$
- 11.1 Is the reporting entity organized as:
 - 11.12 A Medical Group/Staff Model, NO
 - 11.13 An Individual Practice Association (IPA), or, NO
 - 11.14 A Mixed Model (combination of above)? NO
- 11.2 Is the reporting entity subject to Statutory Minimum Capital and Surplus Requirements? YES
- 11.3 If yes, show the name of the state requiring such minimum capital and surplus. Ohio
- 11.4 If yes, show the amount required. \$ 2,500,000
- 11.5 Is this amount included as part of a contingency reserve in stockholder's equity? NO
- 11.6 If the amount is calculated, show the calculation

12. List service areas in which reporting entity is licensed to operate:

1
Name of Service Area
Licensed in all service areas in Ohio.....

- 13.1 Do you act as a custodian for health savings accounts? NO
- 13.2 If yes, please provide the amount of custodial funds held as of the reporting date. \$
- 13.3 Do you act as an administrator for health savings accounts? NO
- 13.4 If yes, please provide the balance of the funds administered as of the reporting date \$
- 14.1 Are any of the captive affiliates reported on Schedule S, Part 3, authorized reinsurers? N/A
- 14.2. If the answer to 14.1 is yes, please provide the following:

1 Company Name	2 NAIC Company Code	3 Domiciliary Jurisdiction	4 Reserve Credit	Assets Supporting Reserve Credit		
				5 Letters of Credit	6 Trust Agreements	7 Other

- 15. Provide the following for individual ordinary life insurance* policies (U.S. business only) for the current year (prior to reinsurance assumed or ceded).
 - 15.1 Direct Premium Written \$
 - 15.2 Total Incurred Claims \$
 - 15.3 Number of Covered Lives

*Ordinary Life Insurance Includes
Term (whether full underwriting, limited underwriting, jet issue, "short form app")
Whole Life (whether full underwriting, limited underwriting, jet issue, "short form app")
Variable Life (with or without secondary guarantee)
Universal Life (with or without secondary guarantee)
Variable Universal Life (with or without secondary guarantee)

- 16. Is the reporting entity licensed or chartered, registered, qualified, eligible or writing business in at least two states? NO
- 16.1 If no, does the reporting entity assume reinsurance business that covers risks residing in at least one state other than the state of domicile of the reporting entity? NO

FIVE-YEAR HISTORICAL DATA

	1	2	3	4	5
	2022	2021	2020	2019	2018
Balance Sheet (Pages 2 and 3)					
1. Total admitted assets (Page 2, Line 28)	26,911,965	15,975,859	4,100,367		
2. Total liabilities (Page 3, Line 24)	13,193,202	5,667,221	1,405,287		
3. Statutory minimum capital and surplus requirement	2,500,000	2,500,000	2,500,000		
4. Total capital and surplus (Page 3, Line 33)	13,718,763	10,308,638	2,695,080		
Income Statement (Page 4)					
5. Total revenues (Line 8)	76,258,782	25,434,243			
6. Total medical and hospital expenses (Line 18)	68,314,026	23,622,323			
7. Claims adjustment expenses (Line 20)	2,096,689	610,930			
8. Total administrative expenses (Line 21)	10,243,993	3,483,651			
9. Net underwriting gain (loss) (Line 24)	(4,416,097)	(1,767,128)	(1,394,287)		
10. Net investment gain (loss) (Line 27)	123,867	399	367		
11. Total other income (Lines 28 plus 29)					
12. Net income or (loss) (Line 32)	(4,292,230)	(1,766,729)	(1,393,920)		
Cash Flow (Page 6)					
13. Net cash from operations (Line 11)	(1,523,968)	(330,750)	367		
Risk-Based Capital Analysis					
14. Total adjusted capital	13,718,763	10,308,638	2,695,080		
15. Authorized control level risk-based capital	3,154,713	2,050,624	8,395		
Enrollment (Exhibit 1)					
16. Total members at end of period (Column 5, Line 7)	7,204	2,774			
17. Total members months (Column 6, Line 7)	82,000	28,074			
Operating Percentage (Page 4) (Item divided by Page 4, sum of Lines 2, 3, and 5) x 100.0					
18. Premiums earned plus risk revenue (Line 2 plus Lines 3 and 5)	100.0 %	100.0 %	100.0 %	100.0 %	100.0 %
19. Total hospital and medical plus other non-health (Lines 18 plus Line 19)	89.6	92.9			
20. Cost containment expenses	1.6	1.3			
21. Other claims adjustment expenses	1.1	1.1			
22. Total underwriting deductions (Line 23)	105.8	106.9			
23. Total underwriting gain (loss) (Line 24)	(5.8)	(6.9)			
Unpaid Claims Analysis (U&I Exhibit, Part 2B)					
24. Total claims incurred for prior years (Line 17, Col. 5)	595,174				
25. Estimated liability of unpaid claims-[prior year (Line 17, Col. 6)]	993,866				
Investments in Parent, Subsidiaries and Affiliates					
26. Affiliated bonds (Sch. D Summary, Line 12, Col. 1)					
27. Affiliated preferred stocks (Sch. D Summary, Line 18, Col. 1)					
28. Affiliated common stocks (Sch. D Summary, Line 24, Col. 1)					
29. Affiliated short-term investments (subtotal included in Sch. DA Verification, Col. 5, Line 10)					
30. Affiliated mortgage loans on real estate					
31. All other affiliated					
32. Total of above Lines 26 to 31					
33. Total investment in parent included in Lines 26 to 31 above					

NOTE: If a party to a merger, have the two most recent years of this exhibit been restated due to a merger in compliance with the disclosure requirements of SSAP No. 3—Accounting Changes and Correction of Errors?

If no, please explain

SCHEDULE T - PREMIUMS AND OTHER CONSIDERATIONS

Allocated by States and Territories

1	Direct Business Only									
	2	3	4	5	6	7	8	9	10	
States, Etc.	Active Status (a)	Accident & Health Premiums	Medicare Title XVIII	Medicaid Title XIX	CHIP Title XXI	Federal Employees Health Benefits Plan Premiums	Life & Annuity Premiums & Other Considerations	Property / Casualty Premiums	Total Columns 2 Through 8	Deposit-Type Contracts
1. Alabama	AL	N								
2. Alaska	AK	N								
3. Arizona	AZ	N								
4. Arkansas	AR	N								
5. California	CA	N								
6. Colorado	CO	N								
7. Connecticut	CT	N								
8. Delaware	DE	N								
9. District of Columbia	DC	N								
10. Florida	FL	N								
11. Georgia	GA	N								
12. Hawaii	HI	N								
13. Idaho	ID	N								
14. Illinois	IL	N								
15. Indiana	IN	N								
16. Iowa	IA	N								
17. Kansas	KS	N								
18. Kentucky	KY	N								
19. Louisiana	LA	N								
20. Maine	ME	N								
21. Maryland	MD	N								
22. Massachusetts	MA	N								
23. Michigan	MI	N								
24. Minnesota	MN	N								
25. Mississippi	MS	N								
26. Missouri	MO	N								
27. Montana	MT	N								
28. Nebraska	NE	N								
29. Nevada	NV	N								
30. New Hampshire	NH	N								
31. New Jersey	NJ	N								
32. New Mexico	NM	N								
33. New York	NY	N								
34. North Carolina	NC	N								
35. North Dakota	ND	N								
36. Ohio	OH	L	77,302,897						77,302,897	
37. Oklahoma	OK	N								
38. Oregon	OR	N								
39. Pennsylvania	PA	N								
40. Rhode Island	RI	N								
41. South Carolina	SC	N								
42. South Dakota	SD	N								
43. Tennessee	TN	N								
44. Texas	TX	N								
45. Utah	UT	N								
46. Vermont	VT	N								
47. Virginia	VA	N								
48. Washington	WA	N								
49. West Virginia	WV	N								
50. Wisconsin	WI	N								
51. Wyoming	WY	N								
52. American Samoa	AS	N								
53. Guam	GU	N								
54. Puerto Rico	PR	N								
55. US Virgin Islands	VI	N								
56. Northern Mariana Islands	MP	N								
57. Canada	CAN	N								
58. Aggregate Other Alien	OT	XXX								
59. Subtotal	XXX		77,302,897						77,302,897	
60. Reporting entity contributions for Employee Benefit Plans	XXX									
61. Total (Direct Business)	XXX		77,302,897						77,302,897	
Details of Write-Ins										
58001.	XXX									
58002.	XXX									
58003.	XXX									
58998. Summary of remaining write-ins for Line 58 from overflow page	XXX									
58999. Totals (Lines 58001 through 58003 plus 58998) (Line 58 above)	XXX									

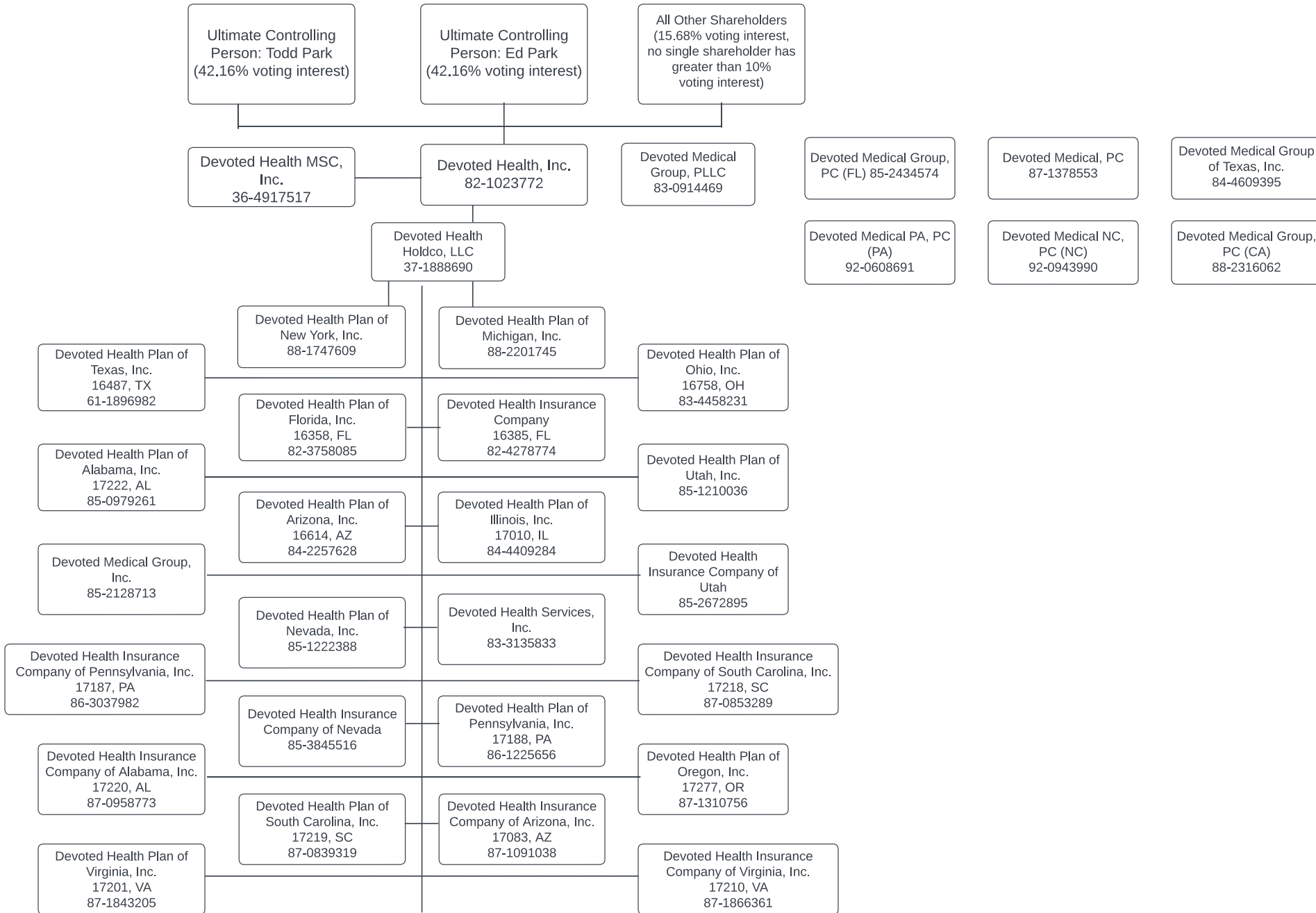
(a) Active Status Counts

1. L - Licensed or Chartered - Licensed insurance carrier or domiciled RRG 1 4. Q - Qualified - Qualified or accredited reinsurer -
 2. R - Registered - Non-domiciled RRGs - 5. N - None of the above - Not allowed to write business in the state 56
 3. E - Eligible - Reporting entities eligible or approved to write surplus lines in the state -

(b) Explanation of basis of allocation by states, premiums by state, etc

SCHEDULE Y - INFORMATION CONCERNING ACTIVITIES OF INSURER MEMBERS OF A HOLDING COMPANY GROUP

PART 1 - ORGANIZATIONAL CHART



SCHEDULE Y - INFORMATION CONCERNING ACTIVITIES OF INSURER MEMBERS OF A HOLDING COMPANY GROUP

PART 1 - ORGANIZATIONAL CHART

