



HEALTH ANNUAL STATEMENT

FOR THE YEAR ENDED DECEMBER 31, 2022
OF THE CONDITION AND AFFAIRS OF THE

Bright Health Insurance Company of Ohio, Inc.

NAIC Group Code 4887 4887 NAIC Company Code 16353 Employer's ID Number 37-1873205
(Current) (Prior)

Organized under the Laws of Ohio, State of Domicile or Port of Entry OH

Country of Domicile United States of America

Licensed as business type: Life, Accident & Health

Is HMO Federally Qualified? Yes [] No []

Incorporated/Organized 10/26/2017 Commenced Business 01/01/2019

Statutory Home Office 300 E Business Way, Suite 220, Cincinnati, OH, US 45241
(Street and Number) (City or Town, State, Country and Zip Code)

Main Administrative Office 8000 Norman Center Dr, Suite 900
(Street and Number)
Minneapolis, MN, US 55437, 612-238-1321
(City or Town, State, Country and Zip Code) (Area Code) (Telephone Number)

Mail Address 8000 Norman Center Dr, Suite 900, Minneapolis, MN, US 55437
(Street and Number or P.O. Box) (City or Town, State, Country and Zip Code)

Primary Location of Books and Records 8000 Norman Center Dr, Suite 900
(Street and Number)
Minneapolis, MN, US 55437, 612-238-1321
(City or Town, State, Country and Zip Code) (Area Code) (Telephone Number)

Internet Website Address www.brighthousehealthcare.com

Statutory Statement Contact Chelsea Marie McGee, 605-216-2433
(Name) (Area Code) (Telephone Number)
cmcgee@brighthousegroup.com, _____
(E-mail Address) (FAX Number)

OFFICERS

Chief Executive Officer and President Jay Matushak # Chief Financial Officer Jay Matushak #
Secretary Jeff Craig #

OTHER

DIRECTORS OR TRUSTEES

Jay Matushak # A.Bartley Bryt # Jeff Craig #

State of _____ SS
County of _____

The officers of this reporting entity being duly sworn, each depose and say that they are the described officers of said reporting entity, and that on the reporting period stated above, all of the herein described assets were the absolute property of the said reporting entity, free and clear from any liens or claims thereon, except as herein stated, and that this statement, together with related exhibits, schedules and explanations therein contained, annexed or referred to, is a full and true statement of all the assets and liabilities and of the condition and affairs of the said reporting entity as of the reporting period stated above, and of its income and deductions therefrom for the period ended, and have been completed in accordance with the NAIC Annual Statement Instructions and Accounting Practices and Procedures manual except to the extent that: (1) state law may differ; or, (2) that state rules or regulations require differences in reporting not related to accounting practices and procedures, according to the best of their information, knowledge and belief, respectively. Furthermore, the scope of this attestation by the described officers also includes the related corresponding electronic filing with the NAIC, when required, that is an exact copy (except for formatting differences due to electronic filing) of the enclosed statement. The electronic filing may be requested by various regulators in lieu of or in addition to the enclosed statement.

Jay Matushak
Chief Executive Officer and President

Jay Matushak
Chief Financial Officer

Jeff Craig
Secretary

Subscribed and sworn to before me this _____ day of _____

- a. Is this an original filing? Yes [X] No []
b. If no,
1. State the amendment number.....
2. Date filed
3. Number of pages attached.....

ASSETS

	Current Year			Prior Year
	1 Assets	2 Nonadmitted Assets	3 Net Admitted Assets (Cols. 1 - 2)	4 Net Admitted Assets
1. Bonds (Schedule D)	0	0	0	3,082,054
2. Stocks (Schedule D):				
2.1 Preferred stocks	0	0	0	0
2.2 Common stocks	0	0	0	0
3. Mortgage loans on real estate (Schedule B):				
3.1 First liens	0	0	0	0
3.2 Other than first liens	0	0	0	0
4. Real estate (Schedule A):				
4.1 Properties occupied by the company (less \$0 encumbrances)	0	0	0	0
4.2 Properties held for the production of income (less \$0 encumbrances)	0	0	0	0
4.3 Properties held for sale (less \$0 encumbrances)	0	0	0	0
5. Cash (\$3,310,521, Schedule E - Part 1), cash equivalents (\$415,063, Schedule E - Part 2) and short-term investments (\$448,379, Schedule DA)	4,173,963	0	4,173,963	1,789,779
6. Contract loans, (including \$0 premium notes)	0	0	0	0
7. Derivatives (Schedule DB)	0	0	0	0
8. Other invested assets (Schedule BA)	0	0	0	0
9. Receivables for securities	49	0	49	0
10. Securities lending reinvested collateral assets (Schedule DL)	0	0	0	0
11. Aggregate write-ins for invested assets	0	0	0	0
12. Subtotals, cash and invested assets (Lines 1 to 11)	4,174,012	0	4,174,012	4,871,833
13. Title plants less \$0 charged off (for Title insurers only)	0	0	0	0
14. Investment income due and accrued	193	0	193	10,170
15. Premiums and considerations:				
15.1 Uncollected premiums and agents' balances in the course of collection	5,971	0	5,971	2,231
15.2 Deferred premiums, agents' balances and installments booked but deferred and not yet due (including \$0 earned but unbilled premiums)	0	0	0	0
15.3 Accrued retrospective premiums (\$56,044) and contracts subject to redetermination (\$153,060)	209,104	0	209,104	247,794
16. Reinsurance:				
16.1 Amounts recoverable from reinsurers	0	0	0	0
16.2 Funds held by or deposited with reinsured companies	0	0	0	0
16.3 Other amounts receivable under reinsurance contracts	0	0	0	0
17. Amounts receivable relating to uninsured plans	110,292	0	110,292	121,610
18.1 Current federal and foreign income tax recoverable and interest thereon	0	0	0	0
18.2 Net deferred tax asset	0	0	0	0
19. Guaranty funds receivable or on deposit	0	0	0	0
20. Electronic data processing equipment and software	0	0	0	0
21. Furniture and equipment, including health care delivery assets (\$0)	0	0	0	0
22. Net adjustment in assets and liabilities due to foreign exchange rates	0	0	0	0
23. Receivables from parent, subsidiaries and affiliates	0	0	0	174,823
24. Health care (\$0) and other amounts receivable	27,102	27,102	0	78,664
25. Aggregate write-ins for other than invested assets	982	982	0	0
26. Total assets excluding Separate Accounts, Segregated Accounts and Protected Cell Accounts (Lines 12 to 25)	4,527,656	28,084	4,499,572	5,507,125
27. From Separate Accounts, Segregated Accounts and Protected Cell Accounts	0	0	0	0
28. Total (Lines 26 and 27)	4,527,656	28,084	4,499,572	5,507,125
DETAILS OF WRITE-INS				
1101.				
1102.				
1103.				
1198. Summary of remaining write-ins for Line 11 from overflow page	0	0	0	0
1199. Totals (Lines 1101 thru 1103 plus 1198)(Line 11 above)	0	0	0	0
2501. Prepaid Expenses	982	982	0	0
2502.				
2503.				
2598. Summary of remaining write-ins for Line 25 from overflow page	0	0	0	0
2599. Totals (Lines 2501 thru 2503 plus 2598)(Line 25 above)	982	982	0	0

LIABILITIES, CAPITAL AND SURPLUS

	Current Year			Prior Year
	1 Covered	2 Uncovered	3 Total	4 Total
1. Claims unpaid (less \$0 reinsurance ceded)	34,109	0	34,109	1,112,347
2. Accrued medical incentive pool and bonus amounts	43,967	0	43,967	43,968
3. Unpaid claims adjustment expenses.....	0	0	0	37,790
4. Aggregate health policy reserves, including the liability of \$0 for medical loss ratio rebate per the Public Health Service Act	503,815	0	503,815	1,027,363
5. Aggregate life policy reserves.....	0	0	0	0
6. Property/casualty unearned premium reserves.....	0	0	0	0
7. Aggregate health claim reserves.....	0	0	0	0
8. Premiums received in advance.....	0	0	0	0
9. General expenses due or accrued.....	2,365	0	2,365	5,065
10.1 Current federal and foreign income tax payable and interest thereon (including \$0 on realized capital gains (losses))	0	0	0	0
10.2 Net deferred tax liability.....	0	0	0	0
11. Ceded reinsurance premiums payable.....	0	0	0	1,707
12. Amounts withheld or retained for the account of others.....	0	0	0	0
13. Remittances and items not allocated.....	0	0	0	8,037
14. Borrowed money (including \$0 current) and interest thereon \$0 (including \$0 current).....	0	0	0	0
15. Amounts due to parent, subsidiaries and affiliates.....	176,499	0	176,499	0
16. Derivatives.....	0	0	0	0
17. Payable for securities.....	0	0	0	0
18. Payable for securities lending	0	0	0	0
19. Funds held under reinsurance treaties (with \$0 authorized reinsurers, \$0 unauthorized reinsurers and \$0 certified reinsurers).....	0	0	0	0
20. Reinsurance in unauthorized and certified (\$0) companies	0	0	0	0
21. Net adjustments in assets and liabilities due to foreign exchange rates	0	0	0	0
22. Liability for amounts held under uninsured plans.....	96,505	0	96,505	99,403
23. Aggregate write-ins for other liabilities (including \$0 current).....	0	0	0	0
24. Total liabilities (Lines 1 to 23).....	857,260	0	857,260	2,335,680
25. Aggregate write-ins for special surplus funds.....	XXX	XXX	0	0
26. Common capital stock.....	XXX	XXX	1,000,000	1,000,000
27. Preferred capital stock.....	XXX	XXX	0	0
28. Gross paid in and contributed surplus.....	XXX	XXX	6,146,351	6,146,351
29. Surplus notes.....	XXX	XXX	0	0
30. Aggregate write-ins for other than special surplus funds.....	XXX	XXX	0	0
31. Unassigned funds (surplus).....	XXX	XXX	(3,504,039)	(3,974,906)
32. Less treasury stock, at cost:				
32.10 shares common (value included in Line 26 \$0).....	XXX	XXX	0	0
32.20 shares preferred (value included in Line 27 \$0).....	XXX	XXX	0	0
33. Total capital and surplus (Lines 25 to 31 minus Line 32).....	XXX	XXX	3,642,312	3,171,445
34. Total liabilities, capital and surplus (Lines 24 and 33).....	XXX	XXX	4,499,572	5,507,125
DETAILS OF WRITE-INS				
2301.				
2302.				
2303.				
2398. Summary of remaining write-ins for Line 23 from overflow page	0	0	0	0
2399. Totals (Lines 2301 thru 2303 plus 2398)(Line 23 above).....	0	0	0	0
2501.	XXX	XXX		
2502.	XXX	XXX		
2503.	XXX	XXX		
2598. Summary of remaining write-ins for Line 25 from overflow page	XXX	XXX	0	0
2599. Totals (Lines 2501 thru 2503 plus 2598)(Line 25 above).....	XXX	XXX	0	0
3001.	XXX	XXX		
3002.	XXX	XXX		
3003.	XXX	XXX		
3098. Summary of remaining write-ins for Line 30 from overflow page	XXX	XXX	0	0
3099. Totals (Lines 3001 thru 3003 plus 3098)(Line 30 above).....	XXX	XXX	0	0

STATEMENT OF REVENUE AND EXPENSES

	Current Year		Prior Year
	1 Uncovered	2 Total	3 Total
1. Member Months.....	XXX.....	0	8,189
2. Net premium income (including \$0 non-health premium income)	XXX.....	(30,084)	6,340,639
3. Change in unearned premium reserves and reserve for rate credits	XXX.....	516,369	(1,295,398)
4. Fee-for-service (net of \$0 medical expenses)	XXX.....	0	0
5. Risk revenue	XXX.....	0	0
6. Aggregate write-ins for other health care related revenues	XXX.....	0	0
7. Aggregate write-ins for other non-health revenues	XXX.....	0	0
8. Total revenues (Lines 2 to 7)	XXX.....	486,285	5,045,241
Hospital and Medical:			
9. Hospital/medical benefits	0	(205,507)	4,886,951
10. Other professional services	0	0	85,045
11. Outside referrals	0	0	0
12. Emergency room and out-of-area	0	0	0
13. Prescription drugs	0	41,058	685,456
14. Aggregate write-ins for other hospital and medical.....	0	0	0
15. Incentive pool, withhold adjustments and bonus amounts	0	0	43,968
16. Subtotal (Lines 9 to 15)	0	(164,449)	5,701,420
Less:			
17. Net reinsurance recoveries	0	0	(12,012)
18. Total hospital and medical (Lines 16 minus 17)	0	(164,449)	5,713,432
19. Non-health claims (net)	0	0	0
20. Claims adjustment expenses, including \$2,526 cost containment expenses	0	(28,076)	204,178
21. General administrative expenses	0	173,239	1,445,563
22. Increase in reserves for life and accident and health contracts (including \$0 increase in reserves for life only)	0	0	(1,611,466)
23. Total underwriting deductions (Lines 18 through 22).....	0	(19,286)	5,751,707
24. Net underwriting gain or (loss) (Lines 8 minus 23)	XXX.....	505,571	(706,466)
25. Net investment income earned (Exhibit of Net Investment Income, Line 17)	0	10,435	32,702
26. Net realized capital gains (losses) less capital gains tax of \$0	0	(21,729)	15,938
27. Net investment gains (losses) (Lines 25 plus 26)	0	(11,294)	48,640
28. Net gain or (loss) from agents' or premium balances charged off [(amount recovered \$0) (amount charged off \$0)]	0	0	(38,655)
29. Aggregate write-ins for other income or expenses	0	0	0
30. Net income or (loss) after capital gains tax and before all other federal income taxes (Lines 24 plus 27 plus 28 plus 29)	XXX.....	494,277	(696,481)
31. Federal and foreign income taxes incurred	XXX.....	0	0
32. Net income (loss) (Lines 30 minus 31)	XXX	494,277	(696,481)
DETAILS OF WRITE-INS			
0601.	XXX.....		
0602.	XXX.....		
0603.	XXX.....		
0698. Summary of remaining write-ins for Line 6 from overflow page	XXX.....	0	0
0699. Totals (Lines 0601 thru 0603 plus 0698)(Line 6 above)	XXX	0	0
0701.	XXX.....		
0702.	XXX.....		
0703.	XXX.....		
0798. Summary of remaining write-ins for Line 7 from overflow page	XXX.....	0	0
0799. Totals (Lines 0701 thru 0703 plus 0798)(Line 7 above)	XXX	0	0
1401.			
1402.			
1403.			
1498. Summary of remaining write-ins for Line 14 from overflow page	0	0	0
1499. Totals (Lines 1401 thru 1403 plus 1498)(Line 14 above)	0	0	0
2901.			
2902.			
2903.			
2998. Summary of remaining write-ins for Line 29 from overflow page	0	0	0
2999. Totals (Lines 2901 thru 2903 plus 2998)(Line 29 above)	0	0	0

STATEMENT OF REVENUE AND EXPENSES (Continued)

	1 Current Year	2 Prior Year
CAPITAL AND SURPLUS ACCOUNT		
33. Capital and surplus prior reporting year.....	3,171,445	3,812,589
34. Net income or (loss) from Line 32	494,277	(696,481)
35. Change in valuation basis of aggregate policy and claim reserves	0	0
36. Change in net unrealized capital gains (losses) less capital gains tax of \$0	0	0
37. Change in net unrealized foreign exchange capital gain or (loss)	0	0
38. Change in net deferred income tax	0	0
39. Change in nonadmitted assets	(23,409)	55,337
40. Change in unauthorized and certified reinsurance	0	0
41. Change in treasury stock	0	0
42. Change in surplus notes	0	0
43. Cumulative effect of changes in accounting principles.....	0	0
44. Capital Changes:		
44.1 Paid in	0	0
44.2 Transferred from surplus (Stock Dividend).....	0	0
44.3 Transferred to surplus.....	0	0
45. Surplus adjustments:		
45.1 Paid in	0	0
45.2 Transferred to capital (Stock Dividend)	0	0
45.3 Transferred from capital	0	0
46. Dividends to stockholders	0	0
47. Aggregate write-ins for gains or (losses) in surplus	0	0
48. Net change in capital and surplus (Lines 34 to 47)	470,868	(641,144)
49. Capital and surplus end of reporting period (Line 33 plus 48)	3,642,313	3,171,445
DETAILS OF WRITE-INS		
4701.		
4702.		
4703.		
4798. Summary of remaining write-ins for Line 47 from overflow page	0	0
4799. Totals (Lines 4701 thru 4703 plus 4798)(Line 47 above)	0	0

CASH FLOW

	1	2
	Current Year	Prior Year
Cash from Operations		
1. Premiums collected net of reinsurance	(4,021)	4,358,165
2. Net investment income	22,116	73,004
3. Miscellaneous income	0	0
4. Total (Lines 1 through 3)	18,095	4,431,169
5. Benefit and loss related payments	860,035	5,712,867
6. Net transfers to Separate Accounts, Segregated Accounts and Protected Cell Accounts	0	0
7. Commissions, expenses paid and aggregate write-ins for deductions	175,734	(51,671)
8. Dividends paid to policyholders	0	0
9. Federal and foreign income taxes paid (recovered) net of \$0 tax on capital gains (losses)	0	0
10. Total (Lines 5 through 9)	1,035,769	5,661,196
11. Net cash from operations (Line 4 minus Line 10)	(1,017,674)	(1,230,027)
Cash from Investments		
12. Proceeds from investments sold, matured or repaid:		
12.1 Bonds	3,078,575	3,788,031
12.2 Stocks	0	0
12.3 Mortgage loans	0	0
12.4 Real estate	0	0
12.5 Other invested assets	0	0
12.6 Net gains or (losses) on cash, cash equivalents and short-term investments	0	0
12.7 Miscellaneous proceeds	0	0
12.8 Total investment proceeds (Lines 12.1 to 12.7)	3,078,575	3,788,031
13. Cost of investments acquired (long-term only):		
13.1 Bonds	19,955	1,863,221
13.2 Stocks	0	0
13.3 Mortgage loans	0	0
13.4 Real estate	0	0
13.5 Other invested assets	0	0
13.6 Miscellaneous applications	49	0
13.7 Total investments acquired (Lines 13.1 to 13.6)	20,004	1,863,221
14. Net increase (decrease) in contract loans and premium notes	0	0
15. Net cash from investments (Line 12.8 minus Line 13.7 minus Line 14)	3,058,571	1,924,810
Cash from Financing and Miscellaneous Sources		
16. Cash provided (applied):		
16.1 Surplus notes, capital notes	0	0
16.2 Capital and paid in surplus, less treasury stock	0	0
16.3 Borrowed funds	0	0
16.4 Net deposits on deposit-type contracts and other insurance liabilities	0	0
16.5 Dividends to stockholders	0	0
16.6 Other cash provided (applied)	343,287	(46,029)
17. Net cash from financing and miscellaneous sources (Lines 16.1 to 16.4 minus Line 16.5 plus Line 16.6)	343,287	(46,029)
RECONCILIATION OF CASH, CASH EQUIVALENTS AND SHORT-TERM INVESTMENTS		
18. Net change in cash, cash equivalents and short-term investments (Line 11, plus Lines 15 and 17)	2,384,185	648,755
19. Cash, cash equivalents and short-term investments:		
19.1 Beginning of year	1,789,779	1,141,025
19.2 End of year (Line 18 plus Line 19.1)	4,173,964	1,789,779

Note: Supplemental disclosures of cash flow information for non-cash transactions:

--	--	--

ANNUAL STATEMENT FOR THE YEAR 2022 OF THE Bright Health Insurance Company of Ohio, Inc.

ANALYSIS OF OPERATIONS BY LINES OF BUSINESS

	1	2	3	4	5	6	7	8	9	10
	Total	Comprehensive (Hospital & Medical)	Medicare Supplement	Dental Only	Vision Only	Federal Employees Health Benefits Plan	Title XVIII Medicare	Title XIX Medicaid	Other Health	Other Non-Health
1. Net premium income	(30,084)	0	0	0	0	0	(30,084)	0	0	0
2. Change in unearned premium reserves and reserve for rate credit	516,369	0	0	0	0	0	516,369	0	0	0
3. Fee-for-service (net of \$ medical expenses)	0	0	0	0	0	0	0	0	0	XXX
4. Risk revenue	0	0	0	0	0	0	0	0	0	XXX
5. Aggregate write-ins for other health care related revenues	0	0	0	0	0	0	0	0	0	XXX
6. Aggregate write-ins for other non-health care related revenues	0	XXX	XXX	XXX	XXX	XXX	XXX	XXX	XXX	0
7. Total revenues (Lines 1 to 6)	486,285	0	0	0	0	0	486,285	0	0	0
8. Hospital/medical benefits	(205,507)	0	0	0	0	0	(205,507)	0	0	XXX
9. Other professional services	0	0	0	0	0	0	0	0	0	XXX
10. Outside referrals	0	0	0	0	0	0	0	0	0	XXX
11. Emergency room and out-of-area	0	0	0	0	0	0	0	0	0	XXX
12. Prescription drugs	41,058	0	0	0	0	0	41,058	0	0	XXX
13. Aggregate write-ins for other hospital and medical	0	0	0	0	0	0	0	0	0	XXX
14. Incentive pool, withhold adjustments and bonus amounts	0	0	0	0	0	0	0	0	0	XXX
15. Subtotal (Lines 8 to 14)	(164,449)	0	0	0	0	0	(164,449)	0	0	XXX
16. Net reinsurance recoveries	0	0	0	0	0	0	0	0	0	XXX
17. Total medical and hospital (Lines 15 minus 16)	(164,449)	0	0	0	0	0	(164,449)	0	0	XXX
18. Non-health claims (net)	0	XXX	XXX	XXX	XXX	XXX	XXX	XXX	XXX	0
19. Claims adjustment expenses including \$ 2,526 cost containment expenses	(28,075)	0	0	0	0	0	(28,075)	0	0	0
20. General administrative expenses	173,240	0	0	0	0	0	173,240	0	0	0
21. Increase in reserves for accident and health contracts	0	0	0	0	0	0	0	0	0	XXX
22. Increase in reserves for life contracts	0	XXX	XXX	XXX	XXX	XXX	XXX	XXX	XXX	0
23. Total underwriting deductions (Lines 17 to 22)	(19,284)	0	0	0	0	0	(19,284)	0	0	0
24. Total underwriting gain or (loss) (Line 7 minus Line 23)	505,569	0	0	0	0	0	505,569	0	0	0
DETAILS OF WRITE-INS										
0501.										XXX
0502.										XXX
0503.										XXX
0598. Summary of remaining write-ins for Line 5 from overflow page	0	0	0	0	0	0	0	0	0	XXX
0599. Totals (Lines 0501 thru 0503 plus 0598) (Line 5 above)	0	0	0	0	0	0	0	0	0	XXX
0601.		XXX	XXX	XXX	XXX	XXX	XXX	XXX	XXX	0
0602.		XXX	XXX	XXX	XXX	XXX	XXX	XXX	XXX	0
0603.		XXX	XXX	XXX	XXX	XXX	XXX	XXX	XXX	0
0698. Summary of remaining write-ins for Line 6 from overflow page	0	XXX	XXX	XXX	XXX	XXX	XXX	XXX	XXX	0
0699. Totals (Lines 0601 thru 0603 plus 0698) (Line 6 above)	0	XXX	XXX	XXX	XXX	XXX	XXX	XXX	XXX	0
1301.										XXX
1302.										XXX
1303.										XXX
1398. Summary of remaining write-ins for Line 13 from overflow page	0	0	0	0	0	0	0	0	0	XXX
1399. Totals (Lines 1301 thru 1303 plus 1398) (Line 13 above)	0	0	0	0	0	0	0	0	0	XXX

ANNUAL STATEMENT FOR THE YEAR 2022 OF THE Bright Health Insurance Company of Ohio, Inc.

UNDERWRITING AND INVESTMENT EXHIBIT

PART 1 - PREMIUMS

Line of Business	1 Direct Business	2 Reinsurance Assumed	3 Reinsurance Ceded	4 Net Premium Income (Cols. 1 + 2 - 3)
1. Comprehensive (hospital and medical) individual	0	0	0	0
2. Comprehensive (hospital and medical) group	0	0	0	0
3. Medicare Supplement	0	0	0	0
4. Dental only	0	0	0	0
5. Vision only	0	0	0	0
6. Federal Employees Health Benefits Plan	0	0	0	0
7. Title XVIII - Medicare	(30,084)	0	0	(30,084)
8. Title XIX - Medicaid	0	0	0	0
9. Credit A&H	0	0	0	0
10. Disability Income	0	0	0	0
11. Long-Term Care	0	0	0	0
12. Other health	0	0	0	0
13. Health subtotal (Lines 1 through 12)	(30,084)	0	0	(30,084)
14. Life	0	0	0	0
15. Property/casualty	0	0	0	0
16. Totals (Lines 13 to 15)	(30,084)	0	0	(30,084)

ANNUAL STATEMENT FOR THE YEAR 2022 OF THE Bright Health Insurance Company of Ohio, Inc.

UNDERWRITING AND INVESTMENT EXHIBIT

PART 2 - CLAIMS INCURRED DURING THE YEAR

	1 Total	Comprehensive (Hospital & Medical)		4 Medicare Supplement	5 Dental Only	6 Vision Only	7 Federal Employees Health Benefits Plan	8 Title XVIII Medicare	9 Title XIX Medicaid	10 Credit A&H	11 Disability Income	12 Long-Term Care	13 Other Health	14 Other Non-Health
		2 Individual	3 Group											
1. Payments during the year:														
1.1 Direct	860,035	0	0	0	0	0	0	860,035	0	0	0	0	0	0
1.2 Reinsurance assumed	0	0	0	0	0	0	0	0	0	0	0	0	0	0
1.3 Reinsurance ceded	0	0	0	0	0	0	0	0	0	0	0	0	0	0
1.4 Net	860,035	0	0	0	0	0	0	860,035	0	0	0	0	0	0
2. Paid medical incentive pools and bonuses	0	0	0	0	0	0	0	0	0	0	0	0	0	0
3. Claim liability December 31, current year from Part 2A:														
3.1 Direct	34,109	0	0	0	0	0	0	34,109	0	0	0	0	0	0
3.2 Reinsurance assumed	0	0	0	0	0	0	0	0	0	0	0	0	0	0
3.3 Reinsurance ceded	0	0	0	0	0	0	0	0	0	0	0	0	0	0
3.4 Net	34,109	0	0	0	0	0	0	34,109	0	0	0	0	0	0
4. Claim reserve December 31, current year from Part 2D:														
4.1 Direct	0	0	0	0	0	0	0	0	0	0	0	0	0	0
4.2 Reinsurance assumed	0	0	0	0	0	0	0	0	0	0	0	0	0	0
4.3 Reinsurance ceded	0	0	0	0	0	0	0	0	0	0	0	0	0	0
4.4 Net	0	0	0	0	0	0	0	0	0	0	0	0	0	0
5. Accrued medical incentive pools and bonuses, current year	43,968	0	0	0	0	0	0	43,968	0	0	0	0	0	0
6. Net health care receivables (a)	(53,754)	0	0	0	0	0	0	(53,754)	0	0	0	0	0	0
7. Amounts recoverable from reinsurers December 31, current year	0	0	0	0	0	0	0	0	0	0	0	0	0	0
8. Claim liability December 31, prior year from Part 2A:														
8.1 Direct	1,112,347	0	0	0	0	0	0	1,112,347	0	0	0	0	0	0
8.2 Reinsurance assumed	0	0	0	0	0	0	0	0	0	0	0	0	0	0
8.3 Reinsurance ceded	0	0	0	0	0	0	0	0	0	0	0	0	0	0
8.4 Net	1,112,347	0	0	0	0	0	0	1,112,347	0	0	0	0	0	0
9. Claim reserve December 31, prior year from Part 2D:														
9.1 Direct	0	0	0	0	0	0	0	0	0	0	0	0	0	0
9.2 Reinsurance assumed	0	0	0	0	0	0	0	0	0	0	0	0	0	0
9.3 Reinsurance ceded	0	0	0	0	0	0	0	0	0	0	0	0	0	0
9.4 Net	0	0	0	0	0	0	0	0	0	0	0	0	0	0
10. Accrued medical incentive pools and bonuses, prior year	43,968	0	0	0	0	0	0	43,968	0	0	0	0	0	0
11. Amounts recoverable from reinsurers December 31, prior year	0	0	0	0	0	0	0	0	0	0	0	0	0	0
12. Incurred Benefits:														
12.1 Direct	(164,449)	0	0	0	0	0	0	(164,449)	0	0	0	0	0	0
12.2 Reinsurance assumed	0	0	0	0	0	0	0	0	0	0	0	0	0	0
12.3 Reinsurance ceded	0	0	0	0	0	0	0	0	0	0	0	0	0	0
12.4 Net	(164,449)	0	0	0	0	0	0	(164,449)	0	0	0	0	0	0
13. Incurred medical incentive pools and bonuses	0	0	0	0	0	0	0	0	0	0	0	0	0	0

(a) Excludes \$0 loans or advances to providers not yet expensed.

ANNUAL STATEMENT FOR THE YEAR 2022 OF THE Bright Health Insurance Company of Ohio, Inc.

UNDERWRITING AND INVESTMENT EXHIBIT

PART 2A - CLAIMS LIABILITY END OF CURRENT YEAR

	1 Total	Comprehensive (Hospital & Medical)		4 Medicare Supplement	5 Dental Only	6 Vision Only	7 Federal Employees Health Benefits Plan	8 Title XVIII Medicare	9 Title XIX Medicaid	10 Credit A&H	11 Disability Income	12 Long-Term Care	13 Other Health	14 Other Non-Health
		2 Individual	3 Group											
1. Reported in Process of Adjustment:														
1.1 Direct	0	0	0	0	0	0	0	0	0	0	0	0	0	0
1.2 Reinsurance assumed	0	0	0	0	0	0	0	0	0	0	0	0	0	0
1.3 Reinsurance ceded	0	0	0	0	0	0	0	0	0	0	0	0	0	0
1.4 Net	0	0	0	0	0	0	0	0	0	0	0	0	0	0
2. Incurred but Unreported:														
2.1 Direct	34,109	0	0	0	0	0	0	34,109	0	0	0	0	0	0
2.2 Reinsurance assumed	0	0	0	0	0	0	0	0	0	0	0	0	0	0
2.3 Reinsurance ceded	0	0	0	0	0	0	0	0	0	0	0	0	0	0
2.4 Net	34,109	0	0	0	0	0	0	34,109	0	0	0	0	0	0
3. Amounts Withheld from Paid Claims and Capitations:														
3.1 Direct	0	0	0	0	0	0	0	0	0	0	0	0	0	0
3.2 Reinsurance assumed	0	0	0	0	0	0	0	0	0	0	0	0	0	0
3.3 Reinsurance ceded	0	0	0	0	0	0	0	0	0	0	0	0	0	0
3.4 Net	0	0	0	0	0	0	0	0	0	0	0	0	0	0
4. TOTALS:														
4.1 Direct	34,109	0	0	0	0	0	0	34,109	0	0	0	0	0	0
4.2 Reinsurance assumed	0	0	0	0	0	0	0	0	0	0	0	0	0	0
4.3 Reinsurance ceded	0	0	0	0	0	0	0	0	0	0	0	0	0	0
4.4 Net	34,109	0	0	0	0	0	0	34,109	0	0	0	0	0	0

ANNUAL STATEMENT FOR THE YEAR 2022 OF THE Bright Health Insurance Company of Ohio, Inc.

UNDERWRITING AND INVESTMENT EXHIBIT

PART 2B - ANALYSIS OF CLAIMS UNPAID - PRIOR YEAR - NET OF REINSURANCE

Line of Business	Claims Paid During the Year		Claim Reserve and Claim Liability December 31 of Current Year		5 Claims Incurred In Prior Years (Columns 1 + 3)	6 Estimated Claim Reserve and Claim Liability December 31 of Prior Year
	1	2	3	4		
	On Claims Incurred Prior to January 1 of Current Year	On Claims Incurred During the Year	On Claims Unpaid December 31 of Prior Year	On Claims Incurred During the Year		
1. Comprehensive (hospital and medical) individual	0	0	0	0	0	0
2. Comprehensive (hospital and medical) group	0	0	0	0	0	0
3. Medicare Supplement	0	0	0	0	0	0
4. Dental Only	0	0	0	0	0	0
5. Vision Only	0	0	0	0	0	0
6. Federal Employees Health Benefits Plan	0	0	0	0	0	0
7. Title XVIII - Medicare	860,036	0	34,109	0	894,145	1,112,347
8. Title XIX - Medicaid	0	0	0	0	0	0
9. Credit A&H	0	0	0	0	0	0
10. Disability Income	0	0	0	0	0	0
11. Long-Term Care	0	0	0	0	0	0
12. Other health	0	0	0	0	0	0
13. Health subtotal (Lines 1 to 12)	860,036	0	34,109	0	894,145	1,112,347
14. Health care receivables (a)	27,103	0	0	0	27,103	80,857
15. Other non-health	0	0	0	0	0	0
16. Medical incentive pools and bonus amounts	0	0	43,967	0	43,967	43,968
17. Totals (Lines 13 - 14 + 15 + 16)	832,933	0	78,076	0	911,009	1,075,458

(a) Excludes \$0 loans or advances to providers not yet expensed.

UNDERWRITING AND INVESTMENT EXHIBIT

PART 2C - DEVELOPMENT OF PAID AND INCURRED HEALTH CLAIMS
(\$000 Omitted)

Section A - Paid Health Claims - Medicare Supplement

Year in Which Losses Were Incurred	Cumulative Net Amounts Paid				
	1 2018	2 2019	3 2020	4 2021	5 2022
1. Prior	0	0	0	0	0
2. 2018	0	0	0	0	0
3. 2019	XXX	0	557	637	637
4. 2020	XXX	XXX	3,908	4,163	4,768
5. 2021	XXX	XXX	XXX	5,378	6,158
6. 2022	XXX	XXX	XXX	XXX	0

Section B - Incurred Health Claims - Medicare Supplement

Year in Which Losses Were Incurred	Sum of Cumulative Net Amount Paid and Claim Liability, Claim Reserve and Medical Incentive Pool and Bonuses Outstanding at End of Year				
	1 2018	2 2019	3 2020	4 2021	5 2022
1. Prior	0	0	0	0	0
2. 2018	0	0	0	0	0
3. 2019	XXX	0	188	268	268
4. 2020	XXX	XXX	4,978	4,158	3,658
5. 2021	XXX	XXX	XXX	6,453	1,902
6. 2022	XXX	XXX	XXX	XXX	34

Section C - Incurred Year Health Claims and Claims Adjustment Expense Ratio - Medicare Supplement

Years in which Premiums were Earned and Claims were Incurred	1 Premiums Earned	2 Claims Payment	3 Claim Adjustment Expense Payments	4 (Col. 3/2) Percent	5 Claim and Claim Adjustment Expense Payments (Col. 2 + 3)	6 (Col. 5/1) Percent	7 Claims Unpaid	8 Unpaid Claims Adjustment Expenses	9 Total Claims and Claims Adjustment Expense Incurred (Col. 5+7+8)	10 (Col. 9/1) Percent
1. 2018	0	0	0	0.0	0	0.0	0	0	0	0.0
2. 2019	0	0	0	0.0	0	0.0	0	0	0	0.0
3. 2020	6,420	4,768	0	0.0	4,768	74.3	0	0	4,768	74.3
4. 2021	5,045	6,158	5	0.1	6,163	122.2	78	0	6,241	123.7
5. 2022	0	0	199	0.0	199	0.0	0	0	199	0.0

UNDERWRITING AND INVESTMENT EXHIBIT

PART 2C - DEVELOPMENT OF PAID AND INCURRED HEALTH CLAIMS

(\$000 Omitted)

Section A - Paid Health Claims - Grand Total

Year in Which Losses Were Incurred	Cumulative Net Amounts Paid				
	1 2018	2 2019	3 2020	4 2021	5 2022
1. Prior	0	0	0	0	0
2. 2018	0	0	0	0	0
3. 2019	XXX	0	557	637	637
4. 2020	XXX	XXX	3,908	4,163	4,768
5. 2021	XXX	XXX	XXX	5,378	6,158
6. 2022	XXX	XXX	XXX	XXX	0

Section B - Incurred Health Claims - Grand Total

Year in Which Losses Were Incurred	Sum of Cumulative Net Amount Paid and Claim Liability, Claim Reserve and Medical Incentive Pool and Bonuses Outstanding at End of Year				
	1 2018	2 2019	3 2020	4 2021	5 2022
1. Prior	0	0	0	0	0
2. 2018	0	0	0	0	0
3. 2019	XXX	0	188	268	268
4. 2020	XXX	XXX	4,978	4,158	3,658
5. 2021	XXX	XXX	XXX	6,453	1,902
6. 2022	XXX	XXX	XXX	XXX	34

Section C - Incurred Year Health Claims and Claims Adjustment Expense Ratio - Grand Total

Years in which Premiums were Earned and Claims were Incurred	1 Premiums Earned	2 Claims Payment	3 Claim Adjustment Expense Payments	4 (Col. 3/2) Percent	5 Claim and Claim Adjustment Expense Payments (Col. 2 + 3)	6 (Col. 5/1) Percent	7 Claims Unpaid	8 Unpaid Claims Adjustment Expenses	9 Total Claims and Claims Adjustment Expense Incurred (Col. 5+7+8)	10 (Col. 9/1) Percent
1. 2018	0	0	0	0.0	0	0.0	0	0	0	0.0
2. 2019	0	0	0	0.0	0	0.0	0	0	0	0.0
3. 2020	6,420	4,768	0	0.0	4,768	74.3	0	0	4,768	74.3
4. 2021	5,045	6,158	5	0.1	6,163	122.2	78	0	6,241	123.7
5. 2022	0	0	199	0.0	199	0.0	0	0	199	0.0

12.GT

UNDERWRITING AND INVESTMENT EXHIBIT

PART 2D - AGGREGATE RESERVE FOR ACCIDENT AND HEALTH CONTRACTS ONLY

	1 Total	Comprehensive (Hospital & Medical)		4 Medicare Supplement	5 Dental Only	6 Vision Only	7 Federal Employees Health Benefits Plan	8 Title XVIII Medicare	9 Title XIX Medicaid	10 Credit A&H	11 Disability Income	12 Long-Term Care	13 Other
		2 Individual	3 Group										
1. Unearned premium reserves	0	0	0	0	0	0	0	0	0	0	0	0	0
2. Additional policy reserves (a)	0	0	0	0	0	0	0	0	0	0	0	0	0
3. Reserve for future contingent benefits	0	0	0	0	0	0	0	0	0	0	0	0	0
4. Reserve for rate credits or experience rating refunds (including \$0 for investment income) ..	503,815	0	0	0	0	0	0	503,815	0	0	0	0	0
5. Aggregate write-ins for other policy reserves	0	0	0	0	0	0	0	0	0	0	0	0	0
6. Totals (gross)	503,815	0	0	0	0	0	0	503,815	0	0	0	0	0
7. Reinsurance ceded	0	0	0	0	0	0	0	0	0	0	0	0	0
8. Totals (Net)(Page 3, Line 4)	503,815	0	0	0	0	0	0	503,815	0	0	0	0	0
9. Present value of amounts not yet due on claims	0	0	0	0	0	0	0	0	0	0	0	0	0
10. Reserve for future contingent benefits	0	0	0	0	0	0	0	0	0	0	0	0	0
11. Aggregate write-ins for other claim reserves	0	0	0	0	0	0	0	0	0	0	0	0	0
12. Totals (gross)	0	0	0	0	0	0	0	0	0	0	0	0	0
13. Reinsurance ceded	0	0	0	0	0	0	0	0	0	0	0	0	0
14. Totals (Net)(Page 3, Line 7)	0	0	0	0	0	0	0	0	0	0	0	0	0
DETAILS OF WRITE-INS													
0501.													
0502.													
0503.													
0598. Summary of remaining write-ins for Line 5 from overflow page	0	0	0	0	0	0	0	0	0	0	0	0	0
0599. Totals (Lines 0501 thru 0503 plus 0598) (Line 5 above)	0	0	0	0	0	0	0	0	0	0	0	0	0
1101.													
1102.													
1103.													
1198. Summary of remaining write-ins for Line 11 from overflow page	0	0	0	0	0	0	0	0	0	0	0	0	0
1199. Totals (Lines 1101 thru 1103 plus 1198) (Line 11 above)	0	0	0	0	0	0	0	0	0	0	0	0	0

(a) Includes \$0 premium deficiency reserve.

UNDERWRITING AND INVESTMENT EXHIBIT

PART 3 - ANALYSIS OF EXPENSES

	Claim Adjustment Expenses		3 General Administrative Expenses	4 Investment Expenses	5 Total
	1 Cost Containment Expenses	2 Other Claim Adjustment Expenses			
1. Rent (\$0 for occupancy of own building)	0	0	1,643	0	1,643
2. Salary, wages and other benefits	189	471	3,667	0	4,327
3. Commissions (less \$0 ceded plus \$0 assumed)	0	0	808	0	808
4. Legal fees and expenses	24	61	473	0	558
5. Certifications and accreditation fees	0	0	0	0	0
6. Auditing, actuarial and other consulting services ...	2,294	5,727	44,688	0	52,709
7. Traveling expenses	9	13	817	0	839
8. Marketing and advertising	0	0	5,190	0	5,190
9. Postage, express and telephone	0	0	332	0	332
10. Printing and office supplies	0	0	1,758	0	1,758
11. Occupancy, depreciation and amortization	0	0	75	0	75
12. Equipment	0	0	471	0	471
13. Cost or depreciation of EDP equipment and software	0	0	1	0	1
14. Outsourced services including EDP, claims, and other services	0	(36,899)	4,007	0	(32,892)
15. Boards, bureaus and association fees	0	0	16	0	16
16. Insurance, except on real estate	0	0	0	0	0
17. Collection and bank service charges	0	0	96,948	0	96,948
18. Group service and administration fees	0	0	0	0	0
19. Reimbursements by uninsured plans	0	0	0	0	0
20. Reimbursements from fiscal intermediaries	0	0	0	0	0
21. Real estate expenses	0	0	0	0	0
22. Real estate taxes	0	0	0	0	0
23. Taxes, licenses and fees:					
23.1 State and local insurance taxes	0	0	0	0	0
23.2 State premium taxes	0	0	250	0	250
23.3 Regulatory authority licenses and fees	0	0	6,702	0	6,702
23.4 Payroll taxes	10	25	198	0	233
23.5 Other (excluding federal income and real estate taxes)	0	0	0	0	0
24. Investment expenses not included elsewhere	0	0	0	0	0
25. Aggregate write-ins for expenses	0	0	5,195	0	5,195
26. Total expenses incurred (Lines 1 to 25)	2,526	(30,602)	173,239	0	(a) 145,163
27. Less expenses unpaid December 31, current year	0	0	709	1,656	2,365
28. Add expenses unpaid December 31, prior year	8,326	29,464	3,409	1,656	42,855
29. Amounts receivable relating to uninsured plans, prior year	0	0	0	0	0
30. Amounts receivable relating to uninsured plans, current year	0	0	0	0	0
31. Total expenses paid (Lines 26 minus 27 plus 28 minus 29 plus 30)	10,852	(1,138)	175,939	0	185,653
DETAILS OF WRITE-INS					
2501. IT Expenses	0	0	3,434	0	3,434
2502. Other General Expenses	0	0	1,761	0	1,761
2503.					
2598. Summary of remaining write-ins for Line 25 from overflow page	0	0	0	0	0
2599. Totals (Lines 2501 thru 2503 plus 2598)(Line 25 above)	0	0	5,195	0	5,195

(a) Includes management fees of \$ 80,578 to affiliates and \$ 0 to non-affiliates.

EXHIBIT OF NET INVESTMENT INCOME

	1 Collected During Year	2 Earned During Year
1. U.S. government bonds	(a) 4,952	424
1.1 Bonds exempt from U.S. tax	(a) 0	0
1.2 Other bonds (unaffiliated)	(a) 6,349	711
1.3 Bonds of affiliates	(a) 0	0
2.1 Preferred stocks (unaffiliated)	(b) 0	0
2.11 Preferred stocks of affiliates	(b) 0	0
2.2 Common stocks (unaffiliated)	0	0
2.21 Common stocks of affiliates	0	0
3. Mortgage loans	(c) 0	0
4. Real estate	(d) 0	0
5. Contract Loans	0	0
6. Cash, cash equivalents and short-term investments	(e) 10,002	9,300
7. Derivative instruments	(f) 0	0
8. Other invested assets	0	0
9. Aggregate write-ins for investment income	0	0
10. Total gross investment income	21,302	10,435
11. Investment expenses		(g) 0
12. Investment taxes, licenses and fees, excluding federal income taxes		(g) 0
13. Interest expense		(h) 0
14. Depreciation on real estate and other invested assets		(i) 0
15. Aggregate write-ins for deductions from investment income		0
16. Total deductions (Lines 11 through 15)		0
17. Net investment income (Line 10 minus Line 16)		10,435
DETAILS OF WRITE-INS		
0901.		
0902.		
0903.		
0998. Summary of remaining write-ins for Line 9 from overflow page	0	0
0999. Totals (Lines 0901 thru 0903 plus 0998) (Line 9, above)	0	0
1501.		
1502.		
1503.		
1598. Summary of remaining write-ins for Line 15 from overflow page		0
1599. Totals (Lines 1501 thru 1503 plus 1598) (Line 15, above)		0

- (a) Includes \$.43 accrual of discount less \$ 1,748 amortization of premium and less \$ 0 paid for accrued interest on purchases.
- (b) Includes \$ 0 accrual of discount less \$ 0 amortization of premium and less \$ 0 paid for accrued dividends on purchases.
- (c) Includes \$ 0 accrual of discount less \$ 0 amortization of premium and less \$ 0 paid for accrued interest on purchases.
- (d) Includes \$ 0 for company's occupancy of its own buildings; and excludes \$ 0 interest on encumbrances.
- (e) Includes \$ 4,910 accrual of discount less \$ 0 amortization of premium and less \$ 6 paid for accrued interest on purchases.
- (f) Includes \$ 0 accrual of discount less \$ 0 amortization of premium.
- (g) Includes \$ 0 investment expenses and \$ 0 investment taxes, licenses and fees, excluding federal income taxes, attributable to segregated and Separate Accounts.
- (h) Includes \$ 0 interest on surplus notes and \$ 0 interest on capital notes.
- (i) Includes \$ 0 depreciation on real estate and \$ 0 depreciation on other invested assets.

EXHIBIT OF CAPITAL GAINS (LOSSES)

	1	2	3	4	5
	Realized Gain (Loss) On Sales or Maturity	Other Realized Adjustments	Total Realized Capital Gain (Loss) (Columns 1 + 2)	Change in Unrealized Capital Gain (Loss)	Change in Unrealized Foreign Exchange Capital Gain (Loss)
1. U.S. Government bonds	(12,004)	0	(12,004)	0	0
1.1 Bonds exempt from U.S. tax	0	0	0	0	0
1.2 Other bonds (unaffiliated)	(9,726)	0	(9,726)	0	0
1.3 Bonds of affiliates	0	0	0	0	0
2.1 Preferred stocks (unaffiliated)	0	0	0	0	0
2.11 Preferred stocks of affiliates	0	0	0	0	0
2.2 Common stocks (unaffiliated)	0	0	0	0	0
2.21 Common stocks of affiliates	0	0	0	0	0
3. Mortgage loans	0	0	0	0	0
4. Real estate	0	0	0	0	0
5. Contract loans	0	0	0	0	0
6. Cash, cash equivalents and short-term investments	0	0	0	0	0
7. Derivative instruments	0	0	0	0	0
8. Other invested assets	0	0	0	0	0
9. Aggregate write-ins for capital gains (losses)	0	0	0	0	0
10. Total capital gains (losses)	(21,729)	0	(21,729)	0	0
DETAILS OF WRITE-INS					
0901.					
0902.					
0903.					
0998. Summary of remaining write-ins for Line 9 from overflow page	0	0	0	0	0
0999. Totals (Lines 0901 thru 0903 plus 0998) (Line 9, above)	0	0	0	0	0

EXHIBIT OF NON-ADMITTED ASSETS

	1	2	3
	Current Year Total Nonadmitted Assets	Prior Year Total Nonadmitted Assets	Change in Total Nonadmitted Assets (Col. 2 - Col. 1)
1. Bonds (Schedule D)	0	0	0
2. Stocks (Schedule D):			
2.1 Preferred stocks	0	0	0
2.2 Common stocks	0	0	0
3. Mortgage loans on real estate (Schedule B):			
3.1 First liens	0	0	0
3.2 Other than first liens.....	0	0	0
4. Real estate (Schedule A):			
4.1 Properties occupied by the company	0	0	0
4.2 Properties held for the production of income.....	0	0	0
4.3 Properties held for sale	0	0	0
5. Cash (Schedule E - Part 1), cash equivalents (Schedule E - Part 2) and short-term investments (Schedule DA)	0	0	0
6. Contract loans	0	0	0
7. Derivatives (Schedule DB)	0	0	0
8. Other invested assets (Schedule BA)	0	0	0
9. Receivables for securities	0	0	0
10. Securities lending reinvested collateral assets (Schedule DL)	0	0	0
11. Aggregate write-ins for invested assets	0	0	0
12. Subtotals, cash and invested assets (Lines 1 to 11)	0	0	0
13. Title plants (for Title insurers only)	0	0	0
14. Investment income due and accrued	0	0	0
15. Premiums and considerations:			
15.1 Uncollected premiums and agents' balances in the course of collection	0	0	0
15.2 Deferred premiums, agents' balances and installments booked but deferred and not yet due ..	0	0	0
15.3 Accrued retrospective premiums and contracts subject to redetermination	0	0	0
16. Reinsurance:			
16.1 Amounts recoverable from reinsurers	0	0	0
16.2 Funds held by or deposited with reinsured companies	0	0	0
16.3 Other amounts receivable under reinsurance contracts	0	0	0
17. Amounts receivable relating to uninsured plans	0	0	0
18.1 Current federal and foreign income tax recoverable and interest thereon	0	0	0
18.2 Net deferred tax asset	0	0	0
19. Guaranty funds receivable or on deposit	0	0	0
20. Electronic data processing equipment and software	0	0	0
21. Furniture and equipment, including health care delivery assets	0	0	0
22. Net adjustment in assets and liabilities due to foreign exchange rates	0	0	0
23. Receivable from parent, subsidiaries and affiliates	0	0	0
24. Health care and other amounts receivable	27,102	2,193	(24,909)
25. Aggregate write-ins for other than invested assets	982	2,482	1,500
26. Total assets excluding Separate Accounts, Segregated Accounts and Protected Cell Accounts (Lines 12 to 25)	28,084	4,675	(23,409)
27. From Separate Accounts, Segregated Accounts and Protected Cell Accounts	0	0	0
28. Total (Lines 26 and 27)	28,084	4,675	(23,409)
DETAILS OF WRITE-INS			
1101.			
1102.			
1103.			
1198. Summary of remaining write-ins for Line 11 from overflow page	0	0	0
1199. Totals (Lines 1101 thru 1103 plus 1198)(Line 11 above)	0	0	0
2501. NA - Write In Assets	982	2,482	1,500
2502.			
2503.			
2598. Summary of remaining write-ins for Line 25 from overflow page	0	0	0
2599. Totals (Lines 2501 thru 2503 plus 2598)(Line 25 above)	982	2,482	1,500

EXHIBIT 1 - ENROLLMENT BY PRODUCT TYPE FOR HEALTH BUSINESS ONLY

Source of Enrollment	Total Members at End of					6 Current Year Member Months
	1 Prior Year	2 First Quarter	3 Second Quarter	4 Third Quarter	5 Current Year	
1. Health Maintenance Organizations	0	0	0	0	0	0
2. Provider Service Organizations	0	0	0	0	0	0
3. Preferred Provider Organizations	0	0	0	0	0	0
4. Point of Service	0	0	0	0	0	0
5. Indemnity Only	0	0	0	0	0	0
6. Aggregate write-ins for other lines of business.....	671	0	0	0	0	0
7. Total	671	0	0	0	0	0
DETAILS OF WRITE-INS						
0601. Exclusive Provider Organization	671	0	0	0	0	0
0602.						
0603.						
0698. Summary of remaining write-ins for Line 6 from overflow page	0	0	0	0	0	0
0699. Totals (Lines 0601 thru 0603 plus 0698) (Line 6 above)	671	0	0	0	0	0

Notes to the Financial Statements

1. Summary of Significant Accounting Policies and Going Concern

Organization and Operators

Bright Health Insurance Company of Ohio, Inc. (the Company) is incorporated in the State of Ohio, dually licensed as a health maintenance organization (HMO) and a life, accident, and health insurer, and is a wholly owned subsidiary of Bright Health Management, Inc. (BHM), which is a health insurer management corporation that provides services to the Company under the terms of a management agreement. BHM is a wholly owned subsidiary of Bright Health Group, Inc., formerly Bright Health, Inc. (Bright Health), a for-profit publicly held company. The Company was incorporated October 26, 2017 and received its license from the Ohio Department of Insurance (the Department) on April 23, 2018. The Company contracts with the Center for Medicare and Medicaid Services (CMS) to provide Medicare Advantage policies for Medicare-eligible enrollees. Effective January 1, 2022, the Company terminated the Medicare Advantage contracts and no members will remain enrolled during 2022.

A. Accounting Practices

The statutory financial statements of the Company have been prepared in conformity with the National Association of Insurance Commissioners' (NAIC) Accounting Practices and Procedures Manual (NAIC SAP), the NAIC Annual Instructions, and other accounting practices, as prescribed or permitted by the Department.

No significant differences exist between the practices prescribed and permitted by the State of Ohio and those prescribed and permitted by the NAIC SAP which materially affect the statutory basis net loss and capital and surplus, as illustrated in the table below:

	SSAP #	F/S Page	F/S Line #	2022	2021
Net Income					
(1) State basis (Page 4, Line 32, Columns 2 & 3)	XXX	XXX	XXX	\$ 494,277	\$ (696,481)
(2) State prescribed practices that are an increase / (decrease) from NAIC SAP:					
(3) State permitted practices that are an increase / (decrease) from NAIC SAP:					
(4) NAIC SAP (1-2-3=4)	XXX	XXX	XXX	\$ 494,277	\$ (696,481)
Surplus					
(5) State basis (Page 3, Line 33, Columns 3 & 4)	XXX	XXX	XXX	\$ 3,642,312	\$ 3,171,445
(6) State prescribed practices that are an increase / (decrease) from NAIC SAP:					
(7) State permitted practices that are an increase / (decrease) from NAIC SAP:					
(8) NAIC SAP (5-6-7=8)	XXX	XXX	XXX	\$ 3,642,312	\$ 3,171,445

B. Use of Estimates in the Preparation of the Financial Statements

The preparation of these statutory basis financial statements in conformity with the NAIC Annual Statement Instructions and the NAIC SAP include certain amounts that are based on the Company's estimates and judgments. These estimates require the Company to apply complex assumptions and judgments, often because the Company must make estimates about the effects of matters that are inherently uncertain and will change in subsequent periods. The most significant estimates relate to hospital and medical benefits, claims unpaid, and Medicare Part D risk corridor estimates. The Company adjusts these estimates each period as more current information becomes available. The impact of any changes in estimates is included in the determination of net income in the period in which the estimate is adjusted.

C. Accounting Policy

Basis of Presentation - The Company prepares its statutory financial statements on the basis of accounting practices prescribed and permitted by the Department. These statutory practices differ from accounting principles generally accepted in the United States of America (GAAP).

Health Premiums are earned ratably over the terms of the related insurance contracts or policies. Expenses incurred in connection with acquiring new business, including acquisition costs such as sales commissions, are charged to operations as incurred. Premiums billed and collected in advance are recorded as premiums received in advance.

Total hospital and medical expenses are recognized in the period in which services are provided. Health care expenses also include an estimate of the cost of services provided to members by providers, which have been incurred but not yet reported. The estimate for incurred but not reported claims is based on actuarial projections of costs using historical paid claims data. Estimates are continually monitored and reviewed and, as settlements are made or estimates adjusted, differences are reflected in current operations. Such estimates are subject to the impact of changes in the regulatory environment and economic conditions. Given the inherent variability of such estimates, the actual liability could differ significantly from the amounts provided.

The Company has also deemed the following to be significant accounting policies and/or differences between statutory practices and GAAP:

ASSETS

Cash and Invested Assets

- Bonds include U.S. government and agency securities, state, county and local municipal securities and corporate debt securities with a maturity of greater than one year at the time of purchase.
- Cash, cash equivalents in the statutory financial statements represent cash balances and investments with original maturities of one year or less from the time of acquisition, whereas under GAAP, the corresponding caption of cash, cash equivalents, and short-term investments includes cash balances and investments that will mature in one year or less from the balance sheet date.
- Cash represents cash held by the Company in disbursement accounts. Claims and other payments are made from the disbursement account.
- Outstanding checks are required to be netted against cash balances or presented as cash overdrafts if in excess of cash balances in the statutory basis financial statements of admitted assets, liabilities and capital and surplus as opposed to being presented as liabilities under GAAP.
- Cash equivalents represent money-market funds. Cash equivalents have original maturity dates of three months or less from the date of acquisition and are reported at cost or amortized cost depending on the nature of the underlying security, which approximates fair value.

Notes to the Financial Statements

1. Summary of Significant Accounting Policies and Going Concern (Continued)

- Short-term investments represent U.S. treasuries and corporate debt securities with a maturity of greater than three months but less than one year at the time of purchase. The Company continually monitors the difference between amortized cost and estimated fair value of its investments. If any of the Company's investments experience a decline in value that the Company has determined is other-than-temporary, or if the Company has determined it will sell the security that is in an impaired status, the Company will record a realized loss in net realized capital gains less capital gains tax in the statutory basis statements of operations. The new cost basis is changed for the subsequent recoveries in fair value. The Company has not recognized any other-than-temporary impairment for the years ended December 31, 2022 and 2021.
- The statutory basis statements of cash flows reconcile cash, cash equivalents, and short-term investments with original maturities of one year or less from the time of acquisition, whereas under GAAP, the statements of cash flows reconcile the corresponding captions of cash and cash equivalents with maturities of three months or less. Short-term investments with a final maturity of one year or less from the balance sheet date are not included in the reconciliation of GAAP cash flows. The statutory basis statements of cash flow are prepared in accordance with the NAIC Annual Statement Instructions.

Other Assets

- Related-party receivable, net - In the normal course of business, the Company has various transactions with its direct parent, BHM (see note 10). The Company reports any unsettled amounts due as related-party receivable, net in the statutory basis of admitted assets, liabilities, and capital and surplus.

LIABILITIES

- Claims Unpaid - Claims unpaid includes claims processed but not yet paid, estimates for claims received but not yet processed, estimates for the costs of health care services enrollees have received but for which claims have not yet been submitted, and liabilities for physician, hospital and other medical cost disputes.
 - The estimates for incurred but not yet reported claims are developed using an actuarial process that is consistently applied and centrally controlled. The actuarial models consider factors such as historical submission and payment data, cost trends, customer and product mix, seasonality, utilization of health care services, contracted service rates and other relevant factors. The Company estimates such liabilities for outcomes, assuming a combination of litigation and settlement strategies. These estimates may change as actuarial methods change or as underlying facts upon which estimates are based change. Management believes the amount of claims unpaid and aggregate health claim reserves is a best estimate of the Company's liability for unpaid claims as of December 31, 2022; however actual payments may differ from those established estimates.
 - The Company contracts with hospitals, physicians and other providers of health care primarily within the Mercy Health Network, under capitated or discounted fee for service arrangements, including a hospital per diem to provide medical care to enrollees. Capitated providers are at risk for the cost of medical care services provided to the Company's enrollees; however, the Company is ultimately responsible for the provision of services should the capitated provider be unable to provide the contracted services.
- Aggregate Health Policy Reserves - The Company establishes a liability, net of ceded reinsurance, for estimated accrued retrospective and redetermination premiums due from the Company based on actuarial method and assumptions for each respective contract. Aggregate health policy reserves includes 1) a risk adjustment payable as defined in Section 1343 of the Affordable Care Act (ACA). Premium adjustments are based upon the risk scores (health status) of enrollees participating the risk adjustment covered plans, rather than the actual loss experience of the insured. A risk adjustment payable is recorded when the Company estimates its average actuarial risk score for policies included in this program is less than the average actuarial risk score in that market and state risk pool (see Note 24).

CAPITAL AND SURPLUS

- Non-admitted Assets - Certain assets, including prepaid expenses, certain aged premium receivables, and certain aged health care receivables are considered non-admitted assets under NAIC SAP and excluded from statutory basis statements of admitted assets, liabilities and capital and surplus and charged directly to unassigned surplus. Under GAAP, such assets are included in the balance sheet.
- Restricted Cash Reserves - The Company held regulatory deposits in the amount of \$463,442 and \$458,757 as of December 31, 2022 and 2021, respectively, in compliance with the state requirements for qualification purposes as a domestic insurer. These restricted cash reserves consist principally of government obligations and are stated at amortized cost, which approximates fair value. These restricted cash reserves included in bonds and cash equivalents in the statutory basis statements of admitted assets, liabilities and capital and surplus. Interest earned on these deposits accrues to the Company.
- Minimum Capital and Surplus - Under the laws of the state of Ohio, the Department requires the Company to maintain minimum capital and surplus equal to \$2,500,000. The Company is in compliance with the required amount as of December 31, 2022.
 - Risk-based capital (RBC) is a regulatory tool for measuring the minimum amount of capital appropriate for a managed care organization to support its overall business operations in consideration of its size and risk profile. The Department requires the Company to maintain minimum capital and surplus equal to the greater of the state statute as outlined above, or the company action level as calculated by the RBC formula or the level needed to avoid action pursuant to the trend test in the RBC formula. The Company is in compliance with the required amount.

STATEMENTS OF OPERATIONS

- Net Premium Income and Change in Reserve for Rate Credits - Revenues consist of net premium income that is recognized in the period in which enrollees are entitled to receive health care services. Net premium income is shown net of reinsurance premiums paid and reinsurance premiums incurred but not paid in the statutory basis statements of operations.
 - Net premium income includes premium under the Medicare Advantage program, which includes CMS premium. It also includes premium under the Medicare Part D program, which includes CMS premium, member premium and CMS low-income premium subsidy for the Company's insurance risk coverage. Net income is recognized ratably over the period in which eligible individuals are entitled to receive covered benefits.
 - Net premium income includes amounts under the CMS risk adjustment program and change in reserves for rate credits includes changes to the estimate related to the CMS risk corridor program. Changes to estimates related to these programs are recorded in the period they become known.
 - Medicare Advantage and Part D prescription drug plans are subject to medical loss ratio requirements under the ACA. Plans with medical loss ratios that fall below certain targets are required to rebate ratable portions of premiums annually.
- Total Hospital and Medical Expenses - Total hospital and medical expenses include claims paid, claims processed but not yet paid, estimates for claims received but not yet processed, estimates for the costs of health care services enrollees have received but for which claims have not yet been submitted, and payments and liabilities for physician, hospital and other medical cost disputes.

Notes to the Financial Statements

1. Summary of Significant Accounting Policies and Going Concern (Continued)

- Total hospital and medical expenses also include amounts incurred for risk sharing amounts that are based on the underlying contractual provisions with the respective providers. In addition, adjustments to claims unpaid estimates and aggregate health claims reserves are reflected in the period once the change in estimate is identified and included in total hospital and medical expenses in the statutory basis statements of operations.
- General Administrative Expenses and Claims Adjustment Expense - The Company is subject to an annual fee under Section 9010 of the ACA. A health insurance entity's annual fee becomes payable once the entity provides health insurance for any U.S. health risk during the calendar year, which is nondeductible for tax purposes. Under the NAIC SAP, the entire amount of the estimate annual fee expense is recognized on January 1 of the fee year. In general administrative expense in the statutory basis statements of operations, whereas under GAAP a deferred asset is created on January 1 of the fee year which is amortized to expense on a straight-line basis throughout the year.
- Change in reserves for accident and health contracts - Change in reserves for accident and health contracts includes adjustments to the premium deficiency reserves in the period in which the change in estimate is identified (see Note 30).

Accounting policy disclosures that are required by the NAIC Annual Statement instructions are as follows:

- (1) - (2) Bonds and short-term investments are stated at amortized cost if they meet NAIC designation of one or two and stated at the lower of amortized cost of fair value if they meet an NAIC designation of three or higher. Amortization of bond premium or accretion or discount is calculated using the constant-yield interest method. Bonds and short-term investments are valued and reported using market prices published by the Securities Valuation Office of the NAIC (SVO) in accordance with the NAIC Valuations of Securities manual prepared by the SVO, the custodian, or an external pricing service. The Company does not hold any SVO-identified investments or mandatory convertible securities.
- (2) Bonds, mandatory convertible securities, and SVO-identified investments per SSAP No. 26R - Not Applicable
- (3) The Company holds no common stock.
- (4) The Company holds no preferred stock.
- (5) The Company holds no mortgage loans.
- (6) Loan-backed securities - Not Applicable
- (7) The Company holds no investments in subsidiaries, controlled, or affiliated entities.
- (8) The Company has no investment interests with respect to joint ventures, partnerships, or limited liability companies.
- (9) The Company holds no derivatives.
- (10) The Company anticipates investment income as a factor in the premium deficiency calculation, in accordance with Statements of Statutory Accounting Principle (SSAP) No. 54.
 - (11) Unpaid losses and loss adjustment expenses include an amount determined from individual case estimates and loss reports and an amount, based on past experience, for losses incurred but not reported. Such liabilities are necessarily based on assumptions and estimates and while management believes the amount is adequate, the ultimate liability may be in excess of or less than the amount provided. The methods for making such estimates and for establishing the resulting liability is continually reviewed and adjustments are reflected in the period determined
 - (12) The Company does not carry fixed assets on the statutory basis financial statements.
 - (13) Health care receivables consist of pharmacy rebate receivables estimated based on the most current data available from the Company's unaffiliated pharmacy benefit manager (PBM). Health care receivables are considered nonadmitted assets under NAIC SAP if they do not meet admissibility requirements. Accordingly, the Company has excluded receivables that do not meet the admissibility criteria from the statutory basis statements of admitted assets, liabilities and capital and surplus (see Note 28). The Company has also deemed the following to be significant accounting policies and/or differences between statutory practices and GAAP
 - D. Going Concern

These financial statements have been prepared in accordance with NAIC SAP assuming the Company will continue as a going concern. The holding company has a history of operating losses, and Bright Health generated a net loss from continuing operations of \$638.0 million for the year ended December 31, 2022. These losses, as well as significant additional expenses in our discontinued Bright HealthCare – Commercial segment, which has required Bright Health to infuse and reserve for additional capital contributions, have reduced the cash available to fund operations.

In addition, Bright Health's \$350.0 million revolving credit agreement with a syndicate of banks (the "Credit Agreement"), matures on February 28, 2024. Based on our projected cash flows and absent any other action, Bright Health will require additional liquidity to meet its obligations as they come due in the 12 months following the date the condensed consolidated financial statements are issued. These conditions raise substantial doubt about the Company's ability to continue as a going concern.

In response to these conditions, management has implemented a restructuring plan to reduce our capital needs and our operating expenses in the future to drive positive operating cash flow and increase liquidity. Bright Health's Bright HealthCare business has exited the Commercial marketplace at the end of the 2022 plan year and is focusing on its Medicare Advantage business in California. This exit will impact all insurance products currently offered by the Company in all states where insurance policies are currently offered. In addition to our market exits, management is in the process of implementing additional restructuring activities, which include reducing our workforce, exiting excess office space, and terminating or restructuring contracts. The Company also closed on a \$175.0 million capital raise in October 2022 to capitalize our continuing operations.

Additionally, Bright Health is actively engaged with the Board of Directors and outside advisors to evaluate additional financing opportunities. However, the Company may not be able to obtain financing on acceptable terms, as any potential financing will be subject to market conditions that are not within the Company's control.

In the event Bright Health is unable to obtain additional financing or take other management actions, among other potential consequences, the Company forecasts it may be unable to satisfy its obligations.

2. Accounting Changes and Corrections of Errors - Not Applicable

3. Business Combinations and Goodwill - Not Applicable

Notes to the Financial Statements

4. Discontinued Operations

Effective January 1, 2022, the Company terminated the Medicare Advantage contracts and no members will remain enrolled during 2022. The Company notified the Department of this change in August 2021.

- A. Discontinued Operation Disposed of or Classified as Held for Sale - Not Applicable
- B. Change in Plan of Sale of Discontinued Operation - Not Applicable
- C. Nature of Any Significant Continuing Involvement with Discontinued Operations After Disposal - Not Applicable
- D. Equity Interest Retained in the Discontinued Operation After Disposal - Not Applicable

5. Investments

- A. Mortgage Loans, including Mezzanine Real Estate Loans - Not Applicable
- B. Debt Restructuring - Not Applicable
- C. Reverse Mortgages - Not Applicable
- D. Loan-Backed Securities - Not Applicable
- E. Dollar Repurchase Agreements and/or Securities Lending Transactions - Not Applicable
- F. Repurchase Agreements Transactions Accounted for as Secured Borrowing - Not Applicable
- G. Reverse Repurchase Agreements Transactions Accounted for as Secured Borrowing - Not Applicable
- H. Repurchase Agreements Transactions Accounted for as a Sale - Not Applicable
- I. Reverse Repurchase Agreements Transactions Accounted for as a Sale - Not Applicable
- J. Real Estate - Not Applicable
- K. Low-Income Housing Tax Credits (LIHTC) - Not Applicable
- L. Restricted Assets

Restricted assets, including pledged securities as of December 31, 2022 and 2021 are presented below:

(1) Restricted assets (including pledged)

Restricted Asset Category	Restricted assets (including pledged)		Increase / (Decrease) (1 - 2)	Restricted assets (including pledged)		Gross (Admitted & Nonadmitted) Restricted to Total Assets	Admitted Restricted to Total Admitted Assets
	(1) Total Gross (Admitted & Nonadmitted) Restricted from Current Year	(2) Total Gross (Admitted & Nonadmitted) Restricted From Prior Year		(4) Total Current Year Nonadmitted Restricted	(5) Total Current Year Admitted Restricted (1 - 4)		
a. Subject to contractual obligation for which liability is not shown	\$	\$	\$	\$	\$	%	%
b. Collateral held under security lending agreements							
c. Subject to repurchase agreements							
d. Subject to reverse repurchase agreements							
e. Subject to dollar repurchase agreements							
f. Subject to dollar reverse repurchase agreements							
g. Placed under option contracts							
h. Letter stock or securities restricted as to sale - excluding FHLB capital stock							
i. FHLB capital stock	463,442	458,757	4,685	463,442	463,442	10.236	10.300
j. On deposit with states							
k. On deposit with other regulatory bodies							
l. Pledged as collateral to FHLB (including assets backing funding agreements)							
m. Pledged as collateral not captured in other categories							
n. Other restricted assets							
o. Total restricted assets (Sum of a through n)	\$ 463,442	\$ 458,757	\$ 4,685	\$ 463,442	\$ 463,442	10.236 %	10.300 %

(2) Detail of assets pledged as collateral not captured in other categories (contracts that share similar characteristics, such as reinsurance and derivatives, are reported in the aggregate) - Not Applicable

(3) Detail of other restricted assets (contracts that share similar characteristics, such as reinsurance and derivatives, are reported in the aggregate) - Not Applicable

(4) Collateral received and reflected as assets within the reporting entity's financial statements - Not Applicable

- M. Working Capital Finance Investments - Not Applicable
 - N. Offsetting and Netting of Assets and Liabilities - Not Applicable
 - O. 5GI Securities - Not Applicable
 - P. Short Sales - Not Applicable
 - Q. Prepayment Penalty and Acceleration Fees - None
 - R. Reporting Entity's Share of Cash Pool by Asset type - Not Applicable
- 6. Joint Ventures, Partnerships and Limited Liability Companies - Not Applicable**

Notes to the Financial Statements

7. Investment Income

A. Due and Accrued Income Excluded from Surplus

The Company has admitted all investment income due and accrued in the statutory basis financial statements of admitted assets, liabilities and capital and surplus.

B. Total Amount Excluded - Not Applicable

8. Derivative Instruments - Not Applicable

9. Income Taxes

A. Components of the Net Deferred Tax Asset/(Liability)

(1) Change between years by tax character

	2022			2021			Change		
	(1)	(2)	(3)	(4)	(5)	(6)	(7)	(8)	(9)
	Ordinary	Capital	Total (Col 1+2)	Ordinary	Capital	Total (Col 4+5)	Ordinary (Col 1-4)	Capital (Col 2-5)	Total (Col 7+8)
(a) Gross deferred tax assets	\$ 762,494	\$ -	\$ 762,494	\$ 866,120	\$ -	\$ 866,120	\$ (103,626)	\$ -	\$ (103,626)
(b) Statutory valuation allowance adjustments	755,372	-	755,372	865,599	(7,022)	858,577	(110,227)	7,022	(103,205)
(c) Adjusted gross deferred tax assets (1a - 1b)	7,122	-	7,122	521	7,022	7,543	6,601	(7,022)	(421)
(d) Deferred tax assets nonadmitted	-	-	-	-	-	-	-	-	-
(e) Subtotal net admitted deferred tax asset (1c - 1d)	\$ 7,122	\$ -	\$ 7,122	\$ 521	\$ 7,022	\$ 7,543	\$ 6,601	\$ (7,022)	\$ (421)
(f) Deferred tax liabilities	7,122	-	7,122	521	7,022	7,543	6,601	(7,022)	(421)
(g) Net admitted deferred tax asset/(net deferred tax liability) (1e - 1f)	\$ -	\$ -	\$ -	\$ -	\$ -	\$ -	\$ -	\$ -	\$ -

(2) Admission calculation components SSAP No. 101

	2022			2021			Change		
	(1)	(2)	(3)	(4)	(5)	(6)	(7)	(8)	(9)
	Ordinary	Capital	Total (Col 1+2)	Ordinary	Capital	Total (Col 4+5)	Ordinary (Col 1-4)	Capital (Col 2-5)	Total (Col 7+8)
(a) Federal income taxes paid in prior years recoverable through loss carrybacks	\$ -	\$ -	\$ -	\$ -	\$ -	\$ -	\$ -	\$ -	\$ -
(b) Adjusted gross deferred tax assets expected to be realized (excluding the amount of deferred tax assets from 2(a) above) after application of the threshold limitation (lesser of 2(b) 1 and 2(b)2 below)	-	-	-	-	-	-	-	-	-
1. Adjusted gross deferred tax assets expected to be realized following the balance sheet date	-	-	-	-	-	-	-	-	-
2. Adjusted gross deferred tax assets allowed per limitation threshold	XXX	XXX	546,347	XXX	XXX	475,717	XXX	XXX	70,630
(c) Adjusted gross deferred tax assets (excluding the amount of deferred tax assets from 2(a) and 2(b) above) offset by gross deferred tax liabilities	-	-	-	-	-	-	-	-	-
(d) Deferred tax assets admitted as the result of application of SSAP No. 101	-	-	-	-	-	-	-	-	-
Total (2(a) + 2(b) + 2(c))	\$ -	\$ -	\$ -	\$ -	\$ -	\$ -	\$ -	\$ -	\$ -

(3) Ratio used as basis of admissibility

	2022	2021
(a) Ratio percentage used to determine recovery period and threshold limitation amount	470.021 %	742.536 %
(b) Amount of adjusted capital and surplus used to determine recovery period and threshold limitation in 2(b)2 above	\$ 3,642,312	\$ 3,171,445

Notes to the Financial Statements**9. Income Taxes (Continued)**

	(1) 2022	(2) 2021	(3) Change (1-2)
3. Deferred Tax Liabilities			
(a) Ordinary			
(1) Investments	\$	\$	\$
(2) Fixed assets			
(3) Deferred and uncollected premium			
(4) Policyholder reserves			
(5) Other	7,122	521	6,601
(b) Subtotal (3a1+3a2+3a3+3a4+3a5)	\$ 7,122	\$ 521	\$ 6,601
Capital			
(1) Investments	\$	\$ 7,022	\$ (7,022)
(2) Real estate			
(3) Other			
(c) Subtotal (3b1+3b2+3b3)	\$	\$ 7,022	\$ (7,022)
(d) Deferred tax liabilities (3a99 + 3b99)	\$ 7,122	\$ 7,543	\$ (421)
(e) Net deferred tax assets/liabilities (2i - 3c)	\$	\$	\$

4. The Company assessed the potential realization of the gross deferred tax asset and established a valuation allowance of \$755,372 and \$865,599 to reduce the gross deferred tax asset to \$7,122 and \$7,543, as of December 31, 2022 and 2021, respectively. This represents the amount of the asset estimated to be recoverable via reduction of future taxes.

D. Among the More Significant Book to Tax Adjustments

The provision for income taxes and changes in deferred income tax assets and liabilities differ from the amount obtained by applying the statutory federal income tax rate to pretax net income. This is primarily due to operating loss carry-forwards which can be applied against future taxable amounts, as well as taxes incurred on a portion of premiums received in advance of the policy effective date.

E. Operating Loss and Tax Credit Carryforwards

(1) The Company has operating loss carryforwards of \$752,171, \$856,771 and \$405,648 originating in 2022, 2021 and 2020 respectively, available for use in future years as of December 31, 2021.

(2) Income tax expense available for recoupment - Not Applicable

(3) Deposits admitted under IRS Code Section 6603 - Not Applicable

F. Consolidated Federal Income Tax Return

(1) The Company is included in the consolidated federal income tax return with its ultimate parent, Bright Health. The entities included within the consolidated return are included in NAIC Statutory Statement *Schedule Y - Information Concerning Activities of Insurer Members of a Holding Company Group*.

(2) Federal income taxes are paid to or refunded by Bright Health pursuant to the terms of a tax-sharing agreement, under which taxes approximate the amount that would have been computed on a separate company basis. Bright Health currently files income tax returns in the U.S. federal jurisdiction and various state jurisdictions. The Company does not believe any adjustments resulting from exams by the IRS will be material to the Company.

G. Federal or Foreign Income Tax Loss Contingencies - Not Applicable

H. Repatriation Transition Tax (RTT) - Not Applicable

I. Alternative Minimum Tax (AMT) Credit - Not Applicable

10. Information Concerning Parent, Subsidiaries, Affiliates and Other Related Parties

A. The Company has a Tax Sharing Agreement with Bright Health.

B. The Company did not receive any cash infusions during 2022 and 2021.

C. Transactions With Related Party Who Are Not Reported on Schedule Y - Not Applicable

D. The Company recorded \$176,499 and \$174,823 due from parent, subsidiaries and affiliates, net in the statutory basis statements of assets, liabilities and capital and surplus as of December 31, 2022 and 2021, respectively.

E. The Company has a management services agreement with BHM to provide the Company with personnel, information systems, claims processing, billing and enrollment, supplies and other services for the performance of all necessary and appropriate management services and functions. As compensation for the management services performed the Company pays a management fee that is the greater of a percentage of premiums or actual cost. Management fees charged to the Company were \$80,577 and \$1,469,366 as of December 31, 2022 and 2021, respectively.

F. Guarantees or Contingencies - Not Applicable

G. The Company believes its transactions with affiliates are fair and reasonable; however, operations of the Company may not be indicative of those that would have occurred if it had operated as an independent company.

H. Amount Deducted for Investment in Upstream Company - Not Applicable

I. Detail of Investments in Affiliates Greater Than 10% of Admitted Assets - Not Applicable

J. Write-Down for Impairments of Investments in Subsidiary Controlled or Affiliated Companies - Not Applicable

K. Foreign Subsidiary Value Using CARVM - Not Applicable

Notes to the Financial Statements

- 10. Information Concerning Parent, Subsidiaries, Affiliates and Other Related Parties (Continued)**
- L. Downstream Holding Company Value Using Look-Through Method - Not Applicable
 - M. All SCA Investments - Not Applicable
 - N. Investment in Insurance SCAs - Not Applicable
 - O. SCA and SSAP No. 48 Entity Loss Tracking - Not Applicable
- 11. Debt - Not Applicable**
- 12. Retirement Plans, Deferred Compensation, Postemployment Benefits and Compensated Absences and Other Postretirement Benefit Plans - Not Applicable**
- 13. Capital and Surplus, Dividend Restrictions and Quasi-Reorganizations**
- A. The Company has 100,000 shares authorized and 100,000 shares issued and outstanding of \$10.00 par value common stock. All issued and outstanding shares are owned by BHM, the parent company.
 - B. Dividend Rate of Preferred Stock - Not Applicable
 - C. Payment of dividends may be restricted by the Department, which generally requires that dividends be paid out of unassigned surplus.
 - D. Ordinary Dividends - Not Applicable
 - E. The amount of ordinary dividends that may be paid out during any given time period is subject to certain restrictions as specified by state statute.
 - F. Surplus Restrictions - Not Applicable
 - G. Surplus Advances - Not Applicable
 - H. Stock Held for Special Purposes - Not Applicable
 - I. Changes in Special Surplus Funds - Not Applicable
 - J. Unassigned Funds (Surplus) - Not Applicable
 - K. Company-Issued Surplus Debentures or Similar Obligations - Not Applicable
 - L. Impact of Any Restatement Due to Prior Quasi-Reorganizations - Not Applicable
 - M. Effective Date(s) of Quasi-Reorganizations in the Prior 10 Years - Not Applicable
- 14. Liabilities, Contingencies and Assessments**
- A. Contingent Commitments - Not Applicable
 - B. Assessments - Not Applicable
 - C. Gain Contingencies - Not Applicable
 - D. Claims Related Extra Contractual Obligation and Bad Faith Losses Stemming from Lawsuits - Not Applicable
 - E. Joint and Several Liabilities - Not Applicable
 - F. All Other Contingencies
- The business of administering and insuring health care programs is regulated at the federal, state and local levels. The laws and rules governing the Company's business and interpretations of those laws and rules are subject to frequent change. Broad latitude is given to the agencies administering those regulations. Further, the Company must obtain and maintain regulatory approvals to market and sell many of its products.
- The ACA and the related federal and state regulations will continue to impact how the Company does business and could restrict revenue and enrollment growth in certain products and market segments, increase medical and administrative costs of the Company, or put the Company at risk for loss of business. Health care regulation, including the ACA and other regulatory reform initiatives, or additional changes in existing laws and regulations or their interpretations, could have a material adverse effect on the Company's business, results of operations and financial condition. The ACA may create new or expand existing opportunities for business growth, but due to its complexity, the long-term impact of the ACA remains difficult to predict and is not yet fully known.
- Because of the nature of its businesses, the Company is frequently made party to a variety of regulatory inquiries, including market conduct reviews and other examinations of its business and reporting practices, audits and investigations by state insurance and health and welfare departments, state attorneys general, and the Office of the Inspector General.
- When the Company (during its regular review of pending litigation and legal or regulatory matters) has determined that a material loss is reasonably possible, the matter is disclosed. In accordance with Statutory Accounting Principles, when litigation and regulatory matters present loss contingencies that are both probably and estimable, the Company accrues the estimated loss by a change to shareholder's net income. Estimates of losses resulting from legal or regulatory matters are inherently difficult to predict and amount of the loss accrued represents the Company's best estimate, which may differ materially from the amount of the ultimate amount of the loss. The Company provides disclosure for any material pending litigation or legal or regulatory action, including accruals, range of losses, or a statement that such information cannot be estimated.
- 15. Leases**
- A. Lessee Operating Lease
- According to the management agreement between the Company and BHM (see Note 10), operating leases for the rental of office facilities and equipment are the responsibility of BHM. Fees associated with the lease agreements are included as a component of the Company's management fee agreement.
- (1) Leasing arrangements - Not Applicable
 - (2) For leases having initial or remaining noncancelable lease terms in excess of one year - Not Applicable

Notes to the Financial Statements

15. Leases (Continued)

- (3) For sale-leaseback transactions - Not Applicable
- B. Lessor Leases - Not Applicable

16. Information About Financial Instruments With Off-Balance-Sheet Risk And Financial Instruments With Concentrations of Credit Risk - Not Applicable

17. Sale, Transfer and Servicing of Financial Assets and Extinguishments of Liabilities - Not Applicable

18. Gain or Loss to the Reporting Entity from Uninsured Plans and the Uninsured Portion of Partially Insured Plans

- A. ASO Plans - Not Applicable
- B. ASC Plans - Not Applicable
- C. Medicare or Other Similarly Structured Cost Based Reimbursement Contract

(1) - (4) The Medicare Part D program is a partially insured plan. The Company recorded a payable in liability for amounts held under uninsured plans in the statutory basis statements of admitted assets, liabilities and capital and surplus of \$20,397 and \$23,295 as of December 31, 2022 and December 31, 2021, respectively, for cost reimbursement under the Medicare Part D program for the catastrophic reinsurance and low-income member cost-sharing subsidies. The Company also recorded a receivable of \$71,518 and \$71,013 and a payable \$76,108 and \$76,108 for the Medicare Part D Coverage Gap Discount program in amounts receivable relating to uninsured plans and liability for amounts held under uninsured plans, respectively, in the statutory basis statements of assets, liabilities and capital and surplus as of December 31, 2022 and December 31, 2021, respectively.

19. Direct Premium Written/Produced by Managing General Agents/Third Party Administrators - Not Applicable

20. Fair Value Measurements

A. Fair Value Measurement

The NAIC defines fair value, establishes a framework for measuring fair value, and outlines the disclosure requirements related to fair value measurements. The fair value hierarchy is as follows:

- LEVEL 1 - Inputs are unaadjusted quoted prices in active markets that are accessible at the measurement date for identical assets or liabilities.
- LEVEL 2 - Inputs are quoted prices for similar assets or liabilities in active markets or quoted prices in markets that are not active, or inputs that are observable, either directly or indirectly, for substantially the full term of the asset or liability.
- LEVEL 3 - Inputs are unobservable and significant to the fair value measurement.

The estimated fair values of bonds, short-term investments and cash equivalent investments are based on quoted market prices, where available. The Company contracts with a vendor, Clearwater Analytics, to utilize their software to assist in accounting for its investments. The Company obtains one price for each security primarily from its custodian, or if unavailable, generally securities evaluations; prices received from Thomson Reuters, or Clearwater calculated prices are used to price securities. If these are unavailable the Company is able to provide pricing overrides from other acceptable sources or methods, however based upon the relatively high rating of its investments, this is generally not required.

The Company is ultimately responsible for determining fair value, as well as the appropriate level within the fair value hierarchy, based on the significance of unobservable inputs.

(1) Fair value measurements at reporting date

The following table presents information about the Company's financial assets that are measured and reported at fair value at December 31, 2022, in the statutory basis statements of admitted assets, liabilities and capital and surplus according to the valuation techniques the Company used to determine their fair values:

Description for each class of asset or liability	Level 1			Level 2		Level 3	Net Asset Value (NAV)		Total
	Assets at fair value								
Money Market Mutual Funds	\$	415,063	\$		\$		\$		\$ 415,063
Total assets at fair value/NAV	\$	415,063	\$		\$		\$		\$ 415,063
Liabilities at fair value									
Total liabilities at fair value	\$		\$		\$		\$		\$

- (2) Fair value measurements in Level 3 of the fair value hierarchy - Not Applicable
- (3) Policy on transfers into and out of Level 3 - Not Applicable
- (4) The framework for determining the level of the Company's investment holdings is outlined above
- (5) Derivatives - Not Applicable

B. Other Fair Value Disclosures - Not Applicable

C. Fair Values for All Financial Instruments by Level 1, 2 and 3

The aggregate fair value by hierarchy of all financial instruments as of December 31, 2022 is presented in the table below:

Type of Financial Instrument	Aggregate Fair Value			Admitted Assets		Level 1	Level 2	Level 3	Net Asset Value (NAV)		Not Practicable (Carrying Value)
U.S. Government Securities	\$	445,392	\$	448,379	\$	445,392	\$		\$		\$
Money Market Mutual Funds		415,063		415,063		415,063					

Included as Level 1 in the fair value hierarchy tables above are U.S. Treasury securities of \$445,392 and money mutual funds of \$415,063 as of December 31, 2022.

D. Not Practicable to Estimate Fair Value - Not Applicable

Notes to the Financial Statements

20. Fair Value Measurements (Continued)

- E. Nature and Risk of Investments Reported at NAV - Not Applicable

21. Other Items - Not Applicable

22. Events Subsequent

The Company has considered subsequent events through March 1, 2023 the date these statutory basis financial statements were available to be issued.

Type I - Recognized Subsequent Events

The Company has determined there are no subsequent events that require disclosure in the statutory basis financial statements as of December 31, 2022.

Type II - Non-recognized Subsequent Events

There are no subsequent events which require disclosure in the statutory basis financial statements as of December 31, 2022.

23. Reinsurance

The Company has a reinsurance agreement which provides excess loss reinsurance coverage to the Company on its policies. Ceded premiums of \$0 and \$20,790 have been included in net premium income, and reinsurance incurred of \$0 and \$12,011 have been included in net reinsurance incurred, in the statutory basis statements of operations as of December 31, 2022 and December 31, 2021, respectively.

The Company recorded a receivable of \$0 for paid losses recoverable from a third-party reinsurer under the contract in amounts recoverable from reinsurance in the statutory basis statements of admitted assets, liabilities, and capital and surplus as of December 31, 2022 and December 31, 2021. The Company also recorded a receivable of \$0 for estimated recoverables under the contract on incurred but unpaid losses, as a reduction to unpaid claims in the statutory statements of admitted assets, liabilities, and capital and surplus as of December 31, 2022 and December 31, 2021, respectively. The Company recorded \$0 and \$1,707 for unpaid reinsurance premiums as ceded reinsurance premiums payable in the statutory statements of admitted assets, liabilities, and capital and surplus as of December 31, 2022 and December 31, 2021, respectively.

- A. Ceded Reinsurance Report
- B. Uncollectible Reinsurance - Not Applicable
- C. Commutation of Reinsurance Reflected in Income and Expenses - Not Applicable
- D. Certified Reinsurer Rating Downgraded or Status Subject to Revocation - Not Applicable
- E. Reinsurance Credit - Not Applicable

24. Retrospectively Rated Contracts & Contracts Subject to Redetermination

- A. Method Used to Estimate
The Company estimates accrued retrospective premium adjustments for its health insurance business based on mathematical calculations in accordance with contractual terms.

- B. Method Used to Record
Estimated accrued retrospective premiums due from the Company are recorded in aggregate health policy reserves in the statutory basis statement of admitted assets, liabilities, capital and surplus and an adjustment to change in reserve for rate credits in the statutory basis statements of operations.

- C. Amount and Percent of Net Retrospective Premiums
The Company's Medicare business is subject to retrospectively rated features based on the actual medical loss ratios experienced on the Medicare line of business. The formula is calculated pursuant to the ACA guidance. The total amount of direct premiums written for Medicare line of business subject to this retrospectively rated feature was (\$30,084) and \$6,361,429, representing 100% of total direct premiums written as of December 31, 2022 and December 31, 2021, respectively.

The Company has Medicare Part D risk corridor amounts from CMS which are subject to a retrospectively rated feature related to Part D premiums. The Company has estimated accrued retrospective premiums related to certain Part D premiums based on guidelines determined by CMS. The formula is tiered and based on the bid medical loss ratio. The amount of Medicare Part D premiums subject to this retrospective rating feature was \$1,399 and \$732,743, representing less than 0% and 12% of total direct written premiums as of December 31, 2022, and December 31, 2021, respectively.

The Company has risk adjustment amounts from CMS which are subject to a redetermination feature related to Medicare premiums. The Company has estimated premium adjustments for changes to each member's health score based on guidelines determined by CMS. The total amount of Medicare direct premiums written for which a portion is subject to redetermination features was (\$30,084) and \$6,361,429, representing 100% of total direct premiums written as of December 31, 2022 and December 31, 2021, respectively.

- D. Medical Loss Ratio Rebates Required Pursuant to the Public Health Service Act
The Company is required to maintain a specific minimum loss ratio on its comprehensive commercial and Medicare lines of business. Medical loss ratio rebates required pursuant to the ACA are listed in the table below:

Notes to the Financial Statements

24. Retrospectively Rated Contracts & Contracts Subject to Redetermination (Continued)

Prior Reporting Year	(1)	(2)	(3)	(4)	(5)
	Individual Employer	Small Group Employer	Large Group Employer	Other Categories with Rebates	Total
(1) Medical loss ratio rebates incurred	\$	\$	\$	\$	1,027,363
(2) Medical loss ratio rebates paid					1,027,363
(3) Medical loss ratio rebates unpaid				1,027,363	1,027,363
(4) Plus reinsurance assumed amounts	XXX	XXX	XXX	XXX	
(5) Less reinsurance ceded amounts	XXX	XXX	XXX	XXX	
(6) Rebates unpaid net of reinsurance	XXX	XXX	XXX	XXX	<u>1,027,363</u>
Current Reporting Year-to-Date					
(7) Medical loss ratio rebates incurred	\$	\$	\$	\$	(1,027,363)
(8) Medical loss ratio rebates paid					(1,027,363)
(9) Medical loss ratio rebates unpaid					
(10) Plus reinsurance assumed amounts	XXX	XXX	XXX	XXX	
(11) Less reinsurance ceded amounts	XXX	XXX	XXX	XXX	
(12) Rebates unpaid net of reinsurance	XXX	XXX	XXX	XXX	<u>\$</u>
E. Risk-Sharing Provisions of the Affordable Care Act (ACA) - Not Applicable					

25. Change in Incurred Claims and Claim Adjustment Expenses

A. Reasons for Changes in the Provision for Incurred Claim and Claim Adjustment Expenses Attributable to Insured Events of Prior Years

Changes in estimates related to the prior year incurred claims are included in total hospital and medical expenses in the current year in the statutory basis statements of operations. The following tables disclose paid claims, incurred claims, and the balance in the claims unpaid, accrued medical incentive pool and bonus amounts, aggregate health claims reserves, health care receivables and reinsurance recoverables at December 31, 2022 and December 31, 2021.

	<u>December 31, 2022</u>	<u>December 31, 2021</u>
Claims unpaid and accrued medical incentive pool – January 1	\$ 1,156,315	\$ 1,327,576
Less—non-admitted assets receivables	(2,193)	(2,078)
Less—health care receivables	(78,664)	(44,372)
Less—reinsurance recoverables	-	(206,233)
Net balance—January 1	<u>1,075,458</u>	<u>1,074,893</u>
Incurred related to:		
Current year	-	6,399,900
Prior year	(164,452)	(686,468)
Total incurred	<u>(164,452)</u>	<u>5,713,432</u>
Paid related to:		
Current year	3	5,131,131
Prior year	860,032	581,736
Total paid	<u>860,035</u>	<u>5,712,867</u>
Net balance—December 31	50,971	1,075,458
Plus—non-admitted assets receivables		
Plus—health care receivables	27,103	2,193
Plus—reinsurance recoverable	-	78,664
Claims unpaid and accrued medical incentive pool –December 31	<u>\$ 78,074</u>	<u>\$ 1,156,315</u>

There has been unfavorable prior-year development since December 31, 2021 to December 31, 2022, generally as the result of recent development trends. Original estimates are increased or decreased as additional information becomes known regarding individual claims.

The Company incurred claims adjustment expenses of \$(28,659) and \$204,178 for the periods ended December 31, 2022 and December 31, 2021, respectively. A portion of these costs are included in the management services fees paid by the Company to BHM as part of its management agreement. Paid claims adjustments expenses of \$9,715 and \$219,491 for the periods ended December 31, 2022 and December 31, 2021, respectively, are considered to be related to the current year.

B. Significant Changes in Methodologies and Assumptions Used in Calculating the Liability for Unpaid Claims and Claim Adjustment Expenses - Not Applicable

26. Intercompany Pooling Arrangements - Not Applicable

27. Structured Settlements - Not Applicable

28. Health Care Receivables

A. Pharmaceutical Rebate Receivables

The Company has contract provisions in its agreement with its unaffiliated pharmacy benefit manager (PBM), in which pharmacy amounts are rebated to the Company on its Medicare Advantage members. Pharmacy rebates receivable are recorded when reasonably estimated or billed by Elixir in accordance with pharmaceutical rebate contract provisions. Information used to support rebates billed to the manufacturer is based on utilization information gathered by the PBM and adjusted for significant changes in contract provisions with the PBM.

Notes to the Financial Statements

28. Health Care Receivables (Continued)

The Company evaluates admissibility of all pharmaceutical rebates receivable based on the administration of the underlying PBM contract. The Company has non-admitted and excluded all pharmacy rebates receivable that do not meet the admissibility criteria of Statements of Statutory Accounting Principles No. 84, *Certain Health Care Receivables and Receivables under Government Insured Plans (SSAP No. 84)* from the statutory basis statements of admitted assets, liabilities and capital and surplus.

For the pharmaceutical management agreement for which all the total pharmacy rebates receivable can be admitted based on the admissibility criteria of SSAP No. 84, the pharmacy rebate transaction history is as follows:

Quarter	Estimated Pharmacy Rebates as Reported on Financial Statements	Pharmacy Rebates as Billed or Otherwise Confirmed	Actual Rebates Received Within 90 Days of Billing	Actual Rebates Received Within 91 to 180 Days of Billing	Actual Rebates Received More Than 180 Days After Billing
12/31/2022	\$ 27,103	\$	\$	\$	\$
09/30/2022	58,795				
06/30/2022	58,795				
03/31/2022	81,213				
12/31/2021	78,664	48,436	48,436		
09/30/2021	67,156	64,095	64,095		
06/30/2021	65,833	68,703	68,703		
03/31/2021	55,407	61,840	61,840		
12/31/2020	46,450	41,349	41,349		
09/30/2020	17,719	64,026	64,026		
06/30/2020	39,763	65,946	65,946		
03/31/2020	191,128	55,333	55,333		

B. Risk-Sharing Receivables - Not Applicable

29. Participating Policies - Not Applicable

30. Premium Deficiency Reserves - Not Applicable

31. Anticipated Salvage and Subrogation - Not Applicable

GENERAL INTERROGATORIES

PART 1 - COMMON INTERROGATORIES GENERAL

- 1.1 Is the reporting entity a member of an Insurance Holding Company System consisting of two or more affiliated persons, one or more of which is an insurer? Yes [X] No []
If yes, complete Schedule Y, Parts 1, 1A, 2 and 3.
- 1.2 If yes, did the reporting entity register and file with its domiciliary State Insurance Commissioner, Director or Superintendent or with such regulatory official of the state of domicile of the principal insurer in the Holding Company System, a registration statement providing disclosure substantially similar to the standards adopted by the National Association of Insurance Commissioners (NAIC) in its Model Insurance Holding Company System Regulatory Act and model regulations pertaining thereto, or is the reporting entity subject to standards and disclosure requirements substantially similar to those required by such Act and regulations? Yes [X] No [] N/A []
- 1.3 State Regulating? Ohio
- 1.4 Is the reporting entity publicly traded or a member of a publicly traded group? Yes [X] No []
- 1.5 If the response to 1.4 is yes, provide the CIK (Central Index Key) code issued by the SEC for the entity/group. 0001671284
- 2.1 Has any change been made during the year of this statement in the charter, by-laws, articles of incorporation, or deed of settlement of the reporting entity? Yes [] No [X]
- 2.2 If yes, date of change:
- 3.1 State as of what date the latest financial examination of the reporting entity was made or is being made. 12/31/2018
- 3.2 State the as of date that the latest financial examination report became available from either the state of domicile or the reporting entity. This date should be the date of the examined balance sheet and not the date the report was completed or released. 12/31/2018
- 3.3 State as of what date the latest financial examination report became available to other states or the public from either the state of domicile or the reporting entity. This is the release date or completion date of the examination report and not the date of the examination (balance sheet date). 05/18/2020
- 3.4 By what department or departments?
Ohio Department of Insurance
- 3.5 Have all financial statement adjustments within the latest financial examination report been accounted for in a subsequent financial statement filed with Departments? Yes [] No [] N/A [X]
- 3.6 Have all of the recommendations within the latest financial examination report been complied with? Yes [] No [] N/A [X]
- 4.1 During the period covered by this statement, did any agent, broker, sales representative, non-affiliated sales/service organization or any combination thereof under common control (other than salaried employees of the reporting entity), receive credit or commissions for or control a substantial part (more than 20 percent of any major line of business measured on direct premiums) of:
4.11 sales of new business? Yes [] No [X]
4.12 renewals? Yes [] No [X]
- 4.2 During the period covered by this statement, did any sales/service organization owned in whole or in part by the reporting entity or an affiliate, receive credit or commissions for or control a substantial part (more than 20 percent of any major line of business measured on direct premiums) of:
4.21 sales of new business? Yes [] No [X]
4.22 renewals? Yes [] No [X]
- 5.1 Has the reporting entity been a party to a merger or consolidation during the period covered by this statement? Yes [] No [X]
If yes, complete and file the merger history data file with the NAIC.
- 5.2 If yes, provide the name of the entity, NAIC Company Code, and state of domicile (use two letter state abbreviation) for any entity that has ceased to exist as a result of the merger or consolidation.

1 Name of Entity	2 NAIC Company Code	3 State of Domicile

- 6.1 Has the reporting entity had any Certificates of Authority, licenses or registrations (including corporate registration, if applicable) suspended or revoked by any governmental entity during the reporting period? Yes [] No [X]
- 6.2 If yes, give full information:
- 7.1 Does any foreign (non-United States) person or entity directly or indirectly control 10% or more of the reporting entity? Yes [] No [X]
- 7.2 If yes,
7.21 State the percentage of foreign control; 0.0 %
7.22 State the nationality(s) of the foreign person(s) or entity(s); or if the entity is a mutual or reciprocal, the nationality of its manager or attorney-in-fact and identify the type of entity(s) (e.g., individual, corporation, government, manager or attorney-in-fact).

1 Nationality	2 Type of Entity

GENERAL INTERROGATORIES

- 8.1 Is the company a subsidiary of a depository institution holding company (DIHC) or a DIHC itself, regulated by the Federal Reserve Board? Yes [] No [X]
- 8.2 If the response to 8.1 is yes, please identify the name of the DIHC.
.....
- 8.3 Is the company affiliated with one or more banks, thrifts or securities firms? Yes [] No [X]
- 8.4 If response to 8.3 is yes, please provide below the names and location (city and state of the main office) of any affiliates regulated by a federal regulatory services agency [i.e. the Federal Reserve Board (FRB), the Office of the Comptroller of the Currency (OCC), the Federal Deposit Insurance Corporation (FDIC) and the Securities Exchange Commission (SEC)] and identify the affiliate's primary federal regulator.

1 Affiliate Name	2 Location (City, State)	3 FRB	4 OCC	5 FDIC	6 SEC

- 8.5 Is the reporting entity a depository institution holding company with significant insurance operations as defined by the Board of Governors of Federal Reserve System or a subsidiary of the depository institution holding company? Yes [] No [X]
- 8.6 If response to 8.5 is no, is the reporting entity a company or subsidiary of a company that has otherwise been made subject to the Federal Reserve Board's capital rule? Yes [] No [X] N/A []
9. What is the name and address of the independent certified public accountant or accounting firm retained to conduct the annual audit?
Deloitte US LLP, 50 South 6th St Suite 2800, Minneapolis, MN 55402
- 10.1 Has the insurer been granted any exemptions to the prohibited non-audit services provided by the certified independent public accountant requirements as allowed in Section 7H of the Annual Financial Reporting Model Regulation (Model Audit Rule), or substantially similar state law or regulation? Yes [] No [X]
- 10.2 If the response to 10.1 is yes, provide information related to this exemption:
.....
- 10.3 Has the insurer been granted any exemptions related to the other requirements of the Annual Financial Reporting Model Regulation as allowed for in Section 18A of the Model Regulation, or substantially similar state law or regulation? Yes [] No [X]
- 10.4 If the response to 10.3 is yes, provide information related to this exemption:
.....
- 10.5 Has the reporting entity established an Audit Committee in compliance with the domiciliary state insurance laws? Yes [X] No [] N/A []
- 10.6 If the response to 10.5 is no or n/a, please explain
.....
11. What is the name, address and affiliation (officer/employee of the reporting entity or actuary/consultant associated with an actuarial consulting firm) of the individual providing the statement of actuarial opinion/certification?
Timothy Feeser, Director, Valuation Actuary, Bright Health Group, 8000 Norman Center Drive, Suite 900, Minneapolis, MN 55437, 651-338-3146
- 12.1 Does the reporting entity own any securities of a real estate holding company or otherwise hold real estate indirectly? Yes [] No [X]
- 12.11 Name of real estate holding company ...
- 12.12 Number of parcels involved 0
- 12.13 Total book/adjusted carrying value \$0
- 12.2 If, yes provide explanation:
.....
13. **FOR UNITED STATES BRANCHES OF ALIEN REPORTING ENTITIES ONLY:**
- 13.1 What changes have been made during the year in the United States manager or the United States trustees of the reporting entity?
.....
- 13.2 Does this statement contain all business transacted for the reporting entity through its United States Branch on risks wherever located? Yes [] No []
- 13.3 Have there been any changes made to any of the trust indentures during the year? Yes [] No []
- 13.4 If answer to (13.3) is yes, has the domiciliary or entry state approved the changes? Yes [] No [] N/A []
- 14.1 Are the senior officers (principal executive officer, principal financial officer, principal accounting officer or controller, or persons performing similar functions) of the reporting entity subject to a code of ethics, which includes the following standards? Yes [X] No []
- a. Honest and ethical conduct, including the ethical handling of actual or apparent conflicts of interest between personal and professional relationships;
- b. Full, fair, accurate, timely and understandable disclosure in the periodic reports required to be filed by the reporting entity;
- c. Compliance with applicable governmental laws, rules and regulations;
- d. The prompt internal reporting of violations to an appropriate person or persons identified in the code; and
- e. Accountability for adherence to the code.
- 14.11 If the response to 14.1 is No, please explain:
.....
- 14.2 Has the code of ethics for senior managers been amended? Yes [] No [X]
- 14.21 If the response to 14.2 is yes, provide information related to amendment(s).
.....
- 14.3 Have any provisions of the code of ethics been waived for any of the specified officers? Yes [] No [X]
- 14.31 If the response to 14.3 is yes, provide the nature of any waiver(s).
.....

GENERAL INTERROGATORIES

- 15.1 Is the reporting entity the beneficiary of a Letter of Credit that is unrelated to reinsurance where the issuing or confirming bank is not on the SVO Bank List? Yes [] No [X]
- 15.2 If the response to 15.1 is yes, indicate the American Bankers Association (ABA) Routing Number and the name of the issuing or confirming bank of the Letter of Credit and describe the circumstances in which the Letter of Credit is triggered.

1 American Bankers Association (ABA) Routing Number	2 Issuing or Confirming Bank Name	3 Circumstances That Can Trigger the Letter of Credit	4 Amount

BOARD OF DIRECTORS

16. Is the purchase or sale of all investments of the reporting entity passed upon either by the board of directors or a subordinate committee thereof? Yes [X] No []
17. Does the reporting entity keep a complete permanent record of the proceedings of its board of directors and all subordinate committees thereof? Yes [X] No []
18. Has the reporting entity an established procedure for disclosure to its board of directors or trustees of any material interest or affiliation on the part of any of its officers, directors, trustees or responsible employees that is in conflict or is likely to conflict with the official duties of such person? Yes [X] No []

FINANCIAL

19. Has this statement been prepared using a basis of accounting other than Statutory Accounting Principles (e.g., Generally Accepted Accounting Principles)? Yes [] No [X]
- 20.1 Total amount loaned during the year (inclusive of Separate Accounts, exclusive of policy loans):
- | | | |
|---|----|---|
| 20.11 To directors or other officers..... | \$ | 0 |
| 20.12 To stockholders not officers..... | \$ | 0 |
| 20.13 Trustees, supreme or grand (Fraternal Only) | \$ | 0 |
- 20.2 Total amount of loans outstanding at the end of year (inclusive of Separate Accounts, exclusive of policy loans):
- | | | |
|---|----|---|
| 20.21 To directors or other officers..... | \$ | 0 |
| 20.22 To stockholders not officers..... | \$ | 0 |
| 20.23 Trustees, supreme or grand (Fraternal Only) | \$ | 0 |
- 21.1 Were any assets reported in this statement subject to a contractual obligation to transfer to another party without the liability for such obligation being reported in the statement? Yes [] No [X]
- 21.2 If yes, state the amount thereof at December 31 of the current year:
- | | | |
|---------------------------------|----|---|
| 21.21 Rented from others..... | \$ | 0 |
| 21.22 Borrowed from others..... | \$ | 0 |
| 21.23 Leased from others | \$ | 0 |
| 21.24 Other | \$ | 0 |
- 22.1 Does this statement include payments for assessments as described in the Annual Statement Instructions other than guaranty fund or guaranty association assessments? Yes [] No [X]
- 22.2 If answer is yes:
- | | | |
|---|----|---|
| 22.21 Amount paid as losses or risk adjustment \$ | \$ | 0 |
| 22.22 Amount paid as expenses | \$ | 0 |
| 22.23 Other amounts paid | \$ | 0 |
- 23.1 Does the reporting entity report any amounts due from parent, subsidiaries or affiliates on Page 2 of this statement? Yes [] No [X]
- 23.2 If yes, indicate any amounts receivable from parent included in the Page 2 amount: \$ 0
- 24.1 Does the insurer utilize third parties to pay agent commissions in which the amounts advanced by the third parties are not settled in full within 90 days? Yes [] No [X]
- 24.2 If the response to 24.1 is yes, identify the third-party that pays the agents and whether they are a related party.

Name of Third-Party	Is the Third-Party Agent a Related Party (Yes/No)

INVESTMENT

- 25.01 Were all the stocks, bonds and other securities owned December 31 of current year, over which the reporting entity has exclusive control, in the actual possession of the reporting entity on said date? (other than securities lending programs addressed in 25.03)..... Yes [X] No []

GENERAL INTERROGATORIES

- 25.02 If no, give full and complete information relating thereto
.....
- 25.03 For securities lending programs, provide a description of the program including value for collateral and amount of loaned securities, and whether collateral is carried on or off-balance sheet. (an alternative is to reference Note 17 where this information is also provided)
.....
- 25.04 For the reporting entity's securities lending program, report amount of collateral for conforming programs as outlined in the Risk-Based Capital Instructions. \$0
- 25.05 For the reporting entity's securities lending program, report amount of collateral for other programs. \$0
- 25.06 Does your securities lending program require 102% (domestic securities) and 105% (foreign securities) from the counterparty at the outset of the contract? Yes [] No [] N/A [X]
- 25.07 Does the reporting entity non-admit when the collateral received from the counterparty falls below 100%? Yes [] No [] N/A [X]
- 25.08 Does the reporting entity or the reporting entity's securities lending agent utilize the Master Securities lending Agreement (MSLA) to conduct securities lending? Yes [] No [] N/A [X]
- 25.09 For the reporting entity's securities lending program state the amount of the following as of December 31 of the current year:
- 25.091 Total fair value of reinvested collateral assets reported on Schedule DL, Parts 1 and 2. \$0
- 25.092 Total book adjusted/carrying value of reinvested collateral assets reported on Schedule DL, Parts 1 and 2 \$0
- 25.093 Total payable for securities lending reported on the liability page. \$0
- 26.1 Were any of the stocks, bonds or other assets of the reporting entity owned at December 31 of the current year not exclusively under the control of the reporting entity or has the reporting entity sold or transferred any assets subject to a put option contract that is currently in force? (Exclude securities subject to Interrogatory 21.1 and 25.03). Yes [X] No []
- 26.2 If yes, state the amount thereof at December 31 of the current year:
- 26.21 Subject to repurchase agreements \$0
- 26.22 Subject to reverse repurchase agreements \$0
- 26.23 Subject to dollar repurchase agreements \$0
- 26.24 Subject to reverse dollar repurchase agreements \$0
- 26.25 Placed under option agreements \$0
- 26.26 Letter stock or securities restricted as to sale -
excluding FHLB Capital Stock \$0
- 26.27 FHLB Capital Stock \$0
- 26.28 On deposit with states \$ 463,442
- 26.29 On deposit with other regulatory bodies \$0
- 26.30 Pledged as collateral - excluding collateral pledged to an FHLB \$0
- 26.31 Pledged as collateral to FHLB - including assets backing funding agreements \$0
- 26.32 Other \$0

26.3 For category (26.26) provide the following:

1 Nature of Restriction	2 Description	3 Amount

- 27.1 Does the reporting entity have any hedging transactions reported on Schedule DB? Yes [] No [X]
- 27.2 If yes, has a comprehensive description of the hedging program been made available to the domiciliary state? Yes [] No [] N/A [X]
If no, attach a description with this statement.

LINES 27.3 through 27.5: FOR LIFE/FRATERNAL REPORTING ENTITIES ONLY:

- 27.3 Does the reporting entity utilize derivatives to hedge variable annuity guarantees subject to fluctuations as a result of interest rate sensitivity? . Yes [] No [X]
- 27.4 If the response to 27.3 is YES, does the reporting entity utilize:
- 27.41 Special accounting provision of SSAP No. 108 Yes [] No []
- 27.42 Permitted accounting practice Yes [] No []
- 27.43 Other accounting guidance Yes [] No []
- 27.5 By responding YES to 27.41 regarding utilizing the special accounting provisions of SSAP No. 108, the reporting entity attests to the following: Yes [] No []
- The reporting entity has obtained explicit approval from the domiciliary state.
 - Hedging strategy subject to the special accounting provisions is consistent with the requirements of VM-21.
 - Actuarial certification has been obtained which indicates that the hedging strategy is incorporated within the establishment of VM-21 reserves and provides the impact of the hedging strategy within the Actuarial Guideline Conditional Tail Expectation Amount.
 - Financial Officer Certification has been obtained which indicates that the hedging strategy meets the definition of a Clearly Defined Hedging Strategy within VM-21 and that the Clearly Defined Hedging Strategy is the hedging strategy being used by the company in its actual day-to-day risk mitigation efforts.
- 28.1 Were any preferred stocks or bonds owned as of December 31 of the current year mandatorily convertible into equity, or, at the option of the issuer, convertible into equity? Yes [] No [X]
- 28.2 If yes, state the amount thereof at December 31 of the current year. \$0
29. Excluding items in Schedule E - Part 3 - Special Deposits, real estate, mortgage loans and investments held physically in the reporting entity's offices, vaults or safety deposit boxes, were all stocks, bonds and other securities, owned throughout the current year held pursuant to a custodial agreement with a qualified bank or trust company in accordance with Section 1, III - General Examination Considerations, F. Outsourcing of Critical Functions, Custodial or Safekeeping Agreements of the NAIC Financial Condition Examiners Handbook?..... Yes [X] No []

29.01 For agreements that comply with the requirements of the NAIC Financial Condition Examiners Handbook, complete the following:

1 Name of Custodian(s)	2 Custodian's Address
US Bank National Association	800 Nicollet Mall, Minneapolis, MN 55402

GENERAL INTERROGATORIES

29.02 For all agreements that do not comply with the requirements of the NAIC Financial Condition Examiners Handbook, provide the name, location and a complete explanation:

1 Name(s)	2 Location(s)	3 Complete Explanation(s)

29.03 Have there been any changes, including name changes, in the custodian(s) identified in 29.01 during the current year?..... Yes [] No [X]

29.04 If yes, give full and complete information relating thereto:

1 Old Custodian	2 New Custodian	3 Date of Change	4 Reason

29.05 Investment management – Identify all investment advisors, investment managers, broker/dealers, including individuals that have the authority to make investment decisions on behalf of the reporting entity. For assets that are managed internally by employees of the reporting entity, note as such. ["...that have access to the investment accounts"; "...handle securities"]

1 Name of Firm or Individual	2 Affiliation
US Bancorp Asset Management, Inc.	U.....
Internally Managed	I.....

29.0597 For those firms/individuals listed in the table for Question 29.05, do any firms/individuals unaffiliated with the reporting entity (i.e. designated with a "U") manage more than 10% of the reporting entity's invested assets?..... Yes [X] No []

29.0598 For firms/individuals unaffiliated with the reporting entity (i.e. designated with a "U") listed in the table for Question 29.05, does the total assets under management aggregate to more than 50% of the reporting entity's invested assets?..... Yes [X] No []

29.06 For those firms or individuals listed in the table for 29.05 with an affiliation code of "A" (affiliated) or "U" (unaffiliated), provide the information for the table below.

1	2	3	4	5
Central Registration Depository Number	Name of Firm or Individual	Legal Entity Identifier (LEI)	Registered With	Investment Management Agreement (IMA) Filed
111912	US Bancorp Asset Management, Inc.	8KUMV9E1J751BFMLFD23	SEC	NO.....

30.1 Does the reporting entity have any diversified mutual funds reported in Schedule D, Part 2 (diversified according to the Securities and Exchange Commission (SEC) in the Investment Company Act of 1940 [Section 5(b)(1)])? Yes [] No [X]

30.2 If yes, complete the following schedule:

1 CUSIP #	2 Name of Mutual Fund	3 Book/Adjusted Carrying Value
30.2999 - Total		0

30.3 For each mutual fund listed in the table above, complete the following schedule:

1	2	3	4
Name of Mutual Fund (from above table)	Name of Significant Holding of the Mutual Fund	Amount of Mutual Fund's Book/Adjusted Carrying Value Attributable to the Holding	Date of Valuation

GENERAL INTERROGATORIES

31. Provide the following information for all short-term and long-term bonds and all preferred stocks. Do not substitute amortized value or statement value for fair value.

	1	2	3
	Statement (Admitted) Value	Fair Value	Excess of Statement over Fair Value (-), or Fair Value over Statement (+)
31.1 Bonds	0	0	0
31.2 Preferred stocks	0	0	0
31.3 Totals	0	0	0

31.4 Describe the sources or methods utilized in determining the fair values:

The Company uses pricing received from the custodian where available. If there is no price available from the custodian, the Company obtains pricing overrides other acceptable sources or methods.

32.1 Was the rate used to calculate fair value determined by a broker or custodian for any of the securities in Schedule D? Yes [X] No []

32.2 If the answer to 32.1 is yes, does the reporting entity have a copy of the broker's or custodian's pricing policy (hard copy or electronic copy) for all brokers or custodians used as a pricing source? Yes [X] No []

32.3 If the answer to 32.2 is no, describe the reporting entity's process for determining a reliable pricing source for purposes of disclosure of fair value for Schedule D:
.....

33.1 Have all the filing requirements of the Purposes and Procedures Manual of the NAIC Investment Analysis Office been followed? Yes [X] No []

33.2 If no, list exceptions:
.....

34. By self-designating 5GI securities, the reporting entity is certifying the following elements of each self-designated 5GI security:

- a. Documentation necessary to permit a full credit analysis of the security does not exist or an NAIC CRP credit rating for an FE or PL security is not available.
- b. Issuer or obligor is current on all contracted interest and principal payments.
- c. The insurer has an actual expectation of ultimate payment of all contracted interest and principal.

Has the reporting entity self-designated 5GI securities? Yes [] No [X]

35. By self-designating PLGI securities, the reporting entity is certifying the following elements of each self-designated PLGI security:

- a. The security was purchased prior to January 1, 2018.
- b. The reporting entity is holding capital commensurate with the NAIC Designation reported for the security.
- c. The NAIC Designation was derived from the credit rating assigned by an NAIC CRP in its legal capacity as a NRSRO which is shown on a current private letter rating held by the insurer and available for examination by state insurance regulators.
- d. The reporting entity is not permitted to share this credit rating of the PL security with the SVO.

Has the reporting entity self-designated PLGI securities? Yes [] No [X]

36. By assigning FE to a Schedule BA non-registered private fund, the reporting entity is certifying the following elements of each self-designated FE fund:

- a. The shares were purchased prior to January 1, 2019.
- b. The reporting entity is holding capital commensurate with the NAIC Designation reported for the security.
- c. The security had a public credit rating(s) with annual surveillance assigned by an NAIC CRP in its legal capacity as an NRSRO prior to January 1, 2019.
- d. The fund only or predominantly holds bonds in its portfolio.
- e. The current reported NAIC Designation was derived from the public credit rating(s) with annual surveillance assigned by an NAIC CRP in its legal capacity as an NRSRO.
- f. The public credit rating(s) with annual surveillance assigned by an NAIC CRP has not lapsed.

Has the reporting entity assigned FE to Schedule BA non-registered private funds that complied with the above criteria? Yes [] No [X]

37. By rolling/renewing short-term or cash equivalent investments with continued reporting on Schedule DA, Part 1 or Schedule E Part 2 (identified through a code (%) in those investment schedules), the reporting entity is certifying to the following:

- a. The investment is a liquid asset that can be terminated by the reporting entity on the current maturity date.
- b. If the investment is with a nonrelated party or nonaffiliate, then it reflects an arms-length transaction with renewal completed at the discretion of all involved parties.
- c. If the investment is with a related party or affiliate, then the reporting entity has completed robust re-underwriting of the transaction for which documentation is available for regulator review.
- d. Short-term and cash equivalent investments that have been renewed/rolled from the prior period that do not meet the criteria in 37.a - 37.c are reported as long-term investments.

Has the reporting entity rolled/renewed short-term or cash equivalent investments in accordance with these criteria? Yes [] No [] N/A [X]

GENERAL INTERROGATORIES

38.1 Does the reporting entity directly hold cryptocurrencies? Yes [] No [X]

38.2 If the response to 38.1 is yes, on what schedule are they reported?

39.1 Does the reporting entity directly or indirectly accept cryptocurrencies as payments for premiums on policies? Yes [] No [X]

39.2 If the response to 39.1 is yes, are the cryptocurrencies held directly or are they immediately converted to U.S. dollars?
 39.21 Held directly Yes [] No []
 39.22 Immediately converted to U.S. dollars Yes [] No []

39.3 If the response to 38.1 or 39.1 is yes, list all cryptocurrencies accepted for payments of premiums or that are held directly.

1 Name of Cryptocurrency	2 Immediately Converted to USD, Directly Held, or Both	3 Accepted for Payment of Premiums

OTHER

40.1 Amount of payments to trade associations, service organizations and statistical or rating bureaus, if any? \$0

40.2 List the name of the organization and the amount paid if any such payment represented 25% or more of the total payments to trade associations, service organizations and statistical or rating bureaus during the period covered by this statement.

1 Name	2 Amount Paid

41.1 Amount of payments for legal expenses, if any? \$0

41.2 List the name of the firm and the amount paid if any such payment represented 25% or more of the total payments for legal expenses during the period covered by this statement.

1 Name	2 Amount Paid

42.1 Amount of payments for expenditures in connection with matters before legislative bodies, officers or departments of government, if any? \$0

42.2 List the name of the firm and the amount paid if any such payment represented 25% or more of the total payment expenditures in connection with matters before legislative bodies, officers, or departments of government during the period covered by this statement.

1 Name	2 Amount Paid

GENERAL INTERROGATORIES

PART 2 - HEALTH INTERROGATORIES

1.1 Does the reporting entity have any direct Medicare Supplement Insurance in force? Yes [] No [X]

1.2 If yes, indicate premium earned on U.S. business only. \$ 0

1.3 What portion of Item (1.2) is not reported on the Medicare Supplement Insurance Experience Exhibit? \$ 0

1.31 Reason for excluding
.....

1.4 Indicate amount of earned premium attributable to Canadian and/or Other Alien not included in Item (1.2) above \$ 0

1.5 Indicate total incurred claims on all Medicare Supplement Insurance. \$ 0

1.6 Individual policies: Most current three years:

1.61 Total premium earned \$ 0

1.62 Total incurred claims \$ 0

1.63 Number of covered lives 0

All years prior to most current three years:

1.64 Total premium earned \$ 0

1.65 Total incurred claims \$ 0

1.66 Number of covered lives 0

1.7 Group policies: Most current three years:

1.71 Total premium earned \$ 0

1.72 Total incurred claims \$ 0

1.73 Number of covered lives 0

All years prior to most current three years:

1.74 Total premium earned \$ 0

1.75 Total incurred claims \$ 0

1.76 Number of covered lives 0

2. Health Test:

	1 Current Year	2 Prior Year
2.1 Premium Numerator	(30,084)	6,340,639
2.2 Premium Denominator	(30,084)	6,340,639
2.3 Premium Ratio (2.1/2.2)	1.000	1.000
2.4 Reserve Numerator	581,891	2,183,678
2.5 Reserve Denominator	581,891	2,183,678
2.6 Reserve Ratio (2.4/2.5)	1.000	1.000

3.1 Has the reporting entity received any endowment or gift from contracting hospitals, physicians, dentists, or others that is agreed will be returned when, as and if the earnings of the reporting entity permits? Yes [] No [X]

3.2 If yes, give particulars:
.....

4.1 Have copies of all agreements stating the period and nature of hospitals', physicians', and dentists' care offered to subscribers and dependents been filed with the appropriate regulatory agency? Yes [X] No []

4.2 If not previously filed, furnish herewith a copy(ies) of such agreement(s). Do these agreements include additional benefits offered? Yes [] No []

5.1 Does the reporting entity have stop-loss reinsurance? Yes [] No [X]

5.2 If no, explain:
.....

5.3 Maximum retained risk (see instructions)

5.31 Comprehensive Medical \$ 0

5.32 Medical Only \$ 0

5.33 Medicare Supplement \$ 0

5.34 Dental & Vision \$ 0

5.35 Other Limited Benefit Plan \$ 0

5.36 Other \$ 0

6. Describe arrangement which the reporting entity may have to protect subscribers and their dependents against the risk of insolvency including hold harmless provisions, conversion privileges with other carriers, agreements with providers to continue rendering services, and any other agreements:
The Company has hold harmless provisions in provider contracts. In addition to hold harmless clauses in provider agreements, Bright Health maintains Plans for the Risk of Insolvency in states where the company is licensed as an HMO and is also covered by state guaranty associations in states wher the company is lincensed as an insurance company.

7.1 Does the reporting entity set up its claim liability for provider services on a service date basis?..... Yes [X] No []

7.2 If no, give details
.....

8. Provide the following information regarding participating providers:

8.1 Number of providers at start of reporting year 24,052

8.2 Number of providers at end of reporting year 0

9.1 Does the reporting entity have business subject to premium rate guarantees? Yes [] No [X]

9.2 If yes, direct premium earned:

9.21 Business with rate guarantees between 15-36 months.. \$ 0

9.22 Business with rate guarantees over 36 months \$ 0

GENERAL INTERROGATORIES

- 10.1 Does the reporting entity have Incentive Pool, Withhold or Bonus Arrangements in its provider contracts? Yes [] No [X]
- 10.2 If yes:
- | | | |
|--|----------|---|
| 10.21 Maximum amount payable bonuses..... | \$ | 0 |
| 10.22 Amount actually paid for year bonuses..... | \$ | 0 |
| 10.23 Maximum amount payable withholds..... | \$ | 0 |
| 10.24 Amount actually paid for year withholds..... | \$ | 0 |

- 11.1 Is the reporting entity organized as:
- | | |
|---|------------------|
| 11.12 A Medical Group/Staff Model, | Yes [] No [X] |
| 11.13 An Individual Practice Association (IPA), or, | Yes [] No [X] |
| 11.14 A Mixed Model (combination of above)? | Yes [] No [X] |
- 11.2 Is the reporting entity subject to Statutory Minimum Capital and Surplus Requirements? Yes [X] No []
- 11.3 If yes, show the name of the state requiring such minimum capital and surplus. Ohio
- 11.4 If yes, show the amount required. \$ 2,500,000
- 11.5 Is this amount included as part of a contingency reserve in stockholder's equity? Yes [] No [X]
- 11.6 If the amount is calculated, show the calculation
-

12. List service areas in which reporting entity is licensed to operate:

1 Name of Service Area
Hamilton, Butler, Clermont, Warren, Brown, Lucas, Wood, Huron, Seneca, Fulton, Ottawa, Defiance, Henry, Mahoning, Trumbull, Columbiana, Lorain, Clark, Champaign, Allen, Auglaize, Putnam, Mercer, Van Wert, Hardin, Medina, Summit, Portage, Lake, Cuyahoga, Geauga

- 13.1 Do you act as a custodian for health savings accounts? Yes [] No [X]
- 13.2 If yes, please provide the amount of custodial funds held as of the reporting date. \$
- 13.3 Do you act as an administrator for health savings accounts? Yes [] No [X]
- 13.4 If yes, please provide the balance of funds administered as of the reporting date. \$
- 14.1 Are any of the captive affiliates reported on Schedule S, Part 3, authorized reinsurers? Yes [] No [] N/A [X]
- 14.2 If the answer to 14.1 is yes, please provide the following:

1 Company Name	2 NAIC Company Code	3 Domiciliary Jurisdiction	4 Reserve Credit	Assets Supporting Reserve Credit		
				5 Letters of Credit	6 Trust Agreements	7 Other
.....

15. Provide the following for individual ordinary life insurance* policies (U.S. business only) for the current year (prior to reinsurance assumed or ceded):
- | | | |
|------------------------------------|----------|---|
| 15.1 Direct Premium Written | \$ | 0 |
| 15.2 Total Incurred Claims | \$ | 0 |
| 15.3 Number of Covered Lives | | 0 |

*Ordinary Life Insurance Includes
Term(whether full underwriting, limited underwriting, jet issue, "short form app")
Whole Life (whether full underwriting, limited underwriting, jet issue, "short form app")
Variable Life (with or without secondary gurarantee)
Universal Life (with or without secondary gurarantee)
Variable Universal Life (with or without secondary gurarantee)

16. Is the reporting entity licensed or chartered, registered, qualified, eligible or writing business in at least two states? Yes [] No [X]
- 16.1 If no, does the reporting entity assume reinsurance business that covers risks residing in at least one state other than the state of domicile of the reporting entity? Yes [] No []

FIVE-YEAR HISTORICAL DATA

	1 2022	2 2021	3 2020	4 2019	5 2018
Balance Sheet (Pages 2 and 3)					
1. Total admitted assets (Page 2, Line 28)	4,499,572	5,507,125	6,903,722	6,856,569	7,264,322
2. Total liabilities (Page 3, Line 24)	857,260	2,335,680	3,091,133	1,061,498	26,180
3. Statutory minimum capital and surplus requirement	2,500,000	2,500,000	2,500,000	2,500,000	2,500,000
4. Total capital and surplus (Page 3, Line 33)	3,642,312	3,171,445	3,812,589	5,795,071	7,238,142
Income Statement (Page 4)					
5. Total revenues (Line 8)	486,285	5,045,241	6,568,089	3,589,859	0
6. Total medical and hospital expenses (Line 18)	(164,449)	5,713,432	5,166,037	2,327,936	0
7. Claims adjustment expenses (Line 20)	(28,076)	204,178	205,662	326,616	0
8. Total administrative expenses (Line 21)	173,239	1,445,563	1,671,307	2,469,775	1,783
9. Net underwriting gain (loss) (Line 24)	505,571	(706,466)	(2,057,858)	(1,562,993)	(1,783)
10. Net investment gain (loss) (Line 27)	(11,294)	48,640	98,479	151,596	117,974
11. Total other income (Lines 28 plus 29)	0	(38,655)	0	0	0
12. Net income or (loss) (Line 32)	494,277	(696,481)	(1,959,379)	(1,411,397)	97,026
Cash Flow (Page 6)					
13. Net cash from operations (Line 11)	(1,017,674)	(1,230,027)	(154,027)	(836,167)	63,611
Risk-Based Capital Analysis					
14. Total adjusted capital	3,642,312	3,171,445	3,812,589	5,795,071	7,238,142
15. Authorized control level risk-based capital	774,926	427,110	393,045	238,288	9,661
Enrollment (Exhibit 1)					
16. Total members at end of period (Column 5, Line 7)	0	671	686	413	0
17. Total members months (Column 6, Line 7)	0	8,189	7,976	4,836	0
Operating Percentage (Page 4) (Item divided by Page 4, sum of Lines 2, 3 and 5) x 100.0					
18. Premiums earned plus risk revenue (Line 2 plus Lines 3 and 5)	100.0	100.0	100.0	100.0	100.0
19. Total hospital and medical plus other non-health (Lines 18 plus Line 19)	(33.8)	113.2	78.7	64.8	0.0
20. Cost containment expenses	0.5	0.9	1.1	3.7	0.0
21. Other claims adjustment expenses	(6.3)	3.2	2.1	5.4	0.0
22. Total underwriting deductions (Line 23)	(4.0)	114.0	131.3	143.5	0.0
23. Total underwriting gain (loss) (Line 24)	104.0	(14.0)	(31.3)	(43.5)	0.0
Unpaid Claims Analysis (U&I Exhibit, Part 2B)					
24. Total claims incurred for prior years (Line 17, Col. 5)	911,009	594,659	602,542	0	0
25. Estimated liability of unpaid claims-[prior year (Line 17, Col. 6)]	1,075,458	1,281,126	416,131	0	0
Investments In Parent, Subsidiaries and Affiliates					
26. Affiliated bonds (Sch. D Summary, Line 12, Col. 1)	0	0	0	0	0
27. Affiliated preferred stocks (Sch. D Summary, Line 18, Col. 1)	0	0	0	0	0
28. Affiliated common stocks (Sch. D Summary, Line 24, Col. 1)	0	0	0	0	0
29. Affiliated short-term investments (subtotal included in Schedule DA Verification, Col. 5, Line 10)	0	0	0	0	0
30. Affiliated mortgage loans on real estate	0	0	0	0	0
31. All other affiliated	0	0	0	0	0
32. Total of above Lines 26 to 31	0	0	0	0	0
33. Total investment in parent included in Lines 26 to 31 above.	0	0	0	0	0

NOTE: If a party to a merger, have the two most recent years of this exhibit been restated due to a merger in compliance with the disclosure requirements of SSAP No. 3, Accounting Changes and Correction of Errors? Yes [] No []
 If no, please explain:

SCHEDULE T PREMIUMS AND OTHER CONSIDERATIONS

Allocated by States and Territories

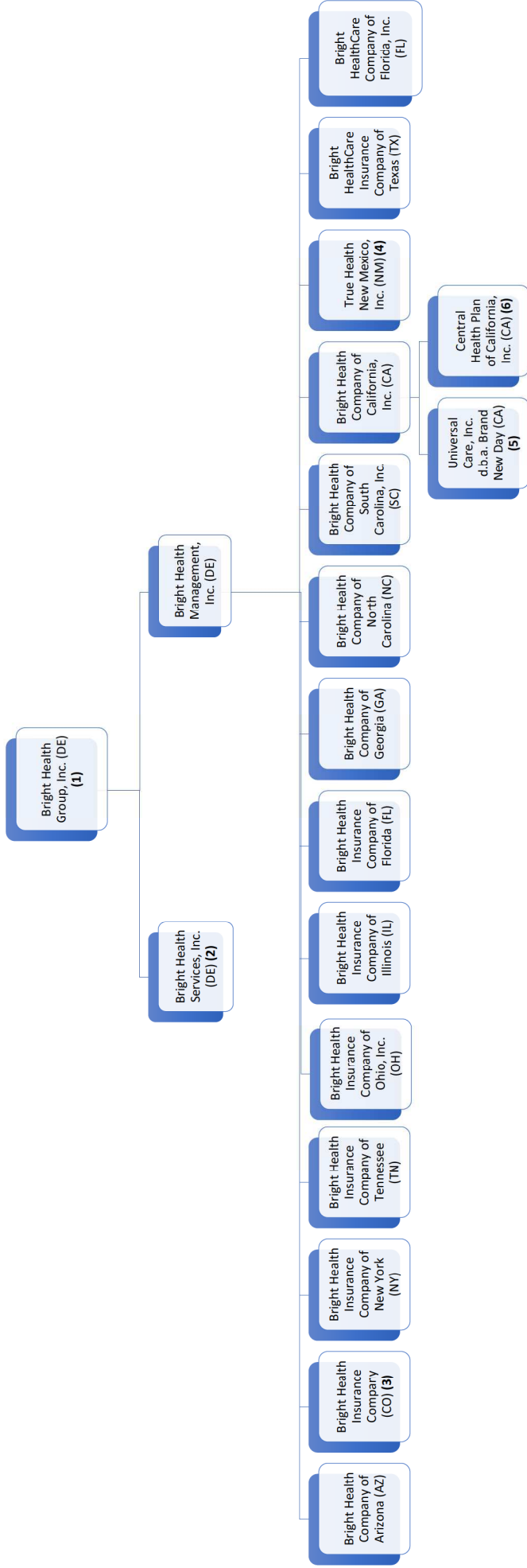
States, etc.	1 Active Status (a)	Direct Business Only									
		2 Accident and Health Premiums	3 Medicare Title XVIII	4 Medicaid Title XIX	5 CHIP Title XXI	6 Federal Employees Health Benefits Program Premiums	7 Life and Annuity Premiums & Other Considerations	8 Property/Casualty Premiums	9 Total Columns 2 Through 8	10 Deposit-Type Contracts	
1. Alabama	AL	.N	.0	.0	.0	.0	.0	.0	.0	.0	.0
2. Alaska	AK	.N	.0	.0	.0	.0	.0	.0	.0	.0	.0
3. Arizona	AZ	.N	.0	.0	.0	.0	.0	.0	.0	.0	.0
4. Arkansas	AR	.N	.0	.0	.0	.0	.0	.0	.0	.0	.0
5. California	CA	.N	.0	.0	.0	.0	.0	.0	.0	.0	.0
6. Colorado	CO	.N	.0	.0	.0	.0	.0	.0	.0	.0	.0
7. Connecticut	CT	.N	.0	.0	.0	.0	.0	.0	.0	.0	.0
8. Delaware	DE	.N	.0	.0	.0	.0	.0	.0	.0	.0	.0
9. District of Columbia	DC	.N	.0	.0	.0	.0	.0	.0	.0	.0	.0
10. Florida	FL	.N	.0	.0	.0	.0	.0	.0	.0	.0	.0
11. Georgia	GA	.N	.0	.0	.0	.0	.0	.0	.0	.0	.0
12. Hawaii	HI	.N	.0	.0	.0	.0	.0	.0	.0	.0	.0
13. Idaho	ID	.N	.0	.0	.0	.0	.0	.0	.0	.0	.0
14. Illinois	IL	.N	.0	.0	.0	.0	.0	.0	.0	.0	.0
15. Indiana	IN	.N	.0	.0	.0	.0	.0	.0	.0	.0	.0
16. Iowa	IA	.N	.0	.0	.0	.0	.0	.0	.0	.0	.0
17. Kansas	KS	.N	.0	.0	.0	.0	.0	.0	.0	.0	.0
18. Kentucky	KY	.N	.0	.0	.0	.0	.0	.0	.0	.0	.0
19. Louisiana	LA	.N	.0	.0	.0	.0	.0	.0	.0	.0	.0
20. Maine	ME	.N	.0	.0	.0	.0	.0	.0	.0	.0	.0
21. Maryland	MD	.N	.0	.0	.0	.0	.0	.0	.0	.0	.0
22. Massachusetts	MA	.N	.0	.0	.0	.0	.0	.0	.0	.0	.0
23. Michigan	MI	.N	.0	.0	.0	.0	.0	.0	.0	.0	.0
24. Minnesota	MN	.N	.0	.0	.0	.0	.0	.0	.0	.0	.0
25. Mississippi	MS	.N	.0	.0	.0	.0	.0	.0	.0	.0	.0
26. Missouri	MO	.N	.0	.0	.0	.0	.0	.0	.0	.0	.0
27. Montana	MT	.N	.0	.0	.0	.0	.0	.0	.0	.0	.0
28. Nebraska	NE	.N	.0	.0	.0	.0	.0	.0	.0	.0	.0
29. Nevada	NV	.N	.0	.0	.0	.0	.0	.0	.0	.0	.0
30. New Hampshire	NH	.N	.0	.0	.0	.0	.0	.0	.0	.0	.0
31. New Jersey	NJ	.N	.0	.0	.0	.0	.0	.0	.0	.0	.0
32. New Mexico	NM	.N	.0	.0	.0	.0	.0	.0	.0	.0	.0
33. New York	NY	.N	.0	.0	.0	.0	.0	.0	.0	.0	.0
34. North Carolina	NC	.N	.0	.0	.0	.0	.0	.0	.0	.0	.0
35. North Dakota	ND	.N	.0	.0	.0	.0	.0	.0	.0	.0	.0
36. Ohio	OH	L	.0	(30,084)	.0	.0	.0	.0	(30,084)	.0	.0
37. Oklahoma	OK	.N	.0	.0	.0	.0	.0	.0	.0	.0	.0
38. Oregon	OR	.N	.0	.0	.0	.0	.0	.0	.0	.0	.0
39. Pennsylvania	PA	.N	.0	.0	.0	.0	.0	.0	.0	.0	.0
40. Rhode Island	RI	.N	.0	.0	.0	.0	.0	.0	.0	.0	.0
41. South Carolina	SC	.N	.0	.0	.0	.0	.0	.0	.0	.0	.0
42. South Dakota	SD	.N	.0	.0	.0	.0	.0	.0	.0	.0	.0
43. Tennessee	TN	.N	.0	.0	.0	.0	.0	.0	.0	.0	.0
44. Texas	TX	.N	.0	.0	.0	.0	.0	.0	.0	.0	.0
45. Utah	UT	.N	.0	.0	.0	.0	.0	.0	.0	.0	.0
46. Vermont	VT	.N	.0	.0	.0	.0	.0	.0	.0	.0	.0
47. Virginia	VA	.N	.0	.0	.0	.0	.0	.0	.0	.0	.0
48. Washington	WA	.N	.0	.0	.0	.0	.0	.0	.0	.0	.0
49. West Virginia	WV	.N	.0	.0	.0	.0	.0	.0	.0	.0	.0
50. Wisconsin	WI	.N	.0	.0	.0	.0	.0	.0	.0	.0	.0
51. Wyoming	WY	.N	.0	.0	.0	.0	.0	.0	.0	.0	.0
52. American Samoa	AS	.N	.0	.0	.0	.0	.0	.0	.0	.0	.0
53. Guam	GU	.N	.0	.0	.0	.0	.0	.0	.0	.0	.0
54. Puerto Rico	PR	.N	.0	.0	.0	.0	.0	.0	.0	.0	.0
55. U.S. Virgin Islands	VI	.N	.0	.0	.0	.0	.0	.0	.0	.0	.0
56. Northern Mariana Islands	MP	.N	.0	.0	.0	.0	.0	.0	.0	.0	.0
57. Canada	CAN	.N	.0	.0	.0	.0	.0	.0	.0	.0	.0
58. Aggregate Other Aliens	OT	.XXX	.0	.0	.0	.0	.0	.0	.0	.0	.0
59. Subtotal	.XXX	.0	(30,084)	.0	.0	.0	.0	.0	(30,084)	.0	.0
60. Reporting Entity Contributions for Employee Benefit Plans	.XXX	.0	.0	.0	.0	.0	.0	.0	.0	.0	.0
61. Totals (Direct Business)	.XXX	0	(30,084)	0	0	0	0	0	(30,084)	0	0
DETAILS OF WRITE-INS											
58001.	.XXX										
58002.	.XXX										
58003.	.XXX										
58998. Summary of remaining write-ins for Line 58 from overflow page	.XXX	.0	.0	.0	.0	.0	.0	.0	.0	.0	.0
58999. Totals (Lines 58001 through 58003 plus 58998)(Line 58 above)	.XXX	0	0	0	0	0	0	0	0	0	0

(a) Active Status Counts:

- 1. L - Licensed or Chartered - Licensed insurance carrier or domiciled RRG..... 1
- 2. R - Registered - Non-domiciled RRGs..... 0
- 3. E - Eligible - Reporting entities eligible or approved to write surplus lines in the state. 0
- 4. Q - Qualified - Qualified or accredited reinsurer..... 0
- 5. N - None of the above - Not allowed to write business in the state..... 56

(b) Explanation of basis of allocation by states, premiums by state, etc.
 Premiums are allocated based on the situs of the contract.

Bright Health Group (as of 12/31/22)



(1)

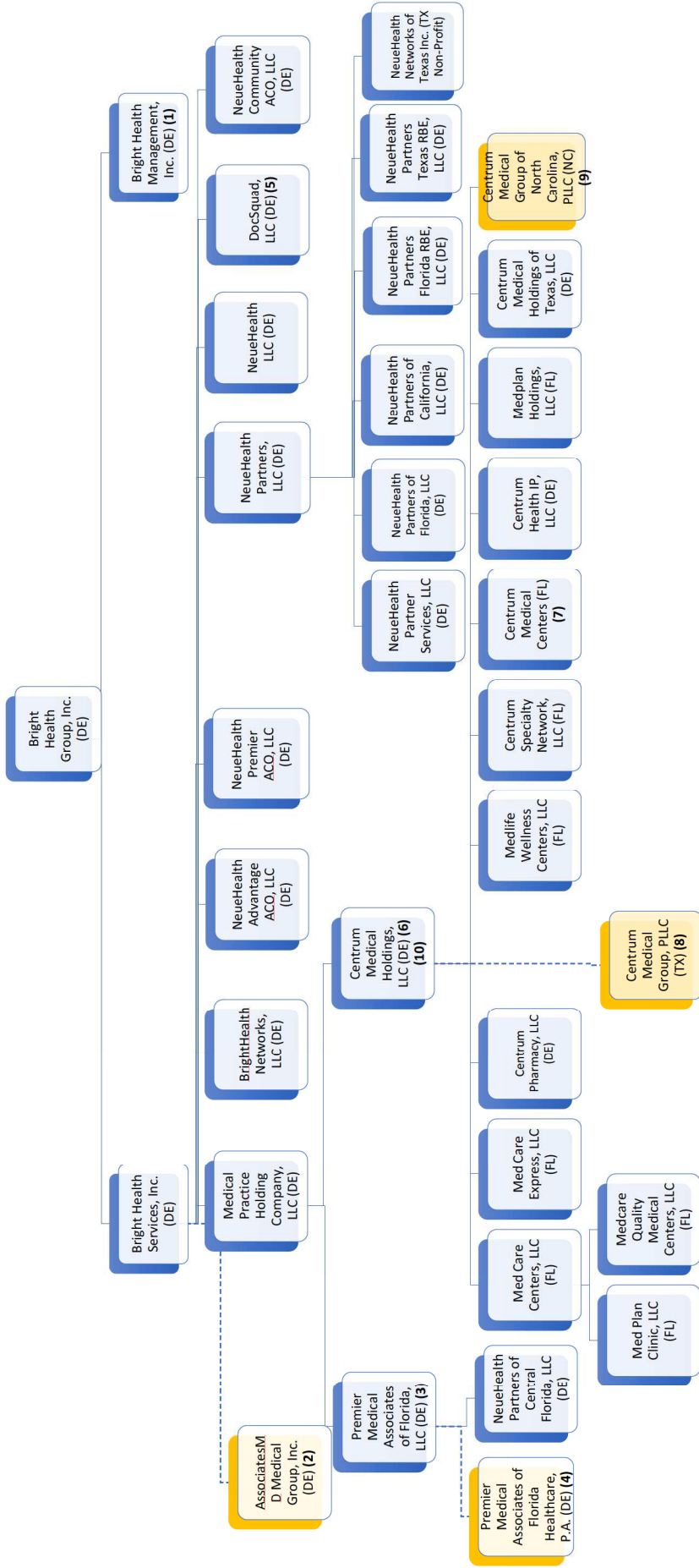
(2) See Page 2.

(3) Bright Health Insurance Company of Alabama, Inc. (AL) merged with and into Bright Health Insurance Company on 12/31/2020.

(4) 100% of stock of True Health New Mexico, Inc. acquired on 3/31/2021.

(5) 100% of stock of Universal Care, Inc. acquired on 4/30/2020.

(6) 100% of stock of Central Health Plan of California, Inc. acquired on 4/1/2021.



(1) See Page 1.

(2) **NO OWNERSHIP INTEREST.** Entity owned by physician, Rundeep Gadh, D.O., that is subject to Management Services Agreement and Stockholder Transfer Restriction Agreement with Bright Health Services, Inc.

(3) Medical Practice Holding Company, LLC owns 62% of membership interests. PMA II, LLC owns 38% of membership interest.

(4) **NO OWNERSHIP INTEREST.** Entity owned by physician, Dr. Dinesh Khanna, that is subject to Management Services Agreement and Succession Agreement with Premier Medical Associates of Florida, LLC.

(5) Zipnosis, Inc. merged with and into Docsquad, LLC on 3/31/2021.

(6) Medical Practice Holding Company, LLC owns 75% of membership interests. RRD Healthcare, LLC owns 25% membership interests.

(7) Includes: Centrum Medical Center – Airport, LLC; Centrum Medical Center – East Hialeah, LLC; Centrum Medical Center – West Hialeah, LLC; Centrum Medical Center – Miami Gardens, LLC; Centrum Medical Center – South Dade, LLC; Centrum Medical Center – Westchester, LLC; Centrum Medical Center – Little Havana 27 Ave, LLC; Centrum Medical Center – Little Havana 12 Ave, LLC; Centrum Medical Centers of Coral Springs, LLC; Centrum Medical Centers of Margate, LLC; Centrum Medical Centers of Davie, LLC; Centrum Medical Centers of Hallandale, LLC; Centrum Medical Centers of Lighthouse Point, LLC; Centrum Medical Centers of Fort Lauderdale, LLC; Centrum Medical Centers of Sheridan, LLC; Centrum Medical Centers of Miramar, LLC; Centrum Medical Center – Homestead, LLC

(8) **NO OWNERSHIP INTEREST.** Entity owned by physician, Dr. Manuel Lam, that is subject to Management Services Agreement and Succession Agreement with Centrum Medical Holdings, LLC.

(9) **NO OWNERSHIP INTEREST.** Entity owned by physician, Dr. James Juiming Ho, MD, that is subject to Management Services Agreement and Succession Agreement with Centrum Medical Holdings, LLC. *[subject to confirmation].*

(10) Centrum Health Franchisor, LLC (DE) merged into Centrum Medical Holdings, LLC on 6/13/2021.

OVERFLOW PAGE FOR WRITE-INS

NONE