

Correct state pages (19) for dividends only.



ANNUAL STATEMENT
FOR THE YEAR ENDED DECEMBER 31, 2022
OF THE CONDITION AND AFFAIRS OF THE
INTEGRITY INSURANCE COMPANY

NAIC Group Code.....0267.....0267..... NAIC Company Code..... 14303... Employer's ID Number.....39-0367560.....
(Current)(Prior)
Organized under the Laws of..... OH..... State of Domicile or Port of Entry..... OH.....
Country of Domicile..... US.....
Incorporated/Organized..... 07/28/1933..... Commenced Business..... 10/03/1933.....
Statutory Home Office..... 671 South High Street..... Columbus, OH, US 43206-1066.....
Main Administrative Office..... 671 South High Street.....
Columbus, OH, US 43206-1066..... 614-445-2900.....
(Telephone)
Mail Address..... 671 South High Street..... Columbus, OH, US 43206-1066.....
Primary Location of Books and
Records..... 671 South High Street.....
Columbus, OH, US 43206-1066..... 614-445-2900.....
(Telephone)
Internet Website Address..... www.integrityinsurance.com.....
Statutory Statement Contact..... Jeffrey P. Siefker..... 614-445-2900.....
(Telephone)
siefkerj@grangeinsurance.com..... 614-542-3017.....
(E-Mail) (Fax)

OFFICERS

..... JOHN (NMN) AMMENDOLA#, PRESIDENT & CEO..... TERESA JEAN BROWN#, EVP & CFO.....
..... LAVAWN DEE COLEMAN, EVP & SECRETARY.....

DIRECTORS OR TRUSTEES

..... JAMES MARTIN BENSON..... THOMAS SIMRALL STEWART.....
..... JOHN (NMN) AMMENDOLA..... TERESA JEAN BROWN.....
..... MARK LEWIS BOXER..... MICHAEL DESMOND FRAIZER.....
..... ROBERT ENLOW HOYT..... MARY MARNETTE PERRY.....
..... CHRISTIANNA (NMN) WOOD..... KATHIE JANE ANDRADE.....

State of OH.....
County of Franklin..... SS

The officers of this reporting entity being duly sworn, each depose and say that they are the described officers of said reporting entity, and that on the reporting period stated above, all of the herein described assets were the absolute property of the said reporting entity, free and clear from any liens or claims thereon, except as herein stated, and that this statement, together with related exhibits, schedules and explanations therein contained, annexed or referred to, is a full and true statement of all the assets and liabilities and of the condition and affairs of the said reporting entity as of the reporting period stated above, and of its income and deductions therefrom for the period ended, and have been completed in accordance with the NAIC Annual Statement Instructions and Accounting Practices and Procedures manual except to the extent that: (1) state law may differ; or, (2) that state rules or regulations require differences in reporting not related to accounting practices and procedures, according to the best of their information, knowledge and belief, respectively. Furthermore, the scope of this attestation by the described officers also includes the related corresponding electronic filing with the NAIC, when required, that is an exact copy (except for formatting differences due to electronic filing) of the enclosed statement. The electronic filing may be requested by various regulators in lieu of or in addition to the enclosed statement.

x [Signature] x [Signature] x [Signature]
JOHN (NMN) AMMENDOLA LAVAWN DEE COLEMAN TERESA JEAN BROWN
PRESIDENT & CEO EVP & SECRETARY EVP & CFO

Subscribed and sworn to before me
this 21st day of
February

- a. Is this an original filing? Yes
b. If no:
1. State the amendment number:
2. Date filed:
3. Number of pages attached:

x [Signature]



TERESA J BURCHWELL
Notary Public
State of Ohio
My Comm. Expires
April 28, 2027

## ASSETS

	Current Year			Prior Year
	1	2	3	4
	Assets	Nonadmitted Assets	Net Admitted Assets (Cols. 1 - 2)	Net Admitted Assets
1. Bonds (Schedule D)	87,952,087		87,952,087	83,124,978
2. Stocks (Schedule D):				
2.1 Preferred stocks				
2.2 Common stocks	21,177,051		21,177,051	20,838,746
3. Mortgage loans on real estate (Schedule B):				
3.1 First liens				
3.2 Other than first liens				
4. Real estate (Schedule A):				
4.1 Properties occupied by the company (less \$ encumbrances)				
4.2 Properties held for the production of income (less \$ encumbrances)				
4.3 Properties held for sale (less \$ encumbrances)				
5. Cash (\$ 0, Schedule E - Part 1), cash equivalents (\$ 1,861,128, Schedule E - Part 2) and short-term investments (\$ , Schedule DA)	1,861,128		1,861,128	2,924,745
6. Contract loans (including \$ premium notes)				
7. Derivatives (Schedule DB)				
8. Other invested assets (Schedule BA)				
9. Receivables for securities				
10. Securities lending reinvested collateral assets (Schedule DL)				
11. Aggregate write-ins for invested assets				
12. Subtotals, cash and invested assets (Lines 1 to 11)	110,990,266		110,990,266	106,888,469
13. Title plants less \$ charged off (for Title insurers only)				
14. Investment income due and accrued	566,552		566,552	598,156
15. Premiums and considerations:				
15.1 Uncollected premiums and agents' balances in the course of collection	13,384,582	173,622	13,210,960	13,321,776
15.2 Deferred premiums, agents' balances and installments booked but deferred and not yet due (including \$ 80,074 earned but unbilled premiums)	80,074		80,074	73,113
15.3 Accrued retrospective premiums (\$ ) and contracts subject to redetermination (\$ )				
16. Reinsurance:				
16.1 Amounts recoverable from reinsurers	121,654		121,654	428,406
16.2 Funds held by or deposited with reinsured companies				
16.3 Other amounts receivable under reinsurance contracts				
17. Amounts receivable relating to uninsured plans				
18.1 Current federal and foreign income tax recoverable and interest thereon	3,464,922		3,464,922	1,105,902
18.2 Net deferred tax asset	1,550,597	87,335	1,463,262	1,661,881
19. Guaranty funds receivable or on deposit				
20. Electronic data processing equipment and software				
21. Furniture and equipment, including health care delivery assets (\$ )				
22. Net adjustment in assets and liabilities due to foreign exchange rates				
23. Receivables from parent, subsidiaries and affiliates	5,200,393		5,200,393	10,220,639
24. Health care (\$ ) and other amounts receivable				
25. Aggregate write-ins for other-than-invested assets	70,229		70,229	43,182
26. Total assets excluding Separate Accounts, Segregated Accounts and Protected Cell Accounts (Lines 12 to 25)	135,429,269	260,957	135,168,312	134,341,524
27. From Separate Accounts, Segregated Accounts and Protected Cell Accounts				
28. Total (Lines 26 and 27)	135,429,269	260,957	135,168,312	134,341,524
<b>Details of Write-Ins</b>				
1101.				
1102.				
1103.				
1198. Summary of remaining write-ins for Line 11 from overflow page				
1199. Totals (Lines 1101 through 1103 plus 1198) (Line 11 above)				
2501. Misc. Assets	17,922		17,922	(7,172)
2502. Equities in Pools	52,307		52,307	50,354
2503.				
2598. Summary of remaining write-ins for Line 25 from overflow page				
2599. Totals (Lines 2501 through 2503 plus 2598) (Line 25 above)	70,229		70,229	43,182

**LIABILITIES, SURPLUS AND OTHER FUNDS**

	1	2
	Current Year	Prior Year
1. Losses (Part 2A, Line 35, Column 8).....	30,733,423	23,012,332
2. Reinsurance payable on paid losses and loss adjustment expenses (Schedule F, Part 1, Column 6).....		
3. Loss adjustment expenses (Part 2A, Line 35, Column 9).....	5,837,726	5,700,422
4. Commissions payable, contingent commissions and other similar charges.....	662,294	1,101,000
5. Other expenses (excluding taxes, licenses and fees).....	1,227,907	1,363,754
6. Taxes, licenses and fees (excluding federal and foreign income taxes).....	692,147	609,456
7.1 Current federal and foreign income taxes (including \$ (161,587) on realized capital gains (losses)).....		
7.2 Net deferred tax liability.....		
8. Borrowed money \$ and interest thereon \$.....		
9. Unearned premiums (Part 1A, Line 38, Column 5) (after deducting unearned premiums for ceded reinsurance of \$ 60,576,469 and including warranty reserves of \$ and accrued accident and health experience rating refunds including \$ for medical loss ratio rebate per the Public Health Service Act).....	26,017,293	24,621,323
10. Advance premium.....	430,918	236,313
11. Dividends declared and unpaid:		
11.1 Stockholders.....		
11.2 Policyholders.....	227,903	191,851
12. Ceded reinsurance premiums payable (net of ceding commissions).....	3,479,281	3,380,480
13. Funds held by company under reinsurance treaties (Schedule F, Part 3, Column 20).....		
14. Amounts withheld or retained by company for account of others.....	859,036	792,636
15. Remittances and items not allocated.....	149,307	6,026
16. Provision for reinsurance (including \$ certified) (Schedule F, Part 3 Column 78).....	133,618	122,455
17. Net adjustments in assets and liabilities due to foreign exchange rates.....		
18. Drafts outstanding.....		
19. Payable to parent, subsidiaries and affiliates.....		
20. Derivatives.....		
21. Payable for securities.....		
22. Payable for securities lending.....		
23. Liability for amounts held under uninsured plans.....		
24. Capital notes \$ and interest thereon \$.....		
25. Aggregate write-ins for liabilities.....	124,721	560,317
26. Total liabilities excluding protected cell liabilities (Lines 1 through 25).....	70,575,575	61,698,365
27. Protected cell liabilities.....		
28. Total liabilities (Lines 26 and 27).....	70,575,575	61,698,365
29. Aggregate write-ins for special surplus funds.....	1,000,000	1,000,000
30. Common capital stock.....	5,000,000	5,000,000
31. Preferred capital stock.....		
32. Aggregate write-ins for other-than-special surplus funds.....		
33. Surplus notes.....		
34. Gross paid in and contributed surplus.....		
35. Unassigned funds (surplus).....	58,592,737	66,643,159
36. Less treasury stock, at cost:		
36.1 shares common (value included in Line 30 \$ ).....		
36.2 shares preferred (value included in Line 31 \$ ).....		
37. Surplus as regards policyholders (Lines 29 to 35, less 36) (Page 4, Line 39).....	64,592,737	72,643,159
38. Totals (Page 2, Line 28, Col. 3).....	135,168,312	134,341,524
<b>Details of Write-Ins</b>		
2501. Suspense.....		
2502. Misc Liabilities.....	124,721	560,317
2503.....		
2598. Summary of remaining write-ins for Line 25 from overflow page.....		
2599. Totals (Lines 2501 through 2503 plus 2598) (Line 25 above).....	124,721	560,317
2901. Guarantee Fund for Non-Assessability.....	1,000,000	1,000,000
2902.....		
2903.....		
2998. Summary of remaining write-ins for Line 29 from overflow page.....		
2999. Totals (Lines 2901 through 2903 plus 2998) (Line 29 above).....	1,000,000	1,000,000
3201.....		
3202.....		
3203.....		
3298. Summary of remaining write-ins for Line 32 from overflow page.....		
3299. Totals (Lines 3201 through 3203 plus 3298) (Line 32 above).....		

**STATEMENT OF INCOME**

	1	2
	Current Year	Prior Year
<b>Underwriting Income</b>		
1. Premiums earned (Part 1, Line 35, Column 4).....	54,882,298	53,657,707
Deductions:		
2. Losses incurred (Part 2, Line 35, Column 7).....	43,171,078	32,118,343
3. Loss adjustment expenses incurred (Part 3, Line 25, Column 1).....	5,860,662	4,837,500
4. Other underwriting expenses incurred (Part 3, Line 25, Column 2).....	17,424,053	16,620,246
5. Aggregate write-ins for underwriting deductions.....		
6. Total underwriting deductions (Lines 2 through 5).....	66,455,793	53,576,089
7. Net income of protected cells.....		
8. Net underwriting gain (loss) (Line 1 minus Line 6 plus Line 7).....	(11,573,495)	81,618
<b>Investment Income</b>		
9. Net investment income earned (Exhibit of Net Investment Income, Line 17).....	1,730,689	1,358,927
10. Net realized capital gains (losses) less capital gains tax of \$ (161,587) (Exhibit of Capital Gains (Losses)).....	(638,341)	2,757,501
11. Net investment gain (loss) (Lines 9 + 10).....	1,092,348	4,116,428
<b>Other Income</b>		
12. Net gain or (loss) from agents' or premium balances charged off (amount recovered \$ amount charged off \$ 151,213).....	(151,213)	(611,734)
13. Finance and service charges not included in premiums.....	533,907	484,428
14. Aggregate write-ins for miscellaneous income.....	(14,356)	29,236
15. Total other income (Lines 12 through 14).....	368,338	(98,070)
16. Net income before dividends to policyholders, after capital gains tax and before all other federal and foreign income taxes (Lines 8 + 11 + 15).....	(10,112,809)	4,099,976
17. Dividends to policyholders.....	259,422	238,697
18. Net income, after dividends to policyholders, after capital gains tax and before all other federal and foreign income taxes (Line 16 minus Line 17).....	(10,372,231)	3,861,279
19. Federal and foreign income taxes incurred.....	(2,262,906)	289,715
20. Net income (Line 18 minus Line 19) (to Line 22).....	(8,109,325)	3,571,564
<b>Capital and Surplus Account</b>		
21. Surplus as regards policyholders, December 31 prior year (Page 4, Line 39, Column 2).....	72,643,159	65,552,947
22. Net income (from Line 20).....	(8,109,325)	3,571,564
23. Net transfers (to) from Protected Cell accounts.....		
24. Change in net unrealized capital gains or (losses) less capital gains tax of \$.....	338,308	394,975
25. Change in net unrealized foreign exchange capital gain (loss).....		
26. Change in net deferred income tax.....	(163,493)	(226,640)
27. Change in nonadmitted assets (Exhibit of Nonadmitted Assets, Line 28, Col. 3).....	(104,748)	838,514
28. Change in provision for reinsurance (Page 3, Line 16, Column 2 minus Column 1).....	(11,163)	2,511,799
29. Change in surplus notes.....		
30. Surplus (contributed to) withdrawn from protected cells.....		
31. Cumulative effect of changes in accounting principles.....		
32. Capital changes:		
32.1 Paid in.....		
32.2 Transferred from surplus (Stock Dividend).....		
32.3 Transferred to surplus.....		
33. Surplus adjustments:		
33.1 Paid in.....		
33.2 Transferred to capital (Stock Dividend).....		
33.3 Transferred from capital.....		
34. Net remittances from or (to) Home Office.....		
35. Dividends to stockholders.....		
36. Change in treasury stock (Page 3, Lines 36.1 and 36.2, Column 2 minus Column 1).....		
37. Aggregate write-ins for gains and losses in surplus.....		
38. Change in surplus as regards to policyholders (Lines 22 through 37).....	(8,050,420)	7,090,212
39. Surplus as regards to policyholders, December 31 current year (Line 21 plus Line 38) (Page 3, Line 37).....	64,592,739	72,643,159
<b>Details of Write-Ins</b>		
0501. ....		
0502. ....		
0503. ....		
0598. Summary of remaining write-ins for Line 5 from overflow page.....		
0599. Totals (Lines 0501 through 0503 plus 0598) (Line 5 above).....		
1401. Misc. Income.....	(14,356)	29,236
1402. ....		
1403. ....		
1498. Summary of remaining write-ins for Line 14 from overflow page.....		
1499. Totals (Lines 1401 through 1403 plus 1498) (Line 14 above).....	(14,356)	29,236
3701. ....		
3702. ....		
3703. ....		
3798. Summary of remaining write-ins for Line 37 from overflow page.....		
3799. Totals (Lines 3701 through 3703 plus 3798) (Line 37 above).....		

**CASH FLOW**

	1	2
	Current Year	Prior Year
<b>Cash from Operations</b>		
1. Premiums collected net of reinsurance .....	56,605,907	53,926,112
2. Net investment income .....	2,368,602	1,857,112
3. Miscellaneous income .....	368,338	(98,070)
4. Total (Lines 1 to 3) .....	59,342,847	55,685,154
5. Benefit and loss related payments .....	35,143,235	27,768,465
6. Net transfers to Separate Accounts, Segregated Accounts and Protected Cell Accounts .....		
7. Commissions, expenses paid and aggregate write-ins for deductions .....	23,639,272	22,350,639
8. Dividends paid to policyholders .....	223,370	212,541
9. Federal and foreign income taxes paid (recovered) net of \$ (161,587) tax on capital gains (losses) .....	(65,473)	1,904,250
10. Total (Lines 5 through 9) .....	58,940,403	52,235,895
11. Net cash from operations (Line 4 minus Line 10) .....	402,444	3,449,259
<b>Cash from Investments</b>		
12. Proceeds from investments sold, matured or repaid:		
12.1 Bonds .....	16,465,243	10,463,638
12.2 Stocks .....		
12.3 Mortgage loans .....		
12.4 Real estate .....		4,298,465
12.5 Other invested assets .....		
12.6 Net gains or (losses) on cash, cash equivalents and short-term investments .....		
12.7 Miscellaneous proceeds .....	-	-
12.8 Total investment proceeds (Lines 12.1 to 12.7) .....	16,465,243	14,762,103
13. Cost of investments acquired (long-term only):		
13.1 Bonds .....	22,698,589	19,079,675
13.2 Stocks .....		
13.3 Mortgage loans .....		
13.4 Real estate .....		
13.5 Other invested assets .....		
13.6 Miscellaneous applications .....	-	-
13.7 Total investments acquired (Lines 13.1 to 13.6) .....	22,698,589	19,079,675
14. Net increase (decrease) in contract loans and premium notes .....		
15. Net cash from investments (Line 12.8 minus Line 13.7 minus Line 14) .....	(6,233,346)	(4,317,572)
<b>Cash from Financing and Miscellaneous Sources</b>		
16. Cash provided (applied):		
16.1 Surplus notes, capital notes .....		
16.2 Capital and paid in surplus, less treasury stock .....	-	-
16.3 Borrowed funds .....		
16.4 Net deposits on deposit-type contracts and other insurance liabilities .....		
16.5 Dividends to stockholders .....		
16.6 Other cash provided (applied) .....	4,767,287	940,288
17. Net cash from financing and miscellaneous sources (Lines 16.1 to 16.4 minus Line 16.5 plus Line 16.6) .....	4,767,287	940,288
<b>Reconciliation of Cash, Cash Equivalents and Short-Term Investments</b>		
18. Net change in cash, cash equivalents and short-term investments (Line 11, plus Lines 15 and 17) .....	(1,063,616)	71,975
19. Cash, cash equivalents and short-term investments:		
19.1 Beginning of year .....	2,924,745	2,852,770
19.2 End of year (Line 18 plus Line 19.1) .....	1,861,129	2,924,745

Note: Supplemental disclosures of cash flow information for non-cash transactions:

20.0001 .....		
---------------	--	--

**UNDERWRITING AND INVESTMENT EXHIBIT**

PART 1 – PREMIUMS EARNED

Line of Business		1	2	3	4
		Net Premiums Written per Column 6, Part 1B	Unearned Premiums Dec. 31 Prior Year - per Col. 3, Last Year's Part 1	Unearned Premiums Dec. 31 Current Year - per Col. 5 Part 1A	Premiums Earned During Year (Cols. 1 + 2 - 3)
1.	Fire	506,982	288,099	277,175	517,906
2.1	Allied lines	272,876	155,634	149,087	279,423
2.2	Multiple peril crop				
2.3	Federal flood				
2.4	Private crop				
2.5	Private flood				
3.	Farmowners multiple peril	584,980	291,777	295,381	581,376
4.	Homeowners multiple peril	13,550,404	7,105,325	7,732,750	12,922,980
5.1	Commercial multiple peril (non-liability portion)	4,524,295	3,544,207	2,439,566	5,628,936
5.2	Commercial multiple peril (liability portion)	2,950,194		1,227,253	1,722,941
6.	Mortgage guaranty				
8.	Ocean marine				
9.	Inland marine	402,384	180,655	180,162	402,876
10.	Financial guaranty				
11.1.	Medical professional liability – occurrence				
11.2.	Medical professional liability – claims-made				
12.	Earthquake	73,247	41,169	39,811	74,605
13.1	Comprehensive (hospital and medical) individual				
13.2	Comprehensive (hospital and medical) group				
14.	Credit accident and health (group and individual)				
15.1	Vision only				
15.2	Dental only				
15.3	Disability income				
15.4	Medicare supplement				
15.5	Medicaid Title XIX				
15.6	Medicare Title XVIII				
15.7	Long-term care				
15.8	Federal employees health benefits plan				
15.9	Other health				
16.	Workers' compensation	2,150,155	906,105	842,945	2,213,315
17.1	Other liability – occurrence	1,075,375	632,610	643,608	1,064,377
17.2	Other liability – claims-made	3,149	1,623	1,357	3,416
17.3	Excess workers' compensation				
18.1	Products liability—occurrence	3,135	11,671	5,157	9,649
18.2	Products liability—claims-made				
19.1	Private passenger auto no-fault (personal injury protection)	237,361	4,194,999	91,756	4,340,604
19.2	Other private passenger auto liability	11,195,905		4,219,951	6,975,954
19.3	Commercial auto no-fault (personal injury protection)	98,949	2,064,646	46,503	2,117,093
19.4	Other commercial auto liability	4,511,647		2,148,570	2,363,077
21.1	Private passenger auto physical damage	12,187,391	5,199,501	4,764,184	12,622,707
21.2	Commercial auto physical damage	1,942,333		908,905	1,033,429
22.	Aircraft (all perils)				
23.	Fidelity				
24.	Surety				
26.	Burglary and theft	7,506	3,302	3,174	7,633
27.	Boiler and machinery				
28.	Credit				
29.	International				
30.	Warranty				
31.	Reinsurance - nonproportional assumed property				
32.	Reinsurance - nonproportional assumed liability				
33.	Reinsurance - nonproportional assumed financial lines				
34.	Aggregate write-ins for other lines of business				
35.	TOTALS	56,278,268	24,621,323	26,017,293	54,882,298
<b>Details of Write-Ins</b>					
3401.					
3402.					
3403.					
3498.	Summary of remaining write-ins for Line 34 from overflow page				
3499.	Totals (Lines 3401 through 3403 plus 3498) (Line 34 above)				

**UNDERWRITING AND INVESTMENT EXHIBIT**

PART 1A – RECAPITULATION OF ALL PREMIUMS

Line of Business		1 Amount Unearned (Running One Year or Less from Date of Policy) (a)	2 Amount Unearned (Running More Than One Year from Date of Policy) (a)	3 Earned but Unbilled Premium	4 Reserve for Rate Credits and Retrospective Adjustments Based on Experience	5 Total Reserve for Unearned Premiums Cols. 1+2+3+4
1.	Fire	277,175				277,175
2.1	Allied lines	149,087				149,087
2.2	Multiple peril crop					
2.3	Federal flood					
2.4	Private crop					
2.5	Private flood					
3.	Farmowners multiple peril	295,381				295,381
4.	Homeowners multiple peril	7,732,750				7,732,750
5.1	Commercial multiple peril (non-liability portion)	2,439,566				2,439,566
5.2	Commercial multiple peril (liability portion)	1,227,253				1,227,253
6.	Mortgage guaranty					
8.	Ocean marine					
9.	Inland marine	180,162				180,162
10.	Financial guaranty					
11.1.	Medical professional liability – occurrence					
11.2.	Medical professional liability – claims-made					
12.	Earthquake	39,811				39,811
13.1	Comprehensive (hospital and medical) individual					
13.2	Comprehensive (hospital and medical) group					
14.	Credit accident and health (group and individual)					
15.1	Vision only					
15.2	Dental only					
15.3	Disability income					
15.4	Medicare supplement					
15.5	Medicaid Title XIX					
15.6	Medicare Title XVIII					
15.7	Long-term care					
15.8	Federal employees health benefits plan					
15.9	Other health					
16.	Workers' compensation	842,945				842,945
17.1	Other liability – occurrence	643,608				643,608
17.2	Other liability – claims-made	1,357				1,357
17.3	Excess workers' compensation					
18.1	Products liability – occurrence	5,157				5,157
18.2	Products liability – claims-made					
19.1	Private passenger auto no-fault (personal injury protection)	91,756				91,756
19.2	Other private passenger auto liability	4,219,951				4,219,951
19.3	Commercial auto no-fault (personal injury protection)	46,503				46,503
19.4	Other commercial auto liability	2,148,570				2,148,570
21.1	Private passenger auto physical damage	4,764,184				4,764,184
21.2	Commercial auto physical damage	908,905				908,905
22.	Aircraft (all perils)					
23.	Fidelity					
24.	Surety					
26.	Burglary and theft	3,174				3,174
27.	Boiler and machinery					
28.	Credit					
29.	International					
30.	Warranty					
31.	Reinsurance - nonproportional assumed property					
32.	Reinsurance - nonproportional assumed liability					
33.	Reinsurance - nonproportional assumed financial lines					
34.	Aggregate write-ins for other lines of business					
35.	TOTALS	26,017,293				26,017,293
36.	Accrued retrospective premiums based on experience	XXX	XXX	XXX	XXX	
37.	Earned but unbilled premiums	XXX	XXX	XXX	XXX	
38.	Balance (Sum of Lines 35 through 37)	XXX	XXX	XXX	XXX	26,017,293
<b>Details of Write-Ins</b>						
3401.						
3402.						
3403.						
3498.	Summary of remaining write-ins for Line 34 from overflow page					
3499.	Totals (Lines 3401 through 3403 plus 3498) (Line 34 above)					

(a) State here basis of computation used in each case:

**UNDERWRITING AND INVESTMENT EXHIBIT**

PART 1B – PREMIUMS WRITTEN

Line of Business	1	Reinsurance Assumed		Reinsurance Ceded		6 Net Premiums Written Cols. 1+2+3-4-5
	Direct Business (a)	2 From Affiliates	3 From Non- Affiliates	4 To Affiliates	5 To Non- Affiliates	
1. Fire	741,569	506,982	-	690,189	51,381	506,982
2.1 Allied lines	523,824	272,876	-	499,758	24,066	272,876
2.2 Multiple peril crop						
2.3 Federal flood						
2.4 Private crop						
2.5 Private flood						
3. Farmowners multiple peril	-	584,980	-	-	-	584,980
4. Homeowners multiple peril	3,461,297	13,550,404	-	3,330,321	130,976	13,550,404
5.1 Commercial multiple peril (non-liability portion)	27,963,756	4,524,295	-	23,072,636	4,891,120	4,524,295
5.2 Commercial multiple peril (liability portion)	17,254,888	2,950,194	-	16,299,152	955,736	2,950,194
6. Mortgage guaranty						
8. Ocean marine						
9. Inland marine	2,633,162	402,384	-	2,319,917	313,244	402,384
10. Financial guaranty						
11.1. Medical professional liability – occurrence						
11.2. Medical professional liability – claims-made						
12. Earthquake	647	73,247	-	625	22	73,247
13.1 Comprehensive (hospital and medical) individual						
13.2 Comprehensive (hospital and medical) group						
14. Credit accident and health (group and individual)						
15.1 Vision only						
15.2 Dental only						
15.3 Disability income						
15.4 Medicare supplement						
15.5 Medicaid Title XIX						
15.6 Medicare Title XVIII						
15.7 Long-term care						
15.8 Federal employees health benefits plan						
15.9 Other health						
16. Workers' compensation	43,859,320	2,150,155	466,862	43,078,813	1,247,369	2,150,155
17.1 Other liability – occurrence	9,763,380	1,075,375	-	5,657,476	4,105,904	1,075,375
17.2 Other liability – claims-made	10,524	3,149	-	10,524	-	3,149
17.3 Excess workers' compensation						
18.1 Products liability—occurrence	13,810	3,135	-	13,810	-	3,135
18.2 Products liability—claims-made						
19.1 Private passenger auto no-fault (personal injury protection)	96,310	237,361	-	96,310	-	237,361
19.2 Other private passenger auto liability	1,412,382	11,195,905	-	1,412,382	-	11,195,905
19.3 Commercial auto no-fault (personal injury protection)	540,277	98,949	-	540,277	-	98,949
19.4 Other commercial auto liability	26,466,392	4,511,647	-	26,029,289	437,103	4,511,647
21.1 Private passenger auto physical damage	1,707,108	12,187,391	-	1,699,334	7,775	12,187,391
21.2 Commercial auto physical damage	15,276,384	1,942,333	-	15,200,782	75,602	1,942,333
22. Aircraft (all perils)						
23. Fidelity						
24. Surety						
26. Burglary and theft	41,283	7,506	-	41,283	-	7,506
27. Boiler and machinery						
28. Credit						
29. International						
30. Warranty						
31. Reinsurance - nonproportional assumed property	XXX					
32. Reinsurance - nonproportional assumed liability	XXX					
33. Reinsurance - nonproportional assumed financial lines	XXX					
34. Aggregate write-ins for other lines of business						
35. TOTALS	151,766,313	56,278,268	466,862	139,992,877	12,240,298	56,278,268
<b>Details of Write-Ins</b>						
3401.						
3402.						
3403.						
3498.	Summary of remaining write-ins for Line 34 from overflow page					
3499.	Totals (Lines 3401 through 3403 plus 3498) (Line 34 above)					

(a) Does the company's direct premiums written include premiums recorded on an installment basis? NO

If yes: 1. The amount of such installment premiums \$

2. Amount at which such installment premiums would have been reported had they been recorded on an annualized basis \$

**UNDERWRITING AND INVESTMENT EXHIBIT**

**PART 2 - LOSSES PAID AND INCURRED**

Line of Business	Losses Paid Less Salvage				5	6	7	8
	1	2	3	4				
	Direct Business	Reinsurance Assumed	Reinsurance Recovered	Net Payments (Cols. 1 + 2 - 3)	Net Losses Unpaid Current Year (Part 2A, Col. 8)	Net Losses Unpaid Prior Year	Losses Incurred Current Year (Cols. 4 + 5 - 6)	Percentage of Losses Incurred (Col. 7, Part 2) to Premiums Earned (Col. 4, Part 1)
1. Fire	1,111,857	323,140	1,111,857	323,140	79,725	74,462	328,403	63.410 %
2.1 Allied lines	277,097	38,305	277,097	38,305	68,023	35,435	70,894	25.372 %
2.2 Multiple peril crop								%
2.3 Federal flood								%
2.4 Private crop								%
2.5 Private flood								%
3. Farmowners multiple peril		318,913		318,913	134,737	143,013	310,637	53.431 %
4. Homeowners multiple peril	3,910,027	9,313,612	3,910,027	9,313,612	3,845,198	2,225,739	10,933,071	84.602 %
5.1 Commercial multiple peril (non-liability portion)	36,175,283	3,097,697	36,175,283	3,097,697	3,526,802	1,515,441	5,109,058	90.764 %
5.2 Commercial multiple peril (liability portion)	6,392,701	1,564,821	6,392,701	1,564,821	4,927,746	4,113,272	2,379,295	138.095 %
6. Mortgage guaranty								%
8. Ocean marine								%
9. Inland marine	1,494,483	167,604	1,494,483	167,604	62,757	35,851	194,510	48.280 %
10. Financial guaranty								%
11.1. Medical professional liability – occurrence								%
11.2. Medical professional liability – claims-made								%
12. Earthquake		285		285	2	1	287	0.384 %
13.1 Comprehensive (hospital and medical) individual								%
13.2 Comprehensive (hospital and medical) group								%
14. Credit accident and health (group and individual)								%
15.1 Vision only								%
15.2 Dental only								%
15.3 Disability income								%
15.4 Medicare supplement								%
15.5 Medicaid Title XIX								%
15.6 Medicare Title XVIII								%
15.7 Long-term care								%
15.8 Federal employees health benefits plan								%
15.9 Other health								%
16. Workers' compensation	19,419,093	1,098,595	19,613,677	904,011	1,700,303	1,710,501	893,812	40.383 %
17.1 Other liability – occurrence	2,339,444	301,838	2,339,444	301,838	823,839	604,641	521,036	48.952 %
17.2 Other liability – claims-made		3,127		3,127	3,242	4,962	1,407	41.194 %
17.3 Excess workers' compensation								%
18.1 Products liability—occurrence		77		77	3,371	2,374	1,075	11.138 %
18.2 Products liability—claims-made								%
19.1 Private passenger auto no-fault (personal injury protection)	55,723	140,632	55,723	140,632	173,012	197,849	115,795	2.668 %
19.2 Other private passenger auto liability	1,045,365	7,182,418	1,045,365	7,182,418	8,778,662	7,342,737	8,618,344	123.544 %
19.3 Commercial auto no-fault (personal injury protection)	264,380	38,552	264,380	38,552	28,289	68,188	(1,347)	(0.064) %
19.4 Other commercial auto liability	13,679,226	2,183,631	13,679,226	2,183,631	5,860,980	4,620,578	3,424,033	144.897 %
21.1 Private passenger auto physical damage	1,063,226	8,444,137	1,063,226	8,444,137	528,293	141,001	8,831,429	69.965 %
21.2 Commercial auto physical damage	12,318,781	1,426,807	12,318,781	1,426,807	187,677	175,708	1,438,775	139.223 %
22. Aircraft (all perils)					14	14		%
23. Fidelity								%
24. Surety								%
26. Burglary and theft	9,448	378	9,448	378	751	565	564	7.385 %
27. Boiler and machinery								%
28. Credit								%
29. International								%
30. Warranty								%
31. Reinsurance - nonproportional assumed property	XXX							%
32. Reinsurance - nonproportional assumed liability	XXX							%
33. Reinsurance - nonproportional assumed financial lines	XXX							%
34. Aggregate write-ins for other lines of business								%
35. TOTALS	99,556,135	35,644,571	99,750,719	35,449,987	30,733,423	23,012,332	43,171,078	78.661 %
Details of Write-Ins								
3401.								
3402.								
3403.								
3498. Summary of remaining write-ins for Line 34 from overflow page								
3499. Totals (Lines 3401 through 3403 plus 3498) (Line 34 above)								

**UNDERWRITING AND INVESTMENT EXHIBIT**  
PART 2A - UNPAID LOSSES AND LOSS ADJUSTMENT EXPENSES

Line of Business	Reported Losses				Incurred But Not Reported			8 Net Losses Unpaid (Cols. 4+5+6+7)	9 Net Unpaid Loss Adjustment Expenses
	1 Direct	2 Reinsurance Assumed	3 Deduct Reinsurance Recoverable	4 Net Losses Excl. Incurred But Not Reported (Cols. 1+2-3)	5 Direct	6 Reinsurance Assumed	7 Reinsurance Ceded		
1. Fire	176,482	40,793	176,482	40,793	130,165	38,932	130,165	79,725	15,971
2.1 Allied lines	31,320	44,868	31,320	44,868	92,315	23,155	92,315	68,023	11,181
2.2 Multiple peril crop									
2.3 Federal flood									
2.4 Private crop									
2.5 Private flood									
3. Farmowners multiple peril		105,437		105,437		29,300		134,737	31,405
4. Homeowners multiple peril	379,140	2,319,005	379,140	2,319,005	1,493,354	1,526,193	1,493,354	3,845,198	448,590
5.1 Commercial multiple peril (non-liability portion)	17,047,930	1,406,176	17,047,930	1,406,176	14,248,624	2,120,625	14,248,624	3,526,802	165,694
5.2 Commercial multiple peril (liability portion)	6,779,856	2,105,534	6,779,856	2,105,534	14,811,545	2,822,212	14,811,545	4,927,746	2,053,246
6. Mortgage guaranty									
8. Ocean marine									
9. Inland marine	(32,315)	35,088	(32,315)	35,088	464,540	27,669	464,540	62,757	9,971
10. Financial guaranty									
11.1. Medical professional liability – occurrence									
11.2. Medical professional liability – claims-made									
12. Earthquake						2		2	(64)
13.1 Comprehensive (hospital and medical) individual								(a)	
13.2 Comprehensive (hospital and medical) group								(a)	88
14. Credit accident and health (group and individual)									
15.1 Vision only								(a)	
15.2 Dental only								(a)	
15.3 Disability income								(a)	
15.4 Medicare supplement								(a)	
15.5 Medicaid Title XIX								(a)	
15.6 Medicare Title XVIII								(a)	
15.7 Long-term care								(a)	
15.8 Federal employees health benefits plan								(a)	
15.9 Other health								(a)	
16. Workers' compensation	66,344,003	1,227,442	66,690,780	880,665	15,927,294	1,232,703	16,340,359	1,700,303	327,203
17.1 Other liability – occurrence	4,784,173	407,012	4,784,173	407,012	5,103,750	416,827	5,103,750	823,839	36,347
17.2 Other liability – claims-made		2,212		2,212	4,227	1,030	4,227	3,242	1,198
17.3 Excess workers' compensation									
18.1 Products liability—occurrence		368		368	5,588	3,003	5,588	3,371	3,010
18.2 Products liability—claims-made									
19.1 Private passenger auto no-fault (personal injury protection)	64,052	163,233	64,052	163,233	8,935	9,779	8,935	173,012	90,788
19.2 Other private passenger liability	1,449,739	5,472,429	1,449,739	5,472,429	633,773	3,306,233	633,773	8,778,662	1,525,154
19.3 Commercial auto no-fault (personal injury protection)	192,826	28,307	192,826	28,307	(112,796)	(18)	(112,796)	28,289	22,291
19.4 Other commercial auto liability	20,755,118	2,992,409	20,755,118	2,992,409	15,533,023	2,868,571	15,533,023	5,860,980	819,261
21.1 Private passenger auto physical damage	(1,819)	198,894	(1,819)	198,894	35,520	329,399	35,520	528,293	242,910
21.2 Commercial auto physical damage	(85,938)	(4,110)	(85,938)	(4,110)	1,787,945	191,787	1,787,945	187,677	33,454
22. Aircraft (all perils)		14		14				14	
23. Fidelity									
24. Surety									
26. Burglary and theft	(320)	153	(320)	153	7,846	598	7,846	751	28
27. Boiler and machinery									
28. Credit									
29. International									
30. Warranty									
31. Reinsurance - nonproportional assumed property	XXX				XXX				
32. Reinsurance - nonproportional assumed liability	XXX				XXX				
33. Reinsurance - nonproportional assumed financial lines	XXX				XXX				
34. Aggregate write-ins for other lines of business									
35. TOTALS	117,884,247	16,545,265	118,231,024	16,198,488	70,175,648	14,948,001	70,588,713	30,733,423	5,837,726
<b>Details of Write-Ins</b>									
3401.									
3402.									
3403.									
3498. Summary of remaining write-ins for Line 34 from overflow page									
3499. Totals (Lines 3401 through 3403 plus 3498) (Line 34 above)									

(a) Including \$ for present value of life indemnity claims reported in Lines 13 and 15.

**UNDERWRITING AND INVESTMENT EXHIBIT**

## PART 3 – EXPENSES

	1	2	3	4
	Loss Adjustment Expenses	Other Underwriting Expenses	Investment Expenses	Total
1. Claim adjustment services:				
1.1. Direct	7,294,748			7,294,748
1.2. Reinsurance assumed	1,816,494			1,816,494
1.3. Reinsurance ceded	7,294,748			7,294,748
1.4. Net claim adjustment services (1.1+1.2-1.3)	1,816,494			1,816,494
2. Commission and brokerage:				
2.1. Direct, excluding contingent		19,307,763		19,307,763
2.2. Reinsurance assumed, excluding contingent		7,728,980		7,728,980
2.3. Reinsurance ceded, excluding contingent		19,307,763		19,307,763
2.4. Contingent—direct		1,007,020		1,007,020
2.5. Contingent—reinsurance assumed		695,302		695,302
2.6. Contingent—reinsurance ceded		1,007,020		1,007,020
2.7. Policy and membership fees				
2.8. Net commission and brokerage (2.1+2.2-2.3+2.4+2.5-2.6+2.7)		8,424,282		8,424,282
3. Allowances to manager and agents	463	110,365		110,828
4. Advertising	546	112,302		112,848
5. Boards, bureaus and associations	50,564	122,785		173,349
6. Surveys and underwriting reports	—	460,997		460,997
7. Audit of assureds' records	—	33,982		33,982
8. Salary and related items:				
8.1. Salaries	2,259,497	3,001,861	60,109	5,321,467
8.2. Payroll taxes	160,523	231,088	3,341	394,953
9. Employee relations and welfare	326,304	404,338	7,114	737,756
10. Insurance	41,892	50,094	947	92,933
11. Directors' fees	16,455	23,356	569	40,381
12. Travel and travel items	52,321	66,305	2,461	121,087
13. Rent and rent items	87,671	137,550		225,220
14. Equipment	59,875	95,959		155,834
15. Cost or depreciation of EDP equipment and software	96,946	142,842		239,788
16. Printing and stationery	8,609	23,683	364	32,656
17. Postage, telephone and telegraph, exchange and express	84,884	303,800	37,541	426,225
18. Legal and auditing	13,506	35,285	5,259	54,049
19. Totals (Lines 3 to 18)	3,260,056	5,356,594	117,704	8,734,354
20. Taxes, licenses and fees:				
20.1. State and local insurance taxes deducting guaranty association credits of \$	—	1,045,105		1,045,105
20.2. Insurance department licenses and fees	—	246,306		246,306
20.3. Gross guaranty association assessments	—	5,753		5,753
20.4. All other (excluding federal and foreign income and real estate)	—	10,614		10,614
20.5. Total taxes, licenses and fees (20.1+20.2+20.3+20.4)	—	1,307,777		1,307,777
21. Real estate expenses	—	—	—	—
22. Real estate taxes	—	—	—	—
23. Reimbursements by uninsured plans	—	—	—	—
24. Aggregate write-ins for miscellaneous expenses	784,111	2,335,400	299,025	3,418,536
25. Total expenses incurred	5,860,662	17,424,053	416,728	(a) 23,701,443
26. Less unpaid expenses—current year	5,837,726	2,584,924	(2,576)	8,420,074
27. Add unpaid expenses—prior year	5,700,421	3,071,609	2,600	8,774,630
28. Amounts receivable relating to uninsured plans, prior year				
29. Amounts receivable relating to uninsured plans, current year				
30. TOTAL EXPENSES PAID (Lines 25 - 26 + 27 - 28 + 29)	5,723,356	17,910,739	421,904	24,055,999
<b>Details of Write-Ins</b>				
2401. Software Expense	568,680	850,263	109,544	1,528,487
2402. Miscellaneous Expense	179,094	1,434,331	26,266	1,639,691
2403. Deferred Compensation	36,338	50,807	(43)	87,101
2498. Summary of remaining write-ins for Line 24 from overflow page			163,258	163,258
2499. Totals (Lines 2401 through 2403 plus 2498) (Line 24 above)	784,111	2,335,400	299,025	3,418,536

(a) Includes management fees of \$ to affiliates and \$ to non-affiliates.

**EXHIBIT OF NET INVESTMENT INCOME**

	1		2	
	Collected During Year		Earned During Year	
1. U.S. Government bonds	(a)	160,794		176,520
1.1. Bonds exempt from U.S. tax	(a)	299,165		303,887
1.2. Other bonds (unaffiliated)	(a)	1,673,518		1,606,423
1.3. Bonds of affiliates	(a)			
2.1. Preferred stocks (unaffiliated)	(b)			
2.11. Preferred stocks of affiliates	(b)			
2.2. Common stocks (unaffiliated)				
2.21. Common stocks of affiliates				
3. Mortgage loans	(c)			
4. Real estate	(d)			
5. Contract loans				
6. Cash, cash equivalents and short-term investments	(e)	45,543		60,587
7. Derivative instruments	(f)			
8. Other invested assets				
9. Aggregate write-ins for investment income				
10. Total gross investment income		2,179,020		2,147,417
11. Investment expenses			(g)	416,728
12. Investment taxes, licenses and fees, excluding federal income taxes			(g)	
13. Interest expense			(h)	
14. Depreciation on real estate and other invested assets			(i)	
15. Aggregate write-ins for deductions from investment income				
16. Total deductions (Lines 11 through 15)				416,728
17. Net investment income (Line 10 minus Line 16)				1,730,689
<b>Details of Write-Ins</b>				
0901.				
0902.				
0903.				
0998. Summary of remaining write-ins for Line 09 from overflow page				
0999. Totals (Lines 0901 through 0903 plus 0998) (Line 09 above)				
1501.				
1502.				
1503.				
1598. Summary of remaining write-ins for Line 15 from overflow page				
1599. Totals (Lines 1501 through 1503 plus 1598) (Line 15 above)				

- (a) Includes \$46,187 accrual of discount less \$652,496 amortization of premium and less \$47,877 paid for accrued interest on purchases.
- (b) Includes \$ accrual of discount less \$ amortization of premium and less \$ paid for accrued dividends on purchases.
- (c) Includes \$ accrual of discount less \$ amortization of premium and less \$ paid for accrued interest on purchases.
- (d) Includes \$ for company's occupancy of its own buildings; and excludes \$ interest on encumbrances.
- (e) Includes \$ accrual of discount less \$ amortization of premium and less \$— paid for accrued interest on purchases.
- (f) Includes \$ accrual of discount less \$ amortization of premium.
- (g) Includes \$ investment expenses and \$ investment taxes, licenses and fees, excluding federal income taxes, attributable to segregated and Separate Accounts.
- (h) Includes \$ interest on surplus notes and \$ interest on capital notes.
- (i) Includes \$ depreciation on real estate and \$ depreciation on other invested assets.

**EXHIBIT OF CAPITAL GAINS (LOSSES)**

	1	2	3	4	5
	Realized Gain (Loss) On Sales or Maturity	Other Realized Adjustments	Total Realized Capital Gain (Loss) (Columns 1 + 2)	Change in Unrealized Capital Gain (Loss)	Change in Unrealized Foreign Exchange Capital Gain (Loss)
1. U.S. Government bonds	(6,309)		(6,309)		
1.1. Bonds exempt from U.S. tax					
1.2. Other bonds (unaffiliated)	(793,620)		(793,620)		
1.3. Bonds of affiliates					
2.1. Preferred stocks (unaffiliated)					
2.11. Preferred stocks of affiliates					
2.2. Common stocks (unaffiliated)					
2.21. Common stocks of affiliates				338,308	
3. Mortgage loans					
4. Real estate					
5. Contract loans					
6. Cash, cash equivalents and short-term investments					
7. Derivative instruments					
8. Other invested assets					
9. Aggregate write-ins for capital gains (losses)					
10. Total capital gains (losses)	(799,929)		(799,929)	338,308	
<b>Details of Write-Ins</b>					
0901.					
0902.					
0903.					
0998. Summary of remaining write-ins for Line 09 from overflow page					
0999. Totals (Lines 0901 through 0903 plus 0998) (Line 09 above)					

**EXHIBIT OF NONADMITTED ASSETS**

	1	2	3
	Current Year Total Nonadmitted Assets	Prior Year Total Nonadmitted Assets	Change in Total Nonadmitted Assets (Col. 2 - Col. 1)
1. Bonds (Schedule D).....			
2. Stocks (Schedule D):			
2.1. Preferred stocks.....			
2.2. Common stocks.....			
3. Mortgage loans on real estate (Schedule B):			
3.1. First liens.....			
3.2. Other than first liens.....			
4. Real estate (Schedule A):			
4.1. Properties occupied by the company.....			
4.2. Properties held for the production of income.....			
4.3. Properties held for sale.....			
5. Cash (Schedule E-Part 1), cash equivalents (Schedule E-Part 2) and short-term investments (Schedule DA).....			
6. Contract loans.....			
7. Derivatives (Schedule DB).....			
8. Other invested assets (Schedule BA).....			
9. Receivables for securities.....			
10. Securities lending reinvested collateral assets (Schedule DL).....			
11. Aggregate write-ins for invested assets.....			
12. Subtotals, cash and invested assets (Lines 1 to 11).....			
13. Title plants (for Title insurers only).....			
14. Investment income due and accrued.....			
15. Premiums and considerations:			
15.1. Uncollected premiums and agents' balances in the course of collection.....	173,622	104,000	(69,622)
15.2. Deferred premiums, agents' balances and installments booked but deferred and not yet due.....			
15.3. Accrued retrospective premiums and contracts subject to redetermination.....			
16. Reinsurance:			
16.1. Amounts recoverable from reinsurers.....			
16.2. Funds held by or deposited with reinsured companies.....			
16.3. Other amounts receivable under reinsurance contracts.....			
17. Amounts receivable relating to uninsured plans.....			
18.1. Current federal and foreign income tax recoverable and interest thereon.....			
18.2. Net deferred tax asset.....	87,335	52,209	(35,126)
19. Guaranty funds receivable or on deposit.....			
20. Electronic data processing equipment and software.....			
21. Furniture and equipment, including health care delivery assets.....			
22. Net adjustment in assets and liabilities due to foreign exchange rates.....			
23. Receivables from parent, subsidiaries and affiliates.....			
24. Health care and other amounts receivable.....			
25. Aggregate write-ins for other-than-invested assets.....			
26. Total assets excluding Separate Accounts, Segregated Accounts and Protected Cell Accounts (Lines 12 to 25).....	260,957	156,209	(104,748)
27. From Separate Accounts, Segregated Accounts and Protected Cell Accounts.....			
28. Total (Lines 26 and 27).....	260,957	156,209	(104,748)
<b>Details of Write-Ins</b>			
1101.....			
1102.....			
1103.....			
1198. Summary of remaining write-ins for Line 11 from overflow page.....			
1199. Totals (Lines 1101 through 1103 plus 1198) (Line 11 above).....			
2501. Prepaid Expenses.....			
2502.....			
2503.....			
2598. Summary of remaining write-ins for Line 25 from overflow page.....			
2599. Totals (Lines 2501 through 2503 plus 2598) (Line 25 above).....			

## Notes to the Financial Statements

### 1. Summary of Significant Accounting Policies and Going Concern

#### A. Accounting Practices

Integrity Insurance Company (the "Company") prepares its statutory financial statements in conformity with accounting practices prescribed or permitted by The Ohio Department of Insurance (the "Department"). The Department requires that insurance companies domiciled in the State of Ohio prepare their statutory basis financial statements in accordance with the National Association of Insurance Commissioners ("NAIC") Accounting Practices and Procedures Manual ("NAIC SAP") subject to any deviations prescribed or permitted by the Department. The Company does not employ accounting practices that depart from the NAIC SAP.

A reconciliation of the Company's net income and surplus between NAIC SAP and practices prescribed and permitted by the State of Ohio is shown below; the reconciliation illustrates that the permitted practice described above has no impact on either net income or surplus:

	SSAP #	F/S Page	F/S Line #	2022	2021
Net Income					
(1) State basis (Page 4, Line 20, Columns 1 & 2)	XXX	XXX	XXX	\$ (8,109,325)	\$ 3,571,564
(2) State prescribed practices that are an increase / (decrease) from NAIC SAP:					
(3) State permitted practices that are an increase / (decrease) from NAIC SAP:					
(4) NAIC SAP (1-2-3=4)	XXX	XXX	XXX	<u>\$ (8,109,325)</u>	<u>\$ 3,571,564</u>
Surplus					
(5) State basis (Page 3, Line 37, Columns 1 & 2)	XXX	XXX	XXX	\$ 64,592,737	\$ 72,643,159
(6) State prescribed practices that are an increase / (decrease) from NAIC SAP:					
(7) State permitted practices that are an increase / (decrease) from NAIC SAP:					
(8) NAIC SAP (5-6-7=8)	XXX	XXX	XXX	<u>\$ 64,592,737</u>	<u>\$ 72,643,159</u>

#### B. Use of Estimates in the Preparation of the Financial Statements

The preparation of financial statements in conformity with NAIC SAP requires management to make estimates and assumptions that affect the reported amounts of assets and liabilities. It also requires disclosure of contingent assets and liabilities at the date of the financial statements and the reported amounts of revenue and expenses during the period. Actual results could differ from those estimates.

#### C. Accounting Policy

Premiums are earned over the terms of the related insurance policies and reinsurance contracts. Unearned premium reserves are established to cover the unexpired portion of premiums written. Such reserves are computed by daily pro rata methods for direct business and are based on reports received from ceding companies for reinsurance.

Expenses incurred in connection with acquiring new insurance business, including such acquisition costs as sales commissions, are charged to operations as incurred. Expenses incurred are reduced for ceding allowances received or receivable.

In addition, the Company uses the following accounting policies:

- (1) Short-term investments are stated at amortized cost, which approximates fair value.
- (2) Bonds not backed by other loans are stated at amortized cost using the scientific method.
- (3) Common stocks - None
- (4) Preferred stocks - None
- (5) Mortgage loans - None
- (6) Loan-backed securities are stated at either amortized cost or the lower or amortized cost or fair market value. The retrospective adjustment method is used to value all securities except for interest only securities or securities where the yield had become negative, those are valued using the prospective method.
- (7) Investments in stocks of subsidiaries and affiliates in which the Company has an interest of 20% or more are carried on the statutory equity basis.
- (8) Investments in joint ventures, partnerships and limited liability companies - None
- (9) Derivatives - None
- (10) The Company does not anticipate investment income as a factor in the premium deficiency calculation, in accordance with SSAP No. 53, Property-Casualty Contracts - Premiums.
- (11) Unpaid losses and loss adjustment expenses include an amount determined from individual case estimates and loss reports and an amount, based on past experience, for losses incurred but not reported. Such liabilities are necessarily based on assumptions and estimates and while management believes the amount is adequate, the ultimate liability may be in excess of or less than the amount provided. The methods for making such estimates and for establishing the resulting liability is continually reviewed and any adjustments are reflected in the period determined.
- (12) Changes in capitalization policy - Not Applicable
- (13) Pharmaceutical rebate receivables - Not Applicable

#### D. Going Concern

Management has evaluated the Company's viability and has no doubt as to the Company's ability to continue as a going concern.

### 2. Accounting Changes and Corrections of Errors - Not Applicable

### 3. Business Combinations and Goodwill - Not Applicable

## Notes to the Financial Statements

### 4. Discontinued Operations - Not Applicable

### 5. Investments

A. Mortgage Loans, including Mezzanine Real Estate Loans - Not Applicable

B. Debt Restructuring - Not Applicable

C. Reverse Mortgages - Not Applicable

D. Loan-Backed Securities

- (1) Prepayment assumptions for single class and multi-class mortgage-backed/asset-backed securities were obtained from Hub Data and Bloomberg. These assumptions are consistent with the current interest rate and economic environment.
- (2) Loan-backed and structured securities with a recognized other-than-temporary impairment (OTTI) - Not Applicable
- (3) Securities held that were other-than-temporarily impaired due to the present value of cash flows expected to be collected was less than the amortized cost of securities - Not Applicable
- (4) All impaired securities for which an OTTI has not been recognized in earnings as a realized loss

a. The aggregate amount of unrealized losses:

1. Less than 12 months..... \$..... (813,584)
2. 12 months or longer..... (1,647,048)

b. The aggregate related fair value of securities with unrealized losses:

1. Less than 12 months..... \$..... 13,167,889
2. 12 months or longer..... 8,246,738

- (5) According to SSAP 43R, the best estimate of future cash flows using the appropriate discount rate was calculated for each affected security, with other-than-temporary impairments realized to the extent that present value was less than amortized cost. Securities held with an intent to sell were other-than-temporarily impaired to current fair value. Securities with a present value greater than amortized cost were not other-than-temporarily impaired.

E. Dollar Repurchase Agreements and/or Securities Lending Transactions - Not Applicable

F. Repurchase Agreements Transactions Accounted for as Secured Borrowing - Not Applicable

G. Reverse Repurchase Agreements Transactions Accounted for as Secured Borrowing - Not Applicable

H. Repurchase Agreements Transactions Accounted for as a Sale - Not Applicable

I. Reverse Repurchase Agreements Transactions Accounted for as a Sale - Not Applicable

J. Real Estate

- (1) Impairment loss - None
- (2) In September 2021, the Company sold its home office for proceeds of \$4.2 million and realized a gain of \$3.2 million on a book value of \$1.0 million.
- (3) Changes to a plan of sale for an investment in real estate - Not Applicable
- (4) Retail land sales operations - Not Applicable
- (5) Participating mortgage loan features - Not Applicable

K. Low-Income Housing Tax Credits (LIHTC) - Not Applicable

**Notes to the Financial Statements**

**5. Investments (Continued)**

L. Restricted Assets

(1) Restricted assets (including pledged)

Restricted Asset Category	Gross (Admitted & Nonadmitted) Restricted							Current Year			
	Current Year							Current Year			
	(1)	(2)	(3)	(4)	(5)	(6)	(7)	(8)	(9)	(10)	(11)
	Total General Account (G/A)	G/A Supporting Protected Cell Account Activity	Total Protected Cell Account Restricted Assets	Protected Cell Account Supporting G/A Activity	Total (1 + 3)	Total From Prior Year	Increase / (Decrease) (5 - 6)	Total Nonadmitted Restricted	Total Admitted Restricted (5-8)	Gross (Admitted & Nonadmitted) Restricted to Total Assets, %	Admitted Restricted to Total Admitted Assets, %
a. Subject to contractual obligation for which liability is not shown	\$	\$	\$	\$	\$	\$	\$	\$	\$	%	%
b. Collateral held under security lending agreements											
c. Subject to repurchase agreements											
d. Subject to reverse repurchase agreements											
e. Subject to dollar repurchase agreements											
f. Subject to dollar reverse repurchase agreements											
g. Placed under option contracts											
h. Letter stock or securities restricted as to sale - excluding FHLB capital stock											
i. FHLB capital stock											
j. On deposit with states	1,504,256				1,504,256	1,530,530	(26,274)		1,504,256	1.111	1.113
k. On deposit with other regulatory bodies											
l. Pledged as collateral to FHLB (including assets backing funding agreements)											
m. Pledged as collateral not captured in other categories											
n. Other restricted assets											
o. Total restricted assets (Sum of a through n)	\$ 1,504,256	\$	\$	\$	\$ 1,504,256	\$ 1,530,530	\$ (26,274)	\$	\$ 1,504,256	1.111 %	1.113 %

- (2) Detail of assets pledged as collateral not captured in other categories (contracts that share similar characteristics, such as reinsurance and derivatives, are reported in the aggregate) - Not Applicable
- (3) Detail of other restricted assets (contracts that share similar characteristics, such as reinsurance and derivatives, are reported in the aggregate) - Not Applicable
- (4) Collateral received and reflected as assets within the reporting entity's financial statements - Not Applicable

- M. Working Capital Finance Investments - Not Applicable
- N. Offsetting and Netting of Assets and Liabilities - Not Applicable
- O. 5GI Securities - Not Applicable
- P. Short Sales - Not Applicable
- Q. Prepayment Penalty and Acceleration Fees

	General Account	Protected Cell
(1) Number of CUSIPs	3	
(2) Aggregate amount of investment income	\$ 2,337	\$

R. Reporting Entity's Share of Cash Pool by Asset type - Not Applicable

- 6. Joint Ventures, Partnerships and Limited Liability Companies - Not Applicable
- 7. Investment Income - Not Applicable
- 8. Derivative Instruments - Not Applicable

## Notes to the Financial Statements

## 9. Income Taxes

## A. Components of the Net Deferred Tax Asset/(Liability)

## (1) Change between years by tax character

	2022			2021			Change		
	(1)	(2)	(3)	(4)	(5)	(6)	(7)	(8)	(9)
	Ordinary	Capital	Total (Col 1+2)	Ordinary	Capital	Total (Col 4+5)	Ordinary (Col 1-4)	Capital (Col 2-5)	Total (Col 7+8)
(a) Gross deferred tax assets	\$ 1,625,368	\$ 296	\$ 1,625,664	\$ 1,802,650	\$ 303	\$ 1,802,953	\$ (177,282)	\$ (7)	\$ (177,289)
(b) Statutory valuation allowance adjustments	-	-	-	-	-	-	-	-	-
(c) Adjusted gross deferred tax assets (1a - 1b)	1,625,368	296	1,625,664	1,802,650	303	1,802,953	(177,282)	(7)	(177,289)
(d) Deferred tax assets nonadmitted	87,039	296	87,335	51,906	303	52,209	35,133	(7)	35,126
(e) Subtotal net admitted deferred tax asset (1c - 1d)	\$ 1,538,329	\$ -	\$ 1,538,329	\$ 1,750,744	\$ -	\$ 1,750,744	\$ (212,415)	\$ -	\$ (212,415)
(f) Deferred tax liabilities	75,067	-	75,067	88,862	-	88,862	(13,795)	-	(13,795)
(g) Net admitted deferred tax asset/(net deferred tax liability) (1e - 1f)	\$ 1,463,262	\$ -	\$ 1,463,262	\$ 1,661,882	\$ -	\$ 1,661,882	\$ (198,620)	\$ -	\$ (198,620)

## (2) Admission calculation components SSAP No. 101

	2022			2021			Change		
	(1)	(2)	(3)	(4)	(5)	(6)	(7)	(8)	(9)
	Ordinary	Capital	Total (Col 1+2)	Ordinary	Capital	Total (Col 4+5)	Ordinary (Col 1-4)	Capital (Col 2-5)	Total (Col 7+8)
(a) Federal income taxes paid in prior years recoverable through loss carrybacks	\$ -	\$ -	\$ -	\$ 1,571,383	\$ -	\$ 1,571,383	\$ (1,571,383)	\$ -	\$ (1,571,383)
(b) Adjusted gross deferred tax assets expected to be realized (excluding the amount of deferred tax assets from 2(a) above) after application of the threshold limitation (lesser of 2(b)1 and 2(b)2 below)	1,463,262	-	1,463,262	90,498	-	90,498	1,372,764	-	1,372,764
1. Adjusted gross deferred tax assets expected to be realized following the balance sheet date	1,463,262	-	1,463,262	90,498	-	90,498	1,372,764	-	1,372,764
2. Adjusted gross deferred tax assets allowed per limitation threshold	XXX	XXX	9,499,464	XXX	XXX	10,627,144	XXX	XXX	(1,127,680)
(c) Adjusted gross deferred tax assets (excluding the amount of deferred tax assets from 2(a) and 2(b) above) offset by gross deferred tax liabilities	75,067	-	75,067	88,862	-	88,862	(13,795)	-	(13,795)
(d) Deferred tax assets admitted as the result of application of SSAP No. 101									
Total (2(a) + 2(b) + 2(c))	\$ 1,538,329	\$ -	\$ 1,538,329	\$ 1,750,743	\$ -	\$ 1,750,743	\$ (212,414)	\$ -	\$ (212,414)

## (3) Ratio used as basis of admissibility

	2022	2021
(a) Ratio percentage used to determine recovery period and threshold limitation amount	1,359.010 %	2,020.803 %
(b) Amount of adjusted capital and surplus used to determine recovery period and threshold limitation in 2(b)2 above	\$ 63,129,475	\$ 70,981,278

## (4) Impact of tax-planning strategies

## (a) Determination of adjusted gross deferred tax assets and net admitted deferred tax assets, by tax character as a percentage

	2022		2021		Change	
	(1)	(2)	(3)	(4)	(5)	(6)
	Ordinary	Capital	Ordinary	Capital	Ordinary (Col. 1-3)	Capital (Col. 2-4)
1. Adjusted gross DTAs amount from Note 9A1(c)	\$ 1,625,368	\$ 296	\$ 1,802,650	\$ 303	\$ (177,282)	\$ (7)
2. Percentage of adjusted gross DTAs by tax character attributable to the impact of tax planning strategies	%	%	%	%	%	%
3. Net admitted adjusted gross DTAs amount from Note 9A1(e)	\$ 1,538,329	\$ -	\$ 1,750,744	\$ -	\$ (212,415)	\$ -
4. Percentage of net admitted adjusted gross DTAs by tax character admitted because of the impact of tax planning strategies	%	%	%	%	%	%

## (b) Use of reinsurance-related tax-planning strategies

Does the company's tax-planning strategies include the use of reinsurance? NO

## B. Regarding Deferred Tax Liabilities That Are Not Recognized - Not Applicable

## Notes to the Financial Statements

## 9. Income Taxes (Continued)

## C. Major Components of Current Income Taxes Incurred

	(1) 2022	(2) 2021	(3) Change (1-2)
Current income taxes incurred consist of the following major components:			
1. Current Income Tax			
(a) Federal	\$ (2,233,414)	\$ 265,256	\$ (2,498,670)
(b) Foreign	-	-	-
(c) Subtotal (1a+1b)	\$ (2,233,414)	\$ 265,256	\$ (2,498,670)
(d) Federal income tax on net capital gains	(161,587)	518,124	(679,711)
(e) Utilization of capital loss carry-forwards	-	-	-
(f) Other	(29,492)	24,458	(53,950)
(g) Federal and foreign income taxes incurred (1c+1d+1e+1f)	\$ (2,424,493)	\$ 807,838	\$ (3,232,331)
	(1) 2022	(2) 2021	(3) Change (1-2)
2. Deferred Tax Assets			
(a) Ordinary			
(1) Discounting of unpaid losses	\$ 452,654	\$ 378,429	\$ 74,225
(2) Unearned premium reserve	1,110,825	1,044,021	66,804
(3) Policyholder reserves	-	-	-
(4) Investments	22,654	18,404	4,250
(5) Deferred acquisition costs	-	-	-
(6) Policyholder dividends accrual	-	-	-
(7) Fixed assets	-	-	-
(8) Compensation and benefits accrual	-	230,756	(230,756)
(9) Pension accrual	-	-	-
(10) Receivables - nonadmitted	39,235	21,840	17,395
(11) Net operating loss carry-forward	-	-	-
(12) Tax credit carry-forward	-	-	-
(13) Other	-	109,200	(109,200)
(99) Subtotal (sum of 2a1 through 2a13)	\$ 1,625,368	\$ 1,802,650	\$ (177,282)
(b) Statutory valuation allowance adjustment	-	-	-
(c) Nonadmitted	87,039	51,906	35,133
(d) Admitted ordinary deferred tax assets (2a99 - 2b - 2c)	\$ 1,538,329	\$ 1,750,744	\$ (212,415)
(e) Capital			
(1) Investments	\$ 296	\$ 303	\$ (7)
(2) Net capital loss carry-forward	-	-	-
(3) Real estate	-	-	-
(4) Other	-	-	-
(99) Subtotal (2e1+2e2+2e3+2e4)	\$ 296	\$ 303	\$ (7)
(f) Statutory valuation allowance adjustment	-	-	-
(g) Nonadmitted	296	303	(7)
(h) Admitted capital deferred tax assets (2e99 - 2f - 2g)	-	-	-
(i) Admitted deferred tax assets (2d + 2h)	\$ 1,538,329	\$ 1,750,744	\$ (212,415)
	(1) 2022	(2) 2021	(3) Change (1-2)
3. Deferred Tax Liabilities			
(a) Ordinary			
(1) Investments	\$ -	\$ -	\$ -
(2) Fixed assets	-	-	-
(3) Deferred and uncollected premium	16,299	9,061	7,238
(4) Policyholder reserves	13,307	11,610	1,697
(5) Other	45,461	68,191	(22,730)
(99) Subtotal (3a1+3a2+3a3+3a4+3a5)	\$ 75,067	\$ 88,862	\$ (13,795)
(b) Capital			
(1) Investments	\$ -	\$ -	\$ -
(2) Real estate	-	-	-
(3) Other	-	-	-
(99) Subtotal (3b1+3b2+3b3)	\$ -	\$ -	\$ -
(c) Deferred tax liabilities (3a99 + 3b99)	\$ 75,067	\$ 88,862	\$ (13,795)
4. Net deferred tax assets/liabilities (2i - 3c)	\$ 1,463,262	\$ 1,661,882	\$ (198,620)

## Notes to the Financial Statements

### 9. Income Taxes (Continued)

#### D. Among the More Significant Book to Tax Adjustments

The Company's provision for income tax incurred is different from that which would be obtained by applying the statutory federal income tax rate to income before taxes. The significant items causing this difference as of the end of the reporting period are as follows:

	2022	Effective Tax Rate
Income before taxes	\$ (2,212,102)	21.000 %
Tax-exempt interest	(60,253)	0.572
Dividends received deduction	—	—
Proration	15,063	-0.143
Meals & entertainment, lobbying expense, etc.	15,392	-0.146
Pension (pre-paid & underfunded PBO)	—	—
Change in nonadmit	(17,395)	0.165
Realized (gain) on donation of securities	—	—
Rate change	—	—
Other, including prior year true-ups	(1,705)	0.016
<b>Total</b>	<b>\$ (2,261,000)</b>	<b>21.464 %</b>

	2022	Effective Tax Rate
Federal and foreign income tax incurred expense/(benefit)	\$ (2,262,906)	21.482 %
Tax on realized gains/(losses)	(161,587)	1.534
Change in net deferred income tax change/(benefit)	163,493	-1.552
<b>Total statutory income taxes</b>	<b>\$ (2,261,000)</b>	<b>21.464 %</b>

#### E. Operating Loss and Tax Credit Carryforwards

- (1) Unused loss carryforwards available - Not Applicable
- (2) Income tax expense available for recoupment - None
- (3) Deposits admitted under IRS Code Section 6603 - Not Applicable

#### F. Consolidated Federal Income Tax Return

- (1) The Company's federal income tax return is consolidated through Grange Mutual Holding Company (GMHC), see Note 10A for additional information on the corporate structure.
- (2) The method of allocation among companies is subject to a written agreement, approved by the Board of Directors, whereby allocation is made based upon the subsidiary's portion of the consolidated tax liability.

#### G. Federal or Foreign Income Tax Loss Contingencies - Not Applicable

#### H. Repatriation Transition Tax (RTT) - Not Applicable

#### I. Alternative Minimum Tax (AMT) Credit - Not Applicable

### 10. Information Concerning Parent, Subsidiaries, Affiliates and Other Related Parties

#### A.

1. The Company and its affiliate, Grange Insurance Company ("GIC"), are stock companies 100% owned by Grange Holdings, Inc. ("GHI"), which is 100% owned by Grange Mutual Holding Company.
2. The Company owns 100% of the common stock of Integrity Property & Casualty Insurance Company ("IPC") and Integrity Select Insurance Company ("ISIC"). The Company, domiciled in the state of Ohio, is a member of the Grange Insurance Operations.
3. The Company is affiliated with GIC, which has four 100% wholly owned subsidiaries, Grange Indemnity Insurance Company, Grange Insurance Company of Michigan, Grange Property & Casualty Insurance Company and Trustgard Insurance Company. The companies, domiciled in Ohio, are members of the Grange Insurance Operations.

#### B. See Note 10D and 10E.

#### C. Transactions With Related Party Who Are Not Reported on Schedule Y - Not Applicable

#### D. As of the end of the period, the Company reported \$5.2 million as amounts due from its affiliate (GIC). This balance relates to reinsurance recoverables which are settled between the affiliates and subsidiaries and GIC prior to the end of the period, but before cash is received. The terms of the settlement require that these amounts be settled within the subsequent quarter. Other expenses and net intercompany balances with IIC are reimbursed quarterly. See Note 10E for additional information.

#### E. GIC maintains a service agreement with the Company, whereby GIC provides services to the Company and makes available all services necessary to support their business operations. These services include all necessary financial, actuarial, audit, accounting, tax, information technology, records management and legal and compliance services, other than those provided by third-party service providers.

#### F. Guarantees or Contingencies - Not Applicable

#### G. The Company participates in a pooling reinsurance agreement detailed in Note 26.

#### H. Amount Deducted for Investment in Upstream Company - Not Applicable

#### I. Detail of Investments in Affiliates Greater Than 10% of Admitted Assets - Not Applicable

#### J. Write-Down for Impairments of Investments in Subsidiary Controlled or Affiliated Companies - Not Applicable

## Notes to the Financial Statements

### 10. Information Concerning Parent, Subsidiaries, Affiliates and Other Related Parties (Continued)

- K. Foreign Subsidiary Value Using CARVM - Not Applicable
- L. Downstream Holding Company Value Using Look-Through Method - Not Applicable
- M. All SCA Investments - Not Applicable
- N. Investment in Insurance SCAs - Not Applicable
- O. SCA and SSAP No. 48 Entity Loss Tracking - Not Applicable

### 11. Debt - Not Applicable

### 12. Retirement Plans, Deferred Compensation, Postemployment Benefits and Compensated Absences and Other Postretirement Benefit Plans

- A. Defined Benefit Plan - Not Applicable
- B. Investment Policies and Strategies of Plan Assets - Not Applicable
- C. Fair Value of Each Class of Plan Assets - Not Applicable
- D. Expected Long-Term Rate of Return for the Plan Assets - Not Applicable
- E. Defined Contribution Plans

Effective January 1, 2021, the sponsorship of the Company's defined contribution plan that covered substantially all employees of the Company moved from the Company to GHI and subsequently merged with the GIC defined contribution plan ("GHI DC Plan"). Also at that time, all employees of the Company became employees of GIC. The GHI DC Plan covers all full-time employees of GIC, in which newly hired employees who have not made an election whether to participate or not are automatically enrolled at a 6% of base pay contribution rate following thirty days of employment. Matching contributions consist of a 100% match on each participant's contributions up to 6% of base pay for employees who are not eligible to participate in the pension plan sponsored by GHI ("Plan"), or a 50% match on each participant's contributions up to 6% of base pay for employees who are eligible to participate in the Plan. The GHI DC Plan provides that additional employer contributions (as defined) may be made in such amounts as determined by the Board. Contributions to the GHI DC Plan are distributed via pooling agreement, see Note 26; IIC portion of the contributions was \$0.2 million and \$0.1 million as of December 31, 2022 and 2021, respectively.

- F. Multiemployer Plans - Not Applicable
- G. Consolidated/Holding Company Plans

All employees are employed by GIC and participate, when eligible, in the pension and other benefit plans of GHI and GIC.

The qualified defined benefit pension plan ("Plan") is sponsored by GHI and is currently fully funded, with no contributions in 2022. As a result, all costs associated with this plan are held at GHI. If the Plan is underfunded in future periods and contributions into the Plan are required, the cost of those future contributions will be allocated via the pooling agreement.

- H. Postemployment Benefits and Compensated Absences

Accruals are distributed via pooling agreement, see Note 26; IIC portion of the accrual was \$0.1 million as of both December 31, 2022 and 2021.

- I. Impact of Medicare Modernization Act on Postretirement Benefits (INT 04-17) - Not Applicable

### 13. Capital and Surplus, Dividend Restrictions and Quasi-Reorganizations

- A. The Company has 2,000 shares authorized, issued and outstanding. All shares are Class A shares.
- B. Dividend Rate of Preferred Stock - Not Applicable
- C. Dividend Restrictions: The Company does not pay dividends to its stockholder (GHI), but it pays dividends on certain workers' compensation policies. The maximum, total dividend which can be paid to policyholders without prior approval of the Department of Insurance of Wisconsin, is subject to restrictions relating to compulsory surplus. Actual surplus as of the end of the period was \$64.5 million, which was in excess of compulsory surplus by \$47.7 million. Total dividends incurred, on a direct basis, were \$6.5 million in 2022.
- D. Ordinary Dividends - Not Applicable
- E. Company Profits Paid as Ordinary Dividends - Not Applicable
- F. Surplus Restrictions - Not Applicable
- G. Surplus Advances - Not Applicable
- H. Stock Held for Special Purposes - Not Applicable
- I. Changes in Special Surplus Funds - Not Applicable
- J. Unassigned Funds (Surplus)
 

The portion of unassigned funds (surplus) represented or reduced by gross cumulative unrealized gains and losses is \$10.2 million.
- K. Company-Issued Surplus Debentures or Similar Obligations - Not Applicable
- L. Impact of Any Restatement Due to Prior Quasi-Reorganizations - Not Applicable
- M. Effective Date(s) of Quasi-Reorganizations in the Prior 10 Years - Not Applicable

### 14. Liabilities, Contingencies and Assessments

- A. Contingent Commitments - Not Applicable

## Notes to the Financial Statements

### 14. Liabilities, Contingencies and Assessments (Continued)

#### B. Assessments

- (1) In the ordinary course of business, the Company receives notification of potential assessments as a result of the insolvency of insurance companies. It is expected that the insolvencies will result in a retrospective-based guaranty fund assessment against the Company. As of the end of the period, the Company has no recorded liability for these guaranty fund assessments. The Company believes there are no insolvencies that will have a material financial impact on the results of the Company. This amount includes assessments against all companies discussed in Note 1C.
- (2) Assets (Liabilities) recognized from paid and accrued premium tax offsets and policy surcharges - Not Applicable
- (3) Guaranty fund liabilities and assets related to long-term care insolvencies - Not Applicable

#### C. Gain Contingencies - Not Applicable

#### D. Claims Related Extra Contractual Obligation and Bad Faith Losses Stemming from Lawsuits - Not Applicable

#### E. Product Warranties - Not Applicable

#### F. Joint and Several Liabilities - Not Applicable

#### G. All Other Contingencies

Various lawsuits against the Company have arisen in the course of business. Contingent liabilities arising from litigation, income taxes and other matters are not considered material in relation to the financial position of the Company.

### 15. Leases - Not Applicable

### 16. Information About Financial Instruments With Off-Balance-Sheet Risk And Financial Instruments With Concentrations of Credit Risk - Not Applicable

### 17. Sale, Transfer and Servicing of Financial Assets and Extinguishments of Liabilities - Not Applicable

### 18. Gain or Loss to the Reporting Entity from Uninsured Plans and the Uninsured Portion of Partially Insured Plans - Not Applicable

### 19. Direct Premium Written/Produced by Managing General Agents/Third Party Administrators - Not Applicable

### 20. Fair Value Measurements

#### A. Fair Value Measurement

- (1) Fair value measurements at reporting date

The Company has categorized its investments that are measured at fair value into the three-level hierarchy or investments reported at net asset value ("NAV") as of the end of the period:

Description for each class of asset or liability	Level 1	Level 2	Level 3	Net Asset Value (NAV)	Total
<b>a. Assets at fair value</b>					
Bonds.....	\$ -	\$ -	\$ -	\$ -	\$ -
Common stock - Parent, subs, affiliate .....	-	-	21,177,051	-	21,177,051
<b>Total assets at fair value/NAV.....</b>	<b>\$ -</b>	<b>\$ -</b>	<b>\$ 21,177,051</b>	<b>\$ -</b>	<b>\$ 21,177,051</b>
<b>b. Liabilities at fair value</b>					
<b>Total liabilities at fair value.....</b>	<b>\$ -</b>	<b>\$ -</b>	<b>\$ -</b>	<b>\$ -</b>	<b>\$ -</b>

- (2) Fair value measurements in Level 3 of the fair value hierarchy

Description	Beginning balance as of 01/01/2022	Transfers Into Level 3	Transfers Out of Level 3	Total Gains and (Losses) Included in Net Income	Total Gains and (Losses) Included in Surplus	Purchases	Issuances	Sales	Settlements	Ending Balance at 12/31/2022
<b>a. Assets</b>										
Common stock-Parent, subs, affiliate.....	\$ 20,838,746	\$ -	\$ -	\$ -	\$ 338,305	\$ -	\$ -	\$ -	\$ -	\$ 21,177,051
<b>Total assets.....</b>	<b>\$ 20,838,746</b>	<b>\$ -</b>	<b>\$ -</b>	<b>\$ -</b>	<b>\$ 338,305</b>	<b>\$ -</b>	<b>\$ -</b>	<b>\$ -</b>	<b>\$ -</b>	<b>\$ 21,177,051</b>
<b>b. Liabilities</b>										
<b>Total liabilities.....</b>	<b>\$ -</b>	<b>\$ -</b>	<b>\$ -</b>	<b>\$ -</b>	<b>\$ -</b>	<b>\$ -</b>	<b>\$ -</b>	<b>\$ -</b>	<b>\$ -</b>	<b>\$ -</b>

- (3) The Company's policy is to recognize transfers in and out as of the end of the reporting period.
- (4) As of the end of the period, the reported fair value of the entity's investments categorized within Level 2 and Level 3 of the fair value hierarchy are as follows:

**Bonds** – According to statutory accounting rules, fixed-income securities with a rating of NAIC 1 or 2 are reported at amortized cost. Securities with a rating of NAIC 3 thru 6, or non-investment grade ratings, are measured and reported at the lower of amortized cost or fair value on the statement of financial position. At the end of every quarter and at year end, the Company utilizes fair values provided by its custodian. Fair value is determined by evaluations that are based on observable market information rather than market quotes. Inputs to the evaluations include, but are not limited to, market prices from recently completed transactions and transactions of comparable securities, credit spreads, interest rate yield curves, and other market-observable information. Thus, any fixed-income securities measured and reported at fair value are included in the amounts disclosed above as Level 2 of the hierarchy.

**Parent, Subsidiaries, and Affiliates** – The Company's investments in two subsidiaries are measured and reported at fair value as of the end of the period, for each respective entity totaling \$21.2 million. Fair value measurement is determined by the individual entity's surplus at the end of a period, or the amount by which assets exceed liabilities. All subsidiaries are in the insurance industry, whereby its assets are largely comprised of fixed income securities carried at amortized cost and its liabilities represent payables related to current federal income taxes and deferred taxes. Some inputs to the valuation methodology are unobservable and significant to the fair value measurement and result in disclosure at Level 3.

- (5) Derivatives - Not Applicable

## Notes to the Financial Statements

### 20. Fair Value Measurements (Continued)

B. Other Fair Value Disclosures - Not Applicable

C. Fair Values for All Financial Instruments by Level 1, 2 and 3

Type of Financial Instrument	Aggregate Fair Value	Admitted Assets	Level 1	Level 2	Level 3	Net Asset Value (NAV)	Not Practicable (Carrying Value)
Bonds	\$ 79,313,872	\$ 87,952,088	\$ -	\$ 79,313,872	\$ -	\$ -	\$ -
Common stock	21,177,051	21,177,051	-	-	21,177,051	-	-
Money market	1,861,128	1,861,128	1,861,128	-	-	-	-

D. Not Practicable to Estimate Fair Value - Not Applicable

E. Nature and Risk of Investments Reported at NAV - Not Applicable

### 21. Other Items

A. Unusual or Infrequent Items

As of December 31, 2022, the Company has no reserve remaining of the \$0.5 million reserve established as of December 31, 2021 for any non-pay cancels that lagged into 2022 in response to issues associated with the transition to a new billing system in 2021 (Page 2, Line 15.1 and Page 4, Line 12 in 2022 and 2021).

B. Troubled Debt Restructuring - Not Applicable

C. Other Disclosures

#### Catastrophic Planning:

The Company utilizes a variety of catastrophe mitigation techniques including exposure management, catastrophe modeling, transfer of risk via reinsurance and claims staff preparation. Exposure management includes active management of exposures and loss potentials such as monitoring of changes in insured values, peril avoidance, pricing actions and/or agency realignments. The Company primarily relies on two probabilistic catastrophe models to identify PML and TVaR estimates on an annual basis. A deterministic model augments this effort. The Company has a comprehensive catastrophic reinsurance program in place and we currently purchase coverage up to our 250-year event outcome. The Company places an emphasis on settlement of claims by Company personnel and these associates receive ongoing training on property claims practices.

D. Business Interruption Insurance Recoveries - Not Applicable

E. State Transferable and Non-Transferable Tax Credits - Not Applicable

F. Subprime-Mortgage-Related Risk Exposure - Not Applicable

G. Insurance-Linked Securities (ILS) Contracts - Not Applicable

H. The Amount That Could Be Realized on Life Insurance Where the Reporting Entity is Owner and Beneficiary or Has Otherwise Obtained Rights to Control the Policy - Not Applicable

### 22. Events Subsequent

There have been no events after the period's end, but before the filing of this statement, which have a material effect upon the financial condition of the Company.

### 23. Reinsurance

A. Unsecured Reinsurance Recoverables

The Company has an unsecured aggregate recoverable for losses paid and unpaid including IBNR, loss adjustment expenses and unearned premium that exceeds 3% of surplus in the current year from the following:

#### Individual Reinsurers with Unsecured Reinsurance Recoverables Exceeding 3% of Policyholder Surplus

##### Individual Reinsurers Who Are Not Members of a Group

FEIN	Reinsurer Name	Unsecured Amount
43-0727872	SAFETY NATL CAS CORP	\$ 2,089,036
13-2673100	GENERAL REINS CORP	27,997,595
13-4924125	MUNICH REINS AMER INC	4,312,455
52-1952955	RENAISSANCE REINS US INC	2,206,219
13-1675535	SWISS REINS AMER CORP	5,091,483

B. Reinsurance Recoverable in Dispute - Not Applicable

C. Reinsurance Assumed and Ceded

(1) Maximum amount of return commission that would have been due reinsurers if all of the company's reinsurance was canceled or if the company's insurance assumed was canceled

	Assumed Reinsurance		Ceded Reinsurance		Net	
	Premium Reserve	Commission Equity	Premium Reserve	Commission Equity	Premium Reserve	Commission Equity
a. Affiliates	\$ 26,017,294	\$ 4,683,113	\$ 58,462,348	\$ 10,523,223	\$ (32,445,054)	\$ (5,840,110)
b. All other	151,896	27,341	2,114,121	380,542	(1,962,225)	(353,201)
c. Total (a+b)	\$ 26,169,190	\$ 4,710,454	\$ 60,576,469	\$ 10,903,765	\$ (34,407,279)	\$ (6,193,311)
d. Direct unearned premium reserve			\$ 60,424,572			

## Notes to the Financial Statements

### 23. Reinsurance (Continued)

- (2) The additional or return commission, predicated on loss experience or on any other form of profit sharing arrangements in this statement as a result of existing contractual arrangements is accrued as follows:

#### Reinsurance

	Direct	Assumed	Ceded	Net
a. Contingent commission	\$ 1,007,020	\$ 695,302	\$ 1,007,020	\$ 695,302
b. Sliding scale adjustments				
c. Other profit commission arrangements				
d. Total (a+b+c)	<u>\$ 1,007,020</u>	<u>\$ 695,302</u>	<u>\$ 1,007,020</u>	<u>\$ 695,302</u>

- (3) Risks attributed to each of the company's protected cells - Not Applicable

- D. Uncollectible Reinsurance - Not Applicable  
 E. Commutation of Ceded Reinsurance - Not Applicable  
 F. Retroactive Reinsurance - Not Applicable  
 G. Reinsurance Accounted for as a Deposit - Not Applicable  
 H. Disclosures for the Transfer of Property and Casualty Run-Off Agreements - Not Applicable  
 I. Certified Reinsurer Rating Downgraded or Status Subject to Revocation - Not Applicable  
 J. Reinsurance Agreements Qualifying for Reinsurer Aggregation - Not Applicable  
 K. Reinsurance Credit - Not Applicable

### 24. Retrospectively Rated Contracts & Contracts Subject to Redetermination

- A. Method Used to Estimate - Not Applicable  
 B. Method Used to Record - Not Applicable  
 C. Amount and Percent of Net Retrospective Premiums - Not Applicable  
 D. Medical Loss Ratio Rebates Required Pursuant to the Public Health Service Act - Not Applicable  
 E. Calculation of Nonadmitted Retrospective Premium - Not Applicable  
 F. Risk-Sharing Provisions of the Affordable Care Act (ACA)

- (1) Accident and health insurance premium subject to the Affordable Care Act risk-sharing provisions

Did the reporting entity write accident and health insurance premium which is subject to the Affordable Care Act risk sharing provisions? **NO**

- (2) Impact of Risk-Sharing Provisions of the Affordable Care Act on admitted assets, liabilities and revenue for the current year - Not Applicable  
 (3) Roll-forward of prior year ACA risk-sharing provisions for the following asset (gross of any nonadmission) and liability balances, along with the reasons for adjustments to prior year balance - Not Applicable  
 (4) Roll-forward of risk corridors asset and liability balances by program benefit year - Not Applicable  
 (5) ACA risk corridors receivable as of reporting date - Not Applicable

### 25. Changes in Incurred Losses and Loss Adjustment Expenses

- A. Reasons for Changes in the Provision for Incurred Loss and Loss Adjustment Expenses Attributable to Insured Events of Prior Years

The changes in incurred losses and loss adjustment expense attributable to insured events of prior years are generally a result of ongoing analysis of recent loss development trends. Original estimates are increased or decreased as additional information becomes known regarding individual claims.

	December 31, 2022	December 31, 2021
Balance January 1	\$38,056,208	\$36,668,318
Less: Reinsurance Recoverable	9,343,453	11,951,462
Net Balance January 1	<u>28,712,755</u>	<u>24,716,856</u>
Incurred Related to:		
Current Year	48,600,905	38,750,527
Prior Year	430,833	(1,794,683)
Total Incurred	<u>49,031,738</u>	<u>36,955,844</u>
Paid Related to:		
Current Year	27,856,137	23,103,467
Prior Year	13,317,206	9,856,478
Total Paid	<u>41,173,343</u>	<u>32,959,945</u>
Net Balance at the end of reporting period	36,571,150	28,712,755
Plus: Reinsurance Recoverable	9,167,389	9,343,453
<b>Balance at the end of reporting period</b>	<b><u>\$45,738,539</u></b>	<b><u>\$38,056,208</u></b>

- B. Significant Changes in Methodologies and Assumptions Used in Calculating the Liability for Unpaid Losses and Loss Adjustment Expenses - Not Applicable

### 26. Intercompany Pooling Arrangements

- A. Effective January 1, 2017, the Company participates in a pooling agreement with the following percentages:

**Notes to the Financial Statements**

**26. Intercompany Pooling Arrangements (Continued)**

	NAIC Co Code	Pooling Percentage
Lead Company: Grange Insurance Company	14060	96.00%
Affiliates: Trustgard Insurance Company	40118	0.00%
Grange Indemnity Insurance Company	10322	0.00%
Grange Insurance Company of Michigan	11136	0.00%
Grange Property & Casualty Insurance Company	11982	0.00%
Integrity Insurance Company	14303	4.00%
Integrity Property & Casualty Insurance Company	12986	0.00%
Integrity Select Insurance Company	10288	0.00%

B. All lines of business are subject to the pooling agreement, with no exceptions. All members of the pool are parties to all reinsurance treaties entered by the group with non-affiliated reinsurers. There are no discrepancies between the reinsurance schedules of the lead company and the reinsurance schedules of the other participants.

The intercompany pooling agreement cedes underwriting results back only to the Company and GIC, with their respective stock subsidiary companies receiving none from the pool.

C. Not Applicable

D. See Note 10D for amounts due from or due to GIC.

E. Not Applicable

F. Not Applicable

G. Not Applicable

**27. Structured Settlements - Not Applicable**

**28. Health Care Receivables - Not Applicable**

**29. Participating Policies - Not Applicable**

**30. Premium Deficiency Reserves**

- 1. Liability carried for premium deficiency reserves: \$-
- 2. Date of the most recent evaluation of this liability: 12/31/2022
- 3. Was anticipated investment income utilized in the calculation? YES

**31. High Deductibles - Not Applicable**

**32. Discounting of Liabilities For Unpaid Losses or Unpaid Loss Adjustment Expenses - Not Applicable**

**33. Asbestos/Environmental Reserves**

A. Does the company have on the books, or has it ever written an insured for which you have identified a potential for the existence of, a liability due to asbestos losses? - Not Applicable

B. Amount of the Ending Reserves for Bulk + IBNR Included in A (Loss & LAE) - Not Applicable

C. Amount of the Ending Reserves for Loss Adjustment Expenses Included in A (Case, Bulk + IBNR) - Not Applicable

D. Does the company have on the books, or has it ever written an insured for which you have identified a potential for the existence of, a liability due to environmental losses?

Yes ( X ) No ( )

(1) Direct basis

	2018	2019	2020	2021	2022
a. Beginning reserves	\$ 218,965	\$ 215,143	\$ 201,922	\$ 176,314	\$ 167,395
b. Incurred losses and loss adjustment expense	12,010	11,669	19,319	29,206	29,148
c. Calendar year payments for losses and loss adjustment expenses	15,832	24,890	44,927	38,125	90,319
d. Ending reserves (a+b-c)	<u>\$ 215,143</u>	<u>\$ 201,922</u>	<u>\$ 176,314</u>	<u>\$ 167,395</u>	<u>\$ 106,224</u>

(2) Assumed reinsurance basis - Not Applicable

(3) Net of ceded reinsurance basis

	2018	2019	2020	2021	2022
a. Beginning reserves	\$ 138,964	\$ 135,261	\$ 117,567	\$ 123,919	\$ 124,360
b. Incurred losses and loss adjustment expenses	7,782	(647)	19,364	28,596	6,369
c. Calendar year payments for loss and loss adjustment expenses	11,485	17,047	13,012	28,155	90,319
d. Ending reserves (a+b-c)	<u>\$ 135,261</u>	<u>\$ 117,567</u>	<u>\$ 123,919</u>	<u>\$ 124,360</u>	<u>\$ 40,410</u>

E. Amount of the Ending Reserves for Bulk + IBNR Included in D (Loss & LAE)

- (1) Direct basis \$ 63,400
- (2) Assumed reinsurance basis \$ -
- (3) Net of ceded reinsurance basis \$ 63,400

**Notes to the Financial Statements**

**33. Asbestos/Environmental Reserves (Continued)**

F. Amount of the Ending Reserves for Loss Adjustment Expenses Included in D (Case, Bulk + IBNR)

(1) Direct basis .....	\$ .....	16,036
(2) Assumed reinsurance basis .....	\$ .....	—
(3) Net of ceded reinsurance basis .....	\$ .....	16,036

**34. Subscriber Savings Accounts** - Not Applicable

**35. Multiple Peril Crop Insurance** - Not Applicable

**36. Financial Guaranty Insurance** - Not Applicable

**GENERAL INTERROGATORIES**  
PART 1 - COMMON INTERROGATORIES

**GENERAL**

- 1.1. Is the reporting entity a member of an Insurance Holding Company System consisting of two or more affiliated persons, one or more of which is an insurer?..... YES
- If yes, complete Schedule Y, Parts 1, 1A, 2, and 3.
- 1.2. If yes, did the reporting entity register and file with its domiciliary State Insurance Commissioner, Director or Superintendent or with such regulatory official of the state of domicile of the principal insurer in the Holding Company System, a registration statement providing disclosure substantially similar to the standards adopted by the National Association of Insurance Commissioners (NAIC) in its Model Insurance Holding Company System Regulatory Act and model regulations pertaining thereto, or is the reporting entity subject to standards and disclosure requirements substantially similar to those required by such Act and regulations?..... YES
- 1.3. State Regulating?..... OHIO
- 1.4. Is the reporting entity publicly traded or a member of a publicly traded group?..... NO
- 1.5. If the response to 1.4 is yes, provide the CIK (Central Index Key) code issued by the SEC for the entity/group.....
- 2.1. Has any change been made during the year of this statement in the charter, by-laws, articles of incorporation, or deed of settlement of the reporting entity?..... NO
- 2.2. If yes, date of change:.....
- 3.1. State as of what date the latest financial examination of the reporting entity was made or is being made..... 12/31/2019
- 3.2. State the as of date that the latest financial examination report became available from either the state of domicile or the reporting entity. This date should be the date of the examined balance sheet and not the date the report was completed or released..... 12/31/2019
- 3.3. State as of what date the latest financial examination report became available to other states or the public from either the state of domicile or the reporting entity. This is the release date or completion date of the examination report and not the date of the examination (balance sheet date)..... 02/03/2021
- 3.4. By what department or departments?  
OHIO
- 3.5. Have all financial statement adjustments within the latest financial examination report been accounted for in a subsequent financial statement filed with Departments?..... N/A
- 3.6. Have all of the recommendations within the latest financial examination report been complied with?..... YES
- 4.1. During the period covered by this statement, did any agent, broker, sales representative, non-affiliated sales/service organization or any combination thereof under common control (other than salaried employees of the reporting entity) receive credit or commissions for or control a substantial part (more than 20 percent of any major line of business measured on direct premiums) of:.....
- 4.11. sales of new business?..... NO
- 4.12. renewals?..... NO
- 4.2. During the period covered by this statement, did any sales/service organization owned in whole or in part by the reporting entity or an affiliate, receive credit or commissions for or control a substantial part (more than 20 percent of any major line of business measured on direct premiums) of:.....
- 4.21. sales of new business?..... NO
- 4.22. renewals?..... NO
- 5.1. Has the reporting entity been a party to a merger or consolidation during the period covered by this statement?..... NO
- If yes, complete and file the merger history data file with the NAIC.
- 5.2. If yes, provide the name of the entity, NAIC company code, and state of domicile (use two letter state abbreviation) for any entity that has ceased to exist as a result of the merger or consolidation.

1	2	3
Name of Entity	NAIC Company Code	State of Domicile

- 6.1. Has the reporting entity had any Certificates of Authority, licenses or registrations (including corporate registration, if applicable) suspended or revoked by any governmental entity during the reporting period?..... NO
- 6.2. If yes, give full information
- 7.1. Does any foreign (non-United States) person or entity directly or indirectly control 10% or more of the reporting entity?..... NO
- 7.2. If yes,
- 7.21. State the percentage of foreign control..... %
- 7.22. State the nationality(s) of the foreign person(s) or entity(s); or if the entity is a mutual or reciprocal, the nationality of its manager or attorney-in-fact and identify the type of entity(s) (e.g., individual, corporation, government, manager or attorney-in-fact).

1	2
Nationality	Type of Entity

- 8.1. Is the company a subsidiary of a depository institution holding company (DIHC) or a DIHC itself, regulated by the Federal Reserve Board?..... NO
- 8.2. If response to 8.1 is yes, please identify the name of the DIHC.....
- 8.3. Is the company affiliated with one or more banks, thrifts or securities firms?..... NO
- 8.4. If response to 8.3 is yes, please provide the names and locations (city and state of the main office) of any affiliates regulated by a federal financial regulatory services agency [i.e. the Federal Reserve Board (FRB), the Office of the Comptroller of the Currency (OCC), the Federal Deposit Insurance Corporation (FDIC) and the Securities Exchange Commission (SEC)] and identify the affiliate's primary federal regulator.

1	2	3	4	5	6
Affiliate Name	Location (City, State)	FRB	OCC	FDIC	SEC

**GENERAL INTERROGATORIES**  
PART 1 - COMMON INTERROGATORIES

- 8.5. Is the reporting entity a depository institution holding company with significant insurance operations as defined by the Board of Governors of Federal Reserve System or a subsidiary of the depository institution holding company?..... NO
- 8.6. If response to 8.5 is no, is the reporting entity a company or subsidiary of a company that has otherwise been made subject to the Federal Reserve Board's capital rule?..... NO
9. What is the name and address of the independent certified public accountant or accounting firm retained to conduct the annual audit?  
DELOITTE & TOUCHE LLP, 180 EAST BROAD ST, SUITE 1400, COLUMBUS, OH 43215
- 10.1. Has the insurer been granted any exemptions to the prohibited non-audit services provided by the certified independent public accountant requirements as allowed in Section 7H of the Annual Financial Reporting Model Regulation (Model Audit Rule), or substantially similar state law or regulation?..... NO
- 10.2. If the response to 10.1 is yes, provide information related to this exemption:
- 10.3. Has the insurer been granted any exemptions related to the other requirements of the Annual Financial Reporting Model Regulation as allowed for in Section 18A of the Model Regulation, or substantially similar state law or regulation?..... NO
- 10.4. If the response to 10.3 is yes, provide information related to this exemption:
- 10.5. Has the reporting entity established an Audit Committee in compliance with the domiciliary state insurance laws?..... YES
- 10.6. If the response to 10.5 is no or n/a, please explain.

11. What is the name, address and affiliation (officer/employee of the reporting entity or actuary/consultant associated with an actuarial consulting firm) of the individual providing the statement of actuarial opinion/certification?  
PHILIP BAUM, FCAS, MAAA, OFFICER OF THE REPORTING ENTITY, GRANGE INSURANCE, COLUMBUS, OH

- 12.1. Does the reporting entity own any securities of a real estate holding company or otherwise hold real estate indirectly?..... NO
- 12.11 Name of real estate holding company
- 12.12 Number of parcels involved.....
- 12.13 Total book / adjusted carrying value..... \$
- 12.2. If yes, provide explanation

13. FOR UNITED STATES BRANCHES OF ALIEN REPORTING ENTITIES ONLY:
- 13.1. What changes have been made during the year in the United States manager or the United States trustees of the reporting entity?.....
- 13.2. Does this statement contain all business transacted for the reporting entity through its United States Branch on risks wherever located?.....
- 13.3. Have there been any changes made to any of the trust indentures during the year?.....
- 13.4. If answer to (13.3) is yes, has the domiciliary or entry state approved the changes?.....
- 14.1. Are the senior officers (principal executive officer, principal financial officer, principal accounting officer or controller, or persons performing similar functions) of the reporting entity subject to a code of ethics, which includes the following standards?..... YES
- a. Honest and ethical conduct, including the ethical handling of actual or apparent conflicts of interest between personal and professional relationships;
  - b. Full, fair, accurate, timely and understandable disclosure in the periodic reports required to be filed by the reporting entity;
  - c. Compliance with applicable governmental laws, rules and regulations;
  - d. The prompt internal reporting of violations to an appropriate person or persons identified in the code; and
  - e. Accountability for adherence to the code.
- 14.11. If the response to 14.1 is no, please explain:

- 14.2. Has the code of ethics for senior managers been amended?..... NO
- 14.21. If the response to 14.2 is yes, provide information related to amendment(s).

- 14.3. Have any provisions of the code of ethics been waived for any of the specified officers?..... NO
- 14.31. If the response to 14.3 is yes, provide the nature of any waiver(s).

- 15.1. Is the reporting entity the beneficiary of a Letter of Credit that is unrelated to reinsurance where the issuing or confirming bank is not on the SVO Bank List?..... NO
- 15.2. If the response to 15.1 is yes, indicate the American Bankers Association (ABA) Routing Number and the name of the issuing or confirming bank of the Letter of Credit and describe the circumstances in which the Letter of Credit is triggered.

1 American Bankers Association (ABA) Routing Number	2 Issuing or Confirming Bank Name	3 Circumstances That Can Trigger the Letter of Credit	4 Amount
.....	.....	.....	\$.....

**BOARD OF DIRECTORS**

16. Is the purchase or sale of all investments of the reporting entity passed upon either by the board of directors or a subordinate committee thereof?..... YES
17. Does the reporting entity keep a complete permanent record of the proceedings of its board of directors and all subordinate committees thereof?..... YES
18. Has the reporting entity an established procedure for disclosure to its board of directors or trustees of any material interest or affiliation on the part of any of its officers, directors, trustees or responsible employees that is in conflict or is likely to conflict with the official duties of such person?..... YES

**GENERAL INTERROGATORIES**  
PART 1 - COMMON INTERROGATORIES

**FINANCIAL**

- 19. Has this statement been prepared using a basis of accounting other than Statutory Accounting Principles (e.g., Generally Accepted Accounting Principles)?..... NO
- 20.1. Total amount loaned during the year (inclusive of Separate Accounts, exclusive of policy loans):
  - 20.11 To directors or other officers..... \$
  - 20.12 To stockholders not officers..... \$
  - 20.13 Trustees, supreme or grand (Fraternal only)..... \$
- 20.2. Total amount of loans outstanding at the end of year (inclusive of Separate Accounts, exclusive of policy loans):
  - 20.21 To directors or other officers..... \$
  - 20.22 To stockholders not officers..... \$
  - 20.23 Trustees, supreme or grand (Fraternal only)..... \$
- 21.1. Were any assets reported in this statement subject to a contractual obligation to transfer to another party without the liability for such obligation being reported in the statement?..... NO
- 21.2. If yes, state the amount thereof at December 31 of the current year:
  - 21.21 Rented from others..... \$
  - 21.22 Borrowed from others..... \$
  - 21.23 Leased from others..... \$
  - 21.24 Other..... \$
- 22.1. Does this statement include payments for assessments as described in the *Annual Statement Instructions* other than guaranty fund or guaranty association assessments?..... NO
- 22.2. If answer is yes:
  - 22.21 Amount paid as losses or risk adjustment..... \$
  - 22.22 Amount paid as expenses..... \$
  - 22.23 Other amounts paid..... \$
- 23.1. Does the reporting entity report any amounts due from parent, subsidiaries or affiliates on Page 2 of this statement?..... YES
- 23.2. If yes, indicate any amounts receivable from parent included in the Page 2 amount:..... \$ 5,200,393
- 24.1. Does the insurer utilize third parties to pay agent commissions in which the amounts advanced by the third parties are not settled in full within 90 days?..... NO
- 24.2. If the response to 24.1 is yes, identify the third-party that pays the agents and whether they are a related party.

1	2
Name of Third-Party	Is the Third-Party Agent a Related Party (Yes/No)

**INVESTMENT**

- 25.01. Were all the stocks, bonds and other securities owned December 31 of current year, over which the reporting entity has exclusive control, in the actual possession of the reporting entity on said date? (other than securities lending programs addressed in 25.03)..... YES
- 25.02. If no, give full and complete information, relating thereto
- 25.03. For securities lending programs, provide a description of the program including value for collateral and amount of loaned securities, and whether collateral is carried on or off-balance sheet. (an alternative is to reference Note 17 where this information is also provided)  
N/A
- 25.04. For the reporting entity's securities lending program, report amount of collateral for conforming programs as outlined in the Risk-Based Capital Instructions..... \$ -
- 25.05. For the reporting entity's securities lending program, report amount of collateral for other programs..... \$
- 25.06. Does your securities lending program require 102% (domestic securities) and 105% (foreign securities) from the counterparty at the outset of the contract?..... N/A
- 25.07. Does the reporting entity non-admit when the collateral received from the counterparty falls below 100%?..... N/A
- 25.08. Does the reporting entity or the reporting entity's securities lending agent utilize the Master Securities Lending Agreement (MSLA) to conduct securities lending?..... N/A
- 25.09. For the reporting entity's securities lending program, state the amount of the following as of December 31 of the current year:
  - 25.091. Total fair value of reinvested collateral assets reported on Schedule DL, Parts 1 and 2..... \$
  - 25.092. Total book adjusted/carrying value of reinvested collateral assets reported on Schedule DL, Parts 1 and 2..... \$
  - 25.093. Total payable for securities lending reported on the liability page..... \$
- 26.1. Were any of the stocks, bonds or other assets of the reporting entity owned at December 31 of the current year not exclusively under the control of the reporting entity or has the reporting entity sold or transferred any assets subject to a put option contract that is currently in force? (Exclude securities subject to Interrogatory 21.1 and 25.03)..... YES
- 26.2. If yes, state the amount thereof at December 31 of the current year:
  - 26.21. Subject to repurchase agreements..... \$
  - 26.22. Subject to reverse repurchase agreements..... \$
  - 26.23. Subject to dollar repurchase agreements..... \$
  - 26.24. Subject to reverse dollar repurchase agreements..... \$
  - 26.25. Placed under option agreements..... \$
  - 26.26. Letter stock or securities restricted as to sale - excluding FHLB Capital Stock..... \$
  - 26.27. FHLB Capital Stock..... \$
  - 26.28. On deposit with states..... \$ 1,504,256
  - 26.29. On deposit with other regulatory bodies..... \$
  - 26.30. Pledged as collateral - excluding collateral pledged to an FHLB..... \$
  - 26.31. Pledged as collateral to FHLB - including assets backing funding agreements..... \$
  - 26.32. Other..... \$
- 26.3. For category (26.26) provide the following:

1	2	3
Nature of Restriction	Description	Amount
		\$

**GENERAL INTERROGATORIES**  
PART 1 - COMMON INTERROGATORIES

- 27.1. Does the reporting entity have any hedging transactions reported on Schedule DB?.....NO.....
- 27.2. If yes, has a comprehensive description of the hedging program been made available to the domiciliary state? If no, attach a description with this statement.....

LINES 27.3 through 27.5: FOR LIFE/FRATERNAL REPORTING ENTITIES ONLY:

- 27.3. Does the reporting entity utilize derivatives to hedge variable annuity guarantees subject to fluctuations as a result of interest rate sensitivity?.....
- 27.4. If the response to 27.3 is YES, does the reporting entity utilize:  
 27.41 Special accounting provision of SSAP No. 108.....  
 27.42 Permitted accounting practice.....  
 27.43 Other accounting guidance.....
- 27.5. By responding YES to 27.41 regarding utilizing the special accounting provisions of SSAP No. 108, the reporting entity attests to the following:.....
- The reporting entity has obtained explicit approval from the domiciliary state.
  - Hedging strategy subject to the special accounting provisions is consistent with the requirements of VM-21.
  - Actuarial certification has been obtained which indicates that the hedging strategy is incorporated within the establishment of VM-21 reserves and provides the impact of the hedging strategy within the Actuarial Guideline Conditional Tail Expectation Amount.
  - Financial Officer Certification has been obtained which indicates that the hedging strategy meets the definition of a Clearly Defined Hedging Strategy within VM-21 and that the Clearly Defined Hedging Strategy is the hedging strategy being used by the company in its actual day-to-day risk mitigation efforts.

28.1. Were any preferred stocks or bonds owned as of December 31 of the current year mandatorily convertible into equity, or, at the option of the issuer, convertible into equity?.....NO.....

28.2. If yes, state the amount thereof at December 31 of the current year.....\$.....

29. Excluding items in Schedule E- Part 3 - Special Deposits, real estate, mortgage loans and investments held physically in the reporting entity's offices, vaults or safety deposit boxes, were all stocks, bonds and other securities, owned throughout the current year held pursuant to a custodial agreement with a qualified bank or trust company in accordance with Section 1, III - General Examination Considerations, F. Outsourcing of Critical Functions, Custodial or Safekeeping Agreements of the *NAIC Financial Condition Examiners Handbook*?.....YES.....

29.01. For agreements that comply with the requirements of the *NAIC Financial Condition Examiners Handbook*, complete the following:

1 Name of Custodian(s)	2 Custodian's Address
The Northern Trust Company	333 S Wabash Street WB43, Chicago, IL 60604

29.02. For all agreements that do not comply with the requirements of the *NAIC Financial Condition Examiners Handbook*, provide the name, location and a complete explanation:

1 Name(s)	2 Location(s)	3 Complete Explanation(s)

29.03. Have there been any changes, including name changes, in the custodian(s) identified in 29.01 during the current year?.....NO.....

29.04. If yes, give full and complete information relating thereto:

1 Old Custodian	2 New Custodian	3 Date of Change	4 Reason

29.05. Investment management – Identify all investment advisors, investment managers, broker/dealers, including individuals that have the authority to make investment decisions on behalf of the reporting entity. For assets that are managed internally by employees of the reporting entity, note as such. ["...that have access to the investment accounts"; "...handle securities"]

1 Name of Firm or Individual	2 Affiliation
J. Christopher Montgomery	I
James Habegger	I
Jill A. Wagner	I
Jeffrey Siefker	I

29.0597. For those firms/individuals listed in the table for Question 29.05, do any firms/individuals unaffiliated with the reporting entity (i.e., designated with a "U") manage more than 10% of the reporting entity's invested assets?.....NO.....

29.0598. For firms/individuals unaffiliated with the reporting entity (i.e., designated with a "U") listed in the table for Question 29.05, does the total assets under management aggregate to more than 50% of the reporting entity's invested assets?.....NO.....

29.06. For those firms or individuals listed in the table for 29.05 with an affiliation code of "A" (affiliated) or "U" (unaffiliated), provide the information for the table below.

1 Central Registration Depository Number	2 Name of Firm or Individual	3 Legal Entity Identifier (LEI)	4 Registered With	5 Investment Management Agreement (IMA) Filed

30.1. Does the reporting entity have any diversified mutual funds reported in Schedule D - Part 2 (diversified according to the Securities and Exchange Commission (SEC) in the Investment Company Act of 1940 [Section 5 (b) (1)])?.....NO.....

30.2. If yes, complete the following schedule:

1 CUSIP #	2 Name of Mutual Fund	3 Book/Adjusted Carrying Value
30.2999 TOTAL		\$.....

30.3. For each mutual fund listed in the table above, complete the following schedule:

**GENERAL INTERROGATORIES**  
PART 1 - COMMON INTERROGATORIES

1	2	3	4
Name of Mutual Fund (from above table)	Name of Significant Holding of the Mutual Fund	Amount of Mutual Fund's Book / Adjusted Carrying Value Attributable to the Holding	Date of Valuation
		\$	

31. Provide the following information for all short-term and long-term bonds and all preferred stocks. Do not substitute amortized value or statement value for fair value.

	1	2	3
	Statement (Admitted) Value	Fair Value	Excess of Statement over Fair Value (-), or Fair Value over Statement (+)
31.1. Bonds .....	\$ 87,952,087	\$ 79,313,872	\$ (8,638,215)
31.2. Preferred Stocks .....			
31.3. Totals .....	\$ 87,952,087	\$ 79,313,872	\$ (8,638,215)

31.4. Describe the sources or methods utilized in determining the fair values:

The Company utilizes fair values provided by its custodian Northern Trust. ICE is their primary source.

32.1. Was the rate used to calculate fair value determined by a broker or custodian for any of the securities in Schedule D? ..... YES

32.2. If the answer to 32.1 is yes, does the reporting entity have a copy of the broker's or custodian's pricing policy (hard copy or electronic copy) for all brokers or custodians used as a pricing source? ..... YES

32.3. If the answer to 32.2 is no, describe the reporting entity's process for determining a reliable pricing source for purposes of disclosure of fair value for Schedule D:

33.1. Have all the filing requirements of the *Purposes and Procedures Manual of the NAIC Investment Analysis Office* been followed? ..... YES

33.2. If no, list exceptions:

34. By self-designating 5GI securities, the reporting entity is certifying the following elements of each self-designated 5GI security:

- a. Documentation necessary to permit a full credit analysis of the security does not exist or an NAIC CRP credit rating for an FE or PL security is not available.
- b. Issuer or obligor is current on all contracted interest and principal payments.
- c. The insurer has an actual expectation of ultimate payment of all contracted interest and principal.

Has the reporting entity self-designated 5GI securities? ..... NO

35. By self-designating PLGI securities, the reporting entity is certifying the following elements of each self-designated PLGI security:

- a. The security was purchased prior to January 1, 2018.
- b. The reporting entity is holding capital commensurate with the NAIC Designation reported for the security.
- c. The NAIC Designation was derived from the credit rating assigned by an NAIC CRP in its legal capacity as an NRSRO which is shown on a current private letter rating held by the insurer and available for examination by state insurance regulators.
- d. The reporting entity is not permitted to share this credit rating of the PL security with the SVO.

Has the reporting entity self-designated PLGI securities? ..... NO

36. By assigning FE to a Schedule BA non-registered private fund, the reporting entity is certifying the following elements of each self-designated FE fund:

- a. The shares were purchased prior to January 1, 2019.
- b. The reporting entity is holding capital commensurate with the NAIC Designation reported for the security.
- c. The security had a public credit rating(s) with annual surveillance assigned by an NAIC CRP in its legal capacity as an NRSRO prior to January 1, 2019.
- d. The fund only or predominantly holds bonds in its portfolio.
- e. The current reported NAIC Designation was derived from the public credit rating(s) with annual surveillance assigned by an NAIC CRP in its legal capacity as an NRSRO.
- f. The public credit rating(s) with annual surveillance assigned by an NAIC CRP has not lapsed.

Has the reporting entity assigned FE to Schedule BA non-registered private funds that complied with the above criteria? ..... NO

37. By rolling/renewing short-term or cash equivalent investments with continued reporting on Schedule DA, Part 1 or Schedule E Part 2 (identified through a code (%) in those investment schedules), the reporting entity is certifying to the following:

- a. The investment is a liquid asset that can be terminated by the reporting entity on the current maturity date.
- b. If the investment is with a nonrelated party or nonaffiliate, then it reflects an arms-length transaction with renewal completed at the discretion of all involved parties.
- c. If the investment is with a related party or affiliate, then the reporting entity has completed robust re-underwriting of the transaction for which documentation is available for regulator review.
- d. Short-term and cash equivalent investments that have been renewed/rolled from the prior period that do not meet the criteria in 37.a - 37.c are reported as long-term investments.

Has the reporting entity rolled/renewed short-term or cash equivalent investments in accordance with these criteria? ..... YES

38.1 Does the reporting entity directly hold cryptocurrencies? ..... NO

38.2 If the response to 38.1 is yes, on what schedule are they reported? .....

39.1 Does the reporting entity directly or indirectly accept cryptocurrencies as payments for premiums on policies? ..... NO

39.2 If the response to 39.1 is yes, are the cryptocurrencies held directly or are they immediately converted to U.S. dollars?

39.21 Held directly .....

39.22 Immediately converted to U.S. dollars .....

39.3. If the response to 38.1 or 39.1 is yes, list all cryptocurrencies accepted for payments of premiums or that are held directly.

1	2	3
Name of Cryptocurrency	Immediately Converted to USD, Directly Held, or Both	Accepted for Payment of Premiums

**OTHER**

40.1. Amount of payments to trade associations, service organizations and statistical or rating bureaus, if any? ..... \$

**GENERAL INTERROGATORIES**

PART 1 - COMMON INTERROGATORIES

40.2. List the name of the organization and the amount paid if any such payment represented 25% or more of the total payments to trade associations, service organizations, and statistical or rating bureaus during the period covered by this statement.

1	2
Name	Amount Paid
	\$

41.1. Amount of payments for legal expenses, if any?..... \$

41.2. List the name of the firm and the amount paid if any such payment represented 25% or more of the total payments for legal expenses during the period covered by this statement.

1	2
Name	Amount Paid
	\$

42.1. Amount of payments for expenditures in connection with matters before legislative bodies, officers, or departments of government, if any?..... \$

42.2. List the name of the firm and the amount paid if any such payment represented 25% or more of the total payment expenditures in connection with matters before legislative bodies, officers, or departments of government during the period covered by this statement.

1	2
Name	Amount Paid
	\$



**GENERAL INTERROGATORIES**  
PART 2 - PROPERTY & CASUALTY INTERROGATORIES

- 9.1. Has the reporting entity ceded any risk under any reinsurance contract (or under multiple contracts with the same reinsurer or its affiliates) for which during the period covered by the statement: (i) it recorded a positive or negative underwriting result greater than 5% of prior year-end surplus as regards policyholders or it reported calendar year written premium ceded or year-end loss and loss expense reserves ceded greater than 5% of prior year-end surplus as regards policyholders; (ii) it accounted for that contract as reinsurance and not as a deposit; and (iii) the contract(s) contain one or more of the following features or other features that would have similar results:
- (a) A contract term longer than two years and the contract is noncancellable by the reporting entity during the contract term
  - (b) A limited or conditional cancellation provision under which cancellation triggers an obligation by the reporting entity, or an affiliate of the reporting entity, to enter into a new reinsurance contract with the reinsurer, or an affiliate of the reinsurer;
  - (c) Aggregate stop loss reinsurance coverage;
  - (d) A unilateral right by either party (or both parties) to commute the reinsurance contract, whether conditional or not, except for such provisions which are only triggered by a decline in the credit status of the other party;
  - (e) A provision permitting reporting of losses, or payment of losses, less frequently than on a quarterly basis (unless there is no activity during the period); or
  - (f) Payment schedule, accumulating retentions from multiple years or any features inherently designed to delay timing of the reimbursement to the ceding entity..... NO.....
- 9.2. Has the reporting entity during the period covered by the statement ceded any risk under any reinsurance contract (or under multiple contracts with the same reinsurer or its affiliates), for which, during the period covered by the statement, it recorded a positive or negative underwriting result greater than 5% of prior year-end surplus as regards policyholders or it reported calendar year written premium ceded or year-end loss and loss expense reserves ceded greater than 5% of prior year-end surplus as regards policyholders; excluding cessions to approved pooling arrangements or to captive insurance companies that are directly or indirectly controlling, controlled by, or under common control with (i) one or more unaffiliated policyholders of the reporting entity, or (ii) an association of which one or more unaffiliated policyholders of the reporting entity is a member where:
- (a) The written premium ceded to the reinsurer by the reporting entity or its affiliates represents fifty percent (50%) or more of the entire direct and assumed premium written by the reinsurer based on its most recently available financial statement; or
  - (b) Twenty-five percent (25%) or more of the written premium ceded to the reinsurer has been retroceded back to the reporting entity or its affiliates in a separate reinsurance contract..... NO.....
- 9.3. If yes to 9.1 or 9.2, please provide the following information in the Reinsurance Summary Supplemental Filing for General Interrogatory 9:
- (a) The aggregate financial statement impact gross of all such ceded reinsurance contracts on the balance sheet and statement of income;
  - (b) A summary of the reinsurance contract terms and indicate whether it applies to the contracts meeting the criteria in 9.1 or 9.2; and
  - (c) A brief discussion of management's principle objectives in entering into the reinsurance contract including the economic purpose to be achieved.
- 9.4. Except for transactions meeting the requirements of paragraph 36 of *SSAP No. 62R—Property and Casualty Reinsurance*, has the reporting entity ceded any risk under any reinsurance contract (or multiple contracts with the same reinsurer or its affiliates) during the period covered by the financial statement, and either:
- (a) Accounted for that contract as reinsurance (either prospective or retroactive) under statutory accounting principles ("SAP") and as a deposit under generally accepted accounting principles ("GAAP"); or
  - (b) Accounted for that contract as reinsurance under GAAP and as a deposit under SAP?..... NO.....
- 9.5. If yes to 9.4, explain in the Reinsurance Summary Supplemental Filing for General Interrogatory 9 (Section D) why the contract(s) is treated differently for GAAP and SAP.
- 9.6. The reporting entity is exempt from the Reinsurance Attestation Supplement under one or more of the following criteria:
- (a) The entity does not utilize reinsurance; or,..... NO.....
  - (b) The entity only engages in a 100% quota share contract with an affiliate and the affiliated or lead company has filed an attestation supplement; or..... NO.....
  - (c) The entity has no external cessions and only participates in an intercompany pool and the affiliated or lead company has filed an attestation supplement..... NO.....
10. If the reporting entity has assumed risks from another entity, there should be charged on account of such reinsurances a reserve equal to that which the original entity would have been required to charge had it retained the risks. Has this been done?..... YES.....
- 11.1. Has the reporting entity guaranteed policies issued by any other entity and now in force?..... NO.....
- 11.2. If yes, give full information
- 12.1. If the reporting entity recorded accrued retrospective premiums on insurance contracts on Line 15.3 of the asset schedule, Page 2, state the amount of corresponding liabilities recorded for:
- 12.11 Unpaid losses..... \$.....
  - 12.12 Unpaid underwriting expenses (including loss adjustment expenses)..... \$.....
- 12.2. Of the amount on Line 15.3, Page 2, state the amount that is secured by letters of credit, collateral and other funds?..... \$.....
- 12.3. If the reporting entity underwrites commercial insurance risks, such as workers' compensation, are premium notes or promissory notes accepted from its insureds covering unpaid premiums and/or unpaid losses?..... NO.....
- 12.4. If yes, provide the range of interest rates charged under such notes during the period covered by this statement:
- 12.41 From..... %.....
  - 12.42 To..... %.....
- 12.5. Are letters of credit or collateral and other funds received from insureds being utilized by the reporting entity to secure premium notes or promissory notes taken by a reporting entity, or to secure any of the reporting entity's reported direct unpaid loss reserves, including unpaid losses under loss deductible features of commercial policies?..... NO.....
- 12.6. If yes, state the amount thereof at December 31 of current year:
- 12.61 Letters of Credit..... \$.....
  - 12.62 Collateral and other funds..... \$.....

**GENERAL INTERROGATORIES**  
PART 2 - PROPERTY & CASUALTY INTERROGATORIES

- 13.1. Largest net aggregate amount insured in any one risk (excluding workers' compensation):..... \$ 2,000,000
- 13.2. Does any reinsurance contract considered in the calculation of this amount include an aggregate limit of recovery without also including a reinstatement provision?..... NO
- 13.3. State the number of reinsurance contracts (excluding individual facultative risk certificates, but including facultative programs, automatic facilities or facultative obligatory contracts) considered in the calculation of the amount. .... 1
- 14.1. Is the reporting entity a cedant in a multiple cedant reinsurance contract?..... YES
- 14.2. If yes, please describe the method of allocating and recording reinsurance among the cedants:  
See Notes to Financial Statement Number 26. Catastrophe Excess Loss Agreement allocated on percentage of participation.
- 14.3. If the answer to 14.1 is yes, are the methods described in item 14.2 entirely contained in the respective multiple cedant reinsurance contracts?..... YES
- 14.4. If the answer to 14.3 is no, are all the methods described in 14.2 entirely contained in written agreements?.....
- 14.5. If the answer to 14.4 is no, please explain:
  
- 15.1. Has the reporting entity guaranteed any financed premium accounts?..... NO
- 15.2. If yes, give full information

- 16.1. Does the reporting entity write any warranty business?..... NO  
If yes, disclose the following information for each of the following types of warranty coverage:

	1	2	3	4	5
	Direct Losses Incurred	Direct Losses Unpaid	Direct Written Premium	Direct Premium Unearned	Direct Premium Earned
16.11. Home.....	\$	\$	\$	\$	\$
16.12. Products.....	\$	\$	\$	\$	\$
16.13. Automobile.....	\$	\$	\$	\$	\$
16.14. Other*.....	\$	\$	\$	\$	\$

- \* Disclose type of coverage:
- 17.1. Does the reporting entity include amounts recoverable on unauthorized reinsurance in Schedule F – Part 3 that is exempt from the statutory provision for unauthorized reinsurance?..... NO  
Incurred but not reported losses on contracts in force prior to July 1, 1984, and not subsequently renewed are exempt from the statutory provision for unauthorized reinsurance. Provide the following information for this exemption:
- 17.11. Gross amount of unauthorized reinsurance in Schedule F – Part 3 exempt from the statutory provision for unauthorized reinsurance..... \$
- 17.12. Unfunded portion of Interrogatory 17.11..... \$
- 17.13. Paid losses and loss adjustment expenses portion of Interrogatory 17.11..... \$
- 17.14. Case reserves portion of Interrogatory 17.11..... \$
- 17.15. Incurred but not reported portion of Interrogatory 17.11..... \$
- 17.16. Unearned premium portion of Interrogatory 17.11..... \$
- 17.17. Contingent commission portion of Interrogatory 17.11..... \$
- 18.1. Do you act as a custodian for health savings accounts?..... NO
- 18.2. If yes, please provide the amount of custodial funds held as of the reporting date..... \$
- 18.3. Do you act as an administrator for health savings accounts?..... NO
- 18.4. If yes, please provide the balance of the funds administered as of the reporting date..... \$
- 19. Is the reporting entity licensed or chartered, registered, qualified, eligible or writing business in at least two states?..... YES
- 19.1. If no, does the reporting entity assume reinsurance business that covers risks residing in at least one state other than the state of domicile of the reporting entity?.....

**FIVE-YEAR HISTORICAL DATA**

Show amounts in whole dollars only, no cents; show percentages to one decimal place, i.e., 17.6.

	1	2	3	4	5
	2022	2021	2020	2019	2018
<b>Gross Premiums Written (Page 8, Part 1B, Cols. 1, 2 &amp; 3)</b>					
1. Liability lines (Lines 11, 16, 17, 18 & 19)	101,904,934	106,425,635	102,421,900	100,256,005	92,488,358
2. Property lines (Lines 1, 2, 9, 12, 21 & 26)	36,316,695	36,080,618	34,987,626	34,144,529	31,280,271
3. Property and liability combined lines (Lines 3, 4, 5, 8, 22 & 27)	70,289,814	70,528,281	65,469,453	62,138,596	58,659,619
4. All other lines (Lines 6, 10, 13, 14, 15, 23, 24, 28, 29, 30 & 34)					
5. Nonproportional reinsurance lines (Lines 31, 32 & 33)					
6. Total (Line 35)	208,511,443	213,034,534	202,878,979	196,539,130	182,428,249
<b>Net Premiums Written (Page 8, Part 1B, Col. 6)</b>					
7. Liability lines (Lines 11, 16, 17, 18 & 19)	19,275,677	19,441,132	19,399,906	19,190,922	18,416,648
8. Property lines (Lines 1, 2, 9, 12, 21 & 26)	15,392,718	14,749,775	14,336,884	13,848,661	13,152,653
9. Property and liability combined lines (Lines 3, 4, 5, 8, 22 & 27)	21,609,873	20,775,507	19,227,005	17,928,510	16,537,013
10. All other lines (Lines 6, 10, 13, 14, 15, 23, 24, 28, 29, 30 & 34)					
11. Nonproportional reinsurance lines (Lines 31, 32 & 33)					
12. Total (Line 35)	56,278,268	54,966,414	52,963,795	50,968,093	48,106,314
<b>Statement of Income (Page 4)</b>					
13. Net underwriting gain (loss) (Line 8)	(11,573,495)	81,618	4,377,852	2,130,399	2,741,629
14. Net investment gain (loss) (Line 11)	1,092,348	4,116,428	1,622,383	2,670,605	1,791,255
15. Total other income (Line 15)	368,338	(98,070)	386,123	464,940	528,268
16. Dividends to policyholders (Line 17)	259,422	238,697	232,156	211,288	185,139
17. Federal and foreign income taxes incurred (Line 19)	(2,262,906)	289,715	1,428,749	672,397	863,882
18. Net income (Line 20)	(8,109,325)	3,571,564	4,725,453	4,382,259	4,012,131
<b>Balance Sheet Lines (Pages 2 and 3)</b>					
19. Total admitted assets excluding protected cell business (Page 2, Line 26, Col. 3)	135,168,312	134,341,524	124,415,719	118,120,101	114,293,476
20. Premiums and considerations (Page 2, Col. 3)					
20.1. In course of collection (Line 15.1)	13,210,960	13,321,776	12,259,342	11,697,247	10,581,850
20.2. Deferred and not yet due (Line 15.2)	80,074	73,113	72,395	85,686	35,982
20.3. Accrued retrospective premiums (Line 15.3)					
21. Total liabilities excluding protected cell business (Page 3, Line 26)	70,575,575	61,698,365	58,862,772	55,251,234	56,534,344
22. Losses (Page 3, Line 1)	30,733,423	23,012,332	18,556,251	20,795,984	20,421,461
23. Loss adjustment expenses (Page 3, Line 3)	5,837,726	5,700,422	6,160,605	6,097,662	6,175,665
24. Unearned premiums (Page 3, Line 9)	26,017,293	24,621,323	23,312,616	21,951,810	19,875,146
25. Capital paid up (Page 3, Lines 30 & 31)	5,000,000	5,000,000	5,000,000	5,000,000	
26. Surplus as regards policyholders (Page 3, Line 37)	64,592,737	72,643,159	65,552,947	62,868,867	57,759,132
<b>Cash Flow (Page 5)</b>					
27. Net cash from operations (Line 11)	402,444	3,449,259	6,889,518	4,055,460	3,123,345
<b>Risk-Based Capital Analysis</b>					
28. Total adjusted capital	64,592,737	72,643,159	65,552,947	62,868,867	57,759,132
29. Authorized control level risk-based capital	4,645,268	4,349,495	5,075,968	3,823,558	3,814,213
<b>Percentage Distribution of Cash, Cash Equivalents and Invested Assets (Page 2, Col. 3) (Item divided by Page 2, Line 12, Col. 3) x 100.0</b>					
30. Bonds (Line 1)	79.2	77.8	75.4	74.7	65.4
31. Stocks (Lines 2.1 & 2.2)	19.1	19.5	20.6	21.2	20.6
32. Mortgage loans on real estate (Lines 3.1 and 3.2)					
33. Real estate (Lines 4.1, 4.2 & 4.3)			1.2	1.4	1.5
34. Cash, cash equivalents and short-term investments (Line 5)	1.7	2.7	2.9	2.7	12.5
35. Contract loans (Line 6)					
36. Derivatives (Line 7)					
37. Other invested assets (Line 8)					
38. Receivables for securities (Line 9)				-	-
39. Securities lending reinvested collateral assets (Line 10)					
40. Aggregate write-ins for invested assets (Line 11)					
41. Cash, cash equivalents and invested assets (Line 12)	100.0	100.0	100.0	100.0	100.0
<b>Investments in Parent, Subsidiaries and Affiliates</b>					
42. Affiliated bonds, (Sch. D, Summary, Line 12, Col. 1)					
43. Affiliated preferred stocks (Sch. D, Summary, Line 18, Col. 1)					
44. Affiliated common stocks (Sch. D, Summary, Line 24, Col. 1)	21,177,051	20,838,746	20,443,771	20,017,986	19,535,519
45. Affiliated short-term investments (subtotals included in Schedule DA Verification, Col. 5, Line 10)					
46. Affiliated mortgage loans on real estate					
47. All other affiliated					
48. Total of above Lines 42 to 47	21,177,051	20,838,746	20,443,771	20,017,986	19,535,519
49. Total investment in parent included in Lines 42 to 47 above					
50. Percentage of investments in parent, subsidiaries and affiliates to surplus as regards policyholders (Line 48 above divided by Page 3, Col. 1, Line 37 x 100.0)	32.8	28.7	31.2	31.8	33.8

**FIVE-YEAR HISTORICAL DATA**

(Continued)

	1	2	3	4	5
	2022	2021	2020	2019	2018
<b>Capital and Surplus Accounts (Page 4)</b>					
51. Net unrealized capital gains (losses) (Line 24)	338,308	394,975	445,020	536,568	118,600
52. Dividends to stockholders (Line 35)					
53. Change in surplus as regards policyholders for the year (Line 38)	(8,050,420)	7,090,212	2,684,080	5,109,734	4,021,730
<b>Gross Losses Paid (Page 9, Part 2, Cols. 1 &amp; 2)</b>					
54. Liability lines (Lines 11, 16, 17, 18 & 19)	47,752,103	47,906,231	43,412,511	45,985,768	42,872,202
55. Property lines (Lines 1, 2, 9, 12, 21 & 26)	26,675,549	24,245,953	19,784,688	18,845,669	18,151,367
56. Property and liability combined lines (Lines 3, 4, 5, 8, 22 & 27)	60,773,054	60,836,889	68,918,245	38,274,581	29,000,901
57. All other lines (Lines 6, 10, 13, 14, 15, 23, 24, 28, 29, 30 & 34)					
58. Nonproportional reinsurance lines (Lines 31, 32 & 33)					
59. Total (Line 35)	135,200,706	132,989,073	132,115,444	103,106,019	90,024,470
<b>Net Losses Paid (Page 9, Part 2, Col. 4)</b>					
60. Liability lines (Lines 11, 16, 17, 18 & 19)	10,754,287	9,556,340	9,026,345	10,512,610	11,267,004
61. Property lines (Lines 1, 2, 9, 12, 21 & 26)	10,400,657	8,553,043	6,778,652	6,861,174	6,487,242
62. Property and liability combined lines (Lines 3, 4, 5, 8, 22 & 27)	14,295,043	9,552,879	11,370,885	8,793,777	7,772,556
63. All other lines (Lines 6, 10, 13, 14, 15, 23, 24, 28, 29, 30 & 34)					
64. Nonproportional reinsurance lines (Lines 31, 32 & 33)					
65. Total (Line 35)	35,449,987	27,662,262	27,175,882	26,167,561	25,526,801
<b>Operating Percentages (Page 4) (Item divided by Page 4, Line 1) x 100.0</b>					
66. Premiums earned (Line 1)	100.0	100.0	100.0	100.0	100.0
67. Losses incurred (Line 2)	78.7	59.9	48.3	54.3	51.2
68. Loss expenses incurred (Line 3)	10.7	9.0	9.9	10.1	10.9
69. Other underwriting expenses incurred (Line 4)	31.7	31.0	33.3	31.3	32.1
70. Net underwriting gain (loss) (Line 8)	(21.1)	0.2	8.5	4.4	5.8
<b>Other Percentages</b>					
71. Other underwriting expenses to net premiums written (Page 4, Lines 4+5-15 divided by Page 8, Part 1B, Col. 6, Line 35 x 100.0)	30.3	30.4	31.7	29.1	30.6
72. Losses and loss expenses incurred to premiums earned (Page 4, Lines 2+3 divided by Page 4, Line 1 x 100.0)	89.3	68.9	58.2	64.4	62.1
73. Net premiums written to policyholders' surplus (Page 8, Part 1B, Col. 6, Line 35 divided by Page 3, Line 37, Col. 1 x 100.0)	87.1	75.7	80.8	81.1	83.3
<b>One-Year Loss Development (\$000 omitted)</b>					
74. Development in estimated losses and loss expenses incurred prior to current year (Schedule P, Part 2-Summary, Line 12, Col. 11)	1,038	(676)	(2,394)	(1,691)	(2,310)
75. Percent of development of losses and loss expenses incurred to policyholders' surplus of prior year-end (Line 74 above divided by Page 4, Line 21, Col. 1 x 100.0)	1.4	(1.0)	(3.8)	(2.9)	(4.3)
<b>Two-Year Loss Development (\$000 omitted)</b>					
76. Development in estimated losses and loss expenses incurred 2 years before the current year and prior year (Schedule P, Part 2-Summary, Line 12, Col. 12)	(330)	(2,737)	(2,936)	(2,811)	(2,090)
77. Percent of development of losses and loss expenses incurred to reported policyholders' surplus of second prior year-end (Line 76 above divided by Page 4, Line 21, Col. 2 x 100.0)	(0.5)	(4.4)	(5.1)	(5.2)	(4.1)

If a party to a merger, have the two most recent years of this exhibit been restated due to a merger in compliance with the disclosure requirements of SSAP No. 3—Accounting Changes and Correction of Errors?

If no, please explain:

**SCHEDULE P – ANALYSIS OF LOSSES AND LOSS EXPENSES**

**SCHEDULE P - PART 1 - SUMMARY**

(\$000 OMITTED)

Years in Which Premiums Were Earned and Losses Were Incurred	Premiums Earned			Loss and Loss Expense Payments							10	11	12
	1	2	3	Loss Payments		Defense and Cost Containment Payments		Adjusting and Other Payments					
				4	5	6	7	8	9				
Direct and Assumed	Ceded	Net (Cols. 1-2)	Direct and Assumed	Ceded	Direct and Assumed	Ceded	Direct and Assumed	Ceded	Salvage and Subrogation Received	Total Net Paid (Cols. 4-5+6-7+8-9)	Number of Claims Reported Direct and Assumed		
1. Prior	XXX	XXX	XXX	227	80	30	1	-	-	19	175	XXX	
2. 2013	46,373	2,151	44,222	25,136	710	1,154	30	3,780	1	1,455	29,329	XXX	
3. 2014	49,300	2,039	47,260	26,662	243	1,357	4	4,089	3	1,667	31,859	XXX	
4. 2015	50,859	1,847	49,013	26,918	551	1,418	45	4,107	5	1,627	31,841	XXX	
5. 2016	49,117	1,804	47,313	23,358	110	968	1	4,024	-	1,580	28,239	XXX	
6. 2017	48,037	1,464	46,573	24,046	189	874	3	3,963	-	1,575	28,691	XXX	
7. 2018	48,982	1,533	47,448	25,019	868	762	12	4,138	1	1,627	29,037	XXX	
8. 2019	50,487	1,595	48,892	25,606	369	849	49	4,123	2	1,835	30,158	XXX	
9. 2020	53,640	2,036	51,604	28,740	4,755	549	14	4,003	2	1,805	28,520	XXX	
10. 2021	55,900	2,242	53,658	27,339	299	324	2	4,181	4	1,981	31,539	XXX	
11. 2022	57,596	2,714	54,882	26,179	2,191	124	2	3,748	2	1,127	27,856	XXX	
12. Totals	XXX	XXX	XXX	259,231	10,365	8,407	162	40,155	21	16,299	297,245	XXX	

Years in Which Premiums Were Earned and Losses Were Incurred	Losses Unpaid				Defense and Cost Containment Unpaid				Adjusting and Other Unpaid		23	24	25
	Case Basis		Bulk + IBNR		Case Basis		Bulk + IBNR		21	22			
	13	14	15	16	17	18	19	20					
Direct and Assumed	Ceded	Direct and Assumed	Ceded	Direct and Assumed	Ceded	Direct and Assumed	Ceded	Direct and Assumed	Ceded	Salvage and Subrogation Anticipated	Total Net Losses and Expenses Unpaid	Number of Claims Outstanding Direct and Assumed	
1. Prior	6,107	5,902	83	-	1	28	56	-	-	-	16	318	XXX
2. 2013	841	734	73	(1)	-	-	25	-	2	-	10	208	XXX
3. 2014	127	62	29	(1)	-	-	40	-	3	-	14	138	XXX
4. 2015	184	51	52	(2)	-	-	62	-	6	-	18	254	XXX
5. 2016	188	40	85	(2)	-	-	70	-	6	-	24	310	XXX
6. 2017	285	6	108	(2)	-	-	107	-	14	-	28	510	XXX
7. 2018	743	264	258	13	-	-	176	-	31	-	41	930	XXX
8. 2019	2,181	764	538	34	-	10	331	-	73	-	63	2,315	XXX
9. 2020	1,955	230	1,162	102	-	-	570	-	123	-	102	3,479	XXX
10. 2021	3,675	79	2,667	182	-	-	978	-	305	-	256	7,364	XXX
11. 2022	9,898	173	8,625	502	1	-	1,300	-	1,596	-	1,108	20,745	XXX
12. Totals	26,182	8,304	13,681	825	3	38	3,715	-	2,158	-	1,679	36,571	XXX

Years in Which Premiums Were Earned and Losses Were Incurred	Total Losses and Loss Expenses Incurred			Loss and Loss Expense Percentage (Incurred/Premiums Earned)			Nontabular Discount		34	Net Balance Sheet Reserves After Discount	
	26	27	28	29	30	31	32	33		35	36
1. Prior	XXX	XXX	XXX	XXX	XXX	XXX			XXX	288	29
2. 2013	31,011	1,475	29,537	66.874	68.570	66.791			4.000	181	27
3. 2014	32,308	311	31,997	65.534	15.256	67.703			4.000	95	43
4. 2015	32,745	650	32,096	64.384	35.185	65.484			4.000	187	67
5. 2016	28,697	149	28,548	58.427	8.264	60.340			4.000	234	75
6. 2017	29,397	196	29,201	61.197	13.372	62.700			4.000	389	121
7. 2018	31,126	1,158	29,967	63.546	75.542	63.158			4.000	723	207
8. 2019	33,701	1,228	32,473	66.752	76.999	66.417			4.000	1,921	394
9. 2020	37,102	5,102	31,999	69.168	250.595	62.010			4.000	2,785	694
10. 2021	39,469	565	38,903	70.606	25.217	72.503			4.000	6,081	1,283
11. 2022	51,471	2,870	48,601	89.365	105.748	88.555			4.000	17,847	2,897
12. Totals	XXX	XXX	XXX	XXX	XXX	XXX			XXX	30,733	5,838

**SCHEDULE P - PART 2 - SUMMARY**

Years in Which Losses Were Incurred	INCURRED NET LOSSES AND DEFENSE AND COST CONTAINMENT EXPENSES REPORTED AT YEAR-END (\$000 OMITTED)										DEVELOPMENT	
	1	2	3	4	5	6	7	8	9	10	11	12
	2013	2014	2015	2016	2017	2018	2019	2020	2021	2022	One Year	Two Year
1. Prior	9,693	10,244	10,272	10,320	10,373	10,296	10,349	10,270	10,227	10,282	55	12
2. 2013	25,847	25,766	26,139	25,968	25,853	25,763	25,761	25,691	25,713	25,756	43	65
3. 2014	XXX	28,119	28,542	28,099	28,214	28,034	28,026	27,924	27,886	27,908	22	(16)
4. 2015	XXX	XXX	29,073	28,684	28,341	28,066	28,094	28,048	27,984	27,988	4	(60)
5. 2016	XXX	XXX	XXX	26,033	25,471	24,855	24,798	24,574	24,533	24,519	(14)	(55)
6. 2017	XXX	XXX	XXX	XXX	27,023	25,952	25,435	25,255	25,138	25,224	86	(31)
7. 2018	XXX	XXX	XXX	XXX	XXX	27,596	26,406	25,862	25,729	25,800	71	(62)
8. 2019	XXX	XXX	XXX	XXX	XXX	XXX	29,252	28,103	28,175	28,280	105	177
9. 2020	XXX	XXX	XXX	XXX	XXX	XXX	XXX	28,235	27,902	27,876	(27)	(359)
10. 2021	XXX	XXX	XXX	XXX	XXX	XXX	XXX	XXX	33,730	34,422	692	XXX
11. 2022	XXX	XXX	XXX	XXX	XXX	XXX	XXX	XXX	XXX	43,260	XXX	XXX
12. Totals	XXX	XXX	XXX	XXX	XXX	XXX	XXX	XXX	XXX	XXX	1,038	(330)

**SCHEDULE P - PART 3 - SUMMARY**

Years in Which Losses Were Incurred	CUMULATIVE PAID NET LOSSES AND DEFENSE AND COST CONTAINMENT EXPENSES REPORTED AT YEAR-END (\$000 OMITTED)										11	12
	1	2	3	4	5	6	7	8	9	10	Number of Claims Closed With Loss Payment	Number of Claims Closed Without Loss Payment
	2013	2014	2015	2016	2017	2018	2019	2020	2021	2022		
1. Prior	XXX	4,584	7,200	8,362	8,939	9,295	9,548	9,715	9,789	9,965	XXX	XXX
2. 2013	15,812	20,437	22,807	24,199	24,890	25,275	25,420	25,454	25,501	25,550	XXX	XXX
3. 2014	XXX	17,518	22,418	24,551	26,172	27,005	27,427	27,576	27,687	27,772	XXX	XXX
4. 2015	XXX	XXX	16,671	21,623	24,474	26,234	27,164	27,565	27,690	27,739	XXX	XXX
5. 2016	XXX	XXX	XXX	14,831	19,489	21,660	23,025	23,635	24,065	24,215	XXX	XXX
6. 2017	XXX	XXX	XXX	XXX	15,646	20,646	22,609	23,657	24,243	24,728	XXX	XXX
7. 2018	XXX	XXX	XXX	XXX	XXX	16,148	21,052	22,976	24,160	24,901	XXX	XXX
8. 2019	XXX	XXX	XXX	XXX	XXX	XXX	17,305	22,577	24,674	26,037	XXX	XXX
9. 2020	XXX	XXX	XXX	XXX	XXX	XXX	XXX	18,592	22,896	24,520	XXX	XXX
10. 2021	XXX	XXX	XXX	XXX	XXX	XXX	XXX	XXX	19,677	27,362	XXX	XXX
11. 2022	XXX	XXX	XXX	XXX	XXX	XXX	XXX	XXX	XXX	24,111	XXX	XXX

**SCHEDULE P - PART 4 - SUMMARY**

Years in Which Losses Were Incurred	BULK AND IBNR RESERVES ON NET LOSSES AND DEFENSE AND COST CONTAINMENT EXPENSES REPORTED AT YEAR-END (\$000 OMITTED)									
	1	2	3	4	5	6	7	8	9	10
	2013	2014	2015	2016	2017	2018	2019	2020	2021	2022
1. Prior	3,634	2,029	1,235	902	740	492	401	270	219	139
2. 2013	4,332	2,262	1,299	758	368	228	173	91	65	99
3. 2014	XXX	4,952	2,963	1,605	981	456	322	165	100	70
4. 2015	XXX	XXX	5,786	3,177	1,763	865	545	274	159	115
5. 2016	XXX	XXX	XXX	5,463	2,884	1,477	755	378	200	156
6. 2017	XXX	XXX	XXX	XXX	5,343	2,519	1,274	628	315	217
7. 2018	XXX	XXX	XXX	XXX	XXX	5,557	2,403	1,252	605	421
8. 2019	XXX	XXX	XXX	XXX	XXX	XXX	5,250	2,387	1,338	836
9. 2020	XXX	XXX	XXX	XXX	XXX	XXX	XXX	4,825	2,547	1,631
10. 2021	XXX	XXX	XXX	XXX	XXX	XXX	XXX	XXX	5,949	3,464
11. 2022	XXX	XXX	XXX	XXX	XXX	XXX	XXX	XXX	XXX	9,423

**SCHEDULE T – EXHIBIT OF PREMIUMS WRITTEN**

Allocated By States And Territories

States, Etc.	1	Gross Premiums, Including Policy and Membership Fees Less Return Premiums and Premiums on Policies Not Taken		4	5	6	7	8	9	
		Active Status (a)	2							3
1. Alabama	AL	N								
2. Alaska	AK	N								
3. Arizona	AZ	N								
4. Arkansas	AR	N								
5. California	CA	N								
6. Colorado	CO	N								
7. Connecticut	CT	N								
8. Delaware	DE	N								
9. District of Columbia	DC	N								
10. Florida	FL	N								
11. Georgia	GA	N								
12. Hawaii	HI	N								
13. Idaho	ID	N								
14. Illinois	IL	L								
15. Indiana	IN	N								
16. Iowa	IA	L	33,304,122	34,702,658	1,024,281	20,825,882	15,330,665	44,031,674	54,686	
17. Kansas	KS	N								
18. Kentucky	KY	N								
19. Louisiana	LA	N								
20. Maine	ME	N								
21. Maryland	MD	N								
22. Massachusetts	MA	N								
23. Michigan	MI	N								
24. Minnesota	MN	L	48,972,030	48,405,722		33,293,917	40,437,309	54,752,046	95,624	
25. Mississippi	MS	N								
26. Missouri	MO	L								
27. Montana	MT	N								
28. Nebraska	NE	N								
29. Nevada	NV	N								
30. New Hampshire	NH	N								
31. New Jersey	NJ	N								
32. New Mexico	NM	N								
33. New York	NY	N								
34. North Carolina	NC	N								
35. North Dakota	ND	N								
36. Ohio	OH	L								
37. Oklahoma	OK	N								
38. Oregon	OR	N								
39. Pennsylvania	PA	N								
40. Rhode Island	RI	N								
41. South Carolina	SC	N								
42. South Dakota	SD	N								
43. Tennessee	TN	N								
44. Texas	TX	N								
45. Utah	UT	N								
46. Vermont	VT	N								
47. Virginia	VA	N								
48. Washington	WA	N								
49. West Virginia	WV	N								
50. Wisconsin	WI	L	69,490,161	71,233,801	5,461,258	45,436,336	59,014,737	89,276,175	160,993	
51. Wyoming	WY	N								
52. American Samoa	AS	N								
53. Guam	GU	N								
54. Puerto Rico	PR	N								
55. US Virgin Islands	VI	N								
56. Northern Mariana Islands	MP	N								
57. Canada	CAN	N								
58. Aggregate Other Alien	OT	XXX								
59. Totals	XXX		151,766,313	154,342,181	6,485,539	99,556,135	114,782,710	188,059,895	311,303	
<b>Details of Write-Ins</b>										
58001.	XXX									
58002.	XXX									
58003.	XXX									
58998. Summary of remaining write-ins for Line 58 from overflow page	XXX									
58999. Totals (Lines 58001 through 58003 plus 58998) (Line 58 above)	XXX									

(a) Active Status Counts

1. L – Licensed or Chartered - Licensed insurance carrier or domiciled RRG ..... 6 ..... 4. Q – Qualified - Qualified or accredited reinsurer ..... –

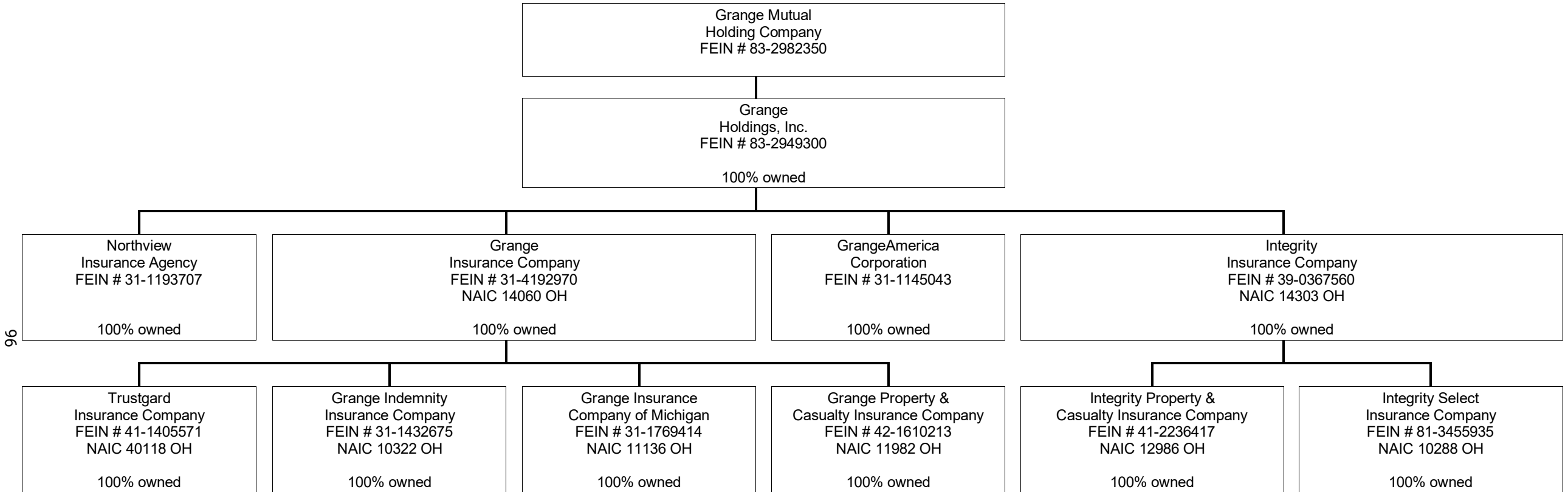
2. R – Registered – Non-domiciled RRGs ..... – ..... 5. D – Domestic Surplus Lines Insurer (DSL) – Reporting entities authorized to write surplus lines in the state of domicile ..... –

3. E – Eligible - Reporting entities eligible or approved to write surplus lines in the state ..... – ..... 6. N – None of the above - Not allowed to write business in the state ..... 51

(b) Explanation of basis of allocation by states, etc., of premiums and annuity considerations  
Location of the risk.

**SCHEDULE Y - INFORMATION CONCERNING ACTIVITIES OF INSURER MEMBERS OF A HOLDING COMPANY GROUP**

PART 1 - ORGANIZATIONAL CHART



96