



**ASSETS**

	Current Year			Prior Year
	1	2	3	4
	Assets	Nonadmitted Assets	Net Admitted Assets (Cols. 1 - 2)	Net Admitted Assets
1. Bonds (Schedule D).....	1,144,442		1,144,442	1,154,792
2. Stocks (Schedule D):				
2.1 Preferred stocks.....				
2.2 Common stocks.....				
3. Mortgage loans on real estate (Schedule B):				
3.1 First liens.....				
3.2 Other than first liens.....				
4. Real estate (Schedule A):				
4.1 Properties occupied by the company (less \$ encumbrances).....				
4.2 Properties held for the production of income (less \$ encumbrances).....				
4.3 Properties held for sale (less \$ encumbrances).....				
5. Cash (\$ 100,662, Schedule E - Part 1), cash equivalents (\$ 1,063,651, Schedule E - Part 2) and short-term investments (\$ , Schedule DA).....	1,164,313		1,164,313	4,100,817
6. Contract loans (including \$ premium notes).....				
7. Derivatives (Schedule DB).....				
8. Other invested assets (Schedule BA).....				
9. Receivables for securities.....				
10. Securities lending reinvested collateral assets (Schedule DL).....				
11. Aggregate write-ins for invested assets.....				
12. Subtotals, cash and invested assets (Lines 1 to 11).....	2,308,755		2,308,755	5,255,609
13. Title plants less \$ charged off (for Title insurers only).....				
14. Investment income due and accrued.....	26,225		26,225	12,767
15. Premiums and considerations:				
15.1 Uncollected premiums and agents' balances in the course of collection.....	1,220	1,220		
15.2 Deferred premiums, agents' balances and installments booked but deferred and not yet due (including \$ earned but unbilled premiums).....				
15.3 Accrued retrospective premiums (\$ ) and contracts subject to redetermination (\$ ).....				
16. Reinsurance:				
16.1 Amounts recoverable from reinsurers.....				
16.2 Funds held by or deposited with reinsured companies.....				
16.3 Other amounts receivable under reinsurance contracts.....				
17. Amounts receivable relating to uninsured plans.....				
18.1 Current federal and foreign income tax recoverable and interest thereon.....	8,846		8,846	8,846
18.2 Net deferred tax asset.....				
19. Guaranty funds receivable or on deposit.....				
20. Electronic data processing equipment and software.....				
21. Furniture and equipment, including health care delivery assets (\$ ).....				
22. Net adjustment in assets and liabilities due to foreign exchange rates.....				
23. Receivables from parent, subsidiaries and affiliates.....				124,102
24. Health care (\$ ) and other amounts receivable.....				
25. Aggregate write-ins for other-than-invested assets.....	3,055	3,055		
26. Total assets excluding Separate Accounts, Segregated Accounts and Protected Cell Accounts (Lines 12 to 25).....	2,348,102	4,275	2,343,826	5,401,324
27. From Separate Accounts, Segregated Accounts and Protected Cell Accounts.....				
28. Total (Lines 26 and 27).....	2,348,102	4,275	2,343,826	5,401,324
<b>Details of Write-Ins</b>				
1101.....				
1102.....				
1103.....				
1198. Summary of remaining write-ins for Line 11 from overflow page.....				
1199. Totals (Lines 1101 through 1103 plus 1198) (Line 11 above).....				
2501. Broker Commission Overpayment.....	3,055	3,055		
2502.....				
2503.....				
2598. Summary of remaining write-ins for Line 25 from overflow page.....				
2599. Totals (Lines 2501 through 2503 plus 2598) (Line 25 above).....	3,055	3,055		

**LIABILITIES, CAPITAL AND SURPLUS**

	Current Year			Prior Year
	1 Covered	2 Uncovered	3 Total	4 Total
1. Claims unpaid (less \$ reinsurance ceded)	14,476		14,476	30,532
2. Accrued medical incentive pool and bonus amounts				
3. Unpaid claims adjustment expenses				1,647
4. Aggregate health policy reserves, including the liability of \$ for medical loss ratio rebate per the Public Health Service Act				
5. Aggregate life policy reserves				
6. Property/casualty unearned premium reserves				
7. Aggregate health claim reserves				
8. Premiums received in advance				
9. General expenses due or accrued	1,338		1,338	5,787
10.1 Current federal and foreign income tax payable and interest thereon (including \$ on realized capital gains (losses))				
10.2 Net deferred tax liability				
11. Ceded reinsurance premiums payable				
12. Amounts withheld or retained for the account of others				
13. Remittances and items not allocated				
14. Borrowed money (including \$ current) and interest thereon \$ (including \$ current)				
15. Amounts due to parent, subsidiaries and affiliates	11,866		11,866	2,836
16. Derivatives				
17. Payable for securities				
18. Payable for securities lending				
19. Funds held under reinsurance treaties (with \$ authorized reinsurers, \$ unauthorized reinsurers and \$ certified reinsurers)				
20. Reinsurance in unauthorized and certified (\$ ) companies				
21. Net adjustments in assets and liabilities due to foreign exchange rates				
22. Liability for amounts held under uninsured plans				
23. Aggregate write-ins for other liabilities (including \$ current)	18,477		18,477	13,658
24. Total liabilities (Lines 1 to 23)	46,157		46,157	54,461
25. Aggregate write-ins for special surplus funds	XXX	XXX		
26. Common capital stock	XXX	XXX		
27. Preferred capital stock	XXX	XXX		
28. Gross paid in and contributed surplus	XXX	XXX	28,236,235	31,536,235
29. Surplus notes	XXX	XXX		
30. Aggregate write-ins for other-than-special surplus funds	XXX	XXX		
31. Unassigned funds (surplus)	XXX	XXX	(25,938,566)	(26,189,372)
32. Less treasury stock, at cost:				
32.1 shares common (value included in Line 26 \$ )	XXX	XXX		
32.2 shares preferred (value included in Line 27 \$ )	XXX	XXX		
33. Total capital and surplus (Lines 25 to 31 minus Line 32)	XXX	XXX	2,297,669	5,346,863
34. Total liabilities, capital and surplus (Lines 24 and 33)	XXX	XXX	2,343,826	5,401,324
<b>Details of Write-Ins</b>				
2301. Escheat Liability Medicare	18,477		18,477	13,658
2302.				
2303.				
2398. Summary of remaining write-ins for Line 23 from overflow page				
2399. Totals (Lines 2301 through 2303 plus 2398) (Line 23 above)	18,477		18,477	13,658
2501.	XXX	XXX		
2502.	XXX	XXX		
2503.	XXX	XXX		
2598. Summary of remaining write-ins for Line 25 from overflow page	XXX	XXX		
2599. Totals (Lines 2501 through 2503 plus 2598) (Line 25 above)	XXX	XXX		
3001.	XXX	XXX		
3002.	XXX	XXX		
3003.	XXX	XXX		
3098. Summary of remaining write-ins for Line 30 from overflow page	XXX	XXX		
3099. Totals (Lines 3001 through 3003 plus 3098) (Line 30 above)	XXX	XXX		

**STATEMENT OF REVENUE AND EXPENSES**

	Current Year		Prior Year
	1 Uncovered	2 Total	3 Total
1. Member Months	XXX		
2. Net premium income (including \$ non-health premium income)	XXX		(167,410)
3. Change in unearned premium reserves and reserve for rate credits	XXX		
4. Fee-for-service (net of \$ medical expenses)	XXX		
5. Risk revenue	XXX		
6. Aggregate write-ins for other health care related revenues	XXX		
7. Aggregate write-ins for other non-health revenues	XXX		
8. Total revenues (Lines 2 to 7)	XXX		(167,410)
<b>Hospital and Medical:</b>			
9. Hospital/medical benefits		(207,697)	(1,188,476)
10. Other professional services			(116,384)
11. Outside referrals			
12. Emergency room and out-of-area			337,614
13. Prescription drugs		13,401	60,314
14. Aggregate write-ins for other hospital and medical			(542)
15. Incentive pool, withhold adjustments and bonus amounts			
16. Subtotal (Lines 9 to 15)		(194,296)	(907,474)
<b>Less:</b>			
17. Net reinsurance recoveries			
18. Total hospital and medical (Lines 16 minus 17)		(194,296)	(907,474)
19. Non-health claims (net)			
20. Claims adjustment expenses, including \$ 4 cost containment expenses		462	(31,547)
21. General administrative expenses		32,701	24,660
22. Increase in reserves for life and accident and health contracts (including \$ increase in reserves for life only)			
23. Total underwriting deductions (Lines 18 through 22)		(161,133)	(914,361)
24. Net underwriting gain or (loss) (Lines 8 minus 23)	XXX	161,133	746,951
25. Net investment income earned (Exhibit of Net Investment Income, Line 17)		84,957	16,511
26. Net realized capital gains (losses) less capital gains tax of \$			
27. Net investment gains (losses) (Lines 25 plus 26)		84,957	16,511
28. Net gain or (loss) from agents' or premium balances charged off [(amount recovered \$ ) (amount charged off \$ )]			(50,174)
29. Aggregate write-ins for other income or expenses			
30. Net income or (loss) after capital gains tax and before all other federal income taxes (Lines 24 plus 27 plus 28 plus 29)	XXX	246,090	713,288
31. Federal and foreign income taxes incurred	XXX		
32. Net income (loss) (Lines 30 minus 31)	XXX	246,090	713,288
<b>Details of Write-Ins</b>			
0601.	XXX		
0602.	XXX		
0603.	XXX		
0698. Summary of remaining write-ins for Line 6 from overflow page	XXX		
0699. Totals (Lines 0601 through 0603 plus 0698) (Line 6 above)	XXX		
0701.	XXX		
0702.	XXX		
0703.	XXX		
0798. Summary of remaining write-ins for Line 7 from overflow page	XXX		
0799. Totals (Lines 0701 through 0703 plus 0798) (Line 7 above)	XXX		
1401. DME			(542)
1402.			
1403.			
1498. Summary of remaining write-ins for Line 14 from overflow page			(542)
1499. Totals (Lines 1401 through 1403 plus 1498) (Line 14 above)			(542)
2901.			
2902.			
2903.			
2998. Summary of remaining write-ins for Line 29 from overflow page			
2999. Totals (Lines 2901 through 2903 plus 2998) (Line 29 above)			

**STATEMENT OF REVENUE AND EXPENSES (CONTINUED)**

	1	2
CAPITAL & SURPLUS ACCOUNT	Current Year	Prior Year
33. Capital and surplus prior reporting year.....	5,346,863	9,503,091
34. Net income or (loss) from Line 32.....	246,090	713,288
35. Change in valuation basis of aggregate policy and claim reserves.....		
36. Change in net unrealized capital gains (losses) less capital gains tax of \$.....		
37. Change in net unrealized foreign exchange capital gain or (loss).....		
38. Change in net deferred income tax.....		
39. Change in nonadmitted assets.....	4,715	130,484
40. Change in unauthorized and certified reinsurance.....		
41. Change in treasury stock.....		
42. Change in surplus notes.....		
43. Cumulative effect of changes in accounting principles.....		
44. Capital Changes:		
44.1 Paid in.....		
44.2 Transferred from surplus (Stock Dividend).....		
44.3 Transferred to surplus.....		
45. Surplus adjustments:		
45.1 Paid in.....	(3,300,000)	(5,000,000)
45.2 Transferred to capital (Stock Dividend).....		
45.3 Transferred from capital.....		
46. Dividends to stockholders.....		
47. Aggregate write-ins for gains or (losses) in surplus.....		
48. Net change in capital and surplus (Lines 34 to 47).....	(3,049,194)	(4,156,228)
49. Capital and surplus end of reporting year (Line 33 plus 48).....	2,297,669	5,346,863
<b>Details of Write-Ins</b>		
4701.....		
4702.....		
4703.....		
4798. Summary of remaining write-ins for Line 47 from overflow page.....		
4799. Totals (Lines 4701 through 4703 plus 4798) (Line 47 above).....		

**CASH FLOW**

	1	2
	Current Year	Prior Year
<b>Cash from Operations</b>		
1. Premiums collected net of reinsurance .....		661,569
2. Net investment income .....	77,400	26,015
3. Miscellaneous income .....		
4. Total (Lines 1 to 3) .....	77,400	687,584
5. Benefit and loss related payments .....	(183,105)	796,562
6. Net transfers to Separate Accounts, Segregated Accounts and Protected Cell Accounts .....		
7. Commissions, expenses paid and aggregate write-ins for deductions .....	34,810	454,380
8. Dividends paid to policyholders .....		
9. Federal and foreign income taxes paid (recovered) net of \$ tax on capital gains (losses) .....		
10. Total (Lines 5 through 9) .....	(148,295)	1,250,942
11. Net cash from operations (Line 4 minus Line 10) .....	225,695	(563,358)
<b>Cash from Investments</b>		
12. Proceeds from investments sold, matured or repaid:		
12.1 Bonds .....		
12.2 Stocks .....		
12.3 Mortgage loans .....		
12.4 Real estate .....		
12.5 Other invested assets .....		
12.6 Net gains or (losses) on cash, cash equivalents and short-term investments .....		
12.7 Miscellaneous proceeds .....		
12.8 Total investment proceeds (Lines 12.1 to 12.7) .....		
13. Cost of investments acquired (long-term only):		
13.1 Bonds .....		
13.2 Stocks .....		
13.3 Mortgage loans .....		
13.4 Real estate .....		
13.5 Other invested assets .....		
13.6 Miscellaneous applications .....		
13.7 Total investments acquired (Lines 13.1 to 13.6) .....		
14. Net increase (decrease) in contract loans and premium notes .....		
15. Net cash from investments (Line 12.8 minus Line 13.7 minus Line 14) .....		
<b>Cash from Financing and Miscellaneous Sources</b>		
16. Cash provided (applied):		
16.1 Surplus notes, capital notes .....		
16.2 Capital and paid in surplus, less treasury stock .....	(3,300,000)	(5,000,000)
16.3 Borrowed funds .....		
16.4 Net deposits on deposit-type contracts and other insurance liabilities .....		
16.5 Dividends to stockholders .....		
16.6 Other cash provided (applied) .....	137,802	(124,781)
17. Net cash from financing and miscellaneous sources (Lines 16.1 to 16.4 minus Line 16.5 plus Line 16.6) .....	(3,162,198)	(5,124,781)
<b>Reconciliation of Cash, Cash Equivalents and Short-Term Investments</b>		
18. Net change in cash, cash equivalents and short-term investments (Line 11, plus Lines 15 and 17) .....	(2,936,504)	(5,688,139)
19. Cash, cash equivalents and short-term investments:		
19.1 Beginning of year .....	4,100,817	9,788,956
19.2 End of year (Line 18 plus Line 19.1) .....	1,164,313	4,100,817

Note: Supplemental disclosures of cash flow information for non-cash transactions:

20.0001 .....		
---------------	--	--

**ANALYSIS OF OPERATIONS BY LINES OF BUSINESS**

	1	2	3	4	5	6	7	8	9	10
	Total	Comprehensive (Hospital & Medical)	Medicare Supplement	Dental Only	Vision Only	Federal Employees Health Benefits Plan	Title XVIII Medicare	Title XIX Medicaid	Other Health	Other Non- Health
1. Net premium income										
2. Change in unearned premium reserves and reserve for rate credit										
3. Fee-for-service (net of \$ medical expenses)										XXX
4. Risk revenue										XXX
5. Aggregate write-ins for other health care related revenues										XXX
6. Aggregate write-ins for other non-health care related revenues		XXX	XXX	XXX	XXX	XXX	XXX	XXX	XXX	
7. Total revenues (Lines 1 to 6)										
8. Hospital/medical benefits	(207,697)						(207,697)			XXX
9. Other professional services										XXX
10. Outside referrals										XXX
11. Emergency room and out-of-area										XXX
12. Prescription drugs	13,401						13,401			XXX
13. Aggregate write-ins for other hospital and medical										XXX
14. Incentive pool, withhold adjustments and bonus amounts										XXX
15. Subtotal (Lines 8 to 14)	(194,296)						(194,296)			XXX
16. Net reinsurance recoveries										XXX
17. Total hospital and medical (Lines 15 minus 16)	(194,296)						(194,296)			XXX
18. Non-health claims (net)		XXX	XXX	XXX	XXX	XXX	XXX	XXX	XXX	
19. Claims adjustment expenses including \$ 4 cost containment expenses	462						462			
20. General administrative expenses	32,701						32,701			
21. Increase in reserves for accident and health contracts										XXX
22. Increase in reserves for life contracts		XXX	XXX	XXX	XXX	XXX	XXX	XXX	XXX	
23. Total underwriting deductions (Lines 17 to 22)	(161,133)						(161,133)			
24. Net underwriting gain or (loss) (Line 7 minus Line 23)	161,133						161,133			
<b>Details of Write-Ins</b>										
0501.										XXX
0502.										XXX
0503.										XXX
0598. Summary of remaining write-ins for Line 5 from overflow page										XXX
0599. Totals (Lines 0501 through 0503 plus 0598) (Line 5 above)										XXX
0601.		XXX	XXX	XXX	XXX	XXX	XXX	XXX	XXX	
0602.		XXX	XXX	XXX	XXX	XXX	XXX	XXX	XXX	
0603.		XXX	XXX	XXX	XXX	XXX	XXX	XXX	XXX	
0698. Summary of remaining write-ins for Line 6 from overflow page		XXX	XXX	XXX	XXX	XXX	XXX	XXX	XXX	
0699. Totals (Lines 0601 through 0603 plus 0698) (Line 6 above)		XXX	XXX	XXX	XXX	XXX	XXX	XXX	XXX	
1301.										XXX
1302.										XXX
1303.										XXX
1398. Summary of remaining write-ins for Line 13 from overflow page										XXX
1399. Totals (Lines 1301 through 1303 plus 1398) (Line 13 above)										XXX

**UNDERWRITING AND INVESTMENT EXHIBIT**

PART 1 – PREMIUMS

Line of Business		1 Direct Business	2 Reinsurance Assumed	3 Reinsurance Ceded	4 Net Premium Income (Cols. 1+2-3)
1.	Comprehensive (hospital and medical) individual.....	<b>NONE</b>			
2.	Comprehensive (hospital and medical) group.....				
3.	Medicare Supplement.....				
4.	Dental only.....				
5.	Vision only.....				
6.	Federal Employees Health Benefits Plan.....				
7.	Title XVIII – Medicare.....				
8.	Title XIX – Medicaid.....				
9.	Credit A&H.....				
10.	Disability Income.....				
11.	Long-Term Care.....				
12.	Other health.....				
13.	Health subtotal (Lines 1 through 12).....				
14.	Life.....				
15.	Property/casualty.....				
16.	Totals (Lines 13 to 15).....				

**UNDERWRITING AND INVESTMENT EXHIBIT**

PART 2 – CLAIMS INCURRED DURING THE YEAR

	1 Total	Comprehensive (Hospital & Medical)		4 Medicare Supplement	5 Dental Only	6 Vision Only	7 Federal Employees Health Benefits Plan	8 Title XVIII Medicare	9 Title XIX Medicaid	10 Credit A&H	11 Disability Income	12 Long-Term Care	13 Other Health	14 Other Non-Health
		2 Individual	3 Group											
1. Payments during the year:														
1.1 Direct	(183,105)							(183,105)						
1.2 Reinsurance assumed														
1.3 Reinsurance ceded														
1.4 Net	(183,105)							(183,105)						
2. Paid medical incentive pools and bonuses														
3. Claim liability December 31, current year from Part 2A:														
3.1 Direct	14,476							14,476						
3.2 Reinsurance assumed														
3.3 Reinsurance ceded														
3.4 Net	14,476							14,476						
4. Claim reserve December 31, current year from Part 2D:														
4.1 Direct														
4.2 Reinsurance assumed														
4.3 Reinsurance ceded														
4.4 Net														
5. Accrued medical incentive pools and bonuses, current year														
6. Net health care receivables (a)	(4,865)							(4,865)						
7. Amounts recoverable from reinsurers December 31, current year														
8. Claim liability December 31, prior year from Part 2A:														
8.1 Direct	30,532							30,532						
8.2 Reinsurance assumed														
8.3 Reinsurance ceded														
8.4 Net	30,532							30,532						
9. Claim reserve December 31, prior year from Part 2D:														
9.1 Direct														
9.2 Reinsurance assumed														
9.3 Reinsurance ceded														
9.4 Net														
10. Accrued medical incentive pools and bonuses, prior year														
11. Amounts recoverable from reinsurers December 31, prior year														
12. Incurred benefits:														
12.1 Direct	(194,296)							(194,296)						
12.2 Reinsurance assumed														
12.3 Reinsurance ceded														
12.4 Net	(194,296)							(194,296)						
13. Incurred medical incentive pools and bonuses														

(a) Excludes \$ loans or advances to providers not yet expensed.

**UNDERWRITING AND INVESTMENT EXHIBIT**

PART 2A – CLAIMS LIABILITY END OF CURRENT YEAR

	1 Total	Comprehensive (Hospital & Medical)		4 Medicare Supplement	5 Dental Only	6 Vision Only	7 Federal Employees Health Benefits Plan	8 Title XVIII Medicare	9 Title XIX Medicaid	10 Credit A&H	11 Disability Income	12 Long-Term Care	13 Other Health	14 Other Non-Health
		2 Individual	3 Group											
1. Reported in Process of Adjustment:														
1.1 Direct														
1.2 Reinsurance assumed														
1.3 Reinsurance ceded														
1.4 Net														
2. Incurred but Unreported:														
2.1 Direct	14,476							14,476						
2.2 Reinsurance assumed														
2.3 Reinsurance ceded														
2.4 Net	14,476							14,476						
3. Amounts Withheld from Paid Claims and Capitations:														
3.1 Direct														
3.2 Reinsurance assumed														
3.3 Reinsurance ceded														
3.4 Net														
4. TOTALS:														
4.1 Direct	14,476							14,476						
4.2 Reinsurance assumed														
4.3 Reinsurance ceded														
4.4 Net	14,476							14,476						

**UNDERWRITING AND INVESTMENT EXHIBIT**

PART 2B – ANALYSIS OF CLAIMS UNPAID – PRIOR YEAR-NET OF REINSURANCE

Line of Business	Claims Paid During the Year		Claim Reserve and Claim Liability December 31 of Current Year		5	6
	1 On Claims Incurred Prior to January 1 of Current Year	2 On Claims Incurred During the Year	3 On Claims Unpaid December 31 of Prior Year	4 On Claims Incurred During the Year	Claims Incurred in Prior Years (Columns 1 + 3)	Estimated Claim Reserve and Claim Liability December 31 of Prior Year
1. Comprehensive (hospital and medical) individual.....						
2. Comprehensive (hospital and medical) group.....						
3. Medicare Supplement.....						
4. Dental Only.....						
5. Vision Only.....						
6. Federal Employees Health Benefits Plan.....						
7. Title XVIII – Medicare.....	(183,105)		14,476		(168,629)	30,532
8. Title XIX – Medicaid.....						
9. Credit A&H.....						
10. Disability Income.....						
11. Long-Term Care.....						
12. Other health.....						
13. Health subtotal (Lines 1 to 12).....	(183,105)		14,476		(168,629)	30,532
14. Health care receivables (a).....						4,865
15. Other non-health.....						
16. Medical incentive pools and bonus amounts.....						
17. Totals (Lines 13 - 14 + 15 + 16).....	(183,105)		14,476		(168,629)	25,667

(a) Excludes \$ loans or advances to providers not yet expensed.

**UNDERWRITING AND INVESTMENT EXHIBIT**  
 PART 2C – DEVELOPMENT OF PAID AND INCURRED HEALTH CLAIMS  
 (\$000 Omitted)  
**GRAND TOTAL**

**Section A – Paid Health Claims**

Year in Which Losses Were Incurred		Cumulative Net Amounts Paid				
		1 2018	2 2019	3 2020	4 2021	5 2022
1.	Prior.....	10,210	10,207	10,175	10,244	10,244
2.	2018.....	87,163	100,979	100,752	100,901	100,901
3.	2019.....	XXX	25,144	28,135	28,798	28,620
4.	2020.....	XXX	XXX			
5.	2021.....	XXX	XXX	XXX		
6.	2022.....	XXX	XXX	XXX	XXX	

**Section B – Incurred Health Claims**

Year in Which Losses Were Incurred		Sum of Cumulative Net Amount Paid and Claim Liability, Claim Reserve and Medical Incentive Pool and Bonuses Outstanding at End of Year				
		1 2018	2 2019	3 2020	4 2021	5 2022
1.	Prior.....	10,332	10,314	10,266	10,244	10,244
2.	2018.....	100,072	100,950	100,944	100,901	100,901
3.	2019.....	XXX	28,330	29,671	28,829	28,635
4.	2020.....	XXX	XXX			
5.	2021.....	XXX	XXX	XXX		
6.	2022.....	XXX	XXX	XXX	XXX	

**Section C – Incurred Year Health Claims and Claims Adjustment Expense Ratio**

Years in which Premiums were Earned and Claims were Incurred		1	2	3	4	5	6	7	8	9	10
		Premiums Earned	Claims Payments	Claim Adjustment Expense Payments	(Col. 3/2) Percent	Claim and Claim Adjustment Expense Payments (Col. 2+3)	(Col. 5/1) Percent	Claims Unpaid	Unpaid Claims Adjustment Expenses	Total Claims and Claims Adjustment Expense Incurred (Col. 5+7+8)	(Col. 9/1) Percent
1.	2018.....	109,247	100,901	2,580	2.557	103,481	94.722			103,481	94.722
2.	2019.....	32,961	28,620	242	0.846	28,862	87.565	14		28,877	87.609
3.	2020.....	(57)									
4.	2021.....	(167)									
5.	2022.....										

12.GT

**UNDERWRITING AND INVESTMENT EXHIBIT**  
 PART 2C – DEVELOPMENT OF PAID AND INCURRED HEALTH CLAIMS  
 (\$000 Omitted)  
 HOSPITAL & MEDICAL

**Section A – Paid Health Claims**

Year in Which Losses Were Incurred	Cumulative Net Amounts Paid				
	1 2018	2 2019	3 2020	4 2021	5 2022
1. Prior.....					
2. 2018.....					
3. 2019.....					
4. 2020.....		XXX			
5. 2021.....	XXX	XXX	XXX		
6. 2022.....	XXX	XXX	XXX	XXX	

**Section B – Incurred Health Claims**

Year in Which Losses Were Incurred	Sum of Cumulative Net Amount Paid and Claim Liability, Claim Reserve and Medical Incentive Pool and Bonuses Outstanding at End of Year				
	1 2018	2 2019	3 2020	4 2021	5 2022
1. Prior.....					
2. 2018.....					
3. 2019.....					
4. 2020.....		XXX			
5. 2021.....	XXX	XXX	XXX		
6. 2022.....	XXX	XXX	XXX	XXX	

**Section C – Incurred Year Health Claims and Claims Adjustment Expense Ratio**

Years in which Premiums were Earned and Claims were Incurred	1 Premiums Earned	2 Claims Payments	3 Claim Adjustment Expense Payments	4 (Col. 3/2) Percent	5 Claim and Claim Adjustment Expense Payments (Col. 2+3)	6 (Col. 5/1) Percent	7 Claims Unpaid	8 Unpaid Claims Adjustment Expenses	9 Total Claims and Claims Adjustment Expense Incurred (Col. 5+7+8)	10 (Col. 9/1) Percent
1. 2018.....										
2. 2019.....										
3. 2020.....										
4. 2021.....										
5. 2022.....										

12.HM

**UNDERWRITING AND INVESTMENT EXHIBIT**  
 PART 2C – DEVELOPMENT OF PAID AND INCURRED HEALTH CLAIMS  
 (\$000 Omitted)  
 MEDICARE SUPPLEMENT

**Section A – Paid Health Claims**

Year in Which Losses Were Incurred	Cumulative Net Amounts Paid				
	1 2018	2 2019	3 2020	4 2021	5 2022
1. Prior.....					
2. 2018.....					
3. 2019.....					
4. 2020.....		XXX			
5. 2021.....	XXX	XXX	XXX		
6. 2022.....	XXX	XXX	XXX	XXX	

**Section B – Incurred Health Claims**

Year in Which Losses Were Incurred	Sum of Cumulative Net Amount Paid and Claim Liability, Claim Reserve and Medical Incentive Pool and Bonuses Outstanding at End of Year				
	1 2018	2 2019	3 2020	4 2021	5 2022
1. Prior.....					
2. 2018.....					
3. 2019.....					
4. 2020.....		XXX			
5. 2021.....	XXX	XXX	XXX		
6. 2022.....	XXX	XXX	XXX	XXX	

**Section C – Incurred Year Health Claims and Claims Adjustment Expense Ratio**

Years in which Premiums were Earned and Claims were Incurred	1	2	3	4	5	6	7	8	9	10
	Premiums Earned	Claims Payments	Claim Adjustment Expense Payments	(Col. 3/2) Percent	Claim and Claim Adjustment Expense Payments (Col. 2+3)	(Col. 5/1) Percent	Claims Unpaid	Unpaid Claims Adjustment Expenses	Total Claims and Claims Adjustment Expense Incurred (Col. 5+7+8)	(Col. 9/1) Percent
1. 2018.....										
2. 2019.....										
3. 2020.....										
4. 2021.....										
5. 2022.....										

12.MS

**UNDERWRITING AND INVESTMENT EXHIBIT**  
 PART 2C – DEVELOPMENT OF PAID AND INCURRED HEALTH CLAIMS  
 (\$000 Omitted)  
 DENTAL ONLY

**Section A – Paid Health Claims**

Year in Which Losses Were Incurred	Cumulative Net Amounts Paid				
	1 2018	2 2019	3 2020	4 2021	5 2022
1. Prior.....					
2. 2018.....					
3. 2019.....					
4. 2020.....		XXX			
5. 2021.....	XXX	XXX	XXX		
6. 2022.....	XXX	XXX	XXX	XXX	

**Section B – Incurred Health Claims**

Year in Which Losses Were Incurred	Sum of Cumulative Net Amount Paid and Claim Liability, Claim Reserve and Medical Incentive Pool and Bonuses Outstanding at End of Year				
	1 2018	2 2019	3 2020	4 2021	5 2022
1. Prior.....					
2. 2018.....					
3. 2019.....					
4. 2020.....		XXX			
5. 2021.....	XXX	XXX	XXX		
6. 2022.....	XXX	XXX	XXX	XXX	

**Section C – Incurred Year Health Claims and Claims Adjustment Expense Ratio**

Years in which Premiums were Earned and Claims were Incurred	1 Premiums Earned	2 Claims Payments	3 Claim Adjustment Expense Payments	4 (Col. 3/2) Percent	5 Claim and Claim Adjustment Expense Payments (Col. 2+3)	6 (Col. 5/1) Percent	7 Claims Unpaid	8 Unpaid Claims Adjustment Expenses	9 Total Claims and Claims Adjustment Expense Incurred (Col. 5+7+8)	10 (Col. 9/1) Percent
1. 2018.....										
2. 2019.....										
3. 2020.....										
4. 2021.....										
5. 2022.....										

12.D0

**UNDERWRITING AND INVESTMENT EXHIBIT**  
 PART 2C – DEVELOPMENT OF PAID AND INCURRED HEALTH CLAIMS  
 (\$000 Omitted)  
 VISION ONLY

**Section A – Paid Health Claims**

Year in Which Losses Were Incurred	Cumulative Net Amounts Paid				
	1 2018	2 2019	3 2020	4 2021	5 2022
1. Prior					
2. 2018					
3. 2019					
4. 2020		XXX			
5. 2021	XXX	XXX	XXX		
6. 2022	XXX	XXX	XXX	XXX	

**Section B – Incurred Health Claims**

Year in Which Losses Were Incurred	Sum of Cumulative Net Amount Paid and Claim Liability, Claim Reserve and Medical Incentive Pool and Bonuses Outstanding at End of Year				
	1 2018	2 2019	3 2020	4 2021	5 2022
1. Prior					
2. 2018					
3. 2019					
4. 2020		XXX			
5. 2021	XXX	XXX	XXX		
6. 2022	XXX	XXX	XXX	XXX	

**Section C – Incurred Year Health Claims and Claims Adjustment Expense Ratio**

Years in which Premiums were Earned and Claims were Incurred	1 Premiums Earned	2 Claims Payments	3 Claim Adjustment Expense Payments	4 (Col. 3/2) Percent	5 Claim and Claim Adjustment Expense Payments (Col. 2+3)	6 (Col. 5/1) Percent	7 Claims Unpaid	8 Unpaid Claims Adjustment Expenses	9 Total Claims and Claims Adjustment Expense Incurred (Col. 5+7+8)	10 (Col. 9/1) Percent
1. 2018										
2. 2019										
3. 2020										
4. 2021										
5. 2022										

12.VO

**UNDERWRITING AND INVESTMENT EXHIBIT**  
 PART 2C – DEVELOPMENT OF PAID AND INCURRED HEALTH CLAIMS  
 (\$000 Omitted)  
 FEDERAL EMPLOYEES HEALTH BENEFITS PLAN

**Section A – Paid Health Claims**

Year in Which Losses Were Incurred	Cumulative Net Amounts Paid				
	1 2018	2 2019	3 2020	4 2021	5 2022
1. Prior.....					
2. 2018.....					
3. 2019.....					
4. 2020.....		XXX			
5. 2021.....	XXX	XXX	XXX		
6. 2022.....	XXX	XXX	XXX	XXX	

**Section B – Incurred Health Claims**

Year in Which Losses Were Incurred	Sum of Cumulative Net Amount Paid and Claim Liability, Claim Reserve and Medical Incentive Pool and Bonuses Outstanding at End of Year				
	1 2018	2 2019	3 2020	4 2021	5 2022
1. Prior.....					
2. 2018.....					
3. 2019.....					
4. 2020.....		XXX			
5. 2021.....	XXX	XXX	XXX		
6. 2022.....	XXX	XXX	XXX	XXX	

**Section C – Incurred Year Health Claims and Claims Adjustment Expense Ratio**

Years in which Premiums were Earned and Claims were Incurred	1	2	3	4	5	6	7	8	9	10
	Premiums Earned	Claims Payments	Claim Adjustment Expense Payments	(Col. 3/2) Percent	Claim and Claim Adjustment Expense Payments (Col. 2+3)	(Col. 5/1) Percent	Claims Unpaid	Unpaid Claims Adjustment Expenses	Total Claims and Claims Adjustment Expense Incurred (Col. 5+7+8)	(Col. 9/1) Percent
1. 2018.....										
2. 2019.....										
3. 2020.....										
4. 2021.....										
5. 2022.....										

12.FE

**UNDERWRITING AND INVESTMENT EXHIBIT**  
 PART 2C – DEVELOPMENT OF PAID AND INCURRED HEALTH CLAIMS  
 (\$000 Omitted)  
 TITLE XVIII MEDICARE

**Section A – Paid Health Claims**

Year in Which Losses Were Incurred	Cumulative Net Amounts Paid				
	1 2018	2 2019	3 2020	4 2021	5 2022
1. Prior.....	10,210	10,207	10,175	10,244	10,244
2. 2018.....	87,163	100,979	100,752	100,901	100,901
3. 2019.....	XXX	25,144	28,135	28,798	28,620
4. 2020.....	XXX	XXX			
5. 2021.....	XXX	XXX	XXX		
6. 2022.....	XXX	XXX	XXX	XXX	

**Section B – Incurred Health Claims**

Year in Which Losses Were Incurred	Sum of Cumulative Net Amount Paid and Claim Liability, Claim Reserve and Medical Incentive Pool and Bonuses Outstanding at End of Year				
	1 2018	2 2019	3 2020	4 2021	5 2022
1. Prior.....	10,332	10,314	10,266	10,244	10,244
2. 2018.....	100,072	100,950	100,944	100,901	100,901
3. 2019.....	XXX	28,330	29,671	28,829	28,635
4. 2020.....	XXX	XXX			
5. 2021.....	XXX	XXX	XXX		
6. 2022.....	XXX	XXX	XXX	XXX	

**Section C – Incurred Year Health Claims and Claims Adjustment Expense Ratio**

Years in which Premiums were Earned and Claims were Incurred	1	2	3	4	5	6	7	8	9	10
	Premiums Earned	Claims Payments	Claim Adjustment Expense Payments	(Col. 3/2) Percent	Claim and Claim Adjustment Expense Payments (Col. 2+3)	(Col. 5/1) Percent	Claims Unpaid	Unpaid Claims Adjustment Expenses	Total Claims and Claims Adjustment Expense Incurred (Col. 5+7+8)	(Col. 9/1) Percent
1. 2018.....	109,247	100,901	2,580	2.557	103,481	94.722			103,481	94.722
2. 2019.....	32,961	28,620	242	0.846	28,862	87.565	14		28,877	87.609
3. 2020.....	(57)									
4. 2021.....	(167)									
5. 2022.....										

**UNDERWRITING AND INVESTMENT EXHIBIT**  
 PART 2C – DEVELOPMENT OF PAID AND INCURRED HEALTH CLAIMS  
 (\$000 Omitted)  
 TITLE XIX MEDICAID

**Section A – Paid Health Claims**

Year in Which Losses Were Incurred	Cumulative Net Amounts Paid				
	1 2018	2 2019	3 2020	4 2021	5 2022
1. Prior.....					
2. 2018.....					
3. 2019.....					
4. 2020.....		XXX			
5. 2021.....	XXX	XXX	XXX		
6. 2022.....	XXX	XXX	XXX	XXX	

**Section B – Incurred Health Claims**

Year in Which Losses Were Incurred	Sum of Cumulative Net Amount Paid and Claim Liability, Claim Reserve and Medical Incentive Pool and Bonuses Outstanding at End of Year				
	1 2018	2 2019	3 2020	4 2021	5 2022
1. Prior.....					
2. 2018.....					
3. 2019.....					
4. 2020.....		XXX			
5. 2021.....	XXX	XXX	XXX		
6. 2022.....	XXX	XXX	XXX	XXX	

**Section C – Incurred Year Health Claims and Claims Adjustment Expense Ratio**

Years in which Premiums were Earned and Claims were Incurred	1	2	3	4	5	6	7	8	9	10
	Premiums Earned	Claims Payments	Claim Adjustment Expense Payments	(Col. 3/2) Percent	Claim and Claim Adjustment Expense Payments (Col. 2+3)	(Col. 5/1) Percent	Claims Unpaid	Unpaid Claims Adjustment Expenses	Total Claims and Claims Adjustment Expense Incurred (Col. 5+7+8)	(Col. 9/1) Percent
1. 2018.....										
2. 2019.....										
3. 2020.....										
4. 2021.....										
5. 2022.....										

12 XI

**UNDERWRITING AND INVESTMENT EXHIBIT**  
 PART 2C – DEVELOPMENT OF PAID AND INCURRED HEALTH CLAIMS  
 (\$000 Omitted)  
 OTHER HEALTH

**Section A – Paid Health Claims**

Year in Which Losses Were Incurred	Cumulative Net Amounts Paid				
	1 2018	2 2019	3 2020	4 2021	5 2022
1. Prior.....					
2. 2018.....					
3. 2019.....					
4. 2020.....		XXX			
5. 2021.....	XXX	XXX	XXX		
6. 2022.....	XXX	XXX	XXX	XXX	

**Section B – Incurred Health Claims**

Year in Which Losses Were Incurred	Sum of Cumulative Net Amount Paid and Claim Liability, Claim Reserve and Medical Incentive Pool and Bonuses Outstanding at End of Year				
	1 2018	2 2019	3 2020	4 2021	5 2022
1. Prior.....					
2. 2018.....					
3. 2019.....					
4. 2020.....		XXX			
5. 2021.....	XXX	XXX	XXX		
6. 2022.....	XXX	XXX	XXX	XXX	

**Section C – Incurred Year Health Claims and Claims Adjustment Expense Ratio**

Years in which Premiums were Earned and Claims were Incurred	1 Premiums Earned	2 Claims Payments	3 Claim Adjustment Expense Payments	4 (Col. 3/2) Percent	5 Claim and Claim Adjustment Expense Payments (Col. 2+3)	6 (Col. 5/1) Percent	7 Claims Unpaid	8 Unpaid Claims Adjustment Expenses	9 Total Claims and Claims Adjustment Expense Incurred (Col. 5+7+8)	10 (Col. 9/1) Percent
1. 2018.....										
2. 2019.....										
3. 2020.....										
4. 2021.....										
5. 2022.....										

12.01

**UNDERWRITING AND INVESTMENT EXHIBIT**

PART 2D – AGGREGATE RESERVE FOR ACCIDENT AND HEALTH CONTRACTS ONLY

	1 Total	Comprehensive (Hospital & Medical)		4 Medicare Supplement	5 Dental Only	6 Vision Only	7 Federal Employees Health Benefits Plan	8 Title XVIII Medicare	9 Title XIX Medicaid	10 Credit A&H	11 Disability Income	12 Long-Term Care	13 Other
		2 Individual	3 Group										
1. Unearned premium reserves													
2. Additional policy reserves (a)													
3. Reserve for future contingent benefits													
4. Reserve for rate credits or experience rating refunds (including \$ for investment income)													
5. Aggregate write-ins for other policy reserves													
6. Totals (gross)													
7. Reinsurance ceded													
8. Totals (Net) (Page 3, Line 4)													
9. Present value of amounts not yet due on claims													
10. Reserve for future contingent benefits													
11. Aggregate write-ins for other claim reserves													
12. Totals (gross)													
13. Reinsurance ceded													
14. Totals (Net) (Page 3, Line 7)													
<b>NONE</b>													
<b>Details of Write-Ins</b>													
0501.													
0502.													
0503.													
0598. Summary of remaining write-ins for Line 5 from overflow page													
0599. Totals (Lines 0501 through 0503 plus 0598) (Line 5 above)													
1101.													
1102.													
1103.													
1198. Summary of remaining write-ins for Line 11 from overflow page													
1199. Totals (Lines 1101 through 1103 plus 1198) (Line 11 above)													

(a) Includes \$ premium deficiency reserve.

**UNDERWRITING AND INVESTMENT EXHIBIT**  
PART 3 – ANALYSIS OF EXPENSES

	Claim Adjustment Expenses		3 General Administrative Expenses	4 Investment Expenses	5 Total
	1 Cost Containment Expenses	2 Other Claim Adjustment Expenses			
1. Rent (\$ for occupancy of own building)					
2. Salaries, wages and other benefits					
3. Commissions (less \$ ceded plus \$ assumed)					
4. Legal fees and expenses					
5. Certifications and accreditation fees					
6. Auditing, actuarial and other consulting services					
7. Traveling expenses					
8. Marketing and advertising					
9. Postage, express and telephone					
10. Printing and office supplies					
11. Occupancy, depreciation and amortization					
12. Equipment					
13. Cost or depreciation of EDP equipment and software					
14. Outsourced services including EDP, claims, and other services	4	458	28,520		28,982
15. Boards, bureaus and association fees			4,181		4,181
16. Insurance, except on real estate					
17. Collection and bank service charges				9,405	9,405
18. Group service and administration fees					
19. Reimbursements by uninsured plans					
20. Reimbursements from fiscal intermediaries					
21. Real estate expenses					
22. Real estate taxes					
23. Taxes, licenses and fees:					
23.1 State and local insurance taxes					
23.2 State premium taxes					
23.3 Regulatory authority licenses and fees					
23.4 Payroll taxes					
23.5 Other (excluding federal income and real estate taxes)					
24. Investment expenses not included elsewhere				1,044	1,044
25. Aggregate write-ins for expenses					
26. Total expenses incurred (Lines 1 to 25)	4	458	32,701	10,449	(a) 43,612
27. Less expenses unpaid December 31, current year				1,338	1,338
28. Add expenses unpaid December 31, prior year		1,647		5,787	7,434
29. Amounts receivable relating to uninsured plans, prior year					
30. Amounts receivable relating to uninsured plans, current year					
31. Total expenses paid (Lines 26 minus 27 plus 28 minus 29 plus 30)	4	2,105	32,701	14,898	49,708
<b>Details of Write-Ins</b>					
2501.					
2502.					
2503.					
2598. Summary of remaining write-ins for Line 25 from overflow page					
2599. Totals (Lines 2501 through 2503 plus 2598) (Line 25 above)					

(a) Includes management fees of \$ 34,259 to affiliates and \$ to non-affiliates.

**EXHIBIT OF NET INVESTMENT INCOME**

	1	2
	Collected During Year	Earned During Year
1. U.S. Government bonds	(a) 42,088	42,088
1.1 Bonds exempt from U.S. tax	(a)	
1.2 Other bonds (unaffiliated)	(a)	
1.3 Bonds of affiliates	(a)	
2.1 Preferred stocks (unaffiliated)	(b)	
2.11 Preferred stocks of affiliates	(b)	
2.2 Common stocks (unaffiliated)		
2.21 Common stocks of affiliates		
3. Mortgage loans	(c)	
4. Real estate	(d)	
5. Contract loans		
6. Cash, cash equivalents and short-term investments	(e) 21,054	34,512
7. Derivative instruments	(f)	
8. Other invested assets		
9. Aggregate write-ins for investment income	18,807	18,807
10. Total gross investment income	81,949	95,406
11. Investment expenses		(g) 10,449
12. Investment taxes, licenses and fees, excluding federal income taxes		(g)
13. Interest expense		(h)
14. Depreciation on real estate and other invested assets		(i)
15. Aggregate write-ins for deductions from investment income		
16. Total deductions (Lines 11 through 15)		10,449
17. Net investment income (Line 10 minus Line 16)		84,957
<b>Details of Write-Ins</b>		
0901. PY Pending Income Received in Current Year	18,807	18,807
0902.		
0903.		
0998. Summary of remaining write-ins for Line 9 from overflow page		
0999. Totals (Lines 0901 through 0903 plus 0998) (Line 9 above)	18,807	18,807
1501.		
1502.		
1503.		
1598. Summary of remaining write-ins for Line 15 from overflow page		
1599. Totals (Lines 1501 through 1503 plus 1598) (Line 15 above)		

- (a) Includes \$ accrual of discount less \$ 10,350 amortization of premium and less \$ paid for accrued interest on purchases.
- (b) Includes \$ accrual of discount less \$ amortization of premium and less \$ paid for accrued dividends on purchases.
- (c) Includes \$ accrual of discount less \$ amortization of premium and less \$ paid for accrued interest on purchases.
- (d) Includes \$ for company's occupancy of its own buildings; and excludes \$ interest on encumbrances.
- (e) Includes \$ accrual of discount less \$ amortization of premium and less \$ paid for accrued interest on purchases.
- (f) Includes \$ accrual of discount less \$ amortization of premium.
- (g) Includes \$ investment expenses and \$ investment taxes, licenses and fees, excluding federal income taxes, attributable to segregated and Separate Accounts.
- (h) Includes \$ interest on surplus notes and \$ interest on capital notes.
- (i) Includes \$ depreciation on real estate and \$ depreciation on other invested assets.

**EXHIBIT OF CAPITAL GAINS (LOSSES)**

	1	2	3	4	5
	Realized Gain (Loss) On Sales or Maturity	Other Realized Adjustments	Total Realized Capital Gain (Loss) (Columns 1 + 2)	Change in Unrealized Capital Gain (Loss)	Change in Unrealized Foreign Exchange Capital Gain (Loss)
1. U.S. Government bonds					
1.1 Bonds exempt from U.S. tax					
1.2 Other bonds (unaffiliated)					
1.3 Bonds of affiliates					
2.1 Preferred stocks (unaffiliated)					
2.11 Preferred stocks of affiliates					
2.2 Common stocks (unaffiliated)					
2.21 Common stocks of affiliates					
3. Mortgage loans					
4. Real estate					
5. Contract loans					
6. Cash, cash equivalents and short-term investments					
7. Derivative instruments					
8. Other invested assets					
9. Aggregate write-ins for capital gains (losses)					
10. Total capital gains (losses)					
<b>NONE</b>					
<b>Details of Write-Ins</b>					
0901.					
0902.					
0903.					
0998. Summary of remaining write-ins for Line 9 from overflow page					
0999. Totals (Lines 0901 through 0903 plus 0998) (Line 9 above)					

**EXHIBIT OF NONADMITTED ASSETS**

	1	2	3
	Current Year Total Nonadmitted Assets	Prior Year Total Nonadmitted Assets	Change in Total Nonadmitted Assets (Col. 2 – Col. 1)
1. Bonds (Schedule D)			
2. Stocks (Schedule D):			
2.1 Preferred stocks			
2.2 Common stocks			
3. Mortgage loans on real estate (Schedule B):			
3.1 First liens			
3.2 Other than first liens			
4. Real estate (Schedule A):			
4.1 Properties occupied by the company			
4.2 Properties held for the production of income			
4.3 Properties held for sale			
5. Cash (Schedule E-Part 1), cash equivalents (Schedule E-Part 2) and short-term investments (Schedule DA)			
6. Contract loans			
7. Derivatives (Schedule DB)			
8. Other invested assets (Schedule BA)			
9. Receivables for securities			
10. Securities lending reinvested collateral assets (Schedule DL)			
11. Aggregate write-ins for invested assets			
12. Subtotals, cash and invested assets (Lines 1 to 11)			
13. Title plants (for Title insurers only)			
14. Investment income due and accrued			
15. Premiums and considerations:			
15.1 Uncollected premiums and agents' balances in the course of collection	1,220	1,220	
15.2 Deferred premiums, agents' balances and installments booked but deferred and not yet due			
15.3 Accrued retrospective premiums and contracts subject to redetermination			
16. Reinsurance:			
16.1 Amounts recoverable from reinsurers			
16.2 Funds held by or deposited with reinsured companies			
16.3 Other amounts receivable under reinsurance contracts			
17. Amounts receivable relating to uninsured plans			
18.1 Current federal and foreign income tax recoverable and interest thereon			
18.2 Net deferred tax asset			
19. Guaranty funds receivable or on deposit			
20. Electronic data processing equipment and software			
21. Furniture and equipment, including health care delivery assets			
22. Net adjustment in assets and liabilities due to foreign exchange rates			
23. Receivables from parent, subsidiaries and affiliates			
24. Health care and other amounts receivable		4,865	4,865
25. Aggregate write-ins for other-than-invested assets	3,055	2,905	(150)
26. Total assets excluding Separate Accounts, Segregated Accounts and Protected Cell Accounts (Lines 12 to 25)	4,275	8,991	4,715
27. From Separate Accounts, Segregated Accounts and Protected Cell Accounts			
28. Total (Lines 26 and 27)	4,275	8,991	4,715
<b>Details of Write-Ins</b>			
1101.			
1102.			
1103.			
1198. Summary of remaining write-ins for Line 11 from overflow page			
1199. Totals (Lines 1101 through 1103 plus 1198) (Line 11 above)			
2501. Broker Commission Overpayment	3,055	2,905	(150)
2502.			
2503.			
2598. Summary of remaining write-ins for Line 25 from overflow page			
2599. Totals (Lines 2501 through 2503 plus 2598) (Line 25 above)	3,055	2,905	(150)

**EXHIBIT 1 – ENROLLMENT BY PRODUCT TYPE FOR HEALTH BUSINESS ONLY**

Source of Enrollment	Total Members at End of					6 Current Year Member Months
	1 Prior Year	2 First Quarter	3 Second Quarter	4 Third Quarter	5 Current Year	
1. Health Maintenance Organizations.....						
2. Provider Service Organizations.....						
3. Preferred Provider Organizations.....						
4. Point of Service.....						
5. Indemnity Only.....						
6. Aggregate write-ins for other lines of business.....						
7. Total.....						
<b>NONE</b>						
<b>Details of Write-Ins</b>						
0601.....						
0602.....						
0603.....						
0698. Summary of remaining write-ins for Line 6 from overflow page.....						
0699. Totals (Lines 0601 through 0603 plus 0698) (Line 6 above).....						

## Notes to the Financial Statements

### 1. Summary of Significant Accounting Policies and Going Concern

#### A. Accounting Practices

The accompanying financial statements of Gateway Health Plan of Ohio, Inc. ("GHPOI") are presented on the basis of accounting practices prescribed or permitted by the Ohio Department of Insurance ("the Department"). The Department recognizes only statutory accounting practices prescribed or permitted by the State of Ohio for determining and reporting the financial condition and results of operations of an insurance company and for determining its solvency under Ohio insurance law and regulations. The National Association of Insurance Commissioners' ("NAIC") Accounting Practices and Procedures Manual, ("NAIC SAP") has been adopted as a component of prescribed or permitted practices by the State of Ohio.

A reconciliation of GHPOI's net income and capital and surplus between NAIC SAP and practices prescribed and permitted by the State of Ohio is shown below:

	SSAP #	F/S Page	F/S Line #	2022	2021
Net Income					
(1) State basis (Page 4, Line 32, Columns 2 & 3)	XXX	XXX	XXX	\$ 246,090	\$ 713,288
(2) State prescribed practices that are an increase / (decrease) from NAIC SAP:					
(3) State permitted practices that are an increase / (decrease) from NAIC SAP:					
(4) NAIC SAP (1-2-3=4)	XXX	XXX	XXX	<u>\$ 246,090</u>	<u>\$ 713,288</u>
Surplus					
(5) State basis (Page 3, Line 33, Columns 3 & 4)	XXX	XXX	XXX	\$ 2,297,669	\$ 5,346,863
(6) State prescribed practices that are an increase / (decrease) from NAIC SAP:					
(7) State permitted practices that are an increase / (decrease) from NAIC SAP:					
(8) NAIC SAP (5-6-7=8)	XXX	XXX	XXX	<u>\$ 2,297,669</u>	<u>\$ 5,346,863</u>

#### B. Use of Estimates in the Preparation of the Financial Statements

The preparation of the financial statements in conformity with Statutory Accounting Principles requires management to make estimates and assumptions that affect the reported amounts of assets and liabilities. It also requires disclosure of contingent assets and liabilities at the date of the financial statements and the reported amounts of revenue and expenses during the period. Actual results could differ from those estimates.

#### C. Accounting Policy

Accounting policies that materially affect assets, liabilities, capital and surplus or results of operations include:

Effective January 1, 2020, GHPOI no longer offers Medicare Advantage plans in the states of OH, KY, and NC. As of January 1, 2020, there is no membership. GHPOI continued to process run-out of claims during 2022. Through December 31, 2019, GHPOI provided Medicare managed care services under contract with the Centers for Medicare and Medicaid Services (CMS). GHPOI's revenue recognized during 2021 was a prior year adjustment based on per capita amounts as previously contracted between GHPOI and CMS through December 31, 2019. Expenses recognized during 2022 and 2021 are prior year adjustments related to services performed on or prior to December 31, 2019.

In addition, GHPOI uses the following accounting policies:

- (1) GHPOI does not hold any short-term investments.
- (2) GHPOI does not hold Mandatory Convertible securities and SVO Identified investments. Bonds are stated at amortized cost using the scientific interest method.
- (3) GHPOI does not hold common stocks.
- (4) GHPOI does not hold preferred stocks.
- (5) GHPOI does not hold any mortgage loans on real estate.
- (6) GHPOI does not hold any loan-backed securities.
- (7) GHPOI does not hold any investments in subsidiaries, controlled or affiliated investments.
- (8) GHPOI does not hold any investments in joint ventures, partnerships and limited liability companies.
- (9) GHPOI does not hold any derivatives instruments.
- (10) Investment Income is not considered a factor in the premium deficiency calculation, in accordance with SSAP No. 54, Individual and Group Accident and Health Contracts.
- (11) Medical and hospital costs are accrued based on claims received but unpaid and an estimate for claims incurred but not yet received (IBNR). These estimates are projected through an actuarial model, which calculates the outstanding liability based on the payment trends and membership. Milliman USA serves as GHPOI's external actuarial firm and completes quarterly and annual certifications of claims liability in conformity with the various Ohio state departments. Claims adjustment expenses are paid by GHPOI's parent, Gateway Health Plan, LLC ("GHLLC") as part of the services fee but are shown separately on the Annual Statement for consistency and presentation of all claim related items.
- (12) The Company has not modified its capitalization policy from the prior period.
- (13) The Company's pharmaceutical rebate receivables are estimated based on historical rebates received per member per month (PMPM) and current volume. The majority of rebates are billed or confirmed within 90 days at the end of each quarter. The rebates are then paid in the accordance with contract terms with each manufacturer.

#### D. Going Concern

Management has evaluated the Company's ability to continue as a going concern. There is no substantial doubt in its ability to continue as a going concern.

**Notes to the Financial Statements**

**2. Accounting Changes and Corrections of Errors - None**

**3. Business Combinations and Goodwill - None**

**4. Discontinued Operations - None**

**5. Investments**

- A. Mortgage Loans, including Mezzanine Real Estate Loans - None
- B. Debt Restructuring - None
- C. Reverse Mortgages - None
- D. Loan-Backed Securities - None
- E. Dollar Repurchase Agreements and/or Securities Lending Transactions - None
- F. Repurchase Agreements Transactions Accounted for as Secured Borrowing - None
- G. Reverse Repurchase Agreements Transactions Accounted for as Secured Borrowing - None
- H. Repurchase Agreements Transactions Accounted for as a Sale - None
- I. Reverse Repurchase Agreements Transactions Accounted for as a Sale - None
- J. Real Estate - None
- K. Low-Income Housing Tax Credits (LIHTC) - None
- L. Restricted Assets

(1) Restricted assets (including pledged)

Restricted Asset Category	(1) Total Gross (Admitted & Nonadmitted) Restricted from Current Year	(2) Total Gross (Admitted & Nonadmitted) Restricted From Prior Year	(3) Increase / (Decrease) (1 - 2)	(4) Total Current Year Nonadmitted Restricted	(5) Total Current Year Admitted Restricted (1 - 4)	(6) Gross (Admitted & Nonadmitted) Restricted to Total Assets	(7) Admitted Restricted to Total Admitted Assets
a. Subject to contractual obligation for which liability is not shown	\$	\$	\$	\$	\$	%	%
b. Collateral held under security lending agreements							
c. Subject to repurchase agreements							
d. Subject to reverse repurchase agreements							
e. Subject to dollar repurchase agreements							
f. Subject to dollar reverse repurchase agreements							
g. Placed under option contracts							
h. Letter stock or securities restricted as to sale - excluding FHLB capital stock							
i. FHLB capital stock							
j. On deposit with states	1,144,442	1,154,792	(10,350)		1,144,442	48.739	48.828
k. On deposit with other regulatory bodies							
l. Pledged as collateral to FHLB (including assets backing funding agreements)							
m. Pledged as collateral not captured in other categories							
n. Other restricted assets							
<b>o. Total restricted assets (Sum of a through n)</b>	<b>\$ 1,144,442</b>	<b>\$ 1,154,792</b>	<b>\$ (10,350)</b>	<b>\$</b>	<b>\$ 1,144,442</b>	<b>48.739 %</b>	<b>48.828 %</b>

(2) Detail of assets pledged as collateral not captured in other categories (contracts that share similar characteristics, such as reinsurance and derivatives, are reported in the aggregate) - None

(3) Detail of other restricted assets (contracts that share similar characteristics, such as reinsurance and derivatives, are reported in the aggregate) - None

(4) Collateral received and reflected as assets within the reporting entity's financial statements - None

- M. Working Capital Finance Investments - None
- N. Offsetting and Netting of Assets and Liabilities - None
- O. 5GI Securities - None
- P. Short Sales - None
- Q. Prepayment Penalty and Acceleration Fees - None
- R. Reporting Entity's Share of Cash Pool by Asset type - None

**6. Joint Ventures, Partnerships and Limited Liability Companies**

- A. Investments in Joint Ventures, Partnerships or Limited Liability Companies that Exceed 10% of Admitted Assets  
GHPOI has no investments in joint ventures, partnerships, or limited liability companies.
- B. Impaired Investments in Joint Ventures, Partnerships and Limited Liability Companies - None

**7. Investment Income**

- A. Due and Accrued Income Excluded from Surplus  
All investment income due and accrued with amounts that are over 90 days past due are excluded.

**Notes to the Financial Statements**

**7. Investment Income (Continued)**

B. Total Amount Excluded

No investment income was excluded from the financial statements.

**8. Derivative Instruments - None**

**9. Income Taxes**

The FASB has issued guidance indicating that it believes the OECD Pillar Two tax is an alternative minimum tax under US GAAP. The Corporation has evaluated the impacts of this guidance and does not expect a material impact to its financial position, results of operations or cash flows, as it does expect the provision of Pillar Two to apply.

The Inflation Reduction Act (the "Act") was enacted on August 16, 2022. The Act includes a new corporate alternative minimum tax ("CAMT") that goes into effect for tax years beginning after 2022. On December 27, 2022 and February 17, 2023, the United States Treasury Department issued Notice 2023-07 and Notice 2023-20 respectively, which provides interim guidance regarding application of the CAMT until the issuance of proposed regulations. Management is currently evaluating if the Corporation will be subject to the CAMT in 2023 and the related impact of the Act on the financial statements.

A. Components of the Net Deferred Tax Asset/(Liability)

(1) Change between years by tax character

	2022			2021			Change		
	(1)	(2)	(3)	(4)	(5)	(6)	(7)	(8)	(9)
	Ordinary	Capital	Total (Col 1+2)	Ordinary	Capital	Total (Col 4+5)	Ordinary (Col 1-4)	Capital (Col 2-5)	Total (Col 7+8)
(a) Gross deferred tax assets	\$ 8,086,044	\$	\$ 8,086,044	\$ 8,149,165	\$	\$ 8,149,165	\$ (63,121)	\$	\$ (63,121)
(b) Statutory valuation allowance adjustments	8,078,376		8,078,376	8,131,046		8,131,046	(52,670)		(52,670)
(c) Adjusted gross deferred tax assets (1a - 1b)	7,668		7,668	18,119		18,119	(10,451)		(10,451)
(d) Deferred tax assets nonadmitted									
(e) Subtotal net admitted deferred tax asset (1c - 1d)	\$ 7,668	\$	\$ 7,668	\$ 18,119	\$	\$ 18,119	\$ (10,451)	\$	\$ (10,451)
(f) Deferred tax liabilities	7,668		7,668	18,119		18,119	(10,451)		(10,451)
(g) Net admitted deferred tax asset/(net deferred tax liability) (1e - 1f)	\$	\$	\$	\$	\$	\$	\$	\$	\$

(2) Admission calculation components SSAP No. 101

	2022			2021			Change		
	(1)	(2)	(3)	(4)	(5)	(6)	(7)	(8)	(9)
	Ordinary	Capital	Total (Col 1+2)	Ordinary	Capital	Total (Col 4+5)	Ordinary (Col 1-4)	Capital (Col 2-5)	Total (Col 7+8)
(a) Federal income taxes paid in prior years recoverable through loss carrybacks	\$	\$	\$	\$	\$	\$	\$	\$	\$
(b) Adjusted gross deferred tax assets expected to be realized (excluding the amount of deferred tax assets from 2(a) above) after application of the threshold limitation (lesser of 2(b)1 and 2(b)2 below)									
1. Adjusted gross deferred tax assets expected to be realized following the balance sheet date									
2. Adjusted gross deferred tax assets allowed per limitation threshold	XXX	XXX	344,650	XXX	XXX	802,029	XXX	XXX	(457,379)
(c) Adjusted gross deferred tax assets (excluding the amount of deferred tax assets from 2(a) and 2(b) above) offset by gross deferred tax liabilities	7,668		7,668	18,119		18,119	(10,451)		(10,451)
(d) Deferred tax assets admitted as the result of application of SSAP No. 101									
Total (2(a) + 2(b) + 2(c))	\$ 7,668	\$	\$ 7,668	\$ 18,119	\$	\$ 18,119	\$ (10,451)	\$	\$ (10,451)

(3) Ratio used as basis of admissibility

	2022	2021
(a) Ratio percentage used to determine recovery period and threshold limitation amount	6,100.000 %	9,211.000 %
(b) Amount of adjusted capital and surplus used to determine recovery period and threshold limitation in 2(b)2 above	\$ 2,297,669	\$ 5,346,863

(4) Impact of tax-planning strategies

For the years ending December 31, 2022 and 2021, the Corporation has not employed any tax planning strategies to admit DTAs.

**Notes to the Financial Statements**

**9. Income Taxes (Continued)**

(a) Determination of adjusted gross deferred tax assets and net admitted deferred tax assets, by tax character as a percentage

	2022		2021		Change	
	(1)	(2)	(3)	(4)	(5)	(6)
	Ordinary	Capital	Ordinary	Capital	Ordinary (Col. 1-3)	Capital (Col. 2-4)
1. Adjusted gross DTAs amount from Note 9A1(c)	\$ 7,668	\$	\$ 18,119	\$	\$ (10,451)	\$
2. Percentage of adjusted gross DTAs by tax character attributable to the impact of tax planning strategies	%	%	%	%	%	%
3. Net admitted adjusted gross DTAs amount from Note 9A1(e)	\$ 7,668	\$	\$ 18,119	\$	\$ (10,451)	\$
4. Percentage of net admitted adjusted gross DTAs by tax character admitted because of the impact of tax planning strategies	%	%	%	%	%	%

(b) Use of reinsurance-related tax-planning strategies

Does the company's tax-planning strategies include the use of reinsurance? **NO**

**B. Regarding Deferred Tax Liabilities That Are Not Recognized**

For the years ending December 31, 2022 and 2021, the Corporation does not have situations where DTLs are not recognized for amounts described in SSAP 101.

**C. Major Components of Current Income Taxes Incurred**

Current income taxes incurred consist of the following major components:	(1)	(2)	(3)
	2022	2021	Change (1-2)
1. Current Income Tax			
(a) Federal	\$	\$	\$
(b) Foreign			
(c) Subtotal (1a+1b)	\$	\$	\$
(d) Federal income tax on net capital gains			
(e) Utilization of capital loss carry-forwards			
(f) Other			
(g) Federal and foreign income taxes incurred (1c+1d+1e+1f)	\$	\$	\$
	(1)	(2)	(3)
	2022	2021	Change (1-2)
2. Deferred Tax Assets			
(a) Ordinary			
(1) Discounting of unpaid losses	\$ 40	\$ 95	\$ (55)
(2) Unearned premium reserve			
(3) Policyholder reserves			
(4) Investments			
(5) Deferred acquisition costs			
(6) Policyholder dividends accrual			
(7) Fixed assets			
(8) Compensation and benefits accrual			
(9) Pension accrual			
(10) Receivables - nonadmitted	898	1,888	(990)
(11) Net operating loss carry-forward	8,085,106	8,147,182	(62,076)
(12) Tax credit carry-forward			
(13) Other			
(99) Subtotal (sum of 2a1 through 2a13)	\$ 8,086,044	\$ 8,149,165	\$ (63,121)
(b) Statutory valuation allowance adjustment	8,078,376	8,131,046	(52,670)
(c) Nonadmitted			
(d) Admitted ordinary deferred tax assets (2a99 - 2b - 2c)	\$ 7,668	\$ 18,119	\$ (10,451)
(e) Capital			
(1) Investments	\$	\$	\$
(2) Net capital loss carry-forward			
(3) Real estate			
(4) Other			
(99) Subtotal (2e1+2e2+2e3+2e4)	\$	\$	\$
(f) Statutory valuation allowance adjustment			
(g) Nonadmitted			
(h) Admitted capital deferred tax assets (2e99 - 2f - 2g)			
(i) Admitted deferred tax assets (2d + 2h)	\$ 7,668	\$ 18,119	\$ (10,451)

## Notes to the Financial Statements

## 9. Income Taxes (Continued)

	(1) 2022	(2) 2021	(3) Change (1-2)
3. Deferred Tax Liabilities			
(a) Ordinary			
(1) Investments	\$	\$	\$
(2) Fixed assets			
(3) Deferred and uncollected premium			
(4) Policyholder reserves			
(5) Other	7,668	18,119	(10,451)
(99) Subtotal (3a1+3a2+3a3+3a4+3a5)	\$ 7,668	\$ 18,119	\$ (10,451)
(b) Capital			
(1) Investments	\$	\$	\$
(2) Real estate			
(3) Other			
(99) Subtotal (3b1+3b2+3b3)	\$	\$	\$
(c) Deferred tax liabilities (3a99 + 3b99)	\$ 7,668	\$ 18,119	\$ (10,451)
4. Net deferred tax assets/liabilities (2i - 3c)	\$	\$	\$

The change in net deferred income taxes is comprised of the following (this analysis is exclusive of non admitted assets as the change in Nonadmitted Assets is reported separately from the Change in Net Deferred Income Taxes in the surplus section of the Annual Statement):

	2022	2021	Change
Adjusted gross deferred tax assets	7,668	18,119	(10,451)
Total deferred tax liabilities	7,668	18,119	(10,451)
Net deferred tax assets / (liabilities)	-	-	-
Tax effect of unrealized gains / (losses)			-
Change in net deferred income tax			-

## D. Among the More Significant Book to Tax Adjustments

The provision for federal and foreign income taxes incurred is different from that which would be obtained by applying the statutory federal .

	2022	Effective Tax Rate
Provision computed at statutory rate	\$ 51,679	21.000 %
Change in valuation allowance	(52,670)	-21.403 ...
Change in temporary differences recorded to surplus	991	0.403 ...
Total	\$	%

	2022	Effective Tax Rate
Federal and foreign income taxes incurred	\$	%
Change in net deferred income taxes		
Total statutory income taxes	\$	%

## E. Operating Loss and Tax Credit Carryforwards

- (1) At December 31, 2022, GHPOI has \$38,500,506 net operating loss carryforwards, \$0 capital loss carry forwards, \$0 charitable contribution carryforwards, and \$0 AMT Tax Credit carryforwards.
- (2) Income tax expense available for recoupment - None
- (3) GHPOI has not made any deposits admitted under Section 6603 of the Internal Revenue Service Code.

## F. Consolidated Federal Income Tax Return

The Corporation is not included in a consolidated federal income tax return with any other entities.

## G. Federal or Foreign Income Tax Loss Contingencies

The Corporation does not anticipate that any significant increase or decrease to unrecognized tax benefits will be recorded in 2023.

SSAP 101 provides that deferred tax assets ("DTA's") are reduced by a statutory valuation allowance if, based on the weight of all available evidence, it's more likely than not that some or all of the DTA will not be realized. The Corporation considered all available evidence, both positive and negative, including projected future taxable income, tax planning strategies and recent core earnings from financial operations. Based on this evidence, a full valuation allowance was recognized against the Corporation's DTA's. Management will continue to monitor the Corporation's financial performance and assess the need for the valuation allowance in the future.

## H. Repatriation Transition Tax (RTT) - None

## I. Alternative Minimum Tax (AMT) Credit - None

## 10. Information Concerning Parent, Subsidiaries, Affiliates and Other Related Parties

- A. GHPOI is a non-profit taxable corporation and a wholly owned subsidiary of Gateway Health, LLC ("GHLLC"), formerly Gateway Health Plan, LP ("GHPLP"). GHLLC is a Pennsylvania limited liability company that is wholly owned by Highmark Inc. ("Highmark"). The Company's ownership structure is included within Schedule Y. GHPOI files its annual and quarterly statutory financial statements under Highmark's NAIC group code (0812).
- B. GHPOI returned \$3,300,000 in contributed surplus to its parent, Gateway Health LLC on December 30, 2022. GHPOI stopped operations as of January 1, 2020 and plans to continue maintaining minimum RBC and Capital levels.

## Notes to the Financial Statements

### 10. Information Concerning Parent, Subsidiaries, Affiliates and Other Related Parties (Continued)

- C. Transactions With Related Party Who Are Not Reported on Schedule Y - None
- D. An inter-company (payable)/ receivable between GHPOI and Gateway Health Plan, Inc. ("GHPI") totaled (\$591) at December 31, 2022 and \$124,102 at December 31, 2021. The balance represents inter-company activity in the normal course of business. An inter-company (payable)/receivable between GHPOI and GHLLC totaled \$(11,275) at December 31, 2022 and (\$2,836) at December 31, 2021. The balance represents inter-company activity in the normal course of business.
- E. GHLLC operates under a Program Services Agreement ("PSA") with GHPOI.
- F. GHPOI has no guarantees or undertakings for the benefit of any affiliate or related party.
- G. GHLLC is the sole member of GHPI, a non-profit Pennsylvania corporation, and GHPOI, a non-profit Ohio corporation. GHLLC is a Pennsylvania limited liability company that is wholly owned by Highmark. Highmark's ultimate controlling person is Highmark Health.
- H. GHPOI has no ownership in upstream entities.
- I. GHPOI has no investments in SCA entities.
- J. GHPOI has no investments in SCA entities.
- K. GHPOI has no foreign insurance subsidiary.
- L. GHPOI has no investments in downstream non-insurance holding companies.
- M. All SCA Investments  
GHPOI has no investments in SCA entities.
- N. Investment in Insurance SCAs  
GHPOI has no investments in SCA entities.
- O. SCA and SSAP No. 48 Entity Loss Tracking  
GHPOI has no investments in SCA entities and SSAP No. 48 Entity Loss Tracking.

### 11. Debt

- A. GHPOI has no Debt including capital notes.
- B. FHLB (Federal Home Loan Bank) Agreements  
GHPOI has no FHLB (Federal Home Loan Bank) agreements.

### 12. Retirement Plans, Deferred Compensation, Postemployment Benefits and Compensated Absences and Other Postretirement Benefit Plans

- A. Defined Benefit Plan - None
- B. Investment Policies and Strategies of Plan Assets - None
- C. Fair Value of Each Class of Plan Assets - None
- D. Expected Long-Term Rate of Return for the Plan Assets - None
- E. Defined Contribution Plans - None
- F. Multiemployer Plans - None
- G. Consolidated/Holding Company Plans - None
- H. Postemployment Benefits and Compensated Absences - None
- I. Impact of Medicare Modernization Act on Postretirement Benefits (INT 04-17) - None

### 13. Capital and Surplus, Dividend Restrictions and Quasi-Reorganizations

- A. GHPOI is a non-profit organization and, as such, does not have stock authorized or outstanding.
- B. GHPOI has no preferred stock outstanding.
- C. There are no restrictions placed on GHPOI's surplus, except risk-based capital requirements imposed by the NAIC, the Department, and GHPOI's regulatory agreement.
- D. No dividends paid in 2022.
- E. Company Profits Paid as Ordinary Dividends - None
- F. There were no restrictions placed on the GHPOI's surplus, including for whom the surplus is being held.
- G. GHPOI has no advances of surplus not repaid nor does GHPOI hold stock of affiliated companies for specific reasons.
- H. Stock Held for Special Purposes  
The amount of stock held by the GHPOI for special purposes is \$0.
- I. There were no changes in the balance of special surplus funds from the prior year.
- J. Unassigned Funds (Surplus) - None
- K. Company-Issued Surplus Debentures or Similar Obligations  
GHPOI has no surplus notes.

**Notes to the Financial Statements**

**13. Capital and Surplus, Dividend Restrictions and Quasi-Reorganizations (Continued)**

- L. Impact of Any Restatement Due to Prior Quasi-Reorganizations  
No quasi-reorganizations have taken place as of December 31, 2022.
- M. No quasi-reorganizations have taken place as of December 31, 2022.

**14. Liabilities, Contingencies and Assessments**

- A. Contingent Commitments  
GHPOI has no contingent commitments.
- B. Assessments  
GHPOI has no assessments.
- C. Gain Contingencies  
GHPOI has no gain contingencies.
- D. Claims Related Extra Contractual Obligation and Bad Faith Losses Stemming from Lawsuits  
GHPOI has no claims related extra contractual obligation and bad faith losses stemming from Lawsuits.
- E. Joint and Several Liabilities  
GHPOI has no joint and several liabilities.
- F. All Other Contingencies  
GHPOI has no other contingencies.

**15. Leases**

GHPOI has no leases.

**16. Information About Financial Instruments With Off-Balance-Sheet Risk And Financial Instruments With Concentrations of Credit Risk - None**

**17. Sale, Transfer and Servicing of Financial Assets and Extinguishments of Liabilities**

- A. Transfers of Receivables Reported as Sales - None
- B. Transfer and Servicing of Financial Assets - None
- C. Wash Sales  
GHPOI had no wash sales.

**18. Gain or Loss to the Reporting Entity from Uninsured Plans and the Uninsured Portion of Partially Insured Plans**

- A. ASO Plans - None
- B. ASC Plans - None
- C. Medicare or Other Similarly Structured Cost Based Reimbursement Contract - None

**19. Direct Premium Written/Produced by Managing General Agents/Third Party Administrators - None**

**20. Fair Value Measurements**

A. Fair Value Measurement

The Level of the fair value hierarchy within which the fair value measurements are categorized in their entirety (Level 1, 2 or 3)

In accordance with SSAP No. 100, financial assets and liabilities recorded at fair value in the statements of assets, liabilities, capital and surplus are categorized based upon the level of judgment associated with the inputs used to measure their fair value. Input levels, as defined by NAIC SAP, are as follows:

- Level 1 – Pricing inputs are based on unadjusted quoted market prices for identical financial assets in active markets. Active markets are those in which transactions occur in sufficient frequency and volume to provide pricing information on an ongoing basis.
- Level 2 – Pricing inputs are based on other than quoted prices in active markets included in Level 1 that are observable unadjusted quoted market prices for similar financial assets or liabilities in active markets or quoted market prices for identical assets in inactive markets.
- Level 3 – Pricing inputs include unobservable inputs that are supported by little or no market activity that reflect management’s best estimate of what market participants would use in pricing the asset at the measurement date.

(1) Fair value measurements at reporting date

Description for each class of asset or liability	Level 1	Level 2	Level 3	Net Asset Value (NAV)	Total
a. Assets at fair value					
Cash Equivalents .....	\$ 1,063,651	\$	\$	\$	\$ 1,063,651
Total assets at fair value/NAV .....	<u>\$ 1,063,651</u>	<u>\$</u>	<u>\$</u>	<u>\$</u>	<u>\$ 1,063,651</u>
b. Liabilities at fair value					
Total liabilities at fair value .....	<u>\$</u>	<u>\$</u>	<u>\$</u>	<u>\$</u>	<u>\$</u>

(2) Fair value measurements in Level 3 of the fair value hierarchy - None

(3) GHPOI’s policy for determining when transfers between levels are recognized is determined at the end of the reporting period

**Notes to the Financial Statements**

**20. Fair Value Measurements (Continued)**

(4) The following methods and assumptions were used to determine the fair value of each class of the following assets and liabilities recorded at fair value in the statements of assets, liabilities, capital and surplus:

Bonds – Fair values are based on quoted market prices, where available. These fair values are obtained primarily from a third party pricing service, which generally uses Level 1 or Level 2 inputs for the determination of fair value to facilitate fair value measurements and disclosures. Level 2 securities primarily include corporate securities, securities from states, municipalities, and political subdivisions and mortgage-backed securities. Inputs that are often used in the valuation methodologies include, but are not limited to, broker quotes, benchmark yields, credit spreads, default rates and prepayment speeds.

Short-term securities – Short-term securities include securities with a maturity of less than one year but greater than 90 days at the date of purchase. Fair values of short-term securities are based on quoted market prices, where available. These fair values are obtained primarily from a third party pricing service, which generally use Level 1 or Level 2 inputs, for the determination of fair value to facilitate fair value measurements and disclosures. U.S. Government securities represent Level 1 securities, while Level 2 securities include corporate securities. Inputs that are often used in the valuation methodologies include, but are not limited to, broker quotes, benchmark yields, credit spreads, default rates, and prepayment speeds.

Cash and cash equivalents: Cash equivalents include exempt money market funds, commercial paper, and discount notes or securities with a maturity of 3 months or less. Cash equivalents are designated as Level 1 or Level 2, depending on structure and the extent of credit-related features.

GHPOI uses a third party pricing service to obtain quoted prices for each security. The third party service provides pricing based on recent trades of the specific security or like securities, as well as a variety of valuation methodologies for those securities where an observable market price may not exist. The third party service may derive pricing for Level 2 securities from market corroborated pricing, matrix pricing, and inputs such as yield curves and indices. Pricing for Level 3 securities may be obtained from investment managers for private placements or derived from discounted cash flows, or ratio analysis and price comparisons of similar companies. GHPOI performs an analysis of reasonableness of the prices received for fair value by monitoring month-to-month fluctuations and determining reasons for significant differences, selectively testing fair values against prices obtained from other sources, and comparing the combined fair value of a class of assets against an appropriate index benchmark. There were no adjustments to quoted market prices obtained from third party pricing services during the period ended December 31, 2022 that were material to the statutory financial statements.

(5) Derivatives - None

B. Other Fair Value Disclosures - None

C. Fair Values for All Financial Instruments by Level 1, 2 and 3

Type of Financial Instrument	Aggregate Fair Value			Level 1	Level 2	Level 3	Net Asset Value (NAV)	Not Practicable (Carrying Value)
	Value	Admitted Assets						
Bonds	\$ 1,105,188	\$ 1,144,442	\$ 1,105,188	\$	\$	\$	\$	\$
Cash Equivalents	1,063,651	1,063,651	1,063,651					

D. Not Practicable to Estimate Fair Value - None

E. Nature and Risk of Investments Reported at NAV - None

**21. Other Items**

A. Unusual or Infrequent Items - None

B. Troubled Debt Restructuring - None

C. Other Disclosures - None

D. Business Interruption Insurance Recoveries - None

E. State Transferable and Non-Transferable Tax Credits - None

F. Subprime-Mortgage-Related Risk Exposure - None

G. Retained Assets - None

H. Insurance-Linked Securities (ILS) Contracts - None

I. The Amount That Could Be Realized on Life Insurance Where the Reporting Entity is Owner and Beneficiary or Has Otherwise Obtained Rights to Control the Policy - None

**22. Events Subsequent**

Type I. – Recognized Subsequent Events -

Subsequent events have been considered through date of filing.

Type II. – Nonrecognized Subsequent Events

Subsequent events have been considered through date of filing.

## Notes to the Financial Statements

### 23. Reinsurance

#### A. Ceded Reinsurance Report

##### Section 1 – General Interrogatories

- (1) Are any of the reinsurers, listed in Schedule S as non-affiliated, owned in excess of 10% or controlled, either directly or indirectly, by the company or by any representative, officer, trustee, or director of the company?  
Yes ( ) No (X)
- (2) Have any policies issued by the company been reinsured with a company chartered in a country other than the United States (excluding U.S. Branches of such companies) that is owned in excess of 10% or controlled directly or indirectly by an insured, a beneficiary, a creditor or any other person not primarily engaged in the insurance business?  
Yes ( ) No (X)

##### Section 2 – Ceded Reinsurance Report – Part A

- (1) Does the company have any reinsurance agreements in effect under which the reinsurer may unilaterally cancel any reinsurance for reasons other than for nonpayment of premium or other similar credits?  
Yes ( ) No (X)
- (2) Does the reporting entity have any reinsurance agreements in effect such that the amount of losses paid or accrued through the statement date may result in a payment to the reinsurer of amounts that, in aggregate and allowing for offset of mutual credits from other reinsurance agreements with the same reinsurer, exceed the total direct premium collected under the reinsured policies?  
Yes ( ) No (X)

##### Section 3 – Ceded Reinsurance Report – Part B

- (1) What is the estimated amount of the aggregate reduction in surplus, (for agreements other than those under which the reinsurer may unilaterally cancel for reasons other than for nonpayment of premium or other similar credits that are reflected in Section 2 above) of termination of ALL reinsurance agreements, by either party, as of the date of this statement? Where necessary, the company may consider the current or anticipated experience of the business reinsured in making this estimate. \$
- (2) Have any new agreements been executed or existing agreements amended, since January 1 of the year of this statement, to include policies or contracts that were in force or which had existing reserves established by the company as of the effective date of the agreement?  
Yes ( ) No (X)

#### B. Uncollectible Reinsurance - None

#### C. Commutation of Reinsurance Reflected in Income and Expenses - None

#### D. Certified Reinsurer Rating Downgraded or Status Subject to Revocation - None

#### E. Reinsurance Credit

- (1) Reinsurance contracts subject to A-791 - None
- (2) Reinsurance contracts not subject to A-791 - None
- (3) Reinsurance contracts containing features which result in delays in payment - None
- (4) Reinsurance accounting credit for contracts not subject to A-791 and not yearly renewable term - None
- (5) Contracts with ceded risk not subject to A-791 accounted for differently under GAAP and SAP - None
- (6) Explanation of the accounting treatment disclosed in Note 23.E(5) if treated differently for GAAP and SAP - None

### 24. Retrospectively Rated Contracts & Contracts Subject to Redetermination

#### A. Method Used to Estimate

The Company estimated accrued retrospective premium adjustments for its Medicare Part D Risk Corridor adjustment based on the contract with CMA and actuarial estimates.

#### B. Method Used to Record

The company recorded accrued retrospective premium as an adjustment to earned premium.

#### C. Amount and Percent of Net Retrospective Premiums - None

#### D. Medical Loss Ratio Rebates Required Pursuant to the Public Health Service Act

GHPOI has no medical loss ratio rebates required pursuant to the Public Health Service Act.

#### E. Risk-Sharing Provisions of the Affordable Care Act (ACA) - None

### 25. Change in Incurred Claims and Claim Adjustment Expenses

#### A. Reasons for Changes in the Provision for Incurred Claim and Claim Adjustment Expenses Attributable to Insured Events of Prior Years

Reserves as of December 31, 2021 were \$32,179. As of December 31, 2022, \$(195,206) has been paid for incurred claims and claims adjustment expenses attributable to insured events of prior years. Reserves remaining for prior years are now \$14,476 as a result of re-estimation of unpaid and claim adjustment expenses. Therefore there has been a \$212,909 favorable prior-year development since December 31, 2021 and December 31, 2022. These changes are generally the result of ongoing analysis of recent loss development trends. Original estimates are increased or decreased, as additional information becomes known regarding individual claims.

**Notes to the Financial Statements**

**25. Change in Incurred Claims and Claim Adjustment Expenses (Continued)**

B. Significant Changes in Methodologies and Assumptions Used in Calculating the Liability for Unpaid Claims and Claim Adjustment Expenses

There were no significant changes in methodologies and assumptions used in calculating the liability for unpaid losses and loss adjustment expenses.

**26. Intercompany Pooling Arrangements - None**

**27. Structured Settlements - None**

**28. Health Care Receivables**

A. Pharmaceutical Rebate Receivables

The rebates accrued are an estimate based on historical rebates received per member per month (PMPM) and current volume.

GHPOI is responsible for billing rebates. The majority of rebates are paid to GHPOI via wire-transfer.

Quarter	Estimated Pharmacy Rebates as Reported on Financial Statements	Pharmacy Rebates as Billed or Otherwise Confirmed	Actual Rebates Received Within 90 Days of Billing	Actual Rebates Received Within 91 to 180 Days of Billing	Actual Rebates Received More Than 180 Days After Billing
12/31/2022	\$	\$	\$	\$	\$
09/30/2022					
06/30/2022					
03/31/2022					
12/31/2021					
09/30/2021					
06/30/2021					
03/31/2021					
12/31/2020					
09/30/2020					
06/30/2020					
03/31/2020	200,712				

\*Estimated Pharmacy Rebates as Reported on Financial Statements represents the admitted rebate receivable as reported on the financial statements.

\*\* Pharmacy Rebates Billed or Confirmed represents rebates billed or confirmed in the quarter.

B. Risk-Sharing Receivables - None

**29. Participating Policies - None**

**30. Premium Deficiency Reserves**

- 1. Liability carried for premium deficiency reserves: \$
- 2. Date of the most recent evaluation of this liability: 12/31/2022
- 3. Was anticipated investment income utilized in the calculation? NO

**31. Anticipated Salvage and Subrogation - None**

**GENERAL INTERROGATORIES**  
PART 1 - COMMON INTERROGATORIES

**GENERAL**

- 1.1. Is the reporting entity a member of an Insurance Holding Company System consisting of two or more affiliated persons, one or more of which is an insurer?..... YES
- If yes, complete Schedule Y, Parts 1, 1A, 2, and 3.
- 1.2. If yes, did the reporting entity register and file with its domiciliary State Insurance Commissioner, Director or Superintendent or with such regulatory official of the state of domicile of the principal insurer in the Holding Company System, a registration statement providing disclosure substantially similar to the standards adopted by the National Association of Insurance Commissioners (NAIC) in its Model Insurance Holding Company System Regulatory Act and model regulations pertaining thereto, or is the reporting entity subject to standards and disclosure requirements substantially similar to those required by such Act and regulations?..... YES
- 1.3. State Regulating?..... Ohio
- 1.4. Is the reporting entity publicly traded or a member of a publicly traded group?..... NO
- 1.5. If the response to 1.4 is yes, provide the CIK (Central Index Key) code issued by the SEC for the entity/group.....
- 2.1. Has any change been made during the year of this statement in the charter, by-laws, articles of incorporation, or deed of settlement of the reporting entity?..... NO
- 2.2. If yes, date of change:.....
- 3.1. State as of what date the latest financial examination of the reporting entity was made or is being made..... 12/31/2021
- 3.2. State the as of date that the latest financial examination report became available from either the state of domicile or the reporting entity. This date should be the date of the examined balance sheet and not the date the report was completed or released..... 12/31/2016
- 3.3. State as of what date the latest financial examination report became available to other states or the public from either the state of domicile or the reporting entity. This is the release date or completion date of the examination report and not the date of the examination (balance sheet date)..... 04/24/2018
- 3.4. By what department or departments?  
Ohio Department of Insurance
- 3.5. Have all financial statement adjustments within the latest financial examination report been accounted for in a subsequent financial statement filed with Departments?..... YES
- 3.6. Have all of the recommendations within the latest financial examination report been complied with?..... YES
- 4.1. During the period covered by this statement, did any agent, broker, sales representative, non-affiliated sales/service organization or any combination thereof under common control (other than salaried employees of the reporting entity) receive credit or commissions for or control a substantial part (more than 20 percent of any major line of business measured on direct premiums) of:.....
- 4.11. sales of new business?..... NO
- 4.12. renewals?..... NO
- 4.2. During the period covered by this statement, did any sales/service organization owned in whole or in part by the reporting entity or an affiliate, receive credit or commissions for or control a substantial part (more than 20 percent of any major line of business measured on direct premiums) of:.....
- 4.21. sales of new business?..... NO
- 4.22. renewals?..... NO
- 5.1. Has the reporting entity been a party to a merger or consolidation during the period covered by this statement?..... NO
- If yes, complete and file the merger history data file with the NAIC.
- 5.2. If yes, provide the name of the entity, NAIC company code, and state of domicile (use two letter state abbreviation) for any entity that has ceased to exist as a result of the merger or consolidation.

1	2	3
Name of Entity	NAIC Company Code	State of Domicile

- 6.1. Has the reporting entity had any Certificates of Authority, licenses or registrations (including corporate registration, if applicable) suspended or revoked by any governmental entity during the reporting period?..... NO
- 6.2. If yes, give full information
- 7.1. Does any foreign (non-United States) person or entity directly or indirectly control 10% or more of the reporting entity?..... NO
- 7.2. If yes,
  - 7.21. State the percentage of foreign control..... %
  - 7.22. State the nationality(s) of the foreign person(s) or entity(s); or if the entity is a mutual or reciprocal, the nationality of its manager or attorney-in-fact and identify the type of entity(s) (e.g., individual, corporation, government, manager or attorney-in-fact).

1	2
Nationality	Type of Entity

- 8.1. Is the company a subsidiary of a depository institution holding company (DIHC) or a DIHC itself, regulated by the Federal Reserve Board?..... NO
- 8.2. If response to 8.1 is yes, please identify the name of the DIHC.....
- 8.3. Is the company affiliated with one or more banks, thrifts or securities firms?..... NO
- 8.4. If response to 8.3 is yes, please provide the names and locations (city and state of the main office) of any affiliates regulated by a federal financial regulatory services agency [i.e. the Federal Reserve Board (FRB), the Office of the Comptroller of the Currency (OCC), the Federal Deposit Insurance Corporation (FDIC) and the Securities Exchange Commission (SEC)] and identify the affiliate's primary federal regulator.

1	2	3	4	5	6
Affiliate Name	Location (City, State)	FRB	OCC	FDIC	SEC

**GENERAL INTERROGATORIES**  
PART 1 - COMMON INTERROGATORIES

- 8.5. Is the reporting entity a depository institution holding company with significant insurance operations as defined by the Board of Governors of Federal Reserve System or a subsidiary of the depository institution holding company?..... NO
- 8.6. If response to 8.5 is no, is the reporting entity a company or subsidiary of a company that has otherwise been made subject to the Federal Reserve Board's capital rule?..... NO
9. What is the name and address of the independent certified public accountant or accounting firm retained to conduct the annual audit?  
The Company received an exemption from filing the annual audit
- 10.1. Has the insurer been granted any exemptions to the prohibited non-audit services provided by the certified independent public accountant requirements as allowed in Section 7H of the Annual Financial Reporting Model Regulation (Model Audit Rule), or substantially similar state law or regulation?..... NO
- 10.2. If the response to 10.1 is yes, provide information related to this exemption:
- 10.3. Has the insurer been granted any exemptions related to the other requirements of the Annual Financial Reporting Model Regulation as allowed for in Section 18A of the Model Regulation, or substantially similar state law or regulation?..... NO
- 10.4. If the response to 10.3 is yes, provide information related to this exemption:
- 10.5. Has the reporting entity established an Audit Committee in compliance with the domiciliary state insurance laws?..... YES
- 10.6. If the response to 10.5 is no or n/a, please explain.

11. What is the name, address and affiliation (officer/employee of the reporting entity or actuary/consultant associated with an actuarial consulting firm) of the individual providing the statement of actuarial opinion/certification?  
Milliman Inc., John Thompson, FSA, 1550 Liberty Drive, Suite 200 Wayne, PA 19087 (Actuary/Consultant associated with an Actuarial Consulting Firm)

- 12.1. Does the reporting entity own any securities of a real estate holding company or otherwise hold real estate indirectly?..... NO
- 12.11 Name of real estate holding company
- 12.12 Number of parcels involved.....
- 12.13 Total book / adjusted carrying value..... \$
- 12.2. If yes, provide explanation

**FOR UNITED STATES BRANCHES OF ALIEN REPORTING ENTITIES ONLY:**

- 13.1. What changes have been made during the year in the United States manager or the United States trustees of the reporting entity?.....
- 13.2. Does this statement contain all business transacted for the reporting entity through its United States Branch on risks wherever located?.....
- 13.3. Have there been any changes made to any of the trust indentures during the year?.....
- 13.4. If answer to (13.3) is yes, has the domiciliary or entry state approved the changes?.....
- 14.1. Are the senior officers (principal executive officer, principal financial officer, principal accounting officer or controller, or persons performing similar functions) of the reporting entity subject to a code of ethics, which includes the following standards?..... YES
- a. Honest and ethical conduct, including the ethical handling of actual or apparent conflicts of interest between personal and professional relationships;
  - b. Full, fair, accurate, timely and understandable disclosure in the periodic reports required to be filed by the reporting entity;
  - c. Compliance with applicable governmental laws, rules and regulations;
  - d. The prompt internal reporting of violations to an appropriate person or persons identified in the code; and
  - e. Accountability for adherence to the code.
- 14.11. If the response to 14.1 is no, please explain:
- 14.2. Has the code of ethics for senior managers been amended?..... NO
- 14.21. If the response to 14.2 is yes, provide information related to amendment(s).
- 14.3. Have any provisions of the code of ethics been waived for any of the specified officers?..... NO
- 14.31. If the response to 14.3 is yes, provide the nature of any waiver(s).

- 15.1. Is the reporting entity the beneficiary of a Letter of Credit that is unrelated to reinsurance where the issuing or confirming bank is not on the SVO Bank List?..... NO
- 15.2. If the response to 15.1 is yes, indicate the American Bankers Association (ABA) Routing Number and the name of the issuing or confirming bank of the Letter of Credit and describe the circumstances in which the Letter of Credit is triggered.

1 American Bankers Association (ABA) Routing Number	2 Issuing or Confirming Bank Name	3 Circumstances That Can Trigger the Letter of Credit	4 Amount
			\$

**BOARD OF DIRECTORS**

16. Is the purchase or sale of all investments of the reporting entity passed upon either by the board of directors or a subordinate committee thereof?..... YES
17. Does the reporting entity keep a complete permanent record of the proceedings of its board of directors and all subordinate committees thereof?..... YES
18. Has the reporting entity an established procedure for disclosure to its board of directors or trustees of any material interest or affiliation on the part of any of its officers, directors, trustees or responsible employees that is in conflict or is likely to conflict with the official duties of such person?..... YES

**GENERAL INTERROGATORIES**  
PART 1 - COMMON INTERROGATORIES

**FINANCIAL**

- 19. Has this statement been prepared using a basis of accounting other than Statutory Accounting Principles (e.g., Generally Accepted Accounting Principles)?..... NO
- 20.1. Total amount loaned during the year (inclusive of Separate Accounts, exclusive of policy loans):
  - 20.11 To directors or other officers..... \$
  - 20.12 To stockholders not officers..... \$
  - 20.13 Trustees, supreme or grand (Fraternal only)..... \$
- 20.2. Total amount of loans outstanding at the end of year (inclusive of Separate Accounts, exclusive of policy loans):
  - 20.21 To directors or other officers..... \$
  - 20.22 To stockholders not officers..... \$
  - 20.23 Trustees, supreme or grand (Fraternal only)..... \$
- 21.1. Were any assets reported in this statement subject to a contractual obligation to transfer to another party without the liability for such obligation being reported in the statement?..... NO
- 21.2. If yes, state the amount thereof at December 31 of the current year:
  - 21.21 Rented from others..... \$
  - 21.22 Borrowed from others..... \$
  - 21.23 Leased from others..... \$
  - 21.24 Other..... \$
- 22.1. Does this statement include payments for assessments as described in the *Annual Statement Instructions* other than guaranty fund or guaranty association assessments?..... NO
- 22.2. If answer is yes:
  - 22.21 Amount paid as losses or risk adjustment..... \$
  - 22.22 Amount paid as expenses..... \$
  - 22.23 Other amounts paid..... \$
- 23.1. Does the reporting entity report any amounts due from parent, subsidiaries or affiliates on Page 2 of this statement?..... NO
- 23.2. If yes, indicate any amounts receivable from parent included in the Page 2 amount..... \$
- 24.1. Does the insurer utilize third parties to pay agent commissions in which the amounts advanced by the third parties are not settled in full within 90 days?..... NO
- 24.2. If the response to 24.1 is yes, identify the third-party that pays the agents and whether they are a related party.

1	2
Name of Third-Party	Is the Third-Party Agent a Related Party (Yes/No)

**INVESTMENT**

- 25.01. Were all the stocks, bonds and other securities owned December 31 of current year, over which the reporting entity has exclusive control, in the actual possession of the reporting entity on said date? (other than securities lending programs addressed in 25.03)..... YES
- 25.02. If no, give full and complete information, relating thereto
- 25.03. For securities lending programs, provide a description of the program including value for collateral and amount of loaned securities, and whether collateral is carried on or off-balance sheet. (an alternative is to reference Note 17 where this information is also provided)
- 25.04. For the reporting entity's securities lending program, report amount of collateral for conforming programs as outlined in the Risk-Based Capital Instructions..... \$
- 25.05. For the reporting entity's securities lending program, report amount of collateral for other programs..... \$
- 25.06. Does your securities lending program require 102% (domestic securities) and 105% (foreign securities) from the counterparty at the outset of the contract?..... N/A
- 25.07. Does the reporting entity non-admit when the collateral received from the counterparty falls below 100%?..... N/A
- 25.08. Does the reporting entity or the reporting entity's securities lending agent utilize the Master Securities Lending Agreement (MSLA) to conduct securities lending?..... N/A
- 25.09. For the reporting entity's securities lending program, state the amount of the following as of December 31 of the current year:
  - 25.091. Total fair value of reinvested collateral assets reported on Schedule DL, Parts 1 and 2..... \$
  - 25.092. Total book adjusted/carrying value of reinvested collateral assets reported on Schedule DL, Parts 1 and 2..... \$
  - 25.093. Total payable for securities lending reported on the liability page..... \$
- 26.1. Were any of the stocks, bonds or other assets of the reporting entity owned at December 31 of the current year not exclusively under the control of the reporting entity or has the reporting entity sold or transferred any assets subject to a put option contract that is currently in force? (Exclude securities subject to Interrogatory 21.1 and 25.03)..... YES
- 26.2. If yes, state the amount thereof at December 31 of the current year:
  - 26.21. Subject to repurchase agreements..... \$
  - 26.22. Subject to reverse repurchase agreements..... \$
  - 26.23. Subject to dollar repurchase agreements..... \$
  - 26.24. Subject to reverse dollar repurchase agreements..... \$
  - 26.25. Placed under option agreements..... \$
  - 26.26. Letter stock or securities restricted as to sale - excluding FHLB Capital Stock..... \$
  - 26.27. FHLB Capital Stock..... \$
  - 26.28. On deposit with states..... \$ 1,144,442
  - 26.29. On deposit with other regulatory bodies..... \$
  - 26.30. Pledged as collateral - excluding collateral pledged to an FHLB..... \$
  - 26.31. Pledged as collateral to FHLB - including assets backing funding agreements..... \$
  - 26.32. Other..... \$
- 26.3. For category (26.26) provide the following:

1	2	3
Nature of Restriction	Description	Amount
		\$

**GENERAL INTERROGATORIES**  
PART 1 - COMMON INTERROGATORIES

- 27.1. Does the reporting entity have any hedging transactions reported on Schedule DB?..... NO
- 27.2. If yes, has a comprehensive description of the hedging program been made available to the domiciliary state? If no, attach a description with this statement..... N/A

LINES 27.3 through 27.5: FOR LIFE/FRATERNAL REPORTING ENTITIES ONLY:

- 27.3. Does the reporting entity utilize derivatives to hedge variable annuity guarantees subject to fluctuations as a result of interest rate sensitivity?..... NO
- 27.4. If the response to 27.3 is YES, does the reporting entity utilize:
- 27.41 Special accounting provision of SSAP No. 108.....
- 27.42 Permitted accounting practice.....
- 27.43 Other accounting guidance.....
- 27.5. By responding YES to 27.41 regarding utilizing the special accounting provisions of SSAP No. 108, the reporting entity attests to the following:
- The reporting entity has obtained explicit approval from the domiciliary state.
  - Hedging strategy subject to the special accounting provisions is consistent with the requirements of VM-21.
  - Actuarial certification has been obtained which indicates that the hedging strategy is incorporated within the establishment of VM-21 reserves and provides the impact of the hedging strategy within the Actuarial Guideline Conditional Tail Expectation Amount.
  - Financial Officer Certification has been obtained which indicates that the hedging strategy meets the definition of a Clearly Defined Hedging Strategy within VM-21 and that the Clearly Defined Hedging Strategy is the hedging strategy being used by the company in its actual day-to-day risk mitigation efforts.

- 28.1. Were any preferred stocks or bonds owned as of December 31 of the current year mandatorily convertible into equity, or, at the option of the issuer, convertible into equity?..... NO

28.2. If yes, state the amount thereof at December 31 of the current year..... \$

29. Excluding items in Schedule E- Part 3 - Special Deposits, real estate, mortgage loans and investments held physically in the reporting entity's offices, vaults or safety deposit boxes, were all stocks, bonds and other securities, owned throughout the current year held pursuant to a custodial agreement with a qualified bank or trust company in accordance with Section 1, III - General Examination Considerations, F. Outsourcing of Critical Functions, Custodial or Safekeeping Agreements of the *NAIC Financial Condition Examiners Handbook*?..... YES

29.01. For agreements that comply with the requirements of the *NAIC Financial Condition Examiners Handbook*, complete the following:

1 Name of Custodian(s)	2 Custodian's Address
BNY Mellon N.A.	Pittsburgh, PA

29.02. For all agreements that do not comply with the requirements of the *NAIC Financial Condition Examiners Handbook*, provide the name, location and a complete explanation:

1 Name(s)	2 Location(s)	3 Complete Explanation(s)

29.03. Have there been any changes, including name changes, in the custodian(s) identified in 29.01 during the current year?..... NO

29.04. If yes, give full and complete information relating thereto:

1 Old Custodian	2 New Custodian	3 Date of Change	4 Reason

29.05. Investment management – Identify all investment advisors, investment managers, broker/dealers, including individuals that have the authority to make investment decisions on behalf of the reporting entity. For assets that are managed internally by employees of the reporting entity, note as such. ["...that have access to the investment accounts"; "...handle securities"]

1 Name of Firm or Individual	2 Affiliation
Ja'Ron Bridges (Gateway/Treasurer)	A
Christopher Cogen (Gateway/Assistant Treasurer)	A
John Orner (Highmark Chief Investment Officer)	A
Kevin Marpoe (Highmark Dir Investments & Treas)	A
Income Research & Management (IR&M)	U

29.0597. For those firms/individuals listed in the table for Question 29.05, do any firms/individuals unaffiliated with the reporting entity (i.e., designated with a "U") manage more than 10% of the reporting entity's invested assets?..... NO

29.0598. For firms/individuals unaffiliated with the reporting entity (i.e., designated with a "U") listed in the table for Question 29.05, does the total assets under management aggregate to more than 50% of the reporting entity's invested assets?..... NO

29.06. For those firms or individuals listed in the table for 29.05 with an affiliation code of "A" (affiliated) or "U" (unaffiliated), provide the information for the table below.

1 Central Registration Depository Number	2 Name of Firm or Individual	3 Legal Entity Identifier (LEI)	4 Registered With	5 Investment Management Agreement (IMA) Filed
	Ja'Ron Bridges (Gateway/Treasurer)			NO
	Christopher Cogen (Gateway/Assistant Treasurer)			NO
	John Orner (Highmark Chief Investment Officer)			NO
	Kevin Marpoe (Highmark Dir Investments & Treasury)			NO
	Rocaton			NO
	Income Research & Management (IR&M) - unaffiliated			NO
	BlackRock - unaffiliated			NO

30.1. Does the reporting entity have any diversified mutual funds reported in Schedule D - Part 2 (diversified according to the Securities and Exchange Commission (SEC) in the Investment Company Act of 1940 [Section 5 (b) (1)])?..... NO

30.2. If yes, complete the following schedule:

**GENERAL INTERROGATORIES**  
PART 1 - COMMON INTERROGATORIES

1 CUSIP #	2 Name of Mutual Fund	3 Book/Adjusted Carrying Value
30.2999 TOTAL		\$ .....

30.3. For each mutual fund listed in the table above, complete the following schedule:

1 Name of Mutual Fund (from above table)	2 Name of Significant Holding of the Mutual Fund	3 Amount of Mutual Fund's Book / Adjusted Carrying Value Attributable to the Holding	4 Date of Valuation
		\$ .....	

31. Provide the following information for all short-term and long-term bonds and all preferred stocks. Do not substitute amortized value or statement value for fair value.

	1 Statement (Admitted) Value	2 Fair Value	3 Excess of Statement over Fair Value (-), or Fair Value over Statement (+)
31.1. Bonds .....	\$ 1,144,442	\$ 1,105,188	\$ (39,253)
31.2. Preferred Stocks .....			
31.3. Totals .....	\$ 1,144,442	\$ 1,105,188	\$ (39,253)

31.4. Describe the sources or methods utilized in determining the fair values:

Rates were obtained from Custodian's Year End Reports.

32.1. Was the rate used to calculate fair value determined by a broker or custodian for any of the securities in Schedule D? ..... YES .....

32.2. If the answer to 32.1 is yes, does the reporting entity have a copy of the broker's or custodian's pricing policy (hard copy or electronic copy) for all brokers or custodians used as a pricing source? ..... YES .....

32.3. If the answer to 32.2 is no, describe the reporting entity's process for determining a reliable pricing source for purposes of disclosure of fair value for Schedule D:

33.1. Have all the filing requirements of the *Purposes and Procedures Manual of the NAIC Investment Analysis Office* been followed? ..... YES .....

33.2. If no, list exceptions:

34. By self-designating 5GI securities, the reporting entity is certifying the following elements of each self-designated 5GI security:

a. Documentation necessary to permit a full credit analysis of the security does not exist or an NAIC CRP credit rating for an FE or PL security is not available.

b. Issuer or obligor is current on all contracted interest and principal payments.

c. The insurer has an actual expectation of ultimate payment of all contracted interest and principal.

Has the reporting entity self-designated 5GI securities? ..... NO .....

35. By self-designating PLGI securities, the reporting entity is certifying the following elements of each self-designated PLGI security:

a. The security was purchased prior to January 1, 2018.

b. The reporting entity is holding capital commensurate with the NAIC Designation reported for the security.

c. The NAIC Designation was derived from the credit rating assigned by an NAIC CRP in its legal capacity as an NRSRO which is shown on a current private letter rating held by the insurer and available for examination by state insurance regulators.

d. The reporting entity is not permitted to share this credit rating of the PL security with the SVO.

Has the reporting entity self-designated PLGI securities? ..... NO .....

36. By assigning FE to a Schedule BA non-registered private fund, the reporting entity is certifying the following elements of each self-designated FE fund:

a. The shares were purchased prior to January 1, 2019.

b. The reporting entity is holding capital commensurate with the NAIC Designation reported for the security.

c. The security had a public credit rating(s) with annual surveillance assigned by an NAIC CRP in its legal capacity as an NRSRO prior to January 1, 2019.

d. The fund only or predominantly holds bonds in its portfolio.

e. The current reported NAIC Designation was derived from the public credit rating(s) with annual surveillance assigned by an NAIC CRP in its legal capacity as an NRSRO.

f. The public credit rating(s) with annual surveillance assigned by an NAIC CRP has not lapsed.

Has the reporting entity assigned FE to Schedule BA non-registered private funds that complied with the above criteria? ..... NO .....

37. By rolling/renewing short-term or cash equivalent investments with continued reporting on Schedule DA, Part 1 or Schedule E Part 2 (identified through a code (%) in those investment schedules), the reporting entity is certifying to the following:

a. The investment is a liquid asset that can be terminated by the reporting entity on the current maturity date.

b. If the investment is with a nonrelated party or nonaffiliate, then it reflects an arms-length transaction with renewal completed at the discretion of all involved parties.

c. If the investment is with a related party or affiliate, then the reporting entity has completed robust re-underwriting of the transaction for which documentation is available for regulator review.

d. Short-term and cash equivalent investments that have been renewed/rolled from the prior period that do not meet the criteria in 37.a - 37.c are reported as long-term investments.

Has the reporting entity rolled/renewed short-term or cash equivalent investments in accordance with these criteria? ..... NO .....

38.1 Does the reporting entity directly hold cryptocurrencies? ..... NO .....

38.2 If the response to 38.1 is yes, on what schedule are they reported? .....

39.1 Does the reporting entity directly or indirectly accept cryptocurrencies as payments for premiums on policies? ..... NO .....

39.2 If the response to 39.1 is yes, are the cryptocurrencies held directly or are they immediately converted to U.S. dollars?

39.21 Held directly .....

39.22 Immediately converted to U.S. dollars .....

39.3. If the response to 38.1 or 39.1 is yes, list all cryptocurrencies accepted for payments of premiums or that are held directly.

1 Name of Cryptocurrency	2 Immediately Converted to USD, Directly Held, or Both	3 Accepted for Payment of Premiums

**GENERAL INTERROGATORIES**  
PART 1 - COMMON INTERROGATORIES

**OTHER**

40.1. Amount of payments to trade associations, service organizations and statistical or rating bureaus, if any?.....\$.....

40.2. List the name of the organization and the amount paid if any such payment represented 25% or more of the total payments to trade associations, service organizations, and statistical or rating bureaus during the period covered by this statement.

1	2
Name	Amount Paid
.....	\$.....

41.1. Amount of payments for legal expenses, if any?.....\$.....

41.2. List the name of the firm and the amount paid if any such payment represented 25% or more of the total payments for legal expenses during the period covered by this statement.

1	2
Name	Amount Paid
.....	\$.....

42.1. Amount of payments for expenditures in connection with matters before legislative bodies, officers, or departments of government, if any?.....\$.....

42.2. List the name of the firm and the amount paid if any such payment represented 25% or more of the total payment expenditures in connection with matters before legislative bodies, officers, or departments of government during the period covered by this statement.

1	2
Name	Amount Paid
.....	\$.....

**GENERAL INTERROGATORIES**  
PART 2 - HEALTH INTERROGATORIES

- 1.1 Does the reporting entity have any direct Medicare Supplement Insurance in force? ..... NO
- 1.2 If yes, indicate premium earned on U.S. business only ..... \$
- 1.3 What portion of Item (1.2) is not reported on the Medicare Supplement Insurance Experience Exhibit? ..... \$
- 1.31 Reason for excluding
  
- 1.4 Indicate amount of earned premium attributable to Canadian and/or Other Alien not included in Item (1.2) above ..... \$
- 1.5 Indicate total incurred claims on all Medicare Supplement insurance ..... \$
- 1.6 Individual policies:  
Most current three years:  
1.61 Total premium earned ..... \$  
1.62 Total incurred claims ..... \$  
1.63 Number of covered lives .....
- All years prior to most current three years:  
1.64 Total premium earned ..... \$  
1.65 Total incurred claims ..... \$  
1.66 Number of covered lives .....
- 1.7 Group policies:  
Most current three years:  
1.71 Total premium earned ..... \$  
1.72 Total incurred claims ..... \$  
1.73 Number of covered lives .....
- All years prior to most current three years:  
1.74 Total premium earned ..... \$  
1.75 Total incurred claims ..... \$  
1.76 Number of covered lives .....

2. Health Test:

	1	2
	Current Year	Prior Year
2.1 Premium Numerator .....	\$ .....	\$ (167,410)
2.2 Premium Denominator .....	\$ .....	\$ (167,410)
2.3 Premium Ratio (2.1/2.2) .....		100.000
2.4 Reserve Numerator .....	\$ 14,476	\$ 30,532
2.5 Reserve Denominator .....	\$ 14,476	\$ 30,532
2.6 Reserve Ratio (2.4/2.5) .....	100.000 %	100.000 %

- 3.1 Has the reporting entity received any endowment or gift from contracting hospitals, physicians, dentists, or others that is agreed will be returned when, as and if the earnings of the reporting entity permits? ..... NO
- 3.2 If yes, give particulars:
  
- 4.1 Have copies of all agreements stating the period and nature of hospitals', physicians', and dentists' care offered to subscribers and dependents been filed with the appropriate regulatory agency? ..... YES
- 4.2 If not previously filed, furnish herewith a copy(ies) of such agreement(s). Do these agreements include additional benefits offered? ..... NO
- 5.1 Does the reporting entity have stop-loss reinsurance? ..... NO
- 5.2 If no, explain:  
The company stopped selling at the end of 2019.
- 5.3 Maximum retained risk (see instructions)  
5.31 Comprehensive Medical ..... \$  
5.32 Medical Only ..... \$  
5.33 Medicare Supplement ..... \$  
5.34 Dental and Vision ..... \$  
5.35 Other Limited Benefit Plan ..... \$  
5.36 Other .....
- 6. Describe arrangement which the reporting entity may have to protect subscribers and their dependents against the risk of insolvency including hold harmless provisions, conversion privileges with other carriers, agreements with providers to continue rendering services, and any other agreements:
  
- 7.1 Does the reporting entity set up its claim liability for provider services on a service date basis? ..... YES
- 7.2 If no, give details

**GENERAL INTERROGATORIES**  
PART 2 - HEALTH INTERROGATORIES

8. Provide the following information regarding participating providers:
- 8.1 Number of providers at start of reporting year.....
- 8.2 Number of providers at end of reporting year.....
- 9.1 Does the reporting entity have business subject to premium rate guarantees?..... NO
- 9.2 If yes, direct premium earned:
- 9.21 Business with rate guarantees between 15-36 months..... \$
- 9.22 Business with rate guarantees over 36 months..... \$
- 10.1 Does the reporting entity have Incentive Pool, Withhold or Bonus Arrangements in its provider contracts?..... NO
- 10.2 If yes:
- 10.21 Maximum amount payable bonuses..... \$
- 10.22 Amount actually paid for year bonuses..... \$
- 10.23 Maximum amount payable withholds..... \$
- 10.24 Amount actually paid for year withholds..... \$
- 11.1 Is the reporting entity organized as:
- 11.12 A Medical Group/Staff Model,..... NO
- 11.13 An Individual Practice Association (IPA), or,..... NO
- 11.14 A Mixed Model (combination of above)?..... NO
- 11.2 Is the reporting entity subject to Statutory Minimum Capital and Surplus Requirements?..... YES
- 11.3 If yes, show the name of the state requiring such minimum capital and surplus..... Ohio
- 11.4 If yes, show the amount required..... \$ 1,700,000
- 11.5 Is this amount included as part of a contingency reserve in stockholder's equity?..... NO
- 11.6 If the amount is calculated, show the calculation

12. List service areas in which reporting entity is licensed to operate:

1
Name of Service Area
State of Ohio.....
State of North Carolina.....
Commonwealth of Kentucky.....

- 13.1 Do you act as a custodian for health savings accounts?..... NO
- 13.2 If yes, please provide the amount of custodial funds held as of the reporting date..... \$
- 13.3 Do you act as an administrator for health savings accounts?..... NO
- 13.4 If yes, please provide the balance of the funds administered as of the reporting date..... \$
- 14.1 Are any of the captive affiliates reported on Schedule S, Part 3, authorized reinsurers?..... N/A
- 14.2. If the answer to 14.1 is yes, please provide the following:

1 Company Name	2 NAIC Company Code	3 Domiciliary Jurisdiction	4 Reserve Credit	Assets Supporting Reserve Credit		
				5 Letters of Credit	6 Trust Agreements	7 Other

15. Provide the following for individual ordinary life insurance\* policies (U.S. business only) for the current year (prior to reinsurance assumed or ceded).
- 15.1 Direct Premium Written..... \$
- 15.2 Total Incurred Claims..... \$
- 15.3 Number of Covered Lives.....

*Ordinary Life Insurance Includes
Term (whether full underwriting, limited underwriting, jet issue, "short form app")
Whole Life (whether full underwriting, limited underwriting, jet issue, "short form app")
Variable Life (with or without secondary guarantee)
Universal Life (with or without secondary guarantee)
Variable Universal Life (with or without secondary guarantee)

16. Is the reporting entity licensed or chartered, registered, qualified, eligible or writing business in at least two states?..... YES
- 16.1 If no, does the reporting entity assume reinsurance business that covers risks residing in at least one state other than the state of domicile of the reporting entity?.....

## FIVE-YEAR HISTORICAL DATA

	1	2	3	4	5
	2022	2021	2020	2019	2018
<b>Balance Sheet (Pages 2 and 3)</b>					
1. Total admitted assets (Page 2, Line 28)	2,343,826	5,401,324	11,886,458	14,585,711	29,043,837
2. Total liabilities (Page 3, Line 24)	46,157	54,461	2,383,367	4,176,949	14,996,301
3. Statutory minimum capital and surplus requirement	1,700,000	1,700,000	1,700,000	1,700,000	1,700,000
4. Total capital and surplus (Page 3, Line 33)	2,297,669	5,346,863	9,503,091	10,408,762	14,047,536
<b>Income Statement (Page 4)</b>					
5. Total revenues (Line 8)		(167,410)	(56,919)	32,960,829	109,247,325
6. Total medical and hospital expenses (Line 18)	(194,296)	(907,474)	1,285,755	29,190,564	97,203,924
7. Claims adjustment expenses (Line 20)	462	(31,547)	241,708	2,580,233	5,076,353
8. Total administrative expenses (Line 21)	32,701	24,660	99,145	5,359,890	11,199,114
9. Net underwriting gain (loss) (Line 24)	161,133	746,951	(1,683,527)	(4,169,858)	(1,793,283)
10. Net investment gain (loss) (Line 27)	84,957	16,511	48,906	288,365	384,679
11. Total other income (Lines 28 plus 29)		(50,174)	(397,267)	41,406	(56,459)
12. Net income or (loss) (Line 32)	246,090	713,288	(2,027,465)	(3,835,663)	(1,456,217)
<b>Cash Flow (Page 6)</b>					
13. Net cash from operations (Line 11)	225,695	(563,358)	(1,551,551)	(10,604,202)	(8,288,028)
<b>Risk-Based Capital Analysis</b>					
14. Total adjusted capital	2,297,669	5,346,863	9,503,091	10,408,762	14,047,536
15. Authorized control level risk-based capital	6,100	9,211	778,597	1,762,323	4,378,478
<b>Enrollment (Exhibit 1)</b>					
16. Total members at end of period (Column 5, Line 7)				1,853	9,944
17. Total members months (Column 6, Line 7)				26,237	125,769
<b>Operating Percentage (Page 4) (Item divided by Page 4, sum of Lines 2, 3, and 5) x 100.0</b>					
18. Premiums earned plus risk revenue (Line 2 plus Lines 3 and 5)	%	100.0 %	100.0 %	100.0 %	100.0 %
19. Total hospital and medical plus other non-health (Lines 18 plus Line 19)		542.1	(2,258.9)	88.6	89.0
20. Cost containment expenses		(3.7)	(314.0)	5.8	2.4
21. Other claims adjustment expenses		22.5	(110.6)	2.0	2.2
22. Total underwriting deductions (Line 23)		546.2	(2,857.7)	112.7	101.6
23. Total underwriting gain (loss) (Line 24)		(446.2)	2,957.7	(12.7)	(1.6)
<b>Unpaid Claims Analysis (U&amp;I Exhibit, Part 2B)</b>					
24. Total claims incurred for prior years (Line 17, Col. 5)	(168,629)	822,230	2,626,125	9,286,848	6,273,415
25. Estimated liability of unpaid claims-[prior year (Line 17, Col. 6)]	25,667	1,729,703	1,340,370	9,641,142	10,403,075
<b>Investments in Parent, Subsidiaries and Affiliates</b>					
26. Affiliated bonds (Sch. D Summary, Line 12, Col. 1)					
27. Affiliated preferred stocks (Sch. D Summary, Line 18, Col. 1)					
28. Affiliated common stocks (Sch. D Summary, Line 24, Col. 1)					
29. Affiliated short-term investments (subtotal included in Sch. DA Verification, Col. 5, Line 10)					
30. Affiliated mortgage loans on real estate					
31. All other affiliated					
32. Total of above Lines 26 to 31					
33. Total investment in parent included in Lines 26 to 31 above					

NOTE: If a party to a merger, have the two most recent years of this exhibit been restated due to a merger in compliance with the disclosure requirements of SSAP No. 3—Accounting Changes and Correction of Errors?

If no, please explain

**SCHEDULE T - PREMIUMS AND OTHER CONSIDERATIONS**

Allocated by States and Territories

States, Etc.	1	Direct Business Only								
		2	3	4	5	6	7	8	9	10
	Active Status (a)	Accident & Health Premiums	Medicare Title XVIII	Medicaid Title XIX	CHIP Title XXI	Federal Employees Health Benefits Plan Premiums	Life & Annuity Premiums & Other Considerations	Property / Casualty Premiums	Total Columns 2 Through 8	Deposit-Type Contracts
1. Alabama	AL	N								
2. Alaska	AK	N								
3. Arizona	AZ	N								
4. Arkansas	AR	N								
5. California	CA	N								
6. Colorado	CO	N								
7. Connecticut	CT	N								
8. Delaware	DE	N								
9. District of Columbia	DC	N								
10. Florida	FL	N								
11. Georgia	GA	N								
12. Hawaii	HI	N								
13. Idaho	ID	N								
14. Illinois	IL	N								
15. Indiana	IN	N								
16. Iowa	IA	N								
17. Kansas	KS	N								
18. Kentucky	KY	L								
19. Louisiana	LA	N								
20. Maine	ME	N								
21. Maryland	MD	N								
22. Massachusetts	MA	N								
23. Michigan	MI	N								
24. Minnesota	MN	N								
25. Mississippi	MS	N								
26. Missouri	MO	N								
27. Montana	MT	N								
28. Nebraska	NE	N								
29. Nevada	NV	N								
30. New Hampshire	NH	N								
31. New Jersey	NJ	N								
32. New Mexico	NM	N								
33. New York	NY	N								
34. North Carolina	NC	L								
35. North Dakota	ND	N								
36. Ohio	OH	L								
37. Oklahoma	OK	N								
38. Oregon	OR	N								
39. Pennsylvania	PA	N								
40. Rhode Island	RI	N								
41. South Carolina	SC	N								
42. South Dakota	SD	N								
43. Tennessee	TN	N								
44. Texas	TX	N								
45. Utah	UT	N								
46. Vermont	VT	N								
47. Virginia	VA	N								
48. Washington	WA	N								
49. West Virginia	WV	N								
50. Wisconsin	WI	N								
51. Wyoming	WY	N								
52. American Samoa	AS	N								
53. Guam	GU	N								
54. Puerto Rico	PR	N								
55. US Virgin Islands	VI	N								
56. Northern Mariana Islands	MP	N								
57. Canada	CAN	N								
58. Aggregate Other Alien	OT	XXX								
59. Subtotal		XXX								
60. Reporting entity contributions for Employee Benefit Plans		XXX								
61. Total (Direct Business)		XXX								
<b>Details of Write-Ins</b>										
58001.		XXX								
58002.		XXX								
58003.		XXX								
58998. Summary of remaining write-ins for Line 58 from overflow page		XXX								
58999. Totals (Lines 58001 through 58003 plus 58998) (Line 58 above)		XXX								

(a) Active Status Counts

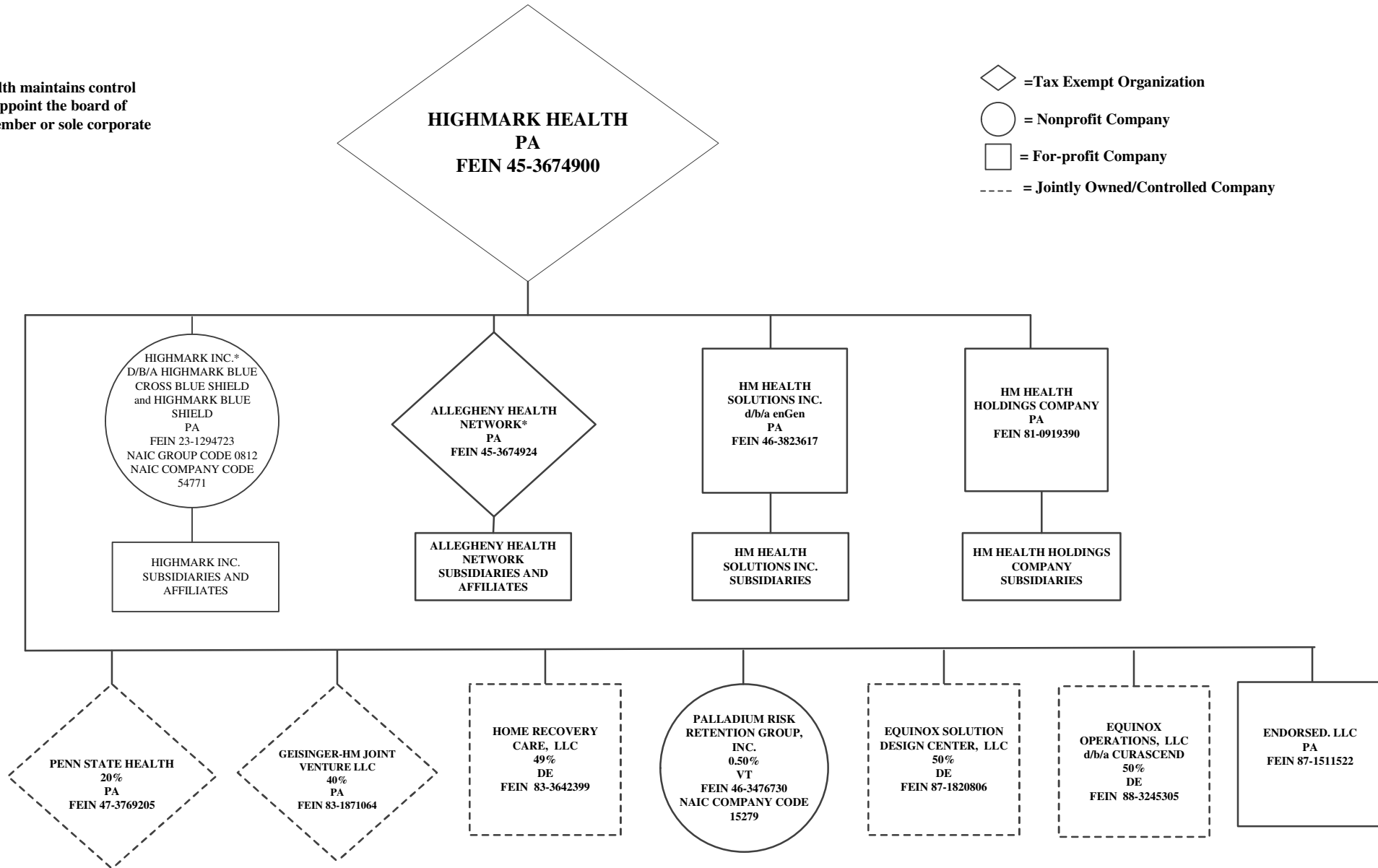
- 1. L - Licensed or Chartered - Licensed insurance carrier or domiciled RRG ..... 3
- 2. R - Registered - Non-domiciled RRGs ..... 54
- 3. E - Eligible - Reporting entities eligible or approved to write surplus lines in the state .....
- 4. Q - Qualified - Qualified or accredited reinsurer .....
- 5. N - None of the above - Not allowed to write business in the state .....

(b) Explanation of basis of allocation by states, premiums by state, etc

Premiums are allocated based on situs of contract.

\* Highmark Health maintains control through ability to appoint the board of directors as sole member or sole corporate member.

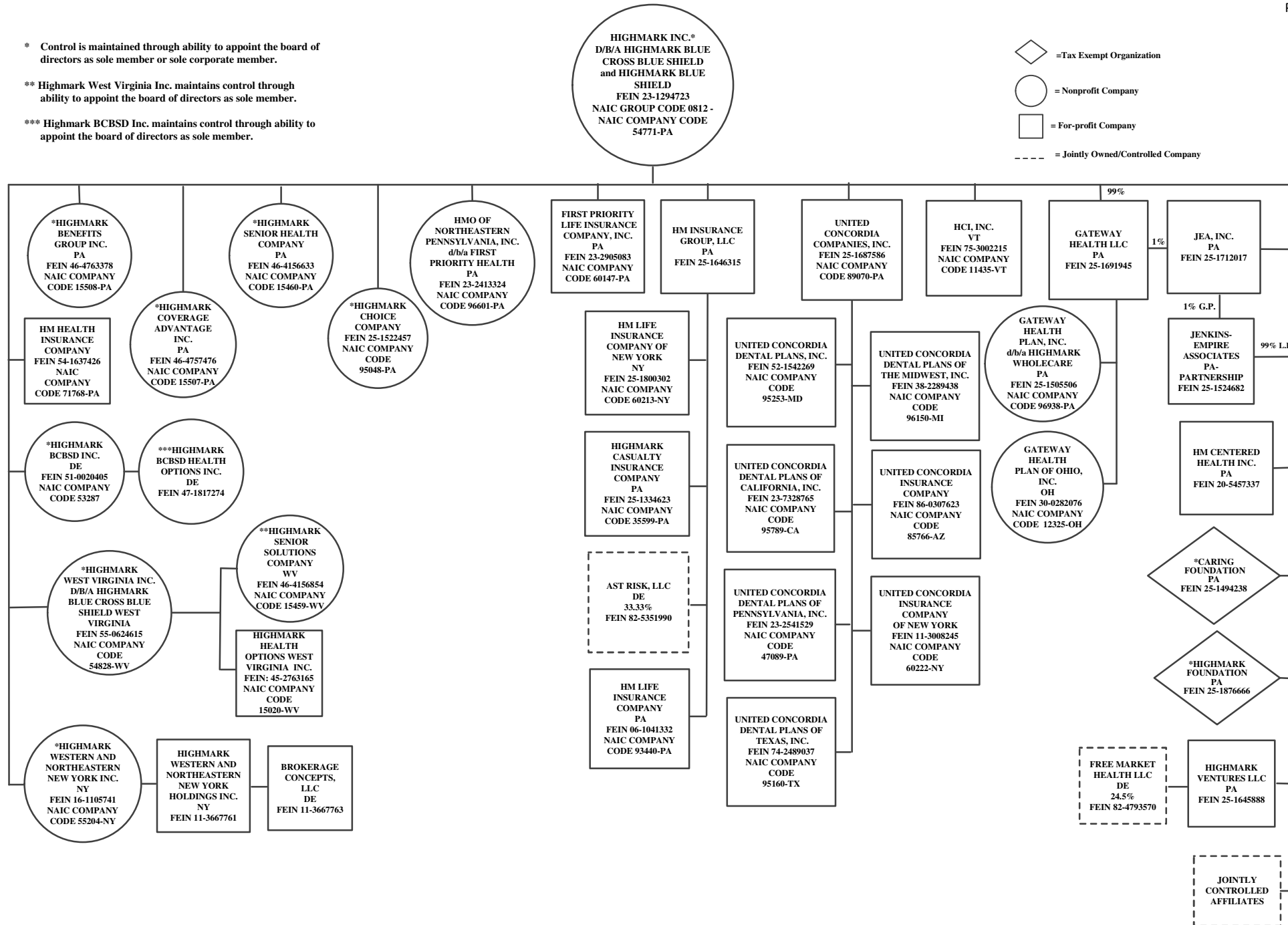
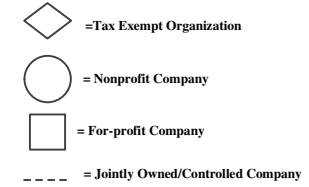
- ◊ = Tax Exempt Organization
- = Nonprofit Company
- = For-profit Company
- = Jointly Owned/Controlled Company



\* Control is maintained through ability to appoint the board of directors as sole member or sole corporate member.

\*\* Highmark West Virginia Inc. maintains control through ability to appoint the board of directors as sole member.

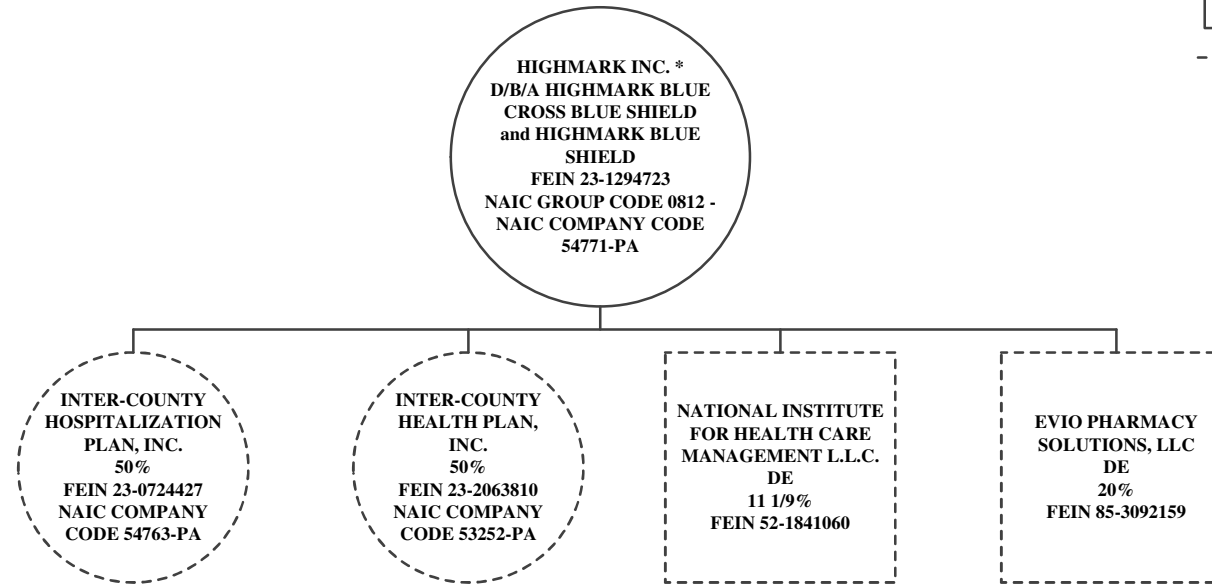
\*\*\* Highmark BCBSD Inc. maintains control through ability to appoint the board of directors as sole member.



SCHEDULE Y – INFORMATION CONCERNING ACTIVITIES OF INSURER MEMBERS OF A HOLDING COMPANY GROUP  
PART 1 – ORGANIZATION CHART

\* Control is maintained through ability to appoint the board of directors as sole member or sole corporate member.

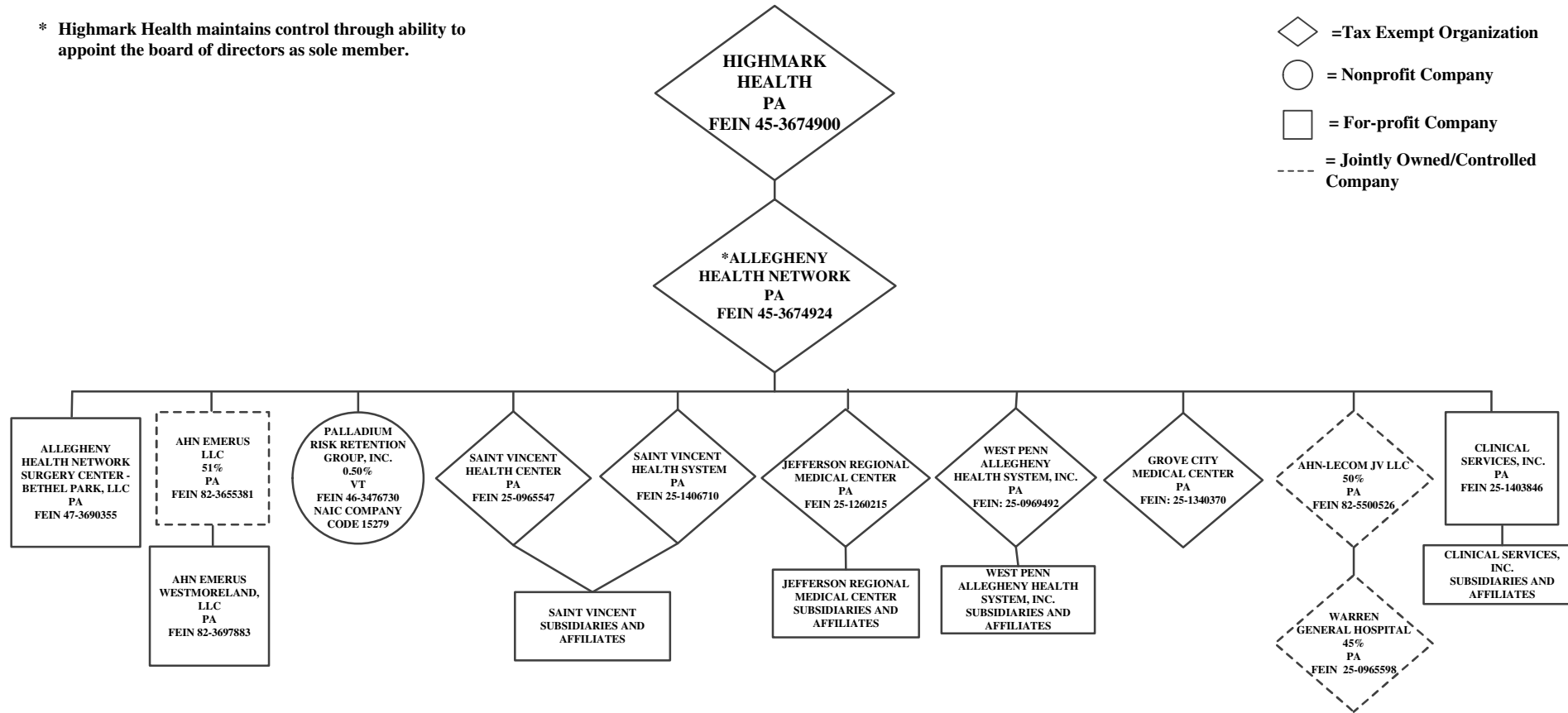
- ◊ = Tax Exempt Organization
- = Nonprofit Company
- = For-profit Company
- = Jointly Owned/Controlled Company



SCHEDULE Y – INFORMATION CONCERNING ACTIVITIES OF INSURER MEMBERS OF A HOLDING COMPANY GROUP  
PART 1 – ORGANIZATION CHART

\* Highmark Health maintains control through ability to appoint the board of directors as sole member.

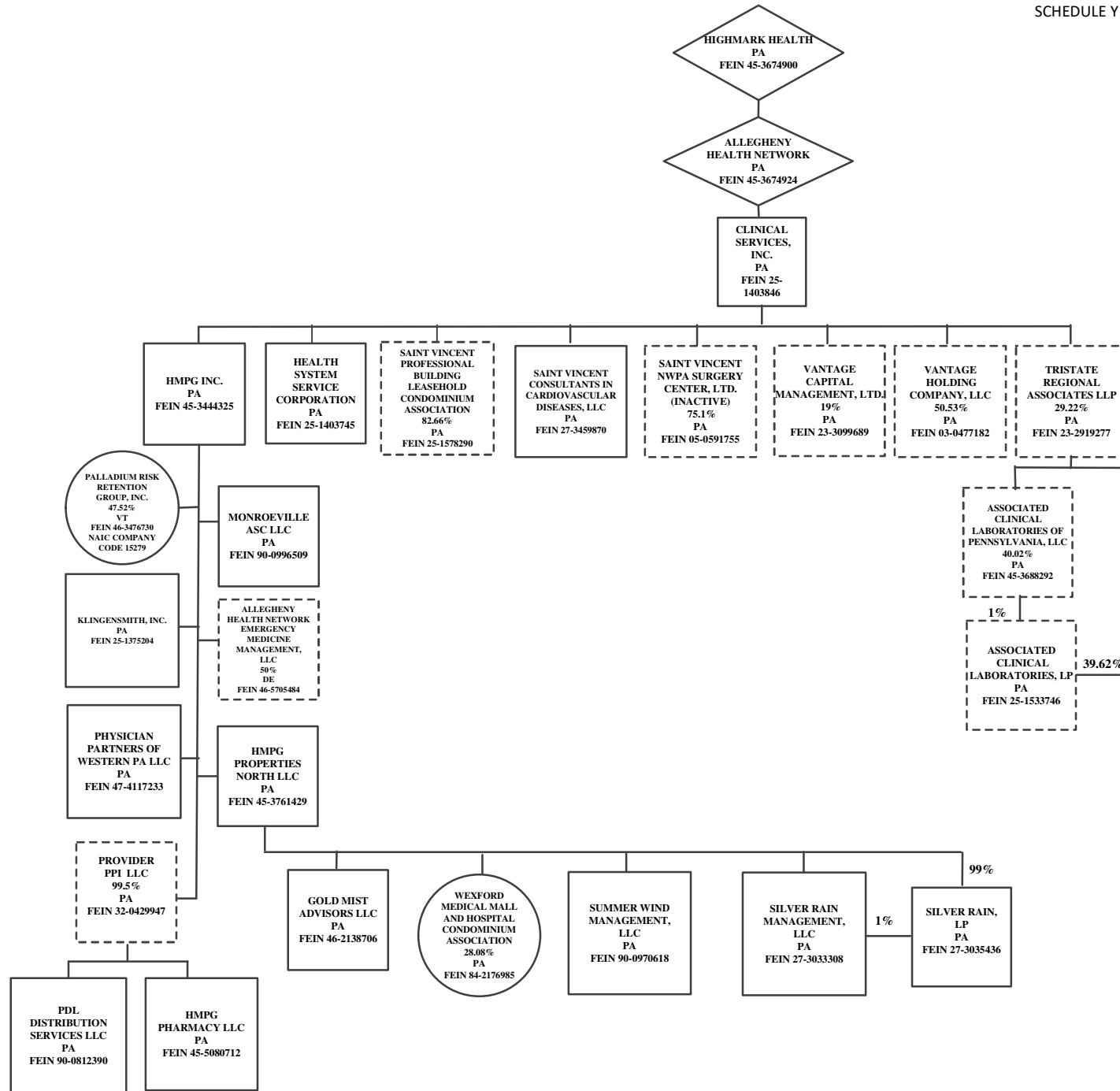
- ◇ = Tax Exempt Organization
- = Nonprofit Company
- = For-profit Company
- - - = Jointly Owned/Controlled Company



Annual Statement for the Year 2022 of the Gateway Health Plan of Ohio, Inc.

SCHEDULE Y – INFORMATION CONCERNING ACTIVITIES OF INSURER MEMBERS OF A HOLDING COMPANY GROUP  
PART 1 – ORGANIZATION CHART

- ◇ = Tax Exempt Organization
- = Nonprofit Company
- = For-profit Company
- = Jointly Owned/Controlled Company



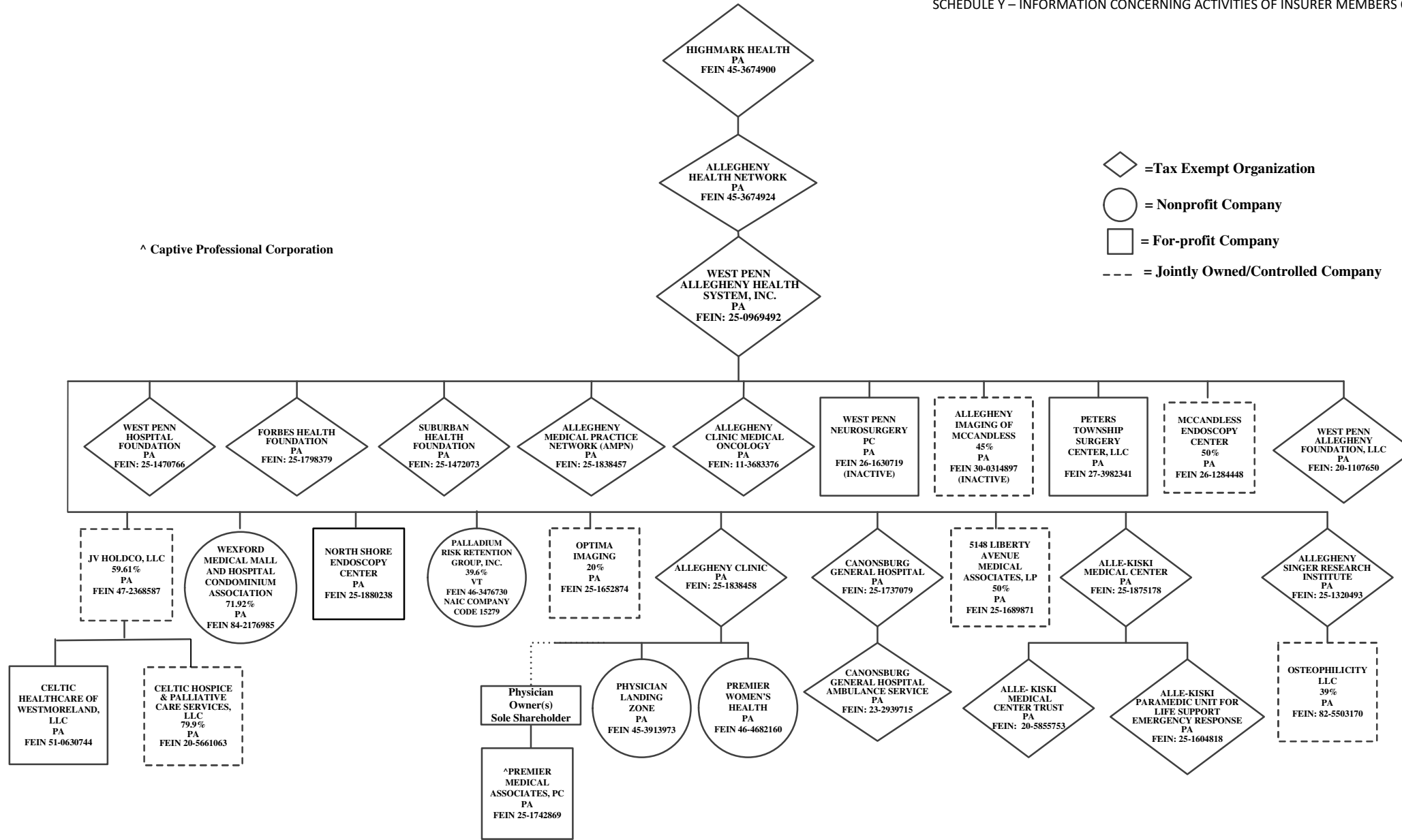
40.4

Annual Statement for the Year 2022 of the Gateway Health Plan of Ohio, Inc.

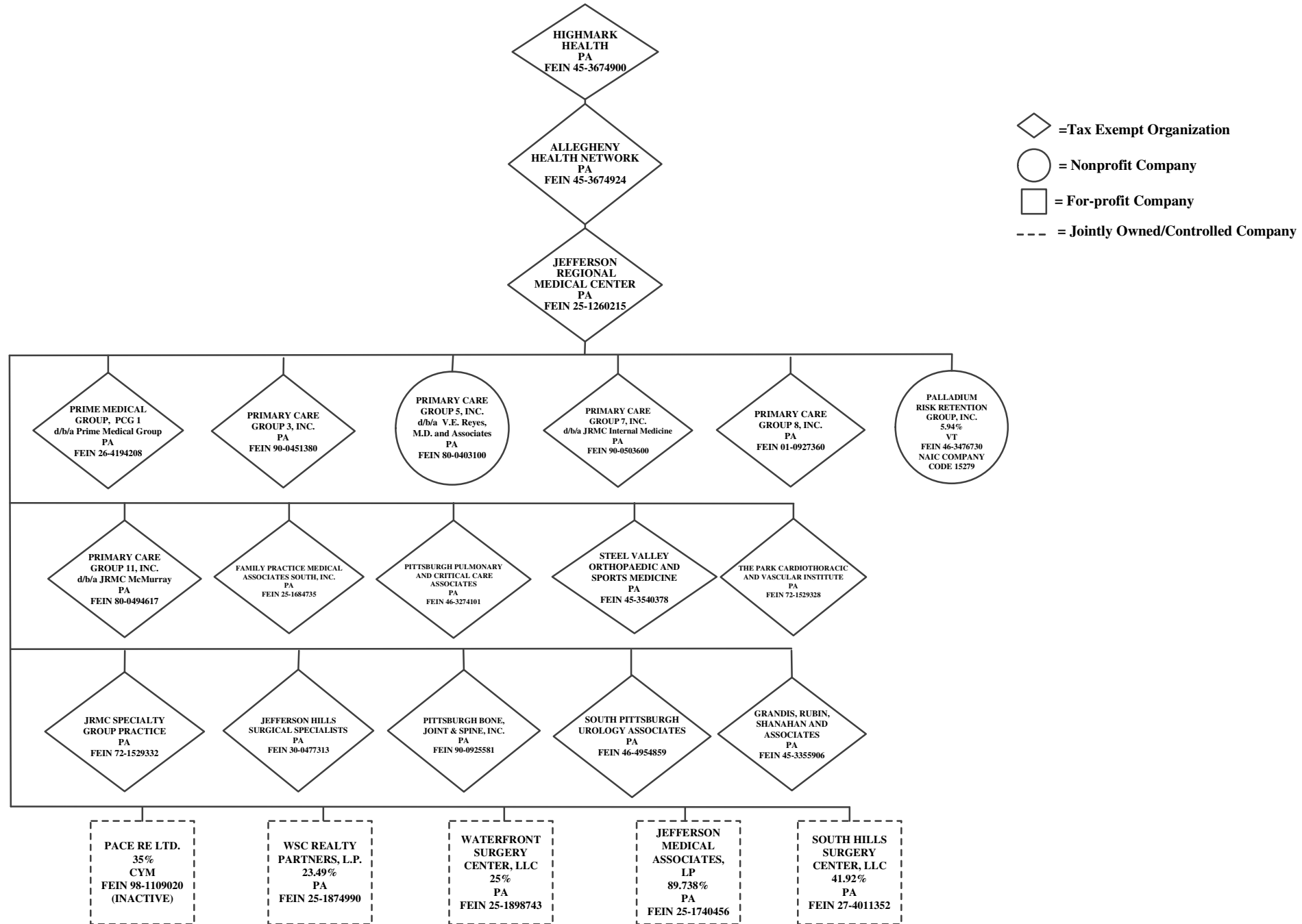
SCHEDULE Y – INFORMATION CONCERNING ACTIVITIES OF INSURER MEMBERS OF A HOLDING COMPANY GROUP  
PART 1 – ORGANIZATION CHART

^ Captive Professional Corporation

- ◇ = Tax Exempt Organization
- = Nonprofit Company
- = For-profit Company
- = Jointly Owned/Controlled Company



40.5



Annual Statement for the Year 2022 of the Gateway Health Plan of Ohio, Inc.

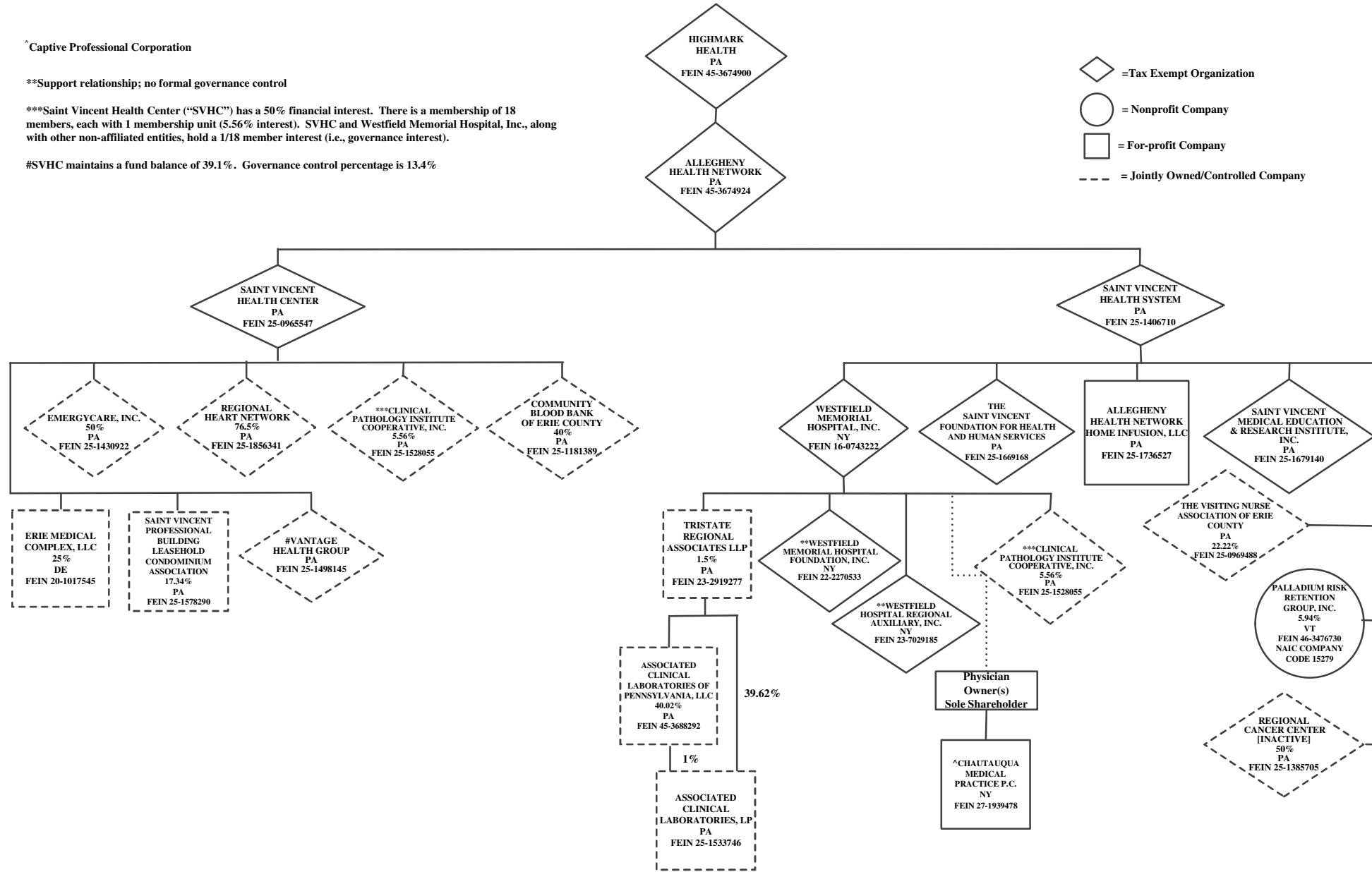
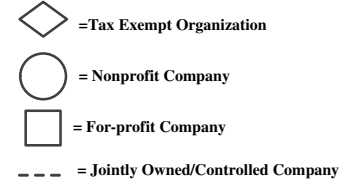
SCHEDULE Y – INFORMATION CONCERNING ACTIVITIES OF INSURER MEMBERS OF A HOLDING COMPANY GROUP  
PART 1 – ORGANIZATION CHART

^ Captive Professional Corporation

\*\*Support relationship; no formal governance control

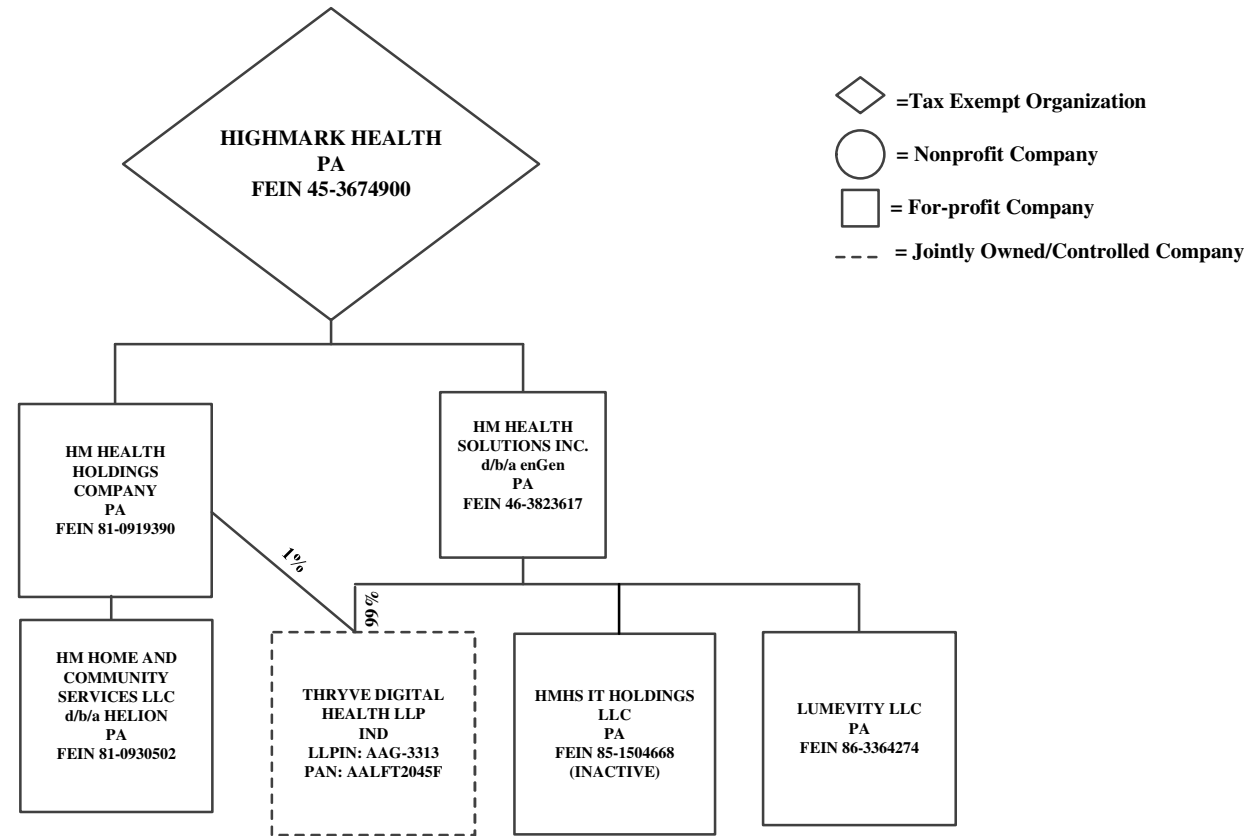
\*\*\*Saint Vincent Health Center (“SVHC”) has a 50% financial interest. There is a membership of 18 members, each with 1 membership unit (5.56% interest). SVHC and Westfield Memorial Hospital, Inc., along with other non-affiliated entities, hold a 1/18 member interest (i.e., governance interest).

#SVHC maintains a fund balance of 39.1%. Governance control percentage is 13.4%



40.7

SCHEDULE Y – INFORMATION CONCERNING ACTIVITIES OF INSURER MEMBERS OF A HOLDING COMPANY GROUP  
PART 1 – ORGANIZATION CHART



# Gateway Health, LLC

## Parent & Subsidiary Organization Chart

