



PROPERTY AND CASUALTY COMPANIES - ASSOCIATION EDITION

QUARTERLY STATEMENT

AS OF SEPTEMBER 30, 2022

OF THE CONDITION AND AFFAIRS OF THE

PROGRESSIVE GULF INSURANCE COMPANY

NAIC Group Code01550155NAIC Company Code42412Employer's ID Number34-1374634  
(Current)(Prior)

Organized under the Laws ofOH, State of Domicile or Port of EntryOH

Country of DomicileUnited States of America

Incorporated/Organized04/20/1982Commenced Business01/01/1983

Statutory Home Office6300 WILSON MILLS ROAD, W33CLEVELAND, OH, US 44143-2182  
(Street and Number)(City or Town, State, Country and Zip Code)

Main Administrative Office6300 WILSON MILLS ROAD, W33  
(Street and Number)  
CLEVELAND, OH, US 44143-2182440-461-5000  
(City or Town, State, Country and Zip Code)(Area Code) (Telephone Number)

Mail AddressP.O. BOX 89490CLEVELAND, OH, US 44101-6490  
(Street and Number or P.O. Box)(City or Town, State, Country and Zip Code)

Primary Location of Books and Records6300 WILSON MILLS ROAD, W33  
(Street and Number)  
CLEVELAND, OH, US 44143-2182440-395-4460  
(City or Town, State, Country and Zip Code)(Area Code) (Telephone Number)

Internet Website AddressPROGRESSIVE.COM

Statutory Statement ContactMICHELLE CRISTEN CAVELL440-395-4460  
(Name)(Area Code) (Telephone Number)  
FINANCIAL\_REPORTING@PROGRESSIVE.COM440-603-5500  
(E-mail Address)(FAX Number)

OFFICERS

PRESIDENTKATHRYN MARGARET LEMIEUXTREASURERPATRICK SEAN BRENNAN

SECRETARYPETER JAMES ALBERT

OTHER

PETER JAMES ALBERT, (VICE PRESIDENT)MICHELLE CAVELL CAVELL #, (VICE PRESIDENT)CHRISTINA LYNN CREWS, (ASST. SECRETARY)

HEATHER ELIZABETH DAY, (VICE PRESIDENT)JAMES LEE KUSMER, (ASST. TREASURER)

DIRECTORS OR TRUSTEES

CHARLES ERNEST CONOVERRICHARD RUSSELL CRAWLEYJOHN ALLEN CURTISS JR.

HEATHER ELIZABETH DAYKATHRYN MARGARET LEMIEUX

State ofOHIOSS:

County ofCUYAHOGA

The officers of this reporting entity being duly sworn, each depose and say that they are the described officers of said reporting entity, and that on the reporting period stated above, all of the herein described assets were the absolute property of the said reporting entity, free and clear from any liens or claims thereon, except as herein stated, and that this statement, together with related exhibits, schedules and explanations therein contained, annexed or referred to, is a full and true statement of all the assets and liabilities and of the condition and affairs of the said reporting entity as of the reporting period stated above, and of its income and deductions therefrom for the period ended, and have been completed in accordance with the NAIC Annual Statement Instructions and Accounting Practices and Procedures manual except to the extent that: (1) state law may differ; or, (2) that state rules or regulations require differences in reporting not related to accounting practices and procedures, according to the best of their information, knowledge and belief, respectively. Furthermore, the scope of this attestation by the described officers also includes the related corresponding electronic filing with the NAIC, when required, that is an exact copy (except for formatting differences due to electronic filing) of the enclosed statement. The electronic filing may be requested by various regulators in lieu of or in addition to the enclosed statement.

KATHRYN MARGARET LEMIEUXPRESIDENT

CHRISTINA LYNN CREWSASSISTANT SECRETARY

PATRICK SEAN BRENNANTREASURER

Subscribed and sworn to before me this8THday ofNOVEMBER, 2022

a. Is this an original filing? .....Yes [ X ] No [ ]

b. If no,  
1. State the amendment number.....  
2. Date filed .....  
3. Number of pages attached.....

STATEMENT AS OF SEPTEMBER 30, 2022 OF THE PROGRESSIVE GULF INSURANCE COMPANY

ASSETS

	Current Statement Date			4 December 31 Prior Year Net Admitted Assets
	1 Assets	2 Nonadmitted Assets	3 Net Admitted Assets (Cols. 1 - 2)	
1. Bonds .....	429,232,892		429,232,892	400,412,849
2. Stocks:				
2.1 Preferred stocks .....				
2.2 Common stocks .....				
3. Mortgage loans on real estate:				
3.1 First liens .....				
3.2 Other than first liens .....				
4. Real estate:				
4.1 Properties occupied by the company (less \$ .....				
encumbrances) .....				
4.2 Properties held for the production of income (less				
\$ ..... encumbrances) .....				
4.3 Properties held for sale (less \$ .....				
encumbrances) .....				
5. Cash (\$ .....), cash equivalents				
(\$ ..... 12,991,351 ) and short-term				
investments (\$ ..... ) .....	12,991,351		12,991,351	
6. Contract loans (including \$ ..... premium notes) .....				
7. Derivatives .....				
8. Other invested assets .....				
9. Receivables for securities .....				
10. Securities lending reinvested collateral assets .....				
11. Aggregate write-ins for invested assets .....				
12. Subtotals, cash and invested assets (Lines 1 to 11) .....	442,224,243		442,224,243	400,412,849
13. Title plants less \$ ..... charged off (for Title insurers				
only) .....				
14. Investment income due and accrued .....	2,664,499		2,664,499	1,090,166
15. Premiums and considerations:				
15.1 Uncollected premiums and agents' balances in the course of collection .....	14,482,664	1,825,335	12,657,329	10,455,563
15.2 Deferred premiums, agents' balances and installments booked but				
deferred and not yet due (including \$ .....				
earned but unbilled premiums) .....	104,197,909		104,197,909	94,671,393
15.3 Accrued retrospective premiums (\$ ..... ) and				
contracts subject to redetermination (\$ ..... ) .....				
16. Reinsurance:				
16.1 Amounts recoverable from reinsurers .....	2,043,603		2,043,603	1,967,709
16.2 Funds held by or deposited with reinsured companies .....				
16.3 Other amounts receivable under reinsurance contracts .....				
17. Amounts receivable relating to uninsured plans .....				
18.1 Current federal and foreign income tax recoverable and interest thereon .....				
18.2 Net deferred tax asset .....	10,688,759	8,119	10,680,640	9,025,555
19. Guaranty funds receivable or on deposit .....				
20. Electronic data processing equipment and software .....				
21. Furniture and equipment, including health care delivery assets				
(\$ ..... ) .....				
22. Net adjustment in assets and liabilities due to foreign exchange rates .....				
23. Receivables from parent, subsidiaries and affiliates .....	23,036,318		23,036,318	8,283,986
24. Health care (\$ ..... ) and other amounts receivable .....				
25. Aggregate write-ins for other than invested assets .....	232,608	232,608		
26. Total assets excluding Separate Accounts, Segregated Accounts and				
Protected Cell Accounts (Lines 12 to 25) .....	599,570,603	2,066,062	597,504,541	525,907,221
27. From Separate Accounts, Segregated Accounts and Protected Cell				
Accounts .....				
28. Total (Lines 26 and 27)	599,570,603	2,066,062	597,504,541	525,907,221
DETAILS OF WRITE-INS				
1101. - .....				
1102. ....				
1103. ....				
1198. Summary of remaining write-ins for Line 11 from overflow page .....				
1199. Totals (Lines 1101 through 1103 plus 1198)(Line 11 above)				
2501. PREPAID EXPENSES .....	232,608	232,608		
2502. MISCELLANEOUS OTHER ASSETS .....				
2503. ....				
2598. Summary of remaining write-ins for Line 25 from overflow page .....				
2599. Totals (Lines 2501 through 2503 plus 2598)(Line 25 above)	232,608	232,608		

STATEMENT AS OF SEPTEMBER 30, 2022 OF THE PROGRESSIVE GULF INSURANCE COMPANY

LIABILITIES, SURPLUS AND OTHER FUNDS

	1 Current Statement Date	2 December 31, Prior Year
1. Losses (current accident year \$ 99,405,533 )	189,121,158	165,029,431
2. Reinsurance payable on paid losses and loss adjustment expenses	1,719,527	1,399,315
3. Loss adjustment expenses	34,672,706	33,128,458
4. Commissions payable, contingent commissions and other similar charges	424,028	760,026
5. Other expenses (excluding taxes, licenses and fees)	24,993,371	17,589,563
6. Taxes, licenses and fees (excluding federal and foreign income taxes)	2,808,057	3,392,726
7.1 Current federal and foreign income taxes (including \$ 0 on realized capital gains (losses))	1,313,891	1,076,261
7.2 Net deferred tax liability		
8. Borrowed money \$ and interest thereon \$		
9. Unearned premiums (after deducting unearned premiums for ceded reinsurance of \$ 178,223,958 and including warranty reserves of \$ and accrued accident and health experience rating refunds including \$ for medical loss ratio rebate per the Public Health Service Act)	162,963,393	143,509,496
10. Advance premium	3,259,906	2,572,769
11. Dividends declared and unpaid:		
11.1 Stockholders		
11.2 Policyholders		
12. Ceded reinsurance premiums payable (net of ceding commissions)	(17,934)	8,909
13. Funds held by company under reinsurance treaties		
14. Amounts withheld or retained by company for account of others		
15. Remittances and items not allocated		
16. Provision for reinsurance (including \$ certified)		
17. Net adjustments in assets and liabilities due to foreign exchange rates		
18. Drafts outstanding	21,069,815	18,633,599
19. Payable to parent, subsidiaries and affiliates		
20. Derivatives		
21. Payable for securities		
22. Payable for securities lending		
23. Liability for amounts held under uninsured plans		
24. Capital notes \$ and interest thereon \$		
25. Aggregate write-ins for liabilities	593,247	600,389
26. Total liabilities excluding protected cell liabilities (Lines 1 through 25)	442,921,165	387,700,942
27. Protected cell liabilities		
28. Total liabilities (Lines 26 and 27)	442,921,165	387,700,942
29. Aggregate write-ins for special surplus funds		
30. Common capital stock	1,500,000	1,500,000
31. Preferred capital stock		
32. Aggregate write-ins for other than special surplus funds		
33. Surplus notes		
34. Gross paid in and contributed surplus	3,188,612	3,188,612
35. Unassigned funds (surplus)	149,894,764	133,517,667
36. Less treasury stock, at cost:		
36.1 shares common (value included in Line 30 \$ )		
36.2 shares preferred (value included in Line 31 \$ )		
37. Surplus as regards policyholders (Lines 29 to 35, less 36)	154,583,376	138,206,279
38. Totals (Page 2, Line 28, Col. 3)	597,504,541	525,907,221
DETAILS OF WRITE-INS		
2501. STATE PLAN LIABILITY	408,508	399,702
2502. ESCHEATABLE PROPERTY	142,714	153,801
2503. OTHER LIABILITIES	42,025	46,886
2598. Summary of remaining write-ins for Line 25 from overflow page		
2599. Totals (Lines 2501 through 2503 plus 2598)(Line 25 above)	593,247	600,389
2901.		
2902.		
2903.		
2998. Summary of remaining write-ins for Line 29 from overflow page		
2999. Totals (Lines 2901 through 2903 plus 2998)(Line 29 above)		
3201.		
3202.		
3203.		
3298. Summary of remaining write-ins for Line 32 from overflow page		
3299. Totals (Lines 3201 through 3203 plus 3298)(Line 32 above)		

STATEMENT OF INCOME

	1	2	3
	Current Year to Date	Prior Year to Date	Prior Year Ended December 31
UNDERWRITING INCOME			
1. Premiums earned:			
1.1 Direct (written \$ .....381,066,747 )	364,911,386	354,765,504	474,813,598
1.2 Assumed (written \$ .....354,830,469 )	335,376,572	308,591,670	416,453,790
1.3 Ceded (written \$ .....381,066,747 )	364,911,386	354,765,504	474,813,598
1.4 Net (written \$ .....354,830,469 )	335,376,572	308,591,670	416,453,790
DEDUCTIONS:			
2. Losses incurred (current accident year \$ .....224,971,745 ):			
2.1 Direct	234,882,719	225,195,194	307,750,349
2.2 Assumed	227,006,212	198,919,486	271,874,372
2.3 Ceded	234,882,719	225,195,194	307,750,349
2.4 Net	227,006,212	198,919,486	271,874,372
3. Loss adjustment expenses incurred	29,608,859	29,976,319	38,958,053
4. Other underwriting expenses incurred	63,928,182	61,590,882	81,100,953
5. Aggregate write-ins for underwriting deductions			
6. Total underwriting deductions (Lines 2 through 5)	320,543,253	290,486,687	391,933,378
7. Net income of protected cells			
8. Net underwriting gain or (loss) (Line 1 minus Line 6 + Line 7)	14,833,319	18,104,983	24,520,412
INVESTMENT INCOME			
9. Net investment income earned	4,751,430	3,752,589	4,852,771
10. Net realized capital gains (losses) less capital gains tax of \$ .....(215,740)	(811,595)	968,634	711,749
11. Net investment gain (loss) (Lines 9 + 10)	3,939,835	4,721,223	5,564,520
OTHER INCOME			
12. Net gain or (loss) from agents' or premium balances charged off (amount recovered \$ .....388,917 amount charged off \$ .....2,959,634 )	(2,570,717)	(2,856,579)	(3,383,308)
13. Finance and service charges not included in premiums	5,369,121	5,650,045	7,511,886
14. Aggregate write-ins for miscellaneous income	762,096	663,222	830,392
15. Total other income (Lines 12 through 14)	3,560,500	3,456,688	4,958,970
16. Net income before dividends to policyholders, after capital gains tax and before all other federal and foreign income taxes (Lines 8 + 11 + 15)	22,333,654	26,282,894	35,043,902
17. Dividends to policyholders			
18. Net income, after dividends to policyholders, after capital gains tax and before all other federal and foreign income taxes (Line 16 minus Line 17)	22,333,654	26,282,894	35,043,902
19. Federal and foreign income taxes incurred	6,125,548	7,200,241	8,344,788
20. Net income (Line 18 minus Line 19)(to Line 22)	16,208,106	19,082,653	26,699,114
CAPITAL AND SURPLUS ACCOUNT			
21. Surplus as regards policyholders, December 31 prior year	138,206,279	139,546,108	139,546,108
22. Net income (from Line 20)	16,208,106	19,082,653	26,699,114
23. Net transfers (to) from Protected Cell accounts			
24. Change in net unrealized capital gains (losses) less capital gains tax of \$ .....(284,094)	(1,068,735)		(22,509)
25. Change in net unrealized foreign exchange capital gain (loss)			
26. Change in net deferred income tax	1,367,170	2,004,439	1,308,798
27. Change in nonadmitted assets	(129,444)	959,924	674,768
28. Change in provision for reinsurance			
29. Change in surplus notes			
30. Surplus (contributed to) withdrawn from protected cells			
31. Cumulative effect of changes in accounting principles			
32. Capital changes:			
32.1 Paid in			
32.2 Transferred from surplus (Stock Dividend)			
32.3 Transferred to surplus			
33. Surplus adjustments:			
33.1 Paid in			
33.2 Transferred to capital (Stock Dividend)			
33.3 Transferred from capital			
34. Net remittances from or (to) Home Office			
35. Dividends to stockholders			(30,000,000)
36. Change in treasury stock			
37. Aggregate write-ins for gains and losses in surplus			
38. Change in surplus as regards policyholders (Lines 22 through 37)	16,377,097	22,047,016	(1,339,829)
39. Surplus as regards policyholders, as of statement date (Lines 21 plus 38)	154,583,376	161,593,124	138,206,279
DETAILS OF WRITE-INS			
0501. -			
0502.			
0503.			
0598. Summary of remaining write-ins for Line 5 from overflow page			
0599. Totals (Lines 0501 through 0503 plus 0598)(Line 5 above)			
1401. MISCELLANEOUS INCOME	477,990	654,670	817,980
1402. INTEREST INCOME ON INTERCOMPANY BALANCES	284,047	8,357	12,161
1403. SERVICE BUSINESS REVENUE	59	195	251
1498. Summary of remaining write-ins for Line 14 from overflow page			
1499. Totals (Lines 1401 through 1403 plus 1498)(Line 14 above)	762,096	663,222	830,392
3701.			
3702.			
3703. -			
3798. Summary of remaining write-ins for Line 37 from overflow page			
3799. Totals (Lines 3701 through 3703 plus 3798)(Line 37 above)			

STATEMENT AS OF SEPTEMBER 30, 2022 OF THE PROGRESSIVE GULF INSURANCE COMPANY

CASH FLOW

	1 Current Year To Date	2 Prior Year To Date	3 Prior Year Ended December 31
<b>Cash from Operations</b>			
1. Premiums collected net of reinsurance .....	343,677,896	327,731,414	431,643,598
2. Net investment income .....	3,265,437	3,796,009	5,906,558
3. Miscellaneous income .....	3,599,292	3,358,373	4,783,076
4. Total (Lines 1 to 3) .....	350,542,625	334,885,796	442,333,232
5. Benefit and loss related payments .....	202,670,167	169,074,891	237,612,395
6. Net transfers to Separate Accounts, Segregated Accounts and Protected Cell Accounts .....			
7. Commissions, expenses paid and aggregate write-ins for deductions .....	85,509,652	81,025,561	117,139,364
8. Dividends paid to policyholders .....			
9. Federal and foreign income taxes paid (recovered) net of \$ ..... (284,026) tax on capital gains (losses) .....	5,672,178	9,722,105	11,519,533
10. Total (Lines 5 through 9) .....	293,851,997	259,822,557	366,271,292
11. Net cash from operations (Line 4 minus Line 10) .....	56,690,628	75,063,239	76,061,940
<b>Cash from Investments</b>			
12. Proceeds from investments sold, matured or repaid:			
12.1 Bonds .....	91,080,005	121,488,607	179,830,072
12.2 Stocks .....			
12.3 Mortgage loans .....			
12.4 Real estate .....			
12.5 Other invested assets .....			
12.6 Net gains or (losses) on cash, cash equivalents and short-term investments .....			
12.7 Miscellaneous proceeds .....			
12.8 Total investment proceeds (Lines 12.1 to 12.7) .....	91,080,005	121,488,607	179,830,072
13. Cost of investments acquired (long-term only):			
13.1 Bonds .....	122,368,552	218,401,878	259,709,130
13.2 Stocks .....			
13.3 Mortgage loans .....			
13.4 Real estate .....			
13.5 Other invested assets .....			
13.6 Miscellaneous applications .....			
13.7 Total investments acquired (Lines 13.1 to 13.6) .....	122,368,552	218,401,878	259,709,130
14. Net increase (or decrease) in contract loans and premium notes .....			
15. Net cash from investments (Line 12.8 minus Line 13.7 and Line 14) .....	(31,288,547)	(96,913,271)	(79,879,058)
<b>Cash from Financing and Miscellaneous Sources</b>			
16. Cash provided (applied):			
16.1 Surplus notes, capital notes .....			
16.2 Capital and paid in surplus, less treasury stock .....			
16.3 Borrowed funds .....			
16.4 Net deposits on deposit-type contracts and other insurance liabilities .....			
16.5 Dividends to stockholders .....			30,000,000
16.6 Other cash provided (applied) .....	(12,410,730)	1,250,516	13,217,602
17. Net cash from financing and miscellaneous sources (Line 16.1 through Line 16.4 minus Line 16.5 plus Line 16.6) .....	(12,410,730)	1,250,516	(16,782,398)
<b>RECONCILIATION OF CASH, CASH EQUIVALENTS AND SHORT-TERM INVESTMENTS</b>			
18. Net change in cash, cash equivalents and short-term investments (Line 11, plus Lines 15 and 17) .....	12,991,351	(20,599,516)	(20,599,516)
19. Cash, cash equivalents and short-term investments:			
19.1 Beginning of year .....		20,599,516	20,599,516
19.2 End of period (Line 18 plus Line 19.1) .....	12,991,351	0	

Note: Supplemental disclosures of cash flow information for non-cash transactions:

--	--	--	--

NOTES TO FINANCIAL STATEMENTS

NOTE 1 Summary of Significant Accounting Policies and Going Concern

A. Accounting Practices

The accompanying statutory-basis financial statements of Progressive Gulf Insurance Company (the "Company") were prepared on the basis of accounting practices prescribed or permitted by the Ohio Department of Insurance ("DOI").

The DOI requires insurance companies domiciled in the state of Ohio to prepare their statutory-basis financial statements in accordance with the National Association of Insurance Commissioners' ("NAIC") Accounting Practices and Procedures Manual subject to any deviations prescribed or permitted by the DOI. No deviations from NAIC statutory accounting practices ("NAIC SAP") were used in preparing these statutory-basis financial statements as illustrated in the table below:

	<u>SSAP #</u>	<u>F/S Page</u>	<u>F/S Line #</u>	<u>2022</u>	<u>2021</u>
NET INCOME					
(1) State basis (Page 4, Line 20, Columns 1 & 3)	XXX	XXX	XXX	\$ 16,208,106	\$ 26,699,114
(2) State Prescribed Practices that are an increase/ (decrease) from NAIC SAP:					
(3) State Permitted Practices that are an increase/(decrease) from NAIC SAP:					
(4) NAIC SAP (1-2-3=4)	XXX	XXX	XXX	\$ 16,208,106	\$ 26,699,114
SURPLUS					
(5) State basis (Page 3, Line 37, Columns 1 & 2)	XXX	XXX	XXX	\$ 154,583,376	\$ 138,206,279
(6) State Prescribed Practices that are an increase/(decrease) from NAIC SAP:					
(7) State Permitted Practices that are an increase/(decrease) from NAIC SAP:					
(8) NAIC SAP (5-6-7=8)	XXX	XXX	XXX	\$ 154,583,376	\$ 138,206,279

B. Use of Estimates in the Preparation of the Financial Statements

No significant changes

C. Accounting Policy

Premiums, acquisition costs, other income, and nonadmitted assets

No significant changes

(1) Cash, cash equivalents, and short-term investments

No significant changes

(2) Bonds

Investment grade bond valuations are based on NAIC designations or NAIC Credit Rating Provider ("CRP") designations from the Acceptable Rating Organization ("ARO") list and are reported at amortized cost using the scientific method which closely approximates the effective interest method. Non-investment grade bond valuations are also based on NAIC designations or NAIC CRP-ARO designations and are reported at the lower of amortized cost or fair market value. Loan-backed and structured securities follow the guidance prescribed by SSAP No. 43R, for the determination of the bond valuation and reporting designation. The difference between the original cost and redemption value of these securities is recognized over the lives of the respective issues and included in net investment gain.

(3) Common stocks

No significant changes

(4) Preferred stocks

No significant changes

(5) Mortgage loans

Not applicable

(6) Loan-backed securities

Loan-backed and structured securities are accounted for as prescribed by Statement of Statutory Accounting Principles No. 43R, Loan-backed and Structured Securities. These securities are generally stated at amortized cost as determined by the estimated value of future cash flows. Prepayment assumptions for loan-backed and structured debt securities are obtained from available market data, broker/dealers, and /or internal estimates, and are consistent with current interest rate and economic trends. See Note 5.D.

(7) Investments in subsidiaries, controlled and affiliated entities

Not applicable

(8) Investments in joint ventures, partnerships and limited liability companies

Not applicable

NOTES TO FINANCIAL STATEMENTS

(9)	Derivatives
	Not applicable
	Repurchase agreements and reverse repurchase agreements
	No significant changes
	Fair market values, realized gains and losses, and other-than-temporary impairment
	No significant changes
(10)	Premium deficiency calculation
	No significant changes
(11)	Loss and loss adjustment expense reserves
	No significant changes
(12)	Capitalization of assets
	No significant changes
(13)	Pharmaceutical rebate receivables
	Not applicable
D.	Going Concern
	Management continuously monitors the Company's financial results and compliance with regulatory requirements and found no reason to expect the Company to not continue as a going concern.

NOTE 2 Accounting Changes and Corrections of Errors

Not applicable

NOTE 3 Business Combinations and Goodwill

Not applicable

NOTE 4 Discontinued Operations

Not applicable

NOTE 5 Investments

A.	Mortgage Loans, including Mezzanine Real Estate Loans
	Not applicable
B.	Debt Restructuring
	Not applicable
C.	Reverse Mortgages
	Not applicable
D.	Loan-Backed Securities
	(1) The sources used to determine prepayment assumptions are derived from updated cash flows from widely utilized reputable industry sources. The Company's portfolio managers review the available cash flow data and prepayment assumptions and make adjustments based on current performance indicators on the underlying assets (e.g., delinquency rates, foreclosure rates, and default rates), credit support (via current levels of subordination), and historical credit ratings.
	(2) The Company has not recorded an other-than-temporary impairment for loan-backed and structured debt securities during the current year.
	(3) The Company has not recorded an other-than-temporary impairment for loan-backed and structured debt securities during the current year.
	(4) The Company does not own loan-backed or structured debt securities in an unrealized loss position.
	(5) Under SSAP No. 43R, the Company analyzes its structured debt securities to determine if the Company intends to sell, or if it is more likely than not that the Company will be required to sell, the security prior to recovery and, if so, the Company writes down the security to its current fair market value with the entire amount of the write-down recorded as a realized loss. To the extent that it is more likely than not that the Company will hold the debt security until recovery (which could be maturity), the Company determines if any of the decline in value is due to a credit loss (i.e., where the present value of cash flows expected to be collected is lower than the amortized cost basis of the security) and, if so, the Company recognizes that portion of the impairment as a realized loss.
E.	Dollar Repurchase Agreements and/or Securities Lending Transactions
	Not applicable

NOTES TO FINANCIAL STATEMENTS

- F.

Repurchase Agreements Transactions Accounted for as Secured Borrowing

Not applicable
- G.

Reverse Repurchase Agreements Transactions Accounted for as Secured Borrowing

Not applicable
- H.

Repurchase Agreements Transactions Accounted for as a Sale

Not applicable
- I.

Reverse Repurchase Agreements Transactions Accounted for as a Sale

Not applicable
- J.

Real Estate

Not applicable
- K.

Low Income Housing tax Credits (LIHTC)

Not applicable
- L.

Restricted Assets

No significant changes
- M.

Working Capital Finance Investments

Not applicable
- N.

Offsetting and Netting of Assets and Liabilities

Not applicable
- O.

5GI Securities

Not applicable
- P.

Short Sales

Not applicable
- Q.

Prepayment Penalty and Acceleration Fees

Not applicable
- R.

Reporting Entity’s Share of Cash Pool by Asset Type

Not applicable

NOTE 6    Joint Ventures, Partnerships and Limited Liability Companies

Not applicable

NOTE 7    Investment Income

No significant changes

NOTE 8    Derivative Instruments

Not applicable

NOTE 9    Income Taxes

No significant changes

NOTE 10   Information Concerning Parent, Subsidiaries, Affiliates and Other Related Parties

No significant changes

NOTE 11   Debt

Not applicable



NOTES TO FINANCIAL STATEMENTS

NOTE 12 Retirement Plans, Deferred Compensation, Postemployment Benefits and Compensated Absences and Other Postretirement Benefit Plans

Not applicable

NOTE 13 Capital and Surplus, Dividend Restrictions and Quasi-Reorganizations

No significant changes

NOTE 14 Liabilities, Contingencies and Assessments

A. Contingent Commitments

Not applicable

B. Assessments

No significant changes

C. Gain Contingencies

Not applicable

D. Claims related extra contractual obligations and bad faith losses stemming from lawsuits

No significant changes

E. Product Warranties

Not applicable

F. Joint and Several Liabilities

Not applicable

G. All Other Contingencies

The Company routinely assesses the collectability of premiums and agents' balances receivable and records a bad debt reserve for amounts exceeding the nonadmitted balance that the Company believes are uncollectible.

The Company is named as defendant in various lawsuits arising out of its insurance operations. All legal actions relating to claims made under insurance policies are considered by the Company in establishing its loss and LAE reserves. The Company also has, on a net basis, potential exposure relating to lawsuits due to its participation in a 100% pooling reinsurance agreement for which it is allocated litigation expenses.

The pending lawsuits summarized below are in various stages of development, and the outcomes are uncertain or, if probable and estimable, are accrued in these statutory-basis financial statements. At the statement date, except to the extent an accrual has been established, the Company does not consider the losses from these pending cases to be both probable and estimable and is unable to estimate a range of loss at this time.

There was a putative class action lawsuit alleging the Company undervalues total loss claims through the use of certain valuation tools.

There was a qui tam lawsuit challenging the Company's reimbursement to Medicare Advantage Plans on first-party and/or third-party medical claims and settlements with insureds and claimants.

NOTE 15 Leases

Not applicable

NOTE 16 Information About Financial Instruments With Off-Balance Sheet Risk and Financial Instruments With Concentrations of Credit Risk

Not applicable

NOTE 17 Sale, Transfer and Servicing of Financial Assets and Extinguishments of Liabilities

Not applicable

NOTE 18 Gain or Loss to the Reporting Entity from Uninsured Plans and the Uninsured Portion of Partially Insured Plans

Not applicable

NOTE 19 Direct Premium Written/Produced by Managing General Agents/Third Party Administrators

Not applicable

NOTES TO FINANCIAL STATEMENTS

NOTE 20 Fair Value Measurements

A. Inputs Used for Assets and Liabilities Measured at Fair Value

(1) Fair Value Measurements by Levels 1, 2, and 3

The Company categorizes its financial instruments, based on the degree of subjectivity inherent in the method by which they are valued, into a fair value hierarchy of three levels, as follows:

Level 1 - Inputs are unadjusted, quoted prices in active markets for identical instruments at the measurement date (e.g., U.S. government obligations, which are continually priced on a daily basis, active exchange-traded equity securities, and certain short-term securities).

Level 2 - Inputs (other than quoted prices included within Level 1) that are observable for the instrument either directly or indirectly (e.g., certain corporate and municipal bonds and certain preferred stocks). This includes: (i) quoted prices for similar instruments in active markets, (ii) quoted prices for identical or similar instruments in markets that are not active, (iii) inputs other than quoted prices that are observable for the instruments, and (iv) inputs that are derived principally from or corroborated by observable market data by correlation or other means.

Level 3 - Inputs that are unobservable. Unobservable inputs reflect the Company's subjective evaluation about the assumptions market participants would use in pricing the financial instrument (e.g., certain structured securities and privately held investments).

Determining the fair value of the investment portfolio is the responsibility of the Company's management. As part of the responsibility, management evaluates whether a market is distressed or inactive in determining the fair value for the Company's portfolio. Management reviews certain market level inputs to evaluate whether sufficient activity, volume, and new issuances exist to create an active market. Based on this evaluation, management concluded that there was sufficient activity related to the sectors and securities for which they obtained valuations.

The valuations classified as either Level 1 or Level 2 in the table below are priced exclusively by external sources, including: pricing vendors, dealers/market makers, and exchange-quoted prices. The Company did not have any transfers between Level 1 and Level 2. At the end of each reporting period, the Company evaluates whether or not any event has occurred or circumstances have changed that would cause an instrument to be transferred into or out of Level 3.

Fair Value Measurements at the reporting date:

Description for each class of asset or liability	(Level 1)	(Level 2)	(Level 3)	Net Asset Value (NAV)	Total
a. Assets at fair value					
Bonds industrial & miscellaneous	\$ -	\$ 4,771,804	\$ -		\$ 4,771,804
Common stock industrial & miscellaneous					\$ -
Preferred stock industrial & miscellaneous					\$ -
Total assets at fair value/NAV	\$ -	\$ 4,771,804	\$ -	\$ -	\$ 4,771,804

The Company does not have any liabilities measured at fair value on the balance sheet.

(2) Roll Forward of Level 3 Items

Not applicable

(3) Policy on Transfers Into and Out of Level 3 input

At the end of each reporting period, the Company evaluates whether or not any event has occurred or circumstances have changed that would cause an instrument to be transferred into or out of Level 3.

(4) Inputs and Techniques Used for Level 2 and Level 3 Fair Values

See Note 20.A.1 above.

(5) Derivative Fair Values

Not applicable

B. Other Fair Value Disclosures

Not applicable

C. Fair Values for all Financial Instruments by Levels 1, 2, and 3

The table below represents the fair value of all financial instruments at the reporting date, however, not all financial instruments are reported at fair value in the Company's financial statements.

Type of Financial Instrument	Aggregate Fair Value	Admitted Assets	(Level 1)	(Level 2)	(Level 3)	Net Asset Value (NAV)	Not Practicable (Carrying Value)
Bonds	\$ 391,504,851	\$ 429,232,892	\$ 156,001,688	\$ 235,503,163	\$ -		
Preferred stock							
Common stock							
Cash equivalents	\$ 12,991,351	\$ 12,991,351	\$ 12,991,351	\$ -	\$ -		
Short-term investments							

D. Not Practicable to Estimate Fair Value

Not applicable

E. NAV Practical Expedient Investments

Not applicable

NOTES TO FINANCIAL STATEMENTS

NOTE 21 Other Items

- A. Unusual or Infrequent Items

Not applicable
- B. Troubled Debt Restructuring: Debtors

Not applicable
- C. Other Disclosures

Not applicable
- D. Business Interruption Insurance Recoveries

Not applicable
- E. State Transferable and Non-transferable Tax Credits

No significant changes
- F. Subprime Mortgage Related Risk Exposure

No significant changes
- G. Insurance-Linked Securities (ILS) Contracts

Not applicable
- H. The Amount That Could Be Realized on Life Insurance Where the Reporting Entity is Owner and Beneficiary or Has Otherwise Obtained Rights to Control the Policy

Not applicable

NOTE 22 Events Subsequent

Subsequent events have been considered through November 10, 2022 for these statutory-basis financial statements that were available for issuance by November 15, 2022. There were no events occurring subsequent to the end of the quarter that merited recognition or disclosure in these statements.

NOTE 23 Reinsurance

No significant changes

NOTE 24 Retrospectively Rated Contracts & Contracts Subject to Redetermination

- A. Method Used to Estimate

Not applicable
- B. Method Used to Record

Not applicable
- C. Amount and Percent of Net Retrospective Premiums

Not applicable
- D. Medical Loss Ratio Rebates

Not applicable
- E. Calculation of Nonadmitted Accrued Retrospective Premiums

Not applicable

NOTES TO FINANCIAL STATEMENTS

F.	Risk Sharing Provisions of the Affordable Care Act	
	(1) Did the reporting entity write accident and health insurance premium which is subject to the Affordable Care Act risk sharing provisions (YES/NO)?	Yes [ ] No [X]
	(2) Impact of Risk Sharing Provisions of the Affordable Care Act on Admitted Assets, Liabilities and Revenue for the Current Year	
	Not applicable	
	(3) Roll-Forward of Prior Year ACA Risk-Sharing Provisions	
	Not applicable	
	(4) Roll-Forward of Risk Corridors Asset and Liability Balances by Program Benefit Year	
	Not applicable	
	(5) ACA Risk Corridors Receivable as of Reporting Date	
	Not applicable	

NOTE 25 Change in Incurred Losses and Loss Adjustment Expenses

A.	Change in Incurred Losses and Loss Adjustment Expenses
	Incurred losses and LAE attributable to insured events of prior accident years decreased by \$558,702 in 2022, which is less than 1.0% of the total prior year net unpaid losses and LAE of \$198,157,889. The favorable development is primarily due to more salvage and subrogation recoveries than expected in auto physical damage and lower than anticipated claims adjusting expenses, partially offset by more supplemental payments on previously closed features than anticipated in private passenger auto liability.
B.	Information about Significant Changes in Methodologies and Assumptions
	Not applicable

NOTE 26 Intercompany Pooling Arrangements

No significant changes
------------------------

NOTE 27 Structured Settlements

Not applicable
----------------

NOTE 28 Health Care Receivables

Not applicable
----------------

NOTE 29 Participating Policies

Not applicable
----------------

NOTE 30 Premium Deficiency Reserves

No significant changes
------------------------

NOTE 31 High Deductibles

Not applicable
----------------

NOTE 32 Discounting of Liabilities for Unpaid Losses or Unpaid Loss Adjustment Expenses

Not applicable
----------------

NOTE 33 Asbestos/Environmental Reserves

No significant changes
------------------------

NOTE 34 Subscriber Savings Accounts

Not applicable
----------------

NOTE 35 Multiple Peril Crop Insurance

Not applicable
----------------

NOTE 36 Financial Guaranty Insurance

Not applicable
----------------

GENERAL INTERROGATORIES

PART 1 - COMMON INTERROGATORIES

GENERAL

- 1.1

Did the reporting entity experience any material transactions requiring the filing of Disclosure of Material Transactions with the State of Domicile, as required by the Model Act? .....

Yes [ ☐ ] No [ ☒ ]
- 1.2

If yes, has the report been filed with the domiciliary state? .....

Yes [ ☐ ] No [ ☐ ]
- 2.1

Has any change been made during the year of this statement in the charter, by-laws, articles of incorporation, or deed of settlement of the reporting entity? .....

Yes [ ☐ ] No [ ☒ ]
- 2.2

If yes, date of change: .....
- 3.1

Is the reporting entity a member of an Insurance Holding Company System consisting of two or more affiliated persons, one or more of which is an insurer? .....

If yes, complete Schedule Y, Parts 1 and 1A.

Yes [ ☒ ] No [ ☐ ]
- 3.2

Have there been any substantial changes in the organizational chart since the prior quarter end? .....

Yes [ ☐ ] No [ ☒ ]
- 3.3

If the response to 3.2 is yes, provide a brief description of those changes.
- 3.4

Is the reporting entity publicly traded or a member of a publicly traded group? .....

Yes [ ☒ ] No [ ☐ ]
- 3.5

If the response to 3.4 is yes, provide the CIK (Central Index Key) code issued by the SEC for the entity/group. ....

0000080661
- 4.1

Has the reporting entity been a party to a merger or consolidation during the period covered by this statement? .....

Yes [ ☐ ] No [ ☒ ]
- 4.2

If yes, provide the name of the entity, NAIC Company Code, and state of domicile (use two letter state abbreviation) for any entity that has ceased to exist as a result of the merger or consolidation.

1	2	3
Name of Entity	NAIC Company Code	State of Domicile
.....	.....	.....
5.

If the reporting entity is subject to a management agreement, including third-party administrator(s), managing general agent(s), attorney-in-fact, or similar agreement, have there been any significant changes regarding the terms of the agreement or principals involved? .....

If yes, attach an explanation.

Yes [ ☐ ] No [ ☒ ] N/A [ ☐ ]
- 6.1

State as of what date the latest financial examination of the reporting entity was made or is being made. ....

12/31/2017
- 6.2

State the as of date that the latest financial examination report became available from either the state of domicile or the reporting entity. This date should be the date of the examined balance sheet and not the date the report was completed or released. ....

12/31/2017
- 6.3

State as of what date the latest financial examination report became available to other states or the public from either the state of domicile or the reporting entity. This is the release date or completion date of the examination report and not the date of the examination (balance sheet date). ....

05/08/2019
- 6.4

By what department or departments?  
OHIO
- 6.5

Have all financial statement adjustments within the latest financial examination report been accounted for in a subsequent financial statement filed with Departments? .....

Yes [ ☐ ] No [ ☐ ] N/A [ ☒ ]
- 6.6

Have all of the recommendations within the latest financial examination report been complied with? .....

Yes [ ☒ ] No [ ☐ ] N/A [ ☐ ]
- 7.1

Has this reporting entity had any Certificates of Authority, licenses or registrations (including corporate registration, if applicable) suspended or revoked by any governmental entity during the reporting period? .....

Yes [ ☐ ] No [ ☒ ]
- 7.2

If yes, give full information:
- 8.1

Is the company a subsidiary of a bank holding company regulated by the Federal Reserve Board? .....

Yes [ ☐ ] No [ ☒ ]
- 8.2

If response to 8.1 is yes, please identify the name of the bank holding company.
- 8.3

Is the company affiliated with one or more banks, thrifts or securities firms? .....

Yes [ ☐ ] No [ ☒ ]
- 8.4

If response to 8.3 is yes, please provide below the names and location (city and state of the main office) of any affiliates regulated by a federal regulatory services agency [i.e. the Federal Reserve Board (FRB), the Office of the Comptroller of the Currency (OCC), the Federal Deposit Insurance Corporation (FDIC) and the Securities Exchange Commission (SEC)] and identify the affiliate's primary federal regulator.

1	2	3	4	5	6
Affiliate Name	Location (City, State)	FRB	OCC	FDIC	SEC
.....	.....				

GENERAL INTERROGATORIES

- 9.1

Are the senior officers (principal executive officer, principal financial officer, principal accounting officer or controller, or persons performing similar functions) of the reporting entity subject to a code of ethics, which includes the following standards? .....  
(a) Honest and ethical conduct, including the ethical handling of actual or apparent conflicts of interest between personal and professional relationships;  
(b) Full, fair, accurate, timely and understandable disclosure in the periodic reports required to be filed by the reporting entity;  
(c) Compliance with applicable governmental laws, rules and regulations;  
(d) The prompt internal reporting of violations to an appropriate person or persons identified in the code; and  
(e) Accountability for adherence to the code.

Yes [ X ] No [ ]
- 9.11

If the response to 9.1 is No, please explain:
- 9.2

Has the code of ethics for senior managers been amended? .....

Yes [ ] No [ X ]
- 9.21

If the response to 9.2 is Yes, provide information related to amendment(s).
- 9.3

Have any provisions of the code of ethics been waived for any of the specified officers? .....

Yes [ ] No [ X ]
- 9.31

If the response to 9.3 is Yes, provide the nature of any waiver(s).

FINANCIAL

- 10.1

Does the reporting entity report any amounts due from parent, subsidiaries or affiliates on Page 2 of this statement? .....

Yes [ X ] No [ ]
- 10.2

If yes, indicate any amounts receivable from parent included in the Page 2 amount: .....\$.....

23,036,318

INVESTMENT

- 11.1

Were any of the stocks, bonds, or other assets of the reporting entity loaned, placed under option agreement, or otherwise made available for use by another person? (Exclude securities under securities lending agreements.) .....

Yes [ ] No [ X ]
- 11.2

If yes, give full and complete information relating thereto:
12.

Amount of real estate and mortgages held in other invested assets in Schedule BA: .....

\$.....
13.

Amount of real estate and mortgages held in short-term investments: .....

\$.....
- 14.1

Does the reporting entity have any investments in parent, subsidiaries and affiliates? .....

Yes [ ] No [ X ]
- 14.2

If yes, please complete the following:
- |   | 1   | 2  |
|---|---|--|
|   | Prior Year-End<br>Book/Adjusted<br>Carrying Value | Current Quarter<br>Book/Adjusted<br>Carrying Value |
| 14.21 Bonds .....   | \$.....   | \$.....  |
| 14.22 Preferred Stock .....   | \$.....   | \$.....  |
| 14.23 Common Stock .....  | \$.....   | \$.....  |
| 14.24 Short-Term Investments .....  | \$.....   | \$.....  |
| 14.25 Mortgage Loans on Real Estate .....   | \$.....   | \$.....  |
| 14.26 All Other .....   | \$.....   | \$.....  |
| 14.27 Total Investment in Parent, Subsidiaries and Affiliates (Subtotal Lines 14.21 to 14.26) ..... | \$.....   | \$.....  |
| 14.28 Total Investment in Parent included in Lines 14.21 to 14.26 above .....                       | \$.....   | \$.....  |
- 15.1

Has the reporting entity entered into any hedging transactions reported on Schedule DB? .....

Yes [ ] No [ X ]
- 15.2

If yes, has a comprehensive description of the hedging program been made available to the domiciliary state? ..... Yes [ ] No [ ] N/A [ X ]  
If no, attach a description with this statement.
16.

For the reporting entity's security lending program, state the amount of the following as of the current statement date:
- 16.1

Total fair value of reinvested collateral assets reported on Schedule DL, Parts 1 and 2. ....

\$.....
- 16.2

Total book adjusted/carrying value of reinvested collateral assets reported on Schedule DL, Parts 1 and 2 .....

\$.....
- 16.3

Total payable for securities lending reported on the liability page. ....

\$.....

STATEMENT AS OF SEPTEMBER 30, 2022 OF THE PROGRESSIVE GULF INSURANCE COMPANY

GENERAL INTERROGATORIES

17. Excluding items in Schedule E - Part 3 - Special Deposits, real estate, mortgage loans and investments held physically in the reporting entity's offices, vaults or safety deposit boxes, were all stocks, bonds and other securities, owned throughout the current year held pursuant to a custodial agreement with a qualified bank or trust company in accordance with Section 1, III - General Examination Considerations, F. Outsourcing of Critical Functions, Custodial or Safekeeping Agreements of the NAIC Financial Condition Examiners Handbook? ..... Yes [ X ] No [ ]
- 17.1 For all agreements that comply with the requirements of the NAIC Financial Condition Examiners Handbook, complete the following:

1 Name of Custodian(s)	2 Custodian Address
CITIBANK, N.A. ....	338 GREENWICH STREET NEW YORK, NY 10013 .....

- 17.2 For all agreements that do not comply with the requirements of the NAIC Financial Condition Examiners Handbook, provide the name, location and a complete explanation:

1 Name(s)	2 Location(s)	3 Complete Explanation(s)

- 17.3 Have there been any changes, including name changes, in the custodian(s) identified in 17.1 during the current quarter? ..... Yes [ ] No [ X ]
- 17.4 If yes, give full information relating thereto:

1 Old Custodian	2 New Custodian	3 Date of Change	4 Reason

- 17.5 Investment management – Identify all investment advisors, investment managers, broker/dealers, including individuals that have the authority to make investment decisions on behalf of the reporting entity. For assets that are managed internally by employees of the reporting entity, note as such. ["...that have access to the investment accounts"; "...handle securities"]

1 Name of Firm or Individual	2 Affiliation
PROGRESSIVE CAPITAL MANAGEMENT CORP .....	A.....

- 17.5097 For those firms/individuals listed in the table for Question 17.5, do any firms/individuals unaffiliated with the reporting entity (i.e. designated with a "U") manage more than 10% of the reporting entity's invested assets?..... Yes [ ] No [ ]

- 17.5098 For firms/individuals unaffiliated with the reporting entity (i.e. designated with a "U") listed in the table for Question 17.5, does the total assets under management aggregate to more than 50% of the reporting entity's invested assets?..... Yes [ ] No [ ]

- 17.6 For those firms or individuals listed in the table for 17.5 with an affiliation code of "A" (affiliated) or "U" (unaffiliated), provide the information for the table below.

1 Central Registration Depository Number	2 Name of Firm or Individual	3 Legal Entity Identifier (LEI)	4 Registered With	5 Investment Management Agreement (IMA) Filed
N/A .....	PROGRESSIVE CAPITAL MANAGEMENT CORP .....	5493001ZR2ZQPS7K1G26 .....	N/A .....	DS.....

- 18.1 Have all the filing requirements of the Purposes and Procedures Manual of the NAIC Investment Analysis Office been followed? ..... Yes [ X ] No [ ]
- 18.2 If no, list exceptions:

19. By self-designating 5GI securities, the reporting entity is certifying the following elements for each self-designated 5GI security:
- a. Documentation necessary to permit a full credit analysis of the security does not exist or an NAIC CRP credit rating for an FE or PL security is not available.
  - b. Issuer or obligor is current on all contracted interest and principal payments.
  - c. The insurer has an actual expectation of ultimate payment of all contracted interest and principal.
- Has the reporting entity self-designated 5GI securities? ..... Yes [ ] No [ X ]

20. By self-designating PLGI securities, the reporting entity is certifying the following elements of each self-designated PLGI security:
- a. The security was purchased prior to January 1, 2018.
  - b. The reporting entity is holding capital commensurate with the NAIC Designation reported for the security.
  - c. The NAIC Designation was derived from the credit rating assigned by an NAIC CRP in its legal capacity as a NRSRO which is shown on a current private letter rating held by the insurer and available for examination by state insurance regulators.
  - d. The reporting entity is not permitted to share this credit rating of the PL security with the SVO.
- Has the reporting entity self-designated PLGI securities? ..... Yes [ ] No [ X ]

21. By assigning FE to a Schedule BA non-registered private fund, the reporting entity is certifying the following elements of each self-designated FE fund:
- a. The shares were purchased prior to January 1, 2019.
  - b. The reporting entity is holding capital commensurate with the NAIC Designation reported for the security.
  - c. The security had a public credit rating(s) with annual surveillance assigned by an NAIC CRP in its legal capacity as an NRSRO prior to January 1, 2019.
  - d. The fund only or predominantly holds bonds in its portfolio.
  - e. The current reported NAIC Designation was derived from the public credit rating(s) with annual surveillance assigned by an NAIC CRP in its legal capacity as an NRSRO.
  - f. The public credit rating(s) with annual surveillance assigned by an NAIC CRP has not lapsed.
- Has the reporting entity assigned FE to Schedule BA non-registered private funds that complied with the above criteria? ..... Yes [ ] No [ X ]

GENERAL INTERROGATORIES

PART 2 - PROPERTY & CASUALTY INTERROGATORIES

1.

If the reporting entity is a member of a pooling arrangement, did the agreement or the reporting entity's participation change? .....  
If yes, attach an explanation.

Yes [ ] No [ X ] N/A [ ]
2.

Has the reporting entity reinsured any risk with any other reporting entity and agreed to release such entity from liability, in whole or in part, from any loss that may occur on the risk, or portion thereof, reinsured? .....  
If yes, attach an explanation.

Yes [ ] No [ X ]
- 3.1

Have any of the reporting entity's primary reinsurance contracts been canceled? .....

Yes [ ] No [ X ]
- 3.2

If yes, give full and complete information thereto.
- 4.1

Are any of the liabilities for unpaid losses and loss adjustment expenses other than certain workers' compensation tabular reserves (see Annual Statement Instructions pertaining to disclosure of discounting for definition of " tabular reserves" ) discounted at a rate of interest greater than zero? .....

Yes [ ] No [ X ]
- 4.2

If yes, complete the following schedule:

			TOTAL DISCOUNT				DISCOUNT TAKEN DURING PERIOD			
1	2	3	4	5	6	7	8	9	10	11
Line of Business	Maximum Interest	Discount Rate	Unpaid Losses	Unpaid LAE	IBNR	TOTAL	Unpaid Losses	Unpaid LAE	IBNR	TOTAL
TOTAL										

5.

Operating Percentages:
- 5.1

A&H loss percent .....

0.000 %
- 5.2

A&H cost containment percent .....

0.000 %
- 5.3

A&H expense percent excluding cost containment expenses .....

0.000 %
- 6.1

Do you act as a custodian for health savings accounts? .....

Yes [ ] No [ X ]
- 6.2

If yes, please provide the amount of custodial funds held as of the reporting date .....\$.....
- 6.3

Do you act as an administrator for health savings accounts? .....

Yes [ ] No [ X ]
- 6.4

If yes, please provide the balance of the funds administered as of the reporting date .....\$.....
7.

Is the reporting entity licensed or chartered, registered, qualified, eligible or writing business in at least two states? .....

Yes [ X ] No [ ]
- 7.1

If no, does the reporting entity assume reinsurance business that covers risks residing in at least one state other than the state of domicile of the reporting entity? .....

Yes [ ] No [ ]



## STATEMENT AS OF SEPTEMBER 30, 2022 OF THE PROGRESSIVE GULF INSURANCE COMPANY

## SCHEDULE F - CEDED REINSURANCE

Showing All New Reinsurers - Current Year to Date

[illegible]

SCHEDULE T - EXHIBIT OF PREMIUMS WRITTEN

Current Year to Date - Allocated by States and Territories							
States, etc.	1 Active Status (a)	Direct Premiums Written		Direct Losses Paid (Deducting Salvage)		Direct Losses Unpaid	
		2 Current Year To Date	3 Prior Year To Date	4 Current Year To Date	5 Prior Year To Date	6 Current Year To Date	7 Prior Year To Date
1. Alabama.....AL	N						
2. Alaska.....AK	N						
3. Arizona.....AZ	N						
4. Arkansas.....AR	N						
5. California.....CA	N						
6. Colorado.....CO	N						
7. Connecticut.....CT	N						
8. Delaware.....DE	N						
9. District of Columbia.....DC	N						
10. Florida.....FL	N						
11. Georgia.....GA	L			(945)	(1,312)		
12. Hawaii.....HI	N						
13. Idaho.....ID	N						
14. Illinois.....IL	N						
15. Indiana.....IN	N						
16. Iowa.....IA	N						
17. Kansas.....KS	N						
18. Kentucky.....KY	N						
19. Louisiana.....LA	N						
20. Maine.....ME	N						
21. Maryland.....MD	N						
22. Massachusetts.....MA	N						
23. Michigan.....MI	Q						
24. Minnesota.....MN	N						
25. Mississippi.....MS	L	173,588,058	163,183,650	101,175,185	95,339,855	78,216,514	80,306,571
26. Missouri.....MO	N						
27. Montana.....MT	N						
28. Nebraska.....NE	N						
29. Nevada.....NV	N						
30. New Hampshire.....NH	N						
31. New Jersey.....NJ	N						
32. New Mexico.....NM	N						
33. New York.....NY	N						
34. North Carolina.....NC	N						
35. North Dakota.....ND	N						
36. Ohio.....OH	L						
37. Oklahoma.....OK	N						
38. Oregon.....OR	E						
39. Pennsylvania.....PA	N						
40. Rhode Island.....RI	N						
41. South Carolina.....SC	N						
42. South Dakota.....SD	N						
43. Tennessee.....TN	N						
44. Texas.....TX	N						
45. Utah.....UT	N						
46. Vermont.....VT	N						
47. Virginia.....VA	L	207,478,688	208,798,501	131,338,830	115,822,624	95,008,430	91,294,587
48. Washington.....WA	N						
49. West Virginia.....WV	N						
50. Wisconsin.....WI	N						
51. Wyoming.....WY	N						
52. American Samoa.....AS	N						
53. Guam.....GU	N						
54. Puerto Rico.....PR	N						
55. U.S. Virgin Islands.....VI	N						
56. Northern Mariana Islands.....MP	N						
57. Canada.....CAN	N						
58. Aggregate Other Alien OT	XXX						
59. Totals	XXX	381,066,747	371,982,151	232,513,071	211,161,167	173,224,944	171,601,158
DETAILS OF WRITE-INS							
58001.	XXX						
58002.	XXX						
58003.	XXX						
58998. Summary of remaining write-ins for Line 58 from overflow page	XXX						
58999. Totals (Lines 58001 through 58003 plus 58998)(Line 58 above)	XXX						

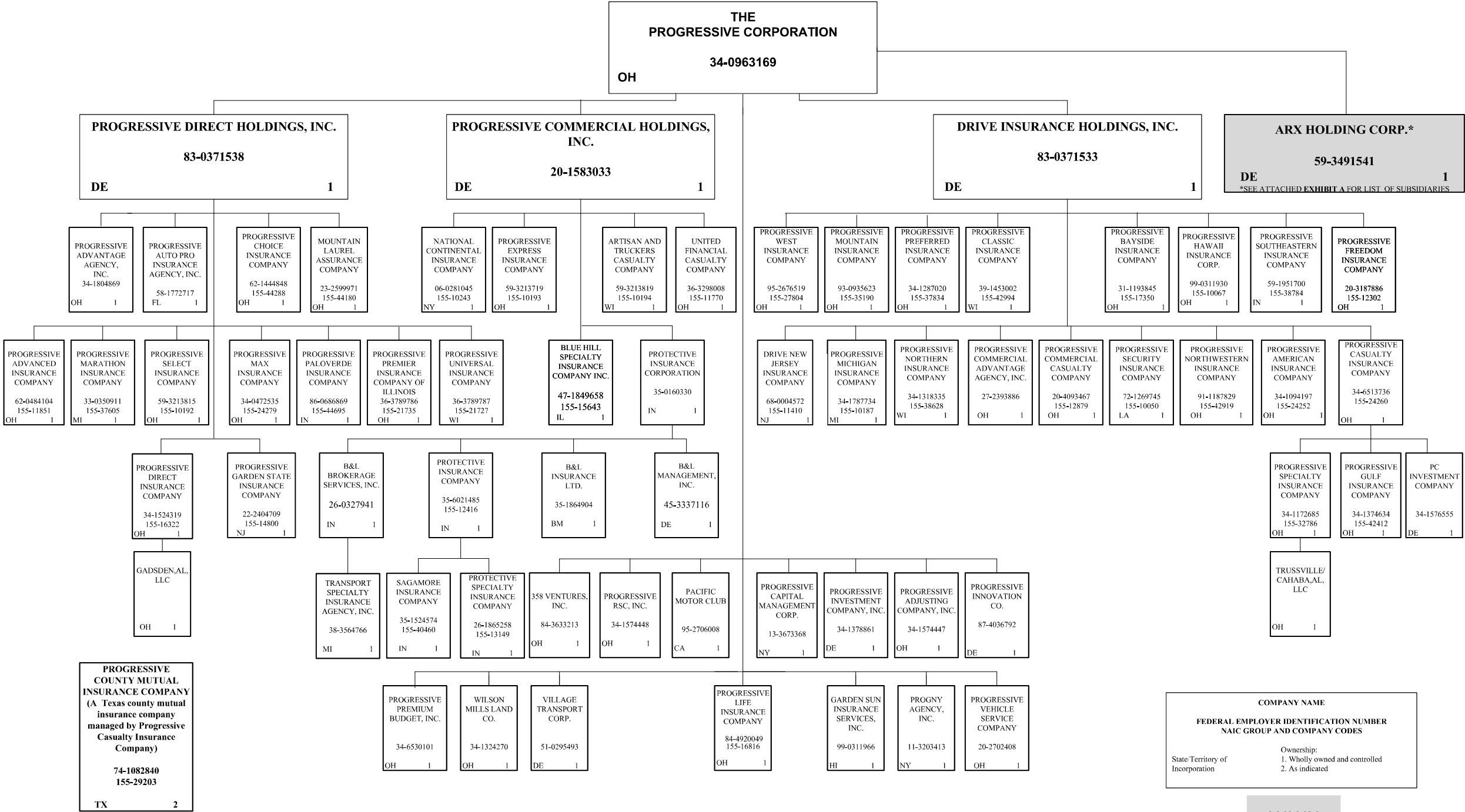
(a) Active Status Counts:

L - Licensed or Chartered - Licensed Insurance carrier or domiciled RRG.....	4	R - Registered - Non-domiciled RRGs.....	
E - Eligible - Reporting entities eligible or approved to write surplus lines in the state (other than their state of domicile - see DSLI).....	1	Q - Qualified - Qualified or accredited reinsurer.....	1
D - Domestic Surplus Lines Insurer (DSLI) - Reporting entities authorized to write surplus lines in the state of domicile.....		N - None of the above - Not allowed to write business in the state.....	51

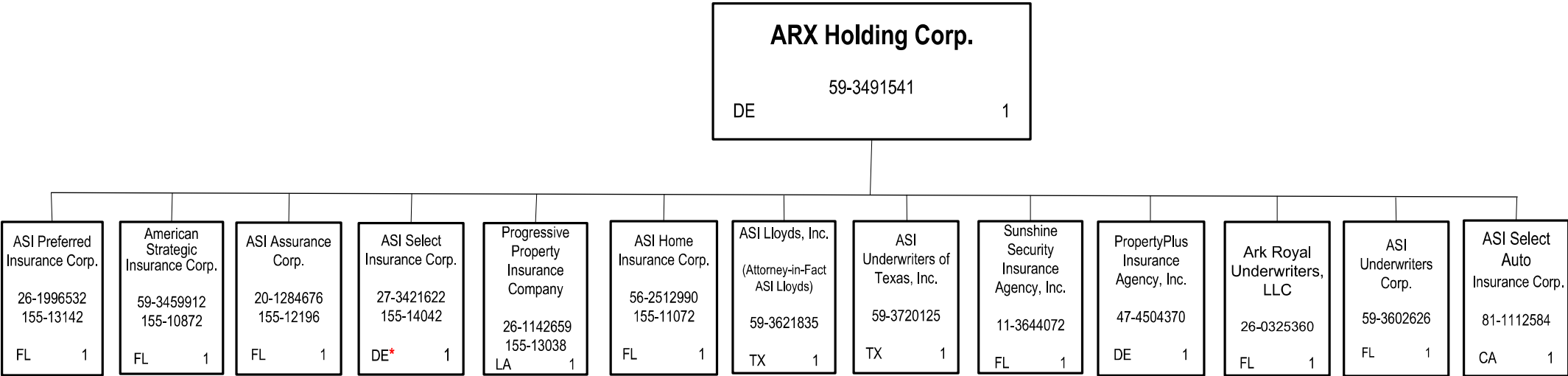
STATEMENT AS OF SEPTEMBER 30, 2022 OF THE PROGRESSIVE GULF INSURANCE COMPANY

SCHEDULE Y – INFORMATION CONCERNING ACTIVITIES OF INSURER MEMBERS OF A HOLDING COMPANY GROUP -- PART 1 – ORGANIZATIONAL CHART

11



SCHEDULE Y – INFORMATION CONCERNING ACTIVITIES OF INSURER MEMBERS OF A HOLDING COMPANY GROUP -- PART 1 – ORGANIZATIONAL CHART



\*The Company has received approval from the Secretary of State to move its incorporation state from Delaware to Indiana; received approval from the Indiana Department of Insurance to change its domicile, effective 10/17/22.

**ASI Lloyds**  
(a Texas Lloyds insurance company managed by ASI Lloyds, Inc.)  
  
75-2904629  
155-11059  
  
TX 2

COMPANY NAME	
FEDERAL EMPLOYER IDENTIFICATION NUMBER NAIC GROUP AND COMPANY CODES	
State/Territory of Incorporation	Ownership: 1. Wholly owned and controlled 2. As indicated

STATEMENT AS OF SEPTEMBER 30, 2022 OF THE PROGRESSIVE GULF INSURANCE COMPANY

SCHEDULE Y  
PART 1A - DETAIL OF INSURANCE HOLDING COMPANY SYSTEM

1	2	3	4	5	6	7	8	9	10	11	12	13	14	15	16
Group Code	Group Name	NAIC Company Code	ID Number	Federal RSSD	CIK	Name of Securities Exchange if Publicly Traded (U.S. or International)	Names of Parent, Subsidiaries Or Affiliates	Domi-ciliary Location	Relation-ship to Reporting Entity	Directly Controlled by (Name of Entity/Person)	Type of Control (Ownership, Board, Management, Attorney-in-Fact, Influence, Other)	If Control is Owner-ship Provide Percen-tage	Ultimate Controlling Entity(ies)/Person(s)	Is an SCA Filing Re-quired? (Yes/No)	*
		.00000	34-0963169		0000080661	NYSE	The Progressive Corporation	OH	UIP	Board, Management	Board		The Progressive Corporation	NO	13
		.00000	83-0371533				Drive Insurance Holdings, Inc.	DE	UIP	The Progressive Corporation	Ownership	100.000	The Progressive Corporation	NO	13
.0155	Progressive Insurance Group	.11410	68-0004572				Drive New Jersey Insurance Company	NJ	IA	Drive Insurance Holdings, Inc.	Ownership	100.000	The Progressive Corporation	NO	13
.0155	Progressive Insurance Group	.12879	20-4093467				Progressive Commercial Casualty Company	OH	IA	Drive Insurance Holdings, Inc.	Ownership	100.000	The Progressive Corporation	NO	13
.0155	Progressive Insurance Group	.24252	34-1094197				Progressive American Insurance Company	OH	IA	Drive Insurance Holdings, Inc.	Ownership	100.000	The Progressive Corporation	NO	13
.0155	Progressive Insurance Group	.17350	31-1193845				Progressive Bayside Insurance Company	OH	IA	Drive Insurance Holdings, Inc.	Ownership	100.000	The Progressive Corporation	NO	13
.0155	Progressive Insurance Group	.24260	34-6513736				Progressive Casualty Insurance Company	OH	UDP	Drive Insurance Holdings, Inc.	Ownership	100.000	The Progressive Corporation	NO	13
		.00000	34-1576555				PC Investment Company	DE	NIA	Progressive Casualty Insurance Company	Ownership	100.000	The Progressive Corporation	YES	13
.0155	Progressive Insurance Group	.29203	74-1082840				Progressive County Mutual Insurance Company	TX	IA	Progressive Casualty Insurance Company	Management		The Progressive Corporation	NO	23
.0155	Progressive Insurance Group	.42412	34-1374634				Progressive Gulf Insurance Company	OH	RE	Progressive Casualty Insurance Company	Ownership	100.000	The Progressive Corporation	YES	13
.0155	Progressive Insurance Group	.32786	34-1172685				Progressive Specialty Insurance Company	OH	IA	Progressive Casualty Insurance Company	Ownership	100.000	The Progressive Corporation	YES	13
		.00000					Trussville/Cahaba, AL, LLC	OH	NIA	Progressive Specialty Insurance Company	Ownership	100.000	The Progressive Corporation	NO	13
.0155	Progressive Insurance Group	.42994	39-1453002				Progressive Classic Insurance Company	WI	IA	Drive Insurance Holdings, Inc.	Ownership	100.000	The Progressive Corporation	NO	13
.0155	Progressive Insurance Group	.10067	99-0311930				Progressive Hawaii Insurance Corp.	OH	IA	Drive Insurance Holdings, Inc.	Ownership	100.000	The Progressive Corporation	NO	13
.0155	Progressive Insurance Group	.10187	34-1787734				Progressive Michigan Insurance Company	MI	IA	Drive Insurance Holdings, Inc.	Ownership	100.000	The Progressive Corporation	NO	13
.0155	Progressive Insurance Group	.35190	93-0935623				Progressive Mountain Insurance Company	OH	IA	Drive Insurance Holdings, Inc.	Ownership	100.000	The Progressive Corporation	NO	13
.0155	Progressive Insurance Group	.38628	34-1318335				Progressive Northern Insurance Company	WI	IA	Drive Insurance Holdings, Inc.	Ownership	100.000	The Progressive Corporation	NO	13
.0155	Progressive Insurance Group	.42919	91-1187829				Progressive Northwestern Insurance Company	OH	IA	Drive Insurance Holdings, Inc.	Ownership	100.000	The Progressive Corporation	NO	13
.0155	Progressive Insurance Group	.37834	34-1287020				Progressive Preferred Insurance Company	OH	IA	Drive Insurance Holdings, Inc.	Ownership	100.000	The Progressive Corporation	NO	13
.0155	Progressive Insurance Group	.10050	72-1269745				Progressive Security Insurance Company	LA	IA	Drive Insurance Holdings, Inc.	Ownership	100.000	The Progressive Corporation	NO	13
.0155	Progressive Insurance Group	.38784	59-1951700				Progressive Southeastern Insurance Company	IN	IA	Drive Insurance Holdings, Inc.	Ownership	100.000	The Progressive Corporation	NO	13
.0155	Progressive Insurance Group	.27804	95-2676519				Progressive West Insurance Company	OH	IA	Drive Insurance Holdings, Inc.	Ownership	100.000	The Progressive Corporation	NO	13
.0155	Progressive Insurance Group	.12302	20-3187886				Progressive Freedom Insurance Company	OH	IA	Drive Insurance Holdings, Inc.	Ownership	100.000	The Progressive Corporation	NO	13
							Progressive Commercial Advantage Agency, Inc.								
		.00000	27-2393886					OH	NIA	Drive Insurance Holdings, Inc.	Ownership	100.000	The Progressive Corporation	NO	13
		.00000	20-1583033				Progressive Commercial Holdings, Inc.	DE	NIA	The Progressive Corporation	Ownership	100.000	The Progressive Corporation	NO	13
.0155	Progressive Insurance Group	.10194	59-3213819				Artisan and Truckers Casualty Company	WI	IA	Progressive Commercial Holdings, Inc.	Ownership	100.000	The Progressive Corporation	NO	13
.0155	Progressive Insurance Group	.10243	06-0281045				National Continental Insurance Company	NY	IA	Progressive Commercial Holdings, Inc.	Ownership	100.000	The Progressive Corporation	NO	13
.0155	Progressive Insurance Group	.10193	59-3213719				Progressive Express Insurance Company	OH	IA	Progressive Commercial Holdings, Inc.	Ownership	100.000	The Progressive Corporation	NO	13
.0155	Progressive Insurance Group	.11770	36-3298008				United Financial Casualty Company	OH	IA	Progressive Commercial Holdings, Inc.	Ownership	100.000	The Progressive Corporation	NO	13
.0155	Progressive Insurance Group	.15643	47-1849658				Blue Hill Specialty Insurance Company, Inc.	IL	IA	Progressive Commercial Holdings, Inc.	Ownership	100.000	The Progressive Corporation	NO	13
		.00000	35-0160330				Protective Insurance Corporation	IN	NIA	Progressive Commercial Holdings, Inc.	Ownership	100.000	The Progressive Corporation	NO	136
.0155	Progressive Insurance Group	.12416	35-6021485				Protective Insurance Company	IN	IA	Protective Insurance Corporation	Ownership	100.000	The Progressive Corporation	NO	136
.0155	Progressive Insurance Group	.40460	35-1524574				Sagamore Insurance Company	IN	IA	Protective Insurance Company	Ownership	100.000	The Progressive Corporation	NO	136
.0155	Progressive Insurance Group	.13149	26-1865258				Protective Specialty Insurance Company	IN	IA	Protective Insurance Company	Ownership	100.000	The Progressive Corporation	NO	136
		.00000	26-0327941				B&L Brokerage Services, Inc.	IN	NIA	Protective Insurance Corporation	Ownership	100.000	The Progressive Corporation	NO	136
		.00000	45-3337116				B&L Management Inc.	DE	NIA	Protective Insurance Corporation	Ownership	100.000	The Progressive Corporation	NO	136
		.00000	35-1864904				B&L Insurance, LTD.	BMU	IA	Protective Insurance Corporation	Ownership	100.000	The Progressive Corporation	NO	136
		.00000	38-3564766				Transport Specialty Insurance Agency, Inc.	MI	NIA	B&L Brokerage Services, Inc.	Ownership	100.000	The Progressive Corporation	NO	136
		.00000	83-0371538				Progressive Direct Holdings, Inc.	DE	NIA	The Progressive Corporation	Ownership	100.000	The Progressive Corporation	NO	13
.0155	Progressive Insurance Group	.44180	23-2599971				Mountain Laurel Assurance Company	OH	IA	Progressive Direct Holdings, Inc.	Ownership	100.000	The Progressive Corporation	NO	13
.0155	Progressive Insurance Group	.11851	62-0484104				Progressive Advanced Insurance Company	OH	IA	Progressive Direct Holdings, Inc.	Ownership	100.000	The Progressive Corporation	NO	13
		.00000	58-1772717				Progressive Auto Pro Insurance Agency, Inc.	FL	NIA	Progressive Direct Holdings, Inc.	Ownership	100.000	The Progressive Corporation	NO	13
.0155	Progressive Insurance Group	.44288	62-1444848				Progressive Choice Insurance Company	OH	IA	Progressive Direct Holdings, Inc.	Ownership	100.000	The Progressive Corporation	NO	13
.0155	Progressive Insurance Group	.16322	34-1524319				Progressive Direct Insurance Company	OH	IA	Progressive Direct Holdings, Inc.	Ownership	100.000	The Progressive Corporation	NO	13
		.00000					Gadsden, AL, LLC	OH	NIA	Progressive Direct Insurance Company	Ownership	100.000	The Progressive Corporation	NO	13
.0155	Progressive Insurance Group	.14800	22-2404709				Progressive Garden State Insurance Company	NJ	IA	Progressive Direct Holdings, Inc.	Ownership	100.000	The Progressive Corporation	NO	13
.0155	Progressive Insurance Group	.37605	33-0350911				Progressive Marathon Insurance Company	MI	IA	Progressive Direct Holdings, Inc.	Ownership	100.000	The Progressive Corporation	NO	13
.0155	Progressive Insurance Group	.24279	34-0472535				Progressive Max Insurance Company	OH	IA	Progressive Direct Holdings, Inc.	Ownership	100.000	The Progressive Corporation	NO	13
.0155	Progressive Insurance Group	.44695	86-0686869				Progressive Paloverde Insurance Company	IN	IA	Progressive Direct Holdings, Inc.	Ownership	100.000	The Progressive Corporation	NO	13
							Progressive Premier Insurance Company of Illinois	OH	IA	Progressive Direct Holdings, Inc.	Ownership	100.000	The Progressive Corporation	NO	13
.0155	Progressive Insurance Group	.21735	36-3789786				Progressive Select Insurance Company	OH	IA	Progressive Direct Holdings, Inc.	Ownership	100.000	The Progressive Corporation	NO	13
.0155	Progressive Insurance Group	.10192	59-3213815				Progressive Advantage Agency, Inc.	OH	NIA	Progressive Direct Holdings, Inc.	Ownership	100.000	The Progressive Corporation	NO	13
		.00000	34-1804869												

STATEMENT AS OF SEPTEMBER 30, 2022 OF THE PROGRESSIVE GULF INSURANCE COMPANY

SCHEDULE Y

PART 1A - DETAIL OF INSURANCE HOLDING COMPANY SYSTEM

1	2	3	4	5	6	7	8	9	10	11	12 Type of Control (Ownership, Board, Management, Attorney-in-Fact, Influence, Other)	13 If Control is Owner- ship Provide Percen- tage	14  Ultimate Controlling Entity(ies)/Person(s)	15  Is an SCA Filing Re- quired? (Yes/No)	16  *
Group Code	Group Name	NAIC Company Code	ID Number	Federal RSSD	CIK	Name of Securities Exchange if Publicly Traded (U.S. or International)	Names of Parent, Subsidiaries Or Affiliates	Domi- ciliary Loca- tion	Relation- ship to Reporting Entity	Directly Controlled by (Name of Entity/Person)					
.0155	Progressive Insurance Group	.21727	36-3789787				Progressive Universal Insurance Company	..WI	..IA	Progressive Direct Holdings, Inc.	Ownership	100.000	The Progressive Corporation	..NO	..13
.0155	Progressive Insurance Group	.16816	84-4920049				Progressive Life Insurance Company	..OH	..IA	The Progressive Corporation	Ownership	100.000	The Progressive Corporation	..NO	..13
		.00000	99-0311966				Garden Sun Insurance Services, Inc	..HI	..NIA	The Progressive Corporation	Ownership	100.000	The Progressive Corporation	..NO	..13
		.00000	95-2706008				Pacific Motor Club	..CA	..NIA	The Progressive Corporation	Ownership	100.000	The Progressive Corporation	..NO	..13
		.00000	11-3203413				PROGNY Agency, Inc.	..NY	..NIA	The Progressive Corporation	Ownership	100.000	The Progressive Corporation	..NO	..13
		.00000	34-1574447				Progressive Adjusting Company, Inc.	..OH	..NIA	The Progressive Corporation	Ownership	100.000	The Progressive Corporation	..NO	..13
		.00000	13-3673368				Progressive Capital Management Corp.	..NY	..NIA	The Progressive Corporation	Ownership	100.000	The Progressive Corporation	..NO	..13
		.00000	34-1378861				Progressive Investment Company, Inc.	..DE	..NIA	The Progressive Corporation	Ownership	100.000	The Progressive Corporation	..NO	..13
		.00000	34-6530101				Progressive Premium Budget, Inc.	..OH	..NIA	The Progressive Corporation	Ownership	100.000	The Progressive Corporation	..NO	..13
		.00000	34-1574448				Progressive RSC, Inc.	..OH	..NIA	The Progressive Corporation	Ownership	100.000	The Progressive Corporation	..NO	..13
		.00000	84-3633213				358 Ventures, Inc.	..OH	..NIA	The Progressive Corporation	Ownership	100.000	The Progressive Corporation	..NO	..13
		.00000	20-2702408				Progressive Vehicle Service Company	..OH	..NIA	The Progressive Corporation	Ownership	100.000	The Progressive Corporation	..NO	..13
		.00000	51-0295493				Village Transport Corp.	..DE	..NIA	The Progressive Corporation	Ownership	100.000	The Progressive Corporation	..NO	..13
		.00000	34-1324270				Wilson Mills Land Co.	..OH	..NIA	The Progressive Corporation	Ownership	100.000	The Progressive Corporation	..NO	..13
		.00000	87-4036792				Progressive Innovation Co.	..DE	..NIA	The Progressive Corporation	Ownership	100.000	The Progressive Corporation	..NO	..13
		.00000	59-3491541				ARX Holding Corp.	..DE	..NIA	The Progressive Corporation	Ownership	100.000	The Progressive Corporation	..NO	..134
.0155	Progressive Insurance Group	.11072	56-2512990				ASI Home Insurance Corp.	..FL	..IA	ARX Holding Corp.	Ownership	100.000	The Progressive Corporation	..NO	..134
.0155	Progressive Insurance Group	.13142	26-1996532				ASI Preferred Insurance Corp.	..FL	..IA	ARX Holding Corp.	Ownership	100.000	The Progressive Corporation	..NO	..134
.0155	Progressive Insurance Group	.10872	59-3459912				American Strategic Insurance Corp.	..FL	..IA	ARX Holding Corp.	Ownership	100.000	The Progressive Corporation	..NO	..134
.0155	Progressive Insurance Group	.11059	75-2904629				ASI Lloyds	..TX	..IA	ASI Lloyds, Inc.	Management		The Progressive Corporation	..NO	..1345
.0155	Progressive Insurance Group	.12196	20-1284676				ASI Assurance Corp.	..FL	..IA	ARX Holding Corp.	Ownership	100.000	The Progressive Corporation	..NO	..134
.0155	Progressive Insurance Group	.14042	27-3421622				ASI Select Insurance Corp.	..DE	..IA	ARX Holding Corp.	Ownership	100.000	The Progressive Corporation	..NO	..134
		.00000	59-3621835				ASI Lloyds, Inc.	..TX	..NIA	ARX Holding Corp.	Ownership	100.000	The Progressive Corporation	..NO	..134
		.00000	59-3720125				ASI Underwriters of Texas, Inc.	..TX	..NIA	ARX Holding Corp.	Ownership	100.000	The Progressive Corporation	..NO	..134
		.00000	11-3644072				Sunshine Security Insurance Agency, Inc.	..FL	..NIA	ARX Holding Corp.	Ownership	100.000	The Progressive Corporation	..NO	..134
		.00000	59-3602626				ASI Underwriters Corp.	..FL	..NIA	ARX Holding Corp.	Ownership	100.000	The Progressive Corporation	..NO	..134
.0155	Progressive Insurance Group	.13038	26-1142659				Progressive Property Insurance Company	..LA	..IA	ARX Holding Corp.	Ownership	100.000	The Progressive Corporation	..NO	..134
		.00000	81-1112584				ASI Select Auto Insurance Corp.	..CA	..NIA	ARX Holding Corp.	Ownership	100.000	The Progressive Corporation	..NO	..134
		.00000	26-0325360				Ark Royal Underwriters, LLC	..FL	..NIA	ARX Holding Corp.	Ownership	100.000	The Progressive Corporation	..NO	..134
		.00000	47-4504370				PropertyPlus Insurance Agency, Inc.	..DE	..NIA	ARX Holding Corp.	Ownership	100.000	The Progressive Corporation	..NO	..134

Asterisk	Explanation
1	Schedule Y Part 1A is a common schedule for all companies of The Progressive Corporation, however column 10 requires specific relationship information relative to the reporting entity.
2	Progressive County Mutual Insurance Company is a Texas county mutual insurance company that is managed, but not owned by Progressive Casualty Insurance Company.
3	None of the companies that are part of The Progressive Corporation are Federally chartered or insured institutions and therefore, do not have Federal RSSD numbers.
4	Effective April 1, 2020, The Progressive Corporation purchased 100% ownership in the ARX Holding Corp.
5	ASI Lloyds is a Texas Lloyds insurance company that is managed, but not owned by ASI Lloyds, Inc.
6	Effective June 1, 2021 The Progressive Corporation purchased 100% ownership in the Protective Insurance Corporation.

PART 1 - LOSS EXPERIENCE

Line of Business	Current Year to Date			4 Prior Year to Date Direct Loss Percentage
	1 Direct Premiums Earned	2 Direct Losses Incurred	3 Direct Loss Percentage	
1. Fire .....				
2.1 Allied Lines .....				
2.2 Multiple peril crop .....				
2.3 Federal flood .....				
2.4 Private crop .....				
2.5 Private flood .....				
3. Farmowners multiple peril .....				
4. Homeowners multiple peril .....	344,119	197,393	57.4	41.9
5. Commercial multiple peril .....	118,170	25,772	21.8	48.1
6. Mortgage guaranty .....				
8. Ocean marine .....				
9. Inland marine .....	5,625,496	2,204,820	39.2	43.0
10. Financial guaranty .....				
11.1 Medical professional liability - occurrence .....				
11.2 Medical professional liability - claims-made .....				
12. Earthquake .....				
13.1 Comprehensive (hospital and medical) individual .....				
13.2 Comprehensive (hospital and medical) group .....				
14. Credit accident and health .....				
15.1 Vision only .....				
15.2 Dental only .....				
15.3 Disability income .....				
15.4 Medicare supplement .....				
15.5 Medicaid Title XIX .....				
15.6 Medicare Title XVIII .....				
15.7 Long-term care .....				
15.8 Federal employees health benefits plan .....				
15.9 Other health .....				
16. Workers' compensation .....				
17.1 Other liability - occurrence .....	2,574,334	460,543	17.9	22.9
17.2 Other liability - claims-made .....	6,040	1,179	19.5	
17.3 Excess workers' compensation .....				
18.1 Products liability - occurrence .....				
18.2 Products liability - claims-made .....				
19.1 Private passenger auto no-fault (personal injury protection) .....	144,025	417,338	289.8	98.8
19.2 Other private passenger auto liability .....	204,298,676	126,387,735	61.9	59.9
19.3 Commercial auto no-fault (personal injury protection) .....		52,137		
19.4 Other commercial auto liability .....	11,857,691	11,594,833	97.8	72.9
21.1 Private passenger auto physical damage .....	134,891,772	90,837,097	67.3	70.5
21.2 Commercial auto physical damage .....	5,051,062	2,703,873	53.5	48.7
22. Aircraft (all perils) .....				
23. Fidelity .....				
24. Surety .....				
26. Burglary and theft .....				
27. Boiler and machinery .....				
28. Credit .....				
29. International .....				
30. Warranty .....				
31. Reinsurance - Nonproportional Assumed Property .....	XXX	XXX	XXX	XXX
32. Reinsurance - Nonproportional Assumed Liability .....	XXX	XXX	XXX	XXX
33. Reinsurance - Nonproportional Assumed Financial Lines .....	XXX	XXX	XXX	XXX
34. Aggregate write-ins for other lines of business .....				
35. Totals	364,911,386	234,882,719	64.4	63.5
DETAILS OF WRITE-INS				
3401. ....				
3402. ....				
3403. ....				
3498. Summary of remaining write-ins for Line 34 from overflow page .....				
3499. Totals (Lines 3401 through 3403 plus 3498)(Line 34 above)				

PART 2 - DIRECT PREMIUMS WRITTEN

Line of Business		1 Current Quarter	2 Current Year to Date	3 Prior Year Year to Date
1.	Fire .....			
2.1	Allied Lines .....			
2.2	Multiple peril crop .....			
2.3	Federal flood .....			
2.4	Private crop .....			
2.5	Private flood .....			
3.	Farmowners multiple peril .....			
4.	Homeowners multiple peril .....	136,630	364,836	363,416
5.	Commercial multiple peril .....	72,296	195,744	18,993
6.	Mortgage guaranty .....			
8.	Ocean marine .....			
9.	Inland marine .....	2,207,656	6,964,898	6,288,925
10.	Financial guaranty .....			
11.1	Medical professional liability - occurrence .....			
11.2	Medical professional liability - claims-made .....			
12.	Earthquake .....			
13.1	Comprehensive (hospital and medical) individual .....			
13.2	Comprehensive (hospital and medical) group .....			
14.	Credit accident and health .....			
15.1	Vision only .....			
15.2	Dental only .....			
15.3	Disability income .....			
15.4	Medicare supplement .....			
15.5	Medicaid Title XIX .....			
15.6	Medicare Title XVIII .....			
15.7	Long-term care .....			
15.8	Federal employees health benefits plan .....			
15.9	Other health .....			
16.	Workers' compensation .....			
17.1	Other liability - occurrence .....	907,699	2,929,290	2,889,001
17.2	Other liability - claims-made .....	1,802	10,111	
17.3	Excess workers' compensation .....			
18.1	Products liability - occurrence .....			
18.2	Products liability - claims-made .....			
19.1	Private passenger auto no-fault (personal injury protection) .....	50,425	143,449	154,445
19.2	Other private passenger auto liability .....	69,769,101	206,911,626	212,268,013
19.3	Commercial auto no-fault (personal injury protection) .....			
19.4	Other commercial auto liability .....	4,534,866	13,458,706	11,688,326
21.1	Private passenger auto physical damage .....	51,456,618	144,293,100	133,612,623
21.2	Commercial auto physical damage .....	1,996,801	5,794,987	4,698,408
22.	Aircraft (all perils) .....			
23.	Fidelity .....			
24.	Surety .....			
26.	Burglary and theft .....			
27.	Boiler and machinery .....			
28.	Credit .....			
29.	International .....			
30.	Warranty .....			
31.	Reinsurance - Nonproportional Assumed Property .....	XXX	XXX	XXX
32.	Reinsurance - Nonproportional Assumed Liability .....	XXX	XXX	XXX
33.	Reinsurance - Nonproportional Assumed Financial Lines .....	XXX	XXX	XXX
34.	Aggregate write-ins for other lines of business .....			
35.	Totals	131,133,894	381,066,747	371,982,151
DETAILS OF WRITE-INS				
3401.	.....			
3402.	.....			
3403.	.....			
3498.	Summary of remaining write-ins for Line 34 from overflow page .....			
3499.	Totals (Lines 3401 through 3403 plus 3498)(Line 34 above)			



STATEMENT AS OF SEPTEMBER 30, 2022 OF THE PROGRESSIVE GULF INSURANCE COMPANY

PART 3 (000 omitted)

LOSS AND LOSS ADJUSTMENT EXPENSE RESERVES SCHEDULE

	1	2	3	4	5	6	7	8	9	10	11	12	13											
Years in Which Losses Occurred	Prior Year-End Known Case Loss and LAE Reserves	Prior Year-End IBNR Loss and LAE Reserves	Total Prior Year-End Loss and LAE Reserves (Cols. 1+2)	2022 Loss and LAE Payments on Claims Reported as of Prior Year-End	2022 Loss and LAE Payments on Claims Unreported as of Prior Year-End	Total 2022 Loss and LAE Payments (Cols. 4+5)	Q.S. Date Known Case Loss and LAE Reserves on Claims Reported and Open as of Prior Year End	Q.S. Date Known Case Loss and LAE Reserves on Claims Reported or Reopened Subsequent to Prior Year End	Q.S. Date IBNR Loss and LAE Reserves	Total Q.S. Loss and LAE Reserves (Cols.7+8+9)	Prior Year-End Known Case Loss and LAE Reserves Developed (Savings)/ Deficiency (Cols.4+7 minus Col. 1)	Prior Year-End IBNR Loss and LAE Reserves Developed (Savings)/ Deficiency (Cols. 5+8+9 minus Col. 2)	Prior Year-End Total Loss and LAE Reserve Developed (Savings)/ Deficiency (Cols. 11+12)											
1. 2019 + Prior .....	30,114	5,263	35,376	13,110	917	14,028	16,353	1,331	3,562	21,246	(651)	549	(102)											
2. 2020 .....	32,777	7,477	40,254	14,591	1,319	15,910	17,259	2,243	4,014	23,516	(927)	99	(828)											
3. Subtotals 2020 + Prior .....	62,891	12,740	75,631	27,701	2,237	29,938	33,612	3,575	7,576	44,763	(1,577)	648	(930)											
4. 2021 .....	99,107	23,420	122,527	51,505	5,927	57,432	43,952	10,578	10,936	65,466	(3,650)	4,021	371											
5. Subtotals 2021 + Prior .....	161,998	36,160	198,158	79,207	8,164	87,370	77,564	14,153	18,512	110,229	(5,227)	4,669	(559)											
6. 2022 .....	XXX	XXX	XXX	XXX	143,609	143,609	XXX	84,511	29,054	113,565	XXX	XXX	XXX											
7. Totals .....	161,998	36,160	198,158	79,207	151,772	230,979	77,564	98,664	47,566	223,794	(5,227)	4,669	(559)											
8. Prior Year-End Surplus As Regards Policyholders	138,206											Col. 11, Line 7 As % of Col. 1 Line 7	Col. 12, Line 7 As % of Col. 2 Line 7	Col. 13, Line 7 As % of Col. 3 Line 7										
												1. (3.2)	2. 12.9	3. (0.3)										
													Col. 13, Line 7 As a % of Col. 1 Line 8	4. (0.4)										

STATEMENT AS OF SEPTEMBER 30, 2022 OF THE PROGRESSIVE GULF INSURANCE COMPANY

SUPPLEMENTAL EXHIBITS AND SCHEDULES INTERROGATORIES

The following supplemental reports are required to be filed as part of your statement filing. However, in the event that your company does not transact the type of business for which the special report must be filed, your response of NO to the specific interrogatory will be accepted in lieu of filing a "NONE" report and a bar code will be printed below. If the supplement is required of your company but is not being filed for whatever reason enter SEE EXPLANATION and provide an explanation following the interrogatory questions.

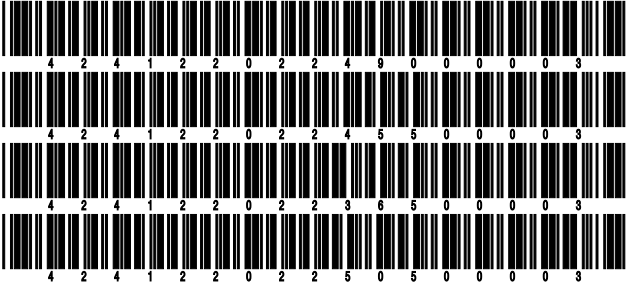
	Response
1. Will the Trusteed Surplus Statement be filed with the state of domicile and the NAIC with this statement? .....	NO
2. Will Supplement A to Schedule T (Medical Professional Liability Supplement) be filed with this statement? .....	NO
3. Will the Medicare Part D Coverage Supplement be filed with the state of domicile and the NAIC with this statement? .....	NO
4. Will the Director and Officer Insurance Coverage Supplement be filed with the state of domicile and the NAIC with this statement? .....	NO
AUGUST FILING	
5. Will the regulator-only (non-public) Communication of Internal Control Related Matters Noted in Audit be filed with the state of domicile and electronically with the NAIC (as a regulator-only non-public document) by August 1? The response for 1st and 3rd quarters should be N/A. A NO response resulting with a bar code is only appropriate in the 2nd quarter. ....	N/A

Explanations:

1.
2.
3.
4.

Bar Codes:

1. Trusteed Surplus Statement [Document Identifier 490]
2. Supplement A to Schedule T [Document Identifier 455]
3. Medicare Part D Coverage Supplement [Document Identifier 365]
4. Director and Officer Supplement [Document Identifier 505]



STATEMENT AS OF SEPTEMBER 30, 2022 OF THE PROGRESSIVE GULF INSURANCE COMPANY

OVERFLOW PAGE FOR WRITE-INS

Additional Write-ins for Assets Line 25

	Current Statement Date			4 December 31 Prior Year Net Admitted Assets
	1 Assets	2 Nonadmitted Assets	3 Net Admitted Assets (Cols. 1 - 2)	
2504. ....				
2505. - .....				
2597. Summary of remaining write-ins for Line 25 from overflow page				

Additional Write-ins for Liabilities Line 25

	1 Current Statement Date	2 December 31, Prior Year
2504. ....		
2505. ....		
2506. ....		
2597. Summary of remaining write-ins for Line 25 from overflow page		

Additional Write-ins for Statement of Income Line 14

	1 Current Year to Date	2 Prior Year to Date	3 Prior Year Ended December 31
1404. ....			
1405. ....			
1406. ....			
1407. ....			
1408. ....			
1409. - .....			
1497. Summary of remaining write-ins for Line 14 from overflow page			

SCHEDULE A - VERIFICATION

Real Estate

	1	2
	Year to Date	Prior Year Ended December 31
1. Book/adjusted carrying value, December 31 of prior year .....		
2. Cost of acquired:		
2.1 Actual cost at time of acquisition .....		
2.2 Additional investment made after acquisition .....		
3. Current year change in encumbrances .....		
4. Total gain (loss) on disposals .....		
5. Deduct amounts received on disposals .....		
6. Total foreign exchange change in book/adjusted carrying value .....		
7. Deduct current year's other than temporary impairment recognized .....		
8. Deduct current year's depreciation .....		
9. Book/adjusted carrying value at the end of current period (Lines 1+2+3+4-5+6-7-8) .....		
10. Deduct total nonadmitted amounts .....		
11. Statement value at end of current period (Line 9 minus Line 10) .....		

SCHEDULE B - VERIFICATION

Mortgage Loans

	1	2
	Year to Date	Prior Year Ended December 31
1. Book value/recorded investment excluding accrued interest, December 31 of prior year .....		
2. Cost of acquired:		
2.1 Actual cost at time of acquisition .....		
2.2 Additional investment made after acquisition .....		
3. Capitalized deferred interest and other .....		
4. Accrual of discount .....		
5. Unrealized valuation increase (decrease) .....		
6. Total gain (loss) on disposals .....		
7. Deduct amounts received on disposals .....		
8. Deduct amortization of premium and mortgage interest points and commitment fees .....		
9. Total foreign exchange change in book value/recorded investment excluding accrued interest .....		
10. Deduct current year's other than temporary impairment recognized .....		
11. Book value/recorded investment excluding accrued interest at end of current period (Lines 1+2+3+4+5+6-7-8+9-10) .....		
12. Total valuation allowance .....		
13. Subtotal (Line 11 plus Line 12) .....		
14. Deduct total nonadmitted amounts .....		
15. Statement value at end of current period (Line 13 minus Line 14) .....		

SCHEDULE BA - VERIFICATION

Other Long-Term Invested Assets

	1	2
	Year to Date	Prior Year Ended December 31
1. Book/adjusted carrying value, December 31 of prior year .....		
2. Cost of acquired:		
2.1 Actual cost at time of acquisition .....		
2.2 Additional investment made after acquisition .....		
3. Capitalized deferred interest and other .....		
4. Accrual of discount .....		
5. Unrealized valuation increase (decrease) .....		
6. Total gain (loss) on disposals .....		
7. Deduct amounts received on disposals .....		
8. Deduct amortization of premium and depreciation .....		
9. Total foreign exchange change in book/adjusted carrying value .....		
10. Deduct current year's other than temporary impairment recognized .....		
11. Book/adjusted carrying value at end of current period (Lines 1+2+3+4+5+6-7-8+9-10) .....		
12. Deduct total nonadmitted amounts .....		
13. Statement value at end of current period (Line 11 minus Line 12) .....		

SCHEDULE D - VERIFICATION

Bonds and Stocks

	1	2
	Year to Date	Prior Year Ended December 31
1. Book/adjusted carrying value of bonds and stocks, December 31 of prior year .....	400,412,850	320,616,530
2. Cost of bonds and stocks acquired .....	122,368,552	259,709,130
3. Accrual of discount .....	401,977	230,866
4. Unrealized valuation increase (decrease) .....	(1,352,829)	(28,493)
5. Total gain (loss) on disposals .....	(1,027,335)	900,948
6. Deduct consideration for bonds and stocks disposed of .....	91,080,005	179,830,072
7. Deduct amortization of premium .....	490,317	1,186,059
8. Total foreign exchange change in book/adjusted carrying value .....		
9. Deduct current year's other than temporary impairment recognized .....		
10. Total investment income recognized as a result of prepayment penalties and/or acceleration fees .....		
11. Book/adjusted carrying value at end of current period (Lines 1+2+3+4+5-6-7+8-9+10) .....	429,232,893	400,412,850
12. Deduct total nonadmitted amounts .....		
13. Statement value at end of current period (Line 11 minus Line 12) .....	429,232,893	400,412,850

STATEMENT AS OF SEPTEMBER 30, 2022 OF THE PROGRESSIVE GULF INSURANCE COMPANY

SCHEDULE D - PART 1B

Showing the Acquisitions, Dispositions and Non-Trading Activity  
During the Current Quarter for all Bonds and Preferred Stock by NAIC Designation

NAIC Designation	1 Book/Adjusted Carrying Value Beginning of Current Quarter	2 Acquisitions During Current Quarter	3 Dispositions During Current Quarter	4 Non-Trading Activity During Current Quarter	5 Book/Adjusted Carrying Value End of First Quarter	6 Book/Adjusted Carrying Value End of Second Quarter	7 Book/Adjusted Carrying Value End of Third Quarter	8 Book/Adjusted Carrying Value December 31 Prior Year
BONDS								
1. NAIC 1 (a) .....	415,720,960	34,860,444	22,164,899	44,940	395,332,589	415,720,960	428,461,445	381,942,123
2. NAIC 2 (a) .....	8,990,522			473	8,990,122	8,990,522	8,990,995	13,989,477
3. NAIC 3 (a) .....	3,000,548			(6,744)	3,436,155	3,000,548	2,993,804	1,987,500
4. NAIC 4 (a) .....	1,900,575			(122,575)	2,214,000	1,900,575	1,778,000	2,493,750
5. NAIC 5 (a) .....								
6. NAIC 6 (a) .....								
7. Total Bonds	429,612,605	34,860,444	22,164,899	(83,906)	409,972,866	429,612,605	442,224,244	400,412,850
PREFERRED STOCK								
8. NAIC 1 .....								
9. NAIC 2 .....								
10. NAIC 3 .....								
11. NAIC 4 .....								
12. NAIC 5 .....								
13. NAIC 6 .....								
14. Total Preferred Stock .....								
15. Total Bonds and Preferred Stock	429,612,605	34,860,444	22,164,899	(83,906)	409,972,866	429,612,605	442,224,244	400,412,850

(a) Book/Adjusted Carrying Value column for the end of the current reporting period includes the following amount of short-term and cash equivalent bonds by NAIC designation:  
NAIC 1 \$ .....12,991,351 ; NAIC 2 \$ ..... ; NAIC 3 \$ ..... NAIC 4 \$ ..... ; NAIC 5 \$ ..... ; NAIC 6 \$.....

Schedule DA - Part 1 - Short-Term Investments

**N O N E**

Schedule DA - Verification - Short-Term Investments

**N O N E**

Schedule DB - Part A - Verification - Options, Caps, Floors, Collars, Swaps and Forwards

**N O N E**

Schedule DB - Part B - Verification - Futures Contracts

**N O N E**

Schedule DB - Part C - Section 1 - Replication (Synthetic Asset) Transactions (RSATs) Open

**N O N E**

Schedule DB-Part C-Section 2-Reconciliation of Replication (Synthetic Asset) Transactions Open

**N O N E**

Schedule DB - Verification - Book/Adjusted Carrying Value, Fair Value and Potential Exposure of  
Derivatives

**N O N E**

SCHEDULE E - PART 2 - VERIFICATION

(Cash Equivalents)

	1	2
	Year To Date	Prior Year Ended December 31
1. Book/adjusted carrying value, December 31 of prior year .....		20,599,516
2. Cost of cash equivalents acquired .....	34,037,395	13,999,470
3. Accrual of discount .....	47,438	1,014
4. Unrealized valuation increase (decrease) .....		
5. Total gain (loss) on disposals .....		
6. Deduct consideration received on disposals .....	21,093,482	34,600,000
7. Deduct amortization of premium .....		
8. Total foreign exchange change in book/adjusted carrying value .....		
9. Deduct current year's other than temporary impairment recognized .....		
10. Book/adjusted carrying value at end of current period (Lines 1+2+3+4+5-6-7+8-9) .....	12,991,351	
11. Deduct total nonadmitted amounts .....		
12. Statement value at end of current period (Line 10 minus Line 11)	12,991,351	

Schedule A - Part 2 - Real Estate Acquired and Additions Made

**N O N E**

Schedule A - Part 3 - Real Estate Disposed

**N O N E**

Schedule B - Part 2 - Mortgage Loans Acquired and Additions Made

**N O N E**

Schedule B - Part 3 - Mortgage Loans Disposed, Transferred or Repaid

**N O N E**

Schedule BA - Part 2 - Other Long-Term Invested Assets Acquired and Additions Made

**N O N E**

Schedule BA - Part 3 - Other Long-Term Invested Assets Disposed, Transferred or Repaid

**N O N E**



STATEMENT AS OF SEPTEMBER 30, 2022 OF THE PROGRESSIVE GULF INSURANCE COMPANY

## SCHEDULE D - PART 3

Show All Long-Term Bonds and Stock Acquired During the Current Quarter

[illegible]

STATEMENT AS OF SEPTEMBER 30, 2022 OF THE PROGRESSIVE GULF INSURANCE COMPANY

SCHEDULE D - PART 4

Show All Long-Term Bonds and Stock Sold, Redeemed or Otherwise Disposed of During the Current Quarter

1	2	3	4	5	6	7	8	9	10	Change In Book/Adjusted Carrying Value					16	17	18	19	20	21	22
										11	12	13	14	15							
CUSIP Identification	Description	For- eign	Disposal Date	Name of Purchaser	Number of Shares of Stock	Consid- eration	Par Value	Actual Cost	Prior Year Book/ Adjusted Carrying Value	Unrealized Valuation Increase/ (Decrease)	Current Year's (Amor- tization)/ Accretion	Current Year's Other Than Temporary Impairment Recogn- ized	Total Change in Book/ Adjusted Carrying Value (11 + 12 - 13)	Total Foreign Exchange Change in Book /Adjusted Carrying Value	Book/ Adjusted Carrying Value at Disposal Date	Foreign Exchange Gain (Loss) on Disposal	Realized Gain (Loss) on Disposal	Total Gain (Loss) on Disposal	Bond Interest/ Stock Dividends Received During Year	Stated Con- tractual Maturity Date	NAIC Desig- nation, NAIC Desig- nation Modifier and SVO Admini- strative Symbol
60535Q-ND-8	MISSISSIPPI HOME CORP 3.500% 12/01/38		09/01/2022	Redemption 100.0000		105,000	105,000	110,423	107,971		(2,971)		(2,971)		105,000				2,450	12/01/2038	1.A FE
60535Q-RN-2	MISSISSIPPI HOME CORP 4.000% 12/01/44		09/01/2022	Redemption 100.0000		105,000	105,000	110,516	108,442		(3,442)		(3,442)		105,000				2,750	12/01/2044	1.A FE
60535Q-SR-2	MISSISSIPPI HOME CORP 4.000% 12/01/48		09/01/2022	Redemption 100.0000		400,000	400,000	428,615	416,431		(16,431)		(16,431)		400,000				10,717	12/01/2048	1.A FE
60535Q-TX-8	MISSISSIPPI HOME CORP 3.500% 12/01/49		09/01/2022	Redemption 100.0000		455,000	455,000	488,993	477,674		(22,674)		(22,674)		455,000				10,967	12/01/2049	1.A FE
0909999999	Subtotal - Bonds - U.S. Special Revenues					1,065,000	1,065,000	1,138,547	1,110,518		(45,518)		(45,518)		1,065,000				26,884	XXX	XXX
855541-AB-4	STARM 2007-S1 2A1 3.367% 01/25/37		09/01/2022	Paydown		6,417	6,417	5,636	5,636		781		781		6,417				115	01/25/2037	1.D FM
1109999999	Subtotal - Bonds - Industrial and Miscellaneous (Unaffiliated)					6,417	6,417	5,636	5,636		781		781		6,417				115	XXX	XXX
2509999997	Total - Bonds - Part 4					1,071,417	1,071,417	1,144,183	1,116,154		(44,737)		(44,737)		1,071,417				26,999	XXX	XXX
2509999998	Total - Bonds - Part 5					XXX	XXX	XXX	XXX	XXX	XXX	XXX	XXX	XXX	XXX	XXX	XXX	XXX	XXX	XXX	XXX
2509999999	Total - Bonds					1,071,417	1,071,417	1,144,183	1,116,154		(44,737)		(44,737)		1,071,417				26,999	XXX	XXX
4509999997	Total - Preferred Stocks - Part 4						XXX													XXX	XXX
4509999998	Total - Preferred Stocks - Part 5					XXX	XXX	XXX	XXX	XXX	XXX	XXX	XXX	XXX	XXX	XXX	XXX	XXX	XXX	XXX	XXX
4509999999	Total - Preferred Stocks						XXX													XXX	XXX
5989999997	Total - Common Stocks - Part 4						XXX													XXX	XXX
5989999998	Total - Common Stocks - Part 5					XXX	XXX	XXX	XXX	XXX	XXX	XXX	XXX	XXX	XXX	XXX	XXX	XXX	XXX	XXX	XXX
5989999999	Total - Common Stocks						XXX													XXX	XXX
5999999999	Total - Preferred and Common Stocks						XXX													XXX	XXX
6009999999	- Totals					1,071,417	XXX	1,144,183	1,116,154		(44,737)		(44,737)		1,071,417				26,999	XXX	XXX

Schedule DB - Part A - Section 1 - Options, Caps, Floors, Collars, Swaps and Forwards Open  
**N O N E**

Schedule DB - Part B - Section 1 - Futures Contracts Open  
**N O N E**

Schedule DB - Part B - Section 1B - Brokers with whom cash deposits have been made  
**N O N E**

Schedule DB - Part D - Section 1 - Counterparty Exposure for Derivative Instruments Open  
**N O N E**

Schedule DB - Part D-Section 2 - Collateral for Derivative Instruments Open - Pledged By  
**N O N E**

Schedule DB - Part D-Section 2 - Collateral for Derivative Instruments Open - Pledged To  
**N O N E**

Schedule DB - Part E - Derivatives Hedging Variable Annuity Guarantees  
**N O N E**

Schedule DL - Part 1 - Reinvested Collateral Assets Owned  
**N O N E**

Schedule DL - Part 2 - Reinvested Collateral Assets Owned  
**N O N E**

SCHEDULE E - PART 1 - CASH

Month End Depository Balances

1  Depository	2  Code	3  Rate of Interest	4  Amount of Interest Received During Current Quarter	5  Amount of Interest Accrued at Current Statement Date	Book Balance at End of Each Month During Current Quarter			9  *
					6  First Month	7  Second Month	8  Third Month	
CITIBANK NEW YORK, NY								XXX
0199998. Deposits in ... depositories that do not exceed the allowable limit in any one depository (See instructions) - Open Depositories	XXX	XXX						XXX
0199999. Totals - Open Depositories	XXX	XXX						XXX
0299998. Deposits in ... depositories that do not exceed the allowable limit in any one depository (See instructions) - Suspended Depositories	XXX	XXX						XXX
0299999. Totals - Suspended Depositories	XXX	XXX						XXX
0399999. Total Cash on Deposit	XXX	XXX						XXX
0499999. Cash in Company's Office	XXX	XXX	XXX	XXX				XXX
0599999. Total - Cash	XXX	XXX						XXX

## SCHEDULE E - PART 2 - CASH EQUIVALENTS

[illegible]