



PROPERTY AND CASUALTY COMPANIES—ASSOCIATION EDITION

QUARTERLY STATEMENT

AS OF SEPTEMBER 30, 2022
OF THE CONDITION AND AFFAIRS OF THE

LIGHTNING ROD MUTUAL INSURANCE COMPANY

NAIC Group Code	00207	(Current Period)	00207	(Prior Period)	NAIC Company Code	26123	Employer's ID Number	34-0359380
Organized under the Laws of	Ohio				State of Domicile or Port of Entry	Ohio		
Country of Domicile	United States							
Incorporated/Organized	01/01/1906				Commenced Business	03/01/1906		
Statutory Home Office	2865 Benden Drive				Wooster, OH, US 44691			
	(Street and Number)				(City or Town, State, Country and Zip Code)			
Main Administrative Office	2865 Benden Drive				Wooster, OH, US 44691		330-262-9060	
	(Street and Number)				(City or Town, State, Country and Zip Code)		(Area Code) (Telephone Number)	
Mail Address	2865 Benden Drive				Wooster, OH, US 44691			
	(Street and Number or P.O. Box)				(City or Town, State, Country and Zip Code)			
Primary Location of Books and Records	2865 Benden Drive				Wooster, OH, US 44691		330-262-9060	
	(Street and Number)				(City or Town, State, Country and Zip Code)		(Area Code) (Telephone Number)	
Internet Web Site Address	www.wrg-ins.com							
Statutory Statement Contact	Christopher M. Racz, CPA				330-262-9060-2446			
	(Name)				(Area Code) (Telephone Number) (Extension)			
	Christopher.Racz@wrginsurance.com				800-563-9896			
	(E-Mail Address)				(Fax Number)			

OFFICERS

Name	Title	Name	Title
KEVIN W. DAY	PRESIDENT AND SECRETARY - CHIEF EXECUTIVE OFFICER	MICHAEL A. SHUTT	VICE PRESIDENT AND TREASURER -CHIEF FINANCIAL OFFICER

OTHER OFFICERS

GREGORY A. BRUNN	EXECUTIVE VICE PRESIDENT	WILLIAM J. GALONSKI	VICE PRESIDENT -CHIEF CLAIMS OFFICER
GLEND A. RISNER #	VICE PRESIDENT-INSURANCE OPERATIONS	LEO S. GENDERS	VICE PRESIDENT- CHIEF INFORMATION OFFICER

DIRECTORS OR TRUSTEES

KEVIN W. DAY	GREGORY A. BRUNN #	JEFFREY P. HASTINGS	RONALD E. HOLTMAN
JOHN P. MURPHY	C. MICHAEL REARDON	EDDIE L. STEINER	KENNETH L. VAGNINI
FLOYD A. TROUTEN III			

State ofOHIO.....

County ofWAYNE.....ss

The officers of this reporting entity being duly sworn, each depose and say that they are the described officers of said reporting entity, and that on the reporting period stated above, all of the herein described assets were the absolute property of the said reporting entity, free and clear from any liens or claims thereon, except as herein stated, and that this statement, together with related exhibits, schedules and explanations therein contained, annexed or referred to, is a full and true statement of all the assets and liabilities and of the condition and affairs of the said reporting entity as of the reporting period stated above, and of its income and deductions therefrom for the period ended, and have been completed in accordance with the NAIC Annual Statement Instructions and Accounting Practices and Procedures manual except to the extent that: (1) state law may differ; or, (2) that state rules or regulations require differences in reporting not related to accounting practices and procedures, according to the best of their information, knowledge and belief, respectively. Furthermore, the scope of this attestation by the described officers also includes the related corresponding electronic filing with the NAIC, when required, that is an exact copy (except for formatting differences due to electronic filing) of the enclosed statement. The electronic filing may be requested by various regulators in lieu of or in addition to the enclosed statement.

KEVIN W. DAY PRESIDENT AND SECRETARY -CHIEF EXECUTIVE OFFICER	MICHAEL A. SHUTT VICE PRESIDENT AND TREASURER -CHIEF FINANCIAL OFFICER
--	---

a. Is this an original filing? Yes [X] No []

b. If no:

1. State the amendment number

2. Date filed

3. Number of pages attached

Subscribed and sworn to before me this day of ,

STATEMENT AS OF SEPTEMBER 30, 2022 OF THE LIGHTNING ROD MUTUAL INSURANCE COMPANY				
ASSETS				
	Current Statement Date			4 December 31 Prior Year Net Admitted Assets
	1 Assets	2 Nonadmitted Assets	3 Net Admitted Assets (Cols. 1 - 2)	
1. Bonds	153,898,111	0	153,898,111	158,851,351
2. Stocks:				
2.1 Preferred stocks	0	0	0	0
2.2 Common stocks	81,310,654	653,352	80,657,301	112,640,349
3. Mortgage loans on real estate:				
3.1 First liens	0	0	0	0
3.2 Other than first liens	0	0	0	0
4. Real estate:				
4.1 Properties occupied by the company (less \$ encumbrances)	25,128,928	0	25,128,928	25,628,993
4.2 Properties held for the production of income (less \$ encumbrances)	0	0	0	0
4.3 Properties held for sale (less \$ encumbrances)	0	0	0	0
5. Cash (\$41,371,445), cash equivalents (\$2,791,924) and short-term investments (\$0)	44,163,369	0	44,163,369	42,394,089
6. Contract loans (including \$premium notes)	0	0	0	0
7. Derivatives	0	0	0	0
8. Other invested assets	8,921,941	0	8,921,941	6,186,092
9. Receivables for securities	0	0	0	0
10. Securities lending reinvested collateral assets	0	0	0	0
11. Aggregate write-ins for invested assets	0	0	0	0
12. Subtotals, cash and invested assets (Lines 1 to 11)	313,423,002	653,352	312,769,650	345,700,874
13. Title plants less \$charged off (for Title insurers only)	0	0	0	0
14. Investment income due and accrued	1,354,526	0	1,354,526	1,308,391
15. Premiums and considerations:				
15.1 Uncollected premiums and agents' balances in the course of collection	11,289,745	21,496	11,268,249	10,046,012
15.2 Deferred premiums, agents' balances and installments booked but deferred and not yet due (including \$earned but unbilled premiums)	7,846,088	0	7,846,088	7,541,562
15.3 Accrued retrospective premiums (\$) and contracts subject to redetermination (\$)	0	0	0	0
16. Reinsurance:				
16.1 Amounts recoverable from reinsurers	1,552,694	0	1,552,694	111,266
16.2 Funds held by or deposited with reinsured companies	0	0	0	0
16.3 Other amounts receivable under reinsurance contracts	0	0	0	0
17. Amounts receivable relating to uninsured plans	0	0	0	0
18.1 Current federal and foreign income tax recoverable and interest thereon	2,693,685	0	2,693,685	1,088,851
18.2 Net deferred tax asset	0	0	0	0
19. Guaranty funds receivable or on deposit	0	0	0	0
20. Electronic data processing equipment and software	14,703	0	14,703	21,004
21. Furniture and equipment, including health care delivery assets (\$)	1,678,521	1,678,521	0	0
22. Net adjustment in assets and liabilities due to foreign exchange rates	0	0	0	0
23. Receivables from parent, subsidiaries and affiliates	0	0	0	0
24. Health care (\$) and other amounts receivable	0	0	0	0
25. Aggregate write-ins for other-than-invested assets	0	0	0	0
26. Total assets excluding Separate Accounts, Segregated Accounts and Protected Cell Accounts (Lines 12 to 25)	339,852,965	2,353,370	337,499,595	365,817,960
27. From Separate Accounts, Segregated Accounts and Protected Cell Accounts	0	0	0	0
28. Total (Lines 26 and 27)	339,852,965	2,353,370	337,499,595	365,817,960
DETAILS OF WRITE-INS				
1101.	0	0	0	0
1102.	0	0	0	0
1103.	0	0	0	0
1198. Summary of remaining write-ins for Line 11 from overflow page	0	0	0	0
1199. Totals (Lines 1101 through 1103 plus 1198) (Line 11 above)	0	0	0	0
2501.	0	0	0	0
2502.	0	0	0	0
2503.	0	0	0	0
2598. Summary of remaining write-ins for Line 25 from overflow page	0	0	0	0
2599. Totals (Lines 2501 through 2503 plus 2598) (Line 25 above)	0	0	0	0

LIABILITIES, SURPLUS AND OTHER FUNDS

	1 Current Statement Date	2 December 31, Prior Year
1. Losses (current accident year \$19,399,753)	41,093,905	42,318,760
2. Reinsurance payable on paid losses and loss adjustment expenses	0	0
3. Loss adjustment expenses	8,955,708	8,955,708
4. Commissions payable, contingent commissions and other similar charges	4,079,770	4,457,682
5. Other expenses (excluding taxes, licenses and fees)	3,630,287	5,552,902
6. Taxes, licenses and fees (excluding federal and foreign income taxes)	1,339,987	1,563,982
7.1 Current federal and foreign income taxes (including \$ on realized capital gains (losses))	0	0
7.2 Net deferred tax liability	2,248,212	7,852,968
8. Borrowed money \$ and interest thereon \$	10,455,645	11,515,155
9. Unearned premiums (after deducting unearned premiums for ceded reinsurance of \$ and including warranty reserves of \$ and accrued accident and health experience rating refunds including \$ for medical loss ratio rebate per the Public Health Service Act)	67,856,720	61,149,297
10. Advance premium	1,438,252	917,993
11. Dividends declared and unpaid:		
11.1 Stockholders	0	0
11.2 Policyholders	0	0
12. Ceded reinsurance premiums payable (net of ceding commissions)	248,885	661,105
13. Funds held by company under reinsurance treaties	0	0
14. Amounts withheld or retained by company for account of others	3,063,684	2,347,092
15. Remittances and items not allocated	0	0
16. Provision for reinsurance (including \$ certified)	0	0
17. Net adjustments in assets and liabilities due to foreign exchange rates	0	0
18. Drafts outstanding	0	0
19. Payable to parent, subsidiaries and affiliates	0	0
20. Derivatives	0	0
21. Payable for securities	0	0
22. Payable for securities lending	0	0
23. Liability for amounts held under uninsured plans	0	0
24. Capital notes \$ and interest thereon \$	0	0
25. Aggregate write-ins for liabilities	0	0
26. Total liabilities excluding protected cell liabilities (Lines 1 through 25)	144,411,056	147,292,644
27. Protected cell liabilities	0	0
28. Total liabilities (Lines 26 and 27)	144,411,056	147,292,644
29. Aggregate write-ins for special surplus funds	0	0
30. Common capital stock	0	0
31. Preferred capital stock	0	0
32. Aggregate write-ins for other than special surplus funds	0	0
33. Surplus notes	0	0
34. Gross paid in and contributed surplus	0	0
35. Unassigned funds (surplus)	193,088,539	218,525,316
36. Less treasury stock, at cost:		
36.1 shares common (value included in Line 30 \$)	0	0
36.2 shares preferred (value included in Line 31 \$)	0	0
37. Surplus as regards policyholders (Lines 29 to 35, less 36)	193,088,539	218,525,316
38. Totals (Page 2, Line 28, Col. 3)	337,499,595	365,817,960
DETAILS OF WRITE-INS		
2501. Other Liabilities.....	0	0
2502.	0	0
2503.		
2598. Summary of remaining write-ins for Line 25 from overflow page	0	0
2599. Totals (Lines 2501 through 2503 plus 2598) (Line 25 above)	0	0
2901.		0
2902.		
2903.		
2998. Summary of remaining write-ins for Line 29 from overflow page	0	0
2999. Totals (Lines 2901 through 2903 plus 2998) (Line 29 above)	0	0
3201.	0	0
3202.	0	0
3203.	0	0
3298. Summary of remaining write-ins for Line 32 from overflow page	0	0
3299. Totals (Lines 3201 through 3203 plus 3298) (Line 32 above)	0	0

STATEMENT OF INCOME

	1 Current Year to Date	2 Prior Year to Date	3 Prior Year Ended December 31
UNDERWRITING INCOME			
1. Premiums earned:			
1.1 Direct (written \$71,541,627)	68,172,842	66,173,810	88,478,729
1.2 Assumed (written \$123,179,626)	114,286,721	106,754,483	143,247,265
1.3 Ceded (written \$90,397,468)	84,843,202	80,167,474	107,438,985
1.4 Net (written \$104,323,785)	97,616,361	92,760,819	124,287,009
DEDUCTIONS:			
2. Losses incurred (current accident year \$):			
2.1 Direct	40,283,210	29,219,906	41,263,698
2.2 Assumed	84,401,521	65,249,689	88,495,854
2.3 Ceded	57,564,594	42,584,273	59,541,092
2.4 Net	67,120,137	51,885,322	70,218,460
3. Loss adjustment expenses incurred	9,798,905	9,461,075	12,914,599
4. Other underwriting expenses incurred	34,092,668	32,576,826	43,359,272
5. Aggregate write-ins for underwriting deductions	0	0	0
6. Total underwriting deductions (Lines 2 through 5)	111,011,709	93,923,224	126,492,331
7. Net income of protected cells	0	0	0
8. Net underwriting gain (loss) (Line 1 minus Line 6 + Line 7)	(13,395,349)	(1,162,406)	(2,205,322)
INVESTMENT INCOME			
9. Net investment income earned	2,388,930	2,018,264	3,071,009
10. Net realized capital gains (losses) less capital gains tax of \$440,795	1,658,228	1,254,028	2,281,414
11. Net investment gain (loss) (Lines 9 + 10)	4,047,157	3,272,292	5,352,423
OTHER INCOME			
12. Net gain or (loss) from agents' or premium balances charged off (amount recovered \$ amount charged off \$108,474)	(108,474)	(119,007)	(155,802)
13. Finance and service charges not included in premiums	1,038,807	1,108,752	1,457,187
14. Aggregate write-ins for miscellaneous income	62,941	73,912	79,645
15. Total other income (Lines 12 through 14)	993,275	1,063,658	1,381,030
16. Net income before dividends to policyholders, after capital gains tax and before all other federal and foreign income taxes (Lines 8 + 11 + 15)	(8,354,917)	3,173,544	4,528,131
17. Dividends to policyholders	0	0	0
18. Net income, after dividends to policyholders, after capital gains tax and before all other federal and foreign income taxes (Line 16 minus Line 17)	(8,354,917)	3,173,544	4,528,131
19. Federal and foreign income taxes incurred	(1,949,335)	406,669	369,961
20. Net income (Line 18 minus Line 19)(to Line 22)	(6,405,581)	2,766,875	4,158,170
CAPITAL AND SURPLUS ACCOUNT			
21. Surplus as regards policyholders, December 31 prior year	218,525,316	202,523,754	202,523,753
22. Net income (from Line 20)	(6,405,581)	2,766,875	4,158,170
23. Net transfers (to) from Protected Cell accounts	0	0	0
24. Change in net unrealized capital gains or (losses) less capital gains tax of \$(5,233,653)	(19,688,506)	6,680,492	12,074,323
25. Change in net unrealized foreign exchange capital gain (loss)	0	0	0
26. Change in net deferred income tax	371,103	319,700	47,002
27. Change in nonadmitted assets	286,206	(379,138)	(277,933)
28. Change in provision for reinsurance	0	0	0
29. Change in surplus notes	0	0	0
30. Surplus (contributed to) withdrawn from protected cells	0	0	0
31. Cumulative effect of changes in accounting principles	0	0	0
32. Capital changes:			
32.1 Paid in	0	0	0
32.2 Transferred from surplus (Stock Dividend)	0	0	0
32.3 Transferred to surplus	0	0	0
33. Surplus adjustments:			
33.1 Paid in	0	0	0
33.2 Transferred to capital (Stock Dividend)	0	0	0
33.3 Transferred from capital	0	0	0
34. Net remittances from or (to) Home Office	0	0	0
35. Dividends to stockholders	0	0	0
36. Change in treasury stock	0	0	0
37. Aggregate write-ins for gains and losses in surplus	0	0	0
38. Change in surplus as regards policyholders (Lines 22 through 37)	(25,436,777)	9,387,929	16,001,563
39. Surplus as regards policyholders, as of statement date (Lines 21 plus 38)	193,088,539	211,911,683	218,525,316
DETAILS OF WRITE-INS			
0501.	0	0	0
0502.			
0503.			
0598. Summary of remaining write-ins for Line 5 from overflow page	0	0	0
0599. TOTALS (Lines 0501 through 0503 plus 0598) (Line 5 above)	0	0	0
1401. Other Income/(Expense)	37,465	12,653	18,386
1402. Gain/(Loss) on Sale of Equipment	25,476	61,259	61,259
1403.			
1498. Summary of remaining write-ins for Line 14 from overflow page	0	0	0
1499. TOTALS (Lines 1401 through 1403 plus 1498) (Line 14 above)	62,941	73,912	79,645
3701.	0	0	0
3702.	0	0	0
3703.	0	0	0
3798. Summary of remaining write-ins for Line 37 from overflow page	0	0	0
3799. TOTALS (Lines 3701 through 3703 plus 3798) (Line 37 above)	0	0	0

CASH FLOW

	1 Current Year To Date	2 Prior Year To Date	3 Prior Year Ended December 31
Cash from Operations			
1. Premiums collected net of reinsurance.....	102,912,875	94,998,774	126,490,326
2. Net investment income	3,533,798	3,205,404	4,802,987
3. Miscellaneous income	993,275	1,063,658	1,381,030
4. Total (Lines 1 to 3)	107,439,948	99,267,836	132,674,343
5. Benefit and loss related payments	69,786,420	51,023,326	70,717,693
6. Net transfers to Separate Accounts, Segregated Accounts and Protected Cell Accounts	0	0	0
7. Commissions, expenses paid and aggregate write-ins for deductions	46,371,483	43,444,775	55,899,337
8. Dividends paid to policyholders	0	0	0
9. Federal and foreign income taxes paid (recovered) net of \$ tax on capital gains (losses).....	96,294	1,035,000	1,035,001
10. Total (Lines 5 through 9)	116,254,198	95,503,102	127,652,030
11. Net cash from operations (Line 4 minus Line 10)	(8,814,250)	3,764,734	5,022,313
Cash from Investments			
12. Proceeds from investments sold, matured or repaid:			
12.1 Bonds	12,611,524	10,627,098	16,943,258
12.2 Stocks	9,301,508	4,333,431	6,782,602
12.3 Mortgage loans	0	0	0
12.4 Real estate	0	0	0
12.5 Other invested assets	3,088,420	602,510	602,510
12.6 Net gains or (losses) on cash, cash equivalents and short-term investments	0	0	0
12.7 Miscellaneous proceeds	0	0	0
12.8 Total investment proceeds (Lines 12.1 to 12.7)	25,001,453	15,563,039	24,328,370
13. Cost of investments acquired (long-term only):			
13.1 Bonds	8,067,148	27,870,240	34,530,384
13.2 Stocks	164,988	385,000	402,848
13.3 Mortgage loans	0	0	0
13.4 Real estate	8,147	185,606	203,939
13.5 Other invested assets	5,941,945	3,898,108	6,761,950
13.6 Miscellaneous applications	0	1	0
13.7 Total investments acquired (Lines 13.1 to 13.6)	14,182,228	32,338,955	41,899,120
14. Net increase (or decrease) in contract loans and premium notes	0	0	0
15. Net cash from investments (Line 12.8 minus Line 13.7 and Line 14)	10,819,224	(16,775,916)	(17,570,751)
Cash from Financing and Miscellaneous Sources			
16. Cash provided (applied):			
16.1 Surplus notes, capital notes	0	0	0
16.2 Capital and paid in surplus, less treasury stock.....	0	0	0
16.3 Borrowed funds	(1,059,509)	(1,030,455)	(1,378,743)
16.4 Net deposits on deposit-type contracts and other insurance liabilities	0	0	0
16.5 Dividends to stockholders	0	0	0
16.6 Other cash provided (applied).....	823,816	(1,340,390)	(1,290,606)
17. Net cash from financing and miscellaneous sources (Line 16.1 through Line 16.4 minus Line 16.5 plus Line 16.6).....	(235,693)	(2,370,845)	(2,669,349)
RECONCILIATION OF CASH, CASH EQUIVALENTS AND SHORT-TERM INVESTMENTS			
18. Net change in cash, cash equivalents and short-term investments (Line 11, plus Lines 15 and 17)	1,769,281	(15,382,027)	(15,217,787)
19. Cash, cash equivalents and short-term investments:			
19.1 Beginning of year.....	42,394,088	57,611,875	57,611,875
19.2 End of period (Line 18 plus Line 19.1)	44,163,369	42,229,847	42,394,088

Note: Supplemental disclosures of cash flow information for non-cash transactions:			
20.0001. Investments acquired in non-cash transactions.....	471,817	210,332	201,494
20.0002. Investments disposed in non-cash transactions.....	471,817	210,332	201,494

NOTES TO FINANCIAL STATEMENTS

1. Summary of Significant Accounting Policies

A. Accounting Practices

The financial statements of Lightning Rod Mutual Insurance Company (LRMIC) are presented on the basis of accounting principles prescribed or permitted by the Ohio Department of Insurance.

The Ohio Department of Insurance recognizes only statutory accounting practices prescribed or permitted by the State of Ohio for determining and reporting the financial condition and results of operations of an insurance company for determining its solvency under Ohio Insurance Law. The National Association of Insurance Commissioners' (NAIC) *Accounting Practices and Procedures Manual* (NAIC SAP) has been adopted as a component of prescribed or permitted practices by the State of Ohio.

The financial statements of the Company are presented solely on the basis of accounting principles prescribed by the Ohio Department of Insurance. As such, there are no increases or decreases to net income or surplus on a statutory accounting basis as shown by the reconciliation below:

	State of Domicile	2022	2021
<u>NET INCOME</u>			
(1) LRMIC state basis (Page 4, Line 20, Columns 1 & 2)	Ohio	\$ (6,405,581)	\$ 4,158,170
(2) State Prescribed Practices that increase/(decrease) NAIC SAP:		—	—
(3) State Permitted Practices that increase/(decrease) NAIC SAP:		—	—
(4) NAIC SAP (1-2-3=4)		<u>\$ (6,405,581)</u>	<u>\$ 4,158,170</u>
<u>SURPLUS</u>			
(5) LRMIC state basis (Page 3, Line 37, Columns 1 & 2)	Ohio	\$ 193,088,539	\$ 218,525,316
(6) State Prescribed Practices that increase/(decrease) NAIC SAP:		—	—
(7) State Permitted Practices that increase/(decrease) NAIC SAP:		—	—
(8) NAIC SAP (5-6-7=8)		<u>\$ 193,088,539</u>	<u>\$ 218,525,316</u>

B. Use of Estimates in the Preparation of the Financial Statements

No significant changes from December 31, 2021.

C. Accounting Policy

No significant changes from December 31, 2021.

D. Going Concern

Management has evaluated the Company's viability and has no doubt as to the Company's ability to continue as a going concern.

2. Accounting Changes and Corrections of Errors

Not applicable.

3. Business Combinations and Goodwill

Not applicable.

4. Discontinued Operations

Not applicable.

5. Investments

A. Mortgage Loans, including Mezzanine Real Estate Loans

Not applicable.

B. Debt Restructuring

Not applicable.

C. Reverse Mortgages

Not applicable.

NOTES TO FINANCIAL STATEMENTS

- D. Loan—Backed Securities
- 1. Prepayment assumptions are generally obtained using a model provided by a third-party vendor.
 - 2. None.
 - 3. None.
 - 4. All impaired securities (fair value is less than cost or amortized cost) for which an other-than-temporary impairment has not been recognized in earnings as a realized loss (including securities with a recognized other-than temporary impairment for non-interest related declines when a non-recognized interest related impairment remains):
 - a. The aggregate amount of unrealized losses:

1. Less than 12 months	\$ (463,993)
2. 12 months or Longer	\$ (880,629)
 - b. The aggregate related fair value of securities with unrealized losses:

1. Less than 12 months	\$ 7,639,880
2. 12 months or longer	\$ 9,478,632
 - 5. The Company reviews all loan-backed and structured securities in which the fair value of a given security is less than the amortized cost to determine if a given security is other-than-temporarily impaired. The Company examines characteristics of the underlying collateral, such as delinquency and default rates, the quality of the underlying borrower, the type of collateral in the pool, the vintage year of the collateral, subordination levels within the structure of the collateral pool, and the quality of any credit guarantors, to determine the cash flows expected to be received for the security.

If the severity and duration of the security’s unrealized loss indicates a risk of other-than-temporary impairment, then the Company will evaluate if the amortized cost basis of the security will be recovered by comparing the present value of the cash flows expected to be received for the given security with the amortized basis of the security. If the present value of cash flows is greater than the amortized cost basis of a security then the security is deemed not to be other-than-temporarily impaired.
- E. Dollar Repurchase Agreements and/or Securities Lending Transactions
- Not applicable.
- F. Repurchase Agreements Transactions Accounted for as Secured Borrowing
- Not applicable.
- G. Reverse Repurchase Agreements Transactions Accounted for as Secured Borrowing
- Not applicable.
- H. Repurchase Agreements Transactions Accounted for as a Sale
- Not applicable.
- I. Reverse Repurchase Agreements Transactions Accounted for as a Sale
- Not applicable.
- J. Real Estate
- Not applicable.
- K. Low—income Housing Tax Credits (LIHTC)
- Not applicable.
- L. Restricted Assets
- No significant changes from December 31, 2021.
- M. Working Capital Finance Investments
- Not applicable.
- N. Offsetting and Netting of Assets and Liabilities
- Not applicable.
- O. 5* Securities
- Not applicable.

NOTES TO FINANCIAL STATEMENTS

P. Short Sales

Not applicable.

Q. Prepayment Penalty and Accelerated Fees

Not applicable.

R. Reporting Entity's Share of Cash Pool by Asset Type

Not applicable.

6. Joint Ventures, Partnerships and Limited Liability Companies

No significant changes from December 31, 2021.

7. Investment Income

No significant changes from December 31, 2021.

8. Derivative Instruments

Not applicable.

9. Income Taxes

No significant changes from December 31, 2021.

10. Information Concerning Parent, Subsidiaries, Affiliates and Other Related Parties

A. Effective January 1, 2022 the Company changed its organizational structure from a mutual insurance company to a mutual holding company owned stock insurance company. Under this structure, the Company converted to a stock insurer and retained its name of Lightning Rod Mutual Insurance Company and became a wholly owned subsidiary of a newly organized holding company, WRG Holdings, Inc. WRG Holdings, Inc. is a wholly owned subsidiary of WRG Mutual Insurance Holding Company (WRG MIHC). WRG MIHC is the ultimate controlling parent of the group. The conversion was approved by the Company's policyholders on July 28, 2021 and by the Ohio Department of Insurance on September 23, 2021.

B. Not applicable.

C. Not applicable.

D. No significant changes from December 31, 2021.

E. Not applicable.

F. No significant changes from December 31, 2021.

G. No significant changes from December 31, 2021.

H. Not applicable.

I. Not applicable.

J. Not applicable.

K. Not applicable.

L. No significant changes from December 31, 2021.

M. No significant changes from December 31, 2021.

N. Not applicable.

O. Not applicable.

11. Debt

A. Apart from the item Note 11B immediately below, the Company did not have any outstanding debentures at September 30, 2022 nor December 31, 2021.

B. FHLB (Federal Home Loan Bank) Agreements

1. The Company is a member of the Federal Home Loan Bank (FHLB) of Cincinnati. In April 2019, through its membership, the Company borrowed funds in the form of three, 10-year fixed term, fixed rate advances at 2.83%, 2.60% and 2.60%. The three advances were \$12.0 million, \$2.0 million, and \$1.0 million, respectively, for a total of \$15.0 million to be used for construction of an addition to the Company's home office. The Company has determined the estimated maximum borrowing capacity as \$6,957,493. The Company calculated this amount in accordance with the Company's holdings of U.S. Treasuries, U.S. Agencies, U.S. Agency residential and commercial mortgage-backed securities, and eligible municipal securities including both revenue and general obligation bonds that meet minimum FHLB credit risk requirements.

NOTES TO FINANCIAL STATEMENTS

2. FHLB Capital Stock

a. Aggregate Totals

1. Current Year	(1)	(2)	(3)
	Total 2 + 3	General Account	Separate Accounts
a. Membership Stock – Class A	\$ —	\$ —	\$ —
b. Membership Stock – Class B	\$ 292,654	\$ 292,654	\$ —
c. Activity Stock	\$ 300,067	\$ 300,067	\$ —
d. Excess Stock	\$ 209,479	\$ 209,479	\$ —
e. Aggregate Total	<u>\$ 802,200</u>	<u>\$ 802,200</u>	<u>\$ —</u>
f. Actual or Estimated Borrowing Capacity as Determined by the Insurer	<u>\$ 6,957,493</u>	<u>\$ XXX</u>	<u>\$ XXX</u>

2. Prior Year-End	(1)	(2)	(3)
	Total 2 + 3	General Account	Separate Accounts
g. Membership Stock – Class A	\$ —	\$ —	\$ —
h. Membership Stock – Class B	\$ 346,800	\$ 346,800	\$ —
i. Activity Stock	\$ 300,067	\$ 300,067	\$ —
j. Excess Stock	\$ 198,333	\$ 198,333	\$ —
k. Aggregate Total (a+b+c+d)	<u>\$ 845,200</u>	<u>\$ 845,200</u>	<u>\$ —</u>
l. Actual or Estimated Borrowing Capacity as Determined by the Insurer	<u>\$ 9,216,160</u>	<u>\$ XXX</u>	<u>\$ XXX</u>

3. Membership Stock Eligible for Redemption

Membership Stock	Current Year Total	Not Eligible For Redemption	Less Than Six Months	Six Months to Less Than a Year	1 to Less Than 3 Years	3 to 5 Years
1. Class A	\$ —	\$ —	\$ —	\$ —	\$ —	\$ —
2. Class B	\$ 292,654	\$ 292,654	\$ —	\$ —	\$ —	\$ —

3. Collateral Pledged to the FHLB

a. Amount Pledged as of Reporting Date

	Fair Value	Carrying Value	Aggregate Total Borrowing
1. Current year total general account collateral pledged	\$10,971,456	\$10,836,408	\$ 15,000,000
2. Current year protected cell account collateral pledged	—	—	—
3. Current year total general and protected cell accounts collateral pledged	10,971,456	10,836,408	15,000,000
4. Prior year total general and protected cell accounts collateral pledged	—	—	—

b. Maximum Amount Pledged During Reporting Period

	Fair Value	Carrying Value	Amount Borrowed at Time of Maximum Collateral
1. Current year total general account maximum collateral pledged	\$12,597,709	\$12,158,675	\$ 15,000,000
2. Current year protected cell account maximum collateral pledged	—	—	—
3. Current year total general and protected cell accounts maximum collateral pledged	12,597,709	12,158,675	15,000,000
4. Prior year total general and protected cell accounts maximum collateral pledged	—	—	—

NOTES TO FINANCIAL STATEMENTS

4. Borrowing from FHLB

a. Amount as of the Reporting Date

		1. Current Year			2. Prior Year		
		<u>Total</u>	<u>General Account</u>	<u>Protected Cell Account</u>	<u>Total</u>	<u>General Account</u>	<u>Protected Cell Account</u>
a.	Debt	\$10,455,645	\$10,455,645	\$ —	\$11,515,155	\$11,515,155	\$ —
b.	Funding Agreements	—	—	—	—	—	—
c.	Other	—	—	—	—	—	—
d.	Total (a+b+c)	10,455,645	10,455,645	—	11,515,155	11,515,155	—

b. Maximum Amount during the Reporting Period (Current Year)

		<u>Total</u>	<u>General Account</u>	<u>Protected Cell Account</u>
a.	Debt	\$ 11,515,155	\$ 11,515,155	\$ —
b.	Funding Agreements	—	—	—
c.	Other	—	—	—
d.	Total (a+b+c)	11,515,155	11,515,155	—

c. The Company has no prepayment obligations under its debt arrangement.

12. Retirement Plans, Deferred Compensation, Postemployment Benefits and Compensated Absences and Other Postretirement Benefit Plans

A. Defined Benefit Plans

The Company has a non-qualified, unfunded, retiree healthcare plan. The retiree health care plan was closed to new participants. The related liabilities and expenses are not material to the Company's financial position.

The Company also has a non-qualified voluntary deferred compensation plan for senior executive officers. The plan allows for deferral of payouts from the Annual Cash Bonus Plan and Performance Share Plan for Key Executives. As of September 30, 2022 and December 31, 2021, amounts held for these deferrals were \$2.8 million and \$2.2 million, respectively.

B. Investment Policies and Strategies

Not applicable.

C. Fair Value of Plan Assets

Not applicable.

D. Basis of Rates of Returns on Assets

Not applicable.

E. Defined Contribution Plans

No significant changes from December 31, 2021.

F. Multiemployer Plans

Not applicable.

G. Consolidated/Holding Company Plans

Not applicable.

H. Postemployment Benefits and Compensated Absences

Not applicable.

I. Impact of Medicare Modernization Act on Postretirement Benefits (INT 04—17)

Not applicable.

13. Capital and Surplus, Dividend Restrictions and Quasi—Reorganizations

No significant changes from December 31, 2021.

14. Liabilities, Contingencies and Assessments

No significant changes from December 31, 2021.

15. Leases

No significant changes from December 31, 2021.

NOTES TO FINANCIAL STATEMENTS

16. Information about Financial Instruments With Off—Balance—Sheet Risk and Financial Instruments With Concentrations of Credit Risk

Not applicable.

17. Sale, Transfer and Servicing of Financial Assets and Extinguishment of Liabilities

Not applicable.

18. Gain or Loss to the Reporting Entity from Uninsured Plans and the Uninsured Portion of Partially Insured Plans

Not applicable.

19. Direct Premium Written/Produced by Managing General Agents/Third Party Administrators

Not applicable.

20. Fair Value Measurements

- A. The Company's financial assets and liabilities carried at fair value have been classified, for disclosure purposes, based on a hierarchy defined by FASB ASC 820 (SFAS No. 157), *Fair Value Measurements*. The hierarchy gives the highest ranking to fair values determined using unadjusted quoted prices in active markets for identical assets and liabilities (Level 1) and the lowest ranking to fair values determined using methodologies and models with unobservable inputs (Level 3). An asset's or a liability's classification is based on the lowest level input that is significant to its measurement. For example, a Level 3 fair value measurement may include inputs that are both observable (Levels 1 and 2) and unobservable (Level 3). The levels of the fair value hierarchy are as follows:

Level 1:

Values are unadjusted quoted prices for identical assets and liabilities in active markets accessible at the measurement date.

Level 2:

Inputs include quoted prices for similar assets or liabilities in active markets, quoted prices from those willing to trade in markets that are not active, or other inputs that are observable or can be corroborated by market data for the term of the instrument. Such inputs include market interest rates and volatilities, spreads and yield curves.

Level 3:

Certain inputs are unobservable (supported by little or no market activity) and significant to the fair value measurement. Unobservable inputs reflect the Company's best estimate of what hypothetical market participants would use to determine a transaction price for the asset or liability at the reporting date.

(1) Fair Value Measurements at September 30, 2022:

Description of each class of asset or liability	(Level 1)	(Level 2)	(Level 3)	Net Asset Value (NAV)	Total
a. Assets at fair value					
Cash equivalents:					
Exempt MM Mutual Funds	\$ 2,791,924	\$ --	\$ --	\$ --	\$ 2,791,924
Total Cash Equivalents	2,791,924	--	--	--	2,791,924
Common Stock:					
Mutual Funds	27,746,869	--	--	--	27,746,869
Industrial and Misc	51,854,568	802,200	253,664	--	52,910,432
Total Common Stocks	79,601,437	802,200	253,664	--	80,657,301
Bonds:					
Industrial and Misc	--	501,769	--	--	501,769
Total Bonds	--	501,769	--	--	501,769
Other Invested Assets	--	--	8,921,941	--	8,921,941
Total assets at fair value/NAV	\$ 82,393,361	\$ 1,303,969	\$ 9,175,605	\$ --	\$ 92,872,935
b. Liabilities at fair value:					
Not applicable.					

NOTES TO FINANCIAL STATEMENTS

Fair Value Measurements at December 31, 2021:

Description of each class of asset or liability	(Level 1)	(Level 2)	(Level 3)	Net Asset Value (NAV)	Total
c. Assets at fair value					
Cash equivalents:					
Exempt MM Mutual Funds	\$ 2,562,841	\$ --	\$ --	\$ --	\$ 2,562,841
Total Cash Equivalents	2,562,841	--	--	--	2,562,841
Common Stock:					
Mutual Funds	46,269,630	--	--	--	46,269,630
Industrial and Misc	65,245,215	845,200	280,303	--	66,370,718
Total Common Stocks	111,514,845	845,200	280,303	--	112,640,348
Other Invested Assets	--	--	6,186,092	--	6,186,092
Total assets at fair value/NAV	\$ 114,077,686	\$ 845,200	\$ 6,466,395	\$ --	\$ 121,389,281
d. Liabilities at fair value:					
Not applicable.					

(1) Fair Value Measurements in (Level 3) of the Fair Value Hierarchy:

	Beginning Balance at 06/30/2022	Transfers In/(out) Level 3	Total Gains/(Losses) Included in Net Income	Total Gains/(Losses) Included in Surplus	Purchases (Sales)	Ending Balance at 09/30/2022
a. Assets:						
Common Stock:						
Industrial and Misc	\$ 253,664	\$ --	\$ --	\$ --	\$ --	\$ 253,664
Other Invested Assets	5,599,581	--	--	(124,605)	3,446,965	8,921,941
Total Assets	\$ 5,853,245	\$ --	\$ --	\$ (124,605)	\$ 3,446,965	\$ 9,175,605
b. Liabilities:						
Not applicable.						

- (3) The Company's policy is to recognize transfers in and out as of the end of the reporting period.
- (4) As of September 30, 2022, the reported fair value of the entity's investments categorized within Level 3 of the fair value hierarchy is as follows:

Common Stocks – The Company holds an investment in NAMIC common stock.
Other Invested Assets – The Company holds limited partnership interests in private credit funds.

- B. Not applicable.
- C. Fair Value of All Financial Instruments:

Type of Financial Instrument	Aggregate Fair Value	Admitted Assets	(Level 1)	(Level 2)	(Level 3)	Net Asset Value (NAV)	Not Practicable (Carrying Value)
Bonds	\$ 142,768,620	\$ 153,898,111	\$ 11,020,446	\$ 131,748,174	\$ --	\$ --	\$ --
Common Stock	80,657,301	80,657,301	79,601,437	802,200	253,664	--	--
Other Invested Assets	8,921,941	8,921,941	--	--	8,921,941	--	--
Cash Equivalents	2,791,924	2,791,924	2,791,924	--	--	--	--

D. The Company has no assets for which it was not practicable to estimate fair value.

21. Other Items

Not applicable.

NOTES TO FINANCIAL STATEMENTS

22. Events Subsequent

Type I – Recognized Subsequent Events:

Subsequent events have been considered through November 14, 2022 for the statutory statement issued on November 14, 2022 for the quarter ending September 30, 2022. No Type I events were identified that would have a material effect on the financial condition of the Company.

Type II – Non-recognized Subsequent Events:

Subsequent events have been considered through November 14, 2022 for the statutory statement issued on November 14, 2022 for the quarter ending September 30, 2022. No Type II events were identified that would have a material effect on the financial condition of the Company.

23. Reinsurance

No significant changes from December 31, 2021.

24. Retrospectively Rated Contracts and Contracts Subject to Redetermination

Not applicable.

25. Changes in Incurred Losses and Loss Adjustment Expense

Reserves as of December 31, 2021 were \$51.3 million. During 2022, \$23.3 million has been paid for incurred losses and loss adjustment expenses attributable to insured events of prior years. Reserves remaining for prior years are now \$27.4 million as a result of re-estimation of unpaid claims and claim adjusting expenses. Therefore, there has been \$0.6 million of favorable prior year development from December 31, 2021 to September 30, 2022. The re-estimation is generally the result of ongoing analysis of recent loss development trends. Original estimates are increased or decreased as additional information becomes known regarding individual claims. The estimates are not affected by prior year loss development on retrospectively rated policies, as the Company does not write this type of policy.

26. Intercompany Pooling Agreements

No significant changes from December 31, 2021.

27. Structured Settlements

Not applicable.

28. Health Care Receivables

Not applicable.

29. Participating Policies

Not applicable.

30. Premium Deficiency Reserves

No significant changes from December 31, 2021.

31. High Deductibles

Not applicable.

32. Discounting of Liabilities for Unpaid Losses or Unpaid Loss Adjustment Expenses

No significant changes from December 31, 2021.

33. Asbestos/Environmental Reserves

No significant changes from December 31, 2021.

34. Subscriber Savings Accounts

Not applicable.

35. Multiple Peril Crop Insurance

Not applicable.

36. Financial Guaranty Insurance

Not applicable.

GENERAL INTERROGATORIES

PART 1 - COMMON INTERROGATORIES

GENERAL

- 1.1

Did the reporting entity experience any material transactions requiring the filing of Disclosure of Material Transactions with the State of Domicile, as required by the Model Act?

Yes ☐ No ☒
- 1.2

If yes, has the report been filed with the domiciliary state?

Yes ☐ No ☐
- 2.1

Has any change been made during the year of this statement in the charter, by-laws, articles of incorporation, or deed of settlement of the reporting entity?

Yes ☐ No ☒
- 2.2

If yes, date of change:
- 3.1

Is the reporting entity a member of an Insurance Holding Company System consisting of two or more affiliated persons, one or more of which is an insurer?

Yes ☒ No ☐
- If yes, complete Schedule Y, Parts 1 and 1A.
- 3.2

Have there been any substantial changes in the organizational chart since the prior quarter end?

Yes ☐ No ☒
- 3.3

If the response to 3.2 is yes, provide a brief description of those changes.
- 3.4

Is the reporting entity publicly traded or a member of a publicly traded group?

Yes ☐ No ☒
- 3.5

If the response to 3.4 is yes, provide the CIK (Central Index Key) code issued by the SEC for the entity/group.
- 4.1

Has the reporting entity been a party to a merger or consolidation during the period covered by this statement?

Yes ☐ No ☒
- 4.2

If yes, provide the name of entity, NAIC Company Code, and state of domicile (use two letter state abbreviation) for any entity that has ceased to exist as a result of the merger or consolidation.

1	2	3
Name of Entity	NAIC Company Code	State of Domicile

5.

If the reporting entity is subject to a management agreement, including third-party administrator(s), managing general agent(s), attorney-in-fact, or similar agreement, have there been any significant changes regarding the terms of the agreement or principals involved?

Yes ☐ No ☐ NA ☒
- If yes, attach an explanation.
- 6.1

State as of what date the latest financial examination of the reporting entity was made or is being made.

12/31/2016
- 6.2

State the as of date that the latest financial examination report became available from either the state of domicile or the reporting entity. This date should be the date of the examined balance sheet and not the date the report was completed or released.

12/31/2016
- 6.3

State as of what date the latest financial examination report became available to other states or the public from either the state of domicile or the reporting entity. This is the release date or completion date of the examination report and not the date of the examination (balance sheet date).

10/25/2017
- 6.4

By what department or departments?

Ohio Department of Insurance
- 6.5

Have all financial statement adjustments within the latest financial examination report been accounted for in a subsequent financial statement filed with Departments?

Yes ☐ No ☐ NA ☒
- 6.6

Have all of the recommendations within the latest financial examination report been complied with?

Yes ☒ No ☐ NA ☐
- 7.1

Has this reporting entity had any Certificates of Authority, licenses or registrations (including corporate registration, if applicable) suspended or revoked by any governmental entity during the reporting period?

Yes ☐ No ☒
- 7.2

If yes, give full information:
- 8.1

Is the company a subsidiary of a bank holding company regulated by the Federal Reserve Board?

Yes ☐ No ☒
- 8.2

If response to 8.1 is yes, please identify the name of the bank holding company.
- 8.3

Is the company affiliated with one or more banks, thrifts or securities firms?

Yes ☐ No ☒
- 8.4

If response to 8.3 is yes, please provide below the names and location (city and state of the main office) of any affiliates regulated by a federal regulatory services agency [i.e. the Federal Reserve Board (FRB), the Office of the Comptroller of the Currency (OCC), the Federal Deposit Insurance Corporation (FDIC) and the Securities Exchange Commission (SEC)] and identify the affiliate's primary federal regulator.]
- | 1 | 2 | 3 | 4 | 5 | 6 |
|----------------|---------------------------|-----|-----|------|-----|
| Affiliate Name | Location
(City, State) | FRB | OCC | FDIC | SEC |
| | | | | | |
- 9.1

Are the senior officers (principal executive officer, principal financial officer, principal accounting officer or controller, or persons performing similar functions) of the reporting entity subject to a code of ethics, which includes the following standards?

Yes ☒ No ☐
- (a) Honest and ethical conduct, including the ethical handling of actual or apparent conflicts of interest between personal and professional relationships;
- (b) Full, fair, accurate, timely and understandable disclosure in the periodic reports required to be filed by the reporting entity;
- (c) Compliance with applicable governmental laws, rules and regulations;
- (d) The prompt internal reporting of violations to an appropriate person or persons identified in the code; and
- (e) Accountability for adherence to the code.
- 9.11

If the response to 9.1 is No, please explain:
- 9.2

Has the code of ethics for senior managers been amended?

Yes ☐ No ☒
- 9.21

If the response to 9.2 is Yes, provide information related to amendment(s).
- 9.3

Have any provisions of the code of ethics been waived for any of the specified officers?

Yes ☐ No ☒
- 9.31

If the response to 9.3 is Yes, provide the nature of any waiver(s).

FINANCIAL

- 10.1

Does the reporting entity report any amounts due from parent, subsidiaries or affiliates on Page 2 of this statement?

Yes ☐ No ☒
- 10.2

If yes, indicate any amounts receivable from parent included in the Page 2 amount:

\$

GENERAL INTERROGATORIES

INVESTMENT

11.1 Were any of the stocks, bonds, or other assets of the reporting entity loaned, placed under option agreement, or otherwise made available for use by another person? (Exclude securities under securities lending agreements.) Yes [] No [X]

11.2 If yes, give full and complete information relating thereto:
.....

12. Amount of real estate and mortgages held in other invested assets in Schedule BA:\$0

13. Amount of real estate and mortgages held in short-term investments:\$0

14.1 Does the reporting entity have any investments in parent, subsidiaries and affiliates? Yes [X] No []

14.2 If yes, please complete the following:

	1 Prior Year-End Book/Adjusted Carrying Value	2 Current Quarter Book/Adjusted Carrying Value
14.21 Bonds	\$0	\$0
14.22 Preferred Stock	\$0	\$0
14.23 Common Stock	\$830,821	\$653,352
14.24 Short-Term Investments	\$0	\$0
14.25 Mortgage Loans on Real Estate	\$0	\$0
14.26 All Other	\$0	\$0
14.27 Total Investment in Parent, Subsidiaries and Affiliates (Subtotal Lines 14.21 to 14.26).....	\$830,821	\$653,352
14.28 Total Investment in Parent included in Lines 14.21 to 14.26 above	\$0	\$0

15.1 Has the reporting entity entered into any hedging transactions reported on Schedule DB? Yes [] No [X]

15.2 If yes, has a comprehensive description of the hedging program been made available to the domiciliary state? Yes [] No [] NA [X]
If no, attach a description with this statement.

16. For the reporting entity's security lending program, state the amount of the following as of the current statement date:

16.1 Total fair value of reinvested collateral assets reported on Schedule DL, Parts 1 and 2	\$0
16.2 Total book adjusted/carrying value of reinvested collateral assets reported on Schedule DL, Parts 1 and 2	\$0
16.3 Total payable for securities lending reported on the liability page	\$0

17. Excluding items in Schedule E – Part 3 – Special Deposits, real estate, mortgage loans and investments held physically in the reporting entity's offices, vaults or safety deposit boxes, were all stocks, bonds and other securities, owned throughout the current year held pursuant to a custodial agreement with a qualified bank or trust company in accordance with Section 1, III – General Examination Considerations, F. Outsourcing of Critical Functions, Custodial or Safekeeping Agreements of the NAIC *Financial Condition Examiners Handbook*? Yes [] No [X]

17.1 For all agreements that comply with the requirements of the NAIC *Financial Condition Examiners Handbook*, complete the following:

1 Name of Custodian(s)	2 Custodian Address
Northern Trust Company.....	50 South LaSalle Street Chicago, IL 60603.....

17.2 For all agreements that do not comply with the requirements of the NAIC *Financial Condition Examiners Handbook*, provide the name, location and a complete explanation:

1 Name(s)	2 Location(s)	3 Complete Explanation(s)
Monroe Capital LLC.....	311 South Wacker Dr, Suite 6400 Chicago, IL 60606.....	Investment in Monroe Capital Private Credit (Delaware) Feeder Fund IV LP; not accounted for by Northern Trust.....
HarbourVest Partners LLC.....	One Financial Center Boston, MA 02111.....	Investment in HarbourVest Direct Lending Fund (L) L.P.; not accounted for by Northern Trust.....
First Eagle Alternative Credit LLC.....	1345 Avenue of the Americas, New York, NY 10105.....	Investment in First Eagle Direct Lending V-B, LLC; not accounted for by Northern Trust.....

17.3 Have there been any changes, including name changes, in the custodian(s) identified in 17.1 during the current quarter? Yes [] No [X]

17.4 If yes, give full and complete information relating thereto:

1 Old Custodian	2 New Custodian	3 Date of Change	4 Reason

17.5 Investment management – Identify all investment advisors, investment managers, broker/dealers, including individuals that have the authority to make investment decisions on behalf of the reporting entity. For assets that are managed internally by employees of the reporting entity, note as such. ["...that have access to the investment accounts"; "...handle securities"]

1 Name of Firm or Individual	2 Affiliation
Michael Shutt.....	I.....
Adrian Besancon.....	I.....

17.5097 For those firms/individuals listed in the table for Question 17.5, do any firms/individuals unaffiliated with the reporting entity (i.e., designated with a "U") manage more than 10% of the reporting entity's invested assets? Yes [] No [X]

17.5098 For firms/individuals unaffiliated with the reporting entity (i.e., designated with a "U") listed in the table for Question 17.5, does the total assets under management aggregate to more than 50% of the reporting entity's invested assets? Yes [] No [X]

17.6 For those firms or individuals listed in the table for 17.5 with an affiliation code of "A" (affiliated) or "U" (unaffiliated), provide the information for the table below.

1 Central Registration Depository Number	2 Name of Firm or Individual	3 Legal Entity Identifier (LEI)	4 Registered With	5 Investment Management Agreement (IMA) Filed

18.1 Have all the filing requirements of the *Purposes and Procedures Manual of the NAIC Investment Analysis Office* been followed? Yes [X] No []

18.2 If no, list exceptions:
.....

19. By self-designating 5GI securities, the reporting entity is certifying the following elements for each self-designated 5GI security:

GENERAL INTERROGATORIES

- Documentation necessary to permit a full credit analysis of the security does not exist or an NAIC CRP credit rating for an FE or
- a. PL security is not available.
 - b. Issuer or obligor is current on all contracted interest and principal payments.
 - c. The insurer has an actual expectation of ultimate payment of all contracted interest and principal.

Has the reporting entity self-designated 5GI securities?..... Yes [] No [X]

20. By self-designating PLGI securities, the reporting entity is certifying the following elements of each self-designated PLGI security:

- a. The security was purchased prior to January 1, 2018.
- b. The reporting entity is holding capital commensurate with the NAIC Designation reported for the security.
The NAIC Designation was derived from the credit rating assigned by an NAIC CRP in its legal capacity as a NRSRO which is shown on a current private letter rating held by the insurer and available for examination by state insurance regulators.
- c. The reporting entity is not permitted to share this credit rating of the PL security with the SVO.

Has the reporting entity self-designated PLGI securities?..... Yes [] No [X]

21. By assigning FE to a Schedule BA non-registered private fund, the reporting entity is certifying the following elements of each self-designated FE fund:

- a. The shares were purchased prior to January 1, 2019.
- b. The reporting entity is holding capital commensurate with the NAIC Designation reported for the security.
- c. The security had a public credit rating(s) with annual surveillance assigned by an NAIC CRP in its legal capacity as an NRSRO prior to January 1, 2019.
- d. The fund only or predominantly holds bonds in its portfolio.
- e. The current reported NAIC Designation was derived from the public credit rating(s) with annual surveillance assigned by an NAIC CRP in its legal capacity as an NRSRO.
- f. The public credit rating(s) with annual surveillance assigned by an NAIC CRP has not lapsed.

Has the reporting entity assigned FE to Schedule BA non-registered private funds that complied with the above criteria?..... Yes [] No [X]

GENERAL INTERROGATORIES
PART 2 - PROPERTY & CASUALTY INTERROGATORIES

1. If the reporting entity is a member of a pooling arrangement, did the agreement or the reporting entity's participation change? Yes [] No [X] NA []
If yes, attach an explanation.

2. Has the reporting entity reinsured any risk with any other reporting entity and agreed to release such entity from liability, in whole or in part, from any loss that may occur on the risk, or portion thereof, reinsured? Yes [] No [X]
If yes, attach an explanation.

3.1 Have any of the reporting entity's primary reinsurance contracts been canceled? Yes [] No [X]

3.2 If yes, give full and complete information thereto.
.....

4.1 Are any of the liabilities for unpaid losses and loss adjustment expenses other than certain workers' compensation tabular reserves (see *Annual Statement Instructions* pertaining to disclosure of discounting for definition of "tabular reserves,") discounted at a rate of interest greater than zero? Yes [] No [X]

4.2 If yes, complete the following schedule:

			TOTAL DISCOUNT				DISCOUNT TAKEN DURING PERIOD			
1	2	3	4	5	6	7	8	9	10	11
Line of Business	Maximum Interest	Discount Rate	Unpaid Losses	Unpaid LAE	IBNR	TOTAL	Unpaid Losses	Unpaid LAE	IBNR	TOTAL
TOTAL			0	0	0	0	0	0	0	0

5. Operating Percentages:

5.1 A&H loss percent

0.0 %

5.2 A&H cost containment percent

0.0 %

5.3 A&H expense percent excluding cost containment expenses.....

0.0 %

6.1 Do you act as a custodian for health savings accounts?..... Yes [] No [X]

6.2 If yes, please provide the amount of custodial funds held as of the reporting date..... \$

6.3 Do you act as an administrator for health savings accounts?..... Yes [] No [X]

6.4 If yes, please provide the balance of the funds administered as of the reporting date..... \$

7. Is the reporting entity licensed or chartered, registered, qualified, eligible or writing business in at least two states?..... Yes [X] No []

7.1 If no, does the reporting entity assume reinsurance business that covers risks residing in at least one state other than the state of domicile of the reporting entity?..... Yes [] No []

STATEMENT AS OF SEPTEMBER 30, 2022 OF THE LIGHTNING ROD MUTUAL INSURANCE COMPANY

SCHEDULE F - CEDED REINSURANCE

Showing All New Reinsurers - Current Year to Date

[illegible]

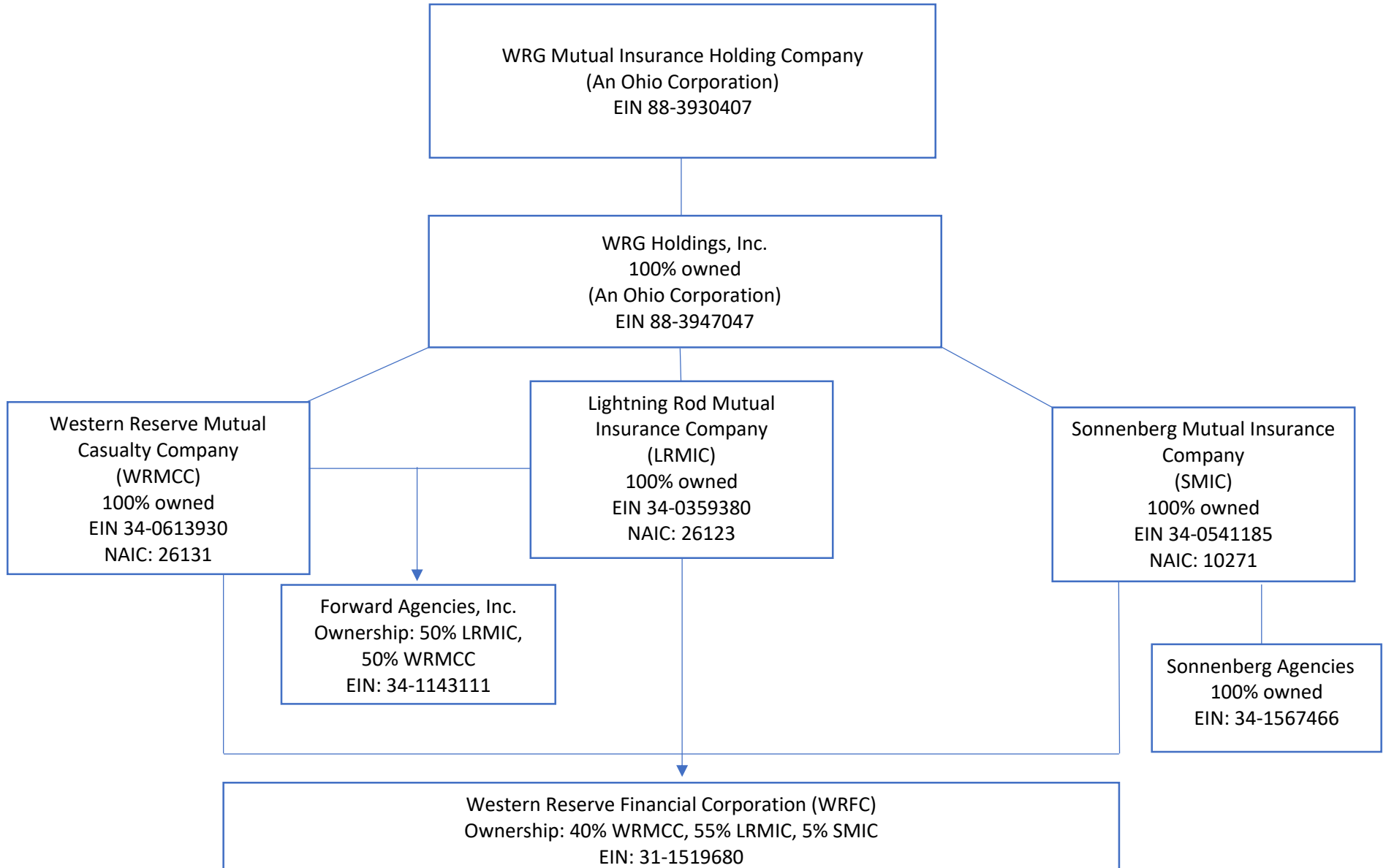
SCHEDULE T - EXHIBIT OF PREMIUMS WRITTEN

Current Year to Date – Allocated by States and Territories								
States, etc.	1 Active Status (a)	Direct Premiums Written		Direct Losses Paid (Deducting Salvage)		Direct Losses Unpaid		
		2 Current Year To Date	3 Prior Year To Date	4 Current Year To Date	5 Prior Year To Date	6 Current Year To Date	7 Prior Year To Date	
1. Alabama	AL	N	0		0		0	
2. Alaska	AK	N	0		0		0	
3. Arizona	AZ	N	0		0		0	
4. Arkansas	AR	N	0		0		0	
5. California	CA	N	0		0		0	
6. Colorado	CO	N	0		0		0	
7. Connecticut	CT	N	0		0		0	
8. Delaware	DE	N	0		0		0	
9. Dist. Columbia	DC	N	0		0		0	
10. Florida	FL	N	0		0		0	
11. Georgia	GA	N	0		0		0	
12. Hawaii	HI	N	0		0		0	
13. Idaho	ID	N	0		0		0	
14. Illinois	IL	L	0		0		0	
15. Indiana	IN	L	17,086,547	16,236,891	9,006,158	7,360,903	4,820,159	6,329,703
16. Iowa	IA	N	0		0		0	
17. Kansas	KS	N	0		0		0	
18. Kentucky	KY	N	0		0		0	
19. Louisiana	LA	N	0		0		0	
20. Maine	ME	N	0		0		0	
21. Maryland	MD	N	0		0		0	
22. Massachusetts	MA	N	0		0		0	
23. Michigan	MI	N	0		0		0	
24. Minnesota	MN	N	0		0		0	
25. Mississippi	MS	N	0		0		0	
26. Missouri	MO	N	0		0		0	
27. Montana	MT	N	0		0		0	
28. Nebraska	NE	N	0		0		0	
29. Nevada	NV	N	0		0		0	
30. New Hampshire	NH	N	0		0		0	
31. New Jersey	NJ	N	0		0		0	
32. New Mexico	NM	N	0		0		0	
33. New York	NY	N	0		0		0	
34. No. Carolina	NC	N	0		0		0	
35. No. Dakota	ND	N	0		0		0	
36. Ohio	OH	L	54,455,079	52,498,826	34,602,221	24,803,183	18,472,396	21,200,094
37. Oklahoma	OK	N	0		0		0	
38. Oregon	OR	N	0		0		0	
39. Pennsylvania	PA	N	0		0		0	
40. Rhode Island	RI	N	0		0		0	
41. So. Carolina	SC	N	0		0		0	
42. So. Dakota	SD	N	0		0		0	
43. Tennessee	TN	L	0		0		0	
44. Texas	TX	N	0		0		0	
45. Utah	UT	N	0		0		0	
46. Vermont	VT	N	0		0		0	
47. Virginia	VA	N	0		0		0	
48. Washington	WA	N	0		0		0	
49. West Virginia	WV	N	0		0		0	
50. Wisconsin	WI	N	0		0		0	
51. Wyoming	WY	N	0		0		0	
52. American Samoa	AS	N	0		0		0	
53. Guam	GU	N	0		0		0	
54. Puerto Rico	PR	N	0		0		0	
55. U.S. Virgin Islands	VI	N	0		0		0	
56. Northern Mariana Islands	MP	N	0		0		0	
57. Canada	CAN	N	0		0		0	
58. Aggregate Other Alien	OT	XXX	0	0	0	0	0	
59. Totals	XXX		71,541,626	68,735,717	43,608,379	32,164,086	23,292,555	27,529,797
DETAILS OF WRITE-INS								
58001.	XXX							
58002.	XXX							
58003.	XXX							
58998. Summary of remaining write-ins for Line 58 from overflow page	XXX		0	0	0	0	0	
58999. TOTALS (Lines 58001 through 58003 plus 58998) (Line 58 above)	XXX		0	0	0	0	0	

(a) Active Status Counts

L – Licensed or Chartered – Licensed insurance carrier or domiciled RRG 4 R – Registered – Non-domiciled RRGs 0
E – Eligible – Reporting entities eligible or approved to write surplus lines in the state (other than their state of domicile – See DSLI) 0 Q – Qualified – Qualified or accredited reinsurer 0
D – Domestic Surplus Lines Insurer (DSLII) – Reporting entities authorized to write surplus lines in the state of domicile 0 N – None of the above – Not allowed to write business in the state 53

SCHEDULE Y- INFORMATION CONCERNING ACTIVITIES OF INSURER MEMBERS OF A HOLDING COMPANY GROUP
PART I- ORGANIZATIONAL CHART



SCHEDULE Y

PART 1A – DETAIL OF INSURANCE HOLDING COMPANY SYSTEM

Asterisk	Explanation
----------	-------------

PART 1 - LOSS EXPERIENCE

Line of Business		Current Year to Date			4 Prior Year to Date Direct Loss Percentage
		1 Direct Premiums Earned	2 Direct Losses Incurred	3 Direct Loss Percentage	
1.	Fire	43,596	0	0.0	0.0
2.1	Allied lines	25,248	(15,000)	(59.4)	146.0
2.2	Multiple peril crop			0.0	
2.3	Federal flood			0.0	
2.4	Private crop			0.0	
2.5	Private flood			0.0	
3.	Farmowners multiple peril	17,454,295	9,369,809	53.7	30.4
4.	Homeowners multiple peril	14,413,203	11,263,559	78.1	61.1
5.	Commercial multiple peril	13,946,647	8,001,408	57.4	44.6
6.	Mortgage guaranty			0.0	0.0
8.	Ocean marine			0.0	0.0
9.	Inland marine	1,890,676	509,611	27.0	7.0
10.	Financial guaranty			0.0	0.0
11.1	Medical professional liability -occurrence			0.0	0.0
11.2	Medical professional liability -claims made			0.0	0.0
12.	Earthquake			0.0	0.0
13.1	Comprehensive (hospital and medical) individual			0.0	
13.2	Comprehensive (hospital and medical) group			0.0	
14.	Credit accident and health			0.0	0.0
15.1	Vision only			0.0	
15.2	Dental only			0.0	
15.3	Disability income			0.0	
15.4	Medicare supplement			0.0	
15.5	Medicaid Title XIX			0.0	
15.6	Medicare Title XVIII			0.0	
15.7	Long-term care			0.0	
15.8	Federal employees health benefits plan			0.0	
15.9	Other health			0.0	
16.	Workers' compensation			0.0	0.0
17.1	Other liability occurrence	670,188	255,906	38.2	(45.7)
17.2	Other liability-claims made	258,492	(28,100)	(10.9)	0.0
17.3	Excess Workers' Compensation			0.0	0.0
18.1	Products liability-occurrence	29,699	15,001	50.5	(212.9)
18.2	Products liability-claims made			0.0	0.0
19.1	Private passenger auto no-fault (personal injury protection)			0.0	
19.2	Other private passenger auto liability	4,797,741	2,314,552	48.2	
19.3	Commercial auto no-fault (personal injury protection)			0.0	
19.4	Other commercial auto liability	7,168,274	2,775,310	38.7	
21.1	Private passenger auto physical damage	3,802,037	2,717,195	71.5	
21.2	Commercial auto physical damage	2,639,869	2,935,530	111.2	
22.	Aircraft (all perils)			0.0	0.0
23.	Fidelity			0.0	0.0
24.	Surety			0.0	0.0
26.	Burglary and theft	66,368	20,605	31.0	0.0
27.	Boiler and machinery	966,509	147,824	15.3	11.2
28.	Credit			0.0	0.0
29.	International			0.0	0.0
30.	Warranty			0.0	0.0
31.	Reinsurance - Nonproportional Assumed Property	XXX	XXX	XXX	XXX
32.	Reinsurance - Nonproportional Assumed Liability	XXX	XXX	XXX	XXX
33.	Reinsurance - Nonproportional Assumed Financial Lines	XXX	XXX	XXX	XXX
34.	Aggregate write-ins for other lines of business	0	0	0.0	0.0
35.	TOTALS	68,172,842	40,283,210	59.1	44.2
DETAILS OF WRITE-INS					
3401.			0.0	0.0
3402.			0.0	0.0
3403.			0.0	0.0
3498.	Sum. of remaining write-ins for Line 34 from overflow page	0	0	0.0	0.0
3499.	Totals (Lines 3401 through 3403 plus 3498) (Line 34)	0	0	0.0	0.0

PART 2 - DIRECT PREMIUMS WRITTEN

Line of Business		1 Current Quarter	2 Current Year to Date	3 Prior Year Year to Date
1.	Fire	22,002	45,835	78,790
2.1	Allied lines	11,164	25,911	40,275
2.2	Multiple peril crop	0		
2.3	Federal flood	0		
2.4	Private crop	0		
2.5	Private flood	0		
3.	Farmowners multiple peril	5,857,911	18,396,927	16,906,004
4.	Homeowners multiple peril	5,408,153	14,931,527	15,486,608
5.	Commercial multiple peril	4,475,437	14,570,727	13,364,533
6.	Mortgage guaranty	0		0
8.	Ocean marine	0		0
9.	Inland marine	684,050	2,116,520	1,815,029
10.	Financial guaranty	0		0
11.1	Medical professional liability-occurrence	0		0
11.2	Medical professional liability-claims made	0		0
12.	Earthquake	0		0
13.1	Comprehensive (hospital and medical) individual	0		
13.2	Comprehensive (hospital and medical) group	0		
14.	Credit accident and health	0		0
15.1	Vision only	0		
15.2	Dental only	0		
15.3	Disability income	0		
15.4	Medicare supplement	0		
15.5	Medicaid Title XIX	0		
15.6	Medicare Title XVIII	0		
15.7	Long-term care	0		
15.8	Federal employee health benefits plan	0		
15.9	Other health	0		
16.	Workers' compensation	0		0
17.1	Other liability occurrence	215,094	726,923	639,017
17.2	Other liability-claims made	90,577	270,556	241,472
17.3	Excess Workers' Compensation	0		0
18.1	Products liability-occurrence	14,696	35,179	31,824
18.2	Products liability-claims made	0		0
19.1	Private passenger auto no-fault (personal injury protection)	0		
19.2	Other private passenger auto liability	1,714,829	4,937,315	5,216,240
19.3	Commercial auto no-fault (personal injury protection)	0		
19.4	Other commercial auto liability	2,218,508	7,621,074	7,174,990
21.1	Private passenger auto physical damage	1,401,557	3,974,649	4,170,303
21.2	Commercial auto physical damage	863,333	2,805,834	2,589,865
22.	Aircraft (all perils)	0		0
23.	Fidelity	0		0
24.	Surety	0		0
26.	Burglary and theft	17,856	69,297	66,957
27.	Boiler and machinery	295,828	1,013,353	913,810
28.	Credit	0		0
29.	International	0		0
30.	Warranty	0		0
31.	Reinsurance - Nonproportional Assumed Property	XXX	XXX	XXX
32.	Reinsurance - Nonproportional Assumed Liability	XXX	XXX	XXX
33.	Reinsurance - Nonproportional Assumed Financial Lines	XXX	XXX	XXX
34.	Aggregate write-ins for other lines of business	0	0	0
35.	TOTALS	23,290,995	71,541,627	68,735,717
DETAILS OF WRITE-INS				
3401.	0		0
3402.	0		0
3403.	0		0
3498.	Sum. of remaining write-ins for Line 34 from overflow page	0	0	0
3499.	Totals (Lines 3401 through 3403 plus 3498) (Line 34)	0	0	0

STATEMENT AS OF SEPTEMBER 30, 2022 OF THE LIGHTNING ROD MUTUAL INSURANCE COMPANY

PART 3 (000 omitted)

LOSS AND LOSS ADJUSTMENT EXPENSE RESERVES SCHEDULE

	1	2	3	4	5	6	7	8	9	10	11	12	13
Years in Which Losses Occurred	Prior Year-End Known Case Loss and LAE Reserves	Prior Year-End IBNR Loss and LAE Reserves	Total Prior Year-End Loss and LAE Reserves (Cols. 1 + 2)	2022 Loss and LAE Payments on Claims Reported as of Prior Year-End	2022 Loss and LAE Payments on Claims Unreported as of Prior Year-End	Total 2022 Loss and LAE Payments (Cols. 4 + 5)	Q.S. Date Known Case Loss and LAE Reserves on Claims Reported and Open as of Prior Year End	Q.S. Date Known Case Loss and LAE Reserves on Claims Reported or Reopened Subsequent to Prior Year End	Q.S. Date IBNR Loss and LAE Reserves	Total Q.S. Loss and LAE Reserves (Cols.7 + 8 + 9)	Prior Year-End Known Case Loss and LAE Reserves Developed (Savings)/ Deficiency (Cols. 4 + 7 minus Col. 1)	Prior Year-End IBNR Loss and LAE Reserves Developed (Savings)/ Deficiency (Cols. 5 + 8 + 9 minus Col. 2)	Prior Year-End Total Loss and LAE Reserve Developed (Savings)/ Deficiency (Cols. 11 + 12)
1. 2019 + Prior	9,247	2,658	11,905	4,009	124	4,133	5,378	378	2,015	7,771	140	(141)	(1)
2. 2020	10,338	2,674	13,012	4,660	119	4,779	4,311	352	3,295	7,958	(1,367)	1,092	(275)
3. Subtotals 2020 + prior	19,585	5,332	24,917	8,669	243	8,912	9,689	730	5,310	15,729	(1,227)	951	(276)
4. 2021	16,576	9,781	26,357	10,320	4,104	14,424	7,305	2,531	1,823	11,659	1,049	(1,323)	(274)
5. Subtotals 2021 + prior	36,161	15,113	51,274	18,989	4,347	23,336	16,994	3,261	7,133	27,388	(178)	(372)	(550)
6. 2022	XXX	XXX	XXX	XXX	54,807	54,807	XXX	14,636	8,025	22,661	XXX	XXX	XXX
7. Totals	36,161	15,113	51,274	18,989	59,154	78,143	16,994	17,897	15,158	50,049	(178)	(372)	(550)
8. Prior Year-End Surplus As Regards Policy-holders	218,525										Col. 11, Line 7 As % of Col. 1, Line 7	Col. 12, Line 7 As % of Col. 2, Line 7	Col. 13, Line 7 As % of Col. 3, Line 7
											1. (0.5)	2. (2.5)	3. (1.1)
											Col. 13, Line 7 Line 8		
											4. (0.3)		

SUPPLEMENTAL EXHIBITS AND SCHEDULES INTERROGATORIES

The following supplemental reports are required to be filed as part of your statement filing. However, in the event that your company does not transact the type of business for which the special report must be filed, your response of **NO** to the specific interrogatory will be accepted in lieu of filing a "NONE" report and a bar code will be printed below. If the supplement is required of your company but is not being filed for whatever reason enter **SEE EXPLANATION** and provide an explanation following the interrogatory questions.

Response

1.

Will the Trusteed Surplus Statement be filed with the state of domicile and the NAIC with this statement?

.....NO.....
2.

Will Supplement A to Schedule T (Medical Professional Liability Supplement) be filed with this statement?

.....NO.....
3.

Will the Medicare Part D Coverage Supplement be filed with the state of domicile and the NAIC with this statement?

.....NO.....
4.

Will the Director and Officer Insurance Coverage Supplement be filed with the state of domicile and the NAIC with this statement?

.....YES.....

AUGUST FILING

5.

Will the regulator-only (non-public) Communication of Internal Control Related Matters Noted in Audit be filed with the state of domicile and electronically with the NAIC (as a regulator-only non-public document) by August 1? The response for 1st and 3rd quarters should be N/A. A NO response resulting with a bar code is only appropriate in the 2nd quarter.

.....N/A.....

Explanation:

Bar Code:

1.


2 6 1 2 3 2 0 2 2 4 9 0 0 0 0 0 3
2.


2 6 1 2 3 2 0 2 2 4 5 5 0 0 0 0 3
3.


2 6 1 2 3 2 0 2 2 3 6 5 0 0 0 0 3

OVERFLOW PAGE FOR WRITE-INS

SCHEDULE A – VERIFICATION

Real Estate

	1	2
	Year To Date	Prior Year Ended December 31
1. Book/adjusted carrying value, December 31 of prior year	25,628,993	26,094,036
2. Cost of acquired:		
2.1 Actual cost at time of acquisition	8,147	203,939
2.2 Additional investment made after acquisition		0
3. Current year change in encumbrances		0
4. Total gain (loss) on disposals		0
5. Deduct amounts received on disposals		0
6. Total foreign exchange change in book/adjusted carrying value		0
7. Deduct current year's other-than-temporary impairment recognized		0
8. Deduct current year's depreciation	508,212	668,982
9. Book/adjusted carrying value at the end of current period (Lines 1+2+3+4-5+6-7-8)	25,128,928	25,628,993
10. Deduct total nonadmitted amounts	0	0
11. Statement value at end of current period (Line 9 minus Line 10)	25,128,928	25,628,993

SCHEDULE B – VERIFICATION

Mortgage Loans

	1	2
	Year To Date	Prior Year Ended December 31
1. Book value/recorded investment excluding accrued interest, December 31 of prior year	0	0
2. Cost of acquired:		
2.1 Actual cost at time of acquisition	0	0
2.2 Additional investment made after acquisition	0	0
3. Capitalized deferred interest and other	0	0
4. Accrual of discount	0	0
5. Unrealized valuation increase (decrease)	0	0
6. Total gain (loss) on disposals	0	0
7. Deduct amounts received on disposals	0	0
8. Deduct amortization of premium and mortgage interest points and commitment fees	0	0
9. Total foreign exchange change in book value/recorded investment excluding accrued interest	0	0
10. Deduct current year's other-than-temporary impairment recognized	0	0
11. Book value/recorded investment excluding accrued interest at end of current period (Lines 1+2+3+4+5+6-7-8+9-10)	0	0
12. Total valuation allowance	0	0
13. Subtotal (Line 11 plus Line 12)	0	0
14. Deduct total nonadmitted amounts	0	0
15. Statement value at end of current period (Line 13 minus Line 14)	0	0

NONE

SCHEDULE BA – VERIFICATION

Other Long-Term Invested Assets

	1	2
	Year To Date	Prior Year Ended December 31
1. Book/adjusted carrying value, December 31 of prior year	6,186,092	0
2. Cost of acquired:		
2.1 Actual cost at time of acquisition	2,508,606	3,162,500
2.2 Additional investment made after acquisition	3,433,339	3,599,450
3. Capitalized deferred interest and other	0	0
4. Accrual of discount	0	0
5. Unrealized valuation increase (decrease)	(117,676)	26,652
6. Total gain (loss) on disposals	0	0
7. Deduct amounts received on disposals	3,088,420	602,510
8. Deduct amortization of premium and depreciation	0	0
9. Total foreign exchange change in book/adjusted carrying value	0	0
10. Deduct current year's other-than-temporary impairment recognized	0	0
11. Book/adjusted carrying value at end of current period (Lines 1+2+3+4+5+6-7-8+9-10)	8,921,941	6,186,092
12. Deduct total nonadmitted amounts	0	0
13. Statement value at end of current period (Line 11 minus Line 12)	8,921,941	6,186,092

SCHEDULE D – VERIFICATION

Bonds and Stocks

	1	2
	Year To Date	Prior Year Ended December 31
1. Book/adjusted carrying value of bonds and stocks, December 31 of prior year	272,322,521	244,042,285
2. Cost of bonds and stocks acquired	8,703,953	35,134,725
3. Accrual of discount	28,065	43,155
4. Unrealized valuation increase (decrease)	(24,804,484)	15,257,301
5. Total gain (loss) on disposals	2,099,022	2,887,866
6. Deduct consideration for bonds and stocks disposed of	22,400,516	23,927,353
7. Deduct amortization of premium	755,464	1,115,457
8. Total foreign exchange change in book/adjusted carrying value	0	0
9. Deduct current year's other-than-temporary impairment recognized	0	0
10. Total investment income recognized as a result of prepayment penalties and/or acceleration fees	15,667	0
11. Book/adjusted carrying value at end of current period (Lines 1+2+3+4+5-6-7+8-9+10)	235,208,765	272,322,521
12. Deduct total nonadmitted amounts	653,352	830,821
13. Statement value at end of current period (Line 11 minus Line 12)	234,555,413	271,491,700

STATEMENT AS OF SEPTEMBER 30, 2022 OF THE LIGHTNING ROD MUTUAL INSURANCE COMPANY

SCHEDULE D - PART 1B

Showing the Acquisitions, Dispositions and Non-Trading Activity
During the Current Quarter for all Bonds and Preferred Stock by NAIC Designation

NAIC Designation	1 Book/Adjusted Carrying Value Beginning of Current Quarter	2 Acquisitions During Current Quarter	3 Dispositions During Current Quarter	4 Non-Trading Activity During Current Quarter	5 Book/Adjusted Carrying Value End of First Quarter	6 Book/Adjusted Carrying Value End of Second Quarter	7 Book/Adjusted Carrying Value End of Third Quarter	8 Book/Adjusted Carrying Value December 31 Prior Year
BONDS								
1. NAIC 1 (a).....	145,511,474	1,658,207	4,020,264	(42,189)	145,724,096	145,511,474	143,107,228	148,681,320
2. NAIC 2 (a).....	10,819,828	0	0	(28,945)	12,195,929	10,819,828	10,790,883	9,569,255
3. NAIC 3 (a).....	518,250	0	600,688	82,438	582,000	518,250	0	600,776
4. NAIC 4 (a).....	0	0	0	0	0	0	0	0
5. NAIC 5 (a).....	0	0	0	0	0	0	0	0
6. NAIC 6 (a).....	0	0	0	0	0	0	0	0
7. Total Bonds	156,849,552	1,658,207	4,620,952	11,304	158,502,025	156,849,552	153,898,111	158,851,351
PREFERRED STOCK								
8. NAIC 1	0	0	0	0	0	0	0	0
9. NAIC 2	0	0	0	0	0	0	0	0
10. NAIC 3	0	0	0	0	0	0	0	0
11. NAIC 4	0	0	0	0	0	0	0	0
12. NAIC 5	0	0	0	0	0	0	0	0
13. NAIC 6	0	0	0	0	0	0	0	0
14. Total Preferred Stock.....	0	0	0	0	0	0	0	0
15. Total Bonds & Preferred Stock	156,849,552	1,658,207	4,620,952	11,304	158,502,025	156,849,552	153,898,111	158,851,351

(a) Book/Adjusted Carrying Value column for the end of the current reporting period includes the following amount of short-term and cash equivalent bonds by NAIC designation: NAIC 1 \$0 ; NAIC 2 \$0 ;
NAIC 3 \$0 ; NAIC 4 \$0 ; NAIC 5 \$0 ; NAIC 6 \$0

Schedule DA - Part 1

NONE

Schedule DA - Verification

NONE

Schedule DB - Part A - Verification

NONE

Schedule DB - Part B - Verification

NONE

Schedule DB - Part C - Section 1

NONE

Schedule DB - Part C - Section 2

NONE

Schedule DB - Verification

NONE

SCHEDULE E – PART 2 – VERIFICATION
(Cash Equivalents)

	1 Year To Date	2 Prior Year Ended December 31
1. Book/adjusted carrying value, December 31 of prior year.....	2,562,842	15,178,073
2. Cost of cash equivalents acquired	25,678,326	38,719,033
3. Accrual of discount	0	0
4. Unrealized valuation increase (decrease)	0	0
5. Total gain (loss) on disposals.....	0	0
6. Deduct consideration received on disposals	25,449,244	51,334,264
7. Deduct amortization of premium	0	0
8. Total foreign exchange change in book/adjusted carrying value	0	0
9. Deduct current year's other-than-temporary impairment recognized	0	0
10. Book/adjusted carrying value at end of current period (Lines 1+2+3+4+5-6-7+8-9)	2,791,924	2,562,842
11. Deduct total nonadmitted amounts	0	0
12. Statement value at end of current period (Line 10 minus Line 11)	2,791,924	2,562,842

EO1

NONE

[illegible]

NONE

[illegible]

STATEMENT AS OF SEPTEMBER 30, 2022 OF THE LIGHTNING ROD MUTUAL INSURANCE COMPANY

SCHEDULE B - PART 2

Showing All Mortgage Loans ACQUIRED AND ADDITIONS MADE During the Current Quarter

1	Location		4	5	6	7	8	9
Loan Number	City	State	Loan Type	Date Acquired	Rate of Interest	Actual Cost at Time of Acquisition	Additional Investment Made After Acquisition	Value of Land and Buildings
			NONE					
						0	0	0

SCHEDULE B - PART 3

Showing All Mortgage Loans DISPOSED, Transferred or Repaid During the Current Quarter

[illegible]

STATEMENT AS OF SEPTEMBER 30, 2022 OF THE LIGHTNING ROD MUTUAL INSURANCE COMPANY

SCHEDULE BA - PART 2

Showing Other Long-Term Invested Assets ACQUIRED AND ADDITIONS MADE During the Current Quarter

[illegible]

SCHEDULE BA - PART 3

Showing Other Long-Term Invested Assets DISPOSED, Transferred or Repaid During the Current Quarter

1 CUSIP Identification	2 Name or Description	Location		5 Name of Purchaser or Nature of Disposal	6 Date Originally Acquired	7 Disposal Date	8 Book/ Adjusted Carrying Value Less Encumbrances Prior Year	Change in Book/Adjusted Carrying Value						15 Book/Adjusted Carrying Value Less Encumbrances on Disposal	16 Consideration	17 Foreign Exchange Gain (Loss) on Disposal	18 Realized Gain (Loss) on Disposal	19 Total Gain (Loss) on Disposal	20 Investment Income
		3 City	4 State					9 Unrealized Valuation Increase (Decrease)	10 Current Year's (Depreciation) or (Amortization)/ Accretion	11 Current Year's Other-Than- Temporary Impairment Recognized	12 Capitalized Deferred Interest and Other	13 Total Change in B./A.C.V. (9+10-11+12)	14 Total Foreign Exchange Change in B./A.C.V.						
Joint Venture, Partnership or Limited Liability Co. Interests for Which the Underlying Assets Have the Characteristics of: Common Stocks - Unaffiliated																			
000000-00-0.....	First Eagle Direct Lending V-B, LLC.....	USA.....		First Eagle Direct Lending V-B, LLC.....	07/27/2022	09/29/2022	0	0	0	0	0	0	0	531,521	531,521	0	0	0	0
1999999 - Joint Venture, Partnership or Limited Liability Co. Interests for Which the Underlying Assets Have the Characteristics of: Common Stocks - Unaffiliated																			0
4899999 - Subtotals - Unaffiliated								0	0	0	0	0	0	531,521	531,521	0	0	0	0
4999999 - Subtotals - Affiliated								0	0	0	0	0	0	0	0	0	0	0	0
5099999 Totals								0	0	0	0	0	0	531,521	531,521	0	0	0	0

STATEMENT AS OF SEPTEMBER 30, 2022 OF THE LIGHTNING ROD MUTUAL INSURANCE COMPANY

SCHEDULE D - PART 3

Show All Long-Term Bonds and Stock Acquired During the Current Quarter

[illegible]

STATEMENT AS OF SEPTEMBER 30, 2022 OF THE LIGHTNING ROD MUTUAL INSURANCE COMPANY

SCHEDULE D - PART 4

Show All Long-Term Bonds and Stock Sold, Redeemed or Otherwise Disposed of During the Current Quarter

1	2	3 F o r e i g n	4	5	6	7	8	9	10	Change in Book/Adjusted Carrying Value					16	17	18	19	20	21	22 NAIC Designation, NAIC Desig. Modifier and SVO Administrative Symbol
										11	12	13	14	15							
CUSIP Identi- fication	Description		Disposal Date	Name of Purchaser	Number of Shares of Stock	Consideration	Par Value	Actual Cost	Prior Year Book/Adjusted Carrying Value	Unrealized Valuation Increase/ (Decrease)	Current Year's (Amortization)/ Accretion	Current Year's Other Than Temporary Impairment Recognized	Total Change in B./A.C.V. (11+12-13)	Total Foreign Exchange Change in B./A.C.V.	Book/ Adjusted Carrying Value at Disposal Date	Foreign Exchange Gain (Loss) on Disposal	Realized Gain (Loss) on Disposal	Total Gain (Loss) on Disposal	Bond Interest/Stock Dividends Received During Year	Stated Contractual Maturity Date	
Bonds - U.S. Governments																					
36179U-ZH-8.	G2 MA6144 - RMBS.....		09/01/2022.	Paydown.....	XXX.....	2,322	2,322	2,352	2,368	0	(46)	0	(46)	0	2,322	0	0	0	48	09/20/2049.	1 A
36295P-GH-0.	GN 676872 - RMBS.....		09/01/2022.	Paydown.....	XXX.....	1,525	1,525	1,538	1,525	0	0	0	0	0	1,525	0	0	0	48	03/15/2023.	1 A
38379U-ZS-8.	GNR 2016-096 HA - CMBS.....		09/01/2022.	Paydown.....	XXX.....	46,885	46,885	46,650	46,618	0	267	0	267	0	46,885	0	0	0	789	12/16/2057.	1 A
38380R-VC-1.	GNR 2021-033 V - CMBS.....		09/01/2022.	Paydown.....	XXX.....	7,884	7,884	7,591	7,601	0	283	0	283	0	7,884	0	0	0	66	06/16/2040.	1 A
38380Y-3C-7.	GNR 2018-124 QC - CMO/RMBS.....		09/01/2022.	Paydown.....	XXX.....	18,104	18,104	18,048	18,057	0	47	0	47	0	18,104	0	0	0	397	10/20/2046.	1 A
38381A-GK-6.	GNR 2018-147 EV - CMO/RMBS.....		09/01/2022.	Paydown.....	XXX.....	131,230	131,230	134,839	132,122	0	(892)	0	(892)	0	131,230	0	0	0	3,062	01/20/2030.	1 A
83162C-PP-2.	SBAP 2005-20 F A - ABS.....		06/01/2022.	Paydown.....	XXX.....	0	0	0	0	0	0	0	0	0	0	0	0	0	1	06/01/2025.	1 A
831641-FJ-9.	SBIC 2017-10 B B - ABS.....		09/01/2022.	Paydown.....	XXX.....	52,040	52,040	52,038	52,000	0	40	0	40	0	52,040	0	0	0	1,310	09/10/2027.	1 A
831641-FK-6.	SBIC 2018-10 A A - ABS.....		09/01/2022.	Paydown.....	XXX.....	59,123	59,123	59,197	59,175	0	(52)	0	(52)	0	59,123	0	0	0	1,884	03/10/2028.	1 A
831641-FL-4.	SBIC 2018-10 B B - ABS.....		09/01/2022.	Paydown.....	XXX.....	105,210	105,210	105,704	105,599	0	(389)	0	(389)	0	105,210	0	0	0	3,733	09/10/2028.	1 A
831641-FT-7.	SBIC 2210A - ABS.....		09/01/2022.	Paydown.....	XXX.....	1,323	1,323	1,334	0	0	(11)	0	(11)	0	1,323	0	0	0	17	03/10/2032.	1 A
0109999999 - Bonds - U.S. Governments						425,646	425,646	429,291	425,065	0	(753)	0	(753)	0	425,646	0	0	0	11,356	XXX	XXX
Bonds - U.S. Political Subdivisions of States, Territories and Possessions																					
194475-RC-5.	COLLEGE STATION TEX INDPT SCH DIST.....		08/15/2022.	Maturity @ 100.00.....	XXX.....	500,000	500,000	600,120	507,985	0	(7,985)	0	(7,985)	0	500,000	0	0	0	25,000	08/15/2022.	1 A FE
718814-NK-6.	PHOENIX ARIZ.....		08/01/2022.	Unknown.....	XXX.....	471,817	460,000	516,046	475,309	0	(3,492)	0	(3,492)	0	471,817	0	0	0	19,933	07/01/2024.	1 B FE
988168-7N-4.	YSLETA TEX INDPT SCH DIST.....		08/15/2022.	Maturity @ 100.00.....	XXX.....	300,000	300,000	383,955	305,875	0	(5,875)	0	(5,875)	0	300,000	0	0	0	15,000	08/15/2022.	1 A FE
0709999999 - Bonds - U.S. Political Subdivisions of States, Territories and Possessions						1,271,817	1,260,000	1,500,121	1,289,169	0	(17,352)	0	(17,352)	0	1,271,817	0	0	0	59,933	XXX	XXX
Bonds - U.S. Special Revenue and Special Assessment and all Non-Guaranteed Obligations of Agencies and Authorities of Governments and Their Political Subdivisions																					
3128P8-GM-7.	FH C92004 - RMBS.....		09/01/2022.	Paydown.....	XXX.....	8,433	8,433	8,722	8,855	0	(422)	0	(422)	0	8,433	0	0	0	223	07/01/2038.	1 A
3128Q0-N9-4.	FH J19416 - RMBS.....		09/01/2022.	Paydown.....	XXX.....	7,012	7,012	7,204	7,111	0	(99)	0	(99)	0	7,012	0	0	0	139	06/01/2027.	1 A
3128S2-QQ-7.	FH T61363 - RMBS.....		09/01/2022.	Paydown.....	XXX.....	295	295	309	311	0	(16)	0	(16)	0	295	0	0	0	7	09/01/2042.	1 A
31326F-Y9-3.	FH ZB1636 - RMBS.....		09/01/2022.	Paydown.....	XXX.....	3,326	3,326	3,290	3,321	0	5	0	5	0	3,326	0	0	0	55	08/01/2043.	1 A
3133KY-SE-0.	FH RB5017 - RMBS.....		09/01/2022.	Paydown.....	XXX.....	9,112	9,112	9,311	9,442	0	(330)	0	(330)	0	9,112	0	0	0	180	11/01/2039.	1 A
3136A1-4P-7.	FNR 2011-117 MA - CMO/RMBS.....		09/01/2022.	Paydown.....	XXX.....	5,390	5,390	5,403	5,392	0	(2)	0	(2)	0	5,390	0	0	0	71	08/25/2040.	1 A
3136AE-Z4-2.	FNR 2013-70 VA - CMO/RMBS.....		09/01/2022.	Paydown.....	XXX.....	12,455	12,455	13,093	12,651	0	(197)	0	(197)	0	12,455	0	0	0	249	08/25/2026.	1 A
3136AW-BD-8.	FNR 2017-25 QH - CMO/RMBS.....		09/01/2022.	Paydown.....	XXX.....	5,450	5,450	5,426	5,422	0	28	0	28	0	5,450	0	0	0	110	04/25/2047.	1 A
3137BY-L3-2.	FHR 4683 PD - CMO/RMBS.....		09/01/2022.	Paydown.....	XXX.....	7,388	7,388	7,369	7,372	0	15	0	15	0	7,388	0	0	0	134	04/15/2046.	1 A
3137F1-VB-1.	FHR 4700 VH - CMO/RMBS.....		09/01/2022.	Paydown.....	XXX.....	10,939	10,939	11,287	11,045	0	(106)	0	(106)	0	10,939	0	0	0	219	12/15/2028.	1 A
3137F3-BA-1.	FHR 4768 AV - CMO/RMBS.....		09/01/2022.	Paydown.....	XXX.....	123,000	123,000	127,113	123,424	0	(424)	0	(424)	0	123,000	0	0	0	2,838	05/15/2029.	1 A
3137F3-JK-1.	FHR 4768 VL - CMO/RMBS.....		09/01/2022.	Paydown.....	XXX.....	89,586	89,586	94,178	90,392	0	(806)	0	(806)	0	89,586	0	0	0	2,356	01/15/2031.	1 A
3138LK-ER-4.	FN AN6443 - CMBS/RMBS.....		09/01/2022.	Paydown.....	XXX.....	2,205	2,205	2,220	2,215	0	(10)	0	(10)	0	2,205	0	0	0	37	09/01/2024.	1 A
3138LL-TH-8.	FN AN7751 - CMBS/RMBS.....		09/01/2022.	Paydown.....	XXX.....	2,930	2,930	2,787	2,840	0	90	0	90	0	2,930	0	0	0	60	12/01/2029.	1 A
31416X-HY-9.	FN AB2046 - RMBS.....		09/01/2022.	Paydown.....	XXX.....	3,701	3,701	3,639	3,665	0	36	0	36	0	3,701	0	0	0	74	01/01/2026.	1 A
31418A-LY-2.	FN MA1242 - RMBS.....		09/01/2022.	Paydown.....	XXX.....	2,025	2,025	2,116	2,112	0	(87)	0	(87)	0	2,025	0	0	0	45	11/01/2042.	1 A
31418A-V5-4.	FN MA1535 - RMBS.....		09/01/2022.	Paydown.....	XXX.....	4,779	4,779	4,776	4,775	0	5	0	5	0	4,779	0	0	0	64	08/01/2023.	1 A
31418A-WS-3.	FN MA1556 - RMBS.....		09/01/2022.	Paydown.....	XXX.....	8,739	8,739	8,673	8,703	0	36	0	36	0	8,739	0	0	0	153	08/01/2028.	1 A
31418C-SA-8.	FN MA3540 - RMBS.....		09/01/2022.	Paydown.....	XXX.....	10,010	10,010	10,266	10,416	0	(406)	0	(406)	0	10,010	0	0	0	234	12/01/2033.	1 A
31418D-HH-8.	FN MA3831 - RMBS.....		09/01/2022.	Paydown.....	XXX.....	5,475	5,475	5,643	5,764	0	(288)	0	(288)	0	5,475	0	0	0	108	11/01/2039.	1 A
773038-DW-3.	ROCKDALE CNTY GA WTR & SEW AUTH REV.....		07/01/2022.	Call @ 100.00.....	XXX.....	500,000	500,000	500,000	500,000	0	0	0	0	0	500,000	0	0	0	13,550	07/01/2022.	1 C FE
89952P-DS-1.	TULSA CNTY OKLA INDL AUTH EDL FACS LEASE.....		09/01/2022.	Maturity @ 100.00.....	XXX.....	400,000	400,000	446,860	403,521	0	(3,521)	0	(3,521)	0	400,000	0	0	0	16,000	09/01/2022.	1 D FE
0909999999 - Bonds - U.S. Special Revenue and Special Assessment and all Non-Guaranteed Obligations of Agencies and Authorities of Governments and Their Political Subdivisions						1,222,249	1,222,249	1,279,688	1,228,747	0	(6,498)	0	(6,498)	0	1,222,249	0	0	0	36,906	XXX	XXX
Bonds - Industrial and Miscellaneous (Unaffiliated)																					
29736R-AE-0.	ESTEE LAUDER COMPANIES INC. GLAXOSMITHKLINE CAPITAL INC.....		08/15/2022.	Maturity @ 100.00.....	XXX.....	600,000	600,000	581,540	598,605	0	1,395	0	1,395	0	600,000	0	0	0	14,100	08/15/2022.	1 E FE
377372-AH-0.	INC.....		09/15/2022.	Call @ 100.00.....	XXX.....	500,000	500,000	509,565	501,301	0	(749)	0	(749)	0	500,551	0	(551)	(551)	13,883	03/18/2023.	1 F FE
904311-AA-5.	UNDER ARMOUR INC.....		07/06/2022.	DAVIDSON (D.A.) & CO. INC.....	XXX.....	522,000	600,000	601,620	600,776	0	(88)	0	(88)	0	600,688	0	(78,688)	(78,688)	10,996	06/15/2026.	3 B FE
1109999999 - Bonds - Industrial and Miscellaneous (Unaffiliated)						1,622,000	1,700,000	1,692,725	1,700,682	0	558	0	558	0	1,701,240	0	(79,240)	(79,240)	38,979	XXX	XXX
2509999997 - Bonds - Subtotals - Bonds - Part 4						4,541,713	4,607,895	4,901,825	4,643,663	0	(24,045)	0	(24,045)	0	4,620,952	0	(79,240)	(79,240)	147,175	XXX	XXX
2509999999 - Bonds - Subtotals - Bonds						4,541,713	4,607,895	4,901,825	4,643,663	0	(24,045)	0	(24,045)	0	4,620,952	0	(79,240)	(79,240)	147,175	XXX	XXX
Common Stocks - Industrial and Miscellaneous (Unaffiliated) - Publicly Traded																					
002824-10-0.	ABBOTT LABORATORIES ORD.....		07/26/2022.	Northern Trust.....	1,006,000	110,047	XXX	18,051	141,584	(123,533)	0	0	(123,533)	0	18,051	0	91,996	91,996	1,418	XXX	XXX
00287Y-10-9.	ABBVIE ORD.....		07/26/2022.	Northern Trust.....	1,089,000	165,085	XXX	20,661	147,451	(126,790)	0	0	(126,790)	0	20,661	0	144,425	144,425	4,606	XXX	XXX
037833-10-0.	APPLE ORD.....		07/26/2022.	Northern Trust.....	1,816,000	275,091	XXX	28,710	322,467	(293,757)	0	0	(293,757)	0	28,						

E05.1

E05.1

E05.1

E05.1

Schedule DB - Part A - Section 1

NONE

Schedule DB - Part B - Section 1

NONE

Schedule DB - Part D - Section 1

NONE

Schedule DB - Part D - Section 2

NONE

Schedule DB - Part E

NONE

Schedule DL - Part 1

NONE

Schedule DL - Part 2

NONE

STATEMENT AS OF SEPTEMBER 30, 2022 OF THE LIGHTNING ROD MUTUAL INSURANCE COMPANY

SCHEDULE E - PART 2 - CASH EQUIVALENTS

[illegible]



SUPPLEMENT FOR THE QUARTER ENDING SEPTEMBER 30, 2022 OF THE LIGHTNING ROD MUTUAL INSURANCE COMPANY

DIRECTOR AND OFFICER INSURANCE COVERAGE SUPPLEMENT

NAIC Group Code 00207 Year To Date For The Period Ended 2022 NAIC Company Code 26123

If the reporting entity writes any director and officer (D&O) business, please provide the following:

1. Monoline Policies

1 Direct Written Premium	2 Direct Earned Premium	3 Direct Losses Incurred
\$ 0	\$ 0	\$ 0

2. Commercial Multiple Peril (CMP) Packaged Policies

- 2.1 Does the reporting entity provide D&O liability coverage as part of a CMP packaged policy? Yes [X] No []
- 2.2 Can the direct premium earned for D&O liability coverage provided as part of a CMP packaged policy be quantified or estimated? Yes [X] No []
- 2.3 If the answer to question 2.2 is yes, provide the quantified or estimated direct premium earned amount for D&O liability coverage in CMP packaged policies

2.31 Amount quantified: \$35,079

2.32 Amount estimated using reasonable assumptions: \$0

- 2.4 If the answer to question 2.1 is yes, provide direct losses incurred (losses paid plus change in case reserves) for the D&O liability coverage provided in CMP packaged policies. \$0