



PROPERTY AND CASUALTY COMPANIES - ASSOCIATION EDITION

QUARTERLY STATEMENT
AS OF SEPTEMBER 30, 2022
OF THE CONDITION AND AFFAIRS OF THE
STATE AUTOMOBILE MUTUAL INSURANCE COMPANY

NAIC Group Code 0111 0175 NAIC Company Code 25135 Employer's ID Number 31-4316080
(Current) (Prior)

Organized under the Laws of Ohio, State of Domicile or Port of Entry OH

Country of Domicile United States of America

Incorporated/Organized 08/15/1921 Commenced Business 09/01/1921

Statutory Home Office 518 East Broad Street, Columbus, OH, US 43215
(Street and Number) (City or Town, State, Country and Zip Code)

Main Administrative Office 518 East Broad Street
(Street and Number)
Columbus, OH, US 43215, 833-724-3577
(City or Town, State, Country and Zip Code) (Area Code) (Telephone Number)

Mail Address 518 East Broad Street, Columbus, OH, US 43215
(Street and Number or P.O. Box) (City or Town, State, Country and Zip Code)

Primary Location of Books and Records 518 East Broad Street
(Street and Number)
Columbus, OH, US 43215, 614-464-5000
(City or Town, State, Country and Zip Code) (Area Code) (Telephone Number)

Internet Website Address www.stateauto.com

Statutory Statement Contact Zachary Skidmore, 614-917-5995
(Name) (Area Code) (Telephone Number)
corporateaccounting@stateauto.com, 317-715-4519
(E-mail Address) (FAX Number)

OFFICERS

President and Chief Executive Officer Hamid Talal Mirza # Executive Vice President and Treasurer Nikos Vasilakos #

Executive Vice President and Secretary Mark Charles Touhey #

OTHER

Christopher Locke Peirce #, Executive Vice President and Chief Financial Officer Paul Sanghera #, EVP and Comptroller Vlad Yakov Barbalat #, EVP and Chief Investment Officer

Damon Paul Hart #, EVP and Chief Legal Officer

DIRECTORS OR TRUSTEES

<u>James Matthew Czapla #</u>	<u>Matthew Paul Dolan #</u>	<u>Alison Brooke Erbig #</u>
<u>Michael Joseph Fallon #</u>	<u>Hamid Talal Mirza #</u>	<u>Elizabeth Julia Morahan #</u>
<u>Edward Jose Pena #</u>	<u>Paul Sanghera #</u>	<u>Mark Charles Touhey #</u>

State of Massachusetts SS:
County of Suffolk

The officers of this reporting entity being duly sworn, each depose and say that they are the described officers of said reporting entity, and that on the reporting period stated above, all of the herein described assets were the absolute property of the said reporting entity, free and clear from any liens or claims thereon, except as herein stated, and that this statement, together with related exhibits, schedules and explanations therein contained, annexed or referred to, is a full and true statement of all the assets and liabilities and of the condition and affairs of the said reporting entity as of the reporting period stated above, and of its income and deductions therefrom for the period ended, and have been completed in accordance with the NAIC Annual Statement Instructions and Accounting Practices and Procedures manual except to the extent that: (1) state law may differ; or, (2) that state rules or regulations require differences in reporting not related to accounting practices and procedures, according to the best of their information, knowledge and belief, respectively. Furthermore, the scope of this attestation by the described officers also includes the related corresponding electronic filing with the NAIC, when required, that is an exact copy (except for formatting differences due to electronic filing) of the enclosed statement. The electronic filing may be requested by various regulators in lieu of or in addition to the enclosed statement.

<u>Hamid Talal Mirza</u> President and Chief Executive Officer	<u>Mark Charles Touhey</u> Executive Vice President and Secretary	<u>Nikos Vasilakos</u> Executive Vice President and Treasurer
---	--	--

Subscribed and sworn to before me this 8th day of November, 2022

a. Is this an original filing? Yes [X] No []
b. If no,
1. State the amendment number.....
2. Date filed
3. Number of pages attached.....

STATEMENT AS OF SEPTEMBER 30, 2022 OF THE STATE AUTOMOBILE MUTUAL INSURANCE COMPANY

ASSETS

	Current Statement Date			4 December 31 Prior Year Net Admitted Assets
	1 Assets	2 Nonadmitted Assets	3 Net Admitted Assets (Cols. 1 - 2)	
1. Bonds	96,281,681	0	96,281,681	409,348,997
2. Stocks:				
2.1 Preferred stocks	0	0	0	0
2.2 Common stocks	899,724,399	25,060,363	874,664,035	711,482,910
3. Mortgage loans on real estate:				
3.1 First liens	0	0	0	0
3.2 Other than first liens.....	0	0	0	0
4. Real estate:				
4.1 Properties occupied by the company (less \$0 encumbrances)	63,990,400	0	63,990,400	56,662,884
4.2 Properties held for the production of income (less \$0 encumbrances)	0	0	0	0
4.3 Properties held for sale (less \$0 encumbrances)	0	0	0	0
5. Cash (\$(8,827,753)), cash equivalents (\$21,567) and short-term investments (\$0)	(8,806,186)	0	(8,806,186)	66,672,121
6. Contract loans (including \$0 premium notes)	0	0	0	0
7. Derivatives	0	0	0	0
8. Other invested assets	10,233,014	0	10,233,014	46,745,329
9. Receivables for securities	(399,285)	0	(399,285)	3,132
10. Securities lending reinvested collateral assets	0	0	0	0
11. Aggregate write-ins for invested assets	0	0	0	0
12. Subtotals, cash and invested assets (Lines 1 to 11)	1,061,024,023	25,060,363	1,035,963,660	1,290,915,374
13. Title plants less \$0 charged off (for Title insurers only)	0	0	0	0
14. Investment income due and accrued	803,345	0	803,345	2,019,234
15. Premiums and considerations:				
15.1 Uncollected premiums and agents' balances in the course of collection	13,618,848	0	13,618,848	167,264,024
15.2 Deferred premiums, agents' balances and installments booked but deferred and not yet due (including \$0 earned but unbilled premiums)	0	0	0	637,907,122
15.3 Accrued retrospective premiums (\$0) and contracts subject to redetermination (\$0)	0	0	0	0
16. Reinsurance:				
16.1 Amounts recoverable from reinsurers	514,360,047	0	514,360,047	273,683,686
16.2 Funds held by or deposited with reinsured companies	0	0	0	0
16.3 Other amounts receivable under reinsurance contracts	0	0	0	0
17. Amounts receivable relating to uninsured plans	0	0	0	0
18.1 Current federal and foreign income tax recoverable and interest thereon	18,123,513	0	18,123,513	671,240
18.2 Net deferred tax asset	31,430,050	28,190,319	3,239,731	2
19. Guaranty funds receivable or on deposit	0	0	0	37,251
20. Electronic data processing equipment and software	54,880,660	54,806,518	74,142	193,579
21. Furniture and equipment, including health care delivery assets (\$0)	4,500,941	4,500,941	0	0
22. Net adjustment in assets and liabilities due to foreign exchange rates	0	0	0	0
23. Receivables from parent, subsidiaries and affiliates	349,917,227	29,408,393	320,508,834	104,883,530
24. Health care (\$0) and other amounts receivable	0	0	0	0
25. Aggregate write-ins for other than invested assets	5,431,182	213,647	5,217,535	6,960,174
26. Total assets excluding Separate Accounts, Segregated Accounts and Protected Cell Accounts (Lines 12 to 25)	2,054,089,837	142,180,181	1,911,909,656	2,484,535,215
27. From Separate Accounts, Segregated Accounts and Protected Cell Accounts	0	0	0	0
28. Total (Lines 26 and 27)	2,054,089,837	142,180,181	1,911,909,656	2,484,535,215
DETAILS OF WRITE-INS				
1101.	0	0	0	0
1102.				
1103.				
1198. Summary of remaining write-ins for Line 11 from overflow page	0	0	0	0
1199. Totals (Lines 1101 through 1103 plus 1198)(Line 11 above)	0	0	0	0
2501. Accounts receivable	5,431,182	213,647	5,217,535	3,379,805
2502. Equities and deposits in pools and associations	0	0	0	515,769
2503. MCCA refund receivable	0	0	0	2,974,000
2598. Summary of remaining write-ins for Line 25 from overflow page	0	0	0	90,600
2599. Totals (Lines 2501 through 2503 plus 2598)(Line 25 above)	5,431,182	213,647	5,217,535	6,960,174

STATEMENT AS OF SEPTEMBER 30, 2022 OF THE STATE AUTOMOBILE MUTUAL INSURANCE COMPANY

LIABILITIES, SURPLUS AND OTHER FUNDS

	1 Current Statement Date	2 December 31, Prior Year
1. Losses (current accident year \$0)	0	456,773,011
2. Reinsurance payable on paid losses and loss adjustment expenses	179,614,222	314,874,018
3. Loss adjustment expenses	0	113,645,504
4. Commissions payable, contingent commissions and other similar charges	0	16,950,009
5. Other expenses (excluding taxes, licenses and fees)	195,000	9,378,818
6. Taxes, licenses and fees (excluding federal and foreign income taxes)	236,147	9,560,450
7.1 Current federal and foreign income taxes (including \$0 on realized capital gains (losses))	0	0
7.2 Net deferred tax liability	0	0
8. Borrowed money \$70,000,000 and interest thereon \$1,188,370	71,188,370	101,027,034
9. Unearned premiums (after deducting unearned premiums for ceded reinsurance of \$478,618,644 and including warranty reserves of \$0 and accrued accident and health experience rating refunds including \$0 for medical loss ratio rebate per the Public Health Service Act)	0	426,598,134
10. Advance premium	0	17,093,823
11. Dividends declared and unpaid:		
11.1 Stockholders	0	0
11.2 Policyholders	0	0
12. Ceded reinsurance premiums payable (net of ceding commissions)	627,234,085	150,382,811
13. Funds held by company under reinsurance treaties	22,293	17,205
14. Amounts withheld or retained by company for account of others	287,085	10,081,139
15. Remittances and items not allocated	0	629,722
16. Provision for reinsurance (including \$0 certified)	552,000	552,000
17. Net adjustments in assets and liabilities due to foreign exchange rates	0	0
18. Drafts outstanding	3,611,028	6,310,608
19. Payable to parent, subsidiaries and affiliates	9,172,093	65,535,189
20. Derivatives	0	0
21. Payable for securities	0	0
22. Payable for securities lending	0	0
23. Liability for amounts held under uninsured plans	0	0
24. Capital notes \$0 and interest thereon \$0	0	0
25. Aggregate write-ins for liabilities	478,280	6,806,547
26. Total liabilities excluding protected cell liabilities (Lines 1 through 25)	892,590,602	1,706,216,021
27. Protected cell liabilities	0	0
28. Total liabilities (Lines 26 and 27)	892,590,602	1,706,216,021
29. Aggregate write-ins for special surplus funds	0	0
30. Common capital stock	5,000,000	0
31. Preferred capital stock	0	0
32. Aggregate write-ins for other than special surplus funds	0	0
33. Surplus notes	0	0
34. Gross paid in and contributed surplus	5,000,000	0
35. Unassigned funds (surplus)	1,009,319,054	778,319,194
36. Less treasury stock, at cost:		
36.10 shares common (value included in Line 30 \$0)	0	0
36.20 shares preferred (value included in Line 31 \$0)	0	0
37. Surplus as regards policyholders (Lines 29 to 35, less 36)	1,019,319,054	778,319,194
38. Totals (Page 2, Line 28, Col. 3)	1,911,909,656	2,484,535,215
DETAILS OF WRITE-INS		
2501. Escheated funds payable	0	5,536,651
2502. Equities and deposits in pools and associations	0	64,956
2503. MCCA policyholder refund payable	0	2,974,000
2598. Summary of remaining write-ins for Line 25 from overflow page	478,280	(1,769,060)
2599. Totals (Lines 2501 through 2503 plus 2598)(Line 25 above)	478,280	6,806,547
2901.	0	0
2902.		
2903.		
2998. Summary of remaining write-ins for Line 29 from overflow page	0	0
2999. Totals (Lines 2901 through 2903 plus 2998)(Line 29 above)	0	0
3201.		
3202.		
3203.		
3298. Summary of remaining write-ins for Line 32 from overflow page	0	0
3299. Totals (Lines 3201 through 3203 plus 3298)(Line 32 above)	0	0

STATEMENT OF INCOME

	1	2	3
	Current Year to Date	Prior Year to Date	Prior Year Ended December 31
UNDERWRITING INCOME			
1. Premiums earned:			
1.1 Direct (written \$728,602,154)	639,487,982	487,309,351	676,411,138
1.2 Assumed (written \$(430,304,557))	422,189,342	1,235,314,761	1,655,036,011
1.3 Ceded (written \$513,378,615)	850,604,554	1,134,767,172	1,536,181,700
1.4 Net (written \$(215,081,018))	211,072,771	587,856,940	795,265,449
DEDUCTIONS:			
2. Losses incurred (current accident year \$122,981,874):			
2.1 Direct	491,741,258	305,743,944	453,821,517
2.2 Assumed	254,406,895	874,095,405	1,148,084,290
2.3 Ceded	622,678,535	781,138,709	1,060,661,108
2.4 Net	123,469,619	398,700,641	541,244,699
3. Loss adjustment expenses incurred	20,480,741	61,176,340	85,335,846
4. Other underwriting expenses incurred	67,314,001	187,513,237	246,534,228
5. Aggregate write-ins for underwriting deductions	0	0	0
6. Total underwriting deductions (Lines 2 through 5)	211,264,361	647,390,218	873,114,774
7. Net income of protected cells	0	0	0
8. Net underwriting gain or (loss) (Line 1 minus Line 6 + Line 7)	(191,590)	(59,533,278)	(77,849,325)
INVESTMENT INCOME			
9. Net investment income earned	13,462,549	14,296,170	19,171,926
10. Net realized capital gains (losses) less capital gains tax of \$6,802,843	20,131,138	14,208,202	15,619,797
11. Net investment gain (loss) (Lines 9 + 10)	33,593,687	28,504,372	34,791,723
OTHER INCOME			
12. Net gain or (loss) from agents' or premium balances charged off (amount recovered \$3,220 amount charged off \$351,049)	(347,829)	(2,151,431)	(2,640,907)
13. Finance and service charges not included in premiums	327,418	1,057,849	1,377,820
14. Aggregate write-ins for miscellaneous income	(3,953,263)	(4,096,332)	(4,846,879)
15. Total other income (Lines 12 through 14)	(3,973,674)	(5,189,913)	(6,109,966)
16. Net income before dividends to policyholders, after capital gains tax and before all other federal and foreign income taxes (Lines 8 + 11 + 15)	29,428,424	(36,218,819)	(49,167,568)
17. Dividends to policyholders	17,562	21,531	43,607
18. Net income, after dividends to policyholders, after capital gains tax and before all other federal and foreign income taxes (Line 16 minus Line 17)	29,410,862	(36,240,351)	(49,211,175)
19. Federal and foreign income taxes incurred	(24,857,798)	(2,861,219)	(3,308,952)
20. Net income (Line 18 minus Line 19)(to Line 22)	54,268,659	(33,379,131)	(45,902,223)
CAPITAL AND SURPLUS ACCOUNT			
21. Surplus as regards policyholders, December 31 prior year	778,319,195	814,189,094	814,189,094
22. Net income (from Line 20)	54,268,659	(33,379,131)	(45,902,223)
23. Net transfers (to) from Protected Cell accounts	0	0	0
24. Change in net unrealized capital gains (losses) less capital gains tax of \$(10,926,945)	(144,646,669)	(17,656,284)	17,069,297
25. Change in net unrealized foreign exchange capital gain (loss)	0	0	0
26. Change in net deferred income tax	20,503,104	992,388	709,123
27. Change in nonadmitted assets	(34,375,102)	(2,027,911)	(8,032,553)
28. Change in provision for reinsurance	0	0	(552,000)
29. Change in surplus notes	0	0	0
30. Surplus (contributed to) withdrawn from protected cells	0	0	0
31. Cumulative effect of changes in accounting principles	0	0	0
32. Capital changes:			
32.1 Paid in	5,000,000	0	0
32.2 Transferred from surplus (Stock Dividend)	0	0	0
32.3 Transferred to surplus	0	0	0
33. Surplus adjustments:			
33.1 Paid in	5,000,000	0	0
33.2 Transferred to capital (Stock Dividend)	0	0	0
33.3 Transferred from capital	0	0	0
34. Net remittances from or (to) Home Office	0	0	0
35. Dividends to stockholders	0	0	0
36. Change in treasury stock	0	0	0
37. Aggregate write-ins for gains and losses in surplus	335,249,867	838,457	838,457
38. Change in surplus as regards policyholders (Lines 22 through 37)	240,999,859	(51,232,481)	(35,869,899)
39. Surplus as regards policyholders, as of statement date (Lines 21 plus 38)	1,019,319,054	762,956,613	778,319,195
DETAILS OF WRITE-INS			
0501.	0	0	0
0502.			
0503.			
0598. Summary of remaining write-ins for Line 5 from overflow page	0	0	0
0599. Totals (Lines 0501 through 0503 plus 0598)(Line 5 above)	0	0	0
1401. Miscellaneous income (expense)	(3,950,941)	(3,625,818)	(3,864,964)
1402. Gain (loss) on sale of fixed assets	600	(235,464)	(967,852)
1403. Governmental fines and penalties	(2,922)	(235,050)	(14,063)
1498. Summary of remaining write-ins for Line 14 from overflow page	0	0	0
1499. Totals (Lines 1401 through 1403 plus 1498)(Line 14 above)	(3,953,263)	(4,096,332)	(4,846,879)
3701. Prior year correction	0	838,457	838,457
3702. Investment in subsidiary adjustment (STFC)	335,249,867	0	0
3703.			
3798. Summary of remaining write-ins for Line 37 from overflow page	0	0	0
3799. Totals (Lines 3701 through 3703 plus 3798)(Line 37 above)	335,249,867	838,457	838,457

STATEMENT AS OF SEPTEMBER 30, 2022 OF THE STATE AUTOMOBILE MUTUAL INSURANCE COMPANY

CASH FLOW

	1 Current Year To Date	2 Prior Year To Date	3 Prior Year Ended December 31
Cash from Operations			
1. Premiums collected net of reinsurance	1,037,147,414	587,510,131	826,588,325
2. Net investment income	17,504,800	22,111,163	23,450,939
3. Miscellaneous income	(3,973,674)	(5,189,915)	(6,109,966)
4. Total (Lines 1 to 3)	1,050,678,540	604,431,379	843,929,297
5. Benefit and loss related payments	953,648,680	399,021,361	519,167,206
6. Net transfers to Separate Accounts, Segregated Accounts and Protected Cell Accounts	0	0	0
7. Commissions, expenses paid and aggregate write-ins for deductions	236,983,653	270,578,865	349,072,444
8. Dividends paid to policyholders	17,562	21,531	43,607
9. Federal and foreign income taxes paid (recovered) net of \$ 6,802,843 tax on capital gains (losses)	(602,682)	(575,426)	(678,797)
10. Total (Lines 5 through 9)	1,190,047,213	669,046,331	867,604,460
11. Net cash from operations (Line 4 minus Line 10)	(139,368,673)	(64,614,952)	(23,675,163)
Cash from Investments			
12. Proceeds from investments sold, matured or repaid:			
12.1 Bonds	391,898,619	141,040,020	165,228,863
12.2 Stocks	121,899,788	30,526,225	32,381,165
12.3 Mortgage loans	0	0	0
12.4 Real estate	0	0	0
12.5 Other invested assets	36,213,817	12,009,690	19,669,287
12.6 Net gains or (losses) on cash, cash equivalents and short-term investments	0	0	0
12.7 Miscellaneous proceeds	402,417	9,901	9,868
12.8 Total investment proceeds (Lines 12.1 to 12.7)	550,414,641	183,585,835	217,289,182
13. Cost of investments acquired (long-term only):			
13.1 Bonds	92,700,701	132,251,421	137,094,850
13.2 Stocks	61,063,939	12,874,915	15,726,760
13.3 Mortgage loans	0	0	0
13.4 Real estate	8,581,496	12,162,113	19,730,875
13.5 Other invested assets	1,041,972	1,301,877	5,155,569
13.6 Miscellaneous applications	0	0	0
13.7 Total investments acquired (Lines 13.1 to 13.6)	163,388,108	158,590,326	177,708,054
14. Net increase (or decrease) in contract loans and premium notes	0	0	0
15. Net cash from investments (Line 12.8 minus Line 13.7 and Line 14)	387,026,533	24,995,509	39,581,128
Cash from Financing and Miscellaneous Sources			
16. Cash provided (applied):			
16.1 Surplus notes, capital notes	0	0	0
16.2 Capital and paid in surplus, less treasury stock	0	0	0
16.3 Borrowed funds	(30,500,000)	0	0
16.4 Net deposits on deposit-type contracts and other insurance liabilities	0	0	0
16.5 Dividends to stockholders	0	0	0
16.6 Other cash provided (applied)	(292,636,167)	30,415,319	(18,790,750)
17. Net cash from financing and miscellaneous sources (Line 16.1 through Line 16.4 minus Line 16.5 plus Line 16.6)	(323,136,167)	30,415,319	(18,790,750)
RECONCILIATION OF CASH, CASH EQUIVALENTS AND SHORT-TERM INVESTMENTS			
18. Net change in cash, cash equivalents and short-term investments (Line 11, plus Lines 15 and 17) ..	(75,478,307)	(9,204,124)	(2,884,784)
19. Cash, cash equivalents and short-term investments:			
19.1 Beginning of year	66,672,121	69,556,905	69,556,905
19.2 End of period (Line 18 plus Line 19.1)	(8,806,186)	60,352,781	66,672,121

Note: Supplemental disclosures of cash flow information for non-cash transactions:

--	--	--	--

NOTES TO FINANCIAL STATEMENTS

1. Summary of Significant Accounting Policies:

A. Accounting Practices:

The accompanying financial statements of State Automobile Mutual Insurance Company (the "Company" or "State Auto Mutual") are presented on the basis of accounting practices prescribed or permitted by the Ohio Department of Insurance, which has adopted the National Association of Insurance Commissioners' (NAIC) *Accounting Practices and Procedures* manual (NAIC SAP).

A reconciliation of the Company's net income and capital and surplus between the practices prescribed and permitted by the state of Ohio and NAIC SAP is shown below:

	SSAP #	F/S Page	F/S Line #	Amount (\$)	
				2022	2021
NET INCOME					
1. State Auto Mutual state basis (Page 4, Line 20, Columns 1 & 3)				54,268,659	(45,902,223)
2. State Prescribed Practices that are an increase/(decrease) from NAIC SAP:				—	—
3. State Permitted Practices that are an increase/(decrease) from NAIC SAP:				—	—
4. NAIC SAP (1 - 2 - 3 = 4)				54,268,659	(45,902,223)
SURPLUS					
5. State Auto Mutual state basis (Page 3, Line 37, Columns 1 & 2)				1,019,319,054	778,319,194
6. State Prescribed Practices that are an increase/(decrease) from NAIC SAP:				—	—
7. State Permitted Practices that are an increase/(decrease) from NAIC SAP:				—	—
8. NAIC SAP (5 - 6 - 7 = 8)				1,019,319,054	778,319,194

C. Accounting Policy:

2. Bonds are carried at cost, adjusted where appropriate for amortization of premium or discount, or fair value as specified by the SVO Manual.
6. Mortgage backed/asset backed securities are carried at amortized cost or fair value based on guidance in the SVO Manual. Prepayment assumptions for mortgage backed/asset backed securities are based on market expectations. The retrospective adjustment method is used to value all mortgage backed/asset backed securities.

D. Going Concern:

Management continuously monitors the Company's financial results and compliance with regulatory requirements. There are currently no circumstances that could call into question the Company's ability to continue as a going concern.

2. Accounting Changes and Corrections of Errors:

No substantial change from December 31, 2021.

3. Business Combinations and Goodwill:

B. Statutory Mergers

On July 12, 2021, State Automobile Mutual Insurance Company (SAM) entered into an agreement and Plan of Merger and Combination (Merger Agreement) with Liberty Mutual Holding Company Inc. (LMHC), and Andover Inc., a wholly-owned indirect subsidiary of LMHC. Pursuant to a Plan of Reorganization, on March 1, 2022, the reorganization was effectuated through a merger of Andover, Inc. with and into SAM, with SAM surviving the merger as an Ohio domiciled reorganized stock insurance subsidiary of LMHC.

4. Discontinued Operations:

No substantial change from December 31, 2021.

5. Investments:

A. Mortgage Loans: Not applicable.

B. Debt Restructuring: Not applicable.

C. Reverse Mortgages: Not applicable.

D. Loan-Backed Securities:

1. Prepayment speed assumptions are updated monthly with data sourced from the Bloomberg data service.
2. The Company has not recognized any other than temporary impairments on its loan-backed securities.
3. The Company has not recognized any other than temporary impairments on its loan-backed securities.
4. All impaired Loaned Backed Securities for which an other-than-temporary impairment has not been recognized in earnings as a realized loss as of September 30, 2022:

	Amount (\$)
a. The aggregate amount of unrealized losses	
1. Less than 12 Months	(14,781,727)
2. 12 Months or Longer	—
b. The aggregate related fair value of securities with unrealized losses	
1. Less than 12 Months	53,644,765
2. 12 Months or Longer	—

5. The Company reviews fixed income securities for impairment on a quarterly basis. Securities are reviewed for both quantitative and qualitative considerations including, but not limited to: (a) the extent of the decline in fair value below book value, (b) the duration of the decline, (c) significant adverse changes in the financial condition or near term prospects of the investment or issuer, (d) significant change in the business climate or credit ratings of the issuer, (e) general market conditions and volatility, (f) industry factors, and (g) the past impairment of the security holding or the issuer. If the Company believes a decline in the value of a particular investment is temporary, the decline is recorded as an unrealized loss in policyholders' equity. If the decline is believed to be "other-than-temporary," and the Company believes it will not be able to collect all cash flows due on its fixed income securities, then the carrying value of the investment is written down to the expected cash flow amount and a realized loss is recorded as a credit impairment.

5. Investments (continued):

- E. Dollar Repurchase Agreements: Not applicable.
- F. Repurchase Agreements Transactions Accounted for as Secured Borrowing: Not applicable.
- G. Reverse Repurchase Agreements Transactions Accounted for as Secured Borrowing: Not applicable.
- H. Repurchase Agreements Transactions Accounted for as a Sale: Not applicable.
- I. Reverse Repurchase Agreements Transactions Accounted for as a Sale: Not applicable.
- J. Real Estate: Not applicable.
- K. Investments in Low Income Housing Tax Credits: Not applicable.
- L. Restricted Assets: No substantial change from December 31, 2021.
- M. Working Capital Finance Investments: Not applicable.
- N. Offsetting and Netting of Assets and Liabilities: Not applicable.
- O. 5GI Securities: Not applicable.
- P. Short Sales: Not applicable.
- Q. Prepayment Penalty and Acceleration Fees: Not applicable.
- R. Reporting Entity's Share of Cash Pool by Asset Type: Not applicable.

6. Joint Ventures, Partnerships and Limited Liability Companies:

No substantial change from December 31, 2021.

7. Investment Income:

No substantial change from December 31, 2021.

8. Derivative Instruments:

No substantial change from December 31, 2021.

STATEMENT AS OF SEPTEMBER 30, 2022 OF THE STATE AUTOMOBILE MUTUAL INSURANCE COMPANY

9. Income Taxes:

F. Consolidated Federal Income Tax Return:

1. The Company's Federal income tax return is consolidated with the following entities:

America First Insurance Company	Liberty Financial Services, Inc.	Open Seas Solutions, Inc.
America First Lloyd's Insurance Company	Liberty Hospitality Group, Inc.	Oregon Automobile Insurance Company
American Compensation Insurance Company	Liberty Insurance Corporation	Peerless Indemnity Insurance Company
American Economy Insurance Company	Liberty Insurance Holdings, Inc.	Peerless Insurance Company
American Fire and Casualty Company	Liberty Insurance Underwriters Inc.	Plaza Insurance Company
American States Insurance Company	Liberty International Europe Inc.	Rianoc Research Corporation
American States Insurance Company of Texas	Liberty International Holdings Inc.	RTW, Inc.
American States Lloyds Insurance Company	Liberty Life Holdings Inc.	Rockhill Holding Company
American States Preferred Insurance Company	Liberty Lloyds of Texas Insurance Company	Rockhill Insurance Company
Barrier Ridge LLC	Liberty Management Services, Inc.	SAFECARE Company, Inc.
Berkeley Management Corporation	Liberty Mexico Holdings Inc.	Safeco Corporation
Bloomington Compensation Insurance Company	Liberty Mutual Agency Corporation	Safeco General Agency, Inc.
Colorado Casualty Insurance Company	Liberty Mutual Credit Risk Transfer PCC Inc.	Safeco Insurance Company of America
Consolidated Insurance Company	Liberty Mutual Fire Insurance Company	Safeco Insurance Company of Illinois
Diversified Settlements, Inc.	Liberty Mutual Group Asset Management Inc.	Safeco Insurance Company of Indiana
Eagle Development Corporation	Liberty Mutual Group Inc.	Safeco Insurance Company of Oregon
Emerald City Insurance Agency, Inc.	Liberty Mutual Holding Company Inc.	Safeco Lloyds Insurance Company
Employers Insurance Company of Wausau	Liberty Mutual Insurance Company	Safeco National Insurance Company
Excelsior Insurance Company	Liberty Mutual Personal Insurance Company	Safeco Properties, Inc.
Excess Risk Reinsurance Inc.	Liberty Mutual Technology Group, Inc.	Safeco Surplus Lines Insurance Company
F.B. Beattie & Co., Inc.	Liberty Northwest Insurance Corporation	San Diego Insurance Company
Facilitators, Inc.	Liberty Personal Insurance Company	SCIT, Inc.
First National Insurance Company of America	Liberty RE (Bermuda) Limited	State Auto Financial Corporation
First State Agency Inc.	Liberty Sponsored Insurance (Vermont), Inc.	State Auto Holdings, Inc.
General America Corporation	Liberty Surplus Insurance Corporation	State Auto Insurance Company of Ohio
General America Corporation of Texas	LIH-RE of America Corporation	State Auto Insurance Company of Wisconsin
General Insurance Company of America	LIU Specialty Insurance Agency Inc.	State Auto Labs Corporation
Golden Eagle Insurance Corporation	LM General Insurance Company	State Auto Property & Casualty Insurance Company
Gulf States AIF, Inc.	LM Insurance Corporation	State Automobile Mutual Insurance Company
Hawkeye-Security Insurance Company	LM Property and Casualty Insurance Company	Stateco Financial Services, Inc.
Indiana Insurance Company	LMCRT-FRE-01 IC	The First Liberty Insurance Corporation
Insurance Company of Illinois	LMHC Massachusetts Holdings Inc.	The Midwestern Indemnity Company
Ironshore Holdings (US) Inc.	Managed Care Associates Inc.	The National Corporation
Ironshore Indemnity Inc.	Meridian Security Insurance Company	The Netherlands Insurance Company
Liberty Specialty Markets Bermuda Limited	Mid-American Fire & Casualty Company	The Ohio Casualty Insurance Company
Ironshore Management Inc.	Milbank Insurance Company	Wausau Business Insurance Company
Ironshore Services Inc.	Nationale Borg Reinsurance N.V.	Wausau General Insurance Company
Ironshore Specialty Insurance Company	North Pacific Insurance Company	Wausau Underwriters Insurance Company
Ironshore Surety Holdings Inc.	Ocasco Budget, Inc.	West American Insurance Company
LEXCO Limited	OCI Printing, Inc.	Winmar Company, Inc.
Liberty-USA Corporation	Ohio Casualty Corporation	Workgrid Software, Inc.
Liberty Energy Canada, Inc.	Ohio Security Insurance Company	

2. The method of federal income tax allocation is subject to a written agreement. Allocation is based upon separate return calculations with credit applied for losses as appropriate. The Company has the enforceable right to recoup prior year payments in the event of future losses.

10. Information Concerning Parent, Subsidiaries and Affiliates:

A. Nature of the Relationships:

Pusuant to the Plan of Reorganization and approval of the State of Ohio, effective March 1, 2022, State Auto Mutual completed the conversion from a mutual company to a stock company. The reorganization did not change the assets or obligations of the Company.

B. Details of Transactions Greater than ½% of Admitted Assets:

On August 17,2022, the Board of Directors of State Auto Holdings, Inc. declared a \$7,500,000 ordinary stockholders dividend to be paid to the Company. This dividend was paid in cash on September 30, 2022.

On November 12, 2021, the Board of Directors of Rockhill Holding Company declared a \$400,000 ordinary stockholders dividend to be paid to the Company. This dividend was paid in cash on December 30, 2021.

STATEMENT AS OF SEPTEMBER 30, 2022 OF THE STATE AUTOMOBILE MUTUAL INSURANCE COMPANY

10. Information Concerning Parent, Subsidiaries and Affiliates (continued):

E. Management, Service Contracts, Cost Sharing Arrangements:

On March 1, 2022 the following changes were effective:

The Company became a party to a management services agreement (the "Agreement") with Liberty Mutual Insurance Company ("LMIC").

The Company became a party to a cash management agreement with LMIC whereby LMIC provides services to the Company.

The Company became a party to an investment management agreement with Liberty Mutual Group Asset Management Inc. ("LMGAM"). Under the agreement, LMGAM provides services to the Company. This agreement replaced the Stateco Investment Management Agreement.

The Company became a party to a Federal Tax Sharing Agreement between Liberty Mutual Holding Company Inc. ("LMHC") and affiliates (refer to Note 9F).

G. Nature of Relationships that Could Affect Operations:

On July 12, 2021, State Auto Mutual ("SAM") entered into an agreement and Plan of Merger and Combination ("Merger Agreement") with Liberty Mutual Holding Company Inc. ("LMHC"), and Andover Inc., a wholly-owned indirect subsidiary of LMHC. Pursuant to a Plan of Reorganization, on March 1, 2022, the reorganization was effectuated through a merger of Andover, Inc. with and into SAM, with SAM surviving the merger as an Ohio domiciled reorganized stock insurance subsidiary of LMHC.

The Company is a member of the Liberty Mutual Group that is defined in Schedule Y – Information Concerning Activities of Insurer Members of a Holding Company Group. See Schedule Y Part 1 – Organizational Chart.

I. Detail of Investments in Affiliates Greater than 10% of Admitted Assets:

On July 12, 2021, State Auto Financial Corporation (STFC), an Ohio corporation, and the Company entered into the Merger Agreement with LMHC, Pymatuning, Inc., a wholly-owned indirect subsidiary of LMHC, and Andover, Inc. The Merger Agreement provides for LMHC to effect the acquisition of STFC through the merger of Pymatuning, Inc. with and into STFC (the "STFC Merger") with STFC the surviving corporation. Pursuant to a Plan of Reorganization, on March 1, 2022, the Company now owns 100% of the outstanding shares of STFC.

M. SCA Investments:

1. Balance Sheet Value (Admitted and Nonadmitted) SCAs (Except 8bi Entities):

SCA Entity	Percentage of SCA Ownership (%)	Gross Amount (\$)	Admitted Amount (\$)	Nonadmitted Amount (\$)
a. SSAP No. 97 8a Entities		—	—	—
b. SSAP No. 97 8b(ii) Entities		—	—	—
c. SSAP No. 97 8b(iii) Entities				
STFC	100	730,347,804	730,347,804	—
Total SSAP No. 97 8b(iii) Entities		730,347,804	730,347,804	—
d. SSAP No. 97 8b(iv) Entities		—	—	—
e. Total SSAP No. 97 8b Entities (except 8bi entities) (b+c+d)	—	730,347,804	730,347,804	—
f. Aggregate Total (a+e)	—	730,347,804	730,347,804	—

11. Debt:

A. In May 2009, the Company borrowed money in the amounts of \$50.0 million and \$20.0 million from State Auto P&C and Milbank, respectively. The principal amount was due in May 2019. The Company refinanced these loans with State Auto P&C and Milbank in May 2019. The principal amount is due in May 2029. At the option of the Company, early repayment may be made. Interest is due semi-annually at a fixed annual interest rate of 4.05%. The total loan interest incurred through September 30, 2022 and 2021, and December 31, 2021 was \$2,120,425, \$2,128,192 and \$2,842,767, respectively.

On September 12, 2020, the Company entered into a Cash Management Advance Agreement (the "CMA") with the Federal Home Loan Bank of Cincinnati (FHLB). The CMA provided the Company with a \$50.0 million one-year line of credit available for general corporate purposes. Draws under the CMA were to be funded at the Company's option of a daily variable rate advance for 90 days or a fixed rate for a term up to 30 days. All advances under the CMA were to be fully secured by a pledge of specific investment securities of the Company. No advances had been made under the CMA when it expired effective September 11, 2021.

On September 12, 2020, the Company entered into a REPO Based Advance Agreement (the "REPO") with the FHLB. The REPO provided the Company with a \$50.0 million one-year line of credit available for general corporate purposes. Draws under the REPO were to be funded at a fixed rate for a term from one day to one year. All advances under the REPO were to be fully secured by a pledge of specific investment securities of the Company. No advances had been made under the REPO when it expired effective September 11, 2021.

B. FHLB Agreements:

1. On January 22, 2019, the Company refinanced its \$19.0 million loan with the FHLB for a period of five years at a fixed rate of 3.16%. This was an interest-only loan with interest payments due monthly and principal due at the maturity date. The loan was repaid on September 21, 2022. The total loan interest incurred through September 30, 2022 and 2021, and December 31, 2021 was \$383,269, \$449,067 and \$600,401, respectively.

On September 2, 2021, the Company refinanced its \$11.5 million loan with the FHLB for one year at a fixed rate of 0.23%. This was an interest-only loan with interest payments due monthly and principal due in full at the maturity date. The loan was repaid on September 2, 2022. The total loan interest incurred through September 30, 2022 and 2021, and December 31, 2021 was \$17,754, \$134,625 and, \$141,280, respectively.

These loans were fully secured by a pledge of specific investment securities of the Company. The table below indicates the amount of the FHLB capital stock purchased, collateral pledged and assets and liabilities related to the agreements with the FHLB.

2. FHLB Capital Stock

a. Aggregate Totals

	Amount (\$)	
	September 30, 2022	December 31, 2021
Membership stock - Class A	—	—
Membership stock - Class B	1,975,694	2,361,730
Activity stock	3,334,106	4,238,970
Excess stock	—	—
Aggregate total	5,309,800	6,600,700
Actual or estimated borrowing capacity as determined by the Company	22,590,937	53,946,351

The borrowing capacity for each security pledged is provided by FHLB, which is based on a factor of the market value based on the type of investment. Available borrowing capacity is determined by taking the total borrowing capacity provided by FHLB and reducing it by the Company's current total borrowing.

11. Debt (continued):

b. Membership Stock (Class A and B) Eligible for Redemption

	Amount (\$)	
	Class A Stock	Class B Stock
Current year total	—	1,975,694
Not eligible for redemption	—	1,975,694
Less than 6 months	—	—
6 months to less than 1 year	—	—
1 year to less than 3 years	—	—
3 to 5 years	—	—

3. Collateral Pledged to FHLB

a. Amount Pledged

General account	Amount (\$)	
	September 30, 2022	December 31, 2021
Fair value	23,515,805	59,022,738
Carrying value	28,037,300	55,994,404
Aggregate total borrowing	—	31,671,710

b. Maximum Amount Pledged

General account	Amount (\$)	
	September 30, 2022	December 31, 2021
Fair value	23,515,805	59,022,738
Carrying value	28,037,300	55,994,404
Aggregate total borrowing	—	31,671,710

4. Borrowing from FHLB

a. Amount Borrowed

General account	Amount (\$)	
	September 30, 2022	December 31, 2021
Debt	—	31,671,710
Funding agreements	—	—
Other	—	—
Aggregate total	—	31,671,710

b. Maximum Amount Borrowed

General account	Amount (\$)
	September 30, 2022
Debt	—
Funding agreements	—
Other	—
Aggregate total	—

c. The Company has no prepayment obligations under its debt arrangement.

12. Retirement Plans, Deferred Compensation, Postretirement Benefits and Compensated Absences and Other Postretirement Benefit Plans:

A. Defined Benefit Plan:

4. The amount of net periodic benefit cost recognized:

State Auto P&C sponsors a defined benefit plan and a postretirement health care benefit plan.

13. Capital and Surplus, Shareholders' Dividend Restrictions and Quasi-Reorganizations:

A. Capital Stock Authorized, Issued, and Outstanding as of the Balance Sheet Date:

The Company has 1,000 shares of common stock authorized with a par value of \$5,000 per share.

D. Dates and Amounts of Dividends Paid:

On August 17,2022, the Board of Directors of State Auto Holdings, Inc. declared a \$7,500,000 ordinary stockholders dividend to be paid to the Company. This dividend was paid in cash on September 30, 2022.

On November 12, 2021, the Board of Directors of Rockhill Holding Company declared a \$400,000 ordinary stockholders dividend to be paid to the Company. This dividend was paid in cash on December 30, 2021.

14. Liabilities, Contingencies and Assessments:

No substantial change from December 31, 2021.

15. Leases:

No substantial change from December 31, 2021.

16. Information about Financial Instruments with Off-Balance-Sheet Risk and Financial Instruments with Concentrations of Credit Risk:

No substantial change from December 31, 2021.

STATEMENT AS OF SEPTEMBER 30, 2022 OF THE STATE AUTOMOBILE MUTUAL INSURANCE COMPANY

17. Sale, Transfer and Servicing of Financial Instruments and Extinguishments of Liabilities:

No substantial change from December 31, 2021.

18. Gain or Loss to the Reporting Entity from Uninsured A&H Plans and the Uninsured Portion of Partially Insured Plans:

No substantial change from December 31, 2021.

19. Direct Premium Written/Produced by Managing General Agents/Third Party Administrators:

No substantial change from December 31, 2021.

20. Fair Value Measurement:

A. Inputs Used for Assets and Liabilities Measured and Reported at Fair Value or Net Asset Value:

The Company has categorized its assets and liabilities that are reported on the balance sheet at fair value into the three-level fair value hierarchy as reflected in the table below. The three-level fair value hierarchy is based on the degree of subjectivity inherent in the valuation method by which fair value was determined. The three levels are defined as follows.

Level 1 - Quoted Prices in Active Markets for Identical Assets and Liabilities: This category, for items measured at fair value on a recurring basis, includes exchange-traded common stocks and other invested assets. The estimated fair value of the equity securities within this category are based on unadjusted market prices provided by a nationally recognized pricing service and are thus classified as level 1. The Company's other invested assets include an investment that consists primarily of holdings in publicly-traded mutual funds. The Company believes that its prices for these publicly-traded mutual funds, which are based on an observable market price for an identical asset in an active market, reflect their fair values.

Level 2 - Significant Other Observable Inputs: The Company has no assets or liabilities measured and reported at fair value in this category.

Level 3 - Significant Unobservable Inputs: This category, for items measured at fair value on a recurring basis, includes common stocks that are not publicly traded. The estimated fair value of the equity securities within this category are based on per share cost and are thus classified as level 3. The Company holds equity securities as a member of Federal Home Loan Bank of Cincinnati (FHLB), which is not publicly traded.

Net asset value (NAV): This category, for items measured at net asset value, includes other invested assets. The Company's other invested assets include one international private equity fund, Silchester International Partners Ltd. ("the fund") that invests in equity securities of foreign issuers and is managed by a third party investment manager. The estimated fair value of the fund within this category is based on net asset value obtained from a third party trustee statement.

1. The Company has categorized its assets that are measured at fair value or net asset value into the three-level fair value hierarchy as reflected in the following table. The Company has no liabilities that are measured and reported at fair value. See item 3 below for a discussion of the Company's transfer policy. See item 4 below for a discussion of Level 2 and Level 3 assets.

Fair Value Measurements at Reporting Date	Amount (\$)				
Description for each class of asset or liability	(Level 1)	(Level 2)	(Level 3)	Net Asset Value (NAV)	Total
a. Assets at fair value					
Common stock					
Industrial and misc	—	—	5,309,800	—	5,309,800
Total common stocks	—	—	5,309,800	—	5,309,800
Other invested assets					
Any other class of asset	—			—	—
Partnership interests	—	—	—	—	—
Total other invested assets	—	—	—	—	—
Total assets at fair value/(NAV)	—	—	5,309,800	—	5,309,800

2. Fair Value Measurements in (Level 3) of the Fair Value Hierarchy:

Description	Amount (\$)									
	Beginning Balance at 1/1/2022	Transfers into Level 3	Transfers out of Level 3	Total gains and (losses) included in Net Income	Total gains and (losses) included in Surplus	Purchases	Issuances	Sales	Settlements	Ending Balance at 9/30/2022
Assets:										
Common stock										
Industrial and misc	6,600,700	—	—	—		—	—	(1,290,900)	—	5,309,800
Total assets	6,600,700	—	—	—	—	—	—	(1,290,900)	—	5,309,800

3. Transfers between level categorizations may occur due to changes in the availability of market observable inputs. Transfers in and out of level categorizations are reported as having occurred at the beginning of the quarter in which the transfer occurred. There were no transfers between level categorizations as of September 30, 2022.
4. As of September 30, 2022, and December 31, 2021, the reported fair value of the Company's investment in Level 3 equity securities of FHLB, was 5,309,800 and \$6,600,700, respectively. See item A above for a discussion of valuation techniques and inputs used in determining fair value. Since these equity securities are not publicly traded, they are classified as Level 3.
5. The Company has no derivative assets or liabilities.

B. Other Fair Value Disclosures: Not applicable.

C. Fair Values for All Financial Instruments by levels 1, 2, and 3:

See Item A for a discussion on valuation techniques for assets and liabilities that are measured and reported at fair value or net asset value.

The Company utilizes information provided by a nationally recognized pricing service to estimate fair value measurements for its fixed maturities.

The Company estimates the fair value of the notes payable to affiliates using market quotations for U.S. treasury securities with similar maturity dates and applies an appropriate credit spread.

STATEMENT AS OF SEPTEMBER 30, 2022 OF THE STATE AUTOMOBILE MUTUAL INSURANCE COMPANY

20. Fair Value Measurement (continued):

September 30, 2022:

Type of Financial Instrument	Amount (\$)						
	Aggregate Fair Value	Admitted Assets	(Level 1)	(Level 2)	(Level 3)	Net Asset Value (NAV)	Not Practicable (Carrying Value)
Bonds	79,748,973	96,281,681	8,765,140	70,983,834	—	—	—
Common stocks	5,309,800	5,309,800	—	—	5,309,800	—	—
Other invested assets	10,233,014	10,233,014	—	—	—		10,233,014
Cash, cash equivalents, and short-term investments	(8,806,186)	(8,806,186)	(8,827,753)	21,567	—	—	—
Receivables for Securities	(399,285)	(399,285)	(399,285)	—	—	—	—
Borrowed money	65,860,765	70,000,000	—	—	65,860,765	—	—

December 31, 2021:

Type of Financial Instrument	Amount (\$)						
	Aggregate Fair Value	Admitted Assets	(Level 1)	(Level 2)	(Level 3)	Net Asset Value (NAV)	Not Practicable (Carrying Value)
Bonds	413,565,806	409,348,997		413,565,806		—	—
Common stocks	72,989,415	72,989,415	66,388,715	—	6,600,700	—	—
Other invested assets	46,745,303	46,745,303	8,539,965	—	—	28,405,232	9,800,106
Cash, cash equivalents, and short-term investments	66,672,121	66,672,121	51,672,246	14,999,875	—	—	—
Receivables for Securities	3,132	3,132	3,132				
Borrowed money	106,567,564	100,500,000	—	76,062,542	30,505,022	—	—

D. Financial Instruments for which Not Practical to Estimate Fair Values:

Type of Class of Financial Instrument	Carrying Value	Effective Interest Rate	Maturity Date	Explanation
Joint venture or partnership interests that have underlying characteristics of common stock - unaffiliated - Stonehenge Opportunity Fund III, LLC	378,446	—	N/A	Investment value is based on 06/30/2022 statement provided by Stonehenge III with adjustments for activity incurred since the date of statement.
Joint venture or partnership interests that have underlying characteristics of common stock - unaffiliated - Stonehenge Opportunity Fund IV, LLC	8,927,322	—	N/A	Investment value is based on 06/30/2022 statement provided by Stonehenge IV with adjustments for activity incurred since the date of statement
Joint venture or partnership interests that have underlying characteristics of common stock - unaffiliated - Rev1 Ventures for Columbus Fund 1, LLC	429,520	—	N/A	Investment value is based on 06/30/2022 statement provided by Rev1 Ventures with adjustments for activity incurred since the date of statement.
Joint venture or partnership interests that have underlying characteristics of other - unaffiliated - NCT Ventures Fund I LP	497,700	—	N/A	Investment value is based on 06/30/2022 statement provided by NCT Ventures with adjustments for activity incurred since the date of statement.

E. Financial Instruments using the NAV practical expedient:

This category, for items measured at net asset value, includes other invested assets. The Company’s other invested assets included one international private equity fund, Silchester International Partners Ltd. (“the fund”) that invests in equity securities of foreign issuers and is managed by a third party investment manager. The estimated fair value of the fund within this category is based on net asset value obtained from a third party trustee statement. The Company employs procedures to assess the reasonableness of the fair value of the fund including obtaining and reviewing the fund’s audited financial statements. As of December 31, 2021, the reported net asset value of the Company’s investment in the fund was \$28,405,232. There was no unfunded commitment related to the fund as of December 31, 2021. During the second quarter of 2022, the Company redeemed all of its investment in the fund at net asset value per share with the appropriate prior written notice. In accordance with SSAP No. 110R - Fair Value, this investment is measured at fair value using the net asset value per share practical expedient and has not been classified in the fair value hierarchy.

21. Other Items:

C. Other Disclosures:

Florida Statute 625.012(5) requires that the Company disclose the amount of Agents’ balances or uncollected premiums and the premiums collected from “controlled” or “controlling” persons. The Company had \$7,214,995 and \$167,264,024 of uncollected premiums as of September 30, 2022 and December 31, 2021, respectively. No premiums were collected from “controlled” or “controlling persons” during the year-to-date periods ended September 30, 2022 and December 31, 2021.

Pursuant to Florida Statutes 624.424, the Company is required to disclose any credit in loss reserves taken for anticipated recoveries from the Special Disability Trust Fund. The Company took no credits in the determination of its loss reserves for the periods ended September 30, 2022 and December 31, 2021. Additionally, the Special Disability Trust Fund made no assessments and issued no payments to the Company during the year-to-date periods ended September 30, 2022 and December 31, 2021.

22. Events Subsequent:

Subsequent events have been considered through November 8, 2022 for the statutory statements issued on November 8, 2022.

23. Reinsurance:

No substantial change from December 31, 2021.

24. Retrospectively Rated Contracts and Contracts Subject to Redetermination:

No substantial change from December 31, 2021.

25. Changes in Incurred Losses and Loss Adjustment Expenses:

A. The Company has no net exposure to changes in incurred losses and loss adjustment expenses. Refer to Note 26 for details regarding the Liberty Mutual Second Amended and Restated Intercompany Reinsurance Agreement.

STATEMENT AS OF SEPTEMBER 30, 2022 OF THE STATE AUTOMOBILE MUTUAL INSURANCE COMPANY

26. Intercompany Pooling Arrangements:

The Company previously participated in the State Auto intercompany pooling agreement which was commuted effective April 1, 2022. Also, effective April 1, 2022, and immediately after the commutation of the State Auto pooling agreement, the existing Liberty Mutual Second Amended and Restated Intercompany Reinsurance Agreement ("Reinsurance Agreement") was amended to add the Company as a party of the agreement. The Company's participation percentage in the Liberty Mutual agreement is 0.0%.

	Pool Participant	NAIC Company Code	Pooling Participation Percentages	Lines of Business
Lead Company:	Liberty Mutual Insurance Company	23043	50.0%	All Lines
Affiliated Pool Companies:	Peerless Insurance Company	24198	20.0%	All Lines
	Employers Insurance Company of Wausau	21458	8.0%	All Lines
	Liberty Mutual Fire Insurance Company	23035	8.0%	All Lines
	The Ohio Casualty Insurance Company	24074	8.0%	All Lines
	Safeco Insurance Company of America	24740	6.0%	All Lines
	American Compensation Insurance Company	45934	0.0%	All Lines
	American Economy Insurance Company	19690	0.0%	All Lines
	America First Insurance Company	12696	0.0%	All Lines
	America Fire and Casualty Company	24066	0.0%	All Lines
	America First Lloyd's Insurance Company	11526	0.0%	All Lines
	American States Insurance Company	19712	0.0%	All Lines
	American States Lloyd's Insurance Company	31933	0.0%	All Lines
	American States Preferred Insurance Company	37214	0.0%	All Lines
	Bloomington Compensation Insurance Company	12311	0.0%	All Lines
	Colorado Casualty Insurance Company	41785	0.0%	All Lines
	Consolidated Insurance Company	22640	0.0%	All Lines
	Excelsior Insurance Company	11045	0.0%	All Lines
	First National Insurance Company of America	24724	0.0%	All Lines
	The First Liberty Insurance Company	33588	0.0%	All Lines
	General Insurance Company of America	24732	0.0%	All Lines
	Golden Eagle Insurance Corporation	10836	0.0%	All Lines
	Hawkeye-Security Insurance Company	36919	0.0%	All Lines
	Insurance Company of Illinois	26700	0.0%	All Lines
	Indiana Insurance Company	22659	0.0%	All Lines
	Ironshore Indemnity Inc.	23647	0.0%	All Lines
	Ironshore Specialty Insurance Company	25445	0.0%	All Lines
	Liberty Insurance Company	42404	0.0%	All Lines
	Liberty Insurance Underwriters, Inc.	19917	0.0%	All Lines
	Liberty County Mutual Insurance Company	19544	0.0%	All Lines
	LM General Insurance Company	36447	0.0%	All Lines
	Liberty Lloyd's of Texas Insurance Company	11041	0.0%	All Lines
	LM Insurance Corporation	33600	0.0%	All Lines
	Liberty Mutual Mid-Atlantic Insurance Company	14486	0.0%	All Lines
	Liberty Mutual Personal Insurance Company	12484	0.0%	All Lines
	Liberty Northwest Insurance Company	41939	0.0%	All Lines
	Liberty Personal Insurance Company	11746	0.0%	All Lines
	Liberty Surplus Insurance Corporation	10725	0.0%	All Lines
	Meridian Security Insurance Company	23353	0.0%	All Lines
	Mid-American Fire & Casualty Company	23507	0.0%	All Lines
	Montgomery Mutual Insurance Company	14613	0.0%	All Lines
	The Midwestern Indemnity Company	23515	0.0%	All Lines
	Milbank Insurance Company	41653	0.0%	All Lines
	National Insurance Association	27944	0.0%	All Lines
	The Netherlands Insurance Company	24171	0.0%	All Lines
	North Pacific Insurance Company	23892	0.0%	All Lines
	Ohio Security Insurance Company	24082	0.0%	All Lines
	Oregon Automobile Insurance Company	23922	0.0%	All Lines
	Patrons Mutual Insurance Company of Connecticut	14923	0.0%	All Lines
	Peerless Indemnity Insurance Company	18333	0.0%	All Lines
	Plaza Insurance Company	30945	0.0%	All Lines
	Rockhill Insurance Company	28053	0.0%	All Lines
	Safeco Insurance Company of Illinois	39012	0.0%	All Lines
	Safeco Insurance Company of Indiana	11215	0.0%	All Lines
	Safeco Insurance Company of Oregon	11071	0.0%	All Lines
	Safeco Lloyds Insurance Company	11070	0.0%	All Lines
	Safeco National Insurance Company	24759	0.0%	All Lines
	Safeco Surplus Lines Insurance Company	11100	0.0%	All Lines
	State Auto Insurance Company of Ohio	11017	0.0%	All Lines
	State Auto Insurance Company of Wisconsin	31755	0.0%	All Lines
	State Automobile Mutual Insurance Company	25135	0.0%	All Lines
	State Auto Property & Casualty Insurance Company	25127	0.0%	All Lines
	Wausau Business Insurance Company	26069	0.0%	All Lines
	Wausau General Insurance Company	26425	0.0%	All Lines
	Wausau Underwriters Insurance Company	26042	0.0%	All Lines
	West American Insurance Company	44393	0.0%	All Lines
100% Quota Share Affiliated Companies: . . .	LM Property and Casualty Insurance Company	32352	0.0%	All Lines

Under the terms of the Reinsurance Agreement, the Company cedes 100% of its underwriting activity to the lead company, Liberty Mutual Insurance Company ("LMIC").

26. Intercompany Pooling Arrangements (continued):

The amount of ceded reinsurance written premiums between the Company and LMIC at September 30, 2022 is \$901,983,451.

The amount of ceded reinsurance loss and loss adjustment expenses between the Company and LMIC at September 30, 2022 is \$283,557,782.

The amount of all other intercompany amounts due to the Company from LMIC at September 30, 2022 is \$204,769,066.

27. Structured Settlements:

No substantial change from December 31, 2021.

28. Health Care Receivables:

No substantial change from December 31, 2021.

29. Participating Policies:

No substantial change from December 31, 2021.

30. Premium Deficiency Reserves:

No substantial change from December 31, 2021.

31. High Deductibles:

No substantial change from December 31, 2021.

32. Discounting of Liabilities for Unpaid Losses or Unpaid Loss Adjustment Expenses:

No substantial change from December 31, 2021.

33. Asbestos/Environmental Reserves:

The Company has no net exposure to asbestos and environmental claims. Refer to Note 26 for details regarding the Liberty Mutual Second Amended and Restated Intercompany Reinsurance Agreement.

34. Subscriber Savings Accounts:

The Company is not a reciprocal insurance company.

35. Multiple Peril Crop Insurance:

No substantial change from December 31, 2021.

36. Financial Guaranty Insurance:

No substantial change from December 31, 2021.

STATEMENT AS OF SEPTEMBER 30, 2022 OF THE STATE AUTOMOBILE MUTUAL INSURANCE COMPANY

GENERAL INTERROGATORIES

PART 1 - COMMON INTERROGATORIES

GENERAL

- 1.1

Did the reporting entity experience any material transactions requiring the filing of Disclosure of Material Transactions with the State of Domicile, as required by the Model Act?

Yes [] No [X]
- 1.2

If yes, has the report been filed with the domiciliary state?

Yes [] No []
- 2.1

Has any change been made during the year of this statement in the charter, by-laws, articles of incorporation, or deed of settlement of the reporting entity?

Yes [] No [X]
- 2.2

If yes, date of change:
- 3.1

Is the reporting entity a member of an Insurance Holding Company System consisting of two or more affiliated persons, one or more of which is an insurer?

If yes, complete Schedule Y, Parts 1 and 1A.

Yes [X] No []
- 3.2

Have there been any substantial changes in the organizational chart since the prior quarter end?

Yes [] No [X]
- 3.3

If the response to 3.2 is yes, provide a brief description of those changes.
- 3.4

Is the reporting entity publicly traded or a member of a publicly traded group?

Yes [] No [X]
- 3.5

If the response to 3.4 is yes, provide the CIK (Central Index Key) code issued by the SEC for the entity/group.
- 4.1

Has the reporting entity been a party to a merger or consolidation during the period covered by this statement?

Yes [] No [X]
- 4.2

If yes, provide the name of the entity, NAIC Company Code, and state of domicile (use two letter state abbreviation) for any entity that has ceased to exist as a result of the merger or consolidation.
- | | | |
|----------------|-------------------|-------------------|
| 1 | 2 | 3 |
| Name of Entity | NAIC Company Code | State of Domicile |
| | | |
5.

If the reporting entity is subject to a management agreement, including third-party administrator(s), managing general agent(s), attorney-in-fact, or similar agreement, have there been any significant changes regarding the terms of the agreement or principals involved?

If yes, attach an explanation.

Yes [] No [X] N/A []
- 6.1

State as of what date the latest financial examination of the reporting entity was made or is being made.

12/31/2018
- 6.2

State the as of date that the latest financial examination report became available from either the state of domicile or the reporting entity. This date should be the date of the examined balance sheet and not the date the report was completed or released.

12/31/2018
- 6.3

State as of what date the latest financial examination report became available to other states or the public from either the state of domicile or the reporting entity. This is the release date or completion date of the examination report and not the date of the examination (balance sheet date).

01/09/2020
- 6.4

By what department or departments?
Ohio Department of Insurance
- 6.5

Have all financial statement adjustments within the latest financial examination report been accounted for in a subsequent financial statement filed with Departments?

Yes [] No [] N/A []
- 6.6

Have all of the recommendations within the latest financial examination report been complied with?

Yes [] No [] N/A []
- 7.1

Has this reporting entity had any Certificates of Authority, licenses or registrations (including corporate registration, if applicable) suspended or revoked by any governmental entity during the reporting period?

Yes [] No [X]
- 7.2

If yes, give full information:
- 8.1

Is the company a subsidiary of a bank holding company regulated by the Federal Reserve Board?

Yes [] No [X]
- 8.2

If response to 8.1 is yes, please identify the name of the bank holding company.
- 8.3

Is the company affiliated with one or more banks, thrifts or securities firms?

Yes [] No [X]
- 8.4

If response to 8.3 is yes, please provide below the names and location (city and state of the main office) of any affiliates regulated by a federal regulatory services agency [i.e. the Federal Reserve Board (FRB), the Office of the Comptroller of the Currency (OCC), the Federal Deposit Insurance Corporation (FDIC) and the Securities Exchange Commission (SEC)] and identify the affiliate's primary federal regulator.

1	2	3	4	5	6
Affiliate Name	Location (City, State)	FRB	OCC	FDIC	SEC

GENERAL INTERROGATORIES

- 9.1

Are the senior officers (principal executive officer, principal financial officer, principal accounting officer or controller, or persons performing similar functions) of the reporting entity subject to a code of ethics, which includes the following standards?
(a) Honest and ethical conduct, including the ethical handling of actual or apparent conflicts of interest between personal and professional relationships;
(b) Full, fair, accurate, timely and understandable disclosure in the periodic reports required to be filed by the reporting entity;
(c) Compliance with applicable governmental laws, rules and regulations;
(d) The prompt internal reporting of violations to an appropriate person or persons identified in the code; and
(e) Accountability for adherence to the code.

Yes ☒ No ☐
- 9.11

If the response to 9.1 is No, please explain:
- 9.2

Has the code of ethics for senior managers been amended?

Yes ☐ No ☒
- 9.21

If the response to 9.2 is Yes, provide information related to amendment(s).
- 9.3

Have any provisions of the code of ethics been waived for any of the specified officers?

Yes ☐ No ☒
- 9.31

If the response to 9.3 is Yes, provide the nature of any waiver(s).

FINANCIAL

- 10.1

Does the reporting entity report any amounts due from parent, subsidiaries or affiliates on Page 2 of this statement?

Yes ☒ No ☐
- 10.2

If yes, indicate any amounts receivable from parent included in the Page 2 amount:

\$ 204,769,066

INVESTMENT

- 11.1

Were any of the stocks, bonds, or other assets of the reporting entity loaned, placed under option agreement, or otherwise made available for use by another person? (Exclude securities under securities lending agreements.)

Yes ☐ No ☒
- 11.2

If yes, give full and complete information relating thereto:
12.

Amount of real estate and mortgages held in other invested assets in Schedule BA:

\$ 0
13.

Amount of real estate and mortgages held in short-term investments:

\$ 0
- 14.1

Does the reporting entity have any investments in parent, subsidiaries and affiliates?

Yes ☒ No ☐
- 14.2

If yes, please complete the following:

	1	2
	Prior Year-End Book/Adjusted Carrying Value	Current Quarter Book/Adjusted Carrying Value
14.21 Bonds	\$ 0	\$ 0
14.22 Preferred Stock	\$ 0	\$ 0
14.23 Common Stock	\$ 664,768,688	\$ 869,257,428
14.24 Short-Term Investments	\$ 0	\$ 0
14.25 Mortgage Loans on Real Estate	\$ 0	\$ 0
14.26 All Other	\$ 0	\$ 0
14.27 Total Investment in Parent, Subsidiaries and Affiliates (Subtotal Lines 14.21 to 14.26)	\$ 664,768,688	\$ 869,257,428
14.28 Total Investment in Parent included in Lines 14.21 to 14.26 above	\$ 0	\$ 0
- 15.1

Has the reporting entity entered into any hedging transactions reported on Schedule DB?

Yes ☐ No ☒
- 15.2

If yes, has a comprehensive description of the hedging program been made available to the domiciliary state?
If no, attach a description with this statement.

Yes ☐ No ☐ N/A ☐
16.

For the reporting entity's security lending program, state the amount of the following as of the current statement date:

16.1

Total fair value of reinvested collateral assets reported on Schedule DL, Parts 1 and 2.

\$ 0

16.2

Total book adjusted/carrying value of reinvested collateral assets reported on Schedule DL, Parts 1 and 2

\$ 0

16.3

Total payable for securities lending reported on the liability page.

\$ 0

STATEMENT AS OF SEPTEMBER 30, 2022 OF THE STATE AUTOMOBILE MUTUAL INSURANCE COMPANY

GENERAL INTERROGATORIES

17. Excluding items in Schedule E - Part 3 - Special Deposits, real estate, mortgage loans and investments held physically in the reporting entity's offices, vaults or safety deposit boxes, were all stocks, bonds and other securities, owned throughout the current year held pursuant to a custodial agreement with a qualified bank or trust company in accordance with Section 1, III - General Examination Considerations, F. Outsourcing of Critical Functions, Custodial or Safekeeping Agreements of the NAIC Financial Condition Examiners Handbook? Yes [X] No []
- 17.1 For all agreements that comply with the requirements of the NAIC Financial Condition Examiners Handbook, complete the following:

1 Name of Custodian(s)	2 Custodian Address
JP Morgan Chase	1 Chase Manhattan Plaza, New York, NY 10005
The Northern Trust Company	50 S. LaSalle Street, B-10, Chicago, Illinois 60675

- 17.2 For all agreements that do not comply with the requirements of the NAIC Financial Condition Examiners Handbook, provide the name, location and a complete explanation:

1 Name(s)	2 Location(s)	3 Complete Explanation(s)
Federal Home Loan Bank	Cincinnati, OH	Investment required as a provision of obtaining loans

- 17.3 Have there been any changes, including name changes, in the custodian(s) identified in 17.1 during the current quarter? Yes [] No [X]
- 17.4 If yes, give full information relating thereto:

1 Old Custodian	2 New Custodian	3 Date of Change	4 Reason

- 17.5 Investment management – Identify all investment advisors, investment managers, broker/dealers, including individuals that have the authority to make investment decisions on behalf of the reporting entity. For assets that are managed internally by employees of the reporting entity, note as such. ["...that have access to the investment accounts"; "...handle securities"]

1 Name of Firm or Individual	2 Affiliation
Liberty Mutual Group Asset Management Inc.	A.....
Liberty Mutual Investment Advisors, LLC	A.....
Brown Brothers Harriman	U.....
Silchester International Investors, LLP	U.....

- 17.5097 For those firms/individuals listed in the table for Question 17.5, do any firms/individuals unaffiliated with the reporting entity (i.e. designated with a "U") manage more than 10% of the reporting entity's invested assets?..... Yes [] No [X]
- 17.5098 For firms/individuals unaffiliated with the reporting entity (i.e. designated with a "U") listed in the table for Question 17.5, does the total assets under management aggregate to more than 50% of the reporting entity's invested assets?..... Yes [] No [X]

- 17.6 For those firms or individuals listed in the table for 17.5 with an affiliation code of "A" (affiliated) or "U" (unaffiliated), provide the information for the table below.

1	2	3	4	5
Central Registration Depository Number	Name of Firm or Individual	Legal Entity Identifier (LEI)	Registered With	Investment Management Agreement (IMA) Filed
N/A	Liberty Mutual Group Asset Management Inc.	N/A	N/A	DS.....
N/A	Liberty Mutual Investment Advisors, LLC	N/A	N/A	DS.....
131394	Silchester International Investors, LLP	NONE	SEC	NO.....
	Brown Brothers Harriman	5493006KMX1VFTPYW14	No	NO.....

- 18.1 Have all the filing requirements of the Purposes and Procedures Manual of the NAIC Investment Analysis Office been followed? Yes [X] No []
- 18.2 If no, list exceptions:

19. By self-designating 5GI securities, the reporting entity is certifying the following elements for each self-designated 5GI security:
- a. Documentation necessary to permit a full credit analysis of the security does not exist or an NAIC CRP credit rating for an FE or PL security is not available.
 - b. Issuer or obligor is current on all contracted interest and principal payments.
 - c. The insurer has an actual expectation of ultimate payment of all contracted interest and principal.
- Has the reporting entity self-designated 5GI securities? Yes [] No [X]

20. By self-designating PLGI securities, the reporting entity is certifying the following elements of each self-designated PLGI security:
- a. The security was purchased prior to January 1, 2018.
 - b. The reporting entity is holding capital commensurate with the NAIC Designation reported for the security.
 - c. The NAIC Designation was derived from the credit rating assigned by an NAIC CRP in its legal capacity as a NRSRO which is shown on a current private letter rating held by the insurer and available for examination by state insurance regulators.
 - d. The reporting entity is not permitted to share this credit rating of the PL security with the SVO.
- Has the reporting entity self-designated PLGI securities? Yes [] No [X]

21. By assigning FE to a Schedule BA non-registered private fund, the reporting entity is certifying the following elements of each self-designated FE fund:
- a. The shares were purchased prior to January 1, 2019.
 - b. The reporting entity is holding capital commensurate with the NAIC Designation reported for the security.
 - c. The security had a public credit rating(s) with annual surveillance assigned by an NAIC CRP in its legal capacity as an NRSRO prior to January 1, 2019.
 - d. The fund only or predominantly holds bonds in its portfolio.
 - e. The current reported NAIC Designation was derived from the public credit rating(s) with annual surveillance assigned by an NAIC CRP in its legal capacity as an NRSRO.
 - f. The public credit rating(s) with annual surveillance assigned by an NAIC CRP has not lapsed.
- Has the reporting entity assigned FE to Schedule BA non-registered private funds that complied with the above criteria? Yes [] No [X]

STATEMENT AS OF SEPTEMBER 30, 2022 OF THE STATE AUTOMOBILE MUTUAL INSURANCE COMPANY

GENERAL INTERROGATORIES

PART 2 - PROPERTY & CASUALTY INTERROGATORIES

1. If the reporting entity is a member of a pooling arrangement, did the agreement or the reporting entity's participation change? Yes [☒] No [☐] N/A [☐]
If yes, attach an explanation.

The Company previously participated in a quota share intercompany pooling agreement with its State Auto affiliates. The commutation of the State Auto intercompany pooling agreement was effective April 1, 2022. Also, effective April 1, 2022, and immediately after the commutation of the State Auto pooling agreement, the existing Liberty Mutual Second Amended and Restated Intercompany Reinsurance Pooling Agreement was amended to add the Company as a party of the agreement. The Companys participation percentage in the Liberty Mutual agreement is 0.0%.

2. Has the reporting entity reinsured any risk with any other reporting entity and agreed to release such entity from liability, in whole or in part, from any loss that may occur on the risk, or portion thereof, reinsured? Yes [☐] No [☒]
If yes, attach an explanation.

3.1 Have any of the reporting entity's primary reinsurance contracts been canceled? Yes [☒] No [☐]

3.2 If yes, give full and complete information thereto.
Subsequent the to acquisition of the Company by Liberty Mutual Insurance Company, the existing reinsurance agreements expired and were non-renewed effective June 30, 2022. The Company is now covered under Liberty Mutual's reinsurance contracts.

4.1 Are any of the liabilities for unpaid losses and loss adjustment expenses other than certain workers' compensation tabular reserves (see Annual Statement Instructions pertaining to disclosure of discounting for definition of " tabular reserves") discounted at a rate of interest greater than zero? Yes [☐] No [☒]

4.2 If yes, complete the following schedule:

			TOTAL DISCOUNT				DISCOUNT TAKEN DURING PERIOD			
1	2	3	4	5	6	7	8	9	10	11
Line of Business	Maximum Interest	Discount Rate	Unpaid Losses	Unpaid LAE	IBNR	TOTAL	Unpaid Losses	Unpaid LAE	IBNR	TOTAL
TOTAL			0	0	0	0	0	0	0	0

5. Operating Percentages:

5.1 A&H loss percent0.000 %

5.2 A&H cost containment percent0.000 %

5.3 A&H expense percent excluding cost containment expenses0.000 %

6.1 Do you act as a custodian for health savings accounts? Yes [☐] No [☒]

6.2 If yes, please provide the amount of custodial funds held as of the reporting date\$.....0

6.3 Do you act as an administrator for health savings accounts? Yes [☐] No [☒]

6.4 If yes, please provide the balance of the funds administered as of the reporting date\$.....0

7. Is the reporting entity licensed or chartered, registered, qualified, eligible or writing business in at least two states? Yes [☒] No [☐]

7.1 If no, does the reporting entity assume reinsurance business that covers risks residing in at least one state other than the state of domicile of the reporting entity? Yes [☐] No [☐]

STATEMENT AS OF SEPTEMBER 30, 2022 OF THE STATE AUTOMOBILE MUTUAL INSURANCE COMPANY

SCHEDULE F - CEDED REINSURANCE

Showing All New Reinsurers - Current Year to Date

[illegible]

SCHEDULE T - EXHIBIT OF PREMIUMS WRITTEN

Current Year to Date - Allocated by States and Territories

			1 Active Status (a)	Direct Premiums Written		Direct Losses Paid (Deducting Salvage)		Direct Losses Unpaid	
				2 Current Year To Date	3 Prior Year To Date	4 Current Year To Date	5 Prior Year To Date	6 Current Year To Date	7 Prior Year To Date
States, etc.									
1.	Alabama	AL	L	20,213,103	11,143,984	3,982,297	4,299,770	9,326,010	5,172,345
2.	Alaska	AK	L	0	0	0	0	0	0
3.	Arizona	AZ	L	20,736,258	16,614,763	11,169,880	5,032,140	12,655,615	7,011,427
4.	Arkansas	AR	L	23,021,270	17,467,259	10,076,613	6,347,192	12,234,755	7,852,689
5.	California	CA	Q	0	0	0	0	0	0
6.	Colorado	CO	L	14,671,934	10,370,555	5,523,777	4,084,624	9,518,332	4,549,382
7.	Connecticut	CT	L	27,418,398	23,282,759	17,285,402	10,892,826	17,806,996	11,382,030
8.	Delaware	DE	L	216,412	192,215	91,913	26,429	495,415	428,028
9.	District of Columbia	DC	L	233,209	217,969	24,796	(285,082)	494,786	401,996
10.	Florida	FL	L	423,690	386,501	50,772	128,397	696,842	761,286
11.	Georgia	GA	L	26,621,399	19,140,353	8,851,344	6,301,351	26,966,942	18,181,249
12.	Hawaii	HI	L	0	0	0	0	0	0
13.	Idaho	ID	L	0	0	0	0	(2)	(29)
14.	Illinois	IL	L	22,172,679	15,172,949	9,780,291	9,234,153	23,359,564	19,071,315
15.	Indiana	IN	L	17,884,456	15,700,055	10,326,817	6,881,868	15,769,487	12,772,591
16.	Iowa	IA	L	5,450,073	3,583,726	7,014,208	1,293,983	7,147,266	4,574,237
17.	Kansas	KS	L	29,238,758	24,879,701	20,387,692	9,845,415	12,114,996	7,206,349
18.	Kentucky	KY	L	17,306,956	15,677,396	10,142,544	4,649,165	11,697,426	10,658,591
19.	Louisiana	LA	L	0	0	0	0	(38)	106
20.	Maine	ME	L	0	0	0	0	0	0
21.	Maryland	MD	L	22,966,602	20,221,912	9,179,035	8,175,252	24,058,173	19,742,399
22.	Massachusetts	MA	L	6,844,490	5,266,513	2,947,601	875,210	5,958,909	2,230,257
23.	Michigan	MI	L	18,966,455	18,660,830	12,680,563	9,841,951	57,445,026	53,120,094
24.	Minnesota	MN	L	18,399,818	13,785,169	16,804,353	4,135,875	16,292,819	7,258,874
25.	Mississippi	MS	L	18,764,401	13,177,575	8,579,513	6,017,464	11,457,752	8,450,251
26.	Missouri	MO	L	58,173,696	46,552,913	31,009,877	21,712,612	22,172,130	15,832,316
27.	Montana	MT	L	0	0	0	0	0	0
28.	Nebraska	NE	L	0	0	0	0	0	4
29.	Nevada	NV	L	(59,814)	0	4,326	0	25,562	0
30.	New Hampshire	NH	L	0	0	0	0	0	0
31.	New Jersey	NJ	L	0	0	0	0	(6)	16
32.	New Mexico	NM	L	0	0	0	0	0	0
33.	New York	NY	L	0	0	0	46,896	0	0
34.	North Carolina	NC	L	21,879,123	15,703,727	9,633,047	8,924,053	11,028,932	8,746,346
35.	North Dakota	ND	L	14,829,084	12,655,454	6,248,378	6,120,427	5,586,713	3,848,479
36.	Ohio	OH	L	53,496,904	55,116,526	32,413,253	24,707,883	57,229,114	36,206,317
37.	Oklahoma	OK	L	8,909,102	7,425,298	3,303,824	2,891,722	5,541,733	2,383,742
38.	Oregon	OR	L	0	0	0	0	0	0
39.	Pennsylvania	PA	L	24,725,134	19,671,675	10,288,532	7,527,388	24,123,731	18,110,782
40.	Rhode Island	RI	L	0	0	0	0	0	0
41.	South Carolina	SC	L	20,384,159	15,640,773	8,982,413	6,746,878	11,409,190	6,839,278
42.	South Dakota	SD	L	9,073,174	7,940,687	15,077,466	2,040,350	15,600,514	7,780,136
43.	Tennessee	TN	L	26,704,666	21,742,537	9,289,073	10,209,591	23,349,876	16,565,174
44.	Texas	TX	L	148,608,893	107,883,782	61,527,982	58,078,569	117,317,661	75,864,177
45.	Utah	UT	L	6,482,464	4,519,264	2,099,623	1,279,627	4,173,940	1,749,281
46.	Vermont	VT	L	0	0	0	0	0	0
47.	Virginia	VA	L	9,721,809	5,939,652	5,104,819	2,583,204	7,928,603	4,143,455
48.	Washington	WA	L	0	0	0	0	0	0
49.	West Virginia	WV	L	7,364,573	5,241,877	1,968,161	2,587,438	5,682,194	2,772,673
50.	Wisconsin	WI	L	6,758,825	4,854,886	3,912,704	1,523,051	4,665,973	2,547,665
51.	Wyoming	WY	L	0	0	0	0	0	0
52.	American Samoa	AS	N	0	0	0	0	0	0
53.	Guam	GU	N	0	0	0	0	0	0
54.	Puerto Rico	PR	N	0	0	0	0	0	0
55.	U.S. Virgin Islands	VI	N	0	0	0	0	0	0
56.	Northern Mariana Islands	MP	N	0	0	0	0	0	0
57.	Canada	CAN	N	0	0	0	0	0	0
58.	Aggregate Other Alien	OT	XXX	0	0	0	0	0	0
59.	Totals	XXX		728,602,154	575,831,238	365,762,888	254,757,671	591,332,930	404,215,309
DETAILS OF WRITE-INS									
58001.		XXX							
58002.		XXX							
58003.		XXX							
58998.	Summary of remaining write-ins for Line 58 from overflow page	XXX		0	0	0	0	0	0
58999.	Totals (Lines 58001 through 58003 plus 58998)(Line 58 above)	XXX		0	0	0	0	0	0

(a) Active Status Counts:

L - Licensed or Chartered - Licensed Insurance carrier or domiciled RRG.....50

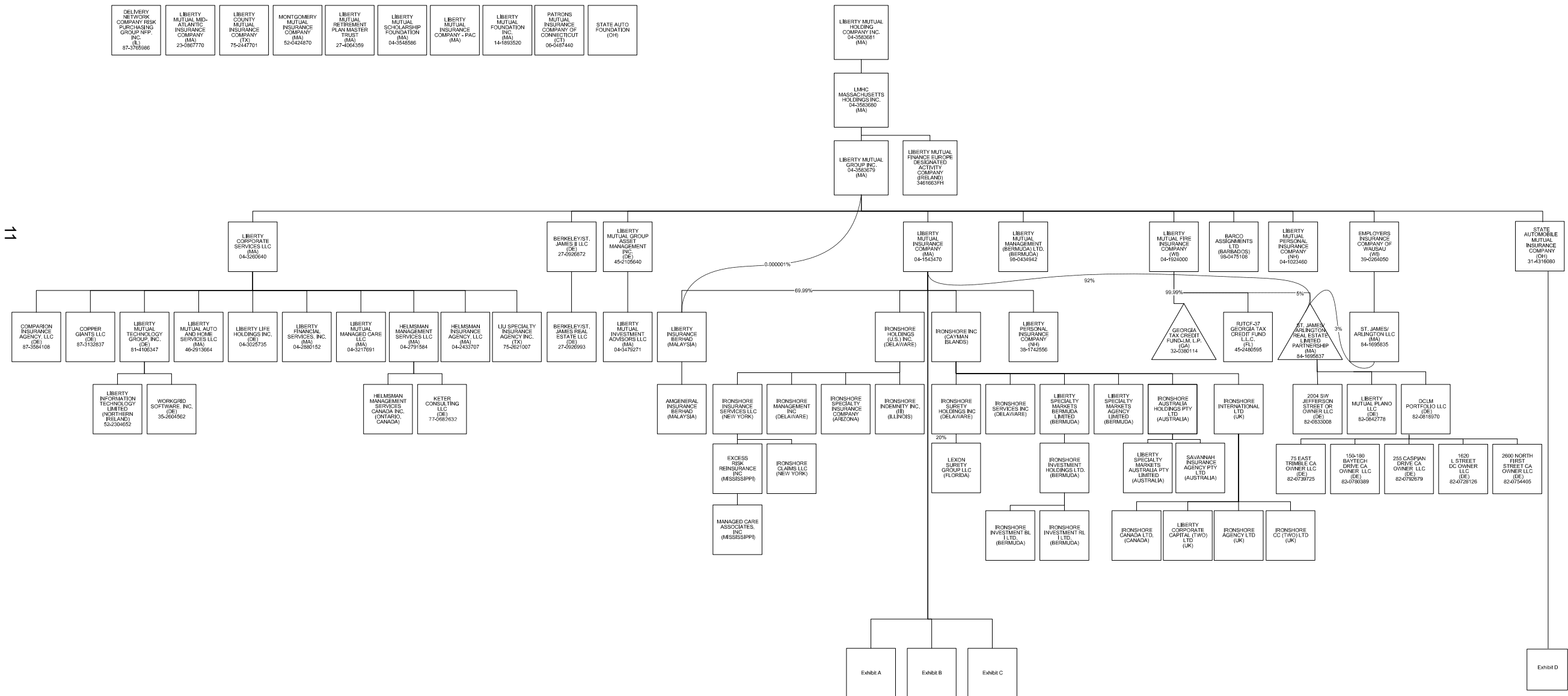
E - Eligible - Reporting entities eligible or approved to write surplus lines in the state (other than their state of domicile - see DSLI).....0

D - Domestic Surplus Lines Insurer (DSLI) - Reporting entities authorized to write surplus lines in the state of domicile.....0

R - Registered - Non-domiciled RRGs.....0

Q - Qualified - Qualified or accredited reinsurer.....1

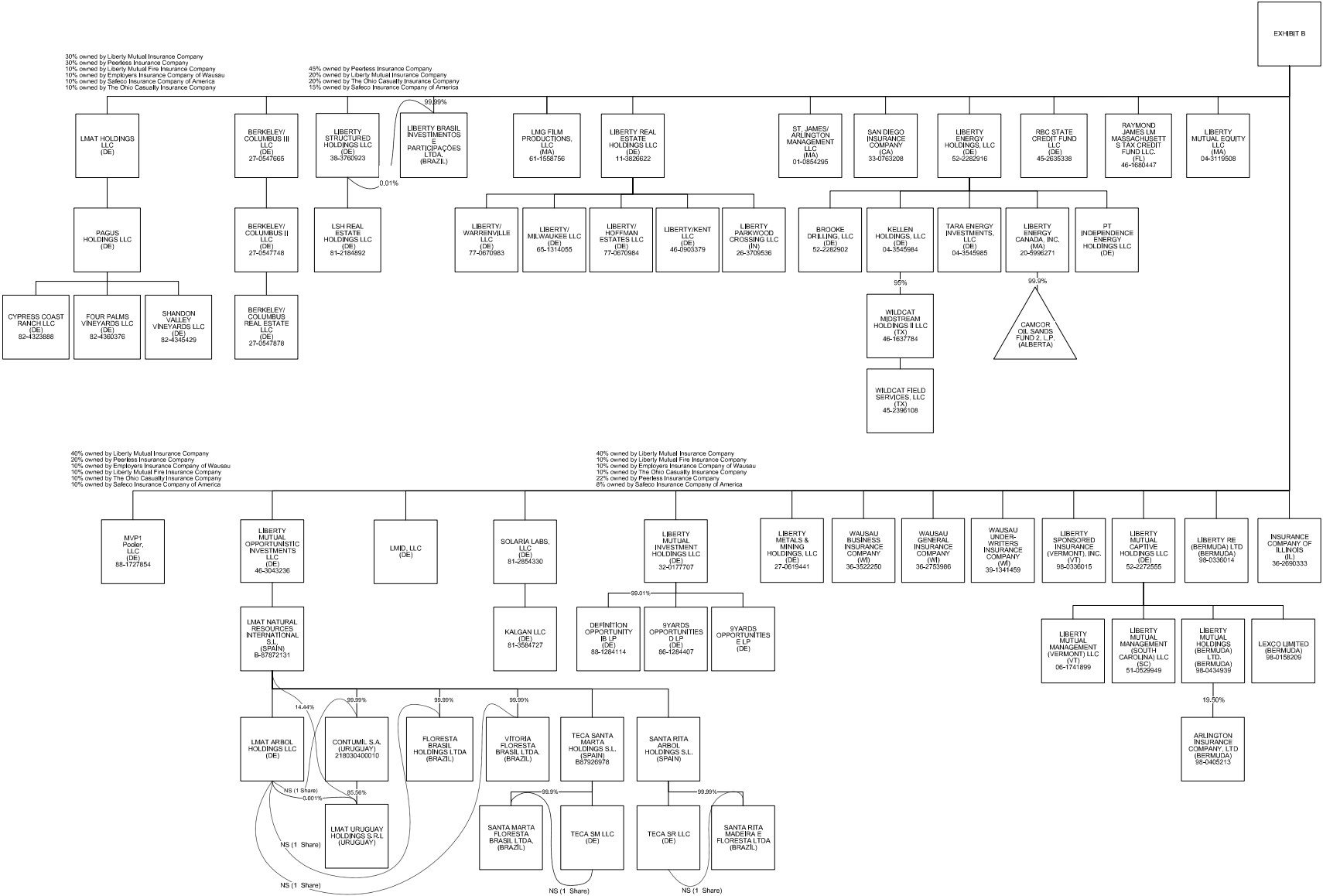
N - None of the above - Not allowed to write business in the state.....6



[illegible]

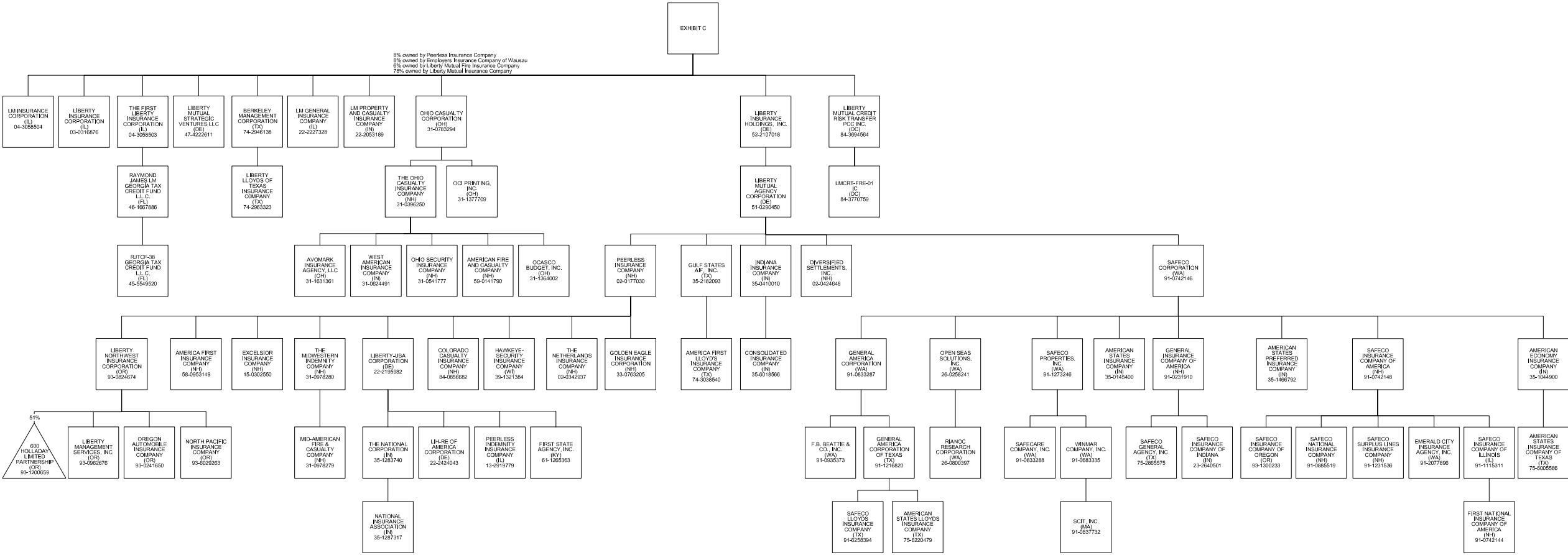
SCHEDULE Y - INFORMATION CONCERNING ACTIVITIES OF INSURER MEMBERS OF A HOLDING COMPANY GROUP

PART 1 - ORGANIZATIONAL CHART



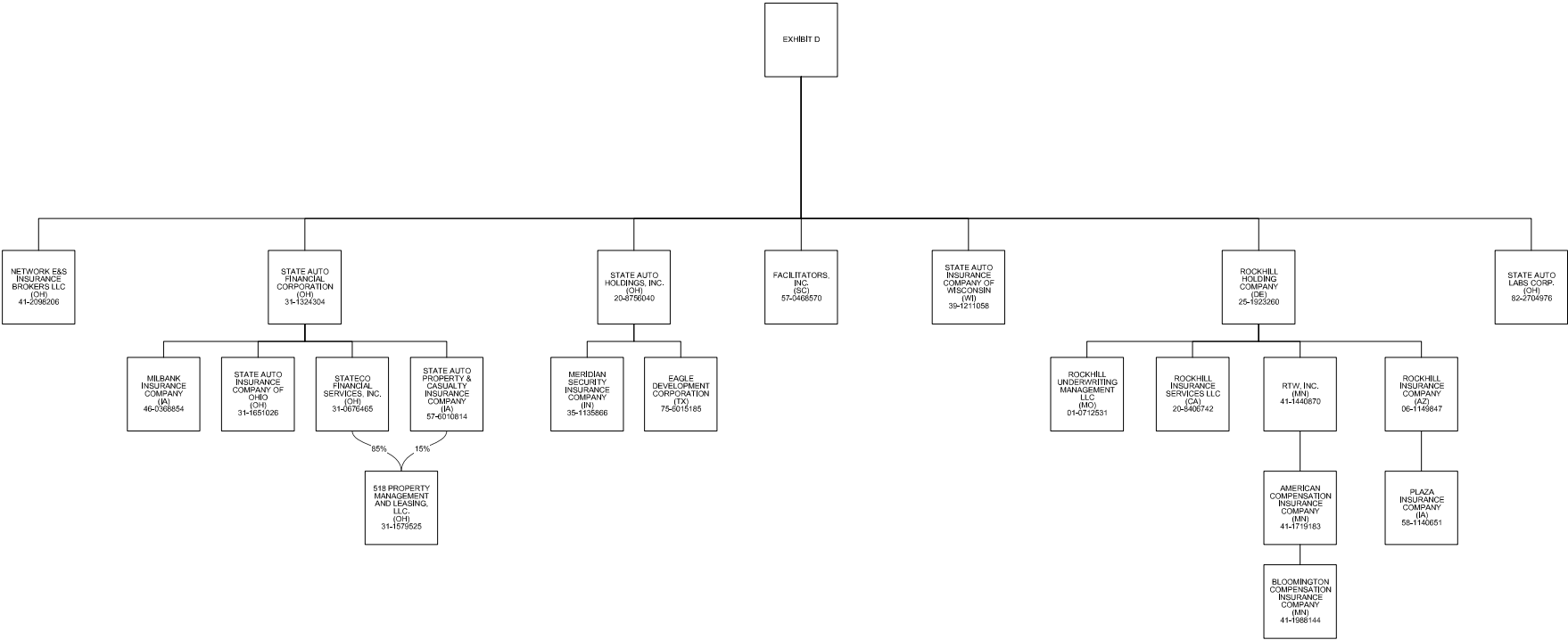
SCHEDULE Y - INFORMATION CONCERNING ACTIVITIES OF INSURER MEMBERS OF A HOLDING COMPANY GROUP

PART 1 - ORGANIZATIONAL CHART



SCHEDULE Y - INFORMATION CONCERNING ACTIVITIES OF INSURER MEMBERS OF A HOLDING COMPANY GROUP

PART 1 - ORGANIZATIONAL CHART



STATEMENT AS OF SEPTEMBER 30, 2022 OF THE STATE AUTOMOBILE MUTUAL INSURANCE COMPANY

SCHEDULE Y

PART 1A - DETAIL OF INSURANCE HOLDING COMPANY SYSTEM

1	2	3	4	5	6	7	8	9	10	11	12	13	14	15	16
Group Code	Group Name	NAIC Company Code	ID Number	Federal RSSD	CIK	Name of Securities Exchange if Publicly Traded (U.S. or International)	Names of Parent, Subsidiaries Or Affiliates	Domi-ciliary Location	Relation-ship to Reporting Entity	Directly Controlled by (Name of Entity/Person)	Type of Control (Ownership, Board, Management, Attorney-in-Fact, Influence, Other)	If Control is Ownership Provide Percentage	Ultimate Controlling Entity(ies)/Person(s)	Is an SCA Filing Re-quired? (Yes/No)	*
		.00000	86-1284407				9Yards Opportunities D LP	DE	NIA	Liberty Mutual Investment Holdings LLC	Ownership	100.000	Liberty Mutual Holding Company Inc.		
		.00000					9Yards Opportunities D LP	DE	NIA	Liberty Mutual Investment Holdings LLC	Ownership	100.000	Liberty Mutual Holding Company Inc.		
		.00000	82-0739725				75 East Trimble CA Owner LLC	DE	NIA	DCLM Portfolio LLC	Ownership, Board, Management	100.000	Liberty Mutual Holding Company Inc.		
		.00000	82-0780389				150-180 Baytech Drive CA Owner LLC	DE	NIA	DCLM Portfolio LLC	Ownership, Board, Management	100.000	Liberty Mutual Holding Company Inc.		
		.00000	82-0792679				255 Caspian Drive CA Owner LLC	DE	NIA	DCLM Portfolio LLC	Ownership, Board, Management	100.000	Liberty Mutual Holding Company Inc.		
		.00000					518 Property Management and Leasing, LLC	OH	NIA	State Auto Property & Casualty Insurance Company	Ownership, Board, and Management	15.000	Liberty Mutual Holding Company Inc.		
		.00000	31-1579525				518 Property Management and Leasing, LLC	OH	NIA	Stateco Financial Services, Inc.	Ownership, Board, and Management	85.000	Liberty Mutual Holding Company Inc.		
		.00000	93-1200659				600 Holladay Limited Partnership	OR	DS	Liberty Northwest Insurance Corporation	Ownership	51.000	Liberty Mutual Holding Company Inc.		
		.00000	82-0728126				1620 L Street DC Owner LLC	DE	NIA	DCLM Portfolio LLC	Ownership, Board, Management	100.000	Liberty Mutual Holding Company Inc.		
		.00000	82-0833008				2004 SW Jefferson Street OR Owner LLC	DE	NIA	Partnership	Ownership, Board, Management	100.000	Liberty Mutual Holding Company Inc.		
		.00000	82-0754405				2600 North First Street CA Owner LLC	DE	NIA	DCLM Portfolio LLC	Ownership, Board, Management	100.000	Liberty Mutual Holding Company Inc.		
.0111	Liberty Mutual Insurance Company and its Affiliated Insurers	.12696	58-0953149				America First Insurance Company	NH	DS	Peerless Insurance Company	Ownership, Board and Management	100.000	Liberty Mutual Holding Company Inc.		
.0111	Liberty Mutual Insurance Company and its Affiliated Insurers	.11526	74-3038540				America First Lloyd's Insurance Company	TX	DS	Gulf States AIF, Inc.	Management and Attorney-in-Fact	0.000	Liberty Mutual Holding Company Inc.		
.0111	Liberty Mutual Insurance Company and its Affiliated Insurers	.45934	41-1719183				American Compensation Insurance Company	MN	IA	RTW, Inc.	Ownership, Board and Management	100.000	Liberty Mutual Holding Company Inc.		
.0111	Liberty Mutual Insurance Company and its Affiliated Insurers	.19690	35-1044900				American Economy Insurance Company	IN	DS	Safeco Corporation	Ownership, Board and Management	100.000	Liberty Mutual Holding Company Inc.		
.0111	Liberty Mutual Insurance Company and its Affiliated Insurers	.24066	59-0141790				American Fire and Casualty Company	NH	DS	The Ohio Casualty Insurance Company	Ownership, Board and Management	100.000	Liberty Mutual Holding Company Inc.		
.0111	Liberty Mutual Insurance Company and its Affiliated Insurers	.19704	35-0145400				American States Insurance Company	IN	DS	Safeco Corporation	Ownership, Board and Management	100.000	Liberty Mutual Holding Company Inc.		
.0111	Liberty Mutual Insurance Company and its Affiliated Insurers	.19712	75-6005586				American States Insurance Company of Texas	TX	DS	American Economy Insurance Company	Ownership, Board and Management	100.000	Liberty Mutual Holding Company Inc.		
.0111	Liberty Mutual Insurance Company and its Affiliated Insurers	.31933	75-6220479				American States Lloyds Insurance Company	TX	DS	General America Corporation of Texas	Management and Attorney-in-Fact	0.000	Liberty Mutual Holding Company Inc.		
.0111	Liberty Mutual Insurance Company and its Affiliated Insurers	.37214	35-1466792				American States Preferred Insurance Company	IN	DS	Safeco Corporation	Ownership, Board and Management	100.000	Liberty Mutual Holding Company Inc.		
		.00000					AmGeneral Insurance Berhad	MYS	IA	Liberty Insurance Berhad	Ownership	100.000	Liberty Mutual Holding Company Inc.		
		.00000	98-0405213				Arlington Insurance Company Ltd.	BMU	DS	Liberty Mutual Holdings (Bermuda) Ltd	Ownership, Board and Management	100.000	Liberty Mutual Holding Company Inc.		
		.00000	31-1631361				Avomark Insurance Agency, LLC	OH	DS	The Ohio Casualty Insurance Company	Ownership, Board and Management	100.000	Liberty Mutual Holding Company Inc.		
		.00000	98-0475108				BARCO Assignments Ltd.	BRB	DS	Liberty Mutual Group Inc.	Ownership	100.000	Liberty Mutual Holding Company Inc.		
		.00000	74-2946138				Berkeley Management Corporation	TX	DS	Liberty Mutual Insurance Company	Ownership, Board and Management	100.000	Liberty Mutual Holding Company Inc.		
		.00000	27-0547748				Berkeley/Columbus II LLC	DE	DS	Berkeley/Columbus III LLC	Ownership, Board and Management	100.000	Liberty Mutual Holding Company Inc.		
		.00000	27-0547665				Berkeley/Columbus III LLC	DE	DS	Liberty Mutual Insurance Company	Ownership, Board and Management	100.000	Liberty Mutual Holding Company Inc.		
		.00000	27-0547878				Berkeley/Columbus Real Estate LLC	DE	DS	Berkeley/Columbus II LLC	Ownership, Board and Management	100.000	Liberty Mutual Holding Company Inc.		
		.00000	27-0926872				Berkeley/St. James II LLC	DE	NIA	Liberty Mutual Group Inc.	Ownership, Board and Management	100.000	Liberty Mutual Holding Company Inc.		
		.00000	27-0926993				Berkeley/St. James Real Estate LLC	DE	NIA	Berkeley/St. James II LLC	Ownership, Board and Management	100.000	Liberty Mutual Holding Company Inc.		
.0111	Liberty Mutual Insurance Company and its Affiliated Insurers	.12311	41-1988144				Bloomington Compensation Insurance Company	MN	IA	American Compensation Insurance Company	Ownership, Board and Management	100.000	Liberty Mutual Holding Company Inc.		
		.00000	52-2282902				Brooke Drilling, LLC	DE	DS	Liberty Energy Holdings, LLC	Ownership, Board and Management	100.000	Liberty Mutual Holding Company Inc.		
		.00000					Camcor Oil Sands Fund 2, L.P.	CAN	DS	Liberty Energy Canada, Inc.	Ownership	99.900	Liberty Mutual Holding Company Inc.		
.0111	Liberty Mutual Insurance Company and its Affiliated Insurers	.41785	84-0856682				Colorado Casualty Insurance Company	NH	DS	Peerless Insurance Company	Ownership, Board and Management	100.000	Liberty Mutual Holding Company Inc.		
		.00000	87-3584108				Comparion Insurance Agency, LLC	DE	IA	Liberty Corporate Services LLC	Ownership, Board and Management	100.000	Liberty Mutual Holding Company Inc.		
.0111	Liberty Mutual Insurance Company and its Affiliated Insurers	.22640	35-6018566				Consolidated Insurance Company	IN	DS	Indiana Insurance Company	Ownership, Board and Management	100.000	Liberty Mutual Holding Company Inc.		
		.00000					Contumil S.A.	URY	NIA	LMAT Natural Resources International S.L.	Ownership	99.990	Liberty Mutual Holding Company Inc.		
		.00000					Contumil S.A.	URY	NIA	LMAT Arbol Holdings LLC	Ownership	0.010	Liberty Mutual Holding Company Inc.		
		.00000	87-3132837				Copper Giants LLC	DE	NIA	Liberty Corporate Services LLC	Ownership	100.000	Liberty Mutual Holding Company Inc.		
		.00000	82-4323888				Cypress Coast Ranch LLC	DE	NIA	PAGUS Holdings LLC	Ownership	100.000	Liberty Mutual Holding Company Inc.		

STATEMENT AS OF SEPTEMBER 30, 2022 OF THE STATE AUTOMOBILE MUTUAL INSURANCE COMPANY

SCHEDULE Y

PART 1A - DETAIL OF INSURANCE HOLDING COMPANY SYSTEM

1	2	3	4	5	6	7	8	9	10	11	12	13	14	15	16
Group Code	Group Name	NAIC Company Code	ID Number	Federal RSSD	CIK	Name of Securities Exchange if Publicly Traded (U.S. or International)	Names of Parent, Subsidiaries Or Affiliates	Domi-ciliary Location	Relation-ship to Reporting Entity	Directly Controlled by (Name of Entity/Person)	Type of Control (Ownership, Board, Management, Attorney-in-Fact, Influence, Other)	If Control is Ownership Provide Percen-tage	Ultimate Controlling Entity(ies)/Person(s)	Is an SCA Filing Re-quired? (Yes/No)	*
		.00000	82-0818970				DCLM Portfolio LLC	.DE	NIA	St. James/Arlington Real Estate Limited Partnership	Ownership, Board and Management	100.000	Liberty Mutual Holding Company Inc.		
		.00000	88-1284114				Definition Opportunity IB LP	.DE	NIA	Liberty Mutual Investment Holdings LLC	Ownership	99.010	Liberty Mutual Holding Company Inc.		
		.00000	87-3765986				Delivery Network Company Risk Purchasing Group NFP, Inc.	.IL	NIA	Not Applicable	Board and Management	0.000	Liberty Mutual Holding Company Inc.		
		.00000	02-0424648				Diversified Settlements, Inc.	.NH	DS	Liberty Mutual Agency Corporation	Ownership, Board and Management	100.000	Liberty Mutual Holding Company Inc.		
		.00000	75-6015185				Eagle Development Corporation	.TX	NIA	State Auto Holdings, Inc.	Ownership, Board and Management	100.000	Liberty Mutual Holding Company Inc.		
		.00000	91-2077896				Emerald City Insurance Agency, Inc.	.WA	DS	Safeco Insurance Company of America	Ownership, Board and Management	100.000	Liberty Mutual Holding Company Inc.		
.0111	Liberty Mutual Insurance Company and its Affiliated Insurers	.21458	39-0264050				Employers Insurance Company of Wausau	.WI	.IA	Liberty Mutual Group Inc.	Ownership, Board and Management	100.000	Liberty Mutual Holding Company Inc.		
.0111	Liberty Mutual Insurance Company and its Affiliated Insurers	.11045	15-0302550				Excelsior Insurance Company	.NH	DS	Peerless Insurance Company	Ownership, Board and Management	100.000	Liberty Mutual Holding Company Inc.		
		.00000	41-2043790				Excess Risk Reinsurance, Inc.	.MS	DS	Ironshore Insurance Services LLC	Ownership	100.000	Liberty Mutual Holding Company Inc.		
		.00000	91-0935373				F.B. Beattie & Co., Inc.	.WA	DS	General America Corporation	Ownership, Board and Management	100.000	Liberty Mutual Holding Company Inc.		
		.00000					Facil Assist Servicios de Asistencia 24 horas Ltda	.BRA	NIA	Liberty Agrega Servicios Ltda	Ownership	100.000	Liberty Mutual Holding Company Inc.		
		.00000	57-0468570				Facilitators, Inc.	.SC	.IA	State Automobile Mutual Insurance Company	Ownership, Board and Management	100.000	Liberty Mutual Holding Company Inc.		
.0111	Liberty Mutual Insurance Company and its Affiliated Insurers	.24724	91-0742144				First National Insurance Company of America	.NH	DS	Safeco Insurance Company of Illinois	Ownership, Board and Management	100.000	Liberty Mutual Holding Company Inc.		
		.00000	61-1265363				First State Agency, Inc.	.KY	DS	Liberty-USA Corporation	Ownership, Board and Management	100.000	Liberty Mutual Holding Company Inc.		
		.00000					LMAT Natural Resources International, S.L.								
		.00000					Floresta Brasil Holdings Ltda.	.BRA	NIA	LMAT Arbol Holdings LLC	Ownership	99.900	Liberty Mutual Holding Company Inc.		
		.00000					Floresta Brasil Holdings Ltda.	.BRA	NIA	LMAT Arbol Holdings LLC	Ownership	0.010	Liberty Mutual Holding Company Inc.		
		.00000	82-4360376				Four Palms Vineyards LLC	.DE	NIA	PAGUS Holdings LLC	Ownership	100.000	Liberty Mutual Holding Company Inc.		
		.00000	91-0833287				General America Corporation	.WA	DS	Safeco Corporation	Ownership, Board and Management	100.000	Liberty Mutual Holding Company Inc.		
		.00000	91-1216820				General America Corporation of Texas	.TX	DS	General America Corporation	Ownership, Board and Management	100.000	Liberty Mutual Holding Company Inc.		
.0111	Liberty Mutual Insurance Company and its Affiliated Insurers	.24732	91-0231910				General Insurance Company of America	.NH	DS	Safeco Corporation	Ownership, Board and Management	100.000	Liberty Mutual Holding Company Inc.		
		.00000	32-0380114				Georgia Tax Credit Fund-LM, L.P.	.GA	DS	Liberty Mutual Fire Insurance Company	Ownership	99.990	Liberty Mutual Holding Company Inc.		
.0111	Liberty Mutual Insurance Company and its Affiliated Insurers	.10836	33-0763205				Golden Eagle Insurance Corporation	.NH	DS	Peerless Insurance Company	Ownership, Board and Management	100.000	Liberty Mutual Holding Company Inc.		
		.00000	35-2182093				Gulf States AIF, Inc.	.TX	DS	Liberty Mutual Agency Corporation	Ownership, Board and Management	100.000	Liberty Mutual Holding Company Inc.		
.0111	Liberty Mutual Insurance Company and its Affiliated Insurers	.36919	39-1321384				Hawkeye-Security Insurance Company	.WI	DS	Peerless Insurance Company	Ownership, Board and Management	100.000	Liberty Mutual Holding Company Inc.		
		.00000	04-2433707				Helmsman Insurance Agency LLC	.MA	.IA	Liberty Corporate Services LLC	Ownership, Board and Management	100.000	Liberty Mutual Holding Company Inc.		
		.00000					Helmsman Management Services Canada Inc.	.CAN	NIA	Helmsman Management Services LLC	Ownership, Board and Management	100.000	Liberty Mutual Holding Company Inc.		
		.00000	04-2791584				Helmsman Management Services LLC	.MA	NIA	Liberty Corporate Services LLC	Ownership, Board and Management	100.000	Liberty Mutual Holding Company Inc.		
		.00000					Hughes Insurance Services Limited	.GBR	DS	Liberty UK and Europe Holdings Limited	Ownership, Board and Management	100.000	Liberty Mutual Holding Company Inc.		
.0111	Liberty Mutual Insurance Company and its Affiliated Insurers	.22659	35-0410010				Indiana Insurance Company	.IN	DS	Liberty Mutual Agency Corporation	Ownership, Board and Management	100.000	Liberty Mutual Holding Company Inc.		
		.00000					Indiana Seguros S/A	.BRA	DS	Liberty International Brasil Ltda.	Ownership, Board and Management	100.000	Liberty Mutual Holding Company Inc.		
.0111	Liberty Mutual Insurance Company and its Affiliated Insurers	.26700	36-2690333				Insurance Company of Illinois	.IL	.IA	Liberty Mutual Insurance Company	Ownership, Board and Management	100.000	Liberty Mutual Holding Company Inc.		
		.00000					Ironshore Agency Ltd.	.GBR	DS	Ironshore International Ltd.	Ownership	100.000	Liberty Mutual Holding Company Inc.		
		.00000					Ironshore Australia Holdings Pty Ltd.	.AUS	DS	Ironshore Inc.	Ownership	100.000	Liberty Mutual Holding Company Inc.		
		.00000					Ironshore Canada Ltd.	.CAN	DS	Ironshore International Ltd.	Ownership	100.000	Liberty Mutual Holding Company Inc.		
		.00000					Ironshore CC (Two) Ltd.	.GBR	DS	Ironshore International Ltd.	Ownership	100.000	Liberty Mutual Holding Company Inc.		
		.00000	26-0748152				Ironshore Claims LLC	.NY	DS	Ironshore Insurance Services LLC	Ownership	100.000	Liberty Mutual Holding Company Inc.		
		.00000	20-8964631				Ironshore Holdings (US) Inc.	.DE	DS	Liberty Mutual Insurance Company	Ownership	100.000	Liberty Mutual Holding Company Inc.		
		.00000	98-0579286				Ironshore Inc.	.CYM	DS	Liberty Mutual Insurance Company	Ownership	100.000	Liberty Mutual Holding Company Inc.		
.0111	Liberty Mutual Insurance Company and its Affiliated Insurers	.23647	41-0121640				Ironshore Indemnity Inc.	.IL	DS	Ironshore Holdings (US) Inc.	Ownership	100.000	Liberty Mutual Holding Company Inc.		
		.00000	26-0542654				Ironshore Insurance Services LLC	.NY	DS	Ironshore Holdings (US) Inc.	Ownership	100.000	Liberty Mutual Holding Company Inc.		
		.00000					Ironshore International Ltd	.GBR	DS	Ironshore Inc.	Ownership	100.000	Liberty Mutual Holding Company Inc.		

STATEMENT AS OF SEPTEMBER 30, 2022 OF THE STATE AUTOMOBILE MUTUAL INSURANCE COMPANY

SCHEDULE Y

PART 1A - DETAIL OF INSURANCE HOLDING COMPANY SYSTEM

1	2	3	4	5	6	7	8	9	10	11	12	13	14	15	16
Group Code	Group Name	NAIC Company Code	ID Number	Federal RSSD	CIK	Name of Securities Exchange if Publicly Traded (U.S. or International)	Names of Parent, Subsidiaries Or Affiliates	Domi-ciliary Location	Relation-ship to Reporting Entity	Directly Controlled by (Name of Entity/Person)	Type of Control (Ownership, Board, Management, Attorney-in-Fact, Influence, Other)	If Control is Ownership Provide Percen-tage	Ultimate Controlling Entity(ies)/Person(s)	Is an SCA Filing Re-quired? (Yes/No)	*
.0111	Liberty Mutual Insurance Company and its Affiliated Insurers	.00000					Ironshore Investment Holdings Ltd.BMU	DS	Ironshore Insurance Ltd.	Ownership.....	100.000	Liberty Mutual Holding Company Inc.		
		.00000					Ironshore Investment BL I Ltd.BMU	DS	Ironshore Investment Holdings Ltd.	Ownership.....	100.000	Liberty Mutual Holding Company Inc.		
		.00000					Ironshore Investment RL I Ltd.BMU	DS	Ironshore Investment Holdings Ltd.	Ownership.....	100.000	Liberty Mutual Holding Company Inc.		
		.00000	26-3835731				Ironshore Management Inc.DE	DS	Ironshore Holdings (US) Inc.	Ownership.....	100.000	Liberty Mutual Holding Company Inc.		
		.00000	26-0412876				Ironshore Services Inc.DE	DS	Ironshore Inc.	Ownership.....	100.000	Liberty Mutual Holding Company Inc.		
		.25445	94-1264187				Ironshore Specialty Insurance CompanyAZ	DS	Ironshore Holdings (US) Inc.	Ownership.....	100.000	Liberty Mutual Holding Company Inc.		
		.00000	46-2678004				Ironshore Surety Holdings Inc.DE	DS	Ironshore Inc.	Ownership.....	100.000	Liberty Mutual Holding Company Inc.		
		.00000	81-3584727				Kalgan LLC	.DE	NIA	Solaria Labs LLC	Ownership, Board and Management	100.000	Liberty Mutual Holding Company Inc.		
		.00000	04-3545984				Kellen Holdings, LLC	.DE	DS	Liberty Energy Holdings, LLC	Ownership, Board and Management	100.000	Liberty Mutual Holding Company Inc.		
		.00000	77-0682632				Keter Consulting LLC	.DE	NIA	Helmsman Management Services LLC	Ownership, Board and Management	100.000	Liberty Mutual Holding Company Inc.		
		.00000					Kritaya Tun Company Limited	.THA	DS	Liberty International Asia Pacific Holdings LLC	Influence.....	48.990	Liberty Mutual Holding Company Inc.		
		.00000					La Libertad Compania de Inversiones y Servicios S.A.S.	.COL	DS	Liberty Seguros S.A.	Ownership, Board and Management	65.770	Liberty Mutual Holding Company Inc.		
		.00000					La Libertad Compania de Inversiones y Servicios S.A.S.	.COL	DS	Li (Colombia) Holdings Ltd.	Ownership, Board and Management	34.220	Liberty Mutual Holding Company Inc.		
		.00000	98-0158209				LEXCO Limited	.BMU	DS	Liberty Mutual Captive Holdings LLC	Ownership, Board and Management	100.000	Liberty Mutual Holding Company Inc.		
		.00000	46-2678004				Lexon Surety Group, LLC	.FL	DS	Ironshore Surety Holdings Inc.	Ownership.....	20.000	Liberty Mutual Holding Company Inc.		
		.00000	98-0470067				LI (Colombia) Holdings Ltd.BMU	DS	Liberty International Latin America Holdings, LLC	Ownership, Board and Management	100.000	Liberty Mutual Holding Company Inc.		
		.00000					Liberty Agrega Servicios Ltda	.BRA	NIA	Liberty International Brasil Ltda.	Ownership, Board and Management	100.000	Liberty Mutual Holding Company Inc.		
		.00000					Liberty Brasil Investimentos e Participacoes Ltda.	.BRA	DS	Liberty Mutual Insurance Company	Ownership, Board and Management	99.990	Liberty Mutual Holding Company Inc.		
		.00000					Liberty Brasil Investimentos e Participacoes Ltda.	.BRA	DS	Liberty Structured Holdings LLC	Ownership, Board and Management	0.010	Liberty Mutual Holding Company Inc.		
		.00000					Summit Asia Investments Holdings Pte. Ltd.	.SGP	DS	Liberty International Asia Pacific Holdings LLC	Ownership, Board and Management	100.000	Liberty Mutual Holding Company Inc.		
.0111	Liberty Mutual Insurance Company and its Affiliated Insurers	.00000					Liberty Compania de Seguros Generales S.A.	.CHL	DS	Liberty International Chile S.A.	Ownership, Board and Management	80.900	Liberty Mutual Holding Company Inc.		
		.00000					Liberty Compania de Seguros Generales S.A.	.CHL	DS	LMG Chile SpA	Ownership, Board and Management	19.010	Liberty Mutual Holding Company Inc.		
		.00000	98-0166390				Liberty Corporate Capital Limited	.GBR	DS	Liberty International Holdings Inc.	Ownership, Board and Management	100.000	Liberty Mutual Holding Company Inc.		
		.00000					Liberty Corporate Capital (Two) Ltd.	.GBR	DS	Ironshore International Ltd.	Ownership.....	100.000	Liberty Mutual Holding Company Inc.		
		.00000	04-3260640				Liberty Corporate Services LLC	.MA	NIA	Liberty Mutual Group Inc.	Ownership, Board and Management	100.000	Liberty Mutual Holding Company Inc.		
		.19544	75-2447701				Liberty County Mutual Insurance Company	.TX	IA	Berkeley Management Corporation	Board and Management	0.000	Liberty Mutual Holding Company Inc.		
		.00000					Liberty Data Analytics Private Limited	.IND	DS	Liberty Citystate Holdings Pte. Ltd.	Ownership, Board and Management	100.000	Liberty Mutual Holding Company Inc.		
		.00000	20-5996271				Liberty Energy Canada, Inc.	.MA	DS	Liberty Energy Holdings, LLC	Ownership, Board and Management	100.000	Liberty Mutual Holding Company Inc.		
		.00000	52-2282916				Liberty Energy Holdings, LLC	.DE	DS	Liberty Mutual Insurance Company	Ownership, Board and Management	100.000	Liberty Mutual Holding Company Inc.		
		.00000					Liberty Fianzas, S.A. de C.V.	.MEX	IA	Liberty Surety Mexico, S. de R.L. de C.V.	Ownership, Board and Management	99.990	Liberty Mutual Holding Company Inc.		
		.00000					Liberty Fianzas, S.A. de C.V.	.MEX	IA	Liberty Mutual Mexico LLC	Ownership, Board and Management	0.010	Liberty Mutual Holding Company Inc.		
		.00000	04-2880152				Liberty Financial Services, Inc.	.IA	NIA	Liberty Corporate Services LLC	Ownership, Board and Management	100.000	Liberty Mutual Holding Company Inc.		
		.00000					Liberty General Insurance Limited	.IND	IA	Liberty Citystate Holdings Pte Ltd	Ownership, Management	48.680	Liberty Mutual Holding Company Inc.		
		.00000	52-2304652				Liberty Information Technology Limited	.GBR	NIA	Liberty Mutual Technology Group Inc.	Ownership, Board and Management	100.000	Liberty Mutual Holding Company Inc.		
		.00000					Liberty Insurance Berhad	.MYS	DS	Liberty Mutual Insurance Company	Ownership, Board and Management	69.990	Liberty Mutual Holding Company Inc.		
		.00000					Liberty Insurance Berhad	.MYS	IA	Liberty Mutual Insurance Company	Ownership, Board and Management	0.000	Liberty Mutual Holding Company Inc.		
		.00000					Liberty Insurance Company Limited	.CHN	DS	Liberty Mutual Insurance Company	Ownership, Board and Management	100.000	Liberty Mutual Holding Company Inc.		
		.42404	03-0316876				Liberty Insurance Corporation	.IL	DS	Liberty Mutual Insurance Company	Ownership, Board and Management	100.000	Liberty Mutual Holding Company Inc.		
		.00000	52-2107018				Liberty Insurance Holdings, Inc.	.DE	DS	Liberty Mutual Insurance Company	Ownership, Board and Management	100.000	Liberty Mutual Holding Company Inc.		
.0111	Liberty Mutual Insurance Company and its Affiliated Insurers	.00000					Liberty Insurance Limited	.VNM	DS	Liberty UK and Europe Holdings Limited	Ownership, Board and Management	100.000	Liberty Mutual Holding Company Inc.		
		.00000					Liberty Insurance Pte Ltd	.SGP	DS	Liberty Citystate Holdings Pte Ltd	Ownership, Board and Management	100.000	Liberty Mutual Holding Company Inc.		
		.19917	22-2227331				Liberty Insurance Underwriters Inc.	.IL	DS	Liberty Mutual Insurance Company	Ownership, Board and Management	100.000	Liberty Mutual Holding Company Inc.		

STATEMENT AS OF SEPTEMBER 30, 2022 OF THE STATE AUTOMOBILE MUTUAL INSURANCE COMPANY

SCHEDULE Y

PART 1A - DETAIL OF INSURANCE HOLDING COMPANY SYSTEM

1	2	3	4	5	6	7	8	9	10	11	12	13	14	15	16
Group Code	Group Name	NAIC Company Code	ID Number	Federal RSSD	CIK	Name of Securities Exchange if Publicly Traded (U.S. or International)	Names of Parent, Subsidiaries Or Affiliates	Domi-ciliary Location	Relation-ship to Reporting Entity	Directly Controlled by (Name of Entity/Person)	Type of Control (Ownership, Board, Management, Attorney-in-Fact, Influence, Other)	If Control is Ownership Provide Percen-tage	Ultimate Controlling Entity(ies)/Person(s)	Is an SCA Filing Re-quired? (Yes/No)	*
		.00000	51-0365936				Liberty International Asia Pacific Holdings LLC	.DE	.DS	Liberty UK and Europe Holdings Limited	Ownership, Board and Management	100.000	Liberty Mutual Holding Company Inc.		
		.00000					Liberty Seguros, Compania de Seguros y Reaseguros, S.A.	.BRA	.DS	Liberty International Brasil Ltda	Ownership, Board and Management	99.990	Liberty Mutual Holding Company Inc.		
		.00000					Liberty International Brasil Ltda	.BRA	.DS	Liberty International Holdings Inc.	Ownership, Board and Management	0.010	Liberty Mutual Holding Company Inc.		
		.00000					Liberty International Chile S.A.	.CHL	.DS	Liberty UK and Europe Holdings Limited	Ownership, Board and Management	99.990	Liberty Mutual Holding Company Inc.		
		.00000					Liberty International Latin America Holdings, LLC								
		.00000					Liberty International Chile S.A.	.CHL	.DS	Liberty International Latin America Holdings, LLC	Ownership, Board and Management	0.010	Liberty Mutual Holding Company Inc.		
		.00000	27-1448815				Liberty International Europe LLC	.DE	.DS	Liberty International Holdings Inc.	Ownership, Board and Management	100.000	Liberty Mutual Holding Company Inc.		
		.00000					Liberty International European Holdings, S.L.								
		.00000					Liberty International Holdings Inc.	.ESP	.DS	Liberty UK and Europe Holdings Limited	Ownership, Board and Management	100.000	Liberty Mutual Holding Company Inc.		
		.00000	04-3209289				Liberty International Insurance Limited	.DE	.DS	Liberty Mutual Insurance Company	Ownership, Board and Management	100.000	Liberty Mutual Holding Company Inc.		
		.00000					Liberty International Insurance Limited	.HKG	.DS	Liberty Insurance Pte Ltd	Ownership, Board and Management	68.000	Liberty Mutual Holding Company Inc.		
		.00000					Liberty International Insurance Limited	.HKG	.DS	Liberty Citystate Holdings Pte Ltd	Ownership, Board and Management	32.000	Liberty Mutual Holding Company Inc.		
		.00000					Liberty International Latin America Holdings, LLC								
		.00000	51-0365934				Liberty International Netherlands V.O.F.	.DE	.DS	Liberty UK and Europe Holdings Limited	Ownership, Board and Management	100.000	Liberty Mutual Holding Company Inc.		
		.00000					Liberty International Netherlands V.O.F.	.NLD	.DS	Liberty International Holdings Inc.	Ownership, Board and Management	86.000	Liberty Mutual Holding Company Inc.		
		.00000					Liberty International Netherlands V.O.F.	.NLD	.DS	Liberty International Europe LLC	Ownership, Board and Management	14.000	Liberty Mutual Holding Company Inc.		
		.00000					Liberty International US European Holdings LLC								
		.00000					Liberty International US European Holdings LLC	.DE	.DS	Liberty International Netherlands V.O.F.	Ownership, Board and Management	100.000	Liberty Mutual Holding Company Inc.		
		.00000	04-3025735				Liberty Life Holdings Inc.	.DE	NIA	Liberty Corporate Services LLC	Ownership, Board and Management	100.000	Liberty Mutual Holding Company Inc.		
.0111	Liberty Mutual Insurance Company and its Affiliated Insurers	.11041	74-2963323				Liberty Lloyds of Texas Insurance Company	.TX	.DS	Berkeley Management Corporation	Management and Attorney-in-Fact	0.000	Liberty Mutual Holding Company Inc.		
		.00000	93-0962676				Liberty Management Services, Inc.	.OR		Liberty Northwest Insurance Corporation	Ownership, Board and Management	100.000	Liberty Mutual Holding Company Inc.		
		.00000					Liberty Managing Agency Limited	.GBR	.DS	Liberty UK and Europe Holdings Limited	Ownership, Board and Management	100.000	Liberty Mutual Holding Company Inc.		
		.00000	27-0619441				Liberty Metals & Mining Holdings, LLC	.DE	.DS	Liberty Mutual Insurance Company	Ownership, Board and Management	100.000	Liberty Mutual Holding Company Inc.		
		.00000	04-3199794				Liberty Mexico Holdings Inc.	.MA	.DS	Liberty International Holdings Inc.	Ownership, Board and Management	100.000	Liberty Mutual Holding Company Inc.		
		.00000					Liberty Mexico Holdings S.A. de C.V.	.MEX	.DS	Liberty Mexico Holdings Inc.	Ownership, Board and Management	99.990	Liberty Mutual Holding Company Inc.		
		.00000					Liberty Mexico Holdings S.A. de C.V.			Liberty International Latin America Holdings, LLC	Ownership, Board and Management	0.010	Liberty Mutual Holding Company Inc.		
		.00000	51-0290450				Liberty Mutual Agency Corporation	.MEX	.DS	Holdings, LLC	Ownership, Board and Management	100.000	Liberty Mutual Holding Company Inc.		
		.00000	46-2913664				Liberty Mutual Auto and Home Services LLC	.DE	.DS	Liberty Insurance Holdings, Inc.	Ownership, Board and Management	100.000	Liberty Mutual Holding Company Inc.		
		.00000	52-2272555				Liberty Mutual Captive Holdings LLC	.MA	NIA	Liberty Corporate Services LLC	Ownership, Board and Management	100.000	Liberty Mutual Holding Company Inc.		
		.00000					Liberty Mutual Credit Risk Transfer PCC Inc.	.DE	.DS	Liberty Mutual Insurance Company	Ownership, Board and Management	100.000	Liberty Mutual Holding Company Inc.		
		.00000	84-3694564				Liberty Mutual Equity LLC	.DC	.IA	Liberty Mutual Insurance Company	Ownership, Board, Management	100.000	Liberty Mutual Holding Company Inc.		
		.00000	04-3119508				Liberty Mutual Finance Europe Designated Activity Company	.MA	.DS	Liberty Mutual Insurance Company	Ownership, Board and Management	100.000	Liberty Mutual Holding Company Inc.		
		.00000	34-61663FH					.IRL	.UIP	LMHC Massachusetts Holdings Inc.	Ownership, Board and Management	100.000	Liberty Mutual Holding Company Inc.		
.0111	Liberty Mutual Insurance Company and its Affiliated Insurers	.23035	04-1924000				Liberty Mutual Fire Insurance Company	.WI	.IA	Liberty Mutual Group Inc.	Ownership, Board and Management	100.000	Liberty Mutual Holding Company Inc.		
		.00000	14-1893520				Liberty Mutual Foundation Inc.	.MA	.DS	Liberty Mutual Insurance Company	Board and Management	0.000	Liberty Mutual Holding Company Inc.		
		.00000	45-2105640				Liberty Mutual Group Asset Management Inc.	.DE	NIA	Liberty Mutual Group Inc.	Ownership, Board and Management	100.000	Liberty Mutual Holding Company Inc.		
		.00000	04-3583679				Liberty Mutual Group Inc.	.MA	.UDP	LMHC Massachusetts Holdings Inc.	Ownership, Board and Management	100.000	Liberty Mutual Holding Company Inc.		
		.00000	04-3583681				Liberty Mutual Holding Company Inc.	.MA	.UIP	N/A	Ultimate Controlling Parent	0.000			
		.00000	98-0434939				Liberty Mutual Holdings (Bermuda) Ltd	.BMU	.DS	Liberty Mutual Captive Holdings LLC	Ownership, Board and Management	100.000	Liberty Mutual Holding Company Inc.		
.0111	Liberty Mutual Insurance Company and its Affiliated Insurers	.23043	04-1543470				Liberty Mutual Insurance Company	.MA		Liberty Mutual Group Inc.	Ownership, Board and Management	100.000	Liberty Mutual Holding Company Inc.		
		.00000					Liberty Mutual Insurance Company – Escritorio De Representacao No Brasil Ltda.	.BRA	.DS	Liberty Mutual Insurance Company	Ownership, Board and Management	99.900	Liberty Mutual Holding Company Inc.		
		.00000					Liberty Mutual Insurance Company – Escritorio De Representacao No Brasil Ltda.	.BRA	.DS	Liberty Insurance Underwriters Inc.	Ownership, Board and Management	0.100	Liberty Mutual Holding Company Inc.		
		.00000					Liberty Mutual Insurance Company – PAC	.MA	NIA	Liberty Mutual Insurance Company	Board and Management	0.000	Liberty Mutual Holding Company Inc.		
		.00000					Liberty Mutual Insurance Europe SE	.LUX	.DS	Liberty Specialty Markets Holdco S.L.U.	Ownership, Board and Management	100.000	Liberty Mutual Holding Company Inc.		

STATEMENT AS OF SEPTEMBER 30, 2022 OF THE STATE AUTOMOBILE MUTUAL INSURANCE COMPANY

SCHEDULE Y

PART 1A - DETAIL OF INSURANCE HOLDING COMPANY SYSTEM

1	2	3	4	5	6	7	8	9	10	11	12	13	14	15	16
Group Code	Group Name	NAIC Company Code	ID Number	Federal RSSD	CIK	Name of Securities Exchange if Publicly Traded (U.S. or International)	Names of Parent, Subsidiaries Or Affiliates	Domi-ciliary Location	Relation-ship to Reporting Entity	Directly Controlled by (Name of Entity/Person)	Type of Control (Ownership, Board, Management, Attorney-in-Fact, Influence, Other)	If Control is Ownership Provide Percen-tage	Ultimate Controlling Entity(ies)/Person(s)	Is an SCA Filing Re-quired? (Yes/No)	*
		.00000	04-3479271				Liberty Mutual Investment Advisors LLC	.MA	NIA	Liberty Mutual Group Asset Management Inc.	Ownership, Board and Management	100.000	Liberty Mutual Holding Company Inc.		
		.00000	32-0177707				Liberty Mutual Investment Holdings LLC	.DE	DS	Liberty Mutual Insurance Company	Ownership, Board and Management	40.000	Liberty Mutual Holding Company Inc.		
		.00000	32-0177707				Liberty Mutual Investment Holdings LLC	.DE	DS	Peerless Insurance Company	Ownership, Board and Management	22.000	Liberty Mutual Holding Company Inc.		
		.00000	32-0177707				Liberty Mutual Investment Holdings LLC	.DE	DS	Employers Insurance Company of Wausau	Ownership, Board and Management	10.000	Liberty Mutual Holding Company Inc.		
		.00000	32-0177707				Liberty Mutual Investment Holdings LLC	.DE	DS	Liberty Mutual Fire Insurance Company	Ownership, Board and Management	10.000	Liberty Mutual Holding Company Inc.		
		.00000	32-0177707				Liberty Mutual Investment Holdings LLC	.DE	DS	The Ohio Casualty Insurance Company	Ownership, Board and Management	10.000	Liberty Mutual Holding Company Inc.		
		.00000	32-0177707				Liberty Mutual Investment Holdings LLC	.DE	DS	Safeco Insurance Company of America	Ownership, Board and Management	8.000	Liberty Mutual Holding Company Inc.		
		.00000					Liberty Mutual Ireland Investment Holdings Limited	.IRL	DS	Liberty UK and Europe Holdings Limited	Ownership, Board and Management	100.000	Liberty Mutual Holding Company Inc.		
		.00000	47-2941258				Liberty Mutual Latam LLC	.DE	NIA	Liberty Mutual Insurance Company	Ownership, Board and Management	100.000	Liberty Mutual Holding Company Inc.		
		.00000	84-2588296				Liberty Mutual Latin Holdings LLC	.DE	NIA	Liberty Mutual Latam LLC	Ownership, Board, Management	100.000	Liberty Mutual Holding Company Inc.		
		.00000	04-3217691				Liberty Mutual Managed Care LLC	.MA	NIA	Liberty Corporate Services LLC	Ownership, Board and Management	100.000	Liberty Mutual Holding Company Inc.		
		.00000	98-0434942				Liberty Mutual Management (Bermuda) Ltd	.BMU	NIA	Liberty Mutual Group Inc.	Ownership, Board and Management	100.000	Liberty Mutual Holding Company Inc.		
		.00000					Liberty Mutual Management (South Carolina) LLC	.SC	DS	Liberty Mutual Captive Holdings LLC	Ownership, Board and Management	100.000	Liberty Mutual Holding Company Inc.		
		.00000	51-0529949				Liberty Mutual Management (Vermont) LLC	.VT	DS	Liberty Mutual Captive Holdings LLC	Ownership, Board and Management	100.000	Liberty Mutual Holding Company Inc.		
		.00000	06-1741899				Liberty Mutual Mexico LLC	.DE	NIA	Liberty Mutual Insurance Company	Ownership, Board and Management	100.000	Liberty Mutual Holding Company Inc.		
		.00000	04-4223650				Liberty Mutual Mid-Atlantic Insurance Company	.MA	IA	Liberty Mutual Insurance Company	Board and Management	0.000	Liberty Mutual Holding Company Inc.		
.0111	Liberty Mutual Insurance Company and its Affiliated Insurers	.14486	23-0867770				Liberty Mutual Opportunistic Investments LLC	.DE	DS	Liberty Mutual Insurance Company	Ownership, Board and Management	100.000	Liberty Mutual Holding Company Inc.		
		.00000	46-3043236												
.0111	Liberty Mutual Insurance Company and its Affiliated Insurers	.12484	04-1023460				Liberty Mutual Personal Insurance Company	.NH	IA	Liberty Mutual Group Inc.	Ownership, Board and Management	100.000	Liberty Mutual Holding Company Inc.		
		.00000	47-4222611				Liberty Mutual Strategic Ventures LLC	.DE	DS	Liberty Mutual Insurance Company	Ownership, Board and Management	100.000	Liberty Mutual Holding Company Inc.		
		.00000	82-0842778				Liberty Mutual Plano LLC	.DE	NIA	Partnership	Ownership, Board and Management	100.000	Liberty Mutual Holding Company Inc.		
		.00000	27-4064359				Liberty Mutual Retirement Plan Master Trust	.MA	NIA	Liberty Mutual Group Inc.	Board	0.000	Liberty Mutual Holding Company Inc.		
		.00000	04-3548586				Liberty Mutual Scholarship Foundation	.MA	NIA	Liberty Mutual Insurance Company	Board and Management	0.000	Liberty Mutual Holding Company Inc.		
		.00000	84-2593582				Liberty Mutual Services LLC	.DE	NIA	Liberty Mutual Latam LLC	Ownership, Board, Management	100.000	Liberty Mutual Holding Company Inc.		
		.00000	86-0145347				Liberty Mutual Surety Europe B.V.	.NLD	IA	Liberty UK and Europe Holdings Limited	Ownership	100.000	Liberty Mutual Holding Company Inc.		
		.00000					Liberty Mutual Surety S.L.U.	.ESP	IA	Liberty UK and Europe Holdings Limited	Ownership, Board, Management	100.000	Liberty Mutual Holding Company Inc.		
		.00000	81-4106347				Liberty Mutual Technology Group, Inc.	.DE	NIA	Liberty Corporate Services LLC	Ownership, Board and Management	100.000	Liberty Mutual Holding Company Inc.		
.0111	Liberty Mutual Insurance Company and its Affiliated Insurers	.41939	93-0824674				Liberty Northwest Insurance Corporation	.OR	DS	Peerless Insurance Company	Ownership, Board and Management	100.000	Liberty Mutual Holding Company Inc.		
		.00000	26-3709536				Liberty Parkwood Crossing LLC	.IN	DS	Liberty Real Estate Holdings LLC	Ownership, Board and Management	100.000	Liberty Mutual Holding Company Inc.		
.0111	Liberty Mutual Insurance Company and its Affiliated Insurers	.11746	38-1742556				Liberty Personal Insurance Company	.NH	DS	Liberty Mutual Insurance Company	Ownership, Board and Management	100.000	Liberty Mutual Holding Company Inc.		
		.00000					Liberty Perú Gestión de Riesgos SAC	.PER	NIA	Liberty Mutual Surety S.L.U.	Ownership, Board, Management	99.900	Liberty Mutual Holding Company Inc.		
		.00000					Liberty Perú Gestión de Riesgos SAC	.PER	NIA	Liberty UK and Europe Holdings Limited	Ownership, Board, Management	0.100	Liberty Mutual Holding Company Inc.		
		.00000	98-0336014				Liberty Re (Bermuda) Limited	.BMU	DS	Liberty Mutual Insurance Company	Ownership, Board and Management	100.000	Liberty Mutual Holding Company Inc.		
		.00000					Liberty Real Estate Holdings LLC	.DE	DS	Liberty Mutual Insurance Company	Ownership, Board and Management	100.000	Liberty Mutual Holding Company Inc.		
		.00000	66-0963226				Liberty Seguros	.PR	IA	Liberty Mutual Latam LLC	Ownership, Board and Management	99.900	Liberty Mutual Holding Company Inc.		
		.00000					Liberty Seguros S.A.	.COL	DS	LILA (Colombia) Holdings Ltd.	Ownership, Board and Management	94.892	Liberty Mutual Holding Company Inc.		
		.00000					Liberty Seguros S.A.	.COL	DS	Li (Colombia) Holdings Ltd.	Ownership, Board and Management	5.093	Liberty Mutual Holding Company Inc.		
		.00000					Liberty Seguros S.A.	.ECU	DS	Liberty UK and Europe Holdings Limited	Ownership, Board and Management	99.895	Liberty Mutual Holding Company Inc.		
		.00000								Liberty International Latin America Holdings, LLC	Ownership, Board and Management	0.002	Liberty Mutual Holding Company Inc.		
		.00000					Liberty Seguros S.A.	.PER	IA	Liberty Mutual Latam LLC	Ownership, Board and Management	99.990	Liberty Mutual Holding Company Inc.		
		.00000					Liberty Seguros S.A.	.PER	IA	Liberty Surplus Insurance Corporation	Ownership, Board and Management	0.010	Liberty Mutual Holding Company Inc.		
		.00000					Liberty Seguros S/A	.BRA	DS	Liberty International Brasil Ltda.	Ownership, Board and Management	100.000	Liberty Mutual Holding Company Inc.		
		.00000					Liberty Seguros, S.A. de C.V.	.MEX	IA	Liberty Mutual Latin Holdings LLC	Ownership, Board and Management	99.990	Liberty Mutual Holding Company Inc.		
		.00000					Liberty Seguros, S.A. de C.V.	.MEX	IA	Liberty Mutual Services LLC	Ownership, Board and Management	0.010	Liberty Mutual Holding Company Inc.		

STATEMENT AS OF SEPTEMBER 30, 2022 OF THE STATE AUTOMOBILE MUTUAL INSURANCE COMPANY

SCHEDULE Y

PART 1A - DETAIL OF INSURANCE HOLDING COMPANY SYSTEM

1	2	3	4	5	6	7	8	9	10	11	12	13	14	15	16
Group Code	Group Name	NAIC Company Code	ID Number	Federal RSSD	CIK	Name of Securities Exchange if Publicly Traded (U.S. or International)	Names of Parent, Subsidiaries Or Affiliates	Domi-ciliary Location	Relation-ship to Reporting Entity	Directly Controlled by (Name of Entity/Person)	Type of Control (Ownership, Board, Management, Attorney-in-Fact, Influence, Other)	If Control is Owner-ship Provide Percen-tage	Ultimate Controlling Entity(ies)/Person(s)	Is an SCA Filing Re-quired? (Yes/No)	*
		.00000					Liberty Seguros, Compania de Seguros y Reaseguros, S.A.	.ESP	.DS	Liberty Spain Holdings LLC	Ownership, Board and Management	.99.990	Liberty Mutual Holding Company Inc.		
		.00000					Liberty Seguros, Compania de Seguros y Reaseguros, S.A.	.ESP	.DS	Liberty UK and Europe Holdings Limited	Ownership, Board and Management	.0.010	Liberty Mutual Holding Company Inc.		
		.00000	77-0653079				Liberty Spain Holdings LLC	.DE	.DS	Liberty International European Holdings S.L.	Ownership, Board and Management	.100.000	Liberty Mutual Holding Company Inc.		
		.00000					Liberty Specialty Markets Agency Limited	.BMU	.DS	Ironshore Inc.	Ownership	.100.000	Liberty Mutual Holding Company Inc.		
		.00000					Liberty Specialty Markets Australia Pty Limited	.AUS	.NIA	Ironshore Australia Holdings Pty Ltd.	Ownership	.100.000	Liberty Mutual Holding Company Inc.		
		.00000	98-0579287				Liberty Specialty Markets Bermuda Limited	.BMU	.DS	Ironshore Inc.	Ownership	.100.000	Liberty Mutual Holding Company Inc.		
		.00000					Liberty Specialty Markets Europe S.a.r.l.	.LUX	.NIA	Liberty UK and Europe Holdings Limited	Ownership, Board and Management	.100.000	Liberty Mutual Holding Company Inc.		
		.00000					Liberty Specialty Markets Europe Two Sarl	.LUX	.NIA	Liberty UK and Europe Holdings Limited	Ownership	.100.000	Liberty Mutual Holding Company Inc.		
		.00000					Liberty Specialty Markets Holdco S.L.U.	.ESP	.NIA	Liberty International European Holdings S.L.	Ownership, Board and Management	.100.000	Liberty Mutual Holding Company Inc.		
		.00000					Liberty Specialty Markets Hong Kong Limited	.HKG	.IA	Liberty UK and Europe Holdings Limited	Ownership, Board and Management	.100.000	Liberty Mutual Holding Company Inc.		
		.00000					Liberty Specialty Markets Limited	.GBR	.DS	Liberty UK and Europe Holdings Limited	Ownership, Board and Management	.100.000	Liberty Mutual Holding Company Inc.		
		.00000					Liberty Specialty Markets MENA Limited	.ARE	.DS	Liberty UK and Europe Holdings Limited	Ownership, Board and Management	.100.000	Liberty Mutual Holding Company Inc.		
		.00000					Liberty Specialty Markets Singapore Pte. Limited	.SGP	.IA	Liberty UK and Europe Holdings Limited	Ownership, Board and Management	.100.000	Liberty Mutual Holding Company Inc.		
		.00000					Liberty Specialty Services Limited	.GBR	.NIA	Liberty UK and Europe Holdings Limited	Ownership, Board and Management	.100.000	Liberty Mutual Holding Company Inc.		
		.00000					Liberty Specialty, Sociedad de Responsabilidad Limitada de Capital Variable	.MEX	.NIA	Liberty Mutual Services LLC	Ownership, Board, Management	.99.990	Liberty Mutual Holding Company Inc.		
		.00000					Liberty Specialty, Sociedad de Responsabilidad Limitada de Capital Variable	.MEX	.NIA	Liberty Mutual Latin Holdings LLC	Ownership, Board, Management	.0.010	Liberty Mutual Holding Company Inc.		
		.00000	98-0336015				Liberty Sponsored Insurance (Vermont), Inc.	.VT	.DS	Liberty Mutual Insurance Company	Ownership, Board and Management	.100.000	Liberty Mutual Holding Company Inc.		
		.00000	38-3760923				Liberty Structured Holdings LLC	.DE	.NIA	Liberty Mutual Insurance Company	Ownership, Board and Management	.20.000	Liberty Mutual Holding Company Inc.		
		.00000	38-3760923				Liberty Structured Holdings LLC	.DE	.NIA	Peerless Insurance Company	Ownership, Board and Management	.45.000	Liberty Mutual Holding Company Inc.		
		.00000	38-3760923				Liberty Structured Holdings LLC	.DE	.NIA	The Ohio Casualty Insurance Company	Ownership, Board and Management	.20.000	Liberty Mutual Holding Company Inc.		
		.00000	38-3760923				Liberty Structured Holdings LLC	.DE	.NIA	Safeco Insurance Company of America	Ownership, Board and Management	.15.000	Liberty Mutual Holding Company Inc.		
		.00000					Liberty Surety México, S. de R.L. de C.V.	.MEX	.DS	Liberty Mutual Mexico LLC	Ownership, Board and Management	.99.990	Liberty Mutual Holding Company Inc.		
		.00000					Liberty Surety México, S. de R.L. de C.V.	.MEX	.DS	Liberty Surplus Insurance Corporation	Ownership, Board and Management	.0.010	Liberty Mutual Holding Company Inc.		
.0111	Liberty Mutual Insurance Company and its Affiliated Insurers	.10725	04-3390891				Liberty Surplus Insurance Corporation	.NH	.DS	Liberty Mutual Insurance Company	Ownership, Board and Management	.100.000	Liberty Mutual Holding Company Inc.		
		.00000	98-0641430				Liberty UK and Europe Holdings Limited	.GBR	.DS	Liberty International US European Holdings LLC	Ownership, Board and Management	.100.000	Liberty Mutual Holding Company Inc.		
		.00000	77-0670984				Liberty/Hoffman Estates LLC	.DE	.DS	Liberty Real Estate Holdings LLC	Ownership, Board and Management	.100.000	Liberty Mutual Holding Company Inc.		
		.00000					Liberty/Kent LLC	.DE	.DS	Liberty Real Estate Holdings LLC	Ownership, Board and Management	.100.000	Liberty Mutual Holding Company Inc.		
		.00000	65-1314055				Liberty/Milwaukee LLC	.DE	.DS	Liberty Real Estate Holdings LLC	Ownership, Board and Management	.100.000	Liberty Mutual Holding Company Inc.		
		.00000	77-0670983				Liberty/Warrenville LLC	.DE	.DS	Liberty Real Estate Holdings LLC	Ownership, Board and Management	.100.000	Liberty Mutual Holding Company Inc.		
		.00000	22-2195982				Liberty-USA Corporation	.DE	.DS	Peerless Insurance Company	Ownership, Board and Management	.100.000	Liberty Mutual Holding Company Inc.		
		.00000	22-2424043				LIH-RE of America Corporation	.DE	.DS	Liberty-USA Corporation	Ownership, Board and Management	.100.000	Liberty Mutual Holding Company Inc.		
		.00000	98-0470064				LILA (Colombia) Holdings Ltd.	.BMU	.DS	Liberty International Latin America Holdings, LLC	Ownership, Board and Management	.100.000	Liberty Mutual Holding Company Inc.		
		.00000	75-2621007				LIU Specialty Insurance Agency Inc.	.TX	.IA	Liberty Corporate Services LLC	Ownership, Board and Management	.100.000	Liberty Mutual Holding Company Inc.		
		.00000					LLIC S.a. r.l.	.LUX	.DS	Liberty UK and Europe Holdings Limited	Ownership, Board and Management	.100.000	Liberty Mutual Holding Company Inc.		
		.00000					LMAT Arbol Holdings LLC	.DE	.NIA	LMAT Natural Resources International S.L.	Ownership, Board and Management	.100.000	Liberty Mutual Holding Company Inc.		
		.00000					LMAT Holdings LLC	.DE	.NIA	Liberty Mutual Insurance Company	Ownership	.30.000	Liberty Mutual Holding Company Inc.		
		.00000					LMAT Holdings LLC	.DE	.NIA	Peerless Insurance Company	Ownership	.30.000	Liberty Mutual Holding Company Inc.		
		.00000					LMAT Holdings LLC	.DE	.NIA	Liberty Mutual Fire Insurance Company	Ownership	.10.000	Liberty Mutual Holding Company Inc.		
		.00000					LMAT Holdings LLC	.DE	.NIA	Employers Insurance Company of Wausau	Ownership	.10.000	Liberty Mutual Holding Company Inc.		
		.00000					LMAT Holdings LLC	.DE	.NIA	Safeco Insurance Company of America	Ownership	.10.000	Liberty Mutual Holding Company Inc.		
		.00000					LMAT Holdings LLC	.DE	.NIA	The Ohio Casualty Insurance Company	Ownership	.10.000	Liberty Mutual Holding Company Inc.		

STATEMENT AS OF SEPTEMBER 30, 2022 OF THE STATE AUTOMOBILE MUTUAL INSURANCE COMPANY

SCHEDULE Y

PART 1A - DETAIL OF INSURANCE HOLDING COMPANY SYSTEM

1	2	3	4	5	6	7	8	9	10	11	12	13	14	15	16
Group Code	Group Name	NAIC Company Code	ID Number	Federal RSSD	CIK	Name of Securities Exchange if Publicly Traded (U.S. or International)	Names of Parent, Subsidiaries Or Affiliates	Domi-ciliary Location	Relation-ship to Reporting Entity	Directly Controlled by (Name of Entity/Person)	Type of Control (Ownership, Board, Management, Attorney-in-Fact, Influence, Other)	If Control is Ownership Provide Percen-tage	Ultimate Controlling Entity(ies)/Person(s)	Is an SCA Filing Re-quired? (Yes/No)	*
		.00000					LMAT Natural Resources International S.L.ESP	.NIA	Liberty Mutual Opportunistic Investments LLC	Ownership, Board and Management	100.000	Liberty Mutual Holding Company Inc.		
		.00000					LMAT Uruguay Holdings S.R.L.URY	.NIA	Contumil S.A.	Ownership.....	85.556	Liberty Mutual Holding Company Inc.		
		.00000					LMAT Uruguay Holdings S.R.L.URY	.NIA	LMAT Natural Resources International S.L.	Ownership.....	14.443	Liberty Mutual Holding Company Inc.		
		.00000					LMAT Uruguay Holdings S.R.L.URY	.NIA	LMAT Arbol Holdings LLC	Ownership.....	0.001	Liberty Mutual Holding Company Inc.		
.0111	Liberty Mutual Insurance Company and its Affiliated Insurers	.36447	22-2227328				LM General Insurance Company	.IL	.DS	Liberty Mutual Insurance Company	Ownership, Board and Management	100.000	Liberty Mutual Holding Company Inc.		
.0111	Liberty Mutual Insurance Company and its Affiliated Insurers	.33600	04-3058504				LM Insurance Corporation	.IL	.DS	Liberty Mutual Insurance Company	Ownership, Board and Management	100.000	Liberty Mutual Holding Company Inc.		
.0111	Liberty Mutual Insurance Company and its Affiliated Insurers	.32352	22-2053189				LM Property and Casualty Insurance Company	.IN	.DS	Liberty Mutual Insurance Company	Ownership, Board and Management	100.000	Liberty Mutual Holding Company Inc.		
		.00000	84-3770759				LMCORT-FRE-01 IC	.DC	.IA	Liberty Mutual Credit Risk Transfer PCC Inc.	Ownership, Board, Management	100.000	Liberty Mutual Holding Company Inc.		
		.00000					LMG Chile SpA	.CHL	.NIA	Liberty UK and Europe Holdings Limited	Ownership, Board and Management	100.000	Liberty Mutual Holding Company Inc.		
		.00000	61-1558756				LMG Film Productions, LLC	.MA	.DS	Liberty Mutual Insurance Company	Ownership, Board and Management	100.000	Liberty Mutual Holding Company Inc.		
		.00000					LMG Insurance Public Company Limited	.THA	.DS	Tun Kaoklai Co., Ltd.	Ownership, Board and Management	74.990	Liberty Mutual Holding Company Inc.		
		.00000					LMG Insurance Public Company Limited	.THA	.DS	Liberty International Asia Pacific Holdings LLC	Ownership, Board and Management	24.990	Liberty Mutual Holding Company Inc.		
		.00000					LMG Singapore Holdings Pte. Ltd.	.SGP	.NIA	Liberty International US European Holdings LLC	Ownership, Board and Management	100.000	Liberty Mutual Holding Company Inc.		
		.00000	04-3583680				LMHC Massachusetts Holdings Inc.	.MA	.UIP	Liberty Mutual Holding Company Inc.	Ownership, Board and Management	100.000	Liberty Mutual Holding Company Inc.		
		.00000					LMID, LLC	.DE	.NIA	Liberty Mutual Insurance Company	Ownership.....	100.000	Liberty Mutual Holding Company Inc.		
		.00000	81-2184892				LSH Real Estate Holdings LLC	.DE	.NIA	Liberty Structured Holdings LLC	Ownership, Board and Management	100.000	Liberty Mutual Holding Company Inc.		
		.00000	71-0950057				Managed Care Associates, Inc.	.MS	.DS	Excess Risk Reinsurance Inc.	Ownership.....	100.000	Liberty Mutual Holding Company Inc.		
.0111	Liberty Mutual Insurance Company and its Affiliated Insurers	.23353	35-1135866				Meridian Security Insurance Company	.IN	.IA	State Auto Holdings, Inc.	Ownership, Board and Management	100.000	Liberty Mutual Holding Company Inc.		
.0111	Liberty Mutual Insurance Company and its Affiliated Insurers	.23507	31-0978279				Mid-American Fire & Casualty Company	.NH	.DS	The Midwestern Indemnity Company	Ownership, Board and Management	100.000	Liberty Mutual Holding Company Inc.		
.0111	Liberty Mutual Insurance Company and its Affiliated Insurers	.41653	46-0368854				Milbank Insurance Company	.IA	.IA	State Auto Financial Corporation	Ownership, Board and Management	100.000	Liberty Mutual Holding Company Inc.		
.0111	Liberty Mutual Insurance Company and its Affiliated Insurers	.14613	52-0424870				Montgomery Mutual Insurance Company	.MA	.IA	Liberty Mutual Insurance Company	Board and Management	0.000	Liberty Mutual Holding Company Inc.		
		.00000					MVP1 Pooler, LLC	.DE	.NIA	Liberty Mutual Insurance Company	Ownership.....	40.000	Liberty Mutual Holding Company Inc.		
		.00000					MVP1 Pooler, LLC	.DE	.NIA	Peerless Insurance Company	Ownership.....	20.000	Liberty Mutual Holding Company Inc.		
		.00000					MVP1 Pooler, LLC	.DE	.NIA	Employers Insurance Company of Wausau	Ownership.....	10.000	Liberty Mutual Holding Company Inc.		
		.00000					MVP1 Pooler, LLC	.DE	.NIA	Liberty Mutual Fire Insurance Company	Ownership.....	10.000	Liberty Mutual Holding Company Inc.		
		.00000					MVP1 Pooler, LLC	.DE	.NIA	The Ohio Casualty Insurance Company	Ownership.....	10.000	Liberty Mutual Holding Company Inc.		
		.00000					MVP1 Pooler, LLC	.DE	.NIA	Safeco Insurance Company of America	Ownership.....	10.000	Liberty Mutual Holding Company Inc.		
.0111	Liberty Mutual Insurance Company and its Affiliated Insurers	.27944	35-1287317				National Insurance Association	.IN	.DS	The National Corporation	Management and Attorney-in-Fact	0.000	Liberty Mutual Holding Company Inc.		
		.00000					Nationale Borg Reinsurance N.V.	.CUW	.IA	Liberty Mutual Insurance Company	Ownership, Board, Management	100.000	Liberty Mutual Holding Company Inc.		
		.00000					Nationale Waarborg B.V.	.NLD	.IA	Liberty UK and Europe Holdings Limited	Ownership, Board, Management	100.000	Liberty Mutual Holding Company Inc.		
		.00000	41-2098206				Network E&S Insurance Brokers, LLC	.OH	.IA	State Automobile Mutual Insurance Company	Ownership, Board and Management	100.000	Liberty Mutual Holding Company Inc.		
.0111	Liberty Mutual Insurance Company and its Affiliated Insurers	.23892	93-6029263				North Pacific Insurance Company	.OR	.DS	Liberty Northwest Insurance Corporation	Ownership, Board and Management	100.000	Liberty Mutual Holding Company Inc.		
		.00000	31-1364002				Ocasco Budget, Inc.	.OH	.DS	The Ohio Casualty Insurance Company	Ownership, Board and Management	100.000	Liberty Mutual Holding Company Inc.		
		.00000	31-1377709				OCI Printing, Inc.	.OH	.DS	Ohio Casualty Corporation	Ownership, Board and Management	100.000	Liberty Mutual Holding Company Inc.		
		.00000	31-0783294				Ohio Casualty Corporation	.OH	.DS	Liberty Mutual Insurance Company	Ownership, Board and Management	78.000	Liberty Mutual Holding Company Inc.		
		.00000	31-0783294				Ohio Casualty Corporation	.OH	.DS	Employers Insurance Company of Wausau	Ownership, Board and Management	8.000	Liberty Mutual Holding Company Inc.		
		.00000	31-0783294				Ohio Casualty Corporation	.OH	.DS	Peerless Insurance Company	Ownership, Board and Management	8.000	Liberty Mutual Holding Company Inc.		
		.00000	31-0783294				Ohio Casualty Corporation	.OH	.DS	Liberty Mutual Fire Insurance Company	Ownership, Board and Management	8.000	Liberty Mutual Holding Company Inc.		
.0111	Liberty Mutual Insurance Company and its Affiliated Insurers	.24082	31-0541777				Ohio Security Insurance Company	.NH	.DS	The Ohio Casualty Insurance Company	Ownership, Board and Management	100.000	Liberty Mutual Holding Company Inc.		
		.00000	26-0258241				Open Seas Solutions, Inc.	.WA	.DS	Safeco Corporation	Ownership, Board and Management	100.000	Liberty Mutual Holding Company Inc.		

STATEMENT AS OF SEPTEMBER 30, 2022 OF THE STATE AUTOMOBILE MUTUAL INSURANCE COMPANY

SCHEDULE Y

PART 1A - DETAIL OF INSURANCE HOLDING COMPANY SYSTEM

1	2	3	4	5	6	7	8	9	10	11	12 Type of Control (Ownership, Board, Management, Attorney-in-Fact, Influence, Other)	13 If Control is Owner- ship Provide Percen- tage	14 Ultimate Controlling Entity(ies)/Person(s)	15 Is an SCA Filing Re- quired? (Yes/No)	16 *
Group Code	Group Name	NAIC Company Code	ID Number	Federal RSSD	CIK	Name of Securities Exchange if Publicly Traded (U.S. or International)	Names of Parent, Subsidiaries Or Affiliates	Domi- ciliary Loca- tion	Rela- tion- ship to Reporting Entity	Directly Controlled by (Name of Entity/Person)					
.0111	Liberty Mutual Insurance Company and its Affiliated Insurers	23922 .00000	93-0241650				Oregon Automobile Insurance Company PAGUS Holdings LLC	OR DE	DS NIA	Liberty Northwest Insurance Corporation LMAT Holdings LLC	Ownership, Board and Management Ownership, Board and Management	100.000 100.000	Liberty Mutual Holding Company Inc. Liberty Mutual Holding Company Inc.		
.0111	Liberty Mutual Insurance Company and its Affiliated Insurers	14923	06-0487440				Patrons Mutual Insurance Company of Connecticut	CT	IA	State Automobile Mutual Insurance Company	Board, Management	0.000	Liberty Mutual Holding Company Inc.		
.0111	Liberty Mutual Insurance Company and its Affiliated Insurers	18333	13-2919779				Peerless Indemnity Insurance Company	IL	DS	Liberty-USA Corporation	Ownership, Board and Management	100.000	Liberty Mutual Holding Company Inc.		
.0111	Liberty Mutual Insurance Company and its Affiliated Insurers	24198	02-0177030				Peerless Insurance Company	NH	DS	Liberty Mutual Agency Corporation	Ownership, Board and Management	100.000	Liberty Mutual Holding Company Inc.		
.0111	Liberty Mutual Insurance Company and its Affiliated Insurers	30945 .00000	58-1140651				Plaza Insurance Company PT Independence Energy Holdings LLC	IA DE	IA NIA	Rockhill Insurance Company Liberty Energy Holdings, LLC	Ownership, Board and Management Ownership	100.000 100.000	Liberty Mutual Holding Company Inc. Liberty Mutual Holding Company Inc.		
		.00000	46-1667886				Raymond James LM Georgia Tax Credit Fund L.L.C.	FL	DS	The First Liberty Insurance Corporation	Ownership	100.000	Liberty Mutual Holding Company Inc.		
		.00000	46-1680447				Raymond James LM Massachusetts Tax Credit Fund L.L.C.	FL	DS	Liberty Mutual Insurance Company	Ownership	100.000	Liberty Mutual Holding Company Inc.		
		.00000	45-2635338				RBC State Credit Fund LLC	DE	NIA	Liberty Mutual Insurance Company	Ownership	100.000	Liberty Mutual Holding Company Inc.		
		.00000	26-0800397				Rianoc Research Corporation	WA	DS	Open Seas Solutions, Inc.	Ownership, Board and Management	100.000	Liberty Mutual Holding Company Inc.		
		.00000	45-2480595				RJTCF-37 Georgia Tax Credit Fund L.L.C.	FL	NIA	Liberty Mutual Fire Insurance Company	Ownership	100.000	Liberty Mutual Holding Company Inc.		
		.00000	45-5549520				RJTCF-38 Georgia Tax Credit Fund L.L.C.	FL	DS	Raymond James LM Georgia Tax Credit Fund L.L.C.	Ownership	100.000	Liberty Mutual Holding Company Inc.		
		.00000	50-9113010				RNA - Rede Nacional De Assistencia, S.A.	PRT	NIA	Liberty Seguros, Compania de Seguros y Reaseguros, S.A.	Ownership	20.000	Liberty Mutual Holding Company Inc.		
		.00000	25-1923260				Rockhill Holding Company	DE	NIA	State Automobile Mutual Insurance Company	Ownership, Board and Management	100.000	Liberty Mutual Holding Company Inc.		
.0111	Liberty Mutual Insurance Company and its Affiliated Insurers	28053 .00000 .00000 .00000 .00000 .00000 .00000 .00000	06-1149847 20-9406742 01-0712531 41-1440870 01-0833288 91-0742146 75-2865575				Rockhill Insurance Company Rockhill Insurance Services LLC Rockhill Underwriting Management, LLC RTW, Inc SAFECARE Company, Inc. Safeco Corporation Safeco General Agency, Inc.	AZ CA MO MN WA WA TX	IA NIA NIA NIA DS DS DS	Rockhill Holding Company Rockhill Holding Company Rockhill Holding Company Rockhill Holding Company Safeco Properties, Inc. Liberty Mutual Agency Corporation General Insurance Company of America	Ownership, Board and Management Ownership, Board and Management Ownership, Board and Management Ownership, Board and Management Ownership, Board and Management Ownership, Board and Management Ownership, Board and Management	100.000 100.000 100.000 100.000 100.000 100.000 100.000	Liberty Mutual Holding Company Inc. Liberty Mutual Holding Company Inc. Liberty Mutual Holding Company Inc. Liberty Mutual Holding Company Inc. Liberty Mutual Holding Company Inc. Liberty Mutual Holding Company Inc. Liberty Mutual Holding Company Inc.		
.0111	Liberty Mutual Insurance Company and its Affiliated Insurers	24740	91-0742148				Safeco Insurance Company of America	NH	DS	Safeco Corporation	Ownership, Board and Management	100.000	Liberty Mutual Holding Company Inc.		
.0111	Liberty Mutual Insurance Company and its Affiliated Insurers	39012	91-1115311				Safeco Insurance Company of Illinois	IL	DS	Safeco Insurance Company of America	Ownership, Board and Management	100.000	Liberty Mutual Holding Company Inc.		
.0111	Liberty Mutual Insurance Company and its Affiliated Insurers	11215	23-2640501				Safeco Insurance Company of Indiana	IN	DS	General Insurance Company of America	Ownership, Board and Management	100.000	Liberty Mutual Holding Company Inc.		
.0111	Liberty Mutual Insurance Company and its Affiliated Insurers	11071	93-1300233				Safeco Insurance Company of Oregon	OR	DS	Safeco Insurance Company of America	Ownership, Board and Management	100.000	Liberty Mutual Holding Company Inc.		
.0111	Liberty Mutual Insurance Company and its Affiliated Insurers	11070	91-6258394				Safeco Lloyds Insurance Company	TX	DS	General America Corporation of Texas	Management and Attorney-in-Fact	0.000	Liberty Mutual Holding Company Inc.		
.0111	Liberty Mutual Insurance Company and its Affiliated Insurers	24759 .00000	91-0885519 91-1273246				Safeco National Insurance Company Safeco Properties, Inc.	NH WA	DS DS	Safeco Insurance Company of America Safeco Corporation	Ownership, Board and Management Ownership, Board and Management	100.000 100.000	Liberty Mutual Holding Company Inc. Liberty Mutual Holding Company Inc.		
.0111	Liberty Mutual Insurance Company and its Affiliated Insurers	11100	91-1231536				Safeco Surplus Lines Insurance Company	NH	DS	Safeco Insurance Company of America	Ownership, Board and Management	100.000	Liberty Mutual Holding Company Inc.		
.0111	Liberty Mutual Insurance Company and its Affiliated Insurers	10837 .00000 .00000 .00000 .00000 .00000	33-0763208				San Diego Insurance Company Santa Marta Floresta Brasil Ltda. Santa Marta Floresta Brasil Ltda. Santa Rita Arbol Holdings S.L. Santa Rita Madeira e Floresta Ltda. Santa Rita Madeira e Floresta Ltda.	CA BRA BRA ESP BRA BRA	DS NIA NIA NIA NIA NIA	Liberty Mutual Insurance Company TECA Santa Marta Holdings, S.L. TECA SM LLC LMAT Natural Resources International S.L. Santa Rita Arbol Holdings, S.L. TECA SR LLC	Ownership, Board and Management Ownership Ownership Ownership Ownership Ownership	100.000 99.900 0.010 100.000 99.900 0.010	Liberty Mutual Holding Company Inc. Liberty Mutual Holding Company Inc. Liberty Mutual Holding Company Inc. Liberty Mutual Holding Company Inc. Liberty Mutual Holding Company Inc. Liberty Mutual Holding Company Inc.		

STATEMENT AS OF SEPTEMBER 30, 2022 OF THE STATE AUTOMOBILE MUTUAL INSURANCE COMPANY

SCHEDULE Y

PART 1A - DETAIL OF INSURANCE HOLDING COMPANY SYSTEM

1	2	3	4	5	6	7	8	9	10	11	12	13	14	15	16
Group Code	Group Name	NAIC Company Code	ID Number	Federal RSSD	CIK	Name of Securities Exchange if Publicly Traded (U.S. or International)	Names of Parent, Subsidiaries Or Affiliates	Domi-ciliary Location	Relation-ship to Reporting Entity	Directly Controlled by (Name of Entity/Person)	Type of Control (Ownership, Board, Management, Attorney-in-Fact, Influence, Other)	If Control is Ownership Provide Percen-tage	Ultimate Controlling Entity(ies)/Person(s)	Is an SCA Filing Re-quired? (Yes/No)	*
		.00000					Savannah Insurance Agency Pty LtdAUS	.DS	Ironshore Australia Holdings Pty Ltd	Ownership.....	100.000	Liberty Mutual Holding Company Inc.		
		.00000	91-0837732				SCIT, Inc.MA	.NIA	Winmar Company, Inc.	Ownership, Board and Management	100.000	Liberty Mutual Holding Company Inc.		
		.00000	82-4345429				Shandon Valley Vineyards LLCDE	.NIA	PAGUS Holdings LLC	Ownership, Board and Management	100.000	Liberty Mutual Holding Company Inc.		
		.00000	81-2854330				Solaria Labs, LLCDE	.NIA	Liberty Mutual Insurance Company	Ownership, Board and Management	100.000	Liberty Mutual Holding Company Inc.		
		.00000					Solaria Labs Singapore Pte. LtdSGP	.NIA	Liberty UK and Europe Holdings Limited	Ownership, Board and Management	100.000	Liberty Mutual Holding Company Inc.		
		.00000	84-1695835				St. James/Arlington LLCMA	.NIA	Employers Insurance Company of Wausau	Ownership, Board and Management	100.000	Liberty Mutual Holding Company Inc.		
		.00000	01-0854295				St. James/Arlington Management LLCMA	.DS	Liberty Mutual Insurance Company	Ownership, Board and Management	100.000	Liberty Mutual Holding Company Inc.		
							St. James/Arlington Real Estate Limited PartnershipMA	.DS	St. James/Arlington LLC	Ownership, Board and Management	3.000	Liberty Mutual Holding Company Inc.		
		.00000	84-1695837				St. James/Arlington Real Estate Limited PartnershipMA	.DS	Liberty Mutual Insurance Company	Ownership, Board and Management	92.000	Liberty Mutual Holding Company Inc.		
							St. James/Arlington Real Estate Limited PartnershipMA	.DS	Liberty Mutual Fire Insurance Company	Ownership, Board and Management	5.000	Liberty Mutual Holding Company Inc.		
		.00000	31-1324304				State Auto Financial CorporationOH	.NIA	State Automobile Mutual Insurance Company	Ownership, Board and Management	100.000	Liberty Mutual Holding Company Inc.		
		.00000					State Auto FoundationOH	.NIA	Liberty Mutual Insurance Company	Board, Management	0.000	Liberty Mutual Holding Company Inc.		
		.00000	20-8756040				State Auto Holdings, Inc.OH	.NIA	State Automobile Mutual Insurance Company	Ownership, Board and Management	100.000	Liberty Mutual Holding Company Inc.		
.0111	Liberty Mutual Insurance Company and its Affiliated Insurers11017	31-1651026				State Auto Insurance Company of OhioOH	.IA	State Auto Financial Corporation	Ownership, Board and Management	100.000	Liberty Mutual Holding Company Inc.		
.0111	Liberty Mutual Insurance Company and its Affiliated Insurers31755	39-1211058				State Auto Insurance Company of WisconsinWI	.IA	State Automobile Mutual Insurance Company	Ownership, Board and Management	100.000	Liberty Mutual Holding Company Inc.		
		.00000	82-2704976				State Auto Labs Corp.OH	.NIA	State Automobile Mutual Insurance Company	Ownership, Board and Management	100.000	Liberty Mutual Holding Company Inc.		
.0111	Liberty Mutual Insurance Company and its Affiliated Insurers25127	57-6010814				State Auto Property & Casualty Insurance CompanyIA	.IA	State Auto Financial Corporation	Ownership, Board and Management	100.000	Liberty Mutual Holding Company Inc.		
.0111	Liberty Mutual Insurance Company and its Affiliated Insurers25135	31-4316080				State Automobile Mutual Insurance CompanyOH	.IA	Liberty Mutual Group Inc.	Ownership, Board and Management	100.000	Liberty Mutual Holding Company Inc.		
		.00000	31-0676465				Stateco Financial Services, Inc.OH	.NIA	State Auto Financial Corporation	Ownership, Board and Management	100.000	Liberty Mutual Holding Company Inc.		
		.00000	04-3545985				Tara Energy Investments, LLCDE	.DS	Liberty Energy Holdings, LLC	Ownership, Board and Management	100.000	Liberty Mutual Holding Company Inc.		
		.00000					TECA Santa Marta Holdings S.LESP	.NIA	LMAT Natural Resources International S.L	Ownership.....	100.000	Liberty Mutual Holding Company Inc.		
		.00000					TECA SM LLCDE	.NIA	Teca Santa Marta Holdings S.L	Ownership.....	100.000	Liberty Mutual Holding Company Inc.		
		.00000					TECA SR LLCDE	.NIA	Santa Rita Arbol Holdings S.L	Ownership.....	100.000	Liberty Mutual Holding Company Inc.		
.0111	Liberty Mutual Insurance Company and its Affiliated Insurers33588	04-3058503				The First Liberty Insurance CorporationIL	.DS	Liberty Mutual Insurance Company	Ownership, Board and Management	100.000	Liberty Mutual Holding Company Inc.		
.0111	Liberty Mutual Insurance Company and its Affiliated Insurers23515	31-0978280				The Midwestern Indemnity CompanyNH	.DS	Peerless Insurance Company	Ownership, Board and Management	100.000	Liberty Mutual Holding Company Inc.		
		.00000	35-1283740				The National CorporationIN	.DS	Liberty-USA Corporation	Ownership, Board and Management	100.000	Liberty Mutual Holding Company Inc.		
.0111	Liberty Mutual Insurance Company and its Affiliated Insurers24171	02-0342937				The Netherlands Insurance CompanyNH	.DS	Peerless Insurance Company	Ownership, Board and Management	100.000	Liberty Mutual Holding Company Inc.		
.0111	Liberty Mutual Insurance Company and its Affiliated Insurers24074	31-0396250				The Ohio Casualty Insurance CompanyNH	.DS	Ohio Casualty Corporation	Ownership, Board and Management	100.000	Liberty Mutual Holding Company Inc.		
		.00000					Tun Kaoklai Co., Ltd.THA	.DS	Kritaya Tun Company Limited	Ownership, Board and Management	99.990	Liberty Mutual Holding Company Inc.		
		.00000					Tun Kaoklai Co., Ltd.THA	.DS	Liberty International Asia Pacific Holdings LLC	Ownership, Board and Management	0.010	Liberty Mutual Holding Company Inc.		
		.00000					Vitoria Floresta Brasil Ltda.BRA	.NIA	LMAT Natural Resources International S.L	Ownership.....	99.990	Liberty Mutual Holding Company Inc.		
		.00000					Vitoria Floresta Brasil Ltda.BRA	.NIA	LMAT Arbol Holdings LLC	Ownership.....	0.010	Liberty Mutual Holding Company Inc.		
.0111	Liberty Mutual Insurance Company and its Affiliated Insurers26069	36-3522250				Wausau Business Insurance CompanyWI	.DS	Liberty Mutual Insurance Company	Ownership, Board and Management	100.000	Liberty Mutual Holding Company Inc.		
.0111	Liberty Mutual Insurance Company and its Affiliated Insurers26425	36-2753986				Wausau General Insurance CompanyWI	.DS	Liberty Mutual Insurance Company	Ownership, Board and Management	100.000	Liberty Mutual Holding Company Inc.		
		.00000					Wausau Insurance Company (U.K.) LimitedGBR	.DS	Liberty International Netherlands V.O.F.	Ownership, Board and Management	100.000	Liberty Mutual Holding Company Inc.		
.0111	Liberty Mutual Insurance Company and its Affiliated Insurers26042	39-1341459				Wausau Underwriters Insurance CompanyWI	.DS	Liberty Mutual Insurance Company	Ownership, Board and Management	100.000	Liberty Mutual Holding Company Inc.		
.0111	Liberty Mutual Insurance Company and its Affiliated Insurers44393	31-0624491				West American Insurance CompanyIN	.DS	The Ohio Casualty Insurance Company	Ownership, Board and Management	100.000	Liberty Mutual Holding Company Inc.		
		.00000	45-2396108				Wildcat Field Services, LLCTX	.DS	Wildcat Midstream Holdings II LLC	Ownership.....	100.000	Liberty Mutual Holding Company Inc.		

STATEMENT AS OF SEPTEMBER 30, 2022 OF THE STATE AUTOMOBILE MUTUAL INSURANCE COMPANY

SCHEDULE Y

PART 1A - DETAIL OF INSURANCE HOLDING COMPANY SYSTEM

1	2	3	4	5	6	7	8	9	10	11	12	13	14	15	16
Group Code	Group Name	NAIC Company Code	ID Number	Federal RSSD	CIK	Name of Securities Exchange if Publicly Traded (U.S. or International)	Names of Parent, Subsidiaries Or Affiliates	Domiciliary Location	Relationship to Reporting Entity	Directly Controlled by (Name of Entity/Person)	Type of Control (Ownership, Board, Management, Attorney-in-Fact, Influence, Other)	If Control is Ownership Provide Percentage	Ultimate Controlling Entity(ies)/Person(s)	Is an SCA Filing Required? (Yes/No)	*
	00000	46-1637784				Wildcat Midstream Holdings II LLC	TX.....	DS.....	Kellen Holdings, LLC	Ownership.....	95.000	Liberty Mutual Holding Company Inc.		
	00000	91-0683335				Winmar Company, Inc.	WA.....	DS.....	Safeco Properties, Inc.	Ownership, Board and Management	100.000	Liberty Mutual Holding Company Inc.		
	00000	35-2604562				Workgrid Software, Inc.	DE.....	NIA.....	Liberty Mutual Technology Group, Inc.	Ownership, Board and Management	100.000	Liberty Mutual Holding Company Inc.		

Asterisk	

NONE

PART 1 - LOSS EXPERIENCE

Line of Business		Current Year to Date			4
		1 Direct Premiums Earned	2 Direct Losses Incurred	3 Direct Loss Percentage	Prior Year to Date Direct Loss Percentage
1.	Fire	29,943,297	19,344,577	64.6	33.5
2.1	Allied Lines	36,477,588	27,023,181	74.1	78.9
2.2	Multiple peril crop	0	0	0.0	0.0
2.3	Federal flood	0	0	0.0	0.0
2.4	Private crop	0	0	0.0	0.0
2.5	Private flood	0	0	0.0	0.0
3.	Farmowners multiple peril	81,319,551	60,985,532	75.0	54.9
4.	Homeowners multiple peril	57,906,480	36,348,295	62.8	54.8
5.	Commercial multiple peril	90,867,866	72,420,067	79.7	97.1
6.	Mortgage guaranty	0	0	0.0	0.0
8.	Ocean marine	1,833	32	1.7	0.7
9.	Inland marine	6,976,808	1,584,885	22.7	26.4
10.	Financial guaranty	0	0	0.0	0.0
11.1	Medical professional liability - occurrence	0	0	0.0	0.0
11.2	Medical professional liability - claims-made	0	0	0.0	0.0
12.	Earthquake	1,861,334	0	0.0	7.4
13.1	Comprehensive (hospital and medical) individual	0	0	0.0	0.0
13.2	Comprehensive (hospital and medical) group	0	0	0.0	0.0
14.	Credit accident and health	0	0	0.0	0.0
15.1	Vision only	0	0	0.0	0.0
15.2	Dental only	0	0	0.0	0.0
15.3	Disability income	0	0	0.0	0.0
15.4	Medicare supplement	0	0	0.0	0.0
15.5	Medicaid Title XIX	0	0	0.0	0.0
15.6	Medicare Title XVIII	0	0	0.0	0.0
15.7	Long-term care	0	0	0.0	0.0
15.8	Federal employees health benefits plan	0	0	0.0	0.0
15.9	Other health	957	0	0.0	6.4
16.	Workers' compensation	15,524,082	1,437,409	9.3	20.2
17.1	Other liability - occurrence	58,558,305	48,154,033	82.2	29.9
17.2	Other liability - claims-made	1,263,255	551,364	43.6	0.1
17.3	Excess workers' compensation	0	0	0.0	0.0
18.1	Products liability - occurrence	4,339,938	1,984,777	45.7	9.2
18.2	Products liability - claims-made	0	0	0.0	0.0
19.1	Private passenger auto no-fault (personal injury protection)	302,334	1,390,376	459.9	(123.9)
19.2	Other private passenger auto liability	21,017,369	21,499,932	102.3	61.0
19.3	Commercial auto no-fault (personal injury protection)	2,398,731	2,983,321	124.4	80.2
19.4	Other commercial auto liability	149,057,497	141,227,584	94.7	76.6
21.1	Private passenger auto physical damage	16,629,295	9,664,160	58.1	51.5
21.2	Commercial auto physical damage	61,984,261	44,126,562	71.2	68.2
22.	Aircraft (all perils)	0	0	0.0	0.0
23.	Fidelity	370,636	35,510	9.6	18.4
24.	Surety	49,330	1,458	3.0	(684.5)
26.	Burglary and theft	214,123	244,734	114.3	24.1
27.	Boiler and machinery	2,423,111	733,467	30.3	36.1
28.	Credit	0	0	0.0	0.0
29.	International	0	0	0.0	0.0
30.	Warranty	0	0	0.0	0.0
31.	Reinsurance - Nonproportional Assumed Property	XXX	XXX	XXX	XXX
32.	Reinsurance - Nonproportional Assumed Liability	XXX	XXX	XXX	XXX
33.	Reinsurance - Nonproportional Assumed Financial Lines	XXX	XXX	XXX	XXX
34.	Aggregate write-ins for other lines of business	0	0	0.0	0.0
35.	Totals	639,487,982	491,741,258	76.9	62.7
DETAILS OF WRITE-INS					
3401.				
3402.				
3403.				
3498.	Summary of remaining write-ins for Line 34 from overflow page	0	0	0.0	0.0
3499.	Totals (Lines 3401 through 3403 plus 3498)(Line 34 above)	0	0	0.0	0.0

STATEMENT AS OF SEPTEMBER 30, 2022 OF THE STATE AUTOMOBILE MUTUAL INSURANCE COMPANY

PART 2 - DIRECT PREMIUMS WRITTEN

Line of Business		1	2	3
		Current Quarter	Current Year to Date	Prior Year Year to Date
1.	Fire	12,278,443	35,434,554	25,688,347
2.1	Allied Lines	15,336,753	43,253,288	30,760,972
2.2	Multiple peril crop	0	0	0
2.3	Federal flood	0	0	0
2.4	Private crop	0	0	0
2.5	Private flood	0	0	0
3.	Farmowners multiple peril	30,441,784	92,713,687	73,610,837
4.	Homeowners multiple peril	23,356,489	61,638,278	56,049,199
5.	Commercial multiple peril	31,754,674	99,667,718	82,848,256
6.	Mortgage guaranty	0	0	0
8.	Ocean marine	761	2,529	1,917
9.	Inland marine	2,743,350	8,532,527	5,915,111
10.	Financial guaranty	0	0	0
11.1	Medical professional liability - occurrence	0	0	0
11.2	Medical professional liability - claims-made	0	0	0
12.	Earthquake	684,585	1,944,912	1,706,899
13.1	Comprehensive (hospital and medical) individual	0	0	0
13.2	Comprehensive (hospital and medical) group	0	0	0
14.	Credit accident and health	0	0	0
15.1	Vision only	0	0	0
15.2	Dental only	0	0	0
15.3	Disability income	0	0	0
15.4	Medicare supplement	0	0	0
15.5	Medicaid Title XIX	0	0	0
15.6	Medicare Title XVIII	0	0	0
15.7	Long-term care	0	0	0
15.8	Federal employees health benefits plan	0	0	0
15.9	Other health	786	1,042	1,256
16.	Workers' compensation	5,431,655	14,503,446	15,989,756
17.1	Other liability - occurrence	22,914,446	72,190,438	47,343,732
17.2	Other liability - claims-made	502,548	1,534,899	1,014,148
17.3	Excess workers' compensation	0	0	0
18.1	Products liability - occurrence	1,303,478	4,444,574	4,330,688
18.2	Products liability - claims-made	0	0	0
19.1	Private passenger auto no-fault (personal injury protection)	87,204	276,637	340,818
19.2	Other private passenger auto liability	7,103,673	20,837,285	22,500,435
19.3	Commercial auto no-fault (personal injury protection)	651,342	2,473,321	2,469,002
19.4	Other commercial auto liability	55,348,495	176,747,600	130,155,346
21.1	Private passenger auto physical damage	5,728,607	16,551,637	17,348,707
21.2	Commercial auto physical damage	22,887,204	72,432,401	54,918,553
22.	Aircraft (all perils)	0	0	0
23.	Fidelity	120,562	378,813	418,866
24.	Surety	21,588	47,984	50,157
26.	Burglary and theft	88,703	264,183	150,396
27.	Boiler and machinery	899,817	2,730,401	2,217,841
28.	Credit	0	0	0
29.	International	0	0	0
30.	Warranty	0	0	0
31.	Reinsurance - Nonproportional Assumed Property	XXX	XXX	XXX
32.	Reinsurance - Nonproportional Assumed Liability	XXX	XXX	XXX
33.	Reinsurance - Nonproportional Assumed Financial Lines	XXX	XXX	XXX
34.	Aggregate write-ins for other lines of business	0	0	0
35.	Totals	239,686,948	728,602,154	575,831,238
DETAILS OF WRITE-INS				
3401.			
3402.			
3403.			
3498.	Summary of remaining write-ins for Line 34 from overflow page	0	0	0
3499.	Totals (Lines 3401 through 3403 plus 3498)(Line 34 above)	0	0	0

STATEMENT AS OF SEPTEMBER 30, 2022 OF THE STATE AUTOMOBILE MUTUAL INSURANCE COMPANY

PART 3 (000 omitted)

LOSS AND LOSS ADJUSTMENT EXPENSE RESERVES SCHEDULE

	1	2	3	4	5	6	7	8	9	10	11	12	13									
Years in Which Losses Occurred	Prior Year-End Known Case Loss and LAE Reserves	Prior Year-End IBNR Loss and LAE Reserves	Total Prior Year-End Loss and LAE Reserves (Cols. 1+2)	2022 Loss and LAE Payments on Claims Reported as of Prior Year-End	2022 Loss and LAE Payments on Claims Unreported as of Prior Year-End	Total 2022 Loss and LAE Payments (Cols. 4+5)	Q.S. Date Known Case Loss and LAE Reserves on Claims Reported and Open as of Prior Year End	Q.S. Date Known Case Loss and LAE Reserves on Claims Reported or Reopened Subsequent to Prior Year End	Q.S. Date IBNR Loss and LAE Reserves	Total Q.S. Loss and LAE Reserves (Cols.7+8+9)	Prior Year-End Known Case Loss and LAE Reserves Developed (Savings)/ Deficiency (Cols.4+7 minus Col. 1)	Prior Year-End IBNR Loss and LAE Reserves Developed (Savings)/ Deficiency (Cols. 5+8+9 minus Col. 2)	Prior Year-End Total Loss and LAE Reserve Developed (Savings)/ Deficiency (Cols. 11+12)									
1. 2019 + Prior	104,197	96,348	200,545	183,797	17,713	201,510	0	0	0	0	79,600	(78,635)	965									
2. 2020	55,737	44,434	100,171	92,955	8,160	101,115	0	0	0	0	37,218	(36,274)	944									
3. Subtotals 2020 + Prior	159,934	140,782	300,716	276,752	25,873	302,625	0	0	0	0	116,818	(114,909)	1,909									
4. 2021	128,469	141,233	269,702	225,820	44,074	269,894	0	0	0	0	97,351	(97,159)	192									
5. Subtotals 2021 + Prior	288,403	282,015	570,418	502,572	69,947	572,519	0	0	0	0	214,169	(212,068)	2,101									
6. 2022	XXX	XXX	XXX	XXX	141,850	141,850	XXX	0	0	0	XXX	XXX	XXX									
7. Totals	288,403	282,015	570,418	502,572	211,797	714,369	0	0	0	0	214,169	(212,068)	2,101									
8. Prior Year-End Surplus As Regards Policyholders	778,319										Col. 11, Line 7 As % of Col. 1 Line 7	Col. 12, Line 7 As % of Col. 2 Line 7	Col. 13, Line 7 As % of Col. 3 Line 7									
											1. 74.3	2. (75.2)	3. 0.4									
											Col. 13, Line 7 As a % of Col. 1 Line 8											
											4. 0.3											

STATEMENT AS OF SEPTEMBER 30, 2022 OF THE STATE AUTOMOBILE MUTUAL INSURANCE COMPANY

SUPPLEMENTAL EXHIBITS AND SCHEDULES INTERROGATORIES

The following supplemental reports are required to be filed as part of your statement filing. However, in the event that your company does not transact the type of business for which the special report must be filed, your response of NO to the specific interrogatory will be accepted in lieu of filing a "NONE" report and a bar code will be printed below. If the supplement is required of your company but is not being filed for whatever reason enter SEE EXPLANATION and provide an explanation following the interrogatory questions.

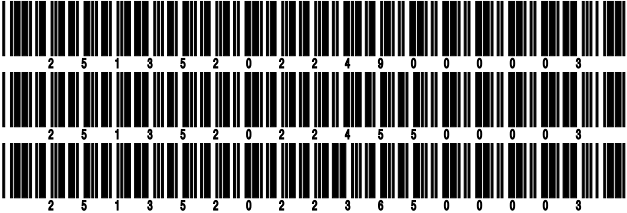
	Response
1. Will the Trusteed Surplus Statement be filed with the state of domicile and the NAIC with this statement?	NO
2. Will Supplement A to Schedule T (Medical Professional Liability Supplement) be filed with this statement?	NO
3. Will the Medicare Part D Coverage Supplement be filed with the state of domicile and the NAIC with this statement?	NO
4. Will the Director and Officer Insurance Coverage Supplement be filed with the state of domicile and the NAIC with this statement?	YES
AUGUST FILING	
5. Will the regulator-only (non-public) Communication of Internal Control Related Matters Noted in Audit be filed with the state of domicile and electronically with the NAIC (as a regulator-only non-public document) by August 1? The response for 1st and 3rd quarters should be N/A. A NO response resulting with a bar code is only appropriate in the 2nd quarter.	N/A

Explanations:

1.
2.
3.

Bar Codes:

1. Trusteed Surplus Statement [Document Identifier 490]
2. Supplement A to Schedule T [Document Identifier 455]
3. Medicare Part D Coverage Supplement [Document Identifier 365]



STATEMENT AS OF SEPTEMBER 30, 2022 OF THE STATE AUTOMOBILE MUTUAL INSURANCE COMPANY

OVERFLOW PAGE FOR WRITE-INS

Additional Write-ins for Assets Line 25

		Current Statement Date			4 December 31 Prior Year Net Admitted Assets
		1 Assets	2 Nonadmitted Assets	3 Net Admitted Assets (Cols. 1 - 2)	
2504.	Loss deductibles	0	0	0	90,600
2597.	Summary of remaining write-ins for Line 25 from overflow page	0	0	0	90,600

Additional Write-ins for Liabilities Line 25

		1 Current Statement Date	2 December 31, Prior Year
2504.	Miscellaneous liabilities	478,280	761,047
2505.	Retroactive reinsurance reserves - ceded	0	(2,530,107)
2597.	Summary of remaining write-ins for Line 25 from overflow page	478,280	(1,769,060)

SCHEDULE A - VERIFICATION

Real Estate

	1	2
	Year to Date	Prior Year Ended December 31
1. Book/adjusted carrying value, December 31 of prior year	56,662,884	39,858,273
2. Cost of acquired:		
2.1 Actual cost at time of acquisition	0	0
2.2 Additional investment made after acquisition	8,581,496	19,730,875
3. Current year change in encumbrances	0	0
4. Total gain (loss) on disposals	0	(985,307)
5. Deduct amounts received on disposals	0	0
6. Total foreign exchange change in book/adjusted carrying value	0	0
7. Deduct current year's other than temporary impairment recognized	0	0
8. Deduct current year's depreciation	1,253,980	1,940,957
9. Book/adjusted carrying value at the end of current period (Lines 1+2+3+4-5+6-7-8)	63,990,400	56,662,884
10. Deduct total nonadmitted amounts	0	0
11. Statement value at end of current period (Line 9 minus Line 10)	63,990,400	56,662,884

SCHEDULE B - VERIFICATION

Mortgage Loans

	1	2
	Year to Date	Prior Year Ended December 31
1. Book value/recorded investment excluding accrued interest, December 31 of prior year		
2. Cost of acquired:		
2.1 Actual cost at time of acquisition		
2.2 Additional investment made after acquisition		
3. Capitalized deferred interest and other		
4. Accrual of discount		
5. Unrealized valuation increase (decrease)		
6. Total gain (loss) on disposals		
7. Deduct amounts received on disposals		
8. Deduct amortization of premium and mortgage interest paid and commitment fees		
9. Total foreign exchange change in book value/recorded investment excluding accrued interest		
10. Deduct current year's other than temporary impairment recognized		
11. Book value/recorded investment excluding accrued interest at end of current period (Lines 1+2+3+4+5+6-7-8+9-10)		
12. Total valuation allowance		
13. Subtotal (Line 11 plus Line 12)		
14. Deduct total nonadmitted amounts		
15. Statement value at end of current period (Line 13 minus Line 14)		

NONE

SCHEDULE BA - VERIFICATION

Other Long-Term Invested Assets

	1	2
	Year to Date	Prior Year Ended December 31
1. Book/adjusted carrying value, December 31 of prior year	46,745,329	55,771,213
2. Cost of acquired:		
2.1 Actual cost at time of acquisition	0	0
2.2 Additional investment made after acquisition	1,041,972	5,155,569
3. Capitalized deferred interest and other	0	0
4. Accrual of discount	0	0
5. Unrealized valuation increase (decrease)	(15,603,309)	(1,750,594)
6. Total gain (loss) on disposals	14,262,839	7,238,428
7. Deduct amounts received on disposals	36,213,817	19,669,287
8. Deduct amortization of premium and depreciation	0	0
9. Total foreign exchange change in book/adjusted carrying value	0	0
10. Deduct current year's other than temporary impairment recognized	0	0
11. Book/adjusted carrying value at end of current period (Lines 1+2+3+4+5+6-7-8+9-10)	10,233,014	46,745,329
12. Deduct total nonadmitted amounts	0	0
13. Statement value at end of current period (Line 11 minus Line 12)	10,233,014	46,745,329

SCHEDULE D - VERIFICATION

Bonds and Stocks

	1	2
	Year to Date	Prior Year Ended December 31
1. Book/adjusted carrying value of bonds and stocks, December 31 of prior year	1,147,107,102	1,162,002,858
2. Cost of bonds and stocks acquired	153,764,640	152,821,610
3. Accrual of discount	286,883	1,022,057
4. Unrealized valuation increase (decrease)	197,479,219	19,528,988
5. Total gain (loss) on disposals	12,632,779	11,964,862
6. Deduct consideration for bonds and stocks disposed of	513,992,853	198,172,583
7. Deduct amortization of premium	1,466,136	2,623,246
8. Total foreign exchange change in book/adjusted carrying value	0	0
9. Deduct current year's other than temporary impairment recognized	0	0
10. Total investment income recognized as a result of prepayment penalties and/or acceleration fees	194,446	562,555
11. Book/adjusted carrying value at end of current period (Lines 1+2+3+4+5-6-7+8-9+10)	996,006,080	1,147,107,102
12. Deduct total nonadmitted amounts	25,060,363	26,275,193
13. Statement value at end of current period (Line 11 minus Line 12)	970,945,717	1,120,831,909

STATEMENT AS OF SEPTEMBER 30, 2022 OF THE STATE AUTOMOBILE MUTUAL INSURANCE COMPANY

SCHEDULE D - PART 1B

Showing the Acquisitions, Dispositions and Non-Trading Activity
During the Current Quarter for all Bonds and Preferred Stock by NAIC Designation

NAIC Designation	1 Book/Adjusted Carrying Value Beginning of Current Quarter	2 Acquisitions During Current Quarter	3 Dispositions During Current Quarter	4 Non-Trading Activity During Current Quarter	5 Book/Adjusted Carrying Value End of First Quarter	6 Book/Adjusted Carrying Value End of Second Quarter	7 Book/Adjusted Carrying Value End of Third Quarter	8 Book/Adjusted Carrying Value December 31 Prior Year
BONDS								
1. NAIC 1 (a)	102,572,513	29,715	1,899,029	(4,421,519)	276,335,971	102,572,513	96,281,680	378,981,467
2. NAIC 2 (a)	0	0	3,650,000	3,650,000	83,653,929	0	0	45,367,265
3. NAIC 3 (a)	0	0	0	0	0	0	0	0
4. NAIC 4 (a)	0	0	0	0	2,011,083	0	0	0
5. NAIC 5 (a)	0	0	0	0	0	0	0	0
6. NAIC 6 (a)	0	0	0	0	0	0	0	0
7. Total Bonds	102,572,513	29,715	5,549,029	(771,519)	362,000,983	102,572,513	96,281,680	424,348,732
PREFERRED STOCK								
8. NAIC 1	0	0	0	0	0	0	0	0
9. NAIC 2	0	0	0	0	0	0	0	0
10. NAIC 3	0	0	0	0	0	0	0	0
11. NAIC 4	0	0	0	0	0	0	0	0
12. NAIC 5	0	0	0	0	0	0	0	0
13. NAIC 6	0	0	0	0	0	0	0	0
14. Total Preferred Stock	0	0	0	0	0	0	0	0
15. Total Bonds and Preferred Stock	102,572,513	29,715	5,549,029	(771,519)	362,000,983	102,572,513	96,281,680	424,348,732

(a) Book/Adjusted Carrying Value column for the end of the current reporting period includes the following amount of short-term and cash equivalent bonds by NAIC designation:
NAIC 1 \$0 ; NAIC 2 \$0 ; NAIC 3 \$0 NAIC 4 \$0 ; NAIC 5 \$0 ; NAIC 6 \$0

SCHEDULE DA - PART 1

Short-Term Investments

	1	2	3	4	5
	Book/Adjusted Carrying Value	Prior Year Value	Actual Cost	Interest Collected Year-to-Date	Paid for Accrued Interest Year-to-Date
7709999999 Totals		XX			

NONE

SCHEDULE DA - VERIFICATION

Short-Term Investments

	1	2
	Year To Date	Prior Year Ended December 31
1. Book/adjusted carrying value, December 31 of prior year	1	1
2. Cost of short-term investments acquired	0	0
3. Accrual of discount	0	0
4. Unrealized valuation increase (decrease)	0	0
5. Total gain (loss) on disposals	0	0
6. Deduct consideration received on disposals	0	0
7. Deduct amortization of premium	0	0
8. Total foreign exchange change in book/adjusted carrying value	0	0
9. Deduct current year's other than temporary impairment recognized	0	0
10. Book/adjusted carrying value at end of current period (Lines 1+2+3+4+5-6-7+8-9)	1	1
11. Deduct total nonadmitted amounts	0	0
12. Statement value at end of current period (Line 10 minus Line 11)	1	1

Schedule DB - Part A - Verification - Options, Caps, Floors, Collars, Swaps and Forwards

N O N E

Schedule DB - Part B - Verification - Futures Contracts

N O N E

Schedule DB - Part C - Section 1 - Replication (Synthetic Asset) Transactions (RSATs) Open

N O N E

Schedule DB-Part C-Section 2-Reconciliation of Replication (Synthetic Asset) Transactions Open

N O N E

Schedule DB - Verification - Book/Adjusted Carrying Value, Fair Value and Potential Exposure of
Derivatives

N O N E

SCHEDULE E - PART 2 - VERIFICATION

(Cash Equivalents)

	1	2
	Year To Date	Prior Year Ended December 31
1. Book/adjusted carrying value, December 31 of prior year	15,024,325	9,307,465
2. Cost of cash equivalents acquired	1	114,279,332
3. Accrual of discount	266	10,022
4. Unrealized valuation increase (decrease)	0	0
5. Total gain (loss) on disposals	0	0
6. Deduct consideration received on disposals	15,003,025	108,572,494
7. Deduct amortization of premium	0	0
8. Total foreign exchange change in book/adjusted carrying value	0	0
9. Deduct current year's other than temporary impairment recognized	0	0
10. Book/adjusted carrying value at end of current period (Lines 1+2+3+4+5-6-7+8-9)	21,567	15,024,325
11. Deduct total nonadmitted amounts	0	0
12. Statement value at end of current period (Line 10 minus Line 11)	21,567	15,024,325

STATEMENT AS OF SEPTEMBER 30, 2022 OF THE STATE AUTOMOBILE MUTUAL INSURANCE COMPANY

SCHEDULE A - PART 2

Showing All Real Estate ACQUIRED AND ADDITIONS MADE During the Current Quarter

1	Location		4	5	6	7	8	9
	2	3						
Description of Property	City	State	Date Acquired	Name of Vendor	Actual Cost at Time of Acquisition	Amount of Encumbrances	Book/Adjusted Carrying Value Less Encumbrances	Additional Investment Made After Acquisition
Home Office - 518 E. Broad Street	Columbus	OH	09/30/2022	Various	0	0	4,904,274	4,904,274
0199999. Acquired by Purchase					0	0	4,904,274	4,904,274
0399999 - Totals					0	0	4,904,274	4,904,274

SCHEDULE A - PART 3

Showing All Real Estate DISPOSED During the Quarter, Including Payments During the Final Year on "Sales Under Contract"

1	Location		4	5	6	7	8	Change in Book/Adjusted Carrying Value Less Encumbrances					14	15	16	17	18	19	20
	2	3						9	10	11	12	13							
Description of Property	City	State	Disposal Date	Name of Purchaser	Actual Cost	Expended for Additions, Permanent Improvements and Changes in Encumbrances	Book/ Adjusted Carrying Value Less Encumbrances Prior Year	Current Year's Depreciation	Current Year's Other-Than-Temporary Impairment Recognized	Current Year's Change in Encumbrances	Total Change in Book/ Adjusted Carrying Value (11-9-10)	Total Foreign Exchange Change in Book/ Adjusted Carrying Value	Book/ Adjusted Carrying Value Less Encumbrances on Disposal	Amounts Received During Year	Foreign Exchange Gain (Loss) on Disposal	Realized Gain (Loss) on Disposal	Total Gain (Loss) on Disposal	Gross Income Earned Less Interest Incurred on Encumbrances	Taxes, Repairs and Expenses Incurred
0399999 - Totals																			

Schedule B - Part 2 - Mortgage Loans Acquired and Additions Made

N O N E

Schedule B - Part 3 - Mortgage Loans Disposed, Transferred or Repaid

N O N E

SCHEDULE BA - PART 2

1 CUSIP Identification	2 Name or Description	Location		5 Name of Vendor or General Partner	6 NAIC Designation, NAIC Designation Modifier and SVO Administrative Symbol	7 Date Originally Acquired	8 Type and Strategy	9 Actual Cost at Time of Acquisition	10 Additional Investment Made After Acquisition	11 Amount of Encumbrances	12 Commitment for Additional Investment	13 Percentage of Ownership
		3 City	4 State									
000000-00-0	Rev1 Ventrures for Columbus Fund 1, LLC	Columbus	OH	Rev1 Ventures		09/08/2016		0	7,500	0	0	3.600
19999999. Joint Venture Interests - Common Stock - Unaffiliated								0	7,500	0	0	XXX
48999999. Total - Unaffiliated								0	7,500	0	0	XXX
49999999. Total - Affiliated								0	0	0	0	XXX
50999999 - Totals								0	7,500	0	0	XXX

Showing Other Long-Term Invested Assets DISPOSED, Transferred or Repaid During the Current Quarter

[illegible]

STATEMENT AS OF SEPTEMBER 30, 2022 OF THE STATE AUTOMOBILE MUTUAL INSURANCE COMPANY

SCHEDULE D - PART 3

Show All Long-Term Bonds and Stock Acquired During the Current Quarter

1	2	3	4	5	6	7	8	9	10
CUSIP Identification	Description	Foreign	Date Acquired	Name of Vendor	Number of Shares of Stock	Actual Cost	Par Value	Paid for Accrued Interest and Dividends	NAIC Designation, NAIC Designation Modifier and SVO Administrative Symbol
38382N-HR-1	GNR 2021-27 ZL09/01/2022	CAPITALIZED INTEREST9,4729,4720	1. A FE
912810-PZ-5	TREASURY (CP) NOTE09/30/2022	CAPITALIZED INTEREST12,95112,9510	1. A
0109999999. Subtotal - Bonds - U.S. Governments						22,423	22,423	0	XXX
3137FF-BG-1	FHLMC 5071Y09/01/2022	CAPITALIZED INTEREST	7,292	7,292	0	1. A FE
0909999999. Subtotal - Bonds - U.S. Special Revenues						7,292	7,292	0	XXX
2509999997. Total - Bonds - Part 3						29,715	29,715	0	XXX
2509999998. Total - Bonds - Part 5						XXX	XXX	XXX	XXX
2509999999. Total - Bonds						29,715	29,715	0	XXX
4509999997. Total - Preferred Stocks - Part 3						0	XXX	0	XXX
4509999998. Total - Preferred Stocks - Part 5						XXX	XXX	XXX	XXX
4509999999. Total - Preferred Stocks						0	XXX	0	XXX
5989999997. Total - Common Stocks - Part 3						0	XXX	0	XXX
5989999998. Total - Common Stocks - Part 5						XXX	XXX	XXX	XXX
5989999999. Total - Common Stocks						0	XXX	0	XXX
5999999999. Total - Preferred and Common Stocks						0	XXX	0	XXX
.....
.....
.....
.....
6009999999 - Totals						29,715	XXX	0	XXX

STATEMENT AS OF SEPTEMBER 30, 2022 OF THE STATE AUTOMOBILE MUTUAL INSURANCE COMPANY

SCHEDULE D - PART 4

Show All Long-Term Bonds and Stock Sold, Redeemed or Otherwise Disposed of During the Current Quarter

1	2	3	4	5	6	7	8	9	10	Change In Book/Adjusted Carrying Value					16	17	18	19	20	21	22
										11	12	13	14	15							
CUSIP Ident-ification	Description	For-eign	Disposal Date	Name of Purchaser	Number of Shares of Stock	Consid-eration	Par Value	Actual Cost	Prior Year Book/ Adjusted Carrying Value	Unrealized Valuation Increase/ (Decrease)	Current Year's (Amor-tization)/ Accretion	Current Year's Other Than Temporary Impairment Recogn-ized	Total Change in Book/ Adjusted Carrying Value (11 + 12 - 13)	Total Foreign Exchange Change in Book /Adjusted Carrying Value	Book/ Adjusted Carrying Value at Disposal Date	Foreign Exchange Gain (Loss) on Disposal	Realized Gain (Loss) on Disposal	Total Gain (Loss) on Disposal	Bond Interest/ Stock Dividends Received During Year	Stated Con-tractual Maturity Date	NAIC Desig-nation, NAIC Desig-nation Modifier and SVO Admini-strative Symbol
36179V-4K-3	GNMA 11 30YR SF - JUMBO-CONFORMING		09/01/2022	MBS PAYMENT		165,404	165,404	167,110	171,240	0	(5,836)	0	(5,836)	0	165,404	0	0	0	1,678	01/20/2051	1.A FE
36213F-ZS-5	GNMA 30YR		09/01/2022	VARIOUS		32,124	32,124	33,911	33,680	0	(1,556)	0	(1,556)	0	32,124	0	0	0	686	01/15/2042	1.A FE
38378B-SH-3	GNMA 12-45		09/01/2022	VARIOUS		468,310	468,310	491,140	643,075	0	(174,765)	0	(174,765)	0	468,310	0	0	0	6,378	04/16/2053	1.B FE
38378X-PU-9	GNMA 14-135		09/01/2022	VARIOUS		76,841	76,841	72,999	89,859	0	(13,018)	0	(13,018)	0	76,841	0	0	0	2,643	01/16/2055	1.B FE
38379R-OP-1	GNMA 17-47		09/01/2022	MBS PAYMENT		8,378	8,378	8,264	8,369	0	8	0	8	0	8,378	0	0	0	105	08/16/2058	1.A FE
0109999999. Subtotal - Bonds - U.S. Governments						751,057	751,057	773,424	946,223	0	(195,167)	0	(195,167)	0	751,057	0	0	0	11,490	XXX	XXX
154871-BY-2	CENTRAL PLATNS ENERGY PROJ NEB		09/01/2022	DIRECT		3,650,000	3,650,000	3,898,127	3,673,609	0	(23,609)	0	(23,609)	0	3,650,000	0	0	0	182,500	09/01/2042	2.A FE
0709999999. Subtotal - Bonds - U.S. Political Subdivisions of States, Territories and Possessions						3,650,000	3,650,000	3,898,127	3,673,609	0	(23,609)	0	(23,609)	0	3,650,000	0	0	0	182,500	XXX	XXX
31281J-RJ-1	FGOLD 30YR GIANT		09/01/2022	VARIOUS		22,135	22,135	23,103	23,628	0	(1,493)	0	(1,493)	0	22,135	0	0	0	485	04/01/2042	1.A FE
3133AD-TX-4	FHLMC 30YR UMBS		09/01/2022	MBS PAYMENT		105,674	105,674	109,984	106,130	0	(456)	0	(456)	0	105,674	0	0	0	1,177	12/01/2050	1.A FE
3133AE-BY-9	FHLMC 30YR UMBS		09/01/2022	MBS PAYMENT		27,151	27,151	28,351	27,342	0	(191)	0	(191)	0	27,151	0	0	0	274	01/01/2051	1.A FE
3136AN-PL-5	FNMA 15-31B		09/01/2022	VARIOUS		51,604	51,604	53,154	53,820	0	(2,216)	0	(2,216)	0	51,604	0	0	0	1,063	05/25/2045	1.A FE
3136AR-2H-0	FNMA 16-30C		09/01/2022	VARIOUS		114,421	114,421	119,606	130,121	0	(15,699)	0	(15,699)	0	114,421	0	0	0	1,740	02/25/2045	1.A FE
3137BP-X9-5	FHLMC 4592A		09/01/2022	VARIOUS		34,725	34,725	36,418	37,850	0	(3,125)	0	(3,125)	0	34,725	0	0	0	727	05/15/2046	1.A FE
3137FF-BG-1	FHLMC 5071Y		07/01/2022	MBS PAYMENT		272,458	272,458	269,742	283,771	0	(11,314)	0	(11,314)	0	272,458	0	0	0	1,251	11/25/2049	1.A FE
3138YU-H4-2	FNMA 30YR		09/01/2022	VARIOUS		37,575	37,575	39,389	40,109	0	(2,535)	0	(2,535)	0	37,575	0	0	0	698	10/01/2045	1.A FE
3140QF-NE-5	FNMA 30YR UMBS		09/01/2022	MBS PAYMENT		204,170	204,170	207,998	209,367	0	(5,197)	0	(5,197)	0	204,170	0	0	0	1,476	11/01/2050	1.A FE
31418B-W9-3	FNMA 30YR		09/01/2022	VARIOUS		102,336	102,336	107,580	113,767	0	(11,432)	0	(11,432)	0	102,336	0	0	0	1,914	12/01/2045	1.A FE
31418D-VK-5	FNMA CONV LONG TERM 30YR - JUMBO-C		09/01/2022	VARIOUS		175,725	175,725	176,329	178,407	0	(2,682)	0	(2,682)	0	175,725	0	0	0	1,365	12/01/2050	1.A FE
0909999999. Subtotal - Bonds - U.S. Special Revenues						1,147,974	1,147,974	1,171,654	1,204,312	0	(56,340)	0	(56,340)	0	1,147,974	0	0	0	12,170	XXX	XXX
2509999997. Total - Bonds - Part 4						5,549,031	5,549,031	5,843,205	5,824,144	0	(275,116)	0	(275,116)	0	5,549,031	0	0	0	206,160	XXX	XXX
2509999998. Total - Bonds - Part 5						XXX	XXX	XXX	XXX	XXX	XXX	XXX	XXX	XXX	XXX	XXX	XXX	XXX	XXX	XXX	XXX
2509999999. Total - Bonds						5,549,031	5,549,031	5,843,205	5,824,144	0	(275,116)	0	(275,116)	0	5,549,031	0	0	0	206,160	XXX	XXX
4509999997. Total - Preferred Stocks - Part 4						0	XXX	0	0	0	0	0	0	0	0	0	0	0	0	XXX	XXX
4509999998. Total - Preferred Stocks - Part 5						XXX	XXX	XXX	XXX	XXX	XXX	XXX	XXX	XXX	XXX	XXX	XXX	XXX	XXX	XXX	XXX
4509999999. Total - Preferred Stocks						0	XXX	0	0	0	0	0	0	0	0	0	0	0	0	XXX	XXX
31337#-10-5	FEDERAL HOME LOAN BANK OF CINCINN		07/26/2022	DIRECT	12,909,000	1,290,900		1,290,900	1,290,900	0	0	0	0	0	1,290,900	0	0	0	0		
5029999999. Subtotal - Common Stocks - Industrial and Miscellaneous (Unaffiliated) Other						1,290,900	XXX	1,290,900	1,290,900	0	0	0	0	0	1,290,900	0	0	0	0	XXX	XXX
5989999997. Total - Common Stocks - Part 4						1,290,900	XXX	1,290,900	1,290,900	0	0	0	0	0	1,290,900	0	0	0	0	XXX	XXX
5989999998. Total - Common Stocks - Part 5						XXX	XXX	XXX	XXX	XXX	XXX	XXX	XXX	XXX	XXX	XXX	XXX	XXX	XXX	XXX	XXX
5989999999. Total - Common Stocks						1,290,900	XXX	1,290,900	1,290,900	0	0	0	0	0	1,290,900	0	0	0	0	XXX	XXX
5999999999. Total - Preferred and Common Stocks						1,290,900	XXX	1,290,900	1,290,900	0	0	0	0	0	1,290,900	0	0	0	0	XXX	XXX
6009999999 - Totals						6,839,931	XXX	7,134,105	7,115,044	0	(275,116)	0	(275,116)	0	6,839,931	0	0	0	206,160	XXX	XXX

Schedule DB - Part A - Section 1 - Options, Caps, Floors, Collars, Swaps and Forwards Open
N O N E

Schedule DB - Part B - Section 1 - Futures Contracts Open
N O N E

Schedule DB - Part B - Section 1B - Brokers with whom cash deposits have been made
N O N E

Schedule DB - Part D - Section 1 - Counterparty Exposure for Derivative Instruments Open
N O N E

Schedule DB - Part D-Section 2 - Collateral for Derivative Instruments Open - Pledged By
N O N E

Schedule DB - Part D-Section 2 - Collateral for Derivative Instruments Open - Pledged To
N O N E

Schedule DB - Part E - Derivatives Hedging Variable Annuity Guarantees
N O N E

Schedule DL - Part 1 - Reinvested Collateral Assets Owned
N O N E

Schedule DL - Part 2 - Reinvested Collateral Assets Owned
N O N E

SCHEDULE E - PART 1 - CASH

Month End Depository Balances

1	2	3	4	5	Book Balance at End of Each Month During Current Quarter			9
					6	7	8	
					First Month	Second Month	Third Month	
Depository	Code	Rate of Interest	Amount of Interest Received During Current Quarter	Amount of Interest Accrued at Current Statement Date				*
JPMorgan - Trust Columbus, OH 43215		2.300	0	0	13,302,037	17,772,881	26,250,290	XXX
PNC Bank - Savings Columbus, OH 43215		2.360	290,225	0	14,986,764	8,783,586	(41,070,979)	XXX
FHLB Cincinnati - Federal								
Home Loan Bank Cincinnati, OH 45202		2.450	0	0	(1,826,225)	(192,713)	1,961,343	XXX
Huntington National Bank Columbus, OH 43215		0.000	181	0	2,290,497	3,664,152	4,031,592	XXX
0199998. Deposits in ... 0 depositories that do not exceed the allowable limit in any one depository (See instructions) - Open Depositories	XXX	XXX	0	0	0	0	0	XXX
0199999. Totals - Open Depositories	XXX	XXX	290,406	0	28,753,073	30,027,906	(8,827,753)	XXX
0299998. Deposits in ... 0 depositories that do not exceed the allowable limit in any one depository (See instructions) - Suspended Depositories	XXX	XXX	0	0	0	0	0	XXX
0299999. Totals - Suspended Depositories	XXX	XXX	0	0	0	0	0	XXX
0399999. Total Cash on Deposit	XXX	XXX	290,406	0	28,753,073	30,027,906	(8,827,753)	XXX
0499999. Cash in Company's Office	XXX	XXX	XXX	XXX	0	0	0	XXX
0599999. Total - Cash	XXX	XXX	290,406	0	28,753,073	30,027,906	(8,827,753)	XXX

STATEMENT AS OF SEPTEMBER 30, 2022 OF THE STATE AUTOMOBILE MUTUAL INSURANCE COMPANY

SCHEDULE E - PART 2 - CASH EQUIVALENTS

Show Investments Owned End of Current Quarter

[illegible]



SUPPLEMENT FOR THE QUARTER ENDING SEPTEMBER 30, 2022 OF THE STATE AUTOMOBILE MUTUAL
INSURANCE COMPANY

DIRECTOR AND OFFICER INSURANCE COVERAGE SUPPLEMENT

Year To Date For The Period Ended SEPTEMBER 30, 2022

NAIC Group Code 0111 NAIC Company Code 25135

Company Name STATE AUTOMOBILE MUTUAL INSURANCE COMPANY

If the reporting entity writes any director and officer (D&O) business, please provide the following:

1. Monoline Policies

1 Direct Written Premium	2 Direct Earned Premium	3 Direct Losses Incurred
\$ 732	\$ 895	\$ 9,113

2. Commercial Multiple Peril (CMP) Packaged Policies

- 2.1 Does the reporting entity provide D&O liability coverage as part of a CMP packaged policy?

Yes ☒ No ☐
- 2.2 Can the direct premium earned for D&O liability coverage provided as part of a CMP packaged policy be quantified or estimated?

Yes ☒ No ☐
- 2.3 If the answer to question 2.2 is yes, provide the quantified or estimated direct premium earned amount for D&O liability coverage in CMP packaged policies

2.31 Amount quantified:

\$ 9,842

2.32 Amount estimated using reasonable assumptions:

\$ 0
- 2.4 If the answer to question 2.1 is yes, provide direct losses incurred (losses paid plus change in case reserves) for the D&O liability coverage provided in CMP packaged policies.

\$ 0