

QUARTERLY STATEMENT

AS OF SEPTEMBER 30, 2022

OF THE CONDITION AND AFFAIRS OF THE

CINCINNATI EQUITABLE INSURANCE COMPANY

NAIC Group Code.....0067.....0067.....NAIC Company Code.....16721.....Employer's ID Number.....31-0239840.....

(Current)(Prior)

Organized under the Laws of.....OH.....State of Domicile or Port of Entry.....OH.....

Country of Domicile.....US.....

Incorporated/Organized.....01/24/1827.....Commenced Business.....07/17/1826.....

Statutory Home Office.....525 VINE STREET, SUITE 1925.....CINCINNATI, OH, US 45202.....

Main Administrative Office.....525 VINE STREET, SUITE 1925.....

CINCINNATI, OH, US 45202.....513-621-1826.....

(Telephone Number)

Mail Address.....525 VINE STREET, SUITE 1925.....CINCINNATI, OH, US 45202.....

Primary Location of Books and

Records.....525 VINE STREET, SUITE 1925.....

CINCINNATI, OH, US 45202.....513-621-1826.....

(Telephone Number)

Internet Website Address.....WWW.CINEQLIFE.COM.....

Statutory Statement Contact.....GREGORY A BAKER.....513-621-1826.....

(Telephone Number)

GBAKER@CINEQLIFE.COM.....513-621-4531.....

(E-Mail Address)(Fax Number)

OFFICERS

.....CARL JOSEPH BEDNARSKI, PRESIDENT.....ANDREW JAMES KOK, SECRETARY.....

.....DONOLD EUGENE SIMON, EXECUTIVE VICE PRESIDENT.....DAVID DUANE BAKER, TREASURER.....

OTHER

.....THOMAS ALAN SCHROTE, CHIEF OPERATING OFFICER.....GREGORY ALLEN BAKER, CHIEF FINANCIAL OFFICER.....

DIRECTORS OR TRUSTEES

.....DAVID HOWARD BAHRMAN.....CARL JOSEPH BEDNARSKI.....

.....DOUGLAS ELGIN DARLING.....MICHAEL ALLEN DERUITER.....

.....TRAVIS EDWARD FAHLEY.....MICHAEL CHARLES FUSILIER.....

.....JEFFERY BLAIR SANDBORN.....BENJAMIN JEFFERY LACROSS.....

.....BRIGETTE LOUISE LEACH.....JENNIFER LYNN LEWIS.....

.....PATRICK WILLIAM MCGUIRE.....MICHAEL RICHARD MULDER.....

.....STEPHANIE LEE SCHAFER.....LEONA MARY DANIELS.....

.....LARRY MARTIN SHAW.....PAUL DAVID PRIDGEON.....

State ofMichigan.....

County ofEaton.....SS

The officers of this reporting entity being duly sworn, each depose and say that they are the described officers of said reporting entity, and that on the reporting period stated above, all of the herein described assets were the absolute property of the said reporting entity, free and clear from any liens or claims thereon, except as herein stated, and that this statement, together with related exhibits, schedules and explanations therein contained, annexed or referred to, is a full and true statement of all the assets and liabilities and of the condition and affairs of the said reporting entity as of the reporting period stated above, and of its income and deductions therefrom for the period ended, and have been completed in accordance with the NAIC Annual Statement Instructions and Accounting Practices and Procedures manual except to the extent that: (1) state law may differ; or, (2) that state rules or regulations require differences in reporting not related to accounting practices and procedures, according to the best of their information, knowledge and belief, respectively. Furthermore, the scope of this attestation by the described officers also includes the related corresponding electronic filing with the NAIC, when required, that is an exact copy (except for formatting differences due to electronic filing) of the enclosed statement. The electronic filing may be requested by various regulators in lieu of or in addition to the enclosed statement.

x

Thomas Schrote

Chief Operating Officer

x

Andrew Kok

Secretary

x

David Baker

Treasurer

Subscribed and sworn to before me

this.....day of

.....

a. Is this an original filing? Yes

b. If no:

1. State the amendment number:.....

2. Date filed:.....

3. Number of pages attached:.....

x

.....

ASSETS

		Current Statement Date		
		1	2	3
		Assets	Nonadmitted Assets	Net Admitted Assets (Cols. 1 - 2)
				December 31 Prior Year Net Admitted Assets
1.	Bonds.....	2,987,849		2,987,849
2.	Stocks:			
	2.1 Preferred stocks.....			
	2.2 Common stocks.....			
3.	Mortgage loans on real estate:			
	3.1 First liens.....			
	3.2 Other than first liens.....			
4.	Real estate:			
	4.1 Properties occupied by the company (less \$ encumbrances).....			
	4.2 Properties held for the production of income (less \$ encumbrances).....			
	4.3 Properties held for sale (less \$ encumbrances).....			
5.	Cash (\$ 337,337), cash equivalents (\$ 89,643) and short-term investments (\$ ).....	426,980		426,980
6.	Contract loans (including \$ premium notes).....			
7.	Derivatives.....			
8.	Other invested assets.....			
9.	Receivables for securities.....			
10.	Securities lending reinvested collateral assets.....			
11.	Aggregate write-ins for invested assets.....			
12.	Subtotals, cash and invested assets (Lines 1 to 11).....	3,414,829		3,414,829
13.	Title plants less \$ charged off (for Title insurers only).....			
14.	Investment income due and accrued.....	30,259		30,259
15.	Premiums and considerations:			
	15.1 Uncollected premiums and agents' balances in the course of collection.....			
	15.2 Deferred premiums, agents' balances and installments booked but deferred and not yet due (including \$ earned but unbilled premiums).....			
	15.3 Accrued retrospective premiums (\$ ) and contracts subject to redetermination (\$ ).....			
16.	Reinsurance:			
	16.1 Amounts recoverable from reinsurers.....			
	16.2 Funds held by or deposited with reinsured companies.....			
	16.3 Other amounts receivable under reinsurance contracts.....			
17.	Amounts receivable relating to uninsured plans.....			
18.1	Current federal and foreign income tax recoverable and interest thereon.....			
18.2	Net deferred tax asset.....			
19.	Guaranty funds receivable or on deposit.....			
20.	Electronic data processing equipment and software.....			
21.	Furniture and equipment, including health care delivery assets (\$ ).....			
22.	Net adjustment in assets and liabilities due to foreign exchange rates.....			
23.	Receivables from parent, subsidiaries and affiliates.....			
24.	Health care (\$ ) and other amounts receivable.....			
25.	Aggregate write-ins for other-than-invested assets.....			
26.	Total assets excluding Separate Accounts, Segregated Accounts and Protected Cell Accounts (Lines 12 to 25).....	3,445,089		3,445,089
27.	From Separate Accounts, Segregated Accounts and Protected Cell Accounts.....			
28.	Total (Lines 26 and 27).....	3,445,089		3,445,089
Details of Write-Ins				
1101.	.....			
1102.	.....			
1103.	.....			
1198.	Summary of remaining write-ins for Line 11 from overflow page.....			
1199.	Totals (Lines 1101 through 1103 plus 1198) (Line 11 above).....			
2501.	.....			
2502.	.....			
2503.	.....			
2598.	Summary of remaining write-ins for Line 25 from overflow page.....			
2599.	Totals (Lines 2501 through 2503 plus 2598) (Line 25 above).....			

LIABILITIES, SURPLUS AND OTHER FUNDS

		1	2
		Current Statement Date	December 31, Prior Year
1.	Losses (current accident year \$ ) .....		10,000
2.	Reinsurance payable on paid losses and loss adjustment expenses .....		
3.	Loss adjustment expenses .....		3,509
4.	Commissions payable, contingent commissions and other similar charges .....		
5.	Other expenses (excluding taxes, licenses and fees) .....	—	990
6.	Taxes, licenses and fees (excluding federal and foreign income taxes) .....		
7.1	Current federal and foreign income taxes (including \$ on realized capital gains (losses)) .....	29,567	18,569
7.2	Net deferred tax liability .....	22	401
8.	Borrowed money \$ and interest thereon \$ .....		
9.	Unearned premiums (after deducting unearned premiums for ceded reinsurance of \$ and including warranty reserves of \$ and accrued accident and health experience rating refunds including \$ for medical loss ratio rebate per the Public Health Service Act) .....		
10.	Advance premium .....		
11.	Dividends declared and unpaid:		
11.1	Stockholders .....		
11.2	Policyholders .....		
12.	Ceded reinsurance premiums payable (net of ceding commissions) .....		
13.	Funds held by company under reinsurance treaties .....		
14.	Amounts withheld or retained by company for account of others .....		
15.	Remittances and items not allocated .....		
16.	Provision for reinsurance (including \$ certified) .....		
17.	Net adjustments in assets and liabilities due to foreign exchange rates .....		
18.	Drafts outstanding .....		
19.	Payable to parent, subsidiaries and affiliates .....		
20.	Derivatives .....		
21.	Payable for securities .....		
22.	Payable for securities lending .....		
23.	Liability for amounts held under uninsured plans .....		
24.	Capital notes \$ and interest thereon \$ .....		
25.	Aggregate write-ins for liabilities .....		
26.	Total liabilities excluding protected cell liabilities (Lines 1 through 25) .....	29,589	33,469
27.	Protected cell liabilities .....		
28.	Total liabilities (Lines 26 and 27) .....	29,589	33,469
29.	Aggregate write-ins for special surplus funds .....		
30.	Common capital stock .....	1,000,000	1,000,000
31.	Preferred capital stock .....		
32.	Aggregate write-ins for other-than-special surplus funds .....		
33.	Surplus notes .....		
34.	Gross paid in and contributed surplus .....	1,949,915	1,949,915
35.	Unassigned funds (surplus) .....	465,585	411,921
36.	Less treasury stock, at cost:		
36.1	shares common (value included in Line 30 \$ ) .....		
36.2	shares preferred (value included in Line 31 \$ ) .....		
37.	Surplus as regards policyholders (Lines 29 to 35, less 36) .....	3,415,500	3,361,836
38.	Totals (Page 2, Line 28, Col. 3) .....	3,445,089	3,395,305
Details of Write-Ins			
2501.	.....		
2502.	.....		
2503.	.....		
2598.	Summary of remaining write-ins for Line 25 from overflow page .....		
2599.	Totals (Lines 2501 through 2503 plus 2598) (Line 25 above) .....		
2901.	.....		
2902.	.....		
2903.	.....		
2998.	Summary of remaining write-ins for Line 29 from overflow page .....		
2999.	Totals (Lines 2901 through 2903 plus 2998) (Line 29 above) .....		
3201.	.....		
3202.	.....		
3203.	.....		
3298.	Summary of remaining write-ins for Line 32 from overflow page .....		
3299.	Totals (Lines 3201 through 3203 plus 3298) (Line 32 above) .....		

STATEMENT OF INCOME

		1	2	3
		Current Year to Date	Prior Year to Date	Prior Year Ended December 31
Underwriting Income				
1.	Premiums earned:			
1.1.	Direct (written \$ )			
1.2.	Assumed (written \$ )			
1.3.	Ceded (written \$ )			
1.4.	Net (written \$ )			
Deductions:				
2.	Losses incurred (current accident year \$ ):			
2.1	Direct	(4,302)	(817)	(1,082)
2.2	Assumed			
2.3	Ceded			
2.4	Net	(4,302)	(817)	(1,082)
3.	Loss adjustment expenses incurred	1,536	1,116	1,416
4.	Other underwriting expenses incurred	17,519	18,688	23,763
5.	Aggregate write-ins for underwriting deductions			
6.	Total underwriting deductions (Lines 2 through 5)	14,753	18,987	24,097
7.	Net income of protected cells			
8.	Net underwriting gain (loss) (Line 1 minus Line 6 + Line 7)	(14,753)	(18,987)	(24,097)
Investment Income				
9.	Net investment income earned	81,633	88,928	115,673
10.	Net realized capital gains (losses) less capital gains tax of \$	419	(670)	(670)
11.	Net investment gain (loss) (Lines 9 + 10)	82,052	88,258	115,003
Other Income				
12.	Net gain or (loss) from agents' or premium balances charged off (amount recovered \$ amount charged off \$ )			
13.	Finance and service charges not included in premiums			
14.	Aggregate write-ins for miscellaneous income			
15.	Total other income (Lines 12 through 14)			
16.	Net income before dividends to policyholders, after capital gains tax and before all other federal and foreign income taxes (Lines 8 + 11 + 15)	67,299	69,271	90,906
17.	Dividends to policyholders			
18.	Net income, after dividends to policyholders, after capital gains tax and before all other federal and foreign income taxes (Line 16 minus Line 17)	67,299	69,271	90,906
19.	Federal and foreign income taxes incurred	10,998	14,420	18,971
20.	Net income (Line 18 minus Line 19) (to Line 22)	56,301	54,851	71,935
Capital and Surplus Account				
21.	Surplus as regards policyholders, December 31 prior year	3,361,836	3,288,605	3,288,605
22.	Net income (from Line 20)	56,301	54,851	71,935
23.	Net transfers (to) from Protected Cell accounts			
24.	Change in net unrealized capital gains or (losses) less capital gains tax of \$	(2,383)	675	675
25.	Change in net unrealized foreign exchange capital gain (loss)			
26.	Change in net deferred income tax	420	699	622
27.	Change in nonadmitted assets	(674)		
28.	Change in provision for reinsurance			
29.	Change in surplus notes			
30.	Surplus (contributed to) withdrawn from protected cells			
31.	Cumulative effect of changes in accounting principles			
32.	Capital changes:			
32.1.	Paid in			
32.2.	Transferred from surplus (Stock Dividend)			
32.3.	Transferred to surplus			
33.	Surplus adjustments:			
33.1.	Paid in	—		
33.2.	Transferred to capital (Stock Dividend)			
33.3.	Transferred from capital			
34.	Net remittances from or (to) Home Office			
35.	Dividends to stockholders			
36.	Change in treasury stock			
37.	Aggregate write-ins for gains and losses in surplus			
38.	Change in surplus as regards policyholders (Lines 22 through 37)	53,664	56,225	73,232
39.	Surplus as regards policyholders, as of statement date (Lines 21 plus 38)	3,415,500	3,344,830	3,361,836
Details of Write-Ins				
0501.				
0502.				
0503.				
0598.	Summary of remaining write-ins for Line 5 from overflow page			
0599.	Totals (Lines 0501 through 0503 plus 0598) (Line 5 above)			
1401.				
1402.				
1403.				
1498.	Summary of remaining write-ins for Line 14 from overflow page			
1499.	Totals (Lines 1401 through 1403 plus 1498) (Line 14 above)			
3701.				
3702.				
3703.				
3798.	Summary of remaining write-ins for Line 37 from overflow page			
3799.	Totals (Lines 3701 through 3703 plus 3798) (Line 37 above)			

CASH FLOW

	1	2	3
	Current Year To Date	Prior Year To Date	Prior Year Ended December 31
<b>Cash from Operations</b>			
1. Premiums collected net of reinsurance .....			
2. Net investment income .....	84,650	106,481	133,006
3. Miscellaneous income .....			
4. Total (Lines 1 to 3) .....	84,650	106,481	133,006
5. Benefit and loss related payments .....	5,698	(817)	(1,082)
6. Net transfers to Separate Accounts, Segregated Accounts and Protected Cell Accounts .....			
7. Commissions, expenses paid and aggregate write-ins for deductions .....	23,554	19,563	24,689
8. Dividends paid to policyholders .....			
9. Federal and foreign income taxes paid (recovered) net of \$ tax on capital gains (losses) .....	1		14,474
10. Total (Lines 5 through 9) .....	29,253	18,746	38,081
11. Net cash from operations (Line 4 minus Line 10) .....	55,396	87,735	94,925
<b>Cash from Investments</b>			
12. Proceeds from investments sold, matured or repaid:			
12.1 Bonds .....	850,000	650,000	650,000
12.2 Stocks .....			
12.3 Mortgage loans .....			
12.4 Real estate .....			
12.5 Other invested assets .....			
12.6 Net gains or (losses) on cash, cash equivalents and short-term investments .....			
12.7 Miscellaneous proceeds .....	–		
12.8 Total investment proceeds (Lines 12.1 to 12.7) .....	850,000	650,000	650,000
13. Cost of investments acquired (long-term only):			
13.1 Bonds .....	528,802	579,989	834,273
13.2 Stocks .....			
13.3 Mortgage loans .....			
13.4 Real estate .....			
13.5 Other invested assets .....			
13.6 Miscellaneous applications .....	–		
13.7 Total investments acquired (Lines 13.1 to 13.6) .....	528,802	579,989	834,273
14. Net increase (or decrease) in contract loans and premium notes .....			
15. Net cash from investments (Line 12.8 minus Line 13.7 and Line 14) .....	321,198	70,011	(184,273)
<b>Cash from Financing and Miscellaneous Sources</b>			
16. Cash provided (applied):			
16.1 Surplus notes, capital notes .....			
16.2 Capital and paid in surplus, less treasury stock .....	–		
16.3 Borrowed funds .....			
16.4 Net deposits on deposit-type contracts and other insurance liabilities .....			
16.5 Dividends to stockholders .....			
16.6 Other cash provided (applied) .....		8,278	
17. Net cash from financing and miscellaneous sources (Line 16.1 through Line 16.4 minus Line 16.5 plus Line 16.6) .....	–	8,278	
<b>Reconciliation of Cash, Cash Equivalents and Short-Term Investments</b>			
18. Net change in cash, cash equivalents and short-term investments (Line 11, plus Lines 15 and 17) .....	376,594	166,024	(89,347)
19. Cash, cash equivalents and short-term investments:			
19.1 Beginning of year .....	50,386	139,733	139,733
19.2 End of period (Line 18 plus Line 19.1) .....	426,980	305,757	50,386
Note: Supplemental disclosures of cash flow information for non-cash transactions:			
20.0001. ....			

Notes to the Financial Statements

1. Summary of Significant Accounting Policies and Going Concern

A. Accounting Practices

The financial statements of Cincinnati Equitable Insurance Company are presented on the basis of accounting practices prescribed or permitted by the Ohio Insurance Department.

The Ohio Insurance Department recognizes only statutory accounting practices prescribed or permitted by the State of Ohio for determining and reporting the financial condition and results of operations of an insurance company, for determining its solvency under the Ohio Insurance Law. The National Association of Insurance Commissioners' (NAIC) Accounting Practices and Procedures manual, version effective January 1, 2021, (NAIC SAP) has been adopted as a component of prescribed or permitted practices by the State of Ohio. The State of Ohio has not adopted and prescribed or permitted practices that differ from NAIC SAP.

	SSAP #	F/S Page	F/S Line #	09/30/2022	12/31/2021
Net Income					
(1) State basis (Page 4, Line 20, Columns 1 & 3)	XXX	XXX	XXX	\$ 56,301	\$ 71,935
(2) State prescribed practices that are an increase / (decrease) from NAIC SAP:					
(3) State permitted practices that are an increase / (decrease) from NAIC SAP:					
(4) NAIC SAP (1-2-3=4)	XXX	XXX	XXX	\$ 56,301	\$ 71,935
Surplus					
(5) State basis (Page 3, Line 37, Columns 1 & 2)	XXX	XXX	XXX	\$ 3,415,500	\$ 3,361,836
(6) State prescribed practices that are an increase / (decrease) from NAIC SAP:					
(7) State permitted practices that are an increase / (decrease) from NAIC SAP:					
(8) NAIC SAP (5-6-7=8)	XXX	XXX	XXX	\$ 3,415,500	\$ 3,361,836

B. Use of Estimates in the Preparation of the Financial Statements - No Significant Changes

C. Accounting Policy

- (1) Short-term investments - No Significant Changes
- (2) Bonds not backed by other loans are stated at amortized cost using the interest method.  

The Company does not hold any SVO Identified Bond ETFs on Schedule D-1.
- (3) Common stocks - No Significant Changes
- (4) Preferred stocks - No Significant Changes
- (5) Mortgage loans - No Significant Changes
- (6) Loan-backed securities are stated at either amortized cost or the lower or amortized cost or fair market value. The retrospective adjustment method is used to value all securities except for interest only securities or securities where the yield had become negative, these are valued using the prospective method.
- (7) Investments in subsidiaries, controlled and affiliated entities - No Significant Changes
- (8) Investments in joint ventures, partnerships and limited liability companies - No Significant Changes
- (9) Derivatives - No Significant Changes
- (10) Investment income as a factor in the premium deficiency calculation - No Significant Changes
- (11) Liabilities for losses and loss/claim adjustment expenses - No Significant Changes
- (12) Changes in capitalization policy - No Significant Changes
- (13) Pharmaceutical rebate receivables - None

D. Going Concern

The Company has no Going Concern issues.

2. Accounting Changes and Corrections of Errors - None

3. Business Combinations and Goodwill - None

4. Discontinued Operations - None

5. Investments

- A. Mortgage Loans, including Mezzanine Real Estate Loans - None
- B. Debt Restructuring - None
- C. Reverse Mortgages - None
- D. Loan-Backed Securities

(1) Prepayment assumptions for single class and multi-class mortgage-backed/asset-backed securities were obtained from broker dealer survey values or NAIC RMBS/ CMBS modeling.

(2) Loan-backed and structured securities with a recognized other-than-temporary impairment (OTTI) - None

Notes to the Financial Statements

5. Investments (Continued)

- (3) Securities held that were other-than-temporarily impaired due to the present value of cash flows expected to be collected was less than the amortized cost of securities - None
- (4) All impaired securities for which an OTTI has not been recognized in earnings as a realized loss - None
- (5) Support for concluding impairments are not other-than-temporary - None
- E. Dollar Repurchase Agreements and/or Securities Lending Transactions - None
- F. Repurchase Agreements Transactions Accounted for as Secured Borrowing - None
- G. Reverse Repurchase Agreements Transactions Accounted for as Secured Borrowing - None
- H. Repurchase Agreements Transactions Accounted for as a Sale - None
- I. Reverse Repurchase Agreements Transactions Accounted for as a Sale - None
- J. Real Estate - None
- K. Low-Income Housing Tax Credits (LIHTC) - None
- L. Restricted Assets - No Significant Changes
- M. Working Capital Finance Investments - None
- N. Offsetting and Netting of Assets and Liabilities - None
- O. 5GI Securities - None
- P. Short Sales - None
- Q. Prepayment Penalty and Acceleration Fees

The Company had no Prepayment Penalties or Acceleration Fees.

	General Account	Protected Cell
(1) Number of CUSIPs .....	.....	.....
(2) Aggregate amount of investment income .....	\$ .....	\$ .....

R. Reporting Entity's Share of Cash Pool by Asset type

Asset Type	Percent Share
(1) Cash .....	.....%
(2) Cash Equivalents .....	.....%
(3) Short-Term Investments .....	.....%
(4) Total .....	.....%

6. Joint Ventures, Partnerships and Limited Liability Companies - None

7. Investment Income - None

8. Derivative Instruments - None

9. Income Taxes - No Significant Changes

10. Information Concerning Parent, Subsidiaries, Affiliates and Other Related Parties

- A. Effective September 30, 2019 Cincinnati Equitable Companies, Inc was acquired by Michigan Farm Bureau Financial Corporation. Cincinnati Equitable Insurance Company remains a wholly owned subsidiary of Cincinnati Equitable Life Insurance Company, however, the ultimate parent company is now Michigan Farm Bureau Financial Corporation.
- B. Cincinnati Equitable Insurance Company pays expenses under a management agreement for the general management of the company. These expenses are generally allocated to the company based on time spent working for each company. As of September 30, 2019, the companies were acquired by Michigan Farm Bureau Financial Corporation. A cost sharing agreement has been executed with the new ultimate parent company where by certain functions may be performed for the company. The charges for these services will be calculated using current methods.
- C. Transactions With Related Party Who Are Not Reported on Schedule Y - None
- D. Amounts Due To or From Related Parties - None
- E. Farm Bureau Financial Corporation has agreed to provide Management and certain processing functions to Cincinnati Equitable Life insurance Company, Cincinnati Equitable Insurance Company (see 10.A. above). In 2022 and 2021 these allocated expenses were \$0 and \$0 respectively.
- F. Guarantees or Contingencies - None
- G. All outstanding stock of Cincinnati Equitable Insurance Company is owned by Cincinnati Equitable Life Insurance Company (see Schedule Y of this statement).
- H. Amount Deducted for Investment in Upstream Company - None
- I. Detail of Investments in Affiliates Greater Than 10% of Admitted Assets - None
- J. Write-Down for Impairments of Investments in Subsidiary Controlled or Affiliated Companies - None
- K. Foreign Subsidiary Value Using CARVM - None
- L. Downstream Holding Company Value Using Look-Through Method - None

Notes to the Financial Statements

10. Information Concerning Parent, Subsidiaries, Affiliates and Other Related Parties (Continued)

- M. All SCA Investments - None
- N. Investment in Insurance SCAs - None
- O. SCA and SSAP No. 48 Entity Loss Tracking - None

11. Debt - None

12. Retirement Plans, Deferred Compensation, Postemployment Benefits and Compensated Absences and Other Postretirement Benefit Plans

- A. Defined Benefit Plan - None
- B. Investment Policies and Strategies of Plan Assets - None
- C. Fair Value of Each Class of Plan Assets - None
- D. Expected Long-Term Rate of Return for the Plan Assets - None
- E. Defined Contribution Plans - None
- F. Multiemployer Plans - None
- G. Consolidated/Holding Company Plans - No Significant Changes
- H. Postemployment Benefits and Compensated Absences - No Significant Changes
- I. Impact of Medicare Modernization Act on Postretirement Benefits (INT 04-17) - None

13. Capital and Surplus, Dividend Restrictions and Quasi-Reorganizations - No Significant Changes

14. Liabilities, Contingencies and Assessments - No Significant Changes

15. Leases - No Significant Changes

16. Information About Financial Instruments With Off-Balance-Sheet Risk And Financial Instruments With Concentrations of Credit Risk - None

17. Sale, Transfer and Servicing of Financial Assets and Extinguishments of Liabilities - None

18. Gain or Loss to the Reporting Entity from Uninsured Plans and the Uninsured Portion of Partially Insured Plans - None

19. Direct Premium Written/Produced by Managing General Agents/Third Party Administrators - None

20. Fair Value Measurements

- A. Fair Value Measurement
  - (1) Fair value measurements at reporting date

Description for each class of asset or liability		Level 1	Level 2	Level 3	Net Asset Value (NAV)	Total
a.	Assets at fair value					
	Bonds - Industrial & Misc .....	\$ .....	\$ .....	\$ .....	\$ .....	\$ .....
	Total assets at fair value/NAV .....	\$ .....	\$ .....	\$ .....	\$ .....	\$ .....
b.	Liabilities at fair value					
	Total liabilities at fair value .....	\$ .....	\$ .....	\$ .....	\$ .....	\$ .....

- (2) Fair value measurements in Level 3 of the fair value hierarchy - None
- (3) Policy on transfers into and out of Level 3 - None
- (4) Inputs and techniques used for Level 2 and Level 3 fair values - None
- (5) Derivatives - None

B. Other Fair Value Disclosures - None

C. Fair Values for All Financial Instruments by Level 1, 2 and 3

Type of Financial Instrument	Aggregate Fair Value	Admitted Assets	Level 1	Level 2	Level 3	Net Asset Value (NAV)	Not Practicable (Carrying Value)
Bonds - Industrial .....	\$ .....	\$ .....	\$ .....	\$ .....	\$ .....	\$ .....	\$ .....

- D. Not Practicable to Estimate Fair Value - None
- E. Nature and Risk of Investments Reported at NAV - None

21. Other Items - None

22. Events Subsequent - None

23. Reinsurance - None

24. Retrospectively Rated Contracts & Contracts Subject to Redetermination

The Company has no retrospectively rated contracts or contracts subject to redetermination.

- A. Method Used to Estimate - None
- B. Method Used to Record - None



Notes to the Financial Statements

24. Retrospectively Rated Contracts & Contracts Subject to Redetermination (Continued)

- C. Amount and Percent of Net Retrospective Premiums - None
- D. Medical Loss Ratio Rebates Required Pursuant to the Public Health Service Act - None
- E. Calculation of Nonadmitted Retrospective Premium - None
- F. Risk-Sharing Provisions of the Affordable Care Act (ACA)

The Company does not write health insurance.

- (1) Accident and health insurance premium subject to the Affordable Care Act risk-sharing provisions - None
- (2) Impact of Risk-Sharing Provisions of the Affordable Care Act on admitted assets, liabilities and revenue for the current year - None
- (3) Roll-forward of prior year ACA risk-sharing provisions for the following asset (gross of any nonadmission) and liability balances, along with the reasons for adjustments to prior year balance - None
- (4) Roll-forward of risk corridors asset and liability balances by program benefit year - None
- (5) ACA risk corridors receivable as of reporting date - None

25. Changes in Incurred Losses and Loss Adjustment Expenses

Current year changes in estimates of the costs of prior year losses and loss adjustment expenses (LAE) affect the current year Statement of Income. Increases in these estimates increase current expense and are referred to as unfavorable development or prior year reserve shortages. Decreases in those estimates decrease current expense and are referred to as favorable development or prior year reserve redundancies.

Current year losses and LAE reflected on the Statement of Income of (\$2,766) were lower by (\$,2,766) due to favorable development of prior year estimates. The favorable development was less than 1% of prior year reserves for unpaid losses and LAE reflected on the Balance Sheet of \$0.

- A. Reasons for Changes in the Provision for Incurred Loss and Loss Adjustment Expenses Attributable to Insured Events of Prior Years  
There have been no significant changes in the Loss and Loss Adjustment Expense reserves for losses incurred in prior accident years.
- B. Significant Changes in Methodologies and Assumptions Used in Calculating the Liability for Unpaid Losses and Loss Adjustment Expenses - None

26. Intercompany Pooling Arrangements - None

27. Structured Settlements - None

28. Health Care Receivables - None

29. Participating Policies - None

30. Premium Deficiency Reserves - No Significant Changes

31. High Deductibles - None

32. Discounting of Liabilities For Unpaid Losses or Unpaid Loss Adjustment Expenses - None

33. Asbestos/Environmental Reserves - None

34. Subscriber Savings Accounts - None

35. Multiple Peril Crop Insurance - None

36. Financial Guaranty Insurance - None

GENERAL INTERROGATORIES  
PART 1 - COMMON INTERROGATORIES

GENERAL

- 1.1 Did the reporting entity experience any material transactions requiring the filing of Disclosure of Material Transactions with the State of Domicile, as required by the Model Act?NO
- 1.2 If yes, has the report been filed with the domiciliary state?NO
- 2.1 Has any change been made during the year of this statement in the charter, by-laws, articles of incorporation, or deed of settlement of the reporting entity?NO
- 2.2 If yes, date of change:
- 3.1 Is the reporting entity a member of an Insurance Holding Company System consisting of two or more affiliated persons, one or more of which is an insurer?YES
- If yes, complete Schedule Y, Parts 1 and 1A.
- 3.2 Have there been any substantial changes in the organizational chart since the prior quarter end?NO
- 3.3 If the response to 3.2 is yes, provide a brief description of those changes.
- 3.4 Is the reporting entity publicly traded or a member of a publicly traded group?NO
- 3.5 If the response to 3.4 is yes, provide the CIK (Central Index Key) code issued by the SEC for the entity/group.
- 4.1 Has the reporting entity been a party to a merger or consolidation during the period covered by this statement?NO
- 4.2 If yes, provide the name of entity, NAIC Company Code, and state of domicile (use two letter state abbreviation) for any entity that has ceased to exist as a result of the merger or consolidation.

1	2	3
Name of Entity	NAIC Company Code	State of Domicile

5. If the reporting entity is subject to a management agreement, including third-party administrator(s), managing general agent(s), attorney-in-fact, or similar agreement, have there been any significant changes regarding the terms of the agreement or principals involved?NO
- If yes, attach an explanation.
- 6.1 State as of what date the latest financial examination of the reporting entity was made or is being made.12/31/2020
- 6.2 State the as of date that the latest financial examination report became available from either the state of domicile or the reporting entity. This date should be the date of the examined balance sheet and not the date the report was completed or released.12/31/2020
- 6.3 State as of what date the latest financial examination report became available to other states or the public from either the state of domicile or the reporting entity. This is the release date or completion date of the examination report and not the date of the examination (balance sheet date).04/05/2022
- 6.4 By what department or departments?  
Michigan & Ohio
- 6.5 Have all financial statement adjustments within the latest financial examination report been accounted for in a subsequent financial statement filed with Departments?N/A
- 6.6 Have all of the recommendations within the latest financial examination report been complied with?YES
- 7.1 Has this reporting entity had any Certificates of Authority, licenses or registrations (including corporate registration, if applicable) suspended or revoked by any governmental entity during the reporting period?NO
- 7.2 If yes, give full information
- 8.1 Is the company a subsidiary of a bank holding company regulated by the Federal Reserve Board?NO
- 8.2 If response to 8.1 is yes, please identify the name of the bank holding company.
- 8.3 Is the company affiliated with one or more banks, thrifts or securities firms?NO
- 8.4 If response to 8.3 is yes, please provide below the names and location (city and state of the main office) of any affiliates regulated by a federal regulatory services agency [i.e. the Federal Reserve Board (FRB), the Office of the Comptroller of the Currency (OCC), the Federal Deposit Insurance Corporation (FDIC) and the Securities Exchange Commission (SEC)] and identify the affiliates primary federal regulator.

1	2	3	4	5	6
Affiliate Name	Location (City, State)	FRB	OCC	FDIC	SEC

- 9.1 Are the senior officers (principal executive officer, principal financial officer, principal accounting officer or controller, or persons performing similar functions) of the reporting entity subject to a code of ethics, which includes the following standards?YES
- (a) Honest and ethical conduct, including the ethical handling of actual or apparent conflicts of interest between personal and professional relationships;
- (b) Full, fair, accurate, timely and understandable disclosure in the periodic reports required to be filed by the reporting entity;
- (c) Compliance with applicable governmental laws, rules and regulations;
- (d) The prompt internal reporting of violations to an appropriate person or persons identified in the code; and
- (e) Accountability for adherence to the code.
- 9.11 If the response to 9.1 is No, please explain:
- 9.2 Has the code of ethics for senior managers been amended?NO
- 9.21 If the response to 9.2 is Yes, provide information related to amendment(s).
- 9.3 Have any provisions of the code of ethics been waived for any of the specified officers?NO
- 9.31 If the response to 9.3 is Yes, provide the nature of any waiver(s).

FINANCIAL

- 10.1 Does the reporting entity report any amounts due from parent, subsidiaries or affiliates on Page 2 of this statement?NO
- 10.2 If yes, indicate any amounts receivable from parent included in the Page 2 amount:\$

INVESTMENT

- 11.1 Were any of the stocks, bonds, or other assets of the reporting entity loaned, placed under option agreement, or otherwise made available for use by another person? (Exclude securities under securities lending agreements.)NO
- 11.2 If yes, give full and complete information relating thereto:
12. Amount of real estate and mortgages held in other invested assets in Schedule BA:\$ -
13. Amount of real estate and mortgages held in short-term investments:\$ -
- 14.1 Does the reporting entity have any investments in parent, subsidiaries and affiliates?NO
- 14.2 If yes, please complete the following:

GENERAL INTERROGATORIES  
PART 1 - COMMON INTERROGATORIES

	1	2
	Prior Year-End Book / Adjusted Carrying Value	Current Quarter Book / Adjusted Carrying Value
14.21 Bonds.....	\$.....	\$.....
14.22 Preferred Stock.....		
14.23 Common Stock.....		
14.24 Short-Term Investments.....		
14.25 Mortgage Loans on Real Estate.....		
14.26 All Other.....		
14.27 Total Investment in Parent, Subsidiaries and Affiliates (Subtotal Lines 14.21 to 14.26).....		
14.28 Total Investment in Parent included in Lines 14.21 to 14.26 above.....		

- 15.1 Has the reporting entity entered into any hedging transactions reported on Schedule DB?.....NO.....
- 15.2 If yes, has a comprehensive description of the hedging program been made available to the domiciliary state?.....N/A.....  
If no, attach a description with this statement.

16. For the reporting entity's security lending program, state the amount of the following as of the current statement date:
- 16.1 Total fair value of reinvested collateral assets reported on Schedule DL, Parts 1 and 2.....\$.....
- 16.2 Total book adjusted/carrying value of reinvested collateral assets reported on Schedule DL, Parts 1 and 2.....\$.....
- 16.3 Total payable for securities lending reported on the liability page.....\$.....

17. Excluding items in Schedule E - Part 3 - Special Deposits, real estate, mortgage loans and investments held physically in the reporting entity's offices, vaults or safety deposit boxes, were all stocks, bonds and other securities, owned throughout the current year held pursuant to a custodial agreement with a qualified bank or trust company in accordance with Section 1, III - General Examination Considerations, F. Outsourcing of Critical Functions, Custodial or Safekeeping Agreements of the NAIC Financial Condition Examiners Handbook?.....YES.....
- 17.1 For all agreements that comply with the requirements of the NAIC Financial Condition Examiners Handbook, complete the following:

1	2
Name of Custodian(s)	Custodian Address
FIFTH THIRD BANK.....	38 FOUNTAIN SQUARE PLAZA, CINCINNATI, OH 45263.....

- 17.2 For all agreements that do not comply with the requirements of the NAIC Financial Condition Examiners Handbook, provide the name, location and a complete explanation:
- | 1       | 2           | 3                       |
|---------|-------------|-------------------------|
| Name(s) | Location(s) | Complete Explanation(s) |
| .....   | .....       | .....                   |

- 17.3 Have there been any changes, including name changes, in the custodian(s) identified in 17.1 during the current quarter?.....NO.....
- 17.4 If yes, give full and complete information relating thereto:

1	2	3	4
Old Custodian	New Custodian	Date of Change	Reason
.....	.....	.....	.....

- 17.5 Investment management - Identify all investment advisors, investment managers, broker/dealers, including individuals that have the authority to make investment decisions on behalf of the reporting entity. For assets that are managed internally by employees of the reporting entity, note as such. ["...that have access to the investment accounts"; "...handle securities"]
- | 1                          | 2           |
|----------------------------|-------------|
| Name of Firm or Individual | Affiliation |
| TRAVIS LOWER.....          | I.....      |

- 17.5097 For those firms/individuals listed in the table for Question 17.5, do any firms/individuals unaffiliated with the reporting entity (i.e., designated with a "U") manage more than 10% of the reporting entity's invested assets?.....NO.....
- 17.5098 For firms/individuals unaffiliated with the reporting entity (i.e., designated with a "U") listed in the table for Question 17.5, does the total assets under management aggregate to more than 50% of the reporting entity's invested assets?.....NO.....

- 17.6 For those firms or individuals listed in the table for 17.5 with an affiliation code of "A" (affiliated) or "U" (unaffiliated), provide the information for the table below.
- | 1   | 2                          | 3                             | 4               | 5  |
|---|----------------------------|-------------------------------|-----------------|--|
| Central<br>Registration<br>Depository<br>Number | Name of Firm or Individual | Legal Entity Identifier (LEI) | Registered With | Investment<br>Management<br>Agreement<br>(IMA) Filed |
| .....   | .....                      | .....                         | .....           | .....  |

GENERAL INTERROGATORIES  
PART 1 - COMMON INTERROGATORIES

- 18.1 Have all the filing requirements of the Purposes and Procedures Manual of the NAIC Investment Analysis Office been followed? .....YES .....
- 18.2 If no, list exceptions:  
.....
19. By self-designating 5GI securities, the reporting entity is certifying the following elements for each self-designated 5GI security:  
a. Documentation necessary to permit a full credit analysis of the security does not exist or an NAIC CRP credit rating for an FE or PL security is not available.  
b. Issuer or obligor is current on all contracted interest and principal payments.  
c. The insurer has an actual expectation of ultimate payment of all contracted interest and principal.  
Has the reporting entity self-designated 5GI securities? .....NO .....
20. By self-designating PLGI securities, the reporting entity is certifying the following elements of each self-designated PLGI security:  
a. The security was purchased prior to January 1, 2018.  
b. The reporting entity is holding capital commensurate with the NAIC Designation reported for the security.  
c. The NAIC Designation was derived from the credit rating assigned by an NAIC CRP in its legal capacity as a NRSRO which is shown on a current private letter rating held by the insurer and available for examination by state insurance regulators.  
d. The reporting entity is not permitted to share this credit rating of the PL security with the SVO.  
Has the reporting entity self-designated PLGI securities? .....NO .....
21. By assigning FE to a Schedule BA non-registered private fund, the reporting entity is certifying the following elements of each self-designated FE fund:  
a. The shares were purchased prior to January 1, 2019.  
b. The reporting entity is holding capital commensurate with the NAIC Designation reported for the security.  
c. The security had a public credit rating(s) with annual surveillance assigned by an NAIC CRP in its legal capacity as an NRSRO prior to January 1, 2019.  
d. The fund only or predominantly holds bonds in its portfolio.  
e. The current reported NAIC Designation was derived from the public credit rating(s) with annual surveillance assigned by an NAIC CRP in its legal capacity as an NRSRO.  
f. The public credit rating(s) with annual surveillance assigned by an NAIC CRP has not lapsed.  
Has the reporting entity assigned FE to Schedule BA non-registered private funds that complied with the above criteria? .....NO .....

GENERAL INTERROGATORIES

PART 2 – PROPERTY & CASUALTY INTERROGATORIES

1. If the reporting entity is a member of a pooling arrangement, did the agreement or the reporting entity's participation change? .....NO.....  
If yes, attach an explanation.  
.....
2. Has the reporting entity reinsured any risk with any other reporting entity and agreed to release such entity from liability, in whole or in part, from any loss that may occur on the risk, or portion thereof, reinsured? .....NO.....  
If yes, attach an explanation.  
.....
- 3.1 Have any of the reporting entity's primary reinsurance contracts been canceled? .....NO.....
- 3.2 If yes, give full and complete information thereto  
.....
- 4.1 Are any of the liabilities for unpaid losses and loss adjustment expenses other than certain workers' compensation tabular reserves (see Annual Statement Instructions pertaining to disclosure of discounting for definition of "tabular reserves,") discounted at a rate of interest greater than zero? .....NO.....
- 4.2 If yes, complete the following schedule:
- | 1                | 2                | 3          | Total Discount |            |      |       | Discount Taken During Period |            |      |       |
|------------------|------------------|------------|----------------|------------|------|-------|------------------------------|------------|------|-------|
|                  |                  |            | 4              | 5          | 6    | 7     | 8                            | 9          | 10   | 11    |
| Line of Business | Maximum Interest | Disc. Rate | Unpaid Losses  | Unpaid LAE | IBNR | Total | Unpaid Losses                | Unpaid LAE | IBNR | Total |
| Total.....       |                  |            |                |            |      |       |                              |            |      |       |
5. Operating Percentages:
- 5.1 A&H loss percent .....%
- 5.2 A&H cost containment percent .....%
- 5.3 A&H expense percent excluding cost containment expenses .....%
- 6.1 Do you act as a custodian for health savings accounts? .....NO.....
- 6.2 If yes, please provide the amount of custodial funds held as of the reporting date. ....\$.....
- 6.3 Do you act as an administrator for health savings accounts? .....NO.....
- 6.4 If yes, please provide the balance of the funds administered as of the reporting date. ....\$.....
7. Is the reporting entity licensed or chartered, registered, qualified, eligible or writing business in at least two states? .....YES.....
- 7.1 If no, does the reporting entity assume reinsurance business that covers risks residing in at least one state other than the state of domicile of the reporting entity? .....NO.....

**SCHEDULE F - CEDED REINSURANCE**  
Showing All New Reinsurers - Current Year to Date

1	2	3	4	5	6	7
NAIC Company Code	ID Number	Name of Reinsurer	Domiciliary Jurisdiction	Type of Reinsurer	Certified Reinsurer Rating (1 through 6)	Effective Date of Certified Reinsurer Rating

NONE

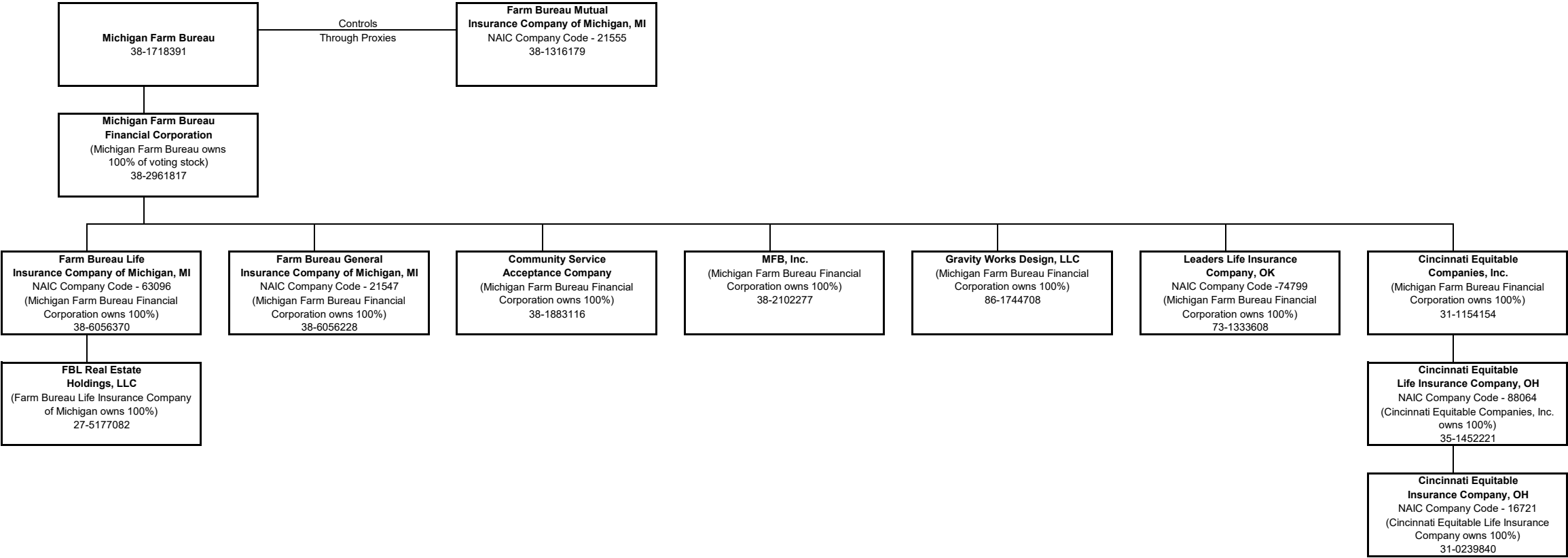
SCHEDULE T – EXHIBIT OF PREMIUMS WRITTEN  
Current Year to Date - Allocated by States and Territories

			1	Direct Premiums Written		Direct Losses Paid (Deducting Salvage)		Direct Losses Unpaid	
			Active Status (a)	2	3	4	5	6	7
				Current Year To Date	Prior Year To Date	Current Year To Date	Prior Year To Date	Current Year To Date	Prior Year To Date
States, Etc.									
1.	Alabama.....	AL	N						
2.	Alaska.....	AK	N						
3.	Arizona.....	AZ	N						
4.	Arkansas.....	AR	N						
5.	California.....	CA	N						
6.	Colorado.....	CO	N						
7.	Connecticut.....	CT	N						
8.	Delaware.....	DE	N						
9.	District of Columbia.....	DC	N						
10.	Florida.....	FL	N						
11.	Georgia.....	GA	N						
12.	Hawaii.....	HI	N						
13.	Idaho.....	ID	N						
14.	Illinois.....	IL	L						
15.	Indiana.....	IN	L						
16.	Iowa.....	IA	N						
17.	Kansas.....	KS	N						
18.	Kentucky.....	KY	L						
19.	Louisiana.....	LA	N						
20.	Maine.....	ME	N						
21.	Maryland.....	MD	N						
22.	Massachusetts.....	MA	N						
23.	Michigan.....	MI	N						
24.	Minnesota.....	MN	N						
25.	Mississippi.....	MS	N						
26.	Missouri.....	MO	N						
27.	Montana.....	MT	N						
28.	Nebraska.....	NE	N						
29.	Nevada.....	NV	N						
30.	New Hampshire.....	NH	N						
31.	New Jersey.....	NJ	N						
32.	New Mexico.....	NM	N						
33.	New York.....	NY	N						
34.	North Carolina.....	NC	N						
35.	North Dakota.....	ND	N						
36.	Ohio.....	OH	L						
37.	Oklahoma.....	OK	N						
38.	Oregon.....	OR	N						
39.	Pennsylvania.....	PA	L			5,698	(817)	–	
40.	Rhode Island.....	RI	N						
41.	South Carolina.....	SC	N						
42.	South Dakota.....	SD	N						
43.	Tennessee.....	TN	N						
44.	Texas.....	TX	N						
45.	Utah.....	UT	N						
46.	Vermont.....	VT	N						
47.	Virginia.....	VA	N						
48.	Washington.....	WA	N						
49.	West Virginia.....	WV	N						
50.	Wisconsin.....	WI	N						
51.	Wyoming.....	WY	N						
52.	American Samoa.....	AS	N						
53.	Guam.....	GU	N						
54.	Puerto Rico.....	PR	N						
55.	US Virgin Islands.....	VI	N						
56.	Northern Mariana Islands.....	MP	N						
57.	Canada.....	CAN	N						
58.	Aggregate Other Alien.....	OT	XXX						
59.	Totals.....		XXX			5,698	(817)	–	
Details of Write-Ins									
58001.			XXX						
58002.			XXX						
58003.			XXX						
58998.	Summary of remaining write-ins for Line 58 from overflow page.....		XXX						
58999.	Totals (Lines 58001 through 58003 plus 58998) (Line 58 above).....		XXX						

(a) Active Status Counts				
L –	Licensed or Chartered - Licensed insurance carrier or domiciled RRG.....	5	R –	Registered - Non-domiciled RRGs..... –
E –	Eligible - Reporting entities eligible or approved to write surplus lines in the state (other than their state of domicile - See DSLI).....	–	Q –	Qualified - Qualified or accredited reinsurer..... –
D –	Domestic Surplus Lines Insurer (DSL I) - Reporting entities authorized to write surplus lines in the state of domicile.....	–	N –	None of the above - Not allowed to write business in the state..... 52

SCHEDULE Y - INFORMATION CONCERNING ACTIVITIES OF INSURER MEMBERS OF A HOLDING COMPANY GROUP  
PART 1 - ORGANIZATIONAL CHART

SCHEDULE Y - INFORMATION CONCERNING ACTIVITIES OF INSURER MEMBERS OF A HOLDING COMPANY GROUP  
PART 1 - ORGANIZATIONAL CHART





SCHEDULE Y

PART 1A - DETAIL OF INSURANCE HOLDING COMPANY SYSTEM

1	2	3	4	5	6	7	8	9	10	11	12	13	14	15	16
Group Code	Group Name	NAIC Company Code	ID Number	Federal RSSD	CIK	Name of Securities Exchange if Publicly Traded (U.S. or International)	Names of Parent, Subsidiaries Or Affiliates	Domiciliary Location	Relationship to Reporting Entity	Directly Controlled by (Name of Entity/Person)	Type of Control (Ownership, Board, Management, Attorney-in-Fact, Influence, Other)	If Control is Ownership Provide Percentage	Ultimate Controlling Entity(ies) / Person(s)	Is an SCA Filing Required? (Yes/No)	*
			38-1718391				MICHIGAN FARM BUREAU	MI	UIP	ULTIMATE CONTROLLING COMPANY	BOARD OF DIRECTORS			NO	
0067	MICHIGAN FARM BUREAU GROUP	21555	38-1316179				FARM BUREAU MUTUAL INSURANCE COMPANY OF MICHIGAN	MI	IA	MICHIGAN FARM BUREAU	OTHER		MICHIGAN FARM BUREAU	NO	1
0067	MICHIGAN FARM BUREAU GROUP	63096	38-6056370				FARM BUREAU LIFE INSURANCE COMPANY OF MICHIGAN	MI	IA	MICHIGAN FARM BUREAU FINANCIAL CORPORATION	OWNERSHIP	100.000	MICHIGAN FARM BUREAU	NO	
0067	MICHIGAN FARM BUREAU GROUP	21547	38-6056228				FARM BUREAU GENERAL INSURANCE COMPANY OF MICHIGAN	MI	IA	MICHIGAN FARM BUREAU FINANCIAL CORPORATION	OWNERSHIP	100.000	MICHIGAN FARM BUREAU	NO	
			38-2961817				MICHIGAN FARM BUREAU FINAINCIAL CORPORATION	MI	UDP	MICHIGAN FARM BUREAU	OWNERSHIP	100.000	MICHIGAN FARM BUREAU	NO	
			27-5177082				FBL REAL ESTATE HOLDINGS, LLC	MI	DS	FARM BUREAU LIFE INSURANCE COMPANY OF MICHIGAN	OWNERSHIP	100.000	MICHIGAN FARM BUREAU	NO	
			38-2102277				MFB, INC.	MI	NIA	MICHIGAN FARM BUREAU FINANCIAL CORPORATION	OWNERSHIP	100.000	MICHIGAN FARM BUREAU	NO	
			38-1883116				COMMUNITY SERVICE ACCEPTANCE COMPANY	MI	NIA	MICHIGAN FARM BUREAU FINANCIAL CORPORATION	OWNERSHIP	100.000	MICHIGAN FARM BUREAU	NO	
			86-1744708				GRAVITY WORKS DESIGN, LLC	MI	NIA	MICHIGAN FARM BUREAU FINANCIAL CORPORATION	OWNERSHIP	100.000	MICHIGAN FARM BUREAU	NO	
0067	MICHIGAN FARM BUREAU GROUP		73-1333610				LIC CORPORATION	OK	NIA	MICHIGAN FARM BUREAU FINANCIAL CORPORATION	OWNERSHIP	100.000	MICHIGAN FARM BUREAU	NO	
		74799	73-1333608				LEADERS LIFE INSURANCE COMPANY	OK	IA	LIC CORPORATION	OWNERSHIP	100.000	MICHIGAN FARM BUREAU	NO	
			27-3936255				BROKER CENTRIC ALLIANCE, INC.	OK	NIA	LIC CORPORATION	OWNERSHIP	100.000	MICHIGAN FARM BUREAU	NO	
0067	MICHIGAN FARM BUREAU GROUP	00020	31-1154154				CINCINNATI EQUITABLE COMPANIES, INC.	OH	NIA	MICHIGAN FARM BUREAU FINANCIAL CORPORATION	OWNERSHIP	100.000	MICHIGAN FARM BUREAU	NO	
0067		88064	35-1452221				CINCINNATI EQUITABLE LIFE INSURANCE COMPANY	OH	IA	CINCINNATI EQUITABLE COMPANIES, INC.	OWNERSHIP	100.000	MICHIGAN FARM BUREAU	NO	
0067		16721	31-0239840				CINCINNATI EQUITABLE INSURANCE COMPANY	OH	IA	CINCINNATI EQUITABLE LIFE INSURANCE COMPANY	OWNERSHIP	100.000	MICHIGAN FARM BUREAU	NO	
Asterisk															
1	MICHIGAN FARM BUREAU HOLDS SUFFICIENT POLICYHOLDER PROXIES TO CONSTITUTE CONTROL														

PART 1 – LOSS EXPERIENCE

		Current Year to Date			4
		1	2	3	Prior Year to Date
Line of Business		Direct Premiums Earned	Direct Losses Incurred	Direct Loss Percentage	Direct Loss Percentage
1.	Fire .....				
2.1.	Allied lines .....				
2.2.	Multiple peril crop .....				
2.3.	Federal flood .....				
2.4.	Private crop .....				
2.5.	Private flood .....				
3.	Farmowners multiple peril .....				
4.	Homeowners multiple peril .....		(156)		
5.	Commercial multiple peril .....				
6.	Mortgage guaranty .....				
8.	Ocean marine .....				
9.	Inland marine .....				
10.	Financial guaranty .....				
11.1.	Medical professional liability - occurrence .....				
11.2.	Medical professional liability - claims made .....				
12.	Earthquake .....				
13.1.	Comprehensive (hospital and medical) individual .....				
13.2.	Comprehensive (hospital and medical) group .....				
14.	Credit accident and health .....				
15.1.	Vision only .....				
15.2.	Dental only .....				
15.3.	Disability income .....				
15.4.	Medicare supplement .....				
15.5.	Medicaid Title XIX .....				
15.6.	Medicare Title XVIII .....				
15.7.	Long-term care .....				
15.8.	Federal employees health benefits plan .....				
15.9.	Other health .....				
16.	Workers' compensation .....				
17.1.	Other liability occurrence .....				
17.2.	Other liability-claims made .....				
17.3.	Excess workers' compensation .....				
18.1.	Products liability - occurrence .....				
18.2.	Products liability - claims made .....				
19.1.	Private passenger auto no-fault (personal injury protection) .....				
19.2.	Other private passenger auto liability .....		(4,147)		
19.3.	Commercial auto no-fault (personal injury protection) .....				
19.4.	Other commercial auto liability .....				
21.1.	Private passenger auto physical damage .....				
21.2.	Commercial auto physical damage .....				
22.	Aircraft (all perils) .....				
23.	Fidelity .....				
24.	Surety .....				
26.	Burglary and theft .....				
27.	Boiler and machinery .....				
28.	Credit .....				
29.	International .....				
30.	Warranty .....				
31.	Reinsurance - nonproportional assumed property .....	XXX	XXX	XXX	XXX
32.	Reinsurance - nonproportional assumed liability .....	XXX	XXX	XXX	XXX
33.	Reinsurance - nonproportional assumed financial lines .....	XXX	XXX	XXX	XXX
34.	Aggregate write-ins for other lines of business .....				
35.	Totals .....		(4,302)		
Details of Write-Ins					
3401.	.....				
3402.	.....				
3403.	.....				
3498.	Summary of remaining write-ins for Line 34 from overflow page .....				
3499.	Totals (Lines 3401 through 3403 plus 3498) (Line 34 above) .....				

PART 2 – DIRECT PREMIUMS WRITTEN

		1	2	3
Line of Business		Current Quarter	Current Year to Date	Prior Year Year to Date
1.	Fire .....			
2.1	Allied lines .....			
2.2	Multiple peril crop .....			
2.3	Federal flood .....			
2.4	Private crop .....			
2.5	Private flood .....			
3.	Farmowners multiple peril .....			
4.	Homeowners multiple peril .....			
5.	Commercial multiple peril .....			
6.	Mortgage guaranty .....			
8.	Ocean marine .....			
9.	Inland marine .....			
10.	Financial guaranty .....			
11.1.	Medical professional liability - occurrence .....			
11.2.	Medical professional liability - claims made .....			
12.	Earthquake .....			
13.1	Comprehensive (hospital and medical) individual .....			
13.2	Comprehensive (hospital and medical) group .....			
14.	Credit accident and health .....			
15.1	Vision only .....			
15.2	Dental only .....			
15.3	Disability income .....			
15.4	Medicare supplement .....			
15.5	Medicaid Title XIX .....			
15.6	Medicare Title XVIII .....			
15.7	Long-term care .....			
15.8	Federal employees health benefits plan .....			
15.9	Other health .....			
16.	Workers' compensation .....			
17.1.	Other liability occurrence .....			
17.2.	Other liability-claims made .....			
17.3.	Excess workers' compensation .....			
18.1.	Products liability - occurrence .....			
18.2.	Products liability - claims made .....			
19.1	Private passenger auto no-fault (personal injury protection) .....			
19.2	Other private passenger auto liability .....			
19.3	Commercial auto no-fault (personal injury protection) .....			
19.4	Other commercial auto liability .....			
21.1	Private passenger auto physical damage .....			
21.2	Commercial auto physical damage .....			
22.	Aircraft (all perils) .....			
23.	Fidelity .....			
24.	Surety .....			
26.	Burglary and theft .....			
27.	Boiler and machinery .....			
28.	Credit .....			
29.	International .....			
30.	Warranty .....			
31.	Reinsurance - nonproportional assumed property .....	XXX	XXX	XXX
32.	Reinsurance - nonproportional assumed liability .....	XXX	XXX	XXX
33.	Reinsurance - nonproportional assumed financial lines .....	XXX	XXX	XXX
34.	Aggregate write-ins for other lines of business .....			
35.	Totals .....			
Details of Write-Ins				
3401.	.....			
3402.	.....			
3403.	.....			
3498.	Summary of remaining write-ins for Line 34 from overflow page .....			
3499.	Totals (Lines 3401 through 3403 plus 3498) (Line 34 above) .....			

PART 3 (000 OMITTED)  
LOSS AND LOSS ADJUSTMENT EXPENSE RESERVES SCHEDULE

	1	2	3	4	5	6	7	8	9	10	11	12	13
								Q.S. Date Known Case Loss and LAE Reserves on Claims Reported or Reopened Subsequent to Prior Year End			Prior Year-End Known Case Loss and LAE Reserves Developed (Savings) / Deficiency (Cols.4+7 minus Col. 1)	Prior Year-End IBNR Loss and LAE Reserves Developed (Savings) / Deficiency (Cols. 5+8+9 minus Col. 2)	Prior Year-End Total Loss and LAE Reserve Developed (Savings) / Deficiency (Cols. 11+12)
Years in Which Losses Occurred	Prior Year End Known Case Loss and LAE Reserves	Prior Year End IBNR Loss and LAE Reserves	Total Prior Year End Loss and LAE Reserves (Cols. 1+2)	2022 Loss and LAE Payments on Claims Reported as of Prior Year End	2022 Loss and LAE Payments on Claims Unreported as of Prior Year End	Total 2022 Loss and LAE Payments (Cols. 4+5)	Q.S. Date Known Case Loss and LAE Reserves on Claims Reported and Open as of Prior Year End		Q.S. Date IBNR Loss and LAE Reserves	Total Q.S. Loss and LAE Reserves (Cols.7+8+9)			
1. 2019 + Prior.....	13		13	10		10	—	—	—	—	(3)	—	(3)
2. 2020.....													
3. Subtotals 2020 + prior.....	13		13	10		10	—	—	—	—	(3)	—	(3)
4. 2021.....													
5. Subtotals 2021 + prior.....	13		13	10		10	—	—	—	—	(3)	—	(3)
6. 2022.....	XXX	XXX	XXX	XXX			XXX				XXX	XXX	XXX
7. Totals.....	13		13	10		10	—	—	—	—	(3)	—	(3)
8. Prior Year-End Surplus As Regards Policyholders.....	3,362										Col. 11, Line 7 As % of Col. 1, Line 7.....  (23.077)%	Col. 12, Line 7 As % of Col. 2, Line 7.....  %	Col. 13, Line 7 As % of Col. 3, Line 7...  (23.077)%  Col. 13, Line 7 / Line 8.....  (0.089)%

SUPPLEMENTAL EXHIBITS AND SCHEDULES INTERROGATORIES

The following supplemental reports are required to be filed as part of your statement filing. However, in the event that your company does not transact the type of business for which the special report must be filed, your response of **NO** to the specific interrogatory will be accepted in lieu of filing a “NONE” report and a bar code will be printed below. If the supplement is required of your company but is not being filed for whatever reason enter **SEE EXPLANATION** and provide an explanation following the interrogatory questions.

		Response
1.	Will the Trusteed Surplus Statement be filed with the state of domicile and the NAIC with this statement?.....	NO .....
2.	Will Supplement A to Schedule T (Medical Professional Liability Supplement) be filed with this statement?.....	NO .....
3.	Will the Medicare Part D Coverage Supplement be filed with the state of domicile and the NAIC with this statement?.....	NO .....
4.	Will the Director and Officer Insurance Coverage Supplement be filed with the state of domicile and the NAIC with this statement?.....	NO .....
August Filing		
5.	Will the regulator-only (non-public) Communication of Internal Control Related Matters Noted in Audit be filed with the state of domicile and electronically with the NAIC (as a regulator-only non-public document) by August 1? The response for 1st and 3rd quarters should be N/A. A NO response resulting with a bar code is only appropriate in the 2nd quarter.....	N/A .....

EXPLANATION:

1. N/A .....
2. N/A .....
3. N/A .....
4. N/A .....
5. N/A .....

BARCODES:

1. 

16721202249000003
2. 

16721202245000003
3. 

16721202236500003
4. 

16721202250500003
5.

**OVERFLOW PAGE FOR WRITE-INS**

SCHEDULE A – VERIFICATION  
Real Estate

		1	2
		Year to Date	Prior Year Ended December 31
1.	Book/adjusted carrying value, December 31 of prior year.....		
2.	Cost of acquired:		
2.1	Actual cost at time of acquisition.....		
2.2	Additional investment made after acquisition.....		
3.	Current year change in encumbrances.....		
4.	Total gain (loss) on disposals.....		
5.	Deduct amounts received on disposals.....		
6.	Total foreign exchange change in book / adjusted carrying value.....		
7.	Deduct current year's other-than-temporary impairment recognized.....		
8.	Deduct current year's depreciation.....		
9.	Book/adjusted carrying value at the end of current period (Lines 1+2+3+4-5+6-7-8).....		
10.	Deduct total nonadmitted amounts.....		
11.	Statement value at end of current period (Line 9 minus Line 10).....		

SCHEDULE B – VERIFICATION  
Mortgage Loans

		1	2
		Year to Date	Prior Year Ended December 31
1.	Book value/recorded investment excluding accrued interest, December 31 of prior year.....		
2.	Cost of acquired:		
2.1	Actual cost at time of acquisition.....		
2.2	Additional investment made after acquisition.....		
3.	Capitalized deferred interest and other.....		
4.	Accrual of discount.....		
5.	Unrealized valuation increase (decrease).....		
6.	Total gain (loss) on disposals.....		
7.	Deduct amounts received on disposals.....		
8.	Deduct amortization of premium and mortgage interest points and commission fees.....		
9.	Total foreign exchange change in book value/recorded investment excluding accrued interest.....		
10.	Deduct current year's other-than-temporary impairment recognized.....		
11.	Book value/recorded investment excluding accrued interest at end of current period (Lines 1+2+3+4+5+6-7-8+9-10).....		
12.	Total valuation allowance.....		
13.	Subtotal (Line 11 plus Line 12).....		
14.	Deduct total nonadmitted amounts.....		
15.	Statement value at end of current period (Line 13 minus Line 14).....		

SCHEDULE BA - VERIFICATION  
Other Long-Term Invested Assets

		1	2
		Year to Date	Prior Year Ended December 31
1.	Book/adjusted carrying value, December 31 of prior year.....		
2.	Cost of acquired:		
2.1	Actual cost at time of acquisition.....		
2.2	Additional investment made after acquisition.....		
3.	Capitalized deferred interest and other.....		
4.	Accrual of discount.....		
5.	Unrealized valuation increase (decrease).....		
6.	Total gain (loss) on disposals.....		
7.	Deduct amounts received on disposals.....		
8.	Deduct amortization of premium and depreciation.....		
9.	Total foreign exchange change in book / adjusted carrying value.....		
10.	Deduct current year's other-than-temporary impairment recognized.....		
11.	Book/adjusted carrying value at end of current period (Lines 1+2+3+4+5+6-7-8+9-10).....		
12.	Deduct total nonadmitted amounts.....		
13.	Statement value at end of current period (Line 11 minus Line 12).....		

SCHEDULE D - VERIFICATION  
Bonds and Stocks

		1	2
		Year to Date	Prior Year Ended December 31
1.	Book/adjusted carrying value of bonds and stocks, December 31 of prior year.....	3,315,360	3,136,843
2.	Cost of bonds and stocks acquired.....	528,802	834,273
3.	Accrual of discount.....	3,129	3,666
4.	Unrealized valuation increase (decrease).....	(3,016)	675
5.	Total gain (loss) on disposals.....	419	(670)
6.	Deduct consideration for bonds and stocks disposed of.....	850,000	658,967
7.	Deduct amortization of premium.....	6,846	9,426
8.	Total foreign exchange change in book / adjusted carrying value.....		
9.	Deduct current year's other-than-temporary impairment recognized.....		
10.	Total investment income recognized as a result of prepayment penalties and/or acceleration fees.....		8,967
11.	Book/adjusted carrying value at end of current period (Lines 1+2+3+4+5-6-7+8-9+10).....	2,987,849	3,315,360
12.	Deduct total nonadmitted amounts.....		
13.	Statement value at end of current period (Line 11 minus Line 12).....	2,987,849	3,315,360

SCHEDULE D – PART 1B

Showing the Acquisitions, Dispositions and Non-Trading Activity  
During the Current Quarter for all Bonds and Preferred Stock by NAIC Designation

NAIC Designation	1	2	3	4	5	6	7	8
	Book / Adjusted Carrying Value Beginning of Current Quarter	Acquisitions During Current Quarter	Dispositions During Current Quarter	Non-Trading Activity During Current Quarter	Book / Adjusted Carrying Value End of First Quarter	Book / Adjusted Carrying Value End of Second Quarter	Book / Adjusted Carrying Value End of Third Quarter	Book / Adjusted Carrying Value December 31 Prior Year
<b>Bonds</b>								
1. NAIC 1 (a).....	2,407,617			633	1,928,469	2,407,617	2,408,250	1,928,501
2. NAIC 2 (a).....	822,781		325,000	(1,232)	1,298,641	822,781	496,549	1,299,720
3. NAIC 3 (a).....	81,410			(27,847)	86,047	81,410	53,564	87,139
4. NAIC 4 (a).....								
5. NAIC 5 (a).....				29,486			29,486	
6. NAIC 6 (a).....								
7. Total Bonds.....	3,311,808		325,000	1,041	3,313,156	3,311,808	2,987,849	3,315,360
<b>Preferred Stock</b>								
8. NAIC 1.....								
9. NAIC 2.....								
10. NAIC 3.....								
11. NAIC 4.....								
12. NAIC 5.....								
13. NAIC 6.....								
14. Total Preferred Stock.....								
15. Total Bonds & Preferred Stock.....	3,311,808		325,000	1,041	3,313,156	3,311,808	2,987,849	3,315,360

(a) Book/Adjusted Carrying Value column for the end of the current reporting period includes the following amount of short-term and cash equivalent bonds by NAIC designation:

NAIC 1 \$ ; NAIC 2 \$ ; NAIC 3 \$ ; NAIC 4 \$ ; NAIC 5 \$ ; NAIC 6 \$



(SI-03) Schedule DA - Part 1

NONE

(SI-03) Schedule DA - Verification - Short-Term Investments

NONE

(SI-04) Schedule DB - Part A - Verification - Options, Caps, Floors, Collars, Swaps and Forwards

NONE

(SI-04) Schedule DB - Part B - Verification - Futures Contracts

NONE

(SI-05) Schedule DB - Part C - Section 1

NONE

(SI-06) Schedule DB - Part C - Section 2

NONE

(SI-07) Schedule DB - Verification

NONE

SCHEDULE E – PART 2 – VERIFICATION  
(Cash Equivalents)

		1	2
		Year to Date	Prior Year Ended December 31
1.	Book/adjusted carrying value, December 31 of prior year.....	43,740	135,756
2.	Cost of cash equivalents acquired.....	490,389	789,303
3.	Accrual of discount.....		
4.	Unrealized valuation increase (decrease).....		
5.	Total gain (loss) on disposals.....		
6.	Deduct consideration received on disposals.....	444,486	881,319
7.	Deduct amortization of premium.....		
8.	Total foreign exchange change in book / adjusted carrying value.....		
9.	Deduct current year's other-than-temporary impairment recognized.....		
10.	Book/adjusted carrying value at end of current period (Lines 1+2+3+4+5-6-7+8-9).....	89,643	43,740
11.	Deduct total nonadmitted amounts.....		
12.	Statement value at end of current period (Line 10 minus Line 11).....	89,643	43,740

(E-01) Schedule A - Part 2  
**NONE**

(E-01) Schedule A - Part 3  
**NONE**

(E-02) Schedule B - Part 2  
**NONE**

(E-02) Schedule B - Part 3  
**NONE**

(E-03) Schedule BA - Part 2  
**NONE**

(E-03) Schedule BA - Part 3  
**NONE**

(E-04) Schedule D - Part 3  
**NONE**

SCHEDULE D - PART 4

Show All Long-Term Bonds and Stock Sold, Redeemed or Otherwise Disposed of During the Current Quarter

1	2	3	4	5	6	7	8	9	10	Change in Book / Adjusted Carrying Value					16	17	18	19	20	21	22
										11	12	13	14	15							
CUSIP Identification	Description	Foreign	Disposal Date	Name of Purchaser	Number of Shares	Consideration	Par Value	Actual Cost	Prior Year Book / Adjusted Carrying Value	Unrealized Valuation Increase / (Decrease)	Current Year's (Amortization) / Accretion	Current Year's Other-Than- Temporary Impairment Recognized	Total Change in B. / A.C.V. (11+12-13)	Total Foreign Exchange Change in B./A.C.V.	Book / Adjusted Carrying Value at Disposal Date	Foreign Exchange Gain (Loss) on Disposal	Realized Gain (Loss) on Disposal	Total Gain (Loss) on Disposal	Bond Interest / Stock Dividends Received During Year	Stated Contractual Maturity Date	NAIC Designation, NAIC Designation Modifier and SVO Administrative Symbol
Bonds: Industrial and Miscellaneous (Unaffiliated)																					
428236-BX-0	HP INC		09/15/2022	Maturity @ 100.00	XXX	325,000	325,000	333,395	325,671		(671)		(671)		325,000				13,163	09/15/2022	2 B FE
1109999999 – Bonds: Industrial and Miscellaneous (Unaffiliated)						325,000	325,000	333,395	325,671		(671)		(671)		325,000				13,163	XXX	XXX
2509999997 – Subtotals - Bonds - Part 4						325,000	325,000	333,395	325,671		(671)		(671)		325,000				13,163	XXX	XXX
2509999999 – Subtotals - Bonds						325,000	325,000	333,395	325,671		(671)		(671)		325,000				13,163	XXX	XXX
6009999999 – Totals						325,000	XXX	333,395	325,671		(671)		(671)		325,000				13,163	XXX	XXX

(E-06) Schedule DB - Part A - Section 1

NONE

(E-06) Schedule DB - Part A - Section 1 - Description of Hedged Risk(s)

NONE

(E-06) Schedule DB - Part A - Section 1 - Financial or Economic Impact of The Hedge

NONE

(E-07) Schedule DB - Part B - Section 1

NONE

(E-07) Schedule DB - Part B - Section 1 - Broker Name

NONE

(E-07) Schedule DB - Part B - Section 1 - Description of Hedged Risk(s)

NONE

(E-07) Schedule DB - Part B - Section 1 - Financial or Economice Impact of The Hedge

NONE

(E-08) Schedule DB - Part D - Section 1

NONE

(E-09) Schedule DB - Part D - Section 2 - By Reporting Entity

NONE

(E-09) Schedule DB - Part D - Section 2 - To Reporting Entity

NONE

(E-10) Schedule DB - Part E

NONE

(E-11) Schedule DL - Part 1

NONE

(E-12) Schedule DL - Part 2

NONE

SCHEDULE E - PART 1 - CASH  
Month End Depository Balances

1  Depository	2  Code	3  Rate of Interest	4  Amount of Interest Received During Current Quarter	5  Amount of Interest Accrued at Current Statement Date	Book Balance at End of Each Month During Current Quarter			9  *
					6	7	8	
					First Month	Second Month	Third Month	
Fifth Third Bank – Cincinnati, Ohio .....	SD .....				10,540	9,095	337,337	XXX
0199998 – Deposits in depositories that do not exceed the allowable limit in any one depository (see Instructions) - Open Depositories .....								XXX
0199999 – Total Open Depositories .....					10,540	9,095	337,337	XXX
0299998 – Deposits in depositories that do not exceed the allowable limit in any one depository (see Instructions) - Suspended Depositories .....								XXX
0299999 – Total Suspended Depositories .....								XXX
0399999 – Total Cash on Deposit .....					10,540	9,095	337,337	XXX
0499999 – Cash in Company's Office .....			XXX	XXX				XXX
0599999 – Total .....					10,540	9,095	337,337	XXX

SCHEDULE E - PART 2 - CASH EQUIVALENTS

Show Investments Owned End of Current Quarter

1	2	3	4	5	6	7	8	9
CUSIP	Description	Code	Date Acquired	Rate of Interest	Maturity Date	Book / Adjusted Carrying Value	Amount of Interest Due and Accrued	Amount Received During Year
Exempt Money Market Mutual Funds – as Identified by SVO								
60934N-50-0 .....	FEDERATED HRMS TRS INST.....		09/29/2022.....	2.850.....	XXX.....	89,643	179	272
8209999999 – Exempt Money Market Mutual Funds – as Identified by SVO.....						89,643	179	272
8609999999 – Total Cash Equivalents.....						89,643	179	272