



LIFE, ACCIDENT AND HEALTH COMPANIES/FRATERNAL BENEFIT SOCIETIES - ASSOCIATION EDITION

QUARTERLY STATEMENT

AS OF JUNE 30, 2022

OF THE CONDITION AND AFFAIRS OF THE

UNITY FINANCIAL LIFE INSURANCE COMPANY

NAIC Group Code00000000NAIC Company Code63819Employer's ID Number23-1640528

Organized under the Laws ofOhio, State of Domicile or Port of EntryOH

Country of DomicileUnited States of America

Licensed as business type:Life, Accident and Health [X] Fraternal Benefit Societies []

Incorporated/Organized05/06/1964Commenced Business05/06/1964

Statutory Home Office4675 Cornell Road, Suite 160Cincinnati, OH, US 45241

(Street and Number)(City or Town, State, Country and Zip Code)

Main Administrative Office4675 Cornell Road, Suite 160Cincinnati, OH, US 45241513-247-0711

(Street and Number)(City or Town, State, Country and Zip Code)(Area Code) (Telephone Number)

Mail AddressP.O. Box 625700Cincinnati, OH, US 45262-5700

(Street and Number or P.O. Box)(City or Town, State, Country and Zip Code)

Primary Location of Books and Records4675 Cornell Road, Suite 160Cincinnati, OH, US 45241513-247-0711

(Street and Number)(City or Town, State, Country and Zip Code)(Area Code) (Telephone Number)

Internet Website Addresswww.uflife.com

Statutory Statement ContactKevin Losekamp513-247-5665

(Name)(Area Code) (Telephone Number)

klosekamp@uflife.com513-247-5040

(E-mail Address)(FAX Number)

OFFICERS

PresidentJay Cresson Hardy

TreasurerKevin James Losekamp

SecretaryElaine Marie Greer

OTHER

Cynthia Lee English, Vice President

Adam Michael Goller, Vice President

Ryan Michael Walsman, Vice President

DIRECTORS OR TRUSTEES

David Benjamin Abraham

Thomas Cresson Hardy - Chairman

David Kevin Mullen

David Michael Davis

John Bernard Yanko

Jay Cresson Hardy

State ofOhio

County ofHamilton

SS:

The officers of this reporting entity being duly sworn, each depose and say that they are the described officers of said reporting entity, and that on the reporting period stated above, all of the herein described assets were the absolute property of the said reporting entity, free and clear from any liens or claims thereon, except as herein stated, and that this statement, together with related exhibits, schedules and explanations therein contained, annexed or referred to, is a full and true statement of all the assets and liabilities and of the condition and affairs of the said reporting entity as of the reporting period stated above, and of its income and deductions therefrom for the period ended, and have been completed in accordance with the NAIC Annual Statement Instructions and Accounting Practices and Procedures manual except to the extent that: (1) state law may differ; or, (2) that state rules or regulations require differences in reporting not related to accounting practices and procedures, according to the best of their information, knowledge and belief, respectively. Furthermore, the scope of this attestation by the described officers also includes the related corresponding electronic filing with the NAIC, when required, that is an exact copy (except for formatting differences due to electronic filing) of the enclosed statement. The electronic filing may be requested by various regulators in lieu of or in addition to the enclosed statement.

Jay HardyPresident

Elaine GreerSecretary

Kevin LosekampTreasurer

Subscribed and sworn to before me this day of

a. Is this an original filing? Yes [X] No []

b. If no,

1. State the amendment number.....

2. Date filed08/15/2022

3. Number of pages attached.....

Michael O'Brien

Notary

06/18/2027

STATEMENT AS OF JUNE 30, 2022 OF THE UNITY FINANCIAL LIFE INSURANCE COMPANY

ASSETS

| | Current Statement Date | | | 4 December 31 Prior Year Net Admitted Assets |
|---|------------------------|-------------------------|---|---|
| | 1 Assets | 2 Nonadmitted Assets | 3 Net Admitted Assets (Cols. 1 - 2) | |
| 1. Bonds | 329,006,676 | | 329,006,676 | 324,284,330 |
| 2. Stocks: | | | | |
| 2.1 Preferred stocks | | | 0 | 0 |
| 2.2 Common stocks | 2,552,200 | | 2,552,200 | 2,543,800 |
| 3. Mortgage loans on real estate: | | | | |
| 3.1 First liens | | | 0 | 0 |
| 3.2 Other than first liens..... | | | 0 | 0 |
| 4. Real estate: | | | | |
| 4.1 Properties occupied by the company (less \$ encumbrances) | | | 0 | 0 |
| 4.2 Properties held for the production of income (less \$ encumbrances) | | | 0 | 0 |
| 4.3 Properties held for sale (less \$ encumbrances) | | | 0 | 0 |
| 5. Cash (\$3,123,814), cash equivalents (\$2,488,537) and short-term investments (\$249,632) | 5,861,983 | | 5,861,983 | 8,736,288 |
| 6. Contract loans (including \$ premium notes) | 509,247 | | 509,247 | 463,013 |
| 7. Derivatives | | | 0 | 0 |
| 8. Other invested assets | 5,138,341 | | 5,138,341 | 2,121,576 |
| 9. Receivables for securities | | | 0 | 0 |
| 10. Securities lending reinvested collateral assets | | | 0 | 0 |
| 11. Aggregate write-ins for invested assets | 0 | 0 | 0 | 0 |
| 12. Subtotals, cash and invested assets (Lines 1 to 11) | 343,068,447 | 0 | 343,068,447 | 338,149,007 |
| 13. Title plants less \$ charged off (for Title insurers only) | | | 0 | 0 |
| 14. Investment income due and accrued | 2,397,518 | | 2,397,518 | 2,306,166 |
| 15. Premiums and considerations: | | | | |
| 15.1 Uncollected premiums and agents' balances in the course of collection | 27,179 | | 27,179 | 33,237 |
| 15.2 Deferred premiums, agents' balances and installments booked but deferred and not yet due (including \$ earned but unbilled premiums) | 2,686,531 | | 2,686,531 | 2,570,489 |
| 15.3 Accrued retrospective premiums (\$) and contracts subject to redetermination (\$) | | | 0 | 0 |
| 16. Reinsurance: | | | | |
| 16.1 Amounts recoverable from reinsurers | | | 0 | 0 |
| 16.2 Funds held by or deposited with reinsured companies | | | 0 | 0 |
| 16.3 Other amounts receivable under reinsurance contracts | 21,574 | | 21,574 | 23,266 |
| 17. Amounts receivable relating to uninsured plans | | | 0 | 0 |
| 18.1 Current federal and foreign income tax recoverable and interest thereon | | | 0 | 0 |
| 18.2 Net deferred tax asset | 3,087,567 | 1,149,161 | 1,938,406 | 1,947,711 |
| 19. Guaranty funds receivable or on deposit | 11,278 | | 11,278 | 15,845 |
| 20. Electronic data processing equipment and software | 490,187 | 483,514 | 6,673 | 5,998 |
| 21. Furniture and equipment, including health care delivery assets (\$) | 3,694 | 3,694 | 0 | 0 |
| 22. Net adjustment in assets and liabilities due to foreign exchange rates | | | 0 | 0 |
| 23. Receivables from parent, subsidiaries and affiliates | 666,301 | | 666,301 | 40,928 |
| 24. Health care (\$) and other amounts receivable | 242,592 | 242,592 | 0 | 0 |
| 25. Aggregate write-ins for other than invested assets | 116,096 | 94,196 | 21,900 | 21,900 |
| 26. Total assets excluding Separate Accounts, Segregated Accounts and Protected Cell Accounts (Lines 12 to 25) | 352,818,963 | 1,973,157 | 350,845,805 | 345,114,547 |
| 27. From Separate Accounts, Segregated Accounts and Protected Cell Accounts | | | 0 | 0 |
| 28. Total (Lines 26 and 27) | 352,818,963 | 1,973,157 | 350,845,805 | 345,114,547 |
| DETAILS OF WRITE-INS | | | | |
| 1101. | | | 0 | 0 |
| 1102. | | | | |
| 1103. | | | | |
| 1198. Summary of remaining write-ins for Line 11 from overflow page | 0 | 0 | 0 | 0 |
| 1199. Totals (Lines 1101 through 1103 plus 1198)(Line 11 above) | 0 | 0 | 0 | 0 |
| 2501. Premiums Receivable | 0 | 0 | 0 | 0 |
| 2502. Prepaid Expenses | 94,196 | 94,196 | 0 | 0 |
| 2503. Krause Agency | 21,900 | | 21,900 | 21,900 |
| 2598. Summary of remaining write-ins for Line 25 from overflow page | 0 | 0 | 0 | 0 |
| 2599. Totals (Lines 2501 through 2503 plus 2598)(Line 25 above) | 116,096 | 94,196 | 21,900 | 21,900 |

STATEMENT AS OF JUNE 30, 2022 OF THE UNITY FINANCIAL LIFE INSURANCE COMPANY

LIABILITIES, SURPLUS AND OTHER FUNDS

| | 1 Current Statement Date | 2 December 31 Prior Year |
|---|--------------------------------|--------------------------------|
| 1. Aggregate reserve for life contracts \$260,172,584 less \$ included in Line 6.3 (including \$ Modco Reserve) | 260,172,584 | 255,200,774 |
| 2. Aggregate reserve for accident and health contracts (including \$ Modco Reserve) | | 0 |
| 3. Liability for deposit-type contracts (including \$ Modco Reserve) | 8,860,710 | 5,624,065 |
| 4. Contract claims: | | |
| 4.1 Life | 2,015,461 | 3,162,527 |
| 4.2 Accident and health | | 0 |
| 5. Policyholders' dividends/refunds to members \$ and coupons \$ due and unpaid | | 0 |
| 6. Provision for policyholders' dividends, refunds to members and coupons payable in following calendar year - estimated amounts: | | |
| 6.1 Policyholders' dividends and refunds to members apportioned for payment (including \$ Modco) | | |
| 6.2 Policyholders' dividends and refunds to members not yet apportioned (including \$ Modco) | | |
| 6.3 Coupons and similar benefits (including \$ Modco) | | |
| 7. Amount provisionally held for deferred dividend policies not included in Line 6 | | |
| 8. Premiums and annuity considerations for life and accident and health contracts received in advance less \$ discount; including \$ accident and health premiums | 53,489 | 77,812 |
| 9. Contract liabilities not included elsewhere: | | |
| 9.1 Surrender values on canceled contracts | | |
| 9.2 Provision for experience rating refunds, including the liability of \$ accident and health experience rating refunds of which \$ 0 is for medical loss ratio rebate per the Public Health Service Act | | |
| 9.3 Other amounts payable on reinsurance, including \$4,185,190 assumed and \$ ceded | 4,185,190 | 2,485,094 |
| 9.4 Interest Maintenance Reserve | 3,454,205 | 3,607,944 |
| 10. Commissions to agents due or accrued-life and annuity contracts \$, accident and health \$ and deposit-type contract funds \$ | | |
| 11. Commissions and expense allowances payable on reinsurance assumed | 123,929 | |
| 12. General expenses due or accrued | 586,930 | 611,048 |
| 13. Transfers to Separate Accounts due or accrued (net) (including \$ accrued for expense allowances recognized in reserves, net of reinsured allowances) | | |
| 14. Taxes, licenses and fees due or accrued, excluding federal income taxes | 198,030 | 338,365 |
| 15.1 Current federal and foreign income taxes, including \$ on realized capital gains (losses) | 49,638 | 729,019 |
| 15.2 Net deferred tax liability | | |
| 16. Unearned investment income | | |
| 17. Amounts withheld or retained by reporting entity as agent or trustee | 1,569,848 | 899,119 |
| 18. Amounts held for agents' account, including \$ agents' credit balances | 1,556,215 | 1,533,320 |
| 19. Remittances and items not allocated | 303,467 | 634,170 |
| 20. Net adjustment in assets and liabilities due to foreign exchange rates | | |
| 21. Liability for benefits for employees and agents if not included above | | |
| 22. Borrowed money \$48,777,000 and interest thereon \$ | 48,777,000 | 51,709,000 |
| 23. Dividends to stockholders declared and unpaid | | |
| 24. Miscellaneous liabilities: | | |
| 24.01 Asset valuation reserve | 1,596,080 | 1,497,180 |
| 24.02 Reinsurance in unauthorized and certified (\$) companies | | 0 |
| 24.03 Funds held under reinsurance treaties with unauthorized and certified (\$) reinsurers | | |
| 24.04 Payable to parent, subsidiaries and affiliates | | |
| 24.05 Drafts outstanding | | |
| 24.06 Liability for amounts held under uninsured plans | | |
| 24.07 Funds held under coinsurance | | |
| 24.08 Derivatives | 0 | 0 |
| 24.09 Payable for securities | | |
| 24.10 Payable for securities lending | | |
| 24.11 Capital notes \$ and interest thereon \$ | | |
| 25. Aggregate write-ins for liabilities | 0 | 0 |
| 26. Total liabilities excluding Separate Accounts business (Lines 1 to 25) | 333,502,776 | 328,109,437 |
| 27. From Separate Accounts Statement | | |
| 28. Total liabilities (Lines 26 and 27) | 333,502,776 | 328,109,437 |
| 29. Common capital stock | 2,524,500 | 2,524,500 |
| 30. Preferred capital stock | | |
| 31. Aggregate write-ins for other than special surplus funds | 0 | 0 |
| 32. Surplus notes | | |
| 33. Gross paid in and contributed surplus | 3,084,370 | 3,084,370 |
| 34. Aggregate write-ins for special surplus funds | 0 | 0 |
| 35. Unassigned funds (surplus) | 11,734,159 | 11,396,240 |
| 36. Less treasury stock, at cost: | | |
| 36.1 shares common (value included in Line 29 \$) | | |
| 36.2 shares preferred (value included in Line 30 \$) | | |
| 37. Surplus (Total Lines 31+32+33+34+35-36) (including \$ in Separate Accounts Statement) | 14,818,529 | 14,480,610 |
| 38. Totals of Lines 29, 30 and 37 | 17,343,029 | 17,005,110 |
| 39. Totals of Lines 28 and 38 (Page 2, Line 28, Col. 3) | 350,845,805 | 345,114,547 |
| DETAILS OF WRITE-INS | | |
| 2501. | | |
| 2502. | | |
| 2503. | | |
| 2598. Summary of remaining write-ins for Line 25 from overflow page | 0 | 0 |
| 2599. Totals (Lines 2501 through 2503 plus 2598)(Line 25 above) | 0 | 0 |
| 3101. | | |
| 3102. | | |
| 3103. | | |
| 3198. Summary of remaining write-ins for Line 31 from overflow page | 0 | 0 |
| 3199. Totals (Lines 3101 through 3103 plus 3198)(Line 31 above) | 0 | 0 |
| 3401. | | |
| 3402. | | |
| 3403. | | |
| 3498. Summary of remaining write-ins for Line 34 from overflow page | 0 | 0 |
| 3499. Totals (Lines 3401 through 3403 plus 3498)(Line 34 above) | 0 | 0 |

STATEMENT AS OF JUNE 30, 2022 OF THE UNITY FINANCIAL LIFE INSURANCE COMPANY

SUMMARY OF OPERATIONS

| | 1 | 2 | 3 |
|---|-------------------------|-----------------------|---------------------------------|
| | Current Year To Date | Prior Year To Date | Prior Year Ended December 31 |
| 1. Premiums and annuity considerations for life and accident and health contracts | 22,101,688 | 20,238,134 | 41,883,735 |
| 2. Considerations for supplementary contracts with life contingencies | | | 0 |
| 3. Net investment income | 5,142,191 | 5,632,517 | 10,717,281 |
| 4. Amortization of Interest Maintenance Reserve (IMR) | 175,863 | 129,830 | 235,252 |
| 5. Separate Accounts net gain from operations excluding unrealized gains or losses | | | 0 |
| 6. Commissions and expense allowances on reinsurance ceded | 794,325 | 1,160,905 | 1,739,312 |
| 7. Reserve adjustments on reinsurance ceded | | | 0 |
| 8. Miscellaneous Income: | | | |
| 8.1 Income from fees associated with investment management, administration and contract guarantees from Separate Accounts | | | 0 |
| 8.2 Charges and fees for deposit-type contracts | 132,068 | | 186,821 |
| 8.3 Aggregate write-ins for miscellaneous income | 1,319,267 | 102,650 | 1,238,358 |
| 9. Totals (Lines 1 to 8.3) | 29,665,402 | 27,264,036 | 56,000,759 |
| 10. Death benefits | 15,792,767 | 16,039,789 | 30,815,120 |
| 11. Matured endowments (excluding guaranteed annual pure endowments) | | | 0 |
| 12. Annuity benefits | | | 0 |
| 13. Disability benefits and benefits under accident and health contracts | | | 0 |
| 14. Coupons, guaranteed annual pure endowments and similar benefits | | | 0 |
| 15. Surrender benefits and withdrawals for life contracts | 128,887 | 97,563 | 247,752 |
| 16. Group conversions | | | 0 |
| 17. Interest and adjustments on contract or deposit-type contract funds | 5,329 | 33,431 | (1,532) |
| 18. Payments on supplementary contracts with life contingencies | | | 0 |
| 19. Increase in aggregate reserves for life and accident and health contracts | 4,971,810 | 3,608,124 | 9,193,658 |
| 20. Totals (Lines 10 to 19) | 20,898,792 | 19,778,907 | 40,254,998 |
| 21. Commissions on premiums, annuity considerations, and deposit-type contract funds (direct business only) | 4,805,283 | 3,810,945 | 8,441,669 |
| 22. Commissions and expense allowances on reinsurance assumed | | | 0 |
| 23. General insurance expenses and fraternal expenses | 2,069,962 | 2,109,697 | 4,176,175 |
| 24. Insurance taxes, licenses and fees, excluding federal income taxes | 771,050 | 750,670 | 1,335,439 |
| 25. Increase in loading on deferred and uncollected premiums | 73,684 | 66,289 | (93,271) |
| 26. Net transfers to or (from) Separate Accounts net of reinsurance | | | 0 |
| 27. Aggregate write-ins for deductions | 0 | 0 | 0 |
| 28. Totals (Lines 20 to 27) | 28,618,771 | 26,516,509 | 54,115,010 |
| 29. Net gain from operations before dividends to policyholders and federal income taxes (Line 9 minus Line 28) | 1,046,631 | 747,527 | 1,885,749 |
| 30. Dividends to policyholders and refunds to members | | | 0 |
| 31. Net gain from operations after dividends to policyholders, refunds to members and before federal income taxes (Line 29 minus Line 30) | 1,046,631 | 747,527 | 1,885,749 |
| 32. Federal and foreign income taxes incurred (excluding tax on capital gains) | 344,722 | 125,924 | 775,344 |
| 33. Net gain from operations after dividends to policyholders, refunds to members and federal income taxes and before realized capital gains or (losses) (Line 31 minus Line 32) | 701,910 | 621,603 | 1,110,405 |
| 34. Net realized capital gains (losses) (excluding gains (losses) transferred to the IMR) less capital gains tax of \$ (excluding taxes of \$ 5,897 transferred to the IMR) | (20,997) | (5,677) | 133,432 |
| 35. Net income (Line 33 plus Line 34) | 680,912 | 615,926 | 1,243,837 |
| CAPITAL AND SURPLUS ACCOUNT | | | |
| 36. Capital and surplus, December 31, prior year | 17,005,110 | 16,162,080 | 16,162,080 |
| 37. Net income (Line 35) | 680,912 | 615,926 | 1,243,837 |
| 38. Change in net unrealized capital gains (losses) less capital gains tax of \$ | 29,765 | 9,004 | (72,873) |
| 39. Change in net unrealized foreign exchange capital gain (loss) | | | |
| 40. Change in net deferred income tax | 210,371 | 121,011 | 484,160 |
| 41. Change in nonadmitted assets | (484,014) | (165,659) | (477,703) |
| 42. Change in liability for reinsurance in unauthorized and certified companies | | | |
| 43. Change in reserve on account of change in valuation basis, (increase) or decrease | | | 0 |
| 44. Change in asset valuation reserve | (98,900) | (115,444) | (33,391) |
| 45. Change in treasury stock | | | 0 |
| 46. Surplus (contributed to) withdrawn from Separate Accounts during period | | | |
| 47. Other changes in surplus in Separate Accounts Statement | | | |
| 48. Change in surplus notes | | | |
| 49. Cumulative effect of changes in accounting principles | | | |
| 50. Capital changes: | | | |
| 50.1 Paid in | | | |
| 50.2 Transferred from surplus (Stock Dividend) | | | |
| 50.3 Transferred to surplus | | | |
| 51. Surplus adjustment: | | | |
| 51.1 Paid in | 0 | 0 | 0 |
| 51.2 Transferred to capital (Stock Dividend) | | | |
| 51.3 Transferred from capital | | | |
| 51.4 Change in surplus as a result of reinsurance | | | |
| 52. Dividends to stockholders | 0 | (301,000) | (301,000) |
| 53. Aggregate write-ins for gains and losses in surplus | 0 | 0 | 0 |
| 54. Net change in capital and surplus for the year (Lines 37 through 53) | 338,134 | 163,839 | 843,031 |
| 55. Capital and surplus, as of statement date (Lines 36 + 54) | 17,343,244 | 16,325,918 | 17,005,110 |
| DETAILS OF WRITE-INS | | | |
| 08.301. Miscellaneous Income | 102,329 | 102,650 | 81,136 |
| 08.302. Commission on Reinsurance SPIA | 1,216,938 | | 1,157,222 |
| 08.303. | | | |
| 08.398. Summary of remaining write-ins for Line 8.3 from overflow page | 0 | 0 | 0 |
| 08.399. Totals (Lines 08.301 through 08.303 plus 08.398) (Line 8.3 above) | 1,319,267 | 102,650 | 1,238,358 |
| 2701. | | | |
| 2702. | | | |
| 2703. | | | |
| 2798. Summary of remaining write-ins for Line 27 from overflow page | 0 | 0 | 0 |
| 2799. Totals (Lines 2701 through 2703 plus 2798)(Line 27 above) | 0 | 0 | 0 |
| 5301. | | | |
| 5302. | | | |
| 5303. | | | |
| 5398. Summary of remaining write-ins for Line 53 from overflow page | 0 | 0 | 0 |
| 5399. Totals (Lines 5301 through 5303 plus 5398)(Line 53 above) | 0 | 0 | 0 |

STATEMENT AS OF JUNE 30, 2022 OF THE UNITY FINANCIAL LIFE INSURANCE COMPANY

CASH FLOW

| | 1 Current Year To Date | 2 Prior Year To Date | 3 Prior Year Ended December 31 |
|---|------------------------------|----------------------------|--------------------------------------|
| Cash from Operations | | | |
| 1. Premiums collected net of reinsurance | 21,895,390 | 20,130,376 | 42,060,214 |
| 2. Net investment income | 5,115,669 | 5,490,139 | 11,154,752 |
| 3. Miscellaneous income | 2,245,660 | 1,263,555 | 3,528,372 |
| 4. Total (Lines 1 to 3) | 29,256,719 | 26,884,071 | 56,743,338 |
| 5. Benefit and loss related payments | 15,373,953 | 13,658,796 | 29,541,247 |
| 6. Net transfers to Separate Accounts, Segregated Accounts and Protected Cell Accounts | 0 | 0 | 0 |
| 7. Commissions, expenses paid and aggregate write-ins for deductions | 7,682,252 | 6,495,760 | 13,501,055 |
| 8. Dividends paid to policyholders | 0 | 0 | 0 |
| 9. Federal and foreign income taxes paid (recovered) net of \$ tax on capital gains (losses) | 1,031,172 | (38,384) | 29,607 |
| 10. Total (Lines 5 through 9) | 24,087,377 | 20,116,172 | 43,071,909 |
| 11. Net cash from operations (Line 4 minus Line 10) | 5,169,342 | 6,767,899 | 13,671,430 |
| Cash from Investments | | | |
| 12. Proceeds from investments sold, matured or repaid: | | | |
| 12.1 Bonds | 27,254,058 | 39,201,054 | 69,537,762 |
| 12.2 Stocks | 0 | 0 | 1,183,420 |
| 12.3 Mortgage loans | 0 | 0 | 0 |
| 12.4 Real estate | 0 | 0 | 0 |
| 12.5 Other invested assets | 13,000 | 13,000 | 13,000 |
| 12.6 Net gains or (losses) on cash, cash equivalents and short-term investments | 0 | 0 | (138) |
| 12.7 Miscellaneous proceeds | 0 | 0 | 0 |
| 12.8 Total investment proceeds (Lines 12.1 to 12.7) | 27,267,058 | 39,214,054 | 70,734,044 |
| 13. Cost of investments acquired (long-term only): | | | |
| 13.1 Bonds | 32,033,468 | 35,800,186 | 76,284,642 |
| 13.2 Stocks | 8,400 | 590,600 | 1,947,720 |
| 13.3 Mortgage loans | 0 | 0 | 0 |
| 13.4 Real estate | 0 | 0 | 0 |
| 13.5 Other invested assets | 3,000,000 | 301,165 | 1,484,585 |
| 13.6 Miscellaneous applications | 0 | 0 | 0 |
| 13.7 Total investments acquired (Lines 13.1 to 13.6) | 35,041,868 | 36,691,951 | 79,716,947 |
| 14. Net increase (or decrease) in contract loans and premium notes | 46,234 | 6,240 | 25,601 |
| 15. Net cash from investments (Line 12.8 minus Line 13.7 and Line 14) | (7,821,044) | 2,515,863 | (9,008,504) |
| Cash from Financing and Miscellaneous Sources | | | |
| 16. Cash provided (applied): | | | |
| 16.1 Surplus notes, capital notes | 0 | 0 | 0 |
| 16.2 Capital and paid in surplus, less treasury stock | 0 | 0 | 0 |
| 16.3 Borrowed funds | (2,932,000) | (2,522,600) | (5,802,600) |
| 16.4 Net deposits on deposit-type contracts and other insurance liabilities | 3,236,645 | 339,856 | 2,751,415 |
| 16.5 Dividends to stockholders | 0 | 301,000 | 301,000 |
| 16.6 Other cash provided (applied) | (527,464) | (1,089,180) | 685,934 |
| 17. Net cash from financing and miscellaneous sources (Line 16.1 through Line 16.4 minus Line 16.5 plus Line 16.6) | (222,819) | (3,572,924) | (2,666,251) |
| RECONCILIATION OF CASH, CASH EQUIVALENTS AND SHORT-TERM INVESTMENTS | | | |
| 18. Net change in cash, cash equivalents and short-term investments (Line 11, plus Lines 15 and 17) .. | (2,874,521) | 5,710,839 | 1,996,675 |
| 19. Cash, cash equivalents and short-term investments: | | | |
| 19.1 Beginning of year | 8,736,504 | 6,739,830 | 6,739,830 |
| 19.2 End of period (Line 18 plus Line 19.1) | 5,861,983 | 12,450,668 | 8,736,504 |

Note: Supplemental disclosures of cash flow information for non-cash transactions:

| | | | |
|--|--|--|--|
| | | | |
|--|--|--|--|

EXHIBIT 1

| DIRECT PREMIUMS AND DEPOSIT-TYPE CONTRACTS | | | |
|---|------------------------------|----------------------------|--------------------------------------|
| | 1 Current Year To Date | 2 Prior Year To Date | 3 Prior Year Ended December 31 |
| 1. Industrial life | | | 0 |
| 2. Ordinary life insurance | 6,806,641 | 6,408,720 | 11,870,819 |
| 3. Ordinary individual annuities | | | 0 |
| 4. Credit life (group and individual) | | | 0 |
| 5. Group life insurance | 19,863,590 | 18,775,157 | 38,833,876 |
| 6. Group annuities | | | 0 |
| 7. A & H - group | | | 0 |
| 8. A & H - credit (group and individual) | | | 0 |
| 9. A & H - other | | | 0 |
| 10. Aggregate of all other lines of business | 0 | 0 | 0 |
| 11. Subtotal (Lines 1 through 10) | 26,670,231 | 25,183,877 | 50,704,695 |
| 12. Fraternal (Fraternal Benefit Societies Only) | | | 0 |
| 13. Subtotal (Lines 11 through 12) | 26,670,231 | 25,183,877 | 50,704,695 |
| 14. Deposit-type contracts | 42,160,991 | 14,673,349 | 50,609,859 |
| 15. Total (Lines 13 and 14) | 68,831,222 | 39,857,226 | 101,314,554 |
| DETAILS OF WRITE-INS | | | |
| 1001. | | | |
| 1002. | | | |
| 1003. | | | |
| 1098. Summary of remaining write-ins for Line 10 from overflow page | 0 | 0 | 0 |
| 1099. Totals (Lines 1001 through 1003 plus 1098)(Line 10 above) | 0 | 0 | 0 |

NOTES TO FINANCIAL STATEMENTS

1. Summary of Significant Accounting Policies

A. Accounting Practices

The financial statements of Unity Financial Life Insurance Company (“the Company”) are presented on the basis of accounting practices prescribed or permitted by the Ohio Department of Insurance (the Department).

The Department recognizes only statutory accounting practices prescribed or permitted by the state of Ohio for determining and reporting the financial condition and results of operations of an insurance company, for determining its solvency under Ohio Insurance Law. The National Association of Insurance Commissioners’ (NAIC) *Accounting Practices and Procedures* manual, (NAIC SAP) has been adopted as a component of prescribed or permitted practices by the State of Ohio.

| | SSAP # | F/S Page | F/S Line # | 2022 | 2021 |
|---|--------|-------------|---------------|------------|------------|
| NET INCOME | | | | | |
| (1) State basis (Page 4, Line 35, Columns 1 & 3) | XXX | XXX | XXX | 680,912 | 1,243,837 |
| (2) State Prescribed Practices that are an increase/(decrease) from NAIC SAP: | | | | | |
| | | | | | |
| (3) State Permitted Practices that are an increase/(decrease) from NAIC SAP: | | | | | |
| | | | | | |
| (4) NAIC SAP (1-2-3=4) | XXX | XXX | XXX | 680,912 | 1,243,837 |
| SURPLUS | | | | | |
| (5) State basis (Page 3, Line 38, Columns 1 & 2) | XXX | XXX | XXX | 17,343,029 | 17,005,110 |
| (6) State Prescribed Practices that are an increase/(decrease) from NAIC SAP: | | | | | |
| | | | | | |
| (7) State Permitted Practices that are an increase/(decrease) from NAIC SAP: | | | | | |
| | | | | | |
| (8) NAIC SAP (5-6-7=8) | XXX | XXX | XXX | 17,343,029 | 17,005,110 |

C. Accounting Policies

(6) Loan-backed securities are stated at either amortized cost or the lower of amortized cost or fair market value. The retrospective adjustment method is used to value all securities except for interest only securities or securities where the yield had become negative, which are valued using the prospective method.

D. Going Concern– No Change.

2. Accounting Changes and Correction of Errors – No Change.

3. Business Combinations and Goodwill – No Change.

4. Discontinued Operations – No Change.

5. Investments

D. Loan Backed Securities

- (1) Prepayment assumptions for mortgage-backed/loan-backed and structured securities were obtained from broker dealer survey values.
- (2) The Company does not have any recognized securities with Other Than Temporary Impairments.
- (3) The Company does not have any recognized securities with Other Than Temporary Impairments to list by cusip.
- (4) Impaired Securities (Fair Value less than Cost or Amortized Cost)
 - a. The aggregate amount of unrealized losses:

| | |
|------------------------|--------------|
| 1. Less than 12 months | \$ 3,068,895 |
| 2. 12 months or Longer | \$ |
 - b. The aggregate related fair value of securities with unrealized losses:

| | |
|------------------------|---------------|
| 1. Less than 12 months | \$ 51,969,869 |
| 2. 12 months or Longer | \$ |
- (5) For loan backed securities with an unrealized loss, management considers the size and duration of the loss, whether the security is backed by an agency of the United States government, general economic data, management's assessment of whether it has the ability and intent to hold the security and whether it is more than likely than not it will be required to sell the security before its anticipated recovery. Based upon management's review of the Company's loan backed securities using the aforementioned criteria and the relative insignificance of the unrealized loss position of those securities, the Company concluded that there are no Other Than Temporary Impaired loan backed securities as of June 30, 2022.

6. Joint Ventures, Partnerships, and Limited Liability Companies – No Change.

7. Investment Income – No Change.

8. Derivative Instruments – No Change.

9. Income Taxes – No Change.

10. Information Concerning Parent, Subsidiaries and Affiliates – No Change.

11. Debt

A. The Company has no debt instructions outstanding.

B. FHLB (Federal Home Loan Bank) Agreements

- (1) The Company became a member of the Federal Home Loan Bank (FHLB) of Cincinnati in March of 2017. Through its membership, the Company will conduct business activity, borrowings with the FHLB. It is part of the Company's strategy to utilize these funds as a way to increase profitability. The Company has determined the estimated maximum borrowing capacity to be \$125,000,000, The Company calculated this amount in accordance with limitations in the FHLB capital plan, and current and potential acquisitions of FHLB capital stock.
- (2) FHLB Capital Stock
 - a. The company held 25,522 shares or \$2,552,200 of membership/activity stock at June 30, 2022.
 - b. The Company has no membership stock eligible for redemption.
- (3) Collateral Pledged to FHLB
 - a. As of June 30, 2022, the Company has pledged bonds with face value of \$63,501,283 and fair value of \$59,772,388 and a book adjusted carry value of \$60,666,514 as collateral to FHLB.
- (4) Borrowing from FHLB
 - a. As of June 30, 2022 the Company has received funding advances from FHLB totaling \$49,577,000.

STATEMENT AS OF JUNE 30, 2022 OF THE UNITY FINANCIAL LIFE INSURANCE COMPANY

12. Retirement Plans, Deferred Compensation, and Other Postretirement Benefits – No Change.
13. Capital and Surplus, Shareholders' Dividend Restrictions and Quasi-Reorganizations
 4. Shareholder dividends of \$0 were paid as of June 30, 2022.
14. Liabilities, Contingencies and Assessments – No Change.
15. Leases – No Change.
16. Financial Instruments with Off-Balance Sheet Risk – No Change.
17. Sales Transfer and Servicing of Financial Assets and Extinguishments of Liabilities – No Change.
18. Gain or Loss from Uninsured A&H Plans – No Change.
19. Direct Premium Written by Managing General Agents/Third Party Administrators – No Change.
20. Fair Value Measurements – No Change.
21. Other Items – No Change.
22. Events Subsequent – No Change.
23. Reinsurance – No Change.
24. Retrospectively Rated Contracts and Contracts Subject to Redetermination – No Change.
25. Change in Incurred Losses and Loss Adjustment Expenses – No Change.
26. Intercompany Pooling Managements – No Change.
27. Structured Settlements – No Change.
28. Health Care Receivables – No Change.
29. Participating Policies – No Change.
30. Premium Deficiency Reserves – No Change.
31. Reserves for Life Contracts and Annuity Contracts – No Change.
32. Analysis of Annuity Actuarial Reserves and Deposit Type Liabilities by Withdrawal Characteristics – No Change.
33. Analysis of Life Actuarial Reserves by Withdrawal Characteristics – No Change.
34. Premiums and Annuity Considerations Deferred and Uncollected – No Change.
35. Separate Accounts – No Change.
36. Loss/Claim Adjustment Expense – No Change.

STATEMENT AS OF JUNE 30, 2022 OF THE UNITY FINANCIAL LIFE INSURANCE COMPANY

GENERAL INTERROGATORIES

PART 1 - COMMON INTERROGATORIES

GENERAL

- 1.1

Did the reporting entity experience any material transactions requiring the filing of Disclosure of Material Transactions with the State of Domicile, as required by the Model Act?

Yes [] No [X]
- 1.2

If yes, has the report been filed with the domiciliary state?

Yes [] No []
- 2.1

Has any change been made during the year of this statement in the charter, by-laws, articles of incorporation, or deed of settlement of the reporting entity?

Yes [] No [X]
- 2.2

If yes, date of change:
- 3.1

Is the reporting entity a member of an Insurance Holding Company System consisting of two or more affiliated persons, one or more of which is an insurer?

If yes, complete Schedule Y, Parts 1 and 1A.

Yes [X] No []
- 3.2

Have there been any substantial changes in the organizational chart since the prior quarter end?

Yes [] No [X]
- 3.3

If the response to 3.2 is yes, provide a brief description of those changes.
- 3.4

Is the reporting entity publicly traded or a member of a publicly traded group?

Yes [] No [X]
- 3.5

If the response to 3.4 is yes, provide the CIK (Central Index Key) code issued by the SEC for the entity/group.
- 4.1

Has the reporting entity been a party to a merger or consolidation during the period covered by this statement?

Yes [] No [X]
- 4.2

If yes, provide the name of the entity, NAIC Company Code, and state of domicile (use two letter state abbreviation) for any entity that has ceased to exist as a result of the merger or consolidation.
- | | | |
|----------------|-------------------|-------------------|
| 1 | 2 | 3 |
| Name of Entity | NAIC Company Code | State of Domicile |
| | | |
5.

If the reporting entity is subject to a management agreement, including third-party administrator(s), managing general agent(s), attorney-in-fact, or similar agreement, have there been any significant changes regarding the terms of the agreement or principals involved?

If yes, attach an explanation.

Yes [] No [X] N/A []
- 6.1

State as of what date the latest financial examination of the reporting entity was made or is being made.

12/31/2017
- 6.2

State the as of date that the latest financial examination report became available from either the state of domicile or the reporting entity. This date should be the date of the examined balance sheet and not the date the report was completed or released.

12/31/2017
- 6.3

State as of what date the latest financial examination report became available to other states or the public from either the state of domicile or the reporting entity. This is the release date or completion date of the examination report and not the date of the examination (balance sheet date).

10/25/2018
- 6.4

By what department or departments?
- 6.5

Have all financial statement adjustments within the latest financial examination report been accounted for in a subsequent financial statement filed with Departments?

Yes [] No [] N/A [X]
- 6.6

Have all of the recommendations within the latest financial examination report been complied with?

Yes [X] No [] N/A []
- 7.1

Has this reporting entity had any Certificates of Authority, licenses or registrations (including corporate registration, if applicable) suspended or revoked by any governmental entity during the reporting period?

Yes [] No [X]
- 7.2

If yes, give full information:
- 8.1

Is the company a subsidiary of a bank holding company regulated by the Federal Reserve Board?

Yes [] No [X]
- 8.2

If response to 8.1 is yes, please identify the name of the bank holding company.
- 8.3

Is the company affiliated with one or more banks, thrifts or securities firms?

Yes [] No [X]
- 8.4

If response to 8.3 is yes, please provide below the names and location (city and state of the main office) of any affiliates regulated by a federal regulatory services agency [i.e. the Federal Reserve Board (FRB), the Office of the Comptroller of the Currency (OCC), the Federal Deposit Insurance Corporation (FDIC) and the Securities Exchange Commission (SEC)] and identify the affiliate's primary federal regulator.

| | | | | | |
|----------------|------------------------|-----|-----|------|-----|
| 1 | 2 | 3 | 4 | 5 | 6 |
| Affiliate Name | Location (City, State) | FRB | OCC | FDIC | SEC |
| | | | | | |

GENERAL INTERROGATORIES

- 9.1

Are the senior officers (principal executive officer, principal financial officer, principal accounting officer or controller, or persons performing similar functions) of the reporting entity subject to a code of ethics, which includes the following standards?
(a) Honest and ethical conduct, including the ethical handling of actual or apparent conflicts of interest between personal and professional relationships;
(b) Full, fair, accurate, timely and understandable disclosure in the periodic reports required to be filed by the reporting entity;
(c) Compliance with applicable governmental laws, rules and regulations;
(d) The prompt internal reporting of violations to an appropriate person or persons identified in the code; and
(e) Accountability for adherence to the code.

Yes [X] No []
- 9.11

If the response to 9.1 is No, please explain:
- 9.2

Has the code of ethics for senior managers been amended?

Yes [] No [X]
- 9.21

If the response to 9.2 is Yes, provide information related to amendment(s).
- 9.3

Have any provisions of the code of ethics been waived for any of the specified officers?

Yes [] No [X]
- 9.31

If the response to 9.3 is Yes, provide the nature of any waiver(s).

FINANCIAL

- 10.1

Does the reporting entity report any amounts due from parent, subsidiaries or affiliates on Page 2 of this statement?

Yes [X] No []
- 10.2

If yes, indicate any amounts receivable from parent included in the Page 2 amount:

\$666,301

INVESTMENT

- 11.1

Were any of the stocks, bonds, or other assets of the reporting entity loaned, placed under option agreement, or otherwise made available for use by another person? (Exclude securities under securities lending agreements.)

Yes [] No [X]
- 11.2

If yes, give full and complete information relating thereto:
12.

Amount of real estate and mortgages held in other invested assets in Schedule BA:

\$
13.

Amount of real estate and mortgages held in short-term investments:

\$
- 14.1

Does the reporting entity have any investments in parent, subsidiaries and affiliates?

Yes [] No [X]
- 14.2

If yes, please complete the following:
- | | 1 | 2 |
|---|---|--|
| | Prior Year-End Book/Adjusted Carrying Value | Current Quarter Book/Adjusted Carrying Value |
| 14.21 Bonds | \$0 | \$ |
| 14.22 Preferred Stock | \$0 | \$ |
| 14.23 Common Stock | \$0 | \$ |
| 14.24 Short-Term Investments | \$0 | \$ |
| 14.25 Mortgage Loans on Real Estate | \$0 | \$ |
| 14.26 All Other | \$0 | \$ |
| 14.27 Total Investment in Parent, Subsidiaries and Affiliates (Subtotal Lines 14.21 to 14.26) | \$0 | \$0 |
| 14.28 Total Investment in Parent included in Lines 14.21 to 14.26 above | \$ | \$ |
- 15.1

Has the reporting entity entered into any hedging transactions reported on Schedule DB?

Yes [] No [X]
- 15.2

If yes, has a comprehensive description of the hedging program been made available to the domiciliary state?
If no, attach a description with this statement.

Yes [] No [] N/A []
16.

For the reporting entity's security lending program, state the amount of the following as of the current statement date:
- 16.1

Total fair value of reinvested collateral assets reported on Schedule DL, Parts 1 and 2.

\$0
- 16.2

Total book adjusted/carrying value of reinvested collateral assets reported on Schedule DL, Parts 1 and 2

\$0
- 16.3

Total payable for securities lending reported on the liability page.

\$0

STATEMENT AS OF JUNE 30, 2022 OF THE UNITY FINANCIAL LIFE INSURANCE COMPANY

GENERAL INTERROGATORIES

17. Excluding items in Schedule E - Part 3 - Special Deposits, real estate, mortgage loans and investments held physically in the reporting entity's offices, vaults or safety deposit boxes, were all stocks, bonds and other securities, owned throughout the current year held pursuant to a custodial agreement with a qualified bank or trust company in accordance with Section 1, III - General Examination Considerations, F. Outsourcing of Critical Functions, Custodial or Safekeeping Agreements of the NAIC Financial Condition Examiners Handbook? Yes [X] No []
- 17.1 For all agreements that comply with the requirements of the NAIC Financial Condition Examiners Handbook, complete the following:

| 1 Name of Custodian(s) | 2 Custodian Address |
|------------------------------|--|
| Fifth Third Bank | 38 Fountain Square Cincinnati, Ohio 45263 |
| Federal Home Loan Bank | 221 East Fourth Street Suited 600 Cincinnati, Ohio 45202 |

- 17.2 For all agreements that do not comply with the requirements of the NAIC Financial Condition Examiners Handbook, provide the name, location and a complete explanation:

| 1 Name(s) | 2 Location(s) | 3 Complete Explanation(s) |
|--------------|------------------|------------------------------|
| | | |

- 17.3 Have there been any changes, including name changes, in the custodian(s) identified in 17.1 during the current quarter? Yes [X] No []
- 17.4 If yes, give full information relating thereto:

| 1 Old Custodian | 2 New Custodian | 3 Date of Change | 4 Reason |
|-------------------------------|--|---------------------|---|
| Loomis Sayles & Company | Asset Allocation and Management, LLC | 04/01/2022 | Moved entire portfolio at Loomis to AAM to consolidate reporting and decrease costs. |

- 17.5 Investment management – Identify all investment advisors, investment managers, broker/dealers, including individuals that have the authority to make investment decisions on behalf of the reporting entity. For assets that are managed internally by employees of the reporting entity, note as such. ["...that have access to the investment accounts"; "...handle securities"]

| 1 Name of Firm or Individual | 2 Affiliation |
|---|------------------|
| Asset Allocation and Management, LLC | U..... |
| Fort Washington Investment Advisors Inc | U..... |
| Securian AM Privates | U..... |
| | |

- 17.5097 For those firms/individuals listed in the table for Question 17.5, do any firms/individuals unaffiliated with the reporting entity (i.e. designated with a "U") manage more than 10% of the reporting entity's invested assets?..... Yes [X] No []
- 17.5098 For firms/individuals unaffiliated with the reporting entity (i.e. designated with a "U") listed in the table for Question 17.5, does the total assets under management aggregate to more than 50% of the reporting entity's invested assets?..... Yes [] No [X]

- 17.6 For those firms or individuals listed in the table for 17.5 with an affiliation code of "A" (affiliated) or "U" (unaffiliated), provide the information for the table below.

| 1 | 2 | 3 | 4 | 5 |
|--|---|-------------------------------|-----------------|---|
| Central Registration Depository Number | Name of Firm or Individual | Legal Entity Identifier (LEI) | Registered With | Investment Management Agreement (IMA) Filed |
| 109875 | Asset Allocation and Management, LLC | 549300DSCHE1V5K3U963 | SEC | DS..... |
| 107126 | Fort Washington Investment Advisors Inc | KSRXYW3EHSEF8KM62609 | SEC | DS..... |
| 109905 | Securian AM Privates | 5URRAMPU5ELNW8AQJB87 | SEC | OS..... |
| | | | | |

- 18.1 Have all the filing requirements of the Purposes and Procedures Manual of the NAIC Investment Analysis Office been followed? Yes [X] No []
- 18.2 If no, list exceptions:

19. By self-designating 5GI securities, the reporting entity is certifying the following elements for each self-designated 5GI security:
- a. Documentation necessary to permit a full credit analysis of the security does not exist or an NAIC CRP credit rating for an FE or PL security is not available.
 - b. Issuer or obligor is current on all contracted interest and principal payments.
 - c. The insurer has an actual expectation of ultimate payment of all contracted interest and principal.
- Has the reporting entity self-designated 5GI securities? Yes [] No [X]

20. By self-designating PLGI securities, the reporting entity is certifying the following elements of each self-designated PLGI security:
- a. The security was purchased prior to January 1, 2018.
 - b. The reporting entity is holding capital commensurate with the NAIC Designation reported for the security.
 - c. The NAIC Designation was derived from the credit rating assigned by an NAIC CRP in its legal capacity as a NRSRO which is shown on a current private letter rating held by the insurer and available for examination by state insurance regulators.
 - d. The reporting entity is not permitted to share this credit rating of the PL security with the SVO.
- Has the reporting entity self-designated PLGI securities? Yes [] No [X]

21. By assigning FE to a Schedule BA non-registered private fund, the reporting entity is certifying the following elements of each self-designated FE fund:
- a. The shares were purchased prior to January 1, 2019.
 - b. The reporting entity is holding capital commensurate with the NAIC Designation reported for the security.
 - c. The security had a public credit rating(s) with annual surveillance assigned by an NAIC CRP in its legal capacity as an NRSRO prior to January 1, 2019.
 - d. The fund only or predominantly holds bonds in its portfolio.
 - e. The current reported NAIC Designation was derived from the public credit rating(s) with annual surveillance assigned by an NAIC CRP in its legal capacity as an NRSRO.
 - f. The public credit rating(s) with annual surveillance assigned by an NAIC CRP has not lapsed.
- Has the reporting entity assigned FE to Schedule BA non-registered private funds that complied with the above criteria? Yes [] No [X]

GENERAL INTERROGATORIES

PART 2 - LIFE AND ACCIDENT AND HEALTH COMPANIES/FRATERNAL BENEFIT SOCIETIES

Life and Accident Health Companies/Fraternal Benefit Societies:

1.

Report the statement value of mortgage loans at the end of this reporting period for the following categories:

1

Amount

1.1

Long-Term Mortgages In Good Standing

1.11

Farm Mortgages

.....

\$

.....

1.12

Residential Mortgages

.....

\$

.....

1.13

Commercial Mortgages

.....

\$

.....

1.14

Total Mortgages in Good Standing

.....

\$

0

1.2

Long-Term Mortgages In Good Standing with Restructured Terms

1.21

Total Mortgages in Good Standing with Restructured Terms

.....

\$

.....

1.3

Long-Term Mortgage Loans Upon which Interest is Overdue more than Three Months

1.31

Farm Mortgages

.....

\$

.....

1.32

Residential Mortgages

.....

\$

.....

1.33

Commercial Mortgages

.....

\$

.....

1.34

Total Mortgages with Interest Overdue more than Three Months

.....

\$

0

1.4

Long-Term Mortgage Loans in Process of Foreclosure

1.41

Farm Mortgages

.....

\$

.....

1.42

Residential Mortgages

.....

\$

.....

1.43

Commercial Mortgages

.....

\$

.....

1.44

Total Mortgages in Process of Foreclosure

.....

\$

0

1.5

Total Mortgage Loans (Lines 1.14 + 1.21 + 1.34 + 1.44) (Page 2, Column 3, Lines 3.1 + 3.2)

.....

\$

0

1.6

Long-Term Mortgages Foreclosed, Properties Transferred to Real Estate in Current Quarter

1.61

Farm Mortgages

.....

\$

.....

1.62

Residential Mortgages

.....

\$

.....

1.63

Commercial Mortgages

.....

\$

.....

1.64

Total Mortgages Foreclosed and Transferred to Real Estate

.....

\$

0

2.

Operating Percentages:

2.1

A&H loss percent

.....

%

2.2

A&H cost containment percent

.....

%

2.3

A&H expense percent excluding cost containment expenses

.....

%

3.1

Do you act as a custodian for health savings accounts?

.....

Yes

[

]

No

[

X

]

3.2

If yes, please provide the amount of custodial funds held as of the reporting date

.....

\$

.....

3.3

Do you act as an administrator for health savings accounts?

.....

Yes

[

]

No

[

X

]

3.4

If yes, please provide the balance of the funds administered as of the reporting date

.....

\$

.....

4.

Is the reporting entity licensed or chartered, registered, qualified, eligible or writing business in at least two states?

.....

Yes

[

X

]

No

[

]

4.1

If no, does the reporting entity assume reinsurance business that covers risks residing in at least one state other than the state of domicile of the reporting entity?

.....

Yes

[

]

No

[

]

Fraternal Benefit Societies Only:

5.1

In all cases where the reporting entity has assumed accident and health risks from another company, provisions should be made in this statement on account of such reinsurances for reserve equal to that which the original company would have been required to establish had it retained the risks. Has this been done?

.....

Yes

[

]

No

[

]

N/A

[

X

]

5.2

If no, explain:

.....

6.1

Does the reporting entity have outstanding assessments in the form of liens against policy benefits that have increased surplus?

.....

Yes

[

]

No

[

X

]

6.2

If yes, what is the date(s) of the original lien and the total outstanding balance of liens that remain in surplus?

| Date | Outstanding Lien Amount |
|-------|-------------------------|
| | |

SCHEDULE S - CEDED REINSURANCE

| 1 | 2 | 3 | 4 | 5 | 6 | 7 | 8 | 9 | 10 |
|-------------------------|--------------|-------------------|-------------------|-----------------------------|---------------------------------|------------------------------|-------------------|---|--|
| NAIC Company Code | ID Number | Effective Date | Name of Reinsurer | Domiciliary Jurisdiction | Type of Reinsurance Ceded | Type of Business Ceded | Type of Reinsurer | Certified Reinsurer Rating (1 through 6) | Effective Date of Certified Reinsurer Rating |
| NONE | | | | | | | | | |

STATEMENT AS OF JUNE 30, 2022 OF THE UNITY FINANCIAL LIFE INSURANCE COMPANY

SCHEDULE T - PREMIUMS AND ANNUITY CONSIDERATIONS

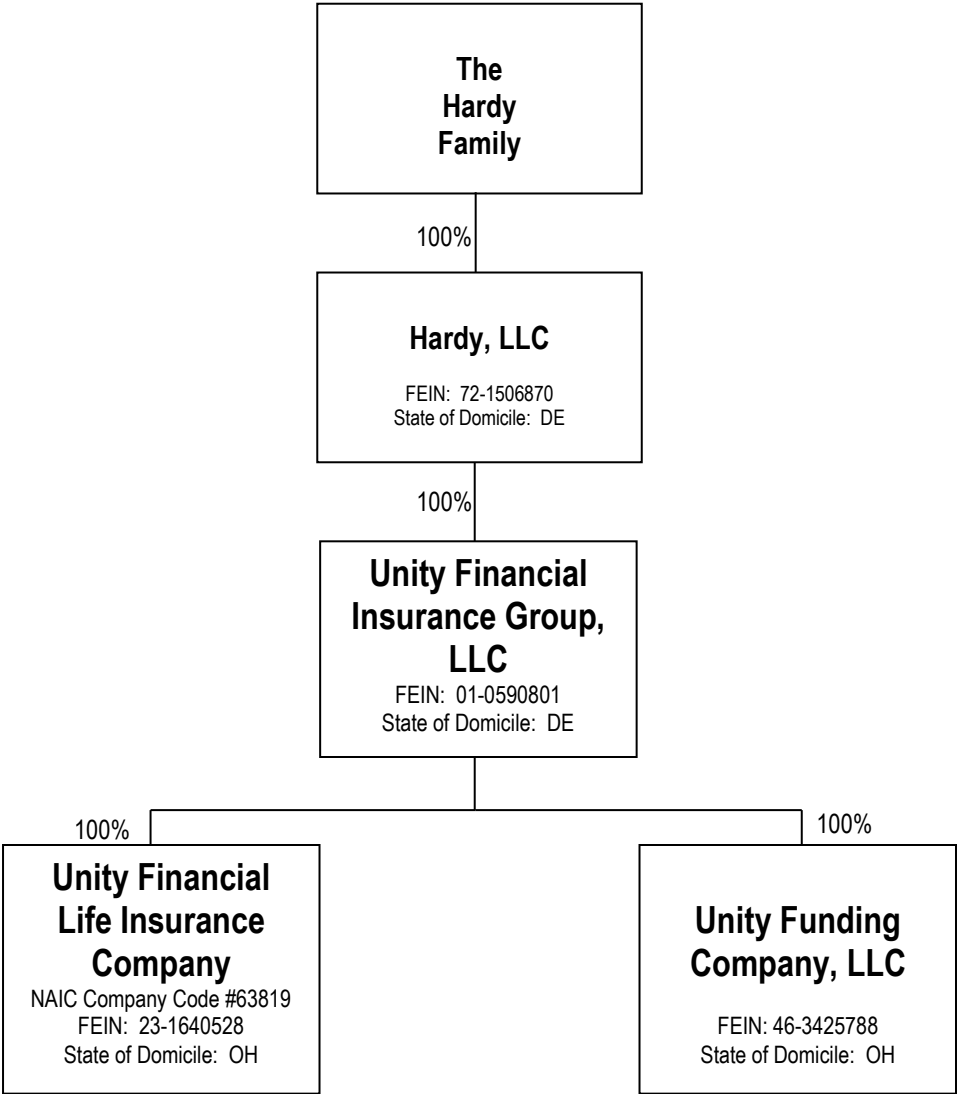
Current Year To Date - Allocated by States and Territories

| States, Etc. | | | 1 | Life Contracts | | 4 | Direct Business Only | | 6 | 7 |
|----------------------|--|-----|-----|----------------|----|----|----------------------|-------------------|------------|-----------|
| | | | | 2 | 3 | | 5 | | | |
| | | | | | | | | Active Status (a) | | |
| 1. | Alabama | AL | L | 481,278 | | | | | 481,278 | .0 |
| 2. | Alaska | AK | N | 22,500 | | | | | 22,500 | .0 |
| 3. | Arizona | AZ | L | 121,041 | | | | | 121,041 | 534,309 |
| 4. | Arkansas | AR | L | 51,195 | | | | | 51,195 | 1,668,644 |
| 5. | California | CA | L | 668,067 | | | | | 668,067 | .0 |
| 6. | Colorado | CO | L | 150,951 | | | | | 150,951 | 176,219 |
| 7. | Connecticut | CT | L | 18,512 | | | | | 18,512 | 9,909,386 |
| 8. | Delaware | DE | L | 34,896 | | | | | 34,896 | .0 |
| 9. | District of Columbia | DC | L | 12,778 | | | | | 12,778 | .0 |
| 10. | Florida | FL | L | 1,118,186 | | | | | 1,118,186 | .0 |
| 11. | Georgia | GA | L | 659,135 | | | | | 659,135 | 25,661 |
| 12. | Hawaii | HI | L | 261 | | | | | 261 | .0 |
| 13. | Idaho | ID | L | 1,048 | | | | | 1,048 | .0 |
| 14. | Illinois | IL | L | 740,699 | | | | | 740,699 | 494,551 |
| 15. | Indiana | IN | L | 1,641,142 | | | | | 1,641,142 | 2,678,907 |
| 16. | Iowa | IA | L | 8,883 | | | | | 8,883 | 345,859 |
| 17. | Kansas | KS | L | 42,065 | | | | | 42,065 | .0 |
| 18. | Kentucky | KY | L | 381,346 | | | | | 381,346 | 148,000 |
| 19. | Louisiana | LA | L | 928,332 | | | | | 928,332 | .0 |
| 20. | Maine | ME | L | 29,374 | | | | | 29,374 | .0 |
| 21. | Maryland | MD | L | 157,315 | | | | | 157,315 | 106,000 |
| 22. | Massachusetts | MA | L | 227,958 | | | | | 227,958 | 4,229,580 |
| 23. | Michigan | MI | L | 12,701 | | | | | 12,701 | 2,949,144 |
| 24. | Minnesota | MN | L | 209,854 | | | | | 209,854 | 864,846 |
| 25. | Mississippi | MS | L | 846,598 | | | | | 846,598 | .0 |
| 26. | Missouri | MO | L | 386,566 | | | | | 386,566 | 39,953 |
| 27. | Montana | MT | L | 737 | | | | | 737 | .0 |
| 28. | Nebraska | NE | L | 111,771 | | | | | 111,771 | 45,882 |
| 29. | Nevada | NV | L | 12,652 | | | | | 12,652 | .0 |
| 30. | New Hampshire | NH | L | 2,172 | | | | | 2,172 | 1,353,000 |
| 31. | New Jersey | NJ | L | 309,035 | | | | | 309,035 | 6,331,002 |
| 32. | New Mexico | NM | L | 31,770 | | | | | 31,770 | .0 |
| 33. | New York | NY | N | 31,434 | | | | | 31,434 | .0 |
| 34. | North Carolina | NC | L | 2,073,980 | | | | | 2,073,980 | 307,781 |
| 35. | North Dakota | ND | L | 21,749 | | | | | 21,749 | .0 |
| 36. | Ohio | OH | L | 378,335 | | | | | 378,335 | 1,019,079 |
| 37. | Oklahoma | OK | L | 301,553 | | | | | 301,553 | 553,945 |
| 38. | Oregon | OR | L | 13,374 | | | | | 13,374 | .0 |
| 39. | Pennsylvania | PA | L | 1,723,819 | | | | | 1,723,819 | 1,621,351 |
| 40. | Rhode Island | RI | L | 152 | | | | | 152 | 410,212 |
| 41. | South Carolina | SC | L | 512,767 | | | | | 512,767 | 46,757 |
| 42. | South Dakota | SD | L | 1,471 | | | | | 1,471 | .0 |
| 43. | Tennessee | TN | L | 442,424 | | | | | 442,424 | 963,685 |
| 44. | Texas | TX | L | 9,256,949 | | | | | 9,256,949 | 3,098,516 |
| 45. | Utah | UT | L | 1,315 | | | | | 1,315 | 264,766 |
| 46. | Vermont | VT | L | 1,490 | | | | | 1,490 | .0 |
| 47. | Virginia | VA | L | 123,567 | | | | | 123,567 | 965,939 |
| 48. | Washington | WA | L | 4,002 | | | | | 4,002 | .0 |
| 49. | West Virginia | WV | L | 204,805 | | | | | 204,805 | 763,703 |
| 50. | Wisconsin | WI | L | 1,587,767 | | | | | 1,587,767 | 244,315 |
| 51. | Wyoming | WY | L | 8,918 | | | | | 8,918 | .0 |
| 52. | American Samoa | AS | N | .0 | | | | | .0 | .0 |
| 53. | Guam | GU | N | | | | | | .0 | .0 |
| 54. | Puerto Rico | PR | N | 466 | | | | | 466 | .0 |
| 55. | U.S. Virgin Islands | VI | N | | | | | | .0 | .0 |
| 56. | Northern Mariana Islands | MP | N | | | | | | .0 | .0 |
| 57. | Canada | CAN | N | .0 | | | | | .0 | .0 |
| 58. | Aggregate Other Aliens | OT | XXX | .0 | .0 | .0 | .0 | .0 | .0 | .0 |
| 59. | Subtotal | XXX | | 26,111,154 | .0 | .0 | .0 | 26,111,154 | 42,160,991 | |
| 90. | Reporting entity contributions for employee benefits plans | XXX | | | | | | .0 | | |
| 91. | Dividends or refunds applied to purchase paid-up additions and annuities | XXX | | | | | | .0 | | |
| 92. | Dividends or refunds applied to shorten endowment or premium paying period | XXX | | | | | | .0 | | |
| 93. | Premium or annuity considerations waived under disability or other contract provisions | XXX | | | | | | .0 | | |
| 94. | Aggregate or other amounts not allocable by State | XXX | | .0 | .0 | .0 | .0 | .0 | .0 | .0 |
| 95. | Totals (Direct Business) | XXX | | 26,111,154 | .0 | .0 | .0 | 26,111,154 | 42,160,991 | |
| 96. | Plus Reinsurance Assumed | XXX | | | | | | .0 | | |
| 97. | Totals (All Business) | XXX | | 26,111,154 | .0 | .0 | .0 | 26,111,154 | 42,160,991 | |
| 98. | Less Reinsurance Ceded | XXX | | 4,232,976 | | | | 4,232,976 | 36,762,562 | |
| 99. | Totals (All Business) less Reinsurance Ceded | XXX | | 21,878,179 | 0 | 0 | 0 | 21,878,179 | 5,398,430 | |
| DETAILS OF WRITE-INS | | | | | | | | | | |
| 58001. | Jamaica | XXX | | .0 | | | | .0 | | |
| 58002. | | XXX | | | | | | | | |
| 58003. | | XXX | | | | | | | | |
| 58998. | Summary of remaining write-ins for Line 58 from overflow page | XXX | | .0 | .0 | .0 | .0 | .0 | .0 | .0 |
| 58999. | Totals (Lines 58001 through 58003 plus 58998)(Line 58 above) | XXX | | 0 | 0 | 0 | 0 | 0 | 0 | 0 |
| 9401. | | XXX | | | | | | | | |
| 9402. | | XXX | | | | | | | | |
| 9403. | | XXX | | | | | | | | |
| 9498. | Summary of remaining write-ins for Line 94 from overflow page | XXX | | .0 | .0 | .0 | .0 | .0 | .0 | .0 |
| 9499. | Totals (Lines 9401 through 9403 plus 9498)(Line 94 above) | XXX | | 0 | 0 | 0 | 0 | 0 | 0 | 0 |

(a) Active Status Counts:

| | | | |
|---|----|--|---|
| L - Licensed or Chartered - Licensed Insurance carrier or domiciled RRG. | 49 | R - Registered - Non-domiciled RRGs. | 0 |
| E - Eligible - Reporting entities eligible or approved to write surplus lines in the state. | 0 | Q - Qualified - Qualified or accredited reinsurer. | 0 |
| N - None of the above - Not allowed to write business in the state. | 8 | | |

SCHEDULE Y – INFORMATION CONCERNING ACTIVITIES OF INSURER MEMBERS OF A HOLDING COMPANY GROUP
PART 1 – ORGANIZATION CHART



SCHEDULE Y
PART 1A - DETAIL OF INSURANCE HOLDING COMPANY SYSTEM

| Asterisk | Explanation |
|----------|-------------|
| | |

STATEMENT AS OF JUNE 30, 2022 OF THE UNITY FINANCIAL LIFE INSURANCE COMPANY

SUPPLEMENTAL EXHIBITS AND SCHEDULES INTERROGATORIES

The following supplemental reports are required to be filed as part of your statement filing. However, in the event that your company does not transact the type of business for which the special report must be filed, your response of NO to the specific interrogatory will be accepted in lieu of filing a "NONE" report and a bar code will be printed below. If the supplement is required of your company but is not being filed for whatever reason enter SEE EXPLANATION and provide an explanation following the interrogatory questions.

| | Response |
|---|----------|
| 1. Will the Trusteed Surplus Statement be filed with the state of domicile and the NAIC with this statement? | NO |
| 2. Will the Medicare Part D Coverage Supplement be filed with the state of domicile and the NAIC with this statement? | NO |
| 3. Will the Reasonableness of Assumptions Certification required by Actuarial Guideline XXXV be filed with the state of domicile and electronically with the NAIC? | NO |
| 4. Will the Reasonableness and Consistency of Assumptions Certification required by Actuarial Guideline XXXV be filed with the state of domicile and electronically with the NAIC? | NO |
| 5. Will the Reasonableness of Assumptions Certification for Implied Guaranteed Rate Method required by Actuarial Guideline XXXVI be filed with the state of domicile and electronically with the NAIC? | NO |
| 6. Will the Reasonableness and Consistency of Assumptions Certification required by Actuarial Guideline XXXVI (Updated Average Market Value) be filed with the state of domicile and electronically with the NAIC? | NO |
| 7. Will the Reasonableness and Consistency of Assumptions Certification required by Actuarial Guideline XXXVI (Updated Market Value) be filed with the state of domicile and electronically with the NAIC? | NO |
| 8. Will the Life PBR Statement of Exemption be filed with the state of domicile by July 1st and electronically with the NAIC with the second quarterly filing per the Valuation Manual (by August 15)? (2nd Quarter Only) The response for 1st and 3rd quarters should be N/A. A NO response resulting with a bar code is only appropriate in the 2nd quarter. | N/A |

AUGUST FILING

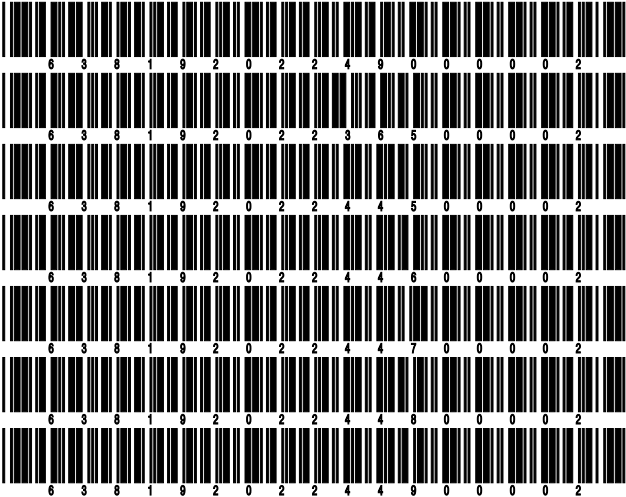
| | |
|--|-----|
| 9. Will the regulator-only (non-public) Communication of Internal Control Related Matters Noted in Audit be filed with the state of domicile and electronically with the NAIC (as a regulator-only non-public document) by August 1? The response for 1st and 3rd quarters should be N/A. A NO response resulting with a bar code is only appropriate in the 2nd quarter. | N/A |
|--|-----|

Explanation:

1.
2.
3.
4.
5.
6.
7.

Bar Code:

1. Trusteed Surplus Statement [Document Identifier 490]
2. Medicare Part D Coverage Supplement [Document Identifier 365]
3. Reasonableness of Assumptions Certification required by Actuarial Guideline XXXV [Document Identifier 445]
4. Reasonableness and Consistency of Assumptions Certification required by Actuarial Guideline XXXV [Document Identifier 446]
5. Reasonableness of Assumptions Certification for Implied Guaranteed Rate Method required by Actuarial Guideline XXXVI [Document Identifier 447]
6. Reasonableness and Consistency of Assumptions Certification required by Actuarial Guideline XXXVI [Document Identifier 448]
7. Reasonableness and Consistency of Assumptions Certification required by Actuarial Guideline XXXVI (Updated Market Value) [Document Identifier 449]



SCHEDULE A - VERIFICATION

Real Estate

| | 1 | 2 |
|--|--------------|---------------------------------|
| | Year to Date | Prior Year Ended December 31 |
| 1. Book/adjusted carrying value, December 31 of prior year | | |
| 2. Cost of acquired: | | |
| 2.1 Actual cost at time of acquisition | | |
| 2.2 Additional investment made after acquisition | | |
| 3. Current year change in encumbrances | | |
| 4. Total gain (loss) on disposals | | |
| 5. Deduct amounts received on disposals | | |
| 6. Total foreign exchange change in book/adjusted carrying value | | |
| 7. Deduct current year's other than temporary impairment recognized | | |
| 8. Deduct current year's depreciation | | |
| 9. Book/adjusted carrying value at the end of current period (Lines 1+2+3+4-5+6-7-8) | | |
| 10. Deduct total nonadmitted amounts | | |
| 11. Statement value at end of current period (Line 9 minus Line 10) | | |

SCHEDULE B - VERIFICATION

Mortgage Loans

| | 1 | 2 |
|---|--------------|---------------------------------|
| | Year to Date | Prior Year Ended December 31 |
| 1. Book value/recorded investment excluding accrued interest, December 31 of prior year | | |
| 2. Cost of acquired: | | |
| 2.1 Actual cost at time of acquisition | | |
| 2.2 Additional investment made after acquisition | | |
| 3. Capitalized deferred interest and other | | |
| 4. Accrual of discount | | |
| 5. Unrealized valuation increase (decrease) | | |
| 6. Total gain (loss) on disposals | | |
| 7. Deduct amounts received on disposals | | |
| 8. Deduct amortization of premium and mortgage interest paid and commitment fees | | |
| 9. Total foreign exchange change in book value/recorded investment excluding accrued interest | | |
| 10. Deduct current year's other than temporary impairment recognized | | |
| 11. Book value/recorded investment excluding accrued interest at end of current period (Lines 1+2+3+4+5+6-7-8+9-10) | | |
| 12. Total valuation allowance | | |
| 13. Subtotal (Line 11 plus Line 12) | | |
| 14. Deduct total nonadmitted amounts | | |
| 15. Statement value at end of current period (Line 13 minus Line 14) | | |

SCHEDULE BA - VERIFICATION

Other Long-Term Invested Assets

| | 1 | 2 |
|--|--------------|---------------------------------|
| | Year to Date | Prior Year Ended December 31 |
| 1. Book/adjusted carrying value, December 31 of prior year | 2,121,576 | 650,000 |
| 2. Cost of acquired: | | |
| 2.1 Actual cost at time of acquisition | 1,000,000 | 1,484,585 |
| 2.2 Additional investment made after acquisition | 2,000,000 | 0 |
| 3. Capitalized deferred interest and other | | |
| 4. Accrual of discount | | |
| 5. Unrealized valuation increase (decrease) | 29,765 | |
| 6. Total gain (loss) on disposals | | |
| 7. Deduct amounts received on disposals | 13,000 | 13,000 |
| 8. Deduct amortization of premium and depreciation | | 9 |
| 9. Total foreign exchange change in book/adjusted carrying value | | |
| 10. Deduct current year's other than temporary impairment recognized | | |
| 11. Book/adjusted carrying value at end of current period (Lines 1+2+3+4+5+6-7-8+9-10) | 5,138,341 | 2,121,576 |
| 12. Deduct total nonadmitted amounts | | |
| 13. Statement value at end of current period (Line 11 minus Line 12) | 5,138,341 | 2,121,576 |

SCHEDULE D - VERIFICATION

Bonds and Stocks

| | 1 | 2 |
|---|--------------|---------------------------------|
| | Year to Date | Prior Year Ended December 31 |
| 1. Book/adjusted carrying value of bonds and stocks, December 31 of prior year | 326,828,118 | 319,400,699 |
| 2. Cost of bonds and stocks acquired | 32,041,868 | 78,232,362 |
| 3. Accrual of discount | 170,090 | 410,949 |
| 4. Unrealized valuation increase (decrease) | 0 | (72,873) |
| 5. Total gain (loss) on disposals | 7,778 | 216,478 |
| 6. Deduct consideration for bonds and stocks disposed of | 27,355,267 | 71,643,111 |
| 7. Deduct amortization of premium | 234,920 | 638,315 |
| 8. Total foreign exchange change in book/adjusted carrying value | 0 | 0 |
| 9. Deduct current year's other than temporary impairment recognized | 0 | 0 |
| 10. Total investment income recognized as a result of prepayment penalties and/or acceleration fees | 101,209 | 921,929 |
| 11. Book/adjusted carrying value at end of current period (Lines 1+2+3+4+5-6-7+8-9+10) | 331,558,876 | 326,828,118 |
| 12. Deduct total nonadmitted amounts | 0 | 0 |
| 13. Statement value at end of current period (Line 11 minus Line 12) | 331,558,876 | 326,828,118 |

STATEMENT AS OF JUNE 30, 2022 OF THE UNITY FINANCIAL LIFE INSURANCE COMPANY

SCHEDULE D - PART 1B

Showing the Acquisitions, Dispositions and Non-Trading Activity
During the Current Quarter for all Bonds and Preferred Stock by NAIC Designation

| NAIC Designation | 1 Book/Adjusted Carrying Value Beginning of Current Quarter | 2 Acquisitions During Current Quarter | 3 Dispositions During Current Quarter | 4 Non-Trading Activity During Current Quarter | 5 Book/Adjusted Carrying Value End of First Quarter | 6 Book/Adjusted Carrying Value End of Second Quarter | 7 Book/Adjusted Carrying Value End of Third Quarter | 8 Book/Adjusted Carrying Value December 31 Prior Year |
|-------------------------------------|---|--|--|--|---|--|---|---|
| BONDS | | | | | | | | |
| 1. NAIC 1 (a) | 232,397,945 | 16,357,924 | 12,309,116 | 18,383 | 232,397,945 | 236,465,136 | 0 | 234,395,277 |
| 2. NAIC 2 (a) | 89,670,776 | 4,933,148 | 2,738,022 | (16,651) | 89,670,776 | 91,849,251 | 0 | 89,855,506 |
| 3. NAIC 3 (a) | 942,201 | 0 | 0 | (280) | 942,201 | 941,921 | 0 | 1,433,268 |
| 4. NAIC 4 (a) | 0 | 0 | 0 | 0 | 0 | 0 | 0 | |
| 5. NAIC 5 (a) | 0 | 0 | 0 | 0 | 0 | 0 | 0 | |
| 6. NAIC 6 (a) | 0 | 0 | 0 | 0 | 0 | 0 | 0 | |
| 7. Total Bonds | 323,010,922 | 21,291,072 | 15,047,138 | 1,452 | 323,010,922 | 329,256,308 | 0 | 325,684,051 |
| PREFERRED STOCK | | | | | | | | |
| 8. NAIC 1 | 0 | 0 | 0 | 0 | 0 | 0 | 0 | |
| 9. NAIC 2 | 0 | 0 | 0 | 0 | 0 | 0 | 0 | |
| 10. NAIC 3 | 0 | 0 | 0 | 0 | 0 | 0 | 0 | |
| 11. NAIC 4 | 0 | 0 | 0 | 0 | 0 | 0 | 0 | |
| 12. NAIC 5 | 0 | 0 | 0 | 0 | 0 | 0 | 0 | |
| 13. NAIC 6 | 0 | 0 | 0 | 0 | 0 | 0 | 0 | |
| 14. Total Preferred Stock | 0 | 0 | 0 | 0 | 0 | 0 | 0 | 0 |
| 15. Total Bonds and Preferred Stock | 323,010,922 | 21,291,072 | 15,047,138 | 1,452 | 323,010,922 | 329,256,308 | 0 | 325,684,051 |

(a) Book/Adjusted Carrying Value column for the end of the current reporting period includes the following amount of short-term and cash equivalent bonds by NAIC designation:

NAIC 1 \$249,632 ; NAIC 2 \$0 ; NAIC 3 \$0 NAIC 4 \$0 ; NAIC 5 \$0 ; NAIC 6 \$0

SCHEDULE DA - PART 1

Short-Term Investments

| | 1 | 2 | 3 | 4 | 5 |
|-------------------|---------------------------------|-----------|-------------|------------------------------------|--|
| | Book/Adjusted Carrying Value | Par Value | Actual Cost | Interest Collected Year-to-Date | Paid for Accrued Interest Year-to-Date |
| 7709999999 Totals | 249,632 | xxx | 249,046 | 0 | 0 |

SCHEDULE DA - VERIFICATION

Short-Term Investments

| | 1 | 2 |
|---|--------------|---------------------------------|
| | Year To Date | Prior Year Ended December 31 |
| 1. Book/adjusted carrying value, December 31 of prior year | 1,399,718 | 773,404 |
| 2. Cost of short-term investments acquired | 1,573,151 | 4,511,168 |
| 3. Accrual of discount | 998 | 78 |
| 4. Unrealized valuation increase (decrease) | 0 | |
| 5. Total gain (loss) on disposals | (526) | (49) |
| 6. Deduct consideration received on disposals | 2,723,709 | 3,881,692 |
| 7. Deduct amortization of premium | 0 | 3,191 |
| 8. Total foreign exchange change in book/adjusted carrying value | 0 | |
| 9. Deduct current year's other than temporary impairment recognized | 0 | |
| 10. Book/adjusted carrying value at end of current period (Lines 1+2+3+4+5-6-7+8-9) | 249,632 | 1,399,718 |
| 11. Deduct total nonadmitted amounts | 0 | |
| 12. Statement value at end of current period (Line 10 minus Line 11) | 249,632 | 1,399,718 |

Schedule DB - Part A - Verification - Options, Caps, Floors, Collars, Swaps and Forwards

N O N E

Schedule DB - Part B - Verification - Futures Contracts

N O N E

Schedule DB - Part C - Section 1 - Replication (Synthetic Asset) Transactions (RSATs) Open

N O N E

Schedule DB-Part C-Section 2-Reconciliation of Replication (Synthetic Asset) Transactions Open

N O N E

Schedule DB - Verification - Book/Adjusted Carrying Value, Fair Value and Potential Exposure of
Derivatives

N O N E

SCHEDULE E - PART 2 - VERIFICATION

(Cash Equivalents)

| | 1 | 2 |
|---|--------------|---------------------------------|
| | Year To Date | Prior Year Ended December 31 |
| 1. Book/adjusted carrying value, December 31 of prior year | 2,158,118 | 4,585,050 |
| 2. Cost of cash equivalents acquired | 1,540,059 | 9,521,322 |
| 3. Accrual of discount | 142 | 38 |
| 4. Unrealized valuation increase (decrease) | 0 | (78) |
| 5. Total gain (loss) on disposals | (167) | (11) |
| 6. Deduct consideration received on disposals | 1,209,615 | 11,948,203 |
| 7. Deduct amortization of premium | 0 | |
| 8. Total foreign exchange change in book/adjusted carrying value | 0 | |
| 9. Deduct current year's other than temporary impairment recognized | 0 | |
| 10. Book/adjusted carrying value at end of current period (Lines 1+2+3+4+5-6-7+8-9) | 2,488,537 | 2,158,118 |
| 11. Deduct total nonadmitted amounts | 0 | |
| 12. Statement value at end of current period (Line 10 minus Line 11) | 2,488,537 | 2,158,118 |

Schedule A - Part 2 - Real Estate Acquired and Additions Made

N O N E

Schedule A - Part 3 - Real Estate Disposed

N O N E

Schedule B - Part 2 - Mortgage Loans Acquired and Additions Made

N O N E

Schedule B - Part 3 - Mortgage Loans Disposed, Transferred or Repaid

N O N E

SCHEDULE BA - PART 2

| 1 CUSIP Identification | 2 Name or Description | Location | | 5 Name of Vendor or General Partner | 6 NAIC Designation, NAIC Designation Modifier and SVO Administrative Symbol | 7 Date Originally Acquired | 8 Type and Strategy | 9 Actual Cost at Time of Acquisition | 10 Additional Investment Made After Acquisition | 11 Amount of Encumbrances | 12 Commitment for Additional Investment | 13 Percentage of Ownership |
|---|---|---------------|----------------|--|--|-----------------------------------|----------------------------|---|--|----------------------------------|--|-----------------------------------|
| | | 3 City | 4 State | | | | | | | | | |
| | ENDURING US INFLATION TRACKING FUND, LP | NORTHBROOK | IL | | | 01/27/2022 | | 1,000,000 | 2,000,000 | | | |
| 1599999. Joint Venture Interests - Fixed Income - NAIC Designation Assigned by the SVO - Unaffiliated | | | | | | | | 1,000,000 | 2,000,000 | 0 | 0 | XXX |
| 4899999. Total - Unaffiliated | | | | | | | | 1,000,000 | 2,000,000 | 0 | 0 | XXX |
| 4999999. Total - Affiliated | | | | | | | | 0 | 0 | 0 | 0 | XXX |
| | | | | | | | | | | | | |
| | | | | | | | | | | | | |
| | | | | | | | | | | | | |
| | | | | | | | | | | | | |
| | | | | | | | | | | | | |
| | | | | | | | | | | | | |
| | | | | | | | | | | | | |
| | | | | | | | | | | | | |
| | | | | | | | | | | | | |
| | | | | | | | | | | | | |
| | | | | | | | | | | | | |
| | | | | | | | | | | | | |
| | | | | | | | | | | | | |
| | | | | | | | | | | | | |
| | | | | | | | | | | | | |
| | | | | | | | | | | | | |
| | | | | | | | | | | | | |
| 5099999 - Totals | | | | | | | | 1,000,000 | 2,000,000 | 0 | 0 | XXX |

Showing Other Long-Term Invested Assets DISPOSED, Transferred or Repaid During the Current Quarter

[illegible]

STATEMENT AS OF JUNE 30, 2022 OF THE UNITY FINANCIAL LIFE INSURANCE COMPANY

SCHEDULE D - PART 3

Show All Long-Term Bonds and Stock Acquired During the Current Quarter

| 1 | 2 | 3 | 4 | 5 | 6 | 7 | 8 | 9 | 10 |
|--|------------------------------------|---------|---------------|----------------|---------------------------|-------------|------------|---|---|
| CUSIP Identification | Description | Foreign | Date Acquired | Name of Vendor | Number of Shares of Stock | Actual Cost | Par Value | Paid for Accrued Interest and Dividends | NAIC Designation, NAIC Designation Modifier and SVO Administrative Symbol |
| 38381E-P6-9 | GNR 2022-035 B 2063 | | 04/18/2022 | Undefined | | 1,596,406 | 2,000,000 | 2,006 | 1.A |
| 0109999999. Subtotal - Bonds - U.S. Governments | | | | | | 1,596,406 | 2,000,000 | 2,006 | XXX |
| 08162V-AE-8 | BMARK 19B10 A4 | | 04/18/2022 | DEUTSCHE | | 997,969 | 1,000,000 | 1,962 | 1.A |
| 08162L-AC-4 | BMARK 2020-IG1 A3 | | 04/18/2022 | Undefined | | 925,625 | 1,000,000 | 1,418 | 1.A FE |
| 178772-AA-7 | CITYLINE MORTGAGE TRUST | | 04/27/2022 | Undefined | | 493,438 | 500,000 | 1,116 | 1.A FE |
| 3136BM-MK-1 | FNR 2022-19 BL 2052 | | 04/18/2022 | SELECT ONE | | 1,665,000 | 2,000,000 | 2,639 | 1.A |
| 465972-AA-5 | JPMCC 22DATA A 3.916% 2042 | | 06/08/2022 | Undefined | | 717,567 | 750,000 | 1,224 | 1.C |
| 0909999999. Subtotal - Bonds - U.S. Special Revenues | | | | | | 4,799,599 | 5,250,000 | 8,359 | XXX |
| 05377R-CU-6 | AESOP 172 A 2024 | | 04/26/2022 | SELECT ONE | | 200,156 | 200,000 | 132 | 1.A FE |
| 03065W-AD-7 | AMCAR 2022-2 A3 4.380% 2028 | | 06/14/2022 | SELECT ONE | | 334,933 | 335,000 | 0 | 1.C FE |
| 025816-CX-5 | AMERICAN EXPRESS CO 4.989% 2033 | | 05/19/2022 | SELECT ONE | | 502,742 | 500,000 | 0 | 2.D |
| 02582J-JT-8 | AMXCA 222 A 3.390 2027 | | 05/17/2022 | SELECT ONE | | 499,889 | 500,000 | 0 | 1.A FE |
| 05523F-AA-1 | BAE SYSTEMS PLC | | 06/15/2022 | PRUDENTIAL | | 78,155 | 78,155 | 0 | 2.B |
| 06406R-BF-3 | BANK OF NEW YORK MELLON CORP | | 06/08/2022 | SELECT ONE | | 475,000 | 475,000 | 0 | 2.C |
| 071813-CL-1 | BAXTER INTERNATIONAL INC 1.915 '27 | | 06/14/2022 | SELECT ONE | | 249,995 | 250,000 | 0 | 2.D |
| 071813-CV-9 | BAXTER INTERNATIONAL INC 3.132 '37 | | 06/14/2022 | SELECT ONE | | 270,000 | 270,000 | 0 | 2.C |
| 05538U-AA-1 | BB-UBS TR 2012-SHOW | | 05/11/2022 | Undefined | | 485,938 | 500,000 | 572 | 1.A |
| 09261X-AD-4 | BLACKSTONE SECURED LENDING FUND | | 06/30/2022 | SELECT ONE | | 242,053 | 245,000 | 0 | 2.C |
| 22550L-2H-3 | CREDIT SUISSE AG (NY BRANCH) 2025 | | 04/04/2022 | SELECT ONE | | 249,690 | 250,000 | 0 | 2.D |
| 29252V-AA-3 | ENCINA EQUIPMENT FINANCE 2022-1 LL | | 06/09/2022 | SELECT ONE | | 499,998 | 500,000 | 0 | 1.B FE |
| 29278G-AV-0 | ENEL FINANCE INTERNATIONAL 4.25 | | 06/08/2022 | SELECT ONE | | 468,026 | 470,000 | 0 | 2.B |
| 88240T-AD-3 | ERCOTT 2022 A4 5.160% 2052 | | 06/08/2022 | SELECT ONE | | 749,923 | 750,000 | 0 | 1.C FE |
| 36192C-AD-7 | GSMIS 2013-GC10 A4 2.681 2046 | | 05/01/2022 | SELECT ONE | | 260,580 | 260,316 | 523 | 1.C FE |
| 41284Y-AD-8 | HDMOT 2022-A A3 2023 | | 04/12/2022 | SELECT ONE | | 349,942 | 350,000 | 0 | 1.A FE |
| 43283B-AA-1 | HGVT 221D A 2034 | | 04/12/2022 | SELECT ONE | | 299,968 | 300,000 | 0 | 1.A FE |
| 67402R-AG-8 | OAKCL 2022-2A C 2033 | | 06/06/2022 | SELECT ONE | | 1,000,000 | 1,000,000 | 0 | 1.E FE |
| 693342-AE-7 | PGEWRF-22A-A5 4.674 2051 | | 05/03/2022 | SELECT ONE | | 1,199,959 | 1,200,000 | 0 | 1.A FE |
| 74170*-BR-9 | PRIME PROPERTY 3.55% 2032 | | 04/13/2022 | SELECT ONE | | 1,000,000 | 1,000,000 | 0 | 2.C |
| 744448-CW-9 | PUB SERV CO 4.100 06/01/32 '31 | | 05/10/2022 | SELECT ONE | | 397,488 | 400,000 | 0 | 2.E |
| 74939K-AS-5 | ROKT 216 A17 2050 | | 04/01/2022 | Undefined | | 317,000 | 400,000 | 111 | 1.A |
| 78391Y-BF-4 | RYMAN HEALTHCARE LTD 2034 | | 04/28/2022 | SELECT ONE | | 1,000,000 | 1,000,000 | 0 | 2.E |
| 81744Y-AB-2 | SEQUOIA MTG TR 2013-4 2.5% 2043 | | 04/01/2022 | SELECT ONE | | 266,011 | 269,549 | 112 | 1.C FE |
| 80286J-AA-3 | SREV 19A A 2032 | | 04/26/2022 | SELECT ONE | | 242,656 | 250,000 | 52 | 1.A FE |
| 80287U-AB-5 | SRT 2022-B A2 2025 | | 04/07/2022 | SELECT ONE | | 249,981 | 250,000 | 0 | 1.A FE |
| 87240N-BA-3 | TCW 2017-1A GR 3.53886 2034 | | 06/02/2022 | SELECT ONE | | 1,425,000 | 1,500,000 | 5,013 | 1.B FE |
| 87823*-AB-8 | TIAA ON BEHALF OF REA 3.35% 2032 | | 06/10/2022 | SELECT ONE | | 1,280,000 | 1,280,000 | 0 | 1. FE |
| 902613-AM-0 | UBS GROUP AG 4.488 2026 | | 05/03/2022 | SELECT ONE | | 200,000 | 200,000 | 0 | 1.G FE |
| 98163N-AC-0 | WOLS 2022-A A3 2025 | | 04/05/2022 | SELECT ONE | | 99,986 | 100,000 | 0 | 1.A FE |
| 1109999999. Subtotal - Bonds - Industrial and Miscellaneous (Unaffiliated) | | | | | | 14,895,069 | 15,083,019 | 6,515 | XXX |
| 2509999997. Total - Bonds - Part 3 | | | | | | 21,291,074 | 22,333,019 | 16,880 | XXX |
| 2509999998. Total - Bonds - Part 5 | | | | | | XXX | XXX | XXX | XXX |
| 2509999999. Total - Bonds | | | | | | 21,291,074 | 22,333,019 | 16,880 | XXX |
| 4509999997. Total - Preferred Stocks - Part 3 | | | | | | 0 | XXX | 0 | XXX |
| 4509999998. Total - Preferred Stocks - Part 5 | | | | | | XXX | XXX | XXX | XXX |
| 4509999999. Total - Preferred Stocks | | | | | | 0 | XXX | 0 | XXX |
| 5989999997. Total - Common Stocks - Part 3 | | | | | | 0 | XXX | 0 | XXX |
| 5989999998. Total - Common Stocks - Part 5 | | | | | | XXX | XXX | XXX | XXX |
| 5989999999. Total - Common Stocks | | | | | | 0 | XXX | 0 | XXX |
| 5999999999. Total - Preferred and Common Stocks | | | | | | 0 | XXX | 0 | XXX |
| 6009999999 - Totals | | | | | | 21,291,074 | XXX | 16,880 | XXX |

STATEMENT AS OF JUNE 30, 2022 OF THE UNITY FINANCIAL LIFE INSURANCE COMPANY

SCHEDULE D - PART 4

Show All Long-Term Bonds and Stock Sold, Redeemed or Otherwise Disposed of During the Current Quarter

| 1 | 2 | 3 | 4 | 5 | 6 | 7 | 8 | 9 | 10 | Change In Book/Adjusted Carrying Value | | | | | 16 | 17 | 18 | 19 | 20 | 21 | 22 |
|----------------------|---|--------------|------------------|------------------------|---------------------------------|--------------------|-----------|----------------|--|--|--|---|---|---|---|--|---|-------------------------------------|---|--|--|
| | | | | | | | | | | 11 | 12 | 13 | 14 | 15 | | | | | | | |
| CUSIP Identification | Description | For- eign | Disposal Date | Name of Purchaser | Number of Shares of Stock | Consid- eration | Par Value | Actual Cost | Prior Year Book/ Adjusted Carrying Value | Unrealized Valuation Increase/ (Decrease) | Current Year's (Amor- tization)/ Accretion | Current Year's Other Than Temporary Impairment Recogn- ized | Total Change in Book/ Adjusted Carrying Value (11 + 12 - 13) | Total Foreign Exchange Change in Book /Adjusted Carrying Value | Book/ Adjusted Carrying Value at Disposal Date | Foreign Exchange Gain (Loss) on Disposal | Realized Gain (Loss) on Disposal | Total Gain (Loss) on Disposal | Bond Interest/ Stock Dividends Received During Year | Stated Con- tractual Maturity Date | NAIC Desig- nation, NAIC Desig- nation Modifier and SVO Admini- strative Symbol |
| 12559Y-AB-1 | CIM TRUST | | 06/27/2022 | PRINCIPAL RECEIPT | | 17,438 | 17,438 | 17,874 | 17,308 | 0 | 130 | 0 | 130 | 0 | 17,438 | 0 | 0 | 0 | 179 | 07/25/2050 | 1.A FE |
| 38374F-3P-7 | GNMA 2004-026 GE | | 06/16/2022 | PRINCIPAL RECEIPT | | 9,070 | 9,070 | 8,285 | 8,927 | 0 | 143 | 0 | 143 | 0 | 9,070 | 0 | 0 | 0 | 188 | 04/16/2034 | 1.A |
| 38376V-BN-6 | GNMA 2010-020 PW | | 06/30/2022 | Undefined | | 0 | 0 | 0 | 0 | 0 | 0 | 0 | 0 | 0 | 0 | 0 | 0 | 0 | 0 | 09/16/2038 | 1.A |
| 38378K-QE-2 | GNMA 2013-072 A | | 06/16/2022 | PRINCIPAL RECEIPT | | 255,969 | 255,969 | 259,909 | 259,793 | 0 | (3,823) | 0 | (3,823) | 0 | 255,969 | 0 | 0 | 0 | 2,193 | 10/16/2046 | 1.A |
| 82281E-AA-5 | SHELLPOINT | | 06/27/2022 | PRINCIPAL RECEIPT | | 5,012 | 5,012 | 5,129 | 5,125 | 0 | (113) | 0 | (113) | 0 | 5,012 | 0 | 0 | 0 | 75 | 11/25/2046 | 1.A FE |
| 95002T-AA-2 | WELLS FARO MBS | | 06/27/2022 | PRINCIPAL RECEIPT | | 14,097 | 14,097 | 14,559 | 14,550 | 0 | (453) | 0 | (453) | 0 | 14,097 | 0 | 0 | 0 | 171 | 06/25/2050 | 1.A FE |
| 97651L-AC-5 | WINWATER MTG LN | | 06/21/2022 | PRINCIPAL RECEIPT | | 4,317 | 4,317 | 4,444 | 4,440 | 0 | (123) | 0 | (123) | 0 | 4,317 | 0 | 0 | 0 | 60 | 06/20/2045 | 1.A FE |
| 0109999999 | Subtotal - Bonds - U.S. Governments | | | | | 305,903 | 305,904 | 310,200 | 310,143 | 0 | (4,239) | 0 | (4,239) | 0 | 305,903 | 0 | 0 | 0 | 2,866 | XXX | XXX |
| 64971X-BK-3 | NEW YORK NY CITY TRANSITIONAL | | 04/21/2022 | CALLED @ 102.7200000 | | 482,784 | 470,000 | 450,439 | 458,846 | 0 | 896 | 0 | 896 | 0 | 459,743 | 0 | 10,257 | 10,257 | 22,255 | 08/01/2025 | 1.A |
| 0709999999 | Subtotal - Bonds - U.S. Political Subdivisions of States, Territories and Possessions | | | | | 482,784 | 470,000 | 450,439 | 458,846 | 0 | 896 | 0 | 896 | 0 | 459,743 | 0 | 10,257 | 10,257 | 22,255 | XXX | XXX |
| 31418D-UH-3 | FANNIE MAE | | 06/27/2022 | PRINCIPAL RECEIPT | | 51,754 | 51,754 | 53,808 | 53,785 | 0 | (2,031) | 0 | (2,031) | 0 | 51,754 | 0 | 0 | 0 | 495 | 11/01/2050 | 1.A |
| 3128MJ-SB-2 | FG | | 06/15/2022 | PRINCIPAL RECEIPT | | 23,574 | 23,574 | 23,174 | 23,193 | 0 | 381 | 0 | 381 | 0 | 23,574 | 0 | 0 | 0 | 335 | 10/01/2048 | 1.A |
| 31394Y-H9-8 | FHLMC 2793 PE | | 06/15/2022 | PRINCIPAL RECEIPT | | 5,162 | 5,162 | 4,627 | 5,146 | 0 | 16 | 0 | 16 | 0 | 5,162 | 0 | 0 | 0 | 106 | 05/15/2034 | 1.A |
| 31395M-DU-0 | FHLMC 2934 KG | | 06/15/2022 | PRINCIPAL RECEIPT | | 3,233 | 3,233 | 3,151 | 3,230 | 0 | 4 | 0 | 4 | 0 | 3,233 | 0 | 0 | 0 | 66 | 02/15/2035 | 1.A |
| 3132Y3-3P-7 | FHLMC PC GOLD F60559805 | | 06/15/2022 | PRINCIPAL RECEIPT | | 37,940 | 37,940 | 39,445 | 39,385 | 0 | (1,445) | 0 | (1,445) | 0 | 37,940 | 0 | 0 | 0 | 725 | 11/01/2048 | 1.A |
| 3140HC-CG-9 | FN BJ9970 | | 06/27/2022 | PRINCIPAL RECEIPT | | 58,891 | 58,891 | 60,026 | 59,969 | 0 | (1,078) | 0 | (1,078) | 0 | 58,891 | 0 | 0 | 0 | 863 | 05/01/2048 | 1.A |
| 314009-H8-9 | FN CA2054 | | 06/27/2022 | PRINCIPAL RECEIPT | | 33,574 | 33,574 | 34,902 | 34,831 | 0 | (1,257) | 0 | (1,257) | 0 | 33,574 | 0 | 0 | 0 | 604 | 07/01/2048 | 1.A |
| 31418C-XM-1 | FN MA3383 | | 06/27/2022 | PRINCIPAL RECEIPT | | 5,151 | 5,151 | 5,359 | 5,353 | 0 | (202) | 0 | (202) | 0 | 5,151 | 0 | 0 | 0 | 71 | 06/01/2048 | 1.A |
| 31418D-FQ-0 | FN MA3774 | | 06/27/2022 | PRINCIPAL RECEIPT | | 23,372 | 23,372 | 23,725 | 23,712 | 0 | (340) | 0 | (340) | 0 | 23,372 | 0 | 0 | 0 | 267 | 09/01/2049 | 1.A |
| 31418C-Z9-8 | FNMA | | 06/27/2022 | PRINCIPAL RECEIPT | | 21,030 | 21,030 | 21,319 | 21,305 | 0 | (275) | 0 | (275) | 0 | 21,030 | 0 | 0 | 0 | 335 | 09/01/2048 | 1.A |
| 31393T-HN-9 | FNMA 2003-81 LC | | 06/30/2022 | PRINCIPAL RECEIPT | | 0 | 0 | 0 | 0 | 0 | 0 | 0 | 0 | 0 | 0 | 0 | 0 | 0 | 0 | 09/25/2018 | 1.A |
| 31394U-KE-1 | FNMA 2005-102 PG | | 06/27/2022 | PRINCIPAL RECEIPT | | 6,878 | 6,878 | 6,424 | 6,847 | 0 | 31 | 0 | 31 | 0 | 6,878 | 0 | 0 | 0 | 145 | 11/25/2035 | 1.A |
| 3132DV-GU-4 | FNMA FR SD8083 | | 06/27/2022 | PRINCIPAL RECEIPT | | 5,413 | 5,413 | 5,639 | 5,633 | 0 | (221) | 0 | (221) | 0 | 5,413 | 0 | 0 | 0 | 55 | 08/01/2050 | 1.A |
| 3132DV-TJ-8 | FNMA FR SD8097 | | 06/27/2022 | PRINCIPAL RECEIPT | | 9,239 | 9,239 | 9,239 | 9,239 | 0 | 0 | 0 | 0 | 0 | 9,239 | 0 | 0 | 0 | 72 | 08/01/2050 | 1.A |
| 31418D-Q8-8 | FNMA MA4078 | | 06/27/2022 | PRINCIPAL RECEIPT | | 5,251 | 5,251 | 5,489 | 5,483 | 0 | (232) | 0 | (232) | 0 | 5,251 | 0 | 0 | 0 | 51 | 07/01/2050 | 1.A |
| 31412U-Y6-1 | FNMA POOL - 935533 | | 06/27/2022 | PRINCIPAL RECEIPT | | 2,815 | 2,815 | 2,872 | 2,833 | 0 | (17) | 0 | (17) | 0 | 2,815 | 0 | 0 | 0 | 44 | 08/01/2039 | 1.A |
| 31416B-WK-0 | FNMA POOL - 995094 | | 06/27/2022 | PRINCIPAL RECEIPT | | 2,473 | 2,473 | 2,639 | 2,502 | 0 | (29) | 0 | (29) | 0 | 2,473 | 0 | 0 | 0 | 44 | 11/01/2035 | 1.A |
| 31417G-ZP-4 | FNMA POOL - AB9749 | | 06/27/2022 | PRINCIPAL RECEIPT | | 31,324 | 31,324 | 31,070 | 31,126 | 0 | 199 | 0 | 199 | 0 | 31,324 | 0 | 0 | 0 | 379 | 06/01/2043 | 1.A |
| 31417M-QQ-9 | FNMA POOL - AC3162 | | 06/27/2022 | PRINCIPAL RECEIPT | | 1,985 | 1,985 | 2,055 | 1,988 | 0 | (3) | 0 | (3) | 0 | 1,985 | 0 | 0 | 0 | 115 | 10/01/2024 | 1.A |
| 31417S-AA-8 | FNMA POOL - AC5400 | | 06/27/2022 | PRINCIPAL RECEIPT | | 1,873 | 1,873 | 1,898 | 1,878 | 0 | (4) | 0 | (4) | 0 | 1,873 | 0 | 0 | 0 | 33 | 10/01/2039 | 1.A |
| 31418S-CJ-6 | FNMA POOL - AD4572 | | 06/27/2022 | PRINCIPAL RECEIPT | | 1,262 | 1,262 | 1,312 | 1,274 | 0 | (12) | 0 | (12) | 0 | 1,262 | 0 | 0 | 0 | 25 | 05/01/2040 | 1.A |
| 31418T-D5-3 | FNMA POOL - AD5523 | | 06/27/2022 | PRINCIPAL RECEIPT | | 7,909 | 7,909 | 8,034 | 7,993 | 0 | (30) | 0 | (30) | 0 | 7,909 | 0 | 0 | 0 | 138 | 06/01/2040 | 1.A |
| 31419C-D3-4 | FNMA POOL - AE1921 | | 06/27/2022 | PRINCIPAL RECEIPT | | 802 | 802 | 824 | 805 | 0 | (3) | 0 | (3) | 0 | 802 | 0 | 0 | 0 | 12 | 09/01/2040 | 1.A |
| 3138A9-CX-0 | FNMA POOL - AH7285 | | 06/27/2022 | PRINCIPAL RECEIPT | | 618 | 618 | 607 | 616 | 0 | 3 | 0 | 3 | 0 | 618 | 0 | 0 | 0 | 10 | 03/01/2041 | 1.A |
| 3138AD-HM-0 | FNMA POOL - AI0235 | | 06/27/2022 | PRINCIPAL RECEIPT | | 1,200 | 1,200 | 1,210 | 1,201 | 0 | 0 | 0 | 0 | 0 | 1,200 | 0 | 0 | 0 | 18 | 05/01/2026 | 1.A |
| 31417Y-TU-1 | FNMA POOL - MA0562 | | 06/27/2022 | PRINCIPAL RECEIPT | | 2,446 | 2,446 | 2,554 | 2,480 | 0 | (35) | 0 | (35) | 0 | 2,446 | 0 | 0 | 0 | 43 | 11/01/2040 | 1.A |
| 31417Y-W3-7 | FNMA POOL - MA0665 | | 06/27/2022 | PRINCIPAL RECEIPT | | 4,172 | 4,172 | 4,193 | 4,179 | 0 | (17) | 0 | (17) | 0 | 4,172 | 0 | 0 | 0 | 64 | 02/01/2041 | 1.A |
| 31418D-ET-5 | FNMA POOL MA3745 | | 06/27/2022 | PRINCIPAL RECEIPT | | 29,494 | 29,494 | 30,377 | 30,343 | 0 | (849) | 0 | (849) | 0 | 29,494 | 0 | 0 | 0 | 392 | 08/01/2049 | 1.A |
| 31418D-ZL-5 | FNMA POOL MA4378 | | 06/27/2022 | PRINCIPAL RECEIPT | | 35,288 | 35,288 | 35,560 | 35,558 | 0 | (270) | 0 | (270) | 0 | 35,288 | 0 | 0 | 0 | 290 | 07/01/2051 | 1.A |
| 3140JG-LW-3 | FNMA-PASS THRU | | 06/27/2022 | PRINCIPAL RECEIPT | | 22,600 | 22,600 | 23,485 | 23,451 | 0 | (851) | 0 | (851) | 0 | 22,600 | 0 | 0 | 0 | 409 | 12/01/2048 | 1.A |
| 3132DV-4L-6 | FR FNMA | | 06/27/2022 | PRINCIPAL RECEIPT | | 40,098 | 40,098 | 42,079 | 42,011 | 0 | (1,913) | 0 | (1,913) | 0 | 40,098 | 0 | 0 | 0 | 675 | 10/01/2049 | 1.A |
| 3132DV-3Y-9 | FR FNMA SD8015 | | 06/27/2022 | PRINCIPAL RECEIPT | | 24,723 | 24,723 | 24,490 | 24,499 | 0 | 224 | 0 | 224 | 0 | 24,723 | 0 | 0 | 0 | 236 | 10/01/2049 | 1.A |
| 33851M-AA-0 | FSMT 2191NV A1 2.500% 2041 | | 06/27/2022 | PRINCIPAL RECEIPT | | 12,651 | 12,651 | 13,068 | 13,068 | 0 | (416) | 0 | (416) | 0 | 12,651 | 0 | 0 | 0 | 131 | 09/25/2041 | 1.A FE |
| 61772L-AJ-0 | MSRM 212 A3 2.5 5/25/51 | | 06/27/2022 | PRINCIPAL RECEIPT | | 17,550 | 17,550 | 17,791 | 17,787 | 0 | (237) | 0 | (237) | 0 | 17,550 | 0 | 0 | 0 | 185 | 05/25/2051 | 1.A FE |
| 81747K-AA-1 | SEQUOIA MORTGAGE TRUST | | 06/27/2022 | PRINCIPAL RECEIPT | | 11,921 | 11,921 | 12,426 | 12,441 | 0 | (519) | 0 | (519) | 0 | 11,921 | 0 | 0 | 0 | 110 | 03/25/2051 | 1.A FE |
| 90276E-AD-9 | USDSM 2017-C1 A3 3.196% 2050 | | 04/19/2022 | PRINCIPAL RECEIPT | | 3,586 | 3,586 | 3,833 | 3,832 | 0 | (246) | 0 | (246) | 0 | 3,586 | 0 | 0 | 0 | 38 | 06/17/2050 | 1.A FE |
| 90932J-AA-0 | UNITED AIRLINE | | 05/03/2022 | PRINCIPAL RECEIPT | | 20,396 | 20,396 | 18,194 | 18,369 | 0 | 2,027 | 0 | 2,027 | 0 | 20,396 | 0 | 0 | 0 | 275 | 11/01/2033 | 1.F |
| 0909999999 | Subtotal - Bonds - U.S. Special Revenues | | | | | 567,648 | 567,649 | 576,898 | 577,291 | 0 | (9,637) | 0 | (9,637) | 0 | 567,648 | 0 | 0 | 0 | 7,856 | XXX | XXX |
| 008414-AA-2 | ABMT 131 A1 | | 06/27/2022 | PRINCIPAL RECEIPT | | 15,604 | 15,604 | 15,842 | 15,828 | 0 | (224) | 0 | (224) | 0 | 15,604 | 0 | 0 | 0 | 205 | 07/25/2043 | 1.D FM |
| 00392#-AA-0 | ABTEEN VENTURES LLC | | 06/15/2022 | Sink PMT @ 100.0000000 | | 13,415 | 13,415 | 13,415 | 13,415 | 0 | 0 | 0 | 0 | 0 | 13,415 | 0 | 0 | 0 | 220 | 08/15/2039 | 1.B |
| 009090-AA-1 | AIR CANADA PASS THROUGH | | 04/04/2022 | SELECT ONE | | 15,713 | 15,713 | 15,713 | 15,713 | 0 | 0 | 0 | 0 | 0 | 15,713 | 0 | 0 | 0 | 412 | 04/01/2029 | 1.G |
| 02380#-AA-0 | AMERICAN AIRLINES | | 04/01/2022 | Sink PMT @ 100.0000000 | | 8,678 | 8,678 | 8,678 | 8,678 | 0 | 0 | 0 | 0 | 0 | 8,678 | 0 | 0 | 0 | 153 | 10/01/2024 | 2.C |
| 02379#-AA-3 | AMERICAN AIRLINES INC | | 06/16/2022 | Sink PMT @ 100.0000000 | | 22,500 | 22,500 | 22,500 | 22,500 | 0 | 0 | 0 | 0 | 0 | 22,500 | 0 | 0 | 0 | 442 | 06/15/2024 | 2.A |

SCHEDULE D - PART 4

E05.1

[illegible]

STATEMENT AS OF JUNE 30, 2022 OF THE UNITY FINANCIAL LIFE INSURANCE COMPANY

SCHEDULE D - PART 4

Show All Long-Term Bonds and Stock Sold, Redeemed or Otherwise Disposed of During the Current Quarter

| 1 | 2 | 3 | 4 | 5 | 6 | 7 | 8 | 9 | 10 | Change In Book/Adjusted Carrying Value | | | | | 16 | 17 | 18 | 19 | 20 | 21 | 22 |
|---|-------------|--------------|------------------|----------------------|---------------------------------|--------------------|-----------|----------------|--|--|--|---|---|---|---|--|---|-------------------------------------|---|--|--|
| | | | | | | | | | | 11 | 12 | 13 | 14 | 15 | | | | | | | |
| CUSIP Ident- ification | Description | For- eign | Disposal Date | Name of Purchaser | Number of Shares of Stock | Consid- eration | Par Value | Actual Cost | Prior Year Book/ Adjusted Carrying Value | Unrealized Valuation Increase/ (Decrease) | Current Year's (Amor- tization)/ Accretion | Current Year's Other Than Temporary Impairment Recog- nized | Total Change in Book/ Adjusted Carrying Value (11 + 12 - 13) | Total Foreign Exchange Change in Book /Adjusted Carrying Value | Book/ Adjusted Carrying Value at Disposal Date | Foreign Exchange Gain (Loss) on Disposal | Realized Gain (Loss) on Disposal | Total Gain (Loss) on Disposal | Bond Interest/ Stock Dividends Received During Year | Stated Con- tractual Maturity Date | NAIC Desig- nation, NAIC Desig- nation Modifier and SVO Admini- strative Symbol |
| 5989999997. Total - Common Stocks - Part 4 | | | | | | 0 | XXX | 0 | 0 | 0 | 0 | 0 | 0 | 0 | 0 | 0 | 0 | 0 | 0 | XXX | XXX |
| 5989999998. Total - Common Stocks - Part 5 | | | | | | XXX | XXX | XXX | XXX | XXX | XXX | XXX | XXX | XXX | XXX | XXX | XXX | XXX | XXX | XXX | XXX |
| 5989999999. Total - Common Stocks | | | | | | 0 | XXX | 0 | 0 | 0 | 0 | 0 | 0 | 0 | 0 | 0 | 0 | 0 | 0 | XXX | XXX |
| 5999999999. Total - Preferred and Common Stocks | | | | | | 0 | XXX | 0 | 0 | 0 | 0 | 0 | 0 | 0 | 0 | 0 | 0 | 0 | 0 | XXX | XXX |
| 6009999999 - Totals | | | | | | 14,686,283 | XXX | 14,730,112 | 12,964,939 | 0 | (17,614) | 0 | (17,614) | 0 | 14,747,320 | 0 | (89,370) | (89,370) | 263,849 | XXX | XXX |

Schedule DB - Part A - Section 1 - Options, Caps, Floors, Collars, Swaps and Forwards Open

N O N E

Schedule DB - Part B - Section 1 - Futures Contracts Open

N O N E

Schedule DB - Part B - Section 1B - Brokers with whom cash deposits have been made

N O N E

Schedule DB - Part D - Section 1 - Counterparty Exposure for Derivative Instruments Open

N O N E

Schedule DB - Part D-Section 2 - Collateral for Derivative Instruments Open - Pledged By

N O N E

Schedule DB - Part D-Section 2 - Collateral for Derivative Instruments Open - Pledged To

N O N E

Schedule DB - Part E - Derivatives Hedging Variable Annuity Guarantees

N O N E

Schedule DL - Part 1 - Reinvested Collateral Assets Owned

N O N E

Schedule DL - Part 2 - Reinvested Collateral Assets Owned

N O N E

SCHEDULE E - PART 1 - CASH

Month End Depository Balances

| 1 Depository | 2 Code | 3 Rate of Interest | 4 Amount of Interest Received During Current Quarter | 5 Amount of Interest Accrued at Current Statement Date | Book Balance at End of Each Month During Current Quarter | | | 9 * |
|--|---------------|---------------------------|---|---|--|--------------|-------------|------------|
| | | | | | 6 | 7 | 8 | |
| | | | | | First Month | Second Month | Third Month | |
| JP Morgan Chase Bank Madison, WI | | | | | 614,395 | 662,882 | 518,231 | XXX |
| Fifth Third Bank Cincinnati, OH | | | | | 1,760,913 | 1,697,864 | 1,891,978 | XXX |
| Federal Home Loan Bank Cincinnati, OH | | 0.010 | 273 | | 1,409,122 | 4,390,212 | 713,605 | XXX |
| 0199998. Deposits in ... depositories that do not exceed the allowable limit in any one depository (See instructions) - Open Depositories | XXX | XXX | | | | | | XXX |
| 0199999. Totals - Open Depositories | XXX | XXX | 273 | 0 | 3,784,430 | 6,750,958 | 3,123,814 | XXX |
| 0299998. Deposits in ... depositories that do not exceed the allowable limit in any one depository (See instructions) - Suspended Depositories | XXX | XXX | | | | | | XXX |
| 0299999. Totals - Suspended Depositories | XXX | XXX | 0 | 0 | 0 | 0 | 0 | XXX |
| 0399999. Total Cash on Deposit | XXX | XXX | 273 | 0 | 3,784,430 | 6,750,958 | 3,123,814 | XXX |
| 0499999. Cash in Company's Office | XXX | XXX | XXX | XXX | | | | XXX |
| | | | | | | | | |
| | | | | | | | | |
| | | | | | | | | |
| | | | | | | | | |
| | | | | | | | | |
| | | | | | | | | |
| | | | | | | | | |
| | | | | | | | | |
| | | | | | | | | |
| | | | | | | | | |
| 0599999. Total - Cash | XXX | XXX | 273 | 0 | 3,784,430 | 6,750,958 | 3,123,814 | XXX |

SCHEDULE E - PART 2 - CASH EQUIVALENTS

[illegible]