



PROPERTY AND CASUALTY COMPANIES - ASSOCIATION EDITION

QUARTERLY STATEMENT

AS OF JUNE 30, 2022

OF THE CONDITION AND AFFAIRS OF THE

PROGRESSIVE NORTHWESTERN INSURANCE COMPANY

NAIC Group Code

0155

(Current)

0155

(Prior)

NAIC Company Code

42919

Employer's ID Number

91-1187829

Organized under the Laws of

OH

, State of Domicile or Port of Entry

OH

Country of Domicile

United States of America

Incorporated/Organized

09/24/1982

Commenced Business

09/26/1983

Statutory Home Office

6300 WILSON MILLS ROAD, W33

(Street and Number)

CLEVELAND, OH, US 44143-2182

(City or Town, State, Country and Zip Code)

Main Administrative Office

6300 WILSON MILLS ROAD, W33

(Street and Number)

CLEVELAND, OH, US 44143-2182

(City or Town, State, Country and Zip Code)

440-461-5000

(Area Code) (Telephone Number)

Mail Address

P.O. BOX 89490

(Street and Number or P.O. Box)

CLEVELAND, OH, US 44101-6490

(City or Town, State, Country and Zip Code)

Primary Location of Books and Records

6300 WILSON MILLS ROAD, W33

(Street and Number)

CLEVELAND, OH, US 44143-2182

(City or Town, State, Country and Zip Code)

440-395-4460

(Area Code) (Telephone Number)

Internet Website Address

PROGRESSIVE.COM

Statutory Statement Contact

MICHELLE CRISTEN CAVELL

(Name)

440-395-4460

(Area Code) (Telephone Number)

FINANCIAL_REPORTING@PROGRESSIVE.COM

(E-mail Address)

440-603-5500

(FAX Number)

OFFICERS

PRESIDENT

KANIK (NMN) VARMA

SECRETARY

PETER JAMES ALBERT

TREASURER

PATRICK SEAN BRENNAN

OTHER

PETER JAMES ALBERT, (VICE PRESIDENT)

MARY BETH ANDREANO, (VICE PRESIDENT)

HEATHER ELIZABETH DAY, (VICE PRESIDENT)

JAMES LEE KUSMER, (ASST. TREASURER)

CHRISTINA LYNN CREWS, (ASST. SECRETARY)

DIRECTORS OR TRUSTEES

CHARLES ERNEST CONOVER

JOHN ALLEN CURTISS JR.

GEOFFREY THOMAS SOUSER

KANIK (NMN) VARMA

KATHRYN MARGARET LEMIEUX

State of

OHIO

County of

CUYAHOGA

SS:

The officers of this reporting entity being duly sworn, each depose and say that they are the described officers of said reporting entity, and that on the reporting period stated above, all of the herein described assets were the absolute property of the said reporting entity, free and clear from any liens or claims thereon, except as herein stated, and that this statement, together with related exhibits, schedules and explanations therein contained, annexed or referred to, is a full and true statement of all the assets and liabilities and of the condition and affairs of the said reporting entity as of the reporting period stated above, and of its income and deductions therefrom for the period ended, and have been completed in accordance with the NAIC Annual Statement Instructions and Accounting Practices and Procedures manual except to the extent that: (1) state law may differ; or, (2) that state rules or regulations require differences in reporting not related to accounting practices and procedures, according to the best of their information, knowledge and belief, respectively. Furthermore, the scope of this attestation by the described officers also includes the related corresponding electronic filing with the NAIC, when required, that is an exact copy (except for formatting differences due to electronic filing) of the enclosed statement. The electronic filing may be requested by various regulators in lieu of or in addition to the enclosed statement.

KANIK (NMN) VARMA

PRESIDENT

PETER JAMES ALBERT

SECRETARY

PATRICK SEAN BRENNAN

TREASURER

Subscribed and sworn to before me this

8TH

day of

AUGUST, 2022

a. Is this an original filing?

Yes [X] No []

b. If no,

1. State the amendment number.....

2. Date filed

3. Number of pages attached.....

ASSETS

	Current Statement Date			4 December 31 Prior Year Net Admitted Assets
	1 Assets	2 Nonadmitted Assets	3 Net Admitted Assets (Cols. 1 - 2)	
1. Bonds	2,551,656,600		2,551,656,600	2,560,719,420
2. Stocks:				
2.1 Preferred stocks				
2.2 Common stocks	181,512,869		181,512,869	316,688,059
3. Mortgage loans on real estate:				
3.1 First liens				
3.2 Other than first liens.....				
4. Real estate:				
4.1 Properties occupied by the company (less \$ encumbrances)				
4.2 Properties held for the production of income (less \$ encumbrances)				
4.3 Properties held for sale (less \$ encumbrances)				
5. Cash (\$22,469), cash equivalents (\$304,323,324) and short-term investments (\$)	304,345,793		304,345,793	2,724,566
6. Contract loans (including \$ premium notes)				
7. Derivatives				
8. Other invested assets				
9. Receivables for securities	1,605		1,605	
10. Securities lending reinvested collateral assets				
11. Aggregate write-ins for invested assets				
12. Subtotals, cash and invested assets (Lines 1 to 11)	3,037,516,867		3,037,516,867	2,880,132,045
13. Title plants less \$ charged off (for Title insurers only)				
14. Investment income due and accrued	10,219,247		10,219,247	8,695,969
15. Premiums and considerations:				
15.1 Uncollected premiums and agents' balances in the course of collection	36,611,933	1,690,308	34,921,625	8,887,484
15.2 Deferred premiums, agents' balances and installments booked but deferred and not yet due (including \$ earned but unbilled premiums)	107,670,168		107,670,168	95,890,471
15.3 Accrued retrospective premiums (\$) and contracts subject to redetermination (\$)				
16. Reinsurance:				
16.1 Amounts recoverable from reinsurers	5,982,559		5,982,559	3,363,605
16.2 Funds held by or deposited with reinsured companies				
16.3 Other amounts receivable under reinsurance contracts				
17. Amounts receivable relating to uninsured plans				
18.1 Current federal and foreign income tax recoverable and interest thereon				
18.2 Net deferred tax asset	34,463,105		34,463,105	2,777,021
19. Guaranty funds receivable or on deposit				
20. Electronic data processing equipment and software				
21. Furniture and equipment, including health care delivery assets (\$)				
22. Net adjustment in assets and liabilities due to foreign exchange rates				
23. Receivables from parent, subsidiaries and affiliates	56,997,705		56,997,705	38,229,063
24. Health care (\$) and other amounts receivable				
25. Aggregate write-ins for other than invested assets	732,163	732,163		
26. Total assets excluding Separate Accounts, Segregated Accounts and Protected Cell Accounts (Lines 12 to 25)	3,290,193,747	2,422,471	3,287,771,276	3,037,975,658
27. From Separate Accounts, Segregated Accounts and Protected Cell Accounts				
28. Total (Lines 26 and 27)	3,290,193,747	2,422,471	3,287,771,276	3,037,975,658
DETAILS OF WRITE-INS				
1101.				
1102.				
1103.				
1198. Summary of remaining write-ins for Line 11 from overflow page				
1199. Totals (Lines 1101 through 1103 plus 1198)(Line 11 above)				
2501. PREPAID EXPENSES	731,054	731,054		
2502. MISCELLANEOUS OTHER ASSETS	1,109	1,109		
2503.				
2598. Summary of remaining write-ins for Line 25 from overflow page				
2599. Totals (Lines 2501 through 2503 plus 2598)(Line 25 above)	732,163	732,163		

STATEMENT AS OF JUNE 30, 2022 OF THE PROGRESSIVE NORTHWESTERN INSURANCE COMPANY

LIABILITIES, SURPLUS AND OTHER FUNDS

	1 Current Statement Date	2 December 31, Prior Year
1. Losses (current accident year \$420,410,460)	1,063,810,679	990,176,584
2. Reinsurance payable on paid losses and loss adjustment expenses	19,288,526	8,395,884
3. Loss adjustment expenses	204,288,622	198,770,746
4. Commissions payable, contingent commissions and other similar charges	1,833,785	4,560,156
5. Other expenses (excluding taxes, licenses and fees)	130,095,994	105,563,703
6. Taxes, licenses and fees (excluding federal and foreign income taxes)	18,118,942	20,356,354
7.1 Current federal and foreign income taxes (including \$7,141,208 on realized capital gains (losses))	36,638,415	7,130,533
7.2 Net deferred tax liability		
8. Borrowed money \$ and interest thereon \$		
9. Unearned premiums (after deducting unearned premiums for ceded reinsurance of \$244,351,196 and including warranty reserves of \$ and accrued accident and health experience rating refunds including \$ for medical loss ratio rebate per the Public Health Service Act)	940,111,028	861,056,976
10. Advance premium	7,741,695	5,152,371
11. Dividends declared and unpaid:		
11.1 Stockholders		
11.2 Policyholders		
12. Ceded reinsurance premiums payable (net of ceding commissions)	(12,348)	(601)
13. Funds held by company under reinsurance treaties		
14. Amounts withheld or retained by company for account of others		
15. Remittances and items not allocated		
16. Provision for reinsurance (including \$ certified)		
17. Net adjustments in assets and liabilities due to foreign exchange rates		
18. Drafts outstanding	31,193,970	24,242,089
19. Payable to parent, subsidiaries and affiliates		
20. Derivatives		
21. Payable for securities		
22. Payable for securities lending		
23. Liability for amounts held under uninsured plans		
24. Capital notes \$ and interest thereon \$		
25. Aggregate write-ins for liabilities	3,423,560	2,787,714
26. Total liabilities excluding protected cell liabilities (Lines 1 through 25)	2,456,532,868	2,228,192,509
27. Protected cell liabilities		
28. Total liabilities (Lines 26 and 27)	2,456,532,868	2,228,192,509
29. Aggregate write-ins for special surplus funds		
30. Common capital stock	3,000,025	3,000,025
31. Preferred capital stock		
32. Aggregate write-ins for other than special surplus funds		
33. Surplus notes		
34. Gross paid in and contributed surplus	146,299,975	146,299,975
35. Unassigned funds (surplus)	681,938,408	660,483,149
36. Less treasury stock, at cost:		
36.1 shares common (value included in Line 30 \$)		
36.2 shares preferred (value included in Line 31 \$)		
37. Surplus as regards policyholders (Lines 29 to 35, less 36)	831,238,408	809,783,149
38. Totals (Page 2, Line 28, Col. 3)	3,287,771,276	3,037,975,658
DETAILS OF WRITE-INS		
2501. STATE PLAN LIABILITY	2,795,798	2,643,245
2502. ESCHEATABLE PROPERTY	608,037	135,093
2503. OTHER LIABILITIES	19,725	9,376
2598. Summary of remaining write-ins for Line 25 from overflow page		
2599. Totals (Lines 2501 through 2503 plus 2598)(Line 25 above)	3,423,560	2,787,714
2901.		
2902.		
2903.		
2998. Summary of remaining write-ins for Line 29 from overflow page		
2999. Totals (Lines 2901 through 2903 plus 2998)(Line 29 above)		
3201.		
3202.		
3203.		
3298. Summary of remaining write-ins for Line 32 from overflow page		
3299. Totals (Lines 3201 through 3203 plus 3298)(Line 32 above)		

STATEMENT OF INCOME

	1	2	3
	Current Year to Date	Prior Year to Date	Prior Year Ended December 31
UNDERWRITING INCOME			
1. Premiums earned:			
1.1 Direct (written \$378,064,005)	350,253,459	327,494,568	667,737,844
1.2 Assumed (written \$1,406,850,388)	1,327,796,336	1,215,977,602	2,498,722,741
1.3 Ceded (written \$378,064,005)	350,253,459	327,494,568	667,737,844
1.4 Net (written \$1,406,850,388)	1,327,796,336	1,215,977,602	2,498,722,741
DEDUCTIONS:			
2. Losses incurred (current accident year \$866,227,675):			
2.1 Direct	226,065,352	183,408,080	406,660,901
2.2 Assumed	878,814,883	751,722,146	1,631,246,232
2.3 Ceded	226,065,352	183,408,080	406,660,901
2.4 Net	878,814,883	751,722,146	1,631,246,232
3. Loss adjustment expenses incurred	117,018,009	120,305,990	233,748,316
4. Other underwriting expenses incurred	253,017,616	249,802,679	486,605,720
5. Aggregate write-ins for underwriting deductions			
6. Total underwriting deductions (Lines 2 through 5)	1,248,850,508	1,121,830,815	2,351,600,268
7. Net income of protected cells			
8. Net underwriting gain or (loss) (Line 1 minus Line 6 + Line 7)	78,945,828	94,146,787	147,122,473
INVESTMENT INCOME			
9. Net investment income earned	27,584,333	26,714,710	50,892,547
10. Net realized capital gains (losses) less capital gains tax of \$7,141,208	27,096,505	4,993,702	8,038,136
11. Net investment gain (loss) (Lines 9 + 10)	54,680,838	31,708,412	58,930,683
OTHER INCOME			
12. Net gain or (loss) from agents' or premium balances charged off (amount recovered \$409,405 amount charged off \$1,938,603)	(1,529,198)	(2,178,831)	(3,600,411)
13. Finance and service charges not included in premiums	4,865,760	4,743,478	9,665,928
14. Aggregate write-ins for miscellaneous income	2,193,598	2,783,442	4,932,662
15. Total other income (Lines 12 through 14)	5,530,160	5,348,089	10,998,179
16. Net income before dividends to policyholders, after capital gains tax and before all other federal and foreign income taxes (Lines 8 + 11 + 15)	139,156,826	131,203,288	217,051,335
17. Dividends to policyholders			
18. Net income, after dividends to policyholders, after capital gains tax and before all other federal and foreign income taxes (Line 16 minus Line 17)	139,156,826	131,203,288	217,051,335
19. Federal and foreign income taxes incurred	29,501,139	33,652,844	51,219,102
20. Net income (Line 18 minus Line 19)(to Line 22)	109,655,687	97,550,444	165,832,233
CAPITAL AND SURPLUS ACCOUNT			
21. Surplus as regards policyholders, December 31 prior year	809,783,149	782,258,014	782,258,014
22. Net income (from Line 20)	109,655,687	97,550,444	165,832,233
23. Net transfers (to) from Protected Cell accounts			
24. Change in net unrealized capital gains (losses) less capital gains tax of \$(25,111,529)	(94,467,181)	30,522,251	41,537,263
25. Change in net unrealized foreign exchange capital gain (loss)			
26. Change in net deferred income tax	6,574,555	7,675,770	9,242,428
27. Change in nonadmitted assets	(307,802)	1,048,632	913,211
28. Change in provision for reinsurance			
29. Change in surplus notes			
30. Surplus (contributed to) withdrawn from protected cells			
31. Cumulative effect of changes in accounting principles			
32. Capital changes:			
32.1 Paid in			
32.2 Transferred from surplus (Stock Dividend)			
32.3 Transferred to surplus			
33. Surplus adjustments:			
33.1 Paid in			
33.2 Transferred to capital (Stock Dividend)			
33.3 Transferred from capital			
34. Net remittances from or (to) Home Office			
35. Dividends to stockholders			(190,000,000)
36. Change in treasury stock			
37. Aggregate write-ins for gains and losses in surplus			
38. Change in surplus as regards policyholders (Lines 22 through 37)	21,455,259	136,797,097	27,525,135
39. Surplus as regards policyholders, as of statement date (Lines 21 plus 38)	831,238,408	919,055,111	809,783,149
DETAILS OF WRITE-INS			
0501.			
0502.			
0503.			
0598. Summary of remaining write-ins for Line 5 from overflow page			
0599. Totals (Lines 0501 through 0503 plus 0598)(Line 5 above)			
1401. MISCELLANEOUS INCOME	2,019,973	2,773,969	4,907,877
1402. INTEREST INCOME ON INTERCOMPANY BALANCES	173,363	8,633	23,278
1403. SERVICE BUSINESS REVENUE	262	840	1,507
1498. Summary of remaining write-ins for Line 14 from overflow page			
1499. Totals (Lines 1401 through 1403 plus 1498)(Line 14 above)	2,193,598	2,783,442	4,932,662
3701.			
3702.			
3703.			
3798. Summary of remaining write-ins for Line 37 from overflow page			
3799. Totals (Lines 3701 through 3703 plus 3798)(Line 37 above)			

STATEMENT AS OF JUNE 30, 2022 OF THE PROGRESSIVE NORTHWESTERN INSURANCE COMPANY

CASH FLOW

	1 Current Year To Date	2 Prior Year To Date	3 Prior Year Ended December 31
Cash from Operations			
1. Premiums collected net of reinsurance	1,371,814,651	1,289,007,752	2,608,830,658
2. Net investment income	27,723,777	30,364,216	56,455,684
3. Miscellaneous income	5,503,424	5,231,131	10,791,688
4. Total (Lines 1 to 3)	1,405,041,852	1,324,603,099	2,676,078,030
5. Benefit and loss related payments	796,907,100	646,296,303	1,427,381,032
6. Net transfers to Separate Accounts, Segregated Accounts and Protected Cell Accounts			
7. Commissions, expenses paid and aggregate write-ins for deductions	344,949,241	328,358,055	702,836,188
8. Dividends paid to policyholders			
9. Federal and foreign income taxes paid (recovered) net of \$272,606 tax on capital gains (losses)	7,134,465	20,010,599	66,666,939
10. Total (Lines 5 through 9)	1,148,990,806	994,664,957	2,196,884,159
11. Net cash from operations (Line 4 minus Line 10)	256,051,046	329,938,142	479,193,871
Cash from Investments			
12. Proceeds from investments sold, matured or repaid:			
12.1 Bonds	510,654,057	769,388,694	1,546,740,397
12.2 Stocks	72,819,618	4,672,302	6,888,827
12.3 Mortgage loans			
12.4 Real estate			
12.5 Other invested assets			
12.6 Net gains or (losses) on cash, cash equivalents and short-term investments			
12.7 Miscellaneous proceeds		12,104,720	
12.8 Total investment proceeds (Lines 12.1 to 12.7)	583,473,675	786,165,716	1,553,629,224
13. Cost of investments acquired (long-term only):			
13.1 Bonds	524,652,343	1,083,405,667	1,853,939,313
13.2 Stocks	1,587,042	6,782,080	11,312,146
13.3 Mortgage loans			
13.4 Real estate			
13.5 Other invested assets			
13.6 Miscellaneous applications	1,605	12,601,701	
13.7 Total investments acquired (Lines 13.1 to 13.6)	526,240,990	1,102,789,448	1,865,251,459
14. Net increase (or decrease) in contract loans and premium notes			
15. Net cash from investments (Line 12.8 minus Line 13.7 and Line 14)	57,232,685	(316,623,732)	(311,622,235)
Cash from Financing and Miscellaneous Sources			
16. Cash provided (applied):			
16.1 Surplus notes, capital notes			
16.2 Capital and paid in surplus, less treasury stock			
16.3 Borrowed funds			
16.4 Net deposits on deposit-type contracts and other insurance liabilities			
16.5 Dividends to stockholders			190,000,000
16.6 Other cash provided (applied)	(11,662,504)	(23,802,944)	14,462,661
17. Net cash from financing and miscellaneous sources (Line 16.1 through Line 16.4 minus Line 16.5 plus Line 16.6)	(11,662,504)	(23,802,944)	(175,537,339)
RECONCILIATION OF CASH, CASH EQUIVALENTS AND SHORT-TERM INVESTMENTS			
18. Net change in cash, cash equivalents and short-term investments (Line 11, plus Lines 15 and 17)	301,621,227	(10,488,534)	(7,965,703)
19. Cash, cash equivalents and short-term investments:			
19.1 Beginning of year	2,724,566	10,690,269	10,690,269
19.2 End of period (Line 18 plus Line 19.1)	304,345,793	201,735	2,724,566

Note: Supplemental disclosures of cash flow information for non-cash transactions:

--	--	--	--

NOTES TO FINANCIAL STATEMENTS

NOTE 1 Summary of Significant Accounting Policies and Going Concern

A. Accounting Practices

The accompanying statutory-basis financial statements of Progressive Northwestern Insurance Company (the “Company”) were prepared on the basis of accounting practices prescribed or permitted by the Ohio Department of Insurance (“DOI”).

The DOI requires insurance companies domiciled in the state of Ohio to prepare their statutory-basis financial statements in accordance with the National Association of Insurance Commissioners’ (“NAIC”) Accounting Practices and Procedures Manual subject to any deviations prescribed or permitted by the DOI. No deviations from NAIC statutory accounting practices (“NAIC SAP”) were used in preparing these statutory-basis financial statements as illustrated in the table below:

	SSAP #	F/S Page	F/S Line #	2022		2021	
NET INCOME							
(1) State basis (Page 4, Line 20, Columns 1 & 3)	XXX	XXX	XXX	\$	109,655,687	\$	165,832,233
(2) State Prescribed Practices that are an increase/ (decrease) from NAIC SAP:							
(3) State Permitted Practices that are an increase/(decrease) from NAIC SAP:							
(4) NAIC SAP (1-2-3=4)	XXX	XXX	XXX	\$	109,655,687	\$	165,832,233
SURPLUS							
(5) State basis (Page 3, Line 37, Columns 1 & 2)	XXX	XXX	XXX	\$	831,238,408	\$	809,783,149
(6) State Prescribed Practices that are an increase/(decrease) from NAIC SAP:							
(7) State Permitted Practices that are an increase/(decrease) from NAIC SAP:							
(8) NAIC SAP (5-6-7=8)	XXX	XXX	XXX	\$	831,238,408	\$	809,783,149

B. Use of Estimates in the Preparation of the Financial Statements

No significant changes

C. Accounting Policy

Premiums, acquisition costs, other income, and nonadmitted assets

No significant changes

(1) Cash, cash equivalents, and short-term investments

No significant changes

(2) Bonds

Investment grade bond valuations are based on NAIC designations or NAIC Credit Rating Provider (“CRP”) designations from the Acceptable Rating Organization (“ARO”) list and are reported at amortized cost using the scientific method which closely approximates the effective interest method. Non-investment grade bond valuations are also based on NAIC designations or NAIC CRP-ARO designations and are reported at the lower of amortized cost or fair market value. Loan-backed and structured securities follow the guidance prescribed by SSAP No. 43R, for the determination of the bond valuation and reporting designation. The difference between the original cost and redemption value of these securities is recognized over the lives of the respective issues and included in net investment gain.

(3) Common stocks

No significant changes

(4) Preferred stocks

No significant changes

(5) Mortgage loans

Not applicable

(6) Loan-backed securities

Loan-backed and structured securities are accounted for as prescribed by Statement of Statutory Accounting Principles No. 43R, Loan-backed and Structured Securities. These securities are generally stated at amortized cost as determined by the estimated value of future cash flows. Prepayment assumptions for loan-backed and structured debt securities are obtained from available market data, broker/dealers, and /or internal estimates, and are consistent with current interest rate and economic trends. See Note 5.D.

(7) Investments in subsidiaries, controlled and affiliated entities

Not applicable

(8) Investments in joint ventures, partnerships and limited liability companies

Not applicable

NOTES TO FINANCIAL STATEMENTS

(9)	Derivatives	Not applicable
	Repurchase agreements and reverse repurchase agreements	No significant changes
	Fair market values, realized gains and losses, and other-than-temporary impairment	No significant changes
(10)	Premium deficiency calculation	No significant changes
(11)	Loss and loss adjustment expense reserves	No significant changes
(12)	Capitalization of assets	No significant changes
(13)	Pharmaceutical rebate receivables	Not applicable
D.	Going Concern	Management continuously monitors the Company's financial results and compliance with regulatory requirements and found no reason to expect the Company to not continue as a going concern.

NOTE 2 Accounting Changes and Corrections of Errors

Not applicable

NOTE 3 Business Combinations and Goodwill

Not applicable

NOTE 4 Discontinued Operations

Not applicable

NOTE 5 Investments

A.	Mortgage Loans, including Mezzanine Real Estate Loans	Not applicable
B.	Debt Restructuring	Not applicable
C.	Reverse Mortgages	Not applicable

NOTES TO FINANCIAL STATEMENTS

D. Loan-Backed Securities

- (1) The sources used to determine prepayment assumptions are derived from updated cash flows from widely utilized reputable industry sources. The Company's portfolio managers review the available cash flow data and prepayment assumptions and make adjustments based on current performance indicators on the underlying assets (e.g., delinquency rates, foreclosure rates, and default rates), credit support (via current levels of subordination), and historical credit ratings.
- (2) The Company has not recorded an other-than-temporary impairment for loan-backed and structured debt securities during the current year.
- (3) The Company has not recorded an other-than-temporary impairment for loan-backed and structured debt securities during the current year.
- (4) At the end of the reporting period, the composition of fair value and gross unrealized losses on loan-backed and structured debt securities by the length of time that individual securities have been in a continuous unrealized loss position is as follows:

a) The aggregate amount of unrealized losses:	
1. Less than 12 Months	\$ 60,422,965
2. 12 Months or Longer	\$ 1,694,122
b)The aggregate related fair value of securities with unrealized losses:	
1. Less than 12 Months	\$ 792,292,026
2. 12 Months or Longer	\$ 24,709,057
- (5) Under SSAP No. 43R, the Company analyzes its structured debt securities to determine if the Company intends to sell, or if it is more likely than not that the Company will be required to sell, the security prior to recovery and, if so, the Company writes down the security to its current fair market value with the entire amount of the write-down recorded as a realized loss. To the extent that it is more likely than not that the Company will hold the debt security until recovery (which could be maturity), the Company determines if any of the decline in value is due to a credit loss (i.e., where the present value of cash flows expected to be collected is lower than the amortized cost basis of the security) and, if so, the Company recognizes that portion of the impairment as a realized loss.

E. Dollar Repurchase Agreements and/or Securities Lending Transactions

Not applicable

F. Repurchase Agreements Transactions Accounted for as Secured Borrowing

Not applicable

G. Reverse Repurchase Agreements Transactions Accounted for as Secured Borrowing

Not applicable

H. Repurchase Agreements Transactions Accounted for as a Sale

Not applicable

I. Reverse Repurchase Agreements Transactions Accounted for as a Sale

Not applicable

J. Real Estate

Not applicable

K. Low Income Housing tax Credits (LIHTC)

Not applicable

L. Restricted Assets

No significant changes

M. Working Capital Finance Investments

Not applicable

N. Offsetting and Netting of Assets and Liabilities

Not applicable

O. 5GI Securities

Not applicable

P. Short Sales

Not applicable

Q. Prepayment Penalty and Acceleration Fees

Not applicable

R. Reporting Entity's Share of Cash Pool by Asset Type

Not applicable

NOTE 6 Joint Ventures, Partnerships and Limited Liability Companies

Not applicable

NOTES TO FINANCIAL STATEMENTS

NOTE 7 Investment Income

No significant changes

NOTE 8 Derivative Instruments

Not applicable

NOTE 9 Income Taxes

No significant changes

NOTE 10 Information Concerning Parent, Subsidiaries, Affiliates and Other Related Parties

No significant changes

NOTE 11 Debt

Not applicable

NOTE 12 Retirement Plans, Deferred Compensation, Postemployment Benefits and Compensated Absences and Other Postretirement Benefit Plans

Not applicable

NOTE 13 Capital and Surplus, Dividend Restrictions and Quasi-Reorganizations

No significant changes

NOTE 14 Liabilities, Contingencies and Assessments

A. Contingent Commitments

Not applicable

B. Assessments

No significant changes

C. Gain Contingencies

Not applicable

D. Claims related extra contractual obligations and bad faith losses stemming from lawsuits

	Direct
(1) The company paid the following amounts in the reporting period to settle claims related extra contractual obligations or bad faith claims stemming from lawsuits	\$ 86,490
(2) Number of claims where amounts were paid to settle claims related extra contractual obligations or bad faith claims resulting from lawsuits during the reporting period	0-25 Claims
(3) Indicate whether claim count information is disclosed per claim or per claimant	Per Claimant

E. Product Warranties

Not applicable

F. Joint and Several Liabilities

Not applicable

NOTES TO FINANCIAL STATEMENTS

G. All Other Contingencies

The Company routinely assesses the collectability of premiums and agents' balances receivable and records a bad debt reserve for amounts exceeding the nonadmitted balance that the Company believes are uncollectible.

The Company is named as defendant in a lawsuit arising out of its insurance operations. All legal actions relating to claims made under insurance policies are considered by the Company in establishing its loss and LAE reserves. The Company also has, on a net basis, potential exposure relating to lawsuits due to its participation in a 100% pooling reinsurance agreement for which it is allocated litigation expenses.

The pending lawsuits summarized below are in various stages of development, and the outcomes are uncertain or, if probable and estimable, are accrued in these statutory-basis financial statements. At the statement date, except to the extent an accrual has been established, the Company does not consider the losses from these pending cases to be both probable and estimable and is unable to estimate a range of loss at this time.

There was an individual lawsuit brought by an auto body repair shop alleging breach of contract, unjust enrichment, unlawful interference with repair, or bad faith.

There was a putative class action lawsuit alleging the Company's uninsured motorist coverage is illusory.

There was a putative class action lawsuit alleging that the Company's uninsured/underinsured motorist coverage on a single vehicle policy is illusory.

There was a putative class action lawsuit alleging the Company improperly reduces or terminates Med-Pay and/or personal injury protection benefits.

There was a qui tam lawsuit challenging the Company's reimbursement to Medicare Advantage Plans on first-party and/or third-party medical claims and settlements with insureds and claimants.

NOTE 15 Leases

Not applicable

NOTE 16 Information About Financial Instruments With Off-Balance Sheet Risk and Financial Instruments With Concentrations of Credit Risk

Not applicable

NOTE 17 Sale, Transfer and Servicing of Financial Assets and Extinguishments of Liabilities

Not applicable

NOTE 18 Gain or Loss to the Reporting Entity from Uninsured Plans and the Uninsured Portion of Partially Insured Plans

Not applicable

NOTE 19 Direct Premium Written/Produced by Managing General Agents/Third Party Administrators

Not applicable

NOTE 20 Fair Value Measurements

A. Inputs Used for Assets and Liabilities Measured at Fair Value

(1) Fair Value Measurements by Levels 1, 2, and 3

The Company categorizes its financial instruments, based on the degree of subjectivity inherent in the method by which they are valued, into a fair value hierarchy of three levels, as follows:

Level 1 - Inputs are unadjusted, quoted prices in active markets for identical instruments at the measurement date (e.g., U.S. government obligations, which are continually priced on a daily basis, active exchange-traded equity securities, and certain short-term securities).

Level 2 - Inputs (other than quoted prices included within Level 1) that are observable for the instrument either directly or indirectly (e.g., certain corporate and municipal bonds and certain preferred stocks). This includes: (i) quoted prices for similar instruments in active markets, (ii) quoted prices for identical or similar instruments in markets that are not active, (iii) inputs other than quoted prices that are observable for the instruments, and (iv) inputs that are derived principally from or corroborated by observable market data by correlation or other means.

Level 3 - Inputs that are unobservable. Unobservable inputs reflect the Company's subjective evaluation about the assumptions market participants would use in pricing the financial instrument (e.g., certain structured securities and privately held investments).

Determining the fair value of the investment portfolio is the responsibility of the Company's management. As part of the responsibility, management evaluates whether a market is distressed or inactive in determining the fair value for the Company's portfolio. Management reviews certain market level inputs to evaluate whether sufficient activity, volume, and new issuances exist to create an active market. Based on this evaluation, management concluded that there was sufficient activity related to the sectors and securities for which they obtained valuations.

The valuations classified as either Level 1 or Level 2 in the table below are priced exclusively by external sources, including: pricing vendors, dealers/market makers, and exchange-quoted prices. The Company did not have any transfers between Level 1 and Level 2. At the end of each reporting period, the Company evaluates whether or not any event has occurred or circumstances have changed that would cause an instrument to be transferred into or out of Level 3.

Fair Value Measurements at the reporting date:

Description for each class of asset or liability	(Level 1)	(Level 2)	(Level 3)	Net Asset Value (NAV)	Total
a. Assets at fair value					
Bonds industrial & miscellaneous	\$ -	\$ 123,859,964	\$ -		\$ 123,859,964
Common stock industrial & miscellaneous	\$ 181,512,869	\$ -	\$ -		\$ 181,512,869
Preferred stock industrial & miscellaneous					\$ -
Total assets at fair value/NAV	\$ 181,512,869	\$ 123,859,964	\$ -	\$ -	\$ 305,372,833

The Company does not have any liabilities measured at fair value on the balance sheet.

NOTES TO FINANCIAL STATEMENTS

(2) Roll Forward of Level 3 Items

Not applicable

(3) Policy on Transfers Into and Out of Level 3 input

At the end of each reporting period, the Company evaluates whether or not any event has occurred or circumstances have changed that would cause an instrument to be transferred into or out of Level 3.

(4) Inputs and Techniques Used for Level 2 and Level 3 Fair Values

See Note 20.A.1 above.

(5) Derivative Fair Values

Not applicable

B. Other Fair Value Disclosures

Not applicable

C. Fair Values for all Financial Instruments by Levels 1, 2, and 3

The table below represents the fair value of all financial instruments at the reporting date, however, not all financial instruments are reported at fair value in the Company's financial statements.

Type of Financial Instrument	Aggregate Fair Value	Admitted Assets	(Level 1)	(Level 2)	(Level 3)	Net Asset Value (NAV)	Not Practicable (Carrying Value)
Bonds	\$ 2,409,162,048	\$ 2,551,656,600	\$ 765,225,086	\$ 1,643,936,962	\$ -		
Preferred stock							
Common stock	\$ 181,512,869	\$ 181,512,869	\$ 181,512,869	\$ -	\$ -		
Cash equivalents	\$ 304,323,324	\$ 304,323,324	\$ 304,323,324	\$ -	\$ -		
Short-term investments							

D. Not Practicable to Estimate Fair Value

Not applicable

E. NAV Practical Expedient Investments

Not applicable

NOTE 21 Other Items

A. Unusual or Infrequent Items

Not applicable

B. Troubled Debt Restructuring: Debtors

Not applicable

C. Other Disclosures

Not applicable

D. Business Interruption Insurance Recoveries

Not applicable

E. State Transferable and Non-transferable Tax Credits

No significant changes

F. Subprime Mortgage Related Risk Exposure

No significant changes

G. Insurance-Linked Securities (ILS) Contracts

Not applicable

H. The Amount That Could Be Realized on Life Insurance Where the Reporting Entity is Owner and Beneficiary or Has Otherwise Obtained Rights to Control the Policy

Not applicable

NOTE 22 Events Subsequent

Subsequent events have been considered through August 10, 2022 for these statutory-basis financial statements that were available for issuance by August 15, 2022. There were no events occurring subsequent to the end of the quarter that merited recognition or disclosure in these statements.

NOTES TO FINANCIAL STATEMENTS

NOTE 23 Reinsurance

No significant changes

NOTE 24 Retrospectively Rated Contracts & Contracts Subject to Redetermination

A. Method Used to Estimate

Not applicable

B. Method Used to Record

Not applicable

C. Amount and Percent of Net Retrospective Premiums

Not applicable

D. Medical Loss Ratio Rebates

Not applicable

E. Calculation of Nonadmitted Accrued Retrospective Premiums

Not applicable

F. Risk Sharing Provisions of the Affordable Care Act

(1) Did the reporting entity write accident and health insurance premium which is subject to the Affordable Care Act risk sharing provisions (YES/NO)? Yes [] No [X]

(2) Impact of Risk Sharing Provisions of the Affordable Care Act on Admitted Assets, Liabilities and Revenue for the Current Year

Not applicable

(3) Roll-Forward of Prior Year ACA Risk-Sharing Provisions

Not applicable

(4) Roll-Forward of Risk Corridors Asset and Liability Balances by Program Benefit Year

Not applicable

(5) ACA Risk Corridors Receivable as of Reporting Date

Not applicable

NOTE 25 Change in Incurred Losses and Loss Adjustment Expenses

A. Change in Incurred Losses and Loss Adjustment Expenses

Incurred losses and LAE attributable to insured events of prior accident years increased by \$3,453,414 in 2022, which is less than 1.0% of the total prior year net unpaid losses and LAE of \$1,188,947,330. The unfavorable development is primarily due to more supplemental payments on previously closed features than anticipated in private passenger auto liability, partially offset by more salvage and subrogation recoveries than expected in auto physical damage and lower than anticipated claims adjusting expenses.

B. Information about Significant Changes in Methodologies and Assumptions

Not applicable

NOTE 26 Intercompany Pooling Arrangements

No significant changes

NOTE 27 Structured Settlements

Not applicable

NOTE 28 Health Care Receivables

Not applicable

NOTE 29 Participating Policies

Not applicable

NOTE 30 Premium Deficiency Reserves

No significant changes

NOTES TO FINANCIAL STATEMENTS

NOTE 31 High Deductibles

Not applicable

NOTE 32 Discounting of Liabilities for Unpaid Losses or Unpaid Loss Adjustment Expenses

Not applicable

NOTE 33 Asbestos/Environmental Reserves

No significant changes

NOTE 34 Subscriber Savings Accounts

Not applicable

NOTE 35 Multiple Peril Crop Insurance

Not applicable

NOTE 36 Financial Guaranty Insurance

Not applicable

GENERAL INTERROGATORIES

PART 1 - COMMON INTERROGATORIES

GENERAL

- 1.1

Did the reporting entity experience any material transactions requiring the filing of Disclosure of Material Transactions with the State of Domicile, as required by the Model Act?

Yes [☐] No [☒]
- 1.2

If yes, has the report been filed with the domiciliary state?

Yes [☐] No [☐]
- 2.1

Has any change been made during the year of this statement in the charter, by-laws, articles of incorporation, or deed of settlement of the reporting entity?

Yes [☐] No [☒]
- 2.2

If yes, date of change:
- 3.1

Is the reporting entity a member of an Insurance Holding Company System consisting of two or more affiliated persons, one or more of which is an insurer?

If yes, complete Schedule Y, Parts 1 and 1A.

Yes [☒] No [☐]
- 3.2

Have there been any substantial changes in the organizational chart since the prior quarter end?

Yes [☒] No [☐]
- 3.3

If the response to 3.2 is yes, provide a brief description of those changes.
EFFECTIVE 4/1/2022 PROGRESSIVE PROPERTY INSURANCE COMPANY WAS REDOMESTICATED TO LOUISIANA.
- 3.4

Is the reporting entity publicly traded or a member of a publicly traded group?

Yes [☒] No [☐]
- 3.5

If the response to 3.4 is yes, provide the CIK (Central Index Key) code issued by the SEC for the entity/group.

0000080661
- 4.1

Has the reporting entity been a party to a merger or consolidation during the period covered by this statement?

Yes [☐] No [☒]
- 4.2

If yes, provide the name of the entity, NAIC Company Code, and state of domicile (use two letter state abbreviation) for any entity that has ceased to exist as a result of the merger or consolidation.

1	2	3
Name of Entity	NAIC Company Code	State of Domicile
.....
5.

If the reporting entity is subject to a management agreement, including third-party administrator(s), managing general agent(s), attorney-in-fact, or similar agreement, have there been any significant changes regarding the terms of the agreement or principals involved?

If yes, attach an explanation.
RENEWED THE JOINT SERVICING (COST ALLOCATION) AGREEMENT BETWEEN PROGRESSIVE DIRECT INSURANCE COMPANY AND PROGRESSIVE SELECT INSURANCE COMPANY. IT IS EFFECTIVE FROM 4/11/2022-4/11/2027 (APPROVED BY OHIO AND FLORIDA).

Yes [☒] No [☐] N/A [☐]
- 6.1

State as of what date the latest financial examination of the reporting entity was made or is being made.

12/31/2017
- 6.2

State the as of date that the latest financial examination report became available from either the state of domicile or the reporting entity. This date should be the date of the examined balance sheet and not the date the report was completed or released.

12/31/2017
- 6.3

State as of what date the latest financial examination report became available to other states or the public from either the state of domicile or the reporting entity. This is the release date or completion date of the examination report and not the date of the examination (balance sheet date).

05/08/2019
- 6.4

By what department or departments?
OHIO
- 6.5

Have all financial statement adjustments within the latest financial examination report been accounted for in a subsequent financial statement filed with Departments?

Yes [☐] No [☐] N/A [☒]
- 6.6

Have all of the recommendations within the latest financial examination report been complied with?

Yes [☒] No [☐] N/A [☐]
- 7.1

Has this reporting entity had any Certificates of Authority, licenses or registrations (including corporate registration, if applicable) suspended or revoked by any governmental entity during the reporting period?

Yes [☐] No [☒]
- 7.2

If yes, give full information:
- 8.1

Is the company a subsidiary of a bank holding company regulated by the Federal Reserve Board?

Yes [☐] No [☒]
- 8.2

If response to 8.1 is yes, please identify the name of the bank holding company.
- 8.3

Is the company affiliated with one or more banks, thrifts or securities firms?

Yes [☐] No [☒]
- 8.4

If response to 8.3 is yes, please provide below the names and location (city and state of the main office) of any affiliates regulated by a federal regulatory services agency [i.e. the Federal Reserve Board (FRB), the Office of the Comptroller of the Currency (OCC), the Federal Deposit Insurance Corporation (FDIC) and the Securities Exchange Commission (SEC)] and identify the affiliate's primary federal regulator.

1	2	3	4	5	6
Affiliate Name	Location (City, State)	FRB	OCC	FDIC	SEC
.....				

STATEMENT AS OF JUNE 30, 2022 OF THE PROGRESSIVE NORTHWESTERN INSURANCE COMPANY

GENERAL INTERROGATORIES

- 9.1

Are the senior officers (principal executive officer, principal financial officer, principal accounting officer or controller, or persons performing similar functions) of the reporting entity subject to a code of ethics, which includes the following standards?
(a) Honest and ethical conduct, including the ethical handling of actual or apparent conflicts of interest between personal and professional relationships;
(b) Full, fair, accurate, timely and understandable disclosure in the periodic reports required to be filed by the reporting entity;
(c) Compliance with applicable governmental laws, rules and regulations;
(d) The prompt internal reporting of violations to an appropriate person or persons identified in the code; and
(e) Accountability for adherence to the code.

Yes [X] No []
- 9.1.1

If the response to 9.1 is No, please explain:
- 9.2

Has the code of ethics for senior managers been amended?

Yes [] No [X]
- 9.2.1

If the response to 9.2 is Yes, provide information related to amendment(s).
- 9.3

Have any provisions of the code of ethics been waived for any of the specified officers?

Yes [] No [X]
- 9.3.1

If the response to 9.3 is Yes, provide the nature of any waiver(s).

FINANCIAL

- 10.1

Does the reporting entity report any amounts due from parent, subsidiaries or affiliates on Page 2 of this statement?

Yes [X] No []
- 10.2

If yes, indicate any amounts receivable from parent included in the Page 2 amount:

\$

INVESTMENT

- 11.1

Were any of the stocks, bonds, or other assets of the reporting entity loaned, placed under option agreement, or otherwise made available for use by another person? (Exclude securities under securities lending agreements.)

Yes [] No [X]
- 11.2

If yes, give full and complete information relating thereto:
12.

Amount of real estate and mortgages held in other invested assets in Schedule BA:

\$
13.

Amount of real estate and mortgages held in short-term investments:

\$
- 14.1

Does the reporting entity have any investments in parent, subsidiaries and affiliates?

Yes [] No [X]
- 14.2

If yes, please complete the following:
- | | 1 | 2 |
|---|---|--|
| | Prior Year-End
Book/Adjusted
Carrying Value | Current Quarter
Book/Adjusted
Carrying Value |
| 14.21 Bonds | \$ | \$ |
| 14.22 Preferred Stock | \$ | \$ |
| 14.23 Common Stock | \$ | \$ |
| 14.24 Short-Term Investments | \$ | \$ |
| 14.25 Mortgage Loans on Real Estate | \$ | \$ |
| 14.26 All Other | \$ | \$ |
| 14.27 Total Investment in Parent, Subsidiaries and Affiliates (Subtotal Lines 14.21 to 14.26) | \$ | \$ |
| 14.28 Total Investment in Parent included in Lines 14.21 to 14.26 above | \$ | \$ |
- 15.1

Has the reporting entity entered into any hedging transactions reported on Schedule DB?

Yes [] No [X]
- 15.2

If yes, has a comprehensive description of the hedging program been made available to the domiciliary state?
If no, attach a description with this statement.

Yes [] No [] N/A [X]
16.

For the reporting entity's security lending program, state the amount of the following as of the current statement date:
- 16.1

Total fair value of reinvested collateral assets reported on Schedule DL, Parts 1 and 2.

\$
- 16.2

Total book adjusted/carrying value of reinvested collateral assets reported on Schedule DL, Parts 1 and 2

\$
- 16.3

Total payable for securities lending reported on the liability page.

\$

STATEMENT AS OF JUNE 30, 2022 OF THE PROGRESSIVE NORTHWESTERN INSURANCE COMPANY

GENERAL INTERROGATORIES

17. Excluding items in Schedule E - Part 3 - Special Deposits, real estate, mortgage loans and investments held physically in the reporting entity's offices, vaults or safety deposit boxes, were all stocks, bonds and other securities, owned throughout the current year held pursuant to a custodial agreement with a qualified bank or trust company in accordance with Section 1, III - General Examination Considerations, F. Outsourcing of Critical Functions, Custodial or Safekeeping Agreements of the NAIC Financial Condition Examiners Handbook? Yes [X] No []
- 17.1 For all agreements that comply with the requirements of the NAIC Financial Condition Examiners Handbook, complete the following:

1 Name of Custodian(s)	2 Custodian Address
CITIBANK, N.A.	338 GREENWICH STREET NEW YORK, NY 10013
STATE STREET	801 PENNSYLVANIA AVE., KANSAS CITY, MO 64105

- 17.2 For all agreements that do not comply with the requirements of the NAIC Financial Condition Examiners Handbook, provide the name, location and a complete explanation:

1 Name(s)	2 Location(s)	3 Complete Explanation(s)

- 17.3 Have there been any changes, including name changes, in the custodian(s) identified in 17.1 during the current quarter? Yes [] No [X]
- 17.4 If yes, give full information relating thereto:

1 Old Custodian	2 New Custodian	3 Date of Change	4 Reason

- 17.5 Investment management – Identify all investment advisors, investment managers, broker/dealers, including individuals that have the authority to make investment decisions on behalf of the reporting entity. For assets that are managed internally by employees of the reporting entity, note as such. ["...that have access to the investment accounts"; "...handle securities"]

1 Name of Firm or Individual	2 Affiliation
PROGRESSIVE CAPITAL MANAGEMENT CORP	A.....
STATE STREET GLOBAL ADVISORS	U.....

- 17.5097 For those firms/individuals listed in the table for Question 17.5, do any firms/individuals unaffiliated with the reporting entity (i.e. designated with a "U") manage more than 10% of the reporting entity's invested assets?..... Yes [] No [X]

- 17.5098 For firms/individuals unaffiliated with the reporting entity (i.e. designated with a "U") listed in the table for Question 17.5, does the total assets under management aggregate to more than 50% of the reporting entity's invested assets?..... Yes [] No [X]

- 17.6 For those firms or individuals listed in the table for 17.5 with an affiliation code of "A" (affiliated) or "U" (unaffiliated), provide the information for the table below.

1	2	3	4	5
Central Registration Depository Number	Name of Firm or Individual	Legal Entity Identifier (LEI)	Registered With	Investment Management Agreement (IMA) Filed
N/A	PROGRESSIVE CAPITAL MANAGEMENT CORP	5493001ZR2ZQPS7K1G26	N/A	DS.....
30107	STATE STREET GLOBAL ADVISORS	549300BYW0XNH286YR10	SEC	DS.....

- 18.1 Have all the filing requirements of the Purposes and Procedures Manual of the NAIC Investment Analysis Office been followed? Yes [X] No []
- 18.2 If no, list exceptions:

19. By self-designating 5GI securities, the reporting entity is certifying the following elements for each self-designated 5GI security:
- a. Documentation necessary to permit a full credit analysis of the security does not exist or an NAIC CRP credit rating for an FE or PL security is not available.
 - b. Issuer or obligor is current on all contracted interest and principal payments.
 - c. The insurer has an actual expectation of ultimate payment of all contracted interest and principal.
- Has the reporting entity self-designated 5GI securities? Yes [] No [X]

20. By self-designating PLGI securities, the reporting entity is certifying the following elements of each self-designated PLGI security:
- a. The security was purchased prior to January 1, 2018.
 - b. The reporting entity is holding capital commensurate with the NAIC Designation reported for the security.
 - c. The NAIC Designation was derived from the credit rating assigned by an NAIC CRP in its legal capacity as a NRSRO which is shown on a current private letter rating held by the insurer and available for examination by state insurance regulators.
 - d. The reporting entity is not permitted to share this credit rating of the PL security with the SVO.
- Has the reporting entity self-designated PLGI securities? Yes [] No [X]

21. By assigning FE to a Schedule BA non-registered private fund, the reporting entity is certifying the following elements of each self-designated FE fund:
- a. The shares were purchased prior to January 1, 2019.
 - b. The reporting entity is holding capital commensurate with the NAIC Designation reported for the security.
 - c. The security had a public credit rating(s) with annual surveillance assigned by an NAIC CRP in its legal capacity as an NRSRO prior to January 1, 2019.
 - d. The fund only or predominantly holds bonds in its portfolio.
 - e. The current reported NAIC Designation was derived from the public credit rating(s) with annual surveillance assigned by an NAIC CRP in its legal capacity as an NRSRO.
 - f. The public credit rating(s) with annual surveillance assigned by an NAIC CRP has not lapsed.
- Has the reporting entity assigned FE to Schedule BA non-registered private funds that complied with the above criteria? Yes [] No [X]

GENERAL INTERROGATORIES

PART 2 - PROPERTY & CASUALTY INTERROGATORIES

1.

If the reporting entity is a member of a pooling arrangement, did the agreement or the reporting entity's participation change?
If yes, attach an explanation.

Yes [] No [X] N/A []
2.

Has the reporting entity reinsured any risk with any other reporting entity and agreed to release such entity from liability, in whole or in part, from any loss that may occur on the risk, or portion thereof, reinsured?
If yes, attach an explanation.

Yes [] No [X]
- 3.1

Have any of the reporting entity's primary reinsurance contracts been canceled?

Yes [] No [X]
- 3.2

If yes, give full and complete information thereto.
- 4.1

Are any of the liabilities for unpaid losses and loss adjustment expenses other than certain workers' compensation tabular reserves (see Annual Statement Instructions pertaining to disclosure of discounting for definition of " tabular reserves") discounted at a rate of interest greater than zero?

Yes [] No [X]
- 4.2

If yes, complete the following schedule:

			TOTAL DISCOUNT				DISCOUNT TAKEN DURING PERIOD			
1	2	3	4	5	6	7	8	9	10	11
Line of Business	Maximum Interest	Discount Rate	Unpaid Losses	Unpaid LAE	IBNR	TOTAL	Unpaid Losses	Unpaid LAE	IBNR	TOTAL
TOTAL										

5.

Operating Percentages:
- 5.1

A&H loss percent

0.000 %
- 5.2

A&H cost containment percent

0.000 %
- 5.3

A&H expense percent excluding cost containment expenses

0.000 %
- 6.1

Do you act as a custodian for health savings accounts?

Yes [] No [X]
- 6.2

If yes, please provide the amount of custodial funds held as of the reporting date\$.....
- 6.3

Do you act as an administrator for health savings accounts?

Yes [] No [X]
- 6.4

If yes, please provide the balance of the funds administered as of the reporting date\$.....
7.

Is the reporting entity licensed or chartered, registered, qualified, eligible or writing business in at least two states?

Yes [X] No []
- 7.1

If no, does the reporting entity assume reinsurance business that covers risks residing in at least one state other than the state of domicile of the reporting entity?

Yes [] No []

STATEMENT AS OF JUNE 30, 2022 OF THE PROGRESSIVE NORTHWESTERN INSURANCE COMPANY

SCHEDULE F - CEDED REINSURANCE

Showing All New Reinsurers - Current Year to Date

[illegible]

SCHEDULE T - EXHIBIT OF PREMIUMS WRITTEN

Current Year to Date - Allocated by States and Territories							
States, etc.	1 Active Status (a)	Direct Premiums Written		Direct Losses Paid (Deducting Salvage)		Direct Losses Unpaid	
		2 Current Year To Date	3 Prior Year To Date	4 Current Year To Date	5 Prior Year To Date	6 Current Year To Date	7 Prior Year To Date
1. Alabama.....AL	N						
2. Alaska.....AK	L	1,754,954	1,753,700	315,230	377,198	493,818	547,589
3. Arizona.....AZ	L			340			
4. Arkansas.....AR	L	84,629,119	82,238,800	58,482,559	37,752,692	40,129,186	33,257,564
5. California.....CA	L						
6. Colorado.....CO	L						
7. Connecticut.....CT	L			248,653	16,114	1,855	735,663
8. Delaware.....DE	L			(800)	(450)		
9. District of Columbia.....DC	L						
10. Florida.....FL	N						
11. Georgia.....GA	L			(1,297)	(1,823)		
12. Hawaii.....HI	L				1,154	3	181
13. Idaho.....ID	L	42,868,609	40,172,880	22,370,090	19,891,080	22,613,844	20,381,002
14. Illinois.....IL	N						
15. Indiana.....IN	L		(3,479)	(3,921)	(1,834)	100,000	100,000
16. Iowa.....IA	L						
17. Kansas.....KS	L	91,666,538	85,892,667	58,012,985	45,509,179	51,961,133	41,112,128
18. Kentucky.....KY	L						
19. Louisiana.....LA	L						
20. Maine.....ME	L	40,373,999	38,856,888	22,786,857	19,358,338	31,629,413	30,065,116
21. Maryland.....MD	L						
22. Massachusetts.....MA	N						
23. Michigan.....MI	Q						
24. Minnesota.....MN	L	(5,898)		(2,390)	(3,124)		
25. Mississippi.....MS	L						
26. Missouri.....MO	L	7,144,274	8,299,863	2,495,947	3,839,731	2,880,992	3,964,480
27. Montana.....MT	L	40,747,490	36,374,136	19,668,819	14,885,249	21,983,081	17,111,145
28. Nebraska.....NE	L						
29. Nevada.....NV	L	(2,590)				18,419	18,666
30. New Hampshire.....NH	N						
31. New Jersey.....NJ	L						
32. New Mexico.....NM	L	(487)		(6,307)	(1,505)		
33. New York.....NY	L	26,965,147	25,913,755	8,455,347	8,529,277	12,238,589	10,748,925
34. North Carolina.....NC	L						
35. North Dakota.....ND	L	41,363,725	36,545,835	25,233,590	17,095,757	17,174,676	15,020,117
36. Ohio.....OH	L						
37. Oklahoma.....OK	L						
38. Oregon.....OR	L						
39. Pennsylvania.....PA	N						
40. Rhode Island.....RI	L	15,630	18,345	3,068	10,522	997	1,175
41. South Carolina.....SC	L						
42. South Dakota.....SD	L						
43. Tennessee.....TN	L			(480)	(880)		
44. Texas.....TX	L						
45. Utah.....UT	L			(17)	(37)		
46. Vermont.....VT	N						
47. Virginia.....VA	L	483,745	961,226	69,773	470,725	517,321	696,562
48. Washington.....WA	L	59,751	75,358	101,853	116,015	261,451	741,029
49. West Virginia.....WV	L						
50. Wisconsin.....WI	L						
51. Wyoming.....WY	N						
52. American Samoa.....AS	N						
53. Guam.....GU	N						
54. Puerto Rico.....PR	N						
55. U.S. Virgin Islands.....VI	N						
56. Northern Mariana Islands.....MP	N						
57. Canada.....CAN	N						
58. Aggregate Other Alien OT	XXX						
59. Totals	XXX	378,064,005	357,099,974	218,229,900	167,843,378	202,004,776	174,501,342
DETAILS OF WRITE-INS							
58001.	XXX						
58002.	XXX						
58003.	XXX						
58998. Summary of remaining write-ins for Line 58 from overflow page	XXX						
58999. Totals (Lines 58001 through 58003 plus 58998)(Line 58 above)	XXX						

(a) Active Status Counts:

L - Licensed or Chartered - Licensed Insurance carrier or domiciled RRG.....42

E - Eligible - Reporting entities eligible or approved to write surplus lines in the state (other than their state of domicile - see DSLI).....

D - Domestic Surplus Lines Insurer (DSLI) - Reporting entities authorized to write surplus lines in the state of domicile.....

R - Registered - Non-domiciled RRGs.....

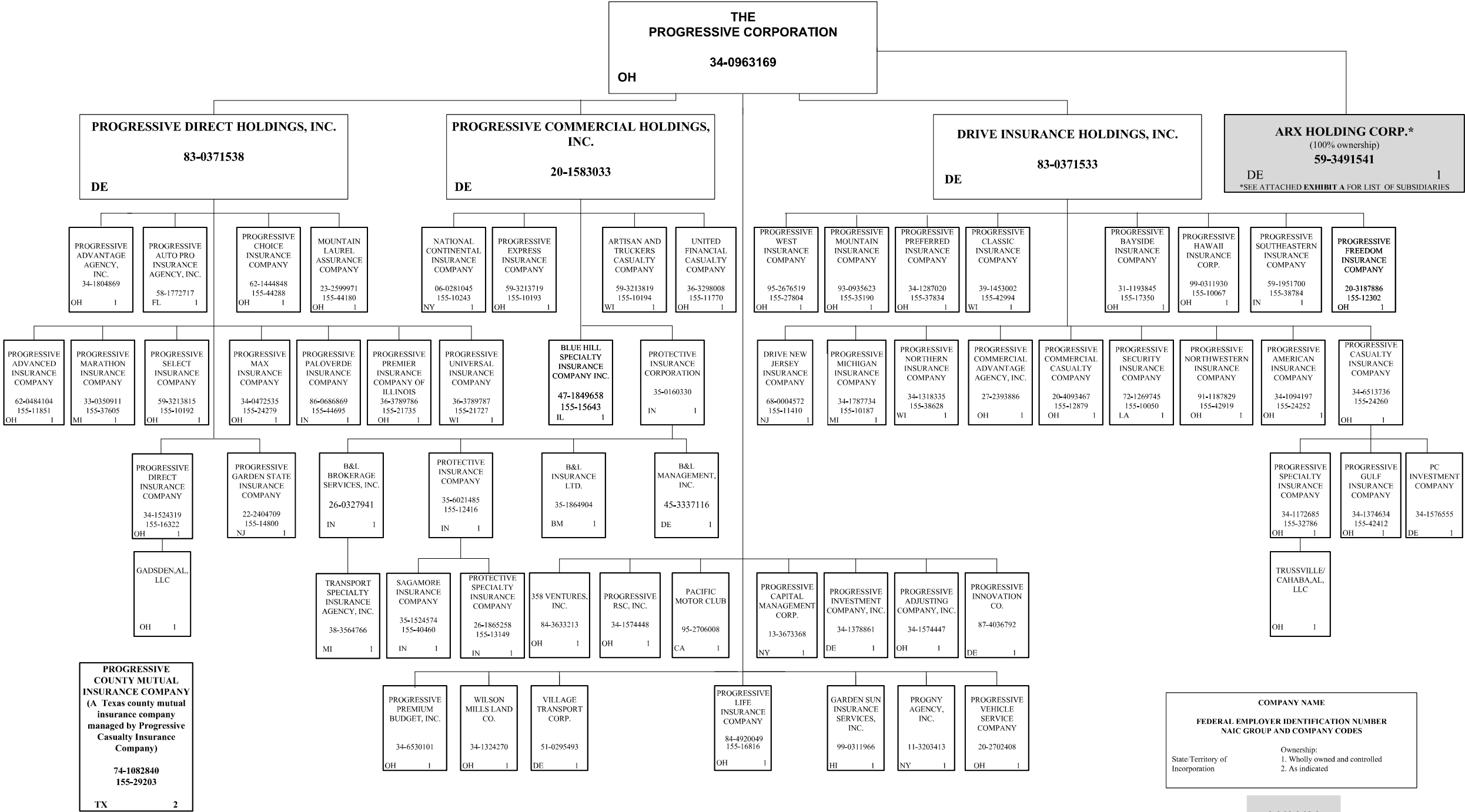
Q - Qualified - Qualified or accredited reinsurer.....1

N - None of the above - Not allowed to write business in the state14

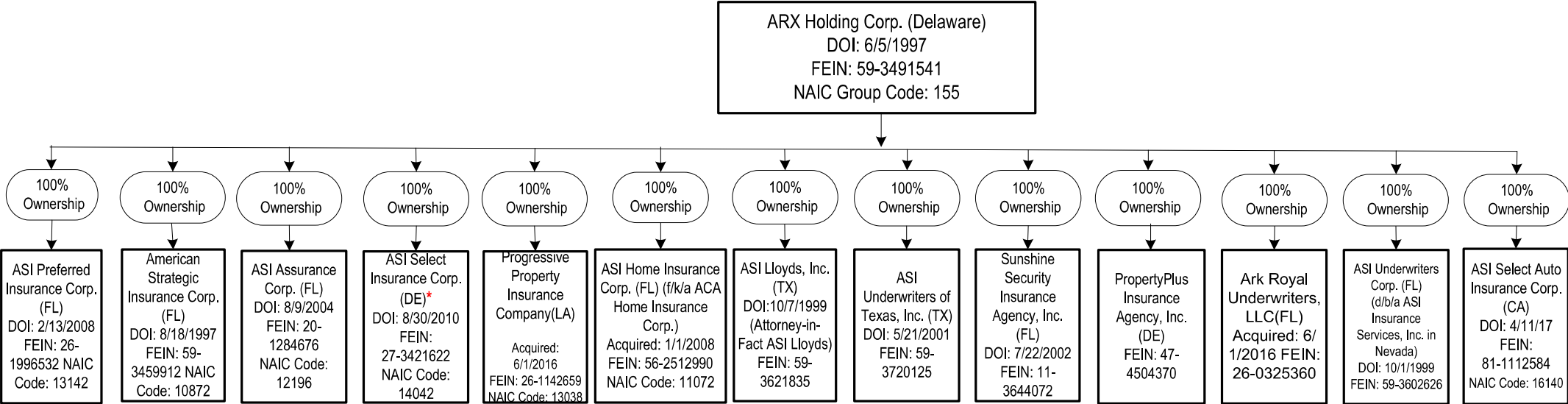
STATEMENT AS OF JUNE 30, 2022 OF THE PROGRESSIVE NORTHWESTERN INSURANCE COMPANY

SCHEDULE Y – INFORMATION CONCERNING ACTIVITIES OF INSURER MEMBERS OF A HOLDING COMPANY GROUP -- PART 1 – ORGANIZATIONAL CHART

11



SCHEDULE Y – INFORMATION CONCERNING ACTIVITIES OF INSURER MEMBERS OF A HOLDING COMPANY GROUP -- PART 1 – ORGANIZATIONAL CHART



*The Company has received approval from the Secretary of State to move its incorporation state from Delaware to Indiana; we are still awaiting approval from the Indiana & Delaware Departments of Insurance to change its domicile.

ASI Lloyds
(a Texas Lloyds insurance company managed by ASI Lloyds, Inc.)
DOI: 10/18/2000
FEIN: 75-2904629
NAIC Code: 11059

STATEMENT AS OF JUNE 30, 2022 OF THE PROGRESSIVE NORTHWESTERN INSURANCE COMPANY

SCHEDULE Y
PART 1A - DETAIL OF INSURANCE HOLDING COMPANY SYSTEM

1	2	3	4	5	6	7	8	9	10	11	12	13	14	15	16
Group Code	Group Name	NAIC Company Code	ID Number	Federal RSSD	CIK	Name of Securities Exchange if Publicly Traded (U.S. or International)	Names of Parent, Subsidiaries Or Affiliates	Domi-ciliary Location	Relation-ship to Reporting Entity	Directly Controlled by (Name of Entity/Person)	Type of Control (Ownership, Board, Management, Attorney-in-Fact, Influence, Other)	If Control is Owner-ship Provide Percen-tage	Ultimate Controlling Entity(ies)/Person(s)	Is an SCA Filing Re-quired? (Yes/No)	*
		.00000	34-0963169		0000080661	NYSE	The Progressive Corporation	OH	UIP	Board, Management	Board		The Progressive Corporation	NO	13
		.00000	83-0371533				Drive Insurance Holdings, Inc.	DE	UDP	The Progressive Corporation	Ownership	100.000	The Progressive Corporation	NO	13
.0155	Progressive Insurance Group	.11410	68-0004572				Drive New Jersey Insurance Company	NJ	IA	Drive Insurance Holdings, Inc.	Ownership	100.000	The Progressive Corporation	NO	13
.0155	Progressive Insurance Group	.12879	20-4093467				Progressive Commercial Casualty Company	OH	IA	Drive Insurance Holdings, Inc.	Ownership	100.000	The Progressive Corporation	NO	13
.0155	Progressive Insurance Group	.24252	34-1094197				Progressive American Insurance Company	OH	IA	Drive Insurance Holdings, Inc.	Ownership	100.000	The Progressive Corporation	NO	13
.0155	Progressive Insurance Group	.17350	31-1193845				Progressive Bayside Insurance Company	OH	IA	Drive Insurance Holdings, Inc.	Ownership	100.000	The Progressive Corporation	NO	13
.0155	Progressive Insurance Group	.24260	34-6513736				Progressive Casualty Insurance Company	OH	IA	Drive Insurance Holdings, Inc.	Ownership	100.000	The Progressive Corporation	NO	13
		.00000	34-1576555				PC Investment Company	DE	NIA	Progressive Casualty Insurance Company	Ownership	100.000	The Progressive Corporation	YES	13
.0155	Progressive Insurance Group	.29203	74-1082840				Progressive County Mutual Insurance Company	TX	IA	Progressive Casualty Insurance Company	Management		The Progressive Corporation	NO	23
.0155	Progressive Insurance Group	.42412	34-1374634				Progressive Gulf Insurance Company	OH	IA	Progressive Casualty Insurance Company	Ownership	100.000	The Progressive Corporation	YES	13
.0155	Progressive Insurance Group	.32786	34-1172685				Progressive Specialty Insurance Company	OH	IA	Progressive Casualty Insurance Company	Ownership	100.000	The Progressive Corporation	YES	13
		.00000					Trussville/Cahaba, AL, LLC	OH	NIA	Progressive Specialty Insurance Company	Ownership	100.000	The Progressive Corporation	NO	13
.0155	Progressive Insurance Group	.42994	39-1453002				Progressive Classic Insurance Company	WI	IA	Drive Insurance Holdings, Inc.	Ownership	100.000	The Progressive Corporation	NO	13
.0155	Progressive Insurance Group	.10067	99-0311930				Progressive Hawaii Insurance Corp.	OH	IA	Drive Insurance Holdings, Inc.	Ownership	100.000	The Progressive Corporation	NO	13
.0155	Progressive Insurance Group	.10187	34-1787734				Progressive Michigan Insurance Company	MI	IA	Drive Insurance Holdings, Inc.	Ownership	100.000	The Progressive Corporation	NO	13
.0155	Progressive Insurance Group	.35190	93-0935623				Progressive Mountain Insurance Company	OH	IA	Drive Insurance Holdings, Inc.	Ownership	100.000	The Progressive Corporation	NO	13
.0155	Progressive Insurance Group	.38628	34-1318335				Progressive Northern Insurance Company	WI	IA	Drive Insurance Holdings, Inc.	Ownership	100.000	The Progressive Corporation	NO	13
.0155	Progressive Insurance Group	.42919	91-1187829				Progressive Northwestern Insurance Company	OH	RE	Drive Insurance Holdings, Inc.	Ownership	100.000	The Progressive Corporation	NO	13
.0155	Progressive Insurance Group	.37834	34-1287020				Progressive Preferred Insurance Company	OH	IA	Drive Insurance Holdings, Inc.	Ownership	100.000	The Progressive Corporation	NO	13
.0155	Progressive Insurance Group	.10050	72-1269745				Progressive Security Insurance Company	LA	IA	Drive Insurance Holdings, Inc.	Ownership	100.000	The Progressive Corporation	NO	13
.0155	Progressive Insurance Group	.38784	59-1951700				Progressive Southeastern Insurance Company	IN	IA	Drive Insurance Holdings, Inc.	Ownership	100.000	The Progressive Corporation	NO	13
.0155	Progressive Insurance Group	.27804	95-2676519				Progressive West Insurance Company	OH	IA	Drive Insurance Holdings, Inc.	Ownership	100.000	The Progressive Corporation	NO	13
.0155	Progressive Insurance Group	.12302	20-3187886				Progressive Freedom Insurance Company	OH	IA	Drive Insurance Holdings, Inc.	Ownership	100.000	The Progressive Corporation	NO	13
							Progressive Commercial Advantage Agency, Inc.								
		.00000	27-2393886					OH	NIA	Drive Insurance Holdings, Inc.	Ownership	100.000	The Progressive Corporation	NO	13
		.00000	20-1583033				Progressive Commercial Holdings, Inc.	DE	NIA	The Progressive Corporation	Ownership	100.000	The Progressive Corporation	NO	13
.0155	Progressive Insurance Group	.10194	59-3213819				Artisan and Truckers Casualty Company	WI	IA	Progressive Commercial Holdings, Inc.	Ownership	100.000	The Progressive Corporation	NO	13
.0155	Progressive Insurance Group	.10243	06-0281045				National Continental Insurance Company	NY	IA	Progressive Commercial Holdings, Inc.	Ownership	100.000	The Progressive Corporation	NO	13
.0155	Progressive Insurance Group	.10193	59-3213719				Progressive Express Insurance Company	OH	IA	Progressive Commercial Holdings, Inc.	Ownership	100.000	The Progressive Corporation	NO	13
.0155	Progressive Insurance Group	.11770	36-3298008				United Financial Casualty Company	OH	IA	Progressive Commercial Holdings, Inc.	Ownership	100.000	The Progressive Corporation	NO	13
.0155	Progressive Insurance Group	.15643	47-1849658				Blue Hill Specialty Insurance Company, Inc.	IL	IA	Progressive Commercial Holdings, Inc.	Ownership	100.000	The Progressive Corporation	NO	13
		.00000	35-0160330				Protective Insurance Corporation	IN	NIA	Progressive Commercial Holdings, Inc.	Ownership	100.000	The Progressive Corporation	NO	136
.0155	Progressive Insurance Group	.12416	35-6021485				Protective Insurance Company	IN	IA	Protective Insurance Corporation	Ownership	100.000	The Progressive Corporation	NO	136
.0155	Progressive Insurance Group	.40460	35-1524574				Sagamore Insurance Company	IN	IA	Protective Insurance Company	Ownership	100.000	The Progressive Corporation	NO	136
.0155	Progressive Insurance Group	.13149	26-1865258				Protective Specialty Insurance Company	IN	IA	Protective Insurance Company	Ownership	100.000	The Progressive Corporation	NO	136
		.00000	26-0327941				B&L Brokerage Services, Inc.	IN	NIA	Protective Insurance Corporation	Ownership	100.000	The Progressive Corporation	NO	136
		.00000	45-3337116				B&L Management Inc.	DE	NIA	Protective Insurance Corporation	Ownership	100.000	The Progressive Corporation	NO	136
		.00000	35-1864904				B&L Insurance, LTD.	BMU	IA	Protective Insurance Corporation	Ownership	100.000	The Progressive Corporation	NO	136
		.00000	38-3564766				Transport Specialty Insurance Agency, Inc.	MI	NIA	B&L Brokerage Services, Inc.	Ownership	100.000	The Progressive Corporation	NO	136
		.00000	83-0371538				Progressive Direct Holdings, Inc.	DE	NIA	The Progressive Corporation	Ownership	100.000	The Progressive Corporation	NO	13
.0155	Progressive Insurance Group	.44180	23-2599971				Mountain Laurel Assurance Company	OH	IA	Progressive Direct Holdings, Inc.	Ownership	100.000	The Progressive Corporation	NO	13
.0155	Progressive Insurance Group	.11851	62-0484104				Progressive Advanced Insurance Company	OH	IA	Progressive Direct Holdings, Inc.	Ownership	100.000	The Progressive Corporation	NO	13
		.00000	58-1772717				Progressive Auto Pro Insurance Agency, Inc.	FL	NIA	Progressive Direct Holdings, Inc.	Ownership	100.000	The Progressive Corporation	NO	13
.0155	Progressive Insurance Group	.44288	62-1444848				Progressive Choice Insurance Company	OH	IA	Progressive Direct Holdings, Inc.	Ownership	100.000	The Progressive Corporation	NO	13
.0155	Progressive Insurance Group	.16322	34-1524319				Progressive Direct Insurance Company	OH	IA	Progressive Direct Holdings, Inc.	Ownership	100.000	The Progressive Corporation	NO	13
		.00000					Gadsden, AL, LLC	OH	NIA	Progressive Direct Insurance Company	Ownership	100.000	The Progressive Corporation	NO	13
.0155	Progressive Insurance Group	.14800	22-2404709				Progressive Garden State Insurance Company	NJ	IA	Progressive Direct Holdings, Inc.	Ownership	100.000	The Progressive Corporation	NO	13
.0155	Progressive Insurance Group	.37605	33-0350911				Progressive Marathon Insurance Company	MI	IA	Progressive Direct Holdings, Inc.	Ownership	100.000	The Progressive Corporation	NO	13
.0155	Progressive Insurance Group	.24279	34-0472535				Progressive Max Insurance Company	OH	IA	Progressive Direct Holdings, Inc.	Ownership	100.000	The Progressive Corporation	NO	13
.0155	Progressive Insurance Group	.44695	86-0686869				Progressive Paloverde Insurance Company	IN	IA	Progressive Direct Holdings, Inc.	Ownership	100.000	The Progressive Corporation	NO	13
							Progressive Premier Insurance Company of Illinois	OH	IA	Progressive Direct Holdings, Inc.	Ownership	100.000	The Progressive Corporation	NO	13
.0155	Progressive Insurance Group	.21735	36-3789786				Progressive Select Insurance Company	OH	IA	Progressive Direct Holdings, Inc.	Ownership	100.000	The Progressive Corporation	NO	13
.0155	Progressive Insurance Group	.10192	59-3213815				Progressive Advantage Agency, Inc.	OH	NIA	Progressive Direct Holdings, Inc.	Ownership	100.000	The Progressive Corporation	NO	13
		.00000	34-1804869												

STATEMENT AS OF JUNE 30, 2022 OF THE PROGRESSIVE NORTHWESTERN INSURANCE COMPANY

SCHEDULE Y
PART 1A - DETAIL OF INSURANCE HOLDING COMPANY SYSTEM

1	2	3	4	5	6	7	8	9	10	11	12 Type of Control (Ownership, Board, Management, Attorney-in-Fact, Influence, Other)	13 If Control is Owner- ship Provide Percen- tage	14 Ultimate Controlling Entity(ies)/Person(s)	15 Is an SCA Filing Re- quired? (Yes/No)	16 *
Group Code	Group Name	NAIC Company Code	ID Number	Federal RSSD	CIK	Name of Securities Exchange if Publicly Traded (U.S. or International)	Names of Parent, Subsidiaries Or Affiliates	Domi- ciliary Loca- tion	Rela- ship to Reporting Entity	Directly Controlled by (Name of Entity/Person)					
.0155	Progressive Insurance Group	.21727	36-3789787				Progressive Universal Insurance Company	WI	IA	Progressive Direct Holdings, Inc.	Ownership	100.000	The Progressive Corporation	NO	13
.0155	Progressive Insurance Group	.16816	84-4920049				Progressive Life Insurance Company	OH	IA	The Progressive Corporation	Ownership	100.000	The Progressive Corporation	NO	13
		.00000	99-0311966				Garden Sun Insurance Services, Inc	HI	NIA	The Progressive Corporation	Ownership	100.000	The Progressive Corporation	NO	13
		.00000	95-2706008				Pacific Motor Club	CA	NIA	The Progressive Corporation	Ownership	100.000	The Progressive Corporation	NO	13
		.00000	11-3203413				PROGNY Agency, Inc.	NY	NIA	The Progressive Corporation	Ownership	100.000	The Progressive Corporation	NO	13
		.00000	34-1574447				Progressive Adjusting Company, Inc.	OH	NIA	The Progressive Corporation	Ownership	100.000	The Progressive Corporation	NO	13
		.00000	13-3673368				Progressive Capital Management Corp.	NY	NIA	The Progressive Corporation	Ownership	100.000	The Progressive Corporation	NO	13
		.00000	34-1378861				Progressive Investment Company, Inc.	DE	NIA	The Progressive Corporation	Ownership	100.000	The Progressive Corporation	NO	13
		.00000	34-6530101				Progressive Premium Budget, Inc.	OH	NIA	The Progressive Corporation	Ownership	100.000	The Progressive Corporation	NO	13
		.00000	34-1574448				Progressive RSC, Inc.	OH	NIA	The Progressive Corporation	Ownership	100.000	The Progressive Corporation	NO	13
		.00000	84-3633213				358 Ventures, Inc.	OH	NIA	The Progressive Corporation	Ownership	100.000	The Progressive Corporation	NO	13
		.00000	20-2702408				Progressive Vehicle Service Company	OH	NIA	The Progressive Corporation	Ownership	100.000	The Progressive Corporation	NO	13
		.00000	51-0295493				Village Transport Corp.	DE	NIA	The Progressive Corporation	Ownership	100.000	The Progressive Corporation	NO	13
		.00000	34-1324270				Wilson Mills Land Co.	OH	NIA	The Progressive Corporation	Ownership	100.000	The Progressive Corporation	NO	13
		.00000	87-4036792				Progressive Innovation Co.	DE	NIA	The Progressive Corporation	Ownership	100.000	The Progressive Corporation	NO	13
		.00000	59-3491541				ARX Holding Corp.	DE	NIA	The Progressive Corporation	Ownership	100.000	The Progressive Corporation	NO	134
.0155	Progressive Insurance Group	.11072	56-2512990				ASI Home Insurance Corp.	FL	IA	ARX Holding Corp.	Ownership	100.000	The Progressive Corporation	NO	134
.0155	Progressive Insurance Group	.13142	26-1996532				ASI Preferred Insurance Corp.	FL	IA	ARX Holding Corp.	Ownership	100.000	The Progressive Corporation	NO	134
.0155	Progressive Insurance Group	.10872	59-3459912				American Strategic Insurance Corp.	FL	IA	ARX Holding Corp.	Ownership	100.000	The Progressive Corporation	NO	134
.0155	Progressive Insurance Group	.11059	75-2904629				ASI Lloyds	TX	IA	ASI Lloyds, Inc.	Management		The Progressive Corporation	NO	1345
.0155	Progressive Insurance Group	.12196	20-1284676				ASI Assurance Corp.	FL	IA	ARX Holding Corp.	Ownership	100.000	The Progressive Corporation	NO	134
.0155	Progressive Insurance Group	.14042	27-3421622				ASI Select Insurance Corp.	DE	IA	ARX Holding Corp.	Ownership	100.000	The Progressive Corporation	NO	134
		.00000	59-3621835				ASI Lloyds, Inc.	TX	NIA	ARX Holding Corp.	Ownership	100.000	The Progressive Corporation	NO	134
		.00000	59-3720125				ASI Underwriters of Texas, Inc.	TX	NIA	ARX Holding Corp.	Ownership	100.000	The Progressive Corporation	NO	134
		.00000	11-3644072				Sunshine Security Insurance Agency, Inc.	FL	NIA	ARX Holding Corp.	Ownership	100.000	The Progressive Corporation	NO	134
		.00000	59-3602626				ASI Underwriters Corp.	FL	NIA	ARX Holding Corp.	Ownership	100.000	The Progressive Corporation	NO	134
.0155	Progressive Insurance Group	.13038	26-1142659				Progressive Property Insurance Company	LA	IA	ARX Holding Corp.	Ownership	100.000	The Progressive Corporation	NO	134
		.00000	81-1112584				ASI Select Auto Insurance Corp.	CA	NIA	ARX Holding Corp.	Ownership	100.000	The Progressive Corporation	NO	134
		.00000	26-0325360				Ark Royal Underwriters, LLC	FL	NIA	ARX Holding Corp.	Ownership	100.000	The Progressive Corporation	NO	134
		.00000	47-4504370				PropertyPlus Insurance Agency, Inc.	DE	NIA	ARX Holding Corp.	Ownership	100.000	The Progressive Corporation	NO	134

Asterisk	Explanation
1	Schedule Y Part 1A is a common schedule for all companies of The Progressive Corporation, however column 10 requires specific relationship information relative to the reporting entity.
2	Progressive County Mutual Insurance Company is a Texas county mutual insurance company that is managed, but not owned by Progressive Casualty Insurance Company.
3	None of the companies that are part of The Progressive Corporation are Federally chartered or insured institutions and therefore, do not have Federal RSSD numbers.
4	Effective April 1, 2020, The Progressive Corporation purchased 100% ownership in the ARX Holding Corp.
5	ASI Lloyds is a Texas Lloyds insurance company that is managed, but not owned by ASI Lloyds, Inc.
6	Effective June 1, 2021 The Progressive Corporation purchased 100% ownership in the Protective Insurance Corporation.

PART 1 - LOSS EXPERIENCE

Line of Business	Current Year to Date			4 Prior Year to Date Direct Loss Percentage
	1 Direct Premiums Earned	2 Direct Losses Incurred	3 Direct Loss Percentage	
1. Fire				
2.1 Allied Lines				
2.2 Multiple peril crop				
2.3 Federal flood				
2.4 Private crop				
2.5 Private flood				
3. Farmowners multiple peril				
4. Homeowners multiple peril	461,041	93,337	20.2	19.5
5. Commercial multiple peril				
6. Mortgage guaranty				
8. Ocean marine				
9. Inland marine	10,287,115	4,110,345	40.0	42.1
10. Financial guaranty				
11.1 Medical professional liability - occurrence				
11.2 Medical professional liability - claims-made				
12. Earthquake				
13.1 Comprehensive (hospital and medical) individual				
13.2 Comprehensive (hospital and medical) group				
14. Credit accident and health				
15.1 Vision only				
15.2 Dental only				
15.3 Disability income				
15.4 Medicare supplement				
15.5 Medicaid Title XIX				
15.6 Medicare Title XVIII				
15.7 Long-term care				
15.8 Federal employees health benefits plan				
15.9 Other health				
16. Workers' compensation				
17.1 Other liability - occurrence	4,994,117	1,138,221	22.8	27.5
17.2 Other liability - claims-made				
17.3 Excess workers' compensation				
18.1 Products liability - occurrence				
18.2 Products liability - claims-made				
19.1 Private passenger auto no-fault (personal injury protection)	11,764,119	5,918,673	50.3	47.3
19.2 Other private passenger auto liability	171,546,673	105,491,490	61.5	55.2
19.3 Commercial auto no-fault (personal injury protection)	1,997	(285)	(14.3)	646.8
19.4 Other commercial auto liability	365,724	88,301	24.1	21.8
21.1 Private passenger auto physical damage	150,710,344	109,233,319	72.5	59.8
21.2 Commercial auto physical damage	122,328	(8,048)	(6.6)	110.4
22. Aircraft (all perils)				
23. Fidelity				
24. Surety				
26. Burglary and theft				
27. Boiler and machinery				
28. Credit				
29. International				
30. Warranty				
31. Reinsurance - Nonproportional Assumed Property	XXX	XXX	XXX	XXX
32. Reinsurance - Nonproportional Assumed Liability	XXX	XXX	XXX	XXX
33. Reinsurance - Nonproportional Assumed Financial Lines	XXX	XXX	XXX	XXX
34. Aggregate write-ins for other lines of business				
35. Totals	350,253,459	226,065,352	64.5	56.0
DETAILS OF WRITE-INS				
3401.				
3402.				
3403.				
3498. Summary of remaining write-ins for Line 34 from overflow page				
3499. Totals (Lines 3401 through 3403 plus 3498)(Line 34 above)				

STATEMENT AS OF JUNE 30, 2022 OF THE PROGRESSIVE NORTHWESTERN INSURANCE COMPANY

PART 2 - DIRECT PREMIUMS WRITTEN

Line of Business		1 Current Quarter	2 Current Year to Date	3 Prior Year Year to Date
1.	Fire			
2.1	Allied Lines			
2.2	Multiple peril crop			
2.3	Federal flood			
2.4	Private crop			
2.5	Private flood			
3.	Farmowners multiple peril			
4.	Homeowners multiple peril	261,672	486,454	462,022
5.	Commercial multiple peril			
6.	Mortgage guaranty			
8.	Ocean marine			
9.	Inland marine	8,182,462	12,833,586	12,061,178
10.	Financial guaranty			
11.1	Medical professional liability - occurrence			
11.2	Medical professional liability - claims-made			
12.	Earthquake			
13.1	Comprehensive (hospital and medical) individual			
13.2	Comprehensive (hospital and medical) group			
14.	Credit accident and health			
15.1	Vision only			
15.2	Dental only			
15.3	Disability income			
15.4	Medicare supplement			
15.5	Medicaid Title XIX			
15.6	Medicare Title XVIII			
15.7	Long-term care			
15.8	Federal employees health benefits plan			
15.9	Other health			
16.	Workers' compensation			
17.1	Other liability - occurrence	2,814,177	5,906,549	5,643,566
17.2	Other liability - claims-made			
17.3	Excess workers' compensation			
18.1	Products liability - occurrence			
18.2	Products liability - claims-made			
19.1	Private passenger auto no-fault (personal injury protection)	5,896,174	11,797,195	12,090,542
19.2	Other private passenger auto liability	92,799,677	181,361,988	174,912,158
19.3	Commercial auto no-fault (personal injury protection)	782	2,222	3,247
19.4	Other commercial auto liability	169,554	408,870	424,079
21.1	Private passenger auto physical damage	88,487,570	165,132,134	151,362,250
21.2	Commercial auto physical damage	61,049	135,007	140,932
22.	Aircraft (all perils)			
23.	Fidelity			
24.	Surety			
26.	Burglary and theft			
27.	Boiler and machinery			
28.	Credit			
29.	International			
30.	Warranty			
31.	Reinsurance - Nonproportional Assumed Property	XXX	XXX	XXX
32.	Reinsurance - Nonproportional Assumed Liability	XXX	XXX	XXX
33.	Reinsurance - Nonproportional Assumed Financial Lines	XXX	XXX	XXX
34.	Aggregate write-ins for other lines of business			
35.	Totals	198,673,117	378,064,005	357,099,973
DETAILS OF WRITE-INS				
3401.			
3402.			
3403.			
3498.	Summary of remaining write-ins for Line 34 from overflow page			
3499.	Totals (Lines 3401 through 3403 plus 3498)(Line 34 above)			

STATEMENT AS OF JUNE 30, 2022 OF THE PROGRESSIVE NORTHWESTERN INSURANCE COMPANY

PART 3 (000 omitted)

LOSS AND LOSS ADJUSTMENT EXPENSE RESERVES SCHEDULE

	1	2	3	4	5	6	7	8	9	10	11	12	13	
Years in Which Losses Occurred	Prior Year-End Known Case Loss and LAE Reserves	Prior Year-End IBNR Loss and LAE Reserves	Total Prior Year-End Loss and LAE Reserves (Cols. 1+2)	2022 Loss and LAE Payments on Claims Reported as of Prior Year-End	2022 Loss and LAE Payments on Claims Unreported as of Prior Year-End	Total 2022 Loss and LAE Payments (Cols. 4+5)	Q.S. Date Known Case Loss and LAE Reserves on Claims Reported and Open as of Prior Year End	Q.S. Date Known Case Loss and LAE Reserves on Claims Reported or Reopened Subsequent to Prior Year End	Q.S. Date IBNR Loss and LAE Reserves	Total Q.S. Loss and LAE Reserves (Cols.7+8+9)	Prior Year-End Known Case Loss and LAE Reserves Developed (Savings)/ Deficiency (Cols.4+7 minus Col. 1)	Prior Year-End IBNR Loss and LAE Reserves Developed (Savings)/ Deficiency (Cols. 5+8+9 minus Col. 2)	Prior Year-End Total Loss and LAE Reserve Developed (Savings)/ Deficiency (Cols. 11+12)	
1. 2019 + Prior	180,683	31,575	212,258	57,512	3,004	60,516	119,664	6,175	25,484	151,323	(3,507)	3,087	(419)	
2. 2020	196,662	44,865	241,526	64,358	4,415	68,773	129,802	11,603	29,674	171,079	(2,501)	828	(1,674)	
3. Subtotals 2020 + Prior	377,345	76,440	453,785	121,870	7,419	129,289	249,467	17,778	55,158	322,403	(6,008)	3,915	(2,093)	
4. 2021	594,642	140,521	735,163	252,798	22,808	275,607	322,024	62,955	80,124	465,103	(19,820)	25,366	5,546	
5. Subtotals 2021 + Prior	971,987	216,961	1,188,948	374,668	30,228	404,896	571,491	80,733	135,281	787,505	(25,828)	29,281	3,453	
6. 2022	XXX	XXX	XXX	XXX	511,785	511,785	XXX	373,118	107,476	480,594	XXX	XXX	XXX	
7. Totals	971,987	216,961	1,188,948	374,668	542,013	916,681	571,491	453,851	242,757	1,268,099	(25,828)	29,281	3,453	
8. Prior Year-End Surplus As Regards Policyholders	809,783											Col. 11, Line 7 As % of Col. 1 Line 7	Col. 12, Line 7 As % of Col. 2 Line 7	Col. 13, Line 7 As % of Col. 3 Line 7
												1. (2.7)	2. 13.5	3. 0.3
												Col. 13, Line 7 As a % of Col. 1 Line 8 4. 0.4		

STATEMENT AS OF JUNE 30, 2022 OF THE PROGRESSIVE NORTHWESTERN INSURANCE COMPANY

SUPPLEMENTAL EXHIBITS AND SCHEDULES INTERROGATORIES

The following supplemental reports are required to be filed as part of your statement filing. However, in the event that your company does not transact the type of business for which the special report must be filed, your response of NO to the specific interrogatory will be accepted in lieu of filing a "NONE" report and a bar code will be printed below. If the supplement is required of your company but is not being filed for whatever reason enter SEE EXPLANATION and provide an explanation following the interrogatory questions.

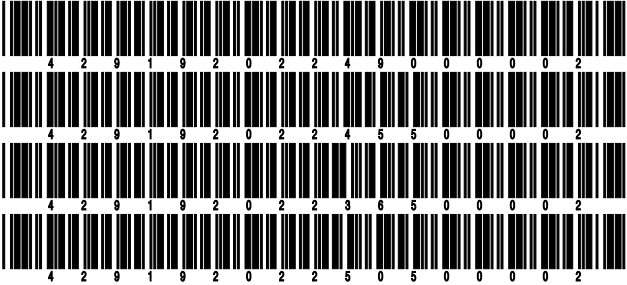
	Response
1. Will the Trusteed Surplus Statement be filed with the state of domicile and the NAIC with this statement?	NO
2. Will Supplement A to Schedule T (Medical Professional Liability Supplement) be filed with this statement?	NO
3. Will the Medicare Part D Coverage Supplement be filed with the state of domicile and the NAIC with this statement?	NO
4. Will the Director and Officer Insurance Coverage Supplement be filed with the state of domicile and the NAIC with this statement?	NO
AUGUST FILING	
5. Will the regulator-only (non-public) Communication of Internal Control Related Matters Noted in Audit be filed with the state of domicile and electronically with the NAIC (as a regulator-only non-public document) by August 1? The response for 1st and 3rd quarters should be N/A. A NO response resulting with a bar code is only appropriate in the 2nd quarter.	YES

Explanations:

1.
2.
3.
4.

Bar Codes:

1. Trusteed Surplus Statement [Document Identifier 490]
2. Supplement A to Schedule T [Document Identifier 455]
3. Medicare Part D Coverage Supplement [Document Identifier 365]
4. Director and Officer Supplement [Document Identifier 505]



STATEMENT AS OF JUNE 30, 2022 OF THE PROGRESSIVE NORTHWESTERN INSURANCE COMPANY

OVERFLOW PAGE FOR WRITE-INS

Additional Write-ins for Assets Line 25

	Current Statement Date			4 December 31 Prior Year Net Admitted Assets
	1 Assets	2 Nonadmitted Assets	3 Net Admitted Assets (Cols. 1 - 2)	
2504.				
2597. Summary of remaining write-ins for Line 25 from overflow page				

Additional Write-ins for Statement of Income Line 14

	1 Current Year to Date	2 Prior Year to Date	3 Prior Year Ended December 31
1404.			
1497. Summary of remaining write-ins for Line 14 from overflow page			

NONE

SCHEDULE A - VERIFICATION

Real Estate

	1 Year to Date	2 Prior Year Ended December 31
1. Book/adjusted carrying value, December 31 of prior year		
2. Cost of acquired:		
2.1 Actual cost at time of acquisition		
2.2 Additional investment made after acquisition		
3. Current year change in encumbrances		
4. Total gain (loss) on disposals		
5. Deduct amounts received on disposals		
6. Total foreign exchange change in book/adjusted carrying value		
7. Deduct current year's other than temporary impairment recognized		
8. Deduct current year's depreciation		
9. Book/adjusted carrying value at the end of current period (Lines 1+2+3+4-5+6-7-8)		
10. Deduct total nonadmitted amounts		
11. Statement value at end of current period (Line 9 minus Line 10)		

SCHEDULE B - VERIFICATION

Mortgage Loans

	1 Year to Date	2 Prior Year Ended December 31
1. Book value/recorded investment excluding accrued interest, December 31 of prior year		
2. Cost of acquired:		
2.1 Actual cost at time of acquisition		
2.2 Additional investment made after acquisition		
3. Capitalized deferred interest and other		
4. Accrual of discount		
5. Unrealized valuation increase (decrease)		
6. Total gain (loss) on disposals		
7. Deduct amounts received on disposals		
8. Deduct amortization of premium and mortgage interest paid and commitment fees		
9. Total foreign exchange change in book value/recorded investment excluding accrued interest		
10. Deduct current year's other than temporary impairment recognized		
11. Book value/recorded investment excluding accrued interest at end of current period (Lines 1+2+3+4+5+6-7-8+9-10)		
12. Total valuation allowance		
13. Subtotal (Line 11 plus Line 12)		
14. Deduct total nonadmitted amounts		
15. Statement value at end of current period (Line 13 minus Line 14)		

SCHEDULE BA - VERIFICATION

Other Long-Term Invested Assets

	1 Year to Date	2 Prior Year Ended December 31
1. Book/adjusted carrying value, December 31 of prior year		
2. Cost of acquired:		
2.1 Actual cost at time of acquisition		
2.2 Additional investment made after acquisition		
3. Capitalized deferred interest and other		
4. Accrual of discount		
5. Unrealized valuation increase (decrease)		
6. Total gain (loss) on disposals		
7. Deduct amounts received on disposals		
8. Deduct amortization of premium and depreciation		
9. Total foreign exchange change in book/adjusted carrying value		
10. Deduct current year's other than temporary impairment recognized		
11. Book/adjusted carrying value at end of current period (Lines 1+2+3+4+5+6-7-8+9-10)		
12. Deduct total nonadmitted amounts		
13. Statement value at end of current period (Line 11 minus Line 12)		

SCHEDULE D - VERIFICATION

Bonds and Stocks

	1 Year to Date	2 Prior Year Ended December 31
1. Book/adjusted carrying value of bonds and stocks, December 31 of prior year	2,877,407,479	2,507,494,546
2. Cost of bonds and stocks acquired	526,239,385	1,865,251,459
3. Accrual of discount	2,291,239	2,641,131
4. Unrealized valuation increase (decrease)	(119,578,710)	52,578,814
5. Total gain (loss) on disposals	34,540,548	10,610,785
6. Deduct consideration for bonds and stocks disposed of	583,473,675	1,553,629,224
7. Deduct amortization of premium	3,953,961	7,540,032
8. Total foreign exchange change in book/adjusted carrying value		
9. Deduct current year's other than temporary impairment recognized	302,835	
10. Total investment income recognized as a result of prepayment penalties and/or acceleration fees		
11. Book/adjusted carrying value at end of current period (Lines 1+2+3+4+5-6-7+8-9+10)	2,733,169,470	2,877,407,479
12. Deduct total nonadmitted amounts		
13. Statement value at end of current period (Line 11 minus Line 12)	2,733,169,470	2,877,407,479

STATEMENT AS OF JUNE 30, 2022 OF THE PROGRESSIVE NORTHWESTERN INSURANCE COMPANY

SCHEDULE D - PART 1B

Showing the Acquisitions, Dispositions and Non-Trading Activity
During the Current Quarter for all Bonds and Preferred Stock by NAIC Designation

NAIC Designation	1 Book/Adjusted Carrying Value Beginning of Current Quarter	2 Acquisitions During Current Quarter	3 Dispositions During Current Quarter	4 Non-Trading Activity During Current Quarter	5 Book/Adjusted Carrying Value End of First Quarter	6 Book/Adjusted Carrying Value End of Second Quarter	7 Book/Adjusted Carrying Value End of Third Quarter	8 Book/Adjusted Carrying Value December 31 Prior Year
BONDS								
1. NAIC 1 (a)	1,885,983,943	396,142,552	188,402,959	651,531	1,885,983,943	2,094,375,067		1,784,085,634
2. NAIC 2 (a)	674,264,458	2,919,300	40,177,029	(720,768)	674,264,458	636,285,961		656,661,734
3. NAIC 3 (a)	124,614,961		1,925,810	(7,365,194)	124,614,961	115,323,957		111,628,145
4. NAIC 4 (a)	9,863,140		1,542	(1,395,318)	9,863,140	8,466,280		10,759,373
5. NAIC 5 (a)								84,364
6. NAIC 6 (a)								
7. Total Bonds	2,694,726,502	399,061,852	230,507,340	(8,829,749)	2,694,726,502	2,854,451,265		2,563,219,250
PREFERRED STOCK								
8. NAIC 1								
9. NAIC 2								
10. NAIC 3								
11. NAIC 4								
12. NAIC 5								
13. NAIC 6								
14. Total Preferred Stock								
15. Total Bonds and Preferred Stock	2,694,726,502	399,061,852	230,507,340	(8,829,749)	2,694,726,502	2,854,451,265		2,563,219,250

(a) Book/Adjusted Carrying Value column for the end of the current reporting period includes the following amount of short-term and cash equivalent bonds by NAIC designation:
NAIC 1 \$ 302,794,665 ; NAIC 2 \$; NAIC 3 \$ NAIC 4 \$; NAIC 5 \$; NAIC 6 \$

SCHEDULE DA - PART 1

Short-Term Investments

	1	2	3	4	5
	Book/Adjusted Carrying Value	Prior Year Value	Actual Cost	Interest Collected Year-to-Date	Paid for Accrued Interest Year-to-Date
7709999999 Totals		XX			

NONE

SCHEDULE DA - VERIFICATION

Short-Term Investments

	1	2
	Year To Date	Prior Year Ended December 31
1. Book/adjusted carrying value, December 31 of prior year		6,855,558
2. Cost of short-term investments acquired		
3. Accrual of discount		
4. Unrealized valuation increase (decrease)		
5. Total gain (loss) on disposals		
6. Deduct consideration received on disposals		6,849,000
7. Deduct amortization of premium		6,558
8. Total foreign exchange change in book/adjusted carrying value		
9. Deduct current year's other than temporary impairment recognized		
10. Book/adjusted carrying value at end of current period (Lines 1+2+3+4+5-6-7+8-9)		
11. Deduct total nonadmitted amounts		
12. Statement value at end of current period (Line 10 minus Line 11)		

Schedule DB - Part A - Verification - Options, Caps, Floors, Collars, Swaps and Forwards

N O N E

Schedule DB - Part B - Verification - Futures Contracts

N O N E

Schedule DB - Part C - Section 1 - Replication (Synthetic Asset) Transactions (RSATs) Open

N O N E

Schedule DB-Part C-Section 2-Reconciliation of Replication (Synthetic Asset) Transactions Open

N O N E

Schedule DB - Verification - Book/Adjusted Carrying Value, Fair Value and Potential Exposure of
Derivatives

N O N E

SCHEDULE E - PART 2 - VERIFICATION

(Cash Equivalents)

	1	2
	Year To Date	Prior Year Ended December 31
1. Book/adjusted carrying value, December 31 of prior year	2,716,838	3,834,711
2. Cost of cash equivalents acquired	305,996,801	16,304,635
3. Accrual of discount	144,743	323
4. Unrealized valuation increase (decrease)		
5. Total gain (loss) on disposals		
6. Deduct consideration received on disposals	4,535,058	17,422,831
7. Deduct amortization of premium		
8. Total foreign exchange change in book/adjusted carrying value		
9. Deduct current year's other than temporary impairment recognized		
10. Book/adjusted carrying value at end of current period (Lines 1+2+3+4+5-6-7+8-9)	304,323,324	2,716,838
11. Deduct total nonadmitted amounts		
12. Statement value at end of current period (Line 10 minus Line 11)	304,323,324	2,716,838

Schedule A - Part 2 - Real Estate Acquired and Additions Made

N O N E

Schedule A - Part 3 - Real Estate Disposed

N O N E

Schedule B - Part 2 - Mortgage Loans Acquired and Additions Made

N O N E

Schedule B - Part 3 - Mortgage Loans Disposed, Transferred or Repaid

N O N E

Schedule BA - Part 2 - Other Long-Term Invested Assets Acquired and Additions Made

N O N E

Schedule BA - Part 3 - Other Long-Term Invested Assets Disposed, Transferred or Repaid

N O N E

STATEMENT AS OF JUNE 30, 2022 OF THE PROGRESSIVE NORTHWESTERN INSURANCE COMPANY

SCHEDULE D - PART 3

Show All Long-Term Bonds and Stock Acquired During the Current Quarter

1	2	3	4	5	6	7	8	9	10
CUSIP Identification	Description	Foreign	Date Acquired	Name of Vendor	Number of Shares of Stock	Actual Cost	Par Value	Paid for Accrued Interest and Dividends	NAIC Designation, NAIC Designation Modifier and SVO Administrative Symbol
91282C-ED-9	US TREASURY NOTE 1.750% 03/15/2504/05/2022	Citadel Securities Inst LLC		19,449,219	20,000,000	20,924	1.A
91282C-EF-4	US TREASURY NOTE 2.500% 03/31/2704/19/2022	Goldman Sachs		6,886,523	7,000,000	9,563	1.A
91282C-EG-2	US TREASURY NOTE 2.250% 03/31/2404/04/2022	Barclays Capital		9,966,406	10,000,000	3,074	1.A
91282C-EP-2	US TREASURY NOTE 2.875% 05/15/3206/28/2022	Goldman Sachs		14,571,094	15,000,000	52,734	1.A
0109999999. Subtotal - Bonds - U.S. Governments						50,873,242	52,000,000	86,295	XXX
06051G-KP-3	BANK OF AMERICA CORP 4.376% 04/27/2804/21/2022	Bank of America Corp		10,000,000	10,000,000		1.F FE
14043Q-AB-8	COPAR 2022-1 A2 2.710% 06/16/2504/26/2022	Wells Fargo Bank		5,999,432	6,000,000		1.A FE
23292G-AB-9	DLLST 2022-1A A2 2.790% 01/22/2404/27/2022	Barclays Capital		9,999,555	10,000,000		1.A FE
34528L-AB-1	FORDL 2022-A A2A 2.780% 10/15/2404/21/2022	Barclays Capital		6,999,870	7,000,000		1.A FE
36192Q-AL-8	GSMS 2012-TMSQ D 3.458% 12/10/3004/05/2022	Wells Fargo Bank		2,610,630	2,592,000	1,494	1.D FM
61747Y-ER-2	MORGAN STANLEY 4.210% 04/20/2804/18/2022	Bank of America Corp		7,009,730	7,000,000		1.F FE
718547-AE-2	PHILLIPS 66 CO 3.550% 10/01/2605/05/2022	Citigroup		2,919,300	3,000,000	10,058	2.A FE
1109999999. Subtotal - Bonds - Industrial and Miscellaneous (Unaffiliated)						45,538,517	45,592,000	11,552	XXX
2509999997. Total - Bonds - Part 3						96,411,759	97,592,000	97,847	XXX
2509999998. Total - Bonds - Part 5						XXX	XXX	XXX	XXX
2509999999. Total - Bonds						96,411,759	97,592,000	97,847	XXX
4509999997. Total - Preferred Stocks - Part 3							XXX		XXX
4509999998. Total - Preferred Stocks - Part 5						XXX	XXX	XXX	XXX
4509999999. Total - Preferred Stocks							XXX		XXX
00206R-10-2	AT&T INC06/01/2022	State Street Bank	11,500,000	244,265			
5019999999. Subtotal - Common Stocks - Industrial and Miscellaneous (Unaffiliated) Publicly Traded						244,265	XXX		XXX
5989999997. Total - Common Stocks - Part 3						244,265	XXX		XXX
5989999998. Total - Common Stocks - Part 5						XXX	XXX	XXX	XXX
5989999999. Total - Common Stocks						244,265	XXX		XXX
5999999999. Total - Preferred and Common Stocks						244,265	XXX		XXX
6009999999 - Totals						96,656,024	XXX	97,847	XXX

STATEMENT AS OF JUNE 30, 2022 OF THE PROGRESSIVE NORTHWESTERN INSURANCE COMPANY

SCHEDULE D - PART 4

Show All Long-Term Bonds and Stock Sold, Redeemed or Otherwise Disposed of During the Current Quarter

1	2	3	4	5	6	7	8	9	10	Change In Book/Adjusted Carrying Value					16	17	18	19	20	21	22
										11	12	13	14	15							
CUSIP Identification	Description	For- eign	Disposal Date	Name of Purchaser	Number of Shares of Stock	Consid- eration	Par Value	Actual Cost	Prior Year Book/ Adjusted Carrying Value	Unrealized Valuation Increase/ (Decrease)	Current Year's (Amor- tization)/ Accretion	Current Year's Other Than Temporary Impairment Recogn- ized	Total Change in Book/ Adjusted Carrying Value (11 + 12 - 13)	Total Foreign Exchange Change in Book /Adjusted Carrying Value	Book/ Adjusted Carrying Value at Disposal Date	Foreign Exchange Gain (Loss) on Disposal	Realized Gain (Loss) on Disposal	Total Gain (Loss) on Disposal	Bond Interest/ Stock Dividends Received During Year	Stated Con- tractual Maturity Date	NAIC Desig- nation, NAIC Desig- nation Modifier and SVO Admini- strative Symbol
912828-SU-0	US TREASURY NOTE 2.625% 12/31/23		04/14/2022	JP Morgan Securities Inc		10,042,578	10,000,000	10,010,547	10,004,465		(847)		(847)		10,003,618		38,960	38,960	78,315	12/31/2023	1.A
912828-N3-0	US TREASURY NOTE 2.125% 12/31/22		04/28/2022	Goldman Sachs		15,044,531	15,000,000	14,675,391	14,929,698		22,552		22,552		14,952,250		92,282	92,282	104,782	12/31/2022	1.A
91282C-AK-7	US TREASURY NOTE 0.125% 09/15/23		04/06/2022	JP Morgan Securities Inc		14,063,867	14,500,000	14,488,457	14,493,408		1,023		1,023		14,494,430		(430,563)	(430,563)	10,195	09/15/2023	1.A
91282C-BE-0	US TREASURY NOTE 0.125% 01/15/24		04/14/2022	JP Morgan Securities Inc		19,232,031	20,000,000	19,967,969	19,977,709		3,220		3,220		19,980,929		(748,898)	(748,898)	18,923	01/15/2024	1.A
91282C-BR-0	US TREASURY NOTE 0.250% 03/15/24		04/07/2022	Citadel Securities Inst LLC		14,390,039	15,000,000	14,962,891	14,972,694		3,301		3,301		14,975,995		(585,956)	(585,956)	21,196	03/15/2024	1.A
91282C-EC-1	US TREASURY NOTE 1.875% 02/28/27		04/07/2022	Citadel Securities Inst LLC		7,695,938	8,000,000	8,074,688		(1,252)			(1,252)		8,073,435		(377,498)	(377,498)	15,897	02/28/2027	1.A
0109999999 Subtotal - Bonds - U.S. Governments						80,468,984	82,500,000	82,179,943	74,377,974		27,997		27,997		82,480,657		(2,011,673)	(2,011,673)	249,308	XXX	XXX
3137FB-BZ-8	FHMS 2017-K068 X1 I0 0.427% 08/25/27		06/01/2022	Paydown				15,816	9,180		(9,180)		(9,180)						758	08/25/2027	1.A FE
3137FE-BS-8	FHMS 2018-K072 X1 I0 0.367% 12/25/27		06/01/2022	Paydown				12,466	7,533		(7,533)		(7,533)						653	12/25/2027	1.A FE
31392C-MS-0	FNW 2002-W1 2A 4.996% 02/25/42		06/01/2022	Paydown		5,165	5,165	5,428	5,144		21		21		5,165				104	02/25/2042	1.B FE
60416S-KD-1	MINNESOTA ST HSG FIN AGY 4.000% 01/01/41		06/01/2022	Redemption 100.0000		195,000	195,000	210,442	201,787		(6,787)		(6,787)		195,000				6,500	01/01/2041	1.B FE
61212R-4G-8	MONTANA ST BRD HSG 3.500% 12/01/44		06/01/2022	Redemption 100.0000		210,000	210,000	215,939	211,621		(1,621)		(1,621)		210,000				3,675	12/01/2044	1.B FE
0909999999 Subtotal - Bonds - U.S. Special Revenues						410,165	410,165	460,091	435,265		(25,100)		(25,100)		410,165				11,690	XXX	XXX
03066P-AB-5	AMCAR 2020-3 A2 0.420% 03/18/24		05/18/2022	Paydown		1,110,165	1,110,165	1,110,132	1,110,158		7		7		1,110,165				1,646	03/18/2024	1.A FE
03073E-AS-4	AMERISOURCEBERGEN CORP 0.737% 03/15/23		06/15/2022	Call 100.0000		1,640,000	1,640,000	1,640,000	1,640,000						1,640,000				9,065	03/15/2023	2.A FE
032654-AS-4	ANALOG DEVICES INC 2.950% 04/01/25		05/16/2022	JP Morgan Securities Inc		4,952,600	5,000,000	4,974,800	4,982,974		1,924		1,924		4,984,898		(32,298)	(32,298)	93,007	04/01/2025	1.G FE
05601X-AB-5	BMILT 2022-1 A2 0.670% 05/28/24		06/25/2022	Paydown		1,934,126	1,934,126	1,934,125	1,934,125		1		1		1,934,126				5,615	05/28/2024	1.A FE
12433Y-AL-1	BX TRUST 2020-VKNG D 3.024% 10/15/37		05/15/2022	Paydown		1,092,570	1,092,570	1,092,487	1,092,451		118		118		1,092,570				7,751	10/15/2037	1.A
165183-BY-9	CFII 2019-1A A1 2.940% 04/15/31		06/15/2022	Paydown		1,036,089	1,036,089	1,035,935	1,037,401		(1,312)		(1,312)		1,036,089				12,631	04/15/2031	1.A FE
165183-CP-7	CFII 2021-1A A1 0.470% 04/15/33		06/15/2022	Paydown		774,170	774,170	774,075	774,263		(94)		(94)		774,170				1,505	04/15/2033	1.A FE
20267U-AB-5	CBSLT 2016-B A2 3.074% 10/25/40		06/27/2022	Paydown		58,357	58,357	58,706	56,860		1,496		1,496		58,357				401	10/25/2040	1.A FE
21036P-AX-6	CONSTELLATION BRANDS INC 3.200% 02/15/23		05/09/2022	Citigroup		6,052,860	6,000,000	5,853,060	5,961,812		11,817		11,817		5,973,628		79,232	79,232	140,800	02/15/2023	2.C FE
22540V-G6-3	CSFB 2002-9 1A1 7.000% 03/25/40		06/01/2022	Paydown		1,542	1,542	1,564	1,639	315	(412)		(97)		1,542				42	03/25/2040	4.B FI
24703N-AC-3	DEFT 2020-1 A3 2.240% 02/22/23		06/22/2022	Paydown		3,920,985	3,920,985	3,920,199	3,920,814		170		170		3,920,985				35,745	02/22/2023	1.A FE
25755T-AP-5	DPABS 2021-1A A2I1 3.151% 04/25/51		04/25/2022	Paydown		50,000	50,000	50,000	50,000						50,000				788	04/25/2051	2.A FE
262081-AB-8	DRIVE 2021-3 A2 0.520% 01/15/25		06/15/2022	Paydown		12,490,565	12,490,565	12,489,865	12,489,978		587		587		12,490,565				26,568	01/15/2025	1.A FE
26857L-AA-0	ELFI 2020-A A 1.730% 08/25/45		06/25/2022	Paydown		523,603	523,603	523,439	523,404		199		199		523,603				3,646	08/25/2045	1.A FE
29374A-AB-0	EFF 2019-1 A2 2.980% 10/22/24		05/20/2022	Paydown		435,986	435,986	435,983	435,985		1		1		435,986				4,781	10/22/2024	1.A FE
30166A-AB-0	EART 2021-3A A2 0.340% 01/16/24		05/15/2022	Paydown		3,205,047	3,205,047	3,204,919	3,204,983		64		64		3,205,047				4,029	01/16/2024	1.A FE
35563K-AH-3	STACR 2019-DNA1 M2 3.656% 01/25/49		06/15/2022	Citigroup		22,257,489	21,868,020	22,134,536	22,106,413		(394)		(394)		22,106,019		151,470	151,470	314,253	01/25/2049	1.A
35563K-AH-3	STACR 2019-DNA1 M2 3.656% 01/25/49		05/25/2022	Paydown		2,254,441	2,254,441	2,281,917	2,279,018		(24,577)		(24,577)		2,254,441				24,053	01/25/2049	1.A
35564K-HE-2	STACR 2021-DNA5 M2 2.576% 01/25/34		06/27/2022	Paydown		551,874	551,874	555,840	555,282		(3,409)		(3,409)		551,874				4,648	01/25/2034	2.B
35564T-AH-3	STACR 2019-DNA3 M2 3.674% 07/25/49		06/27/2022	Paydown		3,911,441	3,911,441	3,960,170	3,936,886		(25,446)		(25,446)		3,911,441				37,108	07/25/2049	1.A
36192H-AA-2	GMS 2012-ALOH A 3.551% 04/10/34		04/01/2022	Paydown		9,900,000	9,900,000	10,158,297	9,925,133		(25,133)		(25,133)		9,900,000				117,183	04/10/2034	1.D FI
3622N6-AG-4	GSR 2007-AR2 4A1 2.652% 02/25/51		06/01/2022	Paydown		10,791	10,791	10,504	10,504		287		287		10,791				104	02/25/2051	1.D FI
36258V-AD-6	GMCAR 2020-2 A3 1.490% 12/16/24		06/16/2022	Paydown		751,858	751,858	751,817	751,829		29		29		751,858				4,612	12/16/2024	1.A FE
46591H-AG-5	CAQLN 2020-CL1 M1 3.874% 10/25/57		06/27/2022	Paydown		593,417	593,417	606,398	608,357		(14,940)		(14,940)		593,417				6,161	10/25/2057	1.C FE
46628K-AT-7	JPMIT 2006-A3 6A1 2.766% 08/25/34		06/01/2022	Paydown		2,697	2,697	2,617	2,845		(148)		(148)		2,697				30	08/25/2034	1.D FI
46628K-AV-2	JPMIT 2006-A3 7A1 2.816% 12/25/48		05/01/2022	Paydown		19,654	19,654	19,011	19,011		643		643		19,654				181	12/25/2048	1.D FI
46636K-AR-1	JPMRR 2011-2 2A6 3.197% 07/26/36		06/01/2022	Paydown		227,803	227,803	218,691	225,525		2,278		2,278		227,803				3,029	07/26/2036	1.D FI
46651F-AD-3	JPMIT 2019-HYB1 A2 3.610% 10/25/49		06/01/2022	Paydown		695,033	695,033	713,504	702,140		(7,106)		(7,106)		695,033				10,061	10/25/2049	1.A
49271V-AH-3	KEURIG DR PEPPER INC 4.417% 05/25/25		04/22/2022	Citigroup		9,142,008	10,062,536	10,062,536	10,018,559		(81,913)		(81,913)		9,936,645		(516,637)	(516,637)	164,886	05/25/2025	2.B FE
55316E-AC-6	MMAF 2019-B A3 2.010% 12/12/24		06/12/2022	Paydown		1,314,499	1,314,499	1,314,160	1,314,348		151		151		1,314,499				11,107	12/12/2024	1.A FE
55354G-AK-6	MSCI INC 3.625% 09/01/30		05/26/2022	Bank of America Corp		1,825,000	2,000,000	1,910,000	1,922,704		3,105		3,105		1,925,810		(100,810)	(100,810)	54,375	09/01/2030	3.A FE
631103-AF-5	NASDAQ INC 4.250% 06/01/24		04/06/2022	Call 100.0000		4,300,000	4,300,000	4,326,703	4,310,938		(1,338)		(1,338)		4,309,600		(9,600)	(9,600)	189,970	06/01/2024	2.B FE
70450Y-AB-9	PAYPAL HOLDINGS INC 2.200% 09/26/22		05/23/2022	Citigroup		10,026,500	10,000,000	9,987,300	9,996,652		1,591		1,591		9,998,243		28,257	28,257	144,833	09/26/2022	1.G FE

STATEMENT AS OF JUNE 30, 2022 OF THE PROGRESSIVE NORTHWESTERN INSURANCE COMPANY

SCHEDULE D - PART 4

Show All Long-Term Bonds and Stock Sold, Redeemed or Otherwise Disposed of During the Current Quarter

1	2	3	4	5	6	7	8	9	10	Change In Book/Adjusted Carrying Value					16	17	18	19	20	21	22
										11	12	13	14	15							
CUSIP Identification	Description	For- eign	Disposal Date	Name of Purchaser	Number of Shares of Stock	Consid- eration	Par Value	Actual Cost	Prior Year Book/ Adjusted Carrying Value	Unrealized Valuation Increase/ (Decrease)	Current Year's (Amor- tization)/ Accretion	Current Year's Other Than Temporary Impairment Recogn- ized	Total Change in Book/ Adjusted Carrying Value (11 + 12 - 13)	Total Foreign Exchange Change in Book /Adjusted Carrying Value	Book/ Adjusted Value at Disposal Date	Foreign Exchange Gain (Loss) on Disposal	Realized Gain (Loss) on Disposal	Total Gain (Loss) on Disposal	Bond Interest/ Stock Dividends Received During Year	Stated Con- tractual Maturity Date	NAIC Desig- nation, NAIC Desig- nation Modifier and SVO Admini- strative Symbol
718549-AD-0	PHILLIPS 66 PARTNERS LP 3.550% 10/01/26		05/05/2022	Citigroup		2,922,300	3,000,000	2,803,770	2,878,563		8,016		8,016		2,886,579		35,720	35,720	63,308	10/01/2026	2.C FE
78448Y-AA-9	SMB 2021-A A1 1.375% 01/15/53		06/15/2022	Paydown		1,930,877	1,930,877	1,930,877	1,930,923		(47)		(47)		1,930,877				6,140	01/15/2053	1.A FE
80286W-AE-6	SDART 2020-4 B 0.730% 03/17/25		06/15/2022	Paydown		8,779,848	8,779,848	8,779,755	8,779,755		93		93		8,779,848				27,769	03/17/2025	1.A FE
80286W-AC-8	SDART 2021-2 A3 0.340% 02/18/25		06/15/2022	Paydown		5,584,241	5,584,241	5,583,785	5,584,021		220		220		5,584,241				8,547	02/18/2025	1.A FE
82434B-AU-0	SHERWIN-WILLIAMS CO 2.750% 06/01/22		06/01/2022	Maturity		429,000	429,000	414,165	427,350		1,650		1,650		429,000				5,899	06/01/2022	2.B FE
83402J-AC-2	SOFI 2016-B A2B 2.740% 10/25/32		06/25/2022	Paydown		292,126	292,126	287,836	285,982		6,144		6,144		292,126				3,261	10/25/2032	1.A FE
83611M-GH-5	SVHE 2005-OPT2 M1 2.389% 08/25/35		06/27/2022	Paydown		752,412	752,412	682,007	748,972		3,440		3,440		752,412				3,510	08/25/2035	1.D FM
87342R-AG-9	BELL 2021-1A A2I 1.946% 08/25/51		05/25/2022	Paydown		62,500	62,500	62,500	62,500						62,500				608	08/25/2051	2.B FE
918204-AZ-1	VF CORPORATION 2.050% 04/23/22		04/23/2022	Maturity		4,976,000	4,976,000	4,975,104	4,975,735		265		265		4,976,000				51,004	04/23/2022	2.A FE
92556V-AA-4	VIATRIS INC 1.125% 06/22/22		06/22/2022	Maturity		5,000,000	5,000,000	4,997,850	4,999,477		523		523		5,000,000				28,125	06/22/2022	2.C FE
96043J-AC-9	WLAKE 2021-3A A2 0.570% 09/16/24		06/15/2022	Paydown		4,614,244	4,614,244	4,613,973	4,613,973		271		271		4,614,244				11,713	09/16/2024	1.A FE
96328D-BM-5	WHL5 2019-1A A2 2.300% 05/22/28		04/20/2022	Paydown		205,932	205,932	205,902	205,929		2		2		205,932				1,579	05/22/2028	1.A FE
98419M-AJ-9	XYLEM INC 3.250% 11/01/26		04/05/2022	Key Bank NA, Cleveland		3,987,004	4,025,000	4,475,406	4,381,359		(20,156)		(20,156)		4,361,203		(374,199)	(374,199)	56,685	11/01/2026	2.B FE
1109999999. Subtotal - Bonds - Industrial and Miscellaneous (Unaffiliated)						146,877,654	146,468,913	147,925,927	145,843,405	315	(161,333)		(161,018)		147,616,518		(738,865)	(738,865)	1,702,762	XXX	XXX
2509999997. Total - Bonds - Part 4						227,756,803	229,379,078	230,565,961	220,656,644	315	(158,436)		(158,121)		230,507,340		(2,750,538)	(2,750,538)	1,963,760	XXX	XXX
2509999998. Total - Bonds - Part 5						XXX	XXX	XXX	XXX	XXX	XXX	XXX	XXX	XXX	XXX	XXX	XXX	XXX	XXX	XXX	XXX
2509999999. Total - Bonds						227,756,803	229,379,078	230,565,961	220,656,644	315	(158,436)		(158,121)		230,507,340		(2,750,538)	(2,750,538)	1,963,760	XXX	XXX
4509999997. Total - Preferred Stocks - Part 4						XXX	XXX	XXX	XXX											XXX	XXX
4509999998. Total - Preferred Stocks - Part 5						XXX	XXX	XXX	XXX	XXX	XXX	XXX	XXX	XXX	XXX	XXX	XXX	XXX	XXX	XXX	XXX
4509999999. Total - Preferred Stocks							XXX													XXX	XXX
002824-10-0	ABBOTT LABORATORIES		05/20/2022	State Street Bank	19,400,000	2,196,792		1,351,146	2,730,356	(1,379,210)			(1,379,210)		1,351,146		845,646	845,646	18,236		
00287Y-10-9	ABBVIE INC		06/14/2022	State Street Bank	37,300,000	5,478,484		1,000,532	5,050,420	(4,049,888)			(4,049,888)		1,000,532		4,477,953	4,477,953	105,186		
00650F-10-9	ADAPTIVE BIOTECHNOLOGIES		05/20/2022	State Street Bank	6,800,000	52,379		228,264	190,808	37,456			37,456		228,264		(175,886)	(175,886)			
016255-10-1	ALIGN TECHNOLOGY INC		06/14/2022	State Street Bank	3,700,000	880,867		983,764	2,431,566	(1,447,802)			(1,447,802)		983,764		(102,897)	(102,897)			
02209S-10-3	ALTRIA GROUP INC		06/14/2022	State Street Bank	12,500,000	578,580		86,681	592,375	(505,694)			(505,694)		86,681		491,899	491,899	22,500		
031162-10-0	AMGEN INC		05/20/2022	State Street Bank	4,600,000	1,138,478		1,034,862	1,034,862	(821,497)			(821,497)		213,365		925,113	925,113	17,848		
03272L-10-8	ANAPLAN INC		06/22/2022	State Street Bank	8,600,000	545,369		414,336	394,310	20,026			20,026		414,336		131,034	131,034			
03748R-74-7	APARTMENT INVT & MGMT CO --A		05/20/2022	State Street Bank	59,122,000	348,794		336,895	456,422	(119,527)			(119,527)		336,895		11,899	11,899			
053015-10-3	AUTOMATIC DATA PROCESSING		06/14/2022	State Street Bank	10,700,000	2,184,114		348,141	2,638,406	(2,290,265)			(2,290,265)		348,141		1,835,974	1,835,974	22,256		
05352A-10-0	AVANTOR INC		05/20/2022	State Street Bank	17,500,000	546,308		308,796	737,450	(428,654)			(428,654)		308,796		237,511	237,511			
060505-10-4	BANK OF AMERICA CORP		06/14/2022	State Street Bank	100,000	3,146		671	4,449	(3,778)			(3,778)		671		2,474	2,474	42		
090043-10-0	BILL COM HOLDINGS INC		05/20/2022	State Street Bank	1,000,000	118,625		191,183	249,150	(57,967)			(57,967)		191,183		(72,557)	(72,557)			
101137-10-7	BOSTON SCIENTIFIC CORP		06/14/2022	State Street Bank	30,800,000	1,085,297		552,903	1,308,384	(755,481)			(755,481)		552,903		532,394	532,394			
126650-10-0	CVS HEALTH CORP		06/14/2022	State Street Bank	15,700,000	1,422,978		499,183	1,619,612	(1,120,429)			(1,120,429)		499,183		923,795	923,795	17,270		
147528-10-3	CASEY'S GENERAL STORES INC		06/14/2022	State Street Bank	4,400,000	818,966		630,354	868,340	(237,986)			(237,986)		630,354		188,632	188,632	3,080		
16119P-10-8	CHARTER COMMUNICATIONS INC A		06/14/2022	State Street Bank	4,340,000	1,961,494		266,536	2,829,550	(2,563,014)			(2,563,014)		266,536		1,694,958	1,694,958			
18915M-10-0	CLOUDFLARE INC A		06/14/2022	State Street Bank	8,600,000	350,764		314,242	1,130,900	(816,658)			(816,658)		314,242		36,522	36,522			
205887-10-2	CONAGRA FOODS INC		05/20/2022	State Street Bank	18,100,000	574,093		486,680	618,115	(131,435)			(131,435)		486,680		87,413	87,413	11,313		
219350-10-5	CORNING INC		06/14/2022	State Street Bank	29,800,000	956,491		376,803	1,109,454	(732,651)			(732,651)		376,803		579,688	579,688	16,092		
22268L-10-6	COUPA SOFTWARE INC		05/20/2022	State Street Bank	3,070,000	211,823		445,540	485,214	(39,674)			(39,674)		445,540		(233,717)	(233,717)			
22788C-10-5	CROWDSTRIKE HOLDINGS INC A		06/14/2022	State Street Bank	11,400,000	1,703,993		1,210,780	2,334,150	(1,123,370)			(1,123,370)		1,210,780		493,212	493,212			
23804L-10-3	DATADOG INC A		05/20/2022	State Street Bank	13,600,000	1,289,087		1,248,649	2,422,296	(1,173,647)			(1,173,647)		1,248,649		40,438	40,438			
25470M-10-9	DISH NETWORK CORP		05/20/2022	State Street Bank	604,000	12,549		6,069	19,594	(13,525)			(13,525)		6,069		6,481	6,481			
256163-10-6	DOCSIGN INC		06/14/2022	State Street Bank	15,800,000	904,964		660,985	2,406,498	(1,745,513)			(1,745,513)		660,985		243,979	243,979			
25746U-10-9	DOMINION ENERGY INC		06/14/2022	State Street Bank	14,800,000	1,104,035		414,621	1,162,688	(748,067)			(748,067)		414,621		689,414	689,414	19,758		
278768-10-0	ECHOSTAR HOLDING CORP		06/14/2022	State Street Bank	2,440,000	49,037		21,487	64,294	(42,807)			(42,807)		21,487		27,550	27,550			
29355A-10-7	ENPHASE ENERGY INC		05/20/2022	State Street Bank	6,600,000	1,110,411		306,014	1,207,404	(901,390)			(901,390)		306,014		804,398	804,398			
29786A-10-6	ETSY INC		06/14/2022	State Street Bank	1,200,000	85,927		225,532	262,728	(37,196)			(37,196)		225,532		(139,605)	(139,605)			
30303M-10-2	META PLATFORMS INC		06/14/2022	State Street Bank	6,400,000	1,047,832		154,956	2,152,640	(1,997,684)			(1,997,684)		154,956		892,876	892,876			
45337C-10-2	INCYTE GENOMICS INC		05/20/2022	State Street Bank	2,700,000	202,165		269,630	198,180	71,450			71,450		269,630		(67,465)	(67,465)			
487836-10-8	KELLOGG CO		05/20/2022	State Street Bank	15,000,000	1,016,050		496,926	966,300	(469,374)			(469,374)		496,926		519,124	519,124	8,700		
571903-20-2	MARRIOTT INTERNATIONAL INC CLASS A		06/14/2022	State Street Bank	24,464,000	3,764,113		373,670	4,042,431	(3,668,761)			(3,668,761)		373,670		3,390,443	3,390,443	7,339		

STATEMENT AS OF JUNE 30, 2022 OF THE PROGRESSIVE NORTHWESTERN INSURANCE COMPANY

SCHEDULE D - PART 4

Show All Long-Term Bonds and Stock Sold, Redeemed or Otherwise Disposed of During the Current Quarter

1	2	3	4	5	6	7	8	9	10	Change In Book/Adjusted Carrying Value					16	17	18	19	20	21	22
										11	12	13	14	15							
CUSIP Identification	Description	For- eign	Disposal Date	Name of Purchaser	Number of Shares of Stock	Consid- eration	Par Value	Actual Cost	Prior Year Book/ Adjusted Carrying Value	Unrealized Valuation Increase/ (Decrease)	Current Year's (Amor- tization)/ Accretion	Current Year's Other Than Temporary Impairment Recogn- ized	Total Change in Book/ Adjusted Carrying Value (11 + 12 - 13)	Total Foreign Exchange Change in Book /Adjusted Carrying Value	Book/ Adjusted Carrying Value at Disposal Date	Foreign Exchange Gain (Loss) on Disposal	Realized Gain (Loss) on Disposal	Total Gain (Loss) on Disposal	Bond Interest/ Stock Dividends Received During Year	Stated Con- tractual Maturity Date	NAIC Desig- nation, NAIC Desig- nation Modifier and SVO Admini- strative Symbol
573284-10-6	MARTIN MARIETTA MATERIALS		06/14/2022	State Street Bank	900,000	284,814		92,403	396,468	(304,065)			(304,065)		92,403		192,411	192,411	1,098		
580135-10-1	MCDONALD'S CORP		05/20/2022	State Street Bank	7,400,000	1,730,890		1,244,391	1,983,718	(739,327)			(739,327)		1,244,391		486,499	486,499	10,212		
581550-10-3	MCKESSON HBOC INC		05/20/2022	State Street Bank	11,584,000	3,739,906		372,194	2,879,435	(2,507,241)			(2,507,241)		372,194		3,367,713	3,367,713	10,889		
617446-44-8	MORGAN STANLEY		06/14/2022	State Street Bank	18,000	1,349		332	1,767	(1,435)			(1,435)		332		1,017	1,017	25		
65339F-10-1	NEXTERA ENERGY INC		06/14/2022	State Street Bank	85,600,000	6,118,342		628,226	7,991,616	(7,363,390)			(7,363,390)		628,226		5,490,116	5,490,116	72,760		
654106-10-3	NIKE INC CLASS B		06/14/2022	State Street Bank	51,200,000	5,600,924		565,526	8,533,504	(7,967,978)			(7,967,978)		565,526		5,035,398	5,035,398	15,616		
655844-10-8	NORFOLK SOUTHERN CORP		06/14/2022	State Street Bank	6,300,000	1,403,655		135,702	1,875,573	(1,739,871)			(1,739,871)		135,702		1,267,953	1,267,953	15,624		
683712-10-3	OPENDOOR TECHNOLOGIES INC		05/20/2022	State Street Bank	61,100,000	418,373		1,048,757	892,671	156,086			156,086		1,048,757		(630,384)	(630,384)			
693186-10-6	PBF ENERGY INC		06/14/2022	State Street Bank	55,705,000	2,033,089		316,822	722,494	(405,672)			(405,672)		316,822		1,716,267	1,716,267			
693506-10-7	PPG INDUSTRIES INC		06/14/2022	State Street Bank	4,600,000	512,923		297,897	793,224	(495,327)			(495,327)		297,897		215,025	215,025	5,428		
69351T-10-6	PPL CORPORATION		05/20/2022	State Street Bank	23,000,000	671,534		352,100	691,380	(339,280)			(339,280)		352,100		319,434	319,434	14,145		
703481-10-1	PATTERSON-UTI ENERGY INC		06/14/2022	State Street Bank	226,004,000	3,630,021		603,272	1,909,734	(1,306,461)			(1,306,461)		603,272		3,026,749	3,026,749	11,941		
713448-10-8	PEPSICO INC		05/20/2022	State Street Bank	884,000	143,393		62,190	153,560	(91,369)			(91,369)		62,190		81,203	81,203	1,901		
72703H-10-1	PLANET FITNESS INC A		05/20/2022	State Street Bank	10,400,000	677,946		505,974	942,032	(436,058)			(436,058)		505,974		171,973	171,973			
742718-10-9	PROCTER & GAMBLE CO		05/20/2022	State Street Bank	15,550,000	2,204,763		1,926,410	2,543,669	(617,259)			(617,259)		1,926,410		278,353	278,353	27,727		
74767V-10-9	QUANTUMSCAPE CORP		05/20/2022	State Street Bank	24,200,000	292,753		583,832	536,998	46,834			46,834		583,832		(291,079)	(291,079)			
76954A-10-3	RIVIAN AUTOMOTIVE INC A		05/20/2022	State Street Bank	8,900,000	257,376		554,931	311,070	(24,588)			(24,588)		554,931		(297,555)	(297,555)			
77543R-10-2	ROKU INC		06/14/2022	State Street Bank	10,800,000	881,931		1,081,795	2,464,560	(1,382,765)			(1,382,765)		1,081,795		(199,864)	(199,864)			
83001A-10-2	SIX FLAGS ENTERTAINMENT CORP		06/14/2022	State Street Bank	24,900,000	570,882		360,365	1,060,242	(699,877)			(699,877)		360,365		210,516	210,516			
852234-10-3	BLOCK INC		05/20/2022	State Street Bank	8,400,000	700,868		233,637	1,356,684	(1,123,047)			(1,123,047)		233,637		467,231	467,231			
874054-10-9	TAKE-TWO INTERACTIVE SOFTWARE		05/20/2022	State Street Bank	3,700,000	429,630		349,349	657,564	(308,215)			(308,215)		349,349		80,281	80,281			
87918A-10-5	TELADOC HEALTH INC		05/20/2022	State Street Bank	17,600,000	576,167		2,301,358	1,616,032	685,326			685,326		2,301,358		(1,725,192)	(1,725,192)			
902973-30-4	US BANCORP		05/20/2022	State Street Bank	30,301,000	1,491,015		730,942	1,702,007	(971,065)			(971,065)		730,942		760,073	760,073	27,877		
904000-10-8	ULTRAGENYX PHARMACEUTICAL IN		05/20/2022	State Street Bank	8,700,000	422,354		760,939	731,583	29,356			29,356		760,939		(338,585)	(338,585)			
91347P-10-5	UNIVERSAL DISPLAY CORP		06/14/2022	State Street Bank	1,700,000	188,640		138,668	280,551	(141,883)			(141,883)		138,668		49,972	49,972	510		
918790-10-9	VAIL RESORTS INC		06/14/2022	State Street Bank	4,200,000	974,104		634,027	1,377,180	(743,153)			(743,153)		634,027		340,077	340,077	11,718		
92343V-10-4	VERIZON COMMUNICATIONS INC		06/14/2022	State Street Bank	8,800,000	432,576		384,446	457,248	(72,802)			(72,802)		384,446		48,130	48,130	11,264		
92838U-20-6	VISTEON CORP		06/14/2022	State Street Bank	5,497,000	562,789		260,764	610,937	(350,173)			(350,173)		260,764		302,025	302,025			
92918V-10-9	VROOM INC		05/20/2022	State Street Bank	148,000,000	214,225		393,680				26,847	(26,847)		393,680		(179,455)	(179,455)			
94419L-10-1	WAYFAIR INC A		05/20/2022	State Street Bank	1,200,000	61,700		132,936	227,964	180,960			(95,028)		132,936		(71,236)	(71,236)			
949746-10-1	WELLS FARGO & CO		05/20/2022	State Street Bank	6,000,000	250,002		230,932	287,880	(56,948)			(56,948)		230,932		19,070	19,070	3,000		
958102-10-5	WESTERN DIGITAL CORP		06/14/2022	State Street Bank	9,800,000	482,516		175,399	639,058	(463,659)			(463,659)		175,399		307,117	307,117			
969457-10-0	WILLIAMS COS INC		06/14/2022	State Street Bank	28,900,000	934,532		282,953	752,556	(469,603)			(469,603)		282,953		651,580	651,580	24,565		
66674U-10-8	NOVOCURE LTD	C	06/14/2022	State Street Bank	3,000,000	179,598		337,521	225,240	112,281			112,281		337,521		(157,923)	(157,923)			
5019999999. Subtotal - Common Stocks - Industrial and Miscellaneous (Unaffiliated) Publicly Traded						72,819,605	XXX	32,506,004	91,325,545	(59,205,680)		302,835	(59,508,515)		32,506,004		40,313,603	40,313,603	535,920	XXX	XXX
5989999997. Total - Common Stocks - Part 4						72,819,605	XXX	32,506,004	91,325,545	(59,205,680)		302,835	(59,508,515)		32,506,004		40,313,603	40,313,603	535,920	XXX	XXX
5989999998. Total - Common Stocks - Part 5						XXX	XXX	XXX	XXX	XXX	XXX	XXX	XXX	XXX	XXX	XXX	XXX	XXX	XXX	XXX	XXX
5989999999. Total - Common Stocks						72,819,605	XXX	32,506,004	91,325,545	(59,205,680)		302,835	(59,508,515)		32,506,004		40,313,603	40,313,603	535,920	XXX	XXX
5999999999. Total - Preferred and Common Stocks						72,819,605	XXX	32,506,004	91,325,545	(59,205,680)		302,835	(59,508,515)		32,506,004		40,313,603	40,313,603	535,920	XXX	XXX
6009999999 - Totals						300,576,408	XXX	263,071,965	311,982,189	(59,205,365)	(158,436)	302,835	(59,666,636)		263,013,344		37,563,065	37,563,065	2,499,680	XXX	XXX

Schedule DB - Part A - Section 1 - Options, Caps, Floors, Collars, Swaps and Forwards Open
N O N E

Schedule DB - Part B - Section 1 - Futures Contracts Open
N O N E

Schedule DB - Part B - Section 1B - Brokers with whom cash deposits have been made
N O N E

Schedule DB - Part D - Section 1 - Counterparty Exposure for Derivative Instruments Open
N O N E

Schedule DB - Part D-Section 2 - Collateral for Derivative Instruments Open - Pledged By
N O N E

Schedule DB - Part D-Section 2 - Collateral for Derivative Instruments Open - Pledged To
N O N E

Schedule DB - Part E - Derivatives Hedging Variable Annuity Guarantees
N O N E

Schedule DL - Part 1 - Reinvested Collateral Assets Owned
N O N E

Schedule DL - Part 2 - Reinvested Collateral Assets Owned
N O N E

SCHEDULE E - PART 1 - CASH

[illegible]

STATEMENT AS OF JUNE 30, 2022 OF THE PROGRESSIVE NORTHWESTERN INSURANCE COMPANY

SCHEDULE E - PART 2 - CASH EQUIVALENTS

Show Investments Owned End of Current Quarter

[illegible]