



**QUARTERLY STATEMENT**  
AS OF JUNE 30, 2022  
OF THE CONDITION AND AFFAIRS OF THE  
**TRUSTGARD INSURANCE COMPANY**

NAIC Group Code.....0267.....0267..... NAIC Company Code.....40118..... Employer's ID Number.....41-1405571.....  
(Current)(Prior)

Organized under the Laws of	OH	State of Domicile or Port of Entry	OH
Country of Domicile	US		
Incorporated/Organized	07/01/1981	Commenced Business	11/10/1981
Statutory Home Office	671 South High Street	Columbus, OH, US 43206-1066	
Main Administrative Office	671 South High Street		
	Columbus, OH, US 43206-1066	614-445-2900	
		(Telephone Number)	
Mail Address	671 South High Street	Columbus, OH, US 43206-1066	
Primary Location of Books and Records	671 South High Street		
	Columbus, OH, US 43206-1066	614-445-2900	
		(Telephone Number)	
Internet Website Address	www.grangeinsurance.com		
Statutory Statement Contact	Jeffrey P Siefker	614-445-2900	
		(Telephone Number)	
	siefkerj@grangeinsurance.com	614-542-3017	
	(E-Mail Address)	(Fax Number)	

## OFFICERS

..... JOHN (NMN) AMMENDOLA, PRESIDENT & CEO ..... TERESA JEAN BROWN, EVP & CFO.....  
..... LAVAWN DEE COLEMAN, EVP & SECRETARY.....

## DIRECTORS OR TRUSTEES

JOHN (NMN) AMMENDOLA	KATHIE JANE ANDRADE
JAMES MARTIN BENSON	MARK LEWIS BOXER
TERESA JEAN BROWN	MICHAEL DESMOND FRAIZER
ROBERT ENLOW HOYT	SUZAN BULYABA KEREERE
MARY MARNETTE PERRY	THOMAS SIMRALL STEWART
CHRISTIANNA (NMN) WOOD	

State of Ohio.....  
County of Franklin..... SS

The officers of this reporting entity being duly sworn, each depose and say that they are the described officers of said reporting entity, and that on the reporting period stated above, all of the herein described assets were the absolute property of the said reporting entity, free and clear from any liens or claims thereon, except as herein stated, and that this statement, together with related exhibits, schedules and explanations therein contained, annexed or referred to, is a full and true statement of all the assets and liabilities and of the condition and affairs of the said reporting entity as of the reporting period stated above, and of its income and deductions therefrom for the period ended, and have been completed in accordance with the NAIC Annual Statement Instructions and Accounting Practices and Procedures manual except to the extent that: (1) state law may differ; or, (2) that state rules or regulations require differences in reporting not related to accounting practices and procedures, according to the best of their information, knowledge and belief, respectively. Furthermore, the scope of this attestation by the described officers also includes the related corresponding electronic filing with the NAIC, when required, that is an exact copy (except for formatting differences due to electronic filing) of the enclosed statement. The electronic filing may be requested by various regulators in lieu of or in addition to the enclosed statement.

X	X	X
JOHN (NMN) AMMENDOLA PRESIDENT & CEO	LAWAWN DEE COLEMAN EVP & SECRETARY	TERESA JEAN BROWN EVP & CFO

Subscribed and sworn to before me

this 10th day of August

a. Is this an original filing? Yes

b. If no:

1. State the amendment number: \_\_\_\_\_

2. Date filed: \_\_\_\_\_

3. Number of pages attached: \_\_\_\_\_

X

ASSETS

		Current Statement Date		
		1	2	3
		Assets	Nonadmitted Assets	Net Admitted Assets (Cols. 1 - 2)
				December 31 Prior Year Net Admitted Assets
1.	Bonds.....	79,528,733		79,528,733
2.	Stocks:			
	2.1 Preferred stocks.....			
	2.2 Common stocks.....			
3.	Mortgage loans on real estate:			
	3.1 First liens.....			
	3.2 Other than first liens.....			
4.	Real estate:			
	4.1 Properties occupied by the company (less \$ encumbrances).....			
	4.2 Properties held for the production of income (less \$ encumbrances).....			
	4.3 Properties held for sale (less \$ encumbrances).....			
5.	Cash (\$ ), cash equivalents (\$ 1,899,340) and short-term investments (\$ ).....	1,899,340		1,899,340
6.	Contract loans (including \$ premium notes).....			
7.	Derivatives.....			
8.	Other invested assets.....			
9.	Receivables for securities.....			2,151
10.	Securities lending reinvested collateral assets.....			
11.	Aggregate write-ins for invested assets.....			
12.	Subtotals, cash and invested assets (Lines 1 to 11).....	81,428,073		81,428,073
13.	Title plants less \$ charged off (for Title insurers only).....			80,320,998
14.	Investment income due and accrued.....	772,653		772,653
15.	Premiums and considerations:			
	15.1 Uncollected premiums and agents' balances in the course of collection.....			
	15.2 Deferred premiums, agents' balances and installments booked but deferred and not yet due (including \$ earned but unbilled premiums).....			
	15.3 Accrued retrospective premiums (\$ ) and contracts subject to redetermination (\$ ).....			
16.	Reinsurance:			
	16.1 Amounts recoverable from reinsurers.....			
	16.2 Funds held by or deposited with reinsured companies.....			
	16.3 Other amounts receivable under reinsurance contracts.....			
17.	Amounts receivable relating to uninsured plans.....			
18.1	Current federal and foreign income tax recoverable and interest thereon.....			
18.2	Net deferred tax asset.....			
19.	Guaranty funds receivable or on deposit.....			
20.	Electronic data processing equipment and software.....			
21.	Furniture and equipment, including health care delivery assets (\$ ).....			
22.	Net adjustment in assets and liabilities due to foreign exchange rates.....			
23.	Receivables from parent, subsidiaries and affiliates.....			
24.	Health care (\$ ) and other amounts receivable.....			
25.	Aggregate write-ins for other-than-invested assets.....			
26.	Total assets excluding Separate Accounts, Segregated Accounts and Protected Cell Accounts (Lines 12 to 25).....	82,200,726		82,200,726
27.	From Separate Accounts, Segregated Accounts and Protected Cell Accounts.....			81,104,403
28.	Total (Lines 26 and 27).....	82,200,726		82,200,726
Details of Write-Ins				
1101.	.....			
1102.	.....			
1103.	.....			
1198.	Summary of remaining write-ins for Line 11 from overflow page.....			
1199.	Totals (Lines 1101 through 1103 plus 1198) (Line 11 above).....			
2501.	.....			
2502.	.....			
2503.	.....			
2598.	Summary of remaining write-ins for Line 25 from overflow page.....			
2599.	Totals (Lines 2501 through 2503 plus 2598) (Line 25 above).....			

LIABILITIES, SURPLUS AND OTHER FUNDS

		1	2
		Current Statement Date	December 31, Prior Year
1.	Losses (current accident year \$ ).....		—
2.	Reinsurance payable on paid losses and loss adjustment expenses .....		
3.	Loss adjustment expenses.....		
4.	Commissions payable, contingent commissions and other similar charges.....		
5.	Other expenses (excluding taxes, licenses and fees) .....	4,166	4,166
6.	Taxes, licenses and fees (excluding federal and foreign income taxes).....		
7.1	Current federal and foreign income taxes (including \$ (1,245) on realized capital gains (losses)) .....	156,924	340,348
7.2	Net deferred tax liability.....	9,536	9,536
8.	Borrowed money \$ and interest thereon \$ .....		
9.	Unearned premiums (after deducting unearned premiums for ceded reinsurance of \$ 87,990,764 and including warranty reserves of \$ and accrued accident and health experience rating refunds including \$ for medical loss ratio rebate per the Public Health Service Act) .....		
10.	Advance premium.....		
11.	Dividends declared and unpaid:		
11.1	Stockholders.....		
11.2	Policyholders.....		
12.	Ceded reinsurance premiums payable (net of ceding commissions) .....		
13.	Funds held by company under reinsurance treaties .....		
14.	Amounts withheld or retained by company for account of others.....		
15.	Remittances and items not allocated.....		
16.	Provision for reinsurance (including \$ certified).....		
17.	Net adjustments in assets and liabilities due to foreign exchange rates .....		
18.	Drafts outstanding.....		
19.	Payable to parent, subsidiaries and affiliates.....	1,292,175	868,862
20.	Derivatives.....		
21.	Payable for securities.....		
22.	Payable for securities lending.....		
23.	Liability for amounts held under uninsured plans.....		
24.	Capital notes \$ and interest thereon \$ .....		
25.	Aggregate write-ins for liabilities.....		
26.	Total liabilities excluding protected cell liabilities (Lines 1 through 25) .....	1,462,802	1,222,913
27.	Protected cell liabilities.....		
28.	Total liabilities (Lines 26 and 27) .....	1,462,802	1,222,913
29.	Aggregate write-ins for special surplus funds.....		
30.	Common capital stock.....	2,500,000	2,500,000
31.	Preferred capital stock.....		
32.	Aggregate write-ins for other-than-special surplus funds.....		
33.	Surplus notes.....		
34.	Gross paid in and contributed surplus.....	4,657,724	4,657,724
35.	Unassigned funds (surplus).....	73,580,200	72,723,767
36.	Less treasury stock, at cost:		
36.1	shares common (value included in Line 30 \$ ).....		
36.2	shares preferred (value included in Line 31 \$ ).....		
37.	Surplus as regards policyholders (Lines 29 to 35, less 36).....	80,737,924	79,881,491
38.	Totals (Page 2, Line 28, Col. 3).....	82,200,726	81,104,403
Details of Write-Ins			
2501.	.....		
2502.	.....		
2503.	.....		
2598.	Summary of remaining write-ins for Line 25 from overflow page.....		
2599.	Totals (Lines 2501 through 2503 plus 2598) (Line 25 above).....		
2901.	.....		
2902.	.....		
2903.	.....		
2998.	Summary of remaining write-ins for Line 29 from overflow page.....		
2999.	Totals (Lines 2901 through 2903 plus 2998) (Line 29 above).....		
3201.	.....		
3202.	.....		
3203.	.....		
3298.	Summary of remaining write-ins for Line 32 from overflow page.....		
3299.	Totals (Lines 3201 through 3203 plus 3298) (Line 32 above).....		

STATEMENT OF INCOME

		1	2	3
		Current Year to Date	Prior Year to Date	Prior Year Ended December 31
Underwriting Income				
1.	Premiums earned:			
1.1.	Direct (written \$ 97,331,875)	92,794,650	87,774,275	180,791,987
1.2.	Assumed (written \$ 24,872)	24,077	23,610	58,683
1.3.	Ceded (written \$ 97,356,746)	92,818,727	87,797,885	180,850,669
1.4.	Net (written \$ 0)	—	—	—
Deductions:				
2.	Losses incurred (current accident year \$ ):			
2.1	Direct	74,781,906	51,969,656	117,377,021
2.2	Assumed	13,851	6,203	26,809
2.3	Ceded	74,795,757	51,975,859	117,403,830
2.4	Net	—	—	—
3.	Loss adjustment expenses incurred			—
4.	Other underwriting expenses incurred			—
5.	Aggregate write-ins for underwriting deductions			
6.	Total underwriting deductions (Lines 2 through 5)	—	—	—
7.	Net income of protected cells			
8.	Net underwriting gain (loss) (Line 1 minus Line 6 + Line 7)	—	—	—
Investment Income				
9.	Net investment income earned	1,019,286	1,020,316	2,048,560
10.	Net realized capital gains (losses) less capital gains tax of \$ (1,245)	(4,684)	1,094	75,414
11.	Net investment gain (loss) (Lines 9 + 10)	1,014,602	1,021,410	2,123,974
Other Income				
12.	Net gain or (loss) from agents' or premium balances charged off (amount recovered \$ amount charged off \$ )			
13.	Finance and service charges not included in premiums			
14.	Aggregate write-ins for miscellaneous income			
15.	Total other income (Lines 12 through 14)			
16.	Net income before dividends to policyholders, after capital gains tax and before all other federal and foreign income taxes (Lines 8 + 11 + 15)	1,014,602	1,021,410	2,123,974
17.	Dividends to policyholders			
18.	Net income, after dividends to policyholders, after capital gains tax and before all other federal and foreign income taxes (Line 16 minus Line 17)	1,014,602	1,021,410	2,123,974
19.	Federal and foreign income taxes incurred	158,169	165,445	320,301
20.	Net income (Line 18 minus Line 19) (to Line 22)	856,433	855,965	1,803,673
Capital and Surplus Account				
21.	Surplus as regards policyholders, December 31 prior year	79,881,491	78,070,004	78,070,004
22.	Net income (from Line 20)	856,433	855,965	1,803,673
23.	Net transfers (to) from Protected Cell accounts			
24.	Change in net unrealized capital gains or (losses) less capital gains tax of \$			
25.	Change in net unrealized foreign exchange capital gain (loss)			
26.	Change in net deferred income tax		12,048	7,814
27.	Change in nonadmitted assets			
28.	Change in provision for reinsurance			
29.	Change in surplus notes			
30.	Surplus (contributed to) withdrawn from protected cells			
31.	Cumulative effect of changes in accounting principles			
32.	Capital changes:			
32.1.	Paid in			
32.2.	Transferred from surplus (Stock Dividend)			
32.3.	Transferred to surplus			
33.	Surplus adjustments:			
33.1.	Paid in	—	—	
33.2.	Transferred to capital (Stock Dividend)			
33.3.	Transferred from capital			
34.	Net remittances from or (to) Home Office			
35.	Dividends to stockholders			
36.	Change in treasury stock			
37.	Aggregate write-ins for gains and losses in surplus			
38.	Change in surplus as regards policyholders (Lines 22 through 37)	856,433	868,013	1,811,487
39.	Surplus as regards policyholders, as of statement date (Lines 21 plus 38)	80,737,924	78,938,017	79,881,491
Details of Write-Ins				
0501.				
0502.				
0503.				
0598.	Summary of remaining write-ins for Line 5 from overflow page			
0599.	Totals (Lines 0501 through 0503 plus 0598) (Line 5 above)			
1401.				
1402.				
1403.				
1498.	Summary of remaining write-ins for Line 14 from overflow page			
1499.	Totals (Lines 1401 through 1403 plus 1498) (Line 14 above)			
3701.				
3702.				
3703.				
3798.	Summary of remaining write-ins for Line 37 from overflow page			
3799.	Totals (Lines 3701 through 3703 plus 3798) (Line 37 above)			

CASH FLOW

	1	2	3
	Current Year To Date	Prior Year To Date	Prior Year Ended December 31
Cash from Operations			
1. Premiums collected net of reinsurance	—	—	—
2. Net investment income	1,375,970	1,407,448	2,817,014
3. Miscellaneous income			
4. Total (Lines 1 to 3)	1,375,970	1,407,448	2,817,014
5. Benefit and loss related payments	—	—	—
6. Net transfers to Separate Accounts, Segregated Accounts and Protected Cell Accounts			
7. Commissions, expenses paid and aggregate write-ins for deductions	—	—	—
8. Dividends paid to policyholders			
9. Federal and foreign income taxes paid (recovered) net of \$ (1,245) tax on capital gains (losses)	340,348	345,858	345,858
10. Total (Lines 5 through 9)	340,348	345,858	345,858
11. Net cash from operations (Line 4 minus Line 10)	1,035,622	1,061,590	2,471,156
Cash from Investments			
12. Proceeds from investments sold, matured or repaid:			
12.1 Bonds	3,431,231	1,000,000	4,875,257
12.2 Stocks			
12.3 Mortgage loans			
12.4 Real estate			
12.5 Other invested assets			
12.6 Net gains or (losses) on cash, cash equivalents and short-term investments			
12.7 Miscellaneous proceeds	2,151	—	—
12.8 Total investment proceeds (Lines 12.1 to 12.7)	3,433,382	1,000,000	4,875,257
13. Cost of investments acquired (long-term only):			
13.1 Bonds	4,056,772	2,488,454	7,520,402
13.2 Stocks			
13.3 Mortgage loans			
13.4 Real estate			
13.5 Other invested assets			
13.6 Miscellaneous applications	—	—	2,151
13.7 Total investments acquired (Lines 13.1 to 13.6)	4,056,772	2,488,454	7,522,553
14. Net increase (or decrease) in contract loans and premium notes			
15. Net cash from investments (Line 12.8 minus Line 13.7 and Line 14)	(623,390)	(1,488,454)	(2,647,296)
Cash from Financing and Miscellaneous Sources			
16. Cash provided (applied):			
16.1 Surplus notes, capital notes			
16.2 Capital and paid in surplus, less treasury stock	—	—	—
16.3 Borrowed funds			
16.4 Net deposits on deposit-type contracts and other insurance liabilities			
16.5 Dividends to stockholders			
16.6 Other cash provided (applied)	423,312	412,980	477,628
17. Net cash from financing and miscellaneous sources (Line 16.1 through Line 16.4 minus Line 16.5 plus Line 16.6)	423,312	412,980	477,628
Reconciliation of Cash, Cash Equivalents and Short-Term Investments			
18. Net change in cash, cash equivalents and short-term investments (Line 11, plus Lines 15 and 17)	835,544	(13,884)	301,488
19. Cash, cash equivalents and short-term investments:			
19.1 Beginning of year	1,063,795	762,307	762,307
19.2 End of period (Line 18 plus Line 19.1)	1,899,340	748,423	1,063,795
Note: Supplemental disclosures of cash flow information for non-cash transactions:			
20.0001.			

Notes to the Financial Statements

1. Summary of Significant Accounting Policies and Going Concern

A. Accounting Practices

Trustgard Insurance Company (the “Company”) prepares its statutory financial statements in conformity with accounting practices prescribed or permitted by The Ohio Department of Insurance (the “Department”). The Department requires that insurance companies domiciled in the State of Ohio prepare their statutory basis financial statements in accordance with the National Association of Insurance Commissioners (“NAIC”) Accounting Practices and Procedures Manual (“NAIC SAP”) subject to any deviations prescribed or permitted by the Department. The Company does not employ accounting practices that depart from the NAIC SAP.

A reconciliation of the Company’s net income and surplus between NAIC SAP and practices prescribed and permitted by the State of Ohio is shown below:

	SSAP #	F/S Page	F/S Line #	06/30/2022	12/31/2021
Net Income					
(1) State basis (Page 4, Line 20, Columns 1 & 3)	XXX	XXX	XXX	\$ 856,433	\$ 1,803,673
(2) State prescribed practices that are an increase / (decrease) from NAIC SAP:					
(3) State permitted practices that are an increase / (decrease) from NAIC SAP:					
(4) NAIC SAP (1-2-3=4)	XXX	XXX	XXX	\$ 856,433	\$ 1,803,673
Surplus					
(5) State basis (Page 3, Line 37, Columns 1 & 2)	XXX	XXX	XXX	\$ 80,737,924	\$ 79,881,491
(6) State prescribed practices that are an increase / (decrease) from NAIC SAP:					
(7) State permitted practices that are an increase / (decrease) from NAIC SAP:					
(8) NAIC SAP (5-6-7=8)	XXX	XXX	XXX	\$ 80,737,924	\$ 79,881,491

C. Accounting Policy

- (2) Bonds not backed by other loans are stated at amortized cost using the scientific method.
- (6) Loan-backed securities are stated at either amortized cost or the lower of amortized cost or fair market value. The retrospective adjustment method is used to value all securities except for interest only securities or securities where the yield had become negative, those are valued using the prospective method.

D. Going Concern

Management has evaluated the Company’s viability and has no doubt as to the Company’s ability to continue as a going concern.

2. Accounting Changes and Corrections of Errors - Not Applicable

3. Business Combinations and Goodwill - Not Applicable

4. Discontinued Operations - Not Applicable

5. Investments

- D. Loan-Backed Securities - Not Applicable
- E. Dollar Repurchase Agreements and/or Securities Lending Transactions - Not Applicable
- F. Repurchase Agreements Transactions Accounted for as Secured Borrowing - Not Applicable
- G. Reverse Repurchase Agreements Transactions Accounted for as Secured Borrowing - Not Applicable
- H. Repurchase Agreements Transactions Accounted for as a Sale - Not Applicable
- I. Reverse Repurchase Agreements Transactions Accounted for as a Sale - Not Applicable
- M. Working Capital Finance Investments - Not Applicable
- N. Offsetting and Netting of Assets and Liabilities - Not Applicable
- R. Reporting Entity's Share of Cash Pool by Asset type - Not Applicable

6. Joint Ventures, Partnerships and Limited Liability Companies - Not Applicable

7. Investment Income - Not Applicable

8. Derivative Instruments - Not Applicable

9. Income Taxes - No Significant Changes

10. Information Concerning Parent, Subsidiaries, Affiliates and Other Related Parties

- A. The Company is a 100% owned subsidiary of Grange Insurance Company (“GIC”), an insurance company domiciled in the State of Ohio and a member of the Grange Insurance Operations. The Company’s parent, GIC, and its affiliate, Integrity Insurance Company, are stock companies 100% owned by Grange Holdings, Inc. (“GHI”), which is 100% owned by Grange Mutual Holding Company.

11. Debt - Not Applicable

12. Retirement Plans, Deferred Compensation, Postemployment Benefits and Compensated Absences and Other Postretirement Benefit Plans

- A. Defined Benefit Plan - Not Applicable

Notes to the Financial Statements

12. Retirement Plans, Deferred Compensation, Postemployment Benefits and Compensated Absences and Other Postretirement Benefit Plans (Continued)

G. Consolidated/Holding Company Plans

All employees are employed by GIC and participate in the pension and other benefit plans of GIC and GHI.

The qualified defined benefit pension plan (“Plan”) is sponsored by GHI and is currently fully funded, with no contributions expected in 2022. As a result, all costs associated with this plan are held at GHI. If the Plan is underfunded in future periods and contributions into the Plan are required, the cost of those future contributions will be allocated via the pooling agreement.

There are two nonqualified plans also sponsored by GHI.

The postretirement benefit plan is still sponsored by GIC and all annual costs for 2022 are shared via the pooling agreement.

13. Capital and Surplus, Dividend Restrictions and Quasi-Reorganizations - No Significant Changes

14. Liabilities, Contingencies and Assessments - No Significant Changes

15. Leases - Not Applicable

16. Information About Financial Instruments With Off-Balance-Sheet Risk And Financial Instruments With Concentrations of Credit Risk - Not Applicable

17. Sale, Transfer and Servicing of Financial Assets and Extinguishments of Liabilities - Not Applicable

18. Gain or Loss to the Reporting Entity from Uninsured Plans and the Uninsured Portion of Partially Insured Plans - Not Applicable

19. Direct Premium Written/Produced by Managing General Agents/Third Party Administrators - Not Applicable

20. Fair Value Measurements

A. Fair Value Measurement

All assets and liabilities of the Company are measured and reported at cost or amortized cost.

- (1) Fair value measurements at reporting date - Not Applicable
- (2) Fair value measurements in Level 3 of the fair value hierarchy - Not Applicable
- (3) Policy on transfers into and out of Level 3 - Not Applicable
- (4) Reported Fair Value of Investments within Level 2 and Level 3: According to statutory accounting rules, fixed income securities with a rating of NAIC 1 or 2 are reported at amortized cost. Securities with a rating of NAIC 3 thru 6, or non-investment grade ratings, are measured and reported at the lower of amortized cost or fair value on the statement of financial position. As of the end of the period, the Company did not have any bonds rated NAIC 3 thru 6, and therefore did not report any securities at fair value.
- (5) Derivatives - Not Applicable

B. Other Fair Value Disclosures - Not Applicable

C. Fair Values for All Financial Instruments by Level 1, 2 and 3

Type of Financial Instrument	Aggregate Fair Value	Admitted Assets	Level 1	Level 2	Level 3	Net Asset Value (NAV)	Not Practicable (Carrying Value)
Bonds.....	\$..... 75,410,892	\$..... 79,528,733	\$..... –	\$..... 75,410,892	\$..... –	\$..... –	\$..... –
Money market.....	1,899,340	1,899,340	1,899,340	–	–	–	–

D. Not Practicable to Estimate Fair Value - Not Applicable

E. Nature and Risk of Investments Reported at NAV - Not Applicable

21. Other Items - No Significant Changes

22. Events Subsequent

There have been no events after the period’s end, but before the filing of this statement, which have a material effect upon the financial condition of the Company.

23. Reinsurance - No Significant Changes

24. Retrospectively Rated Contracts & Contracts Subject to Redetermination

A. Method Used to Estimate - Not Applicable

B. Method Used to Record - Not Applicable

C. Amount and Percent of Net Retrospective Premiums - Not Applicable

D. Medical Loss Ratio Rebates Required Pursuant to the Public Health Service Act - Not Applicable

E. Calculation of Nonadmitted Retrospective Premium - Not Applicable

F. Risk-Sharing Provisions of the Affordable Care Act (ACA)

- (1) Accident and health insurance premium subject to the Affordable Care Act risk-sharing provisions

Did the reporting entity write accident and health insurance premium which is subject to the Affordable Care Act risk sharing provisions? NO

- (2) Impact of Risk-Sharing Provisions of the Affordable Care Act on admitted assets, liabilities and revenue for the current year - Not Applicable
- (3) Roll-forward of prior year ACA risk-sharing provisions for the following asset (gross of any nonadmission) and liability balances, along with the reasons for adjustments to prior year balance - Not Applicable

Notes to the Financial Statements

24. Retrospectively Rated Contracts & Contracts Subject to Redetermination (Continued)

- (4) Roll-forward of risk corridors asset and liability balances by program benefit year - Not Applicable
- (5) ACA risk corridors receivable as of reporting date - Not Applicable

25. Changes in Incurred Losses and Loss Adjustment Expenses

- A. Reasons for Changes in the Provision for Incurred Loss and Loss Adjustment Expenses Attributable to Insured Events of Prior Years  
As a result of the intercompany pooling agreement, all reserves have been ceded based on the pooling agreement.
- B. Significant Changes in Methodologies and Assumptions Used in Calculating the Liability for Unpaid Losses and Loss Adjustment Expenses - Not Applicable

26. Intercompany Pooling Arrangements - No Significant Changes

27. Structured Settlements - Not Applicable

28. Health Care Receivables - Not Applicable

29. Participating Policies - Not Applicable

30. Premium Deficiency Reserves - No Significant Changes

31. High Deductibles - Not Applicable

32. Discounting of Liabilities For Unpaid Losses or Unpaid Loss Adjustment Expenses - Not Applicable

33. Asbestos/Environmental Reserves - Not Applicable

34. Subscriber Savings Accounts - Not Applicable

35. Multiple Peril Crop Insurance - Not Applicable

36. Financial Guaranty Insurance - Not Applicable



GENERAL INTERROGATORIES  
PART 1 - COMMON INTERROGATORIES

GENERAL

- 1.1 Did the reporting entity experience any material transactions requiring the filing of Disclosure of Material Transactions with the State of Domicile, as required by the Model Act?.....NO
- 1.2 If yes, has the report been filed with the domiciliary state?.....
- 2.1 Has any change been made during the year of this statement in the charter, by-laws, articles of incorporation, or deed of settlement of the reporting entity?.....NO
- 2.2 If yes, date of change:.....
- 3.1 Is the reporting entity a member of an Insurance Holding Company System consisting of two or more affiliated persons, one or more of which is an insurer?.....YES
- If yes, complete Schedule Y, Parts 1 and 1A.
- 3.2 Have there been any substantial changes in the organizational chart since the prior quarter end?.....NO
- 3.3 If the response to 3.2 is yes, provide a brief description of those changes.
- 3.4 Is the reporting entity publicly traded or a member of a publicly traded group?.....NO
- 3.5 If the response to 3.4 is yes, provide the CIK (Central Index Key) code issued by the SEC for the entity/group.....
- 4.1 Has the reporting entity been a party to a merger or consolidation during the period covered by this statement?.....NO
- 4.2 If yes, provide the name of entity, NAIC Company Code, and state of domicile (use two letter state abbreviation) for any entity that has ceased to exist as a result of the merger or consolidation.

1	2	3
Name of Entity	NAIC Company Code	State of Domicile

5. If the reporting entity is subject to a management agreement, including third-party administrator(s), managing general agent(s), attorney-in-fact, or similar agreement, have there been any significant changes regarding the terms of the agreement or principals involved?.....NO
- If yes, attach an explanation.
- 6.1 State as of what date the latest financial examination of the reporting entity was made or is being made. ....12/31/2019
- 6.2 State the as of date that the latest financial examination report became available from either the state of domicile or the reporting entity. This date should be the date of the examined balance sheet and not the date the report was completed or released. ....12/31/2019
- 6.3 State as of what date the latest financial examination report became available to other states or the public from either the state of domicile or the reporting entity. This is the release date or completion date of the examination report and not the date of the examination (balance sheet date). ....02/03/2021
- 6.4 By what department or departments?  
Ohio.....
- 6.5 Have all financial statement adjustments within the latest financial examination report been accounted for in a subsequent financial statement filed with Departments?.....N/A
- 6.6 Have all of the recommendations within the latest financial examination report been complied with?.....YES
- 7.1 Has this reporting entity had any Certificates of Authority, licenses or registrations (including corporate registration, if applicable) suspended or revoked by any governmental entity during the reporting period?.....NO
- 7.2 If yes, give full information
- 8.1 Is the company a subsidiary of a bank holding company regulated by the Federal Reserve Board?.....NO
- 8.2 If response to 8.1 is yes, please identify the name of the bank holding company.
- 8.3 Is the company affiliated with one or more banks, thrifts or securities firms?.....NO
- 8.4 If response to 8.3 is yes, please provide below the names and location (city and state of the main office) of any affiliates regulated by a federal regulatory services agency [i.e. the Federal Reserve Board (FRB), the Office of the Comptroller of the Currency (OCC), the Federal Deposit Insurance Corporation (FDIC) and the Securities Exchange Commission (SEC)] and identify the affiliates primary federal regulator.

1	2	3	4	5	6
Affiliate Name	Location (City, State)	FRB	OCC	FDIC	SEC

- 9.1 Are the senior officers (principal executive officer, principal financial officer, principal accounting officer or controller, or persons performing similar functions) of the reporting entity subject to a code of ethics, which includes the following standards?.....YES
- (a) Honest and ethical conduct, including the ethical handling of actual or apparent conflicts of interest between personal and professional relationships;
- (b) Full, fair, accurate, timely and understandable disclosure in the periodic reports required to be filed by the reporting entity;
- (c) Compliance with applicable governmental laws, rules and regulations;
- (d) The prompt internal reporting of violations to an appropriate person or persons identified in the code; and
- (e) Accountability for adherence to the code.
- 9.11 If the response to 9.1 is No, please explain:
- 9.2 Has the code of ethics for senior managers been amended?.....NO
- 9.21 If the response to 9.2 is Yes, provide information related to amendment(s).
- 9.3 Have any provisions of the code of ethics been waived for any of the specified officers?.....NO
- 9.31 If the response to 9.3 is Yes, provide the nature of any waiver(s).

FINANCIAL

- 10.1 Does the reporting entity report any amounts due from parent, subsidiaries or affiliates on Page 2 of this statement?.....NO
- 10.2 If yes, indicate any amounts receivable from parent included in the Page 2 amount:.....\$ -

INVESTMENT

- 11.1 Were any of the stocks, bonds, or other assets of the reporting entity loaned, placed under option agreement, or otherwise made available for use by another person? (Exclude securities under securities lending agreements.).....NO
- 11.2 If yes, give full and complete information relating thereto:
12. Amount of real estate and mortgages held in other invested assets in Schedule BA:.....\$ -
13. Amount of real estate and mortgages held in short-term investments:.....\$ -
- 14.1 Does the reporting entity have any investments in parent, subsidiaries and affiliates?.....NO
- 14.2 If yes, please complete the following:

GENERAL INTERROGATORIES  
PART 1 - COMMON INTERROGATORIES

	1	2
	Prior Year-End Book / Adjusted Carrying Value	Current Quarter Book / Adjusted Carrying Value
14.21 Bonds.....	\$.....	\$..... —
14.22 Preferred Stock.....		—
14.23 Common Stock.....		—
14.24 Short-Term Investments.....		—
14.25 Mortgage Loans on Real Estate.....		—
14.26 All Other.....		—
14.27 Total Investment in Parent, Subsidiaries and Affiliates (Subtotal Lines 14.21 to 14.26).....		—
14.28 Total Investment in Parent included in Lines 14.21 to 14.26 above.....		—

- 15.1 Has the reporting entity entered into any hedging transactions reported on Schedule DB?.....NO.....
- 15.2 If yes, has a comprehensive description of the hedging program been made available to the domiciliary state?.....  
If no, attach a description with this statement.

16. For the reporting entity's security lending program, state the amount of the following as of the current statement date:
- 16.1 Total fair value of reinvested collateral assets reported on Schedule DL, Parts 1 and 2.....\$.....
- 16.2 Total book adjusted/carrying value of reinvested collateral assets reported on Schedule DL, Parts 1 and 2.....\$.....
- 16.3 Total payable for securities lending reported on the liability page.....\$.....

17. Excluding items in Schedule E - Part 3 - Special Deposits, real estate, mortgage loans and investments held physically in the reporting entity's offices, vaults or safety deposit boxes, were all stocks, bonds and other securities, owned throughout the current year held pursuant to a custodial agreement with a qualified bank or trust company in accordance with Section 1, III - General Examination Considerations, F. Outsourcing of Critical Functions, Custodial or Safekeeping Agreements of the NAIC Financial Condition Examiners Handbook?.....YES.....
- 17.1 For all agreements that comply with the requirements of the NAIC Financial Condition Examiners Handbook, complete the following:

1	2
Name of Custodian(s)	Custodian Address
Northern Trust.....	333 S Wabash Street WB43, Chicago, IL 60604.....

- 17.2 For all agreements that do not comply with the requirements of the NAIC Financial Condition Examiners Handbook, provide the name, location and a complete explanation:
- | 1       | 2           | 3                       |
|---------|-------------|-------------------------|
| Name(s) | Location(s) | Complete Explanation(s) |
| .....   | .....       | .....                   |

- 17.3 Have there been any changes, including name changes, in the custodian(s) identified in 17.1 during the current quarter?.....NO.....
- 17.4 If yes, give full and complete information relating thereto:

1	2	3	4
Old Custodian	New Custodian	Date of Change	Reason
.....	.....	.....	.....

- 17.5 Investment management - Identify all investment advisors, investment managers, broker/dealers, including individuals that have the authority to make investment decisions on behalf of the reporting entity. For assets that are managed internally by employees of the reporting entity, note as such. ["...that have access to the investment accounts"; "...handle securities"]
- | 1                              | 2           |
|--------------------------------|-------------|
| Name of Firm or Individual     | Affiliation |
| J. Christopher Montgomery..... | I.....      |
| James Habegger.....            | I.....      |
| John Ammendola.....            | I.....      |
| Teresa Brown.....              | I.....      |

- 17.5097 For those firms/individuals listed in the table for Question 17.5, do any firms/individuals unaffiliated with the reporting entity (i.e., designated with a "U") manage more than 10% of the reporting entity's invested assets?.....NO.....
- 17.5098 For firms/individuals unaffiliated with the reporting entity (i.e., designated with a "U") listed in the table for Question 17.5, does the total assets under management aggregate to more than 50% of the reporting entity's invested assets?.....NO.....

- 17.6 For those firms or individuals listed in the table for 17.5 with an affiliation code of "A" (affiliated) or "U" (unaffiliated), provide the information for the table below.
- | 1   | 2                          | 3                             | 4               | 5  |
|---|----------------------------|-------------------------------|-----------------|--|
| Central<br>Registration<br>Depository<br>Number | Name of Firm or Individual | Legal Entity Identifier (LEI) | Registered With | Investment<br>Management<br>Agreement<br>(IMA) Filed |
| .....   | .....                      | .....                         | .....           | .....  |

GENERAL INTERROGATORIES  
PART 1 - COMMON INTERROGATORIES

- 18.1 Have all the filing requirements of the Purposes and Procedures Manual of the NAIC Investment Analysis Office been followed? .....YES .....
- 18.2 If no, list exceptions:  
.....
19. By self-designating 5GI securities, the reporting entity is certifying the following elements for each self-designated 5GI security:  
a. Documentation necessary to permit a full credit analysis of the security does not exist or an NAIC CRP credit rating for an FE or PL security is not available.  
b. Issuer or obligor is current on all contracted interest and principal payments.  
c. The insurer has an actual expectation of ultimate payment of all contracted interest and principal.  
Has the reporting entity self-designated 5GI securities? .....NO .....
20. By self-designating PLGI securities, the reporting entity is certifying the following elements of each self-designated PLGI security:  
a. The security was purchased prior to January 1, 2018.  
b. The reporting entity is holding capital commensurate with the NAIC Designation reported for the security.  
c. The NAIC Designation was derived from the credit rating assigned by an NAIC CRP in its legal capacity as a NRSRO which is shown on a current private letter rating held by the insurer and available for examination by state insurance regulators.  
d. The reporting entity is not permitted to share this credit rating of the PL security with the SVO.  
Has the reporting entity self-designated PLGI securities? .....NO .....
21. By assigning FE to a Schedule BA non-registered private fund, the reporting entity is certifying the following elements of each self-designated FE fund:  
a. The shares were purchased prior to January 1, 2019.  
b. The reporting entity is holding capital commensurate with the NAIC Designation reported for the security.  
c. The security had a public credit rating(s) with annual surveillance assigned by an NAIC CRP in its legal capacity as an NRSRO prior to January 1, 2019.  
d. The fund only or predominantly holds bonds in its portfolio.  
e. The current reported NAIC Designation was derived from the public credit rating(s) with annual surveillance assigned by an NAIC CRP in its legal capacity as an NRSRO.  
f. The public credit rating(s) with annual surveillance assigned by an NAIC CRP has not lapsed.  
Has the reporting entity assigned FE to Schedule BA non-registered private funds that complied with the above criteria? .....NO .....

GENERAL INTERROGATORIES

PART 2 – PROPERTY & CASUALTY INTERROGATORIES

1. If the reporting entity is a member of a pooling arrangement, did the agreement or the reporting entity's participation change? .....NO.....  
If yes, attach an explanation.  
.....
2. Has the reporting entity reinsured any risk with any other reporting entity and agreed to release such entity from liability, in whole or in part, from any loss that may occur on the risk, or portion thereof, reinsured? .....NO.....  
If yes, attach an explanation.  
.....
- 3.1 Have any of the reporting entity's primary reinsurance contracts been canceled? .....NO.....
- 3.2 If yes, give full and complete information thereto  
.....
- 4.1 Are any of the liabilities for unpaid losses and loss adjustment expenses other than certain workers' compensation tabular reserves (see Annual Statement Instructions pertaining to disclosure of discounting for definition of "tabular reserves,") discounted at a rate of interest greater than zero? .....NO.....
- 4.2 If yes, complete the following schedule:
- | 1                | 2                | 3          | Total Discount |            |      |       | Discount Taken During Period |            |      |       |
|------------------|------------------|------------|----------------|------------|------|-------|------------------------------|------------|------|-------|
|                  |                  |            | 4              | 5          | 6    | 7     | 8                            | 9          | 10   | 11    |
| Line of Business | Maximum Interest | Disc. Rate | Unpaid Losses  | Unpaid LAE | IBNR | Total | Unpaid Losses                | Unpaid LAE | IBNR | Total |
| Total.....       |                  |            |                |            |      |       |                              |            |      |       |
5. Operating Percentages:
- 5.1 A&H loss percent ..... – %
- 5.2 A&H cost containment percent ..... – %
- 5.3 A&H expense percent excluding cost containment expenses ..... – %
- 6.1 Do you act as a custodian for health savings accounts? .....NO.....
- 6.2 If yes, please provide the amount of custodial funds held as of the reporting date. ....\$.....
- 6.3 Do you act as an administrator for health savings accounts? .....NO.....
- 6.4 If yes, please provide the balance of the funds administered as of the reporting date. ....\$.....
7. Is the reporting entity licensed or chartered, registered, qualified, eligible or writing business in at least two states? .....YES.....
- 7.1 If no, does the reporting entity assume reinsurance business that covers risks residing in at least one state other than the state of domicile of the reporting entity? .....

SCHEDULE F - CEDED REINSURANCE

Showing All New Reinsurers - Current Year to Date

1	2	3	4	5	6	7
NAIC Company Code	ID Number	Name of Reinsurer	Domiciliary Jurisdiction	Type of Reinsurer	Certified Reinsurer Rating (1 through 6)	Effective Date of Certified Reinsurer Rating
U.S. Insurers						
13021.....	42-0644327.....	United Fire & Casualty Co.....	IA.....	Authorized.....	.....	.....
All Other Insurers						
00000.....	AA-1780116.....	Chaucer Ins Co Designated Activity Co.....	IRL.....	Unauthorized.....	.....	.....
00000.....	AA-3191432.....	Vantage Risk Ltd.....	BMU.....	Unauthorized.....	.....	.....
00000.....	AA-1128623.....	Lloyds Syndicate #2121.....	GBR.....	Authorized.....	.....	.....

SCHEDULE T – EXHIBIT OF PREMIUMS WRITTEN

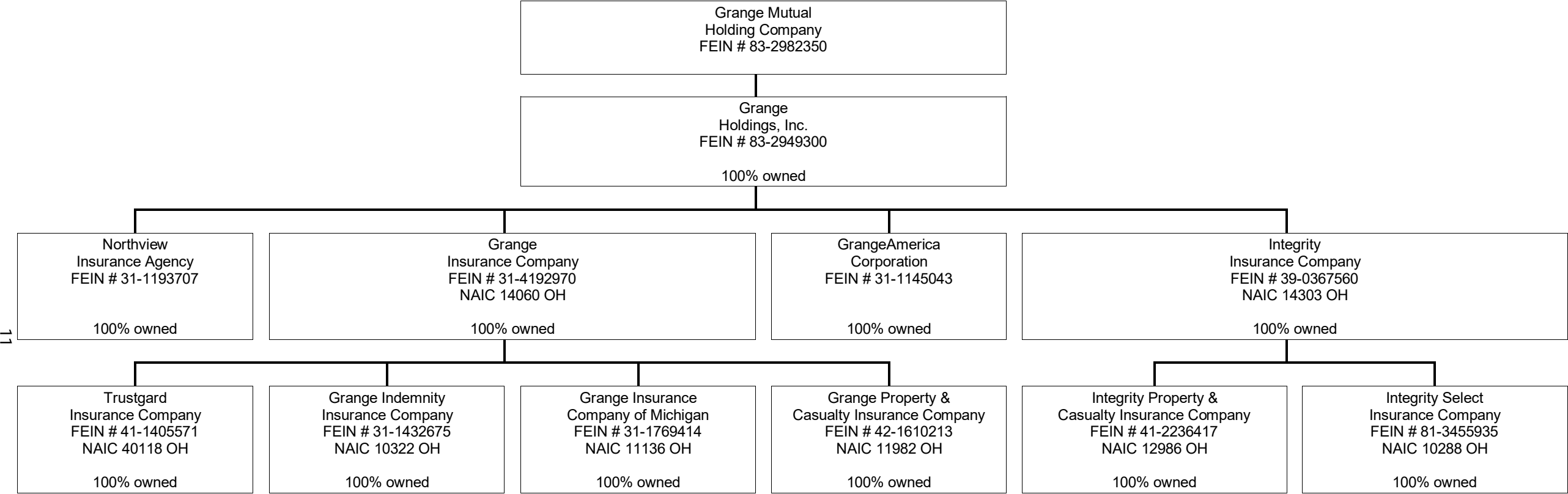
Current Year to Date - Allocated by States and Territories

			1	Direct Premiums Written		Direct Losses Paid (Deducting Salvage)		Direct Losses Unpaid	
			Active Status (a)	2	3	4	5	6	7
				Current Year To Date	Prior Year To Date	Current Year To Date	Prior Year To Date	Current Year To Date	Prior Year To Date
States, Etc.									
1.	Alabama.....	AL	N						
2.	Alaska.....	AK	N						
3.	Arizona.....	AZ	N						
4.	Arkansas.....	AR	N						
5.	California.....	CA	N						
6.	Colorado.....	CO	L						
7.	Connecticut.....	CT	N						
8.	Delaware.....	DE	N						
9.	District of Columbia.....	DC	N						
10.	Florida.....	FL	N						
11.	Georgia.....	GA	L	11,726,703	12,429,970	7,136,631	5,783,388	15,078,299	9,062,200
12.	Hawaii.....	HI	N						
13.	Idaho.....	ID	N						
14.	Illinois.....	IL	L	6,283,252	5,836,128	3,382,306	3,984,221	4,076,156	4,169,302
15.	Indiana.....	IN	L	23,005,519	21,283,600	14,047,627	10,744,169	15,878,229	11,805,822
16.	Iowa.....	IA	L						
17.	Kansas.....	KS	L						
18.	Kentucky.....	KY	L	3,375,265	3,126,722	2,670,623	1,205,723	2,175,629	1,344,943
19.	Louisiana.....	LA	N						
20.	Maine.....	ME	N						
21.	Maryland.....	MD	L						
22.	Massachusetts.....	MA	N						
23.	Michigan.....	MI	N						
24.	Minnesota.....	MN	L						
25.	Mississippi.....	MS	N						
26.	Missouri.....	MO	L						
27.	Montana.....	MT	N						
28.	Nebraska.....	NE	L						
29.	Nevada.....	NV	N						
30.	New Hampshire.....	NH	N						
31.	New Jersey.....	NJ	N						
32.	New Mexico.....	NM	N						
33.	New York.....	NY	N						
34.	North Carolina.....	NC	L						
35.	North Dakota.....	ND	L						
36.	Ohio.....	OH	L	7,129,707	7,254,104	5,426,113	2,628,323	8,733,585	4,760,959
37.	Oklahoma.....	OK	N						
38.	Oregon.....	OR	L						
39.	Pennsylvania.....	PA	L	4,822,776	5,642,982	2,080,109	1,475,693	3,885,630	4,519,064
40.	Rhode Island.....	RI	N						
41.	South Carolina.....	SC	L			47,986	10,696	849,900	546,759
42.	South Dakota.....	SD	L						
43.	Tennessee.....	TN	L	17,544,559	17,062,831	9,933,366	10,012,091	11,580,303	7,781,059
44.	Texas.....	TX	L						
45.	Utah.....	UT	N						
46.	Vermont.....	VT	N						
47.	Virginia.....	VA	L	23,444,095	20,228,298	16,808,508	10,458,904	19,127,455	10,928,104
48.	Washington.....	WA	L						
49.	West Virginia.....	WV	L						
50.	Wisconsin.....	WI	L						
51.	Wyoming.....	WY	N						
52.	American Samoa.....	AS	N						
53.	Guam.....	GU	N						
54.	Puerto Rico.....	PR	N						
55.	US Virgin Islands.....	VI	N						
56.	Northern Mariana Islands.....	MP	N						
57.	Canada.....	CAN	N						
58.	Aggregate Other Alien.....	OT	XXX						
59.	Totals.....		XXX	97,331,875	92,864,634	61,533,269	46,303,208	81,385,185	54,918,211
Details of Write-Ins									
58001.			XXX						
58002.			XXX						
58003.			XXX						
58998.	Summary of remaining write-ins for Line 58 from overflow page.....		XXX						
58999.	Totals (Lines 58001 through 58003 plus 58998) (Line 58 above).....		XXX						

(a) Active Status Counts

L – Licensed or Chartered - Licensed insurance carrier or domiciled RRG.....	24	R – Registered - Non-domiciled RRGs.....	–
E – Eligible - Reporting entities eligible or approved to write surplus lines in the state (other than their state of domicile - See DSLI).....	–	Q – Qualified - Qualified or accredited reinsurer.....	–
D – Domestic Surplus Lines Insurer (DSL) - Reporting entities authorized to write surplus lines in the state of domicile.....	–	N – None of the above - Not allowed to write business in the state.....	33

SCHEDULE Y - INFORMATION CONCERNING ACTIVITIES OF INSURER MEMBERS OF A HOLDING COMPANY GROUP  
PART 1 - ORGANIZATIONAL CHART



SCHEDULE Y

PART 1A - DETAIL OF INSURANCE HOLDING COMPANY SYSTEM

1	2	3	4	5	6	7	8	9	10	11	12	13	14	15	16
Group Code	Group Name	NAIC Company Code	ID Number	Federal RSSD	CIK	Name of Securities Exchange if Publicly Traded (U.S. or International)	Names of Parent, Subsidiaries Or Affiliates	Domiciliary Location	Relationship to Reporting Entity	Directly Controlled by (Name of Entity/Person)	Type of Control (Ownership, Board, Management, Attorney-in-Fact, Influence, Other)	If Control is Ownership Provide Percentage	Ultimate Controlling Entity(ies) / Person(s)	Is an SCA Filing Required? (Yes/No)	*
0267	GRANGE INSURANCE POOL	14060	31-4192970				GRANGE INSURANCE COMPANY	OH	UDP	GRANGE HOLDINGS, INC.	OWNERSHIP	100.000	GRANGE MUTUAL HOLDING COMPANY	N	
0267	GRANGE INSURANCE POOL	40118	41-1405571				TRUSTGARD INSURANCE COMPANY	OH	RE	GRANGE INSURANCE COMPANY	OWNERSHIP	100.000	GRANGE MUTUAL HOLDING COMPANY	N	
0267	GRANGE INSURANCE POOL	10322	31-1432675				GRANGE INDEMNITY INSURANCE COMPANY	OH	IA	GRANGE INSURANCE COMPANY	OWNERSHIP	100.000	GRANGE MUTUAL HOLDING COMPANY	N	
0267	GRANGE INSURANCE POOL	11136	31-1769414				GRANGE INSURANCE COMPANY OF MICHIGAN	OH	IA	GRANGE INSURANCE COMPANY	OWNERSHIP	100.000	GRANGE MUTUAL HOLDING COMPANY	N	
0267	GRANGE INSURANCE POOL	14303	39-0367560				INTEGRITY INSURANCE COMPANY	OH	IA	GRANGE HOLDINGS, INC.	OWNERSHIP	100.000	GRANGE MUTUAL HOLDING COMPANY	N	
0267	GRANGE INSURANCE POOL	11982	42-1610213				GRANGE PROPERTY & CASUALTY INSURANCE COMPANY	OH	IA	GRANGE INSURANCE COMPANY	OWNERSHIP	100.000	GRANGE MUTUAL HOLDING COMPANY	N	
0267	GRANGE INSURANCE POOL	10288	81-3455935				INTEGRITY SELECT INSURANCE COMPANY	OH	IA	INTEGRITY INSURANCE COMPANY	OWNERSHIP	100.000	GRANGE MUTUAL HOLDING COMPANY	N	
0267	GRANGE INSURANCE POOL	12986	41-2236417				INTEGRITY PROPERTY & CASUALTY INSURANCE COMPANY	OH	IA	INTEGRITY INSURANCE COMPANY	OWNERSHIP	100.000	GRANGE MUTUAL HOLDING COMPANY	N	
			31-1145043				GRANGEAMERICA	OH	NIA	GRANGE HOLDINGS, INC.	OWNERSHIP	100.000	GRANGE MUTUAL HOLDING COMPANY	N	
			31-1193707				NORTHVIEW INSURANCE AGENCY	OH	NIA	GRANGE HOLDINGS, INC.	OWNERSHIP	100.000	GRANGE MUTUAL HOLDING COMPANY	N	
			83-2982350				GRANGE MUTUAL HOLDING COMPANY	OH	UIP	GRANGE MUTUAL HOLDING COMPANY	Board of Directors		GRANGE MUTUAL HOLDING COMPANY	N	
			83-2949300				GRANGE HOLDINGS, INC.	OH	UIP	GRANGE MUTUAL HOLDING COMPANY	OWNERSHIP	100.000	GRANGE MUTUAL HOLDING COMPANY	N	
Asterisk	Explanation														



PART 1 – LOSS EXPERIENCE

		Current Year to Date			4
		1	2	3	Prior Year to Date
Line of Business		Direct Premiums Earned	Direct Losses Incurred	Direct Loss Percentage	Direct Loss Percentage
1.	Fire .....	1,456,969	1,055,661	72.456	55.409
2.1.	Allied lines .....	903,607	130,617	14.455	20.081
2.2.	Multiple peril crop .....				
2.3.	Federal flood .....				
2.4.	Private crop .....				
2.5.	Private flood .....				
3.	Farmowners multiple peril .....				
4.	Homeowners multiple peril .....	15,199,395	9,939,793	65.396	65.464
5.	Commercial multiple peril .....	8,744,304	10,261,731	117.353	60.532
6.	Mortgage guaranty .....				
8.	Ocean marine .....				
9.	Inland marine .....	169,609	108,141	63.759	19.507
10.	Financial guaranty .....				
11.1.	Medical professional liability - occurrence .....				
11.2.	Medical professional liability - claims made .....				
12.	Earthquake .....	92,028			
13.1.	Comprehensive (hospital and medical) individual .....				
13.2.	Comprehensive (hospital and medical) group .....				
14.	Credit accident and health .....				
15.1.	Vision only .....				
15.2.	Dental only .....				
15.3.	Disability income .....				
15.4.	Medicare supplement .....				
15.5.	Medicaid Title XIX .....				
15.6.	Medicare Title XVIII .....				
15.7.	Long-term care .....				
15.8.	Federal employees health benefits plan .....				
15.9.	Other health .....				
16.	Workers' compensation .....	1,209,409	608,276	50.295	31.748
17.1.	Other liability occurrence .....	373,737	(834)	(0.223)	(2.855)
17.2.	Other liability-claims made .....				
17.3.	Excess workers' compensation .....				
18.1.	Products liability - occurrence .....	22,026	2,185	9.920	15.591
18.2.	Products liability - claims made .....				
19.1.	Private passenger auto no-fault (personal injury protection) .....	140,683	134,239	95.420	2.456
19.2.	Other private passenger auto liability .....	28,908,755	23,825,221	82.415	66.675
19.3.	Commercial auto no-fault (personal injury protection) .....	70,578	22,581	31.995	(11.817)
19.4.	Other commercial auto liability .....	5,225,967	4,527,012	86.625	44.266
21.1.	Private passenger auto physical damage .....	28,356,816	22,086,967	77.889	54.559
21.2.	Commercial auto physical damage .....	1,920,668	2,080,315	108.312	59.833
22.	Aircraft (all perils) .....				
23.	Fidelity .....				
24.	Surety .....				
26.	Burglary and theft .....	99	2	1.794	
27.	Boiler and machinery .....				
28.	Credit .....				
29.	International .....				
30.	Warranty .....				
31.	Reinsurance - nonproportional assumed property .....	XXX	XXX	XXX	XXX
32.	Reinsurance - nonproportional assumed liability .....	XXX	XXX	XXX	XXX
33.	Reinsurance - nonproportional assumed financial lines .....	XXX	XXX	XXX	XXX
34.	Aggregate write-ins for other lines of business .....				
35.	Totals .....	92,794,650	74,781,906	80.589	59.208
Details of Write-Ins					
3401.	.....				
3402.	.....				
3403.	.....				
3498.	Summary of remaining write-ins for Line 34 from overflow page .....				
3499.	Totals (Lines 3401 through 3403 plus 3498) (Line 34 above) .....				

PART 2 – DIRECT PREMIUMS WRITTEN

		1	2	3
Line of Business		Current Quarter	Current Year to Date	Prior Year Year to Date
1.	Fire .....	759,253	1,428,895	1,473,313
2.1	Allied lines .....	471,557	881,352	922,668
2.2	Multiple peril crop .....			
2.3	Federal flood .....			
2.4	Private crop .....			
2.5	Private flood .....			
3.	Farmowners multiple peril .....			
4.	Homeowners multiple peril .....	8,512,236	14,881,510	14,574,357
5.	Commercial multiple peril .....	5,314,320	9,905,920	8,667,045
6.	Mortgage guaranty .....			
8.	Ocean marine .....			
9.	Inland marine .....	93,674	169,904	173,967
10.	Financial guaranty .....			
11.1.	Medical professional liability - occurrence .....			
11.2.	Medical professional liability - claims made .....			
12.	Earthquake .....	48,623	86,729	94,838
13.1	Comprehensive (hospital and medical) individual .....			
13.2	Comprehensive (hospital and medical) group .....			
14.	Credit accident and health .....			
15.1	Vision only .....			
15.2	Dental only .....			
15.3	Disability income .....			
15.4	Medicare supplement .....			
15.5	Medicaid Title XIX .....			
15.6	Medicare Title XVIII .....			
15.7	Long-term care .....			
15.8	Federal employees health benefits plan .....			
15.9	Other health .....			
16.	Workers' compensation .....	770,226	1,155,539	1,593,319
17.1.	Other liability occurrence .....	200,761	361,321	332,752
17.2.	Other liability-claims made .....			
17.3.	Excess workers' compensation .....			
18.1.	Products liability - occurrence .....	6,825	15,551	4,826
18.2.	Products liability - claims made .....			
19.1	Private passenger auto no-fault (personal injury protection) .....	61,536	130,949	168,100
19.2	Other private passenger auto liability .....	15,326,224	29,779,406	29,168,459
19.3	Commercial auto no-fault (personal injury protection) .....	41,697	83,231	82,902
19.4	Other commercial auto liability .....	2,979,991	6,363,661	5,818,483
21.1	Private passenger auto physical damage .....	15,500,871	29,781,651	27,731,371
21.2	Commercial auto physical damage .....	1,101,000	2,305,978	2,058,233
22.	Aircraft (all perils) .....			
23.	Fidelity .....			
24.	Surety .....			
26.	Burglary and theft .....	—	277	
27.	Boiler and machinery .....			
28.	Credit .....			
29.	International .....			
30.	Warranty .....			
31.	Reinsurance - nonproportional assumed property .....	XXX	XXX	XXX
32.	Reinsurance - nonproportional assumed liability .....	XXX	XXX	XXX
33.	Reinsurance - nonproportional assumed financial lines .....	XXX	XXX	XXX
34.	Aggregate write-ins for other lines of business .....			
35.	Totals .....	51,188,794	97,331,875	92,864,634
Details of Write-Ins				
3401.	.....			
3402.	.....			
3403.	.....			
3498.	Summary of remaining write-ins for Line 34 from overflow page .....			
3499.	Totals (Lines 3401 through 3403 plus 3498) (Line 34 above) .....			

PART 3 (000 OMITTED)  
LOSS AND LOSS ADJUSTMENT EXPENSE RESERVES SCHEDULE

	1	2	3	4	5	6	7	8	9	10	11	12	13
								Q.S. Date Known Case Loss and LAE Reserves on Claims Reported or Reopened Subsequent to Prior Year End			Prior Year-End Known Case Loss and LAE Reserves Developed (Savings) / Deficiency (Cols.4+7 minus Col. 1)	Prior Year-End IBNR Loss and LAE Reserves Developed (Savings) / Deficiency (Cols. 5+8+9 minus Col. 2)	Prior Year-End Total Loss and LAE Reserve Developed (Savings) / Deficiency (Cols. 11+12)
Years in Which Losses Occurred	Prior Year End Known Case Loss and LAE Reserves	Prior Year End IBNR Loss and LAE Reserves	Total Prior Year End Loss and LAE Reserves (Cols. 1+2)	2022 Loss and LAE Payments on Claims Reported as of Prior Year End	2022 Loss and LAE Payments on Claims Unreported as of Prior Year End	Total 2022 Loss and LAE Payments (Cols. 4+5)	Q.S. Date Known Case Loss and LAE Reserves on Claims Reported and Open as of Prior Year End		Q.S. Date IBNR Loss and LAE Reserves	Total Q.S. Loss and LAE Reserves (Cols.7+8+9)			
1. 2019 + Prior.....													
2. 2020.....													
3. Subtotals 2020 + prior.....													
4. 2021.....													
5. Subtotals 2021 + prior.....													
6. 2022.....	XXX	XXX	XXX	XXX			XXX				XXX	XXX	XXX
7. Totals.....													
8. Prior Year-End Surplus As Regards Policyholders.....	79,881										Col. 11, Line 7 As % of Col. 1, Line 7.....	Col. 12, Line 7 As % of Col. 2, Line 7.....	Col. 13, Line 7 As % of Col. 3, Line 7...  Col. 13, Line 7 / Line 8.....
											%	%	% %

SUPPLEMENTAL EXHIBITS AND SCHEDULES INTERROGATORIES





The following supplemental reports are required to be filed as part of your statement filing. However, in the event that your company does not transact the type of business for which the special report must be filed, your response of **NO** to the specific interrogatory will be accepted in lieu of filing a “NONE” report and a bar code will be printed below. If the supplement is required of your company but is not being filed for whatever reason enter **SEE EXPLANATION** and provide an explanation following the interrogatory questions.

		Response
1.	Will the Trusteed Surplus Statement be filed with the state of domicile and the NAIC with this statement?.....	NO .....
2.	Will Supplement A to Schedule T (Medical Professional Liability Supplement) be filed with this statement?.....	NO .....
3.	Will the Medicare Part D Coverage Supplement be filed with the state of domicile and the NAIC with this statement?.....	NO .....
4.	Will the Director and Officer Insurance Coverage Supplement be filed with the state of domicile and the NAIC with this statement?.....	NO .....
August Filing		
5.	Will the regulator-only (non-public) Communication of Internal Control Related Matters Noted in Audit be filed with the state of domicile and electronically with the NAIC (as a regulator-only non-public document) by August 1? The response for 1st and 3rd quarters should be N/A. A NO response resulting with a bar code is only appropriate in the 2nd quarter.....	YES .....

EXPLANATION:

1. No business written.....
2. No business written.....
3. No business written.....
4. No business written.....
5. ....

BARCODES:

1.   
4 0 1 1 8 2 0 2 2 4 9 0 0 0 0 2
2.   
4 0 1 1 8 2 0 2 2 4 5 5 0 0 0 2
3.   
4 0 1 1 8 2 0 2 2 3 6 5 0 0 0 2
4.   
4 0 1 1 8 2 0 2 2 5 0 5 0 0 0 2
5.

**OVERFLOW PAGE FOR WRITE-INS**

SCHEDULE A – VERIFICATION  
Real Estate

		1	2
		Year to Date	Prior Year Ended December 31
1.	Book/adjusted carrying value, December 31 of prior year.....		
2.	Cost of acquired:		
2.1	Actual cost at time of acquisition.....		
2.2	Additional investment made after acquisition.....		
3.	Current year change in encumbrances.....		
4.	Total gain (loss) on disposals.....		
5.	Deduct amounts received on disposals.....		
6.	Total foreign exchange change in book / adjusted carrying value.....		
7.	Deduct current year's other-than-temporary impairment recognized.....		
8.	Deduct current year's depreciation.....		
9.	Book/adjusted carrying value at the end of current period (Lines 1+2+3+4-5+6-7-8).....		
10.	Deduct total nonadmitted amounts.....		
11.	Statement value at end of current period (Line 9 minus Line 10).....		

SCHEDULE B – VERIFICATION  
Mortgage Loans

		1	2
		Year to Date	Prior Year Ended December 31
1.	Book value/recorded investment excluding accrued interest, December 31 of prior year.....		
2.	Cost of acquired:		
2.1	Actual cost at time of acquisition.....		
2.2	Additional investment made after acquisition.....		
3.	Capitalized deferred interest and other.....		
4.	Accrual of discount.....		
5.	Unrealized valuation increase (decrease).....		
6.	Total gain (loss) on disposals.....		
7.	Deduct amounts received on disposals.....		
8.	Deduct amortization of premium and mortgage interest points and comm. net fees.....		
9.	Total foreign exchange change in book value/recorded investment excluding accrued interest.....		
10.	Deduct current year's other-than-temporary impairment recognized.....		
11.	Book value/recorded investment excluding accrued interest at end of current period (Lines 1+2+3+4+5+6-7-8+9-10).....		
12.	Total valuation allowance.....		
13.	Subtotal (Line 11 plus Line 12).....		
14.	Deduct total nonadmitted amounts.....		
15.	Statement value at end of current period (Line 13 minus Line 14).....		

SCHEDULE BA - VERIFICATION  
Other Long-Term Invested Assets

		1	2
		Year to Date	Prior Year Ended December 31
1.	Book/adjusted carrying value, December 31 of prior year.....		
2.	Cost of acquired:		
2.1	Actual cost at time of acquisition.....		
2.2	Additional investment made after acquisition.....		
3.	Capitalized deferred interest and other.....		
4.	Accrual of discount.....		
5.	Unrealized valuation increase (decrease).....		
6.	Total gain (loss) on disposals.....		
7.	Deduct amounts received on disposals.....		
8.	Deduct amortization of premium and depreciation.....		
9.	Total foreign exchange change in book / adjusted carrying value.....		
10.	Deduct current year's other-than-temporary impairment recognized.....		
11.	Book/adjusted carrying value at end of current period (Lines 1+2+3+4+5+6-7-8+9-10).....		
12.	Deduct total nonadmitted amounts.....		
13.	Statement value at end of current period (Line 11 minus Line 12).....		

SCHEDULE D - VERIFICATION  
Bonds and Stocks

		1	2
		Year to Date	Prior Year Ended December 31
1.	Book/adjusted carrying value of bonds and stocks, December 31 of prior year.....	79,255,052	77,245,356
2.	Cost of bonds and stocks acquired.....	4,056,773	7,520,402
3.	Accrual of discount.....	8,732	15,648
4.	Unrealized valuation increase (decrease).....		
5.	Total gain (loss) on disposals.....	(5,929)	95,461
6.	Deduct consideration for bonds and stocks disposed of.....	3,454,788	4,887,674
7.	Deduct amortization of premium.....	354,664	746,559
8.	Total foreign exchange change in book / adjusted carrying value.....		
9.	Deduct current year's other-than-temporary impairment recognized.....		
10.	Total investment income recognized as a result of prepayment penalties and/or acceleration fees.....	23,557	12,417
11.	Book/adjusted carrying value at end of current period (Lines 1+2+3+4+5-6-7+8-9+10).....	79,528,733	79,255,052
12.	Deduct total nonadmitted amounts.....		
13.	Statement value at end of current period (Line 11 minus Line 12).....	79,528,733	79,255,052

SCHEDULE D – PART 1B

Showing the Acquisitions, Dispositions and Non-Trading Activity  
During the Current Quarter for all Bonds and Preferred Stock by NAIC Designation

NAIC Designation	1	2	3	4	5	6	7	8
	Book / Adjusted Carrying Value Beginning of Current Quarter	Acquisitions During Current Quarter	Dispositions During Current Quarter	Non-Trading Activity During Current Quarter	Book / Adjusted Carrying Value End of First Quarter	Book / Adjusted Carrying Value End of Second Quarter	Book / Adjusted Carrying Value End of Third Quarter	Book / Adjusted Carrying Value December 31 Prior Year
<b>Bonds</b>								
1. NAIC 1 (a).....	71,016,629	1,835,009	1,504,575	259,158	71,016,629	71,606,221		69,868,041
2. NAIC 2 (a).....	8,352,280			(429,768)	8,352,280	7,922,512		9,387,011
3. NAIC 3 (a).....								
4. NAIC 4 (a).....								
5. NAIC 5 (a).....								
6. NAIC 6 (a).....								
7. Total Bonds.....	79,368,909	1,835,009	1,504,575	(170,610)	79,368,909	79,528,733		79,255,052
<b>Preferred Stock</b>								
8. NAIC 1.....								
9. NAIC 2.....								
10. NAIC 3.....								
11. NAIC 4.....								
12. NAIC 5.....								
13. NAIC 6.....								
14. Total Preferred Stock.....								
15. Total Bonds & Preferred Stock.....	79,368,909	1,835,009	1,504,575	(170,610)	79,368,909	79,528,733		79,255,052

(a) Book/Adjusted Carrying Value column for the end of the current reporting period includes the following amount of short-term and cash equivalent bonds by NAIC designation:

NAIC 1 \$ ; NAIC 2 \$ ; NAIC 3 \$ ; NAIC 4 \$ ; NAIC 5 \$ ; NAIC 6 \$

(SI-03) Schedule DA - Part 1

NONE

(SI-03) Schedule DA - Verification - Short-Term Investments

NONE

(SI-04) Schedule DB - Part A - Verification - Options, Caps, Floors, Collars, Swaps and Forwards

NONE

(SI-04) Schedule DB - Part B - Verification - Futures Contracts

NONE

(SI-05) Schedule DB - Part C - Section 1

NONE

(SI-06) Schedule DB - Part C - Section 2

NONE

(SI-07) Schedule DB - Verification

NONE



SCHEDULE E – PART 2 – VERIFICATION  
(Cash Equivalents)

		1	2
		Year to Date	Prior Year Ended December 31
1.	Book/adjusted carrying value, December 31 of prior year.....	1,063,797	762,307
2.	Cost of cash equivalents acquired.....	9,291,000	9,564,672
3.	Accrual of discount.....		
4.	Unrealized valuation increase (decrease).....		
5.	Total gain (loss) on disposals.....		
6.	Deduct consideration received on disposals.....	8,455,458	9,263,181
7.	Deduct amortization of premium.....		
8.	Total foreign exchange change in book / adjusted carrying value.....		
9.	Deduct current year's other-than-temporary impairment recognized.....		
10.	Book/adjusted carrying value at end of current period (Lines 1+2+3+4+5-6-7+8-9).....	1,899,340	1,063,797
11.	Deduct total nonadmitted amounts.....		
12.	Statement value at end of current period (Line 10 minus Line 11).....	1,899,340	1,063,797

(E-01) Schedule A - Part 2

**NONE**

(E-01) Schedule A - Part 3

**NONE**

(E-02) Schedule B - Part 2

**NONE**

(E-02) Schedule B - Part 3

**NONE**

(E-03) Schedule BA - Part 2

**NONE**

(E-03) Schedule BA - Part 3

**NONE**

SCHEDULE D - PART 3

Show All Long-Term Bonds and Stock Acquired During the Current Quarter

1	2	3	4	5	6	7	8	9	10
CUSIP Identification	Description	Foreign	Date Acquired	Name of Vendor	Number of Shares of Stock	Actual Cost	Par Value	Paid for Accrued Interest and Dividends	NAIC Designation, NAIC Designation Modifier and SVO Administrative Symbol
<b>Bonds: U.S. Special Revenue and Special Assessment and all Non-Guaranteed Obligations of Agencies and Authorities of Governments and Their Political Subdivisions</b>									
3130AR-UL-3 .....	FEDERAL HOME LOAN BANK 3.5 18/05/27 .....	.....	.....05/10/2022.....	LOOP CAPITAL MARKETS LLC .....	.....XXX.....	.....1,000,000.....	.....1,000,000.....	.....	1.B FE .....
712851-BM-5 .....	PEORIA AZ WTR & WSTWTR REVENUE 5 .....	.....	.....05/10/2022.....	DEAN WITTER REYNOLDS INC .....	.....XXX.....	.....436,929.....	.....395,000.....	.....	1.B FE .....
0909999999 – Bonds: U.S. Special Revenue and Special Assessment and all Non-Guaranteed Obligations of Agencies and Authorities of Governments and Their Political Subdivisions .....						.....1,436,929.....	.....1,395,000.....	.....	.....XXX.....
<b>Bonds: Industrial and Miscellaneous (Unaffiliated)</b>									
17252M-AN-0 .....	CINTAS CORPORATION NO. 2 3.7 01/04/27 .....	.....	.....05/11/2022.....	D. A. DAVIDSON & CO. INC. DADAVINC .....	.....XXX.....	.....398,080.....	.....400,000.....	.....1,727.....	1.G FE .....
1109999999 – Bonds: Industrial and Miscellaneous (Unaffiliated) .....						.....398,080.....	.....400,000.....	.....1,727.....	.....XXX.....
2509999997 – Subtotals - Bonds - Part 3 .....						.....1,835,009.....	.....1,795,000.....	.....1,727.....	.....XXX.....
2509999999 – Subtotals - Bonds .....						.....1,835,009.....	.....1,795,000.....	.....1,727.....	.....XXX.....
6009999999 – Totals .....						.....1,835,009.....	.....XXX.....	.....1,727.....	.....XXX.....

SCHEDULE D - PART 4

Show All Long-Term Bonds and Stock Sold, Redeemed or Otherwise Disposed of During the Current Quarter

1	2	3	4	5	6	7	8	9	10	Change in Book / Adjusted Carrying Value					16	17	18	19	20	21	22
										11	12	13	14	15							
CUSIP Identification	Description	Foreign	Disposal Date	Name of Purchaser	Number of Shares	Consideration	Par Value	Actual Cost	Prior Year Book / Adjusted Carrying Value	Unrealized Valuation Increase / (Decrease)	Current Year's (Amortization) / Accretion	Current Year's Other-Than- Temporary Impairment Recognized	Total Change in B. / A.C.V. (11+12-13)	Total Foreign Exchange Change in B./A.C.V.	Book / Adjusted Carrying Value at Disposal Date	Foreign Exchange Gain (Loss) on Disposal	Realized Gain (Loss) on Disposal	Total Gain (Loss) on Disposal	Bond Interest / Stock Dividends Received During Year	Stated Contractual Maturity Date	NAIC Designation, NAIC Designation Modifier and SVO Administrative Symbol
Bonds: U.S. Governments																					
912828-SV-3	US TREASURY N/B 1.75 15/05/22		05/14/2022	MATURITY	XXX	1,250,000	1,250,000	1,269,648	1,251,224		(1,224)		(1,224)		1,250,000				10,938	05/15/2022	1.A
0109999999 – Bonds: U.S. Governments						1,250,000	1,250,000	1,269,648	1,251,224		(1,224)		(1,224)		1,250,000				10,938	XXX	XXX
Bonds: U.S. Special Revenue and Special Assessment and all Non-Guaranteed Obligations of Agencies and Authorities of Governments and Their Political Subdivisions																					
914072-KX-0	UNIV OF ARKANSAS AR UNIV REVEN 5		05/02/2022	SECURITY CALLED BY ISSUER at 100.000	XXX	250,000	250,000	294,300	251,759		(1,745)		(1,745)		250,015		(15)	(15)	6,250	11/01/2028	1.C FE
0909999999 – Bonds: U.S. Special Revenue and Special Assessment and all Non-Guaranteed Obligations of Agencies and Authorities of Governments and Their Political Subdivisions						250,000	250,000	294,300	251,759		(1,745)		(1,745)		250,015		(15)	(15)	6,250	XXX	XXX
Bonds: Industrial and Miscellaneous (Unaffiliated)																					
129268-AB-4	CALEDONIA GENERA 1.95 28/02/34		06/30/2022	MBS PAYDOWN	XXX	4,561	4,561	4,662	4,659		(6)		(6)		4,561				32	02/28/2034	1.C FE
1109999999 – Bonds: Industrial and Miscellaneous (Unaffiliated)						4,561	4,561	4,662	4,659		(6)		(6)		4,561				32	XXX	XXX
2509999997 – Subtotals - Bonds - Part 4						1,504,561	1,504,561	1,568,610	1,507,643		(2,975)		(2,975)		1,504,575		(15)	(15)	17,219	XXX	XXX
2509999999 – Subtotals - Bonds						1,504,561	1,504,561	1,568,610	1,507,643		(2,975)		(2,975)		1,504,575		(15)	(15)	17,219	XXX	XXX
6009999999 – Totals						1,504,561	XXX	1,568,610	1,507,643		(2,975)		(2,975)		1,504,575		(15)	(15)	17,219	XXX	XXX

(E-06) Schedule DB - Part A - Section 1

NONE

(E-06) Schedule DB - Part A - Section 1 - Description of Hedged Risk(s)

NONE

(E-06) Schedule DB - Part A - Section 1 - Financial or Economic Impact of The Hedge

NONE

(E-07) Schedule DB - Part B - Section 1

NONE

(E-07) Schedule DB - Part B - Section 1 - Broker Name

NONE

(E-07) Schedule DB - Part B - Section 1 - Description of Hedged Risk(s)

NONE

(E-07) Schedule DB - Part B - Section 1 - Financial or Economice Impact of The Hedge

NONE

(E-08) Schedule DB - Part D - Section 1

NONE

(E-09) Schedule DB - Part D - Section 2 - By Reporting Entity

NONE

(E-09) Schedule DB - Part D - Section 2 - To Reporting Entity

NONE

(E-10) Schedule DB - Part E

NONE

(E-11) Schedule DL - Part 1

NONE

(E-12) Schedule DL - Part 2

NONE

(E-13) Schedule E - Part 1

NONE

SCHEDULE E - PART 2 - CASH EQUIVALENTS

Show Investments Owned End of Current Quarter

1	2	3	4	5	6	7	8	9
CUSIP	Description	Code	Date Acquired	Rate of Interest	Maturity Date	Book / Adjusted Carrying Value	Amount of Interest Due and Accrued	Amount Received During Year
Exempt Money Market Mutual Funds – as Identified by SVO								
665279-87-3.....	NORTHERN INSTITUTIONAL TREASURY PORTFOLIO .....		06/30/2022.....		XXX.....	1,899,340	1,288	1,105
8209999999 – Exempt Money Market Mutual Funds – as Identified by SVO.....						1,899,340	1,288	1,105
8609999999 – Total Cash Equivalents.....						1,899,340	1,288	1,105