



PROPERTY AND CASUALTY COMPANIES - ASSOCIATION EDITION

QUARTERLY STATEMENT

AS OF JUNE 30, 2022

OF THE CONDITION AND AFFAIRS OF THE

Safe Auto Choice Insurance Company

NAIC Group Code00080008NAIC Company Code16502Employer's ID Number83-2241547
(Current)(Prior)

Organized under the Laws ofOhio, State of Domicile or Port of EntryOH

Country of DomicileUnited States of America

Incorporated/Organized10/15/2018Commenced Business09/03/2020

Statutory Home Office800 Superior Avenue East - 3rd FloorCleveland, OH, US 44114
(Street and Number)(City or Town, State, Country and Zip Code)

Main Administrative Office5630 University ParkwayWinston-Salem, NC, US 27105336-435-2000
(Street and Number)(City or Town, State, Country and Zip Code)(Area Code) (Telephone Number)

Mail AddressPO Box 3199Winston-Salem, NC, US 27102-3199
(Street and Number or P.O. Box)(City or Town, State, Country and Zip Code)

Primary Location of Books and Records5630 University ParkwayWinston-Salem, NC, US 27105336-435-2000
(Street and Number)(City or Town, State, Country and Zip Code)(Area Code) (Telephone Number)

Internet Website Addresswww.safeauto.com

Statutory Statement ContactDonald Jerome Bolar336-435-2000
(Name)(Area Code) (Telephone Number)
annualstatementcontact@ngic.com336-435-0236
(E-mail Address)(FAX Number)

OFFICERS

Chairman of the Board & PresidentRyan Allen Michel #

Vice President & Chief Accounting OfficerDonald Jerome Bolar

SecretaryDale Edward Gunter #

OTHER

Michael Stuart Goldstein, Senior Vice President, Tax
Patrick James Macellaro, Vice President & Chief Financial Officer

George Harvey Hall Jr., Vice President & Chief Claims Officer
Peter Andrew Rendall, Chief Operating Officer

Christina Hwang, Senior Vice President

DIRECTORS OR TRUSTEES

Ryan Allen Michel #Eric David Huls #

Victoria Lynne Adamczyk #Dale Edward Gunter #

Christina Hwang #

State ofNorth CarolinaSS:

County ofForsyth

The officers of this reporting entity being duly sworn, each depose and say that they are the described officers of said reporting entity, and that on the reporting period stated above, all of the herein described assets were the absolute property of the said reporting entity, free and clear from any liens or claims thereon, except as herein stated, and that this statement, together with related exhibits, schedules and explanations therein contained, annexed or referred to, is a full and true statement of all the assets and liabilities and of the condition and affairs of the said reporting entity as of the reporting period stated above, and of its income and deductions therefrom for the period ended, and have been completed in accordance with the NAIC Annual Statement Instructions and Accounting Practices and Procedures manual except to the extent that: (1) state law may differ; or, (2) that state rules or regulations require differences in reporting not related to accounting practices and procedures, according to the best of their information, knowledge and belief, respectively. Furthermore, the scope of this attestation by the described officers also includes the related corresponding electronic filing with the NAIC, when required, that is an exact copy (except for formatting differences due to electronic filing) of the enclosed statement. The electronic filing may be requested by various regulators in lieu of or in addition to the enclosed statement.

Ryan Allen MichelChairman of Board & President

Dale Edward GunterSecretary

Donald Jermone BolarVice President & Chief Accounting Officer

Subscribed and sworn to before me this day of

a. Is this an original filing? Yes [X] No []

b. If no,
1. State the amendment number.....
2. Date filed
3. Number of pages attached.....

ASSETS

	Current Statement Date			4 December 31 Prior Year Net Admitted Assets
	1 Assets	2 Nonadmitted Assets	3 Net Admitted Assets (Cols. 1 - 2)	
1. Bonds	5,452,116		5,452,116	5,762,239
2. Stocks:				
2.1 Preferred stocks			0	0
2.2 Common stocks			0	0
3. Mortgage loans on real estate:				
3.1 First liens			0	0
3.2 Other than first liens			0	0
4. Real estate:				
4.1 Properties occupied by the company (less \$ encumbrances)			0	0
4.2 Properties held for the production of income (less \$ encumbrances)			0	0
4.3 Properties held for sale (less \$ encumbrances)			0	0
5. Cash (\$679,685), cash equivalents (\$170,633) and short-term investments (\$)	850,318		850,318	886,821
6. Contract loans (including \$ premium notes)			0	0
7. Derivatives			0	0
8. Other invested assets			0	0
9. Receivables for securities	1,054,884		1,054,884	0
10. Securities lending reinvested collateral assets			0	0
11. Aggregate write-ins for invested assets	0	0	0	0
12. Subtotals, cash and invested assets (Lines 1 to 11)	7,357,318	0	7,357,318	6,649,060
13. Title plants less \$ charged off (for Title insurers only)			0	0
14. Investment income due and accrued	10,185		10,185	7,191
15. Premiums and considerations:				
15.1 Uncollected premiums and agents' balances in the course of collection	21,370		21,370	67,071
15.2 Deferred premiums, agents' balances and installments booked but deferred and not yet due (including \$ earned but unbilled premiums)	30,149		30,149	91,120
15.3 Accrued retrospective premiums (\$) and contracts subject to redetermination (\$)			0	0
16. Reinsurance:				
16.1 Amounts recoverable from reinsurers			0	61,715
16.2 Funds held by or deposited with reinsured companies			0	0
16.3 Other amounts receivable under reinsurance contracts	131,952		131,952	15,394
17. Amounts receivable relating to uninsured plans			0	0
18.1 Current federal and foreign income tax recoverable and interest thereon	108,590		108,590	104,666
18.2 Net deferred tax asset			0	0
19. Guaranty funds receivable or on deposit			0	0
20. Electronic data processing equipment and software			0	0
21. Furniture and equipment, including health care delivery assets (\$)			0	0
22. Net adjustment in assets and liabilities due to foreign exchange rates			0	0
23. Receivables from parent, subsidiaries and affiliates			0	0
24. Health care (\$) and other amounts receivable			0	0
25. Aggregate write-ins for other than invested assets	0	0	0	0
26. Total assets excluding Separate Accounts, Segregated Accounts and Protected Cell Accounts (Lines 12 to 25)	7,659,564	0	7,659,564	6,996,217
27. From Separate Accounts, Segregated Accounts and Protected Cell Accounts			0	0
28. Total (Lines 26 and 27)	7,659,564	0	7,659,564	6,996,217
DETAILS OF WRITE-INS				
1101.				
1102.				
1103.				
1198. Summary of remaining write-ins for Line 11 from overflow page	0	0	0	0
1199. Totals (Lines 1101 through 1103 plus 1198)(Line 11 above)	0	0	0	0
2501.				
2502.				
2503.				
2598. Summary of remaining write-ins for Line 25 from overflow page	0	0	0	0
2599. Totals (Lines 2501 through 2503 plus 2598)(Line 25 above)	0	0	0	0

STATEMENT AS OF JUNE 30, 2022 OF THE Safe Auto Choice Insurance Company

LIABILITIES, SURPLUS AND OTHER FUNDS

	1 Current Statement Date	2 December 31, Prior Year
1. Losses (current accident year \$)	0	0
2. Reinsurance payable on paid losses and loss adjustment expenses	0	0
3. Loss adjustment expenses	0	0
4. Commissions payable, contingent commissions and other similar charges		
5. Other expenses (excluding taxes, licenses and fees)		
6. Taxes, licenses and fees (excluding federal and foreign income taxes)		
7.1 Current federal and foreign income taxes (including \$ on realized capital gains (losses))		0
7.2 Net deferred tax liability	159	513
8. Borrowed money \$ and interest thereon \$		
9. Unearned premiums (after deducting unearned premiums for ceded reinsurance of \$ and including warranty reserves of \$ and accrued accident and health experience rating refunds including \$0 for medical loss ratio rebate per the Public Health Service Act)	0	0
10. Advance premium		
11. Dividends declared and unpaid:		
11.1 Stockholders		
11.2 Policyholders		
12. Ceded reinsurance premiums payable (net of ceding commissions)	4,532	2,042
13. Funds held by company under reinsurance treaties	0	0
14. Amounts withheld or retained by company for account of others		
15. Remittances and items not allocated		
16. Provision for reinsurance (including \$ certified)	0	0
17. Net adjustments in assets and liabilities due to foreign exchange rates		
18. Drafts outstanding		
19. Payable to parent, subsidiaries and affiliates	182,339	559,436
20. Derivatives	0	0
21. Payable for securities	1,054,408	
22. Payable for securities lending		
23. Liability for amounts held under uninsured plans		
24. Capital notes \$ and interest thereon \$		
25. Aggregate write-ins for liabilities	0	0
26. Total liabilities excluding protected cell liabilities (Lines 1 through 25)	1,241,438	561,991
27. Protected cell liabilities		
28. Total liabilities (Lines 26 and 27)	1,241,438	561,991
29. Aggregate write-ins for special surplus funds	0	0
30. Common capital stock	2,500,000	2,500,000
31. Preferred capital stock		
32. Aggregate write-ins for other than special surplus funds	0	0
33. Surplus notes		
34. Gross paid in and contributed surplus	3,500,000	3,500,000
35. Unassigned funds (surplus)	418,126	434,226
36. Less treasury stock, at cost:		
36.1 shares common (value included in Line 30 \$)		
36.2 shares preferred (value included in Line 31 \$)		
37. Surplus as regards policyholders (Lines 29 to 35, less 36)	6,418,126	6,434,226
38. Totals (Page 2, Line 28, Col. 3)	7,659,564	6,996,217
DETAILS OF WRITE-INS		
2501.		
2502.		
2503.		
2598. Summary of remaining write-ins for Line 25 from overflow page	0	0
2599. Totals (Lines 2501 through 2503 plus 2598)(Line 25 above)	0	0
2901.		
2902.		
2903.		
2998. Summary of remaining write-ins for Line 29 from overflow page	0	0
2999. Totals (Lines 2901 through 2903 plus 2998)(Line 29 above)	0	0
3201.		
3202.		
3203.		
3298. Summary of remaining write-ins for Line 32 from overflow page	0	0
3299. Totals (Lines 3201 through 3203 plus 3298)(Line 32 above)	0	0

STATEMENT OF INCOME

	1 Current Year to Date	2 Prior Year to Date	3 Prior Year Ended December 31
UNDERWRITING INCOME			
1. Premiums earned:			
1.1 Direct (written \$ 135,405)	160,814	959,422	1,691,407
1.2 Assumed (written \$)		6,844,922	10,115,645
1.3 Ceded (written \$ 135,405)	160,814	959,422	1,691,715
1.4 Net (written \$ 0)	0	6,844,922	10,115,337
DEDUCTIONS:			
2. Losses incurred (current accident year \$)::			
2.1 Direct	105,964	634,504	1,250,800
2.2 Assumed		4,170,542	6,178,049
2.3 Ceded	105,964	634,504	1,250,800
2.4 Net	0	4,170,542	6,178,049
3. Loss adjustment expenses incurred	0	716,523	1,082,307
4. Other underwriting expenses incurred	0	2,485,912	3,592,979
5. Aggregate write-ins for underwriting deductions	0	0	0
6. Total underwriting deductions (Lines 2 through 5)	0	7,372,977	10,853,335
7. Net income of protected cells			
8. Net underwriting gain or (loss) (Line 1 minus Line 6 + Line 7)	0	(528,055)	(737,998)
INVESTMENT INCOME			
9. Net investment income earned	23,359	57,878	77,499
10. Net realized capital gains (losses) less capital gains tax of \$ (9,185)	(34,554)	178,583	175,649
11. Net investment gain (loss) (Lines 9 + 10)	(11,195)	236,461	253,148
OTHER INCOME			
12. Net gain or (loss) from agents' or premium balances charged off (amount recovered \$ amount charged off \$)	0	(88,545)	(144,283)
13. Finance and service charges not included in premiums	0	511,553	745,820
14. Aggregate write-ins for miscellaneous income	0	164,999	171,462
15. Total other income (Lines 12 through 14)	0	588,007	772,999
16. Net income before dividends to policyholders, after capital gains tax and before all other federal and foreign income taxes (Lines 8 + 11 + 15)	(11,195)	296,413	288,149
17. Dividends to policyholders			
18. Net income, after dividends to policyholders, after capital gains tax and before all other federal and foreign income taxes (Line 16 minus Line 17)	(11,195)	296,413	288,149
19. Federal and foreign income taxes incurred	5,259	39,080	(176,782)
20. Net income (Line 18 minus Line 19)(to Line 22)	(16,454)	257,333	464,931
CAPITAL AND SURPLUS ACCOUNT			
21. Surplus as regards policyholders, December 31 prior year	6,434,226	6,169,129	6,169,128
22. Net income (from Line 20)	(16,454)	257,333	464,931
23. Net transfers (to) from Protected Cell accounts			
24. Change in net unrealized capital gains (losses) less capital gains tax of \$			
25. Change in net unrealized foreign exchange capital gain (loss)			
26. Change in net deferred income tax	354	14,080	(199,833)
27. Change in nonadmitted assets			0
28. Change in provision for reinsurance			0
29. Change in surplus notes			
30. Surplus (contributed to) withdrawn from protected cells			
31. Cumulative effect of changes in accounting principles			
32. Capital changes:			
32.1 Paid in			
32.2 Transferred from surplus (Stock Dividend)			
32.3 Transferred to surplus			
33. Surplus adjustments:			
33.1 Paid in	0	0	0
33.2 Transferred to capital (Stock Dividend)			
33.3 Transferred from capital			
34. Net remittances from or (to) Home Office			
35. Dividends to stockholders			0
36. Change in treasury stock			0
37. Aggregate write-ins for gains and losses in surplus	0	0	0
38. Change in surplus as regards policyholders (Lines 22 through 37)	(16,100)	271,413	265,098
39. Surplus as regards policyholders, as of statement date (Lines 21 plus 38)	6,418,126	6,440,542	6,434,226
DETAILS OF WRITE-INS			
0501.			
0502.			
0503.			
0598. Summary of remaining write-ins for Line 5 from overflow page	0	0	0
0599. Totals (Lines 0501 through 0503 plus 0598)(Line 5 above)	0	0	0
1401. NSF fees			2,650
1402. Cancel fee revenue			8,186
1403. Miscellaneous income		164,999	160,626
1498. Summary of remaining write-ins for Line 14 from overflow page	0	0	0
1499. Totals (Lines 1401 through 1403 plus 1498)(Line 14 above)	0	164,999	171,462
3701.			
3702.			
3703.			
3798. Summary of remaining write-ins for Line 37 from overflow page	0	0	0
3799. Totals (Lines 3701 through 3703 plus 3798)(Line 37 above)	0	0	0

CASH FLOW

	1 Current Year To Date	2 Prior Year To Date	3 Prior Year Ended December 31
Cash from Operations			
1. Premiums collected net of reinsurance	(7,396)	17,256,401	19,073,209
2. Net investment income	15,682	77,964	95,833
3. Miscellaneous income	0	588,007	772,999
4. Total (Lines 1 to 3)	8,286	17,922,372	19,942,041
5. Benefit and loss related payments	(61,715)	8,238,562	15,068,078
6. Net transfers to Separate Accounts, Segregated Accounts and Protected Cell Accounts	0	0	0
7. Commissions, expenses paid and aggregate write-ins for deductions	0	686,830	5,379,118
8. Dividends paid to policyholders	0	0	0
9. Federal and foreign income taxes paid (recovered) net of \$ tax on capital gains (losses)	(2)	86,552	(25,421)
10. Total (Lines 5 through 9)	(61,717)	9,011,944	20,421,775
11. Net cash from operations (Line 4 minus Line 10)	70,003	8,910,428	(479,734)
Cash from Investments			
12. Proceeds from investments sold, matured or repaid:			
12.1 Bonds	2,879,545	3,270,200	5,470,894
12.2 Stocks	0	0	0
12.3 Mortgage loans	0	0	0
12.4 Real estate	0	0	0
12.5 Other invested assets	0	0	0
12.6 Net gains or (losses) on cash, cash equivalents and short-term investments	0	0	0
12.7 Miscellaneous proceeds	0	0	0
12.8 Total investment proceeds (Lines 12.1 to 12.7)	2,879,545	3,270,200	5,470,894
13. Cost of investments acquired (long-term only):			
13.1 Bonds	2,608,953	274,864	5,373,670
13.2 Stocks	0	0	0
13.3 Mortgage loans	0	0	0
13.4 Real estate	0	0	0
13.5 Other invested assets	0	0	0
13.6 Miscellaneous applications	0	0	0
13.7 Total investments acquired (Lines 13.1 to 13.6)	2,608,953	274,864	5,373,670
14. Net increase (or decrease) in contract loans and premium notes	0	0	0
15. Net cash from investments (Line 12.8 minus Line 13.7 and Line 14)	270,592	2,995,336	97,224
Cash from Financing and Miscellaneous Sources			
16. Cash provided (applied):			
16.1 Surplus notes, capital notes	0	0	0
16.2 Capital and paid in surplus, less treasury stock	0	0	0
16.3 Borrowed funds	0	0	0
16.4 Net deposits on deposit-type contracts and other insurance liabilities	0	0	0
16.5 Dividends to stockholders	0	0	0
16.6 Other cash provided (applied)	(377,097)	141,404	784,466
17. Net cash from financing and miscellaneous sources (Line 16.1 through Line 16.4 minus Line 16.5 plus Line 16.6)	(377,097)	141,404	784,466
RECONCILIATION OF CASH, CASH EQUIVALENTS AND SHORT-TERM INVESTMENTS			
18. Net change in cash, cash equivalents and short-term investments (Line 11, plus Lines 15 and 17) ..	(36,503)	12,047,168	401,956
19. Cash, cash equivalents and short-term investments:			
19.1 Beginning of year	886,818	484,862	484,862
19.2 End of period (Line 18 plus Line 19.1)	850,316	12,532,030	886,818

Note: Supplemental disclosures of cash flow information for non-cash transactions:

20.0001. Change in payable for securities acquired	1,054,408		
20.0002. Change in receivable from securities sold	1,054,884		

Notes to the Financial Statements

1. Summary of Significant Accounting Policies and Going Concern

A. Accounting Practices

The accompanying financial statements of Safe Auto Choice Insurance Company (“the Company”) have been prepared on the basis of accounting practices prescribed or permitted by the Insurance Department of the State of Ohio. The Insurance Department of the State of Ohio recognizes only statutory accounting practices prescribed or permitted by the State of Ohio for determining and reporting the financial condition and results of operations of an insurance company, and for determining its solvency under the Ohio Insurance Law. The National Association of Insurance Commissioners' (NAIC) Accounting Practices and Procedures manual (NAIC SAP) has been adopted as a component of prescribed or permitted practices by the State of Ohio.

A reconciliation of the Company’s net income and capital and surplus between NAIC SAP and practices prescribed and permitted by the state of Ohio is shown below.

	SSAP #	F/S Page	F/S Line #	06/30/2022	12/31/2021
Net Income					
(1) State basis (Page 4, Line 20, Columns 1 & 3)	XXX	XXX	XXX	\$(16,454)	\$464,931
(2) State prescribed practices that are an increase / (decrease) from NAIC SAP:					
(3) State permitted practices that are an increase / (decrease) from NAIC SAP:					
(4) NAIC SAP (1-2-3=4)	XXX	XXX	XXX	<u>\$ (16,454)</u>	<u>\$ 464,931</u>
Surplus					
(5) State basis (Page 3, Line 37, Columns 1 & 2)	XXX	XXX	XXX	\$6,418,126	\$6,434,226
(6) State prescribed practices that are an increase / (decrease) from NAIC SAP:					
(7) State permitted practices that are an increase / (decrease) from NAIC SAP:					
(8) NAIC SAP (5-6-7=8)	XXX	XXX	XXX	<u>\$ 6,418,126</u>	<u>\$ 6,434,226</u>

B. Use of Estimates in the Preparation of the Financial Statements - No Significant Changes

C. Accounting Policy

Listed below is a summary of the accounting policies that materially affect the financial statements.

No significant changes.

(2) Bonds, mandatory convertible securities, and SVO-identified investments per SSAP No. 26R - No Significant Changes

(6) Loan-backed securities - Not Applicable

(11) Liabilities for losses and loss/claim adjustment expenses - No Significant Changes

D. Going Concern

Based upon its evaluation of relevant conditions and events, management did not have substantial doubt about the Company's ability to continue as a going concern as of June 30, 2022 or December 31, 2021.

2. Accounting Changes and Corrections of Errors - No Significant Changes

3. Business Combinations and Goodwill - Not Applicable

4. Discontinued Operations - Not Applicable

5. Investments

A. Mortgage Loans, including Mezzanine Real Estate Loans - Not Applicable

B. Debt Restructuring - Not Applicable

C. Reverse Mortgages - Not Applicable

D. Loan-Backed Securities - Not Applicable

E. Dollar Repurchase Agreements and/or Securities Lending Transactions - Not Applicable

F. Repurchase Agreements Transactions Accounted for as Secured Borrowing - Not Applicable

G. Reverse Repurchase Agreements Transactions Accounted for as Secured Borrowing - Not Applicable

H. Repurchase Agreements Transactions Accounted for as a Sale - Not Applicable

I. Reverse Repurchase Agreements Transactions Accounted for as a Sale - Not Applicable

J. Real Estate - Not Applicable

K. Low-Income Housing Tax Credits (LIHTC) - Not Applicable

L. Restricted Assets - No Significant Changes

M. Working Capital Finance Investments - Not Applicable

N. Offsetting and Netting of Assets and Liabilities - Not Applicable

O. 5GI Securities - Not Applicable

P. Short Sales - Not Applicable

Notes to the Financial Statements

5. Investments (Continued)

- Q. Prepayment Penalty and Acceleration Fees - Not Applicable
- R. Reporting Entity's Share of Cash Pool by Asset type - Not Applicable

6. Joint Ventures, Partnerships and Limited Liability Companies - Not Applicable

7. Investment Income - No Significant Changes

8. Derivative Instruments - Not Applicable

9. Income Taxes - No Significant Changes

10. Information Concerning Parent, Subsidiaries, Affiliates and Other Related Parties

- A. Nature of Relationships - No Significant Changes
- B. Detail of Related Party Transactions - No Significant Changes
- C. Transactions With Related Party Who Are Not Reported on Schedule Y - Not Applicable
- D. Amounts Due From or To Related Parties

The Company reported a net payable to National General Management Corp of \$182,339 as of June 30, 2022.

The above balance is to be settled quarterly in accordance with the Management Services Agreement which requires settlement to occur within thirty days after quarter-end.

- E. Management Service Contracts and Cost Sharing Arrangements - No Significant Changes
- F. Guarantees or Contingencies - Not Applicable
- G. Nature of Relationships that Could Affect Operations - No Significant Changes
- H. Amount Deducted for Investment in Upstream Company - Not Applicable
- I. Detail of Investments in Affiliates Greater Than 10% of Admitted Assets - Not Applicable
- J. Write-Down for Impairments of Investments in Subsidiary Controlled or Affiliated Companies - Not Applicable
- K. Foreign Subsidiary Value Using CARVM - Not Applicable
- L. Downstream Holding Company Value Using Look-Through Method - Not Applicable
- M. All SCA Investments - Not Applicable
- N. Investment in Insurance SCAs - Not Applicable
- O. SCA and SSAP No. 48 Entity Loss Tracking - Not Applicable

11. Debt - None

12. Retirement Plans, Deferred Compensation, Postemployment Benefits and Compensated Absences and Other Postretirement Benefit Plans

- A. Defined Benefit Plan - Not Applicable
- B. Investment Policies and Strategies of Plan Assets - Not Applicable
- C. Fair Value of Each Class of Plan Assets - Not Applicable
- D. Expected Long-Term Rate of Return for the Plan Assets - Not Applicable
- E. Defined Contribution Plans - No Significant Changes
- F. Multiemployer Plans - Not Applicable
- G. Consolidated/Holding Company Plans - No Significant Changes
- H. Postemployment Benefits and Compensated Absences - Not Applicable
- I. Impact of Medicare Modernization Act on Postretirement Benefits (INT 04-17) - Not Applicable

13. Capital and Surplus, Dividend Restrictions and Quasi-Reorganizations - No Significant Changes

14. Liabilities, Contingencies and Assessments

- A. Contingent Commitments - None
- B. Assessments

(1) Nature of Any Assets That Could Have a Material Financial Effect

The Company is subject to guaranty fund and other assessments by the states in which it writes business. Guaranty fund assessments should be accrued at the time of insolvencies.

Other assessments should be accrued either at the time of assessment or in the case of premium based assessments, at the time the premiums were written, or in the case of loss assessments, at the time the losses are incurred.

- (2) Assets (Liabilities) recognized from paid and accrued premium tax offsets and policy surcharges - Not Applicable
- (3) Guaranty fund liabilities and assets related to long-term care insolvencies - Not Applicable

- C. Gain Contingencies - Not Applicable

Notes to the Financial Statements

14. Liabilities, Contingencies and Assessments (Continued)

- D. Claims Related Extra Contractual Obligation and Bad Faith Losses Stemming from Lawsuits - Not Applicable
- E. Product Warranties - Not Applicable
- F. Joint and Several Liabilities - Not Applicable
- G. All Other Contingencies

The Company could, from time to time and in the ordinary course of business, faced with class action lawsuits, regulatory proceedings, and individual lawsuits that are not directly related to its insurance contracts. There are no current lawsuits directed against the Company.

In accordance with applicable accounting principles, the Company establishes reserves for those matters as to which it has determined that it is probable a loss has been incurred and a reasonable estimate of the Company’s potential exposure can be established. Likewise, the Company does not establish reserves for those matters where the loss is not probable and/or it currently is unable to estimate the Company’s potential exposure.

15. Leases - Not Applicable

16. Information About Financial Instruments With Off-Balance-Sheet Risk And Financial Instruments With Concentrations of Credit Risk - Not Applicable

17. Sale, Transfer and Servicing of Financial Assets and Extinguishments of Liabilities - Not Applicable

18. Gain or Loss to the Reporting Entity from Uninsured Plans and the Uninsured Portion of Partially Insured Plans - Not Applicable

19. Direct Premium Written/Produced by Managing General Agents/Third Party Administrators - Not Applicable

20. Fair Value Measurements

A. Fair Value Measurement

Fair value is defined, per SSAP No. 100R, *Fair Value* (“SSAP No. 100R”), as the price that would be received to sell an asset or paid to transfer a liability in an orderly transaction between market participants at the measurement date. SSAP No. 100R identified three valuation techniques which are used, either independently or in combination, to determine fair value: (1) market approach; (2) income approach; and (3) cost approach. SSAP No. 100R also contains guidance about observable and unobservable inputs, which are assumptions that market participants would use in pricing an asset or liability. To increase consistency and comparability in fair value measurements, the fair value hierarchy prioritizes the inputs to valuation techniques into three broad levels: 1, 2 and 3. The hierarchy for inputs used in determining fair value maximizes the use of observable inputs and minimizes the use of unobservable inputs by requiring that observable inputs be used when available. Certain assets are measured utilizing net asset value (NAV) as a practical expedient to determine fair value.

(1) Fair value measurements at reporting date

The following tables summarize the Company’s assets measured and reported at fair value in the Assets page as of June 30, 2022.

Description for each class of asset or liability	Level 1	Level 2	Level 3	Net Asset Value (NAV)	Total
a. Assets at fair value					
Cash Equivalents: Other Money Market Mutual Fun	\$ 170,633	\$	\$	\$	\$ 170,633
Cash Equivalents: Exempt Money Market Mutual Fund					
Total assets at fair value/NAV	<u>\$ 170,633</u>	<u>\$</u>	<u>\$</u>	<u>\$</u>	<u>\$ 170,633</u>
b. Liabilities at fair value					
Total liabilities at fair value	<u>\$</u>	<u>\$</u>	<u>\$</u>	<u>\$</u>	<u>\$</u>

None of the Company’s liabilities were measured and reported at fair value in the Liabilities, Surplus and Other Funds page as of June 30, 2022.

(2) Fair value measurements in Level 3 of the fair value hierarchy - Not Applicable

(3) The Company consistently follows its policy for determining when transfers between levels are recognized. The policy about the timing of recognizing transfers into Level 3 is the same as that for recognizing transfers out of Level 3.

(4) In determining fair value, the Company principally uses the market approach which generally utilizes market transaction data for the same or similar instruments. To a lesser extent, the Company uses the income approach which involves determining fair values from discounted cash flow methodologies. For the majority of Level 2 valuations a combination of the market and income approaches is used.

(5) Derivatives - Not Applicable

B. Other Fair Value Disclosures - None

C. Fair Values for All Financial Instruments by Level 1, 2 and 3

Presented below are the aggregate fair value estimates and admitted values of financial instruments as of June 20, 2022.

Type of Financial Instrument	Aggregate Fair Value	Admitted Assets	Level 1	Level 2	Level 3	Net Asset Value (NAV)	Not Practicable (Carrying Value)
Bonds: Other than LABASS	\$ 5,188,904	\$ 5,452,116	\$ 4,720,331	\$ 468,573	\$	\$	\$
Preferred Stocks							
Unaffiliated Common Stocks							
Cash Equivalents	170,633	170,633	170,633				
Short-Term Investments							

The fair value of bonds in Level 1 is based on unadjusted quoted prices for identical assets in active markets the Company can access. The fair value of publicly traded bonds in Level 2 is based upon quoted prices for identical or similar assets in markets that are not active, contractual cash flows, benchmark yields and credit spreads.

The fair value of cash equivalents in Level 1 is based on unadjusted quoted prices or daily quoted net asset values for identical assets in active markets the Company can access.

Notes to the Financial Statements

20. Fair Value Measurements (Continued)

- D. Not Practicable to Estimate Fair Value - Not Applicable
- E. Nature and Risk of Investments Reported at NAV - Not Applicable

21. Other Items

- A. Unusual or Infrequent Items - Not Applicable
- B. Troubled Debt Restructuring - Not Applicable
- C. Other Disclosures

The Novel Coronavirus Pandemic or COVID-19 resulted in governments worldwide enacting emergency measures to combat the spread of the virus, including travel restrictions, government-imposed shelter-in-place orders, quarantine periods, social distancing and restrictions on large gatherings. These measures have generally moderated, with periodic changes in response to local conditions. There is no way of predicting with certainty how long the pandemic might last. The Company continues to closely monitor and proactively adapt to developments and changing conditions. Currently, it is not possible to reliably estimate the impact to the Company's operations, but the effects have been and could be material.
- D. Business Interruption Insurance Recoveries - Not Applicable
- E. State Transferable and Non-Transferable Tax Credits - Not Applicable
- F. Subprime-Mortgage-Related Risk Exposure - Not Applicable
- G. Insurance-Linked Securities (ILS) Contracts - Not Applicable
- H. The Amount That Could Be Realized on Life Insurance Where the Reporting Entity is Owner and Beneficiary or Has Otherwise Obtained Rights to Control the Policy - Not Applicable

22. Events Subsequent

An evaluation of subsequent events was made through August 12, 2022 for the Quarterly Statement issued on August 12, 2022. There were no significant subsequent events requiring adjustment to or disclosure in the financial statements.

23. Reinsurance - No Significant Changes

24. Retrospectively Rated Contracts & Contracts Subject to Redetermination

- A. Method Used to Estimate

The Company has not accrued retroactive premiums reported as admitted assets.
- B. Method Used to Record - Not Applicable
- C. Amount and Percent of Net Retrospective Premiums - Not Applicable
- D. Medical Loss Ratio Rebates Required Pursuant to the Public Health Service Act - Not Applicable
- E. Calculation of Nonadmitted Retrospective Premium
 - (1) For Ten Percent (10%) Method of determining nonadmitted retrospective premium - Not Applicable
 - (2) For Quality Rating Method of determining nonadmitted retrospective premium - Not Applicable
- F. Risk-Sharing Provisions of the Affordable Care Act (ACA)
 - (1) Accident and health insurance premium subject to the Affordable Care Act risk-sharing provisions

Did the reporting entity write accident and health insurance premium which is subject to the Affordable Care Act risk sharing provisions?
NO
 - (2) Impact of Risk-Sharing Provisions of the Affordable Care Act on admitted assets, liabilities and revenue for the current year - Not Applicable
 - (3) Roll-forward of prior year ACA risk-sharing provisions for the following asset (gross of any nonadmission) and liability balances, along with the reasons for adjustments to prior year balance - Not Applicable
 - (4) Roll-forward of risk corridors asset and liability balances by program benefit year - Not Applicable
 - (5) ACA risk corridors receivable as of reporting date - Not Applicable

25. Changes in Incurred Losses and Loss Adjustment Expenses

- A. Reasons for Changes in the Provision for Incurred Loss and Loss Adjustment Expenses Attributable to Insured Events of Prior Years

Reserves for incurred losses and loss adjustment expenses attributable to insured events of prior years is \$0 as a result of the Company's 100% quota share agreement with affiliate Integon National.
- B. Significant Changes in Methodologies and Assumptions Used in Calculating the Liability for Unpaid Losses and Loss Adjustment Expenses

There have been no significant changes in methodologies and assumptions used in calculating the liability for unpaid loss and loss adjustment expenses.

26. Intercompany Pooling Arrangements - Not Applicable

27. Structured Settlements - Not Applicable

28. Health Care Receivables - Not Applicable

29. Participating Policies - Not Applicable

30. Premium Deficiency Reserves - No Significant Changes

Notes to the Financial Statements

- 31. High Deductibles - Not Applicable
- 32. Discounting of Liabilities For Unpaid Losses or Unpaid Loss Adjustment Expenses - Not Applicable
- 33. Asbestos/Environmental Reserves - Not Applicable
- 34. Subscriber Savings Accounts - Not Applicable
- 35. Multiple Peril Crop Insurance - Not Applicable
- 36. Financial Guaranty Insurance - Not Applicable

STATEMENT AS OF JUNE 30, 2022 OF THE Safe Auto Choice Insurance Company

GENERAL INTERROGATORIES

PART 1 - COMMON INTERROGATORIES

GENERAL

- 1.1

Did the reporting entity experience any material transactions requiring the filing of Disclosure of Material Transactions with the State of Domicile, as required by the Model Act?

Yes [] No [X]
- 1.2

If yes, has the report been filed with the domiciliary state?

Yes [] No []
- 2.1

Has any change been made during the year of this statement in the charter, by-laws, articles of incorporation, or deed of settlement of the reporting entity?

Yes [] No [X]
- 2.2

If yes, date of change:
- 3.1

Is the reporting entity a member of an Insurance Holding Company System consisting of two or more affiliated persons, one or more of which is an insurer?

If yes, complete Schedule Y, Parts 1 and 1A.

Yes [X] No []
- 3.2

Have there been any substantial changes in the organizational chart since the prior quarter end?

Yes [] No [X]
- 3.3

If the response to 3.2 is yes, provide a brief description of those changes.
- 3.4

Is the reporting entity publicly traded or a member of a publicly traded group?

Yes [X] No []
- 3.5

If the response to 3.4 is yes, provide the CIK (Central Index Key) code issued by the SEC for the entity/group.

899051
- 4.1

Has the reporting entity been a party to a merger or consolidation during the period covered by this statement?

Yes [] No [X]
- 4.2

If yes, provide the name of the entity, NAIC Company Code, and state of domicile (use two letter state abbreviation) for any entity that has ceased to exist as a result of the merger or consolidation.
- | | | |
|----------------|-------------------|-------------------|
| 1 | 2 | 3 |
| Name of Entity | NAIC Company Code | State of Domicile |
| | | |
5.

If the reporting entity is subject to a management agreement, including third-party administrator(s), managing general agent(s), attorney-in-fact, or similar agreement, have there been any significant changes regarding the terms of the agreement or principals involved?

If yes, attach an explanation.

Yes [] No [] N/A [X]
- 6.1

State as of what date the latest financial examination of the reporting entity was made or is being made.
- 6.2

State the as of date that the latest financial examination report became available from either the state of domicile or the reporting entity. This date should be the date of the examined balance sheet and not the date the report was completed or released.
- 6.3

State as of what date the latest financial examination report became available to other states or the public from either the state of domicile or the reporting entity. This is the release date or completion date of the examination report and not the date of the examination (balance sheet date).
- 6.4

By what department or departments?
- 6.5

Have all financial statement adjustments within the latest financial examination report been accounted for in a subsequent financial statement filed with Departments?

Yes [] No [] N/A [X]
- 6.6

Have all of the recommendations within the latest financial examination report been complied with?

Yes [] No [] N/A [X]
- 7.1

Has this reporting entity had any Certificates of Authority, licenses or registrations (including corporate registration, if applicable) suspended or revoked by any governmental entity during the reporting period?

Yes [] No [X]
- 7.2

If yes, give full information:
- 8.1

Is the company a subsidiary of a bank holding company regulated by the Federal Reserve Board?

Yes [] No [X]
- 8.2

If response to 8.1 is yes, please identify the name of the bank holding company.
- 8.3

Is the company affiliated with one or more banks, thrifts or securities firms?

Yes [] No [X]
- 8.4

If response to 8.3 is yes, please provide below the names and location (city and state of the main office) of any affiliates regulated by a federal regulatory services agency [i.e. the Federal Reserve Board (FRB), the Office of the Comptroller of the Currency (OCC), the Federal Deposit Insurance Corporation (FDIC) and the Securities Exchange Commission (SEC)] and identify the affiliate's primary federal regulator.

1	2	3	4	5	6
Affiliate Name	Location (City, State)	FRB	OCC	FDIC	SEC

STATEMENT AS OF JUNE 30, 2022 OF THE Safe Auto Choice Insurance Company

GENERAL INTERROGATORIES

- 9.1

Are the senior officers (principal executive officer, principal financial officer, principal accounting officer or controller, or persons performing similar functions) of the reporting entity subject to a code of ethics, which includes the following standards?
(a) Honest and ethical conduct, including the ethical handling of actual or apparent conflicts of interest between personal and professional relationships;
(b) Full, fair, accurate, timely and understandable disclosure in the periodic reports required to be filed by the reporting entity;
(c) Compliance with applicable governmental laws, rules and regulations;
(d) The prompt internal reporting of violations to an appropriate person or persons identified in the code; and
(e) Accountability for adherence to the code.

Yes [X] No []
- 9.11

If the response to 9.1 is No, please explain:
- 9.2

Has the code of ethics for senior managers been amended?

Yes [] No [X]
- 9.21

If the response to 9.2 is Yes, provide information related to amendment(s).
- 9.3

Have any provisions of the code of ethics been waived for any of the specified officers?

Yes [] No [X]
- 9.31

If the response to 9.3 is Yes, provide the nature of any waiver(s).

FINANCIAL

- 10.1

Does the reporting entity report any amounts due from parent, subsidiaries or affiliates on Page 2 of this statement?

Yes [] No [X]
- 10.2

If yes, indicate any amounts receivable from parent included in the Page 2 amount:

\$

INVESTMENT

- 11.1

Were any of the stocks, bonds, or other assets of the reporting entity loaned, placed under option agreement, or otherwise made available for use by another person? (Exclude securities under securities lending agreements.)

Yes [] No [X]
- 11.2

If yes, give full and complete information relating thereto:
12.

Amount of real estate and mortgages held in other invested assets in Schedule BA:

\$
13.

Amount of real estate and mortgages held in short-term investments:

\$
- 14.1

Does the reporting entity have any investments in parent, subsidiaries and affiliates?

Yes [] No [X]
- 14.2

If yes, please complete the following:
- | | 1 | 2 |
|---|---|--|
| | Prior Year-End
Book/Adjusted
Carrying Value | Current Quarter
Book/Adjusted
Carrying Value |
| 14.21 Bonds | \$0 | \$0 |
| 14.22 Preferred Stock | \$0 | \$0 |
| 14.23 Common Stock | \$0 | \$0 |
| 14.24 Short-Term Investments | \$0 | \$0 |
| 14.25 Mortgage Loans on Real Estate | \$0 | \$0 |
| 14.26 All Other | \$0 | \$0 |
| 14.27 Total Investment in Parent, Subsidiaries and Affiliates (Subtotal Lines 14.21 to 14.26) | \$0 | \$0 |
| 14.28 Total Investment in Parent included in Lines 14.21 to 14.26 above | \$ | \$ |
- 15.1

Has the reporting entity entered into any hedging transactions reported on Schedule DB?

Yes [] No [X]
- 15.2

If yes, has a comprehensive description of the hedging program been made available to the domiciliary state?
If no, attach a description with this statement.

Yes [] No [] N/A [X]
16.

For the reporting entity's security lending program, state the amount of the following as of the current statement date:
- 16.1

Total fair value of reinvested collateral assets reported on Schedule DL, Parts 1 and 2.

\$0
- 16.2

Total book adjusted/carrying value of reinvested collateral assets reported on Schedule DL, Parts 1 and 2

\$0
- 16.3

Total payable for securities lending reported on the liability page.

\$0

STATEMENT AS OF JUNE 30, 2022 OF THE Safe Auto Choice Insurance Company

GENERAL INTERROGATORIES

17. Excluding items in Schedule E - Part 3 - Special Deposits, real estate, mortgage loans and investments held physically in the reporting entity's offices, vaults or safety deposit boxes, were all stocks, bonds and other securities, owned throughout the current year held pursuant to a custodial agreement with a qualified bank or trust company in accordance with Section 1, III - General Examination Considerations, F. Outsourcing of Critical Functions, Custodial or Safekeeping Agreements of the NAIC Financial Condition Examiners Handbook? Yes [X] No []
- 17.1 For all agreements that comply with the requirements of the NAIC Financial Condition Examiners Handbook, complete the following:

1 Name of Custodian(s)	2 Custodian Address
Bank of New York Mellon	NEW YORK, NEW YORK

- 17.2 For all agreements that do not comply with the requirements of the NAIC Financial Condition Examiners Handbook, provide the name, location and a complete explanation:

1 Name(s)	2 Location(s)	3 Complete Explanation(s)

- 17.3 Have there been any changes, including name changes, in the custodian(s) identified in 17.1 during the current quarter? Yes [] No [X]
- 17.4 If yes, give full information relating thereto:

1 Old Custodian	2 New Custodian	3 Date of Change	4 Reason

- 17.5 Investment management – Identify all investment advisors, investment managers, broker/dealers, including individuals that have the authority to make investment decisions on behalf of the reporting entity. For assets that are managed internally by employees of the reporting entity, note as such. ["...that have access to the investment accounts"; "...handle securities"]

1 Name of Firm or Individual	2 Affiliation
ALLSTATE INVESTMENTS, LLC	A.....

- 17.5097 For those firms/individuals listed in the table for Question 17.5, do any firms/individuals unaffiliated with the reporting entity (i.e. designated with a "U") manage more than 10% of the reporting entity's invested assets?..... Yes [] No [X]
- 17.5098 For firms/individuals unaffiliated with the reporting entity (i.e. designated with a "U") listed in the table for Question 17.5, does the total assets under management aggregate to more than 50% of the reporting entity's invested assets?..... Yes [] No [X]

- 17.6 For those firms or individuals listed in the table for 17.5 with an affiliation code of "A" (affiliated) or "U" (unaffiliated), provide the information for the table below.

1 Central Registration Depository Number	2 Name of Firm or Individual	3 Legal Entity Identifier (LEI)	4 Registered With	5 Investment Management Agreement (IMA) Filed
N/A	ALLSTATE INVESTMENTS, LLC	QQVOKOEYTYOWZE36RV47	IL D01	DS.....

- 18.1 Have all the filing requirements of the Purposes and Procedures Manual of the NAIC Investment Analysis Office been followed? Yes [X] No []
- 18.2 If no, list exceptions:

19. By self-designating 5GI securities, the reporting entity is certifying the following elements for each self-designated 5GI security:

a. Documentation necessary to permit a full credit analysis of the security does not exist or an NAIC CRP credit rating for an FE or PL security is not available.

b. Issuer or obligor is current on all contracted interest and principal payments.

c. The insurer has an actual expectation of ultimate payment of all contracted interest and principal.

Has the reporting entity self-designated 5GI securities? Yes [] No [X]
20. By self-designating PLGI securities, the reporting entity is certifying the following elements of each self-designated PLGI security:

a. The security was purchased prior to January 1, 2018.

b. The reporting entity is holding capital commensurate with the NAIC Designation reported for the security.

c. The NAIC Designation was derived from the credit rating assigned by an NAIC CRP in its legal capacity as a NRSRO which is shown on a current private letter rating held by the insurer and available for examination by state insurance regulators.

d. The reporting entity is not permitted to share this credit rating of the PL security with the SVO.

Has the reporting entity self-designated PLGI securities? Yes [] No [X]
21. By assigning FE to a Schedule BA non-registered private fund, the reporting entity is certifying the following elements of each self-designated FE fund:

a. The shares were purchased prior to January 1, 2019.

b. The reporting entity is holding capital commensurate with the NAIC Designation reported for the security.

c. The security had a public credit rating(s) with annual surveillance assigned by an NAIC CRP in its legal capacity as an NRSRO prior to January 1, 2019.

d. The fund only or predominantly holds bonds in its portfolio.

e. The current reported NAIC Designation was derived from the public credit rating(s) with annual surveillance assigned by an NAIC CRP in its legal capacity as an NRSRO.

f. The public credit rating(s) with annual surveillance assigned by an NAIC CRP has not lapsed.

Has the reporting entity assigned FE to Schedule BA non-registered private funds that complied with the above criteria? Yes [] No [X]
- 7.2

GENERAL INTERROGATORIES

PART 2 - PROPERTY & CASUALTY INTERROGATORIES

1.

If the reporting entity is a member of a pooling arrangement, did the agreement or the reporting entity's participation change?
If yes, attach an explanation.

Yes [] No [] N/A [X]
2.

Has the reporting entity reinsured any risk with any other reporting entity and agreed to release such entity from liability, in whole or in part, from any loss that may occur on the risk, or portion thereof, reinsured?
If yes, attach an explanation.

Yes [] No [X]
- 3.1

Have any of the reporting entity's primary reinsurance contracts been canceled?

Yes [] No [X]
- 3.2

If yes, give full and complete information thereto.
- 4.1

Are any of the liabilities for unpaid losses and loss adjustment expenses other than certain workers' compensation tabular reserves (see Annual Statement Instructions pertaining to disclosure of discounting for definition of " tabular reserves") discounted at a rate of interest greater than zero?

Yes [] No [X]
- 4.2

If yes, complete the following schedule:

			TOTAL DISCOUNT				DISCOUNT TAKEN DURING PERIOD			
1	2	3	4	5	6	7	8	9	10	11
Line of Business	Maximum Interest	Discount Rate	Unpaid Losses	Unpaid LAE	IBNR	TOTAL	Unpaid Losses	Unpaid LAE	IBNR	TOTAL
TOTAL			0	0	0	0	0	0	0	0

5.

Operating Percentages:

5.1 A&H loss percent

5.2 A&H cost containment percent

5.3 A&H expense percent excluding cost containment expenses
- 6.1

Do you act as a custodian for health savings accounts?

Yes [] No [X]
- 6.2

If yes, please provide the amount of custodial funds held as of the reporting date\$.....
- 6.3

Do you act as an administrator for health savings accounts?

Yes [] No [X]
- 6.4

If yes, please provide the balance of the funds administered as of the reporting date\$.....
7.

Is the reporting entity licensed or chartered, registered, qualified, eligible or writing business in at least two states?

Yes [X] No []
- 7.1

If no, does the reporting entity assume reinsurance business that covers risks residing in at least one state other than the state of domicile of the reporting entity?

Yes [] No []

STATEMENT AS OF JUNE 30, 2022 OF THE Safe Auto Choice Insurance Company

SCHEDULE F - CEDED REINSURANCE

Showing All New Reinsurers - Current Year to Date

1	2	3	4	5	6	7
NAIC Company Code	ID Number	Name of Reinsurer	Domiciliary Jurisdiction	Type of Reinsurer	Certified Reinsurer Rating (1 through 6)	Effective Date of Certified Reinsurer Rating
NONE						

STATEMENT AS OF JUNE 30, 2022 OF THE Safe Auto Choice Insurance Company

SCHEDULE T - EXHIBIT OF PREMIUMS WRITTEN

Current Year to Date - Allocated by States and Territories							
States, etc.	1 Active Status (a)	Direct Premiums Written		Direct Losses Paid (Deducting Salvage)		Direct Losses Unpaid	
		2 Current Year To Date	3 Prior Year To Date	4 Current Year To Date	5 Prior Year To Date	6 Current Year To Date	7 Prior Year To Date
1. Alabama.....AL	N						
2. Alaska.....AK	N						
3. Arizona.....AZ	L						
4. Arkansas.....AR	N						
5. California.....CA	N						
6. Colorado.....CO	N						
7. Connecticut.....CT	N						
8. Delaware.....DE	N						
9. District of Columbia.....DC	N						
10. Florida.....FL	N						
11. Georgia.....GA	L						
12. Hawaii.....HI	N						
13. Idaho.....ID	N						
14. Illinois.....IL	L						
15. Indiana.....IN	L						
16. Iowa.....IA	N						
17. Kansas.....KS	N						
18. Kentucky.....KY	L						
19. Louisiana.....LA	N						
20. Maine.....ME	N						
21. Maryland.....MD	N						
22. Massachusetts.....MA	N						
23. Michigan.....MI	N						
24. Minnesota.....MN	N						
25. Mississippi.....MS	N						
26. Missouri.....MO	N						
27. Montana.....MT	N						
28. Nebraska.....NE	N						
29. Nevada.....NV	N						
30. New Hampshire.....NH	N						
31. New Jersey.....NJ	N						
32. New Mexico.....NM	N						
33. New York.....NY	N						
34. North Carolina.....NC	N						
35. North Dakota.....ND	N						
36. Ohio.....OH	L						
37. Oklahoma.....OK	L						
38. Oregon.....OR	N						
39. Pennsylvania.....PA	L						
40. Rhode Island.....RI	N						
41. South Carolina.....SC	L						
42. South Dakota.....SD	N						
43. Tennessee.....TN	L						
44. Texas.....TX	N						
45. Utah.....UT	N						
46. Vermont.....VT	N						
47. Virginia.....VA	L	135,405	987,191	304,087	357,944	232,285	414,569
48. Washington.....WA	N						
49. West Virginia.....WV	N						
50. Wisconsin.....WI	N						
51. Wyoming.....WY	N						
52. American Samoa.....AS	N						
53. Guam.....GU	N						
54. Puerto Rico.....PR	N						
55. U.S. Virgin Islands.....VI	N						
56. Northern Mariana Islands.....MP	N						
57. Canada.....CAN	N						
58. Aggregate Other Alien OT	XXX	0	0	0	0	0	0
59. Totals	XXX	135,405	987,191	304,087	357,944	232,285	414,569
DETAILS OF WRITE-INS							
58001.	XXX						
58002.	XXX						
58003.	XXX						
58998. Summary of remaining write-ins for Line 58 from overflow page	XXX	0	0	0	0	0	0
58999. Totals (Lines 58001 through 58003 plus 58998)(Line 58 above)	XXX	0	0	0	0	0	0

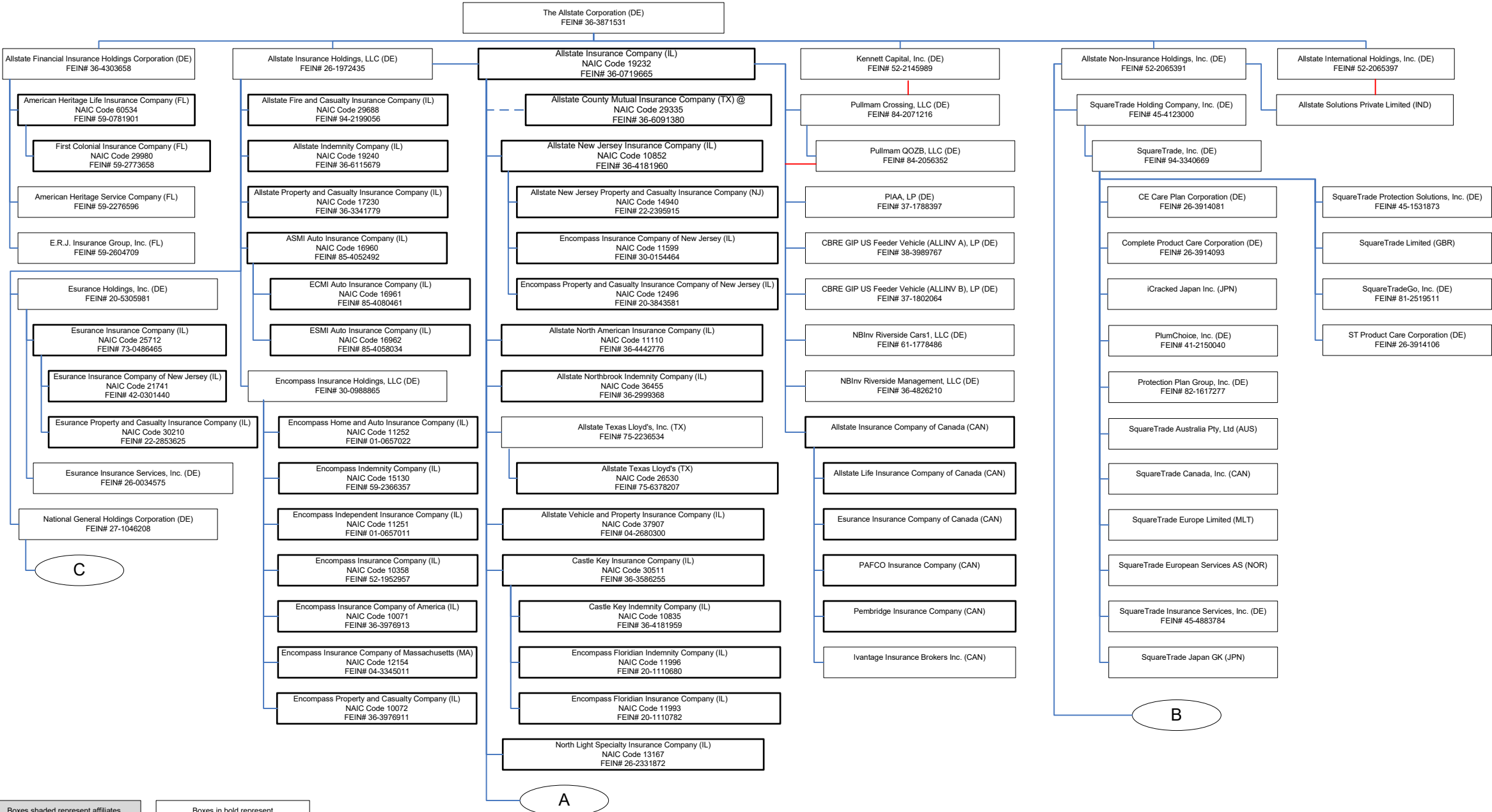
(a) Active Status Counts:

L - Licensed or Chartered - Licensed Insurance carrier or domiciled RRG.....	11	R - Registered - Non-domiciled RRGs.....	0
E - Eligible - Reporting entities eligible or approved to write surplus lines in the state (other than their state of domicile - see DSLI).....	0	Q - Qualified - Qualified or accredited reinsurer.....	0
D - Domestic Surplus Lines Insurer (DSLI) - Reporting entities authorized to write surplus lines in the state of domicile.....	0	N - None of the above - Not allowed to write business in the state.....	46

STATEMENT AS OF JUNE 30, 2022 OF THE Safe Auto Choice Insurance Company

SCHEDULE Y – INFORMATION CONCERNING ACTIVITIES OF INSURER MEMBERS OF A HOLDING COMPANY GROUP

PART 1 – ORGANIZATIONAL CHART



Boxes shaded represent affiliates added since prior period

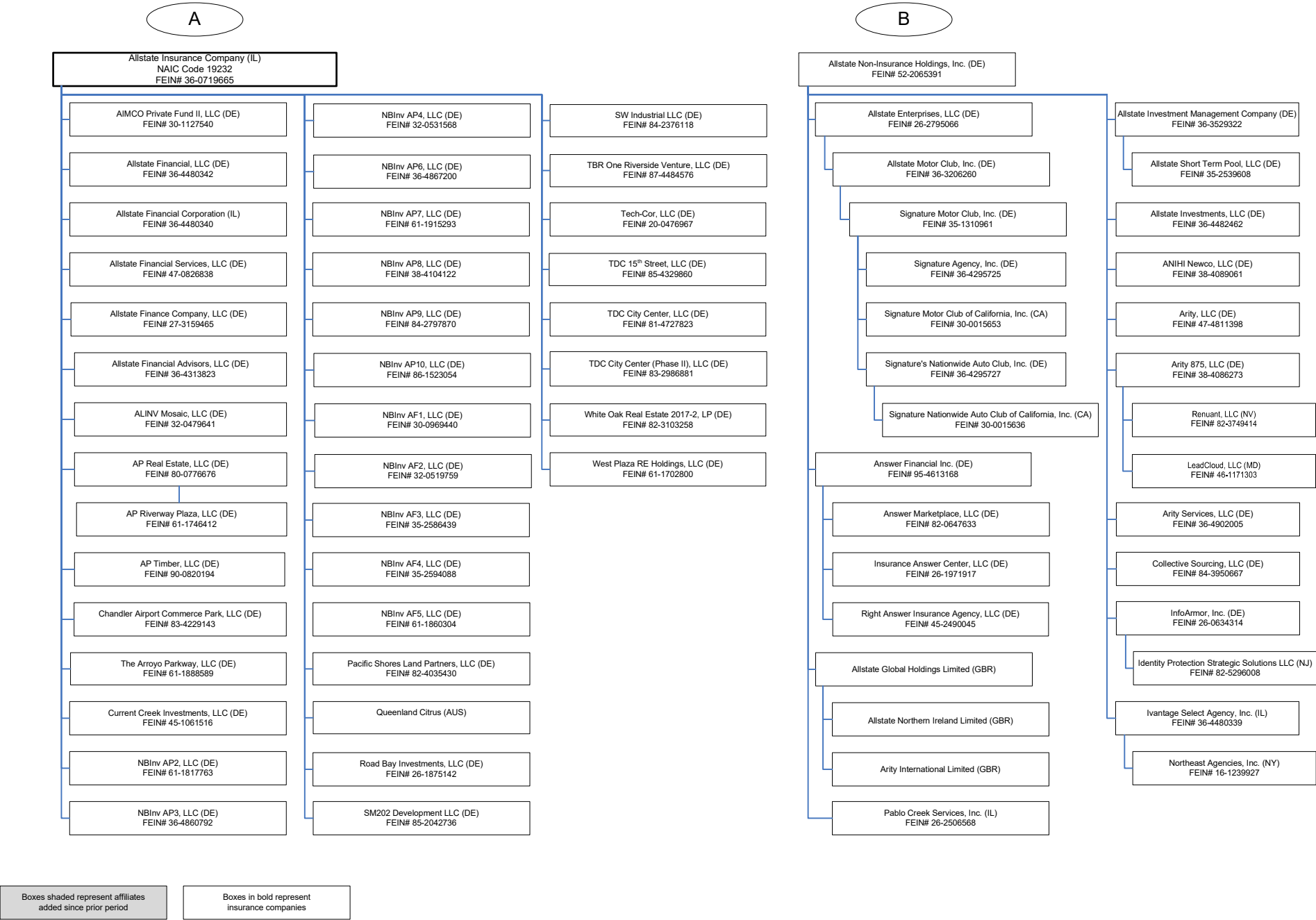
Boxes in bold represent insurance companies

@ Denotes company which is affiliated but not owned

STATEMENT AS OF JUNE 30, 2022 OF THE Safe Auto Choice Insurance Company

SCHEDULE Y – INFORMATION CONCERNING ACTIVITIES OF INSURER MEMBERS OF A HOLDING COMPANY GROUP

PART 1 – ORGANIZATIONAL CHART

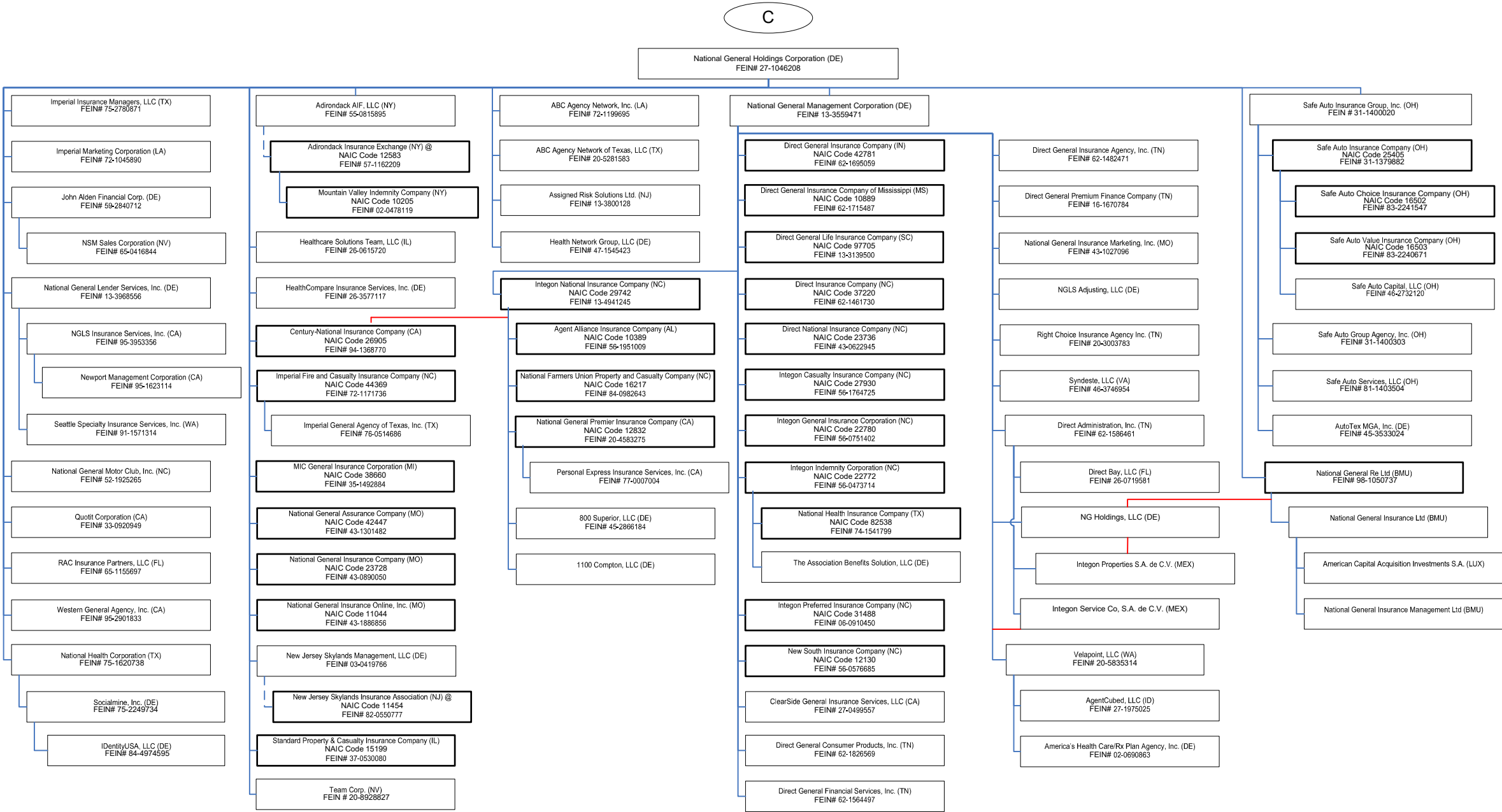


STATEMENT AS OF JUNE 30, 2022 OF THE Safe Auto Choice Insurance Company

SCHEDULE Y – INFORMATION CONCERNING ACTIVITIES OF INSURER MEMBERS OF A HOLDING COMPANY GROUP

PART 1 – ORGANIZATIONAL CHART

11.2



Boxes shaded represent affiliates
added since prior period

Boxes in bold represent
insurance companies

@ Denotes company which is affiliated but not owned

STATEMENT AS OF JUNE 30, 2022 OF THE Safe Auto Choice Insurance Company

SCHEDULE Y
PART 1A - DETAIL OF INSURANCE HOLDING COMPANY SYSTEM

1	2	3	4	5	6	7	8	9	10	11	12	13	14	15	16
Group Code	Group Name	NAIC Company Code	ID Number	Federal RSSD	CIK	Name of Securities Exchange if Publicly Traded (U.S. or International)	Names of Parent, Subsidiaries Or Affiliates	Domi-ciliary Location	Relation-ship to Reporting Entity	Directly Controlled by (Name of Entity/Person)	Type of Control (Ownership, Board, Management, Attorney-in-Fact, Influence, Other)	If Control is Ownership Provide Percen-tage	Ultimate Controlling Entity(ies)/Person(s)	Is an SCA Filing Re-quired? (Yes/No)	*
			36-3871531	2877532	0000899051	New York Stock Exchange	The Allstate Corporation	DE	UIP						.NO.
			45-2866184				1100 Compton, LLC	DE	NIA	Integon National Insurance Company	Ownership	100.000	The Allstate Corporation		.NO.
			20-5281583				800 Superior, LLC	DE	NIA	Integon National Insurance Company	Ownership	100.000	The Allstate Corporation		.NO.
			72-1199695				ABC Agency Network of Texas, LLC	TX	NIA	National General Holdings Corp	Ownership	100.000	The Allstate Corporation		.NO.
			55-0815895				ABC Agency Network, Inc.	LA	NIA	National General Holdings Corp	Ownership	100.000	The Allstate Corporation		.NO.
			57-1162209				Adirondack AIF, LLC	NY	NIA	National General Holdings Corp	Ownership	100.000	The Allstate Corporation		.NO.
.0008	Allstate Insurance Group	12583	56-1951009				Adirondack Insurance Exchange	NY	IA	Adirondack AIF, LLC	Attorney-In-Fact		The Allstate Corporation		.NO.
.0008	Allstate Insurance Group	10389	27-1975025				Agent Alliance Insurance Company	AL	IA	Integon National Insurance Company	Ownership	100.000	The Allstate Corporation		.NO.
			30-1127540				AgentCubed, LLC	ID	NIA	Velapoint, LLC	Ownership	100.000	The Allstate Corporation		.NO.
			32-0479641				AIMCO Private Fund II, LLC	DE	NIA	Allstate Insurance Company	Ownership	100.000	The Allstate Corporation		.NO.
			36-6091380				ALINV Mosaic, LLC	DE	NIA	Allstate Insurance Company	Ownership	100.000	The Allstate Corporation		.NO.
.0008	Allstate Insurance Group	29335	26-2795066				Allstate County Mutual Insurance Company	TX	IA	Allstate Insurance Company	Board of Directors		The Allstate Corporation		.NO.
			27-3159465				Allstate Enterprises, LLC	DE	NIA	Allstate Non-Insurance Holdings, Inc.	Ownership	100.000	The Allstate Corporation		.NO.
			36-4313823				Allstate Finance Company, LLC	DE	NIA	Allstate Insurance Company	Ownership	100.000	The Allstate Corporation		.NO.
			36-4480340				Allstate Financial Advisors, LLC	DE	NIA	Allstate Insurance Company	Ownership	100.000	The Allstate Corporation		.NO.
							Allstate Financial Corporation	IL	NIA	Allstate Insurance Company	Ownership	100.000	The Allstate Corporation		.NO.
							Allstate Financial Insurance Holdings Corporation	DE	NIA	The Allstate Corporation	Ownership	100.000	The Allstate Corporation		.NO.
					0000797152		Allstate Financial Services, LLC	DE	NIA	Allstate Insurance Company	Ownership	100.000	The Allstate Corporation		.NO.
							Allstate Financial, LLC	DE	NIA	Allstate Insurance Company	Ownership	100.000	The Allstate Corporation		.NO.
							Allstate Fire and Casualty Insurance Company								
.0008	Allstate Insurance Group	29688	36-4303658				Allstate Global Holdings Limited	IL	IA	Allstate Insurance Holdings, LLC	Ownership	100.000	The Allstate Corporation		.NO.
			47-0826838				Allstate Indemnity Company	GBR	NIA	Allstate Non-Insurance Holdings, Inc.	Ownership	100.000	The Allstate Corporation		.NO.
			36-4480342				Allstate Insurance Company	IL	IA	Allstate Insurance Holdings, LLC	Ownership	100.000	The Allstate Corporation		.NO.
.0008	Allstate Insurance Group	19240	36-6115679				Allstate Insurance Company of Canada	IL	IA	Allstate Insurance Holdings, LLC	Ownership	100.000	The Allstate Corporation		.NO.
.0008	Allstate Insurance Group	19232	36-0719665		0000314982		Allstate Insurance Holdings, LLC	CAN	IA	Allstate Insurance Company	Ownership	100.000	The Allstate Corporation		.NO.
			26-1972435				Allstate International Holdings, Inc.	DE	UIP	The Allstate Corporation	Ownership	100.000	The Allstate Corporation		.NO.
			52-2065397				Allstate Investment Management Company	DE	NIA	The Allstate Corporation	Ownership	100.000	The Allstate Corporation		.NO.
			36-3529322				Allstate Investments, LLC	DE	NIA	Allstate Non-Insurance Holdings, Inc.	Ownership	100.000	The Allstate Corporation		.NO.
			36-4482462		0001206333		Allstate Life Insurance Company of Canada	DE	NIA	Allstate Non-Insurance Holdings, Inc.	Ownership	100.000	The Allstate Corporation		.NO.
			36-3206260				Allstate Motor Club, Inc.	CAN	IA	Allstate Insurance Company of Canada	Ownership	100.000	The Allstate Corporation		.NO.
.0008	Allstate Insurance Group	10852	36-4181960				Allstate New Jersey Insurance Company	DE	NIA	Allstate Enterprises, LLC	Ownership	100.000	The Allstate Corporation		.NO.
							Allstate New Jersey Property and Casualty Insurance Company	IL	IA	Allstate Insurance Company	Ownership	100.000	The Allstate Corporation		.NO.
.0008	Allstate Insurance Group	14940	22-2395915				Allstate Non-Insurance Holdings, Inc.	NJ	IA	Allstate New Jersey Insurance Company	Ownership	100.000	The Allstate Corporation		.NO.
			52-2065391				Allstate North American Insurance Company	DE	NIA	The Allstate Corporation	Ownership	100.000	The Allstate Corporation		.NO.
.0008	Allstate Insurance Group	11110	36-4442776				Allstate Northbrook Indemnity Company	IL	IA	Allstate Insurance Company	Ownership	100.000	The Allstate Corporation		.NO.
.0008	Allstate Insurance Group	36455	36-2999368				Allstate Northern Ireland Limited	IL	IA	Allstate Insurance Company	Ownership	100.000	The Allstate Corporation		.NO.
							Allstate Property and Casualty Insurance Company	GBR	NIA	Allstate Global Holdings Limited	Ownership	100.000	The Allstate Corporation		.NO.
.0008	Allstate Insurance Group	17230	36-3341779				Allstate Short Term Pool, LLC	IL	IA	Allstate Insurance Holdings, LLC	Ownership	100.000	The Allstate Corporation		.NO.
			35-2539608				Allstate Solutions Private Limited	DE	NIA	Allstate Investment Management Company	Ownership	100.000	The Allstate Corporation		.NO.
							Allstate Texas Lloyd's	IND	NIA	Allstate Non-Insurance Holdings, Inc.	Ownership	100.000	The Allstate Corporation		.NO.
.0008	Allstate Insurance Group	26530	75-6378207				Allstate Texas Lloyd's, Inc.	TX	IA	Allstate Texas Lloyd's, Inc.	Ownership	100.000	The Allstate Corporation		.NO.
			75-2236534				Allstate Vehicle and Property Insurance Company	TX	NIA	Allstate Insurance Company	Ownership	100.000	The Allstate Corporation		.NO.
.0008	Allstate Insurance Group	37907	04-2680300				American Capital Acquisition Investments S.A.	IL	IA	Allstate Insurance Company	Ownership	100.000	The Allstate Corporation		.NO.
							American Heritage Life Insurance Company	LUX	NIA	National General Insurance Ltd	Ownership	100.000	The Allstate Corporation		.NO.
.0008	Allstate Insurance Group	60534	59-0781901				American Heritage Service Company	FL	IA	Allstate Financial Insurance Holdings Corporation	Ownership	100.000	The Allstate Corporation		.NO.
			59-2276596				America's Health Care/Rx Plan Agency, Inc.	FL	NIA	Allstate Financial Insurance Holdings Corporation	Ownership	100.000	The Allstate Corporation		.NO.
			02-0690863					DE	NIA	Velapoint, LLC	Ownership	100.000	The Allstate Corporation		.NO.

STATEMENT AS OF JUNE 30, 2022 OF THE Safe Auto Choice Insurance Company

SCHEDULE Y

PART 1A - DETAIL OF INSURANCE HOLDING COMPANY SYSTEM

1	2	3	4	5	6	7	8	9	10	11	12	13	14	15	16
Group Code	Group Name	NAIC Company Code	ID Number	Federal RSSD	CIK	Name of Securities Exchange if Publicly Traded (U.S. or International)	Names of Parent, Subsidiaries Or Affiliates	Domi-ciliary Location	Relation-ship to Reporting Entity	Directly Controlled by (Name of Entity/Person)	Type of Control (Ownership, Board, Management, Attorney-in-Fact, Influence, Other)	If Control is Ownership Provide Per-centage	Ultimate Controlling Entity(ies)/Person(s)	Is an SCA Filing Re-quired? (Yes/No)	*
			38-4089061				ANIHI Newco, LLC	DE	NIA	Allstate Non-Insurance Holdings, Inc.	Ownership	100.000	The Allstate Corporation	NO	
			95-4613168				Answer Financial Inc.	DE	NIA	Allstate Non-Insurance Holdings, Inc.	Ownership	100.000	The Allstate Corporation	NO	
			82-0647633				Answer Marketplace, LLC	DE	NIA	Answer Financial Inc.	Ownership	100.000	The Allstate Corporation	NO	
			80-0776676				AP Real Estate, LLC	DE	NIA	Allstate Insurance Company	Ownership	100.000	The Allstate Corporation	NO	
			61-1746412				AP Riverway Plaza, LLC	DE	NIA	AP Real Estate, LLC	Ownership	100.000	The Allstate Corporation	NO	
			90-0820194				AP Timber, LLC	DE	NIA	Allstate Insurance Company	Ownership	100.000	The Allstate Corporation	NO	
			38-4086273				Arity 875, LLC	DE	NIA	Allstate Non-Insurance Holdings, Inc.	Ownership	100.000	The Allstate Corporation	NO	
							Arity International Limited	GBR	NIA	Allstate Global Holdings Limited	Ownership	100.000	The Allstate Corporation	NO	
			47-4811398				Arity, LLC	DE	NIA	Allstate Non-Insurance Holdings, Inc.	Ownership	100.000	The Allstate Corporation	NO	
			36-4902005				Arity Services, LLC	DE	NIA	Allstate Non-Insurance Holdings, Inc.	Ownership	100.000	The Allstate Corporation	NO	
0008	Allstate Insurance Group	16960	85-4052492				ASMI Auto Insurance Company	IL	IA	Allstate Insurance Holdings, LLC	Ownership	100.000	The Allstate Corporation	NO	
			13-3800128				Assigned Risk Solutions Ltd.	NJ	NIA	National General Holdings Corp.	Ownership	100.000	The Allstate Corporation	NO	
			45-3533024				AutoTex MGA, Inc.	DE	NIA	Safe Auto Insurance Group, Inc.	Ownership	100.000	The Allstate Corporation	NO	
0008	Allstate Insurance Group	10835	36-4181959				Castle Key Indemnity Company	IL	IA	Castle Key Insurance Company	Ownership	100.000	The Allstate Corporation	NO	
0008	Allstate Insurance Group	30511	36-3586255				Castle Key Insurance Company	IL	IA	Allstate Insurance Company	Ownership	100.000	The Allstate Corporation	NO	
			38-3989767				CBRE GIP US Feeder Vehicle (ALLINV A), LP	DE	NIA	Allstate Insurance Company	Ownership	51.000	The Allstate Corporation	NO	
			37-1802064				CBRE GIP US Feeder Vehicle (ALLINV B), LP	DE	NIA	Allstate Insurance Company	Ownership	51.000	The Allstate Corporation	NO	
			26-3914081				CE Care Plan Corporation	DE	NIA	SquareTrade, Inc.	Ownership	100.000	The Allstate Corporation	NO	
0008	Allstate Insurance Group	26905	94-1368770				Century-National Insurance Company	CA	IA	National General Holdings Corp.	Ownership	78.000	The Allstate Corporation	NO	
0008	Allstate Insurance Group	26905	94-1368770				Century-National Insurance Company	CA	IA	Integon National Insurance Company	Ownership	22.000	The Allstate Corporation	NO	
			83-4229143				Chandler Airport Commerce Park, LLC	DE	NIA	Allstate Insurance Company	Ownership	90.000	The Allstate Corporation	NO	
			27-0499557				ClearSide General Insurance Services, LLC	CA	NIA	National General Management Corp	Ownership	100.000	The Allstate Corporation	NO	
			84-3950667				Collective Sourcing, LLC	DE	NIA	Allstate Non-Insurance Holdings, Inc.	Ownership	100.000	The Allstate Corporation	NO	
			26-3914093				Complete Product Care Corporation	DE	NIA	SquareTrade, Inc.	Ownership	100.000	The Allstate Corporation	NO	
			45-1061516				Current Creek Investments, LLC	DE	NIA	Allstate Insurance Company	Ownership	100.000	The Allstate Corporation	NO	
			62-1586461				Direct Administration, Inc.	TN	NIA	National General Management Corp	Ownership	100.000	The Allstate Corporation	NO	
			26-0719581				Direct Bay, LLC	FL	NIA	Direct Administration, Inc.	Ownership	100.000	The Allstate Corporation	NO	
			62-1826569				Direct General Consumer Products, Inc.	TN	NIA	National General Management Corp	Ownership	100.000	The Allstate Corporation	NO	
			62-1564497				Direct General Financial Services, Inc.	TN	NIA	National General Management Corp	Ownership	100.000	The Allstate Corporation	NO	
			62-1482471				Direct General Insurance Agency, Inc.	TN	NIA	National General Management Corp	Ownership	100.000	The Allstate Corporation	NO	
0008	Allstate Insurance Group	42781	62-1695059				Direct General Insurance Company	IN	IA	National General Management Corp	Ownership	100.000	The Allstate Corporation	NO	
							Direct General Insurance Company of Mississippi	MS	IA	National General Management Corp	Ownership	100.000	The Allstate Corporation	NO	
0008	Allstate Insurance Group	10889	62-1715487				Direct General Life Insurance Company	SC	IA	National General Management Corp	Ownership	100.000	The Allstate Corporation	NO	
0008	Allstate Insurance Group	97705	13-3139500				Direct General Premium Finance Company	TN	NIA	National General Management Corp	Ownership	100.000	The Allstate Corporation	NO	
			16-1670784				Direct Insurance Company	NC	IA	National General Management Corp	Ownership	100.000	The Allstate Corporation	NO	
0008	Allstate Insurance Group	37220	62-1461730				Direct National Insurance Company	NC	IA	National General Management Corp	Ownership	100.000	The Allstate Corporation	NO	
0008	Allstate Insurance Group	23736	43-0622945				EQMI Auto Insurance Company	IL	IA	ASMI Auto Insurance Company	Ownership	100.000	The Allstate Corporation	NO	
0008	Allstate Insurance Group	16961	85-4080461							Allstate Financial Insurance Holdings Corporation	Ownership	100.000	The Allstate Corporation	NO	
			59-2604709				E.R.J. Insurance Group, Inc.	FL	NIA		Ownership	100.000	The Allstate Corporation	NO	
0008	Allstate Insurance Group	11996	20-1110680				Encompass Floridian Indemnity Company	IL	IA	Castle Key Insurance Company	Ownership	100.000	The Allstate Corporation	NO	
0008	Allstate Insurance Group	11993	20-1110782				Encompass Floridian Insurance Company	IL	IA	Castle Key Insurance Company	Ownership	100.000	The Allstate Corporation	NO	
0008	Allstate Insurance Group	11252	01-0657022				Encompass Home and Auto Insurance Company	IL	IA	Encompass Insurance Holdings, LLC	Ownership	100.000	The Allstate Corporation	NO	
0008	Allstate Insurance Group	15130	59-2366357				Encompass Indemnity Company	IL	IA	Encompass Insurance Holdings, LLC	Ownership	100.000	The Allstate Corporation	NO	
0008	Allstate Insurance Group	11251	01-0657011				Encompass Independent Insurance Company	IL	IA	Encompass Insurance Holdings, LLC	Ownership	100.000	The Allstate Corporation	NO	
0008	Allstate Insurance Group	10358	52-1952957				Encompass Insurance Company	IL	IA	Encompass Insurance Holdings, LLC	Ownership	100.000	The Allstate Corporation	NO	
0008	Allstate Insurance Group	10071	36-3976913				Encompass Insurance Company of America	IL	IA	Encompass Insurance Holdings, LLC	Ownership	100.000	The Allstate Corporation	NO	
							Encompass Insurance Company of Massachusetts								
0008	Allstate Insurance Group	12154	04-3345011					MA	IA	Encompass Insurance Holdings, LLC	Ownership	100.000	The Allstate Corporation	NO	
0008	Allstate Insurance Group	11599	30-0154464				Encompass Insurance Company of New Jersey	IL	IA	Allstate New Jersey Insurance Company	Ownership	100.000	The Allstate Corporation	NO	
			30-0988865				Encompass Insurance Holdings, LLC	DE	NIA	Allstate Insurance Holdings, LLC	Ownership	100.000	The Allstate Corporation	NO	
0008	Allstate Insurance Group	10072	36-3976911				Encompass Property and Casualty Company	IL	IA	Encompass Insurance Holdings, LLC	Ownership	100.000	The Allstate Corporation	NO	
							Encompass Property and Casualty Insurance Company of New Jersey	IL	IA	Allstate New Jersey Insurance Company	Ownership	100.000	The Allstate Corporation	NO	

SCHEDULE Y
PART 1A - DETAIL OF INSURANCE HOLDING COMPANY SYSTEM

1	2	3	4	5	6	7	8	9	10	11	12	13	14	15	16
Group Code	Group Name	NAIC Company Code	ID Number	Federal RSSD	CIK	Name of Securities Exchange if Publicly Traded (U.S. or International)	Names of Parent, Subsidiaries Or Affiliates	Domi-ciliary Location	Relation-ship to Reporting Entity	Directly Controlled by (Name of Entity/Person)	Type of Control (Ownership, Board, Management, Attorney-in-Fact, Influence, Other)	If Control is Ownership Provide Per-centage	Ultimate Controlling Entity(ies)/Person(s)	Is an SCA Filing Re-quired? (Yes/No)	*
.0008	Allstate Insurance Group	16962	85-4058034				ESMI Auto Insurance Company	IL	IA	ASMI Auto Insurance Company	Ownership	100.000	The Allstate Corporation	NO	
			20-5305981				Esurance Holdings, Inc.	DE	NIA	Allstate Insurance Holdings, LLC	Ownership	100.000	The Allstate Corporation	NO	
.0008	Allstate Insurance Group	25712	73-0486465				Esurance Insurance Company	IL	IA	Esurance Holdings, Inc.	Ownership	100.000	The Allstate Corporation	NO	
							Esurance Insurance Company of Canada	CAN	IA	Allstate Insurance Company of Canada	Ownership	100.000	The Allstate Corporation	NO	
.0008	Allstate Insurance Group	21741	42-0301440				Esurance Insurance Company of New Jersey	IL	IA	Esurance Insurance Company	Ownership	100.000	The Allstate Corporation	NO	
			26-0034575				Esurance Insurance Services, Inc.	DE	NIA	Esurance Holdings, Inc.	Ownership	100.000	The Allstate Corporation	NO	
							Esurance Property and Casualty Insurance Company	IL	IA	Esurance Insurance Company	Ownership	100.000	The Allstate Corporation	NO	
.0008	Allstate Insurance Group	30210	22-2853625				First Colonial Insurance Company	FL	IA	American Heritage Life Insurance Company	Ownership	100.000	The Allstate Corporation	NO	
.0008	Allstate Insurance Group	29980	59-2773658				Health Network Group, LLC	DE	NIA	National General Holdings Corp.	Ownership	100.000	The Allstate Corporation	NO	
			47-1545423				Healthcare Solutions Team, LLC	IL	NIA	National General Holdings Corp.	Ownership	100.000	The Allstate Corporation	NO	
			26-0615720				HealthCompare Insurance Services, Inc.	DE	NIA	National General Holdings Corp.	Ownership	100.000	The Allstate Corporation	NO	
			26-3577117				iCracked Japan, Inc.	JPN	NIA	SquareTrade, Inc.	Ownership	58.000	The Allstate Corporation	NO	
			84-4974595				IDentityUSA, LLC	DE	NIA	National Health Corporation	Ownership	100.000	The Allstate Corporation	NO	
			82-5296008				Identity Protection Strategic Solutions LLC	NJ	NIA	InfoArmor, Inc.	Ownership	100.000	The Allstate Corporation	NO	
							Imperial Fire and Casualty Insurance Company								
.0008	Allstate Insurance Group	44369	72-1171736					NC	IA	National General Holdings Corp.	Ownership	100.000	The Allstate Corporation	NO	
										Imperial Fire and Casualty Insurance Company					
			76-0514686				Imperial General Agency of Texas, Inc.	TX	NIA		Ownership	100.000	The Allstate Corporation	NO	
			75-2780871				Imperial Insurance Managers, LLC	TX	NIA	National General Holdings Corp.	Ownership	100.000	The Allstate Corporation	NO	
			72-1045890				Imperial Marketing Corporation	LA	NIA	National General Holdings Corp.	Ownership	100.000	The Allstate Corporation	NO	
			26-0634314				InfoArmor, Inc.	DE	NIA	Allstate Non-Insurance Holdings, Inc.	Ownership	100.000	The Allstate Corporation	NO	
			26-1971917				Insurance Answer Center, LLC	DE	NIA	Answer Financial Inc.	Ownership	100.000	The Allstate Corporation	NO	
.0008	Allstate Insurance Group	27930	56-1764725				Integon Casualty Insurance Company	NC	IA	National General Management Corp	Ownership	100.000	The Allstate Corporation	NO	
.0008	Allstate Insurance Group	22780	56-0751402				Integon General Insurance Corporation	NC	IA	National General Management Corp	Ownership	100.000	The Allstate Corporation	NO	
.0008	Allstate Insurance Group	22772	56-0473714				Integon Indemnity Corporation	NC	IA	National General Management Corp	Ownership	100.000	The Allstate Corporation	NO	
.0008	Allstate Insurance Group	29742	13-4941245				Integon National Insurance Company	NC	IA	National General Management Corp	Ownership	100.000	The Allstate Corporation	NO	
.0008	Allstate Insurance Group	31488	06-0910450				Integon Preferred Insurance Company	NC	IA	National General Management Corp	Ownership	100.000	The Allstate Corporation	NO	
							Integon Properties S.A. de C.V.	MEX	NIA	NG Holdings, LLC	Ownership	99.000	The Allstate Corporation	NO	
							Integon Properties S.A. de C.V.	MEX	NIA	Direct Administration, Inc.	Ownership	1.000	The Allstate Corporation	NO	
							Integon Service Co. S.A. de C.V.	MEX	NIA	National General Management Corp	Ownership	99.000	The Allstate Corporation	NO	
							Integon Service Co, S.A. de C.V.	MEX	NIA	Direct Administration, Inc.	Ownership	1.000	The Allstate Corporation	NO	
							Ivantage Insurance Brokers Inc.	CAN	NIA	Allstate Insurance Company of Canada	Ownership	100.000	The Allstate Corporation	NO	
			36-4480339				Ivantage Select Agency, Inc.	IL	NIA	Allstate Non-Insurance Holdings, Inc.	Ownership	100.000	The Allstate Corporation	NO	
			59-2840712				John Alden Financial Corp.	DE	NIA	National General Holdings Corp.	Ownership	100.000	The Allstate Corporation	NO	
			52-2145989				Kennett Capital, Inc.	DE	NIA	The Allstate Corporation	Ownership	100.000	The Allstate Corporation	NO	
			46-1171303				LeadCloud, LLC	MD	NIA	Arity 875, LLC	Ownership	100.000	The Allstate Corporation	NO	
.0008	Allstate Insurance Group	38660	35-1492884				MIC General Insurance Corporation	MI	IA	National General Holdings Corp.	Ownership	100.000	The Allstate Corporation	NO	
.0008	Allstate Insurance Group	10205	02-0478119				Mountain Valley Indemnity Company	NY	IA	Adirondack Insurance Exchange	Ownership	100.000	The Allstate Corporation	NO	
							National Farmers Union Property and Casualty Company								
.0008	Allstate Insurance Group	16217	84-0982643					NC	IA	Integon National Insurance Company	Ownership	100.000	The Allstate Corporation	NO	
.0008	Allstate Insurance Group	42447	43-1301482				National General Assurance Company	MO	IA	National General Holdings Corp.	Ownership	100.000	The Allstate Corporation	NO	
			27-1046208				National General Holdings Corp.	DE	UIP	Allstate Insurance Holdings, LLC	Ownership	100.000	The Allstate Corporation	NO	
.0008	Allstate Insurance Group	23728	43-0890050				National General Insurance Company	MO	IA	National General Holdings Corp.	Ownership	100.000	The Allstate Corporation	NO	
							National General Insurance Ltd	BMU	NIA	National General Re Ltd	Ownership	100.000	The Allstate Corporation	NO	
							National General Insurance Management Ltd	BMU	NIA	National General Insurance Ltd	Ownership	100.000	The Allstate Corporation	NO	
			43-1027096				National General Insurance Marketing, Inc.	MO	NIA	National General Management Corp	Ownership	100.000	The Allstate Corporation	NO	
.0008	Allstate Insurance Group	11044	43-1886856				National General Insurance Online, Inc.	MO	IA	National General Holdings Corp.	Ownership	100.000	The Allstate Corporation	NO	
			13-3968556				National General Lender Services, Inc.	DE	NIA	National General Holdings Corp.	Ownership	100.000	The Allstate Corporation	NO	
			13-3559471				National General Management Corp	DE	NIA	National General Holdings Corp.	Ownership	100.000	The Allstate Corporation	NO	
			52-1925265				National General Motor Club, Inc.	NC	NIA	National General Holdings Corp.	Ownership	100.000	The Allstate Corporation	NO	
.0008	Allstate Insurance Group	12832	20-4583275				National General Premier Insurance Company	CA	IA	Integon National Insurance Company	Ownership	100.000	The Allstate Corporation	NO	
			98-1050737				National General Re Ltd	BMU	IA	National General Holdings Corp.	Ownership	100.000	The Allstate Corporation	NO	
			75-1620738				National Health Corporation	TX	NIA	National General Holdings Corp.	Ownership	100.000	The Allstate Corporation	NO	

STATEMENT AS OF JUNE 30, 2022 OF THE Safe Auto Choice Insurance Company

SCHEDULE Y

PART 1A - DETAIL OF INSURANCE HOLDING COMPANY SYSTEM

1	2	3	4	5	6	7	8	9	10	11	12	13	14	15	16
Group Code	Group Name	NAIC Company Code	ID Number	Federal RSSD	CIK	Name of Securities Exchange if Publicly Traded (U.S. or International)	Names of Parent, Subsidiaries Or Affiliates	Domi-ciliary Location	Relation-ship to Reporting Entity	Directly Controlled by (Name of Entity/Person)	Type of Control (Ownership, Board, Management, Attorney-in-Fact, Influence, Other)	If Control is Ownership Provide Per-centage	Ultimate Controlling Entity(ies)/Person(s)	Is an SCA Filing Re-quired? (Yes/No)	*
.0008	Allstate Insurance Group	.82538	74-1541799 30-0969440 32-0519759 35-2586439 35-2594088 61-1860304 61-1817763 36-4860792 32-0531568 36-4867200 61-1915293 38-4104122 84-2797870 86-1523054 61-1778486 36-4826210				National Health Insurance Company NBInv AF1, LLC NBInv AF2, LLC NBInv AF3, LLC NBInv AF4, LLC NBInv AF5, LLC NBInv AP2, LLC NBInv AP3, LLC NBInv AP4, LLC NBInv AP6, LLC NBInv AP7, LLC NBInv AP8, LLC NBInv AP9, LLC NBInv AP10, LLC NBInv Riverside Cars1, LLC NBInv Riverside Management, LLC	TX DE DE DE DE DE DE DE DE DE DE DE DE DE DE DE DE	IA NIA NIA NIA NIA NIA NIA NIA NIA NIA NIA NIA NIA NIA NIA NIA NIA	Integon Indemnity Corporation Allstate Insurance Company Allstate Insurance Company Allstate Insurance Company Allstate Insurance Company Allstate Insurance Company Allstate Insurance Company Allstate Insurance Company Allstate Insurance Company Allstate Insurance Company Allstate Insurance Company Allstate Insurance Company Allstate Insurance Company Allstate Insurance Company Allstate Insurance Company Allstate Insurance Company Allstate Insurance Company	Ownership Ownership Ownership Ownership Ownership Ownership Ownership Ownership Ownership Ownership Ownership Ownership Ownership Ownership Ownership Ownership Ownership	100.000 100.000 100.000 100.000 100.000 100.000 100.000 100.000 100.000 100.000 100.000 100.000 100.000 100.000 100.000 100.000	The Allstate Corporation The Allstate Corporation The Allstate Corporation The Allstate Corporation The Allstate Corporation The Allstate Corporation The Allstate Corporation The Allstate Corporation The Allstate Corporation The Allstate Corporation The Allstate Corporation The Allstate Corporation The Allstate Corporation The Allstate Corporation The Allstate Corporation The Allstate Corporation The Allstate Corporation	.NO .NO .NO .NO .NO .NO .NO .NO .NO .NO .NO .NO .NO .NO .NO .NO .NO	
.0008	Allstate Insurance Group	.11454	82-0550777 03-0419766				New Jersey Skylands Insurance Association New Jersey Skylands Management, LLC	NJ DE	IA NIA	New Jersey Skylands Management, LLC National General Holdings Corp	Attorney-In-Fact Ownership	 100.000	The Allstate Corporation The Allstate Corporation	.NO .NO	
.0008	Allstate Insurance Group	.12130	56-0576685 95-1623114				New South Insurance Company Newport Management Corporation NG Holdings, LLC NG Holdings, LLC NGLS Adjusting, LLC NGLS Insurance Services, Inc.	NC CA DE DE DE CA	IA NIA NIA NIA NIA NIA	National General Management Corp NGLS Insurance Services, Inc. National General Re Ltd National General Management Corp National General Management Corp National General Lender Services, Inc.	Ownership Ownership Ownership Ownership Ownership Ownership	100.000 100.000 99.000 1.000 100.000 100.000	The Allstate Corporation The Allstate Corporation The Allstate Corporation The Allstate Corporation The Allstate Corporation The Allstate Corporation	.NO .NO .NO .NO .NO .NO	
.0008	Allstate Insurance Group	.13167	95-3953356 26-2331872 16-1239927 65-0416844 26-2506568 82-4035430				North Light Specialty Insurance Company Northeast Agencies, Inc. NSM Sales Corporation Pablo Creek Services, Inc. Pacific Shores Land Partners, LLC PAFCO Insurance Company Pembridge Insurance Company	IL NY NV IL DE CAN CAN	IA NIA NIA NIA NIA IA IA	Allstate Insurance Company Ivantage Select Agency, Inc. John Alden Financial Corp Allstate Non-Insurance Holdings, Inc. Allstate Insurance Company Allstate Insurance Company of Canada Allstate Insurance Company of Canada National General Premier Insurance Company	Ownership Ownership Ownership Ownership Ownership Ownership Ownership	100.000 100.000 100.000 100.000 90.000 100.000 100.000	The Allstate Corporation The Allstate Corporation The Allstate Corporation The Allstate Corporation The Allstate Corporation The Allstate Corporation The Allstate Corporation	.NO .NO .NO .NO .NO .NO .NO	
			77-0007004 37-1788397 41-2150040 82-1617277 84-2071216 84-2071216 84-2056352 84-2056352				Personal Express Insurance Services, Inc. PIAA, LP PlumChoice, Inc. Protection Plan Group, Inc. Pullman Crossing, LLC Pullman Crossing, LLC Pullman QOZB, LLC Pullman QOZB, LLC	CA DE DE DE DE DE DE DE	NIA NIA NIA NIA NIA NIA NIA NIA	Allstate Insurance Company Allstate Insurance Company SquareTrade, Inc. SquareTrade, Inc. Allstate Insurance Company Kennett Capital, Inc. Pullman Crossing, LLC Allstate Insurance Company	Ownership Ownership Ownership Ownership Ownership Ownership Ownership Ownership	100.000 95.000 100.000 100.000 94.500 5.500 99.900 0.100	The Allstate Corporation The Allstate Corporation The Allstate Corporation The Allstate Corporation The Allstate Corporation The Allstate Corporation The Allstate Corporation The Allstate Corporation	.NO .NO .NO .NO .NO .NO .NO .NO	
			33-0920949 65-1155697 82-3749414 45-2490045 20-3003783 26-1875142 31-1400020				Queenland Citrus Quotit Corporation RAC Insurance Partners, LLC Renuant, LLC Right Answer Insurance Agency, LLC Right Choice Insurance Agency, Inc. Road Bay Investments, LLC Safe Auto Insurance Group, Inc.	AUS CA FL NV DE TN DE OH	NIA NIA NIA NIA NIA NIA NIA UIP	Allstate Insurance Company National General Holdings Corp National General Holdings Corp Arity 875, LLC Answer Financial Inc. National General Management Corp Allstate Insurance Company National General Holdings Corp	Ownership Ownership Ownership Ownership Ownership Ownership Ownership Ownership	92.000 100.000 100.000 100.000 100.000 100.000 100.000 100.000	The Allstate Corporation The Allstate Corporation The Allstate Corporation The Allstate Corporation The Allstate Corporation The Allstate Corporation The Allstate Corporation The Allstate Corporation	.NO .NO .NO .NO .NO .NO .NO .NO	
.0008	Allstate Insurance Group	.25405	31-1379882				Safe Auto Insurance Company	OH	UDP	Safe Auto Insurance Group, Inc.	Ownership	100.000	The Allstate Corporation	.NO	
.0008	Allstate Insurance Group	.16502	83-2241547				Safe Auto Choice Insurance Company	OH	RE	Safe Auto Insurance Company	Ownership	100.000	The Allstate Corporation	.NO	
.0008	Allstate Insurance Group	.16503	83-2240671 46-2732120 31-1400303 81-1403504				Safe Auto Value Insurance Company SafeAuto Capital, LLC Safe Auto Group Agency, Inc. SafeAuto Services, LLC	OH OH OH OH	IA NIA NIA NIA	Safe Auto Insurance Company Safe Auto Insurance Company Safe Auto Insurance Group, Inc. Safe Auto Insurance Group, Inc.	Ownership Ownership Ownership Ownership	100.000 100.000 100.000 100.000	The Allstate Corporation The Allstate Corporation The Allstate Corporation The Allstate Corporation	.NO .NO .NO .NO	

STATEMENT AS OF JUNE 30, 2022 OF THE Safe Auto Choice Insurance Company

SCHEDULE Y
PART 1A - DETAIL OF INSURANCE HOLDING COMPANY SYSTEM

1	2	3	4	5	6	7	8	9	10	11	12	13	14	15	16
Group Code	Group Name	NAIC Company Code	ID Number	Federal RSSD	CIK	Name of Securities Exchange if Publicly Traded (U.S. or International)	Names of Parent, Subsidiaries Or Affiliates	Domi-ciliary Location	Relation-ship to Reporting Entity	Directly Controlled by (Name of Entity/Person)	Type of Control (Ownership, Board, Management, Attorney-in-Fact, Influence, Other)	If Control is Ownership Provide Percentage	Ultimate Controlling Entity(ies)/Person(s)	Is an SCA Filing Re-quired? (Yes/No)	*
			91-1571314				Seattle Specialty Insurance Services, Inc.	WA	NIA	National General Lender Services, Inc.	Ownership.....	100.000	The Allstate Corporation	NO	
			36-4295725				Signature Agency, Inc.	DE	NIA	Signature Motor Club, Inc.	Ownership.....	100.000	The Allstate Corporation	NO	
			30-0015653				Signature Motor Club of California, Inc.	CA	NIA	Signature Motor Club, Inc.	Ownership.....	100.000	The Allstate Corporation	NO	
			35-1310961				Signature Motor Club, Inc.	DE	NIA	Allstate Motor Club, Inc.	Ownership.....	100.000	The Allstate Corporation	NO	
							Signature Nationwide Auto Club of California, Inc.	CA	NIA	Signature's Nationwide Auto Club, Inc.	Ownership.....	100.000	The Allstate Corporation	NO	
			30-0015636				Signature's Nationwide Auto Club, Inc.	DE	NIA	Signature Motor Club, Inc.	Ownership.....	100.000	The Allstate Corporation	NO	
			36-4295727				SM202 Development LLC	DE	NIA	Allstate Insurance Company	Ownership.....	95.000	The Allstate Corporation	NO	
			85-2042736				Socialmine, Inc.	DE	NIA	IDentityUSA, LLC	Ownership.....	100.000	The Allstate Corporation	NO	
			75-2249734				SquareTrade Australia Pty Ltd	AUS	NIA	SquareTrade, Inc.	Ownership.....	100.000	The Allstate Corporation	NO	
							SquareTrade Canada, Inc.	CAN	NIA	SquareTrade, Inc.	Ownership.....	100.000	The Allstate Corporation	NO	
							SquareTrade Europe Limited	MLT	NIA	SquareTrade, Inc.	Ownership.....	100.000	The Allstate Corporation	NO	
							SquareTrade European Services AS	NOR	NIA	SquareTrade, Inc.	Ownership.....	100.000	The Allstate Corporation	NO	
			45-4123000				SquareTrade Holding Company, Inc.	DE	NIA	Allstate Non-Insurance Holdings, Inc.	Ownership.....	100.000	The Allstate Corporation	NO	
			45-4883784				SquareTrade Insurance Services, Inc.	DE	NIA	SquareTrade, Inc.	Ownership.....	100.000	The Allstate Corporation	NO	
							SquareTrade Japan GK	JPN	NIA	SquareTrade, Inc.	Ownership.....	100.000	The Allstate Corporation	NO	
							SquareTrade Limited	GBR	NIA	SquareTrade, Inc.	Ownership.....	100.000	The Allstate Corporation	NO	
			45-1531873				SquareTrade Protection Solutions, Inc.	DE	NIA	SquareTrade, Inc.	Ownership.....	100.000	The Allstate Corporation	NO	
			94-3340669				SquareTrade, Inc.	DE	NIA	SquareTrade Holding Company, Inc.	Ownership.....	100.000	The Allstate Corporation	NO	
			81-2519511				SquareTradeGo, Inc.	DE	NIA	SquareTrade, Inc.	Ownership.....	100.000	The Allstate Corporation	NO	
			26-3914106				ST Product Care Corporation	DE	NIA	SquareTrade, Inc.	Ownership.....	100.000	The Allstate Corporation	NO	
							Standard Property & Casualty Insurance Company	IL	IA	National General Holdings Corp.	Ownership.....	100.000	The Allstate Corporation	NO	
			37-0530080				SW Industrial LLC	DE	NIA	Allstate Insurance Company	Ownership.....	95.000	The Allstate Corporation	NO	
			84-2376118				Syndeste, LLC	VA	NIA	National General Management Corp	Ownership.....	100.000	The Allstate Corporation	NO	
			46-3746954				TBR One Riverside Venture, LLC	DE	NIA	Allstate Insurance Company	Ownership.....	90.000	The Allstate Corporation	NO	
			87-4484576				TDC City Center (Phase II), LLC	DE	NIA	Allstate Insurance Company	Ownership.....	90.000	The Allstate Corporation	NO	
			83-2986881				TDC City Center, LLC	DE	NIA	Allstate Insurance Company	Ownership.....	90.000	The Allstate Corporation	NO	
			81-4727823				TDC 15TH Street, LLC	DE	NIA	Allstate Insurance Company	Ownership.....	85.000	The Allstate Corporation	NO	
			85-4329860				Team Corp.	NV	NIA	National General Holdings Corp.	Ownership.....	100.000	The Allstate Corporation	NO	
			20-8928827				Tech-Cor, LLC	DE	NIA	Allstate Insurance Company	Ownership.....	100.000	The Allstate Corporation	NO	
			20-0476967				The Arroyo Parkway, LLC	DE	NIA	Allstate Insurance Company	Ownership.....	90.000	The Allstate Corporation	NO	
			61-1888589				The Association Benefits Solution, LLC	DE	NIA	Integon Indemnity Corporation	Ownership.....	100.000	The Allstate Corporation	NO	
							Velapoint, LLC	WA	NIA	National General Management Corp	Ownership.....	100.000	The Allstate Corporation	NO	
			20-5835314				West Plaza RE Holdings, LLC	DE	NIA	Allstate Insurance Company	Ownership.....	100.000	The Allstate Corporation	NO	
			61-1702800				Western General Agency, Inc.	CA	NIA	National General Holdings Corp.	Ownership.....	100.000	The Allstate Corporation	NO	
			95-2901833				White Oak Real Estate 2017-2, LP	DE	NIA	Allstate Insurance Company	Ownership.....	90.000	The Allstate Corporation	NO	
			82-3103258												

Asterisk	Explanation

PART 1 - LOSS EXPERIENCE

Line of Business		Current Year to Date			4 Prior Year to Date Direct Loss Percentage
		1 Direct Premiums Earned	2 Direct Losses Incurred	3 Direct Loss Percentage	
1.	Fire			0.0	0.0
2.1	Allied Lines			0.0	
2.2	Multiple peril crop			0.0	
2.3	Federal flood			0.0	
2.4	Private crop			0.0	
2.5	Private flood			0.0	
3.	Farmowners multiple peril			0.0	0.0
4.	Homeowners multiple peril			0.0	0.0
5.	Commercial multiple peril			0.0	0.0
6.	Mortgage guaranty			0.0	0.0
8.	Ocean marine			0.0	0.0
9.	Inland marine			0.0	0.0
10.	Financial guaranty			0.0	0.0
11.1	Medical professional liability - occurrence			0.0	0.0
11.2	Medical professional liability - claims-made			0.0	0.0
12.	Earthquake			0.0	0.0
13.1	Comprehensive (hospital and medical) individual			0.0	
13.2	Comprehensive (hospital and medical) group			0.0	
14.	Credit accident and health			0.0	0.0
15.1	Vision only			0.0	
15.2	Dental only			0.0	
15.3	Disability income			0.0	
15.4	Medicare supplement			0.0	
15.5	Medicaid Title XIX			0.0	
15.6	Medicare Title XVIII			0.0	
15.7	Long-term care			0.0	
15.8	Federal employees health benefits plan			0.0	
15.9	Other health			0.0	
16.	Workers' compensation			0.0	0.0
17.1	Other liability - occurrence			0.0	0.0
17.2	Other liability - claims-made			0.0	0.0
17.3	Excess workers' compensation			0.0	0.0
18.1	Products liability - occurrence			0.0	0.0
18.2	Products liability - claims-made			0.0	0.0
19.1	Private passenger auto no-fault (personal injury protection)			0.0	
19.2	Other private passenger auto liability	125,748	74,043	58.9	50.6
19.3	Commercial auto no-fault (personal injury protection)			0.0	
19.4	Other commercial auto liability			0.0	
21.1	Private passenger auto physical damage	35,066	31,921	91.0	112.5
21.2	Commercial auto physical damage			0.0	
22.	Aircraft (all perils)			0.0	0.0
23.	Fidelity			0.0	0.0
24.	Surety			0.0	0.0
26.	Burglary and theft			0.0	0.0
27.	Boiler and machinery			0.0	0.0
28.	Credit			0.0	0.0
29.	International			0.0	0.0
30.	Warranty			0.0	0.0
31.	Reinsurance - Nonproportional Assumed Property	XXX	XXX	XXX	XXX
32.	Reinsurance - Nonproportional Assumed Liability	XXX	XXX	XXX	XXX
33.	Reinsurance - Nonproportional Assumed Financial Lines	XXX	XXX	XXX	XXX
34.	Aggregate write-ins for other lines of business	0	0	0.0	0.0
35.	Totals	160,814	105,964	65.9	66.1
DETAILS OF WRITE-INS					
3401.				
3402.				
3403.				
3498.	Summary of remaining write-ins for Line 34 from overflow page	0	0	0.0	0.0
3499.	Totals (Lines 3401 through 3403 plus 3498)(Line 34 above)	0	0	0.0	0.0

PART 2 - DIRECT PREMIUMS WRITTEN

Line of Business		1 Current Quarter	2 Current Year to Date	3 Prior Year Year to Date
1.	Fire	0	0	
2.1	Allied Lines	0	0	
2.2	Multiple peril crop	0	0	
2.3	Federal flood	0	0	
2.4	Private crop	0	0	
2.5	Private flood	0	0	
3.	Farmowners multiple peril	0	0	
4.	Homeowners multiple peril	0	0	
5.	Commercial multiple peril	0	0	
6.	Mortgage guaranty	0	0	
8.	Ocean marine	0	0	
9.	Inland marine	0	0	
10.	Financial guaranty	0	0	
11.1	Medical professional liability - occurrence	0	0	
11.2	Medical professional liability - claims-made	0	0	
12.	Earthquake	0	0	
13.1	Comprehensive (hospital and medical) individual	0	0	
13.2	Comprehensive (hospital and medical) group	0	0	
14.	Credit accident and health	0	0	
15.1	Vision only	0	0	
15.2	Dental only	0	0	
15.3	Disability income	0	0	
15.4	Medicare supplement	0	0	
15.5	Medicaid Title XIX	0	0	
15.6	Medicare Title XVIII	0	0	
15.7	Long-term care	0	0	
15.8	Federal employees health benefits plan	0	0	
15.9	Other health	0	0	
16.	Workers' compensation	0	0	
17.1	Other liability - occurrence	0	0	
17.2	Other liability - claims-made	0	0	
17.3	Excess workers' compensation	0	0	
18.1	Products liability - occurrence	0	0	
18.2	Products liability - claims-made	0	0	
19.1	Private passenger auto no-fault (personal injury protection)	0	0	
19.2	Other private passenger auto liability	37,783	107,144	726,595
19.3	Commercial auto no-fault (personal injury protection)	0	0	
19.4	Other commercial auto liability	0	0	
21.1	Private passenger auto physical damage	12,937	28,261	260,596
21.2	Commercial auto physical damage	0	0	
22.	Aircraft (all perils)	0		
23.	Fidelity	0		
24.	Surety	0		
26.	Burglary and theft	0		
27.	Boiler and machinery	0		
28.	Credit	0		
29.	International	0		
30.	Warranty	0		
31.	Reinsurance - Nonproportional Assumed Property	XXX	XXX	XXX
32.	Reinsurance - Nonproportional Assumed Liability	XXX	XXX	XXX
33.	Reinsurance - Nonproportional Assumed Financial Lines	XXX	XXX	XXX
34.	Aggregate write-ins for other lines of business	0	0	0
35.	Totals	50,720	135,405	987,191
DETAILS OF WRITE-INS				
3401.			
3402.			
3403.			
3498.	Summary of remaining write-ins for Line 34 from overflow page	0	0	0
3499.	Totals (Lines 3401 through 3403 plus 3498)(Line 34 above)	0	0	0

STATEMENT AS OF JUNE 30, 2022 OF THE Safe Auto Choice Insurance Company

PART 3 (000 omitted)

LOSS AND LOSS ADJUSTMENT EXPENSE RESERVES SCHEDULE

	1	2	3	4	5	6	7	8	9	10	11	12	13
Years in Which Losses Occurred	Prior Year-End Known Case Loss and LAE Reserves	Prior Year-End IBNR Loss and LAE Reserves	Total Prior Year-End Loss and LAE Reserves (Cols. 1+2)	2022 Loss and LAE Payments on Claims Reported as of Prior Year-End	2022 Loss and LAE Payments on Claims Unreported as of Prior Year-End	Total 2022 Loss and LAE Payments (Cols. 4+5)	Q.S. Date Known Case Loss and LAE Reserves on Claims Reported and Open as of Prior Year End	Q.S. Date Known Case Loss and LAE Reserves on Claims Reported or Reopened Subsequent to Prior Year End	Q.S. Date IBNR Loss and LAE Reserves	Total Q.S. Loss and LAE Reserves (Cols.7+8+9)	Prior Year-End Known Case Loss and LAE Reserves Developed (Savings)/ Deficiency (Cols.4+7 minus Col. 1)	Prior Year-End IBNR Loss and LAE Reserves Developed (Savings)/ Deficiency (Cols. 5+8+9 minus Col. 2)	Prior Year-End Total Loss and LAE Reserve Developed (Savings)/ Deficiency (Cols. 11+12)
1. 2019 + Prior00000000
2. 202000000000
3. Subtotals 2020 + Prior0000000000000
4. 202100000000
5. Subtotals 2021 + Prior0000000000000
6. 2022XXXXXXXXXXXX0XXX0XXXXXXXXX
7. Totals0000000000000
8. Prior Year-End Surplus As Regards Policyholders	6,434										Col. 11, Line 7 As % of Col. 1 Line 7	Col. 12, Line 7 As % of Col. 2 Line 7	Col. 13, Line 7 As % of Col. 3 Line 7
											1. 0.0	2. 0.0	3. 0.0
											Col. 13, Line 7 As a % of Col. 1 Line 8		
											4. 0.0		

STATEMENT AS OF JUNE 30, 2022 OF THE Safe Auto Choice Insurance Company

SUPPLEMENTAL EXHIBITS AND SCHEDULES INTERROGATORIES

The following supplemental reports are required to be filed as part of your statement filing. However, in the event that your company does not transact the type of business for which the special report must be filed, your response of NO to the specific interrogatory will be accepted in lieu of filing a "NONE" report and a bar code will be printed below. If the supplement is required of your company but is not being filed for whatever reason enter SEE EXPLANATION and provide an explanation following the interrogatory questions.

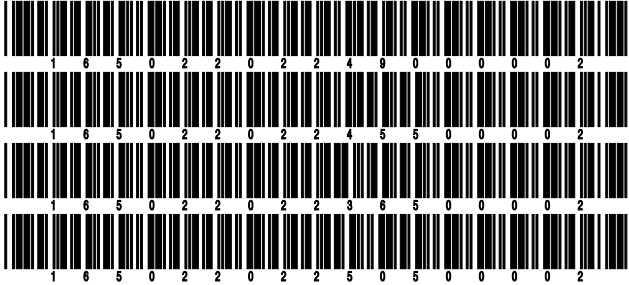
	Response
1. Will the Trusteed Surplus Statement be filed with the state of domicile and the NAIC with this statement?	NO
2. Will Supplement A to Schedule T (Medical Professional Liability Supplement) be filed with this statement?	NO
3. Will the Medicare Part D Coverage Supplement be filed with the state of domicile and the NAIC with this statement?	NO
4. Will the Director and Officer Insurance Coverage Supplement be filed with the state of domicile and the NAIC with this statement?	NO
AUGUST FILING	
5. Will the regulator-only (non-public) Communication of Internal Control Related Matters Noted in Audit be filed with the state of domicile and electronically with the NAIC (as a regulator-only non-public document) by August 1? The response for 1st and 3rd quarters should be N/A. A NO response resulting with a bar code is only appropriate in the 2nd quarter.	YES

Explanations:

1. The data for this supplement is not required to be filed.
2. The data for this supplement is not required to be filed.
3. The data for this supplement is not required to be filed.
4. The data for this supplement is not required to be filed.

Bar Codes:

1. Trusteed Surplus Statement [Document Identifier 490]
2. Supplement A to Schedule T [Document Identifier 455]
3. Medicare Part D Coverage Supplement [Document Identifier 365]
4. Director and Officer Supplement [Document Identifier 505]



SCHEDULE A - VERIFICATION

Real Estate

	1 Year to Date	2 Prior Year Ended December 31
1. Book/adjusted carrying value, December 31 of prior year		
2. Cost of acquired:		
2.1 Actual cost at time of acquisition		
2.2 Additional investment made after acquisition		
3. Current year change in encumbrances		
4. Total gain (loss) on disposals		
5. Deduct amounts received on disposals		
6. Total foreign exchange change in book/adjusted carrying value		
7. Deduct current year's other than temporary impairment recognized		
8. Deduct current year's depreciation		
9. Book/adjusted carrying value at the end of current period (Lines 1+2+3+4-5+6-7-8)		
10. Deduct total nonadmitted amounts		
11. Statement value at end of current period (Line 9 minus Line 10)		

SCHEDULE B - VERIFICATION

Mortgage Loans

	1 Year to Date	2 Prior Year Ended December 31
1. Book value/recorded investment excluding accrued interest, December 31 of prior year		
2. Cost of acquired:		
2.1 Actual cost at time of acquisition		
2.2 Additional investment made after acquisition		
3. Capitalized deferred interest and other		
4. Accrual of discount		
5. Unrealized valuation increase (decrease)		
6. Total gain (loss) on disposals		
7. Deduct amounts received on disposals		
8. Deduct amortization of premium and mortgage interest paid and commitment fees		
9. Total foreign exchange change in book value/recorded investment excluding accrued interest		
10. Deduct current year's other than temporary impairment recognized		
11. Book value/recorded investment excluding accrued interest at end of current period (Lines 1+2+3+4+5+6-7-8+9-10)		
12. Total valuation allowance		
13. Subtotal (Line 11 plus Line 12)		
14. Deduct total nonadmitted amounts		
15. Statement value at end of current period (Line 13 minus Line 14)		

SCHEDULE BA - VERIFICATION

Other Long-Term Invested Assets

	1 Year to Date	2 Prior Year Ended December 31
1. Book/adjusted carrying value, December 31 of prior year		
2. Cost of acquired:		
2.1 Actual cost at time of acquisition		
2.2 Additional investment made after acquisition		
3. Capitalized deferred interest and other		
4. Accrual of discount		
5. Unrealized valuation increase (decrease)		
6. Total gain (loss) on disposals		
7. Deduct amounts received on disposals		
8. Deduct amortization of premium and depreciation		
9. Total foreign exchange change in book/adjusted carrying value		
10. Deduct current year's other than temporary impairment recognized		
11. Book/adjusted carrying value at end of current period (Lines 1+2+3+4+5+6-7-8+9-10)		
12. Deduct total nonadmitted amounts		
13. Statement value at end of current period (Line 11 minus Line 12)		

SCHEDULE D - VERIFICATION

Bonds and Stocks

	1 Year to Date	2 Prior Year Ended December 31
1. Book/adjusted carrying value of bonds and stocks, December 31 of prior year	5,762,236	5,635,323
2. Cost of bonds and stocks acquired	3,663,361	5,373,670
3. Accrual of discount	4,133	4,423
4. Unrealized valuation increase (decrease)	0	
5. Total gain (loss) on disposals	(43,739)	222,341
6. Deduct consideration for bonds and stocks disposed of	3,934,429	5,470,894
7. Deduct amortization of premium	(550)	2,627
8. Total foreign exchange change in book/adjusted carrying value	0	
9. Deduct current year's other than temporary impairment recognized	0	
10. Total investment income recognized as a result of prepayment penalties and/or acceleration fees	0	
11. Book/adjusted carrying value at end of current period (Lines 1+2+3+4+5-6-7+8-9+10)	5,452,113	5,762,236
12. Deduct total nonadmitted amounts	0	
13. Statement value at end of current period (Line 11 minus Line 12)	5,452,113	5,762,236

SCHEDULE D - PART 1B

Showing the Acquisitions, Dispositions and Non-Trading Activity
During the Current Quarter for all Bonds and Preferred Stock by NAIC Designation

NAIC Designation	1 Book/Adjusted Carrying Value Beginning of Current Quarter	2 Acquisitions During Current Quarter	3 Dispositions During Current Quarter	4 Non-Trading Activity During Current Quarter	5 Book/Adjusted Carrying Value End of First Quarter	6 Book/Adjusted Carrying Value End of Second Quarter	7 Book/Adjusted Carrying Value End of Third Quarter	8 Book/Adjusted Carrying Value December 31 Prior Year
BONDS								
1. NAIC 1 (a)	5,491,306	1,810,752	1,852,683	2,741	5,491,306	5,452,116	0	5,762,239
2. NAIC 2 (a)	0	0	0	0	0	0	0	0
3. NAIC 3 (a)	0	0	0	0	0	0	0	0
4. NAIC 4 (a)	0	0	0	0	0	0	0	0
5. NAIC 5 (a)	0	0	0	0	0	0	0	0
6. NAIC 6 (a)	0	0	0	0	0	0	0	0
7. Total Bonds	5,491,306	1,810,752	1,852,683	2,741	5,491,306	5,452,116	0	5,762,239
PREFERRED STOCK								
8. NAIC 1	0	0	0	0	0	0	0	0
9. NAIC 2	0	0	0	0	0	0	0	0
10. NAIC 3	0	0	0	0	0	0	0	0
11. NAIC 4	0	0	0	0	0	0	0	0
12. NAIC 5	0	0	0	0	0	0	0	0
13. NAIC 6	0	0	0	0	0	0	0	0
14. Total Preferred Stock	0	0	0	0	0	0	0	0
15. Total Bonds and Preferred Stock	5,491,306	1,810,752	1,852,683	2,741	5,491,306	5,452,116	0	5,762,239

(a) Book/Adjusted Carrying Value column for the end of the current reporting period includes the following amount of short-term and cash equivalent bonds by NAIC designation:
NAIC 1 \$0 ; NAIC 2 \$0 ; NAIC 3 \$0 NAIC 4 \$0 ; NAIC 5 \$0 ; NAIC 6 \$0

Schedule DA - Part 1 - Short-Term Investments

N O N E

Schedule DA - Verification - Short-Term Investments

N O N E

Schedule DB - Part A - Verification - Options, Caps, Floors, Collars, Swaps and Forwards

N O N E

Schedule DB - Part B - Verification - Futures Contracts

N O N E

Schedule DB - Part C - Section 1 - Replication (Synthetic Asset) Transactions (RSATs) Open

N O N E

Schedule DB-Part C-Section 2-Reconciliation of Replication (Synthetic Asset) Transactions Open

N O N E

Schedule DB - Verification - Book/Adjusted Carrying Value, Fair Value and Potential Exposure of
Derivatives

N O N E

SCHEDULE E - PART 2 - VERIFICATION

(Cash Equivalents)

	1	2
	Year To Date	Prior Year Ended December 31
1. Book/adjusted carrying value, December 31 of prior year	210,400	293,568
2. Cost of cash equivalents acquired	78,844	17,515,595
3. Accrual of discount	0	0
4. Unrealized valuation increase (decrease)	0	0
5. Total gain (loss) on disposals	0	0
6. Deduct consideration received on disposals	118,611	17,598,763
7. Deduct amortization of premium	0	0
8. Total foreign exchange change in book/adjusted carrying value	0	0
9. Deduct current year's other than temporary impairment recognized	0	0
10. Book/adjusted carrying value at end of current period (Lines 1+2+3+4+5-6-7+8-9)	170,633	210,400
11. Deduct total nonadmitted amounts	0	0
12. Statement value at end of current period (Line 10 minus Line 11)	170,633	210,400

Schedule A - Part 2 - Real Estate Acquired and Additions Made

N O N E

Schedule A - Part 3 - Real Estate Disposed

N O N E

Schedule B - Part 2 - Mortgage Loans Acquired and Additions Made

N O N E

Schedule B - Part 3 - Mortgage Loans Disposed, Transferred or Repaid

N O N E

Schedule BA - Part 2 - Other Long-Term Invested Assets Acquired and Additions Made

N O N E

Schedule BA - Part 3 - Other Long-Term Invested Assets Disposed, Transferred or Repaid

N O N E

SCHEDULE D - PART 3

Show All Long-Term Bonds and Stock Acquired During the Current Quarter

1	2	3	4	5	6	7	8	9	10
CUSIP Identification	Description	Foreign	Date Acquired	Name of Vendor	Number of Shares of Stock	Actual Cost	Par Value	Paid for Accrued Interest and Dividends	NAIC Designation, NAIC Designation Modifier and SVO Administrative Symbol
91282C-EK-3	TREASURY NOTE04/29/2022	RBS SECURITIES INC657,267660,00090	1.A FE
91282C-EN-7	TREASURY NOTE04/29/2022	OPPENHEIMER & CO., INC.99,164100,00015	1.A FE
91282C-EW-7	TREASURY NOTE06/30/2022	GOLDMAN, SACHS & CO.353,609350,00031	1.A
91282C-EX-5	TREASURY NOTE06/30/2022	BANK MONTREAL / NESBITT BURNS700,711700,00057	1.A
0109999999. Subtotal - Bonds - U.S. Governments						1,810,752	1,810,000	193	XXX
2509999997. Total - Bonds - Part 3						1,810,752	1,810,000	193	XXX
2509999998. Total - Bonds - Part 5						XXX	XXX	XXX	XXX
2509999999. Total - Bonds						1,810,752	1,810,000	193	XXX
4509999997. Total - Preferred Stocks - Part 3						0	XXX	0	XXX
4509999998. Total - Preferred Stocks - Part 5						XXX	XXX	XXX	XXX
4509999999. Total - Preferred Stocks						0	XXX	0	XXX
5989999997. Total - Common Stocks - Part 3						0	XXX	0	XXX
5989999998. Total - Common Stocks - Part 5						XXX	XXX	XXX	XXX
5989999999. Total - Common Stocks						0	XXX	0	XXX
5999999999. Total - Preferred and Common Stocks						0	XXX	0	XXX
.....
.....
.....
.....
.....
6009999999 - Totals						1,810,752	XXX	193	XXX

STATEMENT AS OF JUNE 30, 2022 OF THE Safe Auto Choice Insurance Company

SCHEDULE D - PART 4

Show All Long-Term Bonds and Stock Sold, Redeemed or Otherwise Disposed of During the Current Quarter

1	2	3	4	5	6	7	8	9	10	Change In Book/Adjusted Carrying Value					16	17	18	19	20	21	22	
										11	12	13	14	15								
CUSIP Identification	Description	Foreign	Disposal Date	Name of Purchaser	Number of Shares of Stock	Consideration	Par Value	Actual Cost	Prior Year Book/ Adjusted Carrying Value	Unrealized Valuation Increase/ (Decrease)	Current Year's (Amortization)/ Accretion	Current Year's Other Than Temporary Impairment Recognized	Total Change in Book/ Adjusted Carrying Value (11 + 12 - 13)	Total Foreign Exchange Change in Book /Adjusted Carrying Value	Book/ Adjusted Carrying Value at Disposal Date	Foreign Exchange Gain (Loss) on Disposal	Realized Gain (Loss) on Disposal	Total Gain (Loss) on Disposal	Bond Interest/ Stock Dividends Received During Year	Stated Contract Maturity Date	NAIC Designation, NAIC Designation Modifier and SVO Administrative Symbol	
.91282C-AX-9	TREASURY NOTE		04/29/2022	MORGAN STANLEY		763,028	769,400	769,160	769,195	0	75	0	75	0	769,269	0	(6,241)	(6,241)	404	11/30/2022	1.A	
.91282C-DR-9	TREASURY NOTE		06/30/2022	CITADEL SECURITIES LLC		1,054,916	1,090,000	1,081,612	0	0	1,802	0	1,802	0	1,083,414	0	(28,498)	(28,498)	4,110	12/31/2023	1.A	
0109999999. Subtotal - Bonds - U.S. Governments						1,817,944	1,859,400	1,850,772	769,195	0	1,876	0	1,876	0	1,852,683	0	(34,739)	(34,739)	4,514	XXX	XXX	
2509999997. Total - Bonds - Part 4						1,817,944	1,859,400	1,850,772	769,195	0	1,876	0	1,876	0	1,852,683	0	(34,739)	(34,739)	4,514	XXX	XXX	
2509999998. Total - Bonds - Part 5						XXX	XXX	XXX	XXX	XXX	XXX	XXX	XXX	XXX	XXX	XXX	XXX	XXX	XXX	XXX	XXX	XXX
2509999999. Total - Bonds						1,817,944	1,859,400	1,850,772	769,195	0	1,876	0	1,876	0	1,852,683	0	(34,739)	(34,739)	4,514	XXX	XXX	
4509999997. Total - Preferred Stocks - Part 4						0	XXX	0	0	0	0	0	0	0	0	0	0	0	0	0	XXX	XXX
4509999998. Total - Preferred Stocks - Part 5						XXX	XXX	XXX	XXX	XXX	XXX	XXX	XXX	XXX	XXX	XXX	XXX	XXX	XXX	XXX	XXX	XXX
4509999999. Total - Preferred Stocks						0	XXX	0	0	0	0	0	0	0	0	0	0	0	0	0	XXX	XXX
5989999997. Total - Common Stocks - Part 4						0	XXX	0	0	0	0	0	0	0	0	0	0	0	0	0	XXX	XXX
5989999998. Total - Common Stocks - Part 5						XXX	XXX	XXX	XXX	XXX	XXX	XXX	XXX	XXX	XXX	XXX	XXX	XXX	XXX	XXX	XXX	XXX
5989999999. Total - Common Stocks						0	XXX	0	0	0	0	0	0	0	0	0	0	0	0	0	XXX	XXX
5999999999. Total - Preferred and Common Stocks						0	XXX	0	0	0	0	0	0	0	0	0	0	0	0	0	XXX	XXX
6009999999 - Totals						1,817,944	XXX	1,850,772	769,195	0	1,876	0	1,876	0	1,852,683	0	(34,739)	(34,739)	4,514	XXX	XXX	

Schedule DB - Part A - Section 1 - Options, Caps, Floors, Collars, Swaps and Forwards Open
N O N E

Schedule DB - Part B - Section 1 - Futures Contracts Open
N O N E

Schedule DB - Part B - Section 1B - Brokers with whom cash deposits have been made
N O N E

Schedule DB - Part D - Section 1 - Counterparty Exposure for Derivative Instruments Open
N O N E

Schedule DB - Part D-Section 2 - Collateral for Derivative Instruments Open - Pledged By
N O N E

Schedule DB - Part D-Section 2 - Collateral for Derivative Instruments Open - Pledged To
N O N E

Schedule DB - Part E - Derivatives Hedging Variable Annuity Guarantees
N O N E

Schedule DL - Part 1 - Reinvested Collateral Assets Owned
N O N E

Schedule DL - Part 2 - Reinvested Collateral Assets Owned
N O N E

SCHEDULE E - PART 1 - CASH

Month End Depository Balances

1	2	3	4	5	Book Balance at End of Each Month During Current Quarter			9
					6	7	8	
					First Month	Second Month	Third Month	
Depository	Code	Rate of Interest	Amount of Interest Received During Current Quarter	Amount of Interest Accrued at Current Statement Date				*
Bank of New York Mellon New York, NY					0	4	0	XXX
US Bank Saint Paul, MN					0	0	1,909	XXX
JP Morgan Chase Columbus, OH					678,609	678,609	677,776	XXX
0199998. Deposits in ... depositories that do not exceed the allowable limit in any one depository (See instructions) - Open Depositories	XXX	XXX						XXX
0199999. Totals - Open Depositories	XXX	XXX	0	0	678,609	678,613	679,685	XXX
0299998. Deposits in ... depositories that do not exceed the allowable limit in any one depository (See instructions) - Suspended Depositories	XXX	XXX						XXX
0299999. Totals - Suspended Depositories	XXX	XXX	0	0	0	0	0	XXX
0399999. Total Cash on Deposit	XXX	XXX	0	0	678,609	678,613	679,685	XXX
0499999. Cash in Company's Office	XXX	XXX	XXX	XXX				XXX
0599999. Total - Cash	XXX	XXX	0	0	678,609	678,613	679,685	XXX

SCHEDULE E - PART 2 - CASH EQUIVALENTS

[illegible]