



PROPERTY AND CASUALTY COMPANIES - ASSOCIATION EDITION

QUARTERLY STATEMENT

AS OF JUNE 30, 2022

OF THE CONDITION AND AFFAIRS OF THE

STATE AUTO INSURANCE COMPANY OF OHIO

NAIC Group Code 0111 0175 NAIC Company Code 11017 Employer's ID Number 31-1651026

Organized under the Laws of , State of Domicile or Port of Entry OH

Country of Domicile United States of America

Incorporated/Organized 05/17/1999 Commenced Business 01/01/2000

Statutory Home Office 518 East Broad Street Columbus, OH, US 43215

Main Administrative Office 518 East Broad Street Columbus, OH, US 43215 833-724-3577

Mail Address 518 East Broad Street Columbus, OH, US 43215

Primary Location of Books and Records 518 East Broad Street Columbus, OH, US 43215 614-464-5000

Internet Website Address www.stateauto.com

Statutory Statement Contact Zachary Skidmore 614-917-5995 corporateaccounting@stateauto.com 317-715-4519

OFFICERS

President and Chief Executive Officer Hamid Talal Mirza # Executive Vice President and Treasurer Nikos Vasilakos # Executive Vice President and Secretary Mark Charles Touhey #

OTHER

Christopher Locke Peirce #, Executive Vice President and Chief Financial Officer Paul Sanghera #, EVP and Comptroller Vlad Yakov Barbalat #, EVP and Chief Investment Officer Damon Paul Hart #, EVP and Chief Legal Officer

DIRECTORS OR TRUSTEES

James Matthew Czapla # Matthew Paul Dolan # Alison Brooke Erbig # Michael Joseph Fallon # Hamid Talal Mirza # Elizabeth Julia Morahan # Edward Jose Pena # Paul Sanghera # Mark Charles Touhey #

State of Massachusetts SS: County of Suffolk

The officers of this reporting entity being duly sworn, each depose and say that they are the described officers of said reporting entity, and that on the reporting period stated above, all of the herein described assets were the absolute property of the said reporting entity, free and clear from any liens or claims thereon, except as herein stated, and that this statement, together with related exhibits, schedules and explanations therein contained, annexed or referred to, is a full and true statement of all the assets and liabilities and of the condition and affairs of the said reporting entity as of the reporting period stated above, and of its income and deductions therefrom for the period ended, and have been completed in accordance with the NAIC Annual Statement Instructions and Accounting Practices and Procedures manual except to the extent that: (1) state law may differ; or, (2) that state rules or regulations require differences in reporting not related to accounting practices and procedures, according to the best of their information, knowledge and belief, respectively. Furthermore, the scope of this attestation by the described officers also includes the related corresponding electronic filing with the NAIC, when required, that is an exact copy (except for formatting differences due to electronic filing) of the enclosed statement. The electronic filing may be requested by various regulators in lieu of or in addition to the enclosed statement.

Hamid Talal Mirza President and Chief Executive Officer

Mark Charles Touhey Executive Vice President and Secretary

Nikos Vasilakos Executive Vice President and Treasurer

Subscribed and sworn to before me this 11th day of August, 2022

- a. Is this an original filing? Yes [X] No []
- b. If no,
1. State the amendment number.....
 2. Date filed
 3. Number of pages attached.....

STATEMENT AS OF JUNE 30, 2022 OF THE STATE AUTO INSURANCE COMPANY OF OHIO

ASSETS

| | Current Statement Date | | | 4 December 31 Prior Year Net Admitted Assets |
|--|------------------------|-------------------------|---|---|
| | 1 Assets | 2 Nonadmitted Assets | 3 Net Admitted Assets (Cols. 1 - 2) | |
| 1. Bonds | 11,307,584 | 0 | 11,307,584 | 17,540,061 |
| 2. Stocks: | | | | |
| 2.1 Preferred stocks | 0 | 0 | 0 | 0 |
| 2.2 Common stocks | 0 | 0 | 0 | 1,006,077 |
| 3. Mortgage loans on real estate: | | | | |
| 3.1 First liens | 0 | 0 | 0 | 0 |
| 3.2 Other than first liens | 0 | 0 | 0 | 0 |
| 4. Real estate: | | | | |
| 4.1 Properties occupied by the company (less \$0 encumbrances) | 0 | 0 | 0 | 0 |
| 4.2 Properties held for the production of income (less \$0 encumbrances) | 0 | 0 | 0 | 0 |
| 4.3 Properties held for sale (less \$0 encumbrances) | 0 | 0 | 0 | 0 |
| 5. Cash (\$7,213,098), cash equivalents (\$0) and short-term investments (\$0) | 7,213,098 | 0 | 7,213,098 | 77,274 |
| 6. Contract loans (including \$0 premium notes) | 0 | 0 | 0 | 0 |
| 7. Derivatives | 0 | 0 | 0 | 0 |
| 8. Other invested assets | 0 | 0 | 0 | 0 |
| 9. Receivables for securities | 0 | 0 | 0 | 0 |
| 10. Securities lending reinvested collateral assets | 0 | 0 | 0 | 0 |
| 11. Aggregate write-ins for invested assets | 0 | 0 | 0 | 0 |
| 12. Subtotals, cash and invested assets (Lines 1 to 11) | 18,520,682 | 0 | 18,520,682 | 18,623,413 |
| 13. Title plants less \$0 charged off (for Title insurers only) | 0 | 0 | 0 | 0 |
| 14. Investment income due and accrued | 72,304 | 0 | 72,304 | 129,605 |
| 15. Premiums and considerations: | | | | |
| 15.1 Uncollected premiums and agents' balances in the course of collection | 0 | 0 | 0 | 0 |
| 15.2 Deferred premiums, agents' balances and installments booked but deferred and not yet due (including \$0 earned but unbilled premiums) | 0 | 0 | 0 | 0 |
| 15.3 Accrued retrospective premiums (\$0) and contracts subject to redetermination (\$0) | 0 | 0 | 0 | 0 |
| 16. Reinsurance: | | | | |
| 16.1 Amounts recoverable from reinsurers | 6,298,957 | 0 | 6,298,957 | 2,686,957 |
| 16.2 Funds held by or deposited with reinsured companies | 0 | 0 | 0 | 0 |
| 16.3 Other amounts receivable under reinsurance contracts | 0 | 0 | 0 | 0 |
| 17. Amounts receivable relating to uninsured plans | 0 | 0 | 0 | 0 |
| 18.1 Current federal and foreign income tax recoverable and interest thereon | 0 | 0 | 0 | 0 |
| 18.2 Net deferred tax asset | 194,301 | 140,501 | 53,800 | 135,855 |
| 19. Guaranty funds receivable or on deposit | 0 | 0 | 0 | 0 |
| 20. Electronic data processing equipment and software | 0 | 0 | 0 | 0 |
| 21. Furniture and equipment, including health care delivery assets (\$0) | 0 | 0 | 0 | 0 |
| 22. Net adjustment in assets and liabilities due to foreign exchange rates | 0 | 0 | 0 | 0 |
| 23. Receivables from parent, subsidiaries and affiliates | 3,227,176 | 0 | 3,227,176 | 2,346,099 |
| 24. Health care (\$0) and other amounts receivable | 0 | 0 | 0 | 0 |
| 25. Aggregate write-ins for other than invested assets | 0 | 0 | 0 | 84,265 |
| 26. Total assets excluding Separate Accounts, Segregated Accounts and Protected Cell Accounts (Lines 12 to 25) | 28,313,420 | 140,501 | 28,172,919 | 24,006,193 |
| 27. From Separate Accounts, Segregated Accounts and Protected Cell Accounts | 0 | 0 | 0 | 0 |
| 28. Total (Lines 26 and 27) | 28,313,420 | 140,501 | 28,172,919 | 24,006,193 |
| DETAILS OF WRITE-INS | | | | |
| 1101. | 0 | 0 | 0 | 0 |
| 1102. | | | | |
| 1103. | | | | |
| 1198. Summary of remaining write-ins for Line 11 from overflow page | 0 | 0 | 0 | 0 |
| 1199. Totals (Lines 1101 through 1103 plus 1198)(Line 11 above) | 0 | 0 | 0 | 0 |
| 2501. Equities and deposits in pools and associations | 0 | 0 | 0 | 84,265 |
| 2502. | | | | |
| 2503. | | | | |
| 2598. Summary of remaining write-ins for Line 25 from overflow page | 0 | 0 | 0 | 0 |
| 2599. Totals (Lines 2501 through 2503 plus 2598)(Line 25 above) | 0 | 0 | 0 | 84,265 |

STATEMENT AS OF JUNE 30, 2022 OF THE STATE AUTO INSURANCE COMPANY OF OHIO

LIABILITIES, SURPLUS AND OTHER FUNDS

| | 1 Current Statement Date | 2 December 31, Prior Year |
|--|--------------------------------|---------------------------------|
| 1. Losses (current accident year \$0) | 0 | 0 |
| 2. Reinsurance payable on paid losses and loss adjustment expenses | 0 | 0 |
| 3. Loss adjustment expenses | 0 | 0 |
| 4. Commissions payable, contingent commissions and other similar charges | 0 | 0 |
| 5. Other expenses (excluding taxes, licenses and fees) | 0 | 0 |
| 6. Taxes, licenses and fees (excluding federal and foreign income taxes) | 0 | 0 |
| 7.1 Current federal and foreign income taxes (including \$0 on realized capital gains (losses)) | 109,440 | 92,576 |
| 7.2 Net deferred tax liability | 0 | 0 |
| 8. Borrowed money \$0 and interest thereon \$0 | 0 | 0 |
| 9. Unearned premiums (after deducting unearned premiums for ceded reinsurance of \$8,380,131 and including warranty reserves of \$0 and accrued accident and health experience rating refunds including \$0 for medical loss ratio rebate per the Public Health Service Act) | 0 | 0 |
| 10. Advance premium | 0 | 0 |
| 11. Dividends declared and unpaid: | | |
| 11.1 Stockholders | 0 | 0 |
| 11.2 Policyholders | 0 | 0 |
| 12. Ceded reinsurance premiums payable (net of ceding commissions) | 9,116,300 | 5,030,737 |
| 13. Funds held by company under reinsurance treaties | 0 | 0 |
| 14. Amounts withheld or retained by company for account of others | 0 | 0 |
| 15. Remittances and items not allocated | 0 | 0 |
| 16. Provision for reinsurance (including \$0 certified) | 0 | 0 |
| 17. Net adjustments in assets and liabilities due to foreign exchange rates | 0 | 0 |
| 18. Drafts outstanding | 0 | 0 |
| 19. Payable to parent, subsidiaries and affiliates | 96,823 | 59,129 |
| 20. Derivatives | 0 | 0 |
| 21. Payable for securities | 0 | 0 |
| 22. Payable for securities lending | 0 | 0 |
| 23. Liability for amounts held under uninsured plans | 0 | 0 |
| 24. Capital notes \$0 and interest thereon \$0 | 0 | 0 |
| 25. Aggregate write-ins for liabilities | 0 | 0 |
| 26. Total liabilities excluding protected cell liabilities (Lines 1 through 25) | 9,322,563 | 5,182,442 |
| 27. Protected cell liabilities | 0 | 0 |
| 28. Total liabilities (Lines 26 and 27) | 9,322,563 | 5,182,442 |
| 29. Aggregate write-ins for special surplus funds | 0 | 0 |
| 30. Common capital stock | 2,300,000 | 2,300,000 |
| 31. Preferred capital stock | 0 | 0 |
| 32. Aggregate write-ins for other than special surplus funds | 0 | 0 |
| 33. Surplus notes | 0 | 0 |
| 34. Gross paid in and contributed surplus | 3,823,680 | 3,823,680 |
| 35. Unassigned funds (surplus) | 12,726,676 | 12,700,072 |
| 36. Less treasury stock, at cost: | | |
| 36.10 shares common (value included in Line 30 \$0) | 0 | 0 |
| 36.20 shares preferred (value included in Line 31 \$0) | 0 | 0 |
| 37. Surplus as regards policyholders (Lines 29 to 35, less 36) | 18,850,356 | 18,823,752 |
| 38. Totals (Page 2, Line 28, Col. 3) | 28,172,919 | 24,006,193 |
| DETAILS OF WRITE-INS | | |
| 2501. | 0 | 0 |
| 2502. | | |
| 2503. | | |
| 2598. Summary of remaining write-ins for Line 25 from overflow page | 0 | 0 |
| 2599. Totals (Lines 2501 through 2503 plus 2598)(Line 25 above) | 0 | 0 |
| 2901. | 0 | 0 |
| 2902. | | |
| 2903. | | |
| 2998. Summary of remaining write-ins for Line 29 from overflow page | 0 | 0 |
| 2999. Totals (Lines 2901 through 2903 plus 2998)(Line 29 above) | 0 | 0 |
| 3201. | | |
| 3202. | | |
| 3203. | | |
| 3298. Summary of remaining write-ins for Line 32 from overflow page | 0 | 0 |
| 3299. Totals (Lines 3201 through 3203 plus 3298)(Line 32 above) | 0 | 0 |

STATEMENT OF INCOME

| | 1 | 2 | 3 |
|---|-------------------------|-----------------------|---------------------------------|
| | Current Year to Date | Prior Year to Date | Prior Year Ended December 31 |
| UNDERWRITING INCOME | | | |
| 1. Premiums earned: | | | |
| 1.1 Direct (written \$ 9,245,937) | 10,164,987 | 12,161,156 | 23,170,740 |
| 1.2 Assumed (written \$ 17,115) | 17,115 | 24,746 | 45,117 |
| 1.3 Ceded (written \$ 9,263,051) | 10,182,102 | 12,185,902 | 23,215,857 |
| 1.4 Net (written \$ 0) | 0 | 0 | 0 |
| DEDUCTIONS: | | | |
| 2. Losses incurred (current accident year \$ 0): | | | |
| 2.1 Direct | 6,187,478 | 5,021,254 | 8,774,248 |
| 2.2 Assumed | 4,630 | 10,878 | 18,703 |
| 2.3 Ceded | 6,192,107 | 5,032,132 | 8,792,951 |
| 2.4 Net | 0 | 0 | 0 |
| 3. Loss adjustment expenses incurred | 0 | 0 | 0 |
| 4. Other underwriting expenses incurred | 0 | 0 | 0 |
| 5. Aggregate write-ins for underwriting deductions | 0 | 0 | 0 |
| 6. Total underwriting deductions (Lines 2 through 5) | 0 | 0 | 0 |
| 7. Net income of protected cells | 0 | 0 | 0 |
| 8. Net underwriting gain or (loss) (Line 1 minus Line 6 + Line 7) | 0 | 0 | 0 |
| INVESTMENT INCOME | | | |
| 9. Net investment income earned | 139,116 | 188,221 | 353,033 |
| 10. Net realized capital gains (losses) less capital gains tax of \$ 10,045 | 341,541 | 45,257 | 45,258 |
| 11. Net investment gain (loss) (Lines 9 + 10) | 480,656 | 233,478 | 398,291 |
| OTHER INCOME | | | |
| 12. Net gain or (loss) from agents' or premium balances charged off (amount recovered \$ 0 amount charged off \$ 0) | 0 | 0 | 0 |
| 13. Finance and service charges not included in premiums | 0 | 0 | 0 |
| 14. Aggregate write-ins for miscellaneous income | 0 | 0 | 0 |
| 15. Total other income (Lines 12 through 14) | 0 | 0 | 0 |
| 16. Net income before dividends to policyholders, after capital gains tax and before all other federal and foreign income taxes (Lines 8 + 11 + 15) | 480,656 | 233,478 | 398,291 |
| 17. Dividends to policyholders | 0 | 0 | 0 |
| 18. Net income, after dividends to policyholders, after capital gains tax and before all other federal and foreign income taxes (Line 16 minus Line 17) | 480,656 | 233,478 | 398,291 |
| 19. Federal and foreign income taxes incurred | 89,819 | 34,941 | 112,228 |
| 20. Net income (Line 18 minus Line 19)(to Line 22) | 390,837 | 198,537 | 286,062 |
| CAPITAL AND SURPLUS ACCOUNT | | | |
| 21. Surplus as regards policyholders, December 31 prior year | 18,823,752 | 18,409,917 | 18,409,917 |
| 22. Net income (from Line 20) | 390,837 | 198,537 | 286,062 |
| 23. Net transfers (to) from Protected Cell accounts | 0 | 0 | 0 |
| 24. Change in net unrealized capital gains (losses) less capital gains tax of \$ (67,722) | (214,456) | 8,705 | 80,809 |
| 25. Change in net unrealized foreign exchange capital gain (loss) | 0 | 0 | 0 |
| 26. Change in net deferred income tax | (9,276) | 10,650 | 46,964 |
| 27. Change in nonadmitted assets | (140,501) | 0 | 0 |
| 28. Change in provision for reinsurance | 0 | 0 | 0 |
| 29. Change in surplus notes | 0 | 0 | 0 |
| 30. Surplus (contributed to) withdrawn from protected cells | 0 | 0 | 0 |
| 31. Cumulative effect of changes in accounting principles | 0 | 0 | 0 |
| 32. Capital changes: | | | |
| 32.1 Paid in | 0 | 0 | 0 |
| 32.2 Transferred from surplus (Stock Dividend) | 0 | 0 | 0 |
| 32.3 Transferred to surplus | 0 | 0 | 0 |
| 33. Surplus adjustments: | | | |
| 33.1 Paid in | 0 | 0 | 0 |
| 33.2 Transferred to capital (Stock Dividend) | 0 | 0 | 0 |
| 33.3 Transferred from capital | 0 | 0 | 0 |
| 34. Net remittances from or (to) Home Office | 0 | 0 | 0 |
| 35. Dividends to stockholders | 0 | 0 | 0 |
| 36. Change in treasury stock | 0 | 0 | 0 |
| 37. Aggregate write-ins for gains and losses in surplus | 0 | 0 | 0 |
| 38. Change in surplus as regards policyholders (Lines 22 through 37) | 26,604 | 217,892 | 413,835 |
| 39. Surplus as regards policyholders, as of statement date (Lines 21 plus 38) | 18,850,356 | 18,627,809 | 18,823,752 |
| DETAILS OF WRITE-INS | | | |
| 0501. | 0 | 0 | 0 |
| 0502. | | | |
| 0503. | | | |
| 0598. Summary of remaining write-ins for Line 5 from overflow page | 0 | 0 | 0 |
| 0599. Totals (Lines 0501 through 0503 plus 0598)(Line 5 above) | 0 | 0 | 0 |
| 1401. | 0 | 0 | 0 |
| 1402. | | | |
| 1403. | | | |
| 1498. Summary of remaining write-ins for Line 14 from overflow page | 0 | 0 | 0 |
| 1499. Totals (Lines 1401 through 1403 plus 1498)(Line 14 above) | 0 | 0 | 0 |
| 3701. | 0 | 0 | 0 |
| 3702. | | | |
| 3703. | | | |
| 3798. Summary of remaining write-ins for Line 37 from overflow page | 0 | 0 | 0 |
| 3799. Totals (Lines 3701 through 3703 plus 3798)(Line 37 above) | 0 | 0 | 0 |

STATEMENT AS OF JUNE 30, 2022 OF THE STATE AUTO INSURANCE COMPANY OF OHIO

CASH FLOW

| | 1 Current Year To Date | 2 Prior Year To Date | 3 Prior Year Ended December 31 |
|---|------------------------------|----------------------------|--------------------------------------|
| Cash from Operations | | | |
| 1. Premiums collected net of reinsurance | 4,085,563 | (158,541) | (935,978) |
| 2. Net investment income | 212,926 | 239,588 | 434,574 |
| 3. Miscellaneous income | 0 | 0 | 0 |
| 4. Total (Lines 1 to 3) | 4,298,489 | 81,047 | (501,404) |
| 5. Benefit and loss related payments | 3,612,001 | 930,719 | 209,719 |
| 6. Net transfers to Separate Accounts, Segregated Accounts and Protected Cell Accounts | 0 | 0 | 0 |
| 7. Commissions, expenses paid and aggregate write-ins for deductions | 0 | 0 | 0 |
| 8. Dividends paid to policyholders | 0 | 0 | 0 |
| 9. Federal and foreign income taxes paid (recovered) net of \$10,045 tax on capital gains (losses) | 83,000 | 54,000 | 102,883 |
| 10. Total (Lines 5 through 9) | 3,695,001 | 984,719 | 312,602 |
| 11. Net cash from operations (Line 4 minus Line 10) | 603,489 | (903,672) | (814,005) |
| Cash from Investments | | | |
| 12. Proceeds from investments sold, matured or repaid: | | | |
| 12.1 Bonds | 20,798,460 | 2,943,695 | 2,943,695 |
| 12.2 Stocks | 2,044,916 | 0 | 0 |
| 12.3 Mortgage loans | 0 | 0 | 0 |
| 12.4 Real estate | 0 | 0 | 0 |
| 12.5 Other invested assets | 0 | 0 | 0 |
| 12.6 Net gains or (losses) on cash, cash equivalents and short-term investments | 0 | 0 | 0 |
| 12.7 Miscellaneous proceeds | 0 | 0 | 0 |
| 12.8 Total investment proceeds (Lines 12.1 to 12.7) | 22,843,376 | 2,943,695 | 2,943,695 |
| 13. Cost of investments acquired (long-term only): | | | |
| 13.1 Bonds | 14,533,906 | 2,370,761 | 2,370,761 |
| 13.2 Stocks | 1,014,440 | 893,433 | 975,399 |
| 13.3 Mortgage loans | 0 | 0 | 0 |
| 13.4 Real estate | 0 | 0 | 0 |
| 13.5 Other invested assets | 0 | 0 | 0 |
| 13.6 Miscellaneous applications | 0 | 0 | 0 |
| 13.7 Total investments acquired (Lines 13.1 to 13.6) | 15,548,346 | 3,264,194 | 3,346,161 |
| 14. Net increase (or decrease) in contract loans and premium notes | 0 | 0 | 0 |
| 15. Net cash from investments (Line 12.8 minus Line 13.7 and Line 14) | 7,295,030 | (320,499) | (402,466) |
| Cash from Financing and Miscellaneous Sources | | | |
| 16. Cash provided (applied): | | | |
| 16.1 Surplus notes, capital notes | 0 | 0 | 0 |
| 16.2 Capital and paid in surplus, less treasury stock | 0 | 0 | 0 |
| 16.3 Borrowed funds | 0 | 0 | 0 |
| 16.4 Net deposits on deposit-type contracts and other insurance liabilities | 0 | 0 | 0 |
| 16.5 Dividends to stockholders | 0 | 0 | 0 |
| 16.6 Other cash provided (applied) | (762,695) | 1,141,081 | 1,168,812 |
| 17. Net cash from financing and miscellaneous sources (Line 16.1 through Line 16.4 minus Line 16.5 plus Line 16.6) | (762,695) | 1,141,081 | 1,168,811 |
| RECONCILIATION OF CASH, CASH EQUIVALENTS AND SHORT-TERM INVESTMENTS | | | |
| 18. Net change in cash, cash equivalents and short-term investments (Line 11, plus Lines 15 and 17) | 7,135,824 | (83,090) | (47,660) |
| 19. Cash, cash equivalents and short-term investments: | | | |
| 19.1 Beginning of year | 77,274 | 124,934 | 124,934 |
| 19.2 End of period (Line 18 plus Line 19.1) | 7,213,098 | 41,844 | 77,274 |

Note: Supplemental disclosures of cash flow information for non-cash transactions:

| | | | |
|--|--|--|--|
| | | | |
|--|--|--|--|

NOTES TO FINANCIAL STATEMENTS

1. Summary of Significant Accounting Policies:

A. Accounting Practices:

The accompanying financial statements of State Auto Insurance Company of Ohio (the "Company" or "SA Ohio") are presented on the basis of accounting practices prescribed or permitted by the Ohio Department of Insurance, which has adopted the National Association of Insurance Commissioners' (NAIC) *Accounting Practices and Procedures* manual (NAIC SAP).

A reconciliation of the Company's net income and capital and surplus between the practices prescribed and permitted by the state of Ohio and NAIC SAP is shown below:

| | SSAP # | F/S Page | F/S Line # | Amount (\$) | |
|--|--------|----------|------------|-------------|------------|
| | | | | 2022 | 2021 |
| NET INCOME | | | | | |
| 1. SA Ohio state basis (Page 4, Line 20, Columns 1 & 3) | | | | 390,837 | 286,062 |
| 2. State Prescribed Practices that are an increase/(decrease) from NAIC SAP: | | | | — | — |
| 3. State Permitted Practices that are an increase/(decrease) from NAIC SAP: | | | | — | — |
| 4. NAIC SAP (1 - 2 - 3 = 4) | | | | 390,837 | 286,062 |
| SURPLUS | | | | | |
| 5. SA Ohio state basis (Page 3, Line 37, Columns 1 & 2) | | | | 18,850,356 | 18,823,752 |
| 6. State Prescribed Practices that are an increase/(decrease) from NAIC SAP: | | | | — | — |
| 7. State Permitted Practices that are an increase/(decrease) from NAIC SAP: | | | | — | — |
| 8. NAIC SAP (5 - 6 - 7 = 8) | | | | 18,850,356 | 18,823,752 |

C. Accounting Policy:

2. Bonds are carried at cost, adjusted where appropriate for amortization of premium or discount, or fair value as specified by the SVO Manual.
6. Mortgage backed/asset backed securities are carried at amortized cost or fair value based on guidance in the SVO Manual. Prepayment assumptions for mortgage backed/asset backed securities are based on market expectations. The retrospective adjustment method is used to value all mortgage backed/asset backed securities.

D. Going Concern:

Management continuously monitors the Company's financial results and compliance with regulatory requirements. There are currently no circumstances that could call into question the Company's ability to continue as a going concern.

2. Accounting Changes and Corrections of Errors:

No substantial change from December 31, 2021.

3. Business Combinations and Goodwill:

No substantial change from December 31, 2021.

4. Discontinued Operations:

No substantial change from December 31, 2021.

5. Investments:

A. Mortgage Loans: Not applicable.

B. Debt Restructuring: Not applicable.

C. Reverse Mortgages: Not applicable.

D. Loan-Backed Securities:

1. Prepayment speed assumptions are updated monthly with data sourced from the Bloomberg data service.
2. The Company has not recognized any other than temporary impairments on its loan-backed securities.
3. The Company has not recognized any other than temporary impairments on its loan-backed securities.
4. All impaired Loaned Backed Securities for which an other-than-temporary impairment has not been recognized in earnings as a realized loss as of June 30, 2022:

| | Amount (\$) |
|--|-------------|
| a. The aggregate amount of unrealized losses | |
| 1. Less than 12 Months | (95,741) |
| 2. 12 Months or Longer | — |
| b. The aggregate related fair value of securities with unrealized losses | |
| 1. Less than 12 Months | 1,632,919 |
| 2. 12 Months or Longer | — |

5. The Company reviews fixed income securities for impairment on a quarterly basis. Securities are reviewed for both quantitative and qualitative considerations including, but not limited to: (a) the extent of the decline in fair value below book value, (b) the duration of the decline, (c) significant adverse changes in the financial condition or near term prospects of the investment or issuer, (d) significant change in the business climate or credit ratings of the issuer, (e) general market conditions and volatility, (f) industry factors, and (g) the past impairment of the security holding or the issuer. If the Company believes a decline in the value of a particular investment is temporary, the decline is recorded as an unrealized loss in policyholders' equity. If the decline is believed to be "other-than-temporary," and the Company believes it will not be able to collect all cash flows due on its fixed income securities, then the carrying value of the investment is written down to the expected cash flow amount and a realized loss is recorded as a credit impairment.

E. Dollar Repurchase Agreements: Not applicable.

F. Repurchase Agreements Transactions Accounted for as Secured Borrowing: Not applicable.

5. Investments (continued):

- G. Reverse Repurchase Agreements Transactions Accounted for as Secured Borrowing: Not applicable.
- H. Repurchase Agreements Transactions Accounted for as a Sale: Not applicable.
- I. Reverse Repurchase Agreements Transactions Accounted for as a Sale: Not applicable.
- J. Real Estate: Not applicable.
- K. Investments in Low Income Housing Tax Credits: Not applicable.
- L. Restricted Assets: No substantial change from December 31, 2021.
- M. Working Capital Finance Investments: Not applicable.
- N. Offsetting and Netting of Assets and Liabilities: Not applicable.
- O. 5GI Securities: Not applicable.
- P. Short Sales: Not applicable.
- Q. Prepayment Penalty and Acceleration Fees: Not applicable.
- R. Reporting Entity's Share of Cash Pool by Asset Type: Not applicable.

6. Joint Ventures, Partnerships and Limited Liability Companies:

No substantial change from December 31, 2021.

7. Investment Income:

No substantial change from December 31, 2021.

8. Derivative Instruments:

No substantial change from December 31, 2021.

STATEMENT AS OF JUNE 30, 2022 OF THE STATE AUTO INSURANCE COMPANY OF OHIO

9. Income Taxes:

F. Consolidated Federal Income Tax Return:

1. The Company's Federal income tax return is consolidated with the following entities:
- | | | |
|---|--|--|
| America First Insurance Company | Liberty Financial Services, Inc. | Open Seas Solutions, Inc. |
| America First Lloyd's Insurance Company | Liberty Hospitality Group, Inc. | Oregon Automobile Insurance Company |
| American Compensation Insurance Company | Liberty Insurance Corporation | Peerless Indemnity Insurance Company |
| American Economy Insurance Company | Liberty Insurance Holdings, Inc. | Peerless Insurance Company |
| American Fire and Casualty Company | Liberty Insurance Underwriters Inc. | Plaza Insurance Company |
| American States Insurance Company | Liberty International Europe Inc. | Rianoc Research Corporation |
| American States Insurance Company of Texas | Liberty International Holdings Inc. | RTW, Inc. |
| American States Lloyds Insurance Company | Liberty Life Holdings Inc. | Rockhill Holding Company |
| American States Preferred Insurance Company | Liberty Lloyds of Texas Insurance Company | Rockhill Insurance Company |
| Barrier Ridge LLC | Liberty Management Services, Inc. | SAFECARE Company, Inc. |
| Berkeley Management Corporation | Liberty Mexico Holdings Inc. | Safeco Corporation |
| Bloomington Compensation Insurance Company | Liberty Mutual Agency Corporation | Safeco General Agency, Inc. |
| Colorado Casualty Insurance Company | Liberty Mutual Credit Risk Transfer PCC Inc. | Safeco Insurance Company of America |
| Consolidated Insurance Company | Liberty Mutual Fire Insurance Company | Safeco Insurance Company of Illinois |
| Diversified Settlements, Inc. | Liberty Mutual Group Asset Management Inc. | Safeco Insurance Company of Indiana |
| Eagle Development Corporation | Liberty Mutual Group Inc. | Safeco Insurance Company of Oregon |
| Emerald City Insurance Agency, Inc. | Liberty Mutual Holding Company Inc. | Safeco Lloyds Insurance Company |
| Employers Insurance Company of Wausau | Liberty Mutual Insurance Company | Safeco National Insurance Company |
| Excelsior Insurance Company | Liberty Mutual Personal Insurance Company | Safeco Properties, Inc. |
| Excess Risk Reinsurance Inc. | Liberty Mutual Technology Group, Inc. | Safeco Surplus Lines Insurance Company |
| F.B. Beattie & Co., Inc. | Liberty Northwest Insurance Corporation | San Diego Insurance Company |
| Facilitators, Inc. | Liberty Personal Insurance Company | SCIT, Inc. |
| First National Insurance Company of America | Liberty RE (Bermuda) Limited | State Auto Financial Corporation |
| First State Agency Inc. | Liberty Sponsored Insurance (Vermont), Inc. | State Auto Holdings, Inc. |
| General America Corporation | Liberty Surplus Insurance Corporation | State Auto Insurance Company of Ohio |
| General America Corporation of Texas | LIH-RE of America Corporation | State Auto Insurance Company of Wisconsin |
| General Insurance Company of America | LIU Specialty Insurance Agency Inc. | State Auto Labs Corporation |
| Golden Eagle Insurance Corporation | LM General Insurance Company | State Auto Property & Casualty Insurance Company |
| Gulf States AIF, Inc. | LM Insurance Corporation | State Automobile Mutual Insurance Company |
| Hawkeye-Security Insurance Company | LM Property and Casualty Insurance Company | Stateco Financial Services, Inc. |
| Indiana Insurance Company | LMCRT-FRE-01 IC | The First Liberty Insurance Corporation |
| Insurance Company of Illinois | LMHC Massachusetts Holdings Inc. | The Midwestern Indemnity Company |
| Ironshore Holdings (US) Inc. | Managed Care Associates Inc. | The National Corporation |
| Ironshore Indemnity Inc. | Meridian Security Insurance Company | The Netherlands Insurance Company |
| Liberty Specialty Markets Bermuda Limited | Mid-American Fire & Casualty Company | The Ohio Casualty Insurance Company |
| Ironshore Management Inc. | Milbank Insurance Company | Wausau Business Insurance Company |
| Ironshore Services Inc. | Nationale Borg Reinsurance N.V. | Wausau General Insurance Company |
| Ironshore Specialty Insurance Company | North Pacific Insurance Company | Wausau Underwriters Insurance Company |
| Ironshore Surety Holdings Inc. | Ocasco Budget, Inc. | West American Insurance Company |
| LEXCO Limited | OCI Printing, Inc. | Winmar Company, Inc. |
| Liberty-USA Corporation | Ohio Casualty Corporation | Workgrid Software, Inc. |
| Liberty Energy Canada, Inc. | Ohio Security Insurance Company | |
2. The method of federal income tax allocation is subject to a written agreement. Allocation is based upon separate return calculations with credit applied for losses as appropriate. The Company has the enforceable right to recoup prior year payments in the event of future losses.

10. Information Concerning Parent, Subsidiaries and Affiliates:

- G. Nature of Relationships that Could Affect Operations:
- On July 12, 2021, the Company's ultimate controlling entity, State Automobile Mutual Insurance Company (SAM), entered into an agreement and Plan of Merger and Combination (Merger Agreement) with Liberty Mutual Holding Company Inc. (LMHC). Pursuant to a Plan of Reorganization, on March 1, 2022, the reorganization was effectuated with SAM surviving the merger as an Ohio domiciled reorganized stock insurance subsidiary of LMHC.
- The Company is a member of the Liberty Mutual Group that is defined in Schedule Y – Information Concerning Activities of Insurer Members of a Holding Company Group. See Schedule Y Part 1 – Organizational Chart.

11. Debt:

No substantial change from December 31, 2021.

12. Retirement Plans, Deferred Compensation, Postretirement Benefits and Compensated Absences and Other Postretirement Benefit Plans:

No substantial change from December 31, 2021.

STATEMENT AS OF JUNE 30, 2022 OF THE STATE AUTO INSURANCE COMPANY OF OHIO

13. Capital and Surplus, Shareholders' Dividend Restrictions and Quasi-Reorganizations:

No substantial change from December 31, 2021.

14. Liabilities, Contingencies and Assessments:

No substantial change from December 31, 2021.

15. Leases:

No substantial change from December 31, 2021.

16. Information about Financial Instruments with Off-Balance-Sheet Risk and Financial Instruments with Concentrations of Credit Risk:

No substantial change from December 31, 2021.

17. Sale, Transfer and Servicing of Financial Instruments and Extinguishments of Liabilities:

No substantial change from December 31, 2021.

18. Gain or Loss to the Reporting Entity from Uninsured A&H Plans and the Uninsured Portion of Partially Insured Plans:

No substantial change from December 31, 2021.

19. Direct Premium Written/Produced by Managing General Agents/Third Party Administrators:

No substantial change from December 31, 2021.

20. Fair Value Measurement:

A. Inputs Used for Assets and Liabilities Measured and Reported at Fair Value or Net Asset Value:

The Company has categorized its assets and liabilities that are reported on the balance sheet at fair value into the three-level fair value hierarchy as reflected in the table below. The three-level fair value hierarchy is based on the degree of subjectivity inherent in the valuation method by which fair value was determined. The three levels are defined as follows.

Level 1 - Quoted Prices in Active Markets for Identical Assets and Liabilities: The Company has no assets or liabilities measured and reported at fair value in this category.

Level 2 - Significant Other Observable Inputs: The Company has no assets or liabilities measured and reported at fair value in this category.

Level 3 - Significant Unobservable Inputs: The Company has no assets or liabilities measured and reported at fair value in this category.

Net asset value (NAV): The Company has no assets or liabilities measured and reported in this category.

- 1. The Company has no assets or liabilities that are measured and reported at fair value or net asset value that can be categorized in the three-level fair value hierarchy.
- 2. The Company has no assets or liabilities measured and reported at fair value in Level 3.
- 3. Transfers between level categorizations may occur due to changes in the availability of market observable inputs. Transfers in and out of level categorizations are reported as having occurred at the beginning of the quarter in which the transfer occurred. There were no transfers between level categorizations as of June 30, 2022.
- 4. The Company has no assets or liabilities measured and reported at fair value in Level 2 or Level 3.
- 5. The Company has no derivative assets or liabilities.

B. Other Fair Value Disclosures: Not applicable.

C. Fair Values for All Financial Instruments by Levels 1, 2, and 3:

See Item A for a discussion on valuation techniques for assets and liabilities that are measured and reported at fair value or net asset value.

The Company utilizes information provided by a nationally recognized pricing service to estimate fair value measurements for its fixed maturities.

June 30, 2022:

| Type of Financial Instrument | Amount (\$) | | | | | | |
|--|----------------------|-----------------|-----------|-----------|-----------|-----------------------|----------------------------------|
| | Aggregate Fair Value | Admitted Assets | (Level 1) | (Level 2) | (Level 3) | Net Asset Value (NAV) | Not Practicable (Carrying Value) |
| Bonds | 10,988,759 | 11,307,584 | 8,008,492 | 2,980,266 | — | — | — |
| Cash, cash equivalents, and short-term investments | 7,213,098 | 7,213,098 | 7,213,098 | — | — | — | — |

December 31, 2021:

| Type of Financial Instrument | Amount (\$) | | | | | | |
|--|----------------------|-----------------|-----------|------------|-----------|-----------------------|----------------------------------|
| | Aggregate Fair Value | Admitted Assets | (Level 1) | (Level 2) | (Level 3) | Net Asset Value (NAV) | Not Practicable (Carrying Value) |
| Bonds | 17,914,783 | 17,540,061 | — | 17,914,783 | — | — | — |
| Common Stock | 1,006,077 | 1,006,077 | 1,006,077 | | | | |
| Cash, cash equivalents, and short-term investments | 77,274 | 77,274 | 77,274 | — | — | — | — |

D. Financial Instruments for which Not Practical to Estimate Fair Values: Not applicable.

E. Financial Instruments using the NAV Practical Expedient: Not applicable.

21. Other Items:

No substantial change from December 31, 2021.

22. Events Subsequent:

Subsequent events have been considered through August 11, 2022 for the statutory statements issued on August 11, 2022.

23. Reinsurance:

No substantial change from December 31, 2021.

24. Retrospectively Rated Contracts and Contracts Subject to Redetermination:

No substantial change from December 31, 2021.

25. Changes in Incurred Losses and Loss Adjustment Expenses:

- A. The Company has no net exposure to changes in incurred losses and loss adjustment expenses. Refer to Note 26 for details regarding the Liberty Mutual Second Amended and Restated Intercompany Reinsurance Agreement.

STATEMENT AS OF JUNE 30, 2022 OF THE STATE AUTO INSURANCE COMPANY OF OHIO

26. Intercompany Pooling Arrangements:

The Company previously participated in the State Auto intercompany pooling agreement which was commuted effective April 1, 2022. Also, effective April 1, 2022, and immediately after the commutation of the State Auto pooling agreement, the existing Liberty Mutual Second Amended and Restated Intercompany Reinsurance Agreement ("Reinsurance Agreement") was amended to add the Company as a party of the agreement. The Company's participation percentage in the Liberty Mutual agreement is 0.0%.

| | Pool Participant | NAIC Company Code | Pooling Participation Percentages | Lines of Business |
|--|--|-------------------|-----------------------------------|-------------------|
| Lead Company: | Liberty Mutual Insurance Company | 23043 | 50.0% | All Lines |
| Affiliated Pool Companies: | Peerless Insurance Company | 24198 | 20.0% | All Lines |
| | Employers Insurance Company of Wausau | 21458 | 8.0% | All Lines |
| | Liberty Mutual Fire Insurance Company | 23035 | 8.0% | All Lines |
| | The Ohio Casualty Insurance Company | 24074 | 8.0% | All Lines |
| | Safeco Insurance Company of America | 24740 | 6.0% | All Lines |
| | American Compensation Insurance Company | 45934 | 0.0% | All Lines |
| | American Economy Insurance Company | 19690 | 0.0% | All Lines |
| | America First Insurance Company | 12696 | 0.0% | All Lines |
| | America Fire and Casualty Company | 24066 | 0.0% | All Lines |
| | America First Lloyd's Insurance Company | 11526 | 0.0% | All Lines |
| | American States Insurance Company | 19712 | 0.0% | All Lines |
| | American States Lloyd's Insurance Company | 31933 | 0.0% | All Lines |
| | American States Preferred Insurance Company | 37214 | 0.0% | All Lines |
| | Bloomington Compensation Insurance Company | 12311 | 0.0% | All Lines |
| | Colorado Casualty Insurance Company | 41785 | 0.0% | All Lines |
| | Consolidated Insurance Company | 22640 | 0.0% | All Lines |
| | Excelsior Insurance Company | 11045 | 0.0% | All Lines |
| | First National Insurance Company of America | 24724 | 0.0% | All Lines |
| | The First Liberty Insurance Company | 33588 | 0.0% | All Lines |
| | General Insurance Company of America | 24732 | 0.0% | All Lines |
| | Golden Eagle Insurance Corporation | 10836 | 0.0% | All Lines |
| | Hawkeye-Security Insurance Company | 36919 | 0.0% | All Lines |
| | Insurance Company of Illinois | 26700 | 0.0% | All Lines |
| | Indiana Insurance Company | 22659 | 0.0% | All Lines |
| | Ironshore Indemnity Inc. | 23647 | 0.0% | All Lines |
| | Ironshore Specialty Insurance Company | 25445 | 0.0% | All Lines |
| | Liberty Insurance Company | 42404 | 0.0% | All Lines |
| | Liberty Insurance Underwriters, Inc. | 19917 | 0.0% | All Lines |
| | Liberty County Mutual Insurance Company | 19544 | 0.0% | All Lines |
| | LM General Insurance Company | 36447 | 0.0% | All Lines |
| | Liberty Lloyd's of Texas Insurance Company | 11041 | 0.0% | All Lines |
| | LM Insurance Corporation | 33600 | 0.0% | All Lines |
| | Liberty Mutual Mid-Atlantic Insurance Company | 14486 | 0.0% | All Lines |
| | Liberty Mutual Personal Insurance Company | 12484 | 0.0% | All Lines |
| | Liberty Northwest Insurance Company | 41939 | 0.0% | All Lines |
| | Liberty Personal Insurance Company | 11746 | 0.0% | All Lines |
| | Liberty Surplus Insurance Corporation | 10725 | 0.0% | All Lines |
| | Meridian Security Insurance Company | 23353 | 0.0% | All Lines |
| | Mid-American Fire & Casualty Company | 23507 | 0.0% | All Lines |
| | Montgomery Mutual Insurance Company | 14613 | 0.0% | All Lines |
| | The Midwestern Indemnity Company | 23515 | 0.0% | All Lines |
| | Milbank Insurance Company | 41653 | 0.0% | All Lines |
| | National Insurance Association | 27944 | 0.0% | All Lines |
| | The Netherlands Insurance Company | 24171 | 0.0% | All Lines |
| | North Pacific Insurance Company | 23892 | 0.0% | All Lines |
| | Ohio Security Insurance Company | 24082 | 0.0% | All Lines |
| | Oregon Automobile Insurance Company | 23922 | 0.0% | All Lines |
| | Patrons Mutual Insurance Company of Connecticut | 14923 | 0.0% | All Lines |
| | Peerless Indemnity Insurance Company | 18333 | 0.0% | All Lines |
| | Plaza Insurance Company | 30945 | 0.0% | All Lines |
| | Rockhill Insurance Company | 28053 | 0.0% | All Lines |
| | Safeco Insurance Company of Illinois | 39012 | 0.0% | All Lines |
| | Safeco Insurance Company of Indiana | 11215 | 0.0% | All Lines |
| | Safeco Insurance Company of Oregon | 11071 | 0.0% | All Lines |
| | Safeco Lloyds Insurance Company | 11070 | 0.0% | All Lines |
| | Safeco National Insurance Company | 24759 | 0.0% | All Lines |
| | Safeco Surplus Lines Insurance Company | 11100 | 0.0% | All Lines |
| | State Auto Insurance Company of Ohio | 11017 | 0.0% | All Lines |
| | State Auto Insurance Company of Wisconsin | 31755 | 0.0% | All Lines |
| | State Automobile Mutual Insurance Company | 25135 | 0.0% | All Lines |
| | State Auto Property & Casualty Insurance Company | 25127 | 0.0% | All Lines |
| | Wausau Business Insurance Company | 26069 | 0.0% | All Lines |
| | Wausau General Insurance Company | 26425 | 0.0% | All Lines |
| | Wausau Underwriters Insurance Company | 26042 | 0.0% | All Lines |
| | West American Insurance Company | 44393 | 0.0% | All Lines |
| 100% Quota Share Affiliated Companies: . . . | LM Property and Casualty Insurance Company | 32352 | 0.0% | All Lines |

Under the terms of the Reinsurance Agreement, the Company cedes 100% of its underwriting activity to the lead company, Liberty Mutual Insurance Company ("LMIC").

26. Intercompany Pooling Arrangements (continued):

The amount of ceded reinsurance written premiums between the Company and LMIC at June 30, 2022 is \$13,309,148.

The amount of ceded reinsurance loss and loss adjustment expenses between the Company and LMIC at June 30, 2022 is \$3,290,694.

The amount of all other intercompany amounts due to the Company from LMIC at June 30, 2022 is \$2,336,931.

27. Structured Settlements:

No substantial change from December 31, 2021.

28. Health Care Receivables:

No substantial change from December 31, 2021.

29. Participating Policies:

No substantial change from December 31, 2021.

30. Premium Deficiency Reserves:

No substantial change from December 31, 2021.

31. High Deductibles:

No substantial change from December 31, 2021.

32. Discounting of Liabilities for Unpaid Losses or Unpaid Loss Adjustment Expenses:

No substantial change from December 31, 2021.

33. Asbestos/Environmental Reserves:

The Company has no net exposure to asbestos and environmental claims. Refer to Note 26 for details regarding the Liberty Mutual Second Amended and Restated Intercompany Reinsurance Agreement.

34. Subscriber Savings Accounts:

No substantial change from December 31, 2021.

35. Multiple Peril Crop Insurance:

No substantial change from December 31, 2021.

36. Financial Guaranty Insurance:

No substantial change from December 31, 2021.

STATEMENT AS OF JUNE 30, 2022 OF THE STATE AUTO INSURANCE COMPANY OF OHIO

GENERAL INTERROGATORIES

PART 1 - COMMON INTERROGATORIES

GENERAL

- 1.1

Did the reporting entity experience any material transactions requiring the filing of Disclosure of Material Transactions with the State of Domicile, as required by the Model Act?

Yes [] No [X]
- 1.2

If yes, has the report been filed with the domiciliary state?

Yes [] No []
- 2.1

Has any change been made during the year of this statement in the charter, by-laws, articles of incorporation, or deed of settlement of the reporting entity?

Yes [] No [X]
- 2.2

If yes, date of change:
- 3.1

Is the reporting entity a member of an Insurance Holding Company System consisting of two or more affiliated persons, one or more of which is an insurer?

If yes, complete Schedule Y, Parts 1 and 1A.

Yes [X] No []
- 3.2

Have there been any substantial changes in the organizational chart since the prior quarter end?

Yes [X] No []
- 3.3

If the response to 3.2 is yes, provide a brief description of those changes.
On March 1, 2022, Liberty Mutual Holding Company, Inc. (LMHC) effected the acquisition of State Auto Financial Corporation (STFC) and State Automobile Mutual Insurance Company (SAM), pursuant to the terms of the Agreement and Plan of Merger and Combination (the Merger Agreement), dated as of July 12, 2021. Subject to the terms and conditions set forth in the Merger Agreement, at the effective time of the Merger the members of SAM became members of LMHC.
- 3.4

Is the reporting entity publicly traded or a member of a publicly traded group?

Yes [] No [X]
- 3.5

If the response to 3.4 is yes, provide the CIK (Central Index Key) code issued by the SEC for the entity/group.
- 4.1

Has the reporting entity been a party to a merger or consolidation during the period covered by this statement?

Yes [] No [X]
- 4.2

If yes, provide the name of the entity, NAIC Company Code, and state of domicile (use two letter state abbreviation) for any entity that has ceased to exist as a result of the merger or consolidation.

| | | |
|----------------|-------------------|-------------------|
| 1 | 2 | 3 |
| Name of Entity | NAIC Company Code | State of Domicile |
| | | |
5.

If the reporting entity is subject to a management agreement, including third-party administrator(s), managing general agent(s), attorney-in-fact, or similar agreement, have there been any significant changes regarding the terms of the agreement or principals involved?

If yes, attach an explanation.

Yes [] No [X] N/A []
- 6.1

State as of what date the latest financial examination of the reporting entity was made or is being made.

12/31/2018
- 6.2

State the as of date that the latest financial examination report became available from either the state of domicile or the reporting entity. This date should be the date of the examined balance sheet and not the date the report was completed or released.

12/31/2018
- 6.3

State as of what date the latest financial examination report became available to other states or the public from either the state of domicile or the reporting entity. This is the release date or completion date of the examination report and not the date of the examination (balance sheet date).

01/09/2020
- 6.4

By what department or departments?
Ohio Department of Insurance
- 6.5

Have all financial statement adjustments within the latest financial examination report been accounted for in a subsequent financial statement filed with Departments?

Yes [] No [] N/A [X]
- 6.6

Have all of the recommendations within the latest financial examination report been complied with?

Yes [] No [] N/A [X]
- 7.1

Has this reporting entity had any Certificates of Authority, licenses or registrations (including corporate registration, if applicable) suspended or revoked by any governmental entity during the reporting period?

Yes [] No [X]
- 7.2

If yes, give full information:
- 8.1

Is the company a subsidiary of a bank holding company regulated by the Federal Reserve Board?

Yes [] No [X]
- 8.2

If response to 8.1 is yes, please identify the name of the bank holding company.
- 8.3

Is the company affiliated with one or more banks, thrifts or securities firms?

Yes [] No [X]
- 8.4

If response to 8.3 is yes, please provide below the names and location (city and state of the main office) of any affiliates regulated by a federal regulatory services agency [i.e. the Federal Reserve Board (FRB), the Office of the Comptroller of the Currency (OCC), the Federal Deposit Insurance Corporation (FDIC) and the Securities Exchange Commission (SEC)] and identify the affiliate's primary federal regulator.

| 1 | 2 | 3 | 4 | 5 | 6 |
|----------------|------------------------|-----|-----|------|-----|
| Affiliate Name | Location (City, State) | FRB | OCC | FDIC | SEC |
| | | | | | |

STATEMENT AS OF JUNE 30, 2022 OF THE STATE AUTO INSURANCE COMPANY OF OHIO

GENERAL INTERROGATORIES

- 9.1

Are the senior officers (principal executive officer, principal financial officer, principal accounting officer or controller, or persons performing similar functions) of the reporting entity subject to a code of ethics, which includes the following standards?
(a) Honest and ethical conduct, including the ethical handling of actual or apparent conflicts of interest between personal and professional relationships;
(b) Full, fair, accurate, timely and understandable disclosure in the periodic reports required to be filed by the reporting entity;
(c) Compliance with applicable governmental laws, rules and regulations;
(d) The prompt internal reporting of violations to an appropriate person or persons identified in the code; and
(e) Accountability for adherence to the code.

Yes [X] No []
- 9.11

If the response to 9.1 is No, please explain:
- 9.2

Has the code of ethics for senior managers been amended?

Yes [] No [X]
- 9.21

If the response to 9.2 is Yes, provide information related to amendment(s).
- 9.3

Have any provisions of the code of ethics been waived for any of the specified officers?

Yes [] No [X]
- 9.31

If the response to 9.3 is Yes, provide the nature of any waiver(s).

FINANCIAL

- 10.1

Does the reporting entity report any amounts due from parent, subsidiaries or affiliates on Page 2 of this statement?

Yes [X] No []
- 10.2

If yes, indicate any amounts receivable from parent included in the Page 2 amount:

\$0

INVESTMENT

- 11.1

Were any of the stocks, bonds, or other assets of the reporting entity loaned, placed under option agreement, or otherwise made available for use by another person? (Exclude securities under securities lending agreements.)

Yes [] No [X]
- 11.2

If yes, give full and complete information relating thereto:
12.

Amount of real estate and mortgages held in other invested assets in Schedule BA:

\$0
13.

Amount of real estate and mortgages held in short-term investments:

\$0
- 14.1

Does the reporting entity have any investments in parent, subsidiaries and affiliates?

Yes [] No [X]
- 14.2

If yes, please complete the following:
- | | 1 | 2 |
|---|---|--|
| | Prior Year-End Book/Adjusted Carrying Value | Current Quarter Book/Adjusted Carrying Value |
| 14.21 Bonds | \$0 | \$0 |
| 14.22 Preferred Stock | \$0 | \$0 |
| 14.23 Common Stock | \$0 | \$0 |
| 14.24 Short-Term Investments | \$0 | \$0 |
| 14.25 Mortgage Loans on Real Estate | \$0 | \$0 |
| 14.26 All Other | \$0 | \$0 |
| 14.27 Total Investment in Parent, Subsidiaries and Affiliates (Subtotal Lines 14.21 to 14.26) | \$0 | \$0 |
| 14.28 Total Investment in Parent included in Lines 14.21 to 14.26 above | \$0 | \$0 |
- 15.1

Has the reporting entity entered into any hedging transactions reported on Schedule DB?

Yes [] No [X]
- 15.2

If yes, has a comprehensive description of the hedging program been made available to the domiciliary state?
If no, attach a description with this statement.

Yes [] No [] N/A [X]
16.

For the reporting entity's security lending program, state the amount of the following as of the current statement date:
- 16.1

Total fair value of reinvested collateral assets reported on Schedule DL, Parts 1 and 2.

\$0
- 16.2

Total book adjusted/carrying value of reinvested collateral assets reported on Schedule DL, Parts 1 and 2

\$0
- 16.3

Total payable for securities lending reported on the liability page.

\$0

STATEMENT AS OF JUNE 30, 2022 OF THE STATE AUTO INSURANCE COMPANY OF OHIO

GENERAL INTERROGATORIES

17. Excluding items in Schedule E - Part 3 - Special Deposits, real estate, mortgage loans and investments held physically in the reporting entity's offices, vaults or safety deposit boxes, were all stocks, bonds and other securities, owned throughout the current year held pursuant to a custodial agreement with a qualified bank or trust company in accordance with Section 1, III - General Examination Considerations, F. Outsourcing of Critical Functions, Custodial or Safekeeping Agreements of the NAIC Financial Condition Examiners Handbook? Yes [X] No []
- 17.1 For all agreements that comply with the requirements of the NAIC Financial Condition Examiners Handbook, complete the following:

| 1 Name of Custodian(s) | 2 Custodian Address |
|---------------------------|---|
| JP Morgan Chase | 1 Chase Manhattan Plaza, New York, NY 10005 |

- 17.2 For all agreements that do not comply with the requirements of the NAIC Financial Condition Examiners Handbook, provide the name, location and a complete explanation:

| 1 Name(s) | 2 Location(s) | 3 Complete Explanation(s) |
|--------------|------------------|------------------------------|
| | | |

- 17.3 Have there been any changes, including name changes, in the custodian(s) identified in 17.1 during the current quarter? Yes [] No [X]
- 17.4 If yes, give full information relating thereto:

| 1 Old Custodian | 2 New Custodian | 3 Date of Change | 4 Reason |
|--------------------|--------------------|---------------------|-------------|
| | | | |

- 17.5 Investment management – Identify all investment advisors, investment managers, broker/dealers, including individuals that have the authority to make investment decisions on behalf of the reporting entity. For assets that are managed internally by employees of the reporting entity, note as such. ["...that have access to the investment accounts"; "...handle securities"]

| 1 Name of Firm or Individual | 2 Affiliation |
|---|------------------|
| Liberty Mutual Group Asset Management Inc. | A..... |
| Liberty Mutual Investment Advisors, LLC | A..... |
| | |

17.5097 For those firms/individuals listed in the table for Question 17.5, do any firms/individuals unaffiliated with the reporting entity (i.e. designated with a "U") manage more than 10% of the reporting entity's invested assets?..... Yes [] No [X]

17.5098 For firms/individuals unaffiliated with the reporting entity (i.e. designated with a "U") listed in the table for Question 17.5, does the total assets under management aggregate to more than 50% of the reporting entity's invested assets?..... Yes [] No [X]

- 17.6 For those firms or individuals listed in the table for 17.5 with an affiliation code of "A" (affiliated) or "U" (unaffiliated), provide the information for the table below.

| 1 Central Registration Depository Number | 2 Name of Firm or Individual | 3 Legal Entity Identifier (LEI) | 4 Registered With | 5 Investment Management Agreement (IMA) Filed |
|--|---|------------------------------------|----------------------|---|
| | Liberty Mutual Group Asset Management Inc. | N/A | N/A | DS..... |
| | Liberty Mutual Investment Advisors, LLC | N/A | N/A | DS..... |
| | | | | |

- 18.1 Have all the filing requirements of the Purposes and Procedures Manual of the NAIC Investment Analysis Office been followed? Yes [X] No []
- 18.2 If no, list exceptions:

19. By self-designating 5GI securities, the reporting entity is certifying the following elements for each self-designated 5GI security:
- a. Documentation necessary to permit a full credit analysis of the security does not exist or an NAIC CRP credit rating for an FE or PL security is not available.
- b. Issuer or obligor is current on all contracted interest and principal payments.
- c. The insurer has an actual expectation of ultimate payment of all contracted interest and principal.
- Has the reporting entity self-designated 5GI securities? Yes [] No [X]

20. By self-designating PLGI securities, the reporting entity is certifying the following elements of each self-designated PLGI security:
- a. The security was purchased prior to January 1, 2018.
- b. The reporting entity is holding capital commensurate with the NAIC Designation reported for the security.
- c. The NAIC Designation was derived from the credit rating assigned by an NAIC CRP in its legal capacity as a NRSRO which is shown on a current private letter rating held by the insurer and available for examination by state insurance regulators.
- d. The reporting entity is not permitted to share this credit rating of the PL security with the SVO.
- Has the reporting entity self-designated PLGI securities? Yes [] No [X]

21. By assigning FE to a Schedule BA non-registered private fund, the reporting entity is certifying the following elements of each self-designated FE fund:
- a. The shares were purchased prior to January 1, 2019.
- b. The reporting entity is holding capital commensurate with the NAIC Designation reported for the security.
- c. The security had a public credit rating(s) with annual surveillance assigned by an NAIC CRP in its legal capacity as an NRSRO prior to January 1, 2019.
- d. The fund only or predominantly holds bonds in its portfolio.
- e. The current reported NAIC Designation was derived from the public credit rating(s) with annual surveillance assigned by an NAIC CRP in its legal capacity as an NRSRO.
- f. The public credit rating(s) with annual surveillance assigned by an NAIC CRP has not lapsed.
- Has the reporting entity assigned FE to Schedule BA non-registered private funds that complied with the above criteria? Yes [] No [X]

GENERAL INTERROGATORIES

PART 2 - PROPERTY & CASUALTY INTERROGATORIES

1. If the reporting entity is a member of a pooling arrangement, did the agreement or the reporting entity's participation change? Yes [X] No [] N/A []
If yes, attach an explanation.

The Company previously participated in a quota share intercompany pooling agreement with its State Auto affiliates. The commutation of the State Auto intercompany pooling agreement was effective April 1, 2022. Also, effective April 1, 2022, and immediately after the commutation of the State Auto pooling agreement, the existing Liberty Mutual Second Amended and Restated Intercompany Reinsurance Pooling Agreement was amended to add the Company as a party of the agreement. The Companys participation percentage in the Liberty Mutual agreement is 0.0%.

2. Has the reporting entity reinsured any risk with any other reporting entity and agreed to release such entity from liability, in whole or in part, from any loss that may occur on the risk, or portion thereof, reinsured? Yes [] No [X]
If yes, attach an explanation.

3.1 Have any of the reporting entity's primary reinsurance contracts been canceled? Yes [X] No []

3.2 If yes, give full and complete information thereto.
Subsequent the to acquisition of the Company by Liberty Mutual Insurance Company, the existing reinsurance agreements expired and were non-renewed effective June 30, 2022.The Company is now covered under Liberty Mutual's reinsurance contracts.

4.1 Are any of the liabilities for unpaid losses and loss adjustment expenses other than certain workers' compensation tabular reserves (see Annual Statement Instructions pertaining to disclosure of discounting for definition of " tabular reserves") discounted at a rate of interest greater than zero? Yes [] No [X]

4.2 If yes, complete the following schedule:

| | | | TOTAL DISCOUNT | | | | DISCOUNT TAKEN DURING PERIOD | | | |
|------------------|------------------|---------------|----------------|------------|------|-------|------------------------------|------------|------|-------|
| 1 | 2 | 3 | 4 | 5 | 6 | 7 | 8 | 9 | 10 | 11 |
| Line of Business | Maximum Interest | Discount Rate | Unpaid Losses | Unpaid LAE | IBNR | TOTAL | Unpaid Losses | Unpaid LAE | IBNR | TOTAL |
| TOTAL | | | 0 | 0 | 0 | 0 | 0 | 0 | 0 | 0 |

5. Operating Percentages:

5.1 A&H loss percent0.000 %

5.2 A&H cost containment percent0.000 %

5.3 A&H expense percent excluding cost containment expenses0.000 %

6.1 Do you act as a custodian for health savings accounts? Yes [] No [X]

6.2 If yes, please provide the amount of custodial funds held as of the reporting date\$.....0

6.3 Do you act as an administrator for health savings accounts? Yes [] No [X]

6.4 If yes, please provide the balance of the funds administered as of the reporting date\$.....0

7. Is the reporting entity licensed or chartered, registered, qualified, eligible or writing business in at least two states? Yes [X] No []

7.1 If no, does the reporting entity assume reinsurance business that covers risks residing in at least one state other than the state of domicile of the reporting entity? Yes [] No []

SCHEDULE F - CEDED REINSURANCE

| 1 | 2 | 3 | 4 | 5 | 6 | 7 |
|----------------------|--------------|-------------------|-----------------------------|-------------------|--|---|
| NAIC Company Code | ID Number | Name of Reinsurer | Domiciliary Jurisdiction | Type of Reinsurer | Certified Reinsurer Rating (1 through 6) | Effective Date of Certified Reinsurer Rating |
| NONE | | | | | | |

SCHEDULE T - EXHIBIT OF PREMIUMS WRITTEN

Current Year to Date - Allocated by States and Territories

| States, etc. | 1 Active Status (a) | Direct Premiums Written | | Direct Losses Paid (Deducting Salvage) | | Direct Losses Unpaid | |
|--|------------------------------|------------------------------|----------------------------|--|----------------------------|------------------------------|----------------------------|
| | | 2 Current Year To Date | 3 Prior Year To Date | 4 Current Year To Date | 5 Prior Year To Date | 6 Current Year To Date | 7 Prior Year To Date |
| 1. Alabama.....AL | N | 0 | 0 | 0 | 0 | 0 | 0 |
| 2. Alaska.....AK | N | 0 | 0 | 0 | 0 | 0 | 0 |
| 3. Arizona.....AZ | N | 0 | 0 | 0 | 0 | 0 | 0 |
| 4. Arkansas.....AR | N | 0 | 0 | 0 | 0 | 0 | 0 |
| 5. California.....CA | N | 0 | 0 | 0 | 0 | 0 | 0 |
| 6. Colorado.....CO | N | 0 | 0 | 0 | 0 | 0 | 0 |
| 7. Connecticut.....CT | N | 0 | 0 | 0 | 0 | 0 | 0 |
| 8. Delaware.....DE | N | 0 | 0 | 0 | 0 | 0 | 0 |
| 9. District of Columbia.....DC | N | 0 | 0 | 0 | 0 | 0 | 0 |
| 10. Florida.....FL | N | 0 | 0 | 0 | 0 | 0 | 0 |
| 11. Georgia.....GA | N | 0 | 0 | 0 | 0 | 0 | 0 |
| 12. Hawaii.....HI | N | 0 | 0 | 0 | 0 | 0 | 0 |
| 13. Idaho.....ID | N | 0 | 0 | 0 | 0 | 0 | 0 |
| 14. Illinois.....IL | N | 0 | 0 | 0 | 0 | 0 | 0 |
| 15. Indiana.....IN | N | 0 | 0 | 0 | 0 | 0 | 0 |
| 16. Iowa.....IA | N | 0 | 0 | 0 | 0 | 0 | 0 |
| 17. Kansas.....KS | N | 0 | 0 | 0 | 0 | 0 | 0 |
| 18. Kentucky.....KY | N | 0 | 0 | 0 | 0 | 0 | 0 |
| 19. Louisiana.....LA | N | 0 | 0 | 0 | 0 | 0 | 0 |
| 20. Maine.....ME | N | 0 | 0 | 0 | 0 | 0 | 0 |
| 21. Maryland.....MD | N | 0 | 0 | 0 | 4,414 | 0 | 0 |
| 22. Massachusetts.....MA | N | 0 | 0 | 0 | 0 | 0 | 0 |
| 23. Michigan.....MI | N | 0 | 0 | 0 | 0 | 0 | 0 |
| 24. Minnesota.....MN | N | 0 | 0 | 0 | 0 | 0 | 0 |
| 25. Mississippi.....MS | N | 0 | 0 | 0 | 0 | 0 | 0 |
| 26. Missouri.....MO | N | 0 | 0 | 0 | 0 | 0 | 0 |
| 27. Montana.....MT | N | 0 | 0 | 0 | 0 | 0 | 0 |
| 28. Nebraska.....NE | N | 0 | 0 | 0 | 0 | 0 | 0 |
| 29. Nevada.....NV | N | 0 | 0 | 0 | 0 | 0 | 0 |
| 30. New Hampshire.....NH | N | 0 | 0 | 0 | 0 | 0 | 0 |
| 31. New Jersey.....NJ | N | 0 | 0 | 0 | 0 | 0 | 0 |
| 32. New Mexico.....NM | N | 0 | 0 | 0 | 0 | 0 | 0 |
| 33. New York.....NY | N | 0 | 0 | 0 | 0 | 0 | 0 |
| 34. North Carolina.....NC | N | 0 | 0 | 0 | 0 | 0 | 0 |
| 35. North Dakota.....ND | N | 0 | 0 | 0 | 0 | 0 | 0 |
| 36. Ohio.....OH | L | 9,245,937 | 10,577,156 | 6,025,570 | 5,736,041 | 8,364,972 | 9,213,824 |
| 37. Oklahoma.....OK | N | 0 | 0 | 0 | 0 | 0 | 0 |
| 38. Oregon.....OR | N | 0 | 0 | 0 | 0 | 0 | 0 |
| 39. Pennsylvania.....PA | N | 0 | 0 | 0 | 0 | 0 | 0 |
| 40. Rhode Island.....RI | N | 0 | 0 | 0 | 0 | 0 | 0 |
| 41. South Carolina.....SC | L | 0 | 0 | 0 | 0 | 0 | 0 |
| 42. South Dakota.....SD | N | 0 | 0 | 0 | 0 | 0 | 0 |
| 43. Tennessee.....TN | N | 0 | 0 | 0 | 0 | 0 | 0 |
| 44. Texas.....TX | N | 0 | 0 | 0 | 0 | 0 | 0 |
| 45. Utah.....UT | N | 0 | 0 | 0 | 0 | 0 | 0 |
| 46. Vermont.....VT | N | 0 | 0 | 0 | 0 | 0 | 0 |
| 47. Virginia.....VA | N | 0 | 0 | 0 | 0 | 0 | 0 |
| 48. Washington.....WA | N | 0 | 0 | 0 | 0 | 0 | 0 |
| 49. West Virginia.....WV | N | 0 | 0 | 0 | 0 | 0 | 0 |
| 50. Wisconsin.....WI | N | 0 | 0 | 0 | 0 | 0 | 0 |
| 51. Wyoming.....WY | N | 0 | 0 | 0 | 0 | 0 | 0 |
| 52. American Samoa.....AS | N | 0 | 0 | 0 | 0 | 0 | 0 |
| 53. Guam.....GU | N | 0 | 0 | 0 | 0 | 0 | 0 |
| 54. Puerto Rico.....PR | N | 0 | 0 | 0 | 0 | 0 | 0 |
| 55. U.S. Virgin Islands.....VI | N | 0 | 0 | 0 | 0 | 0 | 0 |
| 56. Northern Mariana Islands.....MP | N | 0 | 0 | 0 | 0 | 0 | 0 |
| 57. Canada.....CAN | N | 0 | 0 | 0 | 0 | 0 | 0 |
| 58. Aggregate Other Alien OT | XXX | 0 | 0 | 0 | 0 | 0 | 0 |
| 59. Totals | XXX | 9,245,937 | 10,577,156 | 6,025,570 | 5,740,455 | 8,364,972 | 9,213,824 |
| DETAILS OF WRITE-INS | | | | | | | |
| 58001. | XXX | | | | | | |
| 58002. | XXX | | | | | | |
| 58003. | XXX | | | | | | |
| 58998. Summary of remaining write-ins for Line 58 from overflow page | XXX | 0 | 0 | 0 | 0 | 0 | 0 |
| 58999. Totals (Lines 58001 through 58003 plus 58998)(Line 58 above) | XXX | 0 | 0 | 0 | 0 | 0 | 0 |

(a) Active Status Counts:

L - Licensed or Chartered - Licensed Insurance carrier or domiciled RRG.....2

E - Eligible - Reporting entities eligible or approved to write surplus lines in the state (other than their state of domicile - see DSLI).....0

D - Domestic Surplus Lines Insurer (DSLI) - Reporting entities authorized to write surplus lines in the state of domicile.....0

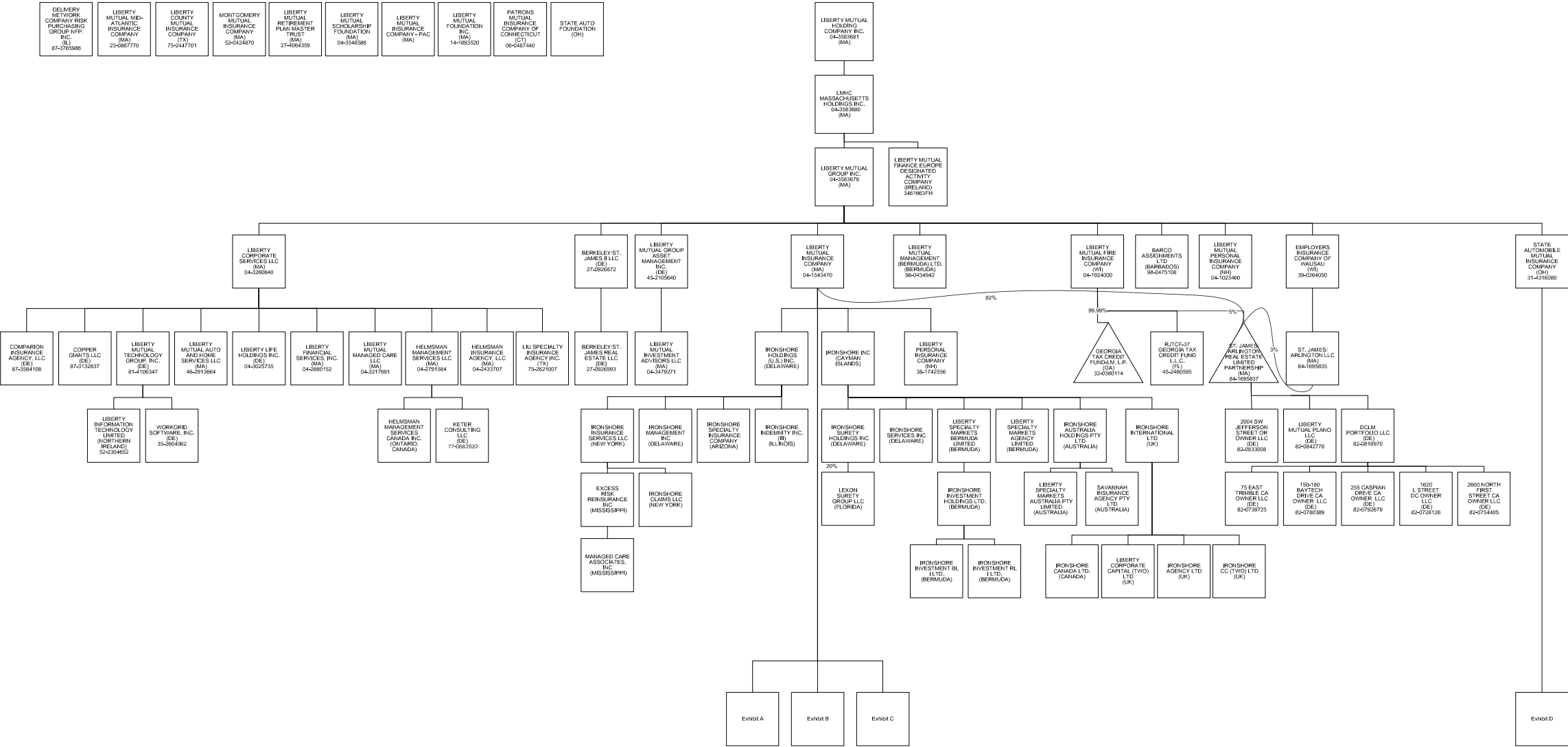
R - Registered - Non-domiciled RRGs.....0

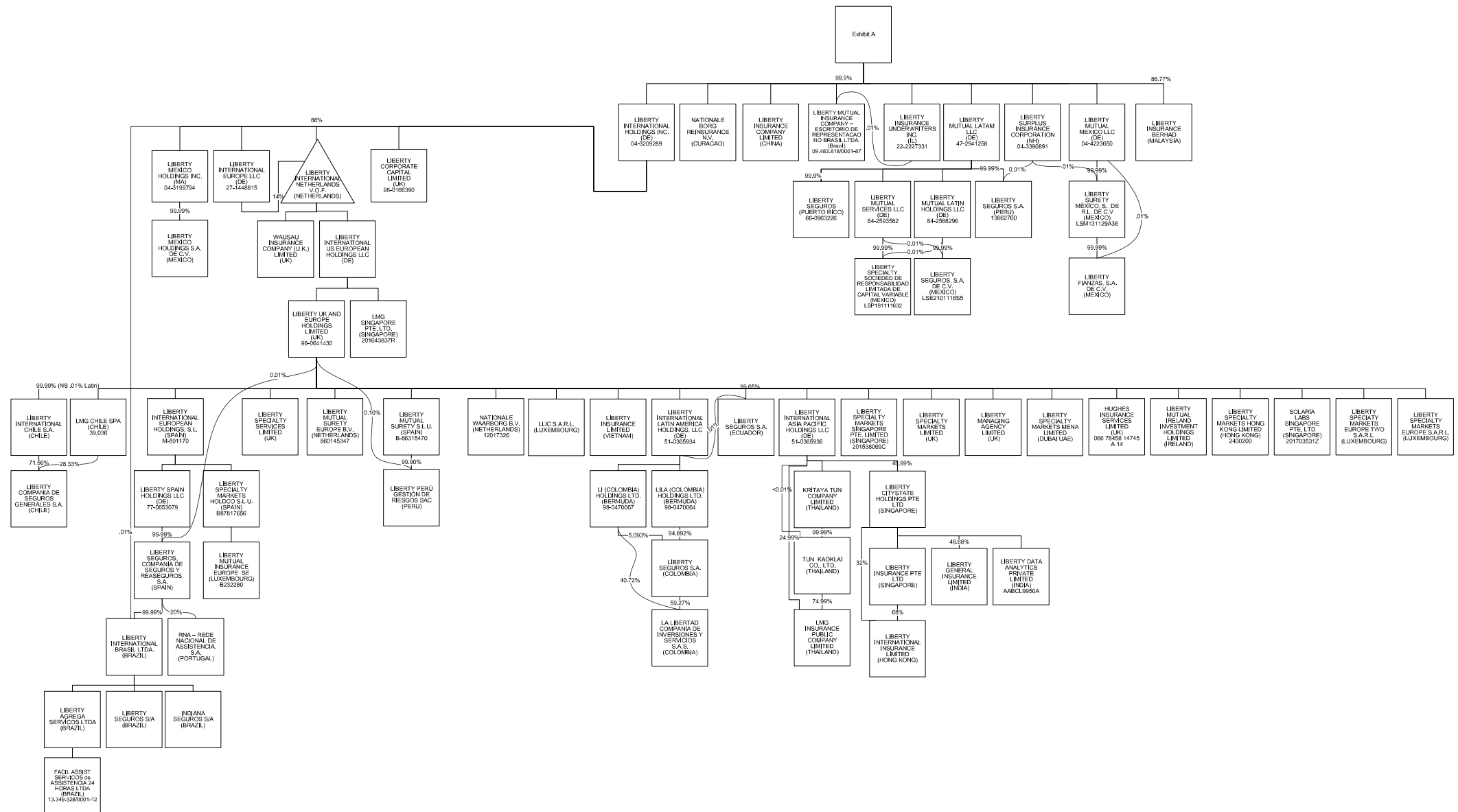
Q - Qualified - Qualified or accredited reinsurer.....0

N - None of the above - Not allowed to write business in the state.....55

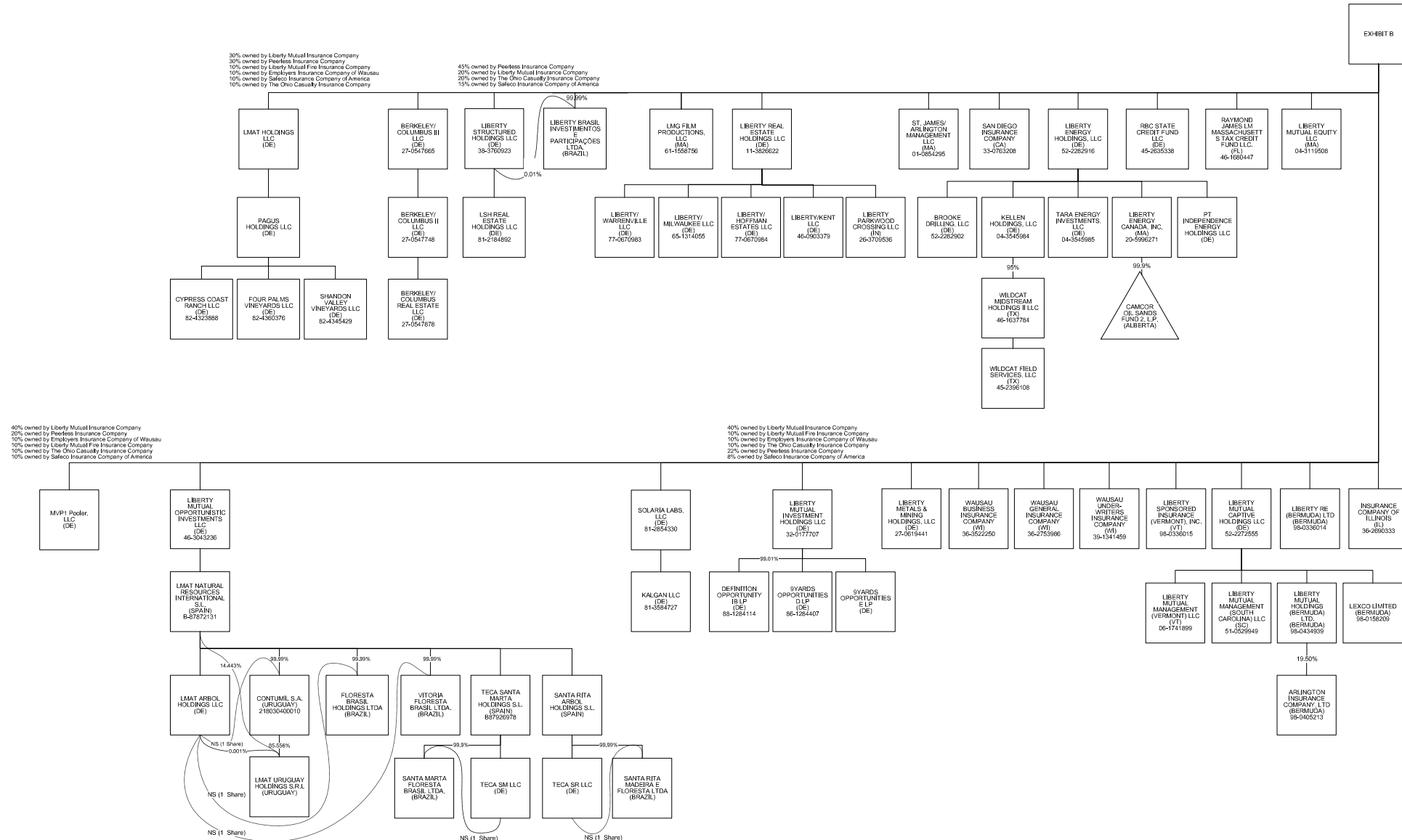
SCHEDULE Y - INFORMATION CONCERNING ACTIVITIES OF INSURER MEMBERS OF A HOLDING COMPANY GROUP

PART 1 - ORGANIZATIONAL CHART



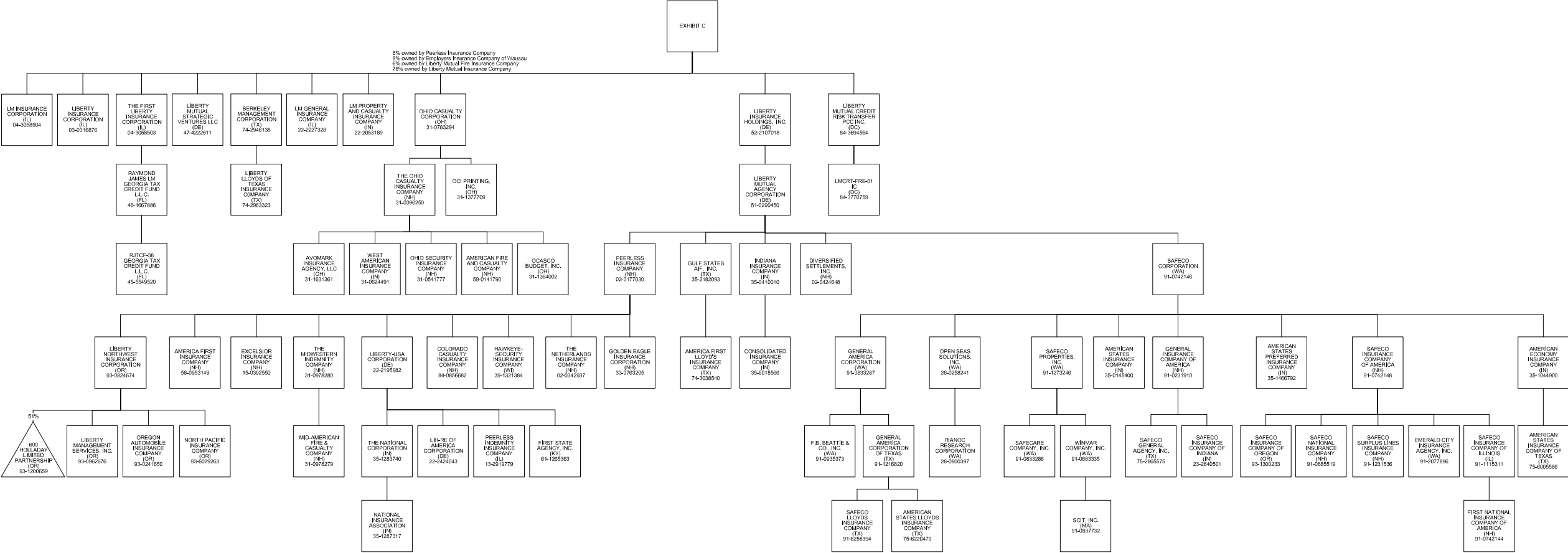


PART 1 - ORGANIZATIONAL CHART



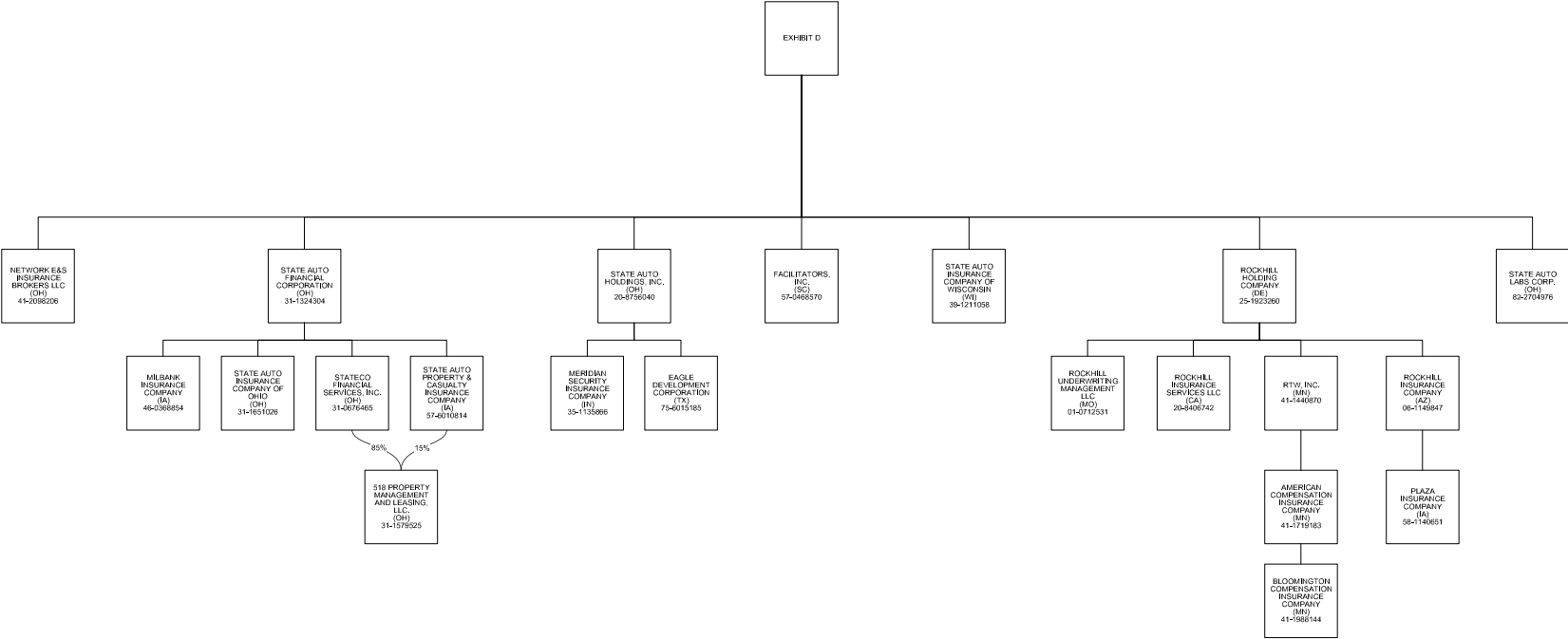
SCHEDULE Y - INFORMATION CONCERNING ACTIVITIES OF INSURER MEMBERS OF A HOLDING COMPANY GROUP

PART 1 - ORGANIZATIONAL CHART



SCHEDULE Y - INFORMATION CONCERNING ACTIVITIES OF INSURER MEMBERS OF A HOLDING COMPANY GROUP

PART 1 - ORGANIZATIONAL CHART



STATEMENT AS OF JUNE 30, 2022 OF THE STATE AUTO INSURANCE COMPANY OF OHIO

SCHEDULE Y
PART 1A - DETAIL OF INSURANCE HOLDING COMPANY SYSTEM

| 1 | 2 | 3 | 4 | 5 | 6 | 7 | 8 | 9 | 10 | 11 | 12 | 13 | 14 | 15 | 16 |
|------------|--|-------------------|------------|--------------|-----|--|---|-----------------------|-----------------------------------|---|--|--|--|--------------------------------------|----|
| Group Code | Group Name | NAIC Company Code | ID Number | Federal RSSD | CIK | Name of Securities Exchange if Publicly Traded (U.S. or International) | Names of Parent, Subsidiaries Or Affiliates | Domi-ciliary Location | Relation-ship to Reporting Entity | Directly Controlled by (Name of Entity/Person) | Type of Control (Ownership, Board, Management, Attorney-in-Fact, Influence, Other) | If Control is Ownership Provide Percentage | Ultimate Controlling Entity(ies)/Person(s) | Is an SCA Filing Re-quired? (Yes/No) | * |
| | | .00000 | 86-1284407 | | | | 9Yards Opportunities D LP | .DE | NIA | Liberty Mutual Investment Holdings LLC | Ownership | 100.000 | Liberty Mutual Holding Company Inc. | | |
| | | .00000 | | | | | 9Yards Opportunities D LP | .DE | NIA | Liberty Mutual Investment Holdings LLC | Ownership | 100.000 | Liberty Mutual Holding Company Inc. | | |
| | | .00000 | 82-0739725 | | | | 75 East Trimble CA Owner LLC | .DE | NIA | DCLM Portfolio LLC | Ownership, Board, Management | 100.000 | Liberty Mutual Holding Company Inc. | | |
| | | .00000 | 82-0780389 | | | | 150-180 Baytech Drive CA Owner LLC | .DE | NIA | DCLM Portfolio LLC | Ownership, Board, Management | 100.000 | Liberty Mutual Holding Company Inc. | | |
| | | .00000 | 82-0792679 | | | | 255 Caspian Drive CA Owner LLC | .DE | NIA | DCLM Portfolio LLC | Ownership, Board, Management | 100.000 | Liberty Mutual Holding Company Inc. | | |
| | | .00000 | | | | | | | | State Auto Property & Casualty Insurance Company | Ownership, Board, and Management | 15.000 | Liberty Mutual Holding Company Inc. | | |
| | | .00000 | 31-1579525 | | | | 518 Property Management and Leasing, LLC | .OH | NIA | Stateco Financial Services, Inc. | Ownership, Board, and Management | 85.000 | Liberty Mutual Holding Company Inc. | | |
| | | .00000 | 31-1579525 | | | | 518 Property Management and Leasing, LLC | .OR | DS | Liberty Northwest Insurance Corporation | Ownership | 51.000 | Liberty Mutual Holding Company Inc. | | |
| | | .00000 | 93-1200659 | | | | 600 Holladay Limited Partnership | .DE | NIA | DCLM Portfolio LLC | Ownership, Board, Management | 100.000 | Liberty Mutual Holding Company Inc. | | |
| | | .00000 | 82-0728126 | | | | 1620 L Street DC Owner LLC | .DE | NIA | St. James/Arlington Real Estate Limited Partnership | Ownership, Board, Management | 100.000 | Liberty Mutual Holding Company Inc. | | |
| | | .00000 | 82-0833008 | | | | 2004 SW Jefferson Street OR Owner LLC | .DE | NIA | Partnership | Ownership, Board, Management | 100.000 | Liberty Mutual Holding Company Inc. | | |
| | | .00000 | 82-0754405 | | | | 2600 North First Street CA Owner LLC | .DE | NIA | DCLM Portfolio LLC | Ownership, Board, Management | 100.000 | Liberty Mutual Holding Company Inc. | | |
| .0111 | Liberty Mutual Insurance Company and its Affiliated Insurers | .12696 | 58-0953149 | | | | America First Insurance Company | .NH | DS | Peerless Insurance Company | Ownership, Board and Management | 100.000 | Liberty Mutual Holding Company Inc. | | |
| .0111 | Liberty Mutual Insurance Company and its Affiliated Insurers | .11526 | 74-3038540 | | | | America First Lloyd's Insurance Company | .TX | DS | Gulf States AIF, Inc. | Management and Attorney-in-Fact | 0.000 | Liberty Mutual Holding Company Inc. | | |
| .0111 | Liberty Mutual Insurance Company and its Affiliated Insurers | .45934 | 41-1719183 | | | | American Compensation Insurance Company | .MN | IA | RTW, Inc. | Ownership, Board and Management | 100.000 | Liberty Mutual Holding Company Inc. | | |
| .0111 | Liberty Mutual Insurance Company and its Affiliated Insurers | .19690 | 35-1044900 | | | | American Economy Insurance Company | .IN | DS | Safeco Corporation | Ownership, Board and Management | 100.000 | Liberty Mutual Holding Company Inc. | | |
| .0111 | Liberty Mutual Insurance Company and its Affiliated Insurers | .24066 | 59-0141790 | | | | American Fire and Casualty Company | .NH | DS | The Ohio Casualty Insurance Company | Ownership, Board and Management | 100.000 | Liberty Mutual Holding Company Inc. | | |
| .0111 | Liberty Mutual Insurance Company and its Affiliated Insurers | .19704 | 35-0145400 | | | | American States Insurance Company | .IN | DS | Safeco Corporation | Ownership, Board and Management | 100.000 | Liberty Mutual Holding Company Inc. | | |
| .0111 | Liberty Mutual Insurance Company and its Affiliated Insurers | .19712 | 75-6005586 | | | | American States Insurance Company of Texas | .TX | DS | American Economy Insurance Company | Ownership, Board and Management | 100.000 | Liberty Mutual Holding Company Inc. | | |
| .0111 | Liberty Mutual Insurance Company and its Affiliated Insurers | .31933 | 75-6220479 | | | | American States Lloyds Insurance Company | .TX | DS | General America Corporation of Texas | Management and Attorney-in-Fact | 0.000 | Liberty Mutual Holding Company Inc. | | |
| .0111 | Liberty Mutual Insurance Company and its Affiliated Insurers | .37214 | 35-1466792 | | | | American States Preferred Insurance Company | .IN | DS | Safeco Corporation | Ownership, Board and Management | 100.000 | Liberty Mutual Holding Company Inc. | | |
| | | .00000 | 98-0405213 | | | | Arlington Insurance Company Ltd. | .BMU | DS | Liberty Mutual Holdings (Bermuda) Ltd | Ownership, Board and Management | 100.000 | Liberty Mutual Holding Company Inc. | | |
| | | .00000 | 31-1631361 | | | | Avomark Insurance Agency, LLC | .OH | DS | The Ohio Casualty Insurance Company | Ownership, Board and Management | 100.000 | Liberty Mutual Holding Company Inc. | | |
| | | .00000 | 98-0475108 | | | | BARCO Assignments Ltd. | .BRB | DS | Liberty Mutual Group Inc. | Ownership | 100.000 | Liberty Mutual Holding Company Inc. | | |
| | | .00000 | 74-2946138 | | | | Berkeley Management Corporation | .TX | DS | Liberty Mutual Insurance Company | Ownership, Board and Management | 100.000 | Liberty Mutual Holding Company Inc. | | |
| | | .00000 | 27-0547748 | | | | Berkeley/Columbus II LLC | .DE | DS | Berkeley/Columbus III LLC | Ownership, Board and Management | 100.000 | Liberty Mutual Holding Company Inc. | | |
| | | .00000 | 27-0547665 | | | | Berkeley/Columbus III LLC | .DE | DS | Liberty Mutual Insurance Company | Ownership, Board and Management | 100.000 | Liberty Mutual Holding Company Inc. | | |
| | | .00000 | 27-0547878 | | | | Berkeley/Columbus Real Estate LLC | .DE | DS | Berkeley/Columbus II LLC | Ownership, Board and Management | 100.000 | Liberty Mutual Holding Company Inc. | | |
| | | .00000 | 27-0926872 | | | | Berkeley/St. James II LLC | .DE | NIA | Liberty Mutual Group Inc. | Ownership, Board and Management | 100.000 | Liberty Mutual Holding Company Inc. | | |
| | | .00000 | 27-0926993 | | | | Berkeley/St. James Real Estate LLC | .DE | NIA | Berkeley/St. James II LLC | Ownership, Board and Management | 100.000 | Liberty Mutual Holding Company Inc. | | |
| .0111 | Liberty Mutual Insurance Company and its Affiliated Insurers | .12311 | 41-1988144 | | | | Bloomington Compensation Insurance Company | .MN | IA | American Compensation Insurance Company | Ownership, Board and Management | 100.000 | Liberty Mutual Holding Company Inc. | | |
| | | .00000 | 52-2282902 | | | | Brooke Drilling, LLC | .DE | DS | Liberty Energy Holdings, LLC | Ownership, Board and Management | 100.000 | Liberty Mutual Holding Company Inc. | | |
| | | .00000 | | | | | Camcor Oil Sands Fund 2, L.P. | .CAN | DS | Liberty Energy Canada, Inc. | Ownership | 99.900 | Liberty Mutual Holding Company Inc. | | |
| .0111 | Liberty Mutual Insurance Company and its Affiliated Insurers | .41785 | 84-0856682 | | | | Colorado Casualty Insurance Company | .NH | DS | Peerless Insurance Company | Ownership, Board and Management | 100.000 | Liberty Mutual Holding Company Inc. | | |
| | | .00000 | 87-3584108 | | | | Comparion Insurance Agency, LLC | .DE | IA | Liberty Corporate Services LLC | Ownership, Board and Management | 100.000 | Liberty Mutual Holding Company Inc. | | |
| .0111 | Liberty Mutual Insurance Company and its Affiliated Insurers | .22640 | 35-6018566 | | | | Consolidated Insurance Company | .IN | DS | Indiana Insurance Company | Ownership, Board and Management | 100.000 | Liberty Mutual Holding Company Inc. | | |
| | | .00000 | | | | | Contumil S.A. | .URY | NIA | LMAT Natural Resources International S.L. | Ownership | 99.990 | Liberty Mutual Holding Company Inc. | | |
| | | .00000 | | | | | Contumil S.A. | .URY | NIA | LMAT Arbol Holdings LLC | Ownership | 0.010 | Liberty Mutual Holding Company Inc. | | |
| | | .00000 | 87-3132837 | | | | Copper Giants LLC | .DE | NIA | Liberty Corporate Services LLC | Ownership | 100.000 | Liberty Mutual Holding Company Inc. | | |
| | | .00000 | 82-4323888 | | | | Cypress Coast Ranch LLC | .DE | NIA | PAGUS Holdings LLC | Ownership | 100.000 | Liberty Mutual Holding Company Inc. | | |

STATEMENT AS OF JUNE 30, 2022 OF THE STATE AUTO INSURANCE COMPANY OF OHIO

SCHEDULE Y
PART 1A - DETAIL OF INSURANCE HOLDING COMPANY SYSTEM

| 1 | 2 | 3 | 4 | 5 | 6 | 7 | 8 | 9 | 10 | 11 | 12 | 13 | 14 | 15 | 16 |
|------------|--|-------------------|------------|--------------|-----|--|--|-----------------------|-----------------------------------|---|--|---|--|--------------------------------------|----|
| Group Code | Group Name | NAIC Company Code | ID Number | Federal RSSD | CIK | Name of Securities Exchange if Publicly Traded (U.S. or International) | Names of Parent, Subsidiaries Or Affiliates | Domi-ciliary Location | Relation-ship to Reporting Entity | Directly Controlled by (Name of Entity/Person) | Type of Control (Ownership, Board, Management, Attorney-in-Fact, Influence, Other) | If Control is Ownership Provide Percen-tage | Ultimate Controlling Entity(ies)/Person(s) | Is an SCA Filing Re-quired? (Yes/No) | * |
| | | .00000 | 82-0818970 | | | | DCLM Portfolio LLC | .DE | NIA | St. James/Arlington Real Estate Limited Partnership | Ownership, Board and Management | 100.000 | Liberty Mutual Holding Company Inc. | | |
| | | .00000 | 88-1284114 | | | | Definition Opportunity IB LP | .DE | NIA | Liberty Mutual Investment Holdings LLC | Ownership | 99.010 | Liberty Mutual Holding Company Inc. | | |
| | | .00000 | 87-3765986 | | | | Delivery Network Company Risk Purchasing Group NFP, Inc. | .IL | NIA | Not Applicable | Board and Management | 0.000 | Liberty Mutual Holding Company Inc. | | |
| | | .00000 | 02-0424648 | | | | Diversified Settlements, Inc. | .NH | DS | Liberty Mutual Agency Corporation | Ownership, Board and Management | 100.000 | Liberty Mutual Holding Company Inc. | | |
| | | .00000 | 75-6015185 | | | | Eagle Development Corporation | .TX | NIA | State Auto Holdings, Inc. | Ownership, Board and Management | 100.000 | Liberty Mutual Holding Company Inc. | | |
| | | .00000 | 91-2077896 | | | | Emerald City Insurance Agency, Inc. | .WA | DS | Safeco Insurance Company of America | Ownership, Board and Management | 100.000 | Liberty Mutual Holding Company Inc. | | |
| .0111 | Liberty Mutual Insurance Company and its Affiliated Insurers | .21458 | 39-0264050 | | | | Employers Insurance Company of Wausau | .WI | .IA | Liberty Mutual Group Inc. | Ownership, Board and Management | 100.000 | Liberty Mutual Holding Company Inc. | | |
| .0111 | Liberty Mutual Insurance Company and its Affiliated Insurers | .11045 | 15-0302550 | | | | Excelsior Insurance Company | .NH | DS | Peerless Insurance Company | Ownership, Board and Management | 100.000 | Liberty Mutual Holding Company Inc. | | |
| | | .00000 | 41-2043790 | | | | Excess Risk Reinsurance, Inc. | .MS | DS | Ironshore Insurance Services LLC | Ownership | 100.000 | Liberty Mutual Holding Company Inc. | | |
| | | .00000 | 91-0935373 | | | | F.B. Beattie & Co., Inc. | .WA | DS | General America Corporation | Ownership, Board and Management | 100.000 | Liberty Mutual Holding Company Inc. | | |
| | | .00000 | | | | | Facil Assist Servicios de Asistencia 24 horas Ltda | .BRA | NIA | Liberty Agrega Servicios Ltda | Ownership | 100.000 | Liberty Mutual Holding Company Inc. | | |
| | | .00000 | 57-0468570 | | | | Facilitators, Inc. | .SC | .IA | State Automobile Mutual Insurance Company | Ownership, Board and Management | 100.000 | Liberty Mutual Holding Company Inc. | | |
| .0111 | Liberty Mutual Insurance Company and its Affiliated Insurers | .24724 | 91-0742144 | | | | First National Insurance Company of America | .NH | DS | Safeco Insurance Company of Illinois | Ownership, Board and Management | 100.000 | Liberty Mutual Holding Company Inc. | | |
| | | .00000 | 61-1265363 | | | | First State Agency, Inc. | .KY | DS | Liberty-USA Corporation | Ownership, Board and Management | 100.000 | Liberty Mutual Holding Company Inc. | | |
| | | .00000 | | | | | LMAT Natural Resources International, S.L. | | | | | | | | |
| | | .00000 | | | | | Floresta Brasil Holdings Ltda. | .BRA | NIA | LMAT Arbol Holdings LLC | Ownership | 99.900 | Liberty Mutual Holding Company Inc. | | |
| | | .00000 | | | | | Floresta Brasil Holdings Ltda. | .BRA | NIA | LMAT Arbol Holdings LLC | Ownership | 0.010 | Liberty Mutual Holding Company Inc. | | |
| | | .00000 | 82-4360376 | | | | Four Palms Vineyards LLC | .DE | NIA | PAGUS Holdings LLC | Ownership | 100.000 | Liberty Mutual Holding Company Inc. | | |
| | | .00000 | 91-0833287 | | | | General America Corporation | .WA | DS | Safeco Corporation | Ownership, Board and Management | 100.000 | Liberty Mutual Holding Company Inc. | | |
| | | .00000 | 91-1216820 | | | | General America Corporation of Texas | .TX | DS | General America Corporation | Ownership, Board and Management | 100.000 | Liberty Mutual Holding Company Inc. | | |
| .0111 | Liberty Mutual Insurance Company and its Affiliated Insurers | .24732 | 91-0231910 | | | | General Insurance Company of America | .NH | DS | Safeco Corporation | Ownership, Board and Management | 100.000 | Liberty Mutual Holding Company Inc. | | |
| | | .00000 | 32-0380114 | | | | Georgia Tax Credit Fund-LM, L.P. | .GA | DS | Liberty Mutual Fire Insurance Company | Ownership | 99.990 | Liberty Mutual Holding Company Inc. | | |
| .0111 | Liberty Mutual Insurance Company and its Affiliated Insurers | .10836 | 33-0763205 | | | | Golden Eagle Insurance Corporation | .NH | DS | Peerless Insurance Company | Ownership, Board and Management | 100.000 | Liberty Mutual Holding Company Inc. | | |
| | | .00000 | 35-2182093 | | | | Gulf States AIF, Inc. | .TX | DS | Liberty Mutual Agency Corporation | Ownership, Board and Management | 100.000 | Liberty Mutual Holding Company Inc. | | |
| .0111 | Liberty Mutual Insurance Company and its Affiliated Insurers | .36919 | 39-1321384 | | | | Hawkeye-Security Insurance Company | .WI | DS | Peerless Insurance Company | Ownership, Board and Management | 100.000 | Liberty Mutual Holding Company Inc. | | |
| | | .00000 | 04-2433707 | | | | Helmsman Insurance Agency LLC | .MA | .IA | Liberty Corporate Services LLC | Ownership, Board and Management | 100.000 | Liberty Mutual Holding Company Inc. | | |
| | | .00000 | | | | | Helmsman Management Services Canada Inc. | .CAN | NIA | Helmsman Management Services LLC | Ownership, Board and Management | 100.000 | Liberty Mutual Holding Company Inc. | | |
| | | .00000 | 04-2791584 | | | | Helmsman Management Services LLC | .MA | NIA | Liberty Corporate Services LLC | Ownership, Board and Management | 100.000 | Liberty Mutual Holding Company Inc. | | |
| | | .00000 | | | | | Hughes Insurance Services Limited | .GBR | DS | Liberty UK and Europe Holdings Limited | Ownership, Board and Management | 100.000 | Liberty Mutual Holding Company Inc. | | |
| .0111 | Liberty Mutual Insurance Company and its Affiliated Insurers | .22659 | 35-0410010 | | | | Indiana Insurance Company | .IN | DS | Liberty Mutual Agency Corporation | Ownership, Board and Management | 100.000 | Liberty Mutual Holding Company Inc. | | |
| | | .00000 | | | | | Indiana Seguros S/A | .BRA | DS | Liberty International Brasil Ltda. | Ownership, Board and Management | 100.000 | Liberty Mutual Holding Company Inc. | | |
| .0111 | Liberty Mutual Insurance Company and its Affiliated Insurers | .26700 | 36-2690333 | | | | Insurance Company of Illinois | .IL | .IA | Liberty Mutual Insurance Company | Ownership, Board and Management | 100.000 | Liberty Mutual Holding Company Inc. | | |
| | | .00000 | | | | | Ironshore Agency Ltd. | .GBR | DS | Ironshore International Ltd. | Ownership | 100.000 | Liberty Mutual Holding Company Inc. | | |
| | | .00000 | | | | | Ironshore Australia Holdings Pty Ltd. | .AUS | DS | Ironshore Inc. | Ownership | 100.000 | Liberty Mutual Holding Company Inc. | | |
| | | .00000 | | | | | Ironshore Canada Ltd. | .CAN | DS | Ironshore International Ltd. | Ownership | 100.000 | Liberty Mutual Holding Company Inc. | | |
| | | .00000 | | | | | Ironshore CC (Two) Ltd. | .GBR | DS | Ironshore International Ltd. | Ownership | 100.000 | Liberty Mutual Holding Company Inc. | | |
| | | .00000 | 26-0748152 | | | | Ironshore Claims LLC | .NY | DS | Ironshore Insurance Services LLC | Ownership | 100.000 | Liberty Mutual Holding Company Inc. | | |
| | | .00000 | 20-8964631 | | | | Ironshore Holdings (US) Inc. | .DE | DS | Liberty Mutual Insurance Company | Ownership | 100.000 | Liberty Mutual Holding Company Inc. | | |
| | | .00000 | 98-0579286 | | | | Ironshore Inc. | .CYM | DS | Liberty Mutual Insurance Company | Ownership | 100.000 | Liberty Mutual Holding Company Inc. | | |
| .0111 | Liberty Mutual Insurance Company and its Affiliated Insurers | .23647 | 41-0121640 | | | | Ironshore Indemnity Inc. | .IL | DS | Ironshore Holdings (US) Inc. | Ownership | 100.000 | Liberty Mutual Holding Company Inc. | | |
| | | .00000 | 26-0542654 | | | | Ironshore Insurance Services LLC | .NY | DS | Ironshore Holdings (US) Inc. | Ownership | 100.000 | Liberty Mutual Holding Company Inc. | | |
| | | .00000 | | | | | Ironshore International Ltd | .GBR | DS | Ironshore Inc. | Ownership | 100.000 | Liberty Mutual Holding Company Inc. | | |

STATEMENT AS OF JUNE 30, 2022 OF THE STATE AUTO INSURANCE COMPANY OF OHIO

SCHEDULE Y

PART 1A - DETAIL OF INSURANCE HOLDING COMPANY SYSTEM

| 1 | 2 | 3 | 4 | 5 | 6 | 7 | 8 | 9 | 10 | 11 | 12 | 13 | 14 | 15 | 16 |
|------------|--|-------------------|------------|--------------|-----|--|--|-----------------------|-----------------------------------|---|--|--|--|--------------------------------------|----|
| Group Code | Group Name | NAIC Company Code | ID Number | Federal RSSD | CIK | Name of Securities Exchange if Publicly Traded (U.S. or International) | Names of Parent, Subsidiaries Or Affiliates | Domi-ciliary Location | Relation-ship to Reporting Entity | Directly Controlled by (Name of Entity/Person) | Type of Control (Ownership, Board, Management, Attorney-in-Fact, Influence, Other) | If Control is Owner-ship Provide Percen-tage | Ultimate Controlling Entity(ies)/Person(s) | Is an SCA Filing Re-quired? (Yes/No) | * |
| .0111 | Liberty Mutual Insurance Company and its Affiliated Insurers | .00000 | | | | | Ironshore Investment Holdings Ltd. | .BMU | DS | Ironshore Insurance Ltd. | Ownership..... | 100.000 | Liberty Mutual Holding Company Inc. | | |
| | | .00000 | | | | | Ironshore Investment BL I Ltd. | .BMU | DS | Ironshore Investment Holdings Ltd. | Ownership..... | 100.000 | Liberty Mutual Holding Company Inc. | | |
| | | .00000 | | | | | Ironshore Investment RL I Ltd. | .BMU | DS | Ironshore Investment Holdings Ltd. | Ownership..... | 100.000 | Liberty Mutual Holding Company Inc. | | |
| | | .00000 | 26-3835731 | | | | Ironshore Management Inc. | .DE | DS | Ironshore Holdings (US) Inc. | Ownership..... | 100.000 | Liberty Mutual Holding Company Inc. | | |
| | | .00000 | 26-0412876 | | | | Ironshore Services Inc. | .DE | DS | Ironshore Inc. | Ownership..... | 100.000 | Liberty Mutual Holding Company Inc. | | |
| | | .25445 | 94-1264187 | | | | Ironshore Specialty Insurance Company | .AZ | DS | Ironshore Holdings (US) Inc. | Ownership..... | 100.000 | Liberty Mutual Holding Company Inc. | | |
| | | .00000 | 46-2678004 | | | | Ironshore Surety Holdings Inc. | .DE | DS | Ironshore Inc. | Ownership..... | 100.000 | Liberty Mutual Holding Company Inc. | | |
| | | .00000 | 81-3584727 | | | | Kalgan LLC | .DE | NIA | Solaria Labs LLC | Ownership, Board and Management | 100.000 | Liberty Mutual Holding Company Inc. | | |
| | | .00000 | 04-3545984 | | | | Kellen Holdings, LLC | .DE | DS | Liberty Energy Holdings, LLC | Ownership, Board and Management | 100.000 | Liberty Mutual Holding Company Inc. | | |
| | | .00000 | 77-0682632 | | | | Keter Consulting LLC | .DE | NIA | Helmsman Management Services LLC | Ownership, Board and Management | 100.000 | Liberty Mutual Holding Company Inc. | | |
| | | .00000 | | | | | Kritaya Tun Company Limited | .THA | DS | Liberty International Asia Pacific Holdings LLC | Influence..... | 48.990 | Liberty Mutual Holding Company Inc. | | |
| | | .00000 | | | | | La Libertad Compania de Inversiones y Servicios S.A.S. | .COL | DS | Liberty Seguros S.A. | Ownership, Board and Management | 59.270 | Liberty Mutual Holding Company Inc. | | |
| | | .00000 | | | | | La Libertad Compania de Inversiones y Servicios S.A.S. | .COL | DS | Li (Colombia) Holdings Ltd. | Ownership, Board and Management | 40.720 | Liberty Mutual Holding Company Inc. | | |
| | | .00000 | 98-0158209 | | | | LEXCO Limited | .BMU | DS | Liberty Mutual Captive Holdings LLC | Ownership, Board and Management | 100.000 | Liberty Mutual Holding Company Inc. | | |
| | | .00000 | 46-2678004 | | | | Lexon Surety Group, LLC | .FL | DS | Ironshore Surety Holdings Inc. | Ownership..... | 20.000 | Liberty Mutual Holding Company Inc. | | |
| | | .00000 | 98-0470067 | | | | LI (Colombia) Holdings Ltd. | .BMU | DS | Liberty International Latin America Holdings, LLC | Ownership, Board and Management | 100.000 | Liberty Mutual Holding Company Inc. | | |
| | | .00000 | | | | | Liberty Agrega Servicios Ltda | .BRA | NIA | Liberty International Brasil Ltda. | Ownership, Board and Management | 100.000 | Liberty Mutual Holding Company Inc. | | |
| | | .00000 | | | | | Liberty Brasil Investimentos e Participacoes Ltda. | .BRA | DS | Liberty Mutual Insurance Company | Ownership, Board and Management | 99.990 | Liberty Mutual Holding Company Inc. | | |
| | | .00000 | | | | | Liberty Brasil Investimentos e Participacoes Ltda. | .BRA | DS | Liberty Structured Holdings LLC | Ownership, Board and Management | 0.010 | Liberty Mutual Holding Company Inc. | | |
| | | .00000 | | | | | Liberty Citystate Holdings Pte Ltd | .SGP | DS | Liberty International Asia Pacific Holdings LLC | Ownership, Board and Management | 100.000 | Liberty Mutual Holding Company Inc. | | |
| | | .00000 | | | | | Liberty Compania de Seguros Generales S.A. | .CHL | DS | Liberty International Chile S.A. | Ownership, Board and Management | 71.560 | Liberty Mutual Holding Company Inc. | | |
| | | .00000 | | | | | Liberty Compania de Seguros Generales S.A. | .CHL | DS | LMG Chile SpA | Ownership, Board and Management | 28.330 | Liberty Mutual Holding Company Inc. | | |
| | | .00000 | 98-0166390 | | | | Liberty Corporate Capital Limited | .GBR | DS | Liberty International Holdings Inc. | Ownership, Board and Management | 100.000 | Liberty Mutual Holding Company Inc. | | |
| | | .00000 | | | | | Liberty Corporate Capital (Two) Ltd. | .GBR | DS | Ironshore International Ltd. | Ownership..... | 100.000 | Liberty Mutual Holding Company Inc. | | |
| | | .00000 | 04-3260640 | | | | Liberty Corporate Services LLC | .MA | NIA | Liberty Mutual Group Inc. | Ownership, Board and Management | 100.000 | Liberty Mutual Holding Company Inc. | | |
| .0111 | Liberty Mutual Insurance Company and its Affiliated Insurers | .19544 | 75-2447701 | | | | Liberty County Mutual Insurance Company | .TX | IA | Berkeley Management Corporation | Board and Management | 0.000 | Liberty Mutual Holding Company Inc. | | |
| | | .00000 | | | | | Liberty Data Analytics Private Limited | .IND | DS | Liberty Citystate Holdings Pte. Ltd. | Ownership, Board and Management | 100.000 | Liberty Mutual Holding Company Inc. | | |
| | | .00000 | 20-5996271 | | | | Liberty Energy Canada, Inc. | .MA | DS | Liberty Energy Holdings, LLC | Ownership, Board and Management | 100.000 | Liberty Mutual Holding Company Inc. | | |
| | | .00000 | 52-2282916 | | | | Liberty Energy Holdings, LLC | .DE | DS | Liberty Mutual Insurance Company | Ownership, Board and Management | 100.000 | Liberty Mutual Holding Company Inc. | | |
| | | .00000 | | | | | Liberty Fianzas, S.A. de C.V. | .MEX | IA | Liberty Surety Mexico, S. de R.L. de C.V. | Ownership, Board and Management | 99.990 | Liberty Mutual Holding Company Inc. | | |
| | | .00000 | | | | | Liberty Fianzas, S.A. de C.V. | .MEX | IA | Liberty Mutual Mexico LLC | Ownership, Board and Management | 0.010 | Liberty Mutual Holding Company Inc. | | |
| | | .00000 | 04-2880152 | | | | Liberty Financial Services, Inc. | .IA | NIA | Liberty Corporate Services LLC | Ownership, Board and Management | 100.000 | Liberty Mutual Holding Company Inc. | | |
| | | .00000 | | | | | Liberty General Insurance Limited | .IND | IA | Liberty Citystate Holdings Pte Ltd | Ownership, Management | 48.680 | Liberty Mutual Holding Company Inc. | | |
| | | .00000 | 52-2304652 | | | | Liberty Information Technology Limited | .GBR | NIA | Liberty Mutual Technology Group Inc. | Ownership, Board and Management | 100.000 | Liberty Mutual Holding Company Inc. | | |
| | | .00000 | | | | | Liberty Insurance Berhad | .MYS | DS | Liberty Mutual Insurance Company | Ownership, Board and Management | 86.770 | Liberty Mutual Holding Company Inc. | | |
| | | .00000 | | | | | Liberty Insurance Company Limited | .CHN | DS | Liberty Mutual Insurance Company | Ownership, Board and Management | 100.000 | Liberty Mutual Holding Company Inc. | | |
| | | .42404 | 03-0316876 | | | | Liberty Insurance Corporation | .IL | DS | Liberty Mutual Insurance Company | Ownership, Board and Management | 100.000 | Liberty Mutual Holding Company Inc. | | |
| | | .00000 | 52-2107018 | | | | Liberty Insurance Holdings, Inc. | .DE | DS | Liberty Mutual Insurance Company | Ownership, Board and Management | 100.000 | Liberty Mutual Holding Company Inc. | | |
| | | .00000 | | | | | Liberty Insurance Limited | .VNM | DS | Liberty UK and Europe Holdings Limited | Ownership, Board and Management | 100.000 | Liberty Mutual Holding Company Inc. | | |
| .0111 | Liberty Mutual Insurance Company and its Affiliated Insurers | .00000 | | | | | Liberty Insurance Pte Ltd | .SGP | DS | Liberty Citystate Holdings Pte Ltd | Ownership, Board and Management | 100.000 | Liberty Mutual Holding Company Inc. | | |
| | | .19917 | 22-2227331 | | | | Liberty Insurance Underwriters Inc. | .IL | DS | Liberty Mutual Insurance Company | Ownership, Board and Management | 100.000 | Liberty Mutual Holding Company Inc. | | |
| | | .00000 | 51-0365936 | | | | Liberty International Asia Pacific Holdings LLC | .DE | DS | Liberty UK and Europe Holdings Limited | Ownership, Board and Management | 100.000 | Liberty Mutual Holding Company Inc. | | |

STATEMENT AS OF JUNE 30, 2022 OF THE STATE AUTO INSURANCE COMPANY OF OHIO

SCHEDULE Y

PART 1A - DETAIL OF INSURANCE HOLDING COMPANY SYSTEM

| 1 | 2 | 3 | 4 | 5 | 6 | 7 | 8 | 9 | 10 | 11 | 12 | 13 | 14 | 15 | 16 |
|------------|--|-------------------|------------|--------------|-----|--|---|-----------------------|-----------------------------------|---|--|---|--|--------------------------------------|----|
| Group Code | Group Name | NAIC Company Code | ID Number | Federal RSSD | CIK | Name of Securities Exchange if Publicly Traded (U.S. or International) | Names of Parent, Subsidiaries Or Affiliates | Domi-ciliary Location | Relation-ship to Reporting Entity | Directly Controlled by (Name of Entity/Person) | Type of Control (Ownership, Board, Management, Attorney-in-Fact, Influence, Other) | If Control is Ownership Provide Percen-tage | Ultimate Controlling Entity(ies)/Person(s) | Is an SCA Filing Re-quired? (Yes/No) | * |
| | | .00000 | | | | | Liberty International Brasil Ltda | .BRA | .DS | Liberty Seguros, Companhia de Seguros y Reaseguros, S.A. | Ownership, Board and Management | ..99.990 | Liberty Mutual Holding Company Inc. | | |
| | | .00000 | | | | | Liberty International Brasil Ltda | .BRA | .DS | Liberty International Holdings Inc. | Ownership, Board and Management | ..0.010 | Liberty Mutual Holding Company Inc. | | |
| | | .00000 | | | | | Liberty International Chile S.A. | .CHL | .DS | Liberty UK and Europe Holdings Limited | Ownership, Board and Management | ..99.990 | Liberty Mutual Holding Company Inc. | | |
| | | .00000 | | | | | Liberty International Chile S.A. | .CHL | .DS | Liberty International Latin America Holdings, LLC | Ownership, Board and Management | ..0.010 | Liberty Mutual Holding Company Inc. | | |
| | | .00000 | 27-1448815 | | | | Liberty International Europe LLC | .DE | .DS | Liberty International Holdings Inc. | Ownership, Board and Management | ..100.000 | Liberty Mutual Holding Company Inc. | | |
| | | .00000 | | | | | Liberty International European Holdings, S.L. | .ESP | .DS | Liberty UK and Europe Holdings Limited | Ownership, Board and Management | ..100.000 | Liberty Mutual Holding Company Inc. | | |
| | | .00000 | 04-3209289 | | | | Liberty International Holdings Inc. | .DE | .DS | Liberty Mutual Insurance Company | Ownership, Board and Management | ..100.000 | Liberty Mutual Holding Company Inc. | | |
| | | .00000 | | | | | Liberty International Insurance Limited | .HKG | .DS | Liberty Insurance Pte Ltd | Ownership, Board and Management | ..68.000 | Liberty Mutual Holding Company Inc. | | |
| | | .00000 | | | | | Liberty International Insurance Limited | .HKG | .DS | Liberty Citystate Holdings Pte Ltd | Ownership, Board and Management | ..32.000 | Liberty Mutual Holding Company Inc. | | |
| | | .00000 | | | | | Liberty International Latin America Holdings, LLC | .DE | .DS | Liberty UK and Europe Holdings Limited | Ownership, Board and Management | ..100.000 | Liberty Mutual Holding Company Inc. | | |
| | | .00000 | 51-0365934 | | | | Liberty International Netherlands V.O.F. | .NLD | .DS | Liberty International Holdings Inc. | Ownership, Board and Management | ..86.000 | Liberty Mutual Holding Company Inc. | | |
| | | .00000 | | | | | Liberty International Netherlands V.O.F. | .NLD | .DS | Liberty International Europe LLC | Ownership, Board and Management | ..14.000 | Liberty Mutual Holding Company Inc. | | |
| | | .00000 | | | | | Liberty International US European Holdings LLC | .DE | .DS | Liberty International Netherlands V.O.F. | Ownership, Board and Management | ..100.000 | Liberty Mutual Holding Company Inc. | | |
| | | .00000 | 04-3025735 | | | | Liberty Life Holdings Inc. | .DE | NIA | Liberty Corporate Services LLC | Ownership, Board and Management | ..100.000 | Liberty Mutual Holding Company Inc. | | |
| ..0111 | Liberty Mutual Insurance Company and its Affiliated Insurers | .11041 | 74-2963323 | | | | Liberty Lloyds of Texas Insurance Company | .TX | .DS | Berkeley Management Corporation | Management and Attorney-in-Fact | ..0.000 | Liberty Mutual Holding Company Inc. | | |
| | | .00000 | 93-0962676 | | | | Liberty Management Services, Inc. | .OR | | Liberty Northwest Insurance Corporation | Ownership, Board and Management | ..100.000 | Liberty Mutual Holding Company Inc. | | |
| | | .00000 | | | | | Liberty Managing Agency Limited | .GBR | .DS | Liberty UK and Europe Holdings Limited | Ownership, Board and Management | ..100.000 | Liberty Mutual Holding Company Inc. | | |
| | | .00000 | 27-0619441 | | | | Liberty Metals & Mining Holdings, LLC | .DE | .DS | Liberty Mutual Insurance Company | Ownership, Board and Management | ..100.000 | Liberty Mutual Holding Company Inc. | | |
| | | .00000 | 04-3199794 | | | | Liberty Mexico Holdings Inc. | .MA | .DS | Liberty International Holdings Inc. | Ownership, Board and Management | ..100.000 | Liberty Mutual Holding Company Inc. | | |
| | | .00000 | | | | | Liberty Mexico Holdings S.A. de C.V. | .MEX | .DS | Liberty Mexico Holdings Inc. | Ownership, Board and Management | ..99.990 | Liberty Mutual Holding Company Inc. | | |
| | | .00000 | | | | | Liberty Mexico Holdings S.A. de C.V. | .MEX | .DS | Liberty International Latin America Holdings, LLC | Ownership, Board and Management | ..0.010 | Liberty Mutual Holding Company Inc. | | |
| | | .00000 | 51-0290450 | | | | Liberty Mutual Agency Corporation | .DE | .DS | Liberty Insurance Holdings, Inc. | Ownership, Board and Management | ..100.000 | Liberty Mutual Holding Company Inc. | | |
| | | .00000 | 46-2913664 | | | | Liberty Mutual Auto and Home Services LLC | .MA | NIA | Liberty Corporate Services LLC | Ownership, Board and Management | ..100.000 | Liberty Mutual Holding Company Inc. | | |
| | | .00000 | 52-2272555 | | | | Liberty Mutual Captive Holdings LLC | .DE | .DS | Liberty Mutual Insurance Company | Ownership, Board and Management | ..100.000 | Liberty Mutual Holding Company Inc. | | |
| | | .00000 | 84-3694564 | | | | Liberty Mutual Credit Risk Transfer PCC Inc. | .DC | .IA | Liberty Mutual Insurance Company | Ownership, Board, Management | ..100.000 | Liberty Mutual Holding Company Inc. | | |
| | | .00000 | 04-3119508 | | | | Liberty Mutual Equity LLC | .MA | .DS | Liberty Mutual Insurance Company | Ownership, Board and Management | ..100.000 | Liberty Mutual Holding Company Inc. | | |
| | | .00000 | 34-61663FH | | | | Liberty Mutual Finance Europe Designated Activity Company | .IRL | UIP | LMHC Massachusetts Holdings Inc. | Ownership, Board and Management | ..100.000 | Liberty Mutual Holding Company Inc. | | |
| ..0111 | Liberty Mutual Insurance Company and its Affiliated Insurers | .23035 | 04-1924000 | | | | Liberty Mutual Fire Insurance Company | .WI | .IA | Liberty Mutual Group Inc. | Ownership, Board and Management | ..100.000 | Liberty Mutual Holding Company Inc. | | |
| | | .00000 | 14-1893520 | | | | Liberty Mutual Foundation Inc. | .MA | .DS | Liberty Mutual Insurance Company | Board and Management | ..0.000 | Liberty Mutual Holding Company Inc. | | |
| | | .00000 | 45-2105640 | | | | Liberty Mutual Group Asset Management Inc. | .DE | NIA | Liberty Mutual Group Inc. | Ownership, Board and Management | ..100.000 | Liberty Mutual Holding Company Inc. | | |
| | | .00000 | 04-3583679 | | | | Liberty Mutual Group Inc. | .MA | UDP | LMHC Massachusetts Holdings Inc. | Ownership, Board and Management | ..100.000 | Liberty Mutual Holding Company Inc. | | |
| | | .00000 | 04-3583681 | | | | Liberty Mutual Holding Company Inc. | .MA | UIP | N/A | Ultimate Controlling Parent | ..0.000 | | | |
| | | .00000 | 98-0434939 | | | | Liberty Mutual Holdings (Bermuda) Ltd | .BMU | .DS | Liberty Mutual Captive Holdings LLC | Ownership, Board and Management | ..100.000 | Liberty Mutual Holding Company Inc. | | |
| ..0111 | Liberty Mutual Insurance Company and its Affiliated Insurers | .23043 | 04-1543470 | | | | Liberty Mutual Insurance Company | .MA | | Liberty Mutual Group Inc. | Ownership, Board and Management | ..100.000 | Liberty Mutual Holding Company Inc. | | |
| | | .00000 | | | | | Liberty Mutual Insurance Company – Escritorio De Representacao No Brasil Ltda. | .BRA | .DS | Liberty Mutual Insurance Company | Ownership, Board and Management | ..99.900 | Liberty Mutual Holding Company Inc. | | |
| | | .00000 | | | | | Liberty Mutual Insurance Company – Escritorio De Representacao No Brasil Ltda. | .BRA | .DS | Liberty Insurance Underwriters Inc. | Ownership, Board and Management | ..0.100 | Liberty Mutual Holding Company Inc. | | |
| | | .00000 | | | | | Liberty Mutual Insurance Company – PAC | .MA | NIA | Liberty Mutual Insurance Company | Board and Management | ..0.000 | Liberty Mutual Holding Company Inc. | | |
| | | .00000 | | | | | Liberty Mutual Insurance Europe SE | .LUX | .DS | Liberty Specialty Markets Holdco S.L.U. | Ownership, Board and Management | ..100.000 | Liberty Mutual Holding Company Inc. | | |
| | | .00000 | 04-3479271 | | | | Liberty Mutual Investment Advisors LLC | .MA | NIA | Liberty Mutual Group Asset Management Inc. | Ownership, Board and Management | ..100.000 | Liberty Mutual Holding Company Inc. | | |
| | | .00000 | 32-0177707 | | | | Liberty Mutual Investment Holdings LLC | .DE | .DS | Liberty Mutual Insurance Company | Ownership, Board and Management | ..40.000 | Liberty Mutual Holding Company Inc. | | |

STATEMENT AS OF JUNE 30, 2022 OF THE STATE AUTO INSURANCE COMPANY OF OHIO

SCHEDULE Y
PART 1A - DETAIL OF INSURANCE HOLDING COMPANY SYSTEM

| 1 | 2 | 3 | 4 | 5 | 6 | 7 | 8 | 9 | 10 | 11 | 12 | 13 | 14 | 15 | 16 |
|------------|--|-------------------|------------|--------------|-----|--|---|-----------------------|-----------------------------------|---|--|--|--|--------------------------------------|----|
| Group Code | Group Name | NAIC Company Code | ID Number | Federal RSSD | CIK | Name of Securities Exchange if Publicly Traded (U.S. or International) | Names of Parent, Subsidiaries Or Affiliates | Domi-ciliary Location | Relation-ship to Reporting Entity | Directly Controlled by (Name of Entity/Person) | Type of Control (Ownership, Board, Management, Attorney-in-Fact, Influence, Other) | If Control is Owner-ship Provide Percen-tage | Ultimate Controlling Entity(ies)/Person(s) | Is an SCA Filing Re-quired? (Yes/No) | * |
| | | .00000 | 32-0177707 | | | | Liberty Mutual Investment Holdings LLC | .DE | .DS | Peerless Insurance Company | Ownership, Board and Management | .22.000 | Liberty Mutual Holding Company Inc. | | |
| | | .00000 | 32-0177707 | | | | Liberty Mutual Investment Holdings LLC | .DE | .DS | Employers Insurance Company of Wausau | Ownership, Board and Management | .10.000 | Liberty Mutual Holding Company Inc. | | |
| | | .00000 | 32-0177707 | | | | Liberty Mutual Investment Holdings LLC | .DE | .DS | Liberty Mutual Fire Insurance Company | Ownership, Board and Management | .10.000 | Liberty Mutual Holding Company Inc. | | |
| | | .00000 | 32-0177707 | | | | Liberty Mutual Investment Holdings LLC | .DE | .DS | The Ohio Casualty Insurance Company | Ownership, Board and Management | .10.000 | Liberty Mutual Holding Company Inc. | | |
| | | .00000 | 32-0177707 | | | | Liberty Mutual Investment Holdings LLC | .DE | .DS | Safeco Insurance Company of America | Ownership, Board and Management | .8.000 | Liberty Mutual Holding Company Inc. | | |
| | | .00000 | | | | | Liberty Mutual Ireland Investment Holdings Limited | .JRL | .DS | Liberty UK and Europe Holdings Limited | Ownership, Board and Management | .100.000 | Liberty Mutual Holding Company Inc. | | |
| | | .00000 | 47-2941258 | | | | Liberty Mutual Latam LLC | .DE | .NIA | Liberty Mutual Insurance Company | Ownership, Board and Management | .100.000 | Liberty Mutual Holding Company Inc. | | |
| | | .00000 | 84-2588296 | | | | Liberty Mutual Latin Holdings LLC | .DE | .NIA | Liberty Mutual Latam LLC | Ownership, Board, Management | .100.000 | Liberty Mutual Holding Company Inc. | | |
| | | .00000 | 04-3217691 | | | | Liberty Mutual Managed Care LLC | .MA | .NIA | Liberty Corporate Services LLC | Ownership, Board and Management | .100.000 | Liberty Mutual Holding Company Inc. | | |
| | | .00000 | 98-0434942 | | | | Liberty Mutual Management (Bermuda) Ltd | .BMU | .NIA | Liberty Mutual Group Inc. | Ownership, Board and Management | .100.000 | Liberty Mutual Holding Company Inc. | | |
| | | .00000 | | | | | Liberty Mutual Management (South Carolina) LLC | .SC | .DS | Liberty Mutual Captive Holdings LLC | Ownership, Board and Management | .100.000 | Liberty Mutual Holding Company Inc. | | |
| | | .00000 | 06-1741899 | | | | Liberty Mutual Management (Vermont) LLC | .VT | .DS | Liberty Mutual Captive Holdings LLC | Ownership, Board and Management | .100.000 | Liberty Mutual Holding Company Inc. | | |
| | | .00000 | 04-4223650 | | | | Liberty Mutual Mexico LLC | .DE | .NIA | Liberty Mutual Insurance Company | Ownership, Board and Management | .100.000 | Liberty Mutual Holding Company Inc. | | |
| .0111 | Liberty Mutual Insurance Company and its Affiliated Insurers | .14486 | 23-0867770 | | | | Liberty Mutual Mid-Atlantic Insurance Company | .MA | .IA | Liberty Mutual Insurance Company | Board and Management | .0.000 | Liberty Mutual Holding Company Inc. | | |
| | | .00000 | 46-3043236 | | | | Liberty Mutual Opportunistic Investments LLC | .DE | .DS | Liberty Mutual Insurance Company | Ownership, Board and Management | .100.000 | Liberty Mutual Holding Company Inc. | | |
| .0111 | Liberty Mutual Insurance Company and its Affiliated Insurers | .12484 | 04-1023460 | | | | Liberty Mutual Personal Insurance Company | .NH | .IA | Liberty Mutual Group Inc. | Ownership, Board and Management | .100.000 | Liberty Mutual Holding Company Inc. | | |
| | | .00000 | 47-4222611 | | | | Liberty Mutual Strategic Ventures LLC | .DE | .DS | Liberty Mutual Insurance Company | Ownership, Board and Management | .100.000 | Liberty Mutual Holding Company Inc. | | |
| | | .00000 | 82-0842778 | | | | Liberty Mutual Plano LLC | .DE | .NIA | Partnership | Ownership, Board and Management | .100.000 | Liberty Mutual Holding Company Inc. | | |
| | | .00000 | 27-4064359 | | | | Liberty Mutual Retirement Plan Master Trust | .MA | .NIA | Liberty Mutual Group Inc. | Board | .0.000 | Liberty Mutual Holding Company Inc. | | |
| | | .00000 | 04-3548586 | | | | Liberty Mutual Scholarship Foundation | .MA | .NIA | Liberty Mutual Insurance Company | Board and Management | .0.000 | Liberty Mutual Holding Company Inc. | | |
| | | .00000 | 84-2593582 | | | | Liberty Mutual Services LLC | .DE | .NIA | Liberty Mutual Latam LLC | Ownership, Board, Management | .100.000 | Liberty Mutual Holding Company Inc. | | |
| | | .00000 | 86-0145347 | | | | Liberty Mutual Surety Europe B.V. | .NLD | .IA | Liberty UK and Europe Holdings Limited | Ownership | .100.000 | Liberty Mutual Holding Company Inc. | | |
| | | .00000 | | | | | Liberty Mutual Surety S.L.U. | .ESP | .IA | Liberty UK and Europe Holdings Limited | Ownership, Board, Management | .100.000 | Liberty Mutual Holding Company Inc. | | |
| | | .00000 | 81-4106347 | | | | Liberty Mutual Technology Group, Inc. | .DE | .NIA | Liberty Corporate Services LLC | Ownership, Board and Management | .100.000 | Liberty Mutual Holding Company Inc. | | |
| .0111 | Liberty Mutual Insurance Company and its Affiliated Insurers | .41939 | 93-0824674 | | | | Liberty Northwest Insurance Corporation | .OR | .DS | Peerless Insurance Company | Ownership, Board and Management | .100.000 | Liberty Mutual Holding Company Inc. | | |
| | | .00000 | 26-3709536 | | | | Liberty Parkwood Crossing LLC | .IN | .DS | Liberty Real Estate Holdings LLC | Ownership, Board and Management | .100.000 | Liberty Mutual Holding Company Inc. | | |
| .0111 | Liberty Mutual Insurance Company and its Affiliated Insurers | .11746 | 38-1742556 | | | | Liberty Personal Insurance Company | .NH | .DS | Liberty Mutual Insurance Company | Ownership, Board and Management | .100.000 | Liberty Mutual Holding Company Inc. | | |
| | | .00000 | | | | | Liberty Perú Gestión de Riesgos SAC | .PER | .NIA | Liberty Mutual Surety S.L.U. | Ownership, Board, Management | .99.900 | Liberty Mutual Holding Company Inc. | | |
| | | .00000 | | | | | Liberty Perú Gestión de Riesgos SAC | .PER | .NIA | Liberty UK and Europe Holdings Limited | Ownership, Board, Management | .0.100 | Liberty Mutual Holding Company Inc. | | |
| | | .00000 | 98-0336014 | | | | Liberty Re (Bermuda) Limited | .BMU | .DS | Liberty Mutual Insurance Company | Ownership, Board and Management | .100.000 | Liberty Mutual Holding Company Inc. | | |
| | | .00000 | | | | | Liberty Real Estate Holdings LLC | .DE | .DS | Liberty Mutual Insurance Company | Ownership, Board and Management | .100.000 | Liberty Mutual Holding Company Inc. | | |
| | | .00000 | 66-0963226 | | | | Liberty Seguros | .PR | .IA | Liberty Mutual Latam LLC | Ownership, Board and Management | .99.900 | Liberty Mutual Holding Company Inc. | | |
| | | .00000 | | | | | Liberty Seguros S.A. | .COL | .DS | LILA (Colombia) Holdings Ltd. | Ownership, Board and Management | .94.892 | Liberty Mutual Holding Company Inc. | | |
| | | .00000 | | | | | Liberty Seguros S.A. | .COL | .DS | Li (Colombia) Holdings Ltd. | Ownership, Board and Management | .5.093 | Liberty Mutual Holding Company Inc. | | |
| | | .00000 | | | | | Liberty Seguros S.A. | .ECU | .DS | Liberty UK and Europe Holdings Limited | Ownership, Board and Management | .99.895 | Liberty Mutual Holding Company Inc. | | |
| | | .00000 | | | | | Liberty Seguros S.A. | .ECU | .DS | Liberty International Latin America Holdings, LLC | Ownership, Board and Management | .0.002 | Liberty Mutual Holding Company Inc. | | |
| | | .00000 | | | | | Liberty Seguros S.A. | .PER | .IA | Liberty Mutual Latam LLC | Ownership, Board and Management | .99.990 | Liberty Mutual Holding Company Inc. | | |
| | | .00000 | | | | | Liberty Seguros S.A. | .PER | .IA | Liberty Surplus Insurance Corporation | Ownership, Board and Management | .0.010 | Liberty Mutual Holding Company Inc. | | |
| | | .00000 | | | | | Liberty Seguros S/A | .BRA | .DS | Liberty International Brasil Ltda. | Ownership, Board and Management | .100.000 | Liberty Mutual Holding Company Inc. | | |
| | | .00000 | | | | | Liberty Seguros, S.A. de C.V. | .MEX | .IA | Liberty Mutual Latin Holdings LLC | Ownership, Board and Management | .99.990 | Liberty Mutual Holding Company Inc. | | |
| | | .00000 | | | | | Liberty Seguros, S.A. de C.V. | .MEX | .IA | Liberty Mutual Services LLC | Ownership, Board and Management | .0.010 | Liberty Mutual Holding Company Inc. | | |
| | | .00000 | | | | | Liberty Seguros, Compania de Seguros y Reaseguros, S.A. | .ESP | .DS | Liberty Spain Holdings LLC | Ownership, Board and Management | .99.990 | Liberty Mutual Holding Company Inc. | | |
| | | .00000 | | | | | Liberty Seguros, Compania de Seguros y Reaseguros, S.A. | .ESP | .DS | Liberty UK and Europe Holdings Limited | Ownership, Board and Management | .0.010 | Liberty Mutual Holding Company Inc. | | |

STATEMENT AS OF JUNE 30, 2022 OF THE STATE AUTO INSURANCE COMPANY OF OHIO

SCHEDULE Y
PART 1A - DETAIL OF INSURANCE HOLDING COMPANY SYSTEM

| 1 | 2 | 3 | 4 | 5 | 6 | 7 | 8 | 9 | 10 | 11 | 12 | 13 | 14 | 15 | 16 |
|------------|--|-------------------|------------|--------------|-----|--|---|-----------------------|-----------------------------------|---|--|--|--|--------------------------------------|----|
| Group Code | Group Name | NAIC Company Code | ID Number | Federal RSSD | CIK | Name of Securities Exchange if Publicly Traded (U.S. or International) | Names of Parent, Subsidiaries Or Affiliates | Domi-ciliary Location | Relation-ship to Reporting Entity | Directly Controlled by (Name of Entity/Person) | Type of Control (Ownership, Board, Management, Attorney-in-Fact, Influence, Other) | If Control is Owner-ship Provide Percen-tage | Ultimate Controlling Entity(ies)/Person(s) | Is an SCA Filing Re-quired? (Yes/No) | * |
| | | .00000 | 77-0653079 | | | | Liberty Spain Holdings LLC | .DE | .DS | Liberty International European Holdings S.L. | Ownership, Board and Management | 100.000 | Liberty Mutual Holding Company Inc. | | |
| | | .00000 | | | | | Liberty Specialty Markets Agency Limited | .BMU | .DS | Ironshore Inc. | Ownership | 100.000 | Liberty Mutual Holding Company Inc. | | |
| | | .00000 | | | | | Liberty Specialty Markets Australia Pty Limited | .AUS | .NIA | Ironshore Australia Holdings Pty Ltd. | Ownership | 100.000 | Liberty Mutual Holding Company Inc. | | |
| | | .00000 | 98-0579287 | | | | Liberty Specialty Markets Bermuda Limited | .BMU | .DS | Ironshore Inc. | Ownership | 100.000 | Liberty Mutual Holding Company Inc. | | |
| | | .00000 | | | | | Liberty Specialty Markets Europe S.a.r.l. | .LUX | .NIA | Liberty UK and Europe Holdings Limited | Ownership, Board and Management | 100.000 | Liberty Mutual Holding Company Inc. | | |
| | | .00000 | | | | | Liberty Specialty Markets Europe Two Sarl | .LUX | .NIA | Liberty UK and Europe Holdings Limited | Ownership | 100.000 | Liberty Mutual Holding Company Inc. | | |
| | | .00000 | | | | | Liberty Specialty Markets Holdco S.L.U. | .ESP | .NIA | Liberty International European Holdings S.L. | Ownership, Board and Management | 100.000 | Liberty Mutual Holding Company Inc. | | |
| | | .00000 | | | | | Liberty Specialty Markets Hong Kong Limited | .HKG | .IA | Liberty UK and Europe Holdings Limited | Ownership, Board and Management | 100.000 | Liberty Mutual Holding Company Inc. | | |
| | | .00000 | | | | | Liberty Specialty Markets Limited | .GBR | .DS | Liberty UK and Europe Holdings Limited | Ownership, Board and Management | 100.000 | Liberty Mutual Holding Company Inc. | | |
| | | .00000 | | | | | Liberty Specialty Markets MENA Limited | .ARE | .DS | Liberty UK and Europe Holdings Limited | Ownership, Board and Management | 100.000 | Liberty Mutual Holding Company Inc. | | |
| | | .00000 | | | | | Liberty Specialty Markets Singapore Pte. Limited | .SGP | .IA | Liberty UK and Europe Holdings Limited | Ownership, Board and Management | 100.000 | Liberty Mutual Holding Company Inc. | | |
| | | .00000 | | | | | Liberty Specialty Services Limited | .GBR | .NIA | Liberty UK and Europe Holdings Limited | Ownership, Board and Management | 100.000 | Liberty Mutual Holding Company Inc. | | |
| | | .00000 | | | | | Liberty Specialty, Sociedad de Responsabilidad Limitada de Capital Variable | | | | | | | | |
| | | .00000 | | | | | Liberty Specialty, Sociedad de Responsabilidad Limitada de Capital Variable | .MEX | .NIA | Liberty Mutual Services LLC | Ownership, Board, Management | 99.990 | Liberty Mutual Holding Company Inc. | | |
| | | .00000 | | | | | Liberty Sponsored Insurance (Vermont), Inc. | .VT | .DS | Liberty Mutual Latin Holdings LLC | Ownership, Board, Management | 0.010 | Liberty Mutual Holding Company Inc. | | |
| | | .00000 | 98-0336015 | | | | Liberty Structured Holdings LLC | .DE | .NIA | Liberty Mutual Insurance Company | Ownership, Board and Management | 100.000 | Liberty Mutual Holding Company Inc. | | |
| | | .00000 | 38-3760923 | | | | Liberty Structured Holdings LLC | .DE | .NIA | Liberty Mutual Insurance Company | Ownership, Board and Management | 20.000 | Liberty Mutual Holding Company Inc. | | |
| | | .00000 | 38-3760923 | | | | Liberty Structured Holdings LLC | .DE | .NIA | Peerless Insurance Company | Ownership, Board and Management | 45.000 | Liberty Mutual Holding Company Inc. | | |
| | | .00000 | 38-3760923 | | | | Liberty Structured Holdings LLC | .DE | .NIA | The Ohio Casualty Insurance Company | Ownership, Board and Management | 20.000 | Liberty Mutual Holding Company Inc. | | |
| | | .00000 | 38-3760923 | | | | Liberty Structured Holdings LLC | .DE | .NIA | Safeco Insurance Company of America | Ownership, Board and Management | 15.000 | Liberty Mutual Holding Company Inc. | | |
| | | .00000 | | | | | Liberty Surety México, S. de R.L. de C.V. | .MEX | .DS | Liberty Mutual Mexico LLC | Ownership, Board and Management | 99.990 | Liberty Mutual Holding Company Inc. | | |
| | | .00000 | | | | | Liberty Surety México, S. de R.L. de C.V. | .MEX | .DS | Liberty Surplus Insurance Corporation | Ownership, Board and Management | 0.010 | Liberty Mutual Holding Company Inc. | | |
| .0111 | Liberty Mutual Insurance Company and its Affiliated Insurers | .10725 | 04-3390891 | | | | Liberty Surplus Insurance Corporation | .NH | .DS | Liberty Mutual Insurance Company | Ownership, Board and Management | 100.000 | Liberty Mutual Holding Company Inc. | | |
| | | .00000 | 98-0641430 | | | | Liberty UK and Europe Holdings Limited | .GBR | .DS | Liberty International US European Holdings LLC | Ownership, Board and Management | 100.000 | Liberty Mutual Holding Company Inc. | | |
| | | .00000 | 77-0670984 | | | | Liberty/Hoffman Estates LLC | .DE | .DS | Liberty Real Estate Holdings LLC | Ownership, Board and Management | 100.000 | Liberty Mutual Holding Company Inc. | | |
| | | .00000 | | | | | Liberty/Kent LLC | .DE | .DS | Liberty Real Estate Holdings LLC | Ownership, Board and Management | 100.000 | Liberty Mutual Holding Company Inc. | | |
| | | .00000 | 65-1314055 | | | | Liberty/Milwaukee LLC | .DE | .DS | Liberty Real Estate Holdings LLC | Ownership, Board and Management | 100.000 | Liberty Mutual Holding Company Inc. | | |
| | | .00000 | 77-0670983 | | | | Liberty/Warrenville LLC | .DE | .DS | Liberty Real Estate Holdings LLC | Ownership, Board and Management | 100.000 | Liberty Mutual Holding Company Inc. | | |
| | | .00000 | 22-2195982 | | | | Liberty-USA Corporation | .DE | .DS | Peerless Insurance Company | Ownership, Board and Management | 100.000 | Liberty Mutual Holding Company Inc. | | |
| | | .00000 | 22-2424043 | | | | LIH-RE of America Corporation | .DE | .DS | Liberty-USA Corporation | Ownership, Board and Management | 100.000 | Liberty Mutual Holding Company Inc. | | |
| | | .00000 | 98-0470064 | | | | LILA (Colombia) Holdings Ltd. | .BMU | .DS | Liberty International Latin America Holdings, LLC | Ownership, Board and Management | 100.000 | Liberty Mutual Holding Company Inc. | | |
| | | .00000 | 75-2621007 | | | | LIU Specialty Insurance Agency Inc. LLC S.a. r.l. | .TX | .IA | Liberty Corporate Services LLC | Ownership, Board and Management | 100.000 | Liberty Mutual Holding Company Inc. | | |
| | | .00000 | | | | | LLIC S.a. r.l. | .LUX | .DS | Liberty UK and Europe Holdings Limited | Ownership, Board and Management | 100.000 | Liberty Mutual Holding Company Inc. | | |
| | | .00000 | | | | | LMAT Arbol Holdings LLC | .DE | .NIA | LMAT Natural Resources International S.L. | Ownership, Board and Management | 100.000 | Liberty Mutual Holding Company Inc. | | |
| | | .00000 | | | | | LMAT Holdings LLC | .DE | .NIA | Liberty Mutual Insurance Company | Ownership | 30.000 | Liberty Mutual Holding Company Inc. | | |
| | | .00000 | | | | | LMAT Holdings LLC | .DE | .NIA | Peerless Insurance Company | Ownership | 30.000 | Liberty Mutual Holding Company Inc. | | |
| | | .00000 | | | | | LMAT Holdings LLC | .DE | .NIA | Liberty Mutual Fire Insurance Company | Ownership | 10.000 | Liberty Mutual Holding Company Inc. | | |
| | | .00000 | | | | | LMAT Holdings LLC | .DE | .NIA | Employers Insurance Company of Wausau | Ownership | 10.000 | Liberty Mutual Holding Company Inc. | | |
| | | .00000 | | | | | LMAT Holdings LLC | .DE | .NIA | Safeco Insurance Company of America | Ownership | 10.000 | Liberty Mutual Holding Company Inc. | | |
| | | .00000 | | | | | LMAT Holdings LLC | .DE | .NIA | The Ohio Casualty Insurance Company | Ownership | 10.000 | Liberty Mutual Holding Company Inc. | | |
| | | .00000 | | | | | LMAT Natural Resources International S.L. | .ESP | .NIA | Liberty Mutual Opportunistic Investments LLC | Ownership, Board and Management | 100.000 | Liberty Mutual Holding Company Inc. | | |
| | | .00000 | | | | | LMAT Uruguay Holdings S.R.L. | .URY | .NIA | Contumil S.A. | Ownership | 85.556 | Liberty Mutual Holding Company Inc. | | |
| | | .00000 | | | | | LMAT Uruguay Holdings S.R.L. | .URY | .NIA | LMAT Natural Resources International S.L. | Ownership | 14.443 | Liberty Mutual Holding Company Inc. | | |

STATEMENT AS OF JUNE 30, 2022 OF THE STATE AUTO INSURANCE COMPANY OF OHIO

SCHEDULE Y

PART 1A - DETAIL OF INSURANCE HOLDING COMPANY SYSTEM

| 1 | 2 | 3 | 4 | 5 | 6 | 7 | 8 | 9 | 10 | 11 | 12 | 13 | 14 | 15 | 16 |
|------------|--|-------------------|------------|--------------|-----|--|---|-----------------------|-----------------------------------|---|--|---|--|--------------------------------------|----|
| Group Code | Group Name | NAIC Company Code | ID Number | Federal RSSD | CIK | Name of Securities Exchange if Publicly Traded (U.S. or International) | Names of Parent, Subsidiaries Or Affiliates | Domi-ciliary Location | Relation-ship to Reporting Entity | Directly Controlled by (Name of Entity/Person) | Type of Control (Ownership, Board, Management, Attorney-in-Fact, Influence, Other) | If Control is Ownership Provide Percen-tage | Ultimate Controlling Entity(ies)/Person(s) | Is an SCA Filing Re-quired? (Yes/No) | * |
| | | .00000 | | | | | LMAT Uruguay Holdings S.R.L. | .URY | .NIA | LMAT Arbol Holdings LLC | Ownership..... | .0.001 | Liberty Mutual Holding Company Inc. | | |
| .0111 | Liberty Mutual Insurance Company and its Affiliated Insurers | .36447 | 22-2227328 | | | | LM General Insurance Company | .IL | .DS | Liberty Mutual Insurance Company | Ownership, Board and Management | .100.000 | Liberty Mutual Holding Company Inc. | | |
| .0111 | Liberty Mutual Insurance Company and its Affiliated Insurers | .33600 | 04-3058504 | | | | LM Insurance Corporation | .IL | .DS | Liberty Mutual Insurance Company | Ownership, Board and Management | .100.000 | Liberty Mutual Holding Company Inc. | | |
| .0111 | Liberty Mutual Insurance Company and its Affiliated Insurers | .32352 | 22-2053189 | | | | LM Property and Casualty Insurance Company .. | .IN | .DS | Liberty Mutual Insurance Company | Ownership, Board and Management | .100.000 | Liberty Mutual Holding Company Inc. | | |
| | | .00000 | 84-3770759 | | | | LMCORT-FRE-01 IC | .DC | .IA | Liberty Mutual Credit Risk Transfer PCC Inc. | Ownership, Board, Management | .100.000 | Liberty Mutual Holding Company Inc. | | |
| | | .00000 | | | | | LMG Chile SpA | .CHL | .NIA | Liberty UK and Europe Holdings Limited | Ownership, Board and Management | .100.000 | Liberty Mutual Holding Company Inc. | | |
| | | .00000 | 61-1558756 | | | | LMG Film Productions, LLC | .MA | .DS | Liberty Mutual Insurance Company | Ownership, Board and Management | .100.000 | Liberty Mutual Holding Company Inc. | | |
| | | .00000 | | | | | LMG Insurance Public Company Limited | .THA | .DS | Tun Kaoklai Co., Ltd. | Ownership, Board and Management | .74.990 | Liberty Mutual Holding Company Inc. | | |
| | | .00000 | | | | | LMG Insurance Public Company Limited | .THA | .DS | Liberty International Asia Pacific Holdings LLC | Ownership, Board and Management | .24.990 | Liberty Mutual Holding Company Inc. | | |
| | | .00000 | | | | | LMG Singapore Holdings Pte. Ltd. | .SGP | .NIA | Liberty International US European Holdings LLC | Ownership, Board and Management | .100.000 | Liberty Mutual Holding Company Inc. | | |
| | | .00000 | 04-3583680 | | | | LMHC Massachusetts Holdings Inc. | .MA | .UIP | Liberty Mutual Holding Company Inc. | Ownership, Board and Management | .100.000 | Liberty Mutual Holding Company Inc. | | |
| | | .00000 | 81-2184892 | | | | LSH Real Estate Holdings LLC | .DE | .NIA | Liberty Structured Holdings LLC | Ownership, Board and Management | .100.000 | Liberty Mutual Holding Company Inc. | | |
| | | .00000 | 71-0950057 | | | | Managed Care Associates, Inc. | .MS | .DS | Excess Risk Reinsurance Inc. | Ownership..... | .100.000 | Liberty Mutual Holding Company Inc. | | |
| .0111 | Liberty Mutual Insurance Company and its Affiliated Insurers | .23353 | 35-1135866 | | | | Meridian Security Insurance Company | .IN | .IA | State Auto Holdings, Inc. | Ownership, Board and Management | .100.000 | Liberty Mutual Holding Company Inc. | | |
| .0111 | Liberty Mutual Insurance Company and its Affiliated Insurers | .23507 | 31-0978279 | | | | Mid-American Fire & Casualty Company | .NH | .DS | The Midwestern Indemnity Company | Ownership, Board and Management | .100.000 | Liberty Mutual Holding Company Inc. | | |
| .0111 | Liberty Mutual Insurance Company and its Affiliated Insurers | .41653 | 46-0368854 | | | | Milbank Insurance Company | .IA | .IA | State Auto Financial Corporation | Ownership, Board and Management | .100.000 | Liberty Mutual Holding Company Inc. | | |
| .0111 | Liberty Mutual Insurance Company and its Affiliated Insurers | .14613 | 52-0424870 | | | | Montgomery Mutual Insurance Company | .MA | .IA | Liberty Mutual Insurance Company | Board and Management | .0.000 | Liberty Mutual Holding Company Inc. | | |
| | | .00000 | | | | | MVP1 Pooler, LLC | .DE | .NIA | Liberty Mutual Insurance Company | Ownership..... | .40.000 | Liberty Mutual Holding Company Inc. | | |
| | | .00000 | | | | | MVP1 Pooler, LLC | .DE | .NIA | Peerless Insurance Company | Ownership..... | .20.000 | Liberty Mutual Holding Company Inc. | | |
| | | .00000 | | | | | MVP1 Pooler, LLC | .DE | .NIA | Employers Insurance Company of Wausau | Ownership..... | .10.000 | Liberty Mutual Holding Company Inc. | | |
| | | .00000 | | | | | MVP1 Pooler, LLC | .DE | .NIA | Liberty Mutual Fire Insurance Company | Ownership..... | .10.000 | Liberty Mutual Holding Company Inc. | | |
| | | .00000 | | | | | MVP1 Pooler, LLC | .DE | .NIA | The Ohio Casualty Insurance Company | Ownership..... | .10.000 | Liberty Mutual Holding Company Inc. | | |
| | | .00000 | | | | | MVP1 Pooler, LLC | .DE | .NIA | Safeco Insurance Company of America | Ownership..... | .10.000 | Liberty Mutual Holding Company Inc. | | |
| .0111 | Liberty Mutual Insurance Company and its Affiliated Insurers | .27944 | 35-1287317 | | | | National Insurance Association | .IN | .DS | The National Corporation | Management and Attorney-in-Fact | .0.000 | Liberty Mutual Holding Company Inc. | | |
| | | .00000 | | | | | Nationale Borg Reinsurance N.V. | .CUW | .IA | Liberty Mutual Insurance Company | Ownership, Board, Management | .100.000 | Liberty Mutual Holding Company Inc. | | |
| | | .00000 | | | | | Nationale Waarborg B.V. | .NLD | .IA | Liberty UK and Europe Holdings Limited | Ownership, Board, Management | .100.000 | Liberty Mutual Holding Company Inc. | | |
| | | .00000 | 41-2098206 | | | | Network E&S Insurance Brokers, LLC | .OH | .IA | State Automobile Mutual Insurance Company .. | Ownership, Board and Management | .100.000 | Liberty Mutual Holding Company Inc. | | |
| .0111 | Liberty Mutual Insurance Company and its Affiliated Insurers | .23892 | 93-6029263 | | | | North Pacific Insurance Company | .OR | .DS | Liberty Northwest Insurance Corporation ... | Ownership, Board and Management | .100.000 | Liberty Mutual Holding Company Inc. | | |
| | | .00000 | 31-1364002 | | | | Ocasco Budget, Inc. | .OH | .DS | The Ohio Casualty Insurance Company | Ownership, Board and Management | .100.000 | Liberty Mutual Holding Company Inc. | | |
| | | .00000 | 31-1377709 | | | | OCI Printing, Inc. | .OH | .DS | Ohio Casualty Corporation | Ownership, Board and Management | .100.000 | Liberty Mutual Holding Company Inc. | | |
| | | .00000 | 31-0783294 | | | | Ohio Casualty Corporation | .OH | .DS | Liberty Mutual Insurance Company | Ownership, Board and Management | .78.000 | Liberty Mutual Holding Company Inc. | | |
| | | .00000 | 31-0783294 | | | | Ohio Casualty Corporation | .OH | .DS | Employers Insurance Company of Wausau | Ownership, Board and Management | .8.000 | Liberty Mutual Holding Company Inc. | | |
| | | .00000 | 31-0783294 | | | | Ohio Casualty Corporation | .OH | .DS | Peerless Insurance Company | Ownership, Board and Management | .8.000 | Liberty Mutual Holding Company Inc. | | |
| | | .00000 | 31-0783294 | | | | Ohio Casualty Corporation | .OH | .DS | Liberty Mutual Fire Insurance Company | Ownership, Board and Management | .6.000 | Liberty Mutual Holding Company Inc. | | |
| .0111 | Liberty Mutual Insurance Company and its Affiliated Insurers | .24082 | 31-0541777 | | | | Ohio Security Insurance Company | .NH | .DS | The Ohio Casualty Insurance Company | Ownership, Board and Management | .100.000 | Liberty Mutual Holding Company Inc. | | |
| | | .00000 | 26-0258241 | | | | Open Seas Solutions, Inc. | .WA | .DS | Safeco Corporation | Ownership, Board and Management | .100.000 | Liberty Mutual Holding Company Inc. | | |
| .0111 | Liberty Mutual Insurance Company and its Affiliated Insurers | .23922 | 93-0241650 | | | | Oregon Automobile Insurance Company | .OR | .DS | Liberty Northwest Insurance Corporation | Ownership, Board and Management | .100.000 | Liberty Mutual Holding Company Inc. | | |
| | | .00000 | | | | | PAGUS Holdings LLC | .DE | .NIA | LMAT Holdings LLC | Ownership, Board and Management | .100.000 | Liberty Mutual Holding Company Inc. | | |
| .0111 | Liberty Mutual Insurance Company and its Affiliated Insurers | .14923 | 06-0487440 | | | | Patrons Mutual Insurance Company of Connecticut | .CT | .IA | State Automobile Mutual Insurance Company .. | Board, Management | .0.000 | Liberty Mutual Holding Company Inc. | | |

STATEMENT AS OF JUNE 30, 2022 OF THE STATE AUTO INSURANCE COMPANY OF OHIO

SCHEDULE Y

PART 1A - DETAIL OF INSURANCE HOLDING COMPANY SYSTEM

| 1 | 2 | 3 | 4 | 5 | 6 | 7 | 8 | 9 | 10 | 11 | 12 | 13 | 14 | 15 | 16 |
|------------|--|-------------------|------------|--------------|-----|--|---|-----------------------|-----------------------------------|---|--|--|--|--------------------------------------|----|
| Group Code | Group Name | NAIC Company Code | ID Number | Federal RSSD | CIK | Name of Securities Exchange if Publicly Traded (U.S. or International) | Names of Parent, Subsidiaries Or Affiliates | Domi-ciliary Location | Relation-ship to Reporting Entity | Directly Controlled by (Name of Entity/Person) | Type of Control (Ownership, Board, Management, Attorney-in-Fact, Influence, Other) | If Control is Owner-ship Provide Percen-tage | Ultimate Controlling Entity(ies)/Person(s) | Is an SCA Filing Re-quired? (Yes/No) | * |
| ..0111 | Liberty Mutual Insurance Company and its Affiliated Insurers | ..18333 | 13-2919779 | | | | Peerless Indemnity Insurance Company | ..IL | ..DS | Liberty-USA Corporation | Ownership, Board and Management | ..100.000 | Liberty Mutual Holding Company Inc. | | |
| ..0111 | Liberty Mutual Insurance Company and its Affiliated Insurers | ..24198 | 02-0177030 | | | | Peerless Insurance Company | ..NH | ..DS | Liberty Mutual Agency Corporation | Ownership, Board and Management | ..100.000 | Liberty Mutual Holding Company Inc. | | |
| ..0111 | Liberty Mutual Insurance Company and its Affiliated Insurers | ..30945 | 58-1140651 | | | | Plaza Insurance Company | ..IA | ..IA | Rockhill Insurance Company | Ownership, Board and Management | ..100.000 | Liberty Mutual Holding Company Inc. | | |
| | | ..00000 | | | | | PT Independence Energy Holdings LLC | ..DE | ..NIA | Liberty Energy Holdings, LLC | Ownership | ..100.000 | Liberty Mutual Holding Company Inc. | | |
| | | ..00000 | 46-1667886 | | | | Raymond James LM Georgia Tax Credit Fund L.L.C. | ..FL | ..DS | The First Liberty Insurance Corporation | Ownership | ..100.000 | Liberty Mutual Holding Company Inc. | | |
| | | ..00000 | 46-1680447 | | | | Raymond James LM Massachusetts Tax Credit Fund L.L.C. | ..FL | ..DS | Liberty Mutual Insurance Company | Ownership | ..100.000 | Liberty Mutual Holding Company Inc. | | |
| | | ..00000 | 45-2635338 | | | | RBC State Credit Fund LLC | ..DE | ..NIA | Liberty Mutual Insurance Company | Ownership | ..100.000 | Liberty Mutual Holding Company Inc. | | |
| | | ..00000 | 26-0800397 | | | | Rianoc Research Corporation | ..WA | ..DS | Open Seas Solutions, Inc. | Ownership, Board and Management | ..100.000 | Liberty Mutual Holding Company Inc. | | |
| | | ..00000 | 45-2480595 | | | | RJTCF-37 Georgia Tax Credit Fund L.L.C. | ..FL | ..NIA | Liberty Mutual Fire Insurance Company | Ownership | ..100.000 | Liberty Mutual Holding Company Inc. | | |
| | | ..00000 | 45-5549520 | | | | Raymond James LM Georgia Tax Credit Fund L.L.C. | ..FL | ..DS | Liberty Mutual Agency Corporation | Ownership | ..100.000 | Liberty Mutual Holding Company Inc. | | |
| | | ..00000 | 50-9113010 | | | | RNA – Rede Nacional De Assistencia, S.A. | ..PRT | ..NIA | Liberty Seguros, Compania de Seguros y Reaseguros, S.A. | Ownership | ..20.000 | Liberty Mutual Holding Company Inc. | | |
| | | ..00000 | 25-1923260 | | | | Rockhill Holding Company | ..DE | ..NIA | State Automobile Mutual Insurance Company | Ownership, Board and Management | ..100.000 | Liberty Mutual Holding Company Inc. | | |
| ..0111 | Liberty Mutual Insurance Company and its Affiliated Insurers | ..28053 | 06-1149847 | | | | Rockhill Insurance Company | ..AZ | ..IA | Rockhill Holding Company | Ownership, Board and Management | ..100.000 | Liberty Mutual Holding Company Inc. | | |
| | | ..00000 | 20-8406742 | | | | Rockhill Insurance Services LLC | ..CA | ..NIA | Rockhill Holding Company | Ownership, Board and Management | ..100.000 | Liberty Mutual Holding Company Inc. | | |
| | | ..00000 | 01-0712531 | | | | Rockhill Underwriting Management, LLC | ..MO | ..NIA | Rockhill Holding Company | Ownership, Board and Management | ..100.000 | Liberty Mutual Holding Company Inc. | | |
| | | ..00000 | 41-1440870 | | | | RTW, Inc | ..MN | ..NIA | Rockhill Holding Company | Ownership, Board and Management | ..100.000 | Liberty Mutual Holding Company Inc. | | |
| | | ..00000 | 91-0833288 | | | | SAFECARE Company, Inc. | ..WA | ..DS | Safeco Properties, Inc. | Ownership, Board and Management | ..100.000 | Liberty Mutual Holding Company Inc. | | |
| | | ..00000 | 91-0742146 | | | | Safeco Corporation | ..WA | ..DS | Liberty Mutual Agency Corporation | Ownership, Board and Management | ..100.000 | Liberty Mutual Holding Company Inc. | | |
| | | ..00000 | 75-2865575 | | | | Safeco General Agency, Inc. | ..TX | ..DS | General Insurance Company of America | Ownership, Board and Management | ..100.000 | Liberty Mutual Holding Company Inc. | | |
| ..0111 | Liberty Mutual Insurance Company and its Affiliated Insurers | ..24740 | 91-0742148 | | | | Safeco Insurance Company of America | ..NH | ..DS | Safeco Corporation | Ownership, Board and Management | ..100.000 | Liberty Mutual Holding Company Inc. | | |
| ..0111 | Liberty Mutual Insurance Company and its Affiliated Insurers | ..39012 | 91-1115311 | | | | Safeco Insurance Company of Illinois | ..IL | ..DS | Safeco Insurance Company of America | Ownership, Board and Management | ..100.000 | Liberty Mutual Holding Company Inc. | | |
| ..0111 | Liberty Mutual Insurance Company and its Affiliated Insurers | ..11215 | 23-2640501 | | | | Safeco Insurance Company of Indiana | ..IN | ..DS | General Insurance Company of America | Ownership, Board and Management | ..100.000 | Liberty Mutual Holding Company Inc. | | |
| ..0111 | Liberty Mutual Insurance Company and its Affiliated Insurers | ..11071 | 93-1300233 | | | | Safeco Insurance Company of Oregon | ..OR | ..DS | Safeco Insurance Company of America | Ownership, Board and Management | ..100.000 | Liberty Mutual Holding Company Inc. | | |
| ..0111 | Liberty Mutual Insurance Company and its Affiliated Insurers | ..11070 | 91-6258394 | | | | Safeco Lloyds Insurance Company | ..TX | ..DS | General America Corporation of Texas | Management and Attorney-in-Fact | ..0.000 | Liberty Mutual Holding Company Inc. | | |
| ..0111 | Liberty Mutual Insurance Company and its Affiliated Insurers | ..24759 | 91-0885519 | | | | Safeco National Insurance Company | ..NH | ..DS | Safeco Insurance Company of America | Ownership, Board and Management | ..100.000 | Liberty Mutual Holding Company Inc. | | |
| | | ..00000 | 91-1273246 | | | | Safeco Properties, Inc. | ..WA | ..DS | Safeco Corporation | Ownership, Board and Management | ..100.000 | Liberty Mutual Holding Company Inc. | | |
| ..0111 | Liberty Mutual Insurance Company and its Affiliated Insurers | ..11100 | 91-1231536 | | | | Safeco Surplus Lines Insurance Company | ..NH | ..DS | Safeco Insurance Company of America | Ownership, Board and Management | ..100.000 | Liberty Mutual Holding Company Inc. | | |
| ..0111 | Liberty Mutual Insurance Company and its Affiliated Insurers | ..10837 | 33-0763208 | | | | San Diego Insurance Company | ..CA | ..DS | Liberty Mutual Insurance Company | Ownership, Board and Management | ..100.000 | Liberty Mutual Holding Company Inc. | | |
| | | ..00000 | | | | | Santa Marta Floresta Brasil Ltda. | ..BRA | ..NIA | TECA Santa Marta Holdings, S.L. | Ownership | ..99.900 | Liberty Mutual Holding Company Inc. | | |
| | | ..00000 | | | | | Santa Marta Floresta Brasil Ltda. | ..BRA | ..NIA | TECA SM LLC | Ownership | ..0.010 | Liberty Mutual Holding Company Inc. | | |
| | | ..00000 | | | | | Santa Rita Arbol Holdings S.L. | ..ESP | ..NIA | LMAT Natural Resources International S.L. | Ownership | ..100.000 | Liberty Mutual Holding Company Inc. | | |
| | | ..00000 | | | | | Santa Rita Madeira e Floresta Ltda. | ..BRA | ..NIA | Santa Rita Arbol Holdings, S.L. | Ownership | ..99.900 | Liberty Mutual Holding Company Inc. | | |
| | | ..00000 | | | | | Santa Rita Madeira e Floresta Ltda. | ..BRA | ..NIA | TECA SR LLC | Ownership | ..0.010 | Liberty Mutual Holding Company Inc. | | |
| | | ..00000 | | | | | Savannah Insurance Agency Pty Ltd | ..AUS | ..DS | Ironshore Australia Holdings Pty Ltd | Ownership | ..100.000 | Liberty Mutual Holding Company Inc. | | |
| | | ..00000 | 91-0837732 | | | | SCIT, Inc. | ..MA | ..NIA | Winnmar Company, Inc. | Ownership, Board and Management | ..100.000 | Liberty Mutual Holding Company Inc. | | |
| | | ..00000 | 82-4345429 | | | | Shandon Valley Vineyards LLC | ..DE | ..NIA | PAGUS Holdings LLC | Ownership, Board and Management | ..100.000 | Liberty Mutual Holding Company Inc. | | |
| | | ..00000 | 81-2854330 | | | | Solaria Labs, LLC | ..DE | ..NIA | Liberty Mutual Insurance Company | Ownership, Board and Management | ..100.000 | Liberty Mutual Holding Company Inc. | | |
| | | ..00000 | | | | | Solaria Labs Singapore Pte. Ltd | ..SGP | ..NIA | Liberty UK and Europe Holdings Limited | Ownership, Board and Management | ..100.000 | Liberty Mutual Holding Company Inc. | | |

STATEMENT AS OF JUNE 30, 2022 OF THE STATE AUTO INSURANCE COMPANY OF OHIO

SCHEDULE Y

PART 1A - DETAIL OF INSURANCE HOLDING COMPANY SYSTEM

| 1 | 2 | 3 | 4 | 5 | 6 | 7 | 8 | 9 | 10 | 11 | 12 | 13 | 14 | 15 | 16 |
|------------|--|-------------------|------------|--------------|-----|--|---|-----------------------|-----------------------------------|---|--|--|--|--------------------------------------|----|
| Group Code | Group Name | NAIC Company Code | ID Number | Federal RSSD | CIK | Name of Securities Exchange if Publicly Traded (U.S. or International) | Names of Parent, Subsidiaries Or Affiliates | Domi-ciliary Location | Relation-ship to Reporting Entity | Directly Controlled by (Name of Entity/Person) | Type of Control (Ownership, Board, Management, Attorney-in-Fact, Influence, Other) | If Control is Owner-ship Provide Percen-tage | Ultimate Controlling Entity(ies)/Person(s) | Is an SCA Filing Re-quired? (Yes/No) | * |
| | | .00000 | 84-1695835 | | | | St. James/Arlington LLC | .MA | .NIA | Employers Insurance Company of Wausau | Ownership, Board and Management | 100.000 | Liberty Mutual Holding Company Inc. | | |
| | | .00000 | 01-0854295 | | | | St. James/Arlington Management LLC | .MA | .DS | Liberty Mutual Insurance Company | Ownership, Board and Management | 100.000 | Liberty Mutual Holding Company Inc. | | |
| | | .00000 | 84-1695837 | | | | St. James/Arlington Real Estate Limited Partnership | .MA | .DS | St. James/Arlington LLC | Ownership, Board and Management | 3.000 | Liberty Mutual Holding Company Inc. | | |
| | | .00000 | 84-1695837 | | | | St. James/Arlington Real Estate Limited Partnership | .MA | .DS | Liberty Mutual Insurance Company | Ownership, Board and Management | 92.000 | Liberty Mutual Holding Company Inc. | | |
| | | .00000 | 84-1695837 | | | | St. James/Arlington Real Estate Limited Partnership | .MA | .DS | Liberty Mutual Fire Insurance Company | Ownership, Board and Management | 5.000 | Liberty Mutual Holding Company Inc. | | |
| | | .00000 | 31-1324304 | | | | State Auto Financial Corporation | .OH | .NIA | State Automobile Mutual Insurance Company | Ownership, Board and Management | 100.000 | Liberty Mutual Holding Company Inc. | | |
| | | .00000 | | | | | State Auto Foundation | .OH | .NIA | Liberty Mutual Insurance Company | Board, Management | 0.000 | Liberty Mutual Holding Company Inc. | | |
| | | .00000 | 20-8756040 | | | | State Auto Holdings, Inc. | .OH | .NIA | State Automobile Mutual Insurance Company | Ownership, Board and Management | 100.000 | Liberty Mutual Holding Company Inc. | | |
| .0111 | Liberty Mutual Insurance Company and its Affiliated Insurers | .11017 | 31-1651026 | | | | State Auto Insurance Company of Ohio | .OH | .IA | State Auto Financial Corporation | Ownership, Board and Management | 100.000 | Liberty Mutual Holding Company Inc. | | |
| .0111 | Liberty Mutual Insurance Company and its Affiliated Insurers | .31755 | 39-1211058 | | | | State Auto Insurance Company of Wisconsin | .WI | .IA | State Automobile Mutual Insurance Company | Ownership, Board and Management | 100.000 | Liberty Mutual Holding Company Inc. | | |
| | | .00000 | 82-2704976 | | | | State Auto Labs Corp. | .OH | .NIA | State Automobile Mutual Insurance Company | Ownership, Board and Management | 100.000 | Liberty Mutual Holding Company Inc. | | |
| .0111 | Liberty Mutual Insurance Company and its Affiliated Insurers | .25127 | 57-6010814 | | | | State Auto Property & Casualty Insurance Company | .IA | .IA | State Auto Financial Corporation | Ownership, Board and Management | 100.000 | Liberty Mutual Holding Company Inc. | | |
| .0111 | Liberty Mutual Insurance Company and its Affiliated Insurers | .25135 | 31-4316080 | | | | State Automobile Mutual Insurance Company | .OH | .IA | Liberty Mutual Group Inc. | Ownership, Board and Management | 100.000 | Liberty Mutual Holding Company Inc. | | |
| | | .00000 | 31-0676465 | | | | Stateco Financial Services, Inc. | .OH | .NIA | State Auto Financial Corporation | Ownership, Board and Management | 100.000 | Liberty Mutual Holding Company Inc. | | |
| | | .00000 | 04-3545985 | | | | Tara Energy Investments, LLC | .DE | .DS | Liberty Energy Holdings, LLC | Ownership, Board and Management | 100.000 | Liberty Mutual Holding Company Inc. | | |
| | | .00000 | | | | | TECA Santa Marta Holdings S.L | .ESP | .NIA | LMAT Natural Resources International S.L | Ownership | 100.000 | Liberty Mutual Holding Company Inc. | | |
| | | .00000 | | | | | TECA SM LLC | .DE | .NIA | Teca Santa Marta Holdings S.L | Ownership | 100.000 | Liberty Mutual Holding Company Inc. | | |
| | | .00000 | | | | | TECA SR LLC | .DE | .NIA | Santa Rita Arbol Holdings S.L | Ownership | 100.000 | Liberty Mutual Holding Company Inc. | | |
| .0111 | Liberty Mutual Insurance Company and its Affiliated Insurers | .33588 | 04-3058503 | | | | The First Liberty Insurance Corporation | .IL | .DS | Liberty Mutual Insurance Company | Ownership, Board and Management | 100.000 | Liberty Mutual Holding Company Inc. | | |
| .0111 | Liberty Mutual Insurance Company and its Affiliated Insurers | .23515 | 31-0978280 | | | | The Midwestern Indemnity Company | .NH | .DS | Peerless Insurance Company | Ownership, Board and Management | 100.000 | Liberty Mutual Holding Company Inc. | | |
| | | .00000 | 35-1283740 | | | | The National Corporation | .IN | .DS | Liberty-USA Corporation | Ownership, Board and Management | 100.000 | Liberty Mutual Holding Company Inc. | | |
| .0111 | Liberty Mutual Insurance Company and its Affiliated Insurers | .24171 | 02-0342937 | | | | The Netherlands Insurance Company | .NH | .DS | Peerless Insurance Company | Ownership, Board and Management | 100.000 | Liberty Mutual Holding Company Inc. | | |
| .0111 | Liberty Mutual Insurance Company and its Affiliated Insurers | .24074 | 31-0396250 | | | | The Ohio Casualty Insurance Company | .NH | .DS | Ohio Casualty Corporation | Ownership, Board and Management | 100.000 | Liberty Mutual Holding Company Inc. | | |
| | | .00000 | | | | | Tun Kaoklai Co., Ltd. | .THA | .DS | Kritaya Tun Company Limited | Ownership, Board and Management | 99.990 | Liberty Mutual Holding Company Inc. | | |
| | | .00000 | | | | | Tun Kaoklai Co., Ltd. | .THA | .DS | Liberty International Asia Pacific Holdings LLC | Ownership, Board and Management | 0.010 | Liberty Mutual Holding Company Inc. | | |
| | | .00000 | | | | | Vitoria Floresta Brasil Ltda. | .BRA | .NIA | LMAT Natural Resources International S.L | Ownership | 99.990 | Liberty Mutual Holding Company Inc. | | |
| | | .00000 | | | | | Vitoria Floresta Brasil Ltda. | .BRA | .NIA | LMAT Arbol Holdings LLC | Ownership | 0.010 | Liberty Mutual Holding Company Inc. | | |
| .0111 | Liberty Mutual Insurance Company and its Affiliated Insurers | .26069 | 36-3522250 | | | | Wausau Business Insurance Company | .WI | .DS | Liberty Mutual Insurance Company | Ownership, Board and Management | 100.000 | Liberty Mutual Holding Company Inc. | | |
| .0111 | Liberty Mutual Insurance Company and its Affiliated Insurers | .26425 | 36-2753986 | | | | Wausau General Insurance Company | .WI | .DS | Liberty Mutual Insurance Company | Ownership, Board and Management | 100.000 | Liberty Mutual Holding Company Inc. | | |
| | | .00000 | | | | | Wausau Insurance Company (U.K.) Limited | .GBR | .DS | Liberty International Netherlands V.O.F. | Ownership, Board and Management | 100.000 | Liberty Mutual Holding Company Inc. | | |
| .0111 | Liberty Mutual Insurance Company and its Affiliated Insurers | .26042 | 39-1341459 | | | | Wausau Underwriters Insurance Company | .WI | .DS | Liberty Mutual Insurance Company | Ownership, Board and Management | 100.000 | Liberty Mutual Holding Company Inc. | | |
| .0111 | Liberty Mutual Insurance Company and its Affiliated Insurers | .44393 | 31-0624491 | | | | West American Insurance Company | .IN | .DS | The Ohio Casualty Insurance Company | Ownership, Board and Management | 100.000 | Liberty Mutual Holding Company Inc. | | |
| | | .00000 | 45-2396108 | | | | Wildcat Field Services, LLC | .TX | .DS | Wildcat Midstream Holdings II LLC | Ownership | 100.000 | Liberty Mutual Holding Company Inc. | | |
| | | .00000 | 46-1637784 | | | | Wildcat Midstream Holdings II LLC | .TX | .DS | Kellen Holdings, LLC | Ownership | 95.000 | Liberty Mutual Holding Company Inc. | | |
| | | .00000 | 91-0683335 | | | | Winnar Company, Inc. | .WA | .DS | Safeco Properties, Inc. | Ownership, Board and Management | 100.000 | Liberty Mutual Holding Company Inc. | | |
| | | .00000 | 35-2604562 | | | | Workgrid Software, Inc. | .DE | .NIA | Liberty Mutual Technology Group, Inc. | Ownership, Board and Management | 100.000 | Liberty Mutual Holding Company Inc. | | |

NONE

| Asterisk | Explanation |
|----------|-------------|
| | |

PART 1 - LOSS EXPERIENCE

| Line of Business | | Current Year to Date | | | 4 |
|----------------------|---|--------------------------------|--------------------------------|--------------------------------|---|
| | | 1 Direct Premiums Earned | 2 Direct Losses Incurred | 3 Direct Loss Percentage | Prior Year to Date Direct Loss Percentage |
| 1. | Fire | 212,928 | 32,372 | 15.2 | 42.7 |
| 2.1 | Allied Lines | 282,548 | 188,633 | 66.8 | 29.0 |
| 2.2 | Multiple peril crop | 0 | 0 | 0.0 | 0.0 |
| 2.3 | Federal flood | 0 | 0 | 0.0 | 0.0 |
| 2.4 | Private crop | 0 | 0 | 0.0 | 0.0 |
| 2.5 | Private flood | 0 | 0 | 0.0 | 0.0 |
| 3. | Farmowners multiple peril | 0 | 0 | 0.0 | 0.0 |
| 4. | Homeowners multiple peril | 4,027,536 | 2,350,385 | 58.4 | 46.8 |
| 5. | Commercial multiple peril | 0 | 0 | 0.0 | 0.0 |
| 6. | Mortgage guaranty | 0 | 0 | 0.0 | 0.0 |
| 8. | Ocean marine | 0 | 0 | 0.0 | 0.0 |
| 9. | Inland marine | 137,502 | 67,301 | 48.9 | (37.4) |
| 10. | Financial guaranty | 0 | 0 | 0.0 | 0.0 |
| 11.1 | Medical professional liability - occurrence | 0 | 0 | 0.0 | 0.0 |
| 11.2 | Medical professional liability - claims-made | 0 | 0 | 0.0 | 0.0 |
| 12. | Earthquake | 45,465 | 0 | 0.0 | 0.0 |
| 13.1 | Comprehensive (hospital and medical) individual | 0 | 0 | 0.0 | 0.0 |
| 13.2 | Comprehensive (hospital and medical) group | 0 | 0 | 0.0 | 0.0 |
| 14. | Credit accident and health | 0 | 0 | 0.0 | 0.0 |
| 15.1 | Vision only | 0 | 0 | 0.0 | 0.0 |
| 15.2 | Dental only | 0 | 0 | 0.0 | 0.0 |
| 15.3 | Disability income | 0 | 0 | 0.0 | 0.0 |
| 15.4 | Medicare supplement | 0 | 0 | 0.0 | 0.0 |
| 15.5 | Medicaid Title XIX | 0 | 0 | 0.0 | 0.0 |
| 15.6 | Medicare Title XVIII | 0 | 0 | 0.0 | 0.0 |
| 15.7 | Long-term care | 0 | 0 | 0.0 | 0.0 |
| 15.8 | Federal employees health benefits plan | 0 | 0 | 0.0 | 0.0 |
| 15.9 | Other health | 0 | 0 | 0.0 | 0.0 |
| 16. | Workers' compensation | 0 | 0 | 0.0 | 0.0 |
| 17.1 | Other liability - occurrence | 208,261 | 66,432 | 31.9 | (41.4) |
| 17.2 | Other liability - claims-made | 0 | 0 | 0.0 | 0.0 |
| 17.3 | Excess workers' compensation | 0 | 0 | 0.0 | 0.0 |
| 18.1 | Products liability - occurrence | 0 | 0 | 0.0 | 0.0 |
| 18.2 | Products liability - claims-made | 0 | 0 | 0.0 | 0.0 |
| 19.1 | Private passenger auto no-fault (personal injury protection) | 0 | 0 | 0.0 | 0.0 |
| 19.2 | Other private passenger auto liability | 2,859,758 | 2,324,196 | 81.3 | 39.9 |
| 19.3 | Commercial auto no-fault (personal injury protection) | 0 | 0 | 0.0 | 0.0 |
| 19.4 | Other commercial auto liability | 0 | 0 | 0.0 | 0.0 |
| 21.1 | Private passenger auto physical damage | 2,390,988 | 1,158,160 | 48.4 | 47.6 |
| 21.2 | Commercial auto physical damage | 0 | 0 | 0.0 | 0.0 |
| 22. | Aircraft (all perils) | 0 | 0 | 0.0 | 0.0 |
| 23. | Fidelity | 0 | 0 | 0.0 | 0.0 |
| 24. | Surety | 0 | 0 | 0.0 | 0.0 |
| 26. | Burglary and theft | 0 | 0 | 0.0 | 0.0 |
| 27. | Boiler and machinery | 0 | 0 | 0.0 | 0.0 |
| 28. | Credit | 0 | 0 | 0.0 | 0.0 |
| 29. | International | 0 | 0 | 0.0 | 0.0 |
| 30. | Warranty | 0 | 0 | 0.0 | 0.0 |
| 31. | Reinsurance - Nonproportional Assumed Property | XXX | XXX | XXX | XXX |
| 32. | Reinsurance - Nonproportional Assumed Liability | XXX | XXX | XXX | XXX |
| 33. | Reinsurance - Nonproportional Assumed Financial Lines | XXX | XXX | XXX | XXX |
| 34. | Aggregate write-ins for other lines of business | 0 | 0 | 0.0 | 0.0 |
| 35. | Totals | 10,164,987 | 6,187,478 | 60.9 | 41.3 |
| DETAILS OF WRITE-INS | | | | | |
| 3401. | | | | | |
| 3402. | | | | | |
| 3403. | | | | | |
| 3498. | Summary of remaining write-ins for Line 34 from overflow page | 0 | 0 | 0.0 | 0.0 |
| 3499. | Totals (Lines 3401 through 3403 plus 3498)(Line 34 above) | 0 | 0 | 0.0 | 0.0 |

PART 2 - DIRECT PREMIUMS WRITTEN

| Line of Business | | 1 Current Quarter | 2 Current Year to Date | 3 Prior Year Year to Date |
|----------------------|---|----------------------|------------------------------|---------------------------------|
| 1. | Fire | 102,417 | 193,773 | 222,882 |
| 2.1 | Allied Lines | 137,352 | 261,052 | 299,245 |
| 2.2 | Multiple peril crop | 0 | 0 | 0 |
| 2.3 | Federal flood | 0 | 0 | 0 |
| 2.4 | Private crop | 0 | 0 | 0 |
| 2.5 | Private flood | 0 | 0 | 0 |
| 3. | Farmowners multiple peril | 0 | 0 | 0 |
| 4. | Homeowners multiple peril | 2,067,258 | 3,605,898 | 4,025,995 |
| 5. | Commercial multiple peril | 0 | 0 | 0 |
| 6. | Mortgage guaranty | 0 | 0 | 0 |
| 8. | Ocean marine | 0 | 0 | 0 |
| 9. | Inland marine | 62,404 | 113,209 | 139,931 |
| 10. | Financial guaranty | 0 | 0 | 0 |
| 11.1 | Medical professional liability - occurrence | 0 | 0 | 0 |
| 11.2 | Medical professional liability - claims-made | 0 | 0 | 0 |
| 12. | Earthquake | 24,953 | 41,224 | 44,752 |
| 13.1 | Comprehensive (hospital and medical) individual | 0 | 0 | 0 |
| 13.2 | Comprehensive (hospital and medical) group | 0 | 0 | 0 |
| 14. | Credit accident and health | 0 | 0 | 0 |
| 15.1 | Vision only | 0 | 0 | 0 |
| 15.2 | Dental only | 0 | 0 | 0 |
| 15.3 | Disability income | 0 | 0 | 0 |
| 15.4 | Medicare supplement | 0 | 0 | 0 |
| 15.5 | Medicaid Title XIX | 0 | 0 | 0 |
| 15.6 | Medicare Title XVIII | 0 | 0 | 0 |
| 15.7 | Long-term care | 0 | 0 | 0 |
| 15.8 | Federal employees health benefits plan | 0 | 0 | 0 |
| 15.9 | Other health | 0 | 0 | 0 |
| 16. | Workers' compensation | 0 | 0 | 0 |
| 17.1 | Other liability - occurrence | 105,221 | 195,259 | 217,600 |
| 17.2 | Other liability - claims-made | 0 | 0 | 0 |
| 17.3 | Excess workers' compensation | 0 | 0 | 0 |
| 18.1 | Products liability - occurrence | 0 | 0 | 0 |
| 18.2 | Products liability - claims-made | 0 | 0 | 0 |
| 19.1 | Private passenger auto no-fault (personal injury protection) | 0 | 0 | 0 |
| 19.2 | Other private passenger auto liability | 1,447,253 | 2,639,271 | 3,113,001 |
| 19.3 | Commercial auto no-fault (personal injury protection) | 0 | 0 | 0 |
| 19.4 | Other commercial auto liability | 0 | 0 | 0 |
| 21.1 | Private passenger auto physical damage | 1,212,556 | 2,196,251 | 2,513,750 |
| 21.2 | Commercial auto physical damage | 0 | 0 | 0 |
| 22. | Aircraft (all perils) | 0 | 0 | 0 |
| 23. | Fidelity | 0 | 0 | 0 |
| 24. | Surety | 0 | 0 | 0 |
| 26. | Burglary and theft | 0 | 0 | 0 |
| 27. | Boiler and machinery | 0 | 0 | 0 |
| 28. | Credit | 0 | 0 | 0 |
| 29. | International | 0 | 0 | 0 |
| 30. | Warranty | 0 | 0 | 0 |
| 31. | Reinsurance - Nonproportional Assumed Property | XXX | XXX | XXX |
| 32. | Reinsurance - Nonproportional Assumed Liability | XXX | XXX | XXX |
| 33. | Reinsurance - Nonproportional Assumed Financial Lines | XXX | XXX | XXX |
| 34. | Aggregate write-ins for other lines of business | 0 | 0 | 0 |
| 35. | Totals | 5,159,414 | 9,245,937 | 10,577,156 |
| DETAILS OF WRITE-INS | | | | |
| 3401. | | | | |
| 3402. | | | | |
| 3403. | | | | |
| 3498. | Summary of remaining write-ins for Line 34 from overflow page | 0 | 0 | 0 |
| 3499. | Totals (Lines 3401 through 3403 plus 3498)(Line 34 above) | 0 | 0 | 0 |

STATEMENT AS OF JUNE 30, 2022 OF THE STATE AUTO INSURANCE COMPANY OF OHIO

PART 3 (000 omitted)

LOSS AND LOSS ADJUSTMENT EXPENSE RESERVES SCHEDULE

| | 1 | 2 | 3 | 4 | 5 | 6 | 7 | 8 | 9 | 10 | 11 | 12 | 13 |
|--|---|---|--|--|--|--|---|--|--------------------------------------|---|---|--|---|
| Years in Which Losses Occurred | Prior Year-End Known Case Loss and LAE Reserves | Prior Year-End IBNR Loss and LAE Reserves | Total Prior Year-End Loss and LAE Reserves (Cols. 1+2) | 2022 Loss and LAE Payments on Claims Reported as of Prior Year-End | 2022 Loss and LAE Payments on Claims Unreported as of Prior Year-End | Total 2022 Loss and LAE Payments (Cols. 4+5) | Q.S. Date Known Case Loss and LAE Reserves on Claims Reported and Open as of Prior Year End | Q.S. Date Known Case Loss and LAE Reserves on Claims Reported or Reopened Subsequent to Prior Year End | Q.S. Date IBNR Loss and LAE Reserves | Total Q.S. Loss and LAE Reserves (Cols.7+8+9) | Prior Year-End Known Case Loss and LAE Reserves Developed (Savings)/ Deficiency (Cols.4+7 minus Col. 1) | Prior Year-End IBNR Loss and LAE Reserves Developed (Savings)/ Deficiency (Cols. 5+8+9 minus Col. 2) | Prior Year-End Total Loss and LAE Reserve Developed (Savings)/ Deficiency (Cols. 11+12) |
| 1. 2019 + Prior |0 |0 |0 |0 |0 |0 |0 |0 |0 |0 |0 |0 |0 |
| 2. 2020 |0 |0 |0 |0 |0 |0 |0 |0 |0 |0 |0 |0 |0 |
| 3. Subtotals 2020 + Prior |0 |0 |0 |0 |0 |0 |0 |0 |0 |0 |0 |0 |0 |
| 4. 2021 |0 |0 |0 |0 |0 |0 |0 |0 |0 |0 |0 |0 |0 |
| 5. Subtotals 2021 + Prior |0 |0 |0 |0 |0 |0 |0 |0 |0 |0 |0 |0 |0 |
| 6. 2022 |XXX |XXX |XXX |XXX |0 |0 |XXX |0 |0 |0 |XXX |XXX |XXX |
| 7. Totals |0 |0 |0 |0 |0 |0 |0 |0 |0 |0 |0 |0 |0 |
| 8. Prior Year-End Surplus As Regards Policyholders | 18,824 | | | | | | | | | | Col. 11, Line 7 As % of Col. 1 Line 7 | Col. 12, Line 7 As % of Col. 2 Line 7 | Col. 13, Line 7 As % of Col. 3 Line 7 |
| | | | | | | | | | | | 1. 0.0 | 2. 0.0 | 3. 0.0 |
| | | | | | | | | | | | Col. 13, Line 7 As a % of Col. 1 Line 8 | | |
| | | | | | | | | | | | 4. 0.0 | | |

STATEMENT AS OF JUNE 30, 2022 OF THE STATE AUTO INSURANCE COMPANY OF OHIO

SUPPLEMENTAL EXHIBITS AND SCHEDULES INTERROGATORIES

The following supplemental reports are required to be filed as part of your statement filing. However, in the event that your company does not transact the type of business for which the special report must be filed, your response of NO to the specific interrogatory will be accepted in lieu of filing a "NONE" report and a bar code will be printed below. If the supplement is required of your company but is not being filed for whatever reason enter SEE EXPLANATION and provide an explanation following the interrogatory questions.

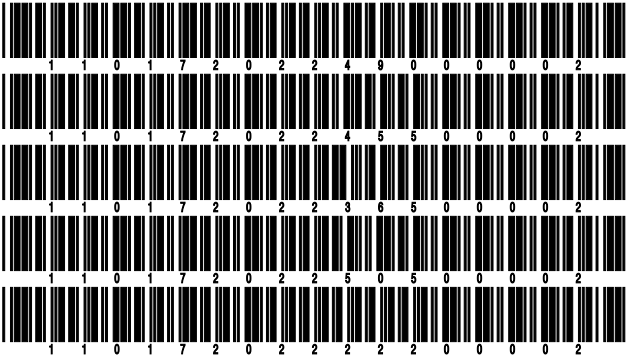
| | Response |
|--|----------|
| 1. Will the Trusteed Surplus Statement be filed with the state of domicile and the NAIC with this statement? | NO |
| 2. Will Supplement A to Schedule T (Medical Professional Liability Supplement) be filed with this statement? | NO |
| 3. Will the Medicare Part D Coverage Supplement be filed with the state of domicile and the NAIC with this statement? | NO |
| 4. Will the Director and Officer Insurance Coverage Supplement be filed with the state of domicile and the NAIC with this statement? | NO |
| AUGUST FILING | |
| 5. Will the regulator-only (non-public) Communication of Internal Control Related Matters Noted in Audit be filed with the state of domicile and electronically with the NAIC (as a regulator-only non-public document) by August 1? The response for 1st and 3rd quarters should be N/A. A NO response resulting with a bar code is only appropriate in the 2nd quarter. | NO |

Explanations:

1.
2.
3.
4.
5.

Bar Codes:

1. Trusteed Surplus Statement [Document Identifier 490]
2. Supplement A to Schedule T [Document Identifier 455]
3. Medicare Part D Coverage Supplement [Document Identifier 365]
4. Director and Officer Supplement [Document Identifier 505]
5. Communication of Internal Control Related Matters Noted in Audit (2nd Quarter Only) [Document Identifier 222]



STATEMENT AS OF JUNE 30, 2022 OF THE STATE AUTO INSURANCE COMPANY OF OHIO

OVERFLOW PAGE FOR WRITE-INS

SCHEDULE A - VERIFICATION

Real Estate

| | 1 | 2 |
|--|--------------|---------------------------------|
| | Year to Date | Prior Year Ended December 31 |
| 1. Book/adjusted carrying value, December 31 of prior year | | |
| 2. Cost of acquired: | | |
| 2.1 Actual cost at time of acquisition | | |
| 2.2 Additional investment made after acquisition | | |
| 3. Current year change in encumbrances | | |
| 4. Total gain (loss) on disposals | | |
| 5. Deduct amounts received on disposals | | |
| 6. Total foreign exchange change in book/adjusted carrying value | | |
| 7. Deduct current year's other than temporary impairment recognized | | |
| 8. Deduct current year's depreciation | | |
| 9. Book/adjusted carrying value at the end of current period (Lines 1+2+3+4-5+6-7-8) | | |
| 10. Deduct total nonadmitted amounts | | |
| 11. Statement value at end of current period (Line 9 minus Line 10) | | |

SCHEDULE B - VERIFICATION

Mortgage Loans

| | 1 | 2 |
|---|--------------|---------------------------------|
| | Year to Date | Prior Year Ended December 31 |
| 1. Book value/recorded investment excluding accrued interest, December 31 of prior year | | |
| 2. Cost of acquired: | | |
| 2.1 Actual cost at time of acquisition | | |
| 2.2 Additional investment made after acquisition | | |
| 3. Capitalized deferred interest and other | | |
| 4. Accrual of discount | | |
| 5. Unrealized valuation increase (decrease) | | |
| 6. Total gain (loss) on disposals | | |
| 7. Deduct amounts received on disposals | | |
| 8. Deduct amortization of premium and mortgage interest paid and commitment fees | | |
| 9. Total foreign exchange change in book value/recorded investment excluding accrued interest | | |
| 10. Deduct current year's other than temporary impairment recognized | | |
| 11. Book value/recorded investment excluding accrued interest at end of current period (Lines 1+2+3+4+5+6-7-8+9-10) | | |
| 12. Total valuation allowance | | |
| 13. Subtotal (Line 11 plus Line 12) | | |
| 14. Deduct total nonadmitted amounts | | |
| 15. Statement value at end of current period (Line 13 minus Line 14) | | |

SCHEDULE BA - VERIFICATION

Other Long-Term Invested Assets

| | 1 | 2 |
|--|--------------|---------------------------------|
| | Year to Date | Prior Year Ended December 31 |
| 1. Book/adjusted carrying value, December 31 of prior year | | |
| 2. Cost of acquired: | | |
| 2.1 Actual cost at time of acquisition | | |
| 2.2 Additional investment made after acquisition | | |
| 3. Capitalized deferred interest and other | | |
| 4. Accrual of discount | | |
| 5. Unrealized valuation increase (decrease) | | |
| 6. Total gain (loss) on disposals | | |
| 7. Deduct amounts received on disposals | | |
| 8. Deduct amortization of premium and depreciation | | |
| 9. Total foreign exchange change in book/adjusted carrying value | | |
| 10. Deduct current year's other than temporary impairment recognized | | |
| 11. Book/adjusted carrying value at end of current period (Lines 1+2+3+4+5+6-7-8+9-10) | | |
| 12. Deduct total nonadmitted amounts | | |
| 13. Statement value at end of current period (Line 11 minus Line 12) | | |

SCHEDULE D - VERIFICATION

Bonds and Stocks

| | 1 | 2 |
|---|--------------|---------------------------------|
| | Year to Date | Prior Year Ended December 31 |
| 1. Book/adjusted carrying value of bonds and stocks, December 31 of prior year | 18,546,136 | 18,038,021 |
| 2. Cost of bonds and stocks acquired | 15,548,346 | 3,346,161 |
| 3. Accrual of discount | 6,752 | 31,655 |
| 4. Unrealized valuation increase (decrease) | (220,822) | 102,289 |
| 5. Total gain (loss) on disposals | 351,586 | 68,169 |
| 6. Deduct consideration for bonds and stocks disposed of | 22,843,376 | 2,943,695 |
| 7. Deduct amortization of premium | 81,038 | 96,463 |
| 8. Total foreign exchange change in book/adjusted carrying value | 0 | 0 |
| 9. Deduct current year's other than temporary impairment recognized | 0 | 0 |
| 10. Total investment income recognized as a result of prepayment penalties and/or acceleration fees | 0 | 0 |
| 11. Book/adjusted carrying value at end of current period (Lines 1+2+3+4+5-6-7+8-9+10) | 11,307,584 | 18,546,136 |
| 12. Deduct total nonadmitted amounts | 0 | 0 |
| 13. Statement value at end of current period (Line 11 minus Line 12) | 11,307,584 | 18,546,136 |

STATEMENT AS OF JUNE 30, 2022 OF THE STATE AUTO INSURANCE COMPANY OF OHIO

SCHEDULE D - PART 1B

Showing the Acquisitions, Dispositions and Non-Trading Activity
During the Current Quarter for all Bonds and Preferred Stock by NAIC Designation

| NAIC Designation | 1 Book/Adjusted Carrying Value Beginning of Current Quarter | 2 Acquisitions During Current Quarter | 3 Dispositions During Current Quarter | 4 Non-Trading Activity During Current Quarter | 5 Book/Adjusted Carrying Value End of First Quarter | 6 Book/Adjusted Carrying Value End of Second Quarter | 7 Book/Adjusted Carrying Value End of Third Quarter | 8 Book/Adjusted Carrying Value December 31 Prior Year |
|-------------------------------------|---|--|--|--|---|--|---|---|
| BONDS | | | | | | | | |
| 1. NAIC 1 (a) | 12,514,397 | 14,533,906 | 15,743,250 | 2,532 | 12,514,397 | 11,307,585 | 0 | 17,540,061 |
| 2. NAIC 2 (a) | 0 | 0 | 0 | 0 | 0 | 0 | 0 | 0 |
| 3. NAIC 3 (a) | 0 | 0 | 0 | 0 | 0 | 0 | 0 | 0 |
| 4. NAIC 4 (a) | 0 | 0 | 0 | 0 | 0 | 0 | 0 | 0 |
| 5. NAIC 5 (a) | 0 | 0 | 0 | 0 | 0 | 0 | 0 | 0 |
| 6. NAIC 6 (a) | 0 | 0 | 0 | 0 | 0 | 0 | 0 | 0 |
| 7. Total Bonds | 12,514,397 | 14,533,906 | 15,743,250 | 2,532 | 12,514,397 | 11,307,585 | 0 | 17,540,061 |
| PREFERRED STOCK | | | | | | | | |
| 8. NAIC 1 | 0 | 0 | 0 | 0 | 0 | 0 | 0 | 0 |
| 9. NAIC 2 | 0 | 0 | 0 | 0 | 0 | 0 | 0 | 0 |
| 10. NAIC 3 | 0 | 0 | 0 | 0 | 0 | 0 | 0 | 0 |
| 11. NAIC 4 | 0 | 0 | 0 | 0 | 0 | 0 | 0 | 0 |
| 12. NAIC 5 | 0 | 0 | 0 | 0 | 0 | 0 | 0 | 0 |
| 13. NAIC 6 | 0 | 0 | 0 | 0 | 0 | 0 | 0 | 0 |
| 14. Total Preferred Stock | 0 | 0 | 0 | 0 | 0 | 0 | 0 | 0 |
| 15. Total Bonds and Preferred Stock | 12,514,397 | 14,533,906 | 15,743,250 | 2,532 | 12,514,397 | 11,307,585 | 0 | 17,540,061 |

(a) Book/Adjusted Carrying Value column for the end of the current reporting period includes the following amount of short-term and cash equivalent bonds by NAIC designation:
NAIC 1 \$0 ; NAIC 2 \$0 ; NAIC 3 \$0 NAIC 4 \$0 ; NAIC 5 \$0 ; NAIC 6 \$0

Schedule DA - Part 1 - Short-Term Investments

N O N E

Schedule DA - Verification - Short-Term Investments

N O N E

Schedule DB - Part A - Verification - Options, Caps, Floors, Collars, Swaps and Forwards

N O N E

Schedule DB - Part B - Verification - Futures Contracts

N O N E

Schedule DB - Part C - Section 1 - Replication (Synthetic Asset) Transactions (RSATs) Open

N O N E

Schedule DB-Part C-Section 2-Reconciliation of Replication (Synthetic Asset) Transactions Open

N O N E

Schedule DB - Verification - Book/Adjusted Carrying Value, Fair Value and Potential Exposure of
Derivatives

N O N E

Schedule E - Part 2 - Verification - Cash Equivalents

N O N E

Schedule A - Part 2 - Real Estate Acquired and Additions Made

N O N E

Schedule A - Part 3 - Real Estate Disposed

N O N E

Schedule B - Part 2 - Mortgage Loans Acquired and Additions Made

N O N E

Schedule B - Part 3 - Mortgage Loans Disposed, Transferred or Repaid

N O N E

Schedule BA - Part 2 - Other Long-Term Invested Assets Acquired and Additions Made

N O N E

Schedule BA - Part 3 - Other Long-Term Invested Assets Disposed, Transferred or Repaid

N O N E

STATEMENT AS OF JUNE 30, 2022 OF THE STATE AUTO INSURANCE COMPANY OF OHIO

SCHEDULE D - PART 3

Show All Long-Term Bonds and Stock Acquired During the Current Quarter

| 1 | 2 | 3 | 4 | 5 | 6 | 7 | 8 | 9 | 10 |
|--|------------------------|---------|-------------------|----------------|---------------------------|-------------|------------|---|---|
| CUSIP Identification | Description | Foreign | Date Acquired | Name of Vendor | Number of Shares of Stock | Actual Cost | Par Value | Paid for Accrued Interest and Dividends | NAIC Designation, NAIC Designation Modifier and SVO Administrative Symbol |
| 38380U-QG-1 | GNMA_18-8A | | .04/25/2022 | DIRECT | | 589,214 | 610,628 | 1,119 | 1.A FE |
| 83162C-SL-8 | SBAP_09-20D | | .04/25/2022 | DIRECT | | 564,654 | 566,111 | 1,627 | 1.A FE |
| 0109999999. Subtotal - Bonds - U.S. Governments | | | | | | 1,153,868 | 1,176,739 | 2,746 | XXX |
| 3136AR-3C-0 | FNMA_16-28A | | .04/25/2022 | DIRECT | | 992,560 | 1,013,204 | 2,026 | 1.A FE |
| 3137FU-GU-2 | FHLMC_4994V | | .04/25/2022 | DIRECT | | 357,982 | 442,511 | 443 | 1.A FE |
| 3140H5-AW-1 | FNMA_30YR | | .04/25/2022 | DIRECT | | 2,706,544 | 2,697,585 | 7,194 | 1.A FE |
| 0909999999. Subtotal - Bonds - U.S. Special Revenues | | | | | | 4,057,086 | 4,153,300 | 9,663 | XXX |
| 27409L-AA-1 | EAST OHIO GAS CO | | .04/25/2022 | DIRECT | | 9,322,952 | 10,000,000 | 46,944 | 1.F FE |
| 1109999999. Subtotal - Bonds - Industrial and Miscellaneous (Unaffiliated) | | | | | | 9,322,952 | 10,000,000 | 46,944 | XXX |
| 2509999997. Total - Bonds - Part 3 | | | | | | 14,533,906 | 15,330,039 | 59,353 | XXX |
| 2509999998. Total - Bonds - Part 5 | | | | | | XXX | XXX | XXX | XXX |
| 2509999999. Total - Bonds | | | | | | 14,533,906 | 15,330,039 | 59,353 | XXX |
| 4509999997. Total - Preferred Stocks - Part 3 | | | | | | 0 | XXX | 0 | XXX |
| 4509999998. Total - Preferred Stocks - Part 5 | | | | | | XXX | XXX | XXX | XXX |
| 4509999999. Total - Preferred Stocks | | | | | | 0 | XXX | 0 | XXX |
| 5989999997. Total - Common Stocks - Part 3 | | | | | | 0 | XXX | 0 | XXX |
| 5989999998. Total - Common Stocks - Part 5 | | | | | | XXX | XXX | XXX | XXX |
| 5989999999. Total - Common Stocks | | | | | | 0 | XXX | 0 | XXX |
| 5999999999. Total - Preferred and Common Stocks | | | | | | 0 | XXX | 0 | XXX |
| 6009999999 - Totals | | | | | | 14,533,906 | XXX | 59,353 | XXX |

STATEMENT AS OF JUNE 30, 2022 OF THE STATE AUTO INSURANCE COMPANY OF OHIO

SCHEDULE D - PART 4

Show All Long-Term Bonds and Stock Sold, Redeemed or Otherwise Disposed of During the Current Quarter

| 1 | 2 | 3 | 4 | 5 | 6 | 7 | 8 | 9 | 10 | Change In Book/Adjusted Carrying Value | | | | | 16 | 17 | 18 | 19 | 20 | 21 | 22 |
|--|--------------------------------|--------------|------------------|----------------------|---------------------------------|--------------------|------------|----------------|--|--|--|---|---|---|---|--|---|-------------------------------------|---|--|--|
| | | | | | | | | | | 11 | 12 | 13 | 14 | 15 | | | | | | | |
| CUSIP Identification | Description | For- eign | Disposal Date | Name of Purchaser | Number of Shares of Stock | Consid- eration | Par Value | Actual Cost | Prior Year Book/ Adjusted Carrying Value | Unrealized Valuation Increase/ (Decrease) | Current Year's (Amor- tization)/ Accretion | Current Year's Other Than Temporary Impairment Recogn- ized | Total Change in Book/ Adjusted Carrying Value (11 + 12 - 13) | Total Foreign Exchange Change in Book /Adjusted Carrying Value | Book/ Adjusted Carrying Value at Disposal Date | Foreign Exchange Gain (Loss) on Disposal | Realized Gain (Loss) on Disposal | Total Gain (Loss) on Disposal | Bond Interest/ Stock Dividends Received During Year | Stated Con- tractual Maturity Date | NAIC Desig- nation, NAIC Desig- nation Modifier and SVO Admini- strative Symbol |
| 38380U-QG-1 | GNMA 18-8A | | 06/01/2022 | MBS PAYMENT | | 48,691 | 48,691 | 46,983 | 0 | 0 | (53) | 0 | (53) | 0 | 48,691 | 0 | 0 | 0 | 138 | 11/20/2047 | 1.A FE |
| 912828-2R-0 | TREASURY NOTE | | 04/25/2022 | DIRECT | | 578,602 | 600,000 | 673,875 | 657,912 | 0 | (3,181) | 0 | (3,181) | 0 | 654,732 | 0 | (76,130) | (76,130) | 2,573 | 08/15/2027 | 1.A FE |
| 0109999999. Subtotal - Bonds - U.S. Governments | | | | | | 627,293 | 648,691 | 720,858 | 657,912 | 0 | (3,234) | 0 | (3,234) | 0 | 703,423 | 0 | (76,130) | (76,130) | 2,711 | XXX | XXX |
| 57582R-D6-0 | MASSACHUSETTS ST | | 04/25/2022 | DIRECT | | 803,363 | 720,000 | 929,822 | 903,597 | 0 | (6,299) | 0 | (6,299) | 0 | 897,297 | 0 | (93,935) | (93,935) | 11,400 | 07/01/2048 | 1.B FE |
| 0509999999. Subtotal - Bonds - U.S. States, Territories and Possessions | | | | | | 803,363 | 720,000 | 929,822 | 903,597 | 0 | (6,299) | 0 | (6,299) | 0 | 897,297 | 0 | (93,935) | (93,935) | 11,400 | XXX | XXX |
| 270618-DS-7 | EAST BATON ROUGE LA SEW COMM | | 04/25/2022 | DIRECT | | 886,657 | 880,000 | 892,258 | 883,121 | 0 | (490) | 0 | (490) | 0 | 882,631 | 0 | 4,026 | 4,026 | 6,776 | 02/01/2024 | 1.D FE |
| 355137-DP-2 | FRANKLIN TWP IND MULTI-SCH BLD | | 04/25/2022 | DIRECT | | 71,562 | 70,000 | 79,678 | 71,132 | 0 | (344) | 0 | (344) | 0 | 70,788 | 0 | 773 | 773 | 972 | 01/15/2035 | 1.A FE |
| 355137-DQ-0 | FRANKLIN TWP IND MULTI-SCH BLD | | 04/25/2022 | DIRECT | | 107,107 | 105,000 | 119,517 | 106,698 | 0 | (509) | 0 | (509) | 0 | 106,190 | 0 | 917 | 917 | 1,458 | 01/15/2035 | 1.D FE |
| 0709999999. Subtotal - Bonds - U.S. Political Subdivisions of States, Territories and Possessions | | | | | | 1,065,326 | 1,055,000 | 1,091,453 | 1,060,951 | 0 | (1,343) | 0 | (1,343) | 0 | 1,059,609 | 0 | 5,716 | 5,716 | 9,206 | XXX | XXX |
| 3136AR-3C-0 | FNMA 16-28A | | 04/25/2022 | DIRECT | | 992,560 | 1,013,204 | 992,560 | 0 | 0 | 0 | 0 | 0 | 0 | 992,560 | 0 | 0 | 0 | 2,026 | 05/25/2045 | 1.A FE |
| 3137FU-GU-2 | FHLMC 4994V | | 06/01/2022 | MBS PAYMENT | | 60,864 | 60,864 | 49,238 | 0 | 0 | 170 | 0 | 170 | 0 | 60,864 | 0 | 0 | 0 | 145 | 07/25/2050 | 1.A FE |
| 3140H5-AW-1 | FNMA 30YR | | 04/25/2022 | DIRECT | | 2,706,544 | 2,697,585 | 2,706,544 | 0 | 0 | 0 | 0 | 0 | 0 | 2,706,544 | 0 | 0 | 0 | 7,194 | 01/01/2048 | 1.A FE |
| 0909999999. Subtotal - Bonds - U.S. Special Revenues | | | | | | 3,759,968 | 3,771,653 | 3,748,342 | 0 | 0 | 170 | 0 | 170 | 0 | 3,759,968 | 0 | 0 | 0 | 9,365 | XXX | XXX |
| 27409L-AA-1 | EAST OHIO GAS CO | | 04/25/2022 | DIRECT | | 9,322,952 | 10,000,000 | 9,322,952 | 0 | 0 | 0 | 0 | 0 | 0 | 9,322,952 | 0 | 0 | 0 | 46,944 | 06/15/2025 | 1.F FE |
| 1109999999. Subtotal - Bonds - Industrial and Miscellaneous (Unaffiliated) | | | | | | 9,322,952 | 10,000,000 | 9,322,952 | 0 | 0 | 0 | 0 | 0 | 0 | 9,322,952 | 0 | 0 | 0 | 46,944 | XXX | XXX |
| 2509999997. Total - Bonds - Part 4 | | | | | | 15,578,902 | 16,195,344 | 15,813,427 | 2,622,460 | 0 | (10,706) | 0 | (10,706) | 0 | 15,743,249 | 0 | (164,349) | (164,349) | 79,626 | XXX | XXX |
| 2509999998. Total - Bonds - Part 5 | | | | | | XXX | XXX | XXX | XXX | XXX | XXX | XXX | XXX | XXX | XXX | XXX | XXX | XXX | XXX | XXX | XXX |
| 2509999999. Total - Bonds | | | | | | 15,578,902 | 16,195,344 | 15,813,427 | 2,622,460 | 0 | (10,706) | 0 | (10,706) | 0 | 15,743,249 | 0 | (164,349) | (164,349) | 79,626 | XXX | XXX |
| 4509999997. Total - Preferred Stocks - Part 4 | | | | | | 0 | XXX | 0 | 0 | 0 | 0 | 0 | 0 | 0 | 0 | 0 | 0 | 0 | 0 | XXX | XXX |
| 4509999998. Total - Preferred Stocks - Part 5 | | | | | | XXX | XXX | XXX | XXX | XXX | XXX | XXX | XXX | XXX | XXX | XXX | XXX | XXX | XXX | XXX | XXX |
| 4509999999. Total - Preferred Stocks | | | | | | 0 | XXX | 0 | 0 | 0 | 0 | 0 | 0 | 0 | 0 | 0 | 0 | 0 | 0 | XXX | XXX |
| 78462F-10-3 | SPDR S&P ETF TRUST | | 04/25/2022 | DIRECT | 2,380,000 | 1,013,975 | | 1,014,440 | 0 | 0 | 0 | 0 | 0 | 0 | 1,014,440 | 0 | (465) | (465) | 3,251 | | |
| 5019999999. Subtotal - Common Stocks - Industrial and Miscellaneous (Unaffiliated) Publicly Traded | | | | | | 1,013,975 | XXX | 1,014,440 | 0 | 0 | 0 | 0 | 0 | 0 | 1,014,440 | 0 | (465) | (465) | 3,251 | XXX | XXX |
| 5989999997. Total - Common Stocks - Part 4 | | | | | | 1,013,975 | XXX | 1,014,440 | 0 | 0 | 0 | 0 | 0 | 0 | 1,014,440 | 0 | (465) | (465) | 3,251 | XXX | XXX |
| 5989999998. Total - Common Stocks - Part 5 | | | | | | XXX | XXX | XXX | XXX | XXX | XXX | XXX | XXX | XXX | XXX | XXX | XXX | XXX | XXX | XXX | XXX |
| 5989999999. Total - Common Stocks | | | | | | 1,013,975 | XXX | 1,014,440 | 0 | 0 | 0 | 0 | 0 | 0 | 1,014,440 | 0 | (465) | (465) | 3,251 | XXX | XXX |
| 5999999999. Total - Preferred and Common Stocks | | | | | | 1,013,975 | XXX | 1,014,440 | 0 | 0 | 0 | 0 | 0 | 0 | 1,014,440 | 0 | (465) | (465) | 3,251 | XXX | XXX |
| 6009999999 - Totals | | | | | | 16,592,877 | XXX | 16,827,867 | 2,622,460 | 0 | (10,706) | 0 | (10,706) | 0 | 16,757,689 | 0 | (164,814) | (164,814) | 82,877 | XXX | XXX |

Schedule DB - Part A - Section 1 - Options, Caps, Floors, Collars, Swaps and Forwards Open
N O N E

Schedule DB - Part B - Section 1 - Futures Contracts Open
N O N E

Schedule DB - Part B - Section 1B - Brokers with whom cash deposits have been made
N O N E

Schedule DB - Part D - Section 1 - Counterparty Exposure for Derivative Instruments Open
N O N E

Schedule DB - Part D-Section 2 - Collateral for Derivative Instruments Open - Pledged By
N O N E

Schedule DB - Part D-Section 2 - Collateral for Derivative Instruments Open - Pledged To
N O N E

Schedule DB - Part E - Derivatives Hedging Variable Annuity Guarantees
N O N E

Schedule DL - Part 1 - Reinvested Collateral Assets Owned
N O N E

Schedule DL - Part 2 - Reinvested Collateral Assets Owned
N O N E

SCHEDULE E - PART 1 - CASH

[illegible]

STATEMENT AS OF JUNE 30, 2022 OF THE STATE AUTO INSURANCE COMPANY OF OHIO

SCHEDULE E - PART 2 - CASH EQUIVALENTS

Show Investments Owned End of Current Quarter

| 1 | 2 | 3 | 4 | 5 | 6 | 7 | 8 | 9 |
|-------------------------------------|-------------|------|---------------|------------------|---------------|---------------------------------|---------------------------------------|--------------------------------|
| CUSIP | Description | Code | Date Acquired | Rate of Interest | Maturity Date | Book/Adjusted Carrying Value | Amount of Interest Due and Accrued | Amount Received During Year |
| NONE | | | | | | | | |
| 8609999999 - Total Cash Equivalents | | | | | | | | |