



PROPERTY AND CASUALTY COMPANIES - ASSOCIATION EDITION

QUARTERLY STATEMENT
AS OF MARCH 31, 2022
OF THE CONDITION AND AFFAIRS OF THE
MICO INSURANCE COMPANY

NAIC Group Code 0291 0291 NAIC Company Code 40932 Employer's ID Number 31-1022150
(Current) (Prior)
Organized under the Laws of Ohio, State of Domicile or Port of Entry OH
Country of Domicile United States of America
Incorporated/Organized 11/30/1981 Commenced Business 12/03/1981
Statutory Home Office 471 EAST BROAD STREET COLUMBUS, OH, US 43215
(Street and Number) (City or Town, State, Country and Zip Code)
Main Administrative Office 471 EAST BROAD STREET
(Street and Number)
COLUMBUS, OH, US 43215 614-225-8211
(City or Town, State, Country and Zip Code) (Area Code) (Telephone Number)
Mail Address 471 EAST BROAD STREET COLUMBUS, OH, US 43215
(Street and Number or P.O. Box) (City or Town, State, Country and Zip Code)
Primary Location of Books and Records 471 EAST BROAD STREET
(Street and Number)
COLUMBUS, OH, US 43215 614-225-8211
(City or Town, State, Country and Zip Code) (Area Code) (Telephone Number)
Internet Website Address ENCOVA.COM
Statutory Statement Contact AMY E. KUHLMAN 614-225-8285
(Name) (Area Code) (Telephone Number)
ACCOUNTING@ENCOVA.COM 614-225-8330
(E-mail Address) (FAX Number)

OFFICERS

PRESIDENT & CHIEF EXECUTIVE OFFICER THOMAS JOSEPH OBROKTA JR. TREASURER JAMES CHRISTOPHER HOWAT
SECRETARY MARCHELLE ELAINE MOORE

OTHER

GREGORY ARTHUR BURTON, EXECUTIVE CHAIR

DIRECTORS OR TRUSTEES

JEFFREY LEIGH BENINTENDI GRADY BRENDAN CAMPBELL JAMES CHRISTOPHER HOWAT
THOMAS JOSEPH OBROKTA JR. MATTHEW CARL WILCOX

State of OH SS:
County of FRANKLIN

The officers of this reporting entity being duly sworn, each depose and say that they are the described officers of said reporting entity, and that on the reporting period stated above, all of the herein described assets were the absolute property of the said reporting entity, free and clear from any liens or claims thereon, except as herein stated, and that this statement, together with related exhibits, schedules and explanations therein contained, annexed or referred to, is a full and true statement of all the assets and liabilities and of the condition and affairs of the said reporting entity as of the reporting period stated above, and of its income and deductions therefrom for the period ended, and have been completed in accordance with the NAIC Annual Statement Instructions and Accounting Practices and Procedures manual except to the extent that: (1) state law may differ; or, (2) that state rules or regulations require differences in reporting not related to accounting practices and procedures, according to the best of their information, knowledge and belief, respectively. Furthermore, the scope of this attestation by the described officers also includes the related corresponding electronic filing with the NAIC, when required, that is an exact copy (except for formatting differences due to electronic filing) of the enclosed statement. The electronic filing may be requested by various regulators in lieu of or in addition to the enclosed statement.

Thomas Joseph Obrokta Jr. Marchelle Elaine Moore James Christopher Howat
THOMAS JOSEPH OBROKTA JR. MARCHELLE ELAINE MOORE JAMES CHRISTOPHER HOWAT
PRESIDENT & CHIEF EXECUTIVE OFFICER SECRETARY TREASURER

Subscribed and sworn to before me this
9th day of May 2022
Deborah Dailey

- a. Is this an original filing? Yes [X] No []
b. If no,
1. State the amendment number
2. Date filed
3. Number of pages attached



Deborah Dailey
Notary Public, State of Ohio
My Commission Expires 11-26-22

STATEMENT AS OF MARCH 31, 2022 OF THE MICO INSURANCE COMPANY

ASSETS

	Current Statement Date			4 December 31 Prior Year Net Admitted Assets
	1 Assets	2 Nonadmitted Assets	3 Net Admitted Assets (Cols. 1 - 2)	
1. Bonds	10,323,955		10,323,955	9,192,389
2. Stocks:				
2.1 Preferred stocks			0	0
2.2 Common stocks	1,792,395		1,792,395	1,876,631
3. Mortgage loans on real estate:				
3.1 First liens			0	0
3.2 Other than first liens.....			0	0
4. Real estate:				
4.1 Properties occupied by the company (less \$ encumbrances)			0	0
4.2 Properties held for the production of income (less \$ encumbrances)			0	0
4.3 Properties held for sale (less \$ encumbrances)			0	0
5. Cash (\$(657)), cash equivalents (\$21,363,957) and short-term investments (\$)	21,363,300		21,363,300	22,471,867
6. Contract loans (including \$ premium notes)			0	0
7. Derivatives			0	0
8. Other invested assets	0		0	0
9. Receivables for securities	1,064		1,064	0
10. Securities lending reinvested collateral assets			0	0
11. Aggregate write-ins for invested assets	0	0	0	0
12. Subtotals, cash and invested assets (Lines 1 to 11)	33,480,714	0	33,480,714	33,540,887
13. Title plants less \$ charged off (for Title insurers only)			0	0
14. Investment income due and accrued	45,597		45,597	54,869
15. Premiums and considerations:				
15.1 Uncollected premiums and agents' balances in the course of collection	5,327,955	3,509	5,324,446	486,214
15.2 Deferred premiums, agents' balances and installments booked but deferred and not yet due (including \$141,269 earned but unbilled premiums)	3,912,054		3,912,054	2,926,345
15.3 Accrued retrospective premiums (\$) and contracts subject to redetermination (\$)			0	0
16. Reinsurance:				
16.1 Amounts recoverable from reinsurers	2,260,099		2,260,099	471,707
16.2 Funds held by or deposited with reinsured companies	44,784,873		44,784,873	0
16.3 Other amounts receivable under reinsurance contracts			0	0
17. Amounts receivable relating to uninsured plans			0	0
18.1 Current federal and foreign income tax recoverable and interest thereon			0	0
18.2 Net deferred tax asset	274,936		274,936	0
19. Guaranty funds receivable or on deposit			0	0
20. Electronic data processing equipment and software			0	0
21. Furniture and equipment, including health care delivery assets (\$)			0	0
22. Net adjustment in assets and liabilities due to foreign exchange rates			0	0
23. Receivables from parent, subsidiaries and affiliates	638,678		638,678	767,993
24. Health care (\$) and other amounts receivable			0	0
25. Aggregate write-ins for other than invested assets	161,065	0	161,065	104,058
26. Total assets excluding Separate Accounts, Segregated Accounts and Protected Cell Accounts (Lines 12 to 25)	90,885,971	3,509	90,882,462	38,352,073
27. From Separate Accounts, Segregated Accounts and Protected Cell Accounts			0	0
28. Total (Lines 26 and 27)	90,885,971	3,509	90,882,462	38,352,073
DETAILS OF WRITE-INS				
1101.				
1102.				
1103.				
1198. Summary of remaining write-ins for Line 11 from overflow page	0	0	0	0
1199. Totals (Lines 1101 through 1103 plus 1198)(Line 11 above)	0	0	0	0
2501. Fees Receivable	108,570		108,570	70,624
2502. Surcharges Receivable	52,495		52,495	33,434
2503.				
2598. Summary of remaining write-ins for Line 25 from overflow page	0	0	0	0
2599. Totals (Lines 2501 through 2503 plus 2598)(Line 25 above)	161,065	0	161,065	104,058

STATEMENT AS OF MARCH 31, 2022 OF THE MICO INSURANCE COMPANY

LIABILITIES, SURPLUS AND OTHER FUNDS

	1 Current Statement Date	2 December 31, Prior Year
1. Losses (current accident year \$ 2,591,484)	28,556,322	
2. Reinsurance payable on paid losses and loss adjustment expenses	3,018,644	0
3. Loss adjustment expenses	4,950,575	
4. Commissions payable, contingent commissions and other similar charges	555,263	0
5. Other expenses (excluding taxes, licenses and fees)	1,488,162	15,772
6. Taxes, licenses and fees (excluding federal and foreign income taxes)	117,929	0
7.1 Current federal and foreign income taxes (including \$ on realized capital gains (losses))	550,102	133,127
7.2 Net deferred tax liability		125,477
8. Borrowed money \$ 0 and interest thereon \$		
9. Unearned premiums (after deducting unearned premiums for ceded reinsurance of \$ 8,076,075 and including warranty reserves of \$ and accrued accident and health experience rating refunds including \$ 0 for medical loss ratio rebate per the Public Health Service Act)	8,816,348	
10. Advance premium		
11. Dividends declared and unpaid:		
11.1 Stockholders		
11.2 Policyholders		
12. Ceded reinsurance premiums payable (net of ceding commissions)	5,093,293	1,284,415
13. Funds held by company under reinsurance treaties	4,263,674	3,442,037
14. Amounts withheld or retained by company for account of others		
15. Remittances and items not allocated	312,361	228,371
16. Provision for reinsurance (including \$ certified)		0
17. Net adjustments in assets and liabilities due to foreign exchange rates		
18. Drafts outstanding		
19. Payable to parent, subsidiaries and affiliates		
20. Derivatives	0	0
21. Payable for securities		10,976
22. Payable for securities lending		
23. Liability for amounts held under uninsured plans		
24. Capital notes \$ and interest thereon \$		
25. Aggregate write-ins for liabilities	86,199	59,920
26. Total liabilities excluding protected cell liabilities (Lines 1 through 25)	57,808,873	5,300,094
27. Protected cell liabilities		
28. Total liabilities (Lines 26 and 27)	57,808,873	5,300,094
29. Aggregate write-ins for special surplus funds	0	0
30. Common capital stock	2,252,000	2,252,000
31. Preferred capital stock		
32. Aggregate write-ins for other than special surplus funds	0	0
33. Surplus notes		
34. Gross paid in and contributed surplus	21,126,000	21,126,000
35. Unassigned funds (surplus)	9,695,591	9,673,979
36. Less treasury stock, at cost:		
36.1 shares common (value included in Line 30 \$)		
36.2 shares preferred (value included in Line 31 \$)		
37. Surplus as regards policyholders (Lines 29 to 35, less 36)	33,073,591	33,051,979
38. Totals (Page 2, Line 28, Col. 3)	90,882,464	38,352,073
DETAILS OF WRITE-INS		
2501. Misc. liability	86,199	59,920
2502.		
2503.		
2598. Summary of remaining write-ins for Line 25 from overflow page	0	0
2599. Totals (Lines 2501 through 2503 plus 2598)(Line 25 above)	86,199	59,920
2901.		
2902.		
2903.		
2998. Summary of remaining write-ins for Line 29 from overflow page	0	0
2999. Totals (Lines 2901 through 2903 plus 2998)(Line 29 above)	0	0
3201.		
3202.		
3203.		
3298. Summary of remaining write-ins for Line 32 from overflow page	0	0
3299. Totals (Lines 3201 through 3203 plus 3298)(Line 32 above)	0	0

STATEMENT OF INCOME

	1	2	3
	Current Year to Date	Prior Year to Date	Prior Year Ended December 31
UNDERWRITING INCOME			
1. Premiums earned:			
1.1 Direct (written \$ 5,109,128)	3,217,316	293,412	5,334,409
1.2 Assumed (written \$ 4,809,229)	4,650,862		0
1.3 Ceded (written \$ 5,109,128)	3,217,314	293,412	5,334,409
1.4 Net (written \$ 4,809,229)	4,650,864	0	0
DEDUCTIONS:			
2. Losses incurred (current accident year \$ 141,493):			
2.1 Direct	2,589,432	207,176	3,508,564
2.2 Assumed	2,322,923		0
2.3 Ceded	2,589,433	207,176	3,508,564
2.4 Net	2,322,922	0	0
3. Loss adjustment expenses incurred	785,637		
4. Other underwriting expenses incurred	1,466,278		
5. Aggregate write-ins for underwriting deductions	0	0	0
6. Total underwriting deductions (Lines 2 through 5)	4,574,837	0	0
7. Net income of protected cells			
8. Net underwriting gain or (loss) (Line 1 minus Line 6 + Line 7)	76,027	0	0
INVESTMENT INCOME			
9. Net investment income earned	53,187	46,820	260,474
10. Net realized capital gains (losses) less capital gains tax of \$ 50	489	98,346	647,757
11. Net investment gain (loss) (Lines 9 + 10)	53,676	145,166	908,231
OTHER INCOME			
12. Net gain or (loss) from agents' or premium balances charged off (amount recovered \$ amount charged off \$ 1,811)	(1,811)	0	0
13. Finance and service charges not included in premiums	8,517	5,436	
14. Aggregate write-ins for miscellaneous income	0	0	0
15. Total other income (Lines 12 through 14)	6,706	5,436	0
16. Net income before dividends to policyholders, after capital gains tax and before all other federal and foreign income taxes (Lines 8 + 11 + 15)	136,409	150,602	908,231
17. Dividends to policyholders	14,705		
18. Net income, after dividends to policyholders, after capital gains tax and before all other federal and foreign income taxes (Line 16 minus Line 17)	121,704	150,602	908,231
19. Federal and foreign income taxes incurred	416,925	(11,499)	(20,738)
20. Net income (Line 18 minus Line 19)(to Line 22)	(295,221)	162,101	928,969
CAPITAL AND SURPLUS ACCOUNT			
21. Surplus as regards policyholders, December 31 prior year	33,051,979	12,482,788	12,482,788
22. Net income (from Line 20)	(295,221)	162,101	928,969
23. Net transfers (to) from Protected Cell accounts			
24. Change in net unrealized capital gains (losses) less capital gains tax of \$ 23,381	(60,195)	127,675	(292,933)
25. Change in net unrealized foreign exchange capital gain (loss)			
26. Change in net deferred income tax	377,031	(67,238)	(66,845)
27. Change in nonadmitted assets		0	0
28. Change in provision for reinsurance			0
29. Change in surplus notes			
30. Surplus (contributed to) withdrawn from protected cells			
31. Cumulative effect of changes in accounting principles			
32. Capital changes:			
32.1 Paid in			
32.2 Transferred from surplus (Stock Dividend)			
32.3 Transferred to surplus			
33. Surplus adjustments:			
33.1 Paid in	0	0	20,000,000
33.2 Transferred to capital (Stock Dividend)			
33.3 Transferred from capital			
34. Net remittances from or (to) Home Office			
35. Dividends to stockholders			
36. Change in treasury stock			0
37. Aggregate write-ins for gains and losses in surplus	0	0	0
38. Change in surplus as regards policyholders (Lines 22 through 37)	21,615	222,538	20,569,191
39. Surplus as regards policyholders, as of statement date (Lines 21 plus 38)	33,073,594	12,705,326	33,051,979
DETAILS OF WRITE-INS			
0501.			
0502.			
0503.			
0598. Summary of remaining write-ins for Line 5 from overflow page	0	0	0
0599. Totals (Lines 0501 through 0503 plus 0598)(Line 5 above)	0	0	0
1401.			
1402.			
1403.			
1498. Summary of remaining write-ins for Line 14 from overflow page	0	0	0
1499. Totals (Lines 1401 through 1403 plus 1498)(Line 14 above)	0	0	0
3701.			
3702.			
3703.			
3798. Summary of remaining write-ins for Line 37 from overflow page	0	0	0
3799. Totals (Lines 3701 through 3703 plus 3798)(Line 37 above)	0	0	0

STATEMENT AS OF MARCH 31, 2022 OF THE MICO INSURANCE COMPANY

CASH FLOW

	1 Current Year To Date	2 Prior Year To Date	3 Prior Year Ended December 31
Cash from Operations			
1. Premiums collected net of reinsurance	4,729,927	676,913	340,859
2. Net investment income	46,545	61,878	281,395
3. Miscellaneous income	6,706	5,436	0
4. Total (Lines 1 to 3)	4,783,179	744,227	622,254
5. Benefit and loss related payments	2,411,467	965,476	31,053
6. Net transfers to Separate Accounts, Segregated Accounts and Protected Cell Accounts	0	0	0
7. Commissions, expenses paid and aggregate write-ins for deductions	2,797,844	17,234	0
8. Dividends paid to policyholders	14,705	0	0
9. Federal and foreign income taxes paid (recovered) net of \$ tax on capital gains (losses)	1	0	43,098
10. Total (Lines 5 through 9)	5,224,017	982,710	74,151
11. Net cash from operations (Line 4 minus Line 10)	(440,838)	(238,483)	548,103
Cash from Investments			
12. Proceeds from investments sold, matured or repaid:			
12.1 Bonds	495,383	1,504,090	2,486,331
12.2 Stocks	1,199	19,315	1,075,640
12.3 Mortgage loans	0	0	0
12.4 Real estate	0	0	0
12.5 Other invested assets	0	146,460	451,708
12.6 Net gains or (losses) on cash, cash equivalents and short-term investments	0	0	0
12.7 Miscellaneous proceeds	0	99,953	10,976
12.8 Total investment proceeds (Lines 12.1 to 12.7)	496,582	1,769,818	4,024,654
13. Cost of investments acquired (long-term only):			
13.1 Bonds	1,626,808	1,454,968	3,043,875
13.2 Stocks	0	26,025	105,541
13.3 Mortgage loans	0	0	0
13.4 Real estate	0	0	0
13.5 Other invested assets	0	3,969	3,969
13.6 Miscellaneous applications	12,040	0	0
13.7 Total investments acquired (Lines 13.1 to 13.6)	1,638,847	1,484,962	3,153,385
14. Net increase (or decrease) in contract loans and premium notes	0	0	0
15. Net cash from investments (Line 12.8 minus Line 13.7 and Line 14)	(1,142,265)	284,856	871,269
Cash from Financing and Miscellaneous Sources			
16. Cash provided (applied):			
16.1 Surplus notes, capital notes	0	0	0
16.2 Capital and paid in surplus, less treasury stock	0	0	20,000,000
16.3 Borrowed funds	0	0	0
16.4 Net deposits on deposit-type contracts and other insurance liabilities	0	0	0
16.5 Dividends to stockholders	0	0	0
16.6 Other cash provided (applied)	474,537	354,221	96,373
17. Net cash from financing and miscellaneous sources (Line 16.1 through Line 16.4 minus Line 16.5 plus Line 16.6)	474,537	354,221	20,096,373
RECONCILIATION OF CASH, CASH EQUIVALENTS AND SHORT-TERM INVESTMENTS			
18. Net change in cash, cash equivalents and short-term investments (Line 11, plus Lines 15 and 17)	(1,108,566)	400,594	21,515,745
19. Cash, cash equivalents and short-term investments:			
19.1 Beginning of year	22,471,866	956,120	956,121
19.2 End of period (Line 18 plus Line 19.1)	21,363,300	1,356,714	22,471,866

Note: Supplemental disclosures of cash flow information for non-cash transactions:

20.0001. Non-Cash Exchanges	2,973	1,862	22,978
-----------------------------------	-------	-------	--------

NOTES TO FINANCIAL STATEMENTS

NOTE 1 Summary of Significant Accounting Policies and Going Concern

A. Accounting Practices
This statement has been completed in accordance with the accounting practices and procedures prescribed or permitted by the National Association of Insurance Commissioners (NAIC) and the State of Ohio. A reconciliation of the company's net income and capital and surplus between NAIC SAP and practices prescribed and permitted by the State of Ohio is shown below.

	SSAP #	F/S Page	F/S Line #	2022	2021
NET INCOME					
(1) State basis (Page 4, Line 20, Columns 1 & 3)	XXX	XXX	XXX	\$ (295,221)	\$ 928,969
(2) State Prescribed Practices that are an increase/ (decrease) from NAIC SAP:					
(3) State Permitted Practices that are an increase/(decrease) from NAIC SAP:					
(4) NAIC SAP (1-2-3=4)	XXX	XXX	XXX	\$ (295,221)	\$ 928,969
SURPLUS					
(5) State basis (Page 3, Line 37, Columns 1 & 2)	XXX	XXX	XXX	\$ 33,073,591	\$ 33,051,979
(6) State Prescribed Practices that are an increase/(decrease) from NAIC SAP:					
(7) State Permitted Practices that are an increase/(decrease) from NAIC SAP:					
(8) NAIC SAP (5-6-7=8)	XXX	XXX	XXX	\$ 33,073,591	\$ 33,051,979

C. Accounting Policy
(2) Basis for Bonds and Amortization Schedule
Bonds not back by other loans are stated at amortized cost using the scientific amortization method.

(6) Basis for Loan-Backed Securities and Adjustment Methodology
Loan-backed securities are stated in accordance with the guidance provided in SSAP No. 43R: Loan-backed and Structured Securities. The restrospective adjustment method is used to value these securities

D. Going Concern
Management has concluded that there is no substantial doubt about the Company's ability to continue as a going concern.

NOTE 2 Accounting Changes and Corrections of Errors
Not Applicable

NOTE 3 Business Combinations and Goodwill
No significant changes

NOTE 4 Discontinued Operations
Not Applicable

NOTE 5 Investments

A. Mortgage Loans, including Mezzanine Real Estate Loans
Not Applicable

B. Debt Restructuring
Not Applicable

C. Reverse Mortgages
Not Applicable

D. Loan-Backed Securities
(1) Prepayment assumptions for mortgage-backed/loan-backed and structured securities were obtained from Broker dealer survey values and internal estimates.

(2)-(3) Not Applicable

(4) At December 31, 2021, the estimated fair value and gross unrealized losses for loan-backed securities, aggregated 'by length of time the securities have been in a continuous loss position were as follows:

a) The aggregate amount of unrealized losses:		
1. Less than 12 Months	\$	81,847
2. 12 Months or Longer	\$	50,209
b) The aggregate related fair value of securities with unrealized losses:		
1. Less than 12 Months	\$	2,318,315
2. 12 Months or Longer	\$	620,603

(5) The company performed an analysis of loan-backed securities and determined that exposure to credit risk was not a factor and did not warrant any other-than-temporary impairments.

E. Dollar Repurchase Agreements and/or Securities Lending Transactions
Not Applicable

F. Repurchase Agreements Transactions Accounted for as Secured Borrowing
Not Applicable

G. Reverse Repurchase Agreements Transactions Accounted for as Secured Borrowing
Not Applicable

H. Repurchase Agreements Transactions Accounted for as a Sale
Not Applicable

I. Reverse Repurchase Agreements Transactions Accounted for as a Sale
Not Applicable

NOTES TO FINANCIAL STATEMENTS

- J. Real Estate
Not Applicable
- K. Low Income Housing tax Credits (LIHTC)
Not Applicable
- L. Restricted Assets
No significant changes
- M. Working Capital Finance Investments
Not Applicable
- N. Offsetting and Netting of Assets and Liabilities
Not Applicable
- O. 5GI Securities
Not Applicable
- P. Short Sales
Not Applicable
- Q. Prepayment Penalty and Acceleration Fees
Not Applicable
- R. Reporting Entity’s Share of Cash Pool by Asset Type
Not Applicable

NOTE 6 Joint Ventures, Partnerships and Limited Liability Companies
No significant changes

NOTE 7 Investment Income
No significant changes

NOTE 8 Derivative Instruments
Not Applicable

NOTE 9 Income Taxes
No significant changes

NOTE 10 Information Concerning Parent, Subsidiaries, Affiliates and Other Related Parties
No significant changes

NOTE 11 Debt
B. FHLB (Federal Home Loan Bank) Agreements
Not Applicable

NOTE 12 Retirement Plans, Deferred Compensation, Postemployment Benefits and Compensated Absences and Other Postretirement Benefit Plans
A. Defined Benefit Plan
No significant changes

NOTE 13 Capital and Surplus, Dividend Restrictions and Quasi-Reorganizations
No significant changes

NOTE 14 Liabilities, Contingencies and Assessments
No significant changes

NOTE 15 Leases
No significant changes

NOTE 16 Information About Financial Instruments With Off-Balance Sheet Risk and Financial Instruments With Concentrations of Credit Risk
Not Applicable

NOTE 17 Sale, Transfer and Servicing of Financial Assets and Extinguishments of Liabilities
A. Transfers of Receivables Reported as Sales
Not Applicable

B. Transfer and Servicing of Financial Assets
Not Applicable

C. Wash Sales
Not Applicable

NOTE 18 Gain or Loss to the Reporting Entity from Uninsured Plans and the Uninsured Portion of Partially Insured Plans
Not Applicable

NOTE 19 Direct Premium Written/Produced by Managing General Agents/Third Party Administrators
Not Applicable

NOTES TO FINANCIAL STATEMENTS

NOTE 20 Fair Value Measurements

A. Fair Value Measurements

(1) Fair Value Measurements at Reporting Date

SSAP No. 100, Fair Value Measurements, clarifies the definition of estimated fair value and establishes a hierarchy for measuring estimated fair value. The hierarchy established by this standard consists of three levels to indicate the quality of the estimated fair value measurements as described below:

Level 1 - Quoted Prices in Active Markets for Identical Assets and Liabilities: Unadjusted quoted prices for identical assets or liabilities in active markets that are readily and regularly obtainable.

Level 2 - Significant Other Observable Inputs: Quoted prices in markets that are not active or inputs that are observable either directly or indirectly. These inputs can include quoted prices for similar but not identical assets or liabilities other than quoted prices in Level 1.

Level 3 - Significant Unobservable Inputs: Unobservable inputs that are supported by little or no market activity and are significant to the determination of estimated fair value of assets or liabilities. Unobservable inputs reflect the entity's assumptions about the assumptions that market participants would use in pricing the asset or liability.

Description for each class of asset or liability	(Level 1)	(Level 2)	(Level 3)	Net Asset Value (NAV)	Total
a. Assets at fair value Common Stocks, unaffiliated	\$ 1,792,395				\$ 1,792,395
Total assets at fair value/NAV	\$ 1,792,395	\$ -	\$ -	\$ -	\$ 1,792,395

Description for each class of asset or liability	(Level 1)	(Level 2)	(Level 3)	Net Asset Value (NAV)	Total
b. Liabilities at fair value					
Total liabilities at fair value	\$ -	\$ -	\$ -	\$ -	\$ -

(2) Fair Value Measurements in (Level 3) of the Fair Value hierarchy
Not Applicable

(3) Policies when Transfers Between Levels are Recognized
At the end of each reporting period, the Company evaluates whether or not any event has occurred or circumstances have changed that would cause an instrument to be transferred between Levels 1, 2 or 3. The Company had no transfers into or out of any of the levels during the quarter.

(4) Description of Valuation Techniques and Inputs Used in Fair Value Measurement
Common Stocks, unaffiliated- According to statutory accounting rules, common stocks are reported at fair value.

(5) Fair Value Disclosures
Not Applicable

B. Fair Value Reporting under SSAP 100 and Other Accounting Pronouncements
Not Applicable

C. Fair Value Level
The following tables reflect the estimated fair values and admitted values of all admitted assets and liabilities that are financial instruments excluding those accounted for under the equity method (subsidiaries, joint ventures and ventures). The estimated fair values are categorized into the three-level fair value hierarchy as described above.

Type of Financial Instrument	Aggregate Fair Value	Admitted Assets	(Level 1)	(Level 2)	(Level 3)	Net Asset Value (NAV)	Not Practicable (Carrying Value)
Bonds	\$ 10,021,107	\$ 10,323,955		\$ 10,021,107			
Common Stocks, unaffiliated	\$ 1,792,395	\$ 1,792,395	\$ 1,792,395				

Bonds and Common Stocks

When available, the estimated fair values for bonds, including loan-backed and structured securities, and certain short-term investments are based on quoted prices in active markets that are readily and regularly obtainable. Generally, these investments are classified in Level 1. Generally, these are the most liquid of the Company's securities holdings and valuation of these securities does not involve management's judgment.

When quoted prices in active markets are not available, the determination of estimated fair value is based on market standard valuation methodologies, giving priority to observable inputs. The significant inputs to the market standard valuation methodologies for certain types of securities with reasonable levels of price transparency are inputs that are observable in the market or can be derived principally from or corroborated by observable market data. Generally, these investments are classified as Level 2.

When observable inputs are not available, the market standard valuation methodologies for determining the estimated fair value of certain types of securities that trade infrequently, and therefore have little or no price transparency, rely on inputs that are significant to the estimated fair value that are not observable in the market or cannot be derived principally from or corroborated by observable market data. These unobservable inputs can be based in large part on management's judgement or estimation, and cannot be supported by reference or market activity. Even though these inputs are unobservable, management believes they are consistent with what other market participants would use when pricing such securities and are considered appropriate given the circumstances. Generally, these investment are classified as Level 3.

The estimated fair value of cash approximates carrying value and is classified as Level 1 given the nature of cash.

D. Not Practicable to Estimate Fair Value
Not Applicable

E. NAV Practical Expedient Investments
Not Applicable

NOTE 21 Other Items
No significant changes

NOTE 22 Events Subsequent
Subsequent events have been considered through May 10, 2022 for these statutory financial statements which are to be issued on May 13, 2022. There were no events occurring subsequent to the end of the quarter that merited recognition or disclosure in these statements.

NOTES TO FINANCIAL STATEMENTS

NOTE 23 Reinsurance
No significant changes

NOTE 24 Retrospectively Rated Contracts & Contracts Subject to Redetermination

- F. Risk Sharing Provisions of the Affordable Care Act
- (1) Did the reporting entity write accident and health insurance premium which is subject to the Affordable Care Act risk sharing provisions (YES/NO)?

Yes [] No [X]
- (2) Impact of Risk Sharing Provisions of the Affordable Care Act on Admitted Assets, Liabilities and Revenue for the Current Year

Not applicable
- (3) Roll forward of prior year ACA risk sharing provisions for the following asset (gross of any nonadmission) and liability balances along with the reasons for adjustments to prior year balance.

Not applicable
- (4) Roll-Forward of Risk Corridors Asset and Liability Balances by Program Benefit Year

Not applicable
- (5) ACA Risk Corridors Receivable as of Reporting Date

Not applicable

NOTE 25 Change in Incurred Losses and Loss Adjustment Expenses
Reserves for the Company's incurred losses and loss adjustment expenses (after intercompany pooling) are attributable to insured events of prior years, which reflect favorable development totaling \$1,041,537. The development can be attributed primarily to the re-estimation of unpaid losses and loss adjustment expenses in the workers' compensation, commercial auto liability, private passenger auto liability, commercial multi perils, products liability and other lines of buisness. The favorable development in these lines was slightly offset by losses in homeowners, farmowners, and auto physical damage. The changes reflected in these lines were generally the result of recent development trends. There were not any premium adjustments made as a result of this loss and loss adjustment expense development.

NOTE 26 Intercompany Pooling Arrangements

- A. Identification of the Lead Entity and all Affiliated Entities Participating in the Intercompany Pool
Effective January 1, 2022, the Company and its affiliates intercompany pooling percentages changed as noted in the below table.

	NAIC Company Code	Pooling Percentage	
		2022	2021
Lead Entity and all Affiliated Entities			
Motorists Mutual Insurance Company (Lead Entity)	14621	24.1%	32.4%
BrickStreet Mutual Insurance Company	12372	48.2%	48.0%
Motorists Commercial Mutual Insurance Company	13331	13.4%	10.3%
Consumers Insurance USA, Inc.	10204	1.9%	2.1%
Iowa Mutual Insurance Company	14338	1.9%	1.7%
PinnaclePoint Insurance Company	15137	1.7%	0.8%
SummitPoint Insurance Company	15136	1.7%	0.8%
MICO Insurance Company	40932	1.7%	%
Phenix Mutual Fire Insurance Company	23175	1.4%	1.6%
AlleghenyPoint Insurance Company	13016	1.4%	%
Wilson Mutual Insurance Company	19950	1.3%	1.7%
NorthStone Insurance Company	13045	1.3%	%
Iowa American Insurance Company	31577	%	0.6%
B. Description of Lines and Types of Business Subject to the Pooling Agreement			
No significant changes			
C. Description of Cessions to Non-Affiliated Reinsurance Subject to Pooling Agreement			
No significant changes			
D. Identification of all Pool Members that are Parties to Reinsurance Agreements with Non-Affiliated Reinsurers			
No significant changes			
E. Explanation of Discrepancies Between Entries of Pooled Business			
No significant changes			
F. Description of Intercompany Sharing			
No significant changes			
G. Amounts Due To/From Lead Entity and all Affiliated Entities Participating in the Intercompany Pool			
No significant changes			

NOTE 27 Structured Settlements
Not Applicable

NOTE 28 Health Care Receivables
Not Applicable

NOTE 29 Participating Policies
Not Applicable

NOTE 30 Premium Deficiency Reserves
No significant changes

NOTE 31 High Deductibles
Not Applicable

NOTE 32 Discounting of Liabilities for Unpaid Losses or Unpaid Loss Adjustment Expenses
Not Applicable

NOTE 33 Asbestos/Environmental Reserves
Not Applicable

NOTES TO FINANCIAL STATEMENTS

NOTE 34 Subscriber Savings Accounts
Not Applicable

NOTE 35 Multiple Peril Crop Insurance
Not Applicable

NOTE 36 Financial Guaranty Insurance
B. Schedule of insured financial obligations at the end of the period
Not Applicable

STATEMENT AS OF MARCH 31, 2022 OF THE MICO INSURANCE COMPANY

GENERAL INTERROGATORIES

PART 1 - COMMON INTERROGATORIES

GENERAL

- 1.1

Did the reporting entity experience any material transactions requiring the filing of Disclosure of Material Transactions with the State of Domicile, as required by the Model Act?

Yes [☐] No [☒]
- 1.2

If yes, has the report been filed with the domiciliary state?

Yes [☐] No [☐]
- 2.1

Has any change been made during the year of this statement in the charter, by-laws, articles of incorporation, or deed of settlement of the reporting entity?

Yes [☐] No [☒]
- 2.2

If yes, date of change:
- 3.1

Is the reporting entity a member of an Insurance Holding Company System consisting of two or more affiliated persons, one or more of which is an insurer?

If yes, complete Schedule Y, Parts 1 and 1A.

Yes [☒] No [☐]
- 3.2

Have there been any substantial changes in the organizational chart since the prior quarter end?

Yes [☐] No [☒]
- 3.3

If the response to 3.2 is yes, provide a brief description of those changes.
- 3.4

Is the reporting entity publicly traded or a member of a publicly traded group?

Yes [☐] No [☒]
- 3.5

If the response to 3.4 is yes, provide the CIK (Central Index Key) code issued by the SEC for the entity/group.
- 4.1

Has the reporting entity been a party to a merger or consolidation during the period covered by this statement?

Yes [☐] No [☒]
- 4.2

If yes, provide the name of the entity, NAIC Company Code, and state of domicile (use two letter state abbreviation) for any entity that has ceased to exist as a result of the merger or consolidation.

1	2	3
Name of Entity	NAIC Company Code	State of Domicile
5.

If the reporting entity is subject to a management agreement, including third-party administrator(s), managing general agent(s), attorney-in-fact, or similar agreement, have there been any significant changes regarding the terms of the agreement or principals involved?

If yes, attach an explanation.

Yes [☐] No [☐] N/A [☒]
- 6.1

State as of what date the latest financial examination of the reporting entity was made or is being made.

12/31/2018
- 6.2

State the as of date that the latest financial examination report became available from either the state of domicile or the reporting entity. This date should be the date of the examined balance sheet and not the date the report was completed or released.

12/31/2018
- 6.3

State as of what date the latest financial examination report became available to other states or the public from either the state of domicile or the reporting entity. This is the release date or completion date of the examination report and not the date of the examination (balance sheet date).

06/03/2020
- 6.4

By what department or departments?
- 6.5

Have all financial statement adjustments within the latest financial examination report been accounted for in a subsequent financial statement filed with Departments?

Yes [☒] No [☐] N/A [☐]
- 6.6

Have all of the recommendations within the latest financial examination report been complied with?

Yes [☒] No [☐] N/A [☐]
- 7.1

Has this reporting entity had any Certificates of Authority, licenses or registrations (including corporate registration, if applicable) suspended or revoked by any governmental entity during the reporting period?

Yes [☐] No [☒]
- 7.2

If yes, give full information:
- 8.1

Is the company a subsidiary of a bank holding company regulated by the Federal Reserve Board?

Yes [☐] No [☒]
- 8.2

If response to 8.1 is yes, please identify the name of the bank holding company.
- 8.3

Is the company affiliated with one or more banks, thrifts or securities firms?

Yes [☐] No [☒]
- 8.4

If response to 8.3 is yes, please provide below the names and location (city and state of the main office) of any affiliates regulated by a federal regulatory services agency [i.e. the Federal Reserve Board (FRB), the Office of the Comptroller of the Currency (OCC), the Federal Deposit Insurance Corporation (FDIC) and the Securities Exchange Commission (SEC)] and identify the affiliate's primary federal regulator.

1	2	3	4	5	6
Affiliate Name	Location (City, State)	FRB	OCC	FDIC	SEC

STATEMENT AS OF MARCH 31, 2022 OF THE MICO INSURANCE COMPANY

GENERAL INTERROGATORIES

- 9.1

Are the senior officers (principal executive officer, principal financial officer, principal accounting officer or controller, or persons performing similar functions) of the reporting entity subject to a code of ethics, which includes the following standards?
(a) Honest and ethical conduct, including the ethical handling of actual or apparent conflicts of interest between personal and professional relationships;
(b) Full, fair, accurate, timely and understandable disclosure in the periodic reports required to be filed by the reporting entity;
(c) Compliance with applicable governmental laws, rules and regulations;
(d) The prompt internal reporting of violations to an appropriate person or persons identified in the code; and
(e) Accountability for adherence to the code.

Yes [X] No []
- 9.11

If the response to 9.1 is No, please explain:
- 9.2

Has the code of ethics for senior managers been amended?

Yes [] No [X]
- 9.21

If the response to 9.2 is Yes, provide information related to amendment(s).
- 9.3

Have any provisions of the code of ethics been waived for any of the specified officers?

Yes [] No [X]
- 9.31

If the response to 9.3 is Yes, provide the nature of any waiver(s).

FINANCIAL

- 10.1

Does the reporting entity report any amounts due from parent, subsidiaries or affiliates on Page 2 of this statement?

Yes [X] No []
- 10.2

If yes, indicate any amounts receivable from parent included in the Page 2 amount:

\$

INVESTMENT

- 11.1

Were any of the stocks, bonds, or other assets of the reporting entity loaned, placed under option agreement, or otherwise made available for use by another person? (Exclude securities under securities lending agreements.)

Yes [] No [X]
- 11.2

If yes, give full and complete information relating thereto:
12.

Amount of real estate and mortgages held in other invested assets in Schedule BA:

\$
13.

Amount of real estate and mortgages held in short-term investments:

\$
- 14.1

Does the reporting entity have any investments in parent, subsidiaries and affiliates?

Yes [] No [X]
- 14.2

If yes, please complete the following:
- | | 1 | 2 |
|---|---|--|
| | Prior Year-End
Book/Adjusted
Carrying Value | Current Quarter
Book/Adjusted
Carrying Value |
| 14.21 Bonds | \$0 | \$ |
| 14.22 Preferred Stock | \$0 | \$ |
| 14.23 Common Stock | \$0 | \$ |
| 14.24 Short-Term Investments | \$0 | \$ |
| 14.25 Mortgage Loans on Real Estate | \$0 | \$ |
| 14.26 All Other | \$0 | \$ |
| 14.27 Total Investment in Parent, Subsidiaries and Affiliates (Subtotal Lines 14.21 to 14.26) | \$0 | \$0 |
| 14.28 Total Investment in Parent included in Lines 14.21 to 14.26 above | \$ | \$ |
- 15.1

Has the reporting entity entered into any hedging transactions reported on Schedule DB?

Yes [] No [X]
- 15.2

If yes, has a comprehensive description of the hedging program been made available to the domiciliary state?
If no, attach a description with this statement.

Yes [] No [] N/A [X]
16.

For the reporting entity's security lending program, state the amount of the following as of the current statement date:
- 16.1

Total fair value of reinvested collateral assets reported on Schedule DL, Parts 1 and 2.

\$0
- 16.2

Total book adjusted/carrying value of reinvested collateral assets reported on Schedule DL, Parts 1 and 2

\$0
- 16.3

Total payable for securities lending reported on the liability page.

\$0

STATEMENT AS OF MARCH 31, 2022 OF THE MICO INSURANCE COMPANY

GENERAL INTERROGATORIES

17. Excluding items in Schedule E - Part 3 - Special Deposits, real estate, mortgage loans and investments held physically in the reporting entity's offices, vaults or safety deposit boxes, were all stocks, bonds and other securities, owned throughout the current year held pursuant to a custodial agreement with a qualified bank or trust company in accordance with Section 1, III - General Examination Considerations, F. Outsourcing of Critical Functions, Custodial or Safekeeping Agreements of the NAIC Financial Condition Examiners Handbook? Yes [X] No []
- 17.1 For all agreements that comply with the requirements of the NAIC Financial Condition Examiners Handbook, complete the following:

1 Name of Custodian(s)	2 Custodian Address
BNY Mellon	500 Grant Street One Mellon Center, Suite #1035, Pittsburgh, PA 15258

- 17.2 For all agreements that do not comply with the requirements of the NAIC Financial Condition Examiners Handbook, provide the name, location and a complete explanation:

1 Name(s)	2 Location(s)	3 Complete Explanation(s)

- 17.3 Have there been any changes, including name changes, in the custodian(s) identified in 17.1 during the current quarter? Yes [] No [X]
- 17.4 If yes, give full information relating thereto:

1 Old Custodian	2 New Custodian	3 Date of Change	4 Reason

- 17.5 Investment management – Identify all investment advisors, investment managers, broker/dealers, including individuals that have the authority to make investment decisions on behalf of the reporting entity. For assets that are managed internally by employees of the reporting entity, note as such. ["...that have access to the investment accounts"; "...handle securities"]

1 Name of Firm or Individual	2 Affiliation
New England Asset Management, Inc.	U.....
Northern Trust Investments, Inc.	U.....

- 17.5097 For those firms/individuals listed in the table for Question 17.5, do any firms/individuals unaffiliated with the reporting entity (i.e. designated with a "U") manage more than 10% of the reporting entity's invested assets?..... Yes [X] No []

- 17.5098 For firms/individuals unaffiliated with the reporting entity (i.e. designated with a "U") listed in the table for Question 17.5, does the total assets under management aggregate to more than 50% of the reporting entity's invested assets?..... Yes [X] No []

- 17.6 For those firms or individuals listed in the table for 17.5 with an affiliation code of "A" (affiliated) or "U" (unaffiliated), provide the information for the table below.

1	2	3	4	5
Central Registration Depository Number	Name of Firm or Individual	Legal Entity Identifier (LEI)	Registered With	Investment Management Agreement (IMA) Filed
109846	New England Asset Management, Inc.	KUR85E5PS4GQFZTFC130	SEC	NO
105900	Northern Trust Investments, Inc.	BEL4B8X7EHJU845Y2N39	SEC	NO.....

- 18.1 Have all the filing requirements of the Purposes and Procedures Manual of the NAIC Investment Analysis Office been followed? Yes [X] No []
- 18.2 If no, list exceptions:

19. By self-designating 5GI securities, the reporting entity is certifying the following elements for each self-designated 5GI security:
- a. Documentation necessary to permit a full credit analysis of the security does not exist or an NAIC CRP credit rating for an FE or PL security is not available.
 - b. Issuer or obligor is current on all contracted interest and principal payments.
 - c. The insurer has an actual expectation of ultimate payment of all contracted interest and principal.
- Has the reporting entity self-designated 5GI securities? Yes [] No [X]

20. By self-designating PLGI securities, the reporting entity is certifying the following elements of each self-designated PLGI security:
- a. The security was purchased prior to January 1, 2018.
 - b. The reporting entity is holding capital commensurate with the NAIC Designation reported for the security.
 - c. The NAIC Designation was derived from the credit rating assigned by an NAIC CRP in its legal capacity as a NRSRO which is shown on a current private letter rating held by the insurer and available for examination by state insurance regulators.
 - d. The reporting entity is not permitted to share this credit rating of the PL security with the SVO.
- Has the reporting entity self-designated PLGI securities? Yes [] No [X]

21. By assigning FE to a Schedule BA non-registered private fund, the reporting entity is certifying the following elements of each self-designated FE fund:
- a. The shares were purchased prior to January 1, 2019.
 - b. The reporting entity is holding capital commensurate with the NAIC Designation reported for the security.
 - c. The security had a public credit rating(s) with annual surveillance assigned by an NAIC CRP in its legal capacity as an NRSRO prior to January 1, 2019.
 - d. The fund only or predominantly holds bonds in its portfolio.
 - e. The current reported NAIC Designation was derived from the public credit rating(s) with annual surveillance assigned by an NAIC CRP in its legal capacity as an NRSRO.
 - f. The public credit rating(s) with annual surveillance assigned by an NAIC CRP has not lapsed.
- Has the reporting entity assigned FE to Schedule BA non-registered private funds that complied with the above criteria? Yes [] No [X]

GENERAL INTERROGATORIES

PART 2 - PROPERTY & CASUALTY INTERROGATORIES

1.

If the reporting entity is a member of a pooling arrangement, did the agreement or the reporting entity's participation change?
If yes, attach an explanation.
See Note 26 for the Company's updated pooling percentage.

Yes ☒ No ☐ N/A ☐
2.

Has the reporting entity reinsured any risk with any other reporting entity and agreed to release such entity from liability, in whole or in part, from any loss that may occur on the risk, or portion thereof, reinsured?
If yes, attach an explanation.

Yes ☐ No ☒
- 3.1

Have any of the reporting entity's primary reinsurance contracts been canceled?

Yes ☐ No ☒
- 3.2

If yes, give full and complete information thereto.
- 4.1

Are any of the liabilities for unpaid losses and loss adjustment expenses other than certain workers' compensation tabular reserves (see Annual Statement Instructions pertaining to disclosure of discounting for definition of " tabular reserves") discounted at a rate of interest greater than zero?

Yes ☐ No ☒
- 4.2

If yes, complete the following schedule:

			TOTAL DISCOUNT				DISCOUNT TAKEN DURING PERIOD			
1	2	3	4	5	6	7	8	9	10	11
Line of Business	Maximum Interest	Discount Rate	Unpaid Losses	Unpaid LAE	IBNR	TOTAL	Unpaid Losses	Unpaid LAE	IBNR	TOTAL
TOTAL			0	0	0	0	0	0	0	0

5.

Operating Percentages:
- 5.1

A&H loss percent

%
- 5.2

A&H cost containment percent

%
- 5.3

A&H expense percent excluding cost containment expenses

%
- 6.1

Do you act as a custodian for health savings accounts?

Yes ☐ No ☒
- 6.2

If yes, please provide the amount of custodial funds held as of the reporting date\$.....
- 6.3

Do you act as an administrator for health savings accounts?

Yes ☐ No ☒
- 6.4

If yes, please provide the balance of the funds administered as of the reporting date\$.....
7.

Is the reporting entity licensed or chartered, registered, qualified, eligible or writing business in at least two states?

Yes ☒ No ☐
- 7.1

If no, does the reporting entity assume reinsurance business that covers risks residing in at least one state other than the state of domicile of the reporting entity?

Yes ☐ No ☐

SCHEDULE F - CEDED REINSURANCE

[illegible]

STATEMENT AS OF MARCH 31, 2022 OF THE MICO INSURANCE COMPANY

SCHEDULE T - EXHIBIT OF PREMIUMS WRITTEN

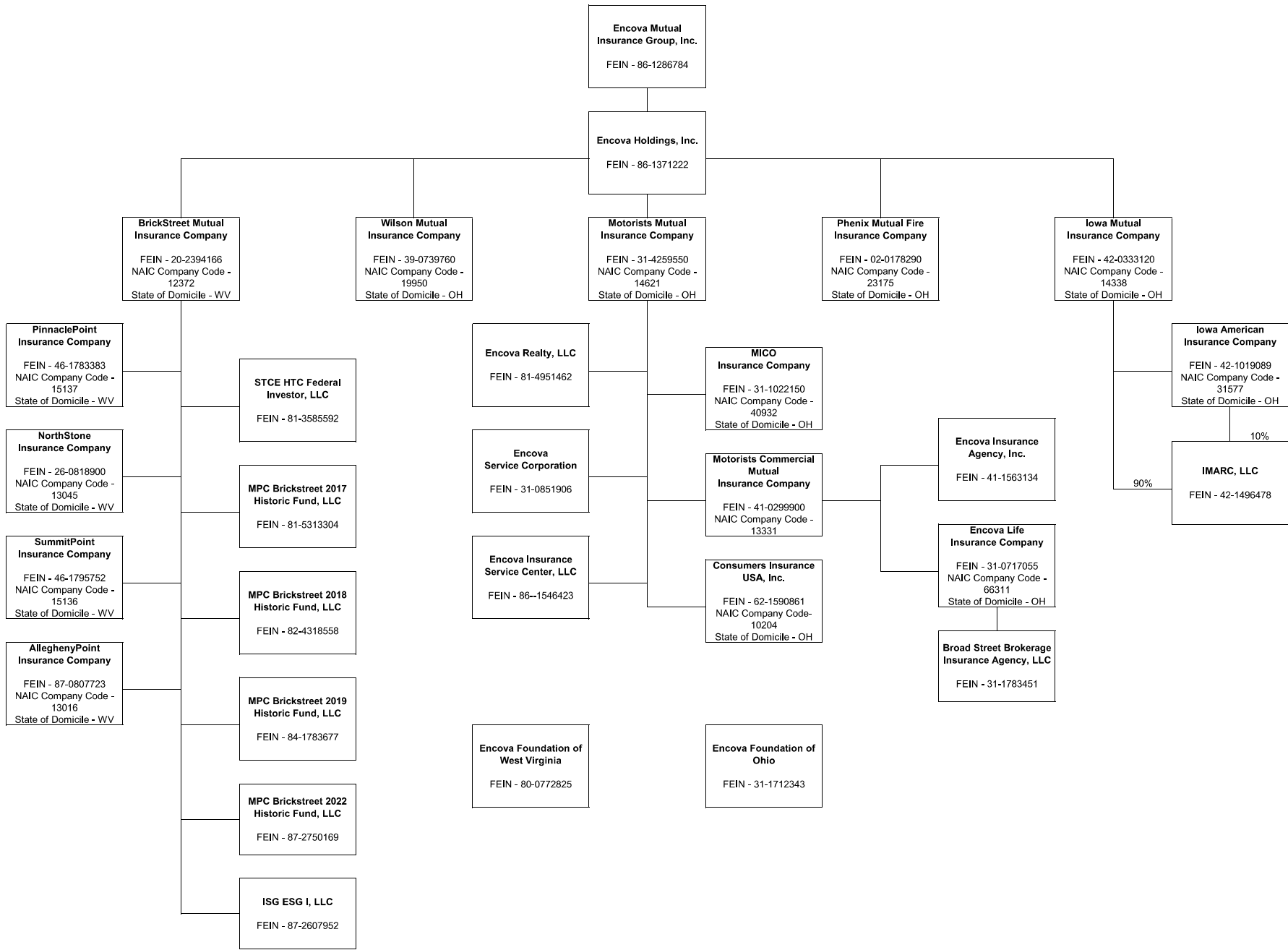
Current Year to Date - Allocated by States and Territories							
States, etc.	1 Active Status (a)	Direct Premiums Written		Direct Losses Paid (Deducting Salvage)		Direct Losses Unpaid	
		2 Current Year To Date	3 Prior Year To Date	4 Current Year To Date	5 Prior Year To Date	6 Current Year To Date	7 Prior Year To Date
1. Alabama.....AL	N	0	0	0	0	0	0
2. Alaska.....AK	N	0	0	0	0	0	0
3. Arizona.....AZ	N	0	0	0	0	0	0
4. Arkansas.....AR	N	0	0	0	0	0	0
5. California.....CA	N	0	0	0	0	0	0
6. Colorado.....CO	N	0	0	0	0	0	0
7. Connecticut.....CT	N	0	0	0	0	0	0
8. Delaware.....DE	N	0	0	0	0	0	0
9. District of Columbia.....DC	N	0	0	0	0	0	0
10. Florida.....FL	N	0	0	0	0	0	0
11. Georgia.....GA	N	0	0	0	0	0	0
12. Hawaii.....HI	N	0	0	0	0	0	0
13. Idaho.....ID	N	0	0	0	0	0	0
14. Illinois.....IL	L	18,238	0	0	0	2,100	0
15. Indiana.....IN	L	192,410	83,852	29,522	109	67,500	1,200
16. Iowa.....IA	L	343,608	1,298	84,489	0	83,800	0
17. Kansas.....KS	N	0	0	0	0	0	0
18. Kentucky.....KY	L	849,123	0	314,230	0	159,271	0
19. Louisiana.....LA	N	0	0	0	0	0	0
20. Maine.....ME	N	0	0	0	0	0	0
21. Maryland.....MD	N	0	0	0	0	0	0
22. Massachusetts.....MA	N	0	0	0	0	0	0
23. Michigan.....MI	N	0	0	0	0	0	0
24. Minnesota.....MN	L	0	0	0	0	0	0
25. Mississippi.....MS	N	0	0	0	0	0	0
26. Missouri.....MO	N	0	0	0	0	0	0
27. Montana.....MT	N	0	0	0	0	0	0
28. Nebraska.....NE	N	0	0	0	0	0	0
29. Nevada.....NV	N	0	0	0	0	0	0
30. New Hampshire.....NH	N	0	0	0	0	0	0
31. New Jersey.....NJ	N	0	0	0	0	0	0
32. New Mexico.....NM	N	0	0	0	0	0	0
33. New York.....NY	N	0	0	0	0	0	0
34. North Carolina.....NC	N	0	0	0	0	0	0
35. North Dakota.....ND	N	0	0	0	0	0	0
36. Ohio.....OH	L	2,286,425	860,494	889,443	38,925	1,117,482	118,610
37. Oklahoma.....OK	N	0	0	0	0	0	0
38. Oregon.....OR	N	0	0	0	0	0	0
39. Pennsylvania.....PA	L	137,146	0	48,222	0	19,725	0
40. Rhode Island.....RI	N	0	0	0	0	0	0
41. South Carolina.....SC	N	0	0	0	0	0	0
42. South Dakota.....SD	N	0	0	0	0	0	0
43. Tennessee.....TN	L	0	0	0	0	0	0
44. Texas.....TX	N	0	0	0	0	0	0
45. Utah.....UT	N	0	0	0	0	0	0
46. Vermont.....VT	N	0	0	0	0	0	0
47. Virginia.....VA	L	0	0	0	0	0	0
48. Washington.....WA	N	0	0	0	0	0	0
49. West Virginia.....WV	L	923,802	293,014	394,827	8,603	457,000	69,730
50. Wisconsin.....WI	L	358,376	8,363	95,665	0	205,452	0
51. Wyoming.....WY	N	0	0	0	0	0	0
52. American Samoa.....AS	N	0	0	0	0	0	0
53. Guam.....GU	N	0	0	0	0	0	0
54. Puerto Rico.....PR	N	0	0	0	0	0	0
55. U.S. Virgin Islands.....VI	N	0	0	0	0	0	0
56. Northern Mariana Islands.....MP	N	0	0	0	0	0	0
57. Canada.....CAN	N	0	0	0	0	0	0
58. Aggregate Other Alien OT	XXX	0	0	0	0	0	0
59. Totals	XXX	5,109,128	1,247,021	1,856,398	47,637	2,112,330	189,540
DETAILS OF WRITE-INS							
58001.	XXX						
58002.	XXX						
58003.	XXX						
58998. Summary of remaining write-ins for Line 58 from overflow page	XXX	0	0	0	0	0	0
58999. Totals (Lines 58001 through 58003 plus 58998)(Line 58 above)	XXX	0	0	0	0	0	0

(a) Active Status Counts:

L - Licensed or Chartered - Licensed Insurance carrier or domiciled RRG.....	11	R - Registered - Non-domiciled RRGs.....	0
E - Eligible - Reporting entities eligible or approved to write surplus lines in the state (other than their state of domicile - see DSLI).....	0	Q - Qualified - Qualified or accredited reinsurer.....	0
D - Domestic Surplus Lines Insurer (DSLI) - Reporting entities authorized to write surplus lines in the state of domicile.....	0	N - None of the above - Not allowed to write business in the state.....	46

STATEMENT AS OF MARCH 31, 2022 OF THE MICO INSURANCE COMPANY

SCHEDULE Y - INFORMATION CONCERNING ACTIVITIES OF INSURER MEMBERS OF A HOLDING COMPANY GROUP
PART 1 - ORGANIZATIONAL CHART



STATEMENT AS OF MARCH 31, 2022 OF THE MICO INSURANCE COMPANY

SCHEDULE Y

PART 1A - DETAIL OF INSURANCE HOLDING COMPANY SYSTEM

1	2	3	4	5	6	7	8	9	10	11	12	13	14	15	16
Group Code	Group Name	NAIC Company Code	ID Number	Federal RSSD	CIK	Name of Securities Exchange if Publicly Traded (U.S. or International)	Names of Parent, Subsidiaries Or Affiliates	Domi-ciliary Location	Relation-ship to Reporting Entity	Directly Controlled by (Name of Entity/Person)	Type of Control (Ownership, Board, Management, Attorney-in-Fact, Influence, Other)	If Control is Owner-ship Provide Percen-tage	Ultimate Controlling Entity(ies)/Person(s)	Is an SCA Filing Re-quired? (Yes/No)	*
							Broad Street Brokerage Insurance Agency, LLC								
.0291	Encova Mutual Insurance Group	.10204	31-1783451 62-1590861 42-1496478				Consumers Insurance USA, Inc.	.OH	.NIA	Encova Life Insurance Company	Ownership	100.000	Encova Mutual Insurance Group, Inc.		
							IMARC, LLC	.OH	.IA	Motorists Mutual Insurance Company	Ownership	100.000	Encova Mutual Insurance Group, Inc.		
.0291	Encova Mutual Insurance Group	.31577	42-1019089				Iowa American Insurance Company	.IA	.NIA	Iowa Mutual Insurance Company	Ownership	90.000	Encova Mutual Insurance Group, Inc.		
.0291	Encova Mutual Insurance Group	.14338	42-0333120				Iowa Mutual Insurance Company	.OH	.IA	Iowa Mutual Insurance Company	Ownership	100.000	Encova Mutual Insurance Group, Inc.		
							Encova Insurance Agency, Inc.	.OH	.IA	Encova Holdings, Inc.	Ownership	100.000	Encova Mutual Insurance Group, Inc.		
.0291	Encova Mutual Insurance Group	.40932	41-1563134 31-1022150				MICO Insurance Company	.MN	.NIA	Motorists Commercial Mutual Insurance Company	Ownership	100.000	Encova Mutual Insurance Group, Inc.		
							Motorists Commercial Mutual Insurance Company	.OH	.RE	Motorists Mutual Insurance Company	Ownership	100.000	Encova Mutual Insurance Group, Inc.		
.0291	Encova Mutual Insurance Group	.13331	41-0299900				Motorists Commercial Mutual Insurance Company	.OH	.IA	Motorists Mutual Insurance Company	Ownership	100.000	Encova Mutual Insurance Group, Inc.	.NO	
							Encova Life Insurance Company	.OH	.IA	Motorists Commercial Mutual Insurance Company	Ownership	100.000	Encova Mutual Insurance Group, Inc.	.NO	
.0291	Encova Mutual Insurance Group	.66311	31-0717055				Motorists Mutual Insurance Company	.OH	.UDP	Encova Holdings, Inc.	Ownership	100.000	Encova Mutual Insurance Group, Inc.	.NO	
.0291	Encova Mutual Insurance Group	.14621	31-4259550 31-0851906				Encova Service Corporation	.OH	.NIA	Motorists Mutual Insurance Company	Ownership	100.000	Encova Mutual Insurance Group, Inc.	.NO	
							Phenix Mutual Fire Insurance Company	.OH	.IA	Encova Holdings, Inc.	Ownership	100.000	Encova Mutual Insurance Group, Inc.	.NO	
.0291	Encova Mutual Insurance Group	.23175	02-0178290				Wilson Mutual Insurance Company	.OH	.IA	Encova Holdings, Inc.	Ownership	100.000	Encova Mutual Insurance Group, Inc.	.NO	
.0291	Encova Mutual Insurance Group	.19950	39-0739760 81-4951462				Encova Realty, LLC	.OH	.NIA	Motorists Mutual Insurance Company	Ownership	100.000	Encova Mutual Insurance Group, Inc.	.NO	
							Encova Foundation of Ohio	.OH	.NIA	Motorists Mutual Insurance Company	Board		Encova Mutual Insurance Group, Inc.	.NO	
.0291	Encova Mutual Insurance Group	.12372	31-1712343 20-2394166				BrickStreet Mutual Insurance Company	.WV	.IA	Encova Holdings, Inc.	Ownership	100.000	Encova Mutual Insurance Group, Inc.	.NO	
.0291	Encova Mutual Insurance Group	.15137	46-1783383				PinnaclePoint Insurance Company	.WV	.IA	BrickStreet Mutual Insurance Company	Ownership	100.000	Encova Mutual Insurance Group, Inc.	.NO	
.0291	Encova Mutual Insurance Group	.13045	26-0818900				NorthStone Insurance Company	.WV	.IA	BrickStreet Mutual Insurance Company	Ownership	100.000	Encova Mutual Insurance Group, Inc.	.NO	
.0291	Encova Mutual Insurance Group	.15136	46-1795752				SummitPoint Insurance Company	.WV	.IA	BrickStreet Mutual Insurance Company	Ownership	100.000	Encova Mutual Insurance Group, Inc.	.NO	
.0291	Encova Mutual Insurance Group	.13016	87-0807723				AlleghenyPoint Insurance Company	.WV	.IA	BrickStreet Mutual Insurance Company	Ownership	100.000	Encova Mutual Insurance Group, Inc.	.NO	
							Encova Foundation of West Virginia, Inc	.WV	.NIA	BrickStreet Mutual Insurance Company	Board		Encova Mutual Insurance Group, Inc.	.NO	
							STCE HTC Federal Investor, LLC	.GA	.NIA	BrickStreet Mutual Insurance Company	Ownership	99.990	Encova Mutual Insurance Group, Inc.	.NO	
							MPC Brickstreet 2017 Historic Fund, LLC	.GA	.NIA	BrickStreet Mutual Insurance Company	Ownership	99.990	Encova Mutual Insurance Group, Inc.	.NO	
							MPC Brickstreet 2018 Historic Fund, LLC	.GA	.NIA	BrickStreet Mutual Insurance Company	Ownership	99.990	Encova Mutual Insurance Group, Inc.	.NO	
							MPC Brickstreet 2019 Historic Fund, LLC	.GA	.NIA	BrickStreet Mutual Insurance Company	Ownership	99.990	Encova Mutual Insurance Group, Inc.	.NO	
							MPC Brickstreet 2022 Historic Fund, LLC	.GA	.NIA	BrickStreet Mutual Insurance Company	Ownership	99.990	Encova Mutual Insurance Group, Inc.	.YES	
							ISG ESG I, LLC	.GA	.NIA	BrickStreet Mutual Insurance Company	Ownership	50.000	Encova Mutual Insurance Group, Inc.	.YES	
							Encova Insurance Service Center, LLC	.OH	.NIA	Motorists Mutual Insurance Company	Ownership	100.000	Encova Mutual Insurance Group, Inc.	.NO	
							Encova Holdings, Inc.	.OH	.UIP	Encova Mutual Insurance Group, Inc.	Ownership	100.000	Encova Mutual Insurance Group, Inc.	.NO	
							Encova Mutual Insurance Group, Inc.	.OH	.UIP		Ownership	100.000	Encova Mutual Insurance Group, Inc.	.NO	

Asterisk	Explanation

NONE

STATEMENT AS OF MARCH 31, 2022 OF THE MICO INSURANCE COMPANY

PART 1 - LOSS EXPERIENCE

Line of Business		Current Year to Date			4 Prior Year to Date Direct Loss Percentage
		1 Direct Premiums Earned	2 Direct Losses Incurred	3 Direct Loss Percentage	
1.	Fire	15,839	(114,587)	(723.4)	33.7
2.1	Allied Lines	23,526	300	1.3	35.4
2.2	Multiple peril crop	0	0	0.0	0.0
2.3	Federal flood	0	0	0.0	0.0
2.4	Private crop	0	0	0.0	0.0
2.5	Private flood	0	0	0.0	0.0
3.	Farmowners multiple peril	0	0	0.0	0.0
4.	Homeowners multiple peril	916,833	412,779	45.0	53.7
5.	Commercial multiple peril	0	0	0.0	0.0
6.	Mortgage guaranty	0	0	0.0	0.0
8.	Ocean marine	0	0	0.0	0.0
9.	Inland marine	29,668	(318)	(1.1)	30.1
10.	Financial guaranty	0	0	0.0	0.0
11.1	Medical professional liability - occurrence	0	0	0.0	0.0
11.2	Medical professional liability - claims-made	0	0	0.0	0.0
12.	Earthquake	10,201	0	0.0	0.0
13.1	Comprehensive (hospital and medical) individual	0	0	0.0	0.0
13.2	Comprehensive (hospital and medical) group	0	0	0.0	0.0
14.	Credit accident and health	0	0	0.0	0.0
15.1	Vision only	0	0	0.0	0.0
15.2	Dental only	0	0	0.0	0.0
15.3	Disability income	0	0	0.0	0.0
15.4	Medicare supplement	0	0	0.0	0.0
15.5	Medicaid Title XIX	0	0	0.0	0.0
15.6	Medicare Title XVIII	0	0	0.0	0.0
15.7	Long-term care	0	0	0.0	0.0
15.8	Federal employees health benefits plan	0	0	0.0	0.0
15.9	Other health	0	0	0.0	0.0
16.	Workers' compensation	0	0	0.0	0.0
17.1	Other liability - occurrence	61,960	335,000	540.7	47.9
17.2	Other liability - claims-made	0	0	0.0	0.0
17.3	Excess workers' compensation	0	0	0.0	0.0
18.1	Products liability - occurrence	0	0	0.0	0.0
18.2	Products liability - claims-made	0	0	0.0	0.0
19.1	Private passenger auto no-fault (personal injury protection)	23,437	27,160	115.9	0.0
19.2	Other private passenger auto liability	1,115,310	804,828	72.2	77.6
19.3	Commercial auto no-fault (personal injury protection)	0	0	0.0	0.0
19.4	Other commercial auto liability	0	0	0.0	0.0
21.1	Private passenger auto physical damage	1,019,525	1,124,270	110.3	83.3
21.2	Commercial auto physical damage	0	0	0.0	0.0
22.	Aircraft (all perils)	0	0	0.0	0.0
23.	Fidelity	0	0	0.0	0.0
24.	Surety	0	0	0.0	0.0
26.	Burglary and theft	0	0	0.0	0.0
27.	Boiler and machinery	0	0	0.0	0.0
28.	Credit	0	0	0.0	0.0
29.	International	0	0	0.0	0.0
30.	Warranty	0	0	0.0	0.0
31.	Reinsurance - Nonproportional Assumed Property	XXX	XXX	XXX	XXX
32.	Reinsurance - Nonproportional Assumed Liability	XXX	XXX	XXX	XXX
33.	Reinsurance - Nonproportional Assumed Financial Lines	XXX	XXX	XXX	XXX
34.	Aggregate write-ins for other lines of business	1,017	0	0.0	0.0
35.	Totals	3,217,316	2,589,432	80.5	70.6
DETAILS OF WRITE-INS					
3401.	Aggregate write-ins for other lines of business	1,017		0.0	
3402.				
3403.				
3498.	Summary of remaining write-ins for Line 34 from overflow page	0	0	0.0	
3499.	Totals (Lines 3401 through 3403 plus 3498)(Line 34 above)	1,017	0	0.0	0.0

STATEMENT AS OF MARCH 31, 2022 OF THE MICO INSURANCE COMPANY

PART 2 - DIRECT PREMIUMS WRITTEN

Line of Business		1 Current Quarter	2 Current Year to Date	3 Prior Year Year to Date
1.	Fire	17,844	17,844	4,551
2.1	Allied Lines	28,044	28,044	6,256
2.2	Multiple peril crop	0		
2.3	Federal flood	0		
2.4	Private crop	0		
2.5	Private flood	0		
3.	Farmowners multiple peril	0		0
4.	Homeowners multiple peril	1,428,952	1,428,952	386,873
5.	Commercial multiple peril	0		0
6.	Mortgage guaranty	0		0
8.	Ocean marine	0		0
9.	Inland marine	42,923	42,923	9,940
10.	Financial guaranty	0		0
11.1	Medical professional liability - occurrence	0		0
11.2	Medical professional liability - claims-made	0		0
12.	Earthquake	25,298	25,298	4,707
13.1	Comprehensive (hospital and medical) individual	0		
13.2	Comprehensive (hospital and medical) group	0		
14.	Credit accident and health	0		0
15.1	Vision only	0		
15.2	Dental only	0		
15.3	Disability income	0		
15.4	Medicare supplement	0		
15.5	Medicaid Title XIX	0		
15.6	Medicare Title XVIII	0		
15.7	Long-term care	0		
15.8	Federal employees health benefits plan	0		
15.9	Other health	0		
16.	Workers' compensation	0		0
17.1	Other liability - occurrence	101,263	101,263	18,599
17.2	Other liability - claims-made	0		0
17.3	Excess workers' compensation	0		0
18.1	Products liability - occurrence	0		0
18.2	Products liability - claims-made	0		0
19.1	Private passenger auto no-fault (personal injury protection)	49,908	49,908	
19.2	Other private passenger auto liability	1,743,505	1,743,505	428,298
19.3	Commercial auto no-fault (personal injury protection)	0		
19.4	Other commercial auto liability	0		
21.1	Private passenger auto physical damage	1,669,956	1,669,956	387,158
21.2	Commercial auto physical damage	0		
22.	Aircraft (all perils)	0		0
23.	Fidelity	0		0
24.	Surety	0		0
26.	Burglary and theft	0		0
27.	Boiler and machinery	0		0
28.	Credit	0		0
29.	International	0		0
30.	Warranty	0		0
31.	Reinsurance - Nonproportional Assumed Property	XXX	XXX	XXX
32.	Reinsurance - Nonproportional Assumed Liability	XXX	XXX	XXX
33.	Reinsurance - Nonproportional Assumed Financial Lines	XXX	XXX	XXX
34.	Aggregate write-ins for other lines of business	1,435	1,435	639
35.	Totals	5,109,128	5,109,128	1,247,021
DETAILS OF WRITE-INS				
3401.	Aggregate Other	1,435	1,435	639
3402.			
3403.			
3498.	Summary of remaining write-ins for Line 34 from overflow page	0	0	0
3499.	Totals (Lines 3401 through 3403 plus 3498)(Line 34 above)	1,435	1,435	639

STATEMENT AS OF MARCH 31, 2022 OF THE MICO INSURANCE COMPANY

PART 3 (000 omitted)

LOSS AND LOSS ADJUSTMENT EXPENSE RESERVES SCHEDULE

	1	2	3	4	5	6	7	8	9	10	11	12	13											
Years in Which Losses Occurred	Prior Year-End Known Case Loss and LAE Reserves	Prior Year-End IBNR Loss and LAE Reserves	Total Prior Year-End Loss and LAE Reserves (Cols. 1+2)	2022 Loss and LAE Payments on Claims Reported as of Prior Year-End	2022 Loss and LAE Payments on Claims Unreported as of Prior Year-End	Total 2022 Loss and LAE Payments (Cols. 4+5)	Q.S. Date Known Case Loss and LAE Reserves on Claims Reported and Open as of Prior Year End	Q.S. Date Known Case Loss and LAE Reserves on Claims Reported or Reopened Subsequent to Prior Year End	Q.S. Date IBNR Loss and LAE Reserves	Total Q.S. Loss and LAE Reserves (Cols.7+8+9)	Prior Year-End Known Case Loss and LAE Reserves Developed (Savings)/ Deficiency (Cols.4+7 minus Col. 1)	Prior Year-End IBNR Loss and LAE Reserves Developed (Savings)/ Deficiency (Cols. 5+8+9 minus Col. 2)	Prior Year-End Total Loss and LAE Reserve Developed (Savings)/ Deficiency (Cols. 11+12)											
1. 2019 + Prior	9,699	7,441	17,141	642	5	647	8,996	200	6,995	16,190	(62)	(242)	(304)											
2. 2020	2,485	3,158	5,644	388	1	389	2,287	(9)	2,591	4,869	190	(575)	(385)											
3. Subtotals 2020 + Prior	12,184	10,600	22,784	1,030	6	1,036	11,282	190	9,586	21,059	128	(817)	(689)											
4. 2021	4,020	6,613	10,633	975	52	1,027	3,905	51	5,297	9,253	860	(1,212)	(353)											
5. Subtotals 2021 + Prior	16,205	17,213	33,417	2,004	58	2,063	15,188	242	14,884	30,313	987	(2,029)	(1,042)											
6. 2022	XXX	XXX	XXX	XXX	956	956	XXX	1,082	2,112	3,194	XXX	XXX	XXX											
7. Totals	16,205	17,213	33,417	2,004	1,014	3,019	15,188	1,324	16,996	33,507	987	(2,029)	(1,042)											
8. Prior Year-End Surplus As Regards Policyholders	33,052											Col. 11, Line 7 As % of Col. 1 Line 7	Col. 12, Line 7 As % of Col. 2 Line 7	Col. 13, Line 7 As % of Col. 3 Line 7										
												1. 6.1	2. (11.8)	3. (3.1)										
													Col. 13, Line 7 As a % of Col. 1 Line 8											
													4. (3.2)											

SUPPLEMENTAL EXHIBITS AND SCHEDULES INTERROGATORIES

The following supplemental reports are required to be filed as part of your statement filing. However, in the event that your company does not transact the type of business for which the special report must be filed, your response of NO to the specific interrogatory will be accepted in lieu of filing a "NONE" report and a bar code will be printed below. If the supplement is required of your company but is not being filed for whatever reason enter SEE EXPLANATION and provide an explanation following the interrogatory questions.

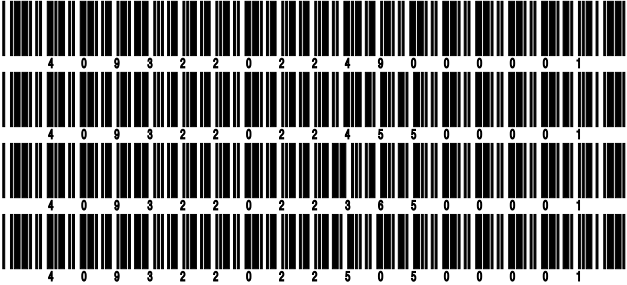
	Response
1. Will the Trusteed Surplus Statement be filed with the state of domicile and the NAIC with this statement?	NO
2. Will Supplement A to Schedule T (Medical Professional Liability Supplement) be filed with this statement?	NO
3. Will the Medicare Part D Coverage Supplement be filed with the state of domicile and the NAIC with this statement?	NO
4. Will the Director and Officer Insurance Coverage Supplement be filed with the state of domicile and the NAIC with this statement?	NO
AUGUST FILING	
5. Will the regulator-only (non-public) Communication of Internal Control Related Matters Noted in Audit be filed with the state of domicile and electronically with the NAIC (as a regulator-only non-public document) by August 1? The response for 1st and 3rd quarters should be N/A. A NO response resulting with a bar code is only appropriate in the 2nd quarter.	N/A

Explanations:

- 1.
- 2.
- 3.
- 4.

Bar Codes:

- 1. Trusteed Surplus Statement [Document Identifier 490]
- 2. Supplement A to Schedule T [Document Identifier 455]
- 3. Medicare Part D Coverage Supplement [Document Identifier 365]
- 4. Director and Officer Supplement [Document Identifier 505]



STATEMENT AS OF MARCH 31, 2022 OF THE MICO INSURANCE COMPANY
OVERFLOW PAGE FOR WRITE-INS

NONE

STATEMENT AS OF MARCH 31, 2022 OF THE MICO INSURANCE COMPANY

SCHEDULE A - VERIFICATION

Real Estate

	1	2
	Year to Date	Prior Year Ended December 31
1. Book/adjusted carrying value, December 31 of prior year		
2. Cost of acquired:		
2.1 Actual cost at time of acquisition		
2.2 Additional investment made after acquisition		
3. Current year change in encumbrances		
4. Total gain (loss) on disposals		
5. Deduct amounts received on disposals		
6. Total foreign exchange change in book/adjusted carrying value		
7. Deduct current year's other than temporary impairment recognized		
8. Deduct current year's depreciation		
9. Book/adjusted carrying value at the end of current period (Lines 1+2+3+4-5+6-7-8)		
10. Deduct total nonadmitted amounts		
11. Statement value at end of current period (Line 9 minus Line 10)		

SCHEDULE B - VERIFICATION

Mortgage Loans

	1	2
	Year to Date	Prior Year Ended December 31
1. Book value/recorded investment excluding accrued interest, December 31 of prior year		
2. Cost of acquired:		
2.1 Actual cost at time of acquisition		
2.2 Additional investment made after acquisition		
3. Capitalized deferred interest and other		
4. Accrual of discount		
5. Unrealized valuation increase (decrease)		
6. Total gain (loss) on disposals		
7. Deduct amounts received on disposals		
8. Deduct amortization of premium and mortgage interest paid and commitment fees		
9. Total foreign exchange change in book value/recorded investment excluding accrued interest		
10. Deduct current year's other than temporary impairment recognized		
11. Book value/recorded investment excluding accrued interest at end of current period (Lines 1+2+3+4+5+6-7-8+9-10)		
12. Total valuation allowance		
13. Subtotal (Line 11 plus Line 12)		
14. Deduct total nonadmitted amounts		
15. Statement value at end of current period (Line 13 minus Line 14)		

SCHEDULE BA - VERIFICATION

Other Long-Term Invested Assets

	1	2
	Year to Date	Prior Year Ended December 31
1. Book/adjusted carrying value, December 31 of prior year	0	438,264
2. Cost of acquired:		
2.1 Actual cost at time of acquisition		0
2.2 Additional investment made after acquisition		3,969
3. Capitalized deferred interest and other		0
4. Accrual of discount		0
5. Unrealized valuation increase (decrease)		(207,559)
6. Total gain (loss) on disposals		217,035
7. Deduct amounts received on disposals		451,708
8. Deduct amortization of premium and depreciation		0
9. Total foreign exchange change in book/adjusted carrying value		0
10. Deduct current year's other than temporary impairment recognized		0
11. Book/adjusted carrying value at end of current period (Lines 1+2+3+4+5+6-7-8+9-10)	0	0
12. Deduct total nonadmitted amounts		
13. Statement value at end of current period (Line 11 minus Line 12)	0	0

SCHEDULE D - VERIFICATION

Bonds and Stocks

	1	2
	Year to Date	Prior Year Ended December 31
1. Book/adjusted carrying value of bonds and stocks, December 31 of prior year	11,069,021	11,072,921
2. Cost of bonds and stocks acquired	1,629,780	3,172,395
3. Accrual of discount	625	9,513
4. Unrealized valuation increase (decrease)	(83,576)	(161,576)
5. Total gain (loss) on disposals	539	603,033
6. Deduct consideration for bonds and stocks disposed of	499,555	3,584,948
7. Deduct amortization of premium	484	42,194
8. Total foreign exchange change in book/adjusted carrying value	0	
9. Deduct current year's other than temporary impairment recognized	0	123
10. Total investment income recognized as a result of prepayment penalties and/or acceleration fees	0	
11. Book/adjusted carrying value at end of current period (Lines 1+2+3+4+5-6-7+8-9+10)	12,116,351	11,069,021
12. Deduct total nonadmitted amounts	0	
13. Statement value at end of current period (Line 11 minus Line 12)	12,116,351	11,069,021

STATEMENT AS OF MARCH 31, 2022 OF THE MICO INSURANCE COMPANY

SCHEDULE D - PART 1B

Showing the Acquisitions, Dispositions and Non-Trading Activity
During the Current Quarter for all Bonds and Preferred Stock by NAIC Designation

NAIC Designation	1 Book/Adjusted Carrying Value Beginning of Current Quarter	2 Acquisitions During Current Quarter	3 Dispositions During Current Quarter	4 Non-Trading Activity During Current Quarter	5 Book/Adjusted Carrying Value End of First Quarter	6 Book/Adjusted Carrying Value End of Second Quarter	7 Book/Adjusted Carrying Value End of Third Quarter	8 Book/Adjusted Carrying Value December 31 Prior Year
BONDS								
1. NAIC 1 (a)	8,905,171	1,421,634	845,383	750	9,482,172	0	0	8,905,171
2. NAIC 2 (a)	637,215	205,174	0	(605)	841,783	0	0	637,215
3. NAIC 3 (a)	0	0	0	0	0	0	0	
4. NAIC 4 (a)	0	0	0	0	0	0	0	
5. NAIC 5 (a)	0	0	0	0	0	0	0	
6. NAIC 6 (a)	0	0	0	0	0	0	0	
7. Total Bonds	9,542,386	1,626,808	845,383	145	10,323,955	0	0	9,542,386
PREFERRED STOCK								
8. NAIC 1	0	0	0	0	0	0	0	0
9. NAIC 2	0	0	0	0	0	0	0	0
10. NAIC 3	0	0	0	0	0	0	0	0
11. NAIC 4	0	0	0	0	0	0	0	0
12. NAIC 5	0	0	0	0	0	0	0	0
13. NAIC 6	0	0	0	0	0	0	0	0
14. Total Preferred Stock	0	0	0	0	0	0	0	0
15. Total Bonds and Preferred Stock	9,542,386	1,626,808	845,383	145	10,323,955	0	0	9,542,386

(a) Book/Adjusted Carrying Value column for the end of the current reporting period includes the following amount of short-term and cash equivalent bonds by NAIC designation:

NAIC 1 \$0 ; NAIC 2 \$0 ; NAIC 3 \$0 NAIC 4 \$0 ; NAIC 5 \$0 ; NAIC 6 \$0

Schedule DA - Part 1 - Short-Term Investments

N O N E

Schedule DA - Verification - Short-Term Investments

N O N E

Schedule DB - Part A - Verification - Options, Caps, Floors, Collars, Swaps and Forwards

N O N E

Schedule DB - Part B - Verification - Futures Contracts

N O N E

Schedule DB - Part C - Section 1 - Replication (Synthetic Asset) Transactions (RSATs) Open

N O N E

Schedule DB-Part C-Section 2-Reconciliation of Replication (Synthetic Asset) Transactions Open

N O N E

Schedule DB - Verification - Book/Adjusted Carrying Value, Fair Value and Potential Exposure of
Derivatives

N O N E

STATEMENT AS OF MARCH 31, 2022 OF THE MICO INSURANCE COMPANY

SCHEDULE E - PART 2 - VERIFICATION

(Cash Equivalents)

	1	2
	Year To Date	Prior Year Ended December 31
1. Book/adjusted carrying value, December 31 of prior year	22,485,146	955,893
2. Cost of cash equivalents acquired	767,473	27,068,236
3. Accrual of discount	3	1
4. Unrealized valuation increase (decrease)	0	
5. Total gain (loss) on disposals	0	
6. Deduct consideration received on disposals	1,888,666	5,538,984
7. Deduct amortization of premium	0	
8. Total foreign exchange change in book/adjusted carrying value	0	
9. Deduct current year's other than temporary impairment recognized	0	
10. Book/adjusted carrying value at end of current period (Lines 1+2+3+4+5-6-7+8-9)	21,363,957	22,485,146
11. Deduct total nonadmitted amounts	0	
12. Statement value at end of current period (Line 10 minus Line 11)	21,363,957	22,485,146

Schedule A - Part 2 - Real Estate Acquired and Additions Made

N O N E

Schedule A - Part 3 - Real Estate Disposed

N O N E

Schedule B - Part 2 - Mortgage Loans Acquired and Additions Made

N O N E

Schedule B - Part 3 - Mortgage Loans Disposed, Transferred or Repaid

N O N E

Schedule BA - Part 2 - Other Long-Term Invested Assets Acquired and Additions Made

N O N E

Schedule BA - Part 3 - Other Long-Term Invested Assets Disposed, Transferred or Repaid

N O N E

STATEMENT AS OF MARCH 31, 2022 OF THE MICO INSURANCE COMPANY

SCHEDULE D - PART 3

Show All Long-Term Bonds and Stock Acquired During the Current Quarter

1	2	3	4	5	6	7	8	9	10
CUSIP Identification	Description	Foreign	Date Acquired	Name of Vendor	Number of Shares of Stock	Actual Cost	Par Value	Paid for Accrued Interest and Dividends	NAIC Designation, NAIC Designation Modifier and SVO Administrative Symbol
00287Y-BV-0	ABBVIE INC		.01/20/2022	MORGAN STANLEY & COMPANY		51,674	50,000	258	2.B FE
010392-FU-7	ALABAMA POWER CO		.02/24/2022	PERSHING DIV OF DLJ SEC LNDING		66,177	75,000	492	1.E FE
010392-FX-1	ALABAMA POWER CO		.03/02/2022	MITSUBISHI UFJ SECURITIES		49,966	50,000	0	1.E FE
037833-CR-9	APPLE INC		.01/10/2022	MORGAN STANLEY & COMPANY		53,234	50,000	271	1.B FE
06051G-KJ-7	BANK OF AMERICA CORP		.02/01/2022	BANC OF AMERICA/FIXED INCOME		50,000	50,000	0	1.F FE
06406R-BA-4	BANK OF NEW YORK MELLON CORP		.01/19/2022	GOLDMAN		49,958	50,000	0	1.E FE
134429-BG-3	CAMPBELL SOUP CO		.01/27/2022	US BANCORP INVESTMENTS INC		54,145	50,000	784	2.B FE
14040H-CH-6	CAPITAL ONE FINANCIAL CORP		.02/10/2022	J P MORGAN SECURITIES		48,048	50,000	266	2.A FE
172967-NG-2	CITIGROUP INC		.02/16/2022	Citigroup (SSB)		50,000	50,000	0	1.G FE
17327C-AN-3	CITIGROUP INC		.01/18/2022	Citigroup (SSB)		50,000	50,000	0	1.G FE
24422E-WA-3	JOHN DEERE CAPITAL CORP		.01/04/2022	RBC CAPITAL MARKETS		149,915	150,000	0	1.F FE
26442U-AN-4	DUKE ENERGY PROGRESS LLC		.03/14/2022	MITSUBISHI UFJ SECURITIES		149,606	150,000	0	1.F FE
38141G-ZK-3	GOLDMAN SACHS GROUP INC		.01/19/2022	GOLDMAN		50,000	50,000	0	1.F FE
46647P-CW-4	JPMORGAN CHASE & CO		.02/16/2022	J P MORGAN SECURITIES		50,000	50,000	0	1.F FE
494368-CB-7	KIMBERLY-CLARK CORP		.03/02/2022	Citigroup (SSB)		128,404	125,000	1,701	1.F FE
61747Y-EK-7	MORGAN STANLEY		.01/19/2022	MORGAN STANLEY & COMPANY		50,000	50,000	0	1.F FE
64831M-AA-0	NRZT 22NQM2 A1 - CMO/RMBS		.03/03/2022	MORGAN STANLEY & COMPANY		224,616	225,000	269	1. FE
666807-BN-1	NORTHROP GRUMMAN CORP		.02/10/2022	GOLDMAN		51,307	50,000	131	2.A FE
74456Q-CJ-3	PUBLIC SERVICE ELECTRIC AND GAS CO		.03/09/2022	BANC OF AMERICA/FIXED INCOME		99,812	100,000	0	1.F FE
857477-BS-1	STATE STREET CORP		.02/02/2022	GOLDMAN		100,000	100,000	0	1.E FE
89236T-JV-8	TOYOTA MOTOR CREDIT CORP		.01/10/2022	BANC OF AMERICA/FIXED INCOME		49,948	50,000	0	1.E FE
1109999999. Subtotal - Bonds - Industrial and Miscellaneous (Unaffiliated)						1,626,808	1,625,000	4,173	XXX
2509999997. Total - Bonds - Part 3						1,626,808	1,625,000	4,173	XXX
2509999998. Total - Bonds - Part 5						XXX	XXX	XXX	XXX
2509999999. Total - Bonds						1,626,808	1,625,000	4,173	XXX
4509999997. Total - Preferred Stocks - Part 3						0	XXX	0	XXX
4509999998. Total - Preferred Stocks - Part 5						XXX	XXX	XXX	XXX
4509999999. Total - Preferred Stocks						0	XXX	0	XXX
007903-10-7	ADVANCED MICRO DEVICES ORD		.02/14/2022	ITG INC	8,617	453		0	
07831C-10-3	BELLRING BRANDS ORD		.03/11/2022	ITG INC	3,803	100		0	
21037T-10-9	CONSTELLATION ENERGY ORD		.02/02/2022	ITG INC	7,333	299		0	
30161N-10-1	EXELON ORD		.02/02/2022	ITG INC	22,000	710		0	
737446-10-4	POST HOLDINGS ORD		.03/11/2022	ITG INC	3,000	189		0	
78409V-10-4	S&P GLOBAL ORD		.02/28/2022	ITG INC	1,987	367		0	
78440X-88-7	SL GREEN RLTY REIT ORD		.01/24/2022	ITG INC	1,941	195		0	
947890-10-9	WEBSTER FINANCIAL ORD		.01/31/2022	MERRILL LYNCH PIERCE FENNER & SMITH INC.	4,167	192		0	
98888T-10-7	ZIMVIE ORD		.03/01/2022	ITG INC	0,400	14		0	
98956P-10-2	ZIMMER BIOMET HOLDINGS ORD		.03/01/2022	ITG INC	4,000	454		0	
5019999999. Subtotal - Common Stocks - Industrial and Miscellaneous (Unaffiliated) Publicly Traded						2,973	XXX	0	XXX
5989999997. Total - Common Stocks - Part 3						2,973	XXX	0	XXX
5989999998. Total - Common Stocks - Part 5						XXX	XXX	XXX	XXX
5989999999. Total - Common Stocks						2,973	XXX	0	XXX
5999999999. Total - Preferred and Common Stocks						2,973	XXX	0	XXX
6009999999 - Totals						1,629,780	XXX	4,173	XXX

STATEMENT AS OF MARCH 31, 2022 OF THE MICO INSURANCE COMPANY

SCHEDULE D - PART 4

Show All Long-Term Bonds and Stock Sold, Redeemed or Otherwise Disposed of During the Current Quarter

1	2	3	4	5	6	7	8	9	10	Change In Book/Adjusted Carrying Value					16	17	18	19	20	21	22
										11	12	13	14	15							
CUSIP Identification	Description	For- eign	Disposal Date	Name of Purchaser	Number of Shares of Stock	Consid- eration	Par Value	Actual Cost	Prior Year Book/ Adjusted Carrying Value	Unrealized Valuation Increase/ (Decrease)	Current Year's (Amor- tization)/ Accretion	Current Year's Other Than Temporary Impairment Recogn- ized	Total Change in Book/ Adjusted Carrying Value (11 + 12 - 13)	Total Foreign Exchange Change in Book /Adjusted Carrying Value	Book/ Adjusted Carrying Value at Disposal Date	Foreign Exchange Gain (Loss) on Disposal	Realized Gain (Loss) on Disposal	Total Gain (Loss) on Disposal	Bond Interest/ Stock Dividends Received During Year	Stated Con- tractual Maturity Date	NAIC Desig- nation, NAIC Desig- nation Modifier and SVO Admini- strative Symbol
38377R-VK-8	GNR 2010-166 GP - CMO/RMBS		03/01/2022	Paydown		1,179	1,179	1,245	1,194	0	(14)	0	(14)	0	1,179	0	0	0	6	04/20/2039	1.A
0109999999. Subtotal - Bonds - U.S. Governments						1,179	1,179	1,245	1,194	0	(14)	0	(14)	0	1,179	0	0	0	6	XXX	XXX
3131XT-QN-3	FH ZM0461 - RMBS		03/01/2022	Paydown		2,774	2,774	2,864	2,870	0	(96)	0	(96)	0	2,774	0	0	0	16	11/01/2045	1.A
3131XV-F6-7	FH ZM1989 - RMBS		03/01/2022	Paydown		3,672	3,672	3,795	3,830	0	(158)	0	(158)	0	3,672	0	0	0	18	10/01/2041	1.A
31329J-PX-9	FH Z11338 - RMBS		03/01/2022	Paydown		1,147	1,147	1,186	1,195	0	(48)	0	(48)	0	1,147	0	0	0	5	08/01/2042	1.A
31329K-X3-3	FH Z12498 - RMBS		03/01/2022	Paydown		6,389	6,389	6,415	6,417	0	(28)	0	(28)	0	6,389	0	0	0	36	03/01/2038	1.A
3132A4-6K-9	FH ZS4474 - RMBS		03/01/2022	Paydown		1,167	1,167	1,206	1,216	0	(48)	0	(48)	0	1,167	0	0	0	7	03/01/2042	1.A
3132A5-AY-1	FH ZS4523 - RMBS		03/01/2022	Paydown		1,843	1,843	1,853	1,852	0	(8)	0	(8)	0	1,843	0	0	0	10	07/01/2043	1.A
3132A5-E8-4	FH ZS4659 - RMBS		03/01/2022	Paydown		4,465	4,465	4,680	4,778	0	(313)	0	(313)	0	4,465	0	0	0	25	04/01/2046	1.A
3136A5-YC-4	FNR 2012-30 ED - CMO/RMBS		03/01/2022	Paydown		877	877	896	880	0	(2)	0	(2)	0	877	0	0	0	4	04/25/2031	1.A
3138M0-4E-0	FN A08920 - RMBS		03/01/2022	Paydown		1,371	1,371	1,426	1,395	0	(24)	0	(24)	0	1,371	0	0	0	6	01/01/2028	1.A
3138M0-3Z-2	FN AS4415 - RMBS		03/01/2022	Paydown		11,723	11,723	12,545	12,331	0	(609)	0	(609)	0	11,723	0	0	0	56	02/01/2045	1.A
3138ME-KK-4	FN AS4797 - RMBS		03/01/2022	Paydown		1,437	1,437	1,514	1,501	0	(64)	0	(64)	0	1,437	0	0	0	8	04/01/2045	1.A
3138WF-TA-4	FN ASS944 - RMBS		03/01/2022	Paydown		3,859	3,859	4,047	4,003	0	(144)	0	(144)	0	3,859	0	0	0	21	10/01/2045	1.A
31397Q-LT-3	FNR 2011-4 PK - CMO/RMBS		03/01/2022	Paydown		705	705	713	713	0	(8)	0	(8)	0	705	0	0	0	3	04/25/2040	1.A
31398V-7F-7	FHR 3649 BW - CMO/RMBS		03/01/2022	Paydown		448	448	476	457	0	(9)	0	(9)	0	448	0	0	0	3	03/15/2025	1.A
3140F1-YB-2	FN BC6105 - RMBS		03/01/2022	Paydown		826	826	866	860	0	(34)	0	(34)	0	826	0	0	0	4	06/01/2046	1.A
3140FP-DG-1	FN BE3702 - RMBS		03/01/2022	Paydown		6,576	6,576	6,895	6,927	0	(351)	0	(351)	0	6,576	0	0	0	44	06/01/2047	1.A
3140X4-H4-5	FN FH1278 - RMBS		03/01/2022	Paydown		7,730	7,730	7,910	7,921	0	(192)	0	(192)	0	7,730	0	0	0	33	07/01/2034	1.A
3140X8-KJ-5	FN FHM796 - RMBS		03/01/2022	Paydown		10,906	10,906	11,368	11,355	0	(449)	0	(449)	0	10,906	0	0	0	28	11/01/2050	1.A
314180-6L-1	FN MA4474 - RMBS		03/01/2022	Paydown		5,855	5,855	5,985	5,981	0	(126)	0	(126)	0	5,855	0	0	0	20	11/01/2041	1.A
0909999999. Subtotal - Bonds - U.S. Special Revenues						73,771	73,771	76,667	76,480	0	(2,710)	0	(2,710)	0	73,771	0	0	0	348	XXX	XXX
14042W-AC-4	COPAR 2019-1 A3 - ABS		03/15/2022	Paydown		12,814	12,814	12,811	12,813	0	0	0	0	0	12,814	0	0	0	53	11/15/2023	1.A FE
14314Q-AB-0	CARMX 2021-2 A2A - ABS		03/15/2022	Paydown		45,660	45,660	45,657	45,658	0	1	0	1	0	45,660	0	0	0	20	06/17/2024	1.A FE
34531F-AA-1	FORDR 2017-REV1 A - ABS		02/15/2022	Paydown		150,000	150,000	149,968	149,999	0	1	0	1	0	150,000	0	0	0	655	08/15/2028	1.A FE
380140-AB-9	GMCAR 213 A2 - ABS		03/16/2022	Paydown		46,637	46,637	46,632	46,659	0	(22)	0	(22)	0	46,637	0	0	0	15	08/16/2024	1.A FE
44933L-AB-9	HART 2021-A A2 - ABS		03/15/2022	Paydown		31,699	31,699	31,696	31,697	0	2	0	2	0	31,699	0	0	0	10	02/15/2024	1.A FE
58769K-AC-8	MBALT 2021-B A2 - ABS		03/15/2022	Paydown		22,709	22,709	22,707	22,708	0	1	0	1	0	22,709	0	0	0	8	01/16/2024	1.A FE
64831M-AA-0	NRZT 22NQM2 A1 - CMO/RMBS		03/25/2022	Paydown		1,064	1,064	1,062	0	0	2	0	2	0	1,064	0	0	0	0	03/03/2062	1.FE
713448-BY-3	PEPSICO INC		03/05/2022	Maturity @ 100.00		50,000	50,000	51,738	50,038	0	(38)	0	(38)	0	50,000	0	0	0	688	03/05/2022	1.E FE
82652Q-AA-9	SFPC 211 A - RMBS		03/20/2022	Paydown		7,554	7,554	7,552	7,552	0	2	0	2	0	7,554	0	0	0	12	11/20/2037	1.A FE
89239C-AB-5	TLOT 21B A2 - ABS		03/20/2022	Paydown		7,050	7,050	7,049	7,050	0	1	0	1	0	7,050	0	0	0	3	03/20/2024	1.A FE
98162V-AD-1	WOART 2019-B A3 - ABS		03/15/2022	Paydown		24,172	24,172	24,172	24,172	0	0	0	0	0	24,172	0	0	0	102	07/15/2024	1.A FE
98163J-AB-1	WOLS 2021-A A2 - ABS		03/15/2022	Paydown		21,074	21,074	21,072	21,073	0	1	0	1	0	21,074	0	0	0	6	04/15/2024	1.A FE
11099999999. Subtotal - Bonds - Industrial and Miscellaneous (Unaffiliated)						420,433	420,433	422,116	419,420	0	(48)	0	(48)	0	420,433	0	0	0	1,571	XXX	XXX
25099999997. Total - Bonds - Part 4						495,383	495,383	500,028	497,094	0	(2,772)	0	(2,772)	0	495,383	0	0	0	1,925	XXX	XXX
25099999998. Total - Bonds - Part 5						XXX	XXX	XXX	XXX	XXX	XXX	XXX	XXX	XXX	XXX	XXX	XXX	XXX	XXX	XXX	XXX
25099999999. Total - Bonds						495,383	495,383	500,028	497,094	0	(2,772)	0	(2,772)	0	495,383	0	0	0	1,925	XXX	XXX
45099999997. Total - Preferred Stocks - Part 4						0	XXX	0	0	0	0	0	0	0	0	0	0	0	0	XXX	XXX
45099999998. Total - Preferred Stocks - Part 5						XXX	XXX	XXX	XXX	XXX	XXX	XXX	XXX	XXX	XXX	XXX	XXX	XXX	XXX	XXX	XXX
45099999999. Total - Preferred Stocks						0	XXX	0	0	0	0	0	0	0	0	0	0	0	0	XXX	XXX
00751Y-10-6	ADVANCE AUTO PARTS ORD		12/21/2021	JP MORGAN SECURITIES INC	0.000	0	0	0	0	0	0	0	0	0	0	0	0	0	2		
007903-10-7	ADVANCED MICRO DEVICES ORD		02/15/2022	Not Available	0.620	70	13	89	89	(76)	0	0	(76)	0	13	0	57	57	0		
00912X-30-2	AIR LEASE CL A ORD		12/21/2021	JP MORGAN SECURITIES INC	0.000	0	0	0	0	0	0	0	0	0	0	0	0	0	1		
012653-10-1	ALBEMARLE ORD		12/21/2021	JP MORGAN SECURITIES INC	0.000	0	0	0	0	0	0	0	0	0	0	0	0	0	1		
020002-10-1	ALLSTATE ORD		12/21/2021	JP MORGAN SECURITIES INC	0.000	0	0	0	0	0	0	0	0	0	0	0	0	0	6		
032095-10-1	AMPHENOL CL A ORD		12/21/2021	JP MORGAN SECURITIES INC	0.000	0	0	0	0	0	0	0	0	0	0	0	0	0	3		

STATEMENT AS OF MARCH 31, 2022 OF THE MICO INSURANCE COMPANY

SCHEDULE D - PART 4

Show All Long-Term Bonds and Stock Sold, Redeemed or Otherwise Disposed of During the Current Quarter

[illegible]

E05.1

STATEMENT AS OF MARCH 31, 2022 OF THE MICO INSURANCE COMPANY

SCHEDULE D - PART 4

Show All Long-Term Bonds and Stock Sold, Redeemed or Otherwise Disposed of During the Current Quarter

1	2	3	4	5	6	7	8	9	10	Change In Book/Adjusted Carrying Value					16	17	18	19	20	21	22
										11	12	13	14	15							
CUSIP Identification	Description	For- eign	Disposal Date	Name of Purchaser	Number of Shares of Stock	Consid- eration	Par Value	Actual Cost	Prior Year Book/ Adjusted Carrying Value	Unrealized Valuation Increase/ (Decrease)	Current Year's (Amor- tization)/ Accretion	Current Year's Other Than Temporary Impairment Recog- nized	Total Change in Book/ Adjusted Carrying Value (11 + 12 - 13)	Total Foreign Exchange Change in Book /Adjusted Carrying Value	Book/ Adjusted Carrying Value at Disposal Date	Foreign Exchange Gain (Loss) on Disposal	Realized Gain (Loss) on Disposal	Total Gain (Loss) on Disposal	Bond Interest/ Stock Dividends Received During Year	Stated Con- tractual Maturity Date	NAIC Desig- nation, NAIC Desig- nation Modifier and SVO Admini- strative Symbol
..681919-10-6	OMNICOM GROUP ORD		12/21/2021	JP MORGAN SECURITIES INC.	0.000	..0		..0	..0	..0	..0	..0	..0	..0	..0	..0	..0	..0	..6		
..69351T-10-6	PPL ORD		12/21/2021	JP MORGAN SECURITIES INC.	0.000	..0		..0	..0	..0	..0	..0	..0	..0	..0	..0	..0	..0	..7		
..693718-10-8	PACCAR ORD		12/21/2021	JP MORGAN SECURITIES INC.	0.000	..0		..0	..0	..0	..0	..0	..0	..0	..0	..0	..0	..0	14		
..695156-10-9	PACKAGING CORP OF AMERICA ORD		12/21/2021	JP MORGAN SECURITIES INC.	0.000	..0		..0	..0	..0	..0	..0	..0	..0	..0	..0	..0	..0	..4		
..713448-10-8	PEPSICO ORD		12/21/2021	JP MORGAN SECURITIES INC.	0.000	..0		..0	..0	..0	..0	..0	..0	..0	..0	..0	..0	..0	30		
..737446-10-4	POST HOLDINGS ORD		03/11/2022	VARIOUS	3.000	288		288	338	(50)	..0	..0	(50)	..0	288	..0	..0	..0	..0		
..743606-10-5	PROSPERITY BANCSHARES ORD		12/21/2021	JP MORGAN SECURITIES INC.	0.000	..0		..0	..0	..0	..0	..0	..0	..0	..0	..0	..0	..0	..2		
..7591EP-10-0	REGIONS FINANCIAL ORD		12/21/2021	JP MORGAN SECURITIES INC.	0.000	..0		..0	..0	..0	..0	..0	..0	..0	..0	..0	..0	..0	..5		
..78409V-10-4	S&P GLOBAL ORD		02/28/2022	Not Available	0.990	380		180	467	(288)	..0	..0	(288)	..0	180	..0	201	201	..1		
..784117-10-3	SEI INVESTMENTS ORD		12/21/2021	JP MORGAN SECURITIES INC.	0.000	..0		..0	..0	..0	..0	..0	..0	..0	..0	..0	..0	..0	..2		
..78440X-80-4	SL GREEN RLTY REIT ORD		01/24/2022	VARIOUS	2.000	195		195	143	52	..0	..0	52	..0	195	..0	..0	..0	..6		
..78440X-88-7	SL GREEN RLTY REIT ORD		01/24/2022	Not Available	0.941	68		95	..0	..0	..0	..0	..0	..0	95	..0	(26)	(26)	..0		
..806857-10-8	SCHLUMBERGER ORD		12/21/2021	JP MORGAN SECURITIES INC.	0.000	..0		..0	..0	..0	..0	..0	..0	..0	..0	..0	..0	..0	..5		
..85917A-10-0	STERLING BAN ORD		01/31/2022	VARIOUS	9.000	192		192	232	(41)	..0	..0	(41)	..0	192	..0	..0	..0	..1		
..883203-10-1	TEXTRON ORD		12/21/2021	JP MORGAN SECURITIES INC.	0.000	..0		..0	..0	..0	..0	..0	..0	..0	..0	..0	..0	..0	..0		
..883556-10-2	THERMO FISHER SCIENTIFIC ORD		12/21/2021	JP MORGAN SECURITIES INC.	0.000	..0		..0	..0	..0	..0	..0	..0	..0	..0	..0	..0	..0	..2		
..931142-10-3	WALMART ORD		12/21/2021	JP MORGAN SECURITIES INC.	0.000	..0		..0	..0	..0	..0	..0	..0	..0	..0	..0	..0	..0	..9		
..947890-10-9	WEBSTER FINANCIAL ORD		02/01/2022	Not Available	0.170	10		8	..0	..0	..0	..0	..0	..0	8	..0	2	2	..0		
..98389B-10-0	XCEL ENERGY ORD		12/21/2021	JP MORGAN SECURITIES INC.	0.000	..0		..0	..0	..0	..0	..0	..0	..0	..0	..0	..0	..0	..6		
..983919-10-1	XILINX ORD		02/14/2022	VARIOUS	5.000	453		453	1,060	(607)	..0	..0	(607)	..0	453	..0	..0	..0	..2		
..98888T-10-7	ZIMVIE ORD		03/01/2022	Not Available	0.400	11		14	..0	..0	..0	..0	..0	..0	14	..0	(3)	(3)	..0		
..98956P-10-2	ZIMMER BIOMET HOLDINGS ORD		03/01/2022	VARIOUS	4.000	468		468	508	(40)	..0	..0	(40)	..0	468	..0	..0	..0	..1		
..647567-10-5	IHS MARKIT ORD	C	02/28/2022	VARIOUS	7.000	367		367	930	(563)	..0	..0	(563)	..0	367	..0	..0	..0	..1		
..651502-10-5	JOHNSON CONTROLS INTERNATIONAL ORD	C	12/21/2021	JP MORGAN SECURITIES INC.	0.000	..0		..0	..0	..0	..0	..0	..0	..0	..0	..0	..0	..0	..6		
..65960L-10-3	MEDTRONIC ORD	C	12/21/2021	JP MORGAN SECURITIES INC.	0.000	..0		..0	..0	..0	..0	..0	..0	..0	..0	..0	..0	..0	17		
..H1467J-10-4	CHUBB ORD	C	12/21/2021	JP MORGAN SECURITIES INC.	0.000	..0		..0	..0	..0	..0	..0	..0	..0	..0	..0	..0	..0	10		
..N6596X-10-9	NXP SEMICONDUCTORS ORD	C	12/21/2021	JP MORGAN SECURITIES INC.	0.000	..0		..0	..0	..0	..0	..0	..0	..0	..0	..0	..0	..0	..1		
5019999999. Subtotal - Common Stocks - Industrial and Miscellaneous (Unaffiliated) Publicly Traded						4,172	XXX	3,632	5,655	(2,174)	0	0	(2,174)	0	3,632	0	539	539	292	XXX	XXX
5989999997. Total - Common Stocks - Part 4						4,172	XXX	3,632	5,655	(2,174)	0	0	(2,174)	0	3,632	0	539	539	292	XXX	XXX
5989999998. Total - Common Stocks - Part 5						XXX	XXX	XXX	XXX	XXX	XXX	XXX	XXX	XXX	XXX	XXX	XXX	XXX	XXX	XXX	XXX
5989999999. Total - Common Stocks						4,172	XXX	3,632	5,655	(2,174)	0	0	(2,174)	0	3,632	0	539	539	292	XXX	XXX
5999999999. Total - Preferred and Common Stocks						4,172	XXX	3,632	5,655	(2,174)	0	0	(2,174)	0	3,632	0	539	539	292	XXX	XXX
6009999999 - Totals						499,555	XXX	503,660	502,749	(2,174)	(2,772)	0	(4,946)	0	499,016	0	539	539	2,217	XXX	XXX

Schedule DB - Part A - Section 1 - Options, Caps, Floors, Collars, Swaps and Forwards Open
N O N E

Schedule DB - Part B - Section 1 - Futures Contracts Open
N O N E

Schedule DB - Part B - Section 1B - Brokers with whom cash deposits have been made
N O N E

Schedule DB - Part D - Section 1 - Counterparty Exposure for Derivative Instruments Open
N O N E

Schedule DB - Part D-Section 2 - Collateral for Derivative Instruments Open - Pledged By
N O N E

Schedule DB - Part D-Section 2 - Collateral for Derivative Instruments Open - Pledged To
N O N E

Schedule DB - Part E - Derivatives Hedging Variable Annuity Guarantees
N O N E

Schedule DL - Part 1 - Reinvested Collateral Assets Owned
N O N E

Schedule DL - Part 2 - Reinvested Collateral Assets Owned
N O N E

SCHEDULE E - PART 1 - CASH

[illegible]

STATEMENT AS OF MARCH 31, 2022 OF THE MICO INSURANCE COMPANY

SCHEDULE E - PART 2 - CASH EQUIVALENTS

Show Investments Owned End of Current Quarter

[illegible]