



PROPERTY AND CASUALTY COMPANIES - ASSOCIATION EDITION

QUARTERLY STATEMENT

AS OF MARCH 31, 2022

OF THE CONDITION AND AFFAIRS OF THE

COLONY SPECIALTY INSURANCE COMPANY

NAIC Group Code 0457 (Current) 0457 (Prior) NAIC Company Code 36927 Employer's ID Number 34-1266871

Organized under the Laws of Ohio, State of Domicile or Port of Entry OH

Country of Domicile United States of America

Incorporated/Organized 12/20/1978 Commenced Business 04/16/1979

Statutory Home Office 50 West Broad Street, Suite 1330 (Street and Number) Columbus, OH, US 43215 (City or Town, State, Country and Zip Code)

Main Administrative Office 8720 Stony Point Pkwy, Suite 400 (Street and Number) Richmond, VA, US 23235 (City or Town, State, Country and Zip Code) 804-560-2000 (Area Code) (Telephone Number)

Mail Address P.O. Box 469012 (Street and Number or P.O. Box) San Antonio, TX, US 78246 (City or Town, State, Country and Zip Code)

Primary Location of Books and Records 8720 Stony Point Pkwy, Suite 400 (Street and Number) Richmond, VA, US 23235 (City or Town, State, Country and Zip Code) 804-560-2000 (Area Code) (Telephone Number)

Internet Website Address www.colonyspecialty.com

Statutory Statement Contact Amanda Frerich (Name) 800-470-7958 (Area Code) (Telephone Number) taxgroup@argogroupus.com (E-mail Address) 804-560-4820 (FAX Number)

OFFICERS

President Marsh Macneil Duncan Chief Financial Officer Kyle Alan Struble #

Corporate Secretary Austin Warner King Treasurer Lynn Kelly Geurin

OTHER

Steven William Laudermilch Frank Mike-Mayer Ronald John Swanstrom

DIRECTORS OR TRUSTEES

Marsh Macneil Duncan Ian Thomas Macartney Frank Mike-Mayer

Kyle Alan Struble Ronald John Swanstrom

State of Texas SS:

County of Bexar

The officers of this reporting entity being duly sworn, each depose and say that they are the described officers of said reporting entity, and that on the reporting period stated above, all of the herein described assets were the absolute property of the said reporting entity, free and clear from any liens or claims thereon, except as herein stated, and that this statement, together with related exhibits, schedules and explanations therein contained, annexed or referred to, is a full and true statement of all the assets and liabilities and of the condition and affairs of the said reporting entity as of the reporting period stated above, and of its income and deductions therefrom for the period ended, and have been completed in accordance with the NAIC Annual Statement Instructions and Accounting Practices and Procedures manual except to the extent that: (1) state law may differ; or, (2) that state rules or regulations require differences in reporting not related to accounting practices and procedures, according to the best of their information, knowledge and belief, respectively. Furthermore, the scope of this attestation by the described officers also includes the related corresponding electronic filing with the NAIC, when required, that is an exact copy (except for formatting differences due to electronic filing) of the enclosed statement. The electronic filing may be requested by various regulators in lieu of or in addition to the enclosed statement.

Subscribed and sworn to before me this day of

a. Is this an original filing? Yes [ X ] No [ ]

b. If no,

1. State the amendment number.....

2. Date filed .....

3. Number of pages attached.....

STATEMENT AS OF MARCH 31, 2022 OF THE COLONY SPECIALTY INSURANCE COMPANY

ASSETS

	Current Statement Date			4 December 31 Prior Year Net Admitted Assets
	1 Assets	2 Nonadmitted Assets	3 Net Admitted Assets (Cols. 1 - 2)	
1. Bonds .....	73,053,365		73,053,365	72,065,715
2. Stocks:				
2.1 Preferred stocks .....			0	0
2.2 Common stocks .....			0	0
3. Mortgage loans on real estate:				
3.1 First liens .....			0	0
3.2 Other than first liens .....			0	0
4. Real estate:				
4.1 Properties occupied by the company (less \$ encumbrances) .....			0	0
4.2 Properties held for the production of income (less \$ ..... encumbrances) .....			0	0
4.3 Properties held for sale (less \$ ..... encumbrances) .....			0	0
5. Cash (\$ .....85,119 ), cash equivalents (\$ .....10,002,221 ) and short-term investments (\$ .....0 ) .....	10,087,340		10,087,340	10,050,491
6. Contract loans (including \$ ..... premium notes) .....			0	0
7. Derivatives .....			0	0
8. Other invested assets .....			0	0
9. Receivables for securities .....	500,000		500,000	0
10. Securities lending reinvested collateral assets .....			0	0
11. Aggregate write-ins for invested assets .....	0	0	0	0
12. Subtotals, cash and invested assets (Lines 1 to 11) .....	83,640,705	0	83,640,705	82,116,206
13. Title plants less \$ ..... charged off (for Title insurers only) .....			0	0
14. Investment income due and accrued .....	336,418		336,418	389,366
15. Premiums and considerations:				
15.1 Uncollected premiums and agents' balances in the course of collection .....	7,241,483	323,452	6,918,031	5,523,352
15.2 Deferred premiums, agents' balances and installments booked but deferred and not yet due (including \$ .....4,320 earned but unbilled premiums) .....	4,320	432	3,888	15,784
15.3 Accrued retrospective premiums (\$ ..... ) and contracts subject to redetermination (\$ ..... ) .....			0	0
16. Reinsurance:				
16.1 Amounts recoverable from reinsurers .....	3,637,968		3,637,968	2,426,564
16.2 Funds held by or deposited with reinsured companies .....			0	0
16.3 Other amounts receivable under reinsurance contracts .....			0	0
17. Amounts receivable relating to uninsured plans .....			0	0
18.1 Current federal and foreign income tax recoverable and interest thereon .....			0	0
18.2 Net deferred tax asset .....	25,003		25,003	265,332
19. Guaranty funds receivable or on deposit .....			0	0
20. Electronic data processing equipment and software .....			0	0
21. Furniture and equipment, including health care delivery assets (\$ ..... ) .....			0	0
22. Net adjustment in assets and liabilities due to foreign exchange rates .....			0	0
23. Receivables from parent, subsidiaries and affiliates .....			0	942,707
24. Health care (\$ ..... ) and other amounts receivable .....			0	0
25. Aggregate write-ins for other than invested assets .....	4,601	4,401	200	200
26. Total assets excluding Separate Accounts, Segregated Accounts and Protected Cell Accounts (Lines 12 to 25) .....	94,890,498	328,285	94,562,213	91,679,511
27. From Separate Accounts, Segregated Accounts and Protected Cell Accounts .....			0	0
28. Total (Lines 26 and 27)	94,890,498	328,285	94,562,213	91,679,511
DETAILS OF WRITE-INS				
1101. ....				
1102. ....				
1103. ....				
1198. Summary of remaining write-ins for Line 11 from overflow page .....	0	0	0	0
1199. Totals (Lines 1101 through 1103 plus 1198)(Line 11 above)	0	0	0	0
2501. Miscellaneous Assets .....	4,601	4,401	200	200
2502. ....				
2503. ....				
2598. Summary of remaining write-ins for Line 25 from overflow page .....	0	0	0	0
2599. Totals (Lines 2501 through 2503 plus 2598)(Line 25 above)	4,601	4,401	200	200

STATEMENT AS OF MARCH 31, 2022 OF THE COLONY SPECIALTY INSURANCE COMPANY

LIABILITIES, SURPLUS AND OTHER FUNDS

	1 Current Statement Date	2 December 31, Prior Year
1. Losses (current accident year \$ ..... ) .....		0
2. Reinsurance payable on paid losses and loss adjustment expenses .....		0
3. Loss adjustment expenses .....		0
4. Commissions payable, contingent commissions and other similar charges .....	79,760	31,266
5. Other expenses (excluding taxes, licenses and fees) .....		0
6. Taxes, licenses and fees (excluding federal and foreign income taxes) .....	15,572	397,298
7.1 Current federal and foreign income taxes (including \$ ..... on realized capital gains (losses)) .....	2,216,565	2,141,927
7.2 Net deferred tax liability .....		0
8. Borrowed money \$ ..... and interest thereon \$ .....		0
9. Unearned premiums (after deducting unearned premiums for ceded reinsurance of \$ .....25,541,483 and including warranty reserves of \$ ..... and accrued accident and health experience rating refunds including \$ .....0 for medical loss ratio rebate per the Public Health Service Act) .....		0
10. Advance premium .....		0
11. Dividends declared and unpaid:		
11.1 Stockholders .....		0
11.2 Policyholders .....		0
12. Ceded reinsurance premiums payable (net of ceding commissions) .....	11,895,975	12,078,818
13. Funds held by company under reinsurance treaties .....	49,383,955	50,119,568
14. Amounts withheld or retained by company for account of others .....		0
15. Remittances and items not allocated .....	108,995	139,913
16. Provision for reinsurance (including \$ ..... certified) .....	1,262,050	1,262,050
17. Net adjustments in assets and liabilities due to foreign exchange rates .....		0
18. Drafts outstanding .....		0
19. Payable to parent, subsidiaries and affiliates .....	3,798,510	1,732,885
20. Derivatives .....	0	0
21. Payable for securities .....	828,727	0
22. Payable for securities lending .....		0
23. Liability for amounts held under uninsured plans .....		0
24. Capital notes \$ ..... and interest thereon \$ .....		0
25. Aggregate write-ins for liabilities .....	0	0
26. Total liabilities excluding protected cell liabilities (Lines 1 through 25) .....	69,590,109	67,903,725
27. Protected cell liabilities .....		0
28. Total liabilities (Lines 26 and 27) .....	69,590,109	67,903,725
29. Aggregate write-ins for special surplus funds .....	0	0
30. Common capital stock .....	3,500,000	3,500,000
31. Preferred capital stock .....		0
32. Aggregate write-ins for other than special surplus funds .....	0	0
33. Surplus notes .....		0
34. Gross paid in and contributed surplus .....	8,002,700	8,002,700
35. Unassigned funds (surplus) .....	13,469,404	12,273,088
36. Less treasury stock, at cost:		
36.1 ..... shares common (value included in Line 30 \$ ..... ) .....		0
36.2 ..... shares preferred (value included in Line 31 \$ ..... ) .....		0
37. Surplus as regards policyholders (Lines 29 to 35, less 36) .....	24,972,104	23,775,788
38. Totals (Page 2, Line 28, Col. 3)	94,562,213	91,679,513
DETAILS OF WRITE-INS		
2501. ....		
2502. ....		
2503. ....		
2598. Summary of remaining write-ins for Line 25 from overflow page .....	0	0
2599. Totals (Lines 2501 through 2503 plus 2598)(Line 25 above)	0	0
2901. ....		
2902. ....		
2903. ....		
2998. Summary of remaining write-ins for Line 29 from overflow page .....	0	0
2999. Totals (Lines 2901 through 2903 plus 2998)(Line 29 above)	0	0
3201. ....		
3202. ....		
3203. ....		
3298. Summary of remaining write-ins for Line 32 from overflow page .....	0	0
3299. Totals (Lines 3201 through 3203 plus 3298)(Line 32 above)	0	0

STATEMENT AS OF MARCH 31, 2022 OF THE COLONY SPECIALTY INSURANCE COMPANY

STATEMENT OF INCOME

	1	2	3
	Current Year to Date	Prior Year to Date	Prior Year Ended December 31
<b>UNDERWRITING INCOME</b>			
1. Premiums earned:			
1.1 Direct (written \$ ..... 14,625,939 )	14,541,400	10,655,489	48,254,268
1.2 Assumed (written \$ ..... 88,500 )	62,629	32,321	44,586
1.3 Ceded (written \$ ..... 14,714,440 )	14,604,029	10,687,811	48,298,854
1.4 Net (written \$ ..... (1) )	0	(1)	0
<b>DEDUCTIONS:</b>			
2. Losses incurred (current accident year \$ ..... ):			
2.1 Direct	6,181,880	5,469,768	42,111,075
2.2 Assumed	23,952	6,590	(124,303)
2.3 Ceded	6,205,832	5,476,358	41,986,772
2.4 Net	0	0	0
3. Loss adjustment expenses incurred		0	0
4. Other underwriting expenses incurred	(2,573)	112	41,109
5. Aggregate write-ins for underwriting deductions	0	0	0
6. Total underwriting deductions (Lines 2 through 5)	(2,573)	112	41,109
7. Net income of protected cells		0	0
8. Net underwriting gain or (loss) (Line 1 minus Line 6 + Line 7)	2,573	(113)	(41,109)
<b>INVESTMENT INCOME</b>			
9. Net investment income earned	352,252	402,856	1,389,539
10. Net realized capital gains (losses) less capital gains tax of \$ ..... (2,353)	(11,763)	(20,620)	(134,501)
11. Net investment gain (loss) (Lines 9 + 10)	340,489	382,236	1,255,038
<b>OTHER INCOME</b>			
12. Net gain or (loss) from agents' or premium balances charged off (amount recovered \$ ..... amount charged off \$ ..... 10,190 )	(10,190)	17	(23,626)
13. Finance and service charges not included in premiums		0	0
14. Aggregate write-ins for miscellaneous income	(16,091)	(13,359)	(58,297)
15. Total other income (Lines 12 through 14)	(26,281)	(13,342)	(81,923)
16. Net income before dividends to policyholders, after capital gains tax and before all other federal and foreign income taxes (Lines 8 + 11 + 15)	316,781	368,781	1,132,006
17. Dividends to policyholders		0	0
18. Net income, after dividends to policyholders, after capital gains tax and before all other federal and foreign income taxes (Line 16 minus Line 17)	316,781	368,781	1,132,006
19. Federal and foreign income taxes incurred	76,991	81,443	289,021
20. Net income (Line 18 minus Line 19)(to Line 22)	239,790	287,338	842,985
<b>CAPITAL AND SURPLUS ACCOUNT</b>			
21. Surplus as regards policyholders, December 31 prior year	23,775,788	23,001,909	23,001,909
22. Net income (from Line 20)	239,790	287,338	842,985
23. Net transfers (to) from Protected Cell accounts		0	0
24. Change in net unrealized capital gains (losses) less capital gains tax of \$ ..... 9,158	34,453	11,947	139,339
25. Change in net unrealized foreign exchange capital gain (loss)		0	0
26. Change in net deferred income tax	(231,172)	(206,090)	140,984
27. Change in nonadmitted assets	1,153,245	1,016,196	(317,983)
28. Change in provision for reinsurance		0	(31,446)
29. Change in surplus notes		0	0
30. Surplus (contributed to) withdrawn from protected cells		0	0
31. Cumulative effect of changes in accounting principles		0	0
32. Capital changes:			
32.1 Paid in		0	0
32.2 Transferred from surplus (Stock Dividend)		0	0
32.3 Transferred to surplus		0	0
33. Surplus adjustments:			
33.1 Paid in	0	0	0
33.2 Transferred to capital (Stock Dividend)		0	0
33.3 Transferred from capital		0	0
34. Net remittances from or (to) Home Office		0	0
35. Dividends to stockholders		0	0
36. Change in treasury stock		0	0
37. Aggregate write-ins for gains and losses in surplus	0	0	0
38. Change in surplus as regards policyholders (Lines 22 through 37)	1,196,316	1,109,391	773,879
39. Surplus as regards policyholders, as of statement date (Lines 21 plus 38)	24,972,104	24,111,300	23,775,788
<b>DETAILS OF WRITE-INS</b>			
0501. ....			
0502. ....			
0503. ....			
0598. Summary of remaining write-ins for Line 5 from overflow page	0	0	0
0599. Totals (Lines 0501 through 0503 plus 0598)(Line 5 above)	0	0	0
1401. Intercompany interest expense	(16,091)	(13,359)	(58,297)
1402. ....			
1403. ....			
1498. Summary of remaining write-ins for Line 14 from overflow page	0	0	0
1499. Totals (Lines 1401 through 1403 plus 1498)(Line 14 above)	(16,091)	(13,359)	(58,297)
3701. ....			
3702. ....			
3703. ....			
3798. Summary of remaining write-ins for Line 37 from overflow page	0	0	0
3799. Totals (Lines 3701 through 3703 plus 3798)(Line 37 above)	0	0	0

STATEMENT AS OF MARCH 31, 2022 OF THE COLONY SPECIALTY INSURANCE COMPANY

CASH FLOW

	1 Current Year To Date	2 Prior Year To Date	3 Prior Year Ended December 31
<b>Cash from Operations</b>			
1. Premiums collected net of reinsurance .....	(412,380)	1,078,932	252,563
2. Net investment income .....	463,461	492,366	1,534,505
3. Miscellaneous income .....	(26,281)	(13,342)	(81,923)
4. Total (Lines 1 to 3) .....	24,800	1,557,956	1,705,145
5. Benefit and loss related payments .....	1,211,404	3,020,797	139,932
6. Net transfers to Separate Accounts, Segregated Accounts and Protected Cell Accounts .....	0	0	0
7. Commissions, expenses paid and aggregate write-ins for deductions .....	330,659	265,159	136,035
8. Dividends paid to policyholders .....	0	0	0
9. Federal and foreign income taxes paid (recovered) net of \$ ..... tax on capital gains (losses) .....	(9,157)	1,276,442	1,276,443
10. Total (Lines 5 through 9) .....	1,532,906	4,562,398	1,552,410
11. Net cash from operations (Line 4 minus Line 10) .....	(1,508,106)	(3,004,442)	152,735
<b>Cash from Investments</b>			
12. Proceeds from investments sold, matured or repaid:			
12.1 Bonds .....	3,362,153	10,823,243	19,864,553
12.2 Stocks .....	0	0	0
12.3 Mortgage loans .....	0	0	0
12.4 Real estate .....	0	0	0
12.5 Other invested assets .....	0	0	0
12.6 Net gains or (losses) on cash, cash equivalents and short-term investments .....	0	0	266
12.7 Miscellaneous proceeds .....	828,727	0	0
12.8 Total investment proceeds (Lines 12.1 to 12.7) .....	4,190,880	10,823,243	19,864,819
13. Cost of investments acquired (long-term only):			
13.1 Bonds .....	4,379,135	4,972,770	30,732,609
13.2 Stocks .....	0	0	0
13.3 Mortgage loans .....	0	0	0
13.4 Real estate .....	0	0	0
13.5 Other invested assets .....	0	0	0
13.6 Miscellaneous applications .....	500,000	0	0
13.7 Total investments acquired (Lines 13.1 to 13.6) .....	4,879,135	4,972,770	30,732,609
14. Net increase (or decrease) in contract loans and premium notes .....	0	0	0
15. Net cash from investments (Line 12.8 minus Line 13.7 and Line 14) .....	(688,255)	5,850,473	(10,867,790)
<b>Cash from Financing and Miscellaneous Sources</b>			
16. Cash provided (applied):			
16.1 Surplus notes, capital notes .....	0	0	0
16.2 Capital and paid in surplus, less treasury stock .....	0	0	0
16.3 Borrowed funds .....	0	0	0
16.4 Net deposits on deposit-type contracts and other insurance liabilities .....	0	0	0
16.5 Dividends to stockholders .....	0	0	0
16.6 Other cash provided (applied) .....	2,233,211	(10,472,409)	6,587,480
17. Net cash from financing and miscellaneous sources (Line 16.1 through Line 16.4 minus Line 16.5 plus Line 16.6) .....	2,233,211	(10,472,409)	6,587,480
<b>RECONCILIATION OF CASH, CASH EQUIVALENTS AND SHORT-TERM INVESTMENTS</b>			
18. Net change in cash, cash equivalents and short-term investments (Line 11, plus Lines 15 and 17) ..	36,849	(7,626,378)	(4,127,575)
19. Cash, cash equivalents and short-term investments:			
19.1 Beginning of year .....	10,050,491	14,178,066	14,178,066
19.2 End of period (Line 18 plus Line 19.1) .....	10,087,340	6,551,688	10,050,491

Note: Supplemental disclosures of cash flow information for non-cash transactions:

--	--	--	--

NOTES TO FINANCIAL STATEMENTS

NOTE 1 Summary of Significant Accounting Policies and Going Concern

A. Accounting Practices

The accompanying financial statements of Colony Specialty Insurance Company ("the Company") are presented on the basis of accounting practices prescribed or permitted by the Department of Insurance in the State of Ohio.

The Ohio Department of Insurance recognizes only statutory accounting practices prescribed or permitted by the State of Ohio for determining and reporting the financial condition and results of operations of an insurance company, for determining its solvency under the Ohio Insurance Law. The National Association of Insurance Commissioners' (NAIC) Accounting Practices and Procedures Manual (NAIC SAP) has been adopted as a component of prescribed or permitted practices by the State of Ohio.

The accompanying financial statements contain no differences as a result of practices prescribed or permitted by Ohio that differ from NAIC SAP.

	SSAP #	F/S Page	F/S Line #	2022	2021
NET INCOME					
(1) State basis (Page 4, Line 20, Columns 1 & 3)	XXX	XXX	XXX	\$ 239,790	\$ 842,985
(2) State Prescribed Practices that are an increase/ (decrease) from NAIC SAP:					
(3) State Permitted Practices that are an increase/(decrease) from NAIC SAP:					
(4) NAIC SAP (1-2-3=4)	XXX	XXX	XXX	\$ 239,790	\$ 842,985
SURPLUS					
(5) State basis (Page 3, Line 37, Columns 1 & 2)	XXX	XXX	XXX	\$ 24,972,104	\$ 23,775,788
(6) State Prescribed Practices that are an increase/(decrease) from NAIC SAP:					
(7) State Permitted Practices that are an increase/(decrease) from NAIC SAP:					
(8) NAIC SAP (5-6-7=8)	XXX	XXX	XXX	\$ 24,972,104	\$ 23,775,788

B. Use of Estimates in the Preparation of the Financial Statements

The preparation of financial statements in conformity with Statutory Accounting Principles requires management to make estimates and assumptions that affect the amounts reported in these financial statements and notes. Such estimates and assumptions could change in the future, as more information becomes known, which could impact the amounts reported and disclosed herein.

C. Accounting Policy

No significant change

D. Going Concern

concern.

NOTE 2 Accounting Changes and Corrections of Errors

No significant change

NOTE 3 Business Combinations and Goodwill

No significant change

NOTE 4 Discontinued Operations

No significant change

NOTE 5 Investments

A. Mortgage Loans, including Mezzanine Real Estate Loans

The Company has not invested in mortgage loans.

B. Debt Restructuring

The Company has not invested in restructured debt.

C. Reverse Mortgages

The Company has not invested in reversed mortgages.

D. Loan-Backed Securities

(1) Description of Sources Used to Determine Prepayment Assumptions

Prepayment assumptions for loan-backed securities are obtained by the Company's third-party accounting provider, from industry standard external data providers.

(2) The Company did not have any securities with a recognized other-than-temporary impairment loss.

(3) Not applicable

NOTES TO FINANCIAL STATEMENTS

(4) All impaired securities (fair value is less than cost or amortized cost) for which an other-than-temporary impairment has not been recognized in earnings as a realized loss (including securities with a recognized other-than-temporary impairment for non-interest related declines when a non-recognized interest related impairment remains):

a) The aggregate amount of unrealized losses:		
1. Less than 12 Months	\$	1,103,544
2. 12 Months or Longer	\$	308,440
b)The aggregate related fair value of securities with unrealized losses:		
1. Less than 12 Months	\$	14,603,689
2. 12 Months or Longer	\$	2,867,111

(5) Information Investor Considered in Reaching Conclusion that Impairments are Not Other-Than-Temporary

The Company evaluates its investments for impairment. In accordance with policy, the determination that a security has incurred an other-than-temporary decline in fair value and the associated amount of any loss recognition requires the judgment by the Company's management and a continual review of its investments. Investments in an unrealized loss position are reviewed on a quarterly basis to determine whether a decline in fair value below the amortized cost basis is other-than-temporary. In general, the process for identifying other-than-temporary declines in fair value involves the consideration of a number of factors, including but not limited to, whether the issuer has been downgraded to below investment-grade, the length of time in which there has been a significant decline in value, the liquidity, business prospects, and overall financial condition of the issuer, the nature and performance of the collateral or other credit support backing the security, the significance of the decline in value, and whether the Company has the intent to sell the security or may be required to sell the security before its anticipated recovery. If consideration of the factors above results in a conclusion that the decline in fair value is other-than-temporary, the cost basis of the security is written down to expected recovery (which may be fair value) and the write-down is recorded as a realized loss. For loan-backed securities the aforementioned factors were evaluated and it was determined that there was no other-than-temporary impairment at March 31, 2022.

E. Dollar Repurchase Agreements and/or Securities Lending Transactions

The Company has no dollar repurchase agreements or securities lending transactions.

F. Repurchase Agreements Transactions Accounted for as Secured Borrowing

The Company has no repurchase agreements.

G. Reverse Repurchase Agreements Transactions Accounted for as Secured Borrowing

The Company has no reverse repurchase agreements.

H. Repurchase Agreements Transactions Accounted for as a Sale

The Company has no repurchase agreements

I. Reverse Repurchase Agreements Transactions Accounted for as a Sale

The Company has no reverse repurchase agreements.

J. Real Estate

The Company has no investments in real estate.

K. Low Income Housing tax Credits (LIHTC)

The Company has no investments in low-income housing tax credits.

L. Restricted Assets

No significant change

M. Working Capital Finance Investments

The Company has no working capital finance investments.

N. Offsetting and Netting of Assets and Liabilities

The Company has no offsetting or netting of assets or liabilities.

O. 5GI Securities

No significant change

P. Short Sales

Not applicable

Q. Prepayment Penalty and Acceleration Fees

No material change

R. Reporting Entity’s Share of Cash Pool by Asset Type

Not applicable

NOTE 6 Joint Ventures, Partnerships and Limited Liability Companies

No significant change

NOTE 7 Investment Income

No significant change

NOTES TO FINANCIAL STATEMENTS

NOTE 8    Derivative Instruments

Not applicable

NOTE 9    Income Taxes

No significant change

NOTE 10   Information Concerning Parent, Subsidiaries, Affiliates and Other Related Parties

No significant change

NOTE 11   Debt

B.    FHLB (Federal Home Loan Bank) Agreements

Not applicable

NOTE 12   Retirement Plans, Deferred Compensation, Postemployment Benefits and Compensated Absences and Other Postretirement Benefit Plans

A.    Defined Benefit Plan

The Company does not sponsor a defined benefit plan.

NOTE 13   Capital and Surplus, Dividend Restrictions and Quasi-Reorganizations

No significant change

NOTE 14   Liabilities, Contingencies and Assessments

No significant change

NOTE 15   Leases

No significant change

NOTE 16   Information About Financial Instruments With Off-Balance Sheet Risk and Financial Instruments With Concentrations of Credit Risk

No significant change

NOTE 17   Sale, Transfer and Servicing of Financial Assets and Extinguishments of Liabilities

The Company has no sale, transfer or servicing of financial assets or extinguishments of liabilities.

The Company had no wash sales as defined in SSAP No.103, Transfer and Servicing of Financial Assets and Extinguishments of Liabilities, involving transactions for securities with a NAIC designation of 3 or below, or unrated.

NOTE 18   Gain or Loss to the Reporting Entity from Uninsured Plans and the Uninsured Portion of Partially Insured Plans

No significant change

NOTE 19   Direct Premium Written/Produced by Managing General Agents/Third Party Administrators

No significant change

NOTE 20   Fair Value Measurements

A.    Fair Value Measurements

The Company's financial assets carried at fair value have been classified for disclosure purposes based on a three-level hierarchy shown below. The hierarchy gives the highest ranking to fair values determined using unadjusted quoted prices in active markets for identical assets (Level 1) and the lowest ranking to fair values using methodologies and models with unobservable inputs (Level 3). An asset's classification is based on the lowest level input that is significant to its measurement. The levels of the fair value hierarchy are as follows:

- Level 1 values are quoted prices (unadjusted) in active markets for identical assets that can be accessed at the reporting date. Actively traded, as defined by the Company, is a security that has traded in the past seven days.
- Level 2 values are inputs other than quoted prices included with Level 1 that are observable for the asset or liability, either directly or indirectly.
- Level 3 values are unobservable inputs reflecting the Company's assumptions using the best information available in the circumstances.

(1) Fair Value Measurements at Reporting Date

Description for each class of asset or liability	(Level 1)	(Level 2)	(Level 3)	Net Asset Value (NAV)	Total
a. Assets at fair value					
Cash Equivalent (E-2) Other MM Mutual Fund	\$ 10,002,221				\$ 10,002,221
Long Term (D-1)		\$ 172,551			\$ 172,551
Total assets at fair value/NAV	\$ 10,002,221	\$ 172,551	\$ -	\$ -	\$ 10,174,772

(2) Fair Value Measurements in (Level 3) of the Fair Value hierarchy

The Company has no Level 3 items

(3) Policies when Transfers between Levels are Recognized

The Company had no transfers between levels.



NOTES TO FINANCIAL STATEMENTS

(4) Description of Valuation Techniques and Inputs Used in Fair Value Measurement

For Level 2 investments, fair value prices are obtained from third-party sources, where available. For securities where the Company is unable to obtain fair values from a pricing source, fair values are obtained from a broker or investment manager. Prices are determined using observable market information such as dealer quotes, market spreads, cash flows, yield curves, live trading levels, trade execution data, market consensus prepayment speeds, credit information and the security's terms and conditions, among other things.

(5) Fair Value Disclosures

The Company has no derivatives.

B. Fair Value Reporting under SSAP 100 and Other Accounting Pronouncements

Not applicable

C. Aggregate fair value for all financial instruments and the level within the fair value hierarchy in which the fair value measurements in their entirety fall.

Type of Financial Instrument	Aggregate Fair Value	Admitted Assets	(Level 1)	(Level 2)	(Level 3)	Net Asset Value (NAV)	Not Practicable (Carrying Value)
Long Term (D-1)	\$ 69,791,092	\$ 73,053,365	\$ 10,335,720	\$ 59,455,372			
Short Term (DA-1)							
Cash Equivalent (E-2)	\$ 10,002,221	\$ 10,002,221	\$ 10,002,221				
Cash (E-1)	\$ 85,119	\$ 85,119	\$ 85,119				
TOTAL	\$ 79,878,432	\$ 83,140,705	\$ 20,423,060	\$ 59,455,372			

D. Not Practicable to Estimate Fair Value

Not applicable

E. NAV Practical Expedient Investments

Not applicable

NOTE 21 Other Items

No significant change

NOTE 22 Events Subsequent

Subsequent events have been considered through May 10, 2022, the date of issuance of these financial statements. There were no events occurring subsequent to the end of the quarter that merited recognition or disclosure in these statements.

NOTE 23 Reinsurance

No significant change

NOTE 24 Retrospectively Rated Contracts & Contracts Subject to Redetermination

F. Risk Sharing Provisions of the Affordable Care Act

Not applicable

NOTE 25 Change in Incurred Losses and Loss Adjustment Expenses

Net reserves at December 31, 2021 were \$0 due to a 100% quota share agreement with Colony Insurance Company. All future loss activity will be subject to the quota share and will have no net effect to Colony Specialty Insurance Company's results. Therefore, Net Reserves at March 31, 2022 are \$0.

NOTE 26 Intercompany Pooling Arrangements

No significant change

NOTE 27 Structured Settlements

Not applicable

NOTE 28 Health Care Receivables

Not applicable

NOTE 29 Participating Policies

Not applicable

NOTE 30 Premium Deficiency Reserves

Not applicable

NOTE 31 High Deductibles

Not applicable

NOTE 32 Discounting of Liabilities for Unpaid Losses or Unpaid Loss Adjustment Expenses

Not applicable

NOTES TO FINANCIAL STATEMENTS

NOTE 33 Asbestos/Environmental Reserves

Not applicable

NOTE 34 Subscriber Savings Accounts

Not applicable

NOTE 35 Multiple Peril Crop Insurance

Not applicable

NOTE 36 Financial Guaranty Insurance

Not applicable

GENERAL INTERROGATORIES

PART 1 - COMMON INTERROGATORIES

GENERAL

1.1

Did the reporting entity experience any material transactions requiring the filing of Disclosure of Material Transactions with the State of Domicile, as required by the Model Act?

Yes [ ] No [ X ]

1.2

If yes, has the report been filed with the domiciliary state?

Yes [ ] No [ ]

2.1

Has any change been made during the year of this statement in the charter, by-laws, articles of incorporation, or deed of settlement of the reporting entity?

Yes [ ] No [ X ]

2.2

If yes, date of change:

3.1

Is the reporting entity a member of an Insurance Holding Company System consisting of two or more affiliated persons, one or more of which is an insurer?  
If yes, complete Schedule Y, Parts 1 and 1A.

Yes [ X ] No [ ]

3.2

Have there been any substantial changes in the organizational chart since the prior quarter end?

Yes [ ] No [ X ]

3.3

If the response to 3.2 is yes, provide a brief description of those changes.

3.4

Is the reporting entity publicly traded or a member of a publicly traded group?

Yes [ X ] No [ ]

3.5

If the response to 3.4 is yes, provide the CIK (Central Index Key) code issued by the SEC for the entity/group.

1091748

4.1

Has the reporting entity been a party to a merger or consolidation during the period covered by this statement?

Yes [ ] No [ X ]

4.2

If yes, provide the name of the entity, NAIC Company Code, and state of domicile (use two letter state abbreviation) for any entity that has ceased to exist as a result of the merger or consolidation.

1	2	3
Name of Entity	NAIC Company Code	State of Domicile

5.

If the reporting entity is subject to a management agreement, including third-party administrator(s), managing general agent(s), attorney-in-fact, or similar agreement, have there been any significant changes regarding the terms of the agreement or principals involved?  
If yes, attach an explanation.

Yes [ ] No [ X ] N/A [ ]

6.1

State as of what date the latest financial examination of the reporting entity was made or is being made.

12/31/2020

6.2

State the as of date that the latest financial examination report became available from either the state of domicile or the reporting entity. This date should be the date of the examined balance sheet and not the date the report was completed or released.

12/31/2017

6.3

State as of what date the latest financial examination report became available to other states or the public from either the state of domicile or the reporting entity. This is the release date or completion date of the examination report and not the date of the examination (balance sheet date).

06/19/2019

6.4

By what department or departments?  
Ohio Department of Insurance

6.5

Have all financial statement adjustments within the latest financial examination report been accounted for in a subsequent financial statement filed with Departments?

Yes [ ] No [ ] N/A [ X ]

6.6

Have all of the recommendations within the latest financial examination report been complied with?

Yes [ ] No [ ] N/A [ X ]

7.1

Has this reporting entity had any Certificates of Authority, licenses or registrations (including corporate registration, if applicable) suspended or revoked by any governmental entity during the reporting period?

Yes [ ] No [ X ]

7.2

If yes, give full information:

8.1

Is the company a subsidiary of a bank holding company regulated by the Federal Reserve Board?

Yes [ ] No [ X ]

8.2

If response to 8.1 is yes, please identify the name of the bank holding company.

8.3

Is the company affiliated with one or more banks, thrifts or securities firms?

Yes [ ] No [ X ]

8.4

If response to 8.3 is yes, please provide below the names and location (city and state of the main office) of any affiliates regulated by a federal regulatory services agency [i.e. the Federal Reserve Board (FRB), the Office of the Comptroller of the Currency (OCC), the Federal Deposit Insurance Corporation (FDIC) and the Securities Exchange Commission (SEC)] and identify the affiliate's primary federal regulator.

1	2	3	4	5	6
Affiliate Name	Location (City, State)	FRB	OCC	FDIC	SEC

STATEMENT AS OF MARCH 31, 2022 OF THE COLONY SPECIALTY INSURANCE COMPANY

GENERAL INTERROGATORIES

- 9.1

Are the senior officers (principal executive officer, principal financial officer, principal accounting officer or controller, or persons performing similar functions) of the reporting entity subject to a code of ethics, which includes the following standards? .....  
(a) Honest and ethical conduct, including the ethical handling of actual or apparent conflicts of interest between personal and professional relationships;  
(b) Full, fair, accurate, timely and understandable disclosure in the periodic reports required to be filed by the reporting entity;  
(c) Compliance with applicable governmental laws, rules and regulations;  
(d) The prompt internal reporting of violations to an appropriate person or persons identified in the code; and  
(e) Accountability for adherence to the code.

Yes [ X ] No [ ]
- 9.11

If the response to 9.1 is No, please explain:
- 9.2

Has the code of ethics for senior managers been amended? .....

Yes [ ] No [ X ]
- 9.21

If the response to 9.2 is Yes, provide information related to amendment(s).
- 9.3

Have any provisions of the code of ethics been waived for any of the specified officers? .....

Yes [ ] No [ X ]
- 9.31

If the response to 9.3 is Yes, provide the nature of any waiver(s).

FINANCIAL

- 10.1

Does the reporting entity report any amounts due from parent, subsidiaries or affiliates on Page 2 of this statement? .....

Yes [ ] No [ X ]
- 10.2

If yes, indicate any amounts receivable from parent included in the Page 2 amount: .....

\$ .....

INVESTMENT

- 11.1

Were any of the stocks, bonds, or other assets of the reporting entity loaned, placed under option agreement, or otherwise made available for use by another person? (Exclude securities under securities lending agreements.) .....

Yes [ ] No [ X ]
- 11.2

If yes, give full and complete information relating thereto:
12.

Amount of real estate and mortgages held in other invested assets in Schedule BA: .....

\$ .....0
13.

Amount of real estate and mortgages held in short-term investments: .....

\$ .....0
- 14.1

Does the reporting entity have any investments in parent, subsidiaries and affiliates? .....

Yes [ ] No [ X ]
- 14.2

If yes, please complete the following:
- |   | 1   | 2  |
|---|---|--|
|   | Prior Year-End<br>Book/Adjusted<br>Carrying Value | Current Quarter<br>Book/Adjusted<br>Carrying Value |
| 14.21 Bonds .....   | \$ .....0   | \$ .....   |
| 14.22 Preferred Stock .....   | \$ .....0   | \$ .....   |
| 14.23 Common Stock .....  | \$ .....0   | \$ .....   |
| 14.24 Short-Term Investments .....  | \$ .....0   | \$ .....   |
| 14.25 Mortgage Loans on Real Estate .....   | \$ .....0   | \$ .....   |
| 14.26 All Other .....   | \$ .....0   | \$ .....   |
| 14.27 Total Investment in Parent, Subsidiaries and Affiliates (Subtotal Lines 14.21 to 14.26) ..... | \$ .....0   | \$ .....0  |
| 14.28 Total Investment in Parent included in Lines 14.21 to 14.26 above .....                       | \$ .....  | \$ .....   |
- 15.1

Has the reporting entity entered into any hedging transactions reported on Schedule DB? .....

Yes [ ] No [ X ]
- 15.2

If yes, has a comprehensive description of the hedging program been made available to the domiciliary state? .....  
If no, attach a description with this statement.

Yes [ ] No [ ] N/A [ X ]
16.

For the reporting entity's security lending program, state the amount of the following as of the current statement date:
- 16.1

Total fair value of reinvested collateral assets reported on Schedule DL, Parts 1 and 2. ....

\$ .....0
- 16.2

Total book adjusted/carrying value of reinvested collateral assets reported on Schedule DL, Parts 1 and 2 .....

\$ .....0
- 16.3

Total payable for securities lending reported on the liability page. ....

\$ .....0

STATEMENT AS OF MARCH 31, 2022 OF THE COLONY SPECIALTY INSURANCE COMPANY

GENERAL INTERROGATORIES

17. Excluding items in Schedule E - Part 3 - Special Deposits, real estate, mortgage loans and investments held physically in the reporting entity's offices, vaults or safety deposit boxes, were all stocks, bonds and other securities, owned throughout the current year held pursuant to a custodial agreement with a qualified bank or trust company in accordance with Section 1, III - General Examination Considerations, F. Outsourcing of Critical Functions, Custodial or Safekeeping Agreements of the NAIC Financial Condition Examiners Handbook? ..... Yes [ X ] No [ ]
- 17.1 For all agreements that comply with the requirements of the NAIC Financial Condition Examiners Handbook, complete the following:

1 Name of Custodian(s)	2 Custodian Address
US Bank Institutional Trust & Custody .....	2204 Lakeshore Dr, Ste 205, Birmingham, AL 35209 .....

- 17.2 For all agreements that do not comply with the requirements of the NAIC Financial Condition Examiners Handbook, provide the name, location and a complete explanation:

1 Name(s)	2 Location(s)	3 Complete Explanation(s)

- 17.3 Have there been any changes, including name changes, in the custodian(s) identified in 17.1 during the current quarter? ..... Yes [ ] No [ X ]
- 17.4 If yes, give full information relating thereto:

1 Old Custodian	2 New Custodian	3 Date of Change	4 Reason

- 17.5 Investment management – Identify all investment advisors, investment managers, broker/dealers, including individuals that have the authority to make investment decisions on behalf of the reporting entity. For assets that are managed internally by employees of the reporting entity, note as such. ["...that have access to the investment accounts"; "...handle securities"]

1 Name of Firm or Individual	2 Affiliation
Goldman Sachs Asset Management, L.P .....	U.....

17.5097 For those firms/individuals listed in the table for Question 17.5, do any firms/individuals unaffiliated with the reporting entity (i.e. designated with a "U") manage more than 10% of the reporting entity's invested assets?..... Yes [ X ] No [ ]

17.5098 For firms/individuals unaffiliated with the reporting entity (i.e. designated with a "U") listed in the table for Question 17.5, does the total assets under management aggregate to more than 50% of the reporting entity's invested assets?..... Yes [ X ] No [ ]

- 17.6 For those firms or individuals listed in the table for 17.5 with an affiliation code of "A" (affiliated) or "U" (unaffiliated), provide the information for the table below.

1 Central Registration Depository Number	2 Name of Firm or Individual	3 Legal Entity Identifier (LEI)	4 Registered With	5 Investment Management Agreement (IMA) Filed
107738 .....	Goldman Sachs Asset Management, L.P. ....	CF5M58QA35CFPUX70H17 .....	SEC .....	NO.....

- 18.1 Have all the filing requirements of the Purposes and Procedures Manual of the NAIC Investment Analysis Office been followed? ..... Yes [ X ] No [ ]
- 18.2 If no, list exceptions:

19. By self-designating 5GI securities, the reporting entity is certifying the following elements for each self-designated 5GI security:
- a. Documentation necessary to permit a full credit analysis of the security does not exist or an NAIC CRP credit rating for an FE or PL security is not available.
  - b. Issuer or obligor is current on all contracted interest and principal payments.
  - c. The insurer has an actual expectation of ultimate payment of all contracted interest and principal.
- Has the reporting entity self-designated 5GI securities? ..... Yes [ ] No [ X ]

20. By self-designating PLGI securities, the reporting entity is certifying the following elements of each self-designated PLGI security:
- a. The security was purchased prior to January 1, 2018.
  - b. The reporting entity is holding capital commensurate with the NAIC Designation reported for the security.
  - c. The NAIC Designation was derived from the credit rating assigned by an NAIC CRP in its legal capacity as a NRSRO which is shown on a current private letter rating held by the insurer and available for examination by state insurance regulators.
  - d. The reporting entity is not permitted to share this credit rating of the PL security with the SVO.
- Has the reporting entity self-designated PLGI securities? ..... Yes [ ] No [ X ]

21. By assigning FE to a Schedule BA non-registered private fund, the reporting entity is certifying the following elements of each self-designated FE fund:
- a. The shares were purchased prior to January 1, 2019.
  - b. The reporting entity is holding capital commensurate with the NAIC Designation reported for the security.
  - c. The security had a public credit rating(s) with annual surveillance assigned by an NAIC CRP in its legal capacity as an NRSRO prior to January 1, 2019.
  - d. The fund only or predominantly holds bonds in its portfolio.
  - e. The current reported NAIC Designation was derived from the public credit rating(s) with annual surveillance assigned by an NAIC CRP in its legal capacity as an NRSRO.
  - f. The public credit rating(s) with annual surveillance assigned by an NAIC CRP has not lapsed.
- Has the reporting entity assigned FE to Schedule BA non-registered private funds that complied with the above criteria? ..... Yes [ ] No [ X ]

GENERAL INTERROGATORIES

PART 2 - PROPERTY & CASUALTY INTERROGATORIES

1.

If the reporting entity is a member of a pooling arrangement, did the agreement or the reporting entity's participation change? .....  
If yes, attach an explanation.

Yes [ ] No [ ] N/A [ X ]
2.

Has the reporting entity reinsured any risk with any other reporting entity and agreed to release such entity from liability, in whole or in part, from any loss that may occur on the risk, or portion thereof, reinsured? .....  
If yes, attach an explanation.

Yes [ ] No [ X ]
- 3.1

Have any of the reporting entity's primary reinsurance contracts been canceled? .....

Yes [ ] No [ X ]
- 3.2

If yes, give full and complete information thereto.
- 4.1

Are any of the liabilities for unpaid losses and loss adjustment expenses other than certain workers' compensation tabular reserves (see Annual Statement Instructions pertaining to disclosure of discounting for definition of " tabular reserves" ) discounted at a rate of interest greater than zero? .....

Yes [ ] No [ X ]
- 4.2

If yes, complete the following schedule:

			TOTAL DISCOUNT				DISCOUNT TAKEN DURING PERIOD			
1	2	3	4	5	6	7	8	9	10	11
Line of Business	Maximum Interest	Discount Rate	Unpaid Losses	Unpaid LAE	IBNR	TOTAL	Unpaid Losses	Unpaid LAE	IBNR	TOTAL
TOTAL			0	0	0	0	0	0	0	0

5.

Operating Percentages:
- 5.1

A&H loss percent .....

0.000 %
- 5.2

A&H cost containment percent .....

0.000 %
- 5.3

A&H expense percent excluding cost containment expenses .....

0.000 %
- 6.1

Do you act as a custodian for health savings accounts? .....

Yes [ ] No [ X ]
- 6.2

If yes, please provide the amount of custodial funds held as of the reporting date .....\$.....

0
- 6.3

Do you act as an administrator for health savings accounts? .....

Yes [ ] No [ X ]
- 6.4

If yes, please provide the balance of the funds administered as of the reporting date .....\$.....

0
7.

Is the reporting entity licensed or chartered, registered, qualified, eligible or writing business in at least two states? .....

Yes [ X ] No [ ]
- 7.1

If no, does the reporting entity assume reinsurance business that covers risks residing in at least one state other than the state of domicile of the reporting entity? .....

Yes [ ] No [ X ]

STATEMENT AS OF MARCH 31, 2022 OF THE COLONY SPECIALTY INSURANCE COMPANY

## SCHEDULE F - CEDED REINSURANCE

Showing All New Reinsurers - Current Year to Date

1	2	3	4	5	6	7
NAIC Company Code	ID Number	Name of Reinsurer	Domiciliary Jurisdiction	Type of Reinsurer	Certified Reinsurer Rating (1 through 6)	Effective Date of Certified Reinsurer Rating
NONE						

# NONE

SCHEDULE T - EXHIBIT OF PREMIUMS WRITTEN

Current Year to Date - Allocated by States and Territories

States, etc.	1 Active Status (a)	Direct Premiums Written		Direct Losses Paid (Deducting Salvage)		Direct Losses Unpaid	
		2 Current Year To Date	3 Prior Year To Date	4 Current Year To Date	5 Prior Year To Date	6 Current Year To Date	7 Prior Year To Date
1. Alabama.....AL	L	283,492	86,468	3,181	.0	370,470	163,268
2. Alaska.....AK	L	0	(537)	.0	.0	2,795	0
3. Arizona.....AZ	L	53,477	6,226	.0	.0	184,221	105,581
4. Arkansas.....AR	L	115,151	15,646	.0	.0	75,479	43,793
5. California.....CA	L	762,586	301,870	1,726,776	2,933,999	1,898,436	276,334
6. Colorado.....CO	L	54,768	26,676	.0	43,300	435,212	253,006
7. Connecticut.....CT	L	(8,590)	23,373	.0	.0	53,114	17,091
8. Delaware.....DE	L	670,761	582,750	.0	.0	1,671,979	341,419
9. District of Columbia.....DC	L	374	21,885	.0	.0	129,211	64,735
10. Florida.....FL	L	358,254	134,657	68,955	108,154	774,878	392,447
11. Georgia.....GA	L	666,079	131,013	.0	10,000	533,452	103,215
12. Hawaii.....HI	L	0	0	.0	.0	880	144
13. Idaho.....ID	L	(9,084)	2,095	.0	.0	61,298	43,118
14. Illinois.....IL	L	591,471	408,624	213,956	197,675	653,922	213,243
15. Indiana.....IN	L	113,852	163,191	23,763	.0	33,808	4,745
16. Iowa.....IA	L	119,007	82,015	.0	.0	97,603	30,230
17. Kansas.....KS	L	16,310	1,560	.0	41,725	117,591	63,155
18. Kentucky.....KY	L	67,725	56,556	.0	.0	136,897	12,099
19. Louisiana.....LA	L	144,761	(3,415)	.0	24,837	2,499,963	13,721
20. Maine.....ME	L	250	0	.0	.0	1,938	832
21. Maryland.....MD	L	105,753	101,059	31,866	12,921	893,563	764,608
22. Massachusetts.....MA	L	333,900	41,819	.0	.0	269,367	54,168
23. Michigan.....MI	L	128,596	249,061	51,728	225,000	949,039	109,527
24. Minnesota.....MN	L	94,073	2,997	.0	.0	104,117	58,856
25. Mississippi.....MS	L	735,363	44,777	221,819	.0	38,758	2,027
26. Missouri.....MO	L	333,716	210,454	20,793	.0	96,021	46,432
27. Montana.....MT	L	6,249	20,802	.0	.0	17,593	1,623
28. Nebraska.....NE	L	1,717	2,026	.0	.0	48,239	18,338
29. Nevada.....NV	L	7,912	7,224	.0	.0	74,106	10,069,207
30. New Hampshire.....NH	L	4,934	2,028	.0	.0	3,437	6,432
31. New Jersey.....NJ	L	206,205	83,957	.0	.0	426,282	84,810
32. New Mexico.....NM	L	13,143	5,590	.0	.0	3,055	0
33. New York.....NY	L	535,833	688,860	110,743	175,822	618,472	52,543
34. North Carolina.....NC	L	175,099	21,164	30,468	.0	1,644,030	1,012,928
35. North Dakota.....ND	L	84	(3,515)	.0	42,456	32,348	0
36. Ohio.....OH	L	79,653	20,323	.0	.0	584,397	361,984
37. Oklahoma.....OK	L	28,101	72,614	.0	97,965	81,088	0
38. Oregon.....OR	L	74,527	1,099	.0	.0	102,842	70,548
39. Pennsylvania.....PA	L	2,486,313	2,280,114	697,309	873,695	15,500,055	12,225,044
40. Rhode Island.....RI	L	0	540	.0	.0	1,529	0
41. South Carolina.....SC	L	509,438	(16,459)	52,501	1,028	207,233	120,985
42. South Dakota.....SD	L	43,635	30,142	25,025	.0	152,808	104,575
43. Tennessee.....TN	L	446,492	30,026	22,062	.0	582,820	322,360
44. Texas.....TX	L	927,839	1,120,875	7,322,962	5,119,453	11,566,229	16,725,807
45. Utah.....UT	L	1,784	1,023	.0	.0	177,011	99,461
46. Vermont.....VT	L	632	924	.0	.0	11,734	2,831
47. Virginia.....VA	E	2,999,456	2,532,543	346,894	209,190	8,545,490	12,177,257
48. Washington.....WA	L	368,110	124,390	101,691	.0	50,972	20,723
49. West Virginia.....WV	L	6,895	4,355	.0	.0	41,575	8,021
50. Wisconsin.....WI	L	(43,415)	1,787,222	683,828	1,967,521	1,386,904	(648,855)
51. Wyoming.....WY	L	13,258	7,062	.0	.0	5,827	0
52. American Samoa.....AS	N		0		.0		0
53. Guam.....GU	N		0		.0		0
54. Puerto Rico.....PR	N		0		.0		0
55. U.S. Virgin Islands.....VI	N		0		.0		0
56. Northern Mariana Islands.....MP	N		0		.0		0
57. Canada.....CAN	N		0		.0		0
58. Aggregate Other Alien OT	XXX	0	0	0	.0	0	0
59. Totals	XXX	14,625,939	11,515,749	11,756,320	12,084,741	53,950,090	56,014,416
DETAILS OF WRITE-INS							
58001.	XXX						
58002.	XXX						
58003.	XXX						
58998. Summary of remaining write-ins for Line 58 from overflow page	XXX	0	0	0	.0	0	0
58999. Totals (Lines 58001 through 58003 plus 58998)(Line 58 above)	XXX	0	0	0	0	0	0

(a) Active Status Counts:

L - Licensed or Chartered - Licensed Insurance carrier or domiciled RRG.....50

E - Eligible - Reporting entities eligible or approved to write surplus lines in the state (other than their state of domicile - see DSLI).....1

D - Domestic Surplus Lines Insurer (DSLI) - Reporting entities authorized to write surplus lines in the state of domicile.....0

R - Registered - Non-domiciled RRGs.....0

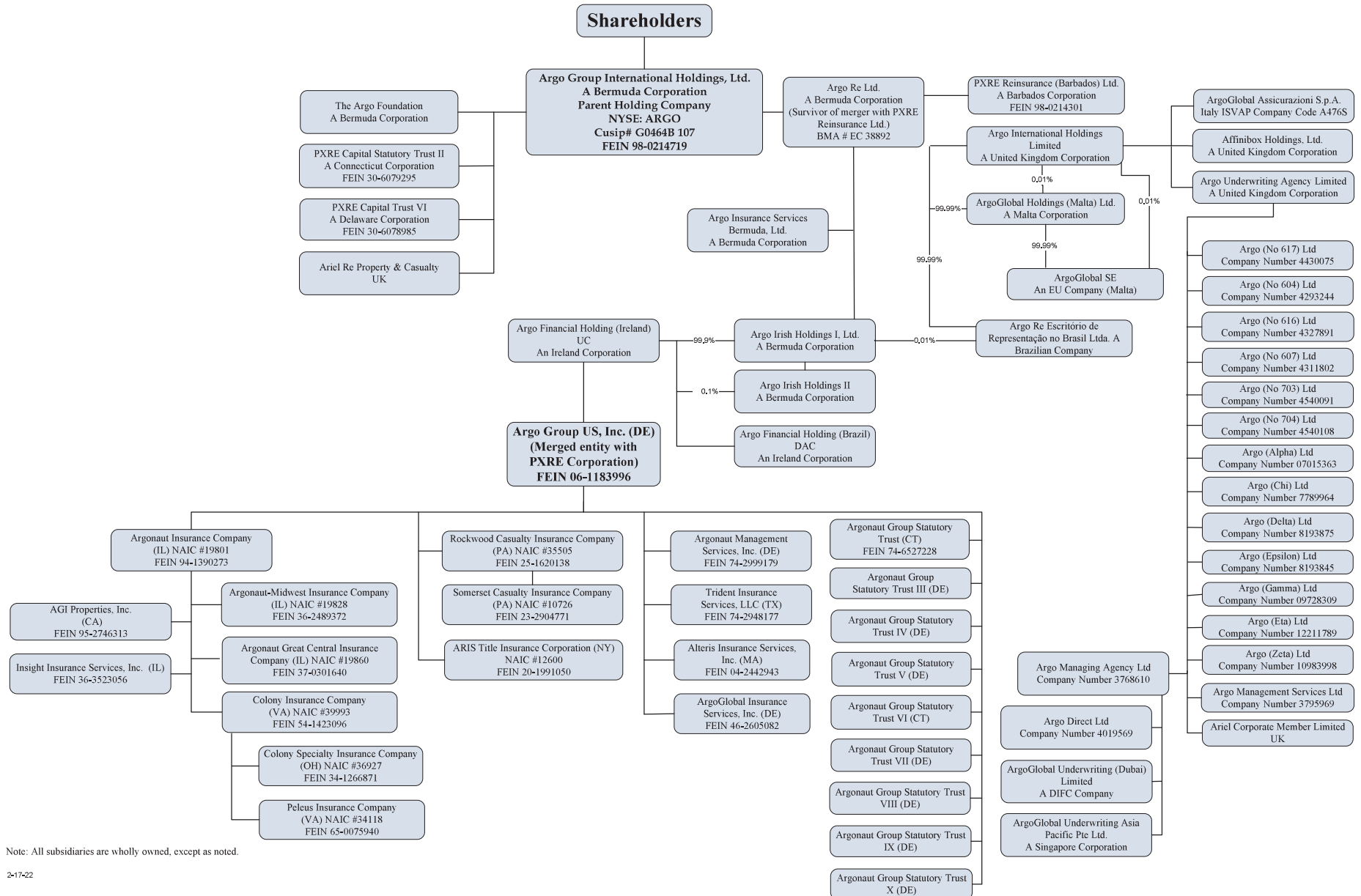
Q - Qualified - Qualified or accredited reinsurer.....0

N - None of the above - Not allowed to write business in the state.....6



# SCHEDULE Y – INFORMATION CONCERNING ACTIVITIES OF INSURER MEMBERS OF A HOLDING COMPANY GROUP

## PART 1 – ORGANIZATIONAL CHART



SCHEDULE Y  
PART 1A - DETAIL OF INSURANCE HOLDING COMPANY SYSTEM

1	2	3	4	5	6	7	8	9	10	11	12 Type of Control (Ownership, Board, Management, Attorney-in-Fact, Influence, Other)	13 If Control is Owner- ship Provide Percen- tage	14 Ultimate Controlling Entity(ies)/Person(s)	15 Is an SCA Filing Re- quired? (Yes/No)	16 *
Group Code	Group Name	NAIC Company Code	ID Number	Federal RSSD	CIK	Name of Securities Exchange if Publicly Traded (U.S. or International)	Names of Parent, Subsidiaries Or Affiliates	Domi- ciliary Loca- tion	Relation- ship to Reporting Entity	Directly Controlled by (Name of Entity/Person)					
		.00000	98-0214719		0001091748	NYSE	Argo Group International Holdings, Ltd.	.BMU	UIP	Shareholders	Ownership	100.000	Argo Group International Holdings, Ltd.	NO	
		.00000					The Argo Foundation	.BMU	NIA	Argo Group International Holdings, Ltd.	Ownership	100.000	Argo Group International Holdings, Ltd.	NO	
		.00000	30-6079295				PXRE Capital Statutory Trust II	.CT	NIA	Argo Group International Holdings, Ltd.	Ownership	100.000	Argo Group International Holdings, Ltd.	NO	
		.00000	30-6078985				PXRE Capital Statutory Trust VI	.DE	NIA	Argo Group International Holdings, Ltd.	Ownership	100.000	Argo Group International Holdings, Ltd.	NO	
		.00000	46-2605082				ArgoGlobal Insurance Services, Inc.	.DE	IA	Argo Group US, Inc.	Ownership	100.000	Argo Group International Holdings, Ltd.	NO	
		.00000					Ariel Re Property & Casualty	.GBR	IA	Argo Group International Holdings, Ltd.	Ownership	100.000	Argo Group International Holdings, Ltd.	NO	
		.00000					Ariel Corporate Member Limited	.GBR	IA	Argo Underwriting Agency Ltd	Ownership	100.000	Argo Group International Holdings, Ltd.	NO	
		.00000			0001436607		Argo Re Ltd.	.BMU	UIP	Argo Group International Holdings, Ltd.	Ownership	100.000	Argo Group International Holdings, Ltd.	NO	
		.00000	98-0214301				PXRE Reinsurance (Barbados), Ltd.	.BRB	IA	Argo Re Ltd.	Ownership	100.000	Argo Group International Holdings, Ltd.	NO	
		.00000					Argo Re Escritório de Representação no Brasil Ltda.	.BRA	IA	Argo Re Ltd.	Ownership	99.990	Argo Group International Holdings, Ltd.	NO	
		.00000					Argo Re Escritório de Representação no Brasil Ltda.	.BRA	IA	Argo Irish Holdings I Ltd.	Ownership	0.010	Argo Group International Holdings, Ltd.	NO	
		.00000					Argo Insurance Services Bermuda, Ltd.	.BMU	IA	Argo Re Ltd.	Ownership	100.000	Argo Group International Holdings, Ltd.	NO	
		.00000					Argo Irish Holdings I Ltd.	.BMU	UIP	Argo Re Ltd.	Ownership	100.000	Argo Group International Holdings, Ltd.	NO	
		.00000					Argo Irish Holdings II	.BMU	UIP	Argo Irish Holdings I Ltd.	Ownership	100.000	Argo Group International Holdings, Ltd.	NO	
		.00000					Argo International Holdings Limited	.GBR	NIA	Argo Re Ltd.	Ownership	100.000	Argo Group International Holdings, Ltd.	NO	
		.00000					ArgoGlobal Holdings (Malta) Ltd.	.MLT	NIA	Argo Re Ltd.	Ownership	99.990	Argo Group International Holdings, Ltd.	NO	
		.00000					ArgoGlobal Holdings (Malta) Ltd.	.MLT	NIA	Argo International Holdings Limited	Ownership	0.010	Argo Group International Holdings, Ltd.	NO	
		.00000					ArgoGlobal SE	.MLT	IA	ArgoGlobal Holdings (Malta) Ltd.	Ownership	99.990	Argo Group International Holdings, Ltd.	NO	
		.00000					ArgoGlobal SE	.MLT	IA	Argo International Holdings Limited	Ownership	0.010	Argo Group International Holdings, Ltd.	NO	
		.00000					ArgoGlobal Assicurazioni S.p.A.	.ITA	IA	Argo International Holdings Limited	Ownership	100.000	Argo Group International Holdings, Ltd.	NO	
		.00000					Affinibox Holdings, Ltd.	.GBR	NIA	Argo International Holdings Limited	Ownership	100.000	Argo Group International Holdings, Ltd.	NO	
		.00000					Argo Underwriting Agency Ltd	.GBR	NIA	Argo International Holdings Limited	Ownership	100.000	Argo Group International Holdings, Ltd.	NO	
		.00000					Argo (No 617), Ltd	.GBR	NIA	Argo Underwriting Agency Ltd	Ownership	100.000	Argo Group International Holdings, Ltd.	NO	
		.00000					Argo (No 604), Ltd	.GBR	NIA	Argo Underwriting Agency Ltd	Ownership	100.000	Argo Group International Holdings, Ltd.	NO	
		.00000					Argo (No 616), Ltd	.GBR	NIA	Argo Underwriting Agency Ltd	Ownership	100.000	Argo Group International Holdings, Ltd.	NO	
		.00000					Argo (No 607), Ltd	.GBR	NIA	Argo Underwriting Agency Ltd	Ownership	100.000	Argo Group International Holdings, Ltd.	NO	
		.00000					Argo (No 703), Ltd	.GBR	NIA	Argo Underwriting Agency Ltd	Ownership	100.000	Argo Group International Holdings, Ltd.	NO	

SCHEDULE Y  
PART 1A - DETAIL OF INSURANCE HOLDING COMPANY SYSTEM

1	2	3	4	5	6	7	8	9	10	11	12 Type of Control (Ownership, Board, Management, Attorney-in-Fact, Influence, Other)	13 If Control is Owner- ship Provide Percen- tage	14  Ultimate Controlling Entity(ies)/Person(s)	15  Is an SCA Filing Re- quired? (Yes/No)	16  *
Group Code	Group Name	NAIC Company Code	ID Number	Federal RSSD	CIK	Name of Securities Exchange if Publicly Traded (U.S. or International)	Names of Parent, Subsidiaries Or Affiliates	Domi- ciliary Loca- tion	Rela- tion- ship to Reporting Entity	Directly Controlled by (Name of Entity/Person)					
		.00000					Argo (No 704), Ltd .....	.GBR	.NIA	Argo Underwriting Agency Ltd .....	Ownership.....	100.000	Argo Group International Holdings, Ltd.	..NO	
		.00000					Argo (Alpha) Ltd .....	.GBR	.NIA	Argo Underwriting Agency Ltd .....	Ownership.....	100.000	Argo Group International Holdings, Ltd.	..NO	
		.00000					Argo (Chi) Ltd .....	.GBR	.NIA	Argo Underwriting Agency Ltd .....	Ownership.....	100.000	Argo Group International Holdings, Ltd.	..NO	
		.00000					Argo (Delta) Ltd .....	.GBR	.NIA	Argo Underwriting Agency Ltd .....	Ownership.....	100.000	Argo Group International Holdings, Ltd.	..NO	
		.00000					Argo (Epsilon) Ltd .....	.GBR	.NIA	Argo Underwriting Agency Ltd .....	Ownership.....	100.000	Argo Group International Holdings, Ltd.	..NO	
		.00000					Argo (Gamma) Ltd .....	.GBR	.NIA	Argo Underwriting Agency Ltd .....	Ownership.....	100.000	Argo Group International Holdings, Ltd.	..NO	
		.00000					Argo (Eta) Ltd .....	.GBR	.NIA	Argo Underwriting Agency Ltd .....	Ownership.....	100.000	Argo Group International Holdings, Ltd.	..NO	
		.00000					Argo (Zeta) Ltd .....	.GBR	.NIA	Argo Underwriting Agency Ltd .....	Ownership.....	100.000	Argo Group International Holdings, Ltd.	..NO	
		.00000					Argo Management Services Ltd .....	.GBR	.NIA	Argo Underwriting Agency Ltd .....	Ownership.....	100.000	Argo Group International Holdings, Ltd.	..NO	
		.00000					Argo Managng Agency Ltd .....	.GBR	.IA	Argo Underwriting Agency Ltd .....	Ownership.....	100.000	Argo Group International Holdings, Ltd.	..NO	
		.00000					Argo Direct Ltd .....	.GBR	.IA	Argo Managng Agency Ltd .....	Ownership.....	100.000	Argo Group International Holdings, Ltd.	..NO	
		.00000					ArgoGlobal Underwriting (Dubai) Limited .....	.ARE	.IA	Argo Managng Agency Ltd .....	Ownership.....	100.000	Argo Group International Holdings, Ltd.	..NO	
		.00000					ArgoGlobal Underwriting Asia Pacific Pte Ltd.	.SGP	.IA	Argo Managng Agency Ltd .....	Ownership.....	100.000	Argo Group International Holdings, Ltd.	..NO	
		.00000					Argo Financial Holding (Ireland) UC .....	.IRL	.UIP	Argo Irish Holdings I Ltd. ....	Ownership.....	99.900	Argo Group International Holdings, Ltd.	..NO	
		.00000					Argo Financial Holding (Ireland) UC .....	.IRL	.UIP	Argo Irish Holdings II .....	Ownership.....	0.100	Argo Group International Holdings, Ltd.	..NO	
		.00000					Argo Financial Holding (Brazil) DAC .....	.IRL	.NIA	Argo Financial Holding (Ireland) UC .....	Ownership.....	100.000	Argo Group International Holdings, Ltd.	..NO	
		.00000	06-1183996				Argo Group US, Inc. ....	.DE	.UDP	Argo Financial Holding (Ireland) UC .....	Ownership.....	100.000	Argo Group International Holdings, Ltd.	..NO	
		.00000	74-6527228			0001470439	Argonaut Group Statutory Trust .....	.CT	.NIA	Argo Group US, Inc. ....	Ownership.....	100.000	Argo Group International Holdings, Ltd.	..NO	
		.00000					Argonaut Group Statutory Trust III .....	.DE	.NIA	Argo Group US, Inc. ....	Ownership.....	100.000	Argo Group International Holdings, Ltd.	..NO	
		.00000					Argonaut Group Statutory Trust IV .....	.DE	.NIA	Argo Group US, Inc. ....	Ownership.....	100.000	Argo Group International Holdings, Ltd.	..NO	
		.00000					Argonaut Group Statutory Trust V .....	.DE	.NIA	Argo Group US, Inc. ....	Ownership.....	100.000	Argo Group International Holdings, Ltd.	..NO	
		.00000					Argonaut Group Statutory Trust VI .....	.CT	.NIA	Argo Group US, Inc. ....	Ownership.....	100.000	Argo Group International Holdings, Ltd.	..NO	
		.00000					Argonaut Group Statutory Trust VII .....	.DE	.NIA	Argo Group US, Inc. ....	Ownership.....	100.000	Argo Group International Holdings, Ltd.	..NO	
		.00000					Argonaut Group Statutory Trust VIII .....	.DE	.NIA	Argo Group US, Inc. ....	Ownership.....	100.000	Argo Group International Holdings, Ltd.	..NO	
		.00000					Argonaut Group Statutory Trust IX .....	.DE	.NIA	Argo Group US, Inc. ....	Ownership.....	100.000	Argo Group International Holdings, Ltd.	..NO	
		.00000					Argonaut Group Statutory Trust X .....	.DE	.NIA	Argo Group US, Inc. ....	Ownership.....	100.000	Argo Group International Holdings, Ltd.	..NO	
		.00000	74-2999179				Argonaut Management Services, Inc. ....	.DE	.NIA	Argo Group US, Inc. ....	Ownership.....	100.000	Argo Group International Holdings, Ltd.	..NO	

STATEMENT AS OF MARCH 31, 2022 OF THE COLONY SPECIALTY INSURANCE COMPANY

SCHEDULE Y

PART 1A - DETAIL OF INSURANCE HOLDING COMPANY SYSTEM

1	2	3	4	5	6	7	8	9	10	11	12 Type of Control (Ownership, Board, Management, Attorney-in-Fact, Influence, Other)	13 If Control is Owner- ship Provide Percen- tage	14  Ultimate Controlling Entity(ies)/Person(s)	15  Is an SCA Filing Re- quired? (Yes/No)	16  *
Group Code	Group Name	NAIC Company Code	ID Number	Federal RSSD	CIK	Name of Securities Exchange if Publicly Traded (U.S. or International)	Names of Parent, Subsidiaries Or Affiliates	Domi- ciliary Loca- tion	Relation- ship to Reporting Entity	Directly Controlled by (Name of Entity/Person)					
.0457	Argo Group, U.S.	..12600	20-1991050				ARIS Title Insurance Corporation	..NY	..IA	Argo Group US, Inc.	Ownership	..100.000	Argo Group International Holdings, Ltd.	..NO	
		..00000	74-2948177				Trident Insurance Services, LLC	..TX	..IA	Argo Group US, Inc.	Ownership	..100.000	Argo Group International Holdings, Ltd.	..NO	
		..00000	04-2442943				Alteris Insurance Services, Inc.	..MA	..IA	Argo Group US, Inc.	Ownership	..100.000	Argo Group International Holdings, Ltd.	..NO	
		..19801	94-1390273				Argonaut Insurance Company	..IL	..IA	Argo Group US, Inc.	Ownership	..100.000	Argo Group International Holdings, Ltd.	..NO	
		..00000	95-2746313				AGI Properties, Inc.	..CA	..NIA	Argonaut Insurance Company	Ownership	..100.000	Argo Group International Holdings, Ltd.	..YES	
		..00000	36-3523056				Insight Insurance Services, Inc.	..IL	..IA	Argonaut Insurance Company	Ownership	..100.000	Argo Group International Holdings, Ltd.	..NO	
		..19828	36-2489372				Argonaut-Midwest Insurance Company	..IL	..IA	Argonaut Insurance Company	Ownership	..100.000	Argo Group International Holdings, Ltd.	..NO	
		..19860	37-0301640				Argonaut Great Central Insurance Company	..IL	..IA	Argonaut Insurance Company	Ownership	..100.000	Argo Group International Holdings, Ltd.	..NO	
		..39993	54-1423096				Colony Insurance Company	..VA	..IA	Argonaut Insurance Company	Ownership	..100.000	Argo Group International Holdings, Ltd.	..NO	
		..34118	65-0075940				Peleus Insurance Company	..VA	..IA	Colony Insurance Company	Ownership	..100.000	Argo Group International Holdings, Ltd.	..NO	
		..36927	34-1266871				Colony Specialty Insurance Company	..OH	..IA	Colony Insurance Company	Ownership	..100.000	Argo Group International Holdings, Ltd.	..NO	
		..35505	25-1620138				Rockwood Casualty Insurance Company	..PA	..RE	Argo Group US, Inc.	Ownership	..100.000	Argo Group International Holdings, Ltd.	..NO	
.0457	Argo Group, U.S.	..10726	23-2904771				Somerset Casualty Insurance Company	..PA	..DS	Rockwood Casualty Insurance Company	Ownership	..100.000	Argo Group International Holdings, Ltd.	..NO	

Asterisk	Explanation

STATEMENT AS OF MARCH 31, 2022 OF THE COLONY SPECIALTY INSURANCE COMPANY

PART 1 - LOSS EXPERIENCE

Line of Business		Current Year to Date			4 Prior Year to Date Direct Loss Percentage
		1 Direct Premiums Earned	2 Direct Losses Incurred	3 Direct Loss Percentage	
1.	Fire .....	26,871	67,631	251.7	47.0
2.1	Allied Lines .....	894,468	1,872,233	209.3	85.1
2.2	Multiple peril crop .....			0.0	
2.3	Federal flood .....			0.0	
2.4	Private crop .....			0.0	
2.5	Private flood .....			0.0	
3.	Farmowners multiple peril .....			0.0	0.0
4.	Homeowners multiple peril .....			0.0	0.0
5.	Commercial multiple peril .....	409,523	51,655	12.6	43.4
6.	Mortgage guaranty .....			0.0	0.0
8.	Ocean marine .....			0.0	0.0
9.	Inland marine .....	7,281,548	2,383,432	32.7	51.1
10.	Financial guaranty .....			0.0	0.0
11.1	Medical professional liability - occurrence .....		(856)	0.0	0.0
11.2	Medical professional liability - claims-made .....			0.0	0.0
12.	Earthquake .....	1,132	555	49.0	51.0
13.1	Comprehensive (hospital and medical) individual .....			0.0	
13.2	Comprehensive (hospital and medical) group .....			0.0	
14.	Credit accident and health .....			0.0	0.0
15.1	Vision only .....			0.0	
15.2	Dental only .....			0.0	
15.3	Disability income .....			0.0	
15.4	Medicare supplement .....			0.0	
15.5	Medicaid Title XIX .....			0.0	
15.6	Medicare Title XVIII .....			0.0	
15.7	Long-term care .....			0.0	
15.8	Federal employees health benefits plan .....			0.0	
15.9	Other health .....			0.0	
16.	Workers' compensation .....	2,306,658	1,479,140	64.1	50.5
17.1	Other liability - occurrence .....	1,937,362	291,361	15.0	47.6
17.2	Other liability - claims-made .....	1,021,839	51,403	5.0	48.3
17.3	Excess workers' compensation .....			0.0	0.0
18.1	Products liability - occurrence .....	450,551	70,489	15.6	44.5
18.2	Products liability - claims-made .....	1,211	(1,354)	(111.8)	46.9
19.1	Private passenger auto no-fault (personal injury protection) .....			0.0	
19.2	Other private passenger auto liability .....			0.0	
19.3	Commercial auto no-fault (personal injury protection) .....			0.0	
19.4	Other commercial auto liability .....	124,041	(154,287)	(124.4)	53.9
21.1	Private passenger auto physical damage .....			0.0	
21.2	Commercial auto physical damage .....	70,065	76,761	109.6	44.7
22.	Aircraft (all perils) .....			0.0	0.0
23.	Fidelity .....			0.0	0.0
24.	Surety .....	16,131	(6,283)	(38.9)	35.5
26.	Burglary and theft .....			0.0	0.0
27.	Boiler and machinery .....			0.0	0.0
28.	Credit .....			0.0	0.0
29.	International .....			0.0	0.0
30.	Warranty .....			0.0	0.0
31.	Reinsurance - Nonproportional Assumed Property .....	XXX	XXX	XXX	XXX
32.	Reinsurance - Nonproportional Assumed Liability .....	XXX	XXX	XXX	XXX
33.	Reinsurance - Nonproportional Assumed Financial Lines .....	XXX	XXX	XXX	XXX
34.	Aggregate write-ins for other lines of business .....	0	0	0.0	0.0
35.	Totals	14,541,400	6,181,880	42.5	51.3
DETAILS OF WRITE-INS					
3401.	.....				
3402.	.....				
3403.	.....				
3498.	Summary of remaining write-ins for Line 34 from overflow page .....	0	0	0.0	
3499.	Totals (Lines 3401 through 3403 plus 3498)(Line 34 above)	0	0	0.0	0.0

STATEMENT AS OF MARCH 31, 2022 OF THE COLONY SPECIALTY INSURANCE COMPANY

PART 2 - DIRECT PREMIUMS WRITTEN

Line of Business		1 Current Quarter	2 Current Year to Date	3 Prior Year Year to Date
1.	Fire .....	(31,350)	(31,350)	4,944
2.1	Allied Lines .....	698,528	698,528	258,401
2.2	Multiple peril crop .....	0		
2.3	Federal flood .....	0		
2.4	Private crop .....	0		
2.5	Private flood .....	0		
3.	Farmowners multiple peril .....	0		0
4.	Homeowners multiple peril .....	0		0
5.	Commercial multiple peril .....	544,211	544,211	89,246
6.	Mortgage guaranty .....	0		0
8.	Ocean marine .....	0		0
9.	Inland marine .....	7,358,366	7,358,366	5,280,719
10.	Financial guaranty .....	0		0
11.1	Medical professional liability - occurrence .....	0		0
11.2	Medical professional liability - claims-made .....	0		0
12.	Earthquake .....	0		0
13.1	Comprehensive (hospital and medical) individual .....	0		
13.2	Comprehensive (hospital and medical) group .....	0		
14.	Credit accident and health .....	0		0
15.1	Vision only .....	0		
15.2	Dental only .....	0		
15.3	Disability income .....	0		
15.4	Medicare supplement .....	0		
15.5	Medicaid Title XIX .....	0		
15.6	Medicare Title XVIII .....	0		
15.7	Long-term care .....	0		
15.8	Federal employees health benefits plan .....	0		
15.9	Other health .....	0		
16.	Workers' compensation .....	2,439,318	2,439,318	2,231,530
17.1	Other liability - occurrence .....	1,748,128	1,748,128	1,742,760
17.2	Other liability - claims-made .....	1,057,399	1,057,399	1,041,186
17.3	Excess workers' compensation .....	0		0
18.1	Products liability - occurrence .....	658,291	658,291	674,457
18.2	Products liability - claims-made .....	0		0
19.1	Private passenger auto no-fault (personal injury protection) .....	0		
19.2	Other private passenger auto liability .....	0		
19.3	Commercial auto no-fault (personal injury protection) .....	0		
19.4	Other commercial auto liability .....	87,382	87,382	94,897
21.1	Private passenger auto physical damage .....	0		
21.2	Commercial auto physical damage .....	65,666	65,666	59,197
22.	Aircraft (all perils) .....	0		0
23.	Fidelity .....	0		0
24.	Surety .....	0		38,412
26.	Burglary and theft .....	0		0
27.	Boiler and machinery .....	0		0
28.	Credit .....	0		0
29.	International .....	0		0
30.	Warranty .....	0		0
31.	Reinsurance - Nonproportional Assumed Property .....	XXX	XXX	XXX
32.	Reinsurance - Nonproportional Assumed Liability .....	XXX	XXX	XXX
33.	Reinsurance - Nonproportional Assumed Financial Lines .....	XXX	XXX	XXX
34.	Aggregate write-ins for other lines of business .....	0	0	0
35.	Totals	14,625,939	14,625,939	11,515,749
DETAILS OF WRITE-INS				
3401.	.....			
3402.	.....			
3403.	.....			
3498.	Summary of remaining write-ins for Line 34 from overflow page .....	0	0	0
3499.	Totals (Lines 3401 through 3403 plus 3498)(Line 34 above)	0	0	0

STATEMENT AS OF MARCH 31, 2022 OF THE COLONY SPECIALTY INSURANCE COMPANY

PART 3 (000 omitted)

LOSS AND LOSS ADJUSTMENT EXPENSE RESERVES SCHEDULE

	1	2	3	4	5	6	7	8	9	10	11	12	13
Years in Which Losses Occurred	Prior Year-End Known Case Loss and LAE Reserves	Prior Year-End IBNR Loss and LAE Reserves	Total Prior Year-End Loss and LAE Reserves (Cols. 1+2)	2022 Loss and LAE Payments on Claims Reported as of Prior Year-End	2022 Loss and LAE Payments on Claims Unreported as of Prior Year-End	Total 2022 Loss and LAE Payments (Cols. 4+5)	Q.S. Date Known Case Loss and LAE Reserves on Claims Reported and Open as of Prior Year End	Q.S. Date Known Case Loss and LAE Reserves on Claims Reported or Reopened Subsequent to Prior Year End	Q.S. Date IBNR Loss and LAE Reserves	Total Q.S. Loss and LAE Reserves (Cols.7+8+9)	Prior Year-End Known Case Loss and LAE Reserves Developed (Savings)/ Deficiency (Cols.4+7 minus Col. 1)	Prior Year-End IBNR Loss and LAE Reserves Developed (Savings)/ Deficiency (Cols. 5+8+9 minus Col. 2)	Prior Year-End Total Loss and LAE Reserve Developed (Savings)/ Deficiency (Cols. 11+12)
1. 2019 + Prior .....	.....	.....	0	.....	.....	0	.....	.....	.....	0	0	0	0
2. 2020 .....	.....	.....	0	.....	.....	0	.....	.....	.....	0	0	0	0
3. Subtotals 2020 + Prior .....	0	0	0	0	0	0	0	0	0	0	0	0	0
4. 2021 .....	.....	.....	0	.....	.....	0	.....	.....	.....	0	0	0	0
5. Subtotals 2021 + Prior .....	0	0	0	0	0	0	0	0	0	0	0	0	0
6. 2022 .....	XXX	XXX	XXX	XXX	.....	0	XXX	.....	.....	0	XXX	XXX	XXX
7. Totals .....	0	0	0	0	0	0	0	0	0	0	0	0	0
8. Prior Year-End Surplus As Regards Policyholders	23,776										Col. 11, Line 7 As % of Col. 1 Line 7	Col. 12, Line 7 As % of Col. 2 Line 7	Col. 13, Line 7 As % of Col. 3 Line 7
											1. 0.0	2. 0.0	3. 0.0
											Col. 13, Line 7 As a % of Col. 1 Line 8		
											4. 0.0		

STATEMENT AS OF MARCH 31, 2022 OF THE COLONY SPECIALTY INSURANCE COMPANY

SUPPLEMENTAL EXHIBITS AND SCHEDULES INTERROGATORIES

The following supplemental reports are required to be filed as part of your statement filing. However, in the event that your company does not transact the type of business for which the special report must be filed, your response of NO to the specific interrogatory will be accepted in lieu of filing a "NONE" report and a bar code will be printed below. If the supplement is required of your company but is not being filed for whatever reason enter SEE EXPLANATION and provide an explanation following the interrogatory questions.

	Response
1. Will the Trusteed Surplus Statement be filed with the state of domicile and the NAIC with this statement? .....	NO
2. Will Supplement A to Schedule T (Medical Professional Liability Supplement) be filed with this statement? .....	YES
3. Will the Medicare Part D Coverage Supplement be filed with the state of domicile and the NAIC with this statement? .....	NO
4. Will the Director and Officer Insurance Coverage Supplement be filed with the state of domicile and the NAIC with this statement? .....	YES
AUGUST FILING	
5. Will the regulator-only (non-public) Communication of Internal Control Related Matters Noted in Audit be filed with the state of domicile and electronically with the NAIC (as a regulator-only non-public document) by August 1? The response for 1st and 3rd quarters should be N/A. A NO response resulting with a bar code is only appropriate in the 2nd quarter. ....	N/A

Explanations:

1. The data for this supplement is not required to be filed.
3. The data for this supplement is not required to be filed.

Bar Codes:

1. Trusteed Surplus Statement [Document Identifier 490]



3. Medicare Part D Coverage Supplement [Document Identifier 365]





**NONE**

SCHEDULE A - VERIFICATION

Real Estate

	1	2
	Year to Date	Prior Year Ended December 31
1. Book/adjusted carrying value, December 31 of prior year .....		
2. Cost of acquired:		
2.1 Actual cost at time of acquisition .....		
2.2 Additional investment made after acquisition .....		
3. Current year change in encumbrances .....		
4. Total gain (loss) on disposals .....		
5. Deduct amounts received on disposals .....		
6. Total foreign exchange change in book/adjusted carrying value .....		
7. Deduct current year's other than temporary impairment recognized .....		
8. Deduct current year's depreciation .....		
9. Book/adjusted carrying value at the end of current period (Lines 1+2+3+4-5+6-7-8) .....		
10. Deduct total nonadmitted amounts .....		
11. Statement value at end of current period (Line 9 minus Line 10) .....		

SCHEDULE B - VERIFICATION

Mortgage Loans

	1	2
	Year to Date	Prior Year Ended December 31
1. Book value/recorded investment excluding accrued interest, December 31 of prior year .....		
2. Cost of acquired:		
2.1 Actual cost at time of acquisition .....		
2.2 Additional investment made after acquisition .....		
3. Capitalized deferred interest and other .....		
4. Accrual of discount .....		
5. Unrealized valuation increase (decrease) .....		
6. Total gain (loss) on disposals .....		
7. Deduct amounts received on disposals .....		
8. Deduct amortization of premium and mortgage interest paid and commitment fees .....		
9. Total foreign exchange change in book value/recorded investment excluding accrued interest .....		
10. Deduct current year's other than temporary impairment recognized .....		
11. Book value/recorded investment excluding accrued interest at end of current period (Lines 1+2+3+4+5+6-7-8+9-10) .....		
12. Total valuation allowance .....		
13. Subtotal (Line 11 plus Line 12) .....		
14. Deduct total nonadmitted amounts .....		
15. Statement value at end of current period (Line 13 minus Line 14) .....		

SCHEDULE BA - VERIFICATION

Other Long-Term Invested Assets

	1	2
	Year to Date	Prior Year Ended December 31
1. Book/adjusted carrying value, December 31 of prior year .....		
2. Cost of acquired:		
2.1 Actual cost at time of acquisition .....		
2.2 Additional investment made after acquisition .....		
3. Capitalized deferred interest and other .....		
4. Accrual of discount .....		
5. Unrealized valuation increase (decrease) .....		
6. Total gain (loss) on disposals .....		
7. Deduct amounts received on disposals .....		
8. Deduct amortization of premium and depreciation .....		
9. Total foreign exchange change in book/adjusted carrying value .....		
10. Deduct current year's other than temporary impairment recognized .....		
11. Book/adjusted carrying value at end of current period (Lines 1+2+3+4+5+6-7-8+9-10) .....		
12. Deduct total nonadmitted amounts .....		
13. Statement value at end of current period (Line 11 minus Line 12) .....		

SCHEDULE D - VERIFICATION

Bonds and Stocks

	1	2
	Year to Date	Prior Year Ended December 31
1. Book/adjusted carrying value of bonds and stocks, December 31 of prior year .....	72,065,716	61,317,686
2. Cost of bonds and stocks acquired .....	4,379,135	30,732,609
3. Accrual of discount .....	5,291	20,090
4. Unrealized valuation increase (decrease) .....	42,818	176,327
5. Total gain (loss) on disposals .....	(13,890)	(113,882)
6. Deduct consideration for bonds and stocks disposed of .....	3,362,153	19,885,243
7. Deduct amortization of premium .....	63,552	202,562
8. Total foreign exchange change in book/adjusted carrying value .....	0	0
9. Deduct current year's other than temporary impairment recognized .....	0	0
10. Total investment income recognized as a result of prepayment penalties and/or acceleration fees .....	0	20,691
11. Book/adjusted carrying value at end of current period (Lines 1+2+3+4+5-6-7+8-9+10) .....	73,053,366	72,065,716
12. Deduct total nonadmitted amounts .....	0	0
13. Statement value at end of current period (Line 11 minus Line 12) .....	73,053,366	72,065,716

STATEMENT AS OF MARCH 31, 2022 OF THE COLONY SPECIALTY INSURANCE COMPANY

**SCHEDULE D - PART 1B**

Showing the Acquisitions, Dispositions and Non-Trading Activity  
During the Current Quarter for all Bonds and Preferred Stock by NAIC Designation

NAIC Designation	1 Book/Adjusted Carrying Value Beginning of Current Quarter	2 Acquisitions During Current Quarter	3 Dispositions During Current Quarter	4 Non-Trading Activity During Current Quarter	5 Book/Adjusted Carrying Value End of First Quarter	6 Book/Adjusted Carrying Value End of Second Quarter	7 Book/Adjusted Carrying Value End of Third Quarter	8 Book/Adjusted Carrying Value December 31 Prior Year
BONDS								
1. NAIC 1 (a) .....	62,494,911	4,379,135	10,306,047	(225,281)	56,342,718	0	0	62,494,911
2. NAIC 2 (a) .....	16,766,187	0	1,069,996	666,904	16,363,096	0	0	16,766,187
3. NAIC 3 (a) .....	803,950	0	0	(456,399)	347,551	0	0	803,950
4. NAIC 4 (a) .....	0	0	0	0	0	0	0	0
5. NAIC 5 (a) .....	0	0	0	0	0	0	0	0
6. NAIC 6 (a) .....	0	0	0	0	0	0	0	0
7. Total Bonds	80,065,048	4,379,135	11,376,043	(14,775)	73,053,365	0	0	80,065,048
PREFERRED STOCK								
8. NAIC 1 .....	0	0	0	0	0	0	0	0
9. NAIC 2 .....	0	0	0	0	0	0	0	0
10. NAIC 3 .....	0	0	0	0	0	0	0	0
11. NAIC 4 .....	0	0	0	0	0	0	0	0
12. NAIC 5 .....	0	0	0	0	0	0	0	0
13. NAIC 6 .....	0	0	0	0	0	0	0	0
14. Total Preferred Stock .....	0	0	0	0	0	0	0	0
15. Total Bonds and Preferred Stock	80,065,048	4,379,135	11,376,043	(14,775)	73,053,365	0	0	80,065,048

(a) Book/Adjusted Carrying Value column for the end of the current reporting period includes the following amount of short-term and cash equivalent bonds by NAIC designation:  
NAIC 1 \$ .....0 ; NAIC 2 \$ .....0 ; NAIC 3 \$ .....0 NAIC 4 \$ .....0 ; NAIC 5 \$ .....0 ; NAIC 6 \$ .....0

SCHEDULE DA - PART 1

Short-Term Investments

	1	2	3	4	5
	Book/Adjusted Carrying Value	Prior Year Value	Actual Cost	Interest Collected Year-to-Date	Paid for Accrued Interest Year-to-Date
7709999999 Totals		XX			

NONE

SCHEDULE DA - VERIFICATION

Short-Term Investments

	1	2
	Year To Date	Prior Year Ended December 31
1. Book/adjusted carrying value, December 31 of prior year .....	7,999,333	11,257,872
2. Cost of short-term investments acquired .....	0	12,999,131
3. Accrual of discount .....	667	1,562
4. Unrealized valuation increase (decrease) .....	0	0
5. Total gain (loss) on disposals .....	0	446
6. Deduct consideration received on disposals .....	8,000,000	16,259,678
7. Deduct amortization of premium .....	0	0
8. Total foreign exchange change in book/adjusted carrying value .....	0	0
9. Deduct current year's other than temporary impairment recognized .....	0	0
10. Book/adjusted carrying value at end of current period (Lines 1+2+3+4+5-6-7+8-9) .....	0	7,999,333
11. Deduct total nonadmitted amounts .....	0	0
12. Statement value at end of current period (Line 10 minus Line 11)	0	7,999,333

Schedule DB - Part A - Verification - Options, Caps, Floors, Collars, Swaps and Forwards

**N O N E**

Schedule DB - Part B - Verification - Futures Contracts

**N O N E**

Schedule DB - Part C - Section 1 - Replication (Synthetic Asset) Transactions (RSATs) Open

**N O N E**

Schedule DB-Part C-Section 2-Reconciliation of Replication (Synthetic Asset) Transactions Open

**N O N E**

Schedule DB - Verification - Book/Adjusted Carrying Value, Fair Value and Potential Exposure of  
Derivatives

**N O N E**

SCHEDULE E - PART 2 - VERIFICATION

(Cash Equivalents)

	1	2
	Year To Date	Prior Year Ended December 31
1. Book/adjusted carrying value, December 31 of prior year .....	1,717,842	2,032,207
2. Cost of cash equivalents acquired .....	11,190,655	58,460,376
3. Accrual of discount .....	0	257
4. Unrealized valuation increase (decrease) .....	792	51
5. Total gain (loss) on disposals .....	(226)	(231)
6. Deduct consideration received on disposals .....	2,906,842	58,774,818
7. Deduct amortization of premium .....	0	0
8. Total foreign exchange change in book/adjusted carrying value .....	0	0
9. Deduct current year's other than temporary impairment recognized .....	0	0
10. Book/adjusted carrying value at end of current period (Lines 1+2+3+4+5-6-7+8-9) .....	10,002,221	1,717,842
11. Deduct total nonadmitted amounts .....	0	0
12. Statement value at end of current period (Line 10 minus Line 11)	10,002,221	1,717,842

Schedule A - Part 2 - Real Estate Acquired and Additions Made  
**N O N E**

Schedule A - Part 3 - Real Estate Disposed  
**N O N E**

Schedule B - Part 2 - Mortgage Loans Acquired and Additions Made  
**N O N E**

Schedule B - Part 3 - Mortgage Loans Disposed, Transferred or Repaid  
**N O N E**

Schedule BA - Part 2 - Other Long-Term Invested Assets Acquired and Additions Made  
**N O N E**

Schedule BA - Part 3 - Other Long-Term Invested Assets Disposed, Transferred or Repaid  
**N O N E**

STATEMENT AS OF MARCH 31, 2022 OF THE COLONY SPECIALTY INSURANCE COMPANY

**SCHEDULE D - PART 3**

Show All Long-Term Bonds and Stock Acquired During the Current Quarter

1	2	3	4	5	6	7	8	9	10
CUSIP Identification	Description	Foreign	Date Acquired	Name of Vendor	Number of Shares of Stock	Actual Cost	Par Value	Paid for Accrued Interest and Dividends	NAIC Designation, NAIC Designation Modifier and SVO Administrative Symbol
91282C-CC-3 .....	UNITED STATES TREASURY .....		..03/31/2022 .....	BOFA SECURITIES, INC .....		..420,475 .....	..440,000 .....	..413 .....	1.A .....
91282C-DM-0 .....	UNITED STATES TREASURY .....		..03/31/2022 .....	NOMURA SECURITIES INTERNATIONAL .....		..62,200 .....	..64,000 .....	..106 .....	1.A .....
0109999999. Subtotal - Bonds - U.S. Governments						482,675	504,000	520	XXX
13063D-L2-2 .....	CALIFORNIA ST .....		..03/25/2022 .....	MORGAN STANLEY & CO. LLC .....		1,160,773	1,275,000	8,181	1.C FE .....
0509999999. Subtotal - Bonds - U.S. States, Territories and Possessions						1,160,773	1,275,000	8,181	XXX
010268-CQ-1 .....	ALABAMA FED AID HWY FIN AUTH SPL OBLIG R .....		..03/24/2022 .....	Jefferies LLC .....		1,355,414	1,470,000	1,904	1.C FE .....
13032U-C4-8 .....	CALIFORNIA HEALTH FACS FING AUTH REV .....		..03/30/2022 .....	RAYMOND JAMES/FI .....		365,000	365,000	0	1.D FE .....
13032U-XP-8 .....	CALIFORNIA HEALTH FACS FING AUTH REV .....		..03/24/2022 .....	PERSHING LLC .....		119,132	130,000	578	1.D FE .....
20775D-LB-6 .....	CONNECTICUT ST HEALTH & EDL FACS AUTH R .....		..03/28/2022 .....	PERSHING LLC .....		320,646	350,000	2,463	1.D FE .....
0909999999. Subtotal - Bonds - U.S. Special Revenues						2,160,191	2,315,000	4,945	XXX
17108J-AA-1 .....	CHRISTUS HEALTH .....		..03/24/2022 .....	BARCLAYS CAPITAL INC. ....		113,971	110,000	1,154	1.E FE .....
85440K-AC-8 .....	LELAND STANFORD JUNIOR UNIVERSITY .....		..03/31/2022 .....	J.P. MORGAN SECURITIES LLC .....		461,525	500,000	2,202	1.A FE .....
1109999999. Subtotal - Bonds - Industrial and Miscellaneous (Unaffiliated)						575,496	610,000	3,356	XXX
2509999997. Total - Bonds - Part 3						4,379,135	4,704,000	17,002	XXX
2509999998. Total - Bonds - Part 5						XXX	XXX	XXX	XXX
2509999999. Total - Bonds						4,379,135	4,704,000	17,002	XXX
4509999997. Total - Preferred Stocks - Part 3						0	XXX	0	XXX
4509999998. Total - Preferred Stocks - Part 5						XXX	XXX	XXX	XXX
4509999999. Total - Preferred Stocks						0	XXX	0	XXX
5989999997. Total - Common Stocks - Part 3						0	XXX	0	XXX
5989999998. Total - Common Stocks - Part 5						XXX	XXX	XXX	XXX
5989999999. Total - Common Stocks						0	XXX	0	XXX
5999999999. Total - Preferred and Common Stocks						0	XXX	0	XXX
6009999999 - Totals						4,379,135	XXX	17,002	XXX



## SCHEDULE D - PART 4

CUSIP Ident-ification	Description	For-foreign	Disposal Date	Name of Purchaser	Number of Shares of Stock	Consid-eration	Par Value	Actual Cost	Prior Year Book/ Adjusted Carrying Value	Change In Book/Adjusted Carrying Value					16	17	18	19	20	21	22
										11	12	13	14	15							
										Unrealized Valuation Increase/ (Decrease)	Current Year's (Amor-tization)/ Accretion	Current Year's Other Than Temporary Impairment	Total Change in Book/ Adjusted Carrying Value (11 + 12 - 13)	Total Foreign Exchange Change in Book /Adjusted Carrying Value	Book/ Adjusted Carrying Value at Disposal Date	Foreign Exchange Gain (Loss) on Disposal	Realized Gain (Loss) on Disposal	Total Gain (Loss) on Disposal	Bond Interest/ Stock Dividends Received During Year	Stated Con-tractual Maturity Date	NAIC Design-ation, NAIC Design-ation Modifier and SVO Administrative Symbol
36179U-SU-7	G2 MA5931 - RMBS		03/01/2022	Paydown		26,811	26,811	28,629	28,292	0	0	0	0	0	28,291	0	(1,480)	(1,480)	170	05/20/2049	1.A
36179U-UK-6	G2 MA5986 - RMBS		03/01/2022	Paydown		25,282	25,282	26,989	26,639	0	0	0	0	0	26,638	0	(1,356)	(1,356)	161	06/20/2049	1.A
912828-6C-9	UNITED STATES TREASURY		02/15/2022	Maturity @ 100.00		750,000	750,000	751,106	750,048	0	(48)	0	(48)	0	750,000	0	0	0	3,125	02/15/2022	1.A
912828-V7-2	UNITED STATES TREASURY		01/31/2022	Maturity @ 100.00		630,000	630,000	622,595	629,781	0	219	0	219	0	630,000	0	0	0	5,906	01/31/2022	1.A
0109999999. Subtotal - Bonds - U.S. Governments						1,432,093	1,432,093	1,429,319	1,434,760	0	170	0	170	0	1,434,930	0	(2,837)	(2,837)	9,362	XXX	XXX
3128M4-2P-7	FH G03182 - RMBS		03/01/2022	Paydown		2,128	2,128	2,005	2,036	0	0	0	0	0	2,037	0	91	91	17	05/01/2036	1.A
3128M7-LM-6	FH G05432 - RMBS		03/01/2022	Paydown		374	374	392	389	0	0	0	0	0	389	0	(15)	(15)	4	04/01/2039	1.A
312931-K6-4	FH A84817 - RMBS		03/01/2022	Paydown		78	78	81	81	0	0	0	0	0	81	0	(3)	(3)	1	03/01/2039	1.A
3131Y7-S6-5	FH ZN1441 - RMBS		03/01/2022	Paydown		21,254	21,254	22,842	22,627	0	(1)	0	(1)	0	22,626	0	(1,372)	(1,372)	177	11/01/2048	1.A
3132DM-Y8-2	FH SD0735 - RMBS		03/01/2022	Paydown		39,321	39,321	41,809	41,748	0	(39)	0	(39)	0	41,709	0	(2,389)	(2,389)	229	11/01/2051	1.A
3132GE-S3-5	FH Q01438 - RMBS		03/01/2022	Paydown		643	643	667	663	0	0	0	0	0	663	0	(19)	(19)	5	06/01/2041	1.A
3132XC-SE-6	FH G67717 - RMBS		03/01/2022	Paydown		28,828	28,828	29,331	29,282	0	(1)	0	(1)	0	29,281	0	(453)	(453)	180	11/01/2048	1.A
31335B-ZY-5	FH G61659 - RMBS		03/01/2022	Paydown		24,117	24,117	24,411	24,387	0	(1)	0	(1)	0	24,387	0	(270)	(270)	147	07/01/2042	1.A
3133KM-4X-0	FH RA6238 - RMBS		03/01/2022	Paydown		19,695	19,695	20,267	20,257	0	(6)	0	(6)	0	20,251	0	(556)	(556)	89	11/01/2051	1.A
3136AV-7G-8	FNA 2017-M7 A2 - CMBS		03/01/2022	Paydown		5,217	5,217	5,268	5,241	0	0	0	0	0	5,241	0	(25)	(25)	20	02/25/2027	1.A
3136B1-XJ-8	FNA 2018-IM4 A2 - CMBS		03/01/2022	Paydown		567	567	553	558	0	0	0	0	0	558	0	9	9	3	03/27/2028	1.A
3137BY-PD-6	FHR 4692 LP - CMO/RMBS		03/01/2022	Paydown		14,668	14,668	15,044	14,938	0	(2)	0	(2)	0	14,936	0	(268)	(268)	70	05/15/2046	1.A
3137BY-PQ-7	FHMS K-726 A2 - CMBS		03/01/2022	Paydown		1,301	1,301	1,340	1,313	0	(1)	0	(1)	0	1,312	0	(11)	(11)	8	04/25/2024	1.A
3137F2-ME-3	FHR 4714 PA - CMO/RMBS		03/01/2022	Paydown		15,409	15														

STATEMENT AS OF MARCH 31, 2022 OF THE COLONY SPECIALTY INSURANCE COMPANY

SCHEDULE D - PART 4

Show All Long-Term Bonds and Stock Sold, Redeemed or Otherwise Disposed of During the Current Quarter

1	2	3	4	5	6	7	8	9	10	Change In Book/Adjusted Carrying Value					16	17	18	19	20	21	22
										11	12	13	14	15							
CUSIP Ident- ification	Description	For- eign	Disposal Date	Name of Purchaser	Number of Shares of Stock	Consid- eration	Par Value	Actual Cost	Prior Year Book/ Adjusted Carrying Value	Unrealized Valuation Increase/ (Decrease)	Current Year's (Amor- tization)/ Accretion	Current Year's Other Than Temporary Impairment Recog- nized	Total Change in Book/ Adjusted Carrying Value (11 + 12 - 13)	Total Foreign Exchange Change in Book /Adjusted Carrying Value	Book/ Adjusted Carrying Value at Disposal Date	Foreign Exchange Gain (Loss) on Disposal	Realized Gain (Loss) on Disposal	Total Gain (Loss) on Disposal	Bond Interest/ Stock Dividends Received During Year	Stated Con- tractual Maturity Date	NAIC Desig- nation, NAIC Desig- nation Modifier and SVO Admini- strative Symbol
5999999999. Total - Preferred and Common Stocks						0	XXX	0	0	0	0	0	0	0	0	0	0	0	0	XXX	XXX
6009999999 - Totals						3,362,153	XXX	3,374,802	3,376,080	0	(38)	0	(38)	0	3,376,043	0	(13,890)	(13,890)	32,174	XXX	XXX

Schedule DB - Part A - Section 1 - Options, Caps, Floors, Collars, Swaps and Forwards Open  
**N O N E**

Schedule DB - Part B - Section 1 - Futures Contracts Open  
**N O N E**

Schedule DB - Part B - Section 1B - Brokers with whom cash deposits have been made  
**N O N E**

Schedule DB - Part D - Section 1 - Counterparty Exposure for Derivative Instruments Open  
**N O N E**

Schedule DB - Part D-Section 2 - Collateral for Derivative Instruments Open - Pledged By  
**N O N E**

Schedule DB - Part D-Section 2 - Collateral for Derivative Instruments Open - Pledged To  
**N O N E**

Schedule DB - Part E - Derivatives Hedging Variable Annuity Guarantees  
**N O N E**

Schedule DL - Part 1 - Reinvested Collateral Assets Owned  
**N O N E**

Schedule DL - Part 2 - Reinvested Collateral Assets Owned  
**N O N E**

SCHEDULE E - PART 1 - CASH

Month End Depository Balances

1	2	3	4	5	Book Balance at End of Each Month During Current Quarter			9
					6	7	8	
					First Month	Second Month	Third Month	
Depository	Code	Rate of Interest	Amount of Interest Received During Current Quarter	Amount of Interest Accrued at Current Statement Date				*
US Bank .....	SD	0.000	0	0	232,616	30,988	34,116	XXX
JP Morgan Chase Bank, NA ..... New York, NY .....		0.000	0	0	303,868	295,891	51,003	XXX
0199998. Deposits in ... 0 depositories that do not exceed the allowable limit in any one depository (See instructions) - Open Depositories	XXX	XXX	0	0	0	0	0	XXX
0199999. Totals - Open Depositories	XXX	XXX	0	0	536,484	326,879	85,119	XXX
0299998. Deposits in ... 0 depositories that do not exceed the allowable limit in any one depository (See instructions) - Suspended Depositories	XXX	XXX	0	0	0	0	0	XXX
0299999. Totals - Suspended Depositories	XXX	XXX	0	0	0	0	0	XXX
0399999. Total Cash on Deposit	XXX	XXX	0	0	536,484	326,879	85,119	XXX
0499999. Cash in Company's Office	XXX	XXX	XXX	XXX	0	0	0	XXX
.....								
.....								
.....								
.....								
.....								
.....								
.....								
.....								
.....								
.....								
0599999. Total - Cash	XXX	XXX	0	0	536,484	326,879	85,119	XXX

## SCHEDULE E - PART 2 - CASH EQUIVALENTS

[illegible]



SUPPLEMENT FOR THE QUARTER ENDING MARCH 31, 2022 OF THE COLONY SPECIALTY INSURANCE COMPANY

Designate the type of health care  
providers reported on this page:  
Other health care facilities

SUPPLEMENT A TO SCHEDULE T  
EXHIBIT OF MEDICAL PROFESSIONAL LIABILITY PREMIUMS WRITTEN  
ALLOCATED BY STATES AND TERRITORIES

		1	2	Direct Losses Paid		5	Direct Losses Unpaid		8
				3	4		6	7	
States, etc.		Direct Premiums Written	Direct Premiums Earned	Amount	No. of Claims	Direct Losses Incurred	Amount Reported	No. of Claims	Direct Losses Incurred But Not Reported
1.	Alabama.....AL								
2.	Alaska.....AK								
3.	Arizona.....AZ					(20)			163
4.	Arkansas.....AR								
5.	California.....CA					(32)			255
6.	Colorado.....CO								
7.	Connecticut.....CT								
8.	Delaware.....DE								
9.	District of Columbia.....DC					(15)			117
10.	Florida.....FL								
11.	Georgia.....GA					(7)			53
12.	Hawaii.....HI								
13.	Idaho.....ID								
14.	Illinois.....IL								
15.	Indiana.....IN								
16.	Iowa.....IA								
17.	Kansas.....KS					(104)			830
18.	Kentucky.....KY								
19.	Louisiana.....LA								
20.	Maine.....ME								
21.	Maryland.....MD								
22.	Massachusetts.....MA								
23.	Michigan.....MI					(9)			71
24.	Minnesota.....MN								
25.	Mississippi.....MS								
26.	Missouri.....MO								
27.	Montana.....MT								
28.	Nebraska.....NE								
29.	Nevada.....NV								
30.	New Hampshire.....NH								
31.	New Jersey.....NJ								
32.	New Mexico.....NM								
33.	New York.....NY								
34.	North Carolina.....NC								
35.	North Dakota.....ND								
36.	Ohio.....OH					(92)			734
37.	Oklahoma.....OK								
38.	Oregon.....OR								
39.	Pennsylvania.....PA								
40.	Rhode Island.....RI								
41.	South Carolina.....SC								
42.	South Dakota.....SD								
43.	Tennessee.....TN								
44.	Texas.....TX								
45.	Utah.....UT								
46.	Vermont.....VT								
47.	Virginia.....VA					(216)			1,724
48.	Washington.....WA					(361)			2,878
49.	West Virginia.....WV								
50.	Wisconsin.....WI								
51.	Wyoming.....WY								
52.	American Samoa.....AS								
53.	Guam.....GU								
54.	Puerto Rico.....PR								
55.	U.S. Virgin Islands.....VI								
56.	Nothern Mariana Islands.....MP								
57.	Canada.....CAN								
58.	Aggregate Other Aliens.....OT	0	0	0	0	0	0	0	0
59.	Totals	0	0	0	0	(856)	0	0	6,825
DETAILS OF WRITE-INS									
58001.	.....								
58002.	.....								
58003.	.....								
58998.	Summary of remaining write-ins for Line 58 from overflow page	0	0	0	0	0	0	0	0
58999.	Totals (Lines 58001 through 58003 plus 58998)(Line 58 above)	0	0	0	0	0	0	0	0



SUPPLEMENT FOR THE QUARTER ENDING MARCH 31, 2022 OF THE COLONY SPECIALTY INSURANCE COMPANY

DIRECTOR AND OFFICER INSURANCE COVERAGE SUPPLEMENT

Year To Date For The Period Ended MARCH 31, 2022

NAIC Group Code 0457 NAIC Company Code 36927

Company Name COLONY SPECIALTY INSURANCE COMPANY

If the reporting entity writes any director and officer (D&O) business, please provide the following:

1. Monoline Policies

1 Direct Written Premium	2 Direct Earned Premium	3 Direct Losses Incurred
\$ 40,065	\$ 182,074	\$ 81,556

2. Commercial Multiple Peril (CMP) Packaged Policies

- 2.1 Does the reporting entity provide D&O liability coverage as part of a CMP packaged policy?

Yes [ ] No [ X ]
- 2.2 Can the direct premium earned for D&O liability coverage provided as part of a CMP packaged policy be quantified or estimated?

Yes [ ] No [ X ]
- 2.3 If the answer to question 2.2 is yes, provide the quantified or estimated direct premium earned amount for D&O liability coverage in CMP packaged policies

2.31 Amount quantified:

\$

2.32 Amount estimated using reasonable assumptions:

\$
- 2.4 If the answer to question 2.1 is yes, provide direct losses incurred (losses paid plus change in case reserves) for the D&O liability coverage provided in CMP packaged policies.

\$