



PROPERTY AND CASUALTY COMPANIES - ASSOCIATION EDITION

QUARTERLY STATEMENT

AS OF MARCH 31, 2022

OF THE CONDITION AND AFFAIRS OF THE

STATE AUTO INSURANCE COMPANY OF OHIO

NAIC Group Code 0111 0175 NAIC Company Code 11017 Employer's ID Number 31-1651026
(Current) (Prior)

Organized under the Laws of , State of Domicile or Port of Entry OH
Country of Domicile United States of America
Incorporated/Organized 05/17/1999 Commenced Business 01/01/2000
Statutory Home Office 518 East Broad Street Columbus, OH, US 43215
(Street and Number) (City or Town, State, Country and Zip Code)
Main Administrative Office 518 East Broad Street
(Street and Number)
Columbus, OH, US 43215 833-724-3577
(City or Town, State, Country and Zip Code) (Area Code) (Telephone Number)
Mail Address 518 East Broad Street Columbus, OH, US 43215
(Street and Number or P.O. Box) (City or Town, State, Country and Zip Code)
Primary Location of Books and Records 518 East Broad Street
(Street and Number)
Columbus, OH, US 43215 614-464-5000
(City or Town, State, Country and Zip Code) (Area Code) (Telephone Number)
Internet Website Address www.stateauto.com
Statutory Statement Contact Zachary Skidmore 614-917-5995
(Name) (Area Code) (Telephone Number)
corporateaccounting@stateauto.com 317-715-4519
(E-mail Address) (FAX Number)

OFFICERS

President and Chief Executive Officer James Michael MacPhee #
Executive Vice President and Chief Financial Officer Christopher Locke Peirce #
Executive Vice President and Secretary Mark Charles Touhey #

OTHER

Edward Jose Pena #, Executive Vice President and Treasurer
Paul Sanghera #, EVP and Comptroller
Damon Paul Hart #, EVP and Chief Legal Officer Vlad Yakov Barbalat #, EVP and Chief Investment Officer

DIRECTORS OR TRUSTEES

James Matthew Czapla # Matthew Paul Dolan # Alison Brooke Erbig #
Michael Joseph Fallon # Julie Marie Haase # James Michael MacPhee #
Elizabeth Julia Morahan # Paul Sanghera # Mark Charles Touhey #

State of Massachusetts SS:
County of Suffolk

The officers of this reporting entity being duly sworn, each depose and say that they are the described officers of said reporting entity, and that on the reporting period stated above, all of the herein described assets were the absolute property of the said reporting entity, free and clear from any liens or claims thereon, except as herein stated, and that this statement, together with related exhibits, schedules and explanations therein contained, annexed or referred to, is a full and true statement of all the assets and liabilities and of the condition and affairs of the said reporting entity as of the reporting period stated above, and of its income and deductions therefrom for the period ended, and have been completed in accordance with the NAIC Annual Statement Instructions and Accounting Practices and Procedures manual except to the extent that: (1) state law may differ; or, (2) that state rules or regulations require differences in reporting not related to accounting practices and procedures, according to the best of their information, knowledge and belief, respectively. Furthermore, the scope of this attestation by the described officers also includes the related corresponding electronic filing with the NAIC, when required, that is an exact copy (except for formatting differences due to electronic filing) of the enclosed statement. The electronic filing may be requested by various regulators in lieu of or in addition to the enclosed statement.

James Michael MacPhee President and Chief Executive Officer
Mark Charles Touhey Executive Vice President and Secretary
Christopher Locke Peirce Executive Vice President and Chief Financial Officer

Subscribed and sworn to before me this 5th day of May, 2022
a. Is this an original filing? Yes [X] No []
b. If no,
1. State the amendment number.....
2. Date filed
3. Number of pages attached.....

STATEMENT AS OF MARCH 31, 2022 OF THE STATE AUTO INSURANCE COMPANY OF OHIO

ASSETS

	Current Statement Date			4 December 31 Prior Year Net Admitted Assets
	1 Assets	2 Nonadmitted Assets	3 Net Admitted Assets (Cols. 1 - 2)	
1. Bonds	12,514,397	0	12,514,397	17,540,061
2. Stocks:				
2.1 Preferred stocks	0	0	0	0
2.2 Common stocks	1,074,903	0	1,074,903	1,006,077
3. Mortgage loans on real estate:				
3.1 First liens	0	0	0	0
3.2 Other than first liens.....	0	0	0	0
4. Real estate:				
4.1 Properties occupied by the company (less \$0 encumbrances)	0	0	0	0
4.2 Properties held for the production of income (less \$0 encumbrances)	0	0	0	0
4.3 Properties held for sale (less \$0 encumbrances)	0	0	0	0
5. Cash (\$5,461,810), cash equivalents (\$0) and short-term investments (\$0)	5,461,810	0	5,461,810	77,274
6. Contract loans (including \$0 premium notes)	0	0	0	0
7. Derivatives	0	0	0	0
8. Other invested assets	0	0	0	0
9. Receivables for securities	0	0	0	0
10. Securities lending reinvested collateral assets	0	0	0	0
11. Aggregate write-ins for invested assets	0	0	0	0
12. Subtotals, cash and invested assets (Lines 1 to 11)	19,051,110	0	19,051,110	18,623,413
13. Title plants less \$0 charged off (for Title insurers only)	0	0	0	0
14. Investment income due and accrued	46,728	0	46,728	129,605
15. Premiums and considerations:				
15.1 Uncollected premiums and agents' balances in the course of collection	0	0	0	0
15.2 Deferred premiums, agents' balances and installments booked but deferred and not yet due (including \$0 earned but unbilled premiums)	0	0	0	0
15.3 Accrued retrospective premiums (\$0) and contracts subject to redetermination (\$0)	0	0	0	0
16. Reinsurance:				
16.1 Amounts recoverable from reinsurers	3,008,260	0	3,008,260	2,686,957
16.2 Funds held by or deposited with reinsured companies	0	0	0	0
16.3 Other amounts receivable under reinsurance contracts	0	0	0	0
17. Amounts receivable relating to uninsured plans	0	0	0	0
18.1 Current federal and foreign income tax recoverable and interest thereon	0	0	0	0
18.2 Net deferred tax asset	120,324	82,389	37,935	135,855
19. Guaranty funds receivable or on deposit	0	0	0	0
20. Electronic data processing equipment and software	0	0	0	0
21. Furniture and equipment, including health care delivery assets (\$0)	0	0	0	0
22. Net adjustment in assets and liabilities due to foreign exchange rates	0	0	0	0
23. Receivables from parent, subsidiaries and affiliates	1,008,161	0	1,008,161	2,346,099
24. Health care (\$0) and other amounts receivable	0	0	0	0
25. Aggregate write-ins for other than invested assets	83,634	0	83,634	84,265
26. Total assets excluding Separate Accounts, Segregated Accounts and Protected Cell Accounts (Lines 12 to 25)	23,318,216	82,389	23,235,827	24,006,193
27. From Separate Accounts, Segregated Accounts and Protected Cell Accounts	0	0	0	0
28. Total (Lines 26 and 27)	23,318,216	82,389	23,235,827	24,006,193
DETAILS OF WRITE-INS				
1101.	0	0	0	0
1102.				
1103.				
1198. Summary of remaining write-ins for Line 11 from overflow page	0	0	0	0
1199. Totals (Lines 1101 through 1103 plus 1198)(Line 11 above)	0	0	0	0
2501. Equities and deposits in pools and associations	83,634	0	83,634	84,265
2502.				
2503.				
2598. Summary of remaining write-ins for Line 25 from overflow page	0	0	0	0
2599. Totals (Lines 2501 through 2503 plus 2598)(Line 25 above)	83,634	0	83,634	84,265

STATEMENT AS OF MARCH 31, 2022 OF THE STATE AUTO INSURANCE COMPANY OF OHIO

LIABILITIES, SURPLUS AND OTHER FUNDS

	1 Current Statement Date	2 December 31, Prior Year
1. Losses (current accident year \$0)	0	0
2. Reinsurance payable on paid losses and loss adjustment expenses	0	0
3. Loss adjustment expenses	0	0
4. Commissions payable, contingent commissions and other similar charges	0	0
5. Other expenses (excluding taxes, licenses and fees)	0	0
6. Taxes, licenses and fees (excluding federal and foreign income taxes)	0	0
7.1 Current federal and foreign income taxes (including \$0 on realized capital gains (losses))	153,250	92,576
7.2 Net deferred tax liability	0	0
8. Borrowed money \$0 and interest thereon \$0	0	0
9. Unearned premiums (after deducting unearned premiums for ceded reinsurance of \$8,221,068 and including warranty reserves of \$0 and accrued accident and health experience rating refunds including \$0 for medical loss ratio rebate per the Public Health Service Act)	0	0
10. Advance premium	0	0
11. Dividends declared and unpaid:		
11.1 Stockholders	0	0
11.2 Policyholders	0	0
12. Ceded reinsurance premiums payable (net of ceding commissions)	4,038,171	5,030,737
13. Funds held by company under reinsurance treaties	0	0
14. Amounts withheld or retained by company for account of others	0	0
15. Remittances and items not allocated	0	0
16. Provision for reinsurance (including \$0 certified)	0	0
17. Net adjustments in assets and liabilities due to foreign exchange rates	0	0
18. Drafts outstanding	0	0
19. Payable to parent, subsidiaries and affiliates	6,695	59,129
20. Derivatives	0	0
21. Payable for securities	0	0
22. Payable for securities lending	0	0
23. Liability for amounts held under uninsured plans	0	0
24. Capital notes \$0 and interest thereon \$0	0	0
25. Aggregate write-ins for liabilities	0	0
26. Total liabilities excluding protected cell liabilities (Lines 1 through 25)	4,198,116	5,182,442
27. Protected cell liabilities	0	0
28. Total liabilities (Lines 26 and 27)	4,198,116	5,182,442
29. Aggregate write-ins for special surplus funds	0	0
30. Common capital stock	2,300,000	2,300,000
31. Preferred capital stock	0	0
32. Aggregate write-ins for other than special surplus funds	0	0
33. Surplus notes	0	0
34. Gross paid in and contributed surplus	3,823,680	3,823,680
35. Unassigned funds (surplus)	12,914,031	12,700,072
36. Less treasury stock, at cost:		
36.10 shares common (value included in Line 30 \$0)	0	0
36.20 shares preferred (value included in Line 31 \$0)	0	0
37. Surplus as regards policyholders (Lines 29 to 35, less 36)	19,037,711	18,823,752
38. Totals (Page 2, Line 28, Col. 3)	23,235,827	24,006,193
DETAILS OF WRITE-INS		
2501.	0	0
2502.		
2503.		
2598. Summary of remaining write-ins for Line 25 from overflow page	0	0
2599. Totals (Lines 2501 through 2503 plus 2598)(Line 25 above)	0	0
2901.	0	0
2902.		
2903.		
2998. Summary of remaining write-ins for Line 29 from overflow page	0	0
2999. Totals (Lines 2901 through 2903 plus 2998)(Line 29 above)	0	0
3201.		
3202.		
3203.		
3298. Summary of remaining write-ins for Line 32 from overflow page	0	0
3299. Totals (Lines 3201 through 3203 plus 3298)(Line 32 above)	0	0

STATEMENT OF INCOME

	1	2	3
	Current Year to Date	Prior Year to Date	Prior Year Ended December 31
UNDERWRITING INCOME			
1. Premiums earned:			
1.1 Direct (written \$ 4,086,523)	5,164,636	6,230,799	23,170,740
1.2 Assumed (written \$ 8,981)	8,981	12,840	45,117
1.3 Ceded (written \$ 4,095,503)	5,173,617	6,243,639	23,215,857
1.4 Net (written \$ 0)	0	0	0
DEDUCTIONS:			
2. Losses incurred (current accident year \$ 0):			
2.1 Direct	2,344,541	2,552,218	8,774,248
2.2 Assumed	3,790	7,295	18,703
2.3 Ceded	2,348,331	2,559,513	8,792,951
2.4 Net	0	0	0
3. Loss adjustment expenses incurred	0	0	0
4. Other underwriting expenses incurred	0	0	0
5. Aggregate write-ins for underwriting deductions	0	0	0
6. Total underwriting deductions (Lines 2 through 5)	0	0	0
7. Net income of protected cells	0	0	0
8. Net underwriting gain or (loss) (Line 1 minus Line 6 + Line 7)	0	0	0
INVESTMENT INCOME			
9. Net investment income earned	77,869	93,485	353,033
10. Net realized capital gains (losses) less capital gains tax of \$ 67,730	448,670	0	45,258
11. Net investment gain (loss) (Lines 9 + 10)	526,538	93,485	398,291
OTHER INCOME			
12. Net gain or (loss) from agents' or premium balances charged off (amount recovered \$ 0 amount charged off \$ 0)	0	0	0
13. Finance and service charges not included in premiums	0	0	0
14. Aggregate write-ins for miscellaneous income	0	0	0
15. Total other income (Lines 12 through 14)	0	0	0
16. Net income before dividends to policyholders, after capital gains tax and before all other federal and foreign income taxes (Lines 8 + 11 + 15)	526,538	93,485	398,291
17. Dividends to policyholders	0	0	0
18. Net income, after dividends to policyholders, after capital gains tax and before all other federal and foreign income taxes (Line 16 minus Line 17)	526,538	93,485	398,291
19. Federal and foreign income taxes incurred	(7,056)	15,224	112,228
20. Net income (Line 18 minus Line 19)(to Line 22)	533,594	78,261	286,062
CAPITAL AND SURPLUS ACCOUNT			
21. Surplus as regards policyholders, December 31 prior year	18,823,752	18,409,917	18,409,917
22. Net income (from Line 20)	533,594	78,261	286,062
23. Net transfers (to) from Protected Cell accounts	0	0	0
24. Change in net unrealized capital gains (losses) less capital gains tax of \$ (46,560)	(175,155)	5,711	80,809
25. Change in net unrealized foreign exchange capital gain (loss)	0	0	0
26. Change in net deferred income tax	(62,091)	(1,115)	46,964
27. Change in nonadmitted assets	(82,389)	0	0
28. Change in provision for reinsurance	0	0	0
29. Change in surplus notes	0	0	0
30. Surplus (contributed to) withdrawn from protected cells	0	0	0
31. Cumulative effect of changes in accounting principles	0	0	0
32. Capital changes:			
32.1 Paid in	0	0	0
32.2 Transferred from surplus (Stock Dividend)	0	0	0
32.3 Transferred to surplus	0	0	0
33. Surplus adjustments:			
33.1 Paid in	0	0	0
33.2 Transferred to capital (Stock Dividend)	0	0	0
33.3 Transferred from capital	0	0	0
34. Net remittances from or (to) Home Office	0	0	0
35. Dividends to stockholders	0	0	0
36. Change in treasury stock	0	0	0
37. Aggregate write-ins for gains and losses in surplus	0	0	0
38. Change in surplus as regards policyholders (Lines 22 through 37)	213,959	82,857	413,835
39. Surplus as regards policyholders, as of statement date (Lines 21 plus 38)	19,037,711	18,492,774	18,823,752
DETAILS OF WRITE-INS			
0501.	0	0	0
0502.			
0503.			
0598. Summary of remaining write-ins for Line 5 from overflow page	0	0	0
0599. Totals (Lines 0501 through 0503 plus 0598)(Line 5 above)	0	0	0
1401.	0	0	0
1402.			
1403.			
1498. Summary of remaining write-ins for Line 14 from overflow page	0	0	0
1499. Totals (Lines 1401 through 1403 plus 1498)(Line 14 above)	0	0	0
3701.	0	0	0
3702.			
3703.			
3798. Summary of remaining write-ins for Line 37 from overflow page	0	0	0
3799. Totals (Lines 3701 through 3703 plus 3798)(Line 37 above)	0	0	0

STATEMENT AS OF MARCH 31, 2022 OF THE STATE AUTO INSURANCE COMPANY OF OHIO

CASH FLOW

	1 Current Year To Date	2 Prior Year To Date	3 Prior Year Ended December 31
Cash from Operations			
1. Premiums collected net of reinsurance	(992,566)	(1,309,350)	(935,978)
2. Net investment income	172,659	170,320	434,574
3. Miscellaneous income	0	0	0
4. Total (Lines 1 to 3)	(819,907)	(1,139,030)	(501,404)
5. Benefit and loss related payments	321,304	138,353	209,719
6. Net transfers to Separate Accounts, Segregated Accounts and Protected Cell Accounts	0	0	0
7. Commissions, expenses paid and aggregate write-ins for deductions	0	0	0
8. Dividends paid to policyholders	0	0	0
9. Federal and foreign income taxes paid (recovered) net of \$ 67,730 tax on capital gains (losses)	0	0	102,883
10. Total (Lines 5 through 9)	321,303	138,353	312,602
11. Net cash from operations (Line 4 minus Line 10)	(1,141,210)	(1,277,383)	(814,005)
Cash from Investments			
12. Proceeds from investments sold, matured or repaid:			
12.1 Bonds	5,219,559	0	2,943,695
12.2 Stocks	1,030,941	0	0
12.3 Mortgage loans	0	0	0
12.4 Real estate	0	0	0
12.5 Other invested assets	0	0	0
12.6 Net gains or (losses) on cash, cash equivalents and short-term investments	0	0	0
12.7 Miscellaneous proceeds	0	0	0
12.8 Total investment proceeds (Lines 12.1 to 12.7)	6,250,499	0	2,943,695
13. Cost of investments acquired (long-term only):			
13.1 Bonds	0	242,978	2,370,761
13.2 Stocks	1,014,440	0	975,399
13.3 Mortgage loans	0	0	0
13.4 Real estate	0	0	0
13.5 Other invested assets	0	0	0
13.6 Miscellaneous applications	0	0	0
13.7 Total investments acquired (Lines 13.1 to 13.6)	1,014,440	242,978	3,346,161
14. Net increase (or decrease) in contract loans and premium notes	0	0	0
15. Net cash from investments (Line 12.8 minus Line 13.7 and Line 14)	5,236,059	(242,978)	(402,466)
Cash from Financing and Miscellaneous Sources			
16. Cash provided (applied):			
16.1 Surplus notes, capital notes	0	0	0
16.2 Capital and paid in surplus, less treasury stock	0	0	0
16.3 Borrowed funds	0	0	0
16.4 Net deposits on deposit-type contracts and other insurance liabilities	0	0	0
16.5 Dividends to stockholders	0	0	0
16.6 Other cash provided (applied)	1,289,687	1,450,441	1,168,812
17. Net cash from financing and miscellaneous sources (Line 16.1 through Line 16.4 minus Line 16.5 plus Line 16.6)	1,289,687	1,450,441	1,168,811
RECONCILIATION OF CASH, CASH EQUIVALENTS AND SHORT-TERM INVESTMENTS			
18. Net change in cash, cash equivalents and short-term investments (Line 11, plus Lines 15 and 17)	5,384,535	(69,920)	(47,660)
19. Cash, cash equivalents and short-term investments:			
19.1 Beginning of year	77,274	124,934	124,934
19.2 End of period (Line 18 plus Line 19.1)	5,461,810	55,014	77,274

Note: Supplemental disclosures of cash flow information for non-cash transactions:

--	--	--	--

NOTES TO FINANCIAL STATEMENTS

1. Summary of Significant Accounting Policies:

A. Accounting Practices:

The accompanying financial statements of State Auto Insurance Company of Ohio (the "Company" or "SA Ohio") are presented on the basis of accounting practices prescribed or permitted by the Ohio Department of Insurance, which has adopted the National Association of Insurance Commissioners' (NAIC) *Accounting Practices and Procedures* manual (NAIC SAP).

A reconciliation of the Company's net income and capital and surplus between the practices prescribed and permitted by the state of Ohio and NAIC SAP is shown below:

		SSAP #	F/S Page	F/S Line #	Amount (\$)	
					2022	2021
NET INCOME						
1.	SA Ohio state basis (Page 4, Line 20, Columns 1 & 3)				533,594	286,062
2.	State Prescribed Practices that are an increase/(decrease) from NAIC SAP:				—	—
3.	State Permitted Practices that are an increase/(decrease) from NAIC SAP:				—	—
4.	NAIC SAP (1 - 2 - 3 = 4)				533,594	286,062
SURPLUS						
5.	SA Ohio state basis (Page 3, Line 37, Columns 1 & 2)				19,037,711	18,823,752
6.	State Prescribed Practices that are an increase/(decrease) from NAIC SAP:				—	—
7.	State Permitted Practices that are an increase/(decrease) from NAIC SAP:				—	—
8.	NAIC SAP (5 - 6 - 7 = 8)				19,037,711	18,823,752

C. Accounting Policy:

6. Loan-backed securities are valued at amortized cost using the scientific interest method. The retrospective adjustment method is used to determine the fair value of all loan-backed securities.

D. Going Concern:

Management continuously monitors the Company's financial results and compliance with regulatory requirements. There are currently no circumstances that could call into question the Company's ability to continue as a going concern.

2. Accounting Changes and Corrections of Errors:

No substantial change from December 31, 2021.

3. Business Combinations and Goodwill:

No substantial change from December 31, 2021.

4. Discontinued Operations:

No substantial change from December 31, 2021.

5. Investments:

A. Mortgage Loans: Not applicable.

B. Debt Restructuring: Not applicable.

C. Reverse Mortgages: Not applicable.

D. Loan-Backed Securities:

1. Prepayment assumptions for mortgage-backed securities, asset-backed securities and collateralized mortgage obligations were generated using a purchased prepayment model. The prepayment model uses a number of factors to estimate prepayment activity including the time of year (seasonality), current levels of interest rates (refinancing incentive), economic activity (including housing turnover) and term and age of the underlying collateral (burnout, seasoning).
2. The Company has not recognized any other than temporary impairments on its loan-backed securities.
3. The Company has not recognized any other than temporary impairments on its loan-backed securities.
4. The Company has loan-backed securities in which the fair value is less than cost or amortized cost for which an other than temporary impairment has not been recognized.

	Amount (\$)
a. The aggregate amount of unrealized losses	
1. Less than 12 Months	(965)
2. 12 Months or Longer	—
b. The aggregate related fair value of securities with unrealized losses	
1. Less than 12 Months	755,003
2. 12 Months or Longer	—

5. The Company regularly reviews its investment portfolio for factors that may indicate that a decline in fair value of an investment is other than temporary. The Company considers various factors, such as the duration and extent the security has been below cost, underlying credit rating of the issuer, receipt of scheduled principal and interest cash flows, and the Company's ability and intent to hold the security until recovery.

E. Dollar Repurchase Agreements: Not applicable.

F. Repurchase Agreements Transactions Accounted for as Secured Borrowing: Not applicable.

G. Reverse Repurchase Agreements Transactions Accounted for as Secured Borrowing: Not applicable.

H. Repurchase Agreements Transactions Accounted for as a Sale: Not applicable.

5. Investments (continued):

- I. Reverse Repurchase Agreements Transactions Accounted for as a Sale: Not applicable.
- J. Real Estate: Not applicable.
- K. Investments in Low Income Housing Tax Credits: Not applicable.
- L. Restricted Assets: No substantial change from December 31, 2021.
- M. Working Capital Finance Investments: Not applicable.
- N. Offsetting and Netting of Assets and Liabilities: Not applicable.
- O. 5GI Securities: Not applicable.
- P. Short Sales: Not applicable.
- Q. Prepayment Penalty and Acceleration Fees: Not applicable.

6. Joint Ventures, Partnerships and Limited Liability Companies:

No substantial change from December 31, 2021.

7. Investment Income:

No substantial change from December 31, 2021.

8. Derivative Instruments:

No substantial change from December 31, 2021.

STATEMENT AS OF MARCH 31, 2022 OF THE STATE AUTO INSURANCE COMPANY OF OHIO

9. Income Taxes:

F. Consolidated Federal Income Tax Return:

1. The Company's Federal income tax return is consolidated with the following entities:
- | | | |
|---|--|--|
| America First Insurance Company | Liberty Financial Services, Inc. | Open Seas Solutions, Inc. |
| America First Lloyd's Insurance Company | Liberty Hospitality Group, Inc. | Oregon Automobile Insurance Company |
| American Compensation Insurance Company | Liberty Insurance Corporation | Peerless Indemnity Insurance Company |
| American Economy Insurance Company | Liberty Insurance Holdings, Inc. | Peerless Insurance Company |
| American Fire and Casualty Company | Liberty Insurance Underwriters Inc. | Plaza Insurance Company |
| American States Insurance Company | Liberty International Europe Inc. | Rianoc Research Corporation |
| American States Insurance Company of Texas | Liberty International Holdings Inc. | RTW, Inc. |
| American States Lloyds Insurance Company | Liberty Life Holdings Inc. | Rockhill Holding Company |
| American States Preferred Insurance Company | Liberty Lloyds of Texas Insurance Company | Rockhill Insurance Company |
| Barrier Ridge LLC | Liberty Management Services, Inc. | SAFECARE Company, Inc. |
| Berkeley Management Corporation | Liberty Mexico Holdings Inc. | Safeco Corporation |
| Bloomington Compensation Insurance Company | Liberty Mutual Agency Corporation | Safeco General Agency, Inc. |
| Colorado Casualty Insurance Company | Liberty Mutual Credit Risk Transfer PCC Inc. | Safeco Insurance Company of America |
| Consolidated Insurance Company | Liberty Mutual Fire Insurance Company | Safeco Insurance Company of Illinois |
| Diversified Settlements, Inc. | Liberty Mutual Group Asset Management Inc. | Safeco Insurance Company of Indiana |
| Eagle Development Corporation | Liberty Mutual Group Inc. | Safeco Insurance Company of Oregon |
| Emerald City Insurance Agency, Inc. | Liberty Mutual Holding Company Inc. | Safeco Lloyds Insurance Company |
| Employers Insurance Company of Wausau | Liberty Mutual Insurance Company | Safeco National Insurance Company |
| Excelsior Insurance Company | Liberty Mutual Personal Insurance Company | Safeco Properties, Inc. |
| Excess Risk Reinsurance Inc. | Liberty Mutual Technology Group, Inc. | Safeco Surplus Lines Insurance Company |
| F.B. Beattie & Co., Inc. | Liberty Northwest Insurance Corporation | San Diego Insurance Company |
| Facilitators, Inc. | Liberty Personal Insurance Company | SCIT, Inc. |
| First National Insurance Company of America | Liberty RE (Bermuda) Limited | State Auto Financial Corporation |
| First State Agency Inc. | Liberty Sponsored Insurance (Vermont), Inc. | State Auto Holdings, Inc. |
| General America Corporation | Liberty Surplus Insurance Corporation | State Auto Insurance Company of Ohio |
| General America Corporation of Texas | LIH-RE of America Corporation | State Auto Insurance Company of Wisconsin |
| General Insurance Company of America | LIU Specialty Insurance Agency Inc. | State Auto Labs Corporation |
| Golden Eagle Insurance Corporation | LM General Insurance Company | State Auto Property & Casualty Insurance Company |
| Gulf States AIF, Inc. | LM Insurance Corporation | State Automobile Mutual Insurance Company |
| Hawkeye-Security Insurance Company | LM Property and Casualty Insurance Company | Stateco Financial Services, Inc. |
| Indiana Insurance Company | LMCRT-FRE-01 IC | The First Liberty Insurance Corporation |
| Insurance Company of Illinois | LMHC Massachusetts Holdings Inc. | The Midwestern Indemnity Company |
| Ironshore Holdings (US) Inc. | Managed Care Associates Inc. | The National Corporation |
| Ironshore Indemnity Inc. | Meridian Security Insurance Company | The Netherlands Insurance Company |
| Liberty Specialty Markets Bermuda Limited | Mid-American Fire & Casualty Company | The Ohio Casualty Insurance Company |
| Ironshore Management Inc. | Milbank Insurance Company | Wausau Business Insurance Company |
| Ironshore Services Inc. | Nationale Borg Reinsurance N.V. | Wausau General Insurance Company |
| Ironshore Specialty Insurance Company | North Pacific Insurance Company | Wausau Underwriters Insurance Company |
| Ironshore Surety Holdings Inc. | Ocasco Budget, Inc. | West American Insurance Company |
| LEXCO Limited | OCI Printing, Inc. | Winmar Company, Inc. |
| Liberty-USA Corporation | Ohio Casualty Corporation | Workgrid Software, Inc. |
| Liberty Energy Canada, Inc. | Ohio Security Insurance Company | |
2. The method of federal income tax allocation is subject to a written agreement. Allocation is based upon separate return calculations with credit applied for losses as appropriate. The Company has the enforceable right to recoup prior year payments in the event of future losses.

10. Information Concerning Parent, Subsidiaries and Affiliates:

- G. Nature of Relationships that Could Affect Operations:
- On July 12, 2021, the Company's ultimate controlling entity, State Automobile Mutual Insurance Company (SAM), entered into an agreement and Plan of Merger and Combination (Merger Agreement) with Liberty Mutual Holding Company Inc. (LMHC). Pursuant to a Plan of Reorganization, on March 1, 2022, the reorganization was effectuated with SAM surviving the merger as an Ohio domiciled reorganized stock insurance subsidiary of LMHC.

The Company is a member of the Liberty Mutual Group that is defined in Schedule Y – Information Concerning Activities of Insurer Members of a Holding Company Group. See Schedule Y Part 1 – Organizational Chart.

11. Debt:

No substantial change from December 31, 2021.

12. Retirement Plans, Deferred Compensation, Postretirement Benefits and Compensated Absences and Other Postretirement Benefit Plans:

No substantial change from December 31, 2021.

STATEMENT AS OF MARCH 31, 2022 OF THE STATE AUTO INSURANCE COMPANY OF OHIO

13. Capital and Surplus, Shareholders' Dividend Restrictions and Quasi-Reorganizations:

No substantial change from December 31, 2021.

14. Liabilities, Contingencies and Assessments:

No substantial change from December 31, 2021.

15. Leases:

No substantial change from December 31, 2021.

16. Information about Financial Instruments with Off-Balance-Sheet Risk and Financial Instruments with Concentrations of Credit Risk:

No substantial change from December 31, 2021.

17. Sale, Transfer and Servicing of Financial Instruments and Extinguishments of Liabilities:

No substantial change from December 31, 2021.

18. Gain or Loss to the Reporting Entity from Uninsured A&H Plans and the Uninsured Portion of Partially Insured Plans:

No substantial change from December 31, 2021.

19. Direct Premium Written/Produced by Managing General Agents/Third Party Administrators:

No substantial change from December 31, 2021.

20. Fair Value Measurement:

A. Inputs Used for Assets and Liabilities Measured and Reported at Fair Value or Net Asset Value:

The Company has categorized its assets and liabilities that are reported on the balance sheet at fair value into the three-level fair value hierarchy as reflected in the table below. The three-level fair value hierarchy is based on the degree of subjectivity inherent in the valuation method by which fair value was determined. The three levels are defined as follows.

Level 1 - Quoted Prices in Active Markets for Identical Assets and Liabilities: The Company has no assets or liabilities measured and reported at fair value in this category.

Level 2 - Significant Other Observable Inputs: The Company has no assets or liabilities measured and reported at fair value in this category.

Level 3 - Significant Unobservable Inputs: The Company has no assets or liabilities measured and reported at fair value in this category.

Net asset value (NAV): The Company has no assets or liabilities measured and reported in this category.

1.
- The Company has categorized its assets that are measured at fair value or net asset value into the three-level fair value hierarchy as reflected in the following table. The Company has no liabilities that are measured and reported at fair value. See item 3 below for a discussion of the Company's transfer policy. See item 4 below for a discussion of Level 2 and Level 3 assets.

Fair Value Measurements at Reporting Date	Amount (\$)				
Description for each class of asset or liability	(Level 1)	(Level 2)	(Level 3)	Net Asset Value (NAV)	Total
a. Assets at fair value					
Common stock					
Industrial and misc	1,074,903	—	—	—	1,074,903
Total common stocks	1,074,903	—	—	—	1,074,903
Total assets at fair value/(NAV)	1,074,903	—	—	—	1,074,903

2.
- The Company has no assets or liabilities measured and reported at fair value in Level 3.
3.
- Transfers between level categorizations may occur due to changes in the availability of market observable inputs. Transfers in and out of level categorizations are reported as having occurred at the beginning of the quarter in which the transfer occurred. There were no transfers between level categorizations as of March 31, 2022.
4.
- The Company has no assets or liabilities measured and reported at fair value in Level 2 or Level 3.
5.
- The Company has no derivative assets or liabilities.

B. Other Fair Value Disclosures: Not applicable.

C. Fair Values for All Financial Instruments by Levels 1, 2, and 3:

See Item A for a discussion on valuation techniques for assets and liabilities that are measured and reported at fair value or net asset value.

The Company utilizes information provided by a nationally recognized pricing service to estimate fair value measurements for its fixed maturities.

March 31, 2022:

Type of Financial Instrument	Amount (\$)						
	Aggregate Fair Value	Admitted Assets	(Level 1)	(Level 2)	(Level 3)	Net Asset Value (NAV)	Not Practicable (Carrying Value)
Bonds	12,251,369	12,514,397	—	12,251,369	—	—	—
Stocks	1,074,903	1,074,903	1,074,903	—	—	—	—
Cash, cash equivalents, and short-term investments	5,461,810	5,461,810	5,461,810	—	—	—	—

STATEMENT AS OF MARCH 31, 2022 OF THE STATE AUTO INSURANCE COMPANY OF OHIO

20. Fair Value Measurement (continued):

December 31, 2021:

Type of Financial Instrument	Amount (\$)						
	Aggregate Fair Value	Admitted Assets	(Level 1)	(Level 2)	(Level 3)	Net Asset Value (NAV)	Not Practicable (Carrying Value)
Bonds	17,914,783	17,540,061	—	17,914,783	—	—	—
Common Stock	1,006,077	1,006,077	1,006,077				
Cash, cash equivalents, and short-term investments	77,274	77,274	77,274	—	—	—	—

- D. Financial Instruments for which Not Practical to Estimate Fair Values: Not applicable.
- E. Financial Instruments using the NAV Practical Expedient: Not applicable.

21. Other Items:

No substantial change from December 31, 2021.

22. Events Subsequent:

The Company participates in a quota share intercompany pooling agreement with its State Auto affiliates, as described in Note 26. The commutation of the State Auto intercompany pooling agreement was effective April 1, 2022. Also, effective April 1, 2022, and immediately after the commutation of the State Auto pooling agreement, the existing Liberty Mutual Second Amended and Restated Intercompany Reinsurance Pooling Agreement was amended to add the Company as a party of the agreement. The Company’s participation percentage in the Liberty Mutual agreement is 0.0%.

23. Reinsurance:

No substantial change from December 31, 2021.

24. Retrospectively Rated Contracts and Contracts Subject to Redetermination:

No substantial change from December 31, 2021.

25. Changes in Incurred Losses and Loss Adjustment Expenses:

No substantial change from December 31, 2021. The Company receives no losses or loss adjustment expenses from State Auto Mutual in accordance with the Pooling Arrangement.

26. Intercompany Pooling Arrangements:

Per SSAP No. 62R - *Property and Casualty Reinsurance*, ceded reinsurance written premiums payable may be deducted from amounts due from the reinsurer when a legal right of offset exists. As the Pooling Arrangement provides for the right of offset, the Company has netted within the Statement of Assets and Liabilities the amount due to State Auto Mutual under ceded reinsurance written premiums payable with the amount due from State Auto Mutual on assumed reinsurance written premiums receivable for transactions under the Pooling Arrangement. The following tabular presentation reflects the ceded reinsurance written premiums payable and assumed reinsurance written premiums receivable at March 31, 2022, between each State Auto Pool participant and State Auto Mutual resulting in the net amount due to or due from State Auto Mutual:

	Amount (\$)		
	Assumed Reinsurance Written Premiums Receivable from State Auto Mutual	Ceded Reinsurance Written Premiums Payable to State Auto Mutual	Net Assumed Reinsurance Written Premiums Receivable/(Net Ceded Reinsurance Written Premiums Payable)
State Auto P&C	312,451,610	184,685,709	127,765,901
Milbank	85,771,030	72,059,639	13,711,391
SA Wisconsin	—	1,102,229	(1,102,229)
SA Ohio	—	4,015,494	(4,015,494)
Meridian Security	—	107,924,475	(107,924,475)
Patrons Mutual	3,063,251	5,826,865	(2,763,614)
Rockhill	—	—	—
Plaza	—	3,790,198	(3,790,198)
American Compensation	—	11,256,167	(11,256,167)
Bloomington Compensation	—	1,923,335	(1,923,335)

The following tabular presentation reflects the reinsurance receivable and payable on loss and loss adjustment expense paid at March 31, 2022, between each State Auto Pool participant and State Auto Mutual:

	Amount (\$)	
	Assumed Reinsurance Loss and Loss Adjustment Expense Paid from State Auto Mutual	Ceded Reinsurance Loss and Loss Adjustment Expense Paid to State Auto Mutual
State Auto P&C	215,080,315	144,611,645
Milbank	59,041,655	57,116,614
SA Wisconsin		1,767,084
SA Ohio		3,004,695
Meridian Security		77,819,659
Patrons Mutual	2,108,631	4,524,843
Rockhill		13,012,785
Plaza		6,554,959
American Compensation		6,159,640
Bloomington Compensation		779,430

26. Intercompany Pooling Arrangements (continued):

The following tabular presentation reflects all other intercompany amounts due from and due to State Auto Mutual from entities participating in the Pooling Arrangement at March 31, 2022:

	Amount (\$)	
	Intercompany Amounts Due from State Auto Mutual	Intercompany Amounts Due to State Auto Mutual
State Auto P&C	—	10,952,466
Milbank		2,177,324
SA Wisconsin		666,418
SA Ohio	1,008,161	—
Meridian Security	33,168,993	—
Patrons Mutual	148,835	—
Rockhill	—	23,636,423
Plaza	—	2,549,235
American Compensation	5,375,068	—
Bloomington Compensation	1,113,284	—

27. Structured Settlements:

No substantial change from December 31, 2021.

28. Health Care Receivables:

No substantial change from December 31, 2021.

29. Participating Policies:

No substantial change from December 31, 2021.

30. Premium Deficiency Reserves:

No substantial change from December 31, 2021.

31. High Deductibles:

No substantial change from December 31, 2021.

32. Discounting of Liabilities for Unpaid Losses or Unpaid Loss Adjustment Expenses:

No substantial change from December 31, 2021.

33. Asbestos/Environmental Reserves:

No substantial change from December 31, 2021.

34. Subscriber Savings Accounts:

No substantial change from December 31, 2021.

35. Multiple Peril Crop Insurance:

No substantial change from December 31, 2021.

36. Financial Guaranty Insurance:

No substantial change from December 31, 2021.

STATEMENT AS OF MARCH 31, 2022 OF THE STATE AUTO INSURANCE COMPANY OF OHIO

GENERAL INTERROGATORIES

PART 1 - COMMON INTERROGATORIES

GENERAL

1.1

Did the reporting entity experience any material transactions requiring the filing of Disclosure of Material Transactions with the State of Domicile, as required by the Model Act?

Yes [] No [X]

1.2

If yes, has the report been filed with the domiciliary state?

Yes [] No []

2.1

Has any change been made during the year of this statement in the charter, by-laws, articles of incorporation, or deed of settlement of the reporting entity?

Yes [] No [X]

2.2

If yes, date of change:

3.1

Is the reporting entity a member of an Insurance Holding Company System consisting of two or more affiliated persons, one or more of which is an insurer?
If yes, complete Schedule Y, Parts 1 and 1A.

Yes [X] No []

3.2

Have there been any substantial changes in the organizational chart since the prior quarter end?

Yes [X] No []

3.3

If the response to 3.2 is yes, provide a brief description of those changes.
On March 1, 2022, Liberty Mutual Holding Company, Inc. (LMHC) effected the acquisition of State Auto Financial Corporation (STFC) and State Automobile Mutual Insurance Company (SAM), pursuant to the terms of the Agreement and Plan of Merger and Combination (the Merger Agreement), dated as of July 12, 2021. Subject to the terms and conditions set forth in the Merger Agreement, at the effective time of the Merger the members of SAM became members of LMHC.

3.4

Is the reporting entity publicly traded or a member of a publicly traded group?

Yes [] No [X]

3.5

If the response to 3.4 is yes, provide the CIK (Central Index Key) code issued by the SEC for the entity/group.

4.1

Has the reporting entity been a party to a merger or consolidation during the period covered by this statement?

Yes [] No [X]

4.2

If yes, provide the name of the entity, NAIC Company Code, and state of domicile (use two letter state abbreviation) for any entity that has ceased to exist as a result of the merger or consolidation.

1	2	3
Name of Entity	NAIC Company Code	State of Domicile

5.

If the reporting entity is subject to a management agreement, including third-party administrator(s), managing general agent(s), attorney-in-fact, or similar agreement, have there been any significant changes regarding the terms of the agreement or principals involved?
If yes, attach an explanation.
SOH has entered into a new Management Services Agreement and a new Cash Management Agreement, with Liberty Mutual Insurance Company (LMIC). SOH has also entered into a new Investment Management Agreement with Liberty Mutual Group Asset Management Inc. (LMGAMI). Each agreement was filed with and approved by the applicable regulatory authority.

Yes [X] No [] N/A []

6.1

State as of what date the latest financial examination of the reporting entity was made or is being made.

12/31/2018

6.2

State the as of date that the latest financial examination report became available from either the state of domicile or the reporting entity. This date should be the date of the examined balance sheet and not the date the report was completed or released.

12/31/2018

6.3

State as of what date the latest financial examination report became available to other states or the public from either the state of domicile or the reporting entity. This is the release date or completion date of the examination report and not the date of the examination (balance sheet date).

01/09/2020

6.4

By what department or departments?
Ohio Department of Insurance

6.5

Have all financial statement adjustments within the latest financial examination report been accounted for in a subsequent financial statement filed with Departments?

Yes [] No [] N/A [X]

6.6

Have all of the recommendations within the latest financial examination report been complied with?

Yes [] No [] N/A [X]

7.1

Has this reporting entity had any Certificates of Authority, licenses or registrations (including corporate registration, if applicable) suspended or revoked by any governmental entity during the reporting period?

Yes [] No [X]

7.2

If yes, give full information:

8.1

Is the company a subsidiary of a bank holding company regulated by the Federal Reserve Board?

Yes [] No [X]

8.2

If response to 8.1 is yes, please identify the name of the bank holding company.

8.3

Is the company affiliated with one or more banks, thrifts or securities firms?

Yes [] No [X]

8.4

If response to 8.3 is yes, please provide below the names and location (city and state of the main office) of any affiliates regulated by a federal regulatory services agency [i.e. the Federal Reserve Board (FRB), the Office of the Comptroller of the Currency (OCC), the Federal Deposit Insurance Corporation (FDIC) and the Securities Exchange Commission (SEC)] and identify the affiliate's primary federal regulator.

1	2	3	4	5	6
Affiliate Name	Location (City, State)	FRB	OCC	FDIC	SEC

STATEMENT AS OF MARCH 31, 2022 OF THE STATE AUTO INSURANCE COMPANY OF OHIO

GENERAL INTERROGATORIES

9.1

Are the senior officers (principal executive officer, principal financial officer, principal accounting officer or controller, or persons performing similar functions) of the reporting entity subject to a code of ethics, which includes the following standards?
(a) Honest and ethical conduct, including the ethical handling of actual or apparent conflicts of interest between personal and professional relationships;
(b) Full, fair, accurate, timely and understandable disclosure in the periodic reports required to be filed by the reporting entity;
(c) Compliance with applicable governmental laws, rules and regulations;
(d) The prompt internal reporting of violations to an appropriate person or persons identified in the code; and
(e) Accountability for adherence to the code.

Yes [X] No []

9.11

If the response to 9.1 is No, please explain:

9.2

Has the code of ethics for senior managers been amended?

Yes [] No [X]

9.21

If the response to 9.2 is Yes, provide information related to amendment(s).

9.3

Have any provisions of the code of ethics been waived for any of the specified officers?

Yes [] No [X]

9.31

If the response to 9.3 is Yes, provide the nature of any waiver(s).

FINANCIAL

10.1

Does the reporting entity report any amounts due from parent, subsidiaries or affiliates on Page 2 of this statement?

Yes [X] No []

10.2

If yes, indicate any amounts receivable from parent included in the Page 2 amount:

\$0

INVESTMENT

11.1

Were any of the stocks, bonds, or other assets of the reporting entity loaned, placed under option agreement, or otherwise made available for use by another person? (Exclude securities under securities lending agreements.)

Yes [] No [X]

11.2

If yes, give full and complete information relating thereto:

12.

Amount of real estate and mortgages held in other invested assets in Schedule BA:

\$0

13.

Amount of real estate and mortgages held in short-term investments:

\$0

14.1

Does the reporting entity have any investments in parent, subsidiaries and affiliates?

Yes [] No [X]

14.2

If yes, please complete the following:

	1	2
	Prior Year-End Book/Adjusted Carrying Value	Current Quarter Book/Adjusted Carrying Value
14.21 Bonds	\$0	\$0
14.22 Preferred Stock	\$0	\$0
14.23 Common Stock	\$0	\$0
14.24 Short-Term Investments	\$0	\$0
14.25 Mortgage Loans on Real Estate	\$0	\$0
14.26 All Other	\$0	\$0
14.27 Total Investment in Parent, Subsidiaries and Affiliates (Subtotal Lines 14.21 to 14.26)	\$0	\$0
14.28 Total Investment in Parent included in Lines 14.21 to 14.26 above	\$0	\$0

15.1

Has the reporting entity entered into any hedging transactions reported on Schedule DB?

Yes [] No [X]

15.2

If yes, has a comprehensive description of the hedging program been made available to the domiciliary state?
If no, attach a description with this statement.

Yes [] No [] N/A []

16.

For the reporting entity's security lending program, state the amount of the following as of the current statement date:

16.1

Total fair value of reinvested collateral assets reported on Schedule DL, Parts 1 and 2.

\$0

16.2

Total book adjusted/carrying value of reinvested collateral assets reported on Schedule DL, Parts 1 and 2

\$0

16.3

Total payable for securities lending reported on the liability page.

\$0

STATEMENT AS OF MARCH 31, 2022 OF THE STATE AUTO INSURANCE COMPANY OF OHIO

GENERAL INTERROGATORIES

17. Excluding items in Schedule E - Part 3 - Special Deposits, real estate, mortgage loans and investments held physically in the reporting entity's offices, vaults or safety deposit boxes, were all stocks, bonds and other securities, owned throughout the current year held pursuant to a custodial agreement with a qualified bank or trust company in accordance with Section 1, III - General Examination Considerations, F. Outsourcing of Critical Functions, Custodial or Safekeeping Agreements of the NAIC Financial Condition Examiners Handbook? Yes [X] No []
- 17.1 For all agreements that comply with the requirements of the NAIC Financial Condition Examiners Handbook, complete the following:

1 Name of Custodian(s)	2 Custodian Address
JP Morgan Chase	1 Chase Manhattan Plaza, New York, NY 10005

- 17.2 For all agreements that do not comply with the requirements of the NAIC Financial Condition Examiners Handbook, provide the name, location and a complete explanation:

1 Name(s)	2 Location(s)	3 Complete Explanation(s)

- 17.3 Have there been any changes, including name changes, in the custodian(s) identified in 17.1 during the current quarter? Yes [] No [X]
- 17.4 If yes, give full information relating thereto:

1 Old Custodian	2 New Custodian	3 Date of Change	4 Reason

- 17.5 Investment management – Identify all investment advisors, investment managers, broker/dealers, including individuals that have the authority to make investment decisions on behalf of the reporting entity. For assets that are managed internally by employees of the reporting entity, note as such. ["...that have access to the investment accounts"; "...handle securities"]

1 Name of Firm or Individual	2 Affiliation
Liberty Mutual Group Asset Management Inc.	A.....
Liberty Mutual Investment Advisors, LLC	A.....
.....

17.5097 For those firms/individuals listed in the table for Question 17.5, do any firms/individuals unaffiliated with the reporting entity (i.e. designated with a "U") manage more than 10% of the reporting entity's invested assets?..... Yes [] No [X]

17.5098 For firms/individuals unaffiliated with the reporting entity (i.e. designated with a "U") listed in the table for Question 17.5, does the total assets under management aggregate to more than 50% of the reporting entity's invested assets?..... Yes [] No [X]

- 17.6 For those firms or individuals listed in the table for 17.5 with an affiliation code of "A" (affiliated) or "U" (unaffiliated), provide the information for the table below.

1 Central Registration Depository Number	2 Name of Firm or Individual	3 Legal Entity Identifier (LEI)	4 Registered With	5 Investment Management Agreement (IMA) Filed
.....	Liberty Mutual Group Asset Management Inc.	DS.....
.....	Liberty Mutual Investment Advisors, LLC	DS.....
.....

- 18.1 Have all the filing requirements of the Purposes and Procedures Manual of the NAIC Investment Analysis Office been followed? Yes [X] No []
- 18.2 If no, list exceptions:

19. By self-designating 5GI securities, the reporting entity is certifying the following elements for each self-designated 5GI security:
- a. Documentation necessary to permit a full credit analysis of the security does not exist or an NAIC CRP credit rating for an FE or PL security is not available.
 - b. Issuer or obligor is current on all contracted interest and principal payments.
 - c. The insurer has an actual expectation of ultimate payment of all contracted interest and principal.
- Has the reporting entity self-designated 5GI securities? Yes [] No [X]

20. By self-designating PLGI securities, the reporting entity is certifying the following elements of each self-designated PLGI security:
- a. The security was purchased prior to January 1, 2018.
 - b. The reporting entity is holding capital commensurate with the NAIC Designation reported for the security.
 - c. The NAIC Designation was derived from the credit rating assigned by an NAIC CRP in its legal capacity as a NRSRO which is shown on a current private letter rating held by the insurer and available for examination by state insurance regulators.
 - d. The reporting entity is not permitted to share this credit rating of the PL security with the SVO.
- Has the reporting entity self-designated PLGI securities? Yes [] No [X]

21. By assigning FE to a Schedule BA non-registered private fund, the reporting entity is certifying the following elements of each self-designated FE fund:
- a. The shares were purchased prior to January 1, 2019.
 - b. The reporting entity is holding capital commensurate with the NAIC Designation reported for the security.
 - c. The security had a public credit rating(s) with annual surveillance assigned by an NAIC CRP in its legal capacity as an NRSRO prior to January 1, 2019.
 - d. The fund only or predominantly holds bonds in its portfolio.
 - e. The current reported NAIC Designation was derived from the public credit rating(s) with annual surveillance assigned by an NAIC CRP in its legal capacity as an NRSRO.
 - f. The public credit rating(s) with annual surveillance assigned by an NAIC CRP has not lapsed.
- Has the reporting entity assigned FE to Schedule BA non-registered private funds that complied with the above criteria? Yes [] No [X]

STATEMENT AS OF MARCH 31, 2022 OF THE STATE AUTO INSURANCE COMPANY OF OHIO

GENERAL INTERROGATORIES

PART 2 - PROPERTY & CASUALTY INTERROGATORIES

1.

If the reporting entity is a member of a pooling arrangement, did the agreement or the reporting entity's participation change?
If yes, attach an explanation.

Yes [] No [X] N/A []
2.

Has the reporting entity reinsured any risk with any other reporting entity and agreed to release such entity from liability, in whole or in part, from any loss that may occur on the risk, or portion thereof, reinsured?
If yes, attach an explanation.

Yes [] No [X]
- 3.1

Have any of the reporting entity's primary reinsurance contracts been canceled?

Yes [] No [X]
- 3.2

If yes, give full and complete information thereto.
- 4.1

Are any of the liabilities for unpaid losses and loss adjustment expenses other than certain workers' compensation tabular reserves (see Annual Statement Instructions pertaining to disclosure of discounting for definition of " tabular reserves") discounted at a rate of interest greater than zero?

Yes [] No [X]
- 4.2

If yes, complete the following schedule:

			TOTAL DISCOUNT				DISCOUNT TAKEN DURING PERIOD			
1	2	3	4	5	6	7	8	9	10	11
Line of Business	Maximum Interest	Discount Rate	Unpaid Losses	Unpaid LAE	IBNR	TOTAL	Unpaid Losses	Unpaid LAE	IBNR	TOTAL
TOTAL			0	0	0	0	0	0	0	0

5.

Operating Percentages:

5.1 A&H loss percent0.000 %

5.2 A&H cost containment percent0.000 %

5.3 A&H expense percent excluding cost containment expenses0.000 %
- 6.1

Do you act as a custodian for health savings accounts?

Yes [] No [X]
- 6.2

If yes, please provide the amount of custodial funds held as of the reporting date\$.....0
- 6.3

Do you act as an administrator for health savings accounts?

Yes [] No [X]
- 6.4

If yes, please provide the balance of the funds administered as of the reporting date\$.....0
7.

Is the reporting entity licensed or chartered, registered, qualified, eligible or writing business in at least two states?

Yes [X] No []
- 7.1

If no, does the reporting entity assume reinsurance business that covers risks residing in at least one state other than the state of domicile of the reporting entity?

Yes [] No []

STATEMENT AS OF MARCH 31, 2022 OF THE STATE AUTO INSURANCE COMPANY OF OHIO

SCHEDULE F - CEDED REINSURANCE

Showing All New Reinsurers - Current Year to Date

[illegible]

SCHEDULE T - EXHIBIT OF PREMIUMS WRITTEN

Current Year to Date - Allocated by States and Territories

States, etc.	1 Active Status (a)	Direct Premiums Written		Direct Losses Paid (Deducting Salvage)		Direct Losses Unpaid	
		2 Current Year To Date	3 Prior Year To Date	4 Current Year To Date	5 Prior Year To Date	6 Current Year To Date	7 Prior Year To Date
1. Alabama.....AL	N	0	0	0	0	0	0
2. Alaska.....AK	N	0	0	0	0	0	0
3. Arizona.....AZ	N	0	0	0	0	0	0
4. Arkansas.....AR	N	0	0	0	0	0	0
5. California.....CA	N	0	0	0	0	0	0
6. Colorado.....CO	N	0	0	0	0	0	0
7. Connecticut.....CT	N	0	0	0	0	0	0
8. Delaware.....DE	N	0	0	0	0	0	0
9. District of Columbia.....DC	N	0	0	0	0	0	0
10. Florida.....FL	N	0	0	0	0	0	0
11. Georgia.....GA	N	0	0	0	0	0	0
12. Hawaii.....HI	N	0	0	0	0	0	0
13. Idaho.....ID	N	0	0	0	0	0	0
14. Illinois.....IL	N	0	0	0	0	0	0
15. Indiana.....IN	N	0	0	0	0	0	0
16. Iowa.....IA	N	0	0	0	0	0	0
17. Kansas.....KS	N	0	0	0	0	0	0
18. Kentucky.....KY	N	0	0	0	0	0	0
19. Louisiana.....LA	N	0	0	0	0	0	0
20. Maine.....ME	N	0	0	0	0	0	0
21. Maryland.....MD	N	0	0	0	0	0	0
22. Massachusetts.....MA	N	0	0	0	0	0	0
23. Michigan.....MI	N	0	0	0	0	0	0
24. Minnesota.....MN	N	0	0	0	0	0	0
25. Mississippi.....MS	N	0	0	0	0	0	0
26. Missouri.....MO	N	0	0	0	0	0	0
27. Montana.....MT	N	0	0	0	0	0	0
28. Nebraska.....NE	N	0	0	0	0	0	0
29. Nevada.....NV	N	0	0	0	0	0	0
30. New Hampshire.....NH	N	0	0	0	0	0	0
31. New Jersey.....NJ	N	0	0	0	0	0	0
32. New Mexico.....NM	N	0	0	0	0	0	0
33. New York.....NY	N	0	0	0	0	0	0
34. North Carolina.....NC	N	0	0	0	0	0	0
35. North Dakota.....ND	N	0	0	0	0	0	0
36. Ohio.....OH	L	4,086,523	4,712,880	2,859,056	2,446,075	7,688,549	10,039,168
37. Oklahoma.....OK	N	0	0	0	0	0	0
38. Oregon.....OR	N	0	0	0	0	0	0
39. Pennsylvania.....PA	N	0	0	0	0	0	0
40. Rhode Island.....RI	N	0	0	0	0	0	0
41. South Carolina.....SC	L	0	0	0	0	0	0
42. South Dakota.....SD	N	0	0	0	0	0	0
43. Tennessee.....TN	N	0	0	0	0	0	0
44. Texas.....TX	N	0	0	0	0	0	0
45. Utah.....UT	N	0	0	0	0	0	0
46. Vermont.....VT	N	0	0	0	0	0	0
47. Virginia.....VA	N	0	0	0	0	0	0
48. Washington.....WA	N	0	0	0	0	0	0
49. West Virginia.....WV	N	0	0	0	0	0	0
50. Wisconsin.....WI	N	0	0	0	0	0	0
51. Wyoming.....WY	N	0	0	0	0	0	0
52. American Samoa.....AS	N	0	0	0	0	0	0
53. Guam.....GU	N	0	0	0	0	0	0
54. Puerto Rico.....PR	N	0	0	0	0	0	0
55. U.S. Virgin Islands.....VI	N	0	0	0	0	0	0
56. Northern Mariana Islands.....MP	N	0	0	0	0	0	0
57. Canada.....CAN	N	0	0	0	0	0	0
58. Aggregate Other Alien OT	XXX	0	0	0	0	0	0
59. Totals	XXX	4,086,523	4,712,880	2,859,056	2,446,075	7,688,549	10,039,168
DETAILS OF WRITE-INS							
58001.....	XXX						
58002.....	XXX						
58003.....	XXX						
58998. Summary of remaining write-ins for Line 58 from overflow page	XXX	0	0	0	0	0	0
58999. Totals (Lines 58001 through 58003 plus 58998)(Line 58 above)	XXX	0	0	0	0	0	0

(a) Active Status Counts:

L - Licensed or Chartered - Licensed Insurance carrier or domiciled RRG.....2

E - Eligible - Reporting entities eligible or approved to write surplus lines in the state (other than their state of domicile - see DSLI).....0

D - Domestic Surplus Lines Insurer (DSLI) - Reporting entities authorized to write surplus lines in the state of domicile.....0

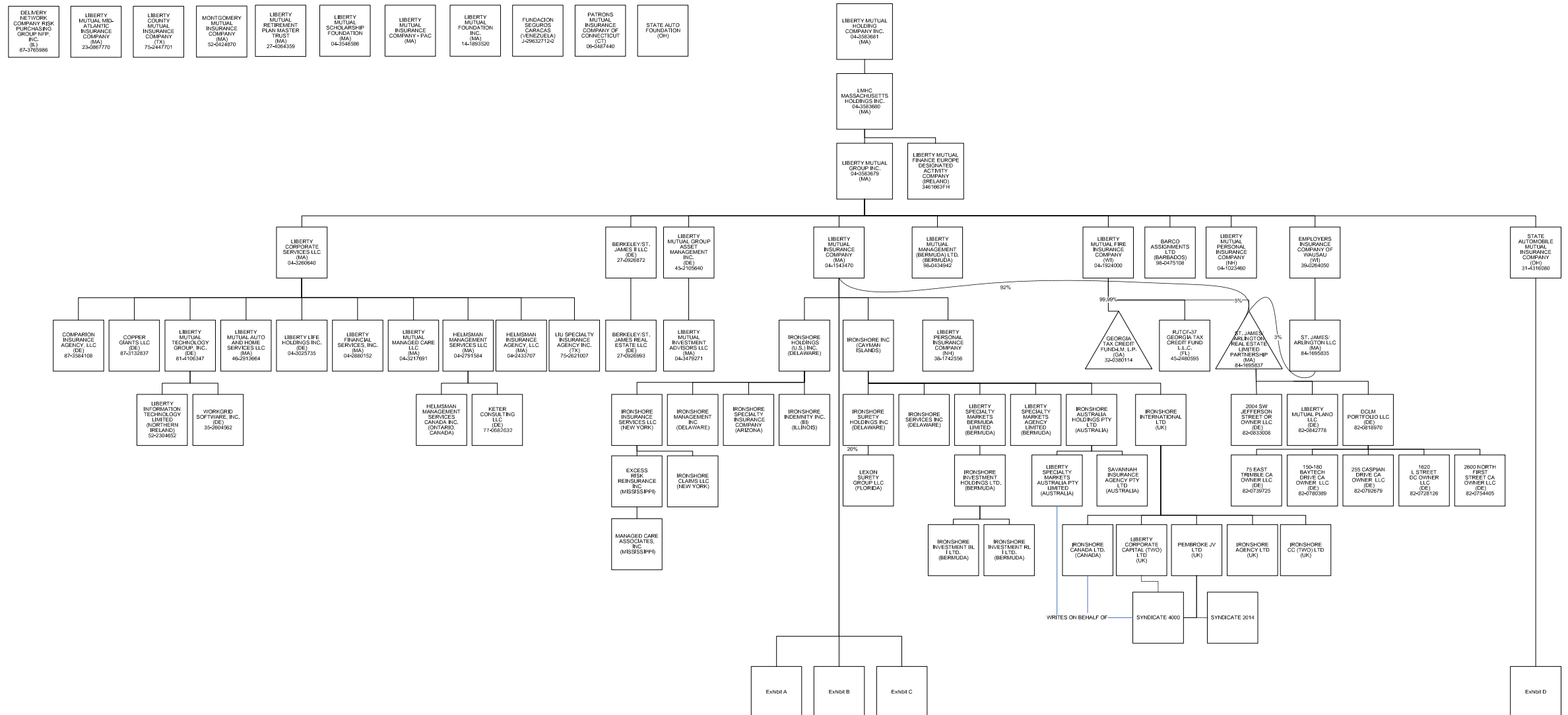
R - Registered - Non-domiciled RRGs.....0

Q - Qualified - Qualified or accredited reinsurer.....0

N - None of the above - Not allowed to write business in the state.....55

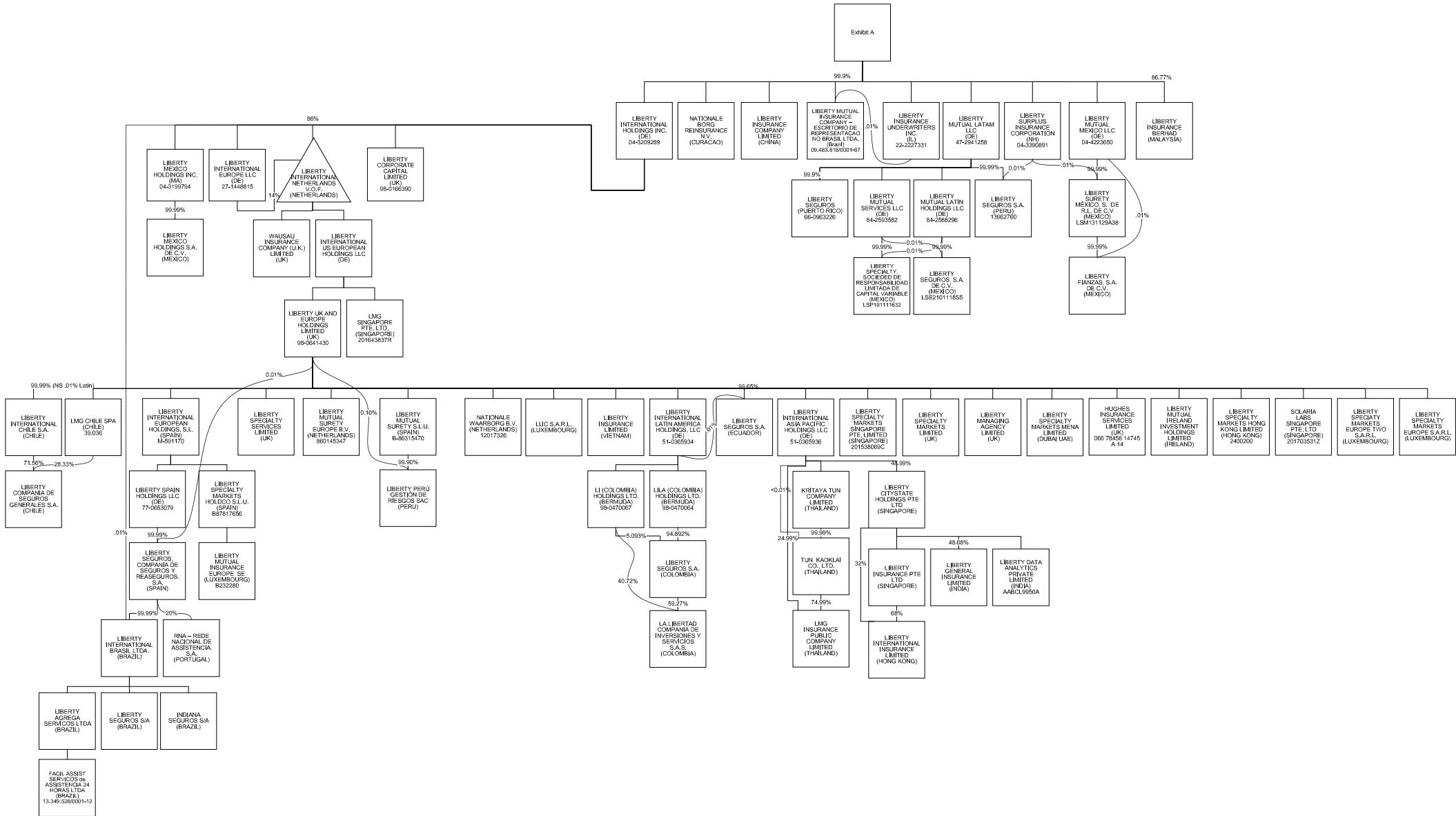
STATEMENT AS OF MARCH 31, 2022 OF THE STATE AUTO INSURANCE COMPANY OF OHIO

SCHEDULE Y - PART 1 - ORGANIZATIONAL CHART



SCHEDULE Y - PART 1 - ORGANIZATIONAL CHART

11.1



SCHEDULE Y - PART 1 - ORGANIZATIONAL CHART

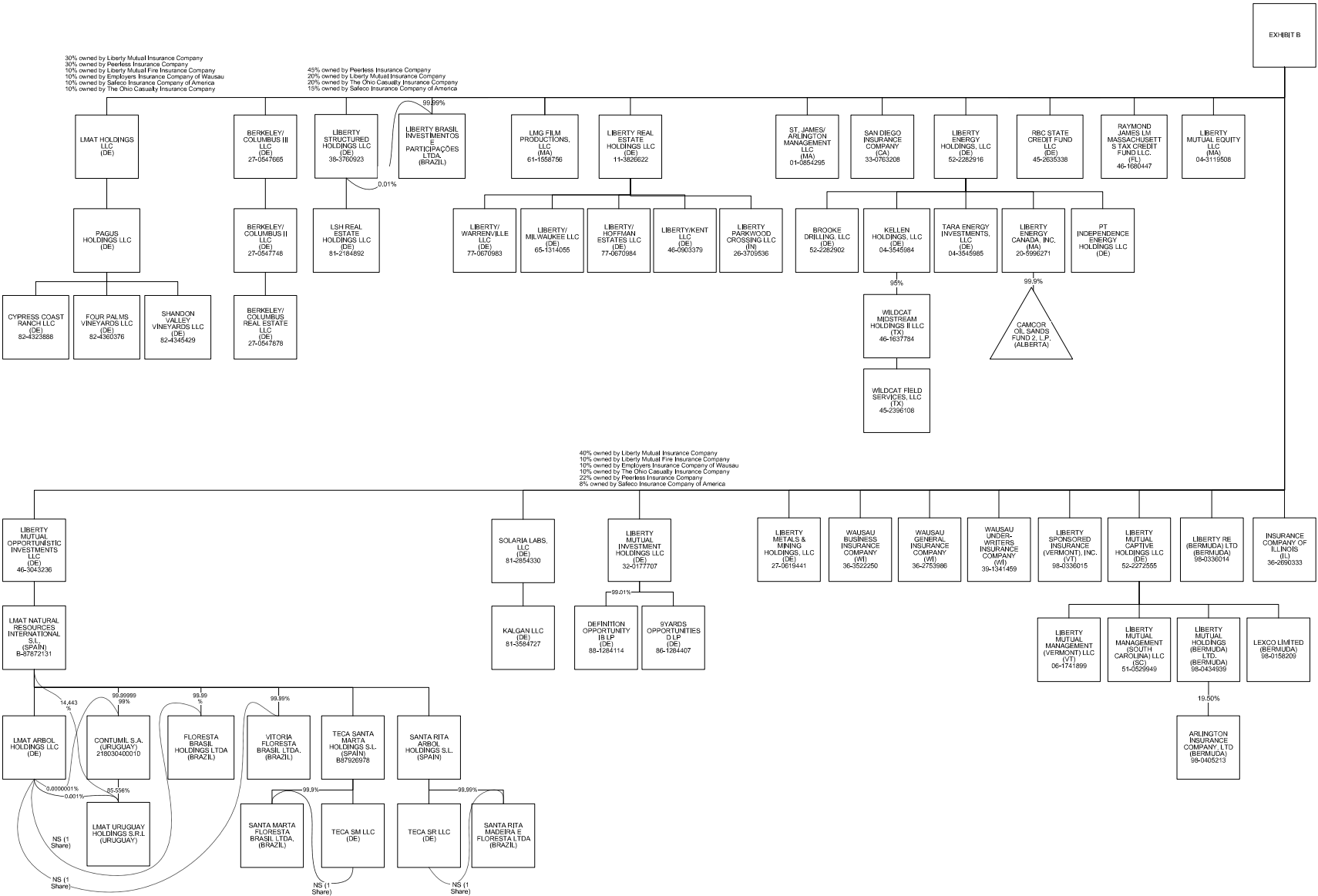
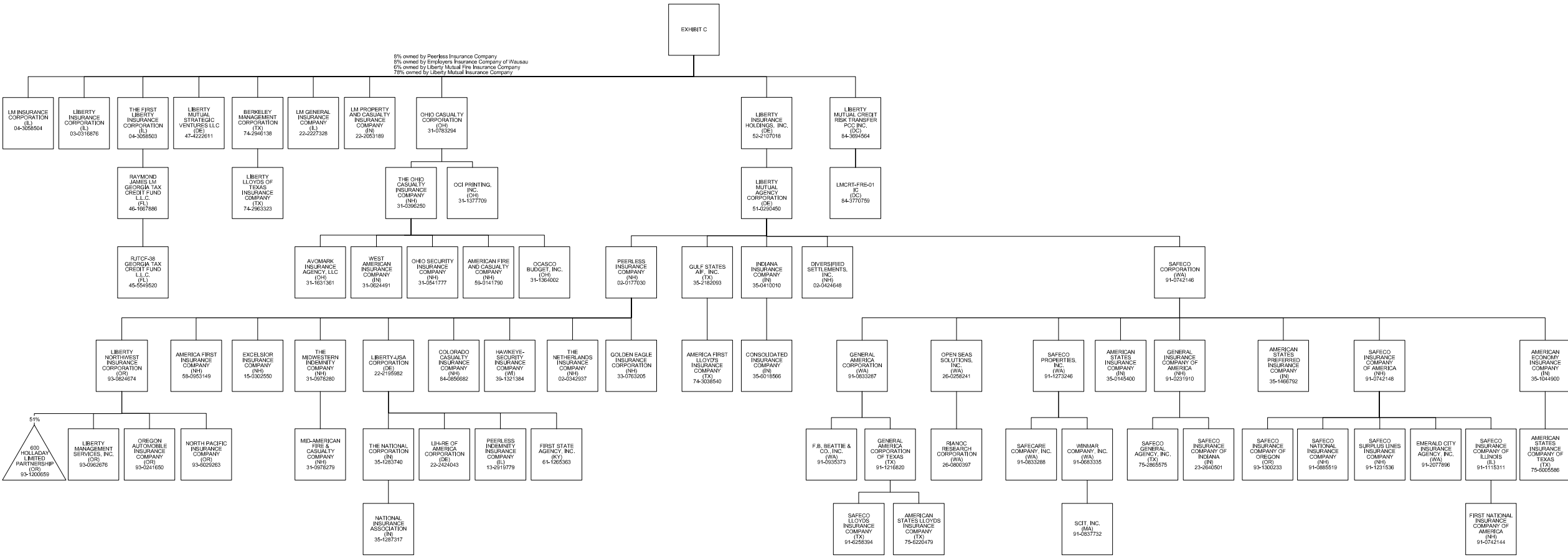
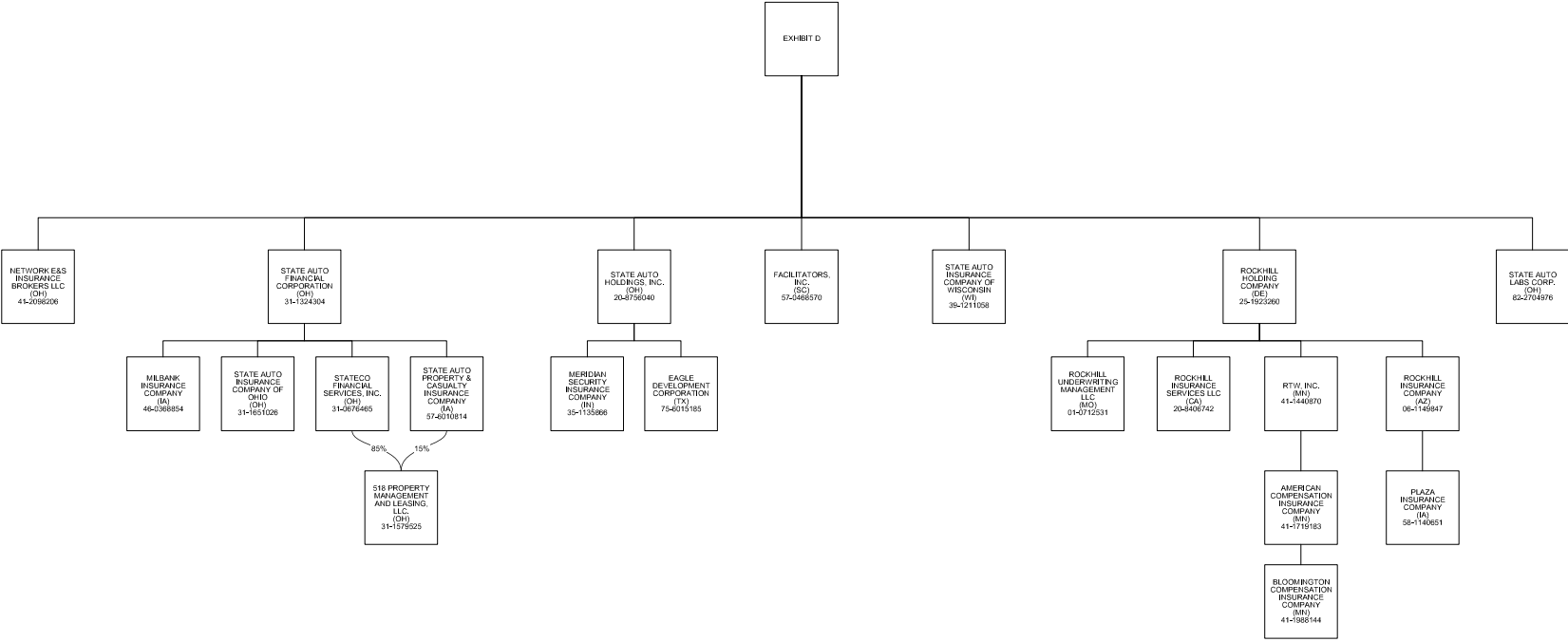


EXHIBIT B

SCHEDULE Y - PART 1 - ORGANIZATIONAL CHART



SCHEDULE Y - PART 1 - ORGANIZATIONAL CHART



STATEMENT AS OF MARCH 31, 2022 OF THE STATE AUTO INSURANCE COMPANY OF OHIO

SCHEDULE Y
PART 1A - DETAIL OF INSURANCE HOLDING COMPANY SYSTEM

1	2	3	4	5	6	7	8	9	10	11	12	13	14	15	16
Group Code	Group Name	NAIC Company Code	ID Number	Federal RSSD	CIK	Name of Securities Exchange if Publicly Traded (U.S. or International)	Names of Parent, Subsidiaries Or Affiliates	Domi-ciliary Location	Relation-ship to Reporting Entity	Directly Controlled by (Name of Entity/Person)	Type of Control (Ownership, Board, Management, Attorney-in-Fact, Influence, Other)	If Control is Ownership Provide Percen-tage	Ultimate Controlling Entity(ies)/Person(s)	Is an SCA Filing Re-quired? (Yes/No)	*
		.00000	86-1284407				9Yards Opportunities D LP	DE	NIA	Liberty Mutual Investment Holdings LLC	Ownership	100.000	Liberty Mutual Holding Company Inc.		
		.00000	82-0739725				75 East Trimble CA Owner LLC	DE	NIA	DCLM Portfolio LLC	Ownership, Board, Management	100.000	Liberty Mutual Holding Company Inc.		
		.00000	82-0780389				150-180 Baytech Drive CA Owner LLC	DE	NIA	DCLM Portfolio LLC	Ownership, Board, Management	100.000	Liberty Mutual Holding Company Inc.		
		.00000	82-0792679				255 Caspian Drive CA Owner LLC	DE	NIA	DCLM Portfolio LLC	Ownership, Board, Management	100.000	Liberty Mutual Holding Company Inc.		
		.00000	31-1579525				518 Property Management and Leasing, LLC	OH	NIA	State Auto Property & Casualty Insurance Company	Ownership, Board, and Management	15.000	Liberty Mutual Holding Company Inc.		
		.00000	31-1579525				518 Property Management and Leasing, LLC	OH	NIA	Stateco Financial Services, Inc.	Ownership, Board, and Management	85.000	Liberty Mutual Holding Company Inc.		
		.00000	93-1200659				600 Holladay Limited Partnership	OR	DS	Liberty Northwest Insurance Corporation	Ownership	51.000	Liberty Mutual Holding Company Inc.		
		.00000	82-0728126				1620 L Street DC Owner LLC	DE	NIA	DCLM Portfolio LLC	Ownership, Board, Management	100.000	Liberty Mutual Holding Company Inc.		
		.00000	82-0833008				2004 SW Jefferson Street OR Owner LLC	DE	NIA	St. James/Arlington Real Estate Limited Partnership	Ownership, Board, Management	100.000	Liberty Mutual Holding Company Inc.		
		.00000	82-0754405				2600 North First Street CA Owner LLC	DE	NIA	DCLM Portfolio LLC	Ownership, Board, Management	100.000	Liberty Mutual Holding Company Inc.		
.0111	Liberty Mutual Insurance Company and its Affiliated Insurers	12696	58-0953149				America First Insurance Company	NH	DS	Peerless Insurance Company	Ownership, Board and Management	100.000	Liberty Mutual Holding Company Inc.		
.0111	Liberty Mutual Insurance Company and its Affiliated Insurers	11526	74-3038540				America First Lloyd's Insurance Company	TX	DS	Gulf States AIF, Inc.	Management and Attorney-in-Fact	0.000	Liberty Mutual Holding Company Inc.		
.0111	Liberty Mutual Insurance Company and its Affiliated Insurers	45934	41-1719183				American Compensation Insurance Company	MN	IA	RTW, Inc.	Ownership, Board and Management	100.000	Liberty Mutual Holding Company Inc.		
.0111	Liberty Mutual Insurance Company and its Affiliated Insurers	19690	35-1044900				American Economy Insurance Company	IN	DS	Safeco Corporation	Ownership, Board and Management	100.000	Liberty Mutual Holding Company Inc.		
.0111	Liberty Mutual Insurance Company and its Affiliated Insurers	24066	59-0141790				American Fire and Casualty Company	NH	DS	The Ohio Casualty Insurance Company	Ownership, Board and Management	100.000	Liberty Mutual Holding Company Inc.		
.0111	Liberty Mutual Insurance Company and its Affiliated Insurers	19704	35-0145400				American States Insurance Company	IN	DS	Safeco Corporation	Ownership, Board and Management	100.000	Liberty Mutual Holding Company Inc.		
.0111	Liberty Mutual Insurance Company and its Affiliated Insurers	19712	75-6005586				American States Insurance Company of Texas	TX	DS	American Economy Insurance Company	Ownership, Board and Management	100.000	Liberty Mutual Holding Company Inc.		
.0111	Liberty Mutual Insurance Company and its Affiliated Insurers	31933	75-6220479				American States Lloyds Insurance Company	TX	DS	General America Corporation of Texas	Management and Attorney-in-Fact	0.000	Liberty Mutual Holding Company Inc.		
.0111	Liberty Mutual Insurance Company and its Affiliated Insurers	37214	35-1466792				American States Preferred Insurance Company	IN	DS	Safeco Corporation	Ownership, Board and Management	100.000	Liberty Mutual Holding Company Inc.		
		.00000	98-0405213				Arlington Insurance Company Ltd.	BMU	DS	Liberty Mutual Holdings (Bermuda) Ltd	Ownership, Board and Management	100.000	Liberty Mutual Holding Company Inc.		
		.00000	31-1631361				Avomark Insurance Agency, LLC	OH	DS	The Ohio Casualty Insurance Company	Ownership, Board and Management	100.000	Liberty Mutual Holding Company Inc.		
		.00000	98-0475108				BARCO Assignments Ltd.	BRB	DS	Liberty Mutual Group Inc.	Ownership	100.000	Liberty Mutual Holding Company Inc.		
		.00000	74-2946138				Berkeley Management Corporation	TX	DS	Liberty Mutual Insurance Company	Ownership, Board and Management	100.000	Liberty Mutual Holding Company Inc.		
		.00000	27-0547748				Berkeley/Columbus II LLC	DE	DS	Berkeley/Columbus III LLC	Ownership, Board and Management	100.000	Liberty Mutual Holding Company Inc.		
		.00000	27-0547665				Berkeley/Columbus III LLC	DE	DS	Liberty Mutual Insurance Company	Ownership, Board and Management	100.000	Liberty Mutual Holding Company Inc.		
		.00000	27-0547878				Berkeley/Columbus Real Estate LLC	DE	DS	Berkeley/Columbus II LLC	Ownership, Board and Management	100.000	Liberty Mutual Holding Company Inc.		
		.00000	27-0926872				Berkeley/St. James II LLC	DE	NIA	Liberty Mutual Group Inc.	Ownership, Board and Management	100.000	Liberty Mutual Holding Company Inc.		
		.00000	27-0926993				Berkeley/St. James Real Estate LLC	DE	NIA	Berkeley/St. James II LLC	Ownership, Board and Management	100.000	Liberty Mutual Holding Company Inc.		
.0111	Liberty Mutual Insurance Company and its Affiliated Insurers	12311	41-1988144				Bloomington Compensation Insurance Company	MN	IA	American Compensation Insurance Company	Ownership, Board and Management	100.000	Liberty Mutual Holding Company Inc.		
		.00000	52-2282902				Brooke Drilling, LLC	DE	DS	Liberty Energy Holdings, LLC	Ownership, Board and Management	100.000	Liberty Mutual Holding Company Inc.		
		.00000					Camcor Oil Sands Fund 2, L.P.	CAN	DS	Liberty Energy Canada, Inc.	Ownership	99.900	Liberty Mutual Holding Company Inc.		
.0111	Liberty Mutual Insurance Company and its Affiliated Insurers	41785	84-0856682				Colorado Casualty Insurance Company	NH	DS	Peerless Insurance Company	Ownership, Board and Management	100.000	Liberty Mutual Holding Company Inc.		
		.00000	87-3584108				Comparion Insurance Agency, LLC	DE	IA	Liberty Corporate Services LLC	Ownership, Board and Management	100.000	Liberty Mutual Holding Company Inc.		
.0111	Liberty Mutual Insurance Company and its Affiliated Insurers	22640	35-6018566				Consolidated Insurance Company	IN	DS	Indiana Insurance Company	Ownership, Board and Management	100.000	Liberty Mutual Holding Company Inc.		
		.00000					Contumil S.A.	URY	NIA	LMAT Natural Resources International S.L.	Ownership	99.990	Liberty Mutual Holding Company Inc.		
		.00000					Contumil S.A.	URY	NIA	LMAT Arbol Holdings LLC	Ownership	0.010	Liberty Mutual Holding Company Inc.		
		.00000	87-3132837				Copper Giants LLC	DE	NIA	Liberty Corporate Services LLC	Ownership	100.000	Liberty Mutual Holding Company Inc.		
		.00000	82-4323888				Cypress Coast Ranch LLC	DE	NIA	PAGUS Holdings LLC	Ownership	100.000	Liberty Mutual Holding Company Inc.		
		.00000	82-0818970				DCLM Portfolio LLC	DE	NIA	St. James/Arlington Real Estate Limited Partnership	Ownership, Board and Management	100.000	Liberty Mutual Holding Company Inc.		

STATEMENT AS OF MARCH 31, 2022 OF THE STATE AUTO INSURANCE COMPANY OF OHIO

SCHEDULE Y

PART 1A - DETAIL OF INSURANCE HOLDING COMPANY SYSTEM

1	2	3	4	5	6	7	8	9	10	11	12	13	14	15	16
Group Code	Group Name	NAIC Company Code	ID Number	Federal RSSD	CIK	Name of Securities Exchange if Publicly Traded (U.S. or International)	Names of Parent, Subsidiaries Or Affiliates	Domi-ciliary Location	Relation-ship to Reporting Entity	Directly Controlled by (Name of Entity/Person)	Type of Control (Ownership, Board, Management, Attorney-in-Fact, Influence, Other)	If Control is Ownership Provide Percen-tage	Ultimate Controlling Entity(ies)/Person(s)	Is an SCA Filing Re-quired? (Yes/No)	*
		.00000	88-1284114				Definition Opportunity IB LP	.DE	.NIA	Liberty Mutual Investment Holdings LLC	Ownership	.99.010	Liberty Mutual Holding Company Inc.		
		.00000	87-3765986				Delivery Network Company Risk Purchasing Group NFP, Inc.	.IL	.NIA	Not Applicable	Board and Management	.0.000	Liberty Mutual Holding Company Inc.		
		.00000	02-0424648				Diversified Settlements, Inc.	.NH	.DS	Liberty Mutual Agency Corporation	Ownership, Board and Management	.100.000	Liberty Mutual Holding Company Inc.		
		.00000	75-6015185				Eagle Development Corporation	.TX	.NIA	State Auto Holdings, Inc.	Ownership, Board and Management	.100.000	Liberty Mutual Holding Company Inc.		
		.00000	91-2077896				Emerald City Insurance Agency, Inc.	.WA	.DS	Safeco Insurance Company of America	Ownership, Board and Management	.100.000	Liberty Mutual Holding Company Inc.		
.0111	Liberty Mutual Insurance Company and its Affiliated Insurers	.21458	39-0264050				Employers Insurance Company of Wausau	.WI	.IA	Liberty Mutual Group Inc.	Ownership, Board and Management	.100.000	Liberty Mutual Holding Company Inc.		
.0111	Liberty Mutual Insurance Company and its Affiliated Insurers	.11045	15-0302550				Excelsior Insurance Company	.NH	.DS	Peerless Insurance Company	Ownership, Board and Management	.100.000	Liberty Mutual Holding Company Inc.		
		.00000	41-2043790				Excess Risk Reinsurance, Inc.	.MS	.DS	Ironshore Insurance Services LLC	Ownership	.100.000	Liberty Mutual Holding Company Inc.		
		.00000	91-0935373				F.B. Beattie & Co., Inc.	.WA	.DS	General America Corporation	Ownership, Board and Management	.100.000	Liberty Mutual Holding Company Inc.		
		.00000					Facil Assist Servicios de Asistencia 24 horas Ltda	.BRA	.NIA	Liberty Agrega Servicios Ltda	Ownership	.100.000	Liberty Mutual Holding Company Inc.		
		.00000	57-0468570				Facilitators, Inc.	.SC	.IA	State Automobile Mutual Insurance Company	Ownership, Board and Management	.100.000	Liberty Mutual Holding Company Inc.		
.0111	Liberty Mutual Insurance Company and its Affiliated Insurers	.24724	91-0742144				First National Insurance Company of America	.NH	.DS	Safeco Insurance Company of Illinois	Ownership, Board and Management	.100.000	Liberty Mutual Holding Company Inc.		
		.00000	61-1265363				First State Agency, Inc.	.KY	.DS	Liberty-USA Corporation	Ownership, Board and Management	.100.000	Liberty Mutual Holding Company Inc.		
		.00000					Floresta Brasil Holdings Ltda.	.BRA	.NIA	LMAT Natural Resources International, S.L.	Ownership	.99.900	Liberty Mutual Holding Company Inc.		
		.00000					Floresta Brasil Holdings Ltda.	.BRA	.NIA	LMAT Arbol Holdings LLC	Ownership	.0.010	Liberty Mutual Holding Company Inc.		
		.00000	82-4360376				Four Palms Vineyards LLC	.DE	.NIA	PAGUS Holdings LLC	Ownership	.100.000	Liberty Mutual Holding Company Inc.		
		.00000					Fundacion Seguros Caracas	.VEN	.DS	Seguros Caracas de Liberty Mutual, C.A.	Board and Management	.0.000	Liberty Mutual Holding Company Inc.		
		.00000	91-0833287				General America Corporation	.WA	.DS	Safeco Corporation	Ownership, Board and Management	.100.000	Liberty Mutual Holding Company Inc.		
		.00000	91-1216820				General America Corporation of Texas	.TX	.DS	General America Corporation	Ownership, Board and Management	.100.000	Liberty Mutual Holding Company Inc.		
.0111	Liberty Mutual Insurance Company and its Affiliated Insurers	.24732	91-0231910				General Insurance Company of America	.NH	.DS	Safeco Corporation	Ownership, Board and Management	.100.000	Liberty Mutual Holding Company Inc.		
		.00000	32-0380114				Georgia Tax Credit Fund-LM, L.P.	.GA	.DS	Liberty Mutual Fire Insurance Company	Ownership	.99.990	Liberty Mutual Holding Company Inc.		
.0111	Liberty Mutual Insurance Company and its Affiliated Insurers	.10836	33-0763205				Golden Eagle Insurance Corporation	.NH	.DS	Peerless Insurance Company	Ownership, Board and Management	.100.000	Liberty Mutual Holding Company Inc.		
		.00000	35-2182093				Gulf States AIF, Inc.	.TX	.DS	Liberty Mutual Agency Corporation	Ownership, Board and Management	.100.000	Liberty Mutual Holding Company Inc.		
.0111	Liberty Mutual Insurance Company and its Affiliated Insurers	.36919	39-1321384				Hawkeye-Security Insurance Company	.WI	.DS	Peerless Insurance Company	Ownership, Board and Management	.100.000	Liberty Mutual Holding Company Inc.		
		.00000	04-2433707				Helmsman Insurance Agency LLC	.MA	.IA	Liberty Corporate Services LLC	Ownership, Board and Management	.100.000	Liberty Mutual Holding Company Inc.		
		.00000					Helmsman Management Services Canada Inc.	.CAN	.NIA	Helmsman Management Services LLC	Ownership, Board and Management	.100.000	Liberty Mutual Holding Company Inc.		
		.00000	04-2791584				Helmsman Management Services LLC	.MA	.NIA	Liberty Corporate Services LLC	Ownership, Board and Management	.100.000	Liberty Mutual Holding Company Inc.		
		.00000					Hughes Insurance Services Limited	.GBR	.DS	Liberty UK and Europe Holdings Limited	Ownership, Board and Management	.100.000	Liberty Mutual Holding Company Inc.		
.0111	Liberty Mutual Insurance Company and its Affiliated Insurers	.22659	35-0410010				Indiana Insurance Company	.IN	.DS	Liberty Mutual Agency Corporation	Ownership, Board and Management	.100.000	Liberty Mutual Holding Company Inc.		
		.00000					Indiana Seguros S/A	.BRA	.DS	Liberty International Brasil Ltda.	Ownership, Board and Management	.100.000	Liberty Mutual Holding Company Inc.		
.0111	Liberty Mutual Insurance Company and its Affiliated Insurers	.26700	36-2690333				Insurance Company of Illinois	.IL	.IA	Liberty Mutual Insurance Company	Ownership, Board and Management	.100.000	Liberty Mutual Holding Company Inc.		
		.00000					Ironshore Agency Ltd.	.GBR	.DS	Ironshore International Ltd.	Ownership	.100.000	Liberty Mutual Holding Company Inc.		
		.00000					Ironshore Australia Holdings Pty Ltd.	.AUS	.DS	Ironshore Inc.	Ownership	.100.000	Liberty Mutual Holding Company Inc.		
		.00000					Ironshore Canada Ltd.	.CAN	.DS	Ironshore International Ltd.	Ownership	.100.000	Liberty Mutual Holding Company Inc.		
		.00000					Ironshore CC (Two) Ltd.	.GBR	.DS	Ironshore International Ltd.	Ownership	.100.000	Liberty Mutual Holding Company Inc.		
		.00000	26-0748152				Ironshore Claims LLC	.NY	.DS	Ironshore Insurance Services LLC	Ownership	.100.000	Liberty Mutual Holding Company Inc.		
		.00000	20-8964631				Ironshore Holdings (US) Inc.	.DE	.DS	Liberty Mutual Insurance Company	Ownership	.100.000	Liberty Mutual Holding Company Inc.		
		.00000	98-0579286				Ironshore Inc.	.CYM	.DS	Liberty Mutual Insurance Company	Ownership	.100.000	Liberty Mutual Holding Company Inc.		
.0111	Liberty Mutual Insurance Company and its Affiliated Insurers	.23647	41-0121640				Ironshore Indemnity Inc.	.IL	.DS	Ironshore Holdings (US) Inc.	Ownership	.100.000	Liberty Mutual Holding Company Inc.		
		.00000	26-0542654				Ironshore Insurance Services LLC	.NY	.DS	Ironshore Holdings (US) Inc.	Ownership	.100.000	Liberty Mutual Holding Company Inc.		
		.00000					Ironshore International Ltd	.GBR	.DS	Ironshore Inc.	Ownership	.100.000	Liberty Mutual Holding Company Inc.		
		.00000					Ironshore Investment Holdings Ltd.	.BMU	.DS	Ironshore Insurance Ltd.	Ownership	.100.000	Liberty Mutual Holding Company Inc.		

STATEMENT AS OF MARCH 31, 2022 OF THE STATE AUTO INSURANCE COMPANY OF OHIO

SCHEDULE Y
PART 1A - DETAIL OF INSURANCE HOLDING COMPANY SYSTEM

1	2	3	4	5	6	7	8	9	10	11	12	13	14	15	16
Group Code	Group Name	NAIC Company Code	ID Number	Federal RSSD	CIK	Name of Securities Exchange if Publicly Traded (U.S. or International)	Names of Parent, Subsidiaries Or Affiliates	Domi-ciliary Location	Relation-ship to Reporting Entity	Directly Controlled by (Name of Entity/Person)	Type of Control (Ownership, Board, Management, Attorney-in-Fact, Influence, Other)	If Control is Owner-ship Provide Percen-tage	Ultimate Controlling Entity(ies)/Person(s)	Is an SCA Filing Re-quired? (Yes/No)	*
.0111	Liberty Mutual Insurance Company and its Affiliated Insurers	.00000					Ironshore Investment BL I Ltd.BMU	.DS	Ironshore Investment Holdings Ltd.	Ownership.....	100.000	Liberty Mutual Holding Company Inc.		
		.00000					Ironshore Investment RL I Ltd.BMU	.DS	Ironshore Investment Holdings Ltd.	Ownership.....	100.000	Liberty Mutual Holding Company Inc.		
		.00000	26-3835731				Ironshore Management Inc.DE	.DS	Ironshore Holdings (US) Inc.	Ownership.....	100.000	Liberty Mutual Holding Company Inc.		
		.00000	26-0412876				Ironshore Services Inc.DE	.DS	Ironshore Inc.	Ownership.....	100.000	Liberty Mutual Holding Company Inc.		
		.25445	94-1264187				Ironshore Specialty Insurance CompanyAZ	.DS	Ironshore Holdings (US) Inc.	Ownership.....	100.000	Liberty Mutual Holding Company Inc.		
		.00000	46-2678004				Ironshore Surety Holdings Inc.DE	.DS	Ironshore Inc.	Ownership.....	100.000	Liberty Mutual Holding Company Inc.		
		.00000	81-3584727				Kalgan LLCDE	.NIA	Solaria Labs LLC	Ownership, Board and Management	100.000	Liberty Mutual Holding Company Inc.		
		.00000	04-3545984				Kellen Holdings, LLCDE	.DS	Liberty Energy Holdings, LLC	Ownership, Board and Management	100.000	Liberty Mutual Holding Company Inc.		
		.00000	77-0682632				Keter Consulting LLCDE	.NIA	Helmsman Management Services LLC	Ownership, Board and Management	100.000	Liberty Mutual Holding Company Inc.		
										Liberty International Asia Pacific Holdings LLC					
		.00000					Kritaya Tun Company LimitedTHA	.DS	LLC	Influence.....	48.990	Liberty Mutual Holding Company Inc.		
		.00000					La Libertad Compania de Inversiones y Servicios S.A.S.COL	.DS	Liberty Seguros S.A.	Ownership, Board and Management	59.270	Liberty Mutual Holding Company Inc.		
		.00000					La Libertad Compania de Inversiones y Servicios S.A.S.COL	.DS	Li (Colombia) Holdings Ltd.	Ownership, Board and Management	40.720	Liberty Mutual Holding Company Inc.		
		.00000	98-0158209				LEXCO LimitedBMU	.DS	Liberty Mutual Captive Holdings LLC	Ownership, Board and Management	100.000	Liberty Mutual Holding Company Inc.		
		.00000	46-2678004				Lexon Surety Group, LLCFL	.DS	Ironshore Surety Holdings Inc.	Ownership.....	20.000	Liberty Mutual Holding Company Inc.		
		.00000	98-0470067				LI (Colombia) Holdings Ltd.BMU	.DS	Liberty International Latin America Holdings, LLC	Ownership, Board and Management	100.000	Liberty Mutual Holding Company Inc.		
		.00000					Liberty Agrega Servicios LtdaBRA	.NIA	Liberty International Brasil Ltda.	Ownership, Board and Management	100.000	Liberty Mutual Holding Company Inc.		
		.00000					Liberty Brasil Investimentos e Participacoes Ltda.BRA	.DS	Liberty Mutual Insurance Company	Ownership, Board and Management	99.990	Liberty Mutual Holding Company Inc.		
		.00000					Liberty Brasil Investimentos e Participacoes Ltda.BRA	.DS	Liberty Structured Holdings LLC	Ownership, Board and Management	0.010	Liberty Mutual Holding Company Inc.		
		.00000					Liberty Citystate Holdings Pte LtdSGP	.DS	Liberty International Asia Pacific Holdings LLC	Ownership, Board and Management	100.000	Liberty Mutual Holding Company Inc.		
		.00000					Liberty Compania de Seguros Generales S.A.CHL	.DS	Liberty International Chile S.A.	Ownership, Board and Management	71.560	Liberty Mutual Holding Company Inc.		
		.00000					Liberty Compania de Seguros Generales S.A.CHL	.DS	LMG Chile SpA	Ownership, Board and Management	28.330	Liberty Mutual Holding Company Inc.		
		.00000	98-0166390				Liberty Corporate Capital LimitedGBR	.DS	Liberty International Holdings Inc.	Ownership, Board and Management	100.000	Liberty Mutual Holding Company Inc.		
		.00000					Liberty Corporate Capital (Two) Ltd.GBR	.DS	Ironshore International Ltd.	Ownership.....	100.000	Liberty Mutual Holding Company Inc.		
		.00000	04-3260640				Liberty Corporate Services LLCIA	.NIA	Liberty Mutual Group Inc.	Ownership, Board and Management	100.000	Liberty Mutual Holding Company Inc.		
.0111	Liberty Mutual Insurance Company and its Affiliated Insurers	.19544	75-2447701				Liberty County Mutual Insurance CompanyTX	.IA	Berkeley Management Corporation	Board and Management	0.000	Liberty Mutual Holding Company Inc.		
		.00000					Liberty Data Analytics Private LimitedIND	.DS	Liberty Citystate Holdings Pte. Ltd.	Ownership, Board and Management	100.000	Liberty Mutual Holding Company Inc.		
		.00000	20-5996271				Liberty Energy Canada, Inc.IA	.DS	Liberty Energy Holdings, LLC	Ownership, Board and Management	100.000	Liberty Mutual Holding Company Inc.		
		.00000	52-2282916				Liberty Energy Holdings, LLCDE	.DS	Liberty Mutual Insurance Company	Ownership, Board and Management	100.000	Liberty Mutual Holding Company Inc.		
		.00000					Liberty Fianzas, S.A. de C.V.MEX	.IA	Liberty Surety Mexico, S. de R.L. de C.V.	Ownership, Board and Management	99.990	Liberty Mutual Holding Company Inc.		
		.00000					Liberty Fianzas, S.A. de C.V.MEX	.IA	Liberty Mutual Mexico LLC	Ownership, Board and Management	0.010	Liberty Mutual Holding Company Inc.		
		.00000	04-2880152				Liberty Financial Services, Inc.IA	.NIA	Liberty Corporate Services LLC	Ownership, Board and Management	100.000	Liberty Mutual Holding Company Inc.		
		.00000					Liberty General Insurance LimitedIND	.IA	Liberty Citystate Holdings Pte Ltd	Ownership, Management	48.680	Liberty Mutual Holding Company Inc.		
		.00000	52-2304652				Liberty Information Technology LimitedGBR	.NIA	Liberty Mutual Technology Group Inc.	Ownership, Board and Management	100.000	Liberty Mutual Holding Company Inc.		
		.00000					Liberty Insurance BerhadMYS	.DS	Liberty Mutual Insurance Company	Ownership, Board and Management	86.770	Liberty Mutual Holding Company Inc.		
		.00000					Liberty Insurance Company LimitedCHN	.DS	Liberty Mutual Insurance Company	Ownership, Board and Management	100.000	Liberty Mutual Holding Company Inc.		
.0111	Liberty Mutual Insurance Company and its Affiliated Insurers	.42404	03-0316876				Liberty Insurance CorporationIL	.DS	Liberty Mutual Insurance Company	Ownership, Board and Management	100.000	Liberty Mutual Holding Company Inc.		
		.00000	52-2107018				Liberty Insurance Holdings, Inc.DE	.DS	Liberty Mutual Insurance Company	Ownership, Board and Management	100.000	Liberty Mutual Holding Company Inc.		
		.00000					Liberty Insurance LimitedVNM	.DS	Liberty UK and Europe Holdings Limited	Ownership, Board and Management	100.000	Liberty Mutual Holding Company Inc.		
		.00000					Liberty Insurance Pte LtdSGP	.DS	Liberty Citystate Holdings Pte Ltd	Ownership, Board and Management	100.000	Liberty Mutual Holding Company Inc.		
.0111	Liberty Mutual Insurance Company and its Affiliated Insurers	.19917	22-2227331				Liberty Insurance Underwriters Inc.IL	.DS	Liberty Mutual Insurance Company	Ownership, Board and Management	100.000	Liberty Mutual Holding Company Inc.		
		.00000	51-0365936				Liberty International Asia Pacific Holdings LLCDE	.DS	Liberty UK and Europe Holdings Limited	Ownership, Board and Management	100.000	Liberty Mutual Holding Company Inc.		

STATEMENT AS OF MARCH 31, 2022 OF THE STATE AUTO INSURANCE COMPANY OF OHIO

SCHEDULE Y
PART 1A - DETAIL OF INSURANCE HOLDING COMPANY SYSTEM

1	2	3	4	5	6	7	8	9	10	11	12 Type of Control (Ownership, Board, Management, Attorney-in-Fact, Influence, Other)	13 If Control is Owner- ship Provide Percen- tage	14 Ultimate Controlling Entity(ies)/Person(s)	15 Is an SCA Filing Re- quired? (Yes/No)	16 *
Group Code	Group Name	NAIC Company Code	ID Number	Federal RSSD	CIK	Name of Securities Exchange if Publicly Traded (U.S. or International)	Names of Parent, Subsidiaries Or Affiliates	Domi- ciliary Loca- tion	Relation- ship to Reporting Entity	Directly Controlled by (Name of Entity/Person)					
		.00000					Liberty International Brasil LtdaBRA	.DS	Liberty Seguros, Companhia de Seguros y					
		.00000					Reaseguros, S.A.			Ownership, Board and Management99.990	Liberty Mutual Holding Company Inc.			
		.00000					Liberty International Brasil LtdaBRA	.DS	Liberty International Holdings Inc.0.010	Liberty Mutual Holding Company Inc.			
							Liberty International Chile S.A.CHL	.DS	Liberty UK and Europe Holdings Limited	.99.990	Liberty Mutual Holding Company Inc.			
							Liberty International Latin America			Ownership, Board and Management					
		.00000					Holdings, LLC	.CHL	.DS	Liberty International Latin America	.0.010	Liberty Mutual Holding Company Inc.			
		.00000	27-1448815				Liberty International Europe LLC	.DE	.DS	Liberty International Holdings Inc.100.000	Liberty Mutual Holding Company Inc.			
							Liberty International European Holdings, S.L.			Ownership, Board and Management					
		.00000					Liberty International Holdings Inc.	.ESP	.DS	Liberty UK and Europe Holdings Limited	.100.000	Liberty Mutual Holding Company Inc.			
		.00000	04-3209289				Liberty International Insurance Limited	.DE	.DS	Liberty Mutual Insurance Company100.000	Liberty Mutual Holding Company Inc.			
		.00000					Liberty International Insurance Limited	.HKG	.DS	Liberty Insurance Pte Ltd68.000	Liberty Mutual Holding Company Inc.			
		.00000					Liberty International Insurance Limited	.HKG	.DS	Liberty Citystate Holdings Pte Ltd32.000	Liberty Mutual Holding Company Inc.			
							Liberty International Latin America Holdings, LLC	.DE	.DS	Liberty UK and Europe Holdings Limited	.100.000	Liberty Mutual Holding Company Inc.			
		.00000	51-0365934				Liberty International Netherlands V.O.F.	.NLD	.DS	Liberty International Holdings Inc.86.000	Liberty Mutual Holding Company Inc.			
		.00000					Liberty International Netherlands V.O.F.	.NLD	.DS	Liberty International Europe LLC	.14.000	Liberty Mutual Holding Company Inc.			
							Liberty International US European Holdings LLC	.DE	.DS	Liberty International Netherlands V.O.F. ..	.100.000	Liberty Mutual Holding Company Inc.			
		.00000	04-3025735				Liberty Life Holdings Inc.DE	NIA	Liberty Corporate Services LLC	.100.000	Liberty Mutual Holding Company Inc.			
.0111	Liberty Mutual Insurance Company and its Affiliated Insurers	.11041	74-2963323				Liberty Lloyds of Texas Insurance CompanyTX	.DS	Berkeley Management Corporation0.000	Liberty Mutual Holding Company Inc.			
		.00000	93-0962676				Liberty Management Services, Inc.OR		Liberty Northwest Insurance Corporation ..	.100.000	Liberty Mutual Holding Company Inc.			
		.00000					Liberty Managing Agency Limited	.GBR	.DS	Liberty UK and Europe Holdings Limited	.100.000	Liberty Mutual Holding Company Inc.			
		.00000	27-0619441				Liberty Metals & Mining Holdings, LLC	.DE	.DS	Liberty Mutual Insurance Company100.000	Liberty Mutual Holding Company Inc.			
		.00000	04-3199794				Liberty Mexico Holdings Inc.MA	.DS	Liberty International Holdings Inc.100.000	Liberty Mutual Holding Company Inc.			
		.00000					Liberty Mexico Holdings S.A. de C.V.MEX	.DS	Liberty Mexico Holdings Inc.99.990	Liberty Mutual Holding Company Inc.			
							Liberty International Latin America			Ownership, Board and Management					
		.00000					Holdings, LLC	.MEX	.DS	Liberty International Latin America	.0.010	Liberty Mutual Holding Company Inc.			
		.00000	51-0290450				Liberty Mexico Holdings S.A. de C.V.DE	.DS	Liberty Insurance Holdings, Inc.100.000	Liberty Mutual Holding Company Inc.			
		.00000	46-2913664				Liberty Mutual Agency Corporation	.MA	NIA	Liberty Corporate Services LLC	.100.000	Liberty Mutual Holding Company Inc.			
		.00000	52-2272555				Liberty Mutual Auto and Home Services LLC	.DE	.DS	Liberty Corporate Services LLC	.100.000	Liberty Mutual Holding Company Inc.			
							Liberty Mutual Captive Holdings LLC			Ownership, Board and Management					
		.00000	84-3694564				Liberty Mutual Credit Risk Transfer PCC Inc.	.DC	.IA	Liberty Mutual Insurance Company100.000	Liberty Mutual Holding Company Inc.			
		.00000	04-3119508				Liberty Mutual Equity LLC	.MA	.DS	Liberty Mutual Insurance Company100.000	Liberty Mutual Holding Company Inc.			
							Liberty Mutual Finance Europe Designated Activity CompanyIRL	.UIP	LMHC Massachusetts Holdings Inc.100.000	Liberty Mutual Holding Company Inc.			
.0111	Liberty Mutual Insurance Company and its Affiliated Insurers	.23035	04-1924000				Liberty Mutual Fire Insurance CompanyWI	.IA	LMHC Massachusetts Holdings Inc.100.000	Liberty Mutual Holding Company Inc.			
		.00000	14-1893520				Liberty Mutual Foundation Inc.MA	.DS	Liberty Mutual Group Inc.0.000	Liberty Mutual Holding Company Inc.			
		.00000	45-2105640				Liberty Mutual Group Asset Management Inc. ..	.DE	NIA	Liberty Mutual Insurance Company100.000	Liberty Mutual Holding Company Inc.			
		.00000	04-3583679				Liberty Mutual Group Inc.MA	.UDP	Liberty Mutual Group Inc.100.000	Liberty Mutual Holding Company Inc.			
		.00000	04-3583681				Liberty Mutual Group Inc.MA	.UIP	LMHC Massachusetts Holdings Inc.100.000	Liberty Mutual Holding Company Inc.			
		.00000	98-0434939				Liberty Mutual Holding Company Inc.MA	.UIP	N/A	.0.000	Liberty Mutual Holding Company Inc.			
.0111	Liberty Mutual Insurance Company and its Affiliated Insurers	.23043	04-1543470				Liberty Mutual Holdings (Bermuda) LtdBMU	.DS	Liberty Mutual Captive Holdings LLC	.100.000	Liberty Mutual Holding Company Inc.			
							Liberty Mutual Insurance Company	.MA		Liberty Mutual Group Inc.100.000	Liberty Mutual Holding Company Inc.			
		.00000					Liberty Mutual Insurance Company -			Ownership, Board and Management					
							Escritorio De Representacao No Brasil Ltda. .	.BRA	.DS	Liberty Mutual Insurance Company99.900	Liberty Mutual Holding Company Inc.			
		.00000					Liberty Mutual Insurance Company -			Ownership, Board and Management					
		.00000					Escritorio De Representacao No Brasil Ltda. .	.BRA	.DS	Liberty Insurance Underwriters Inc.0.100	Liberty Mutual Holding Company Inc.			
		.00000					Liberty Mutual Insurance Company - PAC	.MA	NIA	Liberty Mutual Insurance Company0.000	Liberty Mutual Holding Company Inc.			
		.00000					Liberty Mutual Insurance Europe SE	.LUX	.DS	Liberty Specialty Markets Holdco S.L.U.100.000	Liberty Mutual Holding Company Inc.			
							Liberty Mutual Group Asset Management Inc.			Ownership, Board and Management					
		.00000	04-3479271				Liberty Mutual Investment Advisors LLC	.MA	NIA	Liberty Mutual Group Asset Management Inc.	.100.000	Liberty Mutual Holding Company Inc.			
		.00000	32-0177707				Liberty Mutual Investment Holdings LLC	.DE	.DS	Liberty Mutual Insurance Company40.000	Liberty Mutual Holding Company Inc.			

STATEMENT AS OF MARCH 31, 2022 OF THE STATE AUTO INSURANCE COMPANY OF OHIO

SCHEDULE Y

PART 1A - DETAIL OF INSURANCE HOLDING COMPANY SYSTEM

1	2	3	4	5	6	7	8	9	10	11	12	13	14	15	16
Group Code	Group Name	NAIC Company Code	ID Number	Federal RSSD	CIK	Name of Securities Exchange if Publicly Traded (U.S. or International)	Names of Parent, Subsidiaries Or Affiliates	Domi-ciliary Location	Relation-ship to Reporting Entity	Directly Controlled by (Name of Entity/Person)	Type of Control (Ownership, Board, Management, Attorney-in-Fact, Influence, Other)	If Control is Owner-ship Provide Percen-tage	Ultimate Controlling Entity(ies)/Person(s)	Is an SCA Filing Re-quired? (Yes/No)	*
		.00000	32-0177707				Liberty Mutual Investment Holdings LLC	.DE	.DS	Peerless Insurance Company	Ownership, Board and Management	.22.000	Liberty Mutual Holding Company Inc.		
		.00000	32-0177707				Liberty Mutual Investment Holdings LLC	.DE	.DS	Employers Insurance Company of Wausau	Ownership, Board and Management	.10.000	Liberty Mutual Holding Company Inc.		
		.00000	32-0177707				Liberty Mutual Investment Holdings LLC	.DE	.DS	Liberty Mutual Fire Insurance Company	Ownership, Board and Management	.10.000	Liberty Mutual Holding Company Inc.		
		.00000	32-0177707				Liberty Mutual Investment Holdings LLC	.DE	.DS	The Ohio Casualty Insurance Company	Ownership, Board and Management	.10.000	Liberty Mutual Holding Company Inc.		
		.00000	32-0177707				Liberty Mutual Investment Holdings LLC	.DE	.DS	Safeco Insurance Company of America	Ownership, Board and Management	.8.000	Liberty Mutual Holding Company Inc.		
		.00000					Liberty Mutual Ireland Investment Holdings Limited	.IRL	.DS	Liberty UK and Europe Holdings Limited	Ownership, Board and Management	.100.000	Liberty Mutual Holding Company Inc.		
		.00000	47-2941258				Liberty Mutual Latam LLC	.DE	.NIA	Liberty Mutual Insurance Company	Ownership, Board and Management	.100.000	Liberty Mutual Holding Company Inc.		
		.00000	84-2588296				Liberty Mutual Latin Holdings LLC	.DE	.NIA	Liberty Mutual Latam LLC	Ownership, Board, Management	.100.000	Liberty Mutual Holding Company Inc.		
		.00000	04-3217691				Liberty Mutual Managed Care LLC	.MA	.NIA	Liberty Corporate Services LLC	Ownership, Board and Management	.100.000	Liberty Mutual Holding Company Inc.		
		.00000	98-0434942				Liberty Mutual Management (Bermuda) Ltd	.BMU	.NIA	Liberty Mutual Group Inc.	Ownership, Board and Management	.100.000	Liberty Mutual Holding Company Inc.		
		.00000					Liberty Mutual Management (South Carolina) LLC	.SC	.DS	Liberty Mutual Captive Holdings LLC	Ownership, Board and Management	.100.000	Liberty Mutual Holding Company Inc.		
		.00000	06-1741899				Liberty Mutual Management (Vermont) LLC	.VT	.DS	Liberty Mutual Captive Holdings LLC	Ownership, Board and Management	.100.000	Liberty Mutual Holding Company Inc.		
		.00000	04-4223650				Liberty Mutual Mexico LLC	.DE	.NIA	Liberty Mutual Insurance Company	Ownership, Board and Management	.100.000	Liberty Mutual Holding Company Inc.		
.0111	Liberty Mutual Insurance Company and its Affiliated Insurers	.14486	23-0867770				Liberty Mutual Mid-Atlantic Insurance Company	.MA	.IA	Liberty Mutual Insurance Company	Board and Management	.0.000	Liberty Mutual Holding Company Inc.		
		.00000	46-3043236				Liberty Mutual Opportunistic Investments LLC	.DE	.DS	Liberty Mutual Insurance Company	Ownership, Board and Management	.100.000	Liberty Mutual Holding Company Inc.		
.0111	Liberty Mutual Insurance Company and its Affiliated Insurers	.12484	04-1023460				Liberty Mutual Personal Insurance Company	.NH	.IA	Liberty Mutual Group Inc.	Ownership, Board and Management	.100.000	Liberty Mutual Holding Company Inc.		
		.00000	47-4222611				Liberty Mutual Strategic Ventures LLC	.DE	.DS	Liberty Mutual Insurance Company	Ownership, Board and Management	.100.000	Liberty Mutual Holding Company Inc.		
		.00000	82-0842778				Liberty Mutual Plano LLC	.DE	.NIA	Partnership	Ownership, Board and Management	.100.000	Liberty Mutual Holding Company Inc.		
		.00000	27-4064359				Liberty Mutual Retirement Plan Master Trust	.MA	.NIA	Liberty Mutual Group Inc.	Board	.0.000	Liberty Mutual Holding Company Inc.		
		.00000	04-3548586				Liberty Mutual Scholarship Foundation	.MA	.NIA	Liberty Mutual Insurance Company	Board and Management	.0.000	Liberty Mutual Holding Company Inc.		
		.00000	84-2593582				Liberty Mutual Services LLC	.DE	.NIA	Liberty Mutual Latam LLC	Ownership, Board, Management	.100.000	Liberty Mutual Holding Company Inc.		
		.00000	86-0145347				Liberty Mutual Surety Europe B.V.	.NLD	.IA	Liberty UK and Europe Holdings Limited	Ownership	.100.000	Liberty Mutual Holding Company Inc.		
		.00000					Liberty Mutual Surety S.L.U.	.ESP	.IA	Liberty UK and Europe Holdings Limited	Ownership, Board, Management	.100.000	Liberty Mutual Holding Company Inc.		
		.00000	81-4106347				Liberty Mutual Technology Group, Inc.	.DE	.NIA	Liberty Corporate Services LLC	Ownership, Board and Management	.100.000	Liberty Mutual Holding Company Inc.		
.0111	Liberty Mutual Insurance Company and its Affiliated Insurers	.41939	93-0824674				Liberty Northwest Insurance Corporation	.OR	.DS	Peerless Insurance Company	Ownership, Board and Management	.100.000	Liberty Mutual Holding Company Inc.		
		.00000	26-3709536				Liberty Parkwood Crossing LLC	.IN	.DS	Liberty Real Estate Holdings LLC	Ownership, Board and Management	.100.000	Liberty Mutual Holding Company Inc.		
.0111	Liberty Mutual Insurance Company and its Affiliated Insurers	.11746	38-1742556				Liberty Personal Insurance Company	.NH	.DS	Liberty Mutual Insurance Company	Ownership, Board and Management	.100.000	Liberty Mutual Holding Company Inc.		
		.00000					Liberty Perú Gestión de Riesgos SAC	.PER	.NIA	Liberty Mutual Surety S.L.U.	Ownership, Board, Management	.99.900	Liberty Mutual Holding Company Inc.		
		.00000					Liberty Perú Gestión de Riesgos SAC	.PER	.NIA	Liberty UK and Europe Holdings Limited	Ownership, Board, Management	.0.100	Liberty Mutual Holding Company Inc.		
		.00000	98-0336014				Liberty Re (Bermuda) Limited	.BMU	.DS	Liberty Mutual Insurance Company	Ownership, Board and Management	.100.000	Liberty Mutual Holding Company Inc.		
		.00000					Liberty Real Estate Holdings LLC	.DE	.DS	Liberty Mutual Insurance Company	Ownership, Board and Management	.100.000	Liberty Mutual Holding Company Inc.		
		.00000	66-0963226				Liberty Seguros	.PR	.IA	Liberty Mutual Latam LLC	Ownership, Board and Management	.99.900	Liberty Mutual Holding Company Inc.		
		.00000					Liberty Seguros S.A.	.COL	.DS	LILA (Colombia) Holdings Ltd.	Ownership, Board and Management	.94.892	Liberty Mutual Holding Company Inc.		
		.00000					Liberty Seguros S.A.	.COL	.DS	Li (Colombia) Holdings Ltd.	Ownership, Board and Management	.5.093	Liberty Mutual Holding Company Inc.		
		.00000					Liberty Seguros S.A.	.ECU	.DS	Liberty UK and Europe Holdings Limited	Ownership, Board and Management	.99.895	Liberty Mutual Holding Company Inc.		
		.00000					Liberty Seguros S.A.	.ECU	.DS	Liberty International Latin America Holdings, LLC	Ownership, Board and Management	.0.002	Liberty Mutual Holding Company Inc.		
		.00000					Liberty Seguros S.A.	.PER	.IA	Liberty Mutual Latam LLC	Ownership, Board and Management	.99.990	Liberty Mutual Holding Company Inc.		
		.00000					Liberty Seguros S.A.	.PER	.IA	Liberty Surplus Insurance Corporation	Ownership, Board and Management	.0.010	Liberty Mutual Holding Company Inc.		
		.00000					Liberty Seguros S/A	.BRA	.DS	Liberty International Brasil Ltda.	Ownership, Board and Management	.100.000	Liberty Mutual Holding Company Inc.		
		.00000					Liberty Seguros, S.A. de C.V.	.MEX	.IA	Liberty Mutual Latin Holdings LLC	Ownership, Board and Management	.99.990	Liberty Mutual Holding Company Inc.		
		.00000					Liberty Seguros, S.A. de C.V.	.MEX	.IA	Liberty Mutual Services LLC	Ownership, Board and Management	.0.010	Liberty Mutual Holding Company Inc.		
		.00000					Liberty Seguros, Compania de Seguros y Reaseguros, S.A.	.ESP	.DS	Liberty Spain Holdings LLC	Ownership, Board and Management	.99.990	Liberty Mutual Holding Company Inc.		
		.00000					Liberty Seguros, Compania de Seguros y Reaseguros, S.A.	.ESP	.DS	Liberty UK and Europe Holdings Limited	Ownership, Board and Management	.0.010	Liberty Mutual Holding Company Inc.		

STATEMENT AS OF MARCH 31, 2022 OF THE STATE AUTO INSURANCE COMPANY OF OHIO

SCHEDULE Y
PART 1A - DETAIL OF INSURANCE HOLDING COMPANY SYSTEM

1	2	3	4	5	6	7	8	9	10	11	12	13	14	15	16
Group Code	Group Name	NAIC Company Code	ID Number	Federal RSSD	CIK	Name of Securities Exchange if Publicly Traded (U.S. or International)	Names of Parent, Subsidiaries Or Affiliates	Domi-ciliary Location	Relation-ship to Reporting Entity	Directly Controlled by (Name of Entity/Person)	Type of Control (Ownership, Board, Management, Attorney-in-Fact, Influence, Other)	If Control is Owner-ship Provide Percen-tage	Ultimate Controlling Entity(ies)/Person(s)	Is an SCA Filing Re-quired? (Yes/No)	*
		.00000	77-0653079				Liberty Spain Holdings LLC	.DE	.DS	Liberty International European Holdings S.L.	Ownership, Board and Management	100.000	Liberty Mutual Holding Company Inc.		
		.00000					Liberty Specialty Markets Agency Limited	.BMU	.DS	Ironshore Inc.	Ownership	100.000	Liberty Mutual Holding Company Inc.		
		.00000					Liberty Specialty Markets Australia Pty Limited	.AUS	.NIA	Ironshore Australia Holdings Pty Ltd.	Ownership	100.000	Liberty Mutual Holding Company Inc.		
		.00000	98-0579287				Liberty Specialty Markets Bermuda Limited	.BMU	.DS	Ironshore Inc.	Ownership	100.000	Liberty Mutual Holding Company Inc.		
		.00000					Liberty Specialty Markets Europe S.a.r.l.	.LUX	.NIA	Liberty UK and Europe Holdings Limited	Ownership, Board and Management	100.000	Liberty Mutual Holding Company Inc.		
		.00000					Liberty Specialty Markets Europe Two Sarl	.LUX	.NIA	Liberty UK and Europe Holdings Limited	Ownership	100.000	Liberty Mutual Holding Company Inc.		
		.00000					Liberty Specialty Markets Holdco S.L.U.	.ESP	.NIA	Liberty International European Holdings S.L.	Ownership, Board and Management	100.000	Liberty Mutual Holding Company Inc.		
		.00000					Liberty Specialty Markets Hong Kong Limited	.HKG	.IA	Liberty UK and Europe Holdings Limited	Ownership, Board and Management	100.000	Liberty Mutual Holding Company Inc.		
		.00000					Liberty Specialty Markets Limited	.GBR	.DS	Liberty UK and Europe Holdings Limited	Ownership, Board and Management	100.000	Liberty Mutual Holding Company Inc.		
		.00000					Liberty Specialty Markets MENA Limited	.ARE	.DS	Liberty UK and Europe Holdings Limited	Ownership, Board and Management	100.000	Liberty Mutual Holding Company Inc.		
		.00000					Liberty Specialty Markets Singapore Pte. Limited	.SGP	.IA	Liberty UK and Europe Holdings Limited	Ownership, Board and Management	100.000	Liberty Mutual Holding Company Inc.		
		.00000					Liberty Specialty Services Limited	.GBR	.NIA	Liberty UK and Europe Holdings Limited	Ownership, Board and Management	100.000	Liberty Mutual Holding Company Inc.		
		.00000					Liberty Specialty, Sociedad de Responsabilidad Limitada de Capital Variable								
		.00000					Liberty Specialty, Sociedad de Responsabilidad Limitada de Capital Variable	.MEX	.NIA	Liberty Mutual Services LLC	Ownership, Board, Management	99.990	Liberty Mutual Holding Company Inc.		
		.00000					Liberty Sponsored Insurance (Vermont), Inc.	.VT	.DS	Liberty Mutual Latin Holdings LLC	Ownership, Board, Management	0.010	Liberty Mutual Holding Company Inc.		
		.00000	98-0336015				Liberty Structured Holdings LLC	.DE	.NIA	Liberty Mutual Insurance Company	Ownership, Board and Management	100.000	Liberty Mutual Holding Company Inc.		
		.00000	38-3760923				Liberty Structured Holdings LLC	.DE	.NIA	Liberty Mutual Insurance Company	Ownership, Board and Management	20.000	Liberty Mutual Holding Company Inc.		
		.00000	38-3760923				Liberty Structured Holdings LLC	.DE	.NIA	Peerless Insurance Company	Ownership, Board and Management	45.000	Liberty Mutual Holding Company Inc.		
		.00000	38-3760923				Liberty Structured Holdings LLC	.DE	.NIA	The Ohio Casualty Insurance Company	Ownership, Board and Management	20.000	Liberty Mutual Holding Company Inc.		
		.00000	38-3760923				Liberty Structured Holdings LLC	.DE	.NIA	Safeco Insurance Company of America	Ownership, Board and Management	15.000	Liberty Mutual Holding Company Inc.		
		.00000					Liberty Surety México, S. de R.L. de C.V.	.MEX	.DS	Liberty Mutual Mexico LLC	Ownership, Board and Management	99.990	Liberty Mutual Holding Company Inc.		
		.00000					Liberty Surety México, S. de R.L. de C.V.	.MEX	.DS	Liberty Surplus Insurance Corporation	Ownership, Board and Management	0.010	Liberty Mutual Holding Company Inc.		
.0111	Liberty Mutual Insurance Company and its Affiliated Insurers	.10725	04-3390891				Liberty Surplus Insurance Corporation	.NH	.DS	Liberty Mutual Insurance Company	Ownership, Board and Management	100.000	Liberty Mutual Holding Company Inc.		
		.00000	98-0641430				Liberty UK and Europe Holdings Limited	.GBR	.DS	Liberty International US European Holdings LLC	Ownership, Board and Management	100.000	Liberty Mutual Holding Company Inc.		
		.00000	77-0670984				Liberty/Hoffman Estates LLC	.DE	.DS	Liberty Real Estate Holdings LLC	Ownership, Board and Management	100.000	Liberty Mutual Holding Company Inc.		
		.00000					Liberty/Kent LLC	.DE	.DS	Liberty Real Estate Holdings LLC	Ownership, Board and Management	100.000	Liberty Mutual Holding Company Inc.		
		.00000	65-1314055				Liberty/Milwaukee LLC	.DE	.DS	Liberty Real Estate Holdings LLC	Ownership, Board and Management	100.000	Liberty Mutual Holding Company Inc.		
		.00000	77-0670983				Liberty/Warrenville LLC	.DE	.DS	Liberty Real Estate Holdings LLC	Ownership, Board and Management	100.000	Liberty Mutual Holding Company Inc.		
		.00000	22-2195982				Liberty-USA Corporation	.DE	.DS	Peerless Insurance Company	Ownership, Board and Management	100.000	Liberty Mutual Holding Company Inc.		
		.00000	22-2424043				LIH-RE of America Corporation	.DE	.DS	Liberty-USA Corporation	Ownership, Board and Management	100.000	Liberty Mutual Holding Company Inc.		
		.00000	98-0470064				LILA (Colombia) Holdings Ltd.	.BMU	.DS	Liberty International Latin America Holdings, LLC	Ownership, Board and Management	100.000	Liberty Mutual Holding Company Inc.		
		.00000	75-2621007				LIU Specialty Insurance Agency Inc. LLC S.a. r.l.	.TX	.IA	Liberty Corporate Services LLC	Ownership, Board and Management	100.000	Liberty Mutual Holding Company Inc.		
		.00000					LLIC S.a. r.l.	.LUX	.DS	Liberty UK and Europe Holdings Limited	Ownership, Board and Management	100.000	Liberty Mutual Holding Company Inc.		
		.00000					LMAT Arbol Holdings LLC	.DE	.NIA	LMAT Natural Resources International S.L.	Ownership, Board and Management	100.000	Liberty Mutual Holding Company Inc.		
		.00000					LMAT Holdings LLC	.DE	.NIA	Liberty Mutual Insurance Company	Ownership	30.000	Liberty Mutual Holding Company Inc.		
		.00000					LMAT Holdings LLC	.DE	.NIA	Peerless Insurance Company	Ownership	30.000	Liberty Mutual Holding Company Inc.		
		.00000					LMAT Holdings LLC	.DE	.NIA	Liberty Mutual Fire Insurance Company	Ownership	10.000	Liberty Mutual Holding Company Inc.		
		.00000					LMAT Holdings LLC	.DE	.NIA	Employers Insurance Company of Wausau	Ownership	10.000	Liberty Mutual Holding Company Inc.		
		.00000					LMAT Holdings LLC	.DE	.NIA	Safeco Insurance Company of America	Ownership	10.000	Liberty Mutual Holding Company Inc.		
		.00000					LMAT Holdings LLC	.DE	.NIA	The Ohio Casualty Insurance Company	Ownership	10.000	Liberty Mutual Holding Company Inc.		
		.00000					LMAT Natural Resources International S.L.	.ESP	.NIA	Liberty Mutual Opportunistic Investments LLC	Ownership, Board and Management	100.000	Liberty Mutual Holding Company Inc.		
		.00000					LMAT Uruguay Holdings S.R.L.	.URY	.NIA	Contumil S.A.	Ownership	85.556	Liberty Mutual Holding Company Inc.		
		.00000					LMAT Uruguay Holdings S.R.L.	.URY	.NIA	LMAT Natural Resources International S.L.	Ownership	14.443	Liberty Mutual Holding Company Inc.		

STATEMENT AS OF MARCH 31, 2022 OF THE STATE AUTO INSURANCE COMPANY OF OHIO

SCHEDULE Y
PART 1A - DETAIL OF INSURANCE HOLDING COMPANY SYSTEM

1	2	3	4	5	6	7	8	9	10	11	12	13	14	15	16
Group Code	Group Name	NAIC Company Code	ID Number	Federal RSSD	CIK	Name of Securities Exchange if Publicly Traded (U.S. or International)	Names of Parent, Subsidiaries Or Affiliates	Domi-ciliary Location	Relation-ship to Reporting Entity	Directly Controlled by (Name of Entity/Person)	Type of Control (Ownership, Board, Management, Attorney-in-Fact, Influence, Other)	If Control is Owner-ship Provide Percen-tage	Ultimate Controlling Entity(ies)/Person(s)	Is an SCA Filing Re-quired? (Yes/No)	*
		.00000					LMAT Uruguay Holdings S.R.L.URY	.NIA	LMAT Arbol Holdings LLC	Ownership.....	.0.001	Liberty Mutual Holding Company Inc.		
.0111	Liberty Mutual Insurance Company and its Affiliated Insurers36447	22-2227328				LM General Insurance CompanyIL	.DS	Liberty Mutual Insurance Company	Ownership, Board and Management100.000	Liberty Mutual Holding Company Inc.		
.0111	Liberty Mutual Insurance Company and its Affiliated Insurers33600	04-3058504				LM Insurance CorporationIL	.DS	Liberty Mutual Insurance Company	Ownership, Board and Management100.000	Liberty Mutual Holding Company Inc.		
.0111	Liberty Mutual Insurance Company and its Affiliated Insurers32352	22-2053189				LM Property and Casualty Insurance Company ..	.IN	.DS	Liberty Mutual Insurance Company	Ownership, Board and Management100.000	Liberty Mutual Holding Company Inc.		
		.00000	84-3770759				LMCORT-FRE-01 ICDC	.IA	Liberty Mutual Credit Risk Transfer PCC Inc.	Ownership, Board, Management100.000	Liberty Mutual Holding Company Inc.		
		.00000					LMG Chile SpACHL	.NIA	Liberty UK and Europe Holdings Limited	Ownership, Board and Management100.000	Liberty Mutual Holding Company Inc.		
		.00000	61-1558756				LMG Film Productions, LLCMA	.DS	Liberty Mutual Insurance Company	Ownership, Board and Management100.000	Liberty Mutual Holding Company Inc.		
		.00000					LMG Insurance Public Company LimitedTHA	.DS	Tun Kaoklai Co., Ltd.	Ownership, Board and Management74.990	Liberty Mutual Holding Company Inc.		
		.00000					LMG Insurance Public Company LimitedTHA	.DS	Liberty International Asia Pacific Holdings LLC	Ownership, Board and Management24.990	Liberty Mutual Holding Company Inc.		
		.00000					LMG Singapore Holdings Pte. Ltd.SGP	.NIA	Liberty International US European Holdings LLC	Ownership, Board and Management100.000	Liberty Mutual Holding Company Inc.		
		.00000	04-3583680				LMHC Massachusetts Holdings Inc.MA	.UIP	Liberty Mutual Holding Company Inc.	Ownership, Board and Management100.000	Liberty Mutual Holding Company Inc.		
		.00000	81-2184892				LSH Real Estate Holdings LLCDE	.NIA	Liberty Structured Holdings LLC	Ownership, Board and Management100.000	Liberty Mutual Holding Company Inc.		
		.00000	71-0950057				Managed Care Associates, Inc.MS	.DS	Excess Risk Reinsurance Inc.	Ownership.....	.100.000	Liberty Mutual Holding Company Inc.		
.0111	Liberty Mutual Insurance Company and its Affiliated Insurers23353	35-1135866				Meridian Security Insurance CompanyIN	.IA	State Auto Holdings, Inc.	Ownership, Board and Management100.000	Liberty Mutual Holding Company Inc.		
.0111	Liberty Mutual Insurance Company and its Affiliated Insurers23507	31-0978279				Mid-American Fire & Casualty CompanyNH	.DS	The Midwestern Indemnity Company	Ownership, Board and Management100.000	Liberty Mutual Holding Company Inc.		
.0111	Liberty Mutual Insurance Company and its Affiliated Insurers41653	46-0368854				Milbank Insurance CompanyIA	.IA	State Auto Financial Corporation	Ownership, Board and Management100.000	Liberty Mutual Holding Company Inc.		
.0111	Liberty Mutual Insurance Company and its Affiliated Insurers14613	52-0424870				Montgomery Mutual Insurance CompanyMA	.IA	Liberty Mutual Insurance Company	Board and Management0.000	Liberty Mutual Holding Company Inc.		
.0111	Liberty Mutual Insurance Company and its Affiliated Insurers27944	35-1287317				National Insurance AssociationIN	.DS	The National Corporation	Management and Attorney-in-Fact0.000	Liberty Mutual Holding Company Inc.		
		.00000					Nationale Borg Reinsurance N.V.CUW	.IA	Liberty Mutual Insurance Company	Ownership, Board, Management100.000	Liberty Mutual Holding Company Inc.		
		.00000					Nationale Waarborg B.V.NLD	.IA	Liberty UK and Europe Holdings Limited	Ownership, Board, Management100.000	Liberty Mutual Holding Company Inc.		
		.00000	41-2098206				Network E&S Insurance Brokers, LLCOH	.IA	State Automobile Mutual Insurance Company ..	Ownership, Board and Management100.000	Liberty Mutual Holding Company Inc.		
.0111	Liberty Mutual Insurance Company and its Affiliated Insurers23892	93-6029263				North Pacific Insurance CompanyOR	.DS	Liberty Northwest Insurance Corporation	Ownership, Board and Management100.000	Liberty Mutual Holding Company Inc.		
		.00000	31-1364002				Ocasco Budget, Inc.OH	.DS	The Ohio Casualty Insurance Company	Ownership, Board and Management100.000	Liberty Mutual Holding Company Inc.		
		.00000	31-1377709				OCI Printing, Inc.OH	.DS	Ohio Casualty Corporation	Ownership, Board and Management100.000	Liberty Mutual Holding Company Inc.		
		.00000	31-0783294				Ohio Casualty CorporationOH	.DS	Liberty Mutual Insurance Company	Ownership, Board and Management78.000	Liberty Mutual Holding Company Inc.		
		.00000	31-0783294				Ohio Casualty CorporationOH	.DS	Employers Insurance Company of Wausau	Ownership, Board and Management8.000	Liberty Mutual Holding Company Inc.		
		.00000	31-0783294				Ohio Casualty CorporationOH	.DS	Peerless Insurance Company	Ownership, Board and Management8.000	Liberty Mutual Holding Company Inc.		
		.00000	31-0783294				Ohio Casualty CorporationOH	.DS	Liberty Mutual Fire Insurance Company	Ownership, Board and Management6.000	Liberty Mutual Holding Company Inc.		
.0111	Liberty Mutual Insurance Company and its Affiliated Insurers24082	31-0541777				Ohio Security Insurance CompanyNH	.DS	The Ohio Casualty Insurance Company	Ownership, Board and Management100.000	Liberty Mutual Holding Company Inc.		
		.00000	26-0258241				Open Seas Solutions, Inc.WA	.DS	Safeco Corporation	Ownership, Board and Management100.000	Liberty Mutual Holding Company Inc.		
.0111	Liberty Mutual Insurance Company and its Affiliated Insurers23922	93-0241650				Oregon Automobile Insurance CompanyOR	.DS	Liberty Northwest Insurance Corporation	Ownership, Board and Management100.000	Liberty Mutual Holding Company Inc.		
		.00000					PAGUS Holdings LLCDE	.NIA	LMAT Holdings LLC	Ownership, Board and Management100.000	Liberty Mutual Holding Company Inc.		
.0111	Liberty Mutual Insurance Company and its Affiliated Insurers14923	06-0487440				Patrons Mutual Insurance Company of ConnecticutCT	.IA	State Automobile Mutual Insurance Company ..	Board, Management0.000	Liberty Mutual Holding Company Inc.		
.0111	Liberty Mutual Insurance Company and its Affiliated Insurers18333	13-2919779				Peerless Indemnity Insurance CompanyIL	.DS	Liberty-USA Corporation	Ownership, Board and Management100.000	Liberty Mutual Holding Company Inc.		
.0111	Liberty Mutual Insurance Company and its Affiliated Insurers24198	02-0177030				Peerless Insurance CompanyNH	.DS	Liberty Mutual Agency Corporation	Ownership, Board and Management100.000	Liberty Mutual Holding Company Inc.		
		.00000					Pembroke JV Ltd.GBR	.DS	Ironshore International Ltd.	Ownership.....	.100.000	Liberty Mutual Holding Company Inc.		

12.7

PART 1A - DETAIL OF INSURANCE HOLDING COMPANY SYSTEM

1	2	3	4	5	6	7	8	9	10	11	12	13	14	15	16	
Group Code	Group Name	NAIC Company Code	ID Number	Federal RSSD	CIK	Name of Securities Exchange if Publicly Traded (U.S. or International)	Names of Parent, Subsidiaries Or Affiliates	Domi-ciliary Location	Relation-ship to Reporting Entity	Directly Controlled by (Name of Entity/Person)	Type of Control (Ownership, Board, Management, Attorney-in-Fact, Influence, Other)	If Control is Owner-ship Provide Perce-ntage	Ultimate Controlling Entity(ies)/Person(s)	Is an SCA Filing Re-quired? (Yes/No)	*	
.0111	Liberty Mutual Insurance Company and its Affiliated Insurers	3094500000	58-1140651				Plaza Insurance Company	IA	IA	Rockhill Insurance Company	Ownership, Board and Management	100.000	Liberty Mutual Holding Company Inc.			
							PT Independence Energy Holdings LLC	DE	NIA	Liberty Energy Holdings, LLC	Ownership	100.000	Liberty Mutual Holding Company Inc.			
		000000	46-1667886				Raymond James LM Georgia Tax Credit Fund L.L.C.	FL	DS	The First Liberty Insurance Corporation	Ownership	100.000	Liberty Mutual Holding Company Inc.			
		000000	46-1680447				Raymond James LM Massachusetts Tax Credit Fund L.L.C.	FL	DS	Liberty Mutual Insurance Company	Ownership	100.000	Liberty Mutual Holding Company Inc.			
		000000	45-2635338				RBC State Credit Fund LLC	DE	NIA	Liberty Mutual Insurance Company	Ownership	100.000	Liberty Mutual Holding Company Inc.			
		000000	26-0800397				Rianoc Research Corporation	WA	DS	Open Seas Solutions, Inc.	Ownership, Board and Management	100.000	Liberty Mutual Holding Company Inc.			
		000000	45-2480595				RJTCF-37 Georgia Tax Credit Fund L.L.C.	FL	NIA	Liberty Mutual Fire Insurance Company	Ownership	100.000	Liberty Mutual Holding Company Inc.			
		000000	45-5549520				RJTCF-38 Georgia Tax Credit Fund L.L.C.	FL	DS	Raymond James LM Georgia Tax Credit Fund L.L.C.	Ownership	100.000	Liberty Mutual Holding Company Inc.			
		000000	50-9113010				RNA - Rede Nacional De Assistencia, S.A.	PRT	NIA	Liberty Seguros, Compania de Seguros y Reaseguros, S.A.	Ownership	20.000	Liberty Mutual Holding Company Inc.			
		000000	25-1923260				Rockhill Holding Company	DE	NIA	State Automobile Mutual Insurance Company	Ownership, Board and Management	100.000	Liberty Mutual Holding Company Inc.			
.0111	Liberty Mutual Insurance Company and its Affiliated Insurers	2805300000	06-1149847				Rockhill Insurance Company	AZ	IA	Rockhill Holding Company	Ownership, Board and Management	100.000	Liberty Mutual Holding Company Inc.			
		000000	20-8406742				Rockhill Insurance Services LLC	CA	NIA	Rockhill Holding Company	Ownership, Board and Management	100.000	Liberty Mutual Holding Company Inc.			
		000000	01-0712531				Rockhill Underwriting Management, LLC	MO	NIA	Rockhill Holding Company	Ownership, Board and Management	100.000	Liberty Mutual Holding Company Inc.			
		000000	41-1440870				RTW, Inc	MN	NIA	Rockhill Holding Company	Ownership, Board and Management	100.000	Liberty Mutual Holding Company Inc.			
		000000	91-0833288				SAFECARE Company, Inc.	WA	DS	Safeco Properties, Inc.	Ownership, Board and Management	100.000	Liberty Mutual Holding Company Inc.			
		000000	91-0742146				Safeco Corporation	WA	DS	Liberty Mutual Agency Corporation	Ownership, Board and Management	100.000	Liberty Mutual Holding Company Inc.			
		000000	75-2865575				Safeco General Agency, Inc.	TX	DS	General Insurance Company of America	Ownership, Board and Management	100.000	Liberty Mutual Holding Company Inc.			
.0111	Liberty Mutual Insurance Company and its Affiliated Insurers	24740	91-0742148				Safeco Insurance Company of America	NH	DS	Safeco Corporation	Ownership, Board and Management	100.000	Liberty Mutual Holding Company Inc.			
.0111	Liberty Mutual Insurance Company and its Affiliated Insurers	39012	91-1115311				Safeco Insurance Company of Illinois	IL	DS	Safeco Insurance Company of America	Ownership, Board and Management	100.000	Liberty Mutual Holding Company Inc.			
.0111	Liberty Mutual Insurance Company and its Affiliated Insurers	11215	23-2640501				Safeco Insurance Company of Indiana	IN	DS	General Insurance Company of America	Ownership, Board and Management	100.000	Liberty Mutual Holding Company Inc.			
.0111	Liberty Mutual Insurance Company and its Affiliated Insurers	11071	93-1300233				Safeco Insurance Company of Oregon	OR	DS	Safeco Insurance Company of America	Ownership, Board and Management	100.000	Liberty Mutual Holding Company Inc.			
.0111	Liberty Mutual Insurance Company and its Affiliated Insurers	11070	91-6258394				Safeco Lloyds Insurance Company	TX	DS	General America Corporation of Texas	Management and Attorney-in-Fact	0.000	Liberty Mutual Holding Company Inc.			
.0111	Liberty Mutual Insurance Company and its Affiliated Insurers	2475900000	91-0885519				Safeco National Insurance Company	NH	DS	Safeco Insurance Company of America	Ownership, Board and Management	100.000	Liberty Mutual Holding Company Inc.			
			91-1273246				Safeco Properties, Inc.	WA	DS	Safeco Corporation	Ownership, Board and Management	100.000	Liberty Mutual Holding Company Inc.			
.0111	Liberty Mutual Insurance Company and its Affiliated Insurers	11100	91-1231536				Safeco Surplus Lines Insurance Company	NH	DS	Safeco Insurance Company of America	Ownership, Board and Management	100.000	Liberty Mutual Holding Company Inc.			
.0111	Liberty Mutual Insurance Company and its Affiliated Insurers	1083700000	33-0763208				San Diego Insurance Company	CA	DS	Liberty Mutual Insurance Company	Ownership, Board and Management	100.000	Liberty Mutual Holding Company Inc.			
		000000					Santa Marta Floresta Brasil Ltda.	BRA	NIA	TECA Santa Marta Holdings, S.L	Ownership	99.900	Liberty Mutual Holding Company Inc.			
		000000					Santa Marta Floresta Brasil Ltda.	BRA	NIA	TECA SM LLC	Ownership	0.010	Liberty Mutual Holding Company Inc.			
		000000					Santa Rita Arbol Holdings S.L.	ESP	NIA	LMAT Natural Resources International S.L.	Ownership	100.000	Liberty Mutual Holding Company Inc.			
		000000					Santa Rita Madeira e Floresta Ltda.	BRA	NIA	Santa Rita Arbol Holdings, S.L.	Ownership	99.900	Liberty Mutual Holding Company Inc.			
		000000					Santa Rita Madeira e Floresta Ltda.	BRA	NIA	TECA SR LLC	Ownership	0.010	Liberty Mutual Holding Company Inc.			
		000000					Savannah Insurance Agency Pty Ltd	AUS	DS	Ironshore Australia Holdings Pty Ltd	Ownership	100.000	Liberty Mutual Holding Company Inc.			
		000000	91-0837732				SCIT, Inc.	MA	NIA	Winmar Company, Inc.	Ownership, Board and Management	100.000	Liberty Mutual Holding Company Inc.			
		000000	82-4345429				Shandon Valley Vineyards LLC	DE	NIA	PAGUS Holdings LLC	Ownership, Board and Management	100.000	Liberty Mutual Holding Company Inc.			
		000000	81-2854330				Solaria Labs, LLC	DE	NIA	Liberty Mutual Insurance Company	Ownership, Board and Management	100.000	Liberty Mutual Holding Company Inc.			
		000000					Solaria Labs Singapore Pte. Ltd	SGP	NIA	Liberty UK and Europe Holdings Limited	Ownership, Board and Management	100.000	Liberty Mutual Holding Company Inc.			
		000000	84-1695835				St. James/Arlington LLC	MA	NIA	Employers Insurance Company of Wausau	Ownership, Board and Management	100.000	Liberty Mutual Holding Company Inc.			
		000000	01-0854295				St. James/Arlington Management LLC	MA	DS	Liberty Mutual Insurance Company	Ownership, Board and Management	100.000	Liberty Mutual Holding Company Inc.			
							St. James/Arlington Real Estate Limited Partnership	MA	DS	St. James/Arlington LLC	Ownership, Board and Management	3.000	Liberty Mutual Holding Company Inc.			

STATEMENT AS OF MARCH 31, 2022 OF THE STATE AUTO INSURANCE COMPANY OF OHIO

SCHEDULE Y
PART 1A - DETAIL OF INSURANCE HOLDING COMPANY SYSTEM

1	2	3	4	5	6	7	8	9	10	11	12 Type of Control (Ownership, Board, Management, Attorney-in-Fact, Influence, Other)	13 If Control is Owner- ship Provide Percen- tage	14 Ultimate Controlling Entity(ies)/Person(s)	15 Is an SCA Filing Re- quired? (Yes/No)	16 *
Group Code	Group Name	NAIC Company Code	ID Number	Federal RSSD	CIK	Name of Securities Exchange if Publicly Traded (U.S. or International)	Names of Parent, Subsidiaries Or Affiliates	Domi- ciliary Loca- tion	Rela- tion- ship to Reporting Entity	Directly Controlled by (Name of Entity/Person)					
		.00000	84-1695837				St. James/Arlington Real Estate Limited Partnership	.MA	.DS	Liberty Mutual Insurance Company	Ownership, Board and Management	.92.000	Liberty Mutual Holding Company Inc.		
		.00000	84-1695837				St. James/Arlington Real Estate Limited Partnership	.MA	.DS	Liberty Mutual Fire Insurance Company	Ownership, Board and Management	.5.000	Liberty Mutual Holding Company Inc.		
		.00000	31-1324304				State Auto Financial Corporation	.OH	NIA	State Automobile Mutual Insurance Company	Ownership, Board and Management	.100.000	Liberty Mutual Holding Company Inc.		
		.00000					State Auto Foundation	.OH	NIA	Liberty Mutual Insurance Company	Board, Management	.0.000	Liberty Mutual Holding Company Inc.		
		.00000	20-8756040				State Auto Holdings, Inc.	.OH	NIA	State Automobile Mutual Insurance Company	Ownership, Board and Management	.100.000	Liberty Mutual Holding Company Inc.		
.0111	Liberty Mutual Insurance Company and its Affiliated Insurers	.11017	31-1651026				State Auto Insurance Company of Ohio	.OH	.IA	State Auto Financial Corporation	Ownership, Board and Management	.100.000	Liberty Mutual Holding Company Inc.		
.0111	Liberty Mutual Insurance Company and its Affiliated Insurers	.31755	39-1211058				State Auto Insurance Company of Wisconsin	.WI	.IA	State Automobile Mutual Insurance Company	Ownership, Board and Management	.100.000	Liberty Mutual Holding Company Inc.		
		.00000	82-2704976				State Auto Labs Corp.	.OH	NIA	State Automobile Mutual Insurance Company	Ownership, Board and Management	.100.000	Liberty Mutual Holding Company Inc.		
.0111	Liberty Mutual Insurance Company and its Affiliated Insurers	.25127	57-6010814				State Auto Property & Casualty Insurance Company	.IA	.IA	State Auto Financial Corporation	Ownership, Board and Management	.100.000	Liberty Mutual Holding Company Inc.		
.0111	Liberty Mutual Insurance Company and its Affiliated Insurers	.25135	31-4316080				State Automobile Mutual Insurance Company	.OH	.IA	Liberty Mutual Group Inc.	Ownership, Board and Management	.100.000	Liberty Mutual Holding Company Inc.		
		.00000	31-0676465				Stateco Financial Services, Inc.	.OH	NIA	State Auto Financial Corporation	Ownership, Board and Management	.100.000	Liberty Mutual Holding Company Inc.		
		.00000					Syndicate 2014	.GBR	.DS	Pembroke JV Ltd.	Ownership	.33.000	Liberty Mutual Holding Company Inc.		
		.00000					Syndicate 4000	.GBR	.DS	Pembroke JV Ltd.	Ownership	.100.000	Liberty Mutual Holding Company Inc.		
		.00000	04-3545985				Tara Energy Investments, LLC	.DE	.DS	Liberty Energy Holdings, LLC	Ownership, Board and Management	.100.000	Liberty Mutual Holding Company Inc.		
		.00000					TECA Santa Marta Holdings S.L	.ESP	NIA	LMAT Natural Resources International S.L.	Ownership	.100.000	Liberty Mutual Holding Company Inc.		
		.00000					TECA SM LLC	.DE	NIA	Teca Santa Marta Holdings S.L.	Ownership	.100.000	Liberty Mutual Holding Company Inc.		
		.00000					TECA SR LLC	.DE	NIA	Santa Rita Arbol Holdings S.L.	Ownership	.100.000	Liberty Mutual Holding Company Inc.		
.0111	Liberty Mutual Insurance Company and its Affiliated Insurers	.33588	04-3058503				The First Liberty Insurance Corporation	.IL	.DS	Liberty Mutual Insurance Company	Ownership, Board and Management	.100.000	Liberty Mutual Holding Company Inc.		
.0111	Liberty Mutual Insurance Company and its Affiliated Insurers	.23515	31-0978280				The Midwestern Indemnity Company	.NH	.DS	Peerless Insurance Company	Ownership, Board and Management	.100.000	Liberty Mutual Holding Company Inc.		
		.00000	35-1283740				The National Corporation	.IN	.DS	Liberty-USA Corporation	Ownership, Board and Management	.100.000	Liberty Mutual Holding Company Inc.		
.0111	Liberty Mutual Insurance Company and its Affiliated Insurers	.24171	02-0342937				The Netherlands Insurance Company	.NH	.DS	Peerless Insurance Company	Ownership, Board and Management	.100.000	Liberty Mutual Holding Company Inc.		
.0111	Liberty Mutual Insurance Company and its Affiliated Insurers	.24074	31-0396250				The Ohio Casualty Insurance Company	.NH	.DS	Ohio Casualty Corporation	Ownership, Board and Management	.100.000	Liberty Mutual Holding Company Inc.		
		.00000					Tun Kaoklai Co., Ltd.	.THA	.DS	Kritaya Tun Company Limited	Ownership, Board and Management	.99.990	Liberty Mutual Holding Company Inc.		
		.00000					Tun Kaoklai Co., Ltd.	.THA	.DS	Liberty International Asia Pacific Holdings LLC	Ownership, Board and Management	.0.010	Liberty Mutual Holding Company Inc.		
		.00000					Vitoria Floresta Brasil Ltda.	.BRA	NIA	LMAT Natural Resources International S.L.	Ownership	.99.990	Liberty Mutual Holding Company Inc.		
		.00000					Vitoria Floresta Brasil Ltda.	.BRA	NIA	LMAT Arbol Holdings LLC	Ownership	.0.010	Liberty Mutual Holding Company Inc.		
.0111	Liberty Mutual Insurance Company and its Affiliated Insurers	.26069	36-3522250				Wausau Business Insurance Company	.WI	.DS	Liberty Mutual Insurance Company	Ownership, Board and Management	.100.000	Liberty Mutual Holding Company Inc.		
.0111	Liberty Mutual Insurance Company and its Affiliated Insurers	.26425	36-2753986				Wausau General Insurance Company	.WI	.DS	Liberty Mutual Insurance Company	Ownership, Board and Management	.100.000	Liberty Mutual Holding Company Inc.		
		.00000					Wausau Insurance Company (U.K.) Limited	.GBR	.DS	Liberty International Netherlands V.O.F.	Ownership, Board and Management	.100.000	Liberty Mutual Holding Company Inc.		
.0111	Liberty Mutual Insurance Company and its Affiliated Insurers	.26042	39-1341459				Wausau Underwriters Insurance Company	.WI	.DS	Liberty Mutual Insurance Company	Ownership, Board and Management	.100.000	Liberty Mutual Holding Company Inc.		
.0111	Liberty Mutual Insurance Company and its Affiliated Insurers	.44393	31-0624491				West American Insurance Company	.IN	.DS	The Ohio Casualty Insurance Company	Ownership, Board and Management	.100.000	Liberty Mutual Holding Company Inc.		
		.00000	45-2396108				Wildcat Field Services, LLC	.TX	.DS	Wildcat Midstream Holdings II LLC	Ownership	.100.000	Liberty Mutual Holding Company Inc.		
		.00000	46-1637784				Wildcat Midstream Holdings II LLC	.TX	.DS	Kellen Holdings, LLC	Ownership	.95.000	Liberty Mutual Holding Company Inc.		
		.00000	91-0683335				Winmar Company, Inc.	.WA	.DS	Safeco Properties, Inc.	Ownership, Board and Management	.100.000	Liberty Mutual Holding Company Inc.		
		.00000	35-2604562				Workgrid Software, Inc.	.DE	NIA	Liberty Mutual Technology Group, Inc.	Ownership, Board and Management	.100.000	Liberty Mutual Holding Company Inc.		

NONE

Asterisk	Explanation

PART 1 - LOSS EXPERIENCE

Line of Business		Current Year to Date			4 Prior Year to Date Direct Loss Percentage
		1 Direct Premiums Earned	2 Direct Losses Incurred	3 Direct Loss Percentage	
1.	Fire	109,380	36,416	33.3	10.4
2.1	Allied Lines	145,026	38,214	26.3	0.0
2.2	Multiple peril crop	0	0	0.0	0.0
2.3	Federal flood	0	0	0.0	0.0
2.4	Private crop	0	0	0.0	0.0
2.5	Private flood	0	0	0.0	0.0
3.	Farmowners multiple peril	0	0	0.0	0.0
4.	Homeowners multiple peril	2,047,803	551,888	27.0	19.0
5.	Commercial multiple peril	0	0	0.0	0.0
6.	Mortgage guaranty	0	0	0.0	0.0
8.	Ocean marine	0	0	0.0	0.0
9.	Inland marine	69,896	56,543	80.9	(78.6)
10.	Financial guaranty	0	0	0.0	0.0
11.1	Medical professional liability - occurrence	0	0	0.0	0.0
11.2	Medical professional liability - claims-made	0	0	0.0	0.0
12.	Earthquake	22,851	0	0.0	0.0
13.1	Comprehensive (hospital and medical) individual	0	0	0.0	0.0
13.2	Comprehensive (hospital and medical) group	0	0	0.0	0.0
14.	Credit accident and health	0	0	0.0	0.0
15.1	Vision only	0	0	0.0	0.0
15.2	Dental only	0	0	0.0	0.0
15.3	Disability income	0	0	0.0	0.0
15.4	Medicare supplement	0	0	0.0	0.0
15.5	Medicaid Title XIX	0	0	0.0	0.0
15.6	Medicare Title XVIII	0	0	0.0	0.0
15.7	Long-term care	0	0	0.0	0.0
15.8	Federal employees health benefits plan	0	0	0.0	0.0
15.9	Other health	0	0	0.0	0.0
16.	Workers' compensation	0	0	0.0	0.0
17.1	Other liability - occurrence	105,721	33,726	31.9	(10.4)
17.2	Other liability - claims-made	0	0	0.0	0.0
17.3	Excess workers' compensation	0	0	0.0	0.0
18.1	Products liability - occurrence	0	0	0.0	0.0
18.2	Products liability - claims-made	0	0	0.0	0.0
19.1	Private passenger auto no-fault (personal injury protection)	0	0	0.0	0.0
19.2	Other private passenger auto liability	1,453,926	1,181,676	81.3	0.0
19.3	Commercial auto no-fault (personal injury protection)	0	0	0.0	0.0
19.4	Other commercial auto liability	0	0	0.0	0.0
21.1	Private passenger auto physical damage	1,210,034	446,078	36.9	0.0
21.2	Commercial auto physical damage	0	0	0.0	0.0
22.	Aircraft (all perils)	0	0	0.0	0.0
23.	Fidelity	0	0	0.0	0.0
24.	Surety	0	0	0.0	0.0
26.	Burglary and theft	0	0	0.0	0.0
27.	Boiler and machinery	0	0	0.0	0.0
28.	Credit	0	0	0.0	0.0
29.	International	0	0	0.0	0.0
30.	Warranty	0	0	0.0	0.0
31.	Reinsurance - Nonproportional Assumed Property	XXX	XXX	XXX	XXX
32.	Reinsurance - Nonproportional Assumed Liability	XXX	XXX	XXX	XXX
33.	Reinsurance - Nonproportional Assumed Financial Lines	XXX	XXX	XXX	XXX
34.	Aggregate write-ins for other lines of business	0	0	0.0	0.0
35.	Totals	5,164,636	2,344,541	45.4	41.0
DETAILS OF WRITE-INS					
3401.				
3402.				
3403.				
3498.	Summary of remaining write-ins for Line 34 from overflow page	0	0	0.0	0.0
3499.	Totals (Lines 3401 through 3403 plus 3498)(Line 34 above)	0	0	0.0	0.0

STATEMENT AS OF MARCH 31, 2022 OF THE STATE AUTO INSURANCE COMPANY OF OHIO

PART 2 - DIRECT PREMIUMS WRITTEN

Line of Business		1 Current Quarter	2 Current Year to Date	3 Prior Year Year to Date
1.	Fire	91,356	91,356	102,354
2.1	Allied Lines	123,700	123,700	0
2.2	Multiple peril crop	0	0	0
2.3	Federal flood	0	0	0
2.4	Private crop	0	0	0
2.5	Private flood	0	0	0
3.	Farmowners multiple peril	0	0	0
4.	Homeowners multiple peril	1,538,640	1,538,640	1,692,245
5.	Commercial multiple peril	0	0	0
6.	Mortgage guaranty	0	0	0
8.	Ocean marine	0	0	0
9.	Inland marine	50,805	50,805	60,036
10.	Financial guaranty	0	0	0
11.1	Medical professional liability - occurrence	0	0	0
11.2	Medical professional liability - claims-made	0	0	0
12.	Earthquake	16,271	16,271	16,442
13.1	Comprehensive (hospital and medical) individual	0	0	0
13.2	Comprehensive (hospital and medical) group	0	0	0
14.	Credit accident and health	0	0	0
15.1	Vision only	0	0	0
15.2	Dental only	0	0	0
15.3	Disability income	0	0	0
15.4	Medicare supplement	0	0	0
15.5	Medicaid Title XIX	0	0	0
15.6	Medicare Title XVIII	0	0	0
15.7	Long-term care	0	0	0
15.8	Federal employees health benefits plan	0	0	0
15.9	Other health	0	0	0
16.	Workers' compensation	0	0	0
17.1	Other liability - occurrence	90,038	90,038	100,157
17.2	Other liability - claims-made	0	0	0
17.3	Excess workers' compensation	0	0	0
18.1	Products liability - occurrence	0	0	0
18.2	Products liability - claims-made	0	0	0
19.1	Private passenger auto no-fault (personal injury protection)	0	0	0
19.2	Other private passenger auto liability	1,192,018	1,192,018	0
19.3	Commercial auto no-fault (personal injury protection)	0	0	0
19.4	Other commercial auto liability	0	0	0
21.1	Private passenger auto physical damage	983,695	983,695	0
21.2	Commercial auto physical damage	0	0	0
22.	Aircraft (all perils)	0	0	0
23.	Fidelity	0	0	0
24.	Surety	0	0	0
26.	Burglary and theft	0	0	0
27.	Boiler and machinery	0	0	0
28.	Credit	0	0	0
29.	International	0	0	0
30.	Warranty	0	0	0
31.	Reinsurance - Nonproportional Assumed Property	XXX	XXX	XXX
32.	Reinsurance - Nonproportional Assumed Liability	XXX	XXX	XXX
33.	Reinsurance - Nonproportional Assumed Financial Lines	XXX	XXX	XXX
34.	Aggregate write-ins for other lines of business	0	0	0
35.	Totals	4,086,523	4,086,523	1,971,234
DETAILS OF WRITE-INS				
3401.			
3402.			
3403.			
3498.	Summary of remaining write-ins for Line 34 from overflow page	0	0	0
3499.	Totals (Lines 3401 through 3403 plus 3498)(Line 34 above)	0	0	0

STATEMENT AS OF MARCH 31, 2022 OF THE STATE AUTO INSURANCE COMPANY OF OHIO

PART 3 (000 omitted)

LOSS AND LOSS ADJUSTMENT EXPENSE RESERVES SCHEDULE

	1	2	3	4	5	6	7	8	9	10	11	12	13
Years in Which Losses Occurred	Prior Year-End Known Case Loss and LAE Reserves	Prior Year-End IBNR Loss and LAE Reserves	Total Prior Year-End Loss and LAE Reserves (Cols. 1+2)	2022 Loss and LAE Payments on Claims Reported as of Prior Year-End	2022 Loss and LAE Payments on Claims Unreported as of Prior Year-End	Total 2022 Loss and LAE Payments (Cols. 4+5)	Q.S. Date Known Case Loss and LAE Reserves on Claims Reported and Open as of Prior Year End	Q.S. Date Known Case Loss and LAE Reserves on Claims Reported or Reopened Subsequent to Prior Year End	Q.S. Date IBNR Loss and LAE Reserves	Total Q.S. Loss and LAE Reserves (Cols.7+8+9)	Prior Year-End Known Case Loss and LAE Reserves Developed (Savings)/ Deficiency (Cols.4+7 minus Col. 1)	Prior Year-End IBNR Loss and LAE Reserves Developed (Savings)/ Deficiency (Cols. 5+8+9 minus Col. 2)	Prior Year-End Total Loss and LAE Reserve Developed (Savings)/ Deficiency (Cols. 11+12)
1. 2019 + Prior	0	0	0	0	0	0	0	0	0	0	0	0	0
2. 2020	0	0	0	0	0	0	0	0	0	0	0	0	0
3. Subtotals 2020 + Prior	0	0	0	0	0	0	0	0	0	0	0	0	0
4. 2021	0	0	0	0	0	0	0	0	0	0	0	0	0
5. Subtotals 2021 + Prior	0	0	0	0	0	0	0	0	0	0	0	0	0
6. 2022	XXX	XXX	XXX	XXX	0	0	XXX	0	0	0	XXX	XXX	XXX
7. Totals	0	0	0	0	0	0	0	0	0	0	0	0	0
8. Prior Year-End Surplus As Regards Policyholders	18,824										Col. 11, Line 7 As % of Col. 1 Line 7	Col. 12, Line 7 As % of Col. 2 Line 7	Col. 13, Line 7 As % of Col. 3 Line 7
											1. 0.0	2. 0.0	3. 0.0
											Col. 13, Line 7 As a % of Col. 1 Line 8		
											4. 0.0		

STATEMENT AS OF MARCH 31, 2022 OF THE STATE AUTO INSURANCE COMPANY OF OHIO

SUPPLEMENTAL EXHIBITS AND SCHEDULES INTERROGATORIES

The following supplemental reports are required to be filed as part of your statement filing. However, in the event that your company does not transact the type of business for which the special report must be filed, your response of NO to the specific interrogatory will be accepted in lieu of filing a "NONE" report and a bar code will be printed below. If the supplement is required of your company but is not being filed for whatever reason enter SEE EXPLANATION and provide an explanation following the interrogatory questions.

	Response
1. Will the Trusteed Surplus Statement be filed with the state of domicile and the NAIC with this statement?	NO
2. Will Supplement A to Schedule T (Medical Professional Liability Supplement) be filed with this statement?	NO
3. Will the Medicare Part D Coverage Supplement be filed with the state of domicile and the NAIC with this statement?	NO
4. Will the Director and Officer Insurance Coverage Supplement be filed with the state of domicile and the NAIC with this statement?	NO
AUGUST FILING	
5. Will the regulator-only (non-public) Communication of Internal Control Related Matters Noted in Audit be filed with the state of domicile and electronically with the NAIC (as a regulator-only non-public document) by August 1? The response for 1st and 3rd quarters should be N/A. A NO response resulting with a bar code is only appropriate in the 2nd quarter.	N/A

Explanations:

1.
2.
3.
4.

Bar Codes:

1. Trusteed Surplus Statement [Document Identifier 490]
2. Supplement A to Schedule T [Document Identifier 455]
3. Medicare Part D Coverage Supplement [Document Identifier 365]
4. Director and Officer Supplement [Document Identifier 505]



SCHEDULE A - VERIFICATION

Real Estate

	1	2
	Year to Date	Prior Year Ended December 31
1. Book/adjusted carrying value, December 31 of prior year		
2. Cost of acquired:		
2.1 Actual cost at time of acquisition		
2.2 Additional investment made after acquisition		
3. Current year change in encumbrances		
4. Total gain (loss) on disposals		
5. Deduct amounts received on disposals		
6. Total foreign exchange change in book/adjusted carrying value		
7. Deduct current year's other than temporary impairment recognized		
8. Deduct current year's depreciation		
9. Book/adjusted carrying value at the end of current period (Lines 1+2+3+4-5+6-7-8)		
10. Deduct total nonadmitted amounts		
11. Statement value at end of current period (Line 9 minus Line 10)		

SCHEDULE B - VERIFICATION

Mortgage Loans

	1	2
	Year to Date	Prior Year Ended December 31
1. Book value/recorded investment excluding accrued interest, December 31 of prior year		
2. Cost of acquired:		
2.1 Actual cost at time of acquisition		
2.2 Additional investment made after acquisition		
3. Capitalized deferred interest and other		
4. Accrual of discount		
5. Unrealized valuation increase (decrease)		
6. Total gain (loss) on disposals		
7. Deduct amounts received on disposals		
8. Deduct amortization of premium and mortgage interest paid and commitment fees		
9. Total foreign exchange change in book value/recorded investment excluding accrued interest		
10. Deduct current year's other than temporary impairment recognized		
11. Book value/recorded investment excluding accrued interest at end of current period (Lines 1+2+3+4+5+6-7-8+9-10)		
12. Total valuation allowance		
13. Subtotal (Line 11 plus Line 12)		
14. Deduct total nonadmitted amounts		
15. Statement value at end of current period (Line 13 minus Line 14)		

SCHEDULE BA - VERIFICATION

Other Long-Term Invested Assets

	1	2
	Year to Date	Prior Year Ended December 31
1. Book/adjusted carrying value, December 31 of prior year		
2. Cost of acquired:		
2.1 Actual cost at time of acquisition		
2.2 Additional investment made after acquisition		
3. Capitalized deferred interest and other		
4. Accrual of discount		
5. Unrealized valuation increase (decrease)		
6. Total gain (loss) on disposals		
7. Deduct amounts received on disposals		
8. Deduct amortization of premium and depreciation		
9. Total foreign exchange change in book/adjusted carrying value		
10. Deduct current year's other than temporary impairment recognized		
11. Book/adjusted carrying value at end of current period (Lines 1+2+3+4+5+6-7-8+9-10)		
12. Deduct total nonadmitted amounts		
13. Statement value at end of current period (Line 11 minus Line 12)		

SCHEDULE D - VERIFICATION

Bonds and Stocks

	1	2
	Year to Date	Prior Year Ended December 31
1. Book/adjusted carrying value of bonds and stocks, December 31 of prior year	18,546,136	18,038,021
2. Cost of bonds and stocks acquired	1,014,440	3,346,161
3. Accrual of discount	6,752	31,655
4. Unrealized valuation increase (decrease)	(221,715)	102,289
5. Total gain (loss) on disposals	516,400	68,169
6. Deduct consideration for bonds and stocks disposed of	6,250,499	2,943,695
7. Deduct amortization of premium	22,216	96,463
8. Total foreign exchange change in book/adjusted carrying value	0	0
9. Deduct current year's other than temporary impairment recognized	0	0
10. Total investment income recognized as a result of prepayment penalties and/or acceleration fees	0	0
11. Book/adjusted carrying value at end of current period (Lines 1+2+3+4+5-6-7+8-9+10)	13,589,298	18,546,136
12. Deduct total nonadmitted amounts	0	0
13. Statement value at end of current period (Line 11 minus Line 12)	13,589,298	18,546,136

STATEMENT AS OF MARCH 31, 2022 OF THE STATE AUTO INSURANCE COMPANY OF OHIO

SCHEDULE D - PART 1B

Showing the Acquisitions, Dispositions and Non-Trading Activity
During the Current Quarter for all Bonds and Preferred Stock by NAIC Designation

NAIC Designation	1 Book/Adjusted Carrying Value Beginning of Current Quarter	2 Acquisitions During Current Quarter	3 Dispositions During Current Quarter	4 Non-Trading Activity During Current Quarter	5 Book/Adjusted Carrying Value End of First Quarter	6 Book/Adjusted Carrying Value End of Second Quarter	7 Book/Adjusted Carrying Value End of Third Quarter	8 Book/Adjusted Carrying Value December 31 Prior Year
BONDS								
1. NAIC 1 (a)	17,540,061	0	0	0	17,540,061	0	0	17,540,061
2. NAIC 2 (a)	0	0	0	0	0	0	0	0
3. NAIC 3 (a)	0	0	0	0	0	0	0	0
4. NAIC 4 (a)	0	0	0	0	0	0	0	0
5. NAIC 5 (a)	0	0	0	0	0	0	0	0
6. NAIC 6 (a)	0	0	0	0	0	0	0	0
7. Total Bonds	17,540,061	0	0	0	17,540,061	0	0	17,540,061
PREFERRED STOCK								
8. NAIC 1	0	0	0	0	0	0	0	0
9. NAIC 2	0	0	0	0	0	0	0	0
10. NAIC 3	0	0	0	0	0	0	0	0
11. NAIC 4	0	0	0	0	0	0	0	0
12. NAIC 5	0	0	0	0	0	0	0	0
13. NAIC 6	0	0	0	0	0	0	0	0
14. Total Preferred Stock	0	0	0	0	0	0	0	0
15. Total Bonds and Preferred Stock	17,540,061	0	0	0	17,540,061	0	0	17,540,061

(a) Book/Adjusted Carrying Value column for the end of the current reporting period includes the following amount of short-term and cash equivalent bonds by NAIC designation:

NAIC 1 \$0 ; NAIC 2 \$0 ; NAIC 3 \$0 NAIC 4 \$0 ; NAIC 5 \$0 ; NAIC 6 \$.....0

Schedule DA - Part 1 - Short-Term Investments

N O N E

Schedule DA - Verification - Short-Term Investments

N O N E

Schedule DB - Part A - Verification - Options, Caps, Floors, Collars, Swaps and Forwards

N O N E

Schedule DB - Part B - Verification - Futures Contracts

N O N E

Schedule DB - Part C - Section 1 - Replication (Synthetic Asset) Transactions (RSATs) Open

N O N E

Schedule DB-Part C-Section 2-Reconciliation of Replication (Synthetic Asset) Transactions Open

N O N E

Schedule DB - Verification - Book/Adjusted Carrying Value, Fair Value and Potential Exposure of
Derivatives

N O N E

Schedule E - Part 2 - Verification - Cash Equivalents

N O N E

Schedule A - Part 2 - Real Estate Acquired and Additions Made

N O N E

Schedule A - Part 3 - Real Estate Disposed

N O N E

Schedule B - Part 2 - Mortgage Loans Acquired and Additions Made

N O N E

Schedule B - Part 3 - Mortgage Loans Disposed, Transferred or Repaid

N O N E

Schedule BA - Part 2 - Other Long-Term Invested Assets Acquired and Additions Made

N O N E

Schedule BA - Part 3 - Other Long-Term Invested Assets Disposed, Transferred or Repaid

N O N E

STATEMENT AS OF MARCH 31, 2022 OF THE STATE AUTO INSURANCE COMPANY OF OHIO

SCHEDULE D - PART 3

Show All Long-Term Bonds and Stock Acquired During the Current Quarter

[illegible]

STATEMENT AS OF MARCH 31, 2022 OF THE STATE AUTO INSURANCE COMPANY OF OHIO

SCHEDULE D - PART 4

Show All Long-Term Bonds and Stock Sold, Redeemed or Otherwise Disposed of During the Current Quarter

1	2	3	4	5	6	7	8	9	10	Change In Book/Adjusted Carrying Value					16	17	18	19	20	21	22	
										11	12	13	14	15								
CUSIP Ident- ification	Description	For- eign	Disposal Date	Name of Purchaser	Number of Shares of Stock	Consid- eration	Par Value	Actual Cost	Prior Year Book/ Adjusted Carrying Value	Unrealized Valuation Increase/ (Decrease)	Current Year's (Amor- tization)/ Accretion	Current Year's Other Than Temporary Impairment Recogn- ized	Total Change in Book/ Adjusted Carrying Value (11 + 12 - 13)	Total Foreign Exchange Change in Book /Adjusted Carrying Value	Book/ Adjusted Carrying Value at Disposal Date	Foreign Exchange Gain (Loss) on Disposal	Realized Gain (Loss) on Disposal	Total Gain (Loss) on Disposal	Bond Interest/ Stock Dividends Received During Year	Stated Con- tractual Maturity Date	NAIC Desig- nation, NAIC Desig- nation Modifier and SVO Admini- strative Symbol	
..912810-FQ-6	UNITED STATES TREASURY		03/08/2022 ..	JP MORGAN SECS INC., -		607,975	410,848	496,426	508,670	(66,844)	(1,046)	0	(67,889)	0	440,781	0	167,194	167,194	5,524	04/15/2032	1.A	
..912810-FS-2	UNITED STATES TREASURY		03/08/2022 ..	GOLDMAN		811,078	703,875	513,668	728,330	(169,918)	3,681	0	(166,238)	0	562,092	0	248,986	248,986	9,044	01/15/2026	1.A	
..912828-B2-5	UNITED STATES TREASURY		03/08/2022 ..	GOLDMAN		134,045	125,734	112,612	128,346	(14,738)	196	0	(14,542)	0	113,804	0	20,241	20,241	505	01/15/2024	1.A	
..912828-J7-6	UNITED STATES TREASURY		03/31/2022 ..	Maturity @ 100.00		2,780,000	2,780,000	2,788,028	2,780,384	0	(384)	0	(384)	0	2,780,000	0	0	0	24,325	03/31/2022	1.A	
0109999999. Subtotal - Bonds - U.S. Governments						4,333,098	4,020,457	3,910,734	4,145,731	(251,500)	2,446	0	(249,054)	0	3,896,677	0	436,421	436,421	39,398	XXX	XXX	
..889294-US-6	TOLEDO OHIO CITY SCH DIST		03/10/2022 ..	MORGAN STANLEY CO		886,461	835,000	968,742	865,055	0	(3,032)	0	(3,032)	0	862,023	0	24,438	24,438	11,945	12/01/2029	1.C FE	
0709999999. Subtotal - Bonds - U.S. Political Subdivisions of States, Territories and Possessions						886,461	835,000	968,742	865,055	0	(3,032)	0	(3,032)	0	862,023	0	24,438	24,438	11,945	XXX	XXX	
25099999997. Total - Bonds - Part 4						5,219,559	4,855,457	4,879,476	5,010,786	(251,500)	(585)	0	(252,085)	0	4,758,700	0	460,858	460,858	51,343	XXX	XXX	
25099999998. Total - Bonds - Part 5						XXX	XXX	XXX	XXX	XXX	XXX	XXX	XXX	XXX	XXX	XXX	XXX	XXX	XXX	XXX	XXX	XXX
25099999999. Total - Bonds						5,219,559	4,855,457	4,879,476	5,010,786	(251,500)	(585)	0	(252,085)	0	4,758,700	0	460,858	460,858	51,343	XXX	XXX	
45099999997. Total - Preferred Stocks - Part 4						0	XXX	0	0	0	0	0	0	0	0	0	0	0	0	0	XXX	XXX
45099999998. Total - Preferred Stocks - Part 5						XXX	XXX	XXX	XXX	XXX	XXX	XXX	XXX	XXX	XXX	XXX	XXX	XXX	XXX	XXX	XXX	XXX
45099999999. Total - Preferred Stocks						0	XXX	0	0	0	0	0	0	0	0	0	0	0	0	0	XXX	XXX
..78468R-78-8	SPDR PTF S&P 500 HI DIV		03/11/2022 ..	CITIGROUP GLOBAL MARKETS INC.	23,903.000	1,030,941		975,399	1,006,077	(30,678)	0	0	(30,678)	0	975,399	0	55,541	55,541	0			
58199999999. Subtotal - Common Stocks - Exchange Traded Funds						1,030,941	XXX	975,399	1,006,077	(30,678)	0	0	(30,678)	0	975,399	0	55,541	55,541	0	XXX	XXX	
59899999997. Total - Common Stocks - Part 4						1,030,941	XXX	975,399	1,006,077	(30,678)	0	0	(30,678)	0	975,399	0	55,541	55,541	0	XXX	XXX	
59899999998. Total - Common Stocks - Part 5						XXX	XXX	XXX	XXX	XXX	XXX	XXX	XXX	XXX	XXX	XXX	XXX	XXX	XXX	XXX	XXX	XXX
59899999999. Total - Common Stocks						1,030,941	XXX	975,399	1,006,077	(30,678)	0	0	(30,678)	0	975,399	0	55,541	55,541	0	XXX	XXX	
59999999999. Total - Preferred and Common Stocks						1,030,941	XXX	975,399	1,006,077	(30,678)	0	0	(30,678)	0	975,399	0	55,541	55,541	0	XXX	XXX	
60099999999 - Totals						6,250,499	XXX	5,854,876	6,016,863	(282,178)	(585)	0	(282,763)	0	5,734,100	0	516,400	516,400	51,343	XXX	XXX	

Schedule DB - Part A - Section 1 - Options, Caps, Floors, Collars, Swaps and Forwards Open
N O N E

Schedule DB - Part B - Section 1 - Futures Contracts Open
N O N E

Schedule DB - Part B - Section 1B - Brokers with whom cash deposits have been made
N O N E

Schedule DB - Part D - Section 1 - Counterparty Exposure for Derivative Instruments Open
N O N E

Schedule DB - Part D-Section 2 - Collateral for Derivative Instruments Open - Pledged By
N O N E

Schedule DB - Part D-Section 2 - Collateral for Derivative Instruments Open - Pledged To
N O N E

Schedule DB - Part E - Derivatives Hedging Variable Annuity Guarantees
N O N E

Schedule DL - Part 1 - Reinvested Collateral Assets Owned
N O N E

Schedule DL - Part 2 - Reinvested Collateral Assets Owned
N O N E

SCHEDULE E - PART 1 - CASH

[illegible]

STATEMENT AS OF MARCH 31, 2022 OF THE STATE AUTO INSURANCE COMPANY OF OHIO

SCHEDULE E - PART 2 - CASH EQUIVALENTS

Show Investments Owned End of Current Quarter

1 CUSIP	2 Description	3 Code	4 Date Acquired	5 Rate of Interest	6 Maturity Date	7 Book/Adjusted Carrying Value	8 Amount of Interest Due and Accrued	9 Amount Received During Year
NONE								
8609999999 - Total Cash Equivalents								